

Daily Official List

Athens Exchange sa

Monday, 22 April, 2013

Year: 134 Trading Day No: 75



ΟΜΙΛΟΣ ΕΛΛΗΝΙΚΑ ΧΡΗΜΑΤΙΣΤΗΡΙΑ
HELLENIC EXCHANGES GROUP

Disclaimer:

Athens Exchange (ATHEX) endeavours to ensure that the data and other material ("Information") presented on the Daily Official List are accurate and complete, but it is not liable for any errors or omissions of data or /and for the accuracy, credibility, updating and completeness of the aforesaid information nor it has any liability arising directly or indirectly from the use of the above Information.

ATHEX is not liable for the accuracy of the data included in listed companies' announcements. Only the sender of such an announcement is fully and solely liable for any infringement of third party's rights from the content of such announcement. All contents of the Daily Official List are provided only for information purposes and do not constitute investment advice or solicitation to invest in securities or other products listed for trading on ATHEX.

You acknowledge and agree that ATHEX is the owner of any property rights related to any Information appearing on the Daily Official List including intellectual property rights copyright, trademarks, etc.

The above data are a property of the Athens Exchange and are copyright protected. Users are forbidden to reproduce, modify, copy, sale, transmit or redistribute, by all reproduction means and methods, part or the whole of the above data, without reference to their source.

The commercial exploitation of these data is, also, forbidden by third parties. Athens Exchange does not carry any responsibility, direct or indirect, derived from usage or accidental alteration of the above data when used by third parties.

**Athens Exchange sa**

110 Athinon Ave., 10442 Athens, Tel: (210) 33.66.800, Fax: (210) 32.13.938

www.athex.gr

**Thessalonica Stock Exchange Center (T.S.E.C)**

16-18 Katouni Str., Thessalonica 546 25 Tel: (2310) 567.667, Fax: (2310) 530.545

Athex Members Guarantee Fund

14-16 Fidiou Str., Athens 106 78, Tel: (210) 33.04.682, Fax: (210) 33.04.155

Hellenic Republic Capital Market Commission

1 Kolokotroni Str. & 1 Stadiou Str., Athens 10562 Tel: (210) 33.77.100 Fax: (210) 33.77.173

Table of Contents

Section 1: Statistical Figures of Stocks, Bonds and Derivatives Market

Summary of Markets

Athex Indices

Analytic Figures for Athex Market's Boards and Categories

Trading Details by Sector

Top 10 best & worst performing Shares

Derivatives Summary

Section 2: Analytic Figures of Shares Transactions

Analytic Figures of Shares Transactions

Shares' Notes

Section 3: Figures of Shares Transactions

Shares Blocks Details

Shares Rights Details

Shares Short Selling

Stock Borrowing

Shares Forced Sales

Forced Sales Registered Shares

Exchange Traded Funds (ETFs) Characteristics

Section 5: Bonds traded in Fixed Income Assets Market

Corporate Bonds

Government Bonds

Treasury Bills & Zero Coupon Government Bonds

Government Bonds Traded with the Open Outcry Method

State Banks Bonds

Section 6: Additional Infos

Athex & ATHEXClear Members List

List of Stocks under Market Making operations

Section 7: Derivatives Market Analytic Figures

Index Futures

Stock Futures

Index Options

Stock Options

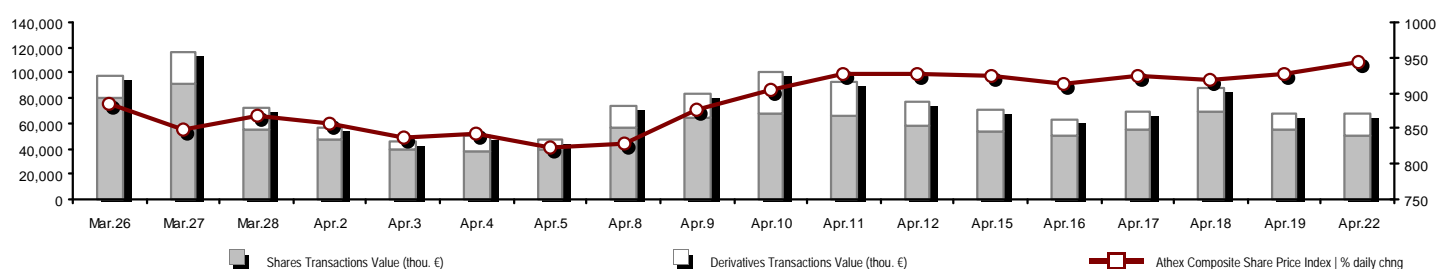
Stock Lending Analytic Figures (Repo Contracts)

Appendix A: Sectors codification for listed companies

Section codification follows the corresponding from the Greek version of Daily Official List for reference purposes.

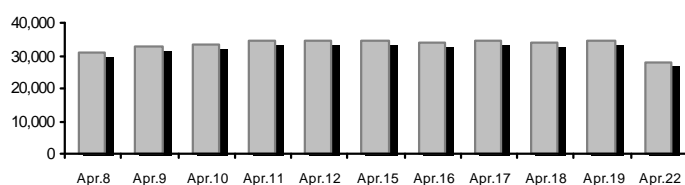
Summary of Markets

Athex Composite Share Price Index vs Shares and Derivatives Transactions Value

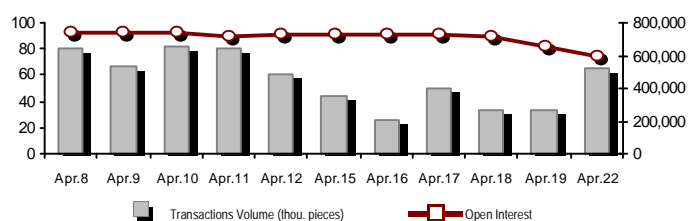


Total Transactions Value (Shares/Derivatives) (thou. €):	66,881.28				
Athex Capitalisation (mill. €):	28,171.10		Derivatives Total Open Interest	599,490	
Daily change: mill. € %	-6,188.25	-18.01%	in Index Futures % daily chng	34,820	-1.91%
Yearly Avg Capitalisation: mill. € % chng prev year Avg	35,563.55	2.93%	in Stock Futures % daily chng	229,961	-17.30%
Athex Composite Share Price Index % daily chng	943.33	1.79%	in Index Options % daily chng	4,011	-53.78%
Athex Composite Share Price Index Capitalisation (mill. €)	30,447.43		in Stock Options % daily chng	5,494	-1.91%
Daily change (mill. €)	535.83		in Stock Repos/Reverse Repos/RA % daily chng	325,204	-0.10%
Shares Transactions Value (thou. €)	50,193.87		Derivatives Transactions Value (thou. €)	16,687.41	
Daily change: thou. € %	-4,370.70	-8.01%	Daily change: thou. € %	3,297.10	24.62%
YtD Avg Trans. Value: thou. € % chng prev year Avg	63,065.57	21.58%	YtD Avg Trans. Value: thou. € % chng prev year Avg	23,118.52	-37.09%
Short Selling Trans. Value: mill. € % in total Value					
Short Covering Trans. Value: mill. € % in total Value					
Blocks of Shares Transactions Value (thou. €)	7,393.91				
Bonds Transactions Value (thou. €)	0.00				
Shares Transactions Volume (thou. pieces)	56,988.87		Derivatives Contracts Volume:	64,676	
Daily change: thou. pieces %	19,605.88	52.45%	Daily change: pieces %	31,910	97.39%
YtD Avg Volume: thou. pieces % chng prev year Avg	40,750.89	-17.59%	YtD Avg Derivatives Contracts % chng prev year Avg	59,680	-7.26%
Short Selling Volume: thou pieces % in total Volume					
Short Covering Volume: thou. pieces % in total Volume					
Blocks of Shares Transactions Volume (thou. pieces)	1,188.61				
Bonds Transactions Volume (thou. pieces)	0.00				
Shares Trades Number	26,419		Derivatives Trades Number:	3,277	
Daily change: number %	493	1.90%	Daily change: number %	843	34.63%
YtD Avg Derivatives Trades number % chng prev year Avg	29,069	17.17%	YtD Avg Derivatives Trades number % chng prev year Avg	3,247	11.41%
Number of Blocks of Shares	27				
Number of Bonds Transactions	0				

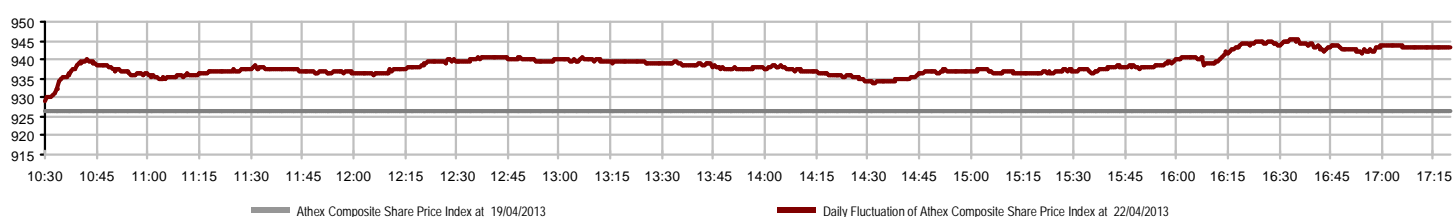
Athex Capitalisation (mill. €)



Derivatives Transactions Volume and Open Interest



Daily Fluctuation of Athex Composite Share Price Index



Athex Indices

Index name	22/04/2013	19/04/2013	pts.	%	Min	Max	Year min	Year max	Year change
Athex Composite Share Price Index	943.33 #	926.73	16.60	1.79%	929.32	945.30	799.04	1,052.83	3.90% #
FTSE/Athex Large Cap	310.62 #	302.17	8.45	2.80%	303.30	311.82	253.17	354.93	0.30% #
FTSE/ATHEX Custom Capped	993.60 #	986.89	6.71	0.68%			871.73	1,155.27	-2.54% €
FTSE/ATHEX Custom Capped - USD	931.87 #	925.61	6.26	0.68%			813.86	1,114.56	-3.29% €
FTSE/Athex Mid Cap Index	1,127.17 #	1,121.66	5.51	0.49%	1,122.19	1,142.07	871.32	1,338.16	-0.53% €
FTSE/ATHEX-CSE Banking Index	105.46 #	89.12	16.34	18.33%	89.12	108.02	64.42	192.07	-37.55% €
FTSE/ATHEX Global Traders Index Plus	1,315.93 #	1,299.94	15.99	1.23%	1,301.81	1,327.27	1,082.32	1,477.64	5.50% #
FTSE/ATHEX Global Traders Index	1,348.86 #	1,326.70	22.16	1.67%	1,332.59	1,355.93	1,053.81	1,468.26	8.59% #
FTSE/ATHEX Mid & Small Cap Factor-Weighted Ind	1,208.19 €	1,212.08	-3.89	-0.32%	1,194.17	1,222.29	1,053.59	1,331.39	-2.49% €
Greece & Turkey 30 Price Index	826.74 #	818.10	8.64	1.06%	817.73	828.83	757.01	861.97	6.29% #
ATHEX Mid & SmallCap Price Index	3,100.78 €	3,123.51	-22.73	-0.73%	3,056.70	3,123.51	2,785.62	3,725.74	-1.09% €
FTSE/Athex Market Index	739.11 #	719.79	19.32	2.68%	722.35	742.03	600.87	842.95	0.23% #
FTSE/Med 100	4,223.63 #	4,214.22	9.41	0.22%			4,101.14	4,470.77	1.93% #
Athex Composite Index Total Return Index	1,345.62 #	1,321.94	23.68	1.79%	1,325.62	1,348.42	1,139.79	1,501.81	3.90% #
FTSE/Athex Large Cap Total Return	432.29 #	420.53	11.76	2.80%			366.91	489.13	0.31% #
FTSE/ATHEX Large Cap Net Total Return	1,229.36 #	1,195.92	33.44	2.80%	1,200.38	1,234.12	1,001.98	1,404.72	0.30% #
FTSE/ATHEX Custom Capped Total Return	1,021.24 #	1,014.35	6.89	0.68%			895.99	1,187.42	-2.54% €
FTSE/ATHEX Custom Capped - USD Total Return	957.80 #	951.37	6.43	0.68%			836.50	1,145.57	-3.29% €
FTSE/Athex Mid Cap Total Return	1,454.22 #	1,447.12	7.10	0.49%			1,194.92	1,703.08	-0.54% €
FTSE/ATHEX-CSE Banking Total Return Index	115.17 #	97.33	17.84	18.33%			85.14	206.26	-37.55% €
Greece & Turkey 30 Total Return Index	972.30 #	969.17	3.13	0.32%			901.31	1,010.30	6.12% #
Hellenic Mid & Small Cap Index	932.19 #	919.97	12.22	1.33%	921.74	936.19	737.97	1,039.06	6.32% #
FTSE/Athex Banks	139.33 #	117.75	21.58	18.33%	117.75	142.72	85.08	256.94	-38.43% €
FTSE/Athex Financial Services	1,235.32 #	1,219.28	16.04	1.32%	1,229.10	1,262.04	817.47	1,638.61	-6.34% €
FTSE/Athex Industrial Goods & Services	3,572.10 #	3,468.43	103.67	2.99%	3,469.36	3,614.80	2,715.10	4,197.17	9.89% #
FTSE/Athex Retail	2,050.72 #	1,958.78	91.94	4.69%	1,951.75	2,050.72	1,629.12	2,094.07	12.09% #
FTSE/ATHEX Real Estate	1,779.36 #	1,775.85	3.51	0.20%	1,755.16	1,783.56	1,491.01	2,066.41	19.34% #
FTSE/Athex Personal & Household Goods	3,569.71 #	3,567.26	2.45	0.07%	3,544.33	3,588.35	2,586.10	4,019.53	14.33% #
FTSE/Athex Food & Beverage	6,901.16 €	6,901.87	-0.71	-0.01%	6,900.14	6,902.69	6,321.85	8,591.23	3.65% #
FTSE/Athex Basic Resources	2,367.81 #	2,314.30	53.51	2.31%	2,336.53	2,391.64	1,674.83	2,901.09	1.91% #
FTSE/Athex Construction & Materials	1,911.31 #	1,907.05	4.26	0.22%	1,903.36	1,942.73	1,439.70	2,130.78	4.10% #
FTSE/Athex Oil & Gas	3,037.63 #	3,027.62	10.01	0.33%	3,009.49	3,063.88	2,474.41	3,344.96	7.98% #
FTSE/Athex Chemicals	6,553.28 €	6,650.36	-97.08	-1.46%	6,456.19	6,650.36	5,194.08	7,572.67	8.87% #
FTSE/Athex Media	3,102.62 €	3,346.40	-243.78	-7.28%	2,807.13	3,346.40	716.56	3,560.63	328.57% #
FTSE/Athex Travel & Leisure	1,283.51 #	1,270.02	13.49	1.06%	1,231.86	1,296.23	1,029.25	1,418.50	27.16% #
FTSE/Athex Technology	694.12 #	683.21	10.91	1.60%	683.21	708.00	555.63	886.96	-6.48% €
FTSE/Athex Telecommunications	1,701.09 #	1,665.30	35.79	2.15%	1,684.57	1,714.85	1,175.35	1,877.25	21.18% #
FTSE/Athex Utilities	2,598.51 #	2,537.91	60.60	2.39%	2,549.23	2,613.93	1,752.55	3,032.09	13.58% #
FTSE/Athex Health Care	254.14 €	259.02	-4.88	-1.88%	254.14	264.59	180.34	346.05	-9.43% €
Athex All Share Index	244.06 #	240.16	3.90	1.62%			215.31	270.57	3.12% #

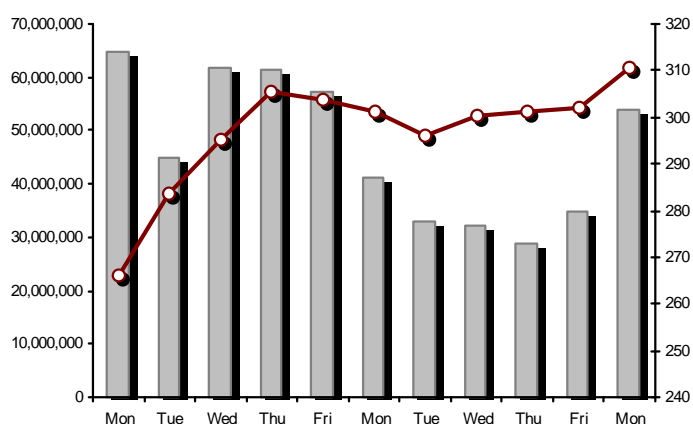
Note 1: Greece & Turkey 30 Pr data is the indicative at 17:20, whereas FTSE/ATHEX Custom Capped, FTSE/ATHEX Custom Capped - USD, FTSE/ATHEX Custom Capped TR, FTSE/ATHEX Custom Capped - USD TR, FTSE/Med 100 & Greece & Turkey 30 Rt closing prices refer to the previous trading day of 19/04/2013.

Note 2: The Hellenic Mid & Small Cap Index is a Customized index calculated by the Athens Exchange.

Athex Indices

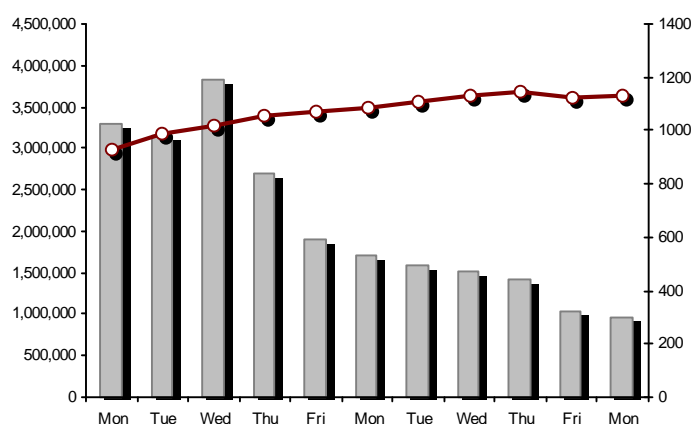
FTSE/Large Cap

22/04/2013: 2.80%



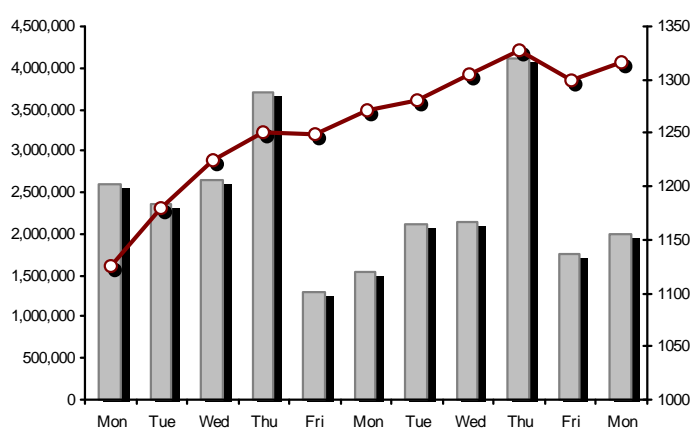
FTSE/Athex Mid Cap Index

22/04/2013: 0.49%



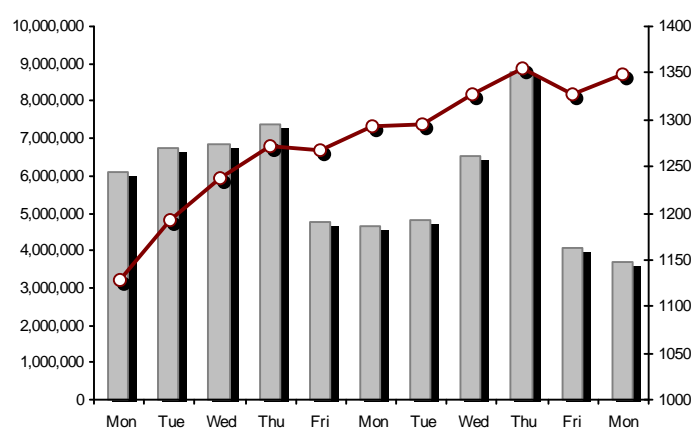
FTSE/ATHEX Global Traders Index Plus

22/04/2013: 1.23%



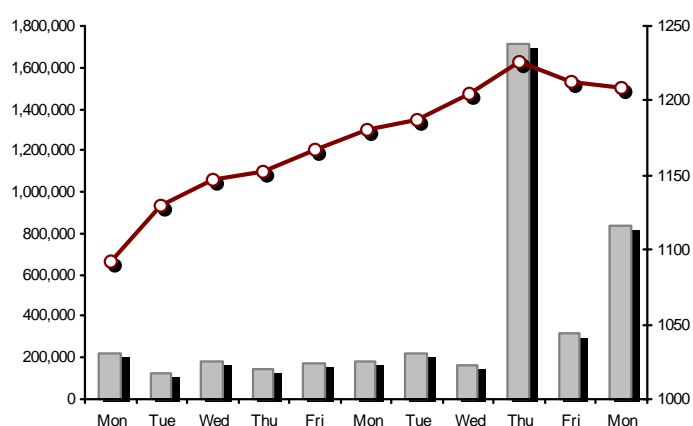
FTSE/ATHEX Global Traders Index

22/04/2013: 1.67%



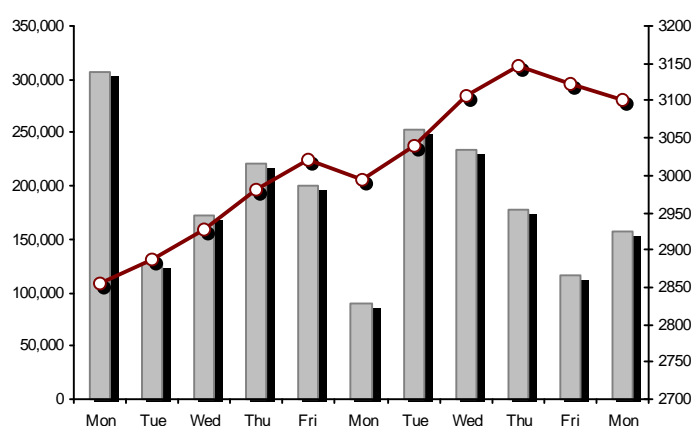
FTSE/ATHEX Mid & Small Cap Factor-Weighted Index

22/04/2013: -0.32%



ATHEX Mid & SmallCap Price Index

22/04/2013: -0.73%



Indices volume of transactions

Indices closing prices

Analytic Figures for Athex Market's Boards and Categories

	Total Traded Shares	Main Market	Low Dispersion	Other Categories (*)	Exchange Traded Funds (ETFs)
Totals	165	118	14	30	3
Gain / Lose / Same:	85 / 57 / 24	64 / 41 / 13	5 / 3 / 6	13 / 13 / 4	3 / 0 / 0
Athex Capitalisation (mill. €)	28,171.10	25,510.36	2,261.84	375.10	23.80
Daily Average Transactions Value (thou. €)	63,065.57	54,966.78	121.51	66.73	67.08
Shares Transactions Value (thou. €)	50,312.02	50,071.04	56.96	58.50	7.37
Main Board:	42,918.11	42,796.07	56.16	58.50	7.37
Blocks Board:	7,393.91	7,274.97	0.80	0.00	0.00
Forced Sales Board:	0.00	0.00	0.00	0.00	0.00
Special Terms Board:	0.00	0.00	0.00	0.00	0.00
Daily Average Transactions Volume	40,750,887	33,652,354	48,403	560,629	15,962
Transactions Volume	56,994,492	56,528,795	27,069	430,543	2,459
Main Board:	55,805,878	55,345,922	26,954	430,543	2,459
Blocks Board:	1,188,614	1,182,873	115	0	0
Forced Sales Board:	0	0	0	0	0
Special Terms Board:	0	0	0	0	0
Daily Average Number of Trades	29,069	24,500	143	267	8
Number of Trades	26,431	26,014	152	243	10
Main Board:	26,404	26,006	145	243	10
Blocks Board:	27	8	7	0	0
Forced Sales Board:	0	0	0	0	0
Special Terms Board:	0	0	0	0	0

(*) Summarised Transactions figures for Low Dispersion & Specific Features and Under Supervision Categories.

Trading Details by Sector

Code	Sectors	Gain / Lose / Same	Number of Trades	Transactions Volume	Transactions Value	% of Total Trans. Value
8300	- Banks	5 / 1 / 1	14,743	48,469,260	19,283,579.44	38.33%
1700	- Basic Resources	6 / 5 / 3	1,272	1,194,596	5,356,658.89	10.65%
1300	- Chemicals	2 / 3 / 1	128	42,033	71,149.46	0.14%
2300	- Construction & Materials	13 / 7 / 2	1,214	807,843	1,304,772.62	2.59%
11000	- ETF	3 / 0 / 0	10	2,459	7,372.34	0.01%
8700	- Financial Services	4 / 0 / 1	1,126	2,402,628	5,288,297.25	10.51%
3500	- Food & Beverage	5 / 8 / 3	199	82,490	176,307.63	0.35%
4500	- Health Care	2 / 3 / 1	299	200,298	97,269.99	0.19%
2700	- Industrial Goods & Services	11 / 6 / 3	1,049	416,487	1,364,707.84	2.71%
8500	- Insurance	0 / 1 / 0	35	20,539	25,783.00	0.05%
5500	- Media	2 / 2 / 0	70	28,508	13,927.96	0.03%
500	- Oil & Gas	2 / 0 / 0	476	262,702	2,193,711.77	4.36%
3700	- Personal & Household Goods	7 / 5 / 4	571	447,095	2,425,931.94	4.82%
8600	- Real Estate	3 / 5 / 1	180	66,832	107,737.59	0.21%
5300	- Retail	3 / 1 / 0	147	61,225	812,874.50	1.62%
9500	- Technology	7 / 6 / 1	455	312,180	175,153.87	0.35%
6500	- Telecommunications	1 / 0 / 0	1,292	859,608	5,316,494.94	10.57%
5700	- Travel & Leisure	5 / 4 / 3	2,155	986,875	4,186,685.24	8.32%
7500	- Utilities	4 / 0 / 0	1,010	330,834	2,103,600.09	4.18%

Top 10 best & worst performing Shares

Main Market					
With positive Price change	Closing price	change	With negative Price change	Closing price	change
NATIONAL BANK (CR)	0.600	19.76% #	NEWSPHONE HELLAS SA (CR)	0.298	-8.87% Ⓔ
ALPHA BANK (CR)	0.985	19.25% #	EUROBANK ERGASIAS (CR)	0.230	-4.17% Ⓔ
PIRAEUS BANK (CR)	0.230	15.58% #	AEGEAN AIRLINES (CR)	2.38	-2.06% Ⓔ
ATTICA BANK S.A. (CR)	0.181	10.37% #	TRASTOR REAL EST. INV. CO.(CR)	0.762	-1.93% Ⓔ
CORINTH PIPEWORKS SA (CR)	2.21	6.76% #	ATHENS MEDICAL CENTER SA (CR)	0.730	-1.88% Ⓔ
INTRACOM HOLDINGS (CR)	0.490	4.70% #	EUROPEAN RELIANCE INSUR. (CR)	1.24	-1.59% Ⓔ
HELL. DUTY FREE SHOPS SA (CR)	14.50	4.69% #	KLOUKINAS - LAPPAS SA (CR)	0.830	-1.54% Ⓔ
FRIGOGLASS SA (CR)	4.99	4.17% #	THRACE PLASTICS SA (CR)	1.35	-1.46% Ⓔ
METKA (CR)	11.60	3.48% #	NIREFS SA (CR)	0.561	-1.41% Ⓔ
BANK OF GREECE (CR)	13.98	3.33% #	CENTRIC HOLDINGS (CR)	0.282	-0.70% Ⓔ
With the highest Transactions Value	Value (thou. €)	change	With the highest Transactions Volume	Volume	change
NATIONAL BANK (CR)	6,060.75	19.76% #	PIRAEUS BANK (CR)	26,224,418	15.58% #
PIRAEUS BANK (CR)	5,986.79	15.58% #	NATIONAL BANK (CR)	10,509,136	19.76% #
ALPHA BANK (CR)	5,848.29	19.25% #	ALPHA BANK (CR)	6,251,737	19.25% #
OTE (CR)	5,316.49	2.15% #	EUROBANK ERGASIAS (CR)	5,262,007	-4.17% Ⓔ
HELLENIC EXCHANGES (CR)	4,804.59	0.81% #	MARFIN INVESTMENT GROUP (CR)	1,431,643	1.88% #
S & B IND. MINERALS (CR)	3,771.18	0.00% -	HELLENIC EXCHANGES (CR)	954,682	0.81% #
OPAP (CR)	3,493.59	0.86% #	OTE (CR)	859,608	2.15% #
JUMBO SA (CR)	2,248.80	0.00% -	S & B IND. MINERALS (CR)	650,204	0.00% -
PPC (CR)	1,855.36	2.52% #	OPAP (CR)	501,540	0.86% #
MOTOR OIL (CR)	1,628.98	0.48% #	JUMBO SA (CR)	321,097	0.00% -

Note: The transactions value of the shares shown in the above tables is at least 10,000€.

Derivatives Summary

	Number of Trades	Volume	Open Interest	Transactions Value
Index Futures	621	5,158	34,820	8,245,735.00
FTSE/Athex Large Cap	621	5,158	34,820	8,245,735.00
FTSE/ATHEX-CSE Banking Index	0	0	0	0.00
Stock Futures	2,554	57,469	229,961	6,320,842.10
ALPHA BANK (CR)	0	0	0	0.00
BANK OF CYPRUS (CR)	0	0	15,754	0.00
COCA - COLA HBC (CR)	0	0	78	0.00
CYPRUS POPULAR BANK (CR)	0	0	0	0.00
ELLAKTOR (CR)	73	310	6,520	66,222.00
EUROBANK ERGASIAS (CR)	140	2,687	7,461	54,423.10
EUROBANK PROPERTIES REIC (CR)	8	31	180	17,874.00
FRIGOGLASS SA (CR)	8	28	351	13,831.00
GEK TERNA (CR)	44	223	31,778	47,717.00
HELL. DUTY FREE SHOPS SA (CR)	4	11	364	15,618.00
HELLENIC EXCHANGES (CR)	21	70	1,189	35,099.00
HELLENIC PETROLEUM (CR)	7	26	1,699	21,791.00
INTRALOT (CR)	55	268	4,869	52,964.00
JUMBO SA (CR)	6	11	360	7,721.00
MARFIN INVESTMENT GROUP (CR)	35	491	13,930	16,248.50
METKA (CR)	2	14	401	15,908.00
MOTOR OIL (CR)	10	36	360	30,372.00
MYTILINEOS HOLDINGS (CR)	52	301	5,637	140,175.00
NATIONAL BANK (CR)	828	26,091	75,586	1,384,901.30
OPAP (CR)	413	2,691	7,855	1,755,103.00
OTE (CR)	173	2,149	16,410	1,327,396.00
P.P.A. S.A. (CR)	13	39	86	72,500.00
PIRAEUS BANK (CR)	408	20,674	26,246	464,085.20
PPC (CR)	178	969	5,959	667,698.00
SIDENOR (CR)	24	126	1,707	21,087.00
TERNA ENERGY (CR)	15	118	4,208	39,784.00
TITAN CEMENT (CR)	5	6	216	8,634.00
VIOHALCO (CB)	32	99	757	43,690.00
Index Options	97	1,309	4,011	2,051,125.00
FTSE/Athex Large Cap	97	1,309	4,011	2,051,125.00
Stock Options	1	1	5,494	740.00
ALPHA BANK (CR)	0	0	0	0.00
NATIONAL BANK (CR)	0	0	60	0.00
OPAP (CR)	0	0	3,438	0.00
OTE (CR)	0	0	1,966	0.00
PPC (CR)	1	1	30	740.00
Stock Repos - Stock Reverse Repos - Repurchase Agreements	4	739	325,204	68,972.00
Stock Reverse Repos	2	22	67,190	14,936.00
Stock Repos	0	0	218,374	0.00
Repurchase Agreement	2	717	39,640	54,036.00
Total Derivatives Traded	3,277	64,676	599,490	16,687,414.10

Number of Listed Shares	Nominal Value	Dividends [1]			Date of Last Coupon Dividend [2]		Date of Right	Note	Shares	Closing price	% change	Previous closing price/date	Open price	Price min	Price max	Last price	Avg price	Last Bid [7]	Last Ask [7]	P/E after	Year	Volume	Trades	Transactions Value	Company Mkt Value (thou. €)	Year low	Year high	Sector[4]
-------------------------	---------------	---------------	--	--	----------------------------------	--	---------------	------	--------	---------------	----------	-----------------------------	------------	-----------	-----------	------------	-----------	--------------	--------------	-----------	------	--------	--------	--------------------	-----------------------------	----------	-----------	------------

Main Market

71,417,100	0.650	---	---	---	26/05/2010	11/07/2007	---		AEGEAN AIRLINES (CR)	2.38	-2.06	€ 2.43	19/04/2013	2.36	2.30	2.39	2.38	2.34	2316@2.35	119@2.38	---	2012	14,454	66	33,812.89	169,972.70	1.96	2.80	5751
11,178,000	1.45	---	---	---	21/04/2010	12/05/2011	---		AEOLIAN INVESTMENT FUND (CR)	0.990	1.75	# 0.973	19/04/2013	0.975	0.975	0.990	0.990	0.979	210@0.976	494@0.990	7.83	2012	745	6	729.60	11,066.22	0.900	1.15	8985
13,000,000	1.00	---	---	---	01/08/2007	07/04/2000	---		AKRITAS SA (CR)	0.307	-9.97	€ 0.341	19/04/2013	0.307	0.307	0.307	0.307	0.307	160@0.307	230@0.375	---	2012	20	2	6.14	3,991.00	0.292	0.520	2353
17,200,576	1.25	---	---	---	03/06/2009	30/06/2010	---		ALCO HELLAS SA (CR)	0.402	-2.90	€ 0.414	19/04/2013	0.380	0.380	0.414	0.402	0.400	100@0.381	53@0.383	---	2012	3,578	15	1,431.71	6,914.63	0.301	0.870	1753
534,269,648	0.300	---	---	---	07/04/2008	06/11/2009	---		ALPHA BANK (CR)	0.985	19.25	# 0.826	19/04/2013	0.858	0.850	1.01	0.985	0.935	200@0.984	5000@0.986	---	2012	6,251,737	3,344	5,848,289.59	526,255.60	0.452	1.67	8355
22,016,250	0.370	---	---	---	15/07/2009	11/05/2000	---		ALUMIL (CR)	0.479	-2.25	€ 0.490	19/04/2013	0.490	0.453	0.500	0.479	0.471	50@0.471	240@0.478	---	2012	2,643	31	1,244.13	10,545.78	0.360	0.740	1753
268,700	16.00	---	---	---	22/04/2010	05/03/2013	---		ANDROMEDA SA (CR)	22.00	---	↘ 22.00	19/04/2013	22.00	22.00	22.00	22.00	22.00	23@22.00	20@23.30	2.04	2012	127	2	2,794.00	5,911.40	19.00	23.50	8985
21,876,700	0.380	---	---	---	08/07/2010	05/06/2001	---		AS COMPANY SA (CR)	0.372	4.79	# 0.355	19/04/2013	0.369	0.351	0.438	0.370	0.370	3000@0.353	990@0.400	42.51	2012	3,216	15	1,189.50	8,138.13	0.320	0.488	5379
86,735,980	0.310	---	---	---	06/07/2009	02/01/2002	---		ATHENS MEDICAL CENTER SA (CR)	0.730	-1.88	€ 0.744	19/04/2013	0.759	0.730	0.760	0.730	0.738	120@0.726	65@0.739	---	2012	23,759	56	17,525.33	63,317.27	0.518	0.994	4533
244,885,573	0.350	---	---	---	04/06/2008	07/09/2009	---		ATTICA BANK S.A. (CR)	0.181	10.37	# 0.164	19/04/2013	0.169	0.169	0.185	0.181	0.178	8746@0.180	482@0.182	---	2012	213,915	185	38,112.74	44,324.29	0.119	0.729	8355
45,457,464	0.700	---	---	---	01/07/2008	01/03/2010	---		AUDIO VISUAL ENTERPRISES (CR)	0.420	-7.28	€ 0.453	19/04/2013	0.445	0.380	0.445	0.420	0.401	250@0.385	240@0.390	---	2012	16,035	39	6,428.76	19,092.13	0.097	0.482	5553
36,360,000	0.320	---	0.15	---	30/04/2012	05/05/2008	---		AUTOHELLAS SA (CR)	1.87	3.31	# 1.81	19/04/2013	1.81	1.81	1.91	1.87	1.87	500@1.85	100@1.89	10.07	2012	83,848	13	156,753.92	67,993.20	1.50	1.91	5759
20,121,710	1.21	---	---	---	27/07/1992	12/03/2003	---		BALKAN R.E. (CR)	0.225	-7.79	€ 0.244	17/04/2013	0.225	0.225	0.225	0.225	0.225	330@0.236	5240@0.268	---	2012	20	1	4.50	4,527.38	0.210	0.438	8633
19,864,886	5.60	1.976	0.670	0.5376	06/03/2013	02/07/2008	---		BANK OF GREECE (CR)	13.98	3.33	# 13.53	19/04/2013	13.87	13.85	14.11	13.98	13.96	100@13.90	499@13.98	---	---	7,706	160	107,546.29	277,711.11	11.26	19.19	8355
23,986,500	1.05	---	---	---	26/06/2009	15/03/2000	---		BIOKARPET S.A.(CR)	0.720	---	↘ 0.720	18/04/2013	0.720	0.720	0.720	0.720	0.720	---	18@0.670	---	2012	1,347	2	969.84	17,270.28	0.519	0.845	3726
15,842,391	1.51	---	---	---	15/07/2009	12/05/2000	---		BITROS HOLDING SA (CR)	0.485	-3.00	€ 0.500	19/04/2013	0.460	0.450	0.485	0.485	0.465	150@0.450	505@0.483	---	2012	2,944	10	1,370.37	7,683.56	0.450	0.745	1757
15,816,009	0.300	---	---	---	01/07/2009	17/07/2000	---		BYTE COMPUTER SA (CR)	0.408	2.00	# 0.400	19/04/2013	0.408	0.408	0.408	0.408	0.408	130@0.396	300@0.409	---	2012	240	2	97.92	6,452.93	0.351	0.620	9533
101,123,806	0.360	---	---	---	22/07/2010	28/06/2011	---		CENTRIC HOLDINGS (CR)	0.282	-0.70	€ 0.284	19/04/2013	0.290	0.282	0.297	0.282	0.287	200@0.281	400@0.288	42.79	2012	37,679	67	10,812.87	28,516.91	0.235	0.440	5752
4,034,950	0.680	---	---	---	01/07/2005	30/12/2010	---		CHATZIKRANOTIS & SONS SA (CR)	0.220	-15.39	€ 0.260	19/04/2013	0.202	0.200	0.220	0.219	0.209	18290@0.219	200@0.230	---	2012	8,950	15	1,873.65	887.69	0.200	0.522	3577
124,170,201	0.780	---	---	---	28/06/2002	07/02/2005	---		CORINTH PIPEWORKS SA (CR)	2.21	6.76	# 2.07	19/04/2013	2.15	2.12	2.23	2.21	2.18	79@2.20	379@2.22	79.17	2012	165,536	325	361,008.02	274,416.14	1.40	2.59	1757
9,907,500	0.300	---	---	---	06/10/2005	13/02/2002	---		CPI SA (CR)	0.269	-9.73	€ 0.298	12/04/2013	0.269	0.269	0.269	0.269	0.269	---	300@0.269	---	2012	2,390	2	642.91	2,665.12	0.240	0.400	9572
27,379,200	0.610	---	---	---	23/06/2010	05/12/2012	---		CRETE PLASTICS SA (CR)	5.22	0.38	# 5.20	19/04/2013	5.20	5.18	5.27	5.26	5.20	47@5.18	15@5.26	14.91	2012	5,003	12	26,020.04	142,919.42	4.77	5.65	1357
26,664,840	0.470	---	---	---	29/06/2005	12/07/1999	---		CYCLON HELLAS SA (CR)	0.452	-7.76	€ 0.490	19/04/2013	0.470	0.452	0.470	0.452	0.461	1000@0.454	5000@0.488	---	2012	2,000	5	922.00	12,052.51	0.390	0.700	1357
15,000,000	0.300	---	---	---	06/07/2007	18/07/2000	---		DAIOS PLASTICS SA (CR)	4.97	---	↘ 4.97	18/04/2013	---	---	---	---	---	50@4.55	300@4.90	---	2012	---	---	---	74,550.00	4.40	5.50	1357
31,370,399	0.300	---	---	---	11/08/2010	15/02/2012	---		DIONIC (CR)	0.143	---	↘ 0.143	19/04/2013	0.141	0.141	0.148	0.143	0.144	6380@0.142	1500@0.145	---	2012	96,480	64	13,889.89	4,485.97	0.081	0.263	2797
34,720,000	0.310	---	---	---	16/06/2010	01/08/2007	---		DROMEAS SA (CR)	0.296	1.02	# 0.293	19/04/2013	0.297	0.285	0.297	0.296	0.293	500@0.288	4685@0.296	---	2012	18,900	18	5,529.60	10,277.12	0.218	0.400	3726
3,873,120	0.300	---	---	---	07/07/2008	04/10/2012	---		DRUCKFARBEN HELLAS (CR)	1.55	---	↘ 1.55	18/04/2013	---	---	---	---	---	---	902@1.55	---	2012	---	---	---	6,003.34	1.35	2.64	1357
11,250,000	0.560	---	---	---	26/07/2010	16/06/1999	---		EKTER SA (CR)	0.499	3.96	# 0.480	19/04/2013	0.499	0.495	0.500	0.499	0.499	120@0.461	2739@0.499	8.72	2012	3,701	8	1,848.21	5,613.75	0.401	0.700	2357
32,188,050	1.04	---	---	---	21/07/2008	20/01/2000	---		EL. D. MOUZAKIS SA (CB)	0.180	---	↘ 0.180	18/04/2013	---	---	---	---	---	3240@0.162	250@0.189	---	2012	---	---	---	5,793.85	0.162	0.330	3763
18,648,000	1.00	---	---	---	07/07/2009	10/09/2010	---		ELASTRON (CR)	0.755	5.01	# 0.719	19/04/2013	0.714	0.711	0.758	0.758	0.734	75@0.715	1200@0.750	---	2012	5,400	19	3,963.33	14,079.24	0.518	0.969	1757
31,937,030	1.60	---	---	---	09/07/2007	19/07/2006	---		ELGEKA SA (CR)	0.620	3.33	# 0.600	19/04/2013	0.621	0.620	0.621	0.620	0.620	4871@0.620	400@0.621	---	2012	232	3	143.94	19,800.96	0.490	0.780	3577
23,828,130	0.500	---	---	---	07/07/2010	17/02/2009	---		ELINOIL S.A. (CR)	1.50	---	↘ 1.50	04/04/2013	---	---	---	---	---	---	100@1.52	---	2012	---	---	---	35,742.20	1.39	1.89	537
177,001,313	1.03	0.0308	---	---	05/07/2011	20/12/2007	---		ELLAKTOR (CR)	2.11	1.44	# 2.08	19/04/2013	2.08	2.08	2.17	2.11	2.14	6006@2.11	8656@2.15	---	2012	231,582	415	496,083.49	373,472.77	1.36	2.39	2357
26,730,187	0.600	---	---	---	25/06/2009	30/12/2010	---		ELTON SA (CR)	0.993	-0.70	€ 1.00	19/04/2013	1.00	0.960	1.00	0.993	0.979	50@0.977	490@0.990	10.38	2012	8,754	38	8,567.47	26,543.08	0.850	1.25	1353
15,146,404	0.340	0.093	---	---	06/07/2011	17/10/2002	---		ELTRAK SA (CR)	1.28	-9.22	€ 1.41	19/04/2013	1.37	1.27	1.37	1.35	1.32	100@1.28	490@1.35	---	2012	280	5	370.40	19,387.40	1.08	1.80	2753
124,100,815	0.300	---	---	---	27/06/2008	07/07/2000	---		ELVAL SA. (CB)	2.00	---	↘ 2.00	19/04/2013	2.00	1.97	2.04	2.00	2.01	773@2.00	300@2.01	15.45	2012	9,304	29	18,705.11	248,201.63	1.55	2.38	1753
13,230,000	0.300	---	---	---	11/08/2010	27/06/2012	---		ELVE SA (CR)	0.548	---	↘ 0.548	18/04/2013	---	---	---	---	---	2000@0.500	70@0.547	---	2012	---	---	---	7,250.04	0.475	0.717	3763
30,009,210	0.310	---	---	---	27/06/2008	26/06/2000	---		ETEM SA (CB)	0.460	---	↘ 0.460	19/04/2013	0.441	0.440	0.460	0.460	0.450	214@0.461	249@0.484	---	2012	7,035	24	3,165.72	13,804.24	0.328	0.828	1753

Number of Listed Shares	Nominal Value	Dividends [1]			Date of Last Coupon Dividend [2]		Date of Right	Note	Shares	Closing price	% change	Previous closing price/date	Open price	Price min	Price max	Last price	Avg price	Last Bid [7]	Last Ask [7]	P/E after	Year	Volume	Trades	Transactions Value	Company Mkt Value (thou. €)	Year low	Year high	Sector[4]
552,948,427	2.22	---	---	---	02/05/2008	31/05/2011	---	---	EUROBANK ERGASIAS (CR)	0.230	-4.17	€ 0.240 19/04/2013	0.240	0.212	0.252	0.230	0.236	8650@0.229	1300@0.233	---	2012	5,262,007	2,059	1,239,744.01	127,178.14	0.105	0.740	8355
61,000,000	2.13	0.5364	0.4067	---	23/03/2012	20/11/2007	---	---	EUROBANK PROPERTIES REIC (CR)	5.83	1.57	# 5.74 19/04/2013	5.75	5.69	5.85	5.83	5.77	250@5.75	1@5.80	---	2012	10,206	114	58,849.04	355,630.00	4.87	6.40	8675
27,503,677	0.600	0.04	0.05	---	13/07/2012	18/10/1999	---	---	EUROPEAN RELIANCE INSUR. (CR)	1.24	-1.59	€ 1.26 19/04/2013	1.25	1.24	1.28	1.24	1.26	100@1.24	908@1.27	3.74	2012	20,539	35	25,783.00	34,104.56	0.973	1.56	8536
13,673,200	0.880	---	---	---	18/07/2008	26/07/2001	---	---	EVROFARMA SA (CR)	0.372	-9.93	€ 0.413 13/03/2013	0.372	0.372	0.372	0.372	0.372	---	31250@0.372	---	2012	200	1	74.40	5,086.43	0.280	0.539	3577
106,500,000	0.600	0.04	0.17	---	04/07/2012	28/01/2000	---	---	EYDAP S.A. (CR)	5.80	1.04	# 5.74 19/04/2013	5.57	5.57	5.82	5.80	5.77	1029@5.80	39@5.82	23.64	2011	12,113	50	69,841.65	617,700.00	4.65	6.47	7577
52,800,154	0.300	---	---	---	16/04/2010	21/06/2004	---	---	F.G. EUROPE S.A. (CR)	0.610	-1.45	€ 0.619 19/04/2013	0.600	0.600	0.610	0.610	0.605	60@0.610	1000@0.626	7.39	2012	260	2	157.40	32,208.09	0.550	0.950	3722
10,203,575	0.730	---	---	---	16/07/2007	18/10/1999	---	---	FIERATEX SA (CR)	0.175	2.94	# 0.170 19/04/2013	0.156	0.120	0.175	0.175	0.154	940@0.121	73@0.175	---	2012	2,072	6	319.68	1,785.63	0.090	0.254	3763
4,181,450	0.500	---	---	---	21/08/2000	05/03/2002	---	---	FLOUR MILLS SARANTOPOULOS S	0.695	---	~ 0.695 11/04/2013	---	---	---	---	---	420@0.630	---	12.85	2012	---	---	---	2,906.11	0.639	0.869	3577
50,992,322	1.00	---	---	---	21/06/2010	16/07/2002	---	---	FOURLIS (CR)	2.09	0.48	# 2.08 19/04/2013	2.08	2.07	2.13	2.09	2.10	500@2.08	50@2.10	---	2012	66,690	226	140,203.78	106,573.95	1.58	2.82	3722
50,517,252	0.300	---	---	---	07/07/2010	07/09/2011	---	---	FRIGOGLASS SA (CR)	4.99	4.17	# 4.79 19/04/2013	4.87	4.87	5.00	4.99	4.97	4975@4.98	2236@5.00	---	2012	50,349	109	250,079.00	252,081.09	3.84	6.26	2757
77,376,446	0.340	---	---	---	23/05/2005	18/08/2011	---	---	G.E. DIMITRIOU (CR)	0.064	4.92	# 0.061 18/04/2013	0.063	0.063	0.064	0.064	0.064	1100@0.047	3050@0.064	---	2012	1,750	5	111.20	4,952.09	0.028	0.118	3722
14,076,360	0.370	---	---	---	19/08/2008	22/07/2003	---	---	GALAXIDI S.A. (CR)	0.530	---	~ 0.530 19/04/2013	---	---	---	---	---	---	1568@0.550	15.07	2012	---	---	---	7,460.47	0.436	0.638	3573
85,882,688	0.570	0.0048	---	---	01/08/2011	02/01/2009	---	---	GEK TERNA (CR)	2.09	0.97	# 2.07 19/04/2013	2.07	2.07	2.16	2.09	2.14	4732@2.09	673@2.11	-(6)-	2012	196,190	357	419,375.86	179,494.82	1.40	2.80	2357
24,060,000	0.300	---	0.017	---	18/06/2012	21/01/2000	---	---	GEN. COMMERCIAL & IND.SA (CR)	0.340	-0.29	€ 0.341 19/04/2013	0.341	0.340	0.341	0.340	0.340	3000@0.335	300@0.359	---	2012	8,000	4	2,721.00	8,180.40	0.310	0.545	2797
1,270,000	0.300	---	---	---	06/07/2007	06/02/2013	---	---	GIRAKIAN PROFIL SA (CB)	2.40	---	~ 2.40 27/03/2013	---	---	---	---	---	---	160@2.40	---	2012	---	---	---	3,048.00	2.00	3.33	1757
34,770,982	1.54	---	---	---	06/07/2010	27/07/2000	---	---	GR. SARANTIS SA (CR)	4.35	---	~ 4.35 19/04/2013	4.35	4.30	4.38	4.35	4.33	125@4.28	197@4.38	---	2012	1,745	19	7,550.07	151,253.77	4.05	4.67	3767
8,340,750	1.20	---	---	---	25/06/2009	30/07/2001	---	---	HAIDEMENOS SA (CR)	0.600	---	~ 0.600 17/04/2013	---	---	---	---	---	400@0.540	270@0.660	---	2012	---	---	---	5,004.45	0.460	0.905	2791
101,279,627	0.380	---	---	---	26/06/2008	14/07/2006	---	---	HALKOR SA (CB)	0.852	1.19	# 0.842 19/04/2013	0.865	0.847	0.870	0.852	0.860	300@0.851	397@0.860	---	2012	43,800	58	37,688.04	86,290.24	0.550	1.42	1755
36,748,909	0.730	---	---	---	15/12/2005	13/12/2006	---	---	HEL. SUGAR INDUSTRY SA (CB)	1.16	0.87	# 1.15 19/04/2013	1.15	1.12	1.16	1.16	1.15	336@1.16	1460@1.17	18.37	2012	13,106	46	15,006.24	42,628.73	0.901	1.74	3577
66,948,210	0.300	---	---	---	14/07/2009	31/12/2010	---	---	HELL. DUTY FREE SHOPS SA (CR)	14.50	4.69	# 13.85 19/04/2013	13.80	13.80	14.50	14.50	14.26	71@14.30	605@14.50	---	2012	57,658	123	811,558.12	970,749.05	11.51	14.80	5379
29,546,360	0.710	---	---	---	20/06/2008	23/08/2000	---	---	HELLENIC CABLES SA (CR)	1.65	0.61	# 1.64 19/04/2013	1.59	1.59	1.69	1.65	1.65	80@1.63	40@1.64	---	2012	3,294	32	5,428.49	48,751.49	1.16	2.32	2733
65,368,563	0.790	0.15	0.11	---	01/06/2012	26/09/2012	---	---	HELLENIC EXCHANGES (CR)	5.00	0.81	# 4.96 19/04/2013	5.04	4.97	5.11	5.00	5.03	838@4.99	500@5.03	22.40	2012	954,682	521	4,804,586.38	326,842.82	3.75	5.58	8777
305,635,185	2.18	0.45	0.45	---	17/08/2012	01/10/2003	4795	---	HELLENIC PETROLEUM (CR)	8.36	0.24	# 8.34 19/04/2013	8.34	8.25	8.50	8.36	8.35	3041@8.34	1781@8.36	26.20	2012	67,674	298	564,733.95	2,555,110.15	6.66	9.13	537
305,732,436	0.410	---	---	---	08/07/2009	28/09/2011	---	---	HYGEIA SA (CR)	0.455	1.11	# 0.450 19/04/2013	0.462	0.435	0.465	0.455	0.456	797@0.446	400@0.457	---	2012	158,504	211	72,233.09	139,108.26	0.280	0.795	4533
53,155,053	0.440	---	---	---	21/07/2010	16/07/2008	---	---	IASO SA (CR)	1.19	1.71	# 1.17 19/04/2013	1.17	1.13	1.19	1.19	1.16	365@1.16	699@1.19	---	2012	4,674	15	5,405.36	63,254.51	0.942	1.58	4533
8,298,467	0.400	---	---	---	30/08/1993	30/12/2010	---	---	IDEAL GROUP SA (CR)	1.18	-0.84	€ 1.19 19/04/2013	1.25	1.09	1.27	1.23	1.21	30@1.23	905@1.26	-(6)-	2012	955	15	1,159.05	9,792.19	0.665	1.85	9574
28,580,100	0.400	0.05	0.02	---	20/08/2012	23/02/2007	---	---	IKTINOS HELLAS SA (CR)	1.38	-0.72	€ 1.39 19/04/2013	1.38	1.35	1.39	1.38	1.37	150@1.37	450@1.38	13.36	2012	5,030	20	6,899.10	39,440.54	1.16	1.45	2353
9,000,000	0.880	---	---	---	15/05/2009	07/12/2010	---	---	ILYDA S.A. (CR)	0.530	---	~ 0.530 09/04/2013	---	---	---	---	---	---	4535@0.500	---	2012	---	---	---	4,770.00	0.369	0.650	9537
20,578,374	0.620	0.03	---	---	02/06/2011	05/05/1999	---	---	INFORM P. LYKOS SA (CR)	1.40	---	~ 1.40 19/04/2013	1.38	1.37	1.40	1.40	1.38	1000@1.36	1505@1.40	---	2012	2,030	3	2,792.00	28,809.72	1.10	1.75	2791
11,233,200	0.730	---	---	---	12/07/2010	30/07/1999	---	---	INTERTECH SA (CR)	0.350	---	~ 0.350 18/04/2013	---	---	---	---	---	540@0.263	2400@0.350	---	2012	---	---	---	3,931.62	0.223	0.600	9572
34,986,430	0.440	---	---	---	25/07/2008	23/02/2010	---	---	INTERWOOD-XYLEMPORIA (CR)	0.112	---	~ 0.112 19/04/2013	---	---	---	---	---	2000@0.125	2000@0.134	---	2012	---	---	---	4,521.69	0.112	0.188	2353
2,566,836	0.440	---	---	---	13/08/2010	09/01/2007	---	---	INTERWOOD-XYLEMPORIA (PR)	0.235	---	~ 0.235 08/04/2013	---	---	---	---	---	---	1800@0.263	---	2012	---	---	---	4,521.69	0.230	0.315	2353
23,154,250	1.36	---	---	---	12/08/2008	02/08/2010	---	---	INTRACOM CONSTR. (CR)	0.890	-1.11	€ 0.900 19/04/2013	0.900	0.890	0.910	0.890	0.897	2450@0.890	370@0.906	---	2012	9,500	19	8,524.50	20,607.28	0.580	1.22	2357
133,025,996	1.41	---	---	---	03/07/2007	07/01/2002	---	---	INTRACOM HOLDINGS (CR)	0.490	4.70	# 0.468 19/04/2013	0.468	0.468	0.510	0.490	0.491	3000@0.486	3000@0.496	---	2012	254,319	275	124,797.06	65,182.74	0.321	0.754	9578
158,961,721	0.300	0.0045	0.0035	---	18/05/2012	14/11/2007	---	---	INTRALOT (CR)	2.00	2.56	# 1.95 19/04/2013	1.93	1.93	2.01	2.00	1.97	330@1.97	6150@2.01	-(6)-	2012	228,881	294	451,665.39	317,923.44	1.61	2.39	5752
77,654,850	0.580	0.04	---	---	01/07/2011	21/02/2003	---	---	J & P - AVAX SA (CR)	1.56	1.96	# 1.53 19/04/2013	1.56	1.53	1.59	1.56	1.56	3250@1.53	10@1.56	---	2012	21,580	36	33,693.70	121,141.57	1.05	1.84	2357
129,994,676	1.19	0.189	---	---	23/12/2010	07/09/2012	---	---	JUMBO SA (CR)	7.00	---	~ 7.00 19/04/2013	6.99	6.94	7.03	7.00	6.99	30@6.95	30@7.05	11.80	2012	321,097	201	2,248,804.99	909,962.73	4.85	7.88	3747
9,742,920	0.400	0.01	0.01	---	13/08/2012	14/07/2000	---	---	KARAMOLEGOS SA (CR)	1.49	---	~ 1.49 19/04/2013	---	---	---	---	---	160@1.38	180@1.48	5.79	2012	---	---	---	14,516.95	1.07	1.83	3577

Number Listed Shares	Nominal Value	Dividends [1]			Date of Last Coupon Dividend [2]		Note	Shares	Closing price	% change	Previous closing price/date	Open price	Price min	Price max	Last price	Avg price	Last Bid [7]	Last Ask [7]	P/E after	Year	Volume	Trades	Transactions Value	Company Mkt Value (thou. €)	Year low	Year high	Sector[4]
14,679,792	1.44	0.065	---	---	03/06/2011	04/09/2000	---	KARATZIS SA (CR)	3.99	2.57 #	3.89 19/04/2013	3.82	3.82	4.00	3.98	3.87	1000@3.84	1000@3.99	13.40	2012	460	12	1,778.90	58,572.37	2.55	4.09	2723
3,300,689	0.350	---	---	---	01/07/2004	21/07/1999	---	KEKROPS SA (CR)	2.40	0.84 #	2.38 19/04/2013	2.35	2.35	2.40	2.40	2.36	140@2.24	20@2.39	---	2012	250	2	590.00	7,921.65	1.75	3.79	8633
7,595,160	0.600	---	---	---	08/08/2008	18/08/2010	---	KIRIAKOULIS SHIPPING SA (CR)	1.04	---	1.04 19/04/2013	---	---	---	---	---	---	506@0.936	72.47	2012	---	---	---	7,898.97	0.635	1.49	5759
23,648,700	0.330	0.05	---	---	13/07/2011	23/07/2008	---	KLEEMAN HELLAS SA (CR)	1.64	---	1.64 19/04/2013	1.63	1.61	1.68	1.64	1.64	1103@1.61	2926@1.64	---	2012	23,297	49	38,159.67	38,783.87	1.20	1.88	2757
40,219,218	0.300	---	---	---	25/05/2009	08/09/2010	---	KLOUKINAS - LAPPAS SA (CR)	0.830	-1.54 €	0.843 19/04/2013	0.850	0.820	0.854	0.830	0.845	2@0.822	11829@0.830	---	2012	19,190	7	16,215.73	33,381.95	0.620	0.929	2357
21,224,340	0.420	---	---	---	02/07/2008	25/04/2006	---	KORDELLOS BROS SA (CR)	0.220	4.76 #	0.210 19/04/2013	0.212	0.212	0.220	0.220	0.220	1000@0.212	36@0.220	---	2012	1,000	5	219.71	4,669.35	0.195	0.428	1757
13,450,000	0.390	---	---	---	25/06/2010	28/05/2008	---	KORRES (CR)	3.63	-0.82 €	3.66 19/04/2013	3.56	3.55	3.63	3.63	3.57	20@3.50	160@3.63	---	2012	290	4	1,034.70	48,823.50	3.40	4.87	3767
29,480,000	0.420	---	---	---	19/07/2010	01/08/2007	---	KRETA FARM SA (CR)	0.488	-3.37 €	0.505 19/04/2013	0.504	0.479	0.504	0.488	0.494	201@0.488	1998@0.500	---	2012	7,652	21	3,777.85	14,386.24	0.307	0.738	3577
33,065,136	0.330	---	---	---	06/07/2009	17/09/2012	---	KRI-KRI S.A. (CR)	1.81	---	1.81 19/04/2013	1.79	1.74	1.81	1.81	1.79	98@1.81	3790@1.84	13.40	2012	13,564	25	24,280.12	59,847.90	1.52	2.05	3577
15,804,800	0.330	---	---	---	15/06/2010	12/03/2004	---	KTIMA KOSTAS LAZARIDIS SA (CR)	0.435	---	0.435 16/04/2013	---	---	---	---	---	---	2000@0.392	---	2012	---	---	---	6,875.09	0.247	0.488	3535
22,945,139	1.00	---	---	---	19/08/2008	10/09/2012	---	KYRIAKIDIS MARBLES SA (CR)	0.840	3.70 #	0.810 19/04/2013	0.810	0.800	0.854	0.840	0.812	400@0.786	240@0.840	82.28	2012	6,845	16	5,558.97	19,273.92	0.735	1.04	2353
44,267,700	0.300	---	---	---	30/05/2007	18/09/2002	---	LAMDA DEVELOPMENT SA (CR)	4.90	-2.00 €	5.00 19/04/2013	5.00	4.90	5.00	4.90	4.93	400@4.87	50@5.00	---	2012	1,700	6	8,380.00	216,911.73	4.01	6.48	8633
5,939,268	0.620	---	---	---	10/07/2003	03/01/2002	---	LANAKAM SA (CR)	0.630	---	0.630 16/04/2013	---	---	---	---	---	200@0.567	180@0.649	---	2012	---	---	---	3,741.74	0.609	0.869	3763
7,734,375	1.00	---	---	---	09/07/2007	07/01/2011	---	LIVANIS SA (CR)	0.180	---	0.180 16/04/2013	---	---	---	---	---	380@0.165	300@0.179	---	2012	---	---	---	1,392.19	0.180	0.363	5557
4,740,000	0.860	---	---	---	14/03/2003	---	---	LOGISMOS S.A. (CR)	0.420	1.45 #	0.414 19/04/2013	0.373	0.373	0.420	0.420	0.390	50@0.420	300@0.455	48.72	2011	870	5	339.59	1,990.80	0.373	1.23	9533
15,222,276	0.640	---	---	---	01/06/2010	02/08/2011	---	LOULIS MILLS SA (CR)	2.54	---	2.54 19/04/2013	---	---	---	---	---	750@2.46	200@2.60	-(6)-	2012	---	---	---	38,664.58	2.08	3.09	3577
770,328,883	0.300	---	---	---	26/04/2007	17/04/2012	---	MARFIN INVESTMENT GROUP (CR)	0.325	1.88 #	0.319 19/04/2013	0.325	0.322	0.340	0.325	0.331	1000@0.324	1566@0.327	---	2012	1,431,643	547	473,852.41	250,356.89	0.175	0.564	8775
9,819,370	0.670	---	---	---	14/08/2007	09/01/2004	---	MATHIOS REFRACTORY SA (CR)	0.240	-4.00 €	0.250 19/04/2013	0.241	0.240	0.241	0.240	0.240	770@0.225	380@0.269	---	2012	5,874	5	1,411.18	2,356.65	0.230	0.510	2353
468,700	1.0556	---	---	---	21/03/2012	21/05/2004	---	MERMEREN KOMB. A.D. PR. (GDR)	4.21	-2.32 €	4.31 19/04/2013	4.29	4.21	4.29	4.21	4.26	23@3.95	20@4.21	1.03	2012	48	3	204.44	1,973.23	3.83	5.19	1775
51,950,600	0.320	0.48	0.75	---	10/05/2012	21/10/2005	---	METKA (CR)	11.60	3.48 #	11.21 19/04/2013	11.55	11.23	11.60	11.60	11.47	530@11.42	690@11.60	16.72	2012	20,820	176	238,875.29	602,626.96	9.00	12.78	2757
10,500,000	0.900	---	---	---	24/06/2008	04/07/2012	---	MEVACO SA (CR)	1.30	1.56 #	1.28 19/04/2013	1.20	1.20	1.30	1.30	1.24	600@1.24	669@1.30	9.41	2012	3,800	8	4,695.00	13,650.00	1.01	1.58	2757
12,340,000	3.00	0.15	0.25	---	02/03/2012	23/07/2009	---	MIG REAL ESTATE (CR)	1.41	-1.40 €	1.43 19/04/2013	1.41	1.41	1.41	1.41	1.41	2585@1.41	200@1.46	---	2012	415	2	585.15	17,399.40	1.17	1.72	8671
6,200,000	0.500	---	---	---	22/06/2010	01/11/1995	---	MINERVA KNITWEAR SA (CB)	0.862	---	0.862 19/04/2013	---	---	---	---	---	---	3905@0.776	---	2012	---	---	---	5,344.40	0.530	0.948	3763
12,417,000	0.370	---	---	---	28/07/2008	06/09/2011	---	MLS MULTIMEDIA SA (CR)	2.74	0.37 #	2.73 19/04/2013	2.73	2.69	2.77	2.74	2.73	100@2.68	339@2.74	36.09	2012	8,335	62	22,784.95	34,022.58	2.60	2.97	9537
4,588,137	16.00	---	---	---	30/06/2005	17/08/2011	---	MOCHLOS SA (CR)	2.02	1.51 #	1.99 19/04/2013	1.95	1.90	2.03	1.99	1.97	150@1.95	141@1.99	---	2012	7,446	51	14,679.08	9,268.04	1.12	2.60	2357
11,700,000	0.590	---	---	---	02/06/2009	24/07/2012	---	MOTODYNAMICS S.A. (CR)	0.335	-1.47 €	0.340 19/04/2013	0.306	0.306	0.339	0.330	0.331	61@0.307	90@0.334	---	2012	301	8	99.53	3,919.50	0.301	0.640	5379
110,782,980	0.850	0.25	0.4	---	02/07/2012	05/11/2012	---	MOTOR OIL (CR)	8.35	0.48 #	8.31 19/04/2013	8.40	8.31	8.54	8.35	8.38	200@8.34	2818@8.50	10.20	2012	195,028	178	1,628,977.82	925,037.88	7.02	9.37	533
116,915,862	1.07	---	---	---	11/05/2009	06/07/2011	---	MYTILINEOS HOLDINGS (CR)	4.62	1.76 #	4.54 19/04/2013	4.60	4.57	4.70	4.62	4.64	1000@4.60	705@4.65	---	2012	219,228	493	1,016,912.24	540,151.28	3.38	5.65	1755
8,321,682	0.670	---	---	---	17/08/2007	23/11/1999	---	N. LEVEDERIS SA (CB)	0.258	---	0.258 18/04/2013	---	---	---	---	---	240@0.237	390@0.258	---	2012	---	---	---	3,034.97	0.233	0.658	1757
2,160,524	0.670	0.0435	0.0435	---	20/08/2012	23/11/1999	---	N. LEVEDERIS SA (PB)	0.411	---	0.411 10/04/2013	---	---	---	---	---	---	672@0.400	---	2012	---	---	---	3,034.97	0.307	0.798	1757
11,510,102	0.890	---	---	---	24/06/2005	06/10/1999	---	NAFPAKTOS TEXTILE IND. SA (CB)	0.389	3.46 #	0.376 18/04/2013	0.399	0.341	0.399	0.389	0.345	---	473@0.389	---	2012	5,009	16	1,726.60	4,477.43	0.268	0.500	3763
6,340,000	0.600	---	---	---	30/11/2009	12/07/2000	---	NAKAS MUSIC	0.399	---	0.399 19/04/2013	---	---	---	---	---	620@0.360	10@0.437	---	2012	---	---	---	2,529.66	0.300	0.600	5379
1,226,601,200	1.00	---	---	---	16/05/2008	21/09/2010	---	NATIONAL BANK (CR)	0.600	19.76 #	0.501 19/04/2013	0.525	0.525	0.617	0.600	0.577	11000@0.599	100@0.605	---	2012	10,509,136	4,372	6,060,749.59	735,960.72	0.364	1.47	8355
23,935,280	0.300	---	---	---	29/06/2009	13/06/2000	---	NAYTEMPORIKI PUBLISHING SA(CR)	0.241	---	0.241 19/04/2013	---	---	---	---	---	1230@0.217	500@0.263	---	2012	---	---	---	5,768.40	0.198	0.360	5557
27,848,000	0.300	0.0301	0.0132	---	20/08/2012	02/09/2003	---	NEWSPHONE HELLAS SA (CR)	0.298	-8.87 €	0.327 19/04/2013	0.289	0.280	0.300	0.298	0.287	400@0.288	2000@0.299	7.30	2012	47,255	43	13,579.32	8,298.70	0.241	0.592	2791
6,132,500	1.25	0.1	---	---	24/06/2011	19/06/2001	---	NEXANS HELLAS SA (CR)	2.57	2.39 #	2.51 17/04/2013	2.45	2.45	2.57	2.57	2.52	100@2.31	219@2.57	---	2012	485	4	1,220.05	15,760.53	2.37	3.11	2733
63,683,276	1.34	---	---	---	08/07/2008	10/11/2008	---	NIREFS SA (CR)	0.561	-1.41 €	0.569 19/04/2013	0.550	0.550	0.577	0.561	0.565	70@0.570	300@0.568	---	2012	17,729	43	10,011.00	35,726.32	0.380	0.839	3573
319,000,000	0.300	1.4177	0.72	---	08/06/2012	25/04/2001	---	OPAP (CR)	7.08	0.86 #	7.02 19/04/2013	7.02	6.75	7.18	7.08	6.97	145@7.04	1417@7.09	4.40	2012	501,540	1,612	3,493,590.47	2,258,520.00	5.49	7.76	5752

Number of Listed Shares	Nominal Value	Dividends [1]			Date of Last Coupon Dividend [2]		Date of Right	Note	Shares	Closing price	% change	Previous closing price/date	Open price	Price min	Price max	Last price	Avg price	Last Bid [7]	Last Ask [7]	P/E after	Year	Volume	Trades	Transactions Value	Company Mkt Value (thou. €)	Year low	Year high	Sector[4]
490,150,389	2.39	0.1179	---	---	28/06/2011	18/06/1998	---	---	OTE (CR)	6.18	2.15 #	6.05 19/04/2013	6.13	6.12	6.23	6.18	6.19	10@6.17	12042@6.20	---	2012	859,608	1,292	5,316,494.94	3,029,129.40	4.26	6.82	6535
25,000,000	2.00	0.02	0.01	---	10/08/2012	08/08/2003	---	---	P.P.A. S.A. (CR)	19.00	2.04 #	18.62 19/04/2013	18.68	18.22	19.08	19.00	18.88	20@19.00	61@19.05	95.82	2012	9,021	98	170,276.31	475,000.00	14.59	20.37	2777
4,971,466	1.46	---	---	---	04/07/2007	08/10/2003	---	---	PAIRIS SA (CR)	0.336	---	↘ 0.336 17/04/2013	---	---	---	---	---	590@0.251	230@0.359	---	2012	---	---	---	1,670.41	0.230	0.478	2723
3,953,090	0.900	---	---	---	02/07/2001	05/12/2012	---	---	PAPERPACK (CR)	0.740	-1.99 €	0.755 19/04/2013	0.610	0.610	0.747	0.740	0.639	182@0.620	100@0.730	---	2012	678	15	432.91	2,925.29	0.500	1.06	2723
50,797,369	0.310	---	---	---	17/08/2000	12/10/2010	---	---	PAPOUTSANIS (CR)	0.568	---	↘ 0.568 19/04/2013	---	---	---	---	---	---	260@0.568	---	2012	---	---	---	28,852.91	0.361	0.639	3767
20,210,127	1.53	---	---	---	27/06/1997	20/03/2000	---	---	PARNASSOS ENTERP. (CR)	0.422	7.93 #	0.391 19/04/2013	0.399	0.380	0.430	0.422	0.411	100@0.416	235@0.429	---	2012	15,431	50	6,334.86	8,528.67	0.285	0.698	8775
7,070,400	0.930	---	---	---	18/05/2010	12/05/2011	---	---	PETROPOULOS PETROS (CR)	1.40	-2.10 €	1.43 19/04/2013	1.43	1.35	1.43	1.40	1.38	50@1.36	1088@1.42	---	2012	4,309	40	5,962.98	9,898.56	1.20	1.53	2753
1,143,326,564	0.300	---	---	---	16/05/2008	10/01/2011	---	---	PIRAEUS BANK (CR)	0.230	15.58 #	0.199 19/04/2013	0.214	0.213	0.238	0.230	0.228	109000@0.228	143100@0.231	---	2012	26,224,418	4,603	5,986,787.61	262,965.11	0.122	0.396	8355
22,080,000	0.320	0.05	0.08	---	22/05/2012	03/10/2000	---	---	PLAISIO COMPUTERS SA (CR)	4.70	-3.88 €	4.89 19/04/2013	4.71	4.70	4.73	4.70	4.71	50@4.62	395@4.70	10.47	2012	1,755	8	8,262.00	103,776.00	3.65	6.25	9572
232,000,000	4.60	0.79	---	---	05/07/2011	12/12/2001	---	---	PPC (CR)	6.92	2.52 #	6.75 19/04/2013	6.88	6.78	6.98	6.92	6.89	1250@6.85	1707@6.92	93.91	2012	269,373	759	1,855,359.94	1,605,440.00	4.55	8.28	7535
11,812,193	0.450	---	---	---	24/07/2009	15/11/2006	---	---	PROFILE SA (CR)	1.04	---	↘ 1.04 19/04/2013	1.05	0.996	1.05	1.04	1.02	5@1.03	1400@1.04	20.01	2012	10,531	54	10,684.75	12,284.68	0.761	1.11	9533
24,319,250	0.300	---	---	---	09/07/2002	04/07/2007	---	---	PROODEFTIKH SA (CR)	0.097	8.99 #	0.089 19/04/2013	0.097	0.097	0.097	0.097	0.097	1526@0.097	---	---	2012	3,000	2	291.00	2,358.97	0.063	0.223	2357
6,836,280	1.88	---	---	---	18/07/2005	10/09/2010	---	---	QUALITY & RELIABILITY SA (CR)	0.550	---	↘ 0.550 19/04/2013	---	---	---	---	---	---	750@0.605	---	2012	---	---	---	3,759.95	0.236	0.708	9533
48,069,201	0.400	---	---	---	05/09/2008	21/06/2012	---	---	QUEST HOLDINGS (CR)	1.05	-4.54 €	1.10 19/04/2013	1.07	1.05	1.08	1.05	1.07	1@1.12	358@1.13	---	2012	3,850	9	4,105.91	50,472.66	0.940	1.39	9533
57,434,884	1.31	---	---	---	05/06/2008	12/06/2009	---	---	REDS S.A. (CR)	0.620	-7.46 €	0.670 19/04/2013	0.649	0.603	0.679	0.620	0.632	529@0.620	150@0.659	---	2012	7,311	20	4,620.16	35,609.63	0.450	0.949	8633
22,280,000	0.300	0.0329	---	---	11/04/2011	23/02/2007	---	---	REVOIL (CR)	0.547	6.21 #	0.515 19/04/2013	0.547	0.547	0.547	0.547	0.547	1000@0.518	1000@0.548	---	2012	50	1	27.35	12,187.16	0.345	0.910	5379
51,197,862	1.00	---	---	---	28/06/2010	25/07/2012	---	---	S & B IND. MINERALS (CR)	5.80	---	↘ 5.80 19/04/2013	5.80	5.80	5.80	5.80	5.80	656621@5.80	12674@5.81	50.23	2012	650,204	77	3,771,183.20	296,947.60	5.29	6.08	1775
52,067,296	0.300	---	---	---	23/12/2003	24/01/2007	---	---	SELECTED TEXT. IND. ASSOC (CR)	0.360	2.86 #	0.350 19/04/2013	0.346	0.338	0.362	0.362	0.352	1500@0.352	2790@0.362	---	2012	18,844	27	6,633.47	18,744.23	0.275	0.587	3763
96,243,908	0.410	---	---	---	26/06/2008	17/07/2000	---	---	SIDENOR (CR)	1.67	1.83 #	1.64 19/04/2013	1.67	1.61	1.69	1.67	1.66	1000@1.65	1925@1.67	---	2012	83,849	181	139,549.45	160,727.33	1.00	2.39	1757
6,456,530	1.60	---	---	---	29/06/2001	02/08/2010	---	---	SPACE HELLAS SA (CR)	1.67	-1.77 €	1.70 19/04/2013	1.65	1.65	1.67	1.67	1.66	81@1.20	4745@1.67	53.64	2012	385	2	640.35	10,782.41	1.25	1.97	9578
28,438,268	0.300	---	---	---	21/08/2006	24/11/1999	---	---	SPIROY AGRICULTURE SA (CR)	0.329	1.86 #	0.323 19/04/2013	0.332	0.291	0.333	0.329	0.312	50@0.320	550@0.329	---	2012	950	10	296.50	9,356.19	0.272	0.557	1357
33,125,000	5.00	---	---	---	03/07/2006	18/08/2010	---	---	TECHNICAL OLYMPIC SA (CR)	1.85	2.78 #	1.80 19/04/2013	1.79	1.75	1.85	1.85	1.82	230@1.78	570@1.85	-(6)-	2012	5,581	36	10,132.01	61,281.25	1.19	2.71	3728
109,319,070	0.300	(0.0399)	(0.0613)	---	28/05/2012	05/09/2012	---	---	TERNA ENERGY (CR)	3.35	2.13 #	3.28 19/04/2013	3.28	3.25	3.39	3.35	3.33	50@3.33	1474@3.36	73.58	2012	43,940	171	146,267.82	366,218.88	2.24	3.73	7537
36,300,000	1.12	0.114	0.188	---	17/08/2012	12/12/2007	---	---	THESSALONIKA WATER & SEWERA	5.97	1.36 #	5.89 19/04/2013	5.95	5.90	5.97	5.97	5.94	4967@5.95	496@5.97	12.25	2012	5,408	30	32,130.68	216,711.00	4.73	6.82	7577
45,949,500	0.500	0.036	---	---	02/05/2011	01/11/1999	---	---	THRACE PLASTICS SA (CR)	1.35	-1.46 €	1.37 19/04/2013	1.36	1.33	1.37	1.35	1.36	1466@1.34	20@1.37	7.77	2012	19,878	46	27,008.01	62,031.83	1.07	1.56	1357
77,063,568	4.00	0.0806	---	---	24/06/2011	25/06/2004	---	---	TITAN CEMENT (CR)	14.26	-0.28 €	14.30 19/04/2013	14.30	14.15	14.46	14.26	14.30	5@14.15	1436@14.30	---	2012	17,713	134	253,335.96	1,144,340.24	11.31	15.60	2353
7,568,960	4.00	0.1869	---	---	24/06/2011	25/06/2004	---	---	TITAN CEMENT CO. (PR)	6.00	0.67 #	5.96 19/04/2013	6.06	6.00	6.06	6.00	6.00	356@6.00	61@6.27	---	2012	476	4	2,857.92	1,144,340.24	5.83	7.27	2353
10,080,000	3.00	0.21	0.4	---	18/07/2012	27/08/2001	---	---	TPA SA (CR)	22.50	0.13 #	22.47 19/04/2013	22.64	22.10	22.80	22.50	22.56	30@22.42	39@22.50	12.30	2012	989	18	22,310.72	226,800.00	19.00	24.48	2777
54,888,240	1.13	0.1	0.1	---	20/04/2012	22/03/2006	---	---	TRASTOR REAL EST. INV. CO.(CR)	0.762	-1.93 €	0.777 19/04/2013	0.755	0.750	0.770	0.762	0.762	54@0.760	2404@0.770	---	2012	42,670	28	32,508.74	41,824.84	0.624	0.829	8671
14,627,315	0.300	---	---	---	16/11/1992	03/12/2012	---	---	UNIBIOS (CR)	0.255	---	↘ 0.255 19/04/2013	0.230	0.230	0.256	0.256	0.253	141@0.232	2210@0.255	---	2012	38,609	22	9,752.69	3,729.97	0.151	0.414	2353
18,810,000	0.400	---	---	---	08/07/2010	14/11/2007	---	---	VARVERIS - MODA BAGNO SA (CR)	0.419	---	↘ 0.419 28/03/2013	---	---	---	---	---	---	5830@0.378	---	2012	---	---	---	7,881.39	0.249	0.419	2353
199,474,091	0.300	---	---	---	03/07/2009	24/03/2000	---	---	VIOHALCO (CB)	4.38	3.06 #	4.25 19/04/2013	4.29	4.29	4.53	4.38	4.39	200@4.37	1563@4.39	---	2012	132,289	350	580,860.82	873,696.52	3.06	5.68	2727
4,968,600	2.88	---	---	---	01/07/1998	14/12/1998	---	---	VIS SA (CR)	0.839	---	↘ 0.839 17/04/2013	---	---	---	---	---	---	242@0.879	---	2012	---	---	---	4,168.66	0.525	0.871	2723
6,325,000	0.600	---	---	---	19/07/2010	25/07/2012	---	---	VOGIATZOGLOU SYSTEMS SA (CR)	1.04	---	↘ 1.04 08/04/2013	---	---	---	---	---	230@0.728	300@1.10	---	2012	---	---	---	6,578.00	0.840	1.19	2797

Exchange Traded Funds (ETFs)

5,745,839	---	---	---	24/01/2008	---	ALPHA ETF FTSE Athex Large Cap	3.03	2.71 #	2.95	19/04/2013	2.98	2.92	3.14	3.03	2.99	82@3.03	---	---	---	2,455	8	7,334.74	-	2.49	3.55	11000
294,878	---	---	---	29/06/2009	---	NBGM ETF	9.77	1.56 #	9.62	19/04/2013	9.77	9.77	9.77	9.77	9.77	---	---	---	---	2	1	19.54	-	8.23	10.90	11000

Number of Listed Shares	Nominal Value	Dividends [1]			Date of Last Coupon Dividend [2]	Right	Note	Shares	Closing price	% change	Previous closing price/date	Open price	Price min	Price max	Last price	Avg price	Last Bid [7]	Last Ask [7]	P/E after	Year	Volume	Trades	Transactions Value	Company Mkt Value (thou. €)	Year low	Year high	Sector[4]
-------------------------	---------------	---------------	--	--	----------------------------------	-------	------	--------	---------------	----------	-----------------------------	------------	-----------	-----------	------------	-----------	--------------	--------------	-----------	------	--------	--------	--------------------	-----------------------------	----------	-----------	------------

Exchange Traded Funds (ETFs)

388,550	---	---	---	---	03/11/2010	---	---	NBGAM ETF GREECE & TURKEY 30	9.03	1.69 #	8.88 19/04/2013	9.03	9.03	9.03	9.03	9.03	---	---	---	---	2	1	18.06	-	8.30	9.20	11000
---------	-----	-----	-----	-----	------------	-----	-----	------------------------------	------	--------	-----------------	------	------	------	------	------	-----	-----	-----	-----	---	---	-------	---	------	------	-------

Low Dispersion

14,000,000	3.80	---	---	---	23/04/2010	29/06/1999	4815	ALPHA REAL ESTATE SA(CR)	6.20	---	↘ 6.20 18/04/2013	6.20	6.20	6.20	6.20	6.20	30@6.21	100@6.98	12.83	2012	260	3	1,612.00	86,800.00	6.20	7.00	8637
63,900,000	3.00	---	---	---	23/06/2003	04/11/2008	4816	ASTIR PALACE SA (CR)	3.93	-1.26	☒ 3.98 19/04/2013	3.98	3.91	3.98	3.91	3.93	446@3.91	200@3.93	---	2012	5,440	50	21,362.32	251,127.00	3.50	4.95	5753
49,152,904	0.800	---	---	---	09/08/2004	08/03/2006	4814	ATHENA SA (CR)	0.194	19.02 #	0.163 19/04/2013	0.194	0.194	0.194	0.194	0.194	1@0.193	1097@0.194	---	2012	4,910	5	952.54	9,535.66	0.094	0.340	2357
191,660,320	0.300	---	---	---	20/07/2009	29/12/2010	4817	ATTICA HOLDINGS (CR)	0.315	4.30 #	0.302 19/04/2013	0.350	0.300	0.350	0.330	0.315	28@0.330	500@0.362	---	2012	2,015	10	634.01	60,373.00	0.291	0.588	5759
15,300,000	0.300	---	---	---	30/07/2009	13/12/1999	4893	ATTICA PUBLICATIONS SA (CR)	0.800	---	↘ 0.800 17/04/2013	---	---	---	---	---	60@0.801	---	---	2012	---	---	---	12,240.00	0.680	1.45	5557
44,448,600	0.600	---	---	---	30/06/2005	31/01/2006	4948	EURODRIP SA (CR)	1.53	---	↘ 1.53 19/04/2013	1.53	1.53	1.53	1.53	1.53	203607@1.53	20@1.83	-(6)-	2012	5,448	17	8,335.44	68,006.36	1.43	1.54	1357
11,720,024	0.530	---	---	---	16/07/2010	29/05/2012	4942	FLEXOPACK SA (CR)	3.50	11.82 #	3.13 18/04/2013	3.50	3.50	3.50	3.50	3.50	1076@3.50	180@3.59	11.79	2012	2,993	9	10,475.50	41,020.08	2.39	3.58	2723
8,418,750	0.300	---	0.15	---	06/06/2012	27/06/2012	4828	GEKE SA (CB)	6.72	---	↘ 6.72 17/04/2013	---	---	---	---	---	100@6.72	50@8.06	21.10	2012	---	---	---	56,574.00	6.59	6.79	5753
68,322,221	1.00	---	---	---	08/03/2002	08/04/2013	---	GENIKI BANK (CR)	6.86	---	↘ 6.86 19/04/2013	6.86	6.86	6.86	6.86	6.86	52213@6.86	---	---	2012	341	20	2,349.61	468,690.44	5.40	6.86	8355
71,082,707	1.70	---	---	---	01/07/2010	21/11/2012	4820	HERACLES GEN.CEMENT CO. (CR)	1.36	4.61 #	1.30 19/04/2013	1.36	1.36	1.36	1.36	1.36	1700@1.28	270@1.36	---	2012	2,200	11	2,992.00	96,672.48	1.20	1.80	2353
13,404,440	8.63	---	---	---	02/04/2001	06/03/1992	4822	IONIAN HOTELS SA (CR)	10.01	---	↘ 10.01 04/04/2013	10.01	10.01	10.01	10.01	10.01	200@10.01	300@12.00	---	2012	100	1	1,001.00	134,178.44	9.01	13.00	5753
2,760,000	7.70	6.3291	7.6	---	30/05/2012	16/07/1990	4823	KARELIA TOBACCO CO. SA (CB)	157.00	---	↘ 157.00 17/04/2013	---	---	---	---	---	16@135.00	50@155.00	9.54	2012	---	---	---	433,320.00	110.00	157.00	3785
17,000,000	0.600	---	---	---	12/06/2008	07/03/2000	4941	KATHIMERINI SA (CR)	0.595	-19.92	☒ 0.743 19/04/2013	0.595	0.595	0.595	0.595	0.595	---	98@0.595	---	2012	1,330	11	791.36	10,115.00	0.321	0.910	5557
21,364,000	1.12	---	---	---	05/07/2010	10/08/2005	4824	LAMPASA HOTEL SA (CR)	17.32	---	↘ 17.32 19/04/2013	17.32	17.32	17.32	17.32	17.32	200@16.10	300@17.00	---	2012	200	3	3,464.00	370,024.48	15.00	18.00	5753
6,700,000	0.800	---	---	---	19/07/2010	29/08/2012	4894	MILLS KEPENOS (CR)	1.31	-19.63	☒ 1.63 02/04/2013	1.31	1.31	1.31	1.31	1.31	---	4608@1.50	7.79	2012	100	2	131.00	8,777.00	1.20	1.69	3577
70,926,000	2.25	---	---	---	25/07/2008	21/06/2000	4825	MINOAN LINES SA (CR)	2.00	---	↘ 2.00 19/04/2013	2.00	2.00	2.00	2.00	2.00	140@1.71	3977@2.00	---	2012	1,400	8	2,800.00	141,852.00	1.81	2.04	5759
17,240,776	0.370	---	---	---	14/07/2005	30/09/2003	4827	PERSEUS SA (CR)	0.170	12.58 #	0.151 19/04/2013	0.170	0.170	0.170	0.170	0.170	388@0.131	---	9.91	2012	332	2	56.44	2,930.93	0.033	0.325	3577
7,500,000	0.560	---	---	---	25/06/2010	10/04/2013	4940	S.KANAKIS SA (CR)	1.28	---	↘ 1.28 19/04/2013	---	---	---	---	---	10@1.18	350@1.27	9.10	2012	---	---	---	9,600.00	1.05	1.40	3577

Surveillance

33,301,715	0.320	---	---	---	27/06/2003	08/07/2009	4412	AEGEK (CR)	0.148	19.36 #	0.124	19/04/2013	0.148	0.148	0.148	0.148	0.148	136673@0.148	---	---	2012	129,487	32	19,164.09	4,928.65	0.089	0.184	2357
14,870,100	0.400	---	---	---	15/05/2008	26/09/2011	4844	ALPHA GRISSIN S.A. (CR)	0.105	---	↘ 0.105	10/04/2013	---	---	---	---	---	780@0.084	1000@0.107	---	2012	---	---	---	1,561.36	0.105	0.328	9533
215,246,452	0.300	---	---	---	25/06/2001	24/09/2001	4446	ALTEC SA (CR)	0.033	3.13 #	0.032	19/04/2013	0.032	0.032	0.034	0.034	0.033	1000@0.033	5040@0.034	---	2012	23,399	13	782.59	7,103.13	0.021	0.062	9533
2,969,713	0.300	---	---	---	02/07/2008	28/02/2011	4958	ANEK LINES SA (PR, issue '96)	0.540	---	↘ 0.540	21/03/2013	---	---	---	---	---	---	---	---	2012	---	---	---	20,140.48	0.306	0.770	5759
312,163	0.300	---	---	---	02/07/2008	28/02/2011	4959	ANEK LINES SA (PR, issue '90)	1.78	---	↘ 1.78	21/02/2013	---	---	---	---	---	---	---	---	2012	---	---	---	20,140.48	1.78	1.78	5759
185,373,016	0.300	---	---	---	02/07/2008	28/02/2011	4957	ANEK LINES SA (CR)	0.097	5.43 #	0.092	19/04/2013	0.096	0.086	0.100	0.100	0.097	3617@0.087	84428@0.100	---	2012	110,400	28	10,754.40	20,140.48	0.072	0.270	5759
81,644,555	0.300	---	---	---	01/07/2008	02/09/2002	4630	ATTI - KAT SA (CR)	0.043	---	↘ 0.043	19/04/2013	0.046	0.038	0.046	0.041	0.043	1945@0.041	4263@0.047	---	2012	35,462	15	1,523.73	3,510.72	0.022	0.088	2357
20,255,805	0.300	---	---	---	22/08/2006	02/08/2010	4881	AXON HOLDING SA (CR)	0.095	---	↘ 0.095	19/04/2013	0.095	0.095	0.095	0.095	0.095	1000@0.078	1601@0.095	---	2012	8,899	5	845.42	1,924.30	0.090	0.192	4533
17,579,754	4.16	---	---	---	18/08/2006	02/08/2010	4885	BIOTER SA (CR)	0.097	-5.82	☒ 0.103	19/04/2013	0.084	0.084	0.102	0.102	0.097	2589@0.102	46@0.103	---	2012	39,411	18	3,825.93	1,705.24	0.059	0.194	2357
12,431,980	0.720	---	---	---	20/06/2003	10/07/2003	4559	COMPUCON SA (CR)	0.090	---	↘ 0.090	09/04/2013	---	---	---	---	---	---	5000@0.089	---	2012	---	---	---	1,118.88	0.064	0.100	9537
30,159,583	0.470	---	---	---	26/06/2008	29/12/2010	4962	DIAS A/C (CR)	0.840	-0.59	☒ 0.845	10/04/2013	0.840	0.840	0.840	0.840	0.840	---	97@0.829	---	2012	97	2	81.48	25,334.05	0.420	0.845	3573
33,718,750	0.300	---	---	---	28/05/2008	21/01/2013	4947	DOL SA (CR)	0.604	0.67 #	0.600	19/04/2013	0.615	0.600	0.615	0.600	0.604	3143@0.600	300@0.605	---	2012	11,099	16	6,704.13	20,366.13	0.244	0.759	5557
15,878,748	0.480	---	---	---	10/07/2006	22/03/2004	4960	DOMIKI KRITIS SA (CR)	0.414	---	↘ 0.414	18/04/2013	---	---	---	---	---	150@0.400	263@0.409	---	2012	---	---	---	6,573.80	0.380	0.800	2357
3,961,300	1.28	---	---	---	29/06/2004	03/08/2000	4808	DUROS SA (CR)	0.144	---	↘ 0.144	19/04/2013	---	---	---	---	---	5000@0.120	---	2012	---	---	---	---	570.43	0.144	0.600	3763
7,085,888	1.59	---	---	---	02/07/1996	06/09/2010	4690	ELVIEMEK (CR)	3.00	---	↘ 3.00	05/02/2013	---	---	---	---	---	---	50@3.29	-(6)-	2012	---	---	---	21,257.66	3.00	3.58	8633

Number Listed Shares	Nominal Value	Dividends [1]			Date of Last Coupon Dividend [2]	Date of Last Coupon Right	Note	Shares	Closing price	% change	Previous closing price/date	Open price	Price min	Price max	Last price	Avg price	Last Bid [7]	Last Ask [7]	P/E after	Year	Volume	Trades	Transactions Value	Company Mkt Value (thou. €)	Year low	Year high	Sector[4]
-------------------------	------------------	---------------	--	--	-------------------------------------	------------------------------	------	--------	------------------	----------	--------------------------------	---------------	--------------	--------------	---------------	--------------	-----------------	--------------	--------------	------	--------	--------	-----------------------	--------------------------------	-------------	--------------	---------------

Surveillance

6,000,000	0.600	---	---	---	13/06/2008	08/04/2004	4886	EUROBROKERS S.A. (CR)	0.180	---	0.180	08/04/2013	---	---	---	---	840@0.144	1472@0.180	---	2012	---	---	---	1,080.00	0.180	0.333	8534
7,347,600	0.600	---	---	---	02/06/2010	25/02/2010	4889	EUROCONSULTANTS S.A. (CR)	2.64	---	2.64	13/12/2012	---	---	---	---	---	4494@2.12	---	2012	---	---	---	19,397.66	2.64	2.64	2791
21,820,410	0.800	---	---	---	22/05/2008	02/08/2011	4882	EUROMEDICA SA (CR)	0.450	-1.75	€ 0.458	19/04/2013	0.450	0.449	0.450	0.449	740@0.367	920@0.449	---	2012	1,950	7	876.45	9,819.18	0.380	0.613	4533
12,952,610	0.300	---	---	---		04/10/2012	4846	Forthnet (CR)	0.542	19.91	# 0.452	19/04/2013	0.542	0.542	0.542	0.540	1200@0.430	501@0.539	---	2011	1	1	0.54	7,020.31	0.350	0.930	9535
179,707,771	0.300	---	---	---	27/06/2002	01/11/2011	4847	HELLAS ONLINE SA (CR)	0.400	0.50	# 0.398	19/04/2013	0.400	0.400	0.400	0.400	2000@0.320	5120@0.400	---	2012	1,400	3	560.00	71,883.11	0.278	0.709	9537
13,692,227	1.47	---	---	---	07/07/2006	08/10/1999	4845	HELLENIC FABRICS SA (CR)	0.299	---	0.299	16/04/2013	---	---	---	---	---	750@0.285	---	2012	---	---	---	4,093.98	0.249	0.354	3763
30,390,000	0.310	---	---	---	18/08/2008	29/12/2006	4447	HELLENIC FISHFARMING SA (CR)	0.072	20.00	# 0.060	19/04/2013	0.072	0.072	0.072	0.072	6000@0.072	---	16.88	2012	100	1	7.20	2,188.08	0.039	0.137	3573
1,540,000	0.600	---	---	---	08/08/1994	19/09/2000	4855	J.BOUTARIS & SON HOLD. (PB)	0.056	---	0.056	26/03/2013	---	---	---	---	2000@0.050	---	---	2012	---	---	---	2,352.41	0.056	0.201	3535
25,179,640	0.600	---	---	---	08/08/1994	19/09/2000	4854	J.BOUTARIS & SON HOLD. SA (CB)	0.090	---	0.090	19/04/2013	0.090	0.090	0.090	0.090	---	1999@0.089	---	2012	1,000	2	90.00	2,352.41	0.055	0.132	3535
7,125,216	0.650	---	---	---	01/07/2005	14/12/1999	4955	KRE.KA SA (CR)	0.242	10.50	# 0.219	19/04/2013	0.262	0.242	0.262	0.242	5000@0.240	1400@0.250	---	2012	5,100	3	1,236.20	1,724.30	0.155	0.580	3573
51,081,030	1.00	---	---	---	20/08/2007	03/09/2007	4912	LAVIPHARM SA (CR)	0.153	-14.05	€ 0.178	19/04/2013	0.153	0.153	0.153	0.153	977@0.153	523@0.166	---	2012	2,512	5	384.34	7,815.40	0.126	0.268	4577
322,925,288	0.300	---	---	---	23/05/2007	10/04/2000	4554	M.J. MAILLIS SA (CR)	0.088	-5.38	€ 0.093	19/04/2013	0.094	0.086	0.094	0.088	9901@0.089	2000@0.091	---	2012	8,699	8	764.11	28,417.43	0.070	0.150	2723
9,567,289	0.300	---	---	---	01/07/2004	19/11/2007	4944	MARAC ELECTRONICS (CR)	0.350	---	0.350	06/02/2013	---	---	---	---	---	2400@0.280	---	2012	---	---	---	3,348.55	0.330	0.409	9578
4,178,856	1.58	0.22	---	---	21/07/2011	28/07/2004	---	MEDICON S.A (CR)	0.890	---	0.890	16/04/2013	---	---	---	---	---	965@0.978	---	2012	---	---	---	3,719.18	0.720	1.18	4535
66,937,526	0.700	---	---	---	13/08/2010	21/05/2003	4927	MICHANIKI SA (CR)	0.200	4.17	# 0.192	19/04/2013	0.195	0.195	0.204	0.200	1000@0.155	500@0.203	---	2012	27,483	27	5,485.71	16,971.23	0.119	0.370	2357
25,968,987	0.700	---	---	---	13/08/2010	21/05/2003	4928	MICHANIKI SA (PR)	0.138	6.15	# 0.130	19/04/2013	0.135	0.135	0.149	0.149	460@0.106	694@0.149	---	2012	2,134	8	295.09	16,971.23	0.077	0.268	2357
255,459,600	0.300	---	---	---	26/06/2000	03/12/2010	4833	NEL SA (CR)	0.037	-19.56	€ 0.046	19/04/2013	0.037	0.037	0.037	0.037	82@0.037	231@0.038	---	2012	918	3	33.97	9,452.01	0.037	0.158	5759
20,231,328	0.600	---	---	---	15/07/2008	25/06/2004	4879	NIKAS SA (CR)	0.300	---	0.300	18/04/2013	---	---	---	---	500@0.280	5188@0.359	---	2012	---	---	---	6,069.40	0.300	0.530	3577
42,501,273	0.300	---	---	---	26/06/2007	10/08/2009	4749	NUTRIART (CR)	0.069	-13.75	€ 0.080	19/04/2013	0.065	0.065	0.090	0.069	1500@0.066	5012@0.090	---	2012	3,134	9	216.62	2,932.59	0.038	0.114	3577
14,967,940	0.500	---	---	---	21/05/2008	04/01/2008	4956	PASAL DEVELOPMENT S.A. (CR)	0.147	8.09	# 0.136	19/04/2013	0.137	0.137	0.149	0.147	500@0.136	250@0.156	---	2012	4,000	4	588.00	2,200.29	0.123	0.414	8633
40,946,303	0.360	---	---	---	18/07/2005	27/11/2007	4856	PC SYSTEMS SA (CR)	0.079	-15.05	€ 0.093	19/04/2013	0.079	0.079	0.079	0.079	2000@0.078	500@0.080	---	2012	3,750	4	296.25	3,234.76	0.079	0.180	9533
18,750,000	0.300	---	---	---	02/07/2001	31/12/2012	---	PEGASUS PUBLISHING S.A. (CR)	0.084	12.00	# 0.075	18/04/2013	0.065	0.065	0.090	0.090	4962@0.090	---	---	2012	44	4	3.71	1,575.00	0.044	0.610	5557
28,056,518	0.530	---	---	---	04/07/2007	19/07/2006	4750	SATO SA (CR)	0.047	---	0.047	19/04/2013	---	---	---	---	12000@0.039	2000@0.046	---	2012	---	---	---	1,318.66	0.025	0.094	3726
36,235,184	1.00	---	---	---	01/07/2008	30/07/2012	4961	SELONDA AQUACULTURE SA (CR)	0.211	-0.94	€ 0.213	19/04/2013	0.213	0.204	0.213	0.204	400@0.205	350@0.212	---	2012	5,568	12	1,175.49	7,645.62	0.198	0.600	3573
7,914,480	2.50	---	---	---	23/06/2008	29/06/2011	4888	SFAKIANAKIS SA (CR)	0.636	---	0.636	19/04/2013	---	---	---	---	2680@0.636	730@0.763	---	2012	---	---	---	5,033.61	0.364	0.720	5379
60,221,300	0.400	---	---	---	01/07/2002	01/11/2010	4880	SHELMAN SA (CR)	0.152	---	0.152	14/03/2013	---	---	---	---	---	4000@0.149	---	2011	---	---	---	9,153.64	0.152	0.280	2353
10,000,000	1.35	---	---	---	24/06/2008	10/05/2005	4887	SIDMA SA (CR)	0.497	-1.39	€ 0.504	19/04/2013	0.497	0.497	0.497	0.497	1000@0.499	100@0.540	---	2011	27	2	13.42	4,970.00	0.497	0.920	1757
29,060,950	0.340	---	---	---	20/08/2007	24/10/2001	4884	SPIDER METAL INDUSTRY SA (CR)	0.037	15.63	# 0.032	19/04/2013	0.037	0.037	0.037	0.037	1000@0.033	41@0.037	---	2012	959	2	35.48	1,075.26	0.030	0.097	2757
6,523,780	0.530	---	---	---	01/07/2002	06/03/2001	4747	TECHNICAL PUBLICATIONS SA (CR)	0.024	---	0.024	15/04/2013	---	---	---	---	4000@0.021	---	---	2012	---	---	---	156.57	0.024	0.347	5557
50,396,500	0.300	---	---	---	16/07/2009	17/07/2012	---	TELETIPOS SA (CR)	0.232	---	0.232	19/04/2013	---	---	---	---	191@0.202	217@0.269	---	2012	---	---	---	11,691.99	0.198	0.600	5553
3,229,566	0.320	---	---	---	22/06/2005	23/09/1999	4629	VARANGIS AVEPE S.A. (CR)	0.670	-4.96	€ 0.705	19/04/2013	0.670	0.670	0.670	0.670	---	275@0.670	---	2012	3,000	4	2,010.00	2,163.81	0.206	0.800	3726
10,305,079	0.300	---	---	---	25/06/2002	03/12/1999	4611	VARVARESSOS SA (CB)	0.160	---	0.160	11/04/2013	0.160	0.160	0.160	0.160	---	11925@0.160	---	2012	85	2	13.60	1,648.81	0.028	0.181	3763
13,191,620	0.620	---	---	---	04/08/2010	09/09/2002	4741	YALCO - CONSTANTINOU SA (CB)	0.210	---	0.210	19/04/2013	---	---	---	---	---	2469@0.251	---	2012	---	---	---	2,770.24	0.120	0.210	3722

Under Deletion

5,025,000	0.300	---	---	---	05/07/2005	14/03/2002	4963	ALSINCO S.A (CR)	0.028	---	0.028	16/04/2013	---	---	---	---	3000@0.023	977@0.033	---	2012	---	---	---	140.70	0.028	0.185	3763
766,000	2.83	---	---	---	01/07/2004	11/12/2012	---	TRIA ALFA SA (CR)	1.36	-19.53	€ 1.69	11/03/2013	1.36	1.36	1.36	1.36	---	100@1.60	---	2012	375	2	510.00	1,431.31	1.36	4.70	3763
245,000	2.83	---	---	---	19/07/2010	11/12/2012	---	TRIA ALFA SA (PR)	1.59	---	1.59	26/02/2013	---	---	---	---	---	3@1.28	---	2012	---	---	---	1,431.31	0.501	1.59	3763

Number of Listed Shares	Nominal Value	Dividends [1]			Date of Last Coupon Dividend [2]		Note	Shares	Closing price	% change	Previous closing price/date	Open price	Price min	Price max	Last price	Avg price	Last Bid [7]	Last Ask [7]	P/E after	Year	Volume	Trades	Transactions Value	Company Mkt Value (thou. €)	Year low	Year high	Sector[4]
-------------------------	---------------	---------------	--	--	----------------------------------	--	------	--------	---------------	----------	-----------------------------	------------	-----------	-----------	------------	-----------	--------------	--------------	-----------	------	--------	--------	--------------------	-----------------------------	----------	-----------	-----------

Under Deletion																												
1,002,280	1.90	0.2532	0.27	---	04/07/2012	07/11/1989	4878	ZAMPA SA (CB)	4.50	-8.54	4.92	19/04/2013	4.50	4.50	4.50	4.50	4.50	50@4.42	---	79.13	2012	50	1	225.00	4,510.26	4.20	4.92	3722

Under Suspension																															
49,030,011	0.300	---	---	---	19/07/2010	12/05/2011	4875	ALAPIS (CR)	0.041	---	0.041	30/03/2012	---	---	---	---	---	---	---	---	---	---	---	---	2,010.23	0.041	0.041	4577			
5,280,000	0.800	---	---	---	07/07/2008	29/03/2010	4561	ALTIUS INV. FUND SA (CR)	1.07	---	1.07	28/04/2009	---	---	---	---	---	---	---	---	---	---	---	---	5,649.60	1.07	1.07	8985			
1,750,955,549	0.600	---	---	---	19/05/2008	08/12/2011	4911	ATE (CR)	0.155	---	0.155	30/07/2012	---	---	---	---	---	---	---	---	---	---	---	---	271,398.11	0.155	0.155	8355			
21,382,067	0.300	---	---	---	02/10/2006	15/02/2006	4628	ATERMON (CR)	0.120	---	0.120	31/03/2010	---	---	---	---	---	---	---	---	---	---	---	---	2,565.85	0.120	0.120	5555			
105,423,498	0.510	---	---	---	01/07/2004	28/12/2005	4920	AVENIR S.A. (CR)	0.046	---	0.046	30/08/2012	---	---	---	---	---	---	---	---	---	---	---	---	4,849.48	0.046	0.046	5752			
33,930,000	0.300	---	---	---	03/07/2006	30/05/2001	4865	BABIS VOVOS SA (CR)	0.304	---	0.304	30/03/2012	---	---	---	---	---	---	---	---	---	---	---	---	10,314.72	0.304	0.304	8633			
1,795,140,547	1.00	(0.0615)	---	---	31/05/2011	19/04/2012	4951	BANK OF CYPRUS (CR)	0.207	---	0.207	15/03/2013	---	---	---	---	5000@0.170	---	---	---	---	---	---	---	371,594.09	0.180	0.282	8355			
21,920,570	0.300	---	---	---	03/07/2007	13/12/1999	4702	CARDASSILARIS SA (CR)	0.140	---	0.140	30/11/2010	---	---	---	---	---	---	---	---	---	---	---	---	3,068.88	0.140	0.140	3577			
54,547,634	0.500	---	---	---	25/04/2005	21/01/2009	4860	CH.TEGOPOULOS PUBL. SA (CR)	0.038	---	0.038	23/03/2012	---	---	---	---	---	---	---	---	---	---	---	---	2,072.81	0.038	0.038	5557			
366,553,507	1.01	---	---	---	23/06/2010	01/08/2012	---	COCA - COLA HBC (CR)	18.40	---	18.40	19/04/2013	---	---	---	---	2765@18.00	50@19.44	---	---	---	---	---	---	5,626	12	118,146.00	6,744,584.53	16.84	22.97	3537
4,065,482,410	0.100	---	---	---	01/06/2010	04/02/2013	4952	CYPRUS POPULAR BANK (CR)	0.040	---	0.040	20/03/2013	---	---	---	---	---	75000@0.043	---	---	---	---	---	---	---	162,619.30	0.039	0.048	8355		
7,847,611	1.20	---	---	---	01/08/2007	28/09/2011	4939	EDRASIS - C. PSALLIDAS SA (CR)	0.150	---	0.150	19/11/2012	---	---	---	---	---	---	---	---	---	---	---	---	1,177.14	0.150	0.150	2357			
5,750,000	0.300	---	---	---	12/12/2008	12/12/2011	4929	ELECTRONIKI ATHINON SA (CR)	0.480	---	0.480	07/09/2012	---	---	---	---	---	---	---	---	---	---	---	---	---	2,760.00	0.480	0.480	5375		
24,605,397	0.400	---	---	---	29/06/1995	27/05/2002	4651	EMPORIKOS DESMOS SA (CR)	0.080	---	0.080	28/05/2010	---	---	---	---	---	---	---	---	---	---	---	---	---	2,134.04	0.080	0.080	3722		
1,182,903	0.400	---	---	---	01/07/1996	27/05/2002	4652	EMPORIKOS DESMOS SA (PR)	0.140	---	0.140	28/09/2009	---	---	---	---	---	---	---	---	---	---	---	---	---	2,134.04	0.140	0.140	3722		
8,593,750	0.300	---	---	---	01/06/2009	20/06/2007	4876	FASHION BOX (CR)	1.30	---	1.30	23/02/2012	---	---	---	---	---	---	---	---	---	---	---	---	---	11,171.88	1.30	1.30	3763		
7,326,648	1.00	---	---	---	26/07/2006	24/07/2001	4921	FINTEXPORT SA (CR)	0.328	---	0.328	29/06/2012	---	---	---	---	---	---	---	---	---	---	---	---	---	2,403.14	0.328	0.328	3763		
20,860,000	0.300	---	---	---	03/07/2000	13/11/2007	4848	IKONA - IHOS SA (CR)	0.072	---	0.072	02/12/2011	---	---	---	---	---	---	---	---	---	---	---	---	---	1,501.92	0.072	0.072	5379		
36,765,744	0.350	---	---	---	16/08/2006	06/06/2011	4869	IMPERIO SA (CR)	0.026	---	0.026	30/03/2012	---	---	---	---	---	---	---	---	---	---	---	---	---	955.91	0.026	0.026	2777		
24,619,524	0.500	---	---	---	10/10/1986	30/12/2002	4914	KERAMIA-ALLATINI (CR)	0.088	---	0.088	27/08/2012	---	---	---	---	---	---	---	---	---	---	---	---	---	2,166.52	0.088	0.088	8633		
7,840,373	1.20	---	---	---	18/07/2002	05/03/2003	4765	KLONATEX SA (PR)	0.080	---	0.080	09/05/2011	---	---	---	---	---	---	---	---	---	---	---	---	---	1,453.75	0.080	0.080	3763		
20,663,047	1.20	---	---	---	21/08/2000	05/03/2003	4764	KLONATEX SA (CR)	0.040	---	0.040	09/05/2011	---	---	---	---	---	---	---	---	---	---	---	---	---	1,453.75	0.040	0.040	3763		
17,544,600	0.600	---	---	---	03/07/2000	01/08/2000	4868	KOYMBAS SYNERGY GROUP (CR)	0.132	---	0.132	29/03/2012	---	---	---	---	---	---	---	---	---	---	---	---	---	2,315.89	0.132	0.132	8775		
15,015,000	1.60	---	---	---	01/07/2002	02/02/2000	4603	MAXIM C.M. PERTSINIDIS SA (CB)	0.100	---	0.100	30/11/2009	---	---	---	---	---	---	---	---	---	---	---	---	---	1,501.50	0.100	0.100	3763		
13,555,100	1.00	---	---	---	08/07/2005		4576	MICROLAND COMPUTERS SA (CR)	0.640	---	0.640	14/07/2009	---	---	---	---	---	---	---	---	---	---	---	---	---	8,675.26	0.640	0.640	5379		
23,463,874	0.800	---	---	---	23/05/2003	21/12/1999	4918	NEORION SA (CR)	0.125	---	0.125	28/08/2012	---	---	---	---	---	---	---	---	---	---	---	---	---	2,932.98	0.125	0.125	2753		
25,583,146	0.300	---	---	---	25/06/2001	03/12/2008	4723	PETZETAKIS SA (CR)	0.260	---	0.260	28/01/2011	---	---	---	---	---	---	---	---	---	---	---	---	---	6,651.62	0.260	0.260	1357		
9,550,386	0.500	---	---	---	01/07/1997	12/06/2008	4626	PRAXITELIO SA (CR)	0.390	---	0.390	11/03/2010	---	---	---	---	---	---	---	---	---	---	---	---	---	4,430.09	0.390	0.390	4533		
1,306,368	0.500	---	---	---	01/07/1997	12/06/2008	4627	PRAXITELIO SA (PR)	0.540	---	0.540	15/12/2009	---	---	---	---	---	---	---	---	---	---	---	---	---	4,430.09	0.540	0.540	4533		
62,683,822	0.300	---	---	---	27/05/2008	09/01/2006	4830	PROTON BANK S.A. (CR)	0.180	---	0.180	07/10/2011	---	---	---	---	---	---	---	---	---	---	---	---	---	11,283.09	0.180	0.180	8355		
23,059,688	0.660	---	---	---	03/07/2008	06/08/2004	4864	RIDENCO SA (CR)	0.032	---	0.032	30/03/2012	---	---	---	---	---	---	---	---	---	---	---	---	---	737.91	0.032	0.032	3765		
51,083,993	1.00	---	---	---	15/07/2008	06/08/2003	4867	SANYO HELLAS HOLD. (CR)	0.020	---	0.020	30/03/2012	---	---	---	---	---	---	---	---	---	---	---	---	---	1,021.68	0.020	0.020	3722		
51,334,286	0.320	---	---	---	03/07/2000	18/12/2007	4548	SAOS (CR)	0.780	---	0.780	27/03/2009	---	---	---	---	---	---	---	---	---	---	---	---	---	40,040.74	0.780	0.780	2773		
26,408,040	0.300	---	---	---	01/07/1997	26/05/1999	4464	SHEET STEEL SA (CR)	0.120	---	0.120	28/11/2008	---	---	---	---	---	---	---	---	---	---	---	---	---	3,168.96	0.120	0.120	1757		
26,262,660	0.900	---	---	---	01/07/2008	24/02/2011	4954	SPRIDER STORES (CR)	0.031	---	0.031	28/03/2013	---	---	---	---	---	---	---	---	---	---	---	---	---	814.14	0.025	0.055	5371		

Number of Listed Shares	Nominal Value	Dividends [1]			Date of Last Coupon Dividend [2] Right		Note	Shares	Closing price	% change	Previous closing price/date		Open price	Price min	Price max	Last price	Avg price	Last Bid [7]	Last Ask [7]	P/E after	Year	Volume	Trades	Transactions Value	Company Mkt Value (thou. €)	Year low	Year high	Sector[4]
----------------------------	------------------	---------------	--	--	---	--	------	--------	------------------	----------	--------------------------------	--	---------------	--------------	--------------	---------------	--------------	-----------------	--------------	--------------	------	--------	--------	-----------------------	--------------------------------	-------------	--------------	---------------

Under Suspension

144,688,060	0.600	---	---	---	21/04/2008	10/03/2010	---	T BANK (CR)	0.048	---	↘	0.048	30/11/2011	---	---	---	---	---	---	---	---	---	---	---	6,945.03	0.048	0.048	8355
13,920,000	0.320	---	---	---	19/11/2001	01/08/2000	4726	TEXAPRET SA (CR)	0.080	---	↘	0.080	23/02/2011	---	---	---	---	---	---	---	---	---	---	---	1,113.60	0.080	0.080	3763
284,465,964	3.70	---	---	---	20/06/2008	15/06/2009	4913	TT HELLENIC POSTBANK (CR)	0.168	---	↘	0.168	30/08/2012	---	---	---	---	---	---	---	---	---	---	---	47,790.28	0.168	0.168	8355
89,616,200	0.300	---	---	---	21/08/2000	28/06/2007	4616	UNITED TEXTILES (CR)	0.050	---	↘	0.050	25/02/2010	---	---	---	---	---	---	---	---	---	---	---	4,480.81	0.050	0.050	3763
71,683,906	0.400	---	---	---	15/06/2005	05/02/2008	4953	XATZIOANNOU (CR)	0.026	---	↘	0.026	28/03/2013	---	---	---	---	---	---	---	---	---	---	---	1,863.78	0.020	0.085	3763

Shares' Notes

Code	Note text
()	- Adjusted dividends.
*	- Last adjusted closing price.
[1]	- Net dividends.
[2]	- The "Date of Last Coupon" for New listings refers to the date company's stocks started to trade in Athex
[3]	- The Company Market Value is referred to the number of listed shares
[4]	- Sectors codification can be found in Appendix A
[5]	- The Market Value refers to the total number of shares listed (including their several classes) in the exchange by the company.
[6]	- P/E greater than 100
[7]	- Last view of the Order Book before the end of the trading session
4412	- Transfer to the Under Supervision Category as of 27/6/2008.
4446	- Transfer to the "Under Supervision" Category as of 20/10/2008.
4447	- Transfer to the "Under Supervision" Category as of 21/10/2008.
4464	- Suspension of trading as of 1/12/2008.
4548	- Suspension of trading as of 1/4/2009.
4554	- Transfer to the "Under Supervision" Category as of 6/4/2009.
4559	- Transfer to the "Under Supervision" Category as of 21/4/2009.
4561	- Suspension of trading as of 29/4/2009.
4576	- Suspension of trading as of 14/7/2009.
4603	- Suspension of trading as of 1/12/2009.
4611	- Transfer to the Under Supervision Category as of 21/12/2009.
4616	- Suspension of trading as of 25/2/2010.
4626	- Suspension of trading as of 1/4/2010.
4627	- Suspension of trading as of 1/4/2010.
4628	- Suspension of trading as of 1/4/2010.
4629	- Transfer to the Under Supervision Category as of 12/4/2010.
4630	- Transfer to the Under Supervision Category as of 12/4/2010.
4651	- Suspension of trading as of 1/6/2010.
4652	- Suspension of trading as of 1/6/2010.
4690	- Transfer to Surveillance category as of 4/4/2006.
4702	- Suspension of trading as of 1/12/2010.
4723	- Suspension of trading as of 31/1/2011.
4726	- Suspension of trading as of 1/3/2011.
4741	- Transfer to the "Under Surveillance Category" from 8/4/2011.
4747	- Transfer to the "Under Surveillance Category" from 8/4/2011.
4749	- Transfer to the "Under Surveillance Category" from 8/4/2011.
4750	- Transfer to the "Under Surveillance Category" from 8/4/2011.
4764	- Suspension of trading as of 20/5/2011.
4765	- Suspension of trading as of 20/5/2011.
4795	- The final gross (pre-tax) dividend is € 0.30 per share and subject to withholding tax on the full dividend amount, i.e. 0.45 per share, for those shareholders liable to withholding tax, in accordance with the applicable tax law provisions.
4808	- Suspension of trading as of 6/9/2011.
4814	- Transfer to the Low Dispersion Category as of 30/5/2011.
4815	- Transfer to the Low Dispersion Category as of 30/5/2011.
4816	- Transfer to the Low Dispersion Category as of 30/5/2011.
4817	- Transfer to the Low Dispersion Category as of 30/5/2011.
4820	- Transfer to the Low Dispersion category as of 18/4/2008.
4822	- Transfer to the Low Dispersion category as of 30/5/2011.
4823	- Transfer to the Low Dispersion category as of 4/4/2006.
4824	- Transfer to the Low Dispersion category as of 18/4/2008.
4825	- Transfer to the Low Dispersion category as of 8/4/2011.
4827	- Transfer to the Low Dispersion category as of 5/5/2010.
4828	- Transfer to the Low Dispersion category as of 4/4/2006.

Shares' Notes

Code	Note text
4830	- Suspension of trading as of 10/10/2011.
4833	- Transfer to Surveillance category from 6/5/2010.
4844	- Transfer to the Surveillance category from 8/4/2011.
4845	- Transfer to the Surveillance Category as of 25/11/2011.
4846	- Transfer to the Surveillance Category as of 25/11/2011.
4847	- Transfer to the Surveillance Category as of 3/7/2009.
4848	- Suspension of trading as of 6/12/2011.
4854	- Transfer to the Surveillance Category as of 29/12/2011.
4855	- Transfer to the Surveillance Category as of 29/12/2011.
4856	- Transfer to the Surveillance Category as of 29/12/2011.
4860	- Suspension of trading as of 30/3/2012.
4864	- Suspension of trading as of 30/3/2012.
4865	- Suspension of trading as of 2/4/2012.
4867	- Suspension of trading as of 2/4/2012.
4868	- Suspension of trading as of 2/4/2012.
4869	- Suspension of trading as of 2/4/2012.
4875	- Suspension of trading as of 2/4/2012.
4876	- Suspension of trading as of 3/4/2012.
4878	- Transfer to the Under Deletion Category as of 10/4/2012.
4879	- Transfer to the Surveillance Category as of 10/4/2012.
4880	- Transfer to the Surveillance Category as of 10/4/2012.
4881	- Transfer to the Surveillance Category as of 10/4/2012.
4882	- Transfer to the Surveillance Category as of 10/4/2012.
4884	- Transfer to the Surveillance Category as of 10/4/2012.
4885	- Transfer to the Surveillance Category as of 10/4/2012.
4886	- Transfer to the Surveillance Category as of 10/4/2012.
4887	- Transfer to the Surveillance Category as of 10/4/2012.
4888	- Transfer to the Surveillance Category as of 10/4/2012.
4889	- Transfer to the Surveillance Category as of 10/4/2012.
4893	- Transfer to the Low Dispersion category as of 28/5/2012.
4894	- Transfer to the Low Dispersion category as of 28/5/2012.
4911	- Lift of suspension from 30/7/2012.
4912	- Transfer to the Surveillance Category as of 31/7/2012.
4913	- Suspension of trading as of 30/8/2012.
4914	- Suspension of trading as of 31/8/2012.
4918	- Suspension of trading as of 31/8/2012.
4920	- Suspension of trading as of 31/8/2012.
4921	- Suspension of trading as of 31/8/2012.
4927	- Transfer to the "Under Surveillance Category" from 8/4/2011.
4928	- Transfer to the "Under Surveillance Category" from 8/4/2011.
4929	- Suspension of trading as of 1/10/2012.
4939	- Suspension of trading as of 30/11/2012.
4940	- Transfer to the Low Dispersion category as of 3/12/2012.
4941	- Transfer to the Low Dispersion category as of 3/12/2012.
4942	- Transfer to the Low Dispersion category as of 3/12/2012.
4944	- Transfer to the Surveillance Category as of 7/12/2012.
4947	- The 23,343,750 new (CR) shares, resulting from the recent share capital increase through a rights issue, are not yet admitted to trading on the ATHEX.
4948	- Transfer to the "Low Dispersion" Category as of 26/2/2013.
4951	- Suspension of trading as of 19/3/2013.
4952	- Suspension of trading as of 19/3/2013.
4953	- Suspension of trading as of 2/4/2013.
4954	- Suspension of trading as of 2/4/2013.
4955	- Transfer to the Surveillance Category as from 5/4/2013.

Shares' Notes

Code	Note text
4956	- Transfer to the Surveillance Category as from 5/4/2013.
4957	- Transfer to the Surveillance Category as from 5/4/2013.
4958	- Transfer to the Surveillance Category as from 5/4/2013.
4959	- Transfer to the Surveillance Category as from 5/4/2013.
4960	- Transfer to the Surveillance Category as from 5/4/2013.
4961	- Transfer to the Surveillance Category as from 5/4/2013.
4962	- Transfer to the Surveillance Category as from 5/4/2013.
4963	- Transfer to the Under Deletion Category as from 5/4/2013.

Shares Blocks Details

Stocks	Block Volume	Price	Block Trade Value	Time of approval	Note
MOTOR OIL (CR)	135,000	8.34	1,125,900.00	11:35:42	20
HELLENIC EXCHANGES (CR)	150,000	5.00	750,000.00	12:01:03	20
HELL. DUTY FREE SHOPS SA (CR)	41,000	14.00	574,000.00	12:05:30	20
JUMBO SA (CR)	190,984	7.01	1,338,797.84	12:20:52	20
JUMBO SA (CR)	65,000	7.00	455,000.00	12:30:22	20
HELLENIC EXCHANGES (CR)	100,000	5.00	500,000.00	13:02:02	20
HELLENIC EXCHANGES (CR)	500,000	5.05	2,525,000.00	13:47:09	20
COCA - COLA HBC (CR)	525	21.00	11,025.00	15:00:41	18
COCA - COLA HBC (CR)	525	21.00	11,025.00	15:00:59	18
COCA - COLA HBC (CR)	1,275	21.00	26,775.00	15:01:00	18
COCA - COLA HBC (CR)	888	21.00	18,648.00	15:01:19	18
COCA - COLA HBC (CR)	1,020	21.00	21,420.00	15:01:34	18
COCA - COLA HBC (CR)	435	21.00	9,135.00	15:01:35	18
COCA - COLA HBC (CR)	100	21.00	2,100.00	15:01:49	18
COCA - COLA HBC (CR)	162	21.00	3,402.00	15:01:58	18
COCA - COLA HBC (CR)	200	21.00	4,200.00	15:01:59	18
COCA - COLA HBC (CR)	100	21.00	2,100.00	15:02:07	18
COCA - COLA HBC (CR)	290	21.00	6,090.00	15:02:24	18
COCA - COLA HBC (CR)	106	21.00	2,226.00	15:02:56	18
GENIKI BANK (CR)	50	6.95	347.50	15:08:05	18
GENIKI BANK (CR)	24	6.95	166.80	15:08:33	18
GENIKI BANK (CR)	8	6.95	55.60	15:09:11	18
GENIKI BANK (CR)	9	6.95	62.55	15:09:27	18
GENIKI BANK (CR)	3	6.95	20.85	15:09:46	18
GENIKI BANK (CR)	4	6.95	27.80	15:10:06	18
GENIKI BANK (CR)	17	6.95	118.15	15:10:28	18
OPAP (CR)	889	7.05	6,267.45	16:20:05	18

Blocks Notes

2 - SPOT 1 or SPOT 2 Packet	11 - Total Assets > 500 bil
3 - Block with Short Selling	12 - Sell Offer through Athex
4 - Buy to Close Block	13 - Forced Sale of NMOE
6 - Simultaneous Constitution	14 - Restoration Packet
7 - Repurchase Agreement	15 - Market Maker Packet
8 - Dispersion's Achievement (Not Listed)	16 - Short Selling
9 - Dispersion's Achievement (Listed)	18 - SPOT 1 Packet
10 - Share Capital Majority of Greek State (> 50 bil)	20 - Method 6-1 Packet

Shares Rights Details

Occured date	Exercise from	Exercise until	Trading until	Rights	Price min	Price max	Closing price	Last Bid	Last Ask	Volume	Trades	Transactions Value
05/03/2013	11/03/2013	24/04/2013	18/04/2013	ALPHA TRUST-ANDROMEDA INVESTMENT TR	---	---	---		---	---	---	---

Stock Borrowing

Stocks	Stock Borrowing through Helex (volume)	Stock Borrowing through OTC (volume) [1]	Totals [2]
ALAPIS (CR)	---	6,250	6,250
ALPHA BANK (CR)	5,750,900	2,055,666	7,806,566
ATE (CR)	---	40,260	40,260
BANK OF CYPRUS (CR)	6,600	27,829	34,429
COCA - COLA HBC (CR)	4,600	125,934	130,534
CYPRUS POPULAR BANK (CR)	---	447,328	447,328
ELLAKTOR (CR)	13,500	---	13,500
EUROBANK ERGASIAS (CR)	156,000	1,028,449	1,184,449
EUROBANK PROPERTIES REIC (CR)	3,000	22,056	25,056
EYDAP S.A. (CR)	500	---	500
FLEXOPACK SA (CR)	---	41,927	41,927
FOURLIS (CR)	7,200	---	7,200
FRIGOGLASS SA (CR)	---	1,540	1,540
GEK TERNA (CR)	---	650	650
HALKOR SA (CB)	---	1,000	1,000
HELL. DUTY FREE SHOPS SA (CR)	3,300	---	3,300
HELLENIC EXCHANGES (CR)	15,000	29,865	44,865
HELLENIC PETROLEUM (CR)	28,600	1,000,248	1,028,848
HYGEIA SA (CR)	6,500	---	6,500
INTERTECH SA (CR)	---	483,000	483,000
INTRALOT (CR)	18,200	---	18,200
J & P - AVAX SA (CR)	4,000	---	4,000
JUMBO SA (CR)	15,400	---	15,400
LAMDA DEVELOPMENT SA (CR)	---	10,377	10,377
MARFIN INVESTMENT GROUP (CR)	55,000	889,854	944,854
METKA (CR)	7,000	---	7,000
MOTOR OIL (CR)	4,900	---	4,900
MYTILINEOS HOLDINGS (CR)	11,400	20,664	32,064
NATIONAL BANK (CR)	7,209,400	3,152,506	10,361,906
NBGAM ETF	10,000	---	10,000
NBGAM ETF GREECE & TURKEY 30	5,500	---	5,500
OPAP (CR)	188,200	63,962	252,162
OTE (CR)	157,500	299,646	457,146
PIRAEUS BANK (CR)	2,429,300	440,860	2,870,160
PPC (CR)	111,100	300,000	411,100
S & B IND. MINERALS (CR)	300	---	300
SIDENOR (CR)	---	1,000	1,000
TITAN CEMENT (CR)	5,800	54	5,854
VIOHALCO (CB)	11,500	---	11,500

Stock Borrowing Notes

[1] - The information concerning OTC Stock Borrowing Transactions is based on the statements of the Dematerialised Securities System (DSS) operators involved and refers to volumes that have been cleared and registered up until the previous working day.

Shares Forced Sales

Stocks	Transaction s Volume	Number of Trades	Transactions Value	Note
No Forced Transactions.				

Forced Sales Notes

- 1 - Normal Forced Sale.
- 2 - Forced Sales of Fixed Registered Shares.
- 3 - Forced Sales of Remaining Stock Fractions.

Forced Sales Registered Shares

Stocks	Start Date	End Date	Initial Volume	Remaining Volume	Date	Avg price (day)	Avg price (period)	Number of Trades	Transactions Volume	Transactions Value
INTRACOM HOLDINGS (CR)	26/03/2013	24/05/2013	145,979	145,979	---	---	---	---	---	---

Forced Sales Notes

According to Decision 1/380/04.05.2008 of the Hellenic Republic Capital Market Commission, the certificated registered shares that have not been deposited to the issuer for dematerialisation, will be auctioned in the Athens Exchange by the supervising issuer. Forced sales procedure is held according to Article 99A of the Athens Exchange Rulebook. The average price of the period is calculated by dividing the Total transactions value by the Total volume and includes all the transactions made until the current date.

Exchange Traded Funds (ETFs) Characteristics

Stocks	Transactions Date (T)	Creation / Redemption	Units (T-1)	New Units (T-1)	Redemptio n Units (T-	Units (T) [1]	Fund Assets [2]	Net Unit Price	Dividen d per	Dividend Date
NBGAM ETF ΓΔ Χ.Α.	22/04/2013	25,000	294,878	---	---	294,878	2,832,122.00	9.6044	---	27/10/2011
ALPHA ETF FTSE Athex Large Cap	22/04/2013	50,000	5,745,839	---	---	5,745,839	16,967,630.00	2.9530	0.07	02/07/2012
NBGAM ETF GREECE & TURKEY 30	22/04/2013	25,000	388,550	---	---	388,550	3,467,409.00	8.9240	---	27/10/2011

ETFs Notes

[1] - Units (T) = Units (T-1) + New Units (T-1) - Redemption Units (T-1)

[2] - The Creation / Redemption Units of T-1 are included.

Corporate Bonds

Num Listed Bonds	Nominal price	Issue price	Today's Rate	Exp. Date	Duration (years)	Note	Coupon attached		Trading	Corporate Bonds	Price min	Price max	Closing price	Previous closing price/date	Volume	Transactions Value	Price	Last order Buy / Sell	Date	Year min	Year max
39,711,653	1.00	1.00	6.00	30/06/2016	5	4786	4	---	1	BANK OF CYPRUS PUBLIC CO. LTD (Convert. to CR sh.)	---	---	---	---	---	---	10.0000	B	13/03/2013	100.0000	100.0000
428,521,983	1.00	1.00	6.50	30/06/2016	5	4785	4	---	1	BANK OF CYPRUS PUBLIC CO. LTD (Convert. to CR sh.)	---	---	---	20.5000	14/03/2013	---	21.0000	B	15/03/2013	19.5000	30.0000
52,757,814	4.77	4.77	5.00	19/03/2015	5	---	13	---	1	MARFIN INVESTMENT GROUP S.A. (Conver to CR shar)	---	---	---	48.0000	08/02/2013	---	5.0000	S	22/04/2013	10.0000	70.0000
73,088,145	1.00	1.00	5.50	30/06/2014	5	4574	8	---	1	BANK OF CYPRUS PUBLIC CO. LTD (Convert. to CR sh.)	---	---	---	20.0000	08/03/2013	---	21.5000	B	15/03/2013	20.0000	26.0000
1,915,684	12.49	9.77	5.32	12/07/2015	8	---	12	---	1	NIREUS S.A. (Convertible to CR shares)	---	---	---	11.5060	06/02/2013	---	28.0000	S	11/04/2013	11.0000	15.0000
27,283,632	1.00	1.00	1.32	30/06/2018	10	---	10	---	1	BANK OF CYPRUS PUBLIC CO. LTD (Convert. to CR sh.)	---	---	---	33.0000	13/12/2012	---	35.0000	B	15/03/2013	33.0000	33.0000

4574 - The bonds are of indefinite duration.

4785 - The bonds are of indefinite duration.

4786 - The bonds are of indefinite duration. The Bond's par value, issue price and trading prices are expressed in USA Dollars, whereas its Transactions Value is expressed in Euros.

Corporate Bonds Notes

Transactions Volume = (Pieces) * (Face Value). Transactions Value = (Pieces) * (Nominal value) * (price %) + (Accrued interest).

The price of a Bond is stated as a percentage (%) of Bond's Face Value.

Nominal Value in Euros (€), except if it is noted differently.

Government Bonds

Number Listed Bonds	Nominal price	Today's Rate	Accrued Interest Calc	Exp. Date [1]	Duration (years)	Note	Coupons Date	Curr. coupon value	Trading Unit	Government Bonds	Price min	Price max	Closing price	Previous closing price/date	Volume	Transactions Value	Price	Last order Buy / Sell	Date
2,658,781,973	1.00	2.00	Actual/Actual	24/02/2023	11	---	24/02	2.00	1	GGB-FXD-240223-11Y-2.000-1.00	---	---	---	---	---	---	---	---	---
2,658,781,973	1.00	2.00	Actual/Actual	24/02/2024	12	---	24/02	2.00	1	GGB-FXD-240224-12Y-2.000-1.00	---	---	---	---	---	---	---	---	---
2,658,781,973	1.00	2.00	Actual/Actual	24/02/2025	13	---	24/02	2.00	1	GGB-FXD-240225-13Y-2.000-1.00	---	---	---	---	---	---	---	---	---
2,658,781,973	1.00	2.00	Actual/Actual	24/02/2026	14	---	24/02	2.00	1	GGB-FXD-240226-14Y-2.000-1.00	---	---	---	---	---	---	---	---	---
2,658,781,973	1.00	2.00	Actual/Actual	24/02/2027	15	---	24/02	2.00	1	GGB-FXD-240227-15Y-2.000-1.00	---	---	---	---	---	---	---	---	---
2,836,034,104	1.00	2.00	Actual/Actual	24/02/2028	16	---	24/02	2.00	1	GGB-FXD-240228-16Y-2.000-1.00	---	---	---	---	---	---	---	---	---
2,836,034,104	1.00	2.00	Actual/Actual	24/02/2029	17	---	24/02	2.00	1	GGB-FXD-240229-17Y-2.000-1.00	---	---	---	---	---	---	---	---	---
2,836,034,104	1.00	2.00	Actual/Actual	24/02/2030	18	---	24/02	2.00	1	GGB-FXD-240230-18Y-2.000-1.00	---	---	---	---	---	---	---	---	---
2,836,034,104	1.00	2.00	Actual/Actual	24/02/2031	19	---	24/02	2.00	1	GGB-FXD-240231-19Y-2.000-1.00	---	---	---	---	---	---	---	---	---
2,836,034,104	1.00	2.00	Actual/Actual	24/02/2032	20	---	24/02	2.00	1	GGB-FXD-240232-20Y-2.000-1.00	---	---	---	---	---	---	---	---	---
2,836,034,104	1.00	2.00	Actual/Actual	24/02/2033	21	---	24/02	2.00	1	GGB-FXD-240233-21Y-2.000-1.00	---	---	---	---	---	---	---	---	---
2,836,034,104	1.00	2.00	Actual/Actual	24/02/2034	22	---	24/02	2.00	1	GGB-FXD-240234-22Y-2.000-1.00	---	---	---	---	---	---	---	---	---
2,836,034,104	1.00	2.00	Actual/Actual	24/02/2035	23	---	24/02	2.00	1	GGB-FXD-240235-23Y-2.000-1.00	---	---	---	---	---	---	---	---	---
2,836,034,104	1.00	2.00	Actual/Actual	24/02/2036	24	---	24/02	2.00	1	GGB-FXD-240236-24Y-2.000-1.00	---	---	---	---	---	---	---	---	---
2,836,034,104	1.00	2.00	Actual/Actual	24/02/2037	25	---	24/02	2.00	1	GGB-FXD-240237-25Y-2.000-1.00	---	---	---	---	---	---	---	---	---
2,836,034,104	1.00	2.00	Actual/Actual	24/02/2038	26	---	24/02	2.00	1	GGB-FXD-240238-26Y-2.000-1.00	---	---	---	---	---	---	---	---	---
2,836,034,104	1.00	2.00	Actual/Actual	24/02/2039	27	---	24/02	2.00	1	GGB-FXD-240239-27Y-2.000-1.00	---	---	---	---	---	---	---	---	---
2,836,034,104	1.00	2.00	Actual/Actual	24/02/2040	28	---	24/02	2.00	1	GGB-FXD-240240-28Y-2.000-1.00	---	---	---	---	---	---	---	---	---
2,836,034,104	1.00	2.00	Actual/Actual	24/02/2041	29	---	24/02	2.00	1	GGB-FXD-240241-29Y-2.000-1.00	---	---	---	---	---	---	---	---	---
2,836,034,104	1.00	2.00	Actual/Actual	24/02/2042	30	---	24/02	2.00	1	GGB-FXD-240242-30Y-2.000-1.00	---	---	---	---	---	---	---	---	---
1,500,000	1,000.00	1.01	FLR Actual/360	10/08/2014	5	---	10/02 - 10/08	---	1	GGB-FRN-100814-05Y-1.762-1000.00	---	---	---	---	---	---	---	---	---
5,187,186	1,000.00	1.65	FLR Actual/360	21/05/2014	5	---	21/11 - 21/05	---	1	GGB-FRN-210514-05Y-2.734-1000.00	---	---	---	---	---	---	---	---	---
78,300	1,000.00	1.18	FLR Actual/360	23/07/2014	5	---	23/01 - 23/07	---	1	GGB-FRN-230714-05Y-2.018-1000.00	---	---	---	---	---	---	---	---	---

Government Bonds Notes

Transactions Volume = (Pieces) * (Face Value). Transactions Value = (Pieces) * (Nominal value) * (price %) + (Accrued interest).

The Value of current coupon for the issues with NV 0.01 euro refers to NV 100 euros

FLR: Floating Interest Rate.

[1] - The Expiration Date of the interest bearing period and the Date for coupon payment.

Bonds in Circulation	Currency / Min nominal traded Value	Coupons Payment Date	Current Coupon Value	Note	Coupon Attached	Trading Unit	Issue Date	Duration (years)	Today's Interest	A.I.C in days	Bonds	Last price of previous days	Last Outcry in Cash (euro) Price	Buy / Sell	Trades in Pieces	Life min	Life Max
Bonds of International Organizations																	
1,000,000	EUR / 1000	21/07	---	---	7	1	21/07/2006	10	5.0 FLR	360	EUROPEAN INVESTMENT BANK BOND	97.50	16/04/2007	---	---	---	---
Corporate Bonds in Foreign Currency and Euro																	
103,746	GBP / 10	01/12	0.25	---	54	1	01/12/1930	98	2.5	360	National Mortgage Bank	2.27	05/02/1996	2.27	S	05/02/1996	2.27
0	GBP / 10	01/12	0.25	---	56	1	01/12/1928	100	2.5	360	National Mortgage Bank	---	---	---	---	---	---

Government Bonds Notes

A.I.C: Accrued Interest Calculation base.
FLR: Floating Interest Rate.
The minimum tradeable Nominal Value for all Demeterialised Government Titles is 100 Euros.

State Banks Bonds (one year maturity)

Number Listed Bonds	Nominal value	Initial Rate	Current Rate	Annual Interest	Issue Date	Note	State Banks Bonds	Trading Unit	Yearly Renewals	Last Outcry in Cash (euro) Price	Buy / Sell	Volume
342,560	130.41	2.35	3.92	0.00	31/01/2005	---	H.I.D.B.	1	9	100.00	B	---
16,015	1,211.71	3.65	2.47	0.00	30/11/2006	---	H.I.D.B.	1	7	---	---	---
8,820	1,124.66	4.80	2.47	28.22	30/04/2008	---	H.I.D.B.	1	5	---	---	---
64,279	1,145.30	4.40	2.47	28.74	30/04/2008	---	H.I.D.B.	1	5	---	---	---
2,446	1,125.75	4.90	2.47	28.25	31/05/2008	---	H.I.D.B.	1	5	---	---	---
171,117	1,134.80	5.50	2.47	28.48	31/05/2008	---	H.I.D.B.	1	5	---	---	---
79,895	1,132.08	5.25	2.47	28.41	30/06/2008	---	H.I.D.B.	1	5	---	---	---
1,583	1,132.08	5.25	2.47	28.41	30/06/2008	---	H.I.D.B.	1	5	---	---	---
237,568	1,135.89	5.60	2.47	28.50	30/06/2008	---	H.I.D.B.	1	5	---	---	---
208,723	1,135.89	5.60	2.47	28.50	30/06/2008	---	H.I.D.B.	1	5	---	---	---
150,857	1,133.91	5.60	2.47	28.45	31/07/2008	---	H.I.D.B.	1	5	---	---	---
184,899	1,133.91	5.60	2.47	28.45	31/07/2008	---	H.I.D.B.	1	5	---	---	---
63,787	1,101.48	5.45	2.47	30.88	31/08/2008	---	H.I.D.B.	1	5	---	---	---
54,559	1,129.20	5.45	2.47	28.34	31/08/2008	---	H.I.D.B.	1	5	---	---	---
165,926	1,130.82	5.60	2.47	28.38	31/08/2008	---	H.I.D.B.	1	5	---	---	---
77,348	1,130.82	5.60	2.47	28.38	31/08/2008	---	H.I.D.B.	1	5	---	---	---
5,358	1,108.96	5.45	2.47	27.83	31/10/2008	---	H.I.D.B.	1	5	---	---	---
1,045	1,129.74	5.50	2.47	28.35	31/10/2008	---	H.I.D.B.	1	5	---	---	---
76,077	1,132.45	5.75	2.47	28.42	31/10/2008	---	H.I.D.B.	1	5	---	---	---

Bonds Notes

The annual renewal of H.I.D.B. Bonds is free of taxes (net rate).

For Bonds issue until 28/02/2013 the accrued interest is capitalized.

Athex & ATHEXClear Members List

Member Name			Stock Market			Derivatives Market			ATHEXClear Member		
Address	Phone	Fax	Market Member	Remote Member	Market Maker	Proprietary	Market Maker	Agent	General Clearing	Direct Clearing	Non Clearing
A. SARRIS SECURITIES S.A.			a								
6, DRAGATSANIOU STR. ATHINA	(210)-3367700	(210)-3312324									
AGRICULTURAL BANK OF GREECE S.A.			a				a			a	
, 23 PANEPISTIMIOU ATHINA	(210)-3298400	(210)-3298322									
ALPHA FINANCE INVESTMENT SERVICES S.A.			a		a		a			a	
5, MERLIN STR. ATHINA	(210)-3677400	(210)-3311193									
ALPHA BANK A.E.						a			a		
40, STADIOU STR ATHINA	(210)-3265546	(210)-3265811									
	(210)-3260000	(210)-3264116									
ARGUS STOCKBROKERS LTD			a	a							
12-14, KENNEDY AVE, S. 303 NICOSIA	(+35722)-22717000	(+35722)-22717070									
ATHENAIKI BROKERAGE FIRM S.A.			a								
33, STADIOU STR. ATHINA	(210)-3254764	(210)-3254767									
ATLANTIC SECURITIES LIMITED			a	a							
37, PRODROMOU STR. NICOSIA	(+35722)-445400	(+35722)-661914									
ATLAS SECURITIES S.A			a			a					a
14 - 16, VERVENON STR.& 125 MICHALAKOPOULOU STR. ATHINA	(210)-3363300	(210)-3238925									
ATTICA BANK S.A.									a		
54, AKADIMIAS STR. ATHINA	(210)-3390757	(210)-3646090									
23, OMIROU STR. ATHINA	(210)-3669000	(210)-3669410									
AXIA VENTURES GROUP LTD			a	a							
10, G. KRANIDIOTI NICOSIA	+357 22 742000	+357 22 742001									
AXON SECURITIES S.A.			a			a					a
48, STADIOU ATHINA	(210)-3363800	(210)-3243903									
BANK OF CYPRUS PUBLIC COMPANY LTD									a		
, 51,STASINOU (AG. PARASKEVI, STROVOLOS) NICOSIA	(0035722)-121883	(0035722)-336258									
170, ALEXANDRAS AVE ATHINA	(210)-6477708	(210)-6477709									
BETA SECURITIES S.A.			a		a	a	a			a	
, BRAILA & 29 ALEXANDRAS AVE ATHINA	(210)-6478900	(210)-6410139									
BNP PARIBAS SECURITIES SERVICES									a		
94, VAS. SOFIAS AVE ATHINA	(210)-7468500	(210)-7468579									
CAPITAL SECURITIES S.A.			a			a					a
58, MITROPOLEOS STR. ATHINA	(210)-3369700	(210)-3369820									
CFS SECURITIES & INVESTMENT SERVICES S.A.			a		a			a		a	
3, STADIOU STR. ATHINA	(210)-3360800	(210)-3311854									
CITIGROUP GLOBAL MARKET LTD			a	a							
, CITIGROUP CENTRE, CANADA SQUARE, CANARY WHART LONDON	002079864000	002079862266									
CO-OPERATIVE CENTRAL BANK LTD			a	a							
8, GRIGORI AFXENTIOU STR. NICOSIA	(+35722)-743300	(+35722)-672083									
CREDIT AGRICOLE CHEUVREUX S.A.			a	a							
, 9 QUAI PAUL DOUMER PARIS	33 (0) 1 41 89 70 00										
CREDIT SUISSE SECURITIES (EUROPE) LIMITED			a	a							
, ONE CABOT SQUARE LONDON	+44 20 7888 8888	+44 20 7888 1600									
CYCLOS SECURITIES S.A.			a		a	a				a	
39, PANEPISTIMIOU STR. ATHINA	(210)-3364300	(210)-3239122									
D.A. TSEKOURAS SEC. S.A.			a								
3, PESMAZOGLOU STR. ATHINA	(210)-3214406	(210)-3211997									
DEUTSCHE BANK S.A.			a	a							
70, THEODOR-HEUSS-ALLEE FRANKFURT	0049 69 910 00	0049 69 910 34 225									
DYNAMIC SECURITIES			a					a		a	
6 - 10, CHAR. TRIKOUPi STR. ATHINA	(210)-3677700	(210)-3677777									
EL. PETROPOULAKIS SECURITIES S.A.			a					a			a
9, ARISTIDOU STR. ATHINA	(210)-3213928	(210)-3216810									
EUROBANK EQUITIES S.A.			a		a		a			a	
10, FILELLINON STR. ATHINA	(210)-3720000	(210)-3720001									
EUROBANK ERGASIAS S.A.									a		
8, OTHONOS STR. ATHINA	(210)-3337000	(210)-3233866									
	(210)-3337969	(210)-3245916									
EUROCORP SECURITIES S.A.			a			a				a	
14, FILIKIS ETAIRIAS SQ. ATHINA	(210)-7263500	(210)-7263666									
EUOTRUST BROKERAGE S.A.			a								
13-15, SOPHOCLEOUS STR. ATHINA	(210)-3363100	(210)-3238334									

Athex & ATHEXClear Members List

Member Name			Stock Market			Derivatives Market			ATHEXClear Member		
Address	Phone	Fax	Market Member	Remote Member	Market Maker	Proprietary	Market Maker	Agent	General Clearing	Direct Clearing	Non Clearing
EUROXX SECURITIES S.A.			a			a				a	
7, PALAIOLOGOU STR. CHALANDRI	(210)-6879400	(210)-6879401									
G.A. PERVANAS SECURITIES & INVESTMENT SERVICES CO S.A.			a			a					a
7 - 9, SOPHOCLEOUS STR. ATHINA	(210)-3251875	(210)-3210291									
GENERAL BANK OF GREECE S.A.									a		
87-89, ERMOY ATHINA	(210)-6976072	(210)-6976079									
, 109-111, MESOGEION AVE. ATHINA	(210)-6975000	(210)-6975706									
GLOBAL CAPITAL SECURITIES AND FINANCIAL SERVICES LTD			a	a							
5, LEMESOU AVE. LEMESOS CYPRUS	(+35722)-710710	(+35722)-339332									
GUARDIAN TRUST SECURITIES S.A			a		a	a					a
15, FILELLINON STR. ATHINA	(210)-3220402	(210)-3220498									
HELLENIC AMERICAN SEC. S.A.			a			a					
6, EVRIPIDOU STR. ATHINA	(210)-3311100	(210)-3215968									
HELLENIC BANK (INVESTMENTS) LTD			a	a							
31, KYRIAKOY MATSI AVE. NICOSIA	(+35722)-500100	(+35722)-500110									
HSBC BANK PLC									a		
109-111, MESOGION AVE ATHINA	(210)-6961507	(210)-6929310									
INDEX SECURITIES S.A.			a								
6, DRAGATSANIOU STR. ATHINA	(210)-3213920	(210)-3213216									
INTERSEC S.A.						a				a	
80-88, SYGROU AVE ATHINA	(210)-9203000	(210)-9203052									
INVESTMENT BANK OF GREECE S.A.			a		a		a		a		
32, AIGEIALIAS MAROUSI	(210) 8173000	(210) 8173101									
24B, KIFISSIAS AVE MAROUSI	(210)-8171800	(210)-8171889									
J. CHR. MAVRIKIS SECURITIES S.A.			a								
5, SOPHOCLEOUS STR. ATHINA	(210)-3213949	(210)-3217767									
KAPPA SECURITIES S.A.			a			a					a
15, VALAORITOU STR. ATHINA	(210)-3610371	(210)-3641002									
KYPROU SECURITIES S.A.			a		a	a					a
26, HALKIDONOS & FIDIPPIDOY STR. ATHINA	(210)-8701000	(210)-8701049									
LAIKI FINANCIAL SERVICES LTD			a	a							
26, CLR HOUSE, VIRONOS AVE. NICOSIA	(+35722)-898600	(+35722)-680953									
LEON DEPOLAS SECURITIES S.A.			a					a			a
1, CHR. LADA STR. ATHINA	(210)-3213286	(210)-3211618									
MAGNA TRUST SECURITIES S.A			a					a			a
9, FIDIOU STR. ATHINA	(210)-3327503	(210)-3327599									
MEGA EQUITY SECURITIES & FINANCIAL SERVICES LTD			a	a							
42-44, GRIBA DIGENI AV. NICOSIA	(+35722)-711711	(+35722)-711811									
MERIT SECURITIES S.A			a		a	a				a	
38, VAS. KONSTANTINOY STR. ATHINA	(210)-3671800	(210)-3671830									
MERRILL LYNCH			a	a							
2, KING EDWARD STREET LONDON	(+4420)-79952000	(+4420)-79954525									
METOCHIKI SECURITIES S.A.			a								
3, G. GENNADIOY STR. ATHINA	(210)-3306700	(210)-3306709									
MIDAS BROKERAGE S.A.			a								
5, SOPHOCLEOUS STR. ATHINA	(210)-3253203	(210)-3253205									
N. CHRYSSOCHOIDIS STOCK BROKERAGE I.S.S.A.			a					a		a	
7 - 9, SOPHOCLEOUS STR. ATHINA	(210)-3213913	(210)-3216115									
N. SARROS SECURITIES S.A.						a					
7-9, SOPHOCLEOUS STR. ATHINA	(210)-3705600	(210)-3219992									
NATIONAL BANK OF GREECE S.A.							a		a		
86, AIOLOU STR. ATHINA	(210)-3341000	(210)-3228187									
68, AKADIMIAS STR. ATHINA	(210)-3328817	(210)-3328678									
NBG SECURITIES S.A.			a		a		a				a
68, AKADIMIAS STR. ATHINA	(210)-3328500	(210)-3328565									
NEW PROTON BANK S.A.			a			a				a	
20, ESLIN & AMALIADOS ATHINA	210 6970000	210 6970111									
NUNTIUS SECURITIES S.A			a					a			a
6, DRAGATSANIOU STR. ATHINA	(210)-3350599	(210)-3254846									
OLYMPIA SECURITIES S.A			a								
46B, A. METAXA STR. GLYFADA	(210)-3702500	(210)-3702520									
ORANGE PARTNERS SECURITIES S.A			a								
5, TZORTZ STR. ATHINA	(210)-3300009	(210)-3305240									

Athex & ATHEXClear Members List

Member Name			Stock Market			Derivatives Market			ATHEXClear Member		
Address	Phone	Fax	Market Member	Remote Member	Market Maker	Proprietary	Market Maker	Agent	General Clearing	Direct Clearing	Non Clearing
PANTELAKIS SEC. S.A.			a			a					a
109-111, MESOGION AVE. ATHINA	(210)-6965000	(210)-6929550									
PEGASUS BROKERAGE FIRM S.A			a			a					
17, VALAORITOU STR. ATHINA	(210)-3670700	(210)-3670760									
PIRAEUS BANK S.A.								a	a		
4, AMERIKIS STR ATHINA	(210)-3335918	(210)-3254207									
4, AMERIKIS STR. ATHINA	(210)-3335000	(210)-3335079									
PIRAEUS SECURITIES S.A.			a				a			a	
10, STADIOU STR. ATHINA	(210)-3354100	(210)-3233814									
PRELIUM SECURITIES & INVESTMENT SERVICES S.A.			a			a					a
, KIFISSIAS AVE & 1 DAVAKI STR ATHINA	(210)-3677000	(210)-6920403									
PROBANK S.A.			a								
10, AMERIKIS STR. ATHINA	(210)-3392631	(210)-3392646									
PROCHOICE SECURITIES LTD			a	a							
57, SPYROU KYPRIANOY NICOSIA	+357-24-661192	+357-24-662464									
SHARELINK SECURITIES & FINANCIAL SERVICES LTD			a	a							
6, ELLINAS HOUSE, THEOTOKI STR. NICOSIA	(+35722)-554200	(+35722)-750852									
SOCIETE GENERALE S.A.			a	a		a					
17, COURS VALMY PUTEAUX - LA DEFENSE PARIS	(+33) 142134754	(+33) 142135697									
240-242, KIFISSIAS AVE ATHINA	(210)-6790161	(210)-6728828									
SOLIDUS SECURITIES S.A			a			a				a	
64, LOUIZIS RIANKOUR STR. ATHINA	(210)-6925500	(210)-6985421									
SOTIRIADIS SECURITIES S.A.			a								
7, VALAORITOU STR. ATHINA	(210)-3636943	(210)-3601943									
ST. EM. LAVRENTAKIS SECURITIES S.A.			a			a					a
7 - 9, SOPHOCLEOUS STR. ATHINA	(210)-3213336	(210)-3246572									
THE CYPRUS INVESTMENT AND SECURITIES CORPORATION LIMITED (CISCO)			a	a							
4, EVROU STR. (EUROLIFE HOUSE) NICOSIA	(+35722)-881800	(+35722)-881801									
UBS LIMITED			a	a							
1, FINSBURY AVENUE LONDON	(+4420)-79013333	(+4420)-79012345									
Z.G. PORTALAKIS INVESTMENT SERVICES S.A.			a								
8, PESMAZOGLOU STR. ATHINA	(210)-3214830	(210)-3212024									
KARAMANOF SECURITIES & INV. SERVICES S.A.			a					a		a	
2, SQ. ST THEODORON ATHINA	(210)-3212947	(210)-3217088									

List of Stocks under Market Making operations

Stocks	Stock Category	
	Start Market Making	End Market Making
BANK OF CYPRUS (CR)	Under Suspension	
EUROBANK EQUITIES S.A.	23/10/2012	22/10/2013
INVESTMENT BANK OF GREECE S.A.	02/01/2013	01/01/2014
NBG SECURITIES S.A.	25/06/2012	24/06/2013
COCA - COLA HBC (CR)	Under Suspension	
EUROBANK EQUITIES S.A.	23/10/2012	22/10/2013
INVESTMENT BANK OF GREECE S.A.	08/01/2013	07/01/2014
NBG SECURITIES S.A.	25/06/2012	24/06/2013
CYPRUS POPULAR BANK (CR)	Under Suspension	
NBG SECURITIES S.A.	02/06/2012	01/06/2013
PIRAEUS SECURITIES S.A.	02/02/2013	01/02/2014
ALPHA BANK (CR)	Main Market	
EUROBANK EQUITIES S.A.	24/10/2012	23/10/2013
INVESTMENT BANK OF GREECE S.A.	08/01/2013	07/01/2014
MERIT SECURITIES S.A.	03/09/2012	02/09/2013
NBG SECURITIES S.A.	15/01/2013	14/01/2014
PIRAEUS SECURITIES S.A.	28/05/2012	27/05/2013
ALUMIL (CR)	Main Market	
BETA SECURITIES S.A.	18/07/2012	17/07/2013
BYTE COMPUTER SA (CR)	Main Market	
MERIT SECURITIES S.A.	04/08/2012	03/08/2013
ELLAKTOR (CR)	Main Market	
EUROBANK EQUITIES S.A.	01/06/2012	31/05/2013
INVESTMENT BANK OF GREECE S.A.	02/01/2013	01/01/2014
NBG SECURITIES S.A.	25/06/2012	24/06/2013
ELTON SA (CR)	Main Market	
BETA SECURITIES S.A.	03/09/2012	02/09/2013
EUROBANK ERGASIAS (CR)	Main Market	
ALPHA FINANCE INVESTMENT SERVICES S.A.	08/01/2013	07/01/2014
EUROBANK EQUITIES S.A.	01/06/2012	31/05/2013
INVESTMENT BANK OF GREECE S.A.	08/01/2013	07/01/2014
FRIGOGLOSS SA (CR)	Main Market	
EUROBANK EQUITIES S.A.	18/07/2012	17/07/2013
GEK TERNA (CR)	Main Market	
INVESTMENT BANK OF GREECE S.A.	02/01/2013	01/01/2014
GR. SARANTIS SA (CR)	Main Market	
BETA SECURITIES S.A.	14/05/2012	13/05/2013
HELLENIC EXCHANGES (CR)	Main Market	
EUROBANK EQUITIES S.A.	01/06/2012	31/05/2013
INVESTMENT BANK OF GREECE S.A.	02/01/2013	01/01/2014
NBG SECURITIES S.A.	25/06/2012	24/06/2013
INTRACOM CONSTR. (CR)	Main Market	
MERIT SECURITIES S.A.	27/12/2012	26/12/2013
INTRALOT (CR)	Main Market	
EUROBANK EQUITIES S.A.	01/06/2012	31/05/2013
INVESTMENT BANK OF GREECE S.A.	02/01/2013	01/01/2014
MARFIN INVESTMENT GROUP (CR)	Main Market	
PIRAEUS SECURITIES S.A.	02/02/2013	01/02/2014
MLS MULTIMEDIA SA (CR)	Main Market	
BETA SECURITIES S.A.	28/05/2012	27/05/2013
MOTOR OIL (CR)	Main Market	
EUROBANK EQUITIES S.A.	23/10/2012	22/10/2013
MYTILINEOS HOLDINGS (CR)	Main Market	
INVESTMENT BANK OF GREECE S.A.	02/01/2013	01/01/2014
NBG SECURITIES S.A.	25/06/2012	24/06/2013
NATIONAL BANK (CR)	Main Market	
ALPHA FINANCE INVESTMENT SERVICES S.A.	08/01/2013	07/01/2014
EUROBANK EQUITIES S.A.	24/10/2012	23/10/2013
INVESTMENT BANK OF GREECE S.A.	08/01/2013	07/01/2014
MERIT SECURITIES S.A.	03/09/2012	02/09/2013
NBG SECURITIES S.A.	28/02/2013	27/02/2014
OPAP (CR)	Main Market	
ALPHA FINANCE INVESTMENT SERVICES S.A.	08/01/2013	07/01/2014
EUROBANK EQUITIES S.A.	24/10/2012	23/10/2013
INVESTMENT BANK OF GREECE S.A.	08/01/2013	07/01/2014
NBG SECURITIES S.A.	15/01/2013	14/01/2014

List of Stocks under Market Making operations

Stocks	Stock Category	
	Start Market Making	End Market Making
Market Maker		
OTE (CR)	Main Market	
ALPHA FINANCE INVESTMENT SERVICES S.A.	08/01/2013	07/01/2014
EUROBANK EQUITIES S.A.	24/10/2012	23/10/2013
INVESTMENT BANK OF GREECE S.A.	08/01/2013	07/01/2014
NBG SECURITIES S.A.	01/12/2012	30/11/2013
PETROPOULOS PETROS (CR)	Main Market	
BETA SECURITIES S.A.	28/05/2012	27/05/2013
PIRAEUS BANK (CR)	Main Market	
EUROBANK EQUITIES S.A.	23/10/2012	22/10/2013
INVESTMENT BANK OF GREECE S.A.	08/01/2013	07/01/2014
NBG SECURITIES S.A.	02/06/2012	01/06/2013
PIRAEUS SECURITIES S.A.	16/02/2013	15/02/2014
PPC (CR)	Main Market	
ALPHA FINANCE INVESTMENT SERVICES S.A.	08/01/2013	07/01/2014
EUROBANK EQUITIES S.A.	23/10/2012	22/10/2013
INVESTMENT BANK OF GREECE S.A.	08/01/2013	07/01/2014
NBG SECURITIES S.A.	26/03/2013	25/03/2014
TITAN CEMENT (CR)	Main Market	
EUROBANK EQUITIES S.A.	23/10/2012	22/10/2013
VIOHALCO (CB)	Main Market	
ALPHA FINANCE INVESTMENT SERVICES S.A.	11/02/2013	10/03/2014
EUROBANK EQUITIES S.A.	20/01/2013	19/01/2014
MERIT SECURITIES S.A.	13/12/2012	12/12/2013

Underlying Asset				Derivatives Market																		
Price max	Price min	Closing price	change	Delivery Month	Open price	Price max	Price min	Last price	Closing price	Last Bid	Last Ask	Settlement price	change	Life high	Life low	Trades	Volume	change	Value	change	Open Interest	change
FTSE/Athex Large Cap				(Trade Unit: 1 Index Point x 5€, Cash Settlement)																		
311.82	303.30	310.62	2.80%	June 2013	316.00	325.00	313.50	323.25	323.75	7@323.25	13@323.75	323.75	4.35%	338.00	246.50	621	5,158	61.24%	8,245,735.00	65.62%	34,820	-0.63%
				September 2013	---	---	---	---	---	---	---	---	---	---	---	---	---	---	---	---	---	---
				December 2013	---	---	---	---	---	---	---	---	---	---	---	---	---	---	---	---	---	---
				March 2014	---	---	---	---	---	---	---	---	---	---	---	---	---	---	---	---	---	---
FTSE/ATHEX-CSE Banking Index				(Trade Unit: 1 Index Point x 1€, Cash Settlement)																		
108.02	89.12	105.46	18.33%	May 2013	---	---	---	---	95.50	---	---	95.50	4.37%	113.00	88.50	---	---	-100.00%	---	-100.00%	---	---

Underlying Asset				Derivatives Market																		
Price max	Price min	Closing price	change	Delivery Month	Open price	Price max	Price min	Last price	Closing price	Last Bid	Last Ask	Settlement price	change	Life high	Life low	Trades	Volume	change	Value	change	Open Interest	change
ALPHA BANK (CR)				(Contract Size: 100 Stocks, Physical Delivery)																		
1.01	0.850	0.985	19.25%	June 2013	---	---	---	---	0.985	---	---	0.985	19.25%	1.95	0.422	---	---	-100.00%	---	-100.00%	---	-100.00%
				September 2013	---	---	---	---	0.985	---	---	0.985	19.25%	1.46	0.721	---	---	---	---	---	---	-100.00%
				December 2013	---	---	---	---	---	---	---	---	---	---	---	---	---	---	---	---	---	---
				March 2014	---	---	---	---	---	---	---	---	---	---	---	---	---	---	---	---	---	---
BANK OF CYPRUS (CR)				(Contract Size: 100 Stocks, Physical Delivery)																		
		0.207	0.00%	June 2013	---	---	---	---	0.207	---	---	0.207	0.00%	0.275	0.172	---	---	---	---	---	15,754	0.00%
				September 2013	---	---	---	---	---	---	---	---	---	---	---	---	---	---	---	---	---	---
				December 2013	---	---	---	---	---	---	---	---	---	---	---	---	---	---	---	---	---	---
				March 2014	---	---	---	---	---	---	---	---	---	---	---	---	---	---	---	---	---	---
COCA - COLA HBC (CR)				(Contract Size: 100 Stocks, Physical Delivery)																		
		18.40	0.00%	June 2013	---	---	---	---	18.18	---	---	18.18	0.00%	22.71	16.62	---	---	-100.00%	---	-100.00%	78	0.00%
				September 2013	---	---	---	---	18.17	---	---	18.17	0.00%	22.34	19.80	---	---	---	---	---	---	---
				December 2013	---	---	---	---	---	---	---	---	---	---	---	---	---	---	---	---	---	---
				March 2014	---	---	---	---	---	---	---	---	---	---	---	---	---	---	---	---	---	---
CYPRUS POPULAR BANK (CR)				(Contract Size: 100 Stocks, Physical Delivery)																		
		0.040	0.00%	June 2013	---	---	---	---	0.040	---	---	0.040	0.00%	0.048	0.032	---	---	---	---	---	---	-100.00%
				September 2013	---	---	---	---	---	---	---	---	---	---	---	---	---	---	---	---	---	---
				December 2013	---	---	---	---	---	---	---	---	---	---	---	---	---	---	---	---	---	---
				March 2014	---	---	---	---	---	---	---	---	---	---	---	---	---	---	---	---	---	---
ELLAKTOR (CR)				(Contract Size: 100 Stocks, Physical Delivery)																		
2.17	2.08	2.11	1.44%	June 2013	2.08	2.18	2.08	2.17	2.12	16@2.13	15@2.17	2.12	1.44%	2.34	1.38	73	310	44.86%	66,222.00	46.44%	6,320	0.80%
				September 2013	---	---	---	---	2.14	---	15@2.21	2.14	1.42%	2.21	1.73	---	---	---	---	---	100	0.00%
				December 2013	---	---	---	---	2.11	---	---	2.11	1.44%	2.11	2.11	---	---	---	---	---	100	0.00%
				March 2014	---	---	---	---	---	---	---	---	---	---	---	---	---	---	---	---	---	---
EUROBANK ERGASIAS (CR)				(Contract Size: 100 Stocks, Physical Delivery)																		
0.252	0.212	0.230	-4.17%	June 2013	0.218	0.218	0.190	0.190	0.194	3@0.190	100@0.198	0.194	-6.73%	0.639	0.093	140	2,687	1644.81%	54,423.10	1643.88%	7,461	3.54%
				September 2013	---	---	---	---	---	---	100@0.208	---	---	---	---	---	---	---	---	---	---	---
				December 2013	---	---	---	---	---	---	---	---	---	---	---	---	---	---	---	---	---	---
				March 2014	---	---	---	---	---	---	---	---	---	---	---	---	---	---	---	---	---	---
EUROBANK PROPERTIES REIC (CR)				(Contract Size: 100 Stocks, Physical Delivery)																		
5.85	5.69	5.83	1.57%	June 2013	5.79	5.80	5.74	5.80	5.89	3@5.65	5@5.91	5.89	1.55%	5.98	5.40	8	31	---	17,874.00	---	180	5.88%
				September 2013	---	---	---	---	---	---	---	---	---	---	---	---	---	---	---	---	---	---
				December 2013	---	---	---	---	---	---	---	---	---	---	---	---	---	---	---	---	---	---
				March 2014	---	---	---	---	---	---	---	---	---	---	---	---	---	---	---	---	---	---
FRIGOGLASS SA (CR)				(Contract Size: 100 Stocks, Physical Delivery)																		
5.00	4.87	4.99	4.17%	June 2013	4.95	4.96	4.85	4.95	5.20	5@5.00	10@5.30	5.20	4.21%	5.42	3.91	8	28	86.67%	13,831.00	87.64%	351	2.93%
				September 2013	---	---	---	---	---	---	---	---	---	---	---	---	---	---	---	---	---	---
				December 2013	---	---	---	---	---	---	---	---	---	---	---	---	---	---	---	---	---	---
				March 2014	---	---	---	---	---	---	---	---	---	---	---	---	---	---	---	---	---	---

Underlying Asset				Derivatives Market																		
Price max	Price min	Closing price	change	Delivery Month	Open price	Price max	Price min	Last price	Closing price	Last Bid	Last Ask	Settlement price	change	Life high	Life low	Trades	Volume	change	Value	change	Open Interest	change
GEK TERNA (CR)				(Contract Size: 100 Stocks, Physical Delivery)																		
2.16	2.07	2.09	0.97%	June 2013	2.10	2.16	2.10	2.10	2.13	1@2.11	2@2.15	2.13	2.40%	2.71	1.37	43	173	-50.00%	36,917.00	-49.27%	31,478	-0.08%
				September 2013	2.16	2.16	2.16	2.16	2.14	---	2@2.19	2.14	4.39%	2.62	1.45	1	50	---	10,800.00	---	200	33.33%
				December 2013	---	---	---	---	2.14	---	---	2.14	2.39%	2.15	1.57	---	---	-100.00%	---	-100.00%	100	0.00%
				March 2014	---	---	---	---	---	---	---	---	---	---	---	---	---	---	---	---	---	---
HELL. DUTY FREE SHOPS SA (CR)				(Contract Size: 100 Stocks, Physical Delivery)																		
14.50	13.80	14.50	4.69%	June 2013	13.99	14.40	13.99	14.40	14.57	5@14.05	3@14.50	14.57	4.67%	14.70	11.71	4	11	-21.43%	15,618.00	-21.29%	364	-0.55%
				September 2013	---	---	---	---	---	---	3@14.75	---	---	---	---	---	---	---	---	---	---	---
				December 2013	---	---	---	---	---	---	---	---	---	---	---	---	---	---	---	---	---	---
				March 2014	---	---	---	---	---	---	---	---	---	---	---	---	---	---	---	---	---	---
HELLENIC EXCHANGES (CR)				(Contract Size: 100 Stocks, Physical Delivery)																		
5.11	4.97	5.00	0.81%	June 2013	4.96	5.08	4.95	4.98	4.97	5@4.96	5@5.05	4.97	0.81%	5.46	3.28	21	70	-57.58%	35,099.00	-57.27%	1,189	3.66%
				September 2013	---	---	---	---	5.03	---	5@5.10	5.03	0.80%	5.01	3.82	---	---	---	---	---	---	---
				December 2013	---	---	---	---	5.03	---	---	5.03	0.80%	5.01	4.01	---	---	---	---	---	---	---
				March 2014	---	---	---	---	---	---	---	---	---	---	---	---	---	---	---	---	---	---
HELLENIC PETROLEUM (CR)				(Contract Size: 100 Stocks, Physical Delivery)																		
8.50	8.25	8.36	0.24%	June 2013	8.45	8.47	8.28	8.35	8.30	5@8.30	7@8.47	8.30	0.24%	8.47	6.70	7	26	-44.68%	21,791.00	-44.55%	1,699	0.30%
				September 2013	---	---	---	---	---	---	7@8.53	---	---	---	---	---	---	---	---	---	---	---
				December 2013	---	---	---	---	---	---	---	---	---	---	---	---	---	---	---	---	---	---
				March 2014	---	---	---	---	---	---	---	---	---	---	---	---	---	---	---	---	---	---
INTRALOT (CR)				(Contract Size: 100 Stocks, Physical Delivery)																		
2.01	1.93	2.00	2.56%	June 2013	1.98	2.01	1.94	1.98	2.00	12@1.97	5@2.01	2.00	2.56%	2.26	1.47	55	268	106.15%	52,964.00	105.88%	4,845	0.33%
				September 2013	---	---	---	---	2.04	---	7@2.00	2.04	2.51%	2.05	1.69	---	---	---	---	---	24	0.00%
				December 2013	---	---	---	---	---	---	---	---	---	---	---	---	---	---	---	---	---	---
				March 2014	---	---	---	---	---	---	---	---	---	---	---	---	---	---	---	---	---	---
JUMBO SA (CR)				(Contract Size: 100 Stocks, Physical Delivery)																		
7.03	6.94	7.00	0.00%	June 2013	7.01	7.04	6.97	7.00	6.87	2@7.00	20@7.30	6.87	0.00%	7.22	4.93	6	11	-31.25%	7,721.00	-30.82%	360	-2.17%
				September 2013	---	---	---	---	---	---	---	---	---	---	---	---	---	---	---	---	---	---
				December 2013	---	---	---	---	---	---	---	---	---	---	---	---	---	---	---	---	---	---
				March 2014	---	---	---	---	---	---	---	---	---	---	---	---	---	---	---	---	---	---
MARFIN INVESTMENT GROUP (CR)				(Contract Size: 100 Stocks, Physical Delivery)																		
0.340	0.322	0.325	1.88%	June 2013	0.332	0.340	0.325	0.325	0.328	3@0.325	3@0.329	0.328	3.80%	0.531	0.176	35	491	-43.89%	16,248.50	-43.34%	13,930	0.30%
				September 2013	---	---	---	---	---	---	---	---	---	---	---	---	---	---	---	---	---	---
				December 2013	---	---	---	---	---	---	---	---	---	---	---	---	---	---	---	---	---	---
				March 2014	---	---	---	---	---	---	---	---	---	---	---	---	---	---	---	---	---	---
METKA (CR)				(Contract Size: 100 Stocks, Physical Delivery)																		
11.60	11.23	11.60	3.48%	June 2013	11.36	11.37	11.36	11.37	11.52	5@11.33	1@11.40	11.52	3.50%	11.73	8.90	2	14	-30.00%	15,908.00	-30.80%	386	2.66%
				September 2013	---	---	---	---	11.70	---	1@11.48	11.70	3.54%	11.09	10.81	---	---	---	---	---	15	0.00%
				December 2013	---	---	---	---	---	---	---	---	---	---	---	---	---	---	---	---	---	---
				March 2014	---	---	---	---	---	---	---	---	---	---	---	---	---	---	---	---	---	---

Underlying Asset				Derivatives Market																		
Price max	Price min	Closing price	change	Delivery Month	Open price	Price max	Price min	Last price	Closing price	Last Bid	Last Ask	Settlement price	change	Life high	Life low	Trades	Volume	change	Value	change	Open Interest	change
MOTOR OIL (CR)				(Contract Size: 100 Stocks, Physical Delivery)																		
8.54	8.31	8.35	0.48%	June 2013	8.38	8.48	8.38	8.43	8.32	1@8.32	5@8.40	8.32	0.48%	8.82	7.02	10	36	80.00%	30,372.00	79.37%	360	4.96%
				September 2013	---	---	---	---	---	---	5@8.50	---	---	---	---	---	---	---	---	---	---	---
				December 2013	---	---	---	---	---	---	---	---	---	---	---	---	---	---	---	---	---	---
				March 2014	---	---	---	---	---	---	---	---	---	---	---	---	---	---	---	---	---	---
MYTILINEOS HOLDINGS (CR)				(Contract Size: 100 Stocks, Physical Delivery)																		
4.70	4.57	4.62	1.76%	June 2013	4.57	4.72	4.57	4.64	4.65	5@4.62	5@4.67	4.65	1.75%	5.50	3.32	52	301	-31.75%	140,175.00	-32.01%	5,614	2.04%
				September 2013	---	---	---	---	4.70	---	5@4.72	4.70	1.73%	5.50	3.50	---	---	---	---	---	23	0.00%
				December 2013	---	---	---	---	4.65	---	---	4.65	1.75%	4.23	3.70	---	---	---	---	---	---	---
				March 2014	---	---	---	---	---	---	---	---	---	---	---	---	---	---	---	---	---	---
NATIONAL BANK (CR)				(Contract Size: 100 Stocks, Physical Delivery)																		
0.617	0.525	0.600	19.76%	June 2013	0.455	0.583	0.455	0.565	0.566	43@0.563	45@0.565	0.566	27.48%	2.28	0.276	828	26,091	666.03%	1,384,901.30	815.56%	75,486	-2.92%
				September 2013	---	---	---	---	0.530	90@0.251	45@0.575	0.530	27.40%	1.36	0.344	---	---	---	---	---	100	0.00%
				December 2013	---	---	---	---	---	---	---	---	---	---	---	---	---	---	---	---	---	---
				March 2014	---	---	---	---	---	---	---	---	---	---	---	---	---	---	---	---	---	---
OPAP (CR)				(Contract Size: 100 Stocks, Physical Delivery)																		
7.18	6.75	7.08	0.86%	June 2013	6.78	6.81	6.30	6.67	6.56	10@6.62	50@6.65	6.56	-0.91%	7.47	4.19	413	2,691	299.85%	1,755,103.00	289.46%	7,854	2.52%
				September 2013	---	---	---	---	6.73	---	50@6.72	6.73	-0.88%	6.72	5.90	---	---	---	---	---	1	0.00%
				December 2013	---	---	---	---	---	---	---	---	---	---	---	---	---	---	---	---	---	---
				March 2014	---	---	---	---	---	---	---	---	---	---	---	---	---	---	---	---	---	---
OTE (CR)				(Contract Size: 100 Stocks, Physical Delivery)																		
6.23	6.12	6.18	2.15%	June 2013	6.16	6.25	6.10	6.20	6.22	6@6.20	50@6.22	6.22	1.80%	6.71	2.95	170	1,199	-29.55%	742,096.00	-29.27%	16,160	2.35%
				September 2013	6.18	6.18	6.16	6.16	6.18	---	50@6.27	6.18	0.98%	6.50	4.35	2	500	400.00%	308,100.00	395.43%	200	-71.43%
				December 2013	6.16	6.16	6.16	6.16	6.18	---	---	6.18	1.15%	6.27	4.40	1	450	800.00%	277,200.00	784.21%	50	-90.00%
				March 2014	---	---	---	---	---	---	---	---	---	---	---	---	---	---	---	---	---	---
P.P.A. S.A. (CR)				(Contract Size: 100 Stocks, Physical Delivery)																		
19.08	18.22	19.00	2.04%	June 2013	18.41	18.75	18.36	18.75	18.71	1@18.50	1@18.90	18.71	2.02%	19.30	14.74	13	39	-7.14%	72,500.00	-7.57%	86	-4.44%
				September 2013	---	---	---	---	---	---	---	---	---	---	---	---	---	---	---	---	---	---
				December 2013	---	---	---	---	---	---	---	---	---	---	---	---	---	---	---	---	---	---
				March 2014	---	---	---	---	---	---	---	---	---	---	---	---	---	---	---	---	---	---
PIRAEUS BANK (CR)				(Contract Size: 100 Stocks, Physical Delivery)																		
0.238	0.213	0.230	15.58%	June 2013	0.194	0.238	0.194	0.228	0.228	23@0.227	9@0.228	0.228	23.24%	0.659	0.080	408	20,674	623.63%	464,085.20	791.06%	26,143	-21.78%
				September 2013	---	---	---	---	0.251	---	9@0.238	0.251	23.04%	0.322	0.169	---	---	---	---	---	103	0.00%
				December 2013	---	---	---	---	0.286	---	---	0.286	23.28%	0.244	0.231	---	---	---	---	---	---	---
				March 2014	---	---	---	---	---	---	---	---	---	---	---	---	---	---	---	---	---	---
PPC (CR)				(Contract Size: 100 Stocks, Physical Delivery)																		
6.98	6.78	6.92	2.52%	June 2013	6.88	6.96	6.80	6.87	6.86	15@6.86	7@6.88	6.86	1.33%	8.20	3.54	178	969	13.73%	667,698.00	14.32%	5,943	3.05%
				September 2013	---	---	---	---	6.87	---	7@6.94	6.87	1.33%	7.80	4.58	---	---	---	---	---	16	0.00%
				December 2013	---	---	---	---	6.89	---	---	6.89	1.32%	6.63	5.08	---	---	---	---	---	---	---
				March 2014	---	---	---	---	---	---	---	---	---	---	---	---	---	---	---	---	---	---

Underlying Asset				Derivatives Market																		
Price max	Price min	Closing price	change	Delivery Month	Open price	Price max	Price min	Last price	Closing price	Last Bid	Last Ask	Settlement price	change	Life high	Life low	Trades	Volume	change	Value	change	Open Interest	change
SIDENOR (CR)				(Contract Size: 100 Stocks, Physical Delivery)																		
1.69	1.61	1.67	1.83%	June 2013	1.68	1.70	1.60	1.70	1.68	5@1.64	6@1.72	1.68	1.82%	1.78	1.03	24	126	-55.00%	21,087.00	-54.44%	1,707	1.67%
				September 2013	---	---	---	---	---	---	6@1.76	---	---	---	---	---	---	---	---	---	---	---
				December 2013	---	---	---	---	---	---	---	---	---	---	---	---	---	---	---	---	---	---
				March 2014	---	---	---	---	---	---	---	---	---	---	---	---	---	---	---	---	---	---
TERNA ENERGY (CR)				(Contract Size: 100 Stocks, Physical Delivery)																		
3.39	3.25	3.35	2.13%	June 2013	3.34	3.45	3.32	3.36	3.32	3@3.35	5@3.39	3.32	2.15%	3.47	2.27	15	118	-13.87%	39,784.00	-14.70%	4,208	2.41%
				September 2013	---	---	---	---	---	---	---	---	---	---	---	---	---	---	---	---	---	---
				December 2013	---	---	---	---	---	---	---	---	---	---	---	---	---	---	---	---	---	---
				March 2014	---	---	---	---	---	---	---	---	---	---	---	---	---	---	---	---	---	---
TITAN CEMENT (CR)				(Contract Size: 100 Stocks, Physical Delivery)																		
14.46	14.15	14.26	-0.28%	June 2013	14.76	14.76	14.26	14.28	14.27	1@14.20	2@14.48	14.27	-0.28%	14.93	11.50	5	6	-50.00%	8,634.00	-49.97%	216	-0.92%
				September 2013	---	---	---	---	---	---	2@14.57	---	---	---	---	---	---	---	---	---	---	---
				December 2013	---	---	---	---	---	---	---	---	---	---	---	---	---	---	---	---	---	---
				March 2014	---	---	---	---	---	---	---	---	---	---	---	---	---	---	---	---	---	---
VIOHALCO (CB)				(Contract Size: 100 Stocks, Physical Delivery)																		
4.53	4.29	4.38	3.06%	June 2013	4.32	4.50	4.32	4.39	4.40	3@4.38	5@4.43	4.40	4.51%	4.50	3.11	32	99	-34.44%	43,690.00	-32.99%	757	-0.26%
				September 2013	---	---	---	---	---	---	---	---	---	---	---	---	---	---	---	---	---	---
				December 2013	---	---	---	---	---	---	---	---	---	---	---	---	---	---	---	---	---	---
				March 2014	---	---	---	---	---	---	---	---	---	---	---	---	---	---	---	---	---	---

FTSE/Athex Large Cap

(Trade Unit: 1 Index Point x 5€ - Exccercise Style: European, Cash Settlement)

Call Options																	Put Options																		
Exerise Price	May 2013							June 2013							Other Months		May 2013								June 2013								Other Months		Exerise Price
	Open price	Price max	Price min	Last price	Closing price	Volume	Open Interest	Open price	Price max	Price min	Last price	Closing price	Volume	Open Interest	Volume	Open Interest	Open price	Price max	Price min	Last price	Closing price	Volume	Open Interest	Open price	Price max	Price min	Last price	Closing price	Volume	Open Interest	Volume	Open Interest			
190	-	-	-	-	-	-	-	-	-	-	-	-	-	-	-	-	-	-	-	-	-	-	-	-	-	-	-	-	-	-	-	-	190		
195	-	-	-	-	-	-	-	-	-	-	-	-	-	-	-	-	-	-	-	-	-	-	-	-	-	-	-	-	-	-	-	-	195		
200	-	-	-	-	121.00	-	30	-	-	-	-	-	-	-	-	-	-	-	-	-	-	-	-	-	-	-	-	-	-	-	-	-	200		
205	-	-	-	-	-	-	-	-	-	-	-	-	-	-	-	-	-	-	-	-	-	-	-	-	-	-	-	-	-	-	-	-	205		
210	-	-	-	-	-	-	-	-	-	-	-	-	-	-	-	-	-	-	-	-	-	-	-	-	-	-	-	-	-	-	-	-	210		
215	-	-	-	-	-	-	-	-	-	-	-	108.00	-	15	-	-	-	-	-	-	-	-	-	-	-	-	-	-	-	-	-	-	215		
220	-	-	-	-	-	-	-	-	-	-	-	-	-	-	-	-	-	-	-	-	-	-	-	-	-	-	-	-	-	-	-	-	220		
225	-	-	-	-	-	-	-	-	-	-	-	-	-	-	-	-	-	-	-	-	-	-	-	-	-	-	-	-	-	-	-	-	225		
230	-	-	-	-	-	-	-	-	-	-	-	93.50	-	7	-	-	-	-	-	-	-	-	-	-	-	-	-	-	-	-	-	-	230		
235	-	-	-	-	-	-	-	-	-	-	-	-	-	-	-	-	-	-	-	-	-	-	-	-	-	-	-	-	-	-	-	-	235		
240	-	-	-	-	-	-	-	-	-	-	-	-	-	-	-	-	-	-	-	-	-	-	-	-	-	-	-	-	-	-	-	-	240		
245	-	-	-	-	-	-	-	-	-	-	-	-	-	-	-	-	-	-	-	-	-	-	-	-	-	-	0.69	-	90	-	-	245			
250	-	-	-	-	71.00	-	40	-	-	-	-	-	-	-	-	-	-	-	-	-	-	-	-	-	-	-	0.95	-	47	-	-	250			
255	-	-	-	-	-	-	-	-	-	-	-	69.50	-	30	-	-	-	-	-	-	0.15	-	20	-	-	-	-	-	-	-	-	-	255		
260	-	-	-	-	61.00	-	275	-	-	-	-	-	-	-	-	-	-	-	-	-	-	-	-	-	-	-	-	-	-	-	-	-	260		
265	-	-	-	-	56.50	-	20	-	-	-	-	-	-	-	-	-	-	-	-	-	0.41	-	10	-	-	-	-	-	-	-	-	-	265		
270	-	-	-	-	51.50	-	5	-	-	-	-	-	-	-	-	-	-	-	-	-	0.65	-	5	-	-	-	2.90	-	25	-	-	270			
275	41.75	48.75	41.75	48.75	47.00	85	175	-	-	-	-	-	-	-	-	-	-	-	-	-	0.98	-	63	-	-	-	-	-	-	-	-	-	275		
280	36.75	43.75	36.75	43.75	42.25	37	141	-	-	-	-	-	-	-	-	-	-	-	-	-	-	-	-	-	-	-	-	-	-	-	-	-	280		
285	35.00	35.00	35.00	35.00	38.00	1	35	-	-	-	-	-	-	-	-	-	-	-	-	-	2.10	-	22	-	-	-	-	-	-	-	-	-	285		
290	31.00	31.00	31.00	31.00	33.75	40	64	-	-	-	-	40.50	-	2	-	-	-	-	-	-	2.90	-	67	-	-	-	-	-	-	-	-	-	290		
295	27.00	30.00	27.00	29.50	29.75	8	164	-	-	-	-	-	-	-	-	-	-	-	-	-	3.90	-	15	-	-	-	-	-	-	-	-	-	295		
300	20.00	25.00	20.00	25.00	26.00	17	215	-	-	-	-	33.50	-	100	-	-	6.00	6.00	4.50	4.50	5.10	130	214	-	-	-	-	-	-	-	-	-	300		
305	22.50	22.50	22.50	22.50	22.50	20	102	-	-	-	-	-	-	-	-	-	8.00	8.00	8.00	8.00	6.60	30	54	-	-	-	-	-	-	-	-	-	305		
310	16.00	17.00	16.00	17.00	19.50	17	320	-	-	-	-	-	-	-	-	-	7.50	7.50	7.50	7.50	8.40	24	73	-	-	-	-	-	-	-	-	-	310		
315	12.00	18.50	12.00	14.25	16.50	192	133	25.25	25.25	23.00	25.00	24.75	310	310	-	-	-	-	-	-	10.50	-	5	-	-	-	-	-	-	-	-	-	315		
320	11.00	12.00	11.00	12.00	14.00	2	29	-	-	-	-	-	-	-	-	-	15.00	16.00	13.00	13.00	13.00	66	66	-	-	-	-	-	-	-	-	-	320		
325	7.00	14.25	7.00	14.25	11.50	51	66	18.00	22.00	18.00	22.00	19.75	90	90	-	-	-	-	-	-	15.50	-	1	-	-	-	-	-	-	-	-	-	325		
330	11.00	11.75	10.00	11.75	9.60	119	114	-	-	-	-	-	-	-	-	-	-	-	-	-	18.50	-	170	-	-	-	-	-	-	-	-	-	330		
335	-	-	-	-	-	-	-	-	-	-	-	-	-	-	-	-	-	-	-	-	-	-	-	-	-	-	-	-	-	-	-	-	335		
340	-	-	-	-	-	-	-	-	-	-	-	-	-	-	-	-	-	-	-	-	-	-	-	-	-	-	-	-	-	-	-	-	340		
345	-	-	-	-	-	-	-	-	-	-	-	-	-	-	-	-	-	-	-	-	29.00	-	180	-	-	-	-	-	-	-	-	-	345		
350	-	-	-	-	-	-	-	-	-	-	-	-	-	-	-	-	-	-	-	-	33.00	-	5	-	-	-	-	-	-	-	-	-	350		
355	-	-	-	-	-	-	-	-	-	-	-	-	-	-	-	-	-	-	-	-	-	-	-	-	-	-	-	-	-	-	-	-	355		
360	-	-	-	-	-	-	-	9.00	9.00	9.00	9.00	8.00	70	70	-	-	-	-	-	-	-	-	-	-	-	-	44.00	-	1	-	-	-	360		
365	-	-	-	-	-	-	-	-	-	-	-	-	-	-	-	-	-	-	-	-	-	-	-	-	-	-	-	-	-	-	-	-	365		

FTSE/Athex Large Cap

(Trade Unit: 1 Index Point x 5€ - Exercise Style: European, Cash Settlement)

Call Options																	Put Options																						
Exercise Price	May 2013							June 2013							Other Months		May 2013								June 2013							Other Months		Exercise Price					
	Open price	Price max	Price min	Last price	Closing price	Volume	Open Interest	Open price	Price max	Price min	Last price	Closing price	Volume	Open Interest	Volume	Open Interest	Open price	Price max	Price min	Last price	Closing price	Volume	Open Interest	Open price	Price max	Price min	Last price	Closing price	Volume	Open Interest	Volume	Open Interest							
370	-	-	-	-	-	-	-	-	-	-	-	-	-	-			-	-	-	-	-	-	-	-	-	-	-	-	-	-	-			370					
375	-	-	-	-	-	-	-	-	-	-	-	-	-	-			-	-	-	-	-	-	-	-	-	-	-	-	-	-	-			375					
435	-	-	-	-	-	-	-	-	-	-	-	-	-	-			-	-	-	-	-	-	-	-	-	-	-	-	-	-	-			435					
440	-	-	-	-	-	-	-	-	-	-	-	-	-	-			-	-	-	-	119.00	-	28	-	-	-	-	116.00	-	244			440						
445	-	-	-	-	-	-	-	-	-	-	-	-	-	-			-	-	-	-	-	-	-	-	-	-	-	-	-	-	-			445					
550	-	-	-	-	-	-	-	-	-	-	-	-	-	-			-	-	-	-	-	-	-	-	-	-	225.00	-	1			550							
1,500	-	-	-	-	-	-	-	-	-	-	-	-	-	-			-	-	-	-	-	-	-	-	-	-	1,170.00	-	53			1,500							
Totals:						589	1,928							470	624	0	0							250	998							0	461	0	0				
Nominal Transactions Value:												760,500.00						0.00							383,550.00												0.00	0.00	
Number of Trades:												18						0							16												0	0	

FTSE/Athex Large Cap

(Trade Unit: 1 Index Point x 5€ - Exercise Style: European, Cash Settlement)

Call Options																Put Options																			
Exercise Price	May 2013							June 2013							Other Months		May 2013								June 2013								Other Months		Exercise Price
	Open price	Price max	Price min	Last price	Closing price	Volume	Open Interest	Open price	Price max	Price min	Last price	Closing price	Volume	Open Interest	Volume	Open Interest	Open price	Price max	Price min	Last price	Closing price	Volume	Open Interest	Open price	Price max	Price min	Last price	Closing price	Volume	Open Interest	Volume	Open Interest			

ALPHA BANK (CR)

(Contract Size: 100 Stocks, Exercise Style: American, Physical Delivery)

Call Options																	Put Options																			
June 2013								September 2013								Other Months		June 2013								September 2013								Other Months		
Exercise Price	Open price	Price max	Price min	Last price	Closing price	Volume	Open Interest	Open price	Price max	Price min	Last price	Closing price	Volume	Open Interest	Volume	Open Interest	Open price	Price max	Price min	Last price	Closing price	Volume	Open Interest	Open price	Price max	Price min	Last price	Closing price	Volume	Open Interest	Volume	Open Interest	Exercise Price			
0.100						-	-							-	-							-	-						-	-			0.100			
0.200						-	-							-	-							-	-						-	-			0.200			
0.300						-	-							-	-							-	-						-	-			0.300			
0.400						-	-							-	-							-	-						-	-			0.400			
0.500						-	-							-	-							-	-						-	-			0.500			
0.600						-	-							-	-							-	-						-	-			0.600			
0.700						-	-							-	-							-	-						-	-			0.700			
0.800						-	-							-	-							-	-						-	-			0.800			
0.850						-	-							-	-							-	-						-	-			0.850			
0.900						-	-							-	-							-	-						-	-			0.900			
0.950						-	-							-	-							-	-						-	-			0.950			
1.00						-	-							-	-							-	-						-	-			1.00			
1.05						-	-							-	-							-	-						-	-			1.05			
1.10						-	-							-	-							-	-						-	-			1.10			
1.15						-	-							-	-							-	-						-	-			1.15			
1.20						-	-							-	-							-	-						-	-			1.20			
1.30						-	-							-	-							-	-						-	-			1.30			
1.40						-	-							-	-							-	-						-	-			1.40			
1.45						-	-							-	-							-	-						-	-			1.45			
1.50						-	-							-	-							-	-						-	-			1.50			
1.55						-	-							-	-							-	-						-	-			1.55			
1.60						-	-							-	-							-	-						-	-			1.60			
1.65						-	-							-	-							-	-						-	-			1.65			
1.70						-	-							-	-							-	-						-	-			1.70			
1.75						-	-							-	-							-	-						-	-			1.75			
1.80						-	-							-	-							-	-						-	-			1.80			
1.90						-	-							-	-							-	-						-	-			1.90			
2.00						-	-							-	-							-	-						-	-			2.00			
2.20						-	-							-	-							-	-						-	-			2.20			
2.40						-	-							-	-							-	-						-	-			2.40			
2.60						-	-							-	-							-	-						-	-			2.60			
2.80						-	-							-	-							-	-						-	-			2.80			
Totals:						0	0							0	0	0	0							0	0							0	0			
Nominal Transactions Value:						0.00								0.00		0.00							0.00								0.00					
Number of Trades:						0								0		0							0								0					

NATIONAL BANK (CR)

(Contract Size: 100 Stocks, Exercise Style: American, Physical Delivery)

Call Options																	Put Options																			
June 2013								September 2013								Other Months		June 2013								September 2013								Other Months		
Exerise Price	Open price	Price max	Price min	Last price	Closing price	Volume	Open Interest	Open price	Price max	Price min	Last price	Closing price	Volume	Open Interest	Volume	Open Interest	Open price	Price max	Price min	Last price	Closing price	Volume	Open Interest	Open price	Price max	Price min	Last price	Closing price	Volume	Open Interest	Volume	Open Interest	Exerise Price			
0.100						-	-							-	-							-	-						-	-			0.100			
0.200						-	-							-	-							-	-						-	-			0.200			
0.300						-	-							-	-							-	-						-	-			0.300			
0.400						-	-							-	-							-	-						-	-			0.400			
0.500						-	-							-	-							-	-						-	-			0.500			
0.600						-	-							-	-							-	-						-	-			0.600			
0.700						-	-							-	-							-	-						-	-			0.700			
0.750						-	-							-	-							-	-						-	-			0.750			
0.800						-	-							-	-							-	-						-	-			0.800			
0.850						-	-							-	-							-	-						-	-			0.850			
0.900						-	-							-	-							-	-						-	-			0.900			
0.950						-	-							-	-							-	-						-	-			0.950			
1.00						-	-							-	-							-	-						-	-			1.00			
1.05						-	-							-	-							-	-						-	-			1.05			
1.10						-	-							-	-							-	-						-	-			1.10			
1.20					0.003	-	20							-	-							-	-						-	-			1.20			
1.25						-	-							-	-							-	-						-	-			1.25			
1.30						-	-							-	-							-	-						-	-			1.30			
1.35						-	-							-	-							-	-						-	-			1.35			
1.40						-	-							-	-							-	-						-	-			1.40			
1.45						-	-							-	-							-	-						-	-			1.45			
1.50						-	-							-	-							-	-						-	-			1.50			
1.55						-	-							-	-							-	-						-	-			1.55			
1.60						-	-							-	-							-	-						-	-			1.60			
1.70						-	-							-	-							-	-						-	-			1.70			
1.80						-	-							-	-							-	-						-	-			1.80			
1.90						-	-							-	-							-	-						-	-			1.90			
2.00						-	-							-	-							-	-						-	-			2.00			
2.20						-	-							-	-							-	-						-	-			2.20			
2.40						-	-							-	-							-	-						-	-			2.40			
2.60						-	-							-	-							2.00	-	40					-	-			2.60			
2.80						-	-							-	-							-	-						-	-			2.80			
Totals:						0	20							0	0	0	0							0	40							0	0	0	0	
Nominal Transactions Value:						0.00								0.00		0.00								0.00								0.00				
Number of Trades:						0								0		0								0								0				

OPAP (CR)

(Contract Size: 100 Stocks, Exercise Style: American, Physical Delivery)

Call Options																	Put Options												

OTE (CR)

(Contract Size: 100 Stocks, Exercise Style: American, Physical Delivery)

Call Options																	Put Options																			
June 2013								September 2013								Other Months		June 2013								September 2013								Other Months		
Exerise Price	Open price	Price max	Price min	Last price	Closing price	Volume	Open Interest	Open price	Price max	Price min	Last price	Closing price	Volume	Open Interest	Volume	Open Interest	Open price	Price max	Price min	Last price	Closing price	Volume	Open Interest	Open price	Price max	Price min	Last price	Closing price	Volume	Open Interest	Volume	Open Interest	Exerise Price			
1.30						-	-							-	-							-	-						-	-			1.30			
1.40						-	-							-	-							-	-						-	-			1.40			
1.50						-	-							-	-							-	-						-	-			1.50			
1.60						-	-							-	-							-	-						-	-			1.60			
1.70						-	-							-	-							-	-						-	-			1.70			
1.80						-	-							-	-							-	-						-	-			1.80			
1.90						-	-							-	-							-	-						-	-			1.90			
2.00						-	-							-	-							-	-						-	-			2.00			
2.20						-	-							-	-							-	-						-	-			2.20			
2.40						-	-							-	-							-	-						-	-			2.40			
2.60						-	-							-	-							-	-						-	-			2.60			
2.80						-	-							-	-							-	-						-	-			2.80			
3.00						-	-							-	-							-	-						-	-			3.00			
3.20						-	-							-	-							-	-						-	-			3.20			
3.40						-	-							-	-							-	-						-	-			3.40			
3.60						-	-							-	-							-	-						-	-			3.60			
3.70						-	-							-	-							-	-						-	-			3.70			
3.80						-	-							-	-							-	-						-	-			3.80			
3.90						-	-							-	-							-	-						-	-			3.90			
4.00						-	-							-	-							-	-						-	-			4.00			
4.20						-	-							-	-							-	-						-	-			4.20			
4.40					1.82	-	70							-	-							-	-						-	-			4.40			
4.60						-	-							-	-							-	-						-	-			4.60			
4.80					1.45	-	1							-	-							0.046	-	100					-	-			4.80			
5.00						-	-							-	-							0.073	-	75					-	-			5.00			
5.20						-	-							-	-							-	-						-	-			5.20			
5.40						-	-							-	-							-	-						-	-			5.40			
5.60					0.826	-	70							-	-							-	-						-	-			5.60			
5.80						-	-							-	-							-	-						-	-			5.80			
6.00						-	-							-	-							-	-						-	-			6.00			
6.20						-	-							-	-							-	-						-	-			6.20			
6.40						-	-							-	-							-	-						-	-			6.40			
6.60						-	-							-	-							-	-						-	-			6.60			
6.80					0.266	-	15							-	-							-	-						-	-			6.80			
7.20						-	-							-	-							-	-						-	-			7.20			
7.60						-	-							-	-							-	-						-	-			7.60			

Call Options																	Put Options																		
Exerise Price	June 2013							September 2013							Other Months		June 2013							September 2013							Other Months		Exerise Price		
	Open price	Price max	Price min	Last price	Closing price	Volume	Open Interest	Open price	Price max	Price min	Last price	Closing price	Volume	Open Interest	Volume	Open Interest	Open price	Price max	Price min	Last price	Closing price	Volume	Open Interest	Open price	Price max	Price min	Last price	Closing price	Volume	Open Interest	Volume	Open Interest			
8.00						-	-							-	-							-	-					-	-			8.00			
8.20						-	-							-	-							-	-					-	-			8.20			
8.40						-	-							-	-						2.24	-	35					-	-			8.40			
8.60						-	-							-	-							-	-					-	-			8.60			
8.80						-	-							-	-							-	-					-	-			8.80			
9.00						-	-							-	-							-	-					-	-			9.00			
Totals:						0	156							0	0	0	1,600							0	210							0	0	0	0
Nominal Transactions Value:						0.00								0.00		0.00								0.00								0.00		0.00	
Number of Trades:						0								0		0								0.00								0		0	

PPC (CR)

(Contract Size: 100 Stocks, Exercise Style: American, Physical Delivery)

Call Options																	Put Options																
	June 2013							September 2013							Other Months		June 2013							September 2013							Other Months		
Exercise Price	Open price	Price max	Price min	Last price	Closing price	Volume	Open Interest	Open price	Price max	Price min	Last price	Closing price	Volume	Open Interest	Volume	Open Interest	Open price	Price max	Price min	Last price	Closing price	Volume	Open Interest	Open price	Price max	Price min	Last price	Closing price	Volume	Open Interest	Volume	Open Interest	Exercise Price
1.40						-	-							-	-							-	-						-	-			1.40
1.50						-	-							-	-							-	-						-	-			1.50
1.60						-	-							-	-							-	-						-	-			1.60
1.70						-	-							-	-							-	-						-	-			1.70
1.80						-	-							-	-							-	-						-	-			1.80
1.90						-	-							-	-							-	-						-	-			1.90
2.00						-	-							-	-							-	-						-	-			2.00
2.20						-	-							-	-							-	-						-	-			2.20
2.40						-	-							-	-							-	-						-	-			2.40
2.60						-	-							-	-							-	-						-	-			2.60
2.80						-	-							-	-							-	-						-	-			2.80
3.00						-	-							-	-							-	-						-	-			3.00
3.20						-	-							-	-							-	-						-	-			3.20
3.40						-	-							-	-							-	-						-	-			3.40
3.60						-	-							-	-							-	-						-	-			3.60
3.80						-	-							-	-							-	-						-	-			3.80
4.00						-	-							-	-							-	-						-	-			4.00
4.20						-	-							-	-							-	-						-	-			4.20
4.40						-	-							-	-							-	-						-	-			4.40
4.60						-	-							-	-							-	-						-	-			4.60
4.80						-	-							-	-							-	-						-	-			4.80
5.00						-	-							-	-							-	-						-	-			5.00
5.20						-	-							-	-							-	-						-	-			5.20
5.40						-	-							-	-							-	-						-	-			5.40
5.60						-	-							-	-							-	-						-	-			5.60
5.80						-	-							-	-							-	-						-	-			5.80
6.00						-	-							-	-							-	-						-	-			6.00
6.40						-	-							-	-							-	-						-	-			6.40
6.60						-	-							-	-							-	-						-	-			6.60
6.80						-	-							-	-							-	-						-	-			6.80
7.00					0.622	-	30							-	-							-	-						-	-			7.00
7.20						-	-							-	-							-	-						-	-			7.20
7.40	0.430	0.430	0.430	0.430		1	-							-	-							-	-						-	-			7.40
7.60						-	-							-	-							-	-						-	-			7.60
7.80						-	-							-	-							-	-						-	-			7.80
8.00						-	-							-	-							-	-						-	-			8.00

PPC (CR)		(Contract Size: 100 Stocks, Exercise Style: American, Physical Delivery)																																
Call Options																	Put Options																	
Exercise Price	June 2013							September 2013							Other Months		June 2013							September 2013							Other Months		Exercise Price	
	Open price	Price max	Price min	Last price	Closing price	Volume	Open Interest	Open price	Price max	Price min	Last price	Closing price	Volume	Open Interest	Volume	Open Interest	Open price	Price max	Price min	Last price	Closing price	Volume	Open Interest	Open price	Price max	Price min	Last price	Closing price	Volume	Open Interest	Volume	Open Interest		
8.20						-	-							-	-							-	-					-	-			8.20		
8.40						-	-							-	-							-	-					-	-			8.40		
8.60						-	-							-	-							-	-					-	-			8.60		
8.80						-	-							-	-							-	-					-	-			8.80		
9.00						-	-							-	-							-	-					-	-			9.00		
9.20						-	-							-	-							-	-					-	-			9.20		
10.00						-	-							-	-							-	-					-	-			10.00		
Totals:						1	30							0	0	0	0							0	0							0	0	
Nominal Transactions Value:						740.00								0.00	0.00								0.00	0.00								0.00	0.00	
Number of Trades:						1								0	0								0.00	0.00								0	0	

PPC (CR)

(Contract Size: 100 Stocks, Exercise Style: American, Physical Delivery)

Call Options																Put Options																			
Exercise Price	June 2013							September 2013							Other Months		June 2013								September 2013								Other Months		Exercise Price
	Open price	Price max	Price min	Last price	Closing price	Volume	Open Interest	Open price	Price max	Price min	Last price	Closing price	Volume	Open Interest	Volume	Open Interest	Open price	Price max	Price min	Last price	Closing price	Volume	Open Interest	Open price	Price max	Price min	Last price	Closing price	Volume	Open Interest	Volume	Open Interest			

Stocks	Type[4]	Stock Repo [1]						Stock Reverse Repo [2]								Repurchase Agreements [3]							
		Trans. price	chg.	Trades	Volume	Transactions Value	Open Interest[5]	Price max	Price min	Last price	Last Ask	Trades	Volume	Transactions Value	Open Interest[5]	Price max	Price min	Last price	Last Ask	Trades	Volume	Transactions Value	Open Interest[5]
AEGEAN AIRLINES (CR)	SR RA	100.00	---	---	---	---	297	---	---	---	148@4.5%	---	---	---	---	---	---	---	---	---	---	---	---
ALPHA BANK (CR)	SR RA	100.31	0.06	---	---	---	56,639	---	---	---	---	---	---	---	---	---	---	---	---	---	---	---	---
ALPHA ETF FTSE Athex Large Cap	SR RA	100.00	---	---	---	---	---	---	---	---	---	---	---	---	---	---	---	---	---	---	---	---	2,664
ALUMIL (CR)	RA	---	---	---	---	---	---	---	---	---	---	---	---	---	---	---	---	---	---	---	---	---	---
ANEK LINES SA (CR)	SR RA	100.00	---	---	---	---	---	---	---	---	---	---	---	---	---	---	---	---	---	---	---	---	---
ATHENS MEDICAL CENTER SA (CR)	SR RA	100.00	---	---	---	---	434	---	---	---	217@4.5%	---	---	---	---	---	---	---	---	---	---	---	---
AUTOHELLAS SA (CR)	SR RA	100.00	---	---	---	---	---	---	---	---	---	---	---	---	---	---	---	---	---	---	---	---	---
BANK OF CYPRUS (CR)	SR RA	100.17	---	---	---	---	3,610	---	---	---	---	---	---	---	---	---	---	---	---	---	---	---	66
CENTRIC HOLDINGS (CR)	SR RA	100.00	---	---	---	---	200	---	---	---	142@6.4%	---	---	---	---	---	---	---	---	---	---	---	---
COCA - COLA HBC (CR)	SR RA	110.38	0.53	---	---	---	94	---	---	---	---	---	---	---	13	---	---	---	---	---	---	---	---
CORINTH PIPEWORKS SA (CR)	SR RA	100.00	---	---	---	---	---	---	---	---	---	---	---	---	---	---	---	---	---	---	---	---	---
CRETE PLASTICS SA (CR)	SR RA	100.00	---	---	---	---	---	---	---	---	---	---	---	---	---	---	---	---	---	---	---	---	---
CYPRUS POPULAR BANK (CR)	SR RA	100.00	---	---	---	---	---	---	---	---	---	---	---	---	---	---	---	---	---	---	---	---	---
DAIOS PLASTICS SA (CR)	SR RA	100.00	---	---	---	---	---	---	---	---	---	---	---	---	---	---	---	---	---	---	---	---	---
ELLAKTOR (CR)	SR RA	100.01	---	---	---	---	3,284	---	---	---	1542@4.5%	---	---	---	100	---	---	---	---	---	---	---	35
ELTRAK SA (CR)	SR RA	100.00	---	---	---	---	23	---	---	---	11@4.5%	---	---	---	---	---	---	---	---	---	---	---	---
ELVAL SA. (CB)	SR RA	100.00	---	---	---	---	730	---	---	---	365@4.5%	---	---	---	---	---	---	---	---	---	---	---	---
EUROBANK ERGASIAS (CR)	SR RA	100.07	0.01	---	---	---	1,472	---	---	---	---	---	---	---	1,082	---	---	---	---	---	---	---	---
EUROBANK PROPERTIES REIC (CR)	SR RA	100.02	0.01	---	---	---	2,316	---	---	---	1128@4.5%	---	---	---	30	---	---	---	---	---	---	---	---
EYDAP S.A. (CR)	SR RA	100.03	---	---	---	---	314	4.50%	4.50%	4.50%	104@4.5%	1	5	2,900.0	10	---	---	---	---	---	---	---	---
FOURLIS (CR)	SR RA	100.13	0.03	---	---	---	195	---	---	---	25@4.5%	---	---	---	72	---	---	---	---	---	---	---	---
FRIGOGLASS SA (CR)	SR RA	100.00	---	---	---	---	253	---	---	---	126@4.5%	---	---	---	---	---	---	---	---	---	---	---	---
GEK TERNA (CR)	SR RA	100.00	---	---	---	---	711	---	---	---	355@4.5%	---	---	---	---	---	---	---	---	---	---	---	---
GR. SARANTIS SA (CR)	SR RA	100.00	---	---	---	---	62	---	---	---	31@4.5%	---	---	---	---	---	---	---	---	---	---	---	---
HALKOR SA (CB)	SR RA	100.00	---	---	---	---	355	---	---	---	177@4.5%	---	---	---	---	---	---	---	---	---	---	---	---
HELL. DUTY FREE SHOPS SA (CR)	SR RA	100.17	0.02	---	---	---	680	---	---	---	314@4.5%	---	---	---	26	---	---	---	---	---	---	---	7
HELLENIC CABLES SA (CR)	SR RA	100.00	---	---	---	---	15	---	---	---	---	---	---	---	---	---	---	---	---	---	---	---	---
HELLENIC EXCHANGES (CR)	SR RA	100.02	---	---	---	---	6,039	---	---	---	2869@4.5%	---	---	---	150	---	---	---	---	---	---	---	---
HELLENIC PETROLEUM (CR)	SR RA	100.26	0.03	---	---	---	2,294	---	---	---	909@4.5%	---	---	---	238	---	---	---	---	---	---	---	48
HYGEIA SA (CR)	SR RA	100.00	---	---	---	---	500	---	---	---	185@4.5%	---	---	---	65	---	---	---	---	---	---	---	---
IASO SA (CR)	SR RA	100.00	---	---	---	---	85	---	---	---	42@4.5%	---	---	---	---	---	---	---	---	---	---	---	---
IKTINOS HELLAS SA (CR)	SR RA	100.00	---	---	---	---	10	---	---	---	---	---	---	---	---	---	---	---	---	---	---	---	---

Stock Lending Notes

- [1] - Stock Repo: A Contract for selling stocks to HELEX with a Repurchase Right (According to ATHEX BoD Resolution No 17)
- [2] - Stock Reverse Repo: A Contract for buying stocks from HELEX with a Resell Right. (According to ATHEX BoD Resolution No 18)
- [3] - Standardized Repurchase Agreements: A Contract that constitutes a standardized agreement for the purchase or sale of shares, with repurchase or resell pact (According to ATHEX BoD Resolution No 20)
- [4] - Type of products is divided into SR: Stock Repo or Stock Reverse Repo, and RA: Repurchase Agreements.
- [5] - Open Interest in all Series (both tradeable or non-tradeable).

Stocks	Type[4]	Stock Repo [1]						Stock Reverse Repo [2]								Repurchase Agreements [3]							
		Trans. price	chg.	Trades	Volume	Transactions Value	Open Interest[5]	Price max	Price min	Last price	Last Ask	Trades	Volume	Transactions Value	Open Interest[5]	Price max	Price min	Last price	Last Ask	Trades	Volume	Transactions Value	Open Interest[5]
INFORM P. LYKOS SA (CR)	SR RA	100.00	---	---	---	---	400	---	---	---	200@4.5%	---	---	---	---	---	---	---	---	---	---	---	---
INTRACOM CONSTR. (CR)	SR RA	100.00	---	---	---	---	---	---	---	---	---	---	---	---	---	---	---	---	---	---	---	---	---
INTRACOM HOLDINGS (CR)	SR RA	100.00	---	---	---	---	665	---	---	---	332@4.5%	---	---	---	---	---	---	---	---	---	---	---	---
INTRALOT (CR)	SR RA	100.02	---	---	---	---	4,340	---	---	---	1988@4.5%	---	---	---	182	---	---	---	---	---	---	---	---
J & P - AVAX SA (CR)	SR RA	100.01	0.01	---	---	---	232	---	---	---	76@4.5%	---	---	---	40	---	---	---	---	---	---	---	---
JUMBO SA (CR)	SR RA	100.09	0.01	---	---	---	2,444	---	---	---	1113@4.5%	---	---	---	109	---	---	---	---	---	---	---	45
KLEEMAN HELLAS SA (CR)	SR RA	100.00	---	---	---	---	200	---	---	---	100@4.5%	---	---	---	---	---	---	---	---	---	---	---	---
KORRES (CR)	SR RA	100.00	---	---	---	---	---	---	---	---	---	---	---	---	---	---	---	---	---	---	---	---	---
KRI-KRI S.A. (CR)	SR RA	100.00	---	---	---	---	550	---	---	---	275@4.5%	---	---	---	---	---	---	---	---	---	---	---	---
LAMDA DEVELOPMENT SA (CR)	SR RA	100.01	---	---	---	---	890	---	---	---	445@4.5%	---	---	---	---	---	---	---	---	---	---	---	---
LOULIS MILLS SA (CR)	SR RA	100.00	---	---	---	---	---	---	---	---	---	---	---	---	---	---	---	---	---	---	---	---	---
MARFIN INVESTMENT GROUP (CR)	SR RA	100.01	---	---	---	---	17,620	---	---	---	11466@5.7%	---	---	---	550	---	---	---	---	---	---	---	---
METKA (CR)	SR RA	100.32	0.03	---	---	---	656	---	---	---	268@4.5%	---	---	---	60	---	---	---	---	---	---	---	10
MLS MULTIMEDIA SA (CR)	SR RA	100.00	---	---	---	---	119	---	---	---	59@4.5%	---	---	---	---	---	---	---	---	---	---	---	---
MOTOR OIL (CR)	SR RA	100.02	---	---	---	---	2,743	---	---	---	1349@4.5%	---	---	---	22	---	---	---	---	---	---	---	27
MYTILINEOS HOLDINGS (CR)	SR RA	100.00	---	---	---	---	4,141	---	---	---	2020@4.5%	---	---	---	50	---	---	---	---	---	---	---	64
NATIONAL BANK (CR)	SR RA	100.47	0.05	---	---	---	50,422	---	---	---	---	---	---	---	43,240	10.00%	10.00%	10.00%	---	1	700	42,000.0	28,554
NBGAM ETF	SR RA	100.00	---	---	---	---	---	---	---	---	---	---	---	---	---	---	---	---	---	---	---	---	100
NBGAM ETF GREECE & TURKEY 30	SR RA	100.00	---	---	---	---	---	---	---	---	---	---	---	---	---	---	---	---	---	---	---	---	55
NIREFS SA (CR)	SR RA	100.00	---	---	---	---	322	---	---	---	161@4.5%	---	---	---	---	---	---	---	---	---	---	---	---
OPAP (CR)	SR RA	100.57	0.06	---	---	---	5,930	4.50%	4.50%	4.50%	1398@4.5%	1	17	12,036.0	1,567	4.50%	4.50%	4.50%	---	1	17	12,036.0	349
OTE (CR)	SR RA	100.19	0.02	---	---	---	6,687	---	---	---	2439@4.5%	---	---	---	904	---	---	---	---	---	---	---	721
P.P.A. S.A. (CR)	SR RA	100.00	---	---	---	---	---	---	---	---	---	---	---	---	---	---	---	---	---	---	---	---	---
PETROPOULOS PETROS (CR)	RA	---	---	---	---	---	---	---	---	---	---	---	---	---	---	---	---	---	---	---	---	---	---
PIRAEUS BANK (CR)	SR RA	100.17	0.02	---	---	---	20,383	---	---	---	---	---	---	---	17,724	---	---	---	---	---	---	---	6,569
PPC (CR)	SR RA	100.52	0.07	---	---	---	2,859	---	---	---	499@4.5%	---	---	---	930	---	---	---	---	---	---	---	181
QUEST HOLDINGS (CR)	SR RA	100.00	---	---	---	---	39	---	---	---	19@4.5%	---	---	---	---	---	---	---	---	---	---	---	---
S & B IND. MINERALS (CR)	SR RA	100.02	0.02	---	---	---	30	---	---	---	12@4.5%	---	---	---	3	---	---	---	---	---	---	---	---
SELECTED TEXT. IND. ASSOC (CR)	SR RA	100.00	---	---	---	---	50	---	---	---	32@5.2%	---	---	---	---	---	---	---	---	---	---	---	---
SIDENOR (CR)	SR RA	100.00	---	---	---	---	412	---	---	---	206@4.5%	---	---	---	---	---	---	---	---	---	---	---	---
TECHNICAL OLYMPIC SA (CR)	SR RA	100.00	---	---	---	---	14	---	---	---	4@4.5%	---	---	---	---	---	---	---	---	---	---	---	---
TERNA ENERGY (CR)	SR RA	100.00	---	---	---	---	218	---	---	---	109@4.5%	---	---	---	---	---	---	---	---	---	---	---	---

Stock Lending Notes

- [1] - Stock Repo: A Contract for selling stocks to HELEX with a Repurchase Right (According to ATHEX BoD Resolution No 17)
- [2] - Stock Reverse Repo: A Contract for buying stocks from HELEX with a Resell Right. (According to ATHEX BoD Resolution No 18)
- [3] - Standardized Repurchase Agreements: A Contract that constitutes a standardized agreement for the purchase or sale of shares, with repurchase or resell pact (According to ATHEX BoD Resolution No 20)
- [4] - Type of products is divided into SR: Stock Repo or Stock Reverse Repo, and RA: Repurchase Agreements.
- [5] - Open Interest in all Series (both tradeable or non-tradeable).

Stocks	Type[4]	Stock Repo [1]						Stock Reverse Repo [2]								Repurchase Agreements [3]							
		Trans. price	chg.	Trades	Volume	Transactions Value	Open Interest[5]	Price max	Price min	Last price	Last Ask	Trades	Volume	Transactions Value	Open Interest[5]	Price max	Price min	Last price	Last Ask	Trades	Volume	Transactions Value	Open Interest[5]
THESSALONIKA WATER & SEWERAGE	SR RA	100.00	---	---	---	---	1,208	---	---	---	604@4.5%	---	---	---	---	---	---	---	---	---	---	---	---
THRACE PLASTICS SA (CR)	SR RA	100.00	---	---	---	---	300	---	---	---	225@4.5%	---	---	---	---	---	---	---	---	---	---	---	---
TITAN CEMENT (CR)	SR RA	100.00	---	---	---	---	9,693	---	---	---	4818@4.5%	---	---	---	23	---	---	---	---	---	---	---	30
TPA SA (CR)	SR RA	100.00	---	---	---	---	6	---	---	---	3@4.5%	---	---	---	---	---	---	---	---	---	---	---	---
TRASTOR REAL EST. INV. CO.(CR)	SR RA	100.00	---	---	---	---	44	---	---	---	22@4.5%	---	---	---	---	---	---	---	---	---	---	---	---
VIOHALCO (CB)	SR RA	100.00	---	---	---	---	4,145	---	---	---	2072@4.5%	---	---	---	---	---	---	---	---	---	---	---	115

Stock Lending Notes

- [1] - Stock Repo: A Contract for selling stocks to HELEX with a Repurchase Right (According to ATHEX BoD Resolution No 17)
- [2] - Stock Reverse Repo: A Contract for buying stocks from HELEX with a Resell Right. (According to ATHEX BoD Resolution No 18)
- [3] - Standardized Repurchase Agreements: A Contract that constitutes a standardized agreement for the purchase or sale of shares, with repurchase or resell pact (According to ATHEX BoD Resolution No 20)
- [4] - Type of products is divided into SR: Stock Repo or Stock Reverse Repo, and RA: Repurchase Agreements.
- [5] - Open Interest in all Series (both tradeable or non-tradeable).

Sectors codification for listed companies

533	-	Exploration & Production	537	-	Integrated Oil & Gas
1353	-	Commodity Chemicals	1357	-	Specialty Chemicals
1753	-	Aluminum	1755	-	Nonferrous Metals
1757	-	Steel	1775	-	General Mining
2353	-	Building Materials & Fixtures	2357	-	Heavy Construction
2723	-	Containers & Packaging	2727	-	Diversified Industrials
2733	-	Electrical Components & Equipment	2753	-	Commercial Vehicles & Trucks
2757	-	Industrial Machinery	2773	-	Marine Transportation
2777	-	Transportation Services	2791	-	Business Support Services
2797	-	Industrial Suppliers	3535	-	Distillers & Vintners
3537	-	Soft Drinks	3573	-	Farming & Fishing
3577	-	Food Products	3722	-	Durable Household Products
3726	-	Furnishings	3728	-	Home Construction
3747	-	Toys	3763	-	Clothing & Accessories
3765	-	Footwear	3767	-	Personal Products
3785	-	Tobacco	4533	-	Health Care Providers
4535	-	Medical Equipment	4577	-	Pharmaceuticals
5337	-	Food Retailers & Wholesalers	5371	-	Apparel Retailers
5373	-	Broadline Retailers	5375	-	Home Improvement Retailers
5379	-	Specialty Retailers	5553	-	Broadcasting & Entertainment
5555	-	Media Agencies	5557	-	Publishing
5751	-	Airlines	5752	-	Gambling
5753	-	Hotels	5755	-	Recreational Services
5757	-	Restaurants & Bars	5759	-	Travel & Tourism
6535	-	Fixed Line Telecommunications	6575	-	Mobile Telecommunications
7535	-	Conventional Electricity	7537	-	Alternative Electricity
7577	-	Water	8355	-	Banks
8534	-	Insurance Brokers	8536	-	Property & Casualty Insurance
8633	-	Real Estate Holding & Development	8637	-	Real Estate Services
8671	-	Industrial & Office REITs	8675	-	Specialty REITs
8775	-	Specialty Finance	8777	-	Investment Services
8985	-	Equity Investment Instruments	9533	-	Computer Services
9535	-	Internet	9537	-	Software
9572	-	Computer Hardware	9574	-	Electronic Office Equipment
9578	-	Telecommunications Equipment	11000	-	ETF

