

Daily Official List

Athens Exchange sa

Tuesday, 30 April, 2013

Year: 134 Trading Day No: 81



ΟΜΙΛΟΣ ΕΛΛΗΝΙΚΑ ΧΡΗΜΑΤΙΣΤΗΡΙΑ
HELLENIC EXCHANGES GROUP

Disclaimer:

Athens Exchange (ATHEX) endeavours to ensure that the data and other material ("Information") presented on the Daily Official List are accurate and complete, but it is not liable for any errors or omissions of data or /and for the accuracy, credibility, updating and completeness of the aforesaid information nor it has any liability arising directly or indirectly from the use of the above Information.

ATHEX is not liable for the accuracy of the data included in listed companies' announcements. Only the sender of such an announcement is fully and solely liable for any infringement of third party's rights from the content of such announcement. All contents of the Daily Official List are provided only for information purposes and do not constitute investment advice or solicitation to invest in securities or other products listed for trading on ATHEX.

You acknowledge and agree that ATHEX is the owner of any property rights related to any Information appearing on the Daily Official List including intellectual property rights copyright, trademarks, etc.

The above data are a property of the Athens Exchange and are copyright protected. Users are forbidden to reproduce, modify, copy, sale, transmit or redistribute, by all reproduction means and methods, part or the whole of the above data, without reference to their source.

The commercial exploitation of these data is, also, forbidden by third parties. Athens Exchange does not carry any responsibility, direct or indirect, derived from usage or accidental alteration of the above data when used by third parties.

**Athens Exchange sa**

110 Athinon Ave., 10442 Athens, Tel: (210) 33.66.800, Fax: (210) 32.13.938

www.athex.gr

**Thessalonica Stock Exchange Center (T.S.E.C)**

16-18 Katouni Str., Thessalonica 546 25 Tel: (2310) 567.667, Fax: (2310) 530.545

Athex Members Guarantee Fund

14-16 Fidiou Str., Athens 106 78, Tel: (210) 33.04.682, Fax: (210) 33.04.155

Hellenic Republic Capital Market Commission

1 Kolokotroni Str. & 1 Stadiou Str., Athens 10562 Tel: (210) 33.77.100 Fax: (210) 33.77.173

Table of Contents

Section 1: Statistical Figures of Stocks, Bonds and Derivatives Market

Summary of Markets

Athex Indices

Analytic Figures for Athex Market's Boards and Categories

Trading Details by Sector

Top 10 best & worst performing Shares

Derivatives Summary

Section 2: Analytic Figures of Shares Transactions

Analytic Figures of Shares Transactions

Shares' Notes

Section 3: Figures of Shares Transactions

Shares Blocks Details

Shares Rights Details

Shares Short Selling

Stock Borrowing

Shares Forced Sales

Forced Sales Registered Shares

Exchange Traded Funds (ETFs) Characteristics

Section 5: Bonds traded in Fixed Income Assets Market

Corporate Bonds

Government Bonds

Treasury Bills & Zero Coupon Government Bonds

Government Bonds Traded with the Open Outcry Method

State Banks Bonds

Section 6: Additional Infos

Athex & ATHEXClear Members List

List of Stocks under Market Making operations

Section 7: Derivatives Market Analytic Figures

Index Futures

Stock Futures

Index Options

Stock Options

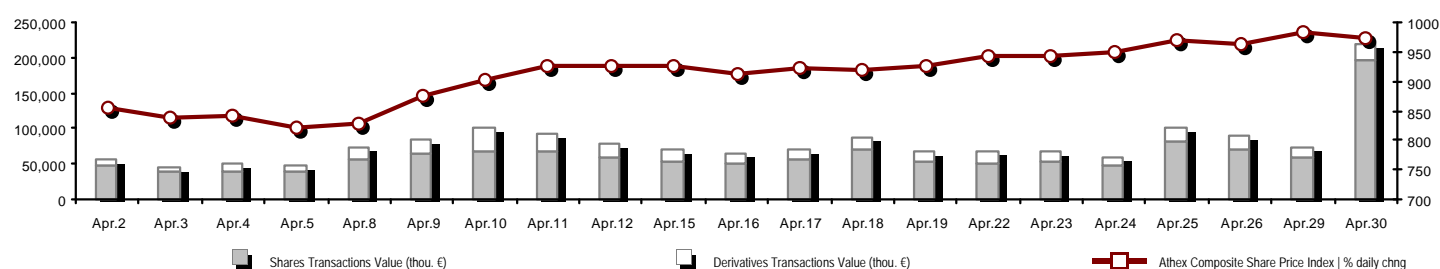
Stock Lending Analytic Figures (Repo Contracts)

Appendix A: Sectors codification for listed companies

Section codification follows the corresponding from the Greek version of Daily Official List for reference purposes.

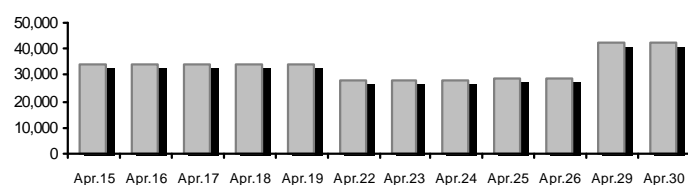
Summary of Markets

Athex Composite Share Price Index vs Shares and Derivatives Transactions Value

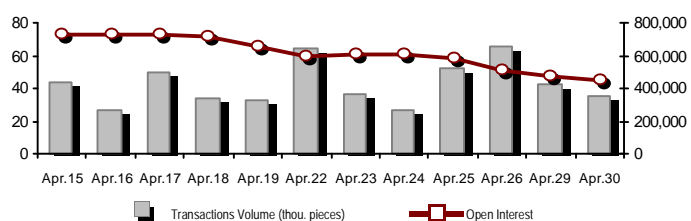


Total Transactions Value (Shares/Derivatives) (thou. €):		217,945.74		
Athex Capitalisation (mill. €) **: 42,504.46			Derivatives Total Open Interest: 449,987	
Daily change: mill. € %: -295.28 -0.69%			in Index Futures % daily chng: 35,517 3.27%	
Yearly Avg Capitalisation: mill. € % chng prev year Avg: 35,393.27 55.30%			in Stock Futures % daily chng: 183,791 -10.95%	
Athex Composite Share Price Index % daily chng: 974.09 -0.81%			in Index Options % daily chng: 5,994 2.99%	
Athex Composite Share Price Index Capitalisation (mill. €): 31,225.77			in Stock Options % daily chng: 5,494 3.27%	
Daily change (mill. €): -253.82			in Stock Repos/Reverse Repos/RA % daily chng: 219,191 -1.95%	
Shares Transactions Value (thou. €): 197,730.50			Derivatives Transactions Value (thou. €): 20,215.23	
Daily change: thou. € %: 138,256.26 232.46%			Daily change: thou. € %: 7,166.78 54.92%	
YtD Avg Trans. Value: thou. € % chng prev year Avg: 64,716.93 24.76%			YtD Avg Trans. Value: thou. € % chng prev year Avg: 22,598.66 -38.51%	
Short Selling Trans. Value: mill. € % in total Value				
Short Covering Trans. Value: mill. € % in total Value				
Blocks of Shares Transactions Value (thou. €): 55,678.47				
Bonds Transactions Value (thou. €): 0.00				
Shares Transactions Volume (thou. pieces): 68,716.75			Derivatives Contracts Volume: 34,586	
Daily change: thou. pieces %: 5,534.58 8.76%			Daily change: pieces %: -7,758 -18.32%	
YtD Avg Volume: thou. pieces % chng prev year Avg: 42,448.23 -14.16%			YtD Avg Derivatives Contracts % chng prev year Avg: 58,425 -9.21%	
Short Selling Volume: thou pieces % in total Volume				
Short Covering Volume: thou. pieces % in total Volume				
Blocks of Shares Transactions Volume (thou. pieces): 7,487.54				
Bonds Transactions Volume (thou. pieces): 0.00				
Shares Trades Number: 33,066			Derivatives Trades Number: 2,835	
Daily change: number %: 4,464 15.61%			Daily change: number %: 133 4.92%	
YtD Avg Derivatives Trades number % chng prev year Avg: 29,156 17.53%			YtD Avg Derivatives Trades number % chng prev year Avg: 3,220 10.48%	
Number of Blocks of Shares: 24				
Number of Bonds Transactions: 0				

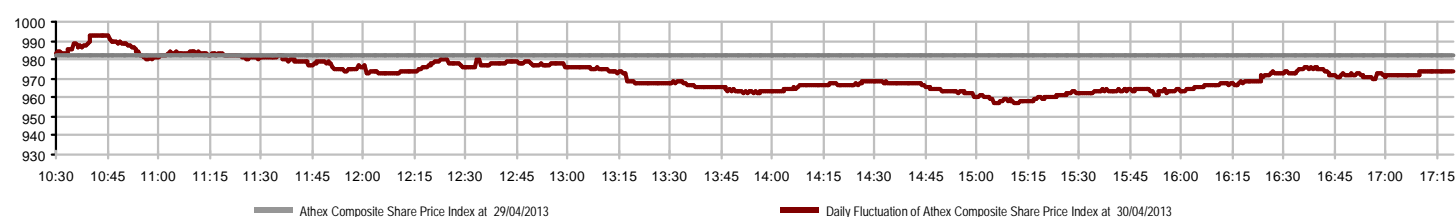
Athex Capitalisation (mill. €) **



Derivatives Transactions Volume and Open Interest



Daily Fluctuation of Athex Composite Share Price Index



Athex Indices

Index name	30/04/2013	29/04/2013	pts.	%	Min	Max	Year min	Year max	Year change
Athex Composite Share Price Index	974.09	982.01	-7.92	-0.81%	957.26	993.03	799.04	1,052.83	7.29% #
FTSE/Athex Large Cap	322.33	325.73	-3.40	-1.04%	317.15	327.86	253.17	354.93	4.08% #
FTSE/ATHEX Custom Capped	1,038.56	1,027.79	10.77	1.05%			871.73	1,155.27	1.87% #
FTSE/ATHEX Custom Capped - USD	975.42	959.92	15.50	1.61%			813.86	1,114.56	1.23% #
FTSE/Athex Mid Cap Index	1,118.49	1,128.84	-10.35	-0.92%	1,110.07	1,132.00	871.32	1,338.16	-1.30% #
FTSE/ATHEX-CSE Banking Index	105.79	124.94	-19.15	-15.33%	105.48	124.43	64.42	192.07	-37.35% #
FTSE/ATHEX Global Traders Index Plus	1,329.25	1,312.18	17.07	1.30%	1,293.32	1,330.45	1,082.32	1,477.64	6.57% #
FTSE/ATHEX Global Traders Index	1,385.61	1,371.35	14.26	1.04%	1,362.65	1,394.90	1,053.81	1,468.26	11.55% #
FTSE/ATHEX Mid & Small Cap Factor-Weighted Ind	1,214.18	1,211.96	2.22	0.18%	1,182.88	1,215.57	1,053.59	1,331.39	-2.00% #
Greece & Turkey 30 Price Index	847.21	841.54	5.67	0.67%	839.12	848.29	757.01	861.97	8.92% #
ATHEX Mid & SmallCap Price Index	3,085.93	3,083.46	2.47	0.08%	3,017.69	3,090.95	2,785.62	3,725.74	-1.56% #
FTSE/Athex Market Index	765.25	773.24	-7.99	-1.03%	753.38	778.15	600.87	842.95	3.77% #
FTSE/Med 100	4,290.81	4,299.53	-8.72	-0.20%			4,101.14	4,470.77	3.55% #
Athex Composite Index Total Return Index	1,389.75	1,401.04	-11.29	-0.81%	1,365.74	1,416.77	1,139.79	1,501.81	7.31% #
FTSE/Athex Large Cap Total Return	448.60	453.33	-4.73	-1.04%			366.91	489.13	4.10% #
FTSE/ATHEX Large Cap Net Total Return	1,275.72	1,289.14	-13.42	-1.04%	1,255.20	1,297.60	1,001.98	1,404.72	4.09% #
FTSE/ATHEX Custom Capped Total Return	1,067.46	1,056.38	11.08	1.05%			895.99	1,187.42	1.88% #
FTSE/ATHEX Custom Capped - USD Total Return	1,002.56	986.63	15.93	1.61%			836.50	1,145.57	1.23% #
FTSE/Athex Mid Cap Total Return	1,443.03	1,456.38	-13.35	-0.92%			1,194.92	1,703.08	-1.30% #
FTSE/ATHEX-CSE Banking Total Return Index	115.55	136.46	-20.91	-15.32%			85.14	206.26	-37.35% #
Greece & Turkey 30 Total Return Index	1,000.18	997.45	2.73	0.27%			901.31	1,010.30	9.16% #
Hellenic Mid & Small Cap Index	943.13	936.47	6.66	0.71%	925.53	943.54	737.97	1,039.06	7.57% #
FTSE/Athex Banks	139.77	165.07	-25.30	-15.33%	139.36	164.40	85.08	256.94	-38.23% #
FTSE/Athex Financial Services	1,263.78	1,246.23	17.55	1.41%	1,211.62	1,263.78	817.47	1,638.61	-4.18% #
FTSE/Athex Industrial Goods & Services	3,671.01	3,548.81	122.20	3.44%	3,480.54	3,672.43	2,715.10	4,197.17	12.93% #
FTSE/Athex Retail	2,245.62	2,234.01	11.61	0.52%	2,189.33	2,290.20	1,629.12	2,333.76	22.74% #
FTSE/ATHEX Real Estate	1,872.72	1,833.50	39.22	2.14%	1,832.29	1,872.72	1,491.01	2,066.41	25.60% #
FTSE/Athex Personal & Household Goods	3,641.35	3,573.61	67.74	1.90%	3,457.44	3,705.70	2,586.10	4,019.53	16.62% #
FTSE/Athex Food & Beverage	7,257.61	7,826.37	-568.76	-7.27%	7,130.34	8,182.68	6,321.85	8,591.23	9.01% #
FTSE/Athex Basic Resources	2,365.79	2,367.56	-1.77	-0.07%	2,312.70	2,409.52	1,674.83	2,901.09	1.82% #
FTSE/Athex Construction & Materials	1,882.24	1,871.18	11.06	0.59%	1,841.15	1,884.25	1,439.70	2,130.78	2.52% #
FTSE/Athex Oil & Gas	3,050.80	2,970.92	79.88	2.69%	2,955.53	3,061.32	2,474.41	3,344.96	8.44% #
FTSE/Athex Chemicals	6,747.45	6,698.90	48.55	0.72%	6,504.73	6,795.99	5,194.08	7,572.67	12.10% #
FTSE/Athex Media	2,474.71	2,267.87	206.84	9.12%	2,223.54	2,511.64	716.56	3,560.63	241.84% #
FTSE/Athex Travel & Leisure	1,355.00	1,256.48	98.52	7.84%	1,243.76	1,355.00	1,029.25	1,418.50	34.24% #
FTSE/Athex Technology	702.40	717.76	-15.36	-2.14%	695.57	719.06	555.63	886.96	-5.36% #
FTSE/Athex Telecommunications	1,816.70	1,789.17	27.53	1.54%	1,800.18	1,866.24	1,175.35	1,877.25	29.41% #
FTSE/Athex Utilities	2,727.61	2,608.12	119.49	4.58%	2,569.83	2,727.61	1,752.55	3,032.09	19.22% #
FTSE/Athex Health Care	252.06	253.10	-1.04	-0.41%	244.05	254.49	180.34	346.05	-10.17% #
Athex All Share Index	251.11	252.83	-1.73	-0.68%			215.31	270.57	6.10% #

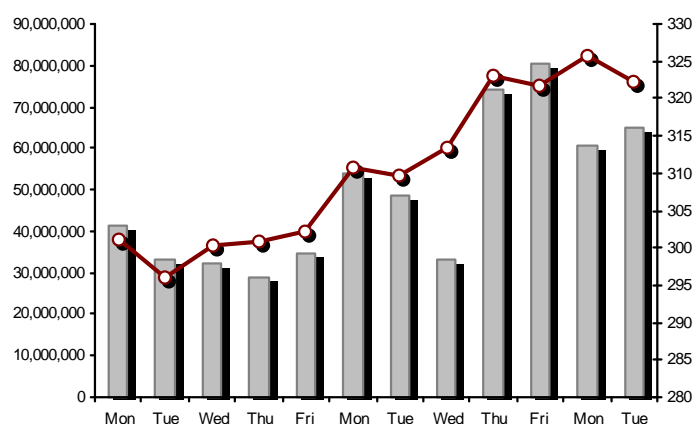
Note 1: Greece & Turkey 30 Pr data is the indicative at 17:20, whereas FTSE/ATHEX Custom Capped, FTSE/ATHEX Custom Capped - USD, FTSE/ATHEX Custom Capped TR, FTSE/ATHEX Custom Capped - USD TR, FTSE/Med 100 & Greece & Turkey 30 Rt closing prices refer to the previous trading day of 29/04/2013.

Note 2: The Hellenic Mid & Small Cap Index is a Customized index calculated by the Athens Exchange.

Athex Indices

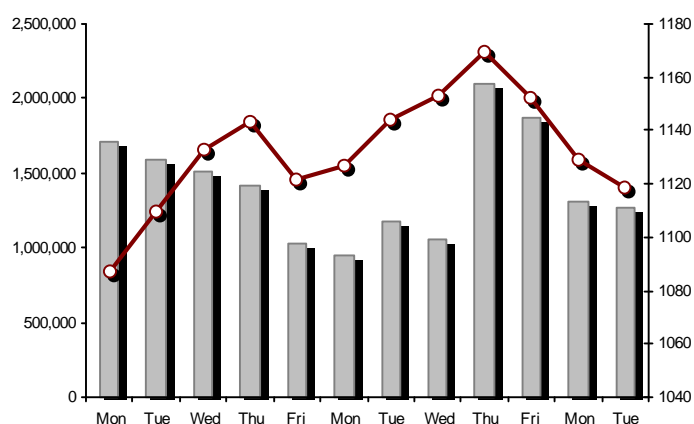
FTSE/Large Cap

30/04/2013: -1.04%



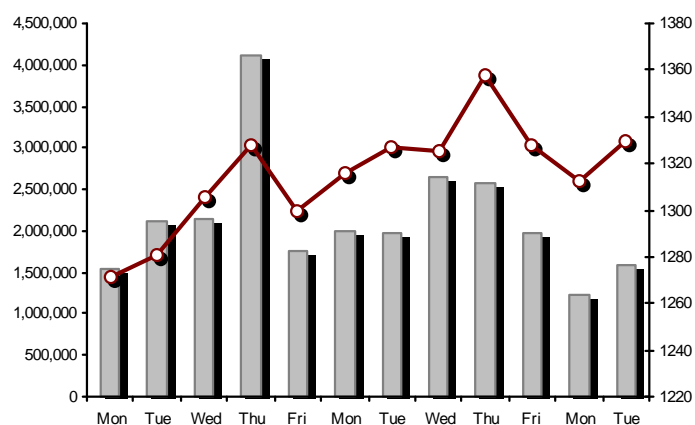
FTSE/Athex Mid Cap Index

30/04/2013: -0.92%



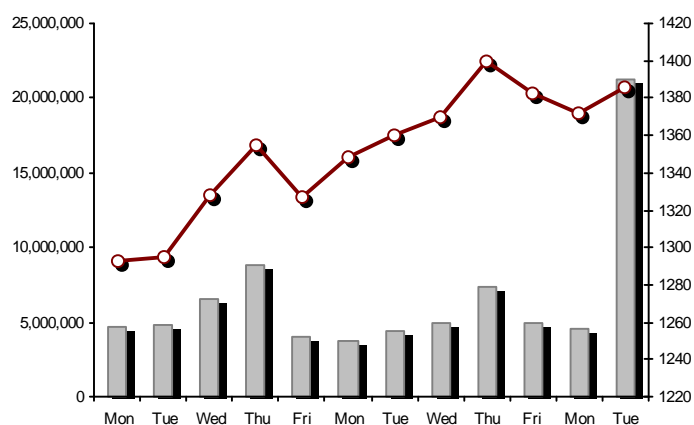
FTSE/ATHEX Global Traders Index Plus

30/04/2013: 1.30%



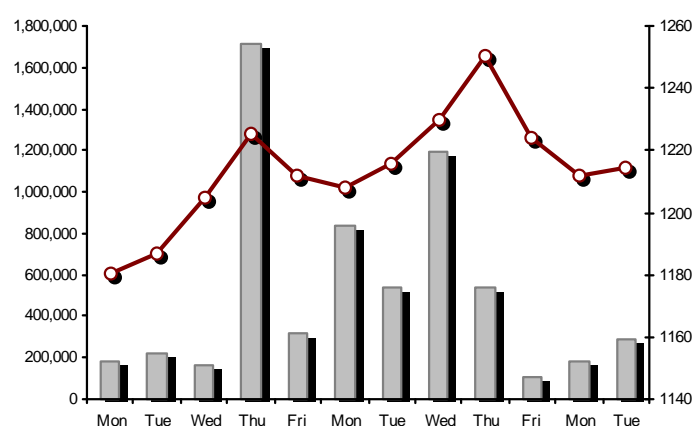
FTSE/ATHEX Global Traders Index

30/04/2013: 1.04%



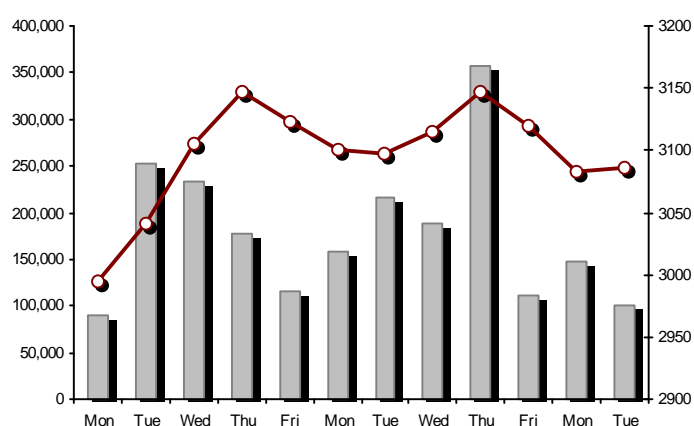
FTSE/ATHEX Mid & Small Cap Factor-Weighted Index

30/04/2013: 0.18%



ATHEX Mid & SmallCap Price Index

30/04/2013: 0.08%



Indices volume of transactions

Indices closing prices

Analytic Figures for Athex Market's Boards and Categories

	Total Traded Shares	Main Market	Low Dispersion	Other Categories (*)	Exchange Traded Funds (ETFs)
Totals	174	125	14	32	3
Gain / Lose / Same:	70 / 81 / 23	51 / 61 / 13	4 / 4 / 6	14 / 14 / 4	1 / 2 / 0
Athex Capitalisation (mill. €) **	42,504.46	32,992.90	9,131.38	355.71	24.47
Daily Average Transactions Value (thou. €)	64,716.93	50,895.16	362.91	64.67	63.73
Shares Transactions Value (thou. €)	197,730.50	180,197.65	17,492.10	33.63	7.12
Main Board:	142,052.03	134,030.16	7,981.13	33.63	7.12
Blocks Board:	55,678.47	46,167.50	9,510.98	0.00	0.00
Forced Sales Board:	0.00	0.00	0.00	0.00	0.00
Special Terms Board:	0.00	0.00	0.00	0.00	0.00
Daily Average Transactions Volume	42,448,227	31,159,587	61,323	539,121	15,107
Transactions Volume	68,716,749	67,585,282	959,856	170,238	1,373
Main Board:	61,229,213	60,605,276	452,326	170,238	1,373
Blocks Board:	7,487,536	6,980,006	507,530	0	0
Forced Sales Board:	0	0	0	0	0
Special Terms Board:	0	0	0	0	0
Daily Average Number of Trades	29,156	22,686	147	264	8
Number of Trades	33,066	32,593	261	202	10
Main Board:	33,042	32,576	254	202	10
Blocks Board:	24	17	7	0	0
Forced Sales Board:	0	0	0	0	0
Special Terms Board:	0	0	0	0	0

(*) Summarised Transactions figures for Low Dispersion & Specific Features and Under Supervision Categories.

(**) The Market Capitalization of Coca Cola Hellenic Bottling Company S.A. shares which are traded in the Low Liquidity Category is included.

Trading Details by Sector

Code	Sectors	Gain / Lose / Same	Number of Trades	Transactions Volume	Transactions Value	% of Total Trans. Value
8300	- Banks	0 / 6 / 1	12,396	40,617,330	18,870,791.95	9.54%
1700	- Basic Resources	4 / 9 / 2	1,570	832,279	2,658,363.02	1.34%
1300	- Chemicals	3 / 3 / 2	145	39,817	65,051.31	0.03%
2300	- Construction & Materials	11 / 10 / 0	1,650	1,082,042	2,223,227.83	1.12%
11000	- ETF	1 / 2 / 0	10	1,373	7,116.44	0.00%
8700	- Financial Services	2 / 1 / 1	787	1,103,620	1,343,249.82	0.68%
3500	- Food & Beverage	6 / 9 / 0	529	1,102,059	19,066,687.98	9.64%
4500	- Health Care	1 / 4 / 1	142	93,068	43,960.15	0.02%
2700	- Industrial Goods & Services	6 / 11 / 4	1,274	277,771	1,526,939.11	0.77%
8500	- Insurance	1 / 1 / 0	41	28,973	35,872.96	0.02%
5500	- Media	5 / 1 / 0	71	33,730	13,582.93	0.01%
500	- Oil & Gas	2 / 0 / 0	473	159,432	1,327,302.17	0.67%
3700	- Personal & Household Goods	5 / 11 / 3	507	275,003	517,781.36	0.26%
8600	- Real Estate	3 / 1 / 2	259	48,937	160,831.85	0.08%
5300	- Retail	3 / 2 / 0	240	46,328	444,687.44	0.22%
9500	- Technology	6 / 8 / 3	465	385,218	217,358.17	0.11%
6500	- Telecommunications	1 / 0 / 0	7,214	18,706,897	124,005,685.16	62.71%
5700	- Travel & Leisure	6 / 2 / 4	3,698	3,216,898	20,675,647.72	10.46%
7500	- Utilities	4 / 0 / 0	1,595	665,974	4,526,364.39	2.29%

Top 10 best & worst performing Shares

Main Market					
With positive Price change	Closing price	change	With negative Price change	Closing price	change
OPAP (CR)	7.49	8.87% #	NATIONAL BANK (CR)	0.635	-19.11% €
VIOHALCO (CB)	4.67	7.36% #	EUROBANK ERGASIAS (CR)	0.196	-14.41% €
PPC (CR)	7.36	5.29% #	ALPHA BANK (CR)	0.961	-12.64% €
EUROBANK PROPERTIES REIC (CR)	6.28	3.46% #	PIRAEUS BANK (CR)	0.212	-7.83% €
HELLENIC PETROLEUM (CR)	8.40	3.45% #	ATTICA BANK S.A. (CR)	0.164	-7.34% €
KYRIAKIDIS MARBLES SA (CR)	0.800	3.23% #	CC HBC AG (CR)	19.36	-7.32% €
TERNA ENERGY (CR)	3.36	2.44% #	EKTER SA (CR)	0.447	-6.68% €
JUMBO SA (CR)	7.15	2.29% #	HALKOR SA (CB)	0.820	-5.75% €
CRETE PLASTICS SA (CR)	5.39	1.89% #	SIDENOR (CR)	1.54	-4.94% €
TITAN CEMENT (CR)	14.10	1.81% #	UNIBIOS (CR)	0.220	-4.35% €
With the highest Transactions Value	Value (thou. €)	change	With the highest Transactions Volume	Volume	change
OTE (CR)	124,005.69	1.54% #	PIRAEUS BANK (CR)	21,730,288	-7.83% €
OPAP (CR)	19,983.28	8.87% #	OTE (CR)	18,706,897	1.54% #
NATIONAL BANK (CR)	7,989.52	-19.11% €	NATIONAL BANK (CR)	11,614,081	-19.11% €
ALPHA BANK (CR)	5,757.74	-12.64% €	ALPHA BANK (CR)	5,697,410	-12.64% €
PIRAEUS BANK (CR)	4,708.33	-7.83% €	OPAP (CR)	2,794,237	8.87% #
PPC (CR)	4,290.31	5.29% #	EUROBANK ERGASIAS (CR)	1,463,884	-14.41% €
CC HBC AG (CR)	1,589.08	-7.32% €	MARFIN INVESTMENT GROUP (CR)	889,987	1.21% #
S & B IND. MINERALS (CR)	1,153.93	-0.17% €	PPC (CR)	605,381	5.29% #
HELLENIC EXCHANGES (CR)	1,050.69	1.60% #	GEK TERNA (CR)	469,523	-0.98% €
GEK TERNA (CR)	949.29	-0.98% €	INTRACOM HOLDINGS (CR)	309,462	-3.69% €

Note: Stocks that are not included in the "Low Dispersion" and "Under Supervision" categories, and the transactions value is more than 10,000 €.

Derivatives Summary

	Number of Trades	Volume	Open Interest	Transactions Value
Index Futures	675	5,535	35,517	8,972,645.00
FTSE/Athex Large Cap	675	5,535	35,517	8,972,645.00
Stock Futures	2,100	27,950	183,791	10,021,800.60
ALPHA BANK (CR)	0	0	0	0.00
BANK OF CYPRUS (CR)	0	0	15,754	0.00
COCA - COLA HBC (CR)	0	0	0	0.00
ELLAKTOR (CR)	67	484	6,406	99,450.00
EUROBANK ERGASIAS (CR)	35	585	6,827	10,888.50
EUROBANK PROPERTIES REIC (CR)	6	18	148	11,026.00
FRIGOGLASS SA (CR)	4	13	348	6,496.00
GEK TERNA (CR)	111	1,307	32,879	264,608.00
HELL. DUTY FREE SHOPS SA (CR)	3	15	288	23,625.00
HELLENIC EXCHANGES (CR)	24	62	1,309	30,895.00
HELLENIC PETROLEUM (CR)	17	87	1,789	72,191.00
INTRALOT (CR)	48	556	4,583	114,256.00
JUMBO SA (CR)	12	45	455	31,481.00
MARFIN INVESTMENT GROUP (CR)	34	350	15,493	11,441.20
METKA (CR)	0	0	406	0.00
MOTOR OIL (CR)	14	32	372	26,894.00
MYTILINEOS HOLDINGS (CR)	50	323	6,044	150,816.00
NATIONAL BANK (CR)	624	11,468	58,367	782,139.90
OPAP (CR)	244	1,675	7,290	1,127,505.00
OTE (CR)	497	8,850	12,795	5,898,599.00
P.P.A. S.A. (CR)	3	8	100	15,320.00
PIRAEUS BANK (CR)	0	0	0	0.00
PPC (CR)	240	1,748	5,065	1,241,246.00
SIDENOR (CR)	17	53	1,769	8,339.00
TERNA ENERGY (CR)	27	234	4,301	77,378.00
TITAN CEMENT (CR)	1	1	205	1,385.00
VIOHALCO (CB)	22	36	798	15,821.00
Index Options	47	396	5,994	611,075.00
FTSE/Athex Large Cap	47	396	5,994	611,075.00
Stock Options	2	90	5,494	59,400.00
ALPHA BANK (CR)	0	0	0	0.00
NATIONAL BANK (CR)	0	0	60	0.00
OPAP (CR)	0	0	3,438	0.00
OTE (CR)	2	90	1,966	59,400.00
PPC (CR)	0	0	30	0.00
Stock Repos - Stock Reverse Repos - Repurchase Agreements	11	615	219,191	550,314.00
Stock Reverse Repos	7	439	40,238	351,976.00
Stock Repos	2	22	159,231	42,592.00
Repurchase Agreement	2	154	19,722	155,746.00
Total Derivatives Traded	2,835	34,586	449,987	20,215,234.60

Number of Listed Shares	Nominal Value	Dividends [1]			Date of Last Coupon		Note	Shares	Closing price	% change	Previous closing price/date	Open price	Price min	Price max	Last price	Avg price	Last Bid [7]	Last Ask [7]	P/E after	Year	Volume	Trades	Transactions Value	Company Mkt Value (thou. €)	Year low	Year high	Sector[4]
		2010	2011	2012	Dividend [2]	Right																					
Main Market																											
71,417,100	0.650	---	---	---	26/05/2010	11/07/2007	---	AEGEAN AIRLINES (CR)	2.40	1.27 #	2.37 29/04/2013	2.32	2.32	2.42	2.40	2.39	3260@2.40	132@2.43	---	2012	9,050	29	21,666.90	171,401.04	1.96	2.80	5751
11,178,000	1.45	---	---	---	21/04/2010	12/05/2011	---	AEOLIAN INVESTMENT FUND (CR)	1.03	---	1.03 29/04/2013	---	---	---	---	---	1500@0.975	1300@1.03	8.15	2012	---	---	---	11,513.34	0.900	1.15	8985
13,000,000	1.00	---	---	---	01/08/2007	07/04/2000	---	AKRITAS SA (CR)	0.313	1.29 #	0.309 26/04/2013	0.308	0.279	0.320	0.320	0.312	30@0.307	20@0.320	---	2012	12,100	15	3,770.05	4,069.00	0.261	0.520	2353
17,200,576	1.25	---	---	---	03/06/2009	30/06/2010	---	ALCO HELLAS SA (CR)	0.431	-4.22 €	0.450 26/04/2013	0.420	0.420	0.451	0.435	0.431	100@0.423	402@0.449	---	2012	9,461	30	4,081.65	7,413.45	0.301	0.870	1753
534,269,648	0.300	---	---	---	07/04/2008	06/11/2009	---	ALPHA BANK (CR)	0.961	-12.64 €	1.10 29/04/2013	1.09	0.961	1.10	0.961	1.01	73100@0.960	1942@0.961	---	2012	5,697,410	2,696	5,757,738.99	513,433.13	0.452	1.67	8355
22,016,250	0.370	---	---	---	15/07/2009	11/05/2000	---	ALUMIL (CR)	0.475	-3.06 €	0.490 29/04/2013	0.515	0.462	0.515	0.470	0.481	50@0.465	1682@0.467	---	2012	1,701	16	817.57	10,457.72	0.360	0.740	1753
268,700	16.00	---	---	---	22/04/2010	05/03/2013	---	ANDROMEDA SA (CR)	23.00	---	23.00 29/04/2013	23.00	23.00	23.00	23.00	23.00	503@23.00	10@24.00	2.13	2012	64	4	1,472.00	6,180.10	19.00	23.50	8985
21,876,700	0.380	---	---	---	08/07/2010	05/06/2001	---	AS COMPANY SA (CR)	0.400	2.56 #	0.390 25/04/2013	0.290	0.290	0.400	0.400	0.335	1000@0.330	134@0.400	45.71	2012	1,230	5	412.63	8,750.68	0.290	0.488	5379
86,735,980	0.310	---	---	---	06/07/2009	02/01/2002	---	ATHENS MEDICAL CENTER SA (CR)	0.724	-0.41 €	0.727 29/04/2013	0.701	0.701	0.731	0.729	0.721	100@0.710	790@0.729	---	2012	3,630	16	2,615.72	62,796.85	0.518	0.994	4533
244,885,573	0.350	---	---	---	04/06/2008	07/09/2009	---	ATTICA BANK S.A. (CR)	0.164	-7.34 €	0.177 29/04/2013	0.180	0.160	0.180	0.164	0.167	10736@0.163	4251@0.165	---	2012	104,449	127	17,468.09	40,161.23	0.119	0.729	8355
45,457,464	0.700	---	---	---	01/07/2008	01/03/2010	---	AUDIO VISUAL ENTERPRISES (CR)	0.335	9.12 #	0.307 29/04/2013	0.305	0.301	0.340	0.335	0.319	78@0.301	7745@0.337	---	2012	9,662	19	3,080.87	15,228.25	0.097	0.482	5553
36,360,000	0.320	---	0.15	---	30/04/2012	05/05/2008	---	AUTOHELLAS SA (CR)	1.90	---	1.90 29/04/2013	1.90	1.85	1.90	1.90	1.90	1000@1.88	5190@1.90	10.23	2012	14,230	14	26,985.70	69,084.00	1.50	1.93	5759
20,121,710	1.21	---	---	---	27/07/1992	12/03/2003	---	BALKAN R.E. (CR)	0.234	6.36 #	0.220 26/04/2013	0.215	0.215	0.234	0.234	0.232	150@0.216	101@0.234	---	2012	449	3	104.12	4,708.48	0.210	0.438	8633
19,864,886	5.60	1.976	0.670	0.5376	06/03/2013	02/07/2008	---	BANK OF GREECE (CR)	13.50	-2.88 €	13.90 29/04/2013	13.90	13.50	13.98	13.50	13.59	98@13.50	25@13.87	---	---	6,428	121	87,383.49	268,175.96	11.26	19.19	8355
23,986,500	1.05	---	---	---	26/06/2009	15/03/2000	---	BIOKARPET S.A.(CR)	0.720	---	0.720 22/04/2013	---	---	---	---	---	---	2000@0.689	---	2012	---	---	---	17,270.28	0.519	0.845	3726
15,842,391	1.51	---	---	---	15/07/2009	12/05/2000	---	BITROS HOLDING SA (CR)	0.509	2.41 #	0.497 29/04/2013	0.460	0.460	0.509	0.509	0.480	345@0.460	196@0.508	---	2012	975	29	468.30	8,063.78	0.416	0.745	1757
15,816,009	0.300	---	---	---	01/07/2009	17/07/2000	---	BYTE COMPUTER SA (CR)	0.402	1.77 #	0.395 26/04/2013	0.395	0.395	0.402	0.402	0.400	150@0.395	200@0.403	---	2012	300	4	120.10	6,358.04	0.351	0.620	9533
355,023,939	6.70	---	---	---	29/04/2013	---	---	CC HBC AG (CR)	19.36	-7.32 €	20.89 29/04/2013	21.13	19.02	21.85	19.36	19.70	200@19.20	500@19.46	---	---	80,668	228	1,589,083.26	6,873,263.46	18.50	21.85	3537
101,123,806	0.360	---	---	---	22/07/2010	28/06/2011	---	CENTRIC HOLDINGS (CR)	0.269	-3.24 €	0.278 29/04/2013	0.277	0.268	0.278	0.269	0.272	2000@0.268	100@0.278	40.81	2012	47,886	38	13,047.11	27,202.30	0.235	0.440	5752
4,034,950	0.680	---	---	---	01/07/2005	30/12/2010	---	CHATZIKRANIOITIS & SONS SA (CR)	0.200	---	0.200 29/04/2013	---	---	---	---	---	200@0.199	300@0.214	---	2012	---	---	---	806.99	0.200	0.522	3577
124,170,201	0.780	---	---	---	28/06/2002	07/02/2005	---	CORINTH PIPEWORKS SA (CR)	2.13	---	2.13 29/04/2013	2.18	2.08	2.18	2.13	2.12	150@2.12	500@2.14	76.31	2012	108,195	292	229,610.98	264,482.53	1.40	2.59	1757
9,907,500	0.300	---	---	---	06/10/2005	13/02/2002	---	CPI SA (CR)	0.270	-8.47 €	0.295 26/04/2013	0.270	0.270	0.270	0.270	0.270	---	500@0.270	---	2012	500	1	135.00	2,675.03	0.240	0.400	9572
27,379,200	0.610	---	---	---	23/06/2010	05/12/2012	---	CRETE PLASTICS SA (CR)	5.39	1.89 #	5.29 29/04/2013	5.23	5.23	5.40	5.40	5.32	400@5.13	150@5.39	15.40	2012	3,080	9	16,371.56	147,573.89	4.77	5.65	1357
26,664,840	0.470	---	---	---	29/06/2005	12/07/1999	---	CYCLON HELLAS SA (CR)	0.511	-0.58 €	0.514 29/04/2013	0.464	0.464	0.511	0.511	0.493	180@0.481	435@0.511	---	2012	1,600	3	788.70	13,625.73	0.390	0.700	1357
15,000,000	0.300	---	---	---	06/07/2007	18/07/2000	---	DAIOS PLASTICS SA (CR)	4.79	-0.21 €	4.80 26/04/2013	4.34	4.34	4.79	4.79	4.42	75@4.34	50@4.79	---	2012	60	2	264.90	71,850.00	4.34	5.50	1357
31,370,399	0.300	---	---	---	11/08/2010	15/02/2012	---	DIONIC (CR)	0.136	-2.16 €	0.139 29/04/2013	0.138	0.132	0.140	0.136	0.136	1500@0.132	2725@0.136	---	2012	38,340	34	5,208.20	4,266.37	0.081	0.263	2797
34,720,000	0.310	---	---	---	16/06/2010	01/08/2007	---	DROMEAS SA (CR)	0.294	-0.34 €	0.295 29/04/2013	0.266	0.252	0.294	0.294	0.271	500@0.287	1410@0.294	---	2012	18,330	43	4,974.54	10,207.68	0.218	0.400	3726
3,873,120	0.300	---	---	---	07/07/2008	04/10/2012	---	DRUCKFARBEN HELLAS (CR)	1.70	9.68 #	1.55 26/04/2013	1.70	1.70	1.70	1.70	1.70	---	50@1.55	---	2012	10	2	17.00	6,584.30	1.35	2.64	1357
11,250,000	0.560	---	---	---	26/07/2010	16/06/1999	---	EKTER SA (CR)	0.447	-6.68 €	0.479 29/04/2013	0.451	0.440	0.473	0.447	0.445	440@0.442	500@0.460	7.81	2012	42,821	43	19,055.24	5,028.75	0.401	0.700	2357
32,188,050	1.04	---	---	---	21/07/2008	20/01/2000	---	EL. D. MOUZAKIS SA (CB)	0.153	-10.00 €	0.170 24/04/2013	0.155	0.153	0.155	0.153	0.154	645@0.153	750@0.168	---	2012	31,150	10	4,787.97	4,924.77	0.153	0.330	3763
18,648,000	1.00	---	---	---	07/07/2009	10/09/2010	---	ELASTRON (CR)	0.709	-0.84 €	0.715 29/04/2013	0.730	0.680	0.750	0.710	0.697	10@0.703	950@0.709	---	2012	5,720	18	3,988.65	13,221.43	0.518	0.969	1757
31,937,030	1.60	---	---	---	09/07/2007	19/07/2006	---	ELGEKA SA (CR)	0.640	2.40 #	0.625 26/04/2013	0.586	0.586	0.640	0.640	0.604	600@0.590	1995@0.640	---	2012	15	2	9.06	20,439.70	0.490	0.780	3577
23,828,130	0.500	---	---	---	07/07/2010	17/02/2009	---	ELINOIL S.A. (CR)	1.48	---	1.48 24/04/2013	---	---	---	---	---	---	382@1.49	---	2012	---	---	---	35,265.63	1.39	1.89	537
177,001,313	1.03	0.0308	---	---	05/07/2011	20/12/2007	---	ELLAKTOR (CR)	2.07	-1.90 €	2.11 29/04/2013	2.08	2.01	2.10	2.07	2.06	5486@2.06	10085@2.08	---	2012	271,724	493	559,014.19	366,392.72	1.36	2.39	2357
26,730,187	0.600	---	---	---	25/06/2009	30/12/2010	---	ELTON SA (CR)	0.964	-0.62 €	0.970 29/04/2013	0.964	0.950	0.970	0.964	0.957	700@0.950	943@0.964	10.08	2012	4,763	34	4,560.39	25,767.90	0.850	1.25	1353
15,146,404	0.340	0.093	---	---	06/07/2011	17/																					

Number of Listed Shares	Nominal Value	Dividends [1]			Date of Last Coupon		Note	Shares	Closing price	% change	Previous closing price/date	Open price	Price min	Price max	Last price	Avg price	Last Bid [7]	Last Ask [7]	P/E after	Year	Volume	Trades	Transactions Value	Company Mkt Value (thou. €)	Year low	Year high	Sector[4]			
		2010	2011	2012	Dividend [2]	Right																								
Main Market																														
30,009,210	0.310	---	---	---	27/06/2008	26/06/2000	---	ETEM SA (CB)	0.487	4.73	#	0.465	29/04/2013	0.434	0.434	0.494	0.487	0.484	244@0.436	300@0.487	---	2012	1,300	6	629.20	14,614.49	0.328	0.828	1753	
552,948,427	2.22	---	---	---	02/05/2008	31/05/2011	---	EUROBANK ERGASIAS (CR)	0.196	-14.41	€	0.229	29/04/2013	0.230	0.196	0.230	0.196	0.208	13500@0.195	6200@0.197	---	2012	1,463,884	691	304,939.34	108,377.89	0.105	0.740	8355	
61,000,000	2.13	0.5364	0.4067	---	23/03/2012	20/11/2007	---	EUROBANK PROPERTIES REIC (CR)	6.28	3.46	#	6.07	29/04/2013	6.15	6.07	6.28	6.28	6.17	10@6.20	2000@6.30	---	2012	22,896	214	141,340.95	383,080.00	4.87	6.40	8675	
27,503,677	0.600	0.04	0.05	---	13/07/2012	18/10/1999	---	EUROPEAN RELIANCE INSUR. (CR)	1.26	0.80	#	1.25	29/04/2013	1.24	1.21	1.29	1.26	1.24	1000@1.24	270@1.26	3.80	2012	28,963	40	35,871.52	34,654.63	0.973	1.56	8536	
13,673,200	0.880	---	---	---	18/07/2008	26/07/2001	---	EVROFARMA SA (CR)	0.290	-9.38	€	0.320	29/04/2013	0.290	0.290	0.320	0.290	0.290	250@0.289	610@0.290	---	2012	920	7	267.10	3,965.23	0.280	0.539	3577	
106,500,000	0.600	0.04	0.17	---	04/07/2012	28/01/2000	---	EYDAP S.A. (CR)	5.69	1.61	#	5.60	29/04/2013	5.44	5.44	5.71	5.71	5.64	200@5.63	620@5.70	23.19	2011	10,206	65	57,510.79	605,985.00	4.65	6.47	7577	
52,800,154	0.300	---	---	---	16/04/2010	21/06/2004	---	F.G. EUROPE S.A. (CR)	0.599	-0.17	€	0.600	29/04/2013	0.581	0.580	0.600	0.599	0.588	856@0.580	1770@0.599	7.25	2012	884	18	519.45	31,627.29	0.550	0.950	3722	
10,203,575	0.730	---	---	---	16/07/2007	18/10/1999	---	FIERATEX SA (CR)	0.378	---	↘	0.378	29/04/2013	---	---	---	---	---	---	999@0.338	---	---	2012	---	---	---	3,856.95	0.090	0.378	3763
4,181,450	0.500	---	---	---	21/08/2000	05/03/2002	---	FLOUR MILLS SARANTOPOULOS S	0.695	---	↘	0.695	11/04/2013	---	---	---	---	---	180@0.626	---	12.85	2012	---	---	---	2,906.11	0.639	0.869	3577	
50,992,322	1.00	---	---	---	21/06/2010	16/07/2002	---	FOURLIS (CR)	2.08	0.97	#	2.06	29/04/2013	2.06	2.05	2.09	2.08	2.06	1850@2.06	2190@2.07	---	2012	46,819	92	96,495.13	106,064.03	1.58	2.82	3722	
50,592,373	0.300	---	---	---	07/07/2010	07/09/2011	---	FRIGOGLASS SA (CR)	5.05	-0.39	€	5.07	29/04/2013	5.05	4.87	5.05	5.05	4.99	223@5.00	100@5.05	---	2012	49,680	273	247,875.85	255,491.48	3.84	6.26	2757	
77,376,446	0.340	---	---	---	23/05/2005	18/08/2011	---	G.E. DIMITRIOU (CR)	0.050	-25.37	€	0.067	29/04/2013	0.056	0.050	0.056	0.050	0.052	13000@0.047	25000@0.050	---	2012	90,000	13	4,693.00	3,868.82	0.028	0.118	3722	
14,076,360	0.370	---	---	---	19/08/2008	22/07/2003	---	GALAXIDI S.A. (CR)	0.520	---	↘	0.520	25/04/2013	---	---	---	---	---	---	1850@0.520	14.79	2012	---	---	---	7,319.71	0.436	0.638	3573	
85,882,688	0.570	0.0048	---	---	01/08/2011	02/01/2009	---	GEK TERNA (CR)	2.03	-0.98	€	2.05	29/04/2013	2.05	1.99	2.07	2.03	2.02	4350@2.02	5500@2.04	-(6)-	2012	469,523	556	949,287.66	174,341.86	1.40	2.80	2357	
24,060,000	0.300	---	0.017	---	18/06/2012	21/01/2000	---	GEN. COMMERCIAL & IND.SA (CR)	0.331	-2.65	€	0.340	29/04/2013	0.321	0.320	0.331	0.331	0.322	1450@0.331	400@0.348	---	2012	1,150	4	370.42	7,963.86	0.310	0.545	2797	
1,270,000	0.300	---	---	---	06/07/2007	06/02/2013	---	GIRAKIAN PROFIL SA (CB)	2.40	---	↘	2.40	23/04/2013	---	---	---	---	---	---	10@2.30	---	2012	---	---	---	3,048.00	2.00	3.33	1757	
34,770,982	1.54	---	---	---	06/07/2010	27/07/2000	---	GR. SARANTIS SA (CR)	4.55	-0.87	€	4.59	29/04/2013	4.60	4.54	4.60	4.55	4.57	150@4.53	935@4.55	---	2012	325	11	1,486.00	158,207.97	4.05	4.67	3767	
8,340,750	1.20	---	---	---	25/06/2009	30/07/2001	---	HAIDEMENOS SA (CR)	0.445	-6.51	€	0.476	29/04/2013	0.445	0.445	0.445	0.445	0.445	600@0.500	---	---	2012	11	1	4.90	3,711.63	0.445	0.905	2791	
101,279,627	0.380	---	---	---	26/06/2008	14/07/2006	---	HALKOR SA (CB)	0.820	-5.75	€	0.870	29/04/2013	0.851	0.800	0.851	0.820	0.822	300@0.815	100@0.832	---	2012	110,002	260	90,452.04	83,049.29	0.550	1.42	1755	
36,748,909	0.730	---	---	---	15/12/2005	13/12/2006	---	HEL. SUGAR INDUSTRY SA (CB)	1.15	-1.71	€	1.17	29/04/2013	1.14	1.14	1.17	1.15	1.15	2000@1.14	100@1.15	18.21	2012	12,454	21	14,341.97	42,261.25	0.901	1.74	3577	
66,948,210	0.300	---	---	---	14/07/2009	31/12/2010	---	HELL. DUTY FREE SHOPS SA (CR)	15.88	0.51	#	15.80	29/04/2013	16.00	15.50	16.20	15.88	15.80	100@15.71	1316@15.88	---	2012	27,559	212	435,504.66	1,063,137.57	11.51	16.52	5379	
29,546,360	0.710	---	---	---	20/06/2008	23/08/2000	---	HELLENIC CABLES SA (CR)	1.69	-1.17	€	1.71	29/04/2013	1.66	1.63	1.74	1.69	1.68	560@1.67	2910@1.70	---	2012	13,936	66	23,345.12	49,933.35	1.16	2.32	2733	
65,368,563	0.790	0.15	0.11	---	01/06/2012	26/09/2012	---	HELLENIC EXCHANGES (CR)	5.09	1.60	#	5.01	29/04/2013	4.97	4.94	5.10	5.09	4.98	816@5.05	2050@5.10	22.80	2012	211,034	368	1,050,693.99	332,725.99	3.75	5.58	8777	
305,635,185	2.18	0.45	0.45	---	17/08/2012	01/10/2003	4795	HELLENIC PETROLEUM (CR)	8.40	3.45	#	8.12	29/04/2013	8.06	8.04	8.40	8.40	8.28	1419@8.32	4585@8.40	26.33	2012	89,631	233	741,869.37	2,567,335.55	6.66	9.13	537	
305,732,436	0.410	---	---	---	08/07/2009	28/09/2011	---	HYGEIA SA (CR)	0.442	-3.70	€	0.459	29/04/2013	0.451	0.435	0.461	0.442	0.449	7529@0.446	500@0.449	---	2012	72,747	98	32,679.10	135,133.74	0.280	0.795	4533	
53,155,053	0.440	---	---	---	21/07/2010	16/07/2008	---	IASO SA (CR)	1.11	-1.77	€	1.13	29/04/2013	1.11	1.09	1.12	1.12	1.10	200@1.10	4176@1.12	---	2012	6,409	21	7,070.01	59,002.11	0.942	1.58	4533	
8,298,467	0.400	---	---	---	30/08/1993	30/12/2010	---	IDEAL GROUP SA (CR)	1.17	---	↘	1.17	29/04/2013	1.15	1.10	1.17	1.17	1.16	150@1.10	2206@1.17	-(6)-	2012	903	8	1,045.62	9,709.21	0.665	1.85	9574	
28,580,100	0.400	0.05	0.02	---	20/08/2012	23/02/2007	---	IKTINOS HELLAS SA (CR)	1.34	0.75	#	1.33	29/04/2013	1.33	1.33	1.34	1.34	1.34	1000@1.29	500@1.33	12.97	2012	200	2	267.00	38,297.33	1.16	1.45	2353	
9,000,000	0.880	---	---	---	15/05/2009	07/12/2010	---	ILYDA S.A. (CR)	0.530	---	↘	0.530	09/04/2013	---	---	---	---	---	---	4535@0.495	---	---	2012	---	---	---	4,770.00	0.369	0.650	9537
20,578,374	0.620	0.03	---	---	02/06/2011	05/05/1999	---	INFORM P. LYKOS SA (CR)	1.44	-2.04	€	1.47	29/04/2013	1.40	1.38	1.44	1.44	1.42	29@1.45	529@1.46	---	2012	550	7	782.04	29,632.86	1.10	1.75	2791	
11,233,200	0.730	---	---	---	12/07/2010	30/07/1999	---	INTERTECH SA (CR)	0.340	---	↘	0.340	29/04/2013	---	---	---	---	---	200@0.313	2210@0.340	---	2012	---	---	---	3,819.29	0.223	0.600	9572	
34,986,430	0.440	---	---	---	25/07/2008	23/02/2010	---	INTERWOOD-XYLEMPORIA (CR)	0.135	---	↘	0.135	26/04/2013	---	---	---	---	---	10970@0.112	2300@0.134	---	2012	---	---	---	5,313.54	0.112	0.188	2353	
2,566,836	0.440	---	---	---	13/08/2010	09/01/2007	---	INTERWOOD-XYLEMPORIA (PR)	0.230	---	↘	0.230	24/04/2013	---	---	---	---	---	---	2000@0.230	---	---	2012	---	---	---	5,313.54	0.230	0.315	2353
23,154,250	1.36	---	---	---	12/08/2008	02/08/2010	---	INTRACOM CONSTR. (CR)	0.877	-2.56	€	0.900	29/04/2013	0.885	0.860	0.893	0.880	0.873	1000@0.865	4230@0.880	---	2012	3,430	15	2,994.08	20,306.28	0.580	1.22	2357	
133,025,996	1.41	---	---	---	03/07/2007	07/01/2002	---	INTRACOM HOLDINGS (CR)	0.496	-3.69	€	0.515	29/04/2013	0.514	0.487	0.514	0.496	0.498	2610@0.495	10000@0.498	---	2012	309,462	269	154,121.59	65,980.89	0.321	0.754	9578	
158,961,721	0.300	0.0045	0.0035	---	18/05/2012	14/11/2007	---	INTRALOT (CR)	2.08	0.97	#	2.06	29/04/2013	2.06	2.04	2.09	2.08	2.07	55@2.08	500@2.09	-(6)-	2012	284,383	414	588,743.80	330,640.38	1.61	2.39	5752	
77,654,850	0.580	0.04	---	---	01/07/2011	21/02/2003	---	J & P - AVAX SA (CR)	1.58	0.64	#	1.57	29/04/2013	1.53	1.50	1.58	1.58	1.53	2000@1.57	250@1.58	---	2012	31,900	73	48,786.08	122,694.66	1.05	1.84	2357	
129,994,676	1.19	0.189	---	---	23/12/2010	07/09/2012	---	JUMBO SA (CR)	7.15	2.29	#	6.99	29/04/2013	6.88	6.73	7.30	7.15	7.03	100@7.10	72@7.15	12.05	2012	53,117	248	373,473.84	929,461.93	4.85	7.88	3747	

Number Listed Shares	Nominal Value	Dividends [1]			Date of Last Coupon Dividend [2]		Note	Shares	Closing price	% change	Previous closing price/date	Open price	Price min	Price max	Last price	Avg price	Last Bid [7]	Last Ask [7]	P/E after	Year	Volume	Trades	Transactions Value	Company Mkt Value (thou. €)	Year low	Year high	Sector[4]
9,742,920	0.400	0.01	0.01	---	13/08/2012	14/07/2000	---	KARMOLEGOS SA (CR)	1.49	0.68 #	1.48 29/04/2013	1.35	1.35	1.49	1.49	1.38	---	2000@1.48	5.79	2012	130	2	179.70	14,516.95	1.07	1.83	3577
14,679,792	1.44	0.065	---	---	03/06/2011	04/09/2000	---	KARATZIS SA (CR)	3.94	--- ↘	3.94 29/04/2013	3.83	3.83	3.94	3.94	3.90	270@3.84	6120@3.94	13.23	2012	300	6	1,168.50	57,838.38	2.55	4.09	2723
3,300,689	0.350	---	---	---	01/07/2004	21/07/1999	---	KEKROPS SA (CR)	2.31	0.44 #	2.30 29/04/2013	2.14	2.14	2.35	2.31	2.20	59@2.16	117@2.31	---	2012	1,293	17	2,842.54	7,624.59	1.75	3.79	8633
7,595,160	0.600	---	---	---	08/08/2008	18/08/2010	---	KIRIAKOULIS SHIPPING SA (CR)	1.01	--- ↘	1.01 26/04/2013	---	---	---	---	---	---	500@0.950	70.38	2012	---	---	---	7,671.11	0.635	1.49	5759
23,648,700	0.330	0.05	---	---	13/07/2011	23/07/2008	---	KLEEMAN HELLAS SA (CR)	1.63	-2.39 €	1.67 29/04/2013	1.67	1.63	1.67	1.63	1.64	500@1.62	1000@1.66	---	2012	5,524	6	9,084.12	38,547.38	1.20	1.88	2757
40,219,218	0.300	---	---	---	25/05/2009	08/09/2010	---	KLOUKINAS - LAPPAS SA (CR)	0.829	-1.19 €	0.839 29/04/2013	0.829	0.829	0.829	0.829	0.829	100@0.797	1750@0.829	---	2012	250	1	207.25	33,341.73	0.620	0.929	2357
21,224,340	0.420	---	---	---	02/07/2008	25/04/2006	---	KORDELLOS BROS SA (CR)	0.210	-8.70 €	0.230 29/04/2013	0.218	0.210	0.218	0.210	0.215	9140@0.210	36@0.230	---	2012	11,124	12	2,394.15	4,457.11	0.195	0.428	1757
13,450,000	0.390	---	---	---	25/06/2010	28/05/2008	---	KORRES (CR)	3.53	--- ↘	3.53 29/04/2013	3.43	3.42	3.53	3.53	3.47	60@3.43	150@3.53	---	2012	1,320	10	4,578.80	47,478.50	3.40	4.87	3767
29,480,000	0.420	---	---	---	19/07/2010	01/08/2007	---	KRETA FARM SA (CR)	0.539	1.32 #	0.532 29/04/2013	0.540	0.518	0.545	0.539	0.531	800@0.533	880@0.538	---	2012	46,635	56	24,748.82	15,889.72	0.307	0.738	3577
33,065,136	0.330	---	---	---	06/07/2009	17/09/2012	---	KRI-KRI S.A. (CR)	1.84	1.10 #	1.82 29/04/2013	1.86	1.77	1.86	1.85	1.82	200@1.83	493@1.85	13.62	2012	2,789	24	5,082.22	60,839.85	1.52	2.05	3577
15,804,800	0.330	---	---	---	15/06/2010	12/03/2004	---	KTIMA KOSTAS LAZARIDIS SA (CR)	0.435	--- ↘	0.435 16/04/2013	---	---	---	---	---	---	4015@0.392	---	2012	---	---	---	6,875.09	0.247	0.488	3535
22,945,139	1.00	---	---	---	19/08/2008	10/09/2012	---	KYRIAKIDIS MARBLES SA (CR)	0.800	3.23 #	0.775 29/04/2013	0.762	0.760	0.806	0.800	0.787	600@0.780	9590@0.750	78.36	2012	15,510	31	12,204.49	18,356.11	0.735	1.04	2353
44,267,700	0.300	---	---	---	30/05/2007	18/09/2002	---	LAMDA DEVELOPMENT SA (CR)	4.98	--- ↘	4.98 26/04/2013	4.98	4.98	4.98	4.98	4.98	100@4.87	181@4.95	---	2012	50	1	249.00	220,453.15	4.01	6.48	8633
5,939,268	0.620	---	---	---	10/07/2003	03/01/2002	---	LANAKAM SA (CR)	0.628	--- ↘	0.628 23/04/2013	---	---	---	---	---	300@0.566	330@0.639	---	2012	---	---	---	3,729.86	0.567	0.869	3763
7,734,375	1.00	---	---	---	09/07/2007	07/01/2011	---	LIVANIS SA (CR)	0.175	--- ↘	0.175 25/04/2013	---	---	---	---	---	1000@0.165	458@0.184	---	2012	---	---	---	1,353.52	0.162	0.363	5557
4,740,000	0.860	---	---	---	14/03/2003	---	---	LOGISMOS S.A. (CR)	0.432	-10.00 €	0.480 26/04/2013	0.432	0.432	0.432	0.432	0.432	30@0.432	4000@0.526	50.11	2011	200	1	86.40	2,047.68	0.373	1.23	9533
15,222,276	0.640	---	---	---	01/06/2010	02/08/2011	---	LOULIS MILLS SA (CR)	2.44	-2.01 €	2.49 29/04/2013	2.48	2.44	2.48	2.44	2.46	449@2.44	507@2.48	-(6)-	2012	1,044	4	2,567.08	37,142.35	2.08	3.09	3577
770,328,883	0.300	---	---	---	26/04/2007	17/04/2012	---	MARFIN INVESTMENT GROUP (CR)	0.335	1.21 #	0.331 29/04/2013	0.326	0.314	0.335	0.335	0.326	150@0.334	32556@0.335	---	2012	889,987	401	290,049.69	258,060.18	0.175	0.564	8775
9,819,370	0.670	---	---	---	14/08/2007	09/01/2004	---	MATHIOS REFRACTORY SA (CR)	0.214	-6.14 €	0.228 29/04/2013	0.214	0.214	0.214	0.214	0.214	217@0.214	---	---	2012	23	1	4.92	2,101.35	0.212	0.510	2353
468,700	1.0556	---	---	---	21/03/2012	21/05/2004	---	MERMEREN KOMB. A.D. PR. (GDR)	4.22	-2.99 €	4.35 29/04/2013	4.52	4.00	4.52	4.25	4.09	22@3.92	30@4.23	1.03	2012	356	8	1,454.60	1,977.91	3.83	5.19	1775
51,950,600	0.320	0.48	0.75	---	10/05/2012	21/10/2005	---	METKA (CR)	11.53	0.88 #	11.43 29/04/2013	11.41	11.22	11.60	11.53	11.37	100@11.49	1080@11.55	16.62	2012	28,244	231	321,140.06	598,990.42	9.00	12.78	2757
10,500,000	0.900	---	---	---	24/06/2008	04/07/2012	---	MEVACO SA (CR)	1.30	0.77 #	1.29 29/04/2013	1.30	1.30	1.30	1.30	1.30	100@1.20	1150@1.32	9.41	2012	1,000	2	1,300.00	13,650.00	1.01	1.58	2757
12,340,000	3.00	0.15	0.25	---	02/03/2012	23/07/2009	---	MIG REAL ESTATE (CR)	1.41	--- ↘	1.41 26/04/2013	---	---	---	---	---	2000@1.37	280@1.48	---	2012	---	---	---	17,399.40	1.17	1.72	8671
6,200,000	0.500	---	---	---	22/06/2010	01/11/1995	---	MINERVA KNITWEAR SA (CB)	0.862	--- ↘	0.862 19/04/2013	---	---	---	---	---	---	3000@0.776	---	2012	---	---	---	5,344.40	0.530	0.948	3763
12,417,000	0.370	---	---	---	28/07/2008	06/09/2011	---	MLS MULTIMEDIA SA (CR)	2.68	0.37 #	2.67 29/04/2013	2.68	2.61	2.68	2.68	2.64	100@2.62	1040@2.67	35.30	2012	7,395	55	19,554.80	33,277.56	2.60	2.97	9537
4,588,137	16.00	---	---	---	30/06/2005	17/08/2011	---	MOCHLOS SA (CR)	1.90	-8.65 €	2.08 29/04/2013	1.94	1.89	2.07	1.90	1.91	200@1.88	100@1.98	---	2012	3,490	34	6,679.57	8,717.46	1.12	2.60	2357
11,700,000	0.590	---	---	---	02/06/2009	24/07/2012	---	MOTODYNAMICS S.A. (CR)	0.300	-1.64 €	0.305 29/04/2013	0.277	0.277	0.300	0.300	0.300	400@0.292	183@0.301	---	2012	2,019	6	605.26	3,510.00	0.275	0.640	5379
110,782,980	0.850	0.25	0.4	---	02/07/2012	05/11/2012	---	MOTOR OIL (CR)	8.38	1.45 #	8.26 29/04/2013	8.26	8.19	8.50	8.38	8.39	653@8.36	29@8.39	10.23	2012	69,801	240	585,432.80	928,361.37	7.02	9.37	533
116,915,862	1.07	---	---	---	11/05/2009	06/07/2011	---	MYTILINEOS HOLDINGS (CR)	4.70	0.64 #	4.67 29/04/2013	4.64	4.57	4.79	4.70	4.66	541@4.70	1141@4.74	---	2012	182,707	508	851,240.63	549,504.55	3.38	5.65	1755
8,321,682	0.670	---	---	---	17/08/2007	23/11/1999	---	N. LEVEDERIS SA (CB)	0.198	-10.00 €	0.220 29/04/2013	0.198	0.198	0.198	0.198	0.198	307@0.200	300@0.242	---	2012	300	1	59.40	2,535.67	0.198	0.658	1757
2,160,524	0.670	0.0435	0.0435	---	20/08/2012	23/11/1999	---	N. LEVEDERIS SA (PB)	0.411	--- ↘	0.411 10/04/2013	---	---	---	---	---	---	2000@0.410	---	2012	---	---	---	2,535.67	0.307	0.798	1757
11,510,102	0.890	---	---	---	24/06/2005	06/10/1999	---	NAFPAKTOS TEXTILE IND. SA (CB)	0.462	--- ↘	0.462 29/04/2013	---	---	---	---	---	---	7156@0.416	---	2012	---	---	---	5,317.67	0.268	0.500	3763
6,340,000	0.600	---	---	---	30/11/2009	12/07/2000	---	NAKAS MUSIC	0.585	9.96 #	0.532 29/04/2013	0.532	0.532	0.585	0.585	0.583	---	---	---	2012	470	4	273.89	3,708.90	0.300	0.600	5379
1,226,601,200	1.00	---	---	---	16/05/2008	21/09/2010	---	NATIONAL BANK (CR)	0.635	-19.11 €	0.785 29/04/2013	0.750	0.635	0.755	0.635	0.688	2130@0.632	22226@0.642	---	2012	11,614,081	5,030	7,989,516.30	778,891.76	0.364	1.47	8355
23,935,280	0.300	---	---	---	29/06/2009	13/06/2000	---	NAYTEMPORIKI PUBLISHING SA(CR)	0.267	2.69 #	0.260 26/04/2013	0.260	0.260	0.267	0.267	0.264	---	540@0.267	---	2012	80	2	21.08	6,390.72	0.198	0.360	5557
27,848,000	0.300	0.0301	0.0132	---	20/08/2012	02/09/2003	---	NEWSPHONE HELLAS SA (CR)	0.268	3.08 #	0.260 29/04/2013	0.268	0.268	0.268	0.268	0.268	500@0.252	1495@0.268	6.56	2012	5	1	1.34	7,463.26	0.241	0.592	2791
6,132,500	1.25	0.1	---	---	24/06/2011	19/06/2001	---	NEXANS HELLAS SA (CR)	2.40	--- ↘	2.40 29/04/2013	2.31	2.31	2.40	2.40	2.34	17@2.40	90@2.58	---	2012	491	6	1,150.68	14,718.00	2.31	3.11	2733
63,683,276	1.34	---	---	---	08/07/2008	10/11/2008	---	NIREFS SA (CR)	0.557	-1.76 €	0.567 29/04/2013	0.530	0.530	0.559	0.550	0.551	1400@0.542	1304@0.550	---	2012	13,219	28	7,279.17	35,471.58	0.380	0.839	3573

Number of Listed Shares	Nominal Value	Dividends [1]			Date of Last Coupon Dividend [2]		Note	Shares	Closing price	% change	Previous closing price/date	Open price	Price min	Price max	Last price	Avg price	Last Bid [7]	Last Ask [7]	P/E after	Year	Volume	Trades	Transactions Value	Company Mkt Value (thou. €)	Year low	Year high	Sector[4]
-------------------------	---------------	---------------	--	--	----------------------------------	--	------	--------	---------------	----------	-----------------------------	------------	-----------	-----------	------------	-----------	--------------	--------------	-----------	------	--------	--------	--------------------	-----------------------------	----------	-----------	-----------

Main Market

319,000,000	0.300	1.4177	0.72	---	08/06/2012	25/04/2001	---	OPAP (CR)	7.49	8.87 #	6.88 29/04/2013	6.85	6.75	7.49	7.49	7.16	23032@7.45	2781@7.49	4.66	2012	2,794,237	3,140	19,983,284.29	2,389,310.00	5.49	7.76	5752
490,150,389	2.39	0.1179	---	---	28/06/2011	18/06/1998	---	OTE (CR)	6.60	1.54 #	6.50 29/04/2013	6.59	6.53	6.79	6.60	6.64	500@6.58	500@6.64	---	2012	18,706,897	7,214	#####	3,234,992.57	4.26	6.82	6535
25,000,000	2.00	0.02	0.01	---	10/08/2012	08/08/2003	---	P.P.A. S.A. (CR)	19.09	1.76 #	18.76 29/04/2013	18.76	18.76	19.40	19.09	19.08	754@18.90	310@19.03	96.28	2012	18,477	126	352,578.83	477,250.00	14.59	20.37	2777
4,971,466	1.46	---	---	---	04/07/2007	08/10/2003	---	PAIRIS SA (CR)	0.350	---	0.350 26/04/2013	---	---	---	---	---	1370@0.245	580@0.430	---	2012	---	---	---	1,740.01	0.230	0.478	2723
3,953,090	0.900	---	---	---	02/07/2001	05/12/2012	---	PAPERPACK (CR)	0.640	-0.47 €	0.643 29/04/2013	0.600	0.600	0.640	0.640	0.601	150@0.501	1000@0.630	---	2012	225	6	135.20	2,529.98	0.500	1.06	2723
50,797,369	0.310	---	---	---	17/08/2000	12/10/2010	---	PAPOUTSANIS (CR)	0.566	1.80 #	0.556 29/04/2013	0.569	0.564	0.569	0.564	0.567	500@0.491	200@0.566	---	2012	170	5	96.41	28,751.31	0.361	0.639	3767
20,210,127	1.53	---	---	---	27/06/1997	20/03/2000	---	PARNASSOS ENTERP. (CR)	0.403	-1.22 €	0.408 29/04/2013	0.433	0.403	0.434	0.403	0.408	495@0.403	500@0.407	---	2012	2,535	14	1,034.14	8,144.68	0.285	0.698	8775
7,070,400	0.930	---	---	---	18/05/2010	12/05/2011	---	PETROPOULOS PETROS (CR)	1.39	---	1.39 29/04/2013	1.39	1.35	1.39	1.39	1.36	50@1.35	175@1.37	---	2012	107	7	145.69	9,827.86	1.20	1.53	2753
1,143,326,564	0.300	---	---	---	16/05/2008	10/01/2011	---	PIRAEUS BANK (CR)	0.212	-7.83 €	0.230 29/04/2013	0.228	0.206	0.232	0.212	0.217	24500@0.210	6750@0.213	---	2012	21,730,288	3,721	4,708,326.34	242,385.23	0.122	0.396	8355
22,080,000	0.320	0.05	0.08	---	22/05/2012	03/10/2000	---	PLAISIO COMPUTERS SA (CR)	4.90	-0.61 €	4.93 29/04/2013	4.90	4.90	5.00	4.92	4.91	103@4.92	100@4.96	10.91	2012	1,463	13	7,182.20	108,192.00	3.65	6.25	9572
232,000,000	4.60	0.79	---	---	05/07/2011	12/12/2001	---	PPC (CR)	7.36	5.29 #	6.99 29/04/2013	6.99	6.87	7.36	7.36	7.09	200@7.17	1549@7.36	99.88	2012	605,381	1,323	4,290,309.76	1,707,520.00	4.55	8.28	7535
11,812,193	0.450	---	---	---	24/07/2009	15/11/2006	---	PROFILE SA (CR)	1.02	---	1.02 29/04/2013	1.03	1.01	1.06	1.02	1.04	900@1.01	780@1.03	19.62	2012	21,400	47	22,138.70	12,048.44	0.761	1.11	9533
24,319,250	0.300	---	---	---	09/07/2002	04/07/2007	---	PROODEFTIKH SA (CR)	0.104	9.47 #	0.095 29/04/2013	0.104	0.104	0.104	0.104	0.104	2000@0.095	200@0.104	---	2012	300	1	31.20	2,529.20	0.063	0.223	2357
6,836,280	1.88	---	---	---	18/07/2005	10/09/2010	---	QUALITY & RELIABILITY SA (CR)	0.531	-8.76 €	0.582 29/04/2013	0.585	0.529	0.585	0.531	0.534	800@0.530	74@0.574	---	2012	4,324	8	2,307.40	3,630.06	0.236	0.708	9533
48,069,201	0.400	---	---	---	05/09/2008	21/06/2012	---	QUEST HOLDINGS (CR)	1.11	-0.89 €	1.12 29/04/2013	1.13	1.10	1.13	1.13	1.12	38@1.10	1140@1.13	---	2012	3,822	6	4,280.70	53,356.81	0.940	1.39	9533
57,434,884	1.31	---	---	---	05/06/2008	12/06/2009	---	REDS S.A. (CR)	0.610	---	0.610 29/04/2013	---	---	---	---	---	680@0.561	1500@0.658	---	2012	---	---	---	35,035.28	0.450	0.949	8633
22,280,000	0.300	0.0329	---	---	11/04/2011	23/02/2007	---	REVOIL (CR)	0.578	-2.03 €	0.590 29/04/2013	0.420	0.420	0.580	0.575	0.524	440@0.513	2475@0.510	---	2012	15,050	13	7,891.00	12,877.84	0.345	0.910	5379
51,197,862	1.00	---	---	---	28/06/2010	25/07/2012	---	S & B IND. MINERALS (CR)	5.80	-0.17 €	5.81 29/04/2013	5.80	5.80	5.80	5.80	5.80	576737@5.80	633@5.81	50.23	2012	198,954	38	1,153,933.20	296,947.60	5.29	6.08	1775
52,067,296	0.300	---	---	---	23/12/2003	24/01/2007	---	SELECTED TEXT. IND. ASSOC (CR)	0.340	-0.29 €	0.341 29/04/2013	0.341	0.315	0.341	0.340	0.329	576@0.339	990@0.340	---	2012	20,134	22	6,623.25	17,702.88	0.275	0.587	3763
96,243,908	0.410	---	---	---	26/06/2008	17/07/2000	---	SIDENOR (CR)	1.54	-4.94 €	1.62 29/04/2013	1.59	1.51	1.59	1.54	1.55	2456@1.53	8939@1.56	---	2012	186,648	300	290,088.54	148,215.62	1.00	2.39	1757
6,456,530	1.60	---	---	---	29/06/2001	02/08/2010	---	SPACE HELLAS SA (CR)	1.79	7.19 #	1.67 29/04/2013	1.67	1.67	1.79	1.79	1.78	123@1.17	748@1.18	57.50	2012	1,580	6	2,807.56	11,557.19	1.25	1.97	9578
28,438,268	0.300	---	---	---	21/08/2006	24/11/1999	---	SPIROY AGRICULTURE SA (CR)	0.347	---	0.347 29/04/2013	0.330	0.330	0.347	0.347	0.337	200@0.314	140@0.345	---	2012	250	2	84.20	9,868.08	0.272	0.557	1357
33,125,000	5.00	---	---	---	03/07/2006	18/08/2010	---	TECHNICAL OLYMPIC SA (CR)	1.85	-1.07 €	1.87 29/04/2013	1.80	1.75	1.87	1.85	1.84	30@1.82	398@1.85	-(6)-	2012	1,666	8	3,056.72	61,281.25	1.19	2.71	3728
109,319,070	0.300	(0.0399)	(0.0613)	---	28/05/2012	05/09/2012	---	TERNA ENERGY (CR)	3.36	2.44 #	3.28 29/04/2013	3.23	3.18	3.40	3.36	3.27	550@3.31	989@3.36	73.80	2012	44,922	175	146,888.33	367,312.08	2.24	3.73	7537
36,300,000	1.12	0.114	0.188	---	17/08/2012	12/12/2007	---	THESSALONIKA WATER & SEWERA	5.87	0.34 #	5.85 29/04/2013	5.90	5.76	5.97	5.87	5.79	300@5.75	300@5.90	12.05	2012	5,465	32	31,655.51	213,081.00	4.73	6.82	7577
45,949,500	0.500	0.036	---	---	02/05/2011	01/11/1999	---	THRACE PLASTICS SA (CR)	1.39	0.72 #	1.38 29/04/2013	1.34	1.34	1.40	1.39	1.38	1000@1.37	131@1.39	8.00	2012	20,649	51	28,574.91	63,869.81	1.07	1.56	1357
77,063,568	4.00	0.0806	---	---	24/06/2011	25/06/2004	---	TITAN CEMENT (CR)	14.10	1.81 #	13.85 29/04/2013	14.00	13.70	14.10	14.10	13.92	20@13.77	863@14.10	---	2012	41,410	245	576,433.44	1,134,583.52	11.31	15.60	2353
7,568,960	4.00	0.1869	---	---	24/06/2011	25/06/2004	---	TITAN CEMENT CO. (PR)	6.34	3.60 #	6.12 26/04/2013	6.00	6.00	6.34	6.34	6.06	1000@5.80	55@6.34	---	2012	120	3	726.80	1,134,583.52	5.75	7.27	2353
10,080,000	3.00	0.21	0.4	---	18/07/2012	27/08/2001	---	TPA SA (CR)	22.71	1.07 #	22.47 29/04/2013	22.74	22.60	23.00	22.94	22.73	25@22.12	18@22.92	12.41	2012	3,586	79	81,516.46	228,916.80	19.00	24.48	2777
54,888,240	1.13	0.1	0.1	0.1	25/04/2013	22/03/2006	---	TRASTOR REAL EST. INV. CO.(CR)	0.648	-1.22 €	0.656 29/04/2013	0.670	0.630	0.670	0.648	0.649	1100@0.640	3909@0.649	---	2012	24,149	23	15,675.24	35,567.58	0.624	0.829	8671
14,627,315	0.300	---	---	---	16/11/1992	03/12/2012	---	UNIBIOS (CR)	0.220	-4.35 €	0.230 26/04/2013	0.240	0.199	0.240	0.220	0.220	10@0.199	5000@0.225	---	2012	163,530	81	35,924.69	3,218.01	0.151	0.414	2353
18,810,000	0.400	---	---	---	08/07/2010	14/11/2007	---	VARVERIS - MODA BAGNO SA (CR)	0.320	4.24 #	0.307 29/04/2013	0.319	0.278	0.320	0.320	0.319	10@0.278	276@0.320	---	2012	2,244	12	715.53	6,019.20	0.249	0.419	2353
199,474,091	0.300	---	---	---	03/07/2009	24/03/2000	---	VIOHALCO (CB)	4.67	7.36 #	4.35 29/04/2013	4.35	4.20	4.67	4.67	4.36	500@4.50	10@4.70	---	2012	110,056	403	480,333.76	931,544.00	3.06	5.68	2727
4,968,600	2.88	---	---	---	01/07/1998	14/12/1998	---	VIS SA (CR)	0.720	-10.00 €	0.800 29/04/2013	0.720	0.720	0.720	0.720	0.720	50@0.790	50@0.879	---	2012	150	3	108.00	3,577.39	0.525	0.880	2723
6,325,000	0.600	---	---	---	19/07/2010	25/07/2012	---	VOGIATZOGLOU SYSTEMS SA (CR)	1.04	---	1.04 08/04/2013	---	---	---	---	---	---	300@1.13	---	2012	---	---	---	6,578.00	0.840	1.19	2797

Exchange Traded Funds (ETFs)

5,745,839	---	---	---	---	24/01/2008	---	ALPHA ETF FTSE Athex Large Cap	3.12	-1.79 €	3.18 29/04/2013	3.14	3.12	3.14	3.12	3.13	---	153@3.14	---	---	---	953	3	2,986.53	-	2.49	3.55	11000
-----------	-----	-----	-----	-----	------------	-----	--------------------------------	------	---------	-----------------	------	------	------	------	------	-----	----------	-----	-----	-----	-----	---	----------	---	------	------	-------

Number of Listed Shares	Nominal Value	Dividends [1]			Date of Last Coupon Dividend [2]	Date of Last Coupon Right	Note	Shares	Closing price	% change	Previous closing price/date	Open price	Price min	Price max	Last price	Avg price	Last Bid [7]	Last Ask [7]	P/E after	Year	Volume	Trades	Transactions Value	Company Mkt Value (thou. €)	Year low	Year high	Sector[4]
-------------------------	---------------	---------------	--	--	----------------------------------	---------------------------	------	--------	---------------	----------	-----------------------------	------------	-----------	-----------	------------	-----------	--------------	--------------	-----------	------	--------	--------	--------------------	-----------------------------	----------	-----------	------------

Exchange Traded Funds (ETFs)

294,878	---	---	---	---	29/06/2009	---	---	NBGAM ETF	9.95	-1.29	€ 10.08	29/04/2013	10.12	9.83	10.14	9.95	10.06	---	---	---	---	318	5	3,198.43	-	8.23	10.90	11000
388,550	---	---	---	---	03/11/2010	---	---	NBGAM ETF GREECE & TURKEY 30	9.24	0.65	# 9.18	29/04/2013	9.13	9.13	9.24	9.24	9.13	---	---	---	---	102	2	931.48	-	8.30	9.24	11000

Low Dispersion

14,000,000	3.80	---	---	---	23/04/2010	29/06/1999	4815	ALPHA REAL ESTATE SA(CR)	6.20	---	↘ 6.20	29/04/2013	6.20	6.20	6.20	6.20	6.20	400@6.20	100@6.99	12.83	2012	100	1	620.00	86,800.00	6.15	7.00	8637
63,900,000	3.00	---	---	---	23/06/2003	04/11/2008	4816	ASTIR PALACE SA (CR)	3.88	2.37	# 3.79	29/04/2013	3.88	3.88	3.88	3.88	3.88	463@3.83	2650@3.89	---	2012	7,650	34	29,682.00	247,932.00	3.50	4.95	5753
49,152,904	0.800	---	---	---	09/08/2004	08/03/2006	4814	ATHENA SA (CR)	0.177	---	↘ 0.177	29/04/2013	---	---	---	---	---	202@0.151	2896@0.177	---	2012	---	---	---	8,700.06	0.094	0.340	2357
191,660,320	0.300	---	---	---	20/07/2009	29/12/2010	4817	ATTICA HOLDINGS (CR)	0.339	15.70	# 0.293	29/04/2013	0.300	0.300	0.350	0.350	0.339	176@0.300	1037@0.350	---	2012	644	5	218.20	64,972.85	0.281	0.588	5759
15,300,000	0.300	---	---	---	30/07/2009	13/12/1999	4893	ATTICA PUBLICATIONS SA (CR)	0.800	---	↘ 0.800	25/04/2013	---	---	---	---	---	20@0.801	---	---	2012	---	---	---	12,240.00	0.680	1.45	5557
366,553,507	1.01	---	---	---	23/06/2010	01/08/2012	4964	COCA - COLA HBC (CR)	18.73	-0.27	€ 18.78	29/04/2013	19.25	18.50	19.25	18.50	18.73	48635@18.50	2500@18.88	---	2012	929,485	124	17,414,298.25	6,865,547.19	16.84	22.97	3537
44,448,600	0.600	---	---	---	30/06/2005	31/01/2006	4948	EURODRIP SA (CR)	1.53	---	↘ 1.53	29/04/2013	1.53	1.53	1.53	1.53	1.53	197271@1.53	---	-(6)-	2012	9,405	42	14,389.65	68,006.36	1.43	1.54	1357
11,720,024	0.530	---	---	---	16/07/2010	29/05/2012	4942	FLEXOPACK SA (CR)	4.10	---	↘ 4.10	29/04/2013	---	---	---	---	---	2770@4.00	500@4.35	13.81	2012	---	---	---	48,052.10	2.39	4.11	2723
8,418,750	0.300	---	---	0.15	06/06/2012	27/06/2012	4828	GEKE SA (CB)	6.74	---	↘ 6.74	26/04/2013	6.74	6.74	6.74	6.74	6.74	50@6.74	50@8.06	21.17	2012	210	4	1,415.40	56,742.38	6.59	6.79	5753
68,322,221	1.00	---	---	---	08/03/2002	08/04/2013	---	GENIKI BANK (CR)	6.86	---	↘ 6.86	29/04/2013	6.86	6.86	6.86	6.86	6.86	50303@6.86	6@7.00	---	2012	790	10	5,419.40	468,690.44	5.40	6.86	8355
71,082,707	1.70	---	---	---	01/07/2010	21/11/2012	4820	HERACLES GEN.CEMENT CO. (CR)	1.28	-3.03	€ 1.32	29/04/2013	1.27	1.27	1.34	1.34	1.28	1800@1.29	830@1.34	---	2012	3,265	11	4,191.00	90,985.86	1.20	1.80	2353
13,404,440	8.63	---	---	---	02/04/2001	06/03/1992	4822	IONIAN HOTELS SA (CR)	11.50	---	↘ 11.50	26/04/2013	---	---	---	---	---	20@9.20	100@12.00	---	2012	---	---	---	154,151.06	9.01	13.00	5753
2,760,000	7.70	6.3291	7.6	---	30/05/2012	16/07/1990	4823	KARELIA TOBACCO CO. SA (CB)	150.00	-0.76	€ 151.15	29/04/2013	150.00	150.00	150.00	150.00	150.00	1592@150.00	1@163.00	9.11	2012	65	2	9,750.00	414,000.00	110.00	157.00	3785
17,000,000	0.600	---	---	---	12/06/2008	07/03/2000	4941	KATHIMERINI SA (CR)	0.673	14.46	# 0.588	29/04/2013	0.588	0.588	0.690	0.690	0.673	19@0.588	48@0.690	---	2012	530	9	356.52	11,441.00	0.321	0.910	5557
21,364,000	1.12	---	---	---	05/07/2010	10/08/2005	4824	LAMPASA HOTEL SA (CR)	17.30	---	↘ 17.30	29/04/2013	17.30	17.30	17.30	17.30	17.30	200@16.10	501@17.25	---	2012	100	3	1,730.00	369,597.20	15.00	18.00	5753
6,700,000	0.800	---	---	---	19/07/2010	29/08/2012	4894	MILLS KEPENOS (CR)	1.31	---	↘ 1.31	22/04/2013	---	---	---	---	---	---	714@1.54	7.79	2012	---	---	---	8,777.00	1.20	1.69	3577
70,926,000	2.25	---	---	---	25/07/2008	21/06/2000	4825	MINOAN LINES SA (CR)	2.00	---	↘ 2.00	29/04/2013	2.00	2.00	2.00	2.00	2.00	124@1.61	1788@2.00	---	2012	1,500	6	3,000.00	141,852.00	1.81	2.04	5759
17,240,776	0.370	---	---	---	14/07/2005	30/09/2003	4827	PERSEUS SA (CR)	0.152	-20.00	€ 0.190	26/04/2013	0.152	0.152	0.152	0.152	0.152	1097@0.152	---	8.86	2012	1,112	2	169.03	2,620.60	0.033	0.325	3577
7,500,000	0.560	---	---	---	25/06/2010	10/04/2013	4940	S.KANAKIS SA (CR)	1.37	3.01	# 1.33	29/04/2013	1.33	1.33	1.40	1.37	1.37	100@1.35	1000@1.50	9.74	2012	5,000	8	6,862.19	10,275.00	1.05	1.40	3577

Surveillance

33,301,715	0.320	---	---	---	27/06/2003	08/07/2009	4412	AEGEK (CR)	0.123	3.36	#	0.119	29/04/2013	0.125	0.114	0.125	0.114	0.123	2257@0.115	10000@0.120	---	2012	7,084	6	869.19	4,096.11	0.089	0.184	2357
14,870,100	0.400	---	---	---	15/05/2008	26/09/2011	4844	ALPHA GRISSIN S.A. (CR)	0.107	16.30	#	0.092	24/04/2013	0.107	0.107	0.107	0.107	0.107	500@0.078	100@0.107	---	2012	2,920	2	312.44	1,591.10	0.084	0.328	9533
215,246,452	0.300	---	---	---	25/06/2001	24/09/2001	4446	ALTEC SA (CR)	0.033	-2.94	€	0.034	29/04/2013	0.034	0.028	0.034	0.033	0.033	16753@0.028	10610@0.034	---	2012	22,437	24	739.05	7,103.13	0.021	0.062	9533
2,969,713	0.300	---	---	---	02/07/2008	28/02/2011	4958	ANEK LINES SA (PR, issue '96)	0.450	---	↘	0.450	29/04/2013	---	---	---	---	---	---	---	---	2012	---	---	---	20,985.44	0.306	0.770	5759
312,163	0.300	---	---	---	02/07/2008	28/02/2011	4959	ANEK LINES SA (PR, issue '90)	1.78	---	↘	1.78	21/02/2013	---	---	---	---	---	---	---	---	2012	---	---	---	20,985.44	1.78	1.78	5759
185,373,016	0.300	---	---	---	02/07/2008	28/02/2011	4957	ANEK LINES SA (CR)	0.103	0.98	#	0.102	29/04/2013	0.102	0.102	0.104	0.104	0.103	5000@0.100	2500@0.104	---	2012	57,000	10	5,874.00	20,985.44	0.072	0.270	5759
81,644,555	0.300	---	---	---	01/07/2008	02/09/2002	4630	ATTI - KAT SA (CR)	0.046	---	↘	0.046	29/04/2013	---	---	---	---	---	7000@0.037	1661@0.045	---	2012	---	---	---	3,755.65	0.022	0.088	2357
20,255,805	0.300	---	---	---	22/08/2006	02/08/2010	4881	AXON HOLDING SA (CR)	0.101	18.82	#	0.085	29/04/2013	0.070	0.070	0.101	0.101	0.101	400@0.086	1002@0.100	---	2012	232	3	23.37	2,045.84	0.070	0.192	4533
17,579,754	4.16	---	---	---	18/08/2006	02/08/2010	4885	BIOTER SA (CR)	0.102	20.00	#	0.085	29/04/2013	0.102	0.102	0.102	0.102	0.102	2@0.084	1000@0.100	---	2012	1,767	6	180.23	1,793.13	0.059	0.194	2357
12,431,980	0.720	---	---	---	20/06/2003	10/07/2003	4559	COMPUCON SA (CR)	0.085	-5.56	€	0.090	09/04/2013	0.085	0.085	0.085	0.085	0.085	---	6899@0.085	---	2012	100	1	8.50	1,056.72	0.064	0.100	9537
30,159,583	0.470	---	---	---	26/06/2008	29/12/2010	4962	DIAS A/C (CR)	0.840	---	↘	0.840	22/04/2013	---	---	---	---	---	---	97@0.834	---	2012	---	---	---	25,334.05	0.420	0.845	3573
33,718,750	0.300	---	---	---	28/05/2008	21/01/2013	4947	DOL SA (CR)	0.615	0.33	#	0.613	29/04/2013	0.615	0.614	0.616	0.615	0.615	59@0.614	204@0.638	---	2012	13,014	23	8,004.24	20,737.03	0.244	0.759	5557
15,878,748	0.480	---	---	---	10/07/2006	22/03/2004	4960	DOMIKI KRITIS SA (CR)	0.398	18.45	#	0.336	29/04/2013	0.398	0.398	0.398	0.398	0.398	650@0.316	250@0.388	---	2012	349	5	138.90	6,319.74	0.313	0.800	2357

Number of Listed Shares	Nominal Value	Dividends [1]			Date of Last Coupon Dividend [2]	Date of Last Coupon Right	Note	Shares	Closing price	% change	Previous closing price/date	Open price	Price min	Price max	Last price	Avg price	Last Bid [7]	Last Ask [7]	P/E after	Year	Volume	Trades	Transactions Value	Company Mkt Value (thou. €)	Year low	Year high	Sector[4]
-------------------------	---------------	---------------	--	--	----------------------------------	---------------------------	------	--------	---------------	----------	-----------------------------	------------	-----------	-----------	------------	-----------	--------------	--------------	-----------	------	--------	--------	--------------------	-----------------------------	----------	-----------	------------

Surveillance

3,961,300	1.28	---	---	---	29/06/2004	03/08/2000	4808	DUROS SA (CR)	0.125	---	↘	0.125	25/04/2013	0.125	0.125	0.125	0.125	29@0.125	---	---	2012	30	4	3.76	495.16	0.120	0.600	3763	
7,085,888	1.59	---	---	---	02/07/1996	06/09/2010	4690	ELVIEMEK (CR)	3.00	---	↘	3.00	05/02/2013	---	---	---	---	50@2.40	78@3.30	-(6)-	2012	---	---	---	21,257.66	3.00	3.58	8633	
6,000,000	0.600	---	---	---	13/06/2008	08/04/2004	4886	EUROBROKERS S.A. (CR)	0.144	-20.00	€	0.180	23/04/2013	0.144	0.144	0.144	0.144	570@0.144	1372@0.180	---	2012	10	1	1.44	864.00	0.144	0.333	8534	
7,347,600	0.600	---	---	---	02/06/2010	25/02/2010	4889	EUROCONSULTANTS S.A. (CR)	2.64	---	↘	2.64	13/12/2012	---	---	---	---	---	10990@2.12	---	2012	---	---	---	19,397.66	2.64	2.64	2791	
21,820,410	0.800	---	---	---	22/05/2008	02/08/2011	4882	EUROMEDICA SA (CR)	0.439	---	↘	0.439	29/04/2013	0.439	0.439	0.439	0.439	50@0.434	3450@0.435	---	2012	50	1	21.95	9,579.16	0.380	0.613	4533	
12,952,610	0.300	---	---	---	---	04/10/2012	4846	Forthnet (CR)	0.367	0.55	#	0.365	29/04/2013	0.365	0.365	0.367	0.367	231@0.369	700@0.386	---	2011	5,962	14	2,186.31	4,753.61	0.350	0.930	9535	
179,707,771	0.300	---	---	---	27/06/2002	01/11/2011	4847	HELLAS ONLINE SA (CR)	0.320	---	↘	0.320	29/04/2013	0.320	0.320	0.320	0.320	1000@0.300	547@0.365	---	2012	450	1	144.00	57,506.49	0.271	0.709	9537	
13,692,227	1.47	---	---	---	07/07/2006	08/10/1999	4845	HELLENIC FABRICS SA (CR)	0.259	-10.69	€	0.290	29/04/2013	0.286	0.232	0.286	0.232	0.259	380@0.244	500@0.255	---	2012	1,000	7	258.60	3,546.29	0.232	0.354	3763
30,390,000	0.310	---	---	---	18/08/2008	29/12/2006	4447	HELLENIC FISHFARMING SA (CR)	0.099	---	↘	0.099	26/04/2013	---	---	---	---	---	16360@0.099	23.21	2012	---	---	---	3,008.61	0.039	0.137	3573	
1,540,000	0.600	---	---	---	08/08/1994	19/09/2000	4855	J.BOUTARIS & SON HOLD. (PB)	0.056	---	↘	0.056	26/03/2013	---	---	---	---	1000@0.045	---	---	2012	---	---	---	2,352.41	0.056	0.201	3535	
25,179,640	0.600	---	---	---	08/08/1994	19/09/2000	4854	J.BOUTARIS & SON HOLD. SA (CB)	0.090	---	↘	0.090	25/04/2013	---	---	---	---	---	2378@0.084	---	2012	---	---	---	2,352.41	0.055	0.132	3535	
7,125,216	0.650	---	---	---	01/07/2005	14/12/1999	4955	KRE.KA SA (CR)	0.203	---	↘	0.203	29/04/2013	---	---	---	---	1000@0.192	3612@0.200	---	2012	---	---	---	1,446.42	0.155	0.580	3573	
51,081,030	1.00	---	---	---	20/08/2007	03/09/2007	4912	LAVIPHARM SA (CR)	0.155	-1.90	€	0.158	29/04/2013	0.155	0.155	0.155	0.155	2@0.151	100@0.155	---	2012	10,000	3	1,550.00	7,917.56	0.126	0.268	4577	
322,925,288	0.300	---	---	---	23/05/2007	10/04/2000	4554	M.J. MAILLIS SA (CR)	0.087	-6.45	€	0.093	29/04/2013	0.094	0.085	0.094	0.089	0.087	1300@0.087	691@0.089	---	2012	5,099	8	442.82	28,094.50	0.070	0.150	2723
9,567,289	0.300	---	---	---	01/07/2004	19/11/2007	4944	MARAC ELECTRONICS (CR)	0.350	---	↘	0.350	06/02/2013	---	---	---	---	---	2400@0.280	---	2012	---	---	---	3,348.55	0.330	0.409	9578	
4,178,856	1.58	0.22	---	---	21/07/2011	28/07/2004	---	MEDICON S.A (CR)	0.909	---	↘	0.909	29/04/2013	---	---	---	---	---	1258@0.900	---	2012	---	---	---	3,798.58	0.720	1.18	4535	
66,937,526	0.700	---	---	---	13/08/2010	21/05/2003	4927	MICHANIKI SA (CR)	0.159	-15.43	€	0.188	29/04/2013	0.152	0.152	0.161	0.161	0.159	1598@0.161	1500@0.170	---	2012	11,002	16	1,746.32	13,785.31	0.119	0.370	2357
25,968,987	0.700	---	---	---	13/08/2010	21/05/2003	4928	MICHANIKI SA (PR)	0.121	---	↘	0.121	29/04/2013	---	---	---	---	---	500@0.116	500@0.143	---	2012	---	---	---	13,785.31	0.077	0.268	2357
255,459,600	0.300	---	---	---	26/06/2000	03/12/2010	4833	NEL SA (CR)	0.040	-14.89	€	0.047	29/04/2013	0.040	0.040	0.040	0.040	1902@0.040	100000@0.055	---	2012	8	1	0.32	10,218.38	0.030	0.158	5759	
20,231,328	0.600	---	---	---	15/07/2008	25/06/2004	4879	NIKAS SA (CR)	0.284	-2.07	€	0.290	26/04/2013	0.290	0.280	0.290	0.280	0.284	13@0.280	3000@0.320	---	2012	1,688	5	479.74	5,745.70	0.280	0.530	3577
42,501,273	0.300	---	---	---	26/06/2007	10/08/2009	4749	NUTRIART (CR)	0.067	19.64	#	0.056	29/04/2013	0.067	0.067	0.067	0.067	0.070	500@0.065	499@0.067	---	2012	1	1	0.07	2,847.59	0.038	0.114	3577
14,967,940	0.500	---	---	---	21/05/2008	04/01/2008	4956	PASAL DEVELOPMENT S.A. (CR)	0.156	---	↘	0.156	24/04/2013	---	---	---	---	---	1700@0.131	1500@0.160	---	2012	---	---	---	2,335.00	0.120	0.414	8633
40,946,303	0.360	---	---	---	18/07/2005	27/11/2007	4856	PC SYSTEMS SA (CR)	0.094	18.99	#	0.079	26/04/2013	0.093	0.093	0.094	0.094	0.094	4470@0.064	7769@0.094	---	2012	2,000	5	187.80	3,848.95	0.079	0.180	9533
18,750,000	0.300	---	---	---	02/07/2001	31/12/2012	---	PEGASUS PUBLISHING S.A. (CR)	0.100	-16.67	€	0.120	29/04/2013	0.100	0.100	0.105	0.105	0.100	4978@0.105	6@0.120	---	2012	46	6	4.62	1,875.00	0.044	0.610	5557
28,056,518	0.530	---	---	---	04/07/2007	19/07/2006	4750	SATO SA (CR)	0.051	18.60	#	0.043	29/04/2013	0.051	0.051	0.051	0.051	0.051	26580@0.051	---	2012	3,000	6	153.00	1,430.88	0.025	0.094	3726	
36,235,184	1.00	---	---	---	01/07/2008	30/07/2012	4961	SELONDA AQUACULTURE SA (CR)	0.191	-2.05	€	0.195	29/04/2013	0.199	0.190	0.199	0.190	0.191	5000@0.185	2796@0.189	---	2012	6,899	17	1,320.32	6,920.92	0.190	0.600	3573
7,914,480	2.50	---	---	---	23/06/2008	29/06/2011	4888	SFAKIANAKIS SA (CR)	0.636	---	↘	0.636	29/04/2013	---	---	---	---	---	14800@0.636	340@0.763	---	2012	---	---	---	5,033.61	0.364	0.763	5379
60,221,300	0.400	---	---	---	01/07/2002	01/11/2010	4880	SHELMAN SA (CR)	0.152	---	↘	0.152	14/03/2013	---	---	---	---	---	6000@0.130	---	2011	---	---	---	9,153.64	0.152	0.280	2353	
10,000,000	1.35	---	---	---	24/06/2008	10/05/2005	4887	SIDMA SA (CR)	0.608	19.92	#	0.507	25/04/2013	0.608	0.608	0.608	0.608	0.608	450@0.510	400@0.600	---	2011	19	2	11.55	6,080.00	0.497	0.920	1757
29,060,950	0.340	---	---	---	20/08/2007	24/10/2001	4884	SPIDER METAL INDUSTRY SA (CR)	0.034	-17.07	€	0.041	29/04/2013	0.034	0.034	0.034	0.034	0.034	2000@0.035	932@0.049	---	2012	680	4	23.12	988.07	0.030	0.097	2757
6,523,780	0.530	---	---	---	01/07/2002	06/03/2001	4747	TECHNICAL PUBLICATIONS SA (CR)	0.021	---	↘	0.021	29/04/2013	---	---	---	---	---	557@0.018	20@0.024	---	2012	---	---	---	137.00	0.021	0.347	5557
50,396,500	0.300	---	---	---	16/07/2009	17/07/2012	---	TELETIPOS SA (CR)	0.204	2.00	#	0.200	29/04/2013	0.200	0.200	0.220	0.204	0.203	2200@0.201	---	2012	10,398	12	2,115.60	10,280.89	0.198	0.600	5553	
3,229,566	0.320	---	---	---	22/06/2005	23/09/1999	4629	VARANGIS AVEPE S.A. (CR)	0.680	7.94	#	0.630	26/04/2013	0.680	0.680	0.680	0.680	0.680	187@0.680	2000@0.703	---	2012	3,013	2	2,048.84	2,196.10	0.206	0.800	3726
10,305,079	0.300	---	---	---	25/06/2002	03/12/1999	4611	VARVARESSOS SA (CB)	0.150	---	↘	0.150	26/04/2013	0.150	0.150	0.150	0.150	0.150	10@0.129	---	2012	10	1	1.50	1,545.76	0.028	0.181	3763	
13,191,620	0.620	---	---	---	04/08/2010	09/09/2002	4741	YALCO - CONSTANTINOU SA (CB)	0.210	---	↘	0.210	19/04/2013	---	---	---	---	---	1100@0.197	---	2012	---	---	---	2,770.24	0.120	0.210	3722	

5,025,000	0.300	---	---	---	05/07/2005	14/03/2002	4963	ALSINCO S.A (CR)	0.027	-18.18	€	0.033	24/04/2013	0.027	0.027	0.039	0.039	0.027	4899@0.027	---	---	2012	2,970	4	80.55	135.68	0.027	0.185	3763
-----------	-------	-----	-----	-----	------------	------------	------	------------------	-------	--------	---	-------	------------	-------	-------	-------	-------	-------	------------	-----	-----	------	-------	---	-------	--------	-------	-------	------

Number of Listed Shares	Nominal Value	Dividends [1]			Date of Last Coupon		Note	Shares	Closing price	% change	Previous closing price/date	Open price	Price min	Price max	Last price	Avg price	Last Bid [7]	Last Ask [7]	P/E after	Year	Volume	Trades	Transactions Value	Company Mkt Value (thou. €)	Year low	Year high	Sector[4]	
		2010	2011	2012	Dividend [2]	Right																						
Under Deletion																												
766,000	2.83	---	---	---	01/07/2004	11/12/2012	---	TRIA ALFA SA (CR)	1.43	---	↘	1.43	29/04/2013	---	---	---	---	250@1.50	10@1.71	---	2012	---	---	---	1,484.93	1.30	4.70	3763
245,000	2.83	---	---	---	19/07/2010	11/12/2012	---	TRIA ALFA SA (PR)	1.59	---	↘	1.59	26/02/2013	---	---	---	---	98@1.89	---	2012	---	---	---	1,484.93	0.501	1.59	3763	
1,002,280	1.90	0.2532	0.27	---	04/07/2012	07/11/1989	4878	ZAMPA SA (CB)	4.70	-2.08	↘	4.80	24/04/2013	4.70	4.70	4.70	4.70	1000@4.62	---	82.64	2012	1,000	1	4,700.00	4,710.72	4.20	4.92	3722

49,030,011	0.300	---	---	---	19/07/2010	12/05/2011	4875	ALAPIS (CR)	0.041	---	↘	0.041	30/03/2012	---	---	---	---	---	---	---	---	---	---	2,010.23	0.041	0.041	4577
5,280,000	0.800	---	---	---	07/07/2008	29/03/2010	4561	ALTUS INV. FUND SA (CR)	1.07	---	↘	1.07	28/04/2009	---	---	---	---	---	---	---	---	---	---	5,649.60	1.07	1.07	8985
1,750,955,549	0.600	---	---	---	19/05/2008	08/12/2011	4911	ATE (CR)	0.155	---	↘	0.155	30/07/2012	---	---	---	---	---	---	---	---	---	---	271,398.11	0.155	0.155	8355
21,382,067	0.300	---	---	---	02/10/2006	15/02/2006	4628	ATERMON (CR)	0.120	---	↘	0.120	31/03/2010	---	---	---	---	---	---	---	---	---	---	2,565.85	0.120	0.120	5555
105,423,498	0.510	---	---	---	01/07/2004	28/12/2005	4920	AVENIR S.A. (CR)	0.046	---	↘	0.046	30/08/2012	---	---	---	---	---	---	---	---	---	---	4,849.48	0.046	0.046	5752
33,930,000	0.300	---	---	---	03/07/2006	30/05/2001	4865	BABIS VOVOS SA (CR)	0.304	---	↘	0.304	30/03/2012	---	---	---	---	---	---	---	---	---	---	10,314.72	0.304	0.304	8633
1,795,140,547	1.00	(0.0615)	---	---	31/05/2011	19/04/2012	4951	BANK OF CYPRUS (CR)	0.207	---	↘	0.207	15/03/2013	---	---	---	---	5000@0.170	---	---	---	---	---	371,594.09	0.180	0.282	8355
21,920,570	0.300	---	---	---	03/07/2007	13/12/1999	4702	CARDASSILARIS SA (CR)	0.140	---	↘	0.140	30/11/2010	---	---	---	---	---	---	---	---	---	---	3,068.88	0.140	0.140	3577
54,547,634	0.500	---	---	---	25/04/2005	21/01/2009	4860	CH.TEGOPOULOS PUBL. SA (CR)	0.038	---	↘	0.038	23/03/2012	---	---	---	---	---	---	---	---	---	---	2,072.81	0.038	0.038	5557
4,065,482,410	0.100	---	---	---	01/06/2010	04/02/2013	4952	CYPRUS POPULAR BANK (CR)	0.040	---	↘	0.040	20/03/2013	---	---	---	---	---	---	---	---	---	---	162,619.30	0.039	0.048	8355
7,847,611	1.20	---	---	---	01/08/2007	28/09/2011	4939	EDRASIS - C. PSALLIDAS SA (CR)	0.150	---	↘	0.150	19/11/2012	---	---	---	---	---	---	---	---	---	---	1,177.14	0.150	0.150	2357
5,750,000	0.300	---	---	---	12/12/2008	12/12/2011	4929	ELECTRONIKI ATHINON SA (CR)	0.480	---	↘	0.480	07/09/2012	---	---	---	---	---	---	---	---	---	---	2,760.00	0.480	0.480	5375
24,605,397	0.400	---	---	---	29/06/1995	27/05/2002	4651	EMPORIKOS DESMOS SA (CR)	0.080	---	↘	0.080	28/05/2010	---	---	---	---	---	---	---	---	---	---	2,134.04	0.080	0.080	3722
1,182,903	0.400	---	---	---	01/07/1996	27/05/2002	4652	EMPORIKOS DESMOS SA (PR)	0.140	---	↘	0.140	28/09/2009	---	---	---	---	---	---	---	---	---	---	2,134.04	0.140	0.140	3722
8,593,750	0.300	---	---	---	01/06/2009	20/06/2007	4876	FASHION BOX (CR)	1.30	---	↘	1.30	23/02/2012	---	---	---	---	---	---	---	---	---	---	11,171.88	1.30	1.30	3763
7,326,648	1.00	---	---	---	26/07/2006	24/07/2001	4921	FINTEXPORT SA (CR)	0.328	---	↘	0.328	29/06/2012	---	---	---	---	---	---	---	---	---	---	2,403.14	0.328	0.328	3763
20,860,000	0.300	---	---	---	03/07/2000	13/11/2007	4848	IKONA - IHOS SA (CR)	0.072	---	↘	0.072	02/12/2011	---	---	---	---	---	---	---	---	---	---	1,501.92	0.072	0.072	5379
36,765,744	0.350	---	---	---	16/08/2006	06/06/2011	4869	IMPERIO SA (CR)	0.026	---	↘	0.026	30/03/2012	---	---	---	---	---	---	---	---	---	---	955.91	0.026	0.026	2777
24,619,524	0.500	---	---	---	10/10/1986	30/12/2002	4914	KERAMIA-ALLATINI (CR)	0.088	---	↘	0.088	27/08/2012	---	---	---	---	---	---	---	---	---	---	2,166.52	0.088	0.088	8633
7,840,373	1.20	---	---	---	18/07/2002	05/03/2003	4765	KLONATEX SA (PR)	0.080	---	↘	0.080	09/05/2011	---	---	---	---	---	---	---	---	---	---	1,453.75	0.080	0.080	3763
20,663,047	1.20	---	---	---	21/08/2000	05/03/2003	4764	KLONATEX SA (CR)	0.040	---	↘	0.040	09/05/2011	---	---	---	---	---	---	---	---	---	---	1,453.75	0.040	0.040	3763
17,544,600	0.600	---	---	---	03/07/2000	01/08/2000	4868	KOYMBAS SYNERGY GROUP (CR)	0.132	---	↘	0.132	29/03/2012	---	---	---	---	---	---	---	---	---	---	2,315.89	0.132	0.132	8775
15,015,000	1.60	---	---	---	01/07/2002	02/02/2000	4603	MAXIM C.M. PERTSINIDIS SA (CB)	0.100	---	↘	0.100	30/11/2009	---	---	---	---	---	---	---	---	---	---	1,501.50	0.100	0.100	3763
13,555,100	1.00	---	---	---	08/07/2005		4576	MICROLAND COMPUTERS SA (CR)	0.640	---	↘	0.640	14/07/2009	---	---	---	---	---	---	---	---	---	---	8,675.26	0.640	0.640	5379
23,463,874	0.800	---	---	---	23/05/2003	21/12/1999	4918	NEORION SA (CR)	0.125	---	↘	0.125	28/08/2012	---	---	---	---	---	---	---	---	---	---	2,932.98	0.125	0.125	2753
25,583,146	0.300	---	---	---	25/06/2001	03/12/2008	4723	PETZETAKIS SA (CR)	0.260	---	↘	0.260	28/01/2011	---	---	---	---	---	---	---	---	---	---	6,651.62	0.260	0.260	1357
9,550,386	0.500	---	---	---	01/07/1997	12/06/2008	4626	PRAXITELIO SA (CR)	0.390	---	↘	0.390	11/03/2010	---	---	---	---	---	---	---	---	---	---	4,430.09	0.390	0.390	4533
1,306,368	0.500	---	---	---	01/07/1997	12/06/2008	4627	PRAXITELIO SA (PR)	0.540	---	↘	0.540	15/12/2009	---	---	---	---	---	---	---	---	---	---	4,430.09	0.540	0.540	4533
62,683,822	0.300	---	---	---	27/05/2008	09/01/2006	4830	PROTON BANK S.A. (CR)	0.180	---	↘	0.180	07/10/2011	---	---	---	---	---	---	---	---	---	---	11,283.09	0.180	0.180	8355
23,059,688	0.660	---	---	---	03/07/2008	06/08/2004	4864	RIDENCO SA (CR)	0.032	---	↘	0.032	30/03/2012	---	---	---	---	---	---	---	---	---	---	737.91	0.032	0.032	3765
51,083,993	1.00	---	---	---	15/07/2008	06/08/2003	4867	SANYO HELLAS HOLD. (CR)	0.020	---	↘	0.020	30/03/2012	---	---	---	---	---	---	---	---	---	---	1,021.68	0.020	0.020	3722
51,334,286	0.320	---	---	---	03/07/2000	18/12/2007	4548	SAOS (CR)	0.780	---	↘	0.780	27/03/2009	---	---	---	---	---	---	---	---	---	---	40,040.74	0.780	0.780	2773
26,408,040	0.300	---	---	---	01/07/1997	26/05/1999	4464	SHEET STEEL SA (CR)	0.120	---	↘	0.120	28/11/2008	---	---	---	---	---	---	---	---	---	---	3,168.96	0.120	0.120	1757

Number of Listed Shares	Nominal Value	Dividends [1]			Date of Last Coupon		Note	Shares	Closing price	% change	Previous closing price/date	Open price	Price min	Price max	Last price	Avg price	Last Bid [7]	Last Ask [7]	P/E after	Year	Volume	Trades	Transactions Value	Company Mkt Value (thou. €)	Year low	Year high	Sector[4]	
		2010	2011	2012	Dividend [2]	Right																						
Under Suspension																												
26,262,660	0.900	---	---	---	01/07/2008	24/02/2011	4954	SPRIDER STORES (CR)	0.031	---	0.031	28/03/2013	---	---	---	---	---	---	---	---	---	---	---	---	814.14	0.025	0.055	5371
144,688,060	0.600	---	---	---	21/04/2008	10/03/2010	---	T BANK (CR)	0.048	---	0.048	30/11/2011	---	---	---	---	---	---	---	---	---	---	---	---	6,945.03	0.048	0.048	8355
13,920,000	0.320	---	---	---	19/11/2001	01/08/2000	4726	TEXAPRET SA (CR)	0.080	---	0.080	23/02/2011	---	---	---	---	---	---	---	---	---	---	---	---	1,113.60	0.080	0.080	3763
284,465,964	3.70	---	---	---	20/06/2008	15/06/2009	4913	TT HELLENIC POSTBANK (CR)	0.168	---	0.168	30/08/2012	---	---	---	---	---	---	---	---	---	---	---	---	47,790.28	0.168	0.168	8355
89,616,200	0.300	---	---	---	21/08/2000	28/06/2007	4616	UNITED TEXTILES (CR)	0.050	---	0.050	25/02/2010	---	---	---	---	---	---	---	---	---	---	---	---	4,480.81	0.050	0.050	3763
71,683,906	0.400	---	---	---	15/06/2005	05/02/2008	4953	XATZIOANNOU (CR)	0.026	---	0.026	28/03/2013	---	---	---	---	---	---	---	---	---	---	---	---	1,863.78	0.020	0.085	3763

Shares' Notes

Code	Note text
()	- Adjusted dividends.
*	- Last adjusted closing price.
[1]	- Net dividends.
[2]	- The "Date of Last Coupon" for New listings refers to the date company's stocks started to trade in Athex
[3]	- The Company Market Value is referred to the number of listed shares
[4]	- Sectors codification can be found in Appendix A
[5]	- The Market Value refers to the total number of shares listed (including their several classes) in the exchange by the company.
[6]	- P/E greater than 100
[7]	- Last view of the Order Book before the end of the trading session
4412	- Transfer to the Under Supervision Category as of 27/6/2008.
4446	- Transfer to the "Under Supervision" Category as of 20/10/2008.
4447	- Transfer to the "Under Supervision" Category as of 21/10/2008.
4464	- Suspension of trading as of 1/12/2008.
4548	- Suspension of trading as of 1/4/2009.
4554	- Transfer to the "Under Supervision" Category as of 6/4/2009.
4559	- Transfer to the "Under Supervision" Category as of 21/4/2009.
4561	- Suspension of trading as of 29/4/2009.
4576	- Suspension of trading as of 14/7/2009.
4603	- Suspension of trading as of 1/12/2009.
4611	- Transfer to the Under Supervision Category as of 21/12/2009.
4616	- Suspension of trading as of 25/2/2010.
4626	- Suspension of trading as of 1/4/2010.
4627	- Suspension of trading as of 1/4/2010.
4628	- Suspension of trading as of 1/4/2010.
4629	- Transfer to the Under Supervision Category as of 12/4/2010.
4630	- Transfer to the Under Supervision Category as of 12/4/2010.
4651	- Suspension of trading as of 1/6/2010.
4652	- Suspension of trading as of 1/6/2010.
4690	- Transfer to Surveillance category as of 4/4/2006.
4702	- Suspension of trading as of 1/12/2010.
4723	- Suspension of trading as of 31/1/2011.
4726	- Suspension of trading as of 1/3/2011.
4741	- Transfer to the "Under Surveillance Category" from 8/4/2011.
4747	- Transfer to the "Under Surveillance Category" from 8/4/2011.
4749	- Transfer to the "Under Surveillance Category" from 8/4/2011.
4750	- Transfer to the "Under Surveillance Category" from 8/4/2011.
4764	- Suspension of trading as of 20/5/2011.
4765	- Suspension of trading as of 20/5/2011.
4795	- The final gross (pre-tax) dividend is € 0.30 per share and subject to withholding tax on the full dividend amount, i.e. 0.45 per share, for those shareholders liable to withholding tax, in accordance with the applicable tax law provisions.
4808	- Suspension of trading as of 6/9/2011.
4814	- Transfer to the Low Dispersion Category as of 30/5/2011.
4815	- Transfer to the Low Dispersion Category as of 30/5/2011.
4816	- Transfer to the Low Dispersion Category as of 30/5/2011.
4817	- Transfer to the Low Dispersion Category as of 30/5/2011.
4820	- Transfer to the Low Dispersion category as of 18/4/2008.
4822	- Transfer to the Low Dispersion category as of 30/5/2011.
4823	- Transfer to the Low Dispersion category as of 4/4/2006.
4824	- Transfer to the Low Dispersion category as of 18/4/2008.
4825	- Transfer to the Low Dispersion category as of 8/4/2011.
4827	- Transfer to the Low Dispersion category as of 5/5/2010.
4828	- Transfer to the Low Dispersion category as of 4/4/2006.

Shares' Notes

Code	Note text
4830	- Suspension of trading as of 10/10/2011.
4833	- Transfer to Surveillance category from 6/5/2010.
4844	- Transfer to the Surveillance category from 8/4/2011.
4845	- Transfer to the Surveillance Category as of 25/11/2011.
4846	- Transfer to the Surveillance Category as of 25/11/2011.
4847	- Transfer to the Surveillance Category as of 3/7/2009.
4848	- Suspension of trading as of 6/12/2011.
4854	- Transfer to the Surveillance Category as of 29/12/2011.
4855	- Transfer to the Surveillance Category as of 29/12/2011.
4856	- Transfer to the Surveillance Category as of 29/12/2011.
4860	- Suspension of trading as of 30/3/2012.
4864	- Suspension of trading as of 30/3/2012.
4865	- Suspension of trading as of 2/4/2012.
4867	- Suspension of trading as of 2/4/2012.
4868	- Suspension of trading as of 2/4/2012.
4869	- Suspension of trading as of 2/4/2012.
4875	- Suspension of trading as of 2/4/2012.
4876	- Suspension of trading as of 3/4/2012.
4878	- Transfer to the Under Deletion Category as of 10/4/2012.
4879	- Transfer to the Surveillance Category as of 10/4/2012.
4880	- Transfer to the Surveillance Category as of 10/4/2012.
4881	- Transfer to the Surveillance Category as of 10/4/2012.
4882	- Transfer to the Surveillance Category as of 10/4/2012.
4884	- Transfer to the Surveillance Category as of 10/4/2012.
4885	- Transfer to the Surveillance Category as of 10/4/2012.
4886	- Transfer to the Surveillance Category as of 10/4/2012.
4887	- Transfer to the Surveillance Category as of 10/4/2012.
4888	- Transfer to the Surveillance Category as of 10/4/2012.
4889	- Transfer to the Surveillance Category as of 10/4/2012.
4893	- Transfer to the Low Dispersion category as of 28/5/2012.
4894	- Transfer to the Low Dispersion category as of 28/5/2012.
4911	- Lift of suspension from 30/7/2012.
4912	- Transfer to the Surveillance Category as of 31/7/2012.
4913	- Suspension of trading as of 30/8/2012.
4914	- Suspension of trading as of 31/8/2012.
4918	- Suspension of trading as of 31/8/2012.
4920	- Suspension of trading as of 31/8/2012.
4921	- Suspension of trading as of 31/8/2012.
4927	- Transfer to the "Under Surveillance Category" from 8/4/2011.
4928	- Transfer to the "Under Surveillance Category" from 8/4/2011.
4929	- Suspension of trading as of 1/10/2012.
4939	- Suspension of trading as of 30/11/2012.
4940	- Transfer to the Low Dispersion category as of 3/12/2012.
4941	- Transfer to the Low Dispersion category as of 3/12/2012.
4942	- Transfer to the Low Dispersion category as of 3/12/2012.
4944	- Transfer to the Surveillance Category as of 7/12/2012.
4947	- The 23,343,750 new (CR) shares, resulting from the recent share capital increase through a rights issue, are not yet admitted to trading on the ATHEX.
4948	- Transfer to the "Low Dispersion" Category as of 26/2/2013.
4951	- Suspension of trading as of 19/3/2013.
4952	- Suspension of trading as of 19/3/2013.
4953	- Suspension of trading as of 2/4/2013.
4954	- Suspension of trading as of 2/4/2013.
4955	- Transfer to the Surveillance Category as from 5/4/2013.

Shares' Notes

Code	Note text
4956	- Transfer to the Surveillance Category as from 5/4/2013.
4957	- Transfer to the Surveillance Category as from 5/4/2013.
4958	- Transfer to the Surveillance Category as from 5/4/2013.
4959	- Transfer to the Surveillance Category as from 5/4/2013.
4960	- Transfer to the Surveillance Category as from 5/4/2013.
4961	- Transfer to the Surveillance Category as from 5/4/2013.
4962	- Transfer to the Surveillance Category as from 5/4/2013.
4963	- Transfer to the Under Deletion Category as from 5/4/2013.
4964	- Transfer to the Low Dispersion category as of 29/4/2013.

Shares Blocks Details

Stocks	Block Volume	Price	Block Trade Value	Time of approval	Note
OPAP (CR)	150,000	6.86	1,029,000.00	10:52:18	20
OPAP (CR)	66,749	6.86	457,898.14	11:01:02	20
COCA - COLA HBC (CR)	78,936	19.25	1,519,518.00	12:09:23	20
ALPHA BANK (CR)	9,715	1.08	10,492.20	13:00:43	18
COCA - COLA HBC (CR)	78,936	19.00	1,499,784.00	13:47:37	20
COCA - COLA HBC (CR)	78,936	18.50	1,460,316.00	15:31:19	20
OTE (CR)	70,000	6.71	469,728.00	17:01:14	20
OTE (CR)	50,000	6.60	330,000.00	17:07:18	20
OTE (CR)	119,439	6.60	788,297.40	17:07:21	20
OTE (CR)	220,000	6.60	1,452,000.00	17:07:47	20
OTE (CR)	145,000	6.60	957,000.00	17:07:53	20
OTE (CR)	1,160,377	6.60	7,658,488.20	17:07:57	20
OTE (CR)	381,000	6.60	2,514,600.00	17:08:10	20
OTE (CR)	59,000	6.60	389,400.00	17:08:11	20
OTE (CR)	3,081,210	6.60	20,335,986.00	17:08:52	20
OTE (CR)	137,639	6.60	908,417.40	17:09:02	20
OTE (CR)	283,585	6.60	1,871,661.00	17:09:35	20
COCA - COLA HBC (CR)	25,000	18.50	462,500.00	17:09:54	20
OTE (CR)	200,000	6.60	1,320,000.00	17:10:13	20
OPAP (CR)	100,000	7.49	749,000.00	17:10:41	20
COCA - COLA HBC (CR)	100,000	18.73	1,873,000.00	17:11:12	20
COCA - COLA HBC (CR)	78,936	18.50	1,460,316.00	17:11:53	20
COCA - COLA HBC (CR)	66,786	18.50	1,235,541.00	17:13:06	20
OTE (CR)	746,292	6.60	4,925,527.20	17:13:41	20

Blocks Notes

2 - SPOT 1 or SPOT 2 Packet	11 - Total Assets > 500 bil
3 - Block with Short Selling	12 - Sell Offer through Athex
4 - Buy to Close Block	13 - Forced Sale of NMOE
6 - Simultaneous Constitution	14 - Restoration Packet
7 - Repurchase Agreement	15 - Market Maker Packet
8 - Dispersion's Achievement (Not Listed)	16 - Short Selling
9 - Dispersion's Achievement (Listed)	18 - SPOT 1 Packet
10 - Share Capital Majority of Greek State (> 50 bil)	20 - Method 6-1 Packet

Daily Official List										Year: 134 Trading Day No: 81			
Section 3: Figures of Shares Transactions										Tuesday, 30 April, 2013			
Shares Rights Details													
Occured date	Exercise from	Exercise until	Trading until	Rights									
					Price min	Price max	Closing price	Last Bid	Last Ask	Volume	Trades	Transactions Value	
No Rights Transactions.													

Shares Short Selling

Stocks	Transactions Value	Transactions Volume	% of Total Volume	Short Covering Trans. Value	Short Covering Volume	% of Total Volume
No Short Sales Transactions.						

Short Selling Notes

[1] - The Hellenic Capital Markets Commission (HCMC) has decided to prohibit the short selling only in relation to shares of credit institutions admitted to trading on the Athens Exchange and comprising the FTSE/ATHEX - CSE Banking Index, for a period of three(3) months and more specifically from February1, 2013 until April 30, 2013.

Stock Borrowing

Stocks	Stock Borrowing through Helex (volume)	Stock Borrowing through OTC (volume) [1]	Totals [2]
ALAPIS (CR)	---	6,250	6,250
ALPHA BANK (CR)	---	4,106,047	4,106,047
ATE (CR)	---	40,260	40,260
BANK OF CYPRUS (CR)	6,600	27,829	34,429
COCA - COLA HBC (CR)	---	124,783	124,783
CYPRUS POPULAR BANK (CR)	---	447,328	447,328
ELLAKTOR (CR)	13,500	2,789	16,289
EUROBANK ERGASIAS (CR)	103,900	1,107,059	1,210,959
EUROBANK PROPERTIES REIC (CR)	3,000	22,056	25,056
EYDAP S.A. (CR)	1,000	---	1,000
FLEXOPACK SA (CR)	---	41,927	41,927
FOURLIS (CR)	7,200	---	7,200
FRIGOGLASS SA (CR)	---	2,540	2,540
GEK TERNA (CR)	---	650	650
HALKOR SA (CB)	---	1,000	1,000
HELL. DUTY FREE SHOPS SA (CR)	3,300	1,000	4,300
HELLENIC EXCHANGES (CR)	20,000	29,867	49,867
HELLENIC PETROLEUM (CR)	27,600	1,001,248	1,028,848
HYGEIA SA (CR)	6,500	---	6,500
INTERTECH SA (CR)	---	483,000	483,000
INTRALOT (CR)	13,200	2,245	15,445
J & P - AVAX SA (CR)	4,000	---	4,000
JUMBO SA (CR)	15,400	2,500	17,900
LAMDA DEVELOPMENT SA (CR)	---	10,377	10,377
MARFIN INVESTMENT GROUP (CR)	55,000	891,554	946,554
METKA (CR)	1,000	268	1,268
MOTOR OIL (CR)	4,900	1,021	5,921
MYTILINEOS HOLDINGS (CR)	11,400	23,253	34,653
NATIONAL BANK (CR)	5,659,500	3,152,506	8,812,006
NBGAM ETF	10,000	---	10,000
NBGAM ETF GREECE & TURKEY 30	5,500	---	5,500
OPAP (CR)	82,700	63,962	146,662
OTE (CR)	137,500	429,646	567,146
P.P.A. S.A. (CR)	---	500	500
PIRAEUS BANK (CR)	1,732,000	526,160	2,258,160
PPC (CR)	46,100	300,252	346,352
SIDENOR (CR)	---	1,000	1,000
TERNA ENERGY (CR)	---	1,000	1,000
TITAN CEMENT (CR)	5,300	554	5,854
VIOHALCO (CB)	13,500	2,100	15,600

Stock Borrowing Notes

[1] - The information concerning OTC Stock Borrowing Transactions is based on the statements of the Dematerialised Securities System (DSS) operators involved and refers to volumes that have been cleared and registered up until the previous working day.

Shares Forced Sales

Stocks	Transaction s Volume	Number of Trades	Transactions Value	Note
No Forced Transactions.				

Forced Sales Notes

- 1 - Normal Forced Sale.
- 2 - Forced Sales of Fixed Registered Shares.
- 3 - Forced Sales of Remaining Stock Fractions.

Forced Sales Registered Shares

Stocks	Start Date	End Date	Initial Volume	Remaining Volume	Date	Avg price (day)	Avg price (period)	Number of Trades	Transactions Volume	Transactions Value
INTRACOM HOLDINGS (CR)	26/03/2013	24/05/2013	145,979	145,979	---	---	---	---	---	---

Forced Sales Notes

According to Decision 1/380/04.05.2008 of the Hellenic Republic Capital Market Commission, the certificated registered shares that have not been deposited to the issuer for dematerialisation, will be auctioned in the Athens Exchange by the supervising issuer. Forced sales procedure is held according to Article 99A of the Athens Exchange Rulebook. The average price of the period is calculated by dividing the Total transactions value by the Total volume and includes all the transactions made until the current date.

Exchange Traded Funds (ETFs) Characteristics

Stocks	Transactions Date (T)	Creation / Redemption	Units (T-1)	New Units (T-1)	Redemptio n Units (T-	Units (T) [1]	Fund Assets [2]	Net Unit Price	Dividen d per	Dividend Date
NBGAM ETF ΓΔ Χ.Α.	30/04/2013	25,000	294,878	---	---	294,878	2,966,731.00	10.0609	---	27/10/2011
ALPHA ETF FTSE Athex Large Cap	30/04/2013	50,000	5,745,839	---	---	5,745,839	18,281,300.00	3.1817	0.07	02/07/2012
NBGAM ETF GREECE & TURKEY 30	30/04/2013	25,000	388,550	---	---	388,550	3,566,243.00	9.1783	---	27/10/2011

ETFs Notes

[1] - Units (T) = Units (T-1) + New Units (T-1) - Redemption Units (T-1)

[2] - The Creation / Redemption Units of T-1 are included.

Corporate Bonds

Num Listed Bonds	Nominal price	Issue price	Today's Rate	Exp. Date	Duration (years)	Note	Coupon attached		Trading	Corporate Bonds	Price min	Price max	Closing price	Previous closing price/date	Volume	Transactions Value	Price	Last order Buy / Sell	Date	Year min	Year max
39,711,653	1.00	1.00	6.00	30/06/2016	5	4786	4	---	1	BANK OF CYPRUS PUBLIC CO. LTD (Convert. to CR sh.)	---	---	---	---	---	---	10.0000	B	13/03/2013	100.0000	100.0000
428,521,983	1.00	1.00	6.50	30/06/2016	5	4785	4	---	1	BANK OF CYPRUS PUBLIC CO. LTD (Convert. to CR sh.)	---	---	---	20.5000	14/03/2013	---	21.0000	B	15/03/2013	19.5000	30.0000
52,757,814	4.77	4.77	5.00	19/03/2015	5	---	13	---	1	MARFIN INVESTMENT GROUP S.A. (Conver to CR shar)	---	---	---	48.0000	08/02/2013	---	5.0000	S	30/04/2013	10.0000	70.0000
73,088,145	1.00	1.00	5.50	30/06/2014	5	4574	8	---	1	BANK OF CYPRUS PUBLIC CO. LTD (Convert. to CR sh.)	---	---	---	20.0000	08/03/2013	---	21.5000	B	15/03/2013	20.0000	26.0000
1,915,684	12.49	9.77	5.32	12/07/2015	8	---	12	---	1	NIREUS S.A. (Convertible to CR shares)	---	---	---	11.5060	06/02/2013	---	28.0000	S	11/04/2013	11.0000	15.0000
27,283,632	1.00	1.00	1.32	30/06/2018	10	---	10	---	1	BANK OF CYPRUS PUBLIC CO. LTD (Convert. to CR sh.)	---	---	---	33.0000	13/12/2012	---	35.0000	B	15/03/2013	33.0000	33.0000

4574 - The bonds are of indefinite duration.

4785 - The bonds are of indefinite duration.

4786 - The bonds are of indefinite duration. The Bond's par value, issue price and trading prices are expressed in USA Dollars, whereas its Transactions Value is expressed in Euros.

Corporate Bonds Notes

Transactions Volume = (Pieces) * (Face Value). Transactions Value = (Pieces) * (Nominal value) * (price %) + (Accrued interest).

The price of a Bond is stated as a percentage (%) of Bond's Face Value.

Nominal Value in Euros (€), except if it is noted differently.

Government Bonds

Number Listed Bonds	Nominal price	Today's Rate	Accrued Interest Calc	Exp. Date [1]	Duration (years)	Note	Coupons Date	Curr. coupon value	Trading Unit	Government Bonds	Price min	Price max	Closing price	Previous closing price/date	Volume	Transactions Value	Price	Last order Buy / Sell	Date
2,658,781,973	1.00	2.00	Actual/Actual	24/02/2023	11	---	24/02	2.00	1	GGB-FXD-240223-11Y-2.000-1.00	---	---	---	---	---	---	---	---	---
2,658,781,973	1.00	2.00	Actual/Actual	24/02/2024	12	---	24/02	2.00	1	GGB-FXD-240224-12Y-2.000-1.00	---	---	---	---	---	---	---	---	---
2,658,781,973	1.00	2.00	Actual/Actual	24/02/2025	13	---	24/02	2.00	1	GGB-FXD-240225-13Y-2.000-1.00	---	---	---	---	---	---	---	---	---
2,658,781,973	1.00	2.00	Actual/Actual	24/02/2026	14	---	24/02	2.00	1	GGB-FXD-240226-14Y-2.000-1.00	---	---	---	---	---	---	---	---	---
2,658,781,973	1.00	2.00	Actual/Actual	24/02/2027	15	---	24/02	2.00	1	GGB-FXD-240227-15Y-2.000-1.00	---	---	---	---	---	---	---	---	---
2,836,034,104	1.00	2.00	Actual/Actual	24/02/2028	16	---	24/02	2.00	1	GGB-FXD-240228-16Y-2.000-1.00	---	---	---	---	---	---	---	---	---
2,836,034,104	1.00	2.00	Actual/Actual	24/02/2029	17	---	24/02	2.00	1	GGB-FXD-240229-17Y-2.000-1.00	---	---	---	---	---	---	---	---	---
2,836,034,104	1.00	2.00	Actual/Actual	24/02/2030	18	---	24/02	2.00	1	GGB-FXD-240230-18Y-2.000-1.00	---	---	---	---	---	---	---	---	---
2,836,034,104	1.00	2.00	Actual/Actual	24/02/2031	19	---	24/02	2.00	1	GGB-FXD-240231-19Y-2.000-1.00	---	---	---	---	---	---	---	---	---
2,836,034,104	1.00	2.00	Actual/Actual	24/02/2032	20	---	24/02	2.00	1	GGB-FXD-240232-20Y-2.000-1.00	---	---	---	---	---	---	---	---	---
2,836,034,104	1.00	2.00	Actual/Actual	24/02/2033	21	---	24/02	2.00	1	GGB-FXD-240233-21Y-2.000-1.00	---	---	---	---	---	---	---	---	---
2,836,034,104	1.00	2.00	Actual/Actual	24/02/2034	22	---	24/02	2.00	1	GGB-FXD-240234-22Y-2.000-1.00	---	---	---	---	---	---	---	---	---
2,836,034,104	1.00	2.00	Actual/Actual	24/02/2035	23	---	24/02	2.00	1	GGB-FXD-240235-23Y-2.000-1.00	---	---	---	---	---	---	---	---	---
2,836,034,104	1.00	2.00	Actual/Actual	24/02/2036	24	---	24/02	2.00	1	GGB-FXD-240236-24Y-2.000-1.00	---	---	---	---	---	---	---	---	---
2,836,034,104	1.00	2.00	Actual/Actual	24/02/2037	25	---	24/02	2.00	1	GGB-FXD-240237-25Y-2.000-1.00	---	---	---	---	---	---	---	---	---
2,836,034,104	1.00	2.00	Actual/Actual	24/02/2038	26	---	24/02	2.00	1	GGB-FXD-240238-26Y-2.000-1.00	---	---	---	---	---	---	---	---	---
2,836,034,104	1.00	2.00	Actual/Actual	24/02/2039	27	---	24/02	2.00	1	GGB-FXD-240239-27Y-2.000-1.00	---	---	---	---	---	---	---	---	---
2,836,034,104	1.00	2.00	Actual/Actual	24/02/2040	28	---	24/02	2.00	1	GGB-FXD-240240-28Y-2.000-1.00	---	---	---	---	---	---	---	---	---
2,836,034,104	1.00	2.00	Actual/Actual	24/02/2041	29	---	24/02	2.00	1	GGB-FXD-240241-29Y-2.000-1.00	---	---	---	---	---	---	---	---	---
2,836,034,104	1.00	2.00	Actual/Actual	24/02/2042	30	---	24/02	2.00	1	GGB-FXD-240242-30Y-2.000-1.00	---	---	---	---	---	---	---	---	---
1,500,000	1,000.00	1.01	FLR Actual/360	10/08/2014	5	---	10/02 - 10/08	---	1	GGB-FRN-100814-05Y-1.762-1000.00	---	---	---	---	---	---	---	---	---
5,187,186	1,000.00	1.65	FLR Actual/360	21/05/2014	5	---	21/11 - 21/05	---	1	GGB-FRN-210514-05Y-2.734-1000.00	---	---	---	---	---	---	---	---	---
78,300	1,000.00	1.18	FLR Actual/360	23/07/2014	5	---	23/01 - 23/07	---	1	GGB-FRN-230714-05Y-2.018-1000.00	---	---	---	---	---	---	---	---	---

Government Bonds Notes

Transactions Volume = (Pieces) * (Face Value). Transactions Value = (Pieces) * (Nominal value) * (price %) + (Accrued interest).

The Value of current coupon for the issues with NV 0.01 euro refers to NV 100 euros

FLR: Floating Interest Rate.

[1] - The Expiration Date of the interest bearing period and the Date for coupon payment.

Bonds in Circulation	Currency / Min nominal traded Value	Coupons Payment Date	Current Coupon Value	Note	Coupon Attached	Trading Unit	Issue Date	Duration (years)	Today's Interest	A.I.C in days	Bonds	Last price of previous days	Last Outcry in Cash (euro) Price	Buy / Sell	Trades in Pieces	Life min	Life Max
Bonds of International Organizations																	
1,000,000	EUR / 1000	21/07	---	---	7	1	21/07/2006	10	5.0 FLR	360	EUROPEAN INVESTMENT BANK BOND	97.50	16/04/2007	---	---	---	---
Corporate Bonds in Foreign Currency and Euro																	
103,746	GBP / 10	01/12	0.25	---	54	1	01/12/1930	98	2.5	360	National Mortgage Bank	2.27	05/02/1996	2.27	S	05/02/1996	2.27
0	GBP / 10	01/12	0.25	---	56	1	01/12/1928	100	2.5	360	National Mortgage Bank	---	---	---	---	---	---

Government Bonds Notes

A.I.C: Accrued Interest Calculation base.
FLR: Floating Interest Rate.
The minimum tradeable Nominal Value for all Demeterialised Government Titles is 100 Euros.

State Banks Bonds (one year maturity)

Number Listed Bonds	Nominal value	Initial Rate	Current Rate	Annual Interest	Issue Date	Note	State Banks Bonds	Trading Unit	Yearly Renewals	Last Outcry in Cash (euro) Price	Buy / Sell	Volume
342,560	130.41	2.35	3.92	0.00	31/01/2005	---	H.I.D.B.	1	9	100.00	B	---
16,015	1,211.71	3.65	2.47	0.00	30/11/2006	---	H.I.D.B.	1	7	---	---	---
2,446	1,125.75	4.90	2.47	28.25	31/05/2008	---	H.I.D.B.	1	5	---	---	---
171,117	1,134.80	5.50	2.47	28.48	31/05/2008	---	H.I.D.B.	1	5	---	---	---
79,895	1,132.08	5.25	2.47	28.41	30/06/2008	---	H.I.D.B.	1	5	---	---	---
1,583	1,132.08	5.25	2.47	28.41	30/06/2008	---	H.I.D.B.	1	5	---	---	---
237,568	1,135.89	5.60	2.47	28.50	30/06/2008	---	H.I.D.B.	1	5	---	---	---
208,723	1,135.89	5.60	2.47	28.50	30/06/2008	---	H.I.D.B.	1	5	---	---	---
150,857	1,133.91	5.60	2.47	28.45	31/07/2008	---	H.I.D.B.	1	5	---	---	---
184,899	1,133.91	5.60	2.47	28.45	31/07/2008	---	H.I.D.B.	1	5	---	---	---
63,787	1,101.48	5.45	2.47	30.88	31/08/2008	---	H.I.D.B.	1	5	---	---	---
54,559	1,129.20	5.45	2.47	28.34	31/08/2008	---	H.I.D.B.	1	5	---	---	---
165,926	1,130.82	5.60	2.47	28.38	31/08/2008	---	H.I.D.B.	1	5	---	---	---
77,348	1,130.82	5.60	2.47	28.38	31/08/2008	---	H.I.D.B.	1	5	---	---	---
5,358	1,108.96	5.45	2.47	27.83	31/10/2008	---	H.I.D.B.	1	5	---	---	---
1,045	1,129.74	5.50	2.47	28.35	31/10/2008	---	H.I.D.B.	1	5	---	---	---
76,077	1,132.45	5.75	2.47	28.42	31/10/2008	---	H.I.D.B.	1	5	---	---	---

Bonds Notes

The annual renewal of H.I.D.B. Bonds is free of taxes (net rate).

For Bonds issue until 28/02/2013 the accrued interest is capitalized.

Athex & ATHEXClear Members List

Member Name			Stock Market			Derivatives Market			ATHEXClear Member		
Address	Phone	Fax	Market Member	Remote Member	Market Maker	Proprietary	Market Maker	Agent	General Clearing	Direct Clearing	Non Clearing
A. SARRIS SECURITIES S.A.			a								
6, DRAGATSANIOU STR. ATHINA	(210)-3367700	(210)-3312324									
AGRICULTURAL BANK OF GREECE S.A.			a				a			a	
, 23 PANEPISTIMIOU ATHINA	(210)-3298400	(210)-3298322									
ALPHA FINANCE INVESTMENT SERVICES S.A.			a		a		a			a	
5, MERLIN STR. ATHINA	(210)-3677400	(210)-3311193									
ALPHA BANK A.E.						a			a		
40, STADIOU STR ATHINA	(210)-3265546	(210)-3265811									
	(210)-3260000	(210)-3264116									
ARGUS STOCKBROKERS LTD			a	a							
12-14, KENNEDY AVE, S. 303 NICOSIA	(+35722)-22717000	(+35722)-22717070									
ATHENAIKI BROKERAGE FIRM S.A.			a								
33, STADIOU STR. ATHINA	(210)-3254764	(210)-3254767									
ATLANTIC SECURITIES LIMITED			a	a							
37, PRODROMOU STR. NICOSIA	(+35722)-445400	(+35722)-661914									
ATLAS SECURITIES S.A			a			a					a
14 - 16, VERVERNON STR.& 125 MICHALAKOPOULOU STR. ATHINA	(210)-3363300	(210)-3238925									
ATTICA BANK S.A.									a		
54, AKADIMIAS STR. ATHINA	(210)-3390757	(210)-3646090									
23, OMIROU STR. ATHINA	(210)-3669000	(210)-3669410									
AXIA VENTURES GROUP LTD			a	a							
10, G. KRANIDIOTI NICOSIA	+357 22 742000	+357 22 742001									
AXON SECURITIES S.A.			a			a					a
48, STADIOU ATHINA	(210)-3363800	(210)-3243903									
BANK OF CYPRUS PUBLIC COMPANY LTD									a		
, 51,STASINOU (AG. PARASKEVI, STROVOLOS) NICOSIA	(0035722)-121883	(0035722)-336258									
170, ALEXANDRAS AVE ATHINA	(210)-6477708	(210)-6477709									
BETA SECURITIES S.A.			a		a	a	a			a	
, BRAILA & 29 ALEXANDRAS AVE ATHINA	(210)-6478900	(210)-6410139									
BNP PARIBAS SECURITIES SERVICES									a		
94, VAS. SOFIAS AVE ATHINA	(210)-7468500	(210)-7468579									
CAPITAL SECURITIES S.A.			a			a					a
58, MITROPOLEOS STR. ATHINA	(210)-3369700	(210)-3369820									
CFS SECURITIES & INVESTMENT SERVICES S.A.			a		a			a		a	
3, STADIOU STR. ATHINA	(210)-3360800	(210)-3311854									
CITIGROUP GLOBAL MARKET LTD			a	a							
, CITIGROUP CENTRE, CANADA SQUARE, CANARY WHART LONDON	002079864000	002079862266									
CO-OPERATIVE CENTRAL BANK LTD			a	a							
8, GRIGORI AFXENTIOU STR. NICOSIA	(+35722)-743300	(+35722)-672083									
CREDIT AGRICOLE CHEUVREUX S.A.			a	a							
, 9 QUAI PAUL DOUMER PARIS	33 (0) 1 41 89 70 00										
CREDIT SUISSE SECURITIES (EUROPE) LIMITED			a	a							
, ONE CABOT SQUARE LONDON	+44 20 7888 8888	+44 20 7888 1600									
CYCLOS SECURITIES S.A.			a		a	a				a	
39, PANEPISTIMIOU STR. ATHINA	(210)-3364300	(210)-3239122									
D.A. TSEKOURAS SEC. S.A.			a								
3, PESMAZOGLOU STR. ATHINA	(210)-3214406	(210)-3211997									
DEUTSCHE BANK S.A.			a	a							
70, THEODOR-HEUSS-ALLEE FRANKFURT	0049 69 910 00	0049 69 910 34 225									
DYNAMIC SECURITIES			a					a		a	
6 - 10, CHAR. TRIKOUPI STR. ATHINA	(210)-3677700	(210)-3677777									
EL. PETROPOULAKIS SECURITIES S.A.			a					a			a
9, ARISTIDOU STR. ATHINA	(210)-3213928	(210)-3216810									
EUROBANK EQUITIES S.A.			a		a		a			a	
10, FILELLINON STR. ATHINA	(210)-3720000	(210)-3720001									
EUROBANK ERGASIAS S.A.									a		
8, OTHONOS STR. ATHINA	(210)-3337000	(210)-3233866									
	(210)-3337969	(210)-3245916									
EUROCORP SECURITIES S.A.			a			a				a	
14, FILIKIS ETAIRIAS SQ. ATHINA	(210)-7263500	(210)-7263666									
EUOTRUST BROKERAGE S.A.			a								
13-15, SOPHOCLEOUS STR. ATHINA	(210)-3363100	(210)-3238334									

Athex & ATHEXClear Members List

Member Name			Stock Market			Derivatives Market			ATHEXClear Member		
Address	Phone	Fax	Market Member	Remote Member	Market Maker	Proprietary	Market Maker	Agent	General Clearing	Direct Clearing	Non Clearing
EUROXX SECURITIES S.A.			a			a				a	
7, PALAIOLOGOU STR. CHALANDRI	(210)-6879400	(210)-6879401									
G.A. PERVANAS SECURITIES & INVESTMENT SERVICES CO S.A.			a			a					a
7 - 9, SOPHOCLEOUS STR. ATHINA	(210)-3251875	(210)-3210291									
GENERAL BANK OF GREECE S.A.									a		
87-89, ERMOY ATHINA	(210)-6976072	(210)-6976079									
, 109-111, MESOGEION AVE. ATHINA	(210)-6975000	(210)-6975706									
GLOBAL CAPITAL SECURITIES AND FINANCIAL SERVICES LTD			a	a							
5, LEMESOU AVE. LEMESOS CYPRUS	(+35722)-710710	(+35722)-339332									
GUARDIAN TRUST SECURITIES S.A			a		a	a					a
15, FILELLINON STR. ATHINA	(210)-3220402	(210)-3220498									
HELLENIC AMERICAN SEC. S.A.			a			a					
6, EVRIPIDOU STR. ATHINA	(210)-3311100	(210)-3215968									
HELLENIC BANK (INVESTMENTS) LTD			a	a							
31, KYRIAKOY MATSI AVE. NICOSIA	(+35722)-500100	(+35722)-500110									
HSBC BANK PLC									a		
109-111, MESOGION AVE ATHINA	(210)-6961507	(210)-6929310									
INDEX SECURITIES S.A.			a								
6, DRAGATSANIOU STR. ATHINA	(210)-3213920	(210)-3213216									
INTERSEC S.A.						a				a	
80-88, SYGROU AVE ATHINA	(210)-9203000	(210)-9203052									
INVESTMENT BANK OF GREECE S.A.			a		a		a		a		
32, AIGEIALIAS MAROUSI	(210) 8173000	(210) 8173101									
24B, KIFISSIAS AVE MAROUSI	(210)-8171800	(210)-8171889									
J. CHR. MAVRIKIS SECURITIES S.A.			a								
5, SOPHOCLEOUS STR. ATHINA	(210)-3213949	(210)-3217767									
KAPPA SECURITIES S.A.			a			a					a
15, VALAORITOU STR. ATHINA	(210)-3610371	(210)-3641002									
KYPROU SECURITIES S.A.			a		a	a					a
26, HALKIDONOS & FIDIPPIDOY STR. ATHINA	(210)-8701000	(210)-8701049									
LAIKI FINANCIAL SERVICES LTD			a	a							
26, CLR HOUSE, VIRONOS AVE. NICOSIA	(+35722)-898600	(+35722)-680953									
LEON DEPOLAS SECURITIES S.A.			a					a			a
1, CHR. LADA STR. ATHINA	(210)-3213286	(210)-3211618									
MAGNA TRUST SECURITIES S.A			a					a			a
9, FIDIOU STR. ATHINA	(210)-3327503	(210)-3327599									
MEGA EQUITY SECURITIES & FINANCIAL SERVICES LTD			a	a							
42-44, GRIBA DIGENI AV. NICOSIA	(+35722)-711711	(+35722)-711811									
MERIT SECURITIES S.A			a		a	a				a	
38, VAS. KONSTANTINOY STR. ATHINA	(210)-3671800	(210)-3671830									
MERRILL LYNCH			a	a							
2, KING EDWARD STREET LONDON	(+4420)-79952000	(+4420)-79954525									
METOCHIKI SECURITIES S.A.			a								
3, G. GENNADIOY STR. ATHINA	(210)-3306700	(210)-3306709									
MIDAS BROKERAGE S.A.			a								
5, SOPHOCLEOUS STR. ATHINA	(210)-3253203	(210)-3253205									
N. CHRYSOCHOIDIS STOCK BROKERAGE I.S.S.A.			a					a		a	
7 - 9, SOPHOCLEOUS STR. ATHINA	(210)-3213913	(210)-3216115									
N. SARROS SECURITIES S.A.						a					
7-9, SOPHOCLEOUS STR. ATHINA	(210)-3705600	(210)-3219992									
NATIONAL BANK OF GREECE S.A.							a		a		
86, AIOLOU STR. ATHINA	(210)-3341000	(210)-3228187									
68, AKADIMIAS STR. ATHINA	(210)-3328817	(210)-3328678									
NBG SECURITIES S.A.			a		a		a				a
68, AKADIMIAS STR. ATHINA	(210)-3328500	(210)-3328565									
NEW PROTON BANK S.A.			a			a				a	
20, ESLIN & AMALIADOS ATHINA	210 6970000	210 6970111									
NUNTIUS SECURITIES S.A			a					a			a
6, DRAGATSANIOU STR. ATHINA	(210)-3350599	(210)-3254846									
OLYMPIA SECURITIES S.A			a								
46B, A. METAXA STR. GLYFADA	(210)-3702500	(210)-3702520									
ORANGE PARTNERS SECURITIES S.A			a								
5, TZORTZ STR. ATHINA	(210)-3300009	(210)-3305240									

Athex & ATHEXClear Members List

Member Name			Stock Market			Derivatives Market			ATHEXClear Member		
Address	Phone	Fax	Market Member	Remote Member	Market Maker	Proprietary	Market Maker	Agent	General Clearing	Direct Clearing	Non Clearing
PANTELAKIS SEC. S.A.			a			a					a
109-111, MESOGION AVE. ATHINA	(210)-6965000	(210)-6929550									
PEGASUS BROKERAGE FIRM S.A			a			a					
17, VALAORITOU STR. ATHINA	(210)-3670700	(210)-3670760									
PIRAEUS BANK S.A.								a	a		
4, AMERIKIS STR ATHINA	(210)-3335918	(210)-3254207									
4, AMERIKIS STR. ATHINA	(210)-3335000	(210)-3335079									
PIRAEUS SECURITIES S.A.			a				a			a	
10, STADIOU STR. ATHINA	(210)-3354100	(210)-3233814									
PRELIUM SECURITIES & INVESTMENT SERVICES S.A.			a			a					a
, KIFISSIAS AVE & 1 DAVAKI STR ATHINA	(210)-3677000	(210)-6920403									
PROBANK S.A.			a								
10, AMERIKIS STR. ATHINA	(210)-3392631	(210)-3392646									
PROCHOICE SECURITIES LTD			a	a							
57, SPYROU KYPRIANOY NICOSIA	+357-24-661192	+357-24-662464									
SHARELINK SECURITIES & FINANCIAL SERVICES LTD			a	a							
6, ELLINAS HOUSE, THEOTOKI STR. NICOSIA	(+35722)-554200	(+35722)-750852									
SOCIETE GENERALE S.A.			a	a		a					
17, COURS VALMY PUTEAUX - LA DEFENSE PARIS	(+33) 142134754	(+33) 142135697									
240-242, KIFISSIAS AVE ATHINA	(210)-6790161	(210)-6728828									
SOLIDUS SECURITIES S.A			a			a				a	
64, LOUIZIS RIANKOUR STR. ATHINA	(210)-6925500	(210)-6985421									
SOTIRIADIS SECURITIES S.A.			a								
7, VALAORITOU STR. ATHINA	(210)-3636943	(210)-3601943									
ST. EM. LAVRENTAKIS SECURITIES S.A.			a			a					a
7 - 9, SOPHOCLEOUS STR. ATHINA	(210)-3213336	(210)-3246572									
THE CYPRUS INVESTMENT AND SECURITIES CORPORATION LIMITED (CISCO)			a	a							
4, EVROU STR. (EUROLIFE HOUSE) NICOSIA	(+35722)-881800	(+35722)-881801									
UBS LIMITED			a	a							
1, FINSBURY AVENUE LONDON	(+4420)-79013333	(+4420)-79012345									
Z.G. PORTALAKIS INVESTMENT SERVICES S.A.			a								
8, PESMAZOGLOU STR. ATHINA	(210)-3214830	(210)-3212024									
KARAMANOF SECURITIES & INV. SERVICES S.A.			a					a		a	
2, SQ. ST THEODORON ATHINA	(210)-3212947	(210)-3217088									

List of Stocks under Market Making operations

Stocks	Stock Category	
	Start Market Making	End Market Making
COCA - COLA HBC (CR)	Low Dispersion	
EUROBANK EQUITIES S.A.	23/10/2012	22/10/2013
INVESTMENT BANK OF GREECE S.A.	08/01/2013	07/01/2014
NBG SECURITIES S.A.	25/06/2012	24/06/2013
BANK OF CYPRUS (CR)	Under Suspension	
EUROBANK EQUITIES S.A.	23/10/2012	22/10/2013
INVESTMENT BANK OF GREECE S.A.	02/01/2013	01/01/2014
NBG SECURITIES S.A.	25/06/2012	24/06/2013
CYPRUS POPULAR BANK (CR)	Under Suspension	
NBG SECURITIES S.A.	02/06/2012	01/06/2013
PIRAEUS SECURITIES S.A.	02/02/2013	01/02/2014
ALPHA BANK (CR)	Main Market	
EUROBANK EQUITIES S.A.	24/10/2012	23/10/2013
INVESTMENT BANK OF GREECE S.A.	08/01/2013	07/01/2014
MERIT SECURITIES S.A.	03/09/2012	02/09/2013
NBG SECURITIES S.A.	15/01/2013	14/01/2014
PIRAEUS SECURITIES S.A.	28/05/2012	27/05/2013
ALUMIL (CR)	Main Market	
BETA SECURITIES S.A.	18/07/2012	17/07/2013
BYTE COMPUTER SA (CR)	Main Market	
MERIT SECURITIES S.A.	04/08/2012	03/08/2013
CC HBC AG (CR)	Main Market	
NBG SECURITIES S.A.	29/04/2013	28/04/2014
ELLAKTOR (CR)	Main Market	
EUROBANK EQUITIES S.A.	01/06/2012	31/05/2013
INVESTMENT BANK OF GREECE S.A.	02/01/2013	01/01/2014
NBG SECURITIES S.A.	25/06/2012	24/06/2013
ELTON SA (CR)	Main Market	
BETA SECURITIES S.A.	03/09/2012	02/09/2013
EUROBANK ERGASIAS (CR)	Main Market	
ALPHA FINANCE INVESTMENT SERVICES S.A.	08/01/2013	07/01/2014
EUROBANK EQUITIES S.A.	01/06/2012	31/05/2013
INVESTMENT BANK OF GREECE S.A.	08/01/2013	07/01/2014
FRIGOGLASS SA (CR)	Main Market	
EUROBANK EQUITIES S.A.	18/07/2012	17/07/2013
GEK TERNA (CR)	Main Market	
INVESTMENT BANK OF GREECE S.A.	02/01/2013	01/01/2014
GR. SARANTIS SA (CR)	Main Market	
BETA SECURITIES S.A.	14/05/2012	13/05/2013
HELLENIC EXCHANGES (CR)	Main Market	
EUROBANK EQUITIES S.A.	01/06/2012	31/05/2013
INVESTMENT BANK OF GREECE S.A.	02/01/2013	01/01/2014
NBG SECURITIES S.A.	25/06/2012	24/06/2013
INTRACOM CONSTR. (CR)	Main Market	
MERIT SECURITIES S.A.	27/12/2012	26/12/2013
INTRALOT (CR)	Main Market	
EUROBANK EQUITIES S.A.	01/06/2012	31/05/2013
INVESTMENT BANK OF GREECE S.A.	02/01/2013	01/01/2014
MARFIN INVESTMENT GROUP (CR)	Main Market	
PIRAEUS SECURITIES S.A.	02/02/2013	01/02/2014
MLS MULTIMEDIA SA (CR)	Main Market	
BETA SECURITIES S.A.	28/05/2012	27/05/2013
MOTOR OIL (CR)	Main Market	
EUROBANK EQUITIES S.A.	23/10/2012	22/10/2013
MYTILINEOS HOLDINGS (CR)	Main Market	
INVESTMENT BANK OF GREECE S.A.	02/01/2013	01/01/2014
NBG SECURITIES S.A.	25/06/2012	24/06/2013
NATIONAL BANK (CR)	Main Market	
ALPHA FINANCE INVESTMENT SERVICES S.A.	08/01/2013	07/01/2014
EUROBANK EQUITIES S.A.	24/10/2012	23/10/2013
INVESTMENT BANK OF GREECE S.A.	08/01/2013	07/01/2014
MERIT SECURITIES S.A.	03/09/2012	02/09/2013
NBG SECURITIES S.A.	28/02/2013	27/02/2014
OPAP (CR)	Main Market	
ALPHA FINANCE INVESTMENT SERVICES S.A.	08/01/2013	07/01/2014
EUROBANK EQUITIES S.A.	24/10/2012	23/10/2013
INVESTMENT BANK OF GREECE S.A.	08/01/2013	07/01/2014
NBG SECURITIES S.A.	15/01/2013	14/01/2014

List of Stocks under Market Making operations

Stocks	Stock Category	
	Start Market Making	End Market Making
Market Maker		
OTE (CR)	Main Market	
ALPHA FINANCE INVESTMENT SERVICES S.A.	08/01/2013	07/01/2014
EUROBANK EQUITIES S.A.	24/10/2012	23/10/2013
INVESTMENT BANK OF GREECE S.A.	08/01/2013	07/01/2014
NBG SECURITIES S.A.	01/12/2012	30/11/2013
PETROPOULOS PETROS (CR)	Main Market	
BETA SECURITIES S.A.	28/05/2012	27/05/2013
PIRAEUS BANK (CR)	Main Market	
EUROBANK EQUITIES S.A.	23/10/2012	22/10/2013
INVESTMENT BANK OF GREECE S.A.	08/01/2013	07/01/2014
NBG SECURITIES S.A.	02/06/2012	01/06/2013
PIRAEUS SECURITIES S.A.	16/02/2013	15/02/2014
PPC (CR)	Main Market	
ALPHA FINANCE INVESTMENT SERVICES S.A.	08/01/2013	07/01/2014
EUROBANK EQUITIES S.A.	23/10/2012	22/10/2013
INVESTMENT BANK OF GREECE S.A.	08/01/2013	07/01/2014
NBG SECURITIES S.A.	26/03/2013	25/03/2014
TITAN CEMENT (CR)	Main Market	
EUROBANK EQUITIES S.A.	23/10/2012	22/10/2013
VIOHALCO (CB)	Main Market	
ALPHA FINANCE INVESTMENT SERVICES S.A.	11/02/2013	10/03/2014
EUROBANK EQUITIES S.A.	20/01/2013	19/01/2014
MERIT SECURITIES S.A.	13/12/2012	12/12/2013

Underlying Asset				Derivatives Market																		
Price max	Price min	Closing price	change	Delivery Month	Open price	Price max	Price min	Last price	Closing price	Last Bid	Last Ask	Settlement price	change	Life high	Life low	Trades	Volume	change	Value	change	Open Interest	change
FTSE/Athex Large Cap				(Trade Unit: 1 Index Point x 5€, Cash Settlement)																		
327.86	317.15	322.33	-1.04%	June 2013	330.25	333.00	317.25	327.00	327.75	6@326.50	90@328.50	327.75	0.00%	344.25	246.50	675	5,535	29.84%	8,972,645.00	28.22%	35,517	3.27%
				September 2013	---	---	---	---	---	---	---	---	---	---	---	---	---	---	---	---	---	---
				December 2013	---	---	---	---	---	---	---	---	---	---	---	---	---	---	---	---	---	---
				March 2014	---	---	---	---	---	---	---	---	---	---	---	---	---	---	---	---	---	---

Underlying Asset				Derivatives Market																		
Price max	Price min	Closing price	change	Delivery Month	Open price	Price max	Price min	Last price	Closing price	Last Bid	Last Ask	Settlement price	change	Life high	Life low	Trades	Volume	change	Value	change	Open Interest	change
ALPHA BANK (CR)				(Contract Size: 100 Stocks, Physical Delivery)																		
1.10	0.961	0.961	-12.64%	June 2013	---	---	---	---	0.961	---	---	0.961	-12.64%	1.95	0.422	---	---	---	---	---	---	
				September 2013	---	---	---	---	0.961	---	---	0.961	-12.64%	1.46	0.721	---	---	---	---	---	---	
				December 2013	---	---	---	---	---	---	---	---	---	---	---	---	---	---	---	---	---	
				March 2014	---	---	---	---	---	---	---	---	---	---	---	---	---	---	---	---	---	
BANK OF CYPRUS (CR)				(Contract Size: 100 Stocks, Physical Delivery)																		
		0.207	0.00%	June 2013	---	---	---	---	0.207	---	---	0.207	0.00%	0.275	0.172	---	---	---	---	---	15,754 0.00%	
				September 2013	---	---	---	---	---	---	---	---	---	---	---	---	---	---	---	---	---	
				December 2013	---	---	---	---	---	---	---	---	---	---	---	---	---	---	---	---	---	
				March 2014	---	---	---	---	---	---	---	---	---	---	---	---	---	---	---	---	---	
COCA - COLA HBC (CR)				(Contract Size: 100 Stocks, Physical Delivery)																		
19.25	18.50	18.73	-0.27%	June 2013	---	---	---	---	18.40	---	---	18.40	0.00%	22.71	16.62	---	---	---	---	---	---	-100.00%
				September 2013	---	---	---	---	18.40	---	---	18.40	0.00%	22.34	19.80	---	---	---	---	---	---	---
				December 2013	---	---	---	---	---	---	---	---	---	---	---	---	---	---	---	---	---	---
				March 2014	---	---	---	---	---	---	---	---	---	---	---	---	---	---	---	---	---	---
ELLAKTOR (CR)				(Contract Size: 100 Stocks, Physical Delivery)																		
2.10	2.01	2.07	-1.90%	June 2013	2.08	2.08	2.02	2.07	2.07	3@2.07	3@2.08	2.07	-2.36%	2.34	1.38	67	484	572.22%	99,450.00	548.98%	6,406	-3.74%
				September 2013	---	---	---	---	2.09	---	3@2.12	2.09	-2.34%	2.21	1.73	---	---	---	---	---	---	---
				December 2013	---	---	---	---	2.06	---	---	2.06	-2.37%	2.13	2.11	---	---	---	---	---	---	---
				March 2014	---	---	---	---	---	---	---	---	---	---	---	---	---	---	---	---	---	---
EUROBANK ERGASIAS (CR)				(Contract Size: 100 Stocks, Physical Delivery)																		
0.230	0.196	0.196	-14.41%	June 2013	0.192	0.194	0.180	0.180	0.172	33@0.180	50@0.184	0.172	-14.43%	0.639	0.093	35	585	-21.69%	10,888.50	-31.42%	6,827	-1.71%
				September 2013	---	---	---	---	---	---	50@0.194	---	---	---	---	---	---	---	---	---	---	---
				December 2013	---	---	---	---	---	---	---	---	---	---	---	---	---	---	---	---	---	---
				March 2014	---	---	---	---	---	---	---	---	---	---	---	---	---	---	---	---	---	---
EUROBANK PROPERTIES REIC (CR)				(Contract Size: 100 Stocks, Physical Delivery)																		
6.28	6.07	6.28	3.46%	June 2013	6.13	6.17	6.11	6.17	6.34	---	1@6.19	6.34	3.43%	6.17	5.40	6	18	260.00%	11,026.00	268.15%	148	0.68%
				September 2013	---	---	---	---	---	---	1@6.29	---	---	---	---	---	---	---	---	---	---	---
				December 2013	---	---	---	---	---	---	---	---	---	---	---	---	---	---	---	---	---	---
				March 2014	---	---	---	---	---	---	---	---	---	---	---	---	---	---	---	---	---	---
FRIGOGLASS SA (CR)				(Contract Size: 100 Stocks, Physical Delivery)																		
5.05	4.87	5.05	-0.39%	June 2013	4.96	5.04	4.96	5.00	5.27	1@4.93	4@5.04	5.27	-0.38%	5.42	3.91	4	13	-87.74%	6,496.00	-87.88%	348	0.00%
				September 2013	---	---	---	---	---	---	4@5.13	---	---	---	---	---	---	---	---	---	---	---
				December 2013	---	---	---	---	---	---	---	---	---	---	---	---	---	---	---	---	---	---
				March 2014	---	---	---	---	---	---	---	---	---	---	---	---	---	---	---	---	---	---
GEK TERNA (CR)				(Contract Size: 100 Stocks, Physical Delivery)																		
2.07	1.99	2.03	-0.98%	June 2013	2.06	2.07	1.98	2.04	2.08	10@2.04	7@2.07	2.08	-0.95%	2.71	1.37	110	1,257	133.21%	254,608.00	120.93%	32,279	0.73%
				September 2013	2.00	2.00	2.00	2.00	2.06	---	7@2.11	2.06	-2.37%	2.62	1.45	1	50	---	10,000.00	---	375	15.38%
				December 2013	---	---	---	---	2.15	---	---	2.15	-0.92%	2.24	1.57	---	---	-100.00%	---	-100.00%	225	0.00%
				March 2014	---	---	---	---	---	---	---	---	---	---	---	---	---	---	---	---	---	---

Underlying Asset				Derivatives Market																		
Price max	Price min	Closing price	change	Delivery Month	Open price	Price max	Price min	Last price	Closing price	Last Bid	Last Ask	Settlement price	change	Life high	Life low	Trades	Volume	change	Value	change	Open Interest	change
HELL. DUTY FREE SHOPS SA (CR)				(Contract Size: 100 Stocks, Physical Delivery)																		
16.20	15.50	15.88	0.51%	June 2013	15.68	15.90	15.67	15.67	15.95	12@14.50	1@16.00	15.95	0.50%	16.50	11.71	3	15	200.00%	23,625.00	197.92%	288	0.00%
				September 2013	---	---	---	---	---	---	1@16.18	---	---	---	---	---	---	---	---	---	---	---
				December 2013	---	---	---	---	---	---	---	---	---	---	---	---	---	---	---	---	---	---
				March 2014	---	---	---	---	---	---	---	---	---	---	---	---	---	---	---	---	---	---
HELLENIC EXCHANGES (CR)				(Contract Size: 100 Stocks, Physical Delivery)																		
5.10	4.94	5.09	1.60%	June 2013	4.95	5.07	4.90	5.07	5.03	4@5.01	1@5.06	5.03	1.62%	5.46	3.28	24	62	113.79%	30,895.00	114.15%	1,251	-0.40%
				September 2013	---	---	---	---	5.08	---	1@5.11	5.08	1.60%	5.17	3.82	---	---	---	---	---	58	0.00%
				December 2013	---	---	---	---	5.09	---	---	5.09	1.60%	5.01	4.01	---	---	---	---	---	---	---
				March 2014	---	---	---	---	---	---	---	---	---	---	---	---	---	---	---	---	---	---
HELLENIC PETROLEUM (CR)				(Contract Size: 100 Stocks, Physical Delivery)																		
8.40	8.04	8.40	3.45%	June 2013	8.17	8.35	8.17	8.33	8.34	1@8.15	1@8.37	8.34	0.72%	8.47	6.70	17	87	77.55%	72,191.00	81.10%	1,789	1.13%
				September 2013	---	---	---	---	---	---	1@8.42	---	---	---	---	---	---	---	---	---	---	---
				December 2013	---	---	---	---	---	---	---	---	---	---	---	---	---	---	---	---	---	---
				March 2014	---	---	---	---	---	---	---	---	---	---	---	---	---	---	---	---	---	---
INTRALOT (CR)				(Contract Size: 100 Stocks, Physical Delivery)																		
2.09	2.04	2.08	0.97%	June 2013	2.06	2.09	2.03	2.06	2.11	2@2.07	4@2.09	2.11	0.96%	2.26	1.47	48	556	1058.33%	114,256.00	1071.86%	4,559	-7.21%
				September 2013	---	---	---	---	2.15	---	4@2.13	2.15	0.94%	2.05	1.69	---	---	---	---	---	24	0.00%
				December 2013	---	---	---	---	---	---	---	---	---	---	---	---	---	---	---	---	---	---
				March 2014	---	---	---	---	---	---	---	---	---	---	---	---	---	---	---	---	---	---
JUMBO SA (CR)				(Contract Size: 100 Stocks, Physical Delivery)																		
7.30	6.73	7.15	2.29%	June 2013	6.96	7.28	6.86	7.15	7.14	1@7.10	10@7.30	7.14	2.29%	7.30	4.93	12	45	-28.57%	31,481.00	-30.07%	455	6.06%
				September 2013	---	---	---	---	---	---	10@7.36	---	---	---	---	---	---	---	---	---	---	---
				December 2013	---	---	---	---	---	---	---	---	---	---	---	---	---	---	---	---	---	---
				March 2014	---	---	---	---	---	---	---	---	---	---	---	---	---	---	---	---	---	---
MARFIN INVESTMENT GROUP (CR)				(Contract Size: 100 Stocks, Physical Delivery)																		
0.335	0.314	0.335	1.21%	June 2013	0.331	0.338	0.320	0.337	0.338	53@0.332	33@0.337	0.338	1.20%	0.531	0.176	34	350	116.05%	11,441.20	108.12%	15,493	1.39%
				September 2013	---	---	---	---	---	---	33@0.347	---	---	---	---	---	---	---	---	---	---	---
				December 2013	---	---	---	---	---	---	---	---	---	---	---	---	---	---	---	---	---	---
				March 2014	---	---	---	---	---	---	---	---	---	---	---	---	---	---	---	---	---	---
METKA (CR)				(Contract Size: 100 Stocks, Physical Delivery)																		
11.60	11.22	11.53	0.88%	June 2013	---	---	---	---	11.45	2@11.35	1@11.49	11.45	0.88%	12.14	8.90	---	---	-100.00%	---	-100.00%	391	0.00%
				September 2013	---	---	---	---	11.62	---	1@11.62	11.62	0.87%	11.09	10.81	---	---	---	---	---	15	0.00%
				December 2013	---	---	---	---	---	---	---	---	---	---	---	---	---	---	---	---	---	---
				March 2014	---	---	---	---	---	---	---	---	---	---	---	---	---	---	---	---	---	---
MOTOR OIL (CR)				(Contract Size: 100 Stocks, Physical Delivery)																		
8.50	8.19	8.38	1.45%	June 2013	8.39	8.45	8.28	8.45	8.45	50@7.45	3@8.46	8.45	2.67%	8.82	7.02	14	32	33.33%	26,894.00	34.40%	372	-4.37%
				September 2013	---	---	---	---	---	---	3@8.52	---	---	---	---	---	---	---	---	---	---	---
				December 2013	---	---	---	---	---	---	---	---	---	---	---	---	---	---	---	---	---	---
				March 2014	---	---	---	---	---	---	---	---	---	---	---	---	---	---	---	---	---	---

Underlying Asset				Derivatives Market																		
Price max	Price min	Closing price	change	Delivery Month	Open price	Price max	Price min	Last price	Closing price	Last Bid	Last Ask	Settlement price	change	Life high	Life low	Trades	Volume	change	Value	change	Open Interest	change
MYTILNEOS HOLDINGS (CR)				(Contract Size: 100 Stocks, Physical Delivery)																		
4.79	4.57	4.70	0.64%	June 2013	4.66	4.77	4.60	4.71	4.73	10@4.71	39@4.74	4.73	1.94%	5.50	3.32	44	219	3.30%	102,615.00	3.30%	6,007	-0.81%
				September 2013	4.58	4.73	4.58	4.73	4.71	---	39@4.79	4.71	0.21%	5.50	3.50	6	104	---	48,201.00	---	37	0.00%
				December 2013	---	---	---	---	4.73	---	---	4.73	1.94%	4.23	3.70	---	---	---	---	---	---	---
				March 2014	---	---	---	---	---	---	---	---	---	---	---	---	---	---	---	---	---	---
NATIONAL BANK (CR)				(Contract Size: 100 Stocks, Physical Delivery)																		
0.755	0.635	0.635	-19.11%	June 2013	0.765	0.765	0.625	0.630	0.637	10@0.629	9@0.630	0.637	-18.02%	2.28	0.276	624	11,468	-47.20%	782,139.90	-52.91%	58,267	-3.18%
				September 2013	---	---	---	---	0.597	90@0.451	9@0.640	0.597	-17.99%	1.36	0.344	---	---	---	---	---	100	0.00%
				December 2013	---	---	---	---	---	---	---	---	---	---	---	---	---	---	---	---	---	---
				March 2014	---	---	---	---	---	---	---	---	---	---	---	---	---	---	---	---	---	---
OPAP (CR)				(Contract Size: 100 Stocks, Physical Delivery)																		
7.49	6.75	7.49	8.87%	June 2013	6.45	6.97	6.39	6.85	6.82	2@6.84	1@6.90	6.82	6.40%	7.47	4.19	244	1,675	479.58%	1,127,505.00	512.01%	7,289	-5.88%
				September 2013	---	---	---	---	6.82	---	1@6.96	6.82	6.40%	6.72	5.90	---	---	---	---	---	1	0.00%
				December 2013	---	---	---	---	---	---	---	---	---	---	---	---	---	---	---	---	---	---
				March 2014	---	---	---	---	---	---	---	---	---	---	---	---	---	---	---	---	---	---
OTE (CR)				(Contract Size: 100 Stocks, Physical Delivery)																		
6.79	6.53	6.60	1.54%	June 2013	6.54	6.78	6.47	6.50	6.70	13@6.49	49@6.50	6.70	2.76%	6.78	2.95	484	7,690	310.13%	5,128,554.00	319.26%	12,185	-26.73%
				September 2013	6.77	6.77	6.57	6.57	6.70	---	49@6.55	6.70	2.60%	6.77	4.35	10	860	32.31%	571,970.00	34.59%	310	-58.67%
				December 2013	6.61	6.62	6.60	6.60	6.75	---	---	6.75	3.37%	6.62	4.40	3	300	---	198,075.00	---	300	---
				March 2014	---	---	---	---	---	---	---	---	---	---	---	---	---	---	---	---	---	---
P.P.A. S.A. (CR)				(Contract Size: 100 Stocks, Physical Delivery)																		
19.40	18.76	19.09	1.76%	June 2013	19.00	19.24	19.00	19.00	18.80	1@18.77	1@19.30	18.80	1.79%	19.30	14.74	3	8	-70.37%	15,320.00	-69.79%	100	1.01%
				September 2013	---	---	---	---	---	---	---	---	---	---	---	---	---	---	---	---	---	---
				December 2013	---	---	---	---	---	---	---	---	---	---	---	---	---	---	---	---	---	---
				March 2014	---	---	---	---	---	---	---	---	---	---	---	---	---	---	---	---	---	---
PIRAEUS BANK (CR)				(Contract Size: 100 Stocks, Physical Delivery)																		
0.232	0.206	0.212	-7.83%	June 2013	---	---	---	---	0.212	---	---	0.212	-7.83%	0.659	0.080	---	---	-100.00%	---	-100.00%	---	-100.00%
				September 2013	---	---	---	---	0.212	---	---	0.212	-7.83%	0.322	0.169	---	---	---	---	---	---	-100.00%
				December 2013	---	---	---	---	0.212	---	---	0.212	-7.83%	0.244	0.231	---	---	---	---	---	---	---
				March 2014	---	---	---	---	---	---	---	---	---	---	---	---	---	---	---	---	---	---
PPC (CR)				(Contract Size: 100 Stocks, Physical Delivery)																		
7.36	6.87	7.36	5.29%	June 2013	7.00	7.30	6.90	7.24	7.20	10@7.23	9@7.24	7.20	3.90%	8.20	3.54	237	1,642	28.89%	1,166,854.00	30.39%	5,043	-8.14%
				September 2013	7.00	7.32	7.00	7.32	7.20	---	9@7.28	7.20	3.90%	7.80	4.58	3	106	-57.60%	74,392.00	-57.35%	22	-80.87%
				December 2013	---	---	---	---	7.23	---	---	7.23	3.88%	6.63	5.08	---	---	---	---	---	---	---
				March 2014	---	---	---	---	---	---	---	---	---	---	---	---	---	---	---	---	---	---
SIDENOR (CR)				(Contract Size: 100 Stocks, Physical Delivery)																		
1.59	1.51	1.54	-4.94%	June 2013	1.60	1.60	1.55	1.58	1.53	2@1.54	3@1.59	1.53	-4.97%	1.82	1.03	17	53	-17.19%	8,339.00	-20.16%	1,769	1.96%
				September 2013	---	---	---	---	---	---	3@1.62	---	---	---	---	---	---	---	---	---	---	---
				December 2013	---	---	---	---	---	---	---	---	---	---	---	---	---	---	---	---	---	---
				March 2014	---	---	---	---	---	---	---	---	---	---	---	---	---	---	---	---	---	---

Underlying Asset				Derivatives Market																		
Price max	Price min	Closing price	change	Delivery Month	Open price	Price max	Price min	Last price	Closing price	Last Bid	Last Ask	Settlement price	change	Life high	Life low	Trades	Volume	change	Value	change	Open Interest	change
TERNA ENERGY (CR)				(Contract Size: 100 Stocks, Physical Delivery)																		
3.40	3.18	3.36	2.44%	June 2013	3.26	3.47	3.21	3.47	3.40	10@3.35	1@3.45	3.40	3.03%	3.47	2.27	27	234	485.00%	77,378.00	490.67%	4,301	2.09%
				September 2013	---	---	---	---	---	---	1@3.50	---	---	---	---	---	---	---	---	---	---	---
				December 2013	---	---	---	---	---	---	---	---	---	---	---	---	---	---	---	---	---	---
				March 2014	---	---	---	---	---	---	---	---	---	---	---	---	---	---	---	---	---	---
TITAN CEMENT (CR)				(Contract Size: 100 Stocks, Physical Delivery)																		
14.10	13.70	14.10	1.81%	June 2013	13.85	13.85	13.85	13.85	14.11	1@13.86	1@14.30	14.11	1.80%	14.93	11.50	1	1	-75.00%	1,385.00	-75.13%	205	0.00%
				September 2013	---	---	---	---	---	---	1@14.39	---	---	---	---	---	---	---	---	---	---	---
				December 2013	---	---	---	---	---	---	---	---	---	---	---	---	---	---	---	---	---	---
				March 2014	---	---	---	---	---	---	---	---	---	---	---	---	---	---	---	---	---	---
VIOHALCO (CB)				(Contract Size: 100 Stocks, Physical Delivery)																		
4.67	4.20	4.67	7.36%	June 2013	4.32	4.54	4.28	4.54	4.65	2@4.50	1@4.56	4.65	7.39%	4.72	3.11	22	36	-5.26%	15,821.00	-4.16%	798	0.76%
				September 2013	---	---	---	---	---	---	1@4.60	---	---	---	---	---	---	---	---	---	---	---
				December 2013	---	---	---	---	---	---	---	---	---	---	---	---	---	---	---	---	---	---
				March 2014	---	---	---	---	---	---	---	---	---	---	---	---	---	---	---	---	---	---

FTSE/Athex Large Cap

(Trade Unit: 1 Index Point x 5€ - Excercise Style: European, Cash Settlement)

Call Options																	Put Options																	
	May 2013							June 2013							Other Months		May 2013								June 2013							Other Months		
Exerise Price	Open price	Price max	Price min	Last price	Closing price	Volume	Open Interest	Open price	Price max	Price min	Last price	Closing price	Volume	Open Interest	Volume	Open Interest	Open price	Price max	Price min	Last price	Closing price	Volume	Open Interest	Open price	Price max	Price min	Last price	Closing price	Volume	Open Interest	Volume	Open Interest	Exerise Price	
190	-	-	-	-	-	-	-	-	-	-	-	-	-	-	-	-	-	-	-	-	-	-	-	-	-	-	-	-	-	-	-	190		
195	-	-	-	-	-	-	-	-	-	-	-	-	-	-	-	-	-	-	-	-	-	-	-	-	-	-	-	-	-	-	-	195		
200	122.00	122.00	122.00	122.00	124.00	25	30	-	-	-	-	-	-	-	-	-	-	-	-	-	-	-	-	-	-	-	-	-	-	-	-	200		
205	-	-	-	-	-	-	-	-	-	-	-	-	-	-	-	-	-	-	-	-	-	-	-	-	-	-	-	-	-	-	-	205		
210	-	-	-	-	-	-	-	-	-	-	-	-	-	-	-	-	-	-	-	-	-	-	-	-	-	-	-	-	-	-	-	210		
215	-	-	-	-	-	-	-	-	-	-	-	112.00	-	15	-	-	-	-	-	-	-	-	-	-	-	-	-	-	-	-	-	215		
220	-	-	-	-	-	-	-	-	-	-	-	-	-	-	-	-	-	-	-	-	-	-	-	-	-	-	-	-	-	-	-	220		
225	-	-	-	-	-	-	-	-	-	-	-	-	-	-	-	-	-	-	-	-	-	-	-	-	-	-	-	-	-	-	-	225		
230	-	-	-	-	-	-	-	-	-	-	-	97.50	-	7	-	-	-	-	-	-	-	-	-	-	-	-	-	-	-	-	-	230		
235	-	-	-	-	-	-	-	-	-	-	-	-	-	-	-	-	-	-	-	-	-	-	-	-	-	-	-	-	-	-	-	235		
240	-	-	-	-	-	-	-	-	-	-	-	-	-	-	-	-	-	-	-	-	-	-	-	-	-	-	-	-	-	-	-	240		
245	-	-	-	-	-	-	-	-	-	-	-	-	-	-	-	-	-	-	-	-	-	-	-	-	-	-	0.33	-	90	-	-	245		
250	-	-	-	-	74.50	-	40	-	-	-	-	-	-	-	-	-	-	-	-	-	-	-	-	-	-	-	0.48	-	47	-	-	250		
255	-	-	-	-	-	-	-	-	-	-	-	73.00	-	30	-	-	-	-	-	-	0.04	-	20	-	-	-	-	-	-	-	-	-	255	
260	-	-	-	-	64.50	-	255	-	-	-	-	-	-	-	-	-	-	-	-	-	-	-	-	-	-	-	-	-	-	-	-	260		
265	-	-	-	-	59.50	-	20	-	-	-	-	-	-	-	-	-	-	-	-	-	0.15	-	10	-	-	-	-	-	-	-	-	265		
270	-	-	-	-	54.50	-	5	-	-	-	-	-	-	-	-	-	-	-	-	-	0.26	-	5	-	-	-	1.80	-	44	-	-	270		
275	-	-	-	-	49.75	-	165	-	-	-	-	-	-	-	-	-	-	-	-	-	0.43	-	63	-	-	-	-	-	-	-	-	275		
280	41.00	41.00	39.50	39.50	45.00	13	129	-	-	-	-	-	-	-	-	-	-	-	-	-	-	-	-	-	-	-	-	-	-	-	-	280		
285	-	-	-	-	40.50	-	30	-	-	-	-	-	-	-	-	-	-	-	-	-	1.10	-	27	-	-	-	-	-	-	-	-	285		
290	-	-	-	-	36.00	-	64	-	-	-	-	42.50	-	2	-	-	-	-	-	-	1.60	-	87	-	-	-	4.90	-	10	-	-	290		
295	-	-	-	-	31.75	-	182	-	-	-	-	-	-	-	-	-	-	-	-	-	2.30	-	2	-	-	-	-	-	-	-	-	295		
300	-	-	-	-	27.75	-	267	-	-	-	-	35.00	-	100	-	-	-	-	-	-	3.30	-	589	-	-	-	7.40	-	262	-	-	300		
305	-	-	-	-	24.00	-	110	-	-	-	-	-	-	-	-	-	5.00	5.00	5.00	5.00	4.50	50	86	-	-	-	-	-	-	-	-	305		
310	17.75	17.75	17.75	17.75	20.50	3	319	-	-	-	-	-	-	-	-	-	3.00	9.00	3.00	6.20	6.00	101	252	-	-	-	-	-	-	-	-	310		
315	16.00	16.00	16.00	16.00	17.25	20	136	-	-	-	-	25.50	-	315	-	-	10.00	10.00	10.00	10.00	7.80	5	75	-	-	-	-	12.75	-	20	-	-	315	
320	9.00	13.50	9.00	13.50	14.25	22	94	-	-	-	-	22.50	-	110	-	-	10.25	10.50	7.20	7.20	9.90	76	133	18.00	18.00	18.00	18.00	15.00	5	40	-	-	320	
325	-	-	-	-	11.75	-	32	-	-	-	-	20.00	-	130	-	-	13.50	13.50	13.50	13.50	12.25	2	5	-	-	-	-	17.25	-	31	-	-	325	
330	8.00	12.00	8.00	12.00	9.60	8	314	13.00	17.00	13.00	13.75	17.75	13	41	-	-	17.75	17.75	12.50	16.25	15.25	25	275	-	-	-	-	-	-	-	-	330		
335	4.00	8.00	4.00	8.00	7.70	3	72	10.00	15.50	10.00	13.00	15.50	21	42	-	-	-	-	-	-	-	-	-	-	-	-	-	-	-	-	-	335		
340	-	-	-	-	6.10	-	61	-	-	-	-	-	-	-	-	-	-	-	-	-	21.50	-	2	-	-	-	-	-	-	-	-	340		
345	2.00	2.00	2.00	2.00	4.80	4	4	-	-	-	-	-	-	-	-	-	-	-	-	-	25.25	-	248	-	-	-	-	-	-	-	-	345		
350	-	-	-	-	3.70	-	38	-	-	-	-	-	-	-	-	-	-	-	-	-	29.25	-	5	-	-	-	-	-	-	-	-	350		
355	-	-	-	-	2.80	-	10	-	-	-	-	-	-	-	-	-	-	-	-	-	-	-	-	-	-	-	-	-	-	-	-	355		
360	-	-	-	-	-	-	-	-	-	-	-	7.60	-	70	-	-	-	-	-	-	-	-	-	-	-	-	39.75	-	1	-	-	360		
365	-	-	-	-	-	-	-	-	-	-	-	-	-	-	-	-	-	-	-	-	-	-	-	-	-	-	-	-	-	-	-	365		

FTSE/Athex Large Cap

(Trade Unit: 1 Index Point x 5€ - Exercise Style: European, Cash Settlement)

Call Options																	Put Options																	
Exercise Price	May 2013							June 2013							Other Months		May 2013								June 2013							Other Months		Exercise Price
	Open price	Price max	Price min	Last price	Closing price	Volume	Open Interest	Open price	Price max	Price min	Last price	Closing price	Volume	Open Interest	Volume	Open Interest	Open price	Price max	Price min	Last price	Closing price	Volume	Open Interest	Open price	Price max	Price min	Last price	Closing price	Volume	Open Interest	Volume	Open Interest		
370	-	-	-	-	-	-	-	-	-	-	-	-	-	-			-	-	-	-	-	-	-	-	-	-	-	-	-	-	-	370		
375	-	-	-	-	-	-	-	-	-	-	-	-	-	-			-	-	-	-	-	-	-	-	-	-	-	-	-	-	-	375		
435	-	-	-	-	-	-	-	-	-	-	-	-	-	-			-	-	-	-	-	-	-	-	-	-	-	-	-	-	-	435		
440	-	-	-	-	-	-	-	-	-	-	-	-	-	-			-	-	-	-	115.00	-	28	-	-	-	-	112.00	-	244	-	440		
445	-	-	-	-	-	-	-	-	-	-	-	-	-	-			-	-	-	-	-	-	-	-	-	-	-	-	-	-	-	445		
550	-	-	-	-	-	-	-	-	-	-	-	-	-	-			-	-	-	-	-	-	-	-	-	-	-	221.00	-	1	-	550		
1,500	-	-	-	-	-	-	-	-	-	-	-	-	-	-			-	-	-	-	-	-	-	-	-	-	-	1,167.00	-	53	-	1,500		
Totals:						98	2,377							34	862	0	0	259						1,912							5	843	0	0
Nominal Transactions Value:						139,675.00								56,625.00		0.00		406,775.00								8,000.00		0.00						
Number of Trades:						13								13		0		20								1		0						

FTSE/Athex Large Cap (Trade Unit: 1 Index Point x 5€ - Exercise Style: European, Cash Settlement)

Call Options																Put Options																	
Exercise Price	May 2013							June 2013							Other Months		May 2013							June 2013							Other Months		Exercise Price
	Open price	Price max	Price min	Last price	Closing price	Volume	Open Interest	Open price	Price max	Price min	Last price	Closing price	Volume	Open Interest	Volume	Open Interest	Open price	Price max	Price min	Last price	Closing price	Volume	Open Interest	Open price	Price max	Price min	Last price	Closing price	Volume	Open Interest	Volume	Open Interest	

ALPHA BANK (CR)

(Contract Size: 100 Stocks, Exercise Style: American, Physical Delivery)

Call Options																	Put Options																			
June 2013								September 2013								Other Months		June 2013								September 2013								Other Months		
Exercise Price	Open price	Price max	Price min	Last price	Closing price	Volume	Open Interest	Open price	Price max	Price min	Last price	Closing price	Volume	Open Interest	Volume	Open Interest	Open price	Price max	Price min	Last price	Closing price	Volume	Open Interest	Open price	Price max	Price min	Last price	Closing price	Volume	Open Interest	Volume	Open Interest	Exercise Price			
0.100						-	-							-	-							-	-						-	-			0.100			
0.200						-	-							-	-							-	-						-	-			0.200			
0.300						-	-							-	-							-	-						-	-			0.300			
0.400						-	-							-	-							-	-						-	-			0.400			
0.500						-	-							-	-							-	-						-	-			0.500			
0.600						-	-							-	-							-	-						-	-			0.600			
0.700						-	-							-	-							-	-						-	-			0.700			
0.800						-	-							-	-							-	-						-	-			0.800			
0.850						-	-							-	-							-	-						-	-			0.850			
0.900						-	-							-	-							-	-						-	-			0.900			
0.950						-	-							-	-							-	-						-	-			0.950			
1.00						-	-							-	-							-	-						-	-			1.00			
1.05						-	-							-	-							-	-						-	-			1.05			
1.10						-	-							-	-							-	-						-	-			1.10			
1.15						-	-							-	-							-	-						-	-			1.15			
1.20						-	-							-	-							-	-						-	-			1.20			
1.30						-	-							-	-							-	-						-	-			1.30			
1.40						-	-							-	-							-	-						-	-			1.40			
1.45						-	-							-	-							-	-						-	-			1.45			
1.50						-	-							-	-							-	-						-	-			1.50			
1.55						-	-							-	-							-	-						-	-			1.55			
1.60						-	-							-	-							-	-						-	-			1.60			
1.65						-	-							-	-							-	-						-	-			1.65			
1.70						-	-							-	-							-	-						-	-			1.70			
1.75						-	-							-	-							-	-						-	-			1.75			
1.80						-	-							-	-							-	-						-	-			1.80			
1.90						-	-							-	-							-	-						-	-			1.90			
2.00						-	-							-	-							-	-						-	-			2.00			
2.20						-	-							-	-							-	-						-	-			2.20			
2.40						-	-							-	-							-	-						-	-			2.40			
2.60						-	-							-	-							-	-						-	-			2.60			
2.80						-	-							-	-							-	-						-	-			2.80			
Totals:						0	0							0	0	0	0							0	0							0	0			
Nominal Transactions Value:						0.00								0.00		0.00								0.00								0.00				
Number of Trades:						0								0		0								0								0				

NATIONAL BANK (CR)

(Contract Size: 100 Stocks, Exercise Style: American, Physical Delivery)

Call Options																	Put Options																			
June 2013								September 2013								Other Months		June 2013								September 2013								Other Months		
Exerise Price	Open price	Price max	Price min	Last price	Closing price	Volume	Open Interest	Open price	Price max	Price min	Last price	Closing price	Volume	Open Interest	Volume	Open Interest	Open price	Price max	Price min	Last price	Closing price	Volume	Open Interest	Open price	Price max	Price min	Last price	Closing price	Volume	Open Interest	Volume	Open Interest	Exerise Price			
0.100						-	-							-	-							-	-						-	-			0.100			
0.200						-	-							-	-							-	-						-	-			0.200			
0.300						-	-							-	-							-	-						-	-			0.300			
0.400						-	-							-	-							-	-						-	-			0.400			
0.500						-	-							-	-							-	-						-	-			0.500			
0.600						-	-							-	-							-	-						-	-			0.600			
0.700						-	-							-	-							-	-						-	-			0.700			
0.750						-	-							-	-							-	-						-	-			0.750			
0.800						-	-							-	-							-	-						-	-			0.800			
0.850						-	-							-	-							-	-						-	-			0.850			
0.900						-	-							-	-							-	-						-	-			0.900			
0.950						-	-							-	-							-	-						-	-			0.950			
1.00						-	-							-	-							-	-						-	-			1.00			
1.05						-	-							-	-							-	-						-	-			1.05			
1.10						-	-							-	-							-	-						-	-			1.10			
1.20					0.002	-	20							-	-							-	-						-	-			1.20			
1.25						-	-							-	-							-	-						-	-			1.25			
1.30						-	-							-	-							-	-						-	-			1.30			
1.35						-	-							-	-							-	-						-	-			1.35			
1.40						-	-							-	-							-	-						-	-			1.40			
1.45						-	-							-	-							-	-						-	-			1.45			
1.50						-	-							-	-							-	-						-	-			1.50			
1.55						-	-							-	-							-	-						-	-			1.55			
1.60						-	-							-	-							-	-						-	-			1.60			
1.70						-	-							-	-							-	-						-	-			1.70			
1.80						-	-							-	-							-	-						-	-			1.80			
1.90						-	-							-	-							-	-						-	-			1.90			
2.00						-	-							-	-							-	-						-	-			2.00			
2.20						-	-							-	-							-	-						-	-			2.20			
2.40						-	-							-	-							-	-						-	-			2.40			
2.60						-	-							-	-							-	-						-	-			2.60			
2.80						-	-							-	-							-	-						-	-			2.80			
Totals:						0	20							0	0	0	0							0	40							0	0	0	0	
Nominal Transactions Value:						0.00								0.00		0.00								0.00								0.00		0.00		
Number of Trades:						0								0		0								0								0		0		

OPAP (CR)

(Contract Size: 100 Stocks, Exercise Style: American, Physical Delivery)

Call Options																	Put Options												
																	</												

OTE (CR)

(Contract Size: 100 Stocks, Exercise Style: American, Physical Delivery)

Call Options																	Put Options																			
June 2013								September 2013								Other Months		June 2013								September 2013								Other Months		
Exerise Price	Open price	Price max	Price min	Last price	Closing price	Volume	Open Interest	Open price	Price max	Price min	Last price	Closing price	Volume	Open Interest	Volume	Open Interest	Open price	Price max	Price min	Last price	Closing price	Volume	Open Interest	Open price	Price max	Price min	Last price	Closing price	Volume	Open Interest	Volume	Open Interest	Exerise Price			
1.30						-	-						-	-								-	-					-	-				1.30			
1.40						-	-						-	-								-	-					-	-				1.40			
1.50						-	-						-	-								-	-					-	-				1.50			
1.60						-	-						-	-								-	-					-	-				1.60			
1.70						-	-						-	-								-	-					-	-				1.70			
1.80						-	-						-	-								-	-					-	-				1.80			
1.90						-	-						-	-								-	-					-	-				1.90			
2.00						-	-						-	-								-	-					-	-				2.00			
2.20						-	-						-	-								-	-					-	-				2.20			
2.40						-	-						-	-								-	-					-	-				2.40			
2.60						-	-						-	-								-	-					-	-				2.60			
2.80						-	-						-	-								-	-					-	-				2.80			
3.00						-	-						-	-								-	-					-	-				3.00			
3.20						-	-						-	-								-	-					-	-				3.20			
3.40						-	-						-	-								-	-					-	-				3.40			
3.60						-	-						-	-								-	-					-	-				3.60			
3.70						-	-						-	-								-	-					-	-				3.70			
3.80						-	-						-	-								-	-					-	-				3.80			
3.90						-	-						-	-								-	-					-	-				3.90			
4.00						-	-						-	-								-	-					-	-				4.00			
4.20						-	-						-	-								-	-					-	-				4.20			
4.40					2.22	-	70						-	-								-	-					-	-				4.40			
4.60						-	-						-	-								-	-					-	-				4.60			
4.80					1.84	-	1						-	-								0.016	-	100				-	-				4.80			
5.00						-	-						-	-								0.028	-	75				-	-				5.00			
5.20						-	-						-	-								-	-					-	-				5.20			
5.40						-	-						-	-								-	-					-	-				5.40			
5.60					1.13	-	70						-	-								-	-					-	-				5.60			
5.80						-	-						-	-								-	-					-	-				5.80			
6.00						-	-						-	-								-	-					-	-				6.00			
6.20						-	-						-	-								-	-					-	-				6.20			
6.40						-	-						-	-								-	-					-	-				6.40			
6.60	0.300	0.550	0.300	0.550		90	-						-	-								-	-					-	-				6.60			
6.80					0.408	-	15						-	-								-	-					-	-				6.80			
7.20						-	-						-	-								-	-					-	-				7.20			
7.60						-	-						-	-								-	-					-	-				7.60			

Call Options																	Put Options																			
Exercise Price	June 2013							September 2013							Other Months			June 2013								September 2013							Other Months			Exercise Price
	Open price	Price max	Price min	Last price	Closing price	Volume	Open Interest	Open price	Price max	Price min	Last price	Closing price	Volume	Open Interest	Volume	Open Interest	Open price	Price max	Price min	Last price	Closing price	Volume	Open Interest	Open price	Price max	Price min	Last price	Closing price	Volume	Open Interest	Volume	Open Interest				
8.00						-	-							-	-							-	-					-	-			8.00				
8.20						-	-							-	-							-	-					-	-			8.20				
8.40						-	-							-	-						1.84	-	35					-	-			8.40				
8.60						-	-							-	-							-	-					-	-			8.60				
8.80						-	-							-	-							-	-					-	-			8.80				
9.00						-	-							-	-							-	-					-	-			9.00				
Totals:						90	156							0	0	0	1,600							0	210							0	0	0	0	
Nominal Transactions Value:						59,400.00								0.00	0.00	0.00								0.00			0.00	0.00			0.00	0.00				
Number of Trades:						2								0	0	0								0.00			0	0			0	0				

PPC (CR)

(Contract Size: 100 Stocks, Excercise Style: American, Physical Delivery)

Call Options																	Put Options																			
June 2013								September 2013								Other Months		June 2013								September 2013								Other Months		
Exerise Price	Open price	Price max	Price min	Last price	Closing price	Volume	Open Interest	Open price	Price max	Price min	Last price	Closing price	Volume	Open Interest	Volume	Open Interest	Open price	Price max	Price min	Last price	Closing price	Volume	Open Interest	Open price	Price max	Price min	Last price	Closing price	Volume	Open Interest	Volume	Open Interest	Exerise Price			
1.40						-	-							-	-							-	-						-	-			1.40			
1.50						-	-							-	-							-	-						-	-			1.50			
1.60						-	-							-	-							-	-						-	-			1.60			
1.70						-	-							-	-							-	-						-	-			1.70			
1.80						-	-							-	-							-	-						-	-			1.80			
1.90						-	-							-	-							-	-						-	-			1.90			
2.00						-	-							-	-							-	-						-	-			2.00			
2.20						-	-							-	-							-	-						-	-			2.20			
2.40						-	-							-	-							-	-						-	-			2.40			
2.60						-	-							-	-							-	-						-	-			2.60			
2.80						-	-							-	-							-	-						-	-			2.80			
3.00						-	-							-	-							-	-						-	-			3.00			
3.20						-	-							-	-							-	-						-	-			3.20			
3.40						-	-							-	-							-	-						-	-			3.40			
3.60						-	-							-	-							-	-						-	-			3.60			
3.80						-	-							-	-							-	-						-	-			3.80			
4.00						-	-							-	-							-	-						-	-			4.00			
4.20						-	-							-	-							-	-						-	-			4.20			
4.40						-	-							-	-							-	-						-	-			4.40			
4.60					2.79	-	30							-	-							-	-						-	-			4.60			
4.80						-	-							-	-							-	-						-	-			4.80			
5.00						-	-							-	-							-	-						-	-			5.00			
5.20						-	-							-	-							-	-						-	-			5.20			
5.40						-	-							-	-							-	-						-	-			5.40			
5.60						-	-							-	-							-	-						-	-			5.60			
5.80						-	-							-	-							-	-						-	-			5.80			
6.00						-	-							-	-							-	-						-	-			6.00			
6.40						-	-							-	-							-	-						-	-			6.40			
6.60						-	-							-	-							-	-						-	-			6.60			
6.80						-	-							-	-							-	-						-	-			6.80			
7.00						-	-							-	-							-	-						-	-			7.00			
7.20						-	-							-	-							-	-						-	-			7.20			
7.40						-	-							-	-							-	-						-	-			7.40			
7.60						-	-							-	-							-	-						-	-			7.60			
7.80						-	-							-	-							-	-						-	-			7.80			
8.00						-	-							-	-							-	-						-	-			8.00			

PPC (CR)

(Contract Size: 100 Stocks, Exercise Style: American, Physical Delivery)

Call Options																	Put Options																
Exerise Price	June 2013						September 2013						Other Months		June 2013						September 2013						Other Months		Exerise Price				
	Open price	Price max	Price min	Last price	Closing price	Volume	Open Interest	Open price	Price max	Price min	Last price	Closing price	Volume	Open Interest	Volume	Open Interest	Open price	Price max	Price min	Last price	Closing price	Volume	Open Interest	Open price	Price max	Price min	Last price	Closing price		Volume	Open Interest	Volume	Open Interest
8.20																													8.20				
8.40																													8.40				
8.60																													8.60				
8.80																													8.80				
9.00																													9.00				
9.20																													9.20				
10.00																													10.00				
Totals:						0	30							0	0	0	0	0						0							0	0	
Nominal Transactions Value:						0.00						0.00						0.00						0.00						0.00			
Number of Trades:						0						0						0						0						0			

PPC (CR)

(Contract Size: 100 Stocks, Excercise Style: American, Physical Delivery)

Call Options																Put Options																		
Exerise Price	June 2013							September 2013							Other Months		June 2013								September 2013							Other Months		Exerise Price
	Open price	Price max	Price min	Last price	Closing price	Volume	Open Interest	Open price	Price max	Price min	Last price	Closing price	Volume	Open Interest	Volume	Open Interest	Open price	Price max	Price min	Last price	Closing price	Volume	Open Interest	Open price	Price max	Price min	Last price	Closing price	Volume	Open Interest	Volume	Open Interest		

Stocks	Type[4]	Stock Repo [1]						Stock Reverse Repo [2]								Repurchase Agreements [3]							
		Trans. price	chg.	Trades	Volume	Transactions Value	Open Interest[5]	Price max	Price min	Last price	Last Ask	Trades	Volume	Transactions Value	Open Interest[5]	Price max	Price min	Last price	Last Ask	Trades	Volume	Transactions Value	Open Interest[5]
AEGEAN AIRLINES (CR)	SR RA	100.00	---	---	---	---	297	---	---	---	148@4.5%	---	---	---	---	---	---	---	---	---	---	---	---
ALPHA BANK (CR)	SR RA	100.33	---	---	---	---	---	---	---	---	---	---	---	---	---	---	---	---	---	---	---	---	---
ALPHA ETF FTSE Athex Large Cap	SR RA	100.00	---	---	---	---	---	---	---	---	---	---	---	---	---	---	---	---	---	---	---	---	2,664
ALUMIL (CR)	RA	---	---	---	---	---	---	---	---	---	---	---	---	---	---	---	---	---	---	---	---	---	---
ATHENS MEDICAL CENTER SA (CR)	SR RA	100.00	---	---	---	---	434	---	---	---	217@4.5%	---	---	---	---	---	---	---	---	---	---	---	---
AUTOHELLAS SA (CR)	SR RA	100.00	---	---	---	---	---	---	---	---	---	---	---	---	---	---	---	---	---	---	---	---	---
BANK OF CYPRUS (CR)	SR RA	100.17	---	---	---	---	3,584	---	---	---	---	---	---	---	---	---	---	---	---	---	---	---	66
CC HBC AG (CR)	SR RA	100.00	---	2	22	42,592.0	22	---	---	---	---	---	---	---	---	---	---	---	---	---	---	---	---
CENTRIC HOLDINGS (CR)	SR RA	100.00	---	---	---	---	200	---	---	---	142@6.5%	---	---	---	---	---	---	---	---	---	---	---	---
COCA - COLA HBC (CR)	SR RA	110.43	---	---	---	---	---	---	---	---	---	---	---	---	---	---	---	---	---	---	---	---	---
CORINTH PIPEWORKS SA (CR)	SR RA	100.00	---	---	---	---	---	---	---	---	---	---	---	---	---	---	---	---	---	---	---	---	---
CRETE PLASTICS SA (CR)	SR RA	100.00	---	---	---	---	---	---	---	---	---	---	---	---	---	---	---	---	---	---	---	---	---
DAIOS PLASTICS SA (CR)	SR RA	100.00	---	---	---	---	---	---	---	---	---	---	---	---	---	---	---	---	---	---	---	---	---
ELLAKTOR (CR)	SR RA	100.02	---	---	---	---	3,171	---	---	---	1485@4.5%	---	---	---	100	---	---	---	---	---	---	---	35
ELTRAK SA (CR)	SR RA	100.00	---	---	---	---	23	---	---	---	11@4.5%	---	---	---	---	---	---	---	---	---	---	---	---
ELVAL SA. (CB)	SR RA	100.00	---	---	---	---	388	---	---	---	194@4.5%	---	---	---	---	---	---	---	---	---	---	---	---
EUROBANK ERGASIAS (CR)	SR RA	100.08	---	---	---	---	1,462	---	---	---	---	---	---	---	1,039	---	---	---	---	---	---	---	109
EUROBANK PROPERTIES REIC (CR)	SR RA	100.02	---	---	---	---	2,290	---	---	---	1122@4.5%	---	---	---	30	---	---	---	---	---	---	---	---
EYDAP S.A. (CR)	SR RA	100.05	---	---	---	---	310	---	---	---	100@4.5%	---	---	---	10	---	---	---	---	---	---	---	---
FOURLIS (CR)	SR RA	100.20	0.01	---	---	---	195	---	---	---	25@4.5%	---	---	---	50	---	---	---	---	---	---	---	---
FRIGOGLASS SA (CR)	SR RA	100.00	---	---	---	---	253	---	---	---	126@4.5%	---	---	---	---	---	---	---	---	---	---	---	---
GEK TERNA (CR)	SR RA	100.00	---	---	---	---	674	---	---	---	337@4.5%	---	---	---	---	---	---	---	---	---	---	---	---
GR. SARANTIS SA (CR)	SR RA	100.00	---	---	---	---	62	---	---	---	31@4.5%	---	---	---	---	---	---	---	---	---	---	---	---
HALKOR SA (CB)	SR RA	100.00	---	---	---	---	355	---	---	---	177@4.5%	---	---	---	---	---	---	---	---	---	---	---	---
HELL. DUTY FREE SHOPS SA (CR)	SR RA	100.22	0.01	---	---	---	679	---	---	---	313@4.5%	---	---	---	26	---	---	---	---	---	---	---	7
HELLENIC CABLES SA (CR)	SR RA	100.00	---	---	---	---	15	---	---	---	---	---	---	---	---	---	---	---	---	---	---	---	---
HELLENIC EXCHANGES (CR)	SR RA	100.04	0.01	---	---	---	6,035	---	---	---	2817@4.5%	---	---	---	200	---	---	---	---	---	---	---	---
HELLENIC PETROLEUM (CR)	SR RA	100.35	0.01	---	---	---	2,246	---	---	---	895@4.5%	---	---	---	228	---	---	---	---	---	---	---	48
HYGEIA SA (CR)	SR RA	100.01	---	---	---	---	500	---	---	---	185@4.5%	---	---	---	---	---	---	---	---	---	---	---	---
IASO SA (CR)	SR RA	100.00	---	---	---	---	85	---	---	---	42@4.5%	---	---	---	---	---	---	---	---	---	---	---	---
IKTINOS HELLAS SA (CR)	SR RA	100.00	---	---	---	---	10	---	---	---	---	---	---	---	---	---	---	---	---	---	---	---	---
INFORM P. LYKOS SA (CR)	SR RA	100.00	---	---	---	---	400	---	---	---	200@4.5%	---	---	---	---	---	---	---	---	---	---	---	---

Stock Lending Notes

- [1] - Stock Repo: A Contract for selling stocks to HELEX with a Repurchase Right (According to ATHEX BoD Resolution No 17)
- [2] - Stock Reverse Repo: A Contract for buying stocks from HELEX with a Resell Right. (According to ATHEX BoD Resolution No 18)
- [3] - Standardized Repurchase Agreements: A Contract that constitutes a standardized agreement for the purchase or sale of shares, with repurchase or resell pact (According to ATHEX BoD Resolution No 20)
- [4] - Type of products is divided into SR: Stock Repo or Stock Reverse Repo, and RA: Repurchase Agreements.
- [5] - Open Interest in all Series (both tradeable or non-tradeable).

Stocks	Type[4]	Stock Repo [1]						Stock Reverse Repo [2]								Repurchase Agreements [3]							
		Trans. price	chg.	Trades	Volume	Transactions Value	Open Interest[5]	Price max	Price min	Last price	Last Ask	Trades	Volume	Transactions Value	Open Interest[5]	Price max	Price min	Last price	Last Ask	Trades	Volume	Transactions Value	Open Interest[5]
INTRACOM CONSTR. (CR)	SR RA	100.00	---	---	---	---	---	---	---	---	---	---	---	---	---	---	---	---	---	---	---	---	---
INTRACOM HOLDINGS (CR)	SR RA	100.00	---	---	---	---	665	---	---	---	332@4.5%	---	---	---	---	---	---	---	---	---	---	---	---
INTRALOT (CR)	SR RA	100.03	---	---	---	---	4,326	4.50%	4.50%	4.50%	2026@4.5%	1	5	1,040.0	137	---	---	---	---	---	---	---	---
J & P - AVAX SA (CR)	SR RA	100.04	---	---	---	---	232	---	---	---	76@4.5%	---	---	---	40	---	---	---	---	---	---	---	---
JUMBO SA (CR)	SR RA	100.12	0.01	---	---	---	2,444	---	---	---	1113@4.5%	---	---	---	109	---	---	---	---	---	---	---	45
KLEEMAN HELLAS SA (CR)	SR RA	100.00	---	---	---	---	200	---	---	---	100@4.5%	---	---	---	---	---	---	---	---	---	---	---	---
KORRES (CR)	SR RA	100.00	---	---	---	---	---	---	---	---	---	---	---	---	---	---	---	---	---	---	---	---	---
KRI-KRI S.A. (CR)	SR RA	100.00	---	---	---	---	550	---	---	---	275@4.5%	---	---	---	---	---	---	---	---	---	---	---	---
LAMDA DEVELOPMENT SA (CR)	SR RA	100.01	---	---	---	---	890	---	---	---	445@4.5%	---	---	---	---	---	---	---	---	---	---	---	---
LOULIS MILLS SA (CR)	SR RA	100.00	---	---	---	---	---	---	---	---	---	---	---	---	---	---	---	---	---	---	---	---	---
MARFIN INVESTMENT GROUP (CR)	SR RA	100.01	---	---	---	---	17,520	---	---	---	11188@5.5%	---	---	---	150	---	---	---	---	---	---	---	---
METKA (CR)	SR RA	100.37	---	---	---	---	656	4.50%	4.50%	4.50%	228@4.5%	1	100	115,300.0	100	4.50%	4.50%	4.50%	---	1	100	115,300.0	110
MLS MULTIMEDIA SA (CR)	SR RA	100.00	---	---	---	---	119	---	---	---	59@4.5%	---	---	---	---	---	---	---	---	---	---	---	---
MOTOR OIL (CR)	SR RA	100.02	---	---	---	---	2,718	4.50%	4.50%	4.50%	1332@4.5%	1	5	4,190.0	27	---	---	---	---	---	---	---	27
MYTILINEOS HOLDINGS (CR)	SR RA	100.01	---	---	---	---	4,131	---	---	---	2015@4.5%	---	---	---	50	---	---	---	---	---	---	---	64
NATIONAL BANK (CR)	SR RA	100.61	0.01	---	---	---	49,986	---	---	---	272@8.1%	---	---	---	36,541	---	---	---	---	---	---	---	15,009
NBGAM ETF	SR RA	100.00	---	---	---	---	---	---	---	---	---	---	---	---	---	---	---	---	---	---	---	---	100
NBGAM ETF GREECE & TURKEY 30	SR RA	100.00	---	---	---	---	---	---	---	---	---	---	---	---	---	---	---	---	---	---	---	---	55
NIREFS SA (CR)	SR RA	100.00	---	---	---	---	322	---	---	---	161@4.5%	---	---	---	---	---	---	---	---	---	---	---	---
OPAP (CR)	SR RA	100.67	---	---	---	---	5,793	4.50%	4.50%	4.50%	2347@4.5%	1	54	40,446.0	549	4.50%	4.50%	4.50%	---	1	54	40,446.0	386
OTE (CR)	SR RA	100.26	0.01	---	---	---	6,554	4.50%	4.50%	4.50%	423@4.5%	1	150	99,000.0	404	---	---	---	---	---	---	---	671
P.P.A. S.A. (CR)	SR RA	100.00	---	---	---	---	---	---	---	---	---	---	---	---	---	---	---	---	---	---	---	---	---
PETROPOULOS PETROS (CR)	RA	---	---	---	---	---	---	---	---	---	---	---	---	---	---	---	---	---	---	---	---	---	---
PIRAEUS BANK (CR)	SR RA	100.22	0.01	---	---	---	19,466	---	---	---	---	---	---	---	---	---	---	---	---	---	---	---	---
PPC (CR)	SR RA	100.63	0.01	---	---	---	2,853	4.50%	4.50%	4.50%	1021@4.5%	2	125	92,000.0	405	---	---	---	---	---	---	---	181
QUEST HOLDINGS (CR)	SR RA	100.00	---	---	---	---	39	---	---	---	19@4.5%	---	---	---	---	---	---	---	---	---	---	---	---
S & B IND. MINERALS (CR)	SR RA	100.04	---	---	---	---	30	---	---	---	15@4.5%	---	---	---	---	---	---	---	---	---	---	---	---
SELECTED TEXT. IND. ASSOC (CR)	SR RA	100.00	---	---	---	---	50	---	---	---	33@5.3%	---	---	---	---	---	---	---	---	---	---	---	---
SIDENOR (CR)	SR RA	100.00	---	---	---	---	412	---	---	---	206@4.5%	---	---	---	---	---	---	---	---	---	---	---	---
TECHNICAL OLYMPIC SA (CR)	SR RA	100.00	---	---	---	---	14	---	---	---	4@4.5%	---	---	---	---	---	---	---	---	---	---	---	---
TERNA ENERGY (CR)	SR RA	100.00	---	---	---	---	218	---	---	---	109@4.5%	---	---	---	---	---	---	---	---	---	---	---	---
THESSALONIKA WATER & SEWERAGE	SR RA	100.00	---	---	---	---	1,208	---	---	---	604@4.5%	---	---	---	---	---	---	---	---	---	---	---	---

Stock Lending Notes

[1] - Stock Repo: A Contract for selling stocks to HELEX with a Repurchase Right (According to ATHEX BoD Resolution No 17)

[2] - Stock Reverse Repo: A Contract for buying stocks from HELEX with a Resell Right. (According to ATHEX BoD Resolution No 18)

[3] - Standardized Repurchase Agreements: A Contract that constitutes a standardized agreement for the purchase or sale of shares, with repurchase or resell pact (According to ATHEX BoD Resolution No 20)

[4] - Type of products is divided into SR: Stock Repo or Stock Reverse Repo, and RA: Repurchase Agreements.

[5] - Open Interest in all Series (both tradeable or non-tradeable).

Stocks	Type[4]	Stock Repo [1]						Stock Reverse Repo [2]								Repurchase Agreements [3]							
		Trans. price	chg.	Trades	Volume	Transactions Value	Open Interest[5]	Price max	Price min	Last price	Last Ask	Trades	Volume	Transactions Value	Open Interest[5]	Price max	Price min	Last price	Last Ask	Trades	Volume	Transactions Value	Open Interest[5]
THRACE PLASTICS SA (CR)	SR RA	100.00	---	---	---	---	300	---	---	---	225@4.5%	---	---	---	---	---	---	---	---	---	---	---	---
TITAN CEMENT (CR)	SR RA	100.01	---	---	---	---	9,685	---	---	---	4819@4.5%	---	---	---	23	---	---	---	---	---	---	---	30
TPA SA (CR)	SR RA	100.00	---	---	---	---	6	---	---	---	3@4.5%	---	---	---	---	---	---	---	---	---	---	---	---
TRASTOR REAL EST. INV. CO.(CR)	SR RA	100.00	---	---	---	---	44	---	---	---	22@4.5%	---	---	---	---	---	---	---	---	---	---	---	---
VIOHALCO (CB)	SR RA	100.00	---	---	---	---	4,110	---	---	---	2035@4.5%	---	---	---	20	---	---	---	---	---	---	---	115

Stock Lending Notes

- [1] - Stock Repo: A Contract for selling stocks to HELEX with a Repurchase Right (According to ATHEX BoD Resolution No 17)
- [2] - Stock Reverse Repo: A Contract for buying stocks from HELEX with a Resell Right. (According to ATHEX BoD Resolution No 18)
- [3] - Standardized Repurchase Agreements: A Contract that constitutes a standardized agreement for the purchase or sale of shares, with repurchase or resell pact (According to ATHEX BoD Resolution No 20)
- [4] - Type of products is divided into SR: Stock Repo or Stock Reverse Repo, and RA: Repurchase Agreements.
- [5] - Open Interest in all Series (both tradeable or non-tradeable).

Sectors codification for listed companies

533	-	Exploration & Production	537	-	Integrated Oil & Gas
1353	-	Commodity Chemicals	1357	-	Specialty Chemicals
1753	-	Aluminum	1755	-	Nonferrous Metals
1757	-	Steel	1775	-	General Mining
2353	-	Building Materials & Fixtures	2357	-	Heavy Construction
2723	-	Containers & Packaging	2727	-	Diversified Industrials
2733	-	Electrical Components & Equipment	2753	-	Commercial Vehicles & Trucks
2757	-	Industrial Machinery	2773	-	Marine Transportation
2777	-	Transportation Services	2791	-	Business Support Services
2797	-	Industrial Suppliers	3535	-	Distillers & Vintners
3537	-	Soft Drinks	3573	-	Farming & Fishing
3577	-	Food Products	3722	-	Durable Household Products
3726	-	Furnishings	3728	-	Home Construction
3747	-	Toys	3763	-	Clothing & Accessories
3765	-	Footwear	3767	-	Personal Products
3785	-	Tobacco	4533	-	Health Care Providers
4535	-	Medical Equipment	4577	-	Pharmaceuticals
5337	-	Food Retailers & Wholesalers	5371	-	Apparel Retailers
5373	-	Broadline Retailers	5375	-	Home Improvement Retailers
5379	-	Specialty Retailers	5553	-	Broadcasting & Entertainment
5555	-	Media Agencies	5557	-	Publishing
5751	-	Airlines	5752	-	Gambling
5753	-	Hotels	5755	-	Recreational Services
5757	-	Restaurants & Bars	5759	-	Travel & Tourism
6535	-	Fixed Line Telecommunications	6575	-	Mobile Telecommunications
7535	-	Conventional Electricity	7537	-	Alternative Electricity
7577	-	Water	8355	-	Banks
8534	-	Insurance Brokers	8536	-	Property & Casualty Insurance
8633	-	Real Estate Holding & Development	8637	-	Real Estate Services
8671	-	Industrial & Office REITs	8675	-	Specialty REITs
8775	-	Specialty Finance	8777	-	Investment Services
8985	-	Equity Investment Instruments	9533	-	Computer Services
9535	-	Internet	9537	-	Software
9572	-	Computer Hardware	9574	-	Electronic Office Equipment
9578	-	Telecommunications Equipment	11000	-	ETF

