

# Daily Official List

Athens Exchange sa

Friday, 16 August, 2013

Year: 134 Trading Day No: 153



ΟΜΙΛΟΣ ΕΛΛΗΝΙΚΑ ΧΡΗΜΑΤΙΣΤΗΡΙΑ  
HELLENIC EXCHANGES GROUP

**Disclaimer:**

Athens Exchange (ATHEX) endeavours to ensure that the data and other material ("Information") presented on the Daily Official List are accurate and complete, but it is not liable for any errors or omissions of data or /and for the accuracy, credibility, updating and completeness of the aforesaid information nor it has any liability arising directly or indirectly from the use of the above Information.

ATHEX is not liable for the accuracy of the data included in listed companies' announcements. Only the sender of such an announcement is fully and solely liable for any infringement of third party's rights from the content of such announcement. All contents of the Daily Official List are provided only for information purposes and do not constitute investment advice or solicitation to invest in securities or other products listed for trading on ATHEX.

You acknowledge and agree that ATHEX is the owner of any property rights related to any Information appearing on the Daily Official List including intellectual property rights copyright, trademarks, etc.

The above data are a property of the Athens Exchange and are copyright protected. Users are forbidden to reproduce, modify, copy, sale, transmit or redistribute, by all reproduction means and methods, part or the whole of the above data, without reference to their source.

The commercial exploitation of these data is, also, forbidden by third parties. Athens Exchange does not carry any responsibility, direct or indirect, derived from usage or accidental alteration of the above data when used by third parties.

**Athens Exchange sa**

110 Athinon Ave., 10442 Athens, Tel: (210) 33.66.800, Fax: (210) 32.13.938

[www.athex.gr](http://www.athex.gr)

**Thessalonica Stock Exchange Center (T.S.E.C)**

16-18 Katouni Str., Thessalonica 546 25 Tel: (2310) 567.667, Fax: (2310) 530.545

**Athex Members Guarantee Fund**

14-16 Fidiou Str., Athens 106 78, Tel: (210) 33.04.682, Fax: (210) 33.04.155

**Hellenic Republic Capital Market Commission**

1 Kolokotroni Str. & 1 Stadiou Str., Athens 10562 Tel: (210) 33.77.100 Fax: (210) 33.77.173

---

**Table of Contents**

---

**Section 1: Statistical Figures of Securities and Derivatives Markets**

Summary of Markets

Athex Indices

Analytic Figures for Athex Market's Boards and Categories

Trading Details by Athex Sectors and ETFs Category

Top 10 best &amp; worst performing Shares

Derivatives Summary

**Section 2: Analytic Figures of Shares Transactions**

Analytic Figures of Shares Transactions

Shares' Notes

**Section 3: Figures of Securities Transactions**

Securities Blocks Details

Shares Rights Details

Shares Short Selling

Stock Borrowing

Shares Forced Sales

Forced Sales Registered Shares

Exchange Traded Funds (ETFs) Characteristics

**Section 5: Bonds traded in Fixed Income Assets Market**

Corporate Bonds

Government Bonds

Treasury Bills &amp; Zero Coupon Government Bonds

Government Bonds Traded with the Open Outcry Method

State Banks Bonds

**Section 6: Additional Infos**

Athex &amp; ATHEXClear Members List

List of Stocks under Market Making operations

**Section 7: Derivatives Market Analytic Figures**

Index Futures

Stock Futures

Index Options

Stock Options

Stock Lending Analytic Figures (Repo Contracts)

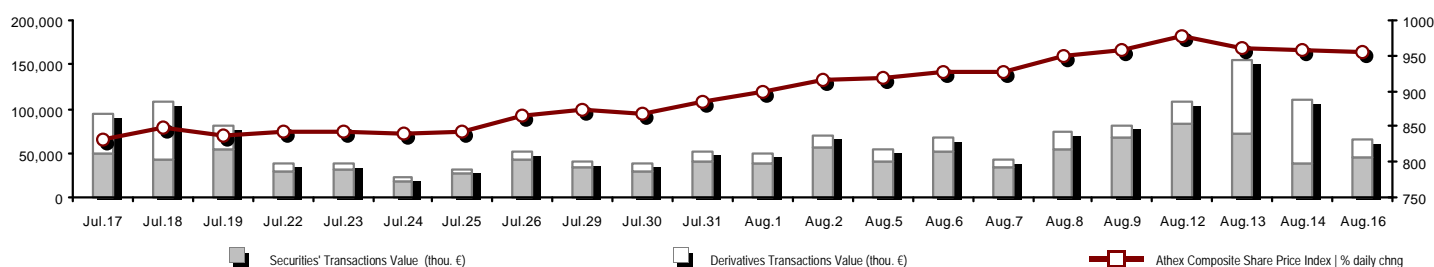
**Appendix A: Sectors codification for listed companies**

---

Section codification follows the corresponding from the Greek version of Daily Official List for reference purposes.

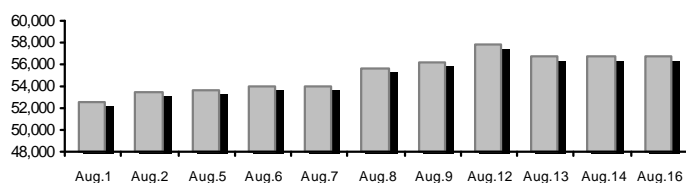
## Summary of Markets

Athex Composite Share Price Index vs Shares and Derivatives Transactions Value

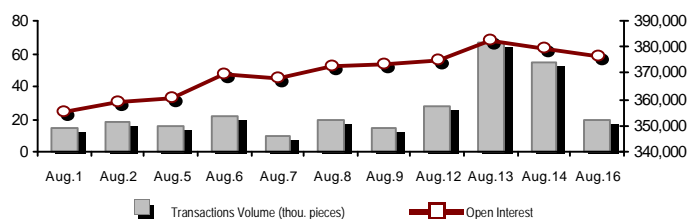


Total Transactions Value (Securities/Derivatives) (thou. €):		65,196.74	
Athex Capitalisation (mill. €) **: 56,711.00		Derivatives Total Open Interest 376,613	
Daily change: mill. €   % -42.83 -0.08%		in Index Futures   % daily chng 55,880 -4.24%	
Yearly Avg Capitalisation: mill. €   % chng prev year Avg 44,385.17 62.18%		in Stock Futures   % daily chng 156,436 0.53%	
Athex Composite Share Price Index   % daily chng 955.18 -0.26%		in Index Options   % daily chng 7,027 -19.93%	
Athex Composite Share Price Index Capitalisation (mill. €) 49,478.91		in Stock Options   % daily chng 5,530 -4.24%	
Daily change (mill. €) -15.57		in Stock Repos/Reverse Repos/RA   % daily chng 151,740 0.29%	
Securities' Transactions Value (thou. €) 44,128.43		Derivatives Transactions Value (thou. €) 21,068.31	
Daily change: thou. €   % 5,180.53 13.30%		Daily change: thou. €   % -49,104.38 -69.98%	
YtD Avg Trans. Value: thou. €   % chng prev year Avg 67,974.99 31.04%		YtD Avg Trans. Value: thou. €   % chng prev year Avg 23,483.78 23.04%	
Short Selling Trans. Value: mill. €   % in total Value 0.00 0.00%			
Short Covering Trans. Value: mill. €   % in total Value 0.03 0.00%			
Transactions Value of Blocks (thou. €) 3,535.58			
Bonds Transactions Value (thou. €) 0.00			
Securities' Transactions Volume (thou. Pieces) 26,897.52		Derivatives Contracts Volume: 19,636	
Daily change: thou. pieces   % 1,071.05 4.15%		Daily change: pieces   % -35,157 -64.16%	
YtD Avg Volume: thou. pieces   % chng prev year Avg 52,751.01 6.68%		YtD Avg Derivatives Contracts   % chng prev year Avg 45,290 -29.62%	
Short Selling Volume: thou pieces   % in total Volume 0.00 0.00%			
Short Covering Volume: thou. pieces   % in total Volume 0.01 0.00%			
Transactions Volume of Blocks (thou. Pieces) 3,089.92			
Bonds Transactions Volume (thou. pieces) 0.00			
Securities' Trades Number 15,758		Derivatives Trades Number: 1,414	
Daily change: number   % -3,056 -16.24%		Daily change: number   % -554 -28.15%	
YtD Avg Derivatives Trades number   % chng prev year Avg 30,243 21.91%		YtD Avg Derivatives Trades number   % chng prev year Avg 2,805 -3.78%	
Number of Blocks 8			
Number of Bonds Transactions 0			

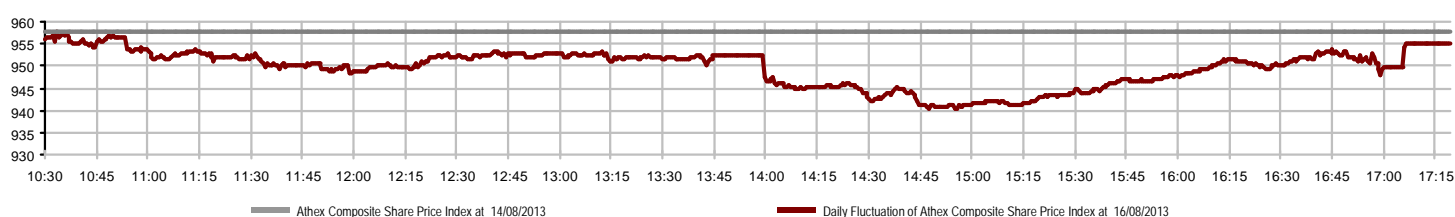
Athex Capitalisation (mill. €) \*\*



Derivatives Transactions Volume and Open Interest



Daily Fluctuation of Athex Composite Share Price Index



## Athex Indices

Index name	16/08/2013	14/08/2013	pts.	%	Min	Max	Year min	Year max	Year change
Athex Composite Share Price Index	955.18	957.68	-2.50	-0.26%	940.21	957.61	788.81	1,159.97	5.21% #
FTSE/Athex Large Cap	323.60	326.28	-2.68	-0.82%	318.69	325.75	253.17	410.78	4.49% #
FTSE/ATHEX Custom Capped	1,034.13	1,038.39	-4.26	-0.41%			863.84	1,275.55	1.44% #
FTSE/ATHEX Custom Capped - USD	983.61	985.42	-1.81	-0.18%			808.44	1,172.76	2.08% #
FTSE/Athex Mid Cap Index	1,091.85	1,082.16	9.69	0.90%	1,077.84	1,092.43	871.32	1,360.26	-3.65% €
FTSE/ATHEX-CSE Banking Index	110.39	108.89	1.50	1.38%	107.59	110.96	64.42	278.69	-34.63% €
FTSE/ATHEX Global Traders Index Plus	1,389.26	1,392.00	-2.74	-0.20%	1,366.85	1,393.59	1,082.32	1,484.90	11.38% #
FTSE/ATHEX Global Traders Index	1,458.68	1,462.05	-3.37	-0.23%	1,434.38	1,462.62	1,053.81	1,553.64	17.43% #
FTSE/ATHEX Mid & Small Cap Factor-Weighted Ind	1,226.93	1,224.27	2.66	0.22%	1,211.98	1,231.96	1,053.59	1,348.92	-0.97% €
Greece & Turkey 30 Price Index	706.70	706.72	-0.02	0.00%	699.54	706.83	662.53	927.16	-9.14% €
ATHEX Mid & SmallCap Price Index	2,924.64	2,968.69	-44.05	-1.48%	2,886.50	2,983.91	2,785.62	3,725.74	-6.71% €
FTSE/Athex Market Index	782.29	787.93	-5.64	-0.72%	770.98	786.71	600.87	972.17	6.08% #
FTSE/Med 100	4,298.31	4,315.87	-17.56	-0.41%			4,075.12	4,570.16	3.74% #
Athex Composite Index Total Return Index	1,383.08	1,385.59	-2.51	-0.18%	1,361.41	1,386.60	1,139.79	1,655.57	6.80% #
FTSE/Athex Large Cap Total Return	443.46	447.13	-3.67	-0.82%			366.91	565.68	2.90% #
FTSE/ATHEX Large Cap Net Total Return	1,297.46	1,307.58	-10.12	-0.77%	1,277.75	1,306.08	1,001.98	1,626.24	5.86% #
FTSE/ATHEX Custom Capped Total Return	1,079.14	1,083.59	-4.44	-0.41%			895.99	1,311.70	2.99% #
FTSE/ATHEX Custom Capped - USD Total Return	1,026.42	1,028.31	-1.89	-0.18%			836.50	1,205.99	3.64% #
FTSE/Athex Mid Cap Total Return	1,351.37	1,339.38	11.99	0.90%			1,152.62	1,720.22	-7.57% €
FTSE/ATHEX-CSE Banking Total Return Index	104.66	103.23	1.43	1.39%			82.32	289.59	-43.25% €
Greece & Turkey 30 Total Return Index	861.33	863.91	-2.58	-0.30%			790.56	1,098.14	-5.99% €
Hellenic Mid & Small Cap Index	989.00	988.81	0.19	0.02%	977.83	990.30	737.97	1,071.68	12.80% #
FTSE/Athex Banks	145.85	143.86	1.99	1.38%	142.15	146.60	85.08	368.22	-35.54% €
FTSE/Athex Insurance	1,253.86	1,264.40	-10.54	-0.83%	1,243.33	1,264.40	1,159.03	1,548.89	-17.36% €
FTSE/Athex Financial Services	1,412.62	1,415.61	-2.99	-0.21%	1,399.71	1,428.51	817.47	1,771.89	7.10% #
FTSE/Athex Industrial Goods & Services	3,607.42	3,659.41	-51.99	-1.42%	3,540.33	3,663.23	2,715.10	4,197.17	10.97% #
FTSE/Athex Retail	2,598.89	2,619.57	-20.68	-0.79%	2,509.17	2,619.57	1,629.12	2,692.44	42.05% #
FTSE/ATHEX Real Estate	1,978.22	2,042.44	-64.22	-3.14%	1,978.22	2,054.90	1,491.01	2,108.44	32.68% #
FTSE/Athex Personal & Household Goods	4,514.98	4,419.08	95.90	2.17%	4,389.03	4,533.73	2,586.10	4,550.67	44.60% #
FTSE/Athex Food & Beverage	7,736.45	8,023.09	-286.64	-3.57%	7,576.36	8,023.09	6,301.12	8,591.23	16.20% #
FTSE/Athex Basic Resources	2,389.80	2,392.86	-3.06	-0.13%	2,356.25	2,389.80	1,674.83	2,901.09	2.86% #
FTSE/Athex Construction & Materials	2,046.83	2,050.05	-3.22	-0.16%	1,991.93	2,054.52	1,439.70	2,130.78	11.48% #
FTSE/Athex Oil & Gas	2,884.07	2,823.15	60.92	2.16%	2,767.75	2,884.07	2,358.47	3,358.80	2.52% #
FTSE/Athex Chemicals	6,412.35	6,574.78	-162.43	-2.47%	6,399.18	6,661.42	5,194.08	7,961.02	6.53% #
FTSE/Athex Media	1,772.93	1,772.93	0.00	0.00%	1,772.93	1,772.93	716.56	3,560.63	144.90% #
FTSE/Athex Travel & Leisure	1,333.89	1,349.05	-15.16	-1.12%	1,331.44	1,353.72	1,028.61	1,496.38	32.15% #
FTSE/Athex Technology	714.63	712.97	1.66	0.23%	708.94	718.44	555.63	886.96	-3.71% €
FTSE/Athex Telecommunications	1,968.09	1,998.37	-30.28	-1.52%	1,962.58	2,009.38	1,175.35	2,147.00	40.20% #
FTSE/Athex Utilities	2,870.99	2,866.24	4.75	0.17%	2,811.39	2,877.70	1,752.55	3,104.53	25.49% #
FTSE/Athex Health Care	255.51	251.95	3.56	1.41%	250.17	256.58	172.87	346.05	-8.94% €
Athex All Share Index	201.42	201.54	-0.12	-0.06%			176.43	294.40	-14.89% €

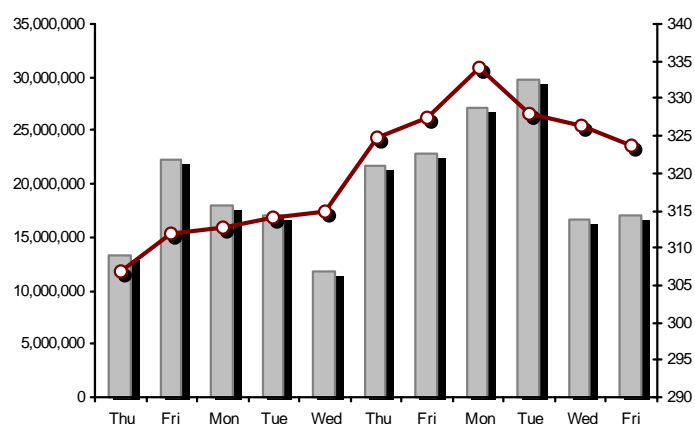
Note 1: Greece & Turkey 30 Pr data is the indicative at 17:20, whereas FTSE/ATHEX Custom Capped, FTSE/ATHEX Custom Capped - USD, FTSE/ATHEX Custom Capped TR, FTSE/ATHEX Custom Capped - USD TR, FTSE/Med 100 & Greece & Turkey 30 Rt closing prices refer to the previous trading day of 14/08/2013.

Note 2: The Hellenic Mid & Small Cap Index is a Customized index calculated by the Athens Exchange.

## Athex Indices

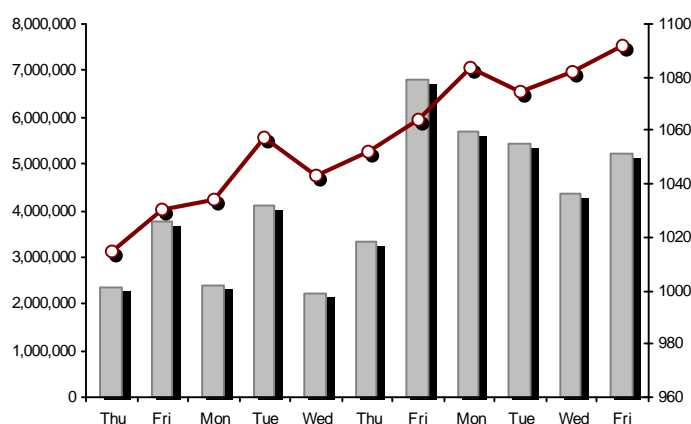
FTSE/Large Cap

16/08/2013: -0.82%



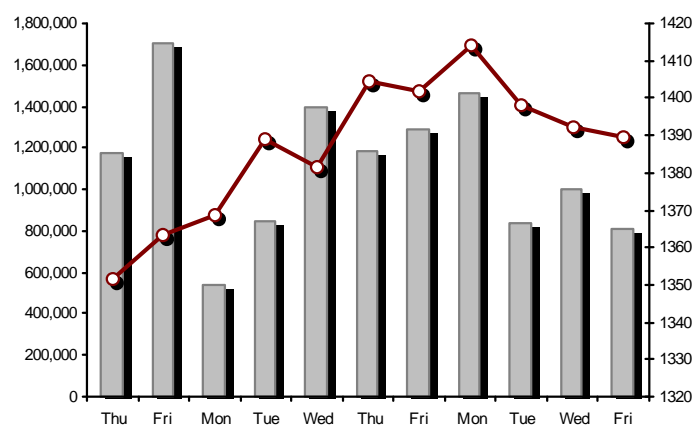
FTSE/Athex Mid Cap Index

16/08/2013: 0.90%



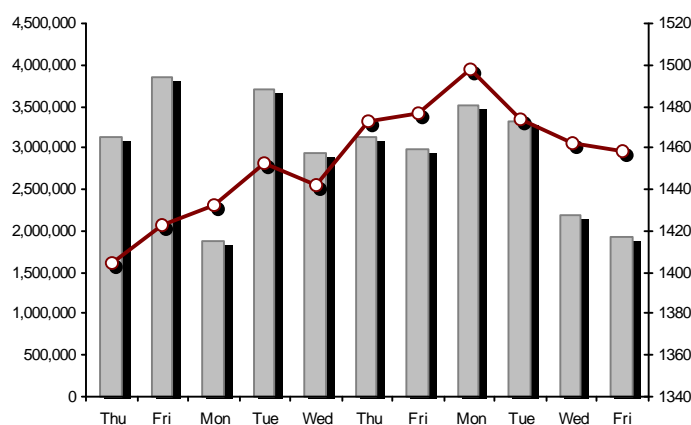
FTSE/ATHEX Global Traders Index Plus

16/08/2013: -0.20%



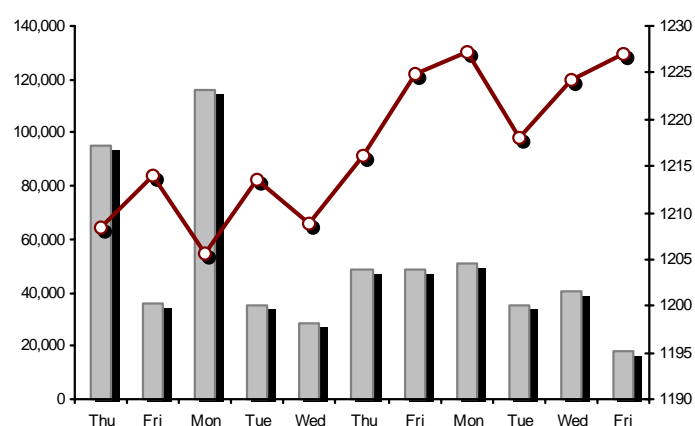
FTSE/ATHEX Global Traders Index

16/08/2013: -0.23%



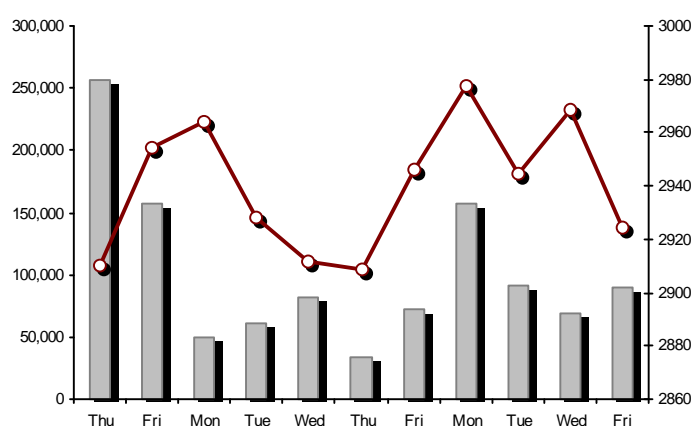
FTSE/ATHEX Mid &amp; Small Cap Factor-Weighted Index

16/08/2013: 0.22%



ATHEX Mid &amp; SmallCap Price Index

16/08/2013: -1.48%



Indices volume of transactions

Indices closing prices

## Analytic Figures for Athex Market's Boards and Categories

	Total Traded Securities	Main Market	Low Dispersion	Other Categories (*)	Exchange Traded Funds (ETFs)	Warrants
Totals	138	105	7	21	2	3
Gain / Lose / Same:	58 / 62 / 18	44 / 49 / 12	5 / 1 / 1	8 / 9 / 4	0 / 2 / 0	1 / 1 / 1
Athex Capitalisation (mill. €) **	56,711.00	54,497.33	1,864.97	348.70		
Daily Average Transactions Value (thou. €)	67,974.99	26,944.50	555.96	86.53	41.82	6,572.76
Transactions Value	44,128.43	40,236.26	70.90	17.57	29.43	3,774.26
Main Board:	40,592.84	38,336.28	70.90	17.57	29.43	2,138.66
Blocks Board:	3,535.58	1,899.98	0.00	0.00	0.00	1,635.60
Forced Sales Board:	0.00	0.00	0.00	0.00	0.00	0.00
Special Terms Board:	0.00	0.00	0.00	0.00	0.00	0.00
Daily Average Transactions Volume	52,751,013	16,496,252	59,616	464,956	10,307	10,143,069
Transactions Volume	26,897,515	22,724,556	47,983	217,405	9,231	3,898,340
Main Board:	23,807,594	21,319,555	47,983	217,405	9,231	2,213,420
Blocks Board:	3,089,921	1,405,001	0	0	0	1,684,920
Forced Sales Board:	0	0	0	0	0	0
Special Terms Board:	0	0	0	0	0	0
Daily Average Number of Trades	30,243	12,010	125	227	9	2,407
Number of Trades	15,758	14,548	43	116	6	1,045
Main Board:	15,750	14,543	43	116	6	1,042
Blocks Board:	8	5	0	0	0	3
Forced Sales Board:	0	0	0	0	0	0
Special Terms Board:	0	0	0	0	0	0

(\*) Summarised Transactions figures for Under Deletion and Under Supervision Categories.

(\*\*) The Market Capitalization of the Companies that belong in the Under Supervision Category is not included.

## Trading Details by Athex Sectors and ETFs Category

Code	Sectors	Gain / Lose / Same	Number of Trades	Transactions Volume	Transactions Value	% of Total Trans. Value
8300	- Banks	4 / 3 / 2	7,020	21,813,528	20,775,565.52	47.08%
1700	- Basic Resources	7 / 4 / 1	560	211,675	669,534.37	1.52%
1300	- Chemicals	2 / 4 / 0	74	9,108	19,244.33	0.04%
2300	- Construction & Materials	8 / 6 / 5	644	364,294	1,432,637.43	3.25%
11000	- ETF	0 / 2 / 0	6	9,231	29,431.98	0.07%
8700	- Financial Services	3 / 2 / 0	671	1,010,817	820,541.21	1.86%
3500	- Food & Beverage	5 / 4 / 1	919	228,449	4,154,641.71	9.41%
4500	- Health Care	1 / 2 / 2	128	155,472	93,670.79	0.21%
2700	- Industrial Goods & Services	6 / 7 / 1	1,064	491,230	1,147,063.72	2.60%
8500	- Insurance	0 / 1 / 0	6	2,402	2,854.40	0.01%
5500	- Media	2 / 0 / 1	13	202	143.25	0.00%
500	- Oil & Gas	2 / 0 / 0	611	174,241	1,349,655.30	3.06%
3700	- Personal & Household Goods	5 / 5 / 1	501	203,157	1,135,883.49	2.57%
8600	- Real Estate	4 / 4 / 0	136	35,282	203,296.65	0.46%
5300	- Retail	2 / 1 / 0	248	49,961	739,428.00	1.68%
9500	- Technology	3 / 6 / 2	170	139,001	80,337.43	0.18%
6500	- Telecommunications	0 / 1 / 0	660	511,085	3,693,755.37	8.37%
5700	- Travel & Leisure	3 / 7 / 2	1,314	1,172,987	5,748,827.07	13.03%
7500	- Utilities	1 / 3 / 0	1,013	315,393	2,031,914.98	4.60%

## Top 10 best &amp; worst performing Shares

Main Market					
With positive Price change	Closing price	change	With negative Price change	Closing price	change
GR. SARANTIS SA (CR)	5.23	4.60% #	PARNASSOS ENTERP. (CR)	0.310	-11.43% €
NATIONAL BANK (CR)	3.15	3.96% #	CC HBC AG (CR)	20.67	-3.64% €
TPA SA (CR)	24.70	2.92% #	EUROBANK PROPERTIES REIC (CR)	7.25	-3.33% €
HELLENIC PETROLEUM (CR)	7.90	2.87% #	VIOHALCO (CB)	4.69	-3.10% €
HYGEIA SA (CR)	0.445	2.30% #	FRIGOGLASS SA (CR)	4.98	-2.35% €
FOURLIS (CR)	2.80	2.19% #	TERNA ENERGY (CR)	3.05	-2.24% €
JUMBO SA (CR)	8.88	1.95% #	CORINTH PIPEWORKS SA (CR)	2.22	-1.77% €
INTRALOT (CR)	1.80	1.70% #	OTE (CR)	7.15	-1.52% €
ATTICA BANK S.A. (CR)	0.304	1.33% #	OPAP (CR)	7.51	-1.44% €
MOTOR OIL (CR)	8.00	1.27% #	DIONIC (CR)	0.075	-1.32% €
With the highest Transactions Value	Value (thou. €)	change	With the highest Transactions Volume	Volume	change
NATIONAL BANK (CR)	7,060.30	3.96% #	ALPHA BANK (CR)	6,609,990	0.95% #
OPAP (CR)	5,209.63	-1.44% €	PIRAEUS BANK (CR)	4,257,196	-0.91% €
PIRAEUS BANK (CR)	4,624.02	-0.91% €	ATTICA BANK S.A. (CR)	3,786,997	1.33% #
CC HBC AG (CR)	4,145.99	-3.64% €	NATIONAL BANK (CR)	2,273,098	3.96% #
OTE (CR)	3,693.76	-1.52% €	EUROBANK ERGASIAS (CR)	986,303	-0.73% €
ALPHA BANK (CR)	3,467.67	0.95% #	MARFIN INVESTMENT GROUP (CR)	874,339	-0.90% €
PPC (CR)	1,605.10	0.76% #	OPAP (CR)	688,429	-1.44% €
ATTICA BANK S.A. (CR)	1,145.06	1.33% #	OTE (CR)	511,085	-1.52% €
JUMBO SA (CR)	859.15	1.95% #	INTRALOT (CR)	280,161	1.70% #
TITAN CEMENT (CR)	821.28	-0.65% €	DIONIC (CR)	276,834	-1.32% €

Note: Stocks that are not included in the "Low Dispersion" and "Under Supervision" categories, and the transactions value is more than 10,000 €.



## Derivatives Summary

	Number of Trades	Volume	Open Interest	Transactions Value
Index Futures	638	11,202	55,880	18,166,687.50
FTSE/Athex Large Cap	638	11,202	55,880	18,166,687.50
Stock Futures	746	7,648	156,436	2,197,454.08
ALPHA BANK (CR)	96	1,949	16,604	102,300.50
CC HBC AG (CR)	43	143	771	295,033.00
CORINTH PIPEWORKS SA (CR)	2	5	441	1,112.00
ELLAKTOR (CR)	15	71	4,373	16,297.00
EUROBANK ERGASIAS (CR)	26	1,198	22,204	8,277.92
EUROBANK PROPERTIES REIC (CR)	4	14	273	10,420.00
EYDAP S.A. (CR)	5	24	200	15,244.00
FOLLI FOLLIE (CR)	3	4	242	7,176.00
FRIGOGLASS SA (CR)	12	38	487	18,821.00
GEK TERNA (CR)	14	161	32,497	38,515.00
HELLENIC EXCHANGES (CR)	14	29	2,499	17,777.00
HELLENIC PETROLEUM (CR)	25	117	2,578	89,357.00
INTRALOT (CR)	18	117	4,624	20,646.00
JUMBO SA (CR)	9	35	386	30,565.00
MARFIN INVESTMENT GROUP (CR)	18	190	19,111	6,311.00
METKA (CR)	3	11	485	12,450.00
MOTOR OIL (CR)	12	43	714	33,727.00
MYTILINEOS HOLDINGS (CR)	17	62	5,168	28,684.00
NATIONAL BANK (CR)	160	1,680	5,603	521,772.00
OPAP (CR)	39	263	4,184	199,014.00
OTE (CR)	47	336	7,818	242,786.00
P.P.A. S.A. (CR)	5	10	555	17,049.00
PIRAEUS BANK (CR)	56	657	14,657	71,800.00
PPC (CR)	54	334	5,312	261,309.00
SIDENOR (CR)	0	0	1,485	0.00
TERNA ENERGY (CR)	15	47	2,401	14,854.66
TITAN CEMENT (CR)	25	63	221	94,212.00
VIOHALCO (CB)	9	47	543	21,944.00
Index Options	27	131	7,027	222,650.00
FTSE/Athex Large Cap	27	131	7,027	222,650.00
Stock Options	0	0	5,530	0.00
ALPHA BANK (CR)	0	0	0	0.00
NATIONAL BANK (CR)	0	0	278	0.00
OPAP (CR)	0	0	2,945	0.00
OTE (CR)	0	0	1,862	0.00
PIRAEUS BANK (CR)	0	0	5	0.00
PPC (CR)	0	0	440	0.00
Stock Repos - Stock Reverse Repos - Repurchase Agreements	3	655	151,740	481,523.00
Stock Reverse Repos	3	655	4,619	481,523.00
Stock Repos	0	0	141,589	0.00
Repurchase Agreement	0	0	5,532	0.00
Total Derivatives Traded	1,414	19,636	376,613	21,068,314.58

Number of Outstanding Securities	Nominal Value	Dividends [1]			Date of Last Coupon		Note	Shares	Closing price	% change	Previous closing price/date	Open price	Price min	Price max	Last price	Avg price	Last Bid [7]	Last Ask [7]	P/E after	Year	Volume	Trades	Transactions Value	Company Mkt Value (thou. €)	Year low	Year high	Sector[4]	
		2010	2011	2012	Dividend [2]	Right																						
Warrants																												
1,233,503,482		---	---	---	11/06/2013	---	ALPHA BANK (W)	1.06	---	↘	1.06	14/08/2013	1.02	1.01	1.07	1.06	1.04	48100@1.05	66077@1.06	---	2012	2,156,007	358	2,245,532.41	5,789,140.19	0.241	1.14	8355
245,779,626		---	---	---	27/06/2013	---	NATIONAL BANK (W)	1.05	0.96	#	1.04	14/08/2013	1.05	0.993	1.06	1.05	1.01	21124@1.02	659401@1.05	---	2012	650,118	419	658,667.70	7,549,875.88	0.420	2.00	8355
849,195,130		---	---	---	03/07/2013	---	PIRAEUS BANK (W)	0.780	-1.76	€	0.794	14/08/2013	0.790	0.780	0.814	0.780	0.794	142@0.780	4000@0.787	---	2012	1,092,215	268	870,058.16	5,529,099.07	0.290	0.889	8355

Warrants

71,417,100	0.650	---	---	---	26/05/2010	11/07/2007	---	AEGEAN AIRLINES (CR)	3.16	-0.32	€ 3.17	14/08/2013	3.15	3.13	3.24	3.16	3.20	700@3.16	1350@3.18	---	2012	5,713	30	18,294.44	225,678.04	1.96	3.24	5751
11,178,000	1.45	---	---	---	21/04/2010	12/05/2011	---	AEOLIAN INVESTMENT FUND (CR)	1.06	0.95	# 1.05	13/08/2013	1.06	1.06	1.06	1.06	1.06	500@1.02	774@1.06	8.38	2012	26	1	27.56	11,848.68	0.900	1.17	8985
13,000,000	1.00	---	---	---	01/08/2007	07/04/2000	---	AKRITAS SA (CR)	0.236	---	↘ 0.236	13/08/2013	---	---	---	---	---	470@0.213	---	---	2012	---	---	---	3,068.00	0.140	0.520	2353
25,000,000	0.400	---	---	---	03/06/2009	12/07/2013	---	ALCO HELLAS SA (CR)	0.450	5.88	# 0.425	14/08/2013	0.397	0.397	0.460	0.450	0.443	2000@0.417	295@0.448	---	2012	21,690	40	9,602.19	11,250.00	0.159	0.599	1753
10,922,906,012	0.300	---	---	---	07/04/2008	13/05/2013	---	ALPHA BANK (CR)	0.530	0.95	# 0.525	14/08/2013	0.525	0.511	0.536	0.530	0.525	3000@0.527	33000@0.531	---	2012	6,609,990	1,525	3,467,672.67	5,789,140.19	0.161	0.696	8355
22,016,250	0.370	---	---	---	15/07/2009	11/05/2000	---	ALUMIL (CR)	0.631	-1.56	€ 0.641	14/08/2013	0.661	0.629	0.661	0.629	0.639	50@0.598	2846@0.600	---	2012	3,203	7	2,046.86	13,892.25	0.360	0.740	1753
418,000	16.00	---	---	---	22/04/2010	05/03/2013	---	ANDROMEDA SA (CR)	21.00	9.95	# 19.10	13/08/2013	17.20	17.20	21.00	21.00	17.63	50@18.01	192@21.00	1.95	2012	71	2	1,251.60	8,778.00	17.20	25.41	8985
21,876,700	0.380	---	---	---	08/07/2010	05/06/2001	---	AS COMPANY SA (CR)	0.344	---	↘ 0.344	14/08/2013	---	---	---	---	---	280@0.306	999@0.340	39.31	2012	---	---	---	7,525.58	0.272	0.488	5379
86,735,980	0.310	---	---	---	06/07/2009	02/01/2002	---	ATHENS MEDICAL CENTER SA (CR)	0.800	---	↘ 0.800	14/08/2013	0.800	0.800	0.800	0.800	0.800	347698@0.800	3308@0.803	---	2012	72,302	37	57,841.60	69,388.78	0.471	0.994	4533
699,673,060	0.300	---	---	---	04/06/2008	05/06/2013	---	ATTICA BANK S.A. (CR)	0.304	1.33	# 0.300	14/08/2013	0.300	0.298	0.307	0.304	0.302	10100@0.303	22492@0.305	---	2012	3,786,997	849	1,145,062.76	212,700.61	0.173	1.06	8355
45,457,464	0.700	---	---	---	01/07/2008	01/03/2010	---	AUDIO VISUAL ENTERPRISES (CR)	0.240	---	↘ 0.240	14/08/2013	0.240	0.240	0.240	0.240	0.240	2000@0.220	5040@0.240	---	2012	50	1	12.00	10,909.79	0.097	0.482	5553
36,360,000	0.320	---	0.15	---	30/04/2012	05/05/2008	---	AUTOHELLAS SA (CR)	2.19	-0.46	€ 2.20	14/08/2013	2.20	2.19	2.20	2.19	2.20	70@2.19	330@2.20	11.80	2012	430	3	943.70	79,628.40	1.50	2.30	5759
19,864,886	5.60	1.976	0.67	0.5376	06/03/2013	02/07/2008	---	BANK OF GREECE (CR)	13.84	---	↘ 13.84	14/08/2013	13.84	13.60	13.90	13.85	13.78	35@13.80	100@13.84	---	---	1,604	51	22,107.80	274,930.02	11.26	19.19	8355
23,986,500	1.05	---	---	---	26/06/2009	15/03/2000	---	BIOKARPET S.A.(CR)	0.673	---	↘ 0.673	05/08/2013	---	---	---	---	---	---	66@0.671	---	2012	---	---	---	16,142.91	0.486	0.845	3726
15,842,391	1.51	---	---	---	15/07/2009	12/05/2000	---	BITROS HOLDING SA (CR)	0.621	---	↘ 0.621	01/08/2013	---	---	---	---	---	---	270@0.579	---	2012	---	---	---	9,838.12	0.336	0.745	1757
15,816,009	0.300	---	---	---	01/07/2009	17/07/2000	---	BYTE COMPUTER SA (CR)	0.472	-0.42	€ 0.474	14/08/2013	0.476	0.470	0.476	0.472	0.472	200@0.465	150@0.472	---	2012	21,350	4	10,077.20	7,465.16	0.351	0.620	9533
366,491,145	6.70	---	---	0.34	26/06/2013	29/04/2013	---	CC HBC AG (CR)	20.67	-3.64	€ 21.45	14/08/2013	21.45	20.15	21.45	20.67	20.40	150@20.50	11057@20.67	---	---	203,250	845	4,145,985.05	7,575,371.97	16.79	22.60	3537
101,123,806	0.360	---	---	---	22/07/2010	28/06/2011	---	CENTRIC HOLDINGS (CR)	0.235	-4.86	€ 0.247	14/08/2013	0.246	0.227	0.246	0.235	0.228	500@0.228	1520@0.235	35.66	2012	24,730	21	5,632.67	23,764.09	0.182	0.440	5752
4,034,950	0.680	---	---	---	01/07/2005	30/12/2010	---	CHATZIKRANIOTIS & SONS SA (CR)	0.153	0.66	# 0.152	14/08/2013	0.165	0.152	0.165	0.153	0.157	2000@0.147	3000@0.155	---	2012	11,000	30	1,731.62	617.35	0.130	0.522	3577
124,170,201	0.780	---	---	---	28/06/2002	07/02/2005	---	CORINTH PIPEWORKS SA (CR)	2.22	-1.77	€ 2.26	14/08/2013	2.22	2.20	2.25	2.22	2.22	1340@2.22	150@2.23	79.53	2012	37,628	122	83,401.67	275,657.85	1.40	2.59	1757
9,907,500	0.300	---	---	---	06/10/2005	13/02/2002	---	CPI SA (CR)	0.212	---	↘ 0.212	13/08/2013	---	---	---	---	---	---	940@0.233	---	2012	---	---	---	2,100.39	0.133	0.400	9572
27,379,200	0.610	---	---	---	23/06/2010	05/12/2012	---	CRETE PLASTICS SA (CR)	5.09	5.38	# 4.83	14/08/2013	4.87	4.76	5.09	5.09	4.78	30@4.75	44@5.08	14.54	2012	1,758	14	8,404.34	139,360.13	4.60	5.65	1357
26,664,840	0.470	---	---	---	29/06/2005	12/07/1999	---	CYCLON HELLAS SA (CR)	0.529	-5.54	€ 0.560	13/08/2013	0.538	0.529	0.538	0.529	0.535	310@0.491	3326@0.529	---	2012	50	3	26.73	14,105.70	0.385	0.700	1357
15,000,000	0.300	---	---	---	06/07/2007	18/07/2000	---	DAIOS PLASTICS SA (CR)	3.71	-3.38	€ 3.84	13/08/2013	3.46	3.46	3.83	3.83	3.49	15@3.46	54@3.83	---	2012	805	18	2,811.20	55,650.00	3.46	5.50	1357
31,370,399	0.300	---	---	---	11/08/2010	15/02/2012	---	DIONIC (CR)	0.075	-1.32	€ 0.076	14/08/2013	0.077	0.068	0.077	0.075	0.072	4000@0.071	9800@0.075	---	2012	276,834	119	19,866.51	2,352.78	0.066	0.263	2797
34,720,000	0.310	---	---	---	16/06/2010	01/08/2007	---	DROMEAS SA (CR)	0.380	-9.74	€ 0.421	14/08/2013	0.421	0.372	0.421	0.375	0.376	1408@0.375	700@0.415	---	2012	5,455	17	2,050.27	13,193.60	0.218	0.634	3726
3,873,120	0.300	---	---	---	07/07/2008	04/10/2012	---	DRUCKFARBEN HELLAS (CR)	1.26	---	↘ 1.26	13/08/2013	---	---	---	---	---	---	---	---	2012	---	---	---	4,880.13	0.901	2.64	1357
11,250,000	0.560	---	---	---	26/07/2010	16/06/1999	---	EKTER SA (CR)	0.463	1.76	# 0.455	14/08/2013	0.460	0.460	0.473	0.464	0.462	950@0.423	2300@0.460	8.09	2012	2,060	8	951.76	5,208.75	0.400	0.700	2357
32,188,050	1.04	---	---	---	21/07/2008	20/01/2000	---	EL. D. MOUZAKIS SA (CB)	0.159	---	↘ 0.159	08/08/2013	---	---	---	---	---	400@0.146	890@0.173	---	2012	---	---	---	5,117.90	0.114	0.330	3763
18,648,000	1.00	---	---	---	07/07/2009	10/09/2010	---	ELASTRON (CR)	0.760	2.70	# 0.740	14/08/2013	0.740	0.740	0.760	0.760	0.750	250@0.666	20@0.732	---	2012	390	2	292.40	14,172.48	0.518	0.969	1757
31,734,530	1.60	---	---	---	09/07/2007	19/07/2006	---	ELGEKA SA (CR)	0.650	---	↘ 0.650	13/08/2013	---	---	---	---	---	100@0.460	812@0.650	---	2012	---	---	---	20,627.44	0.407	0.780	3577
23,828,130	0.500	---	---	---	07/07/2010	17/02/2009	---	ELINOIL S.A. (CR)	1.17	---	↘ 1.17	13/08/2013	---	---	---	---	---	200@1.06	200@1.27	---	2012	---	---	---	27,878.91	1.02	1.89	537
177,001,313	1.03	0.0308	---	---	05/07/2011	20/12/2007	---	ELLAKTOR (CR)	2.30	0.88	# 2.28	14/08/2013	2.28	2.22	2.32	2.30	2.27	1000@2.29	711@2.30	---	2012	186,257	266	423,237.85	407,103.02	1.36	2.50	2357

Number of Outstanding Securities	Nominal Value	Dividends [1]			Date of Last Coupon Dividend [2]		Note	Shares	Closing price	% change	Previous closing price/date	Open price	Price min	Price max	Last price	Avg price	Last Bid [7]	Last Ask [7]	P/E after	Year	Volume	Trades	Transactions Value	Company Mkt Value (thou. €)	Year low	Year high	Sector[ 4]
26,730,187	0.600	---	---	---	25/06/2009	30/12/2010	---	ELTON SA (CR)	1.13	-2.59	€ 1.16 14/08/2013	1.16	1.12	1.16	1.13	1.13	151@1.10	4995@1.12	11.81	2012	573	11	646.02	30,205.11	0.850	1.25	1353
15,146,404	0.340	0.093	---	---	06/07/2011	17/10/2002	---	ELTRAK SA (CR)	1.62	---	↘ 1.62 13/08/2013	---	---	---	---	---	500@1.62	1000@1.72	---	2012	---	---	---	24,537.17	1.08	1.90	2753
124,100,815	0.300	---	---	---	27/06/2008	07/07/2000	---	ELVAL SA. (CB)	2.01	-1.95	€ 2.05 14/08/2013	2.05	2.01	2.05	2.01	2.04	206@2.01	550@2.05	15.53	2012	3,145	14	6,415.71	249,442.64	1.55	2.38	1753
13,230,000	0.300	---	---	---	11/08/2010	27/06/2012	---	ELVE SA (CR)	0.540	---	↘ 0.540 14/08/2013	---	---	---	---	---	---	430@0.540	---	2012	---	---	---	7,144.20	0.423	0.717	3763
30,009,210	0.310	---	---	---	27/06/2008	26/06/2000	---	ETEM SA (CB)	0.425	0.71	# 0.422 14/08/2013	0.443	0.425	0.443	0.425	0.425	130@0.420	240@0.433	---	2012	2,100	6	892.68	12,753.91	0.328	0.828	1753
4,050,416,865	0.300	---	---	---	02/05/2008	13/06/2013	---	EUROBANK ERGASIAS (CR)	0.683	-0.73	€ 0.688 14/08/2013	0.696	0.683	0.706	0.683	0.692	23500@0.682	3312@0.688	---	2012	986,303	702	682,137.31	2,766,434.72	0.555	6.23	8355
61,000,000	2.13	0.5364	0.4067	---	23/03/2012	20/11/2007	---	EUROBANK PROPERTIES REIC (CR)	7.25	-3.33	€ 7.50 14/08/2013	7.50	7.25	7.55	7.25	7.43	1000@7.00	300@7.45	---	2012	26,549	100	197,144.93	442,250.00	4.87	7.75	8675
27,503,677	0.600	0.04	0.05	0.1	11/07/2013	18/10/1999	---	EUROPEAN RELIANCE INSUR. (CR)	1.19	-0.83	€ 1.20 14/08/2013	1.20	1.18	1.20	1.20	1.19	700@1.18	4570@1.20	3.59	2012	2,402	6	2,854.40	32,729.38	0.973	1.62	8536
13,673,200	0.880	---	---	---	18/07/2008	26/07/2001	---	EVROFARMA SA (CR)	0.238	---	↘ 0.238 12/08/2013	---	---	---	---	---	430@0.215	200@0.261	---	2012	---	---	---	3,254.22	0.209	0.539	3577
106,500,000	0.600	0.04	0.05	0.15	31/07/2013	28/01/2000	---	EYDAP S.A. (CR)	6.18	-1.12	€ 6.25 14/08/2013	6.25	6.10	6.34	6.18	6.16	500@6.14	824@6.20	14.05	2012	27,996	201	172,390.33	658,170.00	4.65	6.47	7577
52,800,154	0.300	---	---	---	16/04/2010	21/06/2004	---	F.G. EUROPE S.A. (CR)	0.524	-2.24	€ 0.536 14/08/2013	0.506	0.506	0.538	0.524	0.510	210@0.506	140@0.524	6.34	2012	4,890	35	2,495.74	27,667.28	0.450	0.950	3722
10,203,575	0.730	---	---	---	16/07/2007	18/10/1999	---	FIERATEX SA (CR)	0.125	---	↘ 0.125 14/08/2013	---	---	---	---	---	2000@0.103	1500@0.132	---	2012	---	---	---	1,275.45	0.090	0.400	3763
11,720,024	0.530	---	---	---	16/07/2010	29/05/2012	---	FLEXOPACK SA (CR)	3.80	---	↘ 3.80 14/08/2013	---	---	---	---	---	25@3.63	100@4.00	12.80	2012	---	---	---	44,536.09	2.39	5.00	2723
4,181,450	0.500	---	---	---	21/08/2000	05/03/2002	---	FLOUR MILLS SARANTOPOULOS SA	0.900	---	↘ 0.900 12/08/2013	---	---	---	---	---	500@0.900	---	16.64	2012	---	---	---	3,763.31	0.626	1.02	3577
66,948,210	0.300	---	---	---	14/07/2009	31/12/2010	4988	FOLLI FOLLIE (CR)	18.35	-0.81	€ 18.50 14/08/2013	18.50	17.71	18.50	18.35	18.12	100@17.93	449@18.35	---	2012	40,314	209	730,602.30	1,228,499.65	11.51	19.00	5379
50,992,322	1.00	---	---	---	21/06/2010	16/07/2002	---	FOURLIS (CR)	2.80	2.19	# 2.74 14/08/2013	2.74	2.73	2.82	2.80	2.78	500@2.74	2500@2.81	---	2012	58,334	122	162,309.21	142,778.50	1.58	2.95	3722
50,592,373	0.300	---	---	---	07/07/2010	07/09/2011	---	FRIGOGLASS SA (CR)	4.98	-2.35	€ 5.10 14/08/2013	5.13	4.90	5.14	4.98	4.93	100@4.92	91@4.98	---	2012	20,591	136	101,513.41	251,950.02	3.84	6.26	2757
77,376,446	0.340	---	---	---	23/05/2005	18/08/2011	---	G.E. DIMITRIOU (CR)	0.041	7.90	# 0.038 14/08/2013	0.041	0.041	0.041	0.041	0.041	2300@0.036	---	---	2012	12,500	6	512.50	3,172.43	0.028	0.118	3722
14,076,360	0.370	---	---	---	19/08/2008	22/07/2003	---	GALAXIDI S.A. (CR)	0.360	---	↘ 0.360 08/08/2013	---	---	---	---	---	---	1500@0.350	10.24	2012	---	---	---	5,067.49	0.320	0.638	3573
85,882,688	0.570	0.0048	---	---	01/08/2011	02/01/2009	---	GEK TERNA (CR)	2.40	---	↘ 2.40 14/08/2013	2.37	2.34	2.40	2.40	2.38	32968@2.40	6900@2.41	-(6)-	2012	41,474	90	98,590.63	206,118.45	1.40	2.80	2357
24,060,000	0.300	---	0.017	---	18/06/2012	21/01/2000	---	GEN. COMMERCIAL & IND.SA (CR)	0.364	---	↘ 0.364 13/08/2013	---	---	---	---	---	300@0.343	50@0.389	---	2012	---	---	---	8,757.84	0.303	0.545	2797
1,270,000	0.300	---	---	---	06/07/2007	06/02/2013	---	GIRAKIAN PROFIL SA (CB)	1.33	9.92	# 1.21 14/08/2013	1.33	1.33	1.33	1.33	1.33	150@1.33	---	---	2012	40	4	53.20	1,689.10	0.900	3.33	1757
34,770,982	1.54	---	---	---	06/07/2010	27/07/2000	---	GR. SARANTIS SA (CR)	5.23	4.60	# 5.00 14/08/2013	5.00	5.00	5.45	5.23	5.26	150@5.21	2126@5.23	---	2012	20,547	46	108,118.91	181,852.24	4.05	5.45	3767
8,340,750	1.20	---	---	---	25/06/2009	30/07/2001	---	HAIDEMENOS SA (CR)	0.528	---	↘ 0.528 14/08/2013	---	---	---	---	---	46@0.491	100@0.528	---	2012	---	---	---	4,403.92	0.350	0.905	2791
101,279,627	0.380	---	---	---	26/06/2008	14/07/2006	---	HALKOR SA (CB)	0.875	0.92	# 0.867 14/08/2013	0.870	0.860	0.886	0.875	0.865	727@0.860	880@0.875	---	2012	6,228	45	5,388.94	88,619.67	0.550	1.42	1755
36,748,909	0.730	---	---	---	15/12/2005	13/12/2006	---	HEL. SUGAR INDUSTRY SA (CB)	0.990	-0.30	€ 0.993 14/08/2013	0.910	0.910	0.990	0.990	0.970	500@0.920	850@0.991	15.67	2012	400	3	388.00	36,381.42	0.754	1.74	3577
29,546,360	0.710	---	---	---	20/06/2008	23/08/2000	---	HELLENIC CABLES SA (CR)	1.74	1.75	# 1.71 14/08/2013	1.73	1.69	1.74	1.74	1.69	1@1.70	540@1.74	---	2012	394	3	667.51	51,410.67	1.16	2.32	2733
65,368,563	0.790	0.15	0.11	0.09	03/06/2013	26/09/2012	---	HELLENIC EXCHANGES (CR)	6.18	0.16	# 6.17 14/08/2013	6.10	6.09	6.25	6.18	6.16	223@6.13	50@6.19	27.69	2012	83,402	226	513,479.56	403,977.72	3.75	6.97	8777
305,635,185	2.18	0.45	0.45	0.15	16/08/2013	01/10/2003	4795	HELLENIC PETROLEUM (CR)	7.90	2.87	# 7.68 14/08/2013	7.58	7.51	7.90	7.90	7.65	100@7.68	460@7.90	24.76	2012	91,153	352	697,393.36	2,414,517.96	6.20	9.30	537
305,732,436	0.410	---	---	---	08/07/2009	28/09/2011	---	HYGEIA SA (CR)	0.445	2.30	# 0.435 14/08/2013	0.430	0.430	0.448	0.445	0.439	10000@0.444	1000@0.446	---	2012	80,585	81	35,396.97	136,050.93	0.280	0.795	4533
53,155,053	0.440	---	---	---	21/07/2010	16/07/2008	---	IASO SA (CR)	1.07	---	↘ 1.07 14/08/2013	1.12	1.07	1.12	1.07	1.11	300@1.04	700@1.08	---	2012	70	3	77.60	56,875.91	0.850	1.58	4533
8,298,467	0.400	---	---	---	30/08/1993	08/05/2013	---	IDEAL GROUP SA (CR)	0.706	---	↘ 0.706 14/08/2013	---	---	---	---	---	180@0.636	1688@0.754	-(6)-	2012	---	---	---	5,858.72	0.571	1.85	9574
28,580,100	0.400	0.05	0.02	---	20/08/2012	23/02/2007	---	IKTINOS HELLAS SA (CR)	1.53	---	↘ 1.53 14/08/2013	1.53	1.52	1.55	1.53	1.53	50@1.49	3620@1.53	14.81	2012	2,470	11	3,771.30	43,727.55	1.16	1.80	2353
9,000,000	0.880	---	---	---	15/05/2009	07/12/2010	---	ILYDA S.A. (CR)	0.559	---	↘ 0.559 05/08/2013	---	---	---	---	---	---	396@0.504	---	2012	---	---	---	5,031.00	0.269	0.650	9537
20,578,374	0.620	0.03	---	---	02/06/2011	05/05/1999	---	INFORM P. LYKOS SA (CR)	1.28	-0.77	€ 1.29 14/08/2013	1.28	1.26	1.28	1.28	1.28	1200@1.23	274@1.28	---	2012	793	5	1,011.50	26,340.32	1.10	1.75	2791
11,233,200	0.730	---	---	---	12/07/2010	30/07/1999	---	INTERTECH SA (CR)	0.300	-1.64	€ 0.305 14/08/2013	0.277	0.277	0.300	0.300	0.298	140@0.275	4130@0.300	---	2012	570	3	169.85	3,369.96	0.223	0.600	9572
34,986,430	0.440	---	---	---	25/07/2008	23/02/2010	---	INTERWOOD-XYLEMPORIA (CR)	0.113	---	↘ 0.113 14/08/2013	---	---	---	---	---	1000@0.106	5160@0.116	---	2012	---	---	---	4,518.17	0.101	0.188	2353
2,566,836	0.440	---	---	---	13/08/2010	09/01/2007	---	INTERWOOD-XYLEMPORIA (PR)	0.220	---	↘ 0.220 26/07/2013	---	---	---	---	---	---	3000@0.225	---	2012	---	---	---	4,518.17	0.200	0.315	2353

Number of Outstanding Securities	Nominal Value	Dividends [1]			Date of Last Coupon Dividend [2]		Note	Shares	Closing price	% change	Previous closing price/date	Open price	Price min	Price max	Last price	Avg price	Last Bid [7]	Last Ask [7]	P/E after	Year	Volume	Trades	Transactions Value	Company Mkt Value (thou. €)	Year low	Year high	Sector[ 4]
23,154,250	1.36	---	---	---	12/08/2008	02/08/2010	---	INTRACOM CONSTR. (CR)	0.797	0.38 #	0.794 14/08/2013	0.804	0.790	0.804	0.797	0.798	400@0.770	400@0.797	---	2012	800	6	638.25	18,453.94	0.580	1.22	2357
133,025,996	1.41	---	---	---	03/07/2007	07/01/2002	---	INTRACOM HOLDINGS (CR)	0.485	-0.61 €	0.488 14/08/2013	0.490	0.476	0.490	0.485	0.483	1420@0.484	1607@0.485	---	2012	102,148	91	49,305.67	64,517.61	0.321	0.754	9578
158,961,721	0.300	0.0045	0.0035	0.0026	30/05/2013	14/11/2007	---	INTRALOT (CR)	1.80	1.70 #	1.77 14/08/2013	1.76	1.74	1.80	1.80	1.78	330@1.76	8002@1.80	96.08	2012	280,161	347	498,151.81	286,131.10	1.29	2.41	5752
77,654,850	0.580	0.04	---	---	01/07/2011	21/02/2003	---	J & P - AVAX SA (CR)	1.65	---	1.65 14/08/2013	1.65	1.60	1.65	1.65	1.61	300@1.60	1300@1.63	---	2012	5,110	16	8,209.00	128,130.50	1.05	1.90	2357
129,994,676	1.19	0.189	---	---	23/12/2010	07/09/2012	---	JUMBO SA (CR)	8.88	1.95 #	8.71 14/08/2013	9.00	8.60	9.00	8.88	8.71	3306@8.60	92@8.88	14.97	2012	98,617	259	859,151.05	1,154,352.72	4.85	9.07	3747
9,742,920	0.400	0.01	0.01	0.01	12/08/2013	14/07/2000	---	KARAMOLEGOS SA (CR)	1.30	---	1.30 25/07/2013	---	---	---	---	---	---	423@1.30	5.05	2012	---	---	---	12,665.80	1.07	1.83	3577
14,679,792	1.44	0.065	---	---	03/06/2011	04/09/2000	---	KARATZIS SA (CR)	4.50	---	4.50 14/08/2013	---	---	---	---	---	100@4.41	500@4.59	15.11	2012	---	---	---	66,059.06	2.55	4.90	2723
3,300,689	0.350	---	---	---	01/07/2004	21/07/1999	---	KEKROPS SA (CR)	2.10	-2.78 €	2.16 13/08/2013	2.13	1.98	2.13	2.10	2.01	24@2.00	194@1.99	---	2012	198	8	397.30	6,931.45	1.54	3.79	8633
7,595,160	0.600	---	---	---	08/08/2008	18/08/2010	---	KIRIAKOULIS SHIPPING SA (CR)	1.02	---	1.02 13/08/2013	---	---	---	---	---	---	200@0.999	71.07	2012	---	---	---	7,747.06	0.635	1.49	5759
23,648,700	0.330	0.05	---	---	13/07/2011	23/07/2008	---	KLEEMAN HELLAS SA (CR)	1.54	---	1.54 13/08/2013	---	---	---	---	---	100@1.48	1000@1.52	---	2012	---	---	---	36,419.00	1.20	1.88	2757
40,219,218	0.300	---	---	---	25/05/2009	09/07/2013	---	KLOUKINAS - LAPPAS SA (CR)	0.677	-0.15 €	0.678 14/08/2013	0.646	0.614	0.677	0.677	0.643	100@0.666	334@0.677	---	2012	5,799	17	3,729.56	27,228.41	0.583	0.970	2357
21,224,340	0.420	---	---	---	02/07/2008	25/04/2006	---	KORDELLOS BROS SA (CR)	0.236	7.27 #	0.220 14/08/2013	0.220	0.220	0.240	0.240	0.227	1449@0.210	500@0.237	---	2012	3,550	5	805.00	5,008.94	0.195	0.428	1757
13,450,000	0.390	---	---	---	25/06/2010	28/05/2008	---	KORRES (CR)	3.14	---	3.14 14/08/2013	---	---	---	---	---	100@3.03	550@3.14	---	2012	---	---	---	42,233.00	2.66	4.87	3767
29,480,000	0.420	---	---	---	19/07/2010	01/08/2007	---	KRETA FARM SA (CR)	0.617	-1.12 €	0.624 14/08/2013	0.608	0.608	0.618	0.618	0.615	62@0.608	762@0.618	---	2012	1,288	6	791.50	18,189.16	0.307	0.800	3577
33,065,136	0.440	---	---	---	06/07/2009	02/08/2013	---	KRI-KRI S.A. (CR)	1.93	5.46 #	1.83 14/08/2013	1.93	1.93	1.93	1.93	1.93	500@1.77	1000@1.90	14.29	2012	15	1	28.95	63,815.71	1.52	2.06	3577
15,804,800	0.330	---	---	---	15/06/2010	12/03/2004	---	KTIMA KOSTAS LAZARIDIS SA (CR)	0.309	3.00 #	0.300 09/08/2013	0.309	0.309	0.309	0.309	0.310	280@0.278	82@0.309	---	2012	5	1	1.55	4,883.68	0.239	0.488	3535
22,945,139	1.00	---	---	---	19/08/2008	10/09/2012	---	KYRIAKIDIS MARBLES SA (CR)	0.880	-2.22 €	0.900 14/08/2013	0.900	0.880	0.900	0.880	0.890	1000@0.873	1421@0.900	86.20	2012	2,079	2	1,851.10	20,191.72	0.630	1.04	2353
44,267,700	0.300	---	---	---	30/05/2007	18/09/2002	---	LAMDA DEVELOPMENT SA (CR)	4.02	-2.19 €	4.11 14/08/2013	4.02	4.02	4.02	4.02	4.02	127@4.02	55@4.23	---	2012	33	1	132.66	177,956.15	3.58	6.48	8633
5,939,268	0.620	---	---	---	10/07/2003	03/01/2002	---	LANAKAM SA (CR)	0.639	---	0.639 14/08/2013	---	---	---	---	---	---	10000@0.576	---	2012	---	---	---	3,795.19	0.503	0.869	3763
7,734,375	1.00	---	---	---	09/07/2007	07/01/2011	---	LIVANIS SA (CR)	0.201	---	0.201 12/08/2013	---	---	---	---	---	---	1000@0.209	---	2012	---	---	---	1,554.61	0.144	0.363	5557
4,740,000	0.860	---	---	---	14/03/2003	---	---	LOGISMOS S.A. (CR)	0.496	---	0.496 06/08/2013	---	---	---	---	---	---	340@0.497	57.54	2011	---	---	---	2,351.04	0.373	1.23	9533
15,222,276	0.640	---	---	---	01/06/2010	02/08/2011	---	LOULIS MILLS SA (CR)	2.97	---	2.97 08/08/2013	---	---	---	---	---	500@2.68	200@2.97	-(6)-	2012	---	---	---	45,210.16	2.08	3.76	3577
770,328,883	0.300	---	---	---	26/04/2007	10/05/2013	---	MARFIN INVESTMENT GROUP (CR)	0.331	-0.90 €	0.334 14/08/2013	0.334	0.328	0.338	0.331	0.330	34405@0.328	33300@0.332	---	2012	874,339	327	288,603.03	254,978.86	0.175	0.564	8775
9,819,370	0.690	---	---	---	14/08/2007	09/01/2004	---	MATHIOS REFRACTORY SA (CR)	0.272	---	0.272 07/08/2013	---	---	---	---	---	970@0.191	430@0.289	---	2012	---	---	---	2,670.87	0.201	0.510	2353
468,700	1.0556	---	---	---	21/03/2012	21/05/2004	---	MERMEREN KOMB. A.D. PR. (GDR)	3.92	---	3.92 14/08/2013	---	---	---	---	---	23@3.88	56@4.21	0.96	2012	---	---	---	1,837.30	3.73	5.19	1775
51,950,600	0.320	0.48	0.75	0.25	10/05/2013	21/10/2005	---	METKA (CR)	11.52	-0.17 €	11.54 14/08/2013	11.54	11.34	11.54	11.52	11.39	2@11.37	1@11.54	16.61	2012	23,720	150	270,277.46	598,470.91	9.00	12.78	2757
10,500,000	0.900	---	---	---	24/06/2008	04/07/2012	---	MEVACO SA (CR)	1.42	---	1.42 13/08/2013	---	---	---	---	---	100@1.32	300@1.56	10.28	2012	---	---	---	14,910.00	1.01	1.58	2757
14,074,000	3.00	0.15	0.25	---	02/03/2012	23/07/2009	---	MIG REAL ESTATE (CR)	1.77	9.26 #	1.62 09/08/2013	1.77	1.77	1.77	1.77	1.77	175@1.46	270@1.68	---	2012	30	1	53.10	24,910.98	1.17	1.77	8671
6,200,000	0.500	---	---	---	22/06/2010	01/11/1995	---	MINERVA KNITWEAR SA (CB)	0.776	---	0.776 05/08/2013	---	---	---	---	---	---	3000@0.699	---	2012	---	---	---	4,811.20	0.530	0.948	3763
12,417,000	0.370	---	---	---	28/07/2008	06/09/2011	---	MLS MULTIMEDIA SA (CR)	2.93	-0.34 €	2.94 14/08/2013	2.94	2.89	2.95	2.93	2.93	101@2.92	1585@2.93	38.59	2012	4,890	34	14,314.77	36,381.81	2.60	2.97	9537
4,588,137	16.00	---	---	---	30/06/2005	17/08/2011	---	MOCHLOS SA (CR)	1.81	---	1.81 13/08/2013	---	---	---	---	---	300@1.65	1000@1.77	---	2012	---	---	---	8,304.53	1.12	2.60	2357
11,700,000	0.590	---	---	---	02/06/2009	24/07/2012	---	MOTODYNAMICS S.A. (CR)	0.375	3.02 #	0.364 09/08/2013	0.375	0.375	0.375	0.375	0.375	250@0.331	500@0.373	---	2012	2	1	0.75	4,387.50	0.211	0.640	5379
110,782,980	0.850	0.25	0.4	0.3	26/06/2013	05/11/2012	---	MOTOR OIL (CR)	8.00	1.27 #	7.90 14/08/2013	7.90	7.75	8.00	8.00	7.85	20@7.76	500@8.03	9.77	2012	83,088	259	652,261.94	886,263.84	6.80	9.37	533
116,915,862	1.07	---	---	---	11/05/2009	06/07/2011	---	MYTILINEOS HOLDINGS (CR)	4.67	---	4.67 14/08/2013	4.59	4.59	4.67	4.67	4.62	100@4.62	6255@4.67	---	2012	113,710	270	525,614.92	545,997.08	3.38	5.65	1755
8,321,682	0.670	---	---	---	17/08/2007	23/11/1999	---	N. LEVEDERIS SA (CB)	0.347	---	0.347 14/08/2013	---	---	---	---	---	---	100@0.344	---	2012	---	---	---	3,764.80	0.198	0.658	1757
2,160,524	0.670	0.0435	0.0435	0.0436	16/08/2013	23/11/1999	---	N. LEVEDERIS SA (PB)	0.406	9.73 #	0.370 14/08/2013	0.406	0.406	0.406	0.406	0.406	---	100@0.404	---	2012	5	1	2.03	3,764.80	0.307	0.798	1757
11,510,102	0.890	---	---	---	24/06/2005	06/10/1999	---	NAFPAKTOS TEXTILE IND. SA (CB)	0.369	6.96 #	0.345 13/08/2013	0.369	0.369	0.369	0.369	0.369	---	682@0.356	---	2012	9	1	3.32	4,247.23	0.232	0.500	3763
6,340,000	0.600	---	---	---	30/11/2009	12/07/2000	---	NAKAS MUSIC	1.04	---	1.04 25/07/2013	---	---	---	---	---	---	10@0.936	---	2012	---	---	---	6,593.60	0.300	1.04	5379

Number of Outstanding Securities	Nominal Value	Dividends [1]			Date of Last Coupon Dividend [2]		Note	Shares	Closing price	% change	Previous closing price/date	Open price	Price min	Price max	Last price	Avg price	Last Bid [7]	Last Ask [7]	P/E after	Year	Volume	Trades	Transactions Value	Company Mkt Value (thou. €)	Year low	Year high	Sector[ 4]
2,396,785,994	0.300	---	---	---	16/05/2008	24/05/2013	---	NATIONAL BANK (CR)	3.15	3.96 #	3.03 14/08/2013	3.08	3.04	3.20	3.15	3.11	1290@3.14	1850@3.16	---	2012	2,273,098	1,782	7,060,304.42	7,549,875.88	1.83	9.87	8355
23,935,280	0.300	---	---	---	29/06/2009	13/06/2000	---	NAYTEMPORIKI PUBLISHING SA(CR)	0.195	--- ↘	0.195 14/08/2013	---	---	---	---	---	5340@0.176	2500@0.198	---	2012	---	---	---	4,667.38	0.176	0.360	5557
27,848,000	0.300	0.0301	0.0132	---	20/08/2012	02/09/2003	---	NEWSPHONE HELLAS SA (CR)	0.341	0.89 #	0.338 14/08/2013	0.337	0.302	0.347	0.342	0.339	479@0.304	1521@0.339	8.35	2012	6,135	14	2,081.88	9,496.17	0.241	0.592	2791
6,132,500	1.25	0.1	---	---	24/06/2011	19/06/2001	---	NEXANS HELLAS SA (CR)	2.34	1.74 #	2.30 14/08/2013	2.30	2.30	2.34	2.34	2.33	100@2.21	14@2.35	---	2012	361	6	840.80	14,350.05	2.14	3.11	2733
63,697,153	1.34	---	---	---	08/07/2008	10/11/2008	---	NIREFS SA (CR)	0.465	-2.72 ☒	0.478 14/08/2013	0.461	0.460	0.487	0.472	0.470	500@0.462	716@0.471	---	2012	11,482	25	5,393.59	29,619.18	0.380	0.839	3573
319,000,000	0.300	1.4177	0.72	0.57	28/06/2013	25/04/2001	---	OPAP (CR)	7.51	-1.44 ☒	7.62 14/08/2013	7.51	7.44	7.64	7.51	7.57	5000@7.46	668@7.51	4.67	2012	688,429	852	5,209,627.23	2,395,690.00	5.49	8.27	5752
490,150,389	2.39	0.1179	---	---	28/06/2011	18/06/1998	---	OTE (CR)	7.15	-1.52 ☒	7.26 14/08/2013	7.20	7.13	7.30	7.15	7.23	406@7.13	14044@7.15	---	2012	511,085	660	3,693,755.37	3,504,575.28	4.26	7.80	6535
25,000,000	2.00	0.02	0.01	0.05	18/07/2013	08/08/2003	---	P.P.A. S.A. (CR)	17.19	-0.06 ☒	17.20 14/08/2013	16.96	16.70	17.19	17.19	16.85	80@16.80	547@17.19	86.69	2012	6,237	114	105,106.61	429,750.00	14.59	21.68	2777
4,971,466	1.46	---	---	---	04/07/2007	08/10/2003	---	PAIRIS SA (CR)	0.375	1.08 #	0.371 07/08/2013	0.262	0.262	0.377	0.375	0.348	65@0.263	576@0.373	---	2012	530	5	184.64	1,864.30	0.201	0.605	2723
3,953,090	0.900	---	---	---	02/07/2001	05/12/2012	---	PAPERPACK (CR)	0.674	4.01 #	0.648 14/08/2013	0.680	0.600	0.680	0.674	0.653	484@0.601	314@0.674	---	2012	71	16	46.37	2,664.38	0.500	1.06	2723
50,797,369	0.310	---	---	---	17/08/2000	12/10/2010	---	PAPOUTSANIS (CR)	0.580	-7.94 ☒	0.630 14/08/2013	0.580	0.580	0.580	0.580	0.580	7464@0.580	3404@0.640	---	2012	1,386	1	803.88	29,462.47	0.361	0.750	3767
20,210,127	1.53	---	---	---	27/06/1997	20/03/2000	---	PARNASSOS ENTERP. (CR)	0.310	-11.43 ☒	0.350 14/08/2013	0.359	0.310	0.359	0.310	0.324	7110@0.310	500@0.323	---	2012	52,979	115	17,179.46	6,265.14	0.285	0.698	8775
7,070,400	0.930	---	---	---	18/05/2010	12/05/2011	---	PETROPOULOS PETROS (CR)	1.74	--- ↘	1.74 14/08/2013	1.74	1.74	1.74	1.74	1.74	100@1.72	2799@1.73	---	2012	147	4	255.78	12,302.50	1.20	1.74	2753
5,072,567,951	0.300	---	---	---	16/05/2008	05/06/2013	---	PIRAEUS BANK (CR)	1.09	-0.91 ☒	1.10 14/08/2013	1.10	1.07	1.11	1.09	1.09	16600@1.08	601597@1.09	---	2012	4,257,196	1,066	4,624,022.29	5,529,099.07	0.832	6.28	8355
22,080,000	0.320	0.05	0.08	0.12	22/05/2013	03/10/2000	---	PLAISIO COMPUTERS SA (CR)	5.30	2.91 #	5.15 14/08/2013	5.36	5.30	5.36	5.30	5.30	82@5.06	830@5.30	11.80	2012	155	4	822.10	117,024.00	3.65	6.25	9572
232,000,000	4.60	0.79	---	0.025	22/07/2013	12/12/2001	---	PPC (CR)	7.94	0.76 #	7.88 14/08/2013	7.88	7.73	7.96	7.94	7.82	378@7.86	8300@7.95	-(6)-	2012	205,241	499	1,605,097.51	1,842,080.00	4.55	8.49	7535
11,812,193	0.450	---	---	---	24/07/2009	15/11/2006	---	PROFILE SA (CR)	1.06	-0.93 ☒	1.07 14/08/2013	1.05	1.05	1.08	1.06	1.06	160@1.04	170@1.06	20.39	2012	230	4	243.30	12,520.92	0.761	1.26	9533
24,319,250	0.300	---	---	---	09/07/2002	04/07/2007	---	PROODEFTIKH SA (CR)	0.146	-2.01 ☒	0.149 14/08/2013	0.146	0.146	0.146	0.146	0.146	1000@0.143	1050@0.146	---	2012	1,000	1	146.00	3,550.61	0.054	0.223	2357
6,836,280	1.88	---	---	---	18/07/2005	10/09/2010	---	QUALITY & RELIABILITY SA (CR)	1.35	--- ↘	1.35 14/08/2013	1.36	1.35	1.36	1.35	1.36	266@1.35	1000@1.39	---	2012	300	2	407.50	9,228.98	0.236	1.36	9533
48,069,201	0.400	---	---	---	05/09/2008	21/06/2012	---	QUEST HOLDINGS (CR)	1.14	1.79 #	1.12 14/08/2013	1.13	1.05	1.15	1.15	1.12	500@1.12	1300@1.17	---	2012	3,720	19	4,181.60	54,798.89	0.936	1.39	9533
57,434,884	1.31	---	---	---	05/06/2008	12/06/2009	---	REDS S.A. (CR)	0.516	-3.91 ☒	0.537 14/08/2013	0.538	0.510	0.538	0.528	0.512	40@0.504	320@0.528	---	2012	2,150	13	1,100.71	29,636.40	0.450	0.949	8633
22,280,000	0.300	0.0329	---	---	11/04/2011	23/02/2007	---	REVOIL (CR)	0.921	1.21 #	0.910 14/08/2013	0.970	0.900	0.970	0.930	0.915	700@0.904	184@0.936	---	2012	9,645	38	8,824.95	20,519.88	0.345	1.20	5379
7,500,000	0.560	---	---	---	25/06/2010	10/04/2013	---	S.KANAKIS SA (CR)	1.59	--- ↘	1.59 14/08/2013	1.59	1.59	1.59	1.59	1.59	120@1.57	490@1.58	11.30	2012	101	1	160.59	11,925.00	1.05	1.90	3577
52,067,296	0.300	---	---	---	23/12/2003	24/01/2007	---	SELECTED TEXT. IND. ASSOC (CR)	0.293	--- ↘	0.293 13/08/2013	---	---	---	---	---	500@0.272	500@0.298	---	2012	---	---	---	15,255.72	0.232	0.587	3763
96,243,908	0.410	---	---	---	26/06/2008	17/07/2000	---	SIDENOR (CR)	1.77	-0.56 ☒	1.78 14/08/2013	1.80	1.73	1.80	1.77	1.75	115@1.74	2060@1.77	---	2012	19,986	44	35,018.77	170,351.72	1.00	2.39	1757
6,456,530	1.60	---	---	---	29/06/2001	02/08/2010	---	SPACE HELLAS SA (CR)	2.19	--- ↘	2.19 14/06/2013	---	---	---	---	---	---	4958@1.98	70.35	2012	---	---	---	14,139.80	1.25	2.20	9578
28,438,268	0.300	---	---	---	21/08/2006	24/11/1999	---	SPIROY AGRICULTURE SA (CR)	0.290	3.57 #	0.280 14/08/2013	0.290	0.290	0.290	0.290	0.290	200@0.256	1660@0.299	---	2012	520	3	150.80	8,247.10	0.272	0.557	1357
33,125,000	5.00	---	---	---	03/07/2006	18/08/2010	---	TECHNICAL OLYMPIC SA (CR)	1.35	--- ↘	1.35 14/08/2013	1.35	1.35	1.35	1.35	1.35	100@1.30	560@1.40	-(6)-	2012	138	4	186.30	44,718.75	1.18	2.71	3728
109,319,070	0.300 (0.0399)	(0.0613)	---	---	28/05/2012	05/08/2013	---	TERNA ENERGY (CR)	3.05	-2.24 ☒	3.12 14/08/2013	3.12	3.03	3.15	3.05	3.06	784@3.04	1500@3.08	66.99	2012	81,096	303	248,180.24	333,423.16	2.24	3.73	7537
36,300,000	1.12	0.114	0.188	0.162	16/08/2013	12/12/2007	---	THESSALONIKA WATER & SEWERAGE	5.90	-0.34 ☒	5.92 14/08/2013	5.92	5.87	5.92	5.90	5.89	300@5.87	20@5.93	12.11	2012	1,060	10	6,246.90	214,170.00	4.73	6.82	7577
45,094,620	0.500	0.036	---	0.0467	10/06/2013	01/11/1999	---	THRACE PLASTICS SA (CR)	1.32	-1.49 ☒	1.34 14/08/2013	1.32	1.32	1.37	1.32	1.33	73@1.32	1390@1.37	7.60	2012	5,402	25	7,205.24	59,524.90	1.07	1.64	1357
77,063,568	4.00	0.0806	---	---	24/06/2011	25/06/2004	---	TITAN CEMENT (CR)	15.20	-0.65 ☒	15.30 14/08/2013	14.99	14.78	15.22	15.20	14.97	1598@15.14	258@15.20	---	2012	54,865	184	821,275.31	1,222,683.78	11.31	16.00	2353
7,568,960	4.00	0.1869	---	---	24/06/2011	25/06/2004	---	TITAN CEMENT CO. (PR)	6.78	1.95 #	6.65 09/08/2013	6.45	6.45	6.78	6.78	6.56	90@6.62	5@6.78	---	2012	134	3	879.15	1,222,683.78	5.75	7.27	2353
10,080,000	3.00	0.21	0.4	1.5	17/07/2013	27/08/2001	---	TPA SA (CR)	24.70	2.92 #	24.00 14/08/2013	23.60	23.60	24.70	24.70	24.47	325@23.80	75@24.50	13.50	2012	730	9	17,866.00	248,976.00	19.00	25.20	2777
54,888,240	1.13	0.1	0.1	0.1	25/04/2013	22/03/2006	---	TRASTOR REAL EST. INV. CO.(CR)	0.751	0.81 #	0.745 14/08/2013	0.755	0.750	0.755	0.751	0.752	1015@0.751	1000@0.770	---	2012	5,798	6	4,361.06	41,221.07	0.624	0.829	8671
14,627,315	0.300	---	---	---	16/11/1992	03/12/2012	---	UNIBIOS (CR)	0.258	-0.39 ☒	0.259 14/08/2013	0.258	0.258	0.258	0.258	0.258	840@0.230	5000@0.254	---	2012	1,400	2	361.20	3,773.85	0.151	0.414	2353
18,810,000	0.400	---	---	---	08/07/2010	14/11/2007	---	VARVERIS - MODA BAGNO SA (CR)	0.306	--- ↘	0.306 13/08/2013	---	---	---	---	---	140@0.276	2000@0.300	---	2012	---	---	---	5,755.86	0.243	0.419	2353
199,474,091	0.300	---	---	---	03/07/2009	24/03/2000	---	VIOHALCO (CB)	4.69	-3.10 ☒	4.84 14/08/2013	4.84	4.59	4.84	4.69	4.65	250@4.66	245@4.71	---	2012	134,687	475	625,865.25	935,533.49	3.06	5.70	2727

Number of Outstanding Securities	Nominal Value	Dividends [1]			Date of Last Coupon		Note	Shares	Closing price	% change	Previous closing price/date		Open price	Price min	Price max	Last price	Avg price	Last Bid [7]	Last Ask [7]	P/E after	Year	Volume	Trades	Transactions Value	Company Mkt Value (thou. €)	Year low	Year high	Sector[ 4]
2010	2011	2012	Dividend [2]	Right																								

Main Market

4,968,600	2.88	---	---	---	01/07/1998	14/12/1998	---	VIS SA (CR)	0.825	---	↘	0.825	05/08/2013	---	---	---	---	---	91@0.905	---	2012	---	---	---	4,099.10	0.490	1.01	2723
6,325,000	0.600	---	---	---	19/07/2010	25/07/2012	---	VOGIATZOGLOU SYSTEMS SA (CR)	1.21	---	↘	1.21	05/08/2013	---	---	---	---	---	731@1.15	---	2012	---	---	---	7,653.25	0.812	1.21	2797

Exchange Traded Funds (ETFs)

5,848,618	---	---	---	---	24/01/2008	---	---	ALPHA ETF FTSE Athex Large Cap	3.22	-1.23	↙	3.26	14/08/2013	3.23	3.17	3.24	3.22	3.19	70000@3.20	67@3.23	---	---	9,229	5	29,410.88	-	2.49	3.99	11000
294,878	---	---	---	---	29/06/2009	---	---	NBGAM ETF	10.55	-0.85	↙	10.64	14/08/2013	10.55	10.55	10.55	10.55	10.55	---	---	---	---	2	1	21.10	-	8.23	11.75	11000
388,550	---	---	---	---	03/11/2010	---	---	NBGAM ETF GREECE & TURKEY 30	7.87	---	↘	7.87	06/08/2013	---	---	---	---	---	---	---	---	---	---	---	---	-	7.56	10.11	11000

Low Dispersion

14,000,000	3.80	---	---	---	23/04/2010	29/06/1999	4815	ALPHA REAL ESTATE SA(CR)	6.99	6.55	#	6.56	14/08/2013	6.99	6.99	6.99	6.99	6.99	1@6.98	815@6.99	14.47	2012	2	2	13.98	97,860.00	6.00	7.00	8637
63,900,000	3.00	---	---	---	23/06/2003	04/11/2008	4816	ASTIR PALACE SA (CR)	3.60	3.15	#	3.49	14/08/2013	3.60	3.60	3.60	3.60	3.60	300@3.50	648@3.60	---	2012	52	4	187.20	230,040.00	3.40	4.95	5753
49,152,904	0.800	---	---	---	09/08/2004	08/03/2006	4814	ATHENA SA (CR)	0.275	---	↘	0.275	12/08/2013	---	---	---	---	---	---	3174@0.277	---	2012	---	---	---	13,517.05	0.094	0.340	2357
191,660,320	0.300	---	---	---	20/07/2009	29/12/2010	4817	ATTICA HOLDINGS (CR)	0.304	1.00	#	0.301	14/08/2013	0.360	0.303	0.360	0.310	0.304	1891@0.303	59@0.310	---	2012	699	8	212.79	58,264.74	0.241	0.588	5759
15,300,000	0.300	---	---	---	30/07/2009	13/12/1999	4893	ATTICA PUBLICATIONS SA (CR)	0.520	---	↘	0.520	14/08/2013	---	---	---	---	---	---	40@0.500	---	2012	---	---	---	7,956.00	0.520	1.45	5557
8,418,750	0.300	---	0.15	0.29	05/06/2013	27/06/2012	4828	GEKE SA (CB)	6.70	---	↘	6.70	14/08/2013	---	---	---	---	---	100@6.70	190@7.19	21.04	2012	---	---	---	56,405.63	6.59	6.79	5753
68,322,221	1.00	---	---	---	08/03/2002	08/04/2013	4986	GENIKI BANK (CR)	2.15	---	↘	2.15	13/08/2013	---	---	---	---	---	14@2.15	---	---	2012	---	---	---	146,892.78	2.15	8.85	8355
71,082,707	1.70	---	---	---	01/07/2010	21/11/2012	4820	HERACLES GEN.CEMENT CO. (CR)	1.44	1.41	#	1.42	14/08/2013	1.44	1.44	1.47	1.47	1.44	996@1.47	200@1.48	---	2012	46,904	14	67,571.88	102,359.10	1.20	1.80	2353
13,404,440	8.63	---	---	---	02/04/2001	06/03/1992	4822	IONIAN HOTELS SA (CR)	8.81	---	↘	8.81	09/08/2013	---	---	---	---	---	200@8.85	98@10.50	---	2012	---	---	---	118,093.12	8.40	13.00	5753
2,760,000	7.70	6.3291	7.6	8.52	26/06/2013	16/07/1990	4823	KARELIA TOBACCO CO. SA (CB)	175.25	---	↘	175.25	14/08/2013	---	---	---	---	---	50@176.00	11@177.30	10.64	2012	---	---	---	483,690.00	110.00	177.30	3785
17,000,000	0.600	---	---	---	12/06/2008	07/03/2000	4941	KATHIMERINI SA (CR)	0.978	8.79	#	0.899	14/08/2013	0.995	0.720	0.995	0.980	0.978	298@0.720	3@0.900	---	2012	128	10	125.23	16,626.00	0.321	1.00	5557
21,364,000	1.12	---	---	---	05/07/2010	10/08/2005	4824	LAMPASA HOTEL SA (CR)	18.00	---	↘	18.00	14/08/2013	18.00	18.00	18.00	18.00	18.00	200@15.00	275@18.00	---	2012	150	3	2,700.00	384,552.00	15.00	18.00	5753
6,700,000	0.800	---	---	---	19/07/2010	29/08/2012	4894	MILLS KEPENOS (CR)	1.10	---	↘	1.10	06/08/2013	---	---	---	---	---	300@0.890	230@1.32	6.54	2012	---	---	---	7,370.00	0.777	1.69	3577
70,926,000	2.25	---	---	---	25/07/2008	21/06/2000	4825	MINOAN LINES SA (CR)	1.95	-1.52	↙	1.98	13/08/2013	1.95	1.95	1.95	1.95	1.95	182@1.95	180@1.97	---	2012	48	2	93.60	138,305.70	1.70	2.10	5759
17,240,776	0.370	---	---	---	14/07/2005	30/09/2003	4827	PERSEUS SA (CR)	0.176	---	↘	0.176	12/08/2013	---	---	---	---	---	---	1000@0.211	10.26	2012	---	---	---	3,034.38	0.033	0.325	3577

Surveillance

33,301,715	0.320	---	---	---	27/06/2003	08/07/2009	4978	AEGEK (CR)	0.102	---	↘	0.102	14/08/2013	0.102	0.102	0.102	0.102	0.102	1510@0.097	994@0.102	---	2012	60	2	6.12	3,396.77	0.089	0.184	2357
14,870,100	0.300	---	---	---	15/05/2008	26/09/2011	4844	ALPHA GRISSIN S.A. (CR)	0.225	---	↘	0.225	09/08/2013	---	---	---	---	---	---	2500@0.230	---	2012	---	---	---	3,345.77	0.080	0.328	9533
215,246,452	0.300	---	---	---	25/06/2001	24/09/2001	4446	ALTEC SA (CR)	0.043	7.50	#	0.040	14/08/2013	0.043	0.043	0.043	0.043	0.043	1500@0.034	13000@0.042	---	2012	5,000	3	215.00	9,255.60	0.021	0.062	9533
2,969,713	0.300	---	---	---	02/07/2008	28/02/2011	4958	ANEK LINES SA (PR, issue '96)	0.300	---	↘	0.300	13/08/2013	---	---	---	---	---	---	---	---	2012	---	---	---	16,352.52	0.300	0.770	5759
312,163	0.300	---	---	---	02/07/2008	28/02/2011	4959	ANEK LINES SA (PR, issue '90)	1.43	---	↘	1.43	13/08/2013	1.43	1.43	1.43	1.43	1.43	---	---	---	2012	172	1	245.96	16,352.52	1.43	1.78	5759
185,373,016	0.300	---	---	---	02/07/2008	28/02/2011	4957	ANEK LINES SA (CR)	0.081	-10.00	↙	0.090	14/08/2013	0.088	0.080	0.088	0.080	0.081	30393@0.082	5000@0.089	---	2012	149,585	35	12,098.77	16,352.52	0.072	0.270	5759
81,644,555	0.300	---	---	---	01/07/2008	02/09/2002	4630	ATTI - KAT SA (CR)	0.040	8.11	#	0.037	14/08/2013	0.040	0.040	0.040	0.040	0.040	---	415@0.039	---	2012	3,750	3	150.00	3,265.78	0.022	0.088	2357
20,255,805	0.300	---	---	---	22/08/2006	02/08/2010	4881	AXON HOLDING SA (CR)	0.090	---	↘	0.090	12/08/2013	---	---	---	---	---	2000@0.072	---	---	2012	---	---	---	1,823.02	0.070	0.192	4533
17,579,754	4.16	---	---	---	18/08/2006	02/08/2010	4885	BIOTER SA (CR)	0.185	---	↘	0.185	14/08/2013	0.185	0.185	0.185	0.185	0.185	---	600@0.183	---	2012	2,500	3	462.50	3,252.25	0.059	0.194	2357
12,431,980	0.720	---	---	---	20/06/2003	10/07/2003	4559	COMPUCON SA (CR)	0.090	---	↘	0.090	01/08/2013	---	---	---	---	---	---	5616@0.085	---	2012	---	---	---	1,118.88	0.031	0.100	9537
30,159,583	0.470	---	---	---	26/06/2008	29/12/2010	4962	DIAS A/C (CR)	0.839	---	↘	0.839	03/06/2013	---	---	---	---	---	---	2000@0.800	---	2012	---	---	---	25,303.89	0.420	0.845	3573
15,878,748	0.480	---	---	---	10/07/2006	22/03/2004	4960	DOMIKI KRITIS SA (CR)	0.514	16.82	#	0.440	14/08/2013	0.514	0.514	0.514	0.514	0.514	---	150@0.510	---	2012	20	2	10.28	8,161.68	0.310	0.800	2357

Number of Outstanding Securities	Nominal Value	Dividends [1]			Date of Last Coupon		Note	Shares	Closing price	% change	Previous closing price/date	Open price	Price min	Price max	Last price	Avg price	Last Bid [7]	Last Ask [7]	P/E after	Year	Volume	Trades	Transactions Value	Company Mkt Value (thou. €)	Year low	Year high	Sector[ 4]		
		2010	2011	2012	Dividend [2]	Right																							
Surveillance																													
3,961,300	1.28	---	---	---	29/06/2004	03/08/2000	4808	DUROS SA (CR)	0.970	---	↘	0.970	19/07/2013	---	---	---	---	---	20@0.800	---	2012	---	---	---	3,842.46	0.120	0.970	3763	
7,085,888	1.59	---	---	---	02/07/1996	06/09/2010	4690	ELVIEMEK (CR)	3.00	---	↘	3.00	05/02/2013	---	---	---	---	---	-(6)-	2012	---	---	---	21,257.66	3.00	3.58	8633		
6,000,000	0.600	---	---	---	13/06/2008	08/04/2004	4886	EUROBROKERS S.A. (CR)	0.052	---	↘	0.052	27/06/2013	---	---	---	---	2000@0.042	---	2012	---	---	---	312.00	0.052	0.333	8534		
7,347,600	0.600	---	---	---	02/06/2010	25/02/2010	4889	EUROCONSULTANTS S.A. (CR)	2.60	---	↘	2.60	14/08/2013	---	---	---	---	---	499@2.60	---	2012	---	---	---	19,103.76	2.12	2.64	2791	
21,820,410	0.800	---	---	---	22/05/2008	02/08/2011	4882	EUROMEDICA SA (CR)	0.350	-2.51	€	0.359	14/08/2013	0.359	0.288	0.359	0.288	0.350	125@0.288	16500@0.400	---	2012	115	2	40.22	7,637.14	0.288	0.613	4533
12,952,610	0.300	---	---	---		04/10/2012	4846	Forthnet (CR)	0.955	-8.17	€	1.04	13/08/2013	0.925	0.925	1.07	1.07	0.955	1529@0.925	250@1.06	---	2011	628	4	599.47	12,369.74	0.350	1.43	9535
179,707,771	0.300	---	---	---	27/06/2002	01/11/2011	4847	HELLAS ONLINE SA (CR)	0.362	---	↘	0.362	14/08/2013	---	---	---	---	---	500@0.332	1400@0.399	---	2012	---	---	---	65,054.21	0.271	0.709	9537
13,692,227	1.47	---	---	---	07/07/2006	08/10/1999	4845	HELLENIC FABRICS SA (CR)	0.281	---	↘	0.281	14/08/2013	---	---	---	---	---	180@0.225	5546@0.279	---	2012	---	---	---	3,847.52	0.180	0.354	3763
30,390,000	0.310	---	---	---	18/08/2008	29/12/2006	4447	HELLENIC FISHFARMING SA (CR)	0.119	17.82	#	0.101	14/08/2013	0.119	0.119	0.119	0.119	0.119	---	1000@0.115	27.89	2012	200	2	23.80	3,616.41	0.039	0.137	3573
1,540,000	0.600	---	---	---	08/08/1994	19/09/2000	4855	J.BOUTARIS & SON HOLD. (PB)	0.024	---	↘	0.024	05/08/2013	---	---	---	---	---	1000@0.020	---	2012	---	---	---	1,295.94	0.024	0.201	3535	
25,179,640	0.600	---	---	---	08/08/1994	19/09/2000	4854	J.BOUTARIS & SON HOLD. SA (CB)	0.050	---	↘	0.050	13/08/2013	---	---	---	---	---	1800@0.041	1200@0.060	---	2012	---	---	---	1,295.94	0.040	0.132	3535
7,125,216	0.650	---	---	---	01/07/2005	14/12/1999	4955	KRE.KA SA (CR)	0.252	---	↘	0.252	12/08/2013	---	---	---	---	---	1889@0.250	---	2012	---	---	---	1,795.55	0.144	0.580	3573	
51,081,030	1.00	---	---	---	20/08/2007	03/09/2007	4912	LAVIPHARM SA (CR)	0.131	-5.75	€	0.139	13/08/2013	0.131	0.131	0.131	0.131	0.131	1980@0.123	999@0.131	---	2012	2,400	5	314.40	6,691.61	0.101	0.268	4577
322,925,288	0.300	---	---	---	23/05/2007	10/04/2000	4554	M.J. MAILLIS SA (CR)	0.074	-10.84	€	0.083	13/08/2013	0.074	0.074	0.074	0.074	0.074	1202@0.074	1001@0.081	---	2012	20,000	8	1,480.00	23,896.47	0.066	0.150	2723
9,567,289	0.300	---	---	---	01/07/2004	19/11/2007	4944	MARAC ELECTRONICS (CR)	0.114	---	↘	0.114	30/07/2013	---	---	---	---	---	1999@0.114	---	2012	---	---	---	1,090.67	0.068	0.409	9578	
4,178,856	1.58	0.22	---	---	21/07/2011	28/07/2004	4983	MEDICON S.A (CR)	0.600	---	↘	0.600	16/07/2013	---	---	---	---	---	200@0.481	200@0.720	---	2012	---	---	---	2,507.31	0.446	1.18	4535
66,937,526	0.700	---	---	---	13/08/2010	21/05/2003	4995	MICHANIKI SA (CR)	0.105	-0.94	€	0.106	14/08/2013	0.102	0.102	0.109	0.109	0.105	3032@0.103	1988@0.109	---	2012	7,112	12	745.54	9,625.34	0.085	0.370	2357
25,968,987	0.700	---	---	---	13/08/2010	21/05/2003	4996	MICHANIKI SA (PR)	0.100	2.04	#	0.098	14/08/2013	0.100	0.100	0.100	0.100	0.100	281@0.079	450@0.096	---	2012	500	2	50.00	9,625.34	0.065	0.268	2357
255,459,600	0.300	---	---	---	26/06/2000	03/12/2010	4833	NEL SA (CR)	0.028	-17.65	€	0.034	14/08/2013	0.028	0.028	0.028	0.028	0.028	---	8257@0.034	---	2012	22,818	8	638.90	7,152.87	0.012	0.158	5759
20,231,328	0.600	---	---	---	15/07/2008	25/06/2004	4879	NIKAS SA (CR)	0.262	---	↘	0.262	02/08/2013	---	---	---	---	---	999@0.261	---	2012	---	---	---	5,300.61	0.261	0.530	3577	
14,967,940	0.500	---	---	---	21/05/2008	04/01/2008	4956	PASAL DEVELOPMENT S.A. (CR)	0.178	19.46	#	0.149	14/08/2013	0.178	0.178	0.178	0.178	0.178	---	997@0.178	---	2012	522	5	92.91	2,664.29	0.120	0.414	8633
40,946,303	0.360	---	---	---	18/07/2005	27/11/2007	4856	PC SYSTEMS SA (CR)	0.097	---	↘	0.097	07/06/2013	0.097	0.097	0.097	0.097	0.097	---	49@0.078	---	2012	10	2	0.97	3,971.79	0.057	0.180	9533
18,750,000	0.300	---	---	---	02/07/2001	31/12/2012	4985	PEGASUS PUBLISHING S.A. (CR)	0.331	---	↘	0.331	06/08/2013	---	---	---	---	---	4@0.280	---	2012	---	---	---	6,206.25	0.044	0.610	5557	
28,056,518	0.530	---	---	---	04/07/2007	19/07/2006	4750	SATO SA (CR)	0.088	---	↘	0.088	14/08/2013	---	---	---	---	---	3000@0.088	---	2012	---	---	---	2,468.97	0.025	0.115	3726	
36,235,184	1.00	---	---	---	01/07/2008	30/07/2012	4961	SELONDA AQUACULTURE SA (CR)	0.194	1.57	#	0.191	14/08/2013	0.191	0.191	0.194	0.194	0.194	215@0.180	497@0.194	---	2012	708	5	137.06	7,029.63	0.119	0.600	3573
7,914,480	2.50	---	---	---	23/06/2008	29/06/2011	4888	SFAKIANAKIS SA (CR)	0.620	---	↘	0.620	13/08/2013	---	---	---	---	---	2958@0.550	430@0.744	---	2012	---	---	---	4,906.98	0.364	0.763	5379
60,221,300	0.400	---	---	---	01/07/2002	01/11/2010	4880	SHELMAN SA (CR)	0.130	---	↘	0.130	01/08/2013	---	---	---	---	---	2900@0.120	---	2011	---	---	---	7,828.77	0.098	0.280	2353	
10,000,000	1.35	---	---	---	24/06/2008	10/05/2005	4887	SIDMA SA (CR)	0.800	---	↘	0.800	02/08/2013	---	---	---	---	---	305@0.747	---	2012	---	---	---	8,000.00	0.420	0.920	1757	
29,060,950	0.340	---	---	---	20/08/2007	24/10/2001	4884	SPIDER METAL INDUSTRY SA (CR)	0.022	---	↘	0.022	14/08/2013	---	---	---	---	---	1000@0.019	---	2012	---	---	---	639.34	0.022	0.097	2757	
100,793,000	0.300	---	---	---	16/07/2009	05/08/2013	---	TELETIPOS SA (CR)	0.251	0.40	#	0.250	14/08/2013	0.251	0.251	0.251	0.251	0.251	4996@0.251	15680@0.300	---	2012	24	2	6.02	25,299.04	0.118	0.600	5553
3,229,566	0.320	---	---	---	22/06/2005	23/09/1999	4629	VARANGIS AVEPE S.A. (CR)	0.780	---	↘	0.780	12/08/2013	---	---	---	---	---	999@0.770	---	2012	---	---	---	2,519.06	0.206	0.840	3726	
17,175,132	0.300	---	---	---	25/06/2002	21/06/2013	4997	VARVARESSOS SA (CB)	0.055	---	↘	0.055	13/08/2013	---	---	---	---	---	17@0.066	---	2012	---	---	---	944.63	0.028	0.181	3763	
13,191,620	0.620	---	---	---	04/08/2010	09/09/2002	4977	YALCO - CONSTANTINOU SA (CB)	0.107	-17.69	€	0.130	13/08/2013	0.106	0.106	0.107	0.107	0.107	697@0.106	500@0.155	---	2012	1,201	7	128.31	1,411.50	0.106	0.210	3722

Under Deletion																													
5,025,000	0.300	---	---	---	05/07/2005	14/03/2002	4963	ALSINCO S.A (CR)	0.014	---	↘	0.014	18/07/2013	---	---	---	---	---	---	---	2012	---	---	---	70.35	0.006	0.185	3763	
766,000	2.83	---	---	---	01/07/2004	11/12/2012	4937	TRIA ALFA SA (CR)	3.51	---	↘	3.51	10/07/2013	---	---	---	---	---	50@3.50	---	2012	---	---	---	3,068.41	1.30	4.70	3763	
245,000	2.83	---	---	---	19/07/2010	11/12/2012	4938	TRIA ALFA SA (PR)	1.55	-19.69	€	1.93	14/06/2013	1.55	1.55	1.55	1.55	1.55	---	48@1.55	---	2012	80	3	124.00	3,068.41	0.501	1.93	3763

Number of Outstanding Securities	Nominal Value	Dividends [1]			Date of Last Coupon		Note	Shares	Closing price	% change	Previous closing price/date	Open price	Price min	Price max	Last price	Avg price	Last Bid [7]	Last Ask [7]	P/E after	Year	Volume	Trades	Transactions Value	Company Mkt Value (thou. €)	Year low	Year high	Sector[ 4]
		2010	2011	2012	Dividend [2]	Right																					
Under Suspension																											
49,030,011	0.300	---	---	---	19/07/2010	12/05/2011	4875	ALAPIS (CR)	0.041	---	0.041	30/03/2012	---	---	---	---	---	---	---	---	---	---	---	2,010.23	0.041	0.041	4577
1,750,955,549	0.600	---	---	---	19/05/2008	08/12/2011	4911	ATE (CR)	0.155	---	0.155	30/07/2012	---	---	---	---	---	---	---	---	---	---	---	271,398.11	0.155	0.155	8355
21,382,067	0.300	---	---	---	02/10/2006	15/02/2006	4628	ATERMON (CR)	0.120	---	0.120	31/03/2010	---	---	---	---	---	---	---	---	---	---	---	2,565.85	0.120	0.120	5555
105,423,498	0.510	---	---	---	01/07/2004	28/12/2005	4920	AVENIR S.A. (CR)	0.046	---	0.046	30/08/2012	---	---	---	---	---	---	---	---	---	---	---	4,849.48	0.046	0.046	5752
33,930,000	0.300	---	---	---	03/07/2006	30/05/2001	4865	BABIS VOVOS SA (CR)	0.304	---	0.304	30/03/2012	---	---	---	---	---	---	---	---	---	---	---	10,314.72	0.304	0.304	8633
20,121,710	1.21	---	---	---	27/07/1992	12/03/2003	4970	BALKAN R.E. (CR)	0.220	---	0.220	31/05/2013	---	---	---	---	---	---	---	---	---	---	---	4,426.78	0.195	0.438	8633
1,795,140,547	1.00	(0.0615)	---	---	31/05/2011	19/04/2012	4951	BANK OF CYPRUS (CR)	0.207	---	0.207	15/03/2013	---	---	---	---	5000@0.170	---	---	---	---	---	---	371,594.09	0.180	0.282	8355
21,920,570	0.300	---	---	---	03/07/2007	13/12/1999	4702	CARDASSILARIS SA (CR)	0.140	---	0.140	30/11/2010	---	---	---	---	---	---	---	---	---	---	---	3,068.88	0.140	0.140	3577
54,547,634	0.500	---	---	---	25/04/2005	21/01/2009	4860	CH.TEGOPOULOS PUBL. SA (CR)	0.038	---	0.038	23/03/2012	---	---	---	---	---	---	---	---	---	---	---	2,072.81	0.038	0.038	5557
33,718,750	0.300	---	---	---	28/05/2008	21/01/2013	4998	DOL SA (CR)	0.640	---	0.640	25/07/2013	---	---	---	---	---	3118@0.700	---	---	---	---	---	21,580.00	0.244	0.759	5557
7,847,611	1.20	---	---	---	01/08/2007	28/09/2011	4939	EDRASIS - C. PSALLIDAS SA (CR)	0.150	---	0.150	19/11/2012	---	---	---	---	---	---	---	---	---	---	---	1,177.14	0.150	0.150	2357
5,750,000	0.300	---	---	---	12/12/2008	12/12/2011	4929	ELECTRONIKI ATHINON SA (CR)	0.480	---	0.480	07/09/2012	---	---	---	---	---	---	---	---	---	---	---	2,760.00	0.480	0.480	5375
24,605,397	0.400	---	---	---	29/06/1995	27/05/2002	4651	EMPORIKOS DESMOS SA (CR)	0.080	---	0.080	28/05/2010	---	---	---	---	---	---	---	---	---	---	---	2,134.04	0.080	0.080	3722
1,182,903	0.400	---	---	---	01/07/1996	27/05/2002	4652	EMPORIKOS DESMOS SA (PR)	0.140	---	0.140	28/09/2009	---	---	---	---	---	---	---	---	---	---	---	2,134.04	0.140	0.140	3722
8,593,750	0.300	---	---	---	01/06/2009	20/06/2007	4876	FASHION BOX (CR)	1.30	---	1.30	23/02/2012	---	---	---	---	---	---	---	---	---	---	---	11,171.88	1.30	1.30	3763
7,326,648	1.00	---	---	---	26/07/2006	24/07/2001	4921	FINTEXPORT SA (CR)	0.328	---	0.328	29/06/2012	---	---	---	---	---	---	---	---	---	---	---	2,403.14	0.328	0.328	3763
20,860,000	0.300	---	---	---	03/07/2000	13/11/2007	4848	IKONA - IHOS SA (CR)	0.072	---	0.072	02/12/2011	---	---	---	---	---	---	---	---	---	---	---	1,501.92	0.072	0.072	5379
36,765,744	0.350	---	---	---	16/08/2006	06/06/2011	4869	IMPERIO SA (CR)	0.026	---	0.026	30/03/2012	---	---	---	---	---	---	---	---	---	---	---	955.91	0.026	0.026	2777
24,619,524	0.500	---	---	---	10/10/1986	30/12/2002	4914	KERAMIA-ALLATINI (CR)	0.088	---	0.088	27/08/2012	---	---	---	---	---	---	---	---	---	---	---	2,166.52	0.088	0.088	8633
7,840,373	1.20	---	---	---	18/07/2002	05/03/2003	4765	KLONATEX SA (PR)	0.080	---	0.080	09/05/2011	---	---	---	---	---	---	---	---	---	---	---	1,453.75	0.080	0.080	3763
20,663,047	1.20	---	---	---	21/08/2000	05/03/2003	4764	KLONATEX SA (CR)	0.040	---	0.040	09/05/2011	---	---	---	---	---	---	---	---	---	---	---	1,453.75	0.040	0.040	3763
17,544,600	0.600	---	---	---	03/07/2000	01/08/2000	4868	KOYMBAS SYNERGY GROUP (CR)	0.132	---	0.132	29/03/2012	---	---	---	---	---	---	---	---	---	---	---	2,315.89	0.132	0.132	8775
15,015,000	1.60	---	---	---	01/07/2002	02/02/2000	4603	MAXIM C.M. PERTSINIDIS SA (CB)	0.100	---	0.100	30/11/2009	---	---	---	---	---	---	---	---	---	---	---	1,501.50	0.100	0.100	3763
13,555,100	1.00	---	---	---	08/07/2005	---	4576	MICROLAND COMPUTERS SA (CR)	0.640	---	0.640	14/07/2009	---	---	---	---	---	---	---	---	---	---	---	8,675.26	0.640	0.640	5379
23,463,874	0.800	---	---	---	23/05/2003	21/12/1999	4918	NEORION SA (CR)	0.125	---	0.125	28/08/2012	---	---	---	---	---	---	---	---	---	---	---	2,932.98	0.125	0.125	2753
42,501,273	0.300	---	---	---	26/06/2007	10/08/2009	4993	NUTRIART (CR)	0.049	---	0.049	21/06/2013	---	---	---	---	---	---	---	---	---	---	---	2,082.56	0.038	0.114	3577
25,583,146	0.300	---	---	---	25/06/2001	03/12/2008	4723	PETZETAKIS SA (CR)	0.260	---	0.260	28/01/2011	---	---	---	---	---	---	---	---	---	---	---	6,651.62	0.260	0.260	1357
9,550,386	0.500	---	---	---	01/07/1997	12/06/2008	4626	PRAXITELIO SA (CR)	0.390	---	0.390	11/03/2010	---	---	---	---	---	---	---	---	---	---	---	4,430.09	0.390	0.390	4533
1,306,368	0.500	---	---	---	01/07/1997	12/06/2008	4627	PRAXITELIO SA (PR)	0.540	---	0.540	15/12/2009	---	---	---	---	---	---	---	---	---	---	---	4,430.09	0.540	0.540	4533
62,683,822	0.300	---	---	---	27/05/2008	09/01/2006	4830	PROTON BANK S.A. (CR)	0.180	---	0.180	07/10/2011	---	---	---	---	---	---	---	---	---	---	---	11,283.09	0.180	0.180	8355
23,059,688	0.660	---	---	---	03/07/2008	06/08/2004	4864	RIDENCO SA (CR)	0.032	---	0.032	30/03/2012	---	---	---	---	---	---	---	---	---	---	---	737.91	0.032	0.032	3765
51,083,993	1.00	---	---	---	15/07/2008	06/08/2003	4867	SANYO HELLAS HOLD. (CR)	0.020	---	0.020	30/03/2012	---	---	---	---	---	---	---	---	---	---	---	1,021.68	0.020	0.020	3722
51,334,286	0.320	---	---	---	03/07/2000	18/12/2007	4548	SAOS (CR)	0.780	---	0.780	27/03/2009	---	---	---	---	---	---	---	---	---	---	---	40,040.74	0.780	0.780	2773
26,408,040	0.300	---	---	---	01/07/1997	26/05/1999	4464	SHEET STEEL SA (CR)	0.120	---	0.120	28/11/2008	---	---	---	---	---	---	---	---	---	---	---	3,168.96	0.120	0.120	1757
26,262,660	0.900	---	---	---	01/07/2008	24/02/2011	4954	SPRIDER STORES (CR)	0.031	---	0.031	28/03/2013	---	---	---	---	---	---	---	---	---	---	---	814.14	0.025	0.055	5371
144,688,060	0.600	---	---	---	21/04/2008	10/03/2010	4982	T BANK (CR)	0.048	---	0.048	30/11/2011	---	---	---	---	---	---	---	---	---	---	---	6,945.03	0.048	0.048	8355
6,523,780	0.530	---	---	---	01/07/2002	06/03/2001	4971	TECHNICAL PUBLICATIONS SA (CR)	0.006	---	0.006	29/05/2013	---	---	---	---	---	---	---	---	---	---	---	39.14	0.006	0.347	5557
13,920,000	0.320	---	---	---	19/11/2001	01/08/2000	4726	TEXAPRET SA (CR)	0.080	---	0.080	23/02/2011	---	---	---	---	---	---	---	---	---	---	---	1,113.60	0.080	0.080	3763



Number of Outstanding Securities	Nominal Value	Dividends [1]			Date of Last Coupon Dividend [2]		Note	Shares	Closing price	% change	Previous closing price/date	Open price	Price min	Price max	Last price	Avg price	Last Bid [7]	Last Ask [7]	P/E after	Year	Volume	Trades	Transactions Value	Company Mkt Value (thou. €)	Year low	Year high	Sector[ 4]
--	------------------	---------------	--	--	-------------------------------------	--	------	--------	------------------	----------	--------------------------------	---------------	--------------	--------------	---------------	--------------	-----------------	--------------	--------------	------	--------	--------	-----------------------	--------------------------------	-------------	--------------	---------------

Under Suspension

284,465,964	3.70	---	---	---	20/06/2008	15/06/2009	4913	TT HELLENIC POSTBANK (CR)	0.168	---	↘ 0.168	30/08/2012	---	---	---	---	---	---	---	---	---	---	---	47,790.28	0.168	0.168	8355
89,616,200	0.300	---	---	---	21/08/2000	28/06/2007	4616	UNITED TEXTILES (CR)	0.050	---	↘ 0.050	25/02/2010	---	---	---	---	---	---	---	---	---	---	---	4,480.81	0.050	0.050	3763
71,683,906	0.400	---	---	---	15/06/2005	05/02/2008	4953	XATZIOANNOU (CR)	0.026	---	↘ 0.026	28/03/2013	---	---	---	---	---	---	---	---	---	---	---	1,863.78	0.020	0.085	3763

## Shares' Notes

Code	Note text
( )	- Adjusted dividends.
*	- Last adjusted closing price.
[1]	- Net dividends.
[2]	- The "Date of Last Coupon" for New listings refers to the date company's stocks started to trade in Athex
[3]	- The Company Market Value is referred to the number of outstanding shares
[4]	- Sectors codification can be found in Appendix A
[5]	- The Market Value refers to the total number of shares listed (including their several classes) in the exchange by the company.
[6]	- P/E greater than 100
[7]	- Last view of the Order Book before the end of the trading session
4446	- Transfer to the "Under Supervision" Category as of 20/10/2008.
4447	- Transfer to the "Under Supervision" Category as of 21/10/2008.
4464	- Suspension of trading as of 1/12/2008.
4548	- Suspension of trading as of 1/4/2009.
4554	- Transfer to the "Under Supervision" Category as of 6/4/2009.
4559	- Transfer to the "Under Supervision" Category as of 21/4/2009.
4576	- Suspension of trading as of 14/7/2009.
4603	- Suspension of trading as of 1/12/2009.
4616	- Suspension of trading as of 25/2/2010.
4626	- Suspension of trading as of 1/4/2010.
4627	- Suspension of trading as of 1/4/2010.
4628	- Suspension of trading as of 1/4/2010.
4629	- Transfer to the Under Supervision Category as of 12/4/2010.
4630	- Transfer to the Under Supervision Category as of 12/4/2010.
4651	- Suspension of trading as of 1/6/2010.
4652	- Suspension of trading as of 1/6/2010.
4690	- Transfer to Surveillance category as of 4/4/2006.
4702	- Suspension of trading as of 1/12/2010.
4723	- Suspension of trading as of 31/1/2011.
4726	- Suspension of trading as of 1/3/2011.
4750	- Transfer to the "Under Surveillance Category" from 8/4/2011.
4764	- Suspension of trading as of 20/5/2011.
4765	- Suspension of trading as of 20/5/2011.
4795	- The final gross (pre-tax) dividend is € 0.30 per share and subject to withholding tax on the full dividend amount, i.e. 0,45 per share, for those shareholders liable to withholding tax, in accordance with the applicable tax law provisions.
4808	- Suspension of trading as of 6/9/2011.
4814	- Transfer to the Low Dispersion Category as of 30/5/2011.
4815	- Transfer to the Low Dispersion Category as of 30/5/2011.
4816	- Transfer to the Low Dispersion Category as of 30/5/2011.
4817	- Transfer to the Low Dispersion Category as of 30/5/2011.
4820	- Transfer to the Low Dispersion category as of 18/4/2008.
4822	- Transfer to the Low Dispersion category as of 30/5/2011.
4823	- Transfer to the Low Dispersion category as of 4/4/2006.
4824	- Transfer to the Low Dispersion category as of 18/4/2008.
4825	- Transfer to the Low Dispersion category as of 8/4/2011.
4827	- Transfer to the Low Dispersion category as of 5/5/2010.
4828	- Transfer to the Low Dispersion category as of 4/4/2006.
4830	- Suspension of trading as of 10/10/2011.
4833	- Transfer to Surveillance category from 6/5/2010.
4844	- Transfer to the Surveillance category from 8/4/2011.
4845	- Transfer to the Surveillance Category as of 25/11/2011.
4846	- Transfer to the Surveillance Category as of 25/11/2011.
4847	- Transfer to the Surveillance Category as of 3/7/2009.

## Shares' Notes

Code	Note text
4848	- Suspension of trading as of 6/12/2011.
4854	- Transfer to the Surveillance Category as of 29/12/2011.
4855	- Transfer to the Surveillance Category as of 29/12/2011.
4856	- Transfer to the Surveillance Category as of 29/12/2011.
4860	- Suspension of trading as of 30/3/2012.
4864	- Suspension of trading as of 30/3/2012.
4865	- Suspension of trading as of 2/4/2012.
4867	- Suspension of trading as of 2/4/2012.
4868	- Suspension of trading as of 2/4/2012.
4869	- Suspension of trading as of 2/4/2012.
4875	- Suspension of trading as of 2/4/2012.
4876	- Suspension of trading as of 3/4/2012.
4879	- Transfer to the Surveillance Category as of 10/4/2012.
4880	- Transfer to the Surveillance Category as of 10/4/2012.
4881	- Transfer to the Surveillance Category as of 10/4/2012.
4882	- Transfer to the Surveillance Category as of 10/4/2012.
4884	- Transfer to the Surveillance Category as of 10/4/2012.
4885	- Transfer to the Surveillance Category as of 10/4/2012.
4886	- Transfer to the Surveillance Category as of 10/4/2012.
4887	- Transfer to the Surveillance Category as of 10/4/2012.
4888	- Transfer to the Surveillance Category as of 10/4/2012.
4889	- Transfer to the Surveillance Category as of 10/4/2012.
4893	- Transfer to the Low Dispersion category as of 28/5/2012.
4894	- Transfer to the Low Dispersion category as of 28/5/2012.
4911	- Lift of suspension from 30/7/2012.
4912	- Transfer to the Surveillance Category as of 31/7/2012.
4913	- Suspension of trading as of 30/8/2012.
4914	- Suspension of trading as of 31/8/2012.
4918	- Suspension of trading as of 31/8/2012.
4920	- Suspension of trading as of 31/8/2012.
4921	- Suspension of trading as of 31/8/2012.
4929	- Suspension of trading as of 1/10/2012.
4937	- Transfer to the UNDER DELETION category as of 30/11/2012.
4938	- Transfer to the UNDER DELETION category as of 30/11/2012.
4939	- Suspension of trading as of 30/11/2012.
4941	- Transfer to the Low Dispersion category as of 3/12/2012.
4944	- Transfer to the Surveillance Category as of 7/12/2012.
4951	- Suspension of trading as of 19/3/2013.
4953	- Suspension of trading as of 2/4/2013.
4954	- Suspension of trading as of 2/4/2013.
4955	- Transfer to the Surveillance Category as from 5/4/2013.
4956	- Transfer to the Surveillance Category as from 5/4/2013.
4957	- Transfer to the Surveillance Category as from 5/4/2013.
4958	- Transfer to the Surveillance Category as from 5/4/2013.
4959	- Transfer to the Surveillance Category as from 5/4/2013.
4960	- Transfer to the Surveillance Category as from 5/4/2013.
4961	- Transfer to the Surveillance Category as from 5/4/2013.
4962	- Transfer to the Surveillance Category as from 5/4/2013.
4963	- Transfer to the Under Deletion Category as from 5/4/2013.
4970	- Suspension of trading as of 3/6/2013.
4971	- Suspension of trading as of 3/6/2013.
4977	- Transfer to the "Under Surveillance Category" from 11/6/2013.
4978	- Transfer to the Under Supervision Category as of 11/6/2013.

---

Shares' Notes

---

Code	Note text
4982	- Suspension of trading as of 1/12/2011.
4983	- Transfer to the Surveillance Category as of 5/4/2013.
4985	- Transfer to the "Under Surveillance Category" from 8/4/2011.
4986	- Transfer to the Low Dispersion category as of 30/5/2011.
4988	- As of June 7, 2013, the name of the company "DUTY FREE SHOPS A CORPORATION OPERATING DFS AND LARGE AND SMALL SCALE INDUSTRIAL OPERATIONS, TECHNIC" on ATHEX changes to "FOLLI FOLLIE S.A.".
4993	- Suspension of trading as of 21/6/2013 (15:18).
4995	- Transfer to the "Under Surveillance Category" from 8/4/2011.
4996	- Transfer to the "Under Surveillance Category" from 8/4/2011.
4997	- Transfer to the Under Supervision Category as of 21/12/2009. - The 6,870,053 new (CB) shares, resulting from the recent share capital increase through a rights issue, are not yet admitted to trading on the ATHEX.
4998	- Suspension of trading as of 26/7/2013.

## Securities Blocks Details

Securities	Block Volume	Price	Block Trade Value	Time of approval	Note
PIRAEUS BANK (W)	500,000	0.800	400,000.00	11:14:06	20
PIRAEUS BANK (CR)	308,455	1.10	339,300.50	11:22:28	20
JUMBO SA (CR)	46	8.90	409.40	16:14:09	18
OPAP (CR)	100,000	7.58	757,500.00	16:33:05	20
ALPHA BANK (W)	67,920	1.09	74,032.80	16:37:40	18
OPAP (CR)	40,000	7.52	300,992.00	17:08:50	20
ALPHA BANK (CR)	956,500	0.525	501,779.90	17:10:04	20
ALPHA BANK (W)	1,117,000	1.04	1,161,568.30	17:15:49	20

## Blocks Notes

2 - SPOT 1 or SPOT 2 Packet	11 - Total Assets > 500 bil
3 - Block with Short Selling	12 - Sell Offer through Athex
4 - Buy to Close Block	13 - Forced Sale of NMOE
6 - Simultaneous Constitution	14 - Restoration Packet
7 - Repurchase Agreement	15 - Market Maker Packet
8 - Dispersion's Achievement (Not Listed)	16 - Short Selling
9 - Dispersion's Achievement (Listed)	18 - SPOT 1 Packet
10 - Share Capital Majority of Greek State (> 50 bil)	20 - Method 6-1 Packet

Shares Rights Details

Occured date	Exercise from	Exercise until	Trading until	Rights	Price min	Price max	Closing price	Last Bid	Last Ask	Volume	Trades	Transactions Value
05/08/2013	16/08/2013	30/08/2013	26/08/2013	TELETIPOS S.A. (CR)	---	---	0.001	---	3630@0.001	---	---	---

---

**Shares Short Selling**

---

Securities	Transactions Value	Transactions Volume	% of Total Volume	Short Covering Trans. Value	Short Covering Volume	% of Total Volume
MLS MULTIMEDIA SA (CR)	---	---	---	32.23	11	0.22

---

**Short Selling Notes**

---

[1] - The Hellenic Capital Markets Commission (HCMC) has decided to prohibit the short selling only in relation to shares of credit institutions admitted to trading on the Athens Exchange and comprising the FTSE/ATHEX - CSE Banking Index, for a period of three(3) months and more specifically from February1, 2013 until April 30, 2013.

## Stock Borrowing

Securities	Stock Borrowing through Helex (volume)	Stock Borrowing through OTC (volume) [1]	Totals [2]
ALAPIS (CR)	---	6,250	6,250
ALPHA BANK (CR)	161,200	4,962,713	5,123,913
ATE (CR)	---	69,000	69,000
BANK OF CYPRUS (CR)	---	102,899	102,899
CC HBC AG (CR)	12,800	73,941	86,741
ELLAKTOR (CR)	15,000	---	15,000
EUROBANK ERGASIAS (CR)	21,120	68,433	89,553
EUROBANK PROPERTIES REIC (CR)	7,500	31,215	38,715
EYDAP S.A. (CR)	2,900	---	2,900
FLEXOPACK SA (CR)	---	41,927	41,927
FOLLI FOLLIE (CR)	3,000	8	3,008
FRIGOGLASS SA (CR)	3,500	---	3,500
GEK TERNA (CR)	500	---	500
HELLENIC EXCHANGES (CR)	38,500	50	38,550
HELLENIC PETROLEUM (CR)	22,400	269	22,669
INTERTECH SA (CR)	---	483,000	483,000
INTRALOT (CR)	25,000	---	25,000
JUMBO SA (CR)	10,900	25	10,925
LAMDA DEVELOPMENT SA (CR)	---	10,377	10,377
MARFIN INVESTMENT GROUP (CR)	---	733,793	733,793
METKA (CR)	3,900	---	3,900
MOTOR OIL (CR)	17,700	---	17,700
MYTILINEOS HOLDINGS (CR)	5,000	---	5,000
NATIONAL BANK (CR)	61,100	2,351,434	2,412,534
NBGAM ETF	10,000	---	10,000
NBGAM ETF GREECE & TURKEY 30	3,500	---	3,500
OPAP (CR)	50,500	9,067	59,567
OTE (CR)	67,900	109,116	177,016
PIRAEUS BANK (CR)	5,200	239,460	244,660
PPC (CR)	40,400	44,800	85,200
TERNA ENERGY (CR)	5,400	---	5,400
TITAN CEMENT (CR)	6,200	55,390	61,590
VIOHALCO (CB)	5,200	---	5,200

## Stock Borrowing Notes

[1] - The information concerning OTC Stock Borrowing Transactions is based on the statements of the Dematerialised Securities System (DSS) operators involved and refers to volumes that have been cleared and registered up until the previous working day.



Shares Forced Sales

Securities	Transaction s Volume	Number of Trades	Transactions Value	Note
No Forced Transactions.				

Forced Sales Notes

- 1 - Normal Forced Sale.
- 2 - Forced Sales of Fixed Registered Shares.
- 3 - Forced Sales of Remaining Stock Fractions.

**Forced Sales Registered Shares**

Securities	Start Date	End Date	Initial Volume	Remaining Volume	Date	Avg price (day)	Avg price (period)	Number of Trades	Transactions Volume	Transactions Value
------------	------------	----------	-------------------	---------------------	------	--------------------	-----------------------	---------------------	------------------------	-----------------------

No Fixed Registered Shares Forced Sales.

**Forced Sales Notes**

According to Decision 1/380/04.05.2008 of the Hellenic Republic Capital Market Commission, the certificated registered shares that have not been deposited to the issuer for dematerialisation, will be auctioned in the Athens Exchange by the supervising issuer. Forced sales procedure is held according to Article 99A of the Athens Exchange Rulebook. The average price of the period is calculated by dividing the Total transactions value by the Total volume and includes all the transactions made until the current date.

## Exchange Traded Funds (ETFs) Characteristics

	Transactions Date (T)	Creation / Redemption	Units (T-1)	New Units (T-1)	Redemptio n Units (T-	Units (T) [1]	Fund Assets [2]	Net Unit Price	Dividen d per	Dividend Date
NBGAM ETF ΓΔ Χ.Α.	16/08/2013	25,000	294,878	---	---	294,878	3,137,581.00	10.6403	---	27/10/2011
ALPHA ETF FTSE Athex Large Cap	16/08/2013	50,000	5,848,618	---	---	5,848,618	19,035,570.00	3.2547	0.05	01/07/2013
NBGAM ETF GREECE & TURKEY 30	16/08/2013	25,000	388,550	---	---	388,550	3,141,817.00	8.0860	---	27/10/2011

## ETFs Notes

[1] - Units (T) = Units (T-1) + New Units (T-1) - Redemption Units (T-1)

[2] - The Creation / Redemption Units of T-1 are included.

Corporate Bonds

Num Listed Bonds	Nominal price	Issue price	Today's Rate	Exp. Date	Duration (years)	Note	Coupon attached		Trading	Corporate Bonds	Price min	Price max	Closing price	Previous closing price/date	Volume	Transactions Value	Last order		Date	ear min	Year max
							Common	Preferred									Price	Buy / Sell			
212,849,265	1.00	1.00	6.30	29/07/2020	7	---	1	---	1	MARFIN INVESTMENT GROUP S.A. SERIES B (BOND)	---	---	---	---	---	---	0.9500	B	16/08/2013	100.0000	100.0000
2,156,827	1.00	1.00	7.00	29/07/2019	6	---	1	---	1	MARFIN INVESTMENT GROUP S.A. SERIES A (BOND)	---	---	---	---	---	---	1.0300	B	16/08/2013	100.0000	100.0000
39,711,653	1.00	1.00	6.00	30/06/2016	5	4786	5	---	1	BANK OF CYPRUS PUBLIC CO. LTD (Convert. to CR sh.)	---	---	---	---	---	---	10.0000	B	13/03/2013	100.0000	100.0000
428,521,983	1.00	1.00	6.50	30/06/2016	5	4785	5	---	1	BANK OF CYPRUS PUBLIC CO. LTD (Convert. to CR sh.)	---	---	---	20.5000 14/03/2013	---	---	21.0000	B	15/03/2013	19.5000	30.0000
4,150,176	4.77	4.77	5.00	19/03/2015	5	---	14	---	1	MARFIN INVESTMENT GROUP S.A. (Conver to CR shar)	---	---	---	25.4000 12/08/2013	---	---	25.4000	B	16/08/2013	0.5000	70.0000
73,088,145	1.00	1.00	5.50	30/06/2014	5	4574	9	---	1	BANK OF CYPRUS PUBLIC CO. LTD (Convert. to CR sh.)	---	---	---	20.0000 08/03/2013	---	---	21.5000	B	15/03/2013	20.0000	26.0000
1,794,284	12.49	9.77	5.33	12/07/2015	8	---	13	---	1	NIREUS S.A. (Convertible to CR shares)	---	---	---	12.0000 26/07/2013	---	---	12.0000	B	16/08/2013	11.0000	15.0000
27,283,632	1.00	1.00	1.32	30/06/2018	10	---	11	---	1	BANK OF CYPRUS PUBLIC CO. LTD (Convert. to CR sh.)	---	---	---	33.0000 13/12/2012	---	---	35.0000	B	15/03/2013	33.0000	33.0000

4574 - The bonds are of indefinite duration.

4785 - The bonds are of indefinite duration.

4786 - The bonds are of indefinite duration. The Bond's par value, issue price and trading prices are expressed in USA Dollars, whereas its Transactions Value is expressed in Euros.

Corporate Bonds Notes

Transactions Volume = (Pieces) \* (Nominal Price). Transactions Value = (Pieces) \* (Nominal Price) \* (price %) + (Accrued interest).

The price of a Bond is stated as a percentage (%) of Bond's Nominal Price.

Nominal Price in Euros (€), except if it is noted differently.

Government Bonds

Number Listed Bonds	Nominal price	Today's Rate	Accrued Interest Calc	Exp. Date [1]	Duration (years)	Note	Coupons Date	Curr. coupon value	Trading Unit	Government Bonds	Price min	Price max	Closing price	Previous closing price/date	Volume	Transactions Value	Price	Last order Buy / Sell	Date
2,658,781,973	1.00	2.00	Actual/Actual	24/02/2023	11	---	24/02	2.00	1	GGB-FXD-240223-11Y-2.000-1.00	---	---	---	---	---	---	---	---	---
2,658,781,973	1.00	2.00	Actual/Actual	24/02/2024	12	---	24/02	2.00	1	GGB-FXD-240224-12Y-2.000-1.00	---	---	---	---	---	---	---	---	---
2,658,781,973	1.00	2.00	Actual/Actual	24/02/2025	13	---	24/02	2.00	1	GGB-FXD-240225-13Y-2.000-1.00	---	---	---	---	---	---	---	---	---
2,658,781,973	1.00	2.00	Actual/Actual	24/02/2026	14	---	24/02	2.00	1	GGB-FXD-240226-14Y-2.000-1.00	---	---	---	---	---	---	---	---	---
2,658,781,973	1.00	2.00	Actual/Actual	24/02/2027	15	---	24/02	2.00	1	GGB-FXD-240227-15Y-2.000-1.00	---	---	---	---	---	---	---	---	---
2,836,034,104	1.00	2.00	Actual/Actual	24/02/2028	16	---	24/02	2.00	1	GGB-FXD-240228-16Y-2.000-1.00	---	---	---	---	---	---	---	---	---
2,836,034,104	1.00	2.00	Actual/Actual	24/02/2029	17	---	24/02	2.00	1	GGB-FXD-240229-17Y-2.000-1.00	---	---	---	---	---	---	---	---	---
2,836,034,104	1.00	2.00	Actual/Actual	24/02/2030	18	---	24/02	2.00	1	GGB-FXD-240230-18Y-2.000-1.00	---	---	---	---	---	---	---	---	---
2,836,034,104	1.00	2.00	Actual/Actual	24/02/2031	19	---	24/02	2.00	1	GGB-FXD-240231-19Y-2.000-1.00	---	---	---	---	---	---	---	---	---
2,836,034,104	1.00	2.00	Actual/Actual	24/02/2032	20	---	24/02	2.00	1	GGB-FXD-240232-20Y-2.000-1.00	---	---	---	---	---	---	---	---	---
2,836,034,104	1.00	2.00	Actual/Actual	24/02/2033	21	---	24/02	2.00	1	GGB-FXD-240233-21Y-2.000-1.00	---	---	---	---	---	---	---	---	---
2,836,034,104	1.00	2.00	Actual/Actual	24/02/2034	22	---	24/02	2.00	1	GGB-FXD-240234-22Y-2.000-1.00	---	---	---	---	---	---	---	---	---
2,836,034,104	1.00	2.00	Actual/Actual	24/02/2035	23	---	24/02	2.00	1	GGB-FXD-240235-23Y-2.000-1.00	---	---	---	---	---	---	---	---	---
2,836,034,104	1.00	2.00	Actual/Actual	24/02/2036	24	---	24/02	2.00	1	GGB-FXD-240236-24Y-2.000-1.00	---	---	---	---	---	---	---	---	---
2,836,034,104	1.00	2.00	Actual/Actual	24/02/2037	25	---	24/02	2.00	1	GGB-FXD-240237-25Y-2.000-1.00	---	---	---	---	---	---	---	---	---
2,836,034,104	1.00	2.00	Actual/Actual	24/02/2038	26	---	24/02	2.00	1	GGB-FXD-240238-26Y-2.000-1.00	---	---	---	---	---	---	---	---	---
2,836,034,104	1.00	2.00	Actual/Actual	24/02/2039	27	---	24/02	2.00	1	GGB-FXD-240239-27Y-2.000-1.00	---	---	---	---	---	---	---	---	---
2,836,034,104	1.00	2.00	Actual/Actual	24/02/2040	28	---	24/02	2.00	1	GGB-FXD-240240-28Y-2.000-1.00	---	---	---	---	---	---	---	---	---
2,836,034,104	1.00	2.00	Actual/Actual	24/02/2041	29	---	24/02	2.00	1	GGB-FXD-240241-29Y-2.000-1.00	---	---	---	---	---	---	---	---	---
2,836,034,104	1.00	2.00	Actual/Actual	24/02/2042	30	---	24/02	2.00	1	GGB-FXD-240242-30Y-2.000-1.00	---	---	---	---	---	---	---	---	---
1,500,000	1,000.00	0.97	FLR Actual/360	10/08/2014	5	---	10/02 - 10/08	---	1	GGB-FRN-100814-05Y-1.762-1000.00	---	---	---	---	---	---	---	---	---
5,187,186	1,000.00	1.60	FLR Actual/360	21/05/2014	5	---	21/11 - 21/05	---	1	GGB-FRN-210514-05Y-2.734-1000.00	---	---	---	---	---	---	---	---	---
78,300	1,000.00	1.16	FLR Actual/360	23/07/2014	5	---	23/01 - 23/07	---	1	GGB-FRN-230714-05Y-2.018-1000.00	---	---	---	---	---	---	---	---	---

Government Bonds Notes

Transactions Volume = (Pieces) \* (Nominal Price). Transactions Value = (Pieces) \* (Nominal Price) \* (price %) + (Accrued interest).

The Value of current coupon for the issues with NV 0.01 euro refers to NV 100 euros

FLR: Floating Interest Rate.

[1] - The Expiration Date of the interest bearing period and the Date for coupon payment.

Bonds in Circulation	Currency / Min nominal traded Value	Coupons Payment Date	Current Coupon Value	Note	Coupon Attached	Trading Unit	Issue Date	Duration (years)	Today's Interest	A.I.C in days	Bonds	Last price of previous days	Last Outcry in Cash (euro) Price	Buy / Sell	Trades in Pieces	Life min	Life Max
Bonds of International Organizations																	
1,000,000	EUR / 1000	21/07	---	---	8	1	21/07/2006	10	5.0 FLR	360	EUROPEAN INVESTMENT BANK BOND	97.50	16/04/2007	---	---	---	---
Corporate Bonds in Foreign Currency and Euro																	
103,746	GBP / 10	01/12	0.25	---	54	1	01/12/1930	98	2.5	360	National Mortgage Bank	2.27	05/02/1996	2.27	S	05/02/1996	2.27
0	GBP / 10	01/12	0.25	---	56	1	01/12/1928	100	2.5	360	National Mortgage Bank	---	---	---	---	---	---

Government Bonds Notes

A.I.C: Accrued Interest Calculation base.  
FLR: Floating Interest Rate.  
The minimum tradeable Nominal Value for all Demeterialised Government Titles is 100 Euros.

State Banks Bonds (one year maturity)

Number Listed Bonds	Nominal value	Initial Rate	Current Rate	Annual Interest	Issue Date	Note	State Banks Bonds	Trading Unit	Yearly Renewals	Last Outcry in Cash (euro) Price	Buy / Sell	Volume
342,560	130.41	2.35	3.92	0.00	31/01/2005	---	H.I.D.B.	1	9	100.00	B	---
16,015	1,211.71	3.65	2.47	0.00	30/11/2006	---	H.I.D.B.	1	7	---	---	---
2,446	1,154.00	4.90	2.47	28.96	31/05/2008	---	H.I.D.B.	1	6	---	---	---
171,117	1,163.28	5.50	2.47	29.19	31/05/2008	---	H.I.D.B.	1	6	---	---	---
63,787	1,101.48	5.45	2.47	30.88	31/08/2008	---	H.I.D.B.	1	5	---	---	---
54,559	1,129.20	5.45	2.47	28.34	31/08/2008	---	H.I.D.B.	1	5	---	---	---
77,348	1,130.82	5.60	2.47	28.38	31/08/2008	---	H.I.D.B.	1	5	---	---	---
165,926	1,130.82	5.60	2.47	28.38	31/08/2008	---	H.I.D.B.	1	5	---	---	---
5,358	1,108.96	5.45	2.47	27.83	31/10/2008	---	H.I.D.B.	1	5	---	---	---
1,045	1,129.74	5.50	2.47	28.35	31/10/2008	---	H.I.D.B.	1	5	---	---	---
76,077	1,132.45	5.75	2.47	28.42	31/10/2008	---	H.I.D.B.	1	5	---	---	---

Bonds Notes

The annual renewal of H.I.D.B. Bonds is free of taxes (net rate).  
For Bonds issue until 31/07/2013 the accrued interest is capitalized.

Athex & ATHEXClear Members List

Member Name			Stock Market			Derivatives Market			ATHEXClear Member		
Address	Phone	Fax	Market Member	Remote Member	Market Maker	Proprietary	Market Maker	Agent	General Clearing	Direct Clearing	Non Clearing
A. SARRIS SECURITIES S.A.			a								
6, DRAGATSANIOU STR. ATHINA	(210)-3367700	(210)-3312324									
AGRICULTURAL BANK OF GREECE S.A.			a				a			a	
, 23 PANEPISTIMIOU ATHINA	(210)-3298400	(210)-3298322									
ALPHA FINANCE INVESTMENT SERVICES S.A.			a		a		a			a	
5, MERLIN STR. ATHINA	(210)-3677400	(210)-3311193									
ALPHA BANK A.E.						a			a		
40, STADIOU STR ATHINA	(210)-3265546	(210)-3265811									
	(210)-3260000	(210)-3264116									
ARGUS STOCKBROKERS LTD			a	a							
12-14, KENNEDY AVE, S. 303 NICOSIA	(+35722)-22717000	(+35722)-22717070									
ATHENAIKI BROKERAGE FIRM S.A.			a								
33, STADIOU STR. ATHINA	(210)-3254764	(210)-3254767									
ATLANTIC SECURITIES LIMITED			a	a							
37, PRODROMOU STR. NICOSIA	(+35722)-445400	(+35722)-661914									
ATLAS SECURITIES S.A			a			a					a
14 - 16, VERVENON STR.& 125 MICHALAKOPOULOU STR. ATHINA	(210)-3363300	(210)-3238925									
ATTICA BANK S.A.									a		
54, AKADIMIAS STR. ATHINA	(210)-3390757	(210)-3646090									
23, OMIROU STR. ATHINA	(210)-3669000	(210)-3669410									
AXIA VENTURES GROUP LTD			a	a							
10, G. KRANIDIOTI NICOSIA	+357 22 742000	+357 22 742001									
AXON SECURITIES S.A.			a			a					a
48, STADIOU ATHINA	(210)-3363800	(210)-3243903									
BANK OF CYPRUS PUBLIC COMPANY LTD									a		
, 51,STASINOU (AG. PARASKEVI, STROVOLOS) NICOSIA	(0035722)-121883	(0035722)-336258									
170, ALEXANDRAS AVE ATHINA	(210)-6477708	(210)-6477709									
BETA SECURITIES S.A.			a		a	a	a			a	
, BRAILA & 29 ALEXANDRAS AVE ATHINA	(210)-6478900	(210)-6410139									
BNP PARIBAS SECURITIES SERVICES									a		
94, VAS. SOFIAS AVE ATHINA	(210)-7468500	(210)-7468579									
CAPITAL SECURITIES S.A.			a			a					a
58, MITROPOLEOS STR. ATHINA	(210)-3369700	(210)-3369820									
CFS SECURITIES & INVESTMENT SERVICES S.A.			a		a			a		a	
3, STADIOU STR. ATHINA	(210)-3360800	(210)-3311854									
CITIGROUP GLOBAL MARKET LTD			a	a							
, CITIGROUP CENTRE, CANADA SQUARE, CANARY WHART LONDON	002079864000	002079862266									
CO-OPERATIVE CENTRAL BANK LTD			a	a							
8, GRIGORI AFXENTIOU STR. NICOSIA	(+35722)-743300	(+35722)-672083									
CREDIT AGRICOLE CHEUVREUX S.A.			a	a							
, 9 QUAI PAUL DOUMER PARIS	33 (0) 1 41 89 70 00										
CREDIT SUISSE SECURITIES (EUROPE) LIMITED			a	a							
, ONE CABOT SQUARE LONDON	+44 20 7888 8888	+44 20 7888 1600									
CYCLOS SECURITIES S.A.			a		a	a				a	
39, PANEPISTIMIOU STR. ATHINA	(210)-3364300	(210)-3239122									
D.A. TSEKOURAS SEC. S.A.			a								
3, PESMAZOGLOU STR. ATHINA	(210)-3214406	(210)-3211997									
DEUTSCHE BANK S.A.			a	a							
70, THEODOR-HEUSS-ALLEE FRANKFURT	0049 69 910 00	0049 69 910 34 225									
DYNAMIC SECURITIES			a					a		a	
6 - 10, CHAR. TRIKOUPI STR. ATHINA	(210)-3677700	(210)-3677777									
EL. PETROPOULAKIS SECURITIES S.A.			a					a			a
9, ARISTIDOU STR. ATHINA	(210)-3213928	(210)-3216810									
EUROBANK EQUITIES S.A.			a		a		a			a	
10, FILELLINON STR. ATHINA	(210)-3720000	(210)-3720001									
EUROBANK ERGASIAS S.A.									a		
8, OTHONOS STR. ATHINA	(210)-3337000	(210)-3233866									
	(210)-3337969	(210)-3245916									
EUROCORP SECURITIES S.A.			a			a				a	
14, FILIKIS ETAIRIAS SQ. ATHINA	(210)-7263500	(210)-7263666									
EUOTRUST BROKERAGE S.A.			a								
13-15, SOPHOCLEOUS STR. ATHINA	(210)-3363100	(210)-3238334									



Athex & ATHEXClear Members List

Member Name			Stock Market			Derivatives Market			ATHEXClear Member		
Address	Phone	Fax	Market Member	Remote Member	Market Maker	Proprietary	Market Maker	Agent	General Clearing	Direct Clearing	Non Clearing
EUROXX SECURITIES S.A.			a			a				a	
7, PALAIOLOGOU STR. CHALANDRI	(210)-6879400	(210)-6879401									
G.A. PERVANAS SECURITIES & INVESTMENT SERVICES CO S.A.			a			a					a
7 - 9, SOPHOCLEOUS STR. ATHINA	(210)-3251875	(210)-3210291									
GENERAL BANK OF GREECE S.A.									a		
87-89, ERMOY ATHINA	(210)-6976072	(210)-6976079									
, 109-111, MESOGEION AVE. ATHINA	(210)-6975000	(210)-6975706									
GLOBAL CAPITAL SECURITIES AND FINANCIAL SERVICES LTD			a	a							
5, LEMESOU AVE. LEMESOS CYPRUS	(+35722)-710710	(+35722)-339332									
GUARDIAN TRUST SECURITIES S.A			a		a	a					a
15, FILELLINON STR. ATHINA	(210)-3220402	(210)-3220498									
HELLENIC AMERICAN SEC. S.A.			a			a					
6, EVRIPIDOU STR. ATHINA	(210)-3311100	(210)-3215968									
HELLENIC BANK (INVESTMENTS) LTD			a	a							
31, KYRIAKOY MATSI AVE. NICOSIA	(+35722)-500100	(+35722)-500110									
HSBC BANK PLC									a		
109-111, MESOGION AVE ATHINA	(210)-6961507	(210)-6929310									
INDEX SECURITIES S.A.			a								
6, DRAGATSANIOU STR. ATHINA	(210)-3213920	(210)-3213216									
INTERSEC S.A.						a				a	
80-88, SYGROU AVE ATHINA	(210)-9203000	(210)-9203052									
INVESTMENT BANK OF GREECE S.A.			a		a		a		a		
32, AIGEIALIAS MAROUSI	(210) 8173000	(210) 8173101									
24B, KIFISSIAS AVE MAROUSI	(210)-8171800	(210)-8171889									
J. CHR. MAVRIKIS SECURITIES S.A.			a								
5, SOPHOCLEOUS STR. ATHINA	(210)-3213949	(210)-3217767									
KAPPA SECURITIES S.A.			a			a					a
15, VALAORITOU STR. ATHINA	(210)-3610371	(210)-3641002									
KYPROU SECURITIES S.A.			a		a	a					a
26, HALKIDONOS & FIDIPPIDOY STR. ATHINA	(210)-8701000	(210)-8701049									
LAIKI FINANCIAL SERVICES LTD			a	a							
26, CLR HOUSE, VIRONOS AVE. NICOSIA	(+35722)-898600	(+35722)-680953									
LEON DEPOLAS SECURITIES S.A.			a					a			a
1, CHR. LADA STR. ATHINA	(210)-3213286	(210)-3211618									
MAGNA TRUST SECURITIES S.A			a					a			a
9, FIDIOU STR. ATHINA	(210)-3327503	(210)-3327599									
MEGA EQUITY SECURITIES & FINANCIAL SERVICES LTD			a	a							
42-44, GRIBA DIGENI AV. NICOSIA	(+35722)-711711	(+35722)-711811									
MERIT SECURITIES S.A			a		a	a				a	
38, VAS. KONSTANTINOY STR. ATHINA	(210)-3671800	(210)-3671830									
MERRILL LYNCH			a	a							
2, KING EDWARD STREET LONDON	(+4420)-79952000	(+4420)-79954525									
METOCHIKI SECURITIES S.A.			a								
3, G. GENNADIOY STR. ATHINA	(210)-3306700	(210)-3306709									
MIDAS BROKERAGE S.A.			a								
5, SOPHOCLEOUS STR. ATHINA	(210)-3253203	(210)-3253205									
N. CHRYSOCHOIDIS STOCK BROKERAGE I.S.S.A.			a					a		a	
7 - 9, SOPHOCLEOUS STR. ATHINA	(210)-3213913	(210)-3216115									
N. SARROS SECURITIES S.A.						a					
7-9, SOPHOCLEOUS STR. ATHINA	(210)-3705600	(210)-3219992									
NATIONAL BANK OF GREECE S.A.							a		a		
86, AIOLOU STR. ATHINA	(210)-3341000	(210)-3228187									
68, AKADIMIAS STR. ATHINA	(210)-3328817	(210)-3328678									
NBG SECURITIES S.A.			a		a		a				a
68, AKADIMIAS STR. ATHINA	(210)-3328500	(210)-3328565									
NEW PROTON BANK S.A.			a			a				a	
20, ESLIN & AMALIADOS ATHINA	210 6970000	210 6970111									
NUNTIUS SECURITIES S.A			a					a			a
6, DRAGATSANIOU STR. ATHINA	(210)-3350599	(210)-3254846									
OLYMPIA SECURITIES S.A			a								
46B, A. METAXA STR. GLYFADA	(210)-3702500	(210)-3702520									
ORANGE PARTNERS SECURITIES S.A			a								
5, TZORTZ STR. ATHINA	(210)-3300009	(210)-3305240									

## Athex &amp; ATHEXClear Members List

Member Name			Stock Market			Derivatives Market			ATHEXClear Member		
Address	Phone	Fax	Market Member	Remote Member	Market Maker	Proprietary	Market Maker	Agent	General Clearing	Direct Clearing	Non Clearing
<b>PANTELAKIS SEC. S.A.</b>			a			a					a
109-111, MESOGION AVE. ATHINA	(210)-6965000	(210)-6929550									
<b>PEGASUS BROKERAGE FIRM S.A</b>			a			a					
17, VALAORITOU STR. ATHINA	(210)-3670700	(210)-3670760									
<b>PIRAEUS BANK S.A.</b>								a	a		
4, AMERIKIS STR ATHINA	(210)-3335918	(210)-3254207									
4, AMERIKIS STR. ATHINA	(210)-3335000	(210)-3335079									
<b>PIRAEUS SECURITIES S.A.</b>			a				a			a	
10, STADIOU STR. ATHINA	(210)-3354100	(210)-3233814									
<b>PRELIUM SECURITIES &amp; INVESTMENT SERVICES S.A.</b>			a			a					a
, KIFISSIAS AVE & 1 DAVAKI STR ATHINA	(210)-3677000	(210)-6920403									
<b>PROBANK S.A.</b>			a								
10, AMERIKIS STR. ATHINA	(210)-3392631	(210)-3392646									
<b>PROCHOICE SECURITIES LTD</b>			a	a							
57, SPYROU KYPRIANOY NICOSIA	+357-24-661192	+357-24-662464									
<b>SHARELINK SECURITIES &amp; FINANCIAL SERVICES LTD</b>			a	a							
6, ELLINAS HOUSE, THEOTOKI STR. NICOSIA	(+35722)-554200	(+35722)-750852									
<b>SOCIETE GENERALE S.A.</b>			a	a		a					
17, COURS VALMY PUTEAUX - LA DEFENSE PARIS	(+33) 142134754	(+33) 142135697									
240-242, KIFISSIAS AVE ATHINA	(210)-6790161	(210)-6728828									
<b>SOLIDUS SECURITIES S.A</b>			a			a				a	
64, LOUIZIS RIANKOUR STR. ATHINA	(210)-6925500	(210)-6985421									
<b>SOTIRIADIS SECURITIES S.A.</b>			a								
7, VALAORITOU STR. ATHINA	(210)-3636943	(210)-3601943									
<b>ST. EM. LAVRENTAKIS SECURITIES S.A.</b>			a			a					a
7 - 9, SOPHOCLEOUS STR. ATHINA	(210)-3213336	(210)-3246572									
<b>THE CYPRUS INVESTMENT AND SECURITIES CORPORATION LIMITED (CISCO)</b>			a	a							
4, EVROU STR. (EUROLIFE HOUSE) NICOSIA	(+35722)-881800	(+35722)-881801									
<b>UBS LIMITED</b>			a	a							
1, FINSBURY AVENUE LONDON	(+4420)-79013333	(+4420)-79012345									
<b>Z.G. PORTALAKIS INVESTMENT SERVICES S.A.</b>			a								
8, PESMAZOGLOU STR. ATHINA	(210)-3214830	(210)-3212024									
<b>KARAMANOF SECURITIES &amp; INV. SERVICES S.A.</b>			a					a		a	
2, SQ. ST THEODORON ATHINA	(210)-3212947	(210)-3217088									

## List of Stocks under Market Making operations

Securities	Stock Category	
	Start Market Making	End Market Making
<b>BANK OF CYPRUS (CR)</b>	<b>Under Suspension</b>	
EUROBANK EQUITIES S.A.	23/10/2012	22/10/2013
INVESTMENT BANK OF GREECE S.A.	02/01/2013	01/01/2014
<b>COCA - COLA HBC (CR)</b>	<b>Under Suspension</b>	
EUROBANK EQUITIES S.A.	23/10/2012	22/10/2013
INVESTMENT BANK OF GREECE S.A.	08/01/2013	07/01/2014
<b>CYPRUS POPULAR BANK (CR)</b>	<b>Under Suspension</b>	
PIRAEUS SECURITIES S.A.	02/02/2013	01/02/2014
<b>ALPHA BANK (CR)</b>	<b>Main Market</b>	
EUROBANK EQUITIES S.A.	24/10/2012	23/10/2013
INVESTMENT BANK OF GREECE S.A.	08/01/2013	07/01/2014
MERIT SECURITIES S.A.	03/09/2012	02/09/2013
NBG SECURITIES S.A.	15/01/2013	14/01/2014
PIRAEUS SECURITIES S.A.	28/05/2013	27/05/2014
<b>ALUMIL (CR)</b>	<b>Main Market</b>	
BETA SECURITIES S.A.	18/07/2013	17/07/2014
<b>CC HBC AG (CR)</b>	<b>Main Market</b>	
NBG SECURITIES S.A.	29/04/2013	28/04/2014
<b>ELLAKTOR (CR)</b>	<b>Main Market</b>	
EUROBANK EQUITIES S.A.	01/06/2013	31/05/2014
INVESTMENT BANK OF GREECE S.A.	02/01/2013	01/01/2014
NBG SECURITIES S.A.	25/06/2013	24/06/2014
<b>ELTON SA (CR)</b>	<b>Main Market</b>	
BETA SECURITIES S.A.	03/09/2012	02/09/2013
<b>EUROBANK ERGASIAS (CR)</b>	<b>Main Market</b>	
ALPHA FINANCE INVESTMENT SERVICES S.A.	08/01/2013	07/01/2014
EUROBANK EQUITIES S.A.	01/06/2013	31/05/2014
INVESTMENT BANK OF GREECE S.A.	08/01/2013	07/01/2014
<b>GEK TERNA (CR)</b>	<b>Main Market</b>	
INVESTMENT BANK OF GREECE S.A.	02/01/2013	01/01/2014
<b>GR. SARANTIS SA (CR)</b>	<b>Main Market</b>	
BETA SECURITIES S.A.	14/05/2013	13/05/2014
<b>HELLENIC EXCHANGES (CR)</b>	<b>Main Market</b>	
EUROBANK EQUITIES S.A.	01/06/2013	31/05/2014
INVESTMENT BANK OF GREECE S.A.	02/01/2013	01/01/2014
NBG SECURITIES S.A.	25/06/2013	24/06/2014
<b>INTRACOM CONSTR. (CR)</b>	<b>Main Market</b>	
MERIT SECURITIES S.A.	27/12/2012	26/12/2013
<b>INTRALOT (CR)</b>	<b>Main Market</b>	
EUROBANK EQUITIES S.A.	01/06/2013	31/05/2014
INVESTMENT BANK OF GREECE S.A.	02/01/2013	01/01/2014
<b>MARFIN INVESTMENT GROUP (CR)</b>	<b>Main Market</b>	
PIRAEUS SECURITIES S.A.	02/02/2013	01/02/2014
<b>MLS MULTIMEDIA SA (CR)</b>	<b>Main Market</b>	
BETA SECURITIES S.A.	18/07/2013	17/07/2014
<b>MOTOR OIL (CR)</b>	<b>Main Market</b>	
EUROBANK EQUITIES S.A.	23/10/2012	22/10/2013
<b>MYTILINEOS HOLDINGS (CR)</b>	<b>Main Market</b>	
INVESTMENT BANK OF GREECE S.A.	02/01/2013	01/01/2014
NBG SECURITIES S.A.	25/06/2013	24/06/2014
<b>NATIONAL BANK (CR)</b>	<b>Main Market</b>	
ALPHA FINANCE INVESTMENT SERVICES S.A.	08/01/2013	07/01/2014
EUROBANK EQUITIES S.A.	24/10/2012	23/10/2013
INVESTMENT BANK OF GREECE S.A.	08/01/2013	07/01/2014
MERIT SECURITIES S.A.	03/09/2012	02/09/2013
NBG SECURITIES S.A.	28/02/2013	27/02/2014
<b>OPAP (CR)</b>	<b>Main Market</b>	
ALPHA FINANCE INVESTMENT SERVICES S.A.	08/01/2013	07/01/2014
EUROBANK EQUITIES S.A.	24/10/2012	23/10/2013
INVESTMENT BANK OF GREECE S.A.	08/01/2013	07/01/2014
NBG SECURITIES S.A.	15/01/2013	14/01/2014
<b>OTE (CR)</b>	<b>Main Market</b>	
ALPHA FINANCE INVESTMENT SERVICES S.A.	08/01/2013	07/01/2014
EUROBANK EQUITIES S.A.	24/10/2012	23/10/2013
INVESTMENT BANK OF GREECE S.A.	08/01/2013	07/01/2014
NBG SECURITIES S.A.	01/12/2012	30/11/2013
<b>PETROPOULOS PETROS (CR)</b>	<b>Main Market</b>	
BETA SECURITIES S.A.	28/05/2013	27/05/2014

## List of Stocks under Market Making operations

Securities	Stock Category	
	Start Market Making	End Market Making
Market Maker		
<b>PIRAEUS BANK (CR)</b>	<b>Main Market</b>	
EUROBANK EQUITIES S.A.	23/10/2012	22/10/2013
INVESTMENT BANK OF GREECE S.A.	08/01/2013	07/01/2014
NBG SECURITIES S.A.	02/06/2013	01/06/2014
PIRAEUS SECURITIES S.A.	16/02/2013	15/02/2014
<b>PPC (CR)</b>	<b>Main Market</b>	
ALPHA FINANCE INVESTMENT SERVICES S.A.	08/01/2013	07/01/2014
EUROBANK EQUITIES S.A.	23/10/2012	22/10/2013
INVESTMENT BANK OF GREECE S.A.	08/01/2013	07/01/2014
NBG SECURITIES S.A.	26/03/2013	25/03/2014
<b>S.KANAKIS SA (CR)</b>	<b>Main Market</b>	
BETA SECURITIES S.A.	01/10/2012	30/09/2013
<b>TITAN CEMENT (CR)</b>	<b>Main Market</b>	
EUROBANK EQUITIES S.A.	23/10/2012	22/10/2013
<b>VIOHALCO (CB)</b>	<b>Main Market</b>	
ALPHA FINANCE INVESTMENT SERVICES S.A.	11/02/2013	10/03/2014
EUROBANK EQUITIES S.A.	20/01/2013	19/01/2014
MERIT SECURITIES S.A	13/12/2012	12/12/2013

Underlying Asset				Derivatives Market																		
Price max	Price min	Closing price	change	Delivery Month	Open price	Price max	Price min	Last price	Closing price	Last Bid	Last Ask	Settlement price	change	Life high	Life low	Trades	Volume	change	Value	change	Open Interest	change
FTSE/Athex Large Cap				(Trade Unit: 1 Index Point x 5€, Cash Settlement)																		
325.75	318.69	323.60	-0.82%	August 2013	327.00	329.00	321.75	322.75	318.86	---	---	318.86	-2.34%	374.75	269.75	218	4,555	-78.31%	7,368,480.00	-78.37%	7,119	-26.05%
				September 2013	329.50	329.50	320.50	324.00	324.75	3@324.00	4@325.00	324.75	-1.44%	346.00	271.00	403	6,444	-64.74%	10,466,980.00	-64.99%	47,494	-0.11%
				October 2013	328.50	329.25	323.50	329.25	327.75	5@321.50	13@329.25	327.75	-1.06%	338.75	292.25	13	179	42.06%	291,820.00	41.13%	744	9.90%
				December 2013	330.00	330.00	326.00	326.25	329.00	---	---	329.00	-1.35%	343.00	276.75	4	24	700.00%	39,407.50	691.32%	523	2.95%
				March 2014	---	---	---	---	---	---	---	---	---	---	---	---	---	---	---	---	---	---
				June 2014	---	---	---	---	---	---	---	---	---	---	---	---	---	---	---	---	---	---

Underlying Asset				Derivatives Market																		
Price max	Price min	Closing price	change	Delivery Month	Open price	Price max	Price min	Last price	Closing price	Last Bid	Last Ask	Settlement price	change	Life high	Life low	Trades	Volume	change	Value	change	Open Interest	change
ALPHA BANK (CR)				(Contract Size: 100 Securities, Physical Delivery)																		
0.536	0.511	0.530	0.95%	September 2013	0.518	0.533	0.511	0.533	0.527	53@0.530	1@0.533	0.527	1.54%	1.46	0.371	96	1,949	-33.86%	102,300.50	-31.66%	16,502	2.68%
				December 2013	---	---	---	---	0.522	---	1@0.553	0.522	1.56%	0.470	0.437	---	---	---	---	---	102	0.00%
				March 2014	---	---	---	---	---	---	---	---	---	---	---	---	---	---	---	---	---	---
				June 2014	---	---	---	---	---	---	---	---	---	---	---	---	---	---	---	---	---	---
CC HBC AG (CR)				(Contract Size: 100 Securities, Physical Delivery)																		
21.45	20.15	20.67	-3.64%	September 2013	21.26	21.26	20.25	20.60	20.80	1@20.40	1@20.73	20.80	-3.66%	22.33	16.93	43	143	346.88%	295,033.00	331.34%	766	-1.29%
				December 2013	---	---	---	---	20.94	---	1@20.93	20.94	-3.68%	18.06	17.90	---	---	---	---	---	5	0.00%
				March 2014	---	---	---	---	---	---	---	---	---	---	---	---	---	---	---	---	---	---
				June 2014	---	---	---	---	---	---	---	---	---	---	---	---	---	---	---	---	---	---
CORINTH PIPEWORKS SA (CR)				(Contract Size: 100 Securities, Physical Delivery)																		
2.25	2.20	2.22	-1.77%	September 2013	2.22	2.23	2.22	2.23	2.27	2@2.21	4@2.24	2.27	-1.73%	2.48	1.98	2	5	25.00%	1,112.00	22.74%	441	-1.12%
				December 2013	---	---	---	---	---	---	4@2.29	---	---	---	---	---	---	---	---	---	---	---
				March 2014	---	---	---	---	---	---	---	---	---	---	---	---	---	---	---	---	---	---
				June 2014	---	---	---	---	---	---	---	---	---	---	---	---	---	---	---	---	---	---
ELLAKTOR (CR)				(Contract Size: 100 Securities, Physical Delivery)																		
2.32	2.22	2.30	0.88%	September 2013	2.27	2.31	2.26	2.30	2.30	1@2.26	9@2.30	2.30	0.88%	2.45	1.73	15	71	-28.28%	16,297.00	-27.11%	4,373	-0.32%
				December 2013	---	---	---	---	2.30	---	9@2.34	2.30	0.88%	2.17	2.11	---	---	---	---	---	---	---
				March 2014	---	---	---	---	---	---	---	---	---	---	---	---	---	---	---	---	---	---
				June 2014	---	---	---	---	---	---	---	---	---	---	---	---	---	---	---	---	---	---
EUROBANK ERGASIAS (CR)				(Contract Size: 10 Securities, Physical Delivery)																		
0.706	0.683	0.683	-0.73%	September 2013	0.690	0.700	0.660	0.660	0.675	175@0.661	10@0.697	0.675	-0.74%	5.00	0.537	26	1,198	-55.28%	8,277.92	-53.74%	20,538	-1.99%
				December 2013	---	---	---	---	0.715	20@0.680	20@0.735	0.715	-0.69%	0.700	0.600	---	---	-100.00%	---	-100.00%	1,666	0.00%
				March 2014	---	---	---	---	0.673	---	---	0.673	-0.74%	0.673	0.619	---	---	---	---	---	---	---
				June 2014	---	---	---	---	---	---	---	---	---	---	---	---	---	---	---	---	---	---
EUROBANK PROPERTIES REIC (CR)				(Contract Size: 100 Securities, Physical Delivery)																		
7.55	7.25	7.25	-3.33%	September 2013	7.50	7.50	7.40	7.40	7.24	---	2@7.55	7.24	-3.34%	7.67	6.00	4	14	-81.58%	10,420.00	-81.77%	273	-3.87%
				December 2013	---	---	---	---	---	---	2@7.60	---	---	---	---	---	---	---	---	---	---	---
				March 2014	---	---	---	---	---	---	---	---	---	---	---	---	---	---	---	---	---	---
				June 2014	---	---	---	---	---	---	---	---	---	---	---	---	---	---	---	---	---	---
EYDAP S.A. (CR)				(Contract Size: 100 Securities, Physical Delivery)																		
6.34	6.10	6.18	-1.12%	September 2013	6.67	6.67	6.17	6.17	6.32	2@6.04	1@6.35	6.32	-1.10%	6.67	5.58	5	24	20.00%	15,244.00	20.56%	200	4.71%
				December 2013	---	---	---	---	---	---	1@6.41	---	---	---	---	---	---	---	---	---	---	---
				March 2014	---	---	---	---	---	---	---	---	---	---	---	---	---	---	---	---	---	---
				June 2014	---	---	---	---	---	---	---	---	---	---	---	---	---	---	---	---	---	---
FOLLI FOLLIE (CR)				(Contract Size: 100 Securities, Physical Delivery)																		
18.50	17.71	18.35	-0.81%	September 2013	18.04	18.04	17.83	17.85	18.40	1@17.72	3@18.84	18.40	-0.81%	18.86	14.68	3	4	-87.88%	7,176.00	-88.12%	242	-1.63%
				December 2013	---	---	---	---	---	---	3@19.07	---	---	---	---	---	---	---	---	---	---	---
				March 2014	---	---	---	---	---	---	---	---	---	---	---	---	---	---	---	---	---	---
				June 2014	---	---	---	---	---	---	---	---	---	---	---	---	---	---	---	---	---	---

Underlying Asset				Derivatives Market																		
Price max	Price min	Closing price	change	Delivery Month	Open price	Price max	Price min	Last price	Closing price	Last Bid	Last Ask	Settlement price	change	Life high	Life low	Trades	Volume	change	Value	change	Open Interest	change
FRIGOGLASS SA (CR)				(Contract Size: 100 Securities, Physical Delivery)																		
5.14	4.90	4.98	-2.35%	September 2013	4.99	5.02	4.92	4.93	4.93	1@4.90	1@5.06	4.93	-1.60%	5.71	4.35	12	38	-36.67%	18,821.00	-37.90%	487	-0.81%
				December 2013	---	---	---	---	---	---	1@5.13	---	---	---	---	---	---	---	---	---	---	---
				March 2014	---	---	---	---	---	---	---	---	---	---	---	---	---	---	---	---	---	---
				June 2014	---	---	---	---	---	---	---	---	---	---	---	---	---	---	---	---	---	---
GEK TERNA (CR)				(Contract Size: 100 Securities, Physical Delivery)																		
2.40	2.34	2.40	0.00%	September 2013	2.37	2.43	2.35	2.43	2.42	4@2.38	61@2.44	2.42	-0.41%	2.62	1.45	14	161	4.55%	38,515.00	5.71%	16,602	0.43%
				December 2013	---	---	---	---	2.40	---	61@2.48	2.40	-0.41%	2.51	1.57	---	---	-100.00%	---	-100.00%	---	---
				March 2014	---	---	---	---	2.40	---	---	2.40	-0.41%	2.50	2.26	---	---	-100.00%	---	-100.00%	15,895	0.00%
				June 2014	---	---	---	---	---	---	---	---	---	---	---	---	---	---	---	---	---	---
HELLENIC EXCHANGES (CR)				(Contract Size: 100 Securities, Physical Delivery)																		
6.25	6.09	6.18	0.16%	September 2013	6.10	6.19	6.08	6.19	6.15	3@6.13	1@6.19	6.15	0.33%	6.46	3.82	14	29	-61.84%	17,777.00	-61.97%	2,499	-0.16%
				December 2013	---	---	---	---	6.17	---	1@6.25	6.17	0.33%	6.85	4.01	---	---	---	---	---	---	---
				March 2014	---	---	---	---	---	---	---	---	---	---	---	---	---	---	---	---	---	---
				June 2014	---	---	---	---	---	---	---	---	---	---	---	---	---	---	---	---	---	---
HELLENIC PETROLEUM (CR)				(Contract Size: 100 Securities, Physical Delivery)																		
7.90	7.51	7.90	2.87%	September 2013	7.56	7.86	7.52	7.86	7.80	1@7.71	10@7.89	7.80	1.56%	9.01	6.00	23	103	39.19%	78,570.00	39.02%	2,578	0.00%
				December 2013	7.69	7.72	7.69	7.72	7.72	---	10@7.95	7.72	0.52%	7.72	6.61	2	14	---	10,787.00	---	---	---
				March 2014	---	---	---	---	---	---	---	---	---	---	---	---	---	---	---	---	---	---
				June 2014	---	---	---	---	---	---	---	---	---	---	---	---	---	---	---	---	---	---
INTRALOT (CR)				(Contract Size: 100 Securities, Physical Delivery)																		
1.80	1.74	1.80	1.70%	September 2013	1.77	1.80	1.74	1.79	1.79	3@1.74	1@1.79	1.79	2.87%	2.30	1.30	18	117	-55.00%	20,646.00	-54.64%	4,624	-0.86%
				December 2013	---	---	---	---	---	---	1@1.82	---	---	---	---	---	---	---	---	---	---	---
				March 2014	---	---	---	---	---	---	---	---	---	---	---	---	---	---	---	---	---	---
				June 2014	---	---	---	---	---	---	---	---	---	---	---	---	---	---	---	---	---	---
JUMBO SA (CR)				(Contract Size: 100 Securities, Physical Delivery)																		
9.00	8.60	8.88	1.95%	September 2013	8.85	8.87	8.65	8.70	8.70	1@8.38	1@8.87	8.70	-0.34%	9.03	7.19	9	35	-71.54%	30,565.00	-71.56%	386	-1.28%
				December 2013	---	---	---	---	---	---	1@8.92	---	---	---	---	---	---	---	---	---	---	---
				March 2014	---	---	---	---	---	---	---	---	---	---	---	---	---	---	---	---	---	---
				June 2014	---	---	---	---	---	---	---	---	---	---	---	---	---	---	---	---	---	---
MARFIN INVESTMENT GROUP (CR)				(Contract Size: 100 Securities, Physical Delivery)																		
0.338	0.328	0.331	-0.90%	September 2013	0.333	0.337	0.329	0.332	0.332	5@0.332	18@0.336	0.332	-0.90%	0.420	0.252	18	190	-49.47%	6,311.00	-49.18%	19,111	0.46%
				December 2013	---	---	---	---	---	---	18@0.346	---	---	---	---	---	---	---	---	---	---	---
				March 2014	---	---	---	---	---	---	---	---	---	---	---	---	---	---	---	---	---	---
				June 2014	---	---	---	---	---	---	---	---	---	---	---	---	---	---	---	---	---	---
METKA (CR)				(Contract Size: 100 Securities, Physical Delivery)																		
11.54	11.34	11.52	-0.17%	September 2013	11.30	11.35	11.25	11.25	11.42	1@11.25	15@11.55	11.42	-0.17%	12.18	9.43	3	11	---	12,450.00	---	485	0.21%
				December 2013	---	---	---	---	11.41	---	15@11.70	11.41	-0.17%	10.67	10.52	---	---	---	---	---	---	---
				March 2014	---	---	---	---	---	---	---	---	---	---	---	---	---	---	---	---	---	---
				June 2014	---	---	---	---	---	---	---	---	---	---	---	---	---	---	---	---	---	---

Underlying Asset				Derivatives Market																		
Price max	Price min	Closing price	change	Delivery Month	Open price	Price max	Price min	Last price	Closing price	Last Bid	Last Ask	Settlement price	change	Life high	Life low	Trades	Volume	change	Value	change	Open Interest	change
MOTOR OIL (CR)				(Contract Size: 100 Securities, Physical Delivery)																		
8.00	7.75	8.00	1.27%	September 2013	7.79	7.96	7.78	7.80	7.80	11@7.72	1@7.97	7.80	-0.76%	8.16	6.66	12	43	-12.24%	33,727.00	-12.72%	714	3.63%
				December 2013	---	---	---	---	---	---	1@8.05	---	---	---	---	---	---	---	---	---	---	---
				March 2014	---	---	---	---	---	---	---	---	---	---	---	---	---	---	---	---	---	---
				June 2014	---	---	---	---	---	---	---	---	---	---	---	---	---	---	---	---	---	---
MYTILINEOS HOLDINGS (CR)				(Contract Size: 100 Securities, Physical Delivery)																		
4.67	4.59	4.67	0.00%	September 2013	4.63	4.66	4.60	4.66	4.66	3@4.60	2@4.74	4.66	0.00%	5.50	3.50	17	62	-71.30%	28,684.00	-71.27%	5,013	0.30%
				December 2013	---	---	---	---	4.70	5@4.60	2@4.79	4.70	0.00%	5.28	3.70	---	---	-100.00%	---	-100.00%	105	0.00%
				March 2014	---	---	---	---	4.68	---	---	4.68	0.00%	4.81	4.72	---	---	---	---	---	50	0.00%
				June 2014	---	---	---	---	---	---	---	---	---	---	---	---	---	---	---	---	---	---
NATIONAL BANK (CR)				(Contract Size: 100 Securities, Physical Delivery)																		
3.20	3.04	3.15	3.96%	September 2013	3.09	3.19	3.04	3.15	3.17	43@3.14	7@3.16	3.17	5.32%	3.25	0.344	160	1,680	0.60%	521,772.00	4.60%	5,603	5.46%
				December 2013	---	---	---	---	3.23	---	7@3.20	3.23	5.21%	2.50	2.31	---	---	---	---	---	---	---
				March 2014	---	---	---	---	---	---	---	---	---	---	---	---	---	---	---	---	---	---
				June 2014	---	---	---	---	---	---	---	---	---	---	---	---	---	---	---	---	---	---
OPAP (CR)				(Contract Size: 100 Securities, Physical Delivery)																		
7.64	7.44	7.51	-1.44%	September 2013	7.55	7.65	7.49	7.50	7.51	5@7.50	1@7.54	7.51	-0.53%	7.74	5.82	37	203	-20.70%	153,534.00	-20.00%	4,184	0.97%
				December 2013	7.59	7.59	7.57	7.57	7.51	---	1@7.60	7.51	-0.40%	7.66	6.31	2	60	---	45,480.00	---	---	---
				March 2014	---	---	---	---	---	---	---	---	---	---	---	---	---	---	---	---	---	---
				June 2014	---	---	---	---	---	---	---	---	---	---	---	---	---	---	---	---	---	---
OTE (CR)				(Contract Size: 100 Securities, Physical Delivery)																		
7.30	7.13	7.15	-1.52%	September 2013	7.29	7.30	7.11	7.11	7.16	11@7.11	40@7.18	7.16	-1.65%	7.56	4.35	47	336	-58.97%	242,786.00	-58.64%	7,678	-0.83%
				December 2013	---	---	---	---	7.16	---	40@7.23	7.16	-1.65%	7.56	4.40	---	---	---	---	---	70	0.00%
				March 2014	---	---	---	---	7.21	---	---	7.21	-1.64%	7.39	6.40	---	---	---	---	---	70	0.00%
				June 2014	---	---	---	---	---	---	---	---	---	---	---	---	---	---	---	---	---	---
P.P.A. S.A. (CR)				(Contract Size: 100 Securities, Physical Delivery)																		
17.19	16.70	17.19	-0.06%	September 2013	17.17	17.17	16.73	16.91	17.33	3@16.75	50@18.00	17.33	-0.06%	18.68	15.52	5	10	66.67%	17,049.00	65.88%	555	-0.18%
				December 2013	---	---	---	---	---	---	10@18.23	---	---	---	---	---	---	---	---	---	---	---
				March 2014	---	---	---	---	---	---	---	---	---	---	---	---	---	---	---	---	---	---
				June 2014	---	---	---	---	---	---	---	---	---	---	---	---	---	---	---	---	---	---
PIRAEUS BANK (CR)				(Contract Size: 100 Securities, Physical Delivery)																		
1.11	1.07	1.09	-0.91%	September 2013	1.10	1.11	1.07	1.09	1.08	50@1.08	28@1.09	1.08	-0.92%	1.17	0.169	56	657	-49.03%	71,800.00	-47.36%	14,057	2.13%
				December 2013	---	---	---	---	1.09	---	28@1.11	1.09	-0.91%	1.15	0.231	---	---	-100.00%	---	-100.00%	300	0.00%
				March 2014	---	---	---	---	1.08	---	---	1.08	-0.92%	1.12	0.924	---	---	---	---	---	300	0.00%
				June 2014	---	---	---	---	---	---	---	---	---	---	---	---	---	---	---	---	---	---
PPC (CR)				(Contract Size: 100 Securities, Physical Delivery)																		
7.96	7.73	7.94	0.76%	September 2013	7.78	7.92	7.74	7.90	7.91	5@7.90	1@7.91	7.91	0.38%	8.47	4.58	54	334	-38.15%	261,309.00	-38.15%	5,092	2.15%
				December 2013	---	---	---	---	7.92	1@7.53	1@7.97	7.92	0.38%	8.56	5.08	---	---	---	---	---	200	0.00%
				March 2014	---	---	---	---	7.91	---	---	7.91	0.38%	7.99	6.30	---	---	---	---	---	20	0.00%
				June 2014	---	---	---	---	---	---	---	---	---	---	---	---	---	---	---	---	---	---



Underlying Asset				Derivatives Market																		
Price max	Price min	Closing price	change	Delivery Month	Open price	Price max	Price min	Last price	Closing price	Last Bid	Last Ask	Settlement price	change	Life high	Life low	Trades	Volume	change	Value	change	Open Interest	change
SIDENOR (CR)				(Contract Size: 100 Securities, Physical Delivery)																		
1.80	1.73	1.77	-0.56%	September 2013	---	---	---	---	1.78	2@1.72	5@1.76	1.78	-0.56%	1.82	1.36	---	---	-100.00%	---	-100.00%	1,485	0.00%
				December 2013	---	---	---	---	---	---	5@1.80	---	---	---	---	---	---	---	---	---	---	---
				March 2014	---	---	---	---	---	---	---	---	---	---	---	---	---	---	---	---	---	---
				June 2014	---	---	---	---	---	---	---	---	---	---	---	---	---	---	---	---	---	---
TERNA ENERGY (CR)				(Contract Size: 103 Securities, Physical Delivery)																		
3.15	3.03	3.05	-2.24%	September 2013	3.09	3.12	3.05	3.06	3.12	1@3.05	1@3.11	3.12	-2.19%	3.25	2.43	15	47	113.64%	14,854.66	110.79%	2,401	1.74%
				December 2013	---	---	---	---	---	---	---	---	---	---	---	---	---	---	---	---	---	---
				March 2014	---	---	---	---	---	---	---	---	---	---	---	---	---	---	---	---	---	---
				June 2014	---	---	---	---	---	---	---	---	---	---	---	---	---	---	---	---	---	---
TITAN CEMENT (CR)				(Contract Size: 100 Securities, Physical Delivery)																		
15.22	14.78	15.20	-0.65%	September 2013	15.05	15.15	14.78	15.09	15.35	2@14.77	6@16.20	15.35	-0.65%	15.90	12.22	22	51	218.75%	76,084.00	213.88%	221	-11.24%
				December 2013	15.02	15.22	15.02	15.14	15.19	---	6@16.26	15.19	-1.81%	15.68	15.02	3	12	100.00%	18,128.00	99.27%	---	---
				March 2014	---	---	---	---	---	---	---	---	---	---	---	---	---	---	---	---	---	---
				June 2014	---	---	---	---	---	---	---	---	---	---	---	---	---	---	---	---	---	---
VIOHALCO (CB)				(Contract Size: 100 Securities, Physical Delivery)																		
4.84	4.59	4.69	-3.10%	September 2013	4.85	4.85	4.63	4.66	4.66	10@4.65	1@4.76	4.66	-2.10%	5.19	3.85	9	47	-47.78%	21,944.00	-49.29%	543	4.02%
				December 2013	---	---	---	---	4.70	---	1@4.81	4.70	-2.08%	4.10	3.89	---	---	---	---	---	---	---
				March 2014	---	---	---	---	---	---	---	---	---	---	---	---	---	---	---	---	---	---
				June 2014	---	---	---	---	---	---	---	---	---	---	---	---	---	---	---	---	---	---

FTSE/Athex Large Cap

(Trade Unit: 1 Index Point x 5€ - Excercise Style: European, Cash Settlement)

Call Options																	Put Options																	
Exerise Price	August 2013							September 2013							Other Months		August 2013								September 2013							Other Months		Exerise Price
	Open price	Price max	Price min	Last price	Closing price	Volume	Open Interest	Open price	Price max	Price min	Last price	Closing price	Volume	Open Interest	Volume	Open Interest	Open price	Price max	Price min	Last price	Closing price	Volume	Open Interest	Open price	Price max	Price min	Last price	Closing price	Volume	Open Interest	Volume	Open Interest		
215	-	-	-	-	-	-	-	-	-	-	-	109.00	-	60			-	-	-	-	-	-	-	-	-	-	-	-	-	-	-	215		
230	-	-	-	-	-	-	-	-	-	-	-	94.50	-	3			-	-	-	-	-	-	-	-	-	-	-	-	-	-	-	230		
255	-	-	-	-	63.86	-	-	-	-	-	-	-	-	-			-	-	-	-	-	-	187	-	-	-	-	-	-	-	-	255		
260	-	-	-	-	58.86	-	-	-	-	-	-	-	-	-			-	-	-	-	-	-	104	-	-	-	-	-	-	-	-	260		
265	-	-	-	-	53.86	-	-	-	-	-	-	-	-	-			-	-	-	-	-	-	1	-	-	-	-	0.84	-	100		265		
270	-	-	-	-	48.86	-	-	-	-	-	-	-	-	-			-	-	-	-	-	-	49	2.40	2.40	2.40	2.40	1.20	1	102		270		
275	-	-	-	-	43.86	-	-	-	-	-	-	-	-	-			-	-	-	-	-	-	39	-	-	-	-	1.70	-	1		275		
280	-	-	-	-	38.86	-	-	-	-	-	-	46.75	-	459			-	-	-	-	-	-	45	-	-	-	-	2.20	-	132		280		
285	-	-	-	-	33.86	-	-	-	-	-	-	42.50	-	20			-	-	-	-	-	-	293	4.50	4.50	4.50	4.50	3.00	6	56		285		
290	-	-	-	-	28.86	-	-	-	-	-	-	38.50	-	40			-	-	-	-	-	-	236	-	-	-	-	3.90	-	251		290		
295	-	-	-	-	23.86	-	-	-	-	-	-	34.75	-	1			-	-	-	-	-	-	164	-	-	-	-	-	-	-	-	295		
300	-	-	-	-	18.86	-	-	-	-	-	-	31.00	-	426			-	-	-	-	-	-	481	-	-	-	-	6.30	-	10		300		
305	-	-	-	-	13.86	-	-	-	-	-	-	-	-	-			-	-	-	-	-	-	405	10.00	10.00	10.00	10.00	7.90	2	195		305		
310	-	-	-	-	8.86	-	-	-	-	-	-	24.25	-	740			-	-	-	-	-	-	33	-	-	-	-	-	-	-	-	310		
315	-	-	-	-	3.86	-	-	23.50	23.50	23.50	23.50	21.50	1	620			-	-	-	-	-	-	178	-	-	-	-	11.75	-	33		315		
320	-	-	-	-	-	-	112	20.00	20.00	19.00	20.00	18.75	16	18			-	-	-	-	1.14	-	-	16.50	16.50	16.50	16.50	14.00	2	6		320		
325	1.00	1.00	1.00	1.00	-	2	24	-	-	-	-	16.25	-	6			-	-	-	-	6.14	-	-	18.00	18.00	18.00	18.00	16.50	5	155		325		
330	0.50	0.50	0.50	0.50	-	1	41	14.50	15.00	13.00	13.00	14.00	48	392			7.00	7.00	7.00	7.00	11.14	1	-	-	-	-	-	-	-	-	-	330		
335	-	-	-	-	-	-	100	-	-	-	-	-	-	-			-	-	-	-	16.14	-	-	-	-	-	-	-	-	-	-	335		
340	-	-	-	-	-	-	2	9.00	9.00	9.00	9.00	10.25	1	31			-	-	-	-	21.14	-	-	-	-	-	-	25.50	-	50		340		
345	-	-	-	-	-	-	-	-	-	-	-	-	-	-			-	-	-	-	26.14	-	-	-	-	-	-	-	-	-	-	345		
350	-	-	-	-	-	-	6	-	-	-	-	7.20	-	51			-	-	-	-	31.14	-	-	28.00	28.00	28.00	28.00	32.50	5	5		350		
355	-	-	-	-	-	-	-	-	-	-	-	6.10	-	3			-	-	-	-	36.14	-	-	-	-	-	-	-	-	-	-	355		
360	-	-	-	-	-	-	-	-	-	-	-	-	-	-			-	-	-	-	41.14	-	-	37.00	37.00	37.00	37.00	40.25	5	5		360		
365	-	-	-	-	-	-	-	-	-	-	-	-	-	-			-	-	-	-	46.14	-	-	39.00	39.00	39.00	39.00	44.25	10	130		365		
370	-	-	-	-	-	-	7	-	-	-	-	3.40	-	1			-	-	-	-	51.14	-	-	44.00	44.00	44.00	44.00	48.50	5	5		370		
375	-	-	-	-	-	-	27	-	-	-	-	-	-	-			-	-	-	-	56.14	-	-	-	-	-	-	-	-	-	-	375		
380	-	-	-	-	-	-	-	-	-	-	-	2.30	-	30			-	-	-	-	61.14	-	-	54.00	54.00	54.00	54.00	57.50	10	10		380		
385	-	-	-	-	-	-	-	-	-	-	-	-	-	-			-	-	-	-	66.14	-	-	59.00	59.00	59.00	59.00	62.00	5	5		385		
390	-	-	-	-	-	-	-	-	-	-	-	-	-	-			-	-	-	-	71.14	-	-	-	-	-	-	-	-	-	-	390		
395	-	-	-	-	-	-	-	-	-	-	-	-	-	-			-	-	-	-	76.14	-	-	69.00	69.00	69.00	69.00	71.00	5	5		395		
400	-	-	-	-	-	-	3	-	-	-	-	-	-	-			-	-	-	-	81.14	-	-	-	-	-	-	-	-	-	-	400		
405	-	-	-	-	-	-	11	-	-	-	-	-	-	-			-	-	-	-	86.14	-	-	-	-	-	-	-	-	-	-	405		
410	-	-	-	-	-	-	-	-	-	-	-	-	-	-			-	-	-	-	91.14	-	-	-	-	-	-	-	-	-	-	410		
415	-	-	-	-	-	-	-	-	-	-	-	-	-	-			-	-	-	-	96.14	-	-	-	-	-	-	-	-	-	-	415		
420	-	-	-	-	-	-	50	-	-	-	-	-	-	-			-	-	-	-	101.14	-	-	-	-	-	-	-	-	-	-	420		

FTSE/Athex Large Cap

(Trade Unit: 1 Index Point x 5€ - Exercise Style: European, Cash Settlement)

Call Options																	Put Options																		
Exercise Price	August 2013							September 2013							Other Months		August 2013							September 2013							Other Months		Exercise Price		
	Open price	Price max	Price min	Last price	Closing price	Volume	Open Interest	Open price	Price max	Price min	Last price	Closing price	Volume	Open Interest	Volume	Open Interest	Open price	Price max	Price min	Last price	Closing price	Volume	Open Interest	Open price	Price max	Price min	Last price	Closing price	Volume	Open Interest	Volume	Open Interest			
425	-	-	-	-	-	-	-	-	-	-	-	-	-	-	-	-	-	-	-	-	106.14	-	-	-	-	-	-	-	-	-	-	-	425		
430	-	-	-	-	-	-	-	-	-	-	-	-	-	-	-	-	-	-	-	-	111.14	-	-	-	-	-	-	-	-	-	-	-	430		
440	-	-	-	-	-	-	-	-	-	-	-	-	-	-	-	-	-	-	-	-	121.14	-	-	-	-	-	115.00	-	261	-	-	-	440		
1,500	-	-	-	-	-	-	-	-	-	-	-	-	-	-	-	-	-	-	-	-	-	-	-	-	-	-	1,172.00	-	3	-	-	-	1,500		
Totals:						3	383							66	2,901	0	0							1	2,215							61	1,520	0	8
Nominal Transactions Value:						4,900.00								108,075.00		0.00								1,650.00								108,025.00		0.00	
Number of Trades:						3								11		0								1								12		0	

ALPHA BANK (CR) (Contract Size: 100 Securities, Exercise Style: American, Physical Delivery)

Call Options																	Put Options																			
August 2013								September 2013								Other Months		August 2013								September 2013								Other Months		
Exercise Price	Open price	Price max	Price min	Last price	Closing price	Volume	Open Interest	Open price	Price max	Price min	Last price	Closing price	Volume	Open Interest	Volume	Open Interest	Open price	Price max	Price min	Last price	Closing price	Volume	Open Interest	Open price	Price max	Price min	Last price	Closing price	Volume	Open Interest	Volume	Open Interest	Exercise Price			
0.100						-	-							-	-							9.48	-	-					-	-			0.100			
0.200						-	-							-	-							19.48	-	-					-	-			0.200			
0.300						-	-							-	-							29.48	-	-					-	-			0.300			
0.400						-	-							-	-							39.48	-	-					-	-			0.400			
0.500						-	-							-	-							49.48	-	-					-	-			0.500			
0.600						-	-							-	-							59.48	-	-					-	-			0.600			
0.700						-	-							-	-							69.48	-	-					-	-			0.700			
0.800						-	-							-	-							79.48	-	-					-	-			0.800			
0.850						-	-							-	-								-	-					-	-			0.850			
0.900						-	-							-	-							89.48	-	-					-	-			0.900			
0.950						-	-							-	-								-	-					-	-			0.950			
1.00						-	-							-	-								-	-					-	-			1.00			
1.05						-	-							-	-								-	-					-	-			1.05			
1.10						-	-							-	-								-	-					-	-			1.10			
1.15						-	-							-	-								-	-					-	-			1.15			
1.20						-	-							-	-								-	-					-	-			1.20			
1.30						-	-							-	-								-	-					-	-			1.30			
1.40						-	-							-	-								-	-					-	-			1.40			
1.50						-	-							-	-								-	-					-	-			1.50			
1.60						-	-							-	-								-	-					-	-			1.60			
1.70						-	-							-	-								-	-					-	-			1.70			
1.80						-	-							-	-								-	-					-	-			1.80			
1.90						-	-							-	-								-	-					-	-			1.90			
2.00						-	-							-	-								-	-					-	-			2.00			
2.20						-	-							-	-								-	-					-	-			2.20			
2.40						-	-							-	-								-	-					-	-			2.40			
2.60						-	-							-	-								-	-					-	-			2.60			
2.80						-	-							-	-								-	-					-	-			2.80			
Totals:						0	0							0	0	0	0							0	0							0	0			
Nominal Transactions Value:						0.00								0.00		0.00							0.00								0.00					
Number of Trades:						0								0		0							0.00								0					

NATIONAL BANK (CR)

(Contract Size: 100 Securities, Exercise Style: American, Physical Delivery)

Call Options																	Put Options																			
August 2013								September 2013								Other Months		August 2013								September 2013								Other Months		
Exercise Price	Open price	Price max	Price min	Last price	Closing price	Volume	Open Interest	Open price	Price max	Price min	Last price	Closing price	Volume	Open Interest	Volume	Open Interest	Open price	Price max	Price min	Last price	Closing price	Volume	Open Interest	Open price	Price max	Price min	Last price	Closing price	Volume	Open Interest	Volume	Open Interest	Exercise Price			
0.300						-	-						-	-								-	-					-	-			0.300				
0.400						-	-						-	-								-	-					-	-			0.400				
0.500						-	-						-	-								-	-					-	-			0.500				
0.600						-	-						-	-								-	-					-	-			0.600				
0.700						-	-						-	-								-	-					-	-			0.700				
0.750						-	-						-	-								-	-					-	-			0.750				
0.800						-	-						-	-								-	-					-	-			0.800				
0.850						-	-						-	-								-	-					-	-			0.850				
0.900						-	-						-	-								-	-					-	-			0.900				
0.950						-	-						-	-								-	-					-	-			0.950				
1.00						-	-						-	-								-	-					-	-			1.00				
1.05						-	-						-	-								-	-					-	-			1.05				
1.10						-	-						-	-								-	-					-	-			1.10				
1.20						-	-						-	-								-	-					-	-			1.20				
1.30						-	-						-	-								-	-					-	-			1.30				
1.40						-	-						-	-								-	-					-	-			1.40				
1.50						-	-						-	-								-	-					-	-			1.50				
1.60						-	-						-	-								-	-					-	-			1.60				
1.70						-	-						-	-							166.94	-	-					-	-			1.70				
1.80						-	-						-	-							176.94	-	-					-	-			1.80				
1.90						-	-						-	-							186.94	-	-					-	-			1.90				
2.00						-	-						-	-							196.94	-	-					-	-			2.00				
2.20						-	-						-	-							216.94	-	-					-	-			2.20				
2.40						-	-						-	-							236.94	-	-					-	-			2.40				
2.60						-	-					0.591	-	20							256.94	-	-					-	-			2.60				
2.80						-	-						-	-							276.94	-	-					-	-			2.80				
3.00						-	-					0.304	-	22							296.94	-	-					-	-			3.00				
3.20						-	-					0.203	-	20							316.94	-	-					-	-			3.20				
3.40						-	-						-	-							336.94	-	-					-	-			3.40				
3.60						-	-						-	-							356.94	-	-					-	-			3.60				
3.80						-	-						-	-							376.94	-	-					-	-			3.80				
4.00						-	-						-	-							396.94	-	-					-	-			4.00				
4.40						-	-						-	-							436.94	-	-					-	-			4.40				
Totals:						0	0							0	62	0	140							0	0							0	76			
Nominal Transactions Value:						0.00								0.00		0.00								0.00								0.00				
Number of Trades:						0								0		0								0								0				

OPAP (CR)

(Contract Size: 100 Securities, Exercise Style: American, Physical Delivery)

Call Options																	Put Options																			
August 2013								September 2013								Other Months		August 2013								September 2013								Other Months		
Exercise Price	Open price	Price max	Price min	Last price	Closing price	Volume	Open Interest	Open price	Price max	Price min	Last price	Closing price	Volume	Open Interest	Volume	Open Interest	Open price	Price max	Price min	Last price	Closing price	Volume	Open Interest	Open price	Price max	Price min	Last price	Closing price	Volume	Open Interest	Volume	Open Interest	Exercise Price			
1.00						-	-					6.51	-	270								-	-					-	-			1.00				
3.20						-	-						-	-								-	-					-	-			3.20				
3.40						-	-						-	-								-	-					-	-			3.40				
3.60						-	-						-	-								-	-					-	-			3.60				
3.80						-	-						-	-								-	-					-	-			3.80				
4.00						-	-						-	-								-	-					-	-			4.00				
4.40						-	-						-	-							432.44	-	-					-	-			4.40				
4.80						-	-						-	-							472.44	-	-					-	-			4.80				
5.20						-	-						-	-							512.44	-	-					-	-			5.20				
5.60						-	-						-	-							552.44	-	-					-	-			5.60				
5.80						-	-						-	-								-	-					-	-			5.80				
6.00						-	-						-	-							592.44	-	-					-	-			6.00				
6.20						-	-						-	-							612.44	-	-					-	-			6.20				
6.40						-	-						-	-							632.44	-	-					-	-			6.40				
6.60						-	-						-	-							652.44	-	-				0.117	-	-			6.60				
6.80						-	-						-	-							672.44	-	-					-	-			6.80				
7.00						-	-						-	-							692.44	-	-					-	-			7.00				
7.20						-	-						-	-							712.44	-	-					-	-			7.20				
7.40						-	-						-	-							732.44	-	-					-	-			7.40				
7.60						-	-						-	-							752.44	-	-					-	-			7.60				
7.80						-	-						-	-							772.44	-	-					-	-			7.80				
8.00						-	-						-	-							792.44	-	-					-	-			8.00				
8.40						-	-						-	-							832.44	-	-					-	-			8.40				
8.80						-	-						-	-							872.44	-	-					-	-			8.80				
9.00						-	-						-	-								-	-					-	-			9.00				
9.20						-	-						-	-							912.44	-	-					-	-			9.20				
9.40						-	-						-	-								-	-					-	-			9.40				
9.60						-	-						-	-							952.44	-	-					-	-			9.60				
9.80						-	-						-	-								-	-					-	-			9.80				
10.00						-	-						-	-							992.44	-	-					-	-			10.00				
20.00						-	-						-	270								-	-				12.49	-	-			20.00				
Totals:						0	0						0	540	0	1,675						0	0					0	675	0	55					
Nominal Transactions Value:							0.00						0.00		0.00		0.00					0.00						0.00		0.00						
Number of Trades:							0						0		0		0					0.00						0		0						

Call Options																	Put Options																			
August 2013								September 2013								Other Months		August 2013								September 2013								Other Months		
Exercise Price	Open price	Price max	Price min	Last price	Closing price	Volume	Open Interest	Open price	Price max	Price min	Last price	Closing price	Volume	Open Interest	Volume	Open Interest	Open price	Price max	Price min	Last price	Closing price	Volume	Open Interest	Open price	Price max	Price min	Last price	Closing price	Volume	Open Interest	Volume	Open Interest	Exercise Price			
2.60						-	-							-	-							-	-						-	-			2.60			
2.80						-	-							-	-							-	-						-	-			2.80			
3.00						-	-							-	-							-	-						-	-			3.00			
3.20						-	-							-	-							-	-						-	-			3.20			
3.40						-	-							-	-							-	-						-	-			3.40			
3.60						-	-							-	-							-	-						-	-			3.60			
3.80						-	-							-	-							-	-						-	-			3.80			
4.00						-	-							-	-							-	-						-	-			4.00			
4.40						-	-							-	-							-	-						-	-			4.40			
4.80						-	-							-	-							-	-						-	-			4.80			
5.20						-	-							-	-							-	-						-	-			5.20			
5.40						-	-							-	-							-	-						-	-			5.40			
5.60						-	-							-	-							-	-						-	-			5.60			
5.80						-	-							-	-							-	-						-	-			5.80			
6.00						-	-							-	-							-	-						-	-			6.00			
6.20						-	-							-	-							-	-						-	-			6.20			
6.40						-	-							-	-							-	-						-	-			6.40			
6.60						-	-							-	-							-	-						-	-			6.60			
6.80						-	-					0.643		-	1							-	-						-	-			6.80			
7.00						-	-							-	-							-	-						-	-			7.00			
7.20						-	-							-	-							-	-						-	-			7.20			
7.40						-	-							-	-							-	-						-	-			7.40			
7.60						-	-							-	-							-	-						-	-			7.60			
8.00						-	-					0.167		-	50							-	-						-	-			8.00			
8.20						-	-							-	-							-	-						-	-			8.20			
8.40						-	-							-	-							-	-						-	-			8.40			
8.60						-	-							-	-							-	-						-	-			8.60			
8.80						-	-							-	-							-	-						-	-			8.80			
9.00						-	-							-	-							-	-						-	-			9.00			
9.20						-	-							-	-							-	-						-	-			9.20			
Totals:						0	0							0	51	0	1,600							0	0							0	211	0	0	
Nominal Transactions Value:						0.00								0.00			0.00							0.00								0.00		0.00		
Number of Trades:						0								0			0							0.00								0		0		

PIRAEUS BANK (CR)

(Contract Size: 100 Securities, Exercise Style: American, Physical Delivery)

Call Options																	Put Options																														
August 2013								September 2013								Other Months		August 2013								September 2013								Other Months													
Exercise Price	Open price	Price max	Price min	Last price	Closing price	Volume	Open Interest	Open price	Price max	Price min	Last price	Closing price	Volume	Open Interest	Volume	Open Interest	Open price	Price max	Price min	Last price	Closing price	Volume	Open Interest	Open price	Price max	Price min	Last price	Closing price	Volume	Open Interest	Volume	Open Interest	Exercise Price														
0.500	-						-	-						-	-						-	-						-	-						-	-						0.500					
0.600	-						-	-						-	-						-	58.93						-	-	-	-						-	-						0.600			
0.700	-						-	-						-	-						-	68.93						-	-	-	-						-	-						0.700			
0.800	-						-	-						-	-						-	78.93						-	-	-	-						-	-						0.800			
0.900	-						-	-						-	-						-	88.93						-	-	-	-						-	-						0.900			
1.00	-						-	-						-	-						-	98.93						-	-	-	-						-	-						1.00			
1.10	-						-	-						0.044	-	5	-						108.93						-	-	-	-						-	-						1.10		
1.20	-						-	-						-	-						-	118.93						-	-	-	-						-	-						1.20			
1.30	-						-	-						-	-						-	128.93						-	-	-	-						-	-						1.30			
1.40	-						-	-						-	-						-	138.93						-	-	-	-						-	-						1.40			
Totals:						0	0							0	5	0	0							0	0							0	0							0	0						
Nominal Transactions Value:						0.00								0.00		0.00								0.00								0.00															
Number of Trades:						0								0		0								0								0															



PPC (CR) (Contract Size: 100 Securities, Exercise Style: American, Physical Delivery)

Call Options																	Put Options																			
August 2013								September 2013								Other Months		August 2013								September 2013								Other Months		
Exerise Price	Open price	Price max	Price min	Last price	Closing price	Volume	Open Interest	Open price	Price max	Price min	Last price	Closing price	Volume	Open Interest	Volume	Open Interest	Open price	Price max	Price min	Last price	Closing price	Volume	Open Interest	Open price	Price max	Price min	Last price	Closing price	Volume	Open Interest	Volume	Open Interest	Exerise Price			
3.20						-	-						-	-								-	-					-	-				3.20			
3.40						-	-						-	-								-	-					-	-				3.40			
3.60						-	-						-	-								-	-					-	-				3.60			
3.80						-	-						-	-								-	-					-	-				3.80			
4.00						-	-						-	-								-	-					-	-				4.00			
4.40						-	-					3.55	-	30								-	-					-	-				4.40			
4.80						-	-						-	-							472.21	-	-					-	-				4.80			
5.20						-	-						-	-							512.21	-	-					-	-				5.20			
5.60						-	-						-	-							552.21	-	-					-	-				5.60			
6.00						-	-						-	-							592.21	-	-					-	-				6.00			
6.40						-	-						-	-							632.21	-	-					-	-				6.40			
6.60						-	-						-	-								-	-					-	-				6.60			
6.80						-	-					1.27	-	10							672.21	-	-					-	-				6.80			
7.00						-	-						-	-							692.21	-	-					-	-				7.00			
7.20						-	-						-	-							712.21	-	-				0.213	-	-				7.20			
7.40						-	-						-	-							732.21	-	-					-	-				7.40			
7.60						-	-						-	-							752.21	-	-					-	-				7.60			
7.80						-	-						-	-							772.21	-	-					-	-				7.80			
8.00						-	-						-	-							792.21	-	-					-	-				8.00			
8.20						-	-						-	-							812.21	-	-					-	-				8.20			
8.40						-	-						-	-							832.21	-	-					-	-				8.40			
8.60						-	-						-	-							852.21	-	-					-	-				8.60			
8.80						-	-						-	-							872.21	-	-					-	-				8.80			
9.00						-	-						-	-							892.21	-	-					-	-				9.00			
9.20						-	-						-	-							912.21	-	-					-	-				9.20			
9.60						-	-						-	-							952.21	-	-					-	-				9.60			
10.00						-	-						-	-							992.21	-	-					-	-				10.00			
Totals:						0	0							0	40	0	0							0	0							0	400	0	0	
Nominal Transactions Value:						0.00								0.00		0.00								0.00								0.00		0.00		
Number of Trades:						0								0		0								0								0		0		

Securities	Type[4]	Stock Repo [1]						Stock Reverse Repo [2]								Repurchase Agreements [3]							
		Trans. price	chg.	Trades	Volume	Transactions Value	Open Interest[5]	Price max	Price min	Last price	Last Ask	Trades	Volume	Transactions Value	Open Interest[5]	Price max	Price min	Last price	Last Ask	Trades	Volume	Transactions Value	Open Interest[5]
AEGEAN AIRLINES (CR)	SR RA	100.00	---	---	---	---	285	---	---	---	142@3%	---	---	---	---	---	---	---	---	---	---	---	---
ALPHA BANK (CR)	SR RA	100.00	---	---	---	---	54,394	---	---	---	34000@3.5%	---	---	---	50	---	---	---	---	---	---	---	1,562
ALPHA ETF FTSE Athex Large Cap	SR RA	100.00	---	---	---	---	---	---	---	---	---	---	---	---	---	---	---	---	---	---	---	---	2,664
ALUMIL (CR)	RA	---	---	---	---	---	---	---	---	---	---	---	---	---	---	---	---	---	---	---	---	---	---
ATHENS MEDICAL CENTER SA (CR)	SR RA	100.00	---	---	---	---	434	---	---	---	217@3%	---	---	---	---	---	---	---	---	---	---	---	---
AUTOHELLAS SA (CR)	SR RA	100.00	---	---	---	---	50	---	---	---	25@3%	---	---	---	---	---	---	---	---	---	---	---	---
CC HBC AG (CR)	SR RA	100.09	---	---	---	---	1,251	---	---	---	615@3%	---	---	---	10	---	---	---	---	---	---	---	128
CENTRIC HOLDINGS (CR)	SR RA	100.00	---	---	---	---	200	---	---	---	151@7.3%	---	---	---	---	---	---	---	---	---	---	---	---
CORINTH PIPEWORKS SA (CR)	SR RA	100.00	---	---	---	---	160	---	---	---	80@3%	---	---	---	---	---	---	---	---	---	---	---	---
CRETE PLASTICS SA (CR)	SR RA	100.00	---	---	---	---	---	---	---	---	---	---	---	---	---	---	---	---	---	---	---	---	---
ELLAKTOR (CR)	SR RA	100.03	0.01	---	---	---	2,881	---	---	---	1290@3%	---	---	---	150	---	---	---	---	---	---	---	---
ELTON SA (CR)	SR RA	100.00	---	---	---	---	50	---	---	---	35@3%	---	---	---	---	---	---	---	---	---	---	---	---
ELVAL SA. (CB)	SR RA	100.00	---	---	---	---	621	---	---	---	310@3%	---	---	---	---	---	---	---	---	---	---	---	---
EUROBANK ERGASIAS (CR)	SR RA	100.11	0.03	---	---	---	1,523	3.50%	3.50%	3.50%	6@3.5%	1	10	683.0	987	---	---	---	---	---	---	---	28
EUROBANK PROPERTIES REIC (CR)	SR RA	100.04	0.01	---	---	---	1,641	---	---	---	837@3%	---	---	---	75	---	---	---	---	---	---	---	---
EUROPEAN RELIANCE INSUR. (CR)	SR RA	100.00	---	---	---	---	---	---	---	---	---	---	---	---	---	---	---	---	---	---	---	---	---
EYDAP S.A. (CR)	SR RA	100.04	---	---	---	---	325	---	---	---	112@3%	---	---	---	13	---	---	---	---	---	---	---	16
FOLLI FOLLIE (CR)	SR RA	100.07	0.01	---	---	---	786	---	---	---	373@3%	---	---	---	20	---	---	---	---	---	---	---	10
FOURLIS (CR)	SR RA	100.00	---	---	---	---	195	---	---	---	97@3%	---	---	---	---	---	---	---	---	---	---	---	---
FRIGOGLASS SA (CR)	SR RA	100.15	0.02	---	---	---	229	---	---	---	79@3%	---	---	---	35	---	---	---	---	---	---	---	---
GEK TERNA (CR)	SR RA	100.01	---	---	---	---	674	---	---	---	332@3%	---	---	---	5	---	---	---	---	---	---	---	---
GR. SARANTIS SA (CR)	SR RA	100.00	---	---	---	---	62	---	---	---	31@3%	---	---	---	---	---	---	---	---	---	---	---	---
HALKOR SA (CB)	SR RA	100.00	---	---	---	---	415	---	---	---	207@3%	---	---	---	---	---	---	---	---	---	---	---	---
HELLENIC CABLES SA (CR)	SR RA	100.00	---	---	---	---	84	---	---	---	42@3%	---	---	---	---	---	---	---	---	---	---	---	---
HELLENIC EXCHANGES (CR)	SR RA	100.07	0.01	---	---	---	5,993	---	---	---	2611@3%	---	---	---	350	---	---	---	---	---	---	---	---
HELLENIC PETROLEUM (CR)	SR RA	100.10	0.02	---	---	---	2,224	---	---	---	934@3%	---	---	---	178	---	---	---	---	---	---	---	46
HYGEIA SA (CR)	SR RA	100.00	---	---	---	---	500	---	---	---	200@4.2%	---	---	---	---	---	---	---	---	---	---	---	---
IASO SA (CR)	SR RA	100.00	---	---	---	---	86	---	---	---	43@3%	---	---	---	---	---	---	---	---	---	---	---	---
IKTINOS HELLAS SA (CR)	SR RA	100.00	---	---	---	---	10	---	---	---	---	---	---	---	---	---	---	---	---	---	---	---	---
INFORM P. LYKOS SA (CR)	SR RA	100.00	---	---	---	---	403	---	---	---	201@3%	---	---	---	---	---	---	---	---	---	---	---	---
INTRACOM CONSTR. (CR)	SR RA	100.00	---	---	---	---	37	---	---	---	18@3%	---	---	---	---	---	---	---	---	---	---	---	---
INTRACOM HOLDINGS (CR)	SR RA	100.00	---	---	---	---	665	---	---	---	426@3.7%	---	---	---	---	---	---	---	---	---	---	---	---

Stock Lending Notes

- [1] - Stock Repo: A Contract for selling stocks to HELEX with a Repurchase Right (According to ATHEX BoD Resolution No 17)
- [2] - Stock Reverse Repo: A Contract for buying stocks from HELEX with a Resell Right. (According to ATHEX BoD Resolution No 18)
- [3] - Standardized Repurchase Agreements: A Contract that constitutes a standardized agreement for the purchase or sale of shares, with repurchase or resell pact (According to ATHEX BoD Resolution No 20)
- [4] - Type of products is divided into SR: Stock Repo or Stock Reverse Repo, and RA: Repurchase Agreements.
- [5] - Open Interest in all Series (both tradeable or non-tradeable).

Securities	Type[4]	Stock Repo [1]						Stock Reverse Repo [2]								Repurchase Agreements [3]							
		Trans. price	chg.	Trades	Volume	Transactions Value	Open Interest[5]	Price max	Price min	Last price	Last Ask	Trades	Volume	Transactions Value	Open Interest[5]	Price max	Price min	Last price	Last Ask	Trades	Volume	Transactions Value	Open Interest[5]
INTRALOT (CR)	SR RA	100.02	0.01	---	---	---	4,196	---	---	---	1848@3%	---	---	---	250	---	---	---	---	---	---	---	---
J & P - AVAX SA (CR)	SR RA	100.00	---	---	---	---	235	---	---	---	117@3%	---	---	---	---	---	---	---	---	---	---	---	---
JUMBO SA (CR)	SR RA	100.05	0.01	---	---	---	2,358	---	---	---	1090@3%	---	---	---	89	---	---	---	---	---	---	---	20
KLEEMAN HELLAS SA (CR)	SR RA	100.00	---	---	---	---	1,182	---	---	---	591@3%	---	---	---	---	---	---	---	---	---	---	---	---
KLOUKINAS - LAPPAS SA (CR)	SR RA	100.00	---	---	---	---	---	---	---	---	---	---	---	---	---	---	---	---	---	---	---	---	---
KORRES (CR)	SR RA	100.00	---	---	---	---	---	---	---	---	---	---	---	---	---	---	---	---	---	---	---	---	---
KRI-KRI S.A. (CR)	SR RA	100.00	---	---	---	---	549	---	---	---	274@3%	---	---	---	---	---	---	---	---	---	---	---	---
LAMDA DEVELOPMENT SA (CR)	SR RA	100.00	---	---	---	---	890	---	---	---	445@3%	---	---	---	---	---	---	---	---	---	---	---	---
LOULIS MILLS SA (CR)	SR RA	100.00	---	---	---	---	---	---	---	---	---	---	---	---	---	---	---	---	---	---	---	---	---
MARFIN INVESTMENT GROUP (CR)	SR RA	100.00	---	---	---	---	582	---	---	---	---	---	---	---	---	---	---	---	---	---	---	---	---
METKA (CR)	SR RA	100.09	0.01	---	---	---	651	3.00%	3.00%	3.00%	250@3%	1	45	51,840.0	75	---	---	---	---	---	---	---	9
MLS MULTIMEDIA SA (CR)	SR RA	100.00	---	---	---	---	99	---	---	---	49@3%	---	---	---	---	---	---	---	---	---	---	---	---
MOTOR OIL (CR)	SR RA	100.12	0.01	---	---	---	2,057	---	---	---	868@3%	---	---	---	160	---	---	---	---	---	---	---	17
MYTILINEOS HOLDINGS (CR)	SR RA	100.01	---	---	---	---	3,875	---	---	---	1887@3%	---	---	---	50	---	---	---	---	---	---	---	---
NATIONAL BANK (CR)	SR RA	100.08	---	---	---	---	8,845	---	---	---	4157@3%	---	---	---	265	---	---	---	---	---	---	---	346
NBGAM ETF	SR RA	100.00	---	---	---	---	---	---	---	---	---	---	---	---	---	---	---	---	---	---	---	---	100
NBGAM ETF GREECE & TURKEY 30	SR RA	100.00	---	---	---	---	---	---	---	---	---	---	---	---	---	---	---	---	---	---	---	---	35
NIREFS SA (CR)	SR RA	100.00	---	---	---	---	326	---	---	---	210@3.8%	---	---	---	---	---	---	---	---	---	---	---	---
OPAP (CR)	SR RA	100.05	---	---	---	---	5,743	---	---	---	2733@3%	---	---	---	138	---	---	---	---	---	---	---	367
OTE (CR)	SR RA	100.14	0.01	---	---	---	5,266	3.00%	3.00%	3.00%	1456@3%	1	600	429,000.0	1,177	---	---	---	---	---	---	---	102
P.P.A. S.A. (CR)	SR RA	100.00	---	---	---	---	115	---	---	---	57@3%	---	---	---	---	---	---	---	---	---	---	---	---
PETROPOULOS PETROS (CR)	RA	---	---	---	---	---	---	---	---	---	---	---	---	---	---	---	---	---	---	---	---	---	---
PIRAEUS BANK (CR)	SR RA	100.00	---	---	---	---	8,783	---	---	---	4339@3%	---	---	---	52	---	---	---	---	---	---	---	---
PPC (CR)	SR RA	100.29	0.03	---	---	---	1,933	---	---	---	597@3%	---	---	---	369	---	---	---	---	---	---	---	35
QUEST HOLDINGS (CR)	SR RA	100.00	---	---	---	---	39	---	---	---	19@3%	---	---	---	---	---	---	---	---	---	---	---	---
REDS S.A. (CR)	SR RA	100.00	---	---	---	---	572	---	---	---	352@3.4%	---	---	---	---	---	---	---	---	---	---	---	---
SELECTED TEXT. IND. ASSOC (CR)	SR RA	100.00	---	---	---	---	50	---	---	---	36@6.2%	---	---	---	---	---	---	---	---	---	---	---	---
SIDENOR (CR)	SR RA	100.00	---	---	---	---	442	---	---	---	221@3%	---	---	---	---	---	---	---	---	---	---	---	---
TECHNICAL OLYMPIC SA (CR)	SR RA	100.00	---	---	---	---	100	---	---	---	50@3%	---	---	---	---	---	---	---	---	---	---	---	---
TERNA ENERGY (CR)	SR RA	100.10	0.01	---	---	---	289	---	---	---	95@3%	---	---	---	49	---	---	---	---	---	---	---	5
THESSALONIKA WATER & SEWERAGE	SR RA	100.00	---	---	---	---	1,270	---	---	---	635@3%	---	---	---	---	---	---	---	---	---	---	---	---
THRACE PLASTICS SA (CR)	SR RA	100.00	---	---	---	---	1,210	---	---	---	605@3%	---	---	---	---	---	---	---	---	---	---	---	---

Stock Lending Notes

- [1] - Stock Repo: A Contract for selling stocks to HELEX with a Repurchase Right (According to ATHEX BoD Resolution No 17)
- [2] - Stock Reverse Repo: A Contract for buying stocks from HELEX with a Resell Right. (According to ATHEX BoD Resolution No 18)
- [3] - Standardized Repurchase Agreements: A Contract that constitutes a standardized agreement for the purchase or sale of shares, with repurchase or resell pact (According to ATHEX BoD Resolution No 20)
- [4] - Type of products is divided into SR: Stock Repo or Stock Reverse Repo, and RA: Repurchase Agreements.
- [5] - Open Interest in all Series (both tradeable or non-tradeable).

Securities	Type[4]	Stock Repo [1]						Stock Reverse Repo [2]								Repurchase Agreements [3]							
		Trans. price	chg.	Trades	Volume	Transactions Value	Open Interest[5]	Price max	Price min	Last price	Last Ask	Trades	Volume	Transactions Value	Open Interest[5]	Price max	Price min	Last price	Last Ask	Trades	Volume	Transactions Value	Open Interest[5]
TITAN CEMENT (CR)	SR RA	100.01	---	---	---	---	9,474	---	---	---	4687@3%	---	---	---	50	---	---	---	---	---	---	---	12
TPA SA (CR)	SR RA	100.00	---	---	---	---	6	---	---	---	---	---	---	---	---	---	---	---	---	---	---	---	
TRASTOR REAL EST. INV. CO.(CR)	SR RA	100.00	---	---	---	---	284	---	---	---	142@3%	---	---	---	---	---	---	---	---	---	---	---	
VIOHALCO (CB)	SR RA	100.01	---	---	---	---	3,990	---	---	---	1973@3%	---	---	---	22	---	---	---	---	---	---	30	

Stock Lending Notes

- [1] - Stock Repo: A Contract for selling stocks to HELEX with a Repurchase Right (According to ATHEX BoD Resolution No 17)
- [2] - Stock Reverse Repo: A Contract for buying stocks from HELEX with a Resell Right. (According to ATHEX BoD Resolution No 18)
- [3] - Standardized Repurchase Agreements: A Contract that constitutes a standardized agreement for the purchase or sale of shares, with repurchase or resell pact (According to ATHEX BoD Resolution No 20)
- [4] - Type of products is divided into SR: Stock Repo or Stock Reverse Repo, and RA: Repurchase Agreements.
- [5] - Open Interest in all Series (both tradeable or non-tradeable).

## Sectors codification for listed companies

533	-	Exploration & Production	537	-	Integrated Oil & Gas
1353	-	Commodity Chemicals	1357	-	Specialty Chemicals
1753	-	Aluminum	1755	-	Nonferrous Metals
1757	-	Steel	1775	-	General Mining
2353	-	Building Materials & Fixtures	2357	-	Heavy Construction
2723	-	Containers & Packaging	2727	-	Diversified Industrials
2733	-	Electrical Components & Equipment	2753	-	Commercial Vehicles & Trucks
2757	-	Industrial Machinery	2773	-	Marine Transportation
2777	-	Transportation Services	2791	-	Business Support Services
2797	-	Industrial Suppliers	3535	-	Distillers & Vintners
3537	-	Soft Drinks	3573	-	Farming & Fishing
3577	-	Food Products	3722	-	Durable Household Products
3726	-	Furnishings	3728	-	Home Construction
3747	-	Toys	3763	-	Clothing & Accessories
3765	-	Footwear	3767	-	Personal Products
3785	-	Tobacco	4533	-	Health Care Providers
4535	-	Medical Equipment	4577	-	Pharmaceuticals
5337	-	Food Retailers & Wholesalers	5371	-	Apparel Retailers
5373	-	Broadline Retailers	5375	-	Home Improvement Retailers
5379	-	Specialty Retailers	5553	-	Broadcasting & Entertainment
5555	-	Media Agencies	5557	-	Publishing
5751	-	Airlines	5752	-	Gambling
5753	-	Hotels	5755	-	Recreational Services
5757	-	Restaurants & Bars	5759	-	Travel & Tourism
6535	-	Fixed Line Telecommunications	6575	-	Mobile Telecommunications
7535	-	Conventional Electricity	7537	-	Alternative Electricity
7577	-	Water	8355	-	Banks
8534	-	Insurance Brokers	8536	-	Property & Casualty Insurance
8633	-	Real Estate Holding & Development	8637	-	Real Estate Services
8671	-	Industrial & Office REITs	8675	-	Specialty REITs
8775	-	Specialty Finance	8777	-	Investment Services
8985	-	Equity Investment Instruments	9533	-	Computer Services
9535	-	Internet	9537	-	Software
9572	-	Computer Hardware	9574	-	Electronic Office Equipment
9578	-	Telecommunications Equipment	11000	-	ETF

