

# Daily Official List

Athens Exchange sa

Monday, 19 August, 2013

Year: 134 Trading Day No: 154



ΟΜΙΛΟΣ ΕΛΛΗΝΙΚΑ ΧΡΗΜΑΤΙΣΤΗΡΙΑ  
HELLENIC EXCHANGES GROUP

**Disclaimer:**

Athens Exchange (ATHEX) endeavours to ensure that the data and other material ("Information") presented on the Daily Official List are accurate and complete, but it is not liable for any errors or omissions of data or /and for the accuracy, credibility, updating and completeness of the aforesaid information nor it has any liability arising directly or indirectly from the use of the above Information.

ATHEX is not liable for the accuracy of the data included in listed companies' announcements. Only the sender of such an announcement is fully and solely liable for any infringement of third party's rights from the content of such announcement. All contents of the Daily Official List are provided only for information purposes and do not constitute investment advice or solicitation to invest in securities or other products listed for trading on ATHEX.

You acknowledge and agree that ATHEX is the owner of any property rights related to any Information appearing on the Daily Official List including intellectual property rights copyright, trademarks, etc.

The above data are a property of the Athens Exchange and are copyright protected. Users are forbidden to reproduce, modify, copy, sale, transmit or redistribute, by all reproduction means and methods, part or the whole of the above data, without reference to their source.

The commercial exploitation of these data is, also, forbidden by third parties. Athens Exchange does not carry any responsibility, direct or indirect, derived from usage or accidental alteration of the above data when used by third parties.

**Athens Exchange sa**

110 Athinon Ave., 10442 Athens, Tel: (210) 33.66.800, Fax: (210) 32.13.938

[www.athex.gr](http://www.athex.gr)

**Thessalonica Stock Exchange Center (T.S.E.C)**

16-18 Katouni Str., Thessalonica 546 25 Tel: (2310) 567.667, Fax: (2310) 530.545

**Athex Members Guarantee Fund**

14-16 Fidiou Str., Athens 106 78, Tel: (210) 33.04.682, Fax: (210) 33.04.155

**Hellenic Republic Capital Market Commission**

1 Kolokotroni Str. & 1 Stadiou Str., Athens 10562 Tel: (210) 33.77.100 Fax: (210) 33.77.173

---

**Table of Contents**

---

**Section 1: Statistical Figures of Securities and Derivatives Markets**

Summary of Markets

Athex Indices

Analytic Figures for Athex Market's Boards and Categories

Trading Details by Athex Sectors and ETFs Category

Top 10 best &amp; worst performing Shares

Derivatives Summary

**Section 2: Analytic Figures of Shares Transactions**

Analytic Figures of Shares Transactions

Shares' Notes

**Section 3: Figures of Securities Transactions**

Securities Blocks Details

Shares Rights Details

Shares Short Selling

Stock Borrowing

Shares Forced Sales

Forced Sales Registered Shares

Exchange Traded Funds (ETFs) Characteristics

**Section 5: Bonds traded in Fixed Income Assets Market**

Corporate Bonds

Government Bonds

Treasury Bills &amp; Zero Coupon Government Bonds

Government Bonds Traded with the Open Outcry Method

State Banks Bonds

**Section 6: Additional Infos**

Athex &amp; ATHEXClear Members List

List of Stocks under Market Making operations

**Section 7: Derivatives Market Analytic Figures**

Index Futures

Stock Futures

Index Options

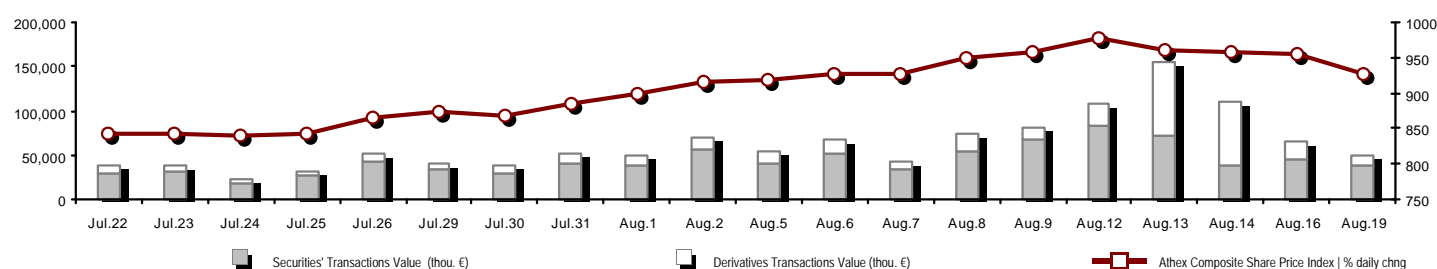
Stock Options

Stock Lending Analytic Figures (Repo Contracts)

**Appendix A: Sectors codification for listed companies**

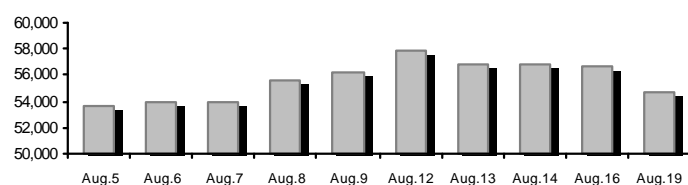
## Summary of Markets

Athex Composite Share Price Index vs Shares and Derivatives Transactions Value

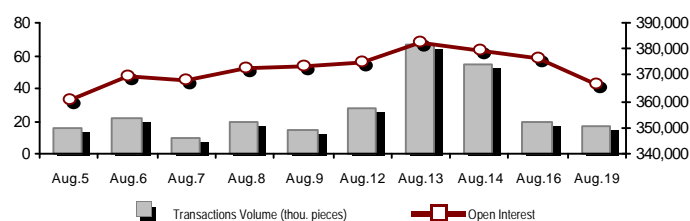


Total Transactions Value (Securities/Derivatives) (thou. €):		48,415.83	
Athex Capitalisation (mill. €) **: 54,764.78		Derivatives Total Open Interest 366,891	
Daily change: mill. €   % -1,946.22 -3.43%		in Index Futures   % daily chng 48,826 -12.62%	
Yearly Avg Capitalisation: mill. €   % chng prev year Avg 44,452.57 62.42%		in Stock Futures   % daily chng 155,911 -0.34%	
Athex Composite Share Price Index   % daily chng 927.00 -2.95%		in Index Options   % daily chng 4,560 -35.11%	
Athex Composite Share Price Index Capitalisation (mill. €) 47,787.67		in Stock Options   % daily chng 5,550 -12.62%	
Daily change (mill. €) -1,691.24		in Stock Repos/Reverse Repos/RA   % daily chng 152,044 0.20%	
Securities' Transactions Value (thou. €) 38,648.22		Derivatives Transactions Value (thou. €) 9,767.62	
Daily change: thou. €   % -5,480.21 -12.42%		Daily change: thou. €   % -11,300.70 -53.64%	
YtD Avg Trans. Value: thou. €   % chng prev year Avg 67,784.56 30.67%		YtD Avg Trans. Value: thou. €   % chng prev year Avg 23,394.72 22.57%	
Short Selling Trans. Value: mill. €   % in total Value			
Short Covering Trans. Value: mill. €   % in total Value			
Transactions Value of Blocks (thou. €) 2,703.97			
Bonds Transactions Value (thou. €) 0.00			
Securities' Transactions Volume (thou. Pieces) 23,770.11		Derivatives Contracts Volume: 16,751	
Daily change: thou. pieces   % -3,127.40 -11.63%		Daily change: pieces   % -2,885 -14.69%	
YtD Avg Volume: thou. pieces   % chng prev year Avg 52,562.83 6.30%		YtD Avg Derivatives Contracts   % chng prev year Avg 45,105 -29.91%	
Short Selling Volume: thou pieces   % in total Volume			
Short Covering Volume: thou. pieces   % in total Volume			
Transactions Volume of Blocks (thou. Pieces) 608.97			
Bonds Transactions Volume (thou. pieces) 0.00			
Securities' Trades Number 18,784		Derivatives Trades Number: 1,526	
Daily change: number   % 3,026 19.20%		Daily change: number   % 112 7.92%	
YtD Avg Derivatives Trades number   % chng prev year Avg 30,169 21.61%		YtD Avg Derivatives Trades number   % chng prev year Avg 2,796 -4.06%	
Number of Blocks 23			
Number of Bonds Transactions 0			

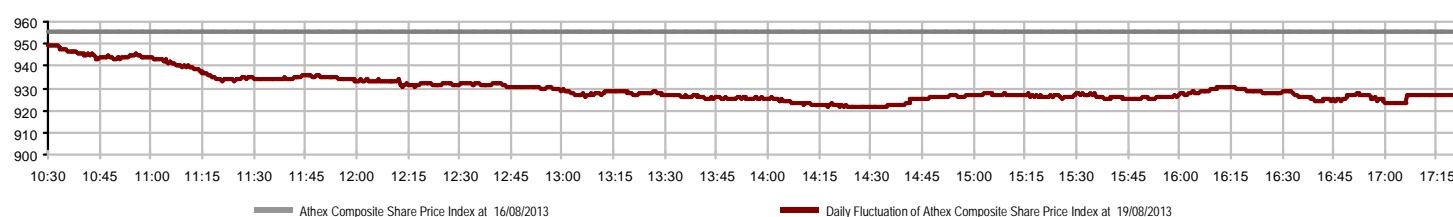
Athex Capitalisation (mill. €) \*\*



Derivatives Transactions Volume and Open Interest



Daily Fluctuation of Athex Composite Share Price Index



## Athex Indices

Index name	19/08/2013	16/08/2013	pts.	%	Min	Max	Year min	Year max	Year change
Athex Composite Share Price Index	927.00	955.18	-28.18	-2.95%	921.25	949.18	788.81	1,159.97	2.10% #
FTSE/Athex Large Cap	314.36	323.60	-9.24	-2.86%	312.40	321.28	253.17	410.78	1.51% #
FTSE/ATHEX Custom Capped	1,027.23	1,034.13	-6.90	-0.67%			863.84	1,275.55	0.76% #
FTSE/ATHEX Custom Capped - USD	981.94	982.50	-0.56	-0.06%			808.44	1,172.76	1.90% #
FTSE/Athex Mid Cap Index	1,042.61	1,091.85	-49.24	-4.51%	1,042.61	1,090.13	871.32	1,360.26	-7.99% €
FTSE/ATHEX-CSE Banking Index	104.56	110.39	-5.83	-5.28%	103.51	109.79	64.42	278.69	-38.08% €
FTSE/ATHEX Global Traders Index Plus	1,359.55	1,389.26	-29.71	-2.14%	1,352.75	1,386.64	1,082.32	1,484.90	9.00% #
FTSE/ATHEX Global Traders Index	1,421.10	1,458.68	-37.58	-2.58%	1,412.51	1,455.47	1,053.81	1,553.64	14.40% #
FTSE/ATHEX Mid & Small Cap Factor-Weighted Ind	1,210.25	1,226.93	-16.68	-1.36%	1,210.25	1,231.04	1,053.59	1,348.92	-2.32% €
Greece & Turkey 30 Price Index	684.21	706.97	-22.76	-3.22%	683.28	706.97	662.53	927.16	-12.04% €
ATHEX Mid & SmallCap Price Index	2,859.93	2,924.64	-64.71	-2.21%	2,843.30	2,928.31	2,785.62	3,725.74	-8.77% €
FTSE/Athex Market Index	759.28	782.29	-23.01	-2.94%	755.26	776.94	600.87	972.17	2.96% #
FTSE/Med 100	4,266.25	4,287.80	-21.55	-0.50%			4,075.12	4,570.16	2.96% #
Athex Composite Index Total Return Index	1,342.27	1,383.08	-40.81	-2.95%	1,333.94	1,374.39	1,139.79	1,655.57	3.64% #
FTSE/Athex Large Cap Total Return	430.79	443.46	-12.67	-2.86%			366.91	565.68	-0.04% €
FTSE/ATHEX Large Cap Net Total Return	1,260.40	1,297.46	-37.06	-2.86%	1,252.52	1,288.16	1,001.98	1,626.24	2.84% #
FTSE/ATHEX Custom Capped Total Return	1,072.83	1,079.14	-6.32	-0.59%			895.99	1,311.70	2.39% #
FTSE/ATHEX Custom Capped - USD Total Return	1,025.52	1,025.26	0.26	0.03%			836.50	1,205.99	3.55% #
FTSE/Athex Mid Cap Total Return	1,290.42	1,351.37	-60.95	-4.51%			1,152.62	1,720.22	-11.74% €
FTSE/ATHEX-CSE Banking Total Return Index	99.13	104.66	-5.53	-5.28%			82.32	289.59	-46.25% €
Greece & Turkey 30 Total Return Index	845.65	845.15	0.50	0.06%			790.56	1,098.14	-7.71% €
Hellenic Mid & Small Cap Index	958.11	989.00	-30.89	-3.12%	958.11	986.25	737.97	1,071.68	9.28% #
FTSE/Athex Banks	138.15	145.85	-7.70	-5.28%	136.76	145.06	85.08	368.22	-38.95% €
FTSE/Athex Insurance	1,264.40	1,253.86	10.54	0.84%	1,232.79	1,264.40	1,159.03	1,548.89	-16.67% €
FTSE/Athex Financial Services	1,364.61	1,412.62	-48.01	-3.40%	1,353.61	1,412.44	817.47	1,771.89	3.46% #
FTSE/Athex Industrial Goods & Services	3,530.63	3,607.42	-76.79	-2.13%	3,494.18	3,595.37	2,715.10	4,197.17	8.61% #
FTSE/Athex Retail	2,581.93	2,598.89	-16.96	-0.65%	2,528.35	2,599.22	1,629.12	2,692.44	41.12% #
FTSE/ATHEX Real Estate	1,951.54	1,978.22	-26.68	-1.35%	1,892.01	1,991.08	1,491.01	2,108.44	30.89% #
FTSE/Athex Personal & Household Goods	4,483.62	4,514.98	-31.36	-0.69%	4,367.98	4,485.18	2,586.10	4,550.67	43.59% #
FTSE/Athex Food & Beverage	7,588.13	7,736.45	-148.32	-1.92%	7,561.99	7,779.79	6,301.12	8,591.23	13.97% #
FTSE/Athex Basic Resources	2,304.36	2,389.80	-85.44	-3.58%	2,277.26	2,378.65	1,674.83	2,901.09	-0.82% €
FTSE/Athex Construction & Materials	2,007.86	2,046.83	-38.97	-1.90%	1,974.26	2,046.16	1,439.70	2,130.78	9.36% #
FTSE/Athex Oil & Gas	2,812.54	2,884.07	-71.53	-2.48%	2,758.10	2,865.11	2,358.47	3,358.80	-0.02% €
FTSE/Athex Chemicals	6,240.95	6,412.35	-171.40	-2.67%	6,166.28	6,412.35	5,194.08	7,961.02	3.68% #
FTSE/Athex Media	1,772.93	1,772.93	0.00	0.00%	1,772.93	1,772.93	716.56	3,560.63	144.90% #
FTSE/Athex Travel & Leisure	1,286.24	1,333.89	-47.65	-3.57%	1,284.50	1,318.31	1,028.61	1,496.38	27.43% #
FTSE/Athex Technology	695.80	714.63	-18.83	-2.63%	690.62	721.14	555.63	886.96	-6.25% €
FTSE/Athex Telecommunications	1,891.02	1,968.09	-77.07	-3.92%	1,891.02	1,968.09	1,175.35	2,147.00	34.71% #
FTSE/Athex Utilities	2,797.90	2,870.99	-73.09	-2.55%	2,785.08	2,865.72	1,752.55	3,104.53	22.29% #
FTSE/Athex Health Care	246.96	255.51	-8.55	-3.35%	246.60	255.51	172.87	346.05	-11.99% €
Athex All Share Index	194.52	201.42	-6.91	-3.43%			176.43	294.40	-17.81% €

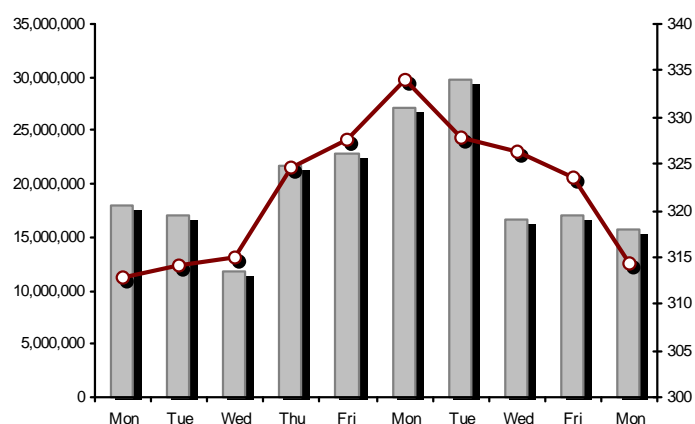
Note 1: Greece & Turkey 30 Pr data is the indicative at 17:20, whereas FTSE/ATHEX Custom Capped, FTSE/ATHEX Custom Capped - USD, FTSE/ATHEX Custom Capped TR, FTSE/ATHEX Custom Capped - USD TR, FTSE/Med 100 & Greece & Turkey 30 Rt closing prices refer to the previous trading day of 16/08/2013.

Note 2: The Hellenic Mid & Small Cap Index is a Customized index calculated by the Athens Exchange.

## Athex Indices

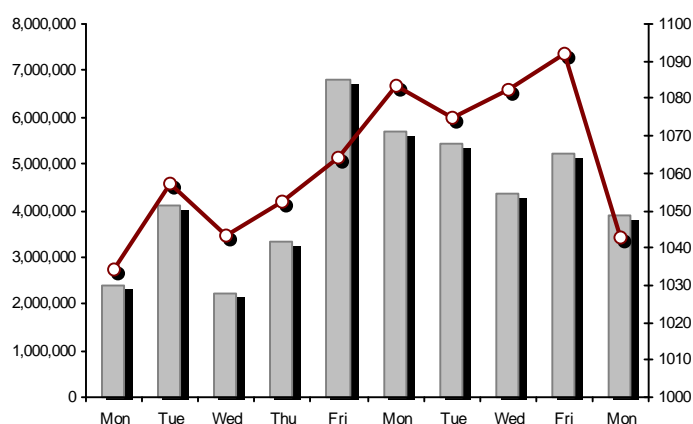
FTSE/Large Cap

19/08/2013: -2.86%



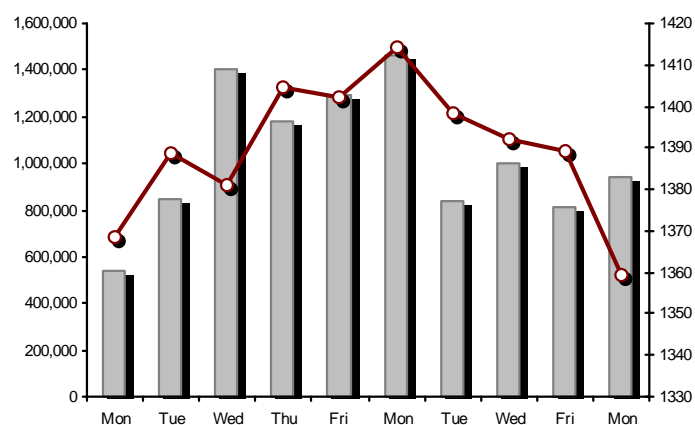
FTSE/Athex Mid Cap Index

19/08/2013: -4.51%



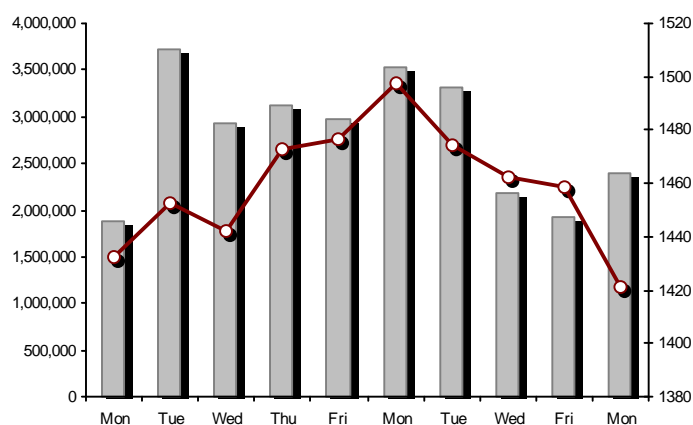
FTSE/ATHEX Global Traders Index Plus

19/08/2013: -2.14%



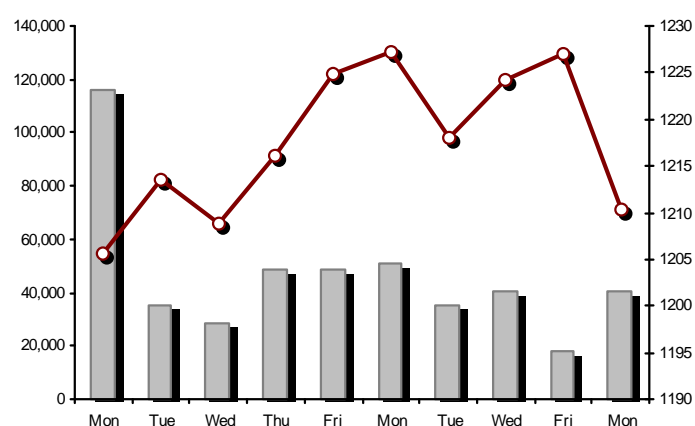
FTSE/ATHEX Global Traders Index

19/08/2013: -2.58%



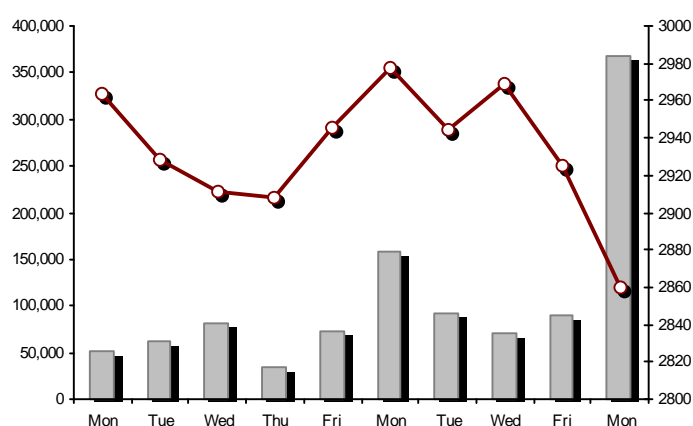
FTSE/ATHEX Mid &amp; Small Cap Factor-Weighted Index

19/08/2013: -1.36%



ATHEX Mid &amp; SmallCap Price Index

19/08/2013: -2.21%



Indices volume of transactions

Indices closing prices

## Analytic Figures for Athex Market's Boards and Categories

	Total Traded Securities	Main Market	Low Dispersion	Other Categories (*)	Exchange Traded Funds (ETFs)	Warrants
Totals	133	106	7	15	2	3
Gain / Lose / Same:	25 / 98 / 10	16 / 82 / 8	3 / 4 / 0	6 / 7 / 2	0 / 2 / 0	0 / 3 / 0
Athex Capitalisation (mill. €) **	54,764.78	52,547.91	1,868.24	348.63		
Daily Average Transactions Value (thou. €)	67,784.56	26,769.53	552.42	86.06	41.55	6,494.94
Transactions Value	38,648.22	35,861.96	11.66	14.43	0.37	2,759.80
Main Board:	35,944.25	33,420.49	11.66	14.43	0.37	2,497.30
Blocks Board:	2,703.97	2,441.47	0.00	0.00	0.00	262.50
Forced Sales Board:	0.00	0.00	0.00	0.00	0.00	0.00
Special Terms Board:	0.00	0.00	0.00	0.00	0.00	0.00
Daily Average Transactions Volume	52,562,825	16,389,134	59,245	462,858	10,241	9,995,906
Transactions Volume	23,770,112	20,693,628	2,349	141,915	112	2,932,108
Main Board:	23,161,142	20,334,658	2,349	141,915	112	2,682,108
Blocks Board:	608,970	358,970	0	0	0	250,000
Forced Sales Board:	0	0	0	0	0	0
Special Terms Board:	0	0	0	0	0	0
Daily Average Number of Trades	30,169	11,932	124	226	8	2,392
Number of Trades	18,784	16,997	19	86	3	1,679
Main Board:	18,761	16,991	19	86	3	1,662
Blocks Board:	23	6	0	0	0	17
Forced Sales Board:	0	0	0	0	0	0
Special Terms Board:	0	0	0	0	0	0

(\*) Summarised Transactions figures for Under Deletion and Under Supervision Categories.

(\*\*) The Market Capitalization of the Companies that belong in the Under Supervision Category is not included.

## Trading Details by Athex Sectors and ETFs Category

Code	Sectors	Gain / Lose / Same	Number of Trades	Transactions Volume	Transactions Value	% of Total Trans. Value
8300	- Banks	0 / 9 / 0	8,396	17,706,390	15,565,318.82	40.27%
1700	- Basic Resources	3 / 9 / 0	941	450,909	805,461.12	2.08%
1300	- Chemicals	1 / 4 / 1	202	32,894	41,918.44	0.11%
2300	- Construction & Materials	1 / 13 / 2	675	386,472	1,138,387.31	2.95%
11000	- ETF	0 / 2 / 0	3	112	368.61	0.00%
8700	- Financial Services	0 / 5 / 0	1,286	1,757,775	2,243,350.84	5.80%
3500	- Food & Beverage	1 / 7 / 1	762	130,618	1,806,748.95	4.67%
4500	- Health Care	1 / 3 / 1	199	282,778	181,746.21	0.47%
2700	- Industrial Goods & Services	3 / 11 / 1	799	164,064	808,004.61	2.09%
8500	- Insurance	1 / 0 / 0	9	1,725	2,048.10	0.01%
5500	- Media	0 / 3 / 0	11	7,117	1,658.96	0.00%
500	- Oil & Gas	0 / 2 / 0	724	198,831	1,532,599.62	3.97%
3700	- Personal & Household Goods	4 / 5 / 2	360	99,770	545,577.41	1.41%
8600	- Real Estate	1 / 5 / 0	135	32,483	101,058.49	0.26%
5300	- Retail	0 / 3 / 0	209	69,162	714,661.01	1.85%
9500	- Technology	3 / 6 / 2	321	235,590	224,087.64	0.58%
6500	- Telecommunications	0 / 1 / 0	1,026	581,255	4,036,733.55	10.44%
5700	- Travel & Leisure	6 / 6 / 0	1,619	1,317,292	6,838,505.83	17.69%
7500	- Utilities	0 / 4 / 0	1,107	314,875	2,059,981.44	5.33%

## Top 10 best &amp; worst performing Shares

Main Market					
With positive Price change	Closing price	change	With negative Price change	Closing price	change
QUALITY & RELIABILITY SA (CR)	1.44	6.67% #	PARNASSOS ENTERP. (CR)	0.249	-19.68% Ⓔ
MLS MULTIMEDIA SA (CR)	2.97	1.37% #	MARFIN INVESTMENT GROUP (CR)	0.305	-7.86% Ⓔ
AUTOHELLAS SA (CR)	2.20	0.46% #	EUROBANK ERGASIAS (CR)	0.633	-7.32% Ⓔ
JUMBO SA (CR)	8.90	0.22% #	SIDENOR (CR)	1.66	-6.22% Ⓔ
			INTRALOT (CR)	1.69	-6.11% Ⓔ
			NATIONAL BANK (CR)	2.96	-6.03% Ⓔ
			NIREFS SA (CR)	0.438	-5.81% Ⓔ
			HALKOR SA (CB)	0.826	-5.60% Ⓔ
			ATTICA BANK S.A. (CR)	0.287	-5.59% Ⓔ
			PIRAEUS BANK (CR)	1.03	-5.51% Ⓔ
With the highest Transactions Value	Value (thou. €)	change	With the highest Transactions Volume	Volume	change
OPAP (CR)	6,262.55	-3.33% Ⓔ	ALPHA BANK (CR)	5,545,159	-3.58% Ⓔ
PIRAEUS BANK (CR)	5,064.79	-5.51% Ⓔ	PIRAEUS BANK (CR)	4,934,576	-5.51% Ⓔ
OTE (CR)	4,036.73	-3.92% Ⓔ	ATTICA BANK S.A. (CR)	1,948,535	-5.59% Ⓔ
NATIONAL BANK (CR)	3,445.73	-6.03% Ⓔ	EUROBANK ERGASIAS (CR)	1,203,722	-7.32% Ⓔ
ALPHA BANK (CR)	2,834.86	-3.58% Ⓔ	MARFIN INVESTMENT GROUP (CR)	1,153,490	-7.86% Ⓔ
HELLENIC EXCHANGES (CR)	1,805.21	-1.46% Ⓔ	NATIONAL BANK (CR)	1,134,744	-6.03% Ⓔ
CC HBC AG (CR)	1,777.68	-1.89% Ⓔ	OPAP (CR)	857,332	-3.33% Ⓔ
PPC (CR)	1,747.00	-2.39% Ⓔ	OTE (CR)	581,255	-3.92% Ⓔ
MOTOR OIL (CR)	1,146.92	-3.88% Ⓔ	PARNASSOS ENTERP. (CR)	305,758	-19.68% Ⓔ
EUROBANK ERGASIAS (CR)	785.61	-7.32% Ⓔ	HELLENIC EXCHANGES (CR)	297,526	-1.46% Ⓔ

Note: Stocks that are not included in the "Low Dispersion" and "Under Supervision" categories, and the transactions value is more than 10,000 €.



## Derivatives Summary

	Number of Trades	Volume	Open Interest	Transactions Value
Index Futures	378	3,726	48,826	5,909,271.25
FTSE/Athex Large Cap	378	3,726	48,826	5,909,271.25
Stock Futures	1,103	12,241	155,911	3,047,076.15
ALPHA BANK (CR)	135	3,316	16,844	169,349.50
CC HBC AG (CR)	8	15	774	30,662.00
CORINTH PIPEWORKS SA (CR)	1	1	441	215.00
ELLAKTOR (CR)	30	108	4,376	24,021.00
EUROBANK ERGASIAS (CR)	25	1,263	21,987	8,293.15
EUROBANK PROPERTIES REIC (CR)	20	46	275	32,487.00
EYDAP S.A. (CR)	7	37	211	22,330.00
FOLLI FOLLIE (CR)	7	18	243	32,567.00
FRIGOGLASS SA (CR)	11	30	473	14,660.00
GEK TERNA (CR)	31	253	32,371	58,650.00
HELLENIC EXCHANGES (CR)	25	62	2,461	37,490.00
HELLENIC PETROLEUM (CR)	39	151	2,568	115,637.00
INTRALOT (CR)	16	96	4,599	16,561.00
JUMBO SA (CR)	6	10	383	8,662.00
MARFIN INVESTMENT GROUP (CR)	34	344	19,093	10,872.00
METKA (CR)	9	14	476	15,474.00
MOTOR OIL (CR)	19	136	737	105,909.00
MYTILINEOS HOLDINGS (CR)	75	401	5,075	182,152.00
NATIONAL BANK (CR)	173	1,900	5,831	574,981.00
OPAP (CR)	59	245	4,096	178,356.00
OTE (CR)	104	808	7,713	563,519.00
P.P.A. S.A. (CR)	17	34	544	57,062.00
PIRAEUS BANK (CR)	102	2,188	14,475	223,666.80
PPC (CR)	81	526	5,233	407,422.00
SIDENOR (CR)	20	40	1,485	6,700.00
TERNA ENERGY (CR)	20	40	2,401	12,143.70
TITAN CEMENT (CR)	9	63	245	93,340.00
VIOHALCO (CB)	20	96	501	43,894.00
Index Options	38	450	4,560	723,275.00
FTSE/Athex Large Cap	38	450	4,560	723,275.00
Stock Options	1	20	5,550	6,400.00
ALPHA BANK (CR)	0	0	0	0.00
NATIONAL BANK (CR)	1	20	298	6,400.00
OPAP (CR)	0	0	2,945	0.00
OTE (CR)	0	0	1,862	0.00
PIRAEUS BANK (CR)	0	0	5	0.00
PPC (CR)	0	0	440	0.00
Stock Repos - Stock Reverse Repos - Repurchase Agreements	6	314	152,044	81,594.10
Stock Reverse Repos	4	93	4,702	70,301.00
Stock Repos	2	221	141,810	11,293.10
Repurchase Agreement	0	0	5,532	0.00
Total Derivatives Traded	1,526	16,751	366,891	9,767,616.50

Number of Outstanding Securities	Nominal Value	Dividends [1]			Date of Last Coupon		Note	Shares	Closing price	% change	Previous closing price/date	Open price	Price min	Price max	Last price	Avg price	Last Bid [7]	Last Ask [7]	P/E after	Year	Volume	Trades	Transactions Value	Company Mkt Value (thou. €)	Year low	Year high	Sector[4]	
		2010	2011	2012	Dividend [2]	Right																						
Warrants																												
1,233,503,482		---	---	---	11/06/2013	---	ALPHA BANK (W)	0.987	-6.89	€	1.06	16/08/2013	1.02	0.972	1.05	0.987	0.990	19700@0.987	2056@0.989	---	2012	1,791,939	748	1,788,647.58	5,581,604.97	0.241	1.14	8355
245,779,626		---	---	---	27/06/2013	---	NATIONAL BANK (W)	0.982	-6.48	€	1.05	16/08/2013	1.05	0.950	1.07	0.982	1.00	500@0.970	1000@0.980	---	2012	534,230	457	535,884.31	7,094,486.54	0.420	2.00	8355
849,195,130		---	---	---	03/07/2013	---	PIRAEUS BANK (W)	0.674	-13.59	€	0.780	16/08/2013	0.766	0.673	0.779	0.674	0.718	3000@0.674	16461@0.680	---	2012	605,939	474	435,272.15	5,224,744.99	0.290	0.889	8355

Warrants

71,417,100	0.650	---	---	---	26/05/2010	11/07/2007	---	AEGEAN AIRLINES (CR)	3.14	-0.63	€ 3.16	16/08/2013	3.08	3.05	3.14	3.14	3.10	250@3.08	900@3.14	---	2012	3,740	25	11,589.00	224,249.69		1.96	3.24	5751
11,178,000	1.45	---	---	---	21/04/2010	12/05/2011	---	AEOLIAN INVESTMENT FUND (CR)	1.02	-3.77	€ 1.06	16/08/2013	1.02	1.02	1.02	1.02	1.02	82@0.978	100@1.06	8.07	2012	1,000	1	1,020.00	11,401.56		0.900	1.17	8985
13,000,000	1.00	---	---	---	01/08/2007	07/04/2000	---	AKRITAS SA (CR)	0.214	-9.32	€ 0.236	13/08/2013	0.213	0.213	0.214	0.214	0.213	140@0.215	10@0.236	---	2012	24	4	5.12	2,782.00		0.140	0.520	2353
25,000,000	0.400	---	---	---	03/06/2009	12/07/2013	---	ALCO HELLAS SA (CR)	0.448	-0.44	€ 0.450	16/08/2013	0.450	0.405	0.469	0.445	0.445	2400@0.429	266@0.450	---	2012	218,562	33	97,258.88	11,200.00		0.159	0.599	1753
10,922,906,012	0.300	---	---	---	07/04/2008	13/05/2013	---	ALPHA BANK (CR)	0.511	-3.58	€ 0.530	16/08/2013	0.530	0.498	0.531	0.511	0.511	22882@0.507	15130@0.511	---	2012	5,545,159	1,700	2,834,861.89	5,581,604.97		0.161	0.696	8355
22,016,250	0.370	---	---	---	15/07/2009	11/05/2000	---	ALUMIL (CR)	0.628	-0.47	€ 0.631	16/08/2013	0.640	0.628	0.640	0.628	0.636	52@0.599	150@0.618	---	2012	151	3	96.04	13,826.21		0.360	0.740	1753
418,000	16.00	---	---	---	22/04/2010	05/03/2013	---	ANDROMEDA SA (CR)	18.90	-10.00	€ 21.00	16/08/2013	18.90	18.90	18.90	18.90	18.90	69@18.90	42@21.00	1.75	2012	1	1	18.90	7,900.20		17.20	25.41	8985
21,876,700	0.380	---	---	---	08/07/2010	05/06/2001	---	AS COMPANY SA (CR)	0.291	-15.41	€ 0.344	14/08/2013	0.340	0.291	0.340	0.291	0.307	330@0.294	1001@0.339	33.25	2012	2,999	4	921.71	6,366.12		0.272	0.488	5379
86,735,980	0.310	---	---	---	06/07/2009	02/01/2002	---	ATHENS MEDICAL CENTER SA (CR)	0.800	---	↘ 0.800	16/08/2013	0.800	0.800	0.801	0.800	0.800	354012@0.800	2000@0.802	---	2012	160,686	56	128,553.80	69,388.78		0.471	0.994	4533
699,673,060	0.300	---	---	---	04/06/2008	05/06/2013	---	ATTICA BANK S.A. (CR)	0.287	-5.59	€ 0.304	16/08/2013	0.300	0.286	0.301	0.287	0.294	24528@0.286	8500@0.290	---	2012	1,948,535	654	573,297.78	200,806.17		0.173	1.06	8355
45,457,464	0.700	---	---	---	01/07/2008	01/03/2010	---	AUDIO VISUAL ENTERPRISES (CR)	0.240	---	↘ 0.240	16/08/2013	---	---	---	---	---	1000@0.170	999@0.250	---	2012	---	---	---	10,909.79		0.097	0.482	5553
36,360,000	0.320	---	0.15	---	30/04/2012	05/05/2008	---	AUTOHELLAS SA (CR)	2.20	0.46	# 2.19	16/08/2013	2.19	2.19	2.27	2.20	2.20	200@2.16	1000@2.24	11.85	2012	10,625	17	23,421.62	79,992.00		1.50	2.30	5759
19,864,886	5.60	1.976	0.67	0.5376	06/03/2013	02/07/2008	---	BANK OF GREECE (CR)	13.29	-3.97	€ 13.84	16/08/2013	13.84	13.29	13.84	13.29	13.42	150@13.28	148@13.44	---	---	7,546	219	101,227.57	264,004.33		11.26	19.19	8355
23,986,500	1.05	---	---	---	26/06/2009	15/03/2000	---	BIOKARPET S.A.(CR)	0.673	---	↘ 0.673	05/08/2013	---	---	---	---	---	---	499@0.670	---	2012	---	---	---	16,142.91		0.486	0.845	3726
15,842,391	1.51	---	---	---	15/07/2009	12/05/2000	---	BITROS HOLDING SA (CR)	0.621	---	↘ 0.621	01/08/2013	---	---	---	---	---	---	440@0.577	---	2012	---	---	---	9,838.12		0.336	0.745	1757
15,816,009	0.300	---	---	---	01/07/2009	17/07/2000	---	BYTE COMPUTER SA (CR)	0.460	-2.54	€ 0.472	16/08/2013	0.470	0.460	0.470	0.460	0.464	5@0.460	250@0.469	---	2012	395	4	183.45	7,275.36		0.351	0.620	9533
366,491,145	6.70	---	---	0.34	26/06/2013	29/04/2013	---	CC HBC AG (CR)	20.28	-1.89	€ 20.67	16/08/2013	20.46	20.21	20.79	20.28	20.44	1388@20.26	150@20.38	---	---	86,968	594	1,777,680.46	7,432,440.42		16.79	22.60	3537
101,123,806	0.360	---	---	---	22/07/2010	28/06/2011	---	CENTRIC HOLDINGS (CR)	0.224	-4.68	€ 0.235	16/08/2013	0.215	0.215	0.239	0.224	0.217	240@0.217	1800@0.224	33.99	2012	11,930	13	2,594.35	22,651.73		0.182	0.440	5752
4,034,950	0.680	---	---	---	01/07/2005	30/12/2010	---	CHATZIKRANIOTIS & SONS SA (CR)	0.153	---	↘ 0.153	16/08/2013	---	---	---	---	---	1000@0.143	500@0.167	---	2012	---	---	---	617.35		0.130	0.522	3577
124,170,201	0.780	---	---	---	28/06/2002	07/02/2005	---	CORINTH PIPEWORKS SA (CR)	2.15	-3.15	€ 2.22	16/08/2013	2.21	2.15	2.22	2.15	2.18	2520@2.14	1000@2.16	77.02	2012	50,657	200	110,346.97	266,965.93		1.40	2.59	1757
9,907,500	0.300	---	---	---	06/10/2005	13/02/2002	---	CPI SA (CR)	0.212	---	↘ 0.212	13/08/2013	---	---	---	---	---	---	430@0.233	---	2012	---	---	---	2,100.39		0.133	0.400	9572
27,379,200	0.610	---	---	---	23/06/2010	05/12/2012	---	CRETE PLASTICS SA (CR)	5.03	-1.18	€ 5.09	16/08/2013	5.03	5.03	5.03	5.03	5.03	10@4.83	499@5.04	14.37	2012	500	3	2,515.00	137,717.38		4.60	5.65	1357
26,664,840	0.470	---	---	---	29/06/2005	12/07/1999	---	CYCLON HELLAS SA (CR)	0.500	-5.48	€ 0.529	16/08/2013	0.457	0.457	0.504	0.500	0.482	180@0.467	1600@0.500	---	2012	6,940	12	3,343.15	13,332.42		0.385	0.700	1357
15,000,000	0.300	---	---	---	06/07/2007	18/07/2000	---	DAIOS PLASTICS SA (CR)	3.74	0.81	# 3.71	16/08/2013	3.34	3.34	3.78	3.74	3.42	41@3.35	76@3.74	---	2012	2,376	87	8,115.98	56,100.00		3.34	5.50	1357
31,370,399	0.300	---	---	---	11/08/2010	15/02/2012	---	DIONIC (CR)	0.077	2.67	# 0.075	16/08/2013	0.070	0.070	0.077	0.077	0.075	2000@0.075	7560@0.077	---	2012	18,800	23	1,412.70	2,415.52		0.066	0.263	2797
34,720,000	0.310	---	---	---	16/06/2010	01/08/2007	---	DROMEAS SA (CR)	0.380	---	↘ 0.380	16/08/2013	0.419	0.380	0.419	0.380	0.382	2135@0.360	2000@0.400	---	2012	2,601	5	992.32	13,193.60		0.218	0.634	3726
3,873,120	0.300	---	---	---	07/07/2008	04/10/2012	---	DRUCKFARBEN HELLAS (CR)	1.26	---	↘ 1.26	13/08/2013	---	---	---	---	---	---	312@1.26	---	2012	---	---	---	4,880.13		0.901	2.64	1357
11,250,000	0.560	---	---	---	26/07/2010	16/06/1999	---	EKTER SA (CR)	0.423	-8.64	€ 0.463	16/08/2013	0.430	0.422	0.430	0.422	0.426	450@0.421	500@0.461	7.39	2012	3,000	5	1,277.00	4,758.75		0.400	0.700	2357
32,188,050	1.04	---	---	---	21/07/2008	20/01/2000	---	EL. D. MOUZAKIS SA (CB)	0.159	---	↘ 0.159	08/08/2013	---	---	---	---	---	300@0.145	100@0.167	---	2012	---	---	---	5,117.90		0.114	0.330	3763
18,648,000	1.00	---	---	---	07/07/2009	10/09/2010	---	ELASTRON (CR)	0.724	-4.74	€ 0.760	16/08/2013	0.685	0.670	0.740	0.739	0.721	20@0.700	3016@0.736	---	2012	2,510	20	1,810.73	13,501.15		0.518	0.969	1757
31,734,530	1.60	---	---	---	09/07/2007	19/07/2006	---	ELGEKA SA (CR)	0.650	---	↘ 0.650	13/08/2013	---	---	---	---	---	2000@0.467	830@0.648	---	2012	---	---	---	20,627.44		0.407	0.780	3577
23,828,130	0.500	---	---	---	07/07/2010	17/02/2009	---	ELINOIL S.A. (CR)	1.17	---	↘ 1.17	13/08/2013	---	---	---	---	---	100@1.07	200@1.27	---	2012	---	---	---	27,878.91		1.02	1.89	537
177,001,313	1.03	0.0308	---	---	05/07/2011	20/12/2007	---	ELLAKTOR (CR)	2.19	-4.78	€ 2.30	16/08/2013	2.30	2.19	2.30	2.19	2.22	7850@2.18	233@2.19	---	2012	104,949	252	232,942.99	387,632.88		1.36	2.50	2357

Number of Outstanding Securities	Nominal Value	Dividends [1]			Date of Last Coupon		Note	Shares	Closing price	% change	Previous closing price/date	Open price	Price min	Price max	Last price	Avg price	Last Bid [7]	Last Ask [7]	P/E after	Year	Volume	Trades	Transactions Value	Company Mkt Value (thou. €)	Year low	Year high	Sector[ 4]	
		2010	2011	2012	Dividend [2]	Right																						
Main Market																												
26,730,187	0.600	---	---	---	25/06/2009	30/12/2010	---	ELTON SA (CR)	1.09	-3.54	€ 1.13 16/08/2013	1.12	1.07	1.13	1.09	1.09	30@1.07	148@1.08	11.39	2012	7,711	59	8,423.05	29,135.90	0.850	1.25	1353	
15,146,404	0.340	0.093	---	---	06/07/2011	17/10/2002	---	ELTRAK SA (CR)	1.62	---	↘ 1.62 13/08/2013	---	---	---	---	---	567@1.62	1000@1.72	---	2012	---	---	---	24,537.17	1.08	1.90	2753	
124,100,815	0.300	---	---	---	27/06/2008	07/07/2000	---	ELVAL SA. (CB)	1.99	-0.99	€ 2.01 16/08/2013	2.00	1.99	2.04	1.99	2.00	166@1.99	500@2.05	15.37	2012	4,480	29	8,963.28	246,960.62	1.55	2.38	1753	
13,230,000	0.300	---	---	---	11/08/2010	27/06/2012	---	ELVE SA (CR)	0.486	-10.00	€ 0.540 14/08/2013	0.486	0.486	0.486	0.486	0.486	970@0.486	1370@0.542	---	2012	30	1	14.58	6,429.78	0.423	0.717	3763	
30,009,210	0.310	---	---	---	27/06/2008	26/06/2000	---	ETEM SA (CB)	0.418	-1.65	€ 0.425 16/08/2013	0.400	0.400	0.438	0.418	0.402	100@0.397	299@0.438	---	2012	3,301	12	1,326.94	12,543.85	0.328	0.828	1753	
4,050,416,865	0.300	---	---	---	02/05/2008	13/06/2013	---	EUROBANK ERGASIAS (CR)	0.633	-7.32	€ 0.683 16/08/2013	0.680	0.633	0.680	0.633	0.653	3500@0.632	5439@0.639	---	2012	1,203,722	822	785,607.33	2,563,913.88	0.555	6.23	8355	
61,000,000	2.13	0.5364	0.4067	---	23/03/2012	20/11/2007	---	EUROBANK PROPERTIES REIC (CR)	7.15	-1.38	€ 7.25 16/08/2013	7.20	6.92	7.30	7.15	7.05	395@7.15	200@7.23	---	2012	10,227	82	72,129.35	436,150.00	4.87	7.75	8675	
27,503,677	0.600	0.04	0.05	0.1	11/07/2013	18/10/1999	---	EUROPEAN RELIANCE INSUR. (CR)	1.20	0.84	# 1.19 16/08/2013	1.19	1.17	1.20	1.20	1.19	260@1.17	1615@1.20	3.62	2012	1,725	9	2,048.10	33,004.41	0.973	1.62	8536	
13,673,200	0.880	---	---	---	18/07/2008	26/07/2001	---	EVROFARMA SA (CR)	0.238	---	↘ 0.238 12/08/2013	---	---	---	---	---	590@0.215	---	---	2012	---	---	---	3,254.22	0.209	0.539	3577	
106,500,000	0.600	0.04	0.05	0.15	31/07/2013	28/01/2000	---	EYDAP S.A. (CR)	6.04	-2.26	€ 6.18 16/08/2013	6.11	5.92	6.15	6.04	6.04	365@6.04	131@6.06	13.73	2012	14,302	124	86,373.42	643,260.00	4.65	6.47	7577	
52,800,154	0.300	---	---	---	16/04/2010	21/06/2004	---	F.G. EUROPE S.A. (CR)	0.520	-0.76	€ 0.524 16/08/2013	0.537	0.500	0.537	0.520	0.522	1980@0.500	290@0.520	6.30	2012	830	10	433.25	27,456.08	0.450	0.950	3722	
10,203,575	0.730	---	---	---	16/07/2007	18/10/1999	---	FIERATEX SA (CR)	0.138	10.40	# 0.125 14/08/2013	0.101	0.101	0.138	0.138	0.102	500@0.106	101@0.136	---	2012	310	5	31.68	1,408.09	0.090	0.400	3763	
11,720,024	0.530	---	---	---	16/07/2010	29/05/2012	---	FLEXOPACK SA (CR)	3.80	---	↘ 3.80 14/08/2013	3.80	3.80	3.80	3.80	3.80	300@3.60	100@4.00	12.80	2012	640	3	2,432.00	44,536.09	2.39	5.00	2723	
4,181,450	0.500	---	---	---	21/08/2000	05/03/2002	---	FLOUR MILLS SARANTOPOULOS SA	0.900	---	↘ 0.900 12/08/2013	---	---	---	---	---	300@0.950	---	16.64	2012	---	---	---	3,763.31	0.626	1.02	3577	
66,948,210	0.300	---	---	---	14/07/2009	31/12/2010	4988	FOLLI FOLLIE (CR)	18.25	-0.55	€ 18.35 16/08/2013	18.35	17.84	18.35	18.25	18.16	5@18.15	21680@18.25	---	2012	37,895	126	688,335.63	1,221,804.83	11.51	19.00	5379	
50,992,322	1.00	---	---	---	21/06/2010	16/07/2002	---	FOURLIS (CR)	2.67	-4.64	€ 2.80 16/08/2013	2.77	2.67	2.77	2.67	2.70	500@2.65	710@2.69	---	2012	38,595	117	104,371.70	136,149.50	1.58	2.95	3722	
50,592,373	0.300	---	---	---	07/07/2010	07/09/2011	---	FRIGOGLASS SA (CR)	4.97	-0.20	€ 4.98 16/08/2013	4.88	4.83	4.97	4.97	4.91	240@4.86	1278@4.97	---	2012	17,673	155	86,814.70	251,444.09	3.84	6.26	2757	
77,376,446	0.340	---	---	---	23/05/2005	18/08/2011	---	G.E. DIMITRIOU (CR)	0.045	9.76	# 0.041 16/08/2013	0.045	0.045	0.045	0.045	0.045	5000@0.039	2500@0.045	---	2012	2,300	3	103.50	3,481.94	0.028	0.118	3722	
14,076,360	0.370	---	---	---	19/08/2008	22/07/2003	---	GALAXIDI S.A. (CR)	0.360	---	↘ 0.360 08/08/2013	---	---	---	---	---	---	3000@0.360	10.24	2012	---	---	---	5,067.49	0.320	0.638	3573	
85,882,688	0.570	0.0048	---	---	01/08/2011	02/01/2009	---	GEK TERNA (CR)	2.31	-3.75	€ 2.40 16/08/2013	2.36	2.28	2.38	2.32	2.32	50@2.29	1450@2.30	-(6)-	2012	96,500	150	224,141.28	198,389.01	1.40	2.80	2357	
24,060,000	0.300	---	0.017	---	18/06/2012	21/01/2000	---	GEN. COMMERCIAL & IND.SA (CR)	0.364	---	↘ 0.364 13/08/2013	---	---	---	---	---	1500@0.360	150@0.379	---	2012	---	---	---	8,757.84	0.303	0.545	2797	
1,270,000	0.300	---	---	---	06/07/2007	06/02/2013	---	GIRAKIAN PROFIL SA (CB)	1.46	9.77	# 1.33 16/08/2013	1.46	1.46	1.46	1.46	1.46	130@1.46	---	---	2012	80	5	116.80	1,854.20	0.900	3.33	1757	
34,770,982	1.54	---	---	---	06/07/2010	27/07/2000	---	GR. SARANTIS SA (CR)	5.06	-3.25	€ 5.23 16/08/2013	5.23	5.00	5.23	5.06	5.05	10@5.00	984@5.06	---	2012	1,638	25	8,263.23	175,941.17	4.05	5.45	3767	
8,340,750	1.20	---	---	---	25/06/2009	30/07/2001	---	HAIDEMENOS SA (CR)	0.476	-9.85	€ 0.528 14/08/2013	0.476	0.476	0.476	0.476	0.476	164@0.476	230@0.575	---	2012	66	1	31.42	3,970.20	0.350	0.905	2791	
101,279,627	0.380	---	---	---	26/06/2008	14/07/2006	---	HALKOR SA (CB)	0.826	-5.60	€ 0.875 16/08/2013	0.898	0.826	0.899	0.826	0.845	1550@0.825	880@0.840	---	2012	16,160	73	13,659.39	83,656.97	0.550	1.42	1755	
36,748,909	0.730	---	---	---	15/12/2005	13/12/2006	---	HEL. SUGAR INDUSTRY SA (CB)	0.910	-8.08	€ 0.990 16/08/2013	0.959	0.900	0.960	0.910	0.914	250@0.901	57@0.910	14.41	2012	4,571	29	4,176.19	33,441.51	0.754	1.74	3577	
29,546,360	0.710	---	---	---	20/06/2008	23/08/2000	---	HELLENIC CABLES SA (CR)	1.68	-3.45	€ 1.74 16/08/2013	1.75	1.66	1.76	1.68	1.71	315@1.66	2500@1.70	---	2012	17,972	49	30,699.03	49,637.88	1.16	2.32	2733	
65,368,563	0.790	0.15	0.11	0.09	03/06/2013	26/09/2012	---	HELLENIC EXCHANGES (CR)	6.09	-1.46	€ 6.18 16/08/2013	6.12	6.02	6.14	6.09	6.07	1100@6.05	931@6.09	27.28	2012	297,526	412	1,805,207.73	398,094.55	3.75	6.97	8777	
305,635,185	2.18	0.45	0.45	0.15	16/08/2013	01/10/2003	4795	HELLENIC PETROLEUM (CR)	7.79	-1.39	€ 7.90 16/08/2013	7.90	7.54	7.90	7.79	7.69	10@7.60	186@7.79	24.42	2012	50,172	301	385,679.47	2,380,898.09	6.20	9.30	537	
305,732,436	0.410	---	---	---	08/07/2009	28/09/2011	---	HYGEIA SA (CR)	0.421	-5.39	€ 0.445 16/08/2013	0.445	0.418	0.445	0.421	0.426	1800@0.421	200@0.429	---	2012	119,245	108	50,750.57	128,713.36	0.280	0.795	4533	
53,155,053	0.440	---	---	---	21/07/2010	16/07/2008	---	IASO SA (CR)	1.05	-1.87	€ 1.07 16/08/2013	1.11	1.00	1.11	1.05	1.03	2@1.00	318@1.04	---	2012	2,147	30	2,210.83	55,812.81	0.850	1.58	4533	
8,298,467	0.400	---	---	---	30/08/1993	08/05/2013	---	IDEAL GROUP SA (CR)	0.706	---	↘ 0.706 14/08/2013	0.636	0.636	0.706	0.706	0.641	23@0.700	19@0.706	-(6)-	2012	423	9	271.27	5,858.72	0.571	1.85	9574	
28,580,100	0.400	0.05	0.02	---	20/08/2012	23/02/2007	---	IKTINOS HELLAS SA (CR)	1.49	-2.61	€ 1.53 16/08/2013	1.47	1.46	1.52	1.49	1.49	400@1.47	2860@1.49	14.42	2012	5,090	19	7,568.90	42,584.35	1.16	1.80	2353	
9,000,000	0.880	---	---	---	15/05/2009	07/12/2010	---	ILYDA S.A. (CR)	0.559	---	↘ 0.559 05/08/2013	---	---	---	---	---	---	2631@0.504	---	---	2012	---	---	---	5,031.00	0.269	0.650	9537
20,578,374	0.620	0.03	---	---	02/06/2011	05/05/1999	---	INFORM P. LYKOS SA (CR)	1.30	1.56	# 1.28 16/08/2013	1.26	1.26	1.30	1.30	1.27	50@1.26	648@1.30	---	2012	502	5	636.10	26,751.89	1.10	1.75	2791	
11,233,200	0.730	---	---	---	12/07/2010	30/07/1999	---	INTERTECH SA (CR)	0.300	---	↘ 0.300 16/08/2013	---	---	---	---	---	300@0.270	98@0.298	---	2012	---	---	---	3,369.96	0.223	0.600	9572	
34,9,																												

Number of Outstanding Securities	Nominal Value	Dividends [1]			Date of Last Coupon		Note	Shares	Closing price	% change	Previous closing price/date	Open price	Price min	Price max	Last price	Avg price	Last Bid [7]	Last Ask [7]	P/E after	Year	Volume	Trades	Transactions Value	Company Mkt Value (thou. €)	Year low	Year high	Sector[4]	
		2010	2011	2012	Dividend [2]	Right																						
Main Market																												
23,154,250	1.36	---	---	---	12/08/2008	02/08/2010	---	INTRACOM CONSTR. (CR)	0.756	-5.14	€ 0.797	16/08/2013	0.751	0.750	0.790	0.770	0.760	800@0.750	3250@0.770	---	2012	9,650	21	7,337.20	17,504.61	0.580	1.22	2357
133,025,996	1.41	---	---	---	03/07/2007	07/01/2002	---	INTRACOM HOLDINGS (CR)	0.464	-4.33	€ 0.485	16/08/2013	0.494	0.460	0.494	0.464	0.466	20@0.463	2000@0.466	---	2012	151,708	167	70,729.07	61,724.06	0.321	0.754	9578
158,961,721	0.300	0.0045	0.0035	0.0026	30/05/2013	14/11/2007	---	INTRALOT (CR)	1.69	-6.11	€ 1.80	16/08/2013	1.81	1.69	1.81	1.69	1.73	6397@1.68	31612@1.70	90.21	2012	171,083	282	296,430.59	268,645.31	1.29	2.41	5752
77,654,850	0.580	0.04	---	---	01/07/2011	21/02/2003	---	J & P - AVAX SA (CR)	1.57	-4.85	€ 1.65	16/08/2013	1.61	1.57	1.61	1.57	1.59	370@1.57	300@1.60	---	2012	3,200	13	5,097.00	121,918.11	1.05	1.90	2357
129,994,676	1.19	0.189	---	---	23/12/2010	07/09/2012	---	JUMBO SA (CR)	8.90	0.22	# 8.88	16/08/2013	8.63	8.58	8.90	8.90	8.73	99@8.66	250@8.99	15.00	2012	49,208	182	429,700.70	1,156,952.62	4.85	9.07	3747
9,742,920	0.400	0.01	0.01	0.01	12/08/2013	14/07/2000	---	KARAMOLEGOS SA (CR)	1.30	---	↘ 1.30	25/07/2013	---	---	---	---	---	---	550@1.29	5.05	2012	---	---	---	12,665.80	1.07	1.83	3577
14,679,792	1.44	0.065	---	---	03/06/2011	04/09/2000	---	KARATZIS SA (CR)	4.50	---	↘ 4.50	14/08/2013	---	---	---	---	---	100@4.37	310@4.59	15.11	2012	---	---	---	66,059.06	2.55	4.90	2723
3,300,689	0.350	---	---	---	01/07/2004	21/07/1999	---	KEKROPS SA (CR)	1.91	-9.05	€ 2.10	16/08/2013	1.94	1.91	1.94	1.91	1.92	1000@1.79	341@1.91	---	2012	5,159	9	9,913.69	6,304.32	1.54	3.79	8633
7,595,160	0.600	---	---	---	08/08/2008	18/08/2010	---	KIRIAKOULIS SHIPPING SA (CR)	0.974	-4.51	€ 1.02	13/08/2013	0.986	0.918	0.990	0.970	0.988	100@0.921	500@0.960	67.87	2012	233,949	14	231,115.17	7,397.69	0.635	1.49	5759
23,648,700	0.330	0.05	---	---	13/07/2011	23/07/2008	---	KLEEMAN HELLAS SA (CR)	1.54	---	↘ 1.54	13/08/2013	---	---	---	---	---	200@1.44	1500@1.54	---	2012	---	---	---	36,419.00	1.20	1.88	2757
40,219,218	0.300	---	---	---	25/05/2009	09/07/2013	---	KLOUKINAS - LAPPAS SA (CR)	0.677	---	↘ 0.677	16/08/2013	---	---	---	---	---	950@0.629	2000@0.670	---	2012	---	---	---	27,228.41	0.583	0.970	2357
21,224,340	0.420	---	---	---	02/07/2008	25/04/2006	---	KORDELLOS BROS SA (CR)	0.236	---	↘ 0.236	16/08/2013	---	---	---	---	---	1329@0.213	1000@0.239	---	2012	---	---	---	5,008.94	0.195	0.428	1757
13,450,000	0.390	---	---	---	25/06/2010	28/05/2008	---	KORRES (CR)	3.14	---	↘ 3.14	14/08/2013	---	---	---	---	---	440@3.02	550@3.16	---	2012	---	---	---	42,233.00	2.66	4.87	3767
29,480,000	0.420	---	---	---	19/07/2010	01/08/2007	---	KRETA FARM SA (CR)	0.600	-2.76	€ 0.617	16/08/2013	0.610	0.586	0.610	0.600	0.594	100@0.588	200@0.600	---	2012	6,012	14	3,569.42	17,688.00	0.307	0.800	3577
33,065,136	0.440	---	---	---	06/07/2009	02/08/2013	---	KRI-KRI S.A. (CR)	1.86	-3.63	€ 1.93	16/08/2013	1.92	1.85	1.93	1.87	1.88	1@1.87	312@1.92	13.77	2012	3,178	10	5,958.65	61,501.15	1.52	2.06	3577
15,804,800	0.330	---	---	---	15/06/2010	12/03/2004	---	KTIMA KOSTAS LAZARIDIS SA (CR)	0.300	-2.91	€ 0.309	16/08/2013	0.280	0.279	0.300	0.300	0.280	390@0.280	242@0.300	---	2012	2,110	6	591.23	4,741.44	0.239	0.488	3535
22,945,139	1.00	---	---	---	19/08/2008	10/09/2012	---	KYRIAKIDIS MARBLES SA (CR)	0.840	-4.54	€ 0.880	16/08/2013	0.880	0.840	0.880	0.840	0.857	3600@0.850	30982@0.880	82.28	2012	5,001	3	4,284.04	19,273.92	0.630	1.04	2353
44,267,700	0.300	---	---	---	30/05/2007	18/09/2002	---	LAMDA DEVELOPMENT SA (CR)	3.92	-2.49	€ 4.02	16/08/2013	4.02	3.92	4.02	3.92	3.98	65@3.91	127@4.00	---	2012	1,476	15	5,877.11	173,529.38	3.58	6.48	8633
5,939,268	0.620	---	---	---	10/07/2003	03/01/2002	---	LANAKAM SA (CR)	0.639	---	↘ 0.639	14/08/2013	---	---	---	---	---	---	12200@0.576	---	2012	---	---	---	3,795.19	0.503	0.869	3763
7,734,375	1.00	---	---	---	09/07/2007	07/01/2011	---	LIVANIS SA (CR)	0.201	---	↘ 0.201	12/08/2013	---	---	---	---	---	---	2000@0.210	---	2012	---	---	---	1,554.61	0.144	0.363	5557
4,740,000	0.860	---	---	---	---	14/03/2003	---	LOGISMOS S.A. (CR)	0.496	---	↘ 0.496	06/08/2013	---	---	---	---	---	---	450@0.498	57.54	2011	---	---	---	2,351.04	0.373	1.23	9533
15,222,276	0.640	---	---	---	01/06/2010	02/08/2011	---	LOULIS MILLS SA (CR)	2.97	---	↘ 2.97	08/08/2013	---	---	---	---	---	500@2.74	60@2.83	-(6)-	2012	---	---	---	45,210.16	2.08	3.76	3577
770,328,883	0.300	---	---	---	26/04/2007	10/05/2013	---	MARFIN INVESTMENT GROUP (CR)	0.305	-7.86	€ 0.331	16/08/2013	0.327	0.303	0.328	0.305	0.315	200@0.304	3000@0.308	---	2012	1,153,490	491	362,918.36	234,950.31	0.175	0.564	8775
9,819,370	0.690	---	---	---	14/08/2007	09/01/2004	---	MATHIOS REFRACTORY SA (CR)	0.272	---	↘ 0.272	07/08/2013	---	---	---	---	---	970@0.191	980@0.279	---	2012	---	---	---	2,670.87	0.201	0.510	2353
468,700	1.0556	---	---	---	21/03/2012	21/05/2004	---	MERMEREN KOMB. A.D. PR. (GDR)	3.97	1.28	# 3.92	14/08/2013	3.97	3.97	3.97	3.97	3.97	18@3.95	56@4.27	0.97	2012	60	2	238.20	1,860.74	3.73	5.19	1775
51,950,600	0.320	0.48	0.75	0.25	10/05/2013	21/10/2005	---	METKA (CR)	10.97	-4.77	€ 11.52	16/08/2013	11.30	10.97	11.38	10.97	11.14	200@10.96	2749@10.97	15.81	2012	15,753	139	175,513.76	569,898.08	9.00	12.78	2757
10,500,000	0.900	---	---	---	24/06/2008	04/07/2012	---	MEVACO SA (CR)	1.42	---	↘ 1.42	13/08/2013	---	---	---	---	---	500@1.34	500@1.42	10.28	2012	---	---	---	14,910.00	1.01	1.58	2757
14,074,000	3.00	0.15	0.25	---	02/03/2012	23/07/2009	---	MIG REAL ESTATE (CR)	1.77	---	↘ 1.77	16/08/2013	---	---	---	---	---	---	215@1.60	---	2012	---	---	---	24,910.98	1.17	1.77	8671
6,200,000	0.500	---	---	---	22/06/2010	01/11/1995	---	MINERVA KNITWEAR SA (CB)	0.776	---	↘ 0.776	05/08/2013	---	---	---	---	---	---	3000@0.699	---	2012	---	---	---	4,811.20	0.530	0.948	3763
12,417,000	0.370	---	---	---	28/07/2008	06/09/2011	---	MLS MULTIMEDIA SA (CR)	2.97	1.37	# 2.93	16/08/2013	2.93	2.89	2.97	2.97	2.90	110@2.95	1724@2.97	39.12	2012	42,822	76	124,161.67	36,878.49	2.60	2.97	9537
4,588,137	16.00	---	---	---	30/06/2005	17/08/2011	---	MOCHLOS SA (CR)	1.81	---	↘ 1.81	13/08/2013	---	---	---	---	---	200@1.68	100@1.79	---	2012	---	---	---	8,304.53	1.12	2.60	2357
11,700,000	0.590	---	---	---	02/06/2009	24/07/2012	---	MOTODYNAMICS S.A. (CR)	0.375	---	↘ 0.375	16/08/2013	---	---	---	---	---	180@0.338	900@0.375	---	2012	---	---	---	4,387.50	0.211	0.640	5379
110,782,980	0.850	0.25	0.4	0.3	26/06/2013	05/11/2012	---	MOTOR OIL (CR)	7.69	-3.88	€ 8.00	16/08/2013	7.88	7.65	7.90	7.69	7.72	100@7.68	150@7.70	9.39	2012	148,659	423	1,146,920.15	851,921.12	6.80	9.37	533
116,915,862	1.07	---	---	---	11/05/2009	06/07/2011	---	MYTILINEOS HOLDINGS (CR)	4.52	-3.21	€ 4.67	16/08/2013	4.63	4.44	4.64	4.52	4.52	50@4.50	2005@4.52	---	2012	109,493	418	495,289.96	528,459.70	3.38	5.65	1755
8,321,682	0.670	---	---	---	17/08/2007	23/11/1999	---	N. LEVEDERIS SA (CB)	0.347	---	↘ 0.347	14/08/2013	---	---	---	---	---	---	326@0.345	---	2012	---	---	---	3,836.09	0.198	0.658	1757
2,160,524	0.670	0.0435	0.0435	0.0436	16/08/2013	23/11/1999	---	N. LEVEDERIS SA (PB)	0.439	8.13	# 0.406	16/08/2013	0.439	0.439	0.439	0.439	0.440	---	230@0.435	---	2012	5	1	2.20	3,836.09	0.307	0.798	1757
11,510,102	0.890	---	---	---	24/06/2005	06/10/1999	---	NAFPAKTOS TEXTILE IND. SA (CB)	0.369	---	↘ 0.369	16/08/2013	---	---	---	---	---	---	1000@0.366	---	2012	---	---	---	4,247.23	0.232	0.500	3763
6,340,000	0.600	---	---	---	30/11/2009	12/07/2000	---	NAKAS MUSIC	1.04	---	↘ 1.04	25/07/2013	---	---	---	---	---	---	10@0.960	---	2012	---	---	---	6,593.60	0.300	1.04	5379

Number of Outstanding Securities	Nominal Value	Dividends [1]			Date of Last Coupon		Note	Shares	Closing price	% change	Previous closing price/date	Open price	Price min	Price max	Last price	Avg price	Last Bid [7]	Last Ask [7]	P/E after	Year	Volume	Trades	Transactions Value	Company Mkt Value (thou. €)	Year low	Year high	Sector[ 4]	
		2010	2011	2012	Dividend [2]	Right																						
Main Market																												
2,396,785,994	0.300	---	---	---	16/05/2008	24/05/2013	---	NATIONAL BANK (CR)	2.96	-6.03	€ 3.15	16/08/2013	3.12	2.95	3.14	2.96	3.04	77516@2.95	2500@2.97	---	2012	1,134,744	1,543	3,445,726.68	7,094,486.54	1.83	9.87	8355
23,935,280	0.300	---	---	---	29/06/2009	13/06/2000	---	NAYTEMPORIKI PUBLISHING SA(CR)	0.177	-9.23	€ 0.195	14/08/2013	0.177	0.177	0.177	0.177	230@0.176	1646@0.194	---	2012	2,000	3	354.00	4,236.54	0.176	0.360	5557	
27,848,000	0.300	0.0301	0.0132	---	20/08/2012	02/09/2003	---	NEWSPHONE HELLAS SA (CR)	0.341	---	₪ 0.341	16/08/2013	---	---	---	---	540@0.239	1225@0.345	8.35	2012	---	---	---	9,496.17	0.241	0.592	2791	
6,132,500	1.25	0.1	---	---	24/06/2011	19/06/2001	---	NEXANS HELLAS SA (CR)	2.36	0.86	# 2.34	16/08/2013	2.34	2.34	2.36	2.36	150@2.22	237@2.37	---	2012	246	6	579.24	14,472.70	2.14	3.11	2733	
63,697,153	1.34	---	---	---	08/07/2008	10/11/2008	---	NIREFS SA (CR)	0.438	-5.81	€ 0.465	16/08/2013	0.451	0.435	0.451	0.438	0.445	530@0.435	50@0.443	---	2012	25,224	50	11,231.16	27,899.35	0.380	0.839	3573
319,000,000	0.300	1.4177	0.72	0.57	28/06/2013	25/04/2001	---	OPAP (CR)	7.26	-3.33	€ 7.51	16/08/2013	7.38	7.22	7.41	7.26	7.28	3155@7.22	100@7.27	4.52	2012	857,332	1,235	6,262,552.19	2,315,940.00	5.49	8.27	5752
490,150,389	2.39	0.1179	---	---	28/06/2011	18/06/1998	---	OTE (CR)	6.87	-3.92	€ 7.15	16/08/2013	7.09	6.87	7.10	6.87	6.94	1100@6.86	1000@6.88	---	2012	581,255	1,026	4,036,733.55	3,367,333.17	4.26	7.80	6535
25,000,000	2.00	0.02	0.01	0.05	18/07/2013	08/08/2003	---	P.P.A. S.A. (CR)	16.56	-3.66	€ 17.19	16/08/2013	17.00	16.44	17.00	16.56	16.62	190@16.53	36@16.87	83.52	2012	6,712	81	111,554.91	414,000.00	14.59	21.68	2777
4,971,466	1.46	---	---	---	04/07/2007	08/10/2003	---	PAIRIS SA (CR)	0.375	---	₪ 0.375	16/08/2013	---	---	---	---	---	430@0.263	926@0.373	---	2012	---	---	---	1,864.30	0.201	0.605	2723
3,953,090	0.900	---	---	---	02/07/2001	05/12/2012	---	PAPERPACK (CR)	0.644	-4.45	€ 0.674	16/08/2013	0.673	0.620	0.673	0.644	0.631	113@0.620	158@0.644	---	2012	5,826	31	3,677.06	2,545.79	0.500	1.06	2723
50,797,369	0.310	---	---	---	17/08/2000	12/10/2010	---	PAPOUTSANIS (CR)	0.580	---	₪ 0.580	16/08/2013	---	---	---	---	---	10000@0.550	1386@0.620	---	2012	---	---	---	29,462.47	0.361	0.750	3767
20,210,127	1.53	---	---	---	27/06/1997	20/03/2000	---	PARNASSOS ENTERP. (CR)	0.249	-19.68	€ 0.310	16/08/2013	0.302	0.217	0.303	0.249	0.243	500@0.230	1200@0.217	---	2012	305,758	381	74,185.85	5,032.32	0.217	0.698	8775
7,070,400	0.930	---	---	---	18/05/2010	12/05/2011	---	PETROPOULOS PETROS (CR)	1.70	-2.30	€ 1.74	16/08/2013	1.74	1.57	1.74	1.70	1.64	100@1.67	942@1.69	---	2012	1,022	35	1,671.98	12,019.68	1.20	1.74	2753
5,072,567,951	0.300	---	---	---	16/05/2008	05/06/2013	---	PIRAEUS BANK (CR)	1.03	-5.51	€ 1.09	16/08/2013	1.08	0.999	1.09	1.03	1.03	101321@1.02	58169@1.04	---	2012	4,934,576	1,779	5,064,793.53	5,224,744.99	0.832	6.28	8355
22,080,000	0.320	0.05	0.08	0.12	22/05/2013	03/10/2000	---	PLAISIO COMPUTERS SA (CR)	5.11	-3.58	€ 5.30	16/08/2013	5.06	5.06	5.34	5.11	5.10	74@5.11	60@5.20	11.38	2012	91	6	463.76	112,828.80	3.65	6.25	9572
232,000,000	4.60	0.79	---	0.025	22/07/2013	12/12/2001	---	PPC (CR)	7.75	-2.39	€ 7.94	16/08/2013	7.86	7.68	7.94	7.75	7.76	139@7.70	2000@7.76	-(6)-	2012	225,163	672	1,747,004.77	1,798,000.00	4.55	8.49	7535
11,812,193	0.450	---	---	---	24/07/2009	15/11/2006	---	PROFILE SA (CR)	1.08	1.89	# 1.06	16/08/2013	1.05	1.05	1.08	1.08	1.07	60@1.05	761@1.08	20.78	2012	1,690	7	1,813.00	12,757.17	0.761	1.26	9533
24,319,250	0.300	---	---	---	09/07/2002	04/07/2007	---	PROODEFTIKH SA (CR)	0.143	-2.05	€ 0.146	16/08/2013	0.133	0.132	0.144	0.143	0.139	1000@0.138	850@0.144	---	2012	11,900	12	1,659.80	3,477.65	0.054	0.223	2357
6,836,280	1.88	---	---	---	18/07/2005	10/09/2010	---	QUALITY & RELIABILITY SA (CR)	1.44	6.67	# 1.35	16/08/2013	1.35	1.35	1.48	1.44	1.39	10@1.39	500@1.43	---	2012	14,660	16	20,398.85	9,844.24	0.236	1.48	9533
48,069,201	0.400	---	---	---	05/09/2008	21/06/2012	---	QUEST HOLDINGS (CR)	1.13	-0.88	€ 1.14	16/08/2013	1.11	1.09	1.14	1.13	1.11	240@1.10	960@1.13	---	2012	3,580	21	3,965.80	54,318.20	0.936	1.39	9533
57,434,884	1.31	---	---	---	05/06/2008	12/06/2009	---	REDS S.A. (CR)	0.504	-2.33	€ 0.516	16/08/2013	0.540	0.490	0.540	0.504	0.502	100@0.482	900@0.515	---	2012	3,505	15	1,758.50	28,947.18	0.450	0.949	8633
22,280,000	0.300	0.0329	---	---	11/04/2011	23/02/2007	---	REVOIL (CR)	0.871	-5.43	€ 0.921	16/08/2013	0.939	0.860	0.939	0.871	0.899	180@0.865	2498@0.900	---	2012	28,268	79	25,403.67	19,405.88	0.345	1.20	5379
7,500,000	0.560	---	---	---	25/06/2010	10/04/2013	---	S.KANAKIS SA (CR)	1.59	---	₪ 1.59	16/08/2013	1.51	1.51	1.59	1.59	1.53	60@1.56	1363@1.59	11.30	2012	2,270	52	3,480.36	11,925.00	1.05	1.90	3577
52,067,296	0.300	---	---	---	23/12/2003	24/01/2007	---	SELECTED TEXT. IND. ASSOC (CR)	0.293	---	₪ 0.293	13/08/2013	0.292	0.292	0.293	0.293	0.293	500@0.261	560@0.289	---	2012	3,848	3	1,126.46	15,255.72	0.232	0.587	3763
96,243,908	0.410	---	---	---	26/06/2008	17/07/2000	---	SIDENOR (CR)	1.66	-6.22	€ 1.77	16/08/2013	1.76	1.66	1.76	1.66	1.68	7588@1.65	1050@1.71	---	2012	45,450	145	76,351.73	159,764.89	1.00	2.39	1757
6,456,530	1.60	---	---	---	29/06/2001	02/08/2010	---	SPACE HELLAS SA (CR)	2.19	---	₪ 2.19	14/06/2013	---	---	---	---	---	---	4898@1.98	70.35	2012	---	---	---	14,139.80	1.25	2.20	9578
28,438,268	0.300	---	---	---	21/08/2006	24/11/1999	---	SPIROY AGRICULTURE SA (CR)	0.290	---	₪ 0.290	16/08/2013	0.303	0.290	0.303	0.290	0.291	300@0.280	630@0.289	---	2012	530	3	154.09	8,247.10	0.272	0.557	1357
33,125,000	5.00	---	---	---	03/07/2006	18/08/2010	---	TECHNICAL OLYMPIC SA (CR)	1.33	-1.48	€ 1.35	16/08/2013	1.32	1.28	1.35	1.33	1.32	2029@1.28	479@1.38	-(6)-	2012	409	8	539.69	44,056.25	1.18	2.71	3728
109,319,070	0.300 (0.0399)	(0.0613)	---	---	28/05/2012	05/08/2013	---	TERNA ENERGY (CR)	2.90	-4.92	€ 3.05	16/08/2013	3.05	2.90	3.05	2.90	2.95	1500@2.88	3000@2.93	63.70	2012	73,950	297	218,081.95	317,025.30	2.24	3.73	7537
36,300,000	1.12	0.114	0.188	0.162	16/08/2013	12/12/2007	---	THESSALONIKA WATER & SEWERAGE	5.80	-1.70	€ 5.90	16/08/2013	5.86	5.80	5.86	5.80	5.84	480@5.81	230@5.85	11.90	2012	1,460	14	8,521.30	210,540.00	4.73	6.82	7577
45,094,620	0.500	0.036	---	0.0467	10/06/2013	01/11/1999	---	THRACE PLASTICS SA (CR)	1.30	-1.52	€ 1.32	16/08/2013	1.31	1.29	1.32	1.29	1.31	1553@1.29	50@1.30	7.48	2012	14,837	38	19,367.17	58,623.01	1.07	1.64	1357
77,063,568	4.00	0.0806	---	---	24/06/2011	25/06/2004	---	TITAN CEMENT (CR)	15.20	---	₪ 15.20	16/08/2013	15.15	14.70	15.20	15.20	14.99	50@14.80	256@15.20	---	2012	42,778	150	641,337.39	1,222,683.78	11.31	16.00	2353
7,568,960	4.00	0.1869	---	---	24/06/2011	25/06/2004	---	TITAN CEMENT CO. (PR)	6.78	---	₪ 6.78	16/08/2013	---	---	---	---	---	150@6.41	19@6.87	---	2012	---	---	---	1,222,683.78	5.75	7.27	2353
10,080,000	3.00	0.21	0.4	1.5	17/07/2013	27/08/2001	---	TPA SA (CR)	23.93	-3.12	€ 24.70	16/08/2013	24.20	23.80	24.45	23.93	23.98	70										

Number of Outstanding Securities	Nominal Value	Dividends [1]			Date of Last Coupon		Note	Shares	Closing price	% change	Previous closing price/date		Open price	Price min	Price max	Last price	Avg price	Last Bid [7]	Last Ask [7]	P/E after	Year	Volume	Trades	Transactions Value	Company Mkt Value (thou. €)	Year low	Year high	Sector[ 4]
2010	2011	2012	Dividend [2]	Right																								

Main Market

4,968,600	2.88	---	---	---	01/07/1998	14/12/1998	---	VIS SA (CR)	0.825	---	↘	0.825	05/08/2013	---	---	---	---	---	150@0.743	91@0.905	---	2012	---	---	---	4,099.10	0.490	1.01	2723
6,325,000	0.600	---	---	---	19/07/2010	25/07/2012	---	VOGIATZOGLOU SYSTEMS SA (CR)	1.15	-4.96	☒	1.21	05/08/2013	1.15	1.15	1.15	1.15	1.15	---	719@1.15	---	2012	12	2	13.80	7,273.75	0.812	1.21	2797

Exchange Traded Funds (ETFs)

5,848,618	---	---	---	---	24/01/2008	---	---	ALPHA ETF FTSE Athex Large Cap	3.17	-1.65	☒	3.22	16/08/2013	3.13	3.13	3.17	3.17	3.16	65@3.14	2239@3.22	---	---	110	2	348.03	-	2.49	3.99	11000
294,878	---	---	---	---	29/06/2009	---	---	NBGAM ETF	10.29	-2.46	☒	10.55	16/08/2013	10.29	10.29	10.29	10.29	10.29	---	287@10.50	---	---	2	1	20.58	-	8.23	11.75	11000
388,550	---	---	---	---	03/11/2010	---	---	NBGAM ETF GREECE & TURKEY 30	7.87	---	↘	7.87	06/08/2013	---	---	---	---	---	---	---	---	---	---	---	---	-	7.56	10.11	11000

Low Dispersion

14,000,000	3.80	---	---	---	23/04/2010	29/06/1999	4815	ALPHA REAL ESTATE SA(CR)	6.50	-7.01	☒	6.99	16/08/2013	6.50	6.50	6.50	6.50	6.50	100@6.50	500@6.97	13.45	2012	400	1	2,600.00	91,000.00	6.00	7.00	8637
63,900,000	3.00	---	---	---	23/06/2003	04/11/2008	4816	ASTIR PALACE SA (CR)	3.57	-0.83	☒	3.60	16/08/2013	3.60	3.51	3.60	3.51	3.57	500@3.50	500@3.53	---	2012	350	6	1,251.00	228,123.00	3.40	4.95	5753
49,152,904	0.800	---	---	---	09/08/2004	08/03/2006	4814	ATHENA SA (CR)	0.275	---	↘	0.275	12/08/2013	---	---	---	---	---	---	1000@0.249	---	2012	---	---	---	13,517.05	0.094	0.340	2357
191,660,320	0.300	---	---	---	20/07/2009	29/12/2010	4817	ATTICA HOLDINGS (CR)	0.362	19.08	#	0.304	16/08/2013	0.362	0.362	0.362	0.362	0.362	1800@0.302	420@0.362	---	2012	10	1	3.62	69,381.04	0.241	0.588	5759
15,300,000	0.300	---	---	---	30/07/2009	13/12/1999	4893	ATTICA PUBLICATIONS SA (CR)	0.520	---	↘	0.520	14/08/2013	---	---	---	---	---	---	---	---	2012	---	---	---	7,956.00	0.520	1.45	5557
8,418,750	0.300	---	0.15	0.29	05/06/2013	27/06/2012	4828	GEKE SA (CB)	6.70	---	↘	6.70	14/08/2013	---	---	---	---	---	100@6.70	---	21.04	2012	---	---	---	56,405.63	6.59	6.79	5753
68,322,221	1.00	---	---	---	08/03/2002	08/04/2013	4986	GENIKI BANK (CR)	2.15	---	↘	2.15	13/08/2013	---	---	---	---	---	6@1.72	---	---	2012	---	---	---	146,892.78	2.15	8.85	8355
71,082,707	1.70	---	---	---	01/07/2010	21/11/2012	4820	HERACLES GEN.CEMENT CO. (CR)	1.42	-1.39	☒	1.44	16/08/2013	1.42	1.42	1.42	1.42	1.42	56@1.42	4041@1.44	---	2012	244	1	346.48	100,937.44	1.20	1.80	2353
13,404,440	8.63	---	---	---	02/04/2001	06/03/1992	4822	IONIAN HOTELS SA (CR)	8.81	---	↘	8.81	09/08/2013	---	---	---	---	---	498@7.05	98@10.50	---	2012	---	---	---	118,093.12	8.40	13.00	5753
2,760,000	7.70	6.3291	7.6	8.52	26/06/2013	16/07/1990	4823	KARELIA TOBACCO CO. SA (CB)	175.25	---	↘	175.25	14/08/2013	---	---	---	---	---	10@146.00	4@175.25	10.64	2012	---	---	---	483,690.00	110.00	177.30	3785
17,000,000	0.600	---	---	---	12/06/2008	07/03/2000	4941	KATHIMERINI SA (CR)	0.820	-16.16	☒	0.978	16/08/2013	0.978	0.800	0.978	0.800	0.820	---	9@0.783	---	2012	45	3	36.89	13,940.00	0.321	1.00	5557
21,364,000	1.12	---	---	---	05/07/2010	10/08/2005	4824	LAMPASA HOTEL SA (CR)	18.07	0.39	#	18.00	16/08/2013	18.00	18.00	18.10	18.10	18.07	200@16.10	75@18.10	---	2012	300	4	5,420.00	386,047.48	15.00	18.10	5753
6,700,000	0.800	---	---	---	19/07/2010	29/08/2012	4894	MILLS KEPENOS (CR)	1.10	---	↘	1.10	06/08/2013	---	---	---	---	---	180@0.880	130@1.32	6.54	2012	---	---	---	7,370.00	0.777	1.69	3577
70,926,000	2.25	---	---	---	25/07/2008	21/06/2000	4825	MINOAN LINES SA (CR)	2.00	2.56	#	1.95	16/08/2013	2.00	2.00	2.00	2.00	2.00	1000@1.80	1212@2.00	---	2012	1,000	3	2,000.00	141,852.00	1.70	2.10	5759
17,240,776	0.370	---	---	---	14/07/2005	30/09/2003	4827	PERSEUS SA (CR)	0.176	---	↘	0.176	12/08/2013	---	---	---	---	---	2000@0.142	1000@0.211	10.26	2012	---	---	---	3,034.38	0.033	0.325	3577

Surveillance

33,301,715	0.320	---	---	---	27/06/2003	08/07/2009	4978	AEGEK (CR)	0.108	5.88	#	0.102	16/08/2013	0.108	0.108	0.108	0.108	0.108	1510@0.093	839@0.108	---	2012	263	2	28.41	3,596.59	0.089	0.184	2357
14,870,100	0.300	---	---	---	15/05/2008	26/09/2011	4844	ALPHA GRISSIN S.A. (CR)	0.225	---	↘	0.225	09/08/2013	---	---	---	---	---	---	2500@0.229	---	2012	---	---	---	3,345.77	0.080	0.328	9533
215,246,452	0.300	---	---	---	25/06/2001	24/09/2001	4446	ALTEC SA (CR)	0.037	-13.95	☒	0.043	16/08/2013	0.040	0.036	0.040	0.036	0.037	4946@0.036	9000@0.041	---	2012	17,054	8	625.72	7,964.12	0.021	0.062	9533
2,969,713	0.300	---	---	---	02/07/2008	28/02/2011	4958	ANEK LINES SA (PR, issue '96)	0.300	---	↘	0.300	13/08/2013	---	---	---	---	---	---	---	---	2012	---	---	---	17,094.01	0.300	0.770	5759
312,163	0.300	---	---	---	02/07/2008	28/02/2011	4959	ANEK LINES SA (PR, issue '90)	1.43	---	↘	1.43	16/08/2013	---	---	---	---	---	---	---	---	2012	---	---	---	17,094.01	1.43	1.78	5759
185,373,016	0.300	---	---	---	02/07/2008	28/02/2011	4957	ANEK LINES SA (CR)	0.085	4.94	#	0.081	16/08/2013	0.081	0.081	0.087	0.085	0.085	3000@0.082	21329@0.085	---	2012	23,914	13	2,030.81	17,094.01	0.072	0.270	5759
81,644,555	0.300	---	---	---	01/07/2008	02/09/2002	4630	ATTI - KAT SA (CR)	0.040	---	↘	0.040	16/08/2013	---	---	---	---	---	---	415@0.039	---	2012	---	---	---	3,265.78	0.022	0.088	2357
20,255,805	0.300	---	---	---	22/08/2006	02/08/2010	4881	AXON HOLDING SA (CR)	0.090	---	↘	0.090	12/08/2013	---	---	---	---	---	750@0.074	400@0.108	---	2012	---	---	---	1,823.02	0.070	0.192	4533
17,579,754	4.16	---	---	---	18/08/2006	02/08/2010	4885	BIOTER SA (CR)	0.185	---	↘	0.185	16/08/2013	---	---	---	---	---	---	840@0.179	---	2012	---	---	---	3,252.25	0.059	0.194	2357
12,431,980	0.720	---	---	---	20/06/2003	10/07/2003	4559	COMPUCON SA (CR)	0.090	---	↘	0.090	01/08/2013	---	---	---	---	---	---	4916@0.085	---	2012	---	---	---	1,118.88	0.031	0.100	9537
30,159,583	0.470	---	---	---	26/06/2008	29/12/2010	4962	DIAS A/C (CR)	0.839	---	↘	0.839	03/06/2013	---	---	---	---	---	---	1625@0.795	---	2012	---	---	---	25,303.89	0.420	0.845	3573
15,878,748	0.480	---	---	---	10/07/2006	22/03/2004	4960	DOMIKI KRITIS SA (CR)	0.514	---	↘	0.514	16/08/2013	---	---	---	---	---	---	150@0.512	---	2012	---	---	---	8,161.68	0.310	0.800	2357

Number of Outstanding Securities	Nominal Value	Dividends [1]			Date of Last Coupon		Note	Shares	Closing price	% change	Previous closing price/date	Open price	Price min	Price max	Last price	Avg price	Last Bid [7]	Last Ask [7]	P/E after	Year	Volume	Trades	Transactions Value	Company Mkt Value (thou. €)	Year low	Year high	Sector[ 4]		
		2010	2011	2012	Dividend [2]	Right																							
Surveillance																													
3,961,300	1.28	---	---	---	29/06/2004	03/08/2000	4808	DUROS SA (CR)	0.970	---	↘	0.970	19/07/2013	---	---	---	---	---	10@0.800	---	2012	---	---	---	3,842.46	0.120	0.970	3763	
7,085,888	1.59	---	---	---	02/07/1996	06/09/2010	4690	ELVIEMEK (CR)	3.00	---	↘	3.00	05/02/2013	---	---	---	---	---	-(6)-	2012	---	---	---	21,257.66	3.00	3.58	8633		
6,000,000	0.600	---	---	---	13/06/2008	08/04/2004	4886	EUROBROKERS S.A. (CR)	0.052	---	↘	0.052	27/06/2013	---	---	---	---	3600@0.044	---	2012	---	---	---	312.00	0.052	0.333	8534		
7,347,600	0.600	---	---	---	02/06/2010	25/02/2010	4889	EUROCONSULTANTS S.A. (CR)	2.60	---	↘	2.60	14/08/2013	---	---	---	---	---	499@2.60	---	2012	---	---	---	19,103.76	2.12	2.64	2791	
21,820,410	0.800	---	---	---	22/05/2008	02/08/2011	4882	EUROMEDICA SA (CR)	0.350	---	↘	0.350	16/08/2013	---	---	---	---	180@0.280	16500@0.400	---	2012	---	---	---	7,637.14	0.288	0.613	4533	
12,952,610	0.300	---	---	---	---	04/10/2012	4846	Forthnet (CR)	0.929	-2.72	↗	0.955	16/08/2013	0.955	0.920	1.00	1.00	0.929	800@0.930	638@1.00	---	2011	1,367	4	1,269.50	12,032.97	0.350	1.43	9535
179,707,771	0.300	---	---	---	27/06/2002	01/11/2011	4847	HELLAS ONLINE SA (CR)	0.362	---	↘	0.362	14/08/2013	---	---	---	---	1000@0.300	620@0.428	---	2012	---	---	---	65,054.21	0.271	0.709	9537	
13,692,227	1.47	---	---	---	07/07/2006	08/10/1999	4845	HELLENIC FABRICS SA (CR)	0.298	6.05	#	0.281	14/08/2013	0.298	0.298	0.298	0.300	100@0.281	2000@0.297	---	2012	1	1	0.30	4,080.28	0.180	0.354	3763	
30,390,000	0.310	---	---	---	18/08/2008	29/12/2006	4447	HELLENIC FISHFARMING SA (CR)	0.119	---	↘	0.119	16/08/2013	---	---	---	---	---	3120@0.116	27.89	2012	---	---	---	3,616.41	0.039	0.137	3573	
1,540,000	0.600	---	---	---	08/08/1994	19/09/2000	4855	J.BOUTARIS & SON HOLD. (PB)	0.024	---	↘	0.024	05/08/2013	---	---	---	---	1000@0.020	---	---	2012	---	---	---	1,295.94	0.024	0.201	3535	
25,179,640	0.600	---	---	---	08/08/1994	19/09/2000	4854	J.BOUTARIS & SON HOLD. SA (CB)	0.050	---	↘	0.050	13/08/2013	---	---	---	---	5000@0.050	1200@0.060	---	2012	---	---	---	1,295.94	0.040	0.132	3535	
7,125,216	0.650	---	---	---	01/07/2005	14/12/1999	4955	KRE.KA SA (CR)	0.252	---	↘	0.252	12/08/2013	---	---	---	---	---	5150@0.250	---	2012	---	---	---	1,795.55	0.144	0.580	3573	
51,081,030	1.00	---	---	---	20/08/2007	03/09/2007	4912	LAVIPHARM SA (CR)	0.135	3.05	#	0.131	16/08/2013	0.135	0.135	0.135	0.135	980@0.122	850@0.133	---	2012	400	4	54.01	6,895.94	0.101	0.268	4577	
322,925,288	0.300	---	---	---	23/05/2007	10/04/2000	4554	M.J. MAILLIS SA (CR)	0.073	-1.35	↗	0.074	16/08/2013	0.073	0.073	0.073	0.073	250@0.073	1750@0.077	---	2012	750	1	54.75	23,573.55	0.066	0.150	2723	
9,567,289	0.300	---	---	---	01/07/2004	19/11/2007	4944	MARAC ELECTRONICS (CR)	0.114	---	↘	0.114	30/07/2013	0.114	0.114	0.115	0.115	---	1330@0.115	---	2012	1,800	3	205.55	1,090.67	0.068	0.409	9578	
4,178,856	1.58	0.22	---	---	21/07/2011	28/07/2004	4983	MEDICON S.A (CR)	0.590	-1.67	↗	0.600	16/07/2013	0.590	0.590	0.590	0.590	430@0.480	2700@0.580	---	2012	300	1	177.00	2,465.53	0.446	1.18	4535	
66,937,526	0.700	---	---	---	13/08/2010	21/05/2003	4995	MICHANIKI SA (CR)	0.097	-7.62	↗	0.105	16/08/2013	0.113	0.094	0.113	0.096	0.097	4399@0.096	10000@0.104	---	2012	68,800	20	6,674.82	9,089.84	0.085	0.370	2357
25,968,987	0.700	---	---	---	13/08/2010	21/05/2003	4996	MICHANIKI SA (PR)	0.100	---	↘	0.100	16/08/2013	0.100	0.081	0.100	0.081	0.100	3931@0.081	99@0.090	---	2012	18,850	11	1,878.35	9,089.84	0.065	0.268	2357
255,459,600	0.300	---	---	---	26/06/2000	03/12/2010	4833	NEL SA (CR)	0.032	14.29	#	0.028	16/08/2013	0.025	0.025	0.032	0.032	0.032	12000@0.028	18744@0.032	---	2012	3,059	6	97.48	8,174.71	0.012	0.158	5759
20,231,328	0.600	---	---	---	15/07/2008	25/06/2004	4879	NIKAS SA (CR)	0.261	-0.38	↗	0.262	02/08/2013	0.261	0.261	0.261	0.261	0.261	921@0.261	---	2012	78	1	20.36	5,280.38	0.261	0.530	3577	
14,967,940	0.500	---	---	---	21/05/2008	04/01/2008	4956	PASAL DEVELOPMENT S.A. (CR)	0.178	---	↘	0.178	16/08/2013	---	---	---	---	---	4000@0.155	1250@0.181	---	2012	---	---	---	2,664.29	0.120	0.414	8633
40,946,303	0.360	---	---	---	18/07/2005	27/11/2007	4856	PC SYSTEMS SA (CR)	0.097	---	↘	0.097	16/08/2013	---	---	---	---	---	49@0.078	---	2012	---	---	---	3,971.79	0.057	0.180	9533	
18,750,000	0.300	---	---	---	02/07/2001	31/12/2012	4985	PEGASUS PUBLISHING S.A. (CR)	0.331	---	↘	0.331	06/08/2013	---	---	---	---	---	11@0.265	---	2012	---	---	---	6,206.25	0.044	0.610	5557	
28,056,518	0.530	---	---	---	04/07/2007	19/07/2006	4750	SATO SA (CR)	0.088	---	↘	0.088	14/08/2013	---	---	---	---	---	6100@0.088	---	2012	---	---	---	2,468.97	0.025	0.115	3726	
36,235,184	1.00	---	---	---	01/07/2008	30/07/2012	4961	SELONDA AQUACULTURE SA (CR)	0.199	2.58	#	0.194	16/08/2013	0.159	0.159	0.199	0.199	0.199	10@0.160	499@0.199	---	2012	207	6	41.12	7,210.80	0.119	0.600	3573
7,914,480	2.50	---	---	---	23/06/2008	29/06/2011	4888	SFAKIANAKIS SA (CR)	0.620	---	↘	0.620	13/08/2013	---	---	---	---	---	2958@0.550	470@0.744	---	2012	---	---	---	4,906.98	0.364	0.763	5379
60,221,300	0.400	---	---	---	01/07/2002	01/11/2010	4880	SHELMAN SA (CR)	0.130	---	↘	0.130	01/08/2013	---	---	---	---	---	7199@0.129	---	2011	---	---	---	7,828.77	0.098	0.280	2353	
10,000,000	1.35	---	---	---	24/06/2008	10/05/2005	4887	SIDMA SA (CR)	0.800	---	↘	0.800	02/08/2013	---	---	---	---	---	210@0.727	---	2012	---	---	---	8,000.00	0.420	0.920	1757	
29,060,950	0.340	---	---	---	20/08/2007	24/10/2001	4884	SPIDER METAL INDUSTRY SA (CR)	0.022	---	↘	0.022	14/08/2013	---	---	---	---	---	2000@0.018	---	2012	---	---	---	639.34	0.022	0.097	2757	
100,793,000	0.300	---	---	---	16/07/2009	05/08/2013	---	TELETIPOS SA (CR)	0.250	-0.40	↗	0.251	16/08/2013	0.251	0.250	0.251	0.250	0.250	1128@0.250	440@0.296	---	2012	5,072	5	1,268.07	25,198.25	0.118	0.600	5553
3,229,566	0.320	---	---	---	22/06/2005	23/09/1999	4629	VARANGIS AVEPE S.A. (CR)	0.780	---	↘	0.780	12/08/2013	---	---	---	---	---	7321@0.780	---	2012	---	---	---	2,519.06	0.206	0.840	3726	
17,175,132	0.300	---	---	---	25/06/2002	21/06/2013	4997	VARVARESSOS SA (CB)	0.055	---	↘	0.055	13/08/2013	---	---	---	---	---	17@0.066	---	2012	---	---	---	944.63	0.028	0.181	3763	
13,191,620	0.620	---	---	---	04/08/2010	09/09/2002	4977	YALCO - CONSTANTINOU SA (CB)	0.107	---	↘	0.107	16/08/2013	---	---	---	---	---	1000@0.100	1000@0.128	---	2012	---	---	---	1,411.50	0.106	0.210	3722
Under Deletion																													
5,025,000	0.300	---	---	---	05/07/2005	14/03/2002	4963	ALSINCO S.A (CR)	0.014	---	↘	0.014	18/07/2013	---	---	---	---	---	---	---	2012	---	---	---	70.35	0.006	0.185	3763	
766,000	2.83	---	---	---	01/07/2004	11/12/2012	4937	TRIA ALFA SA (CR)	3.51	---	↘	3.51	10/07/2013	---	---	---	---	---	50@3.50	---	2012	---	---	---	3,068.41	1.30	4.70	3763	
245,000	2.83	---	---	---	19/07/2010	11/12/2012	4938	TRIA ALFA SA (PR)	1.55	---	↘	1.55	16/08/2013	---	---	---	---	---	48@1.55	---	2012	---	---	---	3,068.41	0.501	1.93	3763	

Number of Outstanding Securities	Nominal Value	Dividends [1]			Date of Last Coupon		Note	Shares	Closing price	% change	Previous closing price/date	Open price	Price min	Price max	Last price	Avg price	Last Bid [7]	Last Ask [7]	P/E after	Year	Volume	Trades	Transactions Value	Company Mkt Value (thou. €)	Year low	Year high	Sector[ 4]
		2010	2011	2012	Dividend [2]	Right																					
Under Suspension																											
49,030,011	0.300	---	---	---	19/07/2010	12/05/2011	4875	ALAPIS (CR)	0.041	---	0.041	30/03/2012	---	---	---	---	---	---	---	---	---	---	---	2,010.23	0.041	0.041	4577
1,750,955,549	0.600	---	---	---	19/05/2008	08/12/2011	4911	ATE (CR)	0.155	---	0.155	30/07/2012	---	---	---	---	---	---	---	---	---	---	---	271,398.11	0.155	0.155	8355
21,382,067	0.300	---	---	---	02/10/2006	15/02/2006	4628	ATERMON (CR)	0.120	---	0.120	31/03/2010	---	---	---	---	---	---	---	---	---	---	---	2,565.85	0.120	0.120	5555
105,423,498	0.510	---	---	---	01/07/2004	28/12/2005	4920	AVENIR S.A. (CR)	0.046	---	0.046	30/08/2012	---	---	---	---	---	---	---	---	---	---	---	4,849.48	0.046	0.046	5752
33,930,000	0.300	---	---	---	03/07/2006	30/05/2001	4865	BABIS VOVOS SA (CR)	0.304	---	0.304	30/03/2012	---	---	---	---	---	---	---	---	---	---	---	10,314.72	0.304	0.304	8633
20,121,710	1.21	---	---	---	27/07/1992	12/03/2003	4970	BALKAN R.E. (CR)	0.220	---	0.220	31/05/2013	---	---	---	---	---	---	---	---	---	---	---	4,426.78	0.195	0.438	8633
1,795,140,547	1.00	(0.0615)	---	---	31/05/2011	19/04/2012	4951	BANK OF CYPRUS (CR)	0.207	---	0.207	15/03/2013	---	---	---	---	5000@0.170	---	---	---	---	---	---	371,594.09	0.180	0.282	8355
21,920,570	0.300	---	---	---	03/07/2007	13/12/1999	4702	CARDASSILARIS SA (CR)	0.140	---	0.140	30/11/2010	---	---	---	---	---	---	---	---	---	---	---	3,068.88	0.140	0.140	3577
54,547,634	0.500	---	---	---	25/04/2005	21/01/2009	4860	CH.TEGOPOULOS PUBL. SA (CR)	0.038	---	0.038	23/03/2012	---	---	---	---	---	---	---	---	---	---	---	2,072.81	0.038	0.038	5557
33,718,750	0.300	---	---	---	28/05/2008	21/01/2013	4998	DOL SA (CR)	0.640	---	0.640	25/07/2013	---	---	---	---	---	3118@0.700	---	---	---	---	---	21,580.00	0.244	0.759	5557
7,847,611	1.20	---	---	---	01/08/2007	28/09/2011	4939	EDRASIS - C. PSALLIDAS SA (CR)	0.150	---	0.150	19/11/2012	---	---	---	---	---	---	---	---	---	---	---	1,177.14	0.150	0.150	2357
5,750,000	0.300	---	---	---	12/12/2008	12/12/2011	4929	ELECTRONIKI ATHINON SA (CR)	0.480	---	0.480	07/09/2012	---	---	---	---	---	---	---	---	---	---	---	2,760.00	0.480	0.480	5375
24,605,397	0.400	---	---	---	29/06/1995	27/05/2002	4651	EMPORIKOS DESMOS SA (CR)	0.080	---	0.080	28/05/2010	---	---	---	---	---	---	---	---	---	---	---	2,134.04	0.080	0.080	3722
1,182,903	0.400	---	---	---	01/07/1996	27/05/2002	4652	EMPORIKOS DESMOS SA (PR)	0.140	---	0.140	28/09/2009	---	---	---	---	---	---	---	---	---	---	---	2,134.04	0.140	0.140	3722
8,593,750	0.300	---	---	---	01/06/2009	20/06/2007	4876	FASHION BOX (CR)	1.30	---	1.30	23/02/2012	---	---	---	---	---	---	---	---	---	---	---	11,171.88	1.30	1.30	3763
7,326,648	1.00	---	---	---	26/07/2006	24/07/2001	4921	FINTEXPORT SA (CR)	0.328	---	0.328	29/06/2012	---	---	---	---	---	---	---	---	---	---	---	2,403.14	0.328	0.328	3763
20,860,000	0.300	---	---	---	03/07/2000	13/11/2007	4848	IKONA - IHOS SA (CR)	0.072	---	0.072	02/12/2011	---	---	---	---	---	---	---	---	---	---	---	1,501.92	0.072	0.072	5379
36,765,744	0.350	---	---	---	16/08/2006	06/06/2011	4869	IMPERIO SA (CR)	0.026	---	0.026	30/03/2012	---	---	---	---	---	---	---	---	---	---	---	955.91	0.026	0.026	2777
24,619,524	0.500	---	---	---	10/10/1986	30/12/2002	4914	KERAMIA-ALLATINI (CR)	0.088	---	0.088	27/08/2012	---	---	---	---	---	---	---	---	---	---	---	2,166.52	0.088	0.088	8633
7,840,373	1.20	---	---	---	18/07/2002	05/03/2003	4765	KLONATEX SA (PR)	0.080	---	0.080	09/05/2011	---	---	---	---	---	---	---	---	---	---	---	1,453.75	0.080	0.080	3763
20,663,047	1.20	---	---	---	21/08/2000	05/03/2003	4764	KLONATEX SA (CR)	0.040	---	0.040	09/05/2011	---	---	---	---	---	---	---	---	---	---	---	1,453.75	0.040	0.040	3763
17,544,600	0.600	---	---	---	03/07/2000	01/08/2000	4868	KOYMBAS SYNERGY GROUP (CR)	0.132	---	0.132	29/03/2012	---	---	---	---	---	---	---	---	---	---	---	2,315.89	0.132	0.132	8775
15,015,000	1.60	---	---	---	01/07/2002	02/02/2000	4603	MAXIM C.M. PERTSINIDIS SA (CB)	0.100	---	0.100	30/11/2009	---	---	---	---	---	---	---	---	---	---	---	1,501.50	0.100	0.100	3763
13,555,100	1.00	---	---	---	08/07/2005		4576	MICROLAND COMPUTERS SA (CR)	0.640	---	0.640	14/07/2009	---	---	---	---	---	---	---	---	---	---	---	8,675.26	0.640	0.640	5379
23,463,874	0.800	---	---	---	23/05/2003	21/12/1999	4918	NEORION SA (CR)	0.125	---	0.125	28/08/2012	---	---	---	---	---	---	---	---	---	---	---	2,932.98	0.125	0.125	2753
42,501,273	0.300	---	---	---	26/06/2007	10/08/2009	4993	NUTRIART (CR)	0.049	---	0.049	21/06/2013	---	---	---	---	---	---	---	---	---	---	---	2,082.56	0.038	0.114	3577
25,583,146	0.300	---	---	---	25/06/2001	03/12/2008	4723	PETZETAKIS SA (CR)	0.260	---	0.260	28/01/2011	---	---	---	---	---	---	---	---	---	---	---	6,651.62	0.260	0.260	1357
9,550,386	0.500	---	---	---	01/07/1997	12/06/2008	4626	PRAXITELIO SA (CR)	0.390	---	0.390	11/03/2010	---	---	---	---	---	---	---	---	---	---	---	4,430.09	0.390	0.390	4533
1,306,368	0.500	---	---	---	01/07/1997	12/06/2008	4627	PRAXITELIO SA (PR)	0.540	---	0.540	15/12/2009	---	---	---	---	---	---	---	---	---	---	---	4,430.09	0.540	0.540	4533
62,683,822	0.300	---	---	---	27/05/2008	09/01/2006	4830	PROTON BANK S.A. (CR)	0.180	---	0.180	07/10/2011	---	---	---	---	---	---	---	---	---	---	---	11,283.09	0.180	0.180	8355
23,059,688	0.660	---	---	---	03/07/2008	06/08/2004	4864	RIDENCO SA (CR)	0.032	---	0.032	30/03/2012	---	---	---	---	---	---	---	---	---	---	---	737.91	0.032	0.032	3765
51,083,993	1.00	---	---	---	15/07/2008	06/08/2003	4867	SANYO HELLAS HOLD. (CR)	0.020	---	0.020	30/03/2012	---	---	---	---	---	---	---	---	---	---	---	1,021.68	0.020	0.020	3722
51,334,286	0.320	---	---	---	03/07/2000	18/12/2007	4548	SAOS (CR)	0.780	---	0.780	27/03/2009	---	---	---	---	---	---	---	---	---	---	---	40,040.74	0.780	0.780	2773
26,408,040	0.300	---	---	---	01/07/1997	26/05/1999	4464	SHEET STEEL SA (CR)	0.120	---	0.120	28/11/2008	---	---	---	---	---	---	---	---	---	---	---	3,168.96	0.120	0.120	1757
26,262,660	0.900	---	---	---	01/07/2008	24/02/2011	4954	SPRIDER STORES (CR)	0.031	---	0.031	28/03/2013	---	---	---	---	---	---	---	---	---	---	---	814.14	0.025	0.055	5371
144,688,060	0.600	---	---	---	21/04/2008	10/03/2010	4982	T BANK (CR)	0.048	---	0.048	30/11/2011	---	---	---	---	---	---	---	---	---	---	---	6,945.03	0.048	0.048	8355
6,523,780	0.530	---	---	---	01/07/2002	06/03/2001	4971	TECHNICAL PUBLICATIONS SA (CR)	0.006	---	0.006	29/05/2013	---	---	---	---	---	---	---	---	---	---	---	39.14	0.006	0.347	5557
13,920,000	0.320	---	---	---	19/11/2001	01/08/2000	4726	TEXAPRET SA (CR)	0.080	---	0.080	23/02/2011	---	---	---	---	---	---	---	---	---	---	---	1,113.60	0.080	0.080	3763



Number of Outstanding Securities	Nominal Value	Dividends [1]			Date of Last Coupon Dividend [2]		Coupon Right	Note	Shares	Closing price	% change	Previous closing price/date		Open price	Price min	Price max	Last price	Avg price	Last Bid [7]	Last Ask [7]	P/E after	Year	Volume	Trades	Transactions Value	Company Mkt Value (thou. €)	Year low	Year high	Sector[ 4]
--	------------------	---------------	--	--	-------------------------------------	--	-----------------	------	--------	------------------	----------	--------------------------------	--	---------------	--------------	--------------	---------------	--------------	-----------------	--------------	--------------	------	--------	--------	-----------------------	--------------------------------	-------------	--------------	---------------

Under Suspension

284,465,964	3.70	---	---	---	20/06/2008	15/06/2009	4913	TT HELLENIC POSTBANK (CR)		0.168	---	↘	0.168	30/08/2012	---	---	---	---	---	---	---	---	---	---	---	---	47,790.28	0.168	0.168	8355
89,616,200	0.300	---	---	---	21/08/2000	28/06/2007	4616	UNITED TEXTILES (CR)		0.050	---	↘	0.050	25/02/2010	---	---	---	---	---	---	---	---	---	---	---	---	4,480.81	0.050	0.050	3763
71,683,906	0.400	---	---	---	15/06/2005	05/02/2008	4953	XATZIOANNOU (CR)		0.026	---	↘	0.026	28/03/2013	---	---	---	---	---	---	---	---	---	---	---	---	1,863.78	0.020	0.085	3763

## Shares' Notes

Code	Note text
( )	- Adjusted dividends.
*	- Last adjusted closing price.
[1]	- Net dividends.
[2]	- The "Date of Last Coupon" for New listings refers to the date company's stocks started to trade in Athex
[3]	- The Company Market Value is referred to the number of outstanding shares
[4]	- Sectors codification can be found in Appendix A
[5]	- The Market Value refers to the total number of shares listed (including their several classes) in the exchange by the company.
[6]	- P/E greater than 100
[7]	- Last view of the Order Book before the end of the trading session
4446	- Transfer to the "Under Supervision" Category as of 20/10/2008.
4447	- Transfer to the "Under Supervision" Category as of 21/10/2008.
4464	- Suspension of trading as of 1/12/2008.
4548	- Suspension of trading as of 1/4/2009.
4554	- Transfer to the "Under Supervision" Category as of 6/4/2009.
4559	- Transfer to the "Under Supervision" Category as of 21/4/2009.
4576	- Suspension of trading as of 14/7/2009.
4603	- Suspension of trading as of 1/12/2009.
4616	- Suspension of trading as of 25/2/2010.
4626	- Suspension of trading as of 1/4/2010.
4627	- Suspension of trading as of 1/4/2010.
4628	- Suspension of trading as of 1/4/2010.
4629	- Transfer to the Under Supervision Category as of 12/4/2010.
4630	- Transfer to the Under Supervision Category as of 12/4/2010.
4651	- Suspension of trading as of 1/6/2010.
4652	- Suspension of trading as of 1/6/2010.
4690	- Transfer to Surveillance category as of 4/4/2006.
4702	- Suspension of trading as of 1/12/2010.
4723	- Suspension of trading as of 31/1/2011.
4726	- Suspension of trading as of 1/3/2011.
4750	- Transfer to the "Under Surveillance Category" from 8/4/2011.
4764	- Suspension of trading as of 20/5/2011.
4765	- Suspension of trading as of 20/5/2011.
4795	- The final gross (pre-tax) dividend is € 0.30 per share and subject to withholding tax on the full dividend amount, i.e. 0,45 per share, for those shareholders liable to withholding tax, in accordance with the applicable tax law provisions.
4808	- Suspension of trading as of 6/9/2011.
4814	- Transfer to the Low Dispersion Category as of 30/5/2011.
4815	- Transfer to the Low Dispersion Category as of 30/5/2011.
4816	- Transfer to the Low Dispersion Category as of 30/5/2011.
4817	- Transfer to the Low Dispersion Category as of 30/5/2011.
4820	- Transfer to the Low Dispersion category as of 18/4/2008.
4822	- Transfer to the Low Dispersion category as of 30/5/2011.
4823	- Transfer to the Low Dispersion category as of 4/4/2006.
4824	- Transfer to the Low Dispersion category as of 18/4/2008.
4825	- Transfer to the Low Dispersion category as of 8/4/2011.
4827	- Transfer to the Low Dispersion category as of 5/5/2010.
4828	- Transfer to the Low Dispersion category as of 4/4/2006.
4830	- Suspension of trading as of 10/10/2011.
4833	- Transfer to Surveillance category from 6/5/2010.
4844	- Transfer to the Surveillance category from 8/4/2011.
4845	- Transfer to the Surveillance Category as of 25/11/2011.
4846	- Transfer to the Surveillance Category as of 25/11/2011.
4847	- Transfer to the Surveillance Category as of 3/7/2009.

## Shares' Notes

Code	Note text
4848	- Suspension of trading as of 6/12/2011.
4854	- Transfer to the Surveillance Category as of 29/12/2011.
4855	- Transfer to the Surveillance Category as of 29/12/2011.
4856	- Transfer to the Surveillance Category as of 29/12/2011.
4860	- Suspension of trading as of 30/3/2012.
4864	- Suspension of trading as of 30/3/2012.
4865	- Suspension of trading as of 2/4/2012.
4867	- Suspension of trading as of 2/4/2012.
4868	- Suspension of trading as of 2/4/2012.
4869	- Suspension of trading as of 2/4/2012.
4875	- Suspension of trading as of 2/4/2012.
4876	- Suspension of trading as of 3/4/2012.
4879	- Transfer to the Surveillance Category as of 10/4/2012.
4880	- Transfer to the Surveillance Category as of 10/4/2012.
4881	- Transfer to the Surveillance Category as of 10/4/2012.
4882	- Transfer to the Surveillance Category as of 10/4/2012.
4884	- Transfer to the Surveillance Category as of 10/4/2012.
4885	- Transfer to the Surveillance Category as of 10/4/2012.
4886	- Transfer to the Surveillance Category as of 10/4/2012.
4887	- Transfer to the Surveillance Category as of 10/4/2012.
4888	- Transfer to the Surveillance Category as of 10/4/2012.
4889	- Transfer to the Surveillance Category as of 10/4/2012.
4893	- Transfer to the Low Dispersion category as of 28/5/2012.
4894	- Transfer to the Low Dispersion category as of 28/5/2012.
4911	- Lift of suspension from 30/7/2012.
4912	- Transfer to the Surveillance Category as of 31/7/2012.
4913	- Suspension of trading as of 30/8/2012.
4914	- Suspension of trading as of 31/8/2012.
4918	- Suspension of trading as of 31/8/2012.
4920	- Suspension of trading as of 31/8/2012.
4921	- Suspension of trading as of 31/8/2012.
4929	- Suspension of trading as of 1/10/2012.
4937	- Transfer to the UNDER DELETION category as of 30/11/2012.
4938	- Transfer to the UNDER DELETION category as of 30/11/2012.
4939	- Suspension of trading as of 30/11/2012.
4941	- Transfer to the Low Dispersion category as of 3/12/2012.
4944	- Transfer to the Surveillance Category as of 7/12/2012.
4951	- Suspension of trading as of 19/3/2013.
4953	- Suspension of trading as of 2/4/2013.
4954	- Suspension of trading as of 2/4/2013.
4955	- Transfer to the Surveillance Category as from 5/4/2013.
4956	- Transfer to the Surveillance Category as from 5/4/2013.
4957	- Transfer to the Surveillance Category as from 5/4/2013.
4958	- Transfer to the Surveillance Category as from 5/4/2013.
4959	- Transfer to the Surveillance Category as from 5/4/2013.
4960	- Transfer to the Surveillance Category as from 5/4/2013.
4961	- Transfer to the Surveillance Category as from 5/4/2013.
4962	- Transfer to the Surveillance Category as from 5/4/2013.
4963	- Transfer to the Under Deletion Category as from 5/4/2013.
4970	- Suspension of trading as of 3/6/2013.
4971	- Suspension of trading as of 3/6/2013.
4977	- Transfer to the "Under Surveillance Category" from 11/6/2013.
4978	- Transfer to the Under Supervision Category as of 11/6/2013.

---

Shares' Notes

---

Code	Note text
4982	- Suspension of trading as of 1/12/2011.
4983	- Transfer to the Surveillance Category as of 5/4/2013.
4985	- Transfer to the "Under Surveillance Category" from 8/4/2011.
4986	- Transfer to the Low Dispersion category as of 30/5/2011.
4988	- As of June 7, 2013, the name of the company "DUTY FREE SHOPS A CORPORATION OPERATING DFS AND LARGE AND SMALL SCALE INDUSTRIAL OPERATIONS, TECHNIC" on ATHEX changes to "FOLLI FOLLIE S.A.".
4993	- Suspension of trading as of 21/6/2013 (15:18).
4995	- Transfer to the "Under Surveillance Category" from 8/4/2011.
4996	- Transfer to the "Under Surveillance Category" from 8/4/2011.
4997	- Transfer to the Under Supervision Category as of 21/12/2009. - The 6,870,053 new (CB) shares, resulting from the recent share capital increase through a rights issue, are not yet admitted to trading on the ATHEX.
4998	- Suspension of trading as of 26/7/2013.

## Securities Blocks Details

Securities	Block Volume	Price	Block Trade Value	Time of approval	Note
OPAP (CR)	100,000	7.36	736,000.00	10:59:29	20
OPAP (CR)	39,640	7.60	301,065.80	11:41:17	20
OTE (CR)	1,204	7.12	8,572.48	14:00:31	14
DIONIC (CR)	1,000	0.082	82.00	14:06:03	18
ALPHA BANK (W)	11,480	1.05	12,054.00	16:20:38	18
ALPHA BANK (W)	29,166	1.05	30,624.30	16:21:06	18
ALPHA BANK (W)	29,166	1.05	30,624.30	16:21:28	18
ALPHA BANK (W)	6,809	1.05	7,149.45	16:21:54	18
ALPHA BANK (W)	3,402	1.05	3,572.10	16:22:20	18
ALPHA BANK (W)	1,578	1.05	1,656.90	16:22:59	18
ALPHA BANK (W)	38,169	1.05	40,077.45	16:23:20	18
ALPHA BANK (W)	19,697	1.05	20,681.85	16:23:48	18
ALPHA BANK (W)	2,245	1.05	2,357.25	16:24:17	18
ALPHA BANK (W)	18,452	1.05	19,374.60	16:25:30	18
ALPHA BANK (W)	45,403	1.05	47,673.15	16:25:53	18
ALPHA BANK (W)	6,066	1.05	6,369.30	16:26:13	18
ALPHA BANK (W)	10,000	1.05	10,500.00	16:26:31	18
ALPHA BANK (W)	9,527	1.05	10,003.35	16:27:28	18
ALPHA BANK (W)	5,055	1.05	5,307.75	16:27:46	18
ALPHA BANK (W)	3,402	1.05	3,572.10	16:28:11	18
ALPHA BANK (W)	10,383	1.05	10,902.15	16:28:34	18
HELLENIC EXCHANGES (CR)	152,300	6.07	924,461.00	16:33:20	20
OPAP (CR)	64,826	7.27	471,285.02	16:56:53	20

## Blocks Notes

2 - SPOT 1 or SPOT 2 Packet	11 - Total Assets > 500 bil
3 - Block with Short Selling	12 - Sell Offer through Athex
4 - Buy to Close Block	13 - Forced Sale of NMOE
6 - Simultaneous Constitution	14 - Restoration Packet
7 - Repurchase Agreement	15 - Market Maker Packet
8 - Dispersion's Achievement (Not Listed)	16 - Short Selling
9 - Dispersion's Achievement (Listed)	18 - SPOT 1 Packet
10 - Share Capital Majority of Greek State (> 50 bil)	20 - Method 6-1 Packet

Shares Rights Details

Occured date	Exercise from	Exercise until	Trading until	Rights	Price min	Price max	Closing price	Last Bid	Last Ask	Volume	Trades	Transactions Value
05/08/2013	16/08/2013	30/08/2013	26/08/2013	TELETIPOS S.A. (CR)	---	---	0.001	---	515@0.005	---	---	---

## Stock Borrowing

Securities	Stock Borrowing through Helex (volume)	Stock Borrowing through OTC (volume) [1]	Totals [2]
ALAPIS (CR)	---	6,250	6,250
ALPHA BANK (CR)	161,200	4,962,713	5,123,913
ATE (CR)	---	69,000	69,000
BANK OF CYPRUS (CR)	---	102,899	102,899
CC HBC AG (CR)	12,800	73,941	86,741
ELLAKTOR (CR)	15,000	---	15,000
EUROBANK ERGASIAS (CR)	22,120	68,433	90,553
EUROBANK PROPERTIES REIC (CR)	7,500	31,215	38,715
EYDAP S.A. (CR)	2,900	---	2,900
FLEXOPACK SA (CR)	---	41,927	41,927
FOLLI FOLLIE (CR)	3,000	8	3,008
FRIGOGLASS SA (CR)	3,500	---	3,500
GEK TERNA (CR)	500	---	500
HELLENIC EXCHANGES (CR)	35,000	50	35,050
HELLENIC PETROLEUM (CR)	22,400	269	22,669
INTERTECH SA (CR)	---	483,000	483,000
INTRALOT (CR)	25,000	---	25,000
JUMBO SA (CR)	10,900	25	10,925
LAMDA DEVELOPMENT SA (CR)	---	10,377	10,377
MARFIN INVESTMENT GROUP (CR)	---	733,793	733,793
METKA (CR)	8,400	---	8,400
MOTOR OIL (CR)	17,700	---	17,700
MYTILINEOS HOLDINGS (CR)	5,000	---	5,000
NATIONAL BANK (CR)	61,100	2,355,136	2,416,236
NBGAM ETF	10,000	---	10,000
NBGAM ETF GREECE & TURKEY 30	3,500	---	3,500
OPAP (CR)	50,500	9,067	59,567
OTE (CR)	127,900	109,116	237,016
PIRAEUS BANK (CR)	5,200	239,460	244,660
PPC (CR)	40,400	44,800	85,200
TERNA ENERGY (CR)	5,400	---	5,400
TITAN CEMENT (CR)	6,200	55,390	61,590
VIOHALCO (CB)	5,200	---	5,200

## Stock Borrowing Notes

[1] - The information concerning OTC Stock Borrowing Transactions is based on the statements of the Dematerialised Securities System (DSS) operators involved and refers to volumes that have been cleared and registered up until the previous working day.

Shares Forced Sales

Securities	Transaction s Volume	Number of Trades	Transactions Value	Note
No Forced Transactions.				

Forced Sales Notes

- 1 - Normal Forced Sale.
- 2 - Forced Sales of Fixed Registered Shares.
- 3 - Forced Sales of Remaining Stock Fractions.



**Forced Sales Registered Shares**

Securities	Start Date	End Date	Initial Volume	Remaining Volume	Date	Avg price (day)	Avg price (period)	Number of Trades	Transactions Volume	Transactions Value
------------	------------	----------	-------------------	---------------------	------	--------------------	-----------------------	---------------------	------------------------	-----------------------

No Fixed Registered Shares Forced Sales.

**Forced Sales Notes**

According to Decision 1/380/04.05.2008 of the Hellenic Republic Capital Market Commission, the certificated registered shares that have not been deposited to the issuer for dematerialisation, will be auctioned in the Athens Exchange by the supervising issuer. Forced sales procedure is held according to Article 99A of the Athens Exchange Rulebook. The average price of the period is calculated by dividing the Total transactions value by the Total volume and includes all the transactions made until the current date.

## Exchange Traded Funds (ETFs) Characteristics

	Transactions Date (T)	Creation / Redemption	Units (T-1)	New Units (T-1)	Redemptio n Units (T-	Units (T) [1]	Fund Assets [2]	Net Unit Price	Dividen d per	Dividend Date
NBGAM ETF ΓΔ Χ.Α.	19/08/2013	25,000	294,878	---	---	294,878	3,131,972.00	10.6212	---	27/10/2011
ALPHA ETF FTSE Athex Large Cap	19/08/2013	50,000	5,848,618	---	---	5,848,618	18,891,980.00	3.2302	0.05	01/07/2013
NBGAM ETF GREECE & TURKEY 30	19/08/2013	25,000	388,550	---	---	388,550	3,087,089.00	7.9452	---	27/10/2011

## ETFs Notes

[1] - Units (T) = Units (T-1) + New Units (T-1) - Redemption Units (T-1)

[2] - The Creation / Redemption Units of T-1 are included.

Corporate Bonds

Num Listed Bonds	Nominal price	Issue price	Today's Rate	Exp. Date	Duration (years)	Note	Coupon attached		Trading	Corporate Bonds	Price min	Price max	Closing price	Previous closing price/date	Volume	Transactions Value	Last order		Date	ear min	Year max
							Common	Preferred									Price	Buy / Sell			
212,849,265	1.00	1.00	6.30	29/07/2020	7	---	1	---	1	MARFIN INVESTMENT GROUP S.A. SERIES B (BOND)	---	---	---	---	---	---	0.9000	B	19/08/2013	100.0000	100.0000
2,156,827	1.00	1.00	7.00	29/07/2019	6	---	1	---	1	MARFIN INVESTMENT GROUP S.A. SERIES A (BOND)	---	---	---	---	---	---	0.9600	B	19/08/2013	100.0000	100.0000
39,711,653	1.00	1.00	6.00	30/06/2016	5	4786	5	---	1	BANK OF CYPRUS PUBLIC CO. LTD (Convert. to CR sh.)	---	---	---	---	---	---	10.0000	B	13/03/2013	100.0000	100.0000
428,521,983	1.00	1.00	6.50	30/06/2016	5	4785	5	---	1	BANK OF CYPRUS PUBLIC CO. LTD (Convert. to CR sh.)	---	---	---	20.5000 14/03/2013	---	---	21.0000	B	15/03/2013	19.5000	30.0000
4,150,176	4.77	4.77	5.00	19/03/2015	5	---	14	---	1	MARFIN INVESTMENT GROUP S.A. (Conver to CR shar)	---	---	---	25.4000 12/08/2013	---	---	25.4000	B	19/08/2013	0.5000	70.0000
73,088,145	1.00	1.00	5.50	30/06/2014	5	4574	9	---	1	BANK OF CYPRUS PUBLIC CO. LTD (Convert. to CR sh.)	---	---	---	20.0000 08/03/2013	---	---	21.5000	B	15/03/2013	20.0000	26.0000
1,794,284	12.49	9.77	5.33	12/07/2015	8	---	13	---	1	NIREUS S.A. (Convertible to CR shares)	---	---	---	12.0000 26/07/2013	---	---	15.0000	B	19/08/2013	11.0000	15.0000
27,283,632	1.00	1.00	1.32	30/06/2018	10	---	11	---	1	BANK OF CYPRUS PUBLIC CO. LTD (Convert. to CR sh.)	---	---	---	33.0000 13/12/2012	---	---	35.0000	B	15/03/2013	33.0000	33.0000

4574 - The bonds are of indefinite duration.

4785 - The bonds are of indefinite duration.

4786 - The bonds are of indefinite duration. The Bond's par value, issue price and trading prices are expressed in USA Dollars, whereas its Transactions Value is expressed in Euros.

Corporate Bonds Notes

Transactions Volume = (Pieces) \* (Nominal Price). Transactions Value = (Pieces) \* (Nominal Price) \* (price %) + (Accrued interest).

The price of a Bond is stated as a percentage (%) of Bond's Nominal Price.

Nominal Price in Euros (€), except if it is noted differently.

Government Bonds

Number Listed Bonds	Nominal price	Today's Rate	Accrued Interest Calc	Exp. Date [1]	Duration (years)	Note	Coupons Date	Curr. coupon value	Trading Unit	Government Bonds	Price min	Price max	Closing price	Previous closing price/date	Volume	Transactions Value	Price	Last order Buy / Sell	Date
2,658,781,973	1.00	2.00	Actual/Actual	24/02/2023	11	---	24/02	2.00	1	GGB-FXD-240223-11Y-2.000-1.00	---	---	---	---	---	---	---	---	---
2,658,781,973	1.00	2.00	Actual/Actual	24/02/2024	12	---	24/02	2.00	1	GGB-FXD-240224-12Y-2.000-1.00	---	---	---	---	---	---	---	---	---
2,658,781,973	1.00	2.00	Actual/Actual	24/02/2025	13	---	24/02	2.00	1	GGB-FXD-240225-13Y-2.000-1.00	---	---	---	---	---	---	---	---	---
2,658,781,973	1.00	2.00	Actual/Actual	24/02/2026	14	---	24/02	2.00	1	GGB-FXD-240226-14Y-2.000-1.00	---	---	---	---	---	---	---	---	---
2,658,781,973	1.00	2.00	Actual/Actual	24/02/2027	15	---	24/02	2.00	1	GGB-FXD-240227-15Y-2.000-1.00	---	---	---	---	---	---	---	---	---
2,836,034,104	1.00	2.00	Actual/Actual	24/02/2028	16	---	24/02	2.00	1	GGB-FXD-240228-16Y-2.000-1.00	---	---	---	---	---	---	---	---	---
2,836,034,104	1.00	2.00	Actual/Actual	24/02/2029	17	---	24/02	2.00	1	GGB-FXD-240229-17Y-2.000-1.00	---	---	---	---	---	---	---	---	---
2,836,034,104	1.00	2.00	Actual/Actual	24/02/2030	18	---	24/02	2.00	1	GGB-FXD-240230-18Y-2.000-1.00	---	---	---	---	---	---	---	---	---
2,836,034,104	1.00	2.00	Actual/Actual	24/02/2031	19	---	24/02	2.00	1	GGB-FXD-240231-19Y-2.000-1.00	---	---	---	---	---	---	---	---	---
2,836,034,104	1.00	2.00	Actual/Actual	24/02/2032	20	---	24/02	2.00	1	GGB-FXD-240232-20Y-2.000-1.00	---	---	---	---	---	---	---	---	---
2,836,034,104	1.00	2.00	Actual/Actual	24/02/2033	21	---	24/02	2.00	1	GGB-FXD-240233-21Y-2.000-1.00	---	---	---	---	---	---	---	---	---
2,836,034,104	1.00	2.00	Actual/Actual	24/02/2034	22	---	24/02	2.00	1	GGB-FXD-240234-22Y-2.000-1.00	---	---	---	---	---	---	---	---	---
2,836,034,104	1.00	2.00	Actual/Actual	24/02/2035	23	---	24/02	2.00	1	GGB-FXD-240235-23Y-2.000-1.00	---	---	---	---	---	---	---	---	---
2,836,034,104	1.00	2.00	Actual/Actual	24/02/2036	24	---	24/02	2.00	1	GGB-FXD-240236-24Y-2.000-1.00	---	---	---	---	---	---	---	---	---
2,836,034,104	1.00	2.00	Actual/Actual	24/02/2037	25	---	24/02	2.00	1	GGB-FXD-240237-25Y-2.000-1.00	---	---	---	---	---	---	---	---	---
2,836,034,104	1.00	2.00	Actual/Actual	24/02/2038	26	---	24/02	2.00	1	GGB-FXD-240238-26Y-2.000-1.00	---	---	---	---	---	---	---	---	---
2,836,034,104	1.00	2.00	Actual/Actual	24/02/2039	27	---	24/02	2.00	1	GGB-FXD-240239-27Y-2.000-1.00	---	---	---	---	---	---	---	---	---
2,836,034,104	1.00	2.00	Actual/Actual	24/02/2040	28	---	24/02	2.00	1	GGB-FXD-240240-28Y-2.000-1.00	---	---	---	---	---	---	---	---	---
2,836,034,104	1.00	2.00	Actual/Actual	24/02/2041	29	---	24/02	2.00	1	GGB-FXD-240241-29Y-2.000-1.00	---	---	---	---	---	---	---	---	---
2,836,034,104	1.00	2.00	Actual/Actual	24/02/2042	30	---	24/02	2.00	1	GGB-FXD-240242-30Y-2.000-1.00	---	---	---	---	---	---	---	---	---
1,500,000	1,000.00	0.97	FLR Actual/360	10/08/2014	5	---	10/02 - 10/08	---	1	GGB-FRN-100814-05Y-1.762-1000.00	---	---	---	---	---	---	---	---	---
5,187,186	1,000.00	1.60	FLR Actual/360	21/05/2014	5	---	21/11 - 21/05	---	1	GGB-FRN-210514-05Y-2.734-1000.00	---	---	---	---	---	---	---	---	---
78,300	1,000.00	1.16	FLR Actual/360	23/07/2014	5	---	23/01 - 23/07	---	1	GGB-FRN-230714-05Y-2.018-1000.00	---	---	---	---	---	---	---	---	---

Government Bonds Notes

Transactions Volume = (Pieces) \* (Nominal Price). Transactions Value = (Pieces) \* (Nominal Price) \* (price %) + (Accrued interest).

The Value of current coupon for the issues with NV 0.01 euro refers to NV 100 euros

FLR: Floating Interest Rate.

[1] - The Expiration Date of the interest bearing period and the Date for coupon payment.

Bonds in Circulation	Currency / Min nominal traded Value	Coupons Payment Date	Current Coupon Value	Note	Coupon Attached	Trading Unit	Issue Date	Duration (years)	Today's Interest	A.I.C in days	Bonds	Last price of previous days	Last Outcry in Cash (euro) Price	Buy / Sell	Trades in Pieces	Life min	Life Max
Bonds of International Organizations																	
1,000,000	EUR / 1000	21/07	---	---	8	1	21/07/2006	10	5.0 FLR	360	EUROPEAN INVESTMENT BANK BOND	97.50	16/04/2007	---	---	---	---
Corporate Bonds in Foreign Currency and Euro																	
103,746	GBP / 10	01/12	0.25	---	54	1	01/12/1930	98	2.5	360	National Mortgage Bank	2.27	05/02/1996	2.27	S	05/02/1996	2.27
0	GBP / 10	01/12	0.25	---	56	1	01/12/1928	100	2.5	360	National Mortgage Bank	---	---	---	---	---	---

Government Bonds Notes

A.I.C: Accrued Interest Calculation base.  
FLR: Floating Interest Rate.  
The minimum tradeable Nominal Value for all Demeterialised Government Titles is 100 Euros.

State Banks Bonds (one year maturity)

Number Listed Bonds	Nominal value	Initial Rate	Current Rate	Annual Interest	Issue Date	Note	State Banks Bonds	Trading Unit	Yearly Renewals	Last Outcry in Cash (euro) Price	Buy / Sell	Volume
342,560	130.41	2.35	3.92	0.00	31/01/2005	---	H.I.D.B.	1	9	100.00	B	---
16,015	1,211.71	3.65	2.47	0.00	30/11/2006	---	H.I.D.B.	1	7	---	---	---
2,446	1,154.00	4.90	2.47	28.96	31/05/2008	---	H.I.D.B.	1	6	---	---	---
171,117	1,163.28	5.50	2.47	29.19	31/05/2008	---	H.I.D.B.	1	6	---	---	---
63,787	1,101.48	5.45	2.47	30.88	31/08/2008	---	H.I.D.B.	1	5	---	---	---
54,559	1,129.20	5.45	2.47	28.34	31/08/2008	---	H.I.D.B.	1	5	---	---	---
77,348	1,130.82	5.60	2.47	28.38	31/08/2008	---	H.I.D.B.	1	5	---	---	---
165,926	1,130.82	5.60	2.47	28.38	31/08/2008	---	H.I.D.B.	1	5	---	---	---
5,358	1,108.96	5.45	2.47	27.83	31/10/2008	---	H.I.D.B.	1	5	---	---	---
1,045	1,129.74	5.50	2.47	28.35	31/10/2008	---	H.I.D.B.	1	5	---	---	---
76,077	1,132.45	5.75	2.47	28.42	31/10/2008	---	H.I.D.B.	1	5	---	---	---

Bonds Notes

The annual renewal of H.I.D.B. Bonds is free of taxes (net rate).  
For Bonds issue until 31/07/2013 the accrued interest is capitalized.

Athex & ATHEXClear Members List

Member Name			Stock Market			Derivatives Market			ATHEXClear Member		
Address	Phone	Fax	Market Member	Remote Member	Market Maker	Proprietary	Market Maker	Agent	General Clearing	Direct Clearing	Non Clearing
A. SARRIS SECURITIES S.A.			a								
6, DRAGATSANIOU STR. ATHINA	(210)-3367700	(210)-3312324									
AGRICULTURAL BANK OF GREECE S.A.			a				a			a	
, 23 PANEPISTIMIOU ATHINA	(210)-3298400	(210)-3298322									
ALPHA FINANCE INVESTMENT SERVICES S.A.			a		a		a			a	
5, MERLIN STR. ATHINA	(210)-3677400	(210)-3311193									
ALPHA BANK A.E.						a			a		
40, STADIOU STR ATHINA	(210)-3265546	(210)-3265811									
	(210)-3260000	(210)-3264116									
ARGUS STOCKBROKERS LTD			a	a							
12-14, KENNEDY AVE, S. 303 NICOSIA	(+35722)-22717000	(+35722)-22717070									
ATHENAIKI BROKERAGE FIRM S.A.			a								
33, STADIOU STR. ATHINA	(210)-3254764	(210)-3254767									
ATLANTIC SECURITIES LIMITED			a	a							
37, PRODROMOU STR. NICOSIA	(+35722)-445400	(+35722)-661914									
ATLAS SECURITIES S.A			a			a					a
14 - 16, VERVENON STR.& 125 MICHALAKOPOULOU STR. ATHINA	(210)-3363300	(210)-3238925									
ATTICA BANK S.A.									a		
54, AKADIMIAS STR. ATHINA	(210)-3390757	(210)-3646090									
23, OMIROU STR. ATHINA	(210)-3669000	(210)-3669410									
AXIA VENTURES GROUP LTD			a	a							
10, G. KRANIDIOTI NICOSIA	+357 22 742000	+357 22 742001									
AXON SECURITIES S.A.			a			a					a
48, STADIOU ATHINA	(210)-3363800	(210)-3243903									
BANK OF CYPRUS PUBLIC COMPANY LTD									a		
, 51,STASINOU (AG. PARASKEVI, STROVOLOS) NICOSIA	(0035722)-121883	(0035722)-336258									
170, ALEXANDRAS AVE ATHINA	(210)-6477708	(210)-6477709									
BETA SECURITIES S.A.			a		a	a	a			a	
, BRAILA & 29 ALEXANDRAS AVE ATHINA	(210)-6478900	(210)-6410139									
BNP PARIBAS SECURITIES SERVICES									a		
94, VAS. SOFIAS AVE ATHINA	(210)-7468500	(210)-7468579									
CAPITAL SECURITIES S.A.			a			a					a
58, MITROPOLEOS STR. ATHINA	(210)-3369700	(210)-3369820									
CFS SECURITIES & INVESTMENT SERVICES S.A.			a		a			a		a	
3, STADIOU STR. ATHINA	(210)-3360800	(210)-3311854									
CITIGROUP GLOBAL MARKET LTD			a	a							
, CITIGROUP CENTRE, CANADA SQUARE, CANARY WHART LONDON	002079864000	002079862266									
CO-OPERATIVE CENTRAL BANK LTD			a	a							
8, GRIGORI AFXENTIOU STR. NICOSIA	(+35722)-743300	(+35722)-672083									
CREDIT AGRICOLE CHEUVREUX S.A.			a	a							
, 9 QUAI PAUL DOUMER PARIS	33 (0) 1 41 89 70 00										
CREDIT SUISSE SECURITIES (EUROPE) LIMITED			a	a							
, ONE CABOT SQUARE LONDON	+44 20 7888 8888	+44 20 7888 1600									
CYCLOS SECURITIES S.A.			a		a	a				a	
39, PANEPISTIMIOU STR. ATHINA	(210)-3364300	(210)-3239122									
D.A. TSEKOURAS SEC. S.A.			a								
3, PESMAZOGLOU STR. ATHINA	(210)-3214406	(210)-3211997									
DEUTSCHE BANK S.A.			a	a							
70, THEODOR-HEUSS-ALLEE FRANKFURT	0049 69 910 00	0049 69 910 34 225									
DYNAMIC SECURITIES			a					a		a	
6 - 10, CHAR. TRIKOUPI STR. ATHINA	(210)-3677700	(210)-3677777									
EL. PETROPOULAKIS SECURITIES S.A.			a					a			a
9, ARISTIDOU STR. ATHINA	(210)-3213928	(210)-3216810									
EUROBANK EQUITIES S.A.			a		a		a			a	
10, FILELLINON STR. ATHINA	(210)-3720000	(210)-3720001									
EUROBANK ERGASIAS S.A.									a		
8, OTHONOS STR. ATHINA	(210)-3337000	(210)-3233866									
	(210)-3337969	(210)-3245916									
EUROCORP SECURITIES S.A.			a			a				a	
14, FILIKIS ETAIRIAS SQ. ATHINA	(210)-7263500	(210)-7263666									
EUOTRUST BROKERAGE S.A.			a								
13-15, SOPHOCLEOUS STR. ATHINA	(210)-3363100	(210)-3238334									

Athex & ATHEXClear Members List

Member Name			Stock Market			Derivatives Market			ATHEXClear Member		
Address	Phone	Fax	Market Member	Remote Member	Market Maker	Proprietary	Market Maker	Agent	General Clearing	Direct Clearing	Non Clearing
EUROXX SECURITIES S.A.			a			a				a	
7, PALAIOLOGOU STR. CHALANDRI	(210)-6879400	(210)-6879401									
G.A. PERVANAS SECURITIES & INVESTMENT SERVICES CO S.A.			a			a					a
7 - 9, SOPHOCLEOUS STR. ATHINA	(210)-3251875	(210)-3210291									
GENERAL BANK OF GREECE S.A.									a		
87-89, ERMOY ATHINA	(210)-6976072	(210)-6976079									
, 109-111, MESOGEION AVE. ATHINA	(210)-6975000	(210)-6975706									
GLOBAL CAPITAL SECURITIES AND FINANCIAL SERVICES LTD			a	a							
5, LEMESOU AVE. LEMESOS CYPRUS	(+35722)-710710	(+35722)-339332									
GUARDIAN TRUST SECURITIES S.A			a		a	a					a
15, FILELLINON STR. ATHINA	(210)-3220402	(210)-3220498									
HELLENIC AMERICAN SEC. S.A.			a			a					
6, EVRIPIDOU STR. ATHINA	(210)-3311100	(210)-3215968									
HELLENIC BANK (INVESTMENTS) LTD			a	a							
31, KYRIAKOY MATSI AVE. NICOSIA	(+35722)-500100	(+35722)-500110									
HSBC BANK PLC									a		
109-111, MESOGION AVE ATHINA	(210)-6961507	(210)-6929310									
INDEX SECURITIES S.A.			a								
6, DRAGATSANIOU STR. ATHINA	(210)-3213920	(210)-3213216									
INTERSEC S.A.						a				a	
80-88, SYGROU AVE ATHINA	(210)-9203000	(210)-9203052									
INVESTMENT BANK OF GREECE S.A.			a		a		a		a		
32, AIGEIALIAS MAROUSI	(210) 8173000	(210) 8173101									
24B, KIFISSIAS AVE MAROUSI	(210)-8171800	(210)-8171889									
J. CHR. MAVRIKIS SECURITIES S.A.			a								
5, SOPHOCLEOUS STR. ATHINA	(210)-3213949	(210)-3217767									
KAPPA SECURITIES S.A.			a			a					a
15, VALAORITOU STR. ATHINA	(210)-3610371	(210)-3641002									
KYPROU SECURITIES S.A.			a		a	a					a
26, HALKIDONOS & FIDIPPIDOY STR. ATHINA	(210)-8701000	(210)-8701049									
LAIKI FINANCIAL SERVICES LTD			a	a							
26, CLR HOUSE, VIRONOS AVE. NICOSIA	(+35722)-898600	(+35722)-680953									
LEON DEPOLAS SECURITIES S.A.			a					a			a
1, CHR. LADA STR. ATHINA	(210)-3213286	(210)-3211618									
MAGNA TRUST SECURITIES S.A			a					a			a
9, FIDIOU STR. ATHINA	(210)-3327503	(210)-3327599									
MEGA EQUITY SECURITIES & FINANCIAL SERVICES LTD			a	a							
42-44, GRIBA DIGENI AV. NICOSIA	(+35722)-711711	(+35722)-711811									
MERIT SECURITIES S.A			a		a	a				a	
38, VAS. KONSTANTINOY STR. ATHINA	(210)-3671800	(210)-3671830									
MERRILL LYNCH			a	a							
2, KING EDWARD STREET LONDON	(+4420)-79952000	(+4420)-79954525									
METOCHIKI SECURITIES S.A.			a								
3, G. GENNADIOY STR. ATHINA	(210)-3306700	(210)-3306709									
MIDAS BROKERAGE S.A.			a								
5, SOPHOCLEOUS STR. ATHINA	(210)-3253203	(210)-3253205									
N. CHRYSOCHOIDIS STOCK BROKERAGE I.S.S.A.			a					a		a	
7 - 9, SOPHOCLEOUS STR. ATHINA	(210)-3213913	(210)-3216115									
N. SARROS SECURITIES S.A.						a					
7-9, SOPHOCLEOUS STR. ATHINA	(210)-3705600	(210)-3219992									
NATIONAL BANK OF GREECE S.A.							a		a		
86, AIOLOU STR. ATHINA	(210)-3341000	(210)-3228187									
68, AKADIMIAS STR. ATHINA	(210)-3328817	(210)-3328678									
NBG SECURITIES S.A.			a		a		a				a
68, AKADIMIAS STR. ATHINA	(210)-3328500	(210)-3328565									
NEW PROTON BANK S.A.			a			a				a	
20, ESLIN & AMALIADOS ATHINA	210 6970000	210 6970111									
NUNTIUS SECURITIES S.A			a					a			a
6, DRAGATSANIOU STR. ATHINA	(210)-3350599	(210)-3254846									
OLYMPIA SECURITIES S.A			a								
46B, A. METAXA STR. GLYFADA	(210)-3702500	(210)-3702520									
ORANGE PARTNERS SECURITIES S.A			a								
5, TZORTZ STR. ATHINA	(210)-3300009	(210)-3305240									



Athex & ATHEXClear Members List

Member Name			Stock Market			Derivatives Market			ATHEXClear Member		
Address	Phone	Fax	Market Member	Remote Member	Market Maker	Proprietary	Market Maker	Agent	General Clearing	Direct Clearing	Non Clearing
PANTELAKIS SEC. S.A.			a			a					a
109-111, MESOGION AVE. ATHINA	(210)-6965000	(210)-6929550									
PEGASUS BROKERAGE FIRM S.A			a			a					
17, VALAORITOU STR. ATHINA	(210)-3670700	(210)-3670760									
PIRAEUS BANK S.A.								a	a		
4, AMERIKIS STR ATHINA	(210)-3335918	(210)-3254207									
4, AMERIKIS STR. ATHINA	(210)-3335000	(210)-3335079									
PIRAEUS SECURITIES S.A.			a				a			a	
10, STADIOU STR. ATHINA	(210)-3354100	(210)-3233814									
PRELIUM SECURITIES & INVESTMENT SERVICES S.A.			a			a					a
, KIFISSIAS AVE & 1 DAVAKI STR ATHINA	(210)-3677000	(210)-6920403									
PROBANK S.A.			a								
10, AMERIKIS STR. ATHINA	(210)-3392631	(210)-3392646									
PROCHOICE SECURITIES LTD			a	a							
57, SPYROU KYPRIANOY NICOSIA	+357-24-661192	+357-24-662464									
SHARELINK SECURITIES & FINANCIAL SERVICES LTD			a	a							
6, ELLINAS HOUSE, THEOTOKI STR. NICOSIA	(+35722)-554200	(+35722)-750852									
SOCIETE GENERALE S.A.			a	a		a					
17, COURS VALMY PUTEAUX - LA DEFENSE PARIS	(+33) 142134754	(+33) 142135697									
240-242, KIFISIAS AVE ATHINA	(210)-6790161	(210)-6728828									
SOLIDUS SECURITIES S.A			a			a				a	
64, LOUIZIS RIANKOUR STR. ATHINA	(210)-6925500	(210)-6985421									
SOTIRIADIS SECURITIES S.A.			a								
7, VALAORITOU STR. ATHINA	(210)-3636943	(210)-3601943									
ST. EM. LAVRENTAKIS SECURITIES S.A.			a			a					a
7 - 9, SOPHOCLEOUS STR. ATHINA	(210)-3213336	(210)-3246572									
THE CYPRUS INVESTMENT AND SECURITIES CORPORATION LIMITED (CISCO)			a	a							
4, EVROU STR. (EUROLIFE HOUSE) NICOSIA	(+35722)-881800	(+35722)-881801									
UBS LIMITED			a	a							
1, FINSBURY AVENUE LONDON	(+4420)-79013333	(+4420)-79012345									
Z.G. PORTALAKIS INVESTMENT SERVICES S.A.			a								
8, PESMAZOGLOU STR. ATHINA	(210)-3214830	(210)-3212024									
KARAMANOF SECURITIES & INV. SERVICES S.A.			a					a		a	
2, SQ. ST THEODORON ATHINA	(210)-3212947	(210)-3217088									

## List of Stocks under Market Making operations

Securities	Stock Category	
	Start Market Making	End Market Making
<b>BANK OF CYPRUS (CR)</b>	<b>Under Suspension</b>	
EUROBANK EQUITIES S.A.	23/10/2012	22/10/2013
INVESTMENT BANK OF GREECE S.A.	02/01/2013	01/01/2014
<b>COCA - COLA HBC (CR)</b>	<b>Under Suspension</b>	
EUROBANK EQUITIES S.A.	23/10/2012	22/10/2013
INVESTMENT BANK OF GREECE S.A.	08/01/2013	07/01/2014
<b>CYPRUS POPULAR BANK (CR)</b>	<b>Under Suspension</b>	
PIRAEUS SECURITIES S.A.	02/02/2013	01/02/2014
<b>ALPHA BANK (CR)</b>	<b>Main Market</b>	
EUROBANK EQUITIES S.A.	24/10/2012	23/10/2013
INVESTMENT BANK OF GREECE S.A.	08/01/2013	07/01/2014
MERIT SECURITIES S.A.	03/09/2012	02/09/2013
NBG SECURITIES S.A.	15/01/2013	14/01/2014
PIRAEUS SECURITIES S.A.	28/05/2013	27/05/2014
<b>ALUMIL (CR)</b>	<b>Main Market</b>	
BETA SECURITIES S.A.	18/07/2013	17/07/2014
<b>CC HBC AG (CR)</b>	<b>Main Market</b>	
NBG SECURITIES S.A.	29/04/2013	28/04/2014
<b>ELLAKTOR (CR)</b>	<b>Main Market</b>	
EUROBANK EQUITIES S.A.	01/06/2013	31/05/2014
INVESTMENT BANK OF GREECE S.A.	02/01/2013	01/01/2014
NBG SECURITIES S.A.	25/06/2013	24/06/2014
<b>ELTON SA (CR)</b>	<b>Main Market</b>	
BETA SECURITIES S.A.	03/09/2012	02/09/2013
<b>EUROBANK ERGASIAS (CR)</b>	<b>Main Market</b>	
ALPHA FINANCE INVESTMENT SERVICES S.A.	08/01/2013	07/01/2014
EUROBANK EQUITIES S.A.	01/06/2013	31/05/2014
INVESTMENT BANK OF GREECE S.A.	08/01/2013	07/01/2014
<b>GEK TERNA (CR)</b>	<b>Main Market</b>	
INVESTMENT BANK OF GREECE S.A.	02/01/2013	01/01/2014
<b>GR. SARANTIS SA (CR)</b>	<b>Main Market</b>	
BETA SECURITIES S.A.	14/05/2013	13/05/2014
<b>HELLENIC EXCHANGES (CR)</b>	<b>Main Market</b>	
EUROBANK EQUITIES S.A.	01/06/2013	31/05/2014
INVESTMENT BANK OF GREECE S.A.	02/01/2013	01/01/2014
NBG SECURITIES S.A.	25/06/2013	24/06/2014
<b>INTRACOM CONSTR. (CR)</b>	<b>Main Market</b>	
MERIT SECURITIES S.A.	27/12/2012	26/12/2013
<b>INTRALOT (CR)</b>	<b>Main Market</b>	
EUROBANK EQUITIES S.A.	01/06/2013	31/05/2014
INVESTMENT BANK OF GREECE S.A.	02/01/2013	01/01/2014
<b>MARFIN INVESTMENT GROUP (CR)</b>	<b>Main Market</b>	
PIRAEUS SECURITIES S.A.	02/02/2013	01/02/2014
<b>MLS MULTIMEDIA SA (CR)</b>	<b>Main Market</b>	
BETA SECURITIES S.A.	18/07/2013	17/07/2014
<b>MOTOR OIL (CR)</b>	<b>Main Market</b>	
EUROBANK EQUITIES S.A.	23/10/2012	22/10/2013
<b>MYTILINEOS HOLDINGS (CR)</b>	<b>Main Market</b>	
INVESTMENT BANK OF GREECE S.A.	02/01/2013	01/01/2014
NBG SECURITIES S.A.	25/06/2013	24/06/2014
<b>NATIONAL BANK (CR)</b>	<b>Main Market</b>	
ALPHA FINANCE INVESTMENT SERVICES S.A.	08/01/2013	07/01/2014
EUROBANK EQUITIES S.A.	24/10/2012	23/10/2013
INVESTMENT BANK OF GREECE S.A.	08/01/2013	07/01/2014
MERIT SECURITIES S.A.	03/09/2012	02/09/2013
NBG SECURITIES S.A.	28/02/2013	27/02/2014
<b>OPAP (CR)</b>	<b>Main Market</b>	
ALPHA FINANCE INVESTMENT SERVICES S.A.	08/01/2013	07/01/2014
EUROBANK EQUITIES S.A.	24/10/2012	23/10/2013
INVESTMENT BANK OF GREECE S.A.	08/01/2013	07/01/2014
NBG SECURITIES S.A.	15/01/2013	14/01/2014
<b>OTE (CR)</b>	<b>Main Market</b>	
ALPHA FINANCE INVESTMENT SERVICES S.A.	08/01/2013	07/01/2014
EUROBANK EQUITIES S.A.	24/10/2012	23/10/2013
INVESTMENT BANK OF GREECE S.A.	08/01/2013	07/01/2014
NBG SECURITIES S.A.	01/12/2012	30/11/2013
<b>PETROPOULOS PETROS (CR)</b>	<b>Main Market</b>	
BETA SECURITIES S.A.	28/05/2013	27/05/2014

## List of Stocks under Market Making operations

Securities	Stock Category	
	Start Market Making	End Market Making
Market Maker		
<b>PIRAEUS BANK (CR)</b>	<b>Main Market</b>	
EUROBANK EQUITIES S.A.	23/10/2012	22/10/2013
INVESTMENT BANK OF GREECE S.A.	08/01/2013	07/01/2014
NBG SECURITIES S.A.	02/06/2013	01/06/2014
PIRAEUS SECURITIES S.A.	16/02/2013	15/02/2014
<b>PPC (CR)</b>	<b>Main Market</b>	
ALPHA FINANCE INVESTMENT SERVICES S.A.	08/01/2013	07/01/2014
EUROBANK EQUITIES S.A.	23/10/2012	22/10/2013
INVESTMENT BANK OF GREECE S.A.	08/01/2013	07/01/2014
NBG SECURITIES S.A.	26/03/2013	25/03/2014
<b>S.KANAKIS SA (CR)</b>	<b>Main Market</b>	
BETA SECURITIES S.A.	01/10/2012	30/09/2013
<b>TITAN CEMENT (CR)</b>	<b>Main Market</b>	
EUROBANK EQUITIES S.A.	23/10/2012	22/10/2013
<b>VIOHALCO (CB)</b>	<b>Main Market</b>	
ALPHA FINANCE INVESTMENT SERVICES S.A.	11/02/2013	10/03/2014
EUROBANK EQUITIES S.A.	20/01/2013	19/01/2014
MERIT SECURITIES S.A	13/12/2012	12/12/2013

Underlying Asset				Derivatives Market																		
Price max	Price min	Closing price	change	Delivery Month	Open price	Price max	Price min	Last price	Closing price	Last Bid	Last Ask	Settlement price	change	Life high	Life low	Trades	Volume	change	Value	change	Open Interest	change
FTSE/Athex Large Cap				(Trade Unit: 1 Index Point x 5€, Cash Settlement)																		
321.28	312.40	314.36	-2.86%	September 2013	323.00	323.00	315.00	315.00	315.25	5@314.75	29@315.50	315.25	-2.93%	346.00	271.00	366	3,700	-42.58%	5,867,883.75	-43.94%	47,562	0.14%
				October 2013	320.25	320.50	317.25	317.25	317.25	1@316.25	10@318.00	317.25	-3.20%	338.75	292.25	12	26	-85.47%	41,387.50	-85.82%	741	-0.40%
				November 2013	---	---	---	---	---	---	1@327.00	---	---	---	---	---	---	---	---	---	---	
				December 2013	---	---	---	---	319.25	1@318.00	---	319.25	-2.96%	343.00	276.75	---	---	-100.00%	---	-100.00%	523	0.00%
				March 2014	---	---	---	---	---	---	---	---	---	---	---	---	---	---	---	---	---	
				June 2014	---	---	---	---	---	---	---	---	---	---	---	---	---	---	---	---	---	

Underlying Asset				Derivatives Market																		
Price max	Price min	Closing price	change	Delivery Month	Open price	Price max	Price min	Last price	Closing price	Last Bid	Last Ask	Settlement price	change	Life high	Life low	Trades	Volume	change	Value	change	Open Interest	change
ALPHA BANK (CR)				(Contract Size: 100 Securities, Physical Delivery)																		
0.531	0.498	0.511	-3.58%	September 2013	0.526	0.531	0.499	0.509	0.506	100@0.507	5@0.510	0.506	-3.98%	1.46	0.371	135	3,316	70.14%	169,349.50	65.54%	16,742	1.45%
				December 2013	---	---	---	---	0.501	---	5@0.530	0.501	-4.02%	0.470	0.437	---	---	---	---	---	102	0.00%
				March 2014	---	---	---	---	---	---	---	---	---	---	---	---	---	---	---	---	---	---
				June 2014	---	---	---	---	---	---	---	---	---	---	---	---	---	---	---	---	---	---
CC HBC AG (CR)				(Contract Size: 100 Securities, Physical Delivery)																		
20.79	20.21	20.28	-1.89%	September 2013	20.69	20.69	20.32	20.45	20.41	1@20.25	5@20.39	20.41	-1.88%	22.33	16.93	8	15	-89.51%	30,662.00	-89.61%	769	0.39%
				December 2013	---	---	---	---	20.55	---	5@20.57	20.55	-1.86%	18.06	17.90	---	---	---	---	---	5	0.00%
				March 2014	---	---	---	---	---	---	---	---	---	---	---	---	---	---	---	---	---	---
				June 2014	---	---	---	---	---	---	---	---	---	---	---	---	---	---	---	---	---	---
CORINTH PIPEWORKS SA (CR)				(Contract Size: 100 Securities, Physical Delivery)																		
2.22	2.15	2.15	-3.15%	September 2013	2.15	2.15	2.15	2.15	2.20	1@2.12	1@2.15	2.20	-3.08%	2.48	1.98	1	1	-80.00%	215.00	-80.67%	441	0.00%
				December 2013	---	---	---	---	---	---	1@2.20	---	---	---	---	---	---	---	---	---	---	---
				March 2014	---	---	---	---	---	---	---	---	---	---	---	---	---	---	---	---	---	---
				June 2014	---	---	---	---	---	---	---	---	---	---	---	---	---	---	---	---	---	---
ELLAKTOR (CR)				(Contract Size: 100 Securities, Physical Delivery)																		
2.30	2.19	2.19	-4.78%	September 2013	2.22	2.27	2.20	2.20	2.19	7@2.19	1@2.25	2.19	-4.78%	2.45	1.73	30	108	52.11%	24,021.00	47.40%	4,376	0.07%
				December 2013	---	---	---	---	2.19	7@2.16	1@2.28	2.19	-4.78%	2.17	2.11	---	---	---	---	---	---	---
				March 2014	---	---	---	---	---	---	---	---	---	---	---	---	---	---	---	---	---	---
				June 2014	---	---	---	---	---	---	---	---	---	---	---	---	---	---	---	---	---	---
EUROBANK ERGASIAS (CR)				(Contract Size: 10 Securities, Physical Delivery)																		
0.680	0.633	0.633	-7.32%	September 2013	0.670	0.670	0.621	0.621	0.632	20@0.621	12@0.631	0.632	-6.37%	5.00	0.537	22	1,260	5.18%	8,097.95	-2.17%	20,318	-1.07%
				December 2013	0.650	0.651	0.650	0.651	0.650	1@0.651	20@0.730	0.650	-9.09%	0.700	0.600	3	3	---	195.20	---	1,669	0.18%
				March 2014	---	---	---	---	0.630	---	---	0.630	-6.39%	0.673	0.619	---	---	---	---	---	---	---
				June 2014	---	---	---	---	---	---	---	---	---	---	---	---	---	---	---	---	---	---
EUROBANK PROPERTIES REIC (CR)				(Contract Size: 100 Securities, Physical Delivery)																		
7.30	6.92	7.15	-1.38%	September 2013	7.15	7.18	6.96	7.18	7.17	1@6.93	1@7.20	7.17	-0.97%	7.67	6.00	20	46	228.57%	32,487.00	211.78%	275	0.73%
				December 2013	---	---	---	---	---	---	1@7.26	---	---	---	---	---	---	---	---	---	---	---
				March 2014	---	---	---	---	---	---	---	---	---	---	---	---	---	---	---	---	---	---
				June 2014	---	---	---	---	---	---	---	---	---	---	---	---	---	---	---	---	---	---
EYDAP S.A. (CR)				(Contract Size: 100 Securities, Physical Delivery)																		
6.15	5.92	6.04	-2.26%	September 2013	6.35	6.35	5.97	6.07	6.18	1@6.05	1@6.11	6.18	-2.22%	6.67	5.58	7	37	54.17%	22,330.00	46.48%	211	5.50%
				December 2013	---	---	---	---	---	---	1@6.16	---	---	---	---	---	---	---	---	---	---	---
				March 2014	---	---	---	---	---	---	---	---	---	---	---	---	---	---	---	---	---	---
				June 2014	---	---	---	---	---	---	---	---	---	---	---	---	---	---	---	---	---	---
FOLLI FOLLIE (CR)				(Contract Size: 100 Securities, Physical Delivery)																		
18.35	17.84	18.25	-0.55%	September 2013	18.19	18.26	17.95	18.26	18.30	1@17.26	1@18.33	18.30	-0.54%	18.86	14.68	7	18	350.00%	32,567.00	353.83%	243	0.41%
				December 2013	---	---	---	---	---	---	1@18.51	---	---	---	---	---	---	---	---	---	---	---
				March 2014	---	---	---	---	---	---	---	---	---	---	---	---	---	---	---	---	---	---
				June 2014	---	---	---	---	---	---	---	---	---	---	---	---	---	---	---	---	---	---

Underlying Asset				Derivatives Market																		
Price max	Price min	Closing price	change	Delivery Month	Open price	Price max	Price min	Last price	Closing price	Last Bid	Last Ask	Settlement price	change	Life high	Life low	Trades	Volume	change	Value	change	Open Interest	change
FRIGOGLASS SA (CR)				(Contract Size: 100 Securities, Physical Delivery)																		
4.97	4.83	4.97	-0.20%	September 2013	4.91	4.92	4.86	4.90	4.90	4@4.89	4@4.94	4.90	-0.61%	5.71	4.35	11	30	-21.05%	14,660.00	-22.11%	473	-2.87%
				December 2013	---	---	---	---	---	---	4@5.00	---	---	---	---	---	---	---	---	---	---	---
				March 2014	---	---	---	---	---	---	---	---	---	---	---	---	---	---	---	---	---	---
				June 2014	---	---	---	---	---	---	---	---	---	---	---	---	---	---	---	---	---	---
GEK TERNA (CR)				(Contract Size: 100 Securities, Physical Delivery)																		
2.38	2.28	2.31	-3.75%	September 2013	2.36	2.36	2.30	2.31	2.33	8@2.29	3@2.33	2.33	-3.72%	2.62	1.45	31	253	57.14%	58,650.00	52.28%	16,476	-0.76%
				December 2013	---	---	---	---	2.31	5@2.22	3@2.37	2.31	-3.75%	2.51	1.57	---	---	---	---	---	---	---
				March 2014	---	---	---	---	2.31	---	---	2.31	-3.75%	2.50	2.26	---	---	---	---	---	15,895	0.00%
				June 2014	---	---	---	---	---	---	---	---	---	---	---	---	---	---	---	---	---	---
HELLENIC EXCHANGES (CR)				(Contract Size: 100 Securities, Physical Delivery)																		
6.14	6.02	6.09	-1.46%	September 2013	6.08	6.12	6.01	6.05	6.03	2@6.00	1@6.07	6.03	-1.95%	6.46	3.82	25	62	113.79%	37,490.00	110.89%	2,461	-1.52%
				December 2013	---	---	---	---	6.05	---	1@6.13	6.05	-1.94%	6.85	4.01	---	---	---	---	---	---	---
				March 2014	---	---	---	---	---	---	---	---	---	---	---	---	---	---	---	---	---	---
				June 2014	---	---	---	---	---	---	---	---	---	---	---	---	---	---	---	---	---	---
HELLENIC PETROLEUM (CR)				(Contract Size: 100 Securities, Physical Delivery)																		
7.90	7.54	7.79	-1.39%	September 2013	7.87	7.87	7.56	7.76	7.75	1@7.64	1@7.75	7.75	-0.64%	9.01	6.00	39	151	46.60%	115,637.00	47.18%	2,568	-0.39%
				December 2013	---	---	---	---	7.67	---	1@7.81	7.67	-0.65%	7.72	6.61	---	---	-100.00%	---	-100.00%	---	---
				March 2014	---	---	---	---	---	---	---	---	---	---	---	---	---	---	---	---	---	---
				June 2014	---	---	---	---	---	---	---	---	---	---	---	---	---	---	---	---	---	---
INTRALOT (CR)				(Contract Size: 100 Securities, Physical Delivery)																		
1.81	1.69	1.69	-6.11%	September 2013	1.75	1.75	1.70	1.70	1.68	2@1.69	1@1.72	1.68	-6.15%	2.30	1.30	16	96	-17.95%	16,561.00	-19.79%	4,599	-0.54%
				December 2013	---	---	---	---	---	---	1@1.75	---	---	---	---	---	---	---	---	---	---	---
				March 2014	---	---	---	---	---	---	---	---	---	---	---	---	---	---	---	---	---	---
				June 2014	---	---	---	---	---	---	---	---	---	---	---	---	---	---	---	---	---	---
JUMBO SA (CR)				(Contract Size: 100 Securities, Physical Delivery)																		
8.90	8.58	8.90	0.22%	September 2013	8.62	8.80	8.62	8.80	8.72	1@8.41	1@8.82	8.72	0.23%	9.03	7.19	6	10	-71.43%	8,662.00	-71.66%	383	-0.78%
				December 2013	---	---	---	---	---	---	1@8.87	---	---	---	---	---	---	---	---	---	---	---
				March 2014	---	---	---	---	---	---	---	---	---	---	---	---	---	---	---	---	---	---
				June 2014	---	---	---	---	---	---	---	---	---	---	---	---	---	---	---	---	---	---
MARFIN INVESTMENT GROUP (CR)				(Contract Size: 100 Securities, Physical Delivery)																		
0.328	0.303	0.305	-7.86%	September 2013	0.327	0.328	0.300	0.309	0.306	30@0.303	20@0.309	0.306	-7.83%	0.420	0.252	34	344	81.05%	10,872.00	72.27%	19,093	-0.09%
				December 2013	---	---	---	---	---	---	20@0.319	---	---	---	---	---	---	---	---	---	---	---
				March 2014	---	---	---	---	---	---	---	---	---	---	---	---	---	---	---	---	---	---
				June 2014	---	---	---	---	---	---	---	---	---	---	---	---	---	---	---	---	---	---
METKA (CR)				(Contract Size: 100 Securities, Physical Delivery)																		
11.38	10.97	10.97	-4.77%	September 2013	11.15	11.21	10.96	10.96	10.88	1@10.90	5@10.99	10.88	-4.73%	12.18	9.43	9	14	27.27%	15,474.00	24.29%	476	-1.86%
				December 2013	---	---	---	---	10.87	---	5@11.08	10.87	-4.73%	10.67	10.52	---	---	---	---	---	---	---
				March 2014	---	---	---	---	---	---	---	---	---	---	---	---	---	---	---	---	---	---
				June 2014	---	---	---	---	---	---	---	---	---	---	---	---	---	---	---	---	---	---

Underlying Asset				Derivatives Market																			
Price max	Price min	Closing price	change	Delivery Month	Open price	Price max	Price min	Last price	Closing price	Last Bid	Last Ask	Settlement price	change	Life high	Life low	Trades	Volume	change	Value	change	Open Interest	change	
MOTOR OIL (CR)				(Contract Size: 100 Securities, Physical Delivery)																			
7.90	7.65	7.69	-3.88%	September 2013	7.90	7.90	7.69	7.70	7.74	2@7.66	5@7.73	7.74	-0.77%	8.16	6.66	19	136	216.28%	105,909.00	214.02%	737	3.22%	
				December 2013	---	---	---	---	---	---	5@7.79	---	---	---	---	---	---	---	---	---	---	---	
				March 2014	---	---	---	---	---	---	---	---	---	---	---	---	---	---	---	---	---	---	
				June 2014	---	---	---	---	---	---	---	---	---	---	---	---	---	---	---	---	---	---	
MYTILINEOS HOLDINGS (CR)				(Contract Size: 100 Securities, Physical Delivery)																			
4.64	4.44	4.52	-3.21%	September 2013	4.64	4.64	4.41	4.50	4.44	2@4.44	2@4.49	4.44	-4.72%	5.50	3.50	71	341	450.00%	154,527.00	438.72%	4,960	-1.06%	
				December 2013	4.61	4.61	4.55	4.55	4.48	---	2@4.53	4.48	-4.68%	5.28	3.70	4	60	---	27,625.00	---	65	-38.10%	
				March 2014	---	---	---	---	4.46	---	---	4.46	-4.70%	4.81	4.72	---	---	---	---	---	50	0.00%	
				June 2014	---	---	---	---	---	---	---	---	---	---	---	---	---	---	---	---	---	---	
NATIONAL BANK (CR)				(Contract Size: 100 Securities, Physical Delivery)																			
3.14	2.95	2.96	-6.03%	September 2013	3.10	3.13	2.95	2.95	2.99	16@2.95	3@2.96	2.99	-5.68%	3.25	0.344	173	1,900	13.10%	574,981.00	10.20%	5,831	4.07%	
				December 2013	---	---	---	---	3.05	16@2.92	3@2.99	3.05	-5.57%	2.50	2.31	---	---	---	---	---	---	---	---
				March 2014	---	---	---	---	---	---	---	---	---	---	---	---	---	---	---	---	---	---	
				June 2014	---	---	---	---	---	---	---	---	---	---	---	---	---	---	---	---	---	---	
OPAP (CR)				(Contract Size: 100 Securities, Physical Delivery)																			
7.41	7.22	7.26	-3.33%	September 2013	7.33	7.37	7.18	7.23	7.24	1@7.19	5@7.29	7.24	-3.60%	7.74	5.82	59	245	20.69%	178,356.00	16.17%	4,096	-2.10%	
				December 2013	---	---	---	---	7.24	3@7.21	5@7.35	7.24	-3.60%	7.66	6.31	---	---	-100.00%	---	-100.00%	---	---	
				March 2014	---	---	---	---	---	---	---	---	---	---	---	---	---	---	---	---	---	---	
				June 2014	---	---	---	---	---	---	---	---	---	---	---	---	---	---	---	---	---	---	
OTE (CR)				(Contract Size: 100 Securities, Physical Delivery)																			
7.10	6.87	6.87	-3.92%	September 2013	7.12	7.12	6.88	6.88	6.94	15@6.87	20@6.89	6.94	-3.07%	7.56	4.35	100	668	98.81%	465,939.00	91.91%	7,710	0.42%	
				December 2013	6.97	6.97	6.97	6.97	6.94	20@6.86	20@6.93	6.94	-3.07%	7.56	4.40	2	70	---	48,790.00	---	3	-95.71%	
				March 2014	6.97	6.97	6.97	6.97	6.94	---	---	6.94	-3.74%	7.39	6.40	2	70	---	48,790.00	---	---	-100.00%	
				June 2014	---	---	---	---	---	---	---	---	---	---	---	---	---	---	---	---	---	---	
P.P.A. S.A. (CR)				(Contract Size: 100 Securities, Physical Delivery)																			
17.00	16.44	16.56	-3.66%	September 2013	16.92	16.92	16.60	16.60	16.70	1@16.50	2@17.20	16.70	-3.64%	18.68	15.52	17	34	240.00%	57,062.00	234.69%	544	-1.98%	
				December 2013	---	---	---	---	---	---	---	---	---	---	---	---	---	---	---	---	---	---	
				March 2014	---	---	---	---	---	---	---	---	---	---	---	---	---	---	---	---	---	---	
				June 2014	---	---	---	---	---	---	---	---	---	---	---	---	---	---	---	---	---	---	
PIRAEUS BANK (CR)				(Contract Size: 100 Securities, Physical Delivery)																			
1.09	0.999	1.03	-5.51%	September 2013	1.07	1.08	0.998	1.02	1.03	317@1.02	21@1.04	1.03	-4.63%	1.17	0.169	102	2,188	233.03%	223,666.80	211.51%	13,875	-1.29%	
				December 2013	---	---	---	---	1.04	---	21@1.05	1.04	-4.59%	1.15	0.231	---	---	---	---	---	300	0.00%	
				March 2014	---	---	---	---	1.03	---	---	1.03	-4.63%	1.12	0.924	---	---	---	---	---	300	0.00%	
				June 2014	---	---	---	---	---	---	---	---	---	---	---	---	---	---	---	---	---	---	
PPC (CR)				(Contract Size: 100 Securities, Physical Delivery)																			
7.94	7.68	7.75	-2.39%	September 2013	7.90	7.91	7.68	7.72	7.72	1@7.71	9@7.73	7.72	-2.40%	8.47	4.58	76	386	15.57%	298,917.00	14.39%	5,073	-0.37%	
				December 2013	7.81	7.81	7.67	7.78	7.74	1@7.66	9@7.79	7.74	-2.27%	8.56	5.08	4	120	---	93,045.00	---	120	-40.00%	
				March 2014	7.73	7.73	7.73	7.73	7.71	---	---	7.71	-2.53%	7.99	6.30	1	20	---	15,460.00	---	40	100.00%	
				June 2014	---	---	---	---	---	---	---	---	---	---	---	---	---	---	---	---	---	---	

Underlying Asset				Derivatives Market																		
Price max	Price min	Closing price	change	Delivery Month	Open price	Price max	Price min	Last price	Closing price	Last Bid	Last Ask	Settlement price	change	Life high	Life low	Trades	Volume	change	Value	change	Open Interest	change
SIDENOR (CR)				(Contract Size: 100 Securities, Physical Delivery)																		
1.76	1.66	1.66	-6.22%	September 2013	1.73	1.73	1.66	1.67	1.67	1@1.66	4@1.69	1.67	-6.18%	1.82	1.36	20	40	---	6,700.00	---	1,485	0.00%
				December 2013	---	---	---	---	---	---	4@1.74	---	---	---	---	---	---	---	---	---	---	---
				March 2014	---	---	---	---	---	---	---	---	---	---	---	---	---	---	---	---	---	---
				June 2014	---	---	---	---	---	---	---	---	---	---	---	---	---	---	---	---	---	---
TERNA ENERGY (CR)				(Contract Size: 103 Securities, Physical Delivery)																		
3.05	2.90	2.90	-4.92%	September 2013	3.03	3.03	2.90	2.92	2.90	---	1@2.92	2.90	-7.05%	3.25	2.43	20	40	-14.89%	12,143.70	-18.25%	2,401	0.00%
				December 2013	---	---	---	---	---	---	---	---	---	---	---	---	---	---	---	---	---	---
				March 2014	---	---	---	---	---	---	---	---	---	---	---	---	---	---	---	---	---	---
				June 2014	---	---	---	---	---	---	---	---	---	---	---	---	---	---	---	---	---	---
TITAN CEMENT (CR)				(Contract Size: 100 Securities, Physical Delivery)																		
15.20	14.70	15.20	0.00%	September 2013	14.82	15.10	14.78	14.80	15.35	10@14.77	1@15.07	15.35	0.00%	15.90	12.22	9	63	23.53%	93,340.00	22.68%	245	10.86%
				December 2013	---	---	---	---	15.19	---	1@15.12	15.19	0.00%	15.68	15.02	---	---	-100.00%	---	-100.00%	---	---
				March 2014	---	---	---	---	---	---	---	---	---	---	---	---	---	---	---	---	---	---
				June 2014	---	---	---	---	---	---	---	---	---	---	---	---	---	---	---	---	---	---
VIOHALCO (CB)				(Contract Size: 100 Securities, Physical Delivery)																		
4.71	4.51	4.66	-0.64%	September 2013	4.61	4.65	4.53	4.65	4.63	3@4.54	1@4.64	4.63	-0.64%	5.19	3.85	20	96	104.26%	43,894.00	100.03%	501	-7.73%
				December 2013	---	---	---	---	4.67	---	1@4.68	4.67	-0.64%	4.10	3.89	---	---	---	---	---	---	---
				March 2014	---	---	---	---	---	---	---	---	---	---	---	---	---	---	---	---	---	---
				June 2014	---	---	---	---	---	---	---	---	---	---	---	---	---	---	---	---	---	---



FTSE/Athex Large Cap

(Trade Unit: 1 Index Point x 5€ - Exercise Style: European, Cash Settlement)

Call Options																	Put Options																		
	September 2013							October 2013							Other Months		September 2013								October 2013								Other Months		
Exercise Price	Open price	Price max	Price min	Last price	Closing price	Volume	Open Interest	Open price	Price max	Price min	Last price	Closing price	Volume	Open Interest	Volume	Open Interest	Open price	Price max	Price min	Last price	Closing price	Volume	Open Interest	Open price	Price max	Price min	Last price	Closing price	Volume	Open Interest	Volume	Open Interest	Exercise Price		
215	-	-	-	-	100.00	-	60	-	-	-	-	-	-	-			-	-	-	-	-	-	-	-	-	-	-	-	-	-	-		215		
230	-	-	-	-	85.50	-	3	-	-	-	-	-	-	-			-	-	-	-	-	-	-	-	-	-	-	-	-	-	-		230		
255	-	-	-	-	-	-	-	-	-	-	-	-	-	-			-	-	-	-	-	-	-	-	-	-	-	-	-	-	-		255		
260	-	-	-	-	-	-	-	-	-	-	-	-	-	-			-	-	-	-	-	-	-	-	-	-	-	-	-	-	-		260		
265	-	-	-	-	-	-	-	-	-	-	-	-	-	-			-	-	-	-	2.70	-	100	-	-	-	-	-	-	-	-	-		265	
270	-	-	-	-	-	-	-	-	-	-	-	-	-	-			-	-	-	-	3.50	-	102	-	-	-	-	-	-	-	-	-		270	
275	-	-	-	-	-	-	-	-	-	-	-	-	-	-			-	-	-	-	4.50	-	1	-	-	-	-	-	-	-	-	-		275	
280	-	-	-	-	40.75	-	459	-	-	-	-	-	-	-			-	-	-	-	5.60	-	132	-	-	-	-	-	-	-	-	-		280	
285	-	-	-	-	37.00	-	20	-	-	-	-	-	-	-			-	-	-	-	6.90	-	56	-	-	-	-	9.50	-	1	-	-		285	
290	-	-	-	-	33.50	-	40	-	-	-	-	-	-	-			5.00	7.00	5.00	7.00	8.40	50	201	-	-	-	-	-	-	-	-	-		290	
295	-	-	-	-	30.25	-	1	-	-	-	-	-	-	-			-	-	-	-	-	-	-	-	-	-	13.00	-	1	-	-		295		
300	23.00	27.75	23.00	27.75	27.25	50	416	-	-	-	-	-	-	-			-	-	-	-	12.00	-	10	-	-	-	-	15.00	-	6	-	-		300	
305	-	-	-	-	-	-	-	-	-	-	-	-	-	-			-	-	-	-	14.00	-	195	-	-	-	-	-	-	-	-	-		305	
310	-	-	-	-	21.50	-	740	-	-	-	-	-	-	-			-	-	-	-	-	-	-	-	-	-	-	-	-	-	-	-		310	
315	20.00	20.00	19.50	19.50	19.25	2	622	-	-	-	-	-	-	-			-	-	-	-	19.00	-	33	-	-	-	-	-	-	-	-	-		315	
320	18.00	18.25	16.00	16.00	17.00	73	76	-	-	-	-	-	-	-			19.00	19.00	19.00	19.00	21.50	12	18	-	-	-	-	-	-	-	-	-		320	
325	-	-	-	-	14.75	-	6	-	-	-	-	-	-	-			-	-	-	-	24.50	-	155	-	-	-	-	-	-	-	-	-		325	
330	15.00	15.00	12.00	12.50	13.00	156	436	-	-	-	-	-	-	-			-	-	-	-	-	-	-	-	-	-	-	-	-	-	-	-		330	
335	12.00	13.75	11.00	11.00	11.25	107	75	-	-	-	-	-	-	-			-	-	-	-	-	-	-	-	-	-	-	-	-	-	-	-		335	
340	-	-	-	-	9.80	-	31	-	-	-	-	-	-	-			-	-	-	-	34.50	-	50	-	-	-	-	-	-	-	-	-		340	
345	-	-	-	-	-	-	-	-	-	-	-	-	-	-			-	-	-	-	-	-	-	-	-	-	-	-	-	-	-	-		345	
350	-	-	-	-	7.30	-	51	-	-	-	-	-	-	-			-	-	-	-	42.00	-	5	-	-	-	-	-	-	-	-	-		350	
355	-	-	-	-	6.30	-	3	-	-	-	-	-	-	-			-	-	-	-	-	-	-	-	-	-	-	-	-	-	-	-		355	
360	-	-	-	-	-	-	-	-	-	-	-	-	-	-			-	-	-	-	50.00	-	5	-	-	-	-	-	-	-	-	-		360	
365	-	-	-	-	-	-	-	-	-	-	-	-	-	-			-	-	-	-	54.00	-	130	-	-	-	-	-	-	-	-	-		365	
370	-	-	-	-	3.90	-	1	-	-	-	-	-	-	-			-	-	-	-	58.50	-	5	-	-	-	-	-	-	-	-	-		370	
375	-	-	-	-	-	-	-	-	-	-	-	-	-	-			-	-	-	-	-	-	-	-	-	-	-	-	-	-	-	-		375	
380	-	-	-	-	2.80	-	30	-	-	-	-	-	-	-			-	-	-	-	67.50	-	10	-	-	-	-	-	-	-	-	-		380	
385	-	-	-	-	-	-	-	-	-	-	-	-	-	-			-	-	-	-	72.00	-	5	-	-	-	-	-	-	-	-	-		385	
390	-	-	-	-	-	-	-	-	-	-	-	-	-	-			-	-	-	-	-	-	-	-	-	-	-	-	-	-	-	-		390	
395	-	-	-	-	-	-	-	-	-	-	-	-	-	-			-	-	-	-	81.00	-	5	-	-	-	-	-	-	-	-	-		395	
400	-	-	-	-	-	-	-	-	-	-	-	-	-	-			-	-	-	-	-	-	-	-	-	-	-	-	-	-	-	-		400	
405	-	-	-	-	-	-	-	-	-	-	-	-	-	-			-	-	-	-	-	-	-	-	-	-	-	-	-	-	-	-		405	
410	-	-	-	-	-	-	-	-	-	-	-	-	-	-			-	-	-	-	-	-	-	-	-	-	-	-	-	-	-	-		410	
415	-	-	-	-	-	-	-	-	-	-	-	-	-	-			-	-	-	-	-	-	-	-	-	-	-	-	-	-	-	-		415	
440	-	-	-	-	-	-	-	-	-	-	-	-	-	-			-	-	-	-	125.00	-	261	-	-	-	-	-	-	-	-	-		440	

FTSE/Athex Large Cap

(Trade Unit: 1 Index Point x 5€ - Exercise Style: European, Cash Settlement)

Call Options																Put Options																			
Exercise Price	September 2013							October 2013							Other Months		September 2013								October 2013								Other Months		Exercise Price
	Open price	Price max	Price min	Last price	Closing price	Volume	Open Interest	Open price	Price max	Price min	Last price	Closing price	Volume	Open Interest	Volume	Open Interest	Open price	Price max	Price min	Last price	Closing price	Volume	Open Interest	Open price	Price max	Price min	Last price	Closing price	Volume	Open Interest	Volume	Open Interest			
1,500	-	-	-	-	-	-	-	-	-	-	-	-	-	-	-	-	-	-	-	-	1,182.00	-	3	-	-	-	-	-	-	-	-	-	1,500		
Totals:						388	3,070							0	0	0	0	62						1,482							0	8	0	0	
Nominal Transactions Value:						631,575.00						0.00						0.00	91,700.00												0.00		0.00		
Number of Trades:						33						0						0	5												0		0		

ALPHA BANK (CR)

(Contract Size: 100 Securities, Exercise Style: American, Physical Delivery)

Call Options																	Put Options																		
	September 2013							October 2013							Other Months			September 2013							October 2013							Other Months			
Exercise Price	Open price	Price max	Price min	Last price	Closing price	Volume	Open Interest	Open price	Price max	Price min	Last price	Closing price	Volume	Open Interest	Volume	Open Interest	Open price	Price max	Price min	Last price	Closing price	Volume	Open Interest	Open price	Price max	Price min	Last price	Closing price	Volume	Open Interest	Volume	Open Interest	Exercise Price		
0.100						-	-							-	-							-	-						-	-			0.100		
0.200						-	-							-	-							-	-						-	-			0.200		
0.300						-	-							-	-							-	-						-	-			0.300		
0.400						-	-							-	-							-	-						-	-			0.400		
0.500						-	-							-	-							-	-						-	-			0.500		
0.600						-	-							-	-							-	-						-	-			0.600		
0.700						-	-							-	-							-	-						-	-			0.700		
0.800						-	-							-	-							-	-						-	-			0.800		
0.850						-	-							-	-							-	-						-	-			0.850		
0.900						-	-							-	-							-	-						-	-			0.900		
0.950						-	-							-	-							-	-						-	-			0.950		
1.00						-	-							-	-							-	-						-	-			1.00		
1.05						-	-							-	-							-	-						-	-			1.05		
1.10						-	-							-	-							-	-						-	-			1.10		
1.15						-	-							-	-							-	-						-	-			1.15		
1.20						-	-							-	-							-	-						-	-			1.20		
1.30						-	-							-	-							-	-						-	-			1.30		
1.40						-	-							-	-							-	-						-	-			1.40		
1.50						-	-							-	-							-	-						-	-			1.50		
1.60						-	-							-	-							-	-						-	-			1.60		
1.70						-	-							-	-							-	-						-	-			1.70		
1.80						-	-							-	-							-	-						-	-			1.80		
1.90						-	-							-	-							-	-						-	-			1.90		
2.00						-	-							-	-							-	-						-	-			2.00		
2.20						-	-							-	-							-	-						-	-			2.20		
2.40						-	-							-	-							-	-						-	-			2.40		
2.60						-	-							-	-							-	-						-	-			2.60		
2.80						-	-							-	-							-	-						-	-			2.80		
Totals:						0	0							0	0	0	0							0	0							0	0	0	0
Nominal Transactions Value:						0.00								0.00		0.00								0.00								0.00			
Number of Trades:						0								0		0								0								0			

NATIONAL BANK (CR)

(Contract Size: 100 Securities, Exercise Style: American, Physical Delivery)

Call Options																	Put Options																			
September 2013																	October 2013																	Other Months		
Exercise Price	Open price	Price max	Price min	Last price	Closing price	Volume	Open Interest	Open price	Price max	Price min	Last price	Closing price	Volume	Open Interest	Volume	Open Interest	Open price	Price max	Price min	Last price	Closing price	Volume	Open Interest	Open price	Price max	Price min	Last price	Closing price	Volume	Open Interest	Volume	Open Interest	Exercise Price			
0.300						-	-							-	-								-	-					-	-			0.300			
0.400						-	-							-	-								-	-					-	-			0.400			
0.500						-	-							-	-								-	-					-	-			0.500			
0.600						-	-							-	-								-	-					-	-			0.600			
0.700						-	-							-	-								-	-					-	-			0.700			
0.750						-	-							-	-								-	-					-	-			0.750			
0.800						-	-							-	-								-	-					-	-			0.800			
0.850						-	-							-	-								-	-					-	-			0.850			
0.900						-	-							-	-								-	-					-	-			0.900			
0.950						-	-							-	-								-	-					-	-			0.950			
1.00						-	-							-	-								-	-					-	-			1.00			
1.05						-	-							-	-								-	-					-	-			1.05			
1.10						-	-							-	-								-	-					-	-			1.10			
1.20						-	-							-	-								-	-					-	-			1.20			
1.30						-	-							-	-								-	-					-	-			1.30			
1.40						-	-							-	-								-	-					-	-			1.40			
1.50						-	-							-	-								-	-					-	-			1.50			
1.60						-	-							-	-								-	-					-	-			1.60			
1.70						-	-							-	-								-	-					-	-			1.70			
1.80						-	-							-	-								-	-					-	-			1.80			
1.90						-	-							-	-								-	-					-	-			1.90			
2.00						-	-							-	-								-	-					-	-			2.00			
2.20						-	-							-	-								-	-					-	-			2.20			
2.40						-	-							-	-								-	-			0.059	-	-				2.40			
2.60					0.416	-	20							-	-								-	-			0.112	-	-				2.60			
2.80						-	-							-	-								-	-			0.187	-	-				2.80			
3.00					0.173	-	22					0.262	-	120									-	-					-	-			3.00			
3.20					0.100	-	20					0.186	-	20									-	-					-	-			3.20			
3.40						-	-							-	-								-	-					-	-			3.40			
3.60						-	-							-	-								-	-					-	-			3.60			
3.80						-	-							-	-								-	-					-	-			3.80			
4.00						-	-							-	-								-	-					-	-			4.00			
4.40						-	-							-	-								-	-					-	-			4.40			
Totals:						0	62							0	140	20	20							0	0							0	0			
Nominal Transactions Value:							0.00							0.00		6,400.00								0.00								0.00				
Number of Trades:							0							0		1								0.00								0				

OPAP (CR)

(Contract Size: 100 Securities, Exercise Style: American, Physical Delivery)

Call Options																	Put Options																						
September 2013								October 2013								Other Months		September 2013								October 2013								Other Months					
Exercise Price	Open price	Price max	Price min	Last price	Closing price	Volume	Open Interest	Open price	Price max	Price min	Last price	Closing price	Volume	Open Interest	Volume	Open Interest	Open price	Price max	Price min	Last price	Closing price	Volume	Open Interest	Open price	Price max	Price min	Last price	Closing price	Volume	Open Interest	Volume	Open Interest	Exercise Price						
1.00	6.26				-	270					-				-			-				270	-				-							1.00					
3.20						-	-					-				-								-				-							3.20				
3.40						-	-					-				-								-				-							3.40				
3.60						-	-					-				-								-				-							3.60				
3.80						-	-					-				-								-				-							3.80				
4.00						-	-					-				-								-				-							4.00				
4.40						-	-					-				-								-				-							4.40				
4.80						-	-					-				-								-				-							4.80				
5.20						-	-					-				-								-				-							5.20				
5.60						-	-					-				-								-				-							5.60				
5.80						-	-					-				-								-				-							5.80				
6.00						-	-					-				-								0.087				-	-							6.00			
6.20						-	-					-				-								-				-							6.20				
6.40						-	-					1.06				-	25								-				-			0.173				6.40			
6.60						-	-					-				-								0.156				-	135			-				-	6.60		
6.80						-	-					0.796				-	25								-				-			-				-	6.80		
7.00						-	-					-				-								-				-			-				-	7.00			
7.20						-	-					0.575				-	25								-				-			-				-	7.20		
7.40						-	-					-				-								-				-			-				-	7.40			
7.60						-	-					-				-								-				-			-				-	7.60			
7.80						-	-					-				-								-				-			-				-	7.80			
8.00						-	-					-				-								-				-			-				-	8.00			
8.40						-	-					-				-								-				-			-				-	8.40			
8.80						-	-					-				-								-				-			-				-	8.80			
9.00						-	-					-				-								-				-			-				-	9.00			
9.20						-	-					-				-								-				-			-				-	9.20			
9.40						-	-					-				-								-				-			-				-	9.40			
9.60						-	-					-				-								-				-			-				-	9.60			
9.80						-	-					-				-								-				-			-				-	9.80			
10.00						-	-					-				-								-				-			-				-	10.00			
20.00						-	270					-				-								12.74				-	270					-				-	20.00
Totals:						0	540							0	75	0	1,600							0	675							0	55	0	0				
Nominal Transactions Value:							0.00							0.00		0.00		0.00								0.00							0.00		0.00				
Number of Trades:							0							0		0		0.00								0.00							0		0				

OTE (CR)

(Contract Size: 100 Securities, Exercise Style: American, Physical Delivery)

Call Options																	Put Options																								
September 2013								October 2013								Other Months		September 2013								October 2013								Other Months							
Exercise Price	Open price	Price max	Price min	Last price	Closing price	Volume	Open Interest	Open price	Price max	Price min	Last price	Closing price	Volume	Open Interest	Volume	Open Interest	Open price	Price max	Price min	Last price	Closing price	Volume	Open Interest	Open price	Price max	Price min	Last price	Closing price	Volume	Open Interest	Volume	Open Interest	Exercise Price								
2.60						-	-							-	-							-	-					-	-					2.60							
2.80						-	-							-	-							-	-					-	-					2.80							
3.00						-	-							-	-							-	-					-	-					3.00							
3.20						-	-							-	-							-	-					-	-					3.20							
3.40						-	-							-	-							-	-					-	-					3.40							
3.60						-	-							-	-							-	-					-	-					3.60							
3.80						-	-							-	-							-	-					-	-					3.80							
4.00						-	-							-	-							-	-					-	-					4.00							
4.40						-	-							-	-							-	-					-	-					4.40							
4.80						-	-							-	-							-	-					-	-					4.80							
5.20						-	-							-	-						0.008	-	100					-	-					5.20							
5.40						-	-							-	-							-	-					-	-					5.40							
5.60						-	-							-	-						0.031	-	1					-	-					5.60							
5.80						-	-							-	-							-	-					-	-					5.80							
6.00						-	-							-	-						0.085	-	75					-	-					6.00							
6.20						-	-							-	-							-	-					-	-					6.20							
6.40						-	-							-	-							-	-					-	-					6.40							
6.60						-	-							-	-							-	-					-	-					6.60							
6.80					0.441	-	1							-	-							-	-					-	-					6.80							
7.00						-	-							-	-							-	-					-	-					7.00							
7.20						-	-							-	-							-	-					-	-					7.20							
7.40						-	-							-	-							-	-					-	-					7.40							
7.60						-	-							-	-							-	-					-	-					7.60							
8.00					0.083	-	50							-	-							-	-					-	-					8.00							
8.20						-	-							-	-							-	-					-	-					8.20							
8.40						-	-							-	-						1.56	-	35					-	-					8.40							
8.60						-	-							-	-							-	-					-	-					8.60							
8.80						-	-							-	-							-	-					-	-					8.80							
9.00						-	-							-	-							-	-					-	-					9.00							
9.20						-	-							-	-							-	-					-	-					9.20							
Totals:						0	51							0	0	0	1,600							0	211							0	0	0	0	0	0				
Nominal Transactions Value:						0.00								0.00		0.00								0.00								0.00		0.00							
Number of Trades:						0								0		0								0								0		0							

PIRAEUS BANK (CR)

(Contract Size: 100 Securities, Exercise Style: American, Physical Delivery)

Call Options																	Put Options																			
September 2013								October 2013								Other Months		September 2013								October 2013								Other Months		
Exercise Price	Open price	Price max	Price min	Last price	Closing price	Volume	Open Interest	Open price	Price max	Price min	Last price	Closing price	Volume	Open Interest	Volume	Open Interest	Open price	Price max	Price min	Last price	Closing price	Volume	Open Interest	Open price	Price max	Price min	Last price	Closing price	Volume	Open Interest	Volume	Open Interest	Exercise Price			
0.500						-	-							-	-							-	-						-	-			0.500			
0.600						-	-							-	-							-	-						-	-			0.600			
0.700						-	-							-	-							-	-						-	-			0.700			
0.800						-	-							-	-							-	-						-	-			0.800			
0.900						-	-							-	-							-	-						-	-			0.900			
1.00						-	-							-	-							-	-						-	-			1.00			
1.10					0.042	-	5							-	-							-	-						-	-			1.10			
1.20						-	-							-	-							-	-						-	-			1.20			
1.30						-	-							-	-							-	-						-	-			1.30			
1.40						-	-							-	-							-	-						-	-			1.40			
1.50						-	-							-	-							-	-						-	-			1.50			
Totals:						0	5							0	0	0	0							0	0							0	0			
Nominal Transactions Value:						0.00								0.00		0.00							0.00		0.00								0.00	0		
Number of Trades:						0								0		0							0.00		0								0	0		

PPC (CR) (Contract Size: 100 Securities, Exercise Style: American, Physical Delivery)

Call Options																	Put Options																				
September 2013								October 2013								Other Months		September 2013								October 2013								Other Months			
Exerise Price	Open price	Price max	Price min	Last price	Closing price	Volume	Open Interest	Open price	Price max	Price min	Last price	Closing price	Volume	Open Interest	Volume	Open Interest	Open price	Price max	Price min	Last price	Closing price	Volume	Open Interest	Open price	Price max	Price min	Last price	Closing price	Volume	Open Interest	Volume	Open Interest	Exerise Price				
3.20						-	-							-	-							-	-						-	-			3.20				
3.40						-	-							-	-							-	-						-	-			3.40				
3.60						-	-							-	-							-	-						-	-			3.60				
3.80						-	-							-	-							-	-						-	-			3.80				
4.00						-	-							-	-							-	-						-	-			4.00				
4.40					3.36	-	30							-	-							-	-						-	-			4.40				
4.80						-	-							-	-							-	-						-	-			4.80				
5.20						-	-							-	-							-	-						-	-			5.20				
5.60						-	-							-	-							-	-						-	-			5.60				
6.00						-	-							-	-							-	-						-	-			6.00				
6.40						-	-							-	-							-	-						-	-			6.40				
6.60						-	-							-	-							-	-						-	-			6.60				
6.80					1.10	-	10							-	-							-	-						-	-			6.80				
7.00						-	-							-	-							-	-						-	-			7.00				
7.20						-	-							-	-							-	-						-	-			7.20				
7.40						-	-							-	-							-	-						-	-			7.40				
7.60						-	-							-	-							-	-						-	-			7.60				
7.80						-	-							-	-							-	-						-	-			7.80				
8.00						-	-							-	-							-	-						-	-			8.00				
8.20						-	-							-	-							-	-						-	-			8.20				
8.40						-	-							-	-							-	-						-	-			8.40				
8.60						-	-							-	-							-	-						-	-			8.60				
8.80						-	-							-	-							-	-						-	-			8.80				
9.00						-	-							-	-							-	-						-	-			9.00				
9.20						-	-							-	-							-	-						-	-			9.20				
9.60						-	-							-	-							-	-						-	-			9.60				
10.00						-	-							-	-							-	-						-	-			10.00				
Totals:						0	40							0	0	0	0							0	400							0	0	0	0	0	
Nominal Transactions Value:						0.00								0.00		0.00								0.00								0.00		0.00			
Number of Trades:						0								0		0								0								0		0			



Securities	Type[4]	Stock Repo [1]						Stock Reverse Repo [2]								Repurchase Agreements [3]							
		Trans. price	chg.	Trades	Volume	Transactions Value	Open Interest[5]	Price max	Price min	Last price	Last Ask	Trades	Volume	Transactions Value	Open Interest[5]	Price max	Price min	Last price	Last Ask	Trades	Volume	Transactions Value	Open Interest[5]
AEGEAN AIRLINES (CR)	SR RA	100.00	---	---	---	---	285	---	---	---	142@3%	---	---	---	---	---	---	---	---	---	---	---	---
ALPHA BANK (CR)	SR RA	100.00	---	2	221	11,293.1	54,615	---	---	---	33456@3.4%	---	---	---	50	---	---	---	---	---	---	---	1,562
ALPHA ETF FTSE Athex Large Cap	SR RA	100.00	---	---	---	---	---	---	---	---	---	---	---	---	---	---	---	---	---	---	---	---	2,664
ALUMIL (CR)	RA	---	---	---	---	---	---	---	---	---	---	---	---	---	---	---	---	---	---	---	---	---	---
ATHENS MEDICAL CENTER SA (CR)	SR RA	100.00	---	---	---	---	434	---	---	---	217@3%	---	---	---	---	---	---	---	---	---	---	---	---
AUTOHELLAS SA (CR)	SR RA	100.00	---	---	---	---	50	---	---	---	25@3%	---	---	---	---	---	---	---	---	---	---	---	---
CC HBC AG (CR)	SR RA	100.09	---	---	---	---	1,251	---	---	---	615@3%	---	---	---	10	---	---	---	---	---	---	---	128
CENTRIC HOLDINGS (CR)	SR RA	100.00	---	---	---	---	200	---	---	---	153@7.7%	---	---	---	---	---	---	---	---	---	---	---	---
CORINTH PIPEWORKS SA (CR)	SR RA	100.00	---	---	---	---	160	---	---	---	80@3%	---	---	---	---	---	---	---	---	---	---	---	---
CRETE PLASTICS SA (CR)	SR RA	100.00	---	---	---	---	---	---	---	---	---	---	---	---	---	---	---	---	---	---	---	---	---
ELLAKTOR (CR)	SR RA	100.03	---	---	---	---	2,881	---	---	---	1290@3%	---	---	---	150	---	---	---	---	---	---	---	---
ELTON SA (CR)	SR RA	100.00	---	---	---	---	50	---	---	---	35@3%	---	---	---	---	---	---	---	---	---	---	---	---
ELVAL SA. (CB)	SR RA	100.00	---	---	---	---	621	---	---	---	310@3%	---	---	---	---	---	---	---	---	---	---	---	---
EUROBANK ERGASIAS (CR)	SR RA	100.15	0.04	---	---	---	1,523	---	---	---	6@3.5%	---	---	---	977	---	---	---	---	---	---	---	28
EUROBANK PROPERTIES REIC (CR)	SR RA	100.05	0.01	---	---	---	1,641	3.00%	3.00%	3.00%	735@3%	1	10	7,150.0	85	---	---	---	---	---	---	---	---
EUROPEAN RELIANCE INSUR. (CR)	SR RA	100.00	---	---	---	---	---	---	---	---	---	---	---	---	---	---	---	---	---	---	---	---	---
EYDAP S.A. (CR)	SR RA	100.05	0.01	---	---	---	325	---	---	---	112@3%	---	---	---	13	---	---	---	---	---	---	---	16
FOLLI FOLLIE (CR)	SR RA	100.08	0.01	---	---	---	786	---	---	---	373@3%	---	---	---	20	---	---	---	---	---	---	---	10
FOURLIS (CR)	SR RA	100.00	---	---	---	---	195	---	---	---	97@3%	---	---	---	---	---	---	---	---	---	---	---	---
FRIGOGLASS SA (CR)	SR RA	100.17	0.02	---	---	---	229	---	---	---	79@3%	---	---	---	35	---	---	---	---	---	---	---	---
GEK TERNA (CR)	SR RA	100.01	---	---	---	---	674	---	---	---	332@3%	---	---	---	5	---	---	---	---	---	---	---	---
GR. SARANTIS SA (CR)	SR RA	100.00	---	---	---	---	62	---	---	---	31@3%	---	---	---	---	---	---	---	---	---	---	---	---
HALKOR SA (CB)	SR RA	100.00	---	---	---	---	415	---	---	---	207@3%	---	---	---	---	---	---	---	---	---	---	---	---
HELLENIC CABLES SA (CR)	SR RA	100.00	---	---	---	---	84	---	---	---	42@3%	---	---	---	---	---	---	---	---	---	---	---	---
HELLENIC EXCHANGES (CR)	SR RA	100.08	0.01	---	---	---	5,993	---	---	---	2646@3%	---	---	---	350	---	---	---	---	---	---	---	---
HELLENIC PETROLEUM (CR)	SR RA	100.12	0.02	---	---	---	2,224	---	---	---	934@3%	---	---	---	178	---	---	---	---	---	---	---	46
HYGEIA SA (CR)	SR RA	100.00	---	---	---	---	500	---	---	---	200@4.1%	---	---	---	---	---	---	---	---	---	---	---	---
IASO SA (CR)	SR RA	100.00	---	---	---	---	86	---	---	---	43@3%	---	---	---	---	---	---	---	---	---	---	---	---
IKTINOS HELLAS SA (CR)	SR RA	100.00	---	---	---	---	10	---	---	---	---	---	---	---	---	---	---	---	---	---	---	---	---
INFORM P. LYKOS SA (CR)	SR RA	100.00	---	---	---	---	403	---	---	---	201@3%	---	---	---	---	---	---	---	---	---	---	---	---
INTRACOM CONSTR. (CR)	SR RA	100.00	---	---	---	---	37	---	---	---	18@3%	---	---	---	---	---	---	---	---	---	---	---	---
INTRACOM HOLDINGS (CR)	SR RA	100.00	---	---	---	---	665	---	---	---	430@3.8%	---	---	---	---	---	---	---	---	---	---	---	---

Stock Lending Notes

- [1] - Stock Repo: A Contract for selling stocks to HELEX with a Repurchase Right (According to ATHEX BoD Resolution No 17)
- [2] - Stock Reverse Repo: A Contract for buying stocks from HELEX with a Resell Right. (According to ATHEX BoD Resolution No 18)
- [3] - Standardized Repurchase Agreements: A Contract that constitutes a standardized agreement for the purchase or sale of shares, with repurchase or resell pact (According to ATHEX BoD Resolution No 20)
- [4] - Type of products is divided into SR: Stock Repo or Stock Reverse Repo, and RA: Repurchase Agreements.
- [5] - Open Interest in all Series (both tradeable or non-tradeable).

Securities	Type[4]	Stock Repo [1]						Stock Reverse Repo [2]								Repurchase Agreements [3]							
		Trans. price	chg.	Trades	Volume	Transactions Value	Open Interest[5]	Price max	Price min	Last price	Last Ask	Trades	Volume	Transactions Value	Open Interest[5]	Price max	Price min	Last price	Last Ask	Trades	Volume	Transactions Value	Open Interest[5]
INTRALOT (CR)	SR RA	100.02	---	---	---	---	4,196	---	---	---	1848@3%	---	---	---	250	---	---	---	---	---	---	---	---
J & P - AVAX SA (CR)	SR RA	100.00	---	---	---	---	235	---	---	---	117@3%	---	---	---	---	---	---	---	---	---	---	---	---
JUMBO SA (CR)	SR RA	100.06	0.01	---	---	---	2,358	---	---	---	1090@3%	---	---	---	89	---	---	---	---	---	---	---	20
KLEEMAN HELLAS SA (CR)	SR RA	100.00	---	---	---	---	1,182	---	---	---	591@3%	---	---	---	---	---	---	---	---	---	---	---	---
KLOUKINAS - LAPPAS SA (CR)	SR RA	100.00	---	---	---	---	---	---	---	---	---	---	---	---	---	---	---	---	---	---	---	---	---
KORRES (CR)	SR RA	100.00	---	---	---	---	---	---	---	---	---	---	---	---	---	---	---	---	---	---	---	---	---
KRI-KRI S.A. (CR)	SR RA	100.00	---	---	---	---	549	---	---	---	274@3%	---	---	---	---	---	---	---	---	---	---	---	---
LAMDA DEVELOPMENT SA (CR)	SR RA	100.00	---	---	---	---	890	---	---	---	445@3%	---	---	---	---	---	---	---	---	---	---	---	---
LOULIS MILLS SA (CR)	SR RA	100.00	---	---	---	---	---	---	---	---	---	---	---	---	---	---	---	---	---	---	---	---	---
MARFIN INVESTMENT GROUP (CR)	SR RA	100.00	---	---	---	---	582	---	---	---	---	---	---	---	---	---	---	---	---	---	---	---	---
METKA (CR)	SR RA	100.13	0.04	---	---	---	651	---	---	---	250@3%	---	---	---	75	---	---	---	---	---	---	---	9
MLS MULTIMEDIA SA (CR)	SR RA	100.00	---	---	---	---	99	---	---	---	49@3%	---	---	---	---	---	---	---	---	---	---	---	---
MOTOR OIL (CR)	SR RA	100.15	0.03	---	---	---	2,057	3.00%	3.00%	3.00%	863@3%	1	5	3,845.0	165	---	---	---	---	---	---	---	17
MYTILINEOS HOLDINGS (CR)	SR RA	100.01	---	---	---	---	3,875	---	---	---	1887@3%	---	---	---	50	---	---	---	---	---	---	---	---
NATIONAL BANK (CR)	SR RA	100.08	---	---	---	---	8,845	---	---	---	4157@3%	---	---	---	265	---	---	---	---	---	---	---	346
NBGAM ETF	SR RA	100.00	---	---	---	---	---	---	---	---	---	---	---	---	---	---	---	---	---	---	---	---	100
NBGAM ETF GREECE & TURKEY 30	SR RA	100.00	---	---	---	---	---	---	---	---	---	---	---	---	---	---	---	---	---	---	---	---	35
NIREFS SA (CR)	SR RA	100.00	---	---	---	---	326	---	---	---	212@3.9%	---	---	---	---	---	---	---	---	---	---	---	---
OPAP (CR)	SR RA	100.06	0.01	---	---	---	5,743	---	---	---	2733@3%	---	---	---	138	---	---	---	---	---	---	---	367
OTE (CR)	SR RA	100.19	0.05	---	---	---	5,266	3.00%	3.00%	3.00%	1443@3%	1	13	8,931.0	1,190	---	---	---	---	---	---	---	102
P.P.A. S.A. (CR)	SR RA	100.00	---	---	---	---	115	---	---	---	57@3%	---	---	---	---	---	---	---	---	---	---	---	---
PETROPOULOS PETROS (CR)	RA	---	---	---	---	---	---	---	---	---	---	---	---	---	---	---	---	---	---	---	---	---	---
PIRAEUS BANK (CR)	SR RA	100.00	---	---	---	---	8,783	---	---	---	4339@3%	---	---	---	52	---	---	---	---	---	---	---	---
PPC (CR)	SR RA	100.34	0.05	---	---	---	1,933	3.00%	3.00%	3.00%	532@3%	1	65	50,375.0	434	---	---	---	---	---	---	---	35
QUEST HOLDINGS (CR)	SR RA	100.00	---	---	---	---	39	---	---	---	19@3%	---	---	---	---	---	---	---	---	---	---	---	---
REDS S.A. (CR)	SR RA	100.00	---	---	---	---	572	---	---	---	356@3.5%	---	---	---	---	---	---	---	---	---	---	---	---
SELECTED TEXT. IND. ASSOC (CR)	SR RA	100.00	---	---	---	---	50	---	---	---	36@6.2%	---	---	---	---	---	---	---	---	---	---	---	---
SIDENOR (CR)	SR RA	100.00	---	---	---	---	442	---	---	---	221@3%	---	---	---	---	---	---	---	---	---	---	---	---
TECHNICAL OLYMPIC SA (CR)	SR RA	100.00	---	---	---	---	100	---	---	---	50@3%	---	---	---	---	---	---	---	---	---	---	---	---
TERNA ENERGY (CR)	SR RA	100.12	0.02	---	---	---	289	---	---	---	95@3%	---	---	---	49	---	---	---	---	---	---	---	5
THESSALONIKA WATER & SEWERAGE	SR RA	100.00	---	---	---	---	1,270	---	---	---	635@3%	---	---	---	---	---	---	---	---	---	---	---	---
THRACE PLASTICS SA (CR)	SR RA	100.00	---	---	---	---	1,210	---	---	---	605@3%	---	---	---	---	---	---	---	---	---	---	---	---

Stock Lending Notes

- [1] - Stock Repo: A Contract for selling stocks to HELEX with a Repurchase Right (According to ATHEX BoD Resolution No 17)
- [2] - Stock Reverse Repo: A Contract for buying stocks from HELEX with a Resell Right. (According to ATHEX BoD Resolution No 18)
- [3] - Standardized Repurchase Agreements: A Contract that constitutes a standardized agreement for the purchase or sale of shares, with repurchase or resell pact (According to ATHEX BoD Resolution No 20)
- [4] - Type of products is divided into SR: Stock Repo or Stock Reverse Repo, and RA: Repurchase Agreements.
- [5] - Open Interest in all Series (both tradeable or non-tradeable).

Securities	Type[4]	Stock Repo [1]						Stock Reverse Repo [2]								Repurchase Agreements [3]							
		Trans. price	chg.	Trades	Volume	Transactions Value	Open Interest[5]	Price max	Price min	Last price	Last Ask	Trades	Volume	Transactions Value	Open Interest[5]	Price max	Price min	Last price	Last Ask	Trades	Volume	Transactions Value	Open Interest[5]
TITAN CEMENT (CR)	SR RA	100.01	---	---	---	---	9,474	---	---	---	4687@3%	---	---	---	50	---	---	---	---	---	---	---	12
TPA SA (CR)	SR RA	100.00	---	---	---	---	6	---	---	---	---	---	---	---	---	---	---	---	---	---	---	---	
TRASTOR REAL EST. INV. CO.(CR)	SR RA	100.00	---	---	---	---	284	---	---	---	142@3%	---	---	---	---	---	---	---	---	---	---	---	
VIOHALCO (CB)	SR RA	100.01	---	---	---	---	3,990	---	---	---	1973@3%	---	---	---	22	---	---	---	---	---	---	30	

Stock Lending Notes

- [1] - Stock Repo: A Contract for selling stocks to HELEX with a Repurchase Right (According to ATHEX BoD Resolution No 17)
- [2] - Stock Reverse Repo: A Contract for buying stocks from HELEX with a Resell Right. (According to ATHEX BoD Resolution No 18)
- [3] - Standardized Repurchase Agreements: A Contract that constitutes a standardized agreement for the purchase or sale of shares, with repurchase or resell pact (According to ATHEX BoD Resolution No 20)
- [4] - Type of products is divided into SR: Stock Repo or Stock Reverse Repo, and RA: Repurchase Agreements.
- [5] - Open Interest in all Series (both tradeable or non-tradeable).

## Sectors codification for listed companies

533	-	Exploration & Production	537	-	Integrated Oil & Gas
1353	-	Commodity Chemicals	1357	-	Specialty Chemicals
1753	-	Aluminum	1755	-	Nonferrous Metals
1757	-	Steel	1775	-	General Mining
2353	-	Building Materials & Fixtures	2357	-	Heavy Construction
2723	-	Containers & Packaging	2727	-	Diversified Industrials
2733	-	Electrical Components & Equipment	2753	-	Commercial Vehicles & Trucks
2757	-	Industrial Machinery	2773	-	Marine Transportation
2777	-	Transportation Services	2791	-	Business Support Services
2797	-	Industrial Suppliers	3535	-	Distillers & Vintners
3537	-	Soft Drinks	3573	-	Farming & Fishing
3577	-	Food Products	3722	-	Durable Household Products
3726	-	Furnishings	3728	-	Home Construction
3747	-	Toys	3763	-	Clothing & Accessories
3765	-	Footwear	3767	-	Personal Products
3785	-	Tobacco	4533	-	Health Care Providers
4535	-	Medical Equipment	4577	-	Pharmaceuticals
5337	-	Food Retailers & Wholesalers	5371	-	Apparel Retailers
5373	-	Broadline Retailers	5375	-	Home Improvement Retailers
5379	-	Specialty Retailers	5553	-	Broadcasting & Entertainment
5555	-	Media Agencies	5557	-	Publishing
5751	-	Airlines	5752	-	Gambling
5753	-	Hotels	5755	-	Recreational Services
5757	-	Restaurants & Bars	5759	-	Travel & Tourism
6535	-	Fixed Line Telecommunications	6575	-	Mobile Telecommunications
7535	-	Conventional Electricity	7537	-	Alternative Electricity
7577	-	Water	8355	-	Banks
8534	-	Insurance Brokers	8536	-	Property & Casualty Insurance
8633	-	Real Estate Holding & Development	8637	-	Real Estate Services
8671	-	Industrial & Office REITs	8675	-	Specialty REITs
8775	-	Specialty Finance	8777	-	Investment Services
8985	-	Equity Investment Instruments	9533	-	Computer Services
9535	-	Internet	9537	-	Software
9572	-	Computer Hardware	9574	-	Electronic Office Equipment
9578	-	Telecommunications Equipment	11000	-	ETF

