

# Daily Official List

Athens Exchange sa

Wednesday, 21 August, 2013

Year: 134 Trading Day No: 156



ΟΜΙΛΟΣ ΕΛΛΗΝΙΚΑ ΧΡΗΜΑΤΙΣΤΗΡΙΑ  
HELLENIC EXCHANGES GROUP

**Disclaimer:**

Athens Exchange (ATHEX) endeavours to ensure that the data and other material ("Information") presented on the Daily Official List are accurate and complete, but it is not liable for any errors or omissions of data or /and for the accuracy, credibility, updating and completeness of the aforesaid information nor it has any liability arising directly or indirectly from the use of the above Information.

ATHEX is not liable for the accuracy of the data included in listed companies' announcements. Only the sender of such an announcement is fully and solely liable for any infringement of third party's rights from the content of such announcement. All contents of the Daily Official List are provided only for information purposes and do not constitute investment advice or solicitation to invest in securities or other products listed for trading on ATHEX.

You acknowledge and agree that ATHEX is the owner of any property rights related to any Information appearing on the Daily Official List including intellectual property rights copyright, trademarks, etc.

The above data are a property of the Athens Exchange and are copyright protected. Users are forbidden to reproduce, modify, copy, sale, transmit or redistribute, by all reproduction means and methods, part or the whole of the above data, without reference to their source.

The commercial exploitation of these data is, also, forbidden by third parties. Athens Exchange does not carry any responsibility, direct or indirect, derived from usage or accidental alteration of the above data when used by third parties.

**Athens Exchange sa**

110 Athinon Ave., 10442 Athens, Tel: (210) 33.66.800, Fax: (210) 32.13.938

[www.athex.gr](http://www.athex.gr)

**Thessalonica Stock Exchange Center (T.S.E.C)**

16-18 Katouni Str., Thessalonica 546 25 Tel: (2310) 567.667, Fax: (2310) 530.545

**Athex Members Guarantee Fund**

14-16 Fidiou Str., Athens 106 78, Tel: (210) 33.04.682, Fax: (210) 33.04.155

**Hellenic Republic Capital Market Commission**

1 Kolokotroni Str. & 1 Stadiou Str., Athens 10562 Tel: (210) 33.77.100 Fax: (210) 33.77.173

---

**Table of Contents**

---

**Section 1: Statistical Figures of Securities and Derivatives Markets**

Summary of Markets

Athex Indices

Analytic Figures for Athex Market's Boards and Categories

Trading Details by Athex Sectors and ETFs Category

Top 10 best &amp; worst performing Shares

Derivatives Summary

**Section 2: Analytic Figures of Shares Transactions**

Analytic Figures of Shares Transactions

Shares' Notes

**Section 3: Figures of Securities Transactions**

Securities Blocks Details

Shares Rights Details

Shares Short Selling

Stock Borrowing

Shares Forced Sales

Forced Sales Registered Shares

Exchange Traded Funds (ETFs) Characteristics

**Section 5: Bonds traded in Fixed Income Assets Market**

Corporate Bonds

Government Bonds

Treasury Bills &amp; Zero Coupon Government Bonds

Government Bonds Traded with the Open Outcry Method

State Banks Bonds

**Section 6: Additional Infos**

Athex &amp; ATHEXClear Members List

List of Stocks under Market Making operations

**Section 7: Derivatives Market Analytic Figures**

Index Futures

Stock Futures

Index Options

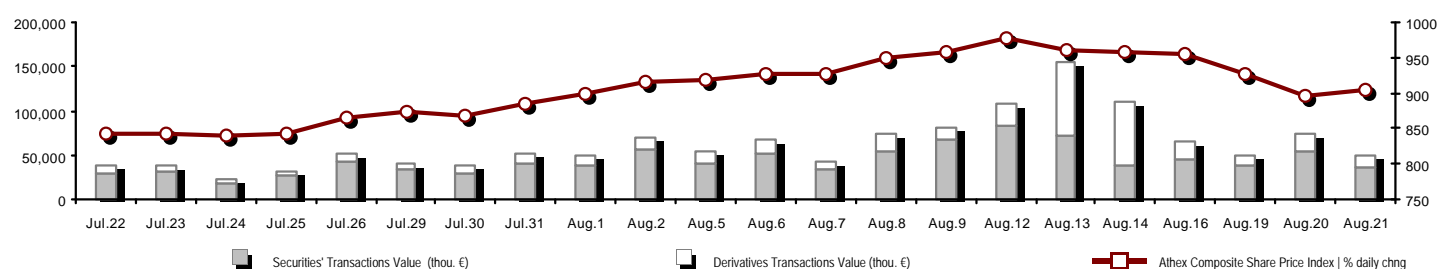
Stock Options

Stock Lending Analytic Figures (Repo Contracts)

**Appendix A: Sectors codification for listed companies**

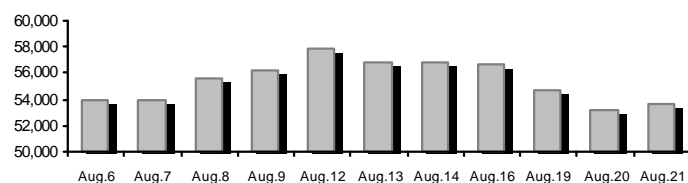
## Summary of Markets

Athex Composite Share Price Index vs Shares and Derivatives Transactions Value

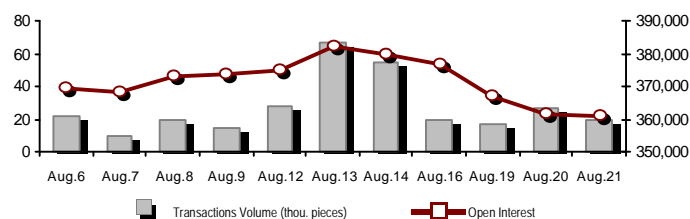


Total Transactions Value (Securities/Derivatives) (thou. €):		49,755.54	
Athex Capitalisation (mill. €) **: 53,642.98		Derivatives Total Open Interest: 360,979	
Daily change: mill. €   %: 431.55 0.81%		in Index Futures   % daily chng: 46,865 2.36%	
Yearly Avg Capitalisation: mill. €   % chng prev year Avg: 44,567.63 62.84%		in Stock Futures   % daily chng: 152,503 -1.23%	
Athex Composite Share Price Index   % daily chng: 903.76 0.85%		in Index Options   % daily chng: 4,718 1.75%	
Athex Composite Share Price Index Capitalisation (mill. €): 46,724.85		in Stock Options   % daily chng: 5,534 2.36%	
Daily change (mill. €): 414.07		in Stock Repos/Reverse Repos/RA   % daily chng: 151,359 0.08%	
Securities' Transactions Value (thou. €): 36,534.82		Derivatives Transactions Value (thou. €): 13,220.72	
Daily change: thou. €   %: -17,615.32 -32.53%		Daily change: thou. €   %: -5,706.39 -30.15%	
YtD Avg Trans. Value: thou. €   % chng prev year Avg: 67,496.84 30.12%		YtD Avg Trans. Value: thou. €   % chng prev year Avg: 23,300.86 22.08%	
Short Selling Trans. Value: mill. €   % in total Value			
Short Covering Trans. Value: mill. €   % in total Value			
Transactions Value of Blocks (thou. €): 950.48			
Bonds Transactions Value (thou. €): 0.00			
Securities' Transactions Volume (thou. Pieces): 22,187.46		Derivatives Contracts Volume: 19,376	
Daily change: thou. pieces   %: -4,385.99 -16.51%		Daily change: pieces   %: -7,544 -28.02%	
YtD Avg Volume: thou. pieces   % chng prev year Avg: 52,201.51 5.57%		YtD Avg Derivatives Contracts   % chng prev year Avg: 44,824 -30.35%	
Short Selling Volume: thou pieces   % in total Volume			
Short Covering Volume: thou. pieces   % in total Volume			
Transactions Volume of Blocks (thou. Pieces): 435.00			
Bonds Transactions Volume (thou. pieces): 0.00			
Securities' Trades Number: 20,743		Derivatives Trades Number: 1,884	
Daily change: number   %: -3,114 -13.05%		Daily change: number   %: -428 -18.51%	
YtD Avg Derivatives Trades number   % chng prev year Avg: 30,068 21.20%		YtD Avg Derivatives Trades number   % chng prev year Avg: 2,787 -4.37%	
Number of Blocks: 1			
Number of Bonds Transactions: 0			

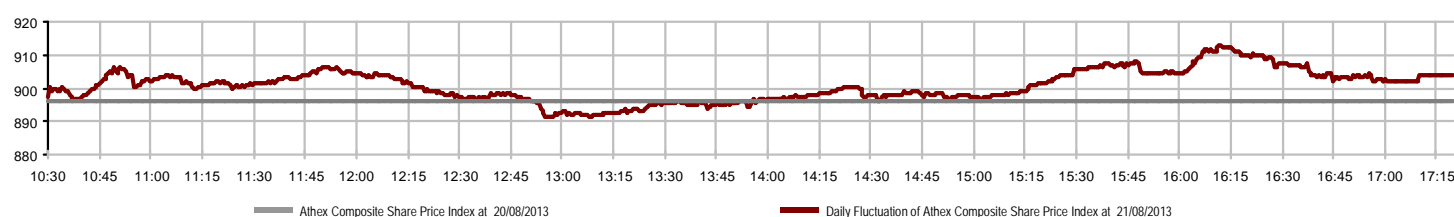
Athex Capitalisation (mill. €) \*\*



Derivatives Transactions Volume and Open Interest



Daily Fluctuation of Athex Composite Share Price Index



## Athex Indices

Index name	21/08/2013	20/08/2013	pts.	%	Min	Max	Year min	Year max	Year change
Athex Composite Share Price Index	903.76 #	896.11	7.65	0.85%	891.15	912.62	788.81	1,159.97	-0.46% €
FTSE/Athex Large Cap	308.69 #	304.81	3.88	1.27%	304.43	312.04	253.17	410.78	-0.32% €
FTSE/ATHEX Custom Capped	964.19 €	996.56	-32.38	-3.25%			863.84	1,275.55	-5.42% €
FTSE/ATHEX Custom Capped - USD	928.13 €	953.87	-25.74	-2.70%			808.44	1,172.76	-3.68% €
FTSE/Athex Mid Cap Index	1,014.26 #	1,014.15	0.11	0.01%	1,005.37	1,026.61	871.32	1,360.26	-10.50% €
FTSE/ATHEX-CSE Banking Index	101.68 #	101.30	0.38	0.38%	100.24	103.36	64.42	278.69	-39.79% €
FTSE/ATHEX Global Traders Index Plus	1,318.84 #	1,309.08	9.76	0.75%	1,296.23	1,324.72	1,082.32	1,484.90	5.73% #
FTSE/ATHEX Global Traders Index	1,373.14 #	1,360.20	12.94	0.95%	1,347.78	1,384.59	1,053.81	1,553.64	10.54% #
FTSE/ATHEX Mid & Small Cap Factor-Weighted Ind	1,197.39 #	1,194.62	2.77	0.23%	1,185.39	1,202.50	1,053.59	1,348.92	-3.36% €
Greece & Turkey 30 Price Index	656.89 €	674.68	-17.79	-2.64%	656.62	674.97	656.62	927.16	-15.55% €
ATHEX Mid & SmallCap Price Index	2,810.79 #	2,787.06	23.73	0.85%	2,773.69	2,818.27	2,752.95	3,725.74	-10.34% €
FTSE/Athex Market Index	745.25 #	736.48	8.77	1.19%	735.53	752.99	600.87	972.17	1.06% #
FTSE/Med 100	4,191.32 €	4,258.24	-66.92	-1.57%			4,075.12	4,570.16	1.15% #
Athex Composite Index Total Return Index	1,308.62 #	1,297.54	11.08	0.85%	1,290.36	1,321.46	1,139.79	1,655.57	1.05% #
FTSE/Athex Large Cap Total Return	423.02 #	417.70	5.32	1.27%			366.91	565.68	-1.84% €
FTSE/ATHEX Large Cap Net Total Return	1,237.68 #	1,222.09	15.59	1.28%	1,220.58	1,251.10	1,001.98	1,626.24	0.98% #
FTSE/ATHEX Custom Capped Total Return	1,006.98 €	1,040.80	-33.81	-3.25%			895.99	1,311.70	-3.90% €
FTSE/ATHEX Custom Capped - USD Total Return	969.33 €	996.21	-26.88	-2.70%			836.50	1,205.99	-2.13% €
FTSE/Athex Mid Cap Total Return	1,255.33 #	1,255.19	0.14	0.01%			1,152.62	1,720.22	-14.14% €
FTSE/ATHEX-CSE Banking Total Return Index	96.40 #	96.04	0.36	0.37%			82.32	289.59	-47.73% €
Greece & Turkey 30 Total Return Index	807.03 €	817.08	-10.05	-1.23%			790.56	1,098.14	-11.92% €
Hellenic Mid & Small Cap Index	931.37 #	927.69	3.68	0.40%	918.70	937.36	737.97	1,071.68	6.23% #
FTSE/Athex Banks	134.34 #	133.84	0.50	0.37%	132.45	136.56	85.08	368.22	-40.63% €
FTSE/Athex Insurance	1,201.18 €	1,222.25	-21.07	-1.72%	1,180.11	1,253.86	1,159.03	1,548.89	-20.83% €
FTSE/Athex Financial Services	1,350.28 #	1,327.11	23.17	1.75%	1,303.55	1,357.68	817.47	1,771.89	2.38% #
FTSE/Athex Industrial Goods & Services	3,415.14 #	3,370.17	44.97	1.33%	3,322.35	3,430.78	2,715.10	4,197.17	5.06% #
FTSE/Athex Retail	2,497.61 €	2,531.99	-34.38	-1.36%	2,441.53	2,538.48	1,629.12	2,692.44	36.51% #
FTSE/ATHEX Real Estate	1,948.54 #	1,937.61	10.93	0.56%	1,910.82	1,976.83	1,491.01	2,108.44	30.69% #
FTSE/Athex Personal & Household Goods	4,233.83 €	4,311.77	-77.94	-1.81%	4,131.87	4,311.77	2,586.10	4,550.67	35.59% #
FTSE/Athex Food & Beverage	7,762.18 #	7,521.48	240.70	3.20%	7,521.48	7,855.29	6,301.12	8,591.23	16.58% #
FTSE/Athex Basic Resources	2,195.29 #	2,191.16	4.13	0.19%	2,161.59	2,235.34	1,674.83	2,901.09	-5.52% €
FTSE/Athex Construction & Materials	1,946.24 #	1,894.64	51.60	2.72%	1,879.81	1,960.66	1,439.70	2,130.78	6.00% #
FTSE/Athex Oil & Gas	2,672.55 #	2,669.39	3.16	0.12%	2,645.72	2,722.10	2,358.47	3,358.80	-5.00% €
FTSE/Athex Chemicals	6,169.59 #	6,124.90	44.69	0.73%	6,124.90	6,291.42	5,194.08	7,961.02	2.50% #
FTSE/Athex Media	2,068.41 #	1,905.90	162.51	8.53%	1,905.90	2,068.41	716.56	3,560.63	185.72% #
FTSE/Athex Travel & Leisure	1,269.49 #	1,264.45	5.04	0.40%	1,259.78	1,280.91	1,028.61	1,496.38	25.77% #
FTSE/Athex Technology	681.80 #	677.60	4.20	0.62%	668.99	687.52	555.63	886.96	-8.14% €
FTSE/Athex Telecommunications	1,857.98 #	1,830.46	27.52	1.50%	1,816.70	1,882.76	1,175.35	2,147.00	32.35% #
FTSE/Athex Utilities	2,669.10 #	2,645.66	23.44	0.89%	2,616.58	2,710.72	1,752.55	3,104.53	16.66% #
FTSE/Athex Health Care	244.00 €	244.23	-0.23	-0.09%	240.91	247.08	172.87	346.05	-13.04% €
Athex All Share Index	190.57 #	189.00	1.56	0.83%			176.43	294.40	-19.48% €

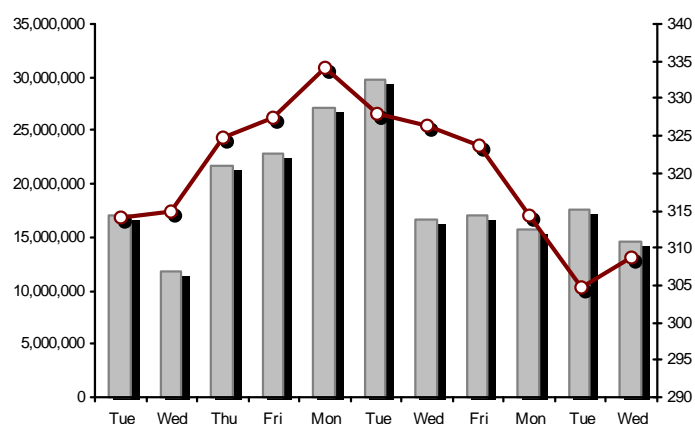
Note 1: Greece & Turkey 30 Pr data is the indicative at 17:20, whereas FTSE/ATHEX Custom Capped, FTSE/ATHEX Custom Capped - USD, FTSE/ATHEX Custom Capped TR, FTSE/ATHEX Custom Capped - USD TR, FTSE/Med 100 & Greece & Turkey 30 Rt closing prices refer to the previous trading day of 20/08/2013.

Note 2: The Hellenic Mid & Small Cap Index is a Customized index calculated by the Athens Exchange.

## Athex Indices

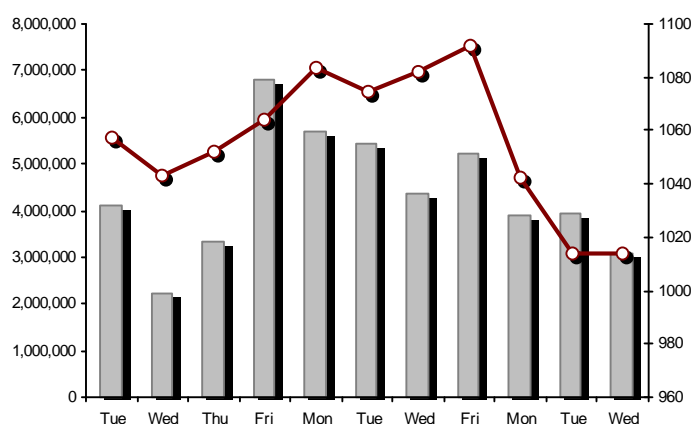
FTSE/Large Cap

21/08/2013: 1.27%



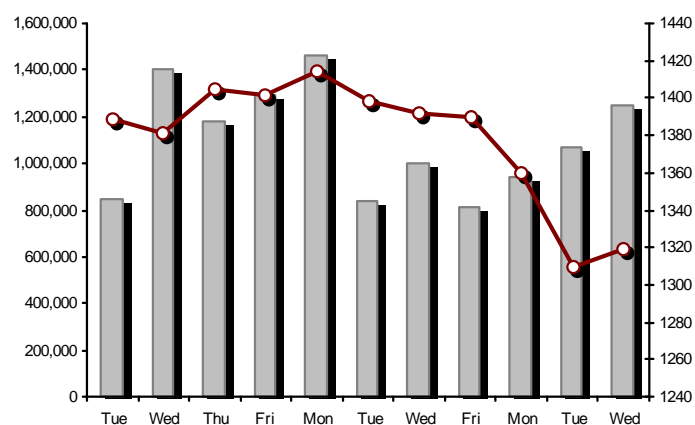
FTSE/Athex Mid Cap Index

21/08/2013: 0.01%



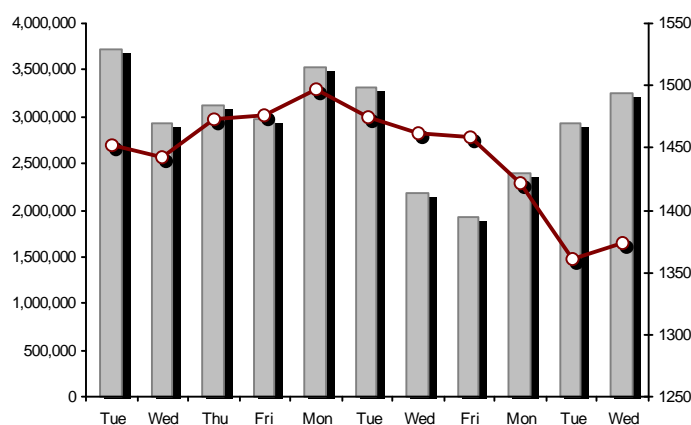
FTSE/ATHEX Global Traders Index Plus

21/08/2013: 0.75%



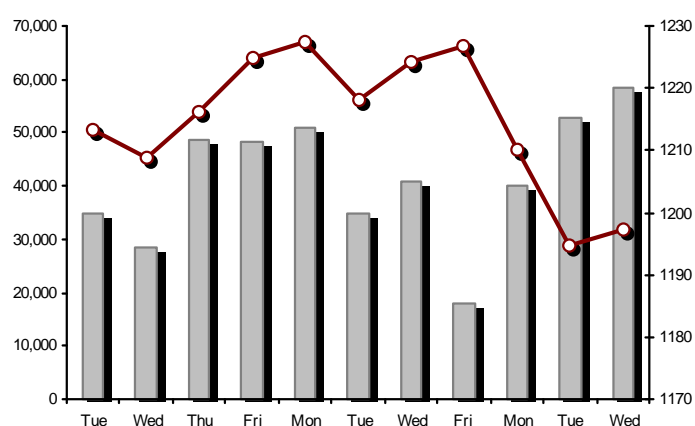
FTSE/ATHEX Global Traders Index

21/08/2013: 0.95%



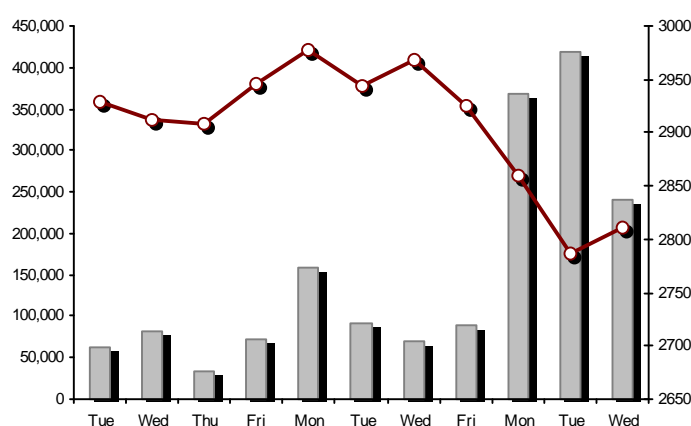
FTSE/ATHEX Mid &amp; Small Cap Factor-Weighted Index

21/08/2013: 0.23%



ATHEX Mid &amp; SmallCap Price Index

21/08/2013: 0.85%



Indices volume of transactions

Indices closing prices

## Analytic Figures for Athex Market's Boards and Categories

	Total Traded Securities	Main Market	Low Dispersion	Other Categories (*)	Exchange Traded Funds (ETFs)	Warrants
Totals	150	121	10	15	1	3
Gain / Lose / Same:	77 / 49 / 24	68 / 36 / 17	4 / 4 / 2	1 / 9 / 5	1 / 0 / 0	3 / 0 / 0
Athex Capitalisation (mill. €) **	53,642.98	51,420.74	1,877.33	344.91		
Daily Average Transactions Value (thou. €)	67,496.84	26,426.33	545.91	85.07	41.11	6,378.71
Transactions Value	36,534.82	33,190.03	56.79	7.47	0.04	3,280.48
Main Board:	35,584.34	32,239.56	56.79	7.47	0.04	3,280.48
Blocks Board:	950.48	950.48	0.00	0.00	0.00	0.00
Forced Sales Board:	0.00	0.00	0.00	0.00	0.00	0.00
Special Terms Board:	0.00	0.00	0.00	0.00	0.00	0.00
Daily Average Transactions Volume	52,201,513	16,179,016	58,658	457,812	10,140	9,764,368
Transactions Volume	22,187,458	18,301,350	17,705	50,091	12	3,818,300
Main Board:	21,752,458	17,866,350	17,705	50,091	12	3,818,300
Blocks Board:	435,000	435,000	0	0	0	0
Forced Sales Board:	0	0	0	0	0	0
Special Terms Board:	0	0	0	0	0	0
Daily Average Number of Trades	30,068	11,779	123	225	8	2,399
Number of Trades	20,743	17,984	73	72	2	2,612
Main Board:	20,742	17,983	73	72	2	2,612
Blocks Board:	1	1	0	0	0	0
Forced Sales Board:	0	0	0	0	0	0
Special Terms Board:	0	0	0	0	0	0

(\*) Summarised Transactions figures for Under Deletion and Under Supervision Categories.

(\*\*) The Market Capitalization of the Companies that belong in the Under Supervision Category is not included.

## Trading Details by Athex Sectors and ETFs Category

Code	Sectors	Gain / Lose / Same	Number of Trades	Transactions Volume	Transactions Value	% of Total Trans. Value
8300	- Banks	7 / 1 / 1	7,497	16,101,402	12,852,114.62	35.18%
1700	- Basic Resources	5 / 1 / 5	1,275	361,105	993,527.50	2.72%
1300	- Chemicals	4 / 2 / 1	60	29,473	33,651.45	0.09%
2300	- Construction & Materials	9 / 8 / 4	1,014	821,343	1,862,890.06	5.10%
11000	- ETF	1 / 0 / 0	2	12	37.18	0.00%
8700	- Financial Services	3 / 2 / 0	939	866,134	740,384.00	2.03%
3500	- Food & Beverage	7 / 4 / 3	1,070	174,526	2,786,070.10	7.63%
4500	- Health Care	1 / 3 / 1	241	322,691	212,996.69	0.58%
2700	- Industrial Goods & Services	10 / 5 / 2	1,447	481,896	1,485,408.45	4.07%
8500	- Insurance	0 / 1 / 0	38	16,294	18,518.73	0.05%
5500	- Media	1 / 3 / 0	20	8,322	2,489.81	0.01%
500	- Oil & Gas	1 / 0 / 1	739	138,204	1,019,163.59	2.79%
3700	- Personal & Household Goods	8 / 5 / 2	734	166,259	988,365.19	2.71%
8600	- Real Estate	3 / 2 / 1	423	53,088	292,263.75	0.80%
5300	- Retail	2 / 2 / 0	344	92,661	473,034.24	1.29%
9500	- Technology	4 / 4 / 2	231	179,034	88,490.26	0.24%
6500	- Telecommunications	1 / 0 / 0	1,417	805,599	5,407,092.75	14.80%
5700	- Travel & Leisure	8 / 4 / 1	1,528	1,043,473	3,743,142.17	10.25%
7500	- Utilities	2 / 2 / 0	1,723	525,842	3,535,175.96	9.68%

## Top 10 best &amp; worst performing Shares

Main Market					
With positive Price change	Closing price	change	With negative Price change	Closing price	change
QUALITY & RELIABILITY SA (CR)	1.68	11.26% #	JUMBO SA (CR)	8.35	-2.23% ⚡
KYRIAKIDIS MARBLES SA (CR)	0.896	6.67% #	ALPHA BANK (CR)	0.490	-2.20% ⚡
GEN. COMMERCIAL & IND.SA (CR)	0.393	6.22% #	FOURLIS (CR)	2.51	-1.95% ⚡
TITAN CEMENT (CR)	14.77	4.60% #	AEGEAN AIRLINES (CR)	3.14	-1.88% ⚡
KEKROPS SA (CR)	1.87	3.31% #	EUROPEAN RELIANCE INSUR. (CR)	1.14	-1.72% ⚡
CC HBC AG (CR)	20.75	3.23% #	FOLLI FOLLIE (CR)	17.65	-1.40% ⚡
VIOHALCO (CB)	4.39	3.05% #	THESSALONIKA WATER & SEWERAGE	5.68	-1.39% ⚡
PARNASSOS ENTERP. (CR)	0.190	2.70% #	GEK TERNA (CR)	2.16	-1.37% ⚡
SIDENOR (CR)	1.58	2.60% #	J & P - AVAX SA (CR)	1.53	-1.29% ⚡
REVOIL (CR)	0.840	2.19% #	KRI-KRI S.A. (CR)	1.88	-0.53% ⚡
With the highest Transactions Value	Value (thou. €)	change	With the highest Transactions Volume	Volume	change
OTE (CR)	5,407.09	1.50% #	ALPHA BANK (CR)	5,761,535	-2.20% ⚡
PIRAEUS BANK (CR)	3,980.67	1.41% #	PIRAEUS BANK (CR)	3,949,440	1.41% #
PPC (CR)	3,169.18	1.25% #	ATTICA BANK S.A. (CR)	1,193,262	1.80% #
ALPHA BANK (CR)	2,851.35	-2.20% ⚡	OTE (CR)	805,599	1.50% #
CC HBC AG (CR)	2,739.15	3.23% #	EUROBANK ERGASIAS (CR)	706,406	0.00% ↔
OPAP (CR)	2,614.62	0.28% #	NATIONAL BANK (CR)	670,168	1.41% #
NATIONAL BANK (CR)	1,930.27	1.41% #	MARFIN INVESTMENT GROUP (CR)	653,560	1.01% #
GEK TERNA (CR)	1,192.68	-1.37% ⚡	INTRALOT (CR)	642,642	1.26% #
INTRALOT (CR)	1,045.01	1.26% #	GEK TERNA (CR)	545,604	-1.37% ⚡
JUMBO SA (CR)	896.98	-2.23% ⚡	PPC (CR)	435,700	1.25% #

Note: Stocks that are not included in the "Low Dispersion" and "Under Supervision" categories, and the transactions value is more than 10,000 €.



## Derivatives Summary

	Number of Trades	Volume	Open Interest	Transactions Value
Index Futures	528	5,579	46,865	8,648,066.25
FTSE/Athex Large Cap	528	5,579	46,865	8,648,066.25
Stock Futures	1,294	13,313	152,503	3,931,558.18
ALPHA BANK (CR)	125	4,034	16,067	199,174.10
CC HBC AG (CR)	38	102	701	211,893.00
CORINTH PIPEWORKS SA (CR)	5	28	462	5,790.00
ELLAKTOR (CR)	23	183	4,361	38,495.00
EUROBANK ERGASIAS (CR)	15	503	20,476	3,265.34
EUROBANK PROPERTIES REIC (CR)	6	16	274	11,430.00
EYDAP S.A. (CR)	6	24	213	14,365.00
FOLLI FOLLIE (CR)	3	11	252	19,318.00
FRIGOGLASS SA (CR)	12	27	416	13,311.00
GEK TERNA (CR)	59	417	32,299	91,089.00
HELLENIC EXCHANGES (CR)	35	114	2,348	67,771.00
HELLENIC PETROLEUM (CR)	66	398	2,343	291,324.00
INTRALOT (CR)	67	798	4,017	130,182.00
JUMBO SA (CR)	44	185	316	154,672.00
MARFIN INVESTMENT GROUP (CR)	24	244	19,235	7,258.40
METKA (CR)	18	69	473	72,675.00
MOTOR OIL (CR)	24	126	923	94,085.00
MYTILINEOS HOLDINGS (CR)	73	190	4,930	81,983.00
NATIONAL BANK (CR)	142	1,625	5,499	466,804.00
OPAP (CR)	35	198	3,971	142,533.00
OTE (CR)	151	1,133	8,332	762,231.00
P.P.A. S.A. (CR)	3	15	543	24,852.00
PIRAEUS BANK (CR)	75	1,638	14,182	164,848.30
PPC (CR)	175	1,041	5,274	758,802.00
SIDENOR (CR)	8	13	1,500	2,048.00
TERNA ENERGY (CR)	13	77	2,407	22,936.04
TITAN CEMENT (CR)	13	33	200	47,937.00
VIOHALCO (CB)	36	71	489	30,486.00
Index Options	60	364	4,718	560,100.00
FTSE/Athex Large Cap	60	364	4,718	560,100.00
Stock Options	0	0	5,534	0.00
ALPHA BANK (CR)	0	0	0	0.00
NATIONAL BANK (CR)	0	0	282	0.00
OPAP (CR)	0	0	2,945	0.00
OTE (CR)	0	0	1,862	0.00
PIRAEUS BANK (CR)	0	0	5	0.00
PPC (CR)	0	0	440	0.00
Stock Repos - Stock Reverse Repos - Repurchase Agreements	2	120	151,359	81,000.00
Stock Reverse Repos	1	60	4,767	40,500.00
Stock Repos	0	0	141,010	0.00
Repurchase Agreement	1	60	5,582	40,500.00
Total Derivatives Traded	1,884	19,376	360,979	13,220,724.43

Number of Outstanding Securities	Nominal Value	Dividends [1]			Date of Last Dividend [2]	Coupon Right	Note	Shares	Closing price	% change	Previous closing price/date	Open price	Price min	Price max	Last price	Avg price	Last Bid [7]	Last Ask [7]	P/E after	Year	Volume	Trades	Transactions Value	Company Mkt Value (thou. €)	Year low	Year high	Sector[ 4]
1,233,503,482		---	---	---		11/06/2013	---	ALPHA BANK (W)	0.928	3.11 #	0.900 20/08/2013	0.900	0.860	0.941	0.928	0.923	31630@0.920	5446@0.929	---	2012	2,310,815	1,506	2,131,939.68	5,352,223.95	0.241	1.14	8355
245,779,626		---	---	---		27/06/2013	---	NATIONAL BANK (W)	0.919	4.91 #	0.876 20/08/2013	0.895	0.860	0.930	0.919	0.906	100@0.898	1422@0.919	---	2012	580,410	463	525,960.09	6,902,743.66	0.420	2.00	8355
849,195,130		---	---	---		03/07/2013	---	PIRAEUS BANK (W)	0.662	1.85 #	0.650 20/08/2013	0.650	0.650	0.699	0.662	0.672	900@0.663	1000@0.669	---	2012	927,075	643	622,583.16	5,123,293.63	0.290	0.889	8355

Warrants

71,417,100	0.650	---	---	---	26/05/2010	11/07/2007	---	AEGEAN AIRLINES (CR)	3.14	-1.88 €	3.20 20/08/2013	3.20	3.06	3.20	3.14	3.12	100@3.09	800@3.10	---	2012	6,450	19	20,127.70	224,249.69	1.96	3.24	5751
11,178,000	1.45	---	---	---	21/04/2010	12/05/2011	---	AEOLIAN INVESTMENT FUND (CR)	0.981	-6.57 €	1.05 20/08/2013	0.982	0.981	0.982	0.981	0.981	300@0.982	1000@1.02	7.76	2012	465	3	456.38	10,965.62	0.900	1.17	8985
13,000,000	1.00	---	---	---	01/08/2007	07/04/2000	---	AKRITAS SA (CR)	0.216	2.37 #	0.211 20/08/2013	0.216	0.216	0.216	0.216	0.216	180@0.227	---	---	2012	20	1	4.32	2,808.00	0.140	0.520	2353
25,000,000	0.400	---	---	---	03/06/2009	12/07/2013	---	ALCO HELLAS SA (CR)	0.436	---	0.436 20/08/2013	0.448	0.402	0.448	0.436	0.435	1150@0.403	215@0.436	---	2012	4,612	27	2,005.39	10,900.00	0.159	0.599	1753
10,922,906,012	0.300	---	---	---	07/04/2008	13/05/2013	---	ALPHA BANK (CR)	0.490	-2.20 €	0.501 20/08/2013	0.498	0.485	0.512	0.490	0.495	16200@0.489	2500@0.493	---	2012	5,761,535	1,860	2,851,347.02	5,352,223.95	0.161	0.696	8355
22,016,250	0.370	---	---	---	15/07/2009	11/05/2000	---	ALUMIL (CR)	0.600	---	0.600 20/08/2013	0.613	0.589	0.613	0.600	0.597	50@0.585	977@0.599	---	2012	987	15	589.10	13,209.75	0.360	0.740	1753
418,000	16.00	---	---	---	22/04/2010	05/03/2013	---	ANDROMEDA SA (CR)	17.10	-9.62 €	18.92 20/08/2013	17.10	17.10	17.10	17.10	17.10	10@17.18	192@20.81	1.58	2012	3	1	51.30	7,147.80	17.10	25.41	8985
21,876,700	0.380	---	---	---	08/07/2010	05/06/2001	---	AS COMPANY SA (CR)	0.301	1.01 #	0.298 20/08/2013	0.300	0.300	0.301	0.300	0.300	330@0.301	1000@0.330	34.40	2012	45,850	13	13,760.00	6,584.89	0.272	0.488	5379
86,735,980	0.310	---	---	---	06/07/2009	02/01/2002	---	ATHENS MEDICAL CENTER SA (CR)	0.802	0.12 #	0.801 20/08/2013	0.800	0.800	0.802	0.802	0.800	515723@0.800	1750@0.802	---	2012	204,135	63	163,340.73	69,562.26	0.471	0.994	4533
699,673,060	0.300	---	---	---	04/06/2008	05/06/2013	---	ATTICA BANK S.A. (CR)	0.283	1.80 #	0.278 20/08/2013	0.280	0.275	0.285	0.283	0.281	500@0.282	11971@0.284	---	2012	1,193,262	381	335,189.46	198,007.48	0.173	1.06	8355
45,457,464	0.700	---	---	---	01/07/2008	01/03/2010	---	AUDIO VISUAL ENTERPRISES (CR)	0.280	8.53 #	0.258 20/08/2013	0.280	0.280	0.280	0.280	0.280	---	4850@0.280	---	2012	200	1	56.00	12,728.09	0.097	0.482	5553
36,360,000	0.320	---	0.15	---	30/04/2012	05/05/2008	---	AUTOHELLAS SA (CR)	2.23	0.91 #	2.21 20/08/2013	2.24	2.21	2.29	2.23	2.25	50@2.22	4170@2.23	12.01	2012	4,730	20	10,658.78	81,082.80	1.50	2.30	5759
19,864,886	5.60	1.976	0.67	0.5376	06/03/2013	02/07/2008	---	BANK OF GREECE (CR)	13.00	0.85 #	12.89 20/08/2013	12.80	12.80	13.20	13.00	12.97	21@12.95	20@13.01	---	---	2,291	80	29,713.37	258,243.52	11.26	19.19	8355
23,986,500	1.05	---	---	---	26/06/2009	15/03/2000	---	BIOKARPET S.A.(CR)	0.673	---	0.673 05/08/2013	---	---	---	---	---	---	400@0.673	---	2012	---	---	---	16,142.91	0.486	0.845	3726
15,842,391	1.51	---	---	---	15/07/2009	12/05/2000	---	BITROS HOLDING SA (CR)	0.621	---	0.621 01/08/2013	---	---	---	---	---	---	1650@0.570	---	2012	---	---	---	9,838.12	0.336	0.745	1757
15,816,009	0.300	---	---	---	01/07/2009	17/07/2000	---	BYTE COMPUTER SA (CR)	0.470	2.17 #	0.460 20/08/2013	0.470	0.460	0.470	0.470	0.469	70@0.460	800@0.470	---	2012	230	3	107.80	7,433.52	0.351	0.620	9533
366,491,145	6.70	---	---	0.34	26/06/2013	29/04/2013	---	CC HBC AG (CR)	20.75	3.23 #	20.10 20/08/2013	20.10	20.10	21.00	20.75	20.77	4719@20.76	2126@20.97	---	---	131,901	958	2,739,152.52	7,604,691.26	16.79	22.60	3537
101,123,806	0.360	---	---	---	22/07/2010	28/06/2011	---	CENTRIC HOLDINGS (CR)	0.229	4.09 #	0.220 20/08/2013	0.220	0.220	0.229	0.229	0.226	250@0.210	2200@0.229	34.75	2012	1,150	4	259.90	23,157.35	0.182	0.440	5752
4,034,950	0.680	---	---	---	01/07/2005	30/12/2010	---	CHATZIKRANIOTIS & SONS SA (CR)	0.190	24.18 #	0.153 16/08/2013	0.190	0.190	0.190	0.190	0.190	1200@0.143	990@0.190	---	2012	10	1	1.90	766.64	0.130	0.522	3577
124,170,201	0.780	---	---	---	28/06/2002	07/02/2005	---	CORINTH PIPEWORKS SA (CR)	2.06	---	2.06 20/08/2013	2.06	2.03	2.13	2.06	2.08	2600@2.05	1000@2.09	73.80	2012	103,938	330	216,222.70	255,790.61	1.40	2.59	1757
9,907,500	0.300	---	---	---	06/10/2005	13/02/2002	---	CPI SA (CR)	0.212	---	0.212 13/08/2013	---	---	---	---	---	---	3000@0.231	---	2012	---	---	---	2,100.39	0.133	0.400	9572
27,379,200	0.610	---	---	---	23/06/2010	05/12/2012	---	CRETE PLASTICS SA (CR)	4.77	-0.42 €	4.79 20/08/2013	4.77	4.77	4.77	4.77	4.77	135@4.80	487@5.02	13.63	2012	153	3	729.81	130,598.78	4.60	5.65	1357
26,664,840	0.470	---	---	---	29/06/2005	12/07/1999	---	CYCLON HELLAS SA (CR)	0.481	3.22 #	0.466 20/08/2013	0.485	0.450	0.485	0.482	0.480	2000@0.455	90@0.484	---	2012	3,760	7	1,806.44	12,825.79	0.385	0.700	1357
15,000,000	0.300	---	---	---	06/07/2007	18/07/2000	---	DAIOS PLASTICS SA (CR)	3.79	2.16 #	3.71 20/08/2013	3.79	3.79	3.79	3.79	3.79	80@3.36	50@3.79	---	2012	10	1	37.90	56,850.00	3.34	5.50	1357
31,370,399	0.300	---	---	---	11/08/2010	15/02/2012	---	DIONIC (CR)	0.076	1.33 #	0.075 20/08/2013	0.075	0.072	0.076	0.076	0.076	2000@0.074	7000@0.077	---	2012	190,590	35	14,402.04	2,384.15	0.066	0.263	2797
34,720,000	0.310	---	---	---	16/06/2010	01/08/2007	---	DROMEAS SA (CR)	0.361	1.98 #	0.354 20/08/2013	0.370	0.350	0.370	0.360	0.356	100@0.355	500@0.365	---	2012	11,196	21	3,986.88	12,533.92	0.218	0.634	3726
3,873,120	0.300	---	---	---	07/07/2008	04/10/2012	---	DRUCKFARBEN HELLAS (CR)	1.16	1.75 #	1.14 20/08/2013	1.14	1.14	1.16	1.16	1.15	370@1.16	---	---	2012	5,048	4	5,787.32	4,492.82	0.901	2.64	1357
11,250,000	0.560	---	---	---	26/07/2010	16/06/1999	---	EKTER SA (CR)	0.469	2.18 #	0.459 20/08/2013	0.469	0.469	0.469	0.469	0.469	800@0.430	50@0.450	8.19	2012	50	1	23.45	5,276.25	0.400	0.700	2357
32,188,050	1.04	---	---	---	21/07/2008	20/01/2000	---	EL. D. MOUZAKIS SA (CB)	0.170	6.92 #	0.159 08/08/2013	0.170	0.170	0.170	0.170	0.170	440@0.148	100@0.170	---	2012	100	1	17.00	5,471.97	0.114	0.330	3763
18,648,000	1.00	---	---	---	07/07/2009	10/09/2010	---	ELASTRON (CR)	0.733	2.09 #	0.718 20/08/2013	0.730	0.723	0.740	0.735	0.729	10@0.725	200@0.730	---	2012	980	12	714.49	13,668.98	0.518	0.969	1757
31,734,530	1.60	---	---	---	09/07/2007	19/07/2006	---	ELGEKA SA (CR)	0.650	---	0.650 13/08/2013	---	---	---	---	---	2000@0.467	80@0.500	---	2012	---	---	---	20,627.44	0.407	0.780	3577
23,828,130	0.500	---	---	---	07/07/2010	17/02/2009	---	ELINOIL S.A. (CR)	1.17	---	1.17 13/08/2013	---	---	---	---	---	200@1.17	400@1.26	---	2012	---	---	---	27,878.91	1.02	1.89	537
177,001,313	1.03	0.0308	---	---	05/07/2011	20/12/2007	---	ELLAKTOR (CR)	2.14	1.42 #	2.11 20/08/2013	2.11	2.06	2.15	2.14	2.11	1000@2.11	3800@2.15	---	2012	147,125	356	310,717.88	378,782.81	1.36	2.50	2357

Number of Outstanding Securities	Nominal Value	Dividends [1]			Date of Last Coupon		Note	Shares	Closing price	% change	Previous closing price/date	Open price	Price min	Price max	Last price	Avg price	Last Bid [7]	Last Ask [7]	P/E after	Year	Volume	Trades	Transactions Value	Company Mkt Value (thou. €)	Year low	Year high	Sector[4]	
		2010	2011	2012	Dividend [2]	Right																						
Main Market																												
26,730,187	0.600	---	---	---	25/06/2009	30/12/2010	---	ELTON SA (CR)	1.11	0.91 #	1.10 20/08/2013	1.10	1.06	1.11	1.11	1.10	1101@1.07	199@1.08	11.60	2012	5,054	17	5,537.77	29,670.51	0.850	1.25	1353	
15,146,404	0.340	0.093	---	---	06/07/2011	17/10/2002	---	ELTRAK SA (CR)	1.62	--- ↘	1.62 20/08/2013	1.62	1.62	1.62	1.62	1.62	130@1.48	609@1.62	---	2012	566	1	916.92	24,537.17	1.08	1.90	2753	
124,100,815	0.300	---	---	---	27/06/2008	07/07/2000	---	ELVAL SA. (CB)	1.95	0.52 #	1.94 20/08/2013	1.97	1.94	1.98	1.95	1.95	100@1.94	1739@1.96	15.06	2012	7,120	33	13,909.01	241,996.59	1.55	2.38	1753	
13,230,000	0.300	---	---	---	11/08/2010	27/06/2012	---	ELVE SA (CR)	0.527	5.40 #	0.500 20/08/2013	0.527	0.527	0.527	0.527	0.527	---	400@0.500	---	2012	10	1	5.27	6,972.21	0.423	0.717	3763	
30,009,210	0.310	---	---	---	27/06/2008	26/06/2000	---	ETEM SA (CB)	0.403	-3.36 €	0.417 20/08/2013	0.415	0.400	0.415	0.403	0.404	2252@0.402	190@0.416	---	2012	4,794	16	1,935.65	12,093.71	0.328	0.828	1753	
4,050,416,865	0.300	---	---	---	02/05/2008	13/06/2013	---	EUROBANK ERGASIAS (CR)	0.624	--- ↘	0.624 20/08/2013	0.637	0.619	0.644	0.624	0.629	1749@0.623	55@0.626	---	2012	706,406	512	444,443.85	2,527,460.12	0.555	6.23	8355	
61,000,000	2.13	0.5364	0.4067	---	23/03/2012	20/11/2007	---	EUROBANK PROPERTIES REIC (CR)	7.14	0.56 #	7.10 20/08/2013	7.10	6.99	7.25	7.14	7.11	100@7.12	100@7.20	---	2012	38,447	385	273,447.01	435,540.00	4.87	7.75	8675	
27,503,677	0.600	0.04	0.05	0.1	11/07/2013	18/10/1999	---	EUROPEAN RELIANCE INSUR. (CR)	1.14	-1.72 €	1.16 20/08/2013	1.15	1.12	1.19	1.12	1.14	100@1.12	246@1.16	3.44	2012	16,294	38	18,518.73	31,354.19	0.973	1.62	8536	
13,673,200	0.880	---	---	---	18/07/2008	26/07/2001	---	EVROFARMA SA (CR)	0.260	9.24 #	0.238 12/08/2013	0.260	0.260	0.260	0.260	0.260	10@0.259	---	---	2012	10	1	2.60	3,555.03	0.209	0.539	3577	
106,500,000	0.600	0.04	0.05	0.15	31/07/2013	28/01/2000	---	EYDAP S.A. (CR)	5.96	-0.17 €	5.97 20/08/2013	5.86	5.86	6.11	5.96	5.97	872@5.97	18@6.11	13.55	2012	17,138	194	102,301.09	634,740.00	4.65	6.47	7577	
52,800,154	0.300	---	---	---	16/04/2010	21/06/2004	---	F.G. EUROPE S.A. (CR)	0.518	0.58 #	0.515 20/08/2013	0.518	0.518	0.518	0.518	0.518	580@0.464	380@0.515	6.27	2012	206	2	106.71	27,350.48	0.450	0.950	3722	
10,203,575	0.730	---	---	---	16/07/2007	18/10/1999	---	FIERATEX SA (CR)	0.138	--- ↘	0.138 20/08/2013	---	---	---	---	---	500@0.109	401@0.138	---	2012	---	---	---	1,408.09	0.090	0.400	3763	
11,720,024	0.530	---	---	---	16/07/2010	29/05/2012	---	FLEXOPACK SA (CR)	3.60	--- ↘	3.60 20/08/2013	---	---	---	---	---	190@3.61	---	12.12	2012	---	---	---	42,192.09	2.39	5.00	2723	
4,181,450	0.500	---	---	---	21/08/2000	05/03/2002	---	FLOUR MILLS SARANTOPOULOS SA	0.900	--- ↘	0.900 12/08/2013	---	---	---	---	---	120@0.950	---	16.64	2012	---	---	---	3,763.31	0.626	1.02	3577	
66,948,210	0.300	---	---	---	14/07/2009	31/12/2010	4988	FOLLI FOLLIE (CR)	17.65	-1.40 €	17.90 20/08/2013	17.95	17.25	17.95	17.65	17.61	100@17.38	2400@17.65	---	2012	25,064	263	441,266.46	1,181,635.91	11.51	19.00	5379	
50,992,322	1.00	---	---	---	21/06/2010	16/07/2002	---	FOURLIS (CR)	2.51	-1.95 €	2.56 20/08/2013	2.54	2.47	2.61	2.51	2.52	1600@2.50	125@2.54	---	2012	31,644	96	79,646.32	127,990.73	1.58	2.95	3722	
50,592,373	0.300	---	---	---	07/07/2010	07/09/2011	---	FRIGOGLASS SA (CR)	4.95	0.82 #	4.91 20/08/2013	4.77	4.77	5.00	4.95	4.92	50@4.92	100@4.97	---	2012	31,535	234	155,196.37	250,432.25	3.84	6.26	2757	
77,376,446	0.340	---	---	---	23/05/2005	18/08/2011	---	G.E. DIMITRIOU (CR)	0.046	2.22 #	0.045 19/08/2013	0.049	0.046	0.049	0.046	0.047	4001@0.046	10000@0.049	---	2012	9,000	5	421.50	3,559.32	0.028	0.118	3722	
14,076,360	0.370	---	---	---	19/08/2008	22/07/2003	---	GALAXIDI S.A. (CR)	0.360	--- ↘	0.360 08/08/2013	---	---	---	---	---	---	1000@0.396	10.24	2012	---	---	---	5,067.49	0.320	0.638	3573	
85,882,688	0.570	0.0048	---	---	01/08/2011	02/01/2009	---	GEK TERNA (CR)	2.16	-1.37 €	2.19 20/08/2013	2.20	2.16	2.23	2.16	2.19	4046@2.15	4074@2.20	-(6)-	2012	545,604	251	1,192,681.47	185,506.61	1.40	2.80	2357	
24,060,000	0.300	---	0.017	---	18/06/2012	21/01/2000	---	GEN. COMMERCIAL & IND.SA (CR)	0.393	6.22 #	0.370 20/08/2013	0.370	0.361	0.396	0.384	0.380	100@0.372	190@0.396	---	2012	41,150	32	15,618.78	9,455.58	0.303	0.545	2797	
1,270,000	0.300	---	---	---	06/07/2007	06/02/2013	---	GIRAKIAN PROFIL SA (CB)	1.76	10.00 #	1.60 20/08/2013	1.76	1.76	1.76	1.76	1.76	340@1.76	---	---	2012	1,850	5	3,256.00	2,235.20	0.900	3.33	1757	
34,770,982	1.54	---	---	---	06/07/2010	27/07/2000	---	GR. SARANTIS SA (CR)	5.03	1.41 #	4.96 20/08/2013	4.96	4.90	5.03	5.03	4.92	480@4.91	28@5.03	---	2012	759	13	3,731.81	174,898.04	4.05	5.45	3767	
8,340,750	1.20	---	---	---	25/06/2009	30/07/2001	---	HAIDEMENOS SA (CR)	0.431	--- ↘	0.431 20/08/2013	---	---	---	---	---	200@0.402	---	---	2012	---	---	---	3,594.86	0.350	0.905	2791	
101,279,627	0.380	---	---	---	26/06/2008	14/07/2006	---	HALKOR SA (CB)	0.790	--- ↘	0.790 20/08/2013	0.771	0.761	0.792	0.790	0.778	199@0.775	74@0.790	---	2012	40,783	177	31,717.76	80,010.91	0.550	1.42	1755	
36,748,909	0.730	---	---	---	15/12/2005	13/12/2006	---	HEL. SUGAR INDUSTRY SA (CB)	0.931	4.49 #	0.891 20/08/2013	0.900	0.900	0.940	0.933	0.910	500@0.905	500@0.930	14.74	2012	4,700	12	4,279.10	34,213.23	0.754	1.74	3577	
29,546,360	0.710	---	---	---	20/06/2008	23/08/2000	---	HELLENIC CABLES SA (CR)	1.59	-4.22 €	1.66 20/08/2013	1.66	1.58	1.66	1.59	1.61	20@1.60	50@1.64	---	2012	5,876	53	9,460.67	46,978.71	1.16	2.32	2733	
65,368,563	0.790	0.15	0.11	0.09	03/06/2013	26/09/2012	---	HELLENIC EXCHANGES (CR)	6.04	2.03 #	5.92 20/08/2013	5.92	5.81	6.07	6.04	5.94	301@5.97	3000@6.05	27.06	2012	87,537	377	519,633.89	394,826.12	3.75	6.97	8777	
305,635,185	2.18	0.45	0.45	0.15	16/08/2013	01/10/2003	4795	HELLENIC PETROLEUM (CR)	7.30	--- ↘	7.30 20/08/2013	7.30	7.20	7.48	7.30	7.34	9213@7.35	100@7.38	22.88	2012	96,430	483	707,577.64	2,231,136.85	6.20	9.30	537	
305,732,436	0.410	---	---	---	08/07/2009	28/09/2011	---	HYGEIA SA (CR)	0.412	-0.24 €	0.413 20/08/2013	0.421	0.404	0.421	0.412	0.410	752@0.411	1000@0.415	---	2012	111,556	151	45,740.44	125,961.76	0.280	0.795	4533	
53,155,053	0.440	---	---	---	21/07/2010	16/07/2008	---	IASO SA (CR)	1.03	--- ↘	1.03 20/08/2013	1.02	1.00	1.06	1.03	1.01	50@0.999	841@1.03	---	2012	3,446	16	3,469.86	54,749.70	0.850	1.58	4533	
8,298,467	0.400	---	---	---	30/08/1993	08/05/2013	---	IDEAL GROUP SA (CR)	0.700	--- ↘	0.700 20/08/2013	---	---	---	---	---	270@0.630	86@0.729	-(6)-	2012	---	---	---	5,808.93	0.571	1.85	9574	
28,580,100	0.400	0.05	0.02	---	20/08/2012	23/02/2007	---	IKTINOS HELLAS SA (CR)	1.49	--- ↘	1.49 20/08/2013	1.49	1.48	1.50	1.49	1.49	100@1.46	980@1.48	14.42	2012	1,890	9	2,808.60	42,584.35	1.16	1.80	2353	
9,000,000	0.880	---	---	---	15/05/2009	07/12/2010	---	ILYDA S.A. (CR)	0.559	--- ↘	0.559 05/08/2013	---	---	---	---	---	---	2631@0.504	---	---	2012	---	---	---	5,031.00	0.269	0.650	9537
20,578,374	0.620	0.03	---	---	02/06/2011	05/05/1999	---	INFORM P. LYKOS SA (CR)	1.24	-3.13 €	1.28 20/08/2013	1.25	1.22	1.29	1.24	1.25	200@1.22	1470@1.25	---	2012	1,912	14	2,385.77	25,517.18	1.10	1.75	2791	
11,233,200	0.730	---	---	---	12/07/2010	30/07/1999	---	INTERTECH SA (CR)	0.300	--- ↘	0.300 16/08/2013	0.270	0.270	0.300	0.300	0.294	100@0.270	2798@0.300	---	2012	500	4	147.00	3,369.96	0.223	0.600	9572	
34,986,430	0.440	---	---	---	25/07/2008																							

Number of Outstanding Securities	Nominal Value	Dividends [1]			Date of Last Coupon Dividend [2]		Note	Shares	Closing price	% change	Previous closing price/date	Open price	Price min	Price max	Last price	Avg price	Last Bid [7]	Last Ask [7]	P/E after	Year	Volume	Trades	Transactions Value	Company Mkt Value (thou. €)	Year low	Year high	Sector[ 4]
----------------------------------	---------------	---------------	--	--	----------------------------------	--	------	--------	---------------	----------	-----------------------------	------------	-----------	-----------	------------	-----------	--------------	--------------	-----------	------	--------	--------	--------------------	-----------------------------	----------	-----------	------------

Main Market

23,154,250	1.36	---	---	---	12/08/2008	02/08/2010	---	INTRACOM CONSTR. (CR)	0.758	3.69 #	0.731	20/08/2013	0.721	0.721	0.768	0.765	0.760	200@0.735	580@0.765	---	2012	1,050	6	798.15	17,550.92	0.580	1.22	2357	
133,025,996	1.41	---	---	---	03/07/2007	07/01/2002	---	INTRACOM HOLDINGS (CR)	0.450	1.12 #	0.445	20/08/2013	0.445	0.440	0.457	0.450	0.447	50@0.443	2300@0.453	---	2012	144,370	142	64,523.67	59,861.70	0.321	0.754	9578	
158,961,721	0.300	0.0045	0.0035	0.0026	30/05/2013	14/11/2007	---	INTRALOT (CR)	1.61	1.26 #	1.59	20/08/2013	1.63	1.60	1.69	1.61	1.63	12150@1.60	1600@1.63	85.94	2012	642,642	719	1,045,011.11	255,928.37	1.29	2.41	5752	
77,654,850	0.580	0.04	---	---	01/07/2011	21/02/2003	---	J & P - AVAX SA (CR)	1.53	-1.29 €	1.55	20/08/2013	1.57	1.51	1.57	1.53	1.53	290@1.52	200@1.57	---	2012	8,292	55	12,708.56	118,811.92	1.05	1.90	2357	
129,994,676	1.19	0.189	---	---	23/12/2010	07/09/2012	---	JUMBO SA (CR)	8.35	-2.23 €	8.54	20/08/2013	8.43	8.13	8.50	8.35	8.32	358@8.26	4348@8.35	14.07	2012	107,786	566	896,984.83	1,085,455.54	4.85	9.07	3747	
9,742,920	0.400	0.01	0.01	0.01	12/08/2013	14/07/2000	---	KARAMOLEGOS SA (CR)	1.30	---	↘	1.30	25/07/2013	---	---	---	---	---	550@1.27	5.05	2012	---	---	---	12,665.80	1.07	1.83	3577	
14,679,792	1.44	0.065	---	---	03/06/2011	04/09/2000	---	KARATZIS SA (CR)	4.46	-0.89 €	4.50	20/08/2013	4.40	4.40	4.48	4.48	4.41	100@4.41	10@4.48	14.98	2012	675	7	2,973.70	65,471.87	2.55	4.90	2723	
3,300,689	0.350	---	---	---	01/07/2004	21/07/1999	---	KEKROPS SA (CR)	1.87	3.31 #	1.81	20/08/2013	1.95	1.77	1.95	1.87	1.82	400@1.70	382@1.87	---	2012	6,264	15	11,408.78	6,172.29	1.54	3.79	8633	
7,595,160	0.600	---	---	---	08/08/2008	18/08/2010	---	KIRIAKOULIS SHIPPING SA (CR)	0.983	2.50 #	0.959	20/08/2013	0.983	0.983	0.983	0.983	0.980	---	99@0.983	68.50	2012	1	1	0.98	7,466.04	0.635	1.49	5759	
23,648,700	0.330	0.05	---	---	13/07/2011	23/07/2008	---	KLEEMAN HELLAS SA (CR)	1.51	1.34 #	1.49	20/08/2013	1.51	1.51	1.52	1.52	1.51	20@1.45	760@1.52	---	2012	840	5	1,268.80	35,709.54	1.20	1.88	2757	
40,219,218	0.300	---	---	---	25/05/2009	09/07/2013	---	KLOUKINAS - LAPPAS SA (CR)	0.637	-5.49 €	0.674	20/08/2013	0.637	0.637	0.637	0.637	0.637	665@0.638	2500@0.650	---	2012	120	1	76.44	25,619.64	0.583	0.970	2357	
21,224,340	0.420	---	---	---	02/07/2008	25/04/2006	---	KORDELLOS BROS SA (CR)	0.236	---	↘	0.236	16/08/2013	---	---	---	---	---	1369@0.213	1036@0.236	---	2012	---	---	---	5,008.94	0.195	0.428	1757
13,450,000	0.390	---	---	---	25/06/2010	28/05/2008	---	KORRES (CR)	3.14	1.62 #	3.09	20/08/2013	3.01	3.01	3.14	3.14	3.09	25@3.02	90@3.14	---	2012	80	2	247.30	42,233.00	2.66	4.87	3767	
29,480,000	0.420	---	---	---	19/07/2010	01/08/2007	---	KRETA FARM SA (CR)	0.600	2.39 #	0.586	20/08/2013	0.615	0.590	0.615	0.600	0.610	150@0.590	548@0.600	---	2012	2,490	6	1,518.75	17,688.00	0.307	0.800	3577	
33,065,136	0.440	---	---	---	06/07/2009	02/08/2013	---	KRI-KRI S.A. (CR)	1.88	-0.53 €	1.89	20/08/2013	1.87	1.87	1.95	1.88	1.92	300@1.89	401@1.92	13.92	2012	14,937	25	28,602.04	62,162.46	1.52	2.06	3577	
15,804,800	0.330	---	---	---	15/06/2010	12/03/2004	---	KTIMA KOSTAS LAZARIDIS SA (CR)	0.297	10.00 #	0.270	20/08/2013	0.297	0.297	0.297	0.297	0.298	500@0.252	197@0.297	---	2012	5	1	1.49	4,694.03	0.239	0.488	3535	
22,945,139	1.00	---	---	---	19/08/2008	10/09/2012	---	KYRIAKIDIS MARBLES SA (CR)	0.896	6.67 #	0.840	20/08/2013	0.821	0.820	0.900	0.900	0.873	500@0.841	30@0.841	87.77	2012	18,955	13	16,540.20	20,558.84	0.630	1.04	2353	
44,267,700	0.300	---	---	---	30/05/2007	18/09/2002	---	LAMDA DEVELOPMENT SA (CR)	3.84	-0.26 €	3.85	20/08/2013	4.02	3.82	4.02	3.84	3.84	33@3.84	55@3.99	---	2012	600	5	2,305.24	169,987.97	3.58	6.48	8633	
5,939,268	0.620	---	---	---	10/07/2003	03/01/2002	---	LANAKAM SA (CR)	0.639	---	↘	0.639	14/08/2013	---	---	---	---	---	4385@0.576	---	2012	---	---	---	3,795.19	0.503	0.869	3763	
7,734,375	1.00	---	---	---	09/07/2007	07/01/2011	---	LIVANIS SA (CR)	0.201	---	↘	0.201	12/08/2013	---	---	---	---	---	900@0.219	---	2012	---	---	---	1,554.61	0.144	0.363	5557	
4,740,000	0.860	---	---	---	14/03/2003	---	---	LOGISMOS S.A. (CR)	0.496	---	↘	0.496	06/08/2013	---	---	---	---	---	1800@0.498	57.54	2011	---	---	---	2,351.04	0.373	1.23	9533	
15,222,276	0.640	---	---	---	01/06/2010	02/08/2011	---	LOULIS MILLS SA (CR)	2.81	-5.39 €	2.97	08/08/2013	2.85	2.80	2.85	2.80	2.84	200@2.72	450@2.90	-(6)-	2012	1,550	5	4,398.00	42,774.60	2.08	3.76	3577	
770,328,883	0.300	---	---	---	26/04/2007	10/05/2013	---	MARFIN INVESTMENT GROUP (CR)	0.301	1.01 #	0.298	20/08/2013	0.296	0.292	0.305	0.301	0.299	4691@0.296	10000@0.302	---	2012	653,560	416	195,484.76	231,868.99	0.175	0.564	8775	
9,819,370	0.690	---	---	---	14/08/2007	09/01/2004	---	MATHIOS REFRACTORY SA (CR)	0.255	-6.25 €	0.272	07/08/2013	0.269	0.255	0.269	0.255	0.258	1100@0.234	149@0.255	---	2012	19,263	14	4,973.86	2,503.94	0.201	0.510	2353	
468,700	1.0556	---	---	---	21/03/2012	21/05/2004	---	MERMEREN KOMB. A.D. PR. (GDR)	4.13	4.03 #	3.97	19/08/2013	4.00	4.00	4.14	4.14	4.04	5@4.00	40@4.13	1.01	2012	233	8	940.12	1,935.73	3.73	5.19	1775	
51,950,600	0.320	0.48	0.75	0.25	10/05/2013	21/10/2005	---	METKA (CR)	10.53	---	↘	10.53	20/08/2013	10.53	10.31	10.67	10.53	10.49	600@10.45	258@10.53	15.18	2012	53,179	357	557,893.93	547,039.82	9.00	12.78	2757
10,500,000	0.900	---	---	---	24/06/2008	04/07/2012	---	MEVACO SA (CR)	1.42	---	↘	1.42	13/08/2013	---	---	---	---	---	100@1.31	1000@1.45	10.28	2012	---	---	---	14,910.00	1.01	1.58	2757
14,074,000	3.00	0.15	0.25	---	02/03/2012	23/07/2009	---	MIG REAL ESTATE (CR)	1.77	---	↘	1.77	16/08/2013	---	---	---	---	---	300@1.68	---	2012	---	---	---	24,910.98	1.17	1.77	8671	
6,200,000	0.500	---	---	---	22/06/2010	01/11/1995	---	MINERVA KNITWEAR SA (CB)	0.776	---	↘	0.776	05/08/2013	---	---	---	---	---	3000@0.699	---	2012	---	---	---	4,811.20	0.530	0.948	3763	
12,417,000	0.370	---	---	---	28/07/2008	06/09/2011	---	MLS MULTIMEDIA SA (CR)	3.00	1.01 #	2.97	20/08/2013	2.97	2.96	3.00	3.00	2.98	200@2.95	998@2.97	39.51	2012	1,923	21	5,738.27	37,251.00	2.60	3.00	9537	
4,588,137	16.00	---	---	---	30/06/2005	17/08/2011	---	MOCHLOS SA (CR)	1.70	0.59 #	1.69	20/08/2013	1.74	1.65	1.74	1.70	1.66	300@1.60	1321@1.70	---	2012	1,644	28	2,730.12	7,799.83	1.12	2.60	2357	
11,700,000	0.590	---	---	---	02/06/2009	24/07/2012	---	MOTODYNAMICS S.A. (CR)	0.374	---	↘	0.374	20/08/2013	---	---	---	---	---	1030@0.373	---	2012	---	---	---	4,375.80	0.211	0.640	5379	
110,782,980	0.850	0.25	0.4	0.3	26/06/2013	05/11/2012	---	MOTOR OIL (CR)	7.44	0.27 #	7.42	20/08/2013	7.42	7.40	7.52	7.44	7.46	780@7.43	700@7.49	9.09	2012	41,774	256	311,585.95	824,225.37	6.80	9.37	533	
116,915,862	1.07	---	---	---	11/05/2009	06/07/2011	---	MYTILINEOS HOLDINGS (CR)	4.30	---	↘	4.30	20/08/2013	4.28	4.24	4.39	4.30	4.31	850@4.29	3781@4.30	---	2012	151,552	539	652,545.47	502,738.21	3.38	5.65	1755
8,321,682	0.670	---	---	---	17/08/2007	23/11/1999	---	N. LEVEDERIS SA (CB)	0.347	---	↘	0.347	14/08/2013	---	---	---	---	---	84@0.313	---	2012	---	---	---	3,836.09	0.198	0.658	1757	
2,160,524	0.670	0.0435	0.0435	0.0436	16/08/2013	23/11/1999	---	N. LEVEDERIS SA (PB)	0.439	---	↘	0.439	19/08/2013	---	---	---	---	---	100@0.433	---	2012	---	---	---	3,836.09	0.307	0.798	1757	
11,510,102	0.890	---	---	---	24/06/2005	06/10/1999	---	NAFPAKTOS TEXTILE IND. SA (CB)	0.335	-9.21 €	0.369	16/08/2013	0.335	0.335	0.335	0.335	0.335	---	360@0.333	---	2012	300	3	100.50	3,855.88	0.232	0.500	3763	
6,340,000	0.600	---	---	---	30/11/2009	12/07/2000	---	NAKAS MUSIC	0.843	-9.94 €	0.936	20/08/2013	0.843	0.843	0.843	0.843	0.843	---	51@0.843	---	2012	410	3	345.63	5,344.62	0.300	1.04	5379	

Number of Outstanding Securities	Nominal Value	Dividends [1]			Date of Last Coupon Dividend [2]		Note	Shares	Closing price	% change	Previous closing price/date	Open price	Price min	Price max	Last price	Avg price	Last Bid [7]	Last Ask [7]	P/E after	Year	Volume	Trades	Transactions Value	Company Mkt Value (thou. €)	Year low	Year high	Sector[ 4]
2,396,785,994	0.300	---	---	---	16/05/2008	24/05/2013	---	NATIONAL BANK (CR)	2.88	1.41 #	2.84 20/08/2013	2.89	2.82	2.93	2.88	2.88	1311@2.87	270@2.89	---	2012	670,168	1,075	1,930,269.08	6,902,743.66	1.83	9.87	8355
23,935,280	0.300	---	---	---	29/06/2009	13/06/2000	---	NAYTEMPORIKI PUBLISHING SA(CR)	0.180	-5.76 €	0.191 20/08/2013	0.172	0.172	0.188	0.180	0.175	1500@0.173	450@0.188	---	2012	2,550	4	447.40	4,308.35	0.172	0.360	5557
27,848,000	0.300	0.0301	0.0132	0.0137	21/08/2013	02/09/2003	---	NEWSPHONE HELLAS SA (CR)	0.337	0.60 #	0.335 20/08/2013	0.302	0.294	0.337	0.337	0.295	4500@0.300	500@0.301	8.25	2012	48	3	14.16	9,384.78	0.241	0.592	2791
6,132,500	1.25	0.1	---	---	24/06/2011	19/06/2001	---	NEXANS HELLAS SA (CR)	2.30	--- ↘	2.30 20/08/2013	---	---	---	---	---	100@2.21	1952@2.30	---	2012	---	---	---	14,104.75	2.14	3.11	2733
63,697,153	1.34	---	---	---	08/07/2008	10/11/2008	---	NIREFS SA (CR)	0.436	1.39 #	0.430 20/08/2013	0.425	0.420	0.445	0.432	0.431	60@0.428	500@0.430	---	2012	13,298	38	5,729.16	27,771.96	0.380	0.839	3573
319,000,000	0.300	1.4177	0.72	0.57	28/06/2013	25/04/2001	---	OPAP (CR)	7.19	0.28 #	7.17 20/08/2013	7.14	7.14	7.25	7.19	7.20	26971@7.19	100@7.23	4.47	2012	363,163	707	2,614,616.59	2,293,610.00	5.49	8.27	5752
490,150,389	2.39	0.1179	---	---	28/06/2011	18/06/1998	---	OTE (CR)	6.75	1.50 #	6.65 20/08/2013	6.68	6.60	6.85	6.75	6.71	6932@6.75	10@6.78	---	2012	805,599	1,417	5,407,092.75	3,308,515.13	4.26	7.80	6535
25,000,000	2.00	0.02	0.01	0.05	18/07/2013	08/08/2003	---	P.P.A. S.A. (CR)	16.84	0.24 #	16.80 20/08/2013	16.46	16.46	16.84	16.84	16.71	69@16.55	42@16.84	84.93	2012	4,241	144	70,856.26	421,000.00	14.59	21.68	2777
4,971,466	1.46	---	---	---	04/07/2007	08/10/2003	---	PAIRIS SA (CR)	0.280	-25.33 €	0.375 16/08/2013	0.264	0.264	0.361	0.280	0.271	400@0.272	480@0.357	---	2012	4,751	12	1,289.73	1,392.01	0.201	0.605	2723
3,953,090	0.900	---	---	---	02/07/2001	05/12/2012	---	PAPERPACK (CR)	0.679	5.43 #	0.644 20/08/2013	0.590	0.590	0.679	0.679	0.629	50@0.660	13@0.679	---	2012	2,070	21	1,301.39	2,684.15	0.500	1.06	2723
50,797,369	0.310	---	---	---	17/08/2000	12/10/2010	---	PAPOUTSANIS (CR)	0.550	--- ↘	0.550 20/08/2013	0.560	0.550	0.560	0.550	0.551	2808@0.550	300@0.599	---	2012	692	3	381.60	27,938.55	0.361	0.750	3767
20,210,127	1.53	---	---	---	27/06/1997	20/03/2000	---	PARNASSOS ENTERP. (CR)	0.190	2.70 #	0.185 20/08/2013	0.190	0.185	0.210	0.190	0.199	820@0.187	2800@0.190	---	2012	124,569	142	24,757.67	3,839.92	0.183	0.698	8775
7,070,400	0.930	---	---	---	18/05/2010	12/05/2011	---	PETROPOULOS PETROS (CR)	1.64	1.24 #	1.62 20/08/2013	1.65	1.60	1.65	1.64	1.62	30@1.57	59@1.59	---	2012	657	16	1,060.94	11,595.46	1.20	1.74	2753
5,072,567,951	0.300	---	---	---	16/05/2008	05/06/2013	---	PIRAEUS BANK (CR)	1.01	1.41 #	0.996 20/08/2013	1.00	0.995	1.03	1.01	1.01	33040@1.00	14397@1.01	---	2012	3,949,440	977	3,980,668.91	5,123,293.63	0.832	6.28	8355
22,080,000	0.320	0.05	0.08	0.12	22/05/2013	03/10/2000	---	PLAISIO COMPUTERS SA (CR)	5.00	-0.40 €	5.02 20/08/2013	4.82	4.81	5.00	5.00	4.86	10@4.92	78@5.01	11.13	2012	130	3	631.22	110,400.00	3.65	6.25	9572
232,000,000	4.60	0.79	---	0.025	22/07/2013	12/12/2001	---	PPC (CR)	7.29	1.25 #	7.20 20/08/2013	7.20	7.12	7.43	7.29	7.27	1025@7.28	2000@7.34	98.93	2012	435,700	1,237	3,169,175.69	1,691,280.00	4.55	8.49	7535
11,812,193	0.450	---	---	---	24/07/2009	15/11/2006	---	PROFILE SA (CR)	1.05	--- ↘	1.05 20/08/2013	1.05	1.05	1.05	1.05	1.05	100@1.04	9950@1.05	20.20	2012	50	1	52.50	12,402.80	0.761	1.26	9533
24,319,250	0.300	---	---	---	09/07/2002	04/07/2007	---	PROODEFTIKH SA (CR)	0.136	-2.86 €	0.140 20/08/2013	0.134	0.132	0.139	0.134	0.135	240@0.132	500@0.134	---	2012	14,210	14	1,917.87	3,307.42	0.054	0.223	2357
6,836,280	1.88	---	---	---	18/07/2005	10/09/2010	---	QUALITY & RELIABILITY SA (CR)	1.68	11.26 #	1.51 20/08/2013	1.60	1.53	1.69	1.69	1.61	60@1.60	500@1.70	---	2012	7,825	33	12,564.60	11,484.95	0.236	1.69	9533
48,069,201	0.400	---	---	---	05/09/2008	21/06/2012	---	QUEST HOLDINGS (CR)	1.11	-1.77 €	1.13 20/08/2013	1.08	1.08	1.13	1.11	1.10	200@1.10	532@1.11	---	2012	1,062	12	1,171.55	53,356.81	0.936	1.39	9533
57,434,884	1.31	---	---	---	05/06/2008	12/06/2009	---	REDS S.A. (CR)	0.498	-1.19 €	0.504 19/08/2013	0.481	0.480	0.498	0.498	0.481	200@0.485	865@0.497	---	2012	3,700	9	1,780.08	28,602.57	0.450	0.949	8633
22,280,000	0.300	0.0329	---	---	11/04/2011	23/02/2007	---	REVOIL (CR)	0.840	2.19 #	0.822 20/08/2013	0.800	0.800	0.898	0.840	0.828	900@0.823	1000@0.840	---	2012	21,337	65	17,662.15	18,715.20	0.345	1.20	5379
7,500,000	0.560	---	---	---	25/06/2010	10/04/2013	---	S.KANAKIS SA (CR)	1.57	-1.26 €	1.59 20/08/2013	1.59	1.55	1.59	1.57	1.58	102@1.56	697@1.58	11.16	2012	774	10	1,221.22	11,775.00	1.05	1.90	3577
52,067,296	0.300	---	---	---	23/12/2003	24/01/2007	---	SELECTED TEXT. IND. ASSOC (CR)	0.280	-2.78 €	0.288 20/08/2013	0.270	0.270	0.281	0.280	0.277	3000@0.270	400@0.280	---	2012	3,446	9	954.93	14,578.84	0.232	0.587	3763
96,243,908	0.410	---	---	---	26/06/2008	17/07/2000	---	SIDENOR (CR)	1.58	2.60 #	1.54 20/08/2013	1.56	1.54	1.61	1.58	1.58	1000@1.57	1700@1.60	---	2012	44,256	113	69,691.81	152,065.37	1.00	2.39	1757
6,456,530	1.60	---	---	---	29/06/2001	02/08/2010	---	SPACE HELLAS SA (CR)	2.19	--- ↘	2.19 14/06/2013	---	---	---	---	---	---	2898@1.98	70.35	2012	---	---	---	14,139.80	1.25	2.20	9578
28,438,268	0.300	---	---	---	21/08/2006	24/11/1999	---	SPIROY AGRICULTURE SA (CR)	0.289	-0.34 €	0.290 20/08/2013	0.261	0.261	0.289	0.289	0.271	300@0.280	1360@0.289	---	2012	290	3	78.49	8,218.66	0.261	0.557	1357
33,125,000	5.00	---	---	---	03/07/2006	18/08/2010	---	TECHNICAL OLYMPIC SA (CR)	1.33	--- ↘	1.33 20/08/2013	1.26	1.26	1.33	1.33	1.29	300@1.29	285@1.33	-(6)-	2012	63	4	80.95	44,056.25	1.18	2.71	3728
109,319,070	0.300 (0.0399)	(0.0613)	---	---	28/05/2012	05/08/2013	---	TERNA ENERGY (CR)	2.89	1.05 #	2.86 20/08/2013	2.85	2.85	2.90	2.89	2.87	300@2.86	716@2.89	63.48	2012	54,648	245	157,028.43	315,932.11	2.24	3.73	7537
36,300,000	1.12	0.114	0.188	0.162	16/08/2013	12/12/2007	---	THESSALONIKA WATER & SEWERAGE	5.68	-1.39 €	5.76 20/08/2013	5.62	5.60	5.97	5.68	5.81	292@5.68	299@5.79	11.66	2012	18,356	47	106,670.75	206,184.00	4.73	6.82	7577
45,094,620	0.500	0.036	---	0.0467	10/06/2013	01/11/1999	---	THRACE PLASTICS SA (CR)	1.28	--- ↘	1.28 20/08/2013	1.31	1.28	1.32	1.28	1.30	467@1.28	4800@1.30	7.37	2012	15,158	25	19,673.72	57,721.11	1.07	1.64	1357
77,063,568	4.00	0.0806	---	---	24/06/2011	25/06/2004	---	TITAN CEMENT (CR)	14.77	4.60 #	14.12 20/08/2013	14.40	14.08	14.85	14.77	14.58	200@14.30	20@14.79	---	2012	20,939	216	305,336.76	1,191,211.62	11.31	16.00	2353
7,568,960	4.00	0.1869	---	---	24/06/2011	25/06/2004	---	TITAN CEMENT CO. (PR)	7.00	--- ↘	7.00 20/08/2013	---	---	---	---	---	30@6.48	129@6.99	---	2012	---	---	---	1,191,211.62	5.75	7.27	2353
10,080,000	3.00	0.21	0.4	1.5	17/07/2013	27/08/2001	---	TPA SA (CR)	24.30	1.67 #	23.90 20/08/2013	23.85	23.85	24.58	24.30	24.25	100@24.12	150@24.50	13.28	2012	1,787	30	43,333.00	244,944.00	19.00	25.20	2777
54,888,240	1.13	0.1	0.1	0.1	25/04/2013	22/03/2006	---	TRASTOR REAL EST. INV. CO.(CR)	0.760	--- ↘	0.760 20/08/2013	0.760	0.740	0.760	0.760	0.743	3000@0.732	474@0.760	---	2012	4,026	7	2,990.16	41,715.06	0.624	0.829	8671
14,627,315	0.300	---	---	---	16/11/1992	03/12/2012	---	UNIBIOS (CR)	0.253	3.69 #	0.244 20/08/2013	0.243	0.238	0.254	0.254	0.244	150@0.240	3000@0.250	---	2012	35,768	20	8,738.38	3,700.71	0.151	0.414	2353
18,810,000	0.400	---	---	---	08/07/2010	14/11/2007	---	VARVERIS - MODA BAGNO SA (CR)	0.299	3.82 #	0.288 20/08/2013	0.299	0.299	0.299	0.299	0.300	240@0.260	100@0.297	---	2012	3	1	0.90	5,624.19	0.243	0.419	2353
199,474,091	0.300	---	---	---	03/07/2009	24/03/2000	---	VIOHALCO (CB)	4.39	3.05 #	4.26 20/08/2013	4.26	4.21	4.39	4.39	4.30	1343@4.34	960@4.40	---	2012	141,089	477	606,565.11	875,691.26	3.06	5.70	2727

Number of Outstanding Securities	Nominal Value	Dividends [1]			Date of Last Coupon		Note	Shares	Closing price	% change	Previous closing price/date		Open price	Price min	Price max	Last price	Avg price	Last Bid [7]	Last Ask [7]	P/E after	Year	Volume	Trades	Transactions Value	Company Mkt Value (thou. €)	Year low	Year high	Sector[ 4]
2010	2011	2012	Dividend [2]	Right																								

Main Market

4,968,600	2.88	---	---	---	01/07/1998	14/12/1998	---	VIS SA (CR)	0.825	---	↘	0.825	05/08/2013	---	---	---	---	---	253@0.743	91@0.899	---	2012	---	---	---	4,099.10	0.490	1.01	2723	
6,325,000	0.600	---	---	---	19/07/2010	25/07/2012	---	VOGIATZOGLOU SYSTEMS SA (CR)	0.936	-10.00	↘	€	1.04	20/08/2013	0.937	0.936	0.937	0.936	0.936	---	120@1.02	---	2012	930	6	870.88	5,920.20	0.812	1.21	2797

Exchange Traded Funds (ETFs)

5,848,618	---	---	---	24/01/2008	---	ALPHA ETF FTSE Athex Large Cap	3.08	1.32	#	3.04	20/08/2013	3.10	3.08	3.10	3.08	3.10	---	66@3.08	---	---	---	12	2	37.18	-	2.49	3.99	11000
294,878	---	---	---	29/06/2009	---	NBGAM ETF	10.00	---	↘	10.00	20/08/2013	---	---	---	---	---	---	---	---	---	---	---	---	---	-	8.23	11.75	11000
388,550	---	---	---	03/11/2010	---	NBGAM ETF GREECE & TURKEY 30	7.87	---	↘	7.87	06/08/2013	---	---	---	---	---	---	---	---	---	---	---	---	---	-	7.56	10.11	11000

Low Dispersion

14,000,000	3.80	---	---	---	23/04/2010	29/06/1999	4815	ALPHA REAL ESTATE SA(CR)	6.52	0.31	#	6.50	20/08/2013	6.98	6.51	6.98	6.51	6.52	50@6.51	198@6.96	13.49	2012	51	2	332.48	91,280.00	6.00	7.00	8637
63,900,000	3.00	---	---	---	23/06/2003	04/11/2008	4816	ASTIR PALACE SA (CR)	3.41	-2.29	€	3.49	20/08/2013	3.49	3.40	3.49	3.43	3.41	234@3.43	500@3.44	---	2012	11,994	26	40,895.48	217,899.00	3.40	4.95	5753
49,152,904	0.800	---	---	---	09/08/2004	08/03/2006	4814	ATHENA SA (CR)	0.275	---	↘	0.275	12/08/2013	---	---	---	---	---	---	147@0.275	---	2012	---	---	---	13,517.05	0.094	0.340	2357
191,660,320	0.300	---	---	---	20/07/2009	29/12/2010	4817	ATTICA HOLDINGS (CR)	0.340	12.58	#	0.302	20/08/2013	0.340	0.340	0.340	0.340	0.340	1500@0.301	5690@0.340	---	2012	5	1	1.70	65,164.51	0.241	0.588	5759
15,300,000	0.300	---	---	---	30/07/2009	13/12/1999	4893	ATTICA PUBLICATIONS SA (CR)	0.520	---	↘	0.520	14/08/2013	---	---	---	---	---	---	---	---	2012	---	---	---	7,956.00	0.520	1.45	5557
8,418,750	0.300	---	0.15	0.29	05/06/2013	27/06/2012	4828	GEKE SA (CB)	6.70	---	↘	6.70	20/08/2013	6.70	6.70	6.70	6.70	6.70	30@6.70	190@7.19	21.04	2012	70	1	469.00	56,405.63	6.59	6.79	5753
68,322,221	1.00	---	---	---	08/03/2002	08/04/2013	4986	GENIKI BANK (CR)	2.15	---	↘	2.15	13/08/2013	---	---	---	---	---	20@1.72	---	---	2012	---	---	---	146,892.78	2.15	8.85	8355
71,082,707	1.70	---	---	---	01/07/2010	21/11/2012	4820	HERACLES GEN.CEMENT CO. (CR)	1.40	-0.71	€	1.41	20/08/2013	1.41	1.40	1.41	1.40	1.40	900@1.39	1587@1.40	---	2012	1,644	11	2,303.60	99,515.79	1.20	1.80	2353
13,404,440	8.63	---	---	---	02/04/2001	06/03/1992	4822	IONIAN HOTELS SA (CR)	8.81	---	↘	8.81	09/08/2013	---	---	---	---	---	498@7.05	98@10.50	---	2012	---	---	---	118,093.12	8.40	13.00	5753
2,760,000	7.70	6.3291	7.6	8.52	26/06/2013	16/07/1990	4823	KARELIA TOBACCO CO. SA (CB)	183.50	2.12	#	179.70	20/08/2013	183.50	183.50	183.50	183.50	183.50	30@179.70	7@183.50	11.15	2012	8	3	1,468.00	506,460.00	110.00	183.50	3785
17,000,000	0.600	---	---	---	12/06/2008	07/03/2000	4941	KATHIMERINI SA (CR)	0.722	-3.35	€	0.747	20/08/2013	0.598	0.598	0.880	0.711	0.722	689@0.710	374@0.711	---	2012	1,346	12	972.17	12,274.00	0.321	1.00	5557
21,364,000	1.12	---	---	---	05/07/2010	10/08/2005	4824	LAMPSA HOTEL SA (CR)	18.37	0.38	#	18.30	20/08/2013	18.30	18.30	18.40	18.40	18.37	23@18.60	10000@20.00	---	2012	327	8	6,006.80	392,456.68	15.00	18.40	5753
6,700,000	0.800	---	---	---	19/07/2010	29/08/2012	4894	MILLS KEPENOS (CR)	1.10	---	↘	1.10	06/08/2013	1.10	1.10	1.10	1.10	1.10	100@1.10	140@1.32	6.54	2012	100	1	110.00	7,370.00	0.777	1.69	3577
70,926,000	2.25	---	---	---	25/07/2008	21/06/2000	4825	MINOAN LINES SA (CR)	1.96	-2.00	€	2.00	20/08/2013	2.00	1.93	2.00	1.93	1.96	1499@1.93	1000@1.99	---	2012	2,160	8	4,231.80	139,014.96	1.70	2.10	5759
17,240,776	0.370	---	---	---	14/07/2005	30/09/2003	4827	PERSEUS SA (CR)	0.176	---	↘	0.176	12/08/2013	---	---	---	---	---	---	1000@0.211	10.26	2012	---	---	---	3,034.38	0.033	0.325	3577

Surveillance

33,301,715	0.320	---	---	---	27/06/2003	08/07/2009	4978	AEGEK (CR)	0.108	---	↘	0.108	20/08/2013	0.108	0.108	0.108	0.108	0.108	1510@0.095	8868@0.108	---	2012	200	3	21.60	3,596.59	0.089	0.184	2357
14,870,100	0.300	---	---	---	15/05/2008	26/09/2011	4844	ALPHA GRISSIN S.A. (CR)	0.225	---	↘	0.225	09/08/2013	---	---	---	---	---	---	2500@0.229	---	2012	---	---	---	3,345.77	0.080	0.328	9533
215,246,452	0.300	---	---	---	25/06/2001	24/09/2001	4446	ALTEC SA (CR)	0.035	-5.40	€	0.037	20/08/2013	0.035	0.035	0.035	0.035	0.035	5000@0.036	63@0.038	---	2012	20,000	4	700.00	7,533.63	0.021	0.062	9533
2,969,713	0.300	---	---	---	02/07/2008	28/02/2011	4958	ANEK LINES SA (PR, issue '96)	0.300	---	↘	0.300	13/08/2013	---	---	---	---	---	---	---	---	2012	---	---	---	16,352.52	0.300	0.770	5759
312,163	0.300	---	---	---	02/07/2008	28/02/2011	4959	ANEK LINES SA (PR, issue '90)	1.43	---	↘	1.43	16/08/2013	---	---	---	---	---	---	---	---	2012	---	---	---	16,352.52	1.43	1.78	5759
185,373,016	0.300	---	---	---	02/07/2008	28/02/2011	4957	ANEK LINES SA (CR)	0.081	6.58	#	0.076	20/08/2013	0.082	0.080	0.082	0.080	0.081	11564@0.080	6697@0.082	---	2012	10,631	13	857.08	16,352.52	0.071	0.270	5759
81,644,555	0.300	---	---	---	01/07/2008	02/09/2002	4630	ATTI - KAT SA (CR)	0.040	---	↘	0.040	16/08/2013	---	---	---	---	---	---	3500@0.039	---	2012	---	---	---	3,265.78	0.022	0.088	2357
20,255,805	0.300	---	---	---	22/08/2006	02/08/2010	4881	AXON HOLDING SA (CR)	0.072	-20.00	€	0.090	12/08/2013	0.072	0.072	0.072	0.072	0.072	3880@0.072	500@0.097	---	2012	120	2	8.64	1,458.42	0.070	0.192	4533
17,579,754	4.16	---	---	---	18/08/2006	02/08/2010	4885	BIOTER SA (CR)	0.185	---	↘	0.185	16/08/2013	---	---	---	---	---	---	1000@0.179	---	2012	---	---	---	3,252.25	0.059	0.194	2357
12,431,980	0.720	---	---	---	20/06/2003	10/07/2003	4559	COMPUCON SA (CR)	0.090	---	↘	0.090	01/08/2013	---	---	---	---	---	---	4916@0.085	---	2012	---	---	---	1,118.88	0.031	0.100	9537
30,159,583	0.470	---	---	---	26/06/2008	29/12/2010	4962	DIAS A/C (CR)	0.839	---	↘	0.839	03/06/2013	---	---	---	---	---	---	1500@0.672	---	2012	---	---	---	25,303.89	0.420	0.845	3573
15,878,748	0.480	---	---	---	10/07/2006	22/03/2004	4960	DOMIKI KRITIS SA (CR)	0.499	-2.92	€	0.514	16/08/2013	0.514	0.450	0.514	0.450	0.498	---	349@0.513	---	2012	66	5	32.90	7,923.50	0.310	0.800	2357

Number of Outstanding Securities	Nominal Value	Dividends [1]			Date of Last Coupon Dividend [2]		Note	Shares	Closing price	% change	Previous closing price/date	Open price	Price min	Price max	Last price	Avg price	Last Bid [7]	Last Ask [7]	P/E after	Year	Volume	Trades	Transactions Value	Company Mkt Value (thou. €)	Year low	Year high	Sector[4]
----------------------------------	---------------	---------------	--	--	----------------------------------	--	------	--------	---------------	----------	-----------------------------	------------	-----------	-----------	------------	-----------	--------------	--------------	-----------	------	--------	--------	--------------------	-----------------------------	----------	-----------	-----------

Surveillance

3,961,300	1.28	---	---	---	29/06/2004	03/08/2000	4808	DUROS SA (CR)	0.970	---	↘	0.970	19/07/2013	---	---	---	---	---	10@0.800	---	2012	---	---	---	3,842.46	0.120	0.970	3763	
7,085,888	1.59	---	---	---	02/07/1996	06/09/2010	4690	ELVIEMEK (CR)	3.00	---	↘	3.00	05/02/2013	---	---	---	---	---	---	-(6)-	2012	---	---	---	21,257.66	3.00	3.58	8633	
6,000,000	0.600	---	---	---	13/06/2008	08/04/2004	4886	EUROBROKERS S.A. (CR)	0.052	---	↘	0.052	27/06/2013	---	---	---	---	3000@0.051	---	2012	---	---	---	312.00	0.052	0.333	8534		
7,347,600	0.600	---	---	---	02/06/2010	25/02/2010	4889	EUROCONSULTANTS S.A. (CR)	2.60	---	↘	2.60	14/08/2013	---	---	---	---	---	290@2.62	---	2012	---	---	---	19,103.76	2.12	2.64	2791	
21,820,410	0.800	---	---	---	22/05/2008	02/08/2011	4882	EUROMEDICA SA (CR)	0.370	---	↘	0.370	20/08/2013	---	---	---	---	180@0.296	2959@0.366	---	2012	---	---	---	8,073.55	0.288	0.613	4533	
12,952,610	0.300	---	---	---	04/10/2012		4846	Forthnet (CR)	0.969	-9.44	↘	1.07	20/08/2013	0.900	0.900	1.00	1.00	0.969	100@0.998	44@1.00	---	2011	2,944	8	2,853.65	12,551.08	0.350	1.43	9535
179,707,771	0.300	---	---	---	27/06/2002	01/11/2011	4847	HELLAS ONLINE SA (CR)	0.362	---	↘	0.362	14/08/2013	---	---	---	---	1000@0.360	1250@0.431	---	2012	---	---	---	65,054.21	0.271	0.709	9537	
13,692,227	1.47	---	---	---	07/07/2006	08/10/1999	4845	HELLENIC FABRICS SA (CR)	0.239	-19.80	↘	0.298	19/08/2013	0.239	0.239	0.239	0.239	0.239	2231@0.239	---	2012	969	5	231.59	3,272.44	0.180	0.354	3763	
30,390,000	0.310	---	---	---	18/08/2008	29/12/2006	4447	HELLENIC FISHFARMING SA (CR)	0.125	---	↘	0.125	20/08/2013	0.125	0.125	0.125	0.125	0.125	5999@0.110	29.30	2012	200	2	25.01	3,798.75	0.039	0.137	3573	
1,540,000	0.600	---	---	---	08/08/1994	19/09/2000	4855	J.BOUTARIS & SON HOLD. (PB)	0.024	---	↘	0.024	05/08/2013	---	---	---	---	2000@0.026	---	---	2012	---	---	---	1,547.74	0.024	0.201	3535	
25,179,640	0.600	---	---	---	08/08/1994	19/09/2000	4854	J.BOUTARIS & SON HOLD. SA (CB)	0.060	---	↘	0.060	20/08/2013	---	---	---	---	500@0.049	1500@0.072	---	2012	---	---	---	1,547.74	0.040	0.132	3535	
7,125,216	0.650	---	---	---	01/07/2005	14/12/1999	4955	KRE.KA SA (CR)	0.252	---	↘	0.252	12/08/2013	---	---	---	---	---	893@0.279	---	2012	---	---	---	1,795.55	0.144	0.580	3573	
51,081,030	1.00	---	---	---	20/08/2007	03/09/2007	4912	LAVIPHARM SA (CR)	0.127	-2.31	↘	0.130	20/08/2013	0.130	0.121	0.130	0.130	0.127	1000@0.125	4800@0.130	---	2012	3,434	9	437.02	6,487.29	0.101	0.268	4577
322,925,288	0.300	---	---	---	23/05/2007	10/04/2000	4554	M.J. MAILLIS SA (CR)	0.070	---	↘	0.070	20/08/2013	---	---	---	---	1000@0.070	3000@0.076	---	2012	---	---	---	22,604.77	0.066	0.150	2723	
9,567,289	0.300	---	---	---	01/07/2004	19/11/2007	4944	MARAC ELECTRONICS (CR)	0.114	---	↘	0.114	19/08/2013	---	---	---	---	397@0.092	1049@0.114	---	2012	---	---	---	1,090.67	0.068	0.409	9578	
4,178,856	1.58	0.22	---	---	21/07/2011	28/07/2004	4983	MEDICON S.A (CR)	0.590	---	↘	0.590	19/08/2013	---	---	---	---	430@0.472	---	---	2012	---	---	---	2,465.53	0.446	1.18	4535	
66,937,526	0.700	---	---	---	13/08/2010	21/05/2003	4995	MICHANIKI SA (CR)	0.103	---	↘	0.103	20/08/2013	0.103	0.103	0.103	0.103	0.103	2000@0.098	120@0.100	---	2012	2,000	4	206.00	9,491.46	0.085	0.370	2357
25,968,987	0.700	---	---	---	13/08/2010	21/05/2003	4996	MICHANIKI SA (PR)	0.100	---	↘	0.100	20/08/2013	0.100	0.100	0.100	0.100	0.100	1850@0.081	2000@0.099	---	2012	500	2	50.00	9,491.46	0.065	0.268	2357
255,459,600	0.300	---	---	---	26/06/2000	03/12/2010	4833	NEL SA (CR)	0.035	-2.78	↘	0.036	20/08/2013	0.035	0.035	0.035	0.035	0.035	558@0.030	560@0.035	---	2012	150	1	5.25	8,941.09	0.012	0.158	5759
20,231,328	0.600	---	---	---	15/07/2008	25/06/2004	4879	NIKAS SA (CR)	0.261	---	↘	0.261	19/08/2013	0.261	0.261	0.261	0.261	0.261	2000@0.260	1000@0.275	---	2012	3,051	5	796.31	5,280.38	0.261	0.530	3577
14,967,940	0.500	---	---	---	21/05/2008	04/01/2008	4956	PASAL DEVELOPMENT S.A. (CR)	0.178	---	↘	0.178	16/08/2013	---	---	---	---	---	400@0.152	6900@0.179	---	2012	---	---	---	2,664.29	0.120	0.414	8633
40,946,303	0.360	---	---	---	18/07/2005	27/11/2007	4856	PC SYSTEMS SA (CR)	0.097	---	↘	0.097	16/08/2013	---	---	---	---	---	49@0.078	---	2012	---	---	---	3,971.79	0.057	0.180	9533	
18,750,000	0.300	---	---	---	02/07/2001	31/12/2012	4985	PEGASUS PUBLISHING S.A. (CR)	0.331	---	↘	0.331	06/08/2013	---	---	---	---	---	8@0.265	---	2012	---	---	---	6,206.25	0.044	0.610	5557	
28,056,518	0.530	---	---	---	04/07/2007	19/07/2006	4750	SATO SA (CR)	0.088	---	↘	0.088	14/08/2013	---	---	---	---	---	2000@0.087	---	2012	---	---	---	2,468.97	0.025	0.115	3726	
36,235,184	1.00	---	---	---	01/07/2008	30/07/2012	4961	SELONDA AQUACULTURE SA (CR)	0.155	-3.73	↘	0.161	20/08/2013	0.180	0.142	0.180	0.142	0.155	329@0.142	1000@0.170	---	2012	1,500	5	232.00	5,616.45	0.119	0.600	3573
7,914,480	2.50	---	---	---	23/06/2008	29/06/2011	4888	SFAKIANAKIS SA (CR)	0.620	---	↘	0.620	13/08/2013	---	---	---	---	2958@0.550	852@0.695	---	2012	---	---	---	4,906.98	0.364	0.763	5379	
60,221,300	0.400	---	---	---	01/07/2002	01/11/2010	4880	SHELMAN SA (CR)	0.130	---	↘	0.130	01/08/2013	---	---	---	---	---	6000@0.120	---	2011	---	---	---	7,828.77	0.098	0.280	2353	
10,000,000	1.35	---	---	---	24/06/2008	10/05/2005	4887	SIDMA SA (CR)	0.800	---	↘	0.800	02/08/2013	---	---	---	---	---	1000@0.640	---	2012	---	---	---	8,000.00	0.420	0.920	1757	
29,060,950	0.340	---	---	---	20/08/2007	24/10/2001	4884	SPIDER METAL INDUSTRY SA (CR)	0.022	---	↘	0.022	14/08/2013	---	---	---	---	2000@0.018	---	---	2012	---	---	---	639.34	0.022	0.097	2757	
100,793,000	0.300	---	---	---	16/07/2009	05/08/2013	---	TELETIPOS SA (CR)	0.240	-15.49	↘	0.284	20/08/2013	0.240	0.240	0.240	0.240	0.240	974@0.240	399@0.280	---	2012	4,226	3	1,014.24	24,190.32	0.118	0.600	5553
3,229,566	0.320	---	---	---	22/06/2005	23/09/1999	4629	VARANGIS AVEPE S.A. (CR)	0.780	---	↘	0.780	12/08/2013	---	---	---	---	---	7321@0.780	---	2012	---	---	---	2,519.06	0.206	0.840	3726	
17,175,132	0.300	---	---	---	25/06/2002	21/06/2013	4997	VARVARESSOS SA (CB)	0.055	---	↘	0.055	13/08/2013	---	---	---	---	500@0.050	---	---	2012	---	---	---	944.63	0.028	0.181	3763	
13,191,620	0.620	---	---	---	04/08/2010	09/09/2002	4977	YALCO - CONSTANTINOU SA (CB)	0.128	---	↘	0.128	20/08/2013	---	---	---	---	2000@0.103	2500@0.153	---	2012	---	---	---	1,688.53	0.106	0.210	3722	

Under Deletion

5,025,000	0.300	---	---	---	05/07/2005	14/03/2002	4963	ALSINCO S.A (CR)	0.014	---	↘	0.014	18/07/2013	---	---	---	---	---	---	---	2012	---	---	---	70.35	0.006	0.185	3763
766,000	2.83	---	---	---	01/07/2004	11/12/2012	4937	TRIA ALFA SA (CR)	3.51	---	↘	3.51	10/07/2013	---	---	---	---	---	50@3.50	---	2012	---	---	---	3,068.41	1.30	4.70	3763
245,000	2.83	---	---	---	19/07/2010	11/12/2012	4938	TRIA ALFA SA (PR)	1.55	---	↘	1.55	16/08/2013	---	---	---	---	---	3@1.24	---	2012	---	---	---	3,068.41	0.501	1.93	3763

Number of Outstanding Securities	Nominal Value	Dividends [1]			Date of Last Coupon		Note	Shares	Closing price	% change	Previous closing price/date	Open price	Price min	Price max	Last price	Avg price	Last Bid [7]	Last Ask [7]	P/E after	Year	Volume	Trades	Transactions Value	Company Mkt Value (thou. €)	Year low	Year high	Sector[ 4]
		2010	2011	2012	Dividend [2]	Right																					
Under Suspension																											
49,030,011	0.300	---	---	---	19/07/2010	12/05/2011	4875	ALAPIS (CR)	0.041	---	0.041	30/03/2012	---	---	---	---	---	---	---	---	---	---	---	2,010.23	0.041	0.041	4577
1,750,955,549	0.600	---	---	---	19/05/2008	08/12/2011	4911	ATE (CR)	0.155	---	0.155	30/07/2012	---	---	---	---	---	---	---	---	---	---	---	271,398.11	0.155	0.155	8355
21,382,067	0.300	---	---	---	02/10/2006	15/02/2006	4628	ATERMON (CR)	0.120	---	0.120	31/03/2010	---	---	---	---	---	---	---	---	---	---	---	2,565.85	0.120	0.120	5555
105,423,498	0.510	---	---	---	01/07/2004	28/12/2005	4920	AVENIR S.A. (CR)	0.046	---	0.046	30/08/2012	---	---	---	---	---	---	---	---	---	---	---	4,849.48	0.046	0.046	5752
33,930,000	0.300	---	---	---	03/07/2006	30/05/2001	4865	BABIS VOVOS SA (CR)	0.304	---	0.304	30/03/2012	---	---	---	---	---	---	---	---	---	---	---	10,314.72	0.304	0.304	8633
20,121,710	1.21	---	---	---	27/07/1992	12/03/2003	4970	BALKAN R.E. (CR)	0.220	---	0.220	31/05/2013	---	---	---	---	---	---	---	---	---	---	---	4,426.78	0.195	0.438	8633
1,795,140,547	1.00	(0.0615)	---	---	31/05/2011	19/04/2012	4951	BANK OF CYPRUS (CR)	0.207	---	0.207	15/03/2013	---	---	---	---	5000@0.170	---	---	---	---	---	---	371,594.09	0.180	0.282	8355
21,920,570	0.300	---	---	---	03/07/2007	13/12/1999	4702	CARDASSILARIS SA (CR)	0.140	---	0.140	30/11/2010	---	---	---	---	---	---	---	---	---	---	---	3,068.88	0.140	0.140	3577
54,547,634	0.500	---	---	---	25/04/2005	21/01/2009	4860	CH.TEGOPOULOS PUBL. SA (CR)	0.038	---	0.038	23/03/2012	---	---	---	---	---	---	---	---	---	---	---	2,072.81	0.038	0.038	5557
33,718,750	0.300	---	---	---	28/05/2008	21/01/2013	4998	DOL SA (CR)	0.640	---	0.640	25/07/2013	---	---	---	---	---	3118@0.700	---	---	---	---	---	21,580.00	0.244	0.759	5557
7,847,611	1.20	---	---	---	01/08/2007	28/09/2011	4939	EDRASIS - C. PSALLIDAS SA (CR)	0.150	---	0.150	19/11/2012	---	---	---	---	---	---	---	---	---	---	---	1,177.14	0.150	0.150	2357
5,750,000	0.300	---	---	---	12/12/2008	12/12/2011	4929	ELECTRONIKI ATHINON SA (CR)	0.480	---	0.480	07/09/2012	---	---	---	---	---	---	---	---	---	---	---	2,760.00	0.480	0.480	5375
24,605,397	0.400	---	---	---	29/06/1995	27/05/2002	4651	EMPORIKOS DESMOS SA (CR)	0.080	---	0.080	28/05/2010	---	---	---	---	---	---	---	---	---	---	---	2,134.04	0.080	0.080	3722
1,182,903	0.400	---	---	---	01/07/1996	27/05/2002	4652	EMPORIKOS DESMOS SA (PR)	0.140	---	0.140	28/09/2009	---	---	---	---	---	---	---	---	---	---	---	2,134.04	0.140	0.140	3722
8,593,750	0.300	---	---	---	01/06/2009	20/06/2007	4876	FASHION BOX (CR)	1.30	---	1.30	23/02/2012	---	---	---	---	---	---	---	---	---	---	---	11,171.88	1.30	1.30	3763
7,326,648	1.00	---	---	---	26/07/2006	24/07/2001	4921	FINTEXPORT SA (CR)	0.328	---	0.328	29/06/2012	---	---	---	---	---	---	---	---	---	---	---	2,403.14	0.328	0.328	3763
20,860,000	0.300	---	---	---	03/07/2000	13/11/2007	4848	IKONA - IHOS SA (CR)	0.072	---	0.072	02/12/2011	---	---	---	---	---	---	---	---	---	---	---	1,501.92	0.072	0.072	5379
36,765,744	0.350	---	---	---	16/08/2006	06/06/2011	4869	IMPERIO SA (CR)	0.026	---	0.026	30/03/2012	---	---	---	---	---	---	---	---	---	---	---	955.91	0.026	0.026	2777
24,619,524	0.500	---	---	---	10/10/1986	30/12/2002	4914	KERAMIA-ALLATINI (CR)	0.088	---	0.088	27/08/2012	---	---	---	---	---	---	---	---	---	---	---	2,166.52	0.088	0.088	8633
7,840,373	1.20	---	---	---	18/07/2002	05/03/2003	4765	KLONATEX SA (PR)	0.080	---	0.080	09/05/2011	---	---	---	---	---	---	---	---	---	---	---	1,453.75	0.080	0.080	3763
20,663,047	1.20	---	---	---	21/08/2000	05/03/2003	4764	KLONATEX SA (CR)	0.040	---	0.040	09/05/2011	---	---	---	---	---	---	---	---	---	---	---	1,453.75	0.040	0.040	3763
17,544,600	0.600	---	---	---	03/07/2000	01/08/2000	4868	KOYMBAS SYNERGY GROUP (CR)	0.132	---	0.132	29/03/2012	---	---	---	---	---	---	---	---	---	---	---	2,315.89	0.132	0.132	8775
15,015,000	1.60	---	---	---	01/07/2002	02/02/2000	4603	MAXIM C.M. PERTSINIDIS SA (CB)	0.100	---	0.100	30/11/2009	---	---	---	---	---	---	---	---	---	---	---	1,501.50	0.100	0.100	3763
13,555,100	1.00	---	---	---	08/07/2005		4576	MICROLAND COMPUTERS SA (CR)	0.640	---	0.640	14/07/2009	---	---	---	---	---	---	---	---	---	---	---	8,675.26	0.640	0.640	5379
23,463,874	0.800	---	---	---	23/05/2003	21/12/1999	4918	NEORION SA (CR)	0.125	---	0.125	28/08/2012	---	---	---	---	---	---	---	---	---	---	---	2,932.98	0.125	0.125	2753
42,501,273	0.300	---	---	---	26/06/2007	10/08/2009	4993	NUTRIART (CR)	0.049	---	0.049	21/06/2013	---	---	---	---	---	---	---	---	---	---	---	2,082.56	0.038	0.114	3577
25,583,146	0.300	---	---	---	25/06/2001	03/12/2008	4723	PETZETAKIS SA (CR)	0.260	---	0.260	28/01/2011	---	---	---	---	---	---	---	---	---	---	---	6,651.62	0.260	0.260	1357
9,550,386	0.500	---	---	---	01/07/1997	12/06/2008	4626	PRAXITELIO SA (CR)	0.390	---	0.390	11/03/2010	---	---	---	---	---	---	---	---	---	---	---	4,430.09	0.390	0.390	4533
1,306,368	0.500	---	---	---	01/07/1997	12/06/2008	4627	PRAXITELIO SA (PR)	0.540	---	0.540	15/12/2009	---	---	---	---	---	---	---	---	---	---	---	4,430.09	0.540	0.540	4533
62,683,822	0.300	---	---	---	27/05/2008	09/01/2006	4830	PROTON BANK S.A. (CR)	0.180	---	0.180	07/10/2011	---	---	---	---	---	---	---	---	---	---	---	11,283.09	0.180	0.180	8355
23,059,688	0.660	---	---	---	03/07/2008	06/08/2004	4864	RIDENCO SA (CR)	0.032	---	0.032	30/03/2012	---	---	---	---	---	---	---	---	---	---	---	737.91	0.032	0.032	3765
51,083,993	1.00	---	---	---	15/07/2008	06/08/2003	4867	SANYO HELLAS HOLD. (CR)	0.020	---	0.020	30/03/2012	---	---	---	---	---	---	---	---	---	---	---	1,021.68	0.020	0.020	3722
51,334,286	0.320	---	---	---	03/07/2000	18/12/2007	4548	SAOS (CR)	0.780	---	0.780	27/03/2009	---	---	---	---	---	---	---	---	---	---	---	40,040.74	0.780	0.780	2773
26,408,040	0.300	---	---	---	01/07/1997	26/05/1999	4464	SHEET STEEL SA (CR)	0.120	---	0.120	28/11/2008	---	---	---	---	---	---	---	---	---	---	---	3,168.96	0.120	0.120	1757
26,262,660	0.900	---	---	---	01/07/2008	24/02/2011	4954	SPRIDER STORES (CR)	0.031	---	0.031	28/03/2013	---	---	---	---	---	---	---	---	---	---	---	814.14	0.025	0.055	5371
144,688,060	0.600	---	---	---	21/04/2008	10/03/2010	4982	T BANK (CR)	0.048	---	0.048	30/11/2011	---	---	---	---	---	---	---	---	---	---	---	6,945.03	0.048	0.048	8355
6,523,780	0.530	---	---	---	01/07/2002	06/03/2001	4971	TECHNICAL PUBLICATIONS SA (CR)	0.006	---	0.006	29/05/2013	---	---	---	---	---	---	---	---	---	---	---	39.14	0.006	0.347	5557
13,920,000	0.320	---	---	---	19/11/2001	01/08/2000	4726	TEXAPRET SA (CR)	0.080	---	0.080	23/02/2011	---	---	---	---	---	---	---	---	---	---	---	1,113.60	0.080	0.080	3763



Number of Outstanding Securities	Nominal Value	Dividends [1]			Date of Last Coupon		Note	Shares	Closing price	% change	Previous closing price/date	Open price	Price min	Price max	Last price	Avg price	Last Bid [7]	Last Ask [7]	P/E after	Year	Volume	Trades	Transactions Value	Company Mkt Value (thou. €)	Year low	Year high	Sector[ 4]
		2010	2011	2012	Dividend [2]	Right																					

Under Suspension

284,465,964	3.70	---	---	---	20/06/2008	15/06/2009	4913	TT HELLENIC POSTBANK (CR)	0.168	---	↘	0.168	30/08/2012	---	---	---	---	---	---	---	---	---	---	---	---	47,790.28	0.168	0.168	8355
89,616,200	0.300	---	---	---	21/08/2000	28/06/2007	4616	UNITED TEXTILES (CR)	0.050	---	↘	0.050	25/02/2010	---	---	---	---	---	---	---	---	---	---	---	---	4,480.81	0.050	0.050	3763
71,683,906	0.400	---	---	---	15/06/2005	05/02/2008	4953	XATZIOANNOU (CR)	0.026	---	↘	0.026	28/03/2013	---	---	---	---	---	---	---	---	---	---	---	---	1,863.78	0.020	0.085	3763

## Shares' Notes

Code	Note text
( )	- Adjusted dividends.
*	- Last adjusted closing price.
[1]	- Net dividends.
[2]	- The "Date of Last Coupon" for New listings refers to the date company's stocks started to trade in Athex
[3]	- The Company Market Value is referred to the number of outstanding shares
[4]	- Sectors codification can be found in Appendix A
[5]	- The Market Value refers to the total number of shares listed (including their several classes) in the exchange by the company.
[6]	- P/E greater than 100
[7]	- Last view of the Order Book before the end of the trading session
4446	- Transfer to the "Under Supervision" Category as of 20/10/2008.
4447	- Transfer to the "Under Supervision" Category as of 21/10/2008.
4464	- Suspension of trading as of 1/12/2008.
4548	- Suspension of trading as of 1/4/2009.
4554	- Transfer to the "Under Supervision" Category as of 6/4/2009.
4559	- Transfer to the "Under Supervision" Category as of 21/4/2009.
4576	- Suspension of trading as of 14/7/2009.
4603	- Suspension of trading as of 1/12/2009.
4616	- Suspension of trading as of 25/2/2010.
4626	- Suspension of trading as of 1/4/2010.
4627	- Suspension of trading as of 1/4/2010.
4628	- Suspension of trading as of 1/4/2010.
4629	- Transfer to the Under Supervision Category as of 12/4/2010.
4630	- Transfer to the Under Supervision Category as of 12/4/2010.
4651	- Suspension of trading as of 1/6/2010.
4652	- Suspension of trading as of 1/6/2010.
4690	- Transfer to Surveillance category as of 4/4/2006.
4702	- Suspension of trading as of 1/12/2010.
4723	- Suspension of trading as of 31/1/2011.
4726	- Suspension of trading as of 1/3/2011.
4750	- Transfer to the "Under Surveillance Category" from 8/4/2011.
4764	- Suspension of trading as of 20/5/2011.
4765	- Suspension of trading as of 20/5/2011.
4795	- The final gross (pre-tax) dividend is € 0.30 per share and subject to withholding tax on the full dividend amount, i.e. 0,45 per share, for those shareholders liable to withholding tax, in accordance with the applicable tax law provisions.
4808	- Suspension of trading as of 6/9/2011.
4814	- Transfer to the Low Dispersion Category as of 30/5/2011.
4815	- Transfer to the Low Dispersion Category as of 30/5/2011.
4816	- Transfer to the Low Dispersion Category as of 30/5/2011.
4817	- Transfer to the Low Dispersion Category as of 30/5/2011.
4820	- Transfer to the Low Dispersion category as of 18/4/2008.
4822	- Transfer to the Low Dispersion category as of 30/5/2011.
4823	- Transfer to the Low Dispersion category as of 4/4/2006.
4824	- Transfer to the Low Dispersion category as of 18/4/2008.
4825	- Transfer to the Low Dispersion category as of 8/4/2011.
4827	- Transfer to the Low Dispersion category as of 5/5/2010.
4828	- Transfer to the Low Dispersion category as of 4/4/2006.
4830	- Suspension of trading as of 10/10/2011.
4833	- Transfer to Surveillance category from 6/5/2010.
4844	- Transfer to the Surveillance category from 8/4/2011.
4845	- Transfer to the Surveillance Category as of 25/11/2011.
4846	- Transfer to the Surveillance Category as of 25/11/2011.
4847	- Transfer to the Surveillance Category as of 3/7/2009.

## Shares' Notes

Code	Note text
4848	- Suspension of trading as of 6/12/2011.
4854	- Transfer to the Surveillance Category as of 29/12/2011.
4855	- Transfer to the Surveillance Category as of 29/12/2011.
4856	- Transfer to the Surveillance Category as of 29/12/2011.
4860	- Suspension of trading as of 30/3/2012.
4864	- Suspension of trading as of 30/3/2012.
4865	- Suspension of trading as of 2/4/2012.
4867	- Suspension of trading as of 2/4/2012.
4868	- Suspension of trading as of 2/4/2012.
4869	- Suspension of trading as of 2/4/2012.
4875	- Suspension of trading as of 2/4/2012.
4876	- Suspension of trading as of 3/4/2012.
4879	- Transfer to the Surveillance Category as of 10/4/2012.
4880	- Transfer to the Surveillance Category as of 10/4/2012.
4881	- Transfer to the Surveillance Category as of 10/4/2012.
4882	- Transfer to the Surveillance Category as of 10/4/2012.
4884	- Transfer to the Surveillance Category as of 10/4/2012.
4885	- Transfer to the Surveillance Category as of 10/4/2012.
4886	- Transfer to the Surveillance Category as of 10/4/2012.
4887	- Transfer to the Surveillance Category as of 10/4/2012.
4888	- Transfer to the Surveillance Category as of 10/4/2012.
4889	- Transfer to the Surveillance Category as of 10/4/2012.
4893	- Transfer to the Low Dispersion category as of 28/5/2012.
4894	- Transfer to the Low Dispersion category as of 28/5/2012.
4911	- Lift of suspension from 30/7/2012.
4912	- Transfer to the Surveillance Category as of 31/7/2012.
4913	- Suspension of trading as of 30/8/2012.
4914	- Suspension of trading as of 31/8/2012.
4918	- Suspension of trading as of 31/8/2012.
4920	- Suspension of trading as of 31/8/2012.
4921	- Suspension of trading as of 31/8/2012.
4929	- Suspension of trading as of 1/10/2012.
4937	- Transfer to the UNDER DELETION category as of 30/11/2012.
4938	- Transfer to the UNDER DELETION category as of 30/11/2012.
4939	- Suspension of trading as of 30/11/2012.
4941	- Transfer to the Low Dispersion category as of 3/12/2012.
4944	- Transfer to the Surveillance Category as of 7/12/2012.
4951	- Suspension of trading as of 19/3/2013.
4953	- Suspension of trading as of 2/4/2013.
4954	- Suspension of trading as of 2/4/2013.
4955	- Transfer to the Surveillance Category as from 5/4/2013.
4956	- Transfer to the Surveillance Category as from 5/4/2013.
4957	- Transfer to the Surveillance Category as from 5/4/2013.
4958	- Transfer to the Surveillance Category as from 5/4/2013.
4959	- Transfer to the Surveillance Category as from 5/4/2013.
4960	- Transfer to the Surveillance Category as from 5/4/2013.
4961	- Transfer to the Surveillance Category as from 5/4/2013.
4962	- Transfer to the Surveillance Category as from 5/4/2013.
4963	- Transfer to the Under Deletion Category as from 5/4/2013.
4970	- Suspension of trading as of 3/6/2013.
4971	- Suspension of trading as of 3/6/2013.
4977	- Transfer to the "Under Surveillance Category" from 11/6/2013.
4978	- Transfer to the Under Supervision Category as of 11/6/2013.

---

Shares' Notes

---

Code	Note text
4982	- Suspension of trading as of 1/12/2011.
4983	- Transfer to the Surveillance Category as of 5/4/2013.
4985	- Transfer to the "Under Surveillance Category" from 8/4/2011.
4986	- Transfer to the Low Dispersion category as of 30/5/2011.
4988	- As of June 7, 2013, the name of the company "DUTY FREE SHOPS A CORPORATION OPERATING DFS AND LARGE AND SMALL SCALE INDUSTRIAL OPERATIONS, TECHNIC" on ATHEX changes to "FOLLI FOLLIE S.A.".
4993	- Suspension of trading as of 21/6/2013 (15:18).
4995	- Transfer to the "Under Surveillance Category" from 8/4/2011.
4996	- Transfer to the "Under Surveillance Category" from 8/4/2011.
4997	- Transfer to the Under Supervision Category as of 21/12/2009. - The 6,870,053 new (CB) shares, resulting from the recent share capital increase through a rights issue, are not yet admitted to trading on the ATHEX.
4998	- Suspension of trading as of 26/7/2013.

Securities Blocks Details

Securities	Block Volume	Price	Block Trade Value	Time of approval	Note
GEK TERNA (CR)	435,000	2.19	950,475.00	12:38:55	20

Blocks Notes

- 2 - SPOT 1 or SPOT 2 Packet
- 3 - Block with Short Selling
- 4 - Buy to Close Block
- 6 - Simultaneous Constitution
- 7 - Repurchase Agreement
- 8 - Dispersion's Achievement (Not Listed)
- 9 - Dispersion's Achievement (Listed)
- 10 - Share Capital Majority of Greek State (> 50 bil)
- 11 - Total Assets > 500 bil
- 12 - Sell Offer through Athex
- 13 - Forced Sale of NMOE
- 14 - Restoration Packet
- 15 - Market Maker Packet
- 16 - Short Selling
- 18 - SPOT 1 Packet
- 20 - Method 6-1 Packet

Shares Rights Details

Occured date	Exercise from	Exercise until	Trading until	Rights	Price min	Price max	Closing price	Last Bid	Last Ask	Volume	Trades	Transactions Value
05/08/2013	16/08/2013	30/08/2013	26/08/2013	TELETIPOS S.A. (CR)	0.001	0.001	0.001	---	2442@0.001	100	1	0.10

## Stock Borrowing

Securities	Stock Borrowing through Helex (volume)	Stock Borrowing through OTC (volume) [1]	Totals [2]
ALAPIS (CR)	---	6,250	6,250
ALPHA BANK (CR)	161,200	4,962,274	5,123,474
ATE (CR)	---	69,000	69,000
BANK OF CYPRUS (CR)	---	102,899	102,899
CC HBC AG (CR)	26,800	73,941	100,741
ELLAKTOR (CR)	5,000	---	5,000
EUROBANK ERGASIAS (CR)	21,120	68,433	89,553
EUROBANK PROPERTIES REIC (CR)	11,500	31,215	42,715
EYDAP S.A. (CR)	2,900	---	2,900
FLEXOPACK SA (CR)	---	41,927	41,927
FOLLI FOLLIE (CR)	3,000	8	3,008
FRIGOGLASS SA (CR)	3,500	---	3,500
GEK TERNA (CR)	500	---	500
HELLENIC EXCHANGES (CR)	38,000	50	38,050
HELLENIC PETROLEUM (CR)	22,400	269	22,669
INTERTECH SA (CR)	---	483,000	483,000
INTRALOT (CR)	20,000	---	20,000
JUMBO SA (CR)	10,900	3,525	14,425
LAMDA DEVELOPMENT SA (CR)	---	10,377	10,377
MARFIN INVESTMENT GROUP (CR)	---	733,474	733,474
METKA (CR)	8,400	---	8,400
MOTOR OIL (CR)	12,700	---	12,700
MYTILINEOS HOLDINGS (CR)	7,000	---	7,000
NATIONAL BANK (CR)	61,100	1,430,751	1,491,851
NBGAM ETF	10,000	---	10,000
NBGAM ETF GREECE & TURKEY 30	3,500	---	3,500
OPAP (CR)	50,500	41,707	92,207
OTE (CR)	129,200	109,116	238,316
PIRAEUS BANK (CR)	5,200	239,460	244,660
PPC (CR)	45,900	44,800	90,700
TERNA ENERGY (CR)	5,400	---	5,400
TITAN CEMENT (CR)	6,200	55,390	61,590
VIOHALCO (CB)	5,200	---	5,200

### Stock Borrowing Notes

[1] - The information concerning OTC Stock Borrowing Transactions is based on the statements of the Dematerialised Securities System (DSS) operators involved and refers to volumes that have been cleared and registered up until the previous working day.

Shares Forced Sales

Securities	Transaction s Volume	Number of Trades	Transactions Value	Note
No Forced Transactions.				

Forced Sales Notes

- 1 - Normal Forced Sale.
- 2 - Forced Sales of Fixed Registered Shares.
- 3 - Forced Sales of Remaining Stock Fractions.



**Forced Sales Registered Shares**

Securities	Start Date	End Date	Initial Volume	Remaining Volume	Date	Avg price (day)	Avg price (period)	Number of Trades	Transactions Volume	Transactions Value
------------	------------	----------	-------------------	---------------------	------	--------------------	-----------------------	---------------------	------------------------	-----------------------

No Fixed Registered Shares Forced Sales.

**Forced Sales Notes**

According to Decision 1/380/04.05.2008 of the Hellenic Republic Capital Market Commission, the certificated registered shares that have not been deposited to the issuer for dematerialisation, will be auctioned in the Athens Exchange by the supervising issuer. Forced sales procedure is held according to Article 99A of the Athens Exchange Rulebook. The average price of the period is calculated by dividing the Total transactions value by the Total volume and includes all the transactions made until the current date.

## Exchange Traded Funds (ETFs) Characteristics

	Transactions Date (T)	Creation / Redemption	Units (T-1)	New Units (T-1)	Redemptio n Units (T-	Units (T) [1]	Fund Assets [2]	Net Unit Price	Dividen d per	Dividend Date
NBGAM ETF ΓΔ Χ.Α.	21/08/2013	25,000	294,878	---	---	294,878	2,940,596.00	9.9722	---	27/10/2011
ALPHA ETF FTSE Athex Large Cap	21/08/2013	50,000	5,848,618	---	---	5,848,618	17,803,090.00	3.0440	0.05	01/07/2013
NBGAM ETF GREECE & TURKEY 30	21/08/2013	25,000	388,550	---	---	388,550	2,950,648.00	7.5940	---	27/10/2011

## ETFs Notes

[1] - Units (T) = Units (T-1) + New Units (T-1) - Redemption Units (T-1)

[2] - The Creation / Redemption Units of T-1 are included.

Corporate Bonds

Num Listed Bonds	Nominal price	Issue price	Today's Rate	Exp. Date	Duration (years)	Note	Coupon attached		Trading	Corporate Bonds	Price min	Price max	Closing price	Previous closing price/date	Volume	Transactions Value	Last order		Date	ear min	Year max
							Common	Preferred									Price	Buy / Sell			
212,849,265	1.00	1.00	6.30	29/07/2020	7	---	1	---	1	MARFIN INVESTMENT GROUP S.A. SERIES B (BOND)	---	---	---	---	---	---	1.0000	B	21/08/2013	100.0000	100.0000
2,156,827	1.00	1.00	7.00	29/07/2019	6	---	1	---	1	MARFIN INVESTMENT GROUP S.A. SERIES A (BOND)	---	---	---	---	---	---	1.0000	B	21/08/2013	100.0000	100.0000
39,711,653	1.00	1.00	6.00	30/06/2016	5	4786	5	---	1	BANK OF CYPRUS PUBLIC CO. LTD (Convert. to CR sh.)	---	---	---	---	---	---	10.0000	B	13/03/2013	100.0000	100.0000
428,521,983	1.00	1.00	6.50	30/06/2016	5	4785	5	---	1	BANK OF CYPRUS PUBLIC CO. LTD (Convert. to CR sh.)	---	---	---	20.5000 14/03/2013	---	---	21.0000	B	15/03/2013	19.5000	30.0000
4,150,176	4.77	4.77	5.00	19/03/2015	5	---	14	---	1	MARFIN INVESTMENT GROUP S.A. (Conver to CR shar)	---	---	---	25.4000 12/08/2013	---	---	26.0000	B	21/08/2013	0.5000	70.0000
73,088,145	1.00	1.00	5.50	30/06/2014	5	4574	9	---	1	BANK OF CYPRUS PUBLIC CO. LTD (Convert. to CR sh.)	---	---	---	20.0000 08/03/2013	---	---	21.5000	B	15/03/2013	20.0000	26.0000
1,794,284	12.49	9.77	5.33	12/07/2015	8	---	13	---	1	NIREUS S.A. (Convertible to CR shares)	---	---	---	12.0000 26/07/2013	---	---	15.0000	B	21/08/2013	11.0000	15.0000
27,283,632	1.00	1.00	1.32	30/06/2018	10	---	11	---	1	BANK OF CYPRUS PUBLIC CO. LTD (Convert. to CR sh.)	---	---	---	33.0000 13/12/2012	---	---	35.0000	B	15/03/2013	33.0000	33.0000

4574 - The bonds are of indefinite duration.

4785 - The bonds are of indefinite duration.

4786 - The bonds are of indefinite duration. The Bond's par value, issue price and trading prices are expressed in USA Dollars, whereas its Transactions Value is expressed in Euros.

Corporate Bonds Notes

Transactions Volume = (Pieces) \* (Nominal Price). Transactions Value = (Pieces) \* (Nominal Price) \* (price %) + (Accrued interest).

The price of a Bond is stated as a percentage (%) of Bond's Nominal Price.

Nominal Price in Euros (€), except if it is noted differently.

Government Bonds

Number Listed Bonds	Nominal price	Today's Rate	Accrued Interest Calc	Exp. Date [1]	Duration (years)	Note	Coupons Date	Curr. coupon value	Trading Unit	Government Bonds	Price min	Price max	Closing price	Previous closing price/date	Volume	Transactions Value	Price	Last order Buy / Sell	Date
2,658,781,973	1.00	2.00	Actual/Actual	24/02/2023	11	---	24/02	2.00	1	GGB-FXD-240223-11Y-2.000-1.00	---	---	---	---	---	---	---	---	---
2,658,781,973	1.00	2.00	Actual/Actual	24/02/2024	12	---	24/02	2.00	1	GGB-FXD-240224-12Y-2.000-1.00	---	---	---	---	---	---	---	---	---
2,658,781,973	1.00	2.00	Actual/Actual	24/02/2025	13	---	24/02	2.00	1	GGB-FXD-240225-13Y-2.000-1.00	---	---	---	---	---	---	---	---	---
2,658,781,973	1.00	2.00	Actual/Actual	24/02/2026	14	---	24/02	2.00	1	GGB-FXD-240226-14Y-2.000-1.00	---	---	---	---	---	---	---	---	---
2,658,781,973	1.00	2.00	Actual/Actual	24/02/2027	15	---	24/02	2.00	1	GGB-FXD-240227-15Y-2.000-1.00	---	---	---	---	---	---	---	---	---
2,836,034,104	1.00	2.00	Actual/Actual	24/02/2028	16	---	24/02	2.00	1	GGB-FXD-240228-16Y-2.000-1.00	---	---	---	---	---	---	---	---	---
2,836,034,104	1.00	2.00	Actual/Actual	24/02/2029	17	---	24/02	2.00	1	GGB-FXD-240229-17Y-2.000-1.00	---	---	---	---	---	---	---	---	---
2,836,034,104	1.00	2.00	Actual/Actual	24/02/2030	18	---	24/02	2.00	1	GGB-FXD-240230-18Y-2.000-1.00	---	---	---	---	---	---	---	---	---
2,836,034,104	1.00	2.00	Actual/Actual	24/02/2031	19	---	24/02	2.00	1	GGB-FXD-240231-19Y-2.000-1.00	---	---	---	---	---	---	---	---	---
2,836,034,104	1.00	2.00	Actual/Actual	24/02/2032	20	---	24/02	2.00	1	GGB-FXD-240232-20Y-2.000-1.00	---	---	---	---	---	---	---	---	---
2,836,034,104	1.00	2.00	Actual/Actual	24/02/2033	21	---	24/02	2.00	1	GGB-FXD-240233-21Y-2.000-1.00	---	---	---	---	---	---	---	---	---
2,836,034,104	1.00	2.00	Actual/Actual	24/02/2034	22	---	24/02	2.00	1	GGB-FXD-240234-22Y-2.000-1.00	---	---	---	---	---	---	---	---	---
2,836,034,104	1.00	2.00	Actual/Actual	24/02/2035	23	---	24/02	2.00	1	GGB-FXD-240235-23Y-2.000-1.00	---	---	---	---	---	---	---	---	---
2,836,034,104	1.00	2.00	Actual/Actual	24/02/2036	24	---	24/02	2.00	1	GGB-FXD-240236-24Y-2.000-1.00	---	---	---	---	---	---	---	---	---
2,836,034,104	1.00	2.00	Actual/Actual	24/02/2037	25	---	24/02	2.00	1	GGB-FXD-240237-25Y-2.000-1.00	---	---	---	---	---	---	---	---	---
2,836,034,104	1.00	2.00	Actual/Actual	24/02/2038	26	---	24/02	2.00	1	GGB-FXD-240238-26Y-2.000-1.00	---	---	---	---	---	---	---	---	---
2,836,034,104	1.00	2.00	Actual/Actual	24/02/2039	27	---	24/02	2.00	1	GGB-FXD-240239-27Y-2.000-1.00	---	---	---	---	---	---	---	---	---
2,836,034,104	1.00	2.00	Actual/Actual	24/02/2040	28	---	24/02	2.00	1	GGB-FXD-240240-28Y-2.000-1.00	---	---	---	---	---	---	---	---	---
2,836,034,104	1.00	2.00	Actual/Actual	24/02/2041	29	---	24/02	2.00	1	GGB-FXD-240241-29Y-2.000-1.00	---	---	---	---	---	---	---	---	---
2,836,034,104	1.00	2.00	Actual/Actual	24/02/2042	30	---	24/02	2.00	1	GGB-FXD-240242-30Y-2.000-1.00	---	---	---	---	---	---	---	---	---
1,500,000	1,000.00	0.97	FLR Actual/360	10/08/2014	5	---	10/02 - 10/08	---	1	GGB-FRN-100814-05Y-1.762-1000.00	---	---	---	---	---	---	---	---	---
5,187,186	1,000.00	1.60	FLR Actual/360	21/05/2014	5	---	21/11 - 21/05	---	1	GGB-FRN-210514-05Y-2.734-1000.00	---	---	---	---	---	---	---	---	---
78,300	1,000.00	1.16	FLR Actual/360	23/07/2014	5	---	23/01 - 23/07	---	1	GGB-FRN-230714-05Y-2.018-1000.00	---	---	---	---	---	---	---	---	---

Government Bonds Notes

Transactions Volume = (Pieces) \* (Nominal Price). Transactions Value = (Pieces) \* (Nominal Price) \* (price %) + (Accrued interest).

The Value of current coupon for the issues with NV 0.01 euro refers to NV 100 euros

FLR: Floating Interest Rate.

[1] - The Expiration Date of the interest bearing period and the Date for coupon payment.

Bonds in Circulation	Currency / Min nominal traded Value	Coupons Payment Date	Current Coupon Value	Note	Coupon Attached	Trading Unit	Issue Date	Duration (years)	Today's Interest	A.I.C in days	Bonds	Last price of previous days	Last Outcry in Cash (euro) Price	Buy / Sell	Trades in Pieces	Life min	Life Max
Bonds of International Organizations																	
1,000,000	EUR / 1000	21/07	---	---	8	1	21/07/2006	10	5.0 FLR	360	EUROPEAN INVESTMENT BANK BOND	97.50	16/04/2007	---	---	---	---
Corporate Bonds in Foreign Currency and Euro																	
103,746	GBP / 10	01/12	0.25	---	54	1	01/12/1930	98	2.5	360	National Mortgage Bank	2.27	05/02/1996	2.27	S	05/02/1996	2.27
0	GBP / 10	01/12	0.25	---	56	1	01/12/1928	100	2.5	360	National Mortgage Bank	---	---	---	---	---	---

Government Bonds Notes

A.I.C: Accrued Interest Calculation base.  
FLR: Floating Interest Rate.  
The minimum tradeable Nominal Value for all Demeterialised Government Titles is 100 Euros.

State Banks Bonds (one year maturity)

Number Listed Bonds	Nominal value	Initial Rate	Current Rate	Annual Interest	Issue Date	Note	State Banks Bonds	Trading Unit	Yearly Renewals	Last Outcry in Cash (euro) Price	Buy / Sell	Volume
342,560	130.41	2.35	3.92	0.00	31/01/2005	---	H.I.D.B.	1	9	100.00	B	---
16,015	1,211.71	3.65	2.47	0.00	30/11/2006	---	H.I.D.B.	1	7	---	---	---
2,446	1,154.00	4.90	2.47	28.96	31/05/2008	---	H.I.D.B.	1	6	---	---	---
171,117	1,163.28	5.50	2.47	29.19	31/05/2008	---	H.I.D.B.	1	6	---	---	---
63,787	1,101.48	5.45	2.47	30.88	31/08/2008	---	H.I.D.B.	1	5	---	---	---
54,559	1,129.20	5.45	2.47	28.34	31/08/2008	---	H.I.D.B.	1	5	---	---	---
77,348	1,130.82	5.60	2.47	28.38	31/08/2008	---	H.I.D.B.	1	5	---	---	---
165,926	1,130.82	5.60	2.47	28.38	31/08/2008	---	H.I.D.B.	1	5	---	---	---
5,358	1,108.96	5.45	2.47	27.83	31/10/2008	---	H.I.D.B.	1	5	---	---	---
1,045	1,129.74	5.50	2.47	28.35	31/10/2008	---	H.I.D.B.	1	5	---	---	---
76,077	1,132.45	5.75	2.47	28.42	31/10/2008	---	H.I.D.B.	1	5	---	---	---

Bonds Notes

The annual renewal of H.I.D.B. Bonds is free of taxes (net rate).  
For Bonds issue until 31/07/2013 the accrued interest is capitalized.

Athex & ATHEXClear Members List

Member Name			Stock Market			Derivatives Market			ATHEXClear Member		
Address	Phone	Fax	Market Member	Remote Member	Market Maker	Proprietary	Market Maker	Agent	General Clearing	Direct Clearing	Non Clearing
A. SARRIS SECURITIES S.A.			a								
6, DRAGATSANIOU STR. ATHINA	(210)-3367700	(210)-3312324									
AGRICULTURAL BANK OF GREECE S.A.			a				a			a	
, 23 PANEPISTIMIOU ATHINA	(210)-3298400	(210)-3298322									
ALPHA FINANCE INVESTMENT SERVICES S.A.			a		a		a			a	
5, MERLIN STR. ATHINA	(210)-3677400	(210)-3311193									
ALPHA BANK A.E.						a			a		
40, STADIOU STR ATHINA	(210)-3265546	(210)-3265811									
	(210)-3260000	(210)-3264116									
ARGUS STOCKBROKERS LTD			a	a							
12-14, KENNEDY AVE, S. 303 NICOSIA	(+35722)-22717000	(+35722)-22717070									
ATHENAIKI BROKERAGE FIRM S.A.			a								
33, STADIOU STR. ATHINA	(210)-3254764	(210)-3254767									
ATLANTIC SECURITIES LIMITED			a	a							
37, PRODROMOU STR. NICOSIA	(+35722)-445400	(+35722)-661914									
ATLAS SECURITIES S.A			a			a					a
14 - 16, VERVENON STR.& 125 MICHALAKOPOULOU STR. ATHINA	(210)-3363300	(210)-3238925									
ATTICA BANK S.A.									a		
54, AKADIMIAS STR. ATHINA	(210)-3390757	(210)-3646090									
23, OMIROU STR. ATHINA	(210)-3669000	(210)-3669410									
AXIA VENTURES GROUP LTD			a	a							
10, G. KRANIDIOTI NICOSIA	+357 22 742000	+357 22 742001									
AXON SECURITIES S.A.			a			a					a
48, STADIOU ATHINA	(210)-3363800	(210)-3243903									
BANK OF CYPRUS PUBLIC COMPANY LTD									a		
, 51,STASINOU (AG. PARASKEVI, STROVOLOS) NICOSIA	(0035722)-121883	(0035722)-336258									
170, ALEXANDRAS AVE ATHINA	(210)-6477708	(210)-6477709									
BETA SECURITIES S.A.			a		a	a	a			a	
, BRAILA & 29 ALEXANDRAS AVE ATHINA	(210)-6478900	(210)-6410139									
BNP PARIBAS SECURITIES SERVICES									a		
94, VAS. SOFIAS AVE ATHINA	(210)-7468500	(210)-7468579									
CAPITAL SECURITIES S.A.			a			a					a
58, MITROPOLEOS STR. ATHINA	(210)-3369700	(210)-3369820									
CFS SECURITIES & INVESTMENT SERVICES S.A.			a		a			a		a	
3, STADIOU STR. ATHINA	(210)-3360800	(210)-3311854									
CITIGROUP GLOBAL MARKET LTD			a	a							
, CITIGROUP CENTRE, CANADA SQUARE, CANARY WHART LONDON	002079864000	002079862266									
CO-OPERATIVE CENTRAL BANK LTD			a	a							
8, GRIGORI AFXENTIOU STR. NICOSIA	(+35722)-743300	(+35722)-672083									
CREDIT AGRICOLE CHEUVREUX S.A.			a	a							
, 9 QUAI PAUL DOUMER PARIS	33 (0) 1 41 89 70 00										
CREDIT SUISSE SECURITIES (EUROPE) LIMITED			a	a							
, ONE CABOT SQUARE LONDON	+44 20 7888 8888	+44 20 7888 1600									
CYCLOS SECURITIES S.A.			a		a	a				a	
39, PANEPISTIMIOU STR. ATHINA	(210)-3364300	(210)-3239122									
D.A. TSEKOURAS SEC. S.A.			a								
3, PESMAZOGLOU STR. ATHINA	(210)-3214406	(210)-3211997									
DEUTSCHE BANK S.A.			a	a							
70, THEODOR-HEUSS-ALLEE FRANKFURT	0049 69 910 00	0049 69 910 34 225									
DYNAMIC SECURITIES			a					a		a	
6 - 10, CHAR. TRIKOUPi STR. ATHINA	(210)-3677700	(210)-3677777									
EL. PETROPOULAKIS SECURITIES S.A.			a					a			a
9, ARISTIDOU STR. ATHINA	(210)-3213928	(210)-3216810									
EUROBANK EQUITIES S.A.			a		a		a			a	
10, FILELLINON STR. ATHINA	(210)-3720000	(210)-3720001									
EUROBANK ERGASIAS S.A.									a		
8, OTHONOS STR. ATHINA	(210)-3337000	(210)-3233866									
	(210)-3337969	(210)-3245916									
EUROCORP SECURITIES S.A.			a			a				a	
14, FILIKIS ETAIRIAS SQ. ATHINA	(210)-7263500	(210)-7263666									
EUOTRUST BROKERAGE S.A.			a								
13-15, SOPHOCLEOUS STR. ATHINA	(210)-3363100	(210)-3238334									

Athex & ATHEXClear Members List

Member Name			Stock Market			Derivatives Market			ATHEXClear Member		
Address	Phone	Fax	Market Member	Remote Member	Market Maker	Proprietary	Market Maker	Agent	General Clearing	Direct Clearing	Non Clearing
EUROXX SECURITIES S.A.			a			a				a	
7, PALAIOLOGOU STR. CHALANDRI	(210)-6879400	(210)-6879401									
G.A. PERVANAS SECURITIES & INVESTMENT SERVICES CO S.A.			a			a					a
7 - 9, SOPHOCLEOUS STR. ATHINA	(210)-3251875	(210)-3210291									
GENERAL BANK OF GREECE S.A.									a		
87-89, ERMOY ATHINA	(210)-6976072	(210)-6976079									
, 109-111, MESOGEION AVE. ATHINA	(210)-6975000	(210)-6975706									
GLOBAL CAPITAL SECURITIES AND FINANCIAL SERVICES LTD			a	a							
5, LEMESOU AVE. LEMESOS CYPRUS	(+35722)-710710	(+35722)-339332									
GUARDIAN TRUST SECURITIES S.A			a		a	a					a
15, FILELLINON STR. ATHINA	(210)-3220402	(210)-3220498									
HELLENIC AMERICAN SEC. S.A.			a			a					
6, EVRIPIDOU STR. ATHINA	(210)-3311100	(210)-3215968									
HELLENIC BANK (INVESTMENTS) LTD			a	a							
31, KYRIAKOY MATSI AVE. NICOSIA	(+35722)-500100	(+35722)-500110									
HSBC BANK PLC									a		
109-111, MESOGION AVE ATHINA	(210)-6961507	(210)-6929310									
INDEX SECURITIES S.A.			a								
6, DRAGATSANIOU STR. ATHINA	(210)-3213920	(210)-3213216									
INTERSEC S.A.						a				a	
80-88, SYGROU AVE ATHINA	(210)-9203000	(210)-9203052									
INVESTMENT BANK OF GREECE S.A.			a		a		a		a		
32, AIGEIALIAS MAROUSI	(210) 8173000	(210) 8173101									
24B, KIFISSIAS AVE MAROUSI	(210)-8171800	(210)-8171889									
J. CHR. MAVRIKIS SECURITIES S.A.			a								
5, SOPHOCLEOUS STR. ATHINA	(210)-3213949	(210)-3217767									
KAPPA SECURITIES S.A.			a			a					a
15, VALAORITOU STR. ATHINA	(210)-3610371	(210)-3641002									
KYPROU SECURITIES S.A.			a		a	a					a
26, HALKIDONOS & FIDIPPIDOY STR. ATHINA	(210)-8701000	(210)-8701049									
LAIKI FINANCIAL SERVICES LTD			a	a							
26, CLR HOUSE, VIRONOS AVE. NICOSIA	(+35722)-898600	(+35722)-680953									
LEON DEPOLAS SECURITIES S.A.			a					a			a
1, CHR. LADA STR. ATHINA	(210)-3213286	(210)-3211618									
MAGNA TRUST SECURITIES S.A			a					a			a
9, FIDIOU STR. ATHINA	(210)-3327503	(210)-3327599									
MEGA EQUITY SECURITIES & FINANCIAL SERVICES LTD			a	a							
42-44, GRIBA DIGENI AV. NICOSIA	(+35722)-711711	(+35722)-711811									
MERIT SECURITIES S.A			a		a	a				a	
38, VAS. KONSTANTINOY STR. ATHINA	(210)-3671800	(210)-3671830									
MERRILL LYNCH			a	a							
2, KING EDWARD STREET LONDON	(+4420)-79952000	(+4420)-79954525									
METOCHIKI SECURITIES S.A.			a								
3, G. GENNADIOY STR. ATHINA	(210)-3306700	(210)-3306709									
MIDAS BROKERAGE S.A.			a								
5, SOPHOCLEOUS STR. ATHINA	(210)-3253203	(210)-3253205									
N. CHRYSOCHOIDIS STOCK BROKERAGE I.S.S.A.			a					a		a	
7 - 9, SOPHOCLEOUS STR. ATHINA	(210)-3213913	(210)-3216115									
N. SARROS SECURITIES S.A.						a					
7-9, SOPHOCLEOUS STR. ATHINA	(210)-3705600	(210)-3219992									
NATIONAL BANK OF GREECE S.A.							a		a		
86, AIOLOU STR. ATHINA	(210)-3341000	(210)-3228187									
68, AKADIMIAS STR. ATHINA	(210)-3328817	(210)-3328678									
NBG SECURITIES S.A.			a		a		a				a
68, AKADIMIAS STR. ATHINA	(210)-3328500	(210)-3328565									
NEW PROTON BANK S.A.			a			a				a	
20, ESLIN & AMALIADOS ATHINA	210 6970000	210 6970111									
NUNTIUS SECURITIES S.A			a					a			a
6, DRAGATSANIOU STR. ATHINA	(210)-3350599	(210)-3254846									
OLYMPIA SECURITIES S.A			a								
46B, A. METAXA STR. GLYFADA	(210)-3702500	(210)-3702520									
ORANGE PARTNERS SECURITIES S.A			a								
5, TZORTZ STR. ATHINA	(210)-3300009	(210)-3305240									



## Athex &amp; ATHEXClear Members List

Member Name			Stock Market			Derivatives Market			ATHEXClear Member		
Address	Phone	Fax	Market Member	Remote Member	Market Maker	Proprietary	Market Maker	Agent	General Clearing	Direct Clearing	Non Clearing
<b>PANTELAKIS SEC. S.A.</b>			a			a					a
109-111, MESOGION AVE. ATHINA	(210)-6965000	(210)-6929550									
<b>PEGASUS BROKERAGE FIRM S.A</b>			a			a					
17, VALAORITOU STR. ATHINA	(210)-3670700	(210)-3670760									
<b>PIRAEUS BANK S.A.</b>								a	a		
4, AMERIKIS STR ATHINA	(210)-3335918	(210)-3254207									
4, AMERIKIS STR. ATHINA	(210)-3335000	(210)-3335079									
<b>PIRAEUS SECURITIES S.A.</b>			a				a			a	
10, STADIOU STR. ATHINA	(210)-3354100	(210)-3233814									
<b>PRELIUM SECURITIES &amp; INVESTMENT SERVICES S.A.</b>			a			a					a
, KIFISSIAS AVE & 1 DAVAKI STR ATHINA	(210)-3677000	(210)-6920403									
<b>PROBANK S.A.</b>			a								
10, AMERIKIS STR. ATHINA	(210)-3392631	(210)-3392646									
<b>PROCHOICE SECURITIES LTD</b>			a	a							
57, SPYROU KYPRIANOY NICOSIA	+357-24-661192	+357-24-662464									
<b>SHARELINK SECURITIES &amp; FINANCIAL SERVICES LTD</b>			a	a							
6, ELLINAS HOUSE, THEOTOKI STR. NICOSIA	(+35722)-554200	(+35722)-750852									
<b>SOCIETE GENERALE S.A.</b>			a	a		a					
17, COURS VALMY PUTEAUX - LA DEFENSE PARIS	(+33) 142134754	(+33) 142135697									
240-242, KIFISSIAS AVE ATHINA	(210)-6790161	(210)-6728828									
<b>SOLIDUS SECURITIES S.A</b>			a			a				a	
64, LOUIZIS RIANKOUR STR. ATHINA	(210)-6925500	(210)-6985421									
<b>SOTIRIADIS SECURITIES S.A.</b>			a								
7, VALAORITOU STR. ATHINA	(210)-3636943	(210)-3601943									
<b>ST. EM. LAVRENTAKIS SECURITIES S.A.</b>			a			a					a
7 - 9, SOPHOCLEOUS STR. ATHINA	(210)-3213336	(210)-3246572									
<b>THE CYPRUS INVESTMENT AND SECURITIES CORPORATION LIMITED (CISCO)</b>			a	a							
4, EVROU STR. (EUROLIFE HOUSE) NICOSIA	(+35722)-881800	(+35722)-881801									
<b>UBS LIMITED</b>			a	a							
1, FINSBURY AVENUE LONDON	(+4420)-79013333	(+4420)-79012345									
<b>Z.G. PORTALAKIS INVESTMENT SERVICES S.A.</b>			a								
8, PESMAZOGLOU STR. ATHINA	(210)-3214830	(210)-3212024									
<b>KARAMANOF SECURITIES &amp; INV. SERVICES S.A.</b>			a					a		a	
2, SQ. ST THEODORON ATHINA	(210)-3212947	(210)-3217088									

## List of Stocks under Market Making operations

Securities	Stock Category	
	Start Market Making	End Market Making
<b>BANK OF CYPRUS (CR)</b>	<b>Under Suspension</b>	
EUROBANK EQUITIES S.A.	23/10/2012	22/10/2013
INVESTMENT BANK OF GREECE S.A.	02/01/2013	01/01/2014
<b>COCA - COLA HBC (CR)</b>	<b>Under Suspension</b>	
EUROBANK EQUITIES S.A.	23/10/2012	22/10/2013
INVESTMENT BANK OF GREECE S.A.	08/01/2013	07/01/2014
<b>CYPRUS POPULAR BANK (CR)</b>	<b>Under Suspension</b>	
PIRAEUS SECURITIES S.A.	02/02/2013	01/02/2014
<b>ALPHA BANK (CR)</b>	<b>Main Market</b>	
EUROBANK EQUITIES S.A.	24/10/2012	23/10/2013
INVESTMENT BANK OF GREECE S.A.	08/01/2013	07/01/2014
MERIT SECURITIES S.A.	03/09/2012	02/09/2013
NBG SECURITIES S.A.	15/01/2013	14/01/2014
PIRAEUS SECURITIES S.A.	28/05/2013	27/05/2014
<b>ALUMIL (CR)</b>	<b>Main Market</b>	
BETA SECURITIES S.A.	18/07/2013	17/07/2014
<b>CC HBC AG (CR)</b>	<b>Main Market</b>	
NBG SECURITIES S.A.	29/04/2013	28/04/2014
<b>ELLAKTOR (CR)</b>	<b>Main Market</b>	
EUROBANK EQUITIES S.A.	01/06/2013	31/05/2014
INVESTMENT BANK OF GREECE S.A.	02/01/2013	01/01/2014
NBG SECURITIES S.A.	25/06/2013	24/06/2014
<b>ELTON SA (CR)</b>	<b>Main Market</b>	
BETA SECURITIES S.A.	03/09/2012	02/09/2013
<b>EUROBANK ERGASIAS (CR)</b>	<b>Main Market</b>	
ALPHA FINANCE INVESTMENT SERVICES S.A.	08/01/2013	07/01/2014
EUROBANK EQUITIES S.A.	01/06/2013	31/05/2014
INVESTMENT BANK OF GREECE S.A.	08/01/2013	07/01/2014
<b>GEK TERNA (CR)</b>	<b>Main Market</b>	
INVESTMENT BANK OF GREECE S.A.	02/01/2013	01/01/2014
<b>GR. SARANTIS SA (CR)</b>	<b>Main Market</b>	
BETA SECURITIES S.A.	14/05/2013	13/05/2014
<b>HELLENIC EXCHANGES (CR)</b>	<b>Main Market</b>	
EUROBANK EQUITIES S.A.	01/06/2013	31/05/2014
INVESTMENT BANK OF GREECE S.A.	02/01/2013	01/01/2014
NBG SECURITIES S.A.	25/06/2013	24/06/2014
<b>INTRACOM CONSTR. (CR)</b>	<b>Main Market</b>	
MERIT SECURITIES S.A.	27/12/2012	26/12/2013
<b>INTRALOT (CR)</b>	<b>Main Market</b>	
EUROBANK EQUITIES S.A.	01/06/2013	31/05/2014
INVESTMENT BANK OF GREECE S.A.	02/01/2013	01/01/2014
<b>MARFIN INVESTMENT GROUP (CR)</b>	<b>Main Market</b>	
PIRAEUS SECURITIES S.A.	02/02/2013	01/02/2014
<b>MLS MULTIMEDIA SA (CR)</b>	<b>Main Market</b>	
BETA SECURITIES S.A.	18/07/2013	17/07/2014
<b>MOTOR OIL (CR)</b>	<b>Main Market</b>	
EUROBANK EQUITIES S.A.	23/10/2012	22/10/2013
<b>MYTILINEOS HOLDINGS (CR)</b>	<b>Main Market</b>	
INVESTMENT BANK OF GREECE S.A.	02/01/2013	01/01/2014
NBG SECURITIES S.A.	25/06/2013	24/06/2014
<b>NATIONAL BANK (CR)</b>	<b>Main Market</b>	
ALPHA FINANCE INVESTMENT SERVICES S.A.	08/01/2013	07/01/2014
EUROBANK EQUITIES S.A.	24/10/2012	23/10/2013
INVESTMENT BANK OF GREECE S.A.	08/01/2013	07/01/2014
MERIT SECURITIES S.A.	03/09/2012	02/09/2013
NBG SECURITIES S.A.	28/02/2013	27/02/2014
<b>OPAP (CR)</b>	<b>Main Market</b>	
ALPHA FINANCE INVESTMENT SERVICES S.A.	08/01/2013	07/01/2014
EUROBANK EQUITIES S.A.	24/10/2012	23/10/2013
INVESTMENT BANK OF GREECE S.A.	08/01/2013	07/01/2014
NBG SECURITIES S.A.	15/01/2013	14/01/2014
<b>OTE (CR)</b>	<b>Main Market</b>	
ALPHA FINANCE INVESTMENT SERVICES S.A.	08/01/2013	07/01/2014
EUROBANK EQUITIES S.A.	24/10/2012	23/10/2013
INVESTMENT BANK OF GREECE S.A.	08/01/2013	07/01/2014
NBG SECURITIES S.A.	01/12/2012	30/11/2013
<b>PETROPOULOS PETROS (CR)</b>	<b>Main Market</b>	
BETA SECURITIES S.A.	28/05/2013	27/05/2014

## List of Stocks under Market Making operations

Securities	Stock Category	
	Start Market Making	End Market Making
Market Maker		
<b>PIRAEUS BANK (CR)</b>	<b>Main Market</b>	
EUROBANK EQUITIES S.A.	23/10/2012	22/10/2013
INVESTMENT BANK OF GREECE S.A.	08/01/2013	07/01/2014
NBG SECURITIES S.A.	02/06/2013	01/06/2014
PIRAEUS SECURITIES S.A.	16/02/2013	15/02/2014
<b>PPC (CR)</b>	<b>Main Market</b>	
ALPHA FINANCE INVESTMENT SERVICES S.A.	08/01/2013	07/01/2014
EUROBANK EQUITIES S.A.	23/10/2012	22/10/2013
INVESTMENT BANK OF GREECE S.A.	08/01/2013	07/01/2014
NBG SECURITIES S.A.	26/03/2013	25/03/2014
<b>S.KANAKIS SA (CR)</b>	<b>Main Market</b>	
BETA SECURITIES S.A.	01/10/2012	30/09/2013
<b>TITAN CEMENT (CR)</b>	<b>Main Market</b>	
EUROBANK EQUITIES S.A.	23/10/2012	22/10/2013
<b>VIOHALCO (CB)</b>	<b>Main Market</b>	
ALPHA FINANCE INVESTMENT SERVICES S.A.	11/02/2013	10/03/2014
EUROBANK EQUITIES S.A.	20/01/2013	19/01/2014
MERIT SECURITIES S.A	13/12/2012	12/12/2013

Underlying Asset				Derivatives Market																		
Price max	Price min	Closing price	change	Delivery Month	Open price	Price max	Price min	Last price	Closing price	Last Bid	Last Ask	Settlement price	change	Life high	Life low	Trades	Volume	change	Value	change	Open Interest	change
FTSE/Athex Large Cap				(Trade Unit: 1 Index Point x 5€, Cash Settlement)																		
312.04	304.43	308.69	1.27%	September 2013	304.00	314.75	304.00	310.25	311.25	2@309.75	10@310.25	311.25	2.64%	346.00	271.00	512	5,557	-27.97%	8,613,833.75	-27.22%	45,608	2.44%
				October 2013	307.50	317.25	307.50	312.25	312.25	1@311.25	1@312.75	312.25	2.38%	338.75	292.25	16	22	-77.32%	34,232.50	-77.16%	734	-0.94%
				November 2013	---	---	---	---	---	---	---	---	---	---	---	---	---	---	---	---	---	---
				December 2013	---	---	---	---	315.00	2@306.00	---	315.00	2.61%	343.00	276.75	---	---	---	---	---	523	0.00%
				March 2014	---	---	---	---	---	---	---	---	---	---	---	---	---	---	---	---	---	---
				June 2014	---	---	---	---	---	---	---	---	---	---	---	---	---	---	---	---	---	---

Underlying Asset				Derivatives Market																		
Price max	Price min	Closing price	change	Delivery Month	Open price	Price max	Price min	Last price	Closing price	Last Bid	Last Ask	Settlement price	change	Life high	Life low	Trades	Volume	change	Value	change	Open Interest	change
ALPHA BANK (CR)				(Contract Size: 100 Securities, Physical Delivery)																		
0.512	0.485	0.490	-2.20%	September 2013	0.496	0.513	0.485	0.490	0.491	30@0.489	30@0.497	0.491	0.00%	1.46	0.371	125	4,034	17.30%	199,174.10	17.37%	15,964	-7.16%
				December 2013	---	---	---	---	0.495	1@0.480	1@0.498	0.495	0.00%	0.494	0.437	---	---	-100.00%	---	-100.00%	103	0.00%
				March 2014	---	---	---	---	---	---	---	---	---	---	---	---	---	---	---	---	---	---
				June 2014	---	---	---	---	---	---	---	---	---	---	---	---	---	---	---	---	---	---
CC HBC AG (CR)				(Contract Size: 100 Securities, Physical Delivery)																		
21.00	20.10	20.75	3.23%	September 2013	20.37	21.01	20.37	20.87	20.86	1@20.67	5@20.98	20.86	3.11%	22.33	16.93	38	102	21.43%	211,893.00	26.70%	696	-9.26%
				December 2013	---	---	---	---	21.00	---	5@21.13	21.00	3.09%	18.06	17.90	---	---	---	---	---	5	0.00%
				March 2014	---	---	---	---	---	---	---	---	---	---	---	---	---	---	---	---	---	---
				June 2014	---	---	---	---	---	---	---	---	---	---	---	---	---	---	---	---	---	---
CORINTH PIPEWORKS SA (CR)				(Contract Size: 100 Securities, Physical Delivery)																		
2.13	2.03	2.06	0.00%	September 2013	2.08	2.10	2.00	2.10	2.11	15@2.05	15@2.16	2.11	0.00%	2.48	1.98	5	28	154.55%	5,790.00	150.65%	462	2.44%
				December 2013	---	---	---	---	---	---	15@2.21	---	---	---	---	---	---	---	---	---	---	---
				March 2014	---	---	---	---	---	---	---	---	---	---	---	---	---	---	---	---	---	---
				June 2014	---	---	---	---	---	---	---	---	---	---	---	---	---	---	---	---	---	---
ELLAKTOR (CR)				(Contract Size: 100 Securities, Physical Delivery)																		
2.15	2.06	2.14	1.42%	September 2013	2.15	2.15	2.08	2.15	2.14	2@2.10	9@2.15	2.14	1.42%	2.45	1.73	23	183	-8.96%	38,495.00	-10.89%	4,361	-1.47%
				December 2013	---	---	---	---	2.14	2@2.07	9@2.17	2.14	1.42%	2.17	2.11	---	---	---	---	---	---	---
				March 2014	---	---	---	---	---	---	---	---	---	---	---	---	---	---	---	---	---	---
				June 2014	---	---	---	---	---	---	---	---	---	---	---	---	---	---	---	---	---	---
EUROBANK ERGASIAS (CR)				(Contract Size: 10 Securities, Physical Delivery)																		
0.644	0.619	0.624	0.00%	September 2013	0.629	0.632	0.622	0.629	0.615	10@0.621	5@0.627	0.615	0.00%	5.00	0.537	13	501	-71.32%	3,136.14	-70.99%	18,796	-1.11%
				December 2013	0.646	0.646	0.646	0.646	0.639	3@0.640	1@0.660	0.639	1.43%	0.700	0.600	2	2	-83.33%	129.20	-83.11%	1,680	0.12%
				March 2014	---	---	---	---	0.613	---	---	0.613	0.00%	0.673	0.619	---	---	---	---	---	---	---
				June 2014	---	---	---	---	---	---	---	---	---	---	---	---	---	---	---	---	---	---
EUROBANK PROPERTIES REIC (CR)				(Contract Size: 100 Securities, Physical Delivery)																		
7.25	6.99	7.14	0.56%	September 2013	7.10	7.20	7.10	7.20	7.09	20@7.01	3@7.17	7.09	0.57%	7.67	6.00	6	16	-86.32%	11,430.00	-86.22%	274	-3.86%
				December 2013	---	---	---	---	---	---	3@7.22	---	---	---	---	---	---	---	---	---	---	---
				March 2014	---	---	---	---	---	---	---	---	---	---	---	---	---	---	---	---	---	---
				June 2014	---	---	---	---	---	---	---	---	---	---	---	---	---	---	---	---	---	---
EYDAP S.A. (CR)				(Contract Size: 100 Securities, Physical Delivery)																		
6.11	5.86	5.96	-0.17%	September 2013	5.95	6.04	5.95	6.01	6.10	3@5.95	2@6.10	6.10	-0.16%	6.67	5.58	6	24	4.35%	14,365.00	4.88%	213	0.00%
				December 2013	---	---	---	---	---	---	2@6.15	---	---	---	---	---	---	---	---	---	---	---
				March 2014	---	---	---	---	---	---	---	---	---	---	---	---	---	---	---	---	---	---
				June 2014	---	---	---	---	---	---	---	---	---	---	---	---	---	---	---	---	---	---
FOLLI FOLLIE (CR)				(Contract Size: 100 Securities, Physical Delivery)																		
17.95	17.25	17.65	-1.40%	September 2013	17.40	17.70	17.40	17.70	17.70	1@17.16	---	17.70	-1.39%	18.86	14.68	3	11	0.00%	19,318.00	-1.53%	252	4.13%
				December 2013	---	---	---	---	---	---	---	---	---	---	---	---	---	---	---	---	---	---
				March 2014	---	---	---	---	---	---	---	---	---	---	---	---	---	---	---	---	---	---
				June 2014	---	---	---	---	---	---	---	---	---	---	---	---	---	---	---	---	---	---

Underlying Asset				Derivatives Market																		
Price max	Price min	Closing price	change	Delivery Month	Open price	Price max	Price min	Last price	Closing price	Last Bid	Last Ask	Settlement price	change	Life high	Life low	Trades	Volume	change	Value	change	Open Interest	change
FRIGOGLASS SA (CR)				(Contract Size: 100 Securities, Physical Delivery)																		
5.00	4.77	4.95	0.82%	September 2013	4.81	5.00	4.81	4.96	4.96	1@4.83	1@4.97	4.96	3.33%	5.71	4.35	12	27	-63.01%	13,311.00	-62.25%	416	-1.65%
				December 2013	---	---	---	---	---	---	1@5.02	---	---	---	---	---	---	---	---	---	---	---
				March 2014	---	---	---	---	---	---	---	---	---	---	---	---	---	---	---	---	---	---
				June 2014	---	---	---	---	---	---	---	---	---	---	---	---	---	---	---	---	---	---
GEK TERNA (CR)				(Contract Size: 100 Securities, Physical Delivery)																		
2.23	2.16	2.16	-1.37%	September 2013	2.19	2.24	2.15	2.15	2.19	9@2.14	2@2.15	2.19	-1.35%	2.62	1.45	59	417	0.48%	91,089.00	-1.64%	16,404	0.17%
				December 2013	---	---	---	---	2.17	---	2@2.18	2.17	-1.36%	2.51	1.57	---	---	---	---	---	---	---
				March 2014	---	---	---	---	2.17	---	---	2.17	-1.36%	2.50	2.26	---	---	---	---	---	15,895	0.00%
				June 2014	---	---	---	---	---	---	---	---	---	---	---	---	---	---	---	---	---	---
HELLENIC EXCHANGES (CR)				(Contract Size: 100 Securities, Physical Delivery)																		
6.07	5.81	6.04	2.03%	September 2013	5.93	6.02	5.83	6.02	6.01	7@5.98	6@6.01	6.01	2.04%	6.46	3.82	35	114	-43.00%	67,771.00	-42.95%	2,348	-1.22%
				December 2013	---	---	---	---	6.03	---	6@6.05	6.03	2.03%	6.85	4.01	---	---	---	---	---	---	---
				March 2014	---	---	---	---	---	---	---	---	---	---	---	---	---	---	---	---	---	---
				June 2014	---	---	---	---	---	---	---	---	---	---	---	---	---	---	---	---	---	---
HELLENIC PETROLEUM (CR)				(Contract Size: 100 Securities, Physical Delivery)																		
7.48	7.20	7.30	0.00%	September 2013	7.37	7.43	7.24	7.30	7.30	4@7.27	2@7.36	7.30	-0.54%	9.01	6.00	66	398	170.75%	291,324.00	166.75%	2,343	-9.08%
				December 2013	---	---	---	---	7.22	4@7.17	2@7.42	7.22	-0.55%	7.72	6.61	---	---	---	---	---	---	---
				March 2014	---	---	---	---	---	---	---	---	---	---	---	---	---	---	---	---	---	---
				June 2014	---	---	---	---	---	---	---	---	---	---	---	---	---	---	---	---	---	---
INTRALOT (CR)				(Contract Size: 100 Securities, Physical Delivery)																		
1.69	1.60	1.61	1.26%	September 2013	1.65	1.68	1.60	1.62	1.61	5@1.61	23@1.62	1.61	1.26%	2.30	1.30	67	798	160.78%	130,182.00	161.19%	4,017	-12.75%
				December 2013	---	---	---	---	---	---	23@1.66	---	---	---	---	---	---	---	---	---	---	---
				March 2014	---	---	---	---	---	---	---	---	---	---	---	---	---	---	---	---	---	---
				June 2014	---	---	---	---	---	---	---	---	---	---	---	---	---	---	---	---	---	---
JUMBO SA (CR)				(Contract Size: 100 Securities, Physical Delivery)																		
8.50	8.13	8.35	-2.23%	September 2013	8.47	8.52	8.16	8.31	8.42	3@8.24	5@8.52	8.42	-2.21%	9.03	7.19	44	185	198.39%	154,672.00	189.71%	316	-12.95%
				December 2013	---	---	---	---	---	---	5@8.56	---	---	---	---	---	---	---	---	---	---	---
				March 2014	---	---	---	---	---	---	---	---	---	---	---	---	---	---	---	---	---	---
				June 2014	---	---	---	---	---	---	---	---	---	---	---	---	---	---	---	---	---	---
MARFIN INVESTMENT GROUP (CR)				(Contract Size: 100 Securities, Physical Delivery)																		
0.305	0.292	0.301	1.01%	September 2013	0.297	0.302	0.290	0.297	0.289	1@0.294	10@0.300	0.289	1.05%	0.420	0.252	24	244	-71.09%	7,258.40	-70.74%	19,235	-0.77%
				December 2013	---	---	---	---	---	---	10@0.310	---	---	---	---	---	---	---	---	---	---	---
				March 2014	---	---	---	---	---	---	---	---	---	---	---	---	---	---	---	---	---	---
				June 2014	---	---	---	---	---	---	---	---	---	---	---	---	---	---	---	---	---	---
METKA (CR)				(Contract Size: 100 Securities, Physical Delivery)																		
10.67	10.31	10.53	0.00%	September 2013	10.56	10.61	10.38	10.45	10.52	2@10.41	1@10.60	10.52	0.00%	12.18	9.43	18	69	56.82%	72,675.00	54.68%	473	3.73%
				December 2013	---	---	---	---	10.51	---	1@10.69	10.51	0.00%	10.67	10.52	---	---	---	---	---	---	---
				March 2014	---	---	---	---	---	---	---	---	---	---	---	---	---	---	---	---	---	---
				June 2014	---	---	---	---	---	---	---	---	---	---	---	---	---	---	---	---	---	---

Underlying Asset				Derivatives Market																		
Price max	Price min	Closing price	change	Delivery Month	Open price	Price max	Price min	Last price	Closing price	Last Bid	Last Ask	Settlement price	change	Life high	Life low	Trades	Volume	change	Value	change	Open Interest	change
MOTOR OIL (CR)				(Contract Size: 100 Securities, Physical Delivery)																		
7.52	7.40	7.44	0.27%	September 2013	7.48	7.55	7.43	7.46	7.50	1@7.43	1@7.62	7.50	0.27%	8.16	6.66	24	126	-48.15%	94,085.00	-48.44%	923	-0.32%
				December 2013	---	---	---	---	---	---	1@7.68	---	---	---	---	---	---	---	---	---	---	---
				March 2014	---	---	---	---	---	---	---	---	---	---	---	---	---	---	---	---	---	---
				June 2014	---	---	---	---	---	---	---	---	---	---	---	---	---	---	---	---	---	---
MYTILINEOS HOLDINGS (CR)				(Contract Size: 100 Securities, Physical Delivery)																		
4.39	4.24	4.30	0.00%	September 2013	4.34	4.39	4.26	4.30	4.32	3@4.30	17@4.32	4.32	0.47%	5.50	3.50	70	185	-39.54%	79,788.00	-40.21%	4,910	0.00%
				December 2013	4.39	4.39	4.39	4.39	4.36	---	17@4.36	4.36	0.46%	5.28	3.70	3	5	-90.00%	2,195.00	-90.09%	20	33.33%
				March 2014	---	---	---	---	4.36	---	---	4.36	0.46%	4.81	4.43	---	---	-100.00%	---	-100.00%	---	---
				June 2014	---	---	---	---	---	---	---	---	---	---	---	---	---	---	---	---	---	---
NATIONAL BANK (CR)				(Contract Size: 100 Securities, Physical Delivery)																		
2.93	2.82	2.88	1.41%	September 2013	2.87	2.93	2.82	2.88	2.87	51@2.87	19@2.88	2.87	1.77%	3.25	0.344	141	1,624	-14.26%	466,517.00	-14.27%	5,493	-1.22%
				December 2013	2.87	2.87	2.87	2.87	2.84	51@2.84	19@2.91	2.84	0.71%	2.94	2.31	1	1	-80.00%	287.00	-79.99%	6	20.00%
				March 2014	---	---	---	---	---	---	---	---	---	---	---	---	---	---	---	---	---	---
				June 2014	---	---	---	---	---	---	---	---	---	---	---	---	---	---	---	---	---	---
OPAP (CR)				(Contract Size: 100 Securities, Physical Delivery)																		
7.25	7.14	7.19	0.28%	September 2013	7.19	7.27	7.14	7.17	7.18	1@7.16	5@7.21	7.18	0.28%	7.74	5.82	35	198	-60.56%	142,533.00	-60.42%	3,971	-0.33%
				December 2013	---	---	---	---	7.18	---	5@7.27	7.18	0.28%	7.66	6.31	---	---	---	---	---	---	---
				March 2014	---	---	---	---	---	---	---	---	---	---	---	---	---	---	---	---	---	---
				June 2014	---	---	---	---	---	---	---	---	---	---	---	---	---	---	---	---	---	---
OTE (CR)				(Contract Size: 100 Securities, Physical Delivery)																		
6.85	6.60	6.75	1.50%	September 2013	6.68	6.85	6.58	6.74	6.75	120@6.73	2@6.78	6.75	2.90%	7.56	4.35	151	1,133	-48.19%	762,231.00	-47.95%	8,262	2.08%
				December 2013	---	---	---	---	6.76	50@6.68	2@6.82	6.76	2.89%	7.56	4.40	---	---	-100.00%	---	-100.00%	70	0.00%
				March 2014	---	---	---	---	6.75	---	---	6.75	2.90%	7.39	6.40	---	---	---	---	---	---	---
				June 2014	---	---	---	---	---	---	---	---	---	---	---	---	---	---	---	---	---	---
P.P.A. S.A. (CR)				(Contract Size: 100 Securities, Physical Delivery)																		
16.84	16.46	16.84	0.24%	September 2013	16.58	16.58	16.52	16.58	16.98	1@16.50	1@17.00	16.98	0.24%	18.68	15.52	3	15	-67.39%	24,852.00	-67.52%	543	-2.69%
				December 2013	---	---	---	---	---	---	1@17.05	---	---	---	---	---	---	---	---	---	---	---
				March 2014	---	---	---	---	---	---	---	---	---	---	---	---	---	---	---	---	---	---
				June 2014	---	---	---	---	---	---	---	---	---	---	---	---	---	---	---	---	---	---
PIRAEUS BANK (CR)				(Contract Size: 100 Securities, Physical Delivery)																		
1.03	0.995	1.01	1.41%	September 2013	1.01	1.03	0.995	1.00	1.00	100@0.999	1@1.01	1.00	0.30%	1.17	0.169	75	1,638	-40.02%	164,848.30	-40.03%	14,182	2.79%
				December 2013	---	---	---	---	1.01	---	1@1.03	1.01	0.00%	1.15	0.231	---	---	-100.00%	---	-100.00%	---	---
				March 2014	---	---	---	---	1.01	---	---	1.01	0.00%	1.12	0.924	---	---	-100.00%	---	-100.00%	---	---
				June 2014	---	---	---	---	---	---	---	---	---	---	---	---	---	---	---	---	---	---
PPC (CR)				(Contract Size: 100 Securities, Physical Delivery)																		
7.43	7.12	7.29	1.25%	September 2013	7.31	7.41	7.12	7.27	7.32	2@7.27	25@7.34	7.32	1.24%	8.47	4.58	174	1,011	-24.89%	736,692.00	-26.18%	5,174	3.65%
				December 2013	---	---	---	---	7.34	2@7.22	25@7.39	7.34	1.24%	8.56	5.08	---	---	-100.00%	---	-100.00%	50	0.00%
				March 2014	7.37	7.37	7.37	7.37	7.35	---	---	7.35	0.68%	7.99	6.30	1	30	50.00%	22,110.00	46.81%	50	150.00%
				June 2014	---	---	---	---	---	---	---	---	---	---	---	---	---	---	---	---	---	---

Underlying Asset				Derivatives Market																		
Price max	Price min	Closing price	change	Delivery Month	Open price	Price max	Price min	Last price	Closing price	Last Bid	Last Ask	Settlement price	change	Life high	Life low	Trades	Volume	change	Value	change	Open Interest	change
SIDENOR (CR)				(Contract Size: 100 Securities, Physical Delivery)																		
1.61	1.54	1.58	2.60%	September 2013	1.59	1.60	1.55	1.58	1.62	1@1.56	1@1.63	1.62	2.53%	1.82	1.36	8	13	-81.16%	2,048.00	-81.24%	1,500	0.13%
				December 2013	---	---	---	---	---	---	1@1.68	---	---	---	---	---	---	---	---	---	---	---
				March 2014	---	---	---	---	---	---	---	---	---	---	---	---	---	---	---	---	---	---
				June 2014	---	---	---	---	---	---	---	---	---	---	---	---	---	---	---	---	---	---
TERNA ENERGY (CR)				(Contract Size: 103 Securities, Physical Delivery)																		
2.90	2.85	2.89	1.05%	September 2013	2.90	2.92	2.83	2.90	2.90	13@2.83	3@2.90	2.90	2.47%	3.25	2.43	13	77	113.89%	22,936.04	117.80%	2,407	1.09%
				December 2013	---	---	---	---	---	---	---	---	---	---	---	---	---	---	---	---	---	---
				March 2014	---	---	---	---	---	---	---	---	---	---	---	---	---	---	---	---	---	---
				June 2014	---	---	---	---	---	---	---	---	---	---	---	---	---	---	---	---	---	---
TITAN CEMENT (CR)				(Contract Size: 100 Securities, Physical Delivery)																		
14.85	14.08	14.77	4.60%	September 2013	14.20	14.84	14.20	14.57	14.57	1@14.36	1@14.75	14.57	1.18%	15.90	12.22	13	33	-60.24%	47,937.00	-60.47%	200	-9.09%
				December 2013	---	---	---	---	14.42	---	1@14.83	14.42	1.19%	15.68	15.02	---	---	---	---	---	---	---
				March 2014	---	---	---	---	---	---	---	---	---	---	---	---	---	---	---	---	---	---
				June 2014	---	---	---	---	---	---	---	---	---	---	---	---	---	---	---	---	---	---
VIOHALCO (CB)				(Contract Size: 100 Securities, Physical Delivery)																		
4.39	4.21	4.39	3.05%	September 2013	4.33	4.38	4.26	4.38	4.36	5@4.34	1@4.39	4.36	3.07%	5.19	3.85	36	71	-8.97%	30,486.00	-11.70%	489	-0.20%
				December 2013	---	---	---	---	4.40	---	1@4.43	4.40	3.04%	4.10	3.89	---	---	---	---	---	---	---
				March 2014	---	---	---	---	---	---	---	---	---	---	---	---	---	---	---	---	---	---
				June 2014	---	---	---	---	---	---	---	---	---	---	---	---	---	---	---	---	---	---



FTSE/Athex Large Cap

(Trade Unit: 1 Index Point x 5€ - Exercise Style: European, Cash Settlement)

Call Options																	Put Options																		
	September 2013							October 2013							Other Months		September 2013								October 2013								Other Months		
Exercise Price	Open price	Price max	Price min	Last price	Closing price	Volume	Open Interest	Open price	Price max	Price min	Last price	Closing price	Volume	Open Interest	Volume	Open Interest	Open price	Price max	Price min	Last price	Closing price	Volume	Open Interest	Open price	Price max	Price min	Last price	Closing price	Volume	Open Interest	Volume	Open Interest	Exercise Price		
215	-	-	-	-	96.00	-	60	-	-	-	-	-	-	-	-	-	-	-	-	-	-	-	-	-	-	-	-	-	-	-	-	-	215		
230	-	-	-	-	81.00	-	3	-	-	-	-	-	-	-	-	-	-	-	-	-	-	-	-	-	-	-	-	-	-	-	-	-	230		
255	-	-	-	-	-	-	-	-	-	-	-	-	-	-	-	-	-	-	-	-	-	-	-	-	-	-	-	-	-	-	-	-	255		
260	-	-	-	-	-	-	-	-	-	-	-	-	-	-	-	-	-	-	-	-	-	-	-	-	-	-	-	-	-	-	-	-	260		
265	-	-	-	-	-	-	-	-	-	-	-	-	-	-	-	-	-	-	-	-	-	-	-	-	-	-	-	-	-	-	-	-	265		
270	-	-	-	-	-	-	-	-	-	-	-	-	-	-	-	-	-	-	-	-	-	-	-	-	-	-	-	-	-	-	-	-	270		
275	-	-	-	-	-	-	-	-	-	-	-	-	-	-	-	-	-	-	-	-	-	-	-	-	-	-	-	-	-	-	-	-	275		
280	34.75	35.75	34.25	34.25	36.00	75	384	-	-	-	-	-	-	-	-	-	-	-	-	-	-	-	-	-	-	-	-	-	-	-	-	-	280		
285	-	-	-	-	32.25	-	20	-	-	-	-	-	-	-	-	-	-	-	-	-	-	-	-	-	-	-	-	10.50	-	1	-	-	285		
290	-	-	-	-	28.75	-	40	-	-	-	-	-	-	-	-	-	-	-	-	-	-	-	-	-	-	-	-	-	-	-	-	-	290		
295	19.00	19.00	19.00	19.00	25.50	1	1	-	-	-	-	-	-	-	-	-	-	-	-	-	-	-	-	15.00	15.00	15.00	15.00	14.25	2	2	-	-	295		
300	21.00	21.50	19.75	20.00	22.25	66	425	-	-	-	-	-	-	-	-	-	-	-	-	-	-	-	-	-	-	-	-	16.25	-	6	-	-	300		
305	-	-	-	-	-	-	-	-	-	-	-	-	-	-	-	-	-	-	-	-	-	-	-	20.00	20.00	20.00	20.00	18.50	1	1	-	-	305		
310	18.00	18.75	17.00	17.00	17.00	43	772	-	-	-	-	-	-	-	-	-	-	-	-	-	-	-	-	-	-	-	-	-	-	-	-	-	310		
315	13.50	13.50	13.50	13.50	14.75	2	632	-	-	-	-	-	-	-	-	-	-	-	-	-	-	-	-	-	-	-	-	-	-	-	-	-	315		
320	14.00	14.00	13.00	13.00	12.75	80	170	-	-	-	-	-	-	-	-	-	-	-	-	-	-	-	-	-	-	-	-	-	-	-	-	-	320		
325	-	-	-	-	10.75	-	60	-	-	-	-	-	-	-	-	-	-	-	-	-	-	-	-	-	-	-	-	-	-	-	-	-	325		
330	7.50	9.00	7.00	9.00	9.20	64	653	-	-	-	-	-	-	-	-	-	-	-	-	-	-	-	-	-	-	-	-	-	-	-	-	-	330		
335	-	-	-	-	7.80	-	75	-	-	-	-	-	-	-	-	-	-	-	-	-	-	-	-	-	-	-	-	-	-	-	-	-	335		
340	-	-	-	-	6.50	-	33	11.00	11.00	11.00	11.00	12.00	5	5	-	-	-	-	-	-	-	-	-	-	-	-	-	-	-	-	-	-	-	340	
345	-	-	-	-	-	-	-	-	-	-	-	-	-	-	-	-	-	-	-	-	-	-	-	-	-	-	-	-	-	-	-	-	345		
350	-	-	-	-	4.50	-	51	-	-	-	-	-	-	-	-	-	-	-	-	-	-	-	-	-	-	-	-	-	-	-	-	-	350		
355	-	-	-	-	3.70	-	3	-	-	-	-	-	-	-	-	-	-	-	-	-	-	-	-	-	-	-	-	-	-	-	-	-	355		
360	-	-	-	-	-	-	-	-	-	-	-	-	-	-	-	-	-	-	-	-	-	-	-	-	-	-	-	-	-	-	-	-	360		
365	-	-	-	-	-	-	-	-	-	-	-	-	-	-	-	-	-	-	-	-	-	-	-	-	-	-	-	-	-	-	-	-	365		
370	-	-	-	-	2.00	-	1	-	-	-	-	-	-	-	-	-	-	-	-	-	-	-	-	-	-	-	-	-	-	-	-	-	370		
375	-	-	-	-	-	-	-	-	-	-	-	-	-	-	-	-	-	-	-	-	-	-	-	-	-	-	-	-	-	-	-	-	375		
380	-	-	-	-	1.30	-	30	-	-	-	-	-	-	-	-	-	-	-	-	-	-	-	-	-	-	-	-	-	-	-	-	-	380		
385	-	-	-	-	-	-	-	-	-	-	-	-	-	-	-	-	-	-	-	-	-	-	-	-	-	-	-	-	-	-	-	-	385		
390	-	-	-	-	-	-	-	-	-	-	-	-	-	-	-	-	-	-	-	-	-	-	-	-	-	-	-	-	-	-	-	-	390		
395	-	-	-	-	-	-	-	-	-	-	-	-	-	-	-	-	-	-	-	-	-	-	-	-	-	-	-	-	-	-	-	-	395		
400	-	-	-	-	-	-	-	-	-	-	-	-	-	-	-	-	-	-	-	-	-	-	-	-	-	-	-	-	-	-	-	-	400		
405	-	-	-	-	-	-	-	-	-	-	-	-	-	-	-	-	-	-	-	-	-	-	-	-	-	-	-	-	-	-	-	-	405		
410	-	-	-	-	-	-	-	-	-	-	-	-	-	-	-	-	-	-	-	-	-	-	-	-	-	-	-	-	-	-	-	-	410		
415	-	-	-	-	-	-	-	-	-	-	-	-	-	-	-	-	-	-	-	-	-	-	-	-	-	-	-	-	-	-	-	-	415		
440	-	-	-	-	-	-	-	-	-	-	-	-	-	-	-	-	-	-	-	-	-	-	-	-	-	-	-	-	-	-	-	-	440		

FTSE/Athex Large Cap (Trade Unit: 1 Index Point x 5€ - Exercise Style: European, Cash Settlement)

Call Options																Put Options																				
Exercise Price	September 2013							October 2013							Other Months		September 2013							October 2013							Other Months		Exercise Price			
	Open price	Price max	Price min	Last price	Closing price	Volume	Open Interest	Open price	Price max	Price min	Last price	Closing price	Volume	Open Interest	Volume	Open Interest	Open price	Price max	Price min	Last price	Closing price	Volume	Open Interest	Open price	Price max	Price min	Last price	Closing price	Volume	Open Interest	Volume	Open Interest				
1,500	-	-	-	-	-	-	-	-	-	-	-	-	-	-	-	-	-	-	-	-	1,186.00	-	3	-	-	-	-	-	-	-	-	1,500				
Totals:							331	3,413							5	5	0	0							25	1,290							3	10	0	0
Nominal Transactions Value:							508,875.00							8,500.00			0.00							38,250.00							4,475.00			0.00		
Number of Trades:							52							1			0							4							3			0		

ALPHA BANK (CR)

(Contract Size: 100 Securities, Exercise Style: American, Physical Delivery)

Call Options																	Put Options																				
September 2013								October 2013								Other Months		September 2013								October 2013								Other Months			
Exercise Price	Open price	Price max	Price min	Last price	Closing price	Volume	Open Interest	Open price	Price max	Price min	Last price	Closing price	Volume	Open Interest	Volume	Open Interest	Open price	Price max	Price min	Last price	Closing price	Volume	Open Interest	Open price	Price max	Price min	Last price	Closing price	Volume	Open Interest	Volume	Open Interest	Exercise Price				
0.100						-	-							-	-							-	-						-	-			0.100				
0.200						-	-							-	-							-	-						-	-			0.200				
0.300						-	-							-	-							-	-						-	-			0.300				
0.400						-	-							-	-							-	-						-	-			0.400				
0.500						-	-							-	-							-	-						-	-			0.500				
0.600						-	-							-	-							-	-						-	-			0.600				
0.700						-	-							-	-							-	-						-	-			0.700				
0.800						-	-							-	-							-	-						-	-			0.800				
0.850						-	-							-	-							-	-						-	-			0.850				
0.900						-	-							-	-							-	-						-	-			0.900				
0.950						-	-							-	-							-	-						-	-			0.950				
1.00						-	-							-	-							-	-						-	-			1.00				
1.05						-	-							-	-							-	-						-	-			1.05				
1.10						-	-							-	-							-	-						-	-			1.10				
1.15						-	-							-	-							-	-						-	-			1.15				
1.20						-	-							-	-							-	-						-	-			1.20				
1.30						-	-							-	-							-	-						-	-			1.30				
1.40						-	-							-	-							-	-						-	-			1.40				
1.50						-	-							-	-							-	-						-	-			1.50				
1.60						-	-							-	-							-	-						-	-			1.60				
1.70						-	-							-	-							-	-						-	-			1.70				
1.80						-	-							-	-							-	-						-	-			1.80				
1.90						-	-							-	-							-	-						-	-			1.90				
2.00						-	-							-	-							-	-						-	-			2.00				
2.20						-	-							-	-							-	-						-	-			2.20				
2.40						-	-							-	-							-	-						-	-			2.40				
2.60						-	-							-	-							-	-						-	-			2.60				
2.80						-	-							-	-							-	-						-	-			2.80				
Totals:						0	0							0	0	0	0							0	0							0	0	0	0	0	
Nominal Transactions Value:						0.00								0.00		0.00								0.00								0.00		0.00			
Number of Trades:						0								0		0								0								0		0			

NATIONAL BANK (CR)

(Contract Size: 100 Securities, Exercise Style: American, Physical Delivery)

Call Options																	Put Options																								
September 2013								October 2013								Other Months		September 2013								October 2013								Other Months							
Exercise Price	Open price	Price max	Price min	Last price	Closing price	Volume	Open Interest	Open price	Price max	Price min	Last price	Closing price	Volume	Open Interest	Volume	Open Interest	Open price	Price max	Price min	Last price	Closing price	Volume	Open Interest	Open price	Price max	Price min	Last price	Closing price	Volume	Open Interest	Volume	Open Interest	Exercise Price								
0.300						-	-							-	-							-	-					-	-					0.300							
0.400						-	-							-	-							-	-					-	-					0.400							
0.500						-	-							-	-							-	-					-	-					0.500							
0.600						-	-							-	-							-	-					-	-					0.600							
0.700						-	-							-	-							-	-					-	-					0.700							
0.750						-	-							-	-							-	-					-	-					0.750							
0.800						-	-							-	-							-	-					-	-					0.800							
0.850						-	-							-	-							-	-					-	-					0.850							
0.900						-	-							-	-							-	-					-	-					0.900							
0.950						-	-							-	-							-	-					-	-					0.950							
1.00						-	-							-	-							-	-					-	-					1.00							
1.05						-	-							-	-							-	-					-	-					1.05							
1.10						-	-							-	-							-	-					-	-					1.10							
1.20						-	-							-	-							-	-					-	-					1.20							
1.30						-	-							-	-							-	-					-	-					1.30							
1.40						-	-							-	-							-	-					-	-					1.40							
1.50						-	-							-	-							-	-					-	-					1.50							
1.60						-	-							-	-							-	-					-	-					1.60							
1.70						-	-							-	-							-	-					-	-					1.70							
1.80						-	-							-	-							-	-					-	-					1.80							
1.90						-	-							-	-							-	-					-	-					1.90							
2.00						-	-							-	-							-	-					-	-					2.00							
2.20						-	-							-	-							-	-					-	-					2.20							
2.40						-	-							-	-							-	-					0.069	-	-					2.40						
2.60					0.352	-	20							-	-							-	-					0.128	-	-					2.60						
2.80						-	-							-	-							-	-					0.214	-	-					2.80						
3.00					0.134	-	22					0.216	-	120								-	-					-	-					3.00							
3.20					0.074	-	20					0.148	-	20								-	-					-	-					3.20							
3.40						-	-							-	-							-	-					-	-					3.40							
3.60						-	-							-	-							-	-					-	-					3.60							
3.80						-	-							-	-							-	-					-	-					3.80							
4.00						-	-							-	-							-	-					-	-					4.00							
4.40						-	-							-	-							-	-					-	-					4.40							
Totals:						0	62							0	140	0	20							0	0							0	60	0	0						
Nominal Transactions Value:						0.00								0.00		0.00								0.00								0.00									
Number of Trades:						0								0		0								0								0									

## OPAP (CR)

(Contract Size: 100 Securities, Exercise Style: American, Physical Delivery)

Call Options																	Put Options																				
September 2013							October 2013							Other Months			September 2013							October 2013							Other Months						
Exercise Price	Open price	Price max	Price min	Last price	Closing price	Volume	Open Interest	Open price	Price max	Price min	Last price	Closing price	Volume	Open Interest	Volume	Open Interest	Open price	Price max	Price min	Last price	Closing price	Volume	Open Interest	Open price	Price max	Price min	Last price	Closing price	Volume	Open Interest	Volume	Open Interest	Exercise Price				
1.00	6.19				-	270							-	-								-	270							-	-				1.00		
3.20					-	-							-	-									-	-							-	-				3.20	
3.40					-	-							-	-									-	-							-	-				3.40	
3.60					-	-							-	-									-	-							-	-				3.60	
3.80					-	-							-	-									-	-							-	-				3.80	
4.00					-	-							-	-									-	-							-	-				4.00	
4.40					-	-							-	-									-	-							-	-				4.40	
4.80					-	-							-	-									-	-							-	-				4.80	
5.20					-	-							-	-									-	-							-	-				5.20	
5.60					-	-							-	-									-	-							-	-				5.60	
5.80					-	-							-	-									-	-							-	-				5.80	
6.00					-	-							-	-																	0.089	-	-				6.00
6.20					-	-							-	-																	-	-				6.20	
6.40					-	-							0.997	-	25																0.177	-	-				6.40
6.60					-	-							-	-									0.162	-	135							-	-				6.60
6.80					-	-							0.735	-	25								-	-							-	-				6.80	
7.00					-	-							-	-									-	-							-	-				7.00	
7.20					-	-							0.520	-	25								-	-							-	-				7.20	
7.40					-	-							-	-									-	-							-	-				7.40	
7.60					-	-							-	-									-	-							-	-				7.60	
7.80					-	-							-	-									-	-							-	-				7.80	
8.00					-	-							-	-									-	-							-	-				8.00	
8.40					-	-							-	-									-	-							-	-				8.40	
8.80					-	-							-	-									-	-							-	-				8.80	
9.00					-	-							-	-									-	-							-	-				9.00	
9.20					-	-							-	-									-	-							-	-				9.20	
9.40					-	-							-	-									-	-							-	-				9.40	
9.60					-	-							-	-									-	-							-	-				9.60	
9.80					-	-							-	-									-	-							-	-				9.80	
10.00					-	-							-	-									-	-							-	-				10.00	
20.00					-	270							-	-									12.81	-	270							-	-				20.00
Totals:						0	540							0	75	0	1,600							0	675							0	55	0	0		
Nominal Transactions Value:						0.00								0.00		0.00		0.00							0.00								0.00		0.00		
Number of Trades:						0								0		0		0.00							0.00								0		0		

OTE (CR)

(Contract Size: 100 Securities, Exercise Style: American, Physical Delivery)

Call Options																	Put Options																								
September 2013								October 2013								Other Months		September 2013								October 2013								Other Months							
Exercise Price	Open price	Price max	Price min	Last price	Closing price	Volume	Open Interest	Open price	Price max	Price min	Last price	Closing price	Volume	Open Interest	Volume	Open Interest	Open price	Price max	Price min	Last price	Closing price	Volume	Open Interest	Open price	Price max	Price min	Last price	Closing price	Volume	Open Interest	Volume	Open Interest	Exercise Price								
2.60						-	-							-	-							-	-					-	-					2.60							
2.80						-	-							-	-							-	-					-	-					2.80							
3.00						-	-							-	-							-	-					-	-					3.00							
3.20						-	-							-	-							-	-					-	-					3.20							
3.40						-	-							-	-							-	-					-	-					3.40							
3.60						-	-							-	-							-	-					-	-					3.60							
3.80						-	-							-	-							-	-					-	-					3.80							
4.00						-	-							-	-							-	-					-	-					4.00							
4.40						-	-							-	-							-	-					-	-					4.40							
4.80						-	-							-	-							-	-					-	-					4.80							
5.20						-	-							-	-							0.011	-	100					-	-					5.20						
5.40						-	-							-	-							-	-					-	-					5.40							
5.60						-	-							-	-							0.038	-	1					-	-					5.60						
5.80						-	-							-	-							-	-					-	-					5.80							
6.00						-	-							-	-							0.102	-	75					-	-					6.00						
6.20						-	-							-	-							-	-					-	-					6.20							
6.40						-	-							-	-							-	-					-	-					6.40							
6.60						-	-							-	-							-	-					-	-					6.60							
6.80					0.370	-	1							-	-							-	-					-	-					6.80							
7.00						-	-							-	-							-	-					-	-					7.00							
7.20						-	-							-	-							-	-					-	-					7.20							
7.40						-	-							-	-							-	-					-	-					7.40							
7.60						-	-							-	-							-	-					-	-					7.60							
8.00					0.063	-	50							-	-							-	-					-	-					8.00							
8.20						-	-							-	-							-	-					-	-					8.20							
8.40						-	-							-	-							1.67	-	35					-	-					8.40						
8.60						-	-							-	-							-	-					-	-					8.60							
8.80						-	-							-	-							-	-					-	-					8.80							
9.00						-	-							-	-							-	-					-	-					9.00							
9.20						-	-							-	-							-	-					-	-					9.20							
Totals:						0	51							0	0	0	1,600							0	211							0	0	0	0	0	0				
Nominal Transactions Value:						0.00								0.00		0.00								0.00								0.00		0.00							
Number of Trades:						0								0		0								0								0		0							

PIRAEUS BANK (CR)

(Contract Size: 100 Securities, Exercise Style: American, Physical Delivery)

Call Options																	Put Options																		
	September 2013							October 2013							Other Months			September 2013							October 2013							Other Months			
Exercise Price	Open price	Price max	Price min	Last price	Closing price	Volume	Open Interest	Open price	Price max	Price min	Last price	Closing price	Volume	Open Interest	Volume	Open Interest	Open price	Price max	Price min	Last price	Closing price	Volume	Open Interest	Open price	Price max	Price min	Last price	Closing price	Volume	Open Interest	Volume	Open Interest	Exercise Price		
0.500						-	-							-	-							-	-						-	-			0.500		
0.600						-	-							-	-							-	-						-	-			0.600		
0.700						-	-							-	-							-	-						-	-			0.700		
0.800						-	-							-	-							-	-						-	-			0.800		
0.900						-	-							-	-							-	-						-	-			0.900		
1.00						-	-							-	-							-	-						-	-			1.00		
1.10					0.046	-	5							-	-							-	-						-	-			1.10		
1.20						-	-							-	-							-	-						-	-			1.20		
1.30						-	-							-	-							-	-						-	-			1.30		
1.40						-	-							-	-							-	-						-	-			1.40		
1.50						-	-							-	-							-	-						-	-			1.50		
Totals:						0	5							0	0	0	0							0	0							0	0		
Nominal Transactions Value:						0.00								0.00		0.00							0.00				0.00								
Number of Trades:						0								0		0							0				0								

PPC (CR)

(Contract Size: 100 Securities, Exercise Style: American, Physical Delivery)

Call Options																	Put Options																		
	September 2013							October 2013							Other Months		September 2013							October 2013							Other Months				
Exercise Price	Open price	Price max	Price min	Last price	Closing price	Volume	Open Interest	Open price	Price max	Price min	Last price	Closing price	Volume	Open Interest	Volume	Open Interest	Open price	Price max	Price min	Last price	Closing price	Volume	Open Interest	Open price	Price max	Price min	Last price	Closing price	Volume	Open Interest	Volume	Open Interest	Exercise Price		
3.20							-	-							-	-									-	-						3.20			
3.40							-	-							-	-									-	-						3.40			
3.60							-	-							-	-									-	-						3.60			
3.80							-	-							-	-									-	-						3.80			
4.00							-	-							-	-									-	-						4.00			
4.40					2.90	-	30							-	-									-	-						4.40				
4.80							-	-							-	-									-	-						4.80			
5.20							-	-							-	-									-	-						5.20			
5.60							-	-							-	-									-	-						5.60			
6.00							-	-							-	-									-	-						6.00			
6.40							-	-							-	-									-	-						6.40			
6.60							-	-							-	-									-	-						6.60			
6.80					0.720	-	10							-	-									-	-						6.80				
7.00							-	-							-	-									-	-						7.00			
7.20							-	-							-	-							0.380	-	400			-	-				7.20		
7.40							-	-							-	-									-	-						7.40			
7.60							-	-							-	-									-	-						7.60			
7.80							-	-							-	-									-	-						7.80			
8.00							-	-							-	-									-	-						8.00			
8.20							-	-							-	-									-	-						8.20			
8.40							-	-							-	-									-	-						8.40			
8.60							-	-							-	-									-	-						8.60			
8.80							-	-							-	-									-	-						8.80			
9.00							-	-							-	-									-	-						9.00			
9.20							-	-							-	-									-	-						9.20			
9.60							-	-							-	-									-	-						9.60			
10.00							-	-							-	-									-	-						10.00			
Totals:						0	40							0	0	0	0							0	400							0	0	0	0
Nominal Transactions Value:						0.00								0.00		0.00								0.00								0.00			
Number of Trades:						0								0		0								0								0			



Securities	Type[4]	Stock Repo [1]						Stock Reverse Repo [2]								Repurchase Agreements [3]							
		Trans. price	chg.	Trades	Volume	Transactions Value	Open Interest[5]	Price max	Price min	Last price	Last Ask	Trades	Volume	Transactions Value	Open Interest[5]	Price max	Price min	Last price	Last Ask	Trades	Volume	Transactions Value	Open Interest[5]
AEGEAN AIRLINES (CR)	SR RA	100.00	---	---	---	---	85	---	---	---	42@3%	---	---	---	---	---	---	---	---	---	---	---	---
ALPHA BANK (CR)	SR RA	100.00	---	---	---	---	54,615	---	---	---	34521@3.6%	---	---	---	50	---	---	---	---	---	---	---	1,562
ALPHA ETF FTSE Athex Large Cap	SR RA	100.00	---	---	---	---	---	---	---	---	---	---	---	---	---	---	---	---	---	---	---	---	2,664
ALUMIL (CR)	RA	---	---	---	---	---	---	---	---	---	---	---	---	---	---	---	---	---	---	---	---	---	---
ATHENS MEDICAL CENTER SA (CR)	SR RA	100.00	---	---	---	---	434	---	---	---	217@3%	---	---	---	---	---	---	---	---	---	---	---	---
AUTOHELLAS SA (CR)	SR RA	100.00	---	---	---	---	50	---	---	---	25@3%	---	---	---	---	---	---	---	---	---	---	---	---
CC HBC AG (CR)	SR RA	100.12	0.02	---	---	---	1,251	---	---	---	475@3%	---	---	---	150	---	---	---	---	---	---	---	118
CENTRIC HOLDINGS (CR)	SR RA	100.00	---	---	---	---	200	---	---	---	155@8.2%	---	---	---	---	---	---	---	---	---	---	---	---
CORINTH PIPEWORKS SA (CR)	SR RA	100.00	---	---	---	---	160	---	---	---	80@3%	---	---	---	---	---	---	---	---	---	---	---	---
CRETE PLASTICS SA (CR)	SR RA	100.00	---	---	---	---	---	---	---	---	---	---	---	---	---	---	---	---	---	---	---	---	---
ELLAKTOR (CR)	SR RA	100.03	---	---	---	---	2,881	---	---	---	1390@3%	---	---	---	50	---	---	---	---	---	---	---	---
ELTON SA (CR)	SR RA	100.00	---	---	---	---	50	---	---	---	35@3%	---	---	---	---	---	---	---	---	---	---	---	---
ELVAL SA. (CB)	SR RA	100.00	---	---	---	---	621	---	---	---	310@3%	---	---	---	---	---	---	---	---	---	---	---	---
EUROBANK ERGASIAS (CR)	SR RA	100.15	---	---	---	---	1,523	---	---	---	15@3.5%	---	---	---	977	---	---	---	---	---	---	---	28
EUROBANK PROPERTIES REIC (CR)	SR RA	100.06	---	---	---	---	1,641	---	---	---	705@3%	---	---	---	115	---	---	---	---	---	---	---	---
EUROPEAN RELIANCE INSUR. (CR)	SR RA	100.00	---	---	---	---	---	---	---	---	---	---	---	---	---	---	---	---	---	---	---	---	---
EYDAP S.A. (CR)	SR RA	100.06	---	---	---	---	325	---	---	---	112@3%	---	---	---	13	---	---	---	---	---	---	---	16
FOLLI FOLLIE (CR)	SR RA	100.09	---	---	---	---	786	---	---	---	373@3%	---	---	---	20	---	---	---	---	---	---	---	10
FOURLIS (CR)	SR RA	100.00	---	---	---	---	195	---	---	---	97@3%	---	---	---	---	---	---	---	---	---	---	---	---
FRIGOGLASS SA (CR)	SR RA	100.19	0.01	---	---	---	229	---	---	---	79@3%	---	---	---	35	---	---	---	---	---	---	---	---
GEK TERNA (CR)	SR RA	100.01	---	---	---	---	674	---	---	---	332@3%	---	---	---	5	---	---	---	---	---	---	---	---
GR. SARANTIS SA (CR)	SR RA	100.00	---	---	---	---	62	---	---	---	31@3%	---	---	---	---	---	---	---	---	---	---	---	---
HALKOR SA (CB)	SR RA	100.00	---	---	---	---	415	---	---	---	207@3%	---	---	---	---	---	---	---	---	---	---	---	---
HELLENIC CABLES SA (CR)	SR RA	100.00	---	---	---	---	84	---	---	---	42@3%	---	---	---	---	---	---	---	---	---	---	---	---
HELLENIC EXCHANGES (CR)	SR RA	100.09	---	---	---	---	5,993	---	---	---	2616@3%	---	---	---	380	---	---	---	---	---	---	---	---
HELLENIC PETROLEUM (CR)	SR RA	100.13	0.01	---	---	---	2,224	---	---	---	934@3%	---	---	---	178	---	---	---	---	---	---	---	46
HYGEIA SA (CR)	SR RA	100.00	---	---	---	---	500	---	---	---	200@4.4%	---	---	---	---	---	---	---	---	---	---	---	---
IASO SA (CR)	SR RA	100.00	---	---	---	---	86	---	---	---	43@3%	---	---	---	---	---	---	---	---	---	---	---	---
IKTINOS HELLAS SA (CR)	SR RA	100.00	---	---	---	---	10	---	---	---	---	---	---	---	---	---	---	---	---	---	---	---	---
INFORM P. LYKOS SA (CR)	SR RA	100.00	---	---	---	---	203	---	---	---	101@3%	---	---	---	---	---	---	---	---	---	---	---	---
INTRACOM CONSTR. (CR)	SR RA	100.00	---	---	---	---	37	---	---	---	18@3%	---	---	---	---	---	---	---	---	---	---	---	---
INTRACOM HOLDINGS (CR)	SR RA	100.00	---	---	---	---	665	---	---	---	442@4.1%	---	---	---	---	---	---	---	---	---	---	---	---

Stock Lending Notes

- [1] - Stock Repo: A Contract for selling stocks to HELEX with a Repurchase Right (According to ATHEX BoD Resolution No 17)
- [2] - Stock Reverse Repo: A Contract for buying stocks from HELEX with a Resell Right. (According to ATHEX BoD Resolution No 18)
- [3] - Standardized Repurchase Agreements: A Contract that constitutes a standardized agreement for the purchase or sale of shares, with repurchase or resell pact (According to ATHEX BoD Resolution No 20)
- [4] - Type of products is divided into SR: Stock Repo or Stock Reverse Repo, and RA: Repurchase Agreements.
- [5] - Open Interest in all Series (both tradeable or non-tradeable).

Securities	Type[4]	Stock Repo [1]						Stock Reverse Repo [2]								Repurchase Agreements [3]							
		Trans. price	chg.	Trades	Volume	Transactions Value	Open Interest[5]	Price max	Price min	Last price	Last Ask	Trades	Volume	Transactions Value	Open Interest[5]	Price max	Price min	Last price	Last Ask	Trades	Volume	Transactions Value	Open Interest[5]
INTRALOT (CR)	SR RA	100.02	---	---	---	---	4,196	---	---	---	1898@3%	---	---	---	200	---	---	---	---	---	---	---	---
J & P - AVAX SA (CR)	SR RA	100.00	---	---	---	---	235	---	---	---	117@3%	---	---	---	---	---	---	---	---	---	---	---	---
JUMBO SA (CR)	SR RA	100.06	---	---	---	---	2,358	---	---	---	1090@3%	---	---	---	89	---	---	---	---	---	---	---	20
KLEEMAN HELLAS SA (CR)	SR RA	100.00	---	---	---	---	982	---	---	---	491@3%	---	---	---	---	---	---	---	---	---	---	---	---
KLOUKINAS - LAPPAS SA (CR)	SR RA	100.00	---	---	---	---	---	---	---	---	---	---	---	---	---	---	---	---	---	---	---	---	---
KORRES (CR)	SR RA	100.00	---	---	---	---	---	---	---	---	---	---	---	---	---	---	---	---	---	---	---	---	---
KRI-KRI S.A. (CR)	SR RA	100.00	---	---	---	---	549	---	---	---	274@3%	---	---	---	---	---	---	---	---	---	---	---	---
LAMDA DEVELOPMENT SA (CR)	SR RA	100.00	---	---	---	---	890	---	---	---	445@3%	---	---	---	---	---	---	---	---	---	---	---	---
LOULIS MILLS SA (CR)	SR RA	100.00	---	---	---	---	---	---	---	---	---	---	---	---	---	---	---	---	---	---	---	---	---
MARFIN INVESTMENT GROUP (CR)	SR RA	100.00	---	---	---	---	582	---	---	---	---	---	---	---	---	---	---	---	---	---	---	---	---
METKA (CR)	SR RA	100.16	0.02	---	---	---	651	---	---	---	250@3%	---	---	---	75	---	---	---	---	---	---	---	9
MLS MULTIMEDIA SA (CR)	SR RA	100.00	---	---	---	---	99	---	---	---	49@3%	---	---	---	---	---	---	---	---	---	---	---	---
MOTOR OIL (CR)	SR RA	100.16	0.01	---	---	---	2,057	---	---	---	918@3%	---	---	---	110	---	---	---	---	---	---	---	17
MYTILINEOS HOLDINGS (CR)	SR RA	100.02	0.01	---	---	---	3,875	---	---	---	1867@3%	---	---	---	70	---	---	---	---	---	---	---	---
NATIONAL BANK (CR)	SR RA	100.08	---	---	---	---	8,845	---	---	---	4157@3%	---	---	---	265	---	---	---	---	---	---	---	346
NBGAM ETF	SR RA	100.00	---	---	---	---	---	---	---	---	---	---	---	---	---	---	---	---	---	---	---	---	100
NBGAM ETF GREECE & TURKEY 30	SR RA	100.00	---	---	---	---	---	---	---	---	---	---	---	---	---	---	---	---	---	---	---	---	35
NIREFS SA (CR)	SR RA	100.00	---	---	---	---	326	---	---	---	218@4.2%	---	---	---	---	---	---	---	---	---	---	---	---
OPAP (CR)	SR RA	100.06	---	---	---	---	5,743	---	---	---	2733@3%	---	---	---	138	---	---	---	---	---	---	---	367
OTE (CR)	SR RA	100.21	0.01	---	---	---	5,266	3.00%	3.00%	3.00%	1383@3%	1	60	40,500.0	1,250	3.00%	3.00%	3.00%	---	1	60	40,500.0	162
P.P.A. S.A. (CR)	SR RA	100.00	---	---	---	---	115	---	---	---	57@3%	---	---	---	---	---	---	---	---	---	---	---	---
PETROPOULOS PETROS (CR)	RA	---	---	---	---	---	---	---	---	---	---	---	---	---	---	---	---	---	---	---	---	---	---
PIRAEUS BANK (CR)	SR RA	100.00	---	---	---	---	8,783	---	---	---	4339@3%	---	---	---	52	---	---	---	---	---	---	---	---
PPC (CR)	SR RA	100.38	0.02	---	---	---	1,933	---	---	---	542@3%	---	---	---	424	---	---	---	---	---	---	---	35
QUEST HOLDINGS (CR)	SR RA	100.00	---	---	---	---	39	---	---	---	19@3%	---	---	---	---	---	---	---	---	---	---	---	---
REDS S.A. (CR)	SR RA	100.00	---	---	---	---	572	---	---	---	363@3.6%	---	---	---	---	---	---	---	---	---	---	---	---
SELECTED TEXT. IND. ASSOC (CR)	SR RA	100.00	---	---	---	---	50	---	---	---	36@6.3%	---	---	---	---	---	---	---	---	---	---	---	---
SIDENOR (CR)	SR RA	100.00	---	---	---	---	442	---	---	---	221@3%	---	---	---	---	---	---	---	---	---	---	---	---
TECHNICAL OLYMPIC SA (CR)	SR RA	100.00	---	---	---	---	100	---	---	---	50@3%	---	---	---	---	---	---	---	---	---	---	---	---
TERNA ENERGY (CR)	SR RA	100.13	---	---	---	---	289	---	---	---	95@3%	---	---	---	49	---	---	---	---	---	---	---	5
THESSALONIKA WATER & SEWERAGE	SR RA	100.00	---	---	---	---	1,270	---	---	---	635@3%	---	---	---	---	---	---	---	---	---	---	---	---
THRACE PLASTICS SA (CR)	SR RA	100.00	---	---	---	---	1,010	---	---	---	505@3%	---	---	---	---	---	---	---	---	---	---	---	---

Stock Lending Notes

- [1] - Stock Repo: A Contract for selling stocks to HELEX with a Repurchase Right (According to ATHEX BoD Resolution No 17)
- [2] - Stock Reverse Repo: A Contract for buying stocks from HELEX with a Resell Right. (According to ATHEX BoD Resolution No 18)
- [3] - Standardized Repurchase Agreements: A Contract that constitutes a standardized agreement for the purchase or sale of shares, with repurchase or resell pact (According to ATHEX BoD Resolution No 20)
- [4] - Type of products is divided into SR: Stock Repo or Stock Reverse Repo, and RA: Repurchase Agreements.
- [5] - Open Interest in all Series (both tradeable or non-tradeable).

Securities	Type[4]	Stock Repo [1]						Stock Reverse Repo [2]								Repurchase Agreements [3]							
		Trans. price	chg.	Trades	Volume	Transactions Value	Open Interest[5]	Price max	Price min	Last price	Last Ask	Trades	Volume	Transactions Value	Open Interest[5]	Price max	Price min	Last price	Last Ask	Trades	Volume	Transactions Value	Open Interest[5]
TITAN CEMENT (CR)	SR RA	100.02	0.01	---	---	---	9,474	---	---	---	4687@3%	---	---	---	50	---	---	---	---	---	---	---	12
TPA SA (CR)	SR RA	100.00	---	---	---	---	6	---	---	---	---	---	---	---	---	---	---	---	---	---	---	---	
TRASTOR REAL EST. INV. CO.(CR)	SR RA	100.00	---	---	---	---	284	---	---	---	142@3%	---	---	---	---	---	---	---	---	---	---	---	
VIOHALCO (CB)	SR RA	100.01	---	---	---	---	3,990	---	---	---	1973@3%	---	---	---	22	---	---	---	---	---	---	30	

Stock Lending Notes

- [1] - Stock Repo: A Contract for selling stocks to HELEX with a Repurchase Right (According to ATHEX BoD Resolution No 17)
- [2] - Stock Reverse Repo: A Contract for buying stocks from HELEX with a Resell Right. (According to ATHEX BoD Resolution No 18)
- [3] - Standardized Repurchase Agreements: A Contract that constitutes a standardized agreement for the purchase or sale of shares, with repurchase or resell pact (According to ATHEX BoD Resolution No 20)
- [4] - Type of products is divided into SR: Stock Repo or Stock Reverse Repo, and RA: Repurchase Agreements.
- [5] - Open Interest in all Series (both tradeable or non-tradeable).

## Sectors codification for listed companies

533	-	Exploration & Production	537	-	Integrated Oil & Gas
1353	-	Commodity Chemicals	1357	-	Specialty Chemicals
1753	-	Aluminum	1755	-	Nonferrous Metals
1757	-	Steel	1775	-	General Mining
2353	-	Building Materials & Fixtures	2357	-	Heavy Construction
2723	-	Containers & Packaging	2727	-	Diversified Industrials
2733	-	Electrical Components & Equipment	2753	-	Commercial Vehicles & Trucks
2757	-	Industrial Machinery	2773	-	Marine Transportation
2777	-	Transportation Services	2791	-	Business Support Services
2797	-	Industrial Suppliers	3535	-	Distillers & Vintners
3537	-	Soft Drinks	3573	-	Farming & Fishing
3577	-	Food Products	3722	-	Durable Household Products
3726	-	Furnishings	3728	-	Home Construction
3747	-	Toys	3763	-	Clothing & Accessories
3765	-	Footwear	3767	-	Personal Products
3785	-	Tobacco	4533	-	Health Care Providers
4535	-	Medical Equipment	4577	-	Pharmaceuticals
5337	-	Food Retailers & Wholesalers	5371	-	Apparel Retailers
5373	-	Broadline Retailers	5375	-	Home Improvement Retailers
5379	-	Specialty Retailers	5553	-	Broadcasting & Entertainment
5555	-	Media Agencies	5557	-	Publishing
5751	-	Airlines	5752	-	Gambling
5753	-	Hotels	5755	-	Recreational Services
5757	-	Restaurants & Bars	5759	-	Travel & Tourism
6535	-	Fixed Line Telecommunications	6575	-	Mobile Telecommunications
7535	-	Conventional Electricity	7537	-	Alternative Electricity
7577	-	Water	8355	-	Banks
8534	-	Insurance Brokers	8536	-	Property & Casualty Insurance
8633	-	Real Estate Holding & Development	8637	-	Real Estate Services
8671	-	Industrial & Office REITs	8675	-	Specialty REITs
8775	-	Specialty Finance	8777	-	Investment Services
8985	-	Equity Investment Instruments	9533	-	Computer Services
9535	-	Internet	9537	-	Software
9572	-	Computer Hardware	9574	-	Electronic Office Equipment
9578	-	Telecommunications Equipment	11000	-	ETF

