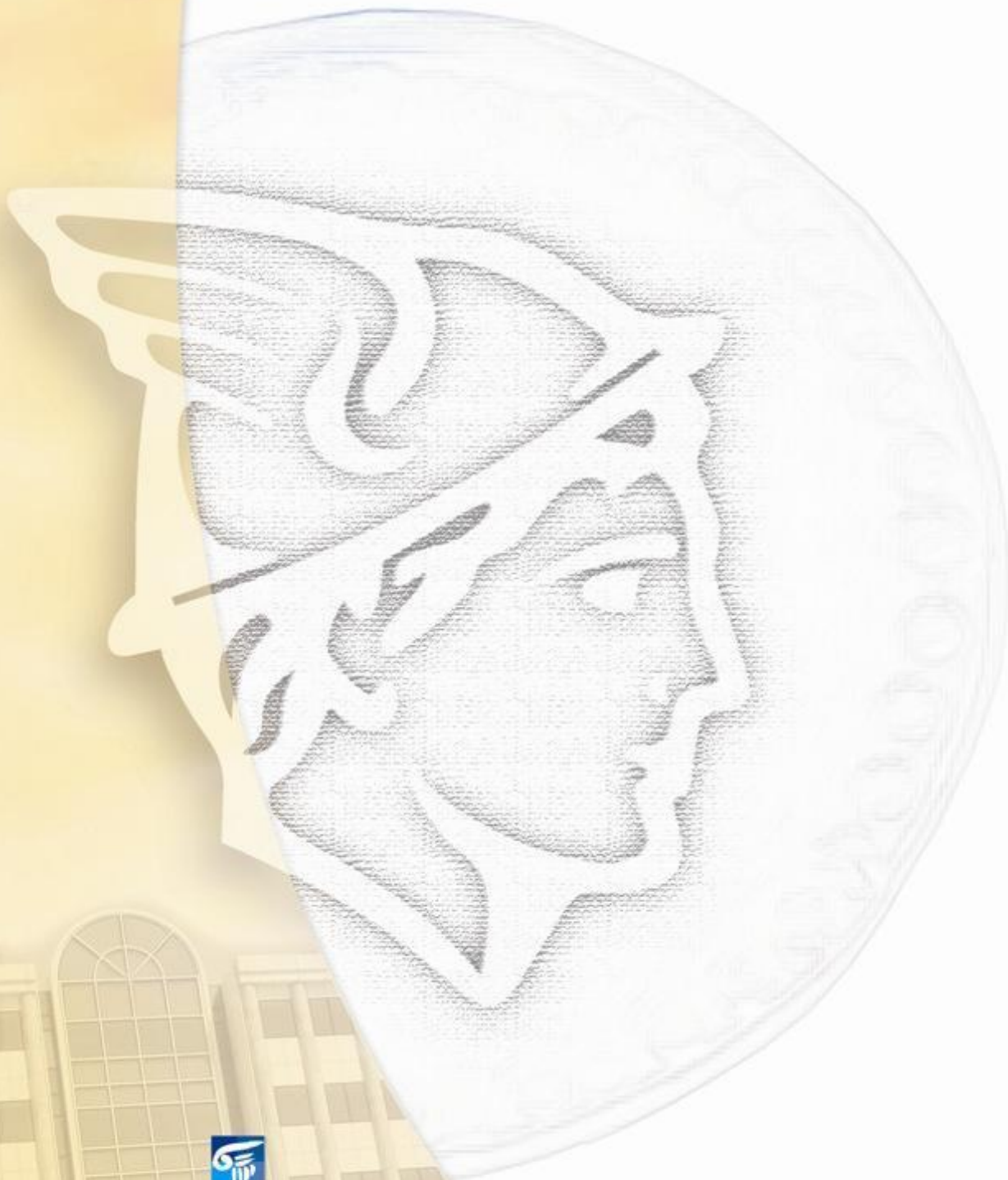


Daily Official List

Athens Exchange sa

Thursday, 22 August, 2013
Year: 134 Trading Day No: 157



ΟΜΙΛΟΣ ΕΛΛΗΝΙΚΑ ΧΡΗΜΑΤΙΣΤΗΡΙΑ
HELLENIC EXCHANGES GROUP

Disclaimer:

Athens Exchange (ATHEX) endeavours to ensure that the data and other material ("Information") presented on the Daily Official List are accurate and complete, but it is not liable for any errors or omissions of data or /and for the accuracy, credibility, updating and completeness of the aforesaid information nor it has any liability arising directly or indirectly from the use of the above Information.

ATHEX is not liable for the accuracy of the data included in listed companies' announcements. Only the sender of such an announcement is fully and solely liable for any infringement of third party's rights from the content of such announcement. All contents of the Daily Official List are provided only for information purposes and do not constitute investment advice or solicitation to invest in securities or other products listed for trading on ATHEX.

You acknowledge and agree that ATHEX is the owner of any property rights related to any Information appearing on the Daily Official List including intellectual property rights copyright, trademarks, etc.

The above data are a property of the Athens Exchange and are copyright protected. Users are forbidden to reproduce, modify, copy, sale, transmit or redistribute, by all reproduction means and methods, part or the whole of the above data, without reference to their source.

The commercial exploitation of these data is, also, forbidden by third parties. Athens Exchange does not carry any responsibility, direct or indirect, derived from usage or accidental alteration of the above data when used by third parties.

**Athens Exchange sa**

110 Athinon Ave., 10442 Athens, Tel: (210) 33.66.800, Fax: (210) 32.13.938

www.athex.gr

**Thessalonica Stock Exchange Center (T.S.E.C)**

16-18 Katouni Str., Thessalonica 546 25 Tel: (2310) 567.667, Fax: (2310) 530.545

Athex Members Guarantee Fund

14-16 Fidiou Str., Athens 106 78, Tel: (210) 33.04.682, Fax: (210) 33.04.155

Hellenic Republic Capital Market Commission

1 Kolokotroni Str. & 1 Stadiou Str., Athens 10562 Tel: (210) 33.77.100 Fax: (210) 33.77.173

Table of Contents

Section 1: Statistical Figures of Securities and Derivatives Markets

Summary of Markets

Athex Indices

Analytic Figures for Athex Market's Boards and Categories

Trading Details by Athex Sectors and ETFs Category

Top 10 best & worst performing Shares

Derivatives Summary

Section 2: Analytic Figures of Shares Transactions

Analytic Figures of Shares Transactions

Shares' Notes

Section 3: Figures of Securities Transactions

Securities Blocks Details

Shares Rights Details

Shares Short Selling

Stock Borrowing

Shares Forced Sales

Forced Sales Registered Shares

Exchange Traded Funds (ETFs) Characteristics

Section 5: Bonds traded in Fixed Income Assets Market

Corporate Bonds

Government Bonds

Treasury Bills & Zero Coupon Government Bonds

Government Bonds Traded with the Open Outcry Method

State Banks Bonds

Section 6: Additional Infos

Athex & ATHEXClear Members List

List of Stocks under Market Making operations

Equity Investment Instruments Acknowledgements

Section 7: Derivatives Market Analytic Figures

Index Futures

Stock Futures

Index Options

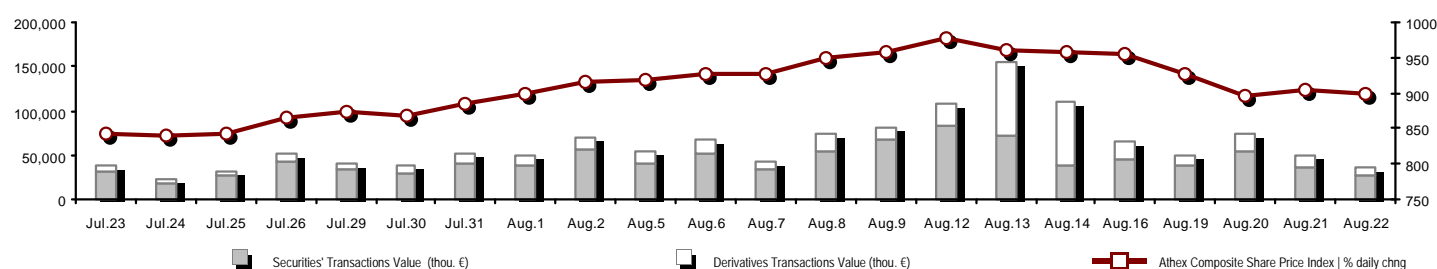
Stock Options

Stock Lending Analytic Figures (Repo Contracts)

Appendix A: Sectors codification for listed companies

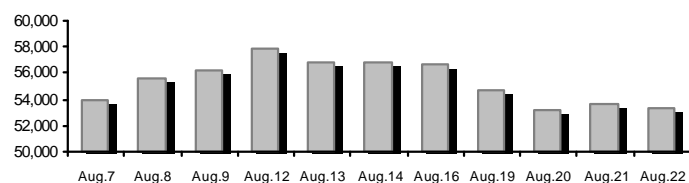
Summary of Markets

Athex Composite Share Price Index vs Shares and Derivatives Transactions Value

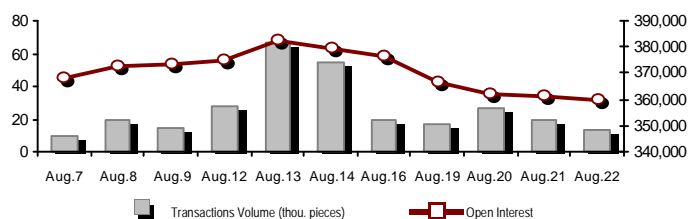


Total Transactions Value (Securities/Derivatives) (thou. €):		36,945.82	
Athex Capitalisation (mill. €) **: 53,362.82		Derivatives Total Open Interest: 359,537	
Daily change: mill. € %: -280.15 -0.52%		in Index Futures % daily chng: 45,918 -2.02%	
Yearly Avg Capitalisation: mill. € % chng prev year Avg: 44,623.65 63.05%		in Stock Futures % daily chng: 151,742 -0.50%	
Athex Composite Share Price Index % daily chng: 898.08 -0.63%		in Index Options % daily chng: 4,984 5.64%	
Athex Composite Share Price Index Capitalisation (mill. €): 46,478.31		in Stock Options % daily chng: 5,534 -2.02%	
Daily change (mill. €): -246.54		in Stock Repos/Reverse Repos/RA % daily chng: 151,359 0.00%	
Securities' Transactions Value (thou. €): 26,884.42		Derivatives Transactions Value (thou. €): 10,061.40	
Daily change: thou. € %: -9,650.39 -26.41%		Daily change: thou. € %: -3,159.33 -23.90%	
YtD Avg Trans. Value: thou. € % chng prev year Avg: 67,238.16 29.62%		YtD Avg Trans. Value: thou. € % chng prev year Avg: 23,216.53 21.64%	
Short Selling Trans. Value: mill. € % in total Value: 0.00 0.00%			
Short Covering Trans. Value: mill. € % in total Value: 0.04 0.00%			
Transactions Value of Blocks (thou. €): 1,022.12			
Bonds Transactions Value (thou. €): 0.00			
Securities' Transactions Volume (thou. Pieces): 15,918.74		Derivatives Contracts Volume: 12,936	
Daily change: thou. pieces %: -6,268.71 -28.25%		Daily change: pieces %: -6,440 -33.24%	
YtD Avg Volume: thou. pieces % chng prev year Avg: 51,970.41 5.10%		YtD Avg Derivatives Contracts % chng prev year Avg: 44,620 -30.66%	
Short Selling Volume: thou pieces % in total Volume: 0.00 0.00%			
Short Covering Volume: thou. pieces % in total Volume: 0.03 0.00%			
Transactions Volume of Blocks (thou. Pieces): 141.65			
Bonds Transactions Volume (thou. pieces): 0.00			
Securities' Trades Number: 15,873		Derivatives Trades Number: 1,310	
Daily change: number %: -4,870 -23.48%		Daily change: number %: -574 -30.47%	
YtD Avg Derivatives Trades number % chng prev year Avg: 29,977 20.83%		YtD Avg Derivatives Trades number % chng prev year Avg: 2,778 -4.69%	
Number of Blocks: 4			
Number of Bonds Transactions: 0			

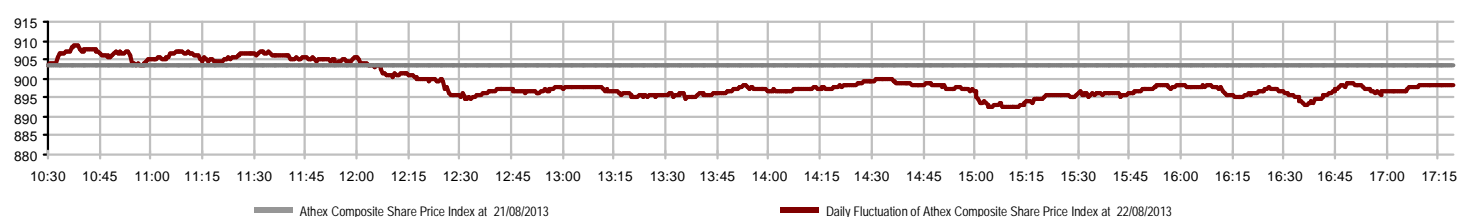
Athex Capitalisation (mill. €) **



Derivatives Transactions Volume and Open Interest



Daily Fluctuation of Athex Composite Share Price Index



Athex Indices

Index name	22/08/2013	21/08/2013	pts.	%	Min	Max	Year min	Year max	Year change
Athex Composite Share Price Index	898.08	903.76	-5.68	-0.63%	892.46	908.90	788.81	1,159.97	-1.08%
FTSE/Athex Large Cap	306.99	308.69	-1.70	-0.55%	305.09	310.49	253.17	410.78	-0.87%
FTSE/ATHEX Custom Capped	974.97	964.19	10.78	1.12%			863.84	1,275.55	-4.36%
FTSE/ATHEX Custom Capped - USD	935.06	928.13	6.93	0.75%			808.44	1,172.76	-2.96%
FTSE/Athex Mid Cap Index	1,005.99	1,014.26	-8.27	-0.82%	1,005.59	1,023.54	871.32	1,360.26	-11.22%
FTSE/ATHEX-CSE Banking Index	100.95	101.68	-0.73	-0.72%	99.85	102.62	64.42	278.69	-40.22%
FTSE/ATHEX Global Traders Index Plus	1,307.02	1,318.84	-11.82	-0.90%	1,300.30	1,328.12	1,082.32	1,484.90	4.78%
FTSE/ATHEX Global Traders Index	1,362.07	1,373.14	-11.07	-0.81%	1,350.74	1,383.06	1,053.81	1,553.64	9.65%
FTSE/ATHEX Mid & Small Cap Factor-Weighted Ind	1,194.74	1,197.39	-2.65	-0.22%	1,178.92	1,200.21	1,053.59	1,348.92	-3.57%
Greece & Turkey 30 Price Index	640.64	655.42	-14.78	-2.26%	638.18	655.42	638.18	927.16	-17.64%
ATHEX Mid & SmallCap Price Index	2,811.60	2,810.79	0.81	0.03%	2,797.80	2,823.70	2,752.95	3,725.74	-10.31%
FTSE/Athex Market Index	740.99	745.25	-4.26	-0.57%	736.80	749.69	600.87	972.17	0.48%
FTSE/Med 100	4,165.34	4,191.32	-25.98	-0.62%			4,075.12	4,570.16	0.53%
Athex Composite Index Total Return Index	1,300.40	1,308.62	-8.22	-0.63%	1,292.26	1,316.07	1,139.79	1,655.57	0.41%
FTSE/Athex Large Cap Total Return	420.69	423.02	-2.33	-0.55%			366.91	565.68	-2.38%
FTSE/ATHEX Large Cap Net Total Return	1,230.86	1,237.68	-6.82	-0.55%	1,223.24	1,244.87	1,001.98	1,626.24	0.43%
FTSE/ATHEX Custom Capped Total Return	1,018.24	1,006.98	11.26	1.12%			895.99	1,311.70	-2.82%
FTSE/ATHEX Custom Capped - USD Total Return	976.56	969.33	7.24	0.75%			836.50	1,205.99	-1.40%
FTSE/Athex Mid Cap Total Return	1,245.10	1,255.33	-10.23	-0.81%			1,152.62	1,720.22	-14.84%
FTSE/ATHEX-CSE Banking Total Return Index	95.71	96.40	-0.69	-0.72%			82.32	289.59	-48.10%
Greece & Turkey 30 Total Return Index	783.99	807.03	-23.04	-2.85%			783.99	1,098.14	-14.43%
Hellenic Mid & Small Cap Index	922.19	931.37	-9.18	-0.99%	918.39	936.67	737.97	1,071.68	5.18%
FTSE/Athex Banks	133.38	134.34	-0.96	-0.71%	131.92	135.59	85.08	368.22	-41.06%
FTSE/Athex Insurance	1,159.03	1,201.18	-42.15	-3.51%	1,148.50	1,201.18	1,148.50	1,548.89	-23.61%
FTSE/Athex Financial Services	1,309.50	1,350.28	-40.78	-3.02%	1,309.50	1,350.28	817.47	1,771.89	-0.72%
FTSE/Athex Industrial Goods & Services	3,318.84	3,415.14	-96.30	-2.82%	3,314.35	3,440.95	2,715.10	4,197.17	2.09%
FTSE/Athex Retail	2,504.73	2,497.61	7.12	0.29%	2,443.11	2,547.21	1,629.12	2,692.44	36.90%
FTSE/ATHEX Real Estate	1,936.42	1,948.54	-12.12	-0.62%	1,927.96	1,953.69	1,491.01	2,108.44	29.87%
FTSE/Athex Personal & Household Goods	4,094.66	4,233.83	-139.17	-3.29%	4,070.75	4,229.95	2,586.10	4,550.67	31.14%
FTSE/Athex Food & Beverage	7,743.51	7,762.18	-18.67	-0.24%	7,690.69	7,845.76	6,301.12	8,591.23	16.30%
FTSE/Athex Basic Resources	2,173.63	2,195.29	-21.66	-0.99%	2,172.57	2,234.04	1,674.83	2,901.09	-6.45%
FTSE/Athex Construction & Materials	1,920.04	1,946.24	-26.20	-1.35%	1,905.09	1,960.85	1,439.70	2,130.78	4.58%
FTSE/Athex Oil & Gas	2,684.85	2,672.55	12.30	0.46%	2,619.03	2,687.37	2,358.47	3,358.80	-4.56%
FTSE/Athex Chemicals	6,196.37	6,169.59	26.78	0.43%	6,143.25	6,411.27	5,194.08	7,961.02	2.94%
FTSE/Athex Media	2,061.03	2,068.41	-7.38	-0.36%	2,061.03	2,068.41	716.56	3,560.63	184.70%
FTSE/Athex Travel & Leisure	1,297.19	1,269.49	27.70	2.18%	1,266.12	1,297.19	1,028.61	1,496.38	28.51%
FTSE/Athex Technology	677.85	681.80	-3.95	-0.58%	669.94	683.97	555.63	886.96	-8.67%
FTSE/Athex Telecommunications	1,849.73	1,857.98	-8.25	-0.44%	1,816.70	1,885.51	1,175.35	2,147.00	31.76%
FTSE/Athex Utilities	2,658.24	2,669.10	-10.86	-0.41%	2,645.76	2,695.15	1,752.55	3,104.53	16.19%
FTSE/Athex Health Care	244.59	244.00	0.59	0.24%	242.81	246.37	172.87	346.05	-12.83%
Athex All Share Index	189.56	190.57	-1.00	-0.53%			176.43	294.40	-19.91%

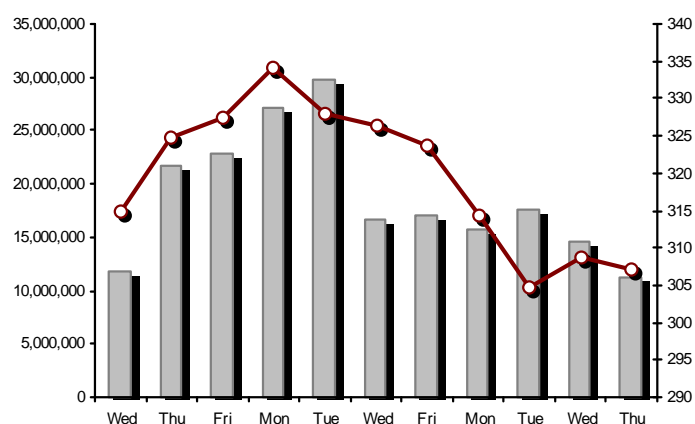
Note 1: Greece & Turkey 30 Pr data is the indicative at 17:20, whereas FTSE/ATHEX Custom Capped, FTSE/ATHEX Custom Capped - USD, FTSE/ATHEX Custom Capped TR, FTSE/ATHEX Custom Capped - USD TR, FTSE/Med 100 & Greece & Turkey 30 Rt closing prices refer to the previous trading day of 21/08/2013.

Note 2: The Hellenic Mid & Small Cap Index is a Customized index calculated by the Athens Exchange.

Athex Indices

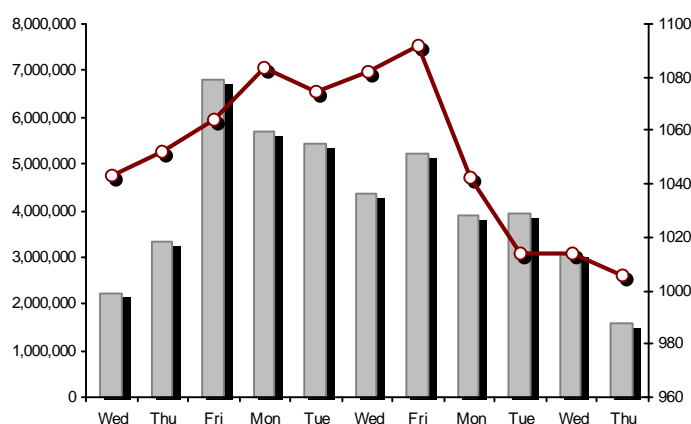
FTSE/Large Cap

22/08/2013: -0.55%



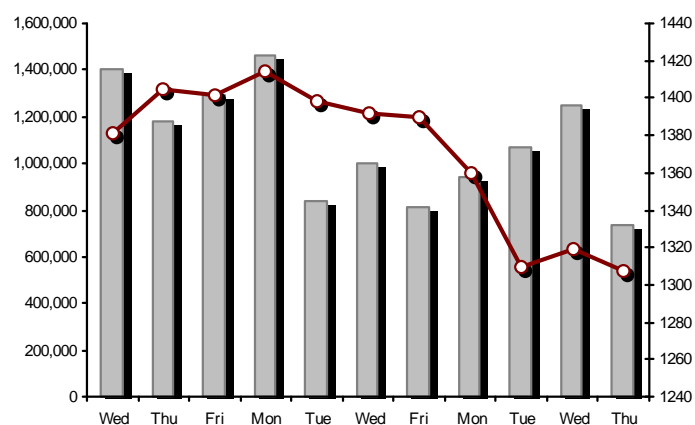
FTSE/Athex Mid Cap Index

22/08/2013: -0.82%



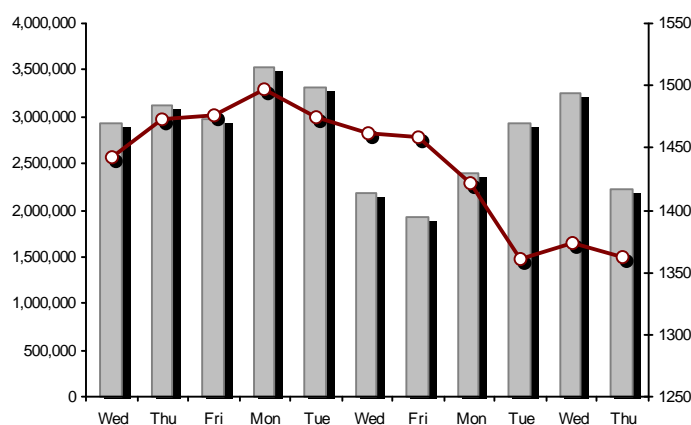
FTSE/ATHEX Global Traders Index Plus

22/08/2013: -0.90%



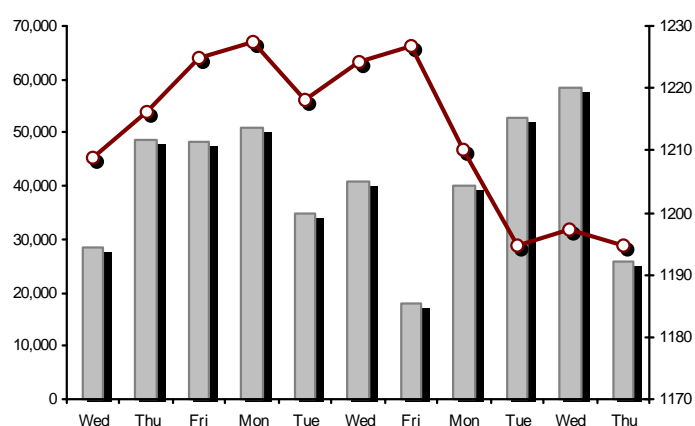
FTSE/ATHEX Global Traders Index

22/08/2013: -0.81%



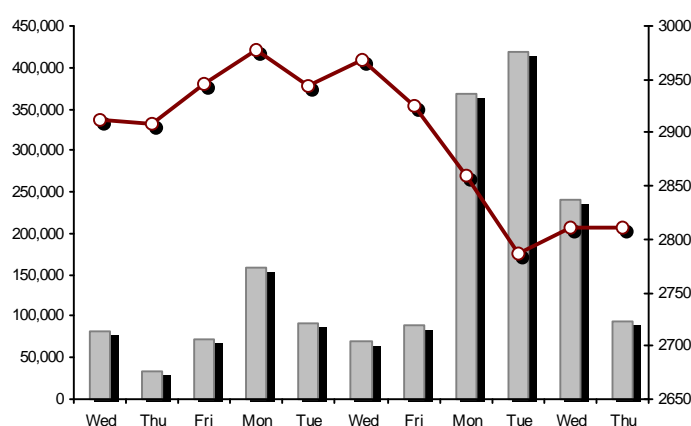
FTSE/ATHEX Mid & Small Cap Factor-Weighted Index

22/08/2013: -0.22%



ATHEX Mid & SmallCap Price Index

22/08/2013: 0.03%



Indices volume of transactions

Indices closing prices

Analytic Figures for Athex Market's Boards and Categories

	Total Traded Securities	Main Market	Low Dispersion	Other Categories (*)	Exchange Traded Funds (ETFs)	Warrants
Totals	141	110	9	17	2	3
Gain / Lose / Same:	46 / 78 / 17	35 / 62 / 13	6 / 3 / 0	4 / 9 / 4	1 / 1 / 0	0 / 3 / 0
Athex Capitalisation (mill. €) **	53,362.82	51,126.54	1,892.46	343.82		
Daily Average Transactions Value (thou. €)	67,238.16	26,258.01	542.86	84.86	40.86	6,296.29
Transactions Value	26,884.42	24,669.98	67.36	53.48	0.83	2,092.77
Main Board:	25,862.30	23,647.86	67.36	53.48	0.83	2,092.77
Blocks Board:	1,022.12	1,022.12	0.00	0.00	0.00	0.00
Forced Sales Board:	0.00	0.00	0.00	0.00	0.00	0.00
Special Terms Board:	0.00	0.00	0.00	0.00	0.00	0.00
Daily Average Transactions Volume	51,970,412	16,075,965	58,346	456,149	10,077	9,623,962
Transactions Volume	15,918,744	13,248,745	9,709	196,759	265	2,463,266
Main Board:	15,777,090	13,107,091	9,709	196,759	265	2,463,266
Blocks Board:	141,654	141,654	0	0	0	0
Forced Sales Board:	0	0	0	0	0	0
Special Terms Board:	0	0	0	0	0	0
Daily Average Number of Trades	29,977	11,704	123	224	8	2,381
Number of Trades	15,873	14,182	73	143	2	1,473
Main Board:	15,869	14,178	73	143	2	1,473
Blocks Board:	4	4	0	0	0	0
Forced Sales Board:	0	0	0	0	0	0
Special Terms Board:	0	0	0	0	0	0

(*) Summarised Transactions figures for Under Deletion and Under Supervision Categories.

(**) The Market Capitalization of the Companies that belong in the Under Supervision Category is not included.

Trading Details by Athex Sectors and ETFs Category

Code	Sectors	Gain / Lose / Same	Number of Trades	Transactions Volume	Transactions Value	% of Total Trans. Value
8300	- Banks	2 / 8 / 0	5,906	11,651,463	10,196,976.26	37.93%
1700	- Basic Resources	3 / 5 / 1	788	260,482	800,476.04	2.98%
1300	- Chemicals	1 / 3 / 1	53	16,155	9,328.47	0.03%
2300	- Construction & Materials	6 / 10 / 4	1,062	349,499	910,939.79	3.39%
11000	- ETF	1 / 1 / 0	2	265	830.49	0.00%
8700	- Financial Services	2 / 3 / 0	748	612,225	436,271.59	1.62%
3500	- Food & Beverage	2 / 6 / 1	830	117,750	1,481,600.95	5.51%
4500	- Health Care	3 / 2 / 0	142	169,937	108,076.94	0.40%
2700	- Industrial Goods & Services	3 / 11 / 2	904	215,962	858,488.22	3.19%
8500	- Insurance	0 / 1 / 0	34	21,501	24,063.94	0.09%
5500	- Media	3 / 1 / 0	14	1,064	431.21	0.00%
500	- Oil & Gas	1 / 0 / 1	567	76,280	558,827.88	2.08%
3700	- Personal & Household Goods	6 / 8 / 1	576	131,357	705,731.48	2.63%
8600	- Real Estate	3 / 2 / 1	291	22,151	140,798.48	0.52%
5300	- Retail	2 / 2 / 0	292	41,813	387,529.50	1.44%
9500	- Technology	4 / 5 / 2	276	199,532	128,875.87	0.48%
6500	- Telecommunications	0 / 1 / 0	982	619,233	4,160,600.80	15.48%
5700	- Travel & Leisure	4 / 6 / 2	1,361	1,162,323	4,433,579.90	16.49%
7500	- Utilities	0 / 3 / 1	1,045	249,752	1,540,995.57	5.73%

Top 10 best & worst performing Shares

Main Market					
With positive Price change	Closing price	change	With negative Price change	Closing price	change
NATIONAL BANK (CR)	2.96	2.78% #	MARFIN INVESTMENT GROUP (CR)	0.285	-5.32% ⚡
HALKOR SA (CB)	0.810	2.53% #	JUMBO SA (CR)	8.00	-4.19% ⚡
OPAP (CR)	7.37	2.50% #	VIOHALCO (CB)	4.22	-3.87% ⚡
QUALITY & RELIABILITY SA (CR)	1.72	2.38% #	ALPHA BANK (CR)	0.472	-3.67% ⚡
FOURLIS (CR)	2.56	1.99% #	EUROPEAN RELIANCE INSUR. (CR)	1.10	-3.51% ⚡
REVOIL (CR)	0.850	1.19% #	METKA (CR)	10.20	-3.13% ⚡
HELLENIC PETROLEUM (CR)	7.36	0.82% #	ELLAKTOR (CR)	2.08	-2.80% ⚡
HYGEIA SA (CR)	0.414	0.49% #	AEGEAN AIRLINES (CR)	3.06	-2.55% ⚡
CORINTH PIPEWORKS SA (CR)	2.07	0.49% #	ATTICA BANK S.A. (CR)	0.276	-2.47% ⚡
FOLLI FOLLIE (CR)	17.70	0.28% #	INTRACOM HOLDINGS (CR)	0.439	-2.44% ⚡
With the highest Transactions Value	Value (thou. €)	change	With the highest Transactions Volume	Volume	change
OTE (CR)	4,160.60	-0.44% ⚡	ALPHA BANK (CR)	4,537,584	-3.67% ⚡
OPAP (CR)	3,617.57	2.50% #	PIRAEUS BANK (CR)	2,689,127	-1.98% ⚡
NATIONAL BANK (CR)	2,773.72	2.78% #	NATIONAL BANK (CR)	947,715	2.78% #
PIRAEUS BANK (CR)	2,693.40	-1.98% ⚡	OTE (CR)	619,233	-0.44% ⚡
ALPHA BANK (CR)	2,176.89	-3.67% ⚡	MARFIN INVESTMENT GROUP (CR)	515,191	-5.32% ⚡
CC HBC AG (CR)	1,453.51	-0.24% ⚡	ATTICA BANK S.A. (CR)	506,813	-2.47% ⚡
PPC (CR)	1,272.76	0.00% ↗	EUROBANK ERGASIAS (CR)	506,412	-1.92% ⚡
MYTILINEOS HOLDINGS (CR)	650.96	-1.39% ⚡	OPAP (CR)	498,093	2.50% #
JUMBO SA (CR)	545.68	-4.19% ⚡	INTRALOT (CR)	336,279	0.00% ↗
INTRALOT (CR)	541.94	0.00% ↗	KIRIAKOULIS SHIPPING SA (CR)	230,000	-0.10% ⚡

Note: Stocks that are not included in the "Low Dispersion" and "Under Supervision" categories, and the transactions value is more than 10,000 €.

Derivatives Summary

	Number of Trades	Volume	Open Interest	Transactions Value
Index Futures	351	3,980	45,918	6,132,526.25
FTSE/Athex Large Cap	351	3,980	45,918	6,132,526.25
Stock Futures	889	7,786	151,742	2,333,019.10
ALPHA BANK (CR)	110	2,026	16,569	97,217.50
CC HBC AG (CR)	16	49	717	101,707.00
CORINTH PIPEWORKS SA (CR)	2	10	457	2,030.00
ELLAKTOR (CR)	12	89	4,356	18,527.00
EUROBANK ERGASIAS (CR)	8	258	20,491	8,066.54
EUROBANK PROPERTIES REIC (CR)	1	5	269	3,550.00
EYDAP S.A. (CR)	2	7	206	4,096.00
FOLLI FOLLIE (CR)	5	25	242	44,065.00
FRIGOGLASS SA (CR)	8	25	417	12,105.00
GEK TERNA (CR)	35	416	32,088	88,694.00
HELLENIC EXCHANGES (CR)	21	96	2,258	56,752.00
HELLENIC PETROLEUM (CR)	32	96	2,341	69,595.00
INTRALOT (CR)	44	165	3,968	26,629.00
JUMBO SA (CR)	46	155	211	125,407.00
MARFIN INVESTMENT GROUP (CR)	11	100	19,164	2,932.90
METKA (CR)	11	31	482	32,432.00
MOTOR OIL (CR)	17	59	927	43,217.00
MYTILINEOS HOLDINGS (CR)	25	107	4,951	46,052.00
NATIONAL BANK (CR)	173	2,203	5,283	647,893.00
OPAP (CR)	31	119	4,007	86,523.00
OTE (CR)	100	504	8,300	340,217.00
P.P.A. S.A. (CR)	9	27	538	44,811.00
PIRAEUS BANK (CR)	53	778	13,820	77,597.50
PPC (CR)	86	336	5,118	245,665.00
SIDENOR (CR)	1	1	1,500	160.00
TERNA ENERGY (CR)	6	27	2,385	7,953.66
TITAN CEMENT (CR)	19	65	188	96,089.00
VIOHALCO (CB)	5	7	489	3,035.00
Index Options	61	821	4,984	1,255,425.00
FTSE/Athex Large Cap	61	821	4,984	1,255,425.00
Stock Options	0	0	5,534	0.00
ALPHA BANK (CR)	0	0	0	0.00
NATIONAL BANK (CR)	0	0	282	0.00
OPAP (CR)	0	0	2,945	0.00
OTE (CR)	0	0	1,862	0.00
PIRAEUS BANK (CR)	0	0	5	0.00
PPC (CR)	0	0	440	0.00
Stock Repos - Stock Reverse Repos - Repurchase Agreements	9	349	151,359	340,426.00
Stock Reverse Repos	8	293	4,810	224,506.00
Stock Repos	0	0	140,911	0.00
Repurchase Agreement	1	56	5,638	115,920.00
Total Derivatives Traded	1,310	12,936	359,537	10,061,396.35

Number of Outstanding Securities	Nominal Value	Dividends [1]			Date of Last Coupon		Note	Shares	Closing price	% change	Previous closing price/date	Open price	Price min	Price max	Last price	Avg price	Last Bid [7]	Last Ask [7]	P/E after	Year	Volume	Trades	Transactions Value	Company Mkt Value (thou. €)	Year low	Year high	Sector[4]
		2010	2011	2012	Dividend [2]	Right																					
Warrants																											
1,233,503,482	---	---	---		11/06/2013	---	ALPHA BANK (W)	0.905	-2.48	€ 0.928	21/08/2013	0.910	0.905	0.936	0.905	0.921	53667@0.905	550@0.907	---	2012	1,616,420	814	1,488,249.77	5,155,611.64	0.241	1.14	8355
245,779,626	---	---	---		27/06/2013	---	NATIONAL BANK (W)	0.900	-2.07	€ 0.919	21/08/2013	0.925	0.893	0.940	0.900	0.907	27377@0.900	1000@0.914	---	2012	203,300	279	184,465.23	7,094,486.54	0.420	2.00	8355
849,195,130	---	---	---		03/07/2013	---	PIRAEUS BANK (W)	0.633	-4.38	€ 0.662	21/08/2013	0.664	0.630	0.681	0.633	0.653	800@0.633	2122@0.639	---	2012	643,546	380	420,051.73	5,021,842.27	0.290	0.889	8355

Warrants

71,417,100	0.650	---	---	---	26/05/2010	11/07/2007	---	AEGEAN AIRLINES (CR)	3.06	-2.55	€ 3.14	21/08/2013	3.10	3.06	3.10	3.06	3.07	960@3.04	597@3.10	---	2012	3,991	22	12,263.29	218,536.33	1.96	3.24	5751
11,178,000	1.45	---	---	---	21/04/2010	12/05/2011	---	AEOLIAN INVESTMENT FUND (CR)	1.04	6.01	# 0.981	21/08/2013	1.00	1.00	1.04	1.04	1.02	200@1.00	700@1.05	8.23	2012	6,260	11	6,356.90	11,625.12	0.900	1.17	8985
13,000,000	1.00	---	---	---	01/08/2007	07/04/2000	---	AKRITAS SA (CR)	0.205	-5.09	€ 0.216	21/08/2013	0.195	0.195	0.205	0.205	0.198	180@0.196	---	---	2012	30	2	5.95	2,665.00	0.140	0.520	2353
25,000,000	0.400	---	---	---	03/06/2009	12/07/2013	---	ALCO HELLAS SA (CR)	0.430	-1.38	€ 0.436	21/08/2013	0.403	0.403	0.430	0.430	0.428	470@0.406	1272@0.443	---	2012	5,727	9	2,449.08	10,750.00	0.159	0.599	1753
10,922,906,012	0.300	---	---	---	07/04/2008	13/05/2013	---	ALPHA BANK (CR)	0.472	-3.67	€ 0.490	21/08/2013	0.494	0.472	0.499	0.472	0.480	34905@0.471	5000@0.476	---	2012	4,537,584	1,766	2,176,891.86	5,155,611.64	0.161	0.696	8355
22,016,250	0.370	---	---	---	15/07/2009	11/05/2000	---	ALUMIL (CR)	0.596	-0.67	€ 0.600	21/08/2013	0.610	0.583	0.610	0.596	0.591	50@0.594	1500@0.595	---	2012	501	13	296.17	13,121.69	0.360	0.740	1753
418,000	16.00	---	---	---	22/04/2010	05/03/2013	---	ANDROMEDA SA (CR)	18.81	10.00	# 17.10	21/08/2013	18.81	18.81	18.81	18.81	18.81	9@17.60	---	1.74	2012	42	3	790.02	7,862.58	17.10	25.41	8985
21,876,700	0.380	---	---	---	08/07/2010	05/06/2001	---	AS COMPANY SA (CR)	0.297	-1.33	€ 0.301	21/08/2013	0.330	0.296	0.330	0.301	0.296	1250@0.296	990@0.326	33.94	2012	3,810	5	1,128.35	6,497.38	0.272	0.488	5379
86,735,980	0.310	---	---	---	06/07/2009	02/01/2002	---	ATHENS MEDICAL CENTER SA (CR)	0.801	-0.12	€ 0.802	21/08/2013	0.800	0.800	0.801	0.801	0.801	36096@0.801	1750@0.802	---	2012	97,104	35	77,765.10	69,475.52	0.471	0.994	4533
699,673,060	0.300	---	---	---	04/06/2008	05/06/2013	---	ATTICA BANK S.A. (CR)	0.276	-2.47	€ 0.283	21/08/2013	0.287	0.276	0.287	0.276	0.278	17600@0.275	18697@0.281	---	2012	506,813	247	141,041.90	193,109.76	0.173	1.06	8355
45,457,464	0.700	---	---	---	01/07/2008	01/03/2010	---	AUDIO VISUAL ENTERPRISES (CR)	0.279	-0.36	€ 0.280	21/08/2013	0.280	0.279	0.280	0.279	0.280	1000@0.200	1750@0.279	---	2012	300	2	83.95	12,682.63	0.097	0.482	5553
36,360,000	0.320	---	0.15	---	30/04/2012	05/05/2008	---	AUTOHELLAS SA (CR)	2.20	-1.35	€ 2.23	21/08/2013	2.25	2.15	2.25	2.20	2.19	820@2.18	8349@2.20	11.85	2012	5,766	24	12,634.50	79,992.00	1.50	2.30	5759
19,864,886	5.60	1.976	0.67	0.5376	06/03/2013	02/07/2008	---	BANK OF GREECE (CR)	13.08	0.61	# 13.00	21/08/2013	13.25	12.81	13.25	13.08	12.96	10@12.90	260@12.99	---	---	544	31	7,051.31	259,832.71	11.26	19.19	8355
23,986,500	1.05	---	---	---	26/06/2009	15/03/2000	---	BIOKARPET S.A.(CR)	0.673	---	↘ 0.673	05/08/2013	---	---	---	---	---	---	2800@0.620	---	2012	---	---	---	16,142.91	0.486	0.845	3726
15,842,391	1.51	---	---	---	15/07/2009	12/05/2000	---	BITROS HOLDING SA (CR)	0.621	---	↘ 0.621	01/08/2013	---	---	---	---	---	---	150@0.569	---	2012	---	---	---	9,838.12	0.336	0.745	1757
15,816,009	0.300	---	---	---	01/07/2009	17/07/2000	---	BYTE COMPUTER SA (CR)	0.460	-2.13	€ 0.470	21/08/2013	0.470	0.435	0.470	0.460	0.452	35@0.460	900@0.470	---	2012	2,150	17	971.21	7,275.36	0.351	0.620	9533
366,491,145	6.70	---	---	0.34	26/06/2013	29/04/2013	---	CC HBC AG (CR)	20.70	-0.24	€ 20.75	21/08/2013	20.56	20.56	21.00	20.70	20.78	1100@21.21	5000@20.75	---	---	69,942	706	1,453,514.46	7,586,366.70	16.79	22.60	3537
101,123,806	0.360	---	---	---	22/07/2010	28/06/2011	---	CENTRIC HOLDINGS (CR)	0.225	-1.75	€ 0.229	21/08/2013	0.209	0.208	0.225	0.225	0.215	750@0.208	450@0.225	34.14	2012	2,500	4	537.25	22,752.86	0.182	0.440	5752
4,034,950	0.680	---	---	---	01/07/2005	30/12/2010	---	CHATZIKRANIOTIS & SONS SA (CR)	0.142	-25.26	€ 0.190	21/08/2013	0.188	0.140	0.188	0.142	0.143	1000@0.143	500@0.185	---	2012	10,500	7	1,497.00	572.96	0.130	0.522	3577
124,170,201	0.780	---	---	---	28/06/2002	07/02/2005	---	CORINTH PIPEWORKS SA (CR)	2.07	0.49	# 2.06	21/08/2013	2.07	2.05	2.09	2.07	2.07	1600@2.06	340@2.08	74.16	2012	36,829	153	76,277.76	257,032.32	1.40	2.59	1757
9,907,500	0.300	---	---	---	06/10/2005	13/02/2002	---	CPI SA (CR)	0.212	---	↘ 0.212	13/08/2013	---	---	---	---	---	---	970@0.231	---	2012	---	---	---	2,100.39	0.133	0.400	9572
27,379,200	0.610	---	---	---	23/06/2010	05/12/2012	---	CRETE PLASTICS SA (CR)	4.67	-2.10	€ 4.77	21/08/2013	4.67	4.67	4.67	4.67	4.67	379@4.67	44@5.02	13.34	2012	1	1	4.67	127,860.86	4.60	5.65	1357
26,664,840	0.470	---	---	---	29/06/2005	12/07/1999	---	CYCLON HELLAS SA (CR)	0.480	-0.21	€ 0.481	21/08/2013	0.480	0.480	0.480	0.480	0.480	150@0.460	500@0.480	---	2012	1,000	2	480.00	12,799.12	0.385	0.700	1357
15,000,000	0.300	---	---	---	06/07/2007	18/07/2000	---	DAIOS PLASTICS SA (CR)	3.79	---	↘ 3.79	21/08/2013	---	---	---	---	---	70@3.44	55@3.77	---	2012	---	---	---	56,850.00	3.34	5.50	1357
31,370,399	0.300	---	---	---	11/08/2010	15/02/2012	---	DIONIC (CR)	0.074	-2.63	€ 0.076	21/08/2013	0.071	0.071	0.076	0.074	0.074	3400@0.072	8951@0.074	---	2012	20,053	22	1,476.26	2,321.41	0.066	0.263	2797
34,720,000	0.310	---	---	---	16/06/2010	01/08/2007	---	DROMEAS SA (CR)	0.352	-2.49	€ 0.361	21/08/2013	0.390	0.352	0.390	0.352	0.353	8000@0.350	3@0.355	---	2012	8,481	11	2,991.35	12,221.44	0.218	0.634	3726
3,873,120	0.300	---	---	---	07/07/2008	04/10/2012	---	DRUCKFARBEN HELLAS (CR)	1.16	---	↘ 1.16	21/08/2013	---	---	---	---	---	---	5@1.27	---	2012	---	---	---	4,492.82	0.901	2.64	1357
11,250,000	0.560	---	---	---	26/07/2010	16/06/1999	---	EKTER SA (CR)	0.479	2.13	# 0.469	21/08/2013	0.479	0.479	0.479	0.479	0.479	500@0.435	2000@0.459	8.37	2012	50	1	23.95	5,388.75	0.400	0.700	2357
32,188,050	1.04	---	---	---	21/07/2008	20/01/2000	---	EL. D. MOUZAKIS SA (CB)	0.170	---	↘ 0.170	21/08/2013	---	---	---	---	---	---	8867@0.170	---	2012	---	---	---	5,471.97	0.114	0.330	3763
18,648,000	1.00	---	---	---	07/07/2009	10/09/2010	---	ELASTRON (CR)	0.733	---	↘ 0.733	21/08/2013	0.732	0.720	0.750	0.733	0.727	30@0.710	240@0.733	---	2012	1,850	13	1,345.70	13,668.98	0.518	0.969	1757
31,734,530	1.60	---	---	---	09/07/2007	19/07/2006	---	ELGEKA SA (CR)	0.650	---	↘ 0.650	13/08/2013	---	---	---	---	---	2000@0.467	80@0.500	---	2012	---	---	---	20,627.44	0.407	0.780	3577
23,828,130	0.500	---	---	---	07/07/2010	17/02/2009	---	ELINOIL S.A. (CR)	1.17	---	↘ 1.17	13/08/2013	---	---	---	---	---	200@1.06	200@1.27	---	2012	---	---	---	27,878.91	1.02	1.89	537
177,001,313	1.03	0.0308	---	---	05/07/2011	20/12/2007	---	ELLAKTOR (CR)	2.08	-2.80	€ 2.14	21/08/2013	2.11	2.06	2.14	2.08	2.09	1000@2.07	300@2.09	---	2012	140,548	422	293,202.31	368,162.73	1.36	2.50	2357

Number of Outstanding Securities	Nominal Value	Dividends [1]			Date of Last Coupon		Note	Shares	Closing price	% change	Previous closing price/date	Open price	Price min	Price max	Last price	Avg price	Last Bid [7]	Last Ask [7]	P/E after	Year	Volume	Trades	Transactions Value	Company Mkt Value (thou. €)	Year low	Year high	Sector[4]		
		2010	2011	2012	Dividend [2]	Right																							
Main Market																													
26,730,187	0.600	---	---	---	25/06/2009	30/12/2010	---	ELTON SA (CR)	1.11	---	↘	1.11	21/08/2013	1.14	1.07	1.14	1.11	1.09	70@1.06	1276@1.11	11.60	2012	1,659	23	1,806.36	29,670.51	0.850	1.25	1353
15,146,404	0.340	0.093	---	---	06/07/2011	17/10/2002	---	ELTRAK SA (CR)	1.62	---	↘	1.62	21/08/2013	1.62	1.62	1.62	1.62	1.62	77@1.62	2351@1.65	---	2012	500	2	810.00	24,537.17	1.08	1.90	2753
124,100,815	0.300	---	---	---	27/06/2008	07/07/2000	---	ELVAL SA. (CB)	1.98	1.54	#	1.95	21/08/2013	1.91	1.91	1.98	1.98	1.94	50@1.93	648@1.98	15.29	2012	4,910	20	9,498.70	245,719.61	1.55	2.38	1753
13,230,000	0.300	---	---	---	11/08/2010	27/06/2012	---	ELVE SA (CR)	0.520	-1.33	€	0.527	21/08/2013	0.530	0.500	0.530	0.520	0.511	---	53@0.520	---	2012	867	7	443.14	6,879.60	0.423	0.717	3763
30,009,210	0.310	---	---	---	27/06/2008	26/06/2000	---	ETEM SA (CB)	0.395	-1.99	€	0.403	21/08/2013	0.403	0.395	0.411	0.395	0.405	1926@0.395	99@0.411	---	2012	574	3	232.33	11,853.64	0.328	0.828	1753
4,050,416,865	0.300	---	---	---	02/05/2008	13/06/2013	---	EUROBANK ERGASIAS (CR)	0.612	-1.92	€	0.624	21/08/2013	0.629	0.611	0.629	0.612	0.616	14750@0.611	7122@0.614	---	2012	506,412	432	312,098.44	2,478,855.12	0.555	6.23	8355
61,000,000	2.13	0.5364	0.4067	---	23/03/2012	20/11/2007	---	EUROBANK PROPERTIES REIC (CR)	7.10	-0.56	€	7.14	21/08/2013	7.06	7.06	7.16	7.10	7.10	719@7.08	18900@7.10	---	2012	18,788	237	133,366.08	433,100.00	4.87	7.75	8675
27,503,677	0.600	0.04	0.05	0.1	11/07/2013	18/10/1999	---	EUROPEAN RELIANCE INSUR. (CR)	1.10	-3.51	€	1.14	21/08/2013	1.09	1.09	1.14	1.10	1.12	1604@1.09	82@1.10	3.32	2012	21,501	34	24,063.94	30,254.04	0.973	1.62	8536
13,673,200	0.880	---	---	---	18/07/2008	26/07/2001	---	EVROFARMA SA (CR)	0.260	---	↘	0.260	21/08/2013	---	---	---	---	---	370@0.234	275@0.286	---	2012	---	---	---	3,555.03	0.209	0.539	3577
106,500,000	0.600	0.04	0.05	0.15	31/07/2013	28/01/2000	---	EYDAP S.A. (CR)	5.91	-0.84	€	5.96	21/08/2013	5.96	5.88	6.03	5.91	5.92	784@5.90	1500@5.96	13.44	2012	4,937	82	29,203.19	629,415.00	4.65	6.47	7577
52,800,154	0.300	---	---	---	16/04/2010	21/06/2004	---	F.G. EUROPE S.A. (CR)	0.529	2.12	#	0.518	21/08/2013	0.510	0.510	0.529	0.529	0.511	200@0.500	179@0.529	6.40	2012	460	6	234.98	27,931.28	0.450	0.950	3722
10,203,575	0.730	---	---	---	16/07/2007	18/10/1999	---	FIERATEX SA (CR)	0.138	---	↘	0.138	20/08/2013	---	---	---	---	---	1000@0.106	701@0.138	---	2012	---	---	---	1,408.09	0.090	0.400	3763
11,720,024	0.530	---	---	---	16/07/2010	29/05/2012	---	FLEXOPACK SA (CR)	3.60	---	↘	3.60	20/08/2013	---	---	---	---	---	400@3.25	---	12.12	2012	---	---	---	42,192.09	2.39	5.00	2723
4,181,450	0.500	---	---	---	21/08/2000	05/03/2002	---	FLOUR MILLS SARANTOPOULOS SA	0.900	---	↘	0.900	12/08/2013	---	---	---	---	---	400@0.950	---	16.64	2012	---	---	---	3,763.31	0.626	1.02	3577
66,948,210	0.300	---	---	---	14/07/2009	31/12/2010	4988	FOLLI FOLLIE (CR)	17.70	0.28	#	17.65	21/08/2013	17.99	17.26	18.00	17.70	17.67	50@17.59	100@17.71	---	2012	21,070	255	372,194.49	1,184,983.32	11.51	19.00	5379
50,992,322	1.00	---	---	---	21/06/2010	16/07/2002	---	FOURLIS (CR)	2.56	1.99	#	2.51	21/08/2013	2.53	2.51	2.57	2.56	2.55	500@2.55	20@2.56	---	2012	27,737	94	70,594.29	130,540.34	1.58	2.95	3722
50,592,373	0.300	---	---	---	07/07/2010	07/09/2011	---	FRIGOGLASS SA (CR)	4.85	-2.02	€	4.95	21/08/2013	4.95	4.77	4.95	4.85	4.84	600@4.80	46@4.89	---	2012	7,444	83	36,024.24	245,373.01	3.84	6.26	2757
77,376,446	0.340	---	---	---	23/05/2005	18/08/2011	---	G.E. DIMITRIOU (CR)	0.050	8.70	#	0.046	21/08/2013	0.049	0.049	0.050	0.050	0.050	---	5000@0.049	---	2012	9,350	7	463.00	3,868.82	0.028	0.118	3722
14,076,360	0.370	---	---	---	19/08/2008	22/07/2003	---	GALAXIDI S.A. (CR)	0.360	---	↘	0.360	08/08/2013	---	---	---	---	---	---	2000@0.350	10.24	2012	---	---	---	5,067.49	0.320	0.638	3573
85,882,688	0.570	0.0048	---	---	01/08/2011	02/01/2009	---	GEK TERNA (CR)	2.12	-1.85	€	2.16	21/08/2013	2.19	2.11	2.19	2.12	2.14	5317@2.11	2000@2.15	-(6)-	2012	131,914	249	281,961.58	182,071.30	1.40	2.80	2357
24,060,000	0.300	---	0.017	---	18/06/2012	21/01/2000	---	GEN. COMMERCIAL & IND.SA (CR)	0.429	9.16	#	0.393	21/08/2013	0.428	0.428	0.429	0.429	0.429	50@0.371	450@0.419	---	2012	500	2	214.45	10,321.74	0.303	0.545	2797
1,270,000	0.300	---	---	---	06/07/2007	06/02/2013	---	GIRAKIAN PROFIL SA (CB)	1.76	---	↘	1.76	21/08/2013	---	---	---	---	---	---	100@1.80	---	2012	---	---	---	2,235.20	0.900	3.33	1757
34,770,982	1.54	---	---	---	06/07/2010	27/07/2000	---	GR. SARANTIS SA (CR)	4.93	-1.99	€	5.03	21/08/2013	5.15	4.90	5.15	5.00	5.00	202@4.90	785@5.00	---	2012	6,280	35	31,427.27	171,420.94	4.05	5.45	3767
8,340,750	1.20	---	---	---	25/06/2009	30/07/2001	---	HAIDEMENOS SA (CR)	0.431	---	↘	0.431	20/08/2013	---	---	---	---	---	320@0.389	---	---	2012	---	---	---	3,594.86	0.350	0.905	2791
101,279,627	0.380	---	---	---	26/06/2008	14/07/2006	---	HALKOR SA (CB)	0.810	2.53	#	0.790	21/08/2013	0.790	0.790	0.820	0.810	0.804	7560@0.800	527@0.810	---	2012	42,043	125	33,784.21	82,036.50	0.550	1.42	1755
36,748,909	0.730	---	---	---	15/12/2005	13/12/2006	---	HEL. SUGAR INDUSTRY SA (CB)	0.907	-2.58	€	0.931	21/08/2013	0.882	0.881	0.920	0.920	0.896	145@0.900	250@0.920	14.36	2012	2,495	13	2,235.85	33,331.26	0.754	1.74	3577
29,546,360	0.710	---	---	---	20/06/2008	23/08/2000	---	HELLENIC CABLES SA (CR)	1.58	-0.63	€	1.59	21/08/2013	1.66	1.52	1.66	1.58	1.57	131@1.55	193@1.58	---	2012	5,772	49	9,043.73	46,683.25	1.16	2.32	2733
65,368,563	0.790	0.15	0.11	0.09	03/06/2013	26/09/2012	---	HELLENIC EXCHANGES (CR)	5.91	-2.15	€	6.04	21/08/2013	6.04	5.88	6.04	5.91	5.93	1@5.91	1086@5.93	26.48	2012	45,577	204	270,023.74	386,328.21	3.75	6.97	8777
305,635,185	2.18	0.45	0.45	0.15	16/08/2013	01/10/2003	4795	HELLENIC PETROLEUM (CR)	7.36	0.82	#	7.30	21/08/2013	7.30	7.17	7.38	7.36	7.27	6@7.27	519@7.36	23.07	2012	28,007	241	203,686.57	2,249,474.96	6.20	9.30	537
305,732,436	0.410	---	---	---	08/07/2009	28/09/2011	---	HYGEIA SA (CR)	0.414	0.49	#	0.412	21/08/2013	0.410	0.409	0.419	0.419	0.412	1657@0.410	1765@0.419	---	2012	70,253	91	28,923.10	126,573.23	0.280	0.795	4533
53,155,053	0.440	---	---	---	21/07/2010	16/07/2008	---	IASO SA (CR)	1.07	3.88	#	1.03	21/08/2013	0.990	0.990	1.07	1.07	1.03	51@0.990	220@1.06	---	2012	1,030	11	1,062.39	56,875.91	0.850	1.58	4533
8,298,467	0.400	---	---	---	30/08/1993	08/05/2013	---	IDEAL GROUP SA (CR)	0.728	4.00	#	0.700	20/08/2013	0.728	0.728	0.728	0.728	0.730	230@0.630	100@0.727	-(6)-	2012	1	1	0.73	6,041.28	0.571	1.85	9574
28,580,100	0.400	0.05	0.02	---	20/08/2012	23/02/2007	---	IKTINOS HELLAS SA (CR)	1.50	0.67	#	1.49	21/08/2013	1.49	1.48	1.50	1.50	1.49	852@1.45	3400@1.49	14.52	2012	1,210	11	1,796.40	42,870.15	1.16	1.80	2353
9,000,000	0.880	---	---	---	15/05/2009	07/12/2010	---	ILYDA S.A. (CR)	0.559	---	↘	0.559	05/08/2013	---	---	---	---	---	---	2631@0.504	---	2012	---	---	---	5,031.00	0.269	0.650	9537
20,578,374	0.620	0.03	---	---	02/06/2011	05/05/1999	---	INFORM P. LYKOS SA (CR)	1.23	-0.81	€	1.24	21/08/2013	1.25	1.20	1.25	1.23	1.22											

Number of Outstanding Securities	Nominal Value	Dividends [1]			Date of Last Coupon		Note	Shares	Closing price	% change	Previous closing price/date	Open price	Price min	Price max	Last price	Avg price	Last Bid [7]	Last Ask [7]	P/E after	Year	Volume	Trades	Transactions Value	Company Mkt Value (thou. €)	Year low	Year high	Sector[4]	
		2010	2011	2012	Dividend [2]	Right																						
Main Market																												
23,154,250	1.36	---	---	---	12/08/2008	02/08/2010	---	INTRACOM CONSTR. (CR)	0.758	---	↘ 0.758	21/08/2013	0.763	0.758	0.763	0.758	0.758	200@0.740	470@0.735	---	2012	3,100	5	2,350.30	17,550.92	0.580	1.22	2357
133,025,996	1.41	---	---	---	03/07/2007	07/01/2002	---	INTRACOM HOLDINGS (CR)	0.439	-2.44	€ 0.450	21/08/2013	0.453	0.437	0.453	0.439	0.444	550@0.438	1000@0.444	---	2012	110,379	112	48,992.30	58,398.41	0.321	0.754	9578
158,961,721	0.300	0.0045	0.0035	0.0026	30/05/2013	14/11/2007	---	INTRALOT (CR)	1.61	---	↘ 1.61	21/08/2013	1.64	1.57	1.66	1.61	1.61	772@1.58	23843@1.61	85.94	2012	336,279	506	541,944.76	255,928.37	1.29	2.41	5752
77,654,850	0.580	0.04	---	---	01/07/2011	21/02/2003	---	J & P - AVAX SA (CR)	1.53	---	↘ 1.53	21/08/2013	1.51	1.47	1.53	1.53	1.50	265@1.53	2500@1.54	---	2012	7,042	51	10,547.44	118,811.92	1.05	1.90	2357
129,994,676	1.19	0.189	---	---	23/12/2010	07/09/2012	---	JUMBO SA (CR)	8.00	-4.19	€ 8.35	21/08/2013	8.30	7.92	8.33	8.00	8.10	200@7.94	2100@8.08	13.48	2012	67,331	351	545,683.66	1,039,957.41	4.85	9.07	3747
9,742,920	0.400	0.01	0.01	0.01	12/08/2013	14/07/2000	---	KARAMOLEGOS SA (CR)	1.30	---	↘ 1.30	25/07/2013	---	---	---	---	---	---	550@1.26	5.05	2012	---	---	---	12,665.80	1.07	1.83	3577
14,679,792	1.44	0.065	---	---	03/06/2011	04/09/2000	---	KARATZIS SA (CR)	4.46	---	↘ 4.46	21/08/2013	---	---	---	---	---	100@4.34	25@4.50	14.98	2012	---	---	---	65,471.87	2.55	4.90	2723
3,300,689	0.350	---	---	---	01/07/2004	21/07/1999	---	KEKROPS SA (CR)	1.70	-9.09	€ 1.87	21/08/2013	1.75	1.70	1.87	1.70	1.71	260@1.62	10@1.80	---	2012	1,862	41	3,177.46	5,611.17	1.54	3.79	8633
7,595,160	0.600	---	---	---	08/08/2008	18/08/2010	---	KIRIAKOULIS SHIPPING SA (CR)	0.982	-0.10	€ 0.983	21/08/2013	0.982	0.982	0.982	0.982	0.982	1000@0.885	671@0.983	68.43	2012	230,000	2	225,860.00	7,458.45	0.635	1.49	5759
23,648,700	0.330	0.05	---	---	13/07/2011	23/07/2008	---	KLEEMAN HELLAS SA (CR)	1.51	---	↘ 1.51	21/08/2013	---	---	---	---	---	270@1.45	320@1.51	---	2012	---	---	---	35,709.54	1.20	1.88	2757
40,219,218	0.300	---	---	---	25/05/2009	09/07/2013	---	KLOUKINAS - LAPPAS SA (CR)	0.621	-2.51	€ 0.637	21/08/2013	0.622	0.621	0.622	0.621	0.621	165@0.621	250@0.641	---	2012	800	2	497.10	24,976.13	0.583	0.970	2357
21,224,340	0.420	---	---	---	02/07/2008	25/04/2006	---	KORDELLOS BROS SA (CR)	0.236	---	↘ 0.236	16/08/2013	---	---	---	---	---	250@0.213	2300@0.240	---	2012	---	---	---	5,008.94	0.195	0.428	1757
13,450,000	0.390	---	---	---	25/06/2010	28/05/2008	---	KORRES (CR)	3.15	0.32	# 3.14	21/08/2013	3.14	3.09	3.15	3.15	3.10	1@3.09	83@3.15	---	2012	607	6	1,881.00	42,367.50	2.66	4.87	3767
29,480,000	0.420	---	---	---	19/07/2010	01/08/2007	---	KRETA FARM SA (CR)	0.592	-1.33	€ 0.600	21/08/2013	0.564	0.540	0.595	0.592	0.555	1000@0.545	500@0.585	---	2012	16,654	21	9,246.61	17,452.16	0.307	0.800	3577
33,065,136	0.440	---	---	---	06/07/2009	02/08/2013	---	KRI-KRI S.A. (CR)	1.88	---	↘ 1.88	21/08/2013	1.89	1.88	1.92	1.88	1.89	121@1.88	149@1.92	13.92	2012	2,345	12	4,429.64	62,162.46	1.52	2.06	3577
15,804,800	0.330	---	---	---	15/06/2010	12/03/2004	---	KTIMA KOSTAS LAZARIDIS SA (CR)	0.297	---	↘ 0.297	21/08/2013	---	---	---	---	---	230@0.269	100@0.295	---	2012	---	---	---	4,694.03	0.239	0.488	3535
22,945,139	1.00	---	---	---	19/08/2008	10/09/2012	---	KYRIAKIDIS MARBLES SA (CR)	0.899	0.33	# 0.896	21/08/2013	0.880	0.850	0.900	0.850	0.886	170@0.850	721@0.900	88.06	2012	4,309	6	3,816.60	20,627.68	0.630	1.04	2353
44,267,700	0.300	---	---	---	30/05/2007	18/09/2002	---	LAMDA DEVELOPMENT SA (CR)	3.84	---	↘ 3.84	21/08/2013	---	---	---	---	---	25@3.84	15@4.00	---	2012	---	---	---	169,987.97	3.58	6.48	8633
5,939,268	0.620	---	---	---	10/07/2003	03/01/2002	---	LANAKAM SA (CR)	0.639	---	↘ 0.639	14/08/2013	---	---	---	---	---	---	4385@0.576	---	2012	---	---	---	3,795.19	0.503	0.869	3763
7,734,375	1.00	---	---	---	09/07/2007	07/01/2011	---	LIVANIS SA (CR)	0.221	9.95	# 0.201	12/08/2013	0.221	0.221	0.221	0.221	0.221	---	1910@0.221	---	2012	10	1	2.21	1,709.30	0.144	0.363	5557
4,740,000	0.860	---	---	---	---	14/03/2003	---	LOGISMOS S.A. (CR)	0.496	---	↘ 0.496	06/08/2013	---	---	---	---	---	---	440@0.498	57.54	2011	---	---	---	2,351.04	0.373	1.23	9533
15,222,276	0.640	---	---	---	01/06/2010	02/08/2011	---	LOULIS MILLS SA (CR)	2.79	-0.71	€ 2.81	21/08/2013	2.71	2.70	2.79	2.79	2.71	350@2.72	200@2.76	-(6)-	2012	1,318	5	3,574.10	42,470.15	2.08	3.76	3577
770,328,883	0.300	---	---	---	26/04/2007	10/05/2013	---	MARFIN INVESTMENT GROUP (CR)	0.285	-5.32	€ 0.301	21/08/2013	0.301	0.285	0.302	0.285	0.292	69659@0.285	30000@0.293	---	2012	515,191	452	150,553.59	219,543.73	0.175	0.564	8775
9,819,370	0.690	---	---	---	14/08/2007	09/01/2004	---	MATHIOS REFRACTORY SA (CR)	0.271	6.27	# 0.255	21/08/2013	0.180	0.180	0.271	0.271	0.260	400@0.205	500@0.272	---	2012	6,172	11	1,603.21	2,661.05	0.180	0.510	2353
468,700	1.0556	---	---	---	21/03/2012	21/05/2004	---	MERMEREN KOMB. A.D. PR. (GDR)	4.13	---	↘ 4.13	21/08/2013	---	---	---	---	---	35@3.90	40@4.25	1.01	2012	---	---	---	1,935.73	3.73	5.19	1775
51,950,600	0.320	0.48	0.75	0.25	10/05/2013	21/10/2005	---	METKA (CR)	10.20	-3.13	€ 10.53	21/08/2013	10.64	10.20	10.64	10.20	10.28	21@10.18	150@10.28	14.70	2012	23,435	222	240,805.20	529,896.12	9.00	12.78	2757
10,500,000	0.900	---	---	---	24/06/2008	04/07/2012	---	MEVACO SA (CR)	1.42	---	↘ 1.42	13/08/2013	---	---	---	---	---	100@1.31	250@1.44	10.28	2012	---	---	---	14,910.00	1.01	1.58	2757
14,074,000	3.00	0.15	0.25	---	02/03/2012	23/07/2009	---	MIG REAL ESTATE (CR)	1.77	---	↘ 1.77	16/08/2013	---	---	---	---	---	---	300@1.76	---	2012	---	---	---	24,910.98	1.17	1.77	8671
6,200,000	0.500	---	---	---	22/06/2010	01/11/1995	---	MINERVA KNITWEAR SA (CB)	0.776	---	↘ 0.776	05/08/2013	---	---	---	---	---	---	3000@0.699	---	2012	---	---	---	4,811.20	0.530	0.948	3763
12,417,000	0.370	---	---	---	28/07/2008	06/09/2011	---	MLS MULTIMEDIA SA (CR)	3.00	---	↘ 3.00	21/08/2013	3.00	2.95	3.00	3.00	2.97	100@2.96	1924@2.98	39.51	2012	2,964	19	8,812.37	37,251.00	2.60	3.00	9537
4,588,137	16.00	---	---	---	30/06/2005	17/08/2011	---	MOCHLOS SA (CR)	1.69	-0.59	€ 1.70	21/08/2013	1.55	1.53	1.70	1.69	1.61	140@1.55	47@1.70	---	2012	1,558	51	2,503.27	7,753.95	1.12	2.60	2357
11,700,000	0.590	---	---	---	02/06/2009	24/07/2012	---	MOTODYNAMICS S.A. (CR)	0.374	---	↘ 0.374	20/08/2013	---	---	---	---	---	---	230@0.377	---	2012	---	---	---	4,375.80	0.211	0.640	5379
110,782,980	0.850	0.25	0.4	0.3	26/06/2013	05/11/2012	---	MOTOR OIL (CR)	7.44	---	↘ 7.44	21/08/2013	7.42	7.27	7.46	7.44	7.36	60@7.32	330@7.45	9.09	2012	48,273	326	355,141.31	824,225.37	6.80	9.37	533
116,915,862	1.07	---	---	---	11/05/2009	06/07/2011	---	MYTILINEOS HOLDINGS (CR)	4.24	-1.39	€ 4.30	21/08/2013	4.30	4.24	4.37	4.24	4.29	10124@4.24	2000@4.29	---	2012	151,723	404	650,962.34	495,723.25	3.38	5.65	1755
8,321,682	0.670	---	---	---	17/08/2007	23/11/1999	---	N. LEVEDERIS SA (CB)	0.347	---	↘ 0.347	14/08/2013	---	---	---	---	---	---	300@0.347	---	2012	---	---	---	3,836.09	0.198	0.658	1757
2,160,524	0.670	0.0435	0.0435	0.0436	16/08/2013	23/11/1999	---	N. LEVEDERIS SA (PB)	0.439	---	↘ 0.439	19/08/2013	---	---	---	---	---	---	560@0.396	---	2012	---	---	---	3,836.09	0.307	0.798	1757
11,510,102	0.890	---	---	---	24/06/2005	06/10/1999	---	NAFPAKTOS TEXTILE IND. SA (CB)	0.334	-0.30	€ 0.335	21/08/2013	0.303	0.303	0.334	0.334	0.319	170@0.303	1000@0.350	---	2012	2,020	7	643.68	3,844.37	0.232	0.500	3763
6,340,000	0.600	---	---	---	30/11/2009	12/07/2000	---	NAKAS MUSIC	0.759	-9.96	€ 0.843	21/08/2013																

Daily Official List																									Year: 134 Trading Day No: 157			
Section 2: Analytic Figures of Shares Transactions																									Thursday, 22 August, 2013			
Number of Outstanding Securities	Nominal Value	Dividends [1]			Date of Last Coupon Dividend [2]		Note	Shares	Closing price	% change	Previous closing price/date	Open price	Price min	Price max	Last price	Avg price	Last Bid [7]	Last Ask [7]	P/E after	Year	Volume	Trades	Transactions Value	Company Mkt Value (thou. €)	Year low	Year high	Sector[4]	
Main Market																												
2,396,785,994	0.300	---	---	---	16/05/2008	24/05/2013	---	NATIONAL BANK (CR)	2.96	2.78 #	2.88 21/08/2013	2.88	2.84	3.03	2.96	2.93	50060@2.95	5000@2.97	---	2012	947,715	1,062	2,773,721.05	7,094,486.54	1.83	9.87	8355	
23,935,280	0.300	---	---	---	29/06/2009	13/06/2000	---	NAYTEMPORIKI PUBLISHING SA(CR)	0.180	--- ↘	0.180 21/08/2013	---	---	---	---	---	500@0.167	500@0.196	---	2012	---	---	---	4,308.35	0.172	0.360	5557	
27,848,000	0.300	0.0301	0.0132	0.0137	21/08/2013	02/09/2003	---	NEWSPHONE HELLAS SA (CR)	0.300	-10.98 €	0.337 21/08/2013	0.301	0.300	0.301	0.300	0.301	119@0.300	390@0.337	7.35	2012	1,511	5	454.09	8,354.40	0.241	0.592	2791	
6,132,500	1.25	0.1	---	---	24/06/2011	19/06/2001	---	NEXANS HELLAS SA (CR)	2.30	--- ↘	2.30 20/08/2013	---	---	---	---	---	152@2.21	291@2.38	---	2012	---	---	---	14,104.75	2.14	3.11	2733	
63,697,153	1.34	---	---	---	08/07/2008	10/11/2008	---	NIREFS SA (CR)	0.438	0.46 #	0.436 21/08/2013	0.412	0.412	0.450	0.438	0.438	188@0.431	1000@0.440	---	2012	11,146	21	4,886.19	27,899.35	0.380	0.839	3573	
319,000,000	0.300	1.4177	0.72	0.57	28/06/2013	25/04/2001	---	OPAP (CR)	7.37	2.50 #	7.19 21/08/2013	7.19	7.17	7.37	7.37	7.26	17794@7.35	50@7.38	4.58	2012	498,093	748	3,617,573.74	2,351,030.00	5.49	8.27	5752	
490,150,389	2.39	0.1179	---	---	28/06/2011	18/06/1998	---	OTE (CR)	6.72	-0.44 €	6.75 21/08/2013	6.75	6.60	6.85	6.72	6.72	25000@6.65	8899@6.73	---	2012	619,233	982	4,160,600.80	3,293,810.61	4.26	7.80	6535	
25,000,000	2.00	0.02	0.01	0.05	18/07/2013	08/08/2003	---	P.P.A. S.A. (CR)	16.50	-2.02 €	16.84 21/08/2013	16.75	16.23	16.76	16.50	16.51	111@16.50	42@16.51	83.21	2012	2,897	101	47,813.76	412,500.00	14.59	21.68	2777	
4,971,466	1.46	---	---	---	04/07/2007	08/10/2003	---	PAIRIS SA (CR)	0.316	12.86 #	0.280 21/08/2013	0.309	0.309	0.316	0.316	0.310	970@0.196	646@0.314	---	2012	2,051	4	656.46	1,570.98	0.201	0.605	2723	
3,953,090	0.900	---	---	---	02/07/2001	05/12/2012	---	PAPERPACK (CR)	0.677	-0.30 €	0.679 21/08/2013	0.625	0.620	0.678	0.677	0.629	2100@0.640	50@0.677	---	2012	1,740	6	1,094.31	2,676.24	0.500	1.06	2723	
50,797,369	0.310	---	---	---	17/08/2000	12/10/2010	---	PAPOUTSANIS (CR)	0.598	8.73 #	0.550 21/08/2013	0.515	0.515	0.598	0.598	0.594	154@0.515	500@0.597	---	2012	21	2	12.48	30,376.83	0.361	0.750	3767	
20,210,127	1.53	---	---	---	27/06/1997	20/03/2000	---	PARNASSOS ENTERP. (CR)	0.188	-1.05 €	0.190 21/08/2013	0.190	0.185	0.200	0.188	0.189	399@0.186	2000@0.190	---	2012	45,155	78	8,547.34	3,799.50	0.183	0.698	8775	
7,070,400	0.930	---	---	---	18/05/2010	12/05/2011	---	PETROPOULOS PETROS (CR)	1.63	-0.61 €	1.64 21/08/2013	1.68	1.50	1.68	1.63	1.59	50@1.56	1095@1.62	---	2012	1,200	49	1,910.05	11,524.75	1.20	1.74	2753	
5,072,567,951	0.300	---	---	---	16/05/2008	05/06/2013	---	PIRAEUS BANK (CR)	0.990	-1.98 €	1.01 21/08/2013	1.01	0.988	1.02	0.990	1.00	4239@0.988	84974@0.995	---	2012	2,689,127	894	2,693,401.53	5,021,842.27	0.832	6.28	8355	
22,080,000	0.320	0.05	0.08	0.12	22/05/2013	03/10/2000	---	PLAISIO COMPUTERS SA (CR)	5.15	3.00 #	5.00 21/08/2013	4.95	4.95	5.15	5.15	5.00	10@4.92	60@5.14	11.47	2012	570	3	2,848.50	113,712.00	3.65	6.25	9572	
232,000,000	4.60	0.79	---	0.025	22/07/2013	12/12/2001	---	PPC (CR)	7.29	--- ↘	7.29 21/08/2013	7.29	7.23	7.39	7.29	7.31	7489@7.29	2500@7.30	98.93	2012	174,025	522	1,272,761.47	1,691,280.00	4.55	8.49	7535	
11,812,193	0.450	---	---	---	24/07/2009	15/11/2006	---	PROFILE SA (CR)	1.03	-1.91 €	1.05 21/08/2013	1.04	1.00	1.04	1.04	1.02	400@1.00	400@1.03	19.81	2012	6,505	32	6,613.80	12,166.56	0.761	1.26	9533	
24,319,250	0.300	---	---	---	09/07/2002	04/07/2007	---	PROODEFTIKH SA (CR)	0.131	-3.68 €	0.136 21/08/2013	0.131	0.131	0.131	0.131	0.131	1000@0.129	495@0.136	---	2012	3,000	2	393.00	3,185.82	0.054	0.223	2357	
6,836,280	1.88	---	---	---	18/07/2005	10/09/2010	---	QUALITY & RELIABILITY SA (CR)	1.72	2.38 #	1.68 21/08/2013	1.73	1.70	1.75	1.72	1.72	20@1.71	1658@1.72	---	2012	9,800	21	16,858.96	11,758.40	0.236	1.75	9533	
48,069,201	0.400	---	---	---	05/09/2008	21/06/2012	---	QUEST HOLDINGS (CR)	1.10	-0.90 €	1.11 21/08/2013	1.08	1.08	1.11	1.10	1.08	250@1.06	402@1.10	---	2012	1,250	17	1,355.60	52,876.12	0.936	1.39	9533	
57,434,884	1.31	---	---	---	05/06/2008	12/06/2009	---	REDS S.A. (CR)	0.519	4.22 #	0.498 21/08/2013	0.509	0.509	0.519	0.519	0.515	450@0.462	3315@0.519	---	2012	80	4	41.23	29,808.70	0.450	0.949	8633	
22,280,000	0.300	0.0329	---	---	11/04/2011	23/02/2007	---	REVOIL (CR)	0.850	1.19 #	0.840 21/08/2013	0.867	0.822	0.867	0.850	0.839	240@0.840	900@0.850	---	2012	16,923	31	14,199.07	18,938.00	0.345	1.20	5379	
7,500,000	0.560	---	---	---	25/06/2010	10/04/2013	---	S.KANAKIS SA (CR)	1.59	1.27 #	1.57 21/08/2013	1.59	1.55	1.60	1.59	1.58	153@1.54	958@1.59	11.30	2012	1,025	43	1,615.85	11,925.00	1.05	1.90	3577	
52,067,296	0.300	---	---	---	23/12/2003	24/01/2007	---	SELECTED TEXT. IND. ASSOC (CR)	0.265	-5.36 €	0.280 21/08/2013	0.265	0.265	0.265	0.265	0.265	1000@0.222	1910@0.280	---	2012	1,000	1	265.00	13,797.83	0.232	0.587	3763	
96,243,908	0.410	---	---	---	26/06/2008	17/07/2000	---	SIDENOR (CR)	1.55	-1.90 €	1.58 21/08/2013	1.59	1.55	1.62	1.55	1.57	8135@1.55	1010@1.59	---	2012	16,325	48	25,629.75	149,178.06	1.00	2.39	1757	
6,456,530	1.60	---	---	---	29/06/2001	02/08/2010	---	SPACE HELLAS SA (CR)	2.19	--- ↘	2.19 14/06/2013	---	---	---	---	---	---	4898@1.98	70.35	2012	---	---	---	14,139.80	1.25	2.20	9578	
28,438,268	0.300	---	---	---	21/08/2006	24/11/1999	---	SPIROY AGRICULTURE SA (CR)	0.280	-3.11 €	0.289 21/08/2013	0.280	0.270	0.282	0.280	0.279	420@0.261	1000@0.285	---	2012	10,310	11	2,875.25	7,962.72	0.261	0.557	1357	
33,125,000	5.00	---	---	---	03/07/2006	18/08/2010	---	TECHNICAL OLYMPIC SA (CR)	1.33	--- ↘	1.33 21/08/2013	1.40	1.23	1.40	1.33	1.26	5000@1.23	98@1.33	-(6)-	2012	4,961	22	6,259.67	44,056.25	1.18	2.71	3728	
109,319,070	0.300 (0.0399)	(0.0613)	---	---	28/05/2012	05/08/2013	---	TERNA ENERGY (CR)	2.82	-2.42 €	2.89 21/08/2013	2.88	2.82	2.90	2.82	2.84	5047@2.82	200@2.85	61.94	2012	57,202	337	162,576.72	308,279.78	2.24	3.73	7537	
36,300,000	1.12	0.114	0.188	0.162	16/08/2013	12/12/2007	---	THESSALONIKA WATER & SEWERAGE	5.58	-1.76 €	5.68 21/08/2013	5.68	5.53	5.79	5.58	5.63	327@5.58	50@5.70	11.45	2012	13,588	104	76,454.19	202,554.00	4.73	6.82	7577	
45,094,620	0.500	0.036	---	0.0467	10/06/2013	01/11/1999	---	THRACE PLASTICS SA (CR)	1.29	0.78 #	1.28 21/08/2013	1.33	1.28	1.35	1.29	1.31	1630@1.28	415@1.29	7.42	2012	3,185	16	4,162.19	58,172.06	1.07	1.64	1357	
77,063,568	4.00	0.0806	---	---	24/06/2011	25/06/2004	---	TITAN CEMENT (CR)	14.65	-0.81 €	14.77 21/08/2013	14.70	14.50	15.07	14.65	14.79	50@14.41	70@14.76	---	2012	20,711	192	306,371.85	1,181,963.99	11.31	16.00	2353	
7,568,960	4.00	0.1869	---	---	24/06/2011	25/06/2004	---	TITAN CEMENT CO. (PR)	7.00	--- ↘	7.00 20/08/2013	---	---	---	---	---	210@6.61	29@6.99	---	2012	---	---	---	1,181,963.99	5.75	7.27	2353	
10,080,000	3.00	0.21	0.4	1.5	17/07/2013	27/08/2001	---	TPA SA (CR)	24.30	--- ↘	24.30 21/08/2013	24.30	24.30	24.30	24.30	24.30	500@24.00	132@24.30	13.28	2012	968	2	23,522,					

Number of Outstanding Securities	Nominal Value	Dividends [1]			Date of Last Coupon		Note	Shares	Closing price	% change	Previous closing price/date	Open price	Price min	Price max	Last price	Avg price	Last Bid [7]	Last Ask [7]	P/E after	Year	Volume	Trades	Transactions Value	Company Mkt Value (thou. €)	Year low	Year high	Sector[4]
		2010	2011	2012	Dividend [2]	Right																					

Main Market

4,968,600	2.88	---	---	---	01/07/1998	14/12/1998	---	VIS SA (CR)	0.825	---	↘	0.825	05/08/2013	---	---	---	---	---	320@0.743	91@0.905	---	2012	---	---	---	---	4,099.10	0.490	1.01	2723
6,325,000	0.600	---	---	---	19/07/2010	25/07/2012	---	VOGIATZOGLOU SYSTEMS SA (CR)	0.999	6.73	#	0.936	21/08/2013	0.999	0.999	0.999	0.999	1.00	100@0.848	180@0.999	---	2012	1	1	1.00	6,318.68	0.812	1.21	2797	

Exchange Traded Funds (ETFs)

5,848,618	---	---	---	---	24/01/2008	---	---	ALPHA ETF FTSE Athex Large Cap	3.08	0.07	#	3.08	21/08/2013	3.08	3.08	3.08	3.08	3.08	100@3.01	46@3.06	---	---	263	1	810.57	-	2.49	3.99	11000
294,878	---	---	---	---	29/06/2009	---	---	NBGAM ETF	9.96	-0.40	↘	10.00	20/08/2013	9.96	9.96	9.96	9.96	9.96	---	---	---	---	2	1	19.92	-	8.23	11.75	11000
388,550	---	---	---	---	03/11/2010	---	---	NBGAM ETF GREECE & TURKEY 30	7.87	---	↘	7.87	06/08/2013	---	---	---	---	---	---	---	---	---	---	---	---	-	7.56	10.11	11000

Low Dispersion

14,000,000	3.80	---	---	---	23/04/2010	29/06/1999	4815	ALPHA REAL ESTATE SA(CR)	6.57	0.77	#	6.52	21/08/2013	6.99	6.56	6.99	6.98	6.57	500@6.55	250@6.89	13.60	2012	581	6	3,815.99	91,980.00	6.00	7.00	8637
63,900,000	3.00	---	---	---	23/06/2003	04/11/2008	4816	ASTIR PALACE SA (CR)	3.46	1.47	#	3.41	21/08/2013	3.49	3.43	3.49	3.43	3.46	350@3.42	750@3.43	---	2012	2,150	15	7,428.50	221,094.00	3.40	4.95	5753
49,152,904	0.800	---	---	---	09/08/2004	08/03/2006	4814	ATHENA SA (CR)	0.275	---	↘	0.275	12/08/2013	---	---	---	---	---	---	200@0.250	---	2012	---	---	---	13,517.05	0.094	0.340	2357
191,660,320	0.300	---	---	---	20/07/2009	29/12/2010	4817	ATTICA HOLDINGS (CR)	0.296	-12.94	↘	0.340	21/08/2013	0.300	0.278	0.300	0.278	0.296	960@0.278	500@0.300	---	2012	620	3	183.36	56,731.45	0.241	0.588	5759
15,300,000	0.300	---	---	---	30/07/2009	13/12/1999	4893	ATTICA PUBLICATIONS SA (CR)	0.520	---	↘	0.520	14/08/2013	---	---	---	---	---	---	---	---	2012	---	---	---	7,956.00	0.520	1.45	5557
8,418,750	0.300	---	0.15	0.29	05/06/2013	27/06/2012	4828	GEKE SA (CB)	6.70	---	↘	6.70	21/08/2013	---	---	---	---	---	100@6.70	190@7.19	21.04	2012	---	---	---	56,405.63	6.59	6.79	5753
68,322,221	1.00	---	---	---	08/03/2002	08/04/2013	4986	GENIKI BANK (CR)	1.72	-20.00	↘	2.15	13/08/2013	1.72	1.72	1.72	1.72	1.72	4@1.72	---	---	2012	2	1	3.44	117,514.22	1.72	8.85	8355
71,082,707	1.70	---	---	---	01/07/2010	21/11/2012	4820	HERACLES GEN.CEMENT CO. (CR)	1.39	-0.71	↘	1.40	21/08/2013	1.39	1.39	1.39	1.39	1.39	757@1.39	100@1.43	---	2012	1,743	10	2,422.77	98,804.96	1.20	1.80	2353
13,404,440	8.63	---	---	---	02/04/2001	06/03/1992	4822	IONIAN HOTELS SA (CR)	8.81	---	↘	8.81	09/08/2013	---	---	---	---	---	100@7.50	98@10.50	---	2012	---	---	---	118,093.12	8.40	13.00	5753
2,760,000	7.70	6.3291	7.6	8.52	26/06/2013	16/07/1990	4823	KARELIA TOBACCO CO. SA (CB)	200.00	8.99	#	183.50	21/08/2013	200.00	200.00	200.00	200.00	200.00	1@190.00	5@200.00	12.15	2012	222	18	44,400.00	552,000.00	110.00	200.00	3785
17,000,000	0.600	---	---	---	12/06/2008	07/03/2000	4941	KATHIMERINI SA (CR)	0.723	0.14	#	0.722	21/08/2013	0.710	0.710	0.750	0.750	0.723	1000@0.720	48@0.750	---	2012	319	7	230.49	12,291.00	0.321	1.00	5557
21,364,000	1.12	---	---	---	05/07/2010	10/08/2005	4824	LAMPASA HOTEL SA (CR)	18.50	0.71	#	18.37	21/08/2013	18.50	18.50	18.50	18.50	18.50	100@18.50	500@19.00	---	2012	50	1	925.00	395,234.00	15.00	18.50	5753
6,700,000	0.800	---	---	---	19/07/2010	29/08/2012	4894	MILLS KEPENOS (CR)	1.10	---	↘	1.10	21/08/2013	---	---	---	---	---	100@0.890	140@1.32	6.54	2012	---	---	---	7,370.00	0.777	1.69	3577
70,926,000	2.25	---	---	---	25/07/2008	21/06/2000	4825	MINOAN LINES SA (CR)	1.98	1.02	#	1.96	21/08/2013	1.99	1.94	1.99	1.99	1.98	120@1.95	11@1.99	---	2012	4,022	12	7,952.68	140,433.48	1.70	2.10	5759
17,240,776	0.370	---	---	---	14/07/2005	30/09/2003	4827	PERSEUS SA (CR)	0.176	---	↘	0.176	12/08/2013	---	---	---	---	---	---	990@0.211	10.26	2012	---	---	---	3,034.38	0.033	0.325	3577

Surveillance

33,301,715	0.320	---	---	---	27/06/2003	08/07/2009	4978	AEGEK (CR)	0.108	---	↘	0.108	21/08/2013	---	---	---	---	---	1510@0.093	16000@0.105	---	2012	---	---	---	3,596.59	0.089	0.184	2357
14,870,100	0.300	---	---	---	15/05/2008	26/09/2011	4844	ALPHA GRISSIN S.A. (CR)	0.225	---	↘	0.225	09/08/2013	---	---	---	---	---	---	2500@0.229	---	2012	---	---	---	3,345.77	0.080	0.328	9533
215,246,452	0.300	---	---	---	25/06/2001	24/09/2001	4446	ALTEC SA (CR)	0.038	8.57	#	0.035	21/08/2013	0.031	0.031	0.040	0.040	0.038	5000@0.034	10006@0.042	---	2012	11,575	7	444.33	8,179.37	0.021	0.062	9533
2,969,713	0.300	---	---	---	02/07/2008	28/02/2011	4958	ANEK LINES SA (PR, issue '96)	0.300	---	↘	0.300	13/08/2013	---	---	---	---	---	---	---	---	2012	---	---	---	16,167.15	0.300	0.770	5759
312,163	0.300	---	---	---	02/07/2008	28/02/2011	4959	ANEK LINES SA (PR, issue '90)	1.43	---	↘	1.43	16/08/2013	---	---	---	---	---	---	---	---	2012	---	---	---	16,167.15	1.43	1.78	5759
185,373,016	0.300	---	---	---	02/07/2008	28/02/2011	4957	ANEK LINES SA (CR)	0.080	-1.24	↘	0.081	21/08/2013	0.080	0.080	0.080	0.080	0.080	3000@0.076	2000@0.088	---	2012	78,159	22	6,252.72	16,167.15	0.071	0.270	5759
81,644,555	0.300	---	---	---	01/07/2008	02/09/2002	4630	ATTI - KAT SA (CR)	0.040	---	↘	0.040	16/08/2013	0.040	0.040	0.040	0.040	0.040	2000@0.033	7387@0.037	---	2012	6,000	5	240.00	3,265.78	0.022	0.088	2357
20,255,805	0.300	---	---	---	22/08/2006	02/08/2010	4881	AXON HOLDING SA (CR)	0.072	---	↘	0.072	21/08/2013	---	---	---	---	---	4000@0.058	---	---	2012	---	---	---	1,458.42	0.070	0.192	4533
17,579,754	4.16	---	---	---	18/08/2006	02/08/2010	4885	BIOTER SA (CR)	0.185	---	↘	0.185	16/08/2013	---	---	---	---	---	100@0.148	840@0.170	---	2012	---	---	---	3,252.25	0.059	0.194	2357
12,431,980	0.720	---	---	---	20/06/2003	10/07/2003	4559	COMPUCON SA (CR)	0.090	---	↘	0.090	01/08/2013	---	---	---	---	---	---	4916@0.085	---	2012	---	---	---	1,118.88	0.031	0.100	9537
30,159,583	0.470	---	---	---	26/06/2008	29/12/2010	4962	DIAS A/C (CR)	0.839	---	↘	0.839	03/06/2013	---	---	---	---	---	---	1500@0.672	---	2012	---	---	---	25,303.89	0.420	0.845	3573
15,878,748	0.480	---	---	---	10/07/2006	22/03/2004	4960	DOMIKI KRITIS SA (CR)	0.499	---	↘	0.499	21/08/2013	0.499	0.499	0.499	0.499	0.499	---	150@0.489	---	2012	34	4	16.96	7,923.50	0.310	0.800	2357

Number of Outstanding Securities	Nominal Value	Dividends [1]			Date of Last Coupon Dividend [2]		Note	Shares	Closing price	% change	Previous closing price/date	Open price	Price min	Price max	Last price	Avg price	Last Bid [7]	Last Ask [7]	P/E after	Year	Volume	Trades	Transactions Value	Company Mkt Value (thou. €)	Year low	Year high	Sector[4]
----------------------------------	---------------	---------------	--	--	----------------------------------	--	------	--------	---------------	----------	-----------------------------	------------	-----------	-----------	------------	-----------	--------------	--------------	-----------	------	--------	--------	--------------------	-----------------------------	----------	-----------	------------

Surveillance

3,961,300	1.28	---	---	---	29/06/2004	03/08/2000	4808	DUROS SA (CR)	0.970	---	↘	0.970	19/07/2013	---	---	---	---	---	10@0.800	---	2012	---	---	---	3,842.46	0.120	0.970	3763	
7,085,888	1.59	---	---	---	02/07/1996	06/09/2010	4690	ELVIEMEK (CR)	3.00	---	↘	3.00	05/02/2013	---	---	---	---	---	100@3.60	-(6)-	2012	---	---	---	21,257.66	3.00	3.58	8633	
6,000,000	0.600	---	---	---	13/06/2008	08/04/2004	4886	EUROBROKERS S.A. (CR)	0.052	---	↘	0.052	27/06/2013	---	---	---	---	2500@0.045	---	2012	---	---	---	312.00	0.052	0.333	8534		
7,347,600	0.600	---	---	---	02/06/2010	25/02/2010	4889	EUROCONSULTANTS S.A. (CR)	2.60	---	↘	2.60	14/08/2013	---	---	---	---	---	290@2.62	---	2012	---	---	---	19,103.76	2.12	2.64	2791	
21,820,410	0.800	---	---	---	22/05/2008	02/08/2011	4882	EUROMEDICA SA (CR)	0.370	---	↘	0.370	20/08/2013	---	---	---	---	180@0.296	2959@0.370	---	2012	---	---	---	8,073.55	0.288	0.613	4533	
12,952,610	0.300	---	---	---	04/10/2012		4846	Forthnet (CR)	0.780	-19.51	€	0.969	21/08/2013	0.825	0.776	0.825	0.780	0.780	500@0.823	---	2011	53,338	45	41,616.07	10,103.04	0.350	1.43	9535	
179,707,771	0.300	---	---	---	27/06/2002	01/11/2011	4847	HELLAS ONLINE SA (CR)	0.362	---	↘	0.362	14/08/2013	0.362	0.362	0.362	0.362	0.362	1500@0.311	47@0.362	---	2012	1,000	2	362.00	65,054.21	0.271	0.709	9537
13,692,227	1.47	---	---	---	07/07/2006	08/10/1999	4845	HELLENIC FABRICS SA (CR)	0.216	-9.62	€	0.239	21/08/2013	0.192	0.192	0.239	0.239	0.216	330@0.193	31@0.239	---	2012	2,000	7	431.00	2,957.52	0.180	0.354	3763
30,390,000	0.310	---	---	---	18/08/2008	29/12/2006	4447	HELLENIC FISHFARMING SA (CR)	0.125	---	↘	0.125	21/08/2013	---	---	---	---	---	750@0.124	29.30	2012	---	---	---	3,798.75	0.039	0.137	3573	
1,540,000	0.600	---	---	---	08/08/1994	19/09/2000	4855	J.BOUTARIS & SON HOLD. (PB)	0.024	---	↘	0.024	05/08/2013	---	---	---	---	4000@0.025	---	2012	---	---	---	1,547.74	0.024	0.201	3535		
25,179,640	0.600	---	---	---	08/08/1994	19/09/2000	4854	J.BOUTARIS & SON HOLD. SA (CB)	0.060	---	↘	0.060	20/08/2013	---	---	---	---	3000@0.049	1500@0.072	---	2012	---	---	---	1,547.74	0.040	0.132	3535	
7,125,216	0.650	---	---	---	01/07/2005	14/12/1999	4955	KRE.KA SA (CR)	0.252	---	↘	0.252	12/08/2013	---	---	---	---	---	797@0.249	---	2012	---	---	---	1,795.55	0.144	0.580	3573	
51,081,030	1.00	---	---	---	20/08/2007	03/09/2007	4912	LAVIPHARM SA (CR)	0.134	5.51	#	0.127	21/08/2013	0.134	0.134	0.134	0.134	0.134	2000@0.120	2640@0.134	---	2012	1,200	2	160.80	6,844.86	0.101	0.268	4577
322,925,288	0.300	---	---	---	23/05/2007	10/04/2000	4554	M.J. MAILLIS SA (CR)	0.067	-4.29	€	0.070	20/08/2013	0.069	0.066	0.069	0.067	0.067	5000@0.060	3000@0.075	---	2012	28,696	12	1,924.27	21,635.99	0.066	0.150	2723
9,567,289	0.300	---	---	---	01/07/2004	19/11/2007	4944	MARAC ELECTRONICS (CR)	0.114	---	↘	0.114	19/08/2013	---	---	---	---	---	---	---	---	2012	---	---	---	1,090.67	0.068	0.409	9578
4,178,856	1.58	0.22	---	---	21/07/2011	28/07/2004	4983	MEDICON S.A (CR)	0.473	-19.83	€	0.590	19/08/2013	0.473	0.473	0.473	0.473	0.473	319@0.474	10@0.679	---	2012	350	3	165.55	1,976.60	0.446	1.18	4535
66,937,526	0.700	---	---	---	13/08/2010	21/05/2003	4995	MICHANIKI SA (CR)	0.098	-4.85	€	0.103	21/08/2013	0.104	0.097	0.104	0.101	0.098	2254@0.097	1549@0.101	---	2012	8,494	14	834.92	9,130.81	0.085	0.370	2357
25,968,987	0.700	---	---	---	13/08/2010	21/05/2003	4996	MICHANIKI SA (PR)	0.099	-1.00	€	0.100	21/08/2013	0.100	0.097	0.100	0.100	0.099	2350@0.081	1587@0.100	---	2012	2,000	8	197.00	9,130.81	0.065	0.268	2357
255,459,600	0.300	---	---	---	26/06/2000	03/12/2010	4833	NEL SA (CR)	0.035	---	↘	0.035	21/08/2013	0.029	0.029	0.037	0.037	0.035	14972@0.029	3700@0.037	---	2012	693	2	24.10	8,941.09	0.012	0.158	5759
20,231,328	0.600	---	---	---	15/07/2008	25/06/2004	4879	NIKAS SA (CR)	0.259	-0.77	€	0.261	21/08/2013	0.260	0.250	0.260	0.250	0.259	4675@0.250	2000@0.260	---	2012	2,325	2	601.25	5,239.91	0.250	0.530	3577
14,967,940	0.500	---	---	---	21/05/2008	04/01/2008	4956	PASAL DEVELOPMENT S.A. (CR)	0.213	19.66	#	0.178	16/08/2013	0.213	0.213	0.213	0.213	0.213	820@0.143	6588@0.178	---	2012	440	2	93.72	3,188.17	0.120	0.414	8633
40,946,303	0.360	---	---	---	18/07/2005	27/11/2007	4856	PC SYSTEMS SA (CR)	0.097	---	↘	0.097	16/08/2013	---	---	---	---	---	49@0.078	---	2012	---	---	---	3,971.79	0.057	0.180	9533	
18,750,000	0.300	---	---	---	02/07/2001	31/12/2012	4985	PEGASUS PUBLISHING S.A. (CR)	0.331	---	↘	0.331	06/08/2013	---	---	---	---	---	14@0.265	---	2012	---	---	---	6,206.25	0.044	0.610	5557	
28,056,518	0.530	---	---	---	04/07/2007	19/07/2006	4750	SATO SA (CR)	0.088	---	↘	0.088	14/08/2013	---	---	---	---	---	250@0.071	6100@0.086	---	2012	---	---	---	2,468.97	0.025	0.115	3726
36,235,184	1.00	---	---	---	01/07/2008	30/07/2012	4961	SELONDA AQUACULTURE SA (CR)	0.155	---	↘	0.155	21/08/2013	---	---	---	---	---	1000@0.160	2000@0.185	---	2012	---	---	---	5,616.45	0.119	0.600	3573
7,914,480	2.50	---	---	---	23/06/2008	29/06/2011	4888	SFAKIANAKIS SA (CR)	0.620	---	↘	0.620	13/08/2013	---	---	---	---	---	2958@0.550	452@0.680	---	2012	---	---	---	4,906.98	0.364	0.763	5379
60,221,300	0.400	---	---	---	01/07/2002	01/11/2010	4880	SHELMAN SA (CR)	0.130	---	↘	0.130	01/08/2013	---	---	---	---	---	5200@0.120	---	2011	---	---	---	7,828.77	0.098	0.280	2353	
10,000,000	1.35	---	---	---	24/06/2008	10/05/2005	4887	SIDMA SA (CR)	0.800	---	↘	0.800	02/08/2013	---	---	---	---	---	1000@0.640	---	2012	---	---	---	8,000.00	0.420	0.920	1757	
29,060,950	0.340	---	---	---	20/08/2007	24/10/2001	4884	SPIDER METAL INDUSTRY SA (CR)	0.022	---	↘	0.022	14/08/2013	---	---	---	---	---	2000@0.018	---	2012	---	---	---	639.34	0.022	0.097	2757	
100,793,000	0.300	---	---	---	16/07/2009	05/08/2013	---	TELETIPOS SA (CR)	0.263	9.58	#	0.240	21/08/2013	0.240	0.240	0.280	0.280	0.263	2000@0.246	3117@0.280	---	2012	435	4	114.56	26,508.56	0.118	0.600	5553
3,229,566	0.320	---	---	---	22/06/2005	23/09/1999	4629	VARANGIS AVEPE S.A. (CR)	0.780	---	↘	0.780	12/08/2013	---	---	---	---	---	7321@0.780	---	2012	---	---	---	2,519.06	0.206	0.840	3726	
17,175,132	0.300	---	---	---	25/06/2002	21/06/2013	4997	VARVARESSOS SA (CB)	0.048	-12.73	€	0.055	13/08/2013	0.048	0.048	0.048	0.048	0.048	480@0.048	20@0.050	---	2012	20	2	0.96	824.41	0.028	0.181	3763
13,191,620	0.620	---	---	---	04/08/2010	09/09/2002	4977	YALCO - CONSTANTINOU SA (CB)	0.128	---	↘	0.128	20/08/2013	---	---	---	---	---	930@0.103	1000@0.153	---	2012	---	---	---	1,688.53	0.106	0.210	3722

Under Deletion																													
5,025,000	0.300	---	---	---	05/07/2005	14/03/2002	4963	ALSINCO S.A (CR)	0.014	---	↘	0.014	18/07/2013	---	---	---	---	---	---	---	---	2012	---	---	---	70.35	0.006	0.185	3763
766,000	2.83	---	---	---	01/07/2004	11/12/2012	4937	TRIA ALFA SA (CR)	3.51	---	↘	3.51	10/07/2013	---	---	---	---	---	---	50@3.50	---	2012	---	---	---	3,068.41	1.30	4.70	3763
245,000	2.83	---	---	---	19/07/2010	11/12/2012	4938	TRIA ALFA SA (PR)	1.55	---	↘	1.55	16/08/2013	---	---	---	---	---	---	48@1.55	---	2012	---	---	---	3,068.41	0.501	1.93	3763

Number of Outstanding Securities	Nominal Value	Dividends [1]			Date of Last Coupon		Note	Shares	Closing price	% change	Previous closing price/date	Open price	Price min	Price max	Last price	Avg price	Last Bid [7]	Last Ask [7]	P/E after	Year	Volume	Trades	Transactions Value	Company Mkt Value (thou. €)	Year low	Year high	Sector[4]
		2010	2011	2012	Dividend [2]	Right																					
Under Suspension																											
49,030,011	0.300	---	---	---	19/07/2010	12/05/2011	4875	ALAPIS (CR)	0.041	---	0.041	30/03/2012	---	---	---	---	---	---	---	---	---	---	---	2,010.23	0.041	0.041	4577
1,750,955,549	0.600	---	---	---	19/05/2008	08/12/2011	4911	ATE (CR)	0.155	---	0.155	30/07/2012	---	---	---	---	---	---	---	---	---	---	---	271,398.11	0.155	0.155	8355
21,382,067	0.300	---	---	---	02/10/2006	15/02/2006	4628	ATERMON (CR)	0.120	---	0.120	31/03/2010	---	---	---	---	---	---	---	---	---	---	---	2,565.85	0.120	0.120	5555
105,423,498	0.510	---	---	---	01/07/2004	28/12/2005	4920	AVENIR S.A. (CR)	0.046	---	0.046	30/08/2012	---	---	---	---	---	---	---	---	---	---	---	4,849.48	0.046	0.046	5752
33,930,000	0.300	---	---	---	03/07/2006	30/05/2001	4865	BABIS VOVOS SA (CR)	0.304	---	0.304	30/03/2012	---	---	---	---	---	---	---	---	---	---	---	10,314.72	0.304	0.304	8633
20,121,710	1.21	---	---	---	27/07/1992	12/03/2003	4970	BALKAN R.E. (CR)	0.220	---	0.220	31/05/2013	---	---	---	---	---	---	---	---	---	---	---	4,426.78	0.195	0.438	8633
1,795,140,547	1.00	(0.0615)	---	---	31/05/2011	19/04/2012	4951	BANK OF CYPRUS (CR)	0.207	---	0.207	15/03/2013	---	---	---	---	5000@0.170	---	---	---	---	---	---	371,594.09	0.180	0.282	8355
21,920,570	0.300	---	---	---	03/07/2007	13/12/1999	4702	CARDASSILARIS SA (CR)	0.140	---	0.140	30/11/2010	---	---	---	---	---	---	---	---	---	---	---	3,068.88	0.140	0.140	3577
54,547,634	0.500	---	---	---	25/04/2005	21/01/2009	4860	CH.TEGOPOULOS PUBL. SA (CR)	0.038	---	0.038	23/03/2012	---	---	---	---	---	---	---	---	---	---	---	2,072.81	0.038	0.038	5557
33,718,750	0.300	---	---	---	28/05/2008	21/01/2013	4998	DOL SA (CR)	0.640	---	0.640	25/07/2013	---	---	---	---	---	3118@0.700	---	---	---	---	---	21,580.00	0.244	0.759	5557
7,847,611	1.20	---	---	---	01/08/2007	28/09/2011	4939	EDRASIS - C. PSALLIDAS SA (CR)	0.150	---	0.150	19/11/2012	---	---	---	---	---	---	---	---	---	---	---	1,177.14	0.150	0.150	2357
5,750,000	0.300	---	---	---	12/12/2008	12/12/2011	4929	ELECTRONIKI ATHINON SA (CR)	0.480	---	0.480	07/09/2012	---	---	---	---	---	---	---	---	---	---	---	2,760.00	0.480	0.480	5375
24,605,397	0.400	---	---	---	29/06/1995	27/05/2002	4651	EMPORIKOS DESMOS SA (CR)	0.080	---	0.080	28/05/2010	---	---	---	---	---	---	---	---	---	---	---	2,134.04	0.080	0.080	3722
1,182,903	0.400	---	---	---	01/07/1996	27/05/2002	4652	EMPORIKOS DESMOS SA (PR)	0.140	---	0.140	28/09/2009	---	---	---	---	---	---	---	---	---	---	---	2,134.04	0.140	0.140	3722
8,593,750	0.300	---	---	---	01/06/2009	20/06/2007	4876	FASHION BOX (CR)	1.30	---	1.30	23/02/2012	---	---	---	---	---	---	---	---	---	---	---	11,171.88	1.30	1.30	3763
7,326,648	1.00	---	---	---	26/07/2006	24/07/2001	4921	FINTEXPORT SA (CR)	0.328	---	0.328	29/06/2012	---	---	---	---	---	---	---	---	---	---	---	2,403.14	0.328	0.328	3763
20,860,000	0.300	---	---	---	03/07/2000	13/11/2007	4848	IKONA - IHOS SA (CR)	0.072	---	0.072	02/12/2011	---	---	---	---	---	---	---	---	---	---	---	1,501.92	0.072	0.072	5379
36,765,744	0.350	---	---	---	16/08/2006	06/06/2011	4869	IMPERIO SA (CR)	0.026	---	0.026	30/03/2012	---	---	---	---	---	---	---	---	---	---	---	955.91	0.026	0.026	2777
24,619,524	0.500	---	---	---	10/10/1986	30/12/2002	4914	KERAMIA-ALLATINI (CR)	0.088	---	0.088	27/08/2012	---	---	---	---	---	---	---	---	---	---	---	2,166.52	0.088	0.088	8633
7,840,373	1.20	---	---	---	18/07/2002	05/03/2003	4765	KLONATEX SA (PR)	0.080	---	0.080	09/05/2011	---	---	---	---	---	---	---	---	---	---	---	1,453.75	0.080	0.080	3763
20,663,047	1.20	---	---	---	21/08/2000	05/03/2003	4764	KLONATEX SA (CR)	0.040	---	0.040	09/05/2011	---	---	---	---	---	---	---	---	---	---	---	1,453.75	0.040	0.040	3763
17,544,600	0.600	---	---	---	03/07/2000	01/08/2000	4868	KOYMBAS SYNERGY GROUP (CR)	0.132	---	0.132	29/03/2012	---	---	---	---	---	---	---	---	---	---	---	2,315.89	0.132	0.132	8775
15,015,000	1.60	---	---	---	01/07/2002	02/02/2000	4603	MAXIM C.M. PERTSINIDIS SA (CB)	0.100	---	0.100	30/11/2009	---	---	---	---	---	---	---	---	---	---	---	1,501.50	0.100	0.100	3763
13,555,100	1.00	---	---	---	08/07/2005		4576	MICROLAND COMPUTERS SA (CR)	0.640	---	0.640	14/07/2009	---	---	---	---	---	---	---	---	---	---	---	8,675.26	0.640	0.640	5379
23,463,874	0.800	---	---	---	23/05/2003	21/12/1999	4918	NEORION SA (CR)	0.125	---	0.125	28/08/2012	---	---	---	---	---	---	---	---	---	---	---	2,932.98	0.125	0.125	2753
42,501,273	0.300	---	---	---	26/06/2007	10/08/2009	4993	NUTRIART (CR)	0.049	---	0.049	21/06/2013	---	---	---	---	---	---	---	---	---	---	---	2,082.56	0.038	0.114	3577
25,583,146	0.300	---	---	---	25/06/2001	03/12/2008	4723	PETZETAKIS SA (CR)	0.260	---	0.260	28/01/2011	---	---	---	---	---	---	---	---	---	---	---	6,651.62	0.260	0.260	1357
9,550,386	0.500	---	---	---	01/07/1997	12/06/2008	4626	PRAXITELIO SA (CR)	0.390	---	0.390	11/03/2010	---	---	---	---	---	---	---	---	---	---	---	4,430.09	0.390	0.390	4533
1,306,368	0.500	---	---	---	01/07/1997	12/06/2008	4627	PRAXITELIO SA (PR)	0.540	---	0.540	15/12/2009	---	---	---	---	---	---	---	---	---	---	---	4,430.09	0.540	0.540	4533
62,683,822	0.300	---	---	---	27/05/2008	09/01/2006	4830	PROTON BANK S.A. (CR)	0.180	---	0.180	07/10/2011	---	---	---	---	---	---	---	---	---	---	---	11,283.09	0.180	0.180	8355
23,059,688	0.660	---	---	---	03/07/2008	06/08/2004	4864	RIDENCO SA (CR)	0.032	---	0.032	30/03/2012	---	---	---	---	---	---	---	---	---	---	---	737.91	0.032	0.032	3765
51,083,993	1.00	---	---	---	15/07/2008	06/08/2003	4867	SANYO HELLAS HOLD. (CR)	0.020	---	0.020	30/03/2012	---	---	---	---	---	---	---	---	---	---	---	1,021.68	0.020	0.020	3722
51,334,286	0.320	---	---	---	03/07/2000	18/12/2007	4548	SAOS (CR)	0.780	---	0.780	27/03/2009	---	---	---	---	---	---	---	---	---	---	---	40,040.74	0.780	0.780	2773
26,408,040	0.300	---	---	---	01/07/1997	26/05/1999	4464	SHEET STEEL SA (CR)	0.120	---	0.120	28/11/2008	---	---	---	---	---	---	---	---	---	---	---	3,168.96	0.120	0.120	1757
26,262,660	0.900	---	---	---	01/07/2008	24/02/2011	4954	SPRIDER STORES (CR)	0.031	---	0.031	28/03/2013	---	---	---	---	---	---	---	---	---	---	---	814.14	0.025	0.055	5371
144,688,060	0.600	---	---	---	21/04/2008	10/03/2010	4982	T BANK (CR)	0.048	---	0.048	30/11/2011	---	---	---	---	---	---	---	---	---	---	---	6,945.03	0.048	0.048	8355
6,523,780	0.530	---	---	---	01/07/2002	06/03/2001	4971	TECHNICAL PUBLICATIONS SA (CR)	0.006	---	0.006	29/05/2013	---	---	---	---	---	---	---	---	---	---	---	39.14	0.006	0.347	5557
13,920,000	0.320	---	---	---	19/11/2001	01/08/2000	4726	TEXAPRET SA (CR)	0.080	---	0.080	23/02/2011	---	---	---	---	---	---	---	---	---	---	---	1,113.60	0.080	0.080	3763

Number of Outstanding Securities	Nominal Value	Dividends [1]			Date of Last Coupon		Note	Shares	Closing price	% change	Previous closing price/date	Open price	Price min	Price max	Last price	Avg price	Last Bid [7]	Last Ask [7]	P/E after	Year	Volume	Trades	Transactions Value	Company Mkt Value (thou. €)	Year low	Year high	Sector[4]
--	------------------	---------------	--	--	---------------------	--	------	--------	------------------	----------	--------------------------------	---------------	--------------	--------------	---------------	--------------	-----------------	--------------	--------------	------	--------	--------	-----------------------	--------------------------------	-------------	--------------	---------------

Under Suspension

284,465,964	3.70	---	---	---	20/06/2008	15/06/2009	4913	TT HELLENIC POSTBANK (CR)	0.168	---	0.168	30/08/2012	---	---	---	---	---	---	---	---	---	---	---	47,790.28	0.168	0.168	8355
89,616,200	0.300	---	---	---	21/08/2000	28/06/2007	4616	UNITED TEXTILES (CR)	0.050	---	0.050	25/02/2010	---	---	---	---	---	---	---	---	---	---	---	4,480.81	0.050	0.050	3763
71,683,906	0.400	---	---	---	15/06/2005	05/02/2008	4953	XATZIOANNOU (CR)	0.026	---	0.026	28/03/2013	---	---	---	---	---	---	---	---	---	---	---	1,863.78	0.020	0.085	3763

Shares' Notes

Code	Note text
()	- Adjusted dividends.
*	- Last adjusted closing price.
[1]	- Net dividends.
[2]	- The "Date of Last Coupon" for New listings refers to the date company's stocks started to trade in Athex
[3]	- The Company Market Value is referred to the number of outstanding shares
[4]	- Sectors codification can be found in Appendix A
[5]	- The Market Value refers to the total number of shares listed (including their several classes) in the exchange by the company.
[6]	- P/E greater than 100
[7]	- Last view of the Order Book before the end of the trading session
4446	- Transfer to the "Under Supervision" Category as of 20/10/2008.
4447	- Transfer to the "Under Supervision" Category as of 21/10/2008.
4464	- Suspension of trading as of 1/12/2008.
4548	- Suspension of trading as of 1/4/2009.
4554	- Transfer to the "Under Supervision" Category as of 6/4/2009.
4559	- Transfer to the "Under Supervision" Category as of 21/4/2009.
4576	- Suspension of trading as of 14/7/2009.
4603	- Suspension of trading as of 1/12/2009.
4616	- Suspension of trading as of 25/2/2010.
4626	- Suspension of trading as of 1/4/2010.
4627	- Suspension of trading as of 1/4/2010.
4628	- Suspension of trading as of 1/4/2010.
4629	- Transfer to the Under Supervision Category as of 12/4/2010.
4630	- Transfer to the Under Supervision Category as of 12/4/2010.
4651	- Suspension of trading as of 1/6/2010.
4652	- Suspension of trading as of 1/6/2010.
4690	- Transfer to Surveillance category as of 4/4/2006.
4702	- Suspension of trading as of 1/12/2010.
4723	- Suspension of trading as of 31/1/2011.
4726	- Suspension of trading as of 1/3/2011.
4750	- Transfer to the "Under Surveillance Category" from 8/4/2011.
4764	- Suspension of trading as of 20/5/2011.
4765	- Suspension of trading as of 20/5/2011.
4795	- The final gross (pre-tax) dividend is € 0.30 per share and subject to withholding tax on the full dividend amount, i.e. 0,45 per share, for those shareholders liable to withholding tax, in accordance with the applicable tax law provisions.
4808	- Suspension of trading as of 6/9/2011.
4814	- Transfer to the Low Dispersion Category as of 30/5/2011.
4815	- Transfer to the Low Dispersion Category as of 30/5/2011.
4816	- Transfer to the Low Dispersion Category as of 30/5/2011.
4817	- Transfer to the Low Dispersion Category as of 30/5/2011.
4820	- Transfer to the Low Dispersion category as of 18/4/2008.
4822	- Transfer to the Low Dispersion category as of 30/5/2011.
4823	- Transfer to the Low Dispersion category as of 4/4/2006.
4824	- Transfer to the Low Dispersion category as of 18/4/2008.
4825	- Transfer to the Low Dispersion category as of 8/4/2011.
4827	- Transfer to the Low Dispersion category as of 5/5/2010.
4828	- Transfer to the Low Dispersion category as of 4/4/2006.
4830	- Suspension of trading as of 10/10/2011.
4833	- Transfer to Surveillance category from 6/5/2010.
4844	- Transfer to the Surveillance category from 8/4/2011.
4845	- Transfer to the Surveillance Category as of 25/11/2011.
4846	- Transfer to the Surveillance Category as of 25/11/2011.
4847	- Transfer to the Surveillance Category as of 3/7/2009.

Shares' Notes

Code	Note text
4848	- Suspension of trading as of 6/12/2011.
4854	- Transfer to the Surveillance Category as of 29/12/2011.
4855	- Transfer to the Surveillance Category as of 29/12/2011.
4856	- Transfer to the Surveillance Category as of 29/12/2011.
4860	- Suspension of trading as of 30/3/2012.
4864	- Suspension of trading as of 30/3/2012.
4865	- Suspension of trading as of 2/4/2012.
4867	- Suspension of trading as of 2/4/2012.
4868	- Suspension of trading as of 2/4/2012.
4869	- Suspension of trading as of 2/4/2012.
4875	- Suspension of trading as of 2/4/2012.
4876	- Suspension of trading as of 3/4/2012.
4879	- Transfer to the Surveillance Category as of 10/4/2012.
4880	- Transfer to the Surveillance Category as of 10/4/2012.
4881	- Transfer to the Surveillance Category as of 10/4/2012.
4882	- Transfer to the Surveillance Category as of 10/4/2012.
4884	- Transfer to the Surveillance Category as of 10/4/2012.
4885	- Transfer to the Surveillance Category as of 10/4/2012.
4886	- Transfer to the Surveillance Category as of 10/4/2012.
4887	- Transfer to the Surveillance Category as of 10/4/2012.
4888	- Transfer to the Surveillance Category as of 10/4/2012.
4889	- Transfer to the Surveillance Category as of 10/4/2012.
4893	- Transfer to the Low Dispersion category as of 28/5/2012.
4894	- Transfer to the Low Dispersion category as of 28/5/2012.
4911	- Lift of suspension from 30/7/2012.
4912	- Transfer to the Surveillance Category as of 31/7/2012.
4913	- Suspension of trading as of 30/8/2012.
4914	- Suspension of trading as of 31/8/2012.
4918	- Suspension of trading as of 31/8/2012.
4920	- Suspension of trading as of 31/8/2012.
4921	- Suspension of trading as of 31/8/2012.
4929	- Suspension of trading as of 1/10/2012.
4937	- Transfer to the UNDER DELETION category as of 30/11/2012.
4938	- Transfer to the UNDER DELETION category as of 30/11/2012.
4939	- Suspension of trading as of 30/11/2012.
4941	- Transfer to the Low Dispersion category as of 3/12/2012.
4944	- Transfer to the Surveillance Category as of 7/12/2012.
4951	- Suspension of trading as of 19/3/2013.
4953	- Suspension of trading as of 2/4/2013.
4954	- Suspension of trading as of 2/4/2013.
4955	- Transfer to the Surveillance Category as from 5/4/2013.
4956	- Transfer to the Surveillance Category as from 5/4/2013.
4957	- Transfer to the Surveillance Category as from 5/4/2013.
4958	- Transfer to the Surveillance Category as from 5/4/2013.
4959	- Transfer to the Surveillance Category as from 5/4/2013.
4960	- Transfer to the Surveillance Category as from 5/4/2013.
4961	- Transfer to the Surveillance Category as from 5/4/2013.
4962	- Transfer to the Surveillance Category as from 5/4/2013.
4963	- Transfer to the Under Deletion Category as from 5/4/2013.
4970	- Suspension of trading as of 3/6/2013.
4971	- Suspension of trading as of 3/6/2013.
4977	- Transfer to the "Under Surveillance Category" from 11/6/2013.
4978	- Transfer to the Under Supervision Category as of 11/6/2013.

Shares' Notes

Code	Note text
4982	- Suspension of trading as of 1/12/2011.
4983	- Transfer to the Surveillance Category as of 5/4/2013.
4985	- Transfer to the "Under Surveillance Category" from 8/4/2011.
4986	- Transfer to the Low Dispersion category as of 30/5/2011.
4988	- As of June 7, 2013, the name of the company "DUTY FREE SHOPS A CORPORATION OPERATING DFS AND LARGE AND SMALL SCALE INDUSTRIAL OPERATIONS, TECHNIC" on ATHEX changes to "FOLLI FOLLIE S.A.".
4993	- Suspension of trading as of 21/6/2013 (15:18).
4995	- Transfer to the "Under Surveillance Category" from 8/4/2011.
4996	- Transfer to the "Under Surveillance Category" from 8/4/2011.
4997	- Transfer to the Under Supervision Category as of 21/12/2009. - The 6,870,053 new (CB) shares, resulting from the recent share capital increase through a rights issue, are not yet admitted to trading on the ATHEX.
4998	- Suspension of trading as of 26/7/2013.

Securities Blocks Details

Securities	Block Volume	Price	Block Trade Value	Time of approval	Note
PAIRIS SA (CR)	1,025	0.330	338.25	12:15:36	18
AUTOHELLAS SA (CR)	129	2.30	296.70	12:25:41	18
OPAP (CR)	100,000	7.23	723,000.00	14:48:54	20
OPAP (CR)	40,500	7.37	298,485.00	17:11:34	20

Blocks Notes

2 - SPOT 1 or SPOT 2 Packet	11 - Total Assets > 500 bil
3 - Block with Short Selling	12 - Sell Offer through Athex
4 - Buy to Close Block	13 - Forced Sale of NMOE
6 - Simultaneous Constitution	14 - Restoration Packet
7 - Repurchase Agreement	15 - Market Maker Packet
8 - Dispersion's Achievement (Not Listed)	16 - Short Selling
9 - Dispersion's Achievement (Listed)	18 - SPOT 1 Packet
10 - Share Capital Majority of Greek State (> 50 bil)	20 - Method 6-1 Packet

Shares Rights Details

Occured date	Exercise from	Exercise until	Trading until	Rights	Price min	Price max	Closing price	Last Bid	Last Ask	Volume	Trades	Transactions Value
05/08/2013	16/08/2013	30/08/2013	26/08/2013	TELETIPOS S.A. (CR)	---	---	0.001	---	897@0.001	---	---	---

Shares Short Selling

Securities	Transactions Value	Transactions Volume	% of Total Volume	Short Covering Trans. Value	Short Covering Volume	% of Total Volume
ALUMIL (CR)	---	---	---	6.56	11	2.20
S.KANAKIS SA (CR)	---	---	---	34.98	22	2.15

Short Selling Notes

[1] - The Hellenic Capital Markets Commission (HCMC) has decided to prohibit the short selling only in relation to shares of credit institutions admitted to trading on the Athens Exchange and comprising the FTSE/ATHEX - CSE Banking Index, for a period of three(3) months and more specifically from February1, 2013 until April 30, 2013.

Stock Borrowing

Securities	Stock Borrowing through Helex (volume)	Stock Borrowing through OTC (volume) [1]	Totals [2]
ALAPIS (CR)	---	6,250	6,250
ALPHA BANK (CR)	161,200	4,962,274	5,123,474
ATE (CR)	---	69,000	69,000
BANK OF CYPRUS (CR)	---	102,899	102,899
CC HBC AG (CR)	26,800	73,941	100,741
ELLAKTOR (CR)	5,000	---	5,000
EUROBANK ERGASIAS (CR)	21,120	68,433	89,553
EUROBANK PROPERTIES REIC (CR)	11,500	31,215	42,715
EYDAP S.A. (CR)	2,900	---	2,900
FLEXOPACK SA (CR)	---	41,927	41,927
FOLLI FOLLIE (CR)	3,000	8	3,008
FRIGOGLASS SA (CR)	3,500	---	3,500
GEK TERNA (CR)	500	---	500
HELLENIC EXCHANGES (CR)	38,000	---	38,000
HELLENIC PETROLEUM (CR)	22,400	269	22,669
INTERTECH SA (CR)	---	483,000	483,000
INTRALOT (CR)	20,000	---	20,000
JUMBO SA (CR)	10,900	3,525	14,425
LAMDA DEVELOPMENT SA (CR)	---	10,377	10,377
MARFIN INVESTMENT GROUP (CR)	---	733,474	733,474
METKA (CR)	8,400	---	8,400
MOTOR OIL (CR)	12,700	---	12,700
MYTILINEOS HOLDINGS (CR)	7,000	---	7,000
NATIONAL BANK (CR)	61,100	1,486,830	1,547,930
NBGAM ETF	10,000	---	10,000
NBGAM ETF GREECE & TURKEY 30	3,500	---	3,500
OPAP (CR)	50,500	43,264	93,764
OTE (CR)	135,200	109,116	244,316
PIRAEUS BANK (CR)	5,200	239,460	244,660
PPC (CR)	45,900	44,800	90,700
TERNA ENERGY (CR)	5,400	---	5,400
TITAN CEMENT (CR)	6,200	55,390	61,590
VIOHALCO (CB)	5,200	---	5,200

Stock Borrowing Notes

[1] - The information concerning OTC Stock Borrowing Transactions is based on the statements of the Dematerialised Securities System (DSS) operators involved and refers to volumes that have been cleared and registered up until the previous working day.

Shares Forced Sales

Securities	Transaction s Volume	Number of Trades	Transactions Value	Note
No Forced Transactions.				

Forced Sales Notes

- 1 - Normal Forced Sale.
- 2 - Forced Sales of Fixed Registered Shares.
- 3 - Forced Sales of Remaining Stock Fractions.

Forced Sales Registered Shares

Securities	Start Date	End Date	Initial Volume	Remaining Volume	Date	Avg price (day)	Avg price (period)	Number of Trades	Transactions Volume	Transactions Value
------------	------------	----------	-------------------	---------------------	------	--------------------	-----------------------	---------------------	------------------------	-----------------------

No Fixed Registered Shares Forced Sales.

Forced Sales Notes

According to Decision 1/380/04.05.2008 of the Hellenic Republic Capital Market Commission, the certificated registered shares that have not been deposited to the issuer for dematerialisation, will be auctioned in the Athens Exchange by the supervising issuer. Forced sales procedure is held according to Article 99A of the Athens Exchange Rulebook. The average price of the period is calculated by dividing the Total transactions value by the Total volume and includes all the transactions made until the current date.

Exchange Traded Funds (ETFs) Characteristics

	Transactions Date (T)	Creation / Redemption	Units (T-1)	New Units (T-1)	Redemptio n Units (T-	Units (T) [1]	Fund Assets [2]	Net Unit Price	Dividen d per	Dividend Date
NBGAM ETF ΓΔ Χ.Α.	22/08/2013	25,000	294,878	---	---	294,878	2,965,081.00	10.0553	---	27/10/2011
ALPHA ETF FTSE Athex Large Cap	22/08/2013	50,000	5,848,618	---	---	5,848,618	18,027,900.00	3.0824	0.05	01/07/2013
NBGAM ETF GREECE & TURKEY 30	22/08/2013	25,000	388,550	---	---	388,550	2,870,304.00	7.3872	---	27/10/2011

ETFs Notes

[1] - Units (T) = Units (T-1) + New Units (T-1) - Redemption Units (T-1)

[2] - The Creation / Redemption Units of T-1 are included.

Corporate Bonds

Num Listed Bonds	Nominal price	Issue price	Today's Rate	Exp. Date	Duration (years)	Note	Coupon attached		Trading	Corporate Bonds	Price min	Price max	Closing price	Previous closing price/date	Volume	Transactions Value	Last order		Date	ear min	Year max
							Common	Preferred									Price	Buy / Sell			
39,711,653	1.00	1.00	6.00	30/06/2016	5	4786	5	---	1	BANK OF CYPRUS PUBLIC CO. LTD (Convert. to CR sh.)	---	---	---	---	---	---	10.0000	B	13/03/2013	100.0000	100.0000
428,521,983	1.00	1.00	6.50	30/06/2016	5	4785	5	---	1	BANK OF CYPRUS PUBLIC CO. LTD (Convert. to CR sh.)	---	---	---	20.5000	14/03/2013	---	21.0000	B	15/03/2013	19.5000	30.0000
4,150,176	4.77	4.77	5.00	19/03/2015	5	---	14	---	1	MARFIN INVESTMENT GROUP S.A. (Conver to CR shar)	---	---	---	25.4000	12/08/2013	---	4.2600	B	22/08/2013	0.5000	70.0000
73,088,145	1.00	1.00	5.50	30/06/2014	5	4574	9	---	1	BANK OF CYPRUS PUBLIC CO. LTD (Convert. to CR sh.)	---	---	---	20.0000	08/03/2013	---	21.5000	B	15/03/2013	20.0000	26.0000
1,794,284	12.49	9.77	5.33	12/07/2015	8	---	13	---	1	NIREUS S.A. (Convertible to CR shares)	---	---	---	12.0000	26/07/2013	---	15.0000	B	22/08/2013	11.0000	15.0000
27,283,632	1.00	1.00	1.32	30/06/2018	10	---	11	---	1	BANK OF CYPRUS PUBLIC CO. LTD (Convert. to CR sh.)	---	---	---	33.0000	13/12/2012	---	35.0000	B	15/03/2013	33.0000	33.0000
212,849,265	1.00	1.00	6.30	29/07/2020	7	---	1	---	1	MARFIN INVESTMENT GROUP S.A. SERIES B (BOND)	---	---	---	---	---	---	1.0600	B	22/08/2013	100.0000	100.0000
2,156,827	1.00	1.00	7.00	29/07/2019	6	---	1	---	1	MARFIN INVESTMENT GROUP S.A. SERIES A (BOND)	---	---	---	---	---	---	1.0600	B	22/08/2013	100.0000	100.0000

4574 - The bonds are of indefinite duration.

4785 - The bonds are of indefinite duration.

4786 - The bonds are of indefinite duration. The Bond's par value, issue price and trading prices are expressed in USA Dollars, whereas its Transactions Value is expressed in Euros.

Corporate Bonds Notes

Transactions Volume = (Pieces) * (Nominal Price). Transactions Value = (Pieces) * (Nominal Price) * (price %) + (Accrued interest).

The price of a Bond is stated as a percentage (%) of Bond's Nominal Price.

Nominal Price in Euros (€), except if it is noted differently.

Government Bonds

Number Listed Bonds	Nominal price	Today's Rate	Accrued Interest Calc	Exp. Date [1]	Duration (years)	Note	Coupons Date	Curr. coupon value	Trading Unit	Government Bonds	Price min	Price max	Closing price	Previous closing price/date	Volume	Transactions Value	Price	Last order Buy / Sell	Date
2,658,781,973	1.00	2.00	Actual/Actual	24/02/2023	11	---	24/02	2.00	1	GGB-FXD-240223-11Y-2.000-1.00	---	---	---	---	---	---	---	---	---
2,658,781,973	1.00	2.00	Actual/Actual	24/02/2024	12	---	24/02	2.00	1	GGB-FXD-240224-12Y-2.000-1.00	---	---	---	---	---	---	---	---	---
2,658,781,973	1.00	2.00	Actual/Actual	24/02/2025	13	---	24/02	2.00	1	GGB-FXD-240225-13Y-2.000-1.00	---	---	---	---	---	---	---	---	---
2,658,781,973	1.00	2.00	Actual/Actual	24/02/2026	14	---	24/02	2.00	1	GGB-FXD-240226-14Y-2.000-1.00	---	---	---	---	---	---	---	---	---
2,658,781,973	1.00	2.00	Actual/Actual	24/02/2027	15	---	24/02	2.00	1	GGB-FXD-240227-15Y-2.000-1.00	---	---	---	---	---	---	---	---	---
2,836,034,104	1.00	2.00	Actual/Actual	24/02/2028	16	---	24/02	2.00	1	GGB-FXD-240228-16Y-2.000-1.00	---	---	---	---	---	---	---	---	---
2,836,034,104	1.00	2.00	Actual/Actual	24/02/2029	17	---	24/02	2.00	1	GGB-FXD-240229-17Y-2.000-1.00	---	---	---	---	---	---	---	---	---
2,836,034,104	1.00	2.00	Actual/Actual	24/02/2030	18	---	24/02	2.00	1	GGB-FXD-240230-18Y-2.000-1.00	---	---	---	---	---	---	---	---	---
2,836,034,104	1.00	2.00	Actual/Actual	24/02/2031	19	---	24/02	2.00	1	GGB-FXD-240231-19Y-2.000-1.00	---	---	---	---	---	---	---	---	---
2,836,034,104	1.00	2.00	Actual/Actual	24/02/2032	20	---	24/02	2.00	1	GGB-FXD-240232-20Y-2.000-1.00	---	---	---	---	---	---	---	---	---
2,836,034,104	1.00	2.00	Actual/Actual	24/02/2033	21	---	24/02	2.00	1	GGB-FXD-240233-21Y-2.000-1.00	---	---	---	---	---	---	---	---	---
2,836,034,104	1.00	2.00	Actual/Actual	24/02/2034	22	---	24/02	2.00	1	GGB-FXD-240234-22Y-2.000-1.00	---	---	---	---	---	---	---	---	---
2,836,034,104	1.00	2.00	Actual/Actual	24/02/2035	23	---	24/02	2.00	1	GGB-FXD-240235-23Y-2.000-1.00	---	---	---	---	---	---	---	---	---
2,836,034,104	1.00	2.00	Actual/Actual	24/02/2036	24	---	24/02	2.00	1	GGB-FXD-240236-24Y-2.000-1.00	---	---	---	---	---	---	---	---	---
2,836,034,104	1.00	2.00	Actual/Actual	24/02/2037	25	---	24/02	2.00	1	GGB-FXD-240237-25Y-2.000-1.00	---	---	---	---	---	---	---	---	---
2,836,034,104	1.00	2.00	Actual/Actual	24/02/2038	26	---	24/02	2.00	1	GGB-FXD-240238-26Y-2.000-1.00	---	---	---	---	---	---	---	---	---
2,836,034,104	1.00	2.00	Actual/Actual	24/02/2039	27	---	24/02	2.00	1	GGB-FXD-240239-27Y-2.000-1.00	---	---	---	---	---	---	---	---	---
2,836,034,104	1.00	2.00	Actual/Actual	24/02/2040	28	---	24/02	2.00	1	GGB-FXD-240240-28Y-2.000-1.00	---	---	---	---	---	---	---	---	---
2,836,034,104	1.00	2.00	Actual/Actual	24/02/2041	29	---	24/02	2.00	1	GGB-FXD-240241-29Y-2.000-1.00	---	---	---	---	---	---	---	---	---
2,836,034,104	1.00	2.00	Actual/Actual	24/02/2042	30	---	24/02	2.00	1	GGB-FXD-240242-30Y-2.000-1.00	---	---	---	---	---	---	---	---	---
1,500,000	1,000.00	0.97	FLR Actual/360	10/08/2014	5	---	10/02 - 10/08	---	1	GGB-FRN-100814-05Y-1.762-1000.00	---	---	---	---	---	---	---	---	---
5,187,186	1,000.00	1.60	FLR Actual/360	21/05/2014	5	---	21/11 - 21/05	---	1	GGB-FRN-210514-05Y-2.734-1000.00	---	---	---	---	---	---	---	---	---
78,300	1,000.00	1.16	FLR Actual/360	23/07/2014	5	---	23/01 - 23/07	---	1	GGB-FRN-230714-05Y-2.018-1000.00	---	---	---	---	---	---	---	---	---

Government Bonds Notes

Transactions Volume = (Pieces) * (Nominal Price). Transactions Value = (Pieces) * (Nominal Price) * (price %) + (Accrued interest).

The Value of current coupon for the issues with NV 0.01 euro refers to NV 100 euros

FLR: Floating Interest Rate.

[1] - The Expiration Date of the interest bearing period and the Date for coupon payment.

Bonds in Circulation	Currency / Min nominal traded Value	Coupons Payment Date	Current Coupon Value	Note	Coupon Attached	Trading Unit	Issue Date	Duration (years)	Today's Interest	A.I.C in days	Bonds	Last price of previous days	Last Outcry in Cash (euro) Price	Buy / Sell	Trades in Pieces	Life min	Life Max
Bonds of International Organizations																	
1,000,000	EUR / 1000	21/07	---	---	8	1	21/07/2006	10	5.0 FLR	360	EUROPEAN INVESTMENT BANK BOND	97.50	16/04/2007	---	---	---	---
Corporate Bonds in Foreign Currency and Euro																	
103,746	GBP / 10	01/12	0.25	---	54	1	01/12/1930	98	2.5	360	National Mortgage Bank	2.27	05/02/1996	2.27	S	05/02/1996	2.27
0	GBP / 10	01/12	0.25	---	56	1	01/12/1928	100	2.5	360	National Mortgage Bank	---	---	---	---	---	---

Government Bonds Notes

A.I.C: Accrued Interest Calculation base.
FLR: Floating Interest Rate.
The minimum tradeable Nominal Value for all Demeterialised Government Titles is 100 Euros.

State Banks Bonds (one year maturity)

Number Listed Bonds	Nominal value	Initial Rate	Current Rate	Annual Interest	Issue Date	Note	State Banks Bonds	Trading Unit	Yearly Renewals	Last Outcry in Cash (euro) Price	Buy / Sell	Volume
342,560	130.41	2.35	3.92	0.00	31/01/2005	---	H.I.D.B.	1	9	100.00	B	---
16,015	1,211.71	3.65	2.47	0.00	30/11/2006	---	H.I.D.B.	1	7	---	---	---
2,446	1,154.00	4.90	2.47	28.96	31/05/2008	---	H.I.D.B.	1	6	---	---	---
171,117	1,163.28	5.50	2.47	29.19	31/05/2008	---	H.I.D.B.	1	6	---	---	---
63,787	1,101.48	5.45	2.47	30.88	31/08/2008	---	H.I.D.B.	1	5	---	---	---
54,559	1,129.20	5.45	2.47	28.34	31/08/2008	---	H.I.D.B.	1	5	---	---	---
77,348	1,130.82	5.60	2.47	28.38	31/08/2008	---	H.I.D.B.	1	5	---	---	---
165,926	1,130.82	5.60	2.47	28.38	31/08/2008	---	H.I.D.B.	1	5	---	---	---
5,358	1,108.96	5.45	2.47	27.83	31/10/2008	---	H.I.D.B.	1	5	---	---	---
1,045	1,129.74	5.50	2.47	28.35	31/10/2008	---	H.I.D.B.	1	5	---	---	---
76,077	1,132.45	5.75	2.47	28.42	31/10/2008	---	H.I.D.B.	1	5	---	---	---

Bonds Notes

The annual renewal of H.I.D.B. Bonds is free of taxes (net rate).
For Bonds issue until 31/07/2013 the accrued interest is capitalized.

Athex & ATHEXClear Members List

Member Name			Stock Market			Derivatives Market			ATHEXClear Member		
Address	Phone	Fax	Market Member	Remote Member	Market Maker	Proprietary	Market Maker	Agent	General Clearing	Direct Clearing	Non Clearing
A. SARRIS SECURITIES S.A.			a								
6, DRAGATSANIOU STR. ATHINA	(210)-3367700	(210)-3312324									
AGRICULTURAL BANK OF GREECE S.A.			a				a			a	
, 23 PANEPISTIMIOU ATHINA	(210)-3298400	(210)-3298322									
ALPHA FINANCE INVESTMENT SERVICES S.A.			a		a		a			a	
5, MERLIN STR. ATHINA	(210)-3677400	(210)-3311193									
ALPHA BANK A.E.						a			a		
40, STADIOU STR ATHINA	(210)-3265546	(210)-3265811									
	(210)-3260000	(210)-3264116									
ARGUS STOCKBROKERS LTD			a	a							
12-14, KENNEDY AVE, S. 303 NICOSIA	(+35722)-22717000	(+35722)-22717070									
ATHENAIKI BROKERAGE FIRM S.A.			a								
33, STADIOU STR. ATHINA	(210)-3254764	(210)-3254767									
ATLANTIC SECURITIES LIMITED			a	a							
37, PRODROMOU STR. NICOSIA	(+35722)-445400	(+35722)-661914									
ATLAS SECURITIES S.A			a			a					a
14 - 16, VERVENON STR.& 125 MICHALAKOPOULOU STR. ATHINA	(210)-3363300	(210)-3238925									
ATTICA BANK S.A.									a		
54, AKADIMIAS STR. ATHINA	(210)-3390757	(210)-3646090									
23, OMIROU STR. ATHINA	(210)-3669000	(210)-3669410									
AXIA VENTURES GROUP LTD			a	a							
10, G. KRANIDIOTI NICOSIA	+357 22 742000	+357 22 742001									
AXON SECURITIES S.A.			a			a					a
48, STADIOU ATHINA	(210)-3363800	(210)-3243903									
BANK OF CYPRUS PUBLIC COMPANY LTD									a		
, 51,STASINOU (AG. PARASKEVI, STROVOLOS) NICOSIA	(0035722)-121883	(0035722)-336258									
170, ALEXANDRAS AVE ATHINA	(210)-6477708	(210)-6477709									
BETA SECURITIES S.A.			a		a	a	a			a	
, BRAILA & 29 ALEXANDRAS AVE ATHINA	(210)-6478900	(210)-6410139									
BNP PARIBAS SECURITIES SERVICES									a		
94, VAS. SOFIAS AVE ATHINA	(210)-7468500	(210)-7468579									
CAPITAL SECURITIES S.A.			a			a					a
58, MITROPOLEOS STR. ATHINA	(210)-3369700	(210)-3369820									
CFS SECURITIES & INVESTMENT SERVICES S.A.			a		a			a		a	
3, STADIOU STR. ATHINA	(210)-3360800	(210)-3311854									
CITIGROUP GLOBAL MARKET LTD			a	a							
, CITIGROUP CENTRE, CANADA SQUARE, CANARY WHART LONDON	002079864000	002079862266									
CO-OPERATIVE CENTRAL BANK LTD			a	a							
8, GRIGORI AFXENTIOU STR. NICOSIA	(+35722)-743300	(+35722)-672083									
CREDIT AGRICOLE CHEUVREUX S.A.			a	a							
, 9 QUAI PAUL DOUMER PARIS	33 (0) 1 41 89 70 00										
CREDIT SUISSE SECURITIES (EUROPE) LIMITED			a	a							
, ONE CABOT SQUARE LONDON	+44 20 7888 8888	+44 20 7888 1600									
CYCLOS SECURITIES S.A.			a		a	a				a	
39, PANEPISTIMIOU STR. ATHINA	(210)-3364300	(210)-3239122									
D.A. TSEKOURAS SEC. S.A.			a								
3, PESMAZOGLOU STR. ATHINA	(210)-3214406	(210)-3211997									
DEUTSCHE BANK S.A.			a	a							
70, THEODOR-HEUSS-ALLEE FRANKFURT	0049 69 910 00	0049 69 910 34 225									
DYNAMIC SECURITIES			a					a		a	
6 - 10, CHAR. TRIKOUPH STR. ATHINA	(210)-3677700	(210)-3677777									
EL. PETROPOULAKIS SECURITIES S.A.			a					a			a
9, ARISTIDOU STR. ATHINA	(210)-3213928	(210)-3216810									
EUROBANK EQUITIES S.A.			a		a		a			a	
10, FILELLINON STR. ATHINA	(210)-3720000	(210)-3720001									
EUROBANK ERGASIAS S.A.									a		
8, OTHONOS STR. ATHINA	(210)-3337000	(210)-3233866									
	(210)-3337969	(210)-3245916									
EUROCORP SECURITIES S.A.			a			a				a	
14, FILIKIS ETAIRIAS SQ. ATHINA	(210)-7263500	(210)-7263666									
EUOTRUST BROKERAGE S.A.			a								
13-15, SOPHOCLEOUS STR. ATHINA	(210)-3363100	(210)-3238334									

Athex & ATHEXClear Members List

Member Name			Stock Market			Derivatives Market			ATHEXClear Member		
Address	Phone	Fax	Market Member	Remote Member	Market Maker	Proprietary	Market Maker	Agent	General Clearing	Direct Clearing	Non Clearing
EUROXX SECURITIES S.A.			a			a				a	
7, PALAIOLOGOU STR. CHALANDRI	(210)-6879400	(210)-6879401									
G.A. PERVANAS SECURITIES & INVESTMENT SERVICES CO S.A.			a			a					a
7 - 9, SOPHOCLEOUS STR. ATHINA	(210)-3251875	(210)-3210291									
GENERAL BANK OF GREECE S.A.									a		
87-89, ERMOY ATHINA	(210)-6976072	(210)-6976079									
, 109-111, MESOGEION AVE. ATHINA	(210)-6975000	(210)-6975706									
GLOBAL CAPITAL SECURITIES AND FINANCIAL SERVICES LTD			a	a							
5, LEMESOU AVE. LEMESOS CYPRUS	(+35722)-710710	(+35722)-339332									
GUARDIAN TRUST SECURITIES S.A			a		a	a					a
15, FILELLINON STR. ATHINA	(210)-3220402	(210)-3220498									
HELLENIC AMERICAN SEC. S.A.			a			a					
6, EVRIPIDOU STR. ATHINA	(210)-3311100	(210)-3215968									
HELLENIC BANK (INVESTMENTS) LTD			a	a							
31, KYRIAKOY MATSI AVE. NICOSIA	(+35722)-500100	(+35722)-500110									
HSBC BANK PLC									a		
109-111, MESOGION AVE ATHINA	(210)-6961507	(210)-6929310									
INDEX SECURITIES S.A.			a								
6, DRAGATSANIOU STR. ATHINA	(210)-3213920	(210)-3213216									
INTERSEC S.A.						a				a	
80-88, SYGROU AVE ATHINA	(210)-9203000	(210)-9203052									
INVESTMENT BANK OF GREECE S.A.			a		a		a		a		
32, AIGEIALIAS MAROUSI	(210) 8173000	(210) 8173101									
24B, KIFISSIAS AVE MAROUSI	(210)-8171800	(210)-8171889									
J. CHR. MAVRIKIS SECURITIES S.A.			a								
5, SOPHOCLEOUS STR. ATHINA	(210)-3213949	(210)-3217767									
KAPPA SECURITIES S.A.			a			a					a
15, VALAORITOU STR. ATHINA	(210)-3610371	(210)-3641002									
KYPROU SECURITIES S.A.			a		a	a					a
26, HALKIDONOS & FIDIPPIDOY STR. ATHINA	(210)-8701000	(210)-8701049									
LAIKI FINANCIAL SERVICES LTD			a	a							
26, CLR HOUSE, VIRONOS AVE. NICOSIA	(+35722)-898600	(+35722)-680953									
LEON DEPOLAS SECURITIES S.A.			a					a			a
1, CHR. LADA STR. ATHINA	(210)-3213286	(210)-3211618									
MAGNA TRUST SECURITIES S.A			a					a			a
9, FIDIOU STR. ATHINA	(210)-3327503	(210)-3327599									
MEGA EQUITY SECURITIES & FINANCIAL SERVICES LTD			a	a							
42-44, GRIBA DIGENI AV. NICOSIA	(+35722)-711711	(+35722)-711811									
MERIT SECURITIES S.A			a		a	a				a	
38, VAS. KONSTANTINOY STR. ATHINA	(210)-3671800	(210)-3671830									
MERRILL LYNCH			a	a							
2, KING EDWARD STREET LONDON	(+4420)-79952000	(+4420)-79954525									
METOCHIKI SECURITIES S.A.			a								
3, G. GENNADIOY STR. ATHINA	(210)-3306700	(210)-3306709									
MIDAS BROKERAGE S.A.			a								
5, SOPHOCLEOUS STR. ATHINA	(210)-3253203	(210)-3253205									
N. CHRYSOCHOIDIS STOCK BROKERAGE I.S.S.A.			a					a		a	
7 - 9, SOPHOCLEOUS STR. ATHINA	(210)-3213913	(210)-3216115									
N. SARROS SECURITIES S.A.						a					
7-9, SOPHOCLEOUS STR. ATHINA	(210)-3705600	(210)-3219992									
NATIONAL BANK OF GREECE S.A.							a		a		
86, AIOLOU STR. ATHINA	(210)-3341000	(210)-3228187									
68, AKADIMIAS STR. ATHINA	(210)-3328817	(210)-3328678									
NBG SECURITIES S.A.			a		a		a				a
68, AKADIMIAS STR. ATHINA	(210)-3328500	(210)-3328565									
NEW PROTON BANK S.A.			a			a				a	
20, ESLIN & AMALIADOS ATHINA	210 6970000	210 6970111									
NUNTIUS SECURITIES S.A			a					a			a
6, DRAGATSANIOU STR. ATHINA	(210)-3350599	(210)-3254846									
OLYMPIA SECURITIES S.A			a								
46B, A. METAXA STR. GLYFADA	(210)-3702500	(210)-3702520									
ORANGE PARTNERS SECURITIES S.A			a								
5, TZORTZ STR. ATHINA	(210)-3300009	(210)-3305240									

Athex & ATHEXClear Members List

Member Name			Stock Market			Derivatives Market			ATHEXClear Member		
Address	Phone	Fax	Market Member	Remote Member	Market Maker	Proprietary	Market Maker	Agent	General Clearing	Direct Clearing	Non Clearing
PANTELAKIS SEC. S.A.			a			a					a
109-111, MESOGION AVE. ATHINA	(210)-6965000	(210)-6929550									
PEGASUS BROKERAGE FIRM S.A			a			a					
17, VALAORITOU STR. ATHINA	(210)-3670700	(210)-3670760									
PIRAEUS BANK S.A.								a	a		
4, AMERIKIS STR ATHINA	(210)-3335918	(210)-3254207									
4, AMERIKIS STR. ATHINA	(210)-3335000	(210)-3335079									
PIRAEUS SECURITIES S.A.			a				a			a	
10, STADIOU STR. ATHINA	(210)-3354100	(210)-3233814									
PRELIUM SECURITIES & INVESTMENT SERVICES S.A.			a			a					a
, KIFISSIAS AVE & 1 DAVAKI STR ATHINA	(210)-3677000	(210)-6920403									
PROBANK S.A.			a								
10, AMERIKIS STR. ATHINA	(210)-3392631	(210)-3392646									
PROCHOICE SECURITIES LTD			a	a							
57, SPYROU KYPRIOU NICOSIA	+357-24-661192	+357-24-662464									
SHARELINK SECURITIES & FINANCIAL SERVICES LTD			a	a							
6, ELLINAS HOUSE, THEOTOKI STR. NICOSIA	(+35722)-554200	(+35722)-750852									
SOCIETE GENERALE S.A.			a	a		a					
17, COURS VALMY PUTEAUX - LA DEFENSE PARIS	(+33) 142134754	(+33) 142135697									
240-242, KIFISSIAS AVE ATHINA	(210)-6790161	(210)-6728828									
SOLIDUS SECURITIES S.A			a			a				a	
64, LOUIZIS RIANKOUR STR. ATHINA	(210)-6925500	(210)-6985421									
SOTIRIADIS SECURITIES S.A.			a								
7, VALAORITOU STR. ATHINA	(210)-3636943	(210)-3601943									
ST. EM. LAVRENTAKIS SECURITIES S.A.			a			a					a
7 - 9, SOPHOCLEOUS STR. ATHINA	(210)-3213336	(210)-3246572									
THE CYPRUS INVESTMENT AND SECURITIES CORPORATION LIMITED (CISCO)			a	a							
4, EVROU STR. (EUROLIFE HOUSE) NICOSIA	(+35722)-881800	(+35722)-881801									
UBS LIMITED			a	a							
1, FINSBURY AVENUE LONDON	(+4420)-79013333	(+4420)-79012345									
Z.G. PORTALAKIS INVESTMENT SERVICES S.A.			a								
8, PESMAZOGLOU STR. ATHINA	(210)-3214830	(210)-3212024									
KARAMANOF SECURITIES & INV. SERVICES S.A.			a					a		a	
2, SQ. ST THEODORON ATHINA	(210)-3212947	(210)-3217088									

List of Stocks under Market Making operations

Securities Market Maker	Stock Category	
	Start Market Making	End Market Making
BANK OF CYPRUS (CR)	Under Suspension	
EUROBANK EQUITIES S.A.	23/10/2012	22/10/2013
INVESTMENT BANK OF GREECE S.A.	02/01/2013	01/01/2014
COCA - COLA HBC (CR)	Under Suspension	
EUROBANK EQUITIES S.A.	23/10/2012	22/10/2013
INVESTMENT BANK OF GREECE S.A.	08/01/2013	07/01/2014
CYPRUS POPULAR BANK (CR)	Under Suspension	
PIRAEUS SECURITIES S.A.	02/02/2013	01/02/2014
ALPHA BANK (CR)	Main Market	
EUROBANK EQUITIES S.A.	24/10/2012	23/10/2013
INVESTMENT BANK OF GREECE S.A.	08/01/2013	07/01/2014
MERIT SECURITIES S.A.	03/09/2012	02/09/2013
NBG SECURITIES S.A.	15/01/2013	14/01/2014
PIRAEUS SECURITIES S.A.	28/05/2013	27/05/2014
ALUMIL (CR)	Main Market	
BETA SECURITIES S.A.	18/07/2013	17/07/2014
CC HBC AG (CR)	Main Market	
NBG SECURITIES S.A.	29/04/2013	28/04/2014
ELLAKTOR (CR)	Main Market	
EUROBANK EQUITIES S.A.	01/06/2013	31/05/2014
INVESTMENT BANK OF GREECE S.A.	02/01/2013	01/01/2014
NBG SECURITIES S.A.	25/06/2013	24/06/2014
ELTON SA (CR)	Main Market	
BETA SECURITIES S.A.	03/09/2012	02/09/2013
EUROBANK ERGASIAS (CR)	Main Market	
ALPHA FINANCE INVESTMENT SERVICES S.A.	08/01/2013	07/01/2014
EUROBANK EQUITIES S.A.	01/06/2013	31/05/2014
INVESTMENT BANK OF GREECE S.A.	08/01/2013	07/01/2014
GEK TERNA (CR)	Main Market	
INVESTMENT BANK OF GREECE S.A.	02/01/2013	01/01/2014
GR. SARANTIS SA (CR)	Main Market	
BETA SECURITIES S.A.	14/05/2013	13/05/2014
HELLENIC EXCHANGES (CR)	Main Market	
EUROBANK EQUITIES S.A.	01/06/2013	31/05/2014
INVESTMENT BANK OF GREECE S.A.	02/01/2013	01/01/2014
NBG SECURITIES S.A.	25/06/2013	24/06/2014
INTRACOM CONSTR. (CR)	Main Market	
MERIT SECURITIES S.A.	27/12/2012	26/12/2013
INTRALOT (CR)	Main Market	
EUROBANK EQUITIES S.A.	01/06/2013	31/05/2014
INVESTMENT BANK OF GREECE S.A.	02/01/2013	01/01/2014
MARFIN INVESTMENT GROUP (CR)	Main Market	
PIRAEUS SECURITIES S.A.	02/02/2013	01/02/2014
MLS MULTIMEDIA SA (CR)	Main Market	
BETA SECURITIES S.A.	18/07/2013	17/07/2014
MOTOR OIL (CR)	Main Market	
EUROBANK EQUITIES S.A.	23/10/2012	22/10/2013
MYTILINEOS HOLDINGS (CR)	Main Market	
INVESTMENT BANK OF GREECE S.A.	02/01/2013	01/01/2014
NBG SECURITIES S.A.	25/06/2013	24/06/2014
NATIONAL BANK (CR)	Main Market	
ALPHA FINANCE INVESTMENT SERVICES S.A.	08/01/2013	07/01/2014
EUROBANK EQUITIES S.A.	24/10/2012	23/10/2013
INVESTMENT BANK OF GREECE S.A.	08/01/2013	07/01/2014
MERIT SECURITIES S.A.	03/09/2012	02/09/2013
NBG SECURITIES S.A.	28/02/2013	27/02/2014
OPAP (CR)	Main Market	
ALPHA FINANCE INVESTMENT SERVICES S.A.	08/01/2013	07/01/2014
EUROBANK EQUITIES S.A.	24/10/2012	23/10/2013
INVESTMENT BANK OF GREECE S.A.	08/01/2013	07/01/2014
NBG SECURITIES S.A.	15/01/2013	14/01/2014
OTE (CR)	Main Market	
ALPHA FINANCE INVESTMENT SERVICES S.A.	08/01/2013	07/01/2014
EUROBANK EQUITIES S.A.	24/10/2012	23/10/2013
INVESTMENT BANK OF GREECE S.A.	08/01/2013	07/01/2014
NBG SECURITIES S.A.	01/12/2012	30/11/2013
PETROPOULOS PETROS (CR)	Main Market	
BETA SECURITIES S.A.	28/05/2013	27/05/2014

List of Stocks under Market Making operations

Securities	Stock Category	
	Start Market Making	End Market Making
Market Maker		
PIRAEUS BANK (CR)	Main Market	
EUROBANK EQUITIES S.A.	23/10/2012	22/10/2013
INVESTMENT BANK OF GREECE S.A.	08/01/2013	07/01/2014
NBG SECURITIES S.A.	02/06/2013	01/06/2014
PIRAEUS SECURITIES S.A.	16/02/2013	15/02/2014
PPC (CR)	Main Market	
ALPHA FINANCE INVESTMENT SERVICES S.A.	08/01/2013	07/01/2014
EUROBANK EQUITIES S.A.	23/10/2012	22/10/2013
INVESTMENT BANK OF GREECE S.A.	08/01/2013	07/01/2014
NBG SECURITIES S.A.	26/03/2013	25/03/2014
S.KANAKIS SA (CR)	Main Market	
BETA SECURITIES S.A.	01/10/2012	30/09/2013
TITAN CEMENT (CR)	Main Market	
EUROBANK EQUITIES S.A.	23/10/2012	22/10/2013
VIOHALCO (CB)	Main Market	
ALPHA FINANCE INVESTMENT SERVICES S.A.	11/02/2013	10/03/2014
EUROBANK EQUITIES S.A.	20/01/2013	19/01/2014
MERIT SECURITIES S.A	13/12/2012	12/12/2013

Equity Investment Instruments Acknowledgements

Portfolio Investments Company Name	NAV per Share	Share Price	Premium/ Discount
AEOLIAN INVESTMENT FUND S.A.	1.64	1.05	-35.98%
ALPHA TRUST ANDROMEDA SA	24.33	18.92	-22.22%

Acknowledgements Notes

According to the Decision of the Capital Market Commission 4/278/12.08.2003 Portfolio Investment Companies are required to notify the Athens Exchange on the 10th, 20th and last working day of each month the Net Asset Value (NAV) of their shares as well as Premium or Discount in relation to their market value.

Underlying Asset				Derivatives Market																		
Price max	Price min	Closing price	change	Delivery Month	Open price	Price max	Price min	Last price	Closing price	Last Bid	Last Ask	Settlement price	change	Life high	Life low	Trades	Volume	change	Value	change	Open Interest	change
FTSE/Athex Large Cap				(Trade Unit: 1 Index Point x 5€, Cash Settlement)																		
310.49	305.09	306.99	-0.55%	September 2013	311.50	313.25	306.00	307.25	307.00	37@307.25	10@307.75	307.00	-1.37%	346.00	271.00	339	3,923	-29.40%	6,043,898.75	-29.83%	44,676	-2.04%
				October 2013	313.50	313.50	308.00	310.25	308.50	30@307.25	7@310.50	308.50	-1.20%	338.75	292.25	12	57	159.09%	88,627.50	158.90%	719	-2.04%
				November 2013	---	---	---	---	---	---	---	---	---	---	---	---	---	---	---	---	---	---
				December 2013	---	---	---	---	310.75	2@305.00	1@319.00	310.75	-1.35%	343.00	276.75	---	---	---	---	---	523	0.00%
				March 2014	---	---	---	---	---	---	---	---	---	---	---	---	---	---	---	---	---	---
				June 2014	---	---	---	---	---	---	---	---	---	---	---	---	---	---	---	---	---	---

Underlying Asset				Derivatives Market																		
Price max	Price min	Closing price	change	Delivery Month	Open price	Price max	Price min	Last price	Closing price	Last Bid	Last Ask	Settlement price	change	Life high	Life low	Trades	Volume	change	Value	change	Open Interest	change
ALPHA BANK (CR)				(Contract Size: 100 Securities, Physical Delivery)																		
0.499	0.472	0.472	-3.67%	September 2013	0.496	0.498	0.469	0.472	0.473	40@0.470	12@0.474	0.473	-3.67%	1.46	0.371	109	2,025	-49.80%	97,169.30	-51.21%	16,465	3.14%
				December 2013	0.482	0.482	0.482	0.482	0.479	1@0.467	12@0.484	0.479	-3.23%	0.494	0.437	1	1	---	48.20	---	104	0.97%
				March 2014	---	---	---	---	---	---	---	---	---	---	---	---	---	---	---	---	---	---
				June 2014	---	---	---	---	---	---	---	---	---	---	---	---	---	---	---	---	---	---
CC HBC AG (CR)				(Contract Size: 100 Securities, Physical Delivery)																		
21.00	20.56	20.70	-0.24%	September 2013	20.65	20.94	20.65	20.80	20.72	5@20.40	1@20.84	20.72	-0.67%	22.33	16.93	16	49	-51.96%	101,707.00	-52.00%	712	2.30%
				December 2013	---	---	---	---	20.86	---	1@20.97	20.86	-0.67%	18.06	17.90	---	---	---	---	---	5	0.00%
				March 2014	---	---	---	---	---	---	---	---	---	---	---	---	---	---	---	---	---	---
				June 2014	---	---	---	---	---	---	---	---	---	---	---	---	---	---	---	---	---	---
CORINTH PIPEWORKS SA (CR)				(Contract Size: 100 Securities, Physical Delivery)																		
2.09	2.05	2.07	0.49%	September 2013	2.04	2.04	2.02	2.02	2.12	25@2.02	5@2.13	2.12	0.47%	2.48	1.98	2	10	-64.29%	2,030.00	-64.94%	457	-1.08%
				December 2013	---	---	---	---	---	---	5@2.17	---	---	---	---	---	---	---	---	---	---	---
				March 2014	---	---	---	---	---	---	---	---	---	---	---	---	---	---	---	---	---	---
				June 2014	---	---	---	---	---	---	---	---	---	---	---	---	---	---	---	---	---	---
ELLAKTOR (CR)				(Contract Size: 100 Securities, Physical Delivery)																		
2.14	2.06	2.08	-2.80%	September 2013	2.09	2.10	2.07	2.08	2.08	29@2.07	1@2.11	2.08	-2.80%	2.45	1.73	12	89	-51.37%	18,527.00	-51.87%	4,356	-0.11%
				December 2013	---	---	---	---	2.08	29@2.04	1@2.14	2.08	-2.80%	2.17	2.11	---	---	---	---	---	---	---
				March 2014	---	---	---	---	---	---	---	---	---	---	---	---	---	---	---	---	---	---
				June 2014	---	---	---	---	---	---	---	---	---	---	---	---	---	---	---	---	---	---
EUROBANK ERGASIAS (CR)				(Contract Size: 10 Securities, Physical Delivery)																		
0.629	0.611	0.612	-1.92%	September 2013	0.628	0.628	0.614	0.616	0.616	10@0.612	10@0.614	0.616	0.16%	5.00	0.537	6	142	-71.66%	874.54	-72.11%	18,695	-0.54%
				December 2013	0.620	0.620	0.620	0.620	0.620	1@0.621	4@0.690	0.620	-2.97%	0.700	0.600	2	116	5700.00%	7,192.00	5466.56%	1,796	6.90%
				March 2014	---	---	---	---	0.614	---	---	0.614	0.16%	0.673	0.619	---	---	---	---	---	---	---
				June 2014	---	---	---	---	---	---	---	---	---	---	---	---	---	---	---	---	---	---
EUROBANK PROPERTIES REIC (CR)				(Contract Size: 100 Securities, Physical Delivery)																		
7.16	7.06	7.10	-0.56%	September 2013	7.10	7.10	7.10	7.10	7.05	1@6.90	1@7.13	7.05	-0.56%	7.67	6.00	1	5	-68.75%	3,550.00	-68.94%	269	-1.82%
				December 2013	---	---	---	---	---	---	1@7.17	---	---	---	---	---	---	---	---	---	---	---
				March 2014	---	---	---	---	---	---	---	---	---	---	---	---	---	---	---	---	---	---
				June 2014	---	---	---	---	---	---	---	---	---	---	---	---	---	---	---	---	---	---
EYDAP S.A. (CR)				(Contract Size: 100 Securities, Physical Delivery)																		
6.03	5.88	5.91	-0.84%	September 2013	5.86	5.86	5.83	5.83	6.05	3@5.82	5@6.12	6.05	-0.82%	6.67	5.58	2	7	-70.83%	4,096.00	-71.49%	206	-3.29%
				December 2013	---	---	---	---	---	---	5@6.18	---	---	---	---	---	---	---	---	---	---	---
				March 2014	---	---	---	---	---	---	---	---	---	---	---	---	---	---	---	---	---	---
				June 2014	---	---	---	---	---	---	---	---	---	---	---	---	---	---	---	---	---	---
FOLLI FOLLIE (CR)				(Contract Size: 100 Securities, Physical Delivery)																		
18.00	17.26	17.70	0.28%	September 2013	17.75	17.75	17.53	17.56	17.75	1@16.90	1@17.92	17.75	0.28%	18.86	14.68	5	25	127.27%	44,065.00	128.10%	242	-3.97%
				December 2013	---	---	---	---	---	---	1@18.11	---	---	---	---	---	---	---	---	---	---	---
				March 2014	---	---	---	---	---	---	---	---	---	---	---	---	---	---	---	---	---	---
				June 2014	---	---	---	---	---	---	---	---	---	---	---	---	---	---	---	---	---	---

Underlying Asset				Derivatives Market																		
Price max	Price min	Closing price	change	Delivery Month	Open price	Price max	Price min	Last price	Closing price	Last Bid	Last Ask	Settlement price	change	Life high	Life low	Trades	Volume	change	Value	change	Open Interest	change
FRIGOGLASS SA (CR)				(Contract Size: 100 Securities, Physical Delivery)																		
4.95	4.77	4.85	-2.02%	September 2013	4.85	4.87	4.82	4.87	4.84	1@4.78	1@4.93	4.84	-2.42%	5.71	4.35	8	25	-7.41%	12,105.00	-9.06%	417	0.24%
				December 2013	---	---	---	---	---	---	1@4.97	---	---	---	---	---	---	---	---	---	---	---
				March 2014	---	---	---	---	---	---	---	---	---	---	---	---	---	---	---	---	---	---
				June 2014	---	---	---	---	---	---	---	---	---	---	---	---	---	---	---	---	---	---
GEK TERNA (CR)				(Contract Size: 100 Securities, Physical Delivery)																		
2.19	2.11	2.12	-1.85%	September 2013	2.18	2.19	2.10	2.11	2.15	4@2.11	5@2.15	2.15	-1.83%	2.62	1.45	34	391	-6.24%	83,244.00	-8.61%	16,168	-1.44%
				December 2013	2.18	2.18	2.18	2.18	2.17	---	5@2.18	2.17	0.00%	2.51	1.57	1	25	---	5,450.00	---	25	---
				March 2014	---	---	---	---	2.13	---	---	2.13	-1.84%	2.50	2.26	---	---	---	---	---	15,895	0.00%
				June 2014	---	---	---	---	---	---	---	---	---	---	---	---	---	---	---	---	---	---
HELLENIC EXCHANGES (CR)				(Contract Size: 100 Securities, Physical Delivery)																		
6.04	5.88	5.91	-2.15%	September 2013	5.99	5.99	5.86	5.93	5.88	4@5.87	1@5.92	5.88	-2.16%	6.46	3.82	21	96	-15.79%	56,752.00	-16.26%	2,258	-3.83%
				December 2013	---	---	---	---	5.90	---	1@5.97	5.90	-2.16%	6.85	4.01	---	---	---	---	---	---	---
				March 2014	---	---	---	---	---	---	---	---	---	---	---	---	---	---	---	---	---	---
				June 2014	---	---	---	---	---	---	---	---	---	---	---	---	---	---	---	---	---	---
HELLENIC PETROLEUM (CR)				(Contract Size: 100 Securities, Physical Delivery)																		
7.38	7.17	7.36	0.82%	September 2013	7.29	7.35	7.18	7.30	7.27	2@7.21	1@7.31	7.27	-0.41%	9.01	6.00	32	96	-75.88%	69,595.00	-76.11%	2,341	-0.09%
				December 2013	---	---	---	---	7.19	2@7.15	1@7.37	7.19	-0.42%	7.72	6.61	---	---	---	---	---	---	---
				March 2014	---	---	---	---	---	---	---	---	---	---	---	---	---	---	---	---	---	---
				June 2014	---	---	---	---	---	---	---	---	---	---	---	---	---	---	---	---	---	---
INTRALOT (CR)				(Contract Size: 100 Securities, Physical Delivery)																		
1.66	1.57	1.61	0.00%	September 2013	1.62	1.65	1.57	1.60	1.61	11@1.59	15@1.63	1.61	0.00%	2.30	1.30	44	165	-79.32%	26,629.00	-79.54%	3,968	-1.22%
				December 2013	---	---	---	---	---	---	15@1.66	---	---	---	---	---	---	---	---	---	---	---
				March 2014	---	---	---	---	---	---	---	---	---	---	---	---	---	---	---	---	---	---
				June 2014	---	---	---	---	---	---	---	---	---	---	---	---	---	---	---	---	---	---
JUMBO SA (CR)				(Contract Size: 100 Securities, Physical Delivery)																		
8.33	7.92	8.00	-4.19%	September 2013	8.38	8.38	7.95	7.95	8.07	1@7.95	10@8.20	8.07	-4.16%	9.03	7.19	46	155	-16.22%	125,407.00	-18.92%	211	-33.23%
				December 2013	---	---	---	---	---	---	10@8.25	---	---	---	---	---	---	---	---	---	---	---
				March 2014	---	---	---	---	---	---	---	---	---	---	---	---	---	---	---	---	---	---
				June 2014	---	---	---	---	---	---	---	---	---	---	---	---	---	---	---	---	---	---
MARFIN INVESTMENT GROUP (CR)				(Contract Size: 100 Securities, Physical Delivery)																		
0.302	0.285	0.285	-5.32%	September 2013	0.300	0.300	0.285	0.285	0.293	10@0.285	10@0.294	0.293	1.38%	0.420	0.252	11	100	-59.02%	2,932.90	-59.59%	19,164	-0.37%
				December 2013	---	---	---	---	---	---	10@0.304	---	---	---	---	---	---	---	---	---	---	---
				March 2014	---	---	---	---	---	---	---	---	---	---	---	---	---	---	---	---	---	---
				June 2014	---	---	---	---	---	---	---	---	---	---	---	---	---	---	---	---	---	---
METKA (CR)				(Contract Size: 100 Securities, Physical Delivery)																		
10.64	10.20	10.20	-3.13%	September 2013	10.63	10.63	10.31	10.36	10.19	1@10.22	10@10.49	10.19	-3.14%	12.18	9.43	11	31	-55.07%	32,432.00	-55.37%	482	1.90%
				December 2013	---	---	---	---	10.18	---	10@10.57	10.18	-3.14%	10.67	10.52	---	---	---	---	---	---	---
				March 2014	---	---	---	---	---	---	---	---	---	---	---	---	---	---	---	---	---	---
				June 2014	---	---	---	---	---	---	---	---	---	---	---	---	---	---	---	---	---	---

Underlying Asset				Derivatives Market																		
Price max	Price min	Closing price	change	Delivery Month	Open price	Price max	Price min	Last price	Closing price	Last Bid	Last Ask	Settlement price	change	Life high	Life low	Trades	Volume	change	Value	change	Open Interest	change
MOTOR OIL (CR)				(Contract Size: 100 Securities, Physical Delivery)																		
7.46	7.27	7.44	0.00%	September 2013	7.45	7.45	7.25	7.25	7.31	3@7.11	3@7.36	7.31	-2.53%	8.16	6.66	17	59	-53.17%	43,217.00	-54.07%	927	0.43%
				December 2013	---	---	---	---	---	---	3@7.41	---	---	---	---	---	---	---	---	---	---	---
				March 2014	---	---	---	---	---	---	---	---	---	---	---	---	---	---	---	---	---	---
				June 2014	---	---	---	---	---	---	---	---	---	---	---	---	---	---	---	---	---	---
MYTILINEOS HOLDINGS (CR)				(Contract Size: 100 Securities, Physical Delivery)																		
4.37	4.24	4.24	-1.39%	September 2013	4.35	4.35	4.24	4.25	4.26	3@4.24	5@4.28	4.26	-1.39%	5.50	3.50	25	107	-42.16%	46,052.00	-42.28%	4,931	0.43%
				December 2013	---	---	---	---	4.30	---	5@4.32	4.30	-1.38%	5.28	3.70	---	---	-100.00%	---	-100.00%	20	0.00%
				March 2014	---	---	---	---	4.30	---	---	4.30	-1.38%	4.81	4.43	---	---	---	---	---	---	---
				June 2014	---	---	---	---	---	---	---	---	---	---	---	---	---	---	---	---	---	---
NATIONAL BANK (CR)				(Contract Size: 100 Securities, Physical Delivery)																		
3.03	2.84	2.96	2.78%	September 2013	2.90	3.03	2.83	2.98	2.99	28@2.98	2@2.99	2.99	4.18%	3.25	0.344	172	2,202	35.59%	647,610.00	38.82%	5,276	-3.95%
				December 2013	2.83	2.83	2.83	2.83	2.96	28@2.95	4@3.02	2.96	4.23%	2.94	2.31	1	1	0.00%	283.00	-1.39%	7	16.67%
				March 2014	---	---	---	---	---	---	---	---	---	---	---	---	---	---	---	---	---	---
				June 2014	---	---	---	---	---	---	---	---	---	---	---	---	---	---	---	---	---	---
OPAP (CR)				(Contract Size: 100 Securities, Physical Delivery)																		
7.37	7.17	7.37	2.50%	September 2013	7.18	7.37	7.17	7.36	7.31	3@7.30	2@7.37	7.31	1.81%	7.74	5.82	31	119	-39.90%	86,523.00	-39.30%	4,007	0.91%
				December 2013	---	---	---	---	7.31	---	2@7.41	7.31	1.81%	7.66	6.31	---	---	---	---	---	---	---
				March 2014	---	---	---	---	---	---	---	---	---	---	---	---	---	---	---	---	---	---
				June 2014	---	---	---	---	---	---	---	---	---	---	---	---	---	---	---	---	---	---
OTE (CR)				(Contract Size: 100 Securities, Physical Delivery)																		
6.85	6.60	6.72	-0.44%	September 2013	6.80	6.84	6.62	6.71	6.65	50@6.68	6@6.73	6.65	-1.48%	7.56	4.35	99	484	-57.28%	326,777.00	-57.13%	8,210	-0.63%
				December 2013	---	---	---	---	6.66	50@6.63	6@6.78	6.66	-1.48%	7.56	4.40	---	---	---	---	---	70	0.00%
				March 2014	6.72	6.72	6.72	6.72	6.66	---	---	6.66	-1.33%	7.39	6.40	1	20	---	13,440.00	---	20	---
				June 2014	---	---	---	---	---	---	---	---	---	---	---	---	---	---	---	---	---	---
P.P.A. S.A. (CR)				(Contract Size: 100 Securities, Physical Delivery)																		
16.76	16.23	16.50	-2.02%	September 2013	16.71	16.71	16.50	16.61	16.64	5@16.20	1@17.50	16.64	-2.00%	18.68	15.52	9	27	80.00%	44,811.00	80.31%	538	-0.92%
				December 2013	---	---	---	---	---	---	1@17.68	---	---	---	---	---	---	---	---	---	---	---
				March 2014	---	---	---	---	---	---	---	---	---	---	---	---	---	---	---	---	---	---
				June 2014	---	---	---	---	---	---	---	---	---	---	---	---	---	---	---	---	---	---
PIRAEUS BANK (CR)				(Contract Size: 100 Securities, Physical Delivery)																		
1.02	0.988	0.990	-1.98%	September 2013	1.01	1.02	0.986	0.986	0.991	10@0.987	7@0.992	0.991	-0.90%	1.17	0.169	53	778	-52.50%	77,597.50	-52.93%	13,820	-2.55%
				December 2013	---	---	---	---	1.00	---	7@1.01	1.00	-0.99%	1.15	0.231	---	---	---	---	---	---	---
				March 2014	---	---	---	---	1.00	---	---	1.00	-0.99%	1.12	0.924	---	---	---	---	---	---	---
				June 2014	---	---	---	---	---	---	---	---	---	---	---	---	---	---	---	---	---	---
PPC (CR)				(Contract Size: 100 Securities, Physical Delivery)																		
7.39	7.23	7.29	0.00%	September 2013	7.33	7.37	7.23	7.28	7.32	1@7.27	1@7.30	7.32	0.00%	8.47	4.58	86	336	-66.77%	245,665.00	-66.65%	5,018	-3.02%
				December 2013	---	---	---	---	7.34	1@7.22	1@7.35	7.34	0.00%	8.56	5.08	---	---	---	---	---	50	0.00%
				March 2014	---	---	---	---	7.35	---	---	7.35	0.00%	7.99	6.30	---	---	-100.00%	---	-100.00%	50	0.00%
				June 2014	---	---	---	---	---	---	---	---	---	---	---	---	---	---	---	---	---	---

Underlying Asset				Derivatives Market																		
Price max	Price min	Closing price	change	Delivery Month	Open price	Price max	Price min	Last price	Closing price	Last Bid	Last Ask	Settlement price	change	Life high	Life low	Trades	Volume	change	Value	change	Open Interest	change
SIDENOR (CR)				(Contract Size: 100 Securities, Physical Delivery)																		
1.62	1.55	1.55	-1.90%	September 2013	1.60	1.60	1.60	1.60	1.59	3@1.55	4@1.62	1.59	-1.85%	1.82	1.36	1	1	-92.31%	160.00	-92.19%	1,500	0.00%
				December 2013	---	---	---	---	---	---	4@1.64	---	---	---	---	---	---	---	---	---	---	---
				March 2014	---	---	---	---	---	---	---	---	---	---	---	---	---	---	---	---	---	---
				June 2014	---	---	---	---	---	---	---	---	---	---	---	---	---	---	---	---	---	---
TERNA ENERGY (CR)				(Contract Size: 103 Securities, Physical Delivery)																		
2.90	2.82	2.82	-2.42%	September 2013	2.86	2.86	2.86	2.86	2.83	10@2.82	1@2.90	2.83	-2.41%	3.25	2.43	6	27	-64.94%	7,953.66	-65.32%	2,385	-0.91%
				December 2013	---	---	---	---	---	---	---	---	---	---	---	---	---	---	---	---	---	---
				March 2014	---	---	---	---	---	---	---	---	---	---	---	---	---	---	---	---	---	---
				June 2014	---	---	---	---	---	---	---	---	---	---	---	---	---	---	---	---	---	---
TITAN CEMENT (CR)				(Contract Size: 100 Securities, Physical Delivery)																		
15.07	14.50	14.65	-0.81%	September 2013	14.80	14.94	14.61	14.61	14.45	2@14.47	1@14.80	14.45	-0.82%	15.90	12.22	19	65	96.97%	96,089.00	100.45%	188	-6.00%
				December 2013	---	---	---	---	14.30	---	1@14.90	14.30	-0.83%	15.68	15.02	---	---	---	---	---	---	---
				March 2014	---	---	---	---	---	---	---	---	---	---	---	---	---	---	---	---	---	---
				June 2014	---	---	---	---	---	---	---	---	---	---	---	---	---	---	---	---	---	---
VIOHALCO (CB)				(Contract Size: 100 Securities, Physical Delivery)																		
4.44	4.22	4.22	-3.87%	September 2013	4.39	4.39	4.25	4.25	4.19	3@4.25	1@4.41	4.19	-3.90%	5.19	3.85	5	7	-90.14%	3,035.00	-90.04%	489	0.00%
				December 2013	---	---	---	---	4.23	---	1@4.46	4.23	-3.86%	4.10	3.89	---	---	---	---	---	---	---
				March 2014	---	---	---	---	---	---	---	---	---	---	---	---	---	---	---	---	---	---
				June 2014	---	---	---	---	---	---	---	---	---	---	---	---	---	---	---	---	---	---

FTSE/Athex Large Cap

(Trade Unit: 1 Index Point x 5€ - Exercise Style: European, Cash Settlement)

Call Options																	Put Options																		
Exercise Price	September 2013							October 2013							Other Months		September 2013								October 2013								Other Months		Exercise Price
	Open price	Price max	Price min	Last price	Closing price	Volume	Open Interest	Open price	Price max	Price min	Last price	Closing price	Volume	Open Interest	Volume	Open Interest	Open price	Price max	Price min	Last price	Closing price	Volume	Open Interest	Open price	Price max	Price min	Last price	Closing price	Volume	Open Interest	Volume	Open Interest			
215	-	-	-	-	92.00	-	60	-	-	-	-	-	-	-	-	-	-	-	-	-	-	-	-	-	-	-	-	-	-	-	-	-	215		
230	-	-	-	-	77.00	-	3	-	-	-	-	-	-	-	-	-	-	-	-	-	-	-	-	-	-	-	-	-	-	-	-	-	230		
255	-	-	-	-	-	-	-	-	-	-	-	-	-	-	-	-	-	-	-	-	-	-	-	-	-	-	-	-	-	-	-	-	255		
260	-	-	-	-	-	-	-	-	-	-	-	-	-	-	-	-	-	-	-	-	-	-	-	-	-	-	-	-	-	-	-	-	260		
265	-	-	-	-	-	-	-	-	-	-	-	-	-	-	-	-	-	-	-	-	-	-	-	-	-	-	-	-	-	-	-	-	265		
270	-	-	-	-	-	-	-	-	-	-	-	-	-	-	-	-	-	-	-	-	4.20	-	1	-	-	-	-	-	-	-	-	-	-	270	
275	-	-	-	-	-	-	-	-	-	-	-	-	-	-	-	-	-	-	-	-	5.30	-	1	-	-	-	-	-	-	-	-	-	-	275	
280	-	-	-	-	33.50	-	384	-	-	-	-	-	-	-	-	-	-	-	-	-	6.70	-	132	-	-	-	-	-	-	-	-	-	-	280	
285	-	-	-	-	30.25	-	20	-	-	-	-	-	-	-	-	-	-	-	-	-	8.20	-	56	-	-	-	-	12.00	-	1	-	-	-	285	
290	-	-	-	-	27.00	-	40	-	-	-	-	-	-	-	-	-	8.00	10.00	8.00	9.90	9.90	113	94	-	-	-	-	-	-	-	-	-	-	290	
295	-	-	-	-	24.00	-	1	-	-	-	-	-	-	-	-	-	-	-	-	-	-	-	-	-	-	-	16.00	-	2	-	-	-	295		
300	21.00	21.00	20.00	20.00	21.00	30	435	-	-	-	-	-	-	-	-	-	-	-	-	-	14.00	-	20	-	-	-	-	18.25	-	6	-	-	-	300	
305	-	-	-	-	-	-	-	-	-	-	-	-	-	-	-	-	14.00	17.00	14.00	16.00	16.50	448	408	-	-	-	-	20.75	-	1	-	-	-	305	
310	18.00	18.00	16.50	16.50	16.25	23	752	-	-	-	-	-	-	-	-	-	-	-	-	-	19.25	-	15	-	-	-	-	-	-	-	-	-	-	310	
315	14.00	14.25	13.50	14.25	14.00	31	646	21.50	22.00	21.25	21.25	19.75	110	90	-	-	-	-	-	-	22.00	-	33	-	-	-	-	-	-	-	-	-	-	315	
320	15.00	15.50	13.00	13.00	12.25	65	220	-	-	-	-	-	-	-	-	-	-	-	-	-	25.25	-	18	-	-	-	-	-	-	-	-	-	-	320	
325	-	-	-	-	10.50	-	60	-	-	-	-	-	-	-	-	-	-	-	-	-	28.50	-	155	-	-	-	-	-	-	-	-	-	-	325	
330	8.50	8.50	8.50	8.50	9.00	1	653	-	-	-	-	-	-	-	-	-	-	-	-	-	-	-	-	-	-	-	-	-	-	-	-	-	330		
335	-	-	-	-	7.70	-	75	-	-	-	-	-	-	-	-	-	-	-	-	-	-	-	-	-	-	-	-	-	-	-	-	-	335		
340	-	-	-	-	6.50	-	33	-	-	-	-	11.25	-	5	-	-	-	-	-	-	39.50	-	50	-	-	-	-	-	-	-	-	-	-	340	
345	-	-	-	-	-	-	-	-	-	-	-	-	-	-	-	-	-	-	-	-	-	-	-	-	-	-	-	-	-	-	-	-	345		
350	-	-	-	-	4.60	-	51	-	-	-	-	-	-	-	-	-	-	-	-	-	47.50	-	5	-	-	-	-	-	-	-	-	-	-	350	
355	-	-	-	-	3.90	-	3	-	-	-	-	-	-	-	-	-	-	-	-	-	-	-	-	-	-	-	-	-	-	-	-	-	-	355	
360	-	-	-	-	-	-	-	-	-	-	-	-	-	-	-	-	-	-	-	-	56.00	-	5	-	-	-	-	-	-	-	-	-	-	360	
365	-	-	-	-	-	-	-	-	-	-	-	-	-	-	-	-	-	-	-	-	60.50	-	130	-	-	-	-	-	-	-	-	-	-	365	
370	-	-	-	-	2.20	-	1	-	-	-	-	-	-	-	-	-	-	-	-	-	65.00	-	5	-	-	-	-	-	-	-	-	-	-	370	
375	-	-	-	-	-	-	-	-	-	-	-	-	-	-	-	-	-	-	-	-	-	-	-	-	-	-	-	-	-	-	-	-	375		
380	-	-	-	-	1.50	-	30	-	-	-	-	-	-	-	-	-	-	-	-	-	74.50	-	10	-	-	-	-	-	-	-	-	-	-	380	
385	-	-	-	-	-	-	-	-	-	-	-	-	-	-	-	-	-	-	-	-	79.00	-	5	-	-	-	-	-	-	-	-	-	-	385	
390	-	-	-	-	-	-	-	-	-	-	-	-	-	-	-	-	-	-	-	-	-	-	-	-	-	-	-	-	-	-	-	-	390		
395	-	-	-	-	-	-	-	-	-	-	-	-	-	-	-	-	-	-	-	-	88.50	-	5	-	-	-	-	-	-	-	-	-	-	395	
400	-	-	-	-	-	-	-	-	-	-	-	-	-	-	-	-	-	-	-	-	-	-	-	-	-	-	-	-	-	-	-	-	400		
405	-	-	-	-	-	-	-	-	-	-	-	-	-	-	-	-	-	-	-	-	-	-	-	-	-	-	-	-	-	-	-	-	405		
410	-	-	-	-	-	-	-	-	-	-	-	-	-	-	-	-	-	-	-	-	-	-	-	-	-	-	-	-	-	-	-	-	410		
415	-	-	-	-	-	-	-	-	-	-	-	-	-	-	-	-	-	-	-	-	-	-	-	-	-	-	-	-	-	-	-	-	415		
440	-	-	-	-	-	-	-	-	-	-	-	-	-	-	-	-	-	-	-	-	133.00	-	261	-	-	-	-	-	-	-	-	-	-	440	

FTSE/Athex Large Cap (Trade Unit: 1 Index Point x 5€ - Exercise Style: European, Cash Settlement)

Call Options																	Put Options																			
Exercise Price	September 2013							October 2013							Other Months		September 2013							October 2013							Other Months		Exercise Price			
	Open price	Price max	Price min	Last price	Closing price	Volume	Open Interest	Open price	Price max	Price min	Last price	Closing price	Volume	Open Interest	Volume	Open Interest	Open price	Price max	Price min	Last price	Closing price	Volume	Open Interest	Open price	Price max	Price min	Last price	Closing price	Volume	Open Interest	Volume	Open Interest				
1,500	-	-	-	-	-	-	-	-	-	-	-	-	-	-	-	-	-	-	-	-	1,190.00	-	3	-	-	-	-	-	-	-	-	-	1,500			
Totals:							150	3,467							110	95	0	0							561	1,412							0	10	0	0
Nominal Transactions Value:							235,125.00							173,250.00	0.00							847,050.00							0.00	0.00						
Number of Trades:							20							5	0							36							0	0						

ALPHA BANK (CR) (Contract Size: 100 Securities, Exercise Style: American, Physical Delivery)

Call Options																	Put Options																			
September 2013								October 2013								Other Months		September 2013								October 2013								Other Months		
Exercise Price	Open price	Price max	Price min	Last price	Closing price	Volume	Open Interest	Open price	Price max	Price min	Last price	Closing price	Volume	Open Interest	Volume	Open Interest	Open price	Price max	Price min	Last price	Closing price	Volume	Open Interest	Open price	Price max	Price min	Last price	Closing price	Volume	Open Interest	Volume	Open Interest	Exercise Price			
0.100						-	-							-	-							-	-						-	-			0.100			
0.200						-	-							-	-							-	-						-	-			0.200			
0.300						-	-							-	-							-	-						-	-			0.300			
0.400						-	-							-	-							-	-						-	-			0.400			
0.500						-	-							-	-							-	-						-	-			0.500			
0.600						-	-							-	-							-	-						-	-			0.600			
0.700						-	-							-	-							-	-						-	-			0.700			
0.800						-	-							-	-							-	-						-	-			0.800			
0.850						-	-							-	-							-	-						-	-			0.850			
0.900						-	-							-	-							-	-						-	-			0.900			
0.950						-	-							-	-							-	-						-	-			0.950			
1.00						-	-							-	-							-	-						-	-			1.00			
1.05						-	-							-	-							-	-						-	-			1.05			
1.10						-	-							-	-							-	-						-	-			1.10			
1.15						-	-							-	-							-	-						-	-			1.15			
1.20						-	-							-	-							-	-						-	-			1.20			
1.30						-	-							-	-							-	-						-	-			1.30			
1.40						-	-							-	-							-	-						-	-			1.40			
1.50						-	-							-	-							-	-						-	-			1.50			
1.60						-	-							-	-							-	-						-	-			1.60			
1.70						-	-							-	-							-	-						-	-			1.70			
1.80						-	-							-	-							-	-						-	-			1.80			
1.90						-	-							-	-							-	-						-	-			1.90			
2.00						-	-							-	-							-	-						-	-			2.00			
2.20						-	-							-	-							-	-						-	-			2.20			
2.40						-	-							-	-							-	-						-	-			2.40			
2.60						-	-							-	-							-	-						-	-			2.60			
2.80						-	-							-	-							-	-						-	-			2.80			
Totals:						0	0							0	0	0	0					0	0					0	0	0	0	0				
Nominal Transactions Value:							0.00							0.00	0.00							0.00	0.00					0.00	0.00		0.00	0.00				
Number of Trades:							0							0	0							0.00	0.00					0	0		0	0				

NATIONAL BANK (CR)

(Contract Size: 100 Securities, Exercise Style: American, Physical Delivery)

Call Options																	Put Options																			
September 2013								October 2013								Other Months		September 2013								October 2013								Other Months		
Exercise Price	Open price	Price max	Price min	Last price	Closing price	Volume	Open Interest	Open price	Price max	Price min	Last price	Closing price	Volume	Open Interest	Volume	Open Interest	Open price	Price max	Price min	Last price	Closing price	Volume	Open Interest	Open price	Price max	Price min	Last price	Closing price	Volume	Open Interest	Volume	Open Interest	Exercise Price			
0.300						-	-							-	-							-	-						-	-			0.300			
0.400						-	-							-	-							-	-						-	-			0.400			
0.500						-	-							-	-							-	-						-	-			0.500			
0.600						-	-							-	-							-	-						-	-			0.600			
0.700						-	-							-	-							-	-						-	-			0.700			
0.750						-	-							-	-							-	-						-	-			0.750			
0.800						-	-							-	-							-	-						-	-			0.800			
0.850						-	-							-	-							-	-						-	-			0.850			
0.900						-	-							-	-							-	-						-	-			0.900			
0.950						-	-							-	-							-	-						-	-			0.950			
1.00						-	-							-	-							-	-						-	-			1.00			
1.05						-	-							-	-							-	-						-	-			1.05			
1.10						-	-							-	-							-	-						-	-			1.10			
1.20						-	-							-	-							-	-						-	-			1.20			
1.30						-	-							-	-							-	-						-	-			1.30			
1.40						-	-							-	-							-	-						-	-			1.40			
1.50						-	-							-	-							-	-						-	-			1.50			
1.60						-	-							-	-							-	-						-	-			1.60			
1.70						-	-							-	-							-	-						-	-			1.70			
1.80						-	-							-	-							-	-						-	-			1.80			
1.90						-	-							-	-							-	-						-	-			1.90			
2.00						-	-							-	-							-	-						-	-			2.00			
2.20						-	-							-	-							-	-						-	-			2.20			
2.40						-	-							-	-							-	-				0.055	-	-	-	-		2.40			
2.60					0.412	-	20							-	-							-	-				0.107	-	-	-	-		2.60			
2.80						-	-							-	-							-	-				0.182	-	-	-	-		2.80			
3.00					0.167	-	22					0.255	-	120								-	-					-	-	-	-		3.00			
3.20					0.095	-	20					0.179	-	20								-	-					-	-	-	-		3.20			
3.40						-	-							-	-							-	-					-	-	-	-		3.40			
3.60						-	-							-	-							-	-					-	-	-	-		3.60			
3.80						-	-							-	-							-	-					-	-	-	-		3.80			
4.00						-	-							-	-							-	-					-	-	-	-		4.00			
4.40						-	-							-	-							-	-					-	-	-	-		4.40			
Totals:						0	62							0	140	0	20							0	0							0	60	0	0	
Nominal Transactions Value:						0.00								0.00		0.00								0.00								0.00				
Number of Trades:						0								0		0								0								0				

OPAP (CR)

(Contract Size: 100 Securities, Exercise Style: American, Physical Delivery)

Call Options																	Put Options																				
September 2013								October 2013								Other Months		September 2013								October 2013								Other Months			
Exercise Price	Open price	Price max	Price min	Last price	Closing price	Volume	Open Interest	Open price	Price max	Price min	Last price	Closing price	Volume	Open Interest	Volume	Open Interest	Open price	Price max	Price min	Last price	Closing price	Volume	Open Interest	Open price	Price max	Price min	Last price	Closing price	Volume	Open Interest	Volume	Open Interest	Exercise Price				
1.00	6.37				-	270					-				-			-				270					-				-			1.00			
3.20						-	-					-				-								-	-					-				-	3.20		
3.40						-	-					-				-								-	-					-				-	3.40		
3.60						-	-					-				-								-	-					-				-	3.60		
3.80						-	-					-				-								-	-					-				-	3.80		
4.00						-	-					-				-								-	-					-				-	4.00		
4.40						-	-					-				-								-	-					-				-	4.40		
4.80						-	-					-				-								-	-					-				-	4.80		
5.20						-	-					-				-								-	-					-				-	5.20		
5.60						-	-					-				-								-	-					-				-	5.60		
5.80						-	-					-				-								-	-					-				-	5.80		
6.00						-	-					-				-										0.069				-	-			6.00			
6.20						-	-					-				-								-	-					-				-	6.20		
6.40						-	-					1.14				-	25								-	-					0.141				-	-	6.40
6.60						-	-					-				-								0.120	-	135					-				-	6.60	
6.80						-	-					0.858				-	25								-	-					-				-	6.80	
7.00						-	-					-				-								-	-					-				-	7.00		
7.20						-	-					0.624				-	25								-	-					-				-	7.20	
7.40						-	-					-				-								-	-					-				-	7.40		
7.60						-	-					-				-								-	-					-				-	7.60		
7.80						-	-					-				-								-	-					-				-	7.80		
8.00						-	-					-				-								-	-					-				-	8.00		
8.40						-	-					-				-								-	-					-				-	8.40		
8.80						-	-					-				-								-	-					-				-	8.80		
9.00						-	-					-				-								-	-					-				-	9.00		
9.20						-	-					-				-								-	-					-				-	9.20		
9.40						-	-					-				-								-	-					-				-	9.40		
9.60						-	-					-				-								-	-					-				-	9.60		
9.80						-	-					-				-								-	-					-				-	9.80		
10.00						-	-					-				-								-	-					-				-	10.00		
20.00						-	270					-				-								12.63	-	270					-				-	20.00	
Totals:						0	540							0	75	0	1,600							0	675							0	55	0	0		
Nominal Transactions Value:						0.00								0.00		0.00		0.00							0.00		0.00							0.00		0.00	
Number of Trades:						0								0		0		0.00							0.00		0							0		0	

OTE (CR)

Call Options																	Put Options																						
September 2013								October 2013								Other Months		September 2013								October 2013								Other Months					
Exerise Price	Open price	Price max	Price min	Last price	Closing price	Volume	Open Interest	Open price	Price max	Price min	Last price	Closing price	Volume	Open Interest	Volume	Open Interest	Open price	Price max	Price min	Last price	Closing price	Volume	Open Interest	Open price	Price max	Price min	Last price	Closing price	Volume	Open Interest	Volume	Open Interest	Exerise Price						
2.60						-	-							-	-							-	-					-	-					2.60					
2.80						-	-							-	-							-	-					-	-					2.80					
3.00						-	-							-	-							-	-					-	-					3.00					
3.20						-	-							-	-							-	-					-	-					3.20					
3.40						-	-							-	-							-	-					-	-					3.40					
3.60						-	-							-	-							-	-					-	-					3.60					
3.80						-	-							-	-							-	-					-	-					3.80					
4.00						-	-							-	-							-	-					-	-					4.00					
4.40						-	-							-	-							-	-					-	-					4.40					
4.80						-	-							-	-							-	-					-	-					4.80					
5.20						-	-							-	-						0.011	-	100					-	-					5.20					
5.40						-	-							-	-							-	-					-	-					5.40					
5.60						-	-							-	-						0.039	-	1					-	-					5.60					
5.80						-	-							-	-							-	-					-	-					5.80					
6.00						-	-							-	-						0.105	-	75					-	-					6.00					
6.20						-	-							-	-							-	-					-	-					6.20					
6.40						-	-							-	-							-	-					-	-					6.40					
6.60						-	-							-	-							-	-					-	-					6.60					
6.80					0.351	-	1							-	-							-	-					-	-					6.80					
7.00						-	-							-	-							-	-					-	-					7.00					
7.20						-	-							-	-							-	-					-	-					7.20					
7.40						-	-							-	-							-	-					-	-					7.40					
7.60						-	-							-	-							-	-					-	-					7.60					
8.00					0.056	-	50							-	-							-	-					-	-					8.00					
8.20						-	-							-	-							-	-					-	-					8.20					
8.40						-	-							-	-						1.70	-	35					-	-					8.40					
8.60						-	-							-	-							-	-					-	-					8.60					
8.80						-	-							-	-							-	-					-	-					8.80					
9.00						-	-							-	-							-	-					-	-					9.00					
9.20						-	-							-	-							-	-					-	-					9.20					
Totals:						0	51							0	0	0	1,600							0	211							0	0	0	0	0	0		
Nominal Transactions Value:						0.00								0.00		0.00								0.00								0.00		0.00		0.00			
Number of Trades:						0								0		0								0.00								0		0		0			

PIRAEUS BANK (CR)

(Contract Size: 100 Securities, Exercise Style: American, Physical Delivery)

Call Options																	Put Options																			
September 2013								October 2013								Other Months		September 2013								October 2013								Other Months		
Exercise Price	Open price	Price max	Price min	Last price	Closing price	Volume	Open Interest	Open price	Price max	Price min	Last price	Closing price	Volume	Open Interest	Volume	Open Interest	Open price	Price max	Price min	Last price	Closing price	Volume	Open Interest	Open price	Price max	Price min	Last price	Closing price	Volume	Open Interest	Volume	Open Interest	Exercise Price			
0.500						-	-							-	-							-	-						-	-			0.500			
0.600						-	-							-	-							-	-						-	-			0.600			
0.700						-	-							-	-							-	-						-	-			0.700			
0.800						-	-							-	-							-	-						-	-			0.800			
0.900						-	-							-	-							-	-						-	-			0.900			
1.00						-	-							-	-							-	-						-	-			1.00			
1.10					0.038	-	5							-	-							-	-						-	-			1.10			
1.20						-	-							-	-							-	-						-	-			1.20			
1.30						-	-							-	-							-	-						-	-			1.30			
1.40						-	-							-	-							-	-						-	-			1.40			
1.50						-	-							-	-							-	-						-	-			1.50			
Totals:						0	5							0	0	0	0							0	0							0	0	0	0	
Nominal Transactions Value:						0.00								0.00		0.00							0.00		0.00								0.00	0		
Number of Trades:						0								0		0							0.00		0								0	0		

PPC (CR) (Contract Size: 100 Securities, Exercise Style: American, Physical Delivery)

Call Options																	Put Options																						
	September 2013							October 2013							Other Months			September 2013											October 2013							Other Months			
Exercise Price	Open price	Price max	Price min	Last price	Closing price	Volume	Open Interest	Open price	Price max	Price min	Last price	Closing price	Volume	Open Interest	Volume	Open Interest	Open price	Price max	Price min	Last price	Closing price	Volume	Open Interest	Open price	Price max	Price min	Last price	Closing price	Volume	Open Interest	Volume	Open Interest	Exercise Price						
3.20							-	-							-	-										-	-							3.20					
3.40							-	-							-	-										-	-							3.40					
3.60							-	-							-	-										-	-							3.60					
3.80							-	-							-	-										-	-							3.80					
4.00							-	-							-	-										-	-							4.00					
4.40					2.90	-	30							-	-										-	-							4.40						
4.80							-	-							-	-										-	-							4.80					
5.20							-	-							-	-										-	-							5.20					
5.60							-	-							-	-										-	-							5.60					
6.00							-	-							-	-										-	-							6.00					
6.40							-	-							-	-										-	-							6.40					
6.60							-	-							-	-										-	-							6.60					
6.80					0.712	-	10							-	-										-	-							6.80						
7.00							-	-							-	-										-	-							7.00					
7.20							-	-							-	-										0.372	-	400				-	-				7.20		
7.40							-	-							-	-										-	-							7.40					
7.60							-	-							-	-										-	-							7.60					
7.80							-	-							-	-										-	-							7.80					
8.00							-	-							-	-										-	-							8.00					
8.20							-	-							-	-										-	-							8.20					
8.40							-	-							-	-										-	-							8.40					
8.60							-	-							-	-										-	-							8.60					
8.80							-	-							-	-										-	-							8.80					
9.00							-	-							-	-										-	-							9.00					
9.20							-	-							-	-										-	-							9.20					
9.60							-	-							-	-										-	-							9.60					
10.00							-	-							-	-										-	-							10.00					
Totals:						0	40							0	0	0	0							0	400							0	0	0	0				
Nominal Transactions Value:						0.00								0.00		0.00								0.00								0.00		0.00					
Number of Trades:						0								0		0								0.00								0		0					

Securities	Type[4]	Stock Repo [1]						Stock Reverse Repo [2]								Repurchase Agreements [3]							
		Trans. price	chg.	Trades	Volume	Transactions Value	Open Interest[5]	Price max	Price min	Last price	Last Ask	Trades	Volume	Transactions Value	Open Interest[5]	Price max	Price min	Last price	Last Ask	Trades	Volume	Transactions Value	Open Interest[5]
AEGEAN AIRLINES (CR)	SR RA	100.00	---	---	---	---	85	---	---	---	42@3%	---	---	---	---	---	---	---	---	---	---	---	---
ALPHA BANK (CR)	SR RA	100.00	---	---	---	---	54,615	---	---	---	34848@3.7%	---	---	---	50	---	---	---	---	---	---	---	1,562
ALPHA ETF FTSE Athex Large Cap	SR RA	100.00	---	---	---	---	---	---	---	---	---	---	---	---	---	---	---	---	---	---	---	---	2,664
ALUMIL (CR)	RA	---	---	---	---	---	---	---	---	---	---	---	---	---	---	---	---	---	---	---	---	---	---
ATHENS MEDICAL CENTER SA (CR)	SR RA	100.00	---	---	---	---	434	---	---	---	217@3%	---	---	---	---	---	---	---	---	---	---	---	---
AUTOHELLAS SA (CR)	SR RA	100.00	---	---	---	---	50	---	---	---	25@3%	---	---	---	---	---	---	---	---	---	---	---	---
CC HBC AG (CR)	SR RA	100.14	0.02	---	---	---	1,251	3.00%	3.00%	3.00%	419@3%	1	56	115,920.0	206	3.00%	3.00%	3.00%	---	1	56	115,920.0	174
CENTRIC HOLDINGS (CR)	SR RA	100.00	---	---	---	---	200	---	---	---	153@7.9%	---	---	---	---	---	---	---	---	---	---	---	---
CORINTH PIPEWORKS SA (CR)	SR RA	100.00	---	---	---	---	160	---	---	---	80@3%	---	---	---	---	---	---	---	---	---	---	---	---
CRETE PLASTICS SA (CR)	SR RA	100.00	---	---	---	---	---	---	---	---	---	---	---	---	---	---	---	---	---	---	---	---	---
ELLAKTOR (CR)	SR RA	100.03	---	---	---	---	2,881	3.00%	3.00%	3.00%	1380@3%	1	10	2,080.0	10	---	---	---	---	---	---	---	---
ELTON SA (CR)	SR RA	100.00	---	---	---	---	50	---	---	---	35@3%	---	---	---	---	---	---	---	---	---	---	---	---
ELVAL SA. (CB)	SR RA	100.00	---	---	---	---	621	---	---	---	310@3%	---	---	---	---	---	---	---	---	---	---	---	---
EUROBANK ERGASIAS (CR)	SR RA	100.16	0.01	---	---	---	1,523	---	---	---	15@3.5%	---	---	---	977	---	---	---	---	---	---	---	28
EUROBANK PROPERTIES REIC (CR)	SR RA	100.07	0.01	---	---	---	1,641	---	---	---	705@3%	---	---	---	115	---	---	---	---	---	---	---	---
EUROPEAN RELIANCE INSUR. (CR)	SR RA	100.00	---	---	---	---	---	---	---	---	---	---	---	---	---	---	---	---	---	---	---	---	---
EYDAP S.A. (CR)	SR RA	100.06	---	---	---	---	325	---	---	---	149@3%	---	---	---	13	---	---	---	---	---	---	---	16
FOLLI FOLLIE (CR)	SR RA	100.09	---	---	---	---	778	---	---	---	373@3%	---	---	---	20	---	---	---	---	---	---	---	10
FOURLIS (CR)	SR RA	100.00	---	---	---	---	195	---	---	---	97@3%	---	---	---	---	---	---	---	---	---	---	---	---
FRIGOGLASS SA (CR)	SR RA	100.20	0.01	---	---	---	229	---	---	---	79@3%	---	---	---	35	---	---	---	---	---	---	---	---
GEK TERNA (CR)	SR RA	100.01	---	---	---	---	624	---	---	---	332@3%	---	---	---	5	---	---	---	---	---	---	---	---
GR. SARANTIS SA (CR)	SR RA	100.00	---	---	---	---	62	---	---	---	31@3%	---	---	---	---	---	---	---	---	---	---	---	---
HALKOR SA (CB)	SR RA	100.00	---	---	---	---	415	---	---	---	207@3%	---	---	---	---	---	---	---	---	---	---	---	---
HELLENIC CABLES SA (CR)	SR RA	100.00	---	---	---	---	84	---	---	---	42@3%	---	---	---	---	---	---	---	---	---	---	---	---
HELLENIC EXCHANGES (CR)	SR RA	100.10	0.01	---	---	---	5,993	---	---	---	2616@3%	---	---	---	330	---	---	---	---	---	---	---	---
HELLENIC PETROLEUM (CR)	SR RA	100.13	---	---	---	---	2,224	---	---	---	934@3%	---	---	---	178	---	---	---	---	---	---	---	46
HYGEIA SA (CR)	SR RA	100.00	---	---	---	---	500	---	---	---	200@4.4%	---	---	---	---	---	---	---	---	---	---	---	---
IASO SA (CR)	SR RA	100.00	---	---	---	---	86	---	---	---	43@3%	---	---	---	---	---	---	---	---	---	---	---	---
IKTINOS HELLAS SA (CR)	SR RA	100.00	---	---	---	---	10	---	---	---	---	---	---	---	---	---	---	---	---	---	---	---	---
INFORM P. LYKOS SA (CR)	SR RA	100.00	---	---	---	---	203	---	---	---	101@3%	---	---	---	---	---	---	---	---	---	---	---	---
INTRACOM CONSTR. (CR)	SR RA	100.00	---	---	---	---	37	---	---	---	18@3%	---	---	---	---	---	---	---	---	---	---	---	---
INTRACOM HOLDINGS (CR)	SR RA	100.00	---	---	---	---	660	---	---	---	442@4.1%	---	---	---	---	---	---	---	---	---	---	---	---

Stock Lending Notes

- [1] - Stock Repo: A Contract for selling stocks to HELEX with a Repurchase Right (According to ATHEX BoD Resolution No 17)
- [2] - Stock Reverse Repo: A Contract for buying stocks from HELEX with a Resell Right. (According to ATHEX BoD Resolution No 18)
- [3] - Standardized Repurchase Agreements: A Contract that constitutes a standardized agreement for the purchase or sale of shares, with repurchase or resell pact (According to ATHEX BoD Resolution No 20)
- [4] - Type of products is divided into SR: Stock Repo or Stock Reverse Repo, and RA: Repurchase Agreements.
- [5] - Open Interest in all Series (both tradeable or non-tradeable).

Securities	Type[4]	Stock Repo [1]						Stock Reverse Repo [2]								Repurchase Agreements [3]							
		Trans. price	chg.	Trades	Volume	Transactions Value	Open Interest[5]	Price max	Price min	Last price	Last Ask	Trades	Volume	Transactions Value	Open Interest[5]	Price max	Price min	Last price	Last Ask	Trades	Volume	Transactions Value	Open Interest[5]
INTRALOT (CR)	SR RA	100.02	---	---	---	---	4,196	3.00%	3.00%	3.00%	1858@3%	1	40	6,440.0	240	---	---	---	---	---	---	---	---
J & P - AVAX SA (CR)	SR RA	100.00	---	---	---	---	235	---	---	---	117@3%	---	---	---	---	---	---	---	---	---	---	---	---
JUMBO SA (CR)	SR RA	100.07	0.01	---	---	---	2,358	---	---	---	1090@3%	---	---	---	89	---	---	---	---	---	---	---	20
KLEEMAN HELLAS SA (CR)	SR RA	100.00	---	---	---	---	982	---	---	---	491@3%	---	---	---	---	---	---	---	---	---	---	---	---
KLOUKINAS - LAPPAS SA (CR)	SR RA	100.00	---	---	---	---	---	---	---	---	---	---	---	---	---	---	---	---	---	---	---	---	---
KORRES (CR)	SR RA	100.00	---	---	---	---	---	---	---	---	---	---	---	---	---	---	---	---	---	---	---	---	---
KRI-KRI S.A. (CR)	SR RA	100.00	---	---	---	---	549	---	---	---	274@3%	---	---	---	---	---	---	---	---	---	---	---	---
LAMDA DEVELOPMENT SA (CR)	SR RA	100.00	---	---	---	---	890	---	---	---	445@3%	---	---	---	---	---	---	---	---	---	---	---	---
LOULIS MILLS SA (CR)	SR RA	100.00	---	---	---	---	---	---	---	---	---	---	---	---	---	---	---	---	---	---	---	---	---
MARFIN INVESTMENT GROUP (CR)	SR RA	100.00	---	---	---	---	582	---	---	---	---	---	---	---	---	---	---	---	---	---	---	---	---
METKA (CR)	SR RA	100.17	0.01	---	---	---	641	---	---	---	250@3%	---	---	---	75	---	---	---	---	---	---	---	9
MLS MULTIMEDIA SA (CR)	SR RA	100.00	---	---	---	---	99	---	---	---	49@3%	---	---	---	---	---	---	---	---	---	---	---	---
MOTOR OIL (CR)	SR RA	100.16	---	---	---	---	2,057	---	---	---	918@3%	---	---	---	110	---	---	---	---	---	---	---	17
MYTILINEOS HOLDINGS (CR)	SR RA	100.02	---	---	---	---	3,875	---	---	---	1867@3%	---	---	---	20	---	---	---	---	---	---	---	---
NATIONAL BANK (CR)	SR RA	100.09	0.01	---	---	---	8,845	3.00%	3.00%	3.00%	4064@3%	1	93	27,528.0	358	---	---	---	---	---	---	---	346
NBGAM ETF	SR RA	100.00	---	---	---	---	---	---	---	---	---	---	---	---	---	---	---	---	---	---	---	---	100
NBGAM ETF GREECE & TURKEY 30	SR RA	100.00	---	---	---	---	---	---	---	---	---	---	---	---	---	---	---	---	---	---	---	---	35
NIREFS SA (CR)	SR RA	100.00	---	---	---	---	326	---	---	---	218@4.2%	---	---	---	---	---	---	---	---	---	---	---	---
OPAP (CR)	SR RA	100.06	---	---	---	---	5,721	3.00%	3.00%	3.00%	2663@3%	1	70	51,590.0	108	---	---	---	---	---	---	---	367
OTE (CR)	SR RA	100.23	0.02	---	---	---	5,262	3.00%	3.00%	3.00%	1379@3%	1	4	2,688.0	1,254	---	---	---	---	---	---	---	162
P.P.A. S.A. (CR)	SR RA	100.00	---	---	---	---	115	---	---	---	57@3%	---	---	---	---	---	---	---	---	---	---	---	---
PETROPOULOS PETROS (CR)	RA	---	---	---	---	---	---	---	---	---	---	---	---	---	---	---	---	---	---	---	---	---	---
PIRAEUS BANK (CR)	SR RA	100.00	---	---	---	---	8,783	---	---	---	4339@3%	---	---	---	52	---	---	---	---	---	---	---	---
PPC (CR)	SR RA	100.40	0.02	---	---	---	1,933	3.00%	3.00%	3.00%	527@3%	1	15	10,935.0	439	---	---	---	---	---	---	---	35
QUEST HOLDINGS (CR)	SR RA	100.00	---	---	---	---	39	---	---	---	19@3%	---	---	---	---	---	---	---	---	---	---	---	---
REDS S.A. (CR)	SR RA	100.00	---	---	---	---	572	---	---	---	366@3.7%	---	---	---	---	---	---	---	---	---	---	---	---
SELECTED TEXT. IND. ASSOC (CR)	SR RA	100.00	---	---	---	---	50	---	---	---	37@6.5%	---	---	---	---	---	---	---	---	---	---	---	---
SIDENOR (CR)	SR RA	100.00	---	---	---	---	442	---	---	---	221@3%	---	---	---	---	---	---	---	---	---	---	---	---
TECHNICAL OLYMPIC SA (CR)	SR RA	100.00	---	---	---	---	100	---	---	---	50@3%	---	---	---	---	---	---	---	---	---	---	---	---
TERNA ENERGY (CR)	SR RA	100.14	0.01	---	---	---	289	---	---	---	95@3%	---	---	---	49	---	---	---	---	---	---	---	5
THESSALONIKA WATER & SEWERAGE	SR RA	100.00	---	---	---	---	1,270	---	---	---	635@3%	---	---	---	---	---	---	---	---	---	---	---	---
THRACE PLASTICS SA (CR)	SR RA	100.00	---	---	---	---	1,010	---	---	---	505@3%	---	---	---	---	---	---	---	---	---	---	---	---

Stock Lending Notes

[1] - Stock Repo: A Contract for selling stocks to HELEX with a Repurchase Right (According to ATHEX BoD Resolution No 17)

[2] - Stock Reverse Repo: A Contract for buying stocks from HELEX with a Resell Right. (According to ATHEX BoD Resolution No 18)

[3] - Standardized Repurchase Agreements: A Contract that constitutes a standardized agreement for the purchase or sale of shares, with repurchase or resell pact (According to ATHEX BoD Resolution No 20)

[4] - Type of products is divided into SR: Stock Repo or Stock Reverse Repo, and RA: Repurchase Agreements.

[5] - Open Interest in all Series (both tradeable or non-tradeable).

Securities	Type[4]	Stock Repo [1]						Stock Reverse Repo [2]								Repurchase Agreements [3]							
		Trans. price	chg.	Trades	Volume	Transactions Value	Open Interest[5]	Price max	Price min	Last price	Last Ask	Trades	Volume	Transactions Value	Open Interest[5]	Price max	Price min	Last price	Last Ask	Trades	Volume	Transactions Value	Open Interest[5]
TITAN CEMENT (CR)	SR RA	100.02	---	---	---	---	9,474	3.00%	3.00%	3.00%	4682@3%	1	5	7,325.0	55	---	---	---	---	---	---	---	12
TPA SA (CR)	SR RA	100.00	---	---	---	---	6	---	---	---	---	---	---	---	---	---	---	---	---	---	---	---	---
TRASTOR REAL EST. INV. CO.(CR)	SR RA	100.00	---	---	---	---	284	---	---	---	142@3%	---	---	---	---	---	---	---	---	---	---	---	---
VIOHALCO (CB)	SR RA	100.01	---	---	---	---	3,990	---	---	---	1973@3%	---	---	---	22	---	---	---	---	---	---	---	30

Stock Lending Notes

- [1] - Stock Repo: A Contract for selling stocks to HELEX with a Repurchase Right (According to ATHEX BoD Resolution No 17)
- [2] - Stock Reverse Repo: A Contract for buying stocks from HELEX with a Resell Right. (According to ATHEX BoD Resolution No 18)
- [3] - Standardized Repurchase Agreements: A Contract that constitutes a standardized agreement for the purchase or sale of shares, with repurchase or resell pact (According to ATHEX BoD Resolution No 20)
- [4] - Type of products is divided into SR: Stock Repo or Stock Reverse Repo, and RA: Repurchase Agreements.
- [5] - Open Interest in all Series (both tradeable or non-tradeable).

Sectors codification for listed companies

533	-	Exploration & Production	537	-	Integrated Oil & Gas
1353	-	Commodity Chemicals	1357	-	Specialty Chemicals
1753	-	Aluminum	1755	-	Nonferrous Metals
1757	-	Steel	1775	-	General Mining
2353	-	Building Materials & Fixtures	2357	-	Heavy Construction
2723	-	Containers & Packaging	2727	-	Diversified Industrials
2733	-	Electrical Components & Equipment	2753	-	Commercial Vehicles & Trucks
2757	-	Industrial Machinery	2773	-	Marine Transportation
2777	-	Transportation Services	2791	-	Business Support Services
2797	-	Industrial Suppliers	3535	-	Distillers & Vintners
3537	-	Soft Drinks	3573	-	Farming & Fishing
3577	-	Food Products	3722	-	Durable Household Products
3726	-	Furnishings	3728	-	Home Construction
3747	-	Toys	3763	-	Clothing & Accessories
3765	-	Footwear	3767	-	Personal Products
3785	-	Tobacco	4533	-	Health Care Providers
4535	-	Medical Equipment	4577	-	Pharmaceuticals
5337	-	Food Retailers & Wholesalers	5371	-	Apparel Retailers
5373	-	Broadline Retailers	5375	-	Home Improvement Retailers
5379	-	Specialty Retailers	5553	-	Broadcasting & Entertainment
5555	-	Media Agencies	5557	-	Publishing
5751	-	Airlines	5752	-	Gambling
5753	-	Hotels	5755	-	Recreational Services
5757	-	Restaurants & Bars	5759	-	Travel & Tourism
6535	-	Fixed Line Telecommunications	6575	-	Mobile Telecommunications
7535	-	Conventional Electricity	7537	-	Alternative Electricity
7577	-	Water	8355	-	Banks
8534	-	Insurance Brokers	8536	-	Property & Casualty Insurance
8633	-	Real Estate Holding & Development	8637	-	Real Estate Services
8671	-	Industrial & Office REITs	8675	-	Specialty REITs
8775	-	Specialty Finance	8777	-	Investment Services
8985	-	Equity Investment Instruments	9533	-	Computer Services
9535	-	Internet	9537	-	Software
9572	-	Computer Hardware	9574	-	Electronic Office Equipment
9578	-	Telecommunications Equipment	11000	-	ETF

