

Daily Official List

Athens Exchange sa

Friday, 23 August, 2013

Year: 134 Trading Day No: 158



ΟΜΙΛΟΣ ΕΛΛΗΝΙΚΑ ΧΡΗΜΑΤΙΣΤΗΡΙΑ
HELLENIC EXCHANGES GROUP

Disclaimer:

Athens Exchange (ATHEX) endeavours to ensure that the data and other material ("Information") presented on the Daily Official List are accurate and complete, but it is not liable for any errors or omissions of data or /and for the accuracy, credibility, updating and completeness of the aforesaid information nor it has any liability arising directly or indirectly from the use of the above Information.

ATHEX is not liable for the accuracy of the data included in listed companies' announcements. Only the sender of such an announcement is fully and solely liable for any infringement of third party's rights from the content of such announcement. All contents of the Daily Official List are provided only for information purposes and do not constitute investment advice or solicitation to invest in securities or other products listed for trading on ATHEX.

You acknowledge and agree that ATHEX is the owner of any property rights related to any Information appearing on the Daily Official List including intellectual property rights copyright, trademarks, etc.

The above data are a property of the Athens Exchange and are copyright protected. Users are forbidden to reproduce, modify, copy, sale, transmit or redistribute, by all reproduction means and methods, part or the whole of the above data, without reference to their source.

The commercial exploitation of these data is, also, forbidden by third parties. Athens Exchange does not carry any responsibility, direct or indirect, derived from usage or accidental alteration of the above data when used by third parties.

**Athens Exchange sa**

110 Athinon Ave., 10442 Athens, Tel: (210) 33.66.800, Fax: (210) 32.13.938

www.athex.gr

**Thessalonica Stock Exchange Center (T.S.E.C)**

16-18 Katouni Str., Thessalonica 546 25 Tel: (2310) 567.667, Fax: (2310) 530.545

Athex Members Guarantee Fund

14-16 Fidiou Str., Athens 106 78, Tel: (210) 33.04.682, Fax: (210) 33.04.155

Hellenic Republic Capital Market Commission

1 Kolokotroni Str. & 1 Stadiou Str., Athens 10562 Tel: (210) 33.77.100 Fax: (210) 33.77.173

Table of Contents

Section 1: Statistical Figures of Securities and Derivatives Markets

Summary of Markets

Athex Indices

Analytic Figures for Athex Market's Boards and Categories

Trading Details by Athex Sectors and ETFs Category

Top 10 best & worst performing Shares

Derivatives Summary

Section 2: Analytic Figures of Shares Transactions

Analytic Figures of Shares Transactions

Shares' Notes

Section 3: Figures of Securities Transactions

Securities Blocks Details

Shares Rights Details

Shares Short Selling

Stock Borrowing

Shares Forced Sales

Forced Sales Registered Shares

Exchange Traded Funds (ETFs) Characteristics

Section 5: Bonds traded in Fixed Income Assets Market

Corporate Bonds

Government Bonds

Treasury Bills & Zero Coupon Government Bonds

Government Bonds Traded with the Open Outcry Method

State Banks Bonds

Section 6: Additional Infos

Athex & ATHEXClear Members List

List of Stocks under Market Making operations

Section 7: Derivatives Market Analytic Figures

Index Futures

Stock Futures

Index Options

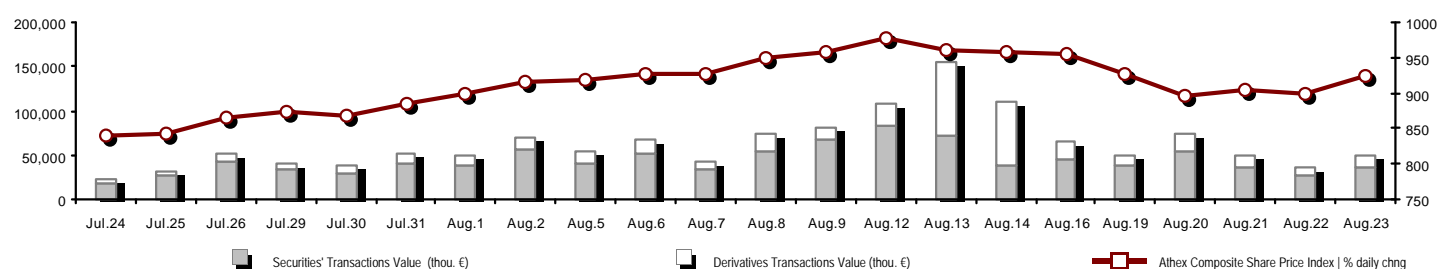
Stock Options

Stock Lending Analytic Figures (Repo Contracts)

Appendix A: Sectors codification for listed companies

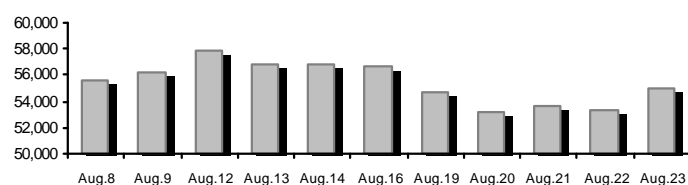
Summary of Markets

Athex Composite Share Price Index vs Shares and Derivatives Transactions Value

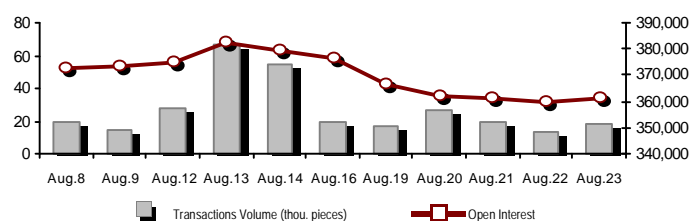


Total Transactions Value (Securities/Derivatives) (thou. €):		49,344.69	
Athex Capitalisation (mill. €) **:		54,993.63	
Daily change: mill. € %		1,630.81	3.06%
Yearly Avg Capitalisation: mill. € % chng prev year Avg		44,689.29	63.29%
Athex Composite Share Price Index % daily chng		924.47	2.94%
Athex Composite Share Price Index Capitalisation (mill. €)		47,993.20	
Daily change (mill. €)		1,514.89	
Securities' Transactions Value (thou. €)		36,619.36	
Daily change: thou. € %		9,734.94	36.21%
YtD Avg Trans. Value: thou. € % chng prev year Avg		67,044.37	29.25%
Short Selling Trans. Value: mill. € % in total Value		0.00	0.00%
Short Covering Trans. Value: mill. € % in total Value		0.00	0.00%
Transactions Value of Blocks (thou. €)		4,538.30	
Bonds Transactions Value (thou. €)		0.00	
Securities' Transactions Volume (thou. Pieces)		22,728.56	
Daily change: thou. pieces %		6,809.82	42.78%
YtD Avg Volume: thou. pieces % chng prev year Avg		51,785.34	4.73%
Short Selling Volume: thou pieces % in total Volume		0.00	0.00%
Short Covering Volume: thou. pieces % in total Volume		0.00	0.00%
Transactions Volume of Blocks (thou. Pieces)		594.27	
Bonds Transactions Volume (thou. pieces)		0.14	
Securities' Trades Number		20,679	
Daily change: number %		4,806	30.28%
YtD Avg Derivatives Trades number % chng prev year Avg		29,918	20.60%
Number of Blocks		7	
Number of Bonds Transactions		3	
		Derivatives Total Open Interest	
		361,589	
		in Index Futures % daily chng	
		47,367	
		in Stock Futures % daily chng	
		152,242	
		in Index Options % daily chng	
		5,099	
		in Stock Options % daily chng	
		5,533	
		in Stock Repos/Reverse Repos/RA % daily chng	
		151,348	
		Derivatives Transactions Value (thou. €)	
		12,725.33	
		Daily change: thou. € %	
		2,663.94	
		26.48%	
		YtD Avg Trans. Value: thou. € % chng prev year Avg	
		23,150.13	
		21.29%	
		Derivatives Contracts Volume:	
		18,030	
		Daily change: pieces %	
		5,094	
		39.38%	
		YtD Avg Derivatives Contracts % chng prev year Avg	
		44,452	
		-30.93%	
		Derivatives Trades Number:	
		1,736	
		Daily change: number %	
		426	
		32.52%	
		YtD Avg Derivatives Trades number % chng prev year Avg	
		2,771	
		-4.92%	

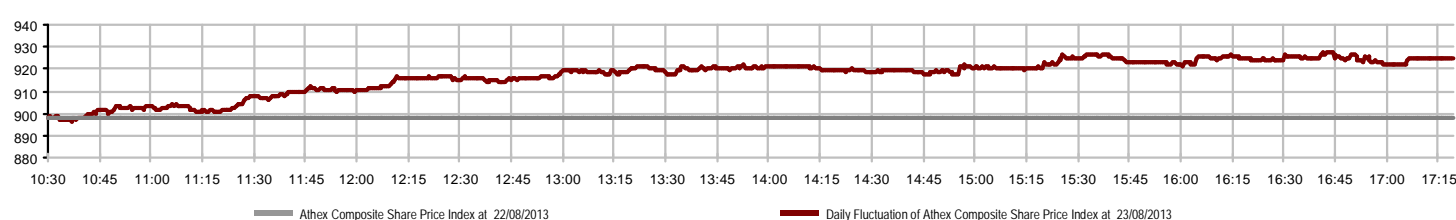
Athex Capitalisation (mill. €) **



Derivatives Transactions Volume and Open Interest



Daily Fluctuation of Athex Composite Share Price Index



Athex Indices

Index name	23/08/2013	22/08/2013	pts.	%	Min	Max	Year min	Year max	Year change
Athex Composite Share Price Index	924.47 #	898.08	26.39	2.94%	896.47	927.72	788.81	1,159.97	1.83% #
FTSE/Athex Large Cap	316.10 #	306.99	9.11	2.97%	306.60	317.33	253.17	410.78	2.07% #
FTSE/ATHEX Custom Capped	968.09 €	974.97	-6.88	-0.71%			863.84	1,275.55	-5.04% €
FTSE/ATHEX Custom Capped - USD	926.25 €	935.06	-8.82	-0.94%			808.44	1,172.76	-3.88% €
FTSE/Athex Mid Cap Index	1,032.69 #	1,005.99	26.70	2.65%	1,004.95	1,035.85	871.32	1,360.26	-8.87% €
FTSE/ATHEX-CSE Banking Index	105.17 #	100.95	4.22	4.18%	101.09	106.37	64.42	278.69	-37.72% €
FTSE/ATHEX Global Traders Index Plus	1,328.42 #	1,307.02	21.40	1.64%	1,295.59	1,335.01	1,082.32	1,484.90	6.50% #
FTSE/ATHEX Global Traders Index	1,391.05 #	1,362.07	28.98	2.13%	1,349.30	1,398.94	1,053.81	1,553.64	11.99% #
FTSE/ATHEX Mid & Small Cap Factor-Weighted Ind	1,198.03 #	1,194.74	3.29	0.28%	1,194.03	1,203.70	1,053.59	1,348.92	-3.31% €
Greece & Turkey 30 Price Index	646.78 #	643.84	2.94	0.46%	641.40	652.78	638.18	927.16	-16.85% €
ATHEX Mid & SmallCap Price Index	2,811.16 €	2,811.60	-0.44	-0.02%	2,772.18	2,815.57	2,752.95	3,725.74	-10.33% €
FTSE/Athex Market Index	762.64 #	740.99	21.65	2.92%	740.30	765.52	600.87	972.17	3.42% #
FTSE/Med 100	4,136.85 €	4,165.34	-28.49	-0.68%			4,075.12	4,570.16	-0.16% €
Athex Composite Index Total Return Index	1,338.61 #	1,300.40	38.21	2.94%	1,298.07	1,343.32	1,139.79	1,655.57	3.36% #
FTSE/Athex Large Cap Total Return	433.17 #	420.69	12.48	2.97%			366.91	565.68	0.52% #
FTSE/ATHEX Large Cap Net Total Return	1,267.39 #	1,230.86	36.53	2.97%	1,229.30	1,272.32	1,001.98	1,626.24	3.41% #
FTSE/ATHEX Custom Capped Total Return	1,011.06 €	1,018.24	-7.18	-0.71%			895.99	1,311.70	-3.51% €
FTSE/ATHEX Custom Capped - USD Total Return	967.36 €	976.56	-9.21	-0.94%			836.50	1,205.99	-2.33% €
FTSE/Athex Mid Cap Total Return	1,278.15 #	1,245.10	33.05	2.65%			1,152.62	1,720.22	-12.58% €
FTSE/ATHEX-CSE Banking Total Return Index	99.71 #	95.71	4.00	4.18%			82.32	289.59	-45.94% €
Greece & Turkey 30 Total Return Index	770.14 €	783.99	-13.85	-1.77%			770.14	1,098.14	-15.95% €
Hellenic Mid & Small Cap Index	945.64 #	922.19	23.45	2.54%	917.83	948.42	737.97	1,071.68	7.86% #
FTSE/Athex Banks	138.96 #	133.38	5.58	4.18%	133.57	140.54	85.08	368.22	-38.59% €
FTSE/Athex Insurance	1,180.11 #	1,159.03	21.08	1.82%	1,159.03	1,253.86	1,148.50	1,548.89	-22.22% €
FTSE/Athex Financial Services	1,357.67 #	1,309.50	48.17	3.68%	1,302.68	1,358.07	817.47	1,771.89	2.94% #
FTSE/Athex Industrial Goods & Services	3,427.65 #	3,318.84	108.81	3.28%	3,300.51	3,455.75	2,715.10	4,197.17	5.44% #
FTSE/Athex Retail	2,527.31 #	2,504.73	22.58	0.90%	2,451.62	2,533.76	1,629.12	2,692.44	38.14% #
FTSE/ATHEX Real Estate	1,963.96 #	1,936.42	27.54	1.42%	1,936.42	1,976.19	1,491.01	2,108.44	31.72% #
FTSE/Athex Personal & Household Goods	4,306.26 #	4,094.66	211.60	5.17%	4,015.59	4,315.86	2,586.10	4,550.67	37.91% #
FTSE/Athex Food & Beverage	7,923.69 #	7,743.51	180.18	2.33%	7,743.51	8,014.07	6,301.12	8,591.23	19.01% #
FTSE/Athex Basic Resources	2,244.03 #	2,173.63	70.40	3.24%	2,161.26	2,250.79	1,674.83	2,901.09	-3.42% €
FTSE/Athex Construction & Materials	1,923.13 #	1,920.04	3.09	0.16%	1,887.23	1,960.59	1,439.70	2,130.78	4.74% #
FTSE/Athex Oil & Gas	2,779.56 #	2,684.85	94.71	3.53%	2,649.65	2,780.66	2,358.47	3,358.80	-1.20% €
FTSE/Athex Chemicals	6,264.76 #	6,196.37	68.39	1.10%	6,125.57	6,293.64	5,194.08	7,961.02	4.08% #
FTSE/Athex Media	1,920.67 €	2,061.03	-140.36	-6.81%	1,920.67	2,061.03	716.56	3,560.63	165.31% #
FTSE/Athex Travel & Leisure	1,325.88 #	1,297.19	28.69	2.21%	1,294.85	1,325.88	1,028.61	1,496.38	31.35% #
FTSE/Athex Technology	690.68 #	677.85	12.83	1.89%	675.41	691.34	555.63	886.96	-6.94% €
FTSE/Athex Telecommunications	1,904.78 #	1,849.73	55.05	2.98%	1,833.21	1,915.79	1,175.35	2,147.00	35.69% #
FTSE/Athex Utilities	2,758.82 #	2,658.24	100.58	3.78%	2,658.24	2,761.08	1,752.55	3,104.53	20.58% #
FTSE/Athex Health Care	247.79 #	244.59	3.20	1.31%	244.47	251.71	172.87	346.05	-11.69% €
Athex All Share Index	195.35 #	189.56	5.79	3.06%			176.43	294.40	-17.46% €

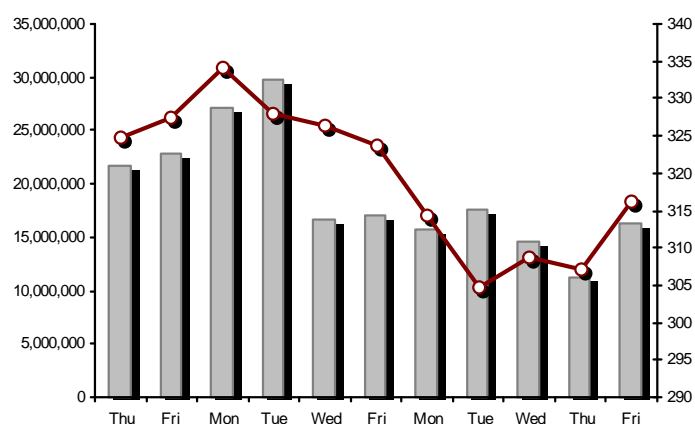
Note 1: Greece & Turkey 30 Pr data is the indicative at 17:20, whereas FTSE/ATHEX Custom Capped, FTSE/ATHEX Custom Capped - USD, FTSE/ATHEX Custom Capped TR, FTSE/ATHEX Custom Capped - USD TR, FTSE/Med 100 & Greece & Turkey 30 Rt closing prices refer to the previous trading day of 22/08/2013.

Note 2: The Hellenic Mid & Small Cap Index is a Customized index calculated by the Athens Exchange.

Athex Indices

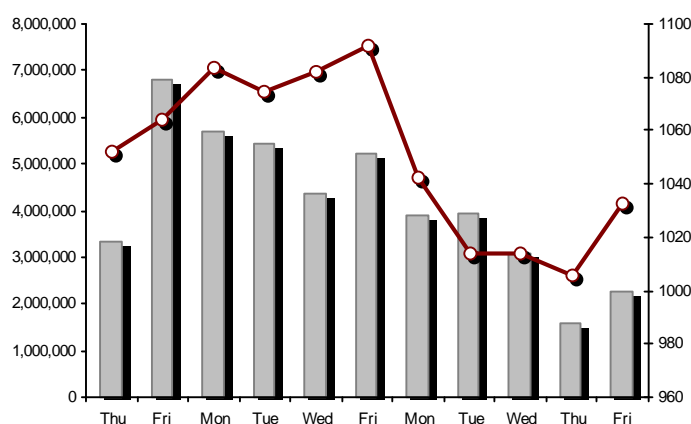
FTSE/Large Cap

23/08/2013: 2.97%



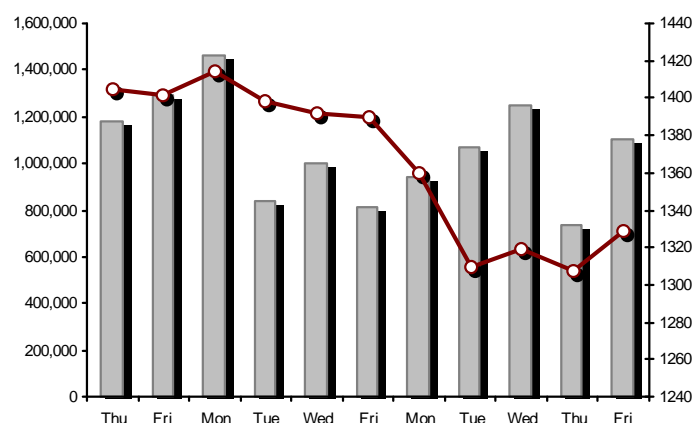
FTSE/Athex Mid Cap Index

23/08/2013: 2.65%



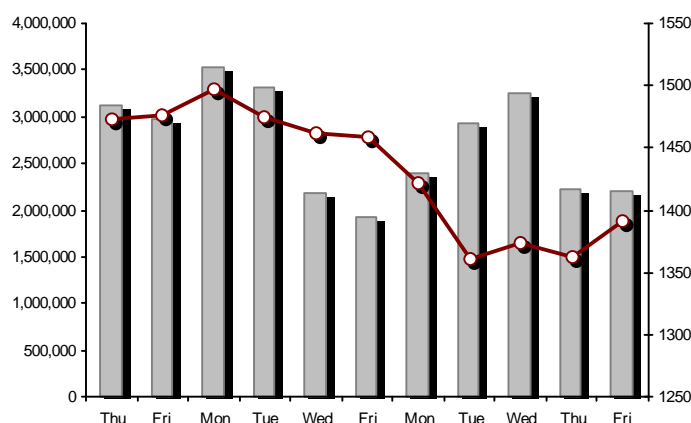
FTSE/ATHEX Global Traders Index Plus

23/08/2013: 1.64%



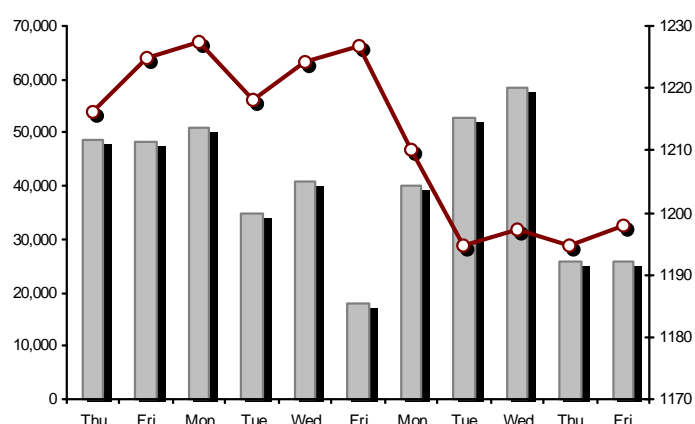
FTSE/ATHEX Global Traders Index

23/08/2013: 2.13%



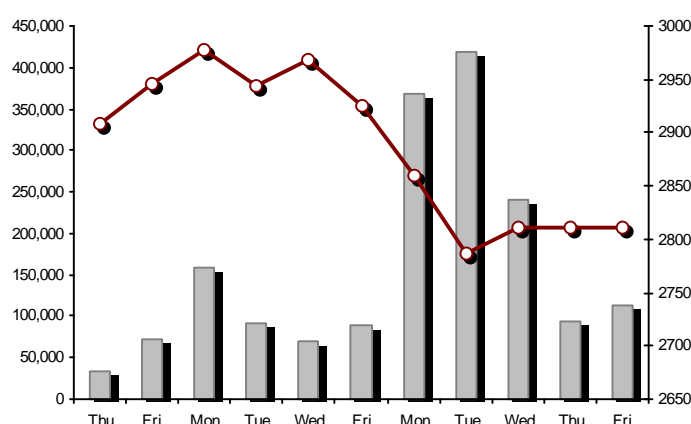
FTSE/ATHEX Mid & Small Cap Factor-Weighted Index

23/08/2013: 0.28%



ATHEX Mid & SmallCap Price Index

23/08/2013: -0.02%



Indices volume of transactions

Indices closing prices

Analytic Figures for Athex Market's Boards and Categories

	Total Traded Securities	Main Market	Low Dispersion	Other Categories (*)	Exchange Traded Funds (ETFs)	Warrants
Totals	151	114	9	23	2	3
Gain / Lose / Same:	87 / 44 / 20	69 / 32 / 13	5 / 2 / 2	8 / 10 / 5	2 / 0 / 0	3 / 0 / 0
Athex Capitalisation (mill. €) **	54,993.63	52,763.33	1,891.47	338.82		
Daily Average Transactions Value (thou. €)	67,044.37	26,091.82	539.50	84.48	40.65	6,234.71
Transactions Value	36,619.36	33,541.71	12.22	24.13	8.71	3,032.59
Main Board:	32,081.06	29,003.41	12.22	24.13	8.71	3,032.59
Blocks Board:	4,538.30	4,538.30	0.00	0.00	0.00	0.00
Forced Sales Board:	0.00	0.00	0.00	0.00	0.00	0.00
Special Terms Board:	0.00	0.00	0.00	0.00	0.00	0.00
Daily Average Transactions Volume	51,785,337	15,974,219	57,993	454,079	10,027	9,509,698
Transactions Volume	22,728,559	19,026,757	2,606	129,102	2,100	3,567,994
Main Board:	22,134,287	18,432,485	2,606	129,102	2,100	3,567,994
Blocks Board:	594,272	594,272	0	0	0	0
Forced Sales Board:	0	0	0	0	0	0
Special Terms Board:	0	0	0	0	0	0
Daily Average Number of Trades	29,918	11,630	122	223	8	2,383
Number of Trades	20,679	17,999	39	140	7	2,494
Main Board:	20,672	17,992	39	140	7	2,494
Blocks Board:	7	7	0	0	0	0
Forced Sales Board:	0	0	0	0	0	0
Special Terms Board:	0	0	0	0	0	0

(*) Summarised Transactions figures for Under Deletion and Under Supervision Categories.

(**) The Market Capitalization of the Companies that belong in the Under Supervision Category is not included.

Trading Details by Athex Sectors and ETFs Category

Code	Sectors	Gain / Lose / Same	Number of Trades	Transactions Volume	Transactions Value	% of Total Trans. Value
8300	- Banks	9 / 1 / 0	8,906	17,782,164	15,870,687.02	43.34%
1700	- Basic Resources	8 / 3 / 0	907	246,048	589,347.67	1.61%
1300	- Chemicals	3 / 0 / 2	53	16,564	19,049.72	0.05%
2300	- Construction & Materials	7 / 10 / 4	1,237	447,325	1,074,909.44	2.94%
11000	- ETF	2 / 0 / 0	7	2,100	8,711.40	0.02%
8700	- Financial Services	4 / 0 / 1	903	949,677	1,335,638.97	3.65%
3500	- Food & Beverage	5 / 4 / 4	808	105,170	1,584,110.18	4.33%
4500	- Health Care	2 / 3 / 2	110	120,429	74,124.66	0.20%
2700	- Industrial Goods & Services	10 / 3 / 3	1,538	383,266	1,053,873.19	2.88%
8500	- Insurance	1 / 0 / 0	21	6,550	7,503.61	0.02%
5500	- Media	1 / 4 / 0	16	2,621	729.49	0.00%
500	- Oil & Gas	2 / 0 / 0	965	302,131	2,287,213.64	6.25%
3700	- Personal & Household Goods	10 / 5 / 1	510	355,361	2,647,863.14	7.23%
8600	- Real Estate	3 / 3 / 0	281	43,994	226,302.13	0.62%
5300	- Retail	2 / 2 / 0	275	42,877	404,515.31	1.10%
9500	- Technology	6 / 3 / 1	288	153,525	111,774.83	0.31%
6500	- Telecommunications	1 / 0 / 0	786	420,384	2,889,283.26	7.89%
5700	- Travel & Leisure	7 / 3 / 2	1,541	998,717	4,209,275.96	11.49%
7500	- Utilities	4 / 0 / 0	1,527	349,656	2,224,445.24	6.07%

Top 10 best & worst performing Shares

Main Market					
With positive Price change	Closing price	change	With negative Price change	Closing price	change
DIONIC (CR)	0.088	18.92% #	TITAN CEMENT (CR)	14.40	-1.71% ⊖
MARFIN INVESTMENT GROUP (CR)	0.307	7.72% #	INTRALOT (CR)	1.60	-0.62% ⊖
ALPHA BANK (CR)	0.501	6.14% #	REVOIL (CR)	0.845	-0.59% ⊖
JUMBO SA (CR)	8.48	6.00% #			
SIDENOR (CR)	1.63	5.16% #			
HALKOR SA (CB)	0.849	4.81% #			
PPC (CR)	7.60	4.25% #			
EUROBANK ERGASIAS (CR)	0.638	4.25% #			
INTRACOM HOLDINGS (CR)	0.457	4.10% #			
HELLENIC PETROLEUM (CR)	7.66	4.08% #			
With the highest Transactions Value	Value (thou. €)	change	With the highest Transactions Volume	Volume	change
PIRAEUS BANK (CR)	5,163.67	4.04% #	ALPHA BANK (CR)	6,174,917	6.14% #
NATIONAL BANK (CR)	3,860.16	3.04% #	PIRAEUS BANK (CR)	5,039,935	4.04% #
OPAP (CR)	3,480.83	2.58% #	NATIONAL BANK (CR)	1,268,085	3.04% #
ALPHA BANK (CR)	3,053.58	6.14% #	ATTICA BANK S.A. (CR)	1,084,990	2.90% #
OTE (CR)	2,889.28	2.98% #	MARFIN INVESTMENT GROUP (CR)	693,330	7.72% #
JUMBO SA (CR)	2,571.64	6.00% #	EUROBANK ERGASIAS (CR)	642,761	4.25% #
PPC (CR)	1,831.86	4.25% #	OPAP (CR)	466,159	2.58% #
MOTOR OIL (CR)	1,652.01	2.82% #	INTRALOT (CR)	427,152	-0.62% ⊖
CC HBC AG (CR)	1,570.77	2.37% #	OTE (CR)	420,384	2.98% #
HELLENIC EXCHANGES (CR)	1,113.20	2.20% #	JUMBO SA (CR)	310,317	6.00% #

Note: Stocks that are not included in the "Low Dispersion" and "Under Supervision" categories, and the transactions value is more than 10,000 €.

Derivatives Summary

	Number of Trades	Volume	Open Interest	Transactions Value
Index Futures	568	5,077	47,367	8,034,383.75
FTSE/Athex Large Cap	568	5,077	47,367	8,034,383.75
Stock Futures	1,106	12,129	152,242	3,425,003.11
ALPHA BANK (CR)	190	4,107	16,501	202,962.00
CC HBC AG (CR)	22	34	723	71,800.00
CORINTH PIPEWORKS SA (CR)	0	0	457	0.00
ELLAKTOR (CR)	16	88	4,393	18,728.00
EUROBANK ERGASIAS (CR)	8	340	20,566	2,754.00
EUROBANK PROPERTIES REIC (CR)	5	17	274	12,182.00
EYDAP S.A. (CR)	7	42	218	25,092.00
FOLLI FOLLIE (CR)	0	0	242	0.00
FRIGOGLASS SA (CR)	13	32	421	15,612.00
GEK TERNA (CR)	38	370	32,091	80,701.00
HELLENIC EXCHANGES (CR)	22	106	2,216	63,289.00
HELLENIC PETROLEUM (CR)	32	78	2,315	58,382.00
INTRALOT (CR)	27	178	4,044	29,034.00
JUMBO SA (CR)	42	124	228	103,617.00
MARFIN INVESTMENT GROUP (CR)	21	223	19,128	6,657.80
METKA (CR)	8	20	477	20,770.00
MOTOR OIL (CR)	13	59	948	44,580.00
MYTILINEOS HOLDINGS (CR)	25	147	4,932	64,123.00
NATIONAL BANK (CR)	154	2,037	5,070	617,497.00
OPAP (CR)	37	196	4,001	146,693.00
OTE (CR)	139	1,098	8,270	752,835.00
P.P.A. S.A. (CR)	27	77	552	128,666.00
PIRAEUS BANK (CR)	72	1,734	14,613	177,956.00
PPC (CR)	145	871	5,052	652,216.00
SIDENOR (CR)	5	9	1,500	1,456.00
TERNA ENERGY (CR)	4	27	2,369	8,113.31
TITAN CEMENT (CR)	23	67	167	98,177.00
VIOHALCO (CB)	11	48	474	21,110.00
Index Options	59	821	5,099	1,265,050.00
FTSE/Athex Large Cap	59	821	5,099	1,265,050.00
Stock Options	1	1	5,533	300.00
ALPHA BANK (CR)	0	0	0	0.00
NATIONAL BANK (CR)	1	1	281	300.00
OPAP (CR)	0	0	2,945	0.00
OTE (CR)	0	0	1,862	0.00
PIRAEUS BANK (CR)	0	0	5	0.00
PPC (CR)	0	0	440	0.00
Stock Repos - Stock Reverse Repos - Repurchase Agreements	2	2	151,348	597.00
Stock Reverse Repos	0	0	4,797	0.00
Stock Repos	2	2	140,913	597.00
Repurchase Agreement	0	0	5,638	0.00
Total Derivatives Traded	1,736	18,030	361,589	12,725,333.86

Number of Outstanding Securities	Nominal Value	Dividends [1]			Date of Last Dividend [2]	Coupon Right	Note	Shares	Closing price	% change	Previous closing price/date	Open price	Price min	Price max	Last price	Avg price	Last Bid [7]	Last Ask [7]	P/E after	Year	Volume	Trades	Transactions Value	Company Mkt Value (thou. €)	Year low	Year high	Sector[4]
1,233,503,482		---	---	---		11/06/2013	---	ALPHA BANK (W)	0.958	5.86 #	0.905 22/08/2013	0.901	0.883	0.960	0.958	0.941	10830@0.958	20000@0.959	---	2012	1,593,025	1,099	1,498,932.22	5,472,375.91	0.241	1.14	8355
245,779,626		---	---	---		27/06/2013	---	NATIONAL BANK (W)	0.974	8.22 #	0.900 22/08/2013	0.942	0.890	0.980	0.974	0.953	72563@0.962	3270@0.974	---	2012	711,677	678	678,499.48	7,310,197.28	0.420	2.00	8355
849,195,130		---	---	---		03/07/2013	---	PIRAEUS BANK (W)	0.678	7.11 #	0.633 22/08/2013	0.630	0.630	0.691	0.678	0.677	2000@0.672	599@0.678	---	2012	1,263,292	717	855,156.63	5,224,744.99	0.290	0.889	8355

Warrants

71,417,100	0.650	---	---	---	26/05/2010	11/07/2007	---	AEGEAN AIRLINES (CR)	3.09	0.98 #	3.06 22/08/2013	3.06	3.04	3.10	3.09	3.06	1710@3.04	15@3.09	---	2012	3,995	33	12,223.90	220,678.84	1.96	3.24	5751
11,178,000	1.45	---	---	---	21/04/2010	12/05/2011	---	AEOLIAN INVESTMENT FUND (CR)	1.04	---	1.04 22/08/2013	1.05	1.04	1.05	1.04	1.04	400@0.983	249@1.04	8.23	2012	273	5	285.14	11,625.12	0.900	1.17	8985
13,000,000	1.00	---	---	---	01/08/2007	07/04/2000	---	AKRITAS SA (CR)	0.186	-9.27 €	0.205 22/08/2013	0.185	0.185	0.186	0.186	0.186	170@0.187	10@0.205	---	2012	160	4	29.74	2,418.00	0.140	0.520	2353
25,000,000	0.400	---	---	---	03/06/2009	12/07/2013	---	ALCO HELLAS SA (CR)	0.420	-2.33 €	0.430 22/08/2013	0.440	0.420	0.445	0.420	0.428	250@0.413	6@0.440	---	2012	851	4	364.45	10,500.00	0.159	0.599	1753
10,922,906,012	0.300	---	---	---	07/04/2008	13/05/2013	---	ALPHA BANK (CR)	0.501	6.14 #	0.472 22/08/2013	0.470	0.470	0.509	0.501	0.495	29000@0.498	60000@0.502	---	2012	6,174,917	2,317	3,053,579.93	5,472,375.91	0.161	0.696	8355
22,016,250	0.370	---	---	---	15/07/2009	11/05/2000	---	ALUMIL (CR)	0.595	-0.17 €	0.596 22/08/2013	0.599	0.582	0.599	0.599	0.592	50@0.590	50@0.595	---	2012	509	16	301.14	13,099.67	0.360	0.740	1753
418,000	16.00	---	---	---	22/04/2010	05/03/2013	---	ANDROMEDA SA (CR)	20.46	8.77 #	18.81 22/08/2013	20.69	18.83	20.69	18.83	20.67	100@18.82	---	1.90	2012	101	5	2,087.83	8,552.28	17.10	25.41	8985
21,876,700	0.380	---	---	---	08/07/2010	05/06/2001	---	AS COMPANY SA (CR)	0.308	3.70 #	0.297 22/08/2013	0.303	0.300	0.309	0.309	0.303	530@0.300	3500@0.309	35.20	2012	7,300	8	2,214.90	6,738.02	0.272	0.488	5379
86,735,980	0.310	---	---	---	06/07/2009	02/01/2002	---	ATHENS MEDICAL CENTER SA (CR)	0.801	---	0.801 22/08/2013	0.801	0.800	0.802	0.800	0.801	686537@0.800	2389@0.801	---	2012	65,182	34	52,193.85	69,475.52	0.471	0.994	4533
699,673,060	0.300	---	---	---	04/06/2008	05/06/2013	---	ATTICA BANK S.A. (CR)	0.284	2.90 #	0.276 22/08/2013	0.279	0.278	0.289	0.284	0.284	905@0.284	10530@0.287	---	2012	1,084,990	341	307,908.20	198,707.15	0.173	1.06	8355
45,457,464	0.700	---	---	---	01/07/2008	01/03/2010	---	AUDIO VISUAL ENTERPRISES (CR)	0.260	-6.81 €	0.279 22/08/2013	0.260	0.260	0.260	0.260	0.260	1000@0.200	6990@0.260	---	2012	700	2	182.00	11,818.94	0.097	0.482	5553
36,360,000	0.320	---	0.15	---	30/04/2012	05/05/2008	---	AUTOHELLAS SA (CR)	2.20	---	2.20 22/08/2013	2.24	2.20	2.25	2.20	2.22	200@2.19	500@2.27	11.85	2012	3,819	16	8,465.80	79,992.00	1.50	2.30	5759
19,864,886	5.60	1.976	0.67	0.5376	06/03/2013	02/07/2008	---	BANK OF GREECE (CR)	13.25	1.30 #	13.08 22/08/2013	13.33	13.00	13.33	13.25	13.19	5@13.18	367@13.25	---	---	3,480	70	45,904.35	263,209.74	11.26	19.19	8355
23,986,500	1.05	---	---	---	26/06/2009	15/03/2000	---	BIOKARPET S.A.(CR)	0.673	---	0.673 05/08/2013	---	---	---	---	---	---	466@0.619	---	2012	---	---	---	16,142.91	0.486	0.845	3726
15,842,391	1.51	---	---	---	15/07/2009	12/05/2000	---	BITROS HOLDING SA (CR)	0.621	---	0.621 01/08/2013	---	---	---	---	---	---	190@0.574	---	2012	---	---	---	9,838.12	0.336	0.745	1757
15,816,009	0.300	---	---	---	01/07/2009	17/07/2000	---	BYTE COMPUTER SA (CR)	0.470	2.17 #	0.460 22/08/2013	0.470	0.470	0.470	0.470	0.470	150@0.461	300@0.469	---	2012	50	1	23.50	7,433.52	0.351	0.620	9533
366,491,145	6.70	---	---	0.34	26/06/2013	29/04/2013	---	CC HBC AG (CR)	21.19	2.37 #	20.70 22/08/2013	20.70	20.70	21.50	21.19	21.16	3@21.18	9500@21.19	---	---	74,228	701	1,570,771.15	7,765,947.36	16.79	22.60	3537
101,123,806	0.360	---	---	---	22/07/2010	28/06/2011	---	CENTRIC HOLDINGS (CR)	0.219	-2.67 €	0.225 22/08/2013	0.220	0.218	0.234	0.219	0.222	1300@0.219	1@0.222	33.23	2012	24,651	21	5,476.73	22,146.11	0.182	0.440	5752
4,034,950	0.680	---	---	---	01/07/2005	30/12/2010	---	CHATZIKRANIOTIS & SONS SA (CR)	0.141	-0.70 €	0.142 22/08/2013	0.155	0.140	0.155	0.140	0.145	500@0.141	1000@0.177	---	2012	13,001	14	1,889.64	568.93	0.130	0.522	3577
124,170,201	0.780	---	---	---	28/06/2002	07/02/2005	---	CORINTH PIPEWORKS SA (CR)	2.12	2.42 #	2.07 22/08/2013	2.04	2.04	2.15	2.12	2.12	5059@2.10	1123@2.13	75.95	2012	64,818	275	137,079.76	263,240.83	1.40	2.59	1757
9,907,500	0.300	---	---	---	06/10/2005	13/02/2002	---	CPI SA (CR)	0.212	---	0.212 13/08/2013	---	---	---	---	---	---	730@0.233	---	2012	---	---	---	2,100.39	0.133	0.400	9572
27,379,200	0.610	---	---	---	23/06/2010	05/12/2012	---	CRETE PLASTICS SA (CR)	4.71	0.86 #	4.67 22/08/2013	4.66	4.66	4.71	4.71	4.68	450@4.70	313@4.79	13.46	2012	750	2	3,507.50	128,956.03	4.60	5.65	1357
26,664,840	0.470	---	---	---	29/06/2005	12/07/1999	---	CYCLON HELLAS SA (CR)	0.480	---	0.480 22/08/2013	0.455	0.455	0.480	0.480	0.464	1000@0.475	2000@0.500	---	2012	4,700	5	2,181.00	12,799.12	0.385	0.700	1357
15,000,000	0.300	---	---	---	06/07/2007	18/07/2000	---	DAIOS PLASTICS SA (CR)	3.79	---	3.79 21/08/2013	---	---	---	---	---	100@3.44	300@3.70	---	2012	---	---	---	56,850.00	3.34	5.50	1357
31,370,399	0.300	---	---	---	11/08/2010	15/02/2012	---	DIONIC (CR)	0.088	18.92 #	0.074 22/08/2013	0.075	0.075	0.089	0.088	0.082	1500@0.084	6246@0.088	---	2012	202,936	124	16,719.65	2,760.60	0.066	0.263	2797
34,720,000	0.310	---	---	---	16/06/2010	01/08/2007	---	DROMEAS SA (CR)	0.369	4.83 #	0.352 22/08/2013	0.360	0.360	0.369	0.369	0.364	1000@0.355	82@0.369	---	2012	600	3	218.58	12,811.68	0.218	0.634	3726
3,873,120	0.300	---	---	---	07/07/2008	04/10/2012	---	DRUCKFARBEN HELLAS (CR)	1.16	---	1.16 21/08/2013	---	---	---	---	---	1@1.05	---	---	2012	---	---	---	4,492.82	0.901	2.64	1357
11,250,000	0.560	---	---	---	26/07/2010	16/06/1999	---	EKTER SA (CR)	0.459	-4.17 €	0.479 22/08/2013	0.460	0.459	0.460	0.459	0.459	380@0.411	500@0.460	8.02	2012	2,450	2	1,125.05	5,163.75	0.400	0.700	2357
32,188,050	1.04	---	---	---	21/07/2008	20/01/2000	---	EL. D. MOUZAKIS SA (CB)	0.170	---	0.170 21/08/2013	---	---	---	---	---	---	1000@0.160	---	2012	---	---	---	5,471.97	0.114	0.330	3763
18,648,000	1.00	---	---	---	07/07/2009	10/09/2010	---	ELASTRON (CR)	0.720	-1.77 €	0.733 22/08/2013	0.720	0.720	0.720	0.720	0.720	10@0.710	960@0.720	---	2012	40	2	28.80	13,426.56	0.518	0.969	1757
31,734,530	1.60	---	---	---	09/07/2007	19/07/2006	---	ELGEKA SA (CR)	0.589	-9.39 €	0.650 13/08/2013	0.501	0.500	0.589	0.589	0.552	470@0.502	792@0.589	---	2012	2,080	11	1,147.33	18,691.64	0.407	0.780	3577
23,828,130	0.500	---	---	---	07/07/2010	17/02/2009	---	ELINOIL S.A. (CR)	1.17	---	1.17 13/08/2013	---	---	---	---	---	200@1.06	5@1.15	---	2012	---	---	---	27,878.91	1.02	1.89	537
177,001,313	1.03	0.0308	---	---	05/07/2011	20/12/2007	---	ELLAKTOR (CR)	2.15	3.36 #	2.08 22/08/2013	2.07	2.07	2.15	2.15	2.12	196@2.13	3020@2.15	---	2012	186,543	494	395,305.90	380,552.82	1.36	2.50	2357

Number of Outstanding Securities	Nominal Value	Dividends [1]			Date of Last Coupon		Note	Shares	Closing price	% change	Previous closing price/date	Open price	Price min	Price max	Last price	Avg price	Last Bid [7]	Last Ask [7]	P/E after	Year	Volume	Trades	Transactions Value	Company Mkt Value (thou. €)	Year low	Year high	Sector[4]	
		2010	2011	2012	Dividend [2]	Right																						
Main Market																												
26,730,187	0.600	---	---	---	25/06/2009	30/12/2010	---	ELTON SA (CR)	1.14	2.70 #	1.11 22/08/2013	1.14	1.14	1.14	1.14	1.14	100@1.09	100@1.11	11.92	2012	103	2	117.42	30,472.41	0.850	1.25	1353	
15,146,404	0.340	0.093	---	---	06/07/2011	17/10/2002	---	ELTRAK SA (CR)	1.62	--- ↘	1.62 22/08/2013	1.62	1.62	1.62	1.62	1.62	190@1.51	609@1.60	---	2012	583	1	944.46	24,537.17	1.08	1.90	2753	
124,100,815	0.300	---	---	---	27/06/2008	07/07/2000	---	ELVAL SA. (CB)	2.02	2.02 #	1.98 22/08/2013	1.98	1.97	2.02	2.02	2.00	3392@2.00	509@2.02	15.60	2012	8,319	19	16,647.62	250,683.65	1.55	2.38	1753	
13,230,000	0.300	---	---	---	11/08/2010	27/06/2012	---	ELVE SA (CR)	0.500	-3.85 €	0.520 22/08/2013	0.570	0.470	0.570	0.500	0.487	1350@0.490	430@0.520	---	2012	1,460	7	710.40	6,615.00	0.423	0.717	3763	
30,009,210	0.310	---	---	---	27/06/2008	26/06/2000	---	ETEM SA (CB)	0.414	4.81 #	0.395 22/08/2013	0.417	0.400	0.418	0.416	0.405	250@0.401	400@0.414	---	2012	5,436	13	2,199.23	12,423.81	0.328	0.828	1753	
4,050,416,865	0.300	---	---	---	02/05/2008	13/06/2013	---	EUROBANK ERGASIAS (CR)	0.638	4.25 #	0.612 22/08/2013	0.612	0.612	0.640	0.638	0.633	3500@0.637	667@0.639	---	2012	642,761	599	406,876.21	2,584,165.96	0.555	6.23	8355	
61,000,000	2.13	0.5364	0.4067	---	23/03/2012	20/11/2007	---	EUROBANK PROPERTIES REIC (CR)	7.20	1.41 #	7.10 22/08/2013	7.10	7.09	7.25	7.20	7.15	222@7.19	7484@7.20	---	2012	30,504	227	218,157.57	439,200.00	4.87	7.75	8675	
27,503,677	0.600	0.04	0.05	0.1	11/07/2013	18/10/1999	---	EUROPEAN RELIANCE INSUR. (CR)	1.12	1.82 #	1.10 22/08/2013	1.12	1.11	1.19	1.11	1.15	200@1.16	569@1.16	3.38	2012	6,550	21	7,503.61	30,804.12	0.973	1.62	8536	
13,673,200	0.880	---	---	---	18/07/2008	26/07/2001	---	EVROFARMA SA (CR)	0.260	--- ↘	0.260 21/08/2013	---	---	---	---	---	10@0.235	---	---	2012	---	---	---	3,555.03	0.209	0.539	3577	
106,500,000	0.600	0.04	0.05	0.15	31/07/2013	28/01/2000	---	EYDAP S.A. (CR)	6.02	1.86 #	5.91 22/08/2013	5.90	5.90	6.09	6.02	6.01	313@6.00	391@6.05	13.69	2012	27,849	287	167,241.74	641,130.00	4.65	6.47	7577	
52,800,154	0.300	---	---	---	16/04/2010	21/06/2004	---	F.G. EUROPE S.A. (CR)	0.523	-1.13 €	0.529 22/08/2013	0.540	0.477	0.540	0.523	0.510	95@0.482	250@0.521	6.33	2012	198	7	100.98	27,614.48	0.450	0.950	3722	
10,203,575	0.730	---	---	---	16/07/2007	18/10/1999	---	FIERATEX SA (CR)	0.178	28.99 #	0.138 20/08/2013	0.097	0.097	0.178	0.178	0.100	5000@0.107	2500@0.150	---	2012	207	6	20.65	1,816.24	0.090	0.400	3763	
11,720,024	0.530	---	---	---	16/07/2010	29/05/2012	---	FLEXOPACK SA (CR)	3.60	--- ↘	3.60 20/08/2013	---	---	---	---	---	125@3.60	---	12.12	2012	---	---	---	42,192.09	2.39	5.00	2723	
4,181,450	0.500	---	---	---	21/08/2000	05/03/2002	---	FLOUR MILLS SARANTOPOULOS SA	0.900	--- ↘	0.900 12/08/2013	---	---	---	---	---	---	---	16.64	2012	---	---	---	3,763.31	0.626	1.02	3577	
66,948,210	0.300	---	---	---	14/07/2009	31/12/2010	4988	FOLLI FOLLIE (CR)	17.86	0.90 #	17.70 22/08/2013	17.70	17.32	17.90	17.86	17.71	167@17.76	500@17.87	---	2012	22,067	219	390,742.77	1,195,695.03	11.51	19.00	5379	
50,992,322	1.00	---	---	---	21/06/2010	16/07/2002	---	FOURLIS (CR)	2.61	1.95 #	2.56 22/08/2013	2.58	2.56	2.62	2.61	2.59	350@2.59	1869@2.62	---	2012	22,972	60	59,500.53	133,089.96	1.58	2.95	3722	
50,592,373	0.300	---	---	---	07/07/2010	07/09/2011	---	FRIGOGLASS SA (CR)	4.97	2.47 #	4.85 22/08/2013	4.81	4.81	4.97	4.97	4.91	10@4.86	677@4.97	---	2012	15,661	279	76,926.18	251,444.09	3.84	6.26	2757	
77,376,446	0.340	---	---	---	23/05/2005	18/08/2011	---	G.E. DIMITRIOU (CR)	0.055	10.00 #	0.050 22/08/2013	0.050	0.050	0.055	0.055	0.054	---	42457@0.055	---	2012	3,040	6	163.46	4,255.70	0.028	0.118	3722	
14,076,360	0.370	---	---	---	19/08/2008	22/07/2003	---	GALAXIDI S.A. (CR)	0.360	--- ↘	0.360 08/08/2013	---	---	---	---	---	1100@0.324	5000@0.350	10.24	2012	---	---	---	5,067.49	0.320	0.638	3573	
85,882,688	0.570	0.0048	---	---	01/08/2011	02/01/2009	---	GEK TERNA (CR)	2.16	1.89 #	2.12 22/08/2013	2.11	2.11	2.21	2.16	2.18	2695@2.15	1256@2.19	-(6)-	2012	139,512	313	304,241.62	185,506.61	1.40	2.80	2357	
24,060,000	0.300	---	0.017	---	18/06/2012	21/01/2000	---	GEN. COMMERCIAL & IND.SA (CR)	0.429	--- ↘	0.429 22/08/2013	---	---	---	---	---	200@0.387	5@0.423	---	2012	---	---	---	10,321.74	0.303	0.545	2797	
1,270,000	0.300	---	---	---	06/07/2007	06/02/2013	---	GIRAKIAN PROFIL SA (CB)	1.93	9.66 #	1.76 21/08/2013	1.93	1.93	1.93	1.93	1.93	---	100@1.80	---	2012	20	2	38.60	2,451.10	0.900	3.33	1757	
34,770,982	1.54	---	---	---	06/07/2010	27/07/2000	---	GR. SARANTIS SA (CR)	5.06	2.64 #	4.93 22/08/2013	5.28	5.02	5.28	5.06	5.06	150@5.01	593@5.06	---	2012	468	5	2,368.50	175,941.17	4.05	5.45	3767	
8,340,750	1.20	---	---	---	25/06/2009	30/07/2001	---	HAIDEMENOS SA (CR)	0.391	-9.28 €	0.431 20/08/2013	0.391	0.391	0.392	0.391	0.392	68@0.392	---	---	2012	121	3	47.40	3,261.23	0.350	0.905	2791	
101,279,627	0.380	---	---	---	26/06/2008	14/07/2006	---	HALKOR SA (CB)	0.849	4.81 #	0.810 22/08/2013	0.800	0.800	0.850	0.849	0.833	18@0.839	585@0.849	---	2012	47,210	66	39,307.11	85,986.40	0.550	1.42	1755	
36,748,909	0.730	---	---	---	15/12/2005	13/12/2006	---	HEL. SUGAR INDUSTRY SA (CB)	0.910	0.33 #	0.907 22/08/2013	0.902	0.890	0.910	0.910	0.903	20@0.900	24@0.910	14.41	2012	4,056	18	3,662.11	33,441.51	0.754	1.74	3577	
29,546,360	0.710	---	---	---	20/06/2008	23/08/2000	---	HELLENIC CABLES SA (CR)	1.63	3.16 #	1.58 22/08/2013	1.60	1.58	1.63	1.63	1.61	1407@1.60	1510@1.63	---	2012	11,418	31	18,333.88	48,160.57	1.16	2.32	2733	
65,368,563	0.790	0.15	0.11	0.09	03/06/2013	26/09/2012	---	HELLENIC EXCHANGES (CR)	6.04	2.20 #	5.91 22/08/2013	5.88	5.86	6.05	6.04	5.99	451@6.02	1100@6.05	27.06	2012	185,282	352	1,113,195.31	394,826.12	3.75	6.97	8777	
305,635,185	2.18	0.45	0.45	0.15	16/08/2013	01/10/2003	4795	HELLENIC PETROLEUM (CR)	7.66	4.08 #	7.36 22/08/2013	7.24	7.24	7.66	7.66	7.56	195@7.60	427@7.67	24.01	2012	84,076	523	635,206.73	2,341,165.52	6.20	9.30	537	
305,732,436	0.410	---	---	---	08/07/2009	28/09/2011	---	HYGEIA SA (CR)	0.423	2.17 #	0.414 22/08/2013	0.414	0.414	0.434	0.426	0.425	300@0.421	500@0.426	---	2012	48,310	52	20,530.36	129,324.82	0.280	0.795	4533	
53,155,053	0.440	---	---	---	21/07/2010	16/07/2008	---	IASO SA (CR)	1.06	-0.93 €	1.07 22/08/2013	1.10	1.06	1.10	1.06	1.07	400@1.00	432@1.06	---	2012	582	7	621.32	56,344.36	0.850	1.58	4533	
8,298,467	0.400	---	---	---	30/08/1993	08/05/2013	---	IDEAL GROUP SA (CR)	0.728	--- ↘	0.728 22/08/2013	0.728	0.728	0.728	0.728	0.728	---	193@0.725	-(6)-	2012	37	1	26.94	6,041.28	0.571	1.85	9574	
28,580,100	0.400	0.05	0.02	---	20/08/2012	23/02/2007	---	IKTINOS HELLAS SA (CR)	1.50	--- ↘	1.50 22/08/2013	1.46	1.46	1.51	1.50	1.48	890@1.47	6321@1.50	14.52	2012	11,691	32	17,267.68	42,870.15	1.16	1.80	2353	
9,000,000	0.880	---	---	---	15/05/2009	07/12/2010	---	ILYDA S.A. (CR)	0.559	--- ↘	0.559 05/08/2013	---	---	---	---	---	---	2631@0.504	---	---	2012	---	---	---	5,031.00	0.269	0.650	9537
20,578,374	0.620	0.03	---	---	02/06/2011	05/05/1999	---	INFORM P. LYKOS SA (CR)	1.27	3.25 #	1.23 22/08/2013	1.27	1.23	1.27	1.27	1.27	4@1.23	1100@1.28	---	2012	2,953	15	3,750.26	26,134.53	1.10	1.75	2791	
11,233,200	0.730	---	---	---	12/07/2010	30/07/1999	---	INTERTECH SA (CR)	0.300	--- ↘	0.300 21/08/2013	---	---	---	---	---	500@0.270	330@0.300	---	2012	---	---	---	3,369				

Number of Outstanding Securities	Nominal Value	Dividends [1]			Date of Last Coupon Dividend [2]		Note	Shares	Closing price	% change	Previous closing price/date	Open price	Price min	Price max	Last price	Avg price	Last Bid [7]	Last Ask [7]	P/E after	Year	Volume	Trades	Transactions Value	Company Mkt Value (thou. €)	Year low	Year high	Sector[4]
----------------------------------	---------------	---------------	--	--	----------------------------------	--	------	--------	---------------	----------	-----------------------------	------------	-----------	-----------	------------	-----------	--------------	--------------	-----------	------	--------	--------	--------------------	-----------------------------	----------	-----------	------------

Main Market

23,154,250	1.36	---	---	---	12/08/2008	02/08/2010	---	INTRACOM CONSTR. (CR)	0.745	-1.71	€ 0.758	22/08/2013	0.763	0.744	0.766	0.745	0.750	150@0.744	3348@0.750	---	2012	10,115	51	7,582.48	17,249.92	0.580	1.22	2357
133,025,996	1.41	---	---	---	03/07/2007	07/01/2002	---	INTRACOM HOLDINGS (CR)	0.457	4.10	# 0.439	22/08/2013	0.449	0.447	0.460	0.457	0.454	220@0.456	1500@0.458	---	2012	115,899	123	52,599.95	60,792.88	0.321	0.754	9578
158,961,721	0.300	0.0045	0.0035	0.0026	30/05/2013	14/11/2007	---	INTRALOT (CR)	1.60	-0.62	€ 1.61	22/08/2013	1.61	1.60	1.64	1.60	1.62	2890@1.59	6150@1.63	85.41	2012	427,152	628	691,955.59	254,338.75	1.29	2.41	5752
77,654,850	0.580	0.04	---	---	01/07/2011	21/02/2003	---	J & P - AVAX SA (CR)	1.58	3.27	# 1.53	22/08/2013	1.53	1.53	1.59	1.59	1.56	3300@1.53	4106@1.59	---	2012	4,150	11	6,461.00	122,694.66	1.05	1.90	2357
129,994,676	1.19	0.189	---	---	23/12/2010	07/09/2012	---	JUMBO SA (CR)	8.48	6.00	# 8.00	22/08/2013	8.00	7.80	8.50	8.48	8.27	444@8.41	7@8.50	14.29	2012	310,317	361	2,571,636.54	1,102,354.85	4.85	9.07	3747
9,742,920	0.400	0.01	0.01	0.01	12/08/2013	14/07/2000	---	KARAMOLEGOS SA (CR)	1.25	-3.85	€ 1.30	25/07/2013	1.25	1.25	1.25	1.25	1.25	---	540@1.25	4.86	2012	10	1	12.50	12,178.65	1.07	1.83	3577
14,679,792	1.44	0.065	---	---	03/06/2011	04/09/2000	---	KARATZIS SA (CR)	4.37	-2.02	€ 4.46	21/08/2013	4.37	4.37	4.37	4.37	4.37	200@4.37	25@4.50	14.68	2012	50	1	218.50	64,150.69	2.55	4.90	2723
3,300,689	0.350	---	---	---	01/07/2004	21/07/1999	---	KEKROPS SA (CR)	1.88	10.59	# 1.70	22/08/2013	1.81	1.81	1.88	1.88	1.87	50@1.70	900@1.89	---	2012	405	8	756.90	6,205.30	1.54	3.79	8633
7,595,160	0.600	---	---	---	08/08/2008	18/08/2010	---	KIRIAKOULIS SHIPPING SA (CR)	1.04	5.91	# 0.982	22/08/2013	1.04	1.04	1.04	1.04	1.04	---	497@1.04	72.47	2012	3	1	3.12	7,898.97	0.635	1.49	5759
23,648,700	0.330	0.05	---	---	13/07/2011	23/07/2008	---	KLEEMAN HELLAS SA (CR)	1.51	---	↘ 1.51	21/08/2013	---	---	---	---	---	250@1.45	1000@1.52	---	2012	---	---	---	35,709.54	1.20	1.88	2757
40,219,218	0.300	---	---	---	25/05/2009	09/07/2013	---	KLOUKINAS - LAPPAS SA (CR)	0.649	4.51	# 0.621	22/08/2013	0.649	0.649	0.649	0.649	0.649	200@0.637	1400@0.649	---	2012	100	1	64.90	26,102.27	0.583	0.970	2357
21,224,340	0.420	---	---	---	02/07/2008	25/04/2006	---	KORDELLOS BROS SA (CR)	0.236	---	↘ 0.236	16/08/2013	---	---	---	---	---	4000@0.215	2000@0.230	---	2012	---	---	---	5,008.94	0.195	0.428	1757
13,450,000	0.390	---	---	---	25/06/2010	28/05/2008	---	KORRES (CR)	3.05	-3.18	€ 3.15	22/08/2013	3.05	3.05	3.10	3.05	3.06	490@3.05	550@3.17	---	2012	230	6	703.30	41,022.50	2.66	4.87	3767
29,480,000	0.420	---	---	---	19/07/2010	01/08/2007	---	KRETA FARM SA (CR)	0.590	-0.34	€ 0.592	22/08/2013	0.585	0.585	0.590	0.590	0.586	600@0.565	370@0.590	---	2012	120	2	70.35	17,393.20	0.307	0.800	3577
33,065,136	0.440	---	---	---	06/07/2009	02/08/2013	---	KRI-KRI S.A. (CR)	1.88	---	↘ 1.88	22/08/2013	1.88	1.88	1.92	1.88	1.88	922@1.88	940@1.92	13.92	2012	1,059	4	1,993.32	62,162.46	1.52	2.06	3577
15,804,800	0.330	---	---	---	15/06/2010	12/03/2004	---	KTIMA KOSTAS LAZARIDIS SA (CR)	0.297	---	↘ 0.297	21/08/2013	---	---	---	---	---	230@0.270	250@0.305	---	2012	---	---	---	4,694.03	0.239	0.488	3535
22,945,139	1.00	---	---	---	19/08/2008	10/09/2012	---	KYRIAKIDIS MARBLES SA (CR)	0.880	-2.11	€ 0.899	22/08/2013	0.880	0.880	0.880	0.880	0.880	1000@0.890	1000@0.920	86.20	2012	7,000	4	6,160.00	20,191.72	0.630	1.04	2353
44,267,700	0.300	---	---	---	30/05/2007	18/09/2002	---	LAMDA DEVELOPMENT SA (CR)	3.84	---	↘ 3.84	21/08/2013	---	---	---	---	---	133@3.86	100@3.95	---	2012	---	---	---	169,987.97	3.58	6.48	8633
5,939,268	0.620	---	---	---	10/07/2003	03/01/2002	---	LANAKAM SA (CR)	0.639	---	↘ 0.639	14/08/2013	---	---	---	---	---	---	4385@0.576	---	2012	---	---	---	3,795.19	0.503	0.869	3763
7,734,375	1.00	---	---	---	09/07/2007	07/01/2011	---	LIVANIS SA (CR)	0.229	3.62	# 0.221	22/08/2013	0.229	0.229	0.229	0.229	0.229	---	1650@0.229	---	2012	10	1	2.29	1,771.17	0.144	0.363	5557
4,740,000	0.860	---	---	---	14/03/2003	---	---	LOGISMOS S.A. (CR)	0.496	---	↘ 0.496	06/08/2013	---	---	---	---	---	10@0.447	1800@0.498	57.54	2011	---	---	---	2,351.04	0.373	1.23	9533
15,222,276	0.640	---	---	---	01/06/2010	02/08/2011	---	LOULIS MILLS SA (CR)	2.79	---	↘ 2.79	22/08/2013	2.79	2.79	2.79	2.79	2.79	200@2.71	118@2.80	-(6)-	2012	200	1	558.00	42,470.15	2.08	3.76	3577
770,328,883	0.300	---	---	---	26/04/2007	10/05/2013	---	MARFIN INVESTMENT GROUP (CR)	0.307	7.72	# 0.285	22/08/2013	0.289	0.286	0.307	0.307	0.298	14061@0.304	19290@0.308	---	2012	693,330	470	206,926.96	236,490.97	0.175	0.564	8775
9,819,370	0.690	---	---	---	14/08/2007	09/01/2004	---	MATHIOS REFRACTORY SA (CR)	0.255	-5.90	€ 0.271	22/08/2013	0.255	0.235	0.255	0.255	0.255	1448@0.235	5030@0.255	---	2012	29,972	15	7,642.82	2,503.94	0.180	0.510	2353
468,700	1.0556	---	---	---	21/03/2012	21/05/2004	---	MERMEREN KOMB. A.D. PR. (GDR)	4.13	---	↘ 4.13	21/08/2013	---	---	---	---	---	35@3.86	50@4.26	1.01	2012	---	---	---	1,935.73	3.73	5.19	1775
51,950,600	0.320	0.48	0.75	0.25	10/05/2013	21/10/2005	---	METKA (CR)	10.55	3.43	# 10.20	22/08/2013	10.16	10.11	10.68	10.55	10.50	8@10.54	113@10.59	15.21	2012	29,218	371	306,889.17	548,078.83	9.00	12.78	2757
10,500,000	0.900	---	---	---	24/06/2008	04/07/2012	---	MEVACO SA (CR)	1.43	0.70	# 1.42	13/08/2013	1.42	1.42	1.43	1.43	1.43	200@1.40	1000@1.45	10.35	2012	2,000	3	2,855.00	15,015.00	1.01	1.58	2757
14,074,000	3.00	0.15	0.25	---	02/03/2012	23/07/2009	---	MIG REAL ESTATE (CR)	1.77	---	↘ 1.77	16/08/2013	---	---	---	---	---	---	100@1.60	---	2012	---	---	---	24,910.98	1.17	1.77	8671
6,200,000	0.500	---	---	---	22/06/2010	01/11/1995	---	MINERVA KNITWEAR SA (CB)	0.776	---	↘ 0.776	05/08/2013	---	---	---	---	---	---	3000@0.699	---	2012	---	---	---	4,811.20	0.530	0.948	3763
12,417,000	0.370	---	---	---	28/07/2008	06/09/2011	---	MLS MULTIMEDIA SA (CR)	3.04	1.33	# 3.00	22/08/2013	3.00	2.98	3.04	3.04	3.00	100@2.99	1995@3.04	40.04	2012	13,338	114	40,062.70	37,747.68	2.60	3.04	9537
4,588,137	16.00	---	---	---	30/06/2005	17/08/2011	---	MOCHLOS SA (CR)	1.74	2.96	# 1.69	22/08/2013	1.74	1.74	1.74	1.74	1.74	170@1.56	299@1.71	---	2012	40	3	69.60	7,983.36	1.12	2.60	2357
11,700,000	0.590	---	---	---	02/06/2009	24/07/2012	---	MOTODYNAMICS S.A. (CR)	0.374	---	↘ 0.374	20/08/2013	---	---	---	---	---	80@0.337	400@0.379	---	2012	---	---	---	4,375.80	0.211	0.640	5379
110,782,980	0.850	0.25	0.4	0.3	26/06/2013	05/11/2012	---	MOTOR OIL (CR)	7.65	2.82	# 7.44	22/08/2013	7.40	7.36	7.67	7.65	7.59	1261@7.64	2@7.67	9.34	2012	218,055	442	1,652,006.91	847,489.80	6.80	9.37	533
116,915,862	1.07	---	---	---	11/05/2009	06/07/2011	---	MYTILINEOS HOLDINGS (CR)	4.37	3.07	# 4.24	22/08/2013	4.22	4.22	4.38	4.37	4.34	483@4.36	2233@4.38	---	2012	74,140	406	321,756.62	510,922.32	3.38	5.65	1755
8,321,682	0.670	---	---	---	17/08/2007	23/11/1999	---	N. LEVEDERIS SA (CB)	0.347	---	↘ 0.347	14/08/2013	---	---	---	---	---	---	1050@0.350	---	2012	---	---	---	3,855.54	0.198	0.658	1757
2,160,524	0.670	0.0435	0.0435	0.0436	16/08/2013	23/11/1999	---	N. LEVEDERIS SA (PB)	0.448	2.05	# 0.439	19/08/2013	0.448	0.448	0.448	0.448	0.450	---	181@0.448	---	2012	2	1	0.90	3,855.54	0.307	0.798	1757
11,510,102	0.890	---	---	---	24/06/2005	06/10/1999	---	NAFPAKTOS TEXTILE IND. SA (CB)	0.367	9.88	# 0.334	22/08/2013	0.367	0.301	0.367	0.367	0.311	110@0.301	300@0.358	---	2012	190	5	59.17	4,224.21	0.232	0.500	3763
6,340,000	0.600	---	---	---	30/11/2009	12/07/2000	---	NAKAS MUSIC	0.684	-9.88	€ 0.759	22/08/2013	0.684	0.684	0.684	0.684	0.684	---	10@0.684	---	2012	10	1	6.84	4,336.56	0.300	1.04	5379

Number of Outstanding Securities	Nominal Value	Dividends [1]			Date of Last Coupon Dividend [2]		Note	Shares	Closing price	% change	Previous closing price/date	Open price	Price min	Price max	Last price	Avg price	Last Bid [7]	Last Ask [7]	P/E after	Year	Volume	Trades	Transactions Value	Company Mkt Value (thou. €)	Year low	Year high	Sector[4]
2,396,785,994	0.300	---	---	---	16/05/2008	24/05/2013	---	NATIONAL BANK (CR)	3.05	3.04 #	2.96 22/08/2013	2.98	2.95	3.10	3.05	3.04	7390@3.05	10@3.07	---	2012	1,268,085	1,511	3,860,160.13	7,310,197.28	1.83	9.87	8355
23,935,280	0.300	---	---	---	29/06/2009	13/06/2000	---	NAYTEMPORIKI PUBLISHING SA(CR)	0.180	--- ↘	0.180 21/08/2013	---	---	---	---	---	5000@0.163	80@0.170	---	2012	---	---	---	4,308.35	0.172	0.360	5557
27,848,000	0.300	0.0301	0.0132	0.0137	21/08/2013	02/09/2003	---	NEWSPHONE HELLAS SA (CR)	0.300	--- ↘	0.300 22/08/2013	---	---	---	---	---	500@0.281	1000@0.331	7.35	2012	---	---	---	8,354.40	0.241	0.592	2791
6,132,500	1.25	0.1	---	---	24/06/2011	19/06/2001	---	NEXANS HELLAS SA (CR)	2.30	--- ↘	2.30 20/08/2013	2.31	2.29	2.31	2.30	2.30	124@2.29	1557@2.30	---	2012	833	6	1,914.76	14,104.75	2.14	3.11	2733
63,697,153	1.34	---	---	---	08/07/2008	10/11/2008	---	NIREFS SA (CR)	0.443	1.14 #	0.438 22/08/2013	0.439	0.435	0.450	0.443	0.442	3000@0.437	1700@0.449	---	2012	5,800	14	2,561.31	28,217.84	0.380	0.839	3573
319,000,000	0.300	1.4177	0.72	0.57	28/06/2013	25/04/2001	---	OPAP (CR)	7.56	2.58 #	7.37 22/08/2013	7.48	7.36	7.56	7.56	7.49	25933@7.50	297@7.56	4.70	2012	466,159	799	3,480,827.92	2,411,640.00	5.49	8.27	5752
490,150,389	2.39	0.1179	---	---	28/06/2011	18/06/1998	---	OTE (CR)	6.92	2.98 #	6.72 22/08/2013	6.66	6.66	6.97	6.92	6.87	10000@6.91	2000@6.95	---	2012	420,384	786	2,889,283.26	3,391,840.69	4.26	7.80	6535
25,000,000	2.00	0.02	0.01	0.05	18/07/2013	08/08/2003	---	P.P.A. S.A. (CR)	17.02	3.15 #	16.50 22/08/2013	16.25	16.25	17.27	17.02	16.99	574@16.97	26@17.15	85.84	2012	9,737	206	165,449.93	425,500.00	14.59	21.68	2777
4,971,466	1.46	---	---	---	04/07/2007	08/10/2003	---	PAIRIS SA (CR)	0.316	--- ↘	0.316 22/08/2013	---	---	---	---	---	790@0.222	300@0.315	---	2012	---	---	---	1,570.98	0.201	0.605	2723
3,953,090	0.900	---	---	---	02/07/2001	05/12/2012	---	PAPERPACK (CR)	0.715	5.61 #	0.677 22/08/2013	0.719	0.700	0.719	0.715	0.707	3000@0.630	200@0.712	---	2012	155	7	109.55	2,826.46	0.500	1.06	2723
50,797,369	0.310	---	---	---	17/08/2000	12/10/2010	---	PAPOUTSANIS (CR)	0.598	--- ↘	0.598 22/08/2013	---	---	---	---	---	1000@0.521	500@0.597	---	2012	---	---	---	30,376.83	0.361	0.750	3767
20,210,127	1.53	---	---	---	27/06/1997	20/03/2000	---	PARNASSOS ENTERP. (CR)	0.189	0.53 #	0.188 22/08/2013	0.190	0.176	0.191	0.189	0.186	2359@0.188	200@0.192	---	2012	70,691	71	13,143.73	3,819.71	0.176	0.698	8775
7,070,400	0.930	---	---	---	18/05/2010	12/05/2011	---	PETROPOULOS PETROS (CR)	1.50	-7.98 €	1.63 22/08/2013	1.67	1.50	1.67	1.50	1.52	100@1.49	244@1.55	---	2012	3,590	97	5,441.27	10,605.60	1.20	1.74	2753
5,072,567,951	0.300	---	---	---	16/05/2008	05/06/2013	---	PIRAEUS BANK (CR)	1.03	4.04 #	0.990 22/08/2013	0.990	0.990	1.04	1.03	1.03	128647@1.02	117112@1.04	---	2012	5,039,935	1,573	5,163,666.85	5,224,744.99	0.832	6.28	8355
22,080,000	0.320	0.05	0.08	0.12	22/05/2013	03/10/2000	---	PLAISIO COMPUTERS SA (CR)	5.08	-1.36 €	5.15 22/08/2013	5.14	4.93	5.14	5.10	4.95	10@5.02	70@5.14	11.31	2012	675	6	3,341.30	112,166.40	3.65	6.25	9572
232,000,000	4.60	0.79	---	0.025	22/07/2013	12/12/2001	---	PPC (CR)	7.60	4.25 #	7.29 22/08/2013	7.35	7.35	7.60	7.60	7.49	191@7.56	6870@7.60	-(6)-	2012	244,602	786	1,831,863.79	1,763,200.00	4.55	8.49	7535
11,812,193	0.450	---	---	---	24/07/2009	15/11/2006	---	PROFILE SA (CR)	1.04	0.97 #	1.03 22/08/2013	1.02	1.02	1.04	1.04	1.03	500@1.02	600@1.04	20.01	2012	200	2	205.00	12,284.68	0.761	1.26	9533
24,319,250	0.300	---	---	---	09/07/2002	04/07/2007	---	PROODEFTIKH SA (CR)	0.129	-1.53 €	0.131 22/08/2013	0.127	0.125	0.129	0.129	0.126	500@0.127	3000@0.128	---	2012	8,500	6	1,073.50	3,137.18	0.054	0.223	2357
6,836,280	1.88	---	---	---	18/07/2005	10/09/2010	---	QUALITY & RELIABILITY SA (CR)	1.70	-1.16 €	1.72 22/08/2013	1.74	1.67	1.74	1.70	1.70	510@1.66	720@1.70	---	2012	700	10	1,187.20	11,621.68	0.236	1.75	9533
48,069,201	0.400	---	---	---	05/09/2008	21/06/2012	---	QUEST HOLDINGS (CR)	1.13	2.73 #	1.10 22/08/2013	1.13	1.13	1.13	1.13	1.13	600@1.07	1000@1.12	---	2012	100	1	113.00	54,318.20	0.936	1.39	9533
57,434,884	1.31	---	---	---	05/06/2008	12/06/2009	---	REDS S.A. (CR)	0.502	-3.28 €	0.519 22/08/2013	0.500	0.490	0.516	0.502	0.497	120@0.496	80@0.516	---	2012	6,243	23	3,101.06	28,832.31	0.450	0.949	8633
22,280,000	0.300	0.0329	---	---	11/04/2011	23/02/2007	---	REVOIL (CR)	0.845	-0.59 €	0.850 22/08/2013	0.870	0.845	0.890	0.845	0.856	955@0.845	200@0.879	---	2012	13,500	47	11,550.80	18,826.60	0.345	1.20	5379
7,500,000	0.560	---	---	---	25/06/2010	10/04/2013	---	S.KANAKIS SA (CR)	1.59	--- ↘	1.59 22/08/2013	1.59	1.55	1.59	1.59	1.58	101@1.55	997@1.58	11.30	2012	550	31	867.18	11,925.00	1.05	1.90	3577
52,067,296	0.300	---	---	---	23/12/2003	24/01/2007	---	SELECTED TEXT. IND. ASSOC (CR)	0.289	9.06 #	0.265 22/08/2013	0.280	0.280	0.289	0.289	0.285	250@0.273	6764@0.289	---	2012	14,700	25	4,188.20	15,047.45	0.232	0.587	3763
96,243,908	0.410	---	---	---	26/06/2008	17/07/2000	---	SIDENOR (CR)	1.63	5.16 #	1.55 22/08/2013	1.55	1.55	1.63	1.63	1.60	1075@1.61	453@1.63	---	2012	44,703	103	71,623.44	156,877.57	1.00	2.39	1757
6,456,530	1.60	---	---	---	29/06/2001	02/08/2010	---	SPACE HELLAS SA (CR)	2.19	--- ↘	2.19 14/06/2013	---	---	---	---	---	---	4898@1.98	70.35	2012	---	---	---	14,139.80	1.25	2.20	9578
28,438,268	0.300	---	---	---	21/08/2006	24/11/1999	---	SPIROY AGRICULTURE SA (CR)	0.280	--- ↘	0.280 22/08/2013	0.252	0.252	0.280	0.280	0.272	200@0.254	550@0.280	---	2012	930	5	252.56	7,962.72	0.252	0.557	1357
33,125,000	5.00	---	---	---	03/07/2006	18/08/2010	---	TECHNICAL OLYMPIC SA (CR)	1.33	--- ↘	1.33 22/08/2013	1.33	1.33	1.33	1.33	1.33	100@1.26	3003@1.33	-(6)-	2012	520	1	691.60	44,056.25	1.18	2.71	3728
109,319,070	0.300 (0.0399)	(0.0613)	---	---	28/05/2012	05/08/2013	---	TERNA ENERGY (CR)	2.92	3.55 #	2.82 22/08/2013	2.87	2.83	2.94	2.92	2.90	1200@2.91	867@2.94	64.14	2012	76,628	446	222,006.41	319,211.68	2.24	3.73	7537
36,300,000	1.12	0.114	0.188	0.162	16/08/2013	12/12/2007	---	THESSALONIKA WATER & SEWERAGE	5.80	3.94 #	5.58 22/08/2013	5.69	5.69	5.80	5.80	5.78	15@5.65	622@5.80	11.90	2012	577	8	3,333.30	210,540.00	4.73	6.82	7577
45,094,620	0.500	0.036	---	0.0467	10/06/2013	01/11/1999	---	THRACE PLASTICS SA (CR)	1.30	0.77 #	1.29 22/08/2013	1.29	1.27	1.31	1.30	1.29	9903@1.28	6490@1.30	7.48	2012	10,081	39	12,991.24	58,623.01	1.07	1.64	1357
77,063,568	4.00	0.0806	---	---	24/06/2011	25/06/2004	---	TITAN CEMENT (CR)	14.40	-1.71 €	14.65 22/08/2013	14.26	14.26	14.96	14.40	14.68	63@14.34	1500@14.84	---	2012	22,139	252	324,908.71	1,162,698.10	11.31	16.00	2353
7,568,960	4.00	0.1869	---	---	24/06/2011	25/06/2004	---	TITAN CEMENT CO. (PR)	7.00	--- ↘	7.00 20/08/2013	---	---	---	---	---	200@6.46	129@6.99	---	2012	---	---	---	1,162,698.10	5.75	7.27	2353
10,080,000	3.00	0.21	0.4	1.5	17/07/2013	27/08/2001	---	TPA SA (CR)	24.60	1.24 #	24.30 22/08/2013	23.72	23.72	24.60	24.60	23.91	45@24.01	78@24.55	13.44	2012	186	7	4,446.44	247,968.00	19.00	25.20	2777
54,888,240	1.13	0.1	0.1	0.1	25/04/2013	22/03/2006	---	TRASTOR REAL EST. INV. CO.(CR)	0.759	-0.13 €	0.760 22/08/2013	0.760	0.750	0.761	0.760	0.758	1700@0.746	1@0.767	---	2012	5,277	11	4,000.27	41,660.17	0.624	0.829	8671
14,627,315	0.300	---	---	---	16/11/1992	03/12/2012	---	UNIBIOS (CR)	0.252	-0.79 €	0.254 22/08/2013	0.241	0.241	0.252	0.252	0.250	30@0.249	880@0.252	---	2012	2,691	6	673.59	3,686.08	0.151	0.414	2353
18,810,000	0.400	---	---	---	08/07/2010	14/11/2007	---	VARVERIS - MODA BAGNO SA (CR)	0.289	-3.34 €	0.299 21/08/2013	0.271	0.270	0.289	0.288	0.270	---	918@0.286	---	2012	776	11	209.62	5,436.09	0.243	0.419	2353
199,474,091	0.300	---	---	---	03/07/2009	24/03/2000	---	VIOHALCO (CB)	4.39	4.03 #	4.22 22/08/2013	4.22	4.21	4.47	4.39	4.35	100@4.37	1000@4.40	---	2012	103,425	385	449,799.94	875,691.26	3.06	5.70	2727

Number of Outstanding Securities	Nominal Value	Dividends [1]			Date of Last Coupon		Note	Shares	Closing price	% change	Previous closing price/date	Open price	Price min	Price max	Last price	Avg price	Last Bid [7]	Last Ask [7]	P/E after	Year	Volume	Trades	Transactions Value	Company Mkt Value (thou. €)	Year low	Year high	Sector[4]
		2010	2011	2012	Dividend [2]	Right																					

Main Market

4,968,600	2.88	---	---	---	01/07/1998	14/12/1998	---	VIS SA (CR)	0.825	---	↘	0.825	05/08/2013	---	---	---	---	---	91@0.905	---	2012	---	---	---	4,099.10	0.490	1.01	2723
6,325,000	0.600	---	---	---	19/07/2010	25/07/2012	---	VOGIATZOGLOU SYSTEMS SA (CR)	0.999	---	↘	0.999	22/08/2013	---	---	---	---	40@0.900	300@1.09	---	2012	---	---	---	6,318.68	0.812	1.21	2797

Exchange Traded Funds (ETFs)

5,848,618	---	---	---	24/01/2008	---	ALPHA ETF FTSE Athex Large Cap	3.15	2.21	#	3.08	22/08/2013	3.10	3.10	3.20	3.15	3.19	26@3.14	1000@3.30	---	---	1,811	5	5,777.77	-	2.49	3.99	11000
294,878	---	---	---	29/06/2009	---	NBGAM ETF	10.29	3.31	#	9.96	22/08/2013	10.15	10.15	10.29	10.29	10.15	---	---	---	---	289	2	2,933.63	-	8.23	11.75	11000
388,550	---	---	---	03/11/2010	---	NBGAM ETF GREECE & TURKEY 30	7.87	---	↘	7.87	06/08/2013	---	---	---	---	---	---	---	---	---	---	---	---	-	7.56	10.11	11000

Low Dispersion

14,000,000	3.80	---	---	---	23/04/2010	29/06/1999	4815	ALPHA REAL ESTATE SA(CR)	6.98	6.24	#	6.57	22/08/2013	6.98	6.98	6.98	6.98	6.98	100@6.56	100@6.88	14.45	2012	1	1	6.98	97,720.00	6.00	7.00	8637
63,900,000	3.00	---	---	---	23/06/2003	04/11/2008	4816	ASTIR PALACE SA (CR)	3.47	0.29	#	3.46	22/08/2013	3.48	3.46	3.48	3.46	3.47	20@3.46	48@3.47	---	2012	760	9	2,633.60	221,733.00	3.40	4.95	5753
49,152,904	0.800	---	---	---	09/08/2004	08/03/2006	4814	ATHENA SA (CR)	0.275	---	↘	0.275	12/08/2013	---	---	---	---	---	---	147@0.250	---	2012	---	---	---	13,517.05	0.094	0.340	2357
191,660,320	0.300	---	---	---	20/07/2009	29/12/2010	4817	ATTICA HOLDINGS (CR)	0.328	10.81	#	0.296	22/08/2013	0.325	0.325	0.330	0.330	0.328	2000@0.305	300@0.330	---	2012	1,000	6	327.51	62,864.58	0.241	0.588	5759
15,300,000	0.300	---	---	---	30/07/2009	13/12/1999	4893	ATTICA PUBLICATIONS SA (CR)	0.520	---	↘	0.520	14/08/2013	---	---	---	---	---	---	40@0.500	---	2012	---	---	---	7,956.00	0.520	1.45	5557
8,418,750	0.300	---	0.15	0.29	05/06/2013	27/06/2012	4828	GEKE SA (CB)	6.70	---	↘	6.70	21/08/2013	6.70	6.70	6.70	6.70	6.70	100@6.69	160@6.70	21.04	2012	100	1	670.00	56,405.63	6.59	6.79	5753
68,322,221	1.00	---	---	---	08/03/2002	08/04/2013	4986	GENIKI BANK (CR)	1.51	-12.21	€	1.72	22/08/2013	1.51	1.51	1.51	1.51	1.51	3@1.51	---	---	2012	2	1	3.02	103,166.55	1.51	8.85	8355
71,082,707	1.70	---	---	---	01/07/2010	21/11/2012	4820	HERACLES GEN.CEMENT CO. (CR)	1.39	---	↘	1.39	22/08/2013	1.39	1.39	1.39	1.39	1.39	554@1.39	400@1.40	---	2012	46	1	63.94	98,804.96	1.20	1.80	2353
13,404,440	8.63	---	---	---	02/04/2001	06/03/1992	4822	IONIAN HOTELS SA (CR)	8.81	---	↘	8.81	09/08/2013	---	---	---	---	---	498@7.05	2@8.81	---	2012	---	---	---	118,093.12	8.40	13.00	5753
2,760,000	7.70	6.3291	7.6	8.52	26/06/2013	16/07/1990	4823	KARELIA TOBACCO CO. SA (CB)	200.25	0.12	#	200.00	22/08/2013	205.00	200.00	205.00	200.00	200.27	22@200.00	2@204.00	12.16	2012	37	8	7,410.00	552,690.00	110.00	205.00	3785
17,000,000	0.600	---	---	---	12/06/2008	07/03/2000	4941	KATHIMERINI SA (CR)	0.649	-10.23	€	0.723	22/08/2013	0.600	0.600	0.652	0.652	0.649	344@0.652	180@0.760	---	2012	160	8	103.81	11,033.00	0.321	1.00	5557
21,364,000	1.12	---	---	---	05/07/2010	10/08/2005	4824	LAMPSA HOTEL SA (CR)	18.50	---	↘	18.50	22/08/2013	---	---	---	---	---	200@17.00	500@19.00	---	2012	---	---	---	395,234.00	15.00	18.50	5753
6,700,000	0.800	---	---	---	19/07/2010	29/08/2012	4894	MILLS KEPENOS (CR)	1.10	---	↘	1.10	21/08/2013	---	---	---	---	---	200@1.11	130@1.32	6.54	2012	---	---	---	7,370.00	0.777	1.69	3577
70,926,000	2.25	---	---	---	25/07/2008	21/06/2000	4825	MINOAN LINES SA (CR)	2.00	1.01	#	1.98	22/08/2013	2.00	2.00	2.00	2.00	2.00	130@1.86	372@2.00	---	2012	500	4	1,000.00	141,852.00	1.70	2.10	5759
17,240,776	0.370	---	---	---	14/07/2005	30/09/2003	4827	PERSEUS SA (CR)	0.176	---	↘	0.176	12/08/2013	---	---	---	---	---	---	970@0.211	10.26	2012	---	---	---	3,034.38	0.033	0.325	3577

Surveillance

33,301,715	0.320	---	---	---	27/06/2003	08/07/2009	4978	AEGEK (CR)	0.108	---	↘	0.108	21/08/2013	0.108	0.108	0.108	0.108	0.108	600@0.099	2500@0.102	---	2012	2,430	4	262.44	3,596.59	0.089	0.184	2357
14,870,100	0.300	---	---	---	15/05/2008	26/09/2011	4844	ALPHA GRISSIN S.A. (CR)	0.225	---	↘	0.225	09/08/2013	---	---	---	---	---	---	2500@0.229	---	2012	---	---	---	3,345.77	0.080	0.328	9533
215,246,452	0.300	---	---	---	25/06/2001	24/09/2001	4446	ALTEC SA (CR)	0.039	2.63	#	0.038	22/08/2013	0.040	0.036	0.040	0.036	0.039	1500@0.036	1999@0.039	---	2012	3,500	7	136.00	8,394.61	0.021	0.062	9533
2,969,713	0.300	---	---	---	02/07/2008	28/02/2011	4958	ANEK LINES SA (PR, issue '96)	0.300	---	↘	0.300	13/08/2013	---	---	---	---	---	---	---	---	2012	---	---	---	17,464.76	0.300	0.770	5759
312,163	0.300	---	---	---	02/07/2008	28/02/2011	4959	ANEK LINES SA (PR, issue '90)	1.43	---	↘	1.43	16/08/2013	---	---	---	---	---	---	---	---	2012	---	---	---	17,464.76	1.43	1.78	5759
185,373,016	0.300	---	---	---	02/07/2008	28/02/2011	4957	ANEK LINES SA (CR)	0.087	8.75	#	0.080	22/08/2013	0.080	0.080	0.090	0.090	0.087	24900@0.085	14591@0.090	---	2012	63,500	19	5,493.61	17,464.76	0.071	0.270	5759
81,644,555	0.300	---	---	---	01/07/2008	02/09/2002	4630	ATTI - KAT SA (CR)	0.040	---	↘	0.040	22/08/2013	0.040	0.040	0.040	0.040	0.040	1500@0.035	4500@0.036	---	2012	2,500	2	100.00	3,265.78	0.022	0.088	2357
20,255,805	0.300	---	---	---	22/08/2006	02/08/2010	4881	AXON HOLDING SA (CR)	0.064	-11.11	€	0.072	21/08/2013	0.064	0.064	0.064	0.064	0.064	3149@0.064	---	---	2012	3,100	2	198.40	1,296.37	0.064	0.192	4533
17,579,754	4.16	---	---	---	18/08/2006	02/08/2010	4885	BIOTER SA (CR)	0.170	-8.11	€	0.185	16/08/2013	0.170	0.170	0.170	0.170	0.170	---	830@0.170	---	2012	10	1	1.70	2,988.56	0.059	0.194	2357
12,431,980	0.720	---	---	---	20/06/2003	10/07/2003	4559	COMPUCON SA (CR)	0.090	---	↘	0.090	01/08/2013	---	---	---	---	---	---	4916@0.085	---	2012	---	---	---	1,118.88	0.031	0.100	9537
30,159,583	0.470	---	---	---	26/06/2008	29/12/2010	4962	DIAS A/C (CR)	0.839	---	↘	0.839	03/06/2013	---	---	---	---	---	---	1500@0.672	---	2012	---	---	---	25,303.89	0.420	0.845	3573
15,878,748	0.480	---	---	---	10/07/2006	22/03/2004	4960	DOMIKI KRITIS SA (CR)	0.499	---	↘	0.499	22/08/2013	---	---	---	---	---	---	15@0.480	---	2012	---	---	---	7,923.50	0.310	0.800	2357

Number of Outstanding Securities	Nominal Value	Dividends [1]			Date of Last Coupon Dividend [2]		Note	Shares	Closing price	% change	Previous closing price/date	Open price	Price min	Price max	Last price	Avg price	Last Bid [7]	Last Ask [7]	P/E after	Year	Volume	Trades	Transactions Value	Company Mkt Value (thou. €)	Year low	Year high	Sector[4]
----------------------------------	---------------	---------------	--	--	----------------------------------	--	------	--------	---------------	----------	-----------------------------	------------	-----------	-----------	------------	-----------	--------------	--------------	-----------	------	--------	--------	--------------------	-----------------------------	----------	-----------	-----------

Surveillance

3,961,300	1.28	---	---	---	29/06/2004	03/08/2000	4808	DUROS SA (CR)	0.970	---	↘	0.970	19/07/2013	---	---	---	---	---	---	30@0.800	---	2012	---	---	---	3,842.46	0.120	0.970	3763
7,085,888	1.59	---	---	---	02/07/1996	06/09/2010	4690	ELVIEMEK (CR)	3.00	---	↘	3.00	05/02/2013	---	---	---	---	---	---	100@3.60	-(6)-	2012	---	---	---	21,257.66	3.00	3.58	8633
6,000,000	0.600	---	---	---	13/06/2008	08/04/2004	4886	EUROBROKERS S.A. (CR)	0.052	---	↘	0.052	27/06/2013	---	---	---	---	2000@0.042	---	---	2012	---	---	---	---	312.00	0.052	0.333	8534
7,347,600	0.600	---	---	---	02/06/2010	25/02/2010	4889	EUROCONSULTANTS S.A. (CR)	2.60	---	↘	2.60	14/08/2013	---	---	---	---	---	---	290@2.62	---	2012	---	---	---	19,103.76	2.12	2.64	2791
21,820,410	0.800	---	---	---	22/05/2008	02/08/2011	4882	EUROMEDICA SA (CR)	0.300	-18.92	€	0.370	20/08/2013	0.299	0.299	0.300	0.300	0.300	230@0.296	6964@0.370	---	2012	845	9	253.46	6,546.12	0.288	0.613	4533
12,952,610	0.300	---	---	---		04/10/2012	4846	Forthnet (CR)	0.740	-5.13	€	0.780	22/08/2013	0.740	0.740	0.740	0.740	0.740	5590@0.740	1000@0.749	---	2011	19,026	23	14,079.24	9,584.93	0.350	1.43	9535
179,707,771	0.300	---	---	---	27/06/2002	01/11/2011	4847	HELLAS ONLINE SA (CR)	0.362	---	↘	0.362	22/08/2013	---	---	---	---	---	1850@0.330	1000@0.430	---	2012	---	---	---	65,054.21	0.271	0.709	9537
13,692,227	1.47	---	---	---	07/07/2006	08/10/1999	4845	HELLENIC FABRICS SA (CR)	0.228	5.56	#	0.216	22/08/2013	0.220	0.220	0.240	0.240	0.228	500@0.175	132@0.240	---	2012	381	7	86.82	3,121.83	0.180	0.354	3763
30,390,000	0.310	---	---	---	18/08/2008	29/12/2006	4447	HELLENIC FISHFARMING SA (CR)	0.125	---	↘	0.125	21/08/2013	---	---	---	---	---	---	6479@0.110	29.30	2012	---	---	---	3,798.75	0.039	0.137	3573
1,540,000	0.600	---	---	---	08/08/1994	19/09/2000	4855	J.BOUTARIS & SON HOLD. (PB)	0.024	---	↘	0.024	05/08/2013	---	---	---	---	---	1000@0.020	---	---	2012	---	---	---	1,547.74	0.024	0.201	3535
25,179,640	0.600	---	---	---	08/08/1994	19/09/2000	4854	J.BOUTARIS & SON HOLD. SA (CB)	0.060	---	↘	0.060	20/08/2013	0.060	0.060	0.060	0.060	0.060	4899@0.060	1499@0.070	---	2012	2,000	2	120.00	1,547.74	0.040	0.132	3535
7,125,216	0.650	---	---	---	01/07/2005	14/12/1999	4955	KRE.KA SA (CR)	0.252	---	↘	0.252	12/08/2013	---	---	---	---	---	---	4000@0.238	---	2012	---	---	---	1,795.55	0.144	0.580	3573
51,081,030	1.00	---	---	---	20/08/2007	03/09/2007	4912	LAVIPHARM SA (CR)	0.134	---	↘	0.134	22/08/2013	0.134	0.134	0.134	0.134	0.134	500@0.124	1245@0.129	---	2012	2,400	5	321.60	6,844.86	0.101	0.268	4577
322,925,288	0.300	---	---	---	23/05/2007	10/04/2000	4554	M.J. MAILLIS SA (CR)	0.067	---	↘	0.067	22/08/2013	0.067	0.067	0.067	0.067	0.067	279@0.069	20000@0.075	---	2012	400	2	26.80	21,635.99	0.066	0.150	2723
9,567,289	0.300	---	---	---	01/07/2004	19/11/2007	4944	MARAC ELECTRONICS (CR)	0.114	---	↘	0.114	19/08/2013	---	---	---	---	---	---	---	---	2012	---	---	---	1,090.67	0.068	0.409	9578
4,178,856	1.58	0.22	---	---	21/07/2011	28/07/2004	4983	MEDICON S.A (CR)	0.567	19.87	#	0.473	22/08/2013	0.567	0.567	0.567	0.567	0.567	80@0.427	---	---	2012	10	1	5.67	2,369.41	0.446	1.18	4535
66,937,526	0.700	---	---	---	13/08/2010	21/05/2003	4995	MICHANIKI SA (CR)	0.101	3.06	#	0.098	22/08/2013	0.103	0.100	0.103	0.100	0.101	1200@0.098	3218@0.100	---	2012	14,500	17	1,465.15	9,357.59	0.085	0.370	2357
25,968,987	0.700	---	---	---	13/08/2010	21/05/2003	4996	MICHANIKI SA (PR)	0.100	1.01	#	0.099	22/08/2013	0.100	0.100	0.100	0.100	0.100	350@0.081	480@0.099	---	2012	2,000	7	200.00	9,357.59	0.065	0.268	2357
255,459,600	0.300	---	---	---	26/06/2000	03/12/2010	4833	NEL SA (CR)	0.028	-20.00	€	0.035	22/08/2013	0.028	0.028	0.028	0.028	0.028	---	120@0.028	---	2012	7,078	4	198.18	7,152.87	0.012	0.158	5759
20,231,328	0.600	---	---	---	15/07/2008	25/06/2004	4879	NIKAS SA (CR)	0.260	0.39	#	0.259	22/08/2013	0.259	0.259	0.260	0.260	0.260	4675@0.230	1060@0.260	---	2012	1,200	4	311.80	5,260.15	0.250	0.530	3577
14,967,940	0.500	---	---	---	21/05/2008	04/01/2008	4956	PASAL DEVELOPMENT S.A. (CR)	0.179	-15.96	€	0.213	22/08/2013	0.182	0.175	0.182	0.179	0.179	---	2141@0.179	---	2012	1,564	11	279.35	2,679.26	0.120	0.414	8633
40,946,303	0.360	---	---	---	18/07/2005	27/11/2007	4856	PC SYSTEMS SA (CR)	0.097	---	↘	0.097	16/08/2013	---	---	---	---	---	---	4149@0.078	---	2012	---	---	---	3,971.79	0.057	0.180	9533
18,750,000	0.300	---	---	---	02/07/2001	31/12/2012	4985	PEGASUS PUBLISHING S.A. (CR)	0.265	-19.94	€	0.331	06/08/2013	0.265	0.265	0.265	0.265	0.266	---	57@0.265	---	2012	10	2	2.66	4,968.75	0.044	0.610	5557
28,056,518	0.530	---	---	---	04/07/2007	19/07/2006	4750	SATO SA (CR)	0.088	---	↘	0.088	14/08/2013	---	---	---	---	---	---	2511@0.083	---	2012	---	---	---	2,468.97	0.025	0.115	3726
36,235,184	1.00	---	---	---	01/07/2008	30/07/2012	4961	SELONDA AQUACULTURE SA (CR)	0.168	8.39	#	0.155	21/08/2013	0.168	0.168	0.168	0.168	0.168	1010@0.143	32@0.168	---	2012	866	5	145.49	6,087.51	0.119	0.600	3573
7,914,480	2.50	---	---	---	23/06/2008	29/06/2011	4888	SFAKIANAKIS SA (CR)	0.620	---	↘	0.620	13/08/2013	---	---	---	---	---	100@0.620	452@0.680	---	2012	---	---	---	4,906.98	0.364	0.763	5379
60,221,300	0.400	---	---	---	01/07/2002	01/11/2010	4880	SHELMAN SA (CR)	0.130	---	↘	0.130	01/08/2013	---	---	---	---	---	---	5500@0.125	---	2011	---	---	---	7,828.77	0.098	0.280	2353
10,000,000	1.35	---	---	---	24/06/2008	10/05/2005	4887	SIDMA SA (CR)	0.800	---	↘	0.800	02/08/2013	---	---	---	---	---	---	3000@0.640	---	2012	---	---	---	8,000.00	0.420	0.920	1757
29,060,950	0.340	---	---	---	20/08/2007	24/10/2001	4884	SPIDER METAL INDUSTRY SA (CR)	0.022	---	↘	0.022	14/08/2013	---	---	---	---	---	1635@0.020	40@0.022	---	2012	---	---	---	639.34	0.022	0.097	2757
100,793,000	0.300	---	---	---	16/07/2009	05/08/2013	---	TELETIPOS SA (CR)	0.252	-4.18	€	0.263	22/08/2013	0.252	0.252	0.252	0.252	0.252	359@0.252	397@0.280	---	2012	1,741	3	438.73	25,399.84	0.118	0.600	5553
3,229,566	0.320	---	---	---	22/06/2005	23/09/1999	4629	VARANGIS AVEPE S.A. (CR)	0.780	---	↘	0.780	12/08/2013	---	---	---	---	---	---	25@0.750	---	2012	---	---	---	2,519.06	0.206	0.840	3726
17,175,132	0.300	---	---	---	25/06/2002	21/06/2013	4997	VARVARESSOS SA (CB)	0.040	-16.67	€	0.048	22/08/2013	0.040	0.040	0.040	0.040	0.040	7960@0.040	---	2012	40	2	1.60	687.01	0.028	0.181	3763	
13,191,620	0.620	---	---	---	04/08/2010	09/09/2002	4977	YALCO - CONSTANTINOU SA (CB)	0.128	---	↘	0.128	20/08/2013	---	---	---	---	---	1000@0.103	1000@0.153	---	2012	---	---	---	1,688.53	0.106	0.210	3722

Under Deletion																													
5,025,000	0.300	---	---	---	05/07/2005	14/03/2002	4963	ALSINCO S.A (CR)	0.014	---	↘	0.014	18/07/2013	---	---	---	---	---	---	---	---	2012	---	---	---	70.35	0.006	0.185	3763
766,000	2.83	---	---	---	01/07/2004	11/12/2012	4937	TRIA ALFA SA (CR)	2.81	-19.94	€	3.51	10/07/2013	2.81	2.81	2.81	2.81	2.81	---	39@2.81	---	2012	1	1	2.81	2,532.21	1.30	4.70	3763
245,000	2.83	---	---	---	19/07/2010	11/12/2012	4938	TRIA ALFA SA (PR)	1.55	---	↘	1.55	16/08/2013	---	---	---	---	---	---	3@1.24	---	2012	---	---	---	2,532.21	0.501	1.93	3763

Number of Outstanding Securities	Nominal Value	Dividends [1]			Date of Last Coupon		Note	Shares	Closing price	% change	Previous closing price/date	Open price	Price min	Price max	Last price	Avg price	Last Bid [7]	Last Ask [7]	P/E after	Year	Volume	Trades	Transactions Value	Company Mkt Value (thou. €)	Year low	Year high	Sector[4]
		2010	2011	2012	Dividend [2]	Right																					
Under Suspension																											
49,030,011	0.300	---	---	---	19/07/2010	12/05/2011	4875	ALAPIS (CR)	0.041	---	0.041	30/03/2012	---	---	---	---	---	---	---	---	---	---	---	2,010.23	0.041	0.041	4577
1,750,955,549	0.600	---	---	---	19/05/2008	08/12/2011	4911	ATE (CR)	0.155	---	0.155	30/07/2012	---	---	---	---	---	---	---	---	---	---	---	271,398.11	0.155	0.155	8355
21,382,067	0.300	---	---	---	02/10/2006	15/02/2006	4628	ATERMON (CR)	0.120	---	0.120	31/03/2010	---	---	---	---	---	---	---	---	---	---	---	2,565.85	0.120	0.120	5555
105,423,498	0.510	---	---	---	01/07/2004	28/12/2005	4920	AVENIR S.A. (CR)	0.046	---	0.046	30/08/2012	---	---	---	---	---	---	---	---	---	---	---	4,849.48	0.046	0.046	5752
33,930,000	0.300	---	---	---	03/07/2006	30/05/2001	4865	BABIS VOVOS SA (CR)	0.304	---	0.304	30/03/2012	---	---	---	---	---	---	---	---	---	---	---	10,314.72	0.304	0.304	8633
20,121,710	1.21	---	---	---	27/07/1992	12/03/2003	4970	BALKAN R.E. (CR)	0.220	---	0.220	31/05/2013	---	---	---	---	---	---	---	---	---	---	---	4,426.78	0.195	0.438	8633
1,795,140,547	1.00	(0.0615)	---	---	31/05/2011	19/04/2012	4951	BANK OF CYPRUS (CR)	0.207	---	0.207	15/03/2013	---	---	---	---	5000@0.170	---	---	---	---	---	---	371,594.09	0.180	0.282	8355
21,920,570	0.300	---	---	---	03/07/2007	13/12/1999	4702	CARDASSILARIS SA (CR)	0.140	---	0.140	30/11/2010	---	---	---	---	---	---	---	---	---	---	---	3,068.88	0.140	0.140	3577
54,547,634	0.500	---	---	---	25/04/2005	21/01/2009	4860	CH.TEGOPOULOS PUBL. SA (CR)	0.038	---	0.038	23/03/2012	---	---	---	---	---	---	---	---	---	---	---	2,072.81	0.038	0.038	5557
33,718,750	0.300	---	---	---	28/05/2008	21/01/2013	4998	DOL SA (CR)	0.640	---	0.640	25/07/2013	---	---	---	---	---	3118@0.700	---	---	---	---	---	21,580.00	0.244	0.759	5557
7,847,611	1.20	---	---	---	01/08/2007	28/09/2011	4939	EDRASIS - C. PSALLIDAS SA (CR)	0.150	---	0.150	19/11/2012	---	---	---	---	---	---	---	---	---	---	---	1,177.14	0.150	0.150	2357
5,750,000	0.300	---	---	---	12/12/2008	12/12/2011	4929	ELECTRONIKI ATHINON SA (CR)	0.480	---	0.480	07/09/2012	---	---	---	---	---	---	---	---	---	---	---	2,760.00	0.480	0.480	5375
24,605,397	0.400	---	---	---	29/06/1995	27/05/2002	4651	EMPORIKOS DESMOS SA (CR)	0.080	---	0.080	28/05/2010	---	---	---	---	---	---	---	---	---	---	---	2,134.04	0.080	0.080	3722
1,182,903	0.400	---	---	---	01/07/1996	27/05/2002	4652	EMPORIKOS DESMOS SA (PR)	0.140	---	0.140	28/09/2009	---	---	---	---	---	---	---	---	---	---	---	2,134.04	0.140	0.140	3722
8,593,750	0.300	---	---	---	01/06/2009	20/06/2007	4876	FASHION BOX (CR)	1.30	---	1.30	23/02/2012	---	---	---	---	---	---	---	---	---	---	---	11,171.88	1.30	1.30	3763
7,326,648	1.00	---	---	---	26/07/2006	24/07/2001	4921	FINTEXPORT SA (CR)	0.328	---	0.328	29/06/2012	---	---	---	---	---	---	---	---	---	---	---	2,403.14	0.328	0.328	3763
20,860,000	0.300	---	---	---	03/07/2000	13/11/2007	4848	IKONA - IHOS SA (CR)	0.072	---	0.072	02/12/2011	---	---	---	---	---	---	---	---	---	---	---	1,501.92	0.072	0.072	5379
36,765,744	0.350	---	---	---	16/08/2006	06/06/2011	4869	IMPERIO SA (CR)	0.026	---	0.026	30/03/2012	---	---	---	---	---	---	---	---	---	---	---	955.91	0.026	0.026	2777
24,619,524	0.500	---	---	---	10/10/1986	30/12/2002	4914	KERAMIA-ALLATINI (CR)	0.088	---	0.088	27/08/2012	---	---	---	---	---	---	---	---	---	---	---	2,166.52	0.088	0.088	8633
7,840,373	1.20	---	---	---	18/07/2002	05/03/2003	4765	KLONATEX SA (PR)	0.080	---	0.080	09/05/2011	---	---	---	---	---	---	---	---	---	---	---	1,453.75	0.080	0.080	3763
20,663,047	1.20	---	---	---	21/08/2000	05/03/2003	4764	KLONATEX SA (CR)	0.040	---	0.040	09/05/2011	---	---	---	---	---	---	---	---	---	---	---	1,453.75	0.040	0.040	3763
17,544,600	0.600	---	---	---	03/07/2000	01/08/2000	4868	KOYMBAS SYNERGY GROUP (CR)	0.132	---	0.132	29/03/2012	---	---	---	---	---	---	---	---	---	---	---	2,315.89	0.132	0.132	8775
15,015,000	1.60	---	---	---	01/07/2002	02/02/2000	4603	MAXIM C.M. PERTSINIDIS SA (CB)	0.100	---	0.100	30/11/2009	---	---	---	---	---	---	---	---	---	---	---	1,501.50	0.100	0.100	3763
13,555,100	1.00	---	---	---	08/07/2005		4576	MICROLAND COMPUTERS SA (CR)	0.640	---	0.640	14/07/2009	---	---	---	---	---	---	---	---	---	---	---	8,675.26	0.640	0.640	5379
23,463,874	0.800	---	---	---	23/05/2003	21/12/1999	4918	NEORION SA (CR)	0.125	---	0.125	28/08/2012	---	---	---	---	---	---	---	---	---	---	---	2,932.98	0.125	0.125	2753
42,501,273	0.300	---	---	---	26/06/2007	10/08/2009	4993	NUTRIART (CR)	0.049	---	0.049	21/06/2013	---	---	---	---	---	---	---	---	---	---	---	2,082.56	0.038	0.114	3577
25,583,146	0.300	---	---	---	25/06/2001	03/12/2008	4723	PETZETAKIS SA (CR)	0.260	---	0.260	28/01/2011	---	---	---	---	---	---	---	---	---	---	---	6,651.62	0.260	0.260	1357
9,550,386	0.500	---	---	---	01/07/1997	12/06/2008	4626	PRAXITELIO SA (CR)	0.390	---	0.390	11/03/2010	---	---	---	---	---	---	---	---	---	---	---	4,430.09	0.390	0.390	4533
1,306,368	0.500	---	---	---	01/07/1997	12/06/2008	4627	PRAXITELIO SA (PR)	0.540	---	0.540	15/12/2009	---	---	---	---	---	---	---	---	---	---	---	4,430.09	0.540	0.540	4533
62,683,822	0.300	---	---	---	27/05/2008	09/01/2006	4830	PROTON BANK S.A. (CR)	0.180	---	0.180	07/10/2011	---	---	---	---	---	---	---	---	---	---	---	11,283.09	0.180	0.180	8355
23,059,688	0.660	---	---	---	03/07/2008	06/08/2004	4864	RIDENCO SA (CR)	0.032	---	0.032	30/03/2012	---	---	---	---	---	---	---	---	---	---	---	737.91	0.032	0.032	3765
51,083,993	1.00	---	---	---	15/07/2008	06/08/2003	4867	SANYO HELLAS HOLD. (CR)	0.020	---	0.020	30/03/2012	---	---	---	---	---	---	---	---	---	---	---	1,021.68	0.020	0.020	3722
51,334,286	0.320	---	---	---	03/07/2000	18/12/2007	4548	SAOS (CR)	0.780	---	0.780	27/03/2009	---	---	---	---	---	---	---	---	---	---	---	40,040.74	0.780	0.780	2773
26,408,040	0.300	---	---	---	01/07/1997	26/05/1999	4464	SHEET STEEL SA (CR)	0.120	---	0.120	28/11/2008	---	---	---	---	---	---	---	---	---	---	---	3,168.96	0.120	0.120	1757
26,262,660	0.900	---	---	---	01/07/2008	24/02/2011	4954	SPRIDER STORES (CR)	0.031	---	0.031	28/03/2013	---	---	---	---	---	---	---	---	---	---	---	814.14	0.025	0.055	5371
144,688,060	0.600	---	---	---	21/04/2008	10/03/2010	4982	T BANK (CR)	0.048	---	0.048	30/11/2011	---	---	---	---	---	---	---	---	---	---	---	6,945.03	0.048	0.048	8355
6,523,780	0.530	---	---	---	01/07/2002	06/03/2001	4971	TECHNICAL PUBLICATIONS SA (CR)	0.006	---	0.006	29/05/2013	---	---	---	---	---	---	---	---	---	---	---	39.14	0.006	0.347	5557
13,920,000	0.320	---	---	---	19/11/2001	01/08/2000	4726	TEXAPRET SA (CR)	0.080	---	0.080	23/02/2011	---	---	---	---	---	---	---	---	---	---	---	1,113.60	0.080	0.080	3763

Number of Outstanding Securities	Nominal Value	Dividends [1]			Date of Last Coupon Dividend [2]		Note	Shares	Closing price	% change	Previous closing price/date	Open price	Price min	Price max	Last price	Avg price	Last Bid [7]	Last Ask [7]	P/E after	Year	Volume	Trades	Transactions Value	Company Mkt Value (thou. €)	Year low	Year high	Sector[4]
--	------------------	---------------	--	--	-------------------------------------	--	------	--------	------------------	----------	--------------------------------	---------------	--------------	--------------	---------------	--------------	-----------------	--------------	--------------	------	--------	--------	-----------------------	--------------------------------	-------------	--------------	---------------

Under Suspension

284,465,964	3.70	---	---	---	20/06/2008	15/06/2009	4913	TT HELLENIC POSTBANK (CR)	0.168	---	↘ 0.168	30/08/2012	---	---	---	---	---	---	---	---	---	---	---	47,790.28	0.168	0.168	8355
89,616,200	0.300	---	---	---	21/08/2000	28/06/2007	4616	UNITED TEXTILES (CR)	0.050	---	↘ 0.050	25/02/2010	---	---	---	---	---	---	---	---	---	---	---	4,480.81	0.050	0.050	3763
71,683,906	0.400	---	---	---	15/06/2005	05/02/2008	4953	XATZIOANNOU (CR)	0.026	---	↘ 0.026	28/03/2013	---	---	---	---	---	---	---	---	---	---	---	1,863.78	0.020	0.085	3763

Shares' Notes

Code	Note text
()	- Adjusted dividends.
*	- Last adjusted closing price.
[1]	- Net dividends.
[2]	- The "Date of Last Coupon" for New listings refers to the date company's stocks started to trade in Athex
[3]	- The Company Market Value is referred to the number of outstanding shares
[4]	- Sectors codification can be found in Appendix A
[5]	- The Market Value refers to the total number of shares listed (including their several classes) in the exchange by the company.
[6]	- P/E greater than 100
[7]	- Last view of the Order Book before the end of the trading session
4446	- Transfer to the "Under Supervision" Category as of 20/10/2008.
4447	- Transfer to the "Under Supervision" Category as of 21/10/2008.
4464	- Suspension of trading as of 1/12/2008.
4548	- Suspension of trading as of 1/4/2009.
4554	- Transfer to the "Under Supervision" Category as of 6/4/2009.
4559	- Transfer to the "Under Supervision" Category as of 21/4/2009.
4576	- Suspension of trading as of 14/7/2009.
4603	- Suspension of trading as of 1/12/2009.
4616	- Suspension of trading as of 25/2/2010.
4626	- Suspension of trading as of 1/4/2010.
4627	- Suspension of trading as of 1/4/2010.
4628	- Suspension of trading as of 1/4/2010.
4629	- Transfer to the Under Supervision Category as of 12/4/2010.
4630	- Transfer to the Under Supervision Category as of 12/4/2010.
4651	- Suspension of trading as of 1/6/2010.
4652	- Suspension of trading as of 1/6/2010.
4690	- Transfer to Surveillance category as of 4/4/2006.
4702	- Suspension of trading as of 1/12/2010.
4723	- Suspension of trading as of 31/1/2011.
4726	- Suspension of trading as of 1/3/2011.
4750	- Transfer to the "Under Surveillance Category" from 8/4/2011.
4764	- Suspension of trading as of 20/5/2011.
4765	- Suspension of trading as of 20/5/2011.
4795	- The final gross (pre-tax) dividend is € 0.30 per share and subject to withholding tax on the full dividend amount, i.e. 0,45 per share, for those shareholders liable to withholding tax, in accordance with the applicable tax law provisions.
4808	- Suspension of trading as of 6/9/2011.
4814	- Transfer to the Low Dispersion Category as of 30/5/2011.
4815	- Transfer to the Low Dispersion Category as of 30/5/2011.
4816	- Transfer to the Low Dispersion Category as of 30/5/2011.
4817	- Transfer to the Low Dispersion Category as of 30/5/2011.
4820	- Transfer to the Low Dispersion category as of 18/4/2008.
4822	- Transfer to the Low Dispersion category as of 30/5/2011.
4823	- Transfer to the Low Dispersion category as of 4/4/2006.
4824	- Transfer to the Low Dispersion category as of 18/4/2008.
4825	- Transfer to the Low Dispersion category as of 8/4/2011.
4827	- Transfer to the Low Dispersion category as of 5/5/2010.
4828	- Transfer to the Low Dispersion category as of 4/4/2006.
4830	- Suspension of trading as of 10/10/2011.
4833	- Transfer to Surveillance category from 6/5/2010.
4844	- Transfer to the Surveillance category from 8/4/2011.
4845	- Transfer to the Surveillance Category as of 25/11/2011.
4846	- Transfer to the Surveillance Category as of 25/11/2011.
4847	- Transfer to the Surveillance Category as of 3/7/2009.

Shares' Notes

Code	Note text
4848	- Suspension of trading as of 6/12/2011.
4854	- Transfer to the Surveillance Category as of 29/12/2011.
4855	- Transfer to the Surveillance Category as of 29/12/2011.
4856	- Transfer to the Surveillance Category as of 29/12/2011.
4860	- Suspension of trading as of 30/3/2012.
4864	- Suspension of trading as of 30/3/2012.
4865	- Suspension of trading as of 2/4/2012.
4867	- Suspension of trading as of 2/4/2012.
4868	- Suspension of trading as of 2/4/2012.
4869	- Suspension of trading as of 2/4/2012.
4875	- Suspension of trading as of 2/4/2012.
4876	- Suspension of trading as of 3/4/2012.
4879	- Transfer to the Surveillance Category as of 10/4/2012.
4880	- Transfer to the Surveillance Category as of 10/4/2012.
4881	- Transfer to the Surveillance Category as of 10/4/2012.
4882	- Transfer to the Surveillance Category as of 10/4/2012.
4884	- Transfer to the Surveillance Category as of 10/4/2012.
4885	- Transfer to the Surveillance Category as of 10/4/2012.
4886	- Transfer to the Surveillance Category as of 10/4/2012.
4887	- Transfer to the Surveillance Category as of 10/4/2012.
4888	- Transfer to the Surveillance Category as of 10/4/2012.
4889	- Transfer to the Surveillance Category as of 10/4/2012.
4893	- Transfer to the Low Dispersion category as of 28/5/2012.
4894	- Transfer to the Low Dispersion category as of 28/5/2012.
4911	- Lift of suspension from 30/7/2012.
4912	- Transfer to the Surveillance Category as of 31/7/2012.
4913	- Suspension of trading as of 30/8/2012.
4914	- Suspension of trading as of 31/8/2012.
4918	- Suspension of trading as of 31/8/2012.
4920	- Suspension of trading as of 31/8/2012.
4921	- Suspension of trading as of 31/8/2012.
4929	- Suspension of trading as of 1/10/2012.
4937	- Transfer to the UNDER DELETION category as of 30/11/2012.
4938	- Transfer to the UNDER DELETION category as of 30/11/2012.
4939	- Suspension of trading as of 30/11/2012.
4941	- Transfer to the Low Dispersion category as of 3/12/2012.
4944	- Transfer to the Surveillance Category as of 7/12/2012.
4951	- Suspension of trading as of 19/3/2013.
4953	- Suspension of trading as of 2/4/2013.
4954	- Suspension of trading as of 2/4/2013.
4955	- Transfer to the Surveillance Category as from 5/4/2013.
4956	- Transfer to the Surveillance Category as from 5/4/2013.
4957	- Transfer to the Surveillance Category as from 5/4/2013.
4958	- Transfer to the Surveillance Category as from 5/4/2013.
4959	- Transfer to the Surveillance Category as from 5/4/2013.
4960	- Transfer to the Surveillance Category as from 5/4/2013.
4961	- Transfer to the Surveillance Category as from 5/4/2013.
4962	- Transfer to the Surveillance Category as from 5/4/2013.
4963	- Transfer to the Under Deletion Category as from 5/4/2013.
4970	- Suspension of trading as of 3/6/2013.
4971	- Suspension of trading as of 3/6/2013.
4977	- Transfer to the "Under Surveillance Category" from 11/6/2013.
4978	- Transfer to the Under Supervision Category as of 11/6/2013.

Shares' Notes

Code	Note text
4982	- Suspension of trading as of 1/12/2011.
4983	- Transfer to the Surveillance Category as of 5/4/2013.
4985	- Transfer to the "Under Surveillance Category" from 8/4/2011.
4986	- Transfer to the Low Dispersion category as of 30/5/2011.
4988	- As of June 7, 2013, the name of the company "DUTY FREE SHOPS A CORPORATION OPERATING DFS AND LARGE AND SMALL SCALE INDUSTRIAL OPERATIONS, TECHNIC" on ATHEX changes to "FOLLI FOLLIE S.A.".
4993	- Suspension of trading as of 21/6/2013 (15:18).
4995	- Transfer to the "Under Surveillance Category" from 8/4/2011.
4996	- Transfer to the "Under Surveillance Category" from 8/4/2011.
4997	- Transfer to the Under Supervision Category as of 21/12/2009. - The 6,870,053 new (CB) shares, resulting from the recent share capital increase through a rights issue, are not yet admitted to trading on the ATHEX.
4998	- Suspension of trading as of 26/7/2013.

Securities Blocks Details

Securities	Block Volume	Price	Block Trade Value	Time of approval	Note
OPAP (CR)	142,470	7.43	1,057,839.75	11:16:57	20
MOTOR OIL (CR)	50,000	7.52	376,000.00	12:16:20	20
ATTICA BANK S.A. (CR)	1,686	0.288	485.57	12:40:24	18
OTE (CR)	84	6.96	584.64	12:41:10	18
MOTOR OIL (CR)	50,000	7.60	380,000.00	14:51:25	20
JUMBO SA (CR)	271,104	8.29	2,247,452.16	16:08:26	20
HELLENIC EXCHANGES (CR)	78,928	6.03	475,935.84	16:59:44	20

Blocks Notes

2 - SPOT 1 or SPOT 2 Packet	11 - Total Assets > 500 bil
3 - Block with Short Selling	12 - Sell Offer through Athex
4 - Buy to Close Block	13 - Forced Sale of NMOE
6 - Simultaneous Constitution	14 - Restoration Packet
7 - Repurchase Agreement	15 - Market Maker Packet
8 - Dispersion's Achievement (Not Listed)	16 - Short Selling
9 - Dispersion's Achievement (Listed)	18 - SPOT 1 Packet
10 - Share Capital Majority of Greek State (> 50 bil)	20 - Method 6-1 Packet

Shares Rights Details

Occured date	Exercise from	Exercise until	Trading until	Rights	Price min	Price max	Closing price	Last Bid	Last Ask	Volume	Trades	Transactions Value
05/08/2013	16/08/2013	30/08/2013	26/08/2013	TELETIPOS S.A. (CR)	---	---	0.001	---	897@0.001	---	---	---

Shares Short Selling

Securities	Transactions Value	Transactions Volume	% of Total Volume	Short Covering Trans. Value	Short Covering Volume	% of Total Volume
PETROPOULOS PETROS (CR)	---	---	---	3.12	2	0.06

Short Selling Notes

[1] - The Hellenic Capital Markets Commission (HCMC) has decided to prohibit the short selling only in relation to shares of credit institutions admitted to trading on the Athens Exchange and comprising the FTSE/ATHEX - CSE Banking Index, for a period of three(3) months and more specifically from February1, 2013 until April 30, 2013.

Stock Borrowing

Securities	Stock Borrowing through Helex (volume)	Stock Borrowing through OTC (volume) [1]	Totals [2]
ALAPIS (CR)	---	6,250	6,250
ALPHA BANK (CR)	161,200	4,562,274	4,723,474
ATE (CR)	---	69,000	69,000
BANK OF CYPRUS (CR)	---	102,899	102,899
CC HBC AG (CR)	32,400	73,941	106,341
ELLAKTOR (CR)	1,000	---	1,000
EUROBANK ERGASIAS (CR)	21,120	68,433	89,553
EUROBANK PROPERTIES REIC (CR)	11,500	31,215	42,715
EYDAP S.A. (CR)	2,900	---	2,900
FLEXOPACK SA (CR)	---	41,927	41,927
FOLLI FOLLIE (CR)	3,000	15,508	18,508
FRIGOGLASS SA (CR)	3,500	---	3,500
GEK TERNA (CR)	500	---	500
HELLENIC EXCHANGES (CR)	33,000	---	33,000
HELLENIC PETROLEUM (CR)	22,400	269	22,669
INTERTECH SA (CR)	---	483,000	483,000
INTRALOT (CR)	24,000	---	24,000
JUMBO SA (CR)	10,900	3,525	14,425
LAMDA DEVELOPMENT SA (CR)	---	10,377	10,377
MARFIN INVESTMENT GROUP (CR)	---	733,474	733,474
METKA (CR)	8,400	---	8,400
MOTOR OIL (CR)	12,700	---	12,700
MYTILINEOS HOLDINGS (CR)	2,000	---	2,000
NATIONAL BANK (CR)	70,400	1,396,830	1,467,230
NBGAM ETF	10,000	---	10,000
NBGAM ETF GREECE & TURKEY 30	3,500	---	3,500
OPAP (CR)	47,500	43,264	90,764
OTE (CR)	135,600	109,116	244,716
PIRAEUS BANK (CR)	5,200	239,460	244,660
PPC (CR)	47,400	44,800	92,200
TERNA ENERGY (CR)	5,400	---	5,400
TITAN CEMENT (CR)	6,700	55,390	62,090
VIOHALCO (CB)	5,200	---	5,200

Stock Borrowing Notes

[1] - The information concerning OTC Stock Borrowing Transactions is based on the statements of the Dematerialised Securities System (DSS) operators involved and refers to volumes that have been cleared and registered up until the previous working day.

Shares Forced Sales

Securities	Transaction s Volume	Number of Trades	Transactions Value	Note
No Forced Transactions.				

Forced Sales Notes

1 - Normal Forced Sale.

2 - Forced Sales of Fixed Registered Shares.

3 - Forced Sales of Remaining Stock Fractions.

Forced Sales Registered Shares

Securities	Start Date	End Date	Initial Volume	Remaining Volume	Date	Avg price (day)	Avg price (period)	Number of Trades	Transactions Volume	Transactions Value
------------	------------	----------	-------------------	---------------------	------	--------------------	-----------------------	---------------------	------------------------	-----------------------

No Fixed Registered Shares Forced Sales.

Forced Sales Notes

According to Decision 1/380/04.05.2008 of the Hellenic Republic Capital Market Commission, the certificated registered shares that have not been deposited to the issuer for dematerialisation, will be auctioned in the Athens Exchange by the supervising issuer. Forced sales procedure is held according to Article 99A of the Athens Exchange Rulebook. The average price of the period is calculated by dividing the Total transactions value by the Total volume and includes all the transactions made until the current date.

Exchange Traded Funds (ETFs) Characteristics

	Transactions Date (T)	Creation / Redemption	Units (T-1)	New Units (T-1)	Redemptio n Units (T-	Units (T) [1]	Fund Assets [2]	Net Unit Price	Dividen d per	Dividend Date
NBGAM ETF ΓΔ Χ.Α.	23/08/2013	25,000	294,878	---	---	294,878	2,946,774.00	9.9932	---	27/10/2011
ALPHA ETF FTSE Athex Large Cap	23/08/2013	50,000	5,848,618	---	---	5,848,618	17,929,340.00	3.0656	0.05	01/07/2013
NBGAM ETF GREECE & TURKEY 30	23/08/2013	25,000	388,550	---	---	388,550	2,817,504.00	7.2513	---	27/10/2011

ETFs Notes

[1] - Units (T) = Units (T-1) + New Units (T-1) - Redemption Units (T-1)

[2] - The Creation / Redemption Units of T-1 are included.

Corporate Bonds

Num Listed Bonds	Nominal price	Issue price	Today's Rate	Exp. Date	Duration (years)	Note	Coupon attached		Trading	Corporate Bonds	Price min	Price max	Closing price	Previous closing price/date	Volume	Transactions Value	Last order		Date	ear min	Year max	
							Common	Preferred									Price	Buy / Sell				
212,849,265	1.00	1.00	6.30	29/07/2020	7	---	1	---	1	MARFIN INVESTMENT GROUP S.A. SERIES B (BOND)	0.8500	0.8500	0.8500	---	---	60	0.80	0.8700	B	23/08/2013	0.8500	0.8500
2,156,827	1.00	1.00	7.00	29/07/2019	6	---	1	---	1	MARFIN INVESTMENT GROUP S.A. SERIES A (BOND)	1.0000	1.0000	1.0000	---	---	83	1.29	1.0000	B	23/08/2013	1.0000	1.0000
39,711,653	1.00	1.00	6.00	30/06/2016	5	4786	5	---	1	BANK OF CYPRUS PUBLIC CO. LTD (Convert. to CR sh.)	---	---	---	---	---	---	---	10.0000	B	13/03/2013	100.0000	100.0000
428,521,983	1.00	1.00	6.50	30/06/2016	5	4785	5	---	1	BANK OF CYPRUS PUBLIC CO. LTD (Convert. to CR sh.)	---	---	---	20.5000	14/03/2013	---	---	21.0000	B	15/03/2013	19.5000	30.0000
4,150,176	4.77	4.77	5.00	19/03/2015	5	---	14	---	1	MARFIN INVESTMENT GROUP S.A. (Conver to CR shar)	---	---	---	25.4000	12/08/2013	---	---	20.0010	B	23/08/2013	0.5000	70.0000
73,088,145	1.00	1.00	5.50	30/06/2014	5	4574	9	---	1	BANK OF CYPRUS PUBLIC CO. LTD (Convert. to CR sh.)	---	---	---	20.0000	08/03/2013	---	---	21.5000	B	15/03/2013	20.0000	26.0000
1,794,284	12.49	9.77	5.33	12/07/2015	8	---	13	---	1	NIREUS S.A. (Convertible to CR shares)	---	---	---	12.0000	26/07/2013	---	---	15.0000	B	23/08/2013	11.0000	15.0000
27,283,632	1.00	1.00	1.32	30/06/2018	10	---	11	---	1	BANK OF CYPRUS PUBLIC CO. LTD (Convert. to CR sh.)	---	---	---	33.0000	13/12/2012	---	---	35.0000	B	15/03/2013	33.0000	33.0000

4574 - The bonds are of indefinite duration.

4785 - The bonds are of indefinite duration.

4786 - The bonds are of indefinite duration. The Bond's par value, issue price and trading prices are expressed in USA Dollars, whereas its Transactions Value is expressed in Euros.

Corporate Bonds Notes

Transactions Volume = (Pieces) * (Nominal Price). Transactions Value = (Pieces) * (Nominal Price) * (price %) + (Accrued interest).

The price of a Bond is stated as a percentage (%) of Bond's Nominal Price.

Nominal Price in Euros (€), except if it is noted differently.

Government Bonds

Number Listed Bonds	Nominal price	Today's Rate	Accrued Interest Calc	Exp. Date [1]	Duration (years)	Note	Coupons Date	Curr. coupon value	Trading Unit	Government Bonds	Price min	Price max	Closing price	Previous closing price/date	Volume	Transactions Value	Price	Last order Buy / Sell	Date
2,658,781,973	1.00	2.00	Actual/Actual	24/02/2023	11	---	24/02	2.00	1	GGB-FXD-240223-11Y-2.000-1.00	---	---	---	---	---	---	---	---	---
2,658,781,973	1.00	2.00	Actual/Actual	24/02/2024	12	---	24/02	2.00	1	GGB-FXD-240224-12Y-2.000-1.00	---	---	---	---	---	---	---	---	---
2,658,781,973	1.00	2.00	Actual/Actual	24/02/2025	13	---	24/02	2.00	1	GGB-FXD-240225-13Y-2.000-1.00	---	---	---	---	---	---	---	---	---
2,658,781,973	1.00	2.00	Actual/Actual	24/02/2026	14	---	24/02	2.00	1	GGB-FXD-240226-14Y-2.000-1.00	---	---	---	---	---	---	---	---	---
2,658,781,973	1.00	2.00	Actual/Actual	24/02/2027	15	---	24/02	2.00	1	GGB-FXD-240227-15Y-2.000-1.00	---	---	---	---	---	---	---	---	---
2,836,034,104	1.00	2.00	Actual/Actual	24/02/2028	16	---	24/02	2.00	1	GGB-FXD-240228-16Y-2.000-1.00	---	---	---	---	---	---	---	---	---
2,836,034,104	1.00	2.00	Actual/Actual	24/02/2029	17	---	24/02	2.00	1	GGB-FXD-240229-17Y-2.000-1.00	---	---	---	---	---	---	---	---	---
2,836,034,104	1.00	2.00	Actual/Actual	24/02/2030	18	---	24/02	2.00	1	GGB-FXD-240230-18Y-2.000-1.00	---	---	---	---	---	---	---	---	---
2,836,034,104	1.00	2.00	Actual/Actual	24/02/2031	19	---	24/02	2.00	1	GGB-FXD-240231-19Y-2.000-1.00	---	---	---	---	---	---	---	---	---
2,836,034,104	1.00	2.00	Actual/Actual	24/02/2032	20	---	24/02	2.00	1	GGB-FXD-240232-20Y-2.000-1.00	---	---	---	---	---	---	---	---	---
2,836,034,104	1.00	2.00	Actual/Actual	24/02/2033	21	---	24/02	2.00	1	GGB-FXD-240233-21Y-2.000-1.00	---	---	---	---	---	---	---	---	---
2,836,034,104	1.00	2.00	Actual/Actual	24/02/2034	22	---	24/02	2.00	1	GGB-FXD-240234-22Y-2.000-1.00	---	---	---	---	---	---	---	---	---
2,836,034,104	1.00	2.00	Actual/Actual	24/02/2035	23	---	24/02	2.00	1	GGB-FXD-240235-23Y-2.000-1.00	---	---	---	---	---	---	---	---	---
2,836,034,104	1.00	2.00	Actual/Actual	24/02/2036	24	---	24/02	2.00	1	GGB-FXD-240236-24Y-2.000-1.00	---	---	---	---	---	---	---	---	---
2,836,034,104	1.00	2.00	Actual/Actual	24/02/2037	25	---	24/02	2.00	1	GGB-FXD-240237-25Y-2.000-1.00	---	---	---	---	---	---	---	---	---
2,836,034,104	1.00	2.00	Actual/Actual	24/02/2038	26	---	24/02	2.00	1	GGB-FXD-240238-26Y-2.000-1.00	---	---	---	---	---	---	---	---	---
2,836,034,104	1.00	2.00	Actual/Actual	24/02/2039	27	---	24/02	2.00	1	GGB-FXD-240239-27Y-2.000-1.00	---	---	---	---	---	---	---	---	---
2,836,034,104	1.00	2.00	Actual/Actual	24/02/2040	28	---	24/02	2.00	1	GGB-FXD-240240-28Y-2.000-1.00	---	---	---	---	---	---	---	---	---
2,836,034,104	1.00	2.00	Actual/Actual	24/02/2041	29	---	24/02	2.00	1	GGB-FXD-240241-29Y-2.000-1.00	---	---	---	---	---	---	---	---	---
2,836,034,104	1.00	2.00	Actual/Actual	24/02/2042	30	---	24/02	2.00	1	GGB-FXD-240242-30Y-2.000-1.00	---	---	---	---	---	---	---	---	---
1,500,000	1,000.00	0.97	FLR Actual/360	10/08/2014	5	---	10/02 - 10/08	---	1	GGB-FRN-100814-05Y-1.762-1000.00	---	---	---	---	---	---	---	---	---
5,187,186	1,000.00	1.60	FLR Actual/360	21/05/2014	5	---	21/11 - 21/05	---	1	GGB-FRN-210514-05Y-2.734-1000.00	---	---	---	---	---	---	---	---	---
78,300	1,000.00	1.16	FLR Actual/360	23/07/2014	5	---	23/01 - 23/07	---	1	GGB-FRN-230714-05Y-2.018-1000.00	---	---	---	---	---	---	---	---	---

Government Bonds Notes

Transactions Volume = (Pieces) * (Nominal Price). Transactions Value = (Pieces) * (Nominal Price) * (price %) + (Accrued interest).

The Value of current coupon for the issues with NV 0.01 euro refers to NV 100 euros

FLR: Floating Interest Rate.

[1] - The Expiration Date of the interest bearing period and the Date for coupon payment.

Bonds in Circulation	Currency / Min nominal traded Value	Coupons Payment Date	Current Coupon Value	Note	Coupon Attached	Trading Unit	Issue Date	Duration (years)	Today's Interest	A.I.C in days	Bonds	Last price of previous days	Last Outcry in Cash (euro) Price	Buy / Sell	Trades in Pieces	Life min	Life Max
Bonds of International Organizations																	
1,000,000	EUR / 1000	21/07	---	---	8	1	21/07/2006	10	5.0 FLR	360	EUROPEAN INVESTMENT BANK BOND	97.50	16/04/2007	---	---	---	---
Corporate Bonds in Foreign Currency and Euro																	
103,746	GBP / 10	01/12	0.25	---	54	1	01/12/1930	98	2.5	360	National Mortgage Bank	2.27	05/02/1996	2.27	S	05/02/1996	2.27
0	GBP / 10	01/12	0.25	---	56	1	01/12/1928	100	2.5	360	National Mortgage Bank	---	---	---	---	---	---

Government Bonds Notes

A.I.C: Accrued Interest Calculation base.
FLR: Floating Interest Rate.
The minimum tradeable Nominal Value for all Demeterialised Government Titles is 100 Euros.

State Banks Bonds (one year maturity)

Number Listed Bonds	Nominal value	Initial Rate	Current Rate	Annual Interest	Issue Date	Note	State Banks Bonds	Trading Unit	Yearly Renewals	Last Outcry in Cash (euro) Price	Buy / Sell	Volume
342,560	130.41	2.35	3.92	0.00	31/01/2005	---	H.I.D.B.	1	9	100.00	B	---
16,015	1,211.71	3.65	2.47	0.00	30/11/2006	---	H.I.D.B.	1	7	---	---	---
2,446	1,154.00	4.90	2.47	28.96	31/05/2008	---	H.I.D.B.	1	6	---	---	---
171,117	1,163.28	5.50	2.47	29.19	31/05/2008	---	H.I.D.B.	1	6	---	---	---
63,787	1,101.48	5.45	2.47	30.88	31/08/2008	---	H.I.D.B.	1	5	---	---	---
54,559	1,129.20	5.45	2.47	28.34	31/08/2008	---	H.I.D.B.	1	5	---	---	---
77,348	1,130.82	5.60	2.47	28.38	31/08/2008	---	H.I.D.B.	1	5	---	---	---
165,926	1,130.82	5.60	2.47	28.38	31/08/2008	---	H.I.D.B.	1	5	---	---	---
5,358	1,108.96	5.45	2.47	27.83	31/10/2008	---	H.I.D.B.	1	5	---	---	---
1,045	1,129.74	5.50	2.47	28.35	31/10/2008	---	H.I.D.B.	1	5	---	---	---
76,077	1,132.45	5.75	2.47	28.42	31/10/2008	---	H.I.D.B.	1	5	---	---	---

Bonds Notes

The annual renewal of H.I.D.B. Bonds is free of taxes (net rate).
For Bonds issue until 31/07/2013 the accrued interest is capitalized.

Athex & ATHEXClear Members List

Member Name			Stock Market			Derivatives Market			ATHEXClear Member		
Address	Phone	Fax	Market Member	Remote Member	Market Maker	Proprietary	Market Maker	Agent	General Clearing	Direct Clearing	Non Clearing
A. SARRIS SECURITIES S.A.			a								
6, DRAGATSANIOU STR. ATHINA	(210)-3367700	(210)-3312324									
AGRICULTURAL BANK OF GREECE S.A.			a				a			a	
, 23 PANEPISTIMIOU ATHINA	(210)-3298400	(210)-3298322									
ALPHA FINANCE INVESTMENT SERVICES S.A.			a		a		a			a	
5, MERLIN STR. ATHINA	(210)-3677400	(210)-3311193									
ALPHA BANK A.E.						a			a		
40, STADIOU STR ATHINA	(210)-3265546	(210)-3265811									
	(210)-3260000	(210)-3264116									
ARGUS STOCKBROKERS LTD			a	a							
12-14, KENNEDY AVE, S. 303 NICOSIA	(+35722)-22717000	(+35722)-22717070									
ATHENAIKI BROKERAGE FIRM S.A.			a								
33, STADIOU STR. ATHINA	(210)-3254764	(210)-3254767									
ATLANTIC SECURITIES LIMITED			a	a							
37, PRODROMOU STR. NICOSIA	(+35722)-445400	(+35722)-661914									
ATLAS SECURITIES S.A			a			a					a
14 - 16, VERVENON STR.& 125 MICHALAKOPOULOU STR. ATHINA	(210)-3363300	(210)-3238925									
ATTICA BANK S.A.									a		
54, AKADIMIAS STR. ATHINA	(210)-3390757	(210)-3646090									
23, OMIROU STR. ATHINA	(210)-3669000	(210)-3669410									
AXIA VENTURES GROUP LTD			a	a							
10, G. KRANIDIOTI NICOSIA	+357 22 742000	+357 22 742001									
AXON SECURITIES S.A.			a			a					a
48, STADIOU ATHINA	(210)-3363800	(210)-3243903									
BANK OF CYPRUS PUBLIC COMPANY LTD									a		
, 51,STASINOU (AG. PARASKEVI, STROVOLOS) NICOSIA	(0035722)-121883	(0035722)-336258									
170, ALEXANDRAS AVE ATHINA	(210)-6477708	(210)-6477709									
BETA SECURITIES S.A.			a		a	a	a			a	
, BRAILA & 29 ALEXANDRAS AVE ATHINA	(210)-6478900	(210)-6410139									
BNP PARIBAS SECURITIES SERVICES									a		
94, VAS. SOFIAS AVE ATHINA	(210)-7468500	(210)-7468579									
CAPITAL SECURITIES S.A.			a			a					a
58, MITROPOLEOS STR. ATHINA	(210)-3369700	(210)-3369820									
CFS SECURITIES & INVESTMENT SERVICES S.A.			a		a			a		a	
3, STADIOU STR. ATHINA	(210)-3360800	(210)-3311854									
CITIGROUP GLOBAL MARKET LTD			a	a							
, CITIGROUP CENTRE, CANADA SQUARE, CANARY WHART LONDON	002079864000	002079862266									
CO-OPERATIVE CENTRAL BANK LTD			a	a							
8, GRIGORI AFXENTIOU STR. NICOSIA	(+35722)-743300	(+35722)-672083									
CREDIT AGRICOLE CHEUVREUX S.A.			a	a							
, 9 QUAI PAUL DOUMER PARIS	33 (0) 1 41 89 70 00										
CREDIT SUISSE SECURITIES (EUROPE) LIMITED			a	a							
, ONE CABOT SQUARE LONDON	+44 20 7888 8888	+44 20 7888 1600									
CYCLOS SECURITIES S.A.			a		a	a				a	
39, PANEPISTIMIOU STR. ATHINA	(210)-3364300	(210)-3239122									
D.A. TSEKOURAS SEC. S.A.			a								
3, PESMAZOGLOU STR. ATHINA	(210)-3214406	(210)-3211997									
DEUTSCHE BANK S.A.			a	a							
70, THEODOR-HEUSS-ALLEE FRANKFURT	0049 69 910 00	0049 69 910 34 225									
DYNAMIC SECURITIES			a					a		a	
6 - 10, CHAR. TRIKOUPi STR. ATHINA	(210)-3677700	(210)-3677777									
EL. PETROPOULAKIS SECURITIES S.A.			a					a			a
9, ARISTIDOU STR. ATHINA	(210)-3213928	(210)-3216810									
EUROBANK EQUITIES S.A.			a		a		a			a	
10, FILELLINON STR. ATHINA	(210)-3720000	(210)-3720001									
EUROBANK ERGASIAS S.A.									a		
8, OTHONOS STR. ATHINA	(210)-3337000	(210)-3233866									
	(210)-3337969	(210)-3245916									
EUROCORP SECURITIES S.A.			a			a				a	
14, FILIKIS ETAIRIAS SQ. ATHINA	(210)-7263500	(210)-7263666									
EUOTRUST BROKERAGE S.A.			a								
13-15, SOPHOCLEOUS STR. ATHINA	(210)-3363100	(210)-3238334									

Athex & ATHEXClear Members List

Member Name			Stock Market			Derivatives Market			ATHEXClear Member		
Address	Phone	Fax	Market Member	Remote Member	Market Maker	Proprietary	Market Maker	Agent	General Clearing	Direct Clearing	Non Clearing
EUROXX SECURITIES S.A.			a			a				a	
7, PALAIOLOGOU STR. CHALANDRI	(210)-6879400	(210)-6879401									
G.A. PERVANAS SECURITIES & INVESTMENT SERVICES CO S.A.			a			a					a
7 - 9, SOPHOCLEOUS STR. ATHINA	(210)-3251875	(210)-3210291									
GENERAL BANK OF GREECE S.A.									a		
87-89, ERMOY ATHINA	(210)-6976072	(210)-6976079									
, 109-111, MESOGEION AVE. ATHINA	(210)-6975000	(210)-6975706									
GLOBAL CAPITAL SECURITIES AND FINANCIAL SERVICES LTD			a	a							
5, LEMESOU AVE. LEMESOS CYPRUS	(+35722)-710710	(+35722)-339332									
GUARDIAN TRUST SECURITIES S.A			a		a	a					a
15, FILELLINON STR. ATHINA	(210)-3220402	(210)-3220498									
HELLENIC AMERICAN SEC. S.A.			a			a					
6, EVRIPIDOU STR. ATHINA	(210)-3311100	(210)-3215968									
HELLENIC BANK (INVESTMENTS) LTD			a	a							
31, KYRIAKOY MATSI AVE. NICOSIA	(+35722)-500100	(+35722)-500110									
HSBC BANK PLC									a		
109-111, MESOGION AVE ATHINA	(210)-6961507	(210)-6929310									
INDEX SECURITIES S.A.			a								
6, DRAGATSANIOU STR. ATHINA	(210)-3213920	(210)-3213216									
INTERSEC S.A.						a				a	
80-88, SYGROU AVE ATHINA	(210)-9203000	(210)-9203052									
INVESTMENT BANK OF GREECE S.A.			a		a		a		a		
32, AIGEIALIAS MAROUSI	(210) 8173000	(210) 8173101									
24B, KIFISSIAS AVE MAROUSI	(210)-8171800	(210)-8171889									
J. CHR. MAVRIKIS SECURITIES S.A.			a								
5, SOPHOCLEOUS STR. ATHINA	(210)-3213949	(210)-3217767									
KAPPA SECURITIES S.A.			a			a					a
15, VALAORITOU STR. ATHINA	(210)-3610371	(210)-3641002									
KYPROU SECURITIES S.A.			a		a	a					a
26, HALKIDONOS & FIDIPPIDOY STR. ATHINA	(210)-8701000	(210)-8701049									
LAIKI FINANCIAL SERVICES LTD			a	a							
26, CLR HOUSE, VIRONOS AVE. NICOSIA	(+35722)-898600	(+35722)-680953									
LEON DEPOLAS SECURITIES S.A.			a					a			a
1, CHR. LADA STR. ATHINA	(210)-3213286	(210)-3211618									
MAGNA TRUST SECURITIES S.A			a					a			a
9, FIDIOU STR. ATHINA	(210)-3327503	(210)-3327599									
MEGA EQUITY SECURITIES & FINANCIAL SERVICES LTD			a	a							
42-44, GRIBA DIGENI AV. NICOSIA	(+35722)-711711	(+35722)-711811									
MERIT SECURITIES S.A			a		a	a				a	
38, VAS. KONSTANTINOY STR. ATHINA	(210)-3671800	(210)-3671830									
MERRILL LYNCH			a	a							
2, KING EDWARD STREET LONDON	(+4420)-79952000	(+4420)-79954525									
METOCHIKI SECURITIES S.A.			a								
3, G. GENNADIOY STR. ATHINA	(210)-3306700	(210)-3306709									
MIDAS BROKERAGE S.A.			a								
5, SOPHOCLEOUS STR. ATHINA	(210)-3253203	(210)-3253205									
N. CHRYSOCHOIDIS STOCK BROKERAGE I.S.S.A.			a					a		a	
7 - 9, SOPHOCLEOUS STR. ATHINA	(210)-3213913	(210)-3216115									
N. SARROS SECURITIES S.A.						a					
7-9, SOPHOCLEOUS STR. ATHINA	(210)-3705600	(210)-3219992									
NATIONAL BANK OF GREECE S.A.							a		a		
86, AIOLOU STR. ATHINA	(210)-3341000	(210)-3228187									
68, AKADIMIAS STR. ATHINA	(210)-3328817	(210)-3328678									
NBG SECURITIES S.A.			a		a		a				a
68, AKADIMIAS STR. ATHINA	(210)-3328500	(210)-3328565									
NEW PROTON BANK S.A.			a			a				a	
20, ESLIN & AMALIADOS ATHINA	210 6970000	210 6970111									
NUNTIUS SECURITIES S.A			a					a			a
6, DRAGATSANIOU STR. ATHINA	(210)-3350599	(210)-3254846									
OLYMPIA SECURITIES S.A			a								
46B, A. METAXA STR. GLYFADA	(210)-3702500	(210)-3702520									
ORANGE PARTNERS SECURITIES S.A			a								
5, TZORTZ STR. ATHINA	(210)-3300009	(210)-3305240									

Athex & ATHEXClear Members List

Member Name			Stock Market			Derivatives Market			ATHEXClear Member		
Address	Phone	Fax	Market Member	Remote Member	Market Maker	Proprietary	Market Maker	Agent	General Clearing	Direct Clearing	Non Clearing
PANTELAKIS SEC. S.A.			a			a					a
109-111, MESOGION AVE. ATHINA	(210)-6965000	(210)-6929550									
PEGASUS BROKERAGE FIRM S.A			a			a					
17, VALAORITOU STR. ATHINA	(210)-3670700	(210)-3670760									
PIRAEUS BANK S.A.								a	a		
4, AMERIKIS STR ATHINA	(210)-3335918	(210)-3254207									
4, AMERIKIS STR. ATHINA	(210)-3335000	(210)-3335079									
PIRAEUS SECURITIES S.A.			a				a			a	
10, STADIOU STR. ATHINA	(210)-3354100	(210)-3233814									
PRELIUM SECURITIES & INVESTMENT SERVICES S.A.			a			a					a
, KIFISSIAS AVE & 1 DAVAKI STR ATHINA	(210)-3677000	(210)-6920403									
PROBANK S.A.			a								
10, AMERIKIS STR. ATHINA	(210)-3392631	(210)-3392646									
PROCHOICE SECURITIES LTD			a	a							
57, SPYROU KYPRIANOY NICOSIA	+357-24-661192	+357-24-662464									
SHARELINK SECURITIES & FINANCIAL SERVICES LTD			a	a							
6, ELLINAS HOUSE, THEOTOKI STR. NICOSIA	(+35722)-554200	(+35722)-750852									
SOCIETE GENERALE S.A.			a	a		a					
17, COURS VALMY PUTEAUX - LA DEFENSE PARIS	(+33) 142134754	(+33) 142135697									
240-242, KIFISSIAS AVE ATHINA	(210)-6790161	(210)-6728828									
SOLIDUS SECURITIES S.A			a			a				a	
64, LOUIZIS RIANKOUR STR. ATHINA	(210)-6925500	(210)-6985421									
SOTIRIADIS SECURITIES S.A.			a								
7, VALAORITOU STR. ATHINA	(210)-3636943	(210)-3601943									
ST. EM. LAVRENTAKIS SECURITIES S.A.			a			a					a
7 - 9, SOPHOCLEOUS STR. ATHINA	(210)-3213336	(210)-3246572									
THE CYPRUS INVESTMENT AND SECURITIES CORPORATION LIMITED (CISCO)			a	a							
4, EVROU STR. (EUROLIFE HOUSE) NICOSIA	(+35722)-881800	(+35722)-881801									
UBS LIMITED			a	a							
1, FINSBURY AVENUE LONDON	(+4420)-79013333	(+4420)-79012345									
Z.G. PORTALAKIS INVESTMENT SERVICES S.A.			a								
8, PESMAZOGLOU STR. ATHINA	(210)-3214830	(210)-3212024									
KARAMANOF SECURITIES & INV. SERVICES S.A.			a					a		a	
2, SQ. ST THEODORON ATHINA	(210)-3212947	(210)-3217088									

List of Stocks under Market Making operations

Securities Market Maker	Stock Category	
	Start Market Making	End Market Making
BANK OF CYPRUS (CR)	Under Suspension	
EUROBANK EQUITIES S.A.	23/10/2012	22/10/2013
INVESTMENT BANK OF GREECE S.A.	02/01/2013	01/01/2014
COCA - COLA HBC (CR)	Under Suspension	
EUROBANK EQUITIES S.A.	23/10/2012	22/10/2013
INVESTMENT BANK OF GREECE S.A.	08/01/2013	07/01/2014
CYPRUS POPULAR BANK (CR)	Under Suspension	
PIRAEUS SECURITIES S.A.	02/02/2013	01/02/2014
ALPHA BANK (CR)	Main Market	
EUROBANK EQUITIES S.A.	24/10/2012	23/10/2013
INVESTMENT BANK OF GREECE S.A.	08/01/2013	07/01/2014
MERIT SECURITIES S.A.	03/09/2012	02/09/2013
NBG SECURITIES S.A.	15/01/2013	14/01/2014
PIRAEUS SECURITIES S.A.	28/05/2013	27/05/2014
ALUMIL (CR)	Main Market	
BETA SECURITIES S.A.	18/07/2013	17/07/2014
CC HBC AG (CR)	Main Market	
NBG SECURITIES S.A.	29/04/2013	28/04/2014
ELLAKTOR (CR)	Main Market	
EUROBANK EQUITIES S.A.	01/06/2013	31/05/2014
INVESTMENT BANK OF GREECE S.A.	02/01/2013	01/01/2014
NBG SECURITIES S.A.	25/06/2013	24/06/2014
ELTON SA (CR)	Main Market	
BETA SECURITIES S.A.	03/09/2012	02/09/2013
EUROBANK ERGASIAS (CR)	Main Market	
ALPHA FINANCE INVESTMENT SERVICES S.A.	08/01/2013	07/01/2014
EUROBANK EQUITIES S.A.	01/06/2013	31/05/2014
INVESTMENT BANK OF GREECE S.A.	08/01/2013	07/01/2014
GEK TERNA (CR)	Main Market	
INVESTMENT BANK OF GREECE S.A.	02/01/2013	01/01/2014
GR. SARANTIS SA (CR)	Main Market	
BETA SECURITIES S.A.	14/05/2013	13/05/2014
HELLENIC EXCHANGES (CR)	Main Market	
EUROBANK EQUITIES S.A.	01/06/2013	31/05/2014
INVESTMENT BANK OF GREECE S.A.	02/01/2013	01/01/2014
NBG SECURITIES S.A.	25/06/2013	24/06/2014
INTRACOM CONSTR. (CR)	Main Market	
MERIT SECURITIES S.A.	27/12/2012	26/12/2013
INTRALOT (CR)	Main Market	
EUROBANK EQUITIES S.A.	01/06/2013	31/05/2014
INVESTMENT BANK OF GREECE S.A.	02/01/2013	01/01/2014
MARFIN INVESTMENT GROUP (CR)	Main Market	
PIRAEUS SECURITIES S.A.	02/02/2013	01/02/2014
MLS MULTIMEDIA SA (CR)	Main Market	
BETA SECURITIES S.A.	18/07/2013	17/07/2014
MOTOR OIL (CR)	Main Market	
EUROBANK EQUITIES S.A.	23/10/2012	22/10/2013
MYTILINEOS HOLDINGS (CR)	Main Market	
INVESTMENT BANK OF GREECE S.A.	02/01/2013	01/01/2014
NBG SECURITIES S.A.	25/06/2013	24/06/2014
NATIONAL BANK (CR)	Main Market	
ALPHA FINANCE INVESTMENT SERVICES S.A.	08/01/2013	07/01/2014
EUROBANK EQUITIES S.A.	24/10/2012	23/10/2013
INVESTMENT BANK OF GREECE S.A.	08/01/2013	07/01/2014
MERIT SECURITIES S.A.	03/09/2012	02/09/2013
NBG SECURITIES S.A.	28/02/2013	27/02/2014
OPAP (CR)	Main Market	
ALPHA FINANCE INVESTMENT SERVICES S.A.	08/01/2013	07/01/2014
EUROBANK EQUITIES S.A.	24/10/2012	23/10/2013
INVESTMENT BANK OF GREECE S.A.	08/01/2013	07/01/2014
NBG SECURITIES S.A.	15/01/2013	14/01/2014
OTE (CR)	Main Market	
ALPHA FINANCE INVESTMENT SERVICES S.A.	08/01/2013	07/01/2014
EUROBANK EQUITIES S.A.	24/10/2012	23/10/2013
INVESTMENT BANK OF GREECE S.A.	08/01/2013	07/01/2014
NBG SECURITIES S.A.	01/12/2012	30/11/2013
PETROPOULOS PETROS (CR)	Main Market	
BETA SECURITIES S.A.	28/05/2013	27/05/2014

List of Stocks under Market Making operations

Securities	Stock Category	
	Start Market Making	End Market Making
Market Maker		
PIRAEUS BANK (CR)		
	Main Market	
EUROBANK EQUITIES S.A.	23/10/2012	22/10/2013
INVESTMENT BANK OF GREECE S.A.	08/01/2013	07/01/2014
NBG SECURITIES S.A.	02/06/2013	01/06/2014
PIRAEUS SECURITIES S.A.	16/02/2013	15/02/2014
PPC (CR)		
	Main Market	
ALPHA FINANCE INVESTMENT SERVICES S.A.	08/01/2013	07/01/2014
EUROBANK EQUITIES S.A.	23/10/2012	22/10/2013
INVESTMENT BANK OF GREECE S.A.	08/01/2013	07/01/2014
NBG SECURITIES S.A.	26/03/2013	25/03/2014
S.KANAKIS SA (CR)		
	Main Market	
BETA SECURITIES S.A.	01/10/2012	30/09/2013
TITAN CEMENT (CR)		
	Main Market	
EUROBANK EQUITIES S.A.	23/10/2012	22/10/2013
VIOHALCO (CB)		
	Main Market	
ALPHA FINANCE INVESTMENT SERVICES S.A.	11/02/2013	10/03/2014
EUROBANK EQUITIES S.A.	20/01/2013	19/01/2014
MERIT SECURITIES S.A	13/12/2012	12/12/2013

Underlying Asset				Derivatives Market																		
Price max	Price min	Closing price	change	Delivery Month	Open price	Price max	Price min	Last price	Closing price	Last Bid	Last Ask	Settlement price	change	Life high	Life low	Trades	Volume	change	Value	change	Open Interest	change
FTSE/Athex Large Cap				(Trade Unit: 1 Index Point x 5€, Cash Settlement)																		
317.33	306.60	316.10	2.97%	September 2013	307.75	321.00	307.00	319.75	319.50	1@319.00	36@320.00	319.50	4.07%	346.00	271.00	552	4,969	26.66%	7,863,596.25	30.11%	46,172	3.35%
				October 2013	311.75	322.75	311.75	322.50	320.75	1@321.25	36@322.75	320.75	3.97%	338.75	292.25	12	104	82.46%	164,432.50	85.53%	670	-6.82%
				November 2013	---	---	---	---	---	5@204.25	---	---	---	---	---	---	---	---	---	---	---	
				December 2013	313.00	323.00	313.00	323.00	323.25	1@317.00	---	323.25	4.02%	343.00	276.75	4	4	---	6,355.00	---	525	0.38%
				March 2014	---	---	---	---	---	---	---	---	---	---	---	---	---	---	---	---	---	
				June 2014	---	---	---	---	---	---	---	---	---	---	---	---	---	---	---	---	---	

Underlying Asset				Derivatives Market																		
Price max	Price min	Closing price	change	Delivery Month	Open price	Price max	Price min	Last price	Closing price	Last Bid	Last Ask	Settlement price	change	Life high	Life low	Trades	Volume	change	Value	change	Open Interest	change
ALPHA BANK (CR)				(Contract Size: 100 Securities, Physical Delivery)																		
0.509	0.470	0.501	6.14%	September 2013	0.469	0.508	0.469	0.499	0.501	10@0.498	9@0.500	0.501	5.92%	1.46	0.371	188	4,105	102.72%	202,862.40	108.77%	16,397	-0.41%
				December 2013	0.498	0.498	0.498	0.498	0.498	1@0.479	9@0.510	0.498	3.97%	0.498	0.437	2	2	100.00%	99.60	106.64%	104	0.00%
				March 2014	---	---	---	---	---	---	---	---	---	---	---	---	---	---	---	---	---	---
				June 2014	---	---	---	---	---	---	---	---	---	---	---	---	---	---	---	---	---	---
CC HBC AG (CR)				(Contract Size: 100 Securities, Physical Delivery)																		
21.50	20.70	21.19	2.37%	September 2013	20.66	21.35	20.66	21.32	21.21	30@21.10	1@21.20	21.21	2.36%	22.33	16.93	22	34	-30.61%	71,800.00	-29.41%	718	0.84%
				December 2013	---	---	---	---	21.35	---	1@21.36	21.35	2.35%	18.06	17.90	---	---	---	---	---	5	0.00%
				March 2014	---	---	---	---	---	---	---	---	---	---	---	---	---	---	---	---	---	---
				June 2014	---	---	---	---	---	---	---	---	---	---	---	---	---	---	---	---	---	---
CORINTH PIPEWORKS SA (CR)				(Contract Size: 100 Securities, Physical Delivery)																		
2.15	2.04	2.12	2.42%	September 2013	---	---	---	---	2.17	1@2.07	5@2.22	2.17	2.36%	2.48	1.98	---	---	-100.00%	---	-100.00%	457	0.00%
				December 2013	---	---	---	---	---	---	5@2.26	---	---	---	---	---	---	---	---	---	---	---
				March 2014	---	---	---	---	---	---	---	---	---	---	---	---	---	---	---	---	---	---
				June 2014	---	---	---	---	---	---	---	---	---	---	---	---	---	---	---	---	---	---
ELLAKTOR (CR)				(Contract Size: 100 Securities, Physical Delivery)																		
2.15	2.07	2.15	3.36%	September 2013	2.13	2.15	2.10	2.13	2.15	24@2.12	1@2.14	2.15	3.37%	2.45	1.73	16	88	-1.12%	18,728.00	1.08%	4,393	0.85%
				December 2013	---	---	---	---	2.15	24@2.09	1@2.18	2.15	3.37%	2.17	2.11	---	---	---	---	---	---	---
				March 2014	---	---	---	---	---	---	---	---	---	---	---	---	---	---	---	---	---	---
				June 2014	---	---	---	---	---	---	---	---	---	---	---	---	---	---	---	---	---	---
EUROBANK ERGASIAS (CR)				(Contract Size: 10 Securities, Physical Delivery)																		
0.640	0.612	0.638	4.25%	September 2013	0.625	0.645	0.625	0.639	0.642	20@0.630	5@0.641	0.642	4.22%	5.00	0.537	3	330	132.39%	2,106.70	140.89%	18,765	0.37%
				December 2013	0.623	0.650	0.623	0.650	0.646	5@0.610	5@0.690	0.646	4.19%	0.700	0.600	5	10	-91.38%	647.30	-91.00%	1,801	0.28%
				March 2014	---	---	---	---	0.640	---	---	0.640	4.23%	0.673	0.619	---	---	---	---	---	---	---
				June 2014	---	---	---	---	---	---	---	---	---	---	---	---	---	---	---	---	---	---
EUROBANK PROPERTIES REIC (CR)				(Contract Size: 100 Securities, Physical Delivery)																		
7.25	7.09	7.20	1.41%	September 2013	7.18	7.20	7.15	7.15	7.16	1@7.04	1@7.22	7.16	1.56%	7.67	6.00	5	17	240.00%	12,182.00	243.15%	274	1.86%
				December 2013	---	---	---	---	---	---	1@7.27	---	---	---	---	---	---	---	---	---	---	---
				March 2014	---	---	---	---	---	---	---	---	---	---	---	---	---	---	---	---	---	---
				June 2014	---	---	---	---	---	---	---	---	---	---	---	---	---	---	---	---	---	---
EYDAP S.A. (CR)				(Contract Size: 100 Securities, Physical Delivery)																		
6.09	5.90	6.02	1.86%	September 2013	5.95	6.06	5.95	6.06	6.16	1@6.00	1@6.15	6.16	1.82%	6.67	5.58	7	42	500.00%	25,092.00	512.60%	218	5.83%
				December 2013	---	---	---	---	---	---	1@6.19	---	---	---	---	---	---	---	---	---	---	---
				March 2014	---	---	---	---	---	---	---	---	---	---	---	---	---	---	---	---	---	---
				June 2014	---	---	---	---	---	---	---	---	---	---	---	---	---	---	---	---	---	---
FOLLI FOLLIE (CR)				(Contract Size: 100 Securities, Physical Delivery)																		
17.90	17.32	17.86	0.90%	September 2013	---	---	---	---	17.91	1@17.10	1@18.13	17.91	0.90%	18.86	14.68	---	---	-100.00%	---	-100.00%	242	0.00%
				December 2013	---	---	---	---	---	---	---	---	---	---	---	---	---	---	---	---	---	---
				March 2014	---	---	---	---	---	---	---	---	---	---	---	---	---	---	---	---	---	---
				June 2014	---	---	---	---	---	---	---	---	---	---	---	---	---	---	---	---	---	---

Underlying Asset				Derivatives Market																		
Price max	Price min	Closing price	change	Delivery Month	Open price	Price max	Price min	Last price	Closing price	Last Bid	Last Ask	Settlement price	change	Life high	Life low	Trades	Volume	change	Value	change	Open Interest	change
FRIGOGLASS SA (CR)				(Contract Size: 100 Securities, Physical Delivery)																		
4.97	4.81	4.97	2.47%	September 2013	4.84	4.93	4.84	4.90	4.96	2@4.84	4@4.97	4.96	2.48%	5.71	4.35	13	32	28.00%	15,612.00	28.97%	421	0.96%
				December 2013	---	---	---	---	---	---	4@5.02	---	---	---	---	---	---	---	---	---	---	---
				March 2014	---	---	---	---	---	---	---	---	---	---	---	---	---	---	---	---	---	---
				June 2014	---	---	---	---	---	---	---	---	---	---	---	---	---	---	---	---	---	---
GEK TERNA (CR)				(Contract Size: 100 Securities, Physical Delivery)																		
2.21	2.11	2.16	1.89%	September 2013	2.16	2.20	2.16	2.16	2.20	21@2.16	23@2.19	2.20	2.33%	2.62	1.45	36	320	-18.16%	69,751.00	-16.21%	16,121	-0.29%
				December 2013	2.19	2.19	2.19	2.19	2.20	---	23@2.22	2.20	1.38%	2.51	1.57	2	50	100.00%	10,950.00	100.92%	75	200.00%
				March 2014	---	---	---	---	2.18	---	---	2.18	2.35%	2.50	2.26	---	---	---	---	---	15,895	0.00%
				June 2014	---	---	---	---	---	---	---	---	---	---	---	---	---	---	---	---	---	---
HELLENIC EXCHANGES (CR)				(Contract Size: 100 Securities, Physical Delivery)																		
6.05	5.86	6.04	2.20%	September 2013	5.90	6.05	5.90	6.04	6.03	1@6.00	1@6.06	6.03	2.55%	6.46	3.82	22	106	10.42%	63,289.00	11.52%	2,216	-1.86%
				December 2013	---	---	---	---	6.05	---	1@6.10	6.05	2.54%	6.85	4.01	---	---	---	---	---	---	---
				March 2014	---	---	---	---	---	---	---	---	---	---	---	---	---	---	---	---	---	---
				June 2014	---	---	---	---	---	---	---	---	---	---	---	---	---	---	---	---	---	---
HELLENIC PETROLEUM (CR)				(Contract Size: 100 Securities, Physical Delivery)																		
7.66	7.24	7.66	4.08%	September 2013	7.29	7.63	7.29	7.63	7.57	1@7.50	2@7.64	7.57	4.13%	9.01	6.00	32	78	-18.75%	58,382.00	-16.11%	2,315	-1.11%
				December 2013	---	---	---	---	7.49	---	2@7.70	7.49	4.17%	7.72	6.61	---	---	---	---	---	---	---
				March 2014	---	---	---	---	---	---	---	---	---	---	---	---	---	---	---	---	---	---
				June 2014	---	---	---	---	---	---	---	---	---	---	---	---	---	---	---	---	---	---
INTRALOT (CR)				(Contract Size: 100 Securities, Physical Delivery)																		
1.64	1.60	1.60	-0.62%	September 2013	1.64	1.66	1.61	1.61	1.62	12@1.60	4@1.64	1.62	0.62%	2.30	1.30	27	178	7.88%	29,034.00	9.03%	4,044	1.92%
				December 2013	---	---	---	---	---	---	4@1.67	---	---	---	---	---	---	---	---	---	---	---
				March 2014	---	---	---	---	---	---	---	---	---	---	---	---	---	---	---	---	---	---
				June 2014	---	---	---	---	---	---	---	---	---	---	---	---	---	---	---	---	---	---
JUMBO SA (CR)				(Contract Size: 100 Securities, Physical Delivery)																		
8.50	7.80	8.48	6.00%	September 2013	7.96	8.47	7.96	8.45	8.46	1@8.30	1@8.48	8.46	4.83%	9.03	7.19	42	124	-20.00%	103,617.00	-17.38%	228	8.06%
				December 2013	---	---	---	---	---	---	1@8.52	---	---	---	---	---	---	---	---	---	---	---
				March 2014	---	---	---	---	---	---	---	---	---	---	---	---	---	---	---	---	---	---
				June 2014	---	---	---	---	---	---	---	---	---	---	---	---	---	---	---	---	---	---
MARFIN INVESTMENT GROUP (CR)				(Contract Size: 100 Securities, Physical Delivery)																		
0.307	0.286	0.307	7.72%	September 2013	0.292	0.305	0.292	0.300	0.301	17@0.300	30@0.307	0.301	2.73%	0.420	0.252	21	223	123.00%	6,657.80	127.00%	19,128	-0.19%
				December 2013	---	---	---	---	---	---	5@0.300	---	---	---	---	---	---	---	---	---	---	---
				March 2014	---	---	---	---	---	---	---	---	---	---	---	---	---	---	---	---	---	---
				June 2014	---	---	---	---	---	---	---	---	---	---	---	---	---	---	---	---	---	---
METKA (CR)				(Contract Size: 100 Securities, Physical Delivery)																		
10.68	10.11	10.55	3.43%	September 2013	10.32	10.55	10.32	10.54	10.54	1@10.35	1@10.66	10.54	3.43%	12.18	9.43	8	20	-35.48%	20,770.00	-35.96%	477	-1.04%
				December 2013	---	---	---	---	10.53	---	1@10.73	10.53	3.44%	10.67	10.52	---	---	---	---	---	---	---
				March 2014	---	---	---	---	---	---	---	---	---	---	---	---	---	---	---	---	---	---
				June 2014	---	---	---	---	---	---	---	---	---	---	---	---	---	---	---	---	---	---

Underlying Asset				Derivatives Market																		
Price max	Price min	Closing price	change	Delivery Month	Open price	Price max	Price min	Last price	Closing price	Last Bid	Last Ask	Settlement price	change	Life high	Life low	Trades	Volume	change	Value	change	Open Interest	change
MOTOR OIL (CR)				(Contract Size: 100 Securities, Physical Delivery)																		
7.67	7.36	7.65	2.82%	September 2013	7.42	7.67	7.42	7.63	7.52	5@7.66	7@7.76	7.52	2.87%	8.16	6.66	13	59	0.00%	44,580.00	3.15%	948	2.27%
				December 2013	---	---	---	---	---	---	7@7.82	---	---	---	---	---	---	---	---	---	---	---
				March 2014	---	---	---	---	---	---	---	---	---	---	---	---	---	---	---	---	---	---
				June 2014	---	---	---	---	---	---	---	---	---	---	---	---	---	---	---	---	---	---
MYTILINEOS HOLDINGS (CR)				(Contract Size: 100 Securities, Physical Delivery)																		
4.38	4.22	4.37	3.07%	September 2013	4.28	4.41	4.27	4.36	4.39	13@4.35	1@4.39	4.39	3.05%	5.50	3.50	25	147	37.38%	64,123.00	39.24%	4,912	-0.39%
				December 2013	---	---	---	---	4.43	3@4.35	1@4.43	4.43	3.02%	5.28	3.70	---	---	---	---	---	20	0.00%
				March 2014	---	---	---	---	4.43	---	---	4.43	3.02%	4.81	4.43	---	---	---	---	---	---	---
				June 2014	---	---	---	---	---	---	---	---	---	---	---	---	---	---	---	---	---	---
NATIONAL BANK (CR)				(Contract Size: 100 Securities, Physical Delivery)																		
3.10	2.95	3.05	3.04%	September 2013	2.96	3.10	2.96	3.05	3.06	20@3.04	79@3.06	3.06	2.34%	3.25	0.344	153	2,036	-7.54%	617,194.00	-4.70%	5,062	-4.06%
				December 2013	3.03	3.03	3.03	3.03	3.03	20@3.01	79@3.09	3.03	2.36%	3.03	2.31	1	1	0.00%	303.00	7.07%	8	14.29%
				March 2014	---	---	---	---	---	---	---	---	---	---	---	---	---	---	---	---	---	---
				June 2014	---	---	---	---	---	---	---	---	---	---	---	---	---	---	---	---	---	---
OPAP (CR)				(Contract Size: 100 Securities, Physical Delivery)																		
7.56	7.36	7.56	2.58%	September 2013	7.40	7.55	7.40	7.55	7.50	10@7.50	6@7.54	7.50	2.60%	7.74	5.82	37	196	64.71%	146,693.00	69.54%	4,001	-0.15%
				December 2013	---	---	---	---	7.50	---	6@7.59	7.50	2.60%	7.66	6.31	---	---	---	---	---	---	---
				March 2014	---	---	---	---	---	---	---	---	---	---	---	---	---	---	---	---	---	---
				June 2014	---	---	---	---	---	---	---	---	---	---	---	---	---	---	---	---	---	---
OTE (CR)				(Contract Size: 100 Securities, Physical Delivery)																		
6.97	6.66	6.92	2.98%	September 2013	6.73	6.97	6.73	6.92	6.89	22@6.91	2@6.93	6.89	3.61%	7.56	4.35	136	998	106.20%	684,605.00	109.50%	8,080	-1.58%
				December 2013	6.80	6.85	6.80	6.85	6.91	22@6.86	2@6.97	6.91	3.75%	7.56	4.40	3	100	---	68,230.00	---	170	142.86%
				March 2014	---	---	---	---	6.90	---	---	6.90	3.60%	7.39	6.40	---	---	-100.00%	---	-100.00%	20	0.00%
				June 2014	---	---	---	---	---	---	---	---	---	---	---	---	---	---	---	---	---	---
P.P.A. S.A. (CR)				(Contract Size: 100 Securities, Physical Delivery)																		
17.27	16.25	17.02	3.15%	September 2013	16.51	17.18	16.51	16.96	17.16	2@16.80	5@17.18	17.16	3.13%	18.68	15.52	27	77	185.19%	128,666.00	187.13%	552	2.60%
				December 2013	---	---	---	---	---	---	---	---	---	---	---	---	---	---	---	---	---	---
				March 2014	---	---	---	---	---	---	---	---	---	---	---	---	---	---	---	---	---	---
				June 2014	---	---	---	---	---	---	---	---	---	---	---	---	---	---	---	---	---	---
PIRAEUS BANK (CR)				(Contract Size: 100 Securities, Physical Delivery)																		
1.04	0.990	1.03	4.04%	September 2013	1.00	1.04	1.00	1.03	1.03	8@1.03	148@1.05	1.03	3.94%	1.17	0.169	63	1,321	69.79%	135,246.00	74.29%	14,200	2.75%
				December 2013	1.04	1.05	1.03	1.05	1.03	1@1.02	148@1.06	1.03	3.00%	1.15	0.231	9	413	---	42,710.00	---	413	---
				March 2014	---	---	---	---	1.04	---	---	1.04	4.00%	1.12	0.924	---	---	---	---	---	---	---
				June 2014	---	---	---	---	---	---	---	---	---	---	---	---	---	---	---	---	---	---
PPC (CR)				(Contract Size: 100 Securities, Physical Delivery)																		
7.60	7.35	7.60	4.25%	September 2013	7.36	7.60	7.36	7.58	7.57	5@7.57	2@7.58	7.57	3.42%	8.47	4.58	142	771	129.46%	577,936.00	135.25%	4,852	-3.31%
				December 2013	7.36	7.46	7.36	7.46	7.58	5@7.52	2@7.62	7.58	3.27%	8.56	5.08	3	100	---	74,280.00	---	150	200.00%
				March 2014	---	---	---	---	7.60	---	---	7.60	3.40%	7.99	6.30	---	---	---	---	---	50	0.00%
				June 2014	---	---	---	---	---	---	---	---	---	---	---	---	---	---	---	---	---	---

Underlying Asset				Derivatives Market																		
Price max	Price min	Closing price	change	Delivery Month	Open price	Price max	Price min	Last price	Closing price	Last Bid	Last Ask	Settlement price	change	Life high	Life low	Trades	Volume	change	Value	change	Open Interest	change
SIDENOR (CR)				(Contract Size: 100 Securities, Physical Delivery)																		
1.63	1.55	1.63	5.16%	September 2013	1.62	1.64	1.61	1.62	1.67	3@1.62	2@1.64	1.67	5.03%	1.82	1.36	5	9	800.00%	1,456.00	810.00%	1,500	0.00%
				December 2013	---	---	---	---	---	1@1.62	2@1.66	---	---	---	---	---	---	---	---	---	---	---
				March 2014	---	---	---	---	---	---	---	---	---	---	---	---	---	---	---	---	---	---
				June 2014	---	---	---	---	---	---	---	---	---	---	---	---	---	---	---	---	---	---
TERNA ENERGY (CR)				(Contract Size: 103 Securities, Physical Delivery)																		
2.94	2.83	2.92	3.55%	September 2013	2.90	2.93	2.90	2.93	2.93	5@2.90	1@2.95	2.93	3.53%	3.25	2.43	4	27	0.00%	8,113.31	2.01%	2,369	-0.67%
				December 2013	---	---	---	---	---	---	---	---	---	---	---	---	---	---	---	---	---	---
				March 2014	---	---	---	---	---	---	---	---	---	---	---	---	---	---	---	---	---	---
				June 2014	---	---	---	---	---	---	---	---	---	---	---	---	---	---	---	---	---	---
TITAN CEMENT (CR)				(Contract Size: 100 Securities, Physical Delivery)																		
14.96	14.26	14.40	-1.71%	September 2013	14.43	14.85	14.41	14.41	14.20	1@14.40	1@14.93	14.20	-1.73%	15.90	12.22	23	67	3.08%	98,177.00	2.17%	167	-11.17%
				December 2013	---	---	---	---	14.05	---	1@14.99	14.05	-1.75%	15.68	15.02	---	---	---	---	---	---	---
				March 2014	---	---	---	---	---	---	---	---	---	---	---	---	---	---	---	---	---	---
				June 2014	---	---	---	---	---	---	---	---	---	---	---	---	---	---	---	---	---	---
VIOHALCO (CB)				(Contract Size: 100 Securities, Physical Delivery)																		
4.47	4.21	4.39	4.03%	September 2013	4.26	4.43	4.26	4.41	4.36	5@4.36	2@4.46	4.36	4.06%	5.19	3.85	11	48	585.71%	21,110.00	595.55%	474	-3.07%
				December 2013	---	---	---	---	4.40	---	2@4.50	4.40	4.02%	4.10	3.89	---	---	---	---	---	---	---
				March 2014	---	---	---	---	---	---	---	---	---	---	---	---	---	---	---	---	---	---
				June 2014	---	---	---	---	---	---	---	---	---	---	---	---	---	---	---	---	---	---

FTSE/Athex Large Cap

(Trade Unit: 1 Index Point x 5€ - Exercicio Style: European, Cash Settlement)

Call Options																	Put Options																			
September 2013								October 2013								Other Months		September 2013								October 2013								Other Months		
Exerise Price	Open price	Price max	Price min	Last price	Closing price	Volume	Open Interest	Open price	Price max	Price min	Last price	Closing price	Volume	Open Interest	Volume	Open Interest	Open price	Price max	Price min	Last price	Closing price	Volume	Open Interest	Open price	Price max	Price min	Last price	Closing price	Volume	Open Interest	Volume	Open Interest	Exerise Price			
215	-	-	-	-	104.00	-	60	-	-	-	-	-	-	-	-	-	-	-	-	-	-	-	-	-	-	-	-	-	-	-	-	-	215			
230	-	-	-	-	89.50	-	3	-	-	-	-	-	-	-	-	-	-	-	-	-	-	-	-	-	-	-	-	-	-	-	-	-	230			
255	-	-	-	-	-	-	-	-	-	-	-	-	-	-	-	-	-	-	-	-	-	-	-	-	-	-	-	-	-	-	-	-	255			
260	-	-	-	-	-	-	-	-	-	-	-	-	-	-	-	-	-	-	-	-	-	-	-	-	-	-	-	-	-	-	-	-	260			
265	-	-	-	-	-	-	-	-	-	-	-	-	-	-	-	-	-	-	-	-	-	-	-	-	-	-	-	-	-	-	-	-	265			
270	-	-	-	-	-	-	-	-	-	-	-	-	-	-	-	-	-	-	-	-	1.90	-	1	-	-	-	-	-	-	-	-	-	-	270		
275	-	-	-	-	-	-	-	-	-	-	-	-	-	-	-	-	-	-	-	-	2.50	-	1	-	-	-	-	-	-	-	-	-	-	275		
280	37.75	42.00	37.75	42.00	42.75	70	314	-	-	-	-	-	-	-	-	-	-	-	-	-	3.30	-	132	-	-	-	-	-	-	-	-	-	-	280		
285	-	-	-	-	38.75	-	20	-	-	-	-	-	-	-	-	-	-	-	-	-	4.30	-	56	-	-	-	-	8.50	-	1	-	-	-	285		
290	35.00	35.00	34.00	34.00	35.00	30	50	-	-	-	-	-	-	-	-	-	10.00	10.00	8.00	8.00	5.50	11	94	-	-	-	-	-	-	-	-	-	-	290		
295	-	-	-	-	31.25	-	1	-	-	-	-	-	-	-	-	-	-	-	-	-	-	-	-	-	-	-	-	11.75	-	2	-	-	-	295		
300	23.00	23.00	23.00	23.00	27.75	20	415	-	-	-	-	-	-	-	-	-	-	-	-	-	8.40	-	20	16.00	16.00	14.00	14.00	13.50	3	9	-	-	-	300		
305	-	-	-	-	-	-	-	28.00	28.00	26.50	26.50	31.25	5	5	-	-	14.00	14.00	10.00	10.00	10.25	350	507	15.50	16.25	15.50	16.25	15.75	5	6	-	-	-	305		
310	19.00	19.00	19.00	19.00	21.75	20	732	27.00	27.00	27.00	27.00	28.50	20	20	-	-	-	-	-	-	12.25	-	15	-	-	-	-	-	-	-	-	-	-	310		
315	16.50	19.00	13.50	19.00	19.00	34	631	27.50	27.50	27.50	27.50	26.00	40	130	-	-	17.00	17.00	17.00	17.00	14.50	4	37	23.25	23.25	23.25	23.25	20.25	20	20	-	-	-	315		
320	15.00	16.00	12.50	13.00	16.50	98	164	-	-	-	-	-	-	-	-	-	17.50	17.50	17.00	17.00	17.00	19	37	-	-	-	-	-	-	-	-	-	-	320		
325	-	-	-	-	14.50	-	60	-	-	-	-	-	-	-	-	-	-	-	-	-	20.00	-	155	-	-	-	-	-	-	-	-	-	-	325		
330	8.50	8.50	8.50	8.50	12.50	1	653	-	-	-	-	-	-	-	-	-	23.00	23.00	23.00	23.00	22.75	1	1	-	-	-	-	-	-	-	-	-	-	330		
335	8.00	8.00	8.00	8.00	10.50	70	145	-	-	-	-	-	-	-	-	-	-	-	-	-	-	-	-	-	-	-	-	-	-	-	-	-	-	335		
340	-	-	-	-	9.00	-	33	-	-	-	-	15.50	-	5	-	-	-	-	-	-	29.50	-	50	-	-	-	-	-	-	-	-	-	-	-	340	
345	-	-	-	-	-	-	-	-	-	-	-	-	-	-	-	-	-	-	-	-	-	-	-	-	-	-	-	-	-	-	-	-	-	345		
350	-	-	-	-	6.40	-	51	-	-	-	-	-	-	-	-	-	-	-	-	-	36.75	-	5	-	-	-	-	-	-	-	-	-	-	-	350	
355	-	-	-	-	5.40	-	3	-	-	-	-	-	-	-	-	-	-	-	-	-	-	-	-	-	-	-	-	-	-	-	-	-	-	355		
360	-	-	-	-	-	-	-	-	-	-	-	-	-	-	-	-	-	-	-	-	45.00	-	5	-	-	-	-	-	-	-	-	-	-	-	360	
365	-	-	-	-	-	-	-	-	-	-	-	-	-	-	-	-	-	-	-	-	49.00	-	130	-	-	-	-	-	-	-	-	-	-	-	365	
370	-	-	-	-	3.10	-	1	-	-	-	-	-	-	-	-	-	-	-	-	-	53.50	-	5	-	-	-	-	-	-	-	-	-	-	-	370	
375	-	-	-	-	-	-	-	-	-	-	-	-	-	-	-	-	-	-	-	-	-	-	-	-	-	-	-	-	-	-	-	-	-	375		
380	-	-	-	-	2.10	-	30	-	-	-	-	-	-	-	-	-	-	-	-	-	62.50	-	10	-	-	-	-	-	-	-	-	-	-	-	380	
385	-	-	-	-	-	-	-	-	-	-	-	-	-	-	-	-	-	-	-	-	67.00	-	5	-	-	-	-	-	-	-	-	-	-	-	385	
390	-	-	-	-	-	-	-	-	-	-	-	-	-	-	-	-	-	-	-	-	-	-	-	-	-	-	-	-	-	-	-	-	-	390		
395	-	-	-	-	-	-	-	-	-	-	-	-	-	-	-	-	-	-	-	-	76.50	-	5	-	-	-	-	-	-	-	-	-	-	-	395	
400	-	-	-	-	-	-	-	-	-	-	-	-	-	-	-	-	-	-	-	-	-	-	-	-	-	-	-	-	-	-	-	-	-	400		
405	-	-	-	-	-	-	-	-	-	-	-	-	-	-	-	-	-	-	-	-	-	-	-	-	-	-	-	-	-	-	-	-	-	405		
410	-	-	-	-	-	-	-	-	-	-	-	-	-	-	-	-	-	-	-	-	-	-	-	-	-	-	-	-	-	-	-	-	-	410		
415	-	-	-	-	-	-	-	-	-	-	-	-	-	-	-	-	-	-	-	-	-	-	-	-	-	-	-	-	-	-	-	-	-	415		
440	-	-	-	-	-	-	-	-	-	-	-	-	-	-	-	-	-	-	-	-	120.00	-	261	-	-	-	-	-	-	-	-	-	-	-	440	

FTSE/Athex Large Cap

(Trade Unit: 1 Index Point x 5€ - Exercise Style: European, Cash Settlement)

Call Options																	Put Options																		
Exercise Price	September 2013							October 2013							Other Months		September 2013							October 2013							Other Months		Exercise Price		
	Open price	Price max	Price min	Last price	Closing price	Volume	Open Interest	Open price	Price max	Price min	Last price	Closing price	Volume	Open Interest	Volume	Open Interest	Open price	Price max	Price min	Last price	Closing price	Volume	Open Interest	Open price	Price max	Price min	Last price	Closing price	Volume	Open Interest	Volume	Open Interest			
1,500	-	-	-	-	-	-	-	-	-	-	-	-	-	-	-	-	-	-	-	-	1,178.00	-	3	-	-	-	-	-	-	-	-	-	1,500		
Totals:						343	3,366							65	160	0	0							385	1,535							28	38	0	0
Nominal Transactions Value:						531,750.00								101,625.00		0.00								588,050.00								43,625.00		0.00	
Number of Trades:						27								4		0								22								6		0	

ALPHA BANK (CR)

(Contract Size: 100 Securities, Exercise Style: American, Physical Delivery)

Call Options																	Put Options																			
September 2013								October 2013								Other Months		September 2013								October 2013								Other Months		
Exercise Price	Open price	Price max	Price min	Last price	Closing price	Volume	Open Interest	Open price	Price max	Price min	Last price	Closing price	Volume	Open Interest	Volume	Open Interest	Open price	Price max	Price min	Last price	Closing price	Volume	Open Interest	Open price	Price max	Price min	Last price	Closing price	Volume	Open Interest	Volume	Open Interest	Exercise Price			
0.100						-	-							-	-							-	-						-	-			0.100			
0.200						-	-							-	-							-	-						-	-			0.200			
0.300						-	-							-	-							-	-						-	-			0.300			
0.400						-	-							-	-							-	-						-	-			0.400			
0.500						-	-							-	-							-	-						-	-			0.500			
0.600						-	-							-	-							-	-						-	-			0.600			
0.700						-	-							-	-							-	-						-	-			0.700			
0.800						-	-							-	-							-	-						-	-			0.800			
0.850						-	-							-	-							-	-						-	-			0.850			
0.900						-	-							-	-							-	-						-	-			0.900			
0.950						-	-							-	-							-	-						-	-			0.950			
1.00						-	-							-	-							-	-						-	-			1.00			
1.05						-	-							-	-							-	-						-	-			1.05			
1.10						-	-							-	-							-	-						-	-			1.10			
1.15						-	-							-	-							-	-						-	-			1.15			
1.20						-	-							-	-							-	-						-	-			1.20			
1.30						-	-							-	-							-	-						-	-			1.30			
1.40						-	-							-	-							-	-						-	-			1.40			
1.50						-	-							-	-							-	-						-	-			1.50			
1.60						-	-							-	-							-	-						-	-			1.60			
1.70						-	-							-	-							-	-						-	-			1.70			
1.80						-	-							-	-							-	-						-	-			1.80			
1.90						-	-							-	-							-	-						-	-			1.90			
2.00						-	-							-	-							-	-						-	-			2.00			
2.20						-	-							-	-							-	-						-	-			2.20			
2.40						-	-							-	-							-	-						-	-			2.40			
2.60						-	-							-	-							-	-						-	-			2.60			
2.80						-	-							-	-							-	-						-	-			2.80			
Totals:						0	0							0	0	0	0					0	0					0	0	0	0	0				
Nominal Transactions Value:							0.00							0.00	0.00							0.00	0.00					0.00	0.00			0.00				
Number of Trades:							0							0	0							0.00	0.00					0	0			0				

NATIONAL BANK (CR)

(Contract Size: 100 Securities, Exercise Style: American, Physical Delivery)

Call Options																	Put Options																			
September 2013								October 2013								Other Months		September 2013								October 2013								Other Months		
Exercise Price	Open price	Price max	Price min	Last price	Closing price	Volume	Open Interest	Open price	Price max	Price min	Last price	Closing price	Volume	Open Interest	Volume	Open Interest	Open price	Price max	Price min	Last price	Closing price	Volume	Open Interest	Open price	Price max	Price min	Last price	Closing price	Volume	Open Interest	Volume	Open Interest	Exercise Price			
0.300						-	-							-	-							-	-						-	-			0.300			
0.400						-	-							-	-							-	-						-	-			0.400			
0.500						-	-							-	-							-	-						-	-			0.500			
0.600						-	-							-	-							-	-						-	-			0.600			
0.700						-	-							-	-							-	-						-	-			0.700			
0.750						-	-							-	-							-	-						-	-			0.750			
0.800						-	-							-	-							-	-						-	-			0.800			
0.850						-	-							-	-							-	-						-	-			0.850			
0.900						-	-							-	-							-	-						-	-			0.900			
0.950						-	-							-	-							-	-						-	-			0.950			
1.00						-	-							-	-							-	-						-	-			1.00			
1.05						-	-							-	-							-	-						-	-			1.05			
1.10						-	-							-	-							-	-						-	-			1.10			
1.20						-	-							-	-							-	-						-	-			1.20			
1.30						-	-							-	-							-	-						-	-			1.30			
1.40						-	-							-	-							-	-						-	-			1.40			
1.50						-	-							-	-							-	-						-	-			1.50			
1.60						-	-							-	-							-	-						-	-			1.60			
1.70						-	-							-	-							-	-						-	-			1.70			
1.80						-	-							-	-							-	-						-	-			1.80			
1.90						-	-							-	-							-	-						-	-			1.90			
2.00						-	-							-	-							-	-						-	-			2.00			
2.20						-	-							-	-							-	-						-	-			2.20			
2.40						-	-							-	-							-	-				0.043	-	-				2.40			
2.60					0.495	-	20							-	-							-	-				0.087	-	-				2.60			
2.80						-	-							-	-							-	-				0.153	-	-				2.80			
3.00	0.190	0.190	0.190	0.190	0.227	1	21					0.306	-	120								-	-					-	-				3.00			
3.20					0.141	-	20					0.218	-	20								-	-					-	-				3.20			
3.40						-	-							-	-							-	-						-	-			3.40			
3.60						-	-							-	-							-	-						-	-			3.60			
3.80						-	-							-	-							-	-						-	-			3.80			
4.00						-	-							-	-							-	-						-	-			4.00			
4.40						-	-							-	-							-	-						-	-			4.40			
Totals:						1	61							0	140	0	20							0	0							0	60	0	0	
Nominal Transactions Value:						300.00						0.00						0.00						0.00						0.00						
Number of Trades:						1						0						0						0						0						

OPAP (CR)

(Contract Size: 100 Securities, Exercise Style: American, Physical Delivery)

Call Options																	Put Options																				
September 2013																	September 2013																				
October 2013																	October 2013																				
Other Months																	Other Months																				
Exercise Price	Open price	Price max	Price min	Last price	Closing price	Volume	Open Interest	Open price	Price max	Price min	Last price	Closing price	Volume	Open Interest	Volume	Open Interest	Exercise Price	Open price	Price max	Price min	Last price	Closing price	Volume	Open Interest	Open price	Price max	Price min	Last price	Closing price	Volume	Open Interest	Exercise Price					
1.00					6.56	-	270									-	-									-	-					1.00					
3.20						-	-									-	-									-	-					3.20					
3.40						-	-									-	-									-	-					3.40					
3.60						-	-									-	-									-	-					3.60					
3.80						-	-									-	-									-	-					3.80					
4.00						-	-									-	-									-	-					4.00					
4.40						-	-									-	-									-	-					4.40					
4.80						-	-									-	-									-	-					4.80					
5.20						-	-									-	-									-	-					5.20					
5.60						-	-									-	-									-	-					5.60					
5.80						-	-									-	-									-	-					5.80					
6.00						-	-									-	-										0.048	-	-					6.00			
6.20						-	-									-	-									-	-					6.20					
6.40						-	-										1.30	-	25									-	-					0.106	-	-	6.40
6.60						-	-									-	-									0.080	-	135					-	-	6.60		
6.80							-	-									0.991	-	25									-	-					-	-	6.80	
7.00						-	-									-	-									-	-					-	-	7.00			
7.20							-	-									0.734	-	25									-	-					-	-	7.20	
7.40						-	-									-	-									-	-					-	-	7.40			
7.60						-	-									-	-									-	-					-	-	7.60			
7.80						-	-									-	-									-	-					-	-	7.80			
8.00						-	-									-	-									-	-					-	-	8.00			
8.40						-	-									-	-									-	-					-	-	8.40			
8.80						-	-									-	-									-	-					-	-	8.80			
9.00						-	-									-	-									-	-					-	-	9.00			
9.20						-	-									-	-									-	-					-	-	9.20			
9.40						-	-									-	-									-	-					-	-	9.40			
9.60						-	-									-	-									-	-					-	-	9.60			
9.80						-	-									-	-									-	-					-	-	9.80			
10.00						-	-									-	-									-	-					-	-	10.00			
20.00						-	270									-	-									12.44	-	270					-	-	20.00		
Totals:						0	540							0	75	0	1,600							0	675							0	55	0	0		
Nominal Transactions Value:						0.00								0.00		0.00								0.00								0.00		0.00			
Number of Trades:						0								0		0								0.00								0		0			

Call Options																	Put Options																			
September 2013								October 2013								Other Months		September 2013								October 2013								Other Months		
Exercise Price	Open price	Price max	Price min	Last price	Closing price	Volume	Open Interest	Open price	Price max	Price min	Last price	Closing price	Volume	Open Interest	Volume	Open Interest	Open price	Price max	Price min	Last price	Closing price	Volume	Open Interest	Open price	Price max	Price min	Last price	Closing price	Volume	Open Interest	Volume	Open Interest	Exercise Price			
2.60						-	-							-	-							-	-						-	-			2.60			
2.80						-	-							-	-							-	-						-	-			2.80			
3.00						-	-							-	-							-	-						-	-			3.00			
3.20						-	-							-	-							-	-						-	-			3.20			
3.40						-	-							-	-							-	-						-	-			3.40			
3.60						-	-							-	-							-	-						-	-			3.60			
3.80						-	-							-	-							-	-						-	-			3.80			
4.00						-	-							-	-							-	-						-	-			4.00			
4.40						-	-							-	-							-	-						-	-			4.40			
4.80						-	-							-	-							-	-						-	-			4.80			
5.20						-	-							-	-						0.006	-	100						-	-			5.20			
5.40						-	-							-	-							-	-						-	-			5.40			
5.60						-	-							-	-						0.023	-	1						-	-			5.60			
5.80						-	-							-	-							-	-						-	-			5.80			
6.00						-	-							-	-						0.069	-	75						-	-			6.00			
6.20						-	-							-	-							-	-						-	-			6.20			
6.40						-	-							-	-							-	-						-	-			6.40			
6.60						-	-							-	-							-	-						-	-			6.60			
6.80					0.454	-	1							-	-							-	-						-	-			6.80			
7.00						-	-							-	-							-	-						-	-			7.00			
7.20						-	-							-	-							-	-						-	-			7.20			
7.40						-	-							-	-							-	-						-	-			7.40			
7.60						-	-							-	-							-	-						-	-			7.60			
8.00					0.082	-	50							-	-							-	-						-	-			8.00			
8.20						-	-							-	-							-	-						-	-			8.20			
8.40						-	-							-	-						1.51	-	35						-	-			8.40			
8.60						-	-							-	-							-	-						-	-			8.60			
8.80						-	-							-	-							-	-						-	-			8.80			
9.00						-	-							-	-							-	-						-	-			9.00			
9.20						-	-							-	-							-	-						-	-			9.20			
Totals:						0	51							0	0	0	1,600							0	211							0	0	0	0	
Nominal Transactions Value:						0.00								0.00		0.00								0.00								0.00		0.00		
Number of Trades:						0								0		0								0.00								0		0		

PIRAEUS BANK (CR)

(Contract Size: 100 Securities, Exercise Style: American, Physical Delivery)

Call Options																	Put Options																			
September 2013								October 2013								Other Months		September 2013								October 2013								Other Months		
Exercise Price	Open price	Price max	Price min	Last price	Closing price	Volume	Open Interest	Open price	Price max	Price min	Last price	Closing price	Volume	Open Interest	Volume	Open Interest	Open price	Price max	Price min	Last price	Closing price	Volume	Open Interest	Open price	Price max	Price min	Last price	Closing price	Volume	Open Interest	Volume	Open Interest	Exercise Price			
0.500						-	-							-	-							-	-						-	-			0.500			
0.600						-	-							-	-							-	-						-	-			0.600			
0.700						-	-							-	-							-	-						-	-			0.700			
0.800						-	-							-	-							-	-						-	-			0.800			
0.900						-	-							-	-							-	-						-	-			0.900			
1.00						-	-							-	-							-	-						-	-			1.00			
1.10					0.050	-	5							-	-							-	-						-	-			1.10			
1.20						-	-							-	-							-	-						-	-			1.20			
1.30						-	-							-	-							-	-						-	-			1.30			
1.40						-	-							-	-							-	-						-	-			1.40			
1.50						-	-							-	-							-	-						-	-			1.50			
Totals:						0	5							0	0	0	0							0	0							0	0	0	0	
Nominal Transactions Value:						0.00								0.00		0.00							0.00		0.00								0.00	0		
Number of Trades:						0								0		0							0.00		0								0	0		

PPC (CR)

(Contract Size: 100 Securities, Exercise Style: American, Physical Delivery)

Call Options																	Put Options																				
	September 2013							October 2013							Other Months			September 2013							October 2013							Other Months					
Exercise Price	Open price	Price max	Price min	Last price	Closing price	Volume	Open Interest	Open price	Price max	Price min	Last price	Closing price	Volume	Open Interest	Volume	Open Interest	Open price	Price max	Price min	Last price	Closing price	Volume	Open Interest	Open price	Price max	Price min	Last price	Closing price	Volume	Open Interest	Volume	Open Interest	Exercise Price				
3.20						-	-							-	-							-	-						-	-			3.20				
3.40						-	-							-	-							-	-						-	-			3.40				
3.60						-	-							-	-							-	-						-	-			3.60				
3.80						-	-							-	-							-	-						-	-			3.80				
4.00						-	-							-	-							-	-						-	-			4.00				
4.40					3.21	-	30							-	-							-	-						-	-			4.40				
4.80						-	-							-	-							-	-						-	-			4.80				
5.20						-	-							-	-							-	-						-	-			5.20				
5.60						-	-							-	-							-	-						-	-			5.60				
6.00						-	-							-	-							-	-						-	-			6.00				
6.40						-	-							-	-							-	-						-	-			6.40				
6.60						-	-							-	-							-	-						-	-			6.60				
6.80					0.943	-	10							-	-							-	-						-	-			6.80				
7.00						-	-							-	-							-	-						-	-			7.00				
7.20						-	-							-	-							-	-						-	-			7.20				
7.40						-	-							-	-							-	-						-	-			7.40				
7.60						-	-							-	-							-	-						-	-			7.60				
7.80						-	-							-	-							-	-						-	-			7.80				
8.00						-	-							-	-							-	-						-	-			8.00				
8.20						-	-							-	-							-	-						-	-			8.20				
8.40						-	-							-	-							-	-						-	-			8.40				
8.60						-	-							-	-							-	-						-	-			8.60				
8.80						-	-							-	-							-	-						-	-			8.80				
9.00						-	-							-	-							-	-						-	-			9.00				
9.20						-	-							-	-							-	-						-	-			9.20				
9.60						-	-							-	-							-	-						-	-			9.60				
10.00						-	-							-	-							-	-						-	-			10.00				
Totals:						0	40							0	0	0	0							0	400							0	0	0	0	0	
Nominal Transactions Value:						0.00								0.00		0.00								0.00								0.00		0.00			
Number of Trades:						0								0		0								0								0		0			

Securities	Type[4]	Stock Repo [1]						Stock Reverse Repo [2]								Repurchase Agreements [3]							
		Trans. price	chg.	Trades	Volume	Transactions Value	Open Interest[5]	Price max	Price min	Last price	Last Ask	Trades	Volume	Transactions Value	Open Interest[5]	Price max	Price min	Last price	Last Ask	Trades	Volume	Transactions Value	Open Interest[5]
AEGEAN AIRLINES (CR)	SR RA	100.00	---	---	---	---	85	---	---	---	42@3%	---	---	---	---	---	---	---	---	---	---	---	---
ALPHA BANK (CR)	SR RA	100.00	---	---	---	---	54,615	---	---	---	35558@3.9%	---	---	---	50	---	---	---	---	---	---	---	1,562
ALPHA ETF FTSE Athex Large Cap	SR RA	100.00	---	---	---	---	---	---	---	---	---	---	---	---	---	---	---	---	---	---	---	---	2,664
ALUMIL (CR)	RA	---	---	---	---	---	---	---	---	---	---	---	---	---	---	---	---	---	---	---	---	---	---
ATHENS MEDICAL CENTER SA (CR)	SR RA	100.00	---	---	---	---	434	---	---	---	217@3%	---	---	---	---	---	---	---	---	---	---	---	---
AUTOHELLAS SA (CR)	SR RA	100.00	---	---	---	---	50	---	---	---	25@3%	---	---	---	---	---	---	---	---	---	---	---	---
CC HBC AG (CR)	SR RA	100.17	0.03	---	---	---	1,251	---	---	---	419@3%	---	---	---	206	---	---	---	---	---	---	---	174
CENTRIC HOLDINGS (CR)	SR RA	100.00	---	---	---	---	200	---	---	---	155@8.1%	---	---	---	---	---	---	---	---	---	---	---	---
CORINTH PIPEWORKS SA (CR)	SR RA	100.00	---	---	---	---	160	---	---	---	80@3%	---	---	---	---	---	---	---	---	---	---	---	---
CRETE PLASTICS SA (CR)	SR RA	100.00	---	---	---	---	---	---	---	---	---	---	---	---	---	---	---	---	---	---	---	---	---
ELLAKTOR (CR)	SR RA	100.03	---	---	---	---	2,881	---	---	---	1430@3%	---	---	---	10	---	---	---	---	---	---	---	---
ELTON SA (CR)	SR RA	100.00	---	---	---	---	50	---	---	---	35@3%	---	---	---	---	---	---	---	---	---	---	---	---
ELVAL SA. (CB)	SR RA	100.00	---	---	---	---	621	---	---	---	310@3%	---	---	---	---	---	---	---	---	---	---	---	---
EUROBANK ERGASIAS (CR)	SR RA	100.16	---	---	---	---	1,523	---	---	---	15@3.5%	---	---	---	977	---	---	---	---	---	---	---	28
EUROBANK PROPERTIES REIC (CR)	SR RA	100.07	---	---	---	---	1,641	---	---	---	705@3%	---	---	---	115	---	---	---	---	---	---	---	---
EUROPEAN RELIANCE INSUR. (CR)	SR RA	100.00	---	---	---	---	---	---	---	---	---	---	---	---	---	---	---	---	---	---	---	---	---
EYDAP S.A. (CR)	SR RA	100.06	---	---	---	---	325	---	---	---	149@3%	---	---	---	13	---	---	---	---	---	---	---	16
FOLLI FOLLIE (CR)	SR RA	100.10	0.01	---	---	---	778	---	---	---	369@3%	---	---	---	20	---	---	---	---	---	---	---	10
FOURLIS (CR)	SR RA	100.00	---	---	---	---	195	---	---	---	97@3%	---	---	---	---	---	---	---	---	---	---	---	---
FRIGOGLASS SA (CR)	SR RA	100.21	0.01	---	---	---	229	---	---	---	79@3%	---	---	---	35	---	---	---	---	---	---	---	---
GEK TERNA (CR)	SR RA	100.01	---	---	---	---	624	---	---	---	307@3%	---	---	---	5	---	---	---	---	---	---	---	---
GR. SARANTIS SA (CR)	SR RA	100.00	---	---	---	---	62	---	---	---	31@3%	---	---	---	---	---	---	---	---	---	---	---	---
HALKOR SA (CB)	SR RA	100.00	---	---	---	---	415	---	---	---	207@3%	---	---	---	---	---	---	---	---	---	---	---	---
HELLENIC CABLES SA (CR)	SR RA	100.00	---	---	---	---	84	---	---	---	42@3%	---	---	---	---	---	---	---	---	---	---	---	---
HELLENIC EXCHANGES (CR)	SR RA	100.10	---	---	---	---	5,993	---	---	---	2666@3%	---	---	---	330	---	---	---	---	---	---	---	---
HELLENIC PETROLEUM (CR)	SR RA	100.14	0.01	---	---	---	2,224	---	---	---	934@3%	---	---	---	178	---	---	---	---	---	---	---	46
HYGEIA SA (CR)	SR RA	100.00	---	---	---	---	500	---	---	---	200@4.4%	---	---	---	---	---	---	---	---	---	---	---	---
IASO SA (CR)	SR RA	100.00	---	---	---	---	86	---	---	---	43@3%	---	---	---	---	---	---	---	---	---	---	---	---
IKTINOS HELLAS SA (CR)	SR RA	100.00	---	---	---	---	10	---	---	---	---	---	---	---	---	---	---	---	---	---	---	---	---
INFORM P. LYKOS SA (CR)	SR RA	100.00	---	---	---	---	203	---	---	---	101@3%	---	---	---	---	---	---	---	---	---	---	---	---
INTRACOM CONSTR. (CR)	SR RA	100.00	---	---	---	---	37	---	---	---	18@3%	---	---	---	---	---	---	---	---	---	---	---	---
INTRACOM HOLDINGS (CR)	SR RA	100.00	---	---	---	---	660	---	---	---	441@4.2%	---	---	---	---	---	---	---	---	---	---	---	---

Stock Lending Notes

- [1] - Stock Repo: A Contract for selling stocks to HELEX with a Repurchase Right (According to ATHEX BoD Resolution No 17)
- [2] - Stock Reverse Repo: A Contract for buying stocks from HELEX with a Resell Right. (According to ATHEX BoD Resolution No 18)
- [3] - Standardized Repurchase Agreements: A Contract that constitutes a standardized agreement for the purchase or sale of shares, with repurchase or resell pact (According to ATHEX BoD Resolution No 20)
- [4] - Type of products is divided into SR: Stock Repo or Stock Reverse Repo, and RA: Repurchase Agreements.
- [5] - Open Interest in all Series (both tradeable or non-tradeable).

Securities	Type[4]	Stock Repo [1]						Stock Reverse Repo [2]								Repurchase Agreements [3]							
		Trans. price	chg.	Trades	Volume	Transactions Value	Open Interest[5]	Price max	Price min	Last price	Last Ask	Trades	Volume	Transactions Value	Open Interest[5]	Price max	Price min	Last price	Last Ask	Trades	Volume	Transactions Value	Open Interest[5]
INTRALOT (CR)	SR RA	100.02	---	---	---	---	4,196	---	---	---	1858@3%	---	---	---	240	---	---	---	---	---	---	---	---
J & P - AVAX SA (CR)	SR RA	100.00	---	---	---	---	235	---	---	---	117@3%	---	---	---	---	---	---	---	---	---	---	---	
JUMBO SA (CR)	SR RA	100.07	---	---	---	---	2,358	---	---	---	1090@3%	---	---	---	89	---	---	---	---	---	---	20	
KLEEMAN HELLAS SA (CR)	SR RA	100.00	---	---	---	---	982	---	---	---	491@3%	---	---	---	---	---	---	---	---	---	---	---	
KLOUKINAS - LAPPAS SA (CR)	SR RA	100.00	---	---	---	---	---	---	---	---	---	---	---	---	---	---	---	---	---	---	---	---	
KORRES (CR)	SR RA	100.00	---	---	---	---	---	---	---	---	---	---	---	---	---	---	---	---	---	---	---	---	
KRI-KRI S.A. (CR)	SR RA	100.00	---	---	---	---	549	---	---	---	274@3%	---	---	---	---	---	---	---	---	---	---	---	
LAMDA DEVELOPMENT SA (CR)	SR RA	100.00	---	---	---	---	890	---	---	---	445@3%	---	---	---	---	---	---	---	---	---	---	---	
LOULIS MILLS SA (CR)	SR RA	100.00	---	---	---	---	---	---	---	---	---	---	---	---	---	---	---	---	---	---	---	---	
MARFIN INVESTMENT GROUP (CR)	SR RA	100.00	---	---	---	---	582	---	---	---	---	---	---	---	---	---	---	---	---	---	---	---	
METKA (CR)	SR RA	100.18	0.01	---	---	---	641	---	---	---	245@3%	---	---	---	75	---	---	---	---	---	---	9	
MLS MULTIMEDIA SA (CR)	SR RA	100.00	---	---	---	---	99	---	---	---	49@3%	---	---	---	---	---	---	---	---	---	---	---	
MOTOR OIL (CR)	SR RA	100.17	0.01	---	---	---	2,057	---	---	---	918@3%	---	---	---	110	---	---	---	---	---	---	17	
MYTILINEOS HOLDINGS (CR)	SR RA	100.02	---	---	---	---	3,875	---	---	---	1917@3%	---	---	---	20	---	---	---	---	---	---	---	
NATIONAL BANK (CR)	SR RA	100.09	---	1	1	305.0	8,846	---	---	---	4064@3%	---	---	---	358	---	---	---	---	---	---	346	
NBGAM ETF	SR RA	100.00	---	---	---	---	---	---	---	---	---	---	---	---	---	---	---	---	---	---	---	100	
NBGAM ETF GREECE & TURKEY 30	SR RA	100.00	---	---	---	---	---	---	---	---	---	---	---	---	---	---	---	---	---	---	---	35	
NIREFS SA (CR)	SR RA	100.00	---	---	---	---	326	---	---	---	218@4.2%	---	---	---	---	---	---	---	---	---	---	---	
OPAP (CR)	SR RA	100.07	0.01	---	---	---	5,721	---	---	---	2752@3%	---	---	---	108	---	---	---	---	---	---	367	
OTE (CR)	SR RA	100.25	0.02	---	---	---	5,262	---	---	---	1377@3%	---	---	---	1,241	---	---	---	---	---	---	162	
P.P.A. S.A. (CR)	SR RA	100.00	---	---	---	---	115	---	---	---	57@3%	---	---	---	---	---	---	---	---	---	---	---	
PETROPOULOS PETROS (CR)	RA	---	---	---	---	---	---	---	---	---	---	---	---	---	---	---	---	---	---	---	---	---	
PIRAEUS BANK (CR)	SR RA	100.00	---	---	---	---	8,783	---	---	---	4339@3%	---	---	---	52	---	---	---	---	---	---	---	
PPC (CR)	SR RA	100.42	0.02	---	---	---	1,933	---	---	---	527@3%	---	---	---	439	---	---	---	---	---	---	35	
QUEST HOLDINGS (CR)	SR RA	100.00	---	---	---	---	39	---	---	---	19@3%	---	---	---	---	---	---	---	---	---	---	---	
REDS S.A. (CR)	SR RA	100.00	---	---	---	---	572	---	---	---	356@3.5%	---	---	---	---	---	---	---	---	---	---	---	
SELECTED TEXT. IND. ASSOC (CR)	SR RA	100.00	---	---	---	---	50	---	---	---	37@6.8%	---	---	---	---	---	---	---	---	---	---	---	
SIDENOR (CR)	SR RA	100.00	---	---	---	---	442	---	---	---	221@3%	---	---	---	---	---	---	---	---	---	---	---	
TECHNICAL OLYMPIC SA (CR)	SR RA	100.00	---	---	---	---	100	---	---	---	50@3%	---	---	---	---	---	---	---	---	---	---	---	
TERNA ENERGY (CR)	SR RA	100.15	0.01	1	1	292.0	290	---	---	---	95@3%	---	---	---	49	---	---	---	---	---	---	5	
THESSALONIKA WATER & SEWERAGE	SR RA	100.00	---	---	---	---	1,270	---	---	---	635@3%	---	---	---	---	---	---	---	---	---	---	---	
THRACE PLASTICS SA (CR)	SR RA	100.00	---	---	---	---	1,010	---	---	---	505@3%	---	---	---	---	---	---	---	---	---	---	---	

Stock Lending Notes

- [1] - Stock Repo: A Contract for selling stocks to HELEX with a Repurchase Right (According to ATHEX BoD Resolution No 17)
- [2] - Stock Reverse Repo: A Contract for buying stocks from HELEX with a Resell Right. (According to ATHEX BoD Resolution No 18)
- [3] - Standardized Repurchase Agreements: A Contract that constitutes a standardized agreement for the purchase or sale of shares, with repurchase or resell pact (According to ATHEX BoD Resolution No 20)
- [4] - Type of products is divided into SR: Stock Repo or Stock Reverse Repo, and RA: Repurchase Agreements.
- [5] - Open Interest in all Series (both tradeable or non-tradeable).

Securities	Type[4]	Stock Repo [1]						Stock Reverse Repo [2]								Repurchase Agreements [3]							
		Trans. price	chg.	Trades	Volume	Transactions Value	Open Interest[5]	Price max	Price min	Last price	Last Ask	Trades	Volume	Transactions Value	Open Interest[5]	Price max	Price min	Last price	Last Ask	Trades	Volume	Transactions Value	Open Interest[5]
TITAN CEMENT (CR)	SR RA	100.02	---	---	---	---	9,474	---	---	---	4682@3%	---	---	---	55	---	---	---	---	---	---	---	12
TPA SA (CR)	SR RA	100.00	---	---	---	---	6	---	---	---	---	---	---	---	---	---	---	---	---	---	---	---	
TRASTOR REAL EST. INV. CO.(CR)	SR RA	100.00	---	---	---	---	284	---	---	---	142@3%	---	---	---	---	---	---	---	---	---	---	---	
VIOHALCO (CB)	SR RA	100.01	---	---	---	---	3,990	---	---	---	1973@3%	---	---	---	22	---	---	---	---	---	---	30	

Stock Lending Notes

- [1] - Stock Repo: A Contract for selling stocks to HELEX with a Repurchase Right (According to ATHEX BoD Resolution No 17)
- [2] - Stock Reverse Repo: A Contract for buying stocks from HELEX with a Resell Right. (According to ATHEX BoD Resolution No 18)
- [3] - Standardized Repurchase Agreements: A Contract that constitutes a standardized agreement for the purchase or sale of shares, with repurchase or resell pact (According to ATHEX BoD Resolution No 20)
- [4] - Type of products is divided into SR: Stock Repo or Stock Reverse Repo, and RA: Repurchase Agreements.
- [5] - Open Interest in all Series (both tradeable or non-tradeable).

Sectors codification for listed companies

533	-	Exploration & Production	537	-	Integrated Oil & Gas
1353	-	Commodity Chemicals	1357	-	Specialty Chemicals
1753	-	Aluminum	1755	-	Nonferrous Metals
1757	-	Steel	1775	-	General Mining
2353	-	Building Materials & Fixtures	2357	-	Heavy Construction
2723	-	Containers & Packaging	2727	-	Diversified Industrials
2733	-	Electrical Components & Equipment	2753	-	Commercial Vehicles & Trucks
2757	-	Industrial Machinery	2773	-	Marine Transportation
2777	-	Transportation Services	2791	-	Business Support Services
2797	-	Industrial Suppliers	3535	-	Distillers & Vintners
3537	-	Soft Drinks	3573	-	Farming & Fishing
3577	-	Food Products	3722	-	Durable Household Products
3726	-	Furnishings	3728	-	Home Construction
3747	-	Toys	3763	-	Clothing & Accessories
3765	-	Footwear	3767	-	Personal Products
3785	-	Tobacco	4533	-	Health Care Providers
4535	-	Medical Equipment	4577	-	Pharmaceuticals
5337	-	Food Retailers & Wholesalers	5371	-	Apparel Retailers
5373	-	Broadline Retailers	5375	-	Home Improvement Retailers
5379	-	Specialty Retailers	5553	-	Broadcasting & Entertainment
5555	-	Media Agencies	5557	-	Publishing
5751	-	Airlines	5752	-	Gambling
5753	-	Hotels	5755	-	Recreational Services
5757	-	Restaurants & Bars	5759	-	Travel & Tourism
6535	-	Fixed Line Telecommunications	6575	-	Mobile Telecommunications
7535	-	Conventional Electricity	7537	-	Alternative Electricity
7577	-	Water	8355	-	Banks
8534	-	Insurance Brokers	8536	-	Property & Casualty Insurance
8633	-	Real Estate Holding & Development	8637	-	Real Estate Services
8671	-	Industrial & Office REITs	8675	-	Specialty REITs
8775	-	Specialty Finance	8777	-	Investment Services
8985	-	Equity Investment Instruments	9533	-	Computer Services
9535	-	Internet	9537	-	Software
9572	-	Computer Hardware	9574	-	Electronic Office Equipment
9578	-	Telecommunications Equipment	11000	-	ETF

