

Daily Official List

Athens Exchange sa

Monday, 26 August, 2013

Year: 134 Trading Day No: 159



ΟΜΙΛΟΣ ΕΛΛΗΝΙΚΑ ΧΡΗΜΑΤΙΣΤΗΡΙΑ
HELLENIC EXCHANGES GROUP

Disclaimer:

Athens Exchange (ATHEX) endeavours to ensure that the data and other material ("Information") presented on the Daily Official List are accurate and complete, but it is not liable for any errors or omissions of data or /and for the accuracy, credibility, updating and completeness of the aforesaid information nor it has any liability arising directly or indirectly from the use of the above Information.

ATHEX is not liable for the accuracy of the data included in listed companies' announcements. Only the sender of such an announcement is fully and solely liable for any infringement of third party's rights from the content of such announcement. All contents of the Daily Official List are provided only for information purposes and do not constitute investment advice or solicitation to invest in securities or other products listed for trading on ATHEX.

You acknowledge and agree that ATHEX is the owner of any property rights related to any Information appearing on the Daily Official List including intellectual property rights copyright, trademarks, etc.

The above data are a property of the Athens Exchange and are copyright protected. Users are forbidden to reproduce, modify, copy, sale, transmit or redistribute, by all reproduction means and methods, part or the whole of the above data, without reference to their source.

The commercial exploitation of these data is, also, forbidden by third parties. Athens Exchange does not carry any responsibility, direct or indirect, derived from usage or accidental alteration of the above data when used by third parties.

**Athens Exchange sa**

110 Athinon Ave., 10442 Athens, Tel: (210) 33.66.800, Fax: (210) 32.13.938

www.athex.gr

**Thessalonica Stock Exchange Center (T.S.E.C)**

16-18 Katouni Str., Thessalonica 546 25 Tel: (2310) 567.667, Fax: (2310) 530.545

Athex Members Guarantee Fund

14-16 Fidiou Str., Athens 106 78, Tel: (210) 33.04.682, Fax: (210) 33.04.155

Hellenic Republic Capital Market Commission

1 Kolokotroni Str. & 1 Stadiou Str., Athens 10562 Tel: (210) 33.77.100 Fax: (210) 33.77.173

Table of Contents

Section 1: Statistical Figures of Securities and Derivatives Markets

Summary of Markets

Athex Indices

Analytic Figures for Athex Market's Boards and Categories

Trading Details by Athex Sectors and ETFs Category

Top 10 best & worst performing Shares

Derivatives Summary

Section 2: Analytic Figures of Shares Transactions

Analytic Figures of Shares Transactions

Shares' Notes

Section 3: Figures of Securities Transactions

Securities Blocks Details

Shares Rights Details

Shares Short Selling

Stock Borrowing

Shares Forced Sales

Forced Sales Registered Shares

Exchange Traded Funds (ETFs) Characteristics

Section 5: Bonds traded in Fixed Income Assets Market

Corporate Bonds

Government Bonds

Treasury Bills & Zero Coupon Government Bonds

Government Bonds Traded with the Open Outcry Method

State Banks Bonds

Section 6: Additional Infos

Athex & ATHEXClear Members List

List of Stocks under Market Making operations

Section 7: Derivatives Market Analytic Figures

Index Futures

Stock Futures

Index Options

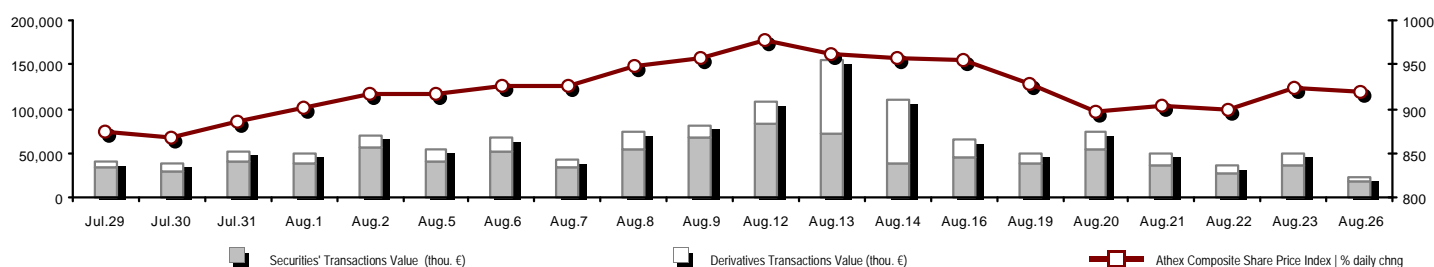
Stock Options

Stock Lending Analytic Figures (Repo Contracts)

Appendix A: Sectors codification for listed companies

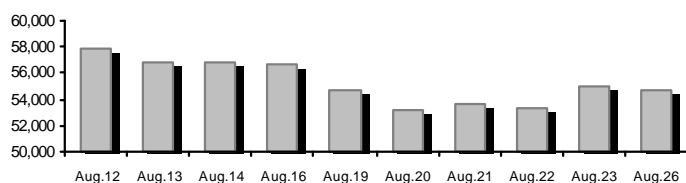
Summary of Markets

Athex Composite Share Price Index vs Shares and Derivatives Transactions Value

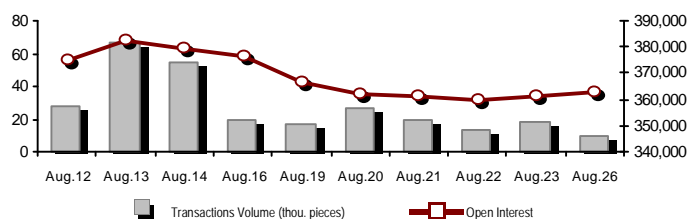


Total Transactions Value (Securities/Derivatives) (thou. €):		22,464.71	
Athex Capitalisation (mill. €) **: 54,660.95		Derivatives Total Open Interest: 362,765	
Daily change: mill. € %: -332.68 -0.60%		in Index Futures % daily chng: 48,038 1.42%	
Yearly Avg Capitalisation: mill. € % chng prev year Avg: 44,752.00 63.52%		in Stock Futures % daily chng: 152,972 0.48%	
Athex Composite Share Price Index % daily chng: 918.82 -0.61%		in Index Options % daily chng: 5,117 0.35%	
Athex Composite Share Price Index Capitalisation (mill. €): 47,616.38		in Stock Options % daily chng: 5,533 1.42%	
Daily change (mill. €): -376.82		in Stock Repos/Reverse Repos/RA % daily chng: 151,105 -0.16%	
Securities' Transactions Value (thou. €): 18,035.94		Derivatives Transactions Value (thou. €): 4,428.77	
Daily change: thou. € %: -18,583.41 -50.75%		Daily change: thou. € %: -8,296.56 -65.20%	
YtD Avg Trans. Value: thou. € % chng prev year Avg: 66,736.14 28.65%		YtD Avg Trans. Value: thou. € % chng prev year Avg: 23,032.39 20.67%	
Short Selling Trans. Value: mill. € % in total Value			
Short Covering Trans. Value: mill. € % in total Value			
Transactions Value of Blocks (thou. €): 2,841.21			
Bonds Transactions Value (thou. €): 0.00			
Securities' Transactions Volume (thou. Pieces): 11,111.36		Derivatives Contracts Volume: 9,194	
Daily change: thou. pieces %: -11,617.20 -51.11%		Daily change: pieces %: -8,836 -49.01%	
YtD Avg Volume: thou. pieces % chng prev year Avg: 51,529.53 4.21%		YtD Avg Derivatives Contracts % chng prev year Avg: 44,230 -31.27%	
Short Selling Volume: thou pieces % in total Volume			
Short Covering Volume: thou. pieces % in total Volume			
Transactions Volume of Blocks (thou. Pieces): 380.23			
Bonds Transactions Volume (thou. pieces): 0.00			
Securities' Trades Number: 10,746		Derivatives Trades Number: 923	
Daily change: number %: -9,933 -48.03%		Daily change: number %: -813 -46.83%	
YtD Avg Derivatives Trades number % chng prev year Avg: 29,798 20.11%		YtD Avg Derivatives Trades number % chng prev year Avg: 2,760 -5.32%	
Number of Blocks: 4			
Number of Bonds Transactions: 0			

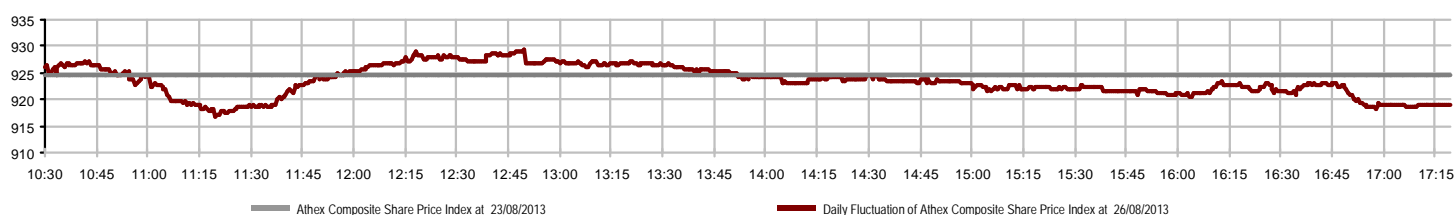
Athex Capitalisation (mill. €) **



Derivatives Transactions Volume and Open Interest



Daily Fluctuation of Athex Composite Share Price Index



Athex Indices

Index name	26/08/2013	23/08/2013	pts.	%	Min	Max	Year min	Year max	Year change
Athex Composite Share Price Index	918.82	924.47	-5.65	-0.61%	916.57	929.27	788.81	1,159.97	1.20% #
FTSE/Athex Large Cap	313.66	316.10	-2.44	-0.77%	313.00	318.17	253.17	410.78	1.29% #
FTSE/ATHEX Custom Capped	998.29	968.09	30.20	3.12%			863.84	1,275.55	-2.08% €
FTSE/ATHEX Custom Capped - USD	959.33	926.25	33.08	3.57%			808.44	1,172.76	-0.44% €
FTSE/Athex Mid Cap Index	1,030.64	1,032.69	-2.05	-0.20%	1,023.86	1,037.99	871.32	1,360.26	-9.05% €
FTSE/ATHEX-CSE Banking Index	104.35	105.17	-0.82	-0.78%	104.35	106.68	64.42	278.69	-38.21% €
FTSE/ATHEX Global Traders Index Plus	1,331.83	1,328.42	3.41	0.26%	1,318.93	1,336.97	1,082.32	1,484.90	6.77% #
FTSE/ATHEX Global Traders Index	1,389.76	1,391.05	-1.29	-0.09%	1,378.21	1,397.31	1,053.81	1,553.64	11.88% #
FTSE/ATHEX Mid & Small Cap Factor-Weighted Ind	1,207.59	1,198.03	9.56	0.80%	1,189.87	1,207.59	1,053.59	1,348.92	-2.53% €
Greece & Turkey 30 Price Index	651.00	646.18	4.82	0.75%	642.08	652.79	638.18	927.16	-16.31% €
ATHEX Mid & SmallCap Price Index	2,863.04	2,811.16	51.88	1.85%	2,737.63	2,863.04	2,737.63	3,725.74	-8.67% €
FTSE/Athex Market Index	757.15	762.64	-5.49	-0.72%	755.34	767.39	600.87	972.17	2.67% #
FTSE/Med 100	4,152.15	4,136.85	15.30	0.37%			4,075.12	4,570.16	0.21% #
Athex Composite Index Total Return Index	1,330.43	1,338.61	-8.18	-0.61%	1,327.17	1,345.56	1,139.79	1,655.57	2.73% #
FTSE/Athex Large Cap Total Return	429.82	433.17	-3.35	-0.77%			366.91	565.68	-0.26% €
FTSE/ATHEX Large Cap Net Total Return	1,257.59	1,267.39	-9.80	-0.77%	1,254.95	1,275.69	1,001.98	1,626.24	2.61% #
FTSE/ATHEX Custom Capped Total Return	1,042.60	1,011.06	31.54	3.12%			895.99	1,311.70	-0.50% €
FTSE/ATHEX Custom Capped - USD Total Return	1,001.91	967.36	34.55	3.57%			836.50	1,205.99	1.16% #
FTSE/Athex Mid Cap Total Return	1,275.62	1,278.15	-2.53	-0.20%			1,152.62	1,720.22	-12.75% €
FTSE/ATHEX-CSE Banking Total Return Index	98.93	99.71	-0.78	-0.78%			82.32	289.59	-46.36% €
Greece & Turkey 30 Total Return Index	772.94	770.14	2.80	0.36%			770.14	1,098.14	-15.64% €
Hellenic Mid & Small Cap Index	942.28	945.64	-3.36	-0.36%	937.05	950.65	737.97	1,071.68	7.48% #
FTSE/Athex Banks	137.87	138.96	-1.09	-0.78%	137.87	140.95	85.08	368.22	-39.07% €
FTSE/Athex Insurance	1,180.11	1,180.11	0.00	0.00%	1,180.11	1,232.79	1,148.50	1,548.89	-22.22% €
FTSE/Athex Financial Services	1,343.84	1,357.67	-13.83	-1.02%	1,334.15	1,358.91	817.47	1,771.89	1.89% #
FTSE/Athex Industrial Goods & Services	3,411.58	3,427.65	-16.07	-0.47%	3,386.87	3,447.99	2,715.10	4,197.17	4.95% #
FTSE/Athex Retail	2,547.61	2,527.31	20.30	0.80%	2,492.44	2,575.53	1,629.12	2,692.44	39.24% #
FTSE/ATHEX Real Estate	1,942.16	1,963.96	-21.80	-1.11%	1,937.17	2,006.47	1,491.01	2,108.44	30.26% #
FTSE/Athex Personal & Household Goods	4,287.63	4,306.26	-18.63	-0.43%	4,216.38	4,372.55	2,586.10	4,550.67	37.32% #
FTSE/Athex Food & Beverage	7,835.42	7,923.69	-88.27	-1.11%	7,816.99	8,037.87	6,301.12	8,591.23	17.68% #
FTSE/Athex Basic Resources	2,228.95	2,244.03	-15.08	-0.67%	2,223.53	2,263.91	1,674.83	2,901.09	-4.07% €
FTSE/Athex Construction & Materials	1,947.29	1,923.13	24.16	1.26%	1,923.13	1,968.03	1,439.70	2,130.78	6.06% #
FTSE/Athex Oil & Gas	2,718.78	2,779.56	-60.78	-2.19%	2,715.31	2,779.56	2,358.47	3,358.80	-3.36% €
FTSE/Athex Chemicals	6,289.40	6,264.76	24.64	0.39%	6,094.04	6,328.91	5,194.08	7,961.02	4.49% #
FTSE/Athex Media	1,913.28	1,920.67	-7.39	-0.38%	1,551.31	2,061.03	716.56	3,560.63	164.29% #
FTSE/Athex Travel & Leisure	1,308.07	1,325.88	-17.81	-1.34%	1,297.23	1,325.01	1,028.61	1,496.38	29.59% #
FTSE/Athex Technology	684.21	690.68	-6.47	-0.94%	680.94	696.46	555.63	886.96	-7.81% €
FTSE/Athex Telecommunications	1,904.78	1,904.78	0.00	0.00%	1,874.50	1,915.79	1,175.35	2,147.00	35.69% #
FTSE/Athex Utilities	2,729.13	2,758.82	-29.69	-1.08%	2,728.38	2,758.82	1,752.55	3,104.53	19.29% #
FTSE/Athex Health Care	244.82	247.79	-2.97	-1.20%	242.69	247.79	172.87	346.05	-12.75% €
Athex All Share Index	194.14	195.35	-1.21	-0.62%			176.43	294.40	-17.97% €

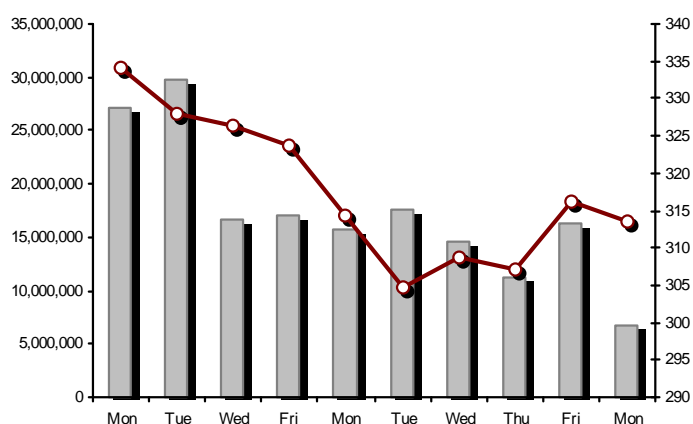
Note 1: Greece & Turkey 30 Pr data is the indicative at 17:20, whereas FTSE/ATHEX Custom Capped, FTSE/ATHEX Custom Capped - USD, FTSE/ATHEX Custom Capped TR, FTSE/ATHEX Custom Capped - USD TR, FTSE/Med 100 & Greece & Turkey 30 Rt closing prices refer to the previous trading day of 23/08/2013.

Note 2: The Hellenic Mid & Small Cap Index is a Customized index calculated by the Athens Exchange.

Athex Indices

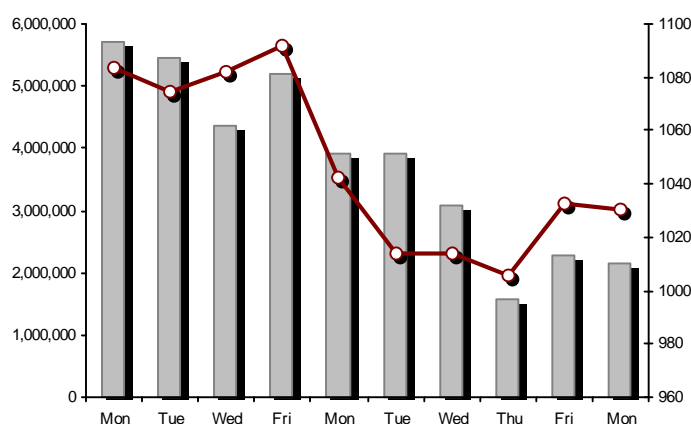
FTSE/Large Cap

26/08/2013: -0.77%



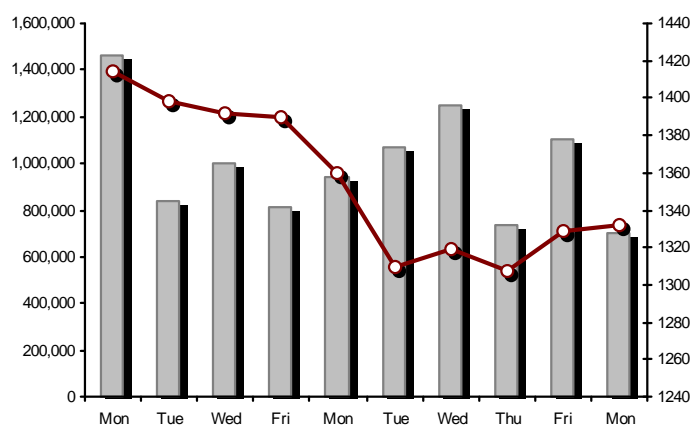
FTSE/Athex Mid Cap Index

26/08/2013: -0.20%



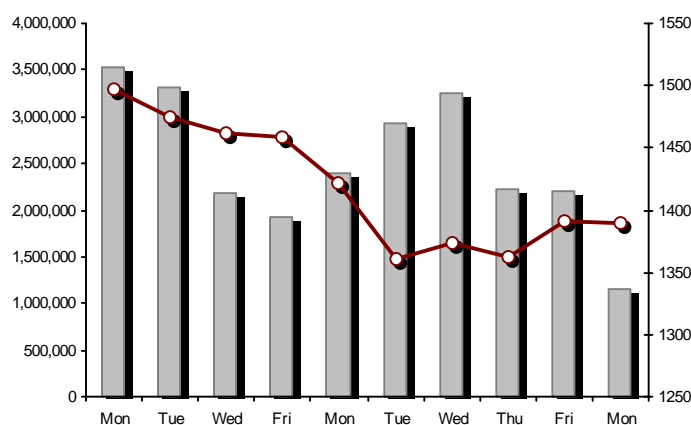
FTSE/ATHEX Global Traders Index Plus

26/08/2013: 0.26%



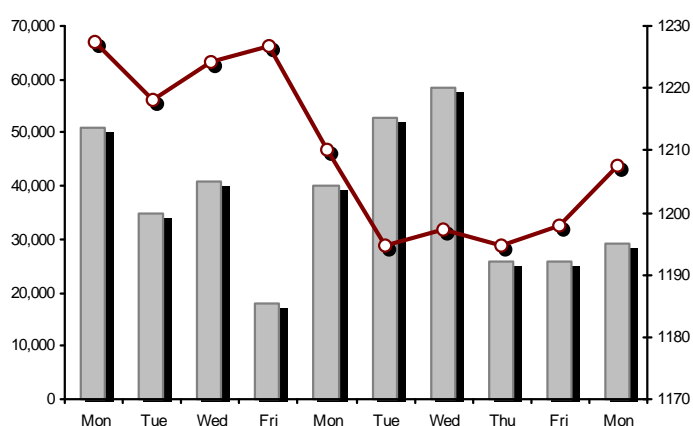
FTSE/ATHEX Global Traders Index

26/08/2013: -0.09%



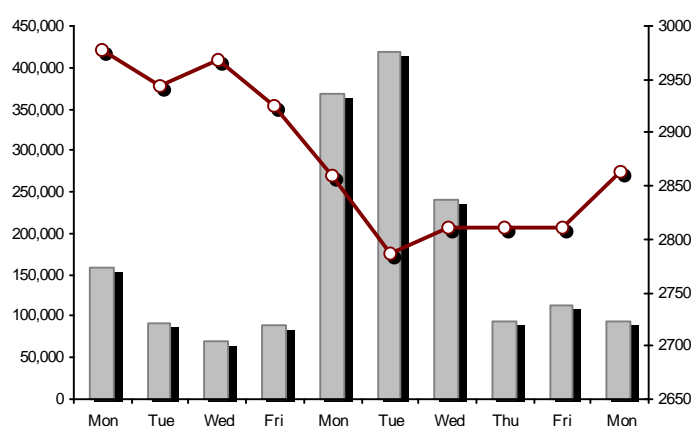
FTSE/ATHEX Mid & Small Cap Factor-Weighted Index

26/08/2013: 0.80%



ATHEX Mid & SmallCap Price Index

26/08/2013: 1.85%



Indices volume of transactions

Indices closing prices

Analytic Figures for Athex Market's Boards and Categories

	Total Traded Securities	Main Market	Low Dispersion	Other Categories (*)	Exchange Traded Funds (ETFs)	Warrants
Totals	146	109	9	22	3	3
Gain / Lose / Same:	57 / 69 / 20	41 / 55 / 13	3 / 3 / 3	12 / 6 / 4	0 / 3 / 0	1 / 2 / 0
Athex Capitalisation (mill. €) **	54,660.95	52,427.12	1,886.68	347.15		
Daily Average Transactions Value (thou. €)	66,736.14	25,927.72	536.31	84.01	40.40	6,147.14
Transactions Value	18,035.94	16,489.48	31.22	9.09	0.15	1,506.00
Main Board:	15,194.74	13,649.27	31.22	9.09	0.15	1,505.00
Blocks Board:	2,841.21	2,840.21	0.00	0.00	0.00	1.00
Forced Sales Board:	0.00	0.00	0.00	0.00	0.00	0.00
Special Terms Board:	0.00	0.00	0.00	0.00	0.00	0.00
Daily Average Transactions Volume	51,529,526	15,873,752	57,692	451,509	9,964	9,364,689
Transactions Volume	11,111,364	9,376,581	10,060	45,462	42	1,679,219
Main Board:	10,731,136	8,997,353	10,060	45,462	42	1,678,219
Blocks Board:	380,228	379,228	0	0	0	1,000
Forced Sales Board:	0	0	0	0	0	0
Special Terms Board:	0	0	0	0	0	0
Daily Average Number of Trades	29,798	11,557	122	223	8	2,365
Number of Trades	10,746	9,207	62	84	3	1,390
Main Board:	10,742	9,204	62	84	3	1,389
Blocks Board:	4	3	0	0	0	1
Forced Sales Board:	0	0	0	0	0	0
Special Terms Board:	0	0	0	0	0	0

(*) Summarised Transactions figures for Under Deletion and Under Supervision Categories.

(**) The Market Capitalization of the Companies that belong in the Under Supervision Category is not included.

Trading Details by Athex Sectors and ETFs Category

Code	Sectors	Gain / Lose / Same	Number of Trades	Transactions Volume	Transactions Value	% of Total Trans. Value
8300	- Banks	2 / 5 / 2	5,322	8,382,070	7,882,788.87	43.71%
1700	- Basic Resources	3 / 6 / 2	675	357,152	483,582.93	2.68%
1300	- Chemicals	3 / 2 / 0	29	3,551	6,645.57	0.04%
2300	- Construction & Materials	6 / 10 / 5	584	256,398	607,541.04	3.37%
11000	- ETF	0 / 3 / 0	3	42	153.98	0.00%
8700	- Financial Services	2 / 2 / 1	434	364,860	294,189.86	1.63%
3500	- Food & Beverage	4 / 6 / 2	166	29,211	194,236.25	1.08%
4500	- Health Care	1 / 3 / 0	131	143,746	102,776.84	0.57%
2700	- Industrial Goods & Services	9 / 6 / 2	492	256,276	582,516.50	3.23%
8500	- Insurance	0 / 0 / 1	10	6,238	7,166.23	0.04%
5500	- Media	1 / 2 / 0	23	4,282	1,082.46	0.01%
500	- Oil & Gas	0 / 2 / 0	368	42,690	320,937.34	1.78%
3700	- Personal & Household Goods	6 / 6 / 1	224	59,413	192,849.94	1.07%
8600	- Real Estate	3 / 3 / 0	64	14,589	70,183.76	0.39%
5300	- Retail	3 / 1 / 1	183	45,230	442,242.05	2.45%
9500	- Technology	5 / 7 / 0	189	79,943	69,792.28	0.39%
6500	- Telecommunications	0 / 0 / 1	514	153,847	1,060,751.69	5.88%
5700	- Travel & Leisure	7 / 3 / 2	888	816,973	5,104,495.55	28.30%
7500	- Utilities	2 / 2 / 0	447	94,853	612,011.00	3.39%

Top 10 best & worst performing Shares

Main Market					
With positive Price change	Closing price	change	With negative Price change	Closing price	change
HALKOR SA (CB)	0.898	5.77% #	J & P - AVAX SA (CR)	1.53	-3.16% Ⓔ
TITAN CEMENT (CR)	14.80	2.78% #	QUALITY & RELIABILITY SA (CR)	1.65	-2.94% Ⓔ
HELLENIC CABLES SA (CR)	1.67	2.45% #	MOTOR OIL (CR)	7.46	-2.48% Ⓔ
KRI-KRI S.A. (CR)	1.92	2.13% #	TPA SA (CR)	24.00	-2.44% Ⓔ
EUROBANK ERGASIAS (CR)	0.650	1.88% #	P.P.A. S.A. (CR)	16.62	-2.35% Ⓔ
ALCO HELLAS SA (CR)	0.426	1.43% #	KLOUKINAS - LAPPAS SA (CR)	0.635	-2.16% Ⓔ
EYDAP S.A. (CR)	6.10	1.33% #	HELLENIC PETROLEUM (CR)	7.51	-1.96% Ⓔ
AEGEAN AIRLINES (CR)	3.13	1.29% #	HYGEIA SA (CR)	0.415	-1.89% Ⓔ
THESSALONIKA WATER & SEWERAGE	5.86	1.03% #	PPC (CR)	7.47	-1.71% Ⓔ
FOLLI FOLLIE (CR)	18.00	0.78% #	HELLENIC EXCHANGES (CR)	5.94	-1.66% Ⓔ
With the highest Transactions Value	Value (thou. €)	change	With the highest Transactions Volume	Volume	change
OPAP (CR)	4,829.66	-1.59% Ⓔ	ALPHA BANK (CR)	2,442,004	-1.00% Ⓔ
NATIONAL BANK (CR)	2,337.21	-1.64% Ⓔ	PIRAEUS BANK (CR)	1,877,266	0.00% ↘
PIRAEUS BANK (CR)	1,944.85	0.00% ↘	EUROBANK ERGASIAS (CR)	1,094,464	1.88% #
ALPHA BANK (CR)	1,222.26	-1.00% Ⓔ	NATIONAL BANK (CR)	766,982	-1.64% Ⓔ
OTE (CR)	1,060.75	0.00% ↘	OPAP (CR)	645,610	-1.59% Ⓔ
EUROBANK ERGASIAS (CR)	709.13	1.88% #	ATTICA BANK S.A. (CR)	521,004	0.00% ↘
PPC (CR)	491.65	-1.71% Ⓔ	MARFIN INVESTMENT GROUP (CR)	277,736	0.65% #
FOLLI FOLLIE (CR)	434.30	0.78% #	OTE (CR)	153,847	0.00% ↘
VIOHALCO (CB)	352.28	0.68% #	HALKOR SA (CB)	129,880	5.77% #
TITAN CEMENT (CR)	226.66	2.78% #	INTRALOT (CR)	124,873	0.63% #

Note: Stocks that are not included in the "Low Dispersion" and "Under Supervision" categories, and the transactions value is more than 10,000 €.

Derivatives Summary

	Number of Trades	Volume	Open Interest	Transactions Value
Index Futures	280	1,382	48,038	2,195,660.00
FTSE/Athex Large Cap	280	1,382	48,038	2,195,660.00
Stock Futures	634	7,379	152,972	1,995,676.32
ALPHA BANK (CR)	87	1,881	17,419	94,611.30
CC HBC AG (CR)	24	78	751	164,795.00
CORINTH PIPEWORKS SA (CR)	2	15	457	3,230.00
ELLAKTOR (CR)	8	34	4,396	7,324.00
EUROBANK ERGASIAS (CR)	23	568	20,197	8,590.37
EUROBANK PROPERTIES REIC (CR)	6	25	275	17,923.00
EYDAP S.A. (CR)	2	5	214	3,030.00
FOLLI FOLLIE (CR)	2	10	232	17,950.00
FRIGOGLASS SA (CR)	5	10	422	4,924.00
GEK TERNA (CR)	51	527	31,888	114,750.00
HELLENIC EXCHANGES (CR)	8	38	2,210	22,630.00
HELLENIC PETROLEUM (CR)	18	69	2,305	51,931.00
INTRALOT (CR)	3	20	4,049	3,200.00
JUMBO SA (CR)	21	92	261	78,615.00
MARFIN INVESTMENT GROUP (CR)	12	105	19,116	3,192.20
METKA (CR)	0	0	477	0.00
MOTOR OIL (CR)	8	20	943	15,118.00
MYTILINEOS HOLDINGS (CR)	19	80	4,977	34,914.00
NATIONAL BANK (CR)	153	2,283	5,691	698,180.00
OPAP (CR)	16	143	4,005	106,839.00
OTE (CR)	41	251	8,277	173,010.00
P.P.A. S.A. (CR)	4	16	551	26,840.00
PIRAEUS BANK (CR)	42	778	14,194	80,859.00
PPC (CR)	57	251	5,137	189,206.00
SIDENOR (CR)	3	9	1,507	1,483.00
TERNA ENERGY (CR)	3	15	2,374	4,547.45
TITAN CEMENT (CR)	11	42	160	61,859.00
VIOHALCO (CB)	5	14	487	6,125.00
Index Options	2	21	5,117	32,625.00
FTSE/Athex Large Cap	2	21	5,117	32,625.00
Stock Options	0	0	5,533	0.00
ALPHA BANK (CR)	0	0	0	0.00
NATIONAL BANK (CR)	0	0	281	0.00
OPAP (CR)	0	0	2,945	0.00
OTE (CR)	0	0	1,862	0.00
PIRAEUS BANK (CR)	0	0	5	0.00
PPC (CR)	0	0	440	0.00
Stock Repos - Stock Reverse Repos - Repurchase Agreements	7	412	151,105	204,809.50
Stock Reverse Repos	5	313	4,455	134,366.00
Stock Repos	1	5	140,918	225.50
Repurchase Agreement	1	94	5,732	70,218.00
Total Derivatives Traded	923	9,194	362,765	4,428,770.82

Number of Outstanding Securities	Nominal Value	Dividends [1]			Date of Last Dividend [2]	Coupon Right	Note	Shares	Closing price	% change	Previous closing price/date	Open price	Price min	Price max	Last price	Avg price	Last Bid [7]	Last Ask [7]	P/E after	Year	Volume	Trades	Transactions Value	Company Value (thou. €)	Mkt Value (thou. €)	Year low	Year high	Sector[4]
1,233,503,482		---	---	---	11/06/2013		---	ALPHA BANK (W)	0.954	-0.42 €	0.958 23/08/2013	0.950	0.920	0.971	0.954	0.956	1000@0.947	1047@0.954	---	2012	968,196	635	925,309.03	5,417,761.38		0.241	1.14	8355
245,779,626		---	---	---	27/06/2013		---	NATIONAL BANK (W)	0.959	-1.54 €	0.974 23/08/2013	0.980	0.950	0.997	0.959	0.974	100@0.951	490@0.959	---	2012	291,839	432	284,357.32	7,190,357.98		0.420	2.00	8355
849,195,130		---	---	---	03/07/2013		---	PIRAEUS BANK (W)	0.719	6.05 #	0.678 23/08/2013	0.680	0.680	0.726	0.719	0.707	600@0.711	1939@0.719	---	2012	419,184	323	296,334.65	5,224,744.99		0.290	0.889	8355

Warrants

71,417,100	0.650	---	---	---	26/05/2010	11/07/2007	---	AEGEAN AIRLINES (CR)	3.13	1.29 #	3.09 23/08/2013	3.08	3.08	3.13	3.13	3.11	250@3.12	580@3.14	---	2012	15,158	46	47,155.74	223,535.52		1.96	3.24	5751
11,178,000	1.45	---	---	---	21/04/2010	12/05/2011	---	AEOLIAN INVESTMENT FUND (CR)	1.04	---	1.04 23/08/2013	1.00	1.00	1.04	1.04	1.02	3000@1.01	1210@1.04	8.23	2012	245	3	248.60	11,625.12		0.900	1.17	8985
13,000,000	1.00	---	---	---	01/08/2007	07/04/2000	---	AKRITAS SA (CR)	0.177	-4.84 €	0.186 23/08/2013	0.177	0.177	0.177	0.177	0.177	340@0.181	---	---	2012	20	2	3.54	2,301.00		0.140	0.520	2353
25,000,000	0.400	---	---	---	03/06/2009	12/07/2013	---	ALCO HELLAS SA (CR)	0.426	1.43 #	0.420 23/08/2013	0.410	0.388	0.437	0.426	0.428	300@0.405	298@0.294	---	2012	116,055	48	49,648.98	10,650.00		0.159	0.599	1753
10,922,906,012	0.300	---	---	---	07/04/2008	13/05/2013	---	ALPHA BANK (CR)	0.496	-1.00 €	0.501 23/08/2013	0.501	0.495	0.506	0.496	0.501	14198@0.496	5910@0.502	---	2012	2,442,004	1,139	1,222,256.80	5,417,761.38		0.161	0.696	8355
22,016,250	0.370	---	---	---	15/07/2009	11/05/2000	---	ALUMIL (CR)	0.590	-0.84 €	0.595 23/08/2013	0.585	0.562	0.590	0.590	0.575	50@0.565	148@0.590	---	2012	202	7	116.12	12,989.59		0.360	0.740	1753
418,000	16.00	---	---	---	22/04/2010	05/03/2013	---	ANDROMEDA SA (CR)	22.50	9.97 #	20.46 23/08/2013	22.50	22.50	22.50	22.50	22.50	40@20.40	6@22.40	2.08	2012	10	2	225.00	9,405.00		17.10	25.41	8985
21,876,700	0.380	---	---	---	08/07/2010	05/06/2001	---	AS COMPANY SA (CR)	0.315	2.27 #	0.308 23/08/2013	0.310	0.310	0.315	0.315	0.310	2500@0.300	2500@0.300	36.00	2012	17,050	4	5,290.50	6,891.16		0.272	0.488	5379
86,735,980	0.310	---	---	---	06/07/2009	02/01/2002	---	ATHENS MEDICAL CENTER SA (CR)	0.800	-0.12 €	0.801 23/08/2013	0.800	0.800	0.801	0.800	0.800	394329@0.800	9944@0.802	---	2012	112,208	41	89,786.40	69,388.78		0.471	0.994	4533
699,673,060	0.300	---	---	---	04/06/2008	05/06/2013	---	ATTICA BANK S.A. (CR)	0.284	---	0.284 23/08/2013	0.284	0.282	0.289	0.284	0.285	5000@0.283	29737@0.284	---	2012	521,004	265	148,490.85	198,707.15		0.173	1.06	8355
45,457,464	0.700	---	---	---	01/07/2008	01/03/2010	---	AUDIO VISUAL ENTERPRISES (CR)	0.259	-0.38 €	0.260 23/08/2013	0.279	0.210	0.279	0.270	0.228	1000@0.220	200@0.260	---	2012	2,089	14	476.82	11,773.48		0.097	0.482	5553
36,360,000	0.320	---	0.15	---	30/04/2012	05/05/2008	---	AUTOHELLAS SA (CR)	2.21	0.46 #	2.20 23/08/2013	2.17	2.17	2.22	2.20	2.21	300@2.15	450@2.28	11.90	2012	5,010	12	11,048.32	80,355.60		1.50	2.30	5759
19,864,886	5.60	1.976	0.67	0.5376	06/03/2013	02/07/2008	---	BANK OF GREECE (CR)	13.09	-1.21 €	13.25 23/08/2013	13.42	13.00	13.42	13.09	13.14	1@13.11	499@13.15	---	---	1,131	61	14,859.63	260,031.36		11.26	19.19	8355
23,986,500	1.05	---	---	---	26/06/2009	15/03/2000	---	BIOKARPET S.A.(CR)	0.673	---	0.673 05/08/2013	---	---	---	---	---	---	850@0.670	---	2012	---	---	---	16,142.91		0.486	0.845	3726
15,842,391	1.51	---	---	---	15/07/2009	12/05/2000	---	BITROS HOLDING SA (CR)	0.621	---	0.621 01/08/2013	---	---	---	---	---	---	1000@0.568	---	2012	---	---	---	9,838.12		0.336	0.745	1757
15,816,009	0.300	---	---	---	01/07/2009	17/07/2000	---	BYTE COMPUTER SA (CR)	0.470	---	0.470 23/08/2013	---	---	---	---	---	100@0.465	1000@0.471	---	2012	---	---	---	7,433.52		0.351	0.620	9533
366,491,145	6.70	---	---	0.34	26/06/2013	29/04/2013	---	CC HBC AG (CR)	20.95	-1.13 €	21.19 23/08/2013	21.19	20.90	21.50	20.95	21.13	1996@20.98	399@21.09	---	---	8,363	74	176,664.89	7,677,989.49		16.79	22.60	3537
101,123,806	0.360	---	---	---	22/07/2010	28/06/2011	---	CENTRIC HOLDINGS (CR)	0.220	0.46 #	0.219 23/08/2013	0.220	0.219	0.220	0.220	0.220	1496@0.219	299@0.222	33.38	2012	11,304	7	2,485.88	22,247.24		0.182	0.440	5752
4,034,950	0.680	---	---	---	01/07/2005	30/12/2010	---	CHATZIKRANIOTIS & SONS SA (CR)	0.142	0.71 #	0.141 23/08/2013	0.145	0.142	0.145	0.142	0.144	850@0.142	300@0.151	---	2012	500	2	72.05	572.96		0.130	0.522	3577
124,170,201	0.780	---	---	---	28/06/2002	07/02/2005	---	CORINTH PIPEWORKS SA (CR)	2.11	-0.47 €	2.12 23/08/2013	2.12	2.09	2.17	2.11	2.14	20@2.11	1000@2.14	75.59	2012	29,577	99	63,198.20	261,999.12		1.40	2.59	1757
9,907,500	0.300	---	---	---	06/10/2005	13/02/2002	---	CPI SA (CR)	0.212	---	0.212 13/08/2013	---	---	---	---	---	---	419@0.233	---	2012	---	---	---	2,100.39		0.133	0.400	9572
27,379,200	0.610	---	---	---	23/06/2010	05/12/2012	---	CRETE PLASTICS SA (CR)	4.83	2.55 #	4.71 23/08/2013	4.83	4.83	4.83	4.83	4.83	1000@4.73	140@4.90	13.80	2012	850	4	4,105.50	132,241.54		4.60	5.65	1357
26,664,840	0.470	---	---	---	29/06/2005	12/07/1999	---	CYCLON HELLAS SA (CR)	0.538	12.08 #	0.480 23/08/2013	0.450	0.440	0.538	0.538	0.448	1510@0.450	126@0.532	---	2012	825	4	369.29	14,345.68		0.385	0.700	1357
15,000,000	0.300	---	---	---	06/07/2007	18/07/2000	---	DAIOS PLASTICS SA (CR)	3.79	---	3.79 21/08/2013	---	---	---	---	---	200@3.42	147@3.69	---	2012	---	---	---	56,850.00		3.34	5.50	1357
31,370,399	0.300	---	---	---	11/08/2010	15/02/2012	---	DIONIC (CR)	0.089	1.14 #	0.088 23/08/2013	0.084	0.082	0.090	0.089	0.088	2000@0.086	7000@0.088	---	2012	95,670	48	8,455.20	2,791.97		0.066	0.263	2797
34,720,000	0.310	---	---	---	16/06/2010	01/08/2007	---	DROMEAS SA (CR)	0.360	-2.44 €	0.369 23/08/2013	0.341	0.341	0.388	0.360	0.365	700@0.354	490@0.370	---	2012	9,710	9	3,545.70	12,499.20		0.218	0.634	3726
3,873,120	0.300	---	---	---	07/07/2008	04/10/2012	---	DRUCKFARBEN HELLAS (CR)	1.16	---	1.16 21/08/2013	---	---	---	---	---	---	412@1.18	---	2012	---	---	---	4,492.82		0.901	2.64	1357
11,250,000	0.560	---	---	---	26/07/2010	16/06/1999	---	EKTER SA (CR)	0.450	-1.96 €	0.459 23/08/2013	0.470	0.450	0.470	0.450	0.452	700@0.430	500@0.450	7.86	2012	550	2	248.50	5,062.50		0.400	0.700	2357
32,188,050	1.04	---	---	---	21/07/2008	20/01/2000	---	EL. D. MOUZAKIS SA (CB)	0.170	---	0.170 21/08/2013	---	---	---	---	---	---	250@0.160	---	2012	---	---	---	5,471.97		0.114	0.330	3763
18,648,000	1.00	---	---	---	07/07/2009	10/09/2010	---	ELASTRON (CR)	0.702	-2.50 €	0.720 23/08/2013	0.740	0.700	0.750	0.720	0.706	10@0.693	500@0.700	---	2012	1,200	12	846.77	13,090.90		0.518	0.969	1757
31,734,530	1.60	---	---	---	09/07/2007	19/07/2006	---	ELGEKA SA (CR)	0.600	1.87 #	0.589 23/08/2013	0.426	0.426	0.600	0.600	0.461	200@0.441	912@0.600	---	2012	500	5	230.40	19,040.72		0.407	0.780	3577
23,828,130	0.500	---	---	---	07/07/2010	17/02/2009	---	ELINOIL S.A. (CR)	1.17	---	1.17 13/08/2013	---	---	---	---	---	200@1.06	200@1.27	---	2012	---	---	---	27,878.91		1.02	1.89	537
177,001,313	1.03	0.0308	---	---	05/07/2011	20/12/2007	---	ELLAKTOR (CR)	2.13	-0.93 €	2.15 23/08/2013	2.15	2.12	2.18	2.13	2.14	1874@2.12	161@2.13	---	2012	70,174	200	150,421.38	377,012.80		1.36	2.50	2357

Number of Outstanding Securities	Nominal Value	Dividends [1]			Date of Last Coupon Dividend [2]		Date of Right	Note	Shares	Closing price	% change	Previous closing price/date	Open price	Price min	Price max	Last price	Avg price	Last Bid [7]	Last Ask [7]	P/E after	Year	Volume	Trades	Transactions Value	Company Mkt Value (thou. €)	Year low	Year high	Sector[4]
26,730,187	0.600	---	---	---	25/06/2009	30/12/2010	---	---	ELTON SA (CR)	1.11	-2.63	€ 1.14 23/08/2013	1.11	1.11	1.14	1.11	1.11	200@1.10	900@1.12	11.60	2012	290	6	322.20	29,670.51	0.850	1.25	1353
15,146,404	0.340	0.093	---	---	06/07/2011	17/10/2002	---	---	ELTRAK SA (CR)	1.71	5.56	# 1.62 23/08/2013	1.62	1.48	1.71	1.71	1.54	20@1.70	127@1.71	---	2012	732	8	1,123.67	25,900.35	1.08	1.90	2753
124,100,815	0.300	---	---	---	27/06/2008	07/07/2000	---	---	ELVAL SA. (CB)	2.02	---	↘ 2.02 23/08/2013	2.00	1.98	2.02	2.02	1.99	430@1.97	797@2.02	15.60	2012	2,313	19	4,596.30	250,683.65	1.55	2.38	1753
13,230,000	0.300	---	---	---	11/08/2010	27/06/2012	---	---	ELVE SA (CR)	0.520	4.00	# 0.500 23/08/2013	0.548	0.490	0.548	0.520	0.519	290@0.481	75@0.520	---	2012	1,265	7	656.88	6,879.60	0.423	0.717	3763
30,009,210	0.310	---	---	---	27/06/2008	26/06/2000	---	---	ETEM SA (CB)	0.420	1.45	# 0.414 23/08/2013	0.401	0.401	0.426	0.420	0.418	40@0.401	1892@0.420	---	2012	3,339	6	1,395.78	12,603.87	0.328	0.828	1753
4,050,416,865	0.300	---	---	---	02/05/2008	13/06/2013	---	---	EUROBANK ERGASIAS (CR)	0.650	1.88	# 0.638 23/08/2013	0.643	0.640	0.664	0.650	0.648	2100@0.647	2000@0.655	---	2012	1,094,464	707	709,125.04	2,632,770.96	0.555	6.23	8355
61,000,000	2.13	0.5364	0.4067	---	23/03/2012	20/11/2007	---	---	EUROBANK PROPERTIES REIC (CR)	7.10	-1.39	€ 7.20 23/08/2013	7.10	7.09	7.35	7.10	7.11	319@7.09	5370@7.15	---	2012	8,223	43	58,472.75	433,100.00	4.87	7.75	8675
27,503,677	0.600	0.04	0.05	0.1	11/07/2013	18/10/1999	---	---	EUROPEAN RELIANCE INSUR. (CR)	1.12	---	↘ 1.12 23/08/2013	1.15	1.12	1.17	1.12	1.15	2550@1.12	278@1.15	3.38	2012	6,238	10	7,166.23	30,804.12	0.973	1.62	8536
13,673,200	0.880	---	---	---	18/07/2008	26/07/2001	---	---	EVROFARMA SA (CR)	0.260	---	↘ 0.260 21/08/2013	---	---	---	---	---	200@0.236	315@0.286	---	2012	---	---	---	3,555.03	0.209	0.539	3577
106,500,000	0.600	0.04	0.05	0.15	31/07/2013	28/01/2000	---	---	EYDAP S.A. (CR)	6.10	1.33	# 6.02 23/08/2013	6.03	6.03	6.15	6.10	6.12	100@6.11	370@6.14	13.87	2012	9,115	73	55,747.66	649,650.00	4.65	6.47	7577
52,800,154	0.300	---	---	---	16/04/2010	21/06/2004	---	---	F.G. EUROPE S.A. (CR)	0.507	-3.06	€ 0.523 23/08/2013	0.528	0.500	0.529	0.507	0.520	2100@0.490	585@0.528	6.14	2012	1,189	8	617.90	26,769.68	0.450	0.950	3722
10,203,575	0.730	---	---	---	16/07/2007	18/10/1999	---	---	FIERATEX SA (CR)	0.178	---	↘ 0.178 23/08/2013	---	---	---	---	---	---	500@0.139	---	2012	---	---	---	1,816.24	0.090	0.400	3763
11,720,024	0.530	---	---	---	16/07/2010	29/05/2012	---	---	FLEXOPACK SA (CR)	3.60	---	↘ 3.60 20/08/2013	---	---	---	---	---	500@3.61	---	12.12	2012	---	---	---	42,192.09	2.39	5.00	2723
4,181,450	0.500	---	---	---	21/08/2000	05/03/2002	---	---	FLOUR MILLS SARANTOPOULOS SA	0.900	---	↘ 0.900 12/08/2013	---	---	---	---	---	326@0.900	---	16.64	2012	---	---	---	3,763.31	0.626	1.02	3577
66,948,210	0.300	---	---	---	14/07/2009	31/12/2010	4988	---	FOLLI FOLLIE (CR)	18.00	0.78	# 17.86 23/08/2013	18.00	17.61	18.20	18.00	18.02	7@17.85	14560@18.00	---	2012	24,099	151	434,295.10	1,205,067.78	11.51	19.00	5379
50,992,322	1.00	---	---	---	21/06/2010	16/07/2002	---	---	FOURLIS (CR)	2.62	0.38	# 2.61 23/08/2013	2.61	2.57	2.63	2.62	2.60	3500@2.60	3378@2.62	---	2012	22,817	48	59,350.68	133,599.88	1.58	2.95	3722
50,592,373	0.300	---	---	---	07/07/2010	07/09/2011	---	---	FRIGOGLASS SA (CR)	4.94	-0.60	€ 4.97 23/08/2013	4.97	4.90	4.97	4.94	4.93	200@4.90	520@4.94	---	2012	3,697	44	18,233.63	249,926.32	3.84	6.26	2757
77,376,446	0.340	---	---	---	23/05/2005	18/08/2011	---	---	G.E. DIMITRIOU (CR)	0.050	-9.09	€ 0.055 23/08/2013	0.050	0.050	0.050	0.050	0.050	---	2700@0.050	---	2012	6,000	1	300.00	3,868.82	0.028	0.118	3722
14,076,360	0.370	---	---	---	19/08/2008	22/07/2003	---	---	GALAXIDI S.A. (CR)	0.360	---	↘ 0.360 08/08/2013	---	---	---	---	---	---	1900@0.350	10.24	2012	---	---	---	5,067.49	0.320	0.638	3573
85,882,688	0.570	0.0048	---	---	01/08/2011	02/01/2009	---	---	GEK TERNA (CR)	2.17	0.46	# 2.16 23/08/2013	2.16	2.15	2.20	2.17	2.18	3350@2.16	2500@2.18	-(6)-	2012	80,286	161	174,839.23	186,365.43	1.40	2.80	2357
24,060,000	0.300	---	0.017	---	18/06/2012	21/01/2000	---	---	GEN. COMMERCIAL & IND.SA (CR)	0.429	---	↘ 0.429 22/08/2013	---	---	---	---	---	10@0.389	249@0.418	---	2012	---	---	---	10,321.74	0.303	0.545	2797
1,270,000	0.300	---	---	---	06/07/2007	06/02/2013	---	---	GIRAKIAN PROFIL SA (CB)	1.93	---	↘ 1.93 23/08/2013	---	---	---	---	---	---	100@1.95	---	2012	---	---	---	2,451.10	0.900	3.33	1757
34,770,982	1.54	---	---	---	06/07/2010	27/07/2000	---	---	GR. SARANTIS SA (CR)	4.91	-2.96	€ 5.06 23/08/2013	4.97	4.91	4.97	4.91	4.94	150@4.94	150@5.03	---	2012	300	2	1,482.00	170,725.52	4.05	5.45	3767
8,340,750	1.20	---	---	---	25/06/2009	30/07/2001	---	---	HAIDEMENOS SA (CR)	0.391	---	↘ 0.391 23/08/2013	---	---	---	---	---	160@0.391	---	---	2012	---	---	---	3,261.23	0.350	0.905	2791
101,279,627	0.380	---	---	---	26/06/2008	14/07/2006	---	---	HALKOR SA (CB)	0.898	5.77	# 0.849 23/08/2013	0.850	0.849	0.898	0.898	0.881	1000@0.881	1200@0.899	---	2012	129,880	229	114,439.82	90,949.11	0.550	1.42	1755
36,748,909	0.730	---	---	---	15/12/2005	13/12/2006	---	---	HEL. SUGAR INDUSTRY SA (CB)	0.900	-1.10	€ 0.910 23/08/2013	0.900	0.888	0.920	0.900	0.904	50@0.917	150@0.919	14.25	2012	1,561	8	1,410.65	33,074.02	0.754	1.74	3577
29,546,360	0.710	---	---	---	20/06/2008	23/08/2000	---	---	HELLENIC CABLES SA (CR)	1.67	2.45	# 1.63 23/08/2013	1.66	1.61	1.69	1.67	1.63	1550@1.64	437@1.67	---	2012	59,683	39	97,474.31	49,342.42	1.16	2.32	2733
65,368,563	0.790	0.15	0.11	0.09	03/06/2013	26/09/2012	---	---	HELLENIC EXCHANGES (CR)	5.94	-1.66	€ 6.04 23/08/2013	6.04	5.94	6.04	5.94	5.96	1241@5.94	450@5.98	26.61	2012	33,449	143	199,197.14	388,289.26	3.75	6.97	8777
305,635,185	2.18	0.45	0.45	0.15	16/08/2013	01/10/2003	4795	---	HELLENIC PETROLEUM (CR)	7.51	-1.96	€ 7.66 23/08/2013	7.52	7.46	7.60	7.51	7.52	117@7.46	500@7.52	23.54	2012	13,839	161	104,061.00	2,295,320.24	6.20	9.30	537
305,732,436	0.410	---	---	---	08/07/2009	28/09/2011	---	---	HYGEIA SA (CR)	0.415	-1.89	€ 0.423 23/08/2013	0.416	0.409	0.423	0.415	0.415	6500@0.410	1000@0.419	---	2012	30,920	83	12,821.62	126,878.96	0.280	0.795	4533
53,155,053	0.440	---	---	---	21/07/2010	16/07/2008	---	---	IASO SA (CR)	1.07	0.94	# 1.06 23/08/2013	1.07	1.07	1.07	1.07	1.07	2500@1.01	1144@1.05	---	2012	98	5	104.86	56,875.91	0.850	1.58	4533
8,298,467	0.400	---	---	---	30/08/1993	08/05/2013	---	---	IDEAL GROUP SA (CR)	0.656	-9.89	€ 0.728 23/08/2013	0.728	0.656	0.728	0.656	0.658	---	300@0.689	-(6)-	2012	592	6	389.79	5,443.79	0.571	1.85	9574
28,580,100	0.400	0.05	0.02	---	20/08/2012	23/02/2007	---	---	IKTINOS HELLAS SA (CR)	1.50	---	↘ 1.50 23/08/2013	1.49	1.49	1.50	1.50	1.49	1090@1.46	1375@1.50	14.52	2012	405	3	603.50	42,870.15	1.16	1.80	2353
9,000,000	0.880	---	---	---	15/05/2009	07/12/2010	---	---	ILYDA S.A. (CR)	0.559	---	↘ 0.559 05/08/2013	---	---	---	---	---	---	2821@0.504	---	2012	---	---	---	5,031.00	0.269	0.650	9537
20,578,374	0.620	0.03	---	---	02/06/2011	05/05/1999	---	---	INFORM P. LYKOS SA (CR)	1.26	-0.79	€ 1.27 23/08/2013	1.25	1.23	1.26	1.26	1.25	50@1.24	88@1.26	---	2012	381	13	474.97	25,928.75	1.10	1.75	2791
11,233,200	0.730	---	---	---	12/07/2010	30/07/1999	---	---	INTERTECH SA (CR)	0.299	-0.33	€ 0.300 21/08/2013	0.273	0.270	0.300	0.300	0.281	290@0.270	180@0.300	---	2012	550	7	154.48	3,358.73	0.223	0.600	9572
34,986,430	0.440	---	---	---	25/07/2008	23/02/2010	---	---	INTERWOOD-XYLEMPORIA (CR)	0.113	---	↘ 0.113 22/08/2013	---	---	---	---	---	3000@0.112	---	---	2012	---	---	---	4,518.17	0.101	0.188	2353
2,566,836	0.440	---	---	---	13/08/2010	09/01/2007	---	---	INTERWOOD-XYLEMPORIA (PR)	0.220	---	↘ 0.220 26/07/2013	---	---	---	---	---	1000@0.220	1000@0.230	---	2012	---	---	---	4,518.17	0.200	0.315	2353

Number of Outstanding Securities	Nominal Value	Dividends [1]			Date of Last Coupon		Note	Shares	Closing price	% change	Previous closing price/date	Open price	Price min	Price max	Last price	Avg price	Last Bid [7]	Last Ask [7]	P/E after	Year	Volume	Trades	Transactions Value	Company Mkt Value (thou. €)	Year low	Year high	Sector[4]	
		2010	2011	2012	Dividend [2]	Right																						
Main Market																												
23,154,250	1.36	---	---	---	12/08/2008	02/08/2010	---	INTRACOM CONSTR. (CR)	0.735	-1.34	€ 0.745	23/08/2013	0.760	0.734	0.760	0.735	0.744	500@0.732	500@0.750	---	2012	964	7	717.36	17,018.37	0.580	1.22	2357
133,025,996	1.41	---	---	---	03/07/2007	07/01/2002	---	INTRACOM HOLDINGS (CR)	0.451	-1.31	€ 0.457	23/08/2013	0.465	0.449	0.465	0.451	0.454	1050@0.449	390@0.455	---	2012	41,896	80	19,000.84	59,994.72	0.321	0.754	9578
158,961,721	0.300	0.0045	0.0035	0.0026	30/05/2013	14/11/2007	---	INTRALOT (CR)	1.61	0.63	# 1.60	23/08/2013	1.62	1.59	1.63	1.61	1.61	2150@1.59	4122@1.62	85.94	2012	124,873	229	200,961.54	255,928.37	1.29	2.41	5752
77,654,850	0.580	0.04	---	---	01/07/2011	21/02/2003	---	J & P - AVAX SA (CR)	1.53	-3.16	€ 1.58	23/08/2013	1.53	1.52	1.56	1.53	1.53	5146@1.52	220@1.53	---	2012	12,410	54	18,980.79	118,811.92	1.05	1.90	2357
129,994,676	1.19	0.189	---	---	23/12/2010	07/09/2012	---	JUMBO SA (CR)	8.46	-0.24	€ 8.48	23/08/2013	8.48	8.30	8.67	8.43	8.52	178@8.38	545@8.38	14.26	2012	13,210	108	112,533.94	1,099,754.96	4.85	9.07	3747
9,742,920	0.400	0.01	0.01	0.01	12/08/2013	14/07/2000	---	KARAMOLEGOS SA (CR)	1.25	---	↘ 1.25	23/08/2013	---	---	---	---	---	---	540@1.25	4.86	2012	---	---	---	12,178.65	1.07	1.83	3577
14,679,792	1.44	0.065	---	---	03/06/2011	04/09/2000	---	KARATZIS SA (CR)	4.55	4.12	# 4.37	23/08/2013	4.24	4.24	4.55	4.55	4.43	50@4.37	385@4.55	15.28	2012	460	8	2,036.85	66,793.05	2.55	4.90	2723
3,300,689	0.350	---	---	---	01/07/2004	21/07/1999	---	KEKROPS SA (CR)	2.02	7.45	# 1.88	23/08/2013	2.02	2.02	2.02	2.02	2.02	50@1.75	700@1.90	---	2012	50	1	101.00	6,667.39	1.54	3.79	8633
7,595,160	0.600	---	---	---	08/08/2008	18/08/2010	---	KIRIAKOULIS SHIPPING SA (CR)	1.04	---	↘ 1.04	23/08/2013	---	---	---	---	---	---	138@1.01	72.47	2012	---	---	---	7,898.97	0.635	1.49	5759
23,648,700	0.330	0.05	---	---	13/07/2011	23/07/2008	---	KLEEMAN HELLAS SA (CR)	1.51	---	↘ 1.51	21/08/2013	---	---	---	---	---	50@1.46	500@1.51	---	2012	---	---	---	35,709.54	1.20	1.88	2757
40,219,218	0.300	---	---	---	25/05/2009	09/07/2013	---	KLOUKINAS - LAPPAS SA (CR)	0.635	-2.16	€ 0.649	23/08/2013	0.625	0.621	0.635	0.635	0.622	200@0.613	400@0.635	---	2012	33,700	15	20,970.81	25,539.20	0.583	0.970	2357
21,224,340	0.420	---	---	---	02/07/2008	25/04/2006	---	KORDELLOS BROS SA (CR)	0.236	---	↘ 0.236	16/08/2013	---	---	---	---	---	1000@0.229	1000@0.239	---	2012	---	---	---	5,008.94	0.195	0.428	1757
13,450,000	0.390	---	---	---	25/06/2010	28/05/2008	---	KORRES (CR)	3.14	2.95	# 3.05	23/08/2013	3.14	3.14	3.15	3.14	3.14	80@3.07	15@3.13	---	2012	450	6	1,414.00	42,233.00	2.66	4.87	3767
29,480,000	0.420	---	---	---	19/07/2010	01/08/2007	---	KRETA FARM SA (CR)	0.583	-1.19	€ 0.590	23/08/2013	0.557	0.557	0.583	0.583	0.566	150@0.556	1810@0.580	---	2012	150	2	84.85	17,186.84	0.307	0.800	3577
33,065,136	0.440	---	---	---	06/07/2009	02/08/2013	---	KRI-KRI S.A. (CR)	1.92	2.13	# 1.88	23/08/2013	1.88	1.88	1.92	1.92	1.90	10324@1.92	8850@1.93	14.22	2012	6,575	8	12,516.03	63,485.06	1.52	2.06	3577
15,804,800	0.330	---	---	---	15/06/2010	12/03/2004	---	KTIMA KOSTAS LAZARIDIS SA (CR)	0.297	---	↘ 0.297	21/08/2013	---	---	---	---	---	180@0.269	400@0.306	---	2012	---	---	---	4,694.03	0.239	0.488	3535
22,945,139	1.00	---	---	---	19/08/2008	10/09/2012	---	KYRIAKIDIS MARBLES SA (CR)	0.880	---	↘ 0.880	23/08/2013	---	---	---	---	---	1300@0.870	1500@0.915	86.20	2012	---	---	---	20,191.72	0.630	1.04	2353
44,267,700	0.300	---	---	---	30/05/2007	18/09/2002	---	LAMDA DEVELOPMENT SA (CR)	4.00	4.17	# 3.84	21/08/2013	4.04	4.00	4.04	4.00	4.02	100@3.90	325@4.02	---	2012	1,220	12	4,898.60	177,070.80	3.58	6.48	8633
5,939,268	0.620	---	---	---	10/07/2003	03/01/2002	---	LANAKAM SA (CR)	0.639	---	↘ 0.639	14/08/2013	---	---	---	---	---	---	4385@0.576	---	2012	---	---	---	3,795.19	0.503	0.869	3763
7,734,375	1.00	---	---	---	09/07/2007	07/01/2011	---	LIVANIS SA (CR)	0.229	---	↘ 0.229	23/08/2013	---	---	---	---	---	---	1000@0.224	---	2012	---	---	---	1,771.17	0.144	0.363	5557
4,740,000	0.860	---	---	---	14/03/2003	---	---	LOGISMOS S.A. (CR)	0.496	---	↘ 0.496	06/08/2013	---	---	---	---	---	10@0.447	340@0.494	57.54	2011	---	---	---	2,351.04	0.373	1.23	9533
15,222,276	0.640	---	---	---	01/06/2010	02/08/2011	---	LOULIS MILLS SA (CR)	2.79	---	↘ 2.79	23/08/2013	---	---	---	---	---	326@2.72	150@2.85	-(6)-	2012	---	---	---	42,470.15	2.08	3.76	3577
770,328,883	0.300	---	---	---	26/04/2007	10/05/2013	---	MARFIN INVESTMENT GROUP (CR)	0.309	0.65	# 0.307	23/08/2013	0.308	0.300	0.309	0.309	0.305	200@0.303	6557@0.309	---	2012	277,736	212	84,602.91	238,031.62	0.175	0.564	8775
9,819,370	0.690	---	---	---	14/08/2007	09/01/2004	---	MATHIOS REFRACTORY SA (CR)	0.255	---	↘ 0.255	23/08/2013	0.255	0.255	0.255	0.255	0.255	10990@0.179	8800@0.255	---	2012	11,200	6	2,856.00	2,503.94	0.180	0.510	2353
468,700	1.0556	---	---	---	21/03/2012	21/05/2004	---	MERMEREN KOMB. A.D. PR. (GDR)	4.13	---	↘ 4.13	21/08/2013	4.13	4.13	4.13	4.13	4.13	20@3.61	50@4.15	1.01	2012	50	1	206.50	1,935.73	3.73	5.19	1775
51,950,600	0.320	0.48	0.75	0.25	10/05/2013	21/10/2005	---	METKA (CR)	10.42	-1.23	€ 10.55	23/08/2013	10.77	10.40	10.77	10.42	10.54	116@10.42	150@10.50	15.02	2012	2,017	50	21,251.87	541,325.25	9.00	12.78	2757
10,500,000	0.900	---	---	---	24/06/2008	04/07/2012	---	MEVACO SA (CR)	1.43	---	↘ 1.43	23/08/2013	1.43	1.43	1.43	1.43	1.43	150@1.43	1000@1.45	10.35	2012	1,350	4	1,930.50	15,015.00	1.01	1.58	2757
14,074,000	3.00	0.15	0.25	---	02/03/2012	23/07/2009	---	MIG REAL ESTATE (CR)	1.77	---	↘ 1.77	16/08/2013	---	---	---	---	---	---	270@1.93	---	2012	---	---	---	24,910.98	1.17	1.77	8671
6,200,000	0.500	---	---	---	22/06/2010	01/11/1995	---	MINERVA KNITWEAR SA (CB)	0.776	---	↘ 0.776	05/08/2013	---	---	---	---	---	---	3000@0.699	---	2012	---	---	---	4,811.20	0.530	0.948	3763
12,417,000	0.370	---	---	---	28/07/2008	06/09/2011	---	MLS MULTIMEDIA SA (CR)	3.03	-0.33	€ 3.04	23/08/2013	3.03	2.96	3.03	3.03	3.01	656@2.96	2025@3.04	39.91	2012	1,215	9	3,653.57	37,623.51	2.60	3.04	9537
4,588,137	16.00	---	---	---	30/06/2005	17/08/2011	---	MOCHLOS SA (CR)	1.79	2.87	# 1.74	23/08/2013	1.79	1.79	1.79	1.79	1.79	40@1.65	2150@1.73	---	2012	68	5	121.72	8,212.77	1.12	2.60	2357
11,700,000	0.590	---	---	---	02/06/2009	24/07/2012	---	MOTODYNAMICS S.A. (CR)	0.338	-9.63	€ 0.374	20/08/2013	0.337	0.337	0.338	0.338	0.337	---	14@0.338	---	2012	1,604	6	541.15	3,954.60	0.211	0.640	5379
110,782,980	0.850	0.25	0.4	0.3	26/06/2013	05/11/2012	---	MOTOR OIL (CR)	7.46	-2.48	€ 7.65	23/08/2013	7.65	7.46	7.65	7.46	7.52	796@7.46	1000@7.54	9.11	2012	28,851	207	216,876.34	826,441.03	6.80	9.37	533
116,915,862	1.07	---	---	---	11/05/2009	06/07/2011	---	MYTILINEOS HOLDINGS (CR)	4.31	-1.37	€ 4.37	23/08/2013	4.33	4.31	4.40	4.31	4.35	396@4.31	1127@4.35	---	2012	46,855	200	203,971.35	503,907.37	3.38	5.65	1755
8,321,682	0.670	---	---	---	17/08/2007	23/11/1999	---	N. LEVEDERIS SA (CB)	0.347	---	↘ 0.347	14/08/2013	---	---	---	---	---	---	300@0.347	---	2012	---	---	---	3,855.54	0.198	0.658	1757
2,160,524	0.670	0.0435	0.0435	0.0436	16/08/2013	23/11/1999	---	N. LEVEDERIS SA (PB)	0.448	---	↘ 0.448	23/08/2013	---	---	---	---	---	---	300@0.448	---	2012	---	---	---	3,855.54	0.307	0.798	1757
11,510,102	0.890	---	---	---	24/06/2005	06/10/1999	---	NAFPAKTOS TEXTILE IND. SA (CB)	0.367	---	↘ 0.367	23/08/2013	---	---	---	---	---	---	50@0.361	---	2012	---	---	---	4,224.21	0.232	0.500	3763
6,340,000	0.600	---	---	---	30/11/2009	12/07/2000	---	NAKAS MUSIC	0.684	---	↘ 0.684	23/08/2013	0.684	0.684	0.684	0.684	0.684	79@0.684	---	---	2012	151	3	1033				

Number of Outstanding Securities	Nominal Value	Dividends [1]			Date of Last Coupon		Note	Shares	Closing price	% change	Previous closing price/date	Open price	Price min	Price max	Last price	Avg price	Last Bid [7]	Last Ask [7]	P/E after	Year	Volume	Trades	Transactions Value	Company Mkt Value (thou. €)	Year low	Year high	Sector[4]	
		2010	2011	2012	Dividend [2]	Right																						
Main Market																												
2,396,785,994	0.300	---	---	---	16/05/2008	24/05/2013	---	NATIONAL BANK (CR)	3.00	-1.64	€ 3.05	23/08/2013	3.05	2.99	3.10	3.00	3.05	51255@3.00	1000@3.03	---	2012	766,982	1,023	2,337,209.23	7,190,357.98	1.83	9.87	8355
23,935,280	0.300	---	---	---	29/06/2009	13/06/2000	---	NAYTEMPORIKI PUBLISHING SA(CR)	0.180	---	₪ 0.180	21/08/2013	---	---	---	---	1000@0.176	630@0.195	---	2012	---	---	---	4,308.35	0.172	0.360	5557	
27,848,000	0.300	0.0301	0.0132	0.0137	21/08/2013	02/09/2003	---	NEWSPHONE HELLAS SA (CR)	0.315	5.00	# 0.300	22/08/2013	0.278	0.278	0.315	0.315	1@0.315	12000@0.331	7.71	2012	500	2	157.47	8,772.12	0.241	0.592	2791	
6,132,500	1.25	0.1	---	---	24/06/2011	19/06/2001	---	NEXANS HELLAS SA (CR)	2.18	-5.22	€ 2.30	23/08/2013	2.25	2.13	2.25	2.18	2.17	167@2.17	500@2.24	---	2012	2,557	15	5,547.16	13,368.85	2.13	3.11	2733
63,697,153	1.34	---	---	---	08/07/2008	10/11/2008	---	NIREFS SA (CR)	0.434	-2.03	€ 0.443	23/08/2013	0.450	0.426	0.450	0.434	0.434	13@0.434	20@0.438	---	2012	5,582	46	2,421.04	27,644.56	0.380	0.839	3573
319,000,000	0.300	1.4177	0.72	0.57	28/06/2013	25/04/2001	---	OPAP (CR)	7.44	-1.59	€ 7.56	23/08/2013	7.51	7.36	7.55	7.44	7.47	4820@7.40	250@7.45	4.63	2012	645,610	545	4,829,663.87	2,373,360.00	5.49	8.27	5752
490,150,389	2.39	0.1179	---	---	28/06/2011	18/06/1998	---	OTE (CR)	6.92	---	₪ 6.92	23/08/2013	6.96	6.81	6.96	6.92	6.90	1@6.90	840@6.92	---	2012	153,847	514	1,060,751.69	3,391,840.69	4.26	7.80	6535
25,000,000	2.00	0.02	0.01	0.05	18/07/2013	08/08/2003	---	P.P.A. S.A. (CR)	16.62	-2.35	€ 17.02	23/08/2013	17.02	16.51	17.20	16.62	16.96	470@16.55	45@16.94	83.82	2012	3,592	87	60,917.85	415,500.00	14.59	21.68	2777
4,971,466	1.46	---	---	---	04/07/2007	08/10/2003	---	PAIRIS SA (CR)	0.316	---	₪ 0.316	22/08/2013	---	---	---	---	970@0.222	430@0.388	---	2012	---	---	---	1,570.98	0.201	0.605	2723	
3,953,090	0.900	---	---	---	02/07/2001	05/12/2012	---	PAPERPACK (CR)	0.722	0.98	# 0.715	23/08/2013	0.724	0.722	0.724	0.722	0.723	2000@0.502	200@0.715	---	2012	430	2	310.92	2,854.13	0.500	1.06	2723
50,797,369	0.310	---	---	---	17/08/2000	12/10/2010	---	PAPOUTSANIS (CR)	0.622	4.01	# 0.598	22/08/2013	0.622	0.622	0.622	0.622	0.622	1000@0.515	1000@0.623	---	2012	510	3	317.22	31,595.96	0.361	0.750	3767
20,210,127	1.53	---	---	---	27/06/1997	20/03/2000	---	PARNASSOS ENTERP. (CR)	0.181	-4.23	€ 0.189	23/08/2013	0.195	0.180	0.197	0.181	0.186	4319@0.180	100@0.186	---	2012	53,420	74	9,916.21	3,658.03	0.176	0.698	8775
7,070,400	0.930	---	---	---	18/05/2010	12/05/2011	---	PETROPOULOS PETROS (CR)	1.50	---	₪ 1.50	23/08/2013	1.50	1.50	1.50	1.50	1.50	50@1.47	50@1.54	---	2012	40	1	60.00	10,605.60	1.20	1.74	2753
5,072,567,951	0.300	---	---	---	16/05/2008	05/06/2013	---	PIRAEUS BANK (CR)	1.03	---	₪ 1.03	23/08/2013	1.05	1.03	1.05	1.03	1.04	83401@1.02	10300@1.04	---	2012	1,877,266	737	1,944,846.32	5,224,744.99	0.832	6.28	8355
22,080,000	0.320	0.05	0.08	0.12	22/05/2013	03/10/2000	---	PLAISIO COMPUTERS SA (CR)	5.00	-1.58	€ 5.08	23/08/2013	4.90	4.87	5.09	5.00	4.96	152@4.98	50@5.10	11.13	2012	596	9	2,957.16	110,400.00	3.65	6.25	9572
232,000,000	4.60	0.79	---	0.025	22/07/2013	12/12/2001	---	PPC (CR)	7.47	-1.71	€ 7.60	23/08/2013	7.60	7.47	7.60	7.47	7.52	300@7.46	600@7.49	-(6)-	2012	65,392	256	491,653.72	1,733,040.00	4.55	8.49	7535
11,812,193	0.450	---	---	---	24/07/2009	15/11/2006	---	PROFILE SA (CR)	1.06	1.92	# 1.04	23/08/2013	1.05	1.04	1.06	1.06	1.05	150@1.02	5119@1.06	20.39	2012	1,600	8	1,682.50	12,520.92	0.761	1.26	9533
24,319,250	0.300	---	---	---	09/07/2002	04/07/2007	---	PROODEFTIKH SA (CR)	0.126	-2.33	€ 0.129	23/08/2013	0.123	0.123	0.126	0.126	0.125	1300@0.126	1000@0.130	---	2012	2,450	3	306.45	3,064.23	0.054	0.223	2357
6,836,280	1.88	---	---	---	18/07/2005	10/09/2010	---	QUALITY & RELIABILITY SA (CR)	1.65	-2.94	€ 1.70	23/08/2013	1.61	1.59	1.65	1.65	1.61	2000@1.60	450@1.65	---	2012	15,650	24	25,259.50	11,279.86	0.236	1.75	9533
48,069,201	0.400	---	---	---	05/09/2008	21/06/2012	---	QUEST HOLDINGS (CR)	1.12	-0.88	€ 1.13	23/08/2013	1.16	1.10	1.16	1.12	1.12	300@1.11	1500@1.13	---	2012	10,264	25	11,441.62	53,837.51	0.936	1.39	9533
57,434,884	1.31	---	---	---	05/06/2008	12/06/2009	---	REDS S.A. (CR)	0.500	-0.40	€ 0.502	23/08/2013	0.497	0.497	0.500	0.500	0.497	180@0.480	3980@0.500	---	2012	4,400	3	2,187.24	28,717.44	0.450	0.949	8633
22,280,000	0.300	0.0329	---	---	11/04/2011	23/02/2007	---	REVOIL (CR)	0.865	2.37	# 0.845	23/08/2013	0.870	0.850	0.870	0.865	0.865	150@0.859	1000@0.878	---	2012	2,326	19	2,012.02	19,272.20	0.345	1.20	5379
7,500,000	0.560	---	---	---	25/06/2010	10/04/2013	---	S.KANAKIS SA (CR)	1.59	---	₪ 1.59	23/08/2013	1.59	1.55	1.59	1.59	1.59	50@1.54	543@1.59	11.30	2012	80	6	127.12	11,925.00	1.05	1.90	3577
52,067,296	0.300	---	---	---	23/12/2003	24/01/2007	---	SELECTED TEXT. IND. ASSOC (CR)	0.289	---	₪ 0.289	23/08/2013	---	---	---	---	---	500@0.265	2220@0.290	---	2012	---	---	---	15,047.45	0.232	0.587	3763
96,243,908	0.410	---	---	---	26/06/2008	17/07/2000	---	SIDENOR (CR)	1.62	-0.61	€ 1.63	23/08/2013	1.63	1.61	1.65	1.62	1.63	3800@1.62	370@1.63	---	2012	27,680	53	45,162.47	155,915.13	1.00	2.39	1757
6,456,530	1.60	---	---	---	29/06/2001	02/08/2010	---	SPACE HELLAS SA (CR)	2.19	---	₪ 2.19	14/06/2013	---	---	---	---	---	100@1.98	4898@1.98	70.35	2012	---	---	---	14,139.80	1.25	2.20	9578
28,438,268	0.300	---	---	---	21/08/2006	24/11/1999	---	SPIROY AGRICULTURE SA (CR)	0.299	6.79	# 0.280	23/08/2013	0.280	0.280	0.299	0.299	0.290	116@0.280	500@0.298	---	2012	184	2	53.42	8,503.04	0.252	0.557	1357
33,125,000	5.00	---	---	---	03/07/2006	18/08/2010	---	TECHNICAL OLYMPIC SA (CR)	1.37	3.01	# 1.33	23/08/2013	1.33	1.33	1.39	1.37	1.34	1241@1.33	742@1.37	-(6)-	2012	3,895	27	5,220.04	45,381.25	1.18	2.71	3728
109,319,070	0.300 (0.0399)	(0.0613)	---	---	28/05/2012	05/08/2013	---	TERNA ENERGY (CR)	2.88	-1.37	€ 2.92	23/08/2013	2.92	2.88	2.96	2.88	2.91	649@2.88	1349@2.93	63.26	2012	18,466	104	53,662.02	314,838.92	2.24	3.73	7537
36,300,000	1.12	0.114	0.188	0.162	16/08/2013	12/12/2007	---	THESSALONIKA WATER & SEWERAGE	5.86	1.03	# 5.80	23/08/2013	5.80	5.80	5.86	5.86	5.82	50@5.79	92@5.85	12.03	2012	1,880	14	10,947.60	212,718.00	4.73	6.82	7577
45,094,620	0.500	0.036	---	0.0467	10/06/2013	01/11/1999	---	THRACE PLASTICS SA (CR)	1.28	-1.54	€ 1.30	23/08/2013	1.27	1.27	1.29	1.28	1.28	2020@1.27	1890@1.29	7.37	2012	1,402	13	1,795.16	57,721.11	1.07	1.64	1357
77,063,568	4.00	0.0806	---	---	24/06/2011	25/06/2004	---	TITAN CEMENT (CR)	14.80	2.78	# 14.40	23/08/2013	14.95	14.52	14.95	14.80	14.89	1@14.68	182@14.80	---	2012	15,225	69	226,660.00	1,192,009.73	11.31	16.00	2353
7,568,960	4.00	0.1869	---	---	24/06/2011	25/06/2004	---	TITAN CEMENT CO. (PR)	6.80	-2.86	€ 7.00	20/08/2013	6.80	6.80	6.80	6.80	6.80	10@6.50	369@6.80	---	2012	31	2	210.80	1,192,009.73	5.75	7.27	2353
10,080,000	3.00	0.21	0.4	1.5	17/07/2013	27/08/2001	---	TPA SA (CR)	24.00	-2.44	€ 24.60	23/08/2013	24.00	24.00	24.49	24.00	24.09	478@24@2										

Number of Outstanding Securities	Nominal Value	Dividends [1]			Date of Last Coupon		Note	Shares	Closing price	% change	Previous closing price/date		Open price	Price min	Price max	Last price	Avg price	Last Bid [7]	Last Ask [7]	P/E after	Year	Volume	Trades	Transactions Value	Company Mkt Value (thou. €)	Year low	Year high	Sector[4]
2010	2011	2012	Dividend [2]	Right																								

Main Market

4,968,600	2.88	---	---	---	01/07/1998	14/12/1998	---	VIS SA (CR)	0.825	---	↘	0.825	05/08/2013	---	---	---	---	---	91@0.905	---	2012	---	---	---	4,099.10	0.490	1.01	2723
6,325,000	0.600	---	---	---	19/07/2010	25/07/2012	---	VOGIATZOGLOU SYSTEMS SA (CR)	0.999	---	↘	0.999	22/08/2013	---	---	---	---	100@0.905	50@1.04	---	2012	---	---	---	6,318.68	0.812	1.21	2797

Exchange Traded Funds (ETFs)

5,848,618	---	---	---	24/01/2008	---	ALPHA ETF FTSE Athex Large Cap	3.13	-0.63	☒	3.15	23/08/2013	3.13	3.13	3.13	3.13	3.13	---	1000@3.20	---	---	---	38	1	118.94	-	2.49	3.99	11000
294,878	---	---	---	29/06/2009	---	NBGAM ETF	10.22	-0.68	☒	10.29	23/08/2013	10.22	10.22	10.22	10.22	10.22	---	---	---	---	2	1	20.44	-	8.23	11.75	11000	
388,550	---	---	---	03/11/2010	---	NBGAM ETF GREECE & TURKEY 30	7.30	-7.24	☒	7.87	06/08/2013	7.30	7.30	7.30	7.30	7.30	---	---	---	---	2	1	14.60	-	7.30	10.11	11000	

Low Dispersion

14,000,000	3.80	---	---	---	23/04/2010	29/06/1999	4815	ALPHA REAL ESTATE SA(CR)	6.55	-6.16	☒	6.98	23/08/2013	6.55	6.55	6.55	6.55	190@6.55	500@6.98	13.56	2012	690	4	4,519.50	91,700.00	6.00	7.00	8637
63,900,000	3.00	---	---	---	23/06/2003	04/11/2008	4816	ASTIR PALACE SA (CR)	3.47	---	↘	3.47	23/08/2013	3.47	3.45	3.48	3.45	93@3.35	250@3.47	---	2012	1,650	21	5,723.86	221,733.00	3.40	4.95	5753
49,152,904	0.800	---	---	---	09/08/2004	08/03/2006	4814	ATHENA SA (CR)	0.275	---	↘	0.275	12/08/2013	---	---	---	---	---	1900@0.274	---	2012	---	---	---	13,517.05	0.094	0.340	2357
191,660,320	0.300	---	---	---	20/07/2009	29/12/2010	4817	ATTICA HOLDINGS (CR)	0.321	-2.13	☒	0.328	23/08/2013	0.310	0.310	0.340	0.340	1500@0.300	440@0.340	---	2012	160	3	51.40	61,522.96	0.241	0.588	5759
15,300,000	0.300	---	---	---	30/07/2009	13/12/1999	4893	ATTICA PUBLICATIONS SA (CR)	0.520	---	↘	0.520	14/08/2013	---	---	---	---	---	2000@0.600	---	2012	---	---	---	7,956.00	0.520	1.45	5557
8,418,750	0.300	---	0.15	0.29	05/06/2013	27/06/2012	4828	GEKE SA (CB)	6.70	---	↘	6.70	23/08/2013	---	---	---	---	100@6.70	190@7.19	21.04	2012	---	---	---	56,405.63	6.59	6.79	5753
68,322,221	1.00	---	---	---	08/03/2002	08/04/2013	4986	GENIKI BANK (CR)	1.51	---	↘	1.51	23/08/2013	---	---	---	---	5@1.35	---	---	2012	---	---	---	103,166.55	1.51	8.85	8355
71,082,707	1.70	---	---	---	01/07/2010	21/11/2012	4820	HERACLES GEN.CEMENT CO. (CR)	1.40	0.72	#	1.39	23/08/2013	1.41	1.39	1.41	1.39	1954@1.39	200@1.42	---	2012	5,000	11	6,980.00	99,515.79	1.20	1.80	2353
13,404,440	8.63	---	---	---	02/04/2001	06/03/1992	4822	IONIAN HOTELS SA (CR)	8.95	1.59	#	8.81	09/08/2013	8.81	8.81	9.05	9.05	198@8.85	26@9.05	---	2012	122	5	1,091.62	119,969.74	8.40	13.00	5753
2,760,000	7.70	6.3291	7.6	8.52	26/06/2013	16/07/1990	4823	KARELIA TOBACCO CO. SA (CB)	200.25	---	↘	200.25	23/08/2013	200.25	200.25	200.25	200.25	4@197.05	197@200.00	12.16	2012	37	2	7,409.25	552,690.00	110.00	205.00	3785
17,000,000	0.600	---	---	---	12/06/2008	07/03/2000	4941	KATHIMERINI SA (CR)	0.731	12.64	#	0.649	23/08/2013	0.541	0.541	0.750	0.749	1000@0.700	49@0.749	---	2012	115	5	84.06	12,427.00	0.321	1.00	5557
21,364,000	1.12	---	---	---	05/07/2010	10/08/2005	4824	LAMPASA HOTEL SA (CR)	18.50	---	↘	18.50	22/08/2013	18.50	18.50	18.50	18.50	50@18.50	500@19.00	---	2012	50	1	925.00	395,234.00	15.00	18.50	5753
6,700,000	0.800	---	---	---	19/07/2010	29/08/2012	4894	MILLS KEPENOS (CR)	1.10	---	↘	1.10	21/08/2013	---	---	---	---	200@1.11	170@1.32	6.54	2012	---	---	---	7,370.00	0.777	1.69	3577
70,926,000	2.25	---	---	---	25/07/2008	21/06/2000	4825	MINOAN LINES SA (CR)	1.98	-1.00	☒	2.00	23/08/2013	1.94	1.94	2.02	2.02	284@2.02	---	---	2012	2,236	10	4,435.12	140,433.48	1.70	2.10	5759
17,240,776	0.370	---	---	---	14/07/2005	30/09/2003	4827	PERSEUS SA (CR)	0.176	---	↘	0.176	12/08/2013	---	---	---	---	---	990@0.211	10.26	2012	---	---	---	3,034.38	0.033	0.325	3577

Surveillance

33,301,715	0.320	---	---	---	27/06/2003	08/07/2009	4978	AEGEK (CR)	0.108	---	↘	0.108	23/08/2013	0.108	0.108	0.108	0.108	310@0.101	1985@0.108	---	2012	1,000	6	108.00	3,596.59	0.089	0.184	2357
14,870,100	0.300	---	---	---	15/05/2008	26/09/2011	4844	ALPHA GRISSIN S.A. (CR)	0.225	---	↘	0.225	09/08/2013	---	---	---	---	---	2500@0.229	---	2012	---	---	---	3,345.77	0.080	0.328	9533
215,246,452	0.300	---	---	---	25/06/2001	24/09/2001	4446	ALTEC SA (CR)	0.042	7.69	#	0.039	23/08/2013	0.036	0.036	0.043	0.043	19937@0.036	2000@0.040	---	2012	563	3	23.77	9,040.35	0.021	0.062	9533
2,969,713	0.300	---	---	---	02/07/2008	28/02/2011	4958	ANEK LINES SA (PR, issue '96)	0.300	---	↘	0.300	13/08/2013	---	---	---	---	---	---	---	2012	---	---	---	17,835.51	0.300	0.770	5759
312,163	0.300	---	---	---	02/07/2008	28/02/2011	4959	ANEK LINES SA (PR, issue '90)	1.43	---	↘	1.43	16/08/2013	---	---	---	---	---	---	---	2012	---	---	---	17,835.51	1.43	1.78	5759
185,373,016	0.300	---	---	---	02/07/2008	28/02/2011	4957	ANEK LINES SA (CR)	0.089	2.30	#	0.087	23/08/2013	0.073	0.073	0.090	0.090	13524@0.083	9999@0.089	---	2012	10,676	6	949.35	17,835.51	0.071	0.270	5759
81,644,555	0.300	---	---	---	01/07/2008	02/09/2002	4630	ATTI - KAT SA (CR)	0.040	---	↘	0.040	23/08/2013	0.040	0.040	0.040	0.040	5500@0.032	20611@0.038	---	2012	3,000	3	120.00	3,265.78	0.022	0.088	2357
20,255,805	0.300	---	---	---	22/08/2006	02/08/2010	4881	AXON HOLDING SA (CR)	0.064	---	↘	0.064	23/08/2013	---	---	---	---	2000@0.052	---	---	2012	---	---	---	1,296.37	0.064	0.192	4533
17,579,754	4.16	---	---	---	18/08/2006	02/08/2010	4885	BIOTER SA (CR)	0.170	---	↘	0.170	23/08/2013	---	---	---	---	---	447@0.136	---	2012	---	---	---	2,988.56	0.059	0.194	2357
12,431,980	0.720	---	---	---	20/06/2003	10/07/2003	4559	COMPUCON SA (CR)	0.090	---	↘	0.090	01/08/2013	---	---	---	---	---	4916@0.085	---	2012	---	---	---	1,118.88	0.031	0.100	9537
30,159,583	0.470	---	---	---	26/06/2008	29/12/2010	4962	DIAS A/C (CR)	0.839	---	↘	0.839	03/06/2013	---	---	---	---	---	1500@0.672	---	2012	---	---	---	25,303.89	0.420	0.845	3573
15,878,748	0.480	---	---	---	10/07/2006	22/03/2004	4960	DOMIKI KRITIS SA (CR)	0.538	7.82	#	0.499	22/08/2013	0.538	0.538	0.538	0.538	---	130@0.499	---	2012	20	1	10.76	8,542.77	0.310	0.800	2357

Number of Outstanding Securities	Nominal Value	Dividends [1]			Date of Last Coupon Dividend [2]		Note	Shares	Closing price	% change	Previous closing price/date	Open price	Price min	Price max	Last price	Avg price	Last Bid [7]	Last Ask [7]	P/E after	Year	Volume	Trades	Transactions Value	Company Mkt Value (thou. €)	Year low	Year high	Sector[4]
----------------------------------	---------------	---------------	--	--	----------------------------------	--	------	--------	---------------	----------	-----------------------------	------------	-----------	-----------	------------	-----------	--------------	--------------	-----------	------	--------	--------	--------------------	-----------------------------	----------	-----------	------------

Surveillance

3,961,300	1.28	---	---	---	29/06/2004	03/08/2000	4808	DUROS SA (CR)	0.970	---	↘	0.970	19/07/2013	---	---	---	---	---	10@0.800	---	2012	---	---	---	3,842.46	0.120	0.970	3763	
7,085,888	1.59	---	---	---	02/07/1996	06/09/2010	4690	ELVIEMEK (CR)	3.00	---	↘	3.00	05/02/2013	---	---	---	---	---	100@3.60	-(6)-	2012	---	---	---	21,257.66	3.00	3.58	8633	
6,000,000	0.600	---	---	---	13/06/2008	08/04/2004	4886	EUROBROKERS S.A. (CR)	0.052	---	↘	0.052	27/06/2013	---	---	---	---	3000@0.042	---	2012	---	---	---	312.00	0.052	0.333	8534		
7,347,600	0.600	---	---	---	02/06/2010	25/02/2010	4889	EUROCONSULTANTS S.A. (CR)	2.60	---	↘	2.60	14/08/2013	---	---	---	---	---	290@2.62	---	2012	---	---	---	19,103.76	2.12	2.64	2791	
21,820,410	0.800	---	---	---	22/05/2008	02/08/2011	4882	EUROMEDICA SA (CR)	0.300	---	↘	0.300	23/08/2013	---	---	---	---	250@0.250	---	2012	---	---	---	6,546.12	0.288	0.613	4533		
12,952,610	0.300	---	---	---		04/10/2012	4846	Forthnet (CR)	0.752	1.62	#	0.740	23/08/2013	0.740	0.740	0.764	0.752	0.752	1809@0.760	500@0.860	2011	6,917	15	5,202.35	9,740.36	0.350	1.43	9535	
179,707,771	0.300	---	---	---	27/06/2002	01/11/2011	4847	HELLAS ONLINE SA (CR)	0.398	9.94	#	0.362	22/08/2013	0.398	0.398	0.398	0.398	0.398	200@0.330	3450@0.398	2012	50	1	19.90	71,523.69	0.271	0.709	9537	
13,692,227	1.47	---	---	---	07/07/2006	08/10/1999	4845	HELLENIC FABRICS SA (CR)	0.228	---	↘	0.228	23/08/2013	---	---	---	---	---	230@0.183	390@0.269	2012	---	---	---	3,121.83	0.180	0.354	3763	
30,390,000	0.310	---	---	---	18/08/2008	29/12/2006	4447	HELLENIC FISHFARMING SA (CR)	0.125	---	↘	0.125	21/08/2013	0.125	0.125	0.125	0.125	0.125	200@0.118	29.30	2012	200	2	25.01	3,798.75	0.039	0.137	3573	
1,540,000	0.600	---	---	---	08/08/1994	19/09/2000	4855	J.BOUTARIS & SON HOLD. (PB)	0.024	---	↘	0.024	05/08/2013	---	---	---	---	---	1000@0.020	---	2012	---	---	---	1,270.76	0.024	0.201	3535	
25,179,640	0.600	---	---	---	08/08/1994	19/09/2000	4854	J.BOUTARIS & SON HOLD. SA (CB)	0.049	-18.33	€	0.060	23/08/2013	0.049	0.049	0.049	0.049	0.049	379@0.052	1490@0.070	2012	3,400	5	166.60	1,270.76	0.040	0.132	3535	
7,125,216	0.650	---	---	---	01/07/2005	14/12/1999	4955	KRE.KA SA (CR)	0.252	---	↘	0.252	12/08/2013	---	---	---	---	---	1889@0.245	---	2012	---	---	---	1,795.55	0.144	0.580	3573	
51,081,030	1.00	---	---	---	20/08/2007	03/09/2007	4912	LAVIPHARM SA (CR)	0.123	-8.21	€	0.134	23/08/2013	0.123	0.123	0.123	0.123	0.123	500@0.125	1245@0.129	2012	520	2	63.96	6,282.97	0.101	0.268	4577	
322,925,288	0.300	---	---	---	23/05/2007	10/04/2000	4554	M.J. MAILLIS SA (CR)	0.070	4.48	#	0.067	23/08/2013	0.070	0.070	0.070	0.070	0.070	900@0.070	900@0.075	2012	4,100	2	287.00	22,604.77	0.066	0.150	2723	
9,567,289	0.300	---	---	---	01/07/2004	19/11/2007	4944	MARAC ELECTRONICS (CR)	0.136	19.30	#	0.114	19/08/2013	0.136	0.136	0.136	0.136	0.136	---	951@0.136	---	2012	50	2	6.80	1,301.15	0.068	0.409	9578
4,178,856	1.58	0.22	---	---	21/07/2011	28/07/2004	4983	MEDICON S.A (CR)	0.567	---	↘	0.567	23/08/2013	---	---	---	---	---	10@0.457	10@0.599	2012	---	---	---	2,369.41	0.446	1.18	4535	
66,937,526	0.700	---	---	---	13/08/2010	21/05/2003	4995	MICHANIKI SA (CR)	0.102	0.99	#	0.101	23/08/2013	0.104	0.102	0.104	0.102	0.102	5000@0.101	772@0.102	2012	9,928	13	1,014.66	9,424.53	0.085	0.370	2357	
25,968,987	0.700	---	---	---	13/08/2010	21/05/2003	4996	MICHANIKI SA (PR)	0.100	---	↘	0.100	23/08/2013	0.100	0.100	0.100	0.100	0.100	3850@0.081	79@0.090	2012	500	3	50.00	9,424.53	0.065	0.268	2357	
255,459,600	0.300	---	---	---	26/06/2000	03/12/2010	4833	NEL SA (CR)	0.031	10.71	#	0.028	23/08/2013	0.023	0.023	0.033	0.033	0.031	25486@0.023	14509@0.033	2012	124	3	3.85	7,919.25	0.012	0.158	5759	
20,231,328	0.600	---	---	---	15/07/2008	25/06/2004	4879	NIKAS SA (CR)	0.230	-11.54	€	0.260	23/08/2013	0.230	0.230	0.230	0.230	0.230	4375@0.230	2060@0.260	2012	2,000	3	460.00	4,653.21	0.230	0.530	3577	
14,967,940	0.500	---	---	---	21/05/2008	04/01/2008	4956	PASAL DEVELOPMENT S.A. (CR)	0.179	---	↘	0.179	23/08/2013	---	---	---	---	---	1200@0.160	5100@0.180	2012	---	---	---	2,679.26	0.120	0.414	8633	
40,946,303	0.360	---	---	---	18/07/2005	27/11/2007	4856	PC SYSTEMS SA (CR)	0.097	---	↘	0.097	16/08/2013	---	---	---	---	---	3049@0.078	---	2012	---	---	---	3,971.79	0.057	0.180	9533	
18,750,000	0.300	---	---	---	02/07/2001	31/12/2012	4985	PEGASUS PUBLISHING S.A. (CR)	0.265	---	↘	0.265	23/08/2013	---	---	---	---	---	16@0.212	---	2012	---	---	---	4,968.75	0.044	0.610	5557	
28,056,518	0.530	---	---	---	04/07/2007	19/07/2006	4750	SATO SA (CR)	0.100	13.64	#	0.088	14/08/2013	0.100	0.100	0.100	0.100	0.100	6099@0.100	---	2012	20	2	2.00	2,805.65	0.025	0.115	3726	
36,235,184	1.00	---	---	---	01/07/2008	30/07/2012	4961	SELONDA AQUACULTURE SA (CR)	0.192	14.29	#	0.168	23/08/2013	0.192	0.192	0.192	0.192	0.192	300@0.147	30@0.191	2012	300	5	57.61	6,957.16	0.119	0.600	3573	
7,914,480	2.50	---	---	---	23/06/2008	29/06/2011	4888	SFAKIANAKIS SA (CR)	0.620	---	↘	0.620	13/08/2013	---	---	---	---	---	2958@0.550	430@0.744	2012	---	---	---	4,906.98	0.364	0.763	5379	
60,221,300	0.400	---	---	---	01/07/2002	01/11/2010	4880	SHELMAN SA (CR)	0.130	---	↘	0.130	01/08/2013	---	---	---	---	---	4000@0.110	---	2011	---	---	---	7,828.77	0.098	0.280	2353	
10,000,000	1.35	---	---	---	24/06/2008	10/05/2005	4887	SIDMA SA (CR)	0.640	-20.00	€	0.800	02/08/2013	0.640	0.640	0.640	0.640	0.640	3029@0.640	---	2012	1	1	0.64	6,400.00	0.420	0.920	1757	
29,060,950	0.340	---	---	---	20/08/2007	24/10/2001	4884	SPIDER METAL INDUSTRY SA (CR)	0.026	18.18	#	0.022	14/08/2013	0.026	0.026	0.026	0.026	0.026	7000@0.020	---	2012	5	1	0.13	755.58	0.022	0.097	2757	
100,793,000	0.300	---	---	---	16/07/2009	05/08/2013	---	TELETIPOS SA (CR)	0.251	-0.40	€	0.252	23/08/2013	0.251	0.251	0.251	0.251	0.251	91@0.251	7500@0.300	2012	2,078	4	521.58	25,299.04	0.118	0.600	5553	
3,229,566	0.320	---	---	---	22/06/2005	23/09/1999	4629	VARANGIS AVEPE S.A. (CR)	0.780	---	↘	0.780	12/08/2013	---	---	---	---	---	7371@0.780	---	2012	---	---	---	2,519.06	0.206	0.840	3726	
17,175,132	0.300	---	---	---	25/06/2002	21/06/2013	4997	VARVARESSOS SA (CB)	0.033	-17.50	€	0.040	23/08/2013	0.033	0.033	0.033	0.033	0.033	500@0.035	50@0.048	2012	10	1	0.33	566.78	0.028	0.181	3763	
13,191,620	0.620	---	---	---	04/08/2010	09/09/2002	4977	YALCO - CONSTANTINOU SA (CB)	0.128	---	↘	0.128	20/08/2013	---	---	---	---	---	800@0.105	500@0.152	2012	---	---	---	1,688.53	0.106	0.210	3722	

5,025,000	0.300	---	---	---	05/07/2005	14/03/2002	4963	ALSINCO S.A (CR)	0.014	---	↘	0.014	18/07/2013	---	---	---	---	---	3@0.016	---	2012	---	---	---	70.35	0.006	0.185	3763
766,000	2.83	---	---	---	01/07/2004	11/12/2012	4937	TRIA ALFA SA (CR)	2.81	---	↘	2.81	23/08/2013	---	---	---	---	---	1@2.25	140@3.37	2012	---	---	---	2,532.21	1.30	4.70	3763
245,000	2.83	---	---	---	19/07/2010	11/12/2012	4938	TRIA ALFA SA (PR)	1.55	---	↘	1.55	16/08/2013	---	---	---	---	---	1@1.24	2048@1.55	2012	---	---	---	2,532.21	0.501	1.93	3763

Number of Outstanding Securities	Nominal Value	Dividends [1]			Date of Last Coupon		Note	Shares	Closing price	% change	Previous closing price/date	Open price	Price min	Price max	Last price	Avg price	Last Bid [7]	Last Ask [7]	P/E after	Year	Volume	Trades	Transactions Value	Company Mkt Value (thou. €)	Year low	Year high	Sector[4]
		2010	2011	2012	Dividend [2]	Right																					
Under Suspension																											
49,030,011	0.300	---	---	---	19/07/2010	12/05/2011	4875	ALAPIS (CR)	0.041	---	0.041	30/03/2012	---	---	---	---	---	---	---	---	---	---	---	2,010.23	0.041	0.041	4577
1,750,955,549	0.600	---	---	---	19/05/2008	08/12/2011	4911	ATE (CR)	0.155	---	0.155	30/07/2012	---	---	---	---	---	---	---	---	---	---	---	271,398.11	0.155	0.155	8355
21,382,067	0.300	---	---	---	02/10/2006	15/02/2006	4628	ATERMON (CR)	0.120	---	0.120	31/03/2010	---	---	---	---	---	---	---	---	---	---	---	2,565.85	0.120	0.120	5555
105,423,498	0.510	---	---	---	01/07/2004	28/12/2005	4920	AVENIR S.A. (CR)	0.046	---	0.046	30/08/2012	---	---	---	---	---	---	---	---	---	---	---	4,849.48	0.046	0.046	5752
33,930,000	0.300	---	---	---	03/07/2006	30/05/2001	4865	BABIS VOVOS SA (CR)	0.304	---	0.304	30/03/2012	---	---	---	---	---	---	---	---	---	---	---	10,314.72	0.304	0.304	8633
20,121,710	1.21	---	---	---	27/07/1992	12/03/2003	4970	BALKAN R.E. (CR)	0.220	---	0.220	31/05/2013	---	---	---	---	---	---	---	---	---	---	---	4,426.78	0.195	0.438	8633
1,795,140,547	1.00	(0.0615)	---	---	31/05/2011	19/04/2012	4951	BANK OF CYPRUS (CR)	0.207	---	0.207	15/03/2013	---	---	---	---	5000@0.170	---	---	---	---	---	---	371,594.09	0.180	0.282	8355
21,920,570	0.300	---	---	---	03/07/2007	13/12/1999	4702	CARDASSILARIS SA (CR)	0.140	---	0.140	30/11/2010	---	---	---	---	---	---	---	---	---	---	---	3,068.88	0.140	0.140	3577
54,547,634	0.500	---	---	---	25/04/2005	21/01/2009	4860	CH.TEGOPOULOS PUBL. SA (CR)	0.038	---	0.038	23/03/2012	---	---	---	---	---	---	---	---	---	---	---	2,072.81	0.038	0.038	5557
33,718,750	0.300	---	---	---	28/05/2008	21/01/2013	4998	DOL SA (CR)	0.640	---	0.640	25/07/2013	---	---	---	---	---	3118@0.700	---	---	---	---	---	21,580.00	0.244	0.759	5557
7,847,611	1.20	---	---	---	01/08/2007	28/09/2011	4939	EDRASIS - C. PSALLIDAS SA (CR)	0.150	---	0.150	19/11/2012	---	---	---	---	---	---	---	---	---	---	---	1,177.14	0.150	0.150	2357
5,750,000	0.300	---	---	---	12/12/2008	12/12/2011	4929	ELECTRONIKI ATHINON SA (CR)	0.480	---	0.480	07/09/2012	---	---	---	---	---	---	---	---	---	---	---	2,760.00	0.480	0.480	5375
24,605,397	0.400	---	---	---	29/06/1995	27/05/2002	4651	EMPORIKOS DESMOS SA (CR)	0.080	---	0.080	28/05/2010	---	---	---	---	---	---	---	---	---	---	---	2,134.04	0.080	0.080	3722
1,182,903	0.400	---	---	---	01/07/1996	27/05/2002	4652	EMPORIKOS DESMOS SA (PR)	0.140	---	0.140	28/09/2009	---	---	---	---	---	---	---	---	---	---	---	2,134.04	0.140	0.140	3722
8,593,750	0.300	---	---	---	01/06/2009	20/06/2007	4876	FASHION BOX (CR)	1.30	---	1.30	23/02/2012	---	---	---	---	---	---	---	---	---	---	---	11,171.88	1.30	1.30	3763
7,326,648	1.00	---	---	---	26/07/2006	24/07/2001	4921	FINTEXPORT SA (CR)	0.328	---	0.328	29/06/2012	---	---	---	---	---	---	---	---	---	---	---	2,403.14	0.328	0.328	3763
20,860,000	0.300	---	---	---	03/07/2000	13/11/2007	4848	IKONA - IHOS SA (CR)	0.072	---	0.072	02/12/2011	---	---	---	---	---	---	---	---	---	---	---	1,501.92	0.072	0.072	5379
36,765,744	0.350	---	---	---	16/08/2006	06/06/2011	4869	IMPERIO SA (CR)	0.026	---	0.026	30/03/2012	---	---	---	---	---	---	---	---	---	---	---	955.91	0.026	0.026	2777
24,619,524	0.500	---	---	---	10/10/1986	30/12/2002	4914	KERAMIA-ALLATINI (CR)	0.088	---	0.088	27/08/2012	---	---	---	---	---	---	---	---	---	---	---	2,166.52	0.088	0.088	8633
7,840,373	1.20	---	---	---	18/07/2002	05/03/2003	4765	KLONATEX SA (PR)	0.080	---	0.080	09/05/2011	---	---	---	---	---	---	---	---	---	---	---	1,453.75	0.080	0.080	3763
20,663,047	1.20	---	---	---	21/08/2000	05/03/2003	4764	KLONATEX SA (CR)	0.040	---	0.040	09/05/2011	---	---	---	---	---	---	---	---	---	---	---	1,453.75	0.040	0.040	3763
17,544,600	0.600	---	---	---	03/07/2000	01/08/2000	4868	KOYMBAS SYNERGY GROUP (CR)	0.132	---	0.132	29/03/2012	---	---	---	---	---	---	---	---	---	---	---	2,315.89	0.132	0.132	8775
15,015,000	1.60	---	---	---	01/07/2002	02/02/2000	4603	MAXIM C.M. PERTSINIDIS SA (CB)	0.100	---	0.100	30/11/2009	---	---	---	---	---	---	---	---	---	---	---	1,501.50	0.100	0.100	3763
13,555,100	1.00	---	---	---	08/07/2005		4576	MICROLAND COMPUTERS SA (CR)	0.640	---	0.640	14/07/2009	---	---	---	---	---	---	---	---	---	---	---	8,675.26	0.640	0.640	5379
23,463,874	0.800	---	---	---	23/05/2003	21/12/1999	4918	NEORION SA (CR)	0.125	---	0.125	28/08/2012	---	---	---	---	---	---	---	---	---	---	---	2,932.98	0.125	0.125	2753
42,501,273	0.300	---	---	---	26/06/2007	10/08/2009	4993	NUTRIART (CR)	0.049	---	0.049	21/06/2013	---	---	---	---	---	---	---	---	---	---	---	2,082.56	0.038	0.114	3577
25,583,146	0.300	---	---	---	25/06/2001	03/12/2008	4723	PETZETAKIS SA (CR)	0.260	---	0.260	28/01/2011	---	---	---	---	---	---	---	---	---	---	---	6,651.62	0.260	0.260	1357
9,550,386	0.500	---	---	---	01/07/1997	12/06/2008	4626	PRAXITELIO SA (CR)	0.390	---	0.390	11/03/2010	---	---	---	---	---	---	---	---	---	---	---	4,430.09	0.390	0.390	4533
1,306,368	0.500	---	---	---	01/07/1997	12/06/2008	4627	PRAXITELIO SA (PR)	0.540	---	0.540	15/12/2009	---	---	---	---	---	---	---	---	---	---	---	4,430.09	0.540	0.540	4533
62,683,822	0.300	---	---	---	27/05/2008	09/01/2006	4830	PROTON BANK S.A. (CR)	0.180	---	0.180	07/10/2011	---	---	---	---	---	---	---	---	---	---	---	11,283.09	0.180	0.180	8355
23,059,688	0.660	---	---	---	03/07/2008	06/08/2004	4864	RIDENCO SA (CR)	0.032	---	0.032	30/03/2012	---	---	---	---	---	---	---	---	---	---	---	737.91	0.032	0.032	3765
51,083,993	1.00	---	---	---	15/07/2008	06/08/2003	4867	SANYO HELLAS HOLD. (CR)	0.020	---	0.020	30/03/2012	---	---	---	---	---	---	---	---	---	---	---	1,021.68	0.020	0.020	3722
51,334,286	0.320	---	---	---	03/07/2000	18/12/2007	4548	SAOS (CR)	0.780	---	0.780	27/03/2009	---	---	---	---	---	---	---	---	---	---	---	40,040.74	0.780	0.780	2773
26,408,040	0.300	---	---	---	01/07/1997	26/05/1999	4464	SHEET STEEL SA (CR)	0.120	---	0.120	28/11/2008	---	---	---	---	---	---	---	---	---	---	---	3,168.96	0.120	0.120	1757
26,262,660	0.900	---	---	---	01/07/2008	24/02/2011	4954	SPRIDER STORES (CR)	0.031	---	0.031	28/03/2013	---	---	---	---	---	---	---	---	---	---	---	814.14	0.025	0.055	5371
144,688,060	0.600	---	---	---	21/04/2008	10/03/2010	4982	T BANK (CR)	0.048	---	0.048	30/11/2011	---	---	---	---	---	---	---	---	---	---	---	6,945.03	0.048	0.048	8355
6,523,780	0.530	---	---	---	01/07/2002	06/03/2001	4971	TECHNICAL PUBLICATIONS SA (CR)	0.006	---	0.006	29/05/2013	---	---	---	---	---	---	---	---	---	---	---	39.14	0.006	0.347	5557
13,920,000	0.320	---	---	---	19/11/2001	01/08/2000	4726	TEXAPRET SA (CR)	0.080	---	0.080	23/02/2011	---	---	---	---	---	---	---	---	---	---	---	1,113.60	0.080	0.080	3763

Number of Outstanding Securities	Nominal Value	Dividends [1]			Date of Last Coupon Dividend [2]		Coupon Right	Note	Shares	Closing price	% change	Previous closing price/date		Open price	Price min	Price max	Last price	Avg price	Last Bid [7]	Last Ask [7]	P/E after	Year	Volume	Trades	Transactions Value	Company Mkt Value (thou. €)	Year low	Year high	Sector[4]
--	------------------	---------------	--	--	-------------------------------------	--	-----------------	------	--------	------------------	----------	--------------------------------	--	---------------	--------------	--------------	---------------	--------------	-----------------	--------------	--------------	------	--------	--------	-----------------------	--------------------------------	-------------	--------------	---------------

Under Suspension

284,465,964	3.70	---	---	---	20/06/2008	15/06/2009	4913	TT HELLENIC POSTBANK (CR)		0.168	---	↘	0.168	30/08/2012	---	---	---	---	---	---	---	---	---	---	---	---	47,790.28	0.168	0.168	8355
89,616,200	0.300	---	---	---	21/08/2000	28/06/2007	4616	UNITED TEXTILES (CR)		0.050	---	↘	0.050	25/02/2010	---	---	---	---	---	---	---	---	---	---	---	---	4,480.81	0.050	0.050	3763
71,683,906	0.400	---	---	---	15/06/2005	05/02/2008	4953	XATZIOANNOU (CR)		0.026	---	↘	0.026	28/03/2013	---	---	---	---	---	---	---	---	---	---	---	---	1,863.78	0.020	0.085	3763

Shares' Notes

Code	Note text
()	- Adjusted dividends.
*	- Last adjusted closing price.
[1]	- Net dividends.
[2]	- The "Date of Last Coupon" for New listings refers to the date company's stocks started to trade in Athex
[3]	- The Company Market Value is referred to the number of outstanding shares
[4]	- Sectors codification can be found in Appendix A
[5]	- The Market Value refers to the total number of shares listed (including their several classes) in the exchange by the company.
[6]	- P/E greater than 100
[7]	- Last view of the Order Book before the end of the trading session
4446	- Transfer to the "Under Supervision" Category as of 20/10/2008.
4447	- Transfer to the "Under Supervision" Category as of 21/10/2008.
4464	- Suspension of trading as of 1/12/2008.
4548	- Suspension of trading as of 1/4/2009.
4554	- Transfer to the "Under Supervision" Category as of 6/4/2009.
4559	- Transfer to the "Under Supervision" Category as of 21/4/2009.
4576	- Suspension of trading as of 14/7/2009.
4603	- Suspension of trading as of 1/12/2009.
4616	- Suspension of trading as of 25/2/2010.
4626	- Suspension of trading as of 1/4/2010.
4627	- Suspension of trading as of 1/4/2010.
4628	- Suspension of trading as of 1/4/2010.
4629	- Transfer to the Under Supervision Category as of 12/4/2010.
4630	- Transfer to the Under Supervision Category as of 12/4/2010.
4651	- Suspension of trading as of 1/6/2010.
4652	- Suspension of trading as of 1/6/2010.
4690	- Transfer to Surveillance category as of 4/4/2006.
4702	- Suspension of trading as of 1/12/2010.
4723	- Suspension of trading as of 31/1/2011.
4726	- Suspension of trading as of 1/3/2011.
4750	- Transfer to the "Under Surveillance Category" from 8/4/2011.
4764	- Suspension of trading as of 20/5/2011.
4765	- Suspension of trading as of 20/5/2011.
4795	- The final gross (pre-tax) dividend is € 0.30 per share and subject to withholding tax on the full dividend amount, i.e. 0,45 per share, for those shareholders liable to withholding tax, in accordance with the applicable tax law provisions.
4808	- Suspension of trading as of 6/9/2011.
4814	- Transfer to the Low Dispersion Category as of 30/5/2011.
4815	- Transfer to the Low Dispersion Category as of 30/5/2011.
4816	- Transfer to the Low Dispersion Category as of 30/5/2011.
4817	- Transfer to the Low Dispersion Category as of 30/5/2011.
4820	- Transfer to the Low Dispersion category as of 18/4/2008.
4822	- Transfer to the Low Dispersion category as of 30/5/2011.
4823	- Transfer to the Low Dispersion category as of 4/4/2006.
4824	- Transfer to the Low Dispersion category as of 18/4/2008.
4825	- Transfer to the Low Dispersion category as of 8/4/2011.
4827	- Transfer to the Low Dispersion category as of 5/5/2010.
4828	- Transfer to the Low Dispersion category as of 4/4/2006.
4830	- Suspension of trading as of 10/10/2011.
4833	- Transfer to Surveillance category from 6/5/2010.
4844	- Transfer to the Surveillance category from 8/4/2011.
4845	- Transfer to the Surveillance Category as of 25/11/2011.
4846	- Transfer to the Surveillance Category as of 25/11/2011.
4847	- Transfer to the Surveillance Category as of 3/7/2009.

Shares' Notes

Code	Note text
4848	- Suspension of trading as of 6/12/2011.
4854	- Transfer to the Surveillance Category as of 29/12/2011.
4855	- Transfer to the Surveillance Category as of 29/12/2011.
4856	- Transfer to the Surveillance Category as of 29/12/2011.
4860	- Suspension of trading as of 30/3/2012.
4864	- Suspension of trading as of 30/3/2012.
4865	- Suspension of trading as of 2/4/2012.
4867	- Suspension of trading as of 2/4/2012.
4868	- Suspension of trading as of 2/4/2012.
4869	- Suspension of trading as of 2/4/2012.
4875	- Suspension of trading as of 2/4/2012.
4876	- Suspension of trading as of 3/4/2012.
4879	- Transfer to the Surveillance Category as of 10/4/2012.
4880	- Transfer to the Surveillance Category as of 10/4/2012.
4881	- Transfer to the Surveillance Category as of 10/4/2012.
4882	- Transfer to the Surveillance Category as of 10/4/2012.
4884	- Transfer to the Surveillance Category as of 10/4/2012.
4885	- Transfer to the Surveillance Category as of 10/4/2012.
4886	- Transfer to the Surveillance Category as of 10/4/2012.
4887	- Transfer to the Surveillance Category as of 10/4/2012.
4888	- Transfer to the Surveillance Category as of 10/4/2012.
4889	- Transfer to the Surveillance Category as of 10/4/2012.
4893	- Transfer to the Low Dispersion category as of 28/5/2012.
4894	- Transfer to the Low Dispersion category as of 28/5/2012.
4911	- Lift of suspension from 30/7/2012.
4912	- Transfer to the Surveillance Category as of 31/7/2012.
4913	- Suspension of trading as of 30/8/2012.
4914	- Suspension of trading as of 31/8/2012.
4918	- Suspension of trading as of 31/8/2012.
4920	- Suspension of trading as of 31/8/2012.
4921	- Suspension of trading as of 31/8/2012.
4929	- Suspension of trading as of 1/10/2012.
4937	- Transfer to the UNDER DELETION category as of 30/11/2012.
4938	- Transfer to the UNDER DELETION category as of 30/11/2012.
4939	- Suspension of trading as of 30/11/2012.
4941	- Transfer to the Low Dispersion category as of 3/12/2012.
4944	- Transfer to the Surveillance Category as of 7/12/2012.
4951	- Suspension of trading as of 19/3/2013.
4953	- Suspension of trading as of 2/4/2013.
4954	- Suspension of trading as of 2/4/2013.
4955	- Transfer to the Surveillance Category as from 5/4/2013.
4956	- Transfer to the Surveillance Category as from 5/4/2013.
4957	- Transfer to the Surveillance Category as from 5/4/2013.
4958	- Transfer to the Surveillance Category as from 5/4/2013.
4959	- Transfer to the Surveillance Category as from 5/4/2013.
4960	- Transfer to the Surveillance Category as from 5/4/2013.
4961	- Transfer to the Surveillance Category as from 5/4/2013.
4962	- Transfer to the Surveillance Category as from 5/4/2013.
4963	- Transfer to the Under Deletion Category as from 5/4/2013.
4970	- Suspension of trading as of 3/6/2013.
4971	- Suspension of trading as of 3/6/2013.
4977	- Transfer to the "Under Surveillance Category" from 11/6/2013.
4978	- Transfer to the Under Supervision Category as of 11/6/2013.

Shares' Notes

Code	Note text
4982	- Suspension of trading as of 1/12/2011.
4983	- Transfer to the Surveillance Category as of 5/4/2013.
4985	- Transfer to the "Under Surveillance Category" from 8/4/2011.
4986	- Transfer to the Low Dispersion category as of 30/5/2011.
4988	- As of June 7, 2013, the name of the company "DUTY FREE SHOPS A CORPORATION OPERATING DFS AND LARGE AND SMALL SCALE INDUSTRIAL OPERATIONS, TECHNIC" on ATHEX changes to "FOLLI FOLLIE S.A.".
4993	- Suspension of trading as of 21/6/2013 (15:18).
4995	- Transfer to the "Under Surveillance Category" from 8/4/2011.
4996	- Transfer to the "Under Surveillance Category" from 8/4/2011.
4997	- Transfer to the Under Supervision Category as of 21/12/2009. - The 6,870,053 new (CB) shares, resulting from the recent share capital increase through a rights issue, are not yet admitted to trading on the ATHEX.
4998	- Suspension of trading as of 26/7/2013.

Securities Blocks Details

Securities	Block Volume	Price	Block Trade Value	Time of approval	Note
OPAP (CR)	131,228	7.50	984,210.00	10:43:34	20
OPAP (CR)	48,000	7.50	360,000.00	11:16:26	20
OPAP (CR)	200,000	7.48	1,496,000.00	16:08:59	20
NATIONAL BANK (W)	1,000	0.999	999.00	16:36:20	18

Blocks Notes

2 - SPOT 1 or SPOT 2 Packet	11 - Total Assets > 500 bil
3 - Block with Short Selling	12 - Sell Offer through Athex
4 - Buy to Close Block	13 - Forced Sale of NMOE
6 - Simultaneous Constitution	14 - Restoration Packet
7 - Repurchase Agreement	15 - Market Maker Packet
8 - Dispersion's Achievement (Not Listed)	16 - Short Selling
9 - Dispersion's Achievement (Listed)	18 - SPOT 1 Packet
10 - Share Capital Majority of Greek State (> 50 bil)	20 - Method 6-1 Packet

Shares Rights Details

Occured date	Exercise from	Exercise until	Trading until	Rights	Price min	Price max	Closing price	Last Bid	Last Ask	Volume	Trades	Transactions Value
05/08/2013	16/08/2013	30/08/2013	26/08/2013	TELETIPOS S.A. (CR)	---	---	0.001	---	7778@0.001	---	---	---

Stock Borrowing

Securities	Stock Borrowing through Helex (volume)	Stock Borrowing through OTC (volume) [1]	Totals [2]
ALAPIS (CR)	---	6,250	6,250
ALPHA BANK (CR)	161,200	4,562,274	4,723,474
ATE (CR)	---	69,000	69,000
BANK OF CYPRUS (CR)	---	102,899	102,899
CC HBC AG (CR)	32,400	73,941	106,341
ELLAKTOR (CR)	1,000	---	1,000
EUROBANK ERGASIAS (CR)	21,120	68,433	89,553
EUROBANK PROPERTIES REIC (CR)	11,500	31,215	42,715
EYDAP S.A. (CR)	2,900	---	2,900
FLEXOPACK SA (CR)	---	41,927	41,927
FOLLI FOLLIE (CR)	3,000	15,508	18,508
FRIGOGLASS SA (CR)	3,500	---	3,500
GEK TERNA (CR)	500	---	500
HELLENIC EXCHANGES (CR)	33,000	---	33,000
HELLENIC PETROLEUM (CR)	22,400	269	22,669
INTERTECH SA (CR)	---	483,000	483,000
INTRALOT (CR)	24,000	---	24,000
JUMBO SA (CR)	10,900	3,525	14,425
LAMDA DEVELOPMENT SA (CR)	---	10,377	10,377
MARFIN INVESTMENT GROUP (CR)	---	733,474	733,474
METKA (CR)	8,400	---	8,400
MOTOR OIL (CR)	12,700	---	12,700
MYTILINEOS HOLDINGS (CR)	2,000	---	2,000
NATIONAL BANK (CR)	70,400	1,396,830	1,467,230
NBGAM ETF	10,000	---	10,000
NBGAM ETF GREECE & TURKEY 30	3,500	---	3,500
OPAP (CR)	47,500	43,264	90,764
OTE (CR)	134,300	109,116	243,416
PIRAEUS BANK (CR)	5,200	239,460	244,660
PPC (CR)	47,400	44,800	92,200
TERNA ENERGY (CR)	5,400	---	5,400
TITAN CEMENT (CR)	6,700	55,390	62,090
VIOHALCO (CB)	5,200	---	5,200

Stock Borrowing Notes

[1] - The information concerning OTC Stock Borrowing Transactions is based on the statements of the Dematerialised Securities System (DSS) operators involved and refers to volumes that have been cleared and registered up until the previous working day.

Shares Forced Sales

Securities	Transaction s Volume	Number of Trades	Transactions Value	Note
No Forced Transactions.				

Forced Sales Notes

- 1 - Normal Forced Sale.
- 2 - Forced Sales of Fixed Registered Shares.
- 3 - Forced Sales of Remaining Stock Fractions.

Forced Sales Registered Shares

Securities	Start Date	End Date	Initial Volume	Remaining Volume	Date	Avg price (day)	Avg price (period)	Number of Trades	Transactions Volume	Transactions Value
------------	------------	----------	-------------------	---------------------	------	--------------------	-----------------------	---------------------	------------------------	-----------------------

No Fixed Registered Shares Forced Sales.

Forced Sales Notes

According to Decision 1/380/04.05.2008 of the Hellenic Republic Capital Market Commission, the certificated registered shares that have not been deposited to the issuer for dematerialisation, will be auctioned in the Athens Exchange by the supervising issuer. Forced sales procedure is held according to Article 99A of the Athens Exchange Rulebook. The average price of the period is calculated by dividing the Total transactions value by the Total volume and includes all the transactions made until the current date.

Exchange Traded Funds (ETFs) Characteristics

	Transactions Date (T)	Creation / Redemption	Units (T-1)	New Units (T-1)	Redemptio n Units (T-	Units (T) [1]	Fund Assets [2]	Net Unit Price	Dividen d per	Dividend Date
NBGAM ETF ΓΔ Χ.Α.	26/08/2013	25,000	294,878	---	---	294,878	3,032,000.00	10.2822	---	27/10/2011
ALPHA ETF FTSE Athex Large Cap	26/08/2013	50,000	5,848,618	---	---	5,848,618	18,456,430.00	3.1557	0.05	01/07/2013
NBGAM ETF GREECE & TURKEY 30	26/08/2013	25,000	388,550	---	---	388,550	2,825,799.00	7.2727	---	27/10/2011

ETFs Notes

[1] - Units (T) = Units (T-1) + New Units (T-1) - Redemption Units (T-1)

[2] - The Creation / Redemption Units of T-1 are included.

Corporate Bonds

Num Listed Bonds	Nominal price	Issue price	Today's Rate	Exp. Date	Duration (years)	Note	Coupon attached		Trading	Corporate Bonds	Price min	Price max	Closing price	Previous closing price/date		Volume	Transactions Value	Last order		Date	ear min	Year max
							Common	Preferred										Price	Buy / Sell			
212,849,265	1.00	1.00	6.30	29/07/2020	7	---	1	---	1	MARFIN INVESTMENT GROUP S.A. SERIES B (BOND)	---	---	---	0.8500	23/08/2013	---	---	0.9500	B	26/08/2013	0.8500	0.8500
2,156,827	1.00	1.00	7.00	29/07/2019	6	---	1	---	1	MARFIN INVESTMENT GROUP S.A. SERIES A (BOND)	---	---	---	1.0000	23/08/2013	---	---	1.0250	B	26/08/2013	1.0000	1.0000
39,711,653	1.00	1.00	6.00	30/06/2016	5	4786	5	---	1	BANK OF CYPRUS PUBLIC CO. LTD (Convert. to CR sh.)	---	---	---	---	---	---	---	10.0000	B	13/03/2013	100.0000	100.0000
428,521,983	1.00	1.00	6.50	30/06/2016	5	4785	5	---	1	BANK OF CYPRUS PUBLIC CO. LTD (Convert. to CR sh.)	---	---	---	20.5000	14/03/2013	---	---	21.0000	B	15/03/2013	19.5000	30.0000
4,150,176	4.77	4.77	5.00	19/03/2015	5	---	14	---	1	MARFIN INVESTMENT GROUP S.A. (Conver to CR shar)	---	---	---	25.4000	12/08/2013	---	---	1.0000	B	26/08/2013	0.5000	70.0000
73,088,145	1.00	1.00	5.50	30/06/2014	5	4574	9	---	1	BANK OF CYPRUS PUBLIC CO. LTD (Convert. to CR sh.)	---	---	---	20.0000	08/03/2013	---	---	21.5000	B	15/03/2013	20.0000	26.0000
1,794,284	12.49	9.77	5.33	12/07/2015	8	---	13	---	1	NIREUS S.A. (Convertible to CR shares)	---	---	---	12.0000	26/07/2013	---	---	15.0000	B	26/08/2013	11.0000	15.0000
27,283,632	1.00	1.00	1.32	30/06/2018	10	---	11	---	1	BANK OF CYPRUS PUBLIC CO. LTD (Convert. to CR sh.)	---	---	---	33.0000	13/12/2012	---	---	35.0000	B	15/03/2013	33.0000	33.0000

4574 - The bonds are of indefinite duration.

4785 - The bonds are of indefinite duration.

4786 - The bonds are of indefinite duration. The Bond's par value, issue price and trading prices are expressed in USA Dollars, whereas its Transactions Value is expressed in Euros.

Corporate Bonds Notes

Transactions Volume = (Pieces) * (Nominal Price). Transactions Value = (Pieces) * (Nominal Price) * (price %) + (Accrued interest).

The price of a Bond is stated as a percentage (%) of Bond's Nominal Price.

Nominal Price in Euros (€), except if it is noted differently.

Government Bonds

Number Listed Bonds	Nominal price	Today's Rate	Accrued Interest Calc	Exp. Date [1]	Duration (years)	Note	Coupons Date	Curr. coupon value	Trading Unit	Government Bonds	Price min	Price max	Closing price	Previous closing price/date	Volume	Transactions Value	Price	Last order Buy / Sell	Date
2,658,781,973	1.00	2.00	Actual/Actual	24/02/2023	11	---	24/02	2.00	1	GGB-FXD-240223-11Y-2.000-1.00	---	---	---	---	---	---	---	---	---
2,658,781,973	1.00	2.00	Actual/Actual	24/02/2024	12	---	24/02	2.00	1	GGB-FXD-240224-12Y-2.000-1.00	---	---	---	---	---	---	---	---	---
2,658,781,973	1.00	2.00	Actual/Actual	24/02/2025	13	---	24/02	2.00	1	GGB-FXD-240225-13Y-2.000-1.00	---	---	---	---	---	---	---	---	---
2,658,781,973	1.00	2.00	Actual/Actual	24/02/2026	14	---	24/02	2.00	1	GGB-FXD-240226-14Y-2.000-1.00	---	---	---	---	---	---	---	---	---
2,658,781,973	1.00	2.00	Actual/Actual	24/02/2027	15	---	24/02	2.00	1	GGB-FXD-240227-15Y-2.000-1.00	---	---	---	---	---	---	---	---	---
2,836,034,104	1.00	2.00	Actual/Actual	24/02/2028	16	---	24/02	2.00	1	GGB-FXD-240228-16Y-2.000-1.00	---	---	---	---	---	---	---	---	---
2,836,034,104	1.00	2.00	Actual/Actual	24/02/2029	17	---	24/02	2.00	1	GGB-FXD-240229-17Y-2.000-1.00	---	---	---	---	---	---	---	---	---
2,836,034,104	1.00	2.00	Actual/Actual	24/02/2030	18	---	24/02	2.00	1	GGB-FXD-240230-18Y-2.000-1.00	---	---	---	---	---	---	---	---	---
2,836,034,104	1.00	2.00	Actual/Actual	24/02/2031	19	---	24/02	2.00	1	GGB-FXD-240231-19Y-2.000-1.00	---	---	---	---	---	---	---	---	---
2,836,034,104	1.00	2.00	Actual/Actual	24/02/2032	20	---	24/02	2.00	1	GGB-FXD-240232-20Y-2.000-1.00	---	---	---	---	---	---	---	---	---
2,836,034,104	1.00	2.00	Actual/Actual	24/02/2033	21	---	24/02	2.00	1	GGB-FXD-240233-21Y-2.000-1.00	---	---	---	---	---	---	---	---	---
2,836,034,104	1.00	2.00	Actual/Actual	24/02/2034	22	---	24/02	2.00	1	GGB-FXD-240234-22Y-2.000-1.00	---	---	---	---	---	---	---	---	---
2,836,034,104	1.00	2.00	Actual/Actual	24/02/2035	23	---	24/02	2.00	1	GGB-FXD-240235-23Y-2.000-1.00	---	---	---	---	---	---	---	---	---
2,836,034,104	1.00	2.00	Actual/Actual	24/02/2036	24	---	24/02	2.00	1	GGB-FXD-240236-24Y-2.000-1.00	---	---	---	---	---	---	---	---	---
2,836,034,104	1.00	2.00	Actual/Actual	24/02/2037	25	---	24/02	2.00	1	GGB-FXD-240237-25Y-2.000-1.00	---	---	---	---	---	---	---	---	---
2,836,034,104	1.00	2.00	Actual/Actual	24/02/2038	26	---	24/02	2.00	1	GGB-FXD-240238-26Y-2.000-1.00	---	---	---	---	---	---	---	---	---
2,836,034,104	1.00	2.00	Actual/Actual	24/02/2039	27	---	24/02	2.00	1	GGB-FXD-240239-27Y-2.000-1.00	---	---	---	---	---	---	---	---	---
2,836,034,104	1.00	2.00	Actual/Actual	24/02/2040	28	---	24/02	2.00	1	GGB-FXD-240240-28Y-2.000-1.00	---	---	---	---	---	---	---	---	---
2,836,034,104	1.00	2.00	Actual/Actual	24/02/2041	29	---	24/02	2.00	1	GGB-FXD-240241-29Y-2.000-1.00	---	---	---	---	---	---	---	---	---
2,836,034,104	1.00	2.00	Actual/Actual	24/02/2042	30	---	24/02	2.00	1	GGB-FXD-240242-30Y-2.000-1.00	---	---	---	---	---	---	---	---	---
1,500,000	1,000.00	0.97	FLR Actual/360	10/08/2014	5	---	10/02 - 10/08	---	1	GGB-FRN-100814-05Y-1.762-1000.00	---	---	---	---	---	---	---	---	---
5,187,186	1,000.00	1.60	FLR Actual/360	21/05/2014	5	---	21/11 - 21/05	---	1	GGB-FRN-210514-05Y-2.734-1000.00	---	---	---	---	---	---	---	---	---
78,300	1,000.00	1.16	FLR Actual/360	23/07/2014	5	---	23/01 - 23/07	---	1	GGB-FRN-230714-05Y-2.018-1000.00	---	---	---	---	---	---	---	---	---

Government Bonds Notes

Transactions Volume = (Pieces) * (Nominal Price). Transactions Value = (Pieces) * (Nominal Price) * (price %) + (Accrued interest).

The Value of current coupon for the issues with NV 0.01 euro refers to NV 100 euros

FLR: Floating Interest Rate.

[1] - The Expiration Date of the interest bearing period and the Date for coupon payment.

Bonds in Circulation	Currency / Min nominal traded Value	Coupons Payment Date	Current Coupon Value	Note	Coupon Attached	Trading Unit	Issue Date	Duration (years)	Today's Interest	A.I.C in days	Bonds	Last price of previous days	Last Outcry in Cash (euro) Price	Buy / Sell	Trades in Pieces	Life min	Life Max
Bonds of International Organizations																	
1,000,000	EUR / 1000	21/07	---	---	8	1	21/07/2006	10	5.0 FLR	360	EUROPEAN INVESTMENT BANK BOND	97.50	16/04/2007	---	---	---	---
Corporate Bonds in Foreign Currency and Euro																	
103,746	GBP / 10	01/12	0.25	---	54	1	01/12/1930	98	2.5	360	National Mortgage Bank	2.27	05/02/1996	2.27	S	05/02/1996	2.27
0	GBP / 10	01/12	0.25	---	56	1	01/12/1928	100	2.5	360	National Mortgage Bank	---	---	---	---	---	---

Government Bonds Notes

A.I.C: Accrued Interest Calculation base.
FLR: Floating Interest Rate.
The minimum tradeable Nominal Value for all Demeterialised Government Titles is 100 Euros.

State Banks Bonds (one year maturity)

Number Listed Bonds	Nominal value	Initial Rate	Current Rate	Annual Interest	Issue Date	Note	State Banks Bonds	Trading Unit	Yearly Renewals	Last Outcry in Cash (euro) Price	Buy / Sell	Volume
342,560	130.41	2.35	3.92	0.00	31/01/2005	---	H.I.D.B.	1	9	100.00	B	---
16,015	1,211.71	3.65	2.47	0.00	30/11/2006	---	H.I.D.B.	1	7	---	---	---
2,446	1,154.00	4.90	2.47	28.96	31/05/2008	---	H.I.D.B.	1	6	---	---	---
171,117	1,163.28	5.50	2.47	29.19	31/05/2008	---	H.I.D.B.	1	6	---	---	---
63,787	1,101.48	5.45	2.47	30.88	31/08/2008	---	H.I.D.B.	1	5	---	---	---
54,559	1,129.20	5.45	2.47	28.34	31/08/2008	---	H.I.D.B.	1	5	---	---	---
77,348	1,130.82	5.60	2.47	28.38	31/08/2008	---	H.I.D.B.	1	5	---	---	---
165,926	1,130.82	5.60	2.47	28.38	31/08/2008	---	H.I.D.B.	1	5	---	---	---
5,358	1,108.96	5.45	2.47	27.83	31/10/2008	---	H.I.D.B.	1	5	---	---	---
1,045	1,129.74	5.50	2.47	28.35	31/10/2008	---	H.I.D.B.	1	5	---	---	---
76,077	1,132.45	5.75	2.47	28.42	31/10/2008	---	H.I.D.B.	1	5	---	---	---

Bonds Notes

The annual renewal of H.I.D.B. Bonds is free of taxes (net rate).
For Bonds issue until 31/07/2013 the accrued interest is capitalized.

Athex & ATHEXClear Members List

Member Name			Stock Market			Derivatives Market			ATHEXClear Member		
Address	Phone	Fax	Market Member	Remote Member	Market Maker	Proprietary	Market Maker	Agent	General Clearing	Direct Clearing	Non Clearing
A. SARRIS SECURITIES S.A.			a								
6, DRAGATSANIOU STR. ATHINA	(210)-3367700	(210)-3312324									
AGRICULTURAL BANK OF GREECE S.A.			a				a			a	
, 23 PANEPISTIMIOU ATHINA	(210)-3298400	(210)-3298322									
ALPHA FINANCE INVESTMENT SERVICES S.A.			a		a		a			a	
5, MERLIN STR. ATHINA	(210)-3677400	(210)-3311193									
ALPHA BANK A.E.						a			a		
40, STADIOU STR ATHINA	(210)-3265546	(210)-3265811									
	(210)-3260000	(210)-3264116									
ARGUS STOCKBROKERS LTD			a	a							
12-14, KENNEDY AVE, S. 303 NICOSIA	(+35722)-22717000	(+35722)-22717070									
ATHENAIKI BROKERAGE FIRM S.A.			a								
33, STADIOU STR. ATHINA	(210)-3254764	(210)-3254767									
ATLANTIC SECURITIES LIMITED			a	a							
37, PRODROMOU STR. NICOSIA	(+35722)-445400	(+35722)-661914									
ATLAS SECURITIES S.A			a			a					a
14 - 16, VERVENON STR.& 125 MICHALAKOPOULOU STR. ATHINA	(210)-3363300	(210)-3238925									
ATTICA BANK S.A.									a		
54, AKADIMIAS STR. ATHINA	(210)-3390757	(210)-3646090									
23, OMIROU STR. ATHINA	(210)-3669000	(210)-3669410									
AXIA VENTURES GROUP LTD			a	a							
10, G. KRANIDIOTI NICOSIA	+357 22 742000	+357 22 742001									
AXON SECURITIES S.A.			a			a					a
48, STADIOU ATHINA	(210)-3363800	(210)-3243903									
BANK OF CYPRUS PUBLIC COMPANY LTD									a		
, 51,STASINOU (AG. PARASKEVI, STROVOLOS) NICOSIA	(0035722)-121883	(0035722)-336258									
170, ALEXANDRAS AVE ATHINA	(210)-6477708	(210)-6477709									
BETA SECURITIES S.A.			a		a	a	a			a	
, BRAILA & 29 ALEXANDRAS AVE ATHINA	(210)-6478900	(210)-6410139									
BNP PARIBAS SECURITIES SERVICES									a		
94, VAS. SOFIAS AVE ATHINA	(210)-7468500	(210)-7468579									
CAPITAL SECURITIES S.A.			a			a					a
58, MITROPOLEOS STR. ATHINA	(210)-3369700	(210)-3369820									
CFS SECURITIES & INVESTMENT SERVICES S.A.			a		a			a		a	
3, STADIOU STR. ATHINA	(210)-3360800	(210)-3311854									
CITIGROUP GLOBAL MARKET LTD			a	a							
, CITIGROUP CENTRE, CANADA SQUARE, CANARY WHART LONDON	002079864000	002079862266									
CO-OPERATIVE CENTRAL BANK LTD			a	a							
8, GRIGORI AFXENTIOU STR. NICOSIA	(+35722)-743300	(+35722)-672083									
CREDIT AGRICOLE CHEUVREUX S.A.			a	a							
, 9 QUAI PAUL DOUMER PARIS	33 (0) 1 41 89 70 00										
CREDIT SUISSE SECURITIES (EUROPE) LIMITED			a	a							
, ONE CABOT SQUARE LONDON	+44 20 7888 8888	+44 20 7888 1600									
CYCLOS SECURITIES S.A.			a		a	a				a	
39, PANEPISTIMIOU STR. ATHINA	(210)-3364300	(210)-3239122									
D.A. TSEKOURAS SEC. S.A.			a								
3, PESMAZOGLOU STR. ATHINA	(210)-3214406	(210)-3211997									
DEUTSCHE BANK S.A.			a	a							
70, THEODOR-HEUSS-ALLEE FRANKFURT	0049 69 910 00	0049 69 910 34 225									
DYNAMIC SECURITIES			a					a		a	
6 - 10, CHAR. TRIKOUPH STR. ATHINA	(210)-3677700	(210)-3677777									
EL. PETROPOULAKIS SECURITIES S.A.			a					a			a
9, ARISTIDOU STR. ATHINA	(210)-3213928	(210)-3216810									
EUROBANK EQUITIES S.A.			a		a		a			a	
10, FILELLINON STR. ATHINA	(210)-3720000	(210)-3720001									
EUROBANK ERGASIAS S.A.									a		
8, OTHONOS STR. ATHINA	(210)-3337000	(210)-3233866									
	(210)-3337969	(210)-3245916									
EUROCORP SECURITIES S.A.			a			a				a	
14, FILIKIS ETAIRIAS SQ. ATHINA	(210)-7263500	(210)-7263666									
EUOTRUST BROKERAGE S.A.			a								
13-15, SOPHOCLEOUS STR. ATHINA	(210)-3363100	(210)-3238334									

Athex & ATHEXClear Members List

Member Name			Stock Market			Derivatives Market			ATHEXClear Member		
Address	Phone	Fax	Market Member	Remote Member	Market Maker	Proprietary	Market Maker	Agent	General Clearing	Direct Clearing	Non Clearing
EUROXX SECURITIES S.A.			a			a				a	
7, PALAIOLOGOU STR. CHALANDRI	(210)-6879400	(210)-6879401									
G.A. PERVANAS SECURITIES & INVESTMENT SERVICES CO S.A.			a			a					a
7 - 9, SOPHOCLEOUS STR. ATHINA	(210)-3251875	(210)-3210291									
GENERAL BANK OF GREECE S.A.									a		
87-89, ERMOY ATHINA	(210)-6976072	(210)-6976079									
, 109-111, MESOGEION AVE. ATHINA	(210)-6975000	(210)-6975706									
GLOBAL CAPITAL SECURITIES AND FINANCIAL SERVICES LTD			a	a							
5, LEMESOU AVE. LEMESOS CYPRUS	(+35722)-710710	(+35722)-339332									
GUARDIAN TRUST SECURITIES S.A			a		a	a					a
15, FILELLINON STR. ATHINA	(210)-3220402	(210)-3220498									
HELLENIC AMERICAN SEC. S.A.			a			a					
6, EVRIPIDOU STR. ATHINA	(210)-3311100	(210)-3215968									
HELLENIC BANK (INVESTMENTS) LTD			a	a							
31, KYRIAKOY MATSI AVE. NICOSIA	(+35722)-500100	(+35722)-500110									
HSBC BANK PLC									a		
109-111, MESOGION AVE ATHINA	(210)-6961507	(210)-6929310									
INDEX SECURITIES S.A.			a								
6, DRAGATSANIOU STR. ATHINA	(210)-3213920	(210)-3213216									
INTERSEC S.A.						a				a	
80-88, SYGROU AVE ATHINA	(210)-9203000	(210)-9203052									
INVESTMENT BANK OF GREECE S.A.			a		a		a		a		
32, AIGEIALIAS MAROUSI	(210) 8173000	(210) 8173101									
24B, KIFISSIAS AVE MAROUSI	(210)-8171800	(210)-8171889									
J. CHR. MAVRIKIS SECURITIES S.A.			a								
5, SOPHOCLEOUS STR. ATHINA	(210)-3213949	(210)-3217767									
KAPPA SECURITIES S.A.			a			a					a
15, VALAORITOU STR. ATHINA	(210)-3610371	(210)-3641002									
KYPROU SECURITIES S.A.			a		a	a					a
26, HALKIDONOS & FIDIPPIDOY STR. ATHINA	(210)-8701000	(210)-8701049									
LAIKI FINANCIAL SERVICES LTD			a	a							
26, CLR HOUSE, VIRONOS AVE. NICOSIA	(+35722)-898600	(+35722)-680953									
LEON DEPOLAS SECURITIES S.A.			a					a			a
1, CHR. LADA STR. ATHINA	(210)-3213286	(210)-3211618									
MAGNA TRUST SECURITIES S.A			a					a			a
9, FIDIOU STR. ATHINA	(210)-3327503	(210)-3327599									
MEGA EQUITY SECURITIES & FINANCIAL SERVICES LTD			a	a							
42-44, GRIBA DIGENI AV. NICOSIA	(+35722)-711711	(+35722)-711811									
MERIT SECURITIES S.A			a		a	a				a	
38, VAS. KONSTANTINOY STR. ATHINA	(210)-3671800	(210)-3671830									
MERRILL LYNCH			a	a							
2, KING EDWARD STREET LONDON	(+4420)-79952000	(+4420)-79954525									
METOCHIKI SECURITIES S.A.			a								
3, G. GENNADIOY STR. ATHINA	(210)-3306700	(210)-3306709									
MIDAS BROKERAGE S.A.			a								
5, SOPHOCLEOUS STR. ATHINA	(210)-3253203	(210)-3253205									
N. CHRYSOCHOIDIS STOCK BROKERAGE I.S.S.A.			a					a		a	
7 - 9, SOPHOCLEOUS STR. ATHINA	(210)-3213913	(210)-3216115									
N. SARROS SECURITIES S.A.						a					
7-9, SOPHOCLEOUS STR. ATHINA	(210)-3705600	(210)-3219992									
NATIONAL BANK OF GREECE S.A.							a		a		
86, AIOLOU STR. ATHINA	(210)-3341000	(210)-3228187									
68, AKADIMIAS STR. ATHINA	(210)-3328817	(210)-3328678									
NBG SECURITIES S.A.			a		a		a				a
68, AKADIMIAS STR. ATHINA	(210)-3328500	(210)-3328565									
NEW PROTON BANK S.A.			a			a				a	
20, ESLIN & AMALIADOS ATHINA	210 6970000	210 6970111									
NUNTIUS SECURITIES S.A			a					a			a
6, DRAGATSANIOU STR. ATHINA	(210)-3350599	(210)-3254846									
OLYMPIA SECURITIES S.A			a								
46B, A. METAXA STR. GLYFADA	(210)-3702500	(210)-3702520									
ORANGE PARTNERS SECURITIES S.A			a								
5, TZORTZ STR. ATHINA	(210)-3300009	(210)-3305240									

Athex & ATHEXClear Members List

Member Name			Stock Market			Derivatives Market			ATHEXClear Member		
Address	Phone	Fax	Market Member	Remote Member	Market Maker	Proprietary	Market Maker	Agent	General Clearing	Direct Clearing	Non Clearing
PANTELAKIS SEC. S.A.			a			a					a
109-111, MESOGION AVE. ATHINA	(210)-6965000	(210)-6929550									
PEGASUS BROKERAGE FIRM S.A			a			a					
17, VALAORITOU STR. ATHINA	(210)-3670700	(210)-3670760									
PIRAEUS BANK S.A.								a	a		
4, AMERIKIS STR ATHINA	(210)-3335918	(210)-3254207									
4, AMERIKIS STR. ATHINA	(210)-3335000	(210)-3335079									
PIRAEUS SECURITIES S.A.			a				a			a	
10, STADIOU STR. ATHINA	(210)-3354100	(210)-3233814									
PRELIUM SECURITIES & INVESTMENT SERVICES S.A.			a			a					a
, KIFISSIAS AVE & 1 DAVAKI STR ATHINA	(210)-3677000	(210)-6920403									
PROBANK S.A.			a								
10, AMERIKIS STR. ATHINA	(210)-3392631	(210)-3392646									
PROCHOICE SECURITIES LTD			a	a							
57, SPYROU KYPRIANOY NICOSIA	+357-24-661192	+357-24-662464									
SHARELINK SECURITIES & FINANCIAL SERVICES LTD			a	a							
6, ELLINAS HOUSE, THEOTOKI STR. NICOSIA	(+35722)-554200	(+35722)-750852									
SOCIETE GENERALE S.A.			a	a		a					
17, COURS VALMY PUTEAUX - LA DEFENSE PARIS	(+33) 142134754	(+33) 142135697									
240-242, KIFISIAS AVE ATHINA	(210)-6790161	(210)-6728828									
SOLIDUS SECURITIES S.A			a			a				a	
64, LOUIZIS RIANKOUR STR. ATHINA	(210)-6925500	(210)-6985421									
SOTIRIADIS SECURITIES S.A.			a								
7, VALAORITOU STR. ATHINA	(210)-3636943	(210)-3601943									
ST. EM. LAVRENTAKIS SECURITIES S.A.			a			a					a
7 - 9, SOPHOCLEOUS STR. ATHINA	(210)-3213336	(210)-3246572									
THE CYPRUS INVESTMENT AND SECURITIES CORPORATION LIMITED (CISCO)			a	a							
4, EVROU STR. (EUROLIFE HOUSE) NICOSIA	(+35722)-881800	(+35722)-881801									
UBS LIMITED			a	a							
1, FINSBURY AVENUE LONDON	(+4420)-79013333	(+4420)-79012345									
Z.G. PORTALAKIS INVESTMENT SERVICES S.A.			a								
8, PESMAZOGLOU STR. ATHINA	(210)-3214830	(210)-3212024									
KARAMANOF SECURITIES & INV. SERVICES S.A.			a					a		a	
2, SQ. ST THEODORON ATHINA	(210)-3212947	(210)-3217088									

List of Stocks under Market Making operations

Securities	Stock Category	
	Start Market Making	End Market Making
BANK OF CYPRUS (CR)	Under Suspension	
EUROBANK EQUITIES S.A.	23/10/2012	22/10/2013
INVESTMENT BANK OF GREECE S.A.	02/01/2013	01/01/2014
COCA - COLA HBC (CR)	Under Suspension	
EUROBANK EQUITIES S.A.	23/10/2012	22/10/2013
INVESTMENT BANK OF GREECE S.A.	08/01/2013	07/01/2014
CYPRUS POPULAR BANK (CR)	Under Suspension	
PIRAEUS SECURITIES S.A.	02/02/2013	01/02/2014
ALPHA BANK (CR)	Main Market	
EUROBANK EQUITIES S.A.	24/10/2012	23/10/2013
INVESTMENT BANK OF GREECE S.A.	08/01/2013	07/01/2014
MERIT SECURITIES S.A.	03/09/2012	02/09/2013
NBG SECURITIES S.A.	15/01/2013	14/01/2014
PIRAEUS SECURITIES S.A.	28/05/2013	27/05/2014
ALUMIL (CR)	Main Market	
BETA SECURITIES S.A.	18/07/2013	17/07/2014
CC HBC AG (CR)	Main Market	
NBG SECURITIES S.A.	29/04/2013	28/04/2014
ELLAKTOR (CR)	Main Market	
EUROBANK EQUITIES S.A.	01/06/2013	31/05/2014
INVESTMENT BANK OF GREECE S.A.	02/01/2013	01/01/2014
NBG SECURITIES S.A.	25/06/2013	24/06/2014
ELTON SA (CR)	Main Market	
BETA SECURITIES S.A.	03/09/2012	02/09/2013
EUROBANK ERGASIAS (CR)	Main Market	
ALPHA FINANCE INVESTMENT SERVICES S.A.	08/01/2013	07/01/2014
EUROBANK EQUITIES S.A.	01/06/2013	31/05/2014
INVESTMENT BANK OF GREECE S.A.	08/01/2013	07/01/2014
GEK TERNA (CR)	Main Market	
INVESTMENT BANK OF GREECE S.A.	02/01/2013	01/01/2014
GR. SARANTIS SA (CR)	Main Market	
BETA SECURITIES S.A.	14/05/2013	13/05/2014
HELLENIC EXCHANGES (CR)	Main Market	
EUROBANK EQUITIES S.A.	01/06/2013	31/05/2014
INVESTMENT BANK OF GREECE S.A.	02/01/2013	01/01/2014
NBG SECURITIES S.A.	25/06/2013	24/06/2014
INTRACOM CONSTR. (CR)	Main Market	
MERIT SECURITIES S.A.	27/12/2012	26/12/2013
INTRALOT (CR)	Main Market	
EUROBANK EQUITIES S.A.	01/06/2013	31/05/2014
INVESTMENT BANK OF GREECE S.A.	02/01/2013	01/01/2014
MARFIN INVESTMENT GROUP (CR)	Main Market	
PIRAEUS SECURITIES S.A.	02/02/2013	01/02/2014
MLS MULTIMEDIA SA (CR)	Main Market	
BETA SECURITIES S.A.	18/07/2013	17/07/2014
MOTOR OIL (CR)	Main Market	
EUROBANK EQUITIES S.A.	23/10/2012	22/10/2013
MYTILINEOS HOLDINGS (CR)	Main Market	
INVESTMENT BANK OF GREECE S.A.	02/01/2013	01/01/2014
NBG SECURITIES S.A.	25/06/2013	24/06/2014
NATIONAL BANK (CR)	Main Market	
ALPHA FINANCE INVESTMENT SERVICES S.A.	08/01/2013	07/01/2014
EUROBANK EQUITIES S.A.	24/10/2012	23/10/2013
INVESTMENT BANK OF GREECE S.A.	08/01/2013	07/01/2014
MERIT SECURITIES S.A.	03/09/2012	02/09/2013
NBG SECURITIES S.A.	28/02/2013	27/02/2014
OPAP (CR)	Main Market	
ALPHA FINANCE INVESTMENT SERVICES S.A.	08/01/2013	07/01/2014
EUROBANK EQUITIES S.A.	24/10/2012	23/10/2013
INVESTMENT BANK OF GREECE S.A.	08/01/2013	07/01/2014
NBG SECURITIES S.A.	15/01/2013	14/01/2014
OTE (CR)	Main Market	
ALPHA FINANCE INVESTMENT SERVICES S.A.	08/01/2013	07/01/2014
EUROBANK EQUITIES S.A.	24/10/2012	23/10/2013
INVESTMENT BANK OF GREECE S.A.	08/01/2013	07/01/2014
NBG SECURITIES S.A.	01/12/2012	30/11/2013
PETROPOULOS PETROS (CR)	Main Market	
BETA SECURITIES S.A.	28/05/2013	27/05/2014

List of Stocks under Market Making operations

Securities	Stock Category	
	Start Market Making	End Market Making
Market Maker		
PIRAEUS BANK (CR)	Main Market	
EUROBANK EQUITIES S.A.	23/10/2012	22/10/2013
INVESTMENT BANK OF GREECE S.A.	08/01/2013	07/01/2014
NBG SECURITIES S.A.	02/06/2013	01/06/2014
PIRAEUS SECURITIES S.A.	16/02/2013	15/02/2014
PPC (CR)	Main Market	
ALPHA FINANCE INVESTMENT SERVICES S.A.	08/01/2013	07/01/2014
EUROBANK EQUITIES S.A.	23/10/2012	22/10/2013
INVESTMENT BANK OF GREECE S.A.	08/01/2013	07/01/2014
NBG SECURITIES S.A.	26/03/2013	25/03/2014
S.KANAKIS SA (CR)	Main Market	
BETA SECURITIES S.A.	01/10/2012	30/09/2013
TITAN CEMENT (CR)	Main Market	
EUROBANK EQUITIES S.A.	23/10/2012	22/10/2013
VIOHALCO (CB)	Main Market	
ALPHA FINANCE INVESTMENT SERVICES S.A.	11/02/2013	10/03/2014
EUROBANK EQUITIES S.A.	20/01/2013	19/01/2014
MERIT SECURITIES S.A	13/12/2012	12/12/2013

Underlying Asset				Derivatives Market																		
Price max	Price min	Closing price	change	Delivery Month	Open price	Price max	Price min	Last price	Closing price	Last Bid	Last Ask	Settlement price	change	Life high	Life low	Trades	Volume	change	Value	change	Open Interest	change
FTSE/Athex Large Cap				(Trade Unit: 1 Index Point x 5€, Cash Settlement)																		
318.17	313.00	313.66	-0.77%	September 2013	321.00	321.00	314.75	315.50	315.75	10@315.50	11@316.00	315.75	-1.17%	346.00	271.00	273	1,359	-72.65%	2,159,165.00	-72.54%	46,859	1.49%
				October 2013	317.00	320.00	316.00	316.00	317.25	8@316.00	2@318.50	317.25	-1.09%	338.75	292.25	7	23	-77.88%	36,495.00	-77.81%	654	-2.39%
				November 2013	---	---	---	---	---	5@204.25	2@321.50	---	---	---	---	---	---	---	---	---	---	---
				December 2013	---	---	---	---	319.50	1@315.00	1@326.00	319.50	-1.16%	343.00	276.75	---	---	-100.00%	---	-100.00%	525	0.00%
				March 2014	---	---	---	---	---	---	---	---	---	---	---	---	---	---	---	---	---	---
				June 2014	---	---	---	---	---	---	---	---	---	---	---	---	---	---	---	---	---	---

Underlying Asset				Derivatives Market																		
Price max	Price min	Closing price	change	Delivery Month	Open price	Price max	Price min	Last price	Closing price	Last Bid	Last Ask	Settlement price	change	Life high	Life low	Trades	Volume	change	Value	change	Open Interest	change
ALPHA BANK (CR)				(Contract Size: 100 Securities, Physical Delivery)																		
0.506	0.495	0.496	-1.00%	September 2013	0.501	0.508	0.496	0.497	0.499	14@0.497	2@0.500	0.499	-0.40%	1.46	0.371	87	1,881	-54.18%	94,611.30	-53.36%	17,315	5.60%
				December 2013	---	---	---	---	0.496	1@0.480	2@0.509	0.496	-0.40%	0.498	0.437	---	---	-100.00%	---	-100.00%	104	0.00%
				March 2014	---	---	---	---	---	---	---	---	---	---	---	---	---	---	---	---	---	---
				June 2014	---	---	---	---	---	---	---	---	---	---	---	---	---	---	---	---	---	---
CC HBC AG (CR)				(Contract Size: 100 Securities, Physical Delivery)																		
21.50	20.90	20.95	-1.13%	September 2013	21.32	21.34	20.90	20.90	21.03	1@20.90	5@21.30	21.03	-0.85%	22.33	16.93	23	77	126.47%	162,667.00	126.56%	747	4.04%
				December 2013	21.28	21.28	21.28	21.28	21.08	---	5@21.35	21.08	-1.26%	21.28	17.90	1	1	---	2,128.00	---	4	-20.00%
				March 2014	---	---	---	---	---	---	---	---	---	---	---	---	---	---	---	---	---	---
				June 2014	---	---	---	---	---	---	---	---	---	---	---	---	---	---	---	---	---	---
CORINTH PIPEWORKS SA (CR)				(Contract Size: 100 Securities, Physical Delivery)																		
2.17	2.09	2.11	-0.47%	September 2013	2.14	2.18	2.14	2.18	2.16	10@2.12	1@2.19	2.16	-0.46%	2.48	1.98	2	15	---	3,230.00	---	457	0.00%
				December 2013	---	---	---	---	---	---	1@2.23	---	---	---	---	---	---	---	---	---	---	---
				March 2014	---	---	---	---	---	---	---	---	---	---	---	---	---	---	---	---	---	---
				June 2014	---	---	---	---	---	---	---	---	---	---	---	---	---	---	---	---	---	---
ELLAKTOR (CR)				(Contract Size: 100 Securities, Physical Delivery)																		
2.18	2.12	2.13	-0.93%	September 2013	2.15	2.18	2.12	2.14	2.13	4@2.12	15@2.14	2.13	-0.93%	2.45	1.73	8	34	-61.36%	7,324.00	-60.89%	4,396	0.07%
				December 2013	---	---	---	---	2.13	4@2.09	15@2.17	2.13	-0.93%	2.17	2.11	---	---	---	---	---	---	---
				March 2014	---	---	---	---	---	---	---	---	---	---	---	---	---	---	---	---	---	---
				June 2014	---	---	---	---	---	---	---	---	---	---	---	---	---	---	---	---	---	---
EUROBANK ERGASIAS (CR)				(Contract Size: 10 Securities, Physical Delivery)																		
0.664	0.640	0.650	1.88%	September 2013	0.648	0.659	0.638	0.639	0.659	1@0.638	120@0.659	0.659	2.65%	5.00	0.537	21	485	46.97%	3,147.37	49.40%	18,476	-1.54%
				December 2013	0.650	0.656	0.650	0.656	0.661	8@0.640	2@0.670	0.661	2.32%	0.700	0.600	2	83	730.00%	5,443.00	740.88%	1,721	-4.44%
				March 2014	---	---	---	---	0.657	---	---	0.657	2.66%	0.673	0.619	---	---	---	---	---	---	---
				June 2014	---	---	---	---	---	---	---	---	---	---	---	---	---	---	---	---	---	---
EUROBANK PROPERTIES REIC (CR)				(Contract Size: 100 Securities, Physical Delivery)																		
7.35	7.09	7.10	-1.39%	September 2013	7.14	7.22	7.13	7.13	7.13	1@6.96	5@7.12	7.13	-0.42%	7.67	6.00	6	25	47.06%	17,923.00	47.13%	275	0.36%
				December 2013	---	---	---	---	---	---	5@7.18	---	---	---	---	---	---	---	---	---	---	---
				March 2014	---	---	---	---	---	---	---	---	---	---	---	---	---	---	---	---	---	---
				June 2014	---	---	---	---	---	---	---	---	---	---	---	---	---	---	---	---	---	---
EYDAP S.A. (CR)				(Contract Size: 100 Securities, Physical Delivery)																		
6.15	6.03	6.10	1.33%	September 2013	6.06	6.06	6.06	6.06	6.24	1@5.93	2@6.14	6.24	1.30%	6.67	5.58	2	5	-88.10%	3,030.00	-87.92%	214	-1.83%
				December 2013	---	---	---	---	---	---	2@6.18	---	---	---	---	---	---	---	---	---	---	---
				March 2014	---	---	---	---	---	---	---	---	---	---	---	---	---	---	---	---	---	---
				June 2014	---	---	---	---	---	---	---	---	---	---	---	---	---	---	---	---	---	---
FOLLI FOLLIE (CR)				(Contract Size: 100 Securities, Physical Delivery)																		
18.20	17.61	18.00	0.78%	September 2013	17.85	18.05	17.85	18.05	18.05	1@16.90	1@18.09	18.05	0.78%	18.86	14.68	2	10	---	17,950.00	---	232	-4.13%
				December 2013	---	---	---	---	---	---	---	---	---	---	---	---	---	---	---	---	---	---
				March 2014	---	---	---	---	---	---	---	---	---	---	---	---	---	---	---	---	---	---
				June 2014	---	---	---	---	---	---	---	---	---	---	---	---	---	---	---	---	---	---

Underlying Asset				Derivatives Market																		
Price max	Price min	Closing price	change	Delivery Month	Open price	Price max	Price min	Last price	Closing price	Last Bid	Last Ask	Settlement price	change	Life high	Life low	Trades	Volume	change	Value	change	Open Interest	change
FRIGOGLASS SA (CR)				(Contract Size: 100 Securities, Physical Delivery)																		
4.97	4.90	4.94	-0.60%	September 2013	4.91	4.97	4.91	4.95	4.93	5@4.91	2@4.97	4.93	-0.60%	5.71	4.35	5	10	-68.75%	4,924.00	-68.46%	422	0.24%
				December 2013	---	---	---	---	---	---	2@5.02	---	---	---	---	---	---	---	---	---	---	---
				March 2014	---	---	---	---	---	---	---	---	---	---	---	---	---	---	---	---	---	---
				June 2014	---	---	---	---	---	---	---	---	---	---	---	---	---	---	---	---	---	---
GEK TERNA (CR)				(Contract Size: 100 Securities, Physical Delivery)																		
2.20	2.15	2.17	0.46%	September 2013	2.18	2.20	2.16	2.18	2.17	50@2.15	47@2.18	2.17	-1.36%	2.62	1.45	50	502	56.88%	109,300.00	56.70%	15,893	-1.41%
				December 2013	2.18	2.18	2.18	2.18	2.17	3@2.11	47@2.21	2.17	-1.36%	2.51	1.57	1	25	-50.00%	5,450.00	-50.23%	100	33.33%
				March 2014	---	---	---	---	2.15	---	---	2.15	-1.38%	2.50	2.26	---	---	---	---	---	15,895	0.00%
				June 2014	---	---	---	---	---	---	---	---	---	---	---	---	---	---	---	---	---	---
HELLENIC EXCHANGES (CR)				(Contract Size: 100 Securities, Physical Delivery)																		
6.04	5.94	5.94	-1.66%	September 2013	5.98	5.98	5.94	5.95	5.93	2@5.96	9@6.06	5.93	-1.66%	6.46	3.82	8	38	-64.15%	22,630.00	-64.24%	2,210	-0.27%
				December 2013	---	---	---	---	5.95	5@5.90	9@6.10	5.95	-1.65%	6.85	4.01	---	---	---	---	---	---	---
				March 2014	---	---	---	---	---	---	---	---	---	---	---	---	---	---	---	---	---	---
				June 2014	---	---	---	---	---	---	---	---	---	---	---	---	---	---	---	---	---	---
HELLENIC PETROLEUM (CR)				(Contract Size: 100 Securities, Physical Delivery)																		
7.60	7.46	7.51	-1.96%	September 2013	7.54	7.56	7.48	7.51	7.51	4@7.44	5@7.53	7.51	-0.79%	9.01	6.00	18	69	-11.54%	51,931.00	-11.05%	2,305	-0.43%
				December 2013	---	---	---	---	7.43	---	5@7.58	7.43	-0.80%	7.72	6.61	---	---	---	---	---	---	---
				March 2014	---	---	---	---	---	---	---	---	---	---	---	---	---	---	---	---	---	---
				June 2014	---	---	---	---	---	---	---	---	---	---	---	---	---	---	---	---	---	---
INTRALOT (CR)				(Contract Size: 100 Securities, Physical Delivery)																		
1.63	1.59	1.61	0.63%	September 2013	1.60	1.60	1.60	1.60	1.63	3@1.60	43@1.62	1.63	0.62%	2.30	1.30	3	20	-88.76%	3,200.00	-88.98%	4,049	0.12%
				December 2013	---	---	---	---	---	---	43@1.65	---	---	---	---	---	---	---	---	---	---	---
				March 2014	---	---	---	---	---	---	---	---	---	---	---	---	---	---	---	---	---	---
				June 2014	---	---	---	---	---	---	---	---	---	---	---	---	---	---	---	---	---	---
JUMBO SA (CR)				(Contract Size: 100 Securities, Physical Delivery)																		
8.67	8.30	8.46	-0.24%	September 2013	8.56	8.64	8.44	8.44	8.44	5@8.26	1@8.62	8.44	-0.24%	9.03	7.19	21	92	-25.81%	78,615.00	-24.13%	261	14.47%
				December 2013	---	---	---	---	---	---	1@8.66	---	---	---	---	---	---	---	---	---	---	---
				March 2014	---	---	---	---	---	---	---	---	---	---	---	---	---	---	---	---	---	---
				June 2014	---	---	---	---	---	---	---	---	---	---	---	---	---	---	---	---	---	---
MARFIN INVESTMENT GROUP (CR)				(Contract Size: 100 Securities, Physical Delivery)																		
0.309	0.300	0.309	0.65%	September 2013	0.304	0.311	0.300	0.305	0.308	1@0.301	5@0.308	0.308	2.33%	0.420	0.252	12	105	-52.91%	3,192.20	-52.05%	19,116	-0.06%
				December 2013	---	---	---	---	---	---	5@0.318	---	---	---	---	---	---	---	---	---	---	---
				March 2014	---	---	---	---	---	---	---	---	---	---	---	---	---	---	---	---	---	---
				June 2014	---	---	---	---	---	---	---	---	---	---	---	---	---	---	---	---	---	---
METKA (CR)				(Contract Size: 100 Securities, Physical Delivery)																		
10.77	10.40	10.42	-1.23%	September 2013	---	---	---	---	10.41	2@10.30	10@10.80	10.41	-1.23%	12.18	9.43	---	---	-100.00%	---	-100.00%	477	0.00%
				December 2013	---	---	---	---	10.40	---	10@10.87	10.40	-1.23%	10.67	10.52	---	---	---	---	---	---	---
				March 2014	---	---	---	---	---	---	---	---	---	---	---	---	---	---	---	---	---	---
				June 2014	---	---	---	---	---	---	---	---	---	---	---	---	---	---	---	---	---	---

Underlying Asset				Derivatives Market																		
Price max	Price min	Closing price	change	Delivery Month	Open price	Price max	Price min	Last price	Closing price	Last Bid	Last Ask	Settlement price	change	Life high	Life low	Trades	Volume	change	Value	change	Open Interest	change
MOTOR OIL (CR)				(Contract Size: 100 Securities, Physical Delivery)																		
7.65	7.46	7.46	-2.48%	September 2013	7.60	7.60	7.54	7.57	7.33	1@7.40	1@7.59	7.33	-2.53%	8.16	6.66	8	20	-66.10%	15,118.00	-66.09%	943	-0.53%
				December 2013	---	---	---	---	---	---	1@7.65	---	---	---	---	---	---	---	---	---	---	---
				March 2014	---	---	---	---	---	---	---	---	---	---	---	---	---	---	---	---	---	---
				June 2014	---	---	---	---	---	---	---	---	---	---	---	---	---	---	---	---	---	---
MYTILINEOS HOLDINGS (CR)				(Contract Size: 100 Securities, Physical Delivery)																		
4.40	4.31	4.31	-1.37%	September 2013	4.40	4.40	4.32	4.32	4.33	4@4.31	1@4.35	4.33	-1.37%	5.50	3.50	19	80	-45.58%	34,914.00	-45.55%	4,957	0.92%
				December 2013	---	---	---	---	4.37	---	1@4.39	4.37	-1.35%	5.28	3.70	---	---	---	---	---	20	0.00%
				March 2014	---	---	---	---	4.37	---	---	4.37	-1.35%	4.81	4.43	---	---	---	---	---	---	---
				June 2014	---	---	---	---	---	---	---	---	---	---	---	---	---	---	---	---	---	---
NATIONAL BANK (CR)				(Contract Size: 100 Securities, Physical Delivery)																		
3.10	2.99	3.00	-1.64%	September 2013	3.06	3.10	3.00	3.01	3.03	2@3.01	40@3.02	3.03	-0.98%	3.25	0.344	153	2,283	12.13%	698,180.00	13.12%	5,683	12.27%
				December 2013	---	---	---	---	3.00	2@2.98	40@3.04	3.00	-0.99%	3.03	2.31	---	---	-100.00%	---	-100.00%	8	0.00%
				March 2014	---	---	---	---	---	---	---	---	---	---	---	---	---	---	---	---	---	---
				June 2014	---	---	---	---	---	---	---	---	---	---	---	---	---	---	---	---	---	---
OPAP (CR)				(Contract Size: 100 Securities, Physical Delivery)																		
7.55	7.36	7.44	-1.59%	September 2013	7.51	7.54	7.38	7.42	7.40	10@7.42	7@7.45	7.40	-1.33%	7.74	5.82	16	143	-27.04%	106,839.00	-27.17%	4,005	0.10%
				December 2013	---	---	---	---	7.40	---	7@7.49	7.40	-1.33%	7.66	6.31	---	---	---	---	---	---	---
				March 2014	---	---	---	---	---	---	---	---	---	---	---	---	---	---	---	---	---	---
				June 2014	---	---	---	---	---	---	---	---	---	---	---	---	---	---	---	---	---	---
OTE (CR)				(Contract Size: 100 Securities, Physical Delivery)																		
6.96	6.81	6.92	0.00%	September 2013	6.90	6.93	6.85	6.90	6.90	10@6.88	25@6.90	6.90	0.15%	7.56	4.35	37	171	-82.87%	117,830.00	-82.79%	8,167	1.08%
				December 2013	6.86	6.92	6.84	6.92	6.92	10@6.83	25@6.95	6.92	0.14%	7.56	4.40	4	80	-20.00%	55,180.00	-19.13%	90	-47.06%
				March 2014	---	---	---	---	6.91	---	---	6.91	0.14%	7.39	6.40	---	---	---	---	---	20	0.00%
				June 2014	---	---	---	---	---	---	---	---	---	---	---	---	---	---	---	---	---	---
P.P.A. S.A. (CR)				(Contract Size: 100 Securities, Physical Delivery)																		
17.20	16.51	16.62	-2.35%	September 2013	17.20	17.20	16.66	16.83	16.75	1@16.50	5@16.83	16.75	-2.39%	18.68	15.52	4	16	-79.22%	26,840.00	-79.14%	551	-0.18%
				December 2013	---	---	---	---	---	---	5@17.03	---	---	---	---	---	---	---	---	---	---	---
				March 2014	---	---	---	---	---	---	---	---	---	---	---	---	---	---	---	---	---	---
				June 2014	---	---	---	---	---	---	---	---	---	---	---	---	---	---	---	---	---	---
PIRAEUS BANK (CR)				(Contract Size: 100 Securities, Physical Delivery)																		
1.05	1.03	1.03	0.00%	September 2013	1.05	1.06	1.02	1.03	1.04	5@1.03	172@1.05	1.04	0.97%	1.17	0.169	34	366	-72.29%	38,058.00	-71.86%	14,169	-0.22%
				December 2013	1.05	1.06	1.03	1.04	1.05	---	172@1.06	1.05	1.94%	1.15	0.231	8	412	-0.24%	42,801.00	0.21%	25	-93.95%
				March 2014	---	---	---	---	1.05	---	---	1.05	0.96%	1.12	0.924	---	---	---	---	---	---	---
				June 2014	---	---	---	---	---	---	---	---	---	---	---	---	---	---	---	---	---	---
PPC (CR)				(Contract Size: 100 Securities, Physical Delivery)																		
7.60	7.47	7.47	-1.71%	September 2013	7.59	7.60	7.48	7.48	7.51	14@7.48	20@7.50	7.51	-0.79%	8.47	4.58	57	251	-67.44%	189,206.00	-67.26%	4,937	1.75%
				December 2013	---	---	---	---	7.52	14@7.43	20@7.54	7.52	-0.79%	8.56	5.08	---	---	-100.00%	---	-100.00%	150	0.00%
				March 2014	---	---	---	---	7.54	---	---	7.54	-0.79%	7.99	6.30	---	---	---	---	---	50	0.00%
				June 2014	---	---	---	---	---	---	---	---	---	---	---	---	---	---	---	---	---	---

Underlying Asset				Derivatives Market																		
Price max	Price min	Closing price	change	Delivery Month	Open price	Price max	Price min	Last price	Closing price	Last Bid	Last Ask	Settlement price	change	Life high	Life low	Trades	Volume	change	Value	change	Open Interest	change
SIDENOR (CR)				(Contract Size: 100 Securities, Physical Delivery)																		
1.65	1.61	1.62	-0.61%	September 2013	1.65	1.65	1.63	1.63	1.66	3@1.62	56@1.65	1.66	-0.60%	1.82	1.36	3	9	0.00%	1,483.00	1.85%	1,507	0.47%
				December 2013	---	---	---	---	---	---	56@1.69	---	---	---	---	---	---	---	---	---	---	---
				March 2014	---	---	---	---	---	---	---	---	---	---	---	---	---	---	---	---	---	---
				June 2014	---	---	---	---	---	---	---	---	---	---	---	---	---	---	---	---	---	---
TERNA ENERGY (CR)				(Contract Size: 103 Securities, Physical Delivery)																		
2.96	2.88	2.88	-1.37%	September 2013	2.95	2.95	2.93	2.93	2.93	1@2.85	10@2.92	2.93	0.00%	3.25	2.43	3	15	-44.44%	4,547.45	-43.95%	2,374	0.21%
				December 2013	---	---	---	---	---	---	---	---	---	---	---	---	---	---	---	---	---	---
				March 2014	---	---	---	---	---	---	---	---	---	---	---	---	---	---	---	---	---	---
				June 2014	---	---	---	---	---	---	---	---	---	---	---	---	---	---	---	---	---	---
TITAN CEMENT (CR)				(Contract Size: 100 Securities, Physical Delivery)																		
14.95	14.52	14.80	2.78%	September 2013	14.78	14.80	14.63	14.80	14.59	5@14.69	2@14.86	14.59	2.75%	15.90	12.22	11	42	-37.31%	61,859.00	-36.99%	160	-4.19%
				December 2013	---	---	---	---	14.44	---	2@14.94	14.44	2.78%	15.68	15.02	---	---	---	---	---	---	---
				March 2014	---	---	---	---	---	---	---	---	---	---	---	---	---	---	---	---	---	---
				June 2014	---	---	---	---	---	---	---	---	---	---	---	---	---	---	---	---	---	---
VIOHALCO (CB)				(Contract Size: 100 Securities, Physical Delivery)																		
4.44	4.33	4.42	0.68%	September 2013	4.37	4.41	4.37	4.41	4.39	20@4.40	5@4.43	4.39	0.69%	5.19	3.85	5	14	-70.83%	6,125.00	-70.99%	487	2.74%
				December 2013	---	---	---	---	4.43	---	5@4.47	4.43	0.68%	4.10	3.89	---	---	---	---	---	---	---
				March 2014	---	---	---	---	---	---	---	---	---	---	---	---	---	---	---	---	---	---
				June 2014	---	---	---	---	---	---	---	---	---	---	---	---	---	---	---	---	---	---

FTSE/Athex Large Cap

(Trade Unit: 1 Index Point x 5€ - Exercise Style: European, Cash Settlement)

Call Options																	Put Options																	
	September 2013							October 2013							Other Months		September 2013								October 2013							Other Months		
Exercise Price	Open price	Price max	Price min	Last price	Closing price	Volume	Open Interest	Open price	Price max	Price min	Last price	Closing price	Volume	Open Interest	Volume	Open Interest	Open price	Price max	Price min	Last price	Closing price	Volume	Open Interest	Open price	Price max	Price min	Last price	Closing price	Volume	Open Interest	Volume	Open Interest	Exercise Price	
215	-	-	-	-	101.00	-	60	-	-	-	-	-	-	-	-	-	-	-	-	-	-	-	-	-	-	-	-	-	-	-	-	-	215	
230	-	-	-	-	85.50	-	3	-	-	-	-	-	-	-	-	-	-	-	-	-	-	-	-	-	-	-	-	-	-	-	-	-	230	
255	-	-	-	-	-	-	-	-	-	-	-	-	-	-	-	-	-	-	-	-	-	-	-	-	-	-	-	-	-	-	-	-	255	
260	-	-	-	-	-	-	-	-	-	-	-	-	-	-	-	-	-	-	-	-	-	-	-	-	-	-	-	-	-	-	-	-	260	
265	-	-	-	-	-	-	-	-	-	-	-	-	-	-	-	-	-	-	-	-	-	-	-	-	-	-	-	-	-	-	-	-	265	
270	-	-	-	-	-	-	-	-	-	-	-	-	-	-	-	-	-	-	-	-	2.60	-	1	-	-	-	-	-	-	-	-	-	-	270
275	-	-	-	-	-	-	-	-	-	-	-	-	-	-	-	-	-	-	-	-	3.40	-	1	-	-	-	-	-	-	-	-	-	-	275
280	-	-	-	-	40.00	-	314	-	-	-	-	-	-	-	-	-	-	-	-	-	4.30	-	132	-	-	-	-	-	-	-	-	-	-	280
285	-	-	-	-	36.25	-	20	-	-	-	-	-	-	-	-	-	-	-	-	-	5.50	-	56	-	-	-	-	9.80	-	1	-	-	-	285
290	-	-	-	-	32.50	-	50	-	-	-	-	-	-	-	-	-	-	-	-	-	6.90	-	94	-	-	-	-	-	-	-	-	-	-	290
295	-	-	-	-	29.00	-	1	-	-	-	-	-	-	-	-	-	-	-	-	-	-	-	-	-	-	-	13.25	-	2	-	-	-	295	
300	-	-	-	-	26.00	-	415	-	-	-	-	-	-	-	-	-	-	-	-	-	10.25	-	20	-	-	-	-	15.25	-	9	-	-	-	300
305	-	-	-	-	-	-	-	-	-	-	-	29.50	-	5	-	-	-	-	-	-	12.25	-	507	-	-	-	-	17.50	-	6	-	-	-	305
310	19.00	19.00	19.00	19.00	20.25	20	749	-	-	-	-	27.00	-	20	-	-	-	-	-	-	14.50	-	15	-	-	-	-	-	-	-	-	-	-	310
315	-	-	-	-	17.75	-	631	-	-	-	-	24.50	-	130	-	-	-	-	-	-	17.00	-	37	-	-	-	-	22.25	-	20	-	-	-	315
320	-	-	-	-	15.50	-	164	-	-	-	-	-	-	-	-	-	-	-	-	-	19.75	-	37	-	-	-	-	-	-	-	-	-	-	320
325	-	-	-	-	13.50	-	60	-	-	-	-	-	-	-	-	-	20.00	20.00	20.00	20.00	22.50	1	156	-	-	-	-	-	-	-	-	-	-	325
330	-	-	-	-	11.50	-	653	-	-	-	-	-	-	-	-	-	-	-	-	-	25.75	-	1	-	-	-	-	-	-	-	-	-	-	330
335	-	-	-	-	9.90	-	145	-	-	-	-	-	-	-	-	-	-	-	-	-	-	-	-	-	-	-	-	-	-	-	-	-	335	
340	-	-	-	-	8.40	-	33	-	-	-	-	14.50	-	5	-	-	-	-	-	-	32.75	-	50	-	-	-	-	-	-	-	-	-	-	340
345	-	-	-	-	-	-	-	-	-	-	-	-	-	-	-	-	-	-	-	-	-	-	-	-	-	-	-	-	-	-	-	-	345	
350	-	-	-	-	6.10	-	51	-	-	-	-	-	-	-	-	-	-	-	-	-	40.25	-	5	-	-	-	-	-	-	-	-	-	-	350
355	-	-	-	-	5.10	-	3	-	-	-	-	-	-	-	-	-	-	-	-	-	-	-	-	-	-	-	-	-	-	-	-	-	-	355
360	-	-	-	-	-	-	-	-	-	-	-	-	-	-	-	-	-	-	-	-	48.50	-	5	-	-	-	-	-	-	-	-	-	-	360
365	-	-	-	-	-	-	-	-	-	-	-	-	-	-	-	-	-	-	-	-	52.50	-	130	-	-	-	-	-	-	-	-	-	-	365
370	-	-	-	-	2.90	-	1	-	-	-	-	-	-	-	-	-	-	-	-	-	57.00	-	5	-	-	-	-	-	-	-	-	-	-	370
375	-	-	-	-	-	-	-	-	-	-	-	-	-	-	-	-	-	-	-	-	-	-	-	-	-	-	-	-	-	-	-	-	375	
380	-	-	-	-	2.00	-	30	-	-	-	-	-	-	-	-	-	-	-	-	-	66.00	-	10	-	-	-	-	-	-	-	-	-	-	380
385	-	-	-	-	-	-	-	-	-	-	-	-	-	-	-	-	-	-	-	-	70.50	-	5	-	-	-	-	-	-	-	-	-	-	385
390	-	-	-	-	-	-	-	-	-	-	-	-	-	-	-	-	-	-	-	-	-	-	-	-	-	-	-	-	-	-	-	-	390	
395	-	-	-	-	-	-	-	-	-	-	-	-	-	-	-	-	-	-	-	-	80.00	-	5	-	-	-	-	-	-	-	-	-	-	395
400	-	-	-	-	-	-	-	-	-	-	-	-	-	-	-	-	-	-	-	-	-	-	-	-	-	-	-	-	-	-	-	-	400	
405	-	-	-	-	-	-	-	-	-	-	-	-	-	-	-	-	-	-	-	-	-	-	-	-	-	-	-	-	-	-	-	-	405	
410	-	-	-	-	-	-	-	-	-	-	-	-	-	-	-	-	-	-	-	-	-	-	-	-	-	-	-	-	-	-	-	-	410	
415	-	-	-	-	-	-	-	-	-	-	-	-	-	-	-	-	-	-	-	-	-	-	-	-	-	-	-	-	-	-	-	-	415	
440	-	-	-	-	-	-	-	-	-	-	-	-	-	-	-	-	-	-	-	-	124.00	-	261	-	-	-	-	-	-	-	-	-	-	440

FTSE/Athex Large Cap

(Trade Unit: 1 Index Point x 5€ - Exercise Style: European, Cash Settlement)

Call Options																	Put Options																												
September 2013								October 2013								Other Months		September 2013								October 2013								Other Months											
Exercise Price	Open price	Price max	Price min	Last price	Closing price	Volume	Open Interest	Open price	Price max	Price min	Last price	Closing price	Volume	Open Interest	Volume	Open Interest	Open price	Price max	Price min	Last price	Closing price	Volume	Open Interest	Open price	Price max	Price min	Last price	Closing price	Volume	Open Interest	Volume	Open Interest	Exercise Price												
1,500	-	-	-	-	-	-	-	-	-	-	-	-	-	-	-	-	-	-	-	-	1,182.00	-	3	-	-	-	-	-	-	-	-	-	1,500												
Totals:						20	3,383							0	160	0	0							1	1,536							0	38	0	0										
Nominal Transactions Value:												31,000.00																		1,625.00												0.00		0.00	
Number of Trades:												1																		1												0		0	

ALPHA BANK (CR)

(Contract Size: 100 Securities, Exercise Style: American, Physical Delivery)

Call Options																	Put Options																			
September 2013								October 2013								Other Months		September 2013								October 2013								Other Months		
Exercise Price	Open price	Price max	Price min	Last price	Closing price	Volume	Open Interest	Open price	Price max	Price min	Last price	Closing price	Volume	Open Interest	Volume	Open Interest	Open price	Price max	Price min	Last price	Closing price	Volume	Open Interest	Open price	Price max	Price min	Last price	Closing price	Volume	Open Interest	Volume	Open Interest	Exercise Price			
0.100						-	-							-	-							-	-						-	-			0.100			
0.200						-	-							-	-							-	-						-	-			0.200			
0.300						-	-							-	-							-	-						-	-			0.300			
0.400						-	-							-	-							-	-						-	-			0.400			
0.500						-	-							-	-							-	-						-	-			0.500			
0.600						-	-							-	-							-	-						-	-			0.600			
0.700						-	-							-	-							-	-						-	-			0.700			
0.800						-	-							-	-							-	-						-	-			0.800			
0.850						-	-							-	-							-	-						-	-			0.850			
0.900						-	-							-	-							-	-						-	-			0.900			
0.950						-	-							-	-							-	-						-	-			0.950			
1.00						-	-							-	-							-	-						-	-			1.00			
1.05						-	-							-	-							-	-						-	-			1.05			
1.10						-	-							-	-							-	-						-	-			1.10			
1.15						-	-							-	-							-	-						-	-			1.15			
1.20						-	-							-	-							-	-						-	-			1.20			
1.30						-	-							-	-							-	-						-	-			1.30			
1.40						-	-							-	-							-	-						-	-			1.40			
1.50						-	-							-	-							-	-						-	-			1.50			
1.60						-	-							-	-							-	-						-	-			1.60			
1.70						-	-							-	-							-	-						-	-			1.70			
1.80						-	-							-	-							-	-						-	-			1.80			
1.90						-	-							-	-							-	-						-	-			1.90			
2.00						-	-							-	-							-	-						-	-			2.00			
2.20						-	-							-	-							-	-						-	-			2.20			
2.40						-	-							-	-							-	-						-	-			2.40			
2.60						-	-							-	-							-	-						-	-			2.60			
2.80						-	-							-	-							-	-						-	-			2.80			
Totals:						0	0							0	0	0	0							0	0							0	0			
Nominal Transactions Value:						0.00								0.00		0.00								0.00								0.00				
Number of Trades:						0								0		0								0								0				

NATIONAL BANK (CR)

(Contract Size: 100 Securities, Exercise Style: American, Physical Delivery)

Call Options																	Put Options																			
September 2013								October 2013								Other Months		September 2013								October 2013								Other Months		
Exercise Price	Open price	Price max	Price min	Last price	Closing price	Volume	Open Interest	Open price	Price max	Price min	Last price	Closing price	Volume	Open Interest	Volume	Open Interest	Open price	Price max	Price min	Last price	Closing price	Volume	Open Interest	Open price	Price max	Price min	Last price	Closing price	Volume	Open Interest	Volume	Open Interest	Exercise Price			
0.300						-	-							-	-							-	-						-	-			0.300			
0.400						-	-							-	-							-	-						-	-			0.400			
0.500						-	-							-	-							-	-						-	-			0.500			
0.600						-	-							-	-							-	-						-	-			0.600			
0.700						-	-							-	-							-	-						-	-			0.700			
0.750						-	-							-	-							-	-						-	-			0.750			
0.800						-	-							-	-							-	-						-	-			0.800			
0.850						-	-							-	-							-	-						-	-			0.850			
0.900						-	-							-	-							-	-						-	-			0.900			
0.950						-	-							-	-							-	-						-	-			0.950			
1.00						-	-							-	-							-	-						-	-			1.00			
1.05						-	-							-	-							-	-						-	-			1.05			
1.10						-	-							-	-							-	-						-	-			1.10			
1.20						-	-							-	-							-	-						-	-			1.20			
1.30						-	-							-	-							-	-						-	-			1.30			
1.40						-	-							-	-							-	-						-	-			1.40			
1.50						-	-							-	-							-	-						-	-			1.50			
1.60						-	-							-	-							-	-						-	-			1.60			
1.70						-	-							-	-							-	-						-	-			1.70			
1.80						-	-							-	-							-	-						-	-			1.80			
1.90						-	-							-	-							-	-						-	-			1.90			
2.00						-	-							-	-							-	-						-	-			2.00			
2.20						-	-							-	-							-	-						-	-			2.20			
2.40						-	-							-	-							-	-				0.043	-	-	-	-		2.40			
2.60					0.437	-	20							-	-							-	-				0.088	-	-	-	-		2.60			
2.80						-	-							-	-							-	-				0.158	-	-	-	-		2.80			
3.00					0.172	-	21					0.263	-	120								-	-					-	-	-	-		3.00			
3.20					0.095	-	20					0.183	-	20								-	-					-	-	-	-		3.20			
3.40						-	-							-	-							-	-					-	-	-	-		3.40			
3.60						-	-							-	-							-	-					-	-	-	-		3.60			
3.80						-	-							-	-							-	-					-	-	-	-		3.80			
4.00						-	-							-	-							-	-					-	-	-	-		4.00			
4.40						-	-							-	-							-	-					-	-	-	-		4.40			
Totals:						0	61							0	140	0	20							0	0							0	60	0	0	
Nominal Transactions Value:						0.00								0.00		0.00								0.00								0.00				
Number of Trades:						0								0		0								0								0				

OPAP (CR)

(Contract Size: 100 Securities, Exercise Style: American, Physical Delivery)

Call Options																	Put Options																				
September 2013							October 2013							Other Months			September 2013							October 2013							Other Months						
Exercise Price	Open price	Price max	Price min	Last price	Closing price	Volume	Open Interest	Open price	Price max	Price min	Last price	Closing price	Volume	Open Interest	Volume	Open Interest	Open price	Price max	Price min	Last price	Closing price	Volume	Open Interest	Open price	Price max	Price min	Last price	Closing price	Volume	Open Interest	Volume	Open Interest	Exercise Price				
1.00	6.44				-	270					-	-									-	270			-	-							1.00				
3.20					-	-					-	-									-	-			-	-							3.20				
3.40					-	-					-	-									-	-			-	-							3.40				
3.60					-	-					-	-									-	-			-	-							3.60				
3.80					-	-					-	-									-	-			-	-							3.80				
4.00					-	-					-	-									-	-			-	-							4.00				
4.40					-	-					-	-									-	-			-	-							4.40				
4.80					-	-					-	-									-	-			-	-							4.80				
5.20					-	-					-	-									-	-			-	-							5.20				
5.60					-	-					-	-									-	-			-	-							5.60				
5.80					-	-					-	-									-	-			-	-							5.80				
6.00					-	-					-	-															0.055	-	-					6.00			
6.20					-	-					-	-													-	-							6.20				
6.40					-	-					1.19	-	25															0.119	-	-					6.40		
6.60					-	-					-	-									0.089	-	135			-	-							6.60			
6.80					-	-					0.895	-	25													-	-							6.80			
7.00					-	-					-	-													-	-							7.00				
7.20					-	-					0.648	-	25													-	-							7.20			
7.40					-	-					-	-													-	-							7.40				
7.60					-	-					-	-													-	-							7.60				
7.80					-	-					-	-													-	-							7.80				
8.00					-	-					-	-													-	-							8.00				
8.40					-	-					-	-													-	-							8.40				
8.80					-	-					-	-													-	-							8.80				
9.00					-	-					-	-													-	-							9.00				
9.20					-	-					-	-													-	-							9.20				
9.40					-	-					-	-													-	-							9.40				
9.60					-	-					-	-													-	-							9.60				
9.80					-	-					-	-													-	-							9.80				
10.00					-	-					-	-													-	-							10.00				
20.00					-	270					-	-									12.56	-	270			-	-							20.00			
Totals:						0	540							0	75	0	1,600							0	675							0	55	0	0		
Nominal Transactions Value:						0.00								0.00		0.00		0.00							0.00								0.00		0.00		
Number of Trades:						0								0		0		0.00							0.00								0		0		

OTE (CR)

(Contract Size: 100 Securities, Exercise Style: American, Physical Delivery)

Call Options																	Put Options																			
September 2013								October 2013								Other Months		September 2013								October 2013								Other Months		
Exercise Price	Open price	Price max	Price min	Last price	Closing price	Volume	Open Interest	Open price	Price max	Price min	Last price	Closing price	Volume	Open Interest	Volume	Open Interest	Open price	Price max	Price min	Last price	Closing price	Volume	Open Interest	Open price	Price max	Price min	Last price	Closing price	Volume	Open Interest	Volume	Open Interest	Exercise Price			
2.60						-	-							-	-							-	-						-	-			2.60			
2.80						-	-							-	-							-	-						-	-			2.80			
3.00						-	-							-	-							-	-						-	-			3.00			
3.20						-	-							-	-							-	-						-	-			3.20			
3.40						-	-							-	-							-	-						-	-			3.40			
3.60						-	-							-	-							-	-						-	-			3.60			
3.80						-	-							-	-							-	-						-	-			3.80			
4.00						-	-							-	-							-	-						-	-			4.00			
4.40						-	-							-	-							-	-						-	-			4.40			
4.80						-	-							-	-							-	-						-	-			4.80			
5.20						-	-							-	-						0.004	-	100						-	-			5.20			
5.40						-	-							-	-							-	-						-	-			5.40			
5.60						-	-							-	-						0.017	-	1						-	-			5.60			
5.80						-	-							-	-							-	-						-	-			5.80			
6.00						-	-							-	-						0.057	-	75						-	-			6.00			
6.20						-	-							-	-							-	-						-	-			6.20			
6.40						-	-							-	-							-	-						-	-			6.40			
6.60						-	-							-	-							-	-						-	-			6.60			
6.80					0.429	-	1							-	-							-	-						-	-			6.80			
7.00						-	-							-	-							-	-						-	-			7.00			
7.20						-	-							-	-							-	-						-	-			7.20			
7.40						-	-							-	-							-	-						-	-			7.40			
7.60						-	-							-	-							-	-						-	-			7.60			
8.00					0.068	-	50							-	-							-	-						-	-			8.00			
8.20						-	-							-	-							-	-						-	-			8.20			
8.40						-	-							-	-						1.50	-	35						-	-			8.40			
8.60						-	-							-	-							-	-						-	-			8.60			
8.80						-	-							-	-							-	-						-	-			8.80			
9.00						-	-							-	-							-	-						-	-			9.00			
9.20						-	-							-	-							-	-						-	-			9.20			
Totals:						0	51							0	0	0	1,600							0	211							0	0	0	0	
Nominal Transactions Value:							0.00							0.00		0.00							0.00									0.00		0.00		
Number of Trades:							0							0		0							0.00									0		0		

PIRAEUS BANK (CR) (Contract Size: 100 Securities, Exercise Style: American, Physical Delivery)

Call Options																	Put Options																			
September 2013								October 2013								Other Months		September 2013								October 2013								Other Months		
Exerise Price	Open price	Price max	Price min	Last price	Closing price	Volume	Open Interest	Open price	Price max	Price min	Last price	Closing price	Volume	Open Interest	Volume	Open Interest	Open price	Price max	Price min	Last price	Closing price	Volume	Open Interest	Open price	Price max	Price min	Last price	Closing price	Volume	Open Interest	Volume	Open Interest	Exerise Price			
0.500						-	-							-	-							-	-						-	-			0.500			
0.600						-	-							-	-							-	-						-	-			0.600			
0.700						-	-							-	-							-	-						-	-			0.700			
0.800						-	-							-	-							-	-						-	-			0.800			
0.900						-	-							-	-							-	-						-	-			0.900			
1.00						-	-							-	-							-	-						-	-			1.00			
1.10					0.041	-	5							-	-							-	-						-	-			1.10			
1.20						-	-							-	-							-	-						-	-			1.20			
1.30						-	-							-	-							-	-						-	-			1.30			
1.40						-	-							-	-							-	-						-	-			1.40			
1.50						-	-							-	-							-	-						-	-			1.50			
Totals:						0	5							0	0	0	0							0	0							0	0	0	0	
Nominal Transactions Value:						0.00								0.00		0.00							0.00		0.00								0.00	0		
Number of Trades:						0								0		0							0		0								0	0		

PPC (CR) (Contract Size: 100 Securities, Exercise Style: American, Physical Delivery)

Call Options																	Put Options																			
September 2013								October 2013								Other Months		September 2013								October 2013								Other Months		
Exerise Price	Open price	Price max	Price min	Last price	Closing price	Volume	Open Interest	Open price	Price max	Price min	Last price	Closing price	Volume	Open Interest	Volume	Open Interest	Open price	Price max	Price min	Last price	Closing price	Volume	Open Interest	Open price	Price max	Price min	Last price	Closing price	Volume	Open Interest	Volume	Open Interest	Exerise Price			
3.20						-	-							-	-							-	-						-	-			3.20			
3.40						-	-							-	-							-	-						-	-			3.40			
3.60						-	-							-	-							-	-						-	-			3.60			
3.80						-	-							-	-							-	-						-	-			3.80			
4.00						-	-							-	-							-	-						-	-			4.00			
4.40					3.08	-	30							-	-							-	-						-	-			4.40			
4.80						-	-							-	-							-	-						-	-			4.80			
5.20						-	-							-	-							-	-						-	-			5.20			
5.60						-	-							-	-							-	-						-	-			5.60			
6.00						-	-							-	-							-	-						-	-			6.00			
6.40						-	-							-	-							-	-						-	-			6.40			
6.60						-	-							-	-							-	-						-	-			6.60			
6.80					0.821	-	10							-	-							-	-						-	-			6.80			
7.00						-	-							-	-							-	-						-	-			7.00			
7.20						-	-							-	-							-	-						-	-			7.20			
7.40						-	-							-	-							-	-						-	-			7.40			
7.60						-	-							-	-							-	-						-	-			7.60			
7.80						-	-							-	-							-	-						-	-			7.80			
8.00						-	-							-	-							-	-						-	-			8.00			
8.20						-	-							-	-							-	-						-	-			8.20			
8.40						-	-							-	-							-	-						-	-			8.40			
8.60						-	-							-	-							-	-						-	-			8.60			
8.80						-	-							-	-							-	-						-	-			8.80			
9.00						-	-							-	-							-	-						-	-			9.00			
9.20						-	-							-	-							-	-						-	-			9.20			
9.60						-	-							-	-							-	-						-	-			9.60			
10.00						-	-							-	-							-	-						-	-			10.00			
Totals:						0	40							0	0	0	0							0	400							0	0	0	0	
Nominal Transactions Value:						0.00								0.00		0.00								0.00								0.00		0.00		
Number of Trades:						0								0		0								0								0		0		

Securities	Type[4]	Stock Repo [1]						Stock Reverse Repo [2]								Repurchase Agreements [3]							
		Trans. price	chg.	Trades	Volume	Transactions Value	Open Interest[5]	Price max	Price min	Last price	Last Ask	Trades	Volume	Transactions Value	Open Interest[5]	Price max	Price min	Last price	Last Ask	Trades	Volume	Transactions Value	Open Interest[5]
AEGEAN AIRLINES (CR)	SR RA	100.00	---	---	---	---	85	---	---	---	42@3%	---	---	---	---	---	---	---	---	---	---	---	---
ALPHA BANK (CR)	SR RA	100.00	---	---	---	---	54,615	---	---	---	34521@3.6%	---	---	---	50	---	---	---	---	---	---	---	1,562
ALPHA ETF FTSE Athex Large Cap	SR RA	100.00	---	---	---	---	---	---	---	---	---	---	---	---	---	---	---	---	---	---	---	---	2,664
ALUMIL (CR)	RA	---	---	---	---	---	---	---	---	---	---	---	---	---	---	---	---	---	---	---	---	---	---
ATHENS MEDICAL CENTER SA (CR)	SR RA	100.00	---	---	---	---	434	---	---	---	217@3%	---	---	---	---	---	---	---	---	---	---	---	---
AUTOHELLAS SA (CR)	SR RA	100.00	---	---	---	---	50	---	---	---	25@3%	---	---	---	---	---	---	---	---	---	---	---	---
CC HBC AG (CR)	SR RA	100.25	0.08	---	---	---	1,251	---	---	---	419@3%	---	---	---	136	---	---	---	---	---	---	---	174
CENTRIC HOLDINGS (CR)	SR RA	100.00	---	---	---	---	200	---	---	---	155@8.3%	---	---	---	---	---	---	---	---	---	---	---	---
CORINTH PIPEWORKS SA (CR)	SR RA	100.00	---	---	---	---	160	---	---	---	80@3%	---	---	---	---	---	---	---	---	---	---	---	---
CRETE PLASTICS SA (CR)	SR RA	100.00	---	---	---	---	---	---	---	---	---	---	---	---	---	---	---	---	---	---	---	---	---
ELLAKTOR (CR)	SR RA	100.03	---	---	---	---	2,881	---	---	---	1430@3%	---	---	---	10	---	---	---	---	---	---	---	---
ELTON SA (CR)	SR RA	100.00	---	---	---	---	50	---	---	---	35@3%	---	---	---	---	---	---	---	---	---	---	---	---
ELVAL SA. (CB)	SR RA	100.00	---	---	---	---	621	---	---	---	310@3%	---	---	---	---	---	---	---	---	---	---	---	---
EUROBANK ERGASIAS (CR)	SR RA	100.19	0.03	---	---	---	1,523	---	---	---	15@3.5%	---	---	---	977	---	---	---	---	---	---	---	28
EUROBANK PROPERTIES REIC (CR)	SR RA	100.09	0.02	---	---	---	1,641	---	---	---	705@3%	---	---	---	115	---	---	---	---	---	---	---	---
EUROPEAN RELIANCE INSUR. (CR)	SR RA	100.00	---	---	---	---	---	---	---	---	---	---	---	---	---	---	---	---	---	---	---	---	---
EYDAP S.A. (CR)	SR RA	100.07	0.01	---	---	---	325	---	---	---	149@3%	---	---	---	13	---	---	---	---	---	---	---	16
FOLLI FOLLIE (CR)	SR RA	100.11	0.01	---	---	---	778	---	---	---	369@3%	---	---	---	20	---	---	---	---	---	---	---	10
FOURLIS (CR)	SR RA	100.00	---	---	---	---	195	---	---	---	97@3%	---	---	---	---	---	---	---	---	---	---	---	---
FRIGOGLASS SA (CR)	SR RA	100.24	0.03	---	---	---	229	---	---	---	79@3%	---	---	---	15	---	---	---	---	---	---	---	---
GEK TERNA (CR)	SR RA	100.01	---	---	---	---	624	---	---	---	307@3%	---	---	---	5	---	---	---	---	---	---	---	---
GR. SARANTIS SA (CR)	SR RA	100.00	---	---	---	---	62	---	---	---	31@3%	---	---	---	---	---	---	---	---	---	---	---	---
HALKOR SA (CB)	SR RA	100.00	---	---	---	---	415	---	---	---	207@3%	---	---	---	---	---	---	---	---	---	---	---	---
HELLENIC CABLES SA (CR)	SR RA	100.00	---	---	---	---	84	---	---	---	42@3%	---	---	---	---	---	---	---	---	---	---	---	---
HELLENIC EXCHANGES (CR)	SR RA	100.11	0.01	---	---	---	5,993	---	---	---	2666@3%	---	---	---	330	---	---	---	---	---	---	---	---
HELLENIC PETROLEUM (CR)	SR RA	100.16	0.02	---	---	---	2,224	---	---	---	934@3%	---	---	---	178	---	---	---	---	---	---	---	46
HYGEIA SA (CR)	SR RA	100.00	---	---	---	---	500	---	---	---	200@4.3%	---	---	---	---	---	---	---	---	---	---	---	---
IASO SA (CR)	SR RA	100.00	---	---	---	---	86	---	---	---	43@3%	---	---	---	---	---	---	---	---	---	---	---	---
IKTINOS HELLAS SA (CR)	SR RA	100.00	---	---	---	---	10	---	---	---	---	---	---	---	---	---	---	---	---	---	---	---	---
INFORM P. LYKOS SA (CR)	SR RA	100.00	---	---	---	---	203	---	---	---	101@3%	---	---	---	---	---	---	---	---	---	---	---	---
INTRACOM CONSTR. (CR)	SR RA	100.00	---	---	---	---	37	---	---	---	18@3%	---	---	---	---	---	---	---	---	---	---	---	---
INTRACOM HOLDINGS (CR)	SR RA	100.00	---	1	5	225.5	665	---	---	---	433@4%	---	---	---	---	---	---	---	---	---	---	---	---

Stock Lending Notes

- [1] - Stock Repo: A Contract for selling stocks to HELEX with a Repurchase Right (According to ATHEX BoD Resolution No 17)
- [2] - Stock Reverse Repo: A Contract for buying stocks from HELEX with a Resell Right. (According to ATHEX BoD Resolution No 18)
- [3] - Standardized Repurchase Agreements: A Contract that constitutes a standardized agreement for the purchase or sale of shares, with repurchase or resell pact (According to ATHEX BoD Resolution No 20)
- [4] - Type of products is divided into SR: Stock Repo or Stock Reverse Repo, and RA: Repurchase Agreements.
- [5] - Open Interest in all Series (both tradeable or non-tradeable).

Securities	Type[4]	Stock Repo [1]						Stock Reverse Repo [2]								Repurchase Agreements [3]							
		Trans. price	chg.	Trades	Volume	Transactions Value	Open Interest[5]	Price max	Price min	Last price	Last Ask	Trades	Volume	Transactions Value	Open Interest[5]	Price max	Price min	Last price	Last Ask	Trades	Volume	Transactions Value	Open Interest[5]
INTRALOT (CR)	SR RA	100.03	0.01	---	---	---	4,196	3.00%	3.00%	3.00%	1798@3%	1	60	9,660.0	300	---	---	---	---	---	---	---	---
J & P - AVAX SA (CR)	SR RA	100.00	---	---	---	---	235	---	---	---	117@3%	---	---	---	---	---	---	---	---	---	---	---	
JUMBO SA (CR)	SR RA	100.08	0.01	---	---	---	2,358	---	---	---	1090@3%	---	---	---	89	---	---	---	---	---	---	20	
KLEEMAN HELLAS SA (CR)	SR RA	100.00	---	---	---	---	982	---	---	---	491@3%	---	---	---	---	---	---	---	---	---	---	---	
KLOUKINAS - LAPPAS SA (CR)	SR RA	100.00	---	---	---	---	---	---	---	---	---	---	---	---	---	---	---	---	---	---	---	---	
KORRES (CR)	SR RA	100.00	---	---	---	---	---	---	---	---	---	---	---	---	---	---	---	---	---	---	---	---	
KRI-KRI S.A. (CR)	SR RA	100.00	---	---	---	---	549	---	---	---	274@3%	---	---	---	---	---	---	---	---	---	---	---	
LAMDA DEVELOPMENT SA (CR)	SR RA	100.00	---	---	---	---	890	---	---	---	445@3%	---	---	---	---	---	---	---	---	---	---	---	
LOULIS MILLS SA (CR)	SR RA	100.00	---	---	---	---	---	---	---	---	---	---	---	---	---	---	---	---	---	---	---	---	
MARFIN INVESTMENT GROUP (CR)	SR RA	100.00	---	---	---	---	582	---	---	---	---	---	---	---	---	---	---	---	---	---	---	---	
METKA (CR)	SR RA	100.22	0.04	---	---	---	641	---	---	---	245@3%	---	---	---	45	---	---	---	---	---	---	9	
MLS MULTIMEDIA SA (CR)	SR RA	100.00	---	---	---	---	99	---	---	---	49@3%	---	---	---	---	---	---	---	---	---	---	---	
MOTOR OIL (CR)	SR RA	100.18	0.01	---	---	---	2,057	---	---	---	918@3%	---	---	---	110	---	---	---	---	---	---	17	
MYTILINEOS HOLDINGS (CR)	SR RA	100.02	---	---	---	---	3,875	---	---	---	1917@3%	---	---	---	20	---	---	---	---	---	---	---	
NATIONAL BANK (CR)	SR RA	100.09	---	---	---	---	8,846	3.00%	3.00%	3.00%	3913@3%	1	152	45,600.0	510	---	---	---	---	---	---	346	
NBGAM ETF	SR RA	100.00	---	---	---	---	---	---	---	---	---	---	---	---	---	---	---	---	---	---	---	100	
NBGAM ETF GREECE & TURKEY 30	SR RA	100.00	---	---	---	---	---	---	---	---	---	---	---	---	---	---	---	---	---	---	---	35	
NIREFS SA (CR)	SR RA	100.00	---	---	---	---	326	---	---	---	216@4.1%	---	---	---	---	---	---	---	---	---	---	---	
OPAP (CR)	SR RA	100.07	---	---	---	---	5,721	3.00%	3.00%	3.00%	2750@3%	1	2	1,488.0	110	---	---	---	---	---	---	367	
OTE (CR)	SR RA	100.29	0.04	---	---	---	5,262	---	---	---	1390@3%	---	---	---	771	---	---	---	---	---	---	162	
P.P.A. S.A. (CR)	SR RA	100.00	---	---	---	---	115	---	---	---	57@3%	---	---	---	---	---	---	---	---	---	---	---	
PETROPOULOS PETROS (CR)	RA	---	---	---	---	---	---	---	---	---	---	---	---	---	---	---	---	---	---	---	---	---	
PIRAEUS BANK (CR)	SR RA	100.00	---	---	---	---	8,783	---	---	---	4339@3%	---	---	---	52	---	---	---	---	---	---	---	
PPC (CR)	SR RA	100.47	0.05	---	---	---	1,933	3.00%	3.00%	3.00%	433@3%	1	94	70,218.0	468	3.00%	3.00%	3.00%	---	1	94	70,218.0	129
QUEST HOLDINGS (CR)	SR RA	100.00	---	---	---	---	39	---	---	---	19@3%	---	---	---	---	---	---	---	---	---	---	---	
REDS S.A. (CR)	SR RA	100.00	---	---	---	---	572	---	---	---	363@3.6%	---	---	---	---	---	---	---	---	---	---	---	
SELECTED TEXT. IND. ASSOC (CR)	SR RA	100.00	---	---	---	---	50	---	---	---	36@6.3%	---	---	---	---	---	---	---	---	---	---	---	
SIDENOR (CR)	SR RA	100.00	---	---	---	---	442	---	---	---	221@3%	---	---	---	---	---	---	---	---	---	---	---	
TECHNICAL OLYMPIC SA (CR)	SR RA	100.00	---	---	---	---	100	---	---	---	50@3%	---	---	---	---	---	---	---	---	---	---	---	
TERNA ENERGY (CR)	SR RA	100.17	0.02	---	---	---	290	---	---	---	96@3%	---	---	---	49	---	---	---	---	---	---	5	
THESSALONIKA WATER & SEWERAGE	SR RA	100.00	---	---	---	---	1,270	---	---	---	635@3%	---	---	---	---	---	---	---	---	---	---	---	
THRACE PLASTICS SA (CR)	SR RA	100.00	---	---	---	---	1,010	---	---	---	505@3%	---	---	---	---	---	---	---	---	---	---	---	

Stock Lending Notes

[1] - Stock Repo: A Contract for selling stocks to HELEX with a Repurchase Right (According to ATHEX BoD Resolution No 17)

[2] - Stock Reverse Repo: A Contract for buying stocks from HELEX with a Resell Right. (According to ATHEX BoD Resolution No 18)

[3] - Standardized Repurchase Agreements: A Contract that constitutes a standardized agreement for the purchase or sale of shares, with repurchase or resell pact (According to ATHEX BoD Resolution No 20)

[4] - Type of products is divided into SR: Stock Repo or Stock Reverse Repo, and RA: Repurchase Agreements.

[5] - Open Interest in all Series (both tradeable or non-tradeable).

Securities	Type[4]	Stock Repo [1]						Stock Reverse Repo [2]								Repurchase Agreements [3]							
		Trans. price	chg.	Trades	Volume	Transactions Value	Open Interest[5]	Price max	Price min	Last price	Last Ask	Trades	Volume	Transactions Value	Open Interest[5]	Price max	Price min	Last price	Last Ask	Trades	Volume	Transactions Value	Open Interest[5]
TITAN CEMENT (CR)	SR RA	100.02	---	---	---	---	9,474	3.00%	3.00%	3.00%	4677@3%	1	5	7,400.0	60	---	---	---	---	---	---	---	12
TPA SA (CR)	SR RA	100.00	---	---	---	---	6	---	---	---	---	---	---	---	---	---	---	---	---	---	---	---	---
TRASTOR REAL EST. INV. CO.(CR)	SR RA	100.00	---	---	---	---	284	---	---	---	142@3%	---	---	---	---	---	---	---	---	---	---	---	---
VIOHALCO (CB)	SR RA	100.01	---	---	---	---	3,990	---	---	---	1973@3%	---	---	---	22	---	---	---	---	---	---	---	30

Stock Lending Notes

- [1] - Stock Repo: A Contract for selling stocks to HELEX with a Repurchase Right (According to ATHEX BoD Resolution No 17)
- [2] - Stock Reverse Repo: A Contract for buying stocks from HELEX with a Resell Right. (According to ATHEX BoD Resolution No 18)
- [3] - Standardized Repurchase Agreements: A Contract that constitutes a standardized agreement for the purchase or sale of shares, with repurchase or resell pact (According to ATHEX BoD Resolution No 20)
- [4] - Type of products is divided into SR: Stock Repo or Stock Reverse Repo, and RA: Repurchase Agreements.
- [5] - Open Interest in all Series (both tradeable or non-tradeable).

Sectors codification for listed companies

533	-	Exploration & Production	537	-	Integrated Oil & Gas
1353	-	Commodity Chemicals	1357	-	Specialty Chemicals
1753	-	Aluminum	1755	-	Nonferrous Metals
1757	-	Steel	1775	-	General Mining
2353	-	Building Materials & Fixtures	2357	-	Heavy Construction
2723	-	Containers & Packaging	2727	-	Diversified Industrials
2733	-	Electrical Components & Equipment	2753	-	Commercial Vehicles & Trucks
2757	-	Industrial Machinery	2773	-	Marine Transportation
2777	-	Transportation Services	2791	-	Business Support Services
2797	-	Industrial Suppliers	3535	-	Distillers & Vintners
3537	-	Soft Drinks	3573	-	Farming & Fishing
3577	-	Food Products	3722	-	Durable Household Products
3726	-	Furnishings	3728	-	Home Construction
3747	-	Toys	3763	-	Clothing & Accessories
3765	-	Footwear	3767	-	Personal Products
3785	-	Tobacco	4533	-	Health Care Providers
4535	-	Medical Equipment	4577	-	Pharmaceuticals
5337	-	Food Retailers & Wholesalers	5371	-	Apparel Retailers
5373	-	Broadline Retailers	5375	-	Home Improvement Retailers
5379	-	Specialty Retailers	5553	-	Broadcasting & Entertainment
5555	-	Media Agencies	5557	-	Publishing
5751	-	Airlines	5752	-	Gambling
5753	-	Hotels	5755	-	Recreational Services
5757	-	Restaurants & Bars	5759	-	Travel & Tourism
6535	-	Fixed Line Telecommunications	6575	-	Mobile Telecommunications
7535	-	Conventional Electricity	7537	-	Alternative Electricity
7577	-	Water	8355	-	Banks
8534	-	Insurance Brokers	8536	-	Property & Casualty Insurance
8633	-	Real Estate Holding & Development	8637	-	Real Estate Services
8671	-	Industrial & Office REITs	8675	-	Specialty REITs
8775	-	Specialty Finance	8777	-	Investment Services
8985	-	Equity Investment Instruments	9533	-	Computer Services
9535	-	Internet	9537	-	Software
9572	-	Computer Hardware	9574	-	Electronic Office Equipment
9578	-	Telecommunications Equipment	11000	-	ETF

