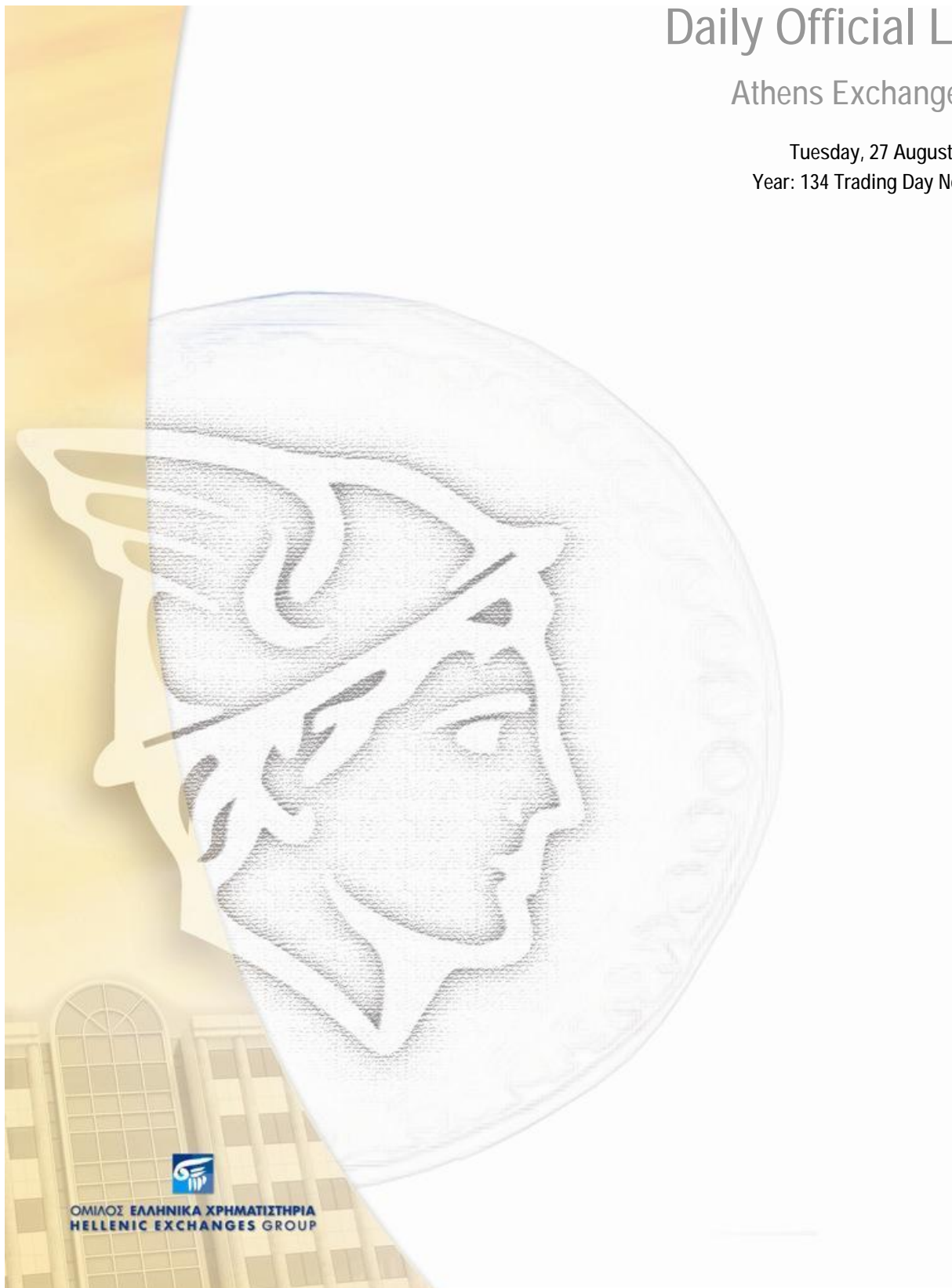


# Daily Official List

Athens Exchange sa

Tuesday, 27 August, 2013  
Year: 134 Trading Day No: 160



**Disclaimer:**

Athens Exchange (ATHEX) endeavours to ensure that the data and other material ("Information") presented on the Daily Official List are accurate and complete, but it is not liable for any errors or omissions of data or /and for the accuracy, credibility, updating and completeness of the aforesaid information nor it has any liability arising directly or indirectly from the use of the above Information.

ATHEX is not liable for the accuracy of the data included in listed companies' announcements. Only the sender of such an announcement is fully and solely liable for any infringement of third party's rights from the content of such announcement. All contents of the Daily Official List are provided only for information purposes and do not constitute investment advice or solicitation to invest in securities or other products listed for trading on ATHEX.

You acknowledge and agree that ATHEX is the owner of any property rights related to any Information appearing on the Daily Official List including intellectual property rights copyright, trademarks, etc.

The above data are a property of the Athens Exchange and are copyright protected. Users are forbidden to reproduce, modify, copy, sale, transmit or redistribute, by all reproduction means and methods, part or the whole of the above data, without reference to their source.

The commercial exploitation of these data is, also, forbidden by third parties. Athens Exchange does not carry any responsibility, direct or indirect, derived from usage or accidental alteration of the above data when used by third parties.

**Athens Exchange sa**

110 Athinon Ave., 10442 Athens, Tel: (210) 33.66.800, Fax: (210) 32.13.938

[www.athex.gr](http://www.athex.gr)

**Thessalonica Stock Exchange Center (T.S.E.C)**

16-18 Katouni Str., Thessalonica 546 25 Tel: (2310) 567.667, Fax: (2310) 530.545

**Athex Members Guarantee Fund**

14-16 Fidiou Str., Athens 106 78, Tel: (210) 33.04.682, Fax: (210) 33.04.155

**Hellenic Republic Capital Market Commission**

1 Kolokotroni Str. & 1 Stadiou Str., Athens 10562 Tel: (210) 33.77.100 Fax: (210) 33.77.173

---

**Table of Contents**

---

**Section 1: Statistical Figures of Securities and Derivatives Markets**

Summary of Markets

Athex Indices

Analytic Figures for Athex Market's Boards and Categories

Trading Details by Athex Sectors and ETFs Category

Top 10 best &amp; worst performing Shares

Derivatives Summary

**Section 2: Analytic Figures of Shares Transactions**

Analytic Figures of Shares Transactions

Shares' Notes

**Section 3: Figures of Securities Transactions**

Securities Blocks Details

Shares Rights Details

Shares Short Selling

Stock Borrowing

Shares Forced Sales

Forced Sales Registered Shares

Exchange Traded Funds (ETFs) Characteristics

**Section 5: Bonds traded in Fixed Income Assets Market**

Corporate Bonds

Government Bonds

Treasury Bills &amp; Zero Coupon Government Bonds

Government Bonds Traded with the Open Outcry Method

State Banks Bonds

**Section 6: Additional Infos**

Athex &amp; ATHEXClear Members List

List of Stocks under Market Making operations

**Section 7: Derivatives Market Analytic Figures**

Index Futures

Stock Futures

Index Options

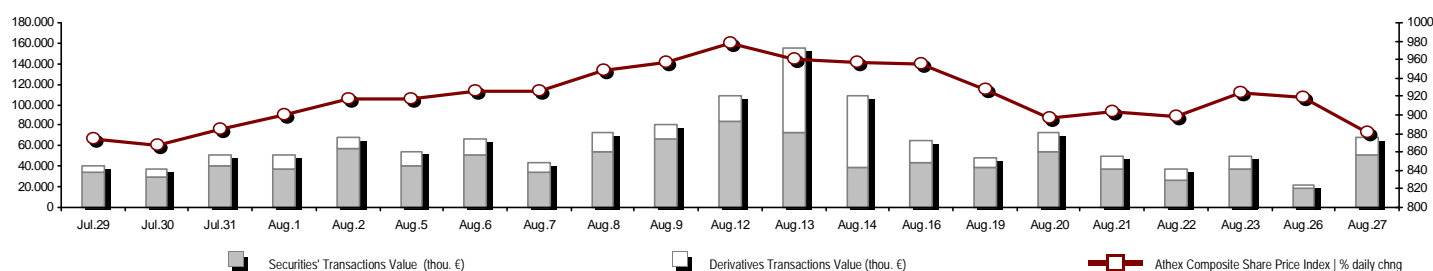
Stock Options

Stock Lending Analytic Figures (Repo Contracts)

**Appendix A: Sectors codification for listed companies**

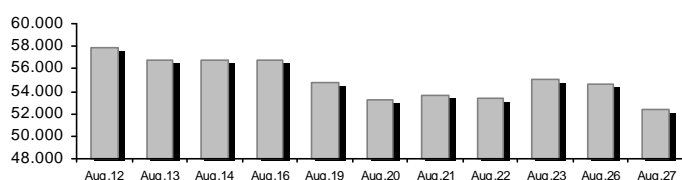
## Summary of Markets

Athex Composite Share Price Index vs Shares and Derivatives Transactions Value

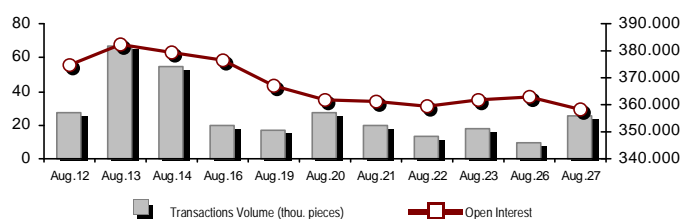


Total Transactions Value (Securities/Derivatives) (thou. €):		68.281,93	
Athex Capitalisation (mill. €) **: 52.416,72		Derivatives Total Open Interest 358.076	
Daily change: mill. €   % -2.244,23 -4,11%		in Index Futures   % daily chng 46.526 -3,15%	
Yearly Avg Capitalisation: mill. €   % chng prev year Avg 44.799,90 63,69%		in Stock Futures   % daily chng 149.282 -2,41%	
Athex Composite Share Price Index   % daily chng 881,35 -4,08%		in Index Options   % daily chng 5.258 2,76%	
Athex Composite Share Price Index Capitalisation (mill. €) 45.613,08		in Stock Options   % daily chng 5.572 -3,15%	
Daily change (mill. €) -2.003,31		in Stock Repos/Reverse Repos/RA   % daily chng 151.438 0,22%	
Securities' Transactions Value (thou. €) 51.613,09		Derivatives Transactions Value (thou. €) 16.668,84	
Daily change: thou. €   % 33.577,14 186,17%		Daily change: thou. €   % 12.240,07 276,38%	
YtD Avg Trans. Value: thou. €   % chng prev year Avg 66.641,62 28,47%		YtD Avg Trans. Value: thou. €   % chng prev year Avg 22.992,62 20,47%	
Short Selling Trans. Value: mill. €   % in total Value			
Short Covering Trans. Value: mill. €   % in total Value			
Transactions Value of Blocks (thou. €) 1.364,81			
Bonds Transactions Value (thou. €) 0,00			
Securities' Transactions Volume (thou. Pieces) 32.401,96		Derivatives Contracts Volume: 25.610	
Daily change: thou. pieces   % 21.290,59 191,61%		Daily change: pieces   % 16.416 178,55%	
YtD Avg Volume: thou. pieces   % chng prev year Avg 51.409,98 3,97%		YtD Avg Derivatives Contracts   % chng prev year Avg 44.114 -31,45%	
Short Selling Volume: thou pieces   % in total Volume			
Short Covering Volume: thou. pieces   % in total Volume			
Transactions Volume of Blocks (thou. Pieces) 1.090,08			
Bonds Transactions Volume (thou. pieces) 0,00			
Securities' Trades Number 29.099		Derivatives Trades Number: 2.541	
Daily change: number   % 18.353 170,79%		Daily change: number   % 1.618 175,30%	
YtD Avg Derivatives Trades number   % chng prev year Avg 29.794 20,09%		YtD Avg Derivatives Trades number   % chng prev year Avg 2.758 -5,37%	
Number of Blocks 4			
Number of Bonds Transactions 0			

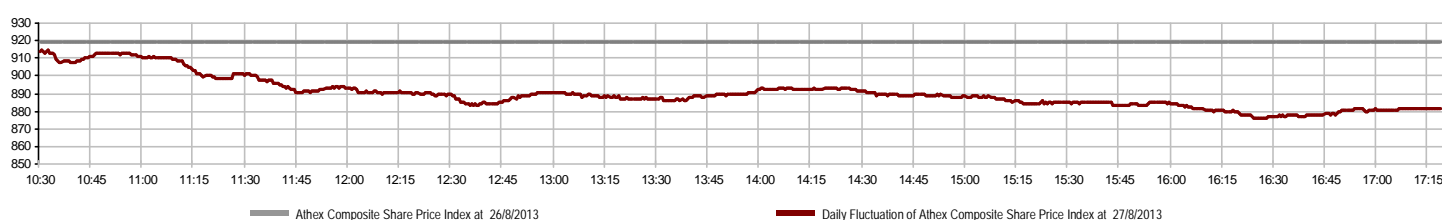
Athex Capitalisation (mill. €) \*\*



Derivatives Transactions Volume and Open Interest



Daily Fluctuation of Athex Composite Share Price Index



## Athex Indices

Index name	27/8/2013	26/8/2013	pts.	%	Min	Max	Year min	Year max	Year change
Athex Composite Share Price Index	881,35 €	918,82	-37,47	-4,08%	875,76	914,65	788,81	1.159,97	-2,92% €
FTSE/Athex Large Cap	301,10 €	313,66	-12,56	-4,00%	299,31	311,72	253,17	410,78	-2,77% €
FTSE/ATHEX Custom Capped	991,32 €	998,29	-6,97	-0,70%			863,84	1.275,55	-2,76% €
FTSE/ATHEX Custom Capped - USD	950,56 €	959,33	-8,76	-0,91%			808,44	1.172,76	-1,35% €
FTSE/Athex Mid Cap Index	974,89 €	1.030,64	-55,75	-5,41%	971,69	1.025,74	871,32	1.360,26	-13,97% €
FTSE/ATHEX-CSE Banking Index	99,34 €	104,35	-5,01	-4,80%	98,94	104,86	64,42	278,69	-41,17% €
FTSE/ATHEX Global Traders Index Plus	1.287,89 €	1.331,83	-43,94	-3,30%	1.278,96	1.330,05	1.082,32	1.484,90	3,25% #
FTSE/ATHEX Global Traders Index	1.334,48 €	1.389,76	-55,28	-3,98%	1.323,76	1.384,73	1.053,81	1.553,64	7,43% #
FTSE/ATHEX Mid & Small Cap Factor-Weighted Ind	1.171,58 €	1.207,59	-36,01	-2,98%	1.168,30	1.214,25	1.053,59	1.348,92	-5,44% €
Greece & Turkey 30 Price Index	616,93 €	651,97	-35,04	-5,37%	616,78	651,97	616,78	927,16	-20,69% €
ATHEX Mid & SmallCap Price Index	2.787,49 €	2.863,04	-75,55	-2,64%	2.773,53	2.863,04	2.737,63	3.725,74	-11,08% €
FTSE/Athex Market Index	726,19 €	757,15	-30,96	-4,09%	722,12	752,47	600,87	972,17	-1,52% €
FTSE/Med 100	4.122,42 €	4.152,15	-29,73	-0,72%			4.075,12	4.570,16	-0,51% €
Athex Composite Index Total Return Index	1.276,18 €	1.330,43	-54,25	-4,08%	1.268,08	1.324,39	1.139,79	1.655,57	-1,46% €
FTSE/Athex Large Cap Total Return	412,61 €	429,82	-17,21	-4,00%			366,91	565,68	-4,26% €
FTSE/ATHEX Large Cap Net Total Return	1.207,23 €	1.257,59	-50,36	-4,00%	1.200,04	1.249,80	1.001,98	1.626,24	-1,50% €
FTSE/ATHEX Custom Capped Total Return	1.035,32 €	1.042,60	-7,28	-0,70%			895,99	1.311,70	-1,19% €
FTSE/ATHEX Custom Capped - USD Total Return	992,75 €	1.001,91	-9,15	-0,91%			836,50	1.205,99	0,24% #
FTSE/Athex Mid Cap Total Return	1.206,62 €	1.275,62	-69,00	-5,41%			1.152,62	1.720,22	-17,47% €
FTSE/ATHEX-CSE Banking Total Return Index	94,18 €	98,93	-4,75	-4,80%			82,32	289,59	-48,93% €
Greece & Turkey 30 Total Return Index	779,86 #	772,94	6,92	0,90%			770,14	1.098,14	-14,89% €
Hellenic Mid & Small Cap Index	901,40 €	942,28	-40,88	-4,34%	897,21	941,03	737,97	1.071,68	2,81% #
FTSE/Athex Banks	131,25 €	137,87	-6,62	-4,80%	130,72	138,54	85,08	368,22	-42,00% €
FTSE/Athex Insurance	1.116,89 €	1.180,11	-63,22	-5,36%	1.106,35	1.180,11	1.106,35	1.548,89	-26,39% €
FTSE/Athex Financial Services	1.260,26 €	1.343,84	-83,58	-6,22%	1.246,88	1.342,22	817,47	1.771,89	-4,45% €
FTSE/Athex Industrial Goods & Services	3.262,04 €	3.411,58	-149,54	-4,38%	3.239,82	3.411,58	2.715,10	4.197,17	0,35% #
FTSE/Athex Retail	2.491,04 €	2.547,61	-56,57	-2,22%	2.459,84	2.547,61	1.629,12	2.692,44	36,15% #
FTSE/ATHEX Real Estate	1.895,66 €	1.942,16	-46,50	-2,39%	1.872,63	1.942,16	1.491,01	2.108,44	27,14% #
FTSE/Athex Personal & Household Goods	4.173,12 €	4.287,63	-114,51	-2,67%	4.044,86	4.276,69	2.586,10	4.550,67	33,65% #
FTSE/Athex Food & Beverage	7.555,62 €	7.835,42	-279,80	-3,57%	7.530,25	7.780,49	6.301,12	8.591,23	13,48% #
FTSE/Athex Basic Resources	2.096,88 €	2.228,95	-132,07	-5,93%	2.084,09	2.232,11	1.674,83	2.901,09	-9,75% €
FTSE/Athex Construction & Materials	1.883,71 €	1.947,29	-63,58	-3,27%	1.847,64	1.947,44	1.439,70	2.130,78	2,60% #
FTSE/Athex Oil & Gas	2.615,23 €	2.718,78	-103,55	-3,81%	2.572,47	2.702,98	2.358,47	3.358,80	-7,04% €
FTSE/Athex Chemicals	5.838,62 €	6.289,40	-450,78	-7,17%	5.815,49	6.328,91	5.194,08	7.961,02	-3,00% €
FTSE/Athex Media	1.699,05 €	1.913,28	-214,23	-11,20%	1.699,05	2.068,41	716,56	3.560,63	134,69% #
FTSE/Athex Travel & Leisure	1.263,28 €	1.308,07	-44,79	-3,42%	1.253,09	1.303,39	1.028,61	1.496,38	25,15% #
FTSE/Athex Technology	657,65 €	684,21	-26,56	-3,88%	648,75	684,21	555,63	886,96	-11,39% €
FTSE/Athex Telecommunications	1.819,45 €	1.904,78	-85,33	-4,48%	1.800,18	1.888,26	1.175,35	2.147,00	29,61% #
FTSE/Athex Utilities	2.566,79 €	2.729,13	-162,34	-5,95%	2.545,05	2.716,11	1.752,55	3.104,53	12,19% #
FTSE/Athex Health Care	236,04 €	244,82	-8,78	-3,59%	233,55	244,82	172,87	346,05	-15,88% €
Athex All Share Index	186,18 €	194,14	-7,96	-4,10%			176,43	294,40	-21,34% €

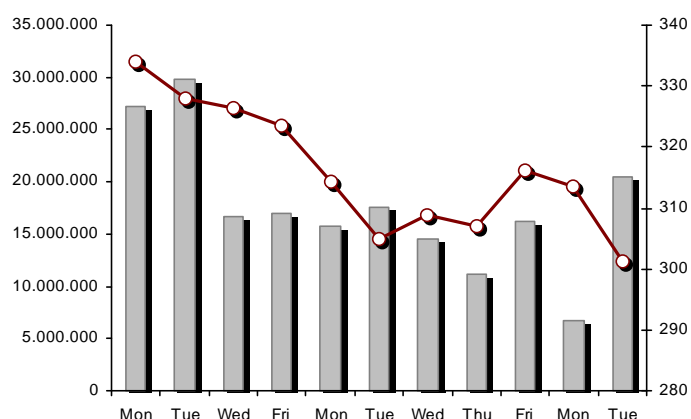
Note 1: Greece & Turkey 30 Pr data is the indicative at 17:20, whereas FTSE/ATHEX Custom Capped, FTSE/ATHEX Custom Capped - USD, FTSE/ATHEX Custom Capped TR, FTSE/ATHEX Custom Capped - USD TR, FTSE/Med 100 & Greece & Turkey 30 Rt closing prices refer to the previous trading day of 26/8/2013.

Note 2: The Hellenic Mid & Small Cap Index is a Customized index calculated by the Athens Exchange.

## Athex Indices

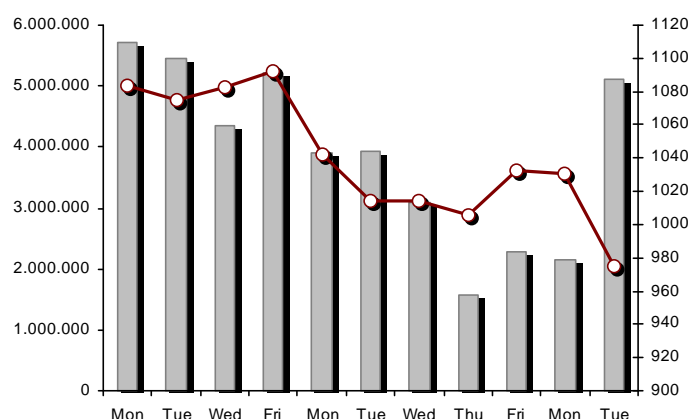
FTSE/Large Cap

27/8/2013: -4,00%



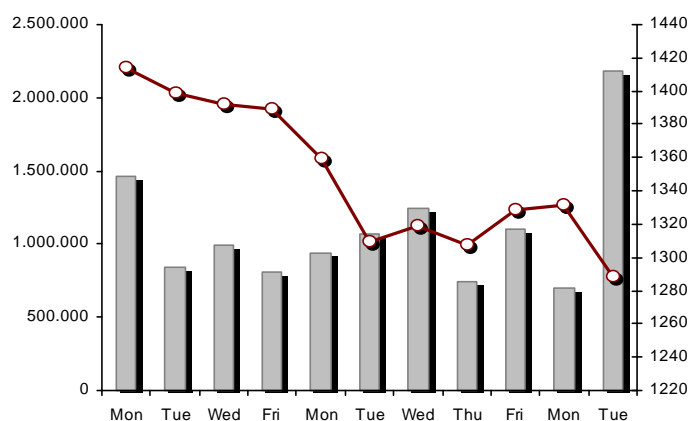
FTSE/Athex Mid Cap Index

27/8/2013: -5,41%



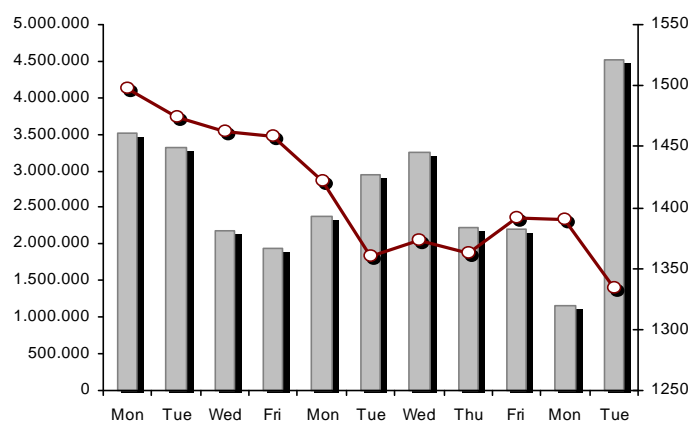
FTSE/ATHEX Global Traders Index Plus

27/8/2013: -3,30%



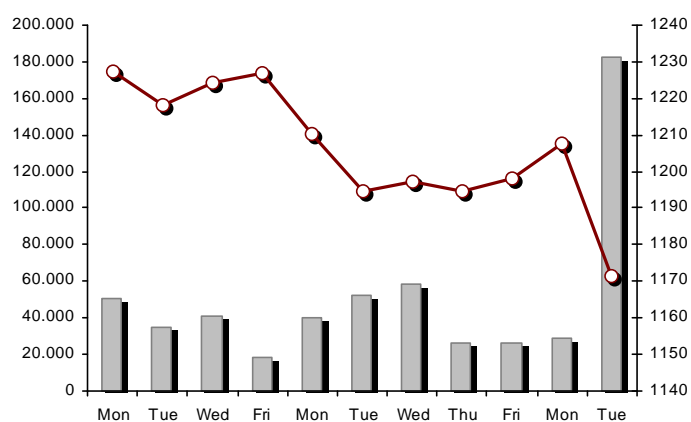
FTSE/ATHEX Global Traders Index

27/8/2013: -3,98%



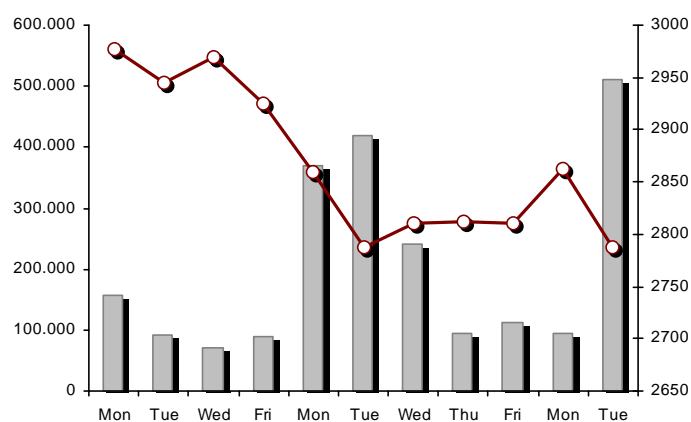
FTSE/ATHEX Mid &amp; Small Cap Factor-Weighted Index

27/8/2013: -2,98%



ATHEX Mid &amp; SmallCap Price Index

27/8/2013: -2,64%



Indices volume of transactions

Indices closing prices

## Analytic Figures for Athex Market's Boards and Categories

	Total Traded Securities	Main Market	Low Dispersion	Other Categories (*)	Exchange Traded Funds (ETFs)	Warrants
Totals	146	110	11	19	3	3
Gain / Lose / Same:	20 / 114 / 12	12 / 90 / 8	3 / 7 / 1	5 / 11 / 3	0 / 3 / 0	0 / 3 / 0
Athex Capitalisation (mill. €) **	52.416,72	50.183,07	1.888,24	345,41		
Daily Average Transactions Value (thou. €)	66.641,62	25.765,68	533,27	83,74	41,19	6.119,85
Transactions Value	51.613,09	46.707,16	50,90	41,71	167,40	4.645,92
Main Board:	50.248,28	46.042,36	50,90	41,71	167,40	3.945,92
Blocks Board:	1.364,81	664,81	0,00	0,00	0,00	700,00
Forced Sales Board:	0,00	0,00	0,00	0,00	0,00	0,00
Special Terms Board:	0,00	0,00	0,00	0,00	0,00	0,00
Daily Average Transactions Volume	51.409.979	15.774.541	57.436	449.441	10.249	9.297.598
Transactions Volume	32.401.958	26.534.373	16.823	120.613	55.461	5.674.688
Main Board:	31.311.874	26.444.289	16.823	120.613	55.461	4.674.688
Blocks Board:	1.090.084	90.084	0	0	0	1.000.000
Forced Sales Board:	0	0	0	0	0	0
Special Terms Board:	0	0	0	0	0	0
Daily Average Number of Trades	29.794	11.485	122	222	8	2.371
Number of Trades	29.099	26.243	65	99	10	2.682
Main Board:	29.095	26.240	65	99	10	2.681
Blocks Board:	4	3	0	0	0	1
Forced Sales Board:	0	0	0	0	0	0
Special Terms Board:	0	0	0	0	0	0

(\*) Summarised Transactions figures for Under Deletion and Under Supervision Categories.

(\*\*) The Market Capitalization of the Companies that belong in the Under Supervision Category is not included.

## Trading Details by Athex Sectors and ETFs Category

Code	Sectors	Gain / Lose / Same	Number of Trades	Transactions Volume	Transactions Value	% of Total Trans. Value
8300	- Banks	0 / 9 / 0	10.788	23.651.070	20.555.572,09	39,83%
1700	- Basic Resources	1 / 7 / 1	2.283	829.065	2.054.832,41	3,98%
1300	- Chemicals	1 / 4 / 1	129	44.859	46.079,23	0,09%
2300	- Construction & Materials	1 / 14 / 2	1.716	773.059	1.906.870,05	3,69%
11000	- ETF	0 / 3 / 0	10	55.461	167.400,11	0,32%
8700	- Financial Services	0 / 5 / 0	1.707	1.611.416	2.036.376,71	3,95%
3500	- Food & Beverage	1 / 10 / 2	850	250.116	1.892.512,92	3,67%
4500	- Health Care	1 / 5 / 0	319	365.276	219.010,43	0,42%
2700	- Industrial Goods & Services	2 / 12 / 3	1.510	246.664	1.163.023,04	2,25%
8500	- Insurance	0 / 1 / 0	32	13.575	14.565,90	0,03%
5500	- Media	1 / 4 / 0	26	11.332	3.197,13	0,01%
500	- Oil & Gas	0 / 2 / 0	1.402	253.759	1.821.452,48	3,53%
3700	- Personal & Household Goods	6 / 8 / 0	677	561.210	851.663,66	1,65%
8600	- Real Estate	1 / 6 / 0	200	44.255	129.133,86	0,25%
5300	- Retail	0 / 4 / 0	287	134.540	1.155.348,21	2,24%
9500	- Technology	3 / 7 / 1	636	448.058	307.365,55	0,60%
6500	- Telecommunications	0 / 1 / 0	1.667	832.090	5.545.095,96	10,74%
5700	- Travel & Leisure	2 / 8 / 2	2.206	1.358.904	5.908.697,88	11,45%
7500	- Utilities	0 / 4 / 0	2.654	917.249	5.834.890,35	11,31%

## Top 10 best &amp; worst performing Shares

Main Market					
With positive Price change	Closing price	change	With negative Price change	Closing price	change
DROMEAS SA (CR)	0,370	2,78% #	CENTRIC HOLDINGS (CR)	0,190	-13,64% Ⓔ
QUALITY & RELIABILITY SA (CR)	1,68	1,82% #	J & P - AVAX SA (CR)	1,40	-8,50% Ⓔ
LOGISMOS S.A. (CR)	0,500	0,81% #	FOURLIS (CR)	2,41	-8,02% Ⓔ
KORRES (CR)	3,15	0,32% #	NIREFS SA (CR)	0,401	-7,60% Ⓔ
ATHENS MEDICAL CENTER SA (CR)	0,801	0,12% #	ELVAL SA. (CB)	1,87	-7,43% Ⓔ
			ATTICA BANK S.A. (CR)	0,263	-7,39% Ⓔ
			INTRACOM HOLDINGS (CR)	0,418	-7,32% Ⓔ
			THRACE PLASTICS SA (CR)	1,19	-7,03% Ⓔ
			GEK TERNA (CR)	2,02	-6,91% Ⓔ
			EUROBANK ERGASIAS (CR)	0,606	-6,77% Ⓔ
With the highest Transactions Value	Value (thou. €)	change	With the highest Transactions Volume	Volume	change
NATIONAL BANK (CR)	5.771,22	-5,00% Ⓔ	ALPHA BANK (CR)	7.533.501	-4,84% Ⓔ
OTE (CR)	5.545,10	-4,48% Ⓔ	PIRAEUS BANK (CR)	4.858.707	-3,98% Ⓔ
PPC (CR)	5.227,34	-6,56% Ⓔ	ATTICA BANK S.A. (CR)	2.022.945	-7,39% Ⓔ
OPAP (CR)	4.935,60	-3,23% Ⓔ	NATIONAL BANK (CR)	1.970.989	-5,00% Ⓔ
PIRAEUS BANK (CR)	4.884,43	-3,98% Ⓔ	EUROBANK ERGASIAS (CR)	1.581.741	-6,77% Ⓔ
ALPHA BANK (CR)	3.623,56	-4,84% Ⓔ	MARFIN INVESTMENT GROUP (CR)	1.287.411	-6,15% Ⓔ
CC HBC AG (CR)	1.700,45	-3,53% Ⓔ	OTE (CR)	832.090	-4,48% Ⓔ
HELLENIC EXCHANGES (CR)	1.656,94	-6,23% Ⓔ	PPC (CR)	734.836	-6,56% Ⓔ
MYTILINEOS HOLDINGS (CR)	1.405,47	-6,27% Ⓔ	OPAP (CR)	680.488	-3,23% Ⓔ
FOLLI FOLLIE (CR)	1.117,68	-2,22% Ⓔ	INTRALOT (CR)	561.078	-4,97% Ⓔ

Note: Stocks that are not included in the "Low Dispersion" and "Under Supervision" categories, and the transactions value is more than 10,000 €.



## Derivatives Summary

	Number of Trades	Volume	Open Interest	Transactions Value
Index Futures	691	6.307	46.526	9.617.997,50
FTSE/Athex Large Cap	691	6.307	46.526	9.617.997,50
Stock Futures	1.769	17.952	149.282	5.616.483,03
ALPHA BANK (CR)	202	4.587	16.217	220.826,60
CC HBC AG (CR)	16	57	709	116.120,00
CORINTH PIPEWORKS SA (CR)	7	10	454	1.993,00
ELLAKTOR (CR)	29	146	4.455	29.572,00
EUROBANK ERGASIAS (CR)	39	597	19.980	4.217,67
EUROBANK PROPERTIES REIC (CR)	13	30	274	20.885,00
EYDAP S.A. (CR)	10	28	221	16.589,00
FOLLI FOLLIE (CR)	3	11	237	19.325,00
FRIGOGLASS SA (CR)	15	47	422	22.365,00
GEK TERNA (CR)	82	607	31.699	125.291,00
HELLENIC EXCHANGES (CR)	61	174	2.213	98.320,00
HELLENIC PETROLEUM (CR)	43	132	2.330	94.887,00
INTRALOT (CR)	29	283	3.930	43.841,00
JUMBO SA (CR)	27	79	257	63.947,00
MARFIN INVESTMENT GROUP (CR)	28	331	18.910	9.534,30
METKA (CR)	19	59	450	59.757,00
MOTOR OIL (CR)	23	162	940	116.859,00
MYTILINEOS HOLDINGS (CR)	70	280	5.053	114.541,00
NATIONAL BANK (CR)	259	3.900	5.218	1.140.294,00
OPAP (CR)	81	551	4.096	398.212,00
OTE (CR)	234	2.006	7.661	1.334.318,00
P.P.A. S.A. (CR)	11	48	553	77.400,00
PIRAEUS BANK (CR)	98	2.018	13.435	201.779,70
PPC (CR)	295	1.528	5.021	1.087.686,00
SIDENOR (CR)	15	43	1.484	6.533,00
TERNA ENERGY (CR)	19	74	2.383	21.312,76
TITAN CEMENT (CR)	24	98	171	142.101,00
VIOHALCO (CB)	17	66	509	27.976,00
Index Options	74	695	5.258	1.103.475,00
FTSE/Athex Large Cap	74	695	5.258	1.103.475,00
Stock Options	3	41	5.572	30.700,00
ALPHA BANK (CR)	0	0	0	0,00
NATIONAL BANK (CR)	1	1	280	300,00
OPAP (CR)	2	40	2.985	30.400,00
OTE (CR)	0	0	1.862	0,00
PIRAEUS BANK (CR)	0	0	5	0,00
PPC (CR)	0	0	440	0,00
Stock Repos - Stock Reverse Repos - Repurchase Agreements	4	615	151.438	300.185,00
Stock Reverse Repos	4	615	4.844	300.185,00
Stock Repos	0	0	140.918	0,00
Repurchase Agreement	0	0	5.676	0,00
Total Derivatives Traded	2.541	25.610	358.076	16.668.840,53

Number of Outstanding Securities	Nominal Value	Dividends [1]			Date of Last Coupon		Note	Shares	Closing price	% change	Previous closing price/date	Open price	Price min	Price max	Last price	Avg price	Last Bid [7]	Last Ask [7]	P/E after	Year	Volume	Trades	Transactions Value	Company Mkt Value (thou. €)	Year low	Year high	Sector[ 4]
		2010	2011	2012	Dividend [2]	Right																					
Warrants																											
1.233.503.482	---	---	---		11/6/2013	---	ALPHA BANK (W)	0,881	-7,65	€ 0,954	26/8/2013	0,921	0,879	0,940	0,881	0,906	500@0,881	1000@0,898	---	2012	2.144.650	1.026	1.942.910,14	5.155.611,64	0,241	1,14	8355
245.779.626	---	---	---		27/6/2013	---	NATIONAL BANK (W)	0,845	-11,89	€ 0,959	26/8/2013	0,969	0,830	0,969	0,845	0,880	4888@0,840	2348@0,845	---	2012	1.473.073	862	1.295.994,51	6.830.840,08	0,420	2,00	8355
849.195.130	---	---	---		3/7/2013	---	PIRAEUS BANK (W)	0,664	-7,65	€ 0,719	26/8/2013	0,719	0,625	0,740	0,664	0,669	24166@0,660	2751@0,664	---	2012	2.056.965	794	1.407.015,01	5.016.769,70	0,290	0,889	8355

Warrants

71.417.100	0,650	---	---	---	26/5/2010	11/7/2007	---		AEGEAN AIRLINES (CR)	3,13	---	↘	3,13	26/8/2013	3,09	3,05	3,14	3,13	3,10	1532@3,05	193@3,13	---	2012	5.364	22	16.614,08	223.535,52	1,96	3,24	5751
11.178.000	1,45	---	---	---	21/4/2010	12/5/2011	---		AEOLIAN INVESTMENT FUND (CR)	1,02	-1,92	€	1,04	26/8/2013	0,970	0,970	1,02	1,02	0,990	100@1,00	1160@1,02	8,07	2012	1.985	8	1.964,65	11.401,56	0,900	1,17	8985
13.000.000	1,00	---	---	---	1/8/2007	7/4/2000	---		AKRITAS SA (CR)	0,177	---	↘	0,177	26/8/2013	---	---	---	---	---	77@0,178	---	---	2012	---	---	---	2.301,00	0,140	0,520	2353
25.000.000	0,400	---	---	---	3/6/2009	12/7/2013	---		ALCO HELLAS SA (CR)	0,403	-5,40	€	0,426	26/8/2013	0,452	0,400	0,452	0,400	0,415	200@0,388	150@0,400	---	2012	6.509	18	2.703,33	10.075,00	0,159	0,599	1753
10.922.906.012	0,300	---	---	---	7/4/2008	13/5/2013	---		ALPHA BANK (CR)	0,472	-4,84	€	0,496	26/8/2013	0,493	0,471	0,500	0,472	0,481	61500@0,471	60813@0,474	---	2012	7.533.501	2.510	3.623.563,45	5.155.611,64	0,161	0,696	8355
22.016.250	0,370	---	---	---	15/7/2009	11/5/2000	---		ALUMIL (CR)	0,590	---	↘	0,590	26/8/2013	0,590	0,500	0,605	0,590	0,543	50@0,565	235@0,590	---	2012	3.903	44	2.118,24	12.989,59	0,360	0,740	1753
418.000	16,00	---	---	---	22/4/2010	5/3/2013	---		ANDROMEDA SA (CR)	22,30	-0,89	€	22,50	26/8/2013	22,30	22,30	22,30	22,30	22,30	5@20,30	36@22,30	2,07	2012	10	2	223,00	9.321,40	17,10	25,41	8985
21.876.700	0,380	---	---	---	8/7/2010	5/6/2001	---		AS COMPANY SA (CR)	0,314	-0,32	€	0,315	26/8/2013	0,315	0,300	0,315	0,314	0,304	5@0,302	2425@0,310	35,88	2012	2.430	15	738,09	6.869,28	0,272	0,488	5379
86.735.980	0,310	---	---	---	6/7/2009	2/1/2002	---		ATHENS MEDICAL CENTER SA (CR)	0,801	0,12	#	0,800	26/8/2013	0,800	0,800	0,803	0,801	0,801	43469@0,801	473@0,803	---	2012	181.629	69	145.445,72	69.475,52	0,471	0,994	4533
699.673.060	0,300	---	---	---	4/6/2008	5/6/2013	---		ATTICA BANK S.A. (CR)	0,263	-7,39	€	0,284	26/8/2013	0,282	0,260	0,283	0,263	0,268	6000@0,262	300@0,265	---	2012	2.022.945	748	541.534,74	184.014,01	0,173	1,06	8355
45.457.464	0,700	---	---	---	1/7/2008	1/3/2010	---		AUDIO VISUAL ENTERPRISES (CR)	0,230	-11,20	€	0,259	26/8/2013	0,279	0,230	0,280	0,230	0,232	1@0,259	1200@0,280	---	2012	5.636	6	1.307,99	10.455,22	0,097	0,482	5553
36.360.000	0,320	---	0,15	---	30/4/2012	5/5/2008	---		AUTOHELLAS SA (CR)	2,15	-2,71	€	2,21	26/8/2013	2,30	2,15	2,30	2,15	2,19	3590@2,15	500@2,19	11,58	2012	29.600	18	64.949,50	78.174,00	1,50	2,30	5759
20.121.710	1,21	---	---	---	27/7/1992	12/3/2003	4970		BALKAN R.E. (CR)	0,198	-10,00	€	0,220	31/5/2013	0,220	0,198	0,220	0,198	0,208	---	2800@0,198	---	2012	2.200	3	457,60	3.984,10	0,195	0,438	8633
19.864.886	5,60	1,976	0,67	0,5376	6/3/2013	2/7/2008	---		BANK OF GREECE (CR)	12,68	-3,13	€	13,09	26/8/2013	13,01	12,55	13,15	12,68	12,78	3@12,58	27@12,83	---	---	8.499	245	108.629,87	251.886,75	11,26	19,19	8355
23.986.500	1,05	---	---	---	26/6/2009	15/3/2000	---		BIOKARPET S.A.(CR)	0,673	---	↘	0,673	5/8/2013	---	---	---	---	---	---	400@0,670	---	2012	---	---	---	16.142,91	0,486	0,845	3726
15.842.391	1,51	---	---	---	15/7/2009	12/5/2000	---		BITROS HOLDING SA (CR)	0,621	---	↘	0,621	1/8/2013	---	---	---	---	---	---	390@0,565	---	2012	---	---	---	9.838,12	0,336	0,745	1757
15.816.009	0,300	---	---	---	1/7/2009	17/7/2000	---		BYTE COMPUTER SA (CR)	0,450	-4,26	€	0,470	23/8/2013	0,465	0,445	0,465	0,450	0,454	120@0,445	50@0,459	---	2012	1.180	6	535,30	7.117,20	0,351	0,620	9533
366.491.145	6,70	---	---	0,34	26/6/2013	29/4/2013	---		CC HBC AG (CR)	20,21	-3,53	€	20,95	26/8/2013	20,60	20,14	20,80	20,21	20,38	5268@20,21	12856@20,50	---	---	83.459	539	1.700.452,17	7.406.786,04	16,79	22,60	3537
101.123.806	0,360	---	---	---	22/7/2010	28/6/2011	---		CENTRIC HOLDINGS (CR)	0,190	-13,64	€	0,220	26/8/2013	0,220	0,182	0,220	0,190	0,196	50@0,189	5000@0,186	28,83	2012	72.567	57	14.233,81	19.213,52	0,182	0,440	5752
4.034.950	0,680	---	---	---	1/7/2005	30/12/2010	---		CHATZIKRANIOTIS & SONS SA (CR)	0,141	-0,70	€	0,142	26/8/2013	0,141	0,141	0,141	0,141	0,141	96@0,141	1000@0,156	---	2012	754	3	106,31	568,93	0,130	0,522	3577
124.170.201	0,780	---	---	---	28/6/2002	7/2/2005	---		CORINTH PIPEWORKS SA (CR)	1,97	-6,63	€	2,11	26/8/2013	2,13	1,95	2,13	1,97	2,01	3257@1,96	7693@2,00	70,58	2012	141.626	430	284.967,96	244.615,30	1,40	2,59	1757
9.907.500	0,300	---	---	---	6/10/2005	13/2/2002	---		CPI SA (CR)	0,212	---	↘	0,212	13/8/2013	---	---	---	---	---	---	680@0,233	---	2012	---	---	---	2.100,39	0,133	0,400	9572
27.379.200	0,610	---	---	---	23/6/2010	5/12/2012	---		CRETE PLASTICS SA (CR)	4,84	0,21	#	4,83	26/8/2013	4,84	4,84	4,84	4,84	4,84	100@4,75	1000@4,76	13,83	2012	35	1	169,40	132.515,33	4,60	5,65	1357
26.664.840	0,470	---	---	---	29/6/2005	12/7/1999	---		CYCLON HELLAS SA (CR)	0,466	-13,38	€	0,538	26/8/2013	0,480	0,461	0,480	0,466	0,468	125@0,466	500@0,481	---	2012	7.435	16	3.478,59	12.425,82	0,385	0,700	1357
15.000.000	0,300	---	---	---	6/7/2007	18/7/2000	---		DAIOS PLASTICS SA (CR)	3,79	---	↘	3,79	21/8/2013	3,79	3,79	3,79	3,79	3,79	130@3,42	147@3,68	---	2012	28	1	106,12	56.850,00	3,34	5,50	1357
31.370.399	0,300	---	---	---	11/8/2010	15/2/2012	---		DIONIC (CR)	0,086	-3,37	€	0,089	26/8/2013	0,084	0,084	0,087	0,084	0,085	5000@0,080	9500@0,084	---	2012	20.311	30	1.735,48	2.697,85	0,066	0,263	2797
34.720.000	0,310	---	---	---	16/6/2010	1/8/2007	---		DROMEAS SA (CR)	0,370	2,78	#	0,360	26/8/2013	0,387	0,360	0,388	0,370	0,365	1000@0,361	298@0,369	---	2012	426.931	67	155.849,87	12.846,40	0,218	0,634	3726
3.873.120	0,300	---	---	---	7/7/2008	4/10/2012	---		DRUCKFARBEN HELLAS (CR)	1,16	---	↘	1,16	21/8/2013	---	---	---	---	---	1@1,05	---	---	2012	---	---	---	4.492,82	0,901	2,64	1357
11.250.000	0,560	---	---	---	26/7/2010	16/6/1999	---		EKTER SA (CR)	0,420	-6,67	€	0,450	26/8/2013	0,450	0,420	0,450	0,420	0,434	500@0,430	280@0,445	7,34	2012	2.200	3	954,00	4.725,00	0,400	0,700	2357
32.188.050	1,04	---	---	---	21/7/2008	20/1/2000	---		EL. D. MOUZAKIS SA (CB)	0,170	---	↘	0,170	21/8/2013	---	---	---	---	---	---	800@0,160	---	2012	---	---	---	5.471,97	0,114	0,330	3763
18.648.000	1,00	---	---	---	7/7/2009	10/9/2010	---		ELASTRON (CR)	0,702	---	↘	0,702	26/8/2013	---	---	---	---	---	10@0,660	10@0,690	---	2012	---	---	---	13.090,90	0,518	0,969	1757
31.734.530	1,60	---	---	---	9/7/2007	19/7/2006	---		ELGEKA SA (CR)	0,427	-28,83	€	0,600	26/8/2013	0,427	0,427	0,427	0,427	0,427	2000@0,430	230@0,626	---	2012	140	2	59,78	13.550,64	0,407	0,780	3577

Number of Outstanding Securities	Nominal Value	Dividends [1]			Date of Last Coupon		Note	Shares	Closing price	% change	Previous closing price/date	Open price	Price min	Price max	Last price	Avg price	Last Bid [7]	Last Ask [7]	P/E after	Year	Volume	Trades	Transactions Value	Company Mkt Value (thou. €)	Year low	Year high	Sector[4]	
		2010	2011	2012	Dividend [2]	Right																						
Main Market																												
23.828.130	0,500	---	---	---	7/7/2010	17/2/2009	---	ELINOIL S.A. (CR)	1,17	---	↘ 1,17	13/8/2013	---	---	---	---	---	200@1,06	280@1,17	---	2012	---	---	---	27.878,91	1,02	1,89	537
177.001.313	1,03	0,0308	---	---	5/7/2011	20/12/2007	---	ELLAKTOR (CR)	1,99	-6,57	€ 2,13	26/8/2013	2,10	1,97	2,12	1,99	2,01	11547@1,98	3092@2,01	---	2012	371.383	702	747.067,45	352.232,61	1,36	2,50	2357
26.730.187	0,600	---	---	---	25/6/2009	30/12/2010	---	ELTON SA (CR)	1,08	-2,70	€ 1,11	26/8/2013	1,14	1,02	1,14	1,07	1,06	70@1,04	400@1,08	11,29	2012	1.361	13	1.445,84	28.868,60	0,850	1,25	1353
15.146.404	0,340	0,093	---	---	6/7/2011	17/10/2002	---	ELTRAK SA (CR)	1,71	---	↘ 1,71	26/8/2013	1,71	1,71	1,71	1,71	1,71	180@1,48	200@1,66	---	2012	208	3	355,68	25.900,35	1,08	1,90	2753
124.100.815	0,300	---	---	---	27/6/2008	7/7/2000	---	ELVAL SA. (CB)	1,87	-7,43	€ 2,02	26/8/2013	1,98	1,87	1,98	1,87	1,90	7300@1,86	480@1,89	14,44	2012	30.743	85	58.499,34	232.068,52	1,55	2,38	1753
13.230.000	0,300	---	---	---	11/8/2010	27/6/2012	---	ELVE SA (CR)	0,514	-1,15	€ 0,520	26/8/2013	0,481	0,480	0,514	0,514	0,486	200@0,481	265@0,514	---	2012	1.210	4	588,24	6.800,22	0,423	0,717	3763
30.009.210	0,310	---	---	---	27/6/2008	26/6/2000	---	ETEM SA (CB)	0,391	-6,90	€ 0,420	26/8/2013	0,396	0,380	0,400	0,400	0,393	12@0,380	460@0,400	---	2012	6.139	28	2.411,40	11.733,60	0,328	0,828	1753
4.050.416.865	0,300	---	---	---	2/5/2008	13/6/2013	---	EUROBANK ERGASIAS (CR)	0,606	-6,77	€ 0,650	26/8/2013	0,640	0,602	0,646	0,606	0,620	7400@0,605	5000@0,611	---	2012	1.581.741	1.042	980.271,80	2.454.552,62	0,555	6,23	8355
61.000.000	2,13	0,5364	0,4067	---	23/3/2012	20/11/2007	---	EUROBANK PROPERTIES REIC (CR)	6,94	-2,25	€ 7,10	26/8/2013	7,04	6,85	7,08	6,94	7,01	300@6,86	2@6,90	---	2012	15.075	149	105.716,59	423.340,00	4,87	7,75	8675
27.503.677	0,600	0,04	0,05	0,1	11/7/2013	18/10/1999	---	EUROPEAN RELIANCE INSUR. (CR)	1,06	-5,36	€ 1,12	26/8/2013	1,10	1,05	1,11	1,10	1,07	49@1,07	1000@1,11	3,20	2012	13.575	32	14.565,90	29.153,90	0,973	1,62	8536
13.673.200	0,880	---	---	---	18/7/2008	26/7/2001	---	EVROFARMA SA (CR)	0,260	---	↘ 0,260	21/8/2013	0,260	0,260	0,260	0,260	0,260	450@0,234	500@0,280	---	2012	1.000	1	260,00	3.555,03	0,209	0,539	3577
106.500.000	0,600	0,04	0,05	0,15	31/7/2013	28/1/2000	---	EYDAP S.A. (CR)	5,80	-4,92	€ 6,10	26/8/2013	5,94	5,80	6,10	5,80	5,89	530@5,75	100@5,88	13,19	2012	30.259	245	178.269,76	617.700,00	4,65	6,47	7577
52.800.154	0,300	---	---	---	16/4/2010	21/6/2004	---	F.G. EUROPE S.A. (CR)	0,513	1,18	# 0,507	26/8/2013	0,525	0,457	0,528	0,513	0,501	25@0,467	170@0,512	6,21	2012	1.925	15	964,22	27.086,48	0,450	0,950	3722
10.203.575	0,730	---	---	---	16/7/2007	18/10/1999	---	FIERATEX SA (CR)	0,129	-27,53	€ 0,178	23/8/2013	0,144	0,125	0,144	0,129	0,131	---	500@0,130	---	2012	2.000	6	261,50	1.316,26	0,090	0,400	3763
11.720.024	0,530	---	---	---	16/7/2010	29/5/2012	---	FLEXOPACK SA (CR)	3,62	0,56	# 3,60	20/8/2013	3,62	3,62	3,62	3,62	3,62	97@3,62	10@3,90	12,19	2012	28	2	101,36	42.426,49	2,39	5,00	2723
4.181.450	0,500	---	---	---	21/8/2000	5/3/2002	---	FLOUR MILLS SARANTOPOULOS SA	0,900	---	↘ 0,900	12/8/2013	---	---	---	---	---	827@0,940	---	16,64	2012	---	---	---	3.763,31	0,626	1,02	3577
66.948.210	0,300	---	---	---	14/7/2009	31/12/2010	4988	FOLLI FOLLIE (CR)	17,60	-2,22	€ 18,00	26/8/2013	18,00	17,38	18,00	17,60	17,59	10@17,38	415@17,60	---	2012	63.540	227	1.117.679,84	1.178.288,50	11,51	19,00	5379
50.992.322	1,00	---	---	---	21/6/2010	16/7/2002	---	FOURLIS (CR)	2,41	-8,02	€ 2,62	26/8/2013	2,56	2,41	2,56	2,41	2,48	1378@2,40	300@2,45	---	2012	51.160	137	126.860,67	122.891,50	1,58	2,95	3722
50.592.373	0,300	---	---	---	7/7/2010	7/9/2011	---	FRIGOGLASS SA (CR)	4,78	-3,24	€ 4,94	26/8/2013	4,86	4,67	4,86	4,78	4,76	200@4,76	250@4,78	---	2012	27.644	277	131.683,90	241.831,54	3,84	6,26	2757
77.376.446	0,340	---	---	---	23/5/2005	18/8/2011	---	G.E. DIMITRIOU (CR)	0,054	8,00	# 0,050	26/8/2013	0,045	0,045	0,054	0,054	0,053	1455@0,045	1800@0,054	---	2012	4.945	4	262,13	4.178,33	0,028	0,118	3722
14.076.360	0,370	---	---	---	19/8/2008	22/7/2003	---	GALAXIDI S.A. (CR)	0,360	---	↘ 0,360	8/8/2013	---	---	---	---	---	---	1000@0,396	10,24	2012	---	---	---	5.067,49	0,320	0,638	3573
85.882.688	0,570	0,0048	---	---	1/8/2011	2/1/2009	---	GEK TERNA (CR)	2,02	-6,91	€ 2,17	26/8/2013	2,18	1,99	2,18	2,02	2,06	500@2,01	2060@2,05	-(6)-	2012	240.702	478	496.784,31	173.483,03	1,40	2,80	2357
24.060.000	0,300	---	0,017	---	18/6/2012	21/1/2000	---	GEN. COMMERCIAL & IND.SA (CR)	0,429	---	↘ 0,429	22/8/2013	---	---	---	---	---	10@0,389	249@0,424	---	2012	---	---	---	10.321,74	0,303	0,545	2797
1.270.000	0,300	---	---	---	6/7/2007	6/2/2013	---	GIRAKIAN PROFIL SA (CB)	2,12	9,84	# 1,93	23/8/2013	2,12	2,12	2,12	2,12	2,12	---	230@2,09	---	2012	10	2	21,20	2.692,40	0,900	3,33	1757
34.770.982	1,54	---	---	---	6/7/2010	27/7/2000	---	GR. SARANTIS SA (CR)	4,80	-2,24	€ 4,91	26/8/2013	4,90	4,80	4,90	4,80	4,88	300@4,77	150@4,87	---	2012	735	3	3.586,70	166.900,71	4,05	5,45	3767
8.340.750	1,20	---	---	---	25/6/2009	30/7/2001	---	HAIDEMENOS SA (CR)	0,382	-2,30	€ 0,391	23/8/2013	0,382	0,382	0,382	0,382	0,382	100@0,394	---	---	2012	22	1	8,40	3.186,17	0,350	0,905	2791
101.279.627	0,380	---	---	---	26/6/2008	14/7/2006	---	HALKOR SA (CB)	0,880	-2,00	€ 0,898	26/8/2013	0,872	0,832	0,920	0,880	0,873	1480@0,860	5470@0,880	---	2012	236.457	352	206.458,49	89.126,07	0,550	1,42	1755
36.748.909	0,730	---	---	---	15/12/2005	13/12/2006	---	HEL. SUGAR INDUSTRY SA (CB)	0,872	-3,11	€ 0,900	26/8/2013	0,890	0,860	0,900	0,886	0,874	50@0,862	948@0,886	13,81	2012	17.982	43	15.709,69	32.045,05	0,754	1,74	3577
29.546.360	0,710	---	---	---	20/6/2008	23/8/2000	---	HELLENIC CABLES SA (CR)	1,63	-2,39	€ 1,67	26/8/2013	1,67	1,55	1,67	1,65	1,60	5@1,57	1000@1,64	---	2012	25.001	104	40.033,38	48.160,57	1,16	2,32	2733
65.368.563	0,790	0,15	0,11	0,09	3/6/2013	26/9/2012	---	HELLENIC EXCHANGES (CR)	5,57	-6,23	€ 5,94	26/8/2013	5,93	5,51	5,93	5,57	5,67	6358@5,55	306@5,59	24,95	2012	292.334	876	1.656.940,68	364.102,90	3,75	6,97	8777
305.635.185	2,18	0,45	0,45	0,15	16/8/2013	1/10/2003	4795	HELLENIC PETROLEUM (CR)	7,19	-4,26	€ 7,51	26/8/2013	7,46	7,02	7,46	7,19	7,12	688@7,09	628@7,19	22,54	2012	99.285	663	707.034,90	2.197.516,98	6,20	9,30	537
305.732.436	0,410	---	---	---	8/7/2009	28/9/2011	---	HYGEIA SA (CR)	0,390	-6,02	€ 0,415	26/8/2013	0,415	0,381	0,415	0,390	0,392	400@0,382	2149@0,390	---	2012	155.525	189	60.949,06	119.235,65	0,280	0,795	4533
53.155.053	0,440	---	---	---	21/7/2010	16/7/2008	---	IASO SA (CR)	1,00	-6,54	€ 1,07	26/8/2013	1,08	0,964	1,08	1,00	0,986	320@0,967	3955@1,00	---	2012	10.264	47	10.120,33	53.155,05	0,850	1,58	4533
8.298.467	0,400	---	---	---	30/8/1993	8/5/2013	---	IDEAL GROUP SA (CR)	0,650	-0,92	€ 0,656	26/8/2013	0,670	0,591	0,718	0,591	0,604	495@0,591	654@0,651	-(6)-	2012	1.255	11	757,55	5.394,00	0,571	1,85	9574
28.580.100	0,400	0,05	0,02	---	20/8/2012	23/2/2007	---	IKTINOS HELLAS SA (CR)	1,47	-2,00	€ 1,50	26/8/2013	1,51	1,43	1,51	1,47	1,45	300@1,44	720@1,47	14,23	2012	13.185	55	19.129,75	42.012,75	1,16	1,80	2353
9.000.000	0,880	---	---	---	15/5/2009	7/12/2010	---	ILYDA S.A. (CR)	0,559	---	↘ 0,559	5/8/2013	---	---	---	---	---	---	586@0,504	---	2012	---	---	---	5.031,00	0,269	0,650	9537
20.578.374	0,620	0,03	---	---	2/6/2011	5/5/1999	---	INFORM P																				

Number of Outstanding Securities	Nominal Value	Dividends [1]			Date of Last Coupon		Note	Shares	Closing price	% change	Previous closing price/date	Open price	Price min	Price max	Last price	Avg price	Last Bid [7]	Last Ask [7]	P/E after	Year	Volume	Trades	Transactions Value	Company Mkt Value (thou. €)	Year low	Year high	Sector[ 4]	
		2010	2011	2012	Dividend [2]	Coupon Right																						
Main Market																												
11.233.200	0,730	---	---	---	12/7/2010	30/7/1999	---	INTERTECH SA (CR)	0,299	---	↘ 0,299	26/8/2013	---	---	---	---	---	280@0,270	90@0,299	---	2012	---	---	---	3.358,73	0,223	0,600	9572
34.986.430	0,440	---	---	---	25/7/2008	23/2/2010	---	INTERWOOD-XYLEMPORIA (CR)	0,113	---	↘ 0,113	22/8/2013	---	---	---	---	---	827@0,113	200@0,124	---	2012	---	---	---	4.518,17	0,101	0,188	2353
2.566.836	0,440	---	---	---	13/8/2010	9/1/2007	---	INTERWOOD-XYLEMPORIA (PR)	0,220	---	↘ 0,220	26/7/2013	---	---	---	---	---	827@0,225	1000@0,230	---	2012	---	---	---	4.518,17	0,200	0,315	2353
23.154.250	1,36	---	---	---	12/8/2008	2/8/2010	---	INTRACOM CONSTR. (CR)	0,697	-5,17	€ 0,735	26/8/2013	0,721	0,691	0,723	0,697	0,712	50@0,695	1300@0,710	---	2012	8.206	28	5.845,06	16.138,51	0,580	1,22	2357
133.025.996	1,41	---	---	---	3/7/2007	7/1/2002	---	INTRACOM HOLDINGS (CR)	0,418	-7,32	€ 0,451	26/8/2013	0,450	0,405	0,450	0,418	0,420	2859@0,411	7850@0,420	---	2012	325.532	466	136.771,43	55.604,87	0,321	0,754	9578
158.961.721	0,300	0,0045	0,0035	0,0026	30/5/2013	14/11/2007	---	INTRALOT (CR)	1,53	-4,97	€ 1,61	26/8/2013	1,61	1,49	1,63	1,53	1,54	23391@1,50	2695@1,54	81,67	2012	561.078	754	864.867,52	243.211,43	1,29	2,41	5752
77.654.850	0,580	0,04	---	---	1/7/2011	21/2/2003	---	J & P - AVAX SA (CR)	1,40	-8,50	€ 1,53	26/8/2013	1,46	1,40	1,49	1,40	1,41	2000@1,38	455@1,40	---	2012	74.002	144	104.613,39	108.716,79	1,05	1,90	2357
129.994.676	1,19	0,189	---	---	23/12/2010	7/9/2012	---	JUMBO SA (CR)	8,29	-2,01	€ 8,46	26/8/2013	8,46	7,91	8,46	8,29	8,11	500@8,12	294@8,29	13,97	2012	63.824	380	517.694,56	1.077.655,86	4,85	9,07	3747
9.742.920	0,400	0,01	0,01	0,01	12/8/2013	14/7/2000	---	KARAMOLEGOS SA (CR)	1,30	4,00	# 1,25	23/8/2013	1,30	1,30	1,30	1,30	1,30	50@1,14	350@1,31	5,05	2012	1.190	5	1.547,00	12.665,80	1,07	1,83	3577
14.679.792	1,44	0,065	---	---	3/6/2011	4/9/2000	---	KARATZIS SA (CR)	4,55	---	↘ 4,55	26/8/2013	4,47	4,32	4,55	4,55	4,43	100@4,27	235@4,55	15,28	2012	1.800	15	7.975,50	66.793,05	2,55	4,90	2723
3.300.689	0,350	---	---	---	1/7/2004	21/7/1999	---	KEKROPS SA (CR)	1,86	-7,92	€ 2,02	26/8/2013	1,79	1,77	1,87	1,86	1,79	310@1,59	6@1,86	---	2012	2.140	15	3.830,80	6.139,28	1,54	3,79	8633
7.595.160	0,600	---	---	---	8/8/2008	18/8/2010	---	KIRIAKOULIS SHIPPING SA (CR)	1,04	---	↘ 1,04	23/8/2013	---	---	---	---	---	---	100@0,999	72,47	2012	---	---	---	7.898,97	0,635	1,49	5759
23.648.700	0,330	0,05	---	---	13/7/2011	23/7/2008	---	KLEEMAN HELLAS SA (CR)	1,49	-1,32	€ 1,51	21/8/2013	1,45	1,44	1,51	1,49	1,47	4816@1,45	150@1,49	---	2012	3.184	26	4.692,30	35.236,56	1,20	1,88	2757
40.219.218	0,300	---	---	---	25/5/2009	9/7/2013	---	KLOUKINAS - LAPPAS SA (CR)	0,600	-5,51	€ 0,635	26/8/2013	0,611	0,600	0,611	0,600	0,604	400@0,590	1800@0,600	---	2012	6.002	9	3.626,62	24.131,53	0,583	0,970	2357
21.224.340	0,420	---	---	---	2/7/2008	25/4/2006	---	KORDELLOS BROS SA (CR)	0,236	---	↘ 0,236	16/8/2013	---	---	---	---	---	4@0,213	500@0,259	---	2012	---	---	---	5.008,94	0,195	0,428	1757
13.450.000	0,390	---	---	---	25/6/2010	28/5/2008	---	KORRES (CR)	3,15	0,32	# 3,14	26/8/2013	3,10	3,07	3,18	3,15	3,12	369@3,10	30@3,16	---	2012	6.861	40	21.416,10	42.367,50	2,66	4,87	3767
29.480.000	0,420	---	---	---	19/7/2010	1/8/2007	---	KRETA FARM SA (CR)	0,549	-5,83	€ 0,583	26/8/2013	0,557	0,540	0,577	0,549	0,547	60@0,543	990@0,560	---	2012	7.905	37	4.327,40	16.184,52	0,307	0,800	3577
33.065.136	0,440	---	---	---	6/7/2009	2/8/2013	---	KRI-KRI S.A. (CR)	1,88	-2,08	€ 1,92	26/8/2013	1,93	1,88	1,94	1,88	1,93	500@1,87	779@1,90	13,92	2012	66.971	32	129.362,54	62.162,46	1,52	2,06	3577
15.804.800	0,330	---	---	---	15/6/2010	12/3/2004	---	KTIMA KOSTAS LAZARIDIS SA (CR)	0,297	---	↘ 0,297	21/8/2013	---	---	---	---	---	200@0,269	200@0,302	---	2012	---	---	---	4.694,03	0,239	0,488	3535
22.945.139	1,00	---	---	---	19/8/2008	10/9/2012	---	KYRIAKIDIS MARBLES SA (CR)	0,880	---	↘ 0,880	23/8/2013	---	---	---	---	---	1000@0,860	1500@0,910	86,20	2012	---	---	---	20.191,72	0,630	1,04	2353
44.267.700	0,300	---	---	---	30/5/2007	18/9/2002	---	LAMDA DEVELOPMENT SA (CR)	3,98	-0,50	€ 4,00	26/8/2013	3,84	3,77	3,98	3,98	3,81	500@3,69	200@3,90	---	2012	507	9	1.932,41	176.185,45	3,58	6,48	8633
5.939.268	0,620	---	---	---	10/7/2003	3/1/2002	---	LANAKAM SA (CR)	0,639	---	↘ 0,639	14/8/2013	---	---	---	---	---	---	5135@0,576	---	2012	---	---	---	3.795,19	0,503	0,869	3763
7.734.375	1,00	---	---	---	9/7/2007	7/1/2011	---	LIVANIS SA (CR)	0,229	---	↘ 0,229	23/8/2013	---	---	---	---	---	---	1700@0,239	---	2012	---	---	---	1.771,17	0,144	0,363	5557
4.740.000	0,860	---	---	---	14/3/2003	---	---	LOGISMOS S.A. (CR)	0,500	0,81	# 0,496	6/8/2013	0,498	0,498	0,500	0,500	0,500	---	1000@0,499	58,00	2011	25.000	5	12.497,60	2.370,00	0,373	1,23	9533
15.222.276	0,640	---	---	---	1/6/2010	2/8/2011	---	LOULIS MILLS SA (CR)	2,77	-0,72	€ 2,79	23/8/2013	2,72	2,72	2,79	2,72	2,77	1000@2,72	150@2,79	-(6)-	2012	4.312	9	11.938,28	42.165,70	2,08	3,76	3577
770.328.883	0,300	---	---	---	26/4/2007	10/5/2013	---	MARFIN INVESTMENT GROUP (CR)	0,290	-6,15	€ 0,309	26/8/2013	0,303	0,280	0,306	0,290	0,289	500@0,289	37162@0,290	---	2012	1.287.411	787	372.410,80	223.395,38	0,175	0,564	8775
9.819.370	0,690	---	---	---	14/8/2007	9/1/2004	---	MATHIOS REFRACTORY SA (CR)	0,255	---	↘ 0,255	26/8/2013	---	---	---	---	---	1000@0,183	9830@0,255	---	2012	---	---	---	2.503,94	0,180	0,510	2353
468.700	1,0556	---	---	---	21/3/2012	21/5/2004	---	MERMEREN KOMB. A.D. PR. (GDR)	4,13	---	↘ 4,13	26/8/2013	---	---	---	---	---	35@3,85	56@4,27	1,01	2012	---	---	---	1.935,73	3,73	5,19	1775
51.950.600	0,320	0,48	0,75	0,25	10/5/2013	21/10/2005	---	METKA (CR)	10,21	-2,02	€ 10,42	26/8/2013	10,31	10,06	10,42	10,21	10,19	310@10,10	43@10,23	14,72	2012	30.065	302	306.327,70	530.415,63	9,00	12,78	2757
10.500.000	0,900	---	---	---	24/6/2008	4/7/2012	---	MEVACO SA (CR)	1,41	-1,40	€ 1,43	26/8/2013	1,41	1,41	1,41	1,41	1,41	10@1,33	50@1,41	10,21	2012	950	2	1.339,50	14.805,00	1,01	1,58	2757
14.074.000	3,00	0,15	0,25	---	2/3/2012	23/7/2009	---	MIG REAL ESTATE (CR)	1,77	---	↘ 1,77	16/8/2013	---	---	---	---	---	---	270@1,92	---	2012	---	---	---	24.910,98	1,17	1,77	8671
6.200.000	0,500	---	---	---	22/6/2010	1/11/1995	---	MINERVA KNITWEAR SA (CB)	0,776	---	↘ 0,776	5/8/2013	---	---	---	---	---	---	3010@0,699	---	2012	---	---	---	4.811,20	0,530	0,948	3763
12.417.000	0,370	---	---	---	28/7/2008	6/9/2011	---	MLS MULTIMEDIA SA (CR)	3,00	-0,99	€ 3,03	26/8/2013	3,03	2,96	3,03	3,00	2,98	1000@2,96	4403@3,00	39,51	2012	21.297	39	63.500,74	37.251,00	2,60	3,04	9537
4.588.137	16,00	---	---	---	30/6/2005	17/8/2011	---	MOCHLOS SA (CR)	1,79	---	↘ 1,79	26/8/2013	1,79	1,79	1,79	1,79	1,79	2150@1,30	500@1,68	---	2012	5	2	8,95	8.212,77	1,12	2,60	2357
11.700.000	0,590	---	---	---	2/6/2009	24/7/2012	---	MOTODYNAMICS S.A. (CR)	0,338	---	↘ 0,338	26/8/2013	---	---	---	---	---	390@0,305	620@0,371	---	2012	---	---	---	3.954,60	0,211	0,640	5379
110.782.980	0,850	0,25	0,4	0,3	26/6/2013	5/11/2012	---	MOTOR OIL (CR)	7,22	-3,22	€ 7,46	26/8/2013	7,36	7,11	7,40	7,22	7,21	1500@7,21	479@7,22	8,82	2012	154.474	739	1.114.417,58	799.853,12	6,80	9,37	533
116.915.862	1,07	---	---	---	11/5/2009	6/7/2011	---	MYTILINEOS HOLDINGS (CR)	4,04	-6,27	€ 4,31	26/8/2013	4,30	4,02	4,30	4,04	4,09	10345@4,03	650@4,05	---	2012	343.841	1.180	1.405.471,66	472.340,08	3,38	5,65	1755

Number of Outstanding Securities	Nominal Value	Dividends [1]			Date of Last Coupon		Note	Shares	Closing price	% change	Previous closing price/date	Open price	Price min	Price max	Last price	Avg price	Last Bid [7]	Last Ask [7]	P/E after	Year	Volume	Trades	Transactions Value	Company Mkt Value (thou. €)	Year low	Year high	Sector[ 4]	
		2010	2011	2012	Dividend [2]	Coupon Right																						
Main Market																												
8.321.682	0,670	---	---	---	17/8/2007	23/11/1999	---	N. LEVEDERIS SA (CB)	0,347	---	↘ 0,347	14/8/2013	---	---	---	---	---	500@0,347	---	2012	---	---	---	3.855,54	0,198	0,658	1757	
2.160.524	0,670	0,0435	0,0435	0,0436	16/8/2013	23/11/1999	---	N. LEVEDERIS SA (PB)	0,448	---	↘ 0,448	23/8/2013	---	---	---	---	---	183@0,446	---	2012	---	---	---	3.855,54	0,307	0,798	1757	
11.510.102	0,890	---	---	---	24/6/2005	6/10/1999	---	NAFPAKTOS TEXTILE IND. SA (CB)	0,400	8,99	# 0,367	23/8/2013	0,400	0,400	0,400	0,400	---	3050@0,360	---	2012	10	1	4,00	4.604,04	0,232	0,500	3763	
6.340.000	0,600	---	---	---	30/11/2009	12/7/2000	---	NAKAS MUSIC	0,684	---	↘ 0,684	26/8/2013	---	---	---	---	50@0,641	---	---	2012	---	---	---	4.336,56	0,300	1,04	5379	
2.396.785.994	0,300	---	---	---	16/5/2008	24/5/2013	---	NATIONAL BANK (CR)	2,85	-5,00	€ 3,00	26/8/2013	2,98	2,83	3,03	2,85	2,93	76341@2,85	1000@2,87	---	2012	1.970.989	1.726	5.771.220,10	6.830.840,08	1,83	9,87	8355
23.935.280	0,300	---	---	---	29/6/2009	13/6/2000	---	NAYTEMPORIKI PUBLISHING SA(CR)	0,165	-8,33	€ 0,180	21/8/2013	0,165	0,165	0,165	0,165	1000@0,168	630@0,189	---	2012	40	1	6,60	3.949,32	0,165	0,360	5557	
27.848.000	0,300	0,0301	0,0132	0,0137	21/8/2013	2/9/2003	---	NEWSPHONE HELLAS SA (CR)	0,300	-4,76	€ 0,315	26/8/2013	0,300	0,300	0,308	0,308	0,300	100@0,254	990@0,308	7,35	2012	5.310	8	1.593,48	8.354,40	0,241	0,592	2791
6.132.500	1,25	0,1	---	---	24/6/2011	19/6/2001	---	NEXANS HELLAS SA (CR)	2,18	---	↘ 2,18	26/8/2013	---	---	---	---	30@2,09	500@2,20	---	2012	---	---	---	13.368,85	2,13	3,11	2733	
63.697.153	1,34	---	---	---	8/7/2008	10/11/2008	---	NIREFS SA (CR)	0,401	-7,60	€ 0,434	26/8/2013	0,426	0,400	0,426	0,401	0,411	3104@0,400	718@0,415	---	2012	64.947	155	26.703,42	25.542,56	0,380	0,839	3573
319.000.000	0,300	1,4177	0,72	0,57	28/6/2013	25/4/2001	---	OPAP (CR)	7,20	-3,23	€ 7,44	26/8/2013	7,40	7,12	7,40	7,20	7,25	39429@7,20	2844@7,23	4,48	2012	680.488	1.315	4.935.597,95	2.296.800,00	5,49	8,27	5752
490.150.389	2,39	0,1179	---	---	28/6/2011	18/6/1998	---	OTE (CR)	6,61	-4,48	€ 6,92	26/8/2013	6,81	6,54	6,87	6,61	6,66	22956@6,61	650@6,65	---	2012	832.090	1.667	5.545.095,96	3.239.894,07	4,26	7,80	6535
25.000.000	2,00	0,02	0,01	0,05	18/7/2013	8/8/2003	---	P.P.A. S.A. (CR)	15,58	-6,26	€ 16,62	26/8/2013	16,51	15,58	16,86	15,58	16,02	21@15,58	193@15,70	78,57	2012	7.660	246	122.689,99	389.500,00	14,59	21,68	2777
4.971.466	1,46	---	---	---	4/7/2007	8/10/2003	---	PAIRIS SA (CR)	0,316	---	↘ 0,316	22/8/2013	---	---	---	---	---	820@0,222	300@0,347	---	2012	---	---	---	1.570,98	0,201	0,605	2723
3.953.090	0,900	---	---	---	2/7/2001	5/12/2012	---	PAPERPACK (CR)	0,722	---	↘ 0,722	26/8/2013	---	---	---	---	---	1000@0,550	500@0,690	---	2012	---	---	---	2.854,13	0,500	1,06	2723
50.797.369	0,310	---	---	---	17/8/2000	12/10/2010	---	PAPOUTSANIS (CR)	0,622	---	↘ 0,622	26/8/2013	---	---	---	---	---	2310@0,510	2@0,600	---	2012	---	---	---	31.595,96	0,361	0,750	3767
20.210.127	1,53	---	---	---	27/6/1997	20/3/2000	---	PARNASSOS ENTERP. (CR)	0,162	-10,50	€ 0,181	26/8/2013	0,164	0,162	0,167	0,162	0,163	500@0,161	40@0,162	---	2012	29.676	34	4.837,58	3.274,04	0,162	0,698	8775
7.070.400	0,930	---	---	---	18/5/2010	12/5/2011	---	PETROPOULOS PETROS (CR)	1,50	---	↘ 1,50	26/8/2013	---	---	---	---	---	50@1,45	300@1,50	---	2012	---	---	---	10.605,60	1,20	1,74	2753
5.072.567.951	0,300	---	---	---	16/5/2008	5/6/2013	---	PIRAEUS BANK (CR)	0,989	-3,98	€ 1,03	26/8/2013	1,03	0,983	1,04	0,989	1,01	1000@0,988	20@0,991	---	2012	4.858.707	1.835	4.884.432,47	5.016.769,70	0,832	6,28	8355
22.080.000	0,320	0,05	0,08	0,12	22/5/2013	3/10/2000	---	PLAISIO COMPUTERS SA (CR)	5,00	---	↘ 5,00	26/8/2013	5,00	5,00	5,00	5,00	5,00	100@4,92	100@5,10	11,13	2012	127	1	635,00	110.400,00	3,65	6,25	9572
232.000.000	4,60	0,79	---	0,025	22/7/2013	12/12/2001	---	PPC (CR)	6,98	-6,56	€ 7,47	26/8/2013	7,39	6,90	7,42	6,98	7,10	200@6,96	4000@7,00	94,73	2012	734.836	1.913	5.227.341,39	1.619.360,00	4,55	8,49	7535
11.812.193	0,450	---	---	---	24/7/2009	15/11/2006	---	PROFILE SA (CR)	1,03	-2,83	€ 1,06	26/8/2013	1,03	1,00	1,04	1,03	1,00	335@1,00	566@1,02	19,81	2012	14.773	19	14.809,56	12.166,56	0,761	1,26	9533
24.319.250	0,300	---	---	---	9/7/2002	4/7/2007	---	PROODEFTIKH SA (CR)	0,126	---	↘ 0,126	26/8/2013	---	---	---	---	---	1000@0,124	1000@0,130	---	2012	---	---	---	3.064,23	0,054	0,223	2357
6.836.280	1,88	---	---	---	18/7/2005	10/9/2010	---	QUALITY & RELIABILITY SA (CR)	1,68	1,82	# 1,65	26/8/2013	1,69	1,61	1,79	1,68	1,71	3454@1,68	1900@1,70	---	2012	40.292	51	68.934,84	11.484,95	0,236	1,79	9533
48.069.201	0,400	---	---	---	5/9/2008	21/6/2012	---	QUEST HOLDINGS (CR)	1,05	-6,25	€ 1,12	26/8/2013	1,06	1,04	1,08	1,04	1,06	1000@1,03	500@1,05	---	2012	2.602	13	2.757,53	50.472,66	0,936	1,39	9533
57.434.884	1,31	---	---	---	5/6/2008	12/6/2009	---	REDS S.A. (CR)	0,500	---	↘ 0,500	26/8/2013	---	---	---	---	---	120@0,455	4500@0,498	---	2012	---	---	---	28.717,44	0,450	0,949	8633
22.280.000	0,300	0,0329	---	---	11/4/2011	23/2/2007	---	REVOIL (CR)	0,840	-2,89	€ 0,865	26/8/2013	0,854	0,822	0,860	0,840	0,837	150@0,835	2000@0,850	---	2012	8.570	41	7.170,29	18.715,20	0,345	1,20	5379
7.500.000	0,560	---	---	---	25/6/2010	10/4/2013	---	S.KANAKIS SA (CR)	1,57	-1,26	€ 1,59	26/8/2013	1,55	1,52	1,59	1,57	1,55	150@1,51	947@1,57	11,16	2012	1.256	21	1.944,83	11.775,00	1,05	1,90	3577
52.067.296	0,300	---	---	---	23/12/2003	24/1/2007	---	SELECTED TEXT. IND. ASSOC (CR)	0,289	---	↘ 0,289	23/8/2013	---	---	---	---	---	300@0,261	1060@0,288	---	2012	---	---	---	15.047,45	0,232	0,587	3763
96.243.908	0,410	---	---	---	26/6/2008	17/7/2000	---	SIDENOR (CR)	1,52	-6,17	€ 1,62	26/8/2013	1,61	1,51	1,62	1,52	1,54	310@1,51	714@1,52	---	2012	59.837	144	92.180,79	146.290,74	1,00	2,39	1757
6.456.530	1,60	---	---	---	29/6/2001	2/8/2010	---	SPACE HELLAS SA (CR)	2,19	---	↘ 2,19	14/6/2013	---	---	---	---	---	4898@1,98	70,35	2012	---	---	---	14.139,80	1,25	2,20	9578	
28.438.268	0,300	---	---	---	21/8/2006	24/11/1999	---	SPIROY AGRICULTURE SA (CR)	0,297	-0,67	€ 0,299	26/8/2013	0,270	0,270	0,297	0,297	0,270	---	61@0,270	---	2012	3.440	7	930,15	8.446,17	0,252	0,557	1357
33.125.000	5,00	---	---	---	3/7/2006	18/8/2010	---	TECHNICAL OLYMPIC SA (CR)	1,30	-5,11	€ 1,37	26/8/2013	1,33	1,23	1,33	1,30	1,32	200@1,26	82@1,30	-(6)-	2012	1.446	11	1.912,16	43.062,50	1,18	2,71	3728
109.319.070	0,300	(0,0399)	(0,0613)	---	28/5/2012	5/8/2013	---	TERNA ENERGY (CR)	2,75	-4,51	€ 2,88	26/8/2013	2,88	2,66	2,90	2,75	2,78	1790@2,74	312@2,75	60,40	2012	149.883	466	416.487,21	300.627,44	2,24	3,73	7537
36.300.000	1,12	0,114	0,188	0,162	16/8/2013	12/12/2007	---	THESSALONIKA WATER & SEWERAGE	5,73	-2,22	€ 5,86	26/8/2013	5,73	5,54	5,73	5,73	5,63	50@5,59	100@5,74	11,76	2012	2.271	30	12.791,99	207.999,00	4,73	6,82	7577
45.094.620	0,500	0,036	---	0,0467	10/6/2013	1/11/1999	---	THRACE PLASTICS SA (CR)	1,19	-7,03	€ 1,28	26/8/2013	1,28	1,16	1,28	1,19	1,23	48@1,19	46203@1,20	6,85	2012	32.560	91	39.949,13	53.662,60	1,07	1,64	1357
77.063.568	4,00	0,0806	---	---	24/6/2011	25/6/2004	---	TITAN CEMENT (CR)	14,68	-0,81	€ 14,80	26/8/2013	14,42	14,12	14,76	14,68	14,43	200@14,20	1000@14,69	---	2012	35.343	246	510.034,03	1.180.794,18	11,31	16,00	2353
7.568.960	4,00	0,1869	---	---	24/6/2011	25/6/2004	---	TITAN CEMENT CO. (PR)	6,54	-3,82	€ 6,80	26/8/2013	6,50	6,41	6,59	6,59	6,46	20@6,44	369@6,60	---	2012	260	5	1.680,50	1.180.794,18	5,75	7,27	2353

Number of Outstanding Securities	Nominal Value	Dividends [1]			Date of Last Coupon Dividend [2]		Coupon Right	Note	Shares	Closing price	% change	Previous closing price/date	Open price	Price min	Price max	Last price	Avg price	Last Bid [7]	Last Ask [7]	P/E after	Year	Volume	Trades	Transactions Value	Company Mkt Value (thou. €)	Year low	Year high	Sector[ 4]
10.080.000	3,00	0,21	0,4	1,5	17/7/2013	27/8/2001	---		TPA SA (CR)	23,70	-1,25	€ 24,00 26/8/2013	24,00	23,50	24,38	23,70	23,75	4208@23,70	495@24,38	12,95	2012	2.544	30	60.411,49	238.896,00	19,00	25,20	2777
54.888.240	1,13	0,1	0,1	0,1	25/4/2013	22/3/2006	---		TRASTOR REAL EST. INV. CO.(CR)	0,749	-3,85	€ 0,779 26/8/2013	0,740	0,725	0,750	0,750	0,739	100@0,741	100@0,747	---	2012	22.955	19	16.969,15	41.111,29	0,624	0,829	8671
14.627.315	0,300	---	---	---	16/11/1992	3/12/2012	---		UNIBIOS (CR)	0,249	-0,40	€ 0,250 26/8/2013	0,230	0,230	0,249	0,249	0,230	4700@0,230	5000@0,245	---	2012	1.010	2	232,49	3.642,20	0,151	0,414	2353
18.810.000	0,400	---	---	---	8/7/2010	14/11/2007	---		VARVERIS - MODA BAGNO SA (CR)	0,279	-1,41	€ 0,283 26/8/2013	0,255	0,255	0,282	0,279	0,257	70@0,256	98@0,279	---	2012	64	6	16,45	5.247,99	0,243	0,419	2353
199.474.091	0,300	---	---	---	3/7/2009	24/3/2000	---		VIOHALCO (CB)	4,13	-6,56	€ 4,42 26/8/2013	4,31	4,06	4,41	4,13	4,23	4278@4,10	778@4,12	---	2012	113.580	432	480.527,19	823.828,00	3,06	5,70	2727
4.968.600	2,88	---	---	---	1/7/1998	14/12/1998	---		VIS SA (CR)	0,825	---	↘ 0,825 5/8/2013	---	---	---	---	---	320@0,743	91@0,905	---	2012	---	---	---	4.099,10	0,490	1,01	2723
6.325.000	0,600	---	---	---	19/7/2010	25/7/2012	---		VOGIATZOGLOU SYSTEMS SA (CR)	0,999	---	↘ 0,999 22/8/2013	---	---	---	---	---	50@0,905	100@0,999	---	2012	---	---	---	6.318,68	0,812	1,21	2797

Exchange Traded Funds (ETFs)

5.848.618	---	---	---	---	24/1/2008	---			ALPHA ETF FTSE Athex Large Cap	3,01	-3,83	€ 3,13 26/8/2013	3,03	2,99	3,04	3,01	3,02	64@3,01	15000@3,05	---	---	55.457	8	167.366,51	-	2,49	3,99	11000
294.878	---	---	---	---	29/6/2009	---			NBGAM ETF	9,80	-4,11	€ 10,22 26/8/2013	9,80	9,80	9,80	9,80	9,80	---	---	---	---	2	1	19,60	-	8,23	11,75	11000
388.550	---	---	---	---	3/11/2010	---			NBGAM ETF GREECE & TURKEY 30	7,00	-4,11	€ 7,30 26/8/2013	7,00	7,00	7,00	7,00	7,00	---	---	---	---	2	1	14,00	-	7,00	10,11	11000

Low Dispersion

14.000.000	3,80	---	---	---	23/4/2010	29/6/1999	4815		ALPHA REAL ESTATE SA(CR)	6,99	6,72	# 6,55 26/8/2013	6,99	6,99	6,99	6,99	6,99	101@6,56	614@6,99	14,47	2012	1	1	6,99	97.860,00	6,00	7,00	8637
63.900.000	3,00	---	---	---	23/6/2003	4/11/2008	4816		ASTIR PALACE SA (CR)	3,42	-1,44	€ 3,47 26/8/2013	3,45	3,40	3,45	3,42	3,42	50@3,20	732@3,40	---	2012	2.010	23	6.873,00	218.538,00	3,40	4,95	5753
49.152.904	0,800	---	---	---	9/8/2004	8/3/2006	4814		ATHENA SA (CR)	0,330	20,00	# 0,275 12/8/2013	0,330	0,330	0,330	0,330	0,330	---	340@0,330	---	2012	250	3	82,50	16.220,46	0,094	0,340	2357
191.660.320	0,300	---	---	---	20/7/2009	29/12/2010	4817		ATTICA HOLDINGS (CR)	0,310	-3,43	€ 0,321 26/8/2013	0,310	0,310	0,310	0,310	0,310	1000@0,311	500@0,320	---	2012	1.140	1	353,40	59.414,70	0,241	0,588	5759
15.300.000	0,300	---	---	---	30/7/2009	13/12/1999	4893		ATTICA PUBLICATIONS SA (CR)	0,520	---	↘ 0,520 14/8/2013	---	---	---	---	---	---	2000@0,600	---	2012	---	---	---	7.956,00	0,520	1,45	5557
8.418.750	0,300	---	0,15	0,29	5/6/2013	27/6/2012	4828		GEKE SA (CB)	6,69	-0,15	€ 6,70 23/8/2013	6,70	6,68	6,70	6,68	6,69	100@6,67	90@6,68	21,01	2012	300	5	2.006,90	56.321,44	6,59	6,79	5753
68.322.221	1,00	---	---	---	8/3/2002	8/4/2013	4986		GENIKI BANK (CR)	1,51	---	↘ 1,51 23/8/2013	---	---	---	---	---	---	2@1,79	---	2012	---	---	---	103.166,55	1,51	8,85	8355
71.082.707	1,70	---	---	---	1/7/2010	21/11/2012	4820		HERACLES GEN.CEMENT CO. (CR)	1,39	-0,71	€ 1,40 26/8/2013	1,39	1,39	1,39	1,39	1,39	3594@1,39	500@1,43	---	2012	11.446	13	15.909,94	98.804,96	1,20	1,80	2353
13.404.440	8,63	---	---	---	2/4/2001	6/3/1992	4822		IONIAN HOTELS SA (CR)	8,95	---	↘ 8,95 26/8/2013	---	---	---	---	---	---	26@9,98	---	2012	---	---	---	119.969,74	8,40	13,00	5753
2.760.000	7,70	6,3291	7,6	8,52	26/6/2013	16/7/1990	4823		KARELIA TOBACCO CO. SA (CB)	200,00	-0,12	€ 200,25 26/8/2013	200,00	200,00	200,00	200,00	200,00	5@181,00	122@200,00	12,15	2012	111	6	22.200,00	552.000,00	110,00	205,00	3785
17.000.000	0,600	---	---	---	12/6/2008	7/3/2000	4941		KATHIMERINI SA (CR)	0,700	-4,24	€ 0,731 26/8/2013	0,700	0,700	0,700	0,700	0,700	---	308@0,700	---	2012	927	7	648,90	11.900,00	0,321	1,00	5557
21.364.000	1,12	---	---	---	5/7/2010	10/8/2005	4824		LAMPASA HOTEL SA (CR)	18,50	---	↘ 18,50 26/8/2013	18,50	18,50	18,50	18,50	18,50	200@15,50	500@19,00	---	2012	100	1	1.850,00	395.234,00	15,00	18,50	5753
6.700.000	0,800	---	---	---	19/7/2010	29/8/2012	4894		MILLS KEPENOS (CR)	0,890	-19,09	€ 1,10 21/8/2013	0,890	0,890	0,890	0,890	0,890	58@0,912	---	5,29	2012	100	2	89,00	5.963,00	0,777	1,69	3577
70.926.000	2,25	---	---	---	25/7/2008	21/6/2000	4825		MINOAN LINES SA (CR)	2,00	1,01	# 1,98 26/8/2013	2,00	2,00	2,00	2,00	2,00	262@2,00	5000@2,05	---	2012	438	3	876,00	141.852,00	1,70	2,10	5759
17.240.776	0,370	---	---	---	14/7/2005	30/9/2003	4827		PERSEUS SA (CR)	0,176	---	↘ 0,176 12/8/2013	---	---	---	---	---	---	1000@0,211	10,26	2012	---	---	---	3.034,38	0,033	0,325	3577

Surveillance

33.301.715	0,320	---	---	---	27/6/2003	8/7/2009	4978		AEGEK (CR)	0,101	-6,48	€ 0,108 26/8/2013	0,107	0,100	0,107	0,100	0,101	1310@0,096	3115@0,099	---	2012	925	4	93,38	3.363,47	0,089	0,184	2357
14.870.100	0,300	---	---	---	15/5/2008	26/9/2011	4844		ALPHA GRISSIN S.A. (CR)	0,225	---	↘ 0,225 9/8/2013	---	---	---	---	---	---	2500@0,230	---	2012	---	---	---	3.345,77	0,080	0,328	9533
215.246.452	0,300	---	---	---	25/6/2001	24/9/2001	4446		ALTEC SA (CR)	0,040	-4,76	€ 0,042 26/8/2013	0,038	0,038	0,041	0,041	0,040	1342@0,038	8599@0,041	---	2012	8.658	6	344,00	8.609,86	0,021	0,062	9533
2.969.713	0,300	---	---	---	2/7/2008	28/2/2011	4958		ANEK LINES SA (PR, Issue '96)	0,300	---	↘ 0,300 13/8/2013	---	---	---	---	---	---	---	---	2012	---	---	---	16.723,27	0,300	0,770	5759
312.163	0,300	---	---	---	2/7/2008	28/2/2011	4959		ANEK LINES SA (PR, Issue '90)	1,43	---	↘ 1,43 16/8/2013	---	---	---	---	---	---	---	---	2012	---	---	---	16.723,27	1,43	1,78	5759
185.373.016	0,300	---	---	---	2/7/2008	28/2/2011	4957		ANEK LINES SA (CR)	0,083	-6,74	€ 0,089 26/8/2013	0,088	0,082	0,088	0,082	0,083	4900@0,082	3000@0,088	---	2012	5.699	5	471,51	16.723,27	0,071	0,270	5759
81.644.555	0,300	---	---	---	1/7/2008	2/9/2002	4630		ATTI - KAT SA (CR)	0,040	---	↘ 0,040 26/8/2013	---	---	---	---	---	---	7500@0,032	---	2012	---	---	---	3.265,78	0,022	0,088	2357

Number of Outstanding Securities	Nominal Value	Dividends [1]			Date of Last Dividend [2]	Coupon Right	Note	Shares	Closing price	% change	Previous closing price/date	Open price	Price min	Price max	Last price	Avg price	Last Bid [7]	Last Ask [7]	P/E after	Year	Volume	Trades	Transactions Value	Company Mkt Value (thou. €)	Year low	Year high	Sector[4]
20.255.805	0,300	---	---	---	22/8/2006	2/8/2010	4881	AXON HOLDING SA (CR)	0,053	-17,19	€ 0,064	23/8/2013	0,053	0,053	0,053	0,053	119@0,055	1001@0,076	---	2012	1.000	2	53,00	1.073,56	0,053	0,192	4533
17.579.754	4,16	---	---	---	18/8/2006	2/8/2010	4885	BIOTER SA (CR)	0,170	---	↘ 0,170	23/8/2013	---	---	---	---	400@0,136	2900@0,170	---	2012	---	---	---	2.988,56	0,059	0,194	2357
12.431.980	0,720	---	---	---	20/6/2003	10/7/2003	4559	COMPUCON SA (CR)	0,090	---	↘ 0,090	1/8/2013	---	---	---	---	---	4916@0,085	---	2012	---	---	---	1.118,88	0,031	0,100	9537
30.159.583	0,470	---	---	---	26/6/2008	29/12/2010	4962	DIAS A/C (CR)	0,839	---	↘ 0,839	3/6/2013	---	---	---	---	---	1575@0,672	---	2012	---	---	---	25.303,89	0,420	0,845	3573
15.878.748	0,480	---	---	---	10/7/2006	22/3/2004	4960	DOMIKI KRITIS SA (CR)	0,538	---	↘ 0,538	26/8/2013	---	---	---	---	---	130@0,528	---	2012	---	---	---	8.542,77	0,310	0,800	2357
3.961.300	1,28	---	---	---	29/6/2004	3/8/2000	4808	DUROS SA (CR)	0,970	---	↘ 0,970	19/7/2013	---	---	---	---	---	10@0,800	---	2012	---	---	---	3.842,46	0,120	0,970	3763
7.085.888	1,59	---	---	---	2/7/1996	6/9/2010	4690	ELVIEMEK (CR)	3,00	---	↘ 3,00	5/2/2013	---	---	---	---	---	100@3,60	-(6)-	2012	---	---	---	21.257,66	3,00	3,58	8633
6.000.000	0,600	---	---	---	13/6/2008	8/4/2004	4886	EUROBROKERS S.A. (CR)	0,052	---	↘ 0,052	27/6/2013	---	---	---	---	3000@0,042	---	---	2012	---	---	---	312,00	0,052	0,333	8534
7.347.600	0,600	---	---	---	2/6/2010	25/2/2010	4889	EUROCONSULTANTS S.A. (CR)	2,60	---	↘ 2,60	14/8/2013	---	---	---	---	---	290@2,62	---	2012	---	---	---	19.103,76	2,12	2,64	2791
21.820.410	0,800	---	---	---	22/5/2008	2/8/2011	4882	EUROMEDICA SA (CR)	0,282	-6,00	€ 0,300	23/8/2013	0,270	0,270	0,330	0,282	290@0,240	1000@0,330	---	2012	2.500	3	705,00	6.153,36	0,270	0,613	4533
12.952.610	0,300	---	---	---	---	4/10/2012	4846	Forthnet (CR)	0,793	5,45	# 0,752	26/8/2013	0,752	0,752	0,850	0,793	4760@0,800	400@0,850	---	2011	7.342	19	5.822,00	10.271,42	0,350	1,43	9535
179.707.771	0,300	---	---	---	27/6/2002	1/11/2011	4847	HELLAS ONLINE SA (CR)	0,398	---	↘ 0,398	26/8/2013	---	---	---	---	500@0,331	1300@0,397	---	2012	---	---	---	71.523,69	0,271	0,709	9537
13.692.227	1,47	---	---	---	7/7/2006	8/10/1999	4845	HELLENIC FABRICS SA (CR)	0,273	19,74	# 0,228	23/8/2013	0,273	0,273	0,273	0,270	320@0,183	199@0,273	---	2012	1	1	0,27	3.737,98	0,180	0,354	3763
30.390.000	0,310	---	---	---	18/8/2008	29/12/2006	4447	HELLENIC FISHFARMING SA (CR)	0,125	---	↘ 0,125	26/8/2013	0,125	0,125	0,125	0,125	---	2249@0,125	29,30	2012	100	1	12,50	3.798,75	0,039	0,137	3573
1.540.000	0,600	---	---	---	8/8/1994	19/9/2000	4855	J.BOUTARIS & SON HOLD. (PB)	0,024	---	↘ 0,024	5/8/2013	---	---	---	---	1000@0,020	---	---	2012	---	---	---	1.270,76	0,024	0,201	3535
25.179.640	0,600	---	---	---	8/8/1994	19/9/2000	4854	J.BOUTARIS & SON HOLD. SA (CB)	0,049	---	↘ 0,049	26/8/2013	---	---	---	---	2340@0,042	1500@0,058	---	2012	---	---	---	1.270,76	0,040	0,132	3535
7.125.216	0,650	---	---	---	1/7/2005	14/12/1999	4955	KRE.KA SA (CR)	0,252	---	↘ 0,252	12/8/2013	---	---	---	---	---	1797@0,259	---	2012	---	---	---	1.795,55	0,144	0,580	3573
51.081.030	1,00	---	---	---	20/8/2007	3/9/2007	4912	LAVIPHARM SA (CR)	0,121	-1,63	€ 0,123	26/8/2013	0,121	0,121	0,121	0,121	3842@0,122	3226@0,139	---	2012	14.358	9	1.737,32	6.180,80	0,101	0,268	4577
322.925.288	0,300	---	---	---	23/5/2007	10/4/2000	4554	M.J. MAILLIS SA (CR)	0,070	---	↘ 0,070	26/8/2013	0,069	0,069	0,074	0,070	1724@0,070	997@0,074	---	2012	5.676	8	396,34	22.604,77	0,066	0,150	2723
9.567.289	0,300	---	---	---	1/7/2004	19/11/2007	4944	MARAC ELECTRONICS (CR)	0,136	---	↘ 0,136	26/8/2013	---	---	---	---	---	1@0,159	---	2012	---	---	---	1.301,15	0,068	0,409	9578
4.178.856	1,58	0,22	---	---	21/7/2011	28/7/2004	4983	MEDICON S.A (CR)	0,567	---	↘ 0,567	23/8/2013	---	---	---	---	10@0,458	3000@0,600	---	2012	---	---	---	2.369,41	0,446	1,18	4535
66.937.526	0,700	---	---	---	13/8/2010	21/5/2003	4995	MICHANIKI SA (CR)	0,102	---	↘ 0,102	26/8/2013	0,102	0,102	0,102	0,102	800@0,100	1900@0,101	---	2012	5.000	8	510,00	9.190,81	0,085	0,370	2357
25.968.987	0,700	---	---	---	13/8/2010	21/5/2003	4996	MICHANIKI SA (PR)	0,091	-9,00	€ 0,100	26/8/2013	0,100	0,082	0,100	0,090	1500@0,085	4988@0,090	---	2012	3.076	8	281,23	9.190,81	0,065	0,268	2357
255.459.600	0,300	---	---	---	26/6/2000	3/12/2010	4833	NEL SA (CR)	0,035	12,90	# 0,031	26/8/2013	0,035	0,035	0,035	0,035	7510@0,025	4401@0,035	---	2012	120	2	4,21	8.941,09	0,012	0,158	5759
20.231.328	0,600	---	---	---	15/7/2008	25/6/2004	4879	NIKAS SA (CR)	0,230	---	↘ 0,230	26/8/2013	---	---	---	---	500@0,231	300@0,259	---	2012	---	---	---	4.653,21	0,230	0,530	3577
14.967.940	0,500	---	---	---	21/5/2008	4/1/2008	4956	PASAL DEVELOPMENT S.A. (CR)	0,160	-10,62	€ 0,179	23/8/2013	0,160	0,160	0,160	0,160	853@0,160	2000@0,180	---	2012	1.377	4	220,32	2.394,87	0,120	0,414	8633
40.946.303	0,360	---	---	---	18/7/2005	27/11/2007	4856	PC SYSTEMS SA (CR)	0,097	---	↘ 0,097	16/8/2013	---	---	---	---	---	4049@0,078	---	2012	---	---	---	3.971,79	0,057	0,180	9533
18.750.000	0,300	---	---	---	2/7/2001	31/12/2012	4985	PEGASUS PUBLISHING S.A. (CR)	0,212	-20,00	€ 0,265	23/8/2013	0,212	0,212	0,212	0,212	---	11@0,212	---	2012	5	2	1,06	3.975,00	0,044	0,610	5557
28.056.518	0,530	---	---	---	4/7/2007	19/7/2006	4750	SATO SA (CR)	0,100	---	↘ 0,100	26/8/2013	---	---	---	---	---	2000@0,089	---	2012	---	---	---	2.805,65	0,025	0,115	3726
36.235.184	1,00	---	---	---	1/7/2008	30/7/2012	4961	SELONDA AQUACULTURE SA (CR)	0,192	---	↘ 0,192	26/8/2013	---	---	---	---	150@0,157	100@0,187	---	2012	---	---	---	6.957,16	0,119	0,600	3573
7.914.480	2,50	---	---	---	23/6/2008	29/6/2011	4888	SFAKIANAKIS SA (CR)	0,496	-20,00	€ 0,620	13/8/2013	0,496	0,496	0,496	0,496	7497@0,496	---	---	2012	60.000	4	29.759,99	3.925,58	0,364	0,763	5379
60.221.300	0,400	---	---	---	1/7/2002	1/11/2010	4880	SHELMAN SA (CR)	0,130	---	↘ 0,130	1/8/2013	---	---	---	---	---	6000@0,128	---	2011	---	---	---	7.828,77	0,098	0,280	2353
10.000.000	1,35	---	---	---	24/6/2008	10/5/2005	4887	SIDMA SA (CR)	0,640	---	↘ 0,640	26/8/2013	---	---	---	---	---	1000@0,512	---	2012	---	---	---	6.400,00	0,420	0,920	1757
29.060.950	0,340	---	---	---	20/8/2007	24/10/2001	4884	SPIDER METAL INDUSTRY SA (CR)	0,031	19,23	# 0,026	26/8/2013	0,031	0,031	0,031	0,030	4000@0,021	---	---	2012	1	1	0,03	900,89	0,022	0,097	2757
100.793.000	0,300	---	---	---	16/7/2009	5/8/2013	---	TELETIPOS SA (CR)	0,261	3,98	# 0,251	26/8/2013	0,260	0,260	0,269	0,260	308@0,260	436@0,263	---	2012	4.724	10	1.232,58	26.306,97	0,118	0,600	5553
3.229.566	0,320	---	---	---	22/6/2005	23/9/1999	4629	VARANGIS AVEPE S.A. (CR)	0,780	---	↘ 0,780	12/8/2013	---	---	---	---	---	7371@0,780	---	2012	---	---	---	2.519,06	0,206	0,840	3726
17.175.132	0,300	---	---	---	25/6/2002	21/6/2013	4997	VARVARESSOS SA (CB)	0,033	---	↘ 0,033	26/8/2013	---	---	---	---	500@0,035	---	---	2012	---	---	---	566,78	0,028	0,181	3763

Number of Outstanding Securities	Nominal Value	Dividends [1]			Date of Last Coupon		Note	Shares	Closing price	% change	Previous closing price/date	Open price	Price min	Price max	Last price	Avg price	Last Bid [7]	Last Ask [7]	P/E after	Year	Volume	Trades	Transactions Value	Company Mkt Value (thou. €)	Year low	Year high	Sector[ 4]
----------------------------------	---------------	---------------	--	--	---------------------	--	------	--------	---------------	----------	-----------------------------	------------	-----------	-----------	------------	-----------	--------------	--------------	-----------	------	--------	--------	--------------------	-----------------------------	----------	-----------	------------

Surveillance

13.191.620	0,620	---	---	---	4/8/2010	9/9/2002	4977	YALCO - CONSTANTINOU SA (CB)	0,128	---	↘ 0,128	20/8/2013	---	---	---	---	959@0,107	1500@0,152	---	2012	---	---	---	1.688,53	0,106	0,210	3722
------------	-------	-----	-----	-----	----------	----------	------	------------------------------	-------	-----	---------	-----------	-----	-----	-----	-----	-----------	------------	-----	------	-----	-----	-----	----------	-------	-------	------

Under Deletion

5.025.000	0,300	---	---	---	5/7/2005	14/3/2002	4963	ALSINCO S.A (CR)	0,014	---	↘ 0,014	18/7/2013	---	---	---	---	---	1@0,016	---	2012	---	---	---	70,35	0,006	0,185	3763
766.000	2,83	---	---	---	1/7/2004	11/12/2012	4937	TRIA ALFA SA (CR)	2,81	---	↘ 2,81	23/8/2013	---	---	---	---	1@2,25	180@3,37	---	2012	---	---	---	2.456,26	1,30	4,70	3763
245.000	2,83	---	---	---	19/7/2010	11/12/2012	4938	TRIA ALFA SA (PR)	1,24	-20,00	↘ 1,55	16/8/2013	1,24	1,24	1,24	1,24	---	49@1,24	---	2012	51	2	63,24	2.456,26	0,501	1,93	3763

Under Suspension

49.030.011	0,300	---	---	---	19/7/2010	12/5/2011	4875	ALAPIS (CR)	0,041	---	↘ 0,041	30/3/2012	---	---	---	---	---	---	---	---	---	---	---	2.010,23	0,041	0,041	4577
1.750.955.549	0,600	---	---	---	19/5/2008	8/12/2011	4911	ATE (CR)	0,155	---	↘ 0,155	30/7/2012	---	---	---	---	---	---	---	---	---	---	---	271.398,11	0,155	0,155	8355
21.382.067	0,300	---	---	---	2/10/2006	15/2/2006	4628	ATERMON (CR)	0,120	---	↘ 0,120	31/3/2010	---	---	---	---	---	---	---	---	---	---	---	2.565,85	0,120	0,120	5555
105.423.498	0,510	---	---	---	1/7/2004	28/12/2005	4920	AVENIR S.A. (CR)	0,046	---	↘ 0,046	30/8/2012	---	---	---	---	---	---	---	---	---	---	---	4.849,48	0,046	0,046	5752
33.930.000	0,300	---	---	---	3/7/2006	30/5/2001	4865	BABIS VOVOS SA (CR)	0,304	---	↘ 0,304	30/3/2012	---	---	---	---	---	---	---	---	---	---	---	10.314,72	0,304	0,304	8633
1.795.140.547	1,00	(0,0615)	---	---	31/5/2011	19/4/2012	4951	BANK OF CYPRUS (CR)	0,207	---	↘ 0,207	15/3/2013	---	---	---	---	5000@0,170	---	---	---	---	---	---	371.594,09	0,180	0,282	8355
21.920.570	0,300	---	---	---	3/7/2007	13/12/1999	4702	CARDASSILARIS SA (CR)	0,140	---	↘ 0,140	30/11/2010	---	---	---	---	---	---	---	---	---	---	---	3.068,88	0,140	0,140	3577
54.547.634	0,500	---	---	---	25/4/2005	21/1/2009	4860	CH.TEGOPOULOS PUBL. SA (CR)	0,038	---	↘ 0,038	23/3/2012	---	---	---	---	---	---	---	---	---	---	---	2.072,81	0,038	0,038	5557
33.718.750	0,300	---	---	---	28/5/2008	21/1/2013	4998	DOL SA (CR)	0,640	---	↘ 0,640	25/7/2013	---	---	---	---	---	3118@0,700	---	---	---	---	---	21.580,00	0,244	0,759	5557
7.847.611	1,20	---	---	---	1/8/2007	28/9/2011	4939	EDRASIS - C. PSALLIDAS SA (CR)	0,150	---	↘ 0,150	19/11/2012	---	---	---	---	---	---	---	---	---	---	---	1.177,14	0,150	0,150	2357
5.750.000	0,300	---	---	---	12/12/2008	12/12/2011	4929	ELECTRONIKI ATHINON SA (CR)	0,480	---	↘ 0,480	7/9/2012	---	---	---	---	---	---	---	---	---	---	---	2.760,00	0,480	0,480	5375
24.605.397	0,400	---	---	---	29/6/1995	27/5/2002	4651	EMPORIKOS DESMOS SA (CR)	0,080	---	↘ 0,080	28/5/2010	---	---	---	---	---	---	---	---	---	---	---	2.134,04	0,080	0,080	3722
1.182.903	0,400	---	---	---	1/7/1996	27/5/2002	4652	EMPORIKOS DESMOS SA (PR)	0,140	---	↘ 0,140	28/9/2009	---	---	---	---	---	---	---	---	---	---	---	2.134,04	0,140	0,140	3722
8.593.750	0,300	---	---	---	1/6/2009	20/6/2007	4876	FASHION BOX (CR)	1,30	---	↘ 1,30	23/2/2012	---	---	---	---	---	---	---	---	---	---	---	11.171,88	1,30	1,30	3763
7.326.648	1,00	---	---	---	26/7/2006	24/7/2001	4921	FINTEXPOT SA (CR)	0,328	---	↘ 0,328	29/6/2012	---	---	---	---	---	---	---	---	---	---	---	2.403,14	0,328	0,328	3763
20.860.000	0,300	---	---	---	3/7/2000	13/11/2007	4848	IKONA - IHOS SA (CR)	0,072	---	↘ 0,072	2/12/2011	---	---	---	---	---	---	---	---	---	---	---	1.501,92	0,072	0,072	5379
36.765.744	0,350	---	---	---	16/8/2006	6/6/2011	4869	IMPERIO SA (CR)	0,026	---	↘ 0,026	30/3/2012	---	---	---	---	---	---	---	---	---	---	---	955,91	0,026	0,026	2777
24.619.524	0,500	---	---	---	10/10/1986	30/12/2002	4914	KERAMIA-ALLATINI (CR)	0,088	---	↘ 0,088	27/8/2012	---	---	---	---	---	---	---	---	---	---	---	2.166,52	0,088	0,088	8633
7.840.373	1,20	---	---	---	18/7/2002	5/3/2003	4765	KLONATEX SA (PR)	0,080	---	↘ 0,080	9/5/2011	---	---	---	---	---	---	---	---	---	---	---	1.453,75	0,080	0,080	3763
20.663.047	1,20	---	---	---	21/8/2000	5/3/2003	4764	KLONATEX SA (CR)	0,040	---	↘ 0,040	9/5/2011	---	---	---	---	---	---	---	---	---	---	---	1.453,75	0,040	0,040	3763
17.544.600	0,600	---	---	---	3/7/2000	1/8/2000	4868	KOYMBAS SYNERGY GROUP (CR)	0,132	---	↘ 0,132	29/3/2012	---	---	---	---	---	---	---	---	---	---	---	2.315,89	0,132	0,132	8775
15.015.000	1,60	---	---	---	1/7/2002	2/2/2000	4603	MAXIM C.M. PERTSINIDIS SA (CB)	0,100	---	↘ 0,100	30/11/2009	---	---	---	---	---	---	---	---	---	---	---	1.501,50	0,100	0,100	3763
13.555.100	1,00	---	---	---	8/7/2005		4576	MICROLAND COMPUTERS SA (CR)	0,640	---	↘ 0,640	14/7/2009	---	---	---	---	---	---	---	---	---	---	---	8.675,26	0,640	0,640	5379
23.463.874	0,800	---	---	---	23/5/2003	21/12/1999	4918	NEORION SA (CR)	0,125	---	↘ 0,125	28/8/2012	---	---	---	---	---	---	---	---	---	---	---	2.932,98	0,125	0,125	2753
42.501.273	0,300	---	---	---	26/6/2007	10/8/2009	4993	NUTRIART (CR)	0,049	---	↘ 0,049	21/6/2013	---	---	---	---	---	---	---	---	---	---	---	2.082,56	0,038	0,114	3577
25.583.146	0,300	---	---	---	25/6/2001	3/12/2008	4723	PETZETAKIS SA (CR)	0,260	---	↘ 0,260	28/1/2011	---	---	---	---	---	---	---	---	---	---	---	6.651,62	0,260	0,260	1357
9.550.386	0,500	---	---	---	1/7/1997	12/6/2008	4626	PRAXITELIO SA (CR)	0,390	---	↘ 0,390	11/3/2010	---	---	---	---	---	---	---	---	---	---	---	4.430,09	0,390	0,390	4533
1.306.368	0,500	---	---	---	1/7/1997	12/6/2008	4627	PRAXITELIO SA (PR)	0,540	---	↘ 0,540	15/12/2009	---	---	---	---	---	---	---	---	---	---	---	4.430,09	0,540	0,540	4533
62.683.822	0,300	---	---	---	27/5/2008	9/1/2006	4830	PROTON BANK S.A. (CR)	0,180	---	↘ 0,180	7/10/2011	---	---	---	---	---	---	---	---	---	---	---	11.283,09	0,180	0,180	8355
23.059.688	0,660	---	---	---	3/7/2008	6/8/2004	4864	RIDENCO SA (CR)	0,032	---	↘ 0,032	30/3/2012	---	---	---	---	---	---	---	---	---	---	---	737,91	0,032	0,032	3765



Number of Outstanding Securities	Nominal Value	Dividends [1]			Date of Last Coupon		Note	Shares	Closing price	% change	Previous closing price/date	Open price	Price min	Price max	Last price	Avg price	Last Bid [7]	Last Ask [7]	P/E after	Year	Volume	Trades	Transactions Value	Company Mkt Value (thou. €)	Year low	Year high	Sector[ 4]	
		2010	2011	2012	Dividend [2]	Coupon Right																						
Under Suspension																												
51.083.993	1,00	---	---	---	15/7/2008	6/8/2003	4867	SANYO HELLAS HOLD. (CR)	0,020	---	↘	0,020	30/3/2012	---	---	---	---	---	---	---	---	---	---	---	1.021,68	0,020	0,020	3722
51.334.286	0,320	---	---	---	3/7/2000	18/12/2007	4548	SAOS (CR)	0,780	---	↘	0,780	27/3/2009	---	---	---	---	---	---	---	---	---	---	---	40.040,74	0,780	0,780	2773
26.408.040	0,300	---	---	---	1/7/1997	26/5/1999	4464	SHEET STEEL SA (CR)	0,120	---	↘	0,120	28/11/2008	---	---	---	---	---	---	---	---	---	---	---	3.168,96	0,120	0,120	1757
26.262.660	0,900	---	---	---	1/7/2008	24/2/2011	4954	SPRIDER STORES (CR)	0,031	---	↘	0,031	28/3/2013	---	---	---	---	---	---	---	---	---	---	---	814,14	0,025	0,055	5371
144.688.060	0,600	---	---	---	21/4/2008	10/3/2010	4982	T BANK (CR)	0,048	---	↘	0,048	30/11/2011	---	---	---	---	---	---	---	---	---	---	---	6.945,03	0,048	0,048	8355
6.523.780	0,530	---	---	---	1/7/2002	6/3/2001	4971	TECHNICAL PUBLICATIONS SA (CR)	0,006	---	↘	0,006	29/5/2013	---	---	---	---	---	---	---	---	---	---	---	39,14	0,006	0,347	5557
13.920.000	0,320	---	---	---	19/11/2001	1/8/2000	4726	TEXAPRET SA (CR)	0,080	---	↘	0,080	23/2/2011	---	---	---	---	---	---	---	---	---	---	---	1.113,60	0,080	0,080	3763
284.465.964	3,70	---	---	---	20/6/2008	15/6/2009	4913	TT HELLENIC POSTBANK (CR)	0,168	---	↘	0,168	30/8/2012	---	---	---	---	---	---	---	---	---	---	---	47.790,28	0,168	0,168	8355
89.616.200	0,300	---	---	---	21/8/2000	28/6/2007	4616	UNITED TEXTILES (CR)	0,050	---	↘	0,050	25/2/2010	---	---	---	---	---	---	---	---	---	---	---	4.480,81	0,050	0,050	3763
71.683.906	0,400	---	---	---	15/6/2005	5/2/2008	4953	XATZIOANNOU (CR)	0,026	---	↘	0,026	28/3/2013	---	---	---	---	---	---	---	---	---	---	---	1.863,78	0,020	0,085	3763

## Shares' Notes

Code	Note text
( )	- Adjusted dividends.
*	- Last adjusted closing price.
[1]	- Net dividends.
[2]	- The "Date of Last Coupon" for New listings refers to the date company's stocks started to trade in Athex
[3]	- The Company Market Value is referred to the number of outstanding shares
[4]	- Sectors codification can be found in Appendix A
[5]	- The Market Value refers to the total number of shares listed (including their several classes) in the exchange by the company.
[6]	- P/E greater than 100
[7]	- Last view of the Order Book before the end of the trading session
4446	- Transfer to the "Under Supervision" Category as of 20/10/2008.
4447	- Transfer to the "Under Supervision" Category as of 21/10/2008.
4464	- Suspension of trading as of 1/12/2008.
4548	- Suspension of trading as of 1/4/2009.
4554	- Transfer to the "Under Supervision" Category as of 6/4/2009.
4559	- Transfer to the "Under Supervision" Category as of 21/4/2009.
4576	- Suspension of trading as of 14/7/2009.
4603	- Suspension of trading as of 1/12/2009.
4616	- Suspension of trading as of 25/2/2010.
4626	- Suspension of trading as of 1/4/2010.
4627	- Suspension of trading as of 1/4/2010.
4628	- Suspension of trading as of 1/4/2010.
4629	- Transfer to the Under Supervision Category as of 12/4/2010.
4630	- Transfer to the Under Supervision Category as of 12/4/2010.
4651	- Suspension of trading as of 1/6/2010.
4652	- Suspension of trading as of 1/6/2010.
4690	- Transfer to Surveillance category as of 4/4/2006.
4702	- Suspension of trading as of 1/12/2010.
4723	- Suspension of trading as of 31/1/2011.
4726	- Suspension of trading as of 1/3/2011.
4750	- Transfer to the "Under Surveillance Category" from 8/4/2011.
4764	- Suspension of trading as of 20/5/2011.
4765	- Suspension of trading as of 20/5/2011.
4795	- The final gross (pre-tax) dividend is € 0.30 per share and subject to withholding tax on the full dividend amount, i.e. 0,45 per share, for those shareholders liable to withholding tax, in accordance with the applicable tax law provisions.
4808	- Suspension of trading as of 6/9/2011.
4814	- Transfer to the Low Dispersion Category as of 30/5/2011.
4815	- Transfer to the Low Dispersion Category as of 30/5/2011.
4816	- Transfer to the Low Dispersion Category as of 30/5/2011.
4817	- Transfer to the Low Dispersion Category as of 30/5/2011.
4820	- Transfer to the Low Dispersion category as of 18/4/2008.
4822	- Transfer to the Low Dispersion category as of 30/5/2011.
4823	- Transfer to the Low Dispersion category as of 4/4/2006.
4824	- Transfer to the Low Dispersion category as of 18/4/2008.
4825	- Transfer to the Low Dispersion category as of 8/4/2011.
4827	- Transfer to the Low Dispersion category as of 5/5/2010.
4828	- Transfer to the Low Dispersion category as of 4/4/2006.
4830	- Suspension of trading as of 10/10/2011.
4833	- Transfer to Surveillance category from 6/5/2010.
4844	- Transfer to the Surveillance category from 8/4/2011.
4845	- Transfer to the Surveillance Category as of 25/11/2011.
4846	- Transfer to the Surveillance Category as of 25/11/2011.
4847	- Transfer to the Surveillance Category as of 3/7/2009.

## Shares' Notes

Code	Note text
4848	- Suspension of trading as of 6/12/2011.
4854	- Transfer to the Surveillance Category as of 29/12/2011.
4855	- Transfer to the Surveillance Category as of 29/12/2011.
4856	- Transfer to the Surveillance Category as of 29/12/2011.
4860	- Suspension of trading as of 30/3/2012.
4864	- Suspension of trading as of 30/3/2012.
4865	- Suspension of trading as of 2/4/2012.
4867	- Suspension of trading as of 2/4/2012.
4868	- Suspension of trading as of 2/4/2012.
4869	- Suspension of trading as of 2/4/2012.
4875	- Suspension of trading as of 2/4/2012.
4876	- Suspension of trading as of 3/4/2012.
4879	- Transfer to the Surveillance Category as of 10/4/2012.
4880	- Transfer to the Surveillance Category as of 10/4/2012.
4881	- Transfer to the Surveillance Category as of 10/4/2012.
4882	- Transfer to the Surveillance Category as of 10/4/2012.
4884	- Transfer to the Surveillance Category as of 10/4/2012.
4885	- Transfer to the Surveillance Category as of 10/4/2012.
4886	- Transfer to the Surveillance Category as of 10/4/2012.
4887	- Transfer to the Surveillance Category as of 10/4/2012.
4888	- Transfer to the Surveillance Category as of 10/4/2012.
4889	- Transfer to the Surveillance Category as of 10/4/2012.
4893	- Transfer to the Low Dispersion category as of 28/5/2012.
4894	- Transfer to the Low Dispersion category as of 28/5/2012.
4911	- Lift of suspension from 30/7/2012.
4912	- Transfer to the Surveillance Category as of 31/7/2012.
4913	- Suspension of trading as of 30/8/2012.
4914	- Suspension of trading as of 31/8/2012.
4918	- Suspension of trading as of 31/8/2012.
4920	- Suspension of trading as of 31/8/2012.
4921	- Suspension of trading as of 31/8/2012.
4929	- Suspension of trading as of 1/10/2012.
4937	- Transfer to the UNDER DELETION category as of 30/11/2012.
4938	- Transfer to the UNDER DELETION category as of 30/11/2012.
4939	- Suspension of trading as of 30/11/2012.
4941	- Transfer to the Low Dispersion category as of 3/12/2012.
4944	- Transfer to the Surveillance Category as of 7/12/2012.
4951	- Suspension of trading as of 19/3/2013.
4953	- Suspension of trading as of 2/4/2013.
4954	- Suspension of trading as of 2/4/2013.
4955	- Transfer to the Surveillance Category as from 5/4/2013.
4956	- Transfer to the Surveillance Category as from 5/4/2013.
4957	- Transfer to the Surveillance Category as from 5/4/2013.
4958	- Transfer to the Surveillance Category as from 5/4/2013.
4959	- Transfer to the Surveillance Category as from 5/4/2013.
4960	- Transfer to the Surveillance Category as from 5/4/2013.
4961	- Transfer to the Surveillance Category as from 5/4/2013.
4962	- Transfer to the Surveillance Category as from 5/4/2013.
4963	- Transfer to the Under Deletion Category as from 5/4/2013.
4970	- Suspension of trading as of 3/6/2013.
4971	- Suspension of trading as of 3/6/2013.
4977	- Transfer to the "Under Surveillance Category" from 11/6/2013.
4978	- Transfer to the Under Supervision Category as of 11/6/2013.

## Shares' Notes

Code	Note text
4982	- Suspension of trading as of 1/12/2011.
4983	- Transfer to the Surveillance Category as of 5/4/2013.
4985	- Transfer to the "Under Surveillance Category" from 8/4/2011.
4986	- Transfer to the Low Dispersion category as of 30/5/2011.
4988	- As of June 7, 2013, the name of the company "DUTY FREE SHOPS A CORPORATION OPERATING DFS AND LARGE AND SMALL SCALE INDUSTRIAL OPERATIONS, TECHNIC" on ATHEX changes to "FOLLI FOLLIE S.A.".
4993	- Suspension of trading as of 21/6/2013 (15:18).
4995	- Transfer to the "Under Surveillance Category" from 8/4/2011.
4996	- Transfer to the "Under Surveillance Category" from 8/4/2011.
4997	- Transfer to the Under Supervision Category as of 21/12/2009. - The 6,870,053 new (CB) shares, resulting from the recent share capital increase through a rights issue, are not yet admitted to trading on the ATHEX.
4998	- Suspension of trading as of 26/7/2013.
5001	- Shares' reverse split in progress. Temporary suspension of trading: 27/08/2013. Start date of trading of the 3,110,000 (CR) shares, with adjusted opening share price of 7.32 is set at 02/09/2013.

## Securities Blocks Details

Securities	Block Volume	Price	Block Trade Value	Time of approval	Note
OPAP (CR)	50.000	7,35	367.500,00	11:04:37	20
PIRAEUS BANK (W)	1.000.000	0,700	700.000,00	11:12:43	20
HELLENIC EXCHANGES (CR)	84	6,05	508,20	11:38:53	18
PPC (CR)	40.000	7,42	296.800,00	16:54:38	20

## Blocks Notes

2 - SPOT 1 or SPOT 2 Packet	11 - Total Assets > 500 bil
3 - Block with Short Selling	12 - Sell Offer through Athex
4 - Buy to Close Block	13 - Forced Sale of NMOE
6 - Simultaneous Constitution	14 - Restoration Packet
7 - Repurchase Agreement	15 - Market Maker Packet
8 - Dispersion's Achievement (Not Listed)	16 - Short Selling
9 - Dispersion's Achievement (Listed)	18 - SPOT 1 Packet
10 - Share Capital Majority of Greek State (> 50 bil)	20 - Method 6-1 Packet

Shares Rights Details

Occured date	Exercise from	Exercise until	Trading until	Rights	Price min	Price max	Closing price	Last Bid	Last Ask	Volume	Trades	Transactions Value
5/8/2013	16/8/2013	30/8/2013	26/8/2013	TELETIPOS S.A. (CR)	---	---	---	---	---	---	---	---

## Stock Borrowing

Securities	Stock Borrowing through Helex (volume)	Stock Borrowing through OTC (volume) [1]	Totals [2]
ALAPIS (CR)	---	6.250	6.250
ALPHA BANK (CR)	161.200	4.562.274	4.723.474
ATE (CR)	---	69.000	69.000
BANK OF CYPRUS (CR)	---	102.899	102.899
CC HBC AG (CR)	25.400	73.941	99.341
ELLAKTOR (CR)	1.000	---	1.000
EUROBANK ERGASIAS (CR)	21.120	68.433	89.553
EUROBANK PROPERTIES REIC (CR)	11.500	31.215	42.715
EYDAP S.A. (CR)	2.900	---	2.900
FLEXOPACK SA (CR)	---	41.927	41.927
FOLLI FOLLIE (CR)	3.000	15.508	18.508
FRIGOGLASS SA (CR)	1.500	---	1.500
GEK TERNA (CR)	500	---	500
HELLENIC EXCHANGES (CR)	33.000	---	33.000
HELLENIC PETROLEUM (CR)	22.400	269	22.669
INTERTECH SA (CR)	---	483.000	483.000
INTRALOT (CR)	30.000	---	30.000
JUMBO SA (CR)	10.900	3.525	14.425
LAMDA DEVELOPMENT SA (CR)	---	10.377	10.377
MARFIN INVESTMENT GROUP (CR)	---	733.474	733.474
METKA (CR)	5.400	---	5.400
MOTOR OIL (CR)	12.700	---	12.700
MYTILINEOS HOLDINGS (CR)	2.000	---	2.000
NATIONAL BANK (CR)	85.600	1.396.830	1.482.430
NBGAM ETF	10.000	---	10.000
NBGAM ETF GREECE & TURKEY 30	3.500	---	3.500
OPAP (CR)	47.700	43.264	90.964
OTE (CR)	87.300	109.116	196.416
PIRAEUS BANK (CR)	5.200	239.460	244.660
PPC (CR)	50.300	44.800	95.100
TERNA ENERGY (CR)	5.400	---	5.400
TITAN CEMENT (CR)	7.200	55.390	62.590
VIOHALCO (CB)	5.200	---	5.200

## Stock Borrowing Notes

[1] - The information concerning OTC Stock Borrowing Transactions is based on the statements of the Dematerialised Securities System (DSS) operators involved and refers to volumes that have been cleared and registered up until the previous working day.

Shares Forced Sales

Securities	Transaction s Volume	Number of Trades	Transactions Value	Note
No Forced Transactions.				

Forced Sales Notes

- 1 - Normal Forced Sale.
- 2 - Forced Sales of Fixed Registered Shares.
- 3 - Forced Sales of Remaining Stock Fractions.



**Forced Sales Registered Shares**

Securities	Start Date	End Date	Initial Volume	Remaining Volume	Date	Avg price (day)	Avg price (period)	Number of Trades	Transactions Volume	Transactions Value
------------	------------	----------	-------------------	---------------------	------	--------------------	-----------------------	---------------------	------------------------	-----------------------

No Fixed Registered Shares Forced Sales.

**Forced Sales Notes**

According to Decision 1/380/04.05.2008 of the Hellenic Republic Capital Market Commission, the certificated registered shares that have not been deposited to the issuer for dematerialisation, will be auctioned in the Athens Exchange by the supervising issuer. Forced sales procedure is held according to Article 99A of the Athens Exchange Rulebook. The average price of the period is calculated by dividing the Total transactions value by the Total volume and includes all the transactions made until the current date.

## Exchange Traded Funds (ETFs) Characteristics

	Transactions Date (T)	Creation / Redemption	Units (T-1)	New Units (T-1)	Redemptio n Units (T-	Units (T) [1]	Fund Assets [2]	Net Unit Price	Dividen d per	Dividend Date
NBGAM ETF ΓΔ Χ.Α.	27/8/2013	25.000	294.878	---	---	294.878	3.013.438,00	10,2193	---	27/10/2011
ALPHA ETF FTSE Athex Large Cap	27/8/2013	50.000	5.848.618	---	---	5.848.618	18.314.360,00	3,1314	0,05	1/7/2013
NBGAM ETF GREECE & TURKEY 30	27/8/2013	25.000	388.550	---	---	388.550	2.850.165,00	7,3354	---	27/10/2011

## ETFs Notes

[1] - Units (T) = Units (T-1) + New Units (T-1) - Redemption Units (T-1)

[2] - The Creation / Redemption Units of T-1 are included.

Corporate Bonds

Num Listed Bonds	Nominal price	Issue price	Today's Rate	Exp. Date	Duration (years)	Note	Coupon attached		Trading	Corporate Bonds	Price min	Price max	Closing price	Previous closing price/date	Volume	Transactions Value	Last order		Date	ear min	Year max
							Common	Preferred									Price	Buy / Sell			
39.711.653	1,00	1,00	6,00	30/6/2016	5	4786	5	---	1	BANK OF CYPRUS PUBLIC CO. LTD (Convert. to CR sh.)	---	---	---	---	---	---	10,0000	B	13/3/2013	100,0000	100,0000
428.521.983	1,00	1,00	6,50	30/6/2016	5	4785	5	---	1	BANK OF CYPRUS PUBLIC CO. LTD (Convert. to CR sh.)	---	---	---	20,5000	14/3/2013	---	21,0000	B	15/3/2013	19,5000	30,0000
4.150.176	4,77	4,77	5,00	19/3/2015	5	---	14	---	1	MARFIN INVESTMENT GROUP S.A. (Conver to CR shar)	---	---	---	25,4000	12/8/2013	---	17,8000	B	27/8/2013	0,5000	70,0000
73.088.145	1,00	1,00	5,50	30/6/2014	5	4574	9	---	1	BANK OF CYPRUS PUBLIC CO. LTD (Convert. to CR sh.)	---	---	---	20,0000	8/3/2013	---	21,5000	B	15/3/2013	20,0000	26,0000
1.794.284	12,49	9,77	5,33	12/7/2015	8	---	13	---	1	NIREUS S.A. (Convertible to CR shares)	---	---	---	12,0000	26/7/2013	---	15,0000	B	27/8/2013	11,0000	15,0000
27.283.632	1,00	1,00	1,32	30/6/2018	10	---	11	---	1	BANK OF CYPRUS PUBLIC CO. LTD (Convert. to CR sh.)	---	---	---	33,0000	13/12/2012	---	35,0000	B	15/3/2013	33,0000	33,0000
212.849.265	1,00	1,00	6,30	29/7/2020	7	---	1	---	1	MARFIN INVESTMENT GROUP S.A. SERIES B (BOND)	---	---	---	0,8500	23/8/2013	---	1,0000	B	27/8/2013	0,8500	0,8500
2.156.827	1,00	1,00	7,00	29/7/2019	6	---	1	---	1	MARFIN INVESTMENT GROUP S.A. SERIES A (BOND)	---	---	---	1,0000	23/8/2013	---	1,0000	B	27/8/2013	1,0000	1,0000

4574 - The bonds are of indefinite duration.

4785 - The bonds are of indefinite duration.

4786 - The bonds are of indefinite duration. The Bond's par value, issue price and trading prices are expressed in USA Dollars, whereas its Transactions Value is expressed in Euros.

Corporate Bonds Notes

Transactions Volume = (Pieces) \* (Nominal Price). Transactions Value = (Pieces) \* (Nominal Price) \* (price %) + (Accrued interest).

The price of a Bond is stated as a percentage (%) of Bond's Nominal Price.

Nominal Price in Euros (€), except if it is noted differently.

Government Bonds

Number Listed Bonds	Nominal price	Today's Rate	Accrued Interest Calc	Exp. Date [1]	Duration (years)	Note	Coupons Date	Curr. coupon value	Trading Unit	Government Bonds	Price min	Price max	Closing price	Previous closing price/date	Volume	Transactions Value	Price	Last order Buy / Sell	Date
2.658.781.973	1,00	2,00	Actual/Actual	24/2/2023	11	---	24/02	2,00	1	GGB-FXD-240223-11Y-2.000-1.00	---	---	---	---	---	---	---	---	---
2.658.781.973	1,00	2,00	Actual/Actual	24/2/2024	12	---	24/02	2,00	1	GGB-FXD-240224-12Y-2.000-1.00	---	---	---	---	---	---	---	---	---
2.658.781.973	1,00	2,00	Actual/Actual	24/2/2025	13	---	24/02	2,00	1	GGB-FXD-240225-13Y-2.000-1.00	---	---	---	---	---	---	---	---	---
2.658.781.973	1,00	2,00	Actual/Actual	24/2/2026	14	---	24/02	2,00	1	GGB-FXD-240226-14Y-2.000-1.00	---	---	---	---	---	---	---	---	---
2.658.781.973	1,00	2,00	Actual/Actual	24/2/2027	15	---	24/02	2,00	1	GGB-FXD-240227-15Y-2.000-1.00	---	---	---	---	---	---	---	---	---
2.836.034.104	1,00	2,00	Actual/Actual	24/2/2028	16	---	24/02	2,00	1	GGB-FXD-240228-16Y-2.000-1.00	---	---	---	---	---	---	---	---	---
2.836.034.104	1,00	2,00	Actual/Actual	24/2/2029	17	---	24/02	2,00	1	GGB-FXD-240229-17Y-2.000-1.00	---	---	---	---	---	---	---	---	---
2.836.034.104	1,00	2,00	Actual/Actual	24/2/2030	18	---	24/02	2,00	1	GGB-FXD-240230-18Y-2.000-1.00	---	---	---	---	---	---	---	---	---
2.836.034.104	1,00	2,00	Actual/Actual	24/2/2031	19	---	24/02	2,00	1	GGB-FXD-240231-19Y-2.000-1.00	---	---	---	---	---	---	---	---	---
2.836.034.104	1,00	2,00	Actual/Actual	24/2/2032	20	---	24/02	2,00	1	GGB-FXD-240232-20Y-2.000-1.00	---	---	---	---	---	---	---	---	---
2.836.034.104	1,00	2,00	Actual/Actual	24/2/2033	21	---	24/02	2,00	1	GGB-FXD-240233-21Y-2.000-1.00	---	---	---	---	---	---	---	---	---
2.836.034.104	1,00	2,00	Actual/Actual	24/2/2034	22	---	24/02	2,00	1	GGB-FXD-240234-22Y-2.000-1.00	---	---	---	---	---	---	---	---	---
2.836.034.104	1,00	2,00	Actual/Actual	24/2/2035	23	---	24/02	2,00	1	GGB-FXD-240235-23Y-2.000-1.00	---	---	---	---	---	---	---	---	---
2.836.034.104	1,00	2,00	Actual/Actual	24/2/2036	24	---	24/02	2,00	1	GGB-FXD-240236-24Y-2.000-1.00	---	---	---	---	---	---	---	---	---
2.836.034.104	1,00	2,00	Actual/Actual	24/2/2037	25	---	24/02	2,00	1	GGB-FXD-240237-25Y-2.000-1.00	---	---	---	---	---	---	---	---	---
2.836.034.104	1,00	2,00	Actual/Actual	24/2/2038	26	---	24/02	2,00	1	GGB-FXD-240238-26Y-2.000-1.00	---	---	---	---	---	---	---	---	---
2.836.034.104	1,00	2,00	Actual/Actual	24/2/2039	27	---	24/02	2,00	1	GGB-FXD-240239-27Y-2.000-1.00	---	---	---	---	---	---	---	---	---
2.836.034.104	1,00	2,00	Actual/Actual	24/2/2040	28	---	24/02	2,00	1	GGB-FXD-240240-28Y-2.000-1.00	---	---	---	---	---	---	---	---	---
2.836.034.104	1,00	2,00	Actual/Actual	24/2/2041	29	---	24/02	2,00	1	GGB-FXD-240241-29Y-2.000-1.00	---	---	---	---	---	---	---	---	---
2.836.034.104	1,00	2,00	Actual/Actual	24/2/2042	30	---	24/02	2,00	1	GGB-FXD-240242-30Y-2.000-1.00	---	---	---	---	---	---	---	---	---
1.500.000	1.000,00	0,97	FLR Actual/360	10/8/2014	5	---	10/02 - 10/08	---	1	GGB-FRN-100814-05Y-1.762-1000.00	---	---	---	---	---	---	---	---	---
5.187.186	1.000,00	1,60	FLR Actual/360	21/5/2014	5	---	21/11 - 21/05	---	1	GGB-FRN-210514-05Y-2.734-1000.00	---	---	---	---	---	---	---	---	---
78.300	1.000,00	1,16	FLR Actual/360	23/7/2014	5	---	23/01 - 23/07	---	1	GGB-FRN-230714-05Y-2.018-1000.00	---	---	---	---	---	---	---	---	---

Government Bonds Notes

Transactions Volume = (Pieces) \* (Nominal Price). Transactions Value = (Pieces) \* (Nominal Price) \* (price %) + (Accrued interest).

The Value of current coupon for the issues with NV 0.01 euro refers to NV 100 euros

FLR: Floating Interest Rate.

[1] - The Expiration Date of the interest bearing period and the Date for coupon payment.

Bonds in Circulation	Currency / Min nominal traded Value	Coupons Payment Date	Current Coupon Value	Note	Coupon Attached	Trading Unit	Issue Date	Duration (years)	Today's Interest	A.I.C in days	Bonds	Last price of previous days		Last Outcry in Cash (euro) Price	Buy / Sell	Date	Trades in Pieces	Life min	Life Max
Bonds of International Organizations																			
1.000.000	EUR / 1000	21/07	---	---	8	1	21/7/2006	10	5,0 FLR	360	EUROPEAN INVESTMENT BANK BOND	97,50	16/4/2007	---	---	---	---	---	---
Corporate Bonds in Foreign Currency and Euro																			
103.746	GBP / 10	01/12	0,25	---	54	1	1/12/1930	98	2,5	360	National Mortgage Bank	2,27	5/2/1996	2,27	S	5/2/1996	---	2,27	2,27
0	GBP / 10	01/12	0,25	---	56	1	1/12/1928	100	2,5	360	National Mortgage Bank	---	---	---	---	---	---	---	---

Government Bonds Notes

A.I.C: Accrued Interest Calculation base.  
FLR: Floating Interest Rate.  
The minimum tradeable Nominal Value for all Demeterialised Government Titles is 100 Euros.

State Banks Bonds (one year maturity)

Number Listed Bonds	Nominal value	Initial Rate	Current Rate	Annual Interest	Issue Date	Note	State Banks Bonds	Trading Unit	Yearly Renewals	Last Outcry in Cash (euro) Price	Buy / Sell	Volume
342.560	130,41	2,35	3,92	0,00	31/1/2005	---	H.I.D.B.	1	9	100,00	B	---
16.015	1.211,71	3,65	2,47	0,00	30/11/2006	---	H.I.D.B.	1	7	---	---	---
2.446	1.154,00	4,90	2,47	28,96	31/5/2008	---	H.I.D.B.	1	6	---	---	---
171.117	1.163,28	5,50	2,47	29,19	31/5/2008	---	H.I.D.B.	1	6	---	---	---
63.787	1.101,48	5,45	2,47	30,88	31/8/2008	---	H.I.D.B.	1	5	---	---	---
54.559	1.129,20	5,45	2,47	28,34	31/8/2008	---	H.I.D.B.	1	5	---	---	---
77.348	1.130,82	5,60	2,47	28,38	31/8/2008	---	H.I.D.B.	1	5	---	---	---
165.926	1.130,82	5,60	2,47	28,38	31/8/2008	---	H.I.D.B.	1	5	---	---	---
5.358	1.108,96	5,45	2,47	27,83	31/10/2008	---	H.I.D.B.	1	5	---	---	---
1.045	1.129,74	5,50	2,47	28,35	31/10/2008	---	H.I.D.B.	1	5	---	---	---
76.077	1.132,45	5,75	2,47	28,42	31/10/2008	---	H.I.D.B.	1	5	---	---	---

Bonds Notes

The annual renewal of H.I.D.B. Bonds is free of taxes (net rate).  
For Bonds issue until 31/07/2013 the accrued interest is capitalized.

Athex & ATHEXClear Members List

Member Name			Stock Market			Derivatives Market			ATHEXClear Member		
Address	Phone	Fax	Market Member	Remote Member	Market Maker	Proprietary	Market Maker	Agent	General Clearing	Direct Clearing	Non Clearing
A. SARRIS SECURITIES S.A.			a								
6, DRAGATSANIOU STR. ATHINA	(210)-3367700	(210)-3312324									
AGRICULTURAL BANK OF GREECE S.A.			a				a			a	
, 23 PANEPISTIMIOU ATHINA	(210)-3298400	(210)-3298322									
ALPHA FINANCE INVESTMENT SERVICES S.A.			a		a		a			a	
5, MERLIN STR. ATHINA	(210)-3677400	(210)-3311193									
ALPHA BANK A.E.						a			a		
40, STADIOU STR ATHINA	(210)-3265546	(210)-3265811									
	(210)-3260000	(210)-3264116									
ARGUS STOCKBROKERS LTD			a	a							
12-14, KENNEDY AVE, S. 303 NICOSIA	(+35722)-22717000	(+35722)-22717070									
ATHENAIKI BROKERAGE FIRM S.A.			a								
33, STADIOU STR. ATHINA	(210)-3254764	(210)-3254767									
ATLANTIC SECURITIES LIMITED			a	a							
37, PRODROMOU STR. NICOSIA	(+35722)-445400	(+35722)-661914									
ATLAS SECURITIES S.A			a			a					a
14 - 16, VERVENON STR.& 125 MICHALAKOPOULOU STR. ATHINA	(210)-3363300	(210)-3238925									
ATTICA BANK S.A.									a		
54, AKADIMIAS STR. ATHINA	(210)-3390757	(210)-3646090									
23, OMIROU STR. ATHINA	(210)-3669000	(210)-3669410									
AXIA VENTURES GROUP LTD			a	a							
10, G. KRANIDIOTI NICOSIA	+357 22 742000	+357 22 742001									
AXON SECURITIES S.A.			a			a					a
48, STADIOU ATHINA	(210)-3363800	(210)-3243903									
BANK OF CYPRUS PUBLIC COMPANY LTD									a		
, 51,STASINOU (AG. PARASKEVI, STROVOLOS) NICOSIA	(0035722)-121883	(0035722)-336258									
170, ALEXANDRAS AVE ATHINA	(210)-6477708	(210)-6477709									
BETA SECURITIES S.A.			a		a	a	a			a	
, BRAILA & 29 ALEXANDRAS AVE ATHINA	(210)-6478900	(210)-6410139									
BNP PARIBAS SECURITIES SERVICES									a		
94, VAS. SOFIAS AVE ATHINA	(210)-7468500	(210)-7468579									
CAPITAL SECURITIES S.A.			a			a					a
58, MITROPOLEOS STR. ATHINA	(210)-3369700	(210)-3369820									
CFS SECURITIES & INVESTMENT SERVICES S.A.			a		a			a		a	
3, STADIOU STR. ATHINA	(210)-3360800	(210)-3311854									
CITIGROUP GLOBAL MARKET LTD			a	a							
, CITIGROUP CENTRE, CANADA SQUARE, CANARY WHART LONDON	002079864000	002079862266									
CO-OPERATIVE CENTRAL BANK LTD			a	a							
8, GRIGORI AFXENTIOU STR. NICOSIA	(+35722)-743300	(+35722)-672083									
CREDIT AGRICOLE CHEUVREUX S.A.			a	a							
, 9 QUAI PAUL DOUMER PARIS	33 (0) 1 41 89 70 00										
CREDIT SUISSE SECURITIES (EUROPE) LIMITED			a	a							
, ONE CABOT SQUARE LONDON	+44 20 7888 8888	+44 20 7888 1600									
CYCLOS SECURITIES S.A.			a		a	a				a	
39, PANEPISTIMIOU STR. ATHINA	(210)-3364300	(210)-3239122									
D.A. TSEKOURAS SEC. S.A.			a								
3, PESMAZOGLOU STR. ATHINA	(210)-3214406	(210)-3211997									
DEUTSCHE BANK S.A.			a	a							
70, THEODOR-HEUSS-ALLEE FRANKFURT	0049 69 910 00	0049 69 910 34 225									
DYNAMIC SECURITIES			a					a		a	
6 - 10, CHAR. TRIKOUPi STR. ATHINA	(210)-3677700	(210)-3677777									
EL. PETROPOULAKIS SECURITIES S.A.			a					a			a
9, ARISTIDOU STR. ATHINA	(210)-3213928	(210)-3216810									
EUROBANK EQUITIES S.A.			a		a		a			a	
10, FILELLINON STR. ATHINA	(210)-3720000	(210)-3720001									
EUROBANK ERGASIAS S.A.									a		
8, OTHONOS STR. ATHINA	(210)-3337000	(210)-3233866									
	(210)-3337969	(210)-3245916									
EUROCORP SECURITIES S.A.			a			a				a	
14, FILIKIS ETAIRIAS SQ. ATHINA	(210)-7263500	(210)-7263666									
EUROTRUST BROKERAGE S.A.			a								
13-15, SOPHOCLEOUS STR. ATHINA	(210)-3363100	(210)-3238334									

Athex & ATHEXClear Members List

Member Name			Stock Market			Derivatives Market			ATHEXClear Member		
Address	Phone	Fax	Market Member	Remote Member	Market Maker	Proprietary	Market Maker	Agent	General Clearing	Direct Clearing	Non Clearing
EUROXX SECURITIES S.A.			a			a				a	
7, PALAIOLOGOU STR. CHALANDRI	(210)-6879400	(210)-6879401									
G.A. PERVANAS SECURITIES & INVESTMENT SERVICES CO S.A.			a			a					a
7 - 9, SOPHOCLEOUS STR. ATHINA	(210)-3251875	(210)-3210291									
GENERAL BANK OF GREECE S.A.									a		
87-89, ERMOY ATHINA	(210)-6976072	(210)-6976079									
, 109-111, MESOGEION AVE. ATHINA	(210)-6975000	(210)-6975706									
GLOBAL CAPITAL SECURITIES AND FINANCIAL SERVICES LTD			a	a							
5, LEMESOU AVE. LEMESOS CYPRUS	(+35722)-710710	(+35722)-339332									
GUARDIAN TRUST SECURITIES S.A			a		a	a					a
15, FILELLINON STR. ATHINA	(210)-3220402	(210)-3220498									
HELLENIC AMERICAN SEC. S.A.			a			a					
6, EVRIPIDOU STR. ATHINA	(210)-3311100	(210)-3215968									
HELLENIC BANK (INVESTMENTS) LTD			a	a							
31, KYRIAKOY MATSI AVE. NICOSIA	(+35722)-500100	(+35722)-500110									
HSBC BANK PLC									a		
109-111, MESOGION AVE ATHINA	(210)-6961507	(210)-6929310									
INDEX SECURITIES S.A.			a								
6, DRAGATSANIOU STR. ATHINA	(210)-3213920	(210)-3213216									
INTERSEC S.A.						a				a	
80-88, SYGROU AVE ATHINA	(210)-9203000	(210)-9203052									
INVESTMENT BANK OF GREECE S.A.			a		a		a		a		
32, AIGEIALIAS MAROUSI	(210) 8173000	(210) 8173101									
24B, KIFISSIAS AVE MAROUSI	(210)-8171800	(210)-8171889									
J. CHR. MAVRIKIS SECURITIES S.A.			a								
5, SOPHOCLEOUS STR. ATHINA	(210)-3213949	(210)-3217767									
KAPPA SECURITIES S.A.			a			a					a
15, VALAORITOU STR. ATHINA	(210)-3610371	(210)-3641002									
KYPROU SECURITIES S.A.			a		a	a					a
26, HALKIDONOS & FIDIPPIDOY STR. ATHINA	(210)-8701000	(210)-8701049									
LAIKI FINANCIAL SERVICES LTD			a	a							
26, CLR HOUSE, VIRONOS AVE. NICOSIA	(+35722)-898600	(+35722)-680953									
LEON DEPOLAS SECURITIES S.A.			a					a			a
1, CHR. LADA STR. ATHINA	(210)-3213286	(210)-3211618									
MAGNA TRUST SECURITIES S.A			a					a			a
9, FIDIOU STR. ATHINA	(210)-3327503	(210)-3327599									
MEGA EQUITY SECURITIES & FINANCIAL SERVICES LTD			a	a							
42-44, GRIBA DIGENI AV. NICOSIA	(+35722)-711711	(+35722)-711811									
MERIT SECURITIES S.A			a		a	a				a	
38, VAS. KONSTANTINOU STR. ATHINA	(210)-3671800	(210)-3671830									
MERRILL LYNCH			a	a							
2, KING EDWARD STREET LONDON	(+4420)-79952000	(+4420)-79954525									
METOCHIKI SECURITIES S.A.			a								
3, G. GENNADIOU STR. ATHINA	(210)-3306700	(210)-3306709									
MIDAS BROKERAGE S.A.			a								
5, SOPHOCLEOUS STR. ATHINA	(210)-3253203	(210)-3253205									
N. CHRYSOCHOIDIS STOCK BROKERAGE I.S.S.A.			a					a		a	
7 - 9, SOPHOCLEOUS STR. ATHINA	(210)-3213913	(210)-3216115									
N. SARROS SECURITIES S.A.						a					
7-9, SOPHOCLEOUS STR. ATHINA	(210)-3705600	(210)-3219992									
NATIONAL BANK OF GREECE S.A.							a		a		
86, AIOLOU STR. ATHINA	(210)-3341000	(210)-3228187									
68, AKADIMIAS STR. ATHINA	(210)-3328817	(210)-3328678									
NBG SECURITIES S.A.			a		a		a				a
68, AKADIMIAS STR. ATHINA	(210)-3328500	(210)-3328565									
NEW PROTON BANK S.A.			a			a				a	
20, ESLIN & AMALIADOS ATHINA	210 6970000	210 6970111									
NUNTIUS SECURITIES S.A			a					a			a
6, DRAGATSANIOU STR. ATHINA	(210)-3350599	(210)-3254846									
OLYMPIA SECURITIES S.A			a								
46B, A. METAXA STR. GLYFADA	(210)-3702500	(210)-3702520									
ORANGE PARTNERS SECURITIES S.A			a								
5, TZORTZ STR. ATHINA	(210)-3300009	(210)-3305240									



## Athex &amp; ATHEXClear Members List

Member Name			Stock Market			Derivatives Market			ATHEXClear Member		
Address	Phone	Fax	Market Member	Remote Member	Market Maker	Proprietary	Market Maker	Agent	General Clearing	Direct Clearing	Non Clearing
<b>PANTELAKIS SEC. S.A.</b>			a			a					a
109-111, MESOGION AVE. ATHINA	(210)-6965000	(210)-6929550									
<b>PEGASUS BROKERAGE FIRM S.A</b>			a			a					
17, VALAORITOU STR. ATHINA	(210)-3670700	(210)-3670760									
<b>PIRAEUS BANK S.A.</b>								a	a		
4, AMERIKIS STR ATHINA	(210)-3335918	(210)-3254207									
4, AMERIKIS STR. ATHINA	(210)-3335000	(210)-3335079									
<b>PIRAEUS SECURITIES S.A.</b>			a				a			a	
10, STADIOU STR. ATHINA	(210)-3354100	(210)-3233814									
<b>PRELIUM SECURITIES &amp; INVESTMENT SERVICES S.A.</b>			a			a					a
, KIFISSIAS AVE & 1 DAVAKI STR ATHINA	(210)-3677000	(210)-6920403									
<b>PROBANK S.A.</b>			a								
10, AMERIKIS STR. ATHINA	(210)-3392631	(210)-3392646									
<b>PROCHOICE SECURITIES LTD</b>			a	a							
57, SPYROU KYPRIOY NICOSIA	+357-24-661192	+357-24-662464									
<b>SHARELINK SECURITIES &amp; FINANCIAL SERVICES LTD</b>			a	a							
6, ELLINAS HOUSE, THEOTOKI STR. NICOSIA	(+35722)-554200	(+35722)-750852									
<b>SOCIETE GENERALE S.A.</b>			a	a		a					
17, COURS VALMY PUTEAUX - LA DEFENSE PARIS	(+33) 142134754	(+33) 142135697									
240-242, KIFISIAS AVE ATHINA	(210)-6790161	(210)-6728828									
<b>SOLIDUS SECURITIES S.A</b>			a			a				a	
64, LOUIZIS RIANKOUR STR. ATHINA	(210)-6925500	(210)-6985421									
<b>SOTIRIADIS SECURITIES S.A.</b>			a								
7, VALAORITOU STR. ATHINA	(210)-3636943	(210)-3601943									
<b>ST. EM. LAVRENTAKIS SECURITIES S.A.</b>			a			a					a
7 - 9, SOPHOCLEOUS STR. ATHINA	(210)-3213336	(210)-3246572									
<b>THE CYPRUS INVESTMENT AND SECURITIES CORPORATION LIMITED (CISCO)</b>			a	a							
4, EVROU STR. (EUROLIFE HOUSE) NICOSIA	(+35722)-881800	(+35722)-881801									
<b>UBS LIMITED</b>			a	a							
1, FINSBURY AVENUE LONDON	(+4420)-79013333	(+4420)-79012345									
<b>Z.G. PORTALAKIS INVESTMENT SERVICES S.A.</b>			a								
8, PESMAZOGLLOU STR. ATHINA	(210)-3214830	(210)-3212024									
<b>KARAMANOF SECURITIES &amp; INV. SERVICES S.A.</b>			a					a		a	
2, SQ. ST THEODORON ATHINA	(210)-3212947	(210)-3217088									

## List of Stocks under Market Making operations

Securities	Stock Category	
	Start Market Making	End Market Making
<b>BANK OF CYPRUS (CR)</b>	<b>Under Suspension</b>	
EUROBANK EQUITIES S.A.	23/10/2012	22/10/2013
INVESTMENT BANK OF GREECE S.A.	2/1/2013	1/1/2014
<b>COCA - COLA HBC (CR)</b>	<b>Under Suspension</b>	
EUROBANK EQUITIES S.A.	23/10/2012	22/10/2013
INVESTMENT BANK OF GREECE S.A.	8/1/2013	7/1/2014
<b>CYPRUS POPULAR BANK (CR)</b>	<b>Under Suspension</b>	
PIRAEUS SECURITIES S.A.	2/2/2013	1/2/2014
<b>ALPHA BANK (CR)</b>	<b>Main Market</b>	
EUROBANK EQUITIES S.A.	24/10/2012	23/10/2013
INVESTMENT BANK OF GREECE S.A.	8/1/2013	7/1/2014
MERIT SECURITIES S.A.	3/9/2012	2/9/2013
NBG SECURITIES S.A.	15/1/2013	14/1/2014
PIRAEUS SECURITIES S.A.	28/5/2013	27/5/2014
<b>ALUMIL (CR)</b>	<b>Main Market</b>	
BETA SECURITIES S.A.	18/7/2013	17/7/2014
<b>CC HBC AG (CR)</b>	<b>Main Market</b>	
NBG SECURITIES S.A.	29/4/2013	28/4/2014
<b>ELLAKTOR (CR)</b>	<b>Main Market</b>	
EUROBANK EQUITIES S.A.	1/6/2013	31/5/2014
INVESTMENT BANK OF GREECE S.A.	2/1/2013	1/1/2014
NBG SECURITIES S.A.	25/6/2013	24/6/2014
<b>ELTON SA (CR)</b>	<b>Main Market</b>	
BETA SECURITIES S.A.	3/9/2012	2/9/2013
<b>EUROBANK ERGASIAS (CR)</b>	<b>Main Market</b>	
ALPHA FINANCE INVESTMENT SERVICES S.A.	8/1/2013	7/1/2014
EUROBANK EQUITIES S.A.	1/6/2013	31/5/2014
INVESTMENT BANK OF GREECE S.A.	8/1/2013	7/1/2014
<b>GEK TERNA (CR)</b>	<b>Main Market</b>	
INVESTMENT BANK OF GREECE S.A.	2/1/2013	1/1/2014
<b>GR. SARANTIS SA (CR)</b>	<b>Main Market</b>	
BETA SECURITIES S.A.	14/5/2013	13/5/2014
<b>HELLENIC EXCHANGES (CR)</b>	<b>Main Market</b>	
EUROBANK EQUITIES S.A.	1/6/2013	31/5/2014
INVESTMENT BANK OF GREECE S.A.	2/1/2013	1/1/2014
NBG SECURITIES S.A.	25/6/2013	24/6/2014
<b>INTRACOM CONSTR. (CR)</b>	<b>Main Market</b>	
MERIT SECURITIES S.A.	27/12/2012	26/12/2013
<b>INTRALOT (CR)</b>	<b>Main Market</b>	
EUROBANK EQUITIES S.A.	1/6/2013	31/5/2014
INVESTMENT BANK OF GREECE S.A.	2/1/2013	1/1/2014
<b>MARFIN INVESTMENT GROUP (CR)</b>	<b>Main Market</b>	
PIRAEUS SECURITIES S.A.	2/2/2013	1/2/2014
<b>MLS MULTIMEDIA SA (CR)</b>	<b>Main Market</b>	
BETA SECURITIES S.A.	18/7/2013	17/7/2014
<b>MOTOR OIL (CR)</b>	<b>Main Market</b>	
EUROBANK EQUITIES S.A.	23/10/2012	22/10/2013
<b>MYTILINEOS HOLDINGS (CR)</b>	<b>Main Market</b>	
INVESTMENT BANK OF GREECE S.A.	2/1/2013	1/1/2014
NBG SECURITIES S.A.	25/6/2013	24/6/2014
<b>NATIONAL BANK (CR)</b>	<b>Main Market</b>	
ALPHA FINANCE INVESTMENT SERVICES S.A.	8/1/2013	7/1/2014
EUROBANK EQUITIES S.A.	24/10/2012	23/10/2013
INVESTMENT BANK OF GREECE S.A.	8/1/2013	7/1/2014
MERIT SECURITIES S.A.	3/9/2012	2/9/2013
NBG SECURITIES S.A.	28/2/2013	27/2/2014
<b>OPAP (CR)</b>	<b>Main Market</b>	
ALPHA FINANCE INVESTMENT SERVICES S.A.	8/1/2013	7/1/2014
EUROBANK EQUITIES S.A.	24/10/2012	23/10/2013
INVESTMENT BANK OF GREECE S.A.	8/1/2013	7/1/2014
NBG SECURITIES S.A.	15/1/2013	14/1/2014
<b>OTE (CR)</b>	<b>Main Market</b>	
ALPHA FINANCE INVESTMENT SERVICES S.A.	8/1/2013	7/1/2014
EUROBANK EQUITIES S.A.	24/10/2012	23/10/2013
INVESTMENT BANK OF GREECE S.A.	8/1/2013	7/1/2014
NBG SECURITIES S.A.	1/12/2012	30/11/2013
<b>PETROPOULOS PETROS (CR)</b>	<b>Main Market</b>	
BETA SECURITIES S.A.	28/5/2013	27/5/2014

## List of Stocks under Market Making operations

Securities	Stock Category	
	Start Market Making	End Market Making
Market Maker		
<b>PIRAEUS BANK (CR)</b>	<b>Main Market</b>	
EUROBANK EQUITIES S.A.	23/10/2012	22/10/2013
INVESTMENT BANK OF GREECE S.A.	8/1/2013	7/1/2014
NBG SECURITIES S.A.	2/6/2013	1/6/2014
PIRAEUS SECURITIES S.A.	16/2/2013	15/2/2014
<b>PPC (CR)</b>	<b>Main Market</b>	
ALPHA FINANCE INVESTMENT SERVICES S.A.	8/1/2013	7/1/2014
EUROBANK EQUITIES S.A.	23/10/2012	22/10/2013
INVESTMENT BANK OF GREECE S.A.	8/1/2013	7/1/2014
NBG SECURITIES S.A.	26/3/2013	25/3/2014
<b>S.KANAKIS SA (CR)</b>	<b>Main Market</b>	
BETA SECURITIES S.A.	1/10/2012	30/9/2013
<b>TITAN CEMENT (CR)</b>	<b>Main Market</b>	
EUROBANK EQUITIES S.A.	23/10/2012	22/10/2013
<b>VIOHALCO (CB)</b>	<b>Main Market</b>	
ALPHA FINANCE INVESTMENT SERVICES S.A.	11/2/2013	10/3/2014
EUROBANK EQUITIES S.A.	20/1/2013	19/1/2014
MERIT SECURITIES S.A	13/12/2012	12/12/2013

Underlying Asset				Derivatives Market																		
Price max	Price min	Closing price	change	Delivery Month	Open price	Price max	Price min	Last price	Closing price	Last Bid	Last Ask	Settlement price	change	Life high	Life low	Trades	Volume	change	Value	change	Open Interest	change
FTSE/Athex Large Cap				(Trade Unit: 1 Index Point x 5€, Cash Settlement)																		
311,72	299,31	301,10	-4,00%	September 2013	314,75	315,00	300,00	300,50	302,25	9@300,50	5@302,00	302,25	-4,28%	346,00	271,00	675	6.244	359,46%	9.519.916,25	340,91%	45.367	-3,18%
				October 2013	314,50	315,25	301,25	301,25	303,75	10@301,00	1@304,50	303,75	-4,26%	338,75	292,25	15	62	169,57%	96.541,25	164,53%	634	-3,06%
				November 2013	---	---	---	---	---	10@205,75	1@308,50	---	---	---	---	---	---	---	---	---	---	---
				December 2013	308,00	308,00	308,00	308,00	305,25	9@304,50	---	305,25	-4,46%	343,00	276,75	1	1	---	1.540,00	---	525	0,00%
				March 2014	---	---	---	---	---	---	---	---	---	---	---	---	---	---	---	---	---	---
				June 2014	---	---	---	---	---	---	---	---	---	---	---	---	---	---	---	---	---	---

Underlying Asset				Derivatives Market																		
Price max	Price min	Closing price	change	Delivery Month	Open price	Price max	Price min	Last price	Closing price	Last Bid	Last Ask	Settlement price	change	Life high	Life low	Trades	Volume	change	Value	change	Open Interest	change
ALPHA BANK (CR)				(Contract Size: 100 Securities, Physical Delivery)																		
0,500	0,471	0,472	-4,84%	September 2013	0,492	0,500	0,469	0,472	0,477	69@0,472	70@0,474	0,477	-4,41%	1,46	0,371	202	4,587	143,86%	220.826,60	133,40%	16.113	-6,94%
				December 2013	---	---	---	---	0,474	1@0,467	70@0,494	0,474	-4,44%	0,498	0,437	---	---	---	---	---	104	0,00%
				March 2014	---	---	---	---	---	---	---	---	---	---	---	---	---	---	---	---	---	---
				June 2014	---	---	---	---	---	---	---	---	---	---	---	---	---	---	---	---	---	---
CC HBC AG (CR)				(Contract Size: 100 Securities, Physical Delivery)																		
20,80	20,14	20,21	-3,53%	September 2013	20,71	20,71	20,21	20,25	20,29	8@20,20	5@20,31	20,29	-3,52%	22,33	16,93	16	57	-25,97%	116.120,00	-28,61%	705	-5,62%
				December 2013	---	---	---	---	20,34	---	5@20,40	20,34	-3,51%	21,28	17,90	---	---	-100,00%	---	-100,00%	4	0,00%
				March 2014	---	---	---	---	---	---	---	---	---	---	---	---	---	---	---	---	---	---
				June 2014	---	---	---	---	---	---	---	---	---	---	---	---	---	---	---	---	---	---
CORINTH PIPEWORKS SA (CR)				(Contract Size: 100 Securities, Physical Delivery)																		
2,13	1,95	1,97	-6,63%	September 2013	2,10	2,10	1,94	1,96	2,02	1@1,97	1@2,10	2,02	-6,48%	2,48	1,94	7	10	-33,33%	1.993,00	-38,30%	454	-0,66%
				December 2013	---	---	---	---	---	---	1@2,14	---	---	---	---	---	---	---	---	---	---	---
				March 2014	---	---	---	---	---	---	---	---	---	---	---	---	---	---	---	---	---	---
				June 2014	---	---	---	---	---	---	---	---	---	---	---	---	---	---	---	---	---	---
ELLAKTOR (CR)				(Contract Size: 100 Securities, Physical Delivery)																		
2,12	1,97	1,99	-6,57%	September 2013	2,08	2,08	1,97	2,03	2,03	10@1,99	59@2,02	2,03	-4,69%	2,45	1,73	29	146	329,41%	29.572,00	303,77%	4.455	1,34%
				December 2013	---	---	---	---	2,03	10@1,96	59@2,06	2,03	-4,69%	2,17	2,11	---	---	---	---	---	---	---
				March 2014	---	---	---	---	---	---	---	---	---	---	---	---	---	---	---	---	---	---
				June 2014	---	---	---	---	---	---	---	---	---	---	---	---	---	---	---	---	---	---
EUROBANK ERGASIAS (CR)				(Contract Size: 10 Securities, Physical Delivery)																		
0,646	0,602	0,606	-6,77%	September 2013	0,640	0,640	0,604	0,604	0,605	5@0,575	30@0,605	0,605	-8,19%	5,00	0,537	30	587	21,03%	3.598,17	14,32%	18.260	-1,17%
				December 2013	0,635	0,635	0,602	0,610	0,607	4@0,602	5@0,690	0,607	-8,17%	0,700	0,600	9	10	-87,95%	619,50	-88,62%	1.720	-0,06%
				March 2014	---	---	---	---	0,603	---	---	0,603	-8,22%	0,673	0,619	---	---	---	---	---	---	---
				June 2014	---	---	---	---	---	---	---	---	---	---	---	---	---	---	---	---	---	---
EUROBANK PROPERTIES REIC (CR)				(Contract Size: 100 Securities, Physical Delivery)																		
7,08	6,85	6,94	-2,25%	September 2013	7,05	7,05	6,88	6,88	6,93	2@6,89	1@7,05	6,93	-2,81%	7,67	6,00	13	30	20,00%	20.885,00	16,53%	274	-0,36%
				December 2013	---	---	---	---	---	---	1@7,09	---	---	---	---	---	---	---	---	---	---	---
				March 2014	---	---	---	---	---	---	---	---	---	---	---	---	---	---	---	---	---	---
				June 2014	---	---	---	---	---	---	---	---	---	---	---	---	---	---	---	---	---	---
EYDAP S.A. (CR)				(Contract Size: 100 Securities, Physical Delivery)																		
6,10	5,80	5,80	-4,92%	September 2013	6,03	6,03	5,85	5,85	5,93	1@5,76	1@6,00	5,93	-4,97%	6,67	5,58	10	28	460,00%	16.589,00	447,49%	221	3,27%
				December 2013	---	---	---	---	---	---	1@6,06	---	---	---	---	---	---	---	---	---	---	---
				March 2014	---	---	---	---	---	---	---	---	---	---	---	---	---	---	---	---	---	---
				June 2014	---	---	---	---	---	---	---	---	---	---	---	---	---	---	---	---	---	---
FOLLI FOLLIE (CR)				(Contract Size: 100 Securities, Physical Delivery)																		
18,00	17,38	17,60	-2,22%	September 2013	17,70	17,70	17,49	17,62	17,65	1@17,31	1@17,91	17,65	-2,22%	18,86	14,68	3	11	10,00%	19.325,00	7,66%	237	2,16%
				December 2013	---	---	---	---	---	---	1@17,95	---	---	---	---	---	---	---	---	---	---	---
				March 2014	---	---	---	---	---	---	---	---	---	---	---	---	---	---	---	---	---	---
				June 2014	---	---	---	---	---	---	---	---	---	---	---	---	---	---	---	---	---	---

Underlying Asset				Derivatives Market																		
Price max	Price min	Closing price	change	Delivery Month	Open price	Price max	Price min	Last price	Closing price	Last Bid	Last Ask	Settlement price	change	Life high	Life low	Trades	Volume	change	Value	change	Open Interest	change
FRIGOGLASS SA (CR)				(Contract Size: 100 Securities, Physical Delivery)																		
4,86	4,67	4,78	-3,24%	September 2013	4,81	4,82	4,66	4,72	4,73	1@4,60	10@4,80	4,73	-4,06%	5,71	4,35	15	47	370,00%	22.365,00	354,20%	422	0,00%
				December 2013	---	---	---	---	---	---	10@4,85	---	---	---	---	---	---	---	---	---	---	---
				March 2014	---	---	---	---	---	---	---	---	---	---	---	---	---	---	---	---	---	---
				June 2014	---	---	---	---	---	---	---	---	---	---	---	---	---	---	---	---	---	---
GEK TERNA (CR)				(Contract Size: 100 Securities, Physical Delivery)																		
2,18	1,99	2,02	-6,91%	September 2013	2,20	2,20	1,97	2,01	2,07	11@2,00	10@2,04	2,07	-4,61%	2,62	1,45	81	606	20,72%	125.080,00	14,44%	15.703	-1,20%
				December 2013	2,11	2,11	2,11	2,11	2,11	---	10@2,08	2,11	-2,76%	2,51	1,57	1	1	-96,00%	211,00	-96,13%	101	1,00%
				March 2014	---	---	---	---	2,05	---	---	2,05	-4,65%	2,50	2,26	---	---	---	---	---	15.895	0,00%
				June 2014	---	---	---	---	---	---	---	---	---	---	---	---	---	---	---	---	---	---
HELLENIC EXCHANGES (CR)				(Contract Size: 100 Securities, Physical Delivery)																		
5,93	5,51	5,57	-6,23%	September 2013	5,88	5,88	5,54	5,56	5,57	3@5,56	3@5,60	5,57	-6,07%	6,46	3,82	58	169	344,74%	95.522,00	322,10%	2.208	-0,09%
				December 2013	5,61	5,61	5,59	5,59	5,61	2@5,55	3@5,64	5,61	-5,71%	6,85	4,01	3	5	---	2.798,00	---	5	---
				March 2014	---	---	---	---	---	---	---	---	---	---	---	---	---	---	---	---	---	---
				June 2014	---	---	---	---	---	---	---	---	---	---	---	---	---	---	---	---	---	---
HELLENIC PETROLEUM (CR)				(Contract Size: 100 Securities, Physical Delivery)																		
7,46	7,02	7,19	-4,26%	September 2013	7,42	7,44	7,06	7,15	7,13	1@7,05	1@7,16	7,13	-5,06%	9,01	6,00	43	132	91,30%	94.887,00	82,72%	2.330	1,08%
				December 2013	---	---	---	---	7,05	---	1@7,21	7,05	-5,11%	7,72	6,61	---	---	---	---	---	---	---
				March 2014	---	---	---	---	---	---	---	---	---	---	---	---	---	---	---	---	---	---
				June 2014	---	---	---	---	---	---	---	---	---	---	---	---	---	---	---	---	---	---
INTRALOT (CR)				(Contract Size: 100 Securities, Physical Delivery)																		
1,63	1,49	1,53	-4,97%	September 2013	1,60	1,60	1,49	1,52	1,52	30@1,53	15@1,55	1,52	-6,75%	2,30	1,30	29	283	1315,00%	43.841,00	1270,03%	3.930	-2,94%
				December 2013	---	---	---	---	---	---	15@1,59	---	---	---	---	---	---	---	---	---	---	---
				March 2014	---	---	---	---	---	---	---	---	---	---	---	---	---	---	---	---	---	---
				June 2014	---	---	---	---	---	---	---	---	---	---	---	---	---	---	---	---	---	---
JUMBO SA (CR)				(Contract Size: 100 Securities, Physical Delivery)																		
8,46	7,91	8,29	-2,01%	September 2013	8,35	8,38	7,96	8,27	8,27	5@8,00	5@8,28	8,27	-2,01%	9,03	7,19	27	79	-14,13%	63.947,00	-18,66%	257	-1,53%
				December 2013	---	---	---	---	---	---	5@8,32	---	---	---	---	---	---	---	---	---	---	---
				March 2014	---	---	---	---	---	---	---	---	---	---	---	---	---	---	---	---	---	---
				June 2014	---	---	---	---	---	---	---	---	---	---	---	---	---	---	---	---	---	---
MARFIN INVESTMENT GROUP (CR)				(Contract Size: 100 Securities, Physical Delivery)																		
0,306	0,280	0,290	-6,15%	September 2013	0,304	0,304	0,282	0,289	0,289	27@0,282	8@0,287	0,289	-6,17%	0,420	0,252	28	331	215,24%	9.534,30	198,67%	18.910	-1,08%
				December 2013	---	---	---	---	---	---	8@0,297	---	---	---	---	---	---	---	---	---	---	---
				March 2014	---	---	---	---	---	---	---	---	---	---	---	---	---	---	---	---	---	---
				June 2014	---	---	---	---	---	---	---	---	---	---	---	---	---	---	---	---	---	---
METKA (CR)				(Contract Size: 100 Securities, Physical Delivery)																		
10,42	10,06	10,21	-2,02%	September 2013	10,21	10,21	10,05	10,18	10,20	9@10,07	5@10,20	10,20	-2,02%	12,18	9,43	19	59	---	59.757,00	---	450	-5,66%
				December 2013	---	---	---	---	10,19	---	5@10,25	10,19	-2,02%	10,67	10,52	---	---	---	---	---	---	---
				March 2014	---	---	---	---	---	---	---	---	---	---	---	---	---	---	---	---	---	---
				June 2014	---	---	---	---	---	---	---	---	---	---	---	---	---	---	---	---	---	---

Underlying Asset				Derivatives Market																		
Price max	Price min	Closing price	change	Delivery Month	Open price	Price max	Price min	Last price	Closing price	Last Bid	Last Ask	Settlement price	change	Life high	Life low	Trades	Volume	change	Value	change	Open Interest	change
MOTOR OIL (CR)				(Contract Size: 100 Securities, Physical Delivery)																		
7,40	7,11	7,22	-3,22%	September 2013	7,35	7,35	7,15	7,21	7,20	9@7,19	7@7,29	7,20	-1,77%	8,16	6,66	23	162	710,00%	116.859,00	672,98%	940	-0,32%
				December 2013	---	---	---	---	---	---	7@7,33	---	---	---	---	---	---	---	---	---	---	---
				March 2014	---	---	---	---	---	---	---	---	---	---	---	---	---	---	---	---	---	---
				June 2014	---	---	---	---	---	---	---	---	---	---	---	---	---	---	---	---	---	---
MYTILINEOS HOLDINGS (CR)				(Contract Size: 100 Securities, Physical Delivery)																		
4,30	4,02	4,04	-6,27%	September 2013	4,27	4,27	4,00	4,04	4,06	7@4,04	20@4,09	4,06	-6,24%	5,50	3,50	70	280	250,00%	114.541,00	228,07%	5.033	1,53%
				December 2013	---	---	---	---	4,10	---	20@4,13	4,10	-6,18%	5,28	3,70	---	---	---	---	---	20	0,00%
				March 2014	---	---	---	---	4,10	---	---	4,10	-6,18%	4,81	4,43	---	---	---	---	---	---	---
				June 2014	---	---	---	---	---	---	---	---	---	---	---	---	---	---	---	---	---	---
NATIONAL BANK (CR)				(Contract Size: 100 Securities, Physical Delivery)																		
3,03	2,83	2,85	-5,00%	September 2013	2,98	3,02	2,83	2,84	2,85	5@2,85	8@2,86	2,85	-5,94%	3,25	0,344	255	3.893	70,52%	1.138.288,00	63,04%	5.209	-8,34%
				December 2013	2,85	2,87	2,85	2,87	2,87	5@2,82	8@2,88	2,87	-4,33%	3,03	2,31	4	7	---	2.006,00	---	9	12,50%
				March 2014	---	---	---	---	---	---	---	---	---	---	---	---	---	---	---	---	---	---
				June 2014	---	---	---	---	---	---	---	---	---	---	---	---	---	---	---	---	---	---
OPAP (CR)				(Contract Size: 100 Securities, Physical Delivery)																		
7,40	7,12	7,20	-3,23%	September 2013	7,37	7,38	7,11	7,19	7,25	16@7,20	10@7,29	7,25	-2,03%	7,74	5,82	81	551	285,31%	398.212,00	272,72%	4.096	2,27%
				December 2013	---	---	---	---	7,25	6@7,00	10@7,35	7,25	-2,03%	7,66	6,31	---	---	---	---	---	---	---
				March 2014	---	---	---	---	---	---	---	---	---	---	---	---	---	---	---	---	---	---
				June 2014	---	---	---	---	---	---	---	---	---	---	---	---	---	---	---	---	---	---
OTE (CR)				(Contract Size: 100 Securities, Physical Delivery)																		
6,87	6,54	6,61	-4,48%	September 2013	6,84	6,86	6,54	6,64	6,64	10@6,62	3@6,64	6,64	-3,77%	7,56	4,35	233	1.956	1043,86%	1.300.118,00	1003,38%	7.601	-6,93%
				December 2013	6,84	6,84	6,84	6,84	6,68	10@6,57	30@6,65	6,68	-3,47%	7,56	4,40	1	50	-37,50%	34.200,00	-38,02%	40	-55,56%
				March 2014	---	---	---	---	6,65	---	---	6,65	-3,76%	7,39	6,40	---	---	---	---	---	20	0,00%
				June 2014	---	---	---	---	---	---	---	---	---	---	---	---	---	---	---	---	---	---
P.P.A. S.A. (CR)				(Contract Size: 100 Securities, Physical Delivery)																		
16,86	15,58	15,58	-6,26%	September 2013	16,55	16,55	15,79	15,79	15,79	5@15,10	5@16,20	15,79	-5,73%	18,68	15,52	11	48	200,00%	77.400,00	188,38%	553	0,36%
				December 2013	---	---	---	---	---	---	5@16,38	---	---	---	---	---	---	---	---	---	---	---
				March 2014	---	---	---	---	---	---	---	---	---	---	---	---	---	---	---	---	---	---
				June 2014	---	---	---	---	---	---	---	---	---	---	---	---	---	---	---	---	---	---
PIRAEUS BANK (CR)				(Contract Size: 100 Securities, Physical Delivery)																		
1,04	0,983	0,989	-3,98%	September 2013	1,03	1,03	0,982	0,991	0,990	48@0,990	3@0,995	0,990	-4,81%	1,17	0,169	98	2.018	451,37%	201.779,70	430,19%	13.410	-5,36%
				December 2013	---	---	---	---	1,00	1@0,900	4@0,999	1,00	-4,76%	1,15	0,231	---	---	-100,00%	---	-100,00%	25	0,00%
				March 2014	---	---	---	---	1,00	---	---	1,00	-4,76%	1,12	0,924	---	---	---	---	---	---	---
				June 2014	---	---	---	---	---	---	---	---	---	---	---	---	---	---	---	---	---	---
PPC (CR)				(Contract Size: 100 Securities, Physical Delivery)																		
7,42	6,90	6,98	-6,56%	September 2013	7,41	7,43	6,90	6,97	7,01	5@6,97	1@6,98	7,01	-6,66%	8,47	4,58	290	1.468	484,86%	1.045.061,00	452,34%	4.761	-3,56%
				December 2013	7,10	7,10	7,10	7,10	7,04	5@6,92	1@7,02	7,04	-6,38%	8,56	5,08	1	10	---	7.100,00	---	160	6,67%
				March 2014	7,10	7,15	7,08	7,08	6,98	---	---	6,98	-7,43%	7,99	6,30	4	50	---	35.525,00	---	100	100,00%
				June 2014	---	---	---	---	---	---	---	---	---	---	---	---	---	---	---	---	---	---

Underlying Asset				Derivatives Market																		
Price max	Price min	Closing price	change	Delivery Month	Open price	Price max	Price min	Last price	Closing price	Last Bid	Last Ask	Settlement price	change	Life high	Life low	Trades	Volume	change	Value	change	Open Interest	change
SIDENOR (CR)				(Contract Size: 100 Securities, Physical Delivery)																		
1,62	1,51	1,52	-6,17%	September 2013	1,54	1,56	1,49	1,49	1,56	1@1,49	1@1,53	1,56	-6,02%	1,82	1,36	15	43	377,78%	6.533,00	340,53%	1.484	-1,53%
				December 2013	---	---	---	---	---	---	1@1,55	---	---	---	---	---	---	---	---	---	---	---
				March 2014	---	---	---	---	---	---	---	---	---	---	---	---	---	---	---	---	---	---
				June 2014	---	---	---	---	---	---	---	---	---	---	---	---	---	---	---	---	---	---
TERNA ENERGY (CR)				(Contract Size: 103 Securities, Physical Delivery)																		
2,90	2,66	2,75	-4,51%	September 2013	2,83	2,83	2,70	2,77	2,76	2@2,69	5@2,82	2,76	-5,80%	3,25	2,43	19	74	393,33%	21.312,76	368,67%	2.383	0,38%
				December 2013	---	---	---	---	---	---	---	---	---	---	---	---	---	---	---	---	---	---
				March 2014	---	---	---	---	---	---	---	---	---	---	---	---	---	---	---	---	---	---
				June 2014	---	---	---	---	---	---	---	---	---	---	---	---	---	---	---	---	---	---
TITAN CEMENT (CR)				(Contract Size: 100 Securities, Physical Delivery)																		
14,76	14,12	14,68	-0,81%	September 2013	14,63	14,64	14,20	14,64	14,47	5@14,52	1@14,74	14,47	-0,82%	15,90	12,22	24	98	133,33%	142.101,00	129,72%	171	6,88%
				December 2013	---	---	---	---	14,32	---	1@14,59	14,32	-0,83%	15,68	15,02	---	---	---	---	---	---	---
				March 2014	---	---	---	---	---	---	---	---	---	---	---	---	---	---	---	---	---	---
				June 2014	---	---	---	---	---	---	---	---	---	---	---	---	---	---	---	---	---	---
VIOHALCO (CB)				(Contract Size: 100 Securities, Physical Delivery)																		
4,41	4,06	4,13	-6,56%	September 2013	4,36	4,36	4,05	4,14	4,10	2@4,12	1@4,20	4,10	-6,61%	5,19	3,85	17	66	371,43%	27.976,00	356,75%	509	4,52%
				December 2013	---	---	---	---	4,14	---	1@4,25	4,14	-6,55%	4,10	3,89	---	---	---	---	---	---	---
				March 2014	---	---	---	---	---	---	---	---	---	---	---	---	---	---	---	---	---	---
				June 2014	---	---	---	---	---	---	---	---	---	---	---	---	---	---	---	---	---	---



FTSE/Athex Large Cap

(Trade Unit: 1 Index Point x 5€ - Exercise Style: European, Cash Settlement)

Call Options																	Put Options																			
September 2013								October 2013								Other Months		September 2013								October 2013								Other Months		
Exerise Price	Open price	Price max	Price min	Last price	Closing price	Volume	Open Interest	Open price	Price max	Price min	Last price	Closing price	Volume	Open Interest	Volume	Open Interest	Open price	Price max	Price min	Last price	Closing price	Volume	Open Interest	Open price	Price max	Price min	Last price	Closing price	Volume	Open Interest	Volume	Open Interest	Exerise Price			
215	-	-	-	-	87,00	-	60	-	-	-	-	-	-	-	-	-	-	-	-	-	-	-	-	-	-	-	-	-	-	-	-	215				
230	-	-	-	-	72,50	-	3	-	-	-	-	-	-	-	-	-	-	-	-	-	-	-	-	-	-	-	-	-	-	-	-	230				
255	-	-	-	-	-	-	-	-	-	-	-	-	-	-	-	-	-	-	-	-	-	-	-	-	-	-	-	-	-	-	-	255				
260	-	-	-	-	-	-	-	-	-	-	-	-	-	-	-	-	-	-	-	-	-	-	-	-	-	-	-	-	-	-	-	260				
265	-	-	-	-	-	-	-	-	-	-	-	-	-	-	-	-	-	-	-	-	-	-	-	-	-	-	-	-	-	-	-	265				
270	-	-	-	-	-	-	-	-	-	-	-	-	-	-	-	-	-	-	-	-	3,60	-	1	-	-	-	-	-	-	-	-	270				
275	-	-	-	-	-	-	-	-	-	-	-	-	-	-	-	-	-	-	-	-	4,70	-	1	-	-	-	-	-	-	-	-	275				
280	-	-	-	-	28,25	-	314	-	-	-	-	-	-	-	-	-	5,90	5,90	5,90	5,90	6,00	1	132	-	-	-	-	-	-	-	-	280				
285	-	-	-	-	24,75	-	20	-	-	-	-	-	-	-	-	-	-	-	-	-	7,60	-	56	-	-	-	-	13,00	-	1	-	285				
290	-	-	-	-	21,75	-	50	-	-	-	-	-	-	-	-	-	9,90	11,00	8,50	10,00	9,40	102	92	-	-	-	-	-	-	-	-	290				
295	-	-	-	-	18,75	-	1	-	-	-	-	-	-	-	-	-	-	-	-	-	-	-	-	-	-	-	17,50	-	2	-	295					
300	15,50	16,00	15,50	16,00	16,25	12	415	-	-	-	-	-	-	-	-	-	14,00	14,00	14,00	14,00	14,00	8	20	-	-	-	-	19,75	-	9	-	300				
305	-	-	-	-	-	-	-	-	-	-	-	21,25	-	5	-	-	14,00	17,75	13,00	17,50	16,50	143	507	-	-	-	-	22,50	-	6	-	305				
310	11,50	13,00	11,00	11,00	11,75	32	750	-	-	-	-	19,00	-	20	-	-	-	-	-	-	19,50	-	15	-	-	-	-	-	-	-	-	310				
315	15,00	15,00	10,00	10,00	9,90	56	650	-	-	-	-	17,00	-	130	-	-	-	-	-	-	22,50	-	37	-	-	-	-	28,25	-	20	-	315				
320	-	-	-	-	8,20	-	164	-	-	-	-	-	-	-	-	-	-	-	-	-	26,00	-	37	-	-	-	-	-	-	-	-	320				
325	-	-	-	-	6,80	-	60	-	-	-	-	-	-	-	-	-	-	-	-	-	29,50	-	156	-	-	-	-	-	-	-	-	325				
330	7,00	8,00	5,50	5,50	5,60	228	663	-	-	-	-	-	-	-	-	-	-	-	-	-	33,25	-	1	-	-	-	-	-	-	-	-	330				
335	-	-	-	-	4,60	-	145	-	-	-	-	-	-	-	-	-	-	-	-	-	-	-	-	-	-	-	-	-	-	-	-	335				
340	4,50	7,50	4,00	7,50	3,70	112	145	9,50	9,50	9,50	9,50	9,40	1	6	-	-	-	-	-	-	41,50	-	50	-	-	-	-	-	-	-	-	340				
345	-	-	-	-	-	-	-	-	-	-	-	-	-	-	-	-	-	-	-	-	-	-	-	-	-	-	-	-	-	-	-	345				
350	-	-	-	-	2,40	-	51	-	-	-	-	-	-	-	-	-	-	-	-	-	50,00	-	5	-	-	-	-	-	-	-	-	350				
355	-	-	-	-	1,90	-	3	-	-	-	-	-	-	-	-	-	-	-	-	-	-	-	-	-	-	-	-	-	-	-	-	355				
360	-	-	-	-	-	-	-	-	-	-	-	-	-	-	-	-	-	-	-	-	59,00	-	5	-	-	-	-	-	-	-	-	360				
365	-	-	-	-	-	-	-	-	-	-	-	-	-	-	-	-	-	-	-	-	64,00	-	130	-	-	-	-	-	-	-	-	365				
370	-	-	-	-	0,94	-	1	-	-	-	-	-	-	-	-	-	-	-	-	-	68,50	-	5	-	-	-	-	-	-	-	-	370				
375	-	-	-	-	-	-	-	-	-	-	-	-	-	-	-	-	-	-	-	-	-	-	-	-	-	-	-	-	-	-	-	375				
380	-	-	-	-	0,56	-	30	-	-	-	-	-	-	-	-	-	-	-	-	-	78,00	-	10	-	-	-	-	-	-	-	-	380				
385	-	-	-	-	-	-	-	-	-	-	-	-	-	-	-	-	-	-	-	-	83,00	-	5	-	-	-	-	-	-	-	-	385				
390	-	-	-	-	-	-	-	-	-	-	-	-	-	-	-	-	-	-	-	-	-	-	-	-	-	-	-	-	-	-	-	390				
395	-	-	-	-	-	-	-	-	-	-	-	-	-	-	-	-	-	-	-	-	93,00	-	5	-	-	-	-	-	-	-	-	395				
400	-	-	-	-	-	-	-	-	-	-	-	-	-	-	-	-	-	-	-	-	-	-	-	-	-	-	-	-	-	-	-	400				
405	-	-	-	-	-	-	-	-	-	-	-	-																								

FTSE/Athex Large Cap

(Trade Unit: 1 Index Point x 5€ - Exercise Style: European, Cash Settlement)

Call Options																	Put Options																		
Exercise Price	September 2013							October 2013							Other Months		September 2013							October 2013							Other Months		Exercise Price		
	Open price	Price max	Price min	Last price	Closing price	Volume	Open Interest	Open price	Price max	Price min	Last price	Closing price	Volume	Open Interest	Volume	Open Interest	Open price	Price max	Price min	Last price	Closing price	Volume	Open Interest	Open price	Price max	Price min	Last price	Closing price	Volume	Open Interest	Volume	Open Interest			
1.500	-	-	-	-	-	-	-	-	-	-	-	-	-	-	-	-	-	-	-	-	1.195,00	-	3	-	-	-	-	-	-	-	-	-	1.500		
Totals:						440	3.525							1	161	0	0							254	1.534							0	38	0	0
Nominal Transactions Value:						722.400,00								1.700,00		0,00								379.375,00								0,00		0,00	
Number of Trades:						39								1		0								34								0		0	

FTSE/Athex Large Cap

(Trade Unit: 1 Index Point x 5€ - Exercise Style: European, Cash Settlement)

Call Options																	Put Options																		
Exercise Price	September 2013							October 2013							Other Months			September 2013								October 2013							Other Months		
	Open price	Price max	Price min	Last price	Closing price	Volume	Open Interest	Open price	Price max	Price min	Last price	Closing price	Volume	Open Interest	Volume	Open Interest	Open price	Price max	Price min	Last price	Closing price	Volume	Open Interest	Open price	Price max	Price min	Last price	Closing price	Volume	Open Interest	Volume	Open Interest	Exercise Price		

ALPHA BANK (CR) (Contract Size: 100 Securities, Exercise Style: American, Physical Delivery)

Call Options																	Put Options																			
September 2013								October 2013								Other Months		September 2013								October 2013								Other Months		
Exerise Price	Open price	Price max	Price min	Last price	Closing price	Volume	Open Interest	Open price	Price max	Price min	Last price	Closing price	Volume	Open Interest	Volume	Open Interest	Open price	Price max	Price min	Last price	Closing price	Volume	Open Interest	Open price	Price max	Price min	Last price	Closing price	Volume	Open Interest	Volume	Open Interest	Exerise Price			
0,100						-	-							-	-							-	-						-	-			0,100			
0,200						-	-							-	-							-	-						-	-			0,200			
0,300						-	-							-	-							-	-						-	-			0,300			
0,400						-	-							-	-							-	-						-	-			0,400			
0,500						-	-							-	-							-	-						-	-			0,500			
0,600						-	-							-	-							-	-						-	-			0,600			
0,700						-	-							-	-							-	-						-	-			0,700			
0,800						-	-							-	-							-	-						-	-			0,800			
0,850						-	-							-	-							-	-						-	-			0,850			
0,900						-	-							-	-							-	-						-	-			0,900			
0,950						-	-							-	-							-	-						-	-			0,950			
1,00						-	-							-	-							-	-						-	-			1,00			
1,05						-	-							-	-							-	-						-	-			1,05			
1,10						-	-							-	-							-	-						-	-			1,10			
1,15						-	-							-	-							-	-						-	-			1,15			
1,20						-	-							-	-							-	-						-	-			1,20			
1,30						-	-							-	-							-	-						-	-			1,30			
1,40						-	-							-	-							-	-						-	-			1,40			
1,50						-	-							-	-							-	-						-	-			1,50			
1,60						-	-							-	-							-	-						-	-			1,60			
1,70						-	-							-	-							-	-						-	-			1,70			
1,80						-	-							-	-							-	-						-	-			1,80			
1,90						-	-							-	-							-	-						-	-			1,90			
2,00						-	-							-	-							-	-						-	-			2,00			
2,20						-	-							-	-							-	-						-	-			2,20			
2,40						-	-							-	-							-	-						-	-			2,40			
2,60						-	-							-	-							-	-						-	-			2,60			
2,80						-	-							-	-							-	-						-	-			2,80			
Totals:						0	0							0	0	0	0					0	0					0	0	0	0	0				
Nominal Transactions Value:							0,00							0,00	0,00							0,00	0,00					0,00	0,00			0,00				
Number of Trades:							0							0	0							0,00	0					0	0			0				

NATIONAL BANK (CR)

(Contract Size: 100 Securities, Exercise Style: American, Physical Delivery)

Call Options																	Put Options																			
September 2013								October 2013								Other Months		September 2013								October 2013								Other Months		
Exerise Price	Open price	Price max	Price min	Last price	Closing price	Volume	Open Interest	Open price	Price max	Price min	Last price	Closing price	Volume	Open Interest	Volume	Open Interest	Open price	Price max	Price min	Last price	Closing price	Volume	Open Interest	Open price	Price max	Price min	Last price	Closing price	Volume	Open Interest	Volume	Open Interest	Exerise Price			
0,300						-	-							-	-							-	-						-	-			0,300			
0,400						-	-							-	-							-	-						-	-			0,400			
0,500						-	-							-	-							-	-						-	-			0,500			
0,600						-	-							-	-							-	-						-	-			0,600			
0,700						-	-							-	-							-	-						-	-			0,700			
0,750						-	-							-	-							-	-						-	-			0,750			
0,800						-	-							-	-							-	-						-	-			0,800			
0,850						-	-							-	-							-	-						-	-			0,850			
0,900						-	-							-	-							-	-						-	-			0,900			
0,950						-	-							-	-							-	-						-	-			0,950			
1,00						-	-							-	-							-	-						-	-			1,00			
1,05						-	-							-	-							-	-						-	-			1,05			
1,10						-	-							-	-							-	-						-	-			1,10			
1,20						-	-							-	-							-	-						-	-			1,20			
1,30						-	-							-	-							-	-						-	-			1,30			
1,40						-	-							-	-							-	-						-	-			1,40			
1,50						-	-							-	-							-	-						-	-			1,50			
1,60						-	-							-	-							-	-						-	-			1,60			
1,70						-	-							-	-							-	-						-	-			1,70			
1,80						-	-							-	-							-	-						-	-			1,80			
1,90						-	-							-	-							-	-						-	-			1,90			
2,00						-	-							-	-							-	-						-	-			2,00			
2,20						-	-							-	-							-	-						-	-			2,20			
2,40						-	-							-	-							-	-				0,073	-	-				2,40			
2,60					0,310	-	20							-	-							-	-				0,134	-	-				2,60			
2,80						-	-							-	-							-	-				0,223	-	-				2,80			
3,00	0,090	0,090	0,090	0,090	0,098	1	20					0,198	-	120								-	-					-	-				3,00			
3,20					0,047	-	20					0,135	-	20								-	-					-	-				3,20			
3,40						-	-							-	-							-	-						-	-			3,40			
3,60						-	-							-	-							-	-						-	-			3,60			
3,80						-	-							-	-							-	-						-	-			3,80			
4,00						-	-							-	-							-	-						-	-			4,00			
4,40						-	-							-	-							-	-						-	-			4,40			
Totals:						1	60							0	140	0	20							0	0							0	60	0	0	
Nominal Transactions Value:							300,00							0,00		0,00							0,00									0,00		0,00		
Number of Trades:						1								0		0							0,00									0		0		

OPAP (CR)

(Contract Size: 100 Securities, Exercise Style: American, Physical Delivery)

Call Options																	Put Options																				
September 2013								October 2013								Other Months		September 2013								October 2013								Other Months			
Exercise Price	Open price	Price max	Price min	Last price	Closing price	Volume	Open Interest	Open price	Price max	Price min	Last price	Closing price	Volume	Open Interest	Volume	Open Interest	Open price	Price max	Price min	Last price	Closing price	Volume	Open Interest	Open price	Price max	Price min	Last price	Closing price	Volume	Open Interest	Volume	Open Interest	Exercise Price				
1,00	6,20				-	270					-				-			-				270	-				-			-				-			1,00
3,20						-	-					-				-								-	-					-	-					3,20	
3,40						-	-					-				-								-	-					-	-					3,40	
3,60						-	-					-				-								-	-					-	-					3,60	
3,80						-	-					-				-								-	-					-	-					3,80	
4,00						-	-					-				-								-	-					-	-					4,00	
4,40						-	-					-				-								-	-					-	-					4,40	
4,80						-	-					-				-								-	-					-	-					4,80	
5,20						-	-					-				-								-	-					-	-					5,20	
5,60						-	-					-				-								-	-					-	-					5,60	
5,80						-	-					-				-								-	-					-	-					5,80	
6,00						-	-					-				-										0,079				-	-					6,00	
6,20						-	-					-				-								-	-					-	-					6,20	
6,40						-	-					0,991				-	25								-	-					0,164	-	-			6,40	
6,60						-	-					-				-			0,133				-	135					-	-					6,60		
6,80						-	-					0,724				-	25								-	-					-	-					6,80
7,00						-	-					-				-								-	-					-	-					7,00	
7,20						-	-					0,506				-	25								-	-					-	-					7,20
7,40						-	-					-				-								-	-					-	-					7,40	
7,60						-	-	0,462	0,481	0,462	0,481	0,344	40	40									-	-					-	-					7,60		
7,80						-	-					-				-								-	-					-	-					7,80	
8,00						-	-					-				-								-	-					-	-					8,00	
8,40						-	-					-				-								-	-					-	-					8,40	
8,80						-	-					-				-								-	-					-	-					8,80	
9,00						-	-					-				-								-	-					-	-					9,00	
9,20						-	-					-				-								-	-					-	-					9,20	
9,40						-	-					-				-								-	-					-	-					9,40	
9,60						-	-					-				-								-	-					-	-					9,60	
9,80						-	-					-				-								-	-					-	-					9,80	
10,00						-	-					-				-								-	-					-	-					10,00	
20,00						-	270					-				-								12,80	-	270					-	-					20,00
Totals:						0	540							40	115	0	1.600							0	675							0	55	0	0		
Nominal Transactions Value:						0,00								30.400,00		0,00								0,00								0,00		0,00			
Number of Trades:						0								2		0								0,00								0		0			

OTE (CR)

(Contract Size: 100 Securities, Exercise Style: American, Physical Delivery)

Call Options																	Put Options																									
September 2013								October 2013								Other Months		September 2013								October 2013								Other Months								
Exercise Price	Open price	Price max	Price min	Last price	Closing price	Volume	Open Interest	Open price	Price max	Price min	Last price	Closing price	Volume	Open Interest	Volume	Open Interest	Open price	Price max	Price min	Last price	Closing price	Volume	Open Interest	Open price	Price max	Price min	Last price	Closing price	Volume	Open Interest	Volume	Open Interest	Exercise Price									
2,60						-	-							-	-							-	-					-	-					2,60								
2,80						-	-							-	-							-	-					-	-					2,80								
3,00						-	-							-	-							-	-					-	-					3,00								
3,20						-	-							-	-							-	-					-	-					3,20								
3,40						-	-							-	-							-	-					-	-					3,40								
3,60						-	-							-	-							-	-					-	-					3,60								
3,80						-	-							-	-							-	-					-	-					3,80								
4,00						-	-							-	-							-	-					-	-					4,00								
4,40						-	-							-	-							-	-					-	-					4,40								
4,80						-	-							-	-							-	-					-	-					4,80								
5,20						-	-							-	-							0,008	-	100				-	-					5,20								
5,40						-	-							-	-							-	-					-	-					5,40								
5,60						-	-							-	-							0,033	-	1				-	-					5,60								
5,80						-	-							-	-							-	-					-	-					5,80								
6,00						-	-							-	-							0,100	-	75				-	-					6,00								
6,20						-	-							-	-							-	-					-	-					6,20								
6,40						-	-							-	-							-	-					-	-					6,40								
6,60						-	-							-	-							-	-					-	-					6,60								
6,80					0,258	-	1							-	-							-	-					-	-					6,80								
7,00						-	-							-	-							-	-					-	-					7,00								
7,20						-	-							-	-							-	-					-	-					7,20								
7,40						-	-							-	-							-	-					-	-					7,40								
7,60						-	-							-	-							-	-					-	-					7,60								
8,00					0,028	-	50							-	-							-	-					-	-					8,00								
8,20						-	-							-	-							-	-					-	-					8,20								
8,40						-	-							-	-							1,79	-	35				-	-					8,40								
8,60						-	-							-	-							-	-					-	-					8,60								
8,80						-	-							-	-							-	-					-	-					8,80								
9,00						-	-							-	-							-	-					-	-					9,00								
9,20						-	-							-	-							-	-					-	-					9,20								
Totals:						0	51							0	0	0	1.600							0	211							0	0	0	0	0						
Nominal Transactions Value:						0,00						0,00						0,00						0,00						0,00						0,00						
Number of Trades:						0						0						0						0,00						0						0						

PIRAEUS BANK (CR) (Contract Size: 100 Securities, Exercise Style: American, Physical Delivery)

Call Options																	Put Options																			
September 2013								October 2013								Other Months		September 2013								October 2013								Other Months		
Exerise Price	Open price	Price max	Price min	Last price	Closing price	Volume	Open Interest	Open price	Price max	Price min	Last price	Closing price	Volume	Open Interest	Volume	Open Interest	Open price	Price max	Price min	Last price	Closing price	Volume	Open Interest	Open price	Price max	Price min	Last price	Closing price	Volume	Open Interest	Volume	Open Interest	Exerise Price			
0,500						-	-							-	-							-	-						-	-			0,500			
0,600						-	-							-	-							-	-						-	-			0,600			
0,700						-	-							-	-							-	-						-	-			0,700			
0,800						-	-							-	-							-	-						-	-			0,800			
0,900						-	-							-	-							-	-						-	-			0,900			
1,00						-	-							-	-							-	-						-	-			1,00			
1,10					0,021	-	5							-	-							-	-						-	-			1,10			
1,20						-	-							-	-							-	-						-	-			1,20			
1,30						-	-							-	-							-	-						-	-			1,30			
1,40						-	-							-	-							-	-						-	-			1,40			
1,50						-	-							-	-							-	-						-	-			1,50			
Totals:						0	5							0	0	0	0					0	0					0	0	0	0	0				
Nominal Transactions Value:							0,00							0,00	0,00	0,00					0,00							0,00	0,00	0,00	0,00					
Number of Trades:							0							0	0	0					0,00							0	0	0	0					



PPC (CR) (Contract Size: 100 Securities, Exercise Style: American, Physical Delivery)

Call Options																	Put Options																							
	September 2013							October 2013							Other Months			September 2013							October 2013							Other Months								
Exerise Price	Open price	Price max	Price min	Last price	Closing price	Volume	Open Interest	Open price	Price max	Price min	Last price	Closing price	Volume	Open Interest	Volume	Open Interest	Open price	Price max	Price min	Last price	Closing price	Volume	Open Interest	Open price	Price max	Price min	Last price	Closing price	Volume	Open Interest	Volume	Open Interest	Exerise Price							
3,20						-	-							-	-							-	-						-	-				3,20						
3,40						-	-							-	-							-	-						-	-				3,40						
3,60						-	-							-	-							-	-						-	-				3,60						
3,80						-	-							-	-							-	-						-	-				3,80						
4,00						-	-							-	-							-	-						-	-				4,00						
4,40					2,59	-	30							-	-							-	-						-	-				4,40						
4,80						-	-							-	-							-	-						-	-				4,80						
5,20						-	-							-	-							-	-						-	-				5,20						
5,60						-	-							-	-							-	-						-	-				5,60						
6,00						-	-							-	-							-	-						-	-				6,00						
6,40						-	-							-	-							-	-						-	-				6,40						
6,60						-	-							-	-							-	-						-	-				6,60						
6,80					0,452	-	10							-	-							-	-						-	-				6,80						
7,00						-	-							-	-							-	-						-	-				7,00						
7,20						-	-							-	-							-	-						-	-				7,20						
7,40						-	-							-	-							-	-						-	-				7,40						
7,60						-	-							-	-							-	-						-	-				7,60						
7,80						-	-							-	-							-	-						-	-				7,80						
8,00						-	-							-	-							-	-						-	-				8,00						
8,20						-	-							-	-							-	-						-	-				8,20						
8,40						-	-							-	-							-	-						-	-				8,40						
8,60						-	-							-	-							-	-						-	-				8,60						
8,80						-	-							-	-							-	-						-	-				8,80						
9,00						-	-							-	-							-	-						-	-				9,00						
9,20						-	-							-	-							-	-						-	-				9,20						
9,60						-	-							-	-							-	-						-	-				9,60						
10,00						-	-							-	-							-	-						-	-				10,00						
Totals:						0	40							0	0	0	0							0	400							0	0	0	0	0	0			
Nominal Transactions Value:						0,00								0,00		0,00								0,00								0,00		0,00		0,00		0,00		
Number of Trades:						0								0		0								0,00								0		0		0		0		

PPC (CR)

(Contract Size: 100 Securities, Exercise Style: American, Physical Delivery)

Call Options																	Put Options																	
Exercise Price	September 2013							October 2013							Other Months			September 2013							October 2013							Other Months		
	Open price	Price max	Price min	Last price	Closing price	Volume	Open Interest	Open price	Price max	Price min	Last price	Closing price	Volume	Open Interest	Volume	Open Interest	Open price	Price max	Price min	Last price	Closing price	Volume	Open Interest	Open price	Price max	Price min	Last price	Closing price	Volume	Open Interest	Volume	Open Interest	Exercise Price	

Securities	Type[4]	Stock Repo [1]						Stock Reverse Repo [2]								Repurchase Agreements [3]							
		Trans. price	chg.	Trades	Volume	Transactions Value	Open Interest[5]	Price max	Price min	Last price	Last Ask	Trades	Volume	Transactions Value	Open Interest[5]	Price max	Price min	Last price	Last Ask	Trades	Volume	Transactions Value	Open Interest[5]
AEGEAN AIRLINES (CR)	SR RA	100,00	---	---	---	---	85	---	---	---	42@3%	---	---	---	---	---	---	---	---	---	---	---	---
ALPHA BANK (CR)	SR RA	100,00	---	---	---	---	54.615	---	---	---	34848@3,7%	---	---	---	50	---	---	---	---	---	---	---	1.562
ALPHA ETF FTSE Athex Large Cap	SR RA	100,00	---	---	---	---	---	---	---	---	---	---	---	---	---	---	---	---	---	---	---	---	2.664
ALUMIL (CR)	RA	---	---	---	---	---	---	---	---	---	---	---	---	---	---	---	---	---	---	---	---	---	---
ATHENS MEDICAL CENTER SA (CR)	SR RA	100,00	---	---	---	---	434	---	---	---	217@3%	---	---	---	---	---	---	---	---	---	---	---	---
AUTOHELLAS SA (CR)	SR RA	100,00	---	---	---	---	50	3,00%	3,00%	3,00%	20@3%	1	5	1.075,0	5	---	---	---	---	---	---	---	---
CC HBC AG (CR)	SR RA	100,27	0,02	---	---	---	1.251	---	---	---	489@3%	---	---	---	80	---	---	---	---	---	---	---	118
CENTRIC HOLDINGS (CR)	SR RA	100,00	---	---	---	---	200	---	---	---	155@8,2%	---	---	---	---	---	---	---	---	---	---	---	---
CORINTH PIPEWORKS SA (CR)	SR RA	100,00	---	---	---	---	160	---	---	---	80@3%	---	---	---	---	---	---	---	---	---	---	---	---
CRETE PLASTICS SA (CR)	SR RA	100,00	---	---	---	---	---	---	---	---	---	---	---	---	---	---	---	---	---	---	---	---	---
ELLAKTOR (CR)	SR RA	100,03	---	---	---	---	2.881	---	---	---	1430@3%	---	---	---	10	---	---	---	---	---	---	---	---
ELTON SA (CR)	SR RA	100,00	---	---	---	---	50	---	---	---	35@3%	---	---	---	---	---	---	---	---	---	---	---	---
ELVAL SA. (CB)	SR RA	100,00	---	---	---	---	621	---	---	---	310@3%	---	---	---	---	---	---	---	---	---	---	---	---
EUROBANK ERGASIAS (CR)	SR RA	100,20	0,01	---	---	---	1.523	---	---	---	15@3,5%	---	---	---	977	---	---	---	---	---	---	---	28
EUROBANK PROPERTIES REIC (CR)	SR RA	100,09	---	---	---	---	1.641	---	---	---	705@3%	---	---	---	115	---	---	---	---	---	---	---	---
EUROPEAN RELIANCE INSUR. (CR)	SR RA	100,00	---	---	---	---	---	---	---	---	---	---	---	---	---	---	---	---	---	---	---	---	---
EYDAP S.A. (CR)	SR RA	100,08	0,01	---	---	---	325	---	---	---	149@3%	---	---	---	8	---	---	---	---	---	---	---	16
FOLLI FOLLIE (CR)	SR RA	100,12	0,01	---	---	---	778	---	---	---	369@3%	---	---	---	20	---	---	---	---	---	---	---	10
FOURLIS (CR)	SR RA	100,00	---	---	---	---	195	---	---	---	97@3%	---	---	---	---	---	---	---	---	---	---	---	---
FRIGOGLASS SA (CR)	SR RA	100,24	---	---	---	---	229	---	---	---	99@3%	---	---	---	15	---	---	---	---	---	---	---	---
GEK TERNA (CR)	SR RA	100,01	---	---	---	---	624	---	---	---	307@3%	---	---	---	5	---	---	---	---	---	---	---	---
GR. SARANTIS SA (CR)	SR RA	100,00	---	---	---	---	62	---	---	---	31@3%	---	---	---	---	---	---	---	---	---	---	---	---
HALKOR SA (CB)	SR RA	100,00	---	---	---	---	415	---	---	---	207@3%	---	---	---	---	---	---	---	---	---	---	---	---
HELLENIC CABLES SA (CR)	SR RA	100,00	---	---	---	---	84	---	---	---	42@3%	---	---	---	---	---	---	---	---	---	---	---	---
HELLENIC EXCHANGES (CR)	SR RA	100,12	0,01	---	---	---	5.993	---	---	---	2666@3%	---	---	---	330	---	---	---	---	---	---	---	---
HELLENIC PETROLEUM (CR)	SR RA	100,17	0,01	---	---	---	2.224	3,00%	3,00%	3,00%	784@3%	1	150	107.850,0	328	---	---	---	---	---	---	---	46
HYGEIA SA (CR)	SR RA	100,00	---	---	---	---	500	---	---	---	200@4,4%	---	---	---	---	---	---	---	---	---	---	---	---
IASO SA (CR)	SR RA	100,00	---	---	---	---	86	---	---	---	43@3%	---	---	---	---	---	---	---	---	---	---	---	---
IKTINOS HELLAS SA (CR)	SR RA	100,00	---	---	---	---	10	---	---	---	---	---	---	---	---	---	---	---	---	---	---	---	---
INFORM P. LYKOS SA (CR)	SR RA	100,00	---	---	---	---	203	---	---	---	101@3%	---	---	---	---	---	---	---	---	---	---	---	---
INTRACOM CONSTR. (CR)	SR RA	100,00	---	---	---	---	37	---	---	---	18@3%	---	---	---	---	---	---	---	---	---	---	---	---

Stock Lending Notes

- [1] - Stock Repo: A Contract for selling stocks to HELEX with a Repurchase Right (According to ATHEX BoD Resolution No 17)
- [2] - Stock Reverse Repo: A Contract for buying stocks from HELEX with a Resell Right. (According to ATHEX BoD Resolution No 18)
- [3] - Standardized Repurchase Agreements: A Contract that constitutes a standardized agreement for the purchase or sale of shares, with repurchase or resell pact (According to ATHEX BoD Resolution No 20)
- [4] - Type of products is divided into SR: Stock Repo or Stock Reverse Repo, and RA: Repurchase Agreements.
- [5] - Open Interest in all Series (both tradeable or non-tradeable).

Securities	Type[4]	Stock Repo [1]						Stock Reverse Repo [2]								Repurchase Agreements [3]							
		Trans. price	chg.	Trades	Volume	Transactions Value	Open Interest[5]	Price max	Price min	Last price	Last Ask	Trades	Volume	Transactions Value	Open Interest[5]	Price max	Price min	Last price	Last Ask	Trades	Volume	Transactions Value	Open Interest[5]
INTRACOM HOLDINGS (CR)	SR RA	100,00	---	---	---	---	665	---	---	---	436@4%	---	---	---	---	---	---	---	---	---	---	---	---
INTRALOT (CR)	SR RA	100,03	---	---	---	---	4.196	---	---	---	1798@3%	---	---	---	300	---	---	---	---	---	---	---	---
J & P - AVAX SA (CR)	SR RA	100,00	---	---	---	---	235	---	---	---	117@3%	---	---	---	---	---	---	---	---	---	---	---	---
JUMBO SA (CR)	SR RA	100,08	---	---	---	---	2.358	---	---	---	1090@3%	---	---	---	84	---	---	---	---	---	---	---	20
KLEEMAN HELLAS SA (CR)	SR RA	100,00	---	---	---	---	982	---	---	---	491@3%	---	---	---	---	---	---	---	---	---	---	---	---
KLOUKINAS - LAPPAS SA (CR)	SR RA	100,00	---	---	---	---	---	---	---	---	---	---	---	---	---	---	---	---	---	---	---	---	---
KORRES (CR)	SR RA	100,00	---	---	---	---	---	---	---	---	---	---	---	---	---	---	---	---	---	---	---	---	---
KRI-KRI S.A. (CR)	SR RA	100,00	---	---	---	---	549	---	---	---	274@3%	---	---	---	---	---	---	---	---	---	---	---	---
LAMDA DEVELOPMENT SA (CR)	SR RA	100,00	---	---	---	---	890	---	---	---	445@3%	---	---	---	---	---	---	---	---	---	---	---	---
LOULIS MILLS SA (CR)	SR RA	100,00	---	---	---	---	---	---	---	---	---	---	---	---	---	---	---	---	---	---	---	---	---
MARFIN INVESTMENT GROUP (CR)	SR RA	100,00	---	---	---	---	582	---	---	---	---	---	---	---	---	---	---	---	---	---	---	---	---
METKA (CR)	SR RA	100,23	0,01	---	---	---	641	---	---	---	275@3%	---	---	---	45	---	---	---	---	---	---	---	9
MLS MULTIMEDIA SA (CR)	SR RA	100,00	---	---	---	---	99	---	---	---	49@3%	---	---	---	---	---	---	---	---	---	---	---	---
MOTOR OIL (CR)	SR RA	100,19	0,01	---	---	---	2.057	---	---	---	918@3%	---	---	---	110	---	---	---	---	---	---	---	17
MYTILINEOS HOLDINGS (CR)	SR RA	100,02	---	---	---	---	3.875	---	---	---	1917@3%	---	---	---	20	---	---	---	---	---	---	---	---
NATIONAL BANK (CR)	SR RA	100,09	---	---	---	---	8.846	3,00%	3,00%	3,00%	3613@3%	1	300	85.500,0	810	---	---	---	---	---	---	---	346
NBGAM ETF	SR RA	100,00	---	---	---	---	---	---	---	---	---	---	---	---	---	---	---	---	---	---	---	---	100
NBGAM ETF GREECE & TURKEY 30	SR RA	100,00	---	---	---	---	---	---	---	---	---	---	---	---	---	---	---	---	---	---	---	---	35
NIREFS SA (CR)	SR RA	100,00	---	---	---	---	326	---	---	---	218@4,2%	---	---	---	---	---	---	---	---	---	---	---	---
OPAP (CR)	SR RA	100,07	---	---	---	---	5.721	---	---	---	2750@3%	---	---	---	110	---	---	---	---	---	---	---	367
OTE (CR)	SR RA	100,30	0,01	---	---	---	5.262	3,00%	3,00%	3,00%	1700@3%	1	160	105.760,0	931	---	---	---	---	---	---	---	162
P.P.A. S.A. (CR)	SR RA	100,00	---	---	---	---	115	---	---	---	57@3%	---	---	---	---	---	---	---	---	---	---	---	---
PETROPOULOS PETROS (CR)	RA	---	---	---	---	---	---	---	---	---	---	---	---	---	---	---	---	---	---	---	---	---	---
PIRAEUS BANK (CR)	SR RA	100,00	---	---	---	---	8.783	---	---	---	4339@3%	---	---	---	52	---	---	---	---	---	---	---	---
PPC (CR)	SR RA	100,49	0,02	---	---	---	1.933	---	---	---	498@3%	---	---	---	308	---	---	---	---	---	---	---	129
QUEST HOLDINGS (CR)	SR RA	100,00	---	---	---	---	39	---	---	---	19@3%	---	---	---	---	---	---	---	---	---	---	---	---
REDS S.A. (CR)	SR RA	100,00	---	---	---	---	572	---	---	---	366@3,7%	---	---	---	---	---	---	---	---	---	---	---	---
SELECTED TEXT. IND. ASSOC (CR)	SR RA	100,00	---	---	---	---	50	---	---	---	36@6,3%	---	---	---	---	---	---	---	---	---	---	---	---
SIDENOR (CR)	SR RA	100,00	---	---	---	---	442	---	---	---	221@3%	---	---	---	---	---	---	---	---	---	---	---	---
TECHNICAL OLYMPIC SA (CR)	SR RA	100,00	---	---	---	---	100	---	---	---	50@3%	---	---	---	---	---	---	---	---	---	---	---	---
TERNA ENERGY (CR)	SR RA	100,17	---	---	---	---	290	---	---	---	96@3%	---	---	---	49	---	---	---	---	---	---	---	5

## Stock Lending Notes

[1] - Stock Repo: A Contract for selling stocks to HELEX with a Repurchase Right (According to ATHEX BoD Resolution No 17)

[2] - Stock Reverse Repo: A Contract for buying stocks from HELEX with a Resell Right. (According to ATHEX BoD Resolution No 18)

[3] - Standardized Repurchase Agreements: A Contract that constitutes a standardized agreement for the purchase or sale of shares, with repurchase or resell pact (According to ATHEX BoD Resolution No 20)

[4] - Type of products is divided into SR: Stock Repo or Stock Reverse Repo, and RA: Repurchase Agreements.

[5] - Open Interest in all Series (both tradeable or non-tradeable).

Securities	Type[4]	Stock Repo [1]						Stock Reverse Repo [2]								Repurchase Agreements [3]							
		Trans. price	chg.	Trades	Volume	Transactions Value	Open Interest[5]	Price max	Price min	Last price	Last Ask	Trades	Volume	Transactions Value	Open Interest[5]	Price max	Price min	Last price	Last Ask	Trades	Volume	Transactions Value	Open Interest[5]
THESSALONIKA WATER & SEWERAGE	SR RA	100,00	---	---	---	---	1.270	---	---	---	635@3%	---	---	---	---	---	---	---	---	---	---	---	---
THRACE PLASTICS SA (CR)	SR RA	100,00	---	---	---	---	1.010	---	---	---	505@3%	---	---	---	---	---	---	---	---	---	---	---	---
TITAN CEMENT (CR)	SR RA	100,02	---	---	---	---	9.474	---	---	---	4677@3%	---	---	---	60	---	---	---	---	---	---	---	12
TPA SA (CR)	SR RA	100,00	---	---	---	---	6	---	---	---	---	---	---	---	---	---	---	---	---	---	---	---	---
TRASTOR REAL EST. INV. CO.(CR)	SR RA	100,00	---	---	---	---	284	---	---	---	142@3%	---	---	---	---	---	---	---	---	---	---	---	---
VIOHALCO (CB)	SR RA	100,01	---	---	---	---	3.990	---	---	---	1973@3%	---	---	---	22	---	---	---	---	---	---	---	30

Stock Lending Notes

- [1] - Stock Repo: A Contract for selling stocks to HELEX with a Repurchase Right (According to ATHEX BoD Resolution No 17)
- [2] - Stock Reverse Repo: A Contract for buying stocks from HELEX with a Resell Right. (According to ATHEX BoD Resolution No 18)
- [3] - Standardized Repurchase Agreements: A Contract that constitutes a standardized agreement for the purchase or sale of shares, with repurchase or resell pact (According to ATHEX BoD Resolution No 20)
- [4] - Type of products is divided into SR: Stock Repo or Stock Reverse Repo, and RA: Repurchase Agreements.
- [5] - Open Interest in all Series (both tradeable or non-tradeable).

## Sectors codification for listed companies

533	-	Exploration & Production	537	-	Integrated Oil & Gas
1353	-	Commodity Chemicals	1357	-	Specialty Chemicals
1753	-	Aluminum	1755	-	Nonferrous Metals
1757	-	Steel	1775	-	General Mining
2353	-	Building Materials & Fixtures	2357	-	Heavy Construction
2723	-	Containers & Packaging	2727	-	Diversified Industrials
2733	-	Electrical Components & Equipment	2753	-	Commercial Vehicles & Trucks
2757	-	Industrial Machinery	2773	-	Marine Transportation
2777	-	Transportation Services	2791	-	Business Support Services
2797	-	Industrial Suppliers	3535	-	Distillers & Vintners
3537	-	Soft Drinks	3573	-	Farming & Fishing
3577	-	Food Products	3722	-	Durable Household Products
3726	-	Furnishings	3728	-	Home Construction
3747	-	Toys	3763	-	Clothing & Accessories
3765	-	Footwear	3767	-	Personal Products
3785	-	Tobacco	4533	-	Health Care Providers
4535	-	Medical Equipment	4577	-	Pharmaceuticals
5337	-	Food Retailers & Wholesalers	5371	-	Apparel Retailers
5373	-	Broadline Retailers	5375	-	Home Improvement Retailers
5379	-	Specialty Retailers	5553	-	Broadcasting & Entertainment
5555	-	Media Agencies	5557	-	Publishing
5751	-	Airlines	5752	-	Gambling
5753	-	Hotels	5755	-	Recreational Services
5757	-	Restaurants & Bars	5759	-	Travel & Tourism
6535	-	Fixed Line Telecommunications	6575	-	Mobile Telecommunications
7535	-	Conventional Electricity	7537	-	Alternative Electricity
7577	-	Water	8355	-	Banks
8534	-	Insurance Brokers	8536	-	Property & Casualty Insurance
8633	-	Real Estate Holding & Development	8637	-	Real Estate Services
8671	-	Industrial & Office REITs	8675	-	Specialty REITs
8775	-	Specialty Finance	8777	-	Investment Services
8985	-	Equity Investment Instruments	9533	-	Computer Services
9535	-	Internet	9537	-	Software
9572	-	Computer Hardware	9574	-	Electronic Office Equipment
9578	-	Telecommunications Equipment	11000	-	ETF

