

# Daily Official List

Hellenic Exchanges – Athens Stock Exchange S.A.

Wednesday, 12 March, 2014

Year: 135 Trading Day No: 48

ΕΛΛΗΝΙΚΑ ΧΡΗΜΑΤΙΣΤΗΡΙΑ - ΧΡΗΜΑΤΙΣΤΗΡΙΟ ΑΘΗΝΩΝ

ΑΝΩΝΥΜΗ ΕΤΑΙΡΕΙΑ ΣΥΜΜΕΤΟΧΩΝ

HELLENIC EXCHANGES – ATHENS STOCK EXCHANGE

**Disclaimer:**

Hellenic Exchanges-Athens Exchange endeavours to ensure that the data and other material ("Information") presented on the Daily Official List are accurate and complete, but it is not liable for any errors or omissions of data or /and for the accuracy, credibility, updating and completeness of the aforesaid information nor it has any liability arising directly or indirectly from the use of the above Information.

The Company is not liable for the accuracy of the data included in listed companies' announcements. Only the sender of such an announcement is fully and solely liable for any infringement of third party's rights from the content of such announcement. All contents of the Daily Official List are provided only for information purposes and do not constitute investment advice or solicitation to invest in securities or other products listed for trading on the Exchange.

You acknowledge and agree that the Company is the owner of any property rights related to any Information appearing on the Daily Official List including intellectual property rights copyright, trademarks, etc.

The above data are a property of the Hellenic Exchanges-Athens Exchange and are copyright protected. Users are forbidden to reproduce, modify, copy, sale, transmit or redistribute, by all reproduction means and methods, part or the whole of the above data, without reference to their source.

The commercial exploitation of these data is, also, forbidden by third parties. Hellenic Exchanges-Athens Exchange does not carry any responsibility, direct or indirect, derived from usage or accidental alteration of the above data when used by third parties.

---

**Hellenic Exchanges – Athens Stock Exchange S.A.**

110 Athinon Ave., 10442 Athens, Tel: (210) 33.66.800, Fax: (210) 32.13.938

[www.athex.gr](http://www.athex.gr)

---

**Thessalonica Stock Exchange Center (T.S.E.C)**

16-18 Katouni Str., Thessalonica 546 25 Tel: (2310) 567.667, Fax: (2310) 530.545

**Athex Members Guarantee Fund**

14-16 Fidiou Str., Athens 106 78, Tel: (210) 33.04.682, Fax: (210) 33.04.155

**Hellenic Republic Capital Market Commission**

1 Kolokotroni Str. & 1 Stadiou Str., Athens 10562 Tel: (210) 33.77.100 Fax: (210) 33.77.173

---

**Table of Contents**

---

**Section 1: Statistical Figures of Securities and Derivatives Markets**

Summary of Markets

Athex Indices

Analytic Figures for Athex Market's Boards and Categories

Trading Details by Athex Sectors and ETFs Category

Top 10 best &amp; worst performing Shares

Derivatives Summary

**Section 2: Analytic Figures of Shares Transactions**

Analytic Figures of Shares Transactions

Shares' Notes

**Section 3: Figures of Securities Transactions**

Securities Blocks Details

Shares Rights Details

Shares Short Selling

Stock Borrowing

Shares Forced Sales

Forced Sales Registered Shares

Exchange Traded Funds (ETFs) Characteristics

**Section 5: Bonds traded in Fixed Income Assets Market**

Corporate Bonds

Government Bonds

Treasury Bills &amp; Zero Coupon Government Bonds

Government Bonds Traded with the Open Outcry Method

State Banks Bonds

**Section 6: Additional Infos**

Athex &amp; ATHEXClear Members List

List of Stocks under Market Making operations

Equity Investment Instruments Acknowledgements

**Section 7: Derivatives Market Analytic Figures**

Index Futures

Stock Futures

Index Options

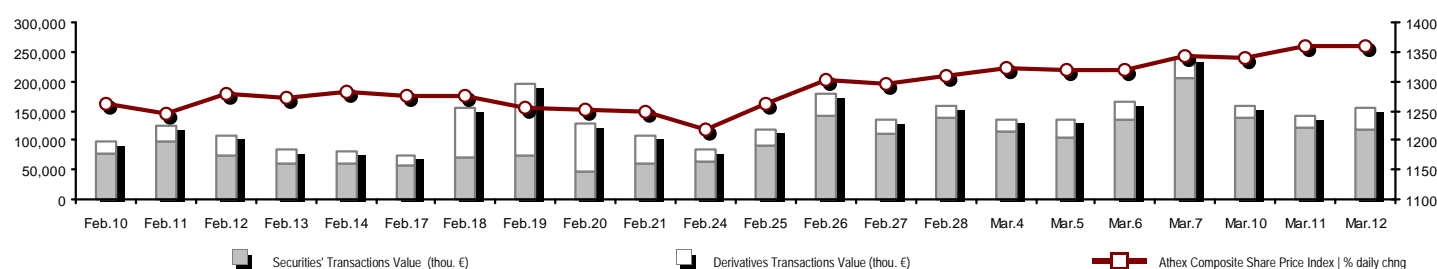
Stock Options

Stock Lending Analytic Figures (Repo Contracts)

**Appendix A: Sectors codification for listed companies**

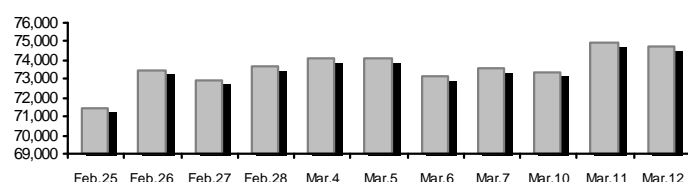
## Summary of Markets

Athex Composite Share Price Index vs Shares and Derivatives Transactions Value

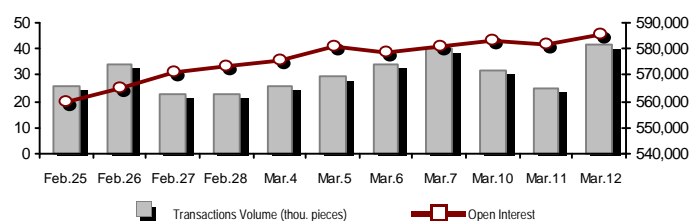


Total Transactions Value (Securities/Derivatives) (thou. €):		156,367.58		
Athex Capitalisation (mill. €) **: 74,748.36			Derivatives Total Open Interest: 585,331	
Daily change: mill. €   %: -170.42 -0.23%			in Index Futures   % daily chng: 53,738 2.40%	
Yearly Avg Capitalisation: mill. €   % chng prev year Avg: 71,117.92 37.70%			in Stock Futures   % daily chng: 179,581 1.05%	
Athex Composite Share Price Index   % daily chng: 1,359.81 -0.04%			in Index Options   % daily chng: 7,372 6.96%	
Athex Composite Share Price Index Capitalisation (mill. €): 65,582.14			in Stock Options   % daily chng: 1,025 2.40%	
Daily change (mill. €): -172.16			in Stock Repos/Reverse Repos/RA   % daily chng: 343,615 0.04%	
Securities' Transactions Value (thou. €): 119,268.56			Derivatives Transactions Value (thou. €): 37,099.02	
Daily change: thou. €   %: -2,969.62 -2.43%			Daily change: thou. €   %: 16,300.36 78.37%	
YtD Avg Trans. Value: thou. €   % chng prev year Avg: 101,288.21 16.94%			YtD Avg Trans. Value: thou. €   % chng prev year Avg: 37,444.13 45.50%	
Short Selling Trans. Value: mill. €   % in total Value				
Short Covering Trans. Value: mill. €   % in total Value				
Transactions Value of Blocks (thou. €): 11,438.24				
Bonds Transactions Value (thou. €): 0.00				
Securities' Transactions Volume (thou. Pieces): 49,316.93			Derivatives Contracts Volume: 41,736	
Daily change: thou. pieces   %: -1,228.10 -2.43%			Daily change: pieces   %: 16,427 64.91%	
YtD Avg Volume: thou. pieces   % chng prev year Avg: 46,063.61 -13.92%			YtD Avg Derivatives Contracts   % chng prev year Avg: 36,303 -12.66%	
Short Selling Volume: thou pieces   % in total Volume				
Short Covering Volume: thou. pieces   % in total Volume				
Transactions Volume of Blocks (thou. Pieces): 1,661.95				
Bonds Transactions Volume (thou. pieces): 0.00				
Securities' Trades Number: 35,965			Derivatives Trades Number: 2,889	
Daily change: number   %: 4,048 12.68%			Daily change: number   %: 539 22.94%	
YtD Avg Derivatives Trades number   % chng prev year Avg: 30,051 1.30%			YtD Avg Derivatives Trades number   % chng prev year Avg: 2,677 1.70%	
Number of Blocks: 13				
Number of Bonds Transactions: 0				

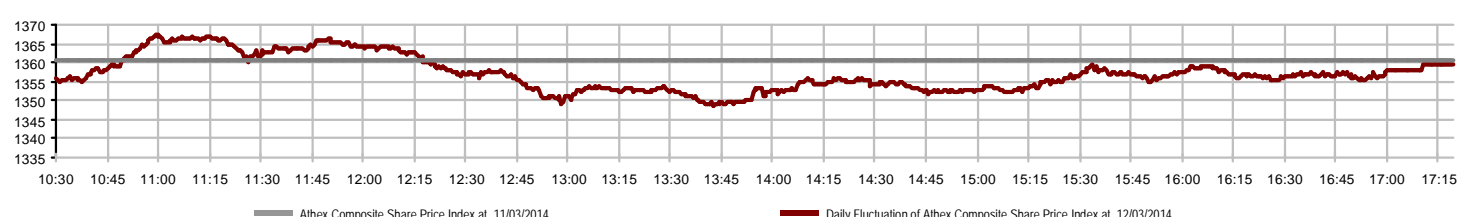
Athex Capitalisation (mill. €) \*\*



Derivatives Transactions Volume and Open Interest



Daily Fluctuation of Athex Composite Share Price Index



## Athex Indices

Index name	12/03/2014	11/03/2014	pts.	%	Min	Max	Year min	Year max	Year change
Athex Composite Share Price Index	1,359.81	1,360.37	-0.56	-0.04%	1,348.79	1,367.16	1,115.09	1,367.16	16.95% #
FTSE/Athex Large Cap	436.39	438.03	-1.64	-0.37%	433.11	439.60	365.97	439.60	13.40% #
FTSE/ATHEX Custom Capped	1,398.67	1,375.25	23.42	1.70%			1,184.20	1,398.67	13.75% #
FTSE/ATHEX Custom Capped - USD	1,390.50	1,368.50	22.00	1.61%			1,158.43	1,390.50	14.47% #
FTSE/Athex Mid Cap Index	1,282.15	1,286.04	-3.89	-0.30%	1,280.38	1,296.39	1,083.43	1,304.34	9.89% #
FTSE/ATHEX-CSE Banking Index	146.88	147.67	-0.79	-0.53%	145.26	147.42	125.25	156.48	7.89% #
FTSE/ATHEX Global Traders Index Plus	1,807.51	1,803.62	3.89	0.22%	1,798.42	1,816.36	1,486.71	1,816.36	16.55% #
FTSE/ATHEX Global Traders Index	2,138.74	2,122.51	16.23	0.76%	2,121.26	2,147.02	1,697.86	2,147.02	23.31% #
FTSE/ATHEX Mid & Small Cap Factor-Weighted Ind	1,459.93	1,435.63	24.30	1.69%	1,424.70	1,461.44	1,279.09	1,471.85	14.14% #
Greece & Turkey 30 Price Index	621.79	622.82	-1.03	-0.17%	611.12	622.82	570.55	674.07	-3.98% €
ATHEX Mid & SmallCap Price Index	2,849.05	2,826.81	22.24	0.79%	2,815.95	2,863.76	2,573.35	2,917.89	10.70% #
FTSE/Athex Market Index	1,045.31	1,049.04	-3.73	-0.36%	1,037.81	1,053.01	878.20	1,053.01	13.15% #
FTSE/Med 100	5,150.14	5,106.32	43.82	0.86%			4,605.95	5,163.23	12.71% #
Athex Composite Index Total Return Index	1,969.68	1,970.48	-0.80	-0.04%	1,953.70	1,980.32	1,615.19	1,980.32	17.00% #
FTSE/Athex Large Cap Total Return	597.99	600.23	-2.24	-0.37%			507.16	600.23	13.39% #
FTSE/ATHEX Large Cap Net Total Return	1,749.67	1,756.23	-6.56	-0.37%	1,736.53	1,762.54	1,467.32	1,762.54	13.40% #
FTSE/ATHEX Custom Capped Total Return	1,460.75	1,436.29	24.46	1.70%			1,236.76	1,460.75	13.75% #
FTSE/ATHEX Custom Capped - USD Total Return	1,452.21	1,429.24	22.97	1.61%			1,209.85	1,452.21	14.47% #
FTSE/Athex Mid Cap Total Return	1,594.07	1,598.91	-4.84	-0.30%			1,355.79	1,599.15	10.38% #
FTSE/ATHEX-CSE Banking Total Return Index	139.23	139.98	-0.75	-0.54%			121.20	146.35	7.87% #
Greece & Turkey 30 Total Return Index	744.99	736.42	8.57	1.16%			697.73	802.55	-3.82% €
Hellenic Mid & Small Cap Index	1,328.91	1,326.93	1.98	0.15%	1,318.71	1,337.15	1,061.82	1,337.15	19.31% #
FTSE/Athex Banks	194.06	195.11	-1.05	-0.54%	191.92	194.78	165.49	206.75	7.88% #
FTSE/Athex Insurance	1,591.04	1,580.50	10.54	0.67%	1,548.89	1,601.57	1,306.55	1,601.57	20.80% #
FTSE/Athex Financial Services	2,144.87	2,132.50	12.37	0.58%	2,102.52	2,156.72	1,599.55	2,156.72	21.28% #
FTSE/Athex Industrial Goods & Services	3,657.55	3,642.37	15.18	0.42%	3,615.36	3,673.45	3,046.48	3,673.45	12.72% #
FTSE/Athex Retail	3,845.86	3,801.45	44.41	1.17%	3,788.70	3,925.39	3,090.34	3,925.39	16.58% #
FTSE/ATHEX Real Estate	2,750.74	2,763.80	-13.06	-0.47%	2,719.73	2,782.69	2,194.73	2,833.78	24.09% #
FTSE/Athex Personal & Household Goods	7,429.28	7,649.84	-220.56	-2.88%	7,348.52	7,560.82	5,965.34	7,649.84	25.55% #
FTSE/Athex Food & Beverage	6,693.52	6,705.15	-11.63	-0.17%	6,653.04	6,815.68	6,557.96	8,227.06	-14.71% €
FTSE/Athex Basic Resources	3,339.31	3,340.03	-0.72	-0.02%	3,300.31	3,356.44	2,535.89	3,356.44	21.35% #
FTSE/Athex Construction & Materials	3,261.44	3,272.29	-10.85	-0.33%	3,259.22	3,311.02	2,531.26	3,324.26	21.62% #
FTSE/Athex Oil & Gas	3,200.75	3,172.04	28.71	0.91%	3,150.15	3,200.75	2,686.40	3,200.75	11.65% #
FTSE/Athex Chemicals	6,406.60	6,338.34	68.26	1.08%	6,319.97	6,453.87	5,783.18	6,737.88	6.84% #
FTSE/Athex Media	2,223.54	2,267.87	-44.33	-1.95%	2,105.35	2,267.87	1,543.92	2,777.58	44.02% #
FTSE/Athex Travel & Leisure	2,153.65	2,180.97	-27.32	-1.25%	2,129.06	2,183.81	1,634.38	2,223.22	28.19% #
FTSE/Athex Technology	1,079.05	1,073.85	5.20	0.48%	1,072.54	1,086.79	786.21	1,086.79	37.03% #
FTSE/Athex Telecommunications	3,627.89	3,570.08	57.81	1.62%	3,553.57	3,627.89	2,675.50	3,627.89	36.30% #
FTSE/Athex Utilities	4,327.06	4,427.53	-100.47	-2.27%	4,279.51	4,471.04	3,308.43	4,471.04	14.09% #
FTSE/Athex Health Care	286.18	283.36	2.82	1.00%	278.63	286.67	220.03	286.67	28.33% #
Athex All Share Index	264.36	265.01	-0.64	-0.24%			226.62	265.01	12.27% #

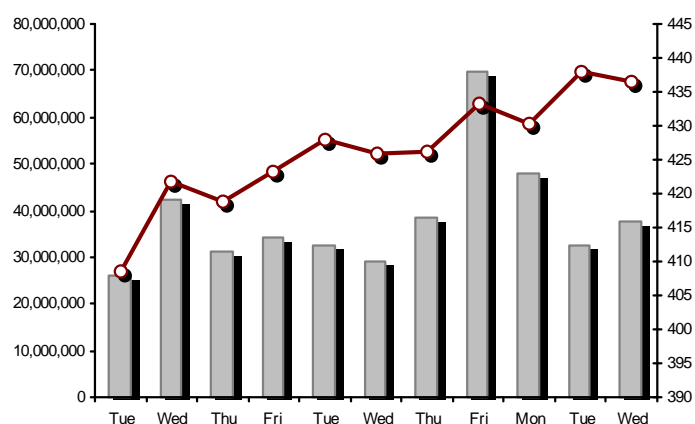
Note 1: Greece & Turkey 30 Pr data is the indicative at 17:20, whereas FTSE/ATHEX Custom Capped, FTSE/ATHEX Custom Capped - USD, FTSE/ATHEX Custom Capped TR, FTSE/ATHEX Custom Capped - USD TR, FTSE/Med 100 & Greece & Turkey 30 Rt closing prices refer to the previous trading day of 11/03/2014.

Note 2: The Hellenic Mid & Small Cap Index is a Customized index calculated by the Athens Exchange.

## Athex Indices

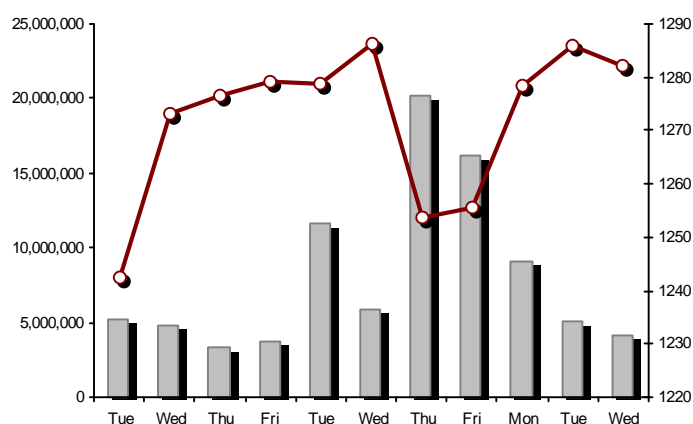
FTSE/Large Cap

12/03/2014: -0.37%



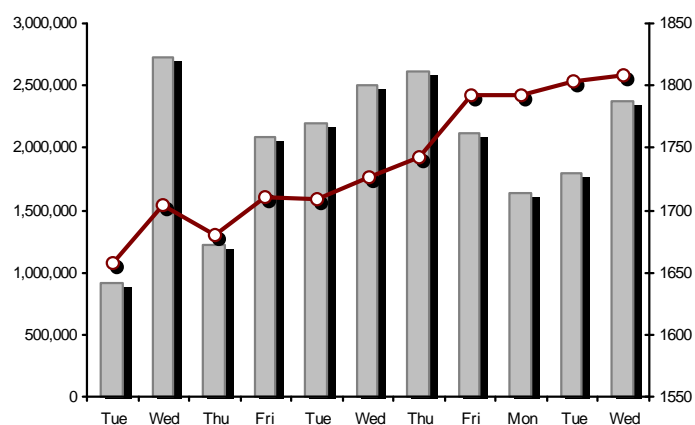
FTSE/Athex Mid Cap Index

12/03/2014: -0.30%



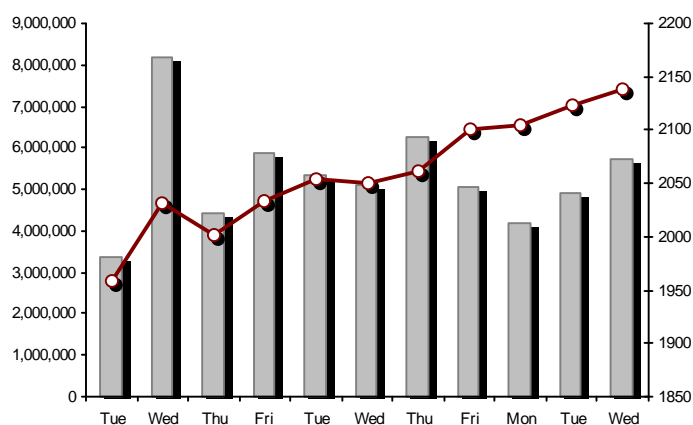
FTSE/ATHEX Global Traders Index Plus

12/03/2014: 0.22%



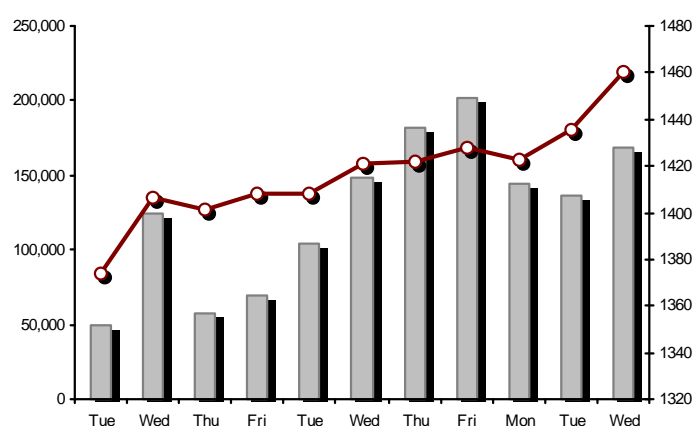
FTSE/ATHEX Global Traders Index

12/03/2014: 0.76%



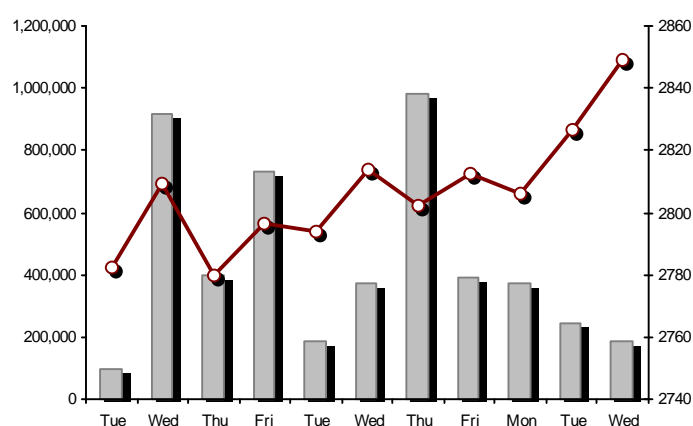
FTSE/ATHEX Mid &amp; Small Cap Factor-Weighted Index

12/03/2014: 1.69%



ATHEX Mid &amp; SmallCap Price Index

12/03/2014: 0.79%



Indices volume of transactions

Indices closing prices

## Analytic Figures for Athex Market's Boards and Categories

	Total Traded Securities	Main Market	Low Dispersion	Other Categories (*)	Exchange Traded Funds (ETFs)	Warrants
Totals	171	131	7	27	3	3
Gain / Lose / Same:	90 / 62 / 19	67 / 51 / 13	4 / 1 / 2	18 / 5 / 4	1 / 2 / 0	0 / 3 / 0
Athex Capitalisation (mill. €) **	74,748.36	72,087.47	2,175.48	485.40		
Daily Average Trans/ons Value(thou.€)	101,288.21	90,077.01	65.81	65.10	73.86	11,006.44
Transactions Value	119,268.56	112,919.84	58.11	71.61	0.05	6,218.96
Main Board:	107,830.33	101,481.60	58.11	71.61	0.05	6,218.96
Blocks Board:	11,438.24	11,438.24	0.00	0.00	0.00	0.00
Forced Sales Board:	0.00	0.00	0.00	0.00	0.00	0.00
Special Terms Board:	0.00	0.00	0.00	0.00	0.00	0.00
Daily Average Transactions Volume	46,063,606	35,998,555	30,729	241,660	14,016	9,778,645
Transactions Volume	49,316,932	43,266,194	9,383	559,001	5	5,482,349
Main Board:	47,654,980	41,604,242	9,383	559,001	5	5,482,349
Blocks Board:	1,661,952	1,661,952	0	0	0	0
Forced Sales Board:	0	0	0	0	0	0
Special Terms Board:	0	0	0	0	0	0
Daily Average Number of Trades	30,051	27,282	66	173	9	2,522
Number of Trades	35,965	33,590	50	222	3	2,100
Main Board:	35,952	33,577	50	222	3	2,100
Blocks Board:	13	13	0	0	0	0
Forced Sales Board:	0	0	0	0	0	0
Special Terms Board:	0	0	0	0	0	0

(\*) Summarised Transactions figures for Under Deletion and Under Supervision Categories. (\*\*) The Market Capitalization of the Companies that belong in the Under Supervision Category is not included.

## Trading Details by Athex Sectors and ETFs Category

Code	Sectors	Gain / Lose / Same	Number of Trades	Transactions Volume	Transactions Value	% of Total Trans. Value
8300	- Banks	3 / 7 / 0	9,802	33,708,669	38,448,338.40	32.24%
1700	- Basic Resources	6 / 3 / 3	1,785	666,981	2,685,307.92	2.25%
1300	- Chemicals	2 / 2 / 2	182	105,430	139,317.45	0.12%
2300	- Construction & Materials	12 / 6 / 3	3,193	1,643,577	8,472,401.25	7.10%
11000	- ETF	1 / 2 / 0	3	5	48.42	0.00%
8700	- Financial Services	1 / 3 / 0	2,812	5,265,031	5,048,138.49	4.23%
3500	- Food & Beverage	8 / 6 / 1	862	459,939	2,095,455.32	1.76%
4500	- Health Care	3 / 3 / 0	274	234,696	188,414.57	0.16%
2700	- Industrial Goods & Services	10 / 5 / 5	2,223	946,786	3,563,521.95	2.99%
8500	- Insurance	1 / 0 / 0	19	6,054	8,996.95	0.01%
5500	- Media	4 / 2 / 0	44	5,833	1,498.55	0.00%
500	- Oil & Gas	3 / 0 / 0	1,740	585,428	4,678,732.18	3.92%
3700	- Personal & Household Goods	12 / 6 / 1	1,837	610,523	5,711,005.83	4.79%
8600	- Real Estate	2 / 3 / 2	374	207,675	1,145,142.78	0.96%
5300	- Retail	4 / 2 / 0	1,317	301,912	5,168,868.89	4.33%
9500	- Technology	7 / 6 / 1	617	569,108	587,537.99	0.49%
6500	- Telecommunications	1 / 0 / 0	1,652	838,584	10,934,827.33	9.17%
5700	- Travel & Leisure	8 / 4 / 1	3,231	1,936,436	16,658,124.66	13.97%
7500	- Utilities	2 / 2 / 0	3,875	1,218,484	13,725,281.93	11.51%

## Top 10 best &amp; worst performing Shares

Main Market					
With positive Price change	Closing price	change	With negative Price change	Closing price	change
KLOUKINAS - LAPPAS SA (CR)	0.697	11.52% #	LAMPASA HOTEL SA (CR)	16.60	-4.60% Ⓔ
KYRIAKIDIS MARBLES SA (CR)	1.64	9.33% #	JUMBO SA (CR)	13.89	-3.54% Ⓔ
REVOIL (CR)	0.664	7.62% #	NATIONAL BANK (CR)	3.85	-3.27% Ⓔ
DROMEAS SA (CR)	0.334	5.70% #	PPC (CR)	12.21	-3.02% Ⓔ
MARFIN INVESTMENT GROUP (CR)	0.512	4.49% #	EUROBANK ERGASIAS (CR)	0.430	-2.27% Ⓔ
INTRALOT (CR)	2.47	4.22% #	AEGEAN AIRLINES (CR)	7.78	-2.26% Ⓔ
ALPHA BANK (CR)	0.708	3.51% #	ATTICA BANK S.A. (CR)	0.178	-2.20% Ⓔ
IASO SA (CR)	1.78	3.49% #	TITAN CEMENT (CR)	23.50	-2.08% Ⓔ
GEK TERNA (CR)	4.03	3.33% #	OPAP (CR)	12.34	-1.83% Ⓔ
INTRACOM CONSTR. (CR)	1.29	3.20% #	SIDENOR (CR)	2.15	-1.83% Ⓔ
With the highest Transactions Value	Value (thou. €)	change	With the highest Transactions Volume	Volume	change
OPAP (CR)	14,440.66	-1.83% Ⓔ	ALPHA BANK (CR)	16,672,926	3.51% #
PIRAEUS BANK (CR)	12,959.93	-0.54% Ⓔ	PIRAEUS BANK (CR)	7,102,272	-0.54% Ⓔ
PPC (CR)	11,991.94	-3.02% Ⓔ	MARFIN INVESTMENT GROUP (CR)	4,983,485	4.49% #
ALPHA BANK (CR)	11,626.29	3.51% #	NATIONAL BANK (CR)	1,701,490	-3.27% Ⓔ
OTE (CR)	10,934.83	1.62% #	EUROBANK ERGASIAS (CR)	1,391,144	-2.27% Ⓔ
NATIONAL BANK (CR)	6,607.02	-3.27% Ⓔ	ATTICA BANK S.A. (CR)	1,346,291	-2.20% Ⓔ
JUMBO SA (CR)	5,377.18	-3.54% Ⓔ	OPAP (CR)	1,170,657	-1.83% Ⓔ
FOLLI FOLLIE (CR)	5,095.14	1.15% #	PPC (CR)	974,396	-3.02% Ⓔ
HELLENIC PETROLEUM (CR)	3,876.73	0.91% #	OTE (CR)	838,584	1.62% #
TITAN CEMENT (CR)	3,741.90	-2.08% Ⓔ	GEK TERNA (CR)	644,910	3.33% #

Note: Stocks that are not included in the "Low Dispersion" and "Under Supervision" categories, and the transactions value is more than 10,000 €.



## Derivatives Summary

	Number of Trades	Volume	Open Interest	Transactions Value
Index Futures	642	8,828	53,738	19,265,443.75
FTSE/Athex Large Cap	642	8,828	53,738	19,265,443.75
Stock Futures	2,201	31,708	179,581	15,438,572.24
ALPHA BANK (CR)	119	2,738	30,859	188,353.60
CC HBC AG (CR)	47	144	1,026	259,995.00
CORINTH PIPEWORKS SA (CR)	5	22	710	4,844.00
ELLAKTOR (CR)	46	309	1,981	126,894.00
EUROBANK ERGASIAS (CR)	15	41	3,764	1,774.00
EUROBANK PROPERTIES REIC (CR)	4	20	193	19,101.00
EYDAP S.A. (CR)	29	169	969	151,875.00
FOLLI FOLLIE (CR)	43	123	250	336,981.00
FRIGOGLASS SA (CR)	73	417	1,169	223,374.00
GEK TERNA (CR)	197	11,937	32,749	4,819,008.00
HELLENIC EXCHANGES-A.S.E. (CR)	43	185	1,616	171,684.00
HELLENIC PETROLEUM (CR)	106	538	6,228	413,863.00
INTRALOT (CR)	135	1,324	4,870	326,696.00
JUMBO SA (CR)	39	120	469	173,018.04
MARFIN INVESTMENT GROUP (CR)	145	2,270	26,508	114,218.60
METKA (CR)	21	50	1,277	67,844.00
MOTOR OIL (CR)	17	36	903	36,043.00
MYTILINEOS HOLDINGS (CR)	112	2,931	12,589	2,108,432.00
NATIONAL BANK (CR)	193	1,719	12,379	665,396.00
OPAP (CR)	105	533	4,040	657,377.00
OTE (CR)	174	1,134	5,979	1,481,527.00
P.P.A. S.A. (CR)	10	22	723	42,191.00
PIRAEUS BANK (CR)	91	2,370	13,590	432,210.00
PPC (CR)	326	1,779	9,499	2,189,553.00
SIDENOR (CR)	16	60	1,242	13,117.00
TERNA ENERGY (CR)	39	557	3,089	261,546.00
TITAN CEMENT (CR)	17	38	688	89,972.00
VIOHALCO SA/NV (CB)	34	122	222	61,685.00
Index Options	41	963	7,372	2,094,850.00
FTSE/Athex Large Cap	41	963	7,372	2,094,850.00
Stock Options	0	0	1,025	0.00
ALPHA BANK (CR)	0	0	0	0.00
NATIONAL BANK (CR)	0	0	110	0.00
OPAP (CR)	0	0	0	0.00
OTE (CR)	0	0	620	0.00
PIRAEUS BANK (CR)	0	0	0	0.00
PPC (CR)	0	0	295	0.00
Stock Repos - Stock Reverse Repos - Repurchase Agreements	5	237	343,615	300,157.00
Stock Reverse Repos	4	197	113,497	250,797.00
Stock Repos	0	0	192,988	0.00
Repurchase Agreement	1	40	37,130	49,360.00
Total Derivatives Traded	2,889	41,736	585,331	37,099,022.99

Number of Outstanding Securities	Nominal Value	Dividends [1]			Date of Last Dividend [2]	Coupon Right	Note	Shares	Closing price	% change	Previous closing price/date	Open price	Price min	Price max	Last price	Avg price	Last Bid [7]	Last Ask [7]	P/E after	Year	Volume	Trades	Transactions Value	Company Mkt Value (thou. €)	Year low	Year high	Sector[4]
----------------------------------	---------------	---------------	--	--	---------------------------	--------------	------	--------	---------------	----------	-----------------------------	------------	-----------	-----------	------------	-----------	--------------	--------------	-----------	------	--------	--------	--------------------	-----------------------------	----------	-----------	-----------

Warrants

1,204,702,851	---	---	---	---	11/06/2013	---	ALPHA BANK (W)		1.40	-1.41	€ 1.42	11/03/2014	1.43	1.36	1.43	1.40	1.40	1150@1.40	117294@1.42	---	2012	2,249,206	870	3,144,619.66	7,733,417.46	1.13	1.54	8355
245,748,580	---	---	---	---	27/06/2013	---	NATIONAL BANK (W)		1.12	-3.45	€ 1.16	11/03/2014	1.17	1.10	1.17	1.12	1.12	34122@1.10	60545@1.12	---	2012	1,227,917	502	1,375,208.41	9,227,626.08	0.880	1.59	8355
848,591,850	---	---	---	---	03/07/2013	---	PIRAEUS BANK (W)		0.832	-5.56	€ 0.881	11/03/2014	0.879	0.830	0.890	0.832	0.847	55500@0.832	2295@0.837	---	2012	2,005,226	728	1,699,130.35	9,282,799.35	0.600	0.989	8355

Main Market

71,417,100	0.650	---	---	---	26/05/2010	11/07/2007	---	AEGEAN AIRLINES (CR)	7.78	-2.26	€ 7.96	11/03/2014	7.96	7.72	8.10	7.78	7.91	5500@7.77	147@7.87	8.38	2013	38,525	301	304,670.70	555,625.04	5.90	8.10	5751	
11,178,000	1.25	---	---	---	21/04/2010	18/12/2013	---	AEOLIAN INVESTMENT FUND (CR)	0.979	-0.41	€ 0.983	11/03/2014	0.917	0.917	0.979	0.979	0.957	21@0.955	190@0.979	13.43	2013	2,453	9	2,347.70	10,943.26	0.700	1.09	8985	
13,000,000	1.00	---	---	---	01/08/2007	07/04/2000	---	AKRITAS SA (CR)	0.164	-0.61	€ 0.165	11/03/2014	0.160	0.160	0.165	0.165	0.162	810@0.165	---	---	2012	110	8	17.87	2,132.00	0.100	0.166	2353	
25,000,000	0.400	---	---	---	03/06/2009	12/07/2013	---	ALCO HELLAS SA (CR)	0.278	8.17	# 0.257	11/03/2014	0.257	0.257	0.279	0.272	0.274	250@0.261	1940@0.272	---	2012	7,014	14	1,923.16	6,950.00	0.218	0.360	1753	
10,922,906,012	0.300	---	---	---	07/04/2008	13/05/2013	---	ALPHA BANK (CR)	0.708	3.51	# 0.684	11/03/2014	0.683	0.677	0.710	0.708	0.697	1100@0.702	5100@0.709	---	2012	16,672,926	3,277	11,626,290.69	7,733,417.46	0.624	0.747	8355	
22,016,250	0.370	---	---	---	15/07/2009	11/05/2000	---	ALUMIL (CR)	0.428	---	↘ 0.428	11/03/2014	0.428	0.398	0.428	0.428	0.409	240@0.380	989@0.405	---	2012	24,866	57	10,167.62	9,422.96	0.398	0.660	1753	
418,000	16.00	---	---	---	22/04/2010	05/03/2013	---	ANDROMEDA SA (CR)	21.02	---	↘ 21.02	11/03/2014	---	---	---	---	---	200@21.50	8@22.77	6.35	2013	---	---	---	8,786.36	20.08	22.40	8985	
26,252,040	0.380	---	---	---	08/07/2010	10/02/2014	---	AS COMPANY SA (CR)	0.360	-0.83	€ 0.363	11/03/2014	0.360	0.360	0.360	0.360	0.360	3000@0.350	2734@0.360	49.37	2012	2,000	4	720.00	9,450.73	0.313	0.372	5379	
86,735,980	0.310	---	---	---	06/07/2009	02/01/2002	---	ATHENS MEDICAL CENTER SA (CR)	0.909	-0.87	€ 0.917	11/03/2014	0.875	0.875	0.910	0.910	0.899	1500@0.880	2000@0.910	---	2012	6,254	15	5,619.41	78,843.01	0.722	0.930	4533	
1,041,560,993	0.300	---	---	---	04/06/2008	10/02/2014	---	ATTICA BANK S.A. (CR)	0.178	-2.20	€ 0.182	11/03/2014	0.181	0.177	0.183	0.178	0.180	46350@0.177	15000@0.179	---	2012	1,346,291	364	242,165.82	185,397.86	0.144	0.277	8355	
15,300,000	0.300	---	---	---	30/07/2009	13/12/1999	---	ATTICA PUBLICATIONS SA (CR)	1.90	---	↘ 1.90	07/03/2014	---	---	---	---	---	---	4117@1.71	---	---	2012	---	---	---	29,070.00	1.79	2.15	5557
45,457,464	0.700	---	---	---	01/07/2008	01/03/2010	---	AUDIO VISUAL ENTERPRISES (CR)	0.301	-1.95	€ 0.307	11/03/2014	0.285	0.285	0.301	0.301	0.295	500@0.286	355@0.302	---	2012	2,480	13	732.53	13,682.70	0.209	0.376	5553	
12,120,000	0.320	(0.45)	---	---	30/04/2012	22/11/2013	---	AUTOHELLAS SA (CR)	10.09	1.61	# 9.93	11/03/2014	10.00	10.00	10.10	10.09	10.03	4000@10.00	121@10.09	18.11	2012	36,507	34	368,233.48	122,290.80	7.50	10.10	5759	
19,864,886	5.60	0.67	0.5376	0.672	05/03/2014	02/07/2008	---	BANK OF GREECE (CR)	15.64	1.89	# 15.35	11/03/2014	15.55	15.50	15.75	15.64	15.66	1@15.58	324@15.62	---	---	12,191	160	190,891.22	310,686.82	14.60	16.53	8355	
23,986,500	1.05	---	---	---	26/06/2009	15/03/2000	---	BIOKARPET S.A.(CR)	0.666	2.30	# 0.651	11/03/2014	0.655	0.655	0.670	0.670	0.661	400@0.660	1000@0.670	---	2012	16,964	19	11,206.92	15,975.01	0.461	0.880	3726	
15,842,391	1.51	---	---	---	15/07/2009	12/05/2000	---	BITROS HOLDING SA (CR)	0.403	---	↘ 0.403	11/03/2014	0.363	0.363	0.403	0.403	0.383	1000@0.363	150@0.400	---	2012	300	2	114.90	6,384.48	0.363	0.559	1757	
15,816,009	0.300	---	---	---	01/07/2009	17/07/2000	---	BYTE COMPUTER SA (CR)	0.620	-1.59	€ 0.630	11/03/2014	0.630	0.620	0.630	0.620	0.626	60@0.620	200@0.633	---	2012	440	4	275.30	9,805.93	0.555	0.666	9533	
367,690,225	6.70	---	0.34	---	26/06/2013	29/04/2013	---	CC HBC AG (CR)	17.86	-0.17	€ 17.89	11/03/2014	17.96	17.75	18.20	17.86	18.02	130@17.76	3335@17.88	---	---	108,994	480	1,963,903.49	6,566,947.42	17.49	22.00	3537	
101,123,806	0.360	---	---	---	22/07/2010	28/06/2011	---	CENTRIC HOLDINGS (CR)	0.360	2.56	# 0.351	11/03/2014	0.352	0.343	0.360	0.360	0.353	2000@0.347	3290@0.360	54.62	2012	43,736	49	15,456.29	36,404.57	0.281	0.390	5752	
4,034,950	0.680	---	---	---	01/07/2005	30/12/2010	---	CHATZIKRANIOTIS & SONS SA (CR)	0.249	3.75	# 0.240	11/03/2014	0.230	0.230	0.250	0.250	0.234	300@0.241	500@0.240	---	2012	10,927	16	2,560.32	1,004.70	0.155	0.420	3577	
124,170,201	0.780	---	---	---	28/06/2002	07/02/2005	---	CORINTH PIPEWORKS SA (CR)	2.16	-0.92	€ 2.18	11/03/2014	2.18	2.13	2.21	2.16	2.17	2250@2.15	4292@2.17	77.38	2012	80,917	256	175,538.89	268,207.63	1.77	2.30	1757	
9,907,500	0.300	---	---	---	06/10/2005	13/02/2002	---	CPI SA (CR)	0.240	---	↘ 0.240	10/03/2014	---	---	---	---	---	---	2630@0.255	---	---	2013	---	---	---	2,377.80	0.133	0.269	9572
27,379,200	0.520	---	---	---	23/06/2010	18/09/2013	---	CRETE PLASTICS SA (CR)	5.07	---	↘ 5.07	11/03/2014	5.07	4.91	5.07	5.07	5.03	25@4.91	324@5.07	14.49	2012	1,132	23	5,694.57	138,812.54	4.80	5.48	1357	
26,664,840	0.470	---	---	---	29/06/2005	12/07/1999	---	CYCLON HELLAS SA (CR)	0.520	5.05	# 0.495	11/03/2014	0.500	0.500	0.520	0.520	0.510	200@0.501	410@0.510	---	2012	3,710	8	1,891.98	13,865.72	0.462	0.609	1357	
15,000,000	0.300	---	---	---	06/07/2007	18/07/2000	---	DAIOS PLASTICS SA (CR)	2.12	-0.93	€ 2.14	11/03/2014	2.00	2.00	2.13	2.13	2.07	50@2.05	15@2.13	---	2012	115	5	237.55	31,800.00	1.66	2.15	1357	
14,173,104	0.300	---	---	---	11/08/2010	28/11/2013	---	DIONIC (CR)	0.222	0.45	# 0.221	11/03/2014	0.218	0.212	0.223	0.222	0.219	998@0.218	5051@0.222	---	2012	49,053	40	10,756.91	3,146.43	0.208	0.307	2797	
34,720,000	0.310	---	---	---	16/06/2010	01/08/2007	---	DROMEAS SA (CR)	0.334	5.70	# 0.316	11/03/2014	0.323	0.312	0.335	0.334	0.319	100@0.326	1090@0.335	---	2012	69,830	174	22,302.09	11,596.48	0.302	0.400	3726	
3,873,120	0.300	---	---	---	07/07/2008	04/10/2012	---	DRUCKFARBEN HELLAS (CR)	1.15	---	↘ 1.15	10/03/2014	---	---	---	---	---	750@1.06	---	---	2012	---	---	---	4,454.09	1.15	1.95	1357	
11,250,000	0.560	---	---	---	26/07/2010	16/06/1999	---	EKTER SA (CR)	0.664	0.30	# 0.662	11/03/2014	0.780	0.661	0.780	0.664	0.664	2000@0.669	2249@0.704	11.60	2012	2,253	8	1,495.73	7,470.00	0.620	0.799	2357	
32,188,050	1.04	---	---	---	21/07/2008	20/01/2000	---	EL. D. MOUZAKIS SA (CB)	0.332	1.22	# 0.328	11/03/2014	0.305	0.305	0.332	0.332	0.321	6000@0.320	1100@0.331	---	2012	2,511	8	805.17	10,686.43	0.171	0.475	3763	
18,648,000	1.00	---	---	---	07/07/2009	10/09/2010	---	ELASTRON (CR)	0.920	1.10	# 0.910	11/03/2014	0.860	0.860	0.920	0.920	0.906	100@0.914	2919@0.920	---	2012	1,810	16	1,639.51	17,156.16	0.730	1.00	1757	
31,734,530	1.60	---	---	---	09/07/2007	19/07/2006	---	ELGEKA SA (CR)	0.333	-1.77	€ 0.339	11/03/2014	0.307	0.306	0.339	0.339	0.325	10@0.339	2500@0.372	---	2012	9,500	12	3,091.99	10,567.60	0.306	0.488	3577	
23,828,130	0.500	---	---	---	07/07/2010	17/02/2009	---	ELINOIL S.A. (CR)	1.20	3.45	# 1.16	11/03/2014	1.16	1.16	1.20	1.20	1.20	300@1.05	303838@1.20	---	2012	3,000	5	3,586.12	28,593.76	0.790	1.20	537	

Number of Outstanding Securities	Nominal Value	Dividends [1]			Date of Last Coupon Dividend [2]		Note	Shares	Closing price	% change	Previous closing price/date	Open price	Price min	Price max	Last price	Avg price	Last Bid [7]	Last Ask [7]	P/E after	Year	Volume	Trades	Transactions Value	Company Mkt Value (thou. €)	Year low	Year high	Sector[ 4]
----------------------------------------	------------------	---------------	--	--	-------------------------------------	--	------	--------	------------------	----------	--------------------------------	---------------	--------------	--------------	---------------	--------------	-----------------	--------------	--------------	------	--------	--------	-----------------------	--------------------------------	-------------	--------------	---------------

Main Market

177,001,313	1.03	---	---	---	05/07/2011	20/12/2007	---	ELLAKTOR (CR)	4.05	1.00 #	4.01 11/03/2014	4.02	4.01	4.14	4.05	4.08	20212@4.05	250@4.06	---	2012	381,761	978	1,556,033.47	716,855.32	3.06	4.14	2357
26,730,187	0.600	---	---	---	25/06/2009	30/12/2010	---	ELTON SA (CR)	1.14	-0.87 €	1.15 11/03/2014	1.15	1.12	1.16	1.14	1.14	300@1.12	6418@1.14	11.92	2012	6,115	32	6,969.50	30,472.41	1.09	1.25	1353
15,146,404	0.340	---	---	---	06/07/2011	17/10/2002	---	ELTRAK SA (CR)	1.86	-1.59 €	1.89 11/03/2014	1.85	1.85	1.86	1.86	1.86	90@1.71	740@1.85	---	2012	790	3	1,468.50	28,172.31	1.40	1.90	2753
124,100,815	0.300	---	---	---	27/06/2008	07/07/2000	---	ELVAL SA. (CB)	2.13	1.43 #	2.10 11/03/2014	2.10	2.06	2.14	2.13	2.11	800@2.07	450@2.13	16.45	2012	24,353	59	51,429.29	264,334.74	1.73	2.15	1753
13,230,000	0.300	---	---	---	11/08/2010	28/08/2013	---	ELVE SA (CR)	0.616	0.49 #	0.613 11/03/2014	0.616	0.616	0.616	0.616	0.616	500@0.576	10@0.616	---	2012	1,890	8	1,164.24	8,149.68	0.553	0.690	3763
30,009,210	0.310	---	---	---	27/06/2008	26/06/2000	---	ETEM SA (CB)	0.380	0.53 #	0.378 11/03/2014	0.382	0.375	0.388	0.380	0.379	110@0.377	6213@0.380	---	2012	14,237	11	5,402.67	11,403.50	0.261	0.400	1753
5,469,166,865	0.300	---	---	---	02/05/2008	13/06/2013	---	EUROBANK ERGASIAS (CR)	0.430	-2.27 €	0.440 11/03/2014	0.441	0.428	0.441	0.430	0.433	14337@0.429	13870@0.432	---	2012	1,391,144	667	603,021.57	2,351,741.75	0.381	0.630	8355
101,260,000	2.13	0.4067	---	---	23/03/2012	08/01/2014	---	EUROBANK PROPERTIES REIC (CR)	8.35	-0.60 €	8.40 11/03/2014	8.46	8.26	8.46	8.35	8.34	34@8.31	300@8.37	---	2013	33,428	228	278,885.58	845,521.00	6.65	8.62	8675
7,959,900	0.600	---	---	---	02/06/2010	10/12/2013	5031	EUROCONSULTANTS S.A. (CR)	2.58	---	2.58 10/03/2014	---	---	---	---	---	150@2.50	2000@2.57	---	2012	---	---	---	20,536.54	2.08	2.85	2791
27,503,677	0.600	0.05	0.1	---	11/07/2013	18/10/1999	---	EUROPEAN RELIANCE INSUR. (CR)	1.51	0.67 #	1.50 11/03/2014	1.52	1.47	1.52	1.51	1.49	50@1.50	1131@1.51	4.56	2012	6,054	19	8,996.95	41,530.55	1.24	1.52	8536
13,673,200	0.880	---	---	---	18/07/2008	26/07/2001	---	EVROFARMA SA (CR)	0.360	---	0.360 07/03/2014	---	---	---	---	---	---	1498@0.340	---	2012	---	---	---	4,922.35	0.224	0.360	3577
106,500,000	0.600	0.05	0.15	---	31/07/2013	28/01/2000	---	EYDAP S.A. (CR)	9.02	0.33 #	8.99 11/03/2014	8.99	8.83	9.09	9.02	9.00	287@9.02	100@9.07	20.51	2012	134,345	412	1,209,149.60	960,630.00	7.06	9.09	7577
52,800,154	0.300	---	---	---	16/04/2010	21/06/2004	---	F.G. EUROPE S.A. (CR)	0.800	-7.73 €	0.867 11/03/2014	0.800	0.800	0.800	0.800	0.800	---	800@0.800	9.69	2012	260	4	208.00	42,240.12	0.580	0.869	3722
10,203,575	0.730	---	---	---	16/07/2007	18/10/1999	---	FIERATEX SA (CR)	0.233	-16.49 €	0.279 11/03/2014	0.199	0.199	0.279	0.275	0.246	190@0.230	174@0.275	---	2012	2,072	17	510.48	2,377.43	0.121	0.299	3763
11,720,024	0.540	---	---	---	16/07/2010	16/10/2013	---	FLEXOPACK SA (CR)	2.98	1.36 #	2.94 11/03/2014	3.00	2.95	3.00	2.98	2.98	1@2.97	234@2.98	10.04	2012	542	8	1,612.88	34,925.67	2.68	3.05	2723
4,181,450	0.500	---	---	---	21/08/2000	05/03/2002	---	FLOUR MILLS SARANTOPOULOS SA	1.00	---	1.00 06/03/2014	---	---	---	---	---	---	125@1.00	18.49	2012	---	---	---	4,181.45	0.702	1.03	3577
66,948,210	0.300	---	---	---	14/07/2009	31/12/2010	4988	FOLLI FOLLIE (CR)	27.30	1.15 #	26.99 11/03/2014	26.92	26.90	27.87	27.30	27.35	669@27.18	500@27.35	---	2012	186,370	977	5,095,144.78	1,827,686.13	21.90	27.87	5379
50,992,322	1.00	---	---	---	21/06/2010	16/07/2002	---	FOURLIS (CR)	5.66	-1.05 €	5.72 11/03/2014	5.84	5.66	5.84	5.66	5.73	1385@5.66	430@5.72	---	2013	39,613	214	226,863.71	288,616.54	3.86	6.01	3722
50,593,832	0.300	---	---	---	07/07/2010	07/09/2011	---	FRIGOGLASS SA (CR)	5.40	2.86 #	5.25 11/03/2014	5.30	5.25	5.43	5.40	5.34	75@5.35	3200@5.41	---	2012	176,642	658	943,489.87	273,206.69	4.10	5.63	2757
77,376,446	0.340	---	---	---	23/05/2005	18/08/2011	---	G.E. DIMITRIOU (CR)	0.028	12.00 #	0.025 11/03/2014	0.026	0.026	0.028	0.028	0.027	10000@0.023	29419@0.028	---	2012	46,000	9	1,261.10	2,166.54	0.022	0.036	3722
14,076,360	0.370	---	---	---	19/08/2008	22/07/2003	---	GALAXIDI S.A. (CR)	0.419	10.26 #	0.380 10/03/2014	0.419	0.419	0.419	0.419	0.419	2500@0.280	419@0.419	11.91	2012	20	1	8.38	5,897.99	0.250	0.419	3573
94,462,368	0.570	---	---	---	01/08/2011	02/01/2009	---	GEK TERNA (CR)	4.03	3.33 #	3.90 11/03/2014	3.92	3.90	4.10	4.03	4.02	5140@4.01	2704@4.04	-(6)-	2012	644,910	1,108	2,594,645.98	380,683.34	3.08	4.10	2357
8,418,750	0.300	0.15	0.29	---	05/06/2013	27/06/2012	---	GEKE SA (CB)	6.64	-0.15 €	6.65 05/03/2014	6.65	6.64	6.65	6.64	6.65	60@6.64	50@7.20	20.85	2012	140	2	930.60	55,900.50	6.64	6.68	5753
24,060,000	0.300	0.017	---	---	18/06/2012	21/01/2000	---	GEN. COMMERCIAL & IND.SA (CR)	0.388	5.15 #	0.369 11/03/2014	0.380	0.380	0.390	0.380	0.383	1300@0.380	23@0.386	---	2012	9,220	21	3,533.18	9,335.28	0.327	0.434	2797
34,770,982	1.54	---	---	0.3	17/01/2014	27/07/2000	---	GR. SARANTIS SA (CR)	7.45	0.13 #	7.44 11/03/2014	7.60	7.40	7.60	7.45	7.42	167@7.40	235@7.45	---	2012	375	9	2,780.77	259,043.82	6.06	7.60	3767
8,340,750	1.20	---	---	---	25/06/2009	30/07/2001	---	HAIDEMENOS SA (CR)	0.550	10.00 #	0.500 11/03/2014	0.451	0.451	0.550	0.550	0.513	478@0.550	---	---	2012	44	3	22.56	4,587.41	0.451	0.760	2791
101,279,627	0.380	---	---	---	26/06/2008	14/07/2006	---	HALKOR SA (CB)	0.843	-0.59 €	0.848 11/03/2014	0.850	0.840	0.860	0.843	0.853	1000@0.841	500@0.844	---	2012	144,263	118	123,099.89	85,378.73	0.682	0.912	1755
36,748,909	0.730	---	---	---	15/12/2005	13/12/2006	---	HEL. SUGAR INDUSTRY SA (CB)	0.890	0.91 #	0.882 11/03/2014	0.881	0.880	0.910	0.890	0.892	5000@0.882	690@0.890	---	2013	25,588	70	22,819.92	32,706.53	0.850	1.10	3577
29,546,360	0.710	---	---	---	20/06/2008	23/08/2000	---	HELLENIC CABLES SA (CR)	1.86	-1.06 €	1.88 11/03/2014	1.90	1.82	1.91	1.86	1.87	20@1.84	999@1.86	---	2012	1,891	18	3,541.29	54,956.23	1.48	1.94	2733
65,368,563	0.760	0.11	0.09	---	03/06/2013	25/09/2013	---	HELLENIC EXCHANGES-A.S.E. (CR)	9.30	-1.06 €	9.40 11/03/2014	9.27	9.18	9.42	9.30	9.31	1550@9.29	27720@9.30	41.66	2012	273,193	1,071	2,542,038.76	607,927.64	6.91	9.42	8777
305,635,185	2.18	0.45	0.15	---	16/08/2013	01/10/2003	4795	HELLENIC PETROLEUM (CR)	7.76	0.91 #	7.69 11/03/2014	7.70	7.63	7.76	7.76	7.71	700@7.72	5550@7.77	---	2013	502,975	1,205	3,876,725.27	2,371,729.04	6.60	8.13	537
305,732,436	0.410	---	---	---	08/07/2009	28/09/2011	---	HYGEIA SA (CR)	0.494	2.07 #	0.484 11/03/2014	0.488	0.485	0.499	0.494	0.491	100@0.489	6296@0.495	---	2012	170,789	163	83,834.98	151,031.82	0.371	0.501	4533
53,155,053	0.440	---	---	---	21/07/2010	16/07/2008	---	IASO SA (CR)	1.78	3.49 #	1.72 11/03/2014	1.70	1.70	1.78	1.78	1.76	5100@1.77	7697@1.79	---	2012	56,002	91	98,709.50	94,615.99	1.34	1.99	4533
8,298,467	0.400	---	---	---	30/08/1993	08/05/2013	---	IDEAL GROUP SA (CR)	0.700	-6.92 €	0.752 11/03/2014	0.700	0.700	0.700	0.700	0.700	600@0.720	266@0.760	-(6)-	2012	14	1	9.80	5,808.93	0.538	1.00	9574
28,580,100	0.400	0.02	---	---	20/08/2012	10/10/2013	---	IKTINOS HELLAS SA (CR)	1.70	-1.16 €	1.72 11/03/2014	1.72	1.67	1.76	1.70	1.69	4800@1.69	815@1.72	16.45	2012	39,976	102	67,693.49	48,586.17	1.49	1.84	2353
9,000,000	0.880	---	---	---	15/05/2009	07/12/2010	---	ILYDA S.A. (CR)	0.644	4.72 #	0.615 11/03/2014	0.590	0.590	0.644	0.644	0.602	---	228@0.642	---	2012	750	3	451.14	5,796.00	0.390	0.760	9537
20,578,374	0.620	---	---	---	02/06/2011	05/05/1999	---	INFORM P. LYKOS SA (CR)	1.50	0.67 #	1.49 11/03/2014	1.45	1.45	1.50	1.50	1.48	300@1.47	9784@1.50	---	2012	5,600	8	8,306.75	30,867.56	1.42	1.55	2791
11,233,200	0.730	---	---	---	12/07/2010	30/07/1999	---	INTERTECH SA (CR)	0.319	-2.15 €	0.326 11/03/2014	0.294	0.294	0.319	0.319	0.296	---	630@0.319	---	2012	760	4	224.94	3,583.39	0.227	0.510	9572

Number of Outstanding Securities	Nominal Value	Dividends [1]			Date of Last Coupon Dividend [2]		Note	Shares	Closing price	% change	Previous closing price/date	Open price	Price min	Price max	Last price	Avg price	Last Bid [7]	Last Ask [7]	P/E after	Year	Volume	Trades	Transactions Value	Company Mkt Value (thou. €)	Year low	Year high	Sector[ 4]
34,986,430	0.440	---	---	---	25/07/2008	23/02/2010	---	INTERWOOD-XYLEMPORIA (CR)	0.111	9.90 #	0.101 11/03/2014	0.110	0.110	0.111	0.111	0.111	1000@0.100	---	---	2012	11,209	5	1,242.20	4,384.03	0.101	0.159	2353
2,566,836	0.440	---	---	---	13/08/2010	09/01/2007	---	INTERWOOD-XYLEMPORIA (PR)	0.195	---	0.195 17/02/2014	---	---	---	---	---	---	---	---	2012	---	---	---	4,384.03	0.195	0.200	2353
23,154,250	1.36	---	---	---	12/08/2008	02/08/2010	---	INTRACOM CONSTR. (CR)	1.29	3.20 #	1.25 11/03/2014	1.27	1.26	1.29	1.29	1.28	165@1.27	6576@1.30	---	2012	24,295	56	31,047.57	29,868.98	0.934	1.32	2357
133,025,996	1.41	---	---	---	03/07/2007	07/01/2002	---	INTRACOM HOLDINGS (CR)	0.849	2.04 #	0.832 11/03/2014	0.830	0.830	0.858	0.849	0.848	1300@0.847	18100@0.854	---	2012	454,144	401	385,030.39	112,939.07	0.526	0.868	9578
158,961,721	0.300	0.0035	0.0026	---	30/05/2013	14/11/2007	---	INTRALOT (CR)	2.47	4.22 #	2.37 11/03/2014	2.37	2.36	2.49	2.47	2.45	16189@2.45	5269@2.47	-(6)-	2012	595,391	974	1,459,091.00	392,635.45	1.84	2.49	5752
77,654,850	0.580	---	---	---	01/07/2011	21/02/2003	---	J & P - AVAX SA (CR)	1.90	2.15 #	1.86 11/03/2014	1.86	1.86	1.93	1.90	1.90	4553@1.90	2000@1.91	---	2012	202,194	219	384,724.46	147,544.22	1.57	1.96	2357
136,059,759	1.19	---	---	---	23/12/2010	05/03/2014	---	JUMBO SA (CR)	13.89	-3.54	14.40 11/03/2014	14.18	13.69	14.18	13.89	13.94	36@13.89	1100@13.98	25.62	2013	385,368	1,275	5,377,181.01	1,889,870.05	11.24	14.40	3747
9,742,920	0.400	0.01	0.01	---	12/08/2013	14/07/2000	---	KARAMOLEGOS SA (CR)	1.40	---	1.40 11/03/2014	---	---	---	---	---	1638@1.27	95@1.39	5.44	2012	---	---	---	13,640.09	0.912	1.58	3577
14,679,792	1.68	---	---	---	03/06/2011	04/09/2000	---	KARATZIS SA (CR)	3.79	-4.53	3.97 11/03/2014	4.01	3.74	4.01	3.84	3.80	150@3.78	199@3.83	12.73	2012	2,000	27	7,607.39	55,636.41	3.70	4.50	2723
30,600,000	0.300	---	---	---	12/06/2008	04/03/2014	5042	KATHIMERINI SA (CR)	0.927	-10.00	1.03 11/03/2014	0.927	0.927	0.927	0.927	0.927	---	826@0.927	---	2012	111	5	102.90	28,366.20	0.628	4.49	5557
3,300,689	0.350	---	---	---	01/07/2004	21/07/1999	---	KEKROPS SA (CR)	1.87	---	1.87 11/03/2014	1.87	1.87	1.87	1.87	1.87	100@1.76	600@1.86	---	2012	50	1	93.50	6,172.29	1.72	2.60	8633
7,595,160	0.600	---	---	---	08/08/2008	18/08/2010	---	KIRIAKOULIS SHIPPING SA (CR)	0.813	6.55 #	0.763 11/03/2014	0.690	0.690	0.813	0.813	0.708	100@0.661	100@0.790	56.65	2012	221	10	156.44	6,174.87	0.492	1.08	5759
23,648,700	0.330	---	---	---	13/07/2011	23/07/2008	---	KLEEMAN HELLAS SA (CR)	2.30	0.88 #	2.28 11/03/2014	2.30	2.24	2.30	2.30	2.26	1002@2.24	460@2.30	---	2012	20,628	33	46,577.80	54,392.01	1.89	2.37	2757
40,219,218	0.300	---	---	---	25/05/2009	09/07/2013	---	KLOUKINAS - LAPPAS SA (CR)	0.697	11.52 #	0.625 11/03/2014	0.649	0.649	0.707	0.697	0.677	600@0.680	768@0.694	---	2012	65,727	64	44,513.10	28,032.79	0.570	0.707	2357
21,224,340	0.420	---	---	---	02/07/2008	25/04/2006	---	KORDELLOS BROS SA (CR)	0.316	5.69 #	0.299 11/03/2014	0.310	0.282	0.317	0.316	0.283	64@0.285	191@0.316	---	2012	2,071	10	585.33	6,706.89	0.200	0.350	1757
13,586,500	0.390	---	---	---	25/06/2010	28/05/2008	---	KORRES (CR)	3.49	-0.29	3.50 11/03/2014	3.43	3.43	3.49	3.49	3.43	200@3.40	100@3.48	---	2012	520	2	1,784.80	47,416.89	2.84	3.69	3767
29,480,000	0.420	---	---	---	19/07/2010	01/08/2007	---	KRETA FARM SA (CR)	0.534	0.19 #	0.533 11/03/2014	0.538	0.533	0.558	0.534	0.540	269@0.532	214@0.540	---	2012	9,571	42	5,171.31	15,742.32	0.484	0.662	3577
33,065,136	0.380	---	---	---	06/07/2009	16/09/2013	---	KRI-KRI S.A. (CR)	1.95	-0.51	1.96 11/03/2014	1.96	1.90	1.96	1.95	1.94	1050@1.91	296@1.94	14.44	2012	5,994	25	11,615.14	64,477.02	1.65	2.07	3577
15,804,800	0.330	---	---	---	15/06/2010	12/03/2004	---	KTIMA KOSTAS LAZARIDIS SA (CR)	0.346	-5.72	0.367 11/03/2014	0.350	0.346	0.350	0.346	0.348	250@0.350	117@0.360	---	2012	750	3	261.00	5,468.46	0.305	0.412	3535
24,474,815	1.15	---	---	---	19/08/2008	30/01/2014	---	KYRIAKIDIS MARBLES SA (CR)	1.64	9.33 #	1.50 11/03/2014	1.51	1.51	1.69	1.67	1.59	985@1.63	437@1.67	-(6)-	2012	17,973	59	28,617.19	40,138.70	1.07	1.78	2353
44,412,347	0.300	---	---	---	30/05/2007	18/09/2002	---	LAMDA DEVELOPMENT SA (CR)	6.35	1.60 #	6.25 11/03/2014	6.09	6.09	6.35	6.35	6.17	49@6.25	500@6.39	---	2012	133,784	89	825,148.87	282,018.40	4.91	6.35	8633
21,364,000	1.12	---	---	---	05/07/2010	10/08/2005	---	LAMPSPA HOTEL SA (CR)	16.60	-4.60	17.40 11/03/2014	17.00	16.30	17.00	16.60	16.61	50@16.30	70@17.80	---	2012	3,050	22	50,673.60	354,642.40	16.00	18.00	5753
5,939,268	0.620	---	---	---	10/07/2003	03/01/2002	---	LANAKAM SA (CR)	0.559	---	0.559 20/01/2014	---	---	---	---	---	---	2184@0.560	---	2012	---	---	---	3,320.05	0.485	0.559	3763
7,734,375	1.00	---	---	---	09/07/2007	07/01/2011	---	LIVANIS SA (CR)	0.211	9.33 #	0.193 10/03/2014	0.175	0.175	0.211	0.211	0.178	690@0.175	146@0.211	---	2012	230	3	40.97	1,631.95	0.158	0.242	5557
4,740,000	0.860	---	---	---	---	14/03/2003	---	LOGISMOS S.A. (CR)	0.393	---	0.393 11/03/2014	---	---	---	---	---	150@0.368	100@0.430	---	---	---	---	---	1,862.82	0.364	0.520	9533
17,125,062	0.640	---	---	---	01/06/2010	02/08/2011	---	LOULIS MILLS SA (CR)	2.83	---	2.83 11/03/2014	---	---	---	---	---	500@2.63	100@2.82	-(6)-	2012	---	---	---	48,463.93	2.50	2.98	3577
770,328,883	0.300	---	---	---	26/04/2007	10/05/2013	---	MARFIN INVESTMENT GROUP (CR)	0.512	4.49 #	0.490 11/03/2014	0.488	0.486	0.515	0.512	0.502	209300@0.511	15441@0.514	---	2012	4,983,485	1,725	2,503,045.93	394,408.39	0.381	0.515	8775
9,819,370	0.690	---	---	---	14/08/2007	09/01/2004	---	MATHIOS REFRACTORY SA (CR)	0.316	-9.71	0.350 04/03/2014	0.360	0.316	0.370	0.316	0.335	1415@0.317	500@0.355	---	2012	8,093	9	2,708.89	3,102.92	0.256	0.370	2353
468,700	---	0.47	---	---	27/02/2014	21/05/2004	---	MERMEREN KOMB. A.D. PR. (GDR)	4.05	2.79 #	3.94 11/03/2014	3.61	3.61	4.09	4.00	3.97	200@3.88	200@4.00	1.98	2013	235	15	933.73	1,898.24	3.45	4.67	1775
51,950,600	0.320	0.75	0.25	---	10/05/2013	21/10/2005	---	METKA (CR)	13.64	---	13.64 11/03/2014	13.65	13.50	13.76	13.64	13.64	56@13.60	53@13.64	19.66	2012	83,075	592	1,132,885.21	708,606.18	11.10	13.76	2757
10,500,000	0.900	---	---	---	24/06/2008	19/12/2013	---	MEVACO SA (CR)	1.30	4.00 #	1.25 11/03/2014	1.27	1.27	1.30	1.30	1.30	100@1.22	728@1.31	9.41	2012	1,900	8	2,462.00	13,650.00	1.10	1.35	2757
14,074,000	3.00	0.25	---	---	02/03/2012	23/07/2009	---	MIG REAL ESTATE (CR)	1.80	---	1.80 11/03/2014	---	---	---	---	---	1000@1.74	320@1.86	---	2012	---	---	---	25,333.20	1.50	2.16	8671
6,700,000	0.800	---	---	---	19/07/2010	29/08/2012	---	MILLS KEPENOS (CR)	1.92	9.71 #	1.75 11/03/2014	1.81	1.81	1.92	1.92	1.90	100@1.91	260@1.92	10.46	2013	4,739	22	8,979.45	12,864.00	0.991	1.92	3577
6,200,000	0.500	---	---	---	22/06/2010	01/11/1995	---	MINERVA KNITWEAR SA (CB)	0.689	---	0.689 18/02/2014	---	---	---	---	---	---	6297@0.621	---	2012	---	---	---	4,271.80	0.651	0.689	3763
12,417,000	0.370	---	---	---	28/07/2008	06/09/2011	---	MLS MULTIMEDIA SA (CR)	4.20	-1.41	4.26 11/03/2014	4.30	4.12	4.30	4.20	4.16	250@4.15	460@4.20	55.32	2012	42,336	111	176,193.61	52,151.40	3.28	4.30	9537
4,588,137	16.00	---	---	---	30/06/2005	17/08/2011	---	MOCHLOS SA (CR)	1.75	-2.24	1.79 11/03/2014	1.63	1.63	1.75	1.75	1.68	615@1.65	520@1.75	---	2012	925	15	1,552.51	8,029.24	1.32	2.00	2357
11,700,000	0.590	---	---	---	02/06/2009	24/07/2012	---	MOTODYNAMICS S.A. (CR)	0.345	15.39 #	0.299 11/03/2014	0.308	0.308	0.382	0.345	0.361	900@0.312	496@0.360	---	2012	3,332	13	1,204.22	4,036.50	0.280	0.416	5379
110,782,980	0.750	0.4	0.3	---	26/06/2013	04/11/2013	---	MOTOR OIL (CR)	10.09	0.90 #	10.00 11/03/2014	10.00	9.92	10.10	10.09	10.05	1142@10.05	13476@10.10	12.32	2012	79,453	530	798,420.79	1,117,800.27	8.02	10.14	533

Number of Outstanding Securities	Nominal Value	Dividends [1]			Date of Last Coupon Dividend [2]		Note	Shares	Closing price	% change	Previous closing price/date	Open price	Price min	Price max	Last price	Avg price	Last Bid [7]	Last Ask [7]	P/E after	Year	Volume	Trades	Transactions Value	Company Mkt Value (thou. €)	Year low	Year high	Sector[ 4]
----------------------------------------	------------------	---------------	--	--	-------------------------------------	--	------	--------	------------------	----------	--------------------------------	---------------	--------------	--------------	---------------	--------------	-----------------	--------------	--------------	------	--------	--------	-----------------------	--------------------------------	-------------	--------------	---------------

Main Market

116,915,862	1.07	---	---	---	11/05/2009	06/07/2011	---	MYTILINEOS HOLDINGS (CR)	7.24	---	↘	7.24	11/03/2014	7.18	7.13	7.29	7.24	7.21	150@7.20	3648@7.24	---	2012	300,804	1,042	2,169,809.74	846,470.84	5.38	7.29	1755
8,321,682	0.670	---	---	---	17/08/2007	23/11/1999	---	N. LEVEDERIS SA (CB)	0.238	---	↘	0.238	11/03/2014	---	---	---	---	---	200@0.216	100@0.237	---	2012	---	---	---	3,663.61	0.207	0.255	1757
2,160,524	0.670	0.0435	0.0436	---	16/08/2013	23/11/1999	---	N. LEVEDERIS SA (PB)	0.779	---	↘	0.779	21/01/2014	---	---	---	---	---	---	200@0.748	---	2012	---	---	---	3,663.61	0.566	0.779	1757
11,510,102	0.890	---	---	---	24/06/2005	06/10/1999	---	NAFPAKTOS TEXTILE IND. SA (CB)	0.305	---	↘	0.305	11/03/2014	---	---	---	---	---	900@0.230	600@0.302	---	2012	---	---	---	3,510.58	0.209	0.397	3763
6,340,000	0.600	---	---	---	30/11/2009	12/07/2000	---	NAKAS MUSIC	0.846	-9.03	€	0.930	11/03/2014	0.841	0.837	0.930	0.930	0.839	---	180@0.925	---	2013	760	7	637.55	5,363.64	0.526	1.62	5379
2,396,785,994	0.300	---	---	---	16/05/2008	24/05/2013	---	NATIONAL BANK (CR)	3.85	-3.27	€	3.98	11/03/2014	3.91	3.82	3.93	3.85	3.88	400@3.84	944@3.87	---	2012	1,701,490	1,657	6,607,024.12	9,227,626.08	3.12	4.31	8355
23,935,280	0.300	---	---	---	29/06/2009	13/06/2000	---	NAYTEMPORIKI PUBLISHING SA(CR)	0.214	8.08	#	0.198	11/03/2014	0.204	0.204	0.214	0.214	0.211	300@0.185	300@0.219	---	2012	2,770	11	583.60	5,122.15	0.170	0.479	5557
27,848,000	0.300	0.0132	0.0137	---	21/08/2013	02/09/2003	---	NEWSPHONE HELLAS SA (CR)	0.389	1.04	#	0.385	10/03/2014	0.390	0.367	0.390	0.389	0.378	5@0.368	43@0.389	9.52	2012	11,934	36	4,508.42	10,832.87	0.343	0.468	2791
6,132,500	1.25	---	---	---	24/06/2011	19/06/2001	---	NEXANS HELLAS SA (CR)	2.36	---	↘	2.36	11/03/2014	---	---	---	---	---	250@2.19	50@2.44	---	2012	---	---	---	14,472.70	2.03	2.40	2733
63,697,153	1.34	---	---	---	08/07/2008	10/11/2008	5040	NIREFS SA (CR)	0.319	-1.24	€	0.323	11/03/2014	0.330	0.308	0.335	0.319	0.321	5300@0.316	395@0.319	---	2012	216,925	141	69,660.20	20,319.39	0.255	0.362	3573
319,000,000	0.300	0.72	0.57	---	28/06/2013	25/04/2001	---	OPAP (CR)	12.34	-1.83	€	12.57	11/03/2014	12.45	12.18	12.54	12.34	12.35	2337@12.28	7005@12.33	7.68	2012	1,170,657	1,780	14,440,657.77	3,936,460.00	9.33	12.85	5752
490,150,389	2.83	---	---	---	28/06/2011	18/06/1998	---	OTE (CR)	13.18	1.62	#	12.97	11/03/2014	13.02	12.91	13.18	13.18	13.04	432@13.05	270@13.19	---	2013	838,584	1,652	10,934,827.33	6,460,182.13	9.72	13.18	6535
25,000,000	2.00	0.01	0.05	---	18/07/2013	08/08/2003	---	P.P.A. S.A. (CR)	19.36	-0.72	€	19.50	11/03/2014	19.00	18.98	19.45	19.36	19.22	30@19.21	17@19.36	97.64	2012	5,668	171	108,943.14	484,000.00	16.41	19.81	2777
4,971,466	1.46	---	---	---	04/07/2007	08/10/2003	---	PAIRIS SA (CR)	0.310	---	↘	0.310	07/03/2014	---	---	---	---	---	---	500@0.309	---	2012	---	---	---	1,541.15	0.231	0.355	2723
3,953,090	0.900	---	---	---	02/07/2001	05/12/2012	---	PAPERPACK (CR)	0.900	---	↘	0.900	11/03/2014	0.900	0.900	0.900	0.900	0.900	220@0.860	2288@0.900	---	2012	900	3	810.00	3,557.78	0.800	1.15	2723
50,797,369	0.310	---	---	---	17/08/2000	12/10/2010	---	PAPOUTSANIS (CR)	0.528	5.60	#	0.500	11/03/2014	0.528	0.500	0.528	0.528	0.500	182@0.505	795@0.519	---	2012	6,501	11	3,253.05	26,821.01	0.395	0.604	3767
7,070,400	0.930	---	---	---	18/05/2010	12/05/2011	---	PETROPOULOS PETROS (CR)	2.03	---	↘	2.03	11/03/2014	2.03	2.03	2.03	2.03	2.03	227@1.93	99@1.95	---	2012	251	5	509.53	14,352.91	1.58	2.34	2753
5,072,567,951	0.300	---	---	---	16/05/2008	05/06/2013	---	PIRAEUS BANK (CR)	1.83	-0.54	€	1.84	11/03/2014	1.83	1.80	1.85	1.83	1.83	1211341@1.82	44743@1.83	---	2012	7,102,272	1,575	12,959,927.76	9,282,799.35	1.49	2.11	8355
22,080,000	0.320	0.08	0.12	---	22/05/2013	03/10/2000	---	PLAISIO COMPUTERS SA (CR)	6.86	-2.00	€	7.00	11/03/2014	6.85	6.85	6.86	6.86	6.85	1500@7.00	16@7.14	10.69	2013	81	2	555.21	151,468.80	5.80	7.10	9572
232,000,000	4.60	---	0.025	---	22/07/2013	12/12/2001	---	PPC (CR)	12.21	-3.02	€	12.59	11/03/2014	12.51	12.06	12.75	12.21	12.31	1466@12.20	50@12.25	-(6)-	2012	974,396	2,762	11,991,944.26	2,832,720.00	9.08	12.75	7535
11,812,193	0.450	---	---	---	24/07/2009	15/11/2006	---	PROFILE SA (CR)	0.906	0.67	#	0.900	11/03/2014	0.913	0.889	0.913	0.906	0.897	100@0.885	61@0.906	17.43	2012	3,838	22	3,442.46	10,701.85	0.870	1.05	9533
24,319,250	0.300	---	---	---	09/07/2002	04/07/2007	---	PROODEFTIKH SA (CR)	0.119	3.48	#	0.115	11/03/2014	0.106	0.106	0.120	0.119	0.116	1000@0.113	150@0.119	---	2012	32,029	33	3,701.63	2,893.99	0.087	0.188	2357
27,345,120	0.470	---	---	---	18/07/2005	26/02/2014	---	QUALITY & RELIABILITY SA (CR)	0.473	0.64	#	0.470	10/03/2014	0.468	0.468	0.473	0.473	0.470	500@0.451	1040@0.473	---	2012	10,510	12	4,942.40	12,934.24	0.378	0.520	9533
11,962,443	0.500	---	---	---	05/09/2008	12/12/2013	---	QUEST HOLDINGS (CR)	5.90	-0.84	€	5.95	11/03/2014	5.40	5.40	5.91	5.90	5.77	75@5.74	10@5.89	---	2012	247	4	1,425.70	70,578.41	4.21	6.30	9533
57,434,884	1.31	---	---	---	05/06/2008	12/06/2009	---	REDS S.A. (CR)	0.629	-0.16	€	0.630	11/03/2014	0.601	0.600	0.629	0.629	0.618	1100@0.611	640@0.629	---	2012	2,622	7	1,619.10	36,126.54	0.530	0.734	8633
22,280,000	0.300	---	---	---	11/04/2011	23/02/2007	---	REVOIL (CR)	0.664	7.62	#	0.617	11/03/2014	0.610	0.610	0.669	0.664	0.649	150@0.662	100@0.665	---	2012	106,450	312	69,062.34	14,793.92	0.580	0.720	5379
7,500,000	0.480	---	---	---	25/06/2010	10/02/2014	---	S.KANAKIS SA (CR)	1.80	-2.70	€	1.85	11/03/2014	1.87	1.73	1.87	1.80	1.78	180@1.72	941@1.80	12.80	2012	1,000	15	1,777.58	13,500.00	1.73	1.95	3577
52,067,296	0.300	---	---	---	23/12/2003	24/01/2007	---	SELECTED TEXT. IND. ASSOC (CR)	0.290	3.57	#	0.280	11/03/2014	0.270	0.270	0.293	0.290	0.284	2000@0.275	1683@0.290	---	2013	22,900	17	6,495.01	15,099.52	0.251	0.355	3763
96,243,908	0.410	---	---	---	26/06/2008	17/07/2000	---	SIDENOR (CR)	2.15	-1.83	€	2.19	11/03/2014	2.14	2.14	2.21	2.15	2.19	849@2.15	32@2.18	---	2012	66,111	185	144,663.19	206,924.40	1.50	2.22	1757
6,456,530	1.60	---	---	---	29/06/2001	02/08/2010	---	SPACE HELLAS SA (CR)	1.47	6.52	#	1.38	11/03/2014	1.40	1.40	1.47	1.47	1.42	325@1.25	190@1.47	47.22	2012	320	6	455.70	9,491.10	1.18	1.87	9578
28,438,268	0.300	---	---	---	21/08/2006	24/11/1999	---	SPIROY AGRICULTURE SA (CR)	0.283	---	↘	0.283	11/03/2014	0.283	0.283	0.283	0.283	0.283	250@0.255	200@0.282	---	2012	300	2	84.90	8,048.03	0.248	0.376	1357
33,125,000	5.00	---	---	---	03/07/2006	18/08/2010	---	TECHNICAL OLYMPIC SA (CR)	1.80	---	↘	1.80	11/03/2014	1.83	1.74	1.83	1.80	1.77	4660@1.74	739@1.80	-(6)-	2012	6,003	38	10,621.22	59,625.00	1.58	1.99	3728
109,314,400	0.300	(0.0589)	---	---	28/05/2012	24/10/2013	---	TERNA ENERGY (CR)	4.62	-1.49	€	4.69	11/03/2014	4.65	4.62	4.76	4.62	4.69	1996@4.61	250@4.68	-(6)-	2012	98,524	622	461,720.09	505,032.53	3.90	4.86	7537
36,300,000	1.12	0.188	0.162	---	16/08/2013	12/12/2007	---	THESSALONIKA WATER & SEWERAGE	5.59	1.45	#	5.51	11/03/2014	5.52	5.46	5.66	5.59	5.57	9@5.51	683@5.59	11.47	2012	11,219	79	62,467.98	202,917.00	4.65	5.66	7577
45,094,620	0.500	---	0.0467	---	10/06/2013	01/11/1999	---	THRACE PLASTICS SA (CR)	1.32	0.76	#	1.31	11/03/2014	1.32	1.30	1.35	1.32	1.32	1350@1.31	3182@1.32	7.60	2012	94,058	112	124,438.95	59,524.90	1.11	1.38	1357
77,063,568	4.00	---	---	---	24/06/2011	25/06/2004	---	TITAN CEMENT (CR)	23.50	-2.08	€	24.00	11/03/2014	24.00	23.50	24.00	23.50	23.66	10@23.48	10000@23.73	---	2013	157,810	473	3,741,904.49	1,884,412.76	18.12	24.65	2353
7,568,960	4.00	---	---	---	24/06/2011	25/06/2004	---	TITAN CEMENT CO. (PR)	9.70	---	↘	9.70	11/03/2014	9.75	9.70	9.75	9.70	9.71	50@9.55	10@9.68	---	2013	370	5	3,592.40	1,884,412.76	8.53	10.10	2353
10,080,000	3.00	0.4	1.5	---	17/07/2013	27/08/2001	---	TPA SA (CR)	24.91	---	↘	24.91	11/03/2014	24.50	24.50	24.91	24.91	24.52	100@24.33	225@24.91	13.61	2012	537	4	13,166.75	251,092.80	22.20	25.06	2777

Number of Outstanding Securities	Nominal Value	Dividends [1]			Date of Last Coupon Dividend [2]		Note	Shares	Closing price	% change	Previous closing price/date	Open price	Price min	Price max	Last price	Avg price	Last Bid [7]	Last Ask [7]	P/E after	Year	Volume	Trades	Transactions Value	Company Mkt Value (thou. €)	Year low	Year high	Sector[ 4]
54,888,240	1.13	0.1	0.1	---	25/04/2013	22/03/2006	---	TRASTOR REAL EST. INV. CO.(CR)	1.20	2.56 #	1.17 11/03/2014	1.17	1.17	1.20	1.20	1.19	500@1.19	5210@1.20	---	2012	31,691	41	37,634.73	65,865.89	0.940	1.21	8671
15,627,315	0.300	---	---	---	16/11/1992	03/12/2012	---	UNIBIOS (CR)	0.388	--- ↘	0.388 11/03/2014	0.372	0.372	0.389	0.388	0.386	6000@0.375	4900@0.388	---	2012	13,026	12	5,023.83	6,063.40	0.308	0.397	2353
18,810,000	0.400	---	---	---	08/07/2010	14/11/2007	---	VARVERIS - MODA BAGNO SA (CR)	0.226	--- ↘	0.226 11/03/2014	---	---	---	---	---	---	15745@0.220	---	2012	---	---	---	4,251.06	0.168	0.279	2353
219,611,308	---	---	---	---	14/02/2014	---	---	VIOHALCO SA/NV (CB)	4.95	-0.80 €	4.99 11/03/2014	5.00	4.95	5.13	4.95	5.04	1000@4.94	1000@4.98	---	---	245,066	563	1,235,365.08	1,087,075.97	3.92	5.13	2727
4,968,600	2.88	---	---	---	01/07/1998	14/12/1998	---	VIS SA (CR)	0.756	--- ↘	0.756 07/03/2014	---	---	---	---	---	90@0.756	---	---	2012	---	---	---	3,756.26	0.756	0.980	2723
6,325,000	0.600	---	---	---	19/07/2010	17/02/2014	---	VOGIATZOGLOU SYSTEMS SA (CR)	1.22	--- ↘	1.22 11/03/2014	---	---	---	---	---	50@0.856	200@1.19	---	2012	---	---	---	7,716.50	0.851	2.27	2797

Exchange Traded Funds (ETFs)

5,848,618	---	---	---	---	24/01/2008	---	---	ALPHA ETF FTSE Athex Large Cap	4.34	-0.46 €	4.36 11/03/2014	4.34	4.34	4.34	4.34	4.34	200@4.29	71@4.34	---	---	1	1	4.34	-	3.69	4.45	11000
294,878	---	---	---	---	29/06/2009	---	---	NBGAM ETF	14.94	0.13 #	14.92 11/03/2014	14.94	14.94	14.94	14.94	14.94	---	---	---	---	2	1	29.88	-	12.20	14.94	11000
388,550	---	---	---	---	03/11/2010	---	---	NBGAM ETF GREECE & TURKEY 30	7.10	-0.56 €	7.14 11/03/2014	7.10	7.10	7.10	7.10	7.10	---	---	---	---	2	1	14.20	-	6.70	7.70	11000

Low Dispersion

14,000,000	3.80	---	---	---	23/04/2010	29/06/1999	4815	ALPHA REAL ESTATE SA(CR)	5.85	-0.34 €	5.87 10/03/2014	5.83	5.83	5.87	5.87	5.85	50@5.88	300@6.49	24.46	2013	100	2	585.00	81,900.00	4.69	7.10	8637
63,900,000	3.00	---	---	---	23/06/2003	04/11/2008	4816	ASTIR PALACE SA (CR)	4.04	0.25 #	4.03 11/03/2014	4.08	4.02	4.08	4.02	4.04	82@4.02	1000@4.06	---	2013	2,050	12	8,282.00	258,156.00	3.56	4.08	5753
90,902,904	0.800	---	---	---	09/08/2004	08/03/2006	4814	ATHENA SA (CR)	0.290	--- ↘	0.290 11/03/2014	---	---	---	---	---	---	1000@0.277	---	2012	---	---	---	26,361.84	0.160	0.310	2357
191,660,320	0.300	---	---	---	20/07/2009	29/12/2010	4817	ATTICA HOLDINGS (CR)	0.701	0.72 #	0.696 11/03/2014	0.710	0.680	0.710	0.680	0.701	1500@0.660	173@0.680	---	2012	5,234	12	3,670.12	134,353.88	0.495	0.795	5759
68,322,221	1.00	---	---	---	08/03/2002	08/04/2013	4986	GENIKI BANK (CR)	9.80	3.16 #	9.50 11/03/2014	9.60	9.60	10.00	10.00	9.80	397@10.00	122@10.52	---	2012	6	2	58.80	669,557.77	8.00	15.00	8355
71,082,707	1.70	---	---	---	01/07/2010	21/11/2012	4820	HERACLES GEN.CEMENT CO. (CR)	1.30	--- ↘	1.30 11/03/2014	1.30	1.30	1.30	1.30	1.30	2038@1.30	300@1.33	---	2012	390	2	507.00	92,407.52	1.26	1.37	2353
13,404,440	8.63	---	---	---	02/04/2001	06/03/1992	4822	IONIAN HOTELS SA (CR)	7.48	--- ↘	7.48 18/02/2014	---	---	---	---	---	100@7.50	50@8.60	-(6)-	2013	---	---	---	100,265.21	6.64	9.90	5753
2,760,000	7.70	7.6	8.52	---	26/06/2013	16/07/1990	4823	KARELIA TOBACCO CO. SA (CB)	234.30	9.00 #	214.95 10/03/2014	234.95	215.00	234.95	234.30	234.28	1@215.00	6@229.50	14.23	2012	183	13	42,873.55	646,668.00	180.00	234.95	3785
106,980,050	2.25	---	---	---	25/07/2008	24/02/2014	5044	MINOAN LINES SA (CR)	1.50	--- ↘	1.50 11/03/2014	1.54	1.50	1.54	1.50	1.50	131489@1.50	20@1.53	---	2012	1,420	7	2,134.00	160,470.08	1.49	2.00	5759
17,240,776	0.370	---	---	---	14/07/2005	30/09/2003	4827	PERSEUS SA (CR)	0.310	--- ↘	0.310 06/03/2014	---	---	---	---	---	---	5409@0.310	18.07	2012	---	---	---	5,344.64	0.260	0.366	3577

Surveillance

33,301,715	0.320	---	---	---	27/06/2003	08/07/2009	4978	AEGEK (CR)	0.093	-6.06	€	0.099	11/03/2014	0.085	0.085	0.095	0.087	0.093	1000@0.087	3940@0.095	---	2012	196	5	18.17	3,097.06	0.077	0.136	2357
14,870,100	0.300	---	---	---	15/05/2008	26/09/2011	4844	ALPHA GRISSIN S.A. (CR)	0.081	---	↘	0.081	05/02/2014	---	---	---	---	---	3000@0.065	---	---	2012	---	---	---	1,204.48	0.068	0.143	9533
215,246,452	0.300	---	---	---	25/06/2001	24/09/2001	4446	ALTEC SA (CR)	0.038	15.15	#	0.033	11/03/2014	0.038	0.033	0.038	0.033	0.037	630@0.033	7000@0.037	---	2012	44,692	18	1,674.84	8,179.37	0.025	0.040	9533
2,969,713	0.300	---	---	---	02/07/2008	28/02/2011	4958	ANEK LINES SA (PR, Issue '96)	0.150	---	↘	0.150	07/03/2014	---	---	---	---	---	1000@0.180	---	---	2012	---	---	---	23,507.36	0.150	0.280	5759
312,163	0.300	---	---	---	02/07/2008	28/02/2011	4959	ANEK LINES SA (PR, Issue '90)	1.43	---	↘	1.43	09/09/2013	---	---	---	---	---	---	16@1.15	---	2012	---	---	---	23,507.36	1.43	1.43	5759
185,373,016	0.300	---	---	---	02/07/2008	28/02/2011	4957	ANEK LINES SA (CR)	0.122	7.96	#	0.113	11/03/2014	0.127	0.120	0.127	0.120	0.122	3000@0.110	8334@0.118	---	2012	28,133	19	3,422.62	23,507.36	0.100	0.141	5759
81,644,555	0.300	---	---	---	01/07/2008	02/09/2002	4630	ATTI - KAT SA (CR)	0.023	4.54	#	0.022	11/03/2014	0.026	0.022	0.026	0.026	0.023	11200@0.024	6989@0.026	---	2012	33,730	15	786.07	1,877.82	0.020	0.036	2357
20,255,805	0.300	---	---	---	22/08/2006	02/08/2010	4881	AXON HOLDING SA (CR)	0.080	-5.88	€	0.085	11/03/2014	0.080	0.080	0.080	0.080	0.080	2499@0.080	2000@0.102	---	2012	1	1	0.08	1,620.46	0.060	0.139	4533
17,579,754	4.16	---	---	---	18/08/2006	02/08/2010	4885	BIOTER SA (CR)	0.165	8.55	#	0.152	11/03/2014	0.150	0.150	0.168	0.168	0.165	30@0.150	730@0.167	---	2012	970	5	159.90	2,900.66	0.104	0.180	2357
12,431,980	0.720	---	---	---	20/06/2003	10/07/2003	4559	COMPUCON SA (CR)	0.045	---	↘	0.045	28/02/2014	---	---	---	---	---	---	10899@0.045	---	2012	---	---	---	559.44	0.025	0.056	9537
30,159,583	0.470	---	---	---	26/06/2008	29/12/2010	4962	DIAS A/C (CR)	0.040	---	↘	0.040	18/02/2014	---	---	---	---	---	2000@0.032	---	---	2012	---	---	---	1,206.38	0.040	0.092	3573
15,878,748	0.480	---	---	---	10/07/2006	22/03/2004	4960	DOMIKI KRITIS SA (CR)	0.429	0.94	#	0.425	10/03/2014	0.429	0.429	0.429	0.429	0.429	4500@0.410	700@0.439	---	2012	5,630	12	2,415.30	6,811.98	0.264	0.429	2357
3,961,300	1.28	---	---	---	29/06/2004	03/08/2000	4808	DUROS SA (CR)	0.264	20.00	#	0.220	11/03/2014	0.264	0.264	0.264	0.264	0.264	4980@0.264	---	---	2012	133	5	35.11	1,045.78	0.185	0.759	3763

Number of Outstanding Securities	Nominal Value	Dividends [1]			Date of Last Coupon		Note	Shares	Closing price	% change	Previous closing price/date	Open price	Price min	Price max	Last price	Avg price	Last Bid [7]	Last Ask [7]	P/E after	Year	Volume	Trades	Transactions Value	Company Mkt Value (thou. €)	Year low	Year high	Sector[ 4]		
		2011	2012	2013	Dividend [2]	Right																							
Surveillance																													
7,085,888	1.59	---	---	---	02/07/1996	06/09/2010	4690	ELVIEMEK (CR)	3.97	---	↘	3.97	26/02/2014	---	---	---	---	---	---	-(6)-	2012	---	---	---	28,130.98	1.54	3.97	8633	
6,000,000	0.600	---	---	---	13/06/2008	08/04/2004	4886	EUROBROKERS S.A. (CR)	0.043	---	↘	0.043	10/03/2014	---	---	---	---	1366@0.045	---	---	2012	---	---	---	258.00	0.043	0.052	8534	
21,820,410	0.800	---	---	---	22/05/2008	02/08/2011	4882	EUROMEDICA SA (CR)	0.300	---	↘	0.300	11/03/2014	---	---	---	---	300@0.240	525@0.350	---	2012	---	---	---	6,546.12	0.300	0.389	4533	
110,097,185	0.300	---	---	---		04/12/2013	5033	Forthnet (CR)	1.30	3.18	#	1.26	11/03/2014	1.30	1.29	1.30	1.30	500@1.28	2437@1.30	---	---	8,976	24	11,664.50	143,126.34	1.10	1.98	9535	
1,270,000	0.300	---	---	---	06/07/2007	06/02/2013	5007	GIRAKIAN PROFIL SA (CB)	1.44	---	↘	1.44	11/03/2014	---	---	---	---	400@1.16	---	---	2012	---	---	---	1,828.80	1.44	1.80	1757	
179,707,771	0.300	---	---	---	27/06/2002	01/11/2011	4847	HELLAS ONLINE SA (CR)	0.596	---	↘	0.596	11/03/2014	0.596	0.596	0.596	0.596	200@0.592	127@0.600	---	2012	2,000	5	1,192.00	107,105.83	0.400	0.670	9537	
13,692,227	1.47	---	---	---	07/07/2006	08/10/1999	4845	HELLENIC FABRICS SA (CR)	0.114	2.70	#	0.111	11/03/2014	0.089	0.089	0.129	0.129	1950@0.089	250@0.129	---	2012	400	3	45.60	1,560.91	0.089	0.153	3763	
30,390,000	0.310	---	---	---	18/08/2008	29/12/2006	4447	HELLENIC FISHFARMING SA (CR)	0.078	18.18	#	0.066	11/03/2014	0.068	0.068	0.079	0.079	100000@0.068	9778@0.079	18.28	2012	58,423	16	4,556.30	2,370.42	0.052	0.119	3573	
1,540,000	0.600	---	---	---	08/08/1994	19/09/2000	4855	J.BOUTARIS & SON HOLD. (PB)	0.012	---	↘	0.012	10/03/2014	---	---	---	---	1500@0.014	---	---	2012	---	---	---	1,277.46	0.012	0.012	3535	
25,179,640	0.600	---	---	---	08/08/1994	19/09/2000	4854	J.BOUTARIS & SON HOLD. SA (CB)	0.050	---	↘	0.050	11/03/2014	---	---	---	---	9999@0.042	---	---	2012	---	---	---	1,277.46	0.043	0.084	3535	
7,125,216	0.650	---	---	---	01/07/2005	14/12/1999	4955	KRE.KA SA (CR)	0.161	6.62	#	0.151	11/03/2014	0.151	0.151	0.181	0.181	3000@0.144	---	---	2012	2,900	6	467.90	1,147.16	0.151	0.278	3573	
51,081,030	1.00	---	---	---	20/08/2007	03/09/2007	4912	LAVIPHARM SA (CR)	0.137	-4.86	€	0.144	11/03/2014	0.131	0.131	0.140	0.140	350@0.132	853@0.140	---	2012	1,600	3	218.60	6,998.10	0.130	0.164	4577	
322,925,288	0.300	---	---	---	23/05/2007	10/04/2000	4554	M.J. MAILLIS SA (CR)	0.115	---	↘	0.115	11/03/2014	0.115	0.115	0.115	0.115	4477@0.112	200000@0.119	---	2012	329,545	21	37,897.69	37,136.41	0.067	0.130	2723	
9,567,289	0.300	---	---	---	01/07/2004	19/11/2007	4944	MARAC ELECTRONICS (CR)	0.297	---	↘	0.297	31/12/2013	---	---	---	---	---	560@0.268	---	---	2012	---	---	---	2,841.48	0.297	0.297	9578
4,178,856	1.58	---	---	---	21/07/2011	28/07/2004	4983	MEDICON S.A (CR)	0.640	7.56	#	0.595	11/03/2014	0.640	0.640	0.640	0.640	569@0.476	560@0.640	---	2012	50	1	32.00	2,674.47	0.303	0.952	4535	
255,459,600	0.300	---	---	---	26/06/2000	03/12/2010	4833	NEL SA (CR)	0.066	6.45	#	0.062	11/03/2014	0.070	0.060	0.070	0.060	4958@0.060	388@0.072	---	2012	11,372	9	746.04	16,860.33	0.049	0.090	5759	
20,231,328	0.600	---	---	---	15/07/2008	25/06/2004	4879	NIKAS SA (CR)	0.170	---	↘	0.170	04/03/2014	0.170	0.170	0.170	0.170	3000@0.173	---	---	2012	9	1	1.53	3,439.33	0.170	0.180	3577	
20,210,127	1.53	---	---	---	27/06/1997	20/03/2000	5006	PARNASSOS ENTERP. (CR)	0.120	-0.83	€	0.121	11/03/2014	0.120	0.119	0.120	0.119	700@0.116	1750@0.119	---	2012	5,900	7	706.10	2,425.22	0.101	0.172	8775	
14,967,940	0.500	---	---	---	21/05/2008	04/01/2008	4956	PASAL DEVELOPMENT S.A. (CR)	0.196	---	↘	0.196	11/03/2014	0.196	0.196	0.196	0.196	2000@0.190	1014@0.195	---	2012	6,000	6	1,176.00	2,933.72	0.129	0.239	8633	
40,946,303	0.360	---	---	---	18/07/2005	27/11/2007	4856	PC SYSTEMS SA (CR)	0.169	---	↘	0.169	26/02/2014	---	---	---	---	---	49035@0.136	---	---	2012	---	---	---	6,919.93	0.070	0.169	9533
18,750,000	0.300	---	---	---	02/07/2001	31/12/2012	4985	PEGASUS PUBLISHING S.A. (CR)	0.061	17.31	#	0.052	11/03/2014	0.060	0.060	0.061	0.061	119958@0.061	---	---	2012	42	10	2.55	1,143.75	0.045	0.189	5557	
65,326,268	0.530	---	---	---	04/07/2007	19/07/2006	4750	SATO SA (CR)	0.162	-10.00	€	0.180	11/03/2014	0.162	0.162	0.162	0.162	4000@0.165	100@0.168	---	2012	7,000	7	1,134.00	10,582.86	0.139	0.250	3726	
36,235,184	1.00	---	---	---	01/07/2008	30/07/2012	4961	SELONDA AQUACULTURE SA (CR)	0.126	0.80	#	0.125	11/03/2014	0.126	0.126	0.127	0.126	998@0.126	12131@0.127	---	2012	4,599	12	580.81	4,565.63	0.090	0.149	3573	
7,914,480	2.50	---	---	---	23/06/2008	29/06/2011	4888	SFAKIANAKIS SA (CR)	0.700	11.11	#	0.630	11/03/2014	0.700	0.700	0.700	0.700	5000@0.505	1181@0.700	---	2012	3,000	4	2,100.00	5,540.14	0.488	0.750	5379	
10,000,000	1.35	---	---	---	24/06/2008	10/05/2005	4887	SIDMA SA (CR)	0.360	---	↘	0.360	11/03/2014	---	---	---	---	625@0.366	90@0.369	---	2012	---	---	---	3,600.00	0.240	0.440	1757	
29,060,950	0.340	---	---	---	20/08/2007	24/10/2001	4884	SPIDER METAL INDUSTRY SA (CR)	0.038	18.75	#	0.032	11/03/2014	0.038	0.038	0.038	0.038	499@0.038	---	---	2012	1,500	1	57.00	1,104.32	0.012	0.053	2757	
100,793,000	0.300	---	---	---	16/07/2009	05/08/2013	5008	TELETIPOS SA (CR)	0.180	20.00	#	0.150	07/03/2014	0.180	0.180	0.180	0.180	2997@0.180	---	---	2012	200	2	36.00	18,142.74	0.111	0.215	5553	
3,229,566	0.320	---	---	---	22/06/2005	23/09/1999	4629	VARANGIS AVEPE S.A. (CR)	1.00	---	↘	1.00	05/11/2013	---	---	---	---	---	841@1.00	---	---	2012	---	---	---	3,229.57	1.00	1.00	3726
16,383,428	0.300	---	---	---	25/06/2002	21/06/2013	4997	VARVARESSOS SA (CB)	0.240	20.00	#	0.200	11/03/2014	0.240	0.240	0.240	0.240	3000@0.195	40@0.220	---	2012	2,000	4	480.00	3,932.02	0.152	0.250	3763	
13,191,620	0.620	---	---	---	04/08/2010	09/09/2002	4977	YALCO - CONSTANTINOY SA (CB)	0.241	---	↘	0.241	10/02/2014	---	---	---	---	---	1000@0.224	---	---	2012	---	---	---	3,179.18	0.241	0.241	3722

Under Deletion																													
766,000	2.83	---	---	---	01/07/2004	11/12/2012	4937	TRIA	ALFA SA (CR)	3.33	---	↘	3.33	27/01/2014	---	---	---	---	---	500@3.29	---	2012	---	---	---	2,788.19	2.81	3.33	3763
245,000	2.83	---	---	---	19/07/2010	11/12/2012	4938	TRIA	ALFA SA (PR)	0.969	---	↘	0.969	10/03/2014	---	---	---	---	---	1@1.15	---	2012	---	---	---	2,788.19	0.969	1.39	3763

Under Suspension																											
49,030,011	0.300	---	---	---	19/07/2010	12/05/2011	4875	ALAPIS (CR)	0.041	---	↘	0.041	30/03/2012	---	---	---	---	---	---	---	---	---	---	2,010.23	0.041	0.041	4577
5,025,000	0.300	---	---	---	05/07/2005	14/03/2002	5023	ALSINCO S.A (CR)	0.043	---	↘	0.043	27/11/2013	---	---	---	---	---	---	---	---	---	---	216.08	0.043	0.043	3763

Number of Outstanding Securities	Nominal Value	Dividends [1]			Date of Last Coupon Dividend [2]		Note	Shares	Closing price	% change	Previous closing price/date	Open price	Price min	Price max	Last price	Avg price	Last Bid [7]	Last Ask [7]	P/E after	Year	Volume	Trades	Transactions Value	Company Mkt Value (thou. €)	Year low	Year high	Sector[ 4]
----------------------------------------	------------------	---------------	--	--	-------------------------------------	--	------	--------	------------------	----------	--------------------------------	---------------	--------------	--------------	---------------	--------------	-----------------	--------------	--------------	------	--------	--------	-----------------------	--------------------------------	-------------	--------------	---------------

Under Suspension

1,750,955,549	0.600	---	---	---	19/05/2008	08/12/2011	4911	ATE (CR)	0.155	---	0.155	30/07/2012	---	---	---	---	---	---	---	---	---	---	---	271,398.11	0.155	0.155	8355
21,382,067	0.300	---	---	---	02/10/2006	15/02/2006	4628	ATERMON (CR)	0.120	---	0.120	31/03/2010	---	---	---	---	---	---	---	---	---	---	---	2,565.85	0.120	0.120	5555
105,423,498	0.510	---	---	---	01/07/2004	28/12/2005	4920	AVENIR S.A. (CR)	0.046	---	0.046	30/08/2012	---	---	---	---	---	---	---	---	---	---	---	4,849.48	0.046	0.046	5752
33,930,000	0.300	---	---	---	03/07/2006	30/05/2001	4865	BABIS VOVOS SA (CR)	0.304	---	0.304	30/03/2012	---	---	---	---	---	---	---	---	---	---	---	10,314.72	0.304	0.304	8633
20,121,710	1.21	---	---	---	27/07/1992	12/03/2003	5002	BALKAN R.E. (CR)	0.190	---	0.190	29/08/2013	---	---	---	---	---	---	---	---	---	---	---	3,823.12	0.190	0.190	8633
1,795,140,547	1.00	---	---	---	31/05/2011	19/04/2012	4951	BANK OF CYPRUS (CR)	0.207	---	0.207	15/03/2013	---	---	---	---	---	---	---	---	---	---	---	371,594.09	0.207	0.207	8355
21,920,570	0.300	---	---	---	03/07/2007	13/12/1999	4702	CARDASSILARIS SA (CR)	0.140	---	0.140	30/11/2010	---	---	---	---	---	---	---	---	---	---	---	3,068.88	0.140	0.140	3577
54,547,634	0.500	---	---	---	25/04/2005	21/01/2009	4860	CH.TEGOPOULOS PUBL. SA (CR)	0.038	---	0.038	23/03/2012	---	---	---	---	---	---	---	---	---	---	---	2,072.81	0.038	0.038	5557
7,847,611	1.20	---	---	---	01/08/2007	28/09/2011	4939	EDRASIS - C. PSALLIDAS SA (CR)	0.150	---	0.150	19/11/2012	---	---	---	---	---	---	---	---	---	---	---	1,177.14	0.150	0.150	2357
5,750,000	0.300	---	---	---	12/12/2008	12/12/2011	4929	ELECTRONIKI ATHINON SA (CR)	0.480	---	0.480	07/09/2012	---	---	---	---	---	---	---	---	---	---	---	2,760.00	0.480	0.480	5375
24,605,397	0.400	---	---	---	29/06/1995	27/05/2002	4651	EMPORIKOS DESMOS SA (CR)	0.080	---	0.080	28/05/2010	---	---	---	---	---	---	---	---	---	---	---	2,134.04	0.080	0.080	3722
1,182,903	0.400	---	---	---	01/07/1996	27/05/2002	4652	EMPORIKOS DESMOS SA (PR)	0.140	---	0.140	28/09/2009	---	---	---	---	---	---	---	---	---	---	---	2,134.04	0.140	0.140	3722
8,593,750	0.300	---	---	---	01/06/2009	20/06/2007	4876	FASHION BOX (CR)	1.30	---	1.30	23/02/2012	---	---	---	---	---	---	---	---	---	---	---	11,171.88	1.30	1.30	3763
7,326,648	1.00	---	---	---	26/07/2006	24/07/2001	4921	FINTEXPOR SA (CR)	0.328	---	0.328	29/06/2012	---	---	---	---	---	---	---	---	---	---	---	2,403.14	0.328	0.328	3763
20,860,000	0.300	---	---	---	03/07/2000	13/11/2007	4848	IKONA - IHOS SA (CR)	0.072	---	0.072	02/12/2011	---	---	---	---	---	---	---	---	---	---	---	1,501.92	0.072	0.072	5379
36,765,744	0.350	---	---	---	16/08/2006	06/06/2011	4869	IMPERIO SA (CR)	0.026	---	0.026	30/03/2012	---	---	---	---	---	---	---	---	---	---	---	955.91	0.026	0.026	2777
24,619,524	0.500	---	---	---	10/10/1986	30/12/2002	4914	KERAMIA-ALLATINI (CR)	0.088	---	0.088	27/08/2012	---	---	---	---	---	---	---	---	---	---	---	2,166.52	0.088	0.088	8633
7,840,373	1.20	---	---	---	18/07/2002	05/03/2003	4765	KLONATEX SA (PR)	0.080	---	0.080	09/05/2011	---	---	---	---	---	---	---	---	---	---	---	1,453.75	0.080	0.080	3763
20,663,047	1.20	---	---	---	21/08/2000	05/03/2003	4764	KLONATEX SA (CR)	0.040	---	0.040	09/05/2011	---	---	---	---	---	---	---	---	---	---	---	1,453.75	0.040	0.040	3763
17,544,600	0.600	---	---	---	03/07/2000	01/08/2000	4868	KOYMBAS SYNERGY GROUP (CR)	0.132	---	0.132	29/03/2012	---	---	---	---	---	---	---	---	---	---	---	2,315.89	0.132	0.132	8775
15,015,000	1.60	---	---	---	01/07/2002	02/02/2000	4603	MAXIM C.M. PERTSINIDIS SA (CB)	0.100	---	0.100	30/11/2009	---	---	---	---	---	---	---	---	---	---	---	1,501.50	0.100	0.100	3763
66,937,526	0.700	---	---	---	13/08/2010	21/05/2003	5003	MICHANIKI SA (CR)	0.100	---	0.100	29/08/2013	---	---	---	---	---	---	---	---	---	---	---	9,186.78	0.100	0.100	2357
25,968,987	0.700	---	---	---	13/08/2010	21/05/2003	5004	MICHANIKI SA (PR)	0.096	---	0.096	29/08/2013	---	---	---	---	---	---	---	---	---	---	---	9,186.78	0.096	0.096	2357
13,555,100	1.00	---	---	---	08/07/2005		4576	MICROLAND COMPUTERS SA (CR)	0.640	---	0.640	14/07/2009	---	---	---	---	---	---	---	---	---	---	---	8,675.26	0.640	0.640	5379
23,463,874	0.800	---	---	---	23/05/2003	21/12/1999	4918	NEORION SA (CR)	0.125	---	0.125	28/08/2012	---	---	---	---	---	---	---	---	---	---	---	2,932.98	0.125	0.125	2753
42,501,273	0.300	---	---	---	26/06/2007	10/08/2009	4993	NUTRIART (CR)	0.049	---	0.049	21/06/2013	---	---	---	---	---	---	---	---	---	---	---	2,082.56	0.049	0.049	3577
25,583,146	0.300	---	---	---	25/06/2001	03/12/2008	4723	PETZETAKIS SA (CR)	0.260	---	0.260	28/01/2011	---	---	---	---	---	---	---	---	---	---	---	6,651.62	0.260	0.260	1357
9,550,386	0.500	---	---	---	01/07/1997	12/06/2008	4626	PRAXITELIO SA (CR)	0.390	---	0.390	11/03/2010	---	---	---	---	---	---	---	---	---	---	---	4,430.09	0.390	0.390	4533
1,306,368	0.500	---	---	---	01/07/1997	12/06/2008	4627	PRAXITELIO SA (PR)	0.540	---	0.540	15/12/2009	---	---	---	---	---	---	---	---	---	---	---	4,430.09	0.540	0.540	4533
62,683,822	0.300	---	---	---	27/05/2008	09/01/2006	4830	PROTON BANK S.A. (CR)	0.180	---	0.180	07/10/2011	---	---	---	---	---	---	---	---	---	---	---	11,283.09	0.180	0.180	8355
23,059,688	0.660	---	---	---	03/07/2008	06/08/2004	4864	RIDENCO SA (CR)	0.032	---	0.032	30/03/2012	---	---	---	---	---	---	---	---	---	---	---	737.91	0.032	0.032	3765
51,334,286	0.320	---	---	---	03/07/2000	18/12/2007	4548	SAOS (CR)	0.780	---	0.780	27/03/2009	---	---	---	---	---	---	---	---	---	---	---	40,040.74	0.780	0.780	2773
26,408,040	0.300	---	---	---	01/07/1997	26/05/1999	4464	SHEET STEEL SA (CR)	0.120	---	0.120	28/11/2008	---	---	---	---	---	---	---	---	---	---	---	3,168.96	0.120	0.120	1757
60,221,300	0.400	---	---	---	01/07/2002	01/11/2010	5022	SHELMAN SA (CR)	0.080	---	0.080	19/11/2013	---	---	---	---	---	4000@0.070	---	---	---	---	---	4,817.70	0.080	0.080	2353
26,262,660	0.900	---	---	---	01/07/2008	24/02/2011	4954	SPRIDER STORES (CR)	0.031	---	0.031	28/03/2013	---	---	---	---	---	---	---	---	---	---	---	814.14	0.031	0.031	5371
144,688,060	0.600	---	---	---	21/04/2008	10/03/2010	4982	T BANK (CR)	0.048	---	0.048	30/11/2011	---	---	---	---	---	---	---	---	---	---	---	6,945.03	0.048	0.048	8355
6,523,780	0.530	---	---	---	01/07/2002	06/03/2001	4971	TECHNICAL PUBLICATIONS SA (CR)	0.006	---	0.006	29/05/2013	---	---	---	---	---	---	---	---	---	---	---	39.14	0.006	0.006	5557
13,920,000	0.320	---	---	---	19/11/2001	01/08/2000	4726	TEXAPRET SA (CR)	0.080	---	0.080	23/02/2011	---	---	---	---	---	---	---	---	---	---	---	1,113.60	0.080	0.080	3763



Number of Outstanding Securities	Nominal Value	Dividends [1]			Date of Last Coupon		Note	Shares	Closing price	% change	Previous closing price/date	Open price	Price min	Price max	Last price	Avg price	Last Bid [7]	Last Ask [7]	P/E after	Year	Volume	Trades	Transactions Value	Company Mkt Value (thou. €)	Year low	Year high	Sector[ 4]	
		2011	2012	2013	Dividend [2]	Right																						
Under Suspension																												
510,840	1.00	---	---	---	15/07/2008	21/11/2013	5036	TROPEA HOLDING (CR)	2.00	---	↘ 0.020 # 30/03/2012	---	---	---	---	---	---	---	---	---	---	---	---	---	1,021.68	0.020	2.00	3722
284,465,964	3.70	---	---	---	20/06/2008	15/06/2009	4913	TT HELLENIC POSTBANK (CR)	0.168	---	↘ 0.168 30/08/2012	---	---	---	---	---	---	---	---	---	---	---	---	---	47,790.28	0.168	0.168	8355
89,616,200	0.300	---	---	---	21/08/2000	28/06/2007	4616	UNITED TEXTILES (CR)	0.050	---	↘ 0.050 25/02/2010	---	---	---	---	---	---	---	---	---	---	---	---	---	4,480.81	0.050	0.050	3763
71,683,906	0.400	---	---	---	15/06/2005	05/02/2008	4953	XATZIOANNOU (CR)	0.026	---	↘ 0.026 28/03/2013	---	---	---	---	---	---	---	---	---	---	---	---	---	1,863.78	0.026	0.026	3763

## Shares' Notes

Code	Note text
( )	- Adjusted dividends.
*	- Last adjusted closing price.
[1]	- Net dividends.
[2]	- The "Date of Last Coupon" for New listings refers to the date company's stocks started to trade in Athex
[3]	- The Company Market Value is referred to the number of outstanding shares
[4]	- Sectors codification can be found in Appendix A
[5]	- The Market Value refers to the total number of shares listed (including their several classes) in the exchange by the company.
[6]	- P/E greater than 100
[7]	- Last view of the Order Book before the end of the trading session
4446	- Transfer to the "Under Supervision" Category as of 20/10/2008.
4447	- Transfer to the "Under Supervision" Category as of 21/10/2008.
4464	- Suspension of trading as of 1/12/2008.
4548	- Suspension of trading as of 1/4/2009.
4554	- Transfer to the "Under Supervision" Category as of 6/4/2009.
4559	- Transfer to the "Under Supervision" Category as of 21/4/2009.
4576	- Suspension of trading as of 14/7/2009.
4603	- Suspension of trading as of 1/12/2009.
4616	- Suspension of trading as of 25/2/2010.
4626	- Suspension of trading as of 1/4/2010.
4627	- Suspension of trading as of 1/4/2010.
4628	- Suspension of trading as of 1/4/2010.
4629	- Transfer to the Under Supervision Category as of 12/4/2010.
4630	- Transfer to the Under Supervision Category as of 12/4/2010.
4651	- Suspension of trading as of 1/6/2010.
4652	- Suspension of trading as of 1/6/2010.
4690	- Transfer to Surveillance category as of 4/4/2006.
4702	- Suspension of trading as of 1/12/2010.
4723	- Suspension of trading as of 31/1/2011.
4726	- Suspension of trading as of 1/3/2011.
4750	- Transfer to the "Under Surveillance Category" from 8/4/2011.
4764	- Suspension of trading as of 20/5/2011.
4765	- Suspension of trading as of 20/5/2011.
4795	- The final gross (pre-tax) dividend is € 0.30 per share and subject to withholding tax on the full dividend amount, i.e. 0,45 per share, for those shareholders liable to withholding tax, in accordance with the applicable tax law provisions.
4808	- Suspension of trading as of 6/9/2011.
4814	- Transfer to the Low Dispersion Category as of 30/5/2011.
4815	- Transfer to the Low Dispersion Category as of 30/5/2011.
4816	- Transfer to the Low Dispersion Category as of 30/5/2011.
4817	- Transfer to the Low Dispersion Category as of 30/5/2011.
4820	- Transfer to the Low Dispersion category as of 18/4/2008.
4822	- Transfer to the Low Dispersion category as of 30/5/2011.
4823	- Transfer to the Low Dispersion category as of 4/4/2006.
4827	- Transfer to the Low Dispersion category as of 5/5/2010.
4830	- Suspension of trading as of 10/10/2011.
4833	- Transfer to Surveillance category from 6/5/2010.
4844	- Transfer to the Surveillance category from 8/4/2011.
4845	- Transfer to the Surveillance Category as of 25/11/2011.
4847	- Transfer to the Surveillance Category as of 3/7/2009.
4848	- Suspension of trading as of 6/12/2011.
4854	- Transfer to the Surveillance Category as of 29/12/2011.
4855	- Transfer to the Surveillance Category as of 29/12/2011.
4856	- Transfer to the Surveillance Category as of 29/12/2011.

## Shares' Notes

Code	Note text
4860	- Suspension of trading as of 30/3/2012.
4864	- Suspension of trading as of 30/3/2012.
4865	- Suspension of trading as of 2/4/2012.
4868	- Suspension of trading as of 2/4/2012.
4869	- Suspension of trading as of 2/4/2012.
4875	- Suspension of trading as of 2/4/2012.
4876	- Suspension of trading as of 3/4/2012.
4879	- Transfer to the Surveillance Category as of 10/4/2012.
4881	- Transfer to the Surveillance Category as of 10/4/2012.
4882	- Transfer to the Surveillance Category as of 10/4/2012.
4884	- Transfer to the Surveillance Category as of 10/4/2012.
4885	- Transfer to the Surveillance Category as of 10/4/2012.
4886	- Transfer to the Surveillance Category as of 10/4/2012.
4887	- Transfer to the Surveillance Category as of 10/4/2012.
4888	- Transfer to the Surveillance Category as of 10/4/2012.
4911	- Lift of suspension from 30/7/2012.
4912	- Transfer to the Surveillance Category as of 31/7/2012.
4913	- Suspension of trading as of 30/8/2012.
4914	- Suspension of trading as of 31/8/2012.
4918	- Suspension of trading as of 31/8/2012.
4920	- Suspension of trading as of 31/8/2012.
4921	- Suspension of trading as of 31/8/2012.
4929	- Suspension of trading as of 1/10/2012.
4937	- Transfer to the UNDER DELETION category as of 30/11/2012.
4938	- Transfer to the UNDER DELETION category as of 30/11/2012.
4939	- Suspension of trading as of 30/11/2012.
4944	- Transfer to the Surveillance Category as of 7/12/2012.
4951	- Suspension of trading as of 19/3/2013.
4953	- Suspension of trading as of 2/4/2013.
4954	- Suspension of trading as of 2/4/2013.
4955	- Transfer to the Surveillance Category as from 5/4/2013.
4956	- Transfer to the Surveillance Category as from 5/4/2013.
4957	- Transfer to the Surveillance Category as from 5/4/2013.
4958	- Transfer to the Surveillance Category as from 5/4/2013.
4959	- Transfer to the Surveillance Category as from 5/4/2013.
4960	- Transfer to the Surveillance Category as from 5/4/2013.
4961	- Transfer to the Surveillance Category as from 5/4/2013.
4962	- Transfer to the Surveillance Category as from 5/4/2013.
4971	- Suspension of trading as of 3/6/2013.
4977	- Transfer to the "Under Surveillance Category" from 11/6/2013.
4978	- Transfer to the Under Supervision Category as of 11/6/2013.
4982	- Suspension of trading as of 1/12/2011.
4983	- Transfer to the Surveillance Category as of 5/4/2013.
4985	- Transfer to the "Under Surveillance Category" from 8/4/2011.
4986	- Transfer to the Low Dispersion category as of 30/5/2011.
4988	- As of June 7, 2013, the name of the company "DUTY FREE SHOPS A CORPORATION OPERATING DFS AND LARGE AND SMALL SCALE INDUSTRIAL OPERATIONS, TECHNIC" on ATHEX changes to "FOLLI FOLLIE S.A.".
4993	- Suspension of trading as of 21/6/2013 (15:18).
4997	- Transfer to the Under Supervision Category as of 21/12/2009. - The 6,870,053 new (CB) shares, resulting from the recent share capital increase through a rights issue, are not yet admitted to trading on the ATHEX.
5002	- Suspension of trading as of 30/08/2013.
5003	- Suspension of trading as of 30/08/2013.
5004	- Suspension of trading as of 30/08/2013.

## Shares' Notes

Code	Note text
5006	- Transfer to the Surveillance Category as of 3/9/2013.
5007	- Transfer to the Surveillance category, as of 11/10/2013.
5008	- Transfer to the Surveillance Category from 8/4/2011.
5022	- Suspension of trading as of 2/12/2013.
5023	- Suspension of trading as of 2/12/2013.
5031	- The 612,300 new (CR) shares, resulting from the recent share capital increase through a rights issue, are not yet admitted to trading on the ATHEX.
5033	- Transfer to the Surveillance Category as of 25/11/2011. The 97,144,575new (CR) shares, resulting from the recent share capital increase through a rights issue, are not yet admitted to trading on the ATHEX.
5036	- The company's share is under suspension of trading as of 2/4/2012. During suspension, the company proceeded and concluded a share reverse split, according to which - after the conclusion of the corporate action - the total number of the company's shares, as well as, the last closing price of 30/03/2012 were adjusted.
5040	- Transfer to the Low Dispersion category as of 8/4/2011. Share capital increase in progress through a rights issue. Rights' trading period on ATHEX: 28/2/2014 - 10/3/2014, pre-emption rights' subscription period: 28/2/2014 - 14/3/2014.
5042	- Share capital increase in progress through a rights issue. Rights' trading period on ATHEX: 10/03/2014 - 18/03/2014, pre-emption rights' subscription period: 10/03/2014 - 24/03/2014.
5044	- Transfer to the Low Dispersion category as of 8/4/2011. The 13,594,150 new (CR) shares, resulting from the recent share capital increase through a rights issue, are not yet admitted to trading on the ATHEX.

## Securities Blocks Details

Securities	Block Volume	Price	Block Trade Value	Time of approval	Note
TITAN CEMENT (CR)	11,520	23.86	274,867.20	11:05:34	20
HELLENIC PETROLEUM (CR)	50,000	7.70	385,000.00	11:09:47	20
LAMDA DEVELOPMENT SA (CR)	60,000	6.16	369,600.00	11:20:05	20
HELLENIC PETROLEUM (CR)	100,000	7.70	770,000.00	11:26:14	20
AUTOHELLAS SA (CR)	30,000	10.10	303,000.00	12:08:49	20
TITAN CEMENT (CR)	48,895	23.76	1,161,500.73	12:16:00	20
JUMBO SA (CR)	63,363	14.00	887,082.00	12:39:20	20
OPAP (CR)	193,200	12.30	2,376,360.00	15:21:39	20
ALPHA BANK (CR)	450,000	0.702	315,900.00	16:02:20	20
FOLLI FOLLIE (CR)	31,525	27.30	860,632.50	16:27:58	20
PIRAEUS BANK (CR)	400,538	1.82	728,979.16	16:36:49	20
OPAP (CR)	200,000	12.31	2,462,000.00	16:36:55	20
TITAN CEMENT (CR)	22,911	23.71	543,313.75	17:10:37	20

## Blocks Notes

2 - SPOT 1 or SPOT 2 Packet	11 - Total Assets > 500 bil
3 - Block with Short Selling	12 - Sell Offer through Athex
4 - Buy to Close Block	13 - Forced Sale of NMOE
6 - Simultaneous Constitution	14 - Restoration Packet
7 - Repurchase Agreement	15 - Market Maker Packet
8 - Dispersion's Achievement (Not Listed)	16 - Short Selling
9 - Dispersion's Achievement (Listed)	18 - SPOT 1 Packet
10 - Share Capital Majority of Greek State (> 50 bil)	20 - Method 6-1 Packet

## Shares Rights Details

Occured date	Exercise from	Exercise until	Trading until	Rights	Price min	Price max	Closing price	Last Bid	Last Ask	Volume	Trades	Transactions Value
04/03/2014	10/03/2014	24/03/2014	18/03/2014	KATHIMERINI PUBLISHING SA (CR)	1.11	1.50	1.31	5@1.28	45@1.34	5,781	123	7,600.50
24/02/2014	28/02/2014	14/03/2014	10/03/2014	MINOAN LINES S.A. (CR)	---	---	---	---	---	---	---	---

## Stock Borrowing

Securities	Stock Borrowing through Helex (volume)	Stock Borrowing through OTC (volume) [1]	Totals [2]
ALAPIS (CR)	---	6,250	6,250
ALPHA BANK (CR)	12,163,300	14,307,955	26,471,255
ATE (CR)	---	69,000	69,000
BANK OF CYPRUS (CR)	---	102,899	102,899
CC HBC AG (CR)	8,300	75,176	83,476
ELLAKTOR (CR)	900	---	900
EUROBANK ERGASIAS (CR)	105,600	68,406	174,006
EUROBANK PROPERTIES REIC (CR)	200	21,856	22,056
EYDAP S.A. (CR)	8,700	---	8,700
FOLLI FOLLIE (CR)	27,700	---	27,700
FOURLIS (CR)	---	13,400	13,400
FRIGOGLASS SA (CR)	1,100	---	1,100
GEK TERNA (CR)	200	10,000	10,200
HELLENIC EXCHANGES-A.S.E. (CR)	7,600	717	8,317
HELLENIC PETROLEUM (CR)	65,700	165,402	231,102
INTRALOT (CR)	10,600	---	10,600
LAMDA DEVELOPMENT SA (CR)	---	10,377	10,377
MARFIN INVESTMENT GROUP (CR)	91,500	728,474	819,974
METKA (CR)	11,000	---	11,000
MOTOR OIL (CR)	24,300	34,000	58,300
MYTILINEOS HOLDINGS (CR)	23,800	---	23,800
NATIONAL BANK (CR)	1,125,900	653,302	1,779,202
NBGAM ETF	10,000	---	10,000
NBGAM ETF GREECE & TURKEY 30	3,600	---	3,600
OPAP (CR)	70,300	40,000	110,300
OTE (CR)	27,300	218,542	245,842
P.P.A. S.A. (CR)	2,100	---	2,100
PIRAEUS BANK (CR)	872,700	9,479,603	10,352,303
PPC (CR)	50,200	---	50,200
SIDENOR (CR)	2,500	---	2,500
TITAN CEMENT (CR)	75,100	54	75,154

## Stock Borrowing Notes

[1] - The information concerning OTC Stock Borrowing Transactions is based on the statements of the Dematerialised Securities System (DSS) operators involved and refers to volumes that have been cleared and registered up until the previous working day.

---

**Shares Forced Sales**

---

Securities	Transaction s Volume	Number of Trades	Transactions Value	Note
No Forced Transactions.				

---

---

**Forced Sales Notes**

---

1 - Normal Forced Sale.

2 - Forced Sales of Fixed Registered Shares.

3 - Forced Sales of Remaining Stock Fractions.



**Forced Sales Registered Shares**

Securities	Start Date	End Date	Initial Volume	Remaining Volume	Date	Avg price (day)	Avg price (period)	Number of Trades	Transactions Volume	Transactions Value
------------	------------	----------	-------------------	---------------------	------	--------------------	-----------------------	---------------------	------------------------	-----------------------

No Fixed Registered Shares Forced Sales.

**Forced Sales Notes**

According to Decision 1/380/04.05.2008 of the Hellenic Republic Capital Market Commission, the certificated registered shares that have not been deposited to the issuer for dematerialisation, will be auctioned in the Athens Exchange by the supervising issuer. Forced sales procedure is held according to Article 99A of the Athens Exchange Rulebook. The average price of the period is calculated by dividing the Total transactions value by the Total volume and includes all the transactions made until the current date.

## Exchange Traded Funds (ETFs) Characteristics

	Transactions Date (T)	Creation / Redemption	Units (T-1)	New Units (T-1)	Redemptio n Units (T-	Units (T) [1]	Fund Assets [2]	Net Unit Price	Dividen d per	Dividend Date
NBGAM ETF ΓΔ Χ.Α.	12/03/2014	25,000	294,878	---	---	294,878	4,413,400.00	14.9669	---	27/10/2011
ALPHA ETF FTSE Athex Large Cap	12/03/2014	50,000	5,848,618	---	---	5,848,618	25,506,470.00	4.3611	0.05	01/07/2013
NBGAM ETF GREECE & TURKEY 30	12/03/2014	25,000	388,550	---	---	388,550	2,775,890.00	7.1442	---	27/10/2011

## ETFs Notes

[1] - Units (T) = Units (T-1) + New Units (T-1) - Redemption Units (T-1)

[2] - The Creation / Redemption Units of T-1 are included.

Corporate Bonds

Num Listed Bonds	Nominal price	Issue price	Today's Rate	Exp. Date	Duration (years)	Note	Coupon attached		Trading	Corporate Bonds	Price min	Price max	Closing price	Previous closing price/date		Volume	Transactions Value	Last order		Date	ear min	Year max
							Common	Preferred										Price	Buy / Sell			
4,150,176	4.77	4.77	5.00	19/03/2015	5	---	16	---	1	MARFIN INVESTMENT GROUP S.A. (Conver to CR shar)	---	---	---	62.5250	20/02/2014	---	---	56.0000	B	12/03/2014	62.5251	91.0000
1,794,284	12.49	9.77	5.22	12/07/2015	8	---	16	---	1	NIREUS S.A. (Convertible to CR shares)	---	---	---	12.0000	29/01/2014	---	---	13.0000	B	12/03/2014	12.0000	12.0000
212,849,265	1.00	1.00	6.30	29/07/2020	7	---	3	---	1	MARFIN INVESTMENT GROUP S.A. SERIES B (BOND)	---	---	---	0.8500	23/08/2013	---	---	95.0000	S	12/03/2014	0.8500	0.8500
2,156,827	1.00	1.00	7.00	29/07/2019	6	---	3	---	1	MARFIN INVESTMENT GROUP S.A. SERIES A (BOND)	---	---	---	1.0000	23/08/2013	---	---	1.0650	B	07/03/2014	1.0000	1.0000

Corporate Bonds Notes

Transactions Volume = (Pieces) \* (Nominal Price). Transactions Value = (Pieces) \* (Nominal Price) \* (price %) + (Accrued interest).  
The price of a Bond is stated as a percentage (%) of Bond's Nominal Price.  
Nominal Price in Euros (€), except if it is noted differently.

Government Bonds

Number Listed Bonds	Nominal price	Today's Rate	Accrued Interest Calc	Exp. Date [1]	Duration (years)	Note	Coupons Date	Curr. coupon value	Trading Unit	Government Bonds	Price min	Price max	Closing price	Previous closing price/date	Volume	Transactions Value	Price	Last order Buy / Sell	Date
2,658,781,973	1.00	4.30	Actual/Actual	24/02/2023	11	---	24/02	4.30	1	GGB-FXD-240223-11Y-2.000-1.00	---	---	---	---	---	---	---	---	---
2,658,781,973	1.00	4.30	Actual/Actual	24/02/2024	12	---	24/02	4.30	1	GGB-FXD-240224-12Y-2.000-1.00	---	---	---	---	---	---	---	---	---
2,658,781,973	1.00	4.30	Actual/Actual	24/02/2025	13	---	24/02	4.30	1	GGB-FXD-240225-13Y-2.000-1.00	---	---	---	---	---	---	---	---	---
2,658,781,973	1.00	4.30	Actual/Actual	24/02/2026	14	---	24/02	4.30	1	GGB-FXD-240226-14Y-2.000-1.00	---	---	---	---	---	---	---	---	---
2,658,781,973	1.00	4.30	Actual/Actual	24/02/2027	15	---	24/02	4.30	1	GGB-FXD-240227-15Y-2.000-1.00	---	---	---	---	---	---	---	---	---
2,836,034,104	1.00	4.30	Actual/Actual	24/02/2028	16	---	24/02	4.30	1	GGB-FXD-240228-16Y-2.000-1.00	---	---	---	---	---	---	---	---	---
2,836,034,104	1.00	4.30	Actual/Actual	24/02/2029	17	---	24/02	4.30	1	GGB-FXD-240229-17Y-2.000-1.00	---	---	---	---	---	---	---	---	---
2,836,034,104	1.00	4.30	Actual/Actual	24/02/2030	18	---	24/02	4.30	1	GGB-FXD-240230-18Y-2.000-1.00	---	---	---	---	---	---	---	---	---
2,836,034,104	1.00	4.30	Actual/Actual	24/02/2031	19	---	24/02	4.30	1	GGB-FXD-240231-19Y-2.000-1.00	---	---	---	---	---	---	---	---	---
2,836,034,104	1.00	4.30	Actual/Actual	24/02/2032	20	---	24/02	4.30	1	GGB-FXD-240232-20Y-2.000-1.00	---	---	---	---	---	---	---	---	---
2,836,034,104	1.00	4.30	Actual/Actual	24/02/2033	21	---	24/02	4.30	1	GGB-FXD-240233-21Y-2.000-1.00	---	---	---	---	---	---	---	---	---
2,836,034,104	1.00	4.30	Actual/Actual	24/02/2034	22	---	24/02	4.30	1	GGB-FXD-240234-22Y-2.000-1.00	---	---	---	---	---	---	---	---	---
2,836,034,104	1.00	4.30	Actual/Actual	24/02/2035	23	---	24/02	4.30	1	GGB-FXD-240235-23Y-2.000-1.00	---	---	---	---	---	---	---	---	---
2,836,034,104	1.00	4.30	Actual/Actual	24/02/2036	24	---	24/02	4.30	1	GGB-FXD-240236-24Y-2.000-1.00	---	---	---	---	---	---	---	---	---
2,836,034,104	1.00	4.30	Actual/Actual	24/02/2037	25	---	24/02	4.30	1	GGB-FXD-240237-25Y-2.000-1.00	---	---	---	---	---	---	---	---	---
2,836,034,104	1.00	4.30	Actual/Actual	24/02/2038	26	---	24/02	4.30	1	GGB-FXD-240238-26Y-2.000-1.00	---	---	---	---	---	---	---	---	---
2,836,034,104	1.00	4.30	Actual/Actual	24/02/2039	27	---	24/02	4.30	1	GGB-FXD-240239-27Y-2.000-1.00	---	---	---	---	---	---	---	---	---
2,836,034,104	1.00	4.30	Actual/Actual	24/02/2040	28	---	24/02	4.30	1	GGB-FXD-240240-28Y-2.000-1.00	---	---	---	---	---	---	---	---	---
2,836,034,104	1.00	4.30	Actual/Actual	24/02/2041	29	---	24/02	4.30	1	GGB-FXD-240241-29Y-2.000-1.00	---	---	---	---	---	---	---	---	---
2,836,034,104	1.00	4.30	Actual/Actual	24/02/2042	30	---	24/02	4.30	1	GGB-FXD-240242-30Y-2.000-1.00	---	---	---	---	---	---	---	---	---
1,500,000	1,000.00	0.97	FLR Actual/360	10/08/2014	5	---	10/02 - 10/08	---	1	GGB-FRN-100814-05Y-1.762-1000.00	---	---	---	---	---	---	---	---	---
5,187,186	1,000.00	1.60	FLR Actual/360	21/05/2014	5	---	21/11 - 21/05	---	1	GGB-FRN-210514-05Y-2.734-1000.00	---	---	---	---	---	---	---	---	---
78,300	1,000.00	1.16	FLR Actual/360	23/07/2014	5	---	23/01 - 23/07	---	1	GGB-FRN-230714-05Y-2.018-1000.00	---	---	---	---	---	---	---	---	---

Government Bonds Notes

Transactions Volume = (Pieces) \* (Nominal Price). Transactions Value = (Pieces) \* (Nominal Price) \* (price %) + (Accrued interest).  
The Value of current coupon for the issues with NV 0.01 euro refers to NV 100 euros  
FLR: Floating Interest Rate.  
[1] - The Expiration Date of the interest bearing period and the Date for coupon payment.

Bonds in Circulation	Currency / Min nominal traded Value	Coupons Payment Date	Current Coupon Value	Note	Coupon Attached	Trading Unit	Issue Date	Duration (years)	Today's Interest	A.I.C in days	Bonds	Last price of previous days	Last Outcry in Cash (euro) Price	Buy / Sell	Trades in Pieces	Life min	Life Max
Bonds of International Organizations																	
1,000,000	EUR / 1000	21/07	---	---	8	1	21/07/2006	10	5.0 FLR	360	EUROPEAN INVESTMENT BANK BOND	97.50	16/04/2007	---	---	---	---
Corporate Bonds in Foreign Currency and Euro																	
103,746	GBP / 10	01/12	0.25	---	55	1	01/12/1930	98	2.5	360	National Mortgage Bank	2.27	05/02/1996	2.27	S	05/02/1996	2.27
0	GBP / 10	01/12	0.25	---	57	1	01/12/1928	100	2.5	360	National Mortgage Bank	---	---	---	---	---	---

Government Bonds Notes

A.I.C: Accrued Interest Calculation base.  
FLR: Floating Interest Rate.  
The minimum tradeable Nominal Value for all Demeterialised Government Titles is 100 Euros.

State Banks Bonds (one year maturity)

Number Listed Bonds	Nominal value	Initial Rate	Current Rate	Annual Interest	Issue Date	Note	State Banks Bonds	Trading Unit	Yearly Renewals	Last Outcry in Cash (euro) Price	Buy / Sell	Volume
342,560	135.17	2.35	3.92	0.00	31/01/2005	---	H.I.D.B.	1	10	100.00	B	---
2,446	1,154.00	4.90	2.47	28.96	31/05/2008	---	H.I.D.B.	1	6	---	---	---
171,117	1,163.28	5.50	2.47	29.19	31/05/2008	---	H.I.D.B.	1	6	---	---	---
63,787	1,129.20	5.45	2.47	30.88	31/08/2008	---	H.I.D.B.	1	6	---	---	---

Bonds Notes

The annual renewal of H.I.D.B. Bonds is free of taxes (net rate).  
For Bonds issue until 31/12/2013 the accrued interest is capitalized.

Athex & ATHEXClear Members List

Member Name			Stock Market			Derivatives Market			ATHEXClear Member		
Address	Phone	Fax	Market Member	Remote Member	Market Maker	Proprietary	Market Maker	Agent	General Clearing	Direct Clearing	Non Clearing
A. SARRIS SECURITIES S.A.			a								
6, DRAGATSANIOU STR. ATHINA	(210)-3367700	(210)-3312324									
AGRICULTURAL BANK OF GREECE S.A.							a			a	
, 23 PANEPISTIMIOU ATHINA	(210)-3298400	(210)-3298322									
ALPHA FINANCE INVESTMENT SERVICES S.A.			a		a		a			a	
5, MERLIN STR. ATHINA	(210)-3677400	(210)-3311193									
ALPHA BANK A.E.						a			a		
40, STADIOU STR ATHINA	(210)-3265546	(210)-3265811									
	(210)-3260000	(210)-3264116									
ARGUS STOCKBROKERS LTD			a	a							
12-14, KENNEDY AVE. S. 303 NICOSIA	(+35722)-22717000	(+35722)-22717070									
ATHENAIKI BROKERAGE FIRM S.A.			a								
33, STADIOU STR. ATHINA	(210)-3254764	(210)-3254767									
ATLANTIC SECURITIES LIMITED			a	a							
37, PRODROMOU STR. NICOSIA	(+35722)-445400	(+35722)-661914									
ATLAS SECURITIES S.A			a			a					a
14 - 16, VERVERNON STR.& 125 MICHALAKOPOULOU STR. ATHINA	(210)-3363300	(210)-3238925									
ATTICA BANK S.A.									a		
23, OMIROU STR. ATHINA	(210)-3669000	(210)-3669410									
54, AKADIMIAS STR. ATHINA	(210)-3390757	(210)-3646090									
AXIA VENTURES GROUP LTD			a	a							
10, G. KRANIDIOTI NICOSIA	+357 22 742000	+357 22 742001									
AXON SECURITIES S.A.			a			a					a
48, STADIOU ATHINA	(210)-3363800	(210)-3243903									
BANK OF CYPRUS PUBLIC COMPANY LTD									a		
170, ALEXANDRAS AVE ATHINA	(210)-6477708	(210)-6477709									
, 51,STASINOY (AG. PARASKEVI, STROVOLOS) NICOSIA	(0035722)-121883	(0035722)-336258									
BETA SECURITIES S.A.			a		a	a	a			a	
, BRAILA & 29 ALEXANDRAS AVE ATHINA	(210)-6478900	(210)-6410139									
BNP PARIBAS SECURITIES SERVICES									a		
94, VAS. SOFIAS AVE ATHINA	(210)-7468500	(210)-7468579									
CAPITAL SECURITIES S.A.			a			a					a
58, MITROPOLEOS STR. ATHINA	(210)-3369700	(210)-3369820									
CFS SECURITIES & INVESTMENT SERVICES S.A.			a		a			a		a	
3, STADIOU STR. ATHINA	(210)-3360800	(210)-3311854									
CITIGROUP GLOBAL MARKET LTD			a	a							
, CITIGROUP CENTRE, CANADA SQUARE, CANARY WHART LONDON	002079864000	002079862266									
CO-OPERATIVE CENTRAL BANK LTD			a	a							
8, GRIGORI AFXENTIOU STR. NICOSIA	(+35722)-743300	(+35722)-672083									
CREDIT AGRICOLE CHEUVREUX S.A.				a							
, 9 QUAI PAUL DOUMER PARIS	33 (0) 1 41 89 70 00										
CREDIT SUISSE SECURITIES (EUROPE) LIMITED			a	a							
, ONE CABOT SQUARE LONDON	+44 20 7888 8888	+44 20 7888 1600									
CYCLOS SECURITIES S.A.			a		a	a				a	
39, PANEPISTIMIOU STR. ATHINA	(210)-3364300	(210)-3239122									
D.A. TSEKOURAS SEC. S.A.			a								
3, PESMAZOGLOU STR. ATHINA	(210)-3214406	(210)-3211997									
DEUTSCHE BANK A.G.			a	a							
70, THEODOR-HEUSS-ALLEE FRANKFURT	0049 69 910 00	0049 69 910 34 225									
DYNAMIC SECURITIES			a					a		a	
6 - 10, CHAR. TRIKOUPY STR. ATHINA	(210)-3677700	(210)-3677777									
EL. PETROPOULAKIS SECURITIES S.A.			a					a			a
9, ARISTIDOU STR. ATHINA	(210)-3213928	(210)-3216810									
EUROBANK EQUITIES S.A.			a		a		a			a	
10, FILELLINON STR. ATHINA	(210)-3720000	(210)-3720001									
EUROBANK ERGASIAS S.A.									a		
8, OTHONOS STR. ATHINA	(210)-3337969	(210)-3245916									
	(210)-3337000	(210)-3233866									
EUROCORP SECURITIES S.A.			a			a				a	
14, FILIKIS ETAIRIAS SQ. ATHINA	(210)-7263500	(210)-7263666									
EUOTRUST BROKERAGE S.A.			a								
13-15, SOPHOCLEOUS STR. ATHINA	(210)-3363100	(210)-3238334									

Athex & ATHEXClear Members List

Member Name			Stock Market			Derivatives Market			ATHEXClear Member		
Address	Phone	Fax	Market Member	Remote Member	Market Maker	Proprietary	Market Maker	Agent	General Clearing	Direct Clearing	Non Clearing
EUROXX SECURITIES S.A.			a			a				a	
7, PALAIOLOGOU STR. CHALANDRI	(210)-6879400	(210)-6879401									
G.A. PERVANAS SECURITIES & INVESTMENT SERVICES CO S.A.			a			a					a
7 - 9, SOPHOCLEOUS STR. ATHINA	(210)-3251875	(210)-3210291									
GENERAL BANK OF GREECE S.A.									a		
87-89, ERMOY ATHINA	(210)-6976072	(210)-6976079									
, 109-111, MESOGEION AVE. ATHINA	(210)-3288737	(210)-3288211									
GLOBAL CAPITAL SECURITIES AND FINANCIAL SERVICES LTD			a	a							
5, LEMESOU AVE. LEMESOS CYPRUS	(+35722)-710710	(+35722)-339332									
GUARDIAN TRUST SECURITIES S.A			a		a	a					a
15, FILELLINON STR. ATHINA	(210)-3220402	(210)-3220498									
HELLENIC AMERICAN SEC. S.A.			a			a					
6, EVRIPIDOU STR. ATHINA	(210)-3311100	(210)-3215968									
HELLENIC BANK (INVESTMENTS) LTD			a	a							
31, KYRIAKOY MATSI AVE. NICOSIA	(+35722)-500100	(+35722)-500110									
HSBC BANK PLC									a		
109-111, MESOGION AVE ATHINA	(210)-6961507	(210)-6929310									
INDEX SECURITIES S.A.			a								
6, DRAGATSANIOU STR. ATHINA	(210)-3213920	(210)-3213216									
INTERSEC S.A.						a				a	
80-88, SYGROU AVE ATHINA	(210)-9203000	(210)-9203052									
INVESTMENT BANK OF GREECE S.A.			a		a		a		a		
32, AIGEIALIAS MAROUSI	(210) 8173000	(210) 8173101									
24B, KIFISSIAS AVE MAROUSI	(210)-8171800	(210)-8171889									
J. CHR. MAVRIKIS SECURITIES S.A.			a								
5, SOPHOCLEOUS STR. ATHINA	(210)-3213949	(210)-3217767									
KAPPA SECURITIES S.A.			a			a					a
15, VALAORITOU STR. ATHINA	(210)-3610371	(210)-3641002									
KYPROU SECURITIES S.A.			a		a	a					a
26, HALKIDONOS & FIDIPPIDOY STR. ATHINA	(210)-8701000	(210)-8701049									
LAIKI FINANCIAL SERVICES LTD			a	a							
26, CLR HOUSE, VIRONOS AVE. NICOSIA	(+35722)-898600	(+35722)-680953									
LEON DEPOLAS SECURITIES S.A.			a					a			a
1, CHR. LADA STR. ATHINA	(210)-3213286	(210)-3211618									
MAGNA TRUST SECURITIES S.A			a					a			a
9, FIDIOU STR. ATHINA	(210)-3327503	(210)-3327599									
MEGA EQUITY SECURITIES & FINANCIAL SERVICES LTD			a	a							
42-44, GRIBA DIGENI AV. NICOSIA	(+35722)-711711	(+35722)-711811									
MERIT SECURITIES S.A			a		a	a				a	
38, VAS. KONSTANTINOY STR. ATHINA	(210)-3671800	(210)-3671830									
MERRILL LYNCH			a	a							
2, KING EDWARD STREET LONDON	(+4420)-79952000	(+4420)-79954525									
METOCHIKI SECURITIES S.A.			a								
3, G. GENNADIOY STR. ATHINA	(210)-3306700	(210)-3306709									
MIDAS BROKERAGE S.A.			a								
5, SOPHOCLEOUS STR. ATHINA	(210)-3253203	(210)-3253205									
N. CHRYSSOCHOIDIS STOCK BROKERAGE I.S.S.A.			a					a		a	
7 - 9, SOPHOCLEOUS STR. ATHINA	(210)-3213913	(210)-3216115									
N. SARROS SECURITIES S.A.						a					
7-9, SOPHOCLEOUS STR. ATHINA	(210)-3705600	(210)-3219992									
NATIONAL BANK OF GREECE / FORMER PROBANK			a								
10, AMERIKIS STR. ATHINA	(210)-3392631	(210)-3392646									
NATIONAL BANK OF GREECE S.A.							a		a		
86, AILOU STR. ATHINA	(210)-3341000	(210)-3228187									
68, AKADIMIAS STR. ATHINA	(210)-3328817	(210)-3328678									
NBG SECURITIES S.A.			a		a		a				a
68, AKADIMIAS STR. ATHINA	(210)-3328500	(210)-3328565									
NEW PROTON BANK S.A.						a				a	
20, ESLIN & AMALIADOS ATHINA	210 6970000	210 6970111									
NUNTIVS SECURITIES S.A			a					a			a
6, DRAGATSANIOU STR. ATHINA	(210)-3350599	(210)-3254846									
ORANGE PARTNERS SECURITIES S.A			a								
5, TZORTZ STR. ATHINA	(210)-3300009	(210)-3305240									



## Athex &amp; ATHEXClear Members List

Member Name			Stock Market			Derivatives Market			ATHEXClear Member		
Address	Phone	Fax	Market Member	Remote Member	Market Maker	Proprietary	Market Maker	Agent	General Clearing	Direct Clearing	Non Clearing
PANTELAKIS SEC. S.A.			a			a					a
109-111, MESOGION AVE. ATHINA	(210)-6965000	(210)-6929550									
PEGASUS BROKERAGE FIRM S.A			a			a					
17, VALAORITOU STR. ATHINA	(210)-3670700	(210)-3670760									
PIRAEUS BANK S.A.								a	a		
4, AMERIKIS STR ATHINA	(210)-3335918	(210)-3254207									
4, AMERIKIS STR. ATHINA	(210)-3335000	(210)-3335079									
PIRAEUS SECURITIES S.A.			a				a			a	
10, STADIOU STR. ATHINA	(210)-3354100	(210)-3233814									
PRELIUM SECURITIES & INVESTMENT SERVICES S.A.			a			a					a
, KIFISSIAS AVE & 1 DAVAKI STR ATHINA	(210)-3677000	(210)-6920403									
PROCHOICE SECURITIES LTD			a	a							
57, SPYROU KYPRIANOY NICOSIA	+357-24-661192	+357-24-662464									
SHARELINK SECURITIES & FINANCIAL SERVICES LTD			a	a							
6, ELLINAS HOUSE, THEOTOKI STR. NICOSIA	(+35722)-554200	(+35722)-750852									
SOCIETE GENERALE S.A.			a	a		a					
17, COURS VALMY PUTEAUX - LA DEFENSE PARIS	(+33) 142134754	(+33) 142135697									
240-242, KIFISIAS AVE ATHINA	(210)-6790161	(210)-6728828									
SOLIDUS SECURITIES S.A			a			a				a	
64, LOUIZIS RIANKOUR STR. ATHINA	(210)-6925500	(210)-6985421									
SOTIRIADIS SECURITIES S.A.			a								
7, VALAORITOU STR. ATHINA	(210)-3636943	(210)-3601943									
ST. EM. LAVRENTAKIS SECURITIES S.A.			a			a					a
7 - 9, SOPHOCLEOUS STR. ATHINA	(210)-3213336	(210)-3246572									
THE CYPRUS INVESTMENT AND SECURITIES CORPORATION LIMITED (CISCO)			a	a							
4, EVROU STR. (EUROLIFE HOUSE) NICOSIA	(+35722)-881800	(+35722)-881801									
UBS LIMITED			a	a							
1, FINSBURY AVENUE LONDON	(+4420)-79013333	(+4420)-79012345									
Z.G. PORTALAKIS INVESTMENT SERVICES S.A.			a								
8, PESMAZOGLOU STR. ATHINA	(210)-3214830	(210)-3212024									
KARAMANOF SECURITIES & INV. SERVICES S.A.			a					a		a	
2, SQ. ST THEODORON ATHINA	(210)-3212947	(210)-3217088									

## List of Stocks under Market Making operations

Securities	Stock Category	
	Start Market Making	End Market Making
<b>CYPRUS POPULAR BANK (CR)</b>	<b>Under Suspension</b>	
PIRAEUS SECURITIES S.A.	02/02/2013	01/01/2400
<b>VIOHALCO (CB)</b>	<b>Under Suspension</b>	
ALPHA FINANCE INVESTMENT SERVICES S.A.	11/02/2013	01/01/2400
EUROBANK EQUITIES S.A.	20/01/2013	01/01/2400
MERIT SECURITIES S.A	13/12/2012	01/01/2400
<b>ALPHA BANK (CR)</b>	<b>Main Market</b>	
EUROBANK EQUITIES S.A.	24/10/2012	01/01/2400
INVESTMENT BANK OF GREECE S.A.	08/01/2013	01/01/2400
MERIT SECURITIES S.A	03/09/2013	01/01/2400
NBG SECURITIES S.A.	15/01/2013	01/01/2400
PIRAEUS SECURITIES S.A.	28/05/2013	01/01/2400
<b>ALUMIL (CR)</b>	<b>Main Market</b>	
BETA SECURITIES S.A.	18/07/2013	01/01/2400
<b>BYTE COMPUTER SA (CR)</b>	<b>Main Market</b>	
MERIT SECURITIES S.A	04/08/2013	01/01/2400
<b>CC HBC AG (CR)</b>	<b>Main Market</b>	
EUROBANK EQUITIES S.A.	23/10/2013	01/01/2400
NBG SECURITIES S.A.	29/04/2013	01/01/2400
<b>ELLAKTOR (CR)</b>	<b>Main Market</b>	
EUROBANK EQUITIES S.A.	01/06/2013	01/01/2400
INVESTMENT BANK OF GREECE S.A.	02/01/2013	01/01/2400
NBG SECURITIES S.A.	25/06/2013	01/01/2400
<b>ELTON SA (CR)</b>	<b>Main Market</b>	
BETA SECURITIES S.A.	03/09/2013	01/01/2400
<b>EUROBANK ERGASIAS (CR)</b>	<b>Main Market</b>	
ALPHA FINANCE INVESTMENT SERVICES S.A.	08/01/2013	01/01/2400
EUROBANK EQUITIES S.A.	01/06/2013	01/01/2400
INVESTMENT BANK OF GREECE S.A.	08/01/2013	01/01/2400
PIRAEUS SECURITIES S.A.	28/09/2013	01/01/2400
<b>FOLLI FOLLIE (CR)</b>	<b>Main Market</b>	
NBG SECURITIES S.A.	17/02/2014	01/01/2400
<b>FRIGOGLASS SA (CR)</b>	<b>Main Market</b>	
EUROBANK EQUITIES S.A.	23/08/2013	01/01/2400
<b>GEK TERNA (CR)</b>	<b>Main Market</b>	
INVESTMENT BANK OF GREECE S.A.	02/01/2013	01/01/2400
<b>GR. SARANTIS SA (CR)</b>	<b>Main Market</b>	
BETA SECURITIES S.A.	14/05/2013	01/01/2400
<b>HELLENIC EXCHANGES-A.S.E. (CR)</b>	<b>Main Market</b>	
EUROBANK EQUITIES S.A.	01/06/2013	01/01/2400
INVESTMENT BANK OF GREECE S.A.	02/01/2013	01/01/2400
NBG SECURITIES S.A.	25/06/2013	01/01/2400
<b>INTRACOM CONSTR. (CR)</b>	<b>Main Market</b>	
MERIT SECURITIES S.A	27/12/2012	01/01/2400
<b>INTRALOT (CR)</b>	<b>Main Market</b>	
EUROBANK EQUITIES S.A.	01/06/2013	01/01/2400
INVESTMENT BANK OF GREECE S.A.	02/01/2013	01/01/2400
PIRAEUS SECURITIES S.A.	28/09/2013	01/01/2400
<b>MARFIN INVESTMENT GROUP (CR)</b>	<b>Main Market</b>	
PIRAEUS SECURITIES S.A.	02/02/2013	01/01/2400
<b>MLS MULTIMEDIA SA (CR)</b>	<b>Main Market</b>	
BETA SECURITIES S.A.	18/07/2013	01/01/2400
<b>MOTOR OIL (CR)</b>	<b>Main Market</b>	
EUROBANK EQUITIES S.A.	23/10/2012	01/01/2400
NBG SECURITIES S.A.	17/02/2014	01/01/2400
<b>MYTILINEOS HOLDINGS (CR)</b>	<b>Main Market</b>	
INVESTMENT BANK OF GREECE S.A.	02/01/2013	01/01/2400
NBG SECURITIES S.A.	25/06/2013	01/01/2400
<b>NATIONAL BANK (CR)</b>	<b>Main Market</b>	
ALPHA FINANCE INVESTMENT SERVICES S.A.	08/01/2013	01/01/2400
EUROBANK EQUITIES S.A.	24/10/2012	01/01/2400
INVESTMENT BANK OF GREECE S.A.	08/01/2013	01/01/2400
MERIT SECURITIES S.A	03/09/2013	01/01/2400
NBG SECURITIES S.A.	28/02/2013	01/01/2400
PIRAEUS SECURITIES S.A.	08/09/2013	01/01/2400

## List of Stocks under Market Making operations

Securities	Stock Category	
	Start Market Making	End Market Making
<b>OPAP (CR)</b>	<b>Main Market</b>	
ALPHA FINANCE INVESTMENT SERVICES S.A.	08/01/2013	01/01/2400
EUROBANK EQUITIES S.A.	24/10/2012	01/01/2400
INVESTMENT BANK OF GREECE S.A.	08/01/2013	01/01/2400
NBG SECURITIES S.A.	15/01/2013	01/01/2400
<b>OTE (CR)</b>	<b>Main Market</b>	
ALPHA FINANCE INVESTMENT SERVICES S.A.	08/01/2013	01/01/2400
EUROBANK EQUITIES S.A.	24/10/2012	01/01/2400
INVESTMENT BANK OF GREECE S.A.	08/01/2013	01/01/2400
NBG SECURITIES S.A.	01/12/2012	01/01/2400
PIRAEUS SECURITIES S.A.	08/09/2013	01/01/2400
<b>PAPOUTSANIS (CR)</b>	<b>Main Market</b>	
BETA SECURITIES S.A.	25/11/2013	01/01/2400
<b>PETROPOULOS PETROS (CR)</b>	<b>Main Market</b>	
BETA SECURITIES S.A.	28/05/2013	01/01/2400
<b>PIRAEUS BANK (CR)</b>	<b>Main Market</b>	
EUROBANK EQUITIES S.A.	23/10/2012	01/01/2400
INVESTMENT BANK OF GREECE S.A.	08/01/2013	01/01/2400
MERIT SECURITIES S.A.	16/09/2013	01/01/2400
NBG SECURITIES S.A.	02/06/2013	01/01/2400
PIRAEUS SECURITIES S.A.	16/02/2013	01/01/2400
<b>PPC (CR)</b>	<b>Main Market</b>	
ALPHA FINANCE INVESTMENT SERVICES S.A.	08/01/2013	01/01/2400
EUROBANK EQUITIES S.A.	23/10/2012	01/01/2400
INVESTMENT BANK OF GREECE S.A.	08/01/2013	01/01/2400
NBG SECURITIES S.A.	26/03/2013	01/01/2400
PIRAEUS SECURITIES S.A.	28/09/2013	01/01/2400
<b>S.KANAKIS SA (CR)</b>	<b>Main Market</b>	
BETA SECURITIES S.A.	01/10/2013	01/01/2400
<b>TITAN CEMENT (CR)</b>	<b>Main Market</b>	
EUROBANK EQUITIES S.A.	23/10/2012	01/01/2400
NBG SECURITIES S.A.	17/02/2014	01/01/2400
<b>VIOHALCO SA/NV (CB)</b>	<b>Main Market</b>	
ALPHA FINANCE INVESTMENT SERVICES S.A.	17/02/2014	01/01/2400

## Equity Investment Instruments Acknowledgements

Portfolio Investments Company Name	NAV per Share	Share Price	Premium/ Discount
AEOLIAN INVESTMENT FUND S.A.	1.62	0.98	-39.51%
ALPHA TRUST ANDROMEDA SA	29.30	22.00	-24.91%

## Acknowledgements Notes

According to the Decision of the Capital Market Commission 4/278/12.08.2003 Portfolio Investment Companies are required to notify the Athens Exchange on the 10th, 20th and last working day of each month the Net Asset Value (NAV) of their shares as well as Premium or Discount in relation to their market value.

Underlying Asset				Derivatives Market																		
Price max	Price min	Closing price	change	Delivery Month	Open price	Price max	Price min	Last price	Closing price	Last Bid	Last Ask	Settlement price	change	Life high	Life low	Trades	Volume	change	Value	change	Open Interest	change
FTSE/Athex Large Cap				(Trade Unit: 1 Index Point x 5€, Cash Settlement)																		
439.60	433.11	436.39	-0.37%	March 2014	435.00	440.25	433.00	435.00	435.00	53@435.00	10@436.00	435.00	-0.46%	440.25	363.75	481	6,110	77.93%	13,322,190.00	79.01%	48,277	-0.47%
				April 2014	437.25	441.25	434.00	437.25	436.25	53@436.00	10@437.50	436.25	-0.40%	441.25	370.50	156	2,006	62.96%	4,379,620.00	63.72%	3,814	26.08%
				May 2014	436.00	438.00	436.00	438.00	437.75	20@434.50	50@439.25	437.75	-0.34%	439.00	418.00	3	12	-7.69%	26,258.75	-6.60%	606	0.00%
				June 2014	439.75	439.75	438.00	438.00	438.25	1@386.25	---	438.25	0.34%	439.75	392.75	2	700	600.00%	1,537,375.00	601.24%	1,040	205.88%
				September 2014	---	---	---	---	443.25	---	---	443.25	-0.45%	390.00	390.00	---	---	---	---	---	1	0.00%
				December 2014	---	---	---	---	---	---	---	---	---	---	---	---	---	---	---	---	---	---

Underlying Asset				Derivatives Market																		
Price max	Price min	Closing price	change	Delivery Month	Open price	Price max	Price min	Last price	Closing price	Last Bid	Last Ask	Settlement price	change	Life high	Life low	Trades	Volume	change	Value	change	Open Interest	change
ALPHA BANK (CR)				(Contract Size: 100 Securities, Physical Delivery)																		
0.710	0.677	0.708	3.51%	March 2014	0.682	0.704	0.682	0.702	0.700	5@0.702	15@0.705	0.700	2.34%	0.733	0.564	65	1,699	-46.79%	118,162.80	-44.40%	24,258	-2.82%
				June 2014	0.674	0.682	0.665	0.682	0.681	10@0.681	74@0.682	0.681	2.56%	0.700	0.561	54	1,039	67.85%	70,190.80	74.93%	6,601	5.96%
				September 2014	---	---	---	---	0.700	1@0.677	---	0.700	2.34%	0.726	0.672	---	---	---	---	---	---	---
				December 2014	---	---	---	---	---	---	---	---	---	---	---	---	---	---	---	---	---	---
CC HBC AG (CR)				(Contract Size: 100 Securities, Physical Delivery)																		
18.20	17.75	17.86	-0.17%	March 2014	18.15	18.21	17.85	18.01	17.90	1@17.79	20@18.14	17.90	-0.17%	22.94	17.54	22	92	104.44%	166,285.00	109.24%	819	4.73%
				June 2014	18.20	18.34	17.93	17.93	17.95	1@17.90	20@18.25	17.95	0.11%	18.79	17.60	25	52	-38.82%	93,710.00	-38.04%	207	31.85%
				September 2014	---	---	---	---	---	---	---	---	---	---	---	---	---	---	---	---	---	---
				December 2014	---	---	---	---	---	---	---	---	---	---	---	---	---	---	---	---	---	---
CORINTH PIPEWORKS SA (CR)				(Contract Size: 100 Securities, Physical Delivery)																		
2.21	2.13	2.16	-0.92%	March 2014	2.17	2.17	2.17	2.17	2.15	10@2.10	1@2.17	2.15	-0.92%	2.32	1.76	1	2	-80.00%	434.00	-79.72%	690	-0.29%
				June 2014	2.23	2.23	2.18	2.18	2.18	1@2.11	1@2.20	2.18	---	2.23	2.18	4	20	---	4,410.00	---	20	---
				September 2014	---	---	---	---	---	---	---	---	---	---	---	---	---	---	---	---	---	---
				December 2014	---	---	---	---	---	---	---	---	---	---	---	---	---	---	---	---	---	---
ELLAKTOR (CR)				(Contract Size: 100 Securities, Physical Delivery)																		
4.14	4.01	4.05	1.00%	March 2014	4.09	4.16	4.05	4.05	4.08	2@4.04	12@4.10	4.08	0.99%	4.16	2.22	30	197	462.86%	80,852.00	471.63%	1,818	2.60%
				June 2014	4.09	4.15	4.06	4.07	4.06	13@4.04	12@4.13	4.06	0.50%	4.15	3.95	16	112	100.00%	46,042.00	103.12%	163	167.21%
				September 2014	---	---	---	---	---	---	---	---	---	---	---	---	---	---	---	---	---	---
				December 2014	---	---	---	---	---	---	---	---	---	---	---	---	---	---	---	---	---	---
EUROBANK ERGASIAS (CR)				(Contract Size: 100 Securities, Physical Delivery)																		
0.441	0.428	0.430	-2.27%	March 2014	0.429	0.439	0.425	0.439	0.438	2@0.425	3@0.439	0.438	-2.23%	0.673	0.389	3	7	-95.91%	301.50	-95.90%	3,477	-0.14%
				June 2014	0.436	0.439	0.411	0.411	0.448	1@0.411	5@0.435	0.448	0.90%	0.802	0.385	12	34	126.67%	1,472.50	129.36%	287	12.55%
				September 2014	---	---	---	---	---	---	---	---	---	---	---	---	---	---	---	---	---	---
				December 2014	---	---	---	---	---	---	---	---	---	---	---	---	---	---	---	---	---	---
EUROBANK PROPERTIES REIC (CR)				(Contract Size: 120 Securities, Physical Delivery)																		
8.46	8.26	8.35	-0.60%	March 2014	8.30	8.31	8.30	8.31	8.43	3@8.26	1@8.52	8.43	-0.59%	8.53	6.39	3	15	---	14,946.00	---	188	0.00%
				June 2014	8.31	8.31	8.31	8.31	8.44	---	---	8.44	---	8.31	8.31	1	5	---	4,155.00	---	5	---
				September 2014	---	---	---	---	---	---	---	---	---	---	---	---	---	---	---	---	---	---
				December 2014	---	---	---	---	---	---	---	---	---	---	---	---	---	---	---	---	---	---
EYDAP S.A. (CR)				(Contract Size: 100 Securities, Physical Delivery)																		
9.09	8.83	9.02	0.33%	March 2014	8.95	9.02	8.95	8.99	8.99	9@8.95	21@9.01	8.99	0.33%	9.02	7.08	20	119	-36.02%	106,869.00	-34.98%	893	-11.06%
				June 2014	9.04	9.05	8.89	9.04	9.05	9@9.00	21@9.06	9.05	0.56%	9.05	7.98	9	50	150.00%	45,006.00	152.32%	76	68.89%
				September 2014	---	---	---	---	---	---	---	---	---	---	---	---	---	---	---	---	---	---
				December 2014	---	---	---	---	---	---	---	---	---	---	---	---	---	---	---	---	---	---
FOLLI FOLLIE (CR)				(Contract Size: 100 Securities, Physical Delivery)																		
27.87	26.90	27.30	1.15%	March 2014	27.07	27.70	27.07	27.28	27.53	2@26.80	1@27.45	27.53	1.14%	27.70	22.02	35	108	285.71%	295,785.00	292.16%	183	17.31%
				June 2014	27.35	27.71	27.21	27.45	27.66	1@26.57	1@27.58	27.66	1.32%	27.71	24.17	8	15	---	41,196.00	---	67	1.52%
				September 2014	---	---	---	---	---	---	---	---	---	---	---	---	---	---	---	---	---	---
				December 2014	---	---	---	---	---	---	---	---	---	---	---	---	---	---	---	---	---	---

Underlying Asset				Derivatives Market																		
Price max	Price min	Closing price	change	Delivery Month	Open price	Price max	Price min	Last price	Closing price	Last Bid	Last Ask	Settlement price	change	Life high	Life low	Trades	Volume	change	Value	change	Open Interest	change
FRIGOGLASS SA (CR)				(Contract Size: 100 Securities, Physical Delivery)																		
5.43	5.25	5.40	2.86%	March 2014	5.23	5.39	5.23	5.39	5.35	10@5.37	1@5.40	5.35	2.29%	5.72	4.17	34	198	55.91%	105,524.00	60.72%	882	-7.06%
				June 2014	5.42	5.44	5.32	5.43	5.40	10@5.41	1@5.44	5.40	3.45%	5.44	5.05	39	219	247.62%	117,850.00	259.25%	287	245.78%
				September 2014	---	---	---	---	---	---	---	---	---	---	---	---	---	---	---	---	---	---
				December 2014	---	---	---	---	---	---	---	---	---	---	---	---	---	---	---	---	---	---
GEK TERNA (CR)				(Contract Size: 100 Securities, Physical Delivery)																		
4.10	3.90	4.03	3.33%	March 2014	3.93	4.10	3.93	4.03	4.01	1@4.02	2@4.03	4.01	2.30%	4.10	2.26	135	6,315	1365.20%	2,541,226.00	1417.31%	26,532	-16.93%
				June 2014	3.98	4.13	3.98	4.07	4.03	1@4.05	2@4.07	4.03	2.28%	4.13	3.17	60	5,572	2051.35%	2,257,982.00	2136.36%	5,967	1399.25%
				September 2014	3.94	3.98	3.94	3.98	4.00	---	---	4.00	2.30%	3.98	3.72	2	50	---	19,800.00	---	250	25.00%
				December 2014	---	---	---	---	---	---	---	---	---	---	---	---	---	---	---	---	---	---
HELLENIC EXCHANGES-A.S.E. (CR)				(Contract Size: 100 Securities, Physical Delivery)																		
9.42	9.18	9.30	-1.06%	March 2014	9.37	9.40	9.21	9.33	9.26	10@9.23	5@9.33	9.26	-1.07%	9.44	6.87	37	157	-56.02%	145,734.00	-55.28%	1,472	-4.04%
				June 2014	9.35	9.35	9.19	9.32	9.32	10@9.25	1@9.34	9.32	-0.11%	9.37	7.12	6	28	-55.56%	25,950.00	-54.95%	144	24.14%
				September 2014	---	---	---	---	9.24	---	---	9.24	-1.07%	7.90	6.95	---	---	---	---	---	---	---
				December 2014	---	---	---	---	---	---	---	---	---	---	---	---	---	---	---	---	---	---
HELLENIC PETROLEUM (CR)				(Contract Size: 100 Securities, Physical Delivery)																		
7.76	7.63	7.76	0.91%	March 2014	7.69	7.75	7.64	7.75	7.72	6@7.72	10@7.75	7.72	0.92%	9.62	6.61	91	481	149.22%	369,855.00	152.65%	5,985	-5.69%
				June 2014	7.70	7.79	7.68	7.75	7.73	3@7.75	3@7.77	7.73	0.52%	9.58	6.86	15	57	-49.56%	44,008.00	-48.99%	243	25.91%
				September 2014	---	---	---	---	---	---	---	---	---	---	---	---	---	---	---	---	---	---
				December 2014	---	---	---	---	---	---	---	---	---	---	---	---	---	---	---	---	---	---
INTRALOT (CR)				(Contract Size: 100 Securities, Physical Delivery)																		
2.49	2.36	2.47	4.22%	March 2014	2.38	2.49	2.38	2.49	2.45	10@2.48	40@2.50	2.45	4.26%	2.49	1.74	81	748	129.45%	183,358.00	138.42%	4,109	-4.69%
				June 2014	2.42	2.52	2.42	2.52	2.48	10@2.47	1@2.52	2.48	5.08%	2.52	2.16	54	576	320.44%	143,338.00	337.90%	761	311.35%
				September 2014	---	---	---	---	---	---	---	---	---	---	---	---	---	---	---	---	---	---
				December 2014	---	---	---	---	---	---	---	---	---	---	---	---	---	---	---	---	---	---
JUMBO SA (CR)				(Contract Size: 104 Securities, Physical Delivery)																		
14.18	13.69	13.89	-3.54%	March 2014	14.13	14.14	13.74	13.86	13.94	2@13.80	5@14.20	13.94	-3.53%	14.39	10.11	30	95	120.93%	137,879.04	117.84%	390	-13.91%
				June 2014	14.22	14.22	13.74	13.80	13.95	2@13.70	2@13.89	13.95	-2.86%	14.22	13.71	9	25	-35.90%	35,139.00	-35.54%	79	38.60%
				September 2014	---	---	---	---	---	---	---	---	---	---	---	---	---	---	---	---	---	---
				December 2014	---	---	---	---	---	---	---	---	---	---	---	---	---	---	---	---	---	---
MARFIN INVESTMENT GROUP (CR)				(Contract Size: 100 Securities, Physical Delivery)																		
0.515	0.486	0.512	4.49%	March 2014	0.490	0.515	0.490	0.511	0.513	5@0.511	24@0.514	0.513	4.91%	0.515	0.352	108	1,467	101.23%	73,579.10	109.43%	25,271	-0.61%
				June 2014	0.491	0.523	0.491	0.517	0.517	10@0.516	28@0.524	0.517	4.66%	0.523	0.443	37	803	1333.93%	40,639.50	1372.55%	1,237	163.19%
				September 2014	---	---	---	---	---	1@0.460	---	---	---	---	---	---	---	---	---	---	---	---
				December 2014	---	---	---	---	---	---	---	---	---	---	---	---	---	---	---	---	---	---
METKA (CR)				(Contract Size: 100 Securities, Physical Delivery)																		
13.76	13.50	13.64	0.00%	March 2014	13.69	13.69	13.55	13.63	13.62	8@13.55	6@13.64	13.62	0.00%	14.19	11.10	4	7	-75.86%	9,519.00	-75.83%	1,162	-0.34%
				June 2014	13.72	13.74	13.46	13.49	13.62	5@13.45	3@13.64	13.62	-0.22%	13.91	11.41	17	43	-29.51%	58,325.00	-29.46%	115	59.72%
				September 2014	---	---	---	---	13.67	---	---	13.67	0.00%	11.68	11.41	---	---	---	---	---	---	---
				December 2014	---	---	---	---	---	---	---	---	---	---	---	---	---	---	---	---	---	---

Underlying Asset				Derivatives Market																		
Price max	Price min	Closing price	change	Delivery Month	Open price	Price max	Price min	Last price	Closing price	Last Bid	Last Ask	Settlement price	change	Life high	Life low	Trades	Volume	change	Value	change	Open Interest	change
MOTOR OIL (CR)				(Contract Size: 100 Securities, Physical Delivery)																		
10.10	9.92	10.09	0.90%	March 2014	9.95	10.10	9.94	10.08	10.00	1@10.01	3@10.08	10.00	0.91%	10.10	7.95	14	33	57.14%	33,017.00	58.09%	890	0.23%
				June 2014	10.08	10.13	10.05	10.13	10.05	---	3@10.14	10.05	1.41%	10.13	8.59	3	3	-85.00%	3,026.00	-84.77%	13	30.00%
				September 2014	---	---	---	---	---	---	---	---	---	---	---	---	---	---	---	---	---	---
				December 2014	---	---	---	---	---	---	---	---	---	---	---	---	---	---	---	---	---	---
MYTILINEOS HOLDINGS (CR)				(Contract Size: 100 Securities, Physical Delivery)																		
7.29	7.13	7.24	0.00%	March 2014	7.22	7.25	7.12	7.21	7.18	8@7.21	5@7.22	7.18	-0.83%	7.28	4.43	82	1,578	56.86%	1,133,088.00	56.78%	10,498	-11.62%
				June 2014	7.26	7.26	7.16	7.21	7.21	8@7.24	5@7.26	7.21	-0.69%	7.27	5.32	28	1,303	123.50%	939,450.00	123.67%	1,991	184.02%
				September 2014	7.18	7.18	7.17	7.17	7.19	---	---	7.19	-0.83%	7.23	5.86	2	50	-60.00%	35,894.00	-60.22%	100	-33.33%
				December 2014	---	---	---	---	---	---	---	---	---	---	---	---	---	---	---	---	---	---
NATIONAL BANK (CR)				(Contract Size: 100 Securities, Physical Delivery)																		
3.93	3.82	3.85	-3.27%	March 2014	3.94	3.94	3.84	3.88	3.85	8@3.85	2@3.87	3.85	-2.53%	4.52	3.07	145	1,389	-66.52%	538,445.00	-66.42%	11,105	-3.32%
				June 2014	3.90	3.91	3.80	3.82	3.82	50@3.81	47@3.86	3.82	-2.80%	4.50	3.21	48	330	-6.52%	126,951.00	-6.35%	1,274	24.17%
				September 2014	---	---	---	---	---	---	---	---	---	---	---	---	---	---	---	---	---	---
				December 2014	---	---	---	---	---	---	---	---	---	---	---	---	---	---	---	---	---	---
OPAP (CR)				(Contract Size: 100 Securities, Physical Delivery)																		
12.54	12.18	12.34	-1.83%	March 2014	12.52	12.52	12.19	12.33	12.27	1@12.33	10@12.36	12.27	-2.23%	12.79	8.98	81	400	27.39%	493,951.00	26.02%	3,478	-2.50%
				June 2014	12.44	12.49	12.09	12.17	12.20	10@12.25	20@12.33	12.20	-2.17%	12.70	8.84	24	133	92.75%	163,426.00	91.60%	362	56.71%
				September 2014	---	---	---	---	12.27	---	---	12.27	-2.23%	10.86	9.63	---	---	---	---	---	200	0.00%
				December 2014	---	---	---	---	---	---	---	---	---	---	---	---	---	---	---	---	---	---
OTE (CR)				(Contract Size: 100 Securities, Physical Delivery)																		
13.18	12.91	13.18	1.62%	March 2014	13.00	13.18	12.90	13.17	13.07	16@13.13	14@13.17	13.07	1.63%	13.18	6.40	145	1,007	43.86%	1,315,939.00	45.97%	5,701	1.99%
				June 2014	12.92	13.18	12.90	13.18	13.08	16@13.11	5@13.18	13.08	1.63%	13.18	8.31	29	127	452.17%	165,588.00	460.95%	205	84.68%
				September 2014	---	---	---	---	12.96	---	---	12.96	1.65%	12.84	11.10	---	---	---	---	---	73	0.00%
				December 2014	---	---	---	---	---	---	---	---	---	---	---	---	---	---	---	---	---	---
P.P.A. S.A. (CR)				(Contract Size: 100 Securities, Physical Delivery)																		
19.45	18.98	19.36	-0.72%	March 2014	19.30	19.30	19.09	19.13	19.33	1@19.00	2@19.25	19.33	-0.72%	19.83	16.30	6	6	-98.18%	11,483.00	-98.12%	382	-0.52%
				June 2014	19.17	19.23	19.17	19.17	19.44	1@19.14	2@19.41	19.44	-0.82%	19.23	18.51	4	16	-95.08%	30,708.00	-94.92%	341	4.92%
				September 2014	---	---	---	---	---	---	---	---	---	---	---	---	---	---	---	---	---	---
				December 2014	---	---	---	---	---	---	---	---	---	---	---	---	---	---	---	---	---	---
PIRAEUS BANK (CR)				(Contract Size: 100 Securities, Physical Delivery)																		
1.85	1.80	1.83	-0.54%	March 2014	1.83	1.85	1.80	1.82	1.83	101@1.81	49@1.83	1.83	-0.54%	2.10	0.924	56	1,586	-40.51%	290,061.00	-39.75%	9,683	-6.05%
				June 2014	1.82	1.83	1.79	1.81	1.81	31@1.79	99@1.81	1.81	-0.55%	2.06	1.33	35	784	35.88%	142,149.00	38.80%	3,607	26.92%
				September 2014	---	---	---	---	1.82	---	---	1.82	-0.55%	2.06	1.54	---	---	---	---	---	300	0.00%
				December 2014	---	---	---	---	---	---	---	---	---	---	---	---	---	---	---	---	---	---
PPC (CR)				(Contract Size: 100 Securities, Physical Delivery)																		
12.75	12.06	12.21	-3.02%	March 2014	12.59	12.73	12.09	12.21	12.18	26@12.21	2@12.23	12.18	-3.03%	12.73	6.30	282	1,580	83.72%	1,944,688.00	81.24%	8,948	7.14%
				June 2014	12.60	12.72	12.10	12.18	12.20	15@12.23	2@12.27	12.20	-2.87%	12.77	9.60	44	199	362.79%	244,865.00	355.37%	306	131.82%
				September 2014	---	---	---	---	12.24	---	---	12.24	-3.01%	12.65	9.70	---	---	-100.00%	---	-100.00%	245	0.00%
				December 2014	---	---	---	---	---	---	---	---	---	---	---	---	---	---	---	---	---	---



Underlying Asset				Derivatives Market																		
Price max	Price min	Closing price	change	Delivery Month	Open price	Price max	Price min	Last price	Closing price	Last Bid	Last Ask	Settlement price	change	Life high	Life low	Trades	Volume	change	Value	change	Open Interest	change
SIDENOR (CR)				(Contract Size: 100 Securities, Physical Delivery)																		
2.21	2.14	2.15	-1.83%	March 2014	2.21	2.21	2.16	2.16	2.11	6@2.15	10@2.20	2.11	-1.86%	2.25	1.51	10	37	-76.13%	8,058.00	-75.80%	1,138	-2.74%
				June 2014	2.21	2.23	2.17	2.20	2.12	2@2.17	10@2.21	2.12	-1.85%	2.23	2.08	6	23	-65.67%	5,059.00	-64.51%	104	14.29%
				September 2014	---	---	---	---	---	---	---	---	---	---	---	---	---	---	---	---	---	---
				December 2014	---	---	---	---	---	---	---	---	---	---	---	---	---	---	---	---	---	---
TERNA ENERGY (CR)				(Contract Size: 100 Securities, Physical Delivery)																		
4.76	4.62	4.62	-1.49%	March 2014	4.74	4.74	4.67	4.67	4.66	3@4.62	5@4.71	4.66	-1.48%	4.85	3.40	15	264	347.46%	123,543.00	352.87%	2,698	-8.14%
				June 2014	4.75	4.78	4.68	4.70	4.69	3@4.64	15@4.75	4.69	-1.26%	4.78	4.18	24	293	523.40%	138,003.00	533.24%	391	291.00%
				September 2014	---	---	---	---	---	---	---	---	---	---	---	---	---	---	---	---	---	---
				December 2014	---	---	---	---	---	---	---	---	---	---	---	---	---	---	---	---	---	---
TITAN CEMENT (CR)				(Contract Size: 100 Securities, Physical Delivery)																		
24.00	23.50	23.50	-2.08%	March 2014	23.93	23.93	23.51	23.51	23.09	1@23.52	1@24.03	23.09	-2.08%	24.53	18.01	14	26	1200.00%	61,557.00	1179.77%	637	-3.04%
				June 2014	23.81	23.81	23.58	23.58	23.13	5@23.30	1@24.08	23.13	-1.95%	24.62	21.64	3	12	-40.00%	28,415.00	-40.55%	51	8.51%
				September 2014	---	---	---	---	---	---	---	---	---	---	---	---	---	---	---	---	---	---
				December 2014	---	---	---	---	---	---	---	---	---	---	---	---	---	---	---	---	---	---
VIOHALCO SA/NV (CB)				(Contract Size: 100 Securities, Physical Delivery)																		
5.13	4.95	4.95	-0.80%	March 2014	5.10	5.10	4.98	4.99	4.99	3@4.90	5@5.02	4.99	0.20%	5.10	4.67	20	66	6500.00%	33,345.00	6650.00%	106	-5.36%
				June 2014	5.11	5.11	5.03	5.05	5.03	1@4.95	2@5.05	5.03	-1.57%	5.11	4.80	14	56	1.82%	28,340.00	6.14%	116	93.33%
				September 2014	---	---	---	---	---	---	---	---	---	---	---	---	---	---	---	---	---	---
				December 2014	---	---	---	---	---	---	---	---	---	---	---	---	---	---	---	---	---	---

FTSE/Athex Large Cap

(Trade Unit: 1 Index Point x 5€ - Excercise Style: European, Cash Settlement)

Call Options																	Put Options																	
Exerise Price	March 2014							April 2014							Other Months		March 2014								April 2014							Other Months		Exerise Price
	Open price	Price max	Price min	Last price	Closing price	Volume	Open Interest	Open price	Price max	Price min	Last price	Closing price	Volume	Open Interest	Volume	Open Interest	Open price	Price max	Price min	Last price	Closing price	Volume	Open Interest	Open price	Price max	Price min	Last price	Closing price	Volume	Open Interest	Volume	Open Interest		
215	-	-	-	-	220.00	-	30	-	-	-	-	-	-	-	-	-	-	-	-	-	-	-	-	-	-	-	-	-	-	-	-	-	215	
255	-	-	-	-	-	-	-	-	-	-	-	-	-	-	-	-	-	-	-	-	-	-	-	-	-	-	-	-	-	-	-	-	255	
260	-	-	-	-	-	-	-	-	-	-	-	-	-	-	-	-	-	-	-	-	-	-	-	-	-	-	-	-	-	-	-	-	260	
265	-	-	-	-	-	-	-	-	-	-	-	-	-	-	-	-	-	-	-	-	-	-	-	-	-	-	-	-	-	-	-	-	265	
270	-	-	-	-	-	-	-	-	-	-	-	-	-	-	-	-	-	-	-	-	-	-	-	-	-	-	-	-	-	-	-	-	270	
275	-	-	-	-	-	-	-	-	-	-	-	-	-	-	-	-	-	-	-	-	-	-	-	-	-	-	-	-	-	-	-	-	275	
280	-	-	-	-	-	-	-	-	-	-	-	-	-	-	-	-	-	-	-	-	-	-	-	-	-	-	-	-	-	-	-	-	280	
285	-	-	-	-	-	-	-	-	-	-	-	-	-	-	-	-	-	-	-	-	-	-	-	-	-	-	-	-	-	-	-	-	285	
290	-	-	-	-	-	-	-	-	-	-	-	-	-	-	-	-	-	-	-	-	-	-	-	-	-	-	-	-	-	-	-	-	290	
295	-	-	-	-	-	-	-	-	-	-	-	-	-	-	-	-	-	-	-	-	-	-	-	-	-	-	-	-	-	-	-	-	295	
300	-	-	-	-	135.00	-	60	-	-	-	-	-	-	-	-	-	-	-	-	-	-	-	-	-	-	-	-	-	-	-	-	-	300	
305	-	-	-	-	-	-	-	-	-	-	-	-	-	-	-	-	-	-	-	-	-	-	-	-	-	-	-	-	-	-	-	-	305	
310	-	-	-	-	125.00	-	1	-	-	-	-	-	-	-	-	-	-	-	-	-	-	-	-	-	-	-	-	-	-	-	-	-	310	
315	-	-	-	-	-	-	-	-	-	-	-	-	-	-	-	-	-	-	-	-	-	-	-	-	-	-	-	-	-	-	-	-	315	
320	-	-	-	-	-	-	-	-	-	-	-	-	-	-	-	-	-	-	-	-	-	-	-	-	-	-	-	-	-	-	-	-	320	
325	-	-	-	-	-	-	-	-	-	-	-	-	-	-	-	-	-	-	-	-	-	-	-	-	-	-	-	-	-	-	-	-	325	
330	-	-	-	-	-	-	-	-	-	-	-	-	-	-	-	-	-	-	-	-	-	-	-	-	-	-	-	-	-	-	-	-	330	
335	-	-	-	-	-	-	-	-	-	-	-	-	-	-	-	-	-	-	-	-	-	-	-	-	-	-	-	-	-	-	-	-	335	
340	-	-	-	-	-	-	-	-	-	-	-	-	-	-	-	-	-	-	-	-	-	-	-	-	-	-	-	-	-	-	-	-	340	
345	-	-	-	-	-	-	-	-	-	-	-	-	-	-	-	-	-	-	-	-	-	-	-	-	-	-	-	-	-	-	-	-	345	
350	-	-	-	-	85.00	-	26	-	-	-	-	86.50	-	6	-	-	-	-	-	-	-	-	-	-	-	-	-	-	-	-	-	-	350	
355	-	-	-	-	-	-	-	-	-	-	-	-	-	-	-	-	-	-	-	-	-	-	-	-	-	-	0.52	-	30	-	-	355		
360	-	-	-	-	-	-	-	-	-	-	-	-	-	-	-	-	-	-	-	-	-	-	-	-	-	-	0.72	-	50	-	-	360		
365	-	-	-	-	-	-	-	-	-	-	-	-	-	-	-	-	-	-	-	-	-	-	-	-	-	-	-	-	-	-	-	365		
370	-	-	-	-	-	-	-	-	-	-	-	-	-	-	-	-	-	-	-	-	0.01	-	30	-	-	-	-	1.30	-	20	-	-	370	
375	-	-	-	-	-	-	-	-	-	-	-	-	-	-	-	-	-	-	-	-	0.03	-	70	-	-	-	-	-	-	-	-	-	375	
380	-	-	-	-	-	-	-	-	-	-	-	-	-	-	-	-	-	-	-	-	0.06	-	11	-	-	-	-	-	-	-	-	-	380	
385	-	-	-	-	-	-	-	-	-	-	-	-	-	-	-	-	-	-	-	-	0.13	-	285	-	-	-	-	-	-	-	-	-	385	
390	-	-	-	-	-	-	-	-	-	-	-	-	-	-	-	-	-	-	-	-	0.24	-	10	-	-	-	-	-	-	-	-	-	390	
395	-	-	-	-	40.50	-	2	-	-	-	-	-	-	-	-	-	-	-	-	-	0.42	-	391	-	-	-	-	-	-	-	-	-	395	
400	38.75	39.75	38.75	39.75	35.75	20	325	-	-	-	-	41.75	-	55	-	-	-	-	-	-	0.72	-	174	-	-	-	-	-	-	-	-	-	400	
405	34.25	34.25	34.25	34.25	31.25	20	498	-	-	-	-	-	-	-	-	-	-	-	-	-	1.20	-	841	-	-	-	-	6.90	-	200	-	-	405	
410	-	-	-	-	26.75	-	362	33.00	33.00	33.00	33.00	34.50	20	20	-	-	-	-	-	-	1.80	-	138	-	-	-	-	8.30	-	185	-	-	410	
415	25.00	25.00	25.00	25.00	22.75	1	29	-	-	-	-	31.25	-	7	-	-	-	-	-	-	2.70	-	36	-	-	-	-	-	-	-	-	-	415	
420	-	-	-	-	19.00	-	91	-	-	-	-	-	-	-	-	-	3.50	3.70	3.00	3.70	3.90	69	272	-	-	-	-	-	-	-	-	-	420	
425	-	-	-	-	15.50	-	46	-	-	-	-	-	-	-	-	-	-	-	-	-	5.50	-	331	-	-	-	-	-	-	-	-	-	425	

FTSE/Athex Large Cap

(Trade Unit: 1 Index Point x 5€ - Exercise Style: European, Cash Settlement)

Call Options																Put Options																			
Exercise Price	March 2014							April 2014							Other Months		March 2014								April 2014								Other Months		Exercise Price
	Open price	Price max	Price min	Last price	Closing price	Volume	Open Interest	Open price	Price max	Price min	Last price	Closing price	Volume	Open Interest	Volume	Open Interest	Open price	Price max	Price min	Last price	Closing price	Volume	Open Interest	Open price	Price max	Price min	Last price	Closing price	Volume	Open Interest	Volume	Open Interest			
430	16.00	16.00	10.25	10.50	12.50	113	1,675	-	-	-	-	22.25	-	74			-	-	-	-	7.50	-	198	-	-	-	-	-	-	-	-		430		
435	10.00	10.00	9.00	9.00	9.80	21	59	-	-	-	-	-	-	-			11.25	11.25	5.40	5.40	9.80	2	7	-	-	-	-	-	-	-	-		435		
440	7.00	10.50	6.00	6.00	7.60	696	578	-	-	-	-	17.50	-	4			13.75	13.75	13.75	13.75	12.50	1	73	-	-	-	-	-	-	-	-		440		
445	-	-	-	-	5.70	-	60	-	-	-	-	15.25	-	6			-	-	-	-	-	-	-	-	-	-	-	-	-	-	-		445		
450	-	-	-	-	-	-	-	-	-	-	-	13.25	-	5			-	-	-	-	-	-	-	-	-	-	-	-	-	-	-		450		
455	-	-	-	-	-	-	-	-	-	-	-	-	-	-			-	-	-	-	-	-	-	-	-	-	-	-	-	-	-		455		
460	-	-	-	-	-	-	-	-	-	-	-	-	-	-			-	-	-	-	-	-	-	-	-	-	-	-	-	-	-		460		
465	-	-	-	-	-	-	-	-	-	-	-	-	-	-			-	-	-	-	-	-	-	-	-	-	-	-	-	-	-		465		
470	-	-	-	-	-	-	-	-	-	-	-	-	-	-			-	-	-	-	-	-	-	-	-	-	-	-	-	-	-		470		
475	-	-	-	-	-	-	-	-	-	-	-	-	-	-			-	-	-	-	-	-	-	-	-	-	-	-	-	-	-		475		
480	-	-	-	-	-	-	-	-	-	-	-	-	-	-			-	-	-	-	-	-	-	-	-	-	-	-	-	-	-		480		
Totals:						871	3,842							20	177	0	0							72	2,867							0	485	0	1
Nominal Transactions Value:						1,902,400.00						41,000.00						151,450.00						0.00						0.00					
Number of Trades:						31						1						9						0						0					

ALPHA BANK (CR)

(Contract Size: 100 Securities, Exercise Style: American, Physical Delivery)

Call Options																	Put Options																									
March 2014								April 2014								Other Months		March 2014								April 2014								Other Months								
Exerise Price	Open price	Price max	Price min	Last price	Closing price	Volume	Open Interest	Open price	Price max	Price min	Last price	Closing price	Volume	Open Interest	Volume	Open Interest	Open price	Price max	Price min	Last price	Closing price	Volume	Open Interest	Open price	Price max	Price min	Last price	Closing price	Volume	Open Interest	Volume	Open Interest	Exerise Price									
0.100						-	-							-	-							-	-						-	-				0.100								
0.200						-	-							-	-							-	-						-	-				0.200								
0.300						-	-							-	-							-	-						-	-				0.300								
0.400						-	-							-	-							-	-						-	-				0.400								
0.450						-	-							-	-							-	-						-	-				0.450								
0.500						-	-							-	-							-	-						-	-				0.500								
0.550						-	-							-	-							-	-						-	-				0.550								
0.600						-	-							-	-							-	-						-	-				0.600								
0.650						-	-							-	-							-	-						-	-				0.650								
0.700						-	-							-	-							-	-						-	-				0.700								
0.750						-	-							-	-							-	-						-	-				0.750								
0.800						-	-							-	-							-	-						-	-				0.800								
0.850						-	-							-	-							-	-						-	-				0.850								
0.900						-	-							-	-							-	-						-	-				0.900								
1.00						-	-							-	-							-	-						-	-				1.00								
1.10						-	-							-	-							-	-						-	-				1.10								
Totals:						0	0							0	0	0	0							0	0							0	0	0	0	0						
Nominal Transactions Value:						0.00								0.00		0.00	0.00							0.00								0.00		0.00	0.00							
Number of Trades:						0								0		0	0							0								0		0	0							

NATIONAL BANK (CR)

(Contract Size: 100 Securities, Exercise Style: American, Physical Delivery)

Call Options																	Put Options																			
March 2014								April 2014								Other Months		March 2014								April 2014								Other Months		
Exercise Price	Open price	Price max	Price min	Last price	Closing price	Volume	Open Interest	Open price	Price max	Price min	Last price	Closing price	Volume	Open Interest	Volume	Open Interest	Open price	Price max	Price min	Last price	Closing price	Volume	Open Interest	Open price	Price max	Price min	Last price	Closing price	Volume	Open Interest	Volume	Open Interest	Exercise Price			
0.300						-	-							-	-							-	-						-	-			0.300			
0.400						-	-							-	-							-	-						-	-			0.400			
0.500						-	-							-	-							-	-						-	-			0.500			
0.600						-	-							-	-							-	-						-	-			0.600			
0.700						-	-							-	-							-	-						-	-			0.700			
0.800						-	-							-	-							-	-						-	-			0.800			
0.900						-	-							-	-							-	-						-	-			0.900			
1.00						-	-							-	-							-	-						-	-			1.00			
1.10						-	-							-	-							-	-						-	-			1.10			
1.20						-	-							-	-							-	-						-	-			1.20			
1.80						-	-							-	-							-	-						-	-			1.80			
1.90						-	-							-	-							-	-						-	-			1.90			
2.00						-	-							-	-							-	-						-	-			2.00			
2.20						-	-							-	-							-	-						-	-			2.20			
2.40						-	-							-	-							-	-						-	-			2.40			
2.60						-	-							-	-							-	-						-	-			2.60			
2.80						-	-							-	-							-	-						-	-			2.80			
3.00						-	-							-	-							-	-						-	-			3.00			
3.10						-	-							-	-							-	-						-	-			3.10			
3.20						-	-							-	-							-	-						-	-			3.20			
3.30						-	-							-	-							-	-						-	-			3.30			
3.40						-	-							-	-							-	-						-	-			3.40			
3.50						-	-							-	-							-	-						-	-			3.50			
3.60						-	-							-	-							-	-						-	-			3.60			
3.70						-	-							-	-							-	-						-	-			3.70			
3.80						-	-							-	-							-	-						-	-			3.80			
3.90						-	-							-	-							-	-						-	-			3.90			
4.00						-	-							-	-							-	-						-	-			4.00			
4.20						-	-							-	-							-	-						-	-			4.20			
4.40						-	-							-	-							-	-						-	-			4.40			
4.60					0.008	-	100							-	-							-	-						-	-			4.60			
4.80						-	-							-	-							-	-						-	-			4.80			
5.00						-	-							-	-							-	-						-	-			5.00			
5.20						-	-							-	-							-	-						-	-			5.20			
5.60						-	-							-	-							-	-						-	-			5.60			

NATIONAL BANK (CR)

(Contract Size: 100 Securities, Exercise Style: American, Physical Delivery)

Call Options																	Put Options																									
Exercise Price	March 2014							April 2014							Other Months		March 2014							April 2014							Other Months		Exercise Price									
	Open price	Price max	Price min	Last price	Closing price	Volume	Open Interest	Open price	Price max	Price min	Last price	Closing price	Volume	Open Interest	Volume	Open Interest	Open price	Price max	Price min	Last price	Closing price	Volume	Open Interest	Open price	Price max	Price min	Last price	Closing price	Volume	Open Interest	Volume	Open Interest										
	Totals:														0		0							0		0								0		0						
	Nominal Transactions Value:														0.00		0.00							0.00		0.00								0.00		0.00						
Number of Trades:														0		0							0		0							0		0								

OPAP (CR)

(Contract Size: 100 Securities, Exercise Style: American, Physical Delivery)

Call Options																	Put Options																			
March 2014								April 2014								Other Months		March 2014								April 2014								Other Months		
Exercise Price	Open price	Price max	Price min	Last price	Closing price	Volume	Open Interest	Open price	Price max	Price min	Last price	Closing price	Volume	Open Interest	Volume	Open Interest	Open price	Price max	Price min	Last price	Closing price	Volume	Open Interest	Open price	Price max	Price min	Last price	Closing price	Volume	Open Interest	Volume	Open Interest	Exercise Price			
1.00						-	-							-	-							-	-						-	-			1.00			
4.80						-	-							-	-							-	-						-	-			4.80			
5.20						-	-							-	-							-	-						-	-			5.20			
5.60						-	-							-	-							-	-						-	-			5.60			
6.00						-	-							-	-							-	-						-	-			6.00			
6.40						-	-							-	-							-	-						-	-			6.40			
6.80						-	-							-	-							-	-						-	-			6.80			
7.20						-	-							-	-							-	-						-	-			7.20			
7.60						-	-							-	-							-	-						-	-			7.60			
8.00						-	-							-	-							-	-						-	-			8.00			
8.40						-	-							-	-							-	-						-	-			8.40			
8.60						-	-							-	-							-	-						-	-			8.60			
8.80						-	-							-	-							-	-						-	-			8.80			
9.00						-	-							-	-							-	-						-	-			9.00			
9.20						-	-							-	-							-	-						-	-			9.20			
9.40						-	-							-	-							-	-						-	-			9.40			
9.60						-	-							-	-							-	-						-	-			9.60			
9.80						-	-							-	-							-	-						-	-			9.80			
10.00						-	-							-	-							-	-						-	-			10.00			
10.50						-	-							-	-							-	-						-	-			10.50			
11.00						-	-							-	-							-	-						-	-			11.00			
11.50						-	-							-	-							-	-						-	-			11.50			
12.00						-	-							-	-							-	-						-	-			12.00			
12.50						-	-							-	-							-	-						-	-			12.50			
13.00						-	-							-	-							-	-						-	-			13.00			
13.50						-	-							-	-							-	-						-	-			13.50			
14.00						-	-							-	-							-	-						-	-			14.00			
14.50						-	-							-	-							-	-						-	-			14.50			
15.00						-	-							-	-							-	-						-	-			15.00			
20.00						-	-							-	-							-	-						-	-			20.00			
Totals:						0	0							0	0	0	0							0	0							0	0	0		
Nominal Transactions Value:						0.00								0.00		0.00								0.00								0.00				
Number of Trades:						0								0		0								0								0				

OTE (CR)

(Contract Size: 100 Securities, Exercise Style: American, Physical Delivery)

Call Options																	Put Options																			
March 2014								April 2014								Other Months		March 2014								April 2014								Other Months		
Exerise Price	Open price	Price max	Price min	Last price	Closing price	Volume	Open Interest	Open price	Price max	Price min	Last price	Closing price	Volume	Open Interest	Volume	Open Interest	Open price	Price max	Price min	Last price	Closing price	Volume	Open Interest	Open price	Price max	Price min	Last price	Closing price	Volume	Open Interest	Volume	Open Interest	Exerise Price			
3.80						-	-							-	-							-	-						-	-		3.80				
4.00						-	-							-	-							-	-						-	-		4.00				
4.40						-	-							-	-							-	-						-	-		4.40				
4.80						-	-							-	-							-	-						-	-		4.80				
5.20						-	-							-	-							-	-						-	-		5.20				
5.60						-	-							-	-							-	-						-	-		5.60				
6.00						-	-							-	-							-	-						-	-		6.00				
6.40						-	-							-	-							-	-						-	-		6.40				
6.80						-	-							-	-							-	-						-	-		6.80				
7.20						-	-							-	-							-	-						-	-		7.20				
7.60						-	-							-	-							-	-						-	-		7.60				
7.80						-	-							-	-							-	-						-	-		7.80				
8.00						-	-							-	-							-	-						-	-		8.00				
8.20						-	-							-	-							-	-						-	-		8.20				
8.40						-	-							-	-							-	-						-	-		8.40				
8.60						-	-							-	-							-	-						-	-		8.60				
8.80						-	-							-	-							-	15						-	-		8.80				
9.00						-	-							-	-							-	-						-	-		9.00				
9.20						-	-							-	-							-	-						-	-		9.20				
9.40						-	-							-	-							-	-						-	-		9.40				
9.60						-	-							-	-							-	-						-	-		9.60				
9.80						-	-							-	-							-	250						-	-		9.80				
10.00						-	-							-	-							-	10						-	-		10.00				
11.00						-	-					2.27		-	20							0.001	-	30				0.055	-	-		11.00				
11.50						-	-							-	-							-	-						-	-		11.50				
12.00					1.22	-	210							-	-							-	-						-	-		12.00				
12.50						-	-							-	-							-	-						-	-		12.50				
13.00					0.444	-	55							-	-							-	-						-	-		13.00				
13.50						-	-							-	-							-	-						-	-		13.50				
14.00						-	-							-	-							-	-						-	-		14.00				
14.50						-	-							-	-							-	-						-	-		14.50				
15.00						-	-							-	-							-	-						-	-		15.00				
16.00						-	-							-	-							-	-						-	-		16.00				
17.00						-	-							-	-							-	-						-	-		17.00				
Totals:						0	265							0	20	0	0							0	305							0	30	0	0	
Nominal Transactions Value:						0.00								0.00		0.00								0.00								0.00				
Number of Trades:						0								0		0								0								0				



PIRAEUS BANK (CR)

(Contract Size: 100 Securities, Exercise Style: American, Physical Delivery)

Call Options																	Put Options																					
March 2014								April 2014								Other Months		March 2014								April 2014								Other Months				
Exercise Price	Open price	Price max	Price min	Last price	Closing price	Volume	Open Interest	Open price	Price max	Price min	Last price	Closing price	Volume	Open Interest	Volume	Open Interest	Open price	Price max	Price min	Last price	Closing price	Volume	Open Interest	Open price	Price max	Price min	Last price	Closing price	Volume	Open Interest	Volume	Open Interest	Exercise Price					
0.600						-	-							-	-							-	-						-	-				0.600				
0.700						-	-							-	-							-	-						-	-				0.700				
0.800						-	-							-	-							-	-						-	-				0.800				
0.900						-	-							-	-							-	-						-	-				0.900				
1.00						-	-							-	-							-	-						-	-				1.00				
1.10						-	-							-	-							-	-						-	-				1.10				
1.20						-	-							-	-							-	-						-	-				1.20				
1.25						-	-							-	-							-	-						-	-				1.25				
1.30						-	-							-	-							-	-						-	-				1.30				
1.35						-	-							-	-							-	-						-	-				1.35				
1.40						-	-							-	-							-	-						-	-				1.40				
1.45						-	-							-	-							-	-						-	-				1.45				
1.50						-	-							-	-							-	-						-	-				1.50				
1.55						-	-							-	-							-	-						-	-				1.55				
1.60						-	-							-	-							-	-						-	-				1.60				
1.65						-	-							-	-							-	-						-	-				1.65				
1.70						-	-							-	-							-	-						-	-				1.70				
1.75						-	-							-	-							-	-						-	-				1.75				
1.80						-	-							-	-							-	-						-	-				1.80				
1.85						-	-							-	-							-	-						-	-				1.85				
1.90						-	-							-	-							-	-						-	-				1.90				
1.95						-	-							-	-							-	-						-	-				1.95				
2.00						-	-							-	-							-	-						-	-				2.00				
2.10						-	-							-	-							-	-						-	-				2.10				
2.20						-	-							-	-							-	-						-	-				2.20				
2.30						-	-							-	-							-	-						-	-				2.30				
2.40						-	-							-	-							-	-						-	-				2.40				
2.60						-	-							-	-							-	-						-	-				2.60				
2.80						-	-							-	-							-	-						-	-				2.80				
Totals:						0	0							0	0	0	0							0	0							0	0	0	0	0		
Nominal Transactions Value:						0.00								0.00		0.00								0.00								0.00		0.00		0.00		
Number of Trades:						0								0		0								0								0		0		0		

PPC (CR)

(Contract Size: 100 Securities, Exercise Style: American, Physical Delivery)

Call Options																	Put Options																				
March 2014								April 2014								Other Months		March 2014								April 2014								Other Months			
Exercise Price	Open price	Price max	Price min	Last price	Closing price	Volume	Open Interest	Open price	Price max	Price min	Last price	Closing price	Volume	Open Interest	Volume	Open Interest	Open price	Price max	Price min	Last price	Closing price	Volume	Open Interest	Open price	Price max	Price min	Last price	Closing price	Volume	Open Interest	Volume	Open Interest	Exercise Price				
4.00						-	-							-	-							-	-					-	-					4.00			
4.40					7.81	-	30							-	-							-	-					-	-					4.40			
4.80						-	-							-	-							-	-					-	-					4.80			
5.20						-	-							-	-							-	-					-	-					5.20			
5.60						-	-							-	-							-	-					-	-					5.60			
6.00						-	-							-	-							-	-					-	-					6.00			
6.40						-	-							-	-							-	-					-	-					6.40			
6.80						-	-							-	-							-	-					-	-					6.80			
7.20						-	-							-	-							-	-					-	-					7.20			
7.60						-	-							-	-							-	-					-	-					7.60			
8.00						-	-							-	-							-	-					-	-					8.00			
8.40						-	-							-	-							-	-					-	-					8.40			
8.80						-	-							-	-							-	-					-	-					8.80			
9.00						-	-							-	-							-	-					-	-					9.00			
9.20						-	-					3.04	-	20								0.003	-	-					-	-					9.20		
9.40						-	-						-	-								-	-					-	-					9.40			
9.60						-	-					2.65	-	10								0.008	-	-					-	-					9.60		
9.80						-	-						-	-								-	5					-	-					9.80			
10.00						-	-					2.26	-	10								-	5					-	-					10.00			
10.50						-	-						-	-								-	-					-	-					10.50			
11.00					1.23	-	5					1.37	-	20								0.012	-	100				-	-					11.00			
11.50						-	-						-	-								-	-					-	-					11.50			
12.00					0.419	-	20						-	-								-	-					-	-					12.00			
12.50					0.182	-	20					0.455	-	20								-	-					-	-					12.50			
13.00						-	-						-	-								-	-					-	-					13.00			
13.50						-	-						-	-								-	-					-	-					13.50			
14.00						-	-						-	-								-	-					-	-					14.00			
14.50						-	-						-	-								-	-					-	-					14.50			
15.00						-	-						-	-								-	-					-	-					15.00			
16.00						-	-						-	-								-	-					-	-					16.00			
Totals:						0	75							0	80	0	0							0	110							0	30	0	0		
Nominal Transactions Value:						0.00								0.00		0.00		0.00							0.00								0.00		0.00		
Number of Trades:						0								0		0		0							0.00								0		0		

Securities	Type[4]	Stock Repo [1]						Stock Reverse Repo [2]								Repurchase Agreements [3]							
		Trans. price	chg.	Trades	Volume	Transactions Value	Open Interest[5]	Price max	Price min	Last price	Last Ask	Trades	Volume	Transactions Value	Open Interest[5]	Price max	Price min	Last price	Last Ask	Trades	Volume	Transactions Value	Open Interest[5]
AEGEAN AIRLINES (CR)	SR RA	100.00	---	---	---	---	88	---	---	---	44@3%	---	---	---	---	---	---	---	---	---	---	---	---
ALPHA BANK (CR)	SR RA	100.09	0.01	---	---	---	115,079	---	---	---	---	---	---	---	92,063	---	---	---	---	---	---	---	29,570
ALPHA ETF FTSE Athex Large Cap	SR RA	100.00	---	---	---	---	---	---	---	---	---	---	---	---	---	---	---	---	---	---	---	---	2,314
ALUMIL (CR)	RA	---	---	---	---	---	---	---	---	---	---	---	---	---	---	---	---	---	---	---	---	---	---
ATHENS MEDICAL CENTER SA (CR)	SR RA	100.00	---	---	---	---	346	---	---	---	173@3%	---	---	---	---	---	---	---	---	---	---	---	---
ATTICA BANK S.A. (CR)	SR RA	100.00	---	---	---	---	3,180	---	---	---	2544@9.9%	---	---	---	---	---	---	---	---	---	---	---	---
AUTOHELLAS SA (CR)	SR RA	100.00	---	---	---	---	16	---	---	---	6@3%	---	---	---	---	---	---	---	---	---	---	---	---
BIOKARPET S.A.(CR)	RA	---	---	---	---	---	---	---	---	---	---	---	---	---	---	---	---	---	---	---	---	---	---
CC HBC AG (CR)	SR RA	100.10	0.01	---	---	---	1,265	---	---	---	577@3%	---	---	---	55	---	---	---	---	---	---	---	28
CENTRIC HOLDINGS (CR)	SR RA	100.00	---	---	---	---	200	---	---	---	141@5.2%	---	---	---	---	---	---	---	---	---	---	---	---
CORINTH PIPEWORKS SA (CR)	SR RA	100.01	---	---	---	---	160	---	---	---	80@3%	---	---	---	---	---	---	---	---	---	---	---	---
CRETE PLASTICS SA (CR)	SR RA	100.00	---	---	---	---	---	---	---	---	---	---	---	---	---	---	---	---	---	---	---	---	---
DROMEAS SA (CR)	SR RA	100.00	---	---	---	---	---	---	---	---	---	---	---	---	---	---	---	---	---	---	---	---	---
ELLAKTOR (CR)	SR RA	100.00	---	---	---	---	2,242	---	---	---	1112@3%	---	---	---	9	---	---	---	---	---	---	---	---
ELTON SA (CR)	SR RA	100.00	---	---	---	---	50	---	---	---	35@3%	---	---	---	---	---	---	---	---	---	---	---	---
ELVAL SA. (CB)	SR RA	100.00	---	---	---	---	368	---	---	---	184@3%	---	---	---	---	---	---	---	---	---	---	---	---
EUROBANK ERGASIAS (CR)	SR RA	100.07	---	---	---	---	1,323	7.60%	7.60%	7.60%	12@7.6%	1	3	129.0	1,000	---	---	---	---	---	---	---	56
EUROBANK PROPERTIES REIC (CR)	SR RA	100.02	---	---	---	---	1,174	---	---	---	585@3%	---	---	---	2	---	---	---	---	---	---	---	---
EUROPEAN RELIANCE INSUR. (CR)	SR RA	100.00	---	---	---	---	---	---	---	---	---	---	---	---	---	---	---	---	---	---	---	---	---
EYDAP S.A. (CR)	SR RA	100.05	0.02	---	---	---	326	3.00%	3.00%	3.00%	81@3%	1	4	3,608.0	82	---	---	---	---	---	---	---	9
FOLLI FOLLIE (CR)	SR RA	100.99	0.09	---	---	---	651	---	---	---	54@3%	---	---	---	271	---	---	---	---	---	---	---	6
FOURLIS (CR)	SR RA	100.03	---	---	---	---	109	---	---	---	54@3%	---	---	---	---	---	---	---	---	---	---	---	---
FRIGOGLASS SA (CR)	SR RA	100.01	0.01	---	---	---	216	---	---	---	97@3%	---	---	---	11	---	---	---	---	---	---	---	---
GEK TERNA (CR)	SR RA	100.01	---	---	---	---	629	---	---	---	312@3%	---	---	---	2	---	---	---	---	---	---	---	---
GR. SARANTIS SA (CR)	SR RA	100.00	---	---	---	---	58	---	---	---	29@3%	---	---	---	---	---	---	---	---	---	---	---	---
HALKOR SA (CB)	SR RA	100.00	---	---	---	---	505	---	---	---	252@3%	---	---	---	---	---	---	---	---	---	---	---	---
HELLENIC EXCHANGES-A.S.E. (CR)	SR RA	100.02	---	---	---	---	5,933	---	---	---	2890@3%	---	---	---	76	---	---	---	---	---	---	---	---
HELLENIC PETROLEUM (CR)	SR RA	100.25	0.02	---	---	---	2,253	---	---	---	493@3%	---	---	---	633	---	---	---	---	---	---	---	24
HYGEIA SA (CR)	SR RA	100.00	---	---	---	---	500	---	---	---	200@3.8%	---	---	---	---	---	---	---	---	---	---	---	---
IASO SA (CR)	SR RA	100.00	---	---	---	---	195	---	---	---	97@3%	---	---	---	---	---	---	---	---	---	---	---	---
IKTINOS HELLAS SA (CR)	SR RA	100.00	---	---	---	---	10	---	---	---	---	---	---	---	---	---	---	---	---	---	---	---	---
INTRACOM CONSTR. (CR)	SR RA	100.00	---	---	---	---	7	---	---	---	---	---	---	---	---	---	---	---	---	---	---	---	---

Stock Lending Notes

- [1] - Stock Repo: A Contract for selling stocks to HELEX with a Repurchase Right (According to ATHEX BoD Resolution No 17)
- [2] - Stock Reverse Repo: A Contract for buying stocks from HELEX with a Resell Right. (According to ATHEX BoD Resolution No 18)
- [3] - Standardized Repurchase Agreements: A Contract that constitutes a standardized agreement for the purchase or sale of shares, with repurchase or resell pact (According to ATHEX BoD Resolution No 20)
- [4] - Type of products is divided into SR: Stock Repo or Stock Reverse Repo, and RA: Repurchase Agreements.
- [5] - Open Interest in all Series (both tradeable or non-tradeable).

Securities	Type[4]	Stock Repo [1]						Stock Reverse Repo [2]								Repurchase Agreements [3]							
		Trans. price	chg.	Trades	Volume	Transactions Value	Open Interest[5]	Price max	Price min	Last price	Last Ask	Trades	Volume	Transactions Value	Open Interest[5]	Price max	Price min	Last price	Last Ask	Trades	Volume	Transactions Value	Open Interest[5]
INTRACOM HOLDINGS (CR)	SR RA	100.00	---	---	---	---	665	---	---	---	332@3%	---	---	---	---	---	---	---	---	---	---	---	---
INTRALOT (CR)	SR RA	100.04	0.01	---	---	---	841	---	---	---	314@3%	---	---	---	56	---	---	---	---	---	---	---	---
J & P - AVAX SA (CR)	SR RA	100.00	---	---	---	---	223	---	---	---	111@3%	---	---	---	---	---	---	---	---	---	---	---	---
JUMBO SA (CR)	SR RA	100.00	---	---	---	---	680	---	---	---	272@3%	---	---	---	---	---	---	---	---	---	---	---	---
KARATZIS SA (CR)	RA	---	---	---	---	---	---	---	---	---	---	---	---	---	---	---	---	---	---	---	---	---	---
KLEEMAN HELLAS SA (CR)	SR RA	100.00	---	---	---	---	982	---	---	---	491@3%	---	---	---	---	---	---	---	---	---	---	---	---
KLOUKINAS - LAPPAS SA (CR)	SR RA	100.00	---	---	---	---	---	---	---	---	---	---	---	---	---	---	---	---	---	---	---	---	---
KRI-KRI S.A. (CR)	SR RA	100.00	---	---	---	---	551	---	---	---	275@3%	---	---	---	---	---	---	---	---	---	---	---	---
LAMDA DEVELOPMENT SA (CR)	SR RA	100.00	---	---	---	---	---	---	---	---	---	---	---	---	---	---	---	---	---	---	---	---	---
LOULIS MILLS SA (CR)	SR RA	100.00	---	---	---	---	---	---	---	---	---	---	---	---	---	---	---	---	---	---	---	---	---
MARFIN INVESTMENT GROUP (CR)	SR RA	100.01	---	---	---	---	3,375	---	---	---	1248@3.7%	---	---	---	915	---	---	---	---	---	---	---	175
METKA (CR)	SR RA	100.28	0.02	---	---	---	533	---	---	---	161@3%	---	---	---	105	---	---	---	---	---	---	---	5
MLS MULTIMEDIA SA (CR)	SR RA	100.00	---	---	---	---	109	---	---	---	54@3%	---	---	---	---	---	---	---	---	---	---	---	---
MOTOR OIL (CR)	SR RA	100.11	0.01	---	---	---	1,856	---	---	---	694@3%	---	---	---	234	---	---	---	---	---	---	---	9
MYTILINEOS HOLDINGS (CR)	SR RA	100.04	---	---	---	---	3,758	---	---	---	1641@3%	---	---	---	238	---	---	---	---	---	---	---	---
NATIONAL BANK (CR)	SR RA	100.55	0.05	---	---	---	9,613	---	---	---	---	---	---	---	8,183	---	---	---	---	---	---	---	3,076
NBGAM ETF	SR RA	100.00	---	---	---	---	---	---	---	---	---	---	---	---	---	---	---	---	---	---	---	---	100
NBGAM ETF GREECE & TURKEY 30	SR RA	100.00	---	---	---	---	---	---	---	---	---	---	---	---	---	---	---	---	---	---	---	---	36
NIREFS SA (CR)	SR RA	100.00	---	---	---	---	342	---	---	---	246@5.6%	---	---	---	---	---	---	---	---	---	---	---	---
OPAP (CR)	SR RA	100.06	0.01	---	---	---	3,829	3.00%	3.00%	3.00%	1515@3%	1	40	49,360.0	399	3.00%	3.00%	3.00%	---	1	40	49,360.0	384
OTE (CR)	SR RA	100.10	---	---	---	---	5,052	3.00%	3.00%	3.00%	2141@3%	1	150	197,700.0	385	---	---	---	---	---	---	---	38
P.P.A. S.A. (CR)	SR RA	100.25	0.01	---	---	---	14	---	---	---	6@3%	---	---	---	1	---	---	---	---	---	---	---	20
PAPOUTSANIS (CR)	SR RA	100.00	---	---	---	---	---	---	---	---	---	---	---	---	---	---	---	---	---	---	---	---	---
PETROPOULOS PETROS (CR)	RA	---	---	---	---	---	---	---	---	---	---	---	---	---	---	---	---	---	---	---	---	---	---
PIRAEUS BANK (CR)	SR RA	100.20	0.02	---	---	---	9,270	---	---	---	---	---	---	---	7,422	---	---	---	---	---	---	---	1,255
PPC (CR)	SR RA	100.35	0.02	---	---	---	1,908	---	---	---	470@3%	---	---	---	484	---	---	---	---	---	---	---	18
QUEST HOLDINGS (CR)	SR RA	100.00	---	---	---	---	---	---	---	---	---	---	---	---	---	---	---	---	---	---	---	---	---
REVOIL (CR)	SR RA	100.00	---	---	---	---	---	---	---	---	---	---	---	---	---	---	---	---	---	---	---	---	---
SELECTED TEXT. IND. ASSOC (CR)	SR RA	100.00	---	---	---	---	110	---	---	---	81@6.5%	---	---	---	---	---	---	---	---	---	---	---	---
SIDENOR (CR)	SR RA	100.01	---	---	---	---	391	---	---	---	170@3%	---	---	---	25	---	---	---	---	---	---	---	---
TECHNICAL OLYMPIC SA (CR)	SR RA	100.00	---	---	---	---	44	---	---	---	22@3%	---	---	---	---	---	---	---	---	---	---	---	---
TERNA ENERGY (CR)	SR RA	100.00	---	---	---	---	175	---	---	---	87@3%	---	---	---	---	---	---	---	---	---	---	---	---

Stock Lending Notes

- [1] - Stock Repo: A Contract for selling stocks to HELEX with a Repurchase Right (According to ATHEX BoD Resolution No 17)
- [2] - Stock Reverse Repo: A Contract for buying stocks from HELEX with a Resell Right. (According to ATHEX BoD Resolution No 18)
- [3] - Standardized Repurchase Agreements: A Contract that constitutes a standardized agreement for the purchase or sale of shares, with repurchase or resell pact (According to ATHEX BoD Resolution No 20)
- [4] - Type of products is divided into SR: Stock Repo or Stock Reverse Repo, and RA: Repurchase Agreements.
- [5] - Open Interest in all Series (both tradeable or non-tradeable).

Securities	Type[4]	Stock Repo [1]						Stock Reverse Repo [2]								Repurchase Agreements [3]							
		Trans. price	chg.	Trades	Volume	Transactions Value	Open Interest[5]	Price max	Price min	Last price	Last Ask	Trades	Volume	Transactions Value	Open Interest[5]	Price max	Price min	Last price	Last Ask	Trades	Volume	Transactions Value	Open Interest[5]
THESSALONIKA WATER & SEWERAGE	SR RA	100.00	---	---	---	---	1,270	---	---	---	635@3%	---	---	---	---	---	---	---	---	---	---	---	---
THRACE PLASTICS SA (CR)	SR RA	100.00	---	---	---	---	1,010	---	---	---	505@3%	---	---	---	---	---	---	---	---	---	---	---	---
TITAN CEMENT (CR)	SR RA	100.18	0.01	---	---	---	8,972	---	---	---	3742@3%	---	---	---	744	---	---	---	---	---	---	---	7
TPA SA (CR)	SR RA	100.00	---	---	---	---	46	---	---	---	23@3%	---	---	---	---	---	---	---	---	---	---	---	---
TRASTOR REAL EST. INV. CO.(CR)	SR RA	100.00	---	---	---	---	284	---	---	---	142@3%	---	---	---	---	---	---	---	---	---	---	---	---
VIOHALCO SA/INV (CB)	SR RA	100.12	0.02	---	---	---	202	---	---	---	---	---	---	---	102	---	---	---	---	---	---	---	---

Stock Lending Notes

- [1] - Stock Repo: A Contract for selling stocks to HELEX with a Repurchase Right (According to ATHEX BoD Resolution No 17)
- [2] - Stock Reverse Repo: A Contract for buying stocks from HELEX with a Resell Right. (According to ATHEX BoD Resolution No 18)
- [3] - Standardized Repurchase Agreements: A Contract that constitutes a standardized agreement for the purchase or sale of shares, with repurchase or resell pact (According to ATHEX BoD Resolution No 20)
- [4] - Type of products is divided into SR: Stock Repo or Stock Reverse Repo, and RA: Repurchase Agreements.
- [5] - Open Interest in all Series (both tradeable or non-tradeable).

## Sectors codification for listed companies

533	-	Exploration & Production	537	-	Integrated Oil & Gas
1353	-	Commodity Chemicals	1357	-	Specialty Chemicals
1753	-	Aluminum	1755	-	Nonferrous Metals
1757	-	Steel	1775	-	General Mining
2353	-	Building Materials & Fixtures	2357	-	Heavy Construction
2723	-	Containers & Packaging	2727	-	Diversified Industrials
2733	-	Electrical Components & Equipment	2753	-	Commercial Vehicles & Trucks
2757	-	Industrial Machinery	2773	-	Marine Transportation
2777	-	Transportation Services	2791	-	Business Support Services
2797	-	Industrial Suppliers	3535	-	Distillers & Vintners
3537	-	Soft Drinks	3573	-	Farming Fishing & Plantations
3577	-	Food Products	3722	-	Durable Household Products
3726	-	Furnishings	3728	-	Home Construction
3747	-	Toys	3763	-	Clothing & Accessories
3765	-	Footwear	3767	-	Personal Products
3785	-	Tobacco	4533	-	Health Care Providers
4535	-	Medical Equipment	4577	-	Pharmaceuticals
5337	-	Food Retailers & Wholesalers	5371	-	Apparel Retailers
5373	-	Broadline Retailers	5375	-	Home Improvement Retailers
5379	-	Specialty Retailers	5553	-	Broadcasting & Entertainment
5555	-	Media Agencies	5557	-	Publishing
5751	-	Airlines	5752	-	Gambling
5753	-	Hotels	5755	-	Recreational Services
5757	-	Restaurants & Bars	5759	-	Travel & Tourism
6535	-	Fixed Line Telecommunications	6575	-	Mobile Telecommunications
7535	-	Conventional Electricity	7537	-	Alternative Electricity
7577	-	Water	8355	-	Banks
8534	-	Insurance Brokers	8536	-	Property & Casualty Insurance
8633	-	Real Estate Holding & Development	8637	-	Real Estate Services
8671	-	Industrial & Office REITs	8675	-	Specialty REITs
8775	-	Specialty Finance	8777	-	Investment Services
8985	-	Equity Investment Instruments	9533	-	Computer Services
9535	-	Internet	9537	-	Software
9572	-	Computer Hardware	9574	-	Electronic Office Equipment
9578	-	Telecommunications Equipment	11000	-	ETF

