

Daily Official List

Hellenic Exchanges – Athens Stock Exchange S.A.

Friday, 11 April, 2014

Year: 135 Trading Day No: 69

ΕΛΛΗΝΙΚΑ ΧΡΗΜΑΤΙΣΤΗΡΙΑ - ΧΡΗΜΑΤΙΣΤΗΡΙΟ ΑΘΗΝΩΝ

ΑΝΩΝΥΜΗ ΕΤΑΙΡΕΙΑ ΣΥΜΜΕΤΟΧΩΝ

HELLENIC EXCHANGES – ATHENS STOCK EXCHANGE

Disclaimer:

Hellenic Exchanges-Athens Exchange endeavours to ensure that the data and other material ("Information") presented on the Daily Official List are accurate and complete, but it is not liable for any errors or omissions of data or /and for the accuracy, credibility, updating and completeness of the aforesaid information nor it has any liability arising directly or indirectly from the use of the above Information.

The Company is not liable for the accuracy of the data included in listed companies' announcements. Only the sender of such an announcement is fully and solely liable for any infringement of third party's rights from the content of such announcement. All contents of the Daily Official List are provided only for information purposes and do not constitute investment advice or solicitation to invest in securities or other products listed for trading on the Exchange.

You acknowledge and agree that the Company is the owner of any property rights related to any Information appearing on the Daily Official List including intellectual property rights copyright, trademarks, etc.

The above data are a property of the Hellenic Exchanges-Athens Exchange and are copyright protected. Users are forbidden to reproduce, modify, copy, sale, transmit or redistribute, by all reproduction means and methods, part or the whole of the above data, without reference to their source.

The commercial exploitation of these data is, also, forbidden by third parties. Hellenic Exchanges-Athens Exchange does not carry any responsibility, direct or indirect, derived from usage or accidental alteration of the above data when used by third parties.

Hellenic Exchanges – Athens Stock Exchange S.A.

110 Athinon Ave., 10442 Athens, Tel: (210) 33.66.800, Fax: (210) 32.13.938

www.athex.gr

Thessalonica Stock Exchange Center (T.S.E.C)

16-18 Katouni Str., Thessalonica 546 25 Tel: (2310) 567.667, Fax: (2310) 530.545

Athex Members Guarantee Fund

14-16 Fidiou Str., Athens 106 78, Tel: (210) 33.04.682, Fax: (210) 33.04.155

Hellenic Republic Capital Market Commission

1 Kolokotroni Str. & 1 Stadiou Str., Athens 10562 Tel: (210) 33.77.100 Fax: (210) 33.77.173

Table of Contents

Section 1: Statistical Figures of Securities and Derivatives Markets

- Summary of Markets
- Athex Indices
- Analytic Figures for Athex Market's Boards and Categories
- Trading Details by Athex Sectors and ETFs Category
- Top 10 best & worst performing Shares
- Derivatives Summary

Section 2: Analytic Figures of Shares Transactions

- Analytic Figures of Shares Transactions
- Shares' Notes

Section 3: Figures of Securities Transactions

- Securities Blocks Details
- Shares Rights Details
- Shares Short Selling
- Stock Borrowing
- Shares Forced Sales
- Forced Sales Registered Shares
- Exchange Traded Funds (ETFs) Characteristics

Section 5: Bonds traded in Fixed Income Assets Market

- Corporate Bonds
- Government Bonds
- Treasury Bills & Zero Coupon Government Bonds
- Government Bonds Traded with the Open Outcry Method
- State Banks Bonds

Section 6: Additional Infos

- Athex & ATHEXClear Members List
- List of Stocks under Market Making operations

Section 7: Derivatives Market Analytic Figures

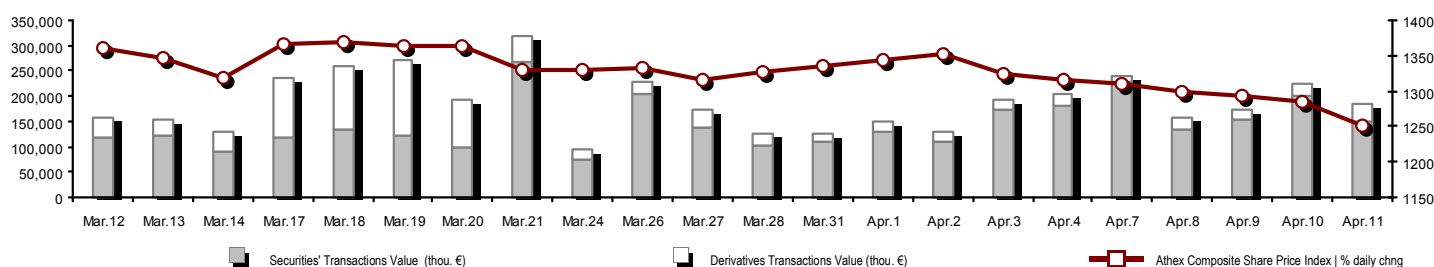
- Index Futures
- Stock Futures
- Index Options
- Stock Options
- Stock Lending Analytic Figures (Repo Contracts)

Appendix A: Sectors codification for listed companies

Section codification follows the corresponding from the Greek version of Daily Official List for reference purposes.

Summary of Markets

Athex Composite Share Price Index vs Shares and Derivatives Transactions Value



Total Transactions Value (Securities/Derivatives) (thou. €): 186,195.17

Athex Capitalisation (mill. €) **: 71,756.45
 Daily change: mill. € | % -2,366.49 -3.19%
 Yearly Avg Capitalisation: mill. € | % chng prev year Avg 72,259.04 39.91%
Athex Composite Share Price Index | % daily chng 1,250.80 -2.58%
Athex Composite Share Price Index Capitalisation (mill. €) 62,741.03
 Daily change (mill. €) -2,243.61

Derivatives Total Open Interest 604,357
 in Index Futures | % daily chng 56,776 -2.30%
 in Stock Futures | % daily chng 203,199 0.48%
 in Index Options | % daily chng 9,011 5.06%
 in Stock Options | % daily chng 620 -2.30%
 in Stock Repos/Reverse Repos/RA | % daily chng 334,751 -2.18%

Securities' Transactions Value (thou. €) 147,931.53
 Daily change: thou. € | % -53,573.37 -26.59%
 YtD Avg Trans. Value: thou. € | % chng prev year Avg 114,583.71 32.29%
 Short Selling Trans. Value: mill. € | % in total Value
 Short Covering Trans. Value: mill. € | % in total Value
Transactions Value of Blocks (thou. €) 18,666.38
Bonds Transactions Value (thou. €) 0.00

Derivatives Transactions Value (thou. €) 38,263.64
 Daily change: thou. € | % 14,016.67 57.81%
 YtD Avg Trans. Value: thou. € | % chng prev year Avg 39,379.98 53.02%

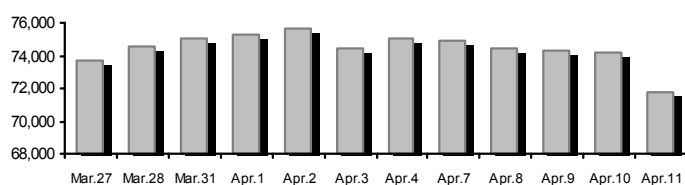
Securities' Transactions Volume (thou. Pieces) 79,356.63
 Daily change: thou. pieces | % -5,508.86 -6.49%
 YtD Avg Volume: thou. pieces | % chng prev year Avg 59,411.93 11.02%
 Short Selling Volume: thou pieces | % in total Volume
 Short Covering Volume: thou. pieces | % in total Volume
Transactions Volume of Blocks (thou. Pieces) 9,622.39
Bonds Transactions Volume (thou. pieces) 0.00

Derivatives Contracts Volume: 45,278
 Daily change: pieces | % 18,568 69.52%
 YtD Avg Derivatives Contracts | % chng prev year Avg 38,622 -7.08%

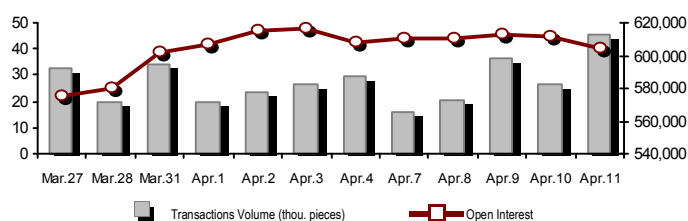
Securities' Trades Number 32,859
 Daily change: number | % -247 -0.75%
 YtD Avg Derivatives Trades number | % chng prev year Avg 30,261 2.01%
Number of Blocks 18
Number of Bonds Transactions 0

Derivatives Trades Number: 3,396
 Daily change: number | % 1,479 77.15%
 YtD Avg Derivatives Trades number | % chng prev year Avg 2,655 0.89%

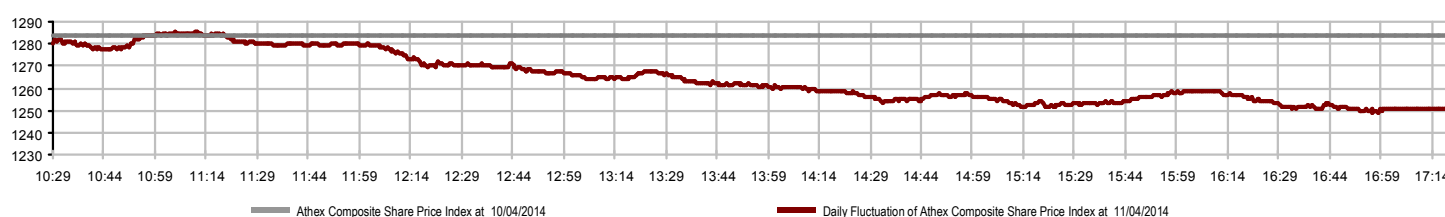
Athex Capitalisation (mill. €) **



Derivatives Transactions Volume and Open Interest



Daily Fluctuation of Athex Composite Share Price Index



Athex Indices

Index name	11/04/2014	10/04/2014	pts.	%	Min	Max	Year min	Year max	Year change
Athex Composite Share Price Index	1,250.80 ↓	1,283.96	-33.16	-2.58%	1,249.03	1,285.23	1,115.09	1,379.42	7.58% ↑
FTSE/Athex Large Cap	402.51 ↓	414.76	-12.25	-2.95%	402.12	414.82	365.97	445.52	4.59% ↑
FTSE/ATHEX Custom Capped	1,319.23 ↓	1,327.28	-8.05	-0.61%			1,184.20	1,410.19	7.29% ↑
FTSE/ATHEX Custom Capped - USD	1,312.90 ↓	1,315.53	-2.63	-0.20%			1,158.43	1,406.66	8.08% ↑
FTSE/Athex Mid Cap Index	1,249.04 ↓	1,267.66	-18.62	-1.47%	1,236.72	1,271.87	1,083.43	1,317.40	7.05% ↑
FTSE/ATHEX-CSE Banking Index	144.45 ↓	151.87	-7.42	-4.89%	144.45	151.38	125.25	161.54	6.10% ↑
FTSE/ATHEX Global Traders Index Plus	1,695.55 ↓	1,717.10	-21.55	-1.26%	1,680.81	1,720.57	1,486.71	1,838.13	9.33% ↑
FTSE/ATHEX Global Traders Index	1,937.90 ↓	1,968.98	-31.08	-1.58%	1,927.22	1,976.22	1,697.86	2,152.38	11.73% ↑
FTSE/ATHEX Mid & Small Cap Factor-Weighted Ind	1,462.27 ↓	1,477.07	-14.80	-1.00%	1,450.15	1,478.65	1,279.09	1,523.02	14.32% ↑
Greece & Turkey 30 Price Index	691.81 ↓	705.65	-13.84	-1.96%	685.31	705.65	570.55	717.15	6.84% ↑
ATHEX Mid & SmallCap Price Index	3,036.12 ↓	3,099.62	-63.50	-2.05%	3,019.88	3,100.50	2,573.35	3,145.10	17.97% ↑
FTSE/Athex Market Index	967.12 ↓	995.78	-28.66	-2.88%	966.25	996.06	878.20	1,066.17	4.69% ↑
FTSE/Med 100	5,220.24 ↑	5,211.40	8.83	0.17%			4,605.95	5,379.93	14.24% ↑
Athex Composite Index Total Return Index	1,811.77 ↓	1,859.79	-48.02	-2.58%	1,809.20	1,861.64	1,615.19	1,998.07	7.62% ↑
FTSE/Athex Large Cap Total Return	551.24 ↓	568.02	-16.78	-2.95%			507.16	605.87	4.53% ↑
FTSE/ATHEX Large Cap Net Total Return	1,613.83 ↓	1,662.96	-49.13	-2.95%	1,612.27	1,663.19	1,467.32	1,786.28	4.59% ↑
FTSE/ATHEX Custom Capped Total Return	1,377.79 ↓	1,386.19	-8.41	-0.61%			1,236.76	1,472.79	7.29% ↑
FTSE/ATHEX Custom Capped - USD Total Return	1,371.17 ↓	1,373.92	-2.75	-0.20%			1,209.85	1,469.09	8.08% ↑
FTSE/Athex Mid Cap Total Return	1,572.53 ↓	1,595.97	-23.44	-1.47%			1,355.79	1,643.81	8.88% ↑
FTSE/ATHEX-CSE Banking Total Return Index	139.01 ↓	146.15	-7.14	-4.89%			121.20	153.89	7.70% ↑
Greece & Turkey 30 Total Return Index	848.28 ↑	839.24	9.04	1.08%			697.73	861.37	9.52% ↑
Hellenic Mid & Small Cap Index	1,241.97 ↓	1,261.40	-19.43	-1.54%	1,235.56	1,267.69	1,061.82	1,351.84	11.51% ↑
FTSE/Athex Banks	190.85 ↓	200.66	-9.81	-4.89%	190.85	200.01	165.49	213.44	6.10% ↑
FTSE/Athex Insurance	1,559.43 ↓	1,612.11	-52.68	-3.27%	1,548.89	1,622.65	1,306.55	1,749.09	18.40% ↑
FTSE/Athex Financial Services	2,064.53 ↓	2,133.78	-69.25	-3.25%	2,056.23	2,163.35	1,599.55	2,207.51	16.74% ↑
FTSE/Athex Industrial Goods & Services	3,307.12 ↓	3,373.82	-66.70	-1.98%	3,294.65	3,401.10	3,046.48	3,724.87	1.92% ↑
FTSE/Athex Retail	3,494.96 ↓	3,572.19	-77.23	-2.16%	3,389.12	3,571.86	3,090.34	3,925.39	5.95% ↑
FTSE/ATHEX Real Estate	2,818.46 ↓	2,828.56	-10.10	-0.36%	2,768.90	2,894.68	2,194.73	3,111.71	27.15% ↑
FTSE/Athex Personal & Household Goods	6,596.83 ↓	6,728.17	-131.34	-1.95%	6,513.97	6,778.34	5,965.34	7,649.84	11.48% ↑
FTSE/Athex Food & Beverage	6,682.54 ↓	6,794.30	-111.76	-1.64%	6,664.27	6,794.45	6,447.83	8,227.06	-14.85% ↓
FTSE/Athex Basic Resources	3,095.58 ↓	3,107.52	-11.94	-0.38%	3,082.60	3,129.66	2,535.89	3,356.44	12.49% ↑
FTSE/Athex Construction & Materials	3,125.48 ↓	3,153.43	-27.95	-0.89%	3,112.43	3,160.83	2,531.26	3,437.31	16.55% ↑
FTSE/Athex Oil & Gas	2,784.87 ↓	2,795.48	-10.61	-0.38%	2,777.57	2,830.07	2,686.40	3,236.15	-2.86% ↓
FTSE/Athex Chemicals	6,408.30 ↓	6,527.69	-119.39	-1.83%	6,396.67	6,540.86	5,783.18	6,811.96	6.87% ↑
FTSE/Athex Media	2,297.42 ↑	2,127.51	169.91	7.99%	2,127.51	2,297.42	1,543.92	2,777.58	48.80% ↑
FTSE/Athex Travel & Leisure	1,842.96 ↓	1,925.11	-82.15	-4.27%	1,842.96	1,954.15	1,634.38	2,223.22	9.70% ↑
FTSE/Athex Technology	1,118.06 ↓	1,118.71	-0.65	-0.06%	1,101.31	1,131.71	786.21	1,134.79	41.99% ↑
FTSE/Athex Telecommunications	3,000.30 ↓	3,093.89	-93.59	-3.02%	2,983.79	3,110.40	2,675.50	3,633.39	12.72% ↑
FTSE/Athex Utilities	3,972.76 ↓	4,084.20	-111.44	-2.73%	3,972.76	4,131.07	3,308.43	4,471.04	4.75% ↑
FTSE/Athex Health Care	269.14 ↓	275.87	-6.73	-2.44%	267.20	278.84	220.03	287.11	20.69% ↑
Athex All Share Index	253.78 ↓	262.12	-8.34	-3.18%			226.62	272.17	7.78% ↑

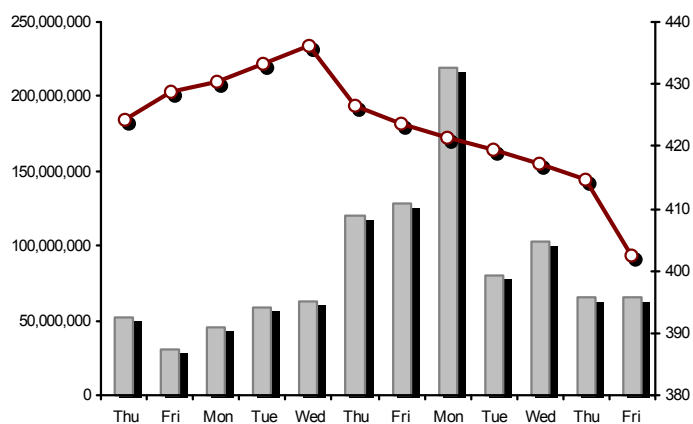
Note 1: Greece & Turkey 30 Pr data is the indicative at 17:20, whereas FTSE/ATHEX Custom Capped, FTSE/ATHEX Custom Capped - USD, FTSE/ATHEX Custom Capped TR, FTSE/ATHEX Custom Capped - USD TR, FTSE/Med 100 & Greece & Turkey 30 Rt closing prices refer to the previous trading day of 10/04/2014.

Note 2: The Hellenic Mid & Small Cap Index is a Customized index calculated by the Athens Exchange.

Athex Indices

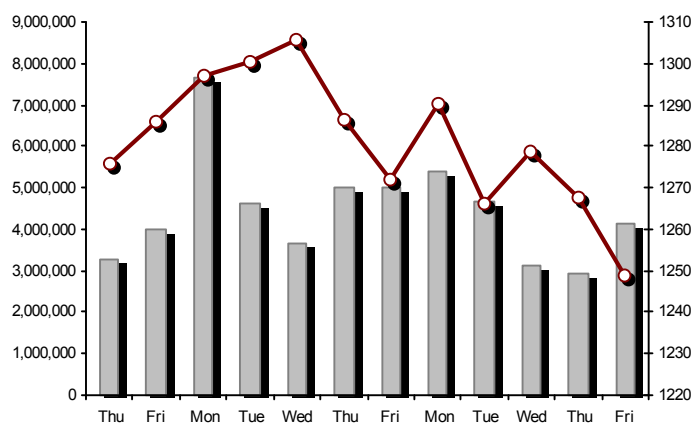
FTSE/Large Cap

11/04/2014: -2.95%



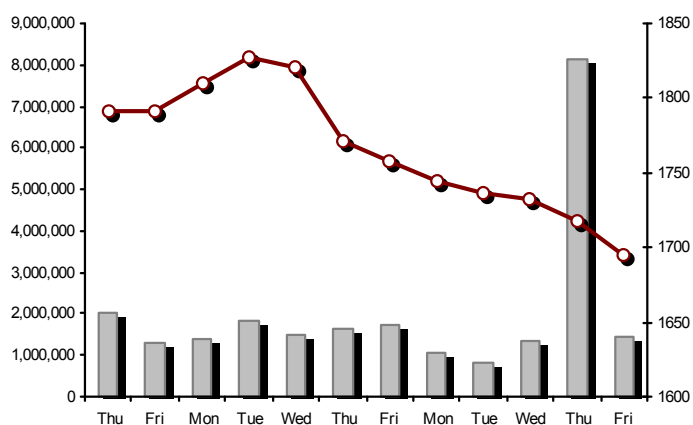
FTSE/Athex Mid Cap Index

11/04/2014: -1.47%



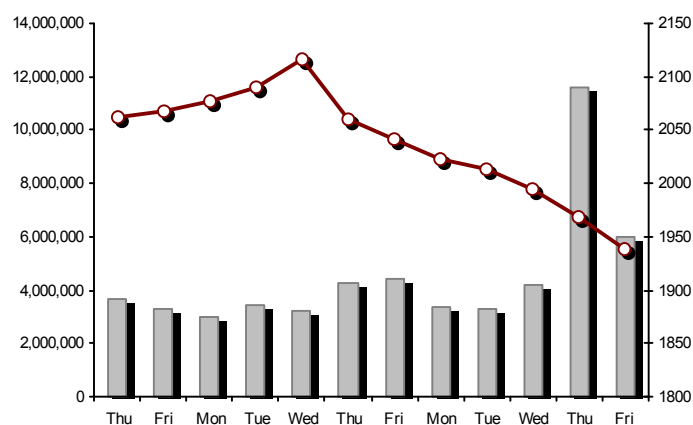
FTSE/ATHEX Global Traders Index Plus

11/04/2014: -1.26%



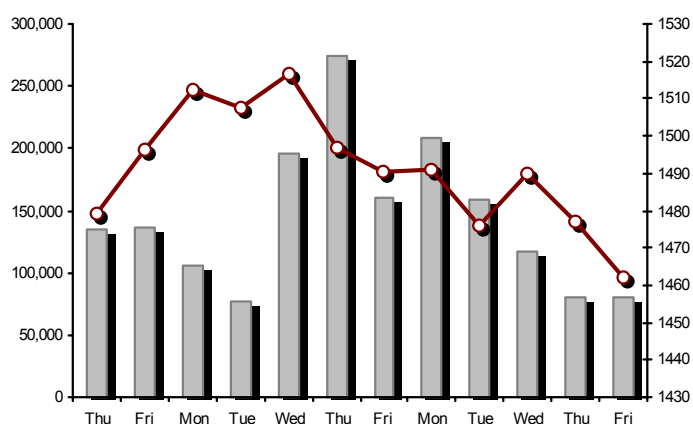
FTSE/ATHEX Global Traders Index

11/04/2014: -1.58%



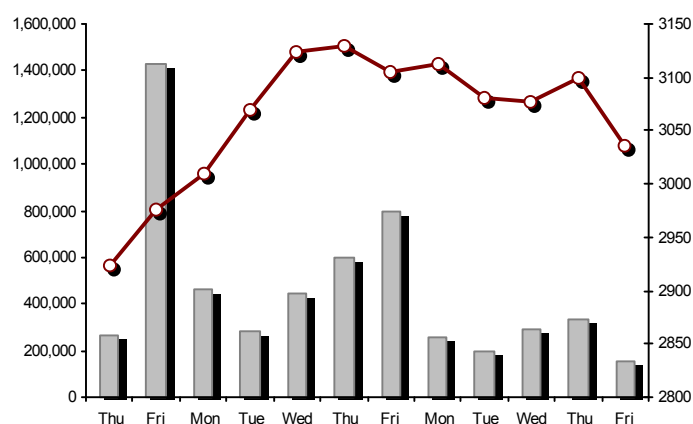
FTSE/ATHEX Mid & Small Cap Factor-Weighted Index

11/04/2014: -1.00%



ATHEX Mid & SmallCap Price Index

11/04/2014: -2.05%



Indices volume of transactions

Indices closing prices

Analytic Figures for Athex Market's Boards and Categories

	Total Traded Securities	Main Market	Low Dispersion	Other Categories (*)	Exchange Traded Funds (ETFs)	Warrants
Totals	156	118	8	24	3	3
Gain / Lose / Same:	30 / 104 / 22	17 / 87 / 14	5 / 2 / 1	8 / 9 / 7	0 / 3 / 0	0 / 3 / 0
Athex Capitalisation (mill. €) **	71,756.45	69,163.33	2,111.92	481.20		
Daily Average Trans/ons Value(thou.€)	114,583.71	102,885.36	55.29	54.40	79.93	11,508.72
Transactions Value	147,931.53	136,295.80	29.37	42.72	221.58	11,342.07
Main Board:	129,265.15	120,566.41	29.37	42.72	221.58	8,405.07
Blocks Board:	18,666.38	15,729.38	0.00	0.00	0.00	2,937.00
Forced Sales Board:	0.00	0.00	0.00	0.00	0.00	0.00
Special Terms Board:	0.00	0.00	0.00	0.00	0.00	0.00
Daily Average Transactions Volume	59,411,935	49,383,277	25,673	229,485	16,234	9,757,265
Transactions Volume	79,356,633	70,785,636	10,250	274,649	54,862	8,231,236
Main Board:	69,734,246	63,663,249	10,250	274,649	54,862	5,731,236
Blocks Board:	9,622,387	7,122,387	0	0	0	2,500,000
Forced Sales Board:	0	0	0	0	0	0
Special Terms Board:	0	0	0	0	0	0
Daily Average Number of Trades	30,261	27,615	60	165	9	2,411
Number of Trades	32,859	30,732	41	182	23	1,881
Main Board:	32,841	30,718	41	182	23	1,877
Blocks Board:	18	14	0	0	0	4
Forced Sales Board:	0	0	0	0	0	0
Special Terms Board:	0	0	0	0	0	0

(*) Summarised Transactions figures for Under Deletion and Under Supervision Categories.(**) The Market Capitalization of the Companies that belong in the Under Supervision Category is not included.

Trading Details by Athex Sectors and ETFs Category

Code	Sectors	Gain / Lose / Same	Number of Trades	Transactions Volume	Transactions Value	% of Total Trans. Value
8300	- Banks	0 / 10 / 0	11,420	65,393,910	76,876,990.43	51.97%
1700	- Basic Resources	1 / 8 / 3	1,342	745,925	3,841,034.11	2.60%
1300	- Chemicals	1 / 3 / 0	143	47,983	65,832.94	0.04%
2300	- Construction & Materials	6 / 13 / 1	2,510	2,284,359	10,929,491.04	7.39%
11000	- ETF	0 / 3 / 0	23	54,862	221,578.29	0.15%
8700	- Financial Services	2 / 2 / 1	2,199	4,389,658	4,956,519.31	3.35%
3500	- Food & Beverage	3 / 5 / 2	362	144,815	1,074,697.46	0.73%
4500	- Health Care	2 / 2 / 1	260	339,247	179,921.35	0.12%
2700	- Industrial Goods & Services	5 / 16 / 2	1,456	407,858	2,014,001.18	1.36%
8500	- Insurance	0 / 1 / 0	28	27,750	41,435.64	0.03%
5500	- Media	1 / 1 / 3	66	22,581	6,846.90	0.00%
500	- Oil & Gas	1 / 1 / 0	1,513	593,340	4,560,544.32	3.08%
3700	- Personal & Household Goods	4 / 10 / 3	1,165	766,341	6,559,864.07	4.43%
8600	- Real Estate	1 / 6 / 0	456	88,535	550,813.53	0.37%
5300	- Retail	0 / 4 / 1	695	107,400	1,364,235.75	0.92%
9500	- Technology	2 / 7 / 3	548	491,522	539,363.97	0.36%
6500	- Telecommunications	0 / 1 / 0	2,434	1,116,547	12,259,750.22	8.29%
5700	- Travel & Leisure	1 / 7 / 2	3,235	1,385,034	12,136,868.23	8.20%
7500	- Utilities	0 / 4 / 0	3,004	948,966	9,751,746.13	6.59%

Top 10 best & worst performing Shares

Main Market					
With positive Price change	Closing price	change	With negative Price change	Closing price	change
NIREFS SA (CR)	0.267	1.91% ↑	REVOIL (CR)	0.575	-7.26% ↓
MARFIN INVESTMENT GROUP (CR)	0.560	1.27% ↑	NATIONAL BANK (CR)	3.71	-7.25% ↓
EKTER SA (CR)	0.779	1.04% ↑	KLEEMAN HELLAS SA (CR)	2.20	-5.98% ↓
PLAISIO COMPUTERS SA (CR)	7.42	0.95% ↑	AUTOHELLAS SA (CR)	10.34	-5.91% ↓
CRETE PLASTICS SA (CR)	5.48	0.74% ↑	DROMEAS SA (CR)	0.251	-5.64% ↓
MOTOR OIL (CR)	8.95	0.56% ↑	INTRACOM CONSTR. (CR)	1.01	-5.61% ↓
			HELLENIC EXCHANGES-A.S.E. (CR)	8.41	-5.51% ↓
			TERNA ENERGY (CR)	4.17	-5.01% ↓
			OPAP (CR)	10.50	-4.37% ↓
			ALPHA BANK (CR)	0.701	-4.37% ↓
With the highest Transactions Value	Value (thou. €)	change	With the highest Transactions Volume	Volume	change
PIRAEUS BANK (CR)	31,172.17	-3.76% ↓	ALPHA BANK (CR)	34,778,519	-4.37% ↓
ALPHA BANK (CR)	24,703.97	-4.37% ↓	PIRAEUS BANK (CR)	17,111,346	-3.76% ↓
OTE (CR)	12,259.75	-3.02% ↓	MARFIN INVESTMENT GROUP (CR)	4,070,174	1.27% ↑
OPAP (CR)	11,013.97	-4.37% ↓	NATIONAL BANK (CR)	2,280,331	-7.25% ↓
NATIONAL BANK (CR)	8,611.02	-7.25% ↓	EUROBANK ERGASIAS (CR)	1,887,734	-4.20% ↓
PPC (CR)	8,518.28	-2.90% ↓	ELLAKTOR (CR)	1,622,864	-0.26% ↓
ELLAKTOR (CR)	6,339.83	-0.26% ↓	OTE (CR)	1,116,547	-3.02% ↓
JUMBO SA (CR)	5,632.01	-2.46% ↓	ATTICA BANK S.A. (CR)	1,102,241	-1.80% ↓
MYTILINEOS HOLDINGS (CR)	3,601.16	0.00% -	OPAP (CR)	1,016,197	-4.37% ↓
TITAN CEMENT (CR)	3,284.88	-0.74% ↓	PPC (CR)	750,207	-2.90% ↓

Note: Stocks that are not included in the "Low Dispersion" and "Under Supervision" categories, and the transactions value is more than 10,000 €.

Derivatives Summary

	Number of Trades	Volume	Open Interest	Transactions Value
Index Futures	1,011	11,659	56,776	23,784,643.75
FTSE/Athex Large Cap	1,011	11,659	56,776	23,784,643.75
Stock Futures	2,256	26,136	203,199	11,035,842.90
ALPHA BANK (CR)	107	2,438	42,399	170,433.60
CC HBC AG (CR)	19	72	932	129,109.00
CORINTH PIPEWORKS SA (CR)	7	36	833	6,661.00
ELLAKTOR (CR)	87	561	2,136	218,288.00
EUROBANK ERGASIAS (CR)	48	699	2,483	30,069.20
EUROBANK PROPERTIES REIC (CR)	26	67	87	57,153.00
EYDAP S.A. (CR)	19	69	611	59,283.00
FOLLI FOLLIE (CR)	10	16	173	39,554.00
FRIGOGLASS SA (CR)	23	59	1,492	26,097.00
GEK TERNA (CR)	94	686	30,074	252,732.00
HELLENIC EXCHANGES-A.S.E. (CR)	77	278	3,107	239,222.00
HELLENIC PETROLEUM (CR)	148	885	6,012	588,582.00
INTRALOT (CR)	44	547	4,182	118,140.00
JUMBO SA (CR)	13	54	673	64,937.00
MARFIN INVESTMENT GROUP (CR)	122	3,007	27,090	170,049.10
METKA (CR)	21	60	998	74,434.00
MOTOR OIL (CR)	24	50	577	44,867.00
MYTILINEOS HOLDINGS (CR)	106	620	12,532	421,442.00
NATIONAL BANK (CR)	226	3,782	8,359	1,420,264.00
OPAP (CR)	209	1,309	4,265	1,395,909.00
OTE (CR)	256	1,767	11,189	1,952,618.00
P.P.A. S.A. (CR)	10	16	672	28,902.00
PIRAEUS BANK (CR)	176	7,003	25,400	1,237,548.00
PPC (CR)	338	1,903	11,270	2,163,846.00
SIDENOR (CR)	11	27	1,157	5,294.00
TERNA ENERGY (CR)	18	76	3,325	32,189.00
TITAN CEMENT (CR)	14	36	538	82,421.00
VIOHALCO SA/NV (CB)	3	13	633	5,799.00
Index Options	77	1,085	9,011	2,244,675.00
FTSE/Athex Large Cap	77	1,085	9,011	2,244,675.00
Stock Options	0	0	620	0.00
ALPHA BANK (CR)	0	0	0	0.00
NATIONAL BANK (CR)	0	0	10	0.00
OPAP (CR)	0	0	110	0.00
OTE (CR)	0	0	350	0.00
PIRAEUS BANK (CR)	0	0	0	0.00
PPC (CR)	0	0	150	0.00
Stock Repos - Stock Reverse Repos - Repurchase Agreements	52	6,398	334,751	1,198,477.00
Stock Reverse Repos	30	5,648	104,543	1,075,483.50
Stock Repos	4	248	191,108	18,538.20
Repurchase Agreement	18	502	39,100	104,455.30
Total Derivatives Traded	3,396	45,278	604,357	38,263,638.65

Number of Outstanding Securities	Nominal Value	Dividends [1]			Date of Last Coupon		Note	Shares	Closing price	% change	Previous closing price/date		Open price	Price min	Price max	Last price	Avg price	Last Bid [7]	Last Ask [7]	P/E after	Year	Volume	Trades	Transactions Value	Company Mkt Value (thou. €)	Year low	Year high	Sector[4]
		2011	2012	2013	Dividend [2]	Right																						
1,204,702,851		---	---	---		11/06/2013	---	ALPHA BANK (W)	1.81	-2.69 ↓	1.86	10/04/2014	1.84	1.76	1.84	1.81	1.80	800@1.77	25704@1.81	4.18	2013	3,452,137	679	6,220,910.83	8,951,110.96	1.13	1.88	8355
245,748,580		---	---	---		27/06/2013	---	NATIONAL BANK (W)	1.18	-8.53 ↓	1.29	10/04/2014	1.27	1.17	1.28	1.18	1.23	26136@1.17	266@1.18	2.63	2013	1,280,703	596	1,578,266.03	8,892,076.04	0.880	1.59	8355
848,591,850		---	---	---		03/07/2013	---	PIRAEUS BANK (W)	0.970	-6.73 ↓	1.04	10/04/2014	1.02	0.964	1.06	0.970	1.01	500@0.965	6250@0.970	1.04	2013	3,498,396	606	3,542,889.18	9,079,896.63	0.600	1.11	8355

Warrants

71,417,100	0.650	---	---	---	26/05/2010	11/07/2007	---	AEGEAN AIRLINES (CR)	7.40	-1.33 ↓	7.50	10/04/2014	7.51	7.40	7.55	7.40	7.47	2000@7.39	50@7.41	7.97	2013	64,437	261	481,603.14	528,486.54	5.90	8.10	5751
11,178,000	1.25	---	---	---	21/04/2010	18/12/2013	---	AEOLIAN INVESTMENT FUND (CR)	0.949	-2.16 ↓	0.970	10/04/2014	0.930	0.910	0.949	0.949	0.916	5@0.949	200@0.950	13.02	2013	2,095	4	1,919.18	10,607.92	0.700	1.09	8985
13,000,000	1.00	---	---	---	01/08/2007	07/04/2000	---	AKRITAS SA (CR)	0.118	4.43 ↑	0.113	10/04/2014	0.113	0.113	0.118	0.118	0.117	4630@0.120	---	---	2013	390	5	45.82	1,534.00	0.100	0.170	2353
25,000,000	0.400	---	---	---	03/06/2009	12/07/2013	---	ALCO HELLAS SA (CR)	0.274	-7.43 ↓	0.296	10/04/2014	0.279	0.261	0.279	0.274	0.268	150@0.267	948@0.274	---	2013	31,533	43	8,451.86	6,850.00	0.218	0.360	1753
12,769,059,858	0.300	---	---	---	07/04/2008	13/05/2013	---	ALPHA BANK (CR)	0.701	-4.37 ↓	0.733	10/04/2014	0.730	0.701	0.730	0.701	0.710	512249@0.700	3000@0.705	1.62	2013	34,778,519	3,461	24,703,970.01	8,951,110.96	0.624	0.754	8355
22,016,250	0.370	---	---	---	15/07/2009	11/05/2000	---	ALUMIL (CR)	0.345	-4.17 ↓	0.360	10/04/2014	0.367	0.332	0.367	0.345	0.343	50@0.342	1000@0.358	---	2013	10,797	64	3,698.43	7,595.61	0.332	0.660	1753
418,000	16.00	---	---	---	22/04/2010	05/03/2013	---	ANDROMEDA SA (CR)	23.99	2.52 ↑	23.40	10/04/2014	23.99	23.99	23.99	23.99	23.99	100@23.40	197@23.99	7.25	2013	3	1	71.97	10,027.82	20.08	23.99	8985
26,252,040	0.380	---	---	---	08/07/2010	10/02/2014	---	AS COMPANY SA (CR)	0.379	-4.05 ↓	0.395	10/04/2014	0.395	0.371	0.395	0.379	0.378	800@0.370	440@0.377	22.76	2013	6,490	11	2,456.37	9,949.52	0.313	0.413	5379
86,735,980	0.310	---	---	---	06/07/2009	02/01/2002	---	ATHENS MEDICAL CENTER SA (CR)	0.870	-3.33 ↓	0.900	10/04/2014	0.899	0.866	0.900	0.870	0.892	751@0.870	499@0.899	---	2013	4,949	11	4,414.03	75,460.30	0.722	0.930	4533
1,041,560,993	0.300	---	---	---	04/06/2008	10/02/2014	---	ATTICA BANK S.A. (CR)	0.164	-1.80 ↓	0.167	10/04/2014	0.167	0.157	0.168	0.164	0.162	70@0.163	30000@0.165	---	2013	1,102,241	277	178,319.53	170,816.00	0.144	0.277	8355
15,300,000	0.300	---	---	---	30/07/2009	13/12/1999	---	ATTICA PUBLICATIONS SA (CR)	1.59	---	1.59	19/03/2014	---	---	---	---	---	---	40@1.56	45.88	2013	---	---	---	24,327.00	1.44	2.15	5557
45,457,464	0.700	---	---	---	01/07/2008	01/03/2010	---	AUDIO VISUAL ENTERPRISES (CR)	0.311	7.99 ↑	0.288	10/04/2014	0.311	0.311	0.311	0.311	0.311	1@0.261	991@0.309	---	2013	15	3	4.67	14,137.27	0.209	0.376	5553
12,120,000	0.320	(0.45)	---	---	30/04/2012	22/11/2013	---	AUTOHELLAS SA (CR)	10.34	-5.91 ↓	10.99	10/04/2014	10.89	10.34	10.89	10.34	10.66	34@10.11	10@10.30	42.18	2013	3,439	37	36,644.61	125,320.80	7.50	11.20	5759
19,864,886	5.60	0.67	0.5376	0.672	05/03/2014	02/07/2008	---	BANK OF GREECE (CR)	15.30	-1.67 ↓	15.56	10/04/2014	15.50	15.30	15.65	15.30	15.36	269@15.26	30@15.48	---	---	2,493	50	38,283.79	303,932.76	14.60	16.53	8355
23,986,500	1.05	---	---	---	26/06/2009	15/03/2000	---	BIOKARPET S.A.(CR)	0.770	-5.05 ↓	0.811	10/04/2014	0.800	0.770	0.800	0.770	0.788	300@0.765	1000@0.779	---	2013	4,150	15	3,269.39	18,469.61	0.461	0.880	3726
15,842,391	1.51	---	---	---	15/07/2009	12/05/2000	---	BITROS HOLDING SA (CR)	0.443	---	0.443	09/04/2014	0.443	0.443	0.443	0.443	0.443	---	880@0.443	---	2013	200	1	88.60	7,018.18	0.362	0.559	1757
15,816,009	0.300	---	---	---	01/07/2009	17/07/2000	---	BYTE COMPUTER SA (CR)	0.511	-3.58 ↓	0.530	10/04/2014	0.525	0.500	0.525	0.525	0.506	200@0.510	450@0.525	---	2013	3,700	10	1,873.90	8,081.98	0.500	0.666	9533
367,690,225	6.70	---	0.34	---	26/06/2013	29/04/2013	---	CC HBC AG (CR)	17.85	-1.65 ↓	18.15	10/04/2014	18.00	17.80	18.05	17.85	17.89	2000@17.84	12250@17.98	---	---	58,394	208	1,044,404.45	6,563,270.52	17.20	22.00	3537
101,123,806	0.360	---	---	---	22/07/2010	28/06/2011	---	CENTRIC HOLDINGS (CR)	0.324	-0.61 ↓	0.326	10/04/2014	0.338	0.316	0.338	0.324	0.325	90@0.316	4000@0.328	15.88	2013	8,161	12	2,650.42	32,764.11	0.281	0.390	5752
4,034,950	0.680	---	---	---	01/07/2005	30/12/2010	---	CHATZIKRANIOTIS & SONS SA (CR)	0.242	---	0.242	10/04/2014	---	---	---	---	---	800@0.178	4102@0.240	---	2013	---	---	---	976.46	0.155	0.420	3577
124,170,201	0.780	---	---	---	28/06/2002	07/02/2005	---	CORINTH PIPEWORKS SA (CR)	1.88	-2.08 ↓	1.92	10/04/2014	1.91	1.86	1.95	1.88	1.89	214@1.88	742@1.90	---	2013	57,191	198	107,802.18	233,439.98	1.77	2.30	1757
9,907,500	0.300	---	---	---	06/10/2005	13/02/2002	---	CPI SA (CR)	0.236	---	0.236	10/04/2014	---	---	---	---	---	400@0.166	400@0.236	---	2013	---	---	---	2,338.17	0.133	0.269	9572
27,379,200	0.520	---	---	---	23/06/2010	18/09/2013	---	CRETE PLASTICS SA (CR)	5.48	0.74 ↑	5.44	10/04/2014	5.46	5.30	5.49	5.48	5.38	18@5.45	697@5.48	16.46	2013	2,240	14	12,059.09	150,038.02	4.80	5.49	1357
26,664,840	0.470	---	---	---	29/06/2005	12/07/1999	---	CYCLON HELLAS SA (CR)	0.483	-3.59 ↓	0.501	10/04/2014	0.490	0.480	0.491	0.490	0.486	2380@0.480	3216@0.490	25.01	2013	5,990	10	2,909.10	12,879.12	0.462	0.609	1357
15,000,000	0.300	---	---	---	06/07/2007	18/07/2000	---	DAIOS PLASTICS SA (CR)	2.18	---	2.18	07/04/2014	---	---	---	---	---	200@1.99	50@2.19	---	2013	---	---	---	32,700.00	1.66	2.29	1357
34,720,000	0.310	---	---	---	16/06/2010	01/08/2007	---	DROMEAS SA (CR)	0.251	-5.64 ↓	0.266	10/04/2014	0.269	0.250	0.275	0.251	0.255	16000@0.250	500@0.256	---	2013	95,224	82	24,317.70	8,714.72	0.250	0.400	3726
3,873,120	0.300	---	---	---	07/07/2008	04/10/2012	---	DRUCKFARBEN HELLAS (CR)	1.03	---	1.03	10/04/2014	---	---	---	---	---	250@0.990	---	---	2013	---	---	---	3,989.31	1.03	1.95	1357
11,250,000	0.560	---	---	---	26/07/2010	16/06/1999	---	EKTER SA (CR)	0.779	1.04 ↑	0.771	10/04/2014	0.760	0.760	0.780	0.779	0.773	1333@0.763	1162@0.779	---	2013	19,424	38	15,008.19	8,763.75	0.620	0.990	2357
32,188,050	1.04	---	---	---	21/07/2008	20/01/2000	---	EL. D. MOUZAKIS SA (CB)	0.338	7.30 ↑	0.315	10/04/2014	0.235	0.235	0.338	0.338	0.285	500@0.242	190@0.329	---	2013	390	6	111.23	10,879.56	0.171	0.475	3763
18,648,000	1.00	---	---	---	07/07/2009	10/09/2010	---	ELASTRON (CR)	0.900	0.90 ↑	0.892	10/04/2014	0.900	0.900	0.910	0.900	0.903	50@0.891	530@0.900	---	2013	620	6	560.00	16,783.20	0.730	1.00	1757
31,734,530	1.60	---	---	---	09/07/2007	19/07/2006	---	ELGEKA SA (CR)	0.315	-6.80 ↓	0.338	10/04/2014	0.305	0.305	0.315	0.315	0.305	---	980@0.315	---	2013	850	4	259.45	9,996.38	0.300	0.488	3577
23,828,130	0.500	---	---	---	07/07/2010	17/02/2009	---	ELINOIL S.A. (CR)	1.25	---	1.25	10/04/2014	---	---	---	---	---	---	101600@1.24	---	2013	---	---	---	29,785.16	0.790	1.30	537
177,001,313	1.03	---	---	---	05/07/2011	20/12/2007	---	ELLAKTOR (CR)	3.91	-0.26 ↓	3.92	10/04/2014	3.91	3.85	3.92	3.91	3.90	20000@3.90	800@3.92	---	2013	1,622,864	745	6,339,831.62	692,075.13	3.06	4.18	2357

Number of Outstanding Securities	Nominal Value	Dividends [1]			Date of Last Coupon		Note	Shares	Closing price	% change	Previous closing price/date	Open price	Price min	Price max	Last price	Avg price	Last Bid [7]	Last Ask [7]	P/E after	Year	Volume	Trades	Transactions Value	Company Mkt Value (thou. €)	Year low	Year high	Sector[4]
		2011	2012	2013	Dividend [2]	Right																					
26,730,187	0.600	---	---	---	25/06/2009	30/12/2010	---	ELTON SA (CR)	1.31	-2.96 ↓	1.35 10/04/2014	1.36	1.27	1.36	1.31	1.29	5@1.30	795@1.31	13.51	2013	11,285	63	14,514.75	35,016.54	1.09	1.40	1353
15,146,404	0.340	---	---	---	06/07/2011	17/10/2002	---	ELTRAK SA (CR)	1.75	---	1.75 10/04/2014	1.75	1.75	1.75	1.75	1.75	300@1.72	500@1.80	---	2013	500	3	875.00	26,506.21	1.40	1.90	2753
124,100,815	0.300	---	---	---	27/06/2008	07/07/2000	---	ELVAL SA. (CB)	2.00	---	2.00 10/04/2014	2.05	1.97	2.06	2.00	2.01	1@1.97	89@2.00	58.32	2013	14,119	63	28,331.57	248,201.63	1.73	2.15	1753
13,230,000	0.300	---	---	---	11/08/2010	28/08/2013	---	ELVE SA (CR)	0.581	---	0.581 10/04/2014	---	---	---	---	---	500@0.578	500@0.607	---	2013	---	---	---	7,686.63	0.553	0.690	3763
30,009,210	0.310	---	---	---	27/06/2008	26/06/2000	---	ETEM SA (CB)	0.268	-0.74 ↓	0.270 10/04/2014	0.256	0.254	0.268	0.268	0.259	880@0.260	500@0.268	---	2013	6,400	6	1,656.00	8,042.47	0.254	0.400	1753
5,469,166,865	0.300	---	---	---	02/05/2008	13/06/2013	---	EUROBANK ERGASIAS (CR)	0.433	-4.20 ↓	0.452 10/04/2014	0.453	0.430	0.457	0.433	0.440	1200@0.432	5000@0.436	---	2013	1,887,734	877	831,065.34	2,368,149.25	0.381	0.630	8355
101,260,000	2.13	0.4067	---	---	23/03/2012	08/01/2014	---	EUROBANK PROPERTIES REIC (CR)	8.56	-0.23 ↓	8.58 10/04/2014	8.78	8.40	8.79	8.56	8.53	5000@8.50	337@8.56	---	2013	42,739	319	364,694.32	866,785.60	6.65	9.50	8675
7,959,900	0.600	---	---	---	02/06/2010	10/12/2013	5031	EUROCONSULTANTS S.A. (CR)	2.71	-3.21 ↓	2.80 07/04/2014	2.68	2.64	2.72	2.72	2.69	100@2.68	1013@2.70	79.63	2013	1,100	6	2,954.00	21,571.33	2.08	2.85	2791
27,503,677	0.600	0.05	0.1	---	11/07/2013	18/10/1999	---	EUROPEAN RELIANCE INSUR. (CR)	1.48	-3.27 ↓	1.53 10/04/2014	1.54	1.47	1.54	1.48	1.49	1350@1.46	550@1.53	4.29	2013	27,750	28	41,435.64	40,705.44	1.24	1.66	8536
13,673,200	0.880	---	---	---	18/07/2008	26/07/2001	---	EVROFARMA SA (CR)	0.350	---	0.350 10/04/2014	---	---	---	---	---	---	20@0.340	---	2013	---	---	---	4,785.62	0.224	0.378	3577
106,500,000	0.600	0.05	0.15	---	31/07/2013	28/01/2000	---	EYDAP S.A. (CR)	8.88	-0.89 ↓	8.96 10/04/2014	8.86	8.63	8.93	8.88	8.85	25@8.80	200@8.89	12.17	2013	83,556	291	739,479.35	945,720.00	7.06	9.28	7577
52,800,154	0.300	---	---	---	16/04/2010	21/06/2004	---	F.G. EUROPE S.A. (CR)	0.980	-0.81 ↓	0.988 10/04/2014	0.975	0.970	0.981	0.980	0.978	1000@0.980	2000@1.00	17.68	2013	16,364	25	16,000.04	51,744.15	0.580	1.00	3722
10,203,575	0.730	---	---	---	16/07/2007	18/10/1999	---	FIERATEX SA (CR)	0.320	---	0.320 10/04/2014	0.320	0.320	0.320	0.320	0.320	100@0.230	200@0.330	---	2013	2,300	5	736.00	3,265.14	0.121	0.430	3763
11,720,024	0.540	---	---	---	16/07/2010	16/10/2013	---	FLEXOPACK SA (CR)	3.16	-1.25 ↓	3.20 10/04/2014	3.12	3.07	3.17	3.16	3.08	113@3.06	188@3.16	14.96	2013	742	9	2,288.02	37,035.28	2.68	3.50	2723
4,181,450	0.500	---	---	---	21/08/2000	05/03/2002	---	FLOUR MILLS SARANTOPOULOS SA	1.05	---	1.05 03/04/2014	---	---	---	---	---	---	155@1.05	---	2013	---	---	---	4,390.52	0.702	1.05	3577
66,948,210	0.300	---	---	---	14/07/2009	31/12/2010	4988	FOLLI FOLLIE (CR)	24.80	-2.13 ↓	25.34 10/04/2014	25.10	24.04	25.12	24.80	24.49	41@24.45	3@24.87	3.84	2013	54,491	566	1,334,600.68	1,660,315.61	21.90	27.87	5379
50,992,322	1.00	---	---	---	21/06/2010	16/07/2002	---	FOURLIS (CR)	5.63	-0.18 ↓	5.64 10/04/2014	5.67	5.44	5.67	5.63	5.57	750@5.55	1550@5.64	---	2013	148,300	230	825,217.70	287,086.77	3.86	6.01	3722
50,593,832	0.300	---	---	---	07/07/2010	07/09/2011	---	FRIGOGLASS SA (CR)	4.38	-0.68 ↓	4.41 10/04/2014	4.45	4.35	4.49	4.38	4.40	685@4.36	1000@4.41	---	2013	46,107	246	202,972.88	221,600.98	4.10	5.63	2757
77,376,446	0.340	---	---	---	23/05/2005	18/08/2011	---	G.E. DIMITRIOU (CR)	0.026	4.00 ↑	0.025 10/04/2014	0.028	0.025	0.028	0.026	0.027	7109@0.026	67706@0.028	---	2013	6,901	5	186.82	2,011.79	0.022	0.041	3722
14,076,360	0.370	---	---	---	19/08/2008	22/07/2003	---	GALAXIDI S.A. (CR)	0.350	---	0.350 07/04/2014	---	---	---	---	---	300@0.261	2000@0.348	---	2013	---	---	---	4,926.73	0.250	0.419	3573
94,462,368	0.570	---	---	---	01/08/2011	02/01/2009	---	GEK TERNA (CR)	3.63	-2.42 ↓	3.72 10/04/2014	3.72	3.58	3.80	3.63	3.67	500@3.61	1@3.66	---	2013	304,565	803	1,117,998.33	342,898.40	3.08	4.21	2357
8,418,750	0.300	0.15	0.29	---	05/06/2013	27/06/2012	---	GEKE SA (CB)	6.60	---	6.60 10/04/2014	---	---	---	---	---	100@6.60	40@7.20	-(6)-	2013	---	---	---	55,563.75	6.60	7.20	5753
24,060,000	0.300	0.017	---	---	18/06/2012	21/01/2000	---	GEN. COMMERCIAL & IND.SA (CR)	0.410	-0.49 ↓	0.412 10/04/2014	0.410	0.410	0.410	0.410	0.410	38@0.410	170@0.421	29.48	2013	1,162	3	476.42	9,864.60	0.327	0.435	2797
34,770,982	1.55	---	---	0.3	17/01/2014	27/07/2000	---	GR. SARANTIS SA (CR)	7.58	-0.26 ↓	7.60 10/04/2014	7.67	7.42	7.67	7.58	7.45	50@7.33	330@7.58	7.18	2013	4,445	19	33,128.95	263,564.04	6.06	8.00	3767
8,340,750	1.20	---	---	---	25/06/2009	30/07/2001	---	HAIDEMENOS SA (CR)	0.500	-3.85 ↓	0.520 10/04/2014	0.364	0.364	0.676	0.500	0.497	197@0.500	298@0.676	---	2013	2,671	7	1,327.17	4,170.38	0.364	0.760	2791
101,279,627	0.380	---	---	---	26/06/2008	14/07/2006	---	HALKOR SA (CB)	0.682	-1.87 ↓	0.695 10/04/2014	0.690	0.682	0.700	0.682	0.692	2550@0.681	5000@0.689	---	2013	77,363	124	53,545.90	69,072.71	0.682	0.912	1755
36,748,909	0.730	---	---	---	15/12/2005	13/12/2006	---	HEL. SUGAR INDUSTRY SA (CB)	0.803	-1.35 ↓	0.814 10/04/2014	0.800	0.780	0.812	0.803	0.788	515@0.780	420@0.803	---	2013	11,610	46	9,148.59	29,509.37	0.780	1.10	3577
29,546,360	0.710	---	---	---	20/06/2008	23/08/2000	---	HELLENIC CABLES SA (CR)	1.87	---	1.87 10/04/2014	1.85	1.83	1.88	1.87	1.85	140@1.83	150@1.88	---	2013	8,905	30	16,508.45	55,251.69	1.48	2.00	2733
65,368,563	0.760	0.11	0.09	---	03/06/2013	25/09/2013	---	HELLENIC EXCHANGES-A.S.E. (CR)	8.41	-5.51 ↓	8.90 10/04/2014	8.90	8.35	8.98	8.41	8.57	50@8.40	1300@8.44	-(6)-	2013	311,376	1,046	2,667,395.51	549,749.61	6.91	9.52	8777
305,635,185	2.18	0.45	0.15	---	16/08/2013	01/10/2003	4795	HELLENIC PETROLEUM (CR)	6.62	-1.34 ↓	6.71 10/04/2014	6.71	6.57	6.79	6.62	6.64	6484@6.62	200@6.63	---	2013	324,215	1,003	2,151,836.23	2,023,304.92	6.57	8.13	537
305,732,436	0.410	---	---	---	08/07/2009	28/09/2011	---	HYGEIA SA (CR)	0.460	-1.92 ↓	0.469 10/04/2014	0.465	0.456	0.477	0.460	0.464	1462@0.458	10200@0.464	---	2013	311,119	189	144,413.86	140,636.92	0.371	0.508	4533
53,155,053	0.440	---	---	---	21/07/2010	16/07/2008	---	IASO SA (CR)	1.50	---	1.50 10/04/2014	1.51	1.45	1.51	1.50	1.48	700@1.47	422@1.49	---	2013	20,829	53	30,757.26	79,732.58	1.34	1.99	4533
8,298,467	0.400	---	---	---	30/08/1993	08/05/2013	---	IDEAL GROUP SA (CR)	0.740	---	0.740 08/04/2014	0.740	0.740	0.740	0.740	0.740	190@0.667	21@0.740	-(6)-	2013	49	4	36.26	6,140.87	0.538	1.00	9574
28,580,100	0.400	0.02	---	---	20/08/2012	10/10/2013	---	IKTINOS HELLAS SA (CR)	1.70	-0.58 ↓	1.71 10/04/2014	1.68	1.67	1.70	1.70	1.68	278@1.67	2009@1.70	10.40	2013	7,044	39	11,853.53	48,586.17	1.49	1.84	2353
9,000,000	0.880	---	---	---	15/05/2009	07/12/2010	---	ILYDA S.A. (CR)	0.789	---	0.789 27/03/2014	---	---	---	---	---	---	245@0.788	---	2013	---	---	---	7,101.00	0.390	0.789	9537
20,578,374	0.620	---	---	---	02/06/2011	05/05/1999	---	INFORM P. LYKOS SA (CR)	1.63	-1.21 ↓	1.65 08/04/2014	1.58	1.58	1.63	1.63	1.59	1100@1.56	455@1.63	---	2013	800	4	1,270.45	33,542.75	1.36	1.80	2791
11,233,200	0.730	---	---	---	12/07/2010	30/07/1999	---	INTERTECH SA (CR)	0.360	---	0.360 10/04/2014	---	---	---	---	---	800@0.252	100@0.320	---	2013	---	---	---	4,043.95	0.227	0.510	9572
34,986,430	0.440	---	---	---	25/07/2008	23/02/2010	---	INTERWOOD-XYLEMPORIA (CR)	0.110	-14.73 ↓	0.129 08/04/2014	0.110	0.110	0.110	0.110	0.110	2000@0.094	4436@0.113	---	2013	4,500	1	495.00	4,349.04	0.088	0.159	2353

Number of Outstanding Securities	Nominal Value	Dividends [1]			Date of Last Coupon		Note	Shares	Closing price	% change	Previous closing price/date	Open price	Price min	Price max	Last price	Avg price	Last Bid [7]	Last Ask [7]	P/E after	Year	Volume	Trades	Transactions Value	Company Mkt Value (thou. €)	Year low	Year high	Sector[4]	
		2011	2012	2013	Dividend [2]	Right																						
Main Market																												
2,566,836	0.440	--	--	--	13/08/2010	09/01/2007	--	INTERWOOD-XYLEMPORIA (PR)	0.195	-- -	0.195	17/02/2014	--	--	--	--	--	300@0.200	--	2013	--	--	--	4,349.04	0.195	0.200	2353	
23,154,250	1.36	--	--	--	12/08/2008	02/08/2010	--	INTRACOM CONSTR. (CR)	1.01	-5.61 ↓	1.07	10/04/2014	1.07	1.01	1.07	1.01	1.02	4787@1.01	1000@1.03	--	2013	28,315	65	29,003.55	23,385.79	0.934	1.32	2357
133,025,996	1.41	--	--	--	03/07/2007	07/01/2002	--	INTRACOM HOLDINGS (CR)	0.880	-- -	0.880	10/04/2014	0.863	0.860	0.899	0.880	0.877	3100@0.871	55@0.881	--	2013	412,079	323	361,266.89	117,062.88	0.526	0.900	9578
158,961,721	0.300	0.0035	0.0026	--	30/05/2013	14/11/2007	--	INTRALOT (CR)	2.16	-3.14 ↓	2.23	10/04/2014	2.20	2.12	2.24	2.16	2.17	27318@2.15	1110@2.17	--	2013	268,846	431	583,079.52	343,357.32	1.84	2.51	5752
77,654,850	0.580	--	--	--	01/07/2011	21/02/2003	--	J & P - AVAX SA (CR)	1.71	-1.72 ↓	1.74	10/04/2014	1.74	1.67	1.74	1.71	1.70	2000@1.66	684@1.71	--	2013	34,067	90	57,858.57	132,789.79	1.57	2.02	2357
136,059,759	1.19	--	--	--	23/12/2010	05/03/2014	--	JUMBO SA (CR)	11.90	-2.46 ↓	12.20	10/04/2014	12.18	11.72	12.29	11.90	11.91	67@11.80	100@11.91	21.95	2013	463,390	704	5,632,014.68	1,619,111.13	11.24	14.40	3747
9,742,920	0.400	0.01	0.01	--	12/08/2013	14/07/2000	--	KARAMOLEGOS SA (CR)	1.57	-- -	1.57	09/04/2014	--	--	--	--	--	--	1186@1.56	--	2013	--	--	--	15,296.38	0.912	1.61	3577
14,679,792	1.68	--	--	--	03/06/2011	04/09/2000	--	KARATZIS SA (CR)	3.73	-0.53 ↓	3.75	10/04/2014	3.75	3.73	3.80	3.73	3.76	50@3.69	989@3.70	11.20	2013	150	3	564.00	54,755.62	3.70	4.50	2723
30,600,000	0.300	--	--	--	12/06/2008	04/03/2014	--	KATHIMERINI SA (CR)	0.489	-3.93 ↓	0.509	10/04/2014	0.478	0.459	0.490	0.489	0.474	1100@0.466	164@0.487	--	2013	8,726	47	4,131.82	14,963.40	0.406	4.49	5557
3,300,689	0.350	--	--	--	01/07/2004	21/07/1999	--	KEKROPS SA (CR)	1.96	-1.51 ↓	1.99	10/04/2014	1.90	1.85	1.97	1.96	1.92	357@1.85	51@1.96	--	2013	583	14	1,118.31	6,469.35	1.48	2.60	8633
7,595,160	0.600	--	--	--	08/08/2008	18/08/2010	--	KIRIAKOULIS SHIPPING SA (CR)	0.924	-- -	0.924	07/04/2014	--	--	--	--	--	--	1650@0.647	59.98	2013	--	--	--	7,017.93	0.492	1.08	5759
23,648,700	0.330	--	--	--	13/07/2011	23/07/2008	--	KLEEMAN HELLAS SA (CR)	2.20	-5.98 ↓	2.34	10/04/2014	2.34	2.15	2.35	2.20	2.27	470@2.15	250@2.20	77.77	2013	5,435	22	12,335.55	52,027.14	1.89	2.58	2757
40,219,218	0.300	--	--	--	25/05/2009	09/07/2013	--	KLOUKINAS - LAPPAS SA (CR)	0.690	-0.14 ↓	0.691	10/04/2014	0.690	0.690	0.690	0.690	0.690	50@0.662	840@0.690	--	2013	50	1	34.50	27,751.26	0.570	0.780	2357
21,224,340	0.420	--	--	--	02/07/2008	25/04/2006	--	KORDELLOS BROS SA (CR)	0.300	-- -	0.300	07/04/2014	--	--	--	--	--	--	200@0.298	--	2013	--	--	--	6,367.30	0.200	0.350	1757
13,586,500	0.390	--	--	--	25/06/2010	28/05/2008	--	KORRES (CR)	3.29	-- -	3.29	10/04/2014	3.13	3.13	3.29	3.29	3.28	85@3.14	10@3.29	--	2013	320	5	1,048.00	44,699.59	2.84	3.69	3767
29,480,000	0.420	--	--	--	19/07/2010	01/08/2007	--	KRETA FARM SA (CR)	0.519	-4.60 ↓	0.544	10/04/2014	0.558	0.501	0.558	0.519	0.525	310@0.501	120@0.500	--	2013	1,370	21	718.67	15,300.12	0.484	0.662	3577
33,065,136	0.380	--	--	--	06/07/2009	16/09/2013	--	KRI-KRI S.A. (CR)	1.84	-1.60 ↓	1.87	10/04/2014	1.84	1.84	1.84	1.84	1.84	1280@1.84	1130@1.87	11.87	2013	720	1	1,324.80	60,839.85	1.65	2.07	3577
15,804,800	0.330	--	--	--	15/06/2010	12/03/2004	--	KTIMA KOSTAS LAZARIDIS SA (CR)	0.352	-- -	0.352	09/04/2014	--	--	--	--	--	--	150@0.354	--	2013	--	--	--	5,563.29	0.305	0.422	3535
24,474,815	1.15	--	--	--	19/08/2008	30/01/2014	--	KYRIAKIDIS MARBLES SA (CR)	2.29	-3.78 ↓	2.38	10/04/2014	2.36	2.23	2.36	2.29	2.32	700@2.22	3924@2.28	5.39	2013	24,235	59	56,205.25	56,047.33	1.07	2.57	2353
44,412,347	0.300	--	--	--	30/05/2007	18/09/2002	--	LAMDA DEVELOPMENT SA (CR)	6.16	-0.97 ↓	6.22	10/04/2014	6.05	5.90	6.16	6.16	6.07	599@5.98	1578@6.16	--	2013	27,594	84	167,551.98	273,580.06	4.91	6.99	8633
21,364,000	1.12	--	--	--	05/07/2010	10/08/2005	--	LAMPSPA HOTEL SA (CR)	17.05	-- -	17.05	10/04/2014	--	--	--	--	--	200@16.51	71@17.50	-(6)-	2013	--	--	--	364,256.20	15.60	18.00	5753
5,939,268	0.620	--	--	--	10/07/2003	03/01/2002	--	LANAKAM SA (CR)	0.942	-- -	0.942	04/04/2014	--	--	--	--	--	--	1554@0.942	--	2013	--	--	--	5,594.79	0.485	0.942	3763
7,734,375	1.00	--	--	--	09/07/2007	07/01/2011	--	LIVANIS SA (CR)	0.230	-- -	0.230	10/04/2014	--	--	--	--	--	--	900@0.237	--	2013	--	--	--	1,778.91	0.158	0.242	5557
4,740,000	0.860	--	--	--	--	14/03/2003	--	LOGISMOS S.A. (CR)	0.385	-- -	0.385	04/04/2014	--	--	--	--	--	--	700@0.419	51.84	2013	--	--	--	1,824.90	0.354	0.520	9533
17,125,062	0.640	--	--	--	01/06/2010	02/08/2011	--	LOULIS MILLS SA (CR)	2.76	-- -	2.76	10/04/2014	--	--	--	--	--	200@2.58	100@2.65	--	2013	--	--	--	47,265.17	2.49	2.98	3577
770,360,560	0.300	--	--	--	26/04/2007	10/05/2013	--	MARFIN INVESTMENT GROUP (CR)	0.560	1.27 ↑	0.553	10/04/2014	0.547	0.547	0.572	0.560	0.562	575021@0.560	11000@0.562	--	2013	4,070,174	1,141	2,286,467.04	431,401.91	0.381	0.572	8775
9,819,370	0.690	--	--	--	14/08/2007	09/01/2004	--	MATHIOS REFRACTORY SA (CR)	0.378	-- -	0.378	10/04/2014	--	--	--	--	--	1000@0.268	900@0.377	--	2013	--	--	--	3,711.72	0.256	0.378	2353
468,700	--	0.47	--	--	27/02/2014	21/05/2004	--	MERMEREN KOMB. A.D. PR. (GDR)	3.78	-3.08 ↓	3.90	10/04/2014	4.00	3.78	4.00	3.78	3.89	98@3.78	99@4.00	1.84	2013	2	2	7.78	1,771.69	3.45	4.67	1775
51,950,600	0.320	0.75	0.25	--	10/05/2013	21/10/2005	--	METKA (CR)	12.30	-2.54 ↓	12.62	10/04/2014	12.62	12.28	12.82	12.30	12.46	329@12.30	84@12.35	14.38	2013	88,621	596	1,104,087.76	638,992.38	11.10	14.29	2757
10,500,000	0.900	--	--	--	24/06/2008	19/12/2013	--	MEVACO SA (CR)	1.26	0.80 ↑	1.25	10/04/2014	1.26	1.26	1.26	1.26	1.26	1000@1.26	1000@1.31	--	2013	1,000	1	1,260.00	13,230.00	1.10	1.35	2757
14,074,000	3.00	0.25	--	--	02/03/2012	23/07/2009	--	MIG REAL ESTATE (CR)	1.87	-4.10 ↓	1.95	10/04/2014	1.89	1.87	1.93	1.87	1.90	624@1.87	100@1.93	-(6)-	2013	376	5	712.64	26,318.38	1.50	2.16	8671
6,700,000	0.800	--	--	--	19/07/2010	29/08/2012	--	MILLS KEPENOS (CR)	2.40	-- -	2.40	10/04/2014	--	--	--	--	--	--	96@2.38	13.07	2013	--	--	--	16,080.00	0.991	2.40	3577
6,200,000	0.500	--	--	--	22/06/2010	01/11/1995	--	MINERVA KNITWEAR SA (CB)	0.603	-- -	0.603	31/03/2014	--	--	--	--	--	--	644@0.543	--	2013	--	--	--	3,738.60	0.550	0.689	3763
12,417,000	0.370	--	--	--	28/07/2008	06/09/2011	--	MLS MULTIMEDIA SA (CR)	4.15	-1.19 ↓	4.20	10/04/2014	4.16	4.10	4.21	4.15	4.13	150@4.11	1451@4.15	44.01	2013	25,726	100	106,279.76	51,530.55	3.28	4.30	9537
4,588,137	16.00	--	--	--	30/06/2005	17/08/2011	--	MOCHLOS SA (CR)	1.58	2.60 ↑	1.54	10/04/2014	1.61	1.40	1.61	1.58	1.45	163@1.46	188@1.58	--	2013	420	35	607.77	7,249.26	1.22	2.00	2357
11,700,000	0.590	--	--	--	02/06/2009	24/07/2012	--	MOTODYNAMICS S.A. (CR)	0.331	-- -	0.331	10/04/2014	0.316	0.316	0.331	0.331	0.324	130@0.320	200@0.331	--	2013	2,030	5	656.84	3,872.70	0.280	0.416	5379
110,782,980	0.750	0.4	0.3	--	26/06/2013	04/11/2013	--	MOTOR OIL (CR)	8.95	0.56 ↑	8.90	10/04/2014	8.81	8.81	9.04	8.95	8.95	9766@8.95	3008@8.96	-(6)-	2013	269,125	510	2,408,708.09	991,507.67	8.02	10.30	533
116,915,862	1.07	--	--	--	11/05/2009	06/07/2011	--	MYTILINEOS HOLDINGS (CR)	6.80	-- -	6.80	10/04/2014	6.76	6.76	6.85	6.80	6.80	16030@6.80										

Number of Outstanding Securities	Nominal Value	Dividends [1]			Date of Last Coupon		Note	Shares	Closing price	% change	Previous closing price/date	Open price	Price min	Price max	Last price	Avg price	Last Bid [7]	Last Ask [7]	P/E after	Year	Volume	Trades	Transactions Value	Company Mkt Value (thou. €)	Year low	Year high	Sector[4]	
		2011	2012	2013	Dividend [2]	Right																						
Main Market																												
8,321,682	0.670	--	--	--	17/08/2007	23/11/1999	--	N. LEVEDERIS SA (CB)	0.249	-- -	0.249	09/04/2014	--	--	--	--	--	571@0.245	--	2013	--	--	--	3,679.53	0.196	0.255	1757	
2,160,524	0.670	0.0435	0.0436	--	16/08/2013	23/11/1999	--	N. LEVEDERIS SA (PB)	0.744	-- -	0.744	26/03/2014	--	--	--	--	--	200@0.698	--	2013	--	--	--	3,679.53	0.566	0.779	1757	
11,510,102	0.890	--	--	--	24/06/2005	06/10/1999	--	NAFPAKTOS TEXTILE IND. SA (CB)	0.299	-5.08 ↓	0.315	07/04/2014	0.266	0.266	0.300	0.300	0.287	1000@0.270	130@0.300	--	2013	1,150	6	330.60	3,441.52	0.209	0.397	3763
6,340,000	0.600	--	--	--	30/11/2009	12/07/2000	--	NAKAS MUSIC	0.793	-6.37 ↓	0.847	10/04/2014	0.765	0.764	0.847	0.847	0.767	80@0.766	103@0.847	--	2013	476	12	365.01	5,027.62	0.526	1.62	5379
2,396,785,994	0.300	--	--	--	16/05/2008	24/05/2013	--	NATIONAL BANK (CR)	3.71	-7.25 ↓	4.00	10/04/2014	3.93	3.71	3.93	3.71	3.78	9317@3.71	2000@3.72	8.25	2013	2,280,331	2,325	8,611,018.28	8,892,076.04	3.12	4.31	8355
23,935,280	0.300	--	--	--	29/06/2009	13/06/2000	--	NAYTEMPORIKI PUBLISHING SA(CR)	0.200	-- -	0.200	02/04/2014	0.200	0.141	0.200	0.200	0.194	2000@0.150	1171@0.200	--	2013	13,590	14	2,632.41	4,787.06	0.141	0.479	5557
27,848,000	0.300	0.0132	0.0137	--	21/08/2013	02/09/2003	--	NEWSPHONE HELLAS SA (CR)	0.379	-0.78 ↓	0.382	10/04/2014	0.379	0.379	0.379	0.379	0.379	300@0.361	503@0.379	34.05	2013	100	1	37.90	10,554.39	0.330	0.468	2791
6,132,500	1.25	--	--	--	24/06/2011	19/06/2001	--	NEXANS HELLAS SA (CR)	2.29	6.51 ↑	2.15	07/04/2014	2.29	2.29	2.29	2.29	2.29	580@2.10	512@2.29	--	2013	3	1	6.87	14,043.43	2.03	2.40	2733
63,697,153	1.34	--	--	--	08/07/2008	10/11/2008	--	NIREFS SA (CR)	0.267	1.91 ↑	0.262	10/04/2014	0.260	0.257	0.269	0.267	0.264	16000@0.262	7688@0.269	--	2013	69,371	75	18,345.80	17,007.14	0.249	0.362	3573
319,000,000	0.300	0.72	0.57	--	28/06/2013	25/04/2001	--	OPAP (CR)	10.50	-4.37 ↓	10.98	10/04/2014	11.00	10.50	11.17	10.50	10.83	756@10.50	5317@10.51	23.48	2013	1,016,197	2,454	11,013,966.80	3,349,500.00	9.33	12.85	5752
490,150,389	2.83	--	--	--	28/06/2011	18/06/1998	--	OTE (CR)	10.90	-3.02 ↓	11.24	10/04/2014	11.07	10.82	11.30	10.90	10.98	1703@10.90	360@10.94	--	2013	1,116,547	2,434	12,259,750.22	5,342,639.24	9.72	13.20	6535
25,000,000	2.00	0.01	0.05	--	18/07/2013	08/08/2003	--	P.P.A. S.A. (CR)	17.89	-1.59 ↓	18.18	10/04/2014	18.15	17.65	18.36	17.89	17.98	15@17.68	13@17.89	55.59	2013	6,985	201	125,564.33	447,250.00	16.41	20.89	2777
4,971,466	1.46	--	--	--	04/07/2007	08/10/2003	--	PAIRIS SA (CR)	0.320	0.63 ↑	0.318	21/03/2014	0.319	0.319	0.320	0.320	0.319	--	4000@0.300	--	2013	1,780	2	568.60	1,590.87	0.231	0.355	2723
3,953,090	0.900	--	--	--	02/07/2001	05/12/2012	--	PAPERPACK (CR)	1.07	-3.60 ↓	1.11	10/04/2014	1.04	1.04	1.11	1.07	1.05	200@1.03	397@1.07	5.53	2013	3,038	19	3,195.36	4,229.81	0.800	1.15	2723
50,797,369	0.310	--	--	--	17/08/2000	12/10/2010	--	PAPOUTSANIS (CR)	0.480	-- -	0.480	10/04/2014	0.505	0.453	0.505	0.480	0.464	198@0.461	455@0.480	--	2013	770	12	357.33	24,382.74	0.395	0.604	3767
7,070,400	0.930	--	--	--	18/05/2010	12/05/2011	--	PETROPOULOS PETROS (CR)	2.16	1.41 ↑	2.13	10/04/2014	2.10	2.06	2.16	2.16	2.10	100@2.03	270@2.16	52.48	2013	2,030	23	4,261.80	15,272.06	1.58	2.34	2753
5,072,567,951	0.300	--	--	--	16/05/2008	05/06/2013	--	PIRAEUS BANK (CR)	1.79	-3.76 ↓	1.86	10/04/2014	1.85	1.78	1.89	1.79	1.82	79397@1.78	800576@1.79	1.92	2013	17,111,346	2,548	31,172,169.44	9,079,896.63	1.49	2.11	8355
22,080,000	0.320	0.08	0.12	--	22/05/2013	03/10/2000	--	PLAISIO COMPUTERS SA (CR)	7.42	0.95 ↑	7.35	10/04/2014	7.31	7.31	7.45	7.42	7.41	22@7.42	50@7.49	11.57	2013	6,787	58	50,296.31	163,833.60	5.80	7.80	9572
232,000,000	4.60	--	0.025	--	22/07/2013	12/12/2001	--	PPC (CR)	11.07	-2.90 ↓	11.40	10/04/2014	11.40	11.07	11.63	11.07	11.36	4213@11.07	175@11.18	--	2013	750,207	2,044	8,518,278.19	2,568,240.00	9.08	12.75	7535
11,812,193	0.450	--	--	--	24/07/2009	15/11/2006	--	PROFILE SA (CR)	0.911	-1.51 ↓	0.925	10/04/2014	0.890	0.890	0.919	0.911	0.908	130@0.890	170@0.919	17.54	2013	205	4	186.05	10,760.91	0.870	1.05	9533
27,345,120	0.470	--	--	--	18/07/2005	26/02/2014	--	QUALITY & RELIABILITY SA (CR)	0.490	-3.35 ↓	0.507	10/04/2014	0.490	0.477	0.490	0.490	0.480	460@0.480	800@0.490	65.16	2013	6,200	8	2,977.00	13,399.11	0.378	0.520	9533
11,962,443	0.500	--	--	--	05/09/2008	12/12/2013	--	QUEST HOLDINGS (CR)	5.79	-2.69 ↓	5.95	09/04/2014	5.80	5.74	5.90	5.74	5.81	200@5.73	50@5.79	--	2013	1,260	14	7,316.36	69,262.54	4.21	6.30	9533
57,434,884	1.31	--	--	--	05/06/2008	12/06/2009	--	REDS S.A. (CR)	0.640	-2.59 ↓	0.657	10/04/2014	0.650	0.629	0.650	0.640	0.632	1886@0.625	398@0.639	--	2013	7,343	16	4,643.58	36,758.33	0.530	0.827	8633
22,280,000	0.300	--	--	--	11/04/2011	23/02/2007	--	REVOIL (CR)	0.575	-7.26 ↓	0.620	10/04/2014	0.605	0.575	0.610	0.575	0.596	100@0.540	125@0.573	--	2013	43,913	101	26,156.85	12,811.00	0.575	0.720	5379
7,500,000	0.480	--	--	--	25/06/2010	10/02/2014	--	S.KANAKIS SA (CR)	1.89	-- -	1.89	10/04/2014	1.89	1.89	1.89	1.89	1.89	50@1.85	3399@1.88	9.73	2013	100	2	189.00	14,175.00	1.70	1.95	3577
52,067,296	0.300	--	--	--	23/12/2003	24/01/2007	--	SELECTED TEXT. IND. ASSOC (CR)	0.280	-3.45 ↓	0.290	10/04/2014	0.290	0.280	0.290	0.280	0.280	2000@0.275	1500@0.287	--	2013	13,352	14	3,741.21	14,578.84	0.242	0.355	3763
96,243,908	0.410	--	--	--	26/06/2008	17/07/2000	--	SIDENOR (CR)	1.95	-2.50 ↓	2.00	10/04/2014	2.00	1.92	2.00	1.96	1.95	1224@1.92	2039@1.96	--	2013	18,327	49	35,660.71	187,675.62	1.50	2.26	1757
6,456,530	1.60	--	--	--	29/06/2001	02/08/2010	--	SPACE HELLAS SA (CR)	1.49	-- -	1.49	10/04/2014	--	--	--	--	--	--	250@1.48	--	2013	--	--	--	9,620.23	1.18	1.87	9578
28,438,268	0.300	--	--	--	21/08/2006	24/11/1999	--	SPIROY AGRICULTURE SA (CR)	0.268	-- -	0.268	03/04/2014	--	--	--	--	--	--	8350@0.267	--	2013	--	--	--	7,621.46	0.248	0.376	1357
33,125,000	5.00	--	--	--	03/07/2006	18/08/2010	--	TECHNICAL OLYMPIC SA (CR)	1.66	-2.35 ↓	1.70	10/04/2014	1.75	1.61	1.75	1.66	1.66	104@1.63	195@1.66	--	2013	2,133	25	3,548.22	54,987.50	1.58	1.99	3728
109,314,400	0.300	(0.0589)	--	--	28/05/2012	24/10/2013	--	TERNA ENERGY (CR)	4.17	-5.01 ↓	4.39	10/04/2014	4.35	4.16	4.36	4.17	4.21	803@4.16	1000@4.21	-(6)-	2013	104,102	545	438,334.76	455,841.05	3.90	4.86	7537
36,300,000	1.12	0.188	0.162	--	16/08/2013	12/12/2007	--	THESSALONIKA WATER & SEWERAGE	5.00	-1.58 ↓	5.08	10/04/2014	5.07	4.97	5.08	5.00	5.01	1100@4.98	500@5.04	13.84	2013	11,101	124	55,653.83	181,500.00	4.65	5.66	7577
45,094,620	0.500	--	0.0467	--	10/06/2013	01/11/1999	--	THRACE PLASTICS SA (CR)	1.27	-0.78 ↓	1.28	10/04/2014	1.28	1.27	1.29	1.27	1.28	6925@1.26	780@1.29	--	2013	28,468	56	36,350.00	57,270.17	1.11	1.39	1357
77,063,568	4.00	--	--	--	24/06/2011	25/06/2004</																						

Number of Outstanding Securities	Nominal Value	Dividends [1]			Date of Last Coupon		Note	Shares	Closing price	% change	Previous closing price/date	Open price	Price min	Price max	Last price	Avg price	Last Bid [7]	Last Ask [7]	P/E after	Year	Volume	Trades	Transactions Value	Company Mkt Value (thou. €)	Year low	Year high	Sector[4]
2011	2012	2013	Dividend [2]	Right																							

Main Market

18,810,000	0.400	---	---	---	08/07/2010	14/11/2007	---	VARVERIS - MODA BAGNO SA (CR)	0.226	---	-	0.226	07/04/2014	---	---	---	---	---	670@0.222	---	2013	---	---	---	4,251.06	0.168	0.279	2353
219,611,308	---	---	---	---	---	14/02/2014	---	VIOHALCO SA/NV (CB)	4.44	-1.33	↓	4.50	10/04/2014	4.45	4.32	4.50	4.44	4.46	100@4.40	---	---	101,495	202	452,621.51	975,074.21	3.92	5.19	2727
4,968,600	2.88	---	---	---	01/07/1998	14/12/1998	---	VIS SA (CR)	0.829	---	-	0.829	02/04/2014	---	---	---	---	---	90@0.756	---	2013	---	---	---	4,118.97	0.755	0.980	2723
6,325,000	0.600	---	---	---	19/07/2010	17/02/2014	---	VOGIATZOGLOU SYSTEMS SA (CR)	1.16	---	-	1.16	09/04/2014	---	---	---	---	---	80@1.05	---	2013	---	---	---	7,337.00	0.851	2.27	2797

Exchange Traded Funds (ETFs)

5,848,618	---	---	---	---	24/01/2008	---	---	ALPHA ETF FTSE Athex Large Cap	4.01	-4.07	↓	4.18	10/04/2014	4.08	3.99	4.55	4.01	4.04	800@3.98	---	---	54,858	21	221,534.95	-	3.69	4.55	11000
294,878	---	---	---	---	29/06/2009	---	---	NBGAM ETF	13.80	-2.40	↓	14.14	10/04/2014	13.80	13.80	13.80	13.80	13.80	---	---	---	2	1	27.60	-	12.20	15.10	11000
388,550	---	---	---	---	03/11/2010	---	---	NBGAM ETF GREECE & TURKEY 30	7.87	-2.48	↓	8.07	10/04/2014	7.87	7.87	7.87	7.87	7.87	---	---	---	2	1	15.74	-	6.70	8.18	11000

Low Dispersion

14,000,000	3.80	---	---	---	23/04/2010	29/06/1999	4815	ALPHA REAL ESTATE SA(CR)	5.82	0.17	↑	5.81	10/04/2014	5.82	5.82	5.82	5.82	5.82	50@5.86	42@6.20	24.33	2013	30	2	174.60	81,480.00	4.69	7.10	8637
63,900,000	3.00	---	---	---	23/06/2003	04/11/2008	4816	ASTIR PALACE SA (CR)	3.91	1.03	↑	3.87	10/04/2014	3.89	3.89	3.96	3.96	3.91	1200@3.90	73@3.92	---	2013	2,300	13	9,001.60	249,849.00	3.56	4.08	5753
90,902,904	0.800	---	---	---	09/08/2004	08/03/2006	4814	ATHENA SA (CR)	0.240	14.29	↑	0.210	10/04/2014	0.240	0.240	0.240	0.240	0.240	600@0.200	1299@0.240	---	2013	1	1	0.24	21,816.70	0.160	0.310	2357
191,660,320	0.300	---	---	---	20/07/2009	29/12/2010	4817	ATTICA HOLDINGS (CR)	0.677	-6.23	↓	0.722	10/04/2014	0.700	0.663	0.700	0.680	0.677	310@0.680	5000@0.700	---	2013	3,504	10	2,373.14	129,754.04	0.495	0.795	5759
68,322,221	1.00	---	---	---	08/03/2002	08/04/2013	4986	GENIKI BANK (CR)	9.80	-0.91	↓	9.89	09/04/2014	9.80	9.80	9.80	9.80	9.80	10@8.10	---	---	2013	10	1	98.00	669,557.77	8.00	15.00	8355
71,082,707	1.70	---	---	---	01/07/2010	21/11/2012	4820	HERACLES GEN.CEMENT CO. (CR)	1.44	6.67	↑	1.35	10/04/2014	1.44	1.44	1.44	1.44	1.44	2000@1.36	1440@1.42	---	2013	203	3	292.32	102,359.10	1.26	1.48	2353
13,404,440	8.63	---	---	---	02/04/2001	06/03/1992	4822	IONIAN HOTELS SA (CR)	7.20	---	-	7.20	09/04/2014	---	---	---	---	---	---	---	-(6)-	2013	---	---	---	96,511.97	6.00	9.90	5753
2,760,000	7.70	7.6	8.52	---	26/06/2013	16/07/1990	4823	KARELIA TOBACCO CO. SA (CB)	215.50	5.02	↑	205.20	10/04/2014	205.20	205.20	217.85	217.85	215.50	500@206.00	12@217.85	14.98	2013	52	6	11,206.20	594,780.00	180.00	234.95	3785
106,980,050	2.25	---	---	---	25/07/2008	24/02/2014	5046	MINOAN LINES SA (CR)	1.50	---	-	1.50	10/04/2014	1.50	1.50	1.50	1.50	1.50	91805@1.50	50@1.55	---	2013	4,150	5	6,225.00	160,470.08	1.49	2.00	5759
17,240,776	0.370	---	---	---	14/07/2005	30/09/2003	4827	PERSEUS SA (CR)	0.310	---	-	0.310	02/04/2014	---	---	---	---	---	---	4910@0.370	2.77	2013	---	---	---	5,344.64	0.260	0.366	3577

Surveillance

33,301,715	0.320	---	---	---	27/06/2003	08/07/2009	4978	AEGEK (CR)	0.077	1.32	↑	0.076	10/04/2014	0.079	0.075	0.079	0.075	0.077	1979@0.075	---	---	2013	2,400	7	183.62	2,564.23	0.074	0.136	2357
14,870,100	0.300	---	---	---	15/05/2008	26/09/2011	4844	ALPHA GRISSIN S.A. (CR)	0.160	---	-	0.160	10/04/2014	---	---	---	---	---	1000@0.152	---	---	2013	---	---	---	2,379.22	0.067	0.160	9533
215,246,452	0.300	---	---	---	25/06/2001	24/09/2001	4446	ALTEC SA (CR)	0.029	3.57	↑	0.028	10/04/2014	0.030	0.025	0.030	0.028	0.029	7500@0.026	---	---	2013	25,513	8	736.78	6,242.15	0.025	0.040	9533
2,969,713	0.300	---	---	---	02/07/2008	28/02/2011	4958	ANEK LINES SA (PR, issue '96)	0.160	---	-	0.160	04/04/2014	---	---	---	---	---	---	---	---	2013	---	---	---	19,829.59	0.150	0.280	5759
312,163	0.300	---	---	---	02/07/2008	28/02/2011	4959	ANEK LINES SA (PR, issue '90)	1.43	---	-	1.43	09/09/2013	---	---	---	---	---	---	---	---	2013	---	---	---	19,829.59	1.43	1.43	5759
185,373,016	0.300	---	---	---	02/07/2008	28/02/2011	4957	ANEK LINES SA (CR)	0.102	-10.53	↓	0.114	10/04/2014	0.102	0.102	0.102	0.102	0.102	1498@0.102	---	---	2013	12,000	9	1,224.00	19,829.59	0.100	0.141	5759
20,255,805	0.300	---	---	---	22/08/2006	02/08/2010	4881	AXON HOLDING SA (CR)	0.116	---	-	0.116	03/04/2014	---	---	---	---	---	---	---	---	2013	---	---	---	2,349.67	0.060	0.139	4533
17,579,754	4.16	---	---	---	18/08/2006	02/08/2010	4885	BIOTER SA (CR)	0.184	-3.16	↓	0.190	10/04/2014	0.153	0.153	0.190	0.190	0.184	---	---	---	2013	597	4	109.84	3,234.67	0.104	0.203	2357
12,431,980	0.720	---	---	---	20/06/2003	10/07/2003	4559	COMPUCON SA (CR)	0.028	---	-	0.028	09/04/2014	---	---	---	---	---	4000@0.023	---	---	2013	---	---	---	348.10	0.025	0.056	9537
14,173,104	0.300	---	---	---	11/08/2010	28/11/2013	5055	DIONIC (CR)	0.148	-19.56	↓	0.184	10/04/2014	0.148	0.148	0.148	0.148	0.148	---	---	---	2013	106,840	46	15,812.32	2,097.62	0.148	0.307	2797
15,878,748	0.480	---	---	---	10/07/2006	22/03/2004	4960	DOMIKI KRITIS SA (CR)	0.435	---	-	0.435	10/04/2014	0.435	0.435	0.435	0.435	0.435	1000@0.400	---	---	2013	99	3	43.08	6,907.26	0.264	0.485	2357
3,961,300	1.28	---	---	---	29/06/2004	03/08/2000	4808	DUROS SA (CR)	0.530	---	-	0.530	10/04/2014	---	---	---	---	---	---	---	---	2013	---	---	---	2,099.49	0.185	0.759	3763
7,085,888	1.59	---	---	---	02/07/1996	06/09/2010	4690	ELVIEMEK (CR)	3.97	---	-	3.97	26/02/2014	---	---	---	---	---	---	---	---	2013	---	---	---	28,130.98	1.54	3.97	8633
6,000,000	0.600	---	---	---	13/06/2008	08/04/2004	4886	EUROBROKERS S.A. (CR)	0.044	---	-	0.044	02/04/2014	---	---	---	---	---	588@0.044	---	---	2013	---	---	---	264.00	0.043	0.052	8534
21,820,410	0.800	---	---	---	22/05/2008	02/08/2011	4882	EUROMEDICA SA (CR)	0.276	15.00	↑	0.240	10/04/2014	0.240	0.240	0.280	0.280	0.276	350@0.200	---	---	2013	150	2	41.40	6,022.43	0.240	0.389	4533

Number of Outstanding Securities	Nominal Value	Dividends [1]			Date of Last Coupon		Note	Shares	Closing price	% change	Previous closing price/date	Open price	Price min	Price max	Last price	Avg price	Last Bid [7]	Last Ask [7]	P/E after	Year	Volume	Trades	Transactions Value	Company Mkt Value (thou. €)	Year low	Year high	Sector[4]
		2011	2012	2013	Dividend [2]	Right																					

Surveillance

110,097,185	0.300	---	---	---	04/12/2013	5033	Forthnet (CR)	1.15	---	-	1.15	10/04/2014	1.17	1.13	1.17	1.15	1.15	3487@1.13	639@1.15	---	2013	4,382	10	5,037.48	126,611.76	1.09	1.98	9535	
1,270,000	0.300	---	---	---	06/07/2007	06/02/2013	5007	GIRAKIAN PROFIL SA (CB)	2.30	-12.55	↓	2.63	24/03/2014	2.30	2.30	2.30	2.30	2.30	---	29@2.30	---	2013	30	2	69.00	2,921.00	1.44	2.63	1757
179,707,771	0.300	---	---	---	27/06/2002	01/11/2011	4847	HELLAS ONLINE SA (CR)	0.607	-5.16	↓	0.640	10/04/2014	0.590	0.590	0.625	0.625	0.607	1650@0.600	5212@0.625	78.91	2013	5,521	8	3,348.58	109,082.62	0.400	0.670	9537
30,390,000	0.310	---	---	---	18/08/2008	29/12/2006	4447	HELLENIC FISHFARMING SA (CR)	0.079	16.18	↑	0.068	10/04/2014	0.079	0.079	0.079	0.079	0.079	1200@0.058	1150@0.079	---	2013	500	2	39.50	2,400.81	0.052	0.119	3573
7,125,216	0.650	---	---	---	01/07/2005	14/12/1999	4955	KRE.KA SA (CR)	0.206	---	-	0.206	26/03/2014	---	---	---	---	---	---	900@0.226	---	2013	---	---	---	1,467.79	0.145	0.278	3573
51,081,030	1.00	---	---	---	20/08/2007	03/09/2007	4912	LAVIPHARM SA (CR)	0.134	3.88	↑	0.129	10/04/2014	0.134	0.134	0.134	0.134	0.134	1500@0.125	6498@0.130	---	2013	2,200	5	294.80	6,844.86	0.124	0.164	4577
322,925,288	0.300	---	---	---	23/05/2007	10/04/2000	4554	M.J. MAILLIS SA (CR)	0.128	-3.76	↓	0.133	10/04/2014	0.133	0.127	0.133	0.129	0.128	97000@0.128	387@0.129	---	2013	26,000	11	3,330.15	41,334.44	0.067	0.136	2723
4,178,856	1.58	---	---	---	21/07/2011	28/07/2004	4983	MEDICON S.A (CR)	0.434	---	-	0.434	07/04/2014	---	---	---	---	---	500@0.360	10000@0.500	17.89	2013	---	---	---	1,813.62	0.303	0.952	4535
255,459,600	0.300	---	---	---	26/06/2000	03/12/2010	4833	NEL SA (CR)	0.050	---	-	0.050	10/04/2014	0.050	0.050	0.050	0.050	0.050	5000@0.045	5062@0.050	---	2013	2,000	3	100.00	12,772.98	0.042	0.090	5759
20,231,328	0.600	---	---	---	15/07/2008	25/06/2004	4879	NIKAS SA (CR)	0.178	---	-	0.178	08/04/2014	0.178	0.178	0.178	0.178	0.178	125@0.178	---	2013	900	1	160.20	3,601.18	0.170	0.180	3577	
20,210,127	1.53	---	---	---	27/06/1997	20/03/2000	5006	PARNASSOS ENTERP. (CR)	0.111	---	-	0.111	10/04/2014	0.111	0.110	0.111	0.111	0.111	5000@0.090	2090@0.123	---	2013	6,010	7	665.61	2,243.32	0.101	0.172	8775
14,967,940	0.500	---	---	---	21/05/2008	04/01/2008	4956	PASAL DEVELOPMENT S.A. (CR)	0.197	---	-	0.197	10/04/2014	---	---	---	---	---	---	1162@0.195	---	2013	---	---	---	2,948.68	0.129	0.239	8633
18,750,000	0.300	---	---	---	02/07/2001	31/12/2012	4985	PEGASUS PUBLISHING S.A. (CR)	0.290	---	-	0.290	09/04/2014	0.290	0.290	0.290	0.290	0.290	---	17835@0.290	---	2013	150	1	43.50	5,437.50	0.045	0.300	5557
24,319,250	0.300	---	---	---	09/07/2002	04/07/2007	5054	PROODEFTIKH SA (CR)	0.094	-15.32	↓	0.111	10/04/2014	0.092	0.092	0.097	0.094	0.094	2000@0.093	16026@0.098	---	2013	71,048	42	6,683.57	2,286.01	0.087	0.188	2357
65,326,268	0.530	---	---	---	04/07/2007	19/07/2006	4750	SATO SA (CR)	0.132	20.00	↑	0.110	10/04/2014	0.132	0.132	0.132	0.132	0.132	400@0.120	1000@0.132	---	2013	2,000	1	264.00	8,623.07	0.109	0.250	3726
36,235,184	1.00	---	---	---	01/07/2008	30/07/2012	4961	SELONDA AQUACULTURE SA (CR)	0.107	1.91	↑	0.105	10/04/2014	0.107	0.107	0.107	0.107	0.107	10000@0.105	2000@0.121	---	2013	1,000	2	107.00	3,877.16	0.090	0.149	3573
7,914,480	2.50	---	---	---	23/06/2008	29/06/2011	4888	SFAKIANAKIS SA (CR)	1.00	---	-	1.00	09/04/2014	---	---	---	---	---	80@1.00	797@1.20	---	2013	---	---	---	7,914.48	0.488	1.00	5379
10,000,000	1.35	---	---	---	24/06/2008	10/05/2005	4887	SIDMA SA (CR)	0.290	---	-	0.290	10/04/2014	---	---	---	---	---	500@0.263	410@0.348	---	2013	---	---	---	2,900.00	0.240	0.440	1757
29,060,950	0.340	---	---	---	20/08/2007	24/10/2001	4884	SPIDER METAL INDUSTRY SA (CR)	0.014	16.67	↑	0.012	10/04/2014	0.014	0.014	0.014	0.014	0.014	4991@0.014	---	2013	9	1	0.13	406.85	0.012	0.053	2757	
100,793,000	0.300	---	---	---	16/07/2009	05/08/2013	5008	TELETIPOS SA (CR)	0.345	---	-	0.345	09/04/2014	0.345	0.345	0.345	0.345	0.345	---	695@0.410	---	2013	100	1	34.50	34,773.59	0.111	0.345	5553
3,229,566	0.320	---	---	---	22/06/2005	23/09/1999	4629	VARANGIS AVEPE S.A. (CR)	0.860	-1.15	↓	0.870	10/04/2014	0.860	0.860	0.860	0.860	0.860	---	1244@0.840	---	2013	5,100	5	4,386.00	2,777.43	0.860	1.00	3726
16,383,428	0.300	---	---	---	25/06/2002	21/06/2013	4997	VARVARESSOS SA (CB)	0.293	---	-	0.293	08/04/2014	---	---	---	---	---	---	305@0.240	0.41	2013	---	---	---	4,800.34	0.152	0.293	3763
13,191,620	0.620	---	---	---	04/08/2010	09/09/2002	4977	YALCO - CONSTANTINOU SA (CB)	0.128	---	-	0.128	10/04/2014	---	---	---	---	---	500@0.105	500@0.152	---	2013	---	---	---	1,688.53	0.124	0.241	3722

Under Deletion

9,567,289	0.300	---	---	---	01/07/2004	19/11/2007	5052	MARAC ELECTRONICS (CR)	0.297	---	0.297	31/12/2013	---	---	---	---	---	---	2596@0.279	---	2013	---	---	---	2,841.48	0.297	0.297	9578
40,946,303	0.360	---	---	---	18/07/2005	27/11/2007	5053	PC SYSTEMS SA (CR)	0.086	-19.63 ↓	0.107	09/04/2014	0.086	0.086	0.086	0.086	0.086	---	143376@0.086	---	2013	100	1	8.60	3,521.38	0.046	0.169	9533
766,000	2.83	---	---	---	01/07/2004	11/12/2012	4937	TRIA ALFA SA (CR)	3.33	---	3.33	27/01/2014	---	---	---	---	---	---	200@3.35	---	2013	---	---	---	2,834.98	2.81	3.33	3763
245,000	2.83	---	---	---	19/07/2010	11/12/2012	4938	TRIA ALFA SA (PR)	1.16	---	1.16	03/04/2014	---	---	---	---	---	---	1@1.38	---	2013	---	---	---	2,834.98	0.969	1.39	3763

Under Suspension

5,025,000	0.300	---	---	---	05/07/2005	14/03/2002	5023	ALSINCO S.A (CR)	0.043	---	0.043	27/11/2013	---	---	---	---	---	---	---	---	---	---	---	---	216.08	0.043	0.043	3763
1,750,955,549	0.600	---	---	---	19/05/2008	08/12/2011	4911	ATE (CR)	0.155	---	0.155	30/07/2012	---	---	---	---	---	---	---	---	---	---	---	---	271,398.11	0.155	0.155	8355
21,382,067	0.300	---	---	---	02/10/2006	15/02/2006	4628	ATERMON (CR)	0.120	---	0.120	31/03/2010	---	---	---	---	---	---	---	---	---	---	---	---	2,565.85	0.120	0.120	5555
81,644,555	0.300	---	---	---	01/07/2008	02/09/2002	5048	ATTI - KAT SA (CR)	0.020	---	0.020	31/03/2014	---	---	---	---	---	100000@0.017	---	---	---	---	---	---	1,632.89	0.020	0.036	2357
105,423,498	0.510	---	---	---	01/07/2004	28/12/2005	4920	AVENIR S.A. (CR)	0.046	---	0.046	30/08/2012	---	---	---	---	---	---	---	---	---	---	---	---	4,849.48	0.046	0.046	5752
33,930,000	0.300	---	---	---	03/07/2006	30/05/2001	4865	BABIS VOVOS SA (CR)	0.304	---	0.304	30/03/2012	---	---	---	---	---	---	---	---	---	---	---	---	10,314.72	0.304	0.304	8633
20,121,710	1.21	---	---	---	27/07/1992	12/03/2003	5002	BALKAN R.E. (CR)	0.190	---	0.190	29/08/2013	---	---	---	---	---	---	---	---	---	---	---	---	3,823.12	0.190	0.190	8633

Daily Official List

Year: 135 Trading Day No: 69

Section 2: Analytic Figures of Shares Transactions

Friday, 11 April, 2014

Number of Outstanding Securities	Nominal Value	Dividends [1]			Date of Last Coupon		Note	Shares	Closing price	% change	Previous closing price/date	Open price	Price min	Price max	Last price	Avg price	Last Bid [7]	Last Ask [7]	P/E after	Year	Volume	Trades	Transactions Value	Company Mkt Value (thou. €)	Year low	Year high	Sector[4]	
		2011	2012	2013	Dividend [2]	Right																						
Under Suspension																												
1,795,140,547	1.00	---	---	---	31/05/2011	19/04/2012	4951	BANK OF CYPRUS (CR)	0.207	---	0.207	15/03/2013	---	---	---	---	---	---	---	---	---	---	---	---	371,594.09	0.207	0.207	8355
21,920,570	0.300	---	---	---	03/07/2007	13/12/1999	4702	CARDASSILARIS SA (CR)	0.140	---	0.140	30/11/2010	---	---	---	---	---	---	---	---	---	---	---	---	3,068.88	0.140	0.140	3577
54,547,634	0.500	---	---	---	25/04/2005	21/01/2009	4860	CH.TEGOPOULOS PUBL. SA (CR)	0.038	---	0.038	23/03/2012	---	---	---	---	---	---	---	---	---	---	---	---	2,072.81	0.038	0.038	5557
30,159,583	0.470	---	---	---	26/06/2008	29/12/2010	5047	DIAS A/C (CR)	0.050	---	0.050	26/03/2014	---	---	---	---	---	---	---	---	---	---	---	---	1,507.98	0.040	0.092	3573
7,847,611	1.20	---	---	---	01/08/2007	28/09/2011	4939	EDRASIS - C. PSALLIDAS SA (CR)	0.150	---	0.150	19/11/2012	---	---	---	---	---	---	---	---	---	---	---	---	1,177.14	0.150	0.150	2357
5,750,000	0.300	---	---	---	12/12/2008	12/12/2011	4929	ELECTRONIKI ATHINON SA (CR)	0.480	---	0.480	07/09/2012	---	---	---	---	---	---	---	---	---	---	---	---	2,760.00	0.480	0.480	5375
24,605,397	0.400	---	---	---	29/06/1995	27/05/2002	4651	EMPORIKOS DESMOS SA (CR)	0.080	---	0.080	28/05/2010	---	---	---	---	---	---	---	---	---	---	---	---	2,134.04	0.080	0.080	3722
1,182,903	0.400	---	---	---	01/07/1996	27/05/2002	4652	EMPORIKOS DESMOS SA (PR)	0.140	---	0.140	28/09/2009	---	---	---	---	---	---	---	---	---	---	---	---	2,134.04	0.140	0.140	3722
7,326,648	1.00	---	---	---	26/07/2006	24/07/2001	4921	FINTEXPORT SA (CR)	0.328	---	0.328	29/06/2012	---	---	---	---	---	---	---	---	---	---	---	---	2,403.14	0.328	0.328	3763
13,692,227	1.47	---	---	---	07/07/2006	08/10/1999	5049	HELLENIC FABRICS SA (CR)	0.117	---	0.117	31/03/2014	---	---	---	---	---	---	---	---	---	---	---	---	1,601.99	0.089	0.153	3763
1,540,000	0.600	---	---	---	08/08/1994	19/09/2000	5051	J.BOUTARIS & SON HOLD. (PB)	0.010	---	0.010	24/03/2014	---	---	---	---	---	---	---	---	---	---	---	---	1,501.00	0.010	0.012	3535
25,179,640	0.600	---	---	---	08/08/1994	19/09/2000	5050	J.BOUTARIS & SON HOLD. SA (CB)	0.059	---	0.059	31/03/2014	---	---	---	---	---	---	---	---	---	---	---	---	1,501.00	0.042	0.084	3535
24,619,524	0.500	---	---	---	10/10/1986	30/12/2002	4914	KERAMIA-ALLATINI (CR)	0.088	---	0.088	27/08/2012	---	---	---	---	---	---	---	---	---	---	---	---	2,166.52	0.088	0.088	8633
7,840,373	1.20	---	---	---	18/07/2002	05/03/2003	4765	KLONATEX SA (PR)	0.080	---	0.080	09/05/2011	---	---	---	---	---	---	---	---	---	---	---	---	1,453.75	0.080	0.080	3763
20,663,047	1.20	---	---	---	21/08/2000	05/03/2003	4764	KLONATEX SA (CR)	0.040	---	0.040	09/05/2011	---	---	---	---	---	---	---	---	---	---	---	---	1,453.75	0.040	0.040	3763
17,544,600	0.600	---	---	---	03/07/2000	01/08/2000	4868	KOYMBAS SYNERGY GROUP (CR)	0.132	---	0.132	29/03/2012	---	---	---	---	---	---	---	---	---	---	---	---	2,315.89	0.132	0.132	8775
15,015,000	1.60	---	---	---	01/07/2002	02/02/2000	4603	MAXIM C.M. PERTSINIDIS SA (CB)	0.100	---	0.100	30/11/2009	---	---	---	---	---	---	---	---	---	---	---	---	1,501.50	0.100	0.100	3763
66,937,526	0.700	---	---	---	13/08/2010	21/05/2003	5003	MICHANIKI SA (CR)	0.100	---	0.100	29/08/2013	---	---	---	---	---	---	---	---	---	---	---	---	9,186.78	0.100	0.100	2357
25,968,987	0.700	---	---	---	13/08/2010	21/05/2003	5004	MICHANIKI SA (PR)	0.096	---	0.096	29/08/2013	---	---	---	---	---	---	---	---	---	---	---	---	9,186.78	0.096	0.096	2357
13,555,100	1.00	---	---	---		08/07/2005	4576	MICROLAND COMPUTERS SA (CR)	0.640	---	0.640	14/07/2009	---	---	---	---	---	---	---	---	---	---	---	---	8,675.26	0.640	0.640	5379
23,463,874	0.800	---	---	---	23/05/2003	21/12/1999	4918	NEORION SA (CR)	0.125	---	0.125	28/08/2012	---	---	---	---	---	---	---	---	---	---	---	---	2,932.98	0.125	0.125	2753
42,501,273	0.300	---	---	---	26/06/2007	10/08/2009	4993	NUTRIART (CR)	0.049	---	0.049	21/06/2013	---	---	---	---	---	---	---	---	---	---	---	---	2,082.56	0.049	0.049	3577
25,583,146	0.300	---	---	---	25/06/2001	03/12/2008	4723	PETZETAKIS SA (CR)	0.260	---	0.260	28/01/2011	---	---	---	---	---	---	---	---	---	---	---	---	6,651.62	0.260	0.260	1357
9,550,386	0.500	---	---	---	01/07/1997	12/06/2008	4626	PRAXITELIO SA (CR)	0.390	---	0.390	11/03/2010	---	---	---	---	---	---	---	---	---	---	---	---	4,430.09	0.390	0.390	4533
1,306,368	0.500	---	---	---	01/07/1997	12/06/2008	4627	PRAXITELIO SA (PR)	0.540	---	0.540	15/12/2009	---	---	---	---	---	---	---	---	---	---	---	---	4,430.09	0.540	0.540	4533
62,683,822	0.300	---	---	---	27/05/2008	09/01/2006	4830	PROTON BANK S.A. (CR)	0.180	---	0.180	07/10/2011	---	---	---	---	---	---	---	---	---	---	---	---	11,283.09	0.180	0.180	8355
51,334,286	0.320	---	---	---	03/07/2000	18/12/2007	4548	SAOS (CR)	0.780	---	0.780	27/03/2009	---	---	---	---	---	---	---	---	---	---	---	---	40,040.74	0.780	0.780	2773
26,408,040	0.300	---	---	---	01/07/1997	26/05/1999	4464	SHEET STEEL SA (CR)	0.120	---	0.120	28/11/2008	---	---	---	---	---	---	---	---	---	---	---	---	3,168.96	0.120	0.120	1757
60,221,300	0.400	---	---	---	01/07/2002	01/11/2010	5022	SHELMAN SA (CR)	0.080	---	0.080	19/11/2013	---	---	---	---	---	4000@0.070	---	---	---	---	---	---	4,817.70	0.080	0.080	2353
26,262,660	0.900	---	---	---	01/07/2008	24/02/2011	4954	SPRIDER STORES (CR)	0.031	---	0.031	28/03/2013	---	---	---	---	---	---	---	---	---	---	---	---	814.14	0.031	0.031	5371
144,688,060	0.600	---	---	---	21/04/2008	10/03/2010	4982	T BANK (CR)	0.048	---	0.048	30/11/2011	---	---	---	---	---	---	---	---	---	---	---	---	6,945.03	0.048	0.048	8355
6,523,780	0.530	---	---	---	01/07/2002	06/03/2001	4971	TECHNICAL PUBLICATIONS SA (CR)	0.006	---	0.006	29/05/2013	---	---	---	---	---	---	---	---	---	---	---	---	39.14	0.006	0.006	5557
13,920,000	0.320	---	---	---	19/11/2001	01/08/2000	4726	TEXAPRET SA (CR)	0.080	---	0.080	23/02/2011	---	---	---	---	---	---	---	---	---	---	---	---	1,113.60	0.080	0.080	3763
510,840	1.00	---	---	---	15/07/2008	21/11/2013	5036	TROPEA HOLDING (CR)	2.00	---	0.020	# 30/03/2012	---	---	---	---	---	---	---	---	---	---	---	---	1,021.68	0.020	2.00	3722
284,465,964	3.70	---	---	---	20/06/2008	15/06/2009	4913	TT HELLENIC POSTBANK (CR)	0.168	---	0.168	30/08/2012	---	---	---	---	---	---	---	---	---	---	---	---	47,790.28	0.168	0.168	8355
89,616,200	0.300	---	---	---	21/08/2000	28/06/2007	4616	UNITED TEXTILES (CR)	0.050	---	0.050	25/02/2010	---	---	---	---	---	---	---	---	---	---	---	---	4,480.81	0.050	0.050	3763
71,683,906	0.400	---	---	---	15/06/2005	05/02/2008	4953	XATZIOANNOU (CR)	0.026	---	0.026	28/03/2013	---	---	---	---	---	---	---	---	---	---	---	---	1,863.78	0.026	0.026	3763

Shares' Notes

Code	Note text
()	- Adjusted dividends.
*	- Last adjusted closing price.
[1]	- Net dividends.
[2]	- The "Date of Last Coupon" for New listings refers to the date company's stocks started to trade in Athex
[3]	- The Company Market Value is referred to the number of outstanding shares
[4]	- Sectors codification can be found in Appendix A
[5]	- The Market Value refers to the total number of shares listed (including their several classes) in the exchange by the company.
[6]	- P/E greater than 100
[7]	- Last view of the Order Book before the end of the trading session
4446	- Transfer to the "Under Supervision" Category as of 20/10/2008.
4447	- Transfer to the "Under Supervision" Category as of 21/10/2008.
4464	- Suspension of trading as of 1/12/2008.
4548	- Suspension of trading as of 1/4/2009.
4554	- Transfer to the "Under Supervision" Category as of 6/4/2009.
4559	- Transfer to the "Under Supervision" Category as of 21/4/2009.
4576	- Suspension of trading as of 14/7/2009.
4603	- Suspension of trading as of 1/12/2009.
4616	- Suspension of trading as of 25/2/2010.
4626	- Suspension of trading as of 1/4/2010.
4627	- Suspension of trading as of 1/4/2010.
4628	- Suspension of trading as of 1/4/2010.
4629	- Transfer to the Under Supervision Category as of 12/4/2010.
4651	- Suspension of trading as of 1/6/2010.
4652	- Suspension of trading as of 1/6/2010.
4690	- Transfer to Surveillance category as of 4/4/2006.
4702	- Suspension of trading as of 1/12/2010.
4723	- Suspension of trading as of 31/1/2011.
4726	- Suspension of trading as of 1/3/2011.
4750	- Transfer to the "Under Surveillance Category" from 8/4/2011.
4764	- Suspension of trading as of 20/5/2011.
4765	- Suspension of trading as of 20/5/2011.
4795	- The final gross (pre-tax) dividend is € 0.30 per share and subject to withholding tax on the full dividend amount, i.e. 0.45 per share, for those shareholders liable to withholding tax, in accordance with the applicable tax law provisions.
4808	- Suspension of trading as of 6/9/2011.
4814	- Transfer to the Low Dispersion Category as of 30/5/2011.
4815	- Transfer to the Low Dispersion Category as of 30/5/2011.
4816	- Transfer to the Low Dispersion Category as of 30/5/2011.
4817	- Transfer to the Low Dispersion Category as of 30/5/2011.
4820	- Transfer to the Low Dispersion category as of 18/4/2008.
4822	- Transfer to the Low Dispersion category as of 30/5/2011.
4823	- Transfer to the Low Dispersion category as of 4/4/2006.
4827	- Transfer to the Low Dispersion category as of 5/5/2010.
4830	- Suspension of trading as of 10/10/2011.
4833	- Transfer to Surveillance category from 6/5/2010.
4844	- Transfer to the Surveillance category from 8/4/2011.
4847	- Transfer to the Surveillance Category as of 3/7/2009.
4860	- Suspension of trading as of 30/3/2012.
4865	- Suspension of trading as of 2/4/2012.
4868	- Suspension of trading as of 2/4/2012.
4879	- Transfer to the Surveillance Category as of 10/4/2012.
4881	- Transfer to the Surveillance Category as of 10/4/2012.
4882	- Transfer to the Surveillance Category as of 10/4/2012.

Shares' Notes

Code	Note text
4884	- Transfer to the Surveillance Category as of 10/4/2012.
4885	- Transfer to the Surveillance Category as of 10/4/2012.
4886	- Transfer to the Surveillance Category as of 10/4/2012.
4887	- Transfer to the Surveillance Category as of 10/4/2012.
4888	- Transfer to the Surveillance Category as of 10/4/2012.
4911	- Lift of suspension from 30/7/2012.
4912	- Transfer to the Surveillance Category as of 31/7/2012.
4913	- Suspension of trading as of 30/8/2012.
4914	- Suspension of trading as of 31/8/2012.
4918	- Suspension of trading as of 31/8/2012.
4920	- Suspension of trading as of 31/8/2012.
4921	- Suspension of trading as of 31/8/2012.
4929	- Suspension of trading as of 1/10/2012.
4937	- Transfer to the UNDER DELETION category as of 30/11/2012.
4938	- Transfer to the UNDER DELETION category as of 30/11/2012.
4939	- Suspension of trading as of 30/11/2012.
4951	- Suspension of trading as of 19/3/2013.
4953	- Suspension of trading as of 2/4/2013.
4954	- Suspension of trading as of 2/4/2013.
4955	- Transfer to the Surveillance Category as from 5/4/2013.
4956	- Transfer to the Surveillance Category as from 5/4/2013.
4957	- Transfer to the Surveillance Category as from 5/4/2013.
4958	- Transfer to the Surveillance Category as from 5/4/2013.
4959	- Transfer to the Surveillance Category as from 5/4/2013.
4960	- Transfer to the Surveillance Category as from 5/4/2013.
4961	- Transfer to the Surveillance Category as from 5/4/2013.
4971	- Suspension of trading as of 3/6/2013.
4977	- Transfer to the "Under Surveillance Category" from 11/6/2013.
4978	- Transfer to the Under Supervision Category as of 11/6/2013.
4982	- Suspension of trading as of 1/12/2011.
4983	- Transfer to the Surveillance Category as of 5/4/2013.
4985	- Transfer to the "Under Surveillance Category" from 8/4/2011.
4986	- Transfer to the Low Dispersion category as of 30/5/2011.
4988	- As of June 7, 2013, the name of the company "DUTY FREE SHOPS A CORPORATION OPERATING DFS AND LARGE AND SMALL SCALE INDUSTRIAL OPERATIONS, TECHNIC" on ATHEX changes to "FOLLI FOLLIE S.A.".
4993	- Suspension of trading as of 21/6/2013 (15:18).
4997	- Transfer to the Under Supervision Category as of 21/12/2009. - The 6,870,053 new (CB) shares, resulting from the recent share capital increase through a rights issue, are not yet admitted to trading on the ATHEX.
5002	- Suspension of trading as of 30/08/2013.
5003	- Suspension of trading as of 30/08/2013.
5004	- Suspension of trading as of 30/08/2013.
5006	- Transfer to the Surveillance Category as of 3/9/2013.
5007	- Transfer to the Surveillance category, as of 11/10/2013.
5008	- Transfer to the Surveillance Category from 8/4/2011.
5022	- Suspension of trading as of 2/12/2013.
5023	- Suspension of trading as of 2/12/2013.
5031	- The 612,300 new (CR) shares, resulting from the recent share capital increase through a rights issue, are not yet admitted to trading on the ATHEX.
5033	- Transfer to the Surveillance Category as of 25/11/2011. The 97,144,575 new (CR) shares, resulting from the recent share capital increase through a rights issue, are not yet admitted to trading on the ATHEX.
5036	- The company's share is under suspension of trading as of 2/4/2012. During suspension, the company proceeded and concluded a share reverse split, according to which - after the conclusion of the corporate action - the total number of the company's shares, as well as, the last closing price of 30/03/2012 were adjusted.
5046	- Transfer to the Low Dispersion category as of 8/4/2011.
5047	- Suspension of trading as of 27/3/2014.
5048	- Under suspension of trading as of 1/4/2014.

Shares' Notes

Code	Note text
5049	- Under suspension of trading as of 1/4/2014.
5050	- Under suspension of trading as of 1/4/2014.
5051	- Under suspension of trading as of 1/4/2014.
5052	- Transfer to the UNDER DELETION category as of 10/4/2014.
5053	- Transfer to the UNDER DELETION category as of 10/4/2014.
5054	- Transfer to the Surveillance Category as of 10/4/2014.
5055	- Transfer to the Surveillance Category as of 10/4/2014.

Securities Blocks Details

Securities	Block Volume	Price	Block Trade Value	Time of approval	Note
JUMBO SA (CR)	100,000	12.23	1,223,000.00	11:06:00	20
JUMBO SA (CR)	1,311	12.75	16,710.14	11:13:56	14
PIRAEUS BANK (W)	1,000,000	1.03	1,030,000.00	11:37:11	20
JUMBO SA (CR)	250,000	12.23	3,057,500.00	11:46:27	20
ELLAKTOR (CR)	184,000	3.92	720,360.00	11:48:01	20
ALPHA BANK (W)	500,000	1.82	910,000.00	12:35:31	20
ALPHA BANK (CR)	500,000	0.714	357,000.00	13:15:53	20
PIRAEUS BANK (W)	500,000	1.01	502,500.00	13:23:50	20
OPAP (CR)	64,328	10.92	702,461.76	13:30:07	20
PIRAEUS BANK (CR)	2,200,000	1.85	4,059,000.00	13:41:22	20
ALPHA BANK (CR)	400,000	0.712	284,800.00	13:54:12	20
ELLAKTOR (CR)	322,296	3.91	1,260,177.36	14:15:09	20
ALPHA BANK (CR)	600,000	0.735	441,000.00	14:21:58	20
ALPHA BANK (CR)	450	0.730	328.50	15:17:36	18
TITAN CEMENT (CR)	2	23.05	46.10	15:24:15	18
ALPHA BANK (CR)	800,000	0.705	564,000.00	16:57:41	20
PIRAEUS BANK (CR)	1,700,000	1.79	3,043,000.00	16:58:21	20
PIRAEUS BANK (W)	500,000	0.989	494,500.00	16:58:39	20

Blocks Notes

2 - SPOT 1 or SPOT 2 Packet	11 - Total Assets > 500 bil
3 - Block with Short Selling	12 - Sell Offer through Athex
4 - Buy to Close Block	13 - Forced Sale of NMOE
6 - Simultaneous Constitution	14 - Restoration Packet
7 - Repurchase Agreement	15 - Market Maker Packet
8 - Dispersion's Achievement (Not Listed)	16 - Short Selling
9 - Dispersion's Achievement (Listed)	18 - SPOT 1 Packet
10 - Share Capital Majority of Greek State (> 50 bil)	20 - Method 6-1 Packet

Shares Rights Details

Occured date	Exercise from	Exercise until	Trading until	Rights	Price min	Price max	Closing price	Last Bid	Last Ask	Volume	Trades	Transactions Value
-----------------	------------------	-------------------	------------------	--------	--------------	--------------	------------------	----------	----------	--------	--------	-----------------------

No Rights Transactions.

Stock Borrowing

Securities	Stock Borrowing through Helex (volume)	Stock Borrowing through OTC (volume) [1]	Totals [2]
ALPHA BANK (CR)	12,629,900	88,145,401	100,775,301
ATE (CR)	---	69,000	69,000
BANK OF CYPRUS (CR)	---	102,899	102,899
CC HBC AG (CR)	---	69,876	69,876
CORINTH PIPEWORKS SA (CR)	700	---	700
ELLAKTOR (CR)	7,600	---	7,600
EUROBANK ERGASIAS (CR)	103,600	68,406	172,006
EUROBANK PROPERTIES REIC (CR)	---	35,356	35,356
EYDAP S.A. (CR)	6,200	---	6,200
FOLLI FOLLIE (CR)	10,100	---	10,100
FRIGOGLASS SA (CR)	4,900	---	4,900
GEK TERNA (CR)	2,200	---	2,200
HELLENIC EXCHANGES-A.S.E. (CR)	5,600	2,000	7,600
HELLENIC PETROLEUM (CR)	62,400	165,402	227,802
INTRACOM HOLDINGS (CR)	8,000	---	8,000
INTRALOT (CR)	3,800	---	3,800
JUMBO SA (CR)	6,000	---	6,000
LAMDA DEVELOPMENT SA (CR)	---	10,377	10,377
MARFIN INVESTMENT GROUP (CR)	66,000	728,474	794,474
METKA (CR)	20,100	---	20,100
MOTOR OIL (CR)	23,900	96,828	120,728
MYTILINEOS HOLDINGS (CR)	5,700	---	5,700
NATIONAL BANK (CR)	657,100	2,644,966	3,302,066
NBGAM ETF	10,000	---	10,000
NBGAM ETF GREECE & TURKEY 30	3,600	---	3,600
OPAP (CR)	52,000	40,000	92,000
OTE (CR)	7,900	218,542	226,442
P.P.A. S.A. (CR)	4,200	280	4,480
PIRAEUS BANK (CR)	1,067,400	44,284,656	45,352,056
PPC (CR)	57,200	---	57,200
TITAN CEMENT (CR)	54,400	54	54,454

Stock Borrowing Notes

[1] - The information concerning OTC Stock Borrowing Transactions is based on the statements of the Dematerialised Securities System (DSS) operators involved and refers to volumes that have been cleared and registered up until the previous working day.

Shares Forced Sales

Securities	Transaction s Volume	Number of Trades	Transactions Value	Note
No Forced Transactions.				

Forced Sales Notes

- 1 - Normal Forced Sale.
- 2 - Forced Sales of Fixed Registered Shares.
- 3 - Forced Sales of Remaining Stock Fractions.

Forced Sales Registered Shares

Securities	Start Date	End Date	Initial Volume	Remaining Volume	Date	Avg price (day)	Avg price (period)	Number of Trades	Transactions Volume	Transactions Value
------------	------------	----------	-------------------	---------------------	------	--------------------	-----------------------	---------------------	------------------------	-----------------------

No Fixed Registered Shares Forced Sales.

Forced Sales Notes

According to Decision 1/380/04.05.2008 of the Hellenic Republic Capital Market Commission, the certificated registered shares that have not been deposited to the issuer for dematerialisation, will be auctioned in the Athens Exchange by the supervising issuer. Forced sales procedure is held according to Article 99A of the Athens Exchange Rulebook. The average price of the period is calculated by dividing the Total transactions value by the Total volume and includes all the transactions made until the current date.

Exchange Traded Funds (ETFs) Characteristics

	Transactions Date (T)	Creation / Redemption	Units (T-1)	New Units (T-1)	Redemptio n Units (T-	Units (T) [1]	Fund Assets [2]	Net Unit Price	Dividen d per	Dividend Date
NBGAM ETF ΓΔ Χ.Α.	11/04/2014	25,000	294,878	---	---	294,878	4,178,915.00	14.1717	---	27/10/2011
ALPHA ETF FTSE Athex Large Cap	11/04/2014	50,000	5,848,618	---	---	5,848,618	24,161,880.00	4.1312	0.05	01/07/2013
NBGAM ETF GREECE & TURKEY 30	11/04/2014	25,000	388,550	---	---	388,550	3,136,485.00	8.0723	---	27/10/2011

ETFs Notes

[1] - Units (T) = Units (T-1) + New Units (T-1) - Redemption Units (T-1)

[2] - The Creation / Redemption Units of T-1 are included.

Corporate Bonds

Num Listed Bonds	Nominal price	Issue price	Today's Rate	Exp. Date	Duration (years)	Note	Coupon attached		Trading	Corporate Bonds	Price min	Price max	Closing price	Previous closing price/date		Volume	Transactions Value	Last order		Date	ear min	Year max
							Common	Preferred										Price	Buy / Sell			
4,150,176	4.77	4.77	5.00	19/03/2015	5	---	17	---	1	MARFIN INVESTMENT GROUP S.A. (Conver to CR shar)	---	---	---	63.0000	03/04/2014	---	---	61.0000	B	11/04/2014	62.5251	91.0000
1,794,284	12.49	9.77	5.31	12/07/2015	8	---	---	---	1	NIREUS S.A. (Convertible to CR shares)	---	---	---	12.0000	29/01/2014	---	---	24.9900	B	11/04/2014	12.0000	12.0000
212,817,904	1.00	1.00	6.30	29/07/2020	7	---	3	---	1	MARFIN INVESTMENT GROUP S.A. SERIES B (BOND)	---	---	---	0.8500	23/08/2013	---	---	96.0000	B	11/04/2014	0.8500	0.8500
2,156,827	1.00	1.00	7.00	29/07/2019	6	---	3	---	1	MARFIN INVESTMENT GROUP S.A. SERIES A (BOND)	---	---	---	1.0000	23/08/2013	---	---	20.0000	B	11/04/2014	1.0000	1.0000

Corporate Bonds Notes

Transactions Volume = (Pieces) * (Nominal Price). Transactions Value = (Pieces) * (Nominal Price) * (price %) + (Accrued interest).
The price of a Bond is stated as a percentage (%) of Bond's Nominal Price.
Nominal Price in Euros (€), except if it is noted differently.

Government Bonds

Number Listed Bonds	Nominal price	Today's Rate	Accrued Interest Calc	Exp. Date [1]	Duration (years)	Note	Coupons Date	Curr. coupon value	Trading Unit	Government Bonds	Price min	Price max	Closing price	Previous closing price/date	Volume	Transactions Value	Price	Last order Buy / Sell	Date
2,658,781,973	1.00	4.30	Actual/Actual	24/02/2023	11	---	24/02	4.30	1	GGB-FXD-240223-11Y-2.000-1.00	---	---	---	---	---	---	---	---	---
2,658,781,973	1.00	4.30	Actual/Actual	24/02/2024	12	---	24/02	4.30	1	GGB-FXD-240224-12Y-2.000-1.00	---	---	---	---	---	---	---	---	---
2,658,781,973	1.00	4.30	Actual/Actual	24/02/2025	13	---	24/02	4.30	1	GGB-FXD-240225-13Y-2.000-1.00	---	---	---	---	---	---	---	---	---
2,658,781,973	1.00	4.30	Actual/Actual	24/02/2026	14	---	24/02	4.30	1	GGB-FXD-240226-14Y-2.000-1.00	---	---	---	---	---	---	---	---	---
2,658,781,973	1.00	4.30	Actual/Actual	24/02/2027	15	---	24/02	4.30	1	GGB-FXD-240227-15Y-2.000-1.00	---	---	---	---	---	---	---	---	---
2,836,034,104	1.00	4.30	Actual/Actual	24/02/2028	16	---	24/02	4.30	1	GGB-FXD-240228-16Y-2.000-1.00	---	---	---	---	---	---	---	---	---
2,836,034,104	1.00	4.30	Actual/Actual	24/02/2029	17	---	24/02	4.30	1	GGB-FXD-240229-17Y-2.000-1.00	---	---	---	---	---	---	---	---	---
2,836,034,104	1.00	4.30	Actual/Actual	24/02/2030	18	---	24/02	4.30	1	GGB-FXD-240230-18Y-2.000-1.00	---	---	---	---	---	---	---	---	---
2,836,034,104	1.00	4.30	Actual/Actual	24/02/2031	19	---	24/02	4.30	1	GGB-FXD-240231-19Y-2.000-1.00	---	---	---	---	---	---	---	---	---
2,836,034,104	1.00	4.30	Actual/Actual	24/02/2032	20	---	24/02	4.30	1	GGB-FXD-240232-20Y-2.000-1.00	---	---	---	---	---	---	---	---	---
2,836,034,104	1.00	4.30	Actual/Actual	24/02/2033	21	---	24/02	4.30	1	GGB-FXD-240233-21Y-2.000-1.00	---	---	---	---	---	---	---	---	---
2,836,034,104	1.00	4.30	Actual/Actual	24/02/2034	22	---	24/02	4.30	1	GGB-FXD-240234-22Y-2.000-1.00	---	---	---	---	---	---	---	---	---
2,836,034,104	1.00	4.30	Actual/Actual	24/02/2035	23	---	24/02	4.30	1	GGB-FXD-240235-23Y-2.000-1.00	---	---	---	---	---	---	---	---	---
2,836,034,104	1.00	4.30	Actual/Actual	24/02/2036	24	---	24/02	4.30	1	GGB-FXD-240236-24Y-2.000-1.00	---	---	---	---	---	---	---	---	---
2,836,034,104	1.00	4.30	Actual/Actual	24/02/2037	25	---	24/02	4.30	1	GGB-FXD-240237-25Y-2.000-1.00	---	---	---	---	---	---	---	---	---
2,836,034,104	1.00	4.30	Actual/Actual	24/02/2038	26	---	24/02	4.30	1	GGB-FXD-240238-26Y-2.000-1.00	---	---	---	---	---	---	---	---	---
2,836,034,104	1.00	4.30	Actual/Actual	24/02/2039	27	---	24/02	4.30	1	GGB-FXD-240239-27Y-2.000-1.00	---	---	---	---	---	---	---	---	---
2,836,034,104	1.00	4.30	Actual/Actual	24/02/2040	28	---	24/02	4.30	1	GGB-FXD-240240-28Y-2.000-1.00	---	---	---	---	---	---	---	---	---
2,836,034,104	1.00	4.30	Actual/Actual	24/02/2041	29	---	24/02	4.30	1	GGB-FXD-240241-29Y-2.000-1.00	---	---	---	---	---	---	---	---	---
2,836,034,104	1.00	4.30	Actual/Actual	24/02/2042	30	---	24/02	4.30	1	GGB-FXD-240242-30Y-2.000-1.00	---	---	---	---	---	---	---	---	---
1,500,000	1,000.00	0.97	FLR Actual/360	10/08/2014	5	---	10/02 - 10/08	---	1	GGB-FRN-100814-05Y-1.762-1000.00	---	---	---	---	---	---	---	---	---
5,187,186	1,000.00	1.60	FLR Actual/360	21/05/2014	5	---	21/11 - 21/05	---	1	GGB-FRN-210514-05Y-2.734-1000.00	---	---	---	---	---	---	---	---	---
78,300	1,000.00	1.16	FLR Actual/360	23/07/2014	5	---	23/01 - 23/07	---	1	GGB-FRN-230714-05Y-2.018-1000.00	---	---	---	---	---	---	---	---	---

Government Bonds Notes

Transactions Volume = (Pieces) * (Nominal Price). Transactions Value = (Pieces) * (Nominal Price) * (price %) + (Accrued interest).
The Value of current coupon for the issues with NV 0.01 euro refers to NV 100 euros
FLR: Floating Interest Rate.
[1] - The Expiration Date of the interest bearing period and the Date for coupon payment.

Bonds in Circulation	Currency / Min nominal traded Value	Coupons Payment Date	Current Coupon Value	Note	Coupon Attached	Trading Unit	Issue Date	Duration (years)	Today's Interest	A.I.C in days	Bonds	Last price of previous days	Last Outcry in Cash (euro) Price	Buy / Sell	Date	Trades in Pieces	Life min	Life Max
Bonds of International Organizations																		
1,000,000	EUR / 1000	21/07	---	---	8	1	21/07/2006	10	5.0 FLR	360	EUROPEAN INVESTMENT BANK BOND	97.50	16/04/2007	---	---	---	---	---
Corporate Bonds in Foreign Currency and Euro																		
103,746	GBP / 10	01/12	0.25	---	55	1	01/12/1930	98	2.5	360	National Mortgage Bank	2.27	05/02/1996	2.27	S	05/02/1996	---	2.27
0	GBP / 10	01/12	0.25	---	57	1	01/12/1928	100	2.5	360	National Mortgage Bank	---	---	---	---	---	---	---

Government Bonds Notes

A.I.C: Accrued Interest Calculation base.
FLR: Floating Interest Rate.
The minimum tradeable Nominal Value for all Demeterialised Government Titles is 100 Euros.

State Banks Bonds (one year maturity)

Number Listed Bonds	Nominal value	Initial Rate	Current Rate	Annual Interest	Issue Date	Note	State Banks Bonds	Trading Unit	Yearly Renewals	Last Outcry in Cash (euro) Price	Buy / Sell	Volume
342,560	135.17	2.35	3.92	0.00	31/01/2005	---	H.I.D.B.	1	10	100.00	B	---
2,446	1,154.00	4.90	2.47	28.96	31/05/2008	---	H.I.D.B.	1	6	---	---	---
171,117	1,163.28	5.50	2.47	29.19	31/05/2008	---	H.I.D.B.	1	6	---	---	---
63,787	1,129.20	5.45	2.47	30.88	31/08/2008	---	H.I.D.B.	1	6	---	---	---

Bonds Notes

The annual renewal of H.I.D.B. Bonds is free of taxes (net rate).
For Bonds issue until 31/12/2013 the accrued interest is capitalized.

Athex & ATHEXClear Members List

Member Name			Stock Market			Derivatives Market			ATHEXClear Member		
Address	Phone	Fax	Market Member	Remote Member	Market Maker	Proprietary	Market Maker	Agent	General Clearing	Direct Clearing	Non Clearing
A. SARRIS SECURITIES S.A.			✓								
6, DRAGATSANIOU STR. ATHINA	(210)-3367700	(210)-3312324									
AGRICULTURAL BANK OF GREECE S.A.							✓			✓	
, 23 PANEPISTIMIOU ATHINA	(210)-3298400	(210)-3298322									
ALPHA FINANCE INVESTMENT SERVICES S.A.			✓		✓		✓			✓	
5, MERLIN STR. ATHINA	(210)-3677400	(210)-3311193									
ALPHA BANK A.E.						✓			✓		
40, STADIOU STR ATHINA	(210)-3265546	(210)-3265811									
	(210)-3260000	(210)-3264116									
ARGUS STOCKBROKERS LTD			✓	✓							
12-14, KENNEDY AVE. S. 303 NICOSIA	(+35722)-22717000	(+35722)-22717070									
ATHENAIKI BROKERAGE FIRM S.A.			✓								
33, STADIOU STR. ATHINA	(210)-3254764	(210)-3254767									
ATLANTIC SECURITIES LIMITED			✓	✓							
37, PRODROMOU STR. NICOSIA	(+35722)-445400	(+35722)-661914									
ATLAS SECURITIES S.A			✓			✓					✓
14 - 16, VERVENON STR.& 125 MICHALAKOPOULOU STR. ATHINA	(210)-3363300	(210)-3238925									
ATTICA BANK S.A.									✓		
23, OMIROU STR. ATHINA	(210)-3669000	(210)-3669410									
54, AKADIMIAS STR. ATHINA	(210)-3390757	(210)-3646090									
AXIA VENTURES GROUP LTD			✓	✓							
10, G. KRANIDIOTI NICOSIA	+357 22 742000	+357 22 742001									
AXON SECURITIES S.A.			✓			✓					✓
48, STADIOU ATHINA	(210)-3363800	(210)-3243903									
BANK OF CYPRUS PUBLIC COMPANY LTD									✓		
170, ALEXANDRAS AVE ATHINA	(210)-6477708	(210)-6477709									
, 51,STASINOU (AG. PARASKEVI, STROVOLOS) NICOSIA	(0035722)-121883	(0035722)-336258									
BETA SECURITIES S.A.			✓		✓	✓	✓			✓	
, BRAILA & 29 ALEXANDRAS AVE ATHINA	(210)-6478900	(210)-6410139									
BNP PARIBAS SECURITIES SERVICES									✓		
94, VAS. SOFIAS AVE ATHINA	(210)-7468500	(210)-7468579									
CAPITAL SECURITIES S.A.			✓			✓					✓
58, MITROPOLEOS STR. ATHINA	(210)-3369700	(210)-3369820									
CFS SECURITIES & INVESTMENT SERVICES S.A.			✓		✓			✓		✓	
3, STADIOU STR. ATHINA	(210)-3360800	(210)-3311854									
CITIGROUP GLOBAL MARKET LTD			✓	✓							
, CITIGROUP CENTRE, CANADA SQUARE, CANARY WHART LONDON	002079864000	002079862266									
CO-OPERATIVE CENTRAL BANK LTD			✓	✓							
8, GRIGORI AFXENTIOU STR. NICOSIA	(+35722)-743300	(+35722)-672083									
CREDIT AGRICOLE CHEUVREUX S.A.				✓							
, 9 QUAI PAUL DOUMER PARIS	33 (0) 1 41 89 70 00										
CREDIT SUISSE SECURITIES (EUROPE) LIMITED			✓	✓							
, ONE CABOT SQUARE LONDON	+44 20 7888 8888	+44 20 7888 1600									
CYCLOS SECURITIES S.A.			✓		✓	✓				✓	
39, PANEPISTIMIOU STR. ATHINA	(210)-3364300	(210)-3239122									
D.A. TSEKOURAS SEC. S.A.			✓								
3, PESMAZOGLOU STR. ATHINA	(210)-3214406	(210)-3211997									
DEUTSCHE BANK A.G.			✓	✓							
70, THEODOR-HEUSS-ALLEE FRANKFURT	0049 69 910 00	0049 69 910 34 225									
DYNAMIC SECURITIES			✓					✓		✓	
6 - 10, CHAR. TRIKOUPi STR. ATHINA	(210)-3677700	(210)-3677777									
EL. PETROPOULAKIS SECURITIES S.A.			✓					✓			✓
9, ARISTIDOU STR. ATHINA	(210)-3213928	(210)-3216810									
EUROBANK EQUITIES S.A.			✓		✓		✓			✓	
10, FILELLINON STR. ATHINA	(210)-3720000	(210)-3720001									
EUROBANK ERGASIAS S.A.									✓		
8, OTHONOS STR. ATHINA	(210)-3337969	(210)-3245916									
	(210)-3337000	(210)-3233866									
EUROCORP SECURITIES S.A.			✓			✓				✓	
14, FILIKIS ETAIRIAS SQ. ATHINA	(210)-7263500	(210)-7263666									
EUOTRUST BROKERAGE S.A.			✓								
13-15, SOPHOCLEOUS STR. ATHINA	(210)-3363100	(210)-3238334									

Athex & ATHEXClear Members List

Member Name			Stock Market			Derivatives Market			ATHEXClear Member		
Address	Phone	Fax	Market Member	Remote Member	Market Maker	Proprietary	Market Maker	Agent	General Clearing	Direct Clearing	Non Clearing
EUROXX SECURITIES S.A.			✓			✓				✓	
7, PALAIOLOGOU STR. CHALANDRI	(210)-6879400	(210)-6879401									
G.A. PERVANAS SECURITIES & INVESTMENT SERVICES CO S.A.			✓			✓					✓
7 - 9, SOPHOCLEOUS STR. ATHINA	(210)-3251875	(210)-3210291									
GENERAL BANK OF GREECE S.A.									✓		
87-89, ERMOY ATHINA	(210)-6976072	(210)-6976079									
, 109-111, MESOGEION AVE. ATHINA	(210)-3288737	(210)-3288211									
GLOBAL CAPITAL SECURITIES AND FINANCIAL SERVICES LTD			✓	✓							
5, LEMESOU AVE. LEMESOS CYPRUS	(+35722)-710710	(+35722)-339332									
GUARDIAN TRUST SECURITIES S.A			✓		✓	✓					✓
15, FILELLINON STR. ATHINA	(210)-3220402	(210)-3220498									
HELLENIC AMERICAN SEC. S.A.			✓			✓					
6, EVRIPIDOU STR. ATHINA	(210)-3311100	(210)-3215968									
HELLENIC BANK (INVESTMENTS) LTD			✓	✓							
31, KYRIAKOY MATSI AVE. NICOSIA	(+35722)-500100	(+35722)-500110									
HSBC BANK PLC									✓		
109-111, MESOGION AVE ATHINA	(210)-6961507	(210)-6929310									
INDEX SECURITIES S.A.			✓								
6, DRAGATSANIOU STR. ATHINA	(210)-3213920	(210)-3213216									
INTERSEC S.A.						✓				✓	
80-88, SYGROU AVE ATHINA	(210)-9203000	(210)-9203052									
INVESTMENT BANK OF GREECE S.A.			✓		✓		✓		✓		
32, AIGEIALIAS MAROUSI	(210) 8173000	(210) 8173101									
24B, KIFISSIAS AVE MAROUSI	(210)-8171800	(210)-8171889									
J. CHR. MAVRIKIS SECURITIES S.A.			✓								
5, SOPHOCLEOUS STR. ATHINA	(210)-3213949	(210)-3217767									
KAPPA SECURITIES S.A.			✓			✓					✓
15, VALAORITOU STR. ATHINA	(210)-3610371	(210)-3641002									
KYPROU SECURITIES S.A.			✓		✓	✓					✓
26, HALKIDONOS & FIDIPPIDOY STR. ATHINA	(210)-8701000	(210)-8701049									
LAIKI FINANCIAL SERVICES LTD			✓	✓							
26, CLR HOUSE, VIROMOS AVE. NICOSIA	(+35722)-898600	(+35722)-680953									
LEON DEPOLAS SECURITIES S.A.			✓					✓			✓
1, CHR. LADA STR. ATHINA	(210)-3213286	(210)-3211618									
MAGNA TRUST SECURITIES S.A			✓					✓			✓
9, FIDIOU STR. ATHINA	(210)-3327503	(210)-3327599									
MEGA EQUITY SECURITIES & FINANCIAL SERVICES LTD			✓	✓							
42-44, GRIBA DIGENI AV. NICOSIA	(+35722)-711711	(+35722)-711811									
MERIT SECURITIES S.A			✓		✓	✓				✓	
38, VAS. KONSTANTINOY STR. ATHINA	(210)-3671800	(210)-3671830									
MERRILL LYNCH			✓	✓							
2, KING EDWARD STREET LONDON	(+4420)-79952000	(+4420)-79954525									
METOCHIKI SECURITIES S.A.			✓								
3, G. GENNADIOY STR. ATHINA	(210)-3306700	(210)-3306709									
MIDAS BROKERAGE S.A.			✓								
5, SOPHOCLEOUS STR. ATHINA	(210)-3253203	(210)-3253205									
N. CHRYSOCHOIDIS STOCK BROKERAGE I.S.S.A.			✓					✓		✓	
7 - 9, SOPHOCLEOUS STR. ATHINA	(210)-3213913	(210)-3216115									
N. SARROS SECURITIES S.A.						✓					
7-9, SOPHOCLEOUS STR. ATHINA	(210)-3705600	(210)-3219992									
NATIONAL BANK OF GREECE / FORMER PROBANK			✓								
10, AMERIKIS STR. ATHINA	(210)-3392631	(210)-3392646									
NATIONAL BANK OF GREECE S.A.							✓		✓		
86, AILOU STR. ATHINA	(210)-3341000	(210)-3228187									
68, AKADIMIAS STR. ATHINA	(210)-3328817	(210)-3328678									
NBG SECURITIES S.A.			✓		✓		✓				✓
68, AKADIMIAS STR. ATHINA	(210)-3328500	(210)-3328565									
NEW PROTON BANK S.A.						✓				✓	
20, ESLIN & AMALIADOS ATHINA	210 6970000	210 6970111									
NUNTIOUS SECURITIES S.A			✓					✓			✓
6, DRAGATSANIOU STR. ATHINA	(210)-3350599	(210)-3254846									
ORANGE PARTNERS SECURITIES S.A			✓								
5, TZORTZ STR. ATHINA	(210)-3300009	(210)-3305240									

Athex & ATHEXClear Members List

Member Name			Stock Market			Derivatives Market			ATHEXClear Member		
Address	Phone	Fax	Market Member	Remote Member	Market Maker	Proprietary	Market Maker	Agent	General Clearing	Direct Clearing	Non Clearing
PANTELAKIS SEC. S.A.			✓			✓					✓
109-111, MESOGION AVE. ATHINA	(210)-6965000	(210)-6929550									
PEGASUS BROKERAGE FIRM S.A			✓			✓					
17, VALAORITOU STR. ATHINA	(210)-3670700	(210)-3670760									
PIRAEUS BANK S.A.								✓	✓		
4, AMERIKIS STR ATHINA	(210)-3335918	(210)-3254207									
4, AMERIKIS STR. ATHINA	(210)-3335000	(210)-3335079									
PIRAEUS SECURITIES S.A.			✓				✓			✓	
10, STADIOU STR. ATHINA	(210)-3354100	(210)-3233814									
PRELIUM SECURITIES & INVESTMENT SERVICES S.A.			✓			✓					✓
, KIFISSIAS AVE & 1 DAVAKI STR ATHINA	(210)-3677000	(210)-6920403									
PROCHOICE SECURITIES LTD			✓	✓							
57, SPYROU KYPRIANOU NICOSIA	+357-24-661192	+357-24-662464									
SHARELINK SECURITIES & FINANCIAL SERVICES LTD			✓	✓							
6, ELLINAS HOUSE, THEOTOKI STR. NICOSIA	(+35722)-554200	(+35722)-750852									
SOCIETE GENERALE S.A.			✓	✓		✓					
17, COURS VALMY PUTEAUX - LA DEFENSE PARIS	(+33) 142134754	(+33) 142135697									
240-242, KIFISIAS AVE ATHINA	(210)-6790161	(210)-6728828									
SOLIDUS SECURITIES S.A			✓			✓				✓	
64, LOUIZIS RIANKOUR STR. ATHINA	(210)-6925500	(210)-6985421									
SOTIRIADIS SECURITIES S.A.			✓								
7, VALAORITOU STR. ATHINA	(210)-3636943	(210)-3601943									
ST. EM. LAVRENTAKIS SECURITIES S.A.			✓			✓					✓
7 - 9, SOPHOCLEOUS STR. ATHINA	(210)-3213336	(210)-3246572									
THE CYPRUS INVESTMENT AND SECURITIES CORPORATION LIMITED (CISCO)			✓	✓							
4, EVROU STR. (EUROLIFE HOUSE) NICOSIA	(+35722)-881800	(+35722)-881801									
UBS LIMITED			✓	✓							
1, FINSBURY AVENUE LONDON	(+4420)-79013333	(+4420)-79012345									
Z.G. PORTALAKIS INVESTMENT SERVICES S.A.			✓								
8, PESMAZOGLOU STR. ATHINA	(210)-3214830	(210)-3212024									
KARAMANOF SECURITIES & INV. SERVICES S.A.			✓					✓		✓	
2, SQ. ST THEODORON ATHINA	(210)-3212947	(210)-3217088									

List of Stocks under Market Making operations

Securities	Stock Category	
	Start Market Making	End Market Making
CYPRUS POPULAR BANK (CR)	Under Suspension	
PIRAEUS SECURITIES S.A.	02/02/2013	01/01/2400
VIOHALCO (CB)	Under Suspension	
ALPHA FINANCE INVESTMENT SERVICES S.A.	11/02/2013	01/01/2400
EUROBANK EQUITIES S.A.	20/01/2013	01/01/2400
MERIT SECURITIES S.A.	13/12/2012	01/01/2400
ALPHA BANK (CR)	Main Market	
EUROBANK EQUITIES S.A.	24/10/2012	01/01/2400
INVESTMENT BANK OF GREECE S.A.	08/01/2013	01/01/2400
MERIT SECURITIES S.A.	03/09/2013	01/01/2400
NBG SECURITIES S.A.	15/01/2013	01/01/2400
PIRAEUS SECURITIES S.A.	28/05/2013	01/01/2400
ALUMIL (CR)	Main Market	
BETA SECURITIES S.A.	18/07/2013	01/01/2400
BYTE COMPUTER SA (CR)	Main Market	
MERIT SECURITIES S.A.	04/08/2013	01/01/2400
CC HBC AG (CR)	Main Market	
EUROBANK EQUITIES S.A.	23/10/2013	01/01/2400
NBG SECURITIES S.A.	29/04/2013	01/01/2400
ELLAKTOR (CR)	Main Market	
EUROBANK EQUITIES S.A.	01/06/2013	01/01/2400
INVESTMENT BANK OF GREECE S.A.	02/01/2013	01/01/2400
NBG SECURITIES S.A.	25/06/2013	01/01/2400
ELTON SA (CR)	Main Market	
BETA SECURITIES S.A.	03/09/2013	01/01/2400
EUROBANK ERGASIAS (CR)	Main Market	
ALPHA FINANCE INVESTMENT SERVICES S.A.	08/01/2013	01/01/2400
EUROBANK EQUITIES S.A.	01/06/2013	01/01/2400
INVESTMENT BANK OF GREECE S.A.	08/01/2013	01/01/2400
PIRAEUS SECURITIES S.A.	28/09/2013	01/01/2400
FOLLI FOLLIE (CR)	Main Market	
NBG SECURITIES S.A.	17/02/2014	01/01/2400
FRIGOGLASS SA (CR)	Main Market	
EUROBANK EQUITIES S.A.	23/08/2013	01/01/2400
GEK TERNA (CR)	Main Market	
INVESTMENT BANK OF GREECE S.A.	02/01/2013	01/01/2400
GR. SARANTIS SA (CR)	Main Market	
BETA SECURITIES S.A.	14/05/2013	01/01/2400
HELLENIC EXCHANGES-A.S.E. (CR)	Main Market	
EUROBANK EQUITIES S.A.	01/06/2013	01/01/2400
INVESTMENT BANK OF GREECE S.A.	02/01/2013	01/01/2400
NBG SECURITIES S.A.	25/06/2013	01/01/2400
INTRACOM CONSTR. (CR)	Main Market	
MERIT SECURITIES S.A.	27/12/2012	01/01/2400
INTRALOT (CR)	Main Market	
EUROBANK EQUITIES S.A.	01/06/2013	01/01/2400
INVESTMENT BANK OF GREECE S.A.	02/01/2013	01/01/2400
PIRAEUS SECURITIES S.A.	28/09/2013	01/01/2400
MARFIN INVESTMENT GROUP (CR)	Main Market	
PIRAEUS SECURITIES S.A.	02/02/2013	01/01/2400
MLS MULTIMEDIA SA (CR)	Main Market	
BETA SECURITIES S.A.	18/07/2013	01/01/2400
MOTOR OIL (CR)	Main Market	
EUROBANK EQUITIES S.A.	23/10/2012	01/01/2400
NBG SECURITIES S.A.	17/02/2014	01/01/2400
MYTILINEOS HOLDINGS (CR)	Main Market	
INVESTMENT BANK OF GREECE S.A.	02/01/2013	01/01/2400
NBG SECURITIES S.A.	25/06/2013	01/01/2400
NATIONAL BANK (CR)	Main Market	
ALPHA FINANCE INVESTMENT SERVICES S.A.	08/01/2013	01/01/2400
EUROBANK EQUITIES S.A.	24/10/2012	01/01/2400
INVESTMENT BANK OF GREECE S.A.	08/01/2013	01/01/2400
MERIT SECURITIES S.A.	03/09/2013	01/01/2400
NBG SECURITIES S.A.	28/02/2013	01/01/2400
PIRAEUS SECURITIES S.A.	08/09/2013	01/01/2400

List of Stocks under Market Making operations

Securities	Stock Category	
	Start Market Making	End Market Making
OPAP (CR)	Main Market	
ALPHA FINANCE INVESTMENT SERVICES S.A.	08/01/2013	01/01/2400
EUROBANK EQUITIES S.A.	24/10/2012	01/01/2400
INVESTMENT BANK OF GREECE S.A.	08/01/2013	01/01/2400
NBG SECURITIES S.A.	15/01/2013	01/01/2400
OTE (CR)	Main Market	
ALPHA FINANCE INVESTMENT SERVICES S.A.	08/01/2013	01/01/2400
EUROBANK EQUITIES S.A.	24/10/2012	01/01/2400
INVESTMENT BANK OF GREECE S.A.	08/01/2013	01/01/2400
NBG SECURITIES S.A.	01/12/2012	01/01/2400
PIRAEUS SECURITIES S.A.	08/09/2013	01/01/2400
PAPOUTSANIS (CR)	Main Market	
BETA SECURITIES S.A.	25/11/2013	01/01/2400
PETROPOULOS PETROS (CR)	Main Market	
BETA SECURITIES S.A.	28/05/2013	01/01/2400
PIRAEUS BANK (CR)	Main Market	
EUROBANK EQUITIES S.A.	23/10/2012	01/01/2400
INVESTMENT BANK OF GREECE S.A.	08/01/2013	01/01/2400
MERIT SECURITIES S.A.	16/09/2013	01/01/2400
NBG SECURITIES S.A.	02/06/2013	01/01/2400
PIRAEUS SECURITIES S.A.	16/02/2013	01/01/2400
PPC (CR)	Main Market	
ALPHA FINANCE INVESTMENT SERVICES S.A.	08/01/2013	01/01/2400
EUROBANK EQUITIES S.A.	23/10/2012	01/01/2400
INVESTMENT BANK OF GREECE S.A.	08/01/2013	01/01/2400
NBG SECURITIES S.A.	26/03/2013	01/01/2400
PIRAEUS SECURITIES S.A.	28/09/2013	01/01/2400
S.KANAKIS SA (CR)	Main Market	
BETA SECURITIES S.A.	01/10/2013	01/01/2400
TITAN CEMENT (CR)	Main Market	
EUROBANK EQUITIES S.A.	23/10/2012	01/01/2400
NBG SECURITIES S.A.	17/02/2014	01/01/2400
VIOHALCO SA/NV (CB)	Main Market	
ALPHA FINANCE INVESTMENT SERVICES S.A.	17/02/2014	01/01/2400
MERIT SECURITIES S.A.	17/03/2014	01/01/2400

Underlying Asset				Derivatives Market																		
Price max	Price min	Closing price	change	Delivery Month	Open price	Price max	Price min	Last price	Closing price	Last Bid	Last Ask	Settlement price	change	Life high	Life low	Trades	Volume	change	Value	change	Open Interest	change
FTSE/Athex Large Cap				(Trade Unit: 1 Index Point x 5€, Cash Settlement)																		
414.82	402.12	402.51	-2.95%	April 2014	415.00	416.00	402.00	402.25	402.75	9@402.25	91@403.00	402.75	-3.07%	447.00	370.50	807	9,647	56.94%	19,652,933.75	53.12%	48,399	-4.60%
				May 2014	413.00	417.00	403.25	403.75	403.75	29@403.00	45@403.75	403.75	-3.00%	446.00	403.25	183	1,884	83.09%	3,871,311.25	79.85%	3,221	39.50%
				June 2014	411.00	411.00	403.00	404.50	403.75	5@402.00	2@404.50	403.75	-3.06%	448.75	392.75	20	127	164.58%	258,360.00	158.14%	5,154	1.64%
				September 2014	407.75	407.75	407.75	407.75	406.00	---	---	406.00	-3.96%	407.75	390.00	1	1	---	2,038.75	---	2	100.00%
				December 2014	---	---	---	---	---	---	---	---	---	---	---	---	---	---	---	---	---	---
				March 2015	---	---	---	---	---	---	---	---	---	---	---	---	---	---	---	---	---	---

Underlying Asset				Derivatives Market																		
Price max	Price min	Closing price	change	Delivery Month	Open price	Price max	Price min	Last price	Closing price	Last Bid	Last Ask	Settlement price	change	Life high	Life low	Trades	Volume	change	Value	change	Open Interest	change
(Contract Size: 100 Securities, Physical Delivery)																						
0.730	0.701	0.701	-4.37%	June 2014	0.718	0.718	0.694	0.696	0.696	25@0.696	539@0.698	0.696	-2.66%	0.734	0.561	107	2,438	17.49%	170,433.60	14.91%	40,899	0.19%
				September 2014	---	---	---	---	0.700	---	539@0.718	0.700	-2.64%	0.726	0.672	---	---	---	---	---	750	0.00%
				December 2014	---	---	---	---	0.710	---	---	0.710	-2.61%	0.740	0.738	---	---	---	---	---	750	0.00%
				March 2015	---	---	---	---	---	---	---	---	---	---	---	---	---	---	---	---	---	---
(Contract Size: 100 Securities, Physical Delivery)																						
18.05	17.80	17.85	-1.65%	June 2014	18.09	18.09	17.80	17.84	17.68	2@17.52	3@17.84	17.68	-1.67%	18.79	17.30	19	72	1.41%	129,109.00	0.66%	932	3.79%
				September 2014	---	---	---	---	---	---	---	---	---	---	---	---	---	---	---	---	---	---
				December 2014	---	---	---	---	---	---	---	---	---	---	---	---	---	---	---	---	---	---
				March 2015	---	---	---	---	---	---	---	---	---	---	---	---	---	---	---	---	---	---
(Contract Size: 100 Securities, Physical Delivery)																						
1.95	1.86	1.88	-2.08%	June 2014	1.90	1.90	1.80	1.89	1.89	5@1.82	3@1.88	1.89	-2.07%	2.23	1.80	7	36	---	6,661.00	---	833	-1.07%
				September 2014	---	---	---	---	---	---	---	---	---	---	---	---	---	---	---	---	---	---
				December 2014	---	---	---	---	---	---	---	---	---	---	---	---	---	---	---	---	---	---
				March 2015	---	---	---	---	---	---	---	---	---	---	---	---	---	---	---	---	---	---
(Contract Size: 100 Securities, Physical Delivery)																						
3.92	3.85	3.91	-0.26%	June 2014	3.93	3.93	3.83	3.87	3.88	9@3.86	15@3.89	3.88	-0.51%	4.18	3.83	87	561	246.30%	218,288.00	244.26%	2,136	-12.96%
				September 2014	---	---	---	---	---	---	---	---	---	---	---	---	---	---	---	---	---	---
				December 2014	---	---	---	---	---	---	---	---	---	---	---	---	---	---	---	---	---	---
				March 2015	---	---	---	---	---	---	---	---	---	---	---	---	---	---	---	---	---	---
(Contract Size: 100 Securities, Physical Delivery)																						
0.457	0.430	0.433	-4.20%	June 2014	0.436	0.442	0.418	0.424	0.425	11@0.424	50@0.429	0.425	-5.13%	0.802	0.385	48	699	2696.00%	30,069.20	2533.03%	2,483	0.69%
				September 2014	---	---	---	---	---	15@0.361	50@0.439	---	---	---	---	---	---	---	---	---	---	---
				December 2014	---	---	---	---	---	---	---	---	---	---	---	---	---	---	---	---	---	---
				March 2015	---	---	---	---	---	---	---	---	---	---	---	---	---	---	---	---	---	---
(Contract Size: 100 Securities, Physical Delivery)																						
8.79	8.40	8.56	-0.23%	June 2014	8.56	8.68	8.42	8.43	8.74	2@8.39	1@8.51	8.74	-0.23%	9.37	8.31	26	67	219.05%	57,153.00	218.95%	87	-19.44%
				September 2014	---	---	---	---	---	---	---	---	---	---	---	---	---	---	---	---	---	---
				December 2014	---	---	---	---	---	---	---	---	---	---	---	---	---	---	---	---	---	---
				March 2015	---	---	---	---	---	---	---	---	---	---	---	---	---	---	---	---	---	---
(Contract Size: 100 Securities, Physical Delivery)																						
8.93	8.63	8.88	-0.89%	June 2014	8.63	8.63	8.56	8.56	8.58	3@8.24	1@8.51	8.58	-1.04%	9.21	7.98	19	69	-40.52%	59,283.00	-41.15%	611	-1.29%
				September 2014	---	---	---	---	---	---	---	---	---	---	---	---	---	---	---	---	---	---
				December 2014	---	---	---	---	---	---	---	---	---	---	---	---	---	---	---	---	---	---
				March 2015	---	---	---	---	---	---	---	---	---	---	---	---	---	---	---	---	---	---
(Contract Size: 100 Securities, Physical Delivery)																						
25.12	24.04	24.80	-2.13%	June 2014	25.31	25.31	24.31	24.50	24.63	1@24.50	1@24.86	24.63	-2.15%	27.71	24.17	10	16	23.08%	39,554.00	21.23%	173	-0.57%
				September 2014	---	---	---	---	---	---	---	---	---	---	---	---	---	---	---	---	---	---
				December 2014	---	---	---	---	---	---	---	---	---	---	---	---	---	---	---	---	---	---
				March 2015	---	---	---	---	---	---	---	---	---	---	---	---	---	---	---	---	---	---

Underlying Asset				Derivatives Market																		
Price max	Price min	Closing price	change	Delivery Month	Open price	Price max	Price min	Last price	Closing price	Last Bid	Last Ask	Settlement price	change	Life high	Life low	Trades	Volume	change	Value	change	Open Interest	change
FRIGOGLASS SA (CR)				(Contract Size: 100 Securities, Physical Delivery)																		
4.49	4.35	4.38	-0.68%	June 2014	4.44	4.48	4.39	4.39	4.39	1@4.30	1@4.36	4.39	-0.68%	5.46	4.39	23	59	11.32%	26,097.00	8.86%	1,492	0.13%
				September 2014	---	---	---	---	---	---	---	---	---	---	---	---	---	---	---	---	---	---
				December 2014	---	---	---	---	---	---	---	---	---	---	---	---	---	---	---	---	---	---
				March 2015	---	---	---	---	---	---	---	---	---	---	---	---	---	---	---	---	---	---
GEK TERNA (CR)				(Contract Size: 100 Securities, Physical Delivery)																		
3.80	3.58	3.63	-2.42%	June 2014	3.72	3.80	3.61	3.61	3.67	6@3.61	3@3.62	3.67	-3.17%	4.23	3.17	90	662	635.56%	243,513.00	610.63%	15,601	-0.88%
				September 2014	3.80	3.95	3.71	3.77	3.93	---	3@3.68	3.93	-0.51%	4.24	3.71	4	24	-56.36%	9,219.00	-56.41%	14,473	0.07%
				December 2014	---	---	---	---	---	---	---	---	---	---	---	---	---	---	---	---	---	---
				March 2015	---	---	---	---	---	---	---	---	---	---	---	---	---	---	---	---	---	---
HELLENIC EXCHANGES-A.S.E. (CR)				(Contract Size: 100 Securities, Physical Delivery)																		
8.98	8.35	8.41	-5.51%	June 2014	8.90	8.93	8.40	8.47	8.43	4@8.47	1@8.53	8.43	-5.49%	9.46	7.12	77	278	234.94%	239,222.00	220.10%	3,107	0.49%
				September 2014	---	---	---	---	8.29	---	---	8.29	-5.47%	7.90	6.95	---	---	---	---	---	---	---
				December 2014	---	---	---	---	---	---	---	---	---	---	---	---	---	---	---	---	---	---
				March 2015	---	---	---	---	---	---	---	---	---	---	---	---	---	---	---	---	---	---
HELLENIC PETROLEUM (CR)				(Contract Size: 100 Securities, Physical Delivery)																		
6.79	6.57	6.62	-1.34%	June 2014	6.76	6.80	6.57	6.64	6.61	2@6.63	2@6.69	6.61	-1.78%	9.58	6.57	148	885	676.32%	588,582.00	663.20%	6,012	0.45%
				September 2014	---	---	---	---	---	---	---	---	---	---	---	---	---	---	---	---	---	---
				December 2014	---	---	---	---	---	---	---	---	---	---	---	---	---	---	---	---	---	---
				March 2015	---	---	---	---	---	---	---	---	---	---	---	---	---	---	---	---	---	---
INTRALOT (CR)				(Contract Size: 100 Securities, Physical Delivery)																		
2.24	2.12	2.16	-3.14%	June 2014	2.17	2.22	2.13	2.14	2.14	200@2.13	15@2.18	2.14	-2.73%	2.53	2.13	44	547	1115.56%	118,140.00	1084.60%	4,182	0.00%
				September 2014	---	---	---	---	---	---	---	---	---	---	---	---	---	---	---	---	---	---
				December 2014	---	---	---	---	---	---	---	---	---	---	---	---	---	---	---	---	---	---
				March 2015	---	---	---	---	---	---	---	---	---	---	---	---	---	---	---	---	---	---
JUMBO SA (CR)				(Contract Size: 100 Securities, Physical Delivery)																		
12.29	11.72	11.90	-2.46%	June 2014	12.18	12.24	11.81	11.85	11.94	5@11.81	1@12.04	11.94	-2.45%	14.22	11.81	13	54	-37.21%	64,937.00	-38.08%	673	6.83%
				September 2014	---	---	---	---	---	---	---	---	---	---	---	---	---	---	---	---	---	---
				December 2014	---	---	---	---	---	---	---	---	---	---	---	---	---	---	---	---	---	---
				March 2015	---	---	---	---	---	---	---	---	---	---	---	---	---	---	---	---	---	---
MARFIN INVESTMENT GROUP (CR)				(Contract Size: 100 Securities, Physical Delivery)																		
0.572	0.547	0.560	1.27%	June 2014	0.547	0.573	0.542	0.569	0.564	65@0.565	10@0.573	0.564	2.36%	0.573	0.443	122	3,007	228.28%	170,049.10	235.08%	27,090	-1.13%
				September 2014	---	---	---	---	---	---	---	---	---	---	---	---	---	---	---	---	---	---
				December 2014	---	---	---	---	---	---	---	---	---	---	---	---	---	---	---	---	---	---
				March 2015	---	---	---	---	---	---	---	---	---	---	---	---	---	---	---	---	---	---
METKA (CR)				(Contract Size: 100 Securities, Physical Delivery)																		
12.82	12.28	12.30	-2.54%	June 2014	12.62	12.65	12.21	12.21	12.35	1@12.21	1@12.53	12.35	-2.53%	14.12	11.41	21	60	-14.29%	74,434.00	-17.30%	998	-0.30%
				September 2014	---	---	---	---	12.47	---	---	12.47	-2.50%	11.68	11.41	---	---	---	---	---	---	---
				December 2014	---	---	---	---	---	---	---	---	---	---	---	---	---	---	---	---	---	---
				March 2015	---	---	---	---	---	---	---	---	---	---	---	---	---	---	---	---	---	---

Underlying Asset				Derivatives Market																		
Price max	Price min	Closing price	change	Delivery Month	Open price	Price max	Price min	Last price	Closing price	Last Bid	Last Ask	Settlement price	change	Life high	Life low	Trades	Volume	change	Value	change	Open Interest	change
MOTOR OIL (CR)				(Contract Size: 100 Securities, Physical Delivery)																		
9.04	8.81	8.95	0.56%	June 2014	8.94	9.15	8.94	9.15	8.91	1@8.87	2@9.14	8.91	0.56%	10.31	8.59	24	50	25.00%	44,867.00	23.89%	577	-3.51%
				September 2014	---	---	---	---	---	---	---	---	---	---	---	---	---	---	---	---	---	---
				December 2014	---	---	---	---	---	---	---	---	---	---	---	---	---	---	---	---	---	---
				March 2015	---	---	---	---	---	---	---	---	---	---	---	---	---	---	---	---	---	---
MYTILINEOS HOLDINGS (CR)				(Contract Size: 100 Securities, Physical Delivery)																		
6.85	6.76	6.80	0.00%	June 2014	6.80	6.85	6.77	6.78	6.82	16@6.78	2@6.79	6.82	0.29%	7.32	5.32	106	620	16.10%	421,442.00	15.78%	10,495	-1.60%
				September 2014	---	---	---	---	6.82	---	2@6.87	6.82	0.29%	7.31	5.86	---	---	---	---	---	637	0.00%
				December 2014	---	---	---	---	7.04	---	---	7.04	0.28%	7.16	7.16	---	---	---	---	---	1,400	0.00%
				March 2015	---	---	---	---	---	---	---	---	---	---	---	---	---	---	---	---	---	---
NATIONAL BANK (CR)				(Contract Size: 100 Securities, Physical Delivery)																		
3.93	3.71	3.71	-7.25%	June 2014	3.92	3.92	3.67	3.69	3.69	6@3.66	25@3.68	3.69	-7.29%	4.50	3.21	226	3,782	298.11%	1,420,264.00	274.75%	8,359	-1.80%
				September 2014	---	---	---	---	---	---	25@3.72	---	---	---	---	---	---	---	---	---	---	---
				December 2014	---	---	---	---	---	---	---	---	---	---	---	---	---	---	---	---	---	---
				March 2015	---	---	---	---	---	---	---	---	---	---	---	---	---	---	---	---	---	---
OPAP (CR)				(Contract Size: 100 Securities, Physical Delivery)																		
11.17	10.50	10.50	-4.37%	June 2014	10.91	11.03	10.40	10.41	10.43	32@10.40	2@10.47	10.43	-4.75%	12.70	8.84	209	1,309	141.96%	1,395,909.00	131.05%	4,115	6.63%
				September 2014	---	---	---	---	10.41	---	---	10.41	-4.76%	12.74	9.63	---	---	---	---	---	150	0.00%
				December 2014	---	---	---	---	---	---	---	---	---	---	---	---	---	---	---	---	---	---
				March 2015	---	---	---	---	---	---	---	---	---	---	---	---	---	---	---	---	---	---
OTE (CR)				(Contract Size: 100 Securities, Physical Delivery)																		
11.30	10.82	10.90	-3.02%	June 2014	11.23	11.29	10.87	10.94	10.91	1@10.88	3@10.94	10.91	-2.33%	13.20	8.31	256	1,767	-12.31%	1,952,618.00	-14.26%	10,991	4.36%
				September 2014	---	---	---	---	10.86	1@10.72	3@11.04	10.86	-2.34%	12.84	11.10	---	---	-100.00%	---	-100.00%	173	0.00%
				December 2014	---	---	---	---	10.92	---	---	10.92	-2.33%	11.62	11.62	---	---	---	---	---	25	0.00%
				March 2015	---	---	---	---	---	---	---	---	---	---	---	---	---	---	---	---	---	---
P.P.A. S.A. (CR)				(Contract Size: 100 Securities, Physical Delivery)																		
18.36	17.65	17.89	-1.59%	June 2014	18.10	18.32	17.84	17.84	18.09	1@17.12	2@18.28	18.09	-1.58%	20.47	17.77	10	16	-67.35%	28,902.00	-67.72%	672	-0.30%
				September 2014	---	---	---	---	---	---	---	---	---	---	---	---	---	---	---	---	---	---
				December 2014	---	---	---	---	---	---	---	---	---	---	---	---	---	---	---	---	---	---
				March 2015	---	---	---	---	---	---	---	---	---	---	---	---	---	---	---	---	---	---
PIRAEUS BANK (CR)				(Contract Size: 100 Securities, Physical Delivery)																		
1.89	1.78	1.79	-3.76%	June 2014	1.76	1.79	1.74	1.74	1.75	268@1.74	75@1.75	1.75	-4.37%	2.06	1.33	174	6,985	-24.29%	1,234,318.00	-25.97%	25,232	6.17%
				September 2014	1.80	1.80	1.78	1.78	1.78	10@1.75	75@1.78	1.78	0.00%	2.06	1.54	2	18	---	3,230.00	---	168	12.00%
				December 2014	---	---	---	---	---	---	---	---	---	---	---	---	---	---	---	---	---	---
				March 2015	---	---	---	---	---	---	---	---	---	---	---	---	---	---	---	---	---	---
PPC (CR)				(Contract Size: 100 Securities, Physical Delivery)																		
11.63	11.07	11.07	-2.90%	June 2014	11.51	11.63	11.08	11.11	11.20	12@11.10	6@11.16	11.20	-2.52%	12.77	9.60	336	1,878	48.34%	2,135,358.00	44.60%	11,067	-1.72%
				September 2014	11.40	11.40	11.39	11.39	11.22	1@10.80	6@11.26	11.22	-2.52%	12.65	9.70	2	25	-66.67%	28,488.00	-67.99%	113	-18.12%
				December 2014	---	---	---	---	11.21	1@10.70	---	11.21	-2.52%	12.48	12.04	---	---	---	---	---	90	0.00%
				March 2015	---	---	---	---	---	---	---	---	---	---	---	---	---	---	---	---	---	---

Underlying Asset				Derivatives Market																		
Price max	Price min	Closing price	change	Delivery Month	Open price	Price max	Price min	Last price	Closing price	Last Bid	Last Ask	Settlement price	change	Life high	Life low	Trades	Volume	change	Value	change	Open Interest	change
SIDENOR (CR)				(Contract Size: 100 Securities, Physical Delivery)																		
2.00	1.92	1.95	-2.50%	June 2014	1.97	1.97	1.93	1.95	1.96	8@1.93	6@1.96	1.96	-2.49%	2.23	1.88	11	27	-28.95%	5,294.00	-28.46%	1,157	-1.78%
				September 2014	---	---	---	---	---	---	---	---	---	---	---	---	---	---	---	---	---	---
				December 2014	---	---	---	---	---	---	---	---	---	---	---	---	---	---	---	---	---	---
				March 2015	---	---	---	---	---	---	---	---	---	---	---	---	---	---	---	---	---	---
TERNA ENERGY (CR)				(Contract Size: 100 Securities, Physical Delivery)																		
4.36	4.16	4.17	-5.01%	June 2014	4.35	4.35	4.17	4.19	4.19	1@4.18	6@4.21	4.19	-4.56%	4.78	4.17	18	76	105.41%	32,189.00	97.73%	3,325	-0.75%
				September 2014	---	---	---	---	---	---	---	---	---	---	---	---	---	---	---	---	---	---
				December 2014	---	---	---	---	---	---	---	---	---	---	---	---	---	---	---	---	---	---
				March 2015	---	---	---	---	---	---	---	---	---	---	---	---	---	---	---	---	---	---
TITAN CEMENT (CR)				(Contract Size: 100 Securities, Physical Delivery)																		
23.10	22.80	22.88	-0.74%	June 2014	23.00	23.00	22.76	22.99	22.90	5@22.75	5@23.00	22.90	-2.05%	26.10	21.64	14	36	28.57%	82,421.00	26.26%	538	-5.61%
				September 2014	---	---	---	---	---	---	---	---	---	---	---	---	---	---	---	---	---	---
				December 2014	---	---	---	---	---	---	---	---	---	---	---	---	---	---	---	---	---	---
				March 2015	---	---	---	---	---	---	---	---	---	---	---	---	---	---	---	---	---	---
VIOHALCO SA/NV (CB)				(Contract Size: 100 Securities, Physical Delivery)																		
4.50	4.32	4.44	-1.33%	June 2014	4.51	4.51	4.43	4.43	4.49	1@4.35	10@4.45	4.49	-1.32%	5.22	4.42	3	13	-18.75%	5,799.00	-21.77%	633	0.80%
				September 2014	---	---	---	---	---	---	---	---	---	---	---	---	---	---	---	---	---	---
				December 2014	---	---	---	---	---	---	---	---	---	---	---	---	---	---	---	---	---	---
				March 2015	---	---	---	---	---	---	---	---	---	---	---	---	---	---	---	---	---	---

FTSE/Athex Large Cap

(Trade Unit: 1 Index Point x 5€ - Exoerise Style: European, Cash Settlement)

Call Options																	Put Options																			
April 2014								May 2014								Other Months		April 2014								May 2014								Other Months		
Exerise Price	Open price	Price max	Price min	Last price	Closing price	Volume	Open Interest	Open price	Price max	Price min	Last price	Closing price	Volume	Open Interest	Volume	Open Interest	Open price	Price max	Price min	Last price	Closing price	Volume	Open Interest	Open price	Price max	Price min	Last price	Closing price	Volume	Open Interest	Volume	Open Interest	Exerise Price			
215	-	-	-	-	-	-	-	-	-	-	-	-	-	-	-	-	-	-	-	-	-	-	-	-	-	-	-	-	-	-	-	215				
255	-	-	-	-	-	-	-	-	-	-	-	-	-	-	-	-	-	-	-	-	-	-	-	-	-	-	-	-	-	-	-	255				
260	-	-	-	-	-	-	-	-	-	-	-	-	-	-	-	-	-	-	-	-	-	-	-	-	-	-	-	-	-	-	-	260				
265	-	-	-	-	-	-	-	-	-	-	-	-	-	-	-	-	-	-	-	-	-	-	-	-	-	-	-	-	-	-	-	265				
270	-	-	-	-	-	-	-	-	-	-	-	-	-	-	-	-	-	-	-	-	-	-	-	-	-	-	-	-	-	-	-	270				
275	-	-	-	-	-	-	-	-	-	-	-	-	-	-	-	-	-	-	-	-	-	-	-	-	-	-	-	-	-	-	-	275				
280	-	-	-	-	-	-	-	-	-	-	-	-	-	-	-	-	-	-	-	-	-	-	-	-	-	-	-	-	-	-	-	280				
285	-	-	-	-	-	-	-	-	-	-	-	-	-	-	-	-	-	-	-	-	-	-	-	-	-	-	-	-	-	-	-	285				
290	-	-	-	-	-	-	-	-	-	-	-	-	-	-	-	-	-	-	-	-	-	-	-	-	-	-	-	-	-	-	-	290				
295	-	-	-	-	-	-	-	-	-	-	-	-	-	-	-	-	-	-	-	-	-	-	-	-	-	-	-	-	-	-	-	295				
300	-	-	-	-	-	-	-	-	-	-	-	-	-	-	-	-	-	-	-	-	-	-	-	-	-	-	-	-	-	-	-	300				
305	-	-	-	-	-	-	-	-	-	-	-	-	-	-	-	-	-	-	-	-	-	-	-	-	-	-	-	-	-	-	-	305				
310	-	-	-	-	-	-	-	-	-	-	-	-	-	-	-	-	-	-	-	-	-	-	-	-	-	-	-	-	-	-	-	310				
315	-	-	-	-	-	-	-	-	-	-	-	-	-	-	-	-	-	-	-	-	-	-	-	-	-	-	-	-	-	-	-	315				
320	-	-	-	-	-	-	-	-	-	-	-	-	-	-	-	-	-	-	-	-	-	-	-	-	-	-	-	-	-	-	-	320				
325	-	-	-	-	-	-	-	-	-	-	-	-	-	-	-	-	-	-	-	-	-	-	-	-	-	-	-	-	-	-	-	325				
330	-	-	-	-	-	-	-	-	-	-	-	-	-	-	-	-	-	-	-	-	-	-	-	-	-	-	-	-	-	-	-	330				
335	-	-	-	-	-	-	-	-	-	-	-	-	-	-	-	-	-	-	-	-	-	-	-	-	-	-	-	-	-	-	-	335				
340	-	-	-	-	-	-	-	-	-	-	-	-	-	-	-	-	-	-	-	-	-	-	-	-	-	-	-	-	-	-	-	340				
345	-	-	-	-	-	-	-	-	-	-	-	-	-	-	-	-	-	-	-	-	-	-	-	-	-	-	-	-	-	-	-	345				
350	-	-	-	-	52.50	-	6	-	-	-	-	-	-	-	-	-	-	-	-	-	-	-	-	-	-	-	-	-	-	-	-	350				
355	-	-	-	-	-	-	-	-	-	-	-	-	-	-	-	-	-	-	-	-	0.01	-	30	-	-	-	-	-	-	-	-	355				
360	-	-	-	-	-	-	-	-	-	-	-	-	-	-	-	-	-	-	-	-	0.02	-	50	-	-	-	-	-	-	-	-	360				
365	-	-	-	-	-	-	-	-	-	-	-	-	-	-	-	-	-	-	-	-	-	-	-	-	-	-	-	-	-	-	-	365				
370	-	-	-	-	-	-	-	-	-	-	-	-	-	-	-	-	-	-	-	-	0.16	-	20	-	-	-	-	-	-	-	-	370				
375	-	-	-	-	-	-	-	-	-	-	-	-	-	-	-	-	-	-	-	-	0.34	-	10	-	-	-	-	-	-	-	-	375				
380	-	-	-	-	-	-	-	-	-	-	-	-	-	-	-	-	7.00	7.00	7.00	7.00	7.40	-	-	7.00	7.00	7.00	7.00	7.40	1	21	-	380				
385	-	-	-	-	-	-	-	-	-	-	-	-	-	-	-	-	-	-	-	-	-	-	-	-	-	-	-	-	-	-	-	385				
390	-	-	-	-	-	-	-	-	-	-	-	-	-	-	-	-	-	-	-	-	2.30	-	1	-	-	-	-	10.75	-	50	-	390				
395	13.00	13.50	12.00	12.00	11.50	60	60	-	-	-	-	-	-	-	-	-	12.00	12.00	12.00	12.00	13.00	-	-	12.00	12.00	12.00	12.00	13.00	100	100	-	395				
400	11.00	11.00	9.00	9.00	8.40	21	29	-	-	-	-	19.00	-	55	-	-	5.30	6.00	5.30	6.00	5.60	37	63	15.00	15.00	15.00	15.00	15.25	100	275	-	400				
405	-	-	-	-	-	-	-	-	-	-	-	-	-	-	-	-	6.00	7.00	5.50	7.00	8.10	41	48	-	-	-	-	-	-	-	-	405				
410	9.10	11.00	7.50	7.50	4.00	76	109	18.50	18.50	18.50	18.50	14.25	11	11	-	-	8.40	11.00	8.00	11.00	11.25	147	761	19.50	19.50	19.50	19.50	20.50	30	40	-	410				
415	-	-	-	-	2.60	-	116	-	-	-	-	-	-	-	-	-	10.00	14.50	10.00	14.50	14.75	4	4	-	-	-	-	23.50	-	25	-	415				
420	3.00	3.40	1.50	1.50	1.60	205	226	-	-	-	-	10.50	-	40	-	-	14.00	16.75	14.00	16.75	18.75	40	114	24.50	24.50	24.50	24.50	26.75	1	958	-	420				
425	-	-	-	-	0.91	-	284	-	-	-	-	9.00	-	14	-	-	17.75	17.75	17.75	17.75	23.25	1	57	-	-	-	-	-	-	-	-	425				

FTSE/Athex Large Cap

(Trade Unit: 1 Index Point x 5€ - Exercise Style: European, Cash Settlement)

Call Options																Put Options																			
Exercise Price	April 2014							May 2014							Other Months		April 2014								May 2014								Other Months		Exercise Price
	Open price	Price max	Price min	Last price	Closing price	Volume	Open Interest	Open price	Price max	Price min	Last price	Closing price	Volume	Open Interest	Volume	Open Interest	Open price	Price max	Price min	Last price	Closing price	Volume	Open Interest	Open price	Price max	Price min	Last price	Closing price	Volume	Open Interest	Volume	Open Interest			
430	-	-	-	-	0.51	-	296	-	-	-	-	7.60	-	131			-	-	-	-	27.75	-	1	-	-	-	-	-	-	-	-		430		
435	-	-	-	-	0.27	-	198	-	-	-	-	6.40	-	36			24.00	30.00	24.00	30.00	32.50	99	35	-	-	-	-	-	-	-	-		435		
440	-	-	-	-	0.14	-	282	6.00	6.00	6.00	6.00	5.30	59	47			-	-	-	-	37.25	-	139	39.00	40.75	37.00	40.75	41.50	52	650			440		
445	-	-	-	-	0.07	-	390	-	-	-	-	4.40	-	126			-	-	-	-	-	-	-	-	-	-	-	-	-	-	-		445		
450	-	-	-	-	0.03	-	2,349	-	-	-	-	-	-	-			-	-	-	-	47.25	-	40	-	-	-	-	-	-	-	-		450		
455	-	-	-	-	0.01	-	460	-	-	-	-	3.00	-	20			-	-	-	-	-	-	-	-	-	-	-	-	-	-	-		455		
460	-	-	-	-	0.01	-	125	-	-	-	-	-	-	-			-	-	-	-	-	-	-	-	-	-	-	-	-	-	-		460		
465	-	-	-	-	-	-	-	-	-	-	-	-	-	-			-	-	-	-	-	-	-	-	-	-	-	-	-	-	-		465		
470	-	-	-	-	-	-	-	-	-	-	-	-	-	-			-	-	-	-	-	-	-	-	-	-	-	-	-	-	-		470		
475	-	-	-	-	-	-	-	-	-	-	-	-	-	-			-	-	-	-	-	-	-	-	-	-	-	-	-	-	-		475		
480	-	-	-	-	-	-	-	-	-	-	-	-	-	-			-	-	-	-	-	-	-	-	-	-	-	-	-	-	-		480		
Totals:						362	4,930							70	480	0	109							369	1,373							284	2,119	0	0
Nominal Transactions Value:						746,800.00								152,350.00		0.00								768,125.00								577,400.00		0.00	
Number of Trades:						21								8		0								38								10		0	

FTSE/Athex Large Cap

(Trade Unit: 1 Index Point x 5€ - Exoercise Style: European, Cash Settlement)

Call Options																	Put Options																	
Exerise Price	April 2014							May 2014							Other Months			April 2014							May 2014							Other Months		
	Open price	Price max	Price min	Last price	Closing price	Volume	Open Interest	Open price	Price max	Price min	Last price	Closing price	Volume	Open Interest	Volume	Open Interest	Open price	Price max	Price min	Last price	Closing price	Volume	Open Interest	Open price	Price max	Price min	Last price	Closing price	Volume	Open Interest	Volume	Open Interest	Exerise Price	

ALPHA BANK (CR)

(Contract Size: 100 Securities, Exercise Style: American, Physical Delivery)

Call Options																	Put Options																			
April 2014								May 2014								Other Months		April 2014								May 2014								Other Months		
Exerise Price	Open price	Price max	Price min	Last price	Closing price	Volume	Open Interest	Open price	Price max	Price min	Last price	Closing price	Volume	Open Interest	Volume	Open Interest	Open price	Price max	Price min	Last price	Closing price	Volume	Open Interest	Open price	Price max	Price min	Last price	Closing price	Volume	Open Interest	Volume	Open Interest	Exerise Price			
0.100						-	-							-	-								-	-					-	-			0.100			
0.200						-	-							-	-								-	-					-	-			0.200			
0.300						-	-							-	-								-	-					-	-			0.300			
0.400						-	-							-	-								-	-					-	-			0.400			
0.500						-	-							-	-								-	-					-	-			0.500			
0.550						-	-							-	-								-	-					-	-			0.550			
0.600						-	-							-	-								-	-					-	-			0.600			
0.650						-	-							-	-								-	-					-	-			0.650			
0.700						-	-							-	-								-	-					-	-			0.700			
0.750						-	-							-	-								-	-					-	-			0.750			
0.800						-	-							-	-								-	-					-	-			0.800			
0.850						-	-							-	-								-	-					-	-			0.850			
0.900						-	-							-	-								-	-					-	-			0.900			
1.00						-	-							-	-								-	-					-	-			1.00			
1.10						-	-							-	-								-	-					-	-			1.10			
Totals:						0	0						0	0	0	0						0	0					0	0	0	0					
Nominal Transactions Value:							0.00							0.00		0.00							0.00					0.00			0.00					
Number of Trades:						0							0		0							0.00					0			0		0				

NATIONAL BANK (CR)

(Contract Size: 100 Securities, Exercise Style: American, Physical Delivery)

Call Options																	Put Options																				
Exerise Price	April 2014							May 2014							Other Months		April 2014							May 2014							Other Months		Exerise Price				
	Open price	Price max	Price min	Last price	Closing price	Volume	Open Interest	Open price	Price max	Price min	Last price	Closing price	Volume	Open Interest	Volume	Open Interest	Open price	Price max	Price min	Last price	Closing price	Volume	Open Interest	Open price	Price max	Price min	Last price	Closing price	Volume	Open Interest	Volume	Open Interest					
1.80							-	-							-	-									-	-					1.80						
1.90							-	-							-	-									-	-					1.90						
2.00							-	-							-	-									-	-					2.00						
2.20							-	-							-	-									-	-					2.20						
2.40							-	-							-	-									-	-					2.40						
2.60							-	-							-	-									-	-					2.60						
2.80							-	-							-	-									-	-					2.80						
3.00							-	-							-	-									-	-					3.00						
3.10							-	-							-	-									-	-					3.10						
3.20							-	-							-	-									-	-					3.20						
3.30							-	-							-	-									-	-					3.30						
3.40							-	-							-	-									-	-					3.40						
3.50							-	-							-	-									-	-					3.50						
3.60							-	-							0.320	-	10									-	-					3.60					
3.70							-	-							-	-									-	-					3.70						
3.80							-	-							-	-									-	-					3.80						
3.90							-	-							-	-									-	-					3.90						
4.00							-	-							-	-									-	-					4.00						
4.40							-	-							-	-									-	-					4.40						
4.80							-	-							-	-									-	-					4.80						
5.20							-	-							-	-									-	-					5.20						
5.60							-	-							-	-									-	-					5.60						
Totals:							0	0								0	10	0	0								0	0								0	0
Nominal Transactions Value:							0.00									0.00		0.00									0.00									0.00	
Number of Trades:							0									0		0									0									0	

OPAP (CR)

(Contract Size: 100 Securities, Exercise Style: American, Physical Delivery)

Call Options																Put Options																	
April 2014								May 2014						Other Months		April 2014								May 2014						Other Months			
Exercise Price	Open price	Price max	Price min	Last price	Closing price	Volume	Open Interest	Open price	Price max	Price min	Last price	Closing price	Volume	Open Interest	Volume	Open Interest	Open price	Price max	Price min	Last price	Closing price	Volume	Open Interest	Open price	Price max	Price min	Last price	Closing price	Volume	Open Interest	Volume	Open Interest	Exercise Price
4.80					-	-						-	-									-	-					-	-			4.80	
5.20					-	-						-	-									-	-					-	-			5.20	
5.60					-	-						-	-									-	-					-	-			5.60	
6.00					-	-						-	-									-	-					-	-			6.00	
6.40					-	-						-	-									-	-					-	-			6.40	
6.80					-	-						-	-									-	-					-	-			6.80	
7.20					-	-						-	-									-	-					-	-			7.20	
7.60					-	-						-	-									-	-					-	-			7.60	
8.00					-	-						-	-									-	-					-	-			8.00	
8.40					-	-						-	-									-	-					-	-			8.40	
8.80					-	-						-	-									-	-					-	-			8.80	
9.20					-	-						-	-									-	-					-	-			9.20	
9.60					-	-						-	-									-	-					-	-			9.60	
10.00					-	-						-	-									-	-					-	-			10.00	
10.50					-	-						-	-									-	-					-	-			10.50	
11.00					-	-						-	-									-	-					-	-			11.00	
11.50					-	-						-	-									-	-					-	-			11.50	
12.00					-	-						-	-									-	-					-	-			12.00	
12.50					-	-						-	-									-	-					-	-			12.50	
13.00					-	-						-	-									-	-					-	-			13.00	
13.50					-	-						-	-									-	-					-	-			13.50	
14.00					-	-						-	-									-	-					-	-			14.00	
14.50					-	-						-	-									-	-					-	-			14.50	
15.00					-	-						-	-									-	-					-	-			15.00	
16.00					-	-						-	-									-	-					-	-			16.00	
Totals:						0	0						0	0	0	95							0	0					0	0	0	15	
Nominal Transactions Value:							0.00						0.00	0.00									0.00						0.00				
Number of Trades:						0							0	0									0.00					0			0		

OTE (CR)

(Contract Size: 100 Securities, Exercise Style: American, Physical Delivery)

Call Options																	Put Options																		
April 2014																	May 2014																		
Other Months																	Other Months																		
Exerise Price	Open price	Price max	Price min	Last price	Closing price	Volume	Open Interest	Open price	Price max	Price min	Last price	Closing price	Volume	Open Interest	Volume	Open Interest	Open price	Price max	Price min	Last price	Closing price	Volume	Open Interest	Open price	Price max	Price min	Last price	Closing price	Volume	Open Interest	Volume	Open Interest	Exerise Price		
4.00						-	-							-	-							-	-									4.00			
4.40						-	-							-	-							-	-									4.40			
4.80						-	-							-	-							-	-									4.80			
5.20						-	-							-	-							-	-									5.20			
5.60						-	-							-	-							-	-									5.60			
6.00						-	-							-	-							-	-									6.00			
6.40						-	-							-	-							-	-									6.40			
6.80						-	-							-	-							-	-									6.80			
7.20						-	-							-	-							-	-									7.20			
7.60						-	-							-	-							-	-									7.60			
8.00						-	-							-	-							-	-									8.00			
8.40						-	-							-	-							-	-									8.40			
8.80						-	-							-	-							-	-									8.80			
9.20						-	-							-	-							-	-									9.20			
9.60						-	-							-	-							-	-									9.60			
10.00						-	-							-	-							-	-									10.00			
11.00					0.240	-	20							-	-							0.335	-	30									11.00		
11.50						-	-							-	-							-	-									11.50			
12.00						-	-							-	-								-	-			1.26					12.00			
12.50						-	-							-	-							-	-									12.50			
13.00					0.001	-	150							-	-							-	-										13.00		
13.50						-	50							-	-							-	-										13.50		
14.00						-	50							-	-							-	-										14.00		
14.50						-	-							-	-							-	-									14.50			
15.00						-	-							-	-							-	-									15.00			
16.00						-	-							-	-							-	-									16.00			
17.00						-	-							-	-							-	-									17.00			
Totals:						0	270							0	0	0	0							0	30							0	50	0	0
Nominal Transactions Value:						0.00								0.00		0.00								0.00								0.00			
Number of Trades:						0								0		0								0								0			

PIRAEUS BANK (CR)

(Contract Size: 100 Securities, Exercise Style: American, Physical Delivery)

Call Options																	Put Options																															
April 2014							May 2014							Other Months			April 2014							May 2014							Other Months																	
Exercise Price	Open price	Price max	Price min	Last price	Closing price	Volume	Open Interest	Open price	Price max	Price min	Last price	Closing price	Volume	Open Interest	Volume	Open Interest	Open price	Price max	Price min	Last price	Closing price	Volume	Open Interest	Open price	Price max	Price min	Last price	Closing price	Volume	Open Interest	Volume	Open Interest	Exercise Price															
0.600							-	-							-	-									-	-							-	-			0.600											
0.700							-	-							-	-										-	-							-	-			0.700										
0.800							-	-							-	-										-	-							-	-			0.800										
0.900							-	-							-	-										-	-							-	-			0.900										
1.00							-	-							-	-										-	-							-	-			1.00										
1.10							-	-							-	-										-	-							-	-			1.10										
1.20							-	-							-	-										-	-							-	-			1.20										
1.30							-	-							-	-										-	-							-	-			1.30										
1.40							-	-							-	-										-	-							-	-			1.40										
1.50							-	-							-	-										-	-							-	-			1.50										
1.60							-	-							-	-										-	-							-	-			1.60										
1.70							-	-							-	-										-	-							-	-			1.70										
1.75							-	-							-	-										-	-							-	-			1.75										
1.80							-	-							-	-										-	-							-	-			1.80										
1.85							-	-							-	-										-	-							-	-			1.85										
1.90							-	-							-	-										-	-							-	-			1.90										
1.95							-	-							-	-										-	-							-	-			1.95										
2.00							-	-							-	-										-	-							-	-			2.00										
2.10							-	-							-	-										-	-							-	-			2.10										
2.20							-	-							-	-										-	-							-	-			2.20										
2.30							-	-							-	-										-	-							-	-			2.30										
2.40							-	-							-	-										-	-							-	-			2.40										
2.60							-	-							-	-										-	-							-	-			2.60										
2.80							-	-							-	-										-	-							-	-			2.80										
Totals:							0	0								0	0	0	0								0	0								0	0	0	0									
Nominal Transactions Value:							0.00								0.00								0.00								0.00								0.00								0.00	
Number of Trades:							0								0								0								0								0								0	

PPC (CR)

(Contract Size: 100 Securities, Exercise Style: American, Physical Delivery)

Call Options																	Put Options																								
April 2014								May 2014								Other Months	April 2014								May 2014								Other Months								
Exerise Price	Open price	Price max	Price min	Last price	Closing price	Volume	Open Interest	Open price	Price max	Price min	Last price	Closing price	Volume	Open Interest	Volume	Open Interest	Open price	Price max	Price min	Last price	Closing price	Volume	Open Interest	Open price	Price max	Price min	Last price	Closing price	Volume	Open Interest	Volume	Open Interest	Exerise Price								
4.80						-	-							-	-							-	-					-	-				4.80								
5.20						-	-							-	-							-	-					-	-				5.20								
5.60						-	-							-	-							-	-					-	-				5.60								
6.00						-	-							-	-							-	-					-	-				6.00								
6.40						-	-							-	-							-	-					-	-				6.40								
6.80						-	-							-	-							-	-					-	-				6.80								
7.20						-	-							-	-							-	-					-	-				7.20								
7.60						-	-							-	-							-	-					-	-				7.60								
8.00						-	-							-	-							-	-					-	-				8.00								
8.40						-	-							-	-							-	-					-	-				8.40								
8.80						-	-							-	-							-	-					-	-				8.80								
9.20					1.87	-	20							-	-							-	20					-	-				9.20								
9.60					1.48	-	10							-	-							0.002	-	10				-	-				9.60								
10.00					1.09	-	10							-	-							-	-					-	-				10.00								
10.50						-	-							-	-							-	-					-	-				10.50								
11.00					0.310	-	20							-	-							-	-					-	-				11.00								
11.50						-	-							-	-							-	-					-	-				11.50								
12.00						-	-							-	-							-	-					-	-				12.00								
12.50						-	-							-	-							-	-					-	-				12.50								
13.00						-	-							-	-							-	-					-	-				13.00								
13.50						-	-							-	-							-	-					-	-				13.50								
14.00						-	-							-	-							-	-					-	-				14.00								
14.50						-	-							-	-							-	-					-	-				14.50								
15.00						-	-							-	-							-	-					-	-				15.00								
16.00						-	-							-	-							-	-					-	-				16.00								
Totals:						0	60							0	0	0	30							0	30							0	0	0	30						
Nominal Transactions Value:						0.00								0.00		0.00								0.00								0.00		0.00							
Number of Trades:						0								0		0								0.00								0		0							

PPC (CR)

(Contract Size: 100 Securities, Excercise Style: American, Physical Delivery)

Call Options																Put Options																			
Exerise Price	April 2014							May 2014							Other Months		April 2014								May 2014								Other Months		Exerise Price
	Open price	Price max	Price min	Last price	Closing price	Volume	Open Interest	Open price	Price max	Price min	Last price	Closing price	Volume	Open Interest	Volume	Open Interest	Open price	Price max	Price min	Last price	Closing price	Volume	Open Interest	Open price	Price max	Price min	Last price	Closing price	Volume	Open Interest	Volume	Open Interest			

Securities	Type[4]	Stock Repo [1]						Stock Reverse Repo [2]								Repurchase Agreements [3]							
		Trans. price	chg.	Trades	Volume	Transactions Value	Open Interest[5]	Price max	Price mii	Last price	Last Ask	Trades	Volume	Transactions Value	Open Interest[5]	Price max	Price min	Last price	Last Ask	Trades	Volume	Transactions Value	Open Interest[5]
AEGEAN AIRLINES (CR)	SR RA	100.00	---	---	---	---	88	---	---	---	44@3%	---	---	---	---	---	---	---	---	---	---	---	---
ALPHA BANK (CR)	SR RA	100.10	0.01	2	222	15,562.2	112,884	10.00%	10.00%	10.00%	---	1	3,385	237,288.5	85,129	6.00%	6.00%	6.00%	---	1	223	15,632.3	31,393
ALPHA ETF FTSE Athex Large Cap	SR RA	100.00	---	---	---	---	---	---	---	---	---	---	---	---	---	---	---	---	---	---	---	2,514	
ALUMIL (CR)	RA	---	---	---	---	---	---	---	---	---	---	---	---	---	---	---	---	---	---	---	---	---	
ATHENS MEDICAL CENTER SA (CR)	SR RA	100.00	---	1	24	2,088.0	434	---	---	---	205@3%	---	---	---	---	---	---	---	---	---	---	---	
ATTICA BANK S.A. (CR)	SR RA	100.00	---	---	---	---	3,180	---	---	---	2544@10%	---	---	---	---	---	---	---	---	---	---	---	
AUTOHELLAS SA (CR)	SR RA	100.00	---	---	---	---	16	---	---	---	6@3%	---	---	---	---	---	---	---	---	---	---	---	
BIOKARPET S.A.(CR)	RA	---	---	---	---	---	---	---	---	---	---	---	---	---	---	---	---	---	---	---	---	---	
CC HBC AG (CR)	SR RA	100.01	---	---	---	---	1,169	---	---	---	584@3%	---	---	---	---	---	---	---	---	---	---	---	
CENTRIC HOLDINGS (CR)	SR RA	100.00	---	---	---	---	200	---	---	---	144@5.6%	---	---	---	---	---	---	---	---	---	---	---	
CORINTH PIPEWORKS SA (CR)	SR RA	100.00	---	---	---	---	160	---	---	---	73@3%	---	---	---	7	---	---	---	---	---	---	---	
CRETE PLASTICS SA (CR)	SR RA	100.00	---	---	---	---	---	---	---	---	---	---	---	---	---	---	---	---	---	---	---	---	
DROMEAS SA (CR)	SR RA	100.00	---	---	---	---	---	---	---	---	---	---	---	---	---	---	---	---	---	---	---	---	
ELLAKTOR (CR)	SR RA	100.01	---	---	---	---	2,153	---	---	---	1000@3%	---	---	---	76	6.00%	6.00%	6.00%	---	2	14	5,474.0	14
ELTON SA (CR)	SR RA	100.00	---	---	---	---	50	---	---	---	35@3%	---	---	---	---	---	---	---	---	---	---	---	
ELVAL SA. (CB)	SR RA	100.00	---	---	---	---	368	---	---	---	184@3%	---	---	---	---	---	---	---	---	---	---	---	
EUROBANK ERGASIAS (CR)	SR RA	100.07	0.01	---	---	---	1,504	6.50%	4.50%	6.50%	6@6.5%	5	100	4,330.0	1,100	---	---	---	---	---	---	36	
EUROBANK PROPERTIES REIC (CR)	SR RA	100.00	---	---	---	---	1,174	---	---	---	587@3%	---	---	---	---	6.00%	6.00%	6.00%	---	1	9	7,704.0	9
EUROPEAN RELIANCE INSUR. (CR)	SR RA	100.00	---	---	---	---	---	---	---	---	---	---	---	---	---	---	---	---	---	---	---	---	
EYDAP S.A. (CR)	SR RA	100.13	0.02	---	---	---	352	3.00%	3.00%	3.00%	118@3%	1	5	4,440.0	58	6.00%	6.00%	6.00%	---	1	1	888.0	10
FOLLI FOLLIE (CR)	SR RA	100.26	0.03	---	---	---	644	---	---	---	227@3%	---	---	---	95	6.00%	6.00%	6.00%	---	1	1	2,480.0	7
FOURLIS (CR)	SR RA	100.00	---	---	---	---	109	---	---	---	54@3%	---	---	---	---	---	---	---	---	---	---	---	
FRIGOGLASS SA (CR)	SR RA	100.02	0.01	---	---	---	216	---	---	---	59@3%	---	---	---	49	---	---	---	---	---	---	---	
GEK TERNA (CR)	SR RA	100.01	---	---	---	---	641	---	---	---	298@3%	---	---	---	22	---	---	---	---	---	---	---	
GR. SARANTIS SA (CR)	SR RA	100.00	---	---	---	---	58	---	---	---	29@3%	---	---	---	---	---	---	---	---	---	---	---	
HALKOR SA (CB)	SR RA	100.00	---	---	---	---	505	---	---	---	252@3%	---	---	---	---	---	---	---	---	---	---	---	
HELLENIC EXCHANGES-A.S.E. (CR)	SR RA	100.01	0.01	---	---	---	5,933	---	---	---	2910@3%	---	---	---	56	---	---	---	---	---	---	6	
HELLENIC PETROLEUM (CR)	SR RA	100.25	0.02	---	---	---	2,251	---	---	---	525@3%	---	---	---	600	6.00%	6.00%	6.00%	---	1	1	662.0	25
HYGEIA SA (CR)	SR RA	100.00	---	---	---	---	500	---	---	---	200@3.9%	---	---	---	---	---	---	---	---	---	---	---	
IASO SA (CR)	SR RA	100.00	---	---	---	---	245	---	---	---	122@3%	---	---	---	---	---	---	---	---	---	---	---	
IKTINOS HELLAS SA (CR)	SR RA	100.00	---	---	---	---	10	---	---	---	---	---	---	---	---	---	---	---	---	---	---	---	
INTRACOM CONSTR. (CR)	SR RA	100.00	---	---	---	---	7	---	---	---	---	---	---	---	---	---	---	---	---	---	---	---	

Stock Lending Notes

- [1] - Stock Repo: A Contract for selling stocks to HELEX with a Repurchase Right (According to ATHEX BoD Resolution No 17)
- [2] - Stock Reverse Repo: A Contract for buying stocks from HELEX with a Resell Right. (According to ATHEX BoD Resolution No 18)
- [3] - Standardized Repurchase Agreements: A Contract that constitutes a standardized agreement for the purchase or sale of shares, with repurchase or resell pact (According to ATHEX BoD Resolution No 20)
- [4] - Type of products is divided into SR: Stock Repo or Stock Reverse Repo, and RA: Repurchase Agreements.
- [5] - Open Interest in all Series (both tradeable or non-tradeable).

Securities		Stock Repo [1]						Stock Reverse Repo [2]								Repurchase Agreements [3]							
		Trans. price	chg.	Trades	Volume	Transactions Value	Open Interest[5]	Price max	Price mii	Last price	Last Ask	Trades	Volume	Transactions Value	Open Interest[5]	Price max	Price min	Last price	Last Ask	Trades	Volume	Transactions Value	Open Interest[5]
INTRACOM HOLDINGS (CR)	SR RA	100.02	---	---	---	---	665	---	---	---	252@3%	---	---	---	80	---	---	---	---	---	---	---	---
INTRALOT (CR)	SR RA	100.00	---	---	---	---	841	3.00%	3.00%	3.00%	322@3%	2	60	12,960.0	98	---	---	---	---	---	---	---	19
J & P - AVAX SA (CR)	SR RA	100.00	---	---	---	---	223	---	---	---	111@3%	---	---	---	---	---	---	---	---	---	---	---	---
JUMBO SA (CR)	SR RA	100.09	0.01	---	---	---	680	---	---	---	212@3%	---	---	---	60	6.00%	6.00%	6.00%	---	1	11	13,090.0	25
KARATZIS SA (CR)	RA	---	---	---	---	---	---	---	---	---	---	---	---	---	---	---	---	---	---	---	---	---	---
KLEEMAN HELLAS SA (CR)	SR RA	100.00	---	---	---	---	982	---	---	---	491@3%	---	---	---	---	---	---	---	---	---	---	---	---
KLOUKINAS - LAPPAS SA (CR)	SR RA	100.00	---	---	---	---	---	---	---	---	---	---	---	---	---	---	---	---	---	---	---	---	---
KRI-KRI S.A. (CR)	SR RA	100.00	---	---	---	---	551	---	---	---	275@3%	---	---	---	---	---	---	---	---	---	---	---	---
LAMDA DEVELOPMENT SA (CR)	SR RA	100.00	---	---	---	---	---	---	---	---	---	---	---	---	---	---	---	---	---	---	---	---	---
LOULIS MILLS SA (CR)	SR RA	100.00	---	---	---	---	---	---	---	---	---	---	---	---	---	---	---	---	---	---	---	---	---
MARFIN INVESTMENT GROUP (CR)	SR RA	100.02	0.01	---	---	---	3,852	---	---	---	1674@3.3%	---	---	---	660	---	---	---	---	---	---	---	---
METKA (CR)	SR RA	100.41	0.04	---	---	---	533	---	---	---	70@3%	---	---	---	51	---	---	---	---	---	---	---	5
MLS MULTIMEDIA SA (CR)	SR RA	100.00	---	---	---	---	109	---	---	---	54@3%	---	---	---	---	---	---	---	---	---	---	---	---
MOTOR OIL (CR)	SR RA	100.10	0.01	---	---	---	1,856	---	---	---	698@3%	---	---	---	230	6.00%	6.00%	6.00%	---	1	1	895.0	10
MYTILINEOS HOLDINGS (CR)	SR RA	100.01	---	---	---	---	3,658	---	---	---	1772@3%	---	---	---	57	6.00%	6.00%	6.00%	---	2	10	6,800.0	10
NATIONAL BANK (CR)	SR RA	100.48	0.04	---	---	---	9,488	10.00%	4.00%	10.00%	---	16	2,045	758,695.0	7,590	6.00%	6.00%	6.00%	---	1	15	5,565.0	1,041
NBGAM ETF	SR RA	100.00	---	---	---	---	---	---	---	---	---	---	---	---	---	---	---	---	---	---	---	---	100
NBGAM ETF GREECE & TURKEY 30	SR RA	100.00	---	---	---	---	---	---	---	---	---	---	---	---	---	---	---	---	---	---	---	---	36
NIREFS SA (CR)	SR RA	100.00	---	---	---	---	342	---	---	---	255@6.9%	---	---	---	---	---	---	---	---	---	---	---	---
OPAP (CR)	SR RA	100.12	---	---	---	---	3,829	---	---	---	1738@3%	---	---	---	176	6.00%	6.00%	6.00%	---	1	2	2,100.0	346
OTE (CR)	SR RA	100.02	---	---	---	---	4,968	3.00%	3.00%	3.00%	2390@3%	5	53	57,770.0	94	6.00%	6.00%	6.00%	---	1	2	2,180.0	40
P.P.A. S.A. (CR)	SR RA	100.49	0.14	---	---	---	14	---	---	---	---	---	---	---	10	---	---	---	---	---	---	---	12
PAPOUTSANIS (CR)	SR RA	100.00	---	---	---	---	---	---	---	---	---	---	---	---	---	---	---	---	---	---	---	---	---
PETROPOULOS PETROS (CR)	RA	---	---	---	---	---	---	---	---	---	---	---	---	---	---	---	---	---	---	---	---	---	---
PIRAEUS BANK (CR)	SR RA	100.19	0.02	---	---	---	9,181	---	---	---	---	---	---	---	7,369	10.00%	10.00%	10.00%	---	2	210	37,590.0	3,415
PPC (CR)	SR RA	100.28	0.03	---	---	---	1,908	---	---	---	400@3%	---	---	---	454	6.00%	6.00%	6.00%	---	1	1	1,107.0	19
QUEST HOLDINGS (CR)	SR RA	100.00	---	---	---	---	---	---	---	---	---	---	---	---	---	---	---	---	---	---	---	---	---
REVOIL (CR)	SR RA	100.00	---	---	---	---	---	---	---	---	---	---	---	---	---	---	---	---	---	---	---	---	---
SELECTED TEXT. IND. ASSOC (CR)	SR RA	100.00	---	---	---	---	110	---	---	---	80@6.3%	---	---	---	---	---	---	---	---	---	---	---	---
SIDENOR (CR)	SR RA	100.00	---	---	---	---	391	---	---	---	195@3%	---	---	---	---	---	---	---	---	---	---	---	---
TECHNICAL OLYMPIC SA (CR)	SR RA	100.00	---	---	---	---	44	---	---	---	22@3%	---	---	---	---	---	---	---	---	---	---	---	---
TERNA ENERGY (CR)	SR RA	100.02	---	---	---	---	283	---	---	---	141@3%	---	---	---	---	---	---	---	---	---	---	---	---

Stock Lending Notes

- [1] - Stock Repo: A Contract for selling stocks to HELEX with a Repurchase Right (According to ATHEX BoD Resolution No 17)
- [2] - Stock Reverse Repo: A Contract for buying stocks from HELEX with a Resell Right. (According to ATHEX BoD Resolution No 18)
- [3] - Standardized Repurchase Agreements: A Contract that constitutes a standardized agreement for the purchase or sale of shares, with repurchase or resell pact (According to ATHEX BoD Resolution No 20)
- [4] - Type of products is divided into SR: Stock Repo or Stock Reverse Repo, and RA: Repurchase Agreements.
- [5] - Open Interest in all Series (both tradeable or non-tradeable).

Securities		Stock Repo [1]						Stock Reverse Repo [2]						Repurchase Agreements [3]									
		Trans. price	chg.	Trades	Volume	Transactions Value	Open Interest[5]	Price max	Price mii	Last price	Last Ask	Trades	Volume	Transactions Value	Open Interest[5]	Price max	Price min	Last price	Last Ask	Trades	Volume	Transactions Value	Open Interest[5]
THESSALONIKA WATER & SEWERAGE	SR RA	100.00	---	---	---	---	1,270	---	---	---	635@3%	---	---	---	---	---	---	---	---	---	---	---	---
THRACE PLASTICS SA (CR)	SR RA	100.00	---	---	---	---	1,010	---	---	---	505@3%	---	---	---	---	---	---	---	---	---	---	---	---
TITAN CEMENT (CR)	SR RA	100.14	0.01	---	---	---	8,915	---	---	---	3920@3%	---	---	---	320	6.00%	6.00%	6.00%	---	1	1	2,288.0	8
TPA SA (CR)	SR RA	100.00	---	---	---	---	46	---	---	---	23@3%	---	---	---	---	---	---	---	---	---	---	---	---
TRASTOR REAL EST. INV. CO.(CR)	SR RA	100.00	---	---	---	---	284	---	---	---	142@3%	---	---	---	---	---	---	---	---	---	---	---	---
VIOHALCO SA/NV (CB)	SR RA	100.21	0.02	1	2	888.0	224	---	---	---	20@3%	---	---	---	102	---	---	---	---	---	---	---	---

Stock Lending Notes

- [1] - Stock Repo: A Contract for selling stocks to HELEX with a Repurchase Right (According to ATHEX BoD Resolution No 17)
- [2] - Stock Reverse Repo: A Contract for buying stocks from HELEX with a Resell Right. (According to ATHEX BoD Resolution No 18)
- [3] - Standardized Repurchase Agreements: A Contract that constitutes a standardized agreement for the purchase or sale of shares, with repurchase or resell pact (According to ATHEX BoD Resolution No 20)
- [4] - Type of products is divided into SR: Stock Repo or Stock Reverse Repo, and RA: Repurchase Agreements.
- [5] - Open Interest in all Series (both tradeable or non-tradeable).

Sectors codification for listed companies

533	-	Exploration & Production	537	-	Integrated Oil & Gas
1353	-	Commodity Chemicals	1357	-	Specialty Chemicals
1753	-	Aluminum	1755	-	Nonferrous Metals
1757	-	Steel	1775	-	General Mining
2353	-	Building Materials & Fixtures	2357	-	Heavy Construction
2723	-	Containers & Packaging	2727	-	Diversified Industrials
2733	-	Electrical Components & Equipment	2753	-	Commercial Vehicles & Trucks
2757	-	Industrial Machinery	2773	-	Marine Transportation
2777	-	Transportation Services	2791	-	Business Support Services
2797	-	Industrial Suppliers	3535	-	Distillers & Vintners
3537	-	Soft Drinks	3573	-	Farming Fishing & Plantations
3577	-	Food Products	3722	-	Durable Household Products
3726	-	Furnishings	3728	-	Home Construction
3747	-	Toys	3763	-	Clothing & Accessories
3765	-	Footwear	3767	-	Personal Products
3785	-	Tobacco	4533	-	Health Care Providers
4535	-	Medical Equipment	4577	-	Pharmaceuticals
5337	-	Food Retailers & Wholesalers	5371	-	Apparel Retailers
5373	-	Broadline Retailers	5375	-	Home Improvement Retailers
5379	-	Specialty Retailers	5553	-	Broadcasting & Entertainment
5555	-	Media Agencies	5557	-	Publishing
5751	-	Airlines	5752	-	Gambling
5753	-	Hotels	5755	-	Recreational Services
5757	-	Restaurants & Bars	5759	-	Travel & Tourism
6535	-	Fixed Line Telecommunications	6575	-	Mobile Telecommunications
7535	-	Conventional Electricity	7537	-	Alternative Electricity
7577	-	Water	8355	-	Banks
8534	-	Insurance Brokers	8536	-	Property & Casualty Insurance
8633	-	Real Estate Holding & Development	8637	-	Real Estate Services
8671	-	Industrial & Office REITs	8675	-	Specialty REITs
8775	-	Specialty Finance	8777	-	Investment Services
8985	-	Equity Investment Instruments	9533	-	Computer Services
9535	-	Internet	9537	-	Software
9572	-	Computer Hardware	9574	-	Electronic Office Equipment
9578	-	Telecommunications Equipment	11000	-	ETF

