

# Daily Official List

Hellenic Exchanges – Athens Stock Exchange S.A.

Wednesday, 16 April, 2014  
Year: 135 Trading Day No: 72

**Disclaimer:**

Hellenic Exchanges-Athens Exchange endeavours to ensure that the data and other material ("Information") presented on the Daily Official List are accurate and complete, but it is not liable for any errors or omissions of data or /and for the accuracy, credibility, updating and completeness of the aforesaid information nor it has any liability arising directly or indirectly from the use of the above Information.

The Company is not liable for the accuracy of the data included in listed companies' announcements. Only the sender of such an announcement is fully and solely liable for any infringement of third party's rights from the content of such announcement. All contents of the Daily Official List are provided only for information purposes and do not constitute investment advice or solicitation to invest in securities or other products listed for trading on the Exchange.

You acknowledge and agree that the Company is the owner of any property rights related to any Information appearing on the Daily Official List including intellectual property rights copyright, trademarks, etc.

The above data are a property of the Hellenic Exchanges-Athens Exchange and are copyright protected. Users are forbidden to reproduce, modify, copy, sale, transmit or redistribute, by all reproduction means and methods, part or the whole of the above data, without reference to their source.

The commercial exploitation of these data is, also, forbidden by third parties. Hellenic Exchanges-Athens Exchange does not carry any responsibility, direct or indirect, derived from usage or accidental alteration of the above data when used by third parties.

---

**Hellenic Exchanges – Athens Stock Exchange S.A.**

110 Athinon Ave., 10442 Athens, Tel: (210) 33.66.800, Fax: (210) 32.13.938

[www.athex.gr](http://www.athex.gr)

---

**Thessalonica Stock Exchange Center (T.S.E.C)**

16-18 Katouni Str., Thessalonica 546 25 Tel: (2310) 567.667, Fax: (2310) 530.545

**Athex Members Guarantee Fund**

14-16 Fidiou Str., Athens 106 78, Tel: (210) 33.04.682, Fax: (210) 33.04.155

**Hellenic Republic Capital Market Commission**

1 Kolokotroni Str. & 1 Stadiou Str., Athens 10562 Tel: (210) 33.77.100 Fax: (210) 33.77.173

---

**Table of Contents**

---

**Section 1: Statistical Figures of Securities and Derivatives Markets**

- Summary of Markets
- Athex Indices
- Analytic Figures for Athex Market's Boards and Categories
- Trading Details by Athex Sectors and ETFs Category
- Top 10 best & worst performing Shares
- Derivatives Summary

**Section 2: Analytic Figures of Shares Transactions**

- Analytic Figures of Shares Transactions
- Shares' Notes

**Section 3: Figures of Securities Transactions**

- Securities Blocks Details
- Shares Rights Details
- Shares Short Selling
- Stock Borrowing
- Shares Forced Sales
- Forced Sales Registered Shares
- Exchange Traded Funds (ETFs) Characteristics

**Section 5: Bonds traded in Fixed Income Assets Market**

- Corporate Bonds
- Government Bonds
- Treasury Bills & Zero Coupon Government Bonds
- Government Bonds Traded with the Open Outcry Method
- State Banks Bonds

**Section 6: Additional Infos**

- Athex & ATHEXClear Members List
- List of Stocks under Market Making operations

**Section 7: Derivatives Market Analytic Figures**

- Index Futures
- Stock Futures
- Index Options
- Stock Options
- Stock Lending Analytic Figures (Repo Contracts)

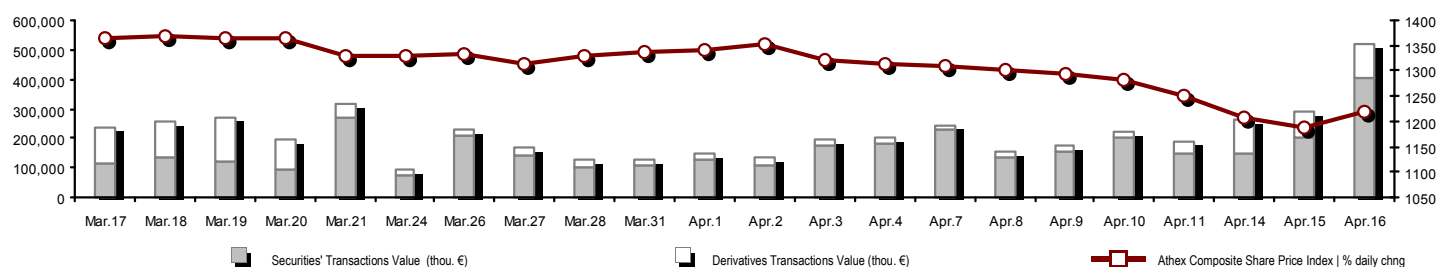
**Appendix A: Sectors codification for listed companies**

---

Section codification follows the corresponding from the Greek version of Daily Official List for reference purposes.

## Summary of Markets

Athex Composite Share Price Index vs Shares and Derivatives Transactions Value


**Total Transactions Value (Securities/Derivatives) (thou. €):** 519,028.44

**Athex Capitalisation (mill. €) \*\*:** 70,668.28  
 Daily change: mill. € | % 2,652.77 3.90%  
 Yearly Avg Capitalisation: mill. € | % chng prev year Avg 72,131.63 39.66%  
**Athex Composite Share Price Index | % daily chng** 1,218.00 2.61%  
**Athex Composite Share Price Index Capitalisation (mill. €)** 61,978.17  
 Daily change (mill. €) 2,701.77

**Derivatives Total Open Interest** 606,906  
 in Index Futures | % daily chng 57,697 -0.24%  
 in Stock Futures | % daily chng 200,232 -0.68%  
 in Index Options | % daily chng 12,653 12.34%  
 in Stock Options | % daily chng 1,275 -0.24%  
 in Stock Repos/Reverse Repos/RA | % daily chng 335,049 1.23%

**Securities' Transactions Value (thou. €)** 401,702.69  
 Daily change: thou. € | % 197,588.30 96.80%  
 YtD Avg Trans. Value: thou. € | % chng prev year Avg 120,297.51 38.88%  
 Short Selling Trans. Value: mill. € | % in total Value  
 Short Covering Trans. Value: mill. € | % in total Value  
**Transactions Value of Blocks (thou. €)** 46,294.02  
**Bonds Transactions Value (thou. €)** 0.00

**Derivatives Transactions Value (thou. €)** 117,325.75  
 Daily change: thou. € | % 29,581.07 33.71%  
 YtD Avg Trans. Value: thou. € | % chng prev year Avg 42,128.99 63.71%

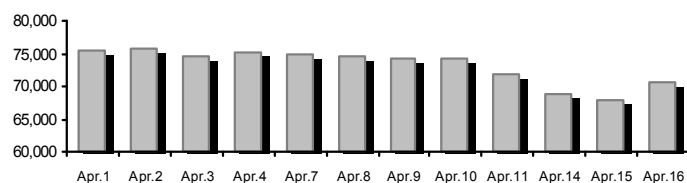
**Securities' Transactions Volume (thou. Pieces)** 220,797.10  
 Daily change: thou. pieces | % 102,830.03 87.17%  
 YtD Avg Volume: thou. pieces | % chng prev year Avg 62,903.45 17.55%  
 Short Selling Volume: thou pieces | % in total Volume  
 Short Covering Volume: thou. pieces | % in total Volume  
**Transactions Volume of Blocks (thou. Pieces)** 26,382.49  
**Bonds Transactions Volume (thou. pieces)** 0.00

**Derivatives Contracts Volume:** 88,308  
 Daily change: pieces | % 26,636 43.19%  
 YtD Avg Derivatives Contracts | % chng prev year Avg 40,499 -2.57%

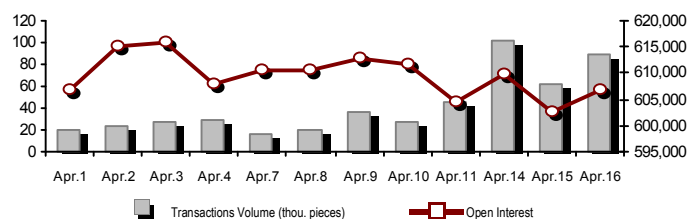
**Securities' Trades Number** 37,635  
 Daily change: number | % -1,962 -4.95%  
 YtD Avg Derivatives Trades number | % chng prev year Avg 30,621 3.22%  
**Number of Blocks** 27  
**Number of Bonds Transactions** 0

**Derivatives Trades Number:** 3,559  
 Daily change: number | % 588 19.79%  
 YtD Avg Derivatives Trades number | % chng prev year Avg 2,693 2.33%

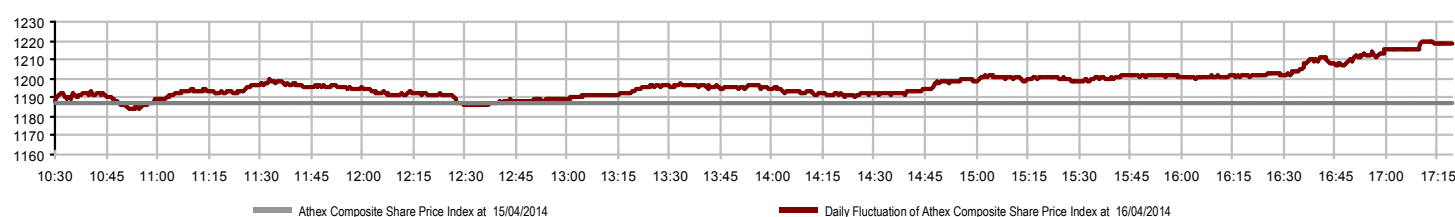
Athex Capitalisation (mill. €) \*\*



Derivatives Transactions Volume and Open Interest



Daily Fluctuation of Athex Composite Share Price Index



## Athex Indices

Index name	16/04/2014	15/04/2014	pts.	%	Min	Max	Year min	Year max	Year change
Athex Composite Share Price Index	1,218.00 ↑	1,186.99	31.01	2.61%	1,183.81	1,219.75	1,115.09	1,379.42	4.76% ↑
FTSE/Athex Large Cap	391.47 ↑	382.82	8.65	2.26%	380.86	392.31	365.97	445.52	1.72% ↑
FTSE/ATHEX Custom Capped	1,222.88 ↓	1,242.68	-19.80	-1.59%			1,184.20	1,410.19	-0.55% ↓
FTSE/ATHEX Custom Capped - USD	1,212.01 ↓	1,230.88	-18.87	-1.53%			1,158.43	1,406.66	-0.23% ↓
FTSE/Athex Mid Cap Index	1,216.03 ↑	1,208.52	7.51	0.62%	1,200.92	1,218.42	1,083.43	1,317.40	4.22% ↑
FTSE/ATHEX-CSE Banking Index	134.28 ↓	135.50	-1.22	-0.90%	132.34	135.27	125.25	161.54	-1.37% ↓
FTSE/ATHEX Global Traders Index Plus	1,658.18 ↑	1,624.61	33.57	2.07%	1,620.43	1,658.22	1,486.71	1,838.13	6.92% ↑
FTSE/ATHEX Global Traders Index	1,904.33 ↑	1,834.02	70.31	3.83%	1,839.59	1,905.05	1,697.86	2,152.38	9.80% ↑
FTSE/ATHEX Mid & Small Cap Factor-Weighted Ind	1,427.80 ↑	1,409.00	18.80	1.33%	1,403.72	1,429.12	1,279.09	1,523.02	11.63% ↑
Greece & Turkey 30 Price Index	672.28 ↑	666.52	5.76	0.86%	664.99	673.29	570.55	717.15	3.82% ↑
ATHEX Mid & SmallCap Price Index	3,053.19 ↑	3,017.26	35.93	1.19%	3,017.61	3,066.03	2,573.35	3,145.10	18.63% ↑
FTSE/Athex Market Index	940.79 ↑	920.84	19.95	2.17%	916.25	942.77	878.20	1,066.17	1.84% ↑
FTSE/Med 100	5,132.34 ↓	5,156.88	-24.54	-0.48%			4,605.95	5,379.93	12.32% ↑
Athex Composite Index Total Return Index	1,764.26 ↑	1,719.35	44.91	2.61%	1,714.74	1,766.79	1,615.19	1,998.07	4.80% ↑
FTSE/Athex Large Cap Total Return	536.12 ↑	524.28	11.84	2.26%			507.16	605.87	1.66% ↑
FTSE/ATHEX Large Cap Net Total Return	1,569.56 ↑	1,534.90	34.66	2.26%	1,527.02	1,572.91	1,467.32	1,786.28	1.72% ↑
FTSE/ATHEX Custom Capped Total Return	1,277.15 ↓	1,297.83	-20.68	-1.59%			1,236.76	1,472.79	-0.55% ↓
FTSE/ATHEX Custom Capped - USD Total Return	1,265.80 ↓	1,285.51	-19.70	-1.53%			1,209.85	1,469.09	-0.23% ↓
FTSE/Athex Mid Cap Total Return	1,530.96 ↑	1,521.51	9.45	0.62%			1,355.79	1,643.81	6.01% ↑
FTSE/ATHEX-CSE Banking Total Return Index	129.23 ↓	130.40	-1.17	-0.90%			121.20	153.89	0.12% ↑
Greece & Turkey 30 Total Return Index	801.24 ↓	826.13	-24.89	-3.01%			697.73	861.37	3.44% ↑
Hellenic Mid & Small Cap Index	1,225.59 ↑	1,183.49	42.10	3.56%	1,186.03	1,228.29	1,061.82	1,351.84	10.04% ↑
FTSE/Athex Banks	177.42 ↓	179.02	-1.60	-0.89%	174.85	178.72	165.49	213.44	-1.37% ↓
FTSE/Athex Insurance	1,591.04 ↑	1,506.74	84.30	5.59%	1,506.74	1,622.65	1,306.55	1,749.09	20.80% ↑
FTSE/Athex Financial Services	2,056.24 ↑	1,959.27	96.97	4.95%	1,954.43	2,056.24	1,599.55	2,207.51	16.27% ↑
FTSE/Athex Industrial Goods & Services	3,296.01 ↑	3,154.55	141.46	4.48%	3,180.46	3,307.01	3,046.48	3,724.87	1.58% ↑
FTSE/Athex Retail	3,377.40 ↑	3,243.51	133.89	4.13%	3,190.40	3,377.40	3,090.34	3,925.39	2.38% ↑
FTSE/ATHEX Real Estate	2,830.55 ↑	2,639.89	190.66	7.22%	2,639.89	2,830.55	2,194.73	3,111.71	27.69% ↑
FTSE/Athex Personal & Household Goods	6,415.22 ↑	6,232.97	182.25	2.92%	6,155.50	6,476.50	5,965.34	7,649.84	8.41% ↑
FTSE/Athex Food & Beverage	6,843.37 ↑	6,763.14	80.23	1.19%	6,749.30	6,861.20	6,447.83	8,227.06	-12.80% ↓
FTSE/Athex Basic Resources	3,029.27 ↑	2,890.90	138.37	4.79%	2,889.01	3,029.27	2,535.89	3,356.44	10.08% ↑
FTSE/Athex Construction & Materials	3,017.92 ↑	2,980.39	37.53	1.26%	2,936.26	3,042.48	2,531.26	3,437.31	12.54% ↑
FTSE/Athex Oil & Gas	2,695.73 ↑	2,616.09	79.64	3.04%	2,594.22	2,695.73	2,594.22	3,236.15	-5.97% ↓
FTSE/Athex Chemicals	6,403.52 ↓	6,413.04	-9.52	-0.15%	6,289.44	6,465.72	5,783.18	6,811.96	6.79% ↑
FTSE/Athex Media	2,127.51 ↓	2,363.90	-236.39	-10.00%	2,127.51	2,363.90	1,543.92	2,777.58	37.80% ↑
FTSE/Athex Travel & Leisure	1,835.32 ↑	1,775.27	60.05	3.38%	1,769.03	1,874.09	1,634.38	2,223.22	9.25% ↑
FTSE/Athex Technology	1,080.65 ↑	1,056.15	24.50	2.32%	1,054.70	1,080.65	786.21	1,134.79	37.24% ↑
FTSE/Athex Telecommunications	2,967.27 ↑	2,780.10	187.17	6.73%	2,802.12	2,967.27	2,675.50	3,633.39	11.48% ↑
FTSE/Athex Utilities	3,887.54 ↑	3,719.98	167.56	4.50%	3,719.98	3,909.65	3,308.43	4,471.04	2.50% ↑
FTSE/Athex Health Care	261.61 ↑	255.19	6.42	2.52%	253.13	263.21	220.03	287.11	17.31% ↑
Athex All Share Index	249.96 ↑	240.57	9.39	3.90%			226.62	272.17	6.15% ↑

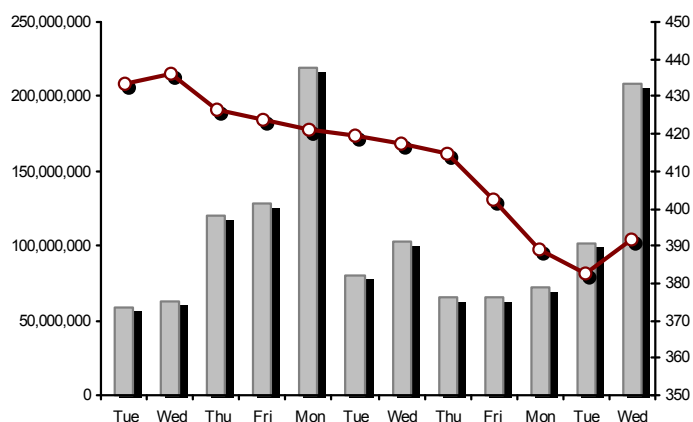
Note 1: Greece & Turkey 30 Pr data is the indicative at 17:20, whereas FTSE/ATHEX Custom Capped, FTSE/ATHEX Custom Capped - USD, FTSE/ATHEX Custom Capped TR, FTSE/ATHEX Custom Capped - USD TR, FTSE/Med 100 & Greece & Turkey 30 Rt closing prices refer to the previous trading day of 15/04/2014.

Note 2: The Hellenic Mid & Small Cap Index is a Customized index calculated by the Athens Exchange.

## Athex Indices

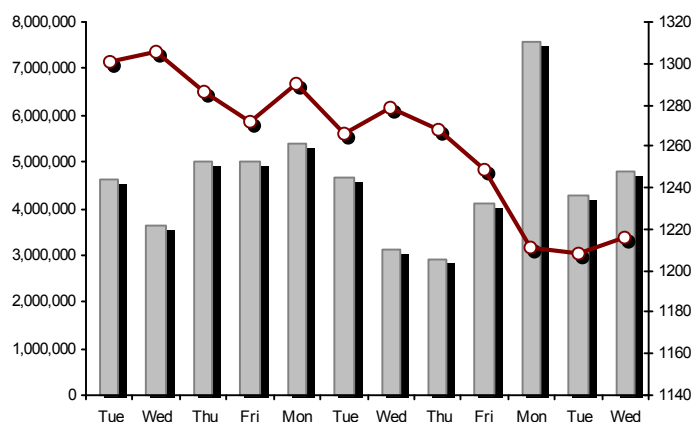
FTSE/Large Cap

16/04/2014: 2.26%



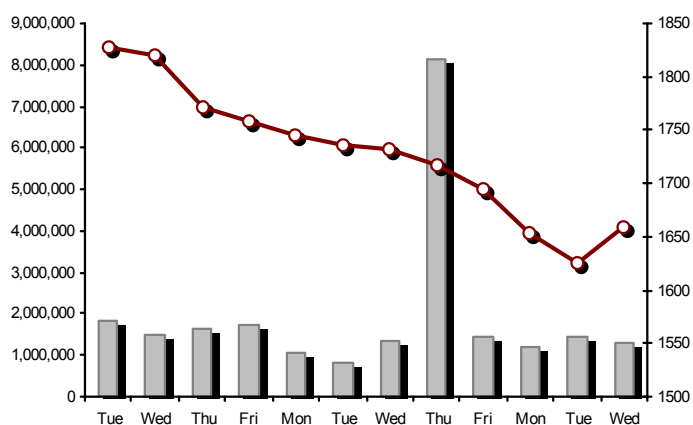
FTSE/Athex Mid Cap Index

16/04/2014: 0.62%



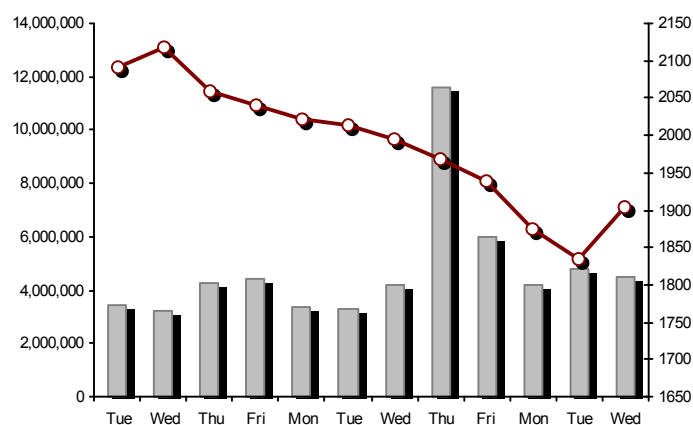
FTSE/ATHEX Global Traders Index Plus

16/04/2014: 2.07%



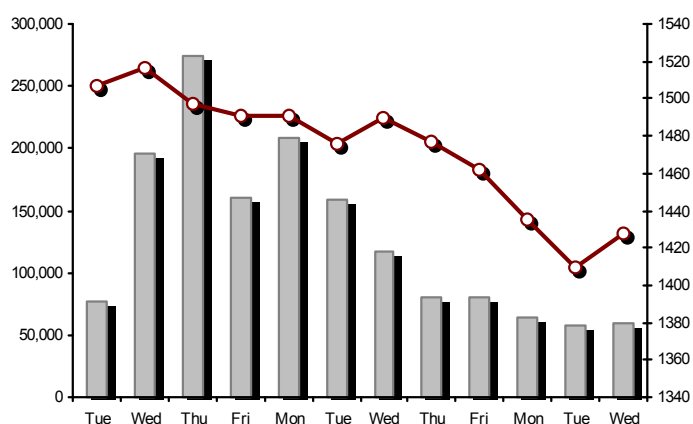
FTSE/ATHEX Global Traders Index

16/04/2014: 3.83%



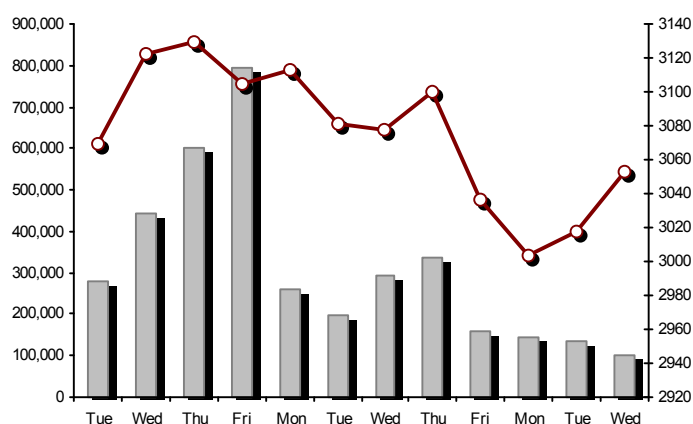
FTSE/ATHEX Mid &amp; Small Cap Factor-Weighted Index

16/04/2014: 1.33%



ATHEX Mid &amp; SmallCap Price Index

16/04/2014: 1.19%



Indices volume of transactions

Indices closing prices

## Analytic Figures for Athex Market's Boards and Categories

	Total Traded Securities	Main Market	Low Dispersion	Other Categories (*)	Exchange Traded Funds (ETFs)	Warrants
<b>Totals</b>	<b>144</b>	<b>117</b>	<b>6</b>	<b>15</b>	<b>3</b>	<b>3</b>
Gain / Lose / Same:	83 / 43 / 18	74 / 31 / 12	1 / 2 / 3	6 / 6 / 3	2 / 1 / 0	0 / 3 / 0
<b>Athex Capitalisation (mill. €) **</b>	<b>70,668.28</b>	<b>68,091.27</b>	<b>2,102.94</b>	<b>474.07</b>		
Daily Average Trans/ons Value(thou.€)	120,297.51	108,580.14	54.70	54.31	79.08	11,529.28
<b>Transactions Value</b>	<b>401,702.69</b>	<b>392,230.53</b>	<b>41.39</b>	<b>24.81</b>	<b>109.63</b>	<b>9,296.33</b>
Main Board:	355,408.67	350,993.63	41.39	24.81	109.63	4,239.22
Blocks Board:	46,294.02	41,236.90	0.00	0.00	0.00	5,057.12
Forced Sales Board:	0.00	0.00	0.00	0.00	0.00	0.00
Special Terms Board:	0.00	0.00	0.00	0.00	0.00	0.00
Daily Average Transactions Volume	62,903,451	52,898,412	25,494	238,475	16,178	9,724,893
<b>Transactions Volume</b>	<b>220,797,097</b>	<b>214,251,318</b>	<b>11,047</b>	<b>227,782</b>	<b>26,999</b>	<b>6,279,951</b>
Main Board:	194,414,612	190,941,653	11,047	227,782	26,999	3,207,131
Blocks Board:	26,382,485	23,309,665	0	0	0	3,072,820
Forced Sales Board:	0	0	0	0	0	0
Special Terms Board:	0	0	0	0	0	0
Daily Average Number of Trades	30,621	27,972	60	165	9	2,415
<b>Number of Trades</b>	<b>37,635</b>	<b>36,260</b>	<b>51</b>	<b>112</b>	<b>17</b>	<b>1,195</b>
Main Board:	37,608	36,235	51	112	17	1,193
Blocks Board:	27	25	0	0	0	2
Forced Sales Board:	0	0	0	0	0	0
Special Terms Board:	0	0	0	0	0	0

(\*) Summarised Transactions figures for Under Deletion and Under Supervision Categories.(\*\*) The Market Capitalization of the Companies that belong in the Under Supervision Category is not included.

## Trading Details by Athex Sectors and ETFs Category

Code	Sectors	Gain / Lose / Same	Number of Trades	Transactions Volume	Transactions Value	% of Total Trans. Value
8300	- Banks	1 / 7 / 1	15,143	209,963,308	326,811,053.81	81.36%
1700	- Basic Resources	6 / 3 / 1	1,752	357,791	1,737,751.27	0.43%
1300	- Chemicals	1 / 1 / 3	73	22,472	30,801.49	0.01%
2300	- Construction & Materials	10 / 6 / 2	2,116	668,563	4,684,040.28	1.17%
11000	- ETF	2 / 1 / 0	17	26,999	109,628.25	0.03%
8700	- Financial Services	4 / 0 / 0	2,330	2,462,305	3,611,196.22	0.90%
3500	- Food & Beverage	7 / 4 / 2	692	329,956	3,255,978.63	0.81%
4500	- Health Care	3 / 1 / 0	138	108,935	75,678.34	0.02%
2700	- Industrial Goods & Services	15 / 2 / 1	1,604	287,438	1,507,770.15	0.38%
8500	- Insurance	1 / 0 / 0	10	1,092	1,599.35	0.00%
5500	- Media	1 / 1 / 0	3	113	46.10	0.00%
500	- Oil & Gas	3 / 0 / 0	1,853	462,053	3,269,962.88	0.81%
3700	- Personal & Household Goods	8 / 6 / 2	1,574	504,955	4,492,495.54	1.12%
8600	- Real Estate	4 / 3 / 0	704	185,811	1,351,531.26	0.34%
5300	- Retail	3 / 1 / 2	721	112,717	2,233,151.89	0.56%
9500	- Technology	7 / 2 / 0	359	259,504	255,832.20	0.06%
6500	- Telecommunications	1 / 0 / 0	2,826	1,911,186	20,156,440.77	5.02%
5700	- Travel & Leisure	3 / 5 / 3	3,197	2,312,907	20,233,293.74	5.04%
7500	- Utilities	3 / 0 / 1	2,523	818,992	7,884,438.20	1.96%

## Top 10 best &amp; worst performing Shares

## Main Market

With positive Price change	Closing price	change	With negative Price change	Closing price	change
EUROBANK PROPERTIES REIC (CR)	8.61	7.63% ↑	EUROBANK ERGASIAS (CR)	0.381	-6.16% ↓
INTRALOT (CR)	2.16	7.46% ↑	LOULIS MILLS SA (CR)	2.57	-4.10% ↓
METKA (CR)	12.50	6.84% ↑	NATIONAL BANK (CR)	2.97	-2.30% ↓
OTE (CR)	10.78	6.73% ↑	TITAN CEMENT (CR)	21.50	-2.27% ↓
FRIGOGLASS SA (CR)	4.34	6.37% ↑	PIRAEUS BANK (CR)	1.75	-2.24% ↓
ELLAKTOR (CR)	3.85	6.35% ↑	MIG REAL ESTATE (CR)	1.93	-2.03% ↓
GEK TERNA (CR)	3.70	6.02% ↑	TRASTOR REAL EST. INV. CO.(CR)	1.17	-1.68% ↓
HELLENIC EXCHANGES-A.S.E. (CR)	8.60	5.78% ↑	ELTON SA (CR)	1.29	-1.53% ↓
MYTILINEOS HOLDINGS (CR)	6.64	5.73% ↑	ATTICA BANK S.A. (CR)	0.148	-1.33% ↓
PPC (CR)	10.84	5.24% ↑	F.G. EUROPE S.A. (CR)	1.01	-0.98% ↓
With the highest Transactions Value	Value (thou. €)	change	With the highest Transactions Volume	Volume	change
PIRAEUS BANK (CR)	288,011.91	-2.24% ↓	PIRAEUS BANK (CR)	165,470,815	-2.24% ↓
ALPHA BANK (CR)	21,731.30	1.92% ↑	ALPHA BANK (CR)	31,830,120	1.92% ↑
OTE (CR)	20,156.44	6.73% ↑	EUROBANK ERGASIAS (CR)	3,600,410	-6.16% ↓
OPAP (CR)	18,939.20	3.05% ↑	MARFIN INVESTMENT GROUP (CR)	2,152,385	3.31% ↑
PPC (CR)	6,500.42	5.24% ↑	NATIONAL BANK (CR)	2,061,996	-2.30% ↓
NATIONAL BANK (CR)	6,210.78	-2.30% ↓	OTE (CR)	1,911,186	6.73% ↑
JUMBO SA (CR)	4,230.31	3.26% ↑	OPAP (CR)	1,835,459	3.05% ↑
CC HBC AG (CR)	3,183.75	1.22% ↑	ATTICA BANK S.A. (CR)	717,094	-1.33% ↓
TITAN CEMENT (CR)	3,103.93	-2.27% ↓	PPC (CR)	608,775	5.24% ↑
HELLENIC EXCHANGES-A.S.E. (CR)	2,498.35	5.78% ↑	JUMBO SA (CR)	376,711	3.26% ↑

Note: Stocks that are not included in the "Low Dispersion" and "Under Supervision" categories, and the transactions value is more than 10,000 €.



## Derivatives Summary

	Number of Trades	Volume	Open Interest	Transactions Value
<b>Index Futures</b>	<b>1,584</b>	<b>53,186</b>	<b>57,697</b>	<b>102,611,733.75</b>
FTSE/Athex Large Cap	1,584	53,186	57,697	102,611,733.75
<b>Stock Futures</b>	<b>1,826</b>	<b>25,421</b>	<b>200,232</b>	<b>9,186,605.30</b>
ALPHA BANK (CR)	49	674	39,367	45,632.30
CC HBC AG (CR)	50	343	877	625,531.00
CORINTH PIPEWORKS SA (CR)	1	2	788	374.00
ELLAKTOR (CR)	11	43	1,959	15,918.00
EUROBANK ERGASIAS (CR)	103	1,824	4,025	67,741.20
EUROBANK PROPERTIES REIC (CR)	28	92	86	76,068.00
EYDAP S.A. (CR)	9	22	588	18,177.00
FOLLI FOLLIE (CR)	26	109	192	251,630.00
FRIGOGLASS SA (CR)	14	36	1,519	15,232.00
GEK TERNA (CR)	45	159	29,983	57,145.00
HELLENIC EXCHANGES-A.S.E. (CR)	69	262	3,691	217,791.00
HELLENIC PETROLEUM (CR)	92	522	6,112	325,275.00
INTRALOT (CR)	19	225	3,894	47,151.00
JUMBO SA (CR)	22	69	634	77,283.00
MARFIN INVESTMENT GROUP (CR)	58	936	25,798	48,473.80
METKA (CR)	9	24	1,048	28,727.00
MOTOR OIL (CR)	20	56	498	48,291.00
MYTILINEOS HOLDINGS (CR)	102	407	12,487	263,388.00
NATIONAL BANK (CR)	154	1,367	9,326	409,574.00
OPAP (CR)	156	669	4,070	686,006.00
OTE (CR)	329	1,829	12,583	1,915,601.00
P.P.A. S.A. (CR)	4	13	676	22,858.00
PIRAEUS BANK (CR)	181	14,418	23,301	2,499,575.00
PPC (CR)	229	1,200	11,260	1,275,056.00
SIDENOR (CR)	4	19	1,083	3,648.00
TERNA ENERGY (CR)	9	24	3,317	9,902.00
TITAN CEMENT (CR)	26	58	460	126,362.00
VIOHALCO SA/NV (CB)	7	19	610	8,195.00
<b>Index Options</b>	<b>107</b>	<b>2,164</b>	<b>12,653</b>	<b>4,267,925.00</b>
FTSE/Athex Large Cap	107	2,164	12,653	4,267,925.00
<b>Stock Options</b>	<b>4</b>	<b>220</b>	<b>1,275</b>	<b>249,500.00</b>
ALPHA BANK (CR)	0	0	0	0.00
NATIONAL BANK (CR)	0	0	130	0.00
OPAP (CR)	0	0	110	0.00
OTE (CR)	4	220	780	249,500.00
PIRAEUS BANK (CR)	0	0	0	0.00
PPC (CR)	0	0	255	0.00
<b>Stock Repos - Stock Reverse Repos - Repurchase Agreements</b>	<b>38</b>	<b>7,317</b>	<b>335,049</b>	<b>1,009,990.30</b>
Stock Reverse Repos	33	6,844	107,198	864,230.30
Stock Repos	1	5	190,960	1,485.00
Repurchase Agreement	4	468	36,891	144,275.00
<b>Total Derivatives Traded</b>	<b>3,559</b>	<b>88,308</b>	<b>606,906</b>	<b>117,325,754.35</b>

Number of Outstanding Securities	Nominal Value	Dividends [1]			Date of Last Coupon		Note	Shares	Closing price	% change	Previous closing price/date	Open price	Price min	Price max	Last price	Avg price	Last Bid [7]	Last Ask [7]	P/E after	Year	Volume	Trades	Transactions Value	Company Mkt Value (thou. €)	Year low	Year high	Sector[ 4]
2011	2012	2013	Dividend [2]	Right																							

Warrants

1,204,702,851	---	---	---	11/06/2013	---	ALPHA BANK (W)	1.63	-0.61 ↓	1.64	15/04/2014	1.67	1.62	1.68	1.63	1.64	115@1.63	3680@1.65	3.76	2013	4,710,039	399	7,746,728.78	8,810,651.30	1.13	1.88	8355
245,748,580	---	---	---	27/06/2013	---	NATIONAL BANK (W)	0.970	-2.81 ↓	0.998	15/04/2014	1.01	0.951	1.04	0.970	0.998	4879@0.970	1900@0.974	2.16	2013	1,277,849	604	1,275,111.60	7,118,454.40	0.880	1.59	8355
848,591,850	---	---	---	03/07/2013	---	PIRAEUS BANK (W)	0.941	-0.95 ↓	0.950	15/04/2014	0.950	0.922	0.951	0.941	0.940	380@0.935	914@0.941	1.01	2013	292,063	192	274,491.53	10,678,464.50	0.600	1.11	8355

Main Market

71,417,100	0.650	---	---	26/05/2010	11/07/2007	---	AEGEAN AIRLINES (CR)	7.18	-0.28 ↓	7.20	15/04/2014	7.26	7.11	7.43	7.18	7.26	200@7.16	250@7.24	7.73	2013	79,429	555	576,945.65	512,774.78	5.90	8.10	5751
11,178,000	1.25	---	---	21/04/2010	18/12/2013	---	AEOLIAN INVESTMENT FUND (CR)	0.920	3.25 ↑	0.891	14/04/2014	0.820	0.820	0.920	0.920	0.873	200@0.890	80@0.920	12.62	2013	530	5	462.60	10,283.76	0.700	1.09	8985
13,000,000	1.00	---	---	01/08/2007	07/04/2000	---	AKRITAS SA (CR)	0.114	---	0.114	15/04/2014	---	---	---	---	---	100@0.125	---	---	2013	---	---	---	1,482.00	0.100	0.170	2353
25,000,000	0.400	---	---	03/06/2009	12/07/2013	---	ALCO HELLAS SA (CR)	0.307	-0.97 ↓	0.310	15/04/2014	0.310	0.302	0.319	0.307	0.304	168@0.303	346@0.307	---	2013	26,639	33	8,106.93	7,675.00	0.218	0.360	1753
12,769,059,858	0.300	---	---	07/04/2008	13/05/2013	---	ALPHA BANK (CR)	0.690	1.92 ↑	0.677	15/04/2014	0.680	0.675	0.693	0.690	0.683	5000@0.688	2164708@0.690	1.59	2013	31,830,120	2,310	21,731,299.60	8,810,651.30	0.624	0.754	8355
22,016,250	0.370	---	---	15/07/2009	11/05/2000	---	ALUMIL (CR)	0.384	2.67 ↑	0.374	15/04/2014	0.384	0.383	0.386	0.384	0.383	50@0.381	500@0.383	---	2013	701	5	268.69	8,454.24	0.332	0.660	1753
418,000	16.00	---	---	22/04/2010	05/03/2013	---	ANDROMEDA SA (CR)	23.40	---	23.40	14/04/2014	---	---	---	---	---	100@23.30	200@23.98	7.07	2013	---	---	---	9,781.20	20.08	23.99	8985
26,252,040	0.380	---	---	08/07/2010	10/02/2014	---	AS COMPANY SA (CR)	0.387	0.52 ↑	0.385	15/04/2014	0.387	0.387	0.387	0.387	0.387	300@0.352	981@0.387	23.24	2013	1,083	4	419.12	10,159.54	0.313	0.413	5379
86,735,980	0.310	---	---	06/07/2009	02/01/2002	---	ATHENS MEDICAL CENTER SA (CR)	0.899	2.74 ↑	0.875	15/04/2014	0.871	0.860	0.900	0.900	0.874	10@0.875	1900@0.901	---	2013	55,987	29	48,925.19	77,975.65	0.722	0.930	4533
1,041,560,993	0.300	---	---	04/06/2008	10/02/2014	---	ATTICA BANK S.A. (CR)	0.148	-1.33 ↓	0.150	15/04/2014	0.151	0.148	0.153	0.148	0.149	13500@0.147	8800@0.150	---	2013	717,094	214	106,926.06	154,151.03	0.144	0.277	8355
15,300,000	0.300	---	---	30/07/2009	13/12/1999	---	ATTICA PUBLICATIONS SA (CR)	1.59	---	1.59	19/03/2014	---	---	---	---	---	---	961@1.49	45.88	2013	---	---	---	24,327.00	1.44	2.15	5557
45,457,464	0.700	---	---	01/07/2008	01/03/2010	---	AUDIO VISUAL ENTERPRISES (CR)	0.288	-10.00 ↓	0.320	14/04/2014	0.288	0.288	0.288	0.288	0.290	---	1347@0.288	---	2013	1	1	0.29	13,091.75	0.209	0.376	5553
12,120,000	0.320	(0.45)	---	30/04/2012	22/11/2013	---	AUTOHELLAS SA (CR)	9.96	---	9.96	15/04/2014	9.78	9.50	9.96	9.96	9.70	2@9.78	480@9.95	40.63	2013	624	24	6,055.10	120,715.20	7.50	11.20	5759
19,864,886	5.60	0.67	0.5376	0.672	05/03/2014	02/07/2008	BANK OF GREECE (CR)	15.25	---	15.25	15/04/2014	15.40	14.90	15.40	15.25	15.11	1@15.16	234@15.25	---	---	2,922	76	44,162.64	302,939.51	14.60	16.53	8355
23,986,500	1.05	---	---	26/06/2009	15/03/2000	---	BIOKARPET S.A.(CR)	0.790	-0.75 ↓	0.796	15/04/2014	0.795	0.790	0.795	0.790	0.792	250@0.785	249@0.794	---	2013	450	2	356.50	18,949.34	0.461	0.880	3726
15,842,391	1.51	---	---	15/07/2009	12/05/2000	---	BITROS HOLDING SA (CR)	0.443	---	0.443	14/04/2014	---	---	---	---	---	---	1280@0.443	---	2013	---	---	---	7,018.18	0.362	0.559	1757
15,816,009	0.300	---	---	01/07/2009	17/07/2000	---	BYTE COMPUTER SA (CR)	0.480	-4.00 ↓	0.500	15/04/2014	0.495	0.470	0.495	0.480	0.475	50@0.475	586@0.480	---	2013	5,814	19	2,761.50	7,591.68	0.470	0.666	9533
367,690,225	6.70	---	0.34	26/06/2013	29/04/2013	---	CC HBC AG (CR)	18.30	1.22 ↑	18.08	15/04/2014	18.05	18.04	18.35	18.30	18.24	10950@18.15	3000@18.31	---	---	174,514	498	3,183,745.48	6,728,731.12	17.20	22.00	3537
101,123,806	0.360	---	---	22/07/2010	28/06/2011	---	CENTRIC HOLDINGS (CR)	0.310	1.31 ↑	0.306	15/04/2014	0.305	0.301	0.318	0.310	0.308	243@0.301	400@0.316	15.19	2013	16,588	15	5,101.39	31,348.38	0.281	0.390	5752
4,034,950	0.680	---	---	01/07/2005	30/12/2010	---	CHATZIKRANIOTIS & SONS SA (CR)	0.225	4.65 ↑	0.215	15/04/2014	0.225	0.225	0.225	0.225	0.225	6000@0.192	5000@0.220	---	2013	40	1	9.00	907.86	0.155	0.420	3577
124,170,201	0.780	---	---	28/06/2002	07/02/2005	---	CORINTH PIPEWORKS SA (CR)	1.88	4.44 ↑	1.80	15/04/2014	1.80	1.80	1.88	1.88	1.84	1000@1.85	6291@1.89	---	2013	30,486	272	56,198.31	233,439.98	1.77	2.30	1757
9,907,500	0.300	---	---	06/10/2005	13/02/2002	---	CPI SA (CR)	0.236	---	0.236	10/04/2014	---	---	---	---	---	800@0.166	300@0.235	---	2013	---	---	---	2,338.17	0.133	0.269	9572
27,379,200	0.520	---	---	23/06/2010	18/09/2013	---	CRETE PLASTICS SA (CR)	5.35	---	5.35	15/04/2014	5.25	5.25	5.35	5.35	5.26	300@5.10	210@5.34	16.07	2013	742	4	3,902.50	146,478.72	4.80	5.50	1357
26,664,840	0.470	---	---	29/06/2005	12/07/1999	---	CYCLON HELLAS SA (CR)	0.507	1.60 ↑	0.499	15/04/2014	0.507	0.507	0.507	0.507	0.507	700@0.490	780@0.507	26.25	2013	20	1	10.14	13,519.07	0.462	0.609	1357
15,000,000	0.300	---	---	06/07/2007	18/07/2000	---	DAIOS PLASTICS SA (CR)	2.18	---	2.18	07/04/2014	---	---	---	---	---	---	50@2.27	---	2013	---	---	---	32,700.00	1.66	2.29	1357
34,720,000	0.310	---	---	16/06/2010	01/08/2007	---	DROMEAS SA (CR)	0.269	1.13 ↑	0.266	15/04/2014	0.251	0.251	0.270	0.269	0.266	139@0.265	25@0.267	---	2013	25,813	22	6,874.97	9,339.68	0.246	0.400	3726
3,873,120	0.300	---	---	07/07/2008	04/10/2012	---	DRUCKFARBEN HELLAS (CR)	1.03	---	1.03	10/04/2014	---	---	---	---	---	3000@1.00	---	---	2013	---	---	---	3,989.31	1.03	1.95	1357
11,250,000	0.560	---	---	26/07/2010	16/06/1999	---	EKTER SA (CR)	0.769	-0.13 ↓	0.770	15/04/2014	0.770	0.750	0.778	0.769	0.754	500@0.751	1000@0.769	---	2013	20,790	20	15,665.45	8,651.25	0.620	0.990	2357
32,188,050	1.04	---	---	21/07/2008	20/01/2000	---	EL. D. MOUZAKIS SA (CB)	0.338	---	0.338	11/04/2014	---	---	---	---	---	880@0.237	1000@0.314	---	2013	---	---	---	10,879.56	0.171	0.475	3763
18,648,000	1.00	---	---	07/07/2009	10/09/2010	---	ELASTRON (CR)	0.876	1.04 ↑	0.867	15/04/2014	0.866	0.866	0.890	0.890	0.876	20@0.874	150@0.890	---	2013	3,050	19	2,672.07	16,335.65	0.730	1.00	1757
31,734,530	1.60	---	---	09/07/2007	19/07/2006	---	ELGEKA SA (CR)	0.338	-0.30 ↓	0.339	14/04/2014	0.339	0.306	0.339	0.338	0.310	300@0.306	480@0.338	---	2013	970	10	300.70	10,726.27	0.284	0.488	3577
23,828,130	0.500	---	---	07/07/2010	17/02/2009	---	ELINOIL S.A. (CR)	1.50	20.00 ↑	1.25	10/04/2014	1.50	1.50	1.50	1.50	1.50	---	152000@1.48	---	2013	30	1	45.00	35,742.20	0.790	1.50	537
177,001,313	1.03	---	---	05/07/2011	20/12/2007	---	ELLAKTOR (CR)	3.85	6.35 ↑	3.62	15/04/2014	3.62	3.60	3.85	3.85	3.72	19914@3.83	550@3.86	---	2013	244,220	564	907,795.13	681,455.06	3.06	4.18	2357

Number of Outstanding Securities	Nominal Value	Dividends [1]			Date of Last Coupon		Note	Shares	Closing price	% change	Previous closing price/date	Open price	Price min	Price max	Last price	Avg price	Last Bid [7]	Last Ask [7]	P/E after	Year	Volume	Trades	Transactions Value	Company Mkt Value (thou. €)	Year low	Year high	Sector [4]
		2011	2012	2013	Dividend [2]	Right																					
Main Market																											
26,730,187	0.600	---	---	---	25/06/2009	30/12/2010	---	ELTON SA (CR)	1.29	-1.53 ↓	1.31 15/04/2014	1.35	1.25	1.35	1.29	1.27	200@1.27	3389@1.29	13.30	2013	16,850	41	21,316.05	34,481.94	1.09	1.40	1353
15,146,404	0.340	---	---	---	06/07/2011	17/10/2002	---	ELTRAK SA (CR)	1.77	4.12 ↑	1.70 15/04/2014	1.70	1.70	1.77	1.77	1.71	7@1.70	573@1.77	---	2013	323	2	551.20	26,809.14	1.40	1.90	2753
124,100,815	0.300	---	---	---	27/06/2008	07/07/2000	---	ELVAL SA. (CB)	1.95	3.72 ↑	1.88 15/04/2014	1.89	1.87	1.95	1.95	1.89	120@1.93	980@1.95	56.86	2013	2,595	14	4,915.25	241,996.59	1.73	2.15	1753
13,230,000	0.300	---	---	---	11/08/2010	28/08/2013	---	ELVE SA (CR)	0.573	-2.22 ↓	0.586 15/04/2014	0.573	0.573	0.573	0.573	0.573	780@0.573	300@0.598	---	2013	20	1	11.46	7,580.79	0.553	0.690	3763
30,009,210	0.310	---	---	---	27/06/2008	26/06/2000	---	ETEM SA (CB)	0.256	---	0.256 15/04/2014	---	---	---	---	---	100@0.248	300@0.268	---	2013	---	---	---	7,682.36	0.254	0.400	1753
5,469,166,865	0.300	---	---	---	02/05/2008	13/06/2013	---	EUROBANK ERGASIAS (CR)	0.381	-6.16 ↓	0.406 15/04/2014	0.406	0.381	0.407	0.381	0.392	298200@0.380	3000@0.382	---	2013	3,600,410	1,052	1,409,647.43	2,083,752.58	0.381	0.630	8355
101,260,000	2.13	0.4067	---	---	23/03/2012	08/01/2014	---	EUROBANK PROPERTIES REIC (CR)	8.61	7.63 ↑	8.00 15/04/2014	8.00	8.00	8.61	8.61	8.36	2300@8.59	50@8.64	---	2013	146,224	542	1,220,140.95	871,848.60	6.65	9.50	8675
7,959,900	0.600	---	---	---	02/06/2010	10/12/2013	5031	EUROCONSULTANTS S.A. (CR)	2.71	---	2.71 11/04/2014	---	---	---	---	---	200@2.64	300@2.74	79.63	2013	---	---	---	21,571.33	2.08	2.85	2791
27,503,677	0.600	0.05	0.1	---	11/07/2013	18/10/1999	---	EUROPEAN RELIANCE INSUR. (CR)	1.51	5.59 ↑	1.43 15/04/2014	1.54	1.45	1.54	1.51	1.47	500@1.47	520@1.51	4.38	2013	1,092	10	1,599.35	41,530.55	1.24	1.66	8536
13,673,200	0.880	---	---	---	18/07/2008	26/07/2001	---	EVROFARMA SA (CR)	0.380	5.56 ↑	0.360 14/04/2014	0.380	0.380	0.380	0.380	0.380	---	700@0.379	---	2013	1	1	0.38	5,195.82	0.224	0.380	3577
106,500,000	0.600	0.05	0.15	---	31/07/2013	28/01/2000	---	EYDAP S.A. (CR)	8.63	3.11 ↑	8.37 15/04/2014	8.67	8.38	8.67	8.63	8.50	265@8.63	600@8.65	11.83	2013	117,142	718	995,357.99	919,095.00	7.06	9.28	7577
52,800,154	0.300	---	---	---	16/04/2010	21/06/2004	---	F.G. EUROPE S.A. (CR)	1.01	-0.98 ↓	1.02 15/04/2014	1.01	1.01	1.04	1.01	1.03	82@1.01	210@1.03	18.23	2013	31,710	28	32,625.10	53,328.16	0.580	1.04	3722
10,203,575	0.730	---	---	---	16/07/2007	18/10/1999	---	FIERATEX SA (CR)	0.320	---	0.320 11/04/2014	---	---	---	---	---	85@0.240	500@0.340	---	2013	---	---	---	3,265.14	0.121	0.430	3763
11,720,024	0.540	---	---	---	16/07/2010	16/10/2013	---	FLEXOPACK SA (CR)	3.10	---	3.10 15/04/2014	---	---	---	---	---	100@3.00	58@3.13	14.67	2013	---	---	---	36,332.07	2.68	3.50	2723
4,181,450	0.500	---	---	---	21/08/2000	05/03/2002	---	FLOUR MILLS SARANTOPOULOS SA	1.05	---	1.05 03/04/2014	---	---	---	---	---	---	155@1.05	---	2013	---	---	---	4,390.52	0.702	1.05	3577
66,948,210	0.300	---	---	---	14/07/2009	31/12/2010	4988	FOLLI FOLLIE (CR)	23.96	4.17 ↑	23.00 15/04/2014	22.87	22.62	23.96	23.96	23.29	5000@23.60	446@23.96	3.71	2013	95,505	690	2,223,789.39	1,604,079.11	21.90	27.87	5379
50,992,322	1.00	---	---	---	21/06/2010	16/07/2002	---	FOURLIS (CR)	5.64	1.99 ↑	5.53 15/04/2014	5.49	5.49	5.68	5.68	5.56	100@5.68	300@5.69	---	2013	22,664	98	125,937.65	287,596.70	3.86	6.01	3722
50,593,832	0.300	---	---	---	07/07/2010	07/09/2011	---	FRIGOGLASS SA (CR)	4.34	6.37 ↑	4.08 15/04/2014	4.11	4.10	4.34	4.34	4.23	170@4.25	4000@4.36	---	2013	50,354	354	213,153.21	219,577.23	4.04	5.63	2757
77,376,446	0.340	---	---	---	23/05/2005	18/08/2011	---	G.E. DIMITRIOU (CR)	0.028	3.70 ↑	0.027 15/04/2014	0.028	0.028	0.028	0.028	0.028	15000@0.023	21700@0.027	---	2013	350	2	9.80	2,166.54	0.022	0.041	3722
14,076,360	0.370	---	---	---	19/08/2008	22/07/2003	---	GALAXIDI S.A. (CR)	0.253	-27.71 ↓	0.350 07/04/2014	0.253	0.253	0.253	0.253	0.253	3600@0.301	864@0.350	---	2013	50	2	12.65	3,561.32	0.250	0.419	3573
94,462,368	0.570	---	---	---	01/08/2011	02/01/2009	---	GEK TERNA (CR)	3.70	6.02 ↑	3.49 15/04/2014	3.56	3.47	3.70	3.70	3.58	1700@3.64	100@3.70	---	2013	153,122	522	548,304.14	349,510.76	3.08	4.21	2357
8,418,750	0.300	0.15	0.29	---	05/06/2013	27/06/2012	---	GEKE SA (CB)	6.60	---	6.60 10/04/2014	---	---	---	---	---	150@6.60	100@6.90	-(6)-	2013	---	---	---	55,563.75	6.60	7.20	5753
24,060,000	0.300	0.017	---	---	18/06/2012	21/01/2000	---	GEN. COMMERCIAL & IND.SA (CR)	0.410	---	0.410 14/04/2014	---	---	---	---	---	2043@0.381	1940@0.420	29.48	2013	---	---	---	9,864.60	0.327	0.435	2797
34,770,982	1.55	---	---	0.3	17/01/2014	27/07/2000	---	GR. SARANTIS SA (CR)	7.88	2.34 ↑	7.70 15/04/2014	7.80	7.70	8.19	7.88	8.00	120@7.63	32@7.77	7.47	2013	9,514	21	76,066.80	273,995.34	6.06	8.19	3767
8,340,750	1.20	---	---	---	25/06/2009	30/07/2001	---	HAIDEMENOS SA (CR)	0.650	30.00 ↑	0.500 15/04/2014	0.650	0.650	0.650	0.650	0.650	300@0.486	2800@0.650	---	2013	80	1	52.00	5,421.49	0.364	0.760	2791
101,279,627	0.380	---	---	---	26/06/2008	14/07/2006	---	HALKOR SA (CB)	0.673	-0.15 ↓	0.674 15/04/2014	0.654	0.654	0.684	0.673	0.671	25@0.673	100@0.678	---	2013	25,498	42	17,121.43	68,161.19	0.654	0.912	1755
36,748,909	0.730	---	---	---	15/12/2005	13/12/2006	---	HEL. SUGAR INDUSTRY SA (CB)	0.750	-3.23 ↓	0.775 15/04/2014	0.800	0.750	0.800	0.750	0.756	1586@0.750	920@0.774	---	2013	10,092	41	7,634.36	27,561.68	0.750	1.10	3577
29,546,360	0.710	---	---	---	20/06/2008	23/08/2000	---	HELLENIC CABLES SA (CR)	1.75	-0.57 ↓	1.76 15/04/2014	1.76	1.72	1.78	1.75	1.75	20@1.82	150@1.82	---	2013	7,584	23	13,267.77	51,706.13	1.48	2.00	2733
65,368,563	0.760	0.11	0.09	---	03/06/2013	25/09/2013	---	HELLENIC EXCHANGES-A.S.E. (CR)	8.60	5.78 ↑	8.13 15/04/2014	8.20	8.14	8.60	8.60	8.29	350@8.58	5723@8.60	-(6)-	2013	301,257	1,265	2,498,349.11	562,169.64	6.91	9.52	8777
305,635,185	2.18	0.45	0.15	---	16/08/2013	01/10/2003	4795	HELLENIC PETROLEUM (CR)	6.38	2.24 ↑	6.24 15/04/2014	6.24	6.08	6.39	6.38	6.26	3420@6.35	10@6.39	---	2013	300,616	1,168	1,880,928.81	1,949,952.48	6.08	8.13	537
305,732,436	0.410	---	---	---	08/07/2009	28/09/2011	---	HYGEIA SA (CR)	0.431	2.37 ↑	0.421 15/04/2014	0.427	0.420	0.435	0.431	0.426	500@0.430	2000@0.434	---	2013	44,113	76	18,802.55	131,770.68	0.371	0.508	4533
53,155,053	0.440	---	---	---	21/07/2010	16/07/2008	---	IASO SA (CR)	1.42	4.41 ↑	1.36 15/04/2014	1.49	1.39	1.49	1.42	1.41	745@1.40	1991@1.42	---	2013	5,335	30	7,506.10	75,480.18	1.34	1.99	4533
8,298,467	0.400	---	---	---	30/08/1993	08/05/2013	---	IDEAL GROUP SA (CR)	0.730	-0.27 ↓	0.732 15/04/2014	0.730	0.730	0.730	0.730	0.730	464@0.732	500@0.805	-(6)-	2013	32	1	23.36	6,057.88	0.538	1.00	9574
28,580,100	0.400	0.02	---	---	20/08/2012	10/10/2013	---	IKTINOS HELLAS SA (CR)	1.70	0.59 ↑	1.69 15/04/2014	1.70	1.64	1.71	1.70	1.66	100@1.69	1670@1.70	10.40	2013	14,600	51	24,265.84	48,586.17	1.49	1.84	2353
9,000,000	0.880	---	---	---	15/05/2009	07/12/2010	---	ILYDA S.A. (CR)	0.787	---	0.787 15/04/2014	---	---	---	---	---	---	2000@0.779	---	2013	---	---	---	7,083.00	0.390	0.789	9537
20,578,374	0.620	---	---	---	02/06/2011	05/05/1999	---	INFORM P. LYKOS SA (CR)	1.50	---	1.50 15/04/2014	1.50	1.50	1.50	1.50	1.50	59777@1.50	100@1.65	---	2013	223	2	334.50	30,867.56	1.36	1.80	2791
11,233,200	0.730	---	---	---	12/07/2/																						

Number of Outstanding Securities	Nominal Value	Dividends [1]			Date of Last Coupon		Note	Shares	Closing price	% change	Previous closing price/date	Open price	Price min	Price max	Last price	Avg price	Last Bid [7]	Last Ask [7]	P/E after	Year	Volume	Trades	Transactions Value	Company Mkt Value (thou. €)	Year low	Year high	Sector[ 4]	
		2011	2012	2013	Dividend [2]	Right																						
Main Market																												
2,566,836	0.440	---	---	---	13/08/2010	09/01/2007	---	INTERWOOD-XYLEMPORIA (PR)	0.195	---	0.195	17/02/2014	---	---	---	---	---	---	---	2013	---	---	---	4,663.92	0.195	0.200	2353	
23,154,250	1.36	---	---	---	12/08/2008	02/08/2010	---	INTRACOM CONSTR. (CR)	0.996	2.68 ↑	0.970	15/04/2014	0.982	0.980	1.01	0.996	0.982	10210@0.990	2550@1.03	---	2013	15,241	24	14,963.64	23,061.63	0.934	1.32	2357
133,025,996	1.41	---	---	---	03/07/2007	07/01/2002	---	INTRACOM HOLDINGS (CR)	0.820	2.50 ↑	0.800	15/04/2014	0.805	0.798	0.820	0.820	0.809	4800@0.812	500@0.823	---	2013	220,957	241	178,856.11	109,081.32	0.526	0.900	9578
158,961,721	0.300	0.0035	0.0026	---	30/05/2013	14/11/2007	---	INTRALOT (CR)	2.16	7.46 ↑	2.01	15/04/2014	2.01	2.01	2.16	2.16	2.09	3000@2.12	7767@2.17	---	2013	317,313	471	662,164.56	343,357.32	1.84	2.51	5752
77,654,850	0.580	---	---	---	01/07/2011	21/02/2003	---	J & P - AVAX SA (CR)	1.74	2.35 ↑	1.70	15/04/2014	1.75	1.67	1.75	1.74	1.71	580@1.72	779@1.74	---	2013	16,233	72	27,713.70	135,119.44	1.57	2.02	2357
136,059,759	1.19	---	---	---	23/12/2010	05/03/2014	---	JUMBO SA (CR)	11.41	3.26 ↑	11.05	15/04/2014	11.05	10.83	11.56	11.41	11.24	5300@11.40	1000@11.45	21.05	2013	376,711	1,331	4,230,313.25	1,552,441.85	10.83	14.40	3747
9,742,920	0.400	0.01	0.01	---	12/08/2013	14/07/2000	---	KARAMOLEGOS SA (CR)	1.57	---	1.57	09/04/2014	---	---	---	---	---	---	487@1.50	---	2013	---	---	---	15,296.38	0.912	1.61	3577
14,679,792	1.68	---	---	---	03/06/2011	04/09/2000	---	KARATZIS SA (CR)	3.85	0.78 ↑	3.82	15/04/2014	3.85	3.85	3.85	3.85	3.85	50@3.78	80@3.83	11.56	2013	20	1	77.00	56,517.20	3.67	4.50	2723
30,600,000	0.300	---	---	---	12/06/2008	04/03/2014	---	KATHIMERINI SA (CR)	0.409	2.00 ↑	0.401	15/04/2014	0.409	0.409	0.409	0.409	0.409	400@0.373	88@0.400	---	2013	112	2	45.81	12,515.40	0.397	4.49	5557
3,300,689	0.350	---	---	---	01/07/2004	21/07/1999	---	KEKROPS SA (CR)	1.95	2.63 ↑	1.90	15/04/2014	1.52	1.52	1.96	1.95	1.92	48@1.90	4@1.95	---	2013	1,180	25	2,266.16	6,436.34	1.48	2.60	8633
7,595,160	0.600	---	---	---	08/08/2008	18/08/2010	---	KIRIAKOULIS SHIPPING SA (CR)	0.924	---	0.924	07/04/2014	---	---	---	---	---	---	1852@0.647	59.98	2013	---	---	---	7,017.93	0.492	1.08	5759
23,648,700	0.330	---	---	---	13/07/2011	23/07/2008	---	KLEEMAN HELLAS SA (CR)	2.11	1.44 ↑	2.08	15/04/2014	2.08	2.08	2.12	2.11	2.10	10@2.11	1000@2.12	74.59	2013	3,817	20	8,029.61	49,898.76	1.89	2.58	2757
40,219,218	0.300	---	---	---	25/05/2009	09/07/2013	---	KLOUKINAS - LAPPAS SA (CR)	0.660	-2.51 ↓	0.677	15/04/2014	0.660	0.660	0.660	0.660	0.660	1000@0.650	162@0.670	---	2013	2,040	3	1,346.40	26,544.68	0.570	0.780	2357
21,224,340	0.420	---	---	---	02/07/2008	25/04/2006	---	KORDELLOS BROS SA (CR)	0.294	-5.16 ↓	0.310	14/04/2014	0.279	0.279	0.294	0.294	0.279	---	9980@0.294	---	2013	10,020	2	2,795.88	6,239.96	0.200	0.350	1757
13,586,500	0.390	---	---	---	25/06/2010	28/05/2008	---	KORRES (CR)	3.24	-0.31 ↓	3.25	15/04/2014	3.20	3.12	3.24	3.24	3.22	497@3.12	40@3.24	---	2013	463	11	1,492.76	44,020.26	2.84	3.69	3767
29,480,000	0.420	---	---	---	19/07/2010	01/08/2007	---	KRETA FARM SA (CR)	0.506	1.61 ↑	0.498	15/04/2014	0.515	0.459	0.515	0.506	0.506	111@0.458	3310@0.506	---	2013	1,736	21	878.34	14,916.88	0.459	0.662	3577
33,065,136	0.380	---	---	---	06/07/2009	16/09/2013	---	KRI-KRI S.A. (CR)	1.75	---	1.75	15/04/2014	1.75	1.68	1.75	1.75	1.73	100@1.74	1000@1.76	11.29	2013	10,760	23	18,590.01	57,863.99	1.65	2.07	3577
15,804,800	0.330	---	---	---	15/06/2010	12/03/2004	---	KTIMA KOSTAS LAZARIDIS SA (CR)	0.369	4.83 ↑	0.352	09/04/2014	0.360	0.360	0.369	0.369	0.365	790@0.317	712@0.367	---	2013	4	4	1.46	5,831.97	0.305	0.422	3535
24,474,815	1.15	---	---	---	19/08/2008	30/01/2014	---	KYRIAKIDIS MARBLES SA (CR)	2.34	3.54 ↑	2.26	15/04/2014	2.27	2.27	2.38	2.34	2.31	1409@2.34	150@2.36	5.51	2013	14,251	33	32,886.57	57,271.07	1.07	2.57	2353
44,412,347	0.300	---	---	---	30/05/2007	18/09/2002	---	LAMDA DEVELOPMENT SA (CR)	6.00	4.53 ↑	5.74	15/04/2014	5.76	5.75	6.00	6.00	5.87	50@5.90	854@6.00	---	2013	16,987	78	99,691.14	266,474.08	4.91	6.99	8633
21,364,000	1.12	---	---	---	05/07/2010	10/08/2005	---	LAMPASA HOTEL SA (CR)	17.05	---	17.05	10/04/2014	---	---	---	---	---	100@16.36	71@17.80	-(6)-	2013	---	---	---	364,256.20	15.60	18.00	5753
5,939,268	0.620	---	---	---	10/07/2003	03/01/2002	---	LANAKAM SA (CR)	0.942	---	0.942	04/04/2014	0.942	0.942	0.942	0.942	0.942	---	3710@0.930	---	2013	100	1	94.20	5,594.79	0.485	0.942	3763
7,734,375	1.00	---	---	---	09/07/2007	07/01/2011	---	LIVANIS SA (CR)	0.236	---	0.236	15/04/2014	---	---	---	---	---	---	746@0.236	---	2013	---	---	---	1,825.31	0.158	0.242	5557
4,740,000	0.860	---	---	---	14/03/2003	---	---	LOGISMOS S.A. (CR)	0.418	---	0.418	14/04/2014	---	---	---	---	---	---	989@0.427	56.29	2013	---	---	---	1,981.32	0.354	0.520	9533
17,125,062	0.640	---	---	---	01/06/2010	02/08/2011	---	LOULIS MILLS SA (CR)	2.57	-4.10 ↓	2.68	15/04/2014	2.54	2.54	2.60	2.57	2.56	395@2.57	258@2.67	---	2013	6,155	21	15,780.35	44,011.41	2.49	2.98	3577
770,360,560	0.300	---	---	---	26/04/2007	10/05/2013	---	MARFIN INVESTMENT GROUP (CR)	0.530	3.31 ↑	0.513	15/04/2014	0.513	0.508	0.530	0.530	0.516	2000@0.525	6000@0.531	---	2013	2,152,385	1,052	1,111,574.40	408,291.10	0.381	0.572	8775
9,819,370	0.690	---	---	---	14/08/2007	09/01/2004	---	MATHIOS REFRACTORY SA (CR)	0.488	29.10 ↑	0.378	10/04/2014	0.488	0.488	0.488	0.488	0.488	1000@0.273	990@0.488	---	2013	10	1	4.88	4,791.85	0.256	0.488	2353
468,700	---	0.47	---	---	27/02/2014	21/05/2004	---	MERMEREN KOMB. A.D. PR. (GDR)	4.35	9.30 ↑	3.98	15/04/2014	4.35	4.35	4.35	4.35	4.35	61@3.78	999@4.00	2.12	2013	1	1	4.35	2,038.85	3.45	4.67	1775
51,950,600	0.320	0.75	0.25	---	10/05/2013	21/10/2005	---	METKA (CR)	12.50	6.84 ↑	11.70	15/04/2014	12.03	11.84	12.50	12.50	12.12	100@12.33	200@12.55	14.62	2013	72,382	707	877,430.52	649,382.50	11.10	14.29	2757
10,500,000	0.900	---	---	---	24/06/2008	19/12/2013	---	MEVACO SA (CR)	1.23	-0.81 ↓	1.24	14/04/2014	1.23	1.23	1.23	1.23	1.23	540@1.23	1000@1.31	---	2013	10	1	12.30	12,915.00	1.10	1.35	2757
14,074,000	3.00	0.25	---	---	02/03/2012	23/07/2009	---	MIG REAL ESTATE (CR)	1.93	-2.03 ↓	1.97	14/04/2014	1.94	1.86	1.95	1.93	1.92	8@1.91	447@1.93	-(6)-	2013	5,658	31	10,837.25	27,162.82	1.50	2.16	8671
6,700,000	0.800	---	---	---	19/07/2010	29/08/2012	---	MILLS KEPENOS (CR)	2.10	---	2.10	15/04/2014	---	---	---	---	---	1000@1.60	355@2.20	11.44	2013	---	---	---	14,070.00	0.991	2.40	3577
6,200,000	0.500	---	---	---	22/06/2010	01/11/1995	---	MINERVA KNITWEAR SA (CB)	0.603	---	0.603	31/03/2014	---	---	---	---	---	---	644@0.543	---	2013	---	---	---	3,738.60	0.550	0.689	3763
12,417,000	0.370	---	---	---	28/07/2008	06/09/2011	---	MLS MULTIMEDIA SA (CR)	4.16	1.46 ↑	4.10	15/04/2014	4.14	4.09	4.16	4.16	4.13	250@4.10	146@4.13	44.11	2013	4,104	39	16,954.21	51,654.72	3.28	4.30	9537
4,588,137	16.00	---	---	---	30/06/2005	17/08/2011	---	MOCHLOS SA (CR)	1.59	-5.36 ↓	1.68	15/04/2014	1.68	1.57	1.68	1.61	1.59	100@1.55	100@1.59	---	2013	474	15	755.64	7,295.14	1.22	2.00	2357
11,700,000	0.590	---	---	---	02/06/2009	24/07/2012	---	MOTODYNAMICS S.A. (CR)	0.330	---	0.330	15/04/2014	0.310	0.310	0.330	0.330	0.330	700@0.321	300@0.337	---	2013	1,009	4	332.79	3,861.00	0.280		

Number of Outstanding Securities	Nominal Value	Dividends [1]			Date of Last Coupon		Note	Shares	Closing price	% change	Previous closing price/date	Open price	Price min	Price max	Last price	Avg price	Last Bid [7]	Last Ask [7]	P/E after	Year	Volume	Trades	Transactions Value	Company Mkt Value (thou. €)	Year low	Year high	Sector[ 4]		
		2011	2012	2013	Dividend [2]	Right																							
Main Market																													
8,321,682	0.670	---	---	---	17/08/2007	23/11/1999	---	N. LEVEDERIS SA (CB)	0.249	---	-	0.249	15/04/2014	---	---	---	---	---	570@0.245	---	2013	---	---	---	3,679.53	0.196	0.255	1757	
2,160,524	0.670	0.0435	0.0436	---	16/08/2013	23/11/1999	---	N. LEVEDERIS SA (PB)	0.744	---	-	0.744	26/03/2014	---	---	---	---	---	724@0.699	---	2013	---	---	---	3,679.53	0.566	0.779	1757	
11,510,102	0.890	---	---	---	24/06/2005	06/10/1999	---	NAFPAKTOS TEXTILE IND. SA (CB)	0.300	0.33	↑	0.299	11/04/2014	0.241	0.241	0.306	0.300	0.262	196@0.248	28@0.300	---	2013	306	6	80.02	3,453.03	0.209	0.397	3763
6,340,000	0.600	---	---	---	30/11/2009	12/07/2000	---	NAKAS MUSIC	0.800	0.88	↑	0.793	11/04/2014	0.780	0.780	0.800	0.800	0.791	400@0.750	294@0.800	---	2013	1,110	4	878.00	5,072.00	0.526	1.62	5379
2,396,785,994	0.300	---	---	---	16/05/2008	24/05/2013	---	NATIONAL BANK (CR)	2.97	-2.30	↓	3.04	15/04/2014	3.10	2.97	3.10	2.97	3.01	25631@2.96	10700@2.98	6.61	2013	2,061,996	2,192	6,210,779.40	7,118,454.40	2.97	4.31	8355
23,935,280	0.300	---	---	---	29/06/2009	13/06/2000	---	NAYTEMPORIKI PUBLISHING SA(CR)	0.158	---	-	0.158	15/04/2014	---	---	---	---	---	500@0.125	---	---	2013	---	---	---	3,781.77	0.141	0.479	5557
27,848,000	0.300	0.0132	0.0137	---	21/08/2013	02/09/2003	---	NEWSPHONE HELLAS SA (CR)	0.379	---	-	0.379	15/04/2014	---	---	---	---	---	225@0.343	900@0.376	34.05	2013	---	---	---	10,554.39	0.330	0.468	2791
6,132,500	1.25	---	---	---	24/06/2011	19/06/2001	---	NEXANS HELLAS SA (CR)	2.27	8.09	↑	2.10	15/04/2014	2.10	2.10	2.28	2.27	2.26	40@2.12	311@2.28	---	2013	535	8	1,208.97	13,920.78	2.03	2.40	2733
63,697,153	1.34	---	---	---	08/07/2008	10/11/2008	---	NIREFS SA (CR)	0.245	0.82	↑	0.243	15/04/2014	0.250	0.237	0.252	0.245	0.242	10000@0.242	1200@0.245	---	2013	112,986	56	27,331.44	15,605.80	0.237	0.362	3573
319,000,000	0.300	0.72	0.57	---	28/06/2013	25/04/2001	---	OPAP (CR)	10.46	3.05	↑	10.15	15/04/2014	10.15	10.10	10.73	10.46	10.35	500@10.44	130@10.65	23.39	2013	1,835,459	2,062	18,939,202.92	3,336,740.00	9.33	12.85	5752
490,150,389	2.83	---	---	---	28/06/2011	18/06/1998	---	OTE (CR)	10.78	6.73	↑	10.10	15/04/2014	10.18	10.18	10.78	10.78	10.54	4101@10.73	5165@10.79	---	2013	1,911,186	2,826	20,156,440.77	5,283,821.19	9.72	13.20	6535
25,000,000	2.00	0.01	0.05	---	18/07/2013	08/08/2003	---	P.P.A. S.A. (CR)	17.30	0.88	↑	17.15	15/04/2014	17.20	17.20	17.68	17.30	17.36	4033@17.30	150@17.55	53.76	2013	12,243	293	212,567.32	432,500.00	16.41	20.89	2777
4,971,466	1.46	---	---	---	04/07/2007	08/10/2003	---	PAIRIS SA (CR)	0.320	---	-	0.320	11/04/2014	---	---	---	---	---	---	56@0.319	---	2013	---	---	---	1,590.87	0.231	0.355	2723
3,953,090	0.900	---	---	---	02/07/2001	05/12/2012	---	PAPERPACK (CR)	1.06	1.92	↑	1.04	15/04/2014	1.06	1.06	1.06	1.06	1.06	100@1.01	585@1.04	5.48	2013	18	2	19.08	4,190.28	0.800	1.15	2723
50,797,369	0.310	---	---	---	17/08/2000	12/10/2010	---	PAPOUTSANIS (CR)	0.480	1.05	↑	0.475	15/04/2014	0.499	0.459	0.499	0.480	0.472	100@0.462	168@0.480	---	2013	622	22	293.85	24,382.74	0.395	0.604	3767
7,070,400	0.930	---	---	---	18/05/2010	12/05/2011	---	PETROPOULOS PETROS (CR)	2.25	2.74	↑	2.19	15/04/2014	2.19	2.12	2.27	2.25	2.18	50@2.20	43@2.22	54.67	2013	14,466	43	31,509.48	15,908.40	1.58	2.34	2753
6,101,979,715	0.300	---	---	---	16/05/2008	05/06/2013	---	PIRAEUS BANK (CR)	1.75	-2.24	↓	1.79	15/04/2014	1.76	1.71	1.78	1.75	1.74	4879@1.74	5394959@1.75	1.87	2013	165,470,815	8,104	288,011,906.77	10,678,464.50	1.49	2.11	8355
22,080,000	0.320	0.08	0.12	---	22/05/2013	03/10/2000	---	PLAISIO COMPUTERS SA (CR)	7.53	2.31	↑	7.36	15/04/2014	7.45	7.40	7.55	7.53	7.41	500@7.42	155@7.53	11.74	2013	5,352	13	39,658.26	166,262.40	5.80	7.80	9572
232,000,000	4.60	---	0.025	---	22/07/2013	12/12/2001	---	PPC (CR)	10.84	5.24	↑	10.30	15/04/2014	10.30	10.30	10.95	10.84	10.68	1000@10.72	10101@10.85	---	2013	608,775	1,378	6,500,415.34	2,514,880.00	9.08	12.75	7535
11,812,193	0.450	---	---	---	24/07/2009	15/11/2006	---	PROFILE SA (CR)	0.949	3.60	↑	0.916	15/04/2014	0.956	0.910	0.956	0.949	0.918	168@0.881	332@0.947	18.27	2013	12	3	11.01	11,209.77	0.870	1.05	9533
27,345,120	0.470	---	---	---	18/07/2005	26/02/2014	---	QUALITY & RELIABILITY SA (CR)	0.505	1.20	↑	0.499	15/04/2014	0.500	0.500	0.505	0.505	0.501	1800@0.470	1000@0.500	67.16	2013	5,038	8	2,526.00	13,809.29	0.378	0.520	9533
11,962,443	0.500	---	---	---	05/09/2008	12/12/2013	---	QUEST HOLDINGS (CR)	5.79	2.30	↑	5.66	15/04/2014	5.50	5.29	5.80	5.79	5.51	200@5.56	250@5.79	---	2013	2,645	27	14,580.60	69,262.54	4.21	6.30	9533
57,434,884	1.31	---	---	---	05/06/2008	12/06/2009	---	REDS S.A. (CR)	0.628	-0.95	↓	0.634	15/04/2014	0.628	0.603	0.645	0.628	0.627	300@0.619	67@0.628	---	2013	546	7	342.24	36,069.11	0.530	0.827	8633
22,280,000	0.300	---	---	---	11/04/2011	23/02/2007	---	REVOIL (CR)	0.556	-2.28	↓	0.569	15/04/2014	0.555	0.533	0.558	0.544	0.549	100@0.543	110@0.549	---	2013	13,930	18	7,652.59	12,387.68	0.533	0.720	5379
7,500,000	0.480	---	---	---	25/06/2010	10/02/2014	---	S.KANAKIS SA (CR)	1.89	---	-	1.89	15/04/2014	1.89	1.88	1.89	1.89	1.89	100@1.85	2993@1.88	9.73	2013	100	8	188.70	14,175.00	1.70	1.95	3577
52,067,296	0.300	---	---	---	23/12/2003	24/01/2007	---	SELECTED TEXT. IND. ASSOC (CR)	0.284	-4.38	↓	0.297	15/04/2014	0.297	0.283	0.297	0.290	0.290	450@0.283	2984@0.290	---	2013	31,515	11	9,133.37	14,787.11	0.242	0.355	3763
96,243,908	0.410	---	---	---	26/06/2008	17/07/2000	---	SIDENOR (CR)	1.90	---	-	1.90	15/04/2014	1.90	1.89	1.93	1.91	1.90	50@1.89	64@1.90	---	2013	6,050	17	11,499.70	182,863.43	1.50	2.26	1757
6,456,530	1.60	---	---	---	29/06/2001	02/08/2010	---	SPACE HELLAS SA (CR)	1.50	---	-	1.50	14/04/2014	---	---	---	---	---	---	3990@1.50	---	2013	---	---	---	9,684.80	1.18	1.87	9578
28,438,268	0.300	---	---	---	21/08/2006	24/11/1999	---	SPIROY AGRICULTURE SA (CR)	0.268	---	-	0.268	15/04/2014	0.268	0.268	0.268	0.268	0.268	---	10980@0.268	---	2013	500	1	134.00	7,621.46	0.248	0.376	1357
33,125,000	5.00	---	---	---	03/07/2006	18/08/2010	---	TECHNICAL OLYMPIC SA (CR)	1.62	1.89	↑	1.59	15/04/2014	1.63	1.58	1.63	1.62	1.59	1599@1.58	190@1.62	---	2013	4,457	14	7,075.81	53,662.50	1.58	1.99	3728
109,314,400	0.300	(0.0589)	---	---	28/05/2012	24/10/2013	---	TERNA ENERGY (CR)	4.10	2.50	↑	4.00	15/04/2014	4.00	4.00	4.16	4.10	4.09	13522@4.10	100@4.15	-(6)-	2013	83,870	386	342,915.95	448,189.04	3.90	4.86	7537
36,300,000	1.12	0.188	0.162	---	16/08/2013	12/12/2007	---	THESSALONIKA WATER & SEWERAGE	4.94	---	-	4.94	15/04/2014	4.92	4.89	5.10	4.94	4.97	195@4.94	20@4.95	13.67	2013	9,205	41	45,748.92	179,322.00	4.65	5.66	7577
45,094,620	0.500	---	0.0467	---	10/06/2013	01/11/1999	---	THRACE PLASTICS SA (CR)	1.26	---	-	1.26	15/04/2014	1.26	1.24	1.26	1.26	1.25	680@1.25	5484@1.26	---	2013	4,360	26	5,438.80	56,819.22	1.11	1.39	1357
77,063,568	4.00	---	---	---	24/06/2011	25/06/2004	---	TITAN CEMENT (CR)	21.50	-2.27	↓	22.00	15/04/2014	22.00	21.50														

Number of Outstanding Securities	Nominal Value	Dividends [1]			Date of Last Coupon		Note	Shares	Closing price	% change	Previous closing price/date	Open price	Price min	Price max	Last price	Avg price	Last Bid [7]	Last Ask [7]	P/E after	Year	Volume	Trades	Transactions Value	Company Mkt Value (thou. €)	Year low	Year high	Sector[ 4]	
		2011	2012	2013	Dividend [2]	Right																						
Main Market																												
18,810,000	0.400	---	---	---	08/07/2010	14/11/2007	---	VARVERIS - MODA BAGNO SA (CR)	0.226	---	0.226	07/04/2014	---	---	---	---	---	900@0.223	---	2013	---	---	---	4,251.06	0.168	0.279	2353	
219,611,308	---	---	---	---		14/02/2014	---	VIOHALCO SA/NV (CB)	4.30	1.18	↑	4.25	15/04/2014	4.22	4.19	4.30	4.30	4.26	805@4.28	---	---	32,029	107	136,580.14	944,328.62	3.92	5.19	2727
4,968,600	2.88	---	---	---	01/07/1998	14/12/1998	---	VIS SA (CR)	0.911	9.89	↑	0.829	02/04/2014	0.911	0.911	0.911	0.911	1070@0.755	---	2013	---	40	2	36.45	4,526.39	0.755	0.980	2723
6,325,000	0.600	---	---	---	19/07/2010	17/02/2014	---	VOGIATZOGLOU SYSTEMS SA (CR)	1.16	---	---	1.16	14/04/2014	---	---	---	---	---	500@1.16	---	2013	---	---	---	7,337.00	0.851	2.27	2797

Exchange Traded Funds (ETFs)

5,848,618	---	---	---	24/01/2008	---	ALPHA ETF FTSE Athens Large Cap	3.89	0.91	↑	3.86	15/04/2014	3.84	3.83	3.91	3.89	3.86	79@3.95	---	---	---	26,420	13	101,914.30	-	3.69	4.55	11000
294,878	---	---	---	29/06/2009	---	NBGAM ETF	13.40	1.98	↑	13.14	15/04/2014	13.29	13.29	13.40	13.40	13.34	---	---	---	---	577	3	7,698.55	-	12.20	15.10	11000
388,550	---	---	---	03/11/2010	---	NBGAM ETF GREECE & TURKEY 30	7.70	-0.65	↓	7.75	15/04/2014	7.70	7.70	7.70	7.70	7.70	---	---	---	---	2	1	15.40	-	6.70	8.18	11000

Low Dispersion

14,000,000	3.80	---	---	---	23/04/2010	29/06/1999	4815	ALPHA REAL ESTATE SA(CR)	5.81	0.17	↑	5.80	14/04/2014	5.81	5.81	5.81	5.81	5.81	250@5.84	42@6.20	24.29	2013	70	1	406.70	81,340.00	4.69	7.10	8637
63,900,000	3.00	---	---	---	23/06/2003	04/11/2008	4816	ASTIR PALACE SA (CR)	3.87	-2.52	↓	3.97	15/04/2014	3.92	3.85	3.92	3.87	3.87	1000@3.75	2613@3.85	---	2013	9,770	41	37,850.10	247,293.00	3.56	4.08	5753
90,902,904	0.800	---	---	---	09/08/2004	08/03/2006	4814	ATHENA SA (CR)	0.240	---	-	0.240	15/04/2014	---	---	---	---	---	---	420@0.220	---	2013	---	---	---	21,816.70	0.160	0.310	2357
191,660,320	0.300	---	---	---	20/07/2009	29/12/2010	4817	ATTICA HOLDINGS (CR)	0.690	-1.00	↓	0.697	15/04/2014	0.690	0.690	0.690	0.690	0.690	92@0.690	248@0.699	---	2013	1,077	5	743.13	132,245.62	0.495	0.795	5759
68,322,221	1.00	---	---	---	08/03/2002	08/04/2013	4986	GENIKI BANK (CR)	9.80	---	-	9.80	11/04/2014	---	---	---	---	---	10@8.01	29@9.80	---	2013	---	---	---	669,557.77	8.00	15.00	8355
71,082,707	1.70	---	---	---	01/07/2010	21/11/2012	4820	HERACLES GEN.CEMENT CO. (CR)	1.53	---	-	1.53	15/04/2014	---	---	---	---	---	1000@1.45	1000@1.52	---	2013	---	---	---	108,756.54	1.26	1.55	2353
13,404,440	8.63	---	---	---	02/04/2001	06/03/1992	4822	IONIAN HOTELS SA (CR)	7.20	---	-	7.20	09/04/2014	7.20	7.20	7.20	7.20	7.20	108@7.20	---	-(6)-	2013	20	1	144.00	96,511.97	6.00	9.90	5753
2,760,000	7.70	7.6	8.52	---	26/06/2013	16/07/1990	4823	KARELIA TOBACCO CO. SA (CB)	210.00	---	-	210.00	14/04/2014	210.00	210.00	210.00	210.00	210.00	1@206.00	10@222.00	14.60	2013	10	2	2,100.00	579,600.00	180.00	234.95	3785
106,980,050	2.25	---	---	---	25/07/2008	24/02/2014	5046	MINOAN LINES SA (CR)	1.50	---	-	1.50	15/04/2014	1.50	1.50	1.50	1.50	1.50	1020@1.51	395@1.57	---	2013	100	1	150.00	160,470.08	1.49	2.00	5759
17,240,776	0.370	---	---	---	14/07/2005	30/09/2003	4827	PERSEUS SA (CR)	0.310	---	-	0.310	02/04/2014	---	---	---	---	---	200@0.248	5010@0.370	2.77	2013	---	---	---	5,344.64	0.260	0.366	3577

Surveillance

33,301,715	0.320	---	---	---	27/06/2003	08/07/2009	4978	AEGEK (CR)	0.074	-7.50	↓	0.080	15/04/2014	0.080	0.073	0.080	0.073	0.074	103@0.073	10650@0.080	---	2013	453	3	33.42	2,464.33	0.071	0.136	2357
14,870,100	0.300	---	---	---	15/05/2008	26/09/2011	4844	ALPHA GRISSIN S.A. (CR)	0.160	---	↓	0.160	10/04/2014	---	---	---	---	---	---	3000@0.192	---	2013	---	---	---	2,379.22	0.067	0.160	9533
215,246,452	0.300	---	---	---	25/06/2001	24/09/2001	4446	ALTEC SA (CR)	0.030	3.45	↑	0.029	15/04/2014	0.033	0.029	0.033	0.033	0.030	27400@0.029	32205@0.033	---	2013	15,550	8	461.15	6,457.39	0.025	0.040	9533
2,969,713	0.300	---	---	---	02/07/2008	28/02/2011	4958	ANEK LINES SA (PR, issue '96)	0.160	---	↓	0.160	04/04/2014	---	---	---	---	---	---	---	---	2013	---	---	---	18,346.61	0.150	0.280	5759
312,163	0.300	---	---	---	02/07/2008	28/02/2011	4959	ANEK LINES SA (PR, issue '90)	1.43	---	↓	1.43	09/09/2013	---	---	---	---	---	---	16@1.15	---	2013	---	---	---	18,346.61	1.43	1.43	5759
185,373,016	0.300	---	---	---	02/07/2008	28/02/2011	4957	ANEK LINES SA (CR)	0.094	-6.00	↓	0.100	15/04/2014	0.095	0.092	0.095	0.092	0.094	4258@0.092	24886@0.095	---	2013	52,333	19	4,925.31	18,346.61	0.092	0.141	5759
81,644,555	0.300	---	---	---	01/07/2008	02/09/2002	5056	ATTI - KAT SA (CR)	0.020	---	↓	0.020	15/04/2014	0.017	0.017	0.020	0.020	0.020	5000@0.020	4000@0.024	---	2013	12,484	3	248.23	1,632.89	0.017	0.036	2357
20,255,805	0.300	---	---	---	22/08/2006	02/08/2010	4881	AXON HOLDING SA (CR)	0.116	---	↓	0.116	03/04/2014	---	---	---	---	---	---	3301@0.100	---	2013	---	---	---	2,349.67	0.060	0.139	4533
17,579,754	4.16	---	---	---	18/08/2006	02/08/2010	4885	BIOTER SA (CR)	0.155	---	↓	0.155	15/04/2014	0.125	0.125	0.170	0.170	0.155	900@0.126	3400@0.175	---	2013	4,947	5	768.38	2,724.86	0.104	0.203	2357
12,431,980	0.720	---	---	---	20/06/2003	10/07/2003	4559	COMPUCON SA (CR)	0.023	---	↓	0.023	14/04/2014	---	---	---	---	---	7000@0.019	3000@0.027	---	2013	---	---	---	285.94	0.023	0.056	9537
14,173,104	0.300	---	---	---	11/08/2010	28/11/2013	5055	DIONIC (CR)	0.100	1.01	↑	0.099	15/04/2014	0.108	0.100	0.108	0.104	0.100	7999@0.101	2011@0.104	---	2013	35,240	16	3,536.80	1,417.31	0.096	0.307	2797
15,878,748	0.480	---	---	---	10/07/2006	22/03/2004	4960	DOMIKI KRITIS SA (CR)	0.389	-2.99	↓	0.401	14/04/2014	0.380	0.380	0.400	0.400	0.389	750@0.400	5000@0.420	---	2013	7,000	4	2,720.00	6,176.83	0.264	0.485	2357
3,961,300	1.28	---	---	---	29/06/2004	03/08/2000	4808	DUROS SA (CR)	0.530	---	↓	0.530	10/04/2014	---	---	---	---	---	---	1000@0.515	---	2013	---	---	---	2,099.49	0.185	0.759	3763
7,085,888	1.59	---	---	---	02/07/1996	06/09/2010	4690	ELVIEMEK (CR)	3.97	---	↓	3.97	26/02/2014	---	---	---	---	---	---	---	---	2013	---	---	---	28,130.98	1.54	3.97	8633
6,000,000	0.600	---	---	---	13/06/2008	08/04/2004	4886	EUROBROKERS S.A. (CR)	0.044	---	↓	0.044	02/04/2014	---	---	---	---	---	588@0.044	---	---	2013	---	---	---	264.00	0.043	0.052	8534

Number of Outstanding Securities	Nominal Value	Dividends [1]			Date of Last Coupon		Note	Shares	Closing price	% change	Previous closing price/date	Open price	Price min	Price max	Last price	Avg price	Last Bid [7]	Last Ask [7]	P/E after	Year	Volume	Trades	Transactions Value	Company Mkt Value (thou. €)	Year low	Year high	Sector[ 4]
2011	2012	2013	Dividend [2]	Right																							

Surveillance

21,820,410	0.800	---	---	---	22/05/2008	02/08/2011	4882	EUROMEDICA SA (CR)	0.300	---	-	0.300	15/04/2014	---	---	---	---	---	---	19477@0.300	---	2013	---	---	---	---	6,546.12	0.240	0.389	4533
110,097,185	0.300	---	---	---	04/12/2013		5033	Forthnet (CR)	1.09	---	-	1.09	15/04/2014	---	---	---	---	---	500@1.04	3100@1.08	---	2013	---	---	---	---	120,005.93	1.09	1.98	9535
1,270,000	0.300	---	---	---	06/07/2007	06/02/2013	5007	GIRAKIAN PROFIL SA (CB)	2.30	---	-	2.30	11/04/2014	---	---	---	---	---	---	4@2.30	---	2013	---	---	---	---	2,921.00	1.44	2.63	1757
179,707,771	0.300	---	---	---	27/06/2002	01/11/2011	4847	HELLAS ONLINE SA (CR)	0.579	---	-	0.579	15/04/2014	---	---	---	---	---	1000@0.540	1771@0.619	75.27	2013	---	---	---	---	104,050.80	0.400	0.670	9537
30,390,000	0.310	---	---	---	18/08/2008	29/12/2006	4447	HELLENIC FISHFARMING SA (CR)	0.085	---	-	0.085	15/04/2014	---	---	---	---	---	---	500@0.085	---	2013	---	---	---	---	2,583.15	0.052	0.119	3573
7,125,216	0.650	---	---	---	01/07/2005	14/12/1999	4955	KRE.KA SA (CR)	0.206	---	-	0.206	26/03/2014	---	---	---	---	---	500@0.165	400@0.206	---	2013	---	---	---	---	1,467.79	0.145	0.278	3573
51,081,030	1.00	---	---	---	20/08/2007	03/09/2007	4912	LAVIPHARM SA (CR)	0.127	-3.79	↓	0.132	15/04/2014	0.127	0.127	0.127	0.127	0.127	1000@0.127	998@0.137	---	2013	3,500	3	444.50	6,487.29	0.124	0.164	4577	
322,925,288	0.300	---	---	---	23/05/2007	10/04/2000	4554	M.J. MAILLIS SA (CR)	0.130	1.56	↑	0.128	15/04/2014	0.130	0.126	0.134	0.126	0.130	---	19958@0.128	---	2013	58,000	19	7,558.00	41,980.29	0.067	0.136	2723	
4,178,856	1.58	---	---	---	21/07/2011	28/07/2004	4983	MEDICON S.A (CR)	0.612	---	-	0.612	15/04/2014	---	---	---	---	---	---	696@0.729	25.23	2013	---	---	---	---	2,557.46	0.303	0.952	4535
255,459,600	0.300	---	---	---	26/06/2000	03/12/2010	4833	NEL SA (CR)	0.060	-6.25	↓	0.064	15/04/2014	0.055	0.055	0.064	0.064	0.060	2406@0.055	4674@0.064	---	2013	194	3	11.58	15,327.58	0.042	0.090	5759	
20,231,328	0.600	---	---	---	15/07/2008	25/06/2004	4879	NIKAS SA (CR)	0.178	---	-	0.178	11/04/2014	---	---	---	---	---	1125@0.178	---	---	2013	---	---	---	---	3,601.18	0.170	0.180	3577
20,210,127	1.53	---	---	---	27/06/1997	20/03/2000	5006	PARNASSOS ENTERP. (CR)	0.100	19.05	↑	0.084	15/04/2014	0.076	0.076	0.100	0.100	0.100	1000@0.083	2813@0.100	---	2013	8,133	8	810.11	2,021.01	0.076	0.172	8775	
14,967,940	0.500	---	---	---	21/05/2008	04/01/2008	4956	PASAL DEVELOPMENT S.A. (CR)	0.215	---	-	0.215	15/04/2014	---	---	---	---	---	1354@0.180	1000@0.230	---	2013	---	---	---	---	3,218.11	0.129	0.239	8633
18,750,000	0.300	---	---	---	02/07/2001	31/12/2012	4985	PEGASUS PUBLISHING S.A. (CR)	0.290	---	-	0.290	11/04/2014	---	---	---	---	---	---	18435@0.310	---	2013	---	---	---	---	5,437.50	0.045	0.300	5557
24,319,250	0.300	---	---	---	09/07/2002	04/07/2007	5054	PROODEFTIKH SA (CR)	0.098	1.03	↑	0.097	15/04/2014	0.096	0.096	0.100	0.098	0.098	2000@0.097	1200@0.103	---	2013	17,070	12	1,673.03	2,383.29	0.087	0.188	2357	
65,326,268	0.530	---	---	---	04/07/2007	19/07/2006	4750	SATO SA (CR)	0.158	---	-	0.158	14/04/2014	---	---	---	---	---	3000@0.127	1936@0.155	---	2013	---	---	---	---	10,321.55	0.109	0.250	3726
36,235,184	1.00	---	---	---	01/07/2008	30/07/2012	4961	SELONDA AQUACULTURE SA (CR)	0.120	0.84	↑	0.119	15/04/2014	0.120	0.120	0.120	0.120	0.120	10452@0.120	910@0.136	---	2013	12,548	6	1,505.76	4,348.22	0.090	0.149	3573	
7,914,480	2.50	---	---	---	23/06/2008	29/06/2011	4888	SFAKIANAKIS SA (CR)	1.00	---	-	1.00	09/04/2014	1.00	1.00	1.00	1.00	1.00	---	20@1.00	---	2013	80	1	80.00	7,914.48	0.488	1.00	5379	
10,000,000	1.35	---	---	---	24/06/2008	10/05/2005	4887	SIDMA SA (CR)	0.348	---	-	0.348	14/04/2014	---	---	---	---	---	400@0.279	410@0.417	---	2013	---	---	---	---	3,480.00	0.240	0.440	1757
29,060,950	0.340	---	---	---	20/08/2007	24/10/2001	4884	SPIDER METAL INDUSTRY SA (CR)	0.014	---	-	0.014	11/04/2014	---	---	---	---	---	350@0.014	---	---	2013	---	---	---	---	406.85	0.012	0.053	2757
100,793,000	0.300	---	---	---	16/07/2009	05/08/2013	5008	TELETIPOS SA (CR)	0.345	---	-	0.345	11/04/2014	---	---	---	---	---	---	245@0.410	---	2013	---	---	---	---	34,773.59	0.111	0.345	5553
3,229,566	0.320	---	---	---	22/06/2005	23/09/1999	4629	VARANGIS AVEPE S.A. (CR)	0.860	---	-	0.860	11/04/2014	---	---	---	---	---	---	500@0.870	---	2013	---	---	---	---	2,777.43	0.860	1.00	3726
16,383,428	0.300	---	---	---	25/06/2002	21/06/2013	4997	VARVARESSOS SA (CB)	0.211	---	-	0.211	15/04/2014	---	---	---	---	---	1000@0.188	500@0.240	0.29	2013	---	---	---	---	3,456.90	0.152	0.293	3763
13,191,620	0.620	---	---	---	04/08/2010	09/09/2002	4977	YALCO - CONSTANTINOU SA (CB)	0.120	-6.25	↓	0.128	15/04/2014	0.120	0.120	0.120	0.120	0.120	200@0.111	1000@0.153	---	2013	250	2	30.00	1,582.99	0.120	0.241	3722	

Under Deletion

9,567,289	0.300	---	---	---	01/07/2004	19/11/2007	5052	MARAC ELECTRONICS (CR)	0.297	---	0.297	31/12/2013	---	---	---	---	---	1000@0.290	---	2013	---	---	---	2,841.48	0.297	0.297	9578
40,946,303	0.360	---	---	---	18/07/2005	27/11/2007	5053	PC SYSTEMS SA (CR)	0.098	---	0.098	15/04/2014	---	---	---	---	---	2000@0.098	---	2013	---	---	---	4,012.74	0.046	0.169	9533
766,000	2.83	---	---	---	01/07/2004	11/12/2012	4937	TRIA ALFA SA (CR)	3.33	---	3.33	27/01/2014	---	---	---	---	---	500@3.34	---	2013	---	---	---	2,834.98	2.81	3.33	3763
245,000	2.83	---	---	---	19/07/2010	11/12/2012	4938	TRIA ALFA SA (PR)	1.16	---	1.16	03/04/2014	---	---	---	---	---	301@1.39	---	2013	---	---	---	2,834.98	0.969	1.39	3763

Under Suspension

5,025,000	0.300	---	---	---	05/07/2005	14/03/2002	5023	AL SINCO S.A (CR)	0.043	---	0.043	27/11/2013	---	---	---	---	---	---	---	---	---	---	---	216.08	0.043	0.043	3763
1,750,955,549	0.600	---	---	---	19/05/2008	08/12/2011	4911	ATE (CR)	0.155	---	0.155	30/07/2012	---	---	---	---	---	---	---	---	---	---	---	271,398.11	0.155	0.155	8355
21,382,067	0.300	---	---	---	02/10/2006	15/02/2006	4628	ATERMON (CR)	0.120	---	0.120	31/03/2010	---	---	---	---	---	---	---	---	---	---	---	2,565.85	0.120	0.120	5555
105,423,498	0.510	---	---	---	01/07/2004	28/12/2005	4920	AVENIR S.A. (CR)	0.046	---	0.046	30/08/2012	---	---	---	---	---	---	---	---	---	---	---	4,849.48	0.046	0.046	5752
33,930,000	0.300	---	---	---	03/07/2006	30/05/2001	4865	BABIS VOVOS SA (CR)	0.304	---	0.304	30/03/2012	---	---	---	---	---	---	---	---	---	---	---	10,314.72	0.304	0.304	8633
20,121,710	1.21	---	---	---	27/07/1992	12/03/2003	5002	BALKAN R.E. (CR)	0.190	---	0.190	29/08/2013	---	---	---	---	---	---	---	---	---	---	---	3,823.12	0.190	0.190	8633

## Daily Official List

Year: 135 Trading Day No: 72

## Section 2: Analytic Figures of Shares Transactions

Wednesday, 16 April, 2014

Number of Outstanding Securities	Nominal Value	Dividends [1]			Date of Last Coupon		Note	Shares	Closing price	% change	Previous closing price/date	Open price	Price min	Price max	Last price	Avg price	Last Bid [7]	Last Ask [7]	P/E after	Year	Volume	Trades	Transactions Value	Company Mkt Value (thou. €)	Year low	Year high	Sector[ 4]	
		2011	2012	2013	Dividend [2]	Right																						
Under Suspension																												
1,795,140,547	1.00	---	---	---	31/05/2011	19/04/2012	4951	BANK OF CYPRUS (CR)	0.207	---	0.207	15/03/2013	---	---	---	---	---	---	---	---	---	---	---	---	371,594.09	0.207	0.207	8355
21,920,570	0.300	---	---	---	03/07/2007	13/12/1999	4702	CARDASSILARIS SA (CR)	0.140	---	0.140	30/11/2010	---	---	---	---	---	---	---	---	---	---	---	---	3,068.88	0.140	0.140	3577
54,547,634	0.500	---	---	---	25/04/2005	21/01/2009	4860	CH.TEGOPOULOS PUBL. SA (CR)	0.038	---	0.038	23/03/2012	---	---	---	---	---	---	---	---	---	---	---	---	2,072.81	0.038	0.038	5557
30,159,583	0.470	---	---	---	26/06/2008	29/12/2010	5047	DIAS A/C (CR)	0.050	---	0.050	26/03/2014	---	---	---	---	---	---	---	---	---	---	---	---	1,507.98	0.040	0.092	3573
7,847,611	1.20	---	---	---	01/08/2007	28/09/2011	4939	EDRASIS - C. PSALLIDAS SA (CR)	0.150	---	0.150	19/11/2012	---	---	---	---	---	---	---	---	---	---	---	---	1,177.14	0.150	0.150	2357
5,750,000	0.300	---	---	---	12/12/2008	12/12/2011	4929	ELECTRONIKI ATHINON SA (CR)	0.480	---	0.480	07/09/2012	---	---	---	---	---	---	---	---	---	---	---	---	2,760.00	0.480	0.480	5375
24,605,397	0.400	---	---	---	29/06/1995	27/05/2002	4651	EMPORIKOS DESMOS SA (CR)	0.080	---	0.080	28/05/2010	---	---	---	---	---	---	---	---	---	---	---	---	2,134.04	0.080	0.080	3722
1,182,903	0.400	---	---	---	01/07/1996	27/05/2002	4652	EMPORIKOS DESMOS SA (PR)	0.140	---	0.140	28/09/2009	---	---	---	---	---	---	---	---	---	---	---	---	2,134.04	0.140	0.140	3722
7,326,648	1.00	---	---	---	26/07/2006	24/07/2001	4921	FINTEXPORT SA (CR)	0.328	---	0.328	29/06/2012	---	---	---	---	---	---	---	---	---	---	---	---	2,403.14	0.328	0.328	3763
13,692,227	1.47	---	---	---	07/07/2006	08/10/1999	5049	HELLENIC FABRICS SA (CR)	0.117	---	0.117	31/03/2014	---	---	---	---	---	---	---	---	---	---	---	---	1,601.99	0.089	0.153	3763
1,540,000	0.600	---	---	---	08/08/1994	19/09/2000	5051	J.BOUTARIS & SON HOLD. (PB)	0.010	---	0.010	24/03/2014	---	---	---	---	---	---	---	---	---	---	---	---	1,501.00	0.010	0.012	3535
25,179,640	0.600	---	---	---	08/08/1994	19/09/2000	5050	J.BOUTARIS & SON HOLD. SA (CB)	0.059	---	0.059	31/03/2014	---	---	---	---	---	---	---	---	---	---	---	---	1,501.00	0.042	0.084	3535
24,619,524	0.500	---	---	---	10/10/1986	30/12/2002	4914	KERAMIA-ALLATINI (CR)	0.088	---	0.088	27/08/2012	---	---	---	---	---	---	---	---	---	---	---	---	2,166.52	0.088	0.088	8633
7,840,373	1.20	---	---	---	18/07/2002	05/03/2003	4765	KLONATEX SA (PR)	0.080	---	0.080	09/05/2011	---	---	---	---	---	---	---	---	---	---	---	---	1,453.75	0.080	0.080	3763
20,663,047	1.20	---	---	---	21/08/2000	05/03/2003	4764	KLONATEX SA (CR)	0.040	---	0.040	09/05/2011	---	---	---	---	---	---	---	---	---	---	---	---	1,453.75	0.040	0.040	3763
17,544,600	0.600	---	---	---	03/07/2000	01/08/2000	4868	KOYMBAS SYNERGY GROUP (CR)	0.132	---	0.132	29/03/2012	---	---	---	---	---	---	---	---	---	---	---	---	2,315.89	0.132	0.132	8775
15,015,000	1.60	---	---	---	01/07/2002	02/02/2000	4603	MAXIM C.M. PERTSINIDIS SA (CB)	0.100	---	0.100	30/11/2009	---	---	---	---	---	---	---	---	---	---	---	---	1,501.50	0.100	0.100	3763
66,937,526	0.700	---	---	---	13/08/2010	21/05/2003	5003	MICHANIKI SA (CR)	0.100	---	0.100	29/08/2013	---	---	---	---	---	---	---	---	---	---	---	---	9,186.78	0.100	0.100	2357
25,968,987	0.700	---	---	---	13/08/2010	21/05/2003	5004	MICHANIKI SA (PR)	0.096	---	0.096	29/08/2013	---	---	---	---	---	---	---	---	---	---	---	---	9,186.78	0.096	0.096	2357
13,555,100	1.00	---	---	---		08/07/2005	4576	MICROLAND COMPUTERS SA (CR)	0.640	---	0.640	14/07/2009	---	---	---	---	---	---	---	---	---	---	---	---	8,675.26	0.640	0.640	5379
23,463,874	0.800	---	---	---	23/05/2003	21/12/1999	4918	NEORION SA (CR)	0.125	---	0.125	28/08/2012	---	---	---	---	---	---	---	---	---	---	---	---	2,932.98	0.125	0.125	2753
42,501,273	0.300	---	---	---	26/06/2007	10/08/2009	4993	NUTRIART (CR)	0.049	---	0.049	21/06/2013	---	---	---	---	---	---	---	---	---	---	---	---	2,082.56	0.049	0.049	3577
25,583,146	0.300	---	---	---	25/06/2001	03/12/2008	4723	PETZETAKIS SA (CR)	0.260	---	0.260	28/01/2011	---	---	---	---	---	---	---	---	---	---	---	---	6,651.62	0.260	0.260	1357
9,550,386	0.500	---	---	---	01/07/1997	12/06/2008	4626	PRAXITELIO SA (CR)	0.390	---	0.390	11/03/2010	---	---	---	---	---	---	---	---	---	---	---	---	4,430.09	0.390	0.390	4533
1,306,368	0.500	---	---	---	01/07/1997	12/06/2008	4627	PRAXITELIO SA (PR)	0.540	---	0.540	15/12/2009	---	---	---	---	---	---	---	---	---	---	---	---	4,430.09	0.540	0.540	4533
62,683,822	0.300	---	---	---	27/05/2008	09/01/2006	4830	PROTON BANK S.A. (CR)	0.180	---	0.180	07/10/2011	---	---	---	---	---	---	---	---	---	---	---	---	11,283.09	0.180	0.180	8355
51,334,286	0.320	---	---	---	03/07/2000	18/12/2007	4548	SAOS (CR)	0.780	---	0.780	27/03/2009	---	---	---	---	---	---	---	---	---	---	---	---	40,040.74	0.780	0.780	2773
26,408,040	0.300	---	---	---	01/07/1997	26/05/1999	4464	SHEET STEEL SA (CR)	0.120	---	0.120	28/11/2008	---	---	---	---	---	---	---	---	---	---	---	---	3,168.96	0.120	0.120	1757
60,221,300	0.400	---	---	---	01/07/2002	01/11/2010	5022	SHELMAN SA (CR)	0.080	---	0.080	19/11/2013	---	---	---	---	---	4000@0.070	---	---	---	---	---	---	4,817.70	0.080	0.080	2353
26,262,660	0.900	---	---	---	01/07/2008	24/02/2011	4954	SPRIDER STORES (CR)	0.031	---	0.031	28/03/2013	---	---	---	---	---	---	---	---	---	---	---	---	814.14	0.031	0.031	5371
144,688,060	0.600	---	---	---	21/04/2008	10/03/2010	4982	T BANK (CR)	0.048	---	0.048	30/11/2011	---	---	---	---	---	---	---	---	---	---	---	---	6,945.03	0.048	0.048	8355
6,523,780	0.530	---	---	---	01/07/2002	06/03/2001	4971	TECHNICAL PUBLICATIONS SA (CR)	0.006	---	0.006	29/05/2013	---	---	---	---	---	---	---	---	---	---	---	---	39.14	0.006	0.006	5557
13,920,000	0.320	---	---	---	19/11/2001	01/08/2000	4726	TEXAPRET SA (CR)	0.080	---	0.080	23/02/2011	---	---	---	---	---	---	---	---	---	---	---	---	1,113.60	0.080	0.080	3763
510,840	1.00	---	---	---	15/07/2008	21/11/2013	5036	TROPEA HOLDING (CR)	2.00	---	0.020	# 30/03/2012	---	---	---	---	---	---	---	---	---	---	---	---	1,021.68	0.020	2.00	3722
284,465,964	3.70	---	---	---	20/06/2008	15/06/2009	4913	TT HELLENIC POSTBANK (CR)	0.168	---	0.168	30/08/2012	---	---	---	---	---	---	---	---	---	---	---	---	47,790.28	0.168	0.168	8355
89,616,200	0.300	---	---	---	21/08/2000	28/06/2007	4616	UNITED TEXTILES (CR)	0.050	---	0.050	25/02/2010	---	---	---	---	---	---	---	---	---	---	---	---	4,480.81	0.050	0.050	3763
71,683,906	0.400	---	---	---	15/06/2005	05/02/2008	4953	XATZIOANNOU (CR)	0.026	---	0.026	28/03/2013	---	---	---	---	---	---	---	---	---	---	---	---	1,863.78	0.026	0.026	3763



## Shares' Notes

Code	Note text
( )	- Adjusted dividends.
*	- Last adjusted closing price.
[1]	- Net dividends.
[2]	- The "Date of Last Coupon" for New listings refers to the date company's stocks started to trade in Athex
[3]	- The Company Market Value is referred to the number of outstanding shares
[4]	- Sectors codification can be found in Appendix A
[5]	- The Market Value refers to the total number of shares listed (including their several classes) in the exchange by the company.
[6]	- P/E greater than 100
[7]	- Last view of the Order Book before the end of the trading session
4446	- Transfer to the "Under Supervision" Category as of 20/10/2008.
4447	- Transfer to the "Under Supervision" Category as of 21/10/2008.
4464	- Suspension of trading as of 1/12/2008.
4548	- Suspension of trading as of 1/4/2009.
4554	- Transfer to the "Under Supervision" Category as of 6/4/2009.
4559	- Transfer to the "Under Supervision" Category as of 21/4/2009.
4576	- Suspension of trading as of 14/7/2009.
4603	- Suspension of trading as of 1/12/2009.
4616	- Suspension of trading as of 25/2/2010.
4626	- Suspension of trading as of 1/4/2010.
4627	- Suspension of trading as of 1/4/2010.
4628	- Suspension of trading as of 1/4/2010.
4629	- Transfer to the Under Supervision Category as of 12/4/2010.
4651	- Suspension of trading as of 1/6/2010.
4652	- Suspension of trading as of 1/6/2010.
4690	- Transfer to Surveillance category as of 4/4/2006.
4702	- Suspension of trading as of 1/12/2010.
4723	- Suspension of trading as of 31/1/2011.
4726	- Suspension of trading as of 1/3/2011.
4750	- Transfer to the "Under Surveillance Category" from 8/4/2011.
4764	- Suspension of trading as of 20/5/2011.
4765	- Suspension of trading as of 20/5/2011.
4795	- The final gross (pre-tax) dividend is € 0.30 per share and subject to withholding tax on the full dividend amount, i.e. 0.45 per share, for those shareholders liable to withholding tax, in accordance with the applicable tax law provisions.
4808	- Suspension of trading as of 6/9/2011.
4814	- Transfer to the Low Dispersion Category as of 30/5/2011.
4815	- Transfer to the Low Dispersion Category as of 30/5/2011.
4816	- Transfer to the Low Dispersion Category as of 30/5/2011.
4817	- Transfer to the Low Dispersion Category as of 30/5/2011.
4820	- Transfer to the Low Dispersion category as of 18/4/2008.
4822	- Transfer to the Low Dispersion category as of 30/5/2011.
4823	- Transfer to the Low Dispersion category as of 4/4/2006.
4827	- Transfer to the Low Dispersion category as of 5/5/2010.
4830	- Suspension of trading as of 10/10/2011.
4833	- Transfer to Surveillance category from 6/5/2010.
4844	- Transfer to the Surveillance category from 8/4/2011.
4847	- Transfer to the Surveillance Category as of 3/7/2009.
4860	- Suspension of trading as of 30/3/2012.
4865	- Suspension of trading as of 2/4/2012.
4868	- Suspension of trading as of 2/4/2012.
4879	- Transfer to the Surveillance Category as of 10/4/2012.
4881	- Transfer to the Surveillance Category as of 10/4/2012.
4882	- Transfer to the Surveillance Category as of 10/4/2012.

## Shares' Notes

Code	Note text
4884	- Transfer to the Surveillance Category as of 10/4/2012.
4885	- Transfer to the Surveillance Category as of 10/4/2012.
4886	- Transfer to the Surveillance Category as of 10/4/2012.
4887	- Transfer to the Surveillance Category as of 10/4/2012.
4888	- Transfer to the Surveillance Category as of 10/4/2012.
4911	- Lift of suspension from 30/7/2012.
4912	- Transfer to the Surveillance Category as of 31/7/2012.
4913	- Suspension of trading as of 30/8/2012.
4914	- Suspension of trading as of 31/8/2012.
4918	- Suspension of trading as of 31/8/2012.
4920	- Suspension of trading as of 31/8/2012.
4921	- Suspension of trading as of 31/8/2012.
4929	- Suspension of trading as of 1/10/2012.
4937	- Transfer to the UNDER DELETION category as of 30/11/2012.
4938	- Transfer to the UNDER DELETION category as of 30/11/2012.
4939	- Suspension of trading as of 30/11/2012.
4951	- Suspension of trading as of 19/3/2013.
4953	- Suspension of trading as of 2/4/2013.
4954	- Suspension of trading as of 2/4/2013.
4955	- Transfer to the Surveillance Category as from 5/4/2013.
4956	- Transfer to the Surveillance Category as from 5/4/2013.
4957	- Transfer to the Surveillance Category as from 5/4/2013.
4958	- Transfer to the Surveillance Category as from 5/4/2013.
4959	- Transfer to the Surveillance Category as from 5/4/2013.
4960	- Transfer to the Surveillance Category as from 5/4/2013.
4961	- Transfer to the Surveillance Category as from 5/4/2013.
4971	- Suspension of trading as of 3/6/2013.
4977	- Transfer to the "Under Surveillance Category" from 11/6/2013.
4978	- Transfer to the Under Supervision Category as of 11/6/2013.
4982	- Suspension of trading as of 1/12/2011.
4983	- Transfer to the Surveillance Category as of 5/4/2013.
4985	- Transfer to the "Under Surveillance Category" from 8/4/2011.
4986	- Transfer to the Low Dispersion category as of 30/5/2011.
4988	- As of June 7, 2013, the name of the company "DUTY FREE SHOPS A CORPORATION OPERATING DFS AND LARGE AND SMALL SCALE INDUSTRIAL OPERATIONS, TECHNIC" on ATHEX changes to "FOLLI FOLLIE S.A.".
4993	- Suspension of trading as of 21/6/2013 (15:18).
4997	- Transfer to the Under Supervision Category as of 21/12/2009. - The 6,870,053 new (CB) shares, resulting from the recent share capital increase through a rights issue, are not yet admitted to trading on the ATHEX.
5002	- Suspension of trading as of 30/08/2013.
5003	- Suspension of trading as of 30/08/2013.
5004	- Suspension of trading as of 30/08/2013.
5006	- Transfer to the Surveillance Category as of 3/9/2013.
5007	- Transfer to the Surveillance category, as of 11/10/2013.
5008	- Transfer to the Surveillance Category from 8/4/2011.
5022	- Suspension of trading as of 2/12/2013.
5023	- Suspension of trading as of 2/12/2013.
5031	- The 612,300 new (CR) shares, resulting from the recent share capital increase through a rights issue, are not yet admitted to trading on the ATHEX.
5033	- Transfer to the Surveillance Category as of 25/11/2011. The 97,144,575 new (CR) shares, resulting from the recent share capital increase through a rights issue, are not yet admitted to trading on the ATHEX.
5036	- The company's share is under suspension of trading as of 2/4/2012. During suspension, the company proceeded and concluded a share reverse split, according to which - after the conclusion of the corporate action - the total number of the company's shares, as well as, the last closing price of 30/03/2012 were adjusted.
5046	- Transfer to the Low Dispersion category as of 8/4/2011.
5047	- Suspension of trading as of 27/3/2014.
5049	- Under suspension of trading as of 1/4/2014.

**Shares' Notes**

Code	Note text
5050	- Under suspension of trading as of 1/4/2014.
5051	- Under suspension of trading as of 1/4/2014.
5052	- Transfer to the UNDER DELETION category as of 10/4/2014.
5053	- Transfer to the UNDER DELETION category as of 10/4/2014.
5054	- Transfer to the Surveillance Category as of 10/4/2014.
5055	- Transfer to the Surveillance Category as of 10/4/2014.
5056	- Transfer to the Under Supervision Category as of 14/4/2014.

## Securities Blocks Details

Securities	Block Volume	Price	Block Trade Value	Time of approval	Note
PIRAEUS BANK (CR)	687,294	1.71	1,175,272.74	10:40:16	20
OPAP (CR)	100,000	10.20	1,020,000.00	11:13:50	20
OPAP (CR)	46,433	10.20	473,616.60	11:18:02	20
PIRAEUS BANK (CR)	1,168,820	1.74	2,033,746.80	11:28:57	20
OPAP (CR)	35,000	10.20	357,000.00	11:33:01	20
OPAP (CR)	115,000	10.20	1,173,000.00	11:36:08	20
OPAP (CR)	50,381	10.25	516,405.25	11:38:17	20
OPAP (CR)	50,000	10.23	511,500.00	11:44:19	20
JUMBO SA (CR)	22,523	11.10	250,005.30	11:56:20	20
PIRAEUS BANK (CR)	1,700,000	1.75	2,975,000.00	12:01:33	20
PIRAEUS BANK (CR)	4,440,400	1.74	7,704,094.00	13:13:48	20
PIRAEUS BANK (CR)	525,780	1.70	893,826.00	13:44:02	20
ALPHA BANK (W)	465,500	1.65	768,075.00	14:04:33	20
ALPHA BANK (CR)	3,101,149	0.681	2,111,882.47	14:05:08	20
PIRAEUS BANK (CR)	4,000,000	1.73	6,900,000.00	14:12:17	20
EUROBANK PROPERTIES REIC (CR)	44,000	8.30	365,200.00	15:05:23	20
PIRAEUS BANK (CR)	2,088,593	1.73	3,613,265.89	15:14:40	20
ALPHA BANK (CR)	461,530	0.679	313,378.87	16:41:04	20
TITAN CEMENT (CR)	25,000	21.85	546,250.00	16:47:05	20
ALPHA BANK (W)	2,607,320	1.65	4,289,041.40	16:52:44	20
PIRAEUS BANK (CR)	848,000	1.74	1,475,520.00	16:56:23	20
OTE (CR)	100,000	10.60	1,060,000.00	16:59:07	20
PIRAEUS BANK (CR)	500,000	1.75	875,000.00	17:11:23	20
PIRAEUS BANK (CR)	932,862	1.75	1,631,668.92	17:12:53	20
PIRAEUS BANK (CR)	1,403,750	1.73	2,428,487.50	17:13:47	20
ALPHA BANK (CR)	838,150	0.682	571,283.04	17:15:54	20
OPAP (CR)	25,000	10.46	261,500.00	17:19:34	20

## Blocks Notes

2 - SPOT 1 or SPOT 2 Packet	11 - Total Assets > 500 bil
3 - Block with Short Selling	12 - Sell Offer through Athex
4 - Buy to Close Block	13 - Forced Sale of NMOE
6 - Simultaneous Constitution	14 - Restoration Packet
7 - Repurchase Agreement	15 - Market Maker Packet
8 - Dispersion's Achievement (Not Listed)	16 - Short Selling
9 - Dispersion's Achievement (Listed)	18 - SPOT 1 Packet
10 - Share Capital Majority of Greek State (> 50 bil)	20 - Method 6-1 Packet

Shares Rights Details

Occured date	Exercise from	Exercise until	Trading until	Rights	Price min	Price max	Closing price	Last Bid	Last Ask	Volume	Trades	Transactions Value
-----------------	------------------	-------------------	------------------	--------	--------------	--------------	------------------	----------	----------	--------	--------	-----------------------

No Rights Transactions.

**Stock Borrowing**

<b>Securities</b>	Stock Borrowing through Helex (volume)	Stock Borrowing through OTC (volume) [1]	<b>Totals [2]</b>
ALPHA BANK (CR)	11,310,000	119,612,133	130,922,133
ATE (CR)	---	69,000	69,000
BANK OF CYPRUS (CR)	---	102,899	102,899
CC HBC AG (CR)	11,000	69,876	80,876
CORINTH PIPEWORKS SA (CR)	700	---	700
ELLAKTOR (CR)	9,100	---	9,100
EUROBANK ERGASIAS (CR)	119,600	68,406	188,006
EUROBANK PROPERTIES REIC (CR)	4,900	23,369	28,269
EYDAP S.A. (CR)	25,800	---	25,800
FOLLI FOLLIE (CR)	52,200	---	52,200
FRIGOGLASS SA (CR)	4,900	---	4,900
GEK TERNA (CR)	2,200	---	2,200
HELLENIC EXCHANGES-A.S.E. (CR)	6,500	2,000	8,500
HELLENIC PETROLEUM (CR)	62,700	185,402	248,102
INTRACOM HOLDINGS (CR)	8,000	---	8,000
INTRALOT (CR)	7,900	---	7,900
JUMBO SA (CR)	15,400	---	15,400
LAMDA DEVELOPMENT SA (CR)	---	10,377	10,377
MARFIN INVESTMENT GROUP (CR)	66,000	728,474	794,474
METKA (CR)	5,600	---	5,600
MOTOR OIL (CR)	24,000	93,828	117,828
MYTILINEOS HOLDINGS (CR)	6,700	---	6,700
NATIONAL BANK (CR)	763,100	568,153	1,331,253
NBGAM ETF	10,000	---	10,000
NBGAM ETF GREECE & TURKEY 30	3,600	---	3,600
OPAP (CR)	53,900	40,000	93,900
OTE (CR)	14,500	218,542	233,042
P.P.A. S.A. (CR)	2,200	280	2,480
PIRAEUS BANK (CR)	1,088,400	45,664,282	46,752,682
PPC (CR)	21,200	---	21,200
TITAN CEMENT (CR)	32,900	54	32,954

**Stock Borrowing Notes**

[1] - The information concerning OTC Stock Borrowing Transactions is based on the statements of the Dematerialised Securities System (DSS) operators involved and refers to volumes that have been cleared and registered up until the previous working day.

**Shares Forced Sales**

Securities	Transaction s Volume	Number of Trades	Transactions Value	Note
No Forced Transactions.				

**Forced Sales Notes**

- 1 - Normal Forced Sale.
- 2 - Forced Sales of Fixed Registered Shares.
- 3 - Forced Sales of Remaining Stock Fractions.

**Forced Sales Registered Shares**

Securities	Start Date	End Date	Initial Volume	Remaining Volume	Date	Avg price (day)	Avg price (period)	Number of Trades	Transactions Volume	Transactions Value
------------	------------	----------	-------------------	---------------------	------	--------------------	-----------------------	---------------------	------------------------	-----------------------

**No Fixed Registered Shares Forced Sales.**

**Forced Sales Notes**

According to Decision 1/380/04.05.2008 of the Hellenic Republic Capital Market Commission, the certificated registered shares that have not been deposited to the issuer for dematerialisation, will be auctioned in the Athens Exchange by the supervising issuer. Forced sales procedure is held according to Article 99A of the Athens Exchange Rulebook. The average price of the period is calculated by dividing the Total transactions value by the Total volume and includes all the transactions made until the current date.



## Exchange Traded Funds (ETFs) Characteristics

	Transactions Date (T)	Creation / Redemption	Units (T-1)	New Units (T-1)	Redemptio n Units (T-	Units (T) [1]	Fund Assets [2]	Net Unit Price	Dividen d per	Dividend Date
NBGAM ETF ΓΔ X.A.	16/04/2014	25,000	294,878	---	---	294,878	3,864,121.00	13.1041	---	27/10/2011
ALPHA ETF FTSE Athex Large Cap	16/04/2014	50,000	5,848,618	---	---	5,848,618	22,306,070.00	3.8139	0.05	01/07/2013
NBGAM ETF GREECE & TURKEY 30	16/04/2014	25,000	388,550	---	---	388,550	2,965,224.00	7.6315	---	27/10/2011

## ETFs Notes

[1] - Units (T) = Units (T-1) + New Units (T-1) - Redemption Units (T-1)

[2] - The Creation / Redemption Units of T-1 are included.

Corporate Bonds

Num Listed Bonds	Nominal price	Issue price	Today's Rate	Exp. Date	Duration (years)	Note	Coupon attached		Trading	Corporate Bonds	Price min	Price max	Closing price	Previous closing price/date		Volume	Transactions Value	Last order		Date	ear min	Year max
							Common	Preferred										Price	Buy / Sell			
4,150,176	4.77	4.77	5.00	19/03/2015	5	---	17	---	1	MARFIN INVESTMENT GROUP S.A. (Conver to CR shar)	---	---	---	63.0000	03/04/2014	---	---	71.0000	B	16/04/2014	62.5251	91.0000
1,794,284	12.49	9.77	5.31	12/07/2015	8	---	---	---	1	NIREUS S.A. (Convertible to CR shares)	---	---	---	12.0000	29/01/2014	---	---	11.0000	B	16/04/2014	12.0000	12.0000
212,817,904	1.00	1.00	6.30	29/07/2020	7	---	3	---	1	MARFIN INVESTMENT GROUP S.A. SERIES B (BOND)	---	---	---	0.8500	23/08/2013	---	---	0.9400	B	16/04/2014	0.8500	0.8500
2,156,827	1.00	1.00	7.00	29/07/2019	6	---	3	---	1	MARFIN INVESTMENT GROUP S.A. SERIES A (BOND)	---	---	---	1.0000	23/08/2013	---	---	0.9500	B	16/04/2014	1.0000	1.0000

Corporate Bonds Notes

Transactions Volume = (Pieces) \* (Nominal Price). Transactions Value = (Pieces) \* (Nominal Price) \* (price %) + (Accrued interest).  
The price of a Bond is stated as a percentage (%) of Bond's Nominal Price.  
Nominal Price in Euros (€), except if it is noted differently.

Government Bonds

Number Listed Bonds	Nominal price	Today's Rate	Accrued Interest Calc	Exp. Date [1]	Duration (years)	Note	Coupons Date	Curr. coupon value	Trading Unit	Government Bonds	Price min	Price max	Closing price	Previous closing price/date	Volume	Transactions Value	Price	Last order Buy / Sell	Date
2,658,781,973	1.00	4.30	Actual/Actual	24/02/2023	11	---	24/02	4.30	1	GGB-FXD-240223-11Y-2.000-1.00	---	---	---	---	---	---	---	---	---
2,658,781,973	1.00	4.30	Actual/Actual	24/02/2024	12	---	24/02	4.30	1	GGB-FXD-240224-12Y-2.000-1.00	---	---	---	---	---	---	---	---	---
2,658,781,973	1.00	4.30	Actual/Actual	24/02/2025	13	---	24/02	4.30	1	GGB-FXD-240225-13Y-2.000-1.00	---	---	---	---	---	---	---	---	---
2,658,781,973	1.00	4.30	Actual/Actual	24/02/2026	14	---	24/02	4.30	1	GGB-FXD-240226-14Y-2.000-1.00	---	---	---	---	---	---	---	---	---
2,658,781,973	1.00	4.30	Actual/Actual	24/02/2027	15	---	24/02	4.30	1	GGB-FXD-240227-15Y-2.000-1.00	---	---	---	---	---	---	---	---	---
2,836,034,104	1.00	4.30	Actual/Actual	24/02/2028	16	---	24/02	4.30	1	GGB-FXD-240228-16Y-2.000-1.00	---	---	---	---	---	---	---	---	---
2,836,034,104	1.00	4.30	Actual/Actual	24/02/2029	17	---	24/02	4.30	1	GGB-FXD-240229-17Y-2.000-1.00	---	---	---	---	---	---	---	---	---
2,836,034,104	1.00	4.30	Actual/Actual	24/02/2030	18	---	24/02	4.30	1	GGB-FXD-240230-18Y-2.000-1.00	---	---	---	---	---	---	---	---	---
2,836,034,104	1.00	4.30	Actual/Actual	24/02/2031	19	---	24/02	4.30	1	GGB-FXD-240231-19Y-2.000-1.00	---	---	---	---	---	---	---	---	---
2,836,034,104	1.00	4.30	Actual/Actual	24/02/2032	20	---	24/02	4.30	1	GGB-FXD-240232-20Y-2.000-1.00	---	---	---	---	---	---	---	---	---
2,836,034,104	1.00	4.30	Actual/Actual	24/02/2033	21	---	24/02	4.30	1	GGB-FXD-240233-21Y-2.000-1.00	---	---	---	---	---	---	---	---	---
2,836,034,104	1.00	4.30	Actual/Actual	24/02/2034	22	---	24/02	4.30	1	GGB-FXD-240234-22Y-2.000-1.00	---	---	---	---	---	---	---	---	---
2,836,034,104	1.00	4.30	Actual/Actual	24/02/2035	23	---	24/02	4.30	1	GGB-FXD-240235-23Y-2.000-1.00	---	---	---	---	---	---	---	---	---
2,836,034,104	1.00	4.30	Actual/Actual	24/02/2036	24	---	24/02	4.30	1	GGB-FXD-240236-24Y-2.000-1.00	---	---	---	---	---	---	---	---	---
2,836,034,104	1.00	4.30	Actual/Actual	24/02/2037	25	---	24/02	4.30	1	GGB-FXD-240237-25Y-2.000-1.00	---	---	---	---	---	---	---	---	---
2,836,034,104	1.00	4.30	Actual/Actual	24/02/2038	26	---	24/02	4.30	1	GGB-FXD-240238-26Y-2.000-1.00	---	---	---	---	---	---	---	---	---
2,836,034,104	1.00	4.30	Actual/Actual	24/02/2039	27	---	24/02	4.30	1	GGB-FXD-240239-27Y-2.000-1.00	---	---	---	---	---	---	---	---	---
2,836,034,104	1.00	4.30	Actual/Actual	24/02/2040	28	---	24/02	4.30	1	GGB-FXD-240240-28Y-2.000-1.00	---	---	---	---	---	---	---	---	---
2,836,034,104	1.00	4.30	Actual/Actual	24/02/2041	29	---	24/02	4.30	1	GGB-FXD-240241-29Y-2.000-1.00	---	---	---	---	---	---	---	---	---
2,836,034,104	1.00	4.30	Actual/Actual	24/02/2042	30	---	24/02	4.30	1	GGB-FXD-240242-30Y-2.000-1.00	---	---	---	---	---	---	---	---	---
1,500,000	1,000.00	0.97	FLR Actual/360	10/08/2014	5	---	10/02 - 10/08	---	1	GGB-FRN-100814-05Y-1.762-1000.00	---	---	---	---	---	---	---	---	---
5,187,186	1,000.00	1.60	FLR Actual/360	21/05/2014	5	---	21/11 - 21/05	---	1	GGB-FRN-210514-05Y-2.734-1000.00	---	---	---	---	---	---	---	---	---
78,300	1,000.00	1.16	FLR Actual/360	23/07/2014	5	---	23/01 - 23/07	---	1	GGB-FRN-230714-05Y-2.018-1000.00	---	---	---	---	---	---	---	---	---

Government Bonds Notes

Transactions Volume = (Pieces) \* (Nominal Price). Transactions Value = (Pieces) \* (Nominal Price) \* (price %) + (Accrued interest).  
The Value of current coupon for the issues with NV 0.01 euro refers to NV 100 euros  
FLR: Floating Interest Rate.  
[1] - The Expiration Date of the interest bearing period and the Date for coupon payment.

Bonds in Circulation	Currency / Min nominal traded Value	Coupons Payment Date	Current Coupon Value	Note	Coupon Attached	Trading Unit	Issue Date	Duration (years)	Today's Interest	A.I.C in days	Bonds	Last price of previous days		Last Outcry in Cash (euro)			Trades in Pieces	Life min	Life Max
Bonds of International Organizations																			
1,000,000	EUR / 1000	21/07	---	---	8	1	21/07/2006	10	5.0 FLR	360	EUROPEAN INVESTMENT BANK BOND	97.50	16/04/2007	---	---	---	---	---	---
Corporate Bonds in Foreign Currency and Euro																			
103,746	GBP / 10	01/12	0.25	---	55	1	01/12/1930	98	2.5	360	National Mortgage Bank	2.27	05/02/1996	2.27	S	05/02/1996	---	2.27	2.27
0	GBP / 10	01/12	0.25	---	57	1	01/12/1928	100	2.5	360	National Mortgage Bank	---	---	---	---	---	---	---	---

Government Bonds Notes

A.I.C: Accrued Interest Calculation base.  
FLR: Floating Interest Rate.  
The minimum tradeable Nominal Value for all Demeterialised Government Titles is 100 Euros.

State Banks Bonds (one year maturity)

Number Listed Bonds	Nominal value	Initial Rate	Current Rate	Annual Interest	Issue Date	Note	State Banks Bonds	Trading Unit	Yearly Renewals	Last Outcry in Cash (euro) Price	Buy / Sell	Volume
342,560	135.17	2.35	3.92	0.00	31/01/2005	---	H.I.D.B.	1	10	100.00	B	---
2,446	1,154.00	4.90	2.47	28.96	31/05/2008	---	H.I.D.B.	1	6	---	---	---
171,117	1,163.28	5.50	2.47	29.19	31/05/2008	---	H.I.D.B.	1	6	---	---	---
63,787	1,129.20	5.45	2.47	30.88	31/08/2008	---	H.I.D.B.	1	6	---	---	---

Bonds Notes

The annual renewal of H.I.D.B. Bonds is free of taxes (net rate).  
For Bonds issue until 31/12/2013 the accrued interest is capitalized.

Athex & ATHEXClear Members List

Member Name			Stock Market			Derivatives Market			ATHEXClear Member		
Address	Phone	Fax	Market Member	Remote Member	Market Maker	Proprietary	Market Maker	Agent	General Clearing	Direct Clearing	Non Clearing
A. SARRIS SECURITIES S.A.			✓								
6, DRAGATSANIOU STR. ATHINA	(210)-3367700	(210)-3312324									
AGRICULTURAL BANK OF GREECE S.A.							✓			✓	
, 23 PANEPISTIMIOU ATHINA	(210)-3298400	(210)-3298322									
ALPHA FINANCE INVESTMENT SERVICES S.A.			✓		✓		✓			✓	
5, MERLIN STR. ATHINA	(210)-3677400	(210)-3311193									
ALPHA BANK A.E.						✓			✓		
40, STADIOU STR ATHINA	(210)-3265546	(210)-3265811									
	(210)-3260000	(210)-3264116									
ARGUS STOCKBROKERS LTD			✓	✓							
12-14, KENNEDY AVE. S. 303 NICOSIA	(+35722)-22717000	(+35722)-22717070									
ATHENAIKI BROKERAGE FIRM S.A.			✓								
33, STADIOU STR. ATHINA	(210)-3254764	(210)-3254767									
ATLANTIC SECURITIES LIMITED			✓	✓							
37, PRODROMOU STR. NICOSIA	(+35722)-445400	(+35722)-661914									
ATLAS SECURITIES S.A			✓			✓					✓
14 - 16, VERVENON STR.& 125 MICHALAKOPOULOU STR. ATHINA	(210)-3363300	(210)-3238925									
ATTICA BANK S.A.									✓		
23, OMIROU STR. ATHINA	(210)-3669000	(210)-3669410									
54, AKADIMIAS STR. ATHINA	(210)-3390757	(210)-3646090									
AXIA VENTURES GROUP LTD			✓	✓							
10, G. KRANIDIOTI NICOSIA	+357 22 742000	+357 22 742001									
AXON SECURITIES S.A.			✓			✓					✓
48, STADIOU ATHINA	(210)-3363800	(210)-3243903									
BANK OF CYPRUS PUBLIC COMPANY LTD									✓		
170, ALEXANDRAS AVE ATHINA	(210)-6477708	(210)-6477709									
, 51,STASINOU (AG. PARASKEVI, STROVOLOS) NICOSIA	(0035722)-121883	(0035722)-336258									
BETA SECURITIES S.A.			✓		✓	✓	✓			✓	
, BRAILA & 29 ALEXANDRAS AVE ATHINA	(210)-6478900	(210)-6410139									
BNP PARIBAS SECURITIES SERVICES									✓		
94, VAS. SOFIAS AVE ATHINA	(210)-7468500	(210)-7468579									
CAPITAL SECURITIES S.A.			✓			✓					✓
58, MITROPOLEOS STR. ATHINA	(210)-3369700	(210)-3369820									
CFS SECURITIES & INVESTMENT SERVICES S.A.			✓		✓			✓		✓	
3, STADIOU STR. ATHINA	(210)-3360800	(210)-3311854									
CITIGROUP GLOBAL MARKET LTD			✓	✓							
, CITIGROUP CENTRE, CANADA SQUARE, CANARY WHART LONDON	002079864000	002079862266									
CO-OPERATIVE CENTRAL BANK LTD			✓	✓							
8, GRIGORI AFXENTIOU STR. NICOSIA	(+35722)-743300	(+35722)-672083									
CREDIT AGRICOLE CHEUVREUX S.A.				✓							
, 9 QUAI PAUL DOUMER PARIS	33 (0) 1 41 89 70 00										
CREDIT SUISSE SECURITIES (EUROPE) LIMITED			✓	✓							
, ONE CABOT SQUARE LONDON	+44 20 7888 8888	+44 20 7888 1600									
CYCLOS SECURITIES S.A.			✓		✓	✓				✓	
39, PANEPISTIMIOU STR. ATHINA	(210)-3364300	(210)-3239122									
D.A. TSEKOURAS SEC. S.A.			✓								
3, PESMAZOGLOU STR. ATHINA	(210)-3214406	(210)-3211997									
DEUTSCHE BANK A.G.			✓	✓							
70, THEODOR-HEUSS-ALLEE FRANKFURT	0049 69 910 00	0049 69 910 34 225									
DYNAMIC SECURITIES			✓					✓		✓	
6 - 10, CHAR. TRIKOUPi STR. ATHINA	(210)-3677700	(210)-3677777									
EL. PETROPOULAKIS SECURITIES S.A.			✓					✓			✓
9, ARISTIDOU STR. ATHINA	(210)-3213928	(210)-3216810									
EUROBANK EQUITIES S.A.			✓		✓		✓			✓	
10, FILELLINON STR. ATHINA	(210)-3720000	(210)-3720001									
EUROBANK ERGASIAS S.A.									✓		
8, OTHONOS STR. ATHINA	(210)-3337969	(210)-3245916									
	(210)-3337000	(210)-3233866									
EUROCORP SECURITIES S.A.			✓			✓				✓	
14, FILIKIS ETAIRIAS SQ. ATHINA	(210)-7263500	(210)-7263666									
EUOTRUST BROKERAGE S.A.			✓								
13-15, SOPHOCLEOUS STR. ATHINA	(210)-3363100	(210)-3238334									

Athex & ATHEXClear Members List

Member Name			Stock Market			Derivatives Market			ATHEXClear Member		
Address	Phone	Fax	Market Member	Remote Member	Market Maker	Proprietary	Market Maker	Agent	General Clearing	Direct Clearing	Non Clearing
EUROXX SECURITIES S.A.			✓			✓				✓	
7, PALAIOLOGOU STR. CHALANDRI	(210)-6879400	(210)-6879401									
G.A. PERVANAS SECURITIES & INVESTMENT SERVICES CO S.A.			✓			✓					✓
7 - 9, SOPHOCLEOUS STR. ATHINA	(210)-3251875	(210)-3210291									
GENERAL BANK OF GREECE S.A.									✓		
87-89, ERMOY ATHINA	(210)-6976072	(210)-6976079									
, 109-111, MESOGEION AVE. ATHINA	(210)-3288737	(210)-3288211									
GLOBAL CAPITAL SECURITIES AND FINANCIAL SERVICES LTD			✓	✓							
5, LEMESOU AVE. LEMESOS CYPRUS	(+35722)-710710	(+35722)-339332									
GUARDIAN TRUST SECURITIES S.A			✓		✓	✓					✓
15, FILELLINON STR. ATHINA	(210)-3220402	(210)-3220498									
HELLENIC AMERICAN SEC. S.A.			✓			✓					
6, EVRIPIDOU STR. ATHINA	(210)-3311100	(210)-3215968									
HELLENIC BANK (INVESTMENTS) LTD			✓	✓							
31, KYRIAKOY MATSI AVE. NICOSIA	(+35722)-500100	(+35722)-500110									
HSBC BANK PLC									✓		
109-111, MESOGION AVE ATHINA	(210)-6961507	(210)-6929310									
INDEX SECURITIES S.A.			✓								
6, DRAGATSANIOU STR. ATHINA	(210)-3213920	(210)-3213216									
INTERSEC S.A.						✓				✓	
80-88, SYGROU AVE ATHINA	(210)-9203000	(210)-9203052									
INVESTMENT BANK OF GREECE S.A.			✓		✓		✓		✓		
32, AIGEIALIAS MAROUSI	(210) 8173000	(210) 8173101									
24B, KIFISSIAS AVE MAROUSI	(210)-8171800	(210)-8171889									
J. CHR. MAVRIKIS SECURITIES S.A.			✓								
5, SOPHOCLEOUS STR. ATHINA	(210)-3213949	(210)-3217767									
KAPPA SECURITIES S.A.			✓			✓					✓
15, VALAORITOU STR. ATHINA	(210)-3610371	(210)-3641002									
KYPROU SECURITIES S.A.			✓		✓	✓					✓
26, HALKIDONOS & FIDIPPIDOY STR. ATHINA	(210)-8701000	(210)-8701049									
LAIKI FINANCIAL SERVICES LTD			✓	✓							
26, CLR HOUSE, VIROMOS AVE. NICOSIA	(+35722)-898600	(+35722)-680953									
LEON DEPOLAS SECURITIES S.A.			✓					✓			✓
1, CHR. LADA STR. ATHINA	(210)-3213286	(210)-3211618									
MAGNA TRUST SECURITIES S.A			✓					✓			✓
9, FIDIOU STR. ATHINA	(210)-3327503	(210)-3327599									
MEGA EQUITY SECURITIES & FINANCIAL SERVICES LTD			✓	✓							
42-44, GRIBA DIGENI AV. NICOSIA	(+35722)-711711	(+35722)-711811									
MERIT SECURITIES S.A			✓		✓	✓				✓	
38, VAS. KONSTANTINOU STR. ATHINA	(210)-3671800	(210)-3671830									
MERRILL LYNCH			✓	✓							
2, KING EDWARD STREET LONDON	(+4420)-79952000	(+4420)-79954525									
METOCHIKI SECURITIES S.A.			✓								
3, G. GENNADIOU STR. ATHINA	(210)-3306700	(210)-3306709									
MIDAS BROKERAGE S.A.			✓								
5, SOPHOCLEOUS STR. ATHINA	(210)-3253203	(210)-3253205									
N. CHRYSOCHOIDIS STOCK BROKERAGE I.S.S.A.			✓					✓		✓	
7 - 9, SOPHOCLEOUS STR. ATHINA	(210)-3213913	(210)-3216115									
N. SARROS SECURITIES S.A.						✓					
7-9, SOPHOCLEOUS STR. ATHINA	(210)-3705600	(210)-3219992									
NATIONAL BANK OF GREECE / FORMER PROBANK			✓								
10, AMERIKIS STR. ATHINA	(210)-3392631	(210)-3392646									
NATIONAL BANK OF GREECE S.A.							✓		✓		
86, AILOU STR. ATHINA	(210)-3341000	(210)-3228187									
68, AKADIMIAS STR. ATHINA	(210)-3328817	(210)-3328678									
NBG SECURITIES S.A.			✓		✓		✓				✓
68, AKADIMIAS STR. ATHINA	(210)-3328500	(210)-3328565									
NEW PROTON BANK S.A.						✓				✓	
20, ESLIN & AMALIADOS ATHINA	210 6970000	210 6970111									
NUNTIVS SECURITIES S.A			✓					✓			✓
6, DRAGATSANIOU STR. ATHINA	(210)-3350599	(210)-3254846									
ORANGE PARTNERS SECURITIES S.A			✓								
5, TZORTZ STR. ATHINA	(210)-3300009	(210)-3305240									

## Athex &amp; ATHEXClear Members List

Member Name			Stock Market			Derivatives Market			ATHEXClear Member		
Address	Phone	Fax	Market Member	Remote Member	Market Maker	Proprietary	Market Maker	Agent	General Clearing	Direct Clearing	Non Clearing
<b>PANTELAKIS SEC. S.A.</b>			✓			✓					✓
109-111, MESOGION AVE. ATHINA	(210)-6965000	(210)-6929550									
<b>PEGASUS BROKERAGE FIRM S.A</b>			✓			✓					
17, VALAORITOU STR. ATHINA	(210)-3670700	(210)-3670760									
<b>PIRAEUS BANK S.A.</b>								✓	✓		
4, AMERIKIS STR ATHINA	(210)-3335918	(210)-3254207									
4, AMERIKIS STR. ATHINA	(210)-3335000	(210)-3335079									
<b>PIRAEUS SECURITIES S.A.</b>			✓				✓			✓	
10, STADIOU STR. ATHINA	(210)-3354100	(210)-3233814									
<b>PRELIUM SECURITIES &amp; INVESTMENT SERVICES S.A.</b>			✓			✓					✓
, KIFISSIAS AVE & 1 DAVAKI STR ATHINA	(210)-3677000	(210)-6920403									
<b>PROCHOICE SECURITIES LTD</b>			✓	✓							
57, SPYROU KYPRIANOY NICOSIA	+357-24-661192	+357-24-662464									
<b>SHARELINK SECURITIES &amp; FINANCIAL SERVICES LTD</b>			✓	✓							
6, ELLINAS HOUSE, THEOTOKI STR. NICOSIA	(+35722)-554200	(+35722)-750852									
<b>SOCIETE GENERALE S.A.</b>			✓	✓		✓					
17, COURS VALMY PUTEAUX - LA DEFENSE PARIS	(+33) 142134754	(+33) 142135697									
240-242, KIFISIAS AVE ATHINA	(210)-6790161	(210)-6728828									
<b>SOLIDUS SECURITIES S.A</b>			✓			✓				✓	
64, LOUIZIS RIANKOUR STR. ATHINA	(210)-6925500	(210)-6985421									
<b>SOTIRIADIS SECURITIES S.A.</b>			✓								
7, VALAORITOU STR. ATHINA	(210)-3636943	(210)-3601943									
<b>ST. EM. LAVRENTAKIS SECURITIES S.A.</b>			✓			✓					✓
7 - 9, SOPHOCLEOUS STR. ATHINA	(210)-3213336	(210)-3246572									
<b>THE CYPRUS INVESTMENT AND SECURITIES CORPORATION LIMITED (CISCO)</b>			✓	✓							
4, EVROU STR. (EUROLIFE HOUSE) NICOSIA	(+35722)-881800	(+35722)-881801									
<b>UBS LIMITED</b>			✓	✓							
1, FINSBURY AVENUE LONDON	(+4420)-79013333	(+4420)-79012345									
<b>Z.G. PORTALAKIS INVESTMENT SERVICES S.A.</b>			✓								
8, PESMAZOGLLOU STR. ATHINA	(210)-3214830	(210)-3212024									
<b>KARAMANOF SECURITIES &amp; INV. SERVICES S.A.</b>			✓					✓		✓	
2, SQ. ST THEODORON ATHINA	(210)-3212947	(210)-3217088									



## List of Stocks under Market Making operations

Securities	Stock Category	
	Start Market Making	End Market Making
<b>CYPRUS POPULAR BANK (CR)</b>	<b>Under Suspension</b>	
PIRAEUS SECURITIES S.A.	02/02/2013	01/01/2400
<b>VIOHALCO (CB)</b>	<b>Under Suspension</b>	
ALPHA FINANCE INVESTMENT SERVICES S.A.	11/02/2013	01/01/2400
EUROBANK EQUITIES S.A.	20/01/2013	01/01/2400
MERIT SECURITIES S.A.	13/12/2012	01/01/2400
<b>ALPHA BANK (CR)</b>	<b>Main Market</b>	
EUROBANK EQUITIES S.A.	24/10/2012	01/01/2400
INVESTMENT BANK OF GREECE S.A.	08/01/2013	01/01/2400
MERIT SECURITIES S.A.	03/09/2013	01/01/2400
NBG SECURITIES S.A.	15/01/2013	01/01/2400
PIRAEUS SECURITIES S.A.	28/05/2013	01/01/2400
<b>ALUMIL (CR)</b>	<b>Main Market</b>	
BETA SECURITIES S.A.	18/07/2013	01/01/2400
<b>BYTE COMPUTER SA (CR)</b>	<b>Main Market</b>	
MERIT SECURITIES S.A.	04/08/2013	01/01/2400
<b>CC HBC AG (CR)</b>	<b>Main Market</b>	
EUROBANK EQUITIES S.A.	23/10/2013	01/01/2400
NBG SECURITIES S.A.	29/04/2013	01/01/2400
<b>ELLAKTOR (CR)</b>	<b>Main Market</b>	
EUROBANK EQUITIES S.A.	01/06/2013	01/01/2400
INVESTMENT BANK OF GREECE S.A.	02/01/2013	01/01/2400
NBG SECURITIES S.A.	25/06/2013	01/01/2400
<b>ELTON SA (CR)</b>	<b>Main Market</b>	
BETA SECURITIES S.A.	03/09/2013	01/01/2400
<b>EUROBANK ERGASIAS (CR)</b>	<b>Main Market</b>	
ALPHA FINANCE INVESTMENT SERVICES S.A.	08/01/2013	01/01/2400
EUROBANK EQUITIES S.A.	01/06/2013	01/01/2400
INVESTMENT BANK OF GREECE S.A.	08/01/2013	01/01/2400
PIRAEUS SECURITIES S.A.	28/09/2013	01/01/2400
<b>FOLLI FOLLIE (CR)</b>	<b>Main Market</b>	
NBG SECURITIES S.A.	17/02/2014	01/01/2400
<b>FRIGOGLASS SA (CR)</b>	<b>Main Market</b>	
EUROBANK EQUITIES S.A.	23/08/2013	01/01/2400
<b>GEK TERNA (CR)</b>	<b>Main Market</b>	
INVESTMENT BANK OF GREECE S.A.	02/01/2013	01/01/2400
<b>GR. SARANTIS SA (CR)</b>	<b>Main Market</b>	
BETA SECURITIES S.A.	14/05/2013	01/01/2400
<b>HELLENIC EXCHANGES-A.S.E. (CR)</b>	<b>Main Market</b>	
EUROBANK EQUITIES S.A.	01/06/2013	01/01/2400
INVESTMENT BANK OF GREECE S.A.	02/01/2013	01/01/2400
NBG SECURITIES S.A.	25/06/2013	01/01/2400
<b>INTRACOM CONSTR. (CR)</b>	<b>Main Market</b>	
MERIT SECURITIES S.A.	27/12/2012	01/01/2400
<b>INTRALOT (CR)</b>	<b>Main Market</b>	
EUROBANK EQUITIES S.A.	01/06/2013	01/01/2400
INVESTMENT BANK OF GREECE S.A.	02/01/2013	01/01/2400
PIRAEUS SECURITIES S.A.	28/09/2013	01/01/2400
<b>MARFIN INVESTMENT GROUP (CR)</b>	<b>Main Market</b>	
PIRAEUS SECURITIES S.A.	02/02/2013	01/01/2400
<b>MLS MULTIMEDIA SA (CR)</b>	<b>Main Market</b>	
BETA SECURITIES S.A.	18/07/2013	01/01/2400
<b>MOTOR OIL (CR)</b>	<b>Main Market</b>	
EUROBANK EQUITIES S.A.	23/10/2012	01/01/2400
NBG SECURITIES S.A.	17/02/2014	01/01/2400
<b>MYTILINEOS HOLDINGS (CR)</b>	<b>Main Market</b>	
INVESTMENT BANK OF GREECE S.A.	02/01/2013	01/01/2400
NBG SECURITIES S.A.	25/06/2013	01/01/2400
<b>NATIONAL BANK (CR)</b>	<b>Main Market</b>	
ALPHA FINANCE INVESTMENT SERVICES S.A.	08/01/2013	01/01/2400
EUROBANK EQUITIES S.A.	24/10/2012	01/01/2400
INVESTMENT BANK OF GREECE S.A.	08/01/2013	01/01/2400
MERIT SECURITIES S.A.	03/09/2013	01/01/2400
NBG SECURITIES S.A.	28/02/2013	01/01/2400
PIRAEUS SECURITIES S.A.	08/09/2013	01/01/2400

## List of Stocks under Market Making operations

Securities	Stock Category	
	Start Market Making	End Market Making
<b>OPAP (CR)</b>	<b>Main Market</b>	
ALPHA FINANCE INVESTMENT SERVICES S.A.	08/01/2013	01/01/2400
EUROBANK EQUITIES S.A.	24/10/2012	01/01/2400
INVESTMENT BANK OF GREECE S.A.	08/01/2013	01/01/2400
NBG SECURITIES S.A.	15/01/2013	01/01/2400
<b>OTE (CR)</b>	<b>Main Market</b>	
ALPHA FINANCE INVESTMENT SERVICES S.A.	08/01/2013	01/01/2400
EUROBANK EQUITIES S.A.	24/10/2012	01/01/2400
INVESTMENT BANK OF GREECE S.A.	08/01/2013	01/01/2400
NBG SECURITIES S.A.	01/12/2012	01/01/2400
PIRAEUS SECURITIES S.A.	08/09/2013	01/01/2400
<b>PAPOUTSANIS (CR)</b>	<b>Main Market</b>	
BETA SECURITIES S.A.	25/11/2013	01/01/2400
<b>PETROPOULOS PETROS (CR)</b>	<b>Main Market</b>	
BETA SECURITIES S.A.	28/05/2013	01/01/2400
<b>PIRAEUS BANK (CR)</b>	<b>Main Market</b>	
EUROBANK EQUITIES S.A.	23/10/2012	01/01/2400
INVESTMENT BANK OF GREECE S.A.	08/01/2013	01/01/2400
MERIT SECURITIES S.A.	16/09/2013	01/01/2400
NBG SECURITIES S.A.	02/06/2013	01/01/2400
PIRAEUS SECURITIES S.A.	16/02/2013	01/01/2400
<b>PPC (CR)</b>	<b>Main Market</b>	
ALPHA FINANCE INVESTMENT SERVICES S.A.	08/01/2013	01/01/2400
EUROBANK EQUITIES S.A.	23/10/2012	01/01/2400
INVESTMENT BANK OF GREECE S.A.	08/01/2013	01/01/2400
NBG SECURITIES S.A.	26/03/2013	01/01/2400
PIRAEUS SECURITIES S.A.	28/09/2013	01/01/2400
<b>S.KANAKIS SA (CR)</b>	<b>Main Market</b>	
BETA SECURITIES S.A.	01/10/2013	01/01/2400
<b>TITAN CEMENT (CR)</b>	<b>Main Market</b>	
EUROBANK EQUITIES S.A.	23/10/2012	01/01/2400
NBG SECURITIES S.A.	17/02/2014	01/01/2400
<b>VIOHALCO SA/NV (CB)</b>	<b>Main Market</b>	
ALPHA FINANCE INVESTMENT SERVICES S.A.	17/02/2014	01/01/2400
MERIT SECURITIES S.A.	17/03/2014	01/01/2400

Underlying Asset				Derivatives Market																		
Price max	Price min	Closing price	change	Delivery Month	Open price	Price max	Price min	Last price	Closing price	Last Bid	Last Ask	Settlement price	change	Life high	Life low	Trades	Volume	change	Value	change	Open Interest	change
FTSE/Athex Large Cap				(Trade Unit: 1 Index Point x 5€, Cash Settlement)																		
392.31	380.86	391.47	2.26%	April 2014	385.25	396.00	379.75	393.75	391.50	20@393.00	112@394.00	391.50	2.29%	447.00	370.50	783	26,653	28.52%	51,363,430.00	27.81%	9,096	-55.19%
				May 2014	387.75	396.50	380.00	393.25	392.00	8@393.25	2@394.00	392.00	2.28%	446.00	380.00	777	26,301	46.10%	50,800,572.50	45.43%	43,282	34.30%
				June 2014	372.00	396.00	372.00	396.00	392.50	5@394.00	2@395.50	392.50	2.01%	448.75	372.00	21	190	-74.08%	366,131.25	-74.15%	5,248	-0.23%
				September 2014	387.00	390.00	387.00	390.00	394.25	---	---	394.25	2.47%	407.75	385.25	3	42	-12.50%	81,600.00	-12.11%	71	44.90%
				December 2014	---	---	---	---	---	---	---	---	---	---	---	---	---	---	---	---	---	---
				March 2015	---	---	---	---	---	---	---	---	---	---	---	---	---	---	---	---	---	---

Underlying Asset				Derivatives Market																		
Price max	Price min	Closing price	change	Delivery Month	Open price	Price max	Price min	Last price	Closing price	Last Bid	Last Ask	Settlement price	change	Life high	Life low	Trades	Volume	change	Value	change	Open Interest	change
ALPHA BANK (CR)				(Contract Size: 100 Securities, Physical Delivery)																		
0.693	0.675	0.690	1.92%	June 2014	0.674	0.690	0.672	0.690	0.685	202@0.686	7@0.690	0.685	1.93%	0.734	0.561	49	674	-74.76%	45,632.30	-74.67%	39,367	-0.37%
				September 2014	---	---	---	---	0.692	---	7@0.700	0.692	1.91%	0.726	0.672	---	---	---	---	---	---	---
				December 2014	---	---	---	---	0.692	---	---	0.692	1.91%	0.740	0.689	---	---	---	---	---	---	---
				March 2015	---	---	---	---	---	---	---	---	---	---	---	---	---	---	---	---	---	---
CC HBC AG (CR)				(Contract Size: 100 Securities, Physical Delivery)																		
18.35	18.04	18.30	1.22%	June 2014	17.98	18.60	17.98	18.35	18.34	10@18.30	5@18.44	18.34	2.40%	18.79	17.30	50	343	397.10%	625,531.00	402.77%	877	6.82%
				September 2014	---	---	---	---	---	---	5@18.62	---	---	---	---	---	---	---	---	---	---	---
				December 2014	---	---	---	---	---	---	---	---	---	---	---	---	---	---	---	---	---	---
				March 2015	---	---	---	---	---	---	---	---	---	---	---	---	---	---	---	---	---	---
CORINTH PIPEWORKS SA (CR)				(Contract Size: 100 Securities, Physical Delivery)																		
1.88	1.80	1.88	4.44%	June 2014	1.87	1.87	1.87	1.87	1.89	4@1.84	4@1.90	1.89	4.42%	2.23	1.80	1	2	---	374.00	---	788	0.00%
				September 2014	---	---	---	---	---	---	---	---	---	---	---	---	---	---	---	---	---	---
				December 2014	---	---	---	---	---	---	---	---	---	---	---	---	---	---	---	---	---	---
				March 2015	---	---	---	---	---	---	---	---	---	---	---	---	---	---	---	---	---	---
ELLAKTOR (CR)				(Contract Size: 100 Securities, Physical Delivery)																		
3.85	3.60	3.85	6.35%	June 2014	3.68	3.85	3.63	3.85	3.85	5@3.74	1@3.87	3.85	6.35%	4.18	3.63	11	43	-41.10%	15,918.00	-41.03%	1,959	-0.15%
				September 2014	---	---	---	---	---	---	---	---	---	---	---	---	---	---	---	---	---	---
				December 2014	---	---	---	---	---	---	---	---	---	---	---	---	---	---	---	---	---	---
				March 2015	---	---	---	---	---	---	---	---	---	---	---	---	---	---	---	---	---	---
EUROBANK ERGASIAS (CR)				(Contract Size: 100 Securities, Physical Delivery)																		
0.407	0.381	0.381	-6.16%	June 2014	0.386	0.386	0.361	0.361	0.362	4@0.361	5@0.367	0.362	-8.59%	0.802	0.361	103	1,824	171.43%	67,741.20	151.70%	4,025	33.06%
				September 2014	---	---	---	---	---	10@0.351	5@0.377	---	---	---	---	---	---	---	---	---	---	---
				December 2014	---	---	---	---	---	---	---	---	---	---	---	---	---	---	---	---	---	---
				March 2015	---	---	---	---	---	---	---	---	---	---	---	---	---	---	---	---	---	---
EUROBANK PROPERTIES REIC (CR)				(Contract Size: 100 Securities, Physical Delivery)																		
8.61	8.00	8.61	7.63%	June 2014	8.17	8.46	8.10	8.46	8.37	1@7.61	10@8.48	8.37	3.08%	9.37	8.05	28	92	-21.37%	76,068.00	-20.52%	86	-5.49%
				September 2014	---	---	---	---	---	---	---	---	---	---	---	---	---	---	---	---	---	---
				December 2014	---	---	---	---	---	---	---	---	---	---	---	---	---	---	---	---	---	---
				March 2015	---	---	---	---	---	---	---	---	---	---	---	---	---	---	---	---	---	---
EYDAP S.A. (CR)				(Contract Size: 100 Securities, Physical Delivery)																		
8.67	8.38	8.63	3.11%	June 2014	8.30	8.37	8.19	8.37	8.33	1@8.20	4@8.37	8.33	3.09%	9.21	7.98	9	22	-37.14%	18,177.00	-35.74%	588	-0.34%
				September 2014	---	---	---	---	---	---	4@8.49	---	---	---	---	---	---	---	---	---	---	---
				December 2014	---	---	---	---	---	---	---	---	---	---	---	---	---	---	---	---	---	---
				March 2015	---	---	---	---	---	---	---	---	---	---	---	---	---	---	---	---	---	---
FOLLI FOLLIE (CR)				(Contract Size: 100 Securities, Physical Delivery)																		
23.96	22.62	23.96	4.17%	June 2014	22.77	23.95	22.77	23.95	23.40	4@23.10	1@24.00	23.40	1.65%	27.71	22.77	26	109	21.11%	251,630.00	19.86%	192	4.92%
				September 2014	---	---	---	---	---	---	---	---	---	---	---	---	---	---	---	---	---	---
				December 2014	---	---	---	---	---	---	---	---	---	---	---	---	---	---	---	---	---	---
				March 2015	---	---	---	---	---	---	---	---	---	---	---	---	---	---	---	---	---	---

Underlying Asset				Derivatives Market																		
Price max	Price min	Closing price	change	Delivery Month	Open price	Price max	Price min	Last price	Closing price	Last Bid	Last Ask	Settlement price	change	Life high	Life low	Trades	Volume	change	Value	change	Open Interest	change
FRIGOGLASS SA (CR)				(Contract Size: 100 Securities, Physical Delivery)																		
4.34	4.10	4.34	6.37%	June 2014	4.21	4.38	4.17	4.38	4.37	2@4.38	2@4.50	4.37	6.33%	5.46	4.09	14	36	-45.45%	15,232.00	-44.64%	1,519	-0.52%
				September 2014	---	---	---	---	---	---	---	---	---	---	---	---	---	---	---	---	---	---
				December 2014	---	---	---	---	---	---	---	---	---	---	---	---	---	---	---	---	---	---
				March 2015	---	---	---	---	---	---	---	---	---	---	---	---	---	---	---	---	---	---
GEK TERNA (CR)				(Contract Size: 100 Securities, Physical Delivery)																		
3.70	3.47	3.70	6.02%	June 2014	3.54	3.70	3.51	3.70	3.69	1@3.65	11@3.73	3.69	3.65%	4.23	3.17	45	159	-29.33%	57,145.00	-27.82%	15,496	0.06%
				September 2014	---	---	---	---	4.07	---	11@3.78	4.07	3.56%	4.24	3.60	---	---	---	---	---	14,487	0.00%
				December 2014	---	---	---	---	---	---	---	---	---	---	---	---	---	---	---	---	---	---
				March 2015	---	---	---	---	---	---	---	---	---	---	---	---	---	---	---	---	---	---
HELLENIC EXCHANGES-A.S.E. (CR)				(Contract Size: 100 Securities, Physical Delivery)																		
8.60	8.14	8.60	5.78%	June 2014	8.23	8.59	8.20	8.57	8.55	3@8.55	1@8.60	8.55	4.27%	9.46	7.12	69	262	197.73%	217,791.00	201.83%	3,691	3.27%
				September 2014	---	---	---	---	8.40	---	---	8.40	4.22%	7.90	6.95	---	---	---	---	---	---	---
				December 2014	---	---	---	---	---	---	---	---	---	---	---	---	---	---	---	---	---	---
				March 2015	---	---	---	---	---	---	---	---	---	---	---	---	---	---	---	---	---	---
HELLENIC PETROLEUM (CR)				(Contract Size: 100 Securities, Physical Delivery)																		
6.39	6.08	6.38	2.24%	June 2014	6.39	6.40	6.10	6.40	6.48	1@6.40	1@6.44	6.48	2.21%	9.58	6.10	92	522	-21.39%	325,275.00	-23.76%	6,112	1.31%
				September 2014	---	---	---	---	---	---	---	---	---	---	---	---	---	---	---	---	---	---
				December 2014	---	---	---	---	---	---	---	---	---	---	---	---	---	---	---	---	---	---
				March 2015	---	---	---	---	---	---	---	---	---	---	---	---	---	---	---	---	---	---
INTRALOT (CR)				(Contract Size: 100 Securities, Physical Delivery)																		
2.16	2.01	2.16	7.46%	June 2014	2.08	2.15	2.06	2.13	2.15	1@2.12	2@2.16	2.15	5.91%	2.53	2.02	19	225	102.70%	47,151.00	105.89%	3,894	-3.06%
				September 2014	---	---	---	---	---	---	2@2.22	---	---	---	---	---	---	---	---	---	---	---
				December 2014	---	---	---	---	---	---	---	---	---	---	---	---	---	---	---	---	---	---
				March 2015	---	---	---	---	---	---	---	---	---	---	---	---	---	---	---	---	---	---
JUMBO SA (CR)				(Contract Size: 100 Securities, Physical Delivery)																		
11.56	10.83	11.41	3.26%	June 2014	11.15	11.46	11.00	11.44	11.50	5@11.43	1@11.47	11.50	3.23%	14.22	11.00	22	69	-64.97%	77,283.00	-65.35%	634	0.48%
				September 2014	---	---	---	---	---	---	---	---	---	---	---	---	---	---	---	---	---	---
				December 2014	---	---	---	---	---	---	---	---	---	---	---	---	---	---	---	---	---	---
				March 2015	---	---	---	---	---	---	---	---	---	---	---	---	---	---	---	---	---	---
MARFIN INVESTMENT GROUP (CR)				(Contract Size: 100 Securities, Physical Delivery)																		
0.530	0.508	0.530	3.31%	June 2014	0.520	0.545	0.507	0.545	0.534	1@0.545	10@0.550	0.534	3.29%	0.573	0.443	58	936	20.62%	48,473.80	20.34%	25,798	0.40%
				September 2014	---	---	---	---	---	---	10@0.560	---	---	---	---	---	---	---	---	---	---	---
				December 2014	---	---	---	---	---	---	---	---	---	---	---	---	---	---	---	---	---	---
				March 2015	---	---	---	---	---	---	---	---	---	---	---	---	---	---	---	---	---	---
METKA (CR)				(Contract Size: 100 Securities, Physical Delivery)																		
12.50	11.84	12.50	6.84%	June 2014	11.88	12.20	11.88	12.19	12.46	1@12.00	3@12.32	12.46	6.86%	14.12	11.41	9	24	-68.83%	28,727.00	-68.84%	1,048	0.38%
				September 2014	---	---	---	---	12.59	---	3@12.55	12.59	6.88%	11.68	11.41	---	---	---	---	---	---	---
				December 2014	---	---	---	---	---	---	---	---	---	---	---	---	---	---	---	---	---	---
				March 2015	---	---	---	---	---	---	---	---	---	---	---	---	---	---	---	---	---	---

Underlying Asset				Derivatives Market																		
Price max	Price min	Closing price	change	Delivery Month	Open price	Price max	Price min	Last price	Closing price	Last Bid	Last Ask	Settlement price	change	Life high	Life low	Trades	Volume	change	Value	change	Open Interest	change
MOTOR OIL (CR)				(Contract Size: 100 Securities, Physical Delivery)																		
8.78	8.40	8.70	3.82%	June 2014	8.57	8.75	8.49	8.58	8.66	3@8.54	1@8.73	8.66	3.84%	10.31	8.42	20	56	-63.87%	48,291.00	-63.58%	498	0.00%
				September 2014	---	---	---	---	---	---	---	---	---	---	---	---	---	---	---	---	---	---
				December 2014	---	---	---	---	---	---	---	---	---	---	---	---	---	---	---	---	---	---
				March 2015	---	---	---	---	---	---	---	---	---	---	---	---	---	---	---	---	---	---
MYTILINEOS HOLDINGS (CR)				(Contract Size: 100 Securities, Physical Delivery)																		
6.64	6.28	6.64	5.73%	June 2014	6.35	6.67	6.31	6.67	6.71	4@6.67	1@6.70	6.71	5.67%	7.32	5.32	102	407	-21.73%	263,388.00	-21.69%	10,450	0.24%
				September 2014	---	---	---	---	6.71	---	1@6.78	6.71	5.67%	7.31	5.86	---	---	---	---	---	637	0.00%
				December 2014	---	---	---	---	6.92	---	---	6.92	5.65%	7.16	7.16	---	---	---	---	---	1,400	0.00%
				March 2015	---	---	---	---	---	---	---	---	---	---	---	---	---	---	---	---	---	---
NATIONAL BANK (CR)				(Contract Size: 100 Securities, Physical Delivery)																		
3.10	2.97	2.97	-2.30%	June 2014	3.10	3.16	2.95	3.01	2.96	5@2.98	1@3.01	2.96	-1.99%	4.50	2.95	154	1,367	15.46%	409,574.00	12.12%	9,326	1.70%
				September 2014	---	---	---	---	---	---	1@3.03	---	---	---	---	---	---	---	---	---	---	---
				December 2014	---	---	---	---	---	---	---	---	---	---	---	---	---	---	---	---	---	---
				March 2015	---	---	---	---	---	---	---	---	---	---	---	---	---	---	---	---	---	---
OPAP (CR)				(Contract Size: 100 Securities, Physical Delivery)																		
10.73	10.10	10.46	3.05%	June 2014	10.03	10.64	9.92	10.56	10.51	1@10.45	4@10.56	10.51	5.52%	12.70	8.84	156	669	25.52%	686,006.00	28.89%	3,920	4.01%
				September 2014	---	---	---	---	10.49	---	4@10.69	10.49	5.53%	12.74	9.63	---	---	---	---	---	150	0.00%
				December 2014	---	---	---	---	---	---	---	---	---	---	---	---	---	---	---	---	---	---
				March 2015	---	---	---	---	---	---	---	---	---	---	---	---	---	---	---	---	---	---
OTE (CR)				(Contract Size: 100 Securities, Physical Delivery)																		
10.78	10.18	10.78	6.73%	June 2014	10.19	10.78	10.18	10.78	10.62	34@10.72	31@10.78	10.62	5.25%	13.20	8.31	329	1,829	-11.13%	1,915,601.00	-8.79%	12,400	-0.34%
				September 2014	---	---	---	---	10.60	---	31@10.90	10.60	5.26%	12.84	10.15	---	---	-100.00%	---	-100.00%	148	0.00%
				December 2014	---	---	---	---	10.57	---	---	10.57	5.28%	11.62	10.15	---	---	-100.00%	---	-100.00%	35	0.00%
				March 2015	---	---	---	---	---	---	---	---	---	---	---	---	---	---	---	---	---	---
P.P.A. S.A. (CR)				(Contract Size: 100 Securities, Physical Delivery)																		
17.68	17.20	17.30	0.88%	June 2014	17.60	17.74	17.53	17.74	17.50	2@17.48	1@17.74	17.50	0.86%	20.47	17.28	4	13	160.00%	22,858.00	163.10%	676	0.30%
				September 2014	---	---	---	---	---	---	---	---	---	---	---	---	---	---	---	---	---	---
				December 2014	---	---	---	---	---	---	---	---	---	---	---	---	---	---	---	---	---	---
				March 2015	---	---	---	---	---	---	---	---	---	---	---	---	---	---	---	---	---	---
PIRAEUS BANK (CR)				(Contract Size: 100 Securities, Physical Delivery)																		
1.78	1.71	1.75	-2.24%	June 2014	1.76	1.77	1.71	1.74	1.75	35@1.72	100@1.74	1.75	0.00%	2.06	1.33	180	14,268	291.98%	2,472,875.00	289.53%	23,278	-11.24%
				September 2014	1.78	1.78	1.78	1.78	1.77	10@1.70	100@1.76	1.77	-0.56%	2.06	1.54	1	150	---	26,700.00	---	23	-86.71%
				December 2014	---	---	---	---	---	---	---	---	---	---	---	---	---	---	---	---	---	---
				March 2015	---	---	---	---	---	---	---	---	---	---	---	---	---	---	---	---	---	---
PPC (CR)				(Contract Size: 100 Securities, Physical Delivery)																		
10.95	10.30	10.84	5.24%	June 2014	10.36	10.96	10.33	10.83	10.62	10@10.77	2@10.83	10.62	2.21%	12.77	9.60	229	1,200	46.34%	1,275,056.00	47.43%	10,954	3.21%
				September 2014	---	---	---	---	10.60	---	2@10.95	10.60	2.22%	12.65	9.70	---	---	-100.00%	---	-100.00%	216	0.00%
				December 2014	---	---	---	---	10.75	---	---	10.75	2.19%	12.48	10.54	---	---	-100.00%	---	-100.00%	90	0.00%
				March 2015	---	---	---	---	---	---	---	---	---	---	---	---	---	---	---	---	---	---

Underlying Asset				Derivatives Market																		
Price max	Price min	Closing price	change	Delivery Month	Open price	Price max	Price min	Last price	Closing price	Last Bid	Last Ask	Settlement price	change	Life high	Life low	Trades	Volume	change	Value	change	Open Interest	change
SIDENOR (CR)				(Contract Size: 100 Securities, Physical Delivery)																		
1.93	1.89	1.90	0.00%	June 2014	1.92	1.92	1.92	1.92	1.91	2@1.90	4@1.98	1.91	0.00%	2.23	1.87	4	19	216.67%	3,648.00	220.84%	1,083	0.37%
				September 2014	---	---	---	---	---	---	---	---	---	---	---	---	---	---	---	---	---	---
				December 2014	---	---	---	---	---	---	---	---	---	---	---	---	---	---	---	---	---	---
				March 2015	---	---	---	---	---	---	---	---	---	---	---	---	---	---	---	---	---	---
TERNA ENERGY (CR)				(Contract Size: 100 Securities, Physical Delivery)																		
4.16	4.00	4.10	2.50%	June 2014	4.06	4.15	4.06	4.15	4.14	5@4.12	2@4.17	4.14	1.72%	4.78	3.98	9	24	-22.58%	9,902.00	-21.07%	3,317	0.55%
				September 2014	---	---	---	---	---	---	2@4.24	---	---	---	---	---	---	---	---	---	---	---
				December 2014	---	---	---	---	---	---	---	---	---	---	---	---	---	---	---	---	---	---
				March 2015	---	---	---	---	---	---	---	---	---	---	---	---	---	---	---	---	---	---
TITAN CEMENT (CR)				(Contract Size: 100 Securities, Physical Delivery)																		
22.09	21.50	21.50	-2.27%	June 2014	21.81	22.00	21.60	21.74	21.81	1@21.81	1@22.28	21.81	-0.05%	26.10	21.60	26	58	-39.58%	126,362.00	-41.13%	460	-2.54%
				September 2014	---	---	---	---	---	---	---	---	---	---	---	---	---	---	---	---	---	---
				December 2014	---	---	---	---	---	---	---	---	---	---	---	---	---	---	---	---	---	---
				March 2015	---	---	---	---	---	---	---	---	---	---	---	---	---	---	---	---	---	---
VIOHALCO SA/NV (CB)				(Contract Size: 100 Securities, Physical Delivery)																		
4.30	4.19	4.30	1.18%	June 2014	4.29	4.35	4.25	4.35	4.32	5@4.32	12@4.40	4.32	0.47%	5.22	4.18	7	19	-52.50%	8,195.00	-51.81%	610	0.49%
				September 2014	---	---	---	---	---	---	---	---	---	---	---	---	---	---	---	---	---	---
				December 2014	---	---	---	---	---	---	---	---	---	---	---	---	---	---	---	---	---	---
				March 2015	---	---	---	---	---	---	---	---	---	---	---	---	---	---	---	---	---	---

FTSE/Athex Large Cap

(Trade Unit: 1 Index Point x 5€ - Exoerise Style: European, Cash Settlement)

Call Options																	Put Options																		
Exerise Price	April 2014							May 2014							Other Months		April 2014								May 2014								Other Months		Exerise Price
	Open price	Price max	Price min	Last price	Closing price	Volume	Open Interest	Open price	Price max	Price min	Last price	Closing price	Volume	Open Interest	Volume	Open Interest	Open price	Price max	Price min	Last price	Closing price	Volume	Open Interest	Open price	Price max	Price min	Last price	Closing price	Volume	Open Interest	Volume	Open Interest			
215	-	-	-	-	-	-	-	-	-	-	-	-	-	-	-	-	-	-	-	-	-	-	-	-	-	-	-	-	-	-	-	215			
255	-	-	-	-	-	-	-	-	-	-	-	-	-	-	-	-	-	-	-	-	-	-	-	-	-	-	-	-	-	-	-	255			
260	-	-	-	-	-	-	-	-	-	-	-	-	-	-	-	-	-	-	-	-	-	-	-	-	-	-	-	-	-	-	-	260			
265	-	-	-	-	-	-	-	-	-	-	-	-	-	-	-	-	-	-	-	-	-	-	-	-	-	-	-	-	-	-	-	265			
270	-	-	-	-	-	-	-	-	-	-	-	-	-	-	-	-	-	-	-	-	-	-	-	-	-	-	-	-	-	-	-	270			
275	-	-	-	-	-	-	-	-	-	-	-	-	-	-	-	-	-	-	-	-	-	-	-	-	-	-	-	-	-	-	-	275			
280	-	-	-	-	-	-	-	-	-	-	-	-	-	-	-	-	-	-	-	-	-	-	-	-	-	-	-	-	-	-	-	280			
285	-	-	-	-	-	-	-	-	-	-	-	-	-	-	-	-	-	-	-	-	-	-	-	-	-	-	-	-	-	-	-	285			
290	-	-	-	-	-	-	-	-	-	-	-	-	-	-	-	-	-	-	-	-	-	-	-	-	-	-	-	-	-	-	-	290			
295	-	-	-	-	-	-	-	-	-	-	-	-	-	-	-	-	-	-	-	-	-	-	-	-	-	-	-	-	-	-	-	295			
300	-	-	-	-	-	-	-	-	-	-	-	-	-	-	-	-	-	-	-	-	-	-	-	-	-	-	-	-	-	-	-	300			
305	-	-	-	-	-	-	-	-	-	-	-	-	-	-	-	-	-	-	-	-	-	-	-	-	-	-	-	-	-	-	-	305			
310	-	-	-	-	-	-	-	-	-	-	-	-	-	-	-	-	-	-	-	-	-	-	-	-	-	-	-	-	-	-	-	310			
315	-	-	-	-	-	-	-	-	-	-	-	-	-	-	-	-	-	-	-	-	-	-	-	-	-	-	-	-	-	-	-	315			
320	-	-	-	-	-	-	-	-	-	-	-	-	-	-	-	-	-	-	-	-	-	-	-	-	-	-	-	-	-	-	-	320			
325	-	-	-	-	-	-	-	-	-	-	-	-	-	-	-	-	-	-	-	-	-	-	-	-	-	-	-	-	-	-	-	325			
330	-	-	-	-	-	-	-	-	-	-	-	-	-	-	-	-	-	-	-	-	-	-	-	-	-	-	-	-	-	-	-	330			
335	-	-	-	-	-	-	-	-	-	-	-	-	-	-	-	-	-	-	-	-	-	-	-	-	-	-	-	-	-	-	-	335			
340	-	-	-	-	-	-	-	-	-	-	-	-	-	-	-	-	-	-	-	-	-	-	-	-	-	-	-	-	-	-	-	340			
345	-	-	-	-	-	-	-	-	-	-	-	-	-	-	-	-	-	-	-	-	-	-	-	-	-	-	-	-	-	-	-	345			
350	-	-	-	-	41.50	-	6	-	-	-	-	-	-	-	-	-	-	-	-	-	-	-	-	-	-	-	-	-	-	-	-	350			
355	-	-	-	-	-	-	-	-	-	-	-	-	-	-	-	-	-	-	-	-	-	30	-	-	-	-	-	-	-	-	-	355			
360	-	-	-	-	-	-	-	-	-	-	-	-	-	-	-	-	-	-	-	-	-	50	-	-	-	-	-	-	-	-	-	360			
365	-	-	-	-	-	-	-	-	-	-	-	-	-	-	-	-	-	-	-	-	-	-	-	-	-	-	-	-	-	-	-	365			
370	-	-	-	-	-	-	-	-	-	-	-	-	-	-	-	-	-	-	-	-	-	20	-	-	-	-	-	-	-	-	-	370			
375	-	-	-	-	-	-	-	17.75	17.75	17.75	17.75	24.75	50	50	-	-	-	-	-	-	0.02	-	10	-	-	-	-	7.80	-	355	-	-	375		
380	7.00	12.25	7.00	12.25	11.75	302	76	16.00	19.00	16.00	18.50	21.50	51	50	-	-	1.00	1.00	1.00	1.00	0.13	3	3	16.75	16.75	16.75	16.75	9.60	2	202	-	-	380		
385	2.20	5.80	2.20	5.80	7.10	92	94	-	-	-	-	-	-	-	-	-	6.00	6.00	2.00	2.00	0.63	2	1	12.00	12.00	12.00	12.00	11.75	8	40	-	-	385		
390	2.00	4.50	2.00	4.50	3.60	138	137	-	-	-	-	-	-	-	-	-	-	-	-	-	2.10	-	3	17.50	18.25	13.00	13.00	14.00	419	458	-	-	390		
395	-	-	-	-	1.40	-	176	11.00	14.75	9.50	14.75	13.75	535	510	-	-	-	-	-	-	-	-	-	-	-	-	-	16.75	-	257	-	-	395		
400	-	-	-	-	0.38	-	139	13.00	13.75	13.00	13.75	11.50	40	99	-	-	-	-	-	-	8.90	-	66	21.00	21.00	21.00	21.00	19.50	30	325	-	-	400		
405	-	-	-	-	-	-	-	-	-	-	-	-	-	-	-	-	22.50	22.50	22.50	22.50	13.50	20	28	28.00	28.00	28.00	28.00	22.75	1	1	-	-	405		
410	-	-	-	-	0.01	-	145	6.20	7.00	6.00	7.00	8.10	279	1,039	-	-	27.00	27.00	20.00	20.00	18.50	103	624	-	-	-	-	26.00	-	40	-	-	410		
415	-	-	-	-	-	-	166	-	-	-	-	6.70	-	210	-	-	-	-	-	-	23.50	-	5	37.00	37.00	37.00	37.00	29.50	3	25	-	-	415		
420	-	-	-	-	-	-	226	6.00	7.00	6.00	7.00	5.50	40	241	-	-	39.00	39.00	39.00	39.00	28.50	2	112	-	-	-	-	33.50	-	786	-	-	420		
425	-	-	-	-	-	-	284	-	-	-	-	4.40	-	15	-	-	-	-	-	-	33.50	-	57	-	-	-	-	-	-	-	-	-	425		



FTSE/Athex Large Cap

(Trade Unit: 1 Index Point x 5€ - Exercise Style: European, Cash Settlement)

Call Options																Put Options																			
Exercise Price	April 2014							May 2014							Other Months		April 2014								May 2014				Other Months		Exercise Price				
	Open price	Price max	Price min	Last price	Closing price	Volume	Open Interest	Open price	Price max	Price min	Last price	Closing price	Volume	Open Interest	Volume	Open Interest	Open price	Price max	Price min	Last price	Closing price	Volume	Open Interest	Open price	Price max	Price min	Last price	Closing price	Volume	Open Interest		Volume	Open Interest		
430	-	-	-	-	-	-	296	-	-	-	-	3.60	-	131			-	-	-	-	38.50	-	1	-	-	-	-	-	-	-	-		430		
435	-	-	-	-	-	-	198	-	-	-	-	2.90	-	31			-	-	-	-	43.50	-	35	-	-	-	-	-	-	-	-		435		
440	-	-	-	-	-	-	282	-	-	-	-	2.30	-	47			59.50	59.50	59.50	59.50	48.50	4	136	-	-	-	-	50.00	-	676			440		
445	-	-	-	-	-	-	390	-	-	-	-	1.80	-	126			-	-	-	-	-	-	-	-	-	-	-	-	-	-	-		445		
450	-	-	-	-	-	-	2,349	-	-	-	-	-	-	-			-	-	-	-	58.50	-	40	-	-	-	-	-	-	-	-		450		
455	-	-	-	-	-	-	460	-	-	-	-	1.10	-	20			-	-	-	-	-	-	-	-	-	-	-	-	-	-	-		455		
460	-	-	-	-	-	-	125	-	-	-	-	-	-	-			-	-	-	-	-	-	-	-	-	-	-	-	-	-	-		460		
465	-	-	-	-	-	-	-	-	-	-	-	-	-	-			-	-	-	-	-	-	-	-	-	-	-	-	-	-	-		465		
470	-	-	-	-	-	-	-	-	-	-	-	-	-	-			-	-	-	-	-	-	-	-	-	-	-	-	-	-	-		470		
475	-	-	-	-	-	-	-	-	-	-	-	-	-	-			-	-	-	-	-	-	-	-	-	-	-	-	-	-	-		475		
480	-	-	-	-	-	-	-	-	-	-	-	-	-	-			-	-	-	-	-	-	-	-	-	-	-	-	-	-	-		480		
Totals:						532	5,549							995	2,569	40	149							134	1,221							463	3,165	0	0
Nominal Transactions Value:						1,020,000.00								1,983,225.00		86,000.00								274,200.00								904,500.00		0.00	
Number of Trades:						31								51		1								11								13		0	

FTSE/Athex Large Cap

(Trade Unit: 1 Index Point x 5€ - Excoercise Style: European, Cash Settlement)

Call Options																Put Options																		
Exerise Price	April 2014							May 2014							Other Months		April 2014								May 2014							Other Months		Exerise Price
	Open price	Price max	Price min	Last price	Closing price	Volume	Open Interest	Open price	Price max	Price min	Last price	Closing price	Volume	Open Interest	Volume	Open Interest	Open price	Price max	Price min	Last price	Closing price	Volume	Open Interest	Open price	Price max	Price min	Last price	Closing price	Volume	Open Interest	Volume	Open Interest		

ALPHA BANK (CR)

(Contract Size: 100 Securities, Exercise Style: American, Physical Delivery)

Call Options																	Put Options																	
	April 2014							May 2014							Other Months			April 2014							May 2014							Other Months		
Exercise Price	Open price	Price max	Price min	Last price	Closing price	Volume	Open Interest	Open price	Price max	Price min	Last price	Closing price	Volume	Open Interest	Volume	Open Interest	Open price	Price max	Price min	Last price	Closing price	Volume	Open Interest	Open price	Price max	Price min	Last price	Closing price	Volume	Open Interest	Volume	Open Interest	Exercise Price	
0.100						-	-							-	-							-	-						-	-			0.100	
0.200						-	-							-	-							-	-						-	-			0.200	
0.300						-	-							-	-							-	-						-	-			0.300	
0.400						-	-							-	-							-	-						-	-			0.400	
0.500						-	-							-	-							-	-						-	-			0.500	
0.550						-	-							-	-							-	-						-	-			0.550	
0.600						-	-							-	-							-	-						-	-			0.600	
0.650						-	-							-	-							-	-						-	-			0.650	
0.700						-	-							-	-							-	-						-	-			0.700	
0.750						-	-							-	-							-	-						-	-			0.750	
0.800						-	-							-	-							-	-						-	-			0.800	
0.850						-	-							-	-							-	-						-	-			0.850	
0.900						-	-							-	-							-	-						-	-			0.900	
1.00						-	-							-	-							-	-						-	-			1.00	
1.10						-	-							-	-							-	-						-	-			1.10	
Totals:						0	0							0	0	0	0					0	0					0	0	0	0			
Nominal Transactions Value:						0.00								0.00	0.00							0.00					0.00		0.00		0.00			
Number of Trades:						0								0	0							0.00					0		0		0			

NATIONAL BANK (CR)

(Contract Size: 100 Securities, Exercise Style: American, Physical Delivery)

Call Options																	Put Options																				
Exerise Price	April 2014							May 2014							Other Months		April 2014							May 2014							Other Months		Exerise Price				
	Open price	Price max	Price min	Last price	Closing price	Volume	Open Interest	Open price	Price max	Price min	Last price	Closing price	Volume	Open Interest	Volume	Open Interest	Open price	Price max	Price min	Last price	Closing price	Volume	Open Interest	Open price	Price max	Price min	Last price	Closing price	Volume	Open Interest	Volume	Open Interest					
1.80							-	-							-	-									-	-					1.80						
1.90							-	-							-	-									-	-					1.90						
2.00							-	-							-	-									-	-					2.00						
2.20							-	-							-	-									-	-					2.20						
2.40							-	-							-	-									-	-					2.40						
2.60							-	-							-	-									-	-					2.60						
2.80							-	-							-	-									-	-					2.80						
3.00							-	-							-	-									-	-					3.00						
3.10							-	-							-	-									-	-					3.10						
3.20							-	-							-	-									-	-					3.20						
3.30							-	-							-	-									-	-					3.30						
3.40							-	-							-	-									-	-					3.40						
3.50							-	-							-	-									-	-					3.50						
3.60							-	-							0.030	-	10									-	-					3.60					
3.70							-	-							-	-									-	-					3.70						
3.80							-	-							-	-									-	-					3.80						
3.90							-	-							0.010	-	100									-	-					3.90					
4.00							-	-							-	-									-	-					4.00						
4.40							-	-							-	-									-	-					4.40						
4.80							-	-							-	-									-	-					4.80						
5.20							-	-							-	-									-	-					5.20						
5.60							-	-							-	-									-	-					5.60						
Totals:							0	0								0	110	0	20								0	0								0	0
Nominal Transactions Value:							0.00									0.00		0.00									0.00		0.00								
Number of Trades:							0									0		0									0		0								

OPAP (CR)

(Contract Size: 100 Securities, Exercise Style: American, Physical Delivery)

Call Options																	Put Options																								
April 2014								May 2014								Other Months		April 2014								May 2014								Other Months							
Exercise Price	Open price	Price max	Price min	Last price	Closing price	Volume	Open Interest	Open price	Price max	Price min	Last price	Closing price	Volume	Open Interest	Volume	Open Interest	Open price	Price max	Price min	Last price	Closing price	Volume	Open Interest	Open price	Price max	Price min	Last price	Closing price	Volume	Open Interest	Volume	Open Interest	Exercise Price								
4.80						-	-							-	-							-	-					-	-					4.80							
5.20						-	-							-	-							-	-					-	-					5.20							
5.60						-	-							-	-							-	-					-	-					5.60							
6.00						-	-							-	-							-	-					-	-					6.00							
6.40						-	-							-	-							-	-					-	-					6.40							
6.80						-	-							-	-							-	-					-	-					6.80							
7.20						-	-							-	-							-	-					-	-					7.20							
7.60						-	-							-	-							-	-					-	-					7.60							
8.00						-	-							-	-							-	-					-	-					8.00							
8.40						-	-							-	-							-	-					-	-					8.40							
8.80						-	-							-	-							-	-					-	-					8.80							
9.20						-	-							-	-							-	-					-	-					9.20							
9.60						-	-							-	-							-	-					-	-					9.60							
10.00						-	-							-	-							-	-					-	-					10.00							
10.50						-	-							-	-							-	-					-	-					10.50							
11.00						-	-							-	-							-	-					-	-					11.00							
11.50						-	-							-	-							-	-					-	-					11.50							
12.00						-	-							-	-							-	-					-	-					12.00							
12.50						-	-							-	-							-	-					-	-					12.50							
13.00						-	-							-	-							-	-					-	-					13.00							
13.50						-	-							-	-							-	-					-	-					13.50							
14.00						-	-							-	-							-	-					-	-					14.00							
14.50						-	-							-	-							-	-					-	-					14.50							
15.00						-	-							-	-							-	-					-	-					15.00							
16.00						-	-							-	-							-	-					-	-					16.00							
Totals:						0	0							0	0	0	95							0	0							0	0	0	15						
Nominal Transactions Value:						0.00								0.00		0.00								0.00								0.00		0.00							
Number of Trades:						0								0		0								0.00								0		0							

**OTE (CR)**

(Contract Size: 100 Securities, Exercise Style: American, Physical Delivery)

Call Options															Put Options																		
April 2014							May 2014							Other Months		April 2014							May 2014							Other Months			
Exerise Price	Open price	Price max	Price min	Last price	Closing price	Volume	Open Interest	Open price	Price max	Price min	Last price	Closing price	Volume	Open Interest	Volume	Open Interest	Open price	Price max	Price min	Last price	Closing price	Volume	Open Interest	Open price	Price max	Price min	Last price	Closing price	Volume	Open Interest	Volume	Open Interest	Exerise Price
4.00						-	-							-	-							-	-						-	-			4.00
4.40						-	-							-	-							-	-						-	-			4.40
4.80						-	-							-	-							-	-						-	-			4.80
5.20						-	-							-	-							-	-						-	-			5.20
5.60						-	-							-	-							-	-						-	-			5.60
6.00						-	-							-	-							-	-						-	-			6.00
6.40						-	-							-	-							-	-						-	-			6.40
6.80						-	-							-	-							-	-						-	-			6.80
7.20						-	-							-	-							-	-						-	-			7.20
7.60						-	-							-	-							-	-						-	-			7.60
8.00						-	-							-	-							-	-						-	-			8.00
8.40						-	-							-	-							-	-						-	-			8.40
8.80						-	-							-	-							-	-						-	-			8.80
9.20						-	-							-	-							-	-						-	-			9.20
9.60						-	-							-	-							-	-						-	-			9.60
10.00						-	-					0.994	-	70								-	-						-	-			10.00
11.00				0.038		-	20	0.200	0.200	0.200	0.200	0.425	60	60							0.257	-	30					-	-			11.00	
11.50						-	-	0.170	0.170	0.170	0.170	0.253	150	150								-	-						-	-			11.50
12.00						-	-							-	-							-	-				1.34	-	-			12.00	
12.50						-	-							-	-							-	-						-	-			12.50
13.00						-	150							-	-							-	-						-	-			13.00
13.50						-	50							-	-							-	-						-	-			13.50
14.00						-	50							-	-							-	-						-	-			14.00
14.50						-	-							-	-							-	-						-	-			14.50
15.00						-	-							-	-							-	-						-	-			15.00
16.00						-	-							-	-							-	-						-	-			16.00
17.00						-	-							-	-							-	-						-	-			17.00
Totals:						0	270						210	280	10	150						0	30					0	50	0	0		
Nominal Transactions Value:						0.00							238,500.00	11,000.00							0.00						0.00			0.00			
Number of Trades:						0							3	1								0.00					0			0			

PIRAEUS BANK (CR)

(Contract Size: 100 Securities, Exercise Style: American, Physical Delivery)

Call Options																	Put Options																
Exercise Price	April 2014							May 2014							Other Months		April 2014							May 2014							Other Months		Exercise Price
	Open price	Price max	Price min	Last price	Closing price	Volume	Open Interest	Open price	Price max	Price min	Last price	Closing price	Volume	Open Interest	Volume	Open Interest	Open price	Price max	Price min	Last price	Closing price	Volume	Open Interest	Open price	Price max	Price min	Last price	Closing price	Volume	Open Interest	Volume	Open Interest	
0.600							-	-							-	-									-	-					0.600		
0.700							-	-							-	-									-	-					0.700		
0.800							-	-							-	-									-	-					0.800		
0.900							-	-							-	-									-	-					0.900		
1.00							-	-							-	-									-	-					1.00		
1.10							-	-							-	-									-	-					1.10		
1.20							-	-							-	-									-	-					1.20		
1.30							-	-							-	-									-	-					1.30		
1.40							-	-							-	-									-	-					1.40		
1.50							-	-							-	-									-	-					1.50		
1.60							-	-							-	-									-	-					1.60		
1.70							-	-							-	-									-	-					1.70		
1.75							-	-							-	-									-	-					1.75		
1.80							-	-							-	-									-	-					1.80		
1.85							-	-							-	-									-	-					1.85		
1.90							-	-							-	-									-	-					1.90		
1.95							-	-							-	-									-	-					1.95		
2.00							-	-							-	-									-	-					2.00		
2.10							-	-							-	-									-	-					2.10		
2.20							-	-							-	-									-	-					2.20		
2.30							-	-							-	-									-	-					2.30		
2.40							-	-							-	-									-	-					2.40		
2.60							-	-							-	-									-	-					2.60		
2.80							-	-							-	-									-	-					2.80		
Totals:							0	0							0	0	0		0							0	0			0	0		
Nominal Transactions Value:							0.00								0.00		0.00		0.00							0.00		0.00		0.00			
Number of Trades:							0								0		0		0							0		0		0			

**PPC (CR)**

(Contract Size: 100 Securities, Exercise Style: American, Physical Delivery)

Call Options																	Put Options																		
April 2014							May 2014							Other Months			April 2014							May 2014							Other Months				
Exerise Price	Open price	Price max	Price min	Last price	Closing price	Volume	Open Interest	Open price	Price max	Price min	Last price	Closing price	Volume	Open Interest	Volume	Open Interest	Open price	Price max	Price min	Last price	Closing price	Volume	Open Interest	Open price	Price max	Price min	Last price	Closing price	Volume	Open Interest	Volume	Open Interest	Exerise Price		
4.80						-	-						-	-								-	-						-	-			4.80		
5.20						-	-						-	-								-	-						-	-			5.20		
5.60						-	-						-	-								-	-						-	-			5.60		
6.00						-	-						-	-								-	-						-	-			6.00		
6.40						-	-						-	-								-	-						-	-			6.40		
6.80						-	-						-	-								-	-						-	-			6.80		
7.20						-	-						-	-								-	-						-	-			7.20		
7.60						-	-						-	-								-	-						-	-			7.60		
8.00						-	-						-	-								-	-						-	-			8.00		
8.40						-	-						-	-								-	-						-	-			8.40		
8.80						-	-						-	-								-	-						-	-			8.80		
9.20					1.64	-	20						-	-								-	20						-	-			9.20		
9.60					1.24	-	10						-	-								-	10						-	-			9.60		
10.00					0.841	-	10						-	-								-	-						-	-			10.00		
10.50						-	-						-	-								-	-						-	-			10.50		
11.00					0.048	-	20						-	-								-	-						-	-			11.00		
11.50						-	-						-	-								-	-						-	-			11.50		
12.00						-	-						-	-								-	-						-	-			12.00		
12.50						-	-						-	-								-	-						-	-			12.50		
13.00						-	-						-	-								-	-						-	-			13.00		
13.50						-	-						-	-								-	-						-	-			13.50		
14.00						-	-						-	-								-	-						-	-			14.00		
14.50						-	-						-	-								-	-						-	-			14.50		
15.00						-	-						-	-								-	-						-	-			15.00		
16.00						-	-						-	-								-	-						-	-			16.00		
Totals:						0	60							0	0	0	135							0	30							0	0	0	30
Nominal Transactions Value:						0.00								0.00		0.00								0.00								0.00		0.00	
Number of Trades:						0								0		0								0								0		0	



PPC (CR)

(Contract Size: 100 Securities, Excercise Style: American, Physical Delivery)

Call Options																Put Options																			
Exerise Price	April 2014							May 2014							Other Months		April 2014								May 2014								Other Months		Exerise Price
	Open price	Price max	Price min	Last price	Closing price	Volume	Open Interest	Open price	Price max	Price min	Last price	Closing price	Volume	Open Interest	Volume	Open Interest	Open price	Price max	Price min	Last price	Closing price	Volume	Open Interest	Open price	Price max	Price min	Last price	Closing price	Volume	Open Interest	Volume	Open Interest			

Securities	Type[4]	Stock Repo [1]						Stock Reverse Repo [2]								Repurchase Agreements [3]							
		Trans. price	chg.	Trades	Volume	Transactions Value	Open Interest[5]	Price max	Price mii	Last price	Last Ask	Trades	Volume	Transactions Value	Open Interest[5]	Price max	Price min	Last price	Last Ask	Trades	Volume	Transactions Value	Open Interest[5]
AEGEAN AIRLINES (CR)	SR RA	100.00	---	---	---	---	88	---	---	---	44@3%	---	---	---	---	---	---	---	---	---	---	---	---
ALPHA BANK (CR)	SR RA	100.15	0.01	---	---	---	112,884	8.50%	6.00%	8.50%	508@8.5%	10	5,641	389,229.0	86,948	8.50%	8.50%	8.50%	---	2	400	27,600.0	28,993
ALPHA ETF FTSE Athex Large Cap	SR RA	100.00	---	---	---	---	---	---	---	---	---	---	---	---	---	---	---	---	---	---	---	2,664	
ALUMIL (CR)	RA	---	---	---	---	---	---	---	---	---	---	---	---	---	---	---	---	---	---	---	---	---	
ATHENS MEDICAL CENTER SA (CR)	SR RA	100.00	---	---	---	---	434	---	---	---	217@3%	---	---	---	---	---	---	---	---	---	---	---	
ATTICA BANK S.A. (CR)	SR RA	100.00	---	---	---	---	3,180	---	---	---	2544@10%	---	---	---	---	---	---	---	---	---	---	---	
AUTOHELLAS SA (CR)	SR RA	100.00	---	---	---	---	16	---	---	---	6@3%	---	---	---	---	---	---	---	---	---	---	---	
BIOKARPET S.A.(CR)	RA	---	---	---	---	---	---	---	---	---	---	---	---	---	---	---	---	---	---	---	---	---	
CC HBC AG (CR)	SR RA	100.03	0.02	---	---	---	1,169	---	---	---	474@3%	---	---	---	110	---	---	---	---	---	---	---	
CENTRIC HOLDINGS (CR)	SR RA	100.00	---	---	---	---	200	---	---	---	145@5.9%	---	---	---	---	---	---	---	---	---	---	---	
CORINTH PIPEWORKS SA (CR)	SR RA	100.00	---	---	---	---	160	---	---	---	73@3%	---	---	---	7	---	---	---	---	---	---	---	
CRETE PLASTICS SA (CR)	SR RA	100.00	---	---	---	---	---	---	---	---	---	---	---	---	---	---	---	---	---	---	---	---	
DROMEAS SA (CR)	SR RA	100.00	---	---	---	---	---	---	---	---	---	---	---	---	---	---	---	---	---	---	---	---	
ELLAKTOR (CR)	SR RA	100.02	0.01	---	---	---	2,153	3.00%	3.00%	3.00%	976@3%	1	23	8,855.0	100	3.00%	3.00%	3.00%	---	1	23	8,855.0	38
ELTON SA (CR)	SR RA	100.00	---	---	---	---	50	---	---	---	35@3%	---	---	---	---	---	---	---	---	---	---	---	
ELVAL SA. (CB)	SR RA	100.00	---	---	---	---	368	---	---	---	184@3%	---	---	---	---	---	---	---	---	---	---	---	
EUROBANK ERGASIAS (CR)	SR RA	100.10	0.01	---	---	---	1,504	10.00%	8.50%	10.00%	---	4	43	1,638.3	1,203	---	---	---	---	---	---	36	
EUROBANK PROPERTIES REIC (CR)	SR RA	100.01	0.01	---	---	---	1,174	3.00%	3.00%	3.00%	527@3%	1	20	17,220.0	60	---	---	---	---	---	---	9	
EUROPEAN RELIANCE INSUR. (CR)	SR RA	100.00	---	---	---	---	---	---	---	---	---	---	---	---	---	---	---	---	---	---	---	---	
EYDAP S.A. (CR)	SR RA	100.27	0.06	---	---	---	352	---	---	---	2@5.5%	---	---	---	248	---	---	---	---	---	---	10	
FOLLI FOLLIE (CR)	SR RA	100.78	0.22	---	---	---	644	---	---	---	---	---	---	---	515	10.00%	10.00%	10.00%	---	1	45	107,820.0	52
FOURLIS (CR)	SR RA	100.00	---	---	---	---	109	3.00%	3.00%	3.00%	37@3%	2	17	9,588.0	17	---	---	---	---	---	---	---	
FRIGOGLASS SA (CR)	SR RA	100.10	0.04	---	---	---	66	---	---	---	---	---	---	---	49	---	---	---	---	---	---	---	
GEK TERNA (CR)	SR RA	100.02	---	---	---	---	641	---	---	---	298@3%	---	---	---	22	---	---	---	---	---	---	---	
GR. SARANTIS SA (CR)	SR RA	100.00	---	---	---	---	56	---	---	---	29@3%	---	---	---	---	---	---	---	---	---	---	---	
HALKOR SA (CB)	SR RA	100.00	---	---	---	---	505	---	---	---	252@3%	---	---	---	---	---	---	---	---	---	---	---	
HELLENIC EXCHANGES-A.S.E. (CR)	SR RA	100.01	---	---	---	---	5,933	---	---	---	2901@3%	---	---	---	65	---	---	---	---	---	---	---	
HELLENIC PETROLEUM (CR)	SR RA	100.35	0.02	---	---	---	2,251	---	---	---	523@3%	---	---	---	602	---	---	---	---	---	---	25	
HYGEIA SA (CR)	SR RA	100.00	---	---	---	---	500	---	---	---	200@4.3%	---	---	---	---	---	---	---	---	---	---	---	
IASO SA (CR)	SR RA	100.00	---	---	---	---	245	---	---	---	122@3%	---	---	---	---	---	---	---	---	---	---	---	
IKTINOS HELLAS SA (CR)	SR RA	100.00	---	---	---	---	10	---	---	---	---	---	---	---	---	---	---	---	---	---	---	---	
INTRACOM CONSTR. (CR)	SR RA	100.00	---	---	---	---	7	---	---	---	---	---	---	---	---	---	---	---	---	---	---	---	

Stock Lending Notes

- [1] - Stock Repo: A Contract for selling stocks to HELEX with a Repurchase Right (According to ATHEX BoD Resolution No 17)
- [2] - Stock Reverse Repo: A Contract for buying stocks from HELEX with a Resell Right. (According to ATHEX BoD Resolution No 18)
- [3] - Standardized Repurchase Agreements: A Contract that constitutes a standardized agreement for the purchase or sale of shares, with repurchase or resell pact (According to ATHEX BoD Resolution No 20)
- [4] - Type of products is divided into SR: Stock Repo or Stock Reverse Repo, and RA: Repurchase Agreements.
- [5] - Open Interest in all Series (both tradeable or non-tradeable).

Securities		Stock Repo [1]						Stock Reverse Repo [2]								Repurchase Agreements [3]								
		Type[4]	Trans. price	chg.	Trades	Volume	Transactions Value	Open Interest[5]	Price max	Price mii	Last price	Last Ask	Trades	Volume	Transactions Value	Open Interest[5]	Price max	Price min	Last price	Last Ask	Trades	Volume	Transactions Value	Open Interest[5]
INTRACOM HOLDINGS (CR)		SR RA	100.02	---	---	---	---	665	---	---	---	252@3%	---	---	---	80	---	---	---	---	---	---	---	---
INTRALOT (CR)		SR RA	100.01	---	---	---	---	841	---	---	---	341@3%	---	---	---	79	---	---	---	---	---	---	---	
J & P - AVAX SA (CR)		SR RA	100.00	---	---	---	---	223	---	---	---	111@3%	---	---	---	---	---	---	---	---	---	---	---	
JUMBO SA (CR)		SR RA	100.15	0.03	---	---	---	680	---	---	---	129@3%	---	---	---	129	---	---	---	---	---	---	11	
KARATZIS SA (CR)		RA	---	---	---	---	---	---	---	---	---	---	---	---	---	---	---	---	---	---	---	---	---	
KLEEMAN HELLAS SA (CR)		SR RA	100.00	---	---	---	---	982	---	---	---	491@3%	---	---	---	---	---	---	---	---	---	---	---	
KLOUKINAS - LAPPAS SA (CR)		SR RA	100.00	---	---	---	---	---	---	---	---	---	---	---	---	---	---	---	---	---	---	---	---	
KRI-KRI S.A. (CR)		SR RA	100.00	---	---	---	---	550	---	---	---	275@3%	---	---	---	---	---	---	---	---	---	---	---	
LAMDA DEVELOPMENT SA (CR)		SR RA	100.00	---	---	---	---	---	---	---	---	---	---	---	---	---	---	---	---	---	---	---	---	
LOULIS MILLS SA (CR)		SR RA	100.00	---	---	---	---	---	---	---	---	---	---	---	---	---	---	---	---	---	---	---	---	
MARFIN INVESTMENT GROUP (CR)		SR RA	100.02	---	---	---	---	3,852	---	---	---	1786@3.6%	---	---	---	660	---	---	---	---	---	---	---	
METKA (CR)		SR RA	100.46	0.01	---	---	---	533	---	---	---	215@3%	---	---	---	51	---	---	---	---	---	---	5	
MLS MULTIMEDIA SA (CR)		SR RA	100.00	---	---	---	---	109	---	---	---	54@3%	---	---	---	---	---	---	---	---	---	---	---	
MOTOR OIL (CR)		SR RA	100.14	0.01	---	---	---	1,856	---	---	---	698@3%	---	---	---	230	---	---	---	---	---	---	10	
MYTILINEOS HOLDINGS (CR)		SR RA	100.02	---	---	---	---	3,658	3.00%	3.00%	3.00%	1722@3%	4	50	33,200.0	107	---	---	---	---	---	---	10	
NATIONAL BANK (CR)		SR RA	100.73	0.06	1	5	1,485.0	9,493	10.00%	5.50%	10.00%	---	10	1,000	297,000.0	7,590	---	---	---	---	---	---	1,041	
NBGAM ETF		SR RA	100.00	---	---	---	---	---	---	---	---	---	---	---	---	---	---	---	---	---	---	---	100	
NBGAM ETF GREECE & TURKEY 30		SR RA	100.00	---	---	---	---	---	---	---	---	---	---	---	---	---	---	---	---	---	---	---	36	
NIREFS SA (CR)		SR RA	100.00	---	---	---	---	342	---	---	---	259@7.5%	---	---	---	---	---	---	---	---	---	---	---	
OPAP (CR)		SR RA	100.15	0.01	---	---	---	3,829	---	---	---	1721@3%	---	---	---	193	---	---	---	---	---	---	357	
OTE (CR)		SR RA	100.03	---	---	---	---	4,968	---	---	---	2379@3%	---	---	---	88	---	---	---	---	---	---	40	
P.P.A. S.A. (CR)		SR RA	101.15	0.13	---	---	---	14	---	---	---	---	---	---	---	10	---	---	---	---	---	---	12	
PAPOUTSANIS (CR)		SR RA	100.00	---	---	---	---	---	---	---	---	---	---	---	---	---	---	---	---	---	---	---	---	
PETROPOULOS PETROS (CR)		RA	---	---	---	---	---	---	---	---	---	---	---	---	---	---	---	---	---	---	---	---	---	
PIRAEUS BANK (CR)		SR RA	100.27	0.01	---	---	---	9,181	---	---	---	---	---	---	---	7,369	---	---	---	---	---	---	3,415	
PPC (CR)		SR RA	100.38	0.01	---	---	---	1,908	---	---	---	761@3%	---	---	---	193	---	---	---	---	---	---	19	
QUEST HOLDINGS (CR)		SR RA	100.00	---	---	---	---	---	---	---	---	---	---	---	---	---	---	---	---	---	---	---	---	
REVOIL (CR)		SR RA	100.00	---	---	---	---	---	---	---	---	---	---	---	---	---	---	---	---	---	---	---	---	
SELECTED TEXT. IND. ASSOC (CR)		SR RA	100.00	---	---	---	---	110	---	---	---	80@6.1%	---	---	---	---	---	---	---	---	---	---	---	
SIDENOR (CR)		SR RA	100.00	---	---	---	---	391	---	---	---	195@3%	---	---	---	---	---	---	---	---	---	---	---	
TECHNICAL OLYMPIC SA (CR)		SR RA	100.00	---	---	---	---	44	---	---	---	22@3%	---	---	---	---	---	---	---	---	---	---	---	
TERNA ENERGY (CR)		SR RA	100.02	---	---	---	---	283	---	---	---	141@3%	---	---	---	---	---	---	---	---	---	---	---	

Stock Lending Notes

- [1] - Stock Repo: A Contract for selling stocks to HELEX with a Repurchase Right (According to ATHEX BoD Resolution No 17)
- [2] - Stock Reverse Repo: A Contract for buying stocks from HELEX with a Resell Right. (According to ATHEX BoD Resolution No 18)
- [3] - Standardized Repurchase Agreements: A Contract that constitutes a standardized agreement for the purchase or sale of shares, with repurchase or resell pact (According to ATHEX BoD Resolution No 20)
- [4] - Type of products is divided into SR: Stock Repo or Stock Reverse Repo, and RA: Repurchase Agreements.
- [5] - Open Interest in all Series (both tradeable or non-tradeable).

Securities		Stock Repo [1]						Stock Reverse Repo [2]						Repurchase Agreements [3]									
		Trans. price	chg.	Trades	Volume	Transactions Value	Open Interest[5]	Price max	Price mii	Last price	Last Ask	Trades	Volume	Transactions Value	Open Interest[5]	Price max	Price min	Last price	Last Ask	Trades	Volume	Transactions Value	Open Interest[5]
THESSALONIKA WATER & SEWERAGE	SR RA	100.00	---	---	---	---	1,270	---	---	---	635@3%	---	---	---	---	---	---	---	---	---	---	---	---
THRACE PLASTICS SA (CR)	SR RA	100.00	---	---	---	---	1,010	---	---	---	505@3%	---	---	---	---	---	---	---	---	---	---	---	---
TITAN CEMENT (CR)	SR RA	100.18	0.01	---	---	---	8,915	3.00%	3.00%	3.00%	4086@3%	1	50	107,500.0	371	---	---	---	---	---	---	---	8
TPA SA (CR)	SR RA	100.00	---	---	---	---	46	---	---	---	23@3%	---	---	---	---	---	---	---	---	---	---	---	---
TRASTOR REAL EST. INV. CO.(CR)	SR RA	100.00	---	---	---	---	284	---	---	---	142@3%	---	---	---	---	---	---	---	---	---	---	---	---
VIOHALCO SA/NV (CB)	SR RA	100.30	0.02	---	---	---	224	---	---	---	22@3%	---	---	---	102	---	---	---	---	---	---	---	---

Stock Lending Notes

- [1] - Stock Repo: A Contract for selling stocks to HELEX with a Repurchase Right (According to ATHEX BoD Resolution No 17)
- [2] - Stock Reverse Repo: A Contract for buying stocks from HELEX with a Resell Right. (According to ATHEX BoD Resolution No 18)
- [3] - Standardized Repurchase Agreements: A Contract that constitutes a standardized agreement for the purchase or sale of shares, with repurchase or resell pact (According to ATHEX BoD Resolution No 20)
- [4] - Type of products is divided into SR: Stock Repo or Stock Reverse Repo, and RA: Repurchase Agreements.
- [5] - Open Interest in all Series (both tradeable or non-tradeable).

**Sectors codification for listed companies**

533	-	Exploration & Production	537	-	Integrated Oil & Gas
1353	-	Commodity Chemicals	1357	-	Specialty Chemicals
1753	-	Aluminum	1755	-	Nonferrous Metals
1757	-	Steel	1775	-	General Mining
2353	-	Building Materials & Fixtures	2357	-	Heavy Construction
2723	-	Containers & Packaging	2727	-	Diversified Industrials
2733	-	Electrical Components & Equipment	2753	-	Commercial Vehicles & Trucks
2757	-	Industrial Machinery	2773	-	Marine Transportation
2777	-	Transportation Services	2791	-	Business Support Services
2797	-	Industrial Suppliers	3535	-	Distillers & Vintners
3537	-	Soft Drinks	3573	-	Farming Fishing & Plantations
3577	-	Food Products	3722	-	Durable Household Products
3726	-	Furnishings	3728	-	Home Construction
3747	-	Toys	3763	-	Clothing & Accessories
3765	-	Footwear	3767	-	Personal Products
3785	-	Tobacco	4533	-	Health Care Providers
4535	-	Medical Equipment	4577	-	Pharmaceuticals
5337	-	Food Retailers & Wholesalers	5371	-	Apparel Retailers
5373	-	Broadline Retailers	5375	-	Home Improvement Retailers
5379	-	Specialty Retailers	5553	-	Broadcasting & Entertainment
5555	-	Media Agencies	5557	-	Publishing
5751	-	Airlines	5752	-	Gambling
5753	-	Hotels	5755	-	Recreational Services
5757	-	Restaurants & Bars	5759	-	Travel & Tourism
6535	-	Fixed Line Telecommunications	6575	-	Mobile Telecommunications
7535	-	Conventional Electricity	7537	-	Alternative Electricity
7577	-	Water	8355	-	Banks
8534	-	Insurance Brokers	8536	-	Property & Casualty Insurance
8633	-	Real Estate Holding & Development	8637	-	Real Estate Services
8671	-	Industrial & Office REITs	8675	-	Specialty REITs
8775	-	Specialty Finance	8777	-	Investment Services
8985	-	Equity Investment Instruments	9533	-	Computer Services
9535	-	Internet	9537	-	Software
9572	-	Computer Hardware	9574	-	Electronic Office Equipment
9578	-	Telecommunications Equipment	11000	-	ETF

