

# Daily Official List

Hellenic Exchanges – Athens Stock Exchange S.A.

Friday, 13 June, 2014  
Year: 135 Trading Day No: 110

**Disclaimer:**

Hellenic Exchanges-Athens Exchange endeavours to ensure that the data and other material ("Information") presented on the Daily Official List are accurate and complete, but it is not liable for any errors or omissions of data or /and for the accuracy, credibility, updating and completeness of the aforesaid information nor it has any liability arising directly or indirectly from the use of the above Information.

The Company is not liable for the accuracy of the data included in listed companies' announcements. Only the sender of such an announcement is fully and solely liable for any infringement of third party's rights from the content of such announcement. All contents of the Daily Official List are provided only for information purposes and do not constitute investment advice or solicitation to invest in securities or other products listed for trading on the Exchange.

You acknowledge and agree that the Company is the owner of any property rights related to any Information appearing on the Daily Official List including intellectual property rights copyright, trademarks, etc.

The above data are a property of the Hellenic Exchanges-Athens Exchange and are copyright protected. Users are forbidden to reproduce, modify, copy, sale, transmit or redistribute, by all reproduction means and methods, part or the whole of the above data, without reference to their source.

The commercial exploitation of these data is, also, forbidden by third parties. Hellenic Exchanges-Athens Exchange does not carry any responsibility, direct or indirect, derived from usage or accidental alteration of the above data when used by third parties.

---

**Hellenic Exchanges – Athens Stock Exchange S.A.**

110 Athinon Ave., 10442 Athens, Tel: (210) 33.66.800, Fax: (210) 32.13.938

[www.athex.gr](http://www.athex.gr)

---

**Thessalonica Stock Exchange Center (T.S.E.C)**

16-18 Katouni Str., Thessalonica 546 25 Tel: (2310) 567.667, Fax: (2310) 530.545

**Athex Members Guarantee Fund**

14-16 Fidiou Str., Athens 106 78, Tel: (210) 33.04.682, Fax: (210) 33.04.155

**Hellenic Republic Capital Market Commission**

1 Kolokotroni Str. & 1 Stadiou Str., Athens 10562 Tel: (210) 33.77.100 Fax: (210) 33.77.173

---

**Table of Contents**

---

**Section 1: Statistical Figures of Securities and Derivatives Markets**

- Summary of Markets
- Athex Indices
- Analytic Figures for Athex Market's Boards and Categories
- Trading Details by Athex Sectors and ETFs Category
- Top 10 best & worst performing Shares
- Derivatives Summary

**Section 2: Analytic Figures of Shares Transactions**

- Analytic Figures of Shares Transactions
- Shares' Notes

**Section 3: Figures of Securities Transactions**

- Securities Blocks Details
- Shares Rights Details
- Shares Short Selling
- Stock Borrowing
- Shares Forced Sales
- Forced Sales Registered Shares
- Exchange Traded Funds (ETFs) Characteristics

**Section 5: Bonds traded in Fixed Income Assets Market**

- Corporate Bonds
- Government Bonds
- Treasury Bills & Zero Coupon Government Bonds
- Government Bonds Traded with the Open Outcry Method
- State Banks Bonds

**Section 6: Additional Infos**

- Athex & ATHEXClear Members List
- List of Stocks under Market Making operations

**Section 7: Derivatives Market Analytic Figures**

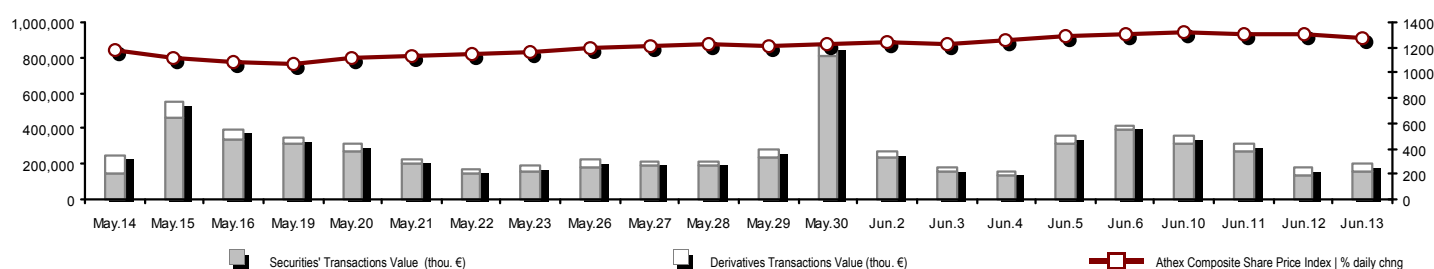
- Index Futures
- Stock Futures
- Index Options
- Stock Options
- Stock Lending Analytic Figures (Repo Contracts)

**Appendix A: Sectors codification for listed companies**

Section codification follows the corresponding from the Greek version of Daily Official List for reference purposes.

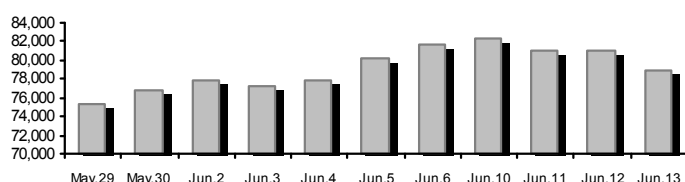
## Summary of Markets

Athex Composite Share Price Index vs Shares and Derivatives Transactions Value

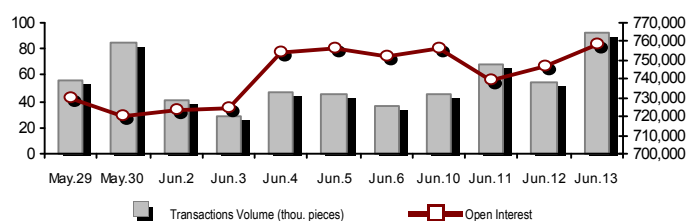


<b>Total Transactions Value (Securities/Derivatives) (thou. €):</b>		<b>207,039.62</b>	
<b>Athex Capitalisation (mill. €) **:</b>		<b>78,968.18</b>	
Daily change: mill. €   %		-2,061.63	-2.54%
Yearly Avg Capitalisation: mill. €   % chng prev year Avg		72,521.29	40.41%
<b>Athex Composite Share Price Index   % daily chng</b>		<b>1,270.69</b>	<b>-2.78%</b>
<b>Athex Composite Share Price Index Capitalisation (mill. €)</b>		<b>73,498.70</b>	
Daily change (mill. €)		-2,104.97	
<b>Securities' Transactions Value (thou. €)</b>		<b>152,670.45</b>	
Daily change: thou. €   %		15,653.59	11.42%
YtD Avg Trans. Value: thou. €   % chng prev year Avg		151,607.12	75.03%
Short Selling Trans. Value: mill. €   % in total Value			
Short Covering Trans. Value: mill. €   % in total Value			
<b>Transactions Value of Blocks (thou. €)</b>		<b>19,469.07</b>	
<b>Bonds Transactions Value (thou. €)</b>		<b>0.00</b>	
<b>Securities' Transactions Volume (thou. Pieces)</b>		<b>96,542.53</b>	
Daily change: thou. pieces   %		15,489.79	19.11%
YtD Avg Volume: thou. pieces   % chng prev year Avg		101,538.93	89.74%
Short Selling Volume: thou pieces   % in total Volume			
Short Covering Volume: thou. pieces   % in total Volume			
<b>Transactions Volume of Blocks (thou. Pieces)</b>		<b>20,426.12</b>	
<b>Bonds Transactions Volume (thou. pieces)</b>		<b>0.00</b>	
<b>Securities' Trades Number</b>		<b>28,980</b>	
Daily change: number   %		3,414	13.35%
YtD Avg Derivatives Trades number   % chng prev year Avg		31,682	6.80%
<b>Number of Blocks</b>		<b>26</b>	
<b>Number of Bonds Transactions</b>		<b>0</b>	
<b>Derivatives Total Open Interest</b>		<b>757,934</b>	
in Index Futures   % daily chng		64,063	0.31%
in Stock Futures   % daily chng		313,855	0.74%
in Index Options   % daily chng		11,869	5.63%
in Stock Options   % daily chng		8,972	0.31%
in Stock Repos/Reverse Repos/RA   % daily chng		359,175	2.33%
<b>Derivatives Transactions Value (thou. €)</b>		<b>54,369.17</b>	
Daily change: thou. €   %		10,932.21	25.17%
YtD Avg Trans. Value: thou. €   % chng prev year Avg		41,152.86	59.91%
<b>Derivatives Contracts Volume:</b>		<b>92,875</b>	
Daily change: pieces   %		38,199	69.86%
YtD Avg Derivatives Contracts   % chng prev year Avg		43,464	4.56%
<b>Derivatives Trades Number:</b>		<b>3,667</b>	
Daily change: number   %		1,125	44.26%
YtD Avg Derivatives Trades number   % chng prev year Avg		2,718	3.27%

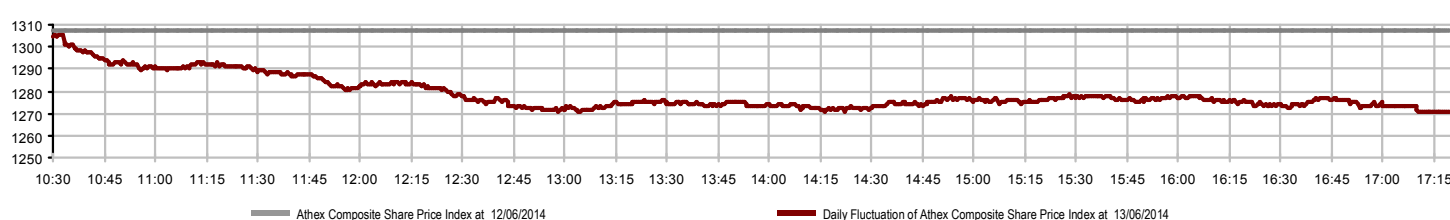
Athex Capitalisation (mill. €) \*\*



Derivatives Transactions Volume and Open Interest



Daily Fluctuation of Athex Composite Share Price Index



## Athex Indices

Index name	13/06/2014	12/06/2014	pts.	%	Min	Max	Year min	Year max	Year change
Athex Composite Share Price Index	1,270.69 ↓	1,307.08	-36.39	-2.78%	1,270.33	1,305.76	1,062.66	1,379.42	9.29% ↑
FTSE/Athex Large Cap	410.74 ↓	423.00	-12.26	-2.90%	410.44	422.38	341.34	445.52	6.73% ↑
FTSE/ATHEX Custom Capped	1,361.75 ↑	1,356.64	5.11	0.38%			1,103.54	1,410.19	10.75% ↑
FTSE/ATHEX Custom Capped - USD	1,323.04 ↑	1,316.27	6.77	0.51%			1,085.46	1,406.66	8.91% ↑
FTSE/Athex Mid Cap Index	1,164.67 ↓	1,182.23	-17.56	-1.49%	1,162.75	1,181.55	1,060.67	1,317.40	-0.18% ↓
FTSE/ATHEX-CSE Banking Index	134.56 ↓	139.53	-4.97	-3.56%	134.21	139.47	107.37	161.54	-1.16% ↓
FTSE/ATHEX Global Traders Index Plus	1,785.81 ↓	1,825.07	-39.26	-2.15%	1,783.32	1,826.49	1,486.71	1,845.84	15.15% ↑
FTSE/ATHEX Global Traders Index	2,019.25 ↓	2,063.56	-44.31	-2.15%	2,016.72	2,064.92	1,686.82	2,152.38	16.42% ↑
FTSE/ATHEX Mid & Small Cap Factor-Weighted Ind	1,372.25 ↓	1,382.88	-10.63	-0.77%	1,363.50	1,383.63	1,279.09	1,523.02	7.28% ↑
Greece & Turkey 30 Price Index	746.76 ↓	759.62	-12.86	-1.69%	742.45	759.62	570.55	783.68	15.32% ↑
ATHEX Mid & SmallCap Price Index	3,066.01 ↓	3,075.98	-9.97	-0.32%	3,053.13	3,101.07	2,573.35	3,155.19	19.13% ↑
FTSE/Athex Market Index	984.02 ↓	1,012.65	-28.63	-2.83%	983.35	1,011.25	821.30	1,066.17	6.52% ↑
FTSE Med Index	5,323.48 ↓	5,349.29	-25.81	-0.48%			4,605.95	5,379.93	16.50% ↑
Athex Composite Index Total Return Index	1,844.59 ↓	1,897.41	-52.82	-2.78%	1,844.06	1,895.50	1,540.53	1,998.07	9.57% ↑
FTSE/Athex Large Cap Total Return	554.46 ↓	571.00	-16.54	-2.90%			469.70	605.87	5.14% ↑
FTSE/ATHEX Large Cap Net Total Return	1,650.96 ↓	1,700.22	-49.26	-2.90%	1,649.75	1,697.76	1,369.61	1,786.28	7.00% ↑
FTSE/ATHEX Custom Capped Total Return	1,426.54 ↑	1,421.19	5.36	0.38%			1,153.69	1,472.79	11.08% ↑
FTSE/ATHEX Custom Capped - USD Total Return	1,385.99 ↑	1,378.91	7.09	0.51%			1,134.79	1,469.09	9.25% ↑
FTSE/Athex Mid Cap Total Return	1,475.82 ↓	1,498.07	-22.25	-1.49%			1,337.23	1,643.81	2.19% ↑
FTSE/ATHEX-CSE Banking Total Return Index	125.61 ↓	130.25	-4.64	-3.56%			104.83	153.89	-2.68% ↓
Greece & Turkey 30 Total Return Index	918.46 ↑	915.42	3.04	0.33%			697.73	946.62	18.58% ↑
Hellenic Mid & Small Cap Index	1,229.36 ↓	1,257.19	-27.83	-2.21%	1,228.34	1,257.47	1,061.82	1,351.84	10.38% ↑
FTSE/Athex Banks	177.78 ↓	184.35	-6.57	-3.56%	177.33	184.27	141.86	213.44	-1.17% ↓
FTSE/Athex Insurance	1,464.60 ↓	1,496.21	-31.61	-2.11%	1,443.52	1,506.74	1,296.01	1,749.09	11.20% ↑
FTSE/Athex Financial Services	1,992.10 ↓	2,080.72	-88.62	-4.26%	1,992.10	2,087.52	1,599.55	2,207.51	12.64% ↑
FTSE/Athex Industrial Goods & Services	3,292.69 ↓	3,385.71	-93.02	-2.75%	3,292.69	3,386.01	2,839.79	3,724.87	1.48% ↑
FTSE/Athex Retail	4,582.53 ↓	4,639.05	-56.52	-1.22%	4,513.10	4,639.05	3,090.34	4,652.78	38.92% ↑
FTSE/ATHEX Real Estate	2,756.61 ↓	2,849.54	-92.93	-3.26%	2,743.09	2,849.54	2,194.73	3,111.71	24.36% ↑
FTSE/Athex Personal & Household Goods	6,785.32 ↓	7,027.20	-241.88	-3.44%	6,772.83	7,030.57	5,634.03	7,649.84	14.67% ↑
FTSE/Athex Food & Beverage	6,562.41 ↑	6,545.54	16.87	0.26%	6,510.60	6,584.23	6,139.41	8,227.06	-16.38% ↓
FTSE/Athex Basic Resources	2,913.17 ↓	3,024.04	-110.87	-3.67%	2,911.32	3,028.64	2,518.75	3,356.44	5.86% ↑
FTSE/Athex Construction & Materials	3,308.82 ↓	3,400.55	-91.73	-2.70%	3,304.64	3,411.71	2,531.26	3,482.98	23.39% ↑
FTSE/Athex Oil & Gas	2,545.49 ↓	2,596.26	-50.77	-1.96%	2,534.85	2,607.03	2,283.05	3,236.15	-11.21% ↓
FTSE/Athex Chemicals	5,965.97 ↓	6,091.68	-125.71	-2.06%	5,937.09	6,118.02	5,516.28	6,811.96	-0.51% ↓
FTSE/Athex Media	1,979.77 ↓	2,142.29	-162.52	-7.59%	1,979.77	2,142.29	1,543.92	2,777.58	28.23% ↑
FTSE/Athex Travel & Leisure	2,205.71 ↓	2,297.85	-92.14	-4.01%	2,200.58	2,285.27	1,634.38	2,304.69	31.29% ↑
FTSE/Athex Technology	1,014.02 ↓	1,034.27	-20.25	-1.96%	1,008.58	1,034.38	786.21	1,134.79	28.78% ↑
FTSE/Athex Telecommunications	3,278.31 ↓	3,358.14	-79.83	-2.38%	3,250.78	3,366.39	2,603.93	3,633.39	23.16% ↑
FTSE/Athex Utilities	4,149.66 ↓	4,236.56	-86.90	-2.05%	4,100.04	4,234.13	3,308.43	4,471.04	9.41% ↑
FTSE/Athex Health Care	215.86 ↓	218.65	-2.79	-1.28%	215.31	221.26	209.98	287.11	-3.21% ↓
Athex All Share Index	279.41 ↓	286.64	-7.23	-2.52%			226.62	291.46	18.66% ↑

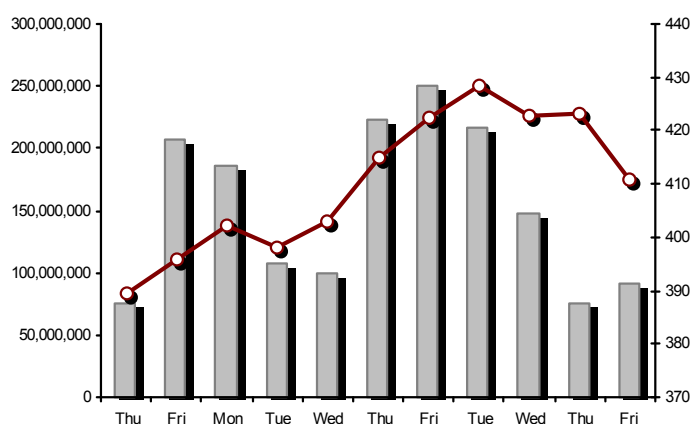
Note 1: Greece & Turkey 30 Pr data is the indicative at 17:20, whereas FTSE/ATHEX Custom Capped, FTSE/ATHEX Custom Capped - USD, FTSE/ATHEX Custom Capped TR, FTSE/ATHEX Custom Capped - USD TR, FTSE/Med 100 & Greece & Turkey 30 Rt closing prices refer to the previous trading day of 12/06/2014.

Note 2: The Hellenic Mid & Small Cap Index is a Customized index calculated by the Athens Exchange.

## Athex Indices

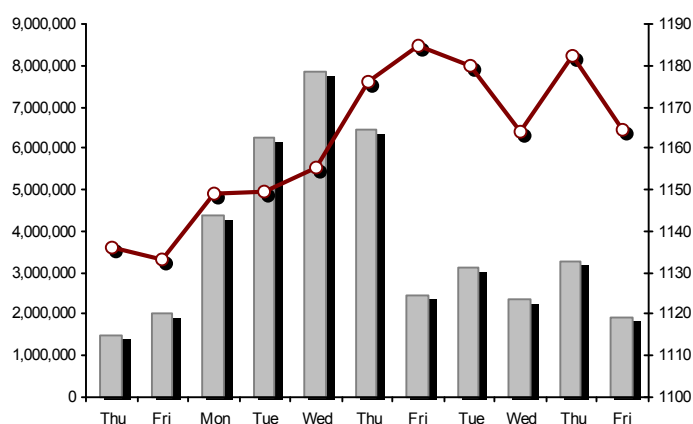
FTSE/Large Cap

13/06/2014: -2.90%



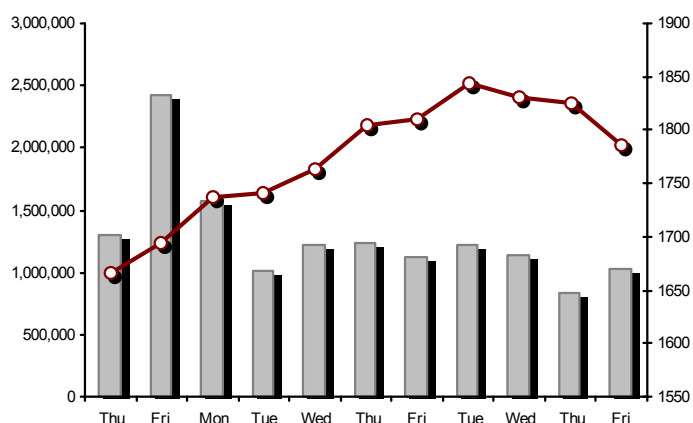
FTSE/Athex Mid Cap Index

13/06/2014: -1.49%



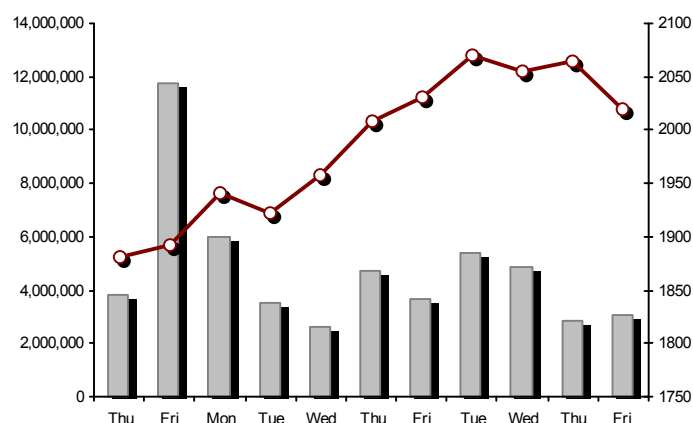
FTSE/ATHEX Global Traders Index Plus

13/06/2014: -2.15%



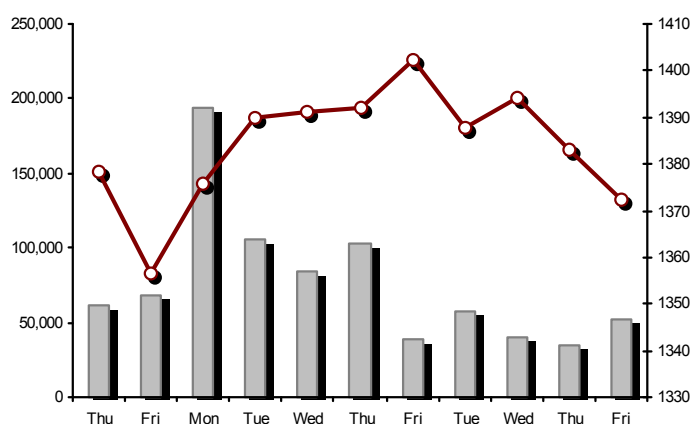
FTSE/ATHEX Global Traders Index

13/06/2014: -2.15%



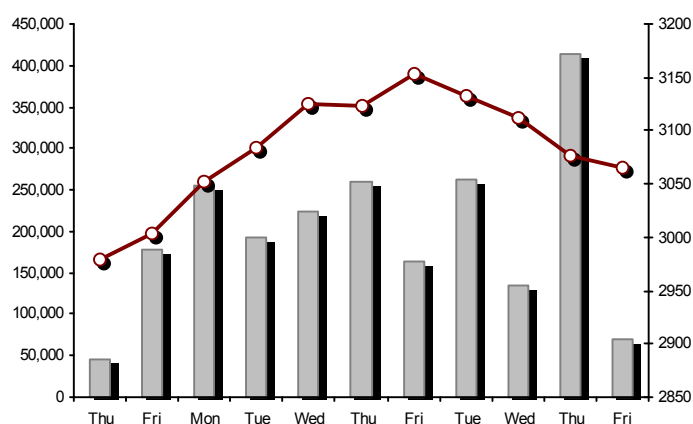
FTSE/ATHEX Mid &amp; Small Cap Factor-Weighted Index

13/06/2014: -0.77%



ATHEX Mid &amp; SmallCap Price Index

13/06/2014: -0.32%



Indices volume of transactions

Indices closing prices

## Analytic Figures for Athex Market's Boards and Categories

	Total Traded Securities	Main Market	Low Dispersion	Other Categories (*)	Exchange Traded Funds (ETFs)	Warrants
<b>Totals</b>	<b>149</b>	<b>110</b>	<b>7</b>	<b>26</b>	<b>3</b>	<b>3</b>
Gain / Lose / Same:	36 / 103 / 10	27 / 77 / 6	1 / 4 / 2	8 / 16 / 2	0 / 3 / 0	0 / 3 / 0
<b>Athex Capitalisation (mill. €) **</b>	<b>78,968.18</b>	<b>76,485.04</b>	<b>2,032.59</b>	<b>450.55</b>		
Daily Average Trans/ons Value(thou.€)	151,607.12	141,019.16	51.79	46.87	70.10	10,419.20
<b>Transactions Value</b>	<b>152,670.45</b>	<b>148,427.11</b>	<b>77.87</b>	<b>23.39</b>	<b>131.48</b>	<b>4,010.60</b>
Main Board:	133,201.39	128,958.17	77.87	23.39	131.48	4,010.48
Blocks Board:	19,469.07	19,468.95	0.00	0.00	0.00	0.12
Forced Sales Board:	0.00	0.00	0.00	0.00	0.00	0.00
Special Terms Board:	0.00	0.00	0.00	0.00	0.00	0.00
Daily Average Transactions Volume	101,538,925	92,673,309	21,983	239,627	14,818	8,589,189
<b>Transactions Volume</b>	<b>96,542,525</b>	<b>93,484,784</b>	<b>52,744</b>	<b>206,610</b>	<b>30,588</b>	<b>2,767,799</b>
Main Board:	76,116,403	73,058,722	52,744	206,610	30,588	2,767,739
Blocks Board:	20,426,122	20,426,062	0	0	0	60
Forced Sales Board:	0	0	0	0	0	0
Special Terms Board:	0	0	0	0	0	0
Daily Average Number of Trades	31,682	29,285	54	148	9	2,187
<b>Number of Trades</b>	<b>28,980</b>	<b>27,695</b>	<b>43</b>	<b>131</b>	<b>13</b>	<b>1,098</b>
Main Board:	28,954	27,670	43	131	13	1,097
Blocks Board:	26	25	0	0	0	1
Forced Sales Board:	0	0	0	0	0	0
Special Terms Board:	0	0	0	0	0	0

(\*) Summarised Transactions figures for Under Deletion and Under Supervision Categories.(\*\*) The Market Capitalization of the Companies that belong in the Under Supervision Status is not included.

## Trading Details by Athex Sectors and ETFs Category

Code	Sectors	Gain / Lose / Same	Number of Trades	Transactions Volume	Transactions Value	% of Total Trans. Value
8300	- Banks	1 / 9 / 0	12,565	89,526,283	103,604,985.99	67.86%
1700	- Basic Resources	2 / 8 / 0	1,160	514,387	1,712,834.02	1.12%
1300	- Chemicals	0 / 6 / 1	85	37,647	58,400.46	0.04%
2300	- Construction & Materials	3 / 12 / 3	1,709	528,259	2,656,109.85	1.74%
11000	- ETF	0 / 3 / 0	13	30,588	131,483.11	0.09%
8700	- Financial Services	0 / 2 / 0	1,192	1,288,810	2,211,370.77	1.45%
3500	- Food & Beverage	6 / 5 / 2	416	156,265	1,319,486.10	0.86%
4500	- Health Care	2 / 4 / 0	238	229,905	95,270.17	0.06%
2700	- Industrial Goods & Services	4 / 15 / 1	1,065	285,699	1,352,294.76	0.89%
8500	- Insurance	0 / 1 / 0	15	4,990	7,055.50	0.00%
5500	- Media	1 / 2 / 1	16	4,179	2,007.54	0.00%
500	- Oil & Gas	0 / 2 / 0	1,817	473,848	3,328,308.95	2.18%
3700	- Personal & Household Goods	5 / 10 / 0	842	333,015	2,455,026.43	1.61%
8600	- Real Estate	1 / 5 / 0	508	179,988	1,448,129.63	0.95%
5300	- Retail	3 / 2 / 0	503	64,511	2,033,562.91	1.33%
9500	- Technology	4 / 6 / 0	254	197,688	247,832.81	0.16%
6500	- Telecommunications	0 / 1 / 0	1,743	988,866	11,831,734.03	7.75%
5700	- Travel & Leisure	3 / 7 / 2	2,999	1,265,106	13,754,310.54	9.01%
7500	- Utilities	1 / 3 / 0	1,840	432,491	4,420,250.69	2.90%

## Top 10 best &amp; worst performing Shares

## Main Market

With positive Price change	Closing price	change	With negative Price change	Closing price	change
ETEM SA (CB)	0.281	26.58% ↑	TECHNICAL OLYMPIC SA (CR)	1.45	-5.23% ↓
LAMPSA HOTEL SA (CR)	18.40	2.22% ↑	HELLENIC EXCHANGES-A.S.E. (CR)	8.65	-4.94% ↓
AEGEAN AIRLINES (CR)	8.25	0.61% ↑	OPAP (CR)	12.95	-4.78% ↓
AUTOHELLAS SA (CR)	9.44	0.53% ↑	HALKOR SA (CB)	0.545	-4.72% ↓
CC HBC AG (CR)	17.54	0.23% ↑	TERNA ENERGY (CR)	4.00	-4.54% ↓
EYDAP S.A. (CR)	9.58	0.21% ↑	PIRAEUS BANK (CR)	1.70	-4.49% ↓
			ATTICA BANK S.A. (CR)	0.155	-4.32% ↓
			EUROBANK ERGASIAS (CR)	0.410	-4.21% ↓
			METKA (CR)	13.30	-3.97% ↓
			MYTILINEOS HOLDINGS (CR)	6.53	-3.97% ↓
With the highest Transactions Value	Value (thou. €)	change	With the highest Transactions Volume	Volume	change
NATIONAL BANK (CR)	50,285.89	-3.57% ↓	ALPHA BANK (CR)	38,459,172	-1.52% ↓
ALPHA BANK (CR)	27,456.29	-1.52% ↓	EUROBANK ERGASIAS (CR)	21,040,921	-4.21% ↓
PIRAEUS BANK (CR)	12,875.00	-4.49% ↓	NATIONAL BANK (CR)	18,536,473	-3.57% ↓
OPAP (CR)	12,830.46	-4.78% ↓	PIRAEUS BANK (CR)	7,479,484	-4.49% ↓
OTE (CR)	11,831.73	-2.38% ↓	ATTICA BANK S.A. (CR)	1,240,112	-4.32% ↓
EUROBANK ERGASIAS (CR)	8,748.56	-4.21% ↓	MARFIN INVESTMENT GROUP (CR)	1,097,241	-2.67% ↓
PPC (CR)	3,686.16	-2.51% ↓	OTE (CR)	988,866	-2.38% ↓
FOLLI FOLLIE (CR)	2,032.29	-1.21% ↓	OPAP (CR)	980,553	-4.78% ↓
JUMBO SA (CR)	1,792.30	-3.85% ↓	PPC (CR)	315,315	-2.51% ↓
HELLENIC EXCHANGES-A.S.E. (CR)	1,678.20	-4.94% ↓	HELLENIC PETROLEUM (CR)	270,097	-1.62% ↓

Note: Stocks that are not included in the "Low Dispersion" and "Under Supervision" categories, and the transactions value is more than 10,000 €.



## Derivatives Summary

	Number of Trades	Volume	Open Interest	Transactions Value
<b>Index Futures</b>	<b>1,162</b>	<b>16,570</b>	<b>64,063</b>	<b>34,110,307.50</b>
FTSE/Athex Large Cap	1,162	16,570	64,063	34,110,307.50
<b>Stock Futures</b>	<b>2,267</b>	<b>39,005</b>	<b>313,855</b>	<b>12,387,828.40</b>
ALPHA BANK (CR)	161	8,692	47,990	621,724.80
CC HBC AG (CR)	9	20	459	34,788.00
CORINTH PIPEWORKS SA (CR)	6	15	740	2,553.00
ELLAKTOR (CR)	27	155	1,913	61,961.00
EUROBANK ERGASIAS (CR)	122	9,292	79,142	387,403.70
EUROBANK PROPERTIES REIC (CR)	16	79	170	71,201.00
EYDAP S.A. (CR)	35	151	358	140,909.00
FOLLI FOLLIE (CR)	9	13	459	42,190.00
FRIGOGLASS SA (CR)	10	10	1,143	4,086.00
GEK TERNA (CR)	54	369	29,822	143,253.00
HELLENIC EXCHANGES-A.S.E. (CR)	76	329	7,635	291,455.00
HELLENIC PETROLEUM (CR)	161	550	9,047	339,316.00
INTRALOT (CR)	56	663	2,673	139,354.00
JUMBO SA (CR)	12	42	375	52,428.00
MARFIN INVESTMENT GROUP (CR)	72	2,078	27,289	101,279.90
METKA (CR)	15	61	873	82,018.00
MOTOR OIL (CR)	53	201	589	164,180.00
MYTILINEOS HOLDINGS (CR)	155	2,467	11,585	1,629,043.00
NATIONAL BANK (CR)	257	5,284	42,951	1,438,184.00
OPAP (CR)	168	635	2,585	833,213.00
OTE (CR)	298	2,452	9,833	2,934,289.00
P.P.A. S.A. (CR)	11	36	486	64,453.00
PIRAEUS BANK (CR)	111	2,365	23,590	407,094.00
PPC (CR)	251	1,226	5,220	1,433,854.00
SIDENOR (CR)	5	43	1,057	7,249.00
TERNA ENERGY (CR)	34	1,535	4,299	633,642.00
TITAN CEMENT (CR)	50	108	814	270,923.00
VIOHALCO SA/NV (CB)	33	134	758	55,784.00
<b>Index Options</b>	<b>77</b>	<b>964</b>	<b>11,869</b>	<b>1,992,250.00</b>
FTSE/Athex Large Cap	77	964	11,869	1,992,250.00
<b>Stock Options</b>	<b>2</b>	<b>3</b>	<b>8,972</b>	<b>3,300.00</b>
ALPHA BANK (CR)	0	0	10	0.00
NATIONAL BANK (CR)	0	0	8,092	0.00
OPAP (CR)	0	0	190	0.00
OTE (CR)	2	3	600	3,300.00
PIRAEUS BANK (CR)	0	0	0	0.00
PPC (CR)	0	0	80	0.00
<b>Stock Repos - Stock Reverse Repos - Repurchase Agreements</b>	<b>159</b>	<b>36,333</b>	<b>359,175</b>	<b>5,875,482.50</b>
Stock Reverse Repos	27	8,309	111,539	2,373,295.00
Stock Repos	14	5,967	216,176	737,497.50
Repurchase Agreement	118	22,057	31,460	2,764,690.00
<b>Total Derivatives Traded</b>	<b>3,667</b>	<b>92,875</b>	<b>757,934</b>	<b>54,369,168.40</b>

Number of Outstanding Securities	Nominal Value	Dividends [1]			Date of Last Coupon		Note	Shares	Closing price	% change	Previous closing price/date	Open price	Price min	Price max	Last price	Avg price	Last Bid [7]	Last Ask [7]	P/E after	Year	Volume	Trades	Transactions Value	Company Mkt Value (thou. €)	Year low	Year high	Sector[ 4]
		2011	2012	2013	Dividend [2]	Right																					

Warrants

1,204,702,851	---	---	---	11/06/2013	---	ALPHA BANK (W)	1.87	-3.11 ↓	1.93	12/06/2014	1.93	1.87	1.95	1.87	1.90	1111@1.87	24676@1.90	4.32	2013	1,412,471	566	2,677,533.01	9,129,877.80	1.13	2.15	8355
245,748,580	---	---	---	27/06/2013	---	NATIONAL BANK (W)	0.898	-1.96 ↓	0.916	12/06/2014	0.917	0.885	0.920	0.898	0.897	3474@0.895	15906@0.898	2.00	2013	427,892	271	383,637.33	9,539,504.00	0.462	1.59	8355
848,591,850	---	---	---	03/07/2013	---	PIRAEUS BANK (W)	1.04	-1.89 ↓	1.06	12/06/2014	1.04	1.00	1.04	1.04	1.02	7580@1.04	34000@1.05	1.11	2013	927,436	261	949,428.75	10,373,365.52	0.600	1.15	8355

Main Market

71,417,100	0.650	---	---	26/05/2010	11/07/2007	---	AEGEAN AIRLINES (CR)	8.25	0.61 ↑	8.20	12/06/2014	8.13	8.13	8.25	8.25	8.17	102@8.18	3751@8.25	8.88	2013	66,693	81	544,341.65	589,191.08	5.90	8.65	5751	
11,178,000	1.25	---	---	21/04/2010	18/12/2013	---	AEOLIAN INVESTMENT FUND (CR)	0.900	---	0.900	10/06/2014	---	---	---	---	---	300@0.871	200@0.923	12.35	2013	---	---	---	10,060.20	0.700	1.09	8985	
13,000,000	1.00	---	---	01/08/2007	07/04/2000	---	AKRITAS SA (CR)	0.223	9.85 ↑	0.203	12/06/2014	0.183	0.183	0.223	0.223	0.186	390@0.223	---	---	2013	11	2	2.05	2,899.00	0.100	0.223	2353	
25,000,000	0.400	---	---	03/06/2009	12/07/2013	---	ALCO HELLAS SA (CR)	0.216	-4.85 ↓	0.227	12/06/2014	0.211	0.211	0.228	0.216	0.222	148@0.216	5900@0.220	---	2013	18,004	30	3,992.21	5,400.00	0.211	0.418	1753	
12,769,059,858	0.300	---	---	07/04/2008	13/05/2013	---	ALPHA BANK (CR)	0.715	-1.52 ↓	0.726	12/06/2014	0.726	0.706	0.730	0.715	0.714	4109042@0.715	1200@0.717	1.65	2013	38,459,172	2,442	27,456,293.00	9,129,877.80	0.584	0.784	8355	
22,016,250	0.370	---	---	15/07/2009	11/05/2000	---	ALUMIL (CR)	0.306	5.16 ↑	0.291	12/06/2014	0.295	0.295	0.330	0.300	0.316	50@0.295	5191@0.300	---	2013	3,499	23	1,106.30	6,736.97	0.253	0.660	1753	
418,000	16.00	---	---	0.8	29/04/2014	05/03/2013	---	ANDROMEDA SA (CR)	21.30	---	21.30	11/06/2014	---	---	---	---	200@21.80	10@23.35	6.44	2013	---	---	---	8,903.40	20.08	23.99	8985	
26,252,040	0.380	---	---	08/07/2010	10/02/2014	---	AS COMPANY SA (CR)	0.355	0.85 ↑	0.352	12/06/2014	0.355	0.355	0.355	0.355	0.355	50@0.342	1490@0.355	21.32	2013	10	1	3.55	9,319.47	0.310	0.413	5379	
86,735,980	0.310	---	---	06/07/2009	02/01/2002	---	ATHENS MEDICAL CENTER SA (CR)	0.800	-0.62 ↓	0.805	12/06/2014	0.800	0.781	0.800	0.800	0.796	1200@0.781	1042@0.800	---	2013	1,305	9	1,038.30	69,388.78	0.722	0.930	4533	
1,041,560,993	0.300	---	---	04/06/2008	10/02/2014	---	ATTICA BANK S.A. (CR)	0.155	-4.32 ↓	0.162	12/06/2014	0.160	0.153	0.161	0.155	0.157	10831@0.155	26000@0.157	---	2013	1,240,112	292	194,203.08	161,441.95	0.111	0.277	8355	
15,300,000	0.300	---	---	30/07/2009	13/12/1999	---	ATTICA PUBLICATIONS SA (CR)	1.59	---	1.59	19/03/2014	---	---	---	---	---	---	961@1.49	45.88	2013	---	---	---	24,327.00	1.44	2.15	5557	
45,457,464	0.700	---	---	01/07/2008	01/03/2010	---	AUDIO VISUAL ENTERPRISES (CR)	0.268	-7.59 ↓	0.290	12/06/2014	0.290	0.268	0.290	0.268	0.287	1@0.261	1970@0.268	---	2013	6	2	1.72	12,182.60	0.209	0.376	5553	
12,120,000	0.320	(0.45)	---	30/04/2012	22/11/2013	---	AUTOHELLAS SA (CR)	9.44	0.53 ↑	9.39	12/06/2014	9.45	9.40	9.50	9.50	9.46	10@9.40	50@9.49	38.51	2013	1,241	17	11,739.76	114,412.80	7.50	11.20	5759	
19,864,886	5.60	0.67	0.5376	0.672	05/03/2014	02/07/2008	---	BANK OF GREECE (CR)	14.74	-1.54 ↓	14.97	12/06/2014	14.98	14.73	14.98	14.74	14.84	150@14.71	75@14.81	---	---	2,321	52	34,437.08	292,808.42	13.60	16.53	8355
23,986,500	1.05	---	---	26/06/2009	15/03/2000	---	BIOKARPET S.A.(CR)	0.790	-1.74 ↓	0.804	12/06/2014	0.790	0.790	0.790	0.790	0.790	300@0.785	1000@0.804	---	2013	300	1	237.00	18,949.34	0.461	0.880	3726	
15,842,391	1.51	---	---	15/07/2009	12/05/2000	---	BITROS HOLDING SA (CR)	0.315	-9.74 ↓	0.349	12/06/2014	0.315	0.315	0.315	0.315	0.315	---	193@0.315	---	2013	2,300	4	724.50	4,990.35	0.315	0.559	1757	
15,816,009	0.300	---	---	01/07/2009	17/07/2000	---	BYTE COMPUTER SA (CR)	0.460	2.22 ↑	0.450	12/06/2014	0.455	0.455	0.460	0.460	0.455	900@0.455	269@0.460	---	2013	331	2	150.76	7,275.36	0.432	0.666	9533	
367,690,225	6.70	---	0.34	26/06/2013	29/04/2013	---	CC HBC AG (CR)	17.54	0.23 ↑	17.50	12/06/2014	17.40	17.40	17.60	17.54	17.50	1486@17.54	400@17.60	---	---	73,969	294	1,294,705.72	6,449,286.55	16.40	22.00	3537	
101,123,806	0.360	---	---	22/07/2010	28/06/2011	---	CENTRIC HOLDINGS (CR)	0.276	-5.80 ↓	0.293	12/06/2014	0.295	0.270	0.295	0.276	0.280	300@0.271	1021@0.276	13.52	2013	29,529	31	8,266.54	27,910.17	0.234	0.390	5752	
4,034,950	0.680	---	---	01/07/2005	30/12/2010	---	CHATZIKRANIOTIS & SONS SA (CR)	0.224	1.82 ↑	0.220	12/06/2014	0.220	0.220	0.224	0.224	0.220	2000@0.199	983@0.224	---	2013	10,135	8	2,229.76	903.83	0.155	0.420	3577	
124,170,201	0.780	---	---	28/06/2002	07/02/2005	---	CORINTH PIPEWORKS SA (CR)	1.68	-1.75 ↓	1.71	12/06/2014	1.73	1.67	1.73	1.68	1.70	5733@1.67	1250@1.69	---	2013	23,007	58	39,073.99	208,605.94	1.41	2.30	1757	
9,907,500	0.300	---	---	06/10/2005	13/02/2002	---	CPI SA (CR)	0.295	---	0.295	11/06/2014	---	---	---	---	---	---	2630@0.280	---	2013	---	---	---	2,922.71	0.133	0.295	9572	
27,379,200	0.520	---	---	23/06/2010	18/09/2013	---	CRETE PLASTICS SA (CR)	5.29	-0.19 ↓	5.30	12/06/2014	5.29	5.15	5.30	5.29	5.29	100@5.07	300@5.25	15.89	2013	5,110	10	27,004.97	144,835.97	4.80	5.50	1357	
26,664,840	0.470	---	---	29/06/2005	12/07/1999	---	CYCLON HELLAS SA (CR)	0.509	-0.20 ↓	0.510	12/06/2014	0.499	0.487	0.510	0.509	0.506	500@0.500	155@0.508	26.35	2013	9,425	14	4,770.62	13,572.40	0.450	0.609	1357	
15,000,000	0.300	---	---	06/07/2007	18/07/2000	---	DAIOS PLASTICS SA (CR)	2.15	-3.59 ↓	2.23	11/06/2014	2.01	2.01	2.15	2.15	2.09	---	163@2.15	---	2013	200	7	418.00	32,250.00	1.66	2.29	1357	
34,720,000	0.310	---	---	16/06/2010	01/08/2007	---	DROMEAS SA (CR)	0.242	-2.02 ↓	0.247	12/06/2014	0.243	0.235	0.243	0.242	0.240	346@0.235	1971@0.242	---	2013	7,844	20	1,884.01	8,402.24	0.227	0.400	3726	
3,873,120	0.300	---	---	07/07/2008	04/10/2012	---	DRUCKFARBEN HELLAS (CR)	1.00	---	1.00	10/06/2014	1.00	1.00	1.00	1.00	1.00	25@1.00	---	---	2013	25	1	25.00	3,873.12	1.00	1.95	1357	
11,250,000	0.560	---	---	26/07/2010	16/06/1999	---	EKTER SA (CR)	0.640	-1.84 ↓	0.652	12/06/2014	0.632	0.631	0.640	0.640	0.637	200@0.632	2980@0.640	---	2013	1,620	4	1,031.84	7,200.00	0.600	0.990	2357	
32,188,050	1.04	---	---	21/07/2008	20/01/2000	---	EL. D. MOUZAKIS SA (CB)	0.297	---	0.297	12/06/2014	---	---	---	---	---	---	1142@0.297	---	2013	---	---	---	9,559.85	0.171	0.475	3763	
18,648,000	1.00	---	---	07/07/2009	10/09/2010	---	ELASTRON (CR)	0.844	---	0.844	12/06/2014	---	---	---	---	---	10@0.830	95@0.839	---	2013	---	---	---	15,738.91	0.730	1.00	1757	
31,734,530	1.60	---	---	09/07/2007	19/07/2006	---	ELGEKA SA (CR)	0.295	-2.32 ↓	0.302	12/06/2014	0.302	0.290	0.302	0.295	0.294	3000@0.288	14220@0.295	---	2013	9,280	6	2,726.10	9,361.69	0.238	0.488	3577	
23,828,130	0.500	---	---	07/07/2010	17/02/2009	---	ELINOIL S.A. (CR)	0.880	---	0.880	04/06/2014	---	---	---	---	---	400@0.800	700@0.968	---	2013	---	---	---	20,968.75	0.790	1.50	537	
177,001,313	1.03	---	---	05/07/2011	20/12/2007	---	ELLAKTOR (CR)	4.00	-1.48 ↓	4.06	12/06/2014	4.02	3.95	4.05	4.00	4.00	21173@4.00	14949@4.05	---	2013	259,767	732	1,039,244.46	708,005.25	3.06	4.18	2357	

Number of Outstanding Securities	Nominal Value	Dividends [1]			Date of Last Coupon		Note	Shares	Closing price	% change	Previous closing price/date	Open price	Price min	Price max	Last price	Avg price	Last Bid [7]	Last Ask [7]	P/E after	Year	Volume	Trades	Transactions Value	Company Mkt Value (thou. €)	Year low	Year high	Sector[ 4]
		2011	2012	2013	Dividend [2]	Right																					
Main Market																											
26,730,187	0.600	---	---	---	25/06/2009	30/12/2010	---	ELTON SA (CR)	1.13	-4.24 ↓	1.18 12/06/2014	1.20	1.13	1.20	1.13	1.14	800@1.12	300@1.17	11.65	2013	2,096	9	2,384.83	30,205.11	1.09	1.40	1353
15,146,404	0.340	---	---	---	06/07/2011	17/10/2002	---	ELTRAK SA (CR)	1.90	-1.04 ↓	1.92 12/06/2014	1.90	1.90	1.90	1.90	1.90	50@1.74	2000@1.85	---	2013	2,800	6	5,320.00	28,778.17	1.40	1.92	2753
124,100,815	0.300	---	0.08	---	30/05/2014	07/07/2000	---	ELVAL SA. (CB)	1.79	-2.19 ↓	1.83 12/06/2014	1.80	1.75	1.82	1.79	1.79	640@1.76	894@1.79	52.19	2013	10,354	35	18,497.90	222,140.46	1.70	2.15	1753
13,230,000	0.300	---	---	---	11/08/2010	28/08/2013	---	ELVE SA (CR)	0.620	6.35 ↑	0.583 12/06/2014	0.602	0.602	0.620	0.620	0.608	413@0.581	300@0.614	---	2013	350	3	212.68	8,202.60	0.552	0.690	3763
30,009,210	0.310	---	---	---	27/06/2008	26/06/2000	---	ETEM SA (CB)	0.281	26.58 ↑	0.222 12/06/2014	0.287	0.269	0.288	0.281	0.280	1000@0.274	729@0.282	---	2013	145,660	137	40,819.45	8,432.59	0.163	0.400	1753
14,707,876,542	0.300	---	---	---	02/05/2008	13/06/2013	---	EUROBANK ERGASIAS (CR)	0.410	-4.21 ↓	0.428 12/06/2014	0.427	0.410	0.427	0.410	0.415	714861@0.410	25000@0.413	---	2013	21,040,921	1,839	8,748,558.52	6,030,229.38	0.316	0.630	8355
101,260,000	2.13	0.4067	---	0.1821	17/04/2014	08/01/2014	---	EUROBANK PROPERTIES REIC (CR)	8.90	-3.68 ↓	9.24 12/06/2014	9.24	8.81	9.24	8.90	8.90	500@8.83	250@8.91	---	2013	155,621	438	1,384,927.23	901,214.00	6.65	9.50	8675
7,959,900	0.600	---	---	---	02/06/2010	10/12/2013	5031	EUROCONSULTANTS S.A. (CR)	2.21	1.38 ↑	2.18 12/06/2014	2.12	2.09	2.22	2.21	2.14	51@2.12	299@2.21	64.94	2013	1,809	28	3,867.68	17,591.38	2.08	2.87	2791
27,503,677	0.600	0.05	0.1	---	11/07/2013	18/10/1999	---	EUROPEAN RELIANCE INSUR. (CR)	1.39	-2.11 ↓	1.42 12/06/2014	1.43	1.37	1.43	1.39	1.41	2932@1.36	970@1.39	4.03	2013	4,990	15	7,055.50	38,230.11	1.23	1.66	8536
13,673,200	0.880	---	---	---	18/07/2008	26/07/2001	---	EVROFARMA SA (CR)	0.307	---	0.307 10/06/2014	---	---	---	---	---	40@0.277	20948@0.300	---	2013	---	---	---	4,197.67	0.224	0.455	3577
106,500,000	0.600	0.05	0.15	0.36	05/05/2014	28/01/2000	---	EYDAP S.A. (CR)	9.58	0.21 ↑	9.56 12/06/2014	9.42	9.18	9.58	9.58	9.38	500@9.27	277@9.58	13.13	2013	47,788	296	448,393.57	1,020,270.00	7.06	9.95	7577
52,800,154	0.300	---	---	---	16/04/2010	21/06/2004	---	F.G. EUROPE S.A. (CR)	1.44	-1.37 ↓	1.46 12/06/2014	1.44	1.44	1.44	1.44	1.44	50@1.44	500@1.47	25.99	2013	600	1	864.00	76,032.22	0.580	1.50	3722
10,203,575	0.730	---	---	---	16/07/2007	18/10/1999	---	FIERATEX SA (CR)	0.377	---	0.377 11/06/2014	---	---	---	---	---	---	250@0.360	---	2013	---	---	---	3,846.75	0.121	0.430	3763
11,720,024	0.540	---	---	---	16/07/2010	16/10/2013	---	FLEXOPACK SA (CR)	3.01	-1.95 ↓	3.07 05/06/2014	3.00	2.92	3.02	3.02	2.99	900@2.94	46@3.02	14.25	2013	1,500	5	4,479.00	35,277.27	2.68	3.50	2723
4,181,450	0.500	---	---	---	21/08/2000	05/03/2002	---	FLOUR MILLS SARANTOPOULOS SA	1.14	---	1.14 28/04/2014	---	---	---	---	---	---	549@1.09	---	2013	---	---	---	4,766.85	0.702	1.14	3577
66,948,210	0.300	---	---	---	14/07/2009	31/12/2010	---	FOLLI FOLLIE (CR)	32.60	-1.21 ↓	33.00 12/06/2014	32.40	32.10	32.80	32.60	32.51	9177@32.60	805@32.98	5.05	2013	62,660	492	2,032,288.22	2,182,511.65	21.90	33.10	5379
50,992,322	1.00	---	---	---	21/06/2010	16/07/2002	---	FOURLIS (CR)	5.60	-1.41 ↓	5.68 12/06/2014	5.70	5.55	5.75	5.60	5.65	100@5.56	150@5.66	---	2013	107,858	234	609,860.28	285,557.00	3.86	6.01	3722
50,593,832	0.300	---	---	---	07/07/2010	07/09/2011	---	FRIGOGLASS SA (CR)	4.10	-2.15 ↓	4.19 12/06/2014	4.19	4.04	4.19	4.10	4.11	500@4.08	889@4.10	---	2013	12,215	83	50,171.08	207,434.71	3.00	5.63	2757
77,376,446	0.340	---	---	---	23/05/2005	18/08/2011	---	G.E. DIMITRIOU (CR)	0.021	10.53 ↑	0.019 12/06/2014	0.022	0.020	0.022	0.021	0.020	100@0.022	41250@0.022	---	2013	51,500	3	1,031.75	1,624.91	0.018	0.041	3722
14,076,360	0.370	---	---	---	19/08/2008	22/07/2003	---	GALAXIDI S.A. (CR)	0.290	---	0.290 12/06/2014	---	---	---	---	---	---	1950@0.300	---	2013	---	---	---	4,082.14	0.250	0.419	3573
94,462,368	0.570	---	---	---	01/08/2011	02/01/2009	---	GEK TERNA (CR)	3.85	-3.27 ↓	3.98 12/06/2014	3.93	3.82	3.95	3.85	3.86	1239@3.84	6174@3.86	---	2013	132,076	435	510,023.69	363,680.12	3.08	4.21	2357
8,418,750	0.300	0.15	0.29	---	05/06/2013	27/06/2012	---	GEKE SA (CB)	5.51	---	5.51 04/06/2014	---	---	---	---	---	30@5.46	20@6.06	87.12	2013	---	---	---	46,387.31	5.51	7.20	5753
24,060,000	0.300	0.017	---	---	18/06/2012	21/01/2000	---	GEN. COMMERCIAL & IND.SA (CR)	0.408	-0.49 ↓	0.410 12/06/2014	0.400	0.390	0.408	0.408	0.392	2200@0.394	460@0.408	29.34	2013	2,560	9	1,003.96	9,816.48	0.327	0.455	2797
34,770,982	1.55	---	---	0.3	17/01/2014	27/07/2000	---	GR. SARANTIS SA (CR)	6.90	-3.09 ↓	7.12 12/06/2014	7.08	6.90	7.08	6.90	6.98	120@6.89	1000@7.00	6.54	2013	3,420	24	23,861.70	239,919.78	6.06	8.24	3767
8,340,750	1.20	---	---	---	25/06/2009	30/07/2001	---	HAIDEMENOS SA (CR)	0.487	---	0.487 10/06/2014	---	---	---	---	---	130@0.535	---	---	2013	---	---	---	4,061.95	0.334	0.760	2791
101,279,627	0.380	---	---	---	26/06/2008	14/07/2006	---	HALKOR SA (CB)	0.545	-4.72 ↓	0.572 12/06/2014	0.577	0.545	0.577	0.545	0.557	3700@0.544	3060@0.548	---	2013	46,630	68	25,962.62	55,197.40	0.510	0.912	1755
36,748,909	0.730	---	---	---	15/12/2005	13/12/2006	---	HEL. SUGAR INDUSTRY SA (CB)	0.651	-5.24 ↓	0.687 12/06/2014	0.654	0.645	0.678	0.651	0.652	166@0.651	1965@0.660	---	2013	11,154	39	7,271.20	23,923.54	0.615	1.10	3577
29,546,360	0.710	---	---	---	20/06/2008	23/08/2000	---	HELLENIC CABLES SA (CR)	1.55	-2.52 ↓	1.59 12/06/2014	1.54	1.51	1.55	1.55	1.53	100@1.52	20@1.55	---	2013	2,610	13	3,997.10	45,796.86	1.37	2.00	2733
65,368,563	0.760	0.11	0.09	---	03/06/2013	25/09/2013	---	HELLENIC EXCHANGES-A.S.E. (CR)	8.65	-4.94 ↓	9.10 12/06/2014	9.09	8.61	9.11	8.65	8.81	177@8.64	1523@8.69	-(6)-	2013	191,569	644	1,678,200.89	565,438.07	6.91	9.52	8777
305,635,185	2.18	0.45	0.15	---	16/08/2013	01/10/2003	4795	HELLENIC PETROLEUM (CR)	6.09	-1.62 ↓	6.19 12/06/2014	6.22	6.09	6.25	6.09	6.16	1544@6.09	1000@6.12	---	2013	270,097	1,148	1,663,234.52	1,861,318.28	5.11	8.13	537
305,732,436	0.410	---	---	---	08/07/2009	28/09/2011	---	HYGEIA SA (CR)	0.338	-1.74 ↓	0.344 12/06/2014	0.344	0.335	0.351	0.338	0.340	570@0.338	2500@0.340	---	2013	201,639	169	68,626.10	103,337.56	0.311	0.508	4533
53,155,053	0.440	---	---	---	21/07/2010	16/07/2008	---	IASO SA (CR)	1.40	-1.41 ↓	1.42 12/06/2014	1.45	1.31	1.45	1.40	1.35	30@1.34	250@1.39	---	2013	18,450	53	24,964.40	74,417.07	1.22	1.99	4533
8,298,467	0.400	---	---	---	30/08/1993	08/05/2013	---	IDEAL GROUP SA (CR)	0.810	-0.49 ↓	0.814 12/06/2014	0.753	0.733	0.814	0.810	0.742	85@0.733	170@0.809	-(6)-	2013	690	7	511.70	6,721.76	0.538	1.00	9574
28,580,100	0.400	0.02	---	---	20/08/2012	10/10/2013	---	IKTINOS HELLAS SA (CR)	1.59	1.27 ↑	1.57 12/06/2014	1.58	1.58	1.59	1.59	1.58	1000@1.53	50@1.56	9.73	2013	750	4	1,185.33	45,442.36	1.49	1.84	2353
9,000,000	0.880	---	---	---	15/05/2009	07/12/2010	---	ILYDA S.A. (CR)	0.695	---	0.695 23/05/2014	---	---	---	---	---	200@0.487	1755@0.590	---	2013	---	---	---	6,255.00	0.350	0.789	9537
20,578,374	0.620	---	---	---	02/06/2011	05/05/1999	---	INFORM P. LYKOS SA (CR)	1.57	-1.26 ↓	1.59 12/06/2014	1.53	1.53	1.57	1.57	1.56	1110@1.50	300@1.56	---	2013	1,3,						

Number of Outstanding Securities	Nominal Value	Dividends [1]			Date of Last Coupon		Note	Shares	Closing price	% change	Previous closing price/date	Open price	Price min	Price max	Last price	Avg price	Last Bid [7]	Last Ask [7]	P/E after	Year	Volume	Trades	Transactions Value	Company Mkt Value (thou. €)	Year low	Year high	Sector[ 4]		
		2011	2012	2013	Dividend [2]	Right																							
Main Market																													
2,566,836	0.440	---	---	---	13/08/2010	09/01/2007	---	INTERWOOD-XYLEMPORIA (PR)	0.195	---	0.195	17/02/2014	---	---	---	---	---	200@0.210	---	2013	---	---	---	4,593.95	0.195	0.200	2353		
23,154,250	1.36	---	---	---	12/08/2008	02/08/2010	---	INTRACOM CONSTR. (CR)	0.956	-1.75 ↓	0.973	12/06/2014	0.970	0.940	0.970	0.956	0.946	170@0.945	25@0.956	---	2013	3,780	13	3,574.00	22,135.46	0.890	1.32	2357	
133,025,996	1.41	---	---	---	03/07/2007	07/01/2002	---	INTRACOM HOLDINGS (CR)	0.715	-3.38 ↓	0.740	12/06/2014	0.740	0.708	0.740	0.715	0.717	2229@0.711	1057@0.719	---	2013	132,375	160	94,895.56	95,113.59	0.526	0.900	9578	
158,961,721	0.300	0.0035	0.0026	---	30/05/2013	14/11/2007	---	INTRALOT (CR)	2.10	---	2.10	12/06/2014	2.13	2.07	2.14	2.10	2.09	2319@2.08	1549@2.10	---	2013	129,796	280	271,747.02	333,819.61	1.81	2.51	5752	
77,654,850	0.580	---	---	---	01/07/2011	21/02/2003	---	J & P - AVAX SA (CR)	1.69	-0.59 ↓	1.70	12/06/2014	1.69	1.67	1.69	1.69	1.67	560@1.66	3000@1.68	---	2013	1,915	17	3,203.60	131,236.70	1.50	2.02	2357	
136,059,759	1.19	---	---	---	23/12/2010	05/03/2014	---	JUMBO SA (CR)	12.50	-3.85 ↓	13.00	12/06/2014	12.70	12.45	12.76	12.50	12.55	30748@12.50	2@12.62	23.06	2013	142,861	457	1,792,296.10	1,700,746.99	10.10	14.40	3747	
9,742,920	0.400	0.01	0.01	---	12/08/2013	14/07/2000	---	KARAMOLEGOS SA (CR)	1.61	---	1.61	26/05/2014	---	---	---	---	---	---	1077@1.56	---	2013	---	---	---	15,686.10	0.912	1.78	3577	
14,679,792	1.68	---	---	---	03/06/2011	04/09/2000	---	KARATZIS SA (CR)	3.42	-3.12 ↓	3.53	12/06/2014	3.54	3.40	3.54	3.40	3.44	50@3.38	30@3.45	10.27	2013	320	9	1,100.70	50,204.89	3.10	4.50	2723	
3,300,689	0.350	---	---	---	01/07/2004	21/07/1999	---	KEKROPS SA (CR)	1.92	---	1.92	12/06/2014	---	---	---	---	---	500@1.61	303@1.87	---	2013	---	---	---	6,337.32	1.45	2.60	8633	
7,595,160	0.600	---	---	---	08/08/2008	18/08/2010	---	KIRIAKOULIS SHIPPING SA (CR)	0.644	---	0.644	12/06/2014	---	---	---	---	---	---	500@0.635	41.81	2013	---	---	---	4,891.28	0.492	1.08	5759	
23,648,700	0.330	---	---	---	13/07/2011	23/07/2008	---	KLEEMAN HELLAS SA (CR)	2.21	-1.78 ↓	2.25	12/06/2014	2.26	2.20	2.27	2.21	2.24	95@2.21	747@2.27	78.12	2013	12,212	48	27,389.83	52,263.63	1.89	2.58	2757	
40,219,218	0.300	---	---	---	25/05/2009	09/07/2013	---	KLOUKINAS - LAPPAS SA (CR)	0.665	---	0.665	12/06/2014	---	---	---	---	---	1200@0.611	727@0.645	---	2013	---	---	---	26,745.78	0.570	0.780	2357	
21,224,340	0.420	---	---	---	02/07/2008	25/04/2006	---	KORDELLOS BROS SA (CR)	0.359	---	0.359	05/06/2014	---	---	---	---	---	---	4500@0.324	---	2013	---	---	---	7,619.54	0.200	0.359	1757	
13,586,500	0.390	---	---	---	25/06/2010	28/05/2008	---	KORRES (CR)	3.33	-2.06 ↓	3.40	12/06/2014	3.26	3.23	3.40	3.40	3.31	57@3.25	200@3.37	---	2013	2,920	33	9,657.35	45,243.05	2.84	3.69	3767	
29,480,000	0.420	---	---	---	19/07/2010	01/08/2007	---	KRETA FARM SA (CR)	0.421	2.68 ↑	0.410	12/06/2014	0.410	0.406	0.422	0.421	0.411	500@0.407	100@0.421	---	2013	1,683	8	691.02	12,411.08	0.400	0.662	3577	
33,065,136	0.380	---	---	---	06/07/2009	16/09/2013	---	KRI-KRI S.A. (CR)	1.83	1.10 ↑	1.81	12/06/2014	1.84	1.77	1.84	1.83	1.79	250@1.80	1200@1.83	11.81	2013	2,130	6	3,813.80	60,509.20	1.65	2.07	3577	
15,804,800	0.330	---	---	---	15/06/2010	12/03/2004	---	KTIMA KOSTAS LAZARIDIS SA (CR)	0.520	---	0.520	10/06/2014	---	---	---	---	---	---	841@0.499	---	2013	---	---	---	8,218.50	0.305	0.548	3535	
24,474,815	1.15	---	---	---	19/08/2008	30/01/2014	---	KYRIAKIDIS MARBLES SA (CR)	2.44	-0.41 ↓	2.45	12/06/2014	2.45	2.41	2.45	2.44	2.43	1006@2.41	190@2.44	5.74	2013	3,444	7	8,373.94	59,718.55	1.07	2.60	2353	
44,412,347	0.300	---	---	---	30/05/2007	18/09/2002	---	LAMDA DEVELOPMENT SA (CR)	5.04	-2.14 ↓	5.15	12/06/2014	5.23	5.00	5.23	5.04	5.11	1000@5.02	680@5.08	---	2013	10,782	41	55,092.91	223,838.23	4.74	6.99	8633	
21,364,000	1.12	---	---	---	05/07/2010	10/08/2005	---	LAMPSA HOTEL SA (CR)	18.40	2.22 ↑	18.00	12/06/2014	17.80	17.80	18.40	18.40	18.09	100@18.00	375@18.40	-(6)-	2013	625	9	11,305.00	393,097.60	15.60	18.40	5753	
5,939,268	0.620	---	---	---	10/07/2003	03/01/2002	---	LANAKAM SA (CR)	1.29	---	1.29	02/05/2014	---	---	---	---	---	---	480@1.36	---	2013	---	---	---	7,661.66	0.485	1.29	3763	
7,734,375	1.00	---	---	---	09/07/2007	07/01/2011	---	LIVANIS SA (CR)	0.233	---	0.233	26/05/2014	---	---	---	---	---	---	158@0.220	---	2013	---	---	---	1,802.11	0.158	0.242	5557	
4,740,000	0.860	---	---	---	---	14/03/2003	---	LOGISMOS S.A. (CR)	0.335	---	0.335	06/06/2014	---	---	---	---	---	150@0.337	---	45.11	2013	---	---	---	1,587.90	0.335	0.520	9533	
17,125,062	0.640	---	---	---	01/06/2010	02/08/2011	---	LOULIS MILLS SA (CR)	2.77	9.49 ↑	2.53	12/06/2014	2.77	2.77	2.77	2.77	2.77	1000@2.37	100@2.52	---	2013	---	1	1	2.77	47,436.42	2.26	2.98	3577
770,360,560	0.300	---	---	---	26/04/2007	10/05/2013	---	MARFIN INVESTMENT GROUP (CR)	0.474	-2.67 ↓	0.487	12/06/2014	0.487	0.474	0.496	0.474	0.486	8500@0.473	17977@0.480	---	2013	1,097,241	548	533,169.88	365,150.91	0.381	0.572	8775	
9,819,370	0.690	---	---	---	14/08/2007	09/01/2004	---	MATHIOS REFRACTORY SA (CR)	0.343	---	0.343	10/06/2014	---	---	---	---	---	50@0.309	3296@0.339	---	2013	---	---	---	3,368.04	0.250	0.488	2353	
468,700	---	0.47	---	---	27/02/2014	21/05/2004	---	MERMEREN KOMB. A.D. PR. (GDR)	4.20	---	4.20	12/06/2014	---	---	---	---	---	900@4.00	1001@4.16	2.05	2013	---	---	---	1,968.54	3.45	4.67	1775	
51,950,600	0.320	0.75	0.25	---	10/05/2013	21/10/2005	---	METKA (CR)	13.30	-3.97 ↓	13.85	12/06/2014	13.85	13.30	13.85	13.30	13.50	10@13.28	250@13.40	15.55	2013	51,132	332	697,647.02	690,942.98	10.80	14.29	2757	
10,500,000	0.900	---	---	---	24/06/2008	19/12/2013	---	MEVACO SA (CR)	1.18	---	1.18	12/06/2014	---	---	---	---	---	300@1.13	100@1.19	---	2013	---	---	---	12,390.00	1.10	1.35	2757	
14,074,000	3.00	0.25	---	---	02/03/2012	23/07/2009	---	MIG REAL ESTATE (CR)	1.80	-4.76 ↓	1.89	12/06/2014	1.80	1.80	1.80	1.80	1.80	150@1.77	100@1.88	-(6)-	2013	150	1	270.00	25,333.20	1.50	2.23	8671	
6,700,000	0.800	---	---	0.16	26/05/2014	29/05/2014	---	MILLS KEPENOS (CR)	2.40	---	2.40	10/06/2014	---	---	---	---	---	---	200@2.20	13.07	2013	---	---	---	16,080.00	0.991	2.50	3577	
6,200,000	0.500	---	---	---	22/06/2010	01/11/1995	---	MINERVA KNITWEAR SA (CB)	0.468	---	0.468	06/06/2014	---	---	---	---	---	---	496@0.459	---	2013	---	---	---	2,901.60	0.396	0.689	3763	
12,417,000	0.370	---	---	---	28/07/2008	06/09/2011	---	MLS MULTIMEDIA SA (CR)	4.58	-0.44 ↓	4.60	12/06/2014	4.58	4.54	4.58	4.58	4.54	80@4.54	10@4.57	48.57	2013	17,240	23	78,301.70	56,869.86	3.28	4.68	9537	
4,588,137	16.00	---	---	---	30/06/2005	17/08/2011	---	MOCHLOS SA (CR)	1.34	3.08 ↑	1.30	12/06/2014	1.20	1.20	1.35	1.34	1.31	35@1.24	299@1.33	---	2013	336	9	441.43	6,148.10	1.20	2.00	2357	
11,700,000	0.590	---	---	---	02/06/2009	24/07/2012	---	MOTODYNAMICS S.A. (CR)	0.392	0.77 ↑	0.389	12/06/2014	0.392	0.392	0.392	0.392	0.390	433@0.303	1067@0.379	---	2013	---	1	1	0.39	4,586.40	0.280	0.447	5379
110,782,980	0.750	0.4	0.3	---	26/06/2013	04/11/2013	---	MOTOR OIL (CR)	8.13	-2.28 ↓	8.32	12/06/2014	8.31	8.04	8.34	8.13	8.20	2600@8.12	1544@8.13	-(6)-	2013	203,751	669	1,665,074.43	900,665.63	7.71	10.30	533	
116,915,862	1.07	---	---	---	11/05/2009	06/07/2011	---	MYTILINEOS HOLDINGS (CR)	6.53	-3.97 ↓	6.80	12/06/2014	6.80	6.52	6.80	6.53	6.58	2148@6.52	500@6.58	---	2013	232,658	723	1,531,172.11	763,460.58	5.38	7.32	1755	
8,321,682	0.670	---	---	---	17/08/2007	23/11/1999	---	N. LEVEDERIS SA (CB)	0.240	---	0.240	03/06/2014	---	---	---	---	---	---	3200@0.240	---	2013	---	---	---	3,604.63	0.196	0.255	1757	

Number of Outstanding Securities	Nominal Value	Dividends [1]			Date of Last Coupon		Note	Shares	Closing price	% change	Previous closing price/date	Open price	Price min	Price max	Last price	Avg price	Last Bid [7]	Last Ask [7]	P/E after	Year	Volume	Trades	Transactions Value	Company Mkt Value (thou. €)	Year low	Year high	Sector[ 4]	
		2011	2012	2013	Dividend [2]	Right																						
Main Market																												
2,160,524	0.670	0.0435	0.0436	--	16/08/2013	23/11/1999	--	N. LEVEDERIS SA (PB)	0.744	-- -	0.744	26/03/2014	--	--	--	--	--	724@0.679	--	2013	--	--	--	3,604.63	0.566	0.779	1757	
11,510,102	0.890	--	--	--	24/06/2005	06/10/1999	--	NAFPAKTOS TEXTILE IND. SA (CB)	0.279	-- -	0.279	11/06/2014	--	--	--	--	250@0.261	700@0.289	--	2013	--	--	--	3,211.32	0.209	0.397	3763	
6,340,000	0.600	--	--	--	30/11/2009	12/07/2000	--	NAKAS MUSIC	0.830	-- -	0.830	10/06/2014	--	--	--	--	180@0.795	292@0.850	--	2013	--	--	--	5,262.20	0.526	1.62	5379	
3,533,149,631	0.300	--	--	--	16/05/2008	24/05/2013	--	NATIONAL BANK (CR)	2.70	-3.57 ↓	2.80	12/06/2014	2.78	2.67	2.82	2.70	2.71	52768@2.69	23566@2.71	6.01	2013	18,536,473	4,418	50,285,891.58	9,539,504.00	1.98	4.31	8355
23,935,280	0.300	--	--	--	29/06/2009	13/06/2000	--	NAYTEMPORIKI PUBLISHING SA(CR)	0.150	7.14 ↑	0.140	12/06/2014	0.145	0.145	0.150	0.150	0.148	4500@0.150	190@0.154	--	2013	500	3	73.75	3,590.29	0.133	0.479	5557
27,848,000	0.300	0.0132	0.0137	--	21/08/2013	02/09/2003	--	NEWSPHONE HELLAS SA (CR)	0.349	-0.29 ↓	0.350	12/06/2014	0.342	0.342	0.377	0.349	0.349	3000@0.341	198@0.349	31.36	2013	16,103	15	5,624.24	9,718.95	0.330	0.468	2791
6,132,500	1.25	--	--	--	24/06/2011	19/06/2001	--	NEXANS HELLAS SA (CR)	2.05	-4.21 ↓	2.14	12/06/2014	2.03	2.03	2.14	2.05	2.06	200@2.06	30@2.13	--	2013	230	4	474.40	12,571.63	2.03	2.40	2733
63,697,153	1.34	--	--	--	08/07/2008	10/11/2008	--	NIREFS SA (CR)	0.225	-- -	0.225	12/06/2014	0.224	0.220	0.234	0.225	0.225	44@0.220	600@0.229	--	2013	25,537	36	5,758.17	14,331.86	0.199	0.362	3573
319,000,000	0.300	0.72	0.57	0.25	27/05/2014	25/04/2001	--	OPAP (CR)	12.95	-4.78 ↓	13.60	12/06/2014	13.52	12.92	13.52	12.95	13.07	230@12.92	5024@12.98	28.96	2013	980,553	2,544	12,830,461.64	4,131,050.00	9.33	13.65	5752
490,150,389	2.83	--	--	--	28/06/2011	18/06/1998	--	OTE (CR)	11.91	-2.38 ↓	12.20	12/06/2014	12.20	11.80	12.23	11.91	11.97	48661@11.91	50@11.92	--	2013	988,866	1,743	11,831,734.03	5,837,691.13	9.46	13.20	6535
25,000,000	2.00	0.01	0.05	--	18/07/2013	08/08/2003	--	P.P.A. S.A. (CR)	17.86	-1.71 ↓	18.17	12/06/2014	18.00	17.86	18.29	17.86	17.95	2@17.86	100@17.90	55.50	2013	8,280	136	148,642.30	446,500.00	15.65	20.89	2777
4,971,466	1.46	--	--	--	04/07/2007	08/10/2003	--	PAIRIS SA (CR)	0.290	-- -	0.290	12/06/2014	--	--	--	--	--	200@0.262	1500@0.316	--	2013	--	--	--	1,441.73	0.231	0.355	2723
3,953,090	0.900	--	--	--	02/07/2001	05/12/2012	--	PAPERPACK (CR)	0.968	3.53 ↑	0.935	11/06/2014	0.945	0.930	0.979	0.968	0.939	100@0.911	20@0.976	5.00	2013	5,189	19	4,870.10	3,826.59	0.800	1.15	2723
50,797,369	0.310	--	--	--	17/08/2000	12/10/2010	--	PAPOUTSANIS (CR)	0.495	1.02 ↑	0.490	12/06/2014	0.485	0.480	0.500	0.490	0.494	100@0.480	600@0.490	--	2013	1,600	9	790.58	25,144.70	0.395	0.604	3767
7,070,400	0.930	--	--	--	18/05/2010	12/05/2011	--	PETROPOULOS PETROS (CR)	2.08	-- -	2.08	12/06/2014	2.08	2.08	2.08	2.08	2.08	100@2.01	950@2.05	50.54	2013	10	1	20.80	14,706.43	1.58	2.34	2753
6,101,979,715	0.300	--	--	--	16/05/2008	05/06/2013	--	PIRAEUS BANK (CR)	1.70	-4.49 ↓	1.78	12/06/2014	1.76	1.70	1.77	1.70	1.72	594576@1.70	7533@1.72	1.82	2013	7,479,484	2,423	12,874,995.48	10,373,365.52	1.36	2.11	8355
22,080,000	0.320	0.08	0.12	0.2	21/05/2014	03/10/2000	--	PLAISIO COMPUTERS SA (CR)	7.89	-0.13 ↓	7.90	12/06/2014	7.95	7.71	7.95	7.89	7.92	100@7.82	169@7.89	12.30	2013	6,069	18	48,092.82	174,211.20	5.80	7.98	9572
232,000,000	4.60	--	0.025	--	22/07/2013	12/12/2001	--	PPC (CR)	11.64	-2.51 ↓	11.94	12/06/2014	11.90	11.55	11.93	11.64	11.69	4823@11.61	11721@11.64	--	2013	315,315	1,142	3,686,162.70	2,700,480.00	9.08	12.75	7535
11,812,193	0.450	--	--	--	24/07/2009	15/11/2006	--	PROFILE SA (CR)	0.900	1.24 ↑	0.889	12/06/2014	0.891	0.880	0.900	0.900	0.890	250@0.873	808@0.900	17.32	2013	3,103	17	2,760.49	10,630.97	0.817	1.05	9533
27,345,120	0.470	--	--	--	18/07/2005	26/02/2014	--	QUALITY & RELIABILITY SA (CR)	0.679	-1.02 ↓	0.686	12/06/2014	0.652	0.652	0.679	0.679	0.678	1800@0.652	1300@0.679	90.29	2013	20,650	6	14,006.00	18,567.34	0.378	0.740	9533
11,962,443	0.500	--	--	--	05/09/2008	12/12/2013	--	QUEST HOLDINGS (CR)	5.19	0.19 ↑	5.18	12/06/2014	5.10	5.10	5.19	5.19	5.10	100@4.96	100@5.15	--	2013	887	3	4,527.03	62,085.08	4.21	6.30	9533
57,434,884	1.31	--	--	--	05/06/2008	12/06/2009	--	REDS S.A. (CR)	0.549	3.58 ↑	0.530	12/06/2014	0.550	0.549	0.550	0.549	0.549	2000@0.526	201@0.547	--	2013	51	2	28.00	31,531.75	0.507	0.827	8633
22,280,000	0.300	--	--	--	11/04/2011	23/02/2007	--	REVOIL (CR)	0.500	-6.02 ↓	0.532	12/06/2014	0.501	0.500	0.501	0.500	0.501	70@0.500	50@0.538	--	2013	1,150	5	575.75	11,140.00	0.427	0.720	5379
7,500,000	0.480	--	--	--	25/06/2010	10/02/2014	--	S.KANAKIS SA (CR)	1.89	-- -	1.89	12/06/2014	1.89	1.89	1.89	1.89	1.89	50@1.81	900@1.89	9.73	2013	100	5	189.00	14,175.00	1.70	1.99	3577
52,067,296	0.300	--	--	--	23/12/2003	24/01/2007	--	SELECTED TEXT. IND. ASSOC (CR)	0.289	1.76 ↑	0.284	12/06/2014	0.283	0.283	0.289	0.289	0.284	250@0.276	200@0.288	--	2013	4,100	3	1,162.90	15,047.45	0.242	0.355	3763
96,243,908	0.410	--	--	--	26/06/2008	17/07/2000	--	SIDENOR (CR)	1.70	-2.30 ↓	1.74	12/06/2014	1.71	1.67	1.72	1.70	1.69	6100@1.67	493@1.70	--	2013	29,945	75	50,713.08	163,614.64	1.45	2.26	1757
6,456,530	1.60	--	--	--	29/06/2001	02/08/2010	--	SPACE HELLAS SA (CR)	1.40	-- -	1.40	06/06/2014	--	--	--	--	--	190@1.26	289@1.39	--	2013	--	--	--	9,039.14	1.13	1.87	9578
28,438,268	0.300	--	--	--	21/08/2006	24/11/1999	--	SPIROY AGRICULTURE SA (CR)	0.278	-1.77 ↓	0.283	12/06/2014	0.278	0.278	0.278	0.278	0.278	500@0.260	14235@0.278	--	2013	500	1	139.00	7,905.84	0.241	0.376	1357
33,125,000	5.00	--	--	--	03/07/2006	18/08/2010	--	TECHNICAL OLYMPIC SA (CR)	1.45	-5.23 ↓	1.53	12/06/2014	1.53	1.44	1.53	1.45	1.47	2663@1.44	140@1.45	--	2013	8,844	51	13,004.87	48,031.25	1.36	1.99	3728
109,314,400	0.300	(0.0589)	--	--	28/05/2012	24/10/2013	--	TERNA ENERGY (CR)	4.00	-4.54 ↓	4.19	12/06/2014	4.24	4.00	4.24	4.00	4.07	1472@4.00	400@4.09	-(6)-	2013	65,058	376	264,750.41	437,257.60	3.50	4.86	7537
36,300,000	1.12	0.188	0.162	--	16/08/2013	12/12/2007	--	THESSALONIKA WATER & SEWERAGE	4.90	-0.61 ↓	4.93	12/06/2014	4.90	4.78	4.97	4.90	4.84	19@4.90	50@4.94	13.56	2013	4,330	26	20,944.01	177,870.00	4.25	5.66	7577
45,094,620	0.500	--	0.0467	0.05	28/04/2014	01/11/1999	--	THRACE PLASTICS SA (CR)	1.18	-1.67 ↓	1.20	12/06/2014	1.18	1.16	1.20	1.18	1.17	2661@1.17	2239@1.18	--	2013	20,291	43	23,658.04	53,211.65	1.07	1.39	1357
77,063,568	4.00	--	--	--	24/06/2011	25/06/2004	--	TITAN CEMENT (CR)	24.82	-3.35 ↓	25.68	12/06/2014	25.83	24.80	25.83	24.82	24.99	179@24.80	1700@24.90	--	2013	42,704	444	1,067,297.05	1,986,893.57	18.12	26.80	2353
7,568,960	4.00	--	--	--	24/06/2011	25/06/2004	--	TITAN CEMENT CO. (PR)	9.80	-- -	9.80	12/06/2014	9.50	9.50	9.80	9.80	9.76	40@9.80	60									

Number of Outstanding Securities	Nominal Value	Dividends [1]			Date of Last Coupon		Note	Shares	Closing price	% change	Previous closing price/date		Open price	Price min	Price max	Last price	Avg price	Last Bid [7]	Last Ask [7]	P/E after	Year	Volume	Trades	Transactions Value	Company Mkt Value (thou. €)	Year low	Year high	Sector[ 4]
2011	2012	2013	Dividend [2]	Right																								

Main Market

219,611,308	---	---	---	14/02/2014	---	VIOHALCO SA/NV (CB)	4.14	-2.59 ↓	4.25	12/06/2014	4.23	4.14	4.25	4.14	4.20	1030@4.13	700@4.17	---	---	90,368	307	379,351.58	909,190.82	3.79	5.19	2727
4,968,600	2.88	---	---	01/07/1998	14/12/1998	---	VIS SA (CR)	0.780	---	0.780	11/06/2014	---	---	---	---	1500@0.750	1840@0.839	---	2013	---	---	---	3,875.51	0.517	0.980	2723
6,325,000	0.600	---	---	02/05/2014	17/02/2014	---	VOGIATZOGLOU SYSTEMS SA (CR)	1.09	---	1.09	11/06/2014	---	---	---	---	500@1.01	300@1.05	---	2013	---	---	---	6,894.25	0.770	2.27	2797

Exchange Traded Funds (ETFs)

5,848,618	---	---	---	24/01/2008	---	ALPHA ETF FTSE Athex Large Cap	4.10	-2.84 ↓	4.22	12/06/2014	4.09	4.08	4.10	4.10	4.10	3000@4.10	54@4.11	---	---	29,954	8	122,651.11	-	3.38	4.55	11000
294,878	---	---	---	29/06/2009	---	NBGAM ETF	13.95	-3.13 ↓	14.40	12/06/2014	13.93	13.93	14.05	13.95	13.95	---	---	---	---	632	4	8,814.90	-	11.76	15.10	11000
388,550	---	---	---	03/11/2010	---	NBGAM ETF GREECE & TURKEY 30	8.55	-2.29 ↓	8.75	12/06/2014	8.55	8.55	8.55	8.55	8.55	---	---	---	---	2	1	17.10	-	6.70	8.93	11000

Low Dispersion

14,000,000	3.80	---	---	23/04/2010	29/06/1999	4815	ALPHA REAL ESTATE SA(CR)	6.01	---	6.01	12/06/2014	---	---	---	---	---	1000@4.92	142@6.00	25.12	2013	---	---	---	84,140.00	4.69	7.10	8637
63,900,000	3.00	---	---	23/06/2003	04/11/2008	4816	ASTIR PALACE SA (CR)	3.77	-1.05 ↓	3.81	12/06/2014	3.77	3.75	3.78	3.75	3.77	200@3.75	250@3.76	---	2013	2,500	14	9,420.50	240,903.00	3.45	4.08	5753
90,902,904	0.800	---	---	09/08/2004	08/03/2006	4814	ATHENA SA (CR)	0.192	---	0.192	11/06/2014	---	---	---	---	---	900@0.154	---	---	2013	---	---	---	17,453.36	0.160	0.310	2357
191,660,320	0.300	---	---	20/07/2009	29/12/2010	4817	ATTICA HOLDINGS (CR)	0.640	-0.47 ↓	0.643	12/06/2014	0.630	0.630	0.643	0.630	0.640	221@0.630	2@0.643	---	2013	3,579	6	2,291.17	122,662.60	0.495	0.799	5759
68,322,221	1.00	---	---	08/03/2002	08/04/2013	4986	GENIKI BANK (CR)	8.16	20.00 ↑	6.80	12/06/2014	8.16	8.16	8.16	8.16	8.16	100@7.00	---	---	2013	1	1	8.16	557,509.32	6.00	15.00	8355
71,082,707	1.70	---	---	01/07/2010	21/11/2012	4820	HERACLES GEN.CEMENT CO. (CR)	1.27	-2.31 ↓	1.30	12/06/2014	1.27	1.27	1.27	1.27	1.27	1445@1.27	599@1.33	---	2013	130	2	165.10	90,275.04	1.26	1.55	2353
13,404,440	8.63	---	---	02/04/2001	06/03/1992	4822	IONIAN HOTELS SA (CR)	7.00	---	7.00	05/06/2014	---	---	---	---	---	300@5.60	---	-(6)-	2013	---	---	---	93,831.08	6.00	9.90	5753
2,760,000	7.70	7.6	8.52	26/06/2013	16/07/1990	4823	KARELIA TOBACCO CO. SA (CB)	233.75	---	233.75	12/06/2014	---	---	---	---	---	10@216.25	8@234.00	16.25	2013	---	---	---	645,150.00	180.00	234.95	3785
30,600,000	0.300	---	---	12/06/2008	04/03/2014	5059	KATHIMERINI SA (CR)	0.527	---	0.527	12/06/2014	0.480	0.480	0.527	0.527	0.527	1000@0.481	679@0.525	---	2013	3,665	9	1,931.27	16,126.20	0.357	4.49	5557
106,980,050	2.25	---	---	25/07/2008	24/02/2014	5046	MINOAN LINES SA (CR)	1.50	---	1.50	12/06/2014	1.50	1.50	1.50	1.50	1.50	24419@1.50	40@1.54	---	2013	42,669	9	64,003.50	160,470.08	1.49	2.00	5759
17,240,776	0.370	---	---	14/07/2005	30/09/2003	4827	PERSEUS SA (CR)	0.236	-20.00 ↓	0.295	12/06/2014	0.236	0.236	0.236	0.236	0.236	---	1300@0.236	2.11	2013	200	2	47.20	4,068.82	0.205	0.504	3577

Surveillance

33,301,715	0.320	---	---	---	27/06/2003	08/07/2009	4978	AEGEK (CR)	0.082	---	-	0.082	12/06/2014	0.075	0.075	0.086	0.086	0.082	100@0.085	500@0.095	---	2013	772	5	63.10	2,730.74	0.065	0.136	2357	
14,870,100	0.300	---	---	---	15/05/2008	26/09/2011	4844	ALPHA GRISSIN S.A. (CR)	0.144	---	-	0.144	11/06/2014	---	---	---	---	---	---	480@0.150	---	2013	---	---	---	2,141.29	0.067	0.160	9533	
215,246,452	0.300	---	---	---	25/06/2001	24/09/2001	4446	ALTEC SA (CR)	0.029	7.41	↑	0.027	11/06/2014	0.030	0.025	0.030	0.025	0.029	2260@0.025	3472@0.030	---	2013	12,842	8	371.05	6,242.15	0.024	0.040	9533	
2,969,713	0.300	---	---	---	02/07/2008	28/02/2011	4958	ANEK LINES SA (PR, issue '96)	0.149	---	-	0.149	12/06/2014	---	---	---	---	---	50@0.140	160@0.160	---	2013	---	---	---	18,041.17	0.120	0.280	5759	
312,163	0.300	---	---	---	02/07/2008	28/02/2011	4959	ANEK LINES SA (PR, issue '90)	1.15	-19.58	↓	1.43	09/09/2013	1.15	1.15	1.15	1.15	1.15	484@1.15	37@1.37	---	2013	16	1	18.40	18,041.17	1.15	1.43	5759	
185,373,016	0.300	---	---	---	02/07/2008	28/02/2011	4957	ANEK LINES SA (CR)	0.093	-1.06	↓	0.094	11/06/2014	0.094	0.091	0.094	0.091	0.093	1200@0.080	250@0.090	---	2013	7,549	4	703.61	18,041.17	0.082	0.141	5759	
81,644,555	0.300	---	---	---	01/07/2008	02/09/2002	5056	ATTI - KAT SA (CR)	0.018	-5.26	↓	0.019	11/06/2014	0.017	0.017	0.019	0.019	0.018	99976@0.017	33989@0.019	---	2013	25,500	4	464.50	1,469.60	0.017	0.036	2357	
20,255,805	0.300	---	---	---	22/08/2006	02/08/2010	4881	AXON HOLDING SA (CR)	0.062	19.23	↑	0.052	10/06/2014	0.062	0.062	0.062	0.062	0.062	9000@0.053	---	---	2013	6,010	3	372.62	1,255.86	0.040	0.139	4533	
17,579,754	4.16	---	---	---	18/08/2006	02/08/2010	4885	BIOTER SA (CR)	0.155	---	-	0.155	12/06/2014	0.155	0.155	0.155	0.155	0.155	500@0.125	757@0.153	---	2013	1,000	2	155.01	2,724.86	0.104	0.203	2357	
12,431,980	0.720	---	---	---	20/06/2003	10/07/2003	4559	COMPUCON SA (CR)	0.039	---	-	0.039	03/06/2014	---	---	---	---	---	---	2000@0.046	---	2013	---	---	---	---	484.85	0.016	0.074	9537
14,173,104	0.300	---	---	---	11/08/2010	28/11/2013	5055	DIONIC (CR)	0.050	16.28	↑	0.043	12/06/2014	0.050	0.050	0.051	0.051	0.050	3000@0.051	---	---	2013	28,777	14	1,447.85	708.66	0.041	0.307	2797	
15,878,748	0.480	---	---	---	10/07/2006	22/03/2004	4960	DOMIKI KRITIS SA (CR)	0.365	-10.98	↓	0.410	12/06/2014	0.365	0.365	0.365	0.365	0.365	1000@0.364	1350@0.400	---	2013	2,240	4	817.61	5,795.74	0.264	0.485	2357	
3,961,300	1.28	---	---	---	29/06/2004	03/08/2000	4808	DUROS SA (CR)	0.530	---	-	0.530	12/06/2014	---	---	---	---	---	---	4590@0.530	---	2013	---	---	---	---	2,099.49	0.185	0.759	3763
7,085,888	1.59	---	---	---	02/07/1996	06/09/2010	4690	ELVIEMEK (CR)	3.97	---	-	3.97	26/02/2014	---	---	---	---	---	---	---	---	2013	---	---	---	---	28,130.98	1.54	3.97	8633
6,000,000	0.600	---	---	---	13/06/2008	08/04/2004	4886	EUROBROKERS S.A. (CR)	0.024	---	-	0.024	12/05/2014	---	---	---	---	---	1000@0.025	---	---	2013	---	---	---	---	144.00	0.024	0.052	8534

Number of Outstanding Securities	Nominal Value	Dividends [1]			Date of Last Coupon		Note	Shares	Closing price	% change	Previous closing price/date	Open price	Price min	Price max	Last price	Avg price	Last Bid [7]	Last Ask [7]	P/E after	Year	Volume	Trades	Transactions Value	Company Mkt Value (thou. €)	Year low	Year high	Sector[ 4]		
		2011	2012	2013	Dividend [2]	Right																							
Surveillance																													
21,820,410	0.800	---	---	---	22/05/2008	02/08/2011	4882	EUROMEDICA SA (CR)	0.364	---	0.364	12/06/2014	---	---	---	---	---	312@0.292	---	2013	---	---	---	7,942.63	0.240	0.389	4533		
110,097,185	0.300	---	---	---		04/12/2013	5033	Forthnet (CR)	1.20	-10.45 ↓	1.34	12/06/2014	1.21	1.20	1.21	1.20	1.20	15216@1.20	10142@1.21	---	2013	3,501	10	4,215.70	132,116.62	0.874	1.98	9535	
1,270,000	0.300	---	---	---	06/07/2007	06/02/2013	5007	GIRAKIAN PROFIL SA (CB)	2.30	---	2.30	11/04/2014	---	---	---	---	---	1000@1.90	25@2.06	---	2013	---	---	---	2,921.00	1.44	2.63	1757	
179,707,771	0.300	---	---	---	27/06/2002	01/11/2011	4847	HELLAS ONLINE SA (CR)	0.472	---	0.472	12/06/2014	---	---	---	---	---	900@0.420	1493@0.469	61.36	2013	---	---	---	84,822.07	0.400	0.670	9537	
30,390,000	0.310	---	---	---	18/08/2008	29/12/2006	4447	HELLENIC FISHFARMING SA (CR)	0.071	-10.13 ↓	0.079	12/06/2014	0.065	0.065	0.075	0.075	0.071	9999@0.065	10116@0.075	---	2013	320	4	22.82	2,157.69	0.052	0.119	3573	
1,540,000	0.600	---	---	---	08/08/1994	19/09/2000	5058	J.BOUTARIS & SON HOLD. (PB)	0.008	---	0.008	10/06/2014	---	---	---	---	---	2500@0.008	---	---	2013	---	---	---	1,649.00	0.008	0.012	3535	
25,179,640	0.600	---	---	---	08/08/1994	19/09/2000	5057	J.BOUTARIS & SON HOLD. SA (CB)	0.065	10.17 ↑	0.059	12/06/2014	0.065	0.065	0.065	0.065	---	8900@0.065	---	2013	9,200	3	598.00	1,649.00	0.041	0.084	3535		
7,125,216	0.650	---	---	---	01/07/2005	14/12/1999	4955	KRE.KA SA (CR)	0.170	---	0.170	12/06/2014	---	---	---	---	---	1000@0.150	2000@0.170	---	2013	---	---	---	1,211.29	0.131	0.278	3573	
51,081,030	1.00	---	---	---	20/08/2007	03/09/2007	4912	LAVIPHARM SA (CR)	0.107	1.91 ↑	0.105	12/06/2014	0.113	0.106	0.113	0.106	0.107	8000@0.106	840@0.110	---	2013	2,500	3	268.50	5,465.67	0.104	0.164	4577	
322,925,288	0.300	---	---	---	23/05/2007	10/04/2000	4554	M.J. MAILLIS SA (CR)	0.131	1.55 ↑	0.129	12/06/2014	0.129	0.129	0.134	0.134	0.131	1700@0.131	8000@0.134	---	2013	46,800	19	6,143.80	42,303.21	0.067	0.144	2723	
4,178,856	1.58	---	---	---	21/07/2011	28/07/2004	4983	MEDICON S.A (CR)	0.251	-19.81 ↓	0.313	11/06/2014	0.251	0.251	0.251	0.251	0.250	1199@0.251	1@0.375	10.35	2013	1	1	0.25	1,048.89	0.251	0.952	4535	
255,459,600	0.300	---	---	---	26/06/2000	03/12/2010	4833	NEL SA (CR)	0.033	-8.33 ↓	0.036	12/06/2014	0.033	0.033	0.033	0.033	0.033	3400@0.036	91963@0.040	---	2013	356	3	11.75	8,430.17	0.033	0.090	5759	
20,231,328	0.600	---	---	---	15/07/2008	25/06/2004	4879	NIKAS SA (CR)	0.180	---	0.180	11/06/2014	---	---	---	---	---	1125@0.180	---	---	2013	---	---	---	3,641.64	0.170	0.180	3577	
14,967,940	0.500	---	---	---	21/05/2008	04/01/2008	4956	PASAL DEVELOPMENT S.A. (CR)	0.154	-3.75 ↓	0.160	12/06/2014	0.135	0.135	0.160	0.154	0.154	500@0.137	5154@0.160	---	2013	6,674	12	1,029.90	2,305.06	0.129	0.239	8633	
18,750,000	0.300	---	---	---	02/07/2001	31/12/2012	4985	PEGASUS PUBLISHING S.A. (CR)	0.100	-19.36 ↓	0.124	12/06/2014	0.100	0.100	0.100	0.100	0.100	50@0.148	---	---	2013	8	2	0.80	1,875.00	0.045	0.300	5557	
24,319,250	0.300	---	---	---	09/07/2002	04/07/2007	5054	PROODEFTIKH SA (CR)	0.102	-2.86 ↓	0.105	12/06/2014	0.102	0.100	0.102	0.102	0.102	1000@0.101	790@0.107	---	2013	35,000	8	3,568.86	2,480.56	0.075	0.188	2357	
65,326,268	0.530	---	---	---	04/07/2007	19/07/2006	4750	SATO SA (CR)	0.139	7.75 ↑	0.129	12/06/2014	0.139	0.139	0.139	0.139	0.139	2200@0.125	6082@0.139	---	2013	108	1	15.01	9,080.35	0.106	0.250	3726	
36,235,184	1.00	---	---	---	01/07/2008	30/07/2012	4961	SELONDA AQUACULTURE SA (CR)	0.114	-1.72 ↓	0.116	10/06/2014	0.114	0.099	0.114	0.099	0.114	6944@0.099	100@0.110	---	2013	12,556	4	1,430.54	4,130.81	0.090	0.149	3573	
7,914,480	2.50	---	---	---	23/06/2008	29/06/2011	4888	SFAKIANAKIS SA (CR)	1.01	1.00 ↑	1.00	10/06/2014	1.10	1.00	1.10	1.00	1.01	200@1.00	100@1.10	---	2013	690	4	695.00	7,993.62	0.488	1.10	5379	
10,000,000	1.35	---	---	---	24/06/2008	10/05/2005	4887	SIDMA SA (CR)	0.331	-12.89 ↓	0.380	12/06/2014	0.341	0.305	0.341	0.305	0.331	185@0.305	1900@0.339	---	2013	2,330	7	771.86	3,310.00	0.240	0.479	1757	
29,060,950	0.340	---	---	---	20/08/2007	24/10/2001	4884	SPIDER METAL INDUSTRY SA (CR)	0.049	-15.52 ↓	0.058	12/06/2014	0.047	0.047	0.069	0.069	0.049	2000@0.058	1900@0.069	---	2013	1,150	3	56.25	1,423.99	0.012	0.070	2757	
100,793,000	0.300	---	---	---	16/07/2009	05/08/2013	5008	TELETIPOS SA (CR)	0.340	---	0.340	24/04/2014	---	---	---	---	---	---	450@0.295	---	---	2013	---	---	---	34,269.62	0.111	0.345	5553
3,229,566	0.320	---	---	---	22/06/2005	23/09/1999	4629	VARANGIS AVEPE S.A. (CR)	0.680	---	0.680	06/06/2014	---	---	---	---	---	2000@0.600	163@0.690	---	2013	---	---	---	2,196.10	0.680	1.00	3726	
16,383,428	0.300	---	---	---	25/06/2002	21/06/2013	4997	VARVARESSOS SA (CB)	0.170	-11.46 ↓	0.192	12/06/2014	0.170	0.170	0.170	0.170	0.170	---	5000@0.210	0.24	2013	699	1	118.83	2,785.18	0.120	0.293	3763	
13,191,620	0.620	---	---	---	04/08/2010	09/09/2002	4977	YALCO - CONSTANTINOU SA (CB)	0.169	---	0.169	27/05/2014	---	---	---	---	---	---	3354@0.169	---	---	2013	---	---	---	2,229.38	0.079	0.241	3722

Under Deletion																											
9,567,289	0.300	---	---	---	01/07/2004	19/11/2007	5062	MARAC ELECTRONICS (CR)	0.348	---	0.348	29/05/2014	---	---	---	---	---	500@0.340	---	2013	---	---	---	3,329.42	0.290	0.356	9578
40,946,303	0.360	---	---	---	18/07/2005	27/11/2007	5053	PC SYSTEMS SA (CR)	0.117	---	0.117	20/05/2014	---	---	---	---	---	87850@0.094	---	2013	---	---	---	4,790.72	0.046	0.169	9533
766,000	2.83	---	---	---	01/07/2004	11/12/2012	4937	TRIA ALFA SA (CR)	2.67	-19.82 ↓	3.33	27/01/2014	2.67	2.67	2.67	2.67	2.67	11@2.67	---	2013	11	1	29.37	2,674.87	2.67	3.33	3763
245,000	2.83	---	---	---	19/07/2010	11/12/2012	4938	TRIA ALFA SA (PR)	2.57	---	2.57	05/06/2014	---	---	---	---	---	191@3.07	---	2013	---	---	---	2,674.87	0.969	2.57	3763

Under Suspension																											
5,025,000	0.300	---	---	---	05/07/2005	14/03/2002	5023	ALSINCO S.A (CR)	0.043	---	0.043	27/11/2013	---	---	---	---	---	---	---	---	---	---	---	216.08	0.043	0.043	3763
1,750,955,549	0.600	---	---	---	19/05/2008	08/12/2011	4911	ATE (CR)	0.155	---	0.155	30/07/2012	---	---	---	---	---	---	---	---	---	---	---	271,398.11	0.155	0.155	8355
21,382,067	0.300	---	---	---	02/10/2006	15/02/2006	4628	ATERMON (CR)	0.120	---	0.120	31/03/2010	---	---	---	---	---	---	---	---	---	---	---	2,565.85	0.120	0.120	5555
105,423,498	0.510	---	---	---	01/07/2004	28/12/2005	4920	AVENIR S.A. (CR)	0.046	---	0.046	30/08/2012	---	---	---	---	---	---	---	---	---	---	---	4,849.48	0.046	0.046	5752
33,930,000	0.300	---	---	---	03/07/2006	30/05/2001	4865	BABIS VOVOS SA (CR)	0.304	---	0.304	30/03/2012	---	---	---	---	---	---	---	---	---	---	---	10,314.72	0.304	0.304	8633

Number of Outstanding Securities	Nominal Value	Dividends [1]			Date of Last Coupon		Note	Shares	Closing price	% change	Previous closing price/date	Open price	Price min	Price max	Last price	Avg price	Last Bid [7]	Last Ask [7]	P/E after	Year	Volume	Trades	Transactions Value	Company Mkt Value (thou. €)	Year low	Year high	Sector[ 4]	
		2011	2012	2013	Dividend [2]	Right																						
Under Suspension																												
20,121,710	1.21	---	---	---	27/07/1992	12/03/2003	5002	BALKAN R.E. (CR)	0.190	---	0.190	29/08/2013	---	---	---	---	---	---	---	---	---	---	---	---	3,823.12	0.190	0.190	8633
1,795,140,547	1.00	---	---	---	31/05/2011	19/04/2012	4951	BANK OF CYPRUS (CR)	0.207	---	0.207	15/03/2013	---	---	---	---	---	---	---	---	---	---	---	---	371,594.09	0.207	0.207	8355
21,920,570	0.300	---	---	---	03/07/2007	13/12/1999	4702	CARDASSILARIS SA (CR)	0.140	---	0.140	30/11/2010	---	---	---	---	---	---	---	---	---	---	---	---	3,068.88	0.140	0.140	3577
54,547,634	0.500	---	---	---	25/04/2005	21/01/2009	4860	CH.TEGOPOULOS PUBL. SA (CR)	0.038	---	0.038	23/03/2012	---	---	---	---	---	---	---	---	---	---	---	---	2,072.81	0.038	0.038	5557
30,159,583	0.470	---	---	---	26/06/2008	29/12/2010	5047	DIAS A/C (CR)	0.050	---	0.050	26/03/2014	---	---	---	---	---	---	---	---	---	---	---	---	1,507.98	0.040	0.092	3573
7,847,611	1.20	---	---	---	01/08/2007	28/09/2011	4939	EDRASIS - C. PSALLIDAS SA (CR)	0.150	---	0.150	19/11/2012	---	---	---	---	---	---	---	---	---	---	---	---	1,177.14	0.150	0.150	2357
5,750,000	0.300	---	---	---	12/12/2008	12/12/2011	4929	ELECTRONIKI ATHINON SA (CR)	0.480	---	0.480	07/09/2012	---	---	---	---	---	---	---	---	---	---	---	---	2,760.00	0.480	0.480	5375
24,605,397	0.400	---	---	---	29/06/1995	27/05/2002	4651	EMPORIKOS DESMOS SA (CR)	0.080	---	0.080	28/05/2010	---	---	---	---	---	---	---	---	---	---	---	---	2,134.04	0.080	0.080	3722
1,182,903	0.400	---	---	---	01/07/1996	27/05/2002	4652	EMPORIKOS DESMOS SA (PR)	0.140	---	0.140	28/09/2009	---	---	---	---	---	---	---	---	---	---	---	---	2,134.04	0.140	0.140	3722
7,326,648	1.00	---	---	---	26/07/2006	24/07/2001	4921	FINTEXPORT SA (CR)	0.328	---	0.328	29/06/2012	---	---	---	---	---	---	---	---	---	---	---	---	2,403.14	0.328	0.328	3763
13,692,227	1.47	---	---	---	07/07/2006	08/10/1999	5049	HELLENIC FABRICS SA (CR)	0.117	---	0.117	31/03/2014	---	---	---	---	---	---	---	---	---	---	---	---	1,601.99	0.089	0.153	3763
24,619,524	0.500	---	---	---	10/10/1986	30/12/2002	4914	KERAMIA-ALLATINI (CR)	0.088	---	0.088	27/08/2012	---	---	---	---	---	---	---	---	---	---	---	---	2,166.52	0.088	0.088	8633
7,840,373	1.20	---	---	---	18/07/2002	05/03/2003	4765	KLONATEX SA (PR)	0.080	---	0.080	09/05/2011	---	---	---	---	---	---	---	---	---	---	---	---	1,453.75	0.080	0.080	3763
20,663,047	1.20	---	---	---	21/08/2000	05/03/2003	4764	KLONATEX SA (CR)	0.040	---	0.040	09/05/2011	---	---	---	---	---	---	---	---	---	---	---	---	1,453.75	0.040	0.040	3763
17,544,600	0.600	---	---	---	03/07/2000	01/08/2000	4868	KOYMBAS SYNERGY GROUP (CR)	0.132	---	0.132	29/03/2012	---	---	---	---	---	---	---	---	---	---	---	---	2,315.89	0.132	0.132	8775
15,015,000	1.60	---	---	---	01/07/2002	02/02/2000	4603	MAXIM C.M. PERTSINIDIS SA (CB)	0.100	---	0.100	30/11/2009	---	---	---	---	---	---	---	---	---	---	---	---	1,501.50	0.100	0.100	3763
66,937,526	0.700	---	---	---	13/08/2010	21/05/2003	5003	MICHANIKI SA (CR)	0.100	---	0.100	29/08/2013	---	---	---	---	---	---	---	---	---	---	---	---	9,186.78	0.100	0.100	2357
25,968,987	0.700	---	---	---	13/08/2010	21/05/2003	5004	MICHANIKI SA (PR)	0.096	---	0.096	29/08/2013	---	---	---	---	---	---	---	---	---	---	---	---	9,186.78	0.096	0.096	2357
13,555,100	1.00	---	---	---	08/07/2005		4576	MICROLAND COMPUTERS SA (CR)	0.640	---	0.640	14/07/2009	---	---	---	---	---	---	---	---	---	---	---	---	8,675.26	0.640	0.640	5379
23,463,874	0.800	---	---	---	23/05/2003	21/12/1999	4918	NEORION SA (CR)	0.125	---	0.125	28/08/2012	---	---	---	---	---	---	---	---	---	---	---	---	2,932.98	0.125	0.125	2753
42,501,273	0.300	---	---	---	26/06/2007	10/08/2009	4993	NUTRIART (CR)	0.049	---	0.049	21/06/2013	---	---	---	---	---	---	---	---	---	---	---	---	2,082.56	0.049	0.049	3577
20,210,127	1.53	---	---	---	27/06/1997	20/03/2000	5061	PARNASSOS ENTERP. (CR)	0.070	---	0.070	29/05/2014	---	---	---	---	---	---	---	---	---	---	---	---	1,414.71	0.065	0.172	8775
25,583,146	0.300	---	---	---	25/06/2001	03/12/2008	4723	PETZETAKIS SA (CR)	0.260	---	0.260	28/01/2011	---	---	---	---	---	---	---	---	---	---	---	---	6,651.62	0.260	0.260	1357
9,550,386	0.500	---	---	---	01/07/1997	12/06/2008	4626	PRAXITELIO SA (CR)	0.390	---	0.390	11/03/2010	---	---	---	---	---	---	---	---	---	---	---	---	4,430.09	0.390	0.390	4533
1,306,368	0.500	---	---	---	01/07/1997	12/06/2008	4627	PRAXITELIO SA (PR)	0.540	---	0.540	15/12/2009	---	---	---	---	---	---	---	---	---	---	---	---	4,430.09	0.540	0.540	4533
62,683,822	0.300	---	---	---	27/05/2008	09/01/2006	4830	PROTON BANK S.A. (CR)	0.180	---	0.180	07/10/2011	---	---	---	---	---	---	---	---	---	---	---	---	11,283.09	0.180	0.180	8355
51,334,286	0.320	---	---	---	03/07/2000	18/12/2007	4548	SAOS (CR)	0.780	---	0.780	27/03/2009	---	---	---	---	---	---	---	---	---	---	---	---	40,040.74	0.780	0.780	2773
26,408,040	0.300	---	---	---	01/07/1997	26/05/1999	4464	SHEET STEEL SA (CR)	0.120	---	0.120	28/11/2008	---	---	---	---	---	---	---	---	---	---	---	---	3,168.96	0.120	0.120	1757
60,221,300	0.400	---	---	---	01/07/2002	01/11/2010	5022	SHELMAN SA (CR)	0.080	---	0.080	19/11/2013	---	---	---	---	---	600@0.080	---	---	---	---	---	---	4,817.70	0.080	0.080	2353
26,262,660	0.900	---	---	---	01/07/2008	24/02/2011	4954	SPRIDER STORES (CR)	0.031	---	0.031	28/03/2013	---	---	---	---	---	---	---	---	---	---	---	---	814.14	0.031	0.031	5371
144,688,060	0.600	---	---	---	21/04/2008	10/03/2010	4982	T BANK (CR)	0.048	---	0.048	30/11/2011	---	---	---	---	---	---	---	---	---	---	---	---	6,945.03	0.048	0.048	8355
6,523,780	0.530	---	---	---	01/07/2002	06/03/2001	4971	TECHNICAL PUBLICATIONS SA (CR)	0.006	---	0.006	29/05/2013	---	---	---	---	---	---	---	---	---	---	---	---	39.14	0.006	0.006	5557
13,920,000	0.320	---	---	---	19/11/2001	01/08/2000	4726	TEXAPRET SA (CR)	0.080	---	0.080	23/02/2011	---	---	---	---	---	---	---	---	---	---	---	---	1,113.60	0.080	0.080	3763
510,840	1.00	---	---	---	15/07/2008	21/11/2013	5036	TROPEA HOLDING (CR)	2.00	---	0.020	# 30/03/2012	---	---	---	---	---	---	---	---	---	---	---	---	1,021.68	0.020	2.00	3722
284,465,964	3.70	---	---	---	20/06/2008	15/06/2009	4913	TT HELLENIC POSTBANK (CR)	0.168	---	0.168	30/08/2012	---	---	---	---	---	---	---	---	---	---	---	---	47,790.28	0.168	0.168	8355
89,616,200	0.300	---	---	---	21/08/2000	28/06/2007	4616	UNITED TEXTILES (CR)	0.050	---	0.050	25/02/2010	---	---	---	---	---	---	---	---	---	---	---	---	4,480.81	0.050	0.050	3763
71,683,906	0.400	---	---	---	15/06/2005	05/02/2008	4953	XATZIOANNOU (CR)	0.026	---	0.026	28/03/2013	---	---	---	---	---	---	---	---	---	---	---	---	1,863.78	0.026	0.026	3763



## Shares' Notes

Code	Note text
( )	- Adjusted dividends.
*	- Last adjusted closing price.
[1]	- Net dividends.
[2]	- The "Date of Last Coupon" for New listings refers to the date company's stocks started to trade in Athex
[3]	- The Company Market Value is referred to the number of outstanding shares
[4]	- Sectors codification can be found in Appendix A
[5]	- The Market Value refers to the total number of shares listed (including their several classes) in the exchange by the company.
[6]	- P/E greater than 100
[7]	- Last view of the Order Book before the end of the trading session
4446	- Transfer to the "Under Supervision" Category as of 20/10/2008.
4447	- Transfer to the "Under Supervision" Category as of 21/10/2008.
4464	- Suspension of trading as of 1/12/2008.
4548	- Suspension of trading as of 1/4/2009.
4554	- Transfer to the "Under Supervision" Category as of 6/4/2009.
4559	- Transfer to the "Under Supervision" Category as of 21/4/2009.
4576	- Suspension of trading as of 14/7/2009.
4603	- Suspension of trading as of 1/12/2009.
4616	- Suspension of trading as of 25/2/2010.
4626	- Suspension of trading as of 1/4/2010.
4627	- Suspension of trading as of 1/4/2010.
4628	- Suspension of trading as of 1/4/2010.
4629	- Transfer to the Under Supervision Category as of 12/4/2010.
4651	- Suspension of trading as of 1/6/2010.
4652	- Suspension of trading as of 1/6/2010.
4690	- Transfer to Surveillance category as of 4/4/2006.
4702	- Suspension of trading as of 1/12/2010.
4723	- Suspension of trading as of 31/1/2011.
4726	- Suspension of trading as of 1/3/2011.
4750	- Transfer to the "Under Surveillance Category" from 8/4/2011.
4764	- Suspension of trading as of 20/5/2011.
4765	- Suspension of trading as of 20/5/2011.
4795	- The final gross (pre-tax) dividend is € 0.30 per share and subject to withholding tax on the full dividend amount, i.e. 0.45 per share, for those shareholders liable to withholding tax, in accordance with the applicable tax law provisions.
4808	- Suspension of trading as of 6/9/2011.
4814	- Transfer to the Low Dispersion Category as of 30/5/2011.
4815	- Transfer to the Low Dispersion Category as of 30/5/2011.
4816	- Transfer to the Low Dispersion Category as of 30/5/2011.
4817	- Transfer to the Low Dispersion Category as of 30/5/2011.
4820	- Transfer to the Low Dispersion category as of 18/4/2008.
4822	- Transfer to the Low Dispersion category as of 30/5/2011.
4823	- Transfer to the Low Dispersion category as of 4/4/2006.
4827	- Transfer to the Low Dispersion category as of 5/5/2010.
4830	- Suspension of trading as of 10/10/2011.
4833	- Transfer to Surveillance category from 6/5/2010.
4844	- Transfer to the Surveillance category from 8/4/2011.
4847	- Transfer to the Surveillance Category as of 3/7/2009.
4860	- Suspension of trading as of 30/3/2012.
4865	- Suspension of trading as of 2/4/2012.
4868	- Suspension of trading as of 2/4/2012.
4879	- Transfer to the Surveillance Category as of 10/4/2012.
4881	- Transfer to the Surveillance Category as of 10/4/2012.
4882	- Transfer to the Surveillance Category as of 10/4/2012.

## Shares' Notes

Code	Note text
4884	- Transfer to the Surveillance Category as of 10/4/2012.
4885	- Transfer to the Surveillance Category as of 10/4/2012.
4886	- Transfer to the Surveillance Category as of 10/4/2012.
4887	- Transfer to the Surveillance Category as of 10/4/2012.
4888	- Transfer to the Surveillance Category as of 10/4/2012.
4911	- Lift of suspension from 30/7/2012.
4912	- Transfer to the Surveillance Category as of 31/7/2012.
4913	- Suspension of trading as of 30/8/2012.
4914	- Suspension of trading as of 31/8/2012.
4918	- Suspension of trading as of 31/8/2012.
4920	- Suspension of trading as of 31/8/2012.
4921	- Suspension of trading as of 31/8/2012.
4929	- Suspension of trading as of 1/10/2012.
4937	- Transfer to the UNDER DELETION category as of 30/11/2012.
4938	- Transfer to the UNDER DELETION category as of 30/11/2012.
4939	- Suspension of trading as of 30/11/2012.
4951	- Suspension of trading as of 19/3/2013.
4953	- Suspension of trading as of 2/4/2013.
4954	- Suspension of trading as of 2/4/2013.
4955	- Transfer to the Surveillance Category as from 5/4/2013.
4956	- Transfer to the Surveillance Category as from 5/4/2013.
4957	- Transfer to the Surveillance Category as from 5/4/2013.
4958	- Transfer to the Surveillance Category as from 5/4/2013.
4959	- Transfer to the Surveillance Category as from 5/4/2013.
4960	- Transfer to the Surveillance Category as from 5/4/2013.
4961	- Transfer to the Surveillance Category as from 5/4/2013.
4971	- Suspension of trading as of 3/6/2013.
4977	- Transfer to the "Under Surveillance Category" from 11/6/2013.
4978	- Transfer to the Under Supervision Category as of 11/6/2013.
4982	- Suspension of trading as of 1/12/2011.
4983	- Transfer to the Surveillance Category as of 5/4/2013.
4985	- Transfer to the "Under Surveillance Category" from 8/4/2011.
4986	- Transfer to the Low Dispersion category as of 30/5/2011.
4993	- Suspension of trading as of 21/6/2013 (15:18).
4997	- Transfer to the Under Supervision Category as of 21/12/2009. - The 6,870,053 new (CB) shares, resulting from the recent share capital increase through a rights issue, are not yet admitted to trading on the ATHEX.
5002	- Suspension of trading as of 30/08/2013.
5003	- Suspension of trading as of 30/08/2013.
5004	- Suspension of trading as of 30/08/2013.
5007	- Transfer to the Surveillance category, as of 11/10/2013.
5008	- Transfer to the Surveillance Category from 8/4/2011.
5022	- Suspension of trading as of 2/12/2013.
5023	- Suspension of trading as of 2/12/2013.
5031	- The 612,300 new (CR) shares, resulting from the recent share capital increase through a rights issue, are not yet admitted to trading on the ATHEX.
5033	- Transfer to the Surveillance Category as of 25/11/2011. The 97,144,575 new (CR) shares, resulting from the recent share capital increase through a rights issue, are not yet admitted to trading on the ATHEX.
5036	- The company's share is under suspension of trading as of 2/4/2012. During suspension, the company proceeded and concluded a share reverse split, according to which - after the conclusion of the corporate action - the total number of the company's shares, as well as, the last closing price of 30/03/2012 were adjusted.
5046	- Transfer to the Low Dispersion category as of 8/4/2011.
5047	- Suspension of trading as of 27/3/2014.
5049	- Under suspension of trading as of 1/4/2014.
5053	- Transfer to the UNDER DELETION category as of 10/4/2014.
5054	- Transfer to the Surveillance Category as of 10/4/2014.
5055	- Transfer to the Surveillance Category as of 10/4/2014.

**Shares' Notes**

Code	Note text
5056	- Transfer to the Under Supervision Category as of 14/4/2014.
5057	- Transfer to the Surveillance Category as of 29/12/2011.
5058	- Transfer to the Surveillance Category as of 29/12/2011.
5059	- Transfer to the Low Dispersion category as of 2/6/2014.
5061	- Suspension of trading as of 2/6/2014.
5062	- Transfer to the UNDER DELETION category as of 4/6/2014.

## Securities Blocks Details

Securities	Block Volume	Price	Block Trade Value	Time of approval	Note
OPAP (CR)	30,000	13.50	405,000.00	10:38:34	20
NATIONAL BANK (CR)	250,000	2.79	697,500.00	10:40:09	20
ALPHA BANK (W)	60	2.00	120.00	11:03:48	18
EUROBANK ERGASIAS (CR)	3,502,847	0.420	1,471,195.74	11:04:39	20
NATIONAL BANK (CR)	31,874	2.86	91,159.64	11:47:21	14
FOLLI FOLLIE (CR)	4,652	31.42	146,188.63	11:47:55	14
JUMBO SA (CR)	5,053	12.57	63,528.34	11:48:39	14
EUROBANK ERGASIAS (CR)	1,467,350	0.418	612,618.63	12:30:53	20
NATIONAL BANK (CR)	250,000	2.70	675,000.00	12:42:46	20
OPAP (CR)	21	13.16	276.36	13:59:14	18
AEGEAN AIRLINES (CR)	55,802	8.16	455,344.32	14:52:50	20
NATIONAL BANK (CR)	309,013	2.72	840,515.36	15:33:46	20
METKA (CR)	20,000	13.88	277,500.00	16:33:39	20
OTE (CR)	50,000	11.93	596,500.00	16:38:58	20
JUMBO SA (CR)	52,085	12.53	652,625.05	16:39:12	20
EUROBANK PROPERTIES REIC (CR)	39,735	8.90	353,641.50	16:44:57	20
MOTOR OIL (CR)	56,567	8.11	458,758.37	16:45:12	20
NATIONAL BANK (CR)	251,693	2.91	731,369.52	16:54:06	14
ALPHA BANK (CR)	976,488	0.751	733,244.84	16:55:41	14
OTE (CR)	25,000	11.91	297,750.00	16:55:45	20
ALPHA BANK (CR)	500,000	0.715	357,500.00	17:10:56	20
NATIONAL BANK (CR)	300,000	2.70	810,000.00	17:11:05	20
ALPHA BANK (CR)	10,000,000	0.710	7,100,000.00	17:11:32	20
EUROBANK ERGASIAS (CR)	1,447,882	0.410	593,631.62	17:11:45	20
HELLENIC EXCHANGES-A.S.E. (CR)	60,000	8.65	519,000.00	17:13:04	20
ALPHA BANK (CR)	740,000	0.715	529,100.00	17:17:55	20

## Blocks Notes

2 - SPOT 1 or SPOT 2 Packet	11 - Total Assets > 500 bil
3 - Block with Short Selling	12 - Sell Offer through Athex
4 - Buy to Close Block	13 - Forced Sale of NMOE
6 - Simultaneous Constitution	14 - Restoration Packet
7 - Repurchase Agreement	15 - Market Maker Packet
8 - Dispersion's Achievement (Not Listed)	16 - Short Selling
9 - Dispersion's Achievement (Listed)	18 - SPOT 1 Packet
10 - Share Capital Majority of Greek State (> 50 bil)	20 - Method 6-1 Packet

Shares Rights Details

Occured date	Exercise from	Exercise until	Trading until	Rights	Price min	Price max	Closing price	Last Bid	Last Ask	Volume	Trades	Transactions Value
-----------------	------------------	-------------------	------------------	--------	--------------	--------------	------------------	----------	----------	--------	--------	-----------------------

No Rights Transactions.

**Stock Borrowing**

<b>Securities</b>	Stock Borrowing through Helex (volume)	Stock Borrowing through OTC (volume) [1]	<b>Totals [2]</b>
ALPHA BANK (CR)	11,434,200	200,601,652	212,035,852
ATE (CR)	---	69,000	69,000
ATTICA BANK S.A. (CR)	33,000	---	33,000
BANK OF CYPRUS (CR)	---	102,899	102,899
CC HBC AG (CR)	48,200	72,576	120,776
CORINTH PIPEWORKS SA (CR)	9,800	---	9,800
ELLAKTOR (CR)	27,400	---	27,400
EUROBANK ERGASIAS (CR)	277,400	1,888,407	2,165,807
EUROBANK PROPERTIES REIC (CR)	16,200	23,369	39,569
EYDAP S.A. (CR)	20,500	---	20,500
FOLLI FOLLIE (CR)	57,800	32,060	89,860
FOURLIS (CR)	---	3,850	3,850
FRIGOGLASS SA (CR)	7,400	---	7,400
GEK TERNA (CR)	3,300	---	3,300
HELLENIC EXCHANGES-A.S.E. (CR)	400	876,600	877,000
HELLENIC PETROLEUM (CR)	65,800	360,402	426,202
INTRALOT (CR)	5,100	2,000	7,100
JUMBO SA (CR)	92,900	15,553	108,453
KARELIA TOBACCO CO. SA (CB)	---	84	84
LAMDA DEVELOPMENT SA (CR)	---	10,377	10,377
MARFIN INVESTMENT GROUP (CR)	17,800	728,474	746,274
METKA (CR)	50,500	---	50,500
MOTOR OIL (CR)	88,200	34,129	122,329
MYTILINEOS HOLDINGS (CR)	24,500	5,000	29,500
NATIONAL BANK (CR)	556,700	1,405,271	1,961,971
NBGAM ETF	10,000	---	10,000
NBGAM ETF GREECE & TURKEY 30	3,600	---	3,600
OPAP (CR)	188,600	60,982	249,582
OTE (CR)	32,000	178,543	210,543
P.P.A. S.A. (CR)	4,700	280	4,980
PIRAEUS BANK (CR)	224,000	18,238,478	18,462,478
PPC (CR)	119,100	37,804	156,904
TERNA ENERGY (CR)	---	2,000	2,000
TITAN CEMENT (CR)	86,400	1,496	87,896

**Stock Borrowing Notes**

[1] - The information concerning OTC Stock Borrowing Transactions is based on the statements of the Dematerialised Securities System (DSS) operators involved and refers to volumes that have been cleared and registered up until the previous working day.

**Shares Forced Sales**

Securities	Transaction s Volume	Number of Trades	Transactions Value	Note
No Forced Transactions.				

**Forced Sales Notes**

- 1 - Normal Forced Sale.
- 2 - Forced Sales of Fixed Registered Shares.
- 3 - Forced Sales of Remaining Stock Fractions.

**Forced Sales Registered Shares**

Securities	Start Date	End Date	Initial Volume	Remaining Volume	Date	Avg price (day)	Avg price (period)	Number of Trades	Transactions Volume	Transactions Value
------------	------------	----------	-------------------	---------------------	------	--------------------	-----------------------	---------------------	------------------------	-----------------------

**No Fixed Registered Shares Forced Sales.**

**Forced Sales Notes**

According to Decision 1/380/04.05.2008 of the Hellenic Republic Capital Market Commission, the certificated registered shares that have not been deposited to the issuer for dematerialisation, will be auctioned in the Athens Exchange by the supervising issuer. Forced sales procedure is held according to Article 99A of the Athens Exchange Rulebook. The average price of the period is calculated by dividing the Total transactions value by the Total volume and includes all the transactions made until the current date.



## Exchange Traded Funds (ETFs) Characteristics

	Transactions Date (T)	Creation / Redemption	Units (T-1)	New Units (T-1)	Redemptio n Units (T-	Units (T) [1]	Fund Assets [2]	Net Unit Price	Dividen d per	Dividend Date
NBGAM ETF ΓΔ Χ.Α.	13/06/2014	25,000	294,878	---	---	294,878	4,252,836.00	14.4224	---	27/10/2011
ALPHA ETF FTSE Athex Large Cap	13/06/2014	50,000	5,848,618	---	---	5,848,618	24,681,500.00	4.2201	0.05	01/07/2013
NBGAM ETF GREECE & TURKEY 30	13/06/2014	25,000	388,550	---	---	388,550	3,394,145.00	8.7354	---	27/10/2011

## ETFs Notes

[1] - Units (T) = Units (T-1) + New Units (T-1) - Redemption Units (T-1)

[2] - The Creation / Redemption Units of T-1 are included.

Corporate Bonds

Num Listed Bonds	Nominal price	Issue price	Today's Rate	Exp. Date	Duration (years)	Note	Coupon attached		Trading	Corporate Bonds	Price min	Price max	Closing price	Previous closing price/date		Volume	Transactions Value	Last order		Date	ear min	Year max
							Common	Preferred										Price	Buy / Sell			
4,150,176	4.77	4.77	5.00	19/03/2015	5	---	17	---	1	MARFIN INVESTMENT GROUP S.A. (Conver to CR shar)	---	---	---	90.0000	04/06/2014	---	---	91.0000	B	13/06/2014	62.5251	91.1000
1,794,284	12.49	9.77	5.31	12/07/2015	8	---	---	---	1	NIREUS S.A. (Convertible to CR shares)	---	---	---	12.0000	29/01/2014	---	---	11.0000	B	05/06/2014	12.0000	12.0000
212,817,904	1.00	1.00	6.30	29/07/2020	7	---	4	---	1	MARFIN INVESTMENT GROUP S.A. SERIES B (BOND)	---	---	---	0.8500	23/08/2013	---	---	98.0000	B	13/06/2014	0.8500	0.8500
2,156,827	1.00	1.00	7.00	29/07/2019	6	---	4	---	1	MARFIN INVESTMENT GROUP S.A. SERIES A (BOND)	---	---	---	1.0000	23/08/2013	---	---	1.0000	B	02/06/2014	1.0000	1.0000

Corporate Bonds Notes

Transactions Volume = (Pieces) \* (Nominal Price). Transactions Value = (Pieces) \* (Nominal Price) \* (price %) + (Accrued interest).  
The price of a Bond is stated as a percentage (%) of Bond's Nominal Price.  
Nominal Price in Euros (€), except if it is noted differently.

Government Bonds

Number Listed Bonds	Nominal price	Today's Rate	Accrued Interest Calc	Exp. Date [1]	Duration (years)	Note	Coupons Date	Curr. coupon value	Trading Unit	Government Bonds	Price min	Price max	Closing price	Previous closing price/date	Volume	Transactions Value	Price	Last order Buy / Sell	Date
2,658,781,973	1.00	4.30	Actual/Actual	24/02/2023	11	---	24/02	4.30	1	GGB-FXD-240223-11Y-2.000-1.00	---	---	---	---	---	---	---	---	---
2,658,781,973	1.00	4.30	Actual/Actual	24/02/2024	12	---	24/02	4.30	1	GGB-FXD-240224-12Y-2.000-1.00	---	---	---	---	---	---	---	---	---
2,658,781,973	1.00	4.30	Actual/Actual	24/02/2025	13	---	24/02	4.30	1	GGB-FXD-240225-13Y-2.000-1.00	---	---	---	---	---	---	---	---	---
2,658,781,973	1.00	4.30	Actual/Actual	24/02/2026	14	---	24/02	4.30	1	GGB-FXD-240226-14Y-2.000-1.00	---	---	---	---	---	---	---	---	---
2,658,781,973	1.00	4.30	Actual/Actual	24/02/2027	15	---	24/02	4.30	1	GGB-FXD-240227-15Y-2.000-1.00	---	---	---	---	---	---	---	---	---
2,836,034,104	1.00	4.30	Actual/Actual	24/02/2028	16	---	24/02	4.30	1	GGB-FXD-240228-16Y-2.000-1.00	---	---	---	---	---	---	---	---	---
2,836,034,104	1.00	4.30	Actual/Actual	24/02/2029	17	---	24/02	4.30	1	GGB-FXD-240229-17Y-2.000-1.00	---	---	---	---	---	---	---	---	---
2,836,034,104	1.00	4.30	Actual/Actual	24/02/2030	18	---	24/02	4.30	1	GGB-FXD-240230-18Y-2.000-1.00	---	---	---	---	---	---	---	---	---
2,836,034,104	1.00	4.30	Actual/Actual	24/02/2031	19	---	24/02	4.30	1	GGB-FXD-240231-19Y-2.000-1.00	---	---	---	---	---	---	---	---	---
2,836,034,104	1.00	4.30	Actual/Actual	24/02/2032	20	---	24/02	4.30	1	GGB-FXD-240232-20Y-2.000-1.00	---	---	---	---	---	---	---	---	---
2,836,034,104	1.00	4.30	Actual/Actual	24/02/2033	21	---	24/02	4.30	1	GGB-FXD-240233-21Y-2.000-1.00	---	---	---	---	---	---	---	---	---
2,836,034,104	1.00	4.30	Actual/Actual	24/02/2034	22	---	24/02	4.30	1	GGB-FXD-240234-22Y-2.000-1.00	---	---	---	---	---	---	---	---	---
2,836,034,104	1.00	4.30	Actual/Actual	24/02/2035	23	---	24/02	4.30	1	GGB-FXD-240235-23Y-2.000-1.00	---	---	---	---	---	---	---	---	---
2,836,034,104	1.00	4.30	Actual/Actual	24/02/2036	24	---	24/02	4.30	1	GGB-FXD-240236-24Y-2.000-1.00	---	---	---	---	---	---	---	---	---
2,836,034,104	1.00	4.30	Actual/Actual	24/02/2037	25	---	24/02	4.30	1	GGB-FXD-240237-25Y-2.000-1.00	---	---	---	---	---	---	---	---	---
2,836,034,104	1.00	4.30	Actual/Actual	24/02/2038	26	---	24/02	4.30	1	GGB-FXD-240238-26Y-2.000-1.00	---	---	---	---	---	---	---	---	---
2,836,034,104	1.00	4.30	Actual/Actual	24/02/2039	27	---	24/02	4.30	1	GGB-FXD-240239-27Y-2.000-1.00	---	---	---	---	---	---	---	---	---
2,836,034,104	1.00	4.30	Actual/Actual	24/02/2040	28	---	24/02	4.30	1	GGB-FXD-240240-28Y-2.000-1.00	---	---	---	---	---	---	---	---	---
2,836,034,104	1.00	4.30	Actual/Actual	24/02/2041	29	---	24/02	4.30	1	GGB-FXD-240241-29Y-2.000-1.00	---	---	---	---	---	---	---	---	---
2,836,034,104	1.00	4.30	Actual/Actual	24/02/2042	30	---	24/02	4.30	1	GGB-FXD-240242-30Y-2.000-1.00	---	---	---	---	---	---	---	---	---
1,500,000	1,000.00	0.97	FLR Actual/360	10/08/2014	5	---	10/02 - 10/08	---	1	GGB-FRN-100814-05Y-1.762-1000.00	---	---	---	---	---	---	---	---	---
3,000,000	1,000.00	4.75	Actual/Actual	17/04/2019	5	---	17/04	4.75	1	GGB-FXD-170419-05Y-4.750-1,000	---	---	---	---	---	---	---	---	---
78,300	1,000.00	1.16	FLR Actual/360	23/07/2014	5	---	23/01 - 23/07	---	1	GGB-FRN-230714-05Y-2.018-1000.00	---	---	---	---	---	---	---	---	---

Government Bonds Notes

Transactions Volume = (Pieces) \* (Nominal Price). Transactions Value = (Pieces) \* (Nominal Price) \* (price %) + (Accrued interest).

The Value of current coupon for the issues with NV 0.01 euro refers to NV 100 euros

FLR: Floating Interest Rate.

[1] - The Expiration Date of the interest bearing period and the Date for coupon payment.

Bonds in Circulation	Currency / Min nominal traded Value	Coupons Payment Date	Current Coupon Value	Note	Coupon Attached	Trading Unit	Issue Date	Duration (years)	Today's Interest	A.I.C in days	Bonds	Last price of previous days		Last Outcry in Cash (euro)			Trades in Pieces	Life min	Life Max
														Price	Buy / Sell	Date			
Bonds of International Organizations																			
1,000,000	EUR / 1000	21/07	---	---	8	1	21/07/2006	10	5.0 FLR	360	EUROPEAN INVESTMENT BANK BOND	97.50	16/04/2007	---	---	---	---	---	---
Corporate Bonds in Foreign Currency and Euro																			
103,746	GBP / 10	01/12	0.25	---	55	1	01/12/1930	98	2.5	360	National Mortgage Bank	2.27	05/02/1996	2.27	S	05/02/1996	---	2.27	2.27
0	GBP / 10	01/12	0.25	---	57	1	01/12/1928	100	2.5	360	National Mortgage Bank	---	---	---	---	---	---	---	---

Government Bonds Notes

A.I.C: Accrued Interest Calculation base.  
FLR: Floating Interest Rate.  
The minimum tradeable Nominal Value for all Demeterialised Government Titles is 100 Euros.

State Banks Bonds (one year maturity)

Number Listed Bonds	Nominal value	Initial Rate	Current Rate	Annual Interest	Issue Date	Note	State Banks Bonds	Trading Unit	Yearly Renewals	Last Outcry in Cash (euro) Price	Buy / Sell	Volume
342,560	135.17	2.35	3.92	0.00	31/01/2005	---	H.I.D.B.	1	10	100.00	B	---
2,446	1,182.96	4.90	2.47	29.69	31/05/2008	---	H.I.D.B.	1	7	---	---	---
63,787	1,129.20	5.45	2.47	30.88	31/08/2008	---	H.I.D.B.	1	6	---	---	---

Bonds Notes

The annual renewal of H.I.D.B. Bonds is free of taxes (net rate).  
For Bonds issue until 31/05/2014 the accrued interest is capitalized.

Athex & ATHEXClear Members List

Member Name			Stock Market			Derivatives Market			ATHEXClear Member		
Address	Phone	Fax	Market Member	Remote Member	Market Maker	Proprietary	Market Maker	Agent	General Clearing	Direct Clearing	Non Clearing
A. SARRIS SECURITIES S.A.			✓								
6, DRAGATSANIOU STR. ATHINA	(210)-3367700	(210)-3312324									
AGRICULTURAL BANK OF GREECE S.A.							✓			✓	
, 23 PANEPISTIMIOU ATHINA	(210)-3298400	(210)-3298322									
ALPHA FINANCE INVESTMENT SERVICES S.A.			✓		✓		✓			✓	
5, MERLIN STR. ATHINA	(210)-3677400	(210)-3311193									
ALPHA BANK A.E.						✓			✓		
40, STADIOU STR ATHINA	(210)-3265546	(210)-3265811									
	(210)-3260000	(210)-3264116									
ARGUS STOCKBROKERS LTD			✓	✓							
12-14, KENNEDY AVE. S. 303 NICOSIA	(+35722)-22717000	(+35722)-22717070									
ATHENAIKI BROKERAGE FIRM S.A.			✓								
33, STADIOU STR. ATHINA	(210)-3254764	(210)-3254767									
ATLANTIC SECURITIES LIMITED			✓	✓							
37, PRODROMOU STR. NICOSIA	(+35722)-445400	(+35722)-661914									
ATLAS SECURITIES S.A			✓			✓					✓
14 - 16, VERVENON STR.& 125 MICHALAKOPOULOU STR. ATHINA	(210)-3363300	(210)-3238925									
ATTICA BANK S.A.									✓		
54, AKADIMIAS STR. ATHINA	(210)-3390757	(210)-3646090									
23, OMIROU STR. ATHINA	(210)-3669000	(210)-3669410									
AXIA VENTURES GROUP LTD			✓	✓							
10, G. KRANIDIOTI NICOSIA	+357 22 742000	+357 22 742001									
AXON SECURITIES S.A.			✓			✓					✓
48, STADIOU ATHINA	(210)-3363800	(210)-3243903									
BANK OF CYPRUS PUBLIC COMPANY LTD									✓		
170, ALEXANDRAS AVE ATHINA	(210)-6477708	(210)-6477709									
, 51,STASINOU (AG. PARASKEVI, STROVOLOS) NICOSIA	(0035722)-121883	(0035722)-336258									
BETA SECURITIES S.A.			✓		✓	✓	✓			✓	
, BRAILA & 29 ALEXANDRAS AVE ATHINA	(210)-6478900	(210)-6410139									
BNP PARIBAS SECURITIES SERVICES									✓		
94, VAS. SOFIAS AVE ATHINA	(210)-7468500	(210)-7468579									
CAPITAL SECURITIES S.A.			✓			✓					✓
58, MITROPOLEOS STR. ATHINA	(210)-3369700	(210)-3369820									
CFS SECURITIES & INVESTMENT SERVICES S.A.			✓		✓			✓		✓	
3, STADIOU STR. ATHINA	(210)-3360800	(210)-3311854									
CITIGROUP GLOBAL MARKET LTD			✓	✓							
, CITIGROUP CENTRE, CANADA SQUARE, CANARY WHART LONDON	002079864000	002079862266									
CO-OPERATIVE CENTRAL BANK LTD			✓	✓							
8, GRIGORI AFXENTIOU STR. NICOSIA	(+35722)-743300	(+35722)-672083									
CREDIT AGRICOLE CHEUVREUX S.A.				✓							
, 9 QUAI PAUL DOUMER PARIS	33 (0) 1 41 89 70 00										
CREDIT SUISSE SECURITIES (EUROPE) LIMITED			✓	✓							
, ONE CABOT SQUARE LONDON	+44 20 7888 8888	+44 20 7888 1600									
CYCLOS SECURITIES S.A.			✓		✓	✓				✓	
39, PANEPISTIMIOU STR. ATHINA	(210)-3364300	(210)-3239122									
D.A. TSEKOURAS SEC. S.A.			✓								
3, PESMAZOGLOU STR. ATHINA	(210)-3214406	(210)-3211997									
DEUTSCHE BANK A.G.			✓	✓							
70, THEODOR-HEUSS-ALLEE FRANKFURT	0049 69 910 00	0049 69 910 34 225									
DYNAMIC SECURITIES			✓					✓		✓	
6 - 10, CHAR. TRIKOUPi STR. ATHINA	(210)-3677700	(210)-3677777									
EL. PETROPOULAKIS SECURITIES S.A.			✓					✓			✓
9, ARISTIDOU STR. ATHINA	(210)-3213928	(210)-3216810									
EUROBANK EQUITIES S.A.			✓		✓		✓			✓	
10, FILELLINON STR. ATHINA	(210)-3720000	(210)-3720001									
EUROBANK ERGASIAS S.A.									✓		
8, OTHONOS STR. ATHINA	(210)-3337000	(210)-3233866									
	(210)-3337969	(210)-3245916									
EUROCORP SECURITIES S.A.			✓			✓				✓	
14, FILIKIS ETAIRIAS SQ. ATHINA	(210)-7263500	(210)-7263666									
EUOTRUST BROKERAGE S.A.			✓								
13-15, SOPHOCLEOUS STR. ATHINA	(210)-3363100	(210)-3238334									

Athex & ATHEXClear Members List

Member Name			Stock Market			Derivatives Market			ATHEXClear Member		
Address	Phone	Fax	Market Member	Remote Member	Market Maker	Proprietary	Market Maker	Agent	General Clearing	Direct Clearing	Non Clearing
EUROXX SECURITIES S.A.			✓			✓				✓	
7, PALAIOLOGOU STR. CHALANDRI	(210)-6879400	(210)-6879401									
G.A. PERVANAS SECURITIES & INVESTMENT SERVICES CO S.A.			✓			✓					✓
7 - 9, SOPHOCLEOUS STR. ATHINA	(210)-3251875	(210)-3210291									
GENERAL BANK OF GREECE S.A.									✓		
, 109-111, MESOGEION AVE. ATHINA	(210)-3288737	(210)-3288211									
87-89, ERMOY ATHINA	(210)-6976072	(210)-6976079									
GLOBAL CAPITAL SECURITIES AND FINANCIAL SERVICES LTD			✓	✓							
5, LEMESOU AVE. LEMESOS CYPRUS	(+35722)-710710	(+35722)-339332									
GUARDIAN TRUST SECURITIES S.A			✓		✓	✓					✓
15, FILELLINON STR. ATHINA	(210)-3220402	(210)-3220498									
HELLENIC AMERICAN SEC. S.A.			✓			✓					
6, EVRIPIDOU STR. ATHINA	(210)-3311100	(210)-3215968									
HELLENIC BANK (INVESTMENTS) LTD			✓	✓							
31, KYRIAKOY MATSI AVE. NICOSIA	(+35722)-500100	(+35722)-500110									
HSBC BANK PLC									✓		
109-111, MESOGION AVE ATHINA	(210)-6961507	(210)-6929310									
INDEX SECURITIES S.A.			✓								
6, DRAGATSANIOU STR. ATHINA	(210)-3213920	(210)-3213216									
INTERSEC S.A.						✓				✓	
80-88, SYGROU AVE ATHINA	(210)-9203000	(210)-9203052									
INVESTMENT BANK OF GREECE S.A.			✓		✓		✓		✓		
24B, KIFISSIAS AVE MAROUSI	(210)-8171800	(210)-8171889									
32, AIGEIALIAS MAROUSI	(210) 8173000	(210) 8173101									
J. CHR. MAVRIKIS SECURITIES S.A.			✓								
5, SOPHOCLEOUS STR. ATHINA	(210)-3213949	(210)-3217767									
KAPPA SECURITIES S.A.			✓			✓					✓
15, VALAORITOU STR. ATHINA	(210)-3610371	(210)-3641002									
KYPROU SECURITIES S.A.					✓	✓					✓
26, HALKIDONOS & FIDIPPIDOY STR. ATHINA	(210)-8701000	(210)-8701049									
LAIKI FINANCIAL SERVICES LTD			✓	✓							
26, CLR HOUSE, VIROMOS AVE. NICOSIA	(+35722)-898600	(+35722)-680953									
LEON DEPOLAS SECURITIES S.A.			✓					✓			✓
1, CHR. LADA STR. ATHINA	(210)-3213286	(210)-3211618									
MAGNA TRUST SECURITIES S.A			✓					✓			✓
9, FIDIOU STR. ATHINA	(210)-3327503	(210)-3327599									
MEGA EQUITY SECURITIES & FINANCIAL SERVICES LTD			✓	✓							
42-44, GRIBA DIGENI AV. NICOSIA	(+35722)-711711	(+35722)-711811									
MERIT SECURITIES S.A			✓		✓	✓				✓	
38, VAS. KONSTANTINOY STR. ATHINA	(210)-3671800	(210)-3671830									
MERRILL LYNCH			✓	✓							
2, KING EDWARD STREET LONDON	(+4420)-79952000	(+4420)-79954525									
METOCHIKI SECURITIES S.A.			✓								
3, G. GENNADIOY STR. ATHINA	(210)-3306700	(210)-3306709									
MIDAS BROKERAGE S.A.			✓								
5, SOPHOCLEOUS STR. ATHINA	(210)-3253203	(210)-3253205									
N. CHRYSOCHOIDIS STOCK BROKERAGE I.S.S.A.			✓					✓		✓	
7 - 9, SOPHOCLEOUS STR. ATHINA	(210)-3213913	(210)-3216115									
N. SARROS SECURITIES S.A.						✓					
7-9, SOPHOCLEOUS STR. ATHINA	(210)-3705600	(210)-3219992									
NATIONAL BANK OF GREECE / FORMER PROBANK			✓								
10, AMERIKIS STR. ATHINA	(210)-3392631	(210)-3392646									
NATIONAL BANK OF GREECE S.A.							✓		✓		
86, AILOU STR. ATHINA	(210)-3341000	(210)-3228187									
68, AKADIMIAS STR. ATHINA	(210)-3328817	(210)-3328678									
NBG SECURITIES S.A.			✓		✓		✓				✓
68, AKADIMIAS STR. ATHINA	(210)-3328500	(210)-3328565									
NEW PROTON BANK S.A.						✓				✓	
20, ESLIN & AMALIADOS ATHINA	210 6970000	210 6970111									
NUNTIOUS SECURITIES S.A			✓					✓			✓
6, DRAGATSANIOU STR. ATHINA	(210)-3350599	(210)-3254846									
PANTELAKIS SEC. S.A.			✓			✓					✓
109-111, MESOGION AVE. ATHINA	(210)-6965000	(210)-6929550									

## Athex &amp; ATHEXClear Members List

Member Name			Stock Market			Derivatives Market			ATHEXClear Member		
Address	Phone	Fax	Market Member	Remote Member	Market Maker	Proprietary	Market Maker	Agent	General Clearing	Direct Clearing	Non Clearing
<b>PEGASUS BROKERAGE FIRM S.A</b>			✓			✓					
17, VALAORITOU STR. ATHINA	(210)-3670700	(210)-3670760									
<b>PIRAEUS BANK S.A.</b>			✓					✓	✓		
4, AMERIKIS STR. ATHINA	(210)-3335918	(210)-3254207									
4, AMERIKIS STR. ATHINA	(210)-3335000	(210)-3335079									
<b>PIRAEUS SECURITIES S.A.</b>			✓				✓			✓	
10, STADIOU STR. ATHINA	(210)-3354100	(210)-3233814									
<b>PRELIUM SECURITIES &amp; INVESTMENT SERVICES S.A.</b>			✓			✓					✓
, KIFISSIAS AVE & 1 DAVAKI STR. ATHINA	(210)-3677000	(210)-6920403									
<b>PROCHOICE SECURITIES LTD</b>			✓	✓							
57, SPYROU KYPRIANOY NICOSIA	+357-24-661192	+357-24-662464									
<b>SHARELINK SECURITIES &amp; FINANCIAL SERVICES LTD</b>			✓	✓							
6, ELLINAS HOUSE, THEOTOKI STR. NICOSIA	(+35722)-554200	(+35722)-750852									
<b>SOCIETE GENERALE S.A.</b>			✓	✓		✓					
240-242, KIFISSIAS AVE. ATHINA	(210)-6790161	(210)-6728828									
17, COURS VALMY PUTEAUX - LA DEFENSE PARIS	(+33) 142134754	(+33) 142135697									
<b>SOLIDUS SECURITIES S.A</b>			✓			✓				✓	
64, LOUIZIS RIANKOUR STR. ATHINA	(210)-6925500	(210)-6985421									
<b>ST. EM. LAVRENTAKIS SECURITIES S.A.</b>			✓			✓					✓
7 - 9, SOPHOCLEOUS STR. ATHINA	(210)-3213336	(210)-3246572									
<b>THE CYPRUS INVESTMENT AND SECURITIES CORPORATION LIMITED (CISCO)</b>			✓	✓							
4, EVROU STR. (EUROLIFE HOUSE) NICOSIA	(+35722)-881800	(+35722)-881801									
<b>UBS LIMITED</b>			✓	✓							
1, FINSBURY AVENUE LONDON	(+4420)-79013333	(+4420)-79012345									
<b>Z.G. PORTALAKIS INVESTMENT SERVICES S.A.</b>			✓								
8, PESMAZOGLOU STR. ATHINA	(210)-3214830	(210)-3212024									
<b>KARAMANOF SECURITIES &amp; INV. SERVICES S.A.</b>			✓					✓		✓	
2, SQ. ST. THEODORON ATHINA	(210)-3212947	(210)-3217088									



## List of Stocks under Market Making operations

Securities	Stock Category	
	Start Market Making	End Market Making
<b>CYPRUS POPULAR BANK (CR)</b>	<b>Under Suspension</b>	
PIRAEUS SECURITIES S.A.	02/02/2013	01/01/2400
<b>VIOHALCO (CB)</b>	<b>Under Suspension</b>	
ALPHA FINANCE INVESTMENT SERVICES S.A.	11/02/2013	01/01/2400
EUROBANK EQUITIES S.A.	20/01/2013	01/01/2400
MERIT SECURITIES S.A.	13/12/2012	01/01/2400
<b>ALPHA BANK (CR)</b>	<b>Main Market</b>	
EUROBANK EQUITIES S.A.	24/10/2012	01/01/2400
INVESTMENT BANK OF GREECE S.A.	08/01/2013	01/01/2400
MERIT SECURITIES S.A.	03/09/2013	01/01/2400
NBG SECURITIES S.A.	15/01/2013	01/01/2400
PIRAEUS SECURITIES S.A.	28/05/2013	01/01/2400
<b>ALUMIL (CR)</b>	<b>Main Market</b>	
BETA SECURITIES S.A.	18/07/2013	01/01/2400
<b>ATTICA BANK S.A. (CR)</b>	<b>Main Market</b>	
BETA SECURITIES S.A.	02/06/2014	01/01/2400
<b>BYTE COMPUTER SA (CR)</b>	<b>Main Market</b>	
MERIT SECURITIES S.A.	04/08/2013	01/01/2400
<b>CC HBC AG (CR)</b>	<b>Main Market</b>	
EUROBANK EQUITIES S.A.	23/10/2013	01/01/2400
NBG SECURITIES S.A.	29/04/2013	01/01/2400
<b>ELLAKTOR (CR)</b>	<b>Main Market</b>	
EUROBANK EQUITIES S.A.	01/06/2013	01/01/2400
INVESTMENT BANK OF GREECE S.A.	02/01/2013	01/01/2400
NBG SECURITIES S.A.	25/06/2013	01/01/2400
<b>ELTON SA (CR)</b>	<b>Main Market</b>	
BETA SECURITIES S.A.	03/09/2013	01/01/2400
<b>EUROBANK ERGASIAS (CR)</b>	<b>Main Market</b>	
ALPHA FINANCE INVESTMENT SERVICES S.A.	08/01/2013	01/01/2400
EUROBANK EQUITIES S.A.	01/06/2013	01/01/2400
INVESTMENT BANK OF GREECE S.A.	08/01/2013	01/01/2400
PIRAEUS SECURITIES S.A.	28/09/2013	01/01/2400
<b>FOLLI FOLLIE (CR)</b>	<b>Main Market</b>	
NBG SECURITIES S.A.	17/02/2014	01/01/2400
<b>FRIGOGLASS SA (CR)</b>	<b>Main Market</b>	
EUROBANK EQUITIES S.A.	23/08/2013	01/01/2400
<b>GEK TERNA (CR)</b>	<b>Main Market</b>	
INVESTMENT BANK OF GREECE S.A.	02/01/2013	01/01/2400
<b>GR. SARANTIS SA (CR)</b>	<b>Main Market</b>	
BETA SECURITIES S.A.	14/05/2013	01/01/2400
<b>HELLENIC EXCHANGES-A.S.E. (CR)</b>	<b>Main Market</b>	
EUROBANK EQUITIES S.A.	01/06/2013	01/01/2400
INVESTMENT BANK OF GREECE S.A.	02/01/2013	01/01/2400
NBG SECURITIES S.A.	25/06/2013	01/01/2400
<b>INTRACOM CONSTR. (CR)</b>	<b>Main Market</b>	
MERIT SECURITIES S.A.	27/12/2012	01/01/2400
<b>INTRALOT (CR)</b>	<b>Main Market</b>	
EUROBANK EQUITIES S.A.	01/06/2013	01/01/2400
INVESTMENT BANK OF GREECE S.A.	02/01/2013	01/01/2400
PIRAEUS SECURITIES S.A.	28/09/2013	01/01/2400
<b>MARFIN INVESTMENT GROUP (CR)</b>	<b>Main Market</b>	
PIRAEUS SECURITIES S.A.	02/02/2013	01/01/2400
<b>MLS MULTIMEDIA SA (CR)</b>	<b>Main Market</b>	
BETA SECURITIES S.A.	18/07/2013	01/01/2400
<b>MOTOR OIL (CR)</b>	<b>Main Market</b>	
EUROBANK EQUITIES S.A.	23/10/2012	01/01/2400
NBG SECURITIES S.A.	17/02/2014	01/01/2400
<b>MYTILINEOS HOLDINGS (CR)</b>	<b>Main Market</b>	
INVESTMENT BANK OF GREECE S.A.	02/01/2013	01/01/2400
NBG SECURITIES S.A.	25/06/2013	01/01/2400
<b>NATIONAL BANK (CR)</b>	<b>Main Market</b>	
ALPHA FINANCE INVESTMENT SERVICES S.A.	08/01/2013	01/01/2400
EUROBANK EQUITIES S.A.	24/10/2012	01/01/2400
INVESTMENT BANK OF GREECE S.A.	08/01/2013	01/01/2400
MERIT SECURITIES S.A.	03/09/2013	01/01/2400
NBG SECURITIES S.A.	28/02/2013	01/01/2400
PIRAEUS SECURITIES S.A.	08/09/2013	01/01/2400

## List of Stocks under Market Making operations

Securities	Stock Category	
	Start Market Making	End Market Making
<b>OPAP (CR)</b>	<b>Main Market</b>	
ALPHA FINANCE INVESTMENT SERVICES S.A.	08/01/2013	01/01/2400
EUROBANK EQUITIES S.A.	24/10/2012	01/01/2400
INVESTMENT BANK OF GREECE S.A.	08/01/2013	01/01/2400
NBG SECURITIES S.A.	15/01/2013	01/01/2400
<b>OTE (CR)</b>	<b>Main Market</b>	
ALPHA FINANCE INVESTMENT SERVICES S.A.	08/01/2013	01/01/2400
EUROBANK EQUITIES S.A.	24/10/2012	01/01/2400
INVESTMENT BANK OF GREECE S.A.	08/01/2013	01/01/2400
NBG SECURITIES S.A.	01/12/2012	01/01/2400
PIRAEUS SECURITIES S.A.	08/09/2013	01/01/2400
<b>PAPOUTSANIS (CR)</b>	<b>Main Market</b>	
BETA SECURITIES S.A.	25/11/2013	01/01/2400
<b>PETROPOULOS PETROS (CR)</b>	<b>Main Market</b>	
BETA SECURITIES S.A.	28/05/2013	01/01/2400
<b>PIRAEUS BANK (CR)</b>	<b>Main Market</b>	
EUROBANK EQUITIES S.A.	23/10/2012	01/01/2400
INVESTMENT BANK OF GREECE S.A.	08/01/2013	01/01/2400
MERIT SECURITIES S.A.	16/09/2013	01/01/2400
NBG SECURITIES S.A.	02/06/2013	01/01/2400
PIRAEUS SECURITIES S.A.	16/02/2013	01/01/2400
<b>PLAISIO COMPUTERS SA (CR)</b>	<b>Main Market</b>	
BETA SECURITIES S.A.	05/05/2014	01/01/2400
<b>PPC (CR)</b>	<b>Main Market</b>	
ALPHA FINANCE INVESTMENT SERVICES S.A.	08/01/2013	01/01/2400
EUROBANK EQUITIES S.A.	23/10/2012	01/01/2400
INVESTMENT BANK OF GREECE S.A.	08/01/2013	01/01/2400
NBG SECURITIES S.A.	26/03/2013	01/01/2400
PIRAEUS SECURITIES S.A.	28/09/2013	01/01/2400
<b>S.KANAKIS SA (CR)</b>	<b>Main Market</b>	
BETA SECURITIES S.A.	01/10/2013	01/01/2400
<b>TITAN CEMENT (CR)</b>	<b>Main Market</b>	
EUROBANK EQUITIES S.A.	23/10/2012	01/01/2400
NBG SECURITIES S.A.	17/02/2014	01/01/2400
<b>VIOHALCO SA/NV (CB)</b>	<b>Main Market</b>	
ALPHA FINANCE INVESTMENT SERVICES S.A.	17/02/2014	01/01/2400
MERIT SECURITIES S.A.	17/03/2014	01/01/2400

Underlying Asset				Derivatives Market																		
Price max	Price min	Closing price	change	Delivery Month	Open price	Price max	Price min	Last price	Closing price	Last Bid	Last Ask	Settlement price	change	Life high	Life low	Trades	Volume	change	Value	change	Open Interest	change
FTSE/Athex Large Cap				(Trade Unit: 1 Index Point x 5€, Cash Settlement)																		
422.38	410.44	410.74	-2.90%	June 2014	421.50	422.25	409.00	409.25	410.50	81@409.25	9@409.75	410.50	-3.13%	448.75	340.50	789	11,131	49.99%	22,930,576.25	46.55%	51,342	-6.92%
				July 2014	422.50	422.50	408.00	408.25	409.50	81@408.25	9@408.75	409.50	-3.13%	437.00	342.00	366	5,223	38.32%	10,731,516.25	35.24%	12,297	49.00%
				August 2014	410.50	413.25	409.50	409.50	411.25	4@408.75	43@411.75	411.25	-2.78%	427.00	366.00	3	10	233.33%	20,518.75	223.96%	51	2.00%
				September 2014	417.00	417.00	410.25	411.00	413.00	1@409.00	---	413.00	-2.82%	425.00	343.00	4	206	85.59%	427,696.25	81.85%	373	-7.67%
				December 2014	---	---	---	---	---	---	---	---	---	---	---	---	---	---	---	---	---	---
				March 2015	---	---	---	---	---	---	---	---	---	---	---	---	---	---	---	---	---	---

Underlying Asset				Derivatives Market																		
Price max	Price min	Closing price	change	Delivery Month	Open price	Price max	Price min	Last price	Closing price	Last Bid	Last Ask	Settlement price	change	Life high	Life low	Trades	Volume	change	Value	change	Open Interest	change
ALPHA BANK (CR)				(Contract Size: 100 Securities, Physical Delivery)																		
0.730	0.706	0.715	-1.52%	June 2014	0.720	0.723	0.706	0.710	0.713	70@0.711	52@0.717	0.713	-1.79%	0.780	0.561	114	5,647	167.88%	402,506.10	164.24%	39,068	-7.39%
				September 2014	0.722	0.722	0.706	0.708	0.712	15@0.707	50@0.719	0.712	-2.20%	0.780	0.635	41	1,745	83.11%	124,068.70	80.73%	4,922	51.17%
				December 2014	0.726	0.736	0.711	0.733	0.731	---	---	0.731	-2.53%	0.775	0.616	6	1,300	160.00%	95,150.00	154.75%	4,000	48.15%
				March 2015	---	---	---	---	---	---	---	---	---	---	---	---	---	---	---	---	---	---
CC HBC AG (CR)				(Contract Size: 100 Securities, Physical Delivery)																		
17.60	17.40	17.54	0.23%	June 2014	17.42	17.51	17.42	17.50	17.58	2@17.46	1@17.55	17.58	0.23%	18.79	16.29	5	12	-94.03%	20,978.00	-94.00%	266	-3.97%
				September 2014	17.21	17.42	17.21	17.42	17.33	2@17.18	1@17.43	17.33	-0.86%	17.42	16.25	4	8	-93.04%	13,810.00	-93.05%	193	0.00%
				December 2014	---	---	---	---	---	---	---	---	---	---	---	---	---	---	---	---	---	---
				March 2015	---	---	---	---	---	---	---	---	---	---	---	---	---	---	---	---	---	---
CORINTH PIPEWORKS SA (CR)				(Contract Size: 100 Securities, Physical Delivery)																		
1.73	1.67	1.68	-1.75%	June 2014	1.69	1.69	1.68	1.68	1.65	1@1.67	11@1.71	1.65	-1.79%	2.23	1.43	4	10	-86.67%	1,687.00	-86.92%	578	-1.70%
				September 2014	1.74	1.74	1.72	1.72	1.68	1@1.69	3@1.72	1.68	-0.59%	1.77	1.68	2	5	-93.59%	866.00	-93.58%	162	3.18%
				December 2014	---	---	---	---	---	---	---	---	---	---	---	---	---	---	---	---	---	---
				March 2015	---	---	---	---	---	---	---	---	---	---	---	---	---	---	---	---	---	---
ELLAKTOR (CR)				(Contract Size: 100 Securities, Physical Delivery)																		
4.05	3.95	4.00	-1.48%	June 2014	3.99	4.02	3.99	4.02	4.01	5@3.96	7@4.03	4.01	-0.25%	4.18	3.34	20	126	36.96%	50,355.00	34.11%	1,741	-6.60%
				September 2014	4.02	4.03	3.99	4.01	4.02	1@3.99	7@4.06	4.02	-1.47%	4.14	3.99	7	29	-75.83%	11,606.00	-76.17%	172	20.28%
				December 2014	---	---	---	---	---	---	---	---	---	---	---	---	---	---	---	---	---	---
				March 2015	---	---	---	---	---	---	---	---	---	---	---	---	---	---	---	---	---	---
EUROBANK ERGASIAS (CR)				(Contract Size: 100 Securities, Physical Delivery)																		
0.427	0.410	0.410	-4.21%	June 2014	0.424	0.426	0.407	0.413	0.414	50@0.412	5@0.414	0.414	-3.72%	0.802	0.317	73	4,861	330.56%	201,903.40	315.29%	68,330	-4.11%
				September 2014	0.420	0.425	0.408	0.408	0.411	20@0.407	300@0.413	0.411	-3.97%	0.433	0.330	49	4,431	642.21%	185,500.30	624.90%	10,812	62.90%
				December 2014	---	---	---	---	0.425	---	---	0.425	-3.63%	0.410	0.322	---	---	---	---	---	---	---
				March 2015	---	---	---	---	---	---	---	---	---	---	---	---	---	---	---	---	---	---
EUROBANK PROPERTIES REIC (CR)				(Contract Size: 100 Securities, Physical Delivery)																		
9.24	8.81	8.90	-3.68%	June 2014	9.22	9.22	8.86	8.92	8.71	1@8.77	5@9.33	8.71	-3.65%	9.37	7.71	8	53	47.22%	47,703.00	44.89%	27	-10.00%
				September 2014	9.10	9.20	8.89	8.89	8.69	1@8.73	5@9.29	8.69	-3.44%	9.28	7.97	8	26	73.33%	23,498.00	71.58%	143	-1.38%
				December 2014	---	---	---	---	---	---	---	---	---	---	---	---	---	---	---	---	---	---
				March 2015	---	---	---	---	---	---	---	---	---	---	---	---	---	---	---	---	---	---
EYDAP S.A. (CR)				(Contract Size: 100 Securities, Physical Delivery)																		
9.58	9.18	9.58	0.21%	June 2014	9.35	9.48	9.23	9.48	9.37	2@9.36	5@9.60	9.37	-2.09%	9.72	7.98	26	104	136.36%	96,976.00	135.22%	298	-17.22%
				September 2014	9.33	9.41	9.24	9.27	9.27	---	5@9.67	9.27	-3.24%	9.44	9.24	9	47	176.47%	43,933.00	177.71%	60	114.29%
				December 2014	---	---	---	---	---	---	---	---	---	---	---	---	---	---	---	---	---	---
				March 2015	---	---	---	---	---	---	---	---	---	---	---	---	---	---	---	---	---	---
FOLLI FOLLIE (CR)				(Contract Size: 100 Securities, Physical Delivery)																		
32.80	32.10	32.60	-1.21%	June 2014	32.46	32.56	32.24	32.52	31.44	1@32.50	5@33.30	31.44	-1.19%	33.10	22.77	8	12	-62.50%	38,996.00	-62.75%	440	-2.00%
				September 2014	31.94	31.94	31.94	31.94	31.05	1@32.12	1@32.99	31.05	-1.18%	32.54	25.27	1	1	0.00%	3,194.00	-1.48%	19	5.56%
				December 2014	---	---	---	---	---	---	---	---	---	---	---	---	---	---	---	---	---	---
				March 2015	---	---	---	---	---	---	---	---	---	---	---	---	---	---	---	---	---	---

Underlying Asset				Derivatives Market																		
Price max	Price min	Closing price	change	Delivery Month	Open price	Price max	Price min	Last price	Closing price	Last Bid	Last Ask	Settlement price	change	Life high	Life low	Trades	Volume	change	Value	change	Open Interest	change
FRIGOGLASS SA (CR)				(Contract Size: 100 Securities, Physical Delivery)																		
4.19	4.04	4.10	-2.15%	June 2014	4.12	4.12	4.02	4.12	4.17	10@4.04	6@4.13	4.17	-2.11%	5.46	2.99	9	9	-92.37%	3,675.00	-92.47%	1,015	-0.88%
				September 2014	4.11	4.11	4.11	4.11	4.20	10@4.07	6@4.16	4.20	-2.10%	4.18	3.81	1	1	-98.94%	411.00	-98.95%	128	0.79%
				December 2014	---	---	---	---	---	---	---	---	---	---	---	---	---	---	---	---	---	---
				March 2015	---	---	---	---	---	---	---	---	---	---	---	---	---	---	---	---	---	---
GEK TERNA (CR)				(Contract Size: 100 Securities, Physical Delivery)																		
3.95	3.82	3.85	-3.27%	June 2014	3.92	3.92	3.81	3.81	3.84	15@3.80	2@3.83	3.84	-3.76%	4.23	3.04	31	221	-97.30%	85,539.00	-97.35%	6,081	-2.89%
				September 2014	3.96	3.96	3.85	3.86	3.87	20@3.82	2@3.86	3.87	-3.49%	4.24	3.17	23	148	-98.16%	57,714.00	-98.20%	18,541	0.75%
				December 2014	---	---	---	---	3.85	---	15@4.39	3.85	-3.75%	4.01	3.93	---	---	-100.00%	---	-100.00%	200	0.00%
				March 2015	---	---	---	---	3.96	---	---	3.96	-3.65%	4.07	4.06	---	---	---	---	---	5,000	0.00%
HELLENIC EXCHANGES-A.S.E. (CR)				(Contract Size: 100 Securities, Physical Delivery)																		
9.11	8.61	8.65	-4.94%	June 2014	9.08	9.08	8.66	8.71	8.70	1@8.64	1@8.71	8.70	-4.19%	9.50	7.12	44	188	198.41%	166,358.00	187.62%	6,351	-1.96%
				September 2014	9.08	9.08	8.70	8.77	8.75	1@8.70	1@8.77	8.75	-4.89%	9.50	6.95	32	141	187.76%	125,097.00	178.71%	1,284	10.59%
				December 2014	---	---	---	---	---	---	---	---	---	---	---	---	---	---	---	---	---	---
				March 2015	---	---	---	---	---	---	---	---	---	---	---	---	---	---	---	---	---	---
HELLENIC PETROLEUM (CR)				(Contract Size: 100 Securities, Physical Delivery)																		
6.25	6.09	6.09	-1.62%	June 2014	6.23	6.23	6.10	6.13	6.13	13@6.11	5@6.15	6.13	-1.29%	9.58	5.10	83	306	-37.93%	188,228.00	-37.17%	6,820	-3.85%
				September 2014	6.24	6.25	6.15	6.16	6.16	4@6.16	5@6.19	6.16	-1.12%	6.26	5.31	72	214	-71.99%	132,474.00	-71.83%	1,872	11.89%
				December 2014	6.23	6.23	6.17	6.17	6.14	---	---	6.14	-1.60%	6.29	5.46	6	30	-88.24%	18,614.00	-88.26%	355	-7.79%
				March 2015	---	---	---	---	---	---	---	---	---	---	---	---	---	---	---	---	---	---
INTRALOT (CR)				(Contract Size: 100 Securities, Physical Delivery)																		
2.14	2.07	2.10	0.00%	June 2014	2.15	2.15	2.02	2.06	2.10	23@2.06	1@2.09	2.10	0.00%	2.53	1.83	33	386	152.29%	80,876.00	152.13%	2,270	-13.46%
				September 2014	2.12	2.14	2.06	2.08	2.12	23@2.08	1@2.11	2.12	0.00%	2.16	1.90	23	277	274.32%	58,478.00	270.02%	403	205.30%
				December 2014	---	---	---	---	---	---	---	---	---	---	---	---	---	---	---	---	---	---
				March 2015	---	---	---	---	---	---	---	---	---	---	---	---	---	---	---	---	---	---
JUMBO SA (CR)				(Contract Size: 100 Securities, Physical Delivery)																		
12.76	12.45	12.50	-3.85%	June 2014	12.50	12.59	12.21	12.21	12.25	1@12.25	1@12.62	12.25	-3.85%	14.22	10.13	9	31	-18.42%	38,593.00	-21.05%	357	-2.72%
				September 2014	12.59	12.59	12.45	12.45	12.35	2@11.50	1@12.72	12.35	-3.06%	13.00	12.45	3	11	37.50%	13,835.00	34.31%	18	20.00%
				December 2014	---	---	---	---	---	---	---	---	---	---	---	---	---	---	---	---	---	---
				March 2015	---	---	---	---	---	---	---	---	---	---	---	---	---	---	---	---	---	---
MARFIN INVESTMENT GROUP (CR)				(Contract Size: 100 Securities, Physical Delivery)																		
0.496	0.474	0.474	-2.67%	June 2014	0.490	0.490	0.477	0.478	0.481	5@0.465	5@0.472	0.481	-2.24%	0.573	0.379	40	788	-73.95%	38,132.40	-74.39%	23,069	-1.83%
				September 2014	0.492	0.494	0.480	0.480	0.486	5@0.475	5@0.482	0.486	-1.82%	0.512	0.416	32	1,290	43.97%	63,147.50	40.98%	4,220	43.88%
				December 2014	---	---	---	---	---	---	---	---	---	---	---	---	---	---	---	---	---	---
				March 2015	---	---	---	---	---	---	---	---	---	---	---	---	---	---	---	---	---	---
METKA (CR)				(Contract Size: 100 Securities, Physical Delivery)																		
13.85	13.30	13.30	-3.97%	June 2014	13.60	13.60	13.25	13.27	12.93	1@13.20	2@13.57	12.93	-3.94%	14.12	10.67	12	46	43.75%	61,888.00	41.47%	839	-3.78%
				September 2014	13.43	13.43	13.40	13.40	12.94	1@13.12	1@13.40	12.94	-4.01%	13.73	11.41	3	15	400.00%	20,130.00	389.42%	34	41.67%
				December 2014	---	---	---	---	---	---	---	---	---	---	---	---	---	---	---	---	---	---
				March 2015	---	---	---	---	---	---	---	---	---	---	---	---	---	---	---	---	---	---

Underlying Asset				Derivatives Market																		
Price max	Price min	Closing price	change	Delivery Month	Open price	Price max	Price min	Last price	Closing price	Last Bid	Last Ask	Settlement price	change	Life high	Life low	Trades	Volume	change	Value	change	Open Interest	change
MOTOR OIL (CR)				(Contract Size: 100 Securities, Physical Delivery)																		
8.34	8.04	8.13	-2.28%	June 2014	8.26	8.26	8.10	8.10	8.01	1@8.08	1@8.24	8.01	-2.32%	10.31	7.75	26	84	86.67%	68,865.00	82.77%	400	-7.19%
				September 2014	8.32	8.32	8.01	8.01	8.02	1@8.00	5@8.24	8.02	-3.49%	8.69	8.01	27	117	134.00%	95,315.00	129.01%	189	47.66%
				December 2014	---	---	---	---	---	---	---	---	---	---	---	---	---	---	---	---	---	---
				March 2015	---	---	---	---	---	---	---	---	---	---	---	---	---	---	---	---	---	---
MYTILINEOS HOLDINGS (CR)				(Contract Size: 100 Securities, Physical Delivery)																		
6.80	6.52	6.53	-3.97%	June 2014	6.73	6.73	6.54	6.54	6.56	1@6.53	10@6.57	6.56	-3.24%	7.32	5.32	63	1,077	358.30%	708,393.00	345.98%	7,950	-10.45%
				September 2014	6.92	6.92	6.56	6.56	6.60	11@6.56	10@6.62	6.60	-3.37%	7.31	5.86	84	1,265	343.86%	837,612.00	332.44%	2,235	126.90%
				December 2014	6.73	6.73	6.62	6.62	6.55	---	---	6.55	-3.68%	7.16	5.58	8	125	733.33%	83,038.00	708.94%	1,400	-8.20%
				March 2015	---	---	---	---	---	---	---	---	---	---	---	---	---	---	---	---	---	---
NATIONAL BANK (CR)				(Contract Size: 100 Securities, Physical Delivery)																		
2.82	2.67	2.70	-3.57%	June 2014	2.79	2.81	2.68	2.70	2.71	30@2.70	220@2.71	2.71	-3.56%	4.50	2.00	168	3,254	53.42%	882,506.00	49.46%	36,654	-2.98%
				September 2014	2.81	2.82	2.68	2.70	2.70	40@2.70	40@2.71	2.70	-3.57%	3.03	2.07	87	1,430	44.74%	387,878.00	40.95%	4,997	31.92%
				December 2014	2.73	2.81	2.73	2.81	2.80	---	---	2.80	-4.11%	2.92	2.09	2	600	---	167,800.00	---	1,300	85.71%
				March 2015	---	---	---	---	---	---	---	---	---	---	---	---	---	---	---	---	---	---
OPAP (CR)				(Contract Size: 100 Securities, Physical Delivery)																		
13.52	12.92	12.95	-4.78%	June 2014	13.53	13.53	12.93	12.95	12.95	4@12.95	7@13.04	12.95	-4.85%	13.65	8.84	127	511	31.36%	670,619.00	27.45%	2,391	-9.33%
				September 2014	13.30	13.30	12.96	12.96	12.95	1@12.95	1@13.03	12.95	-4.64%	13.60	9.63	41	124	117.54%	162,594.00	111.60%	194	73.21%
				December 2014	---	---	---	---	12.91	---	---	12.91	-4.86%	13.34	10.42	---	---	---	---	---	---	---
				March 2015	---	---	---	---	---	---	---	---	---	---	---	---	---	---	---	---	---	---
OTE (CR)				(Contract Size: 100 Securities, Physical Delivery)																		
12.23	11.80	11.91	-2.38%	June 2014	12.20	12.23	11.82	11.89	11.90	1@11.88	25@11.92	11.90	-1.82%	13.20	8.31	256	2,109	74.30%	2,524,188.00	71.75%	9,186	-11.72%
				September 2014	12.10	12.11	11.86	11.90	11.92	1@11.91	20@11.94	11.92	-1.81%	12.84	9.69	42	343	115.72%	410,101.00	112.08%	647	53.68%
				December 2014	---	---	---	---	11.86	---	---	11.86	-1.82%	11.62	10.15	---	---	---	---	---	---	---
				March 2015	---	---	---	---	---	---	---	---	---	---	---	---	---	---	---	---	---	---
P.P.A. S.A. (CR)				(Contract Size: 100 Securities, Physical Delivery)																		
18.29	17.86	17.86	-1.71%	June 2014	18.14	18.14	17.80	17.80	17.86	3@17.77	1@17.95	17.86	-1.71%	20.47	16.07	5	17	-71.67%	30,370.00	-71.84%	389	-1.52%
				September 2014	18.01	18.01	17.84	17.85	17.90	5@17.80	1@17.99	17.90	-1.70%	18.26	17.70	6	19	-71.64%	34,083.00	-71.77%	97	16.87%
				December 2014	---	---	---	---	---	---	---	---	---	---	---	---	---	---	---	---	---	---
				March 2015	---	---	---	---	---	---	---	---	---	---	---	---	---	---	---	---	---	---
PIRAEUS BANK (CR)				(Contract Size: 100 Securities, Physical Delivery)																		
1.77	1.70	1.70	-4.49%	June 2014	1.77	1.77	1.70	1.71	1.72	305@1.70	24@1.71	1.72	-3.37%	2.06	1.33	62	1,130	-21.25%	194,594.00	-23.61%	21,128	-1.66%
				September 2014	1.75	1.75	1.71	1.71	1.73	95@1.70	124@1.72	1.73	-2.81%	2.06	1.47	49	1,235	148.99%	212,500.00	142.30%	2,462	89.38%
				December 2014	---	---	---	---	---	---	---	---	---	---	---	---	---	---	---	---	---	---
				March 2015	---	---	---	---	---	---	---	---	---	---	---	---	---	---	---	---	---	---
PPC (CR)				(Contract Size: 100 Securities, Physical Delivery)																		
11.93	11.55	11.64	-2.51%	June 2014	11.90	11.90	11.55	11.55	11.63	1@11.59	5@11.62	11.63	-2.51%	12.77	9.29	188	953	22.18%	1,113,558.00	18.91%	4,542	-4.40%
				September 2014	11.84	11.89	11.61	11.62	11.67	1@11.62	1@11.68	11.67	-2.34%	12.65	9.70	63	273	75.00%	320,296.00	70.87%	678	37.25%
				December 2014	---	---	---	---	11.67	---	---	11.67	-2.51%	12.48	9.54	---	---	---	---	---	---	---
				March 2015	---	---	---	---	---	---	---	---	---	---	---	---	---	---	---	---	---	---

Underlying Asset				Derivatives Market																		
Price max	Price min	Closing price	change	Delivery Month	Open price	Price max	Price min	Last price	Closing price	Last Bid	Last Ask	Settlement price	change	Life high	Life low	Trades	Volume	change	Value	change	Open Interest	change
				(Contract Size: 100 Securities, Physical Delivery)																		
1.72	1.67	1.70	-2.30%	June 2014	1.68	1.70	1.68	1.70	1.69	20@1.66	1@1.72	1.69	-2.31%	2.23	1.41	4	38	-66.37%	6,404.00	-66.94%	925	-3.44%
				September 2014	1.69	1.69	1.69	1.69	1.68	20@1.68	1@1.74	1.68	-3.45%	1.77	1.69	1	5	-96.03%	845.00	-96.12%	132	3.94%
				December 2014	---	---	---	---	---	---	---	---	---	---	---	---	---	---	---	---	---	---
				March 2015	---	---	---	---	---	---	---	---	---	---	---	---	---	---	---	---	---	---
				(Contract Size: 100 Securities, Physical Delivery)																		
4.24	4.00	4.00	-4.54%	June 2014	4.12	4.12	4.04	4.04	4.03	3@4.02	1@4.11	4.03	-4.50%	4.78	3.56	10	755	-16.30%	310,568.00	-18.03%	1,728	-18.61%
				September 2014	4.22	4.22	4.07	4.09	4.09	5@4.03	1@4.15	4.09	-3.76%	4.30	4.07	24	780	-14.94%	323,074.00	-16.73%	2,571	43.23%
				December 2014	---	---	---	---	---	---	---	---	---	---	---	---	---	---	---	---	---	---
				March 2015	---	---	---	---	---	---	---	---	---	---	---	---	---	---	---	---	---	---
				(Contract Size: 100 Securities, Physical Delivery)																		
25.83	24.80	24.82	-3.35%	June 2014	25.33	25.54	24.80	24.87	24.87	8@24.80	17@24.94	24.87	-2.78%	26.71	19.40	36	86	-33.85%	215,822.00	-36.11%	698	-5.68%
				September 2014	25.40	25.40	24.89	24.89	24.88	1@24.81	17@25.04	24.88	-2.77%	26.66	22.38	14	22	-54.17%	55,101.00	-55.63%	116	-10.77%
				December 2014	---	---	---	---	---	---	---	---	---	---	---	---	---	---	---	---	---	---
				March 2015	---	---	---	---	---	---	---	---	---	---	---	---	---	---	---	---	---	---
				(Contract Size: 100 Securities, Physical Delivery)																		
4.25	4.14	4.14	-2.59%	June 2014	4.21	4.22	4.12	4.12	4.11	1@4.12	1@4.15	4.11	-2.61%	5.22	3.84	22	99	725.00%	41,146.00	700.97%	694	-12.48%
				September 2014	4.26	4.26	4.16	4.16	4.14	1@4.15	1@4.18	4.14	-3.50%	4.32	4.16	11	35	40.00%	14,638.00	36.59%	64	77.78%
				December 2014	---	---	---	---	---	---	---	---	---	---	---	---	---	---	---	---	---	---
				March 2015	---	---	---	---	---	---	---	---	---	---	---	---	---	---	---	---	---	---

FTSE/Athex Large Cap

(Trade Unit: 1 Index Point x 5€ - Exercise Style: European, Cash Settlement)

Call Options																	Put Options																		
Exerise Price	June 2014							July 2014							Other Months		June 2014							July 2014							Other Months		Exerise Price		
	Open price	Price max	Price min	Last price	Closing price	Volume	Open Interest	Open price	Price max	Price min	Last price	Closing price	Volume	Open Interest	Volume	Open Interest	Open price	Price max	Price min	Last price	Closing price	Volume	Open Interest	Open price	Price max	Price min	Last price	Closing price	Volume	Open Interest	Volume	Open Interest			
215	-	-	-	-	195.00	-	30	-	-	-	-	-	-	-			-	-	-	-	-	-	-	-	-	-	-	-	-	-	-			215	
255	-	-	-	-	-	-	-	-	-	-	-	-	-	-			-	-	-	-	-	-	-	-	-	-	-	-	-	-	-			255	
260	-	-	-	-	-	-	-	-	-	-	-	-	-	-			-	-	-	-	-	-	-	-	-	-	-	-	-	-	-			260	
265	-	-	-	-	-	-	-	-	-	-	-	-	-	-			-	-	-	-	-	-	-	-	-	-	-	-	-	-	-			265	
270	-	-	-	-	-	-	-	-	-	-	-	-	-	-			-	-	-	-	-	-	-	-	-	-	-	-	-	-	-			270	
275	-	-	-	-	135.00	-	2	-	-	-	-	-	-	-			-	-	-	-	-	-	-	-	-	-	-	-	-	-	-			275	
280	-	-	-	-	-	-	-	-	-	-	-	-	-	-			-	-	-	-	-	-	-	-	-	-	-	-	-	-	-			280	
285	-	-	-	-	-	-	-	-	-	-	-	-	-	-			-	-	-	-	-	-	-	-	-	-	-	-	-	-	-			285	
290	-	-	-	-	-	-	-	-	-	-	-	-	-	-			-	-	-	-	-	-	-	-	-	-	-	-	-	-	-			290	
295	-	-	-	-	-	-	-	-	-	-	-	-	-	-			-	-	-	-	-	-	-	-	-	-	-	-	-	-	-			295	
300	-	-	-	-	110.00	-	80	-	-	-	-	-	-	-			-	-	-	-	-	-	-	-	-	-	-	-	-	-	-	-			300
305	-	-	-	-	-	-	-	-	-	-	-	-	-	-			-	-	-	-	-	-	-	-	-	-	-	-	-	-	-			305	
310	-	-	-	-	100.00	-	1	-	-	-	-	-	-	-			-	-	-	-	-	-	-	-	-	-	-	-	-	-	-			310	
315	-	-	-	-	-	-	-	-	-	-	-	-	-	-			-	-	-	-	-	-	2	-	-	-	-	-	-	-	-			315	
320	-	-	-	-	-	-	-	-	-	-	-	-	-	-			-	-	-	-	-	-	2	-	-	-	-	-	-	-	-			320	
325	-	-	-	-	-	-	-	-	-	-	-	-	-	-			-	-	-	-	-	-	-	-	-	-	-	-	-	-	-			325	
330	-	-	-	-	-	-	-	-	-	-	-	-	-	-			-	-	-	-	-	-	221	-	-	-	-	-	-	-	-			330	
335	-	-	-	-	-	-	-	-	-	-	-	-	-	-			-	-	-	-	-	-	-	-	-	-	-	-	-	-	-			335	
340	-	-	-	-	70.50	-	4	-	-	-	-	-	-	-			-	-	-	-	-	-	136	-	-	-	-	-	-	-	-			340	
345	-	-	-	-	65.50	-	5	-	-	-	-	65.50	-	1			-	-	-	-	-	-	20	-	-	-	-	-	-	-	-			345	
350	63.00	63.00	60.50	60.50	60.50	20	172	-	-	-	-	-	-	-			-	-	-	-	-	-	94	-	-	-	-	-	-	-	-			350	
355	-	-	-	-	55.50	-	44	-	-	-	-	-	-	-			-	-	-	-	-	-	66	-	-	-	-	-	-	-	-			355	
360	-	-	-	-	50.50	-	198	-	-	-	-	-	-	-			-	-	-	-	0.01	-	344	-	-	-	-	2.50	-	90	-			360	
365	-	-	-	-	45.50	-	67	-	-	-	-	-	-	-			-	-	-	-	-	-	-	-	-	-	3.30	-	20	-			365		
370	-	-	-	-	40.50	-	49	-	-	-	-	-	-	-			-	-	-	-	0.06	-	374	-	-	-	-	-	-	-	-			370	
375	-	-	-	-	35.75	-	49	-	-	-	-	-	-	-			-	-	-	-	0.15	-	705	-	-	-	-	-	-	-	-			375	
380	37.50	37.50	32.00	32.00	30.75	74	412	-	-	-	-	35.75	-	7			-	-	-	-	0.31	-	696	-	-	-	-	6.50	-	102	-			380	
385	-	-	-	-	26.00	-	64	-	-	-	-	32.25	-	4			-	-	-	-	0.62	-	45	-	-	-	-	7.90	-	38	-			385	
390	-	-	-	-	21.75	-	131	-	-	-	-	-	-	-			-	-	-	-	1.10	-	385	7.00	7.00	7.00	7.00	9.50	73	323	-			390	
395	-	-	-	-	17.50	-	192	-	-	-	-	-	-	-			2.50	2.50	2.50	2.50	2.00	20	647	-	-	-	-	-	-	-	-			395	
400	18.00	18.00	15.00	15.00	13.75	2	1,105	-	-	-	-	23.00	-	696			-	-	-	-	3.20	-	495	-	-	-	-	13.50	-	1	-			400	
405	-	-	-	-	10.50	-	4	-	-	-	-	-	-	-			5.00	5.00	5.00	5.00	4.90	150	162	-	-	-	-	-	-	-	-			405	
410	9.50	9.50	7.50	7.50	7.60	3	134	-	-	-	-	-	-	-			6.50	8.00	3.20	8.00	7.10	97	541	-	-	-	-	-	-	-	-			410	
415	-	-	-	-	5.40	-	54	16.00	16.00	16.00	16.00	15.50	1	92			5.50	5.50	5.50	5.50	9.90	40	42	-	-	-	-	-	-	-	-			415	
420	5.30	5.30	4.00	4.50	3.60	246	563	-	-	-	-	13.50	-	392			11.00	14.00	11.00	12.00	13.25	16	81	-	-	-	-	-	-	-	-			420	
425	-	-	-	-	2.40	-	152	-	-	-	-	11.75	-	10			14.25	14.50	14.25	14.50	16.75	21	135	-	-	-	-	-	-	-	-			425	



FTSE/Athex Large Cap

(Trade Unit: 1 Index Point x 5€ - Exercise Style: European, Cash Settlement)

Call Options																Put Options																			
Exercise Price	June 2014							July 2014							Other Months		June 2014								July 2014								Other Months		Exercise Price
	Open price	Price max	Price min	Last price	Closing price	Volume	Open Interest	Open price	Price max	Price min	Last price	Closing price	Volume	Open Interest	Volume	Open Interest	Open price	Price max	Price min	Last price	Closing price	Volume	Open Interest	Open price	Price max	Price min	Last price	Closing price	Volume	Open Interest	Volume	Open Interest			
430	-	-	-	-	1.50	-	229	-	-	-	-	-	-	-			19.00	19.00	19.00	19.00	21.00	1	5	-	-	-	-	-	-	-	-	-	430		
435	-	-	-	-	-	-	-	-	-	-	-	-	-	-			-	-	-	-	-	-	-	-	-	-	-	-	-	-	-	435			
440	-	-	-	-	0.51	-	1	-	-	-	-	-	-	-			-	-	-	-	30.00	-	5	-	-	-	-	-	-	-	-	440			
445	-	-	-	-	-	-	-	-	-	-	-	-	-	-			-	-	-	-	-	-	-	-	-	-	-	-	-	-	-	445			
450	-	-	-	-	0.15	-	2	-	-	-	-	-	-	-			-	-	-	-	39.50	-	30	-	-	-	-	-	-	-	-	450			
455	-	-	-	-	-	-	-	-	-	-	-	-	-	-			-	-	-	-	-	-	-	-	-	-	-	-	-	-	-	455			
460	-	-	-	-	-	-	-	-	-	-	-	-	-	-			-	-	-	-	-	-	-	-	-	-	-	-	-	-	-	460			
465	-	-	-	-	-	-	-	-	-	-	-	-	-	-			-	-	-	-	-	-	-	-	-	-	-	-	-	-	-	465			
Totals:						345	3,744							1	1,202	200	826							345	5,233							73	574	0	290
Nominal Transactions Value:						702,350.00								2,075.00		440,000.00								705,475.00								142,350.00		0.00	
Number of Trades:						41								1		1								30								4		0	

FTSE/Athex Large Cap

(Trade Unit: 1 Index Point x 5€ - Exoercise Style: European, Cash Settlement)

Call Options																	Put Options																				
Exerise Price	June 2014							July 2014							Other Months			June 2014										July 2014							Other Months		
	Open price	Price max	Price min	Last price	Closing price	Volume	Open Interest	Open price	Price max	Price min	Last price	Closing price	Volume	Open Interest	Volume	Open Interest	Open price	Price max	Price min	Last price	Closing price	Volume	Open Interest	Open price	Price max	Price min	Last price	Closing price	Volume	Open Interest	Volume	Open Interest	Exerise Price				

ALPHA BANK (CR)

(Contract Size: 100 Securities, Exercise Style: American, Physical Delivery)

Call Options																	Put Options																								
June 2014								July 2014								Other Months		June 2014								July 2014								Other Months							
Exerise Price	Open price	Price max	Price min	Last price	Closing price	Volume	Open Interest	Open price	Price max	Price min	Last price	Closing price	Volume	Open Interest	Volume	Open Interest	Open price	Price max	Price min	Last price	Closing price	Volume	Open Interest	Open price	Price max	Price min	Last price	Closing price	Volume	Open Interest	Volume	Open Interest	Exerise Price								
0.100						-	-							-	-							-	-						-	-				0.100							
0.200						-	-							-	-							-	-						-	-					0.200						
0.300						-	-							-	-							-	-						-	-					0.300						
0.400						-	-							-	-							-	-						-	-					0.400						
0.500						-	-							-	-							-	-						-	-					0.500						
0.550						-	-							-	-							-	-						-	-					0.550						
0.600						-	-							-	-							-	-						-	-					0.600						
0.650						-	-							-	-							-	-						-	-					0.650						
0.700						-	-							-	-							-	-						-	-					0.700						
0.750						-	-							-	-							-	-						-	-					0.750						
0.800						-	-							-	-							-	-						-	-					0.800						
0.850						-	-							-	-							-	-						-	-					0.850						
0.900						-	-					0.005		-	10							-	-						-	-					0.900						
0.950						-	-							-	-							-	-						-	-					0.950						
1.00						-	-							-	-							-	-						-	-					1.00						
1.10						-	-							-	-							-	-						-	-					1.10						
Totals:						0	0							0	10	0	0							0	0							0	0	0	0						
Nominal Transactions Value:						0.00								0.00		0.00								0.00								0.00		0.00							
Number of Trades:						0								0		0								0								0		0							

**NATIONAL BANK (CR)**

(Contract Size: 100 Securities, Exercise Style: American, Physical Delivery)

Call Options																	Put Options																								
June 2014							July 2014							Other Months			June 2014							July 2014							Other Months										
Exerise Price	Open price	Price max	Price min	Last price	Closing price	Volume	Open Interest	Open price	Price max	Price min	Last price	Closing price	Volume	Open Interest	Volume	Open Interest	Open price	Price max	Price min	Last price	Closing price	Volume	Open Interest	Open price	Price max	Price min	Last price	Closing price	Volume	Open Interest	Volume	Open Interest	Exerise Price								
1.70							-	-							-	-									-	-							-	-			1.70				
1.80							-	-							-	-										-	-							-	-			1.80			
1.90							-	-							-	-										-	-							-	-			1.90			
2.00							-	-							-	-										-	-							-	-			2.00			
2.20							0.509	-	2,980							-	-										0.008	-	950							-	-			2.20	
2.40							0.335	-	1,061							-	-										-	-							-	-			2.40		
2.50							-	-							-	-										-	-							-	-			2.50			
2.60							0.196	-	100							0.271	-	5										0.094	-	200							-	-			2.60
2.70							-	-							-	-										-	-							-	-			2.70			
2.80							0.101	-	6							-	-										0.199	-	2,535							-	-			2.80	
2.90							-	-							-	-										-	-							-	-			2.90			
3.00							-	-							-	-										0.344	-	180							-	-			3.00		
3.10							-	-							-	-										0.427	-	20							-	-			3.10		
3.20							0.018	-	20							-	-										0.517	-	20							-	-			3.20	
3.30							-	-							-	-										-	-							-	-			3.30			
3.40							-	-							-	-										-	-							-	-			3.40			
3.50							0.004	-	5							-	-										-	-							-	-			3.50		
3.60							-	-							-	-										-	-							-	-			3.60			
3.70							-	-							-	-										-	-							-	-			3.70			
3.80							-	-							-	-										-	-							-	-			3.80			
3.90							-	-							-	-										-	-							-	-			3.90			
4.00							-	-							-	-										-	-							-	-			4.00			
4.40							-	-							-	-										-	-							-	-			4.40			
4.80							-	-							-	-										-	-							-	-			4.80			
5.20							-	-							-	-										-	-							-	-			5.20			
5.60							-	-							-	-										-	-							-	-			5.60			
Totals:							0	4,172								0	5	0	10								0	3,905								0	0	0	0	0	
Nominal Transactions Value:							0.00									0.00		0.00									0.00									0.00		0.00			
Number of Trades:							0									0		0									0.00									0		0			

OPAP (CR)

(Contract Size: 100 Securities, Exercise Style: American, Physical Delivery)

Call Options																Put Options																				
June 2014								July 2014								Other Months		June 2014								July 2014								Other Months		
Exercise Price	Open price	Price max	Price min	Last price	Closing price	Volume	Open Interest	Open price	Price max	Price min	Last price	Closing price	Volume	Open Interest	Volume	Open Interest	Open price	Price max	Price min	Last price	Closing price	Volume	Open Interest	Open price	Price max	Price min	Last price	Closing price	Volume	Open Interest	Volume	Open Interest	Exercise Price			
4.80						-	-							-	-							-	-					-	-			4.80				
5.20						-	-							-	-							-	-					-	-			5.20				
5.60						-	-							-	-							-	-					-	-			5.60				
6.00						-	-							-	-							-	-					-	-			6.00				
6.40						-	-							-	-							-	-					-	-			6.40				
6.80						-	-							-	-							-	-					-	-			6.80				
7.20						-	-							-	-							-	-					-	-			7.20				
7.60						-	-							-	-							-	-					-	-			7.60				
8.00						-	-							-	-							-	-					-	-			8.00				
8.40						-	-							-	-							-	-					-	-			8.40				
8.80						-	-							-	-							-	-					-	-			8.80				
9.20						-	-							-	-							-	-					-	-			9.20				
9.60						-	-							-	-							-	-					-	-			9.60				
10.00						-	-							-	-							-	-					-	-			10.00				
10.50						-	-							-	-							-	-					-	-			10.50				
11.00						-	-							-	15							-	-					-	-			11.00				
11.50						-	-							-	-							-	-					-	-			11.50				
12.00						-	-					1.22		-	10							-	-					-	-			12.00				
12.50					0.565	-	30							-	-							-	-					-	-			12.50				
13.00					0.265	-	35					0.621		-	5							-	-					-	-			13.00				
13.50						-	-							-	-							-	-					-	-			13.50				
14.00						-	-							-	-							-	-					-	-			14.00				
14.50						-	-							-	-							-	-					-	-			14.50				
15.00						-	-							-	-							-	-					-	-			15.00				
16.00						-	-							-	-							-	-					-	-			16.00				
Totals:						0	65							0	15	0	95							0	15							0	0			
Nominal Transactions Value:						0.00								0.00		0.00								0.00								0.00				
Number of Trades:						0								0		0								0								0				

OTE (CR)

(Contract Size: 100 Securities, Exercise Style: American, Physical Delivery)

Call Options																	Put Options																								
June 2014								July 2014								Other Months		June 2014								July 2014								Other Months							
Exercise Price	Open price	Price max	Price min	Last price	Closing price	Volume	Open Interest	Open price	Price max	Price min	Last price	Closing price	Volume	Open Interest	Volume	Open Interest	Open price	Price max	Price min	Last price	Closing price	Volume	Open Interest	Open price	Price max	Price min	Last price	Closing price	Volume	Open Interest	Volume	Open Interest	Exercise Price								
4.00						-	-							-	-							-	-					-	-					4.00							
4.40						-	-							-	-							-	-					-	-					4.40							
4.80						-	-							-	-							-	-					-	-					4.80							
5.20						-	-							-	-							-	-					-	-					5.20							
5.60						-	-							-	-							-	-					-	-					5.60							
6.00						-	-							-	-							-	-					-	-					6.00							
6.40						-	-							-	-							-	-					-	-					6.40							
6.80						-	-							-	-							-	-					-	-					6.80							
7.20						-	-							-	-							-	-					-	-					7.20							
7.60						-	-							-	-							-	-					-	-					7.60							
8.00						-	-							-	-							-	-					-	-					8.00							
8.40						-	-							-	-							-	-					-	-					8.40							
8.80						-	-							-	-							-	-					-	-					8.80							
9.20						-	-							-	-							-	-					-	-					9.20							
9.60						-	-							-	-							-	-					-	-					9.60							
9.80						-	-							-	-							-	-					-	-					9.80							
10.00						-	-							-	-							-	150					-	-					10.00							
10.50						-	-							-	-							0.003	350					-	-					10.50							
11.00	0.990	0.990	0.950	0.950		3	-							-	-							-	-					-	-					11.00							
11.50						-	-							-	-							0.111	100					-	-					11.50							
12.00						-	-							-	-							-	-					-	-					12.00							
12.50						-	-							-	-							-	-					-	-					12.50							
13.00						-	-							-	-							-	-					-	-					13.00							
13.50						-	-							-	-							-	-					-	-					13.50							
14.00						-	-							-	-							-	-					-	-					14.00							
14.50						-	-							-	-							-	-					-	-					14.50							
15.00						-	-							-	-							-	-					-	-					15.00							
16.00						-	-							-	-							-	-					-	-					16.00							
Totals:						3	0							0	0	0	0							0	600							0	0	0	0	0	0				
Nominal Transactions Value:						3,300.00						0.00						0.00						0.00						0.00						0.00					
Number of Trades:						2						0						0						0						0						0					

PIRAEUS BANK (CR)

(Contract Size: 100 Securities, Exercise Style: American, Physical Delivery)

Call Options																Put Options																				
June 2014								July 2014								Other Months		June 2014								July 2014								Other Months		
Exerise Price	Open price	Price max	Price min	Last price	Closing price	Volume	Open Interest	Open price	Price max	Price min	Last price	Closing price	Volume	Open Interest	Volume	Open Interest	Open price	Price max	Price min	Last price	Closing price	Volume	Open Interest	Open price	Price max	Price min	Last price	Closing price	Volume	Open Interest	Volume	Open Interest	Exerise Price			
0.600						-	-							-	-							-	-						-	-		0.600				
0.700						-	-							-	-							-	-						-	-		0.700				
0.800						-	-							-	-							-	-						-	-		0.800				
0.900						-	-							-	-							-	-						-	-		0.900				
1.00						-	-							-	-							-	-						-	-		1.00				
1.10						-	-							-	-							-	-						-	-		1.10				
1.20						-	-							-	-							-	-						-	-		1.20				
1.30						-	-							-	-							-	-						-	-		1.30				
1.40						-	-							-	-							-	-						-	-		1.40				
1.50						-	-							-	-							-	-						-	-		1.50				
1.60						-	-							-	-							-	-						-	-		1.60				
1.70						-	-							-	-							-	-						-	-		1.70				
1.75						-	-							-	-							-	-						-	-		1.75				
1.80						-	-							-	-							-	-						-	-		1.80				
1.85						-	-							-	-							-	-						-	-		1.85				
1.90						-	-							-	-							-	-						-	-		1.90				
1.95						-	-							-	-							-	-						-	-		1.95				
2.00						-	-							-	-							-	-						-	-		2.00				
2.10						-	-							-	-							-	-						-	-		2.10				
2.20						-	-							-	-							-	-						-	-		2.20				
2.30						-	-							-	-							-	-						-	-		2.30				
2.40						-	-							-	-							-	-						-	-		2.40				
2.60						-	-							-	-							-	-						-	-		2.60				
2.80						-	-							-	-							-	-						-	-		2.80				
Totals:						0	0							0	0	0	0							0	0							0	0			
Nominal Transactions Value:						0.00								0.00		0.00							0.00								0.00	0.00				
Number of Trades:						0								0		0							0								0	0				

PPC (CR)

(Contract Size: 100 Securities, Exercise Style: American, Physical Delivery)

Call Options																	Put Options																		
June 2014																	July 2014																		
Other Months																	Other Months																		
Exercise Price	Open price	Price max	Price min	Last price	Closing price	Volume	Open Interest	Open price	Price max	Price min	Last price	Closing price	Volume	Open Interest	Volume	Open Interest	Exercise Price	Open price	Price max	Price min	Last price	Closing price	Volume	Open Interest	Open price	Price max	Price min	Last price	Closing price	Volume	Open Interest	Volume	Open Interest	Exercise Price	
4.80					6.84	-	30							-	-								-	-					-	-			4.80		
5.20						-	-							-	-								-	-					-	-			5.20		
5.60						-	-							-	-								-	-					-	-			5.60		
6.00						-	-							-	-								-	-					-	-			6.00		
6.40						-	-							-	-								-	-					-	-			6.40		
6.80						-	-							-	-								-	-					-	-			6.80		
7.20						-	-							-	-								-	-					-	-			7.20		
7.60						-	-							-	-								-	-					-	-			7.60		
8.00						-	-							-	-								-	-					-	-			8.00		
8.40						-	-							-	-								-	-					-	-			8.40		
8.80						-	-							-	-								-	-					-	-			8.80		
9.20						-	-							-	-								-	-					-	-			9.20		
9.60						-	-							-	-								-	-					-	-			9.60		
10.00						-	-							-	-								-	-					-	-			10.00		
10.50						-	-							-	-								-	-					-	-			10.50		
11.00						-	-							-	-								-	-					-	-			11.00		
11.50						-	-							-	-								-	-					-	-			11.50		
12.00						-	-							-	-								-	-					-	-			12.00		
12.50						-	-							-	-								-	-					-	-			12.50		
13.00						-	-							-	-								-	-					-	-			13.00		
13.50						-	-							-	-								-	-					-	-			13.50		
14.00						-	-							-	-								-	-					-	-			14.00		
14.50						-	-							-	-								-	-					-	-			14.50		
15.00						-	-							-	-								-	-					-	-			15.00		
Totals:						0	30							0	0	0	15							0	35							0	0	0	0
Nominal Transactions Value:						0.00								0.00		0.00								0.00								0.00			
Number of Trades:						0								0		0								0								0			



PPC (CR)

(Contract Size: 100 Securities, Excercise Style: American, Physical Delivery)

Exerise Price	Call Options																Put Options															
	June 2014							July 2014							Other Months		June 2014							July 2014							Other Months	
	Open price	Price max	Price min	Last price	Closing price	Volume	Open Interest	Open price	Price max	Price min	Last price	Closing price	Volume	Open Interest	Volume	Open Interest	Open price	Price max	Price min	Last price	Closing price	Volume	Open Interest	Open price	Price max	Price min	Last price	Closing price	Volume	Open Interest	Volume	Open Interest

Securities	Type[4]	Stock Repo [1]						Stock Reverse Repo [2]								Repurchase Agreements [3]							
		Trans. price	chg.	Trades	Volume	Transactions Value	Open Interest[5]	Price max	Price mii	Last price	Last Ask	Trades	Volume	Transactions Value	Open Interest[5]	Price max	Price min	Last price	Last Ask	Trades	Volume	Transactions Value	Open Interest[5]
AEGEAN AIRLINES (CR)	SR RA	100.00	---	---	---	---	54	---	---	---	27@3%	---	---	---	---	---	---	---	---	---	---	---	---
ALPHA BANK (CR)	SR RA	100.11	0.01	8	5,705	407,907.5	122,084	---	---	---	600@10%	---	---	---	85,158	10.00%	10.00%	10.00%	---	100	10,000	715,000.0	11,839
ALPHA ETF FTSE Athex Large Cap	SR RA	100.00	---	---	---	---	---	---	---	---	---	---	---	---	---	---	---	---	---	---	---	---	4,654
ALUMIL (CR)	RA	---	---	---	---	---	---	---	---	---	---	---	---	---	---	---	---	---	---	---	---	---	---
ATHENS MEDICAL CENTER SA (CR)	SR RA	100.00	---	---	---	---	434	---	---	---	217@3%	---	---	---	---	---	---	---	---	---	---	---	---
ATTICA BANK S.A. (CR)	SR RA	100.01	---	---	---	---	430	---	---	---	---	---	---	---	330	---	---	---	---	---	---	---	---
AUTOHELLAS SA (CR)	SR RA	100.00	---	---	---	---	16	---	---	---	6@3%	---	---	---	---	---	---	---	---	---	---	---	---
BIOKARPET S.A.(CR)	RA	---	---	---	---	---	---	---	---	---	---	---	---	---	---	---	---	---	---	---	---	---	---
CC HBC AG (CR)	SR RA	101.30	0.07	---	---	---	952	3.50%	3.50%	3.50%	47@3.5%	2	110	192,940.0	544	---	---	---	---	---	---	---	30
CENTRIC HOLDINGS (CR)	SR RA	100.00	---	---	---	---	200	---	---	---	147@6.2%	---	---	---	---	---	---	---	---	---	---	---	---
CORINTH PIPEWORKS SA (CR)	SR RA	100.11	0.01	---	---	---	161	---	---	---	2@3.5%	---	---	---	98	---	---	---	---	---	---	---	---
CRETE PLASTICS SA (CR)	SR RA	100.00	---	---	---	---	---	---	---	---	---	---	---	---	---	---	---	---	---	---	---	---	---
CYCLON HELLAS SA (CR)	SR RA	100.00	---	---	---	---	---	---	---	---	---	---	---	---	---	---	---	---	---	---	---	---	---
DROMEAS SA (CR)	SR RA	100.00	---	---	---	---	---	---	---	---	---	---	---	---	---	---	---	---	---	---	---	---	---
ELGEKA SA (CR)	SR RA	100.00	---	---	---	---	---	---	---	---	---	---	---	---	---	---	---	---	---	---	---	---	---
ELLAKTOR (CR)	SR RA	100.06	---	1	32	12,800.0	2,075	---	---	---	777@3%	---	---	---	240	---	---	---	---	---	---	---	14
ELTON SA (CR)	SR RA	100.00	---	---	---	---	---	---	---	---	---	---	---	---	---	---	---	---	---	---	---	---	---
ELVAL SA. (CB)	SR RA	100.00	---	---	---	---	368	---	---	---	184@3%	---	---	---	---	---	---	---	---	---	---	---	---
EUROBANK ERGASIAS (CR)	SR RA	100.07	---	---	---	---	14,792	---	---	---	7172@4.3%	---	---	---	2,738	---	---	---	---	---	---	---	36
EUROBANK PROPERTIES REIC (CR)	SR RA	100.12	0.01	---	---	---	1,177	3.00%	3.00%	3.00%	395@3%	1	40	35,600.0	193	---	---	---	---	---	---	---	9
EUROPEAN RELIANCE INSUR. (CR)	SR RA	100.00	---	---	---	---	---	---	---	---	---	---	---	---	---	---	---	---	---	---	---	---	---
EYDAP S.A. (CR)	SR RA	100.61	0.04	---	---	---	362	---	---	---	29@3.5%	---	---	---	195	---	---	---	---	---	---	---	10
FOLLI FOLLIE (CR)	SR RA	102.68	0.06	1	15	48,900.0	1,127	3.00%	3.00%	3.00%	289@3%	2	75	244,500.0	236	---	---	---	---	---	---	---	449
FOURLIS (CR)	SR RA	100.00	---	---	---	---	109	---	---	---	54@3%	---	---	---	---	---	---	---	---	---	---	---	---
FRIGOGLASS SA (CR)	SR RA	100.38	0.02	---	---	---	71	---	---	---	---	---	---	---	49	---	---	---	---	---	---	---	25
GEK TERNA (CR)	SR RA	100.02	---	---	---	---	641	---	---	---	287@3%	---	---	---	33	---	---	---	---	---	---	---	---
GR. SARANTIS SA (CR)	SR RA	100.00	---	---	---	---	56	---	---	---	28@3%	---	---	---	---	---	---	---	---	---	---	---	---
HALKOR SA (CB)	SR RA	100.00	---	---	---	---	505	---	---	---	299@3.2%	---	---	---	---	---	---	---	---	---	---	---	---
HELLENIC EXCHANGES-A.S.E. (CR)	SR RA	100.00	---	---	---	---	5,930	---	---	---	2961@3%	---	---	---	4	---	---	---	---	---	---	---	---
HELLENIC PETROLEUM (CR)	SR RA	100.60	0.03	---	---	---	2,395	---	---	---	325@3%	---	---	---	633	---	---	---	---	---	---	---	25
HYGEIA SA (CR)	SR RA	100.00	---	---	---	---	500	---	---	---	330@5.3%	---	---	---	---	---	---	---	---	---	---	---	---
IASO SA (CR)	SR RA	100.00	---	---	---	---	245	---	---	---	122@3%	---	---	---	---	---	---	---	---	---	---	---	---

Stock Lending Notes

- [1] - Stock Repo: A Contract for selling stocks to HELEX with a Repurchase Right (According to ATHEX BoD Resolution No 17)
- [2] - Stock Reverse Repo: A Contract for buying stocks from HELEX with a Resell Right. (According to ATHEX BoD Resolution No 18)
- [3] - Standardized Repurchase Agreements: A Contract that constitutes a standardized agreement for the purchase or sale of shares, with repurchase or resell pact (According to ATHEX BoD Resolution No 20)
- [4] - Type of products is divided into SR: Stock Repo or Stock Reverse Repo, and RA: Repurchase Agreements.
- [5] - Open Interest in all Series (both tradeable or non-tradeable).

Securities	Type[4]	Stock Repo [1]						Stock Reverse Repo [2]								Repurchase Agreements [3]							
		Trans. price	chg.	Trades	Volume	Transactions Value	Open Interest[5]	Price max	Price min	Last price	Last Ask	Trades	Volume	Transactions Value	Open Interest[5]	Price max	Price min	Last price	Last Ask	Trades	Volume	Transactions Value	Open Interest[5]
IKTINOS HELLAS SA (CR)	SR RA	100.00	---	---	---	---	10	---	---	---	---	---	---	---	---	---	---	---	---	---	---	---	---
INFORM P. LYKOS SA (CR)	SR RA	100.00	---	---	---	---	---	---	---	---	---	---	---	---	---	---	---	---	---	---	---	---	---
INTRACOM CONSTR. (CR)	SR RA	100.00	---	---	---	---	7	---	---	---	---	---	---	---	---	---	---	---	---	---	---	---	---
INTRACOM HOLDINGS (CR)	SR RA	100.00	---	---	---	---	665	---	---	---	332@3%	---	---	---	---	---	---	---	---	---	---	---	---
INTRALOT (CR)	SR RA	100.02	---	---	---	---	1,099	---	---	---	498@3%	---	---	---	51	---	---	---	---	---	---	---	---
J & P - AVAX SA (CR)	SR RA	100.00	---	---	---	---	223	---	---	---	111@3%	---	---	---	---	---	---	---	---	---	---	---	---
JUMBO SA (CR)	SR RA	101.03	0.05	3	205	256,250.0	1,345	3.50%	3.50%	3.50%	130@3.5%	1	40	50,000.0	578	---	---	---	---	---	---	---	442
KARATZIS SA (CR)	RA	---	---	---	---	---	---	---	---	---	---	---	---	---	---	---	---	---	---	---	---	---	---
KLEEMAN HELLAS SA (CR)	SR RA	100.00	---	---	---	---	982	---	---	---	491@3%	---	---	---	---	---	---	---	---	---	---	---	---
KLOUKINAS - LAPPAS SA (CR)	SR RA	100.00	---	---	---	---	---	---	---	---	---	---	---	---	---	---	---	---	---	---	---	---	---
KRI-KRI S.A. (CR)	SR RA	100.00	---	---	---	---	550	---	---	---	275@3%	---	---	---	---	---	---	---	---	---	---	---	---
LAMDA DEVELOPMENT SA (CR)	SR RA	100.00	---	---	---	---	---	---	---	---	---	---	---	---	---	---	---	---	---	---	---	---	---
LOULIS MILLS SA (CR)	SR RA	100.00	---	---	---	---	---	---	---	---	---	---	---	---	---	---	---	---	---	---	---	---	---
MARFIN INVESTMENT GROUP (CR)	SR RA	100.01	---	---	---	---	3,852	---	---	---	2291@3.7%	---	---	---	178	---	---	---	---	---	---	---	18
METKA (CR)	SR RA	101.49	0.12	---	---	---	549	---	---	---	---	---	---	---	439	---	---	---	---	---	---	---	66
MLS MULTIMEDIA SA (CR)	SR RA	100.00	---	---	---	---	109	---	---	---	54@3%	---	---	---	---	---	---	---	---	---	---	---	---
MOTOR OIL (CR)	SR RA	100.44	0.03	---	---	---	2,209	---	---	---	232@3%	---	---	---	622	---	---	---	---	---	---	---	10
MYTILINEOS HOLDINGS (CR)	SR RA	100.03	---	---	---	---	3,564	---	---	---	1547@3%	---	---	---	228	---	---	---	---	---	---	---	10
NATIONAL BANK (CR)	SR RA	100.34	0.02	---	---	---	11,145	4.00%	3.50%	4.00%	1523@4%	2	500	135,000.0	5,467	---	---	---	---	---	---	---	919
NBGAM ETF	SR RA	100.00	---	---	---	---	---	---	---	---	---	---	---	---	---	---	---	---	---	---	---	---	---
NBGAM ETF GREECE & TURKEY 30	SR RA	100.00	---	---	---	---	---	---	---	---	---	---	---	---	---	---	---	---	---	---	---	---	---
NIREFS SA (CR)	SR RA	100.00	---	---	---	---	342	---	---	---	265@8.1%	---	---	---	---	---	---	---	---	---	---	---	---
OPAP (CR)	SR RA	100.67	0.04	---	---	---	3,807	3.00%	3.00%	3.00%	228@3%	1	135	174,825.0	1,375	---	---	---	---	---	---	---	346
OTE (CR)	SR RA	100.06	0.01	---	---	---	4,688	---	---	---	2064@3%	---	---	---	280	---	---	---	---	---	---	---	40
P.P.A. S.A. (CR)	SR RA	102.21	0.16	---	---	---	14	---	---	---	---	---	---	---	10	---	---	---	---	---	---	---	37
PAPOUTSANIS (CR)	SR RA	100.00	---	---	---	---	---	---	---	---	---	---	---	---	---	---	---	---	---	---	---	---	---
PETROPOULOS PETROS (CR)	RA	---	---	---	---	---	---	---	---	---	---	---	---	---	---	---	---	---	---	---	---	---	---
PIRAEUS BANK (CR)	SR RA	100.03	---	---	---	---	11,874	10.00%	3.00%	10.00%	---	15	7,259	1,234,030.0	9,499	10.00%	3.00%	10.00%	---	18	12,057	2,049,690.0	12,194
PLAISIO COMPUTERS SA (CR)	RA	---	---	---	---	---	---	---	---	---	---	---	---	---	---	---	---	---	---	---	---	---	---
PPC (CR)	SR RA	100.62	0.06	1	10	11,640.0	1,930	4.00%	3.50%	4.00%	45@4%	2	50	58,200.0	1,222	---	---	---	---	---	---	---	69
QUEST HOLDINGS (CR)	SR RA	100.00	---	---	---	---	---	---	---	---	---	---	---	---	---	---	---	---	---	---	---	---	---
REVOIL (CR)	SR RA	100.00	---	---	---	---	---	---	---	---	---	---	---	---	---	---	---	---	---	---	---	---	---

Stock Lending Notes

- [1] - Stock Repo: A Contract for selling stocks to HELEX with a Repurchase Right (According to ATHEX BoD Resolution No 17)
- [2] - Stock Reverse Repo: A Contract for buying stocks from HELEX with a Resell Right. (According to ATHEX BoD Resolution No 18)
- [3] - Standardized Repurchase Agreements: A Contract that constitutes a standardized agreement for the purchase or sale of shares, with repurchase or resell pact (According to ATHEX BoD Resolution No 20)
- [4] - Type of products is divided into SR: Stock Repo or Stock Reverse Repo, and RA: Repurchase Agreements.
- [5] - Open Interest in all Series (both tradeable or non-tradeable).

Securities	Type[4]	Stock Repo [1]						Stock Reverse Repo [2]								Repurchase Agreements [3]							
		Trans. price	chg.	Trades	Volume	Transactions Value	Open Interest[5]	Price max	Price min	Last price	Last Ask	Trades	Volume	Transactions Value	Open Interest[5]	Price max	Price min	Last price	Last Ask	Trades	Volume	Transactions Value	Open Interest[5]
SELECTED TEXT. IND. ASSOC (CR)	SR RA	100.00	---	---	---	---	---	---	---	---	---	---	---	---	---	---	---	---	---	---	---	---	---
SIDENOR (CR)	SR RA	100.00	---	---	---	---	391	---	---	---	195@3%	---	---	---	---	---	---	---	---	---	---	---	---
TECHNICAL OLYMPIC SA (CR)	SR RA	100.00	---	---	---	---	44	---	---	---	22@3%	---	---	---	---	---	---	---	---	---	---	---	---
TERNA ENERGY (CR)	SR RA	100.00	---	---	---	---	294	---	---	---	147@3%	---	---	---	---	---	---	---	---	---	---	---	---
THESSALONIKA WATER & SEWERAGE	SR RA	100.00	---	---	---	---	1,310	---	---	---	655@3%	---	---	---	---	---	---	---	---	---	---	---	---
THRACE PLASTICS SA (CR)	SR RA	100.00	---	---	---	---	1,010	---	---	---	505@3%	---	---	---	---	---	---	---	---	---	---	---	---
TITAN CEMENT (CR)	SR RA	100.21	0.02	---	---	---	8,843	3.00%	3.00%	3.00%	3465@3%	1	100	248,200.0	943	---	---	---	---	---	---	---	8
TPA SA (CR)	SR RA	100.00	---	---	---	---	46	---	---	---	23@3%	---	---	---	---	---	---	---	---	---	---	---	---
TRASTOR REAL EST. INV. CO.(CR)	SR RA	100.00	---	---	---	---	344	---	---	---	172@3%	---	---	---	---	---	---	---	---	---	---	---	---
VIOHALCO SA/NV (CB)	SR RA	100.46	0.04	---	---	---	246	---	---	---	---	---	---	---	196	---	---	---	---	---	---	---	210

Stock Lending Notes

- [1] - Stock Repo: A Contract for selling stocks to HELEX with a Repurchase Right (According to ATHEX BoD Resolution No 17)
- [2] - Stock Reverse Repo: A Contract for buying stocks from HELEX with a Resell Right. (According to ATHEX BoD Resolution No 18)
- [3] - Standardized Repurchase Agreements: A Contract that constitutes a standardized agreement for the purchase or sale of shares, with repurchase or resell pact (According to ATHEX BoD Resolution No 20)
- [4] - Type of products is divided into SR: Stock Repo or Stock Reverse Repo, and RA: Repurchase Agreements.
- [5] - Open Interest in all Series (both tradeable or non-tradeable).

**Sectors codification for listed companies**

533	-	Exploration & Production	537	-	Integrated Oil & Gas
1353	-	Commodity Chemicals	1357	-	Specialty Chemicals
1753	-	Aluminum	1755	-	Nonferrous Metals
1757	-	Steel	1775	-	General Mining
2353	-	Building Materials & Fixtures	2357	-	Heavy Construction
2723	-	Containers & Packaging	2727	-	Diversified Industrials
2733	-	Electrical Components & Equipment	2753	-	Commercial Vehicles & Trucks
2757	-	Industrial Machinery	2773	-	Marine Transportation
2777	-	Transportation Services	2791	-	Business Support Services
2797	-	Industrial Suppliers	3535	-	Distillers & Vintners
3537	-	Soft Drinks	3573	-	Farming Fishing & Plantations
3577	-	Food Products	3722	-	Durable Household Products
3726	-	Furnishings	3728	-	Home Construction
3747	-	Toys	3763	-	Clothing & Accessories
3765	-	Footwear	3767	-	Personal Products
3785	-	Tobacco	4533	-	Health Care Providers
4535	-	Medical Equipment	4577	-	Pharmaceuticals
5337	-	Food Retailers & Wholesalers	5371	-	Apparel Retailers
5373	-	Broadline Retailers	5375	-	Home Improvement Retailers
5379	-	Specialty Retailers	5553	-	Broadcasting & Entertainment
5555	-	Media Agencies	5557	-	Publishing
5751	-	Airlines	5752	-	Gambling
5753	-	Hotels	5755	-	Recreational Services
5757	-	Restaurants & Bars	5759	-	Travel & Tourism
6535	-	Fixed Line Telecommunications	6575	-	Mobile Telecommunications
7535	-	Conventional Electricity	7537	-	Alternative Electricity
7577	-	Water	8355	-	Banks
8534	-	Insurance Brokers	8536	-	Property & Casualty Insurance
8633	-	Real Estate Holding & Development	8637	-	Real Estate Services
8671	-	Industrial & Office REITs	8675	-	Specialty REITs
8775	-	Specialty Finance	8777	-	Investment Services
8985	-	Equity Investment Instruments	9533	-	Computer Services
9535	-	Internet	9537	-	Software
9572	-	Computer Hardware	9574	-	Electronic Office Equipment
9578	-	Telecommunications Equipment	11000	-	ETF

