

Daily Official List

Hellenic Exchanges – Athens Stock Exchange S.A.

Friday, 20 June, 2014

Year: 135 Trading Day No: 115

ΕΛΛΗΝΙΚΑ ΧΡΗΜΑΤΙΣΤΗΡΙΑ - ΧΡΗΜΑΤΙΣΤΗΡΙΟ ΑΘΗΝΩΝ

ΑΝΩΝΥΜΗ ΕΤΑΙΡΕΙΑ ΣΥΜΜΕΤΟΧΩΝ

HELLENIC EXCHANGES – ATHENS STOCK EXCHANGE

Disclaimer:

Hellenic Exchanges-Athens Exchange endeavours to ensure that the data and other material ("Information") presented on the Daily Official List are accurate and complete, but it is not liable for any errors or omissions of data or /and for the accuracy, credibility, updating and completeness of the aforesaid information nor it has any liability arising directly or indirectly from the use of the above Information.

The Company is not liable for the accuracy of the data included in listed companies' announcements. Only the sender of such an announcement is fully and solely liable for any infringement of third party's rights from the content of such announcement. All contents of the Daily Official List are provided only for information purposes and do not constitute investment advice or solicitation to invest in securities or other products listed for trading on the Exchange.

You acknowledge and agree that the Company is the owner of any property rights related to any Information appearing on the Daily Official List including intellectual property rights copyright, trademarks, etc.

The above data are a property of the Hellenic Exchanges-Athens Exchange and are copyright protected. Users are forbidden to reproduce, modify, copy, sale, transmit or redistribute, by all reproduction means and methods, part or the whole of the above data, without reference to their source.

The commercial exploitation of these data is, also, forbidden by third parties. Hellenic Exchanges-Athens Exchange does not carry any responsibility, direct or indirect, derived from usage or accidental alteration of the above data when used by third parties.

Hellenic Exchanges – Athens Stock Exchange S.A.

110 Athinon Ave., 10442 Athens, Tel: (210) 33.66.800, Fax: (210) 32.13.938

www.athex.gr

Thessalonica Stock Exchange Center (T.S.E.C)

16-18 Katouni Str., Thessalonica 546 25 Tel: (2310) 567.667, Fax: (2310) 530.545

Athex Members Guarantee Fund

14-16 Fidiou Str., Athens 106 78, Tel: (210) 33.04.682, Fax: (210) 33.04.155

Hellenic Republic Capital Market Commission

1 Kolokotroni Str. & 1 Stadiou Str., Athens 10562 Tel: (210) 33.77.100 Fax: (210) 33.77.173

Table of Contents

Section 1: Statistical Figures of Securities and Derivatives Markets

- Summary of Markets
- Athex Indices
- Analytic Figures for Athex Market's Boards and Categories
- Trading Details by Athex Sectors and ETFs Category
- Top 10 best & worst performing Shares
- Derivatives Summary

Section 2: Analytic Figures of Shares Transactions

- Analytic Figures of Shares Transactions
- Shares' Notes

Section 3: Figures of Securities Transactions

- Securities Blocks Details
- Shares Rights Details
- Shares Short Selling
- Stock Borrowing
- Shares Forced Sales
- Forced Sales Registered Shares
- Exchange Traded Funds (ETFs) Characteristics

Section 5: Bonds traded in Fixed Income Assets Market

- Corporate Bonds
- Government Bonds
- Treasury Bills & Zero Coupon Government Bonds
- Government Bonds Traded with the Open Outcry Method
- State Banks Bonds

Section 6: Additional Infos

- Athex & ATHEXClear Members List
- List of Stocks under Market Making operations

Section 7: Derivatives Market Analytic Figures

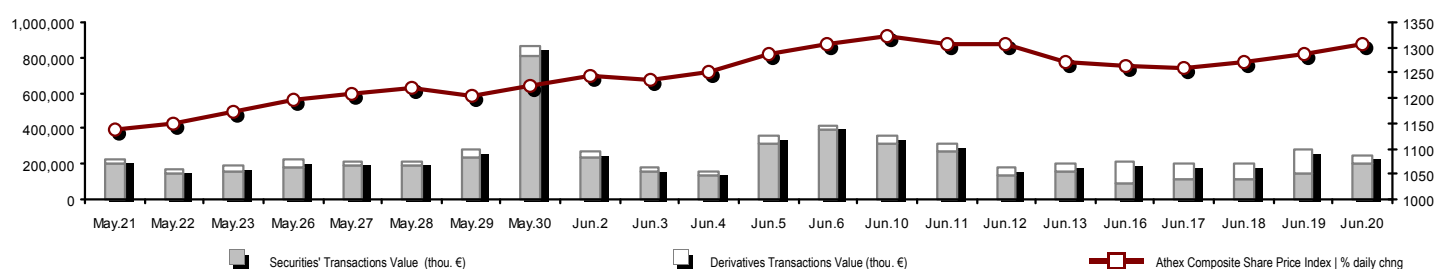
- Index Futures
- Stock Futures
- Index Options
- Stock Options
- Stock Lending Analytic Figures (Repo Contracts)

Appendix A: Sectors codification for listed companies

Section codification follows the corresponding from the Greek version of Daily Official List for reference purposes.

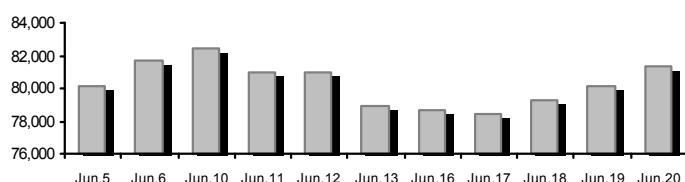
Summary of Markets

Athex Composite Share Price Index vs Shares and Derivatives Transactions Value

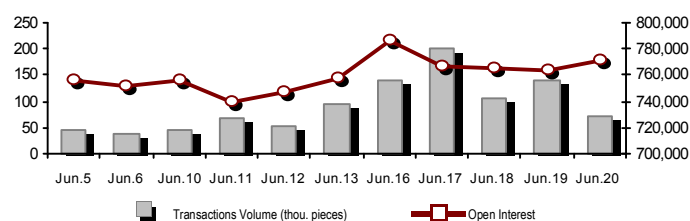


Total Transactions Value (Securities/Derivatives) (thou. €):		245,355.97	
Athex Capitalisation (mill. €) **: 81,307.76		Derivatives Total Open Interest 771,628	
Daily change: mill. € % 1,208.54 1.51%		in Index Futures % daily chng 67,700 0.50%	
Yearly Avg Capitalisation: mill. € % chng prev year Avg 72,826.97 41.01%		in Stock Futures % daily chng 348,649 1.37%	
Athex Composite Share Price Index % daily chng 1,305.93 1.47%		in Index Options % daily chng 11,023 -17.33%	
Athex Composite Share Price Index Capitalisation (mill. €) 75,867.50		in Stock Options % daily chng 5,525 0.50%	
Daily change (mill. €) 1,172.81		in Stock Repos/Reverse Repos/RA % daily chng 338,731 2.57%	
Securities' Transactions Value (thou. €) 197,057.76		Derivatives Transactions Value (thou. €) 48,298.21	
Daily change: thou. € % 47,599.24 31.85%		Daily change: thou. € % -81,107.06 -62.68%	
YtD Avg Trans. Value: thou. € % chng prev year Avg 150,772.10 74.07%		YtD Avg Trans. Value: thou. € % chng prev year Avg 43,602.64 69.43%	
Short Selling Trans. Value: mill. € % in total Value			
Short Covering Trans. Value: mill. € % in total Value			
Transactions Value of Blocks (thou. €) 21,876.13			
Bonds Transactions Value (thou. €) 0.00			
Securities' Transactions Volume (thou. Pieces) 135,242.86		Derivatives Contracts Volume: 73,369	
Daily change: thou. pieces % 44,663.45 49.31%		Daily change: pieces % -65,338 -47.11%	
YtD Avg Volume: thou. pieces % chng prev year Avg 100,857.16 88.47%		YtD Avg Derivatives Contracts % chng prev year Avg 47,301 13.80%	
Short Selling Volume: thou pieces % in total Volume			
Short Covering Volume: thou. pieces % in total Volume			
Transactions Volume of Blocks (thou. Pieces) 5,527.99			
Bonds Transactions Volume (thou. pieces) 0.00			
Securities' Trades Number 22,517		Derivatives Trades Number: 3,403	
Daily change: number % -2,256 -9.11%		Daily change: number % -1,631 -32.40%	
YtD Avg Derivatives Trades number % chng prev year Avg 31,302 5.51%		YtD Avg Derivatives Trades number % chng prev year Avg 2,770 5.24%	
Number of Blocks 20			
Number of Bonds Transactions 0			

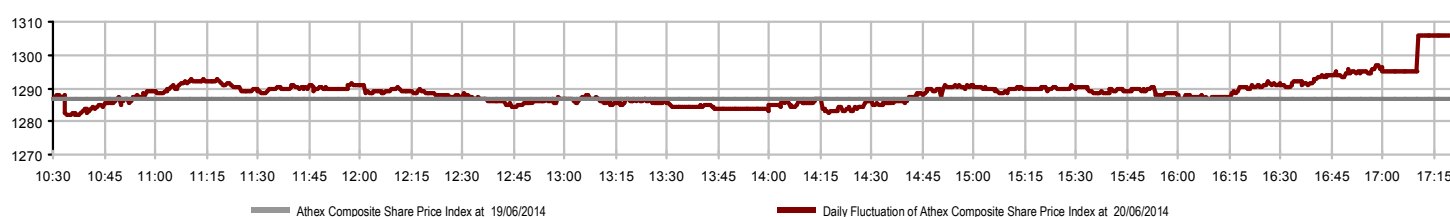
Athex Capitalisation (mill. €) **



Derivatives Transactions Volume and Open Interest



Daily Fluctuation of Athex Composite Share Price Index



Athex Indices

Index name	20/06/2014	19/06/2014	pts.	%	Min	Max	Year min	Year max	Year change
Athex Composite Share Price Index	1,305.93 ↑	1,286.99	18.94	1.47%	1,282.04	1,305.93	1,062.66	1,379.42	12.32% ↑
FTSE/Athex Large Cap	423.17 ↑	416.23	6.94	1.67%	414.68	423.17	341.34	445.52	9.96% ↑
FTSE/ATHEX Custom Capped	1,351.43 ↑	1,335.37	16.06	1.20%			1,103.54	1,410.19	9.91% ↑
FTSE/ATHEX Custom Capped - USD	1,320.81 ↑	1,299.37	21.44	1.65%			1,085.46	1,406.66	8.73% ↑
FTSE/Athex Mid Cap Index	1,176.01 ↑	1,169.86	6.15	0.53%	1,166.61	1,178.38	1,060.67	1,317.40	0.79% ↑
FTSE/ATHEX-CSE Banking Index	139.67 ↑	137.31	2.36	1.72%	136.19	139.67	107.37	161.54	2.59% ↑
FTSE/ATHEX Global Traders Index Plus	1,826.51 ↑	1,807.20	19.31	1.07%	1,795.55	1,826.51	1,486.71	1,845.84	17.77% ↑
FTSE/ATHEX Global Traders Index	2,068.01 ↑	2,047.68	20.33	0.99%	2,040.90	2,068.03	1,686.82	2,152.38	19.24% ↑
FTSE/ATHEX Mid & Small Cap Factor-Weighted Ind	1,352.52 ↓	1,361.04	-8.52	-0.63%	1,346.12	1,361.93	1,279.09	1,523.02	5.74% ↑
Greece & Turkey 30 Price Index	740.09 ↓	742.46	-2.37	-0.32%	736.69	742.47	570.55	783.68	14.29% ↑
ATHEX Mid & SmallCap Price Index	3,117.59 ↑	3,059.93	57.66	1.88%	3,055.81	3,121.01	2,573.35	3,155.19	21.14% ↑
FTSE/Athex Market Index	1,012.96 ↑	996.80	16.16	1.62%	993.35	1,012.96	821.30	1,066.17	9.65% ↑
FTSE Med Index	5,352.00 ↑	5,289.19	62.80	1.19%			4,605.95	5,379.93	17.13% ↑
Athex Composite Index Total Return Index	1,896.30 ↑	1,868.25	28.05	1.50%	1,861.61	1,896.30	1,540.53	1,998.07	12.64% ↑
FTSE/Athex Large Cap Total Return	571.24 ↑	561.87	9.37	1.67%			469.70	605.87	8.32% ↑
FTSE/ATHEX Large Cap Net Total Return	1,701.25 ↑	1,673.01	28.24	1.69%	1,667.15	1,701.25	1,369.61	1,786.28	10.26% ↑
FTSE/ATHEX Custom Capped Total Return	1,415.73 ↑	1,398.91	16.82	1.20%			1,153.69	1,472.79	10.24% ↑
FTSE/ATHEX Custom Capped - USD Total Return	1,383.66 ↑	1,361.20	22.46	1.65%			1,134.79	1,469.09	9.06% ↑
FTSE/Athex Mid Cap Total Return	1,490.20 ↑	1,482.41	7.79	0.53%			1,337.23	1,643.81	3.18% ↑
FTSE/ATHEX-CSE Banking Total Return Index	130.39 ↑	128.19	2.20	1.72%			104.83	153.89	1.02% ↑
Greece & Turkey 30 Total Return Index	897.72 ↑	887.35	10.37	1.17%			697.73	946.62	15.90% ↑
Hellenic Mid & Small Cap Index	1,255.12 ↑	1,242.37	12.75	1.03%	1,238.05	1,255.12	1,061.82	1,351.84	12.69% ↑
FTSE/Athex Banks	184.54 ↑	181.42	3.12	1.72%	179.94	184.54	141.86	213.44	2.59% ↑
FTSE/Athex Insurance	1,411.91 ↓	1,454.06	-42.15	-2.90%	1,401.38	1,454.06	1,296.01	1,749.09	7.20% ↑
FTSE/Athex Financial Services	2,019.57 ↓	2,036.93	-17.36	-0.85%	2,009.36	2,047.13	1,599.55	2,207.51	14.20% ↑
FTSE/Athex Industrial Goods & Services	3,424.54 ↑	3,400.35	24.19	0.71%	3,363.35	3,424.85	2,839.79	3,724.87	5.54% ↑
FTSE/Athex Retail	4,836.94 ↑	4,625.73	211.21	4.57%	4,611.74	4,836.94	3,090.34	4,836.94	46.63% ↑
FTSE/ATHEX Real Estate	2,882.99 ↑	2,848.75	34.24	1.20%	2,795.75	2,882.99	2,194.73	3,111.71	30.06% ↑
FTSE/Athex Personal & Household Goods	6,829.59 ↑	6,717.04	112.55	1.68%	6,700.88	6,829.59	5,634.03	7,649.84	15.41% ↑
FTSE/Athex Food & Beverage	6,591.95 ↑	6,527.94	64.01	0.98%	6,476.33	6,591.95	6,139.41	8,227.06	-16.01% ↓
FTSE/Athex Basic Resources	3,010.73 ↑	2,986.38	24.35	0.82%	2,936.81	3,010.73	2,518.75	3,356.44	9.41% ↑
FTSE/Athex Construction & Materials	3,412.49 ↑	3,392.98	19.51	0.58%	3,359.26	3,428.79	2,531.26	3,482.98	27.25% ↑
FTSE/Athex Oil & Gas	2,609.88 ↑	2,582.61	27.27	1.06%	2,552.79	2,609.88	2,283.05	3,236.15	-8.96% ↓
FTSE/Athex Chemicals	6,488.49 ↑	6,475.33	13.16	0.20%	6,446.44	6,488.49	5,516.28	6,811.96	8.20% ↑
FTSE/Athex Media	1,839.41 ↓	2,038.86	-199.45	-9.78%	1,839.41	2,038.86	1,543.92	2,777.58	19.14% ↑
FTSE/Athex Travel & Leisure	2,298.61 ↑	2,218.80	79.81	3.60%	2,198.51	2,298.61	1,634.38	2,304.69	36.82% ↑
FTSE/Athex Technology	1,021.26 ↑	1,011.23	10.03	0.99%	997.34	1,021.26	786.21	1,134.79	29.70% ↑
FTSE/Athex Telecommunications	3,303.08 ↑	3,289.32	13.76	0.42%	3,289.32	3,349.88	2,603.93	3,633.39	24.10% ↑
FTSE/Athex Utilities	4,254.82 ↑	4,181.75	73.07	1.75%	4,168.02	4,254.82	3,308.43	4,471.04	12.18% ↑
FTSE/Athex Health Care	211.11 ↓	217.51	-6.40	-2.94%	210.18	217.89	209.98	287.11	-5.34% ↓
Athex All Share Index	287.70 ↑	283.46	4.23	1.49%			226.62	291.46	22.18% ↑

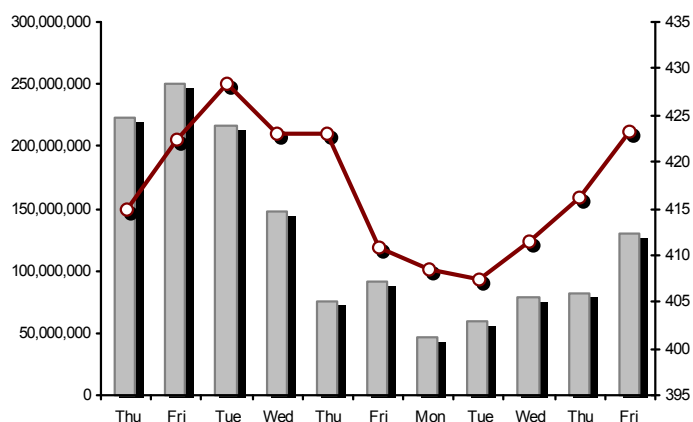
Note 1: Greece & Turkey 30 Pr data is the indicative at 17:20, whereas FTSE/ATHEX Custom Capped, FTSE/ATHEX Custom Capped - USD, FTSE/ATHEX Custom Capped TR, FTSE/ATHEX Custom Capped - USD TR, FTSE/Med 100 & Greece & Turkey 30 Rt closing prices refer to the previous trading day of 19/06/2014.

Note 2: The Hellenic Mid & Small Cap Index is a Customized index calculated by the Athens Exchange.

Athex Indices

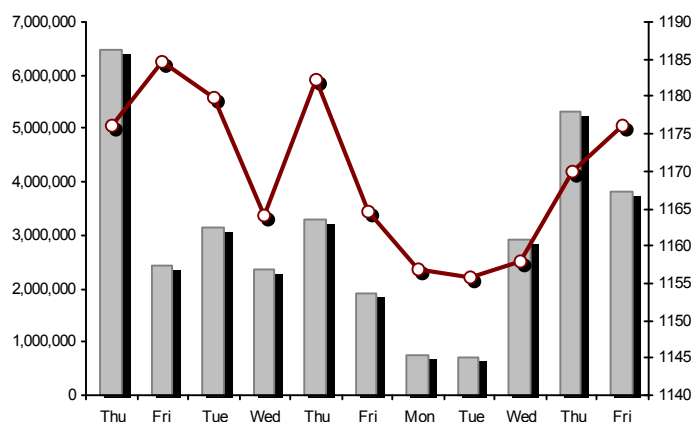
FTSE/Large Cap

20/06/2014: 1.67%



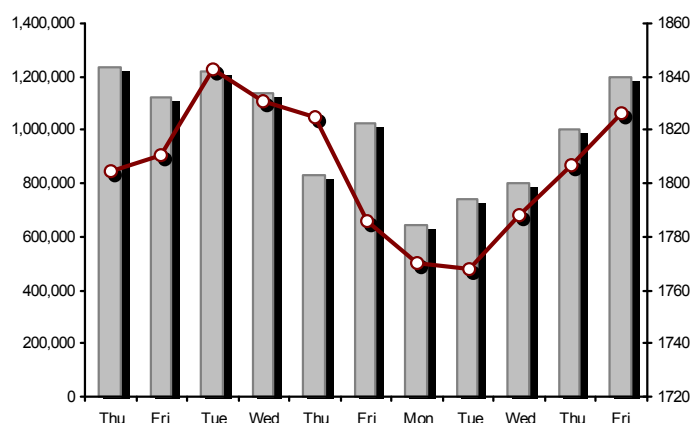
FTSE/Athex Mid Cap Index

20/06/2014: 0.53%



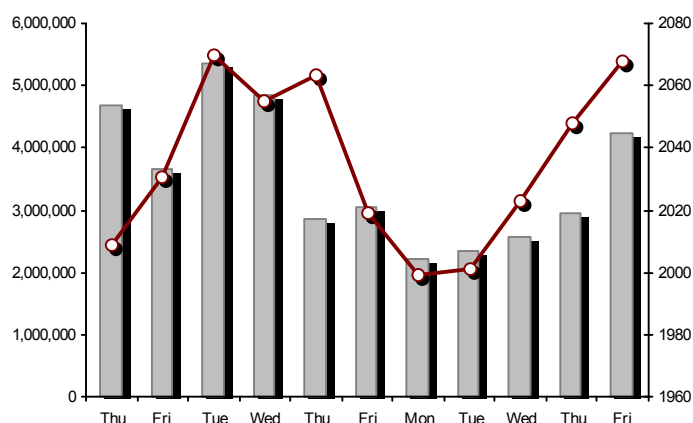
FTSE/ATHEX Global Traders Index Plus

20/06/2014: 1.07%



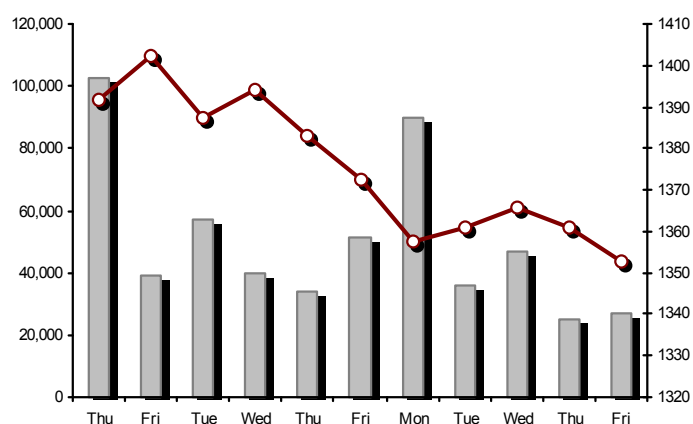
FTSE/ATHEX Global Traders Index

20/06/2014: 0.99%



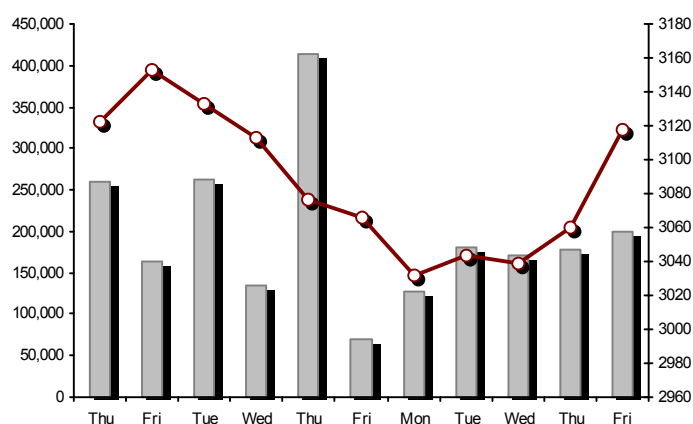
FTSE/ATHEX Mid & Small Cap Factor-Weighted Index

20/06/2014: -0.63%



ATHEX Mid & SmallCap Price Index

20/06/2014: 1.88%



Indices volume of transactions

Indices closing prices

Analytic Figures for Athex Market's Boards and Categories

	Total Traded Securities	Main Market	Low Dispersion	Other Categories (*)	Exchange Traded Funds (ETFs)	Warrants
Totals	154	121	5	22	3	3
Gain / Lose / Same:	83 / 50 / 21	67 / 37 / 17	2 / 2 / 1	11 / 8 / 3	2 / 1 / 0	1 / 2 / 0
Athex Capitalisation (mill. €) **	81,307.76	78,901.03	1,958.99	447.74		
Daily Average Trans/ons Value(thou.€)	150,772.10	140,525.50	50.96	46.15	67.84	10,081.65
Transactions Value	197,057.76	194,594.75	16.26	16.70	8.14	2,421.91
Main Board:	175,181.63	172,718.62	16.26	16.70	8.14	2,421.91
Blocks Board:	21,876.13	21,876.13	0.00	0.00	0.00	0.00
Forced Sales Board:	0.00	0.00	0.00	0.00	0.00	0.00
Special Terms Board:	0.00	0.00	0.00	0.00	0.00	0.00
Daily Average Transactions Volume	100,857,164	92,284,435	22,387	239,359	14,357	8,296,626
Transactions Volume	135,242,862	133,641,587	28,188	152,626	1,954	1,418,507
Main Board:	129,714,873	128,113,598	28,188	152,626	1,954	1,418,507
Blocks Board:	5,527,989	5,527,989	0	0	0	0
Forced Sales Board:	0	0	0	0	0	0
Special Terms Board:	0	0	0	0	0	0
Daily Average Number of Trades	31,302	28,968	54	147	9	2,125
Number of Trades	22,517	21,791	28	112	7	579
Main Board:	22,497	21,771	28	112	7	579
Blocks Board:	20	20	0	0	0	0
Forced Sales Board:	0	0	0	0	0	0
Special Terms Board:	0	0	0	0	0	0

(*) Summarised Transactions figures for Under Deletion and Under Supervision Categories.(**) The Market Capitalization of the Companies that belong in the Under Supervision Status is not included.

Trading Details by Athex Sectors and ETFs Category

Code	Sectors	Gain / Lose / Same	Number of Trades	Transactions Volume	Transactions Value	% of Total Trans. Value
8300	- Banks	4 / 4 / 1	8,319	124,283,622	114,539,459.71	58.12%
1700	- Basic Resources	5 / 6 / 1	935	297,738	1,323,971.48	0.67%
1300	- Chemicals	3 / 1 / 2	58	239,826	175,086.59	0.09%
2300	- Construction & Materials	14 / 6 / 0	1,737	807,011	5,498,990.30	2.79%
11000	- ETF	2 / 1 / 0	7	1,954	8,137.51	0.00%
8700	- Financial Services	0 / 3 / 1	741	981,142	1,337,695.40	0.68%
3500	- Food & Beverage	11 / 1 / 2	233	175,904	1,837,748.26	0.93%
4500	- Health Care	0 / 3 / 1	251	264,588	101,202.29	0.05%
2700	- Industrial Goods & Services	9 / 5 / 5	1,056	300,938	1,602,674.26	0.81%
8500	- Insurance	0 / 1 / 0	14	3,305	4,481.32	0.00%
5500	- Media	2 / 1 / 0	18	25,743	12,224.61	0.01%
500	- Oil & Gas	1 / 1 / 1	1,302	783,488	5,491,978.63	2.79%
3700	- Personal & Household Goods	7 / 4 / 3	774	438,968	3,912,812.09	1.99%
8600	- Real Estate	3 / 4 / 1	713	2,851,044	14,331,731.75	7.27%
5300	- Retail	5 / 0 / 0	780	231,472	6,316,881.71	3.21%
9500	- Technology	6 / 4 / 1	126	40,680	95,638.07	0.05%
6500	- Telecommunications	1 / 0 / 0	2,131	1,667,153	20,079,118.36	10.19%
5700	- Travel & Leisure	7 / 4 / 2	1,331	1,158,888	13,561,202.66	6.88%
7500	- Utilities	3 / 1 / 0	1,991	689,398	6,826,720.61	3.46%

Top 10 best & worst performing Shares

Main Market

With positive Price change	Closing price	change	With negative Price change	Closing price	change
REVOIL (CR)	0.650	10.36% ↑	ATHENS MEDICAL CENTER SA (CR)	0.781	-4.52% ↓
TECHNICAL OLYMPIC SA (CR)	1.66	5.06% ↑	BANK OF GREECE (CR)	14.20	-3.01% ↓
ALPHA BANK (CR)	0.750	4.75% ↑	INTRALOT (CR)	2.07	-2.36% ↓
FOLLI FOLLIE (CR)	34.40	4.56% ↑	MARFIN INVESTMENT GROUP (CR)	0.473	-2.27% ↓
OPAP (CR)	13.63	4.44% ↑	AUTOHELLAS SA (CR)	9.40	-2.08% ↓
TERNA ENERGY (CR)	4.23	4.44% ↑	THESSALONIKA WATER & SEWERAGE	4.62	-1.91% ↓
EUROBANK ERGASIAS (CR)	0.407	4.36% ↑	HYGEIA SA (CR)	0.331	-1.78% ↓
TPA SA (CR)	29.12	4.00% ↑	FRIGOGLASS SA (CR)	3.94	-1.25% ↓
HALKOR SA (CB)	0.584	3.55% ↑	GR. SARANTIS SA (CR)	7.02	-0.99% ↓
F.G. EUROPE S.A. (CR)	1.50	2.74% ↑	PLAISIO COMPUTERS SA (CR)	7.51	-0.92% ↓
With the highest Transactions Value	Value (thou. €)	change	With the highest Transactions Volume	Volume	change
ALPHA BANK (CR)	57,605.62	4.75% ↑	ALPHA BANK (CR)	77,702,228	4.75% ↑
NATIONAL BANK (CR)	23,028.75	-0.70% ↓	EUROBANK ERGASIAS (CR)	24,147,931	4.36% ↑
PIRAEUS BANK (CR)	21,675.78	0.00% -	PIRAEUS BANK (CR)	12,225,942	0.00% -
OTE (CR)	20,079.12	0.42% ↑	NATIONAL BANK (CR)	8,094,787	-0.70% ↓
LAMDA DEVELOPMENT SA (CR)	13,055.79	2.29% ↑	LAMDA DEVELOPMENT SA (CR)	2,678,274	2.29% ↑
OPAP (CR)	13,014.71	4.44% ↑	OTE (CR)	1,667,153	0.42% ↑
EUROBANK ERGASIAS (CR)	9,619.34	4.36% ↑	OPAP (CR)	985,162	4.44% ↑
FOLLI FOLLIE (CR)	6,289.48	4.56% ↑	MARFIN INVESTMENT GROUP (CR)	876,463	-2.27% ↓
PPC (CR)	5,155.45	1.27% ↑	ATTICA BANK S.A. (CR)	688,356	0.67% ↑
JUMBO SA (CR)	3,518.93	2.05% ↑	HELLENIC PETROLEUM (CR)	487,856	2.27% ↑

Note: Stocks that are not included in the "Low Dispersion" and "Under Supervision" categories, and the transactions value is more than 10,000 €.

Derivatives Summary

	Number of Trades	Volume	Open Interest	Transactions Value
Index Futures	645	13,067	67,700	27,200,627.50
FTSE/Athex Large Cap	645	13,067	67,700	27,200,627.50
Stock Futures	2,655	48,044	348,649	16,768,799.10
ALPHA BANK (CR)	235	8,166	51,742	596,480.50
CC HBC AG (CR)	34	114	618	196,277.00
CORINTH PIPEWORKS SA (CR)	17	494	813	83,986.00
ELLAKTOR (CR)	45	352	1,883	147,681.00
EUROBANK ERGASIAS (CR)	124	4,779	88,411	189,393.80
EUROBANK PROPERTIES REIC (CR)	12	61	208	55,620.00
EYDAP S.A. (CR)	20	79	366	74,799.00
FOLLI FOLLIE (CR)	100	249	686	829,752.00
FRIGOGLASS SA (CR)	38	258	1,579	103,003.00
GEK TERNA (CR)	79	1,530	30,052	608,284.00
HELLENIC EXCHANGES-A.S.E. (CR)	68	335	11,233	296,105.00
HELLENIC PETROLEUM (CR)	201	1,705	8,687	1,056,096.00
INTRALOT (CR)	65	917	2,410	191,827.00
JUMBO SA (CR)	27	102	454	125,189.00
MARFIN INVESTMENT GROUP (CR)	139	6,068	27,773	291,671.80
METKA (CR)	40	191	903	261,214.00
MOTOR OIL (CR)	28	124	760	102,126.00
MYTILINEOS HOLDINGS (CR)	143	1,902	11,776	1,270,925.00
NATIONAL BANK (CR)	284	10,042	51,981	2,857,786.00
OPAP (CR)	133	849	2,742	1,116,447.00
OTE (CR)	273	2,162	10,302	2,611,441.00
P.P.A. S.A. (CR)	17	36	482	65,681.00
PIRAEUS BANK (CR)	160	4,559	29,293	806,291.00
PPC (CR)	225	1,731	5,510	2,062,610.00
SIDENOR (CR)	25	394	1,129	65,616.00
TERNA ENERGY (CR)	48	373	5,483	154,749.00
TITAN CEMENT (CR)	50	163	671	413,966.00
VIOHALCO SA/NV (CB)	25	309	702	133,782.00
Index Options	78	1,039	11,023	2,094,400.00
FTSE/Athex Large Cap	78	1,039	11,023	2,094,400.00
Stock Options	6	1,226	5,525	313,280.00
ALPHA BANK (CR)	0	0	10	0.00
NATIONAL BANK (CR)	6	1,226	4,740	313,280.00
OPAP (CR)	0	0	125	0.00
OTE (CR)	0	0	600	0.00
PIRAEUS BANK (CR)	0	0	0	0.00
PPC (CR)	0	0	50	0.00
Stock Repos - Stock Reverse Repos - Repurchase Agreements	19	9,993	338,731	1,921,107.10
Stock Reverse Repos	11	4,847	109,175	1,599,015.00
Stock Repos	8	5,146	222,258	322,092.10
Repurchase Agreement	0	0	7,298	0.00
Total Derivatives Traded	3,403	73,369	771,628	48,298,213.70

Number of Outstanding Securities	Nominal Value	Dividends [1]			Date of Last Coupon		Note	Shares	Closing price	% change	Previous closing price/date	Open price	Price min	Price max	Last price	Avg price	Last Bid [7]	Last Ask [7]	P/E after	Year	Volume	Trades	Transactions Value	Company Mkt Value (thou. €)	Year low	Year high	Sector[4]
2011	2012	2013	Dividend [2]	Right																							

Warrants

1,143,803,533	---	---	---	11/06/2013	---	ALPHA BANK (W)	1.95	1.56 ↑	1.92	19/06/2014	1.92	1.89	1.96	1.95	1.92	1600@1.94	5177@1.95	4.50	2013	1,100,318	399	2,110,384.10	9,576,794.89	1.13	2.15	8355
245,748,580	---	---	---	27/06/2013	---	NATIONAL BANK (W)	0.868	-0.57 ↓	0.873	19/06/2014	0.852	0.852	0.880	0.868	0.870	763@0.868	44@0.873	1.93	2013	69,050	98	60,075.07	10,034,144.95	0.462	1.59	8355
848,591,850	---	---	---	03/07/2013	---	PIRAEUS BANK (W)	1.01	-0.98 ↓	1.02	19/06/2014	1.01	1.00	1.03	1.01	1.01	43074@1.00	46332@1.01	1.08	2013	249,139	82	251,454.50	10,983,563.49	0.600	1.15	8355

Main Market

71,417,100	0.650	---	---	26/05/2010	11/07/2007	---	AEGEAN AIRLINES (CR)	8.15	0.62 ↑	8.10	19/06/2014	8.08	8.00	8.17	8.15	8.13	460@8.10	1984@8.15	8.77	2013	31,244	99	253,962.08	582,049.37	5.90	8.65	5751	
11,178,000	1.25	---	---	21/04/2010	18/12/2013	---	AEOLIAN INVESTMENT FUND (CR)	0.900	---	0.900	19/06/2014	0.900	0.900	0.900	0.900	0.900	350@0.900	200@0.949	12.35	2013	350	1	315.00	10,060.20	0.700	1.09	8985	
13,000,000	1.00	---	---	01/08/2007	07/04/2000	---	AKRITAS SA (CR)	0.240	-9.77 ↓	0.266	19/06/2014	0.240	0.240	0.240	0.240	0.240	323@0.240	20@0.250	---	2013	10	1	2.40	3,120.00	0.100	0.324	2353	
25,000,000	0.400	---	---	03/06/2009	12/07/2013	---	ALCO HELLAS SA (CR)	0.190	-5.00 ↓	0.200	19/06/2014	0.200	0.190	0.205	0.190	0.193	4752@0.190	281@0.200	---	2013	21,389	49	4,128.20	4,750.00	0.190	0.418	1753	
12,769,059,858	0.300	---	---	07/04/2008	13/05/2013	---	ALPHA BANK (CR)	0.750	4.75 ↑	0.716	19/06/2014	0.718	0.712	0.750	0.750	0.741	667927@0.738	130160@0.752	1.73	2013	77,702,228	2,749	57,605,618.45	9,576,794.89	0.584	0.784	8355	
22,016,250	0.370	---	---	15/07/2009	11/05/2000	---	ALUMIL (CR)	0.292	-0.34 ↓	0.293	19/06/2014	0.304	0.285	0.304	0.299	0.292	50@0.285	1000@0.295	---	2013	3,850	12	1,125.09	6,428.75	0.253	0.660	1753	
418,000	16.00	---	---	0.8	29/04/2014	05/03/2013	---	ANDROMEDA SA (CR)	22.43	-4.15 ↓	23.40	19/06/2014	22.43	22.43	22.43	22.43	191@22.43	5@23.39	6.78	2013	9	2	201.87	9,375.74	20.08	23.99	8985	
26,252,040	0.380	---	---	08/07/2010	10/02/2014	---	AS COMPANY SA (CR)	0.340	0.89 ↑	0.337	19/06/2014	0.336	0.330	0.340	0.340	0.334	151@0.338	1187@0.340	20.42	2013	6,599	5	2,206.67	8,925.69	0.310	0.413	5379	
86,735,980	0.310	---	---	06/07/2009	02/01/2002	---	ATHENS MEDICAL CENTER SA (CR)	0.781	-4.52 ↓	0.818	18/06/2014	0.782	0.776	0.800	0.781	0.783	500@0.780	65@0.794	---	2013	18,384	56	14,398.40	67,740.80	0.722	0.930	4533	
1,041,560,993	0.300	---	---	04/06/2008	10/02/2014	---	ATTICA BANK S.A. (CR)	0.150	0.67 ↑	0.149	19/06/2014	0.148	0.148	0.153	0.150	0.150	35983@0.150	10000@0.151	---	2013	688,356	153	103,406.09	156,234.15	0.111	0.277	8355	
15,300,000	0.300	---	---	30/07/2009	13/12/1999	---	ATTICA PUBLICATIONS SA (CR)	1.59	---	1.59	19/03/2014	---	---	---	---	---	---	40@1.48	45.88	2013	---	---	---	24,327.00	1.44	2.15	5557	
45,457,464	0.700	---	---	01/07/2008	01/03/2010	---	AUDIO VISUAL ENTERPRISES (CR)	0.249	-9.78 ↓	0.276	19/06/2014	0.249	0.249	0.260	0.249	0.249	---	4792@0.249	---	2013	2,138	8	532.37	11,318.91	0.209	0.376	5553	
12,120,000	0.320	(0.45)	---	30/04/2012	22/11/2013	---	AUTOHELLAS SA (CR)	9.40	-2.08 ↓	9.60	19/06/2014	9.12	9.12	9.55	9.55	9.40	2@9.50	2795@9.55	38.34	2013	1,444	14	13,570.93	113,928.00	7.50	11.20	5759	
19,864,886	5.60	0.67	0.5376	0.672	05/03/2014	02/07/2008	---	BANK OF GREECE (CR)	14.20	-3.01 ↓	14.64	19/06/2014	14.63	14.20	14.63	14.20	14.42	50@14.12	134@14.50	---	---	5,871	99	84,656.71	282,081.38	13.60	16.53	8355
23,986,500	1.05	---	---	26/06/2009	15/03/2000	---	BIOKARPET S.A.(CR)	0.785	1.29 ↑	0.775	19/06/2014	0.785	0.785	0.785	0.785	0.785	350@0.770	450@0.785	---	2013	100	1	78.50	18,829.40	0.461	0.880	3726	
15,842,391	1.51	---	---	15/07/2009	12/05/2000	---	BITROS HOLDING SA (CR)	0.308	-9.68 ↓	0.341	19/06/2014	0.310	0.308	0.374	0.308	0.309	---	502@0.308	---	2013	963	8	297.89	4,879.46	0.287	0.559	1757	
15,816,009	0.300	---	---	01/07/2009	17/07/2000	---	BYTE COMPUTER SA (CR)	0.480	---	0.480	19/06/2014	---	---	---	---	---	200@0.475	250@0.485	---	2013	---	---	---	7,591.68	0.432	0.666	9533	
367,690,225	6.70	---	0.34	26/06/2013	29/04/2013	---	CC HBC AG (CR)	17.62	0.97 ↑	17.45	19/06/2014	17.34	17.31	17.62	17.62	17.45	8@17.54	3523@17.62	---	---	104,378	131	1,821,740.21	6,478,701.76	16.40	22.00	3537	
101,123,806	0.360	---	---	22/07/2010	28/06/2011	---	CENTRIC HOLDINGS (CR)	0.280	2.56 ↑	0.273	19/06/2014	0.273	0.270	0.280	0.280	0.273	1500@0.270	2475@0.280	13.72	2013	10,911	6	2,975.08	28,314.67	0.234	0.390	5752	
4,034,950	0.680	---	---	01/07/2005	30/12/2010	---	CHATZIKRANIOTIS & SONS SA (CR)	0.213	---	0.213	19/06/2014	---	---	---	---	---	1000@0.195	6555@0.205	---	2013	---	---	---	859.44	0.155	0.420	3577	
124,170,201	0.780	---	---	28/06/2002	07/02/2005	---	CORINTH PIPEWORKS SA (CR)	1.70	1.19 ↑	1.68	19/06/2014	1.69	1.69	1.72	1.70	1.70	1000@1.68	1881@1.71	---	2013	23,991	82	40,816.51	211,089.34	1.41	2.30	1757	
9,907,500	0.300	---	---	06/10/2005	13/02/2002	---	CPI SA (CR)	0.295	---	0.295	11/06/2014	---	---	---	---	---	---	400@0.298	---	2013	---	---	---	2,922.71	0.133	0.295	9572	
27,379,200	0.520	---	---	23/06/2010	18/09/2013	---	CRETE PLASTICS SA (CR)	5.18	-4.07 ↓	5.40	19/06/2014	5.40	5.18	5.40	5.18	5.21	40@5.18	59@5.33	15.56	2013	641	9	3,341.03	141,824.26	4.80	5.50	1357	
26,664,840	0.470	---	---	29/06/2005	12/07/1999	---	CYCLON HELLAS SA (CR)	0.700	---	0.700	19/06/2014	0.700	0.700	0.702	0.700	0.700	12940927@0.700	2844@0.701	36.24	2013	230,150	27	161,105.76	18,665.39	0.450	0.708	1357	
15,000,000	0.300	---	---	06/07/2007	18/07/2000	---	DAIOS PLASTICS SA (CR)	2.20	5.77 ↑	2.08	17/06/2014	2.20	2.20	2.20	2.20	2.20	38@1.91	90@2.19	---	2013	40	1	88.00	33,000.00	1.66	2.29	1357	
34,720,000	0.310	---	---	16/06/2010	01/08/2007	---	DROMEAS SA (CR)	0.239	---	0.239	19/06/2014	0.245	0.232	0.245	0.240	0.237	500@0.236	1418@0.240	---	2013	3,882	15	920.45	8,298.08	0.227	0.400	3726	
3,873,120	0.300	---	---	07/07/2008	04/10/2012	---	DRUCKFARBEN HELLAS (CR)	1.00	---	1.00	19/06/2014	---	---	---	---	---	---	---	---	2013	---	---	---	3,873.12	1.00	1.95	1357	
11,250,000	0.560	---	---	26/07/2010	16/06/1999	---	EKTER SA (CR)	0.650	1.88 ↑	0.638	19/06/2014	0.616	0.616	0.650	0.650	0.633	150@0.638	1546@0.650	---	2013	5,830	8	3,689.26	7,312.50	0.600	0.990	2357	
32,188,050	1.04	---	---	21/07/2008	20/01/2000	---	EL. D. MOUZAKIS SA (CB)	0.290	-2.36 ↓	0.297	12/06/2014	0.268	0.268	0.290	0.290	0.268	---	280@0.290	---	2013	1,020	3	273.80	9,334.53	0.171	0.475	3763	
18,648,000	1.00	---	---	07/07/2009	10/09/2010	---	ELASTRON (CR)	0.821	---	0.821	19/06/2014	0.821	0.821	0.821	0.821	0.821	30@0.820	3480@0.821	---	2013	520	2	426.92	15,310.01	0.730	1.00	1757	
31,734,530	1.60	---	---	09/07/2007	19/07/2006	---	ELGEKA SA (CR)	0.313	5.74 ↑	0.296	19/06/2014	0.321	0.311	0.325	0.313	0.319	50@0.313	200@0.320	---	2013	5,450	9	1,740.40	9,932.91	0.238	0.488	3577	
23,828,130	0.500	---	---	07/07/2010	17/02/2009	---	ELINOIL S.A. (CR)	1.00	---	1.00	18/06/2014	1.00	1.00	1.00	1.00	1.00	580@0.900	620@1.00	---	2013	350	1	350.00	23,828.13	0.790	1.50	537	
177,001,313	1.03	---	---	05/07/2011	20/12/2007	---	ELLAKTOR (CR)	4.25	2.66 ↑	4.14	19/06/2014	4.18	4.11	4.35	4.25	4.21	31063@4.25	8020@4.26	---	2013	467,008	624	1,964,514.48	752,255.58	3.06	4.35	2357	

Number of Outstanding Securities	Nominal Value	Dividends [1]			Date of Last Coupon		Note	Shares	Closing price	% change	Previous closing price/date	Open price	Price min	Price max	Last price	Avg price	Last Bid [7]	Last Ask [7]	P/E after	Year	Volume	Trades	Transactions Value	Company Mkt Value (thou. €)	Year low	Year high	Sector[4]
		2011	2012	2013	Dividend [2]	Right																					
Main Market																											
26,730,187	0.600	---	---	---	25/06/2009	30/12/2010	---	ELTON SA (CR)	1.20	0.84 ↑	1.19 19/06/2014	1.18	1.17	1.20	1.20	1.18	10@1.17	100@1.20	12.37	2013	4,565	11	5,386.80	32,076.22	1.09	1.40	1353
15,146,404	0.340	---	---	---	06/07/2011	17/10/2002	---	ELTRAK SA (CR)	1.90	--- ▾	1.90 18/06/2014	1.90	1.90	1.90	1.90	1.90	100@1.76	160@1.90	---	2013	100	1	190.00	28,778.17	1.40	1.92	2753
124,100,815	0.300	---	0.08	---	30/05/2014	07/07/2000	---	ELVAL SA. (CB)	1.78	-1.11 ↓	1.80 19/06/2014	1.78	1.76	1.78	1.78	1.77	25@1.76	275@1.78	51.90	2013	2,335	17	4,132.25	220,899.45	1.70	2.15	1753
13,230,000	0.300	---	---	---	11/08/2010	28/08/2013	---	ELVE SA (CR)	0.609	--- ▾	0.609 18/06/2014	---	---	---	---	---	250@0.571	201@0.602	---	2013	---	---	---	8,057.07	0.528	0.690	3763
30,009,210	0.310	---	---	---	27/06/2008	26/06/2000	---	ETEM SA (CB)	0.271	-1.46 ↓	0.275 19/06/2014	0.270	0.270	0.279	0.271	0.272	1300@0.271	616@0.276	---	2013	31,500	32	8,564.38	8,132.50	0.163	0.400	1753
14,707,876,542	0.300	---	---	---	02/05/2008	13/06/2013	---	EUROBANK ERGASIAS (CR)	0.407	4.36 ↑	0.390 19/06/2014	0.393	0.392	0.407	0.407	0.399	272684@0.405	295600@0.408	---	2013	24,147,931	1,569	9,619,340.28	5,986,105.75	0.316	0.630	8355
101,260,000	2.13	0.4067	---	0.1821	17/04/2014	08/01/2014	---	EUROBANK PROPERTIES REIC (CR)	9.30	1.09 ↑	9.20 19/06/2014	9.24	9.02	9.30	9.30	9.26	433@9.22	100@9.33	---	2013	134,833	253	1,247,891.34	941,718.00	6.65	9.50	8675
7,959,900	0.600	---	---	---	02/06/2010	10/12/2013	5031	EUROCONSULTANTS S.A. (CR)	2.37	--- ▾	2.37 19/06/2014	2.28	2.28	2.37	2.37	2.32	100@2.37	190@2.39	69.64	2013	500	3	1,158.00	18,864.96	2.01	2.87	2791
27,503,677	0.600	0.05	0.1	---	11/07/2013	18/10/1999	---	EUROPEAN RELIANCE INSUR. (CR)	1.34	-2.90 ↓	1.38 19/06/2014	1.35	1.33	1.38	1.34	1.36	485@1.34	1250@1.39	3.88	2013	3,305	14	4,481.32	36,854.93	1.23	1.66	8536
13,673,200	0.880	---	---	---	18/07/2008	26/07/2001	---	EVROFARMA SA (CR)	0.336	9.80 ↑	0.306 19/06/2014	0.336	0.336	0.336	0.336	0.336	300@0.278	30@0.336	---	2013	30	1	10.08	4,594.20	0.224	0.455	3577
106,500,000	0.600	0.05	0.15	0.36	05/05/2014	28/01/2000	---	EYDAP S.A. (CR)	9.75	2.63 ↑	9.50 19/06/2014	9.40	9.35	9.75	9.75	9.56	10000@9.56	6954@9.75	13.37	2013	110,613	296	1,057,407.00	1,038,375.00	7.06	9.95	7577
52,800,154	0.300	---	---	---	16/04/2010	21/06/2004	---	F.G. EUROPE S.A. (CR)	1.50	2.74 ↑	1.46 19/06/2014	1.45	1.45	1.52	1.52	1.47	740@1.50	500@1.52	27.07	2013	59,710	26	87,947.80	79,200.23	0.580	1.52	3722
10,203,575	0.730	---	---	---	16/07/2007	18/10/1999	---	FIERATEX SA (CR)	0.377	--- ▾	0.377 11/06/2014	---	---	---	---	---	---	3000@0.340	---	2013	---	---	---	3,846.75	0.121	0.430	3763
11,720,024	0.540	---	---	---	16/07/2010	16/10/2013	---	FLEXOPACK SA (CR)	2.90	--- ▾	2.90 19/06/2014	2.90	2.90	2.90	2.90	2.90	154@2.90	250@3.06	13.73	2013	46	1	133.40	33,988.07	2.68	3.50	2723
4,181,450	0.500	---	---	---	21/08/2000	05/03/2002	---	FLOUR MILLS SARANTOPOULOS SA	1.14	--- ▾	1.14 28/04/2014	---	---	---	---	---	---	140@1.03	---	2013	---	---	---	4,766.85	0.702	1.14	3577
66,948,210	0.300	---	---	---	14/07/2009	31/12/2010	---	FOLLI FOLLIE (CR)	34.40	4.56 ↑	32.90 19/06/2014	33.29	32.80	34.40	34.40	33.89	10852@34.10	655@34.50	5.33	2013	185,564	703	6,289,481.71	2,303,018.42	21.90	34.40	5379
50,992,322	1.00	---	---	---	21/06/2010	16/07/2002	---	FOURLIS (CR)	5.85	0.86 ↑	5.80 19/06/2014	5.80	5.70	5.87	5.85	5.79	200@5.80	708@5.87	---	2013	29,371	88	170,014.02	298,305.08	3.86	6.01	3722
50,593,832	0.300	---	---	---	07/07/2010	07/09/2011	---	FRIGOGLASS SA (CR)	3.94	-1.25 ↓	3.99 19/06/2014	4.00	3.94	4.10	3.94	4.01	1807@3.94	201@3.95	---	2013	35,837	204	143,737.21	199,339.70	3.00	5.63	2757
77,376,446	0.340	---	---	---	23/05/2005	18/08/2011	---	G.E. DIMITRIOU (CR)	0.019	--- ▾	0.019 19/06/2014	0.019	0.019	0.019	0.019	0.019	27955@0.018	404300@0.019	---	2013	15,000	1	285.00	1,470.15	0.018	0.041	3722
14,076,360	0.370	---	---	---	19/08/2008	22/07/2003	---	GALAXIDI S.A. (CR)	0.290	--- ▾	0.290 12/06/2014	---	---	---	---	---	---	497@0.319	---	2013	---	---	---	4,082.14	0.250	0.419	3573
94,462,368	0.570	---	---	---	01/08/2011	02/01/2009	---	GEK TERNA (CR)	4.00	1.01 ↑	3.96 19/06/2014	3.93	3.93	4.01	4.00	3.97	1240@3.99	26914@4.00	---	2013	192,117	533	763,465.82	377,849.47	3.08	4.21	2357
8,418,750	0.300	0.15	0.29	---	05/06/2013	27/06/2012	---	GEKE SA (CB)	5.51	--- ▾	5.51 19/06/2014	---	---	---	---	---	120@5.44	20@6.06	87.12	2013	---	---	---	46,387.31	5.45	7.20	5753
24,060,000	0.300	0.017	---	---	18/06/2012	21/01/2000	---	GEN. COMMERCIAL & IND.SA (CR)	0.396	--- ▾	0.396 19/06/2014	---	---	---	---	---	1949@0.396	948@0.415	28.47	2013	---	---	---	9,527.76	0.327	0.455	2797
34,770,982	1.55	---	---	0.3	17/01/2014	27/07/2000	---	GR. SARANTIS SA (CR)	7.02	-0.99 ↓	7.09 19/06/2014	7.09	7.00	7.12	7.00	7.03	1400@7.00	100@7.13	6.65	2013	6,618	43	46,496.55	244,092.29	6.06	8.24	3767
8,340,750	1.20	---	---	---	25/06/2009	30/07/2001	---	HAIDEMENOS SA (CR)	0.588	--- ▾	0.588 17/06/2014	---	---	---	---	---	---	200@0.638	---	2013	---	---	---	4,904.36	0.334	0.760	2791
101,279,627	0.380	---	---	---	26/06/2008	14/07/2006	---	HALKOR SA (CB)	0.584	3.55 ↑	0.564 19/06/2014	0.556	0.556	0.584	0.584	0.567	1000@0.575	1000@0.585	---	2013	19,042	37	10,799.18	59,147.30	0.510	0.912	1755
36,748,909	0.730	---	---	---	15/12/2005	13/12/2006	---	HEL. SUGAR INDUSTRY SA (CB)	0.672	0.75 ↑	0.667 19/06/2014	0.667	0.665	0.672	0.672	0.667	191@0.665	227@0.669	---	2013	569	3	379.36	24,695.27	0.615	1.10	3577
29,546,360	0.710	---	---	---	20/06/2008	23/08/2000	---	HELLENIC CABLES SA (CR)	1.52	-1.93 ↓	1.55 19/06/2014	1.55	1.52	1.56	1.52	1.54	1130@1.53	100@1.57	---	2013	1,900	12	2,915.95	44,910.47	1.37	2.00	2733
65,368,563	0.760	0.11	0.09	---	03/06/2013	25/09/2013	---	HELLENIC EXCHANGES-A.S.E. (CR)	8.83	-0.23 ↓	8.85 19/06/2014	8.84	8.73	8.95	8.83	8.81	1000@8.81	200@8.86	-(6)-	2013	104,320	344	919,166.96	577,204.41	6.91	9.52	8777
305,635,185	2.18	0.45	0.15	---	16/08/2013	01/10/2003	4795	HELLENIC PETROLEUM (CR)	6.31	2.27 ↑	6.17 19/06/2014	6.17	6.11	6.31	6.31	6.25	500@6.29	2110@6.32	---	2013	487,856	1,056	3,050,406.26	1,928,558.02	5.11	8.13	537
305,732,436	0.410	---	---	---	08/07/2009	28/09/2011	---	HYGEIA SA (CR)	0.331	-1.78 ↓	0.337 19/06/2014	0.335	0.330	0.338	0.331	0.332	9000@0.330	1131@0.334	---	2013	235,265	175	78,023.55	101,197.44	0.311	0.508	4533
53,155,053	0.440	---	---	---	21/07/2010	16/07/2008	---	IASO SA (CR)	1.34	-1.47 ↓	1.36 19/06/2014	1.34	1.33	1.34	1.34	1.34	2681@1.33	1900@1.34	---	2013	6,269	16	8,379.74	71,227.77	1.22	1.99	4533
8,298,467	0.400	---	---	---	30/08/1993	08/05/2013	---	IDEAL GROUP SA (CR)	0.789	5.91 ↑	0.745 19/06/2014	0.671	0.671	0.790	0.789	0.776	150@0.705	99@0.790	-(6)-	2013	178	5	138.18	6,547.49	0.538	1.00	9574
28,580,100	0.400	0.02	---	---	20/08/2012	10/10/2013	---	IKTINOS HELLAS SA (CR)	1.55	2.65 ↑	1.51 19/06/2014	1.53	1.53	1.55	1.55	1.54	1000@1.51	4999@1.55	9.48	2013	3,262	18	5,027.21	44,299.16	1.49	1.84	2353
9,000,000	0.880	---	---	---	15/05/2009	07/12/2010	---	ILYDA S.A. (CR)	0.682	--- ▾	0.682 19/06/2014	---	---	---	---	---	200@0.478	1135@0.600	---	2013	---	---	---	6,138.00	0.350	0.789	9537
20,578,374	0.620	---	---	---	02/06/2011	05/05/1999	---	INFORM P. LYKOS SA (CR)	1.61	--- ▾	1.61 19/06/2014	1.61	1.61	1.61	1.61	1.61	550@1.57	150@1.64	---	2013	2,000	5	3,220.00	33,1			

Number of Outstanding Securities	Nominal Value	Dividends [1]			Date of Last Coupon		Note	Shares	Closing price	% change	Previous closing price/date	Open price	Price min	Price max	Last price	Avg price	Last Bid [7]	Last Ask [7]	P/E after	Year	Volume	Trades	Transactions Value	Company Mkt Value (thou. €)	Year low	Year high	Sector[4]	
		2011	2012	2013	Dividend [2]	Right																						
Main Market																												
2,566,836	0.440	--	--	--	13/08/2010	09/01/2007	--	INTERWOOD-XYLEMPORIA (PR)	0.195	-- -	0.195	17/02/2014	--	--	--	--	--	--	--	2013	--	--	--	4,593.95	0.195	0.200	2353	
23,154,250	1.36	--	--	--	12/08/2008	02/08/2010	--	INTRACOM CONSTR. (CR)	0.974	1.14 ↑	0.963	19/06/2014	0.950	0.930	0.975	0.974	0.959	200@0.952	139@0.970	--	2013	1,661	8	1,592.31	22,552.24	0.890	1.32	2357
133,025,996	1.41	--	--	--	03/07/2007	07/01/2002	--	INTRACOM HOLDINGS (CR)	0.729	1.39 ↑	0.719	19/06/2014	0.728	0.720	0.730	0.729	0.727	80@0.715	1245@0.730	--	2013	19,280	38	14,022.19	96,975.95	0.526	0.900	9578
158,961,721	0.300	0.0035	0.0026	--	30/05/2013	14/11/2007	--	INTRALOT (CR)	2.07	-2.36 ↓	2.12	19/06/2014	2.12	2.07	2.12	2.07	2.09	8550@2.06	4920@2.11	--	2013	125,212	168	261,175.15	329,050.76	1.81	2.51	5752
77,654,850	0.580	--	--	--	01/07/2011	21/02/2003	--	J & P - AVAX SA (CR)	1.65	1.85 ↑	1.62	19/06/2014	1.65	1.62	1.65	1.65	1.64	1000@1.63	1200@1.66	--	2013	8,529	37	13,985.85	128,130.50	1.50	2.02	2357
136,059,759	1.19	--	--	--	23/12/2010	05/03/2014	--	JUMBO SA (CR)	12.46	2.05 ↑	12.21	19/06/2014	12.38	12.16	12.46	12.46	12.38	3440@12.43	20@12.48	22.99	2013	284,324	536	3,518,925.02	1,695,304.60	10.10	14.40	3747
9,742,920	0.400	0.01	0.01	--	12/08/2013	14/07/2000	--	KARAMOLEGOS SA (CR)	1.61	7.33 ↑	1.50	18/06/2014	1.61	1.61	1.61	1.61	1.61	--	1277@1.56	--	2013	10	1	16.10	15,686.10	0.912	1.78	3577
14,679,792	1.68	--	--	--	03/06/2011	04/09/2000	--	KARATZIS SA (CR)	3.50	-0.57 ↓	3.52	19/06/2014	3.49	3.38	3.50	3.50	3.43	50@3.49	265@3.50	10.51	2013	713	22	2,444.34	51,379.27	3.10	4.50	2723
3,300,689	0.350	--	--	--	01/07/2004	21/07/1999	--	KEKROPS SA (CR)	1.91	-0.52 ↓	1.92	19/06/2014	1.91	1.90	1.91	1.91	1.91	20@1.61	25@1.91	--	2013	16	3	30.51	6,304.32	1.45	2.60	8633
7,595,160	0.600	--	--	--	08/08/2008	18/08/2010	--	KIRIAKOULIS SHIPPING SA (CR)	0.670	9.84 ↑	0.610	19/06/2014	0.670	0.670	0.670	0.670	0.670	300@0.551	340@0.649	43.49	2013	10	1	6.70	5,088.76	0.492	1.08	5759
23,648,700	0.330	--	--	--	13/07/2011	23/07/2008	--	KLEEMAN HELLAS SA (CR)	2.41	1.69 ↑	2.37	19/06/2014	2.40	2.40	2.42	2.41	2.40	1000@2.40	495@2.41	85.19	2013	6,188	20	14,857.95	56,993.37	1.89	2.58	2757
40,219,218	0.300	--	--	--	25/05/2009	09/07/2013	--	KLOUKINAS - LAPPAS SA (CR)	0.698	8.22 ↑	0.645	19/06/2014	0.645	0.645	0.698	0.698	0.651	1200@0.586	750@0.698	--	2013	4,700	5	3,061.25	28,073.01	0.570	0.780	2357
21,224,340	0.420	--	--	--	02/07/2008	25/04/2006	--	KORDELLOS BROS SA (CR)	0.324	-- -	0.324	19/06/2014	--	--	--	--	--	--	13000@0.292	--	2013	--	--	--	6,876.69	0.200	0.359	1757
13,586,500	0.390	--	--	--	25/06/2010	28/05/2008	--	KORRES (CR)	3.40	-- -	3.40	19/06/2014	3.41	3.39	3.41	3.40	3.41	430@3.39	14709@3.40	--	2013	17,551	6	59,807.40	46,194.10	2.84	3.69	3767
29,480,000	0.420	--	--	--	19/07/2010	01/08/2007	--	KRETA FARM SA (CR)	0.414	0.24 ↑	0.413	19/06/2014	0.413	0.413	0.427	0.414	0.415	299@0.411	250@0.414	--	2013	7,100	16	2,946.94	12,204.72	0.386	0.662	3577
33,065,136	0.380	--	--	--	06/07/2009	16/09/2013	--	KRI-KRI S.A. (CR)	1.80	1.70 ↑	1.77	19/06/2014	1.77	1.76	1.80	1.80	1.80	500@1.78	100@1.83	11.61	2013	2,272	5	4,087.17	59,517.24	1.65	2.07	3577
15,804,800	0.330	--	--	--	15/06/2010	12/03/2004	--	KTIMA KOSTAS LAZARIDIS SA (CR)	0.546	5.00 ↑	0.520	10/06/2014	0.546	0.546	0.546	0.546	0.550	--	926@0.546	--	2013	1	1	0.55	8,629.42	0.305	0.548	3535
24,474,815	1.15	--	--	--	19/08/2008	30/01/2014	--	KYRIAKIDIS MARBLES SA (CR)	2.37	0.85 ↑	2.35	19/06/2014	2.39	2.31	2.39	2.37	2.32	500@2.33	140@2.37	5.58	2013	1,744	9	4,048.64	58,005.31	1.07	2.60	2353
44,412,347	0.300	--	--	--	30/05/2007	18/09/2002	--	LAMDA DEVELOPMENT SA (CR)	5.35	2.29 ↑	5.23	19/06/2014	5.23	5.13	5.52	5.35	5.38	700@5.34	200@5.47	--	2013	2,678,274	400	13,055,792.37	237,606.06	4.74	6.99	8633
21,364,000	1.12	--	--	--	05/07/2010	10/08/2005	--	LAMPSPA HOTEL SA (CR)	18.46	-0.38 ↓	18.53	19/06/2014	18.10	18.10	18.46	18.46	18.20	100@17.83	200@18.46	-(6)-	2013	700	5	12,742.00	394,379.44	15.60	18.60	5753
5,939,268	0.620	--	--	--	10/07/2003	03/01/2002	--	LANAKAM SA (CR)	1.29	-- -	1.29	02/05/2014	--	--	--	--	--	--	700@1.27	--	2013	--	--	--	7,661.66	0.485	1.29	3763
7,734,375	1.00	--	--	--	09/07/2007	07/01/2011	--	LIVANIS SA (CR)	0.230	-- -	0.230	19/06/2014	--	--	--	--	--	--	52@0.230	--	2013	--	--	--	1,778.91	0.158	0.242	5557
4,740,000	0.860	--	--	--	14/03/2003	--	--	LOGISMOS S.A. (CR)	0.368	-- -	0.368	16/06/2014	--	--	--	--	--	300@0.351	100@0.404	49.55	2013	--	--	--	1,744.32	0.335	0.520	9533
17,125,062	0.640	--	--	--	01/06/2010	02/08/2011	--	LOULIS MILLS SA (CR)	2.76	-- -	2.76	19/06/2014	--	--	--	--	--	--	872@2.60	--	2013	--	--	--	47,265.17	2.26	2.98	3577
770,360,560	0.300	--	--	--	26/04/2007	10/05/2013	--	MARFIN INVESTMENT GROUP (CR)	0.473	-2.27 ↓	0.484	19/06/2014	0.484	0.473	0.484	0.473	0.477	70211@0.473	5000@0.479	--	2013	876,463	394	418,011.57	364,380.54	0.381	0.572	8775
9,819,370	0.690	--	--	--	14/08/2007	09/01/2004	--	MATHIOS REFRACTORY SA (CR)	0.370	-- -	0.370	18/06/2014	--	--	--	--	--	--	1500@0.381	--	2013	--	--	--	3,633.17	0.250	0.488	2353
468,700	--	--	0.47	--	27/02/2014	21/05/2004	--	MERMEREN KOMB. A.D. PR. (GDR)	4.00	-0.25 ↓	4.01	19/06/2014	4.00	4.00	4.00	4.00	4.00	200@4.00	500@4.20	1.95	2013	70	1	280.00	1,874.80	3.45	4.67	1775
51,950,600	0.320	0.75	0.25	0.3	20/06/2014	21/10/2005	--	METKA (CR)	13.92	-0.14 ↓	13.94	19/06/2014	13.94	13.53	13.94	13.92	13.77	57514@13.92	250@13.94	16.28	2013	62,363	260	858,746.78	723,152.35	10.80	14.29	2757
10,500,000	0.900	--	--	--	24/06/2008	19/12/2013	--	MEVACO SA (CR)	1.12	--	1.12	19/06/2014	--	--	--	--	--	1000@1.15	1100@1.19	--	2013	--	--	--	11,760.00	1.10	1.35	2757
14,074,000	3.00	0.25	--	--	02/03/2012	23/07/2009	--	MIG REAL ESTATE (CR)	1.89	-- -	1.89	19/06/2014	1.89	1.89	1.89	1.89	1.89	200@1.76	215@1.89	-(6)-	2013	4,221	7	7,977.69	26,599.86	1.50	2.23	8671
6,700,000	0.800	--	--	0.16	26/05/2014	29/05/2014	--	MILLS KEPENOS (CR)	1.85	1.09 ↑	1.83	19/06/2014	1.85	1.85	1.85	1.85	1.85	47@1.85	336@2.01	10.08	2013	83	2	153.55	12,395.00	0.991	2.50	3577
6,200,000	0.500	--	--	--	22/06/2010	01/11/1995	--	MINERVA KNITWEAR SA (CB)	0.459	-- -	0.459	16/06/2014	--	--	--	--	--	--	246@0.450	--	2013	--	--	--	2,845.80	0.396	0.689	3763
12,417,000	0.370	--	--	--	28/07/2008	06/09/2011	--	MLS MULTIMEDIA SA (CR)	4.60	-- -	4.60	19/06/2014	4.61	4.56	4.61	4.60	4.58	260@4.56	2494@4.58	48.78	2013	2,526	13	11,574.30	57,118.20	3.28	4.68	9537
4,588,137	16.00	--	--	--	30/06/2005	17/08/2011	--	MOCHLOS SA (CR)	1.36	1.49 ↑	1.34	19/06/2014	1.43	1.36	1.45	1.36	1.41	98@1.36	675@1.45	--	2013	950	10	1,336.22	6,239.87	1.20	2.00	2357
11,700,000	0.590	--	--	--	02/06/2009	24/07/2012	--	MOTODYNAMICS S.A. (CR)	0.392	11.68 ↑	0.351	19/06/2014	0.392	0.392	0.392	0.392	0.392	150@0.320	1990@0.392	--	2013	10	1	3.92	4,586.40	0.280	0.447	5379
110,782,980	0.750	0.4	0.3	--	26/06/2013	04/11/2013	--	MOTOR OIL (CR)	8.25	-0.12 ↓	8.26	19/06/2014	8.26	8.15	8.33	8.25	8.26	1000@8.23	3462@8.27	-(6)-	2013	295,282	245	2,441,222.37	913,959.59	7.71	10.30	533
116,915,862	1.07	--	--	--	11/05/2009	06/07/2011	--	MYTILINEOS HOLDINGS (CR)	6.77	0.59 ↑</																		

Number of Outstanding Securities	Nominal Value	Dividends [1]			Date of Last Coupon		Note	Shares	Closing price	% change	Previous closing price/date	Open price	Price min	Price max	Last price	Avg price	Last Bid [7]	Last Ask [7]	P/E after	Year	Volume	Trades	Transactions Value	Company Mkt Value (thou. €)	Year low	Year high	Sector[4]	
		2011	2012	2013	Dividend [2]	Right																						
Main Market																												
2,160,524	0.670	0.0435	0.0436	--	16/08/2013	23/11/1999	--	N. LEVEDERIS SA (PB)	0.744	-- -	0.744	26/03/2014	--	--	--	--	--	924@0.670	--	2013	--	--	--	3,604.63	0.566	0.779	1757	
11,510,102	0.890	--	--	--	24/06/2005	06/10/1999	--	NAFPAKTOS TEXTILE IND. SA (CB)	0.270	-3.57 ↓	0.280	16/06/2014	0.270	0.270	0.270	0.270	3527@0.270	2090@0.280	--	2013	998	2	269.46	3,107.73	0.209	0.397	3763	
6,340,000	0.600	--	--	--	30/11/2009	12/07/2000	--	NAKAS MUSIC	0.850	8.97 ↑	0.780	17/06/2014	0.850	0.780	0.850	0.822	480@0.780	464@0.850	--	2013	50	4	41.10	5,389.00	0.526	1.62	5379	
3,533,149,631	0.300	--	--	--	16/05/2008	24/05/2013	--	NATIONAL BANK (CR)	2.84	-0.70 ↓	2.86	19/06/2014	2.84	2.83	2.86	2.84	2.85	176189@2.84	6720@2.85	6.32	2013	8,094,787	1,507	23,028,748.80	10,034,144.95	1.98	4.31	8355
23,935,280	0.300	--	--	--	29/06/2009	13/06/2000	--	NAYTEMPORIKI PUBLISHING SA(CR)	0.170	-- -	0.170	18/06/2014	--	--	--	--	1000@0.153	--	--	2013	--	--	--	4,069.00	0.133	0.479	5557	
27,848,000	0.300	0.0132	0.0137	--	21/08/2013	02/09/2003	--	NEWSPHONE HELLAS SA (CR)	0.370	4.52 ↑	0.354	19/06/2014	0.374	0.370	0.374	0.370	0.370	400@0.333	5419@0.368	33.24	2013	300	2	111.00	10,303.76	0.323	0.468	2791
6,132,500	1.25	--	--	--	24/06/2011	19/06/2001	--	NEXANS HELLAS SA (CR)	2.19	1.86 ↑	2.15	19/06/2014	2.15	2.00	2.19	2.19	2.03	200@2.00	238@2.19	--	2013	2,220	25	4,498.99	13,430.18	2.00	2.40	2733
63,697,153	1.34	--	--	--	08/07/2008	10/11/2008	--	NIREFS SA (CR)	0.236	4.43 ↑	0.226	19/06/2014	0.236	0.223	0.250	0.223	0.241	101@0.234	2@0.223	--	2013	12,612	30	3,039.70	15,032.53	0.199	0.362	3573
319,000,000	0.300	0.72	0.57	0.25	27/05/2014	25/04/2001	--	OPAP (CR)	13.63	4.44 ↑	13.05	19/06/2014	13.00	12.94	13.63	13.63	13.26	526@13.59	100@13.67	30.48	2013	985,162	1,022	13,014,710.89	4,347,970.00	9.33	13.65	5752
490,150,389	2.83	--	--	--	28/06/2011	18/06/1998	--	OTE (CR)	12.00	0.42 ↑	11.95	19/06/2014	12.00	11.94	12.19	12.00	12.05	5000@11.98	200@12.05	--	2013	1,667,153	2,131	20,079,118.36	5,881,804.67	9.46	13.20	6535
25,000,000	2.00	0.01	0.05	--	18/07/2013	08/08/2003	--	P.P.A. S.A. (CR)	18.38	1.32 ↑	18.14	19/06/2014	18.14	18.06	18.57	18.38	18.23	200@18.20	703@18.38	57.11	2013	4,909	127	89,496.03	459,500.00	15.65	20.89	2777
4,971,466	1.46	--	--	--	04/07/2007	08/10/2003	--	PAIRIS SA (CR)	0.300	-- -	0.300	17/06/2014	--	--	--	--	--	300@0.270	4000@0.330	--	2013	--	--	--	1,491.44	0.231	0.355	2723
3,953,090	0.900	--	--	--	02/07/2001	05/12/2012	--	PAPERPACK (CR)	0.960	-- -	0.960	19/06/2014	0.905	0.905	0.965	0.960	0.911	50@0.911	2199@0.960	4.96	2013	626	6	569.99	3,794.97	0.800	1.15	2723
50,797,369	0.310	--	--	--	17/08/2000	12/10/2010	--	PAPOUTSANIS (CR)	0.500	-1.96 ↓	0.510	19/06/2014	0.510	0.500	0.510	0.500	0.500	500@0.499	200@0.510	--	2013	210	3	105.10	25,398.68	0.395	0.604	3767
7,070,400	0.930	--	--	--	18/05/2010	12/05/2011	--	PETROPOULOS PETROS (CR)	2.08	0.48 ↑	2.07	19/06/2014	2.08	2.08	2.08	2.08	2.08	200@2.01	1193@2.07	50.54	2013	110	3	228.80	14,706.43	1.58	2.34	2753
6,101,979,715	0.300	--	--	--	16/05/2008	05/06/2013	--	PIRAEUS BANK (CR)	1.80	-- -	1.80	19/06/2014	1.79	1.74	1.80	1.80	1.77	461@1.79	1480965@1.80	1.93	2013	12,225,942	1,663	21,675,775.71	10,983,563.49	1.36	2.11	8355
22,080,000	0.320	0.08	0.12	0.2	21/05/2014	03/10/2000	--	PLAISIO COMPUTERS SA (CR)	7.51	-0.92 ↓	7.58	19/06/2014	7.52	7.51	7.60	7.51	7.60	50@7.48	188@7.50	11.71	2013	8,014	14	60,863.34	165,820.80	5.80	7.98	9572
232,000,000	4.60	--	0.025	--	22/07/2013	12/12/2001	--	PPC (CR)	11.95	1.27 ↑	11.80	19/06/2014	11.80	11.77	11.95	11.95	11.91	20@11.83	5985@11.95	--	2013	433,116	1,149	5,155,452.93	2,772,400.00	9.08	12.75	7535
11,812,193	0.450	--	--	--	24/07/2009	15/11/2006	--	PROFILE SA (CR)	0.882	-0.11 ↓	0.883	19/06/2014	0.883	0.865	0.883	0.882	0.873	229@0.861	99@0.882	16.98	2013	961	11	838.96	10,418.35	0.817	1.05	9533
27,345,120	0.470	--	--	--	18/07/2005	26/02/2014	--	QUALITY & RELIABILITY SA (CR)	0.695	0.87 ↑	0.689	19/06/2014	0.694	0.694	0.695	0.695	0.694	300@0.655	5827@0.680	92.42	2013	500	2	347.10	19,004.86	0.378	0.740	9533
11,962,443	0.500	--	--	--	05/09/2008	12/12/2013	--	QUEST HOLDINGS (CR)	5.03	1.41 ↑	4.96	19/06/2014	4.48	4.48	5.06	5.03	4.93	10@5.03	50@5.10	--	2013	1,130	22	5,570.12	60,171.09	4.21	6.30	9533
57,434,884	1.31	--	--	--	05/06/2008	12/06/2009	--	REDS S.A. (CR)	0.575	2.68 ↑	0.560	19/06/2014	0.545	0.545	0.585	0.575	0.575	961@0.575	8000@0.585	--	2013	31,405	39	18,065.39	33,025.06	0.507	0.827	8633
22,280,000	0.300	--	--	--	11/04/2011	23/02/2007	--	REVOIL (CR)	0.650	10.36 ↑	0.589	19/06/2014	0.589	0.588	0.669	0.633	0.641	1@0.630	500@0.633	--	2013	39,249	67	25,148.31	14,482.00	0.427	0.720	5379
7,500,000	0.480	--	--	--	25/06/2010	10/02/2014	--	S.KANAKIS SA (CR)	1.89	-- -	1.89	19/06/2014	1.89	1.89	1.89	1.89	1.89	1000@1.80	942@1.89	9.73	2013	90	6	170.10	14,175.00	1.70	1.99	3577
52,067,296	0.300	--	--	--	23/12/2003	24/01/2007	--	SELECTED TEXT. IND. ASSOC (CR)	0.299	7.17 ↑	0.279	19/06/2014	0.278	0.278	0.299	0.299	0.281	50@0.265	633@0.299	--	2013	2,910	6	816.44	15,568.12	0.242	0.355	3763
96,243,908	0.410	--	--	--	26/06/2008	17/07/2000	--	SIDENOR (CR)	1.71	2.39 ↑	1.67	19/06/2014	1.67	1.66	1.71	1.71	1.68	2555@1.70	402@1.71	--	2013	8,326	44	13,973.26	164,577.08	1.45	2.26	1757
6,456,530	1.60	--	--	--	29/06/2001	02/08/2010	--	SPACE HELLAS SA (CR)	1.40	-- -	1.40	06/06/2014	--	--	--	--	--	--	1108@1.39	--	2013	--	--	--	9,039.14	1.13	1.87	9578
28,438,268	0.300	--	--	--	21/08/2006	24/11/1999	--	SPIROY AGRICULTURE SA (CR)	0.280	0.72 ↑	0.278	18/06/2014	0.280	0.280	0.280	0.280	0.280	9300@0.260	3440@0.280	--	2013	100	1	28.00	7,962.72	0.241	0.376	1357
33,125,000	5.00	--	--	--	03/07/2006	18/08/2010	--	TECHNICAL OLYMPIC SA (CR)	1.66	5.06 ↑	1.58	19/06/2014	1.68	1.60	1.68	1.66	1.64	501@1.64	1190@1.66	--	2013	16,274	40	26,723.75	54,987.50	1.36	1.99	3728
109,314,400	0.300	(0.0589)	--	--	28/05/2012	24/10/2013	--	TERNA ENERGY (CR)	4.23	4.44 ↑	4.05	19/06/2014	4.12	4.11	4.23	4.23	4.18	350@4.22	8648@4.23	-(6)-	2013	134,646	482	562,300.10	462,399.91	3.50	4.86	7537
36,300,000	1.12	0.188	0.162	--	16/08/2013	12/12/2007	--	THESSALONIKA WATER & SEWERAGE	4.62	-1.91 ↓	4.71	19/06/2014	4.72	4.60	4.75	4.61	4.68	3@4.65	75@4.69	12.79	2013	11,023	64	51,560.58	167,706.00	4.25	5.66	7577
45,094,620	0.500	--	0.0467	0.05	28/04/2014	01/11/1999	--	THRACE PLASTICS SA (CR)	1.19	-- -	1.19	19/06/2014	1.19	1.18	1.19	1.19	1.19	3430@1.18	520@1.20	--	2013	4,330	9	5,137.00	53,662.60	1.07	1.39	1357
77,063,568	4.00	--	--	--	24/06/2011	25/06/2004	--	TITAN CEMENT (CR)	25.32	-0.63 ↓	25.48	19/06/2014	25.65	25.05	25.65	25.32	25.35	50@25.00	500@25.40	--	2013	107,822	405	2,733,325.54	2,025,046.90	18.12	26.80	2353
7,568,960	4.00	--	--	--	24/06/2011	25/06/2004	--	TITAN CEMENT CO. (PR)	9.75	-0.21 ↓	9.77	19/06/2014	9.75	9.75	9.75													

Daily Official List																									Year: 135 Trading Day No: 115			
Section 2: Analytic Figures of Shares Transactions																									Friday, 20 June, 2014			
Number of Outstanding Securities	Nominal Value	Dividends [1]			Date of Last Coupon		Note	Shares	Closing price	% change	Previous closing price/date	Open price	Price min	Price max	Last price	Avg price	Last Bid [7]	Last Ask [7]	P/E after	Year	Volume	Trades	Transactions Value	Company Mkt Value (thou. €)	Year low	Year high	Sector[4]	
		2011	2012	2013	Dividend [2]	Right																						
Main Market																												
219,611,308		--	--	--		14/02/2014	--	VIOHALCO SA/NV (CB)	4.38	1.86 ↑	4.30 19/06/2014	4.30	4.28	4.38	4.38	4.34	2000@4.31	337@4.38	--	--	95,094	279	412,398.35	961,897.53	3.79	5.19	2727	
4,968,600	2.88	--	--	--	01/07/1998	14/12/1998	--	VIS SA (CR)	0.780	-- ▬	0.780 11/06/2014	--	--	--	--	--	1000@0.740	300@0.879	--	2013	--	--	--	3,875.51	0.517	0.980	2723	
6,325,000	0.600	--	--	--	02/05/2014	17/02/2014	--	VOGIATZOGLOU SYSTEMS SA (CR)	1.05	2.94 ↑	1.02 19/06/2014	0.922	0.922	1.05	1.05	1.01	200@0.970	600@1.11	--	2013	1,035	16	1,048.57	6,641.25	0.770	2.27	2797	
Exchange Traded Funds (ETFs)																												
5,848,618		--	--	--		24/01/2008	--	ALPHA ETF FTSE Athex Large Cap	4.17	0.48 ↑	4.15 19/06/2014	4.15	4.15	4.17	4.17	4.15	--	299@4.17	--	--	1,950	5	8,091.91	-	3.38	4.55	11000	
294,878		--	--	--		29/06/2009	--	NBGAM ETF	14.30	0.63 ↑	14.21 19/06/2014	14.30	14.30	14.30	14.30	14.30	--	--	--	--	2	1	28.60	-	11.76	15.10	11000	
388,550		--	--	--		03/11/2010	--	NBGAM ETF GREECE & TURKEY 30	8.50	-0.58 ↓	8.55 19/06/2014	8.50	8.50	8.50	8.50	8.50	--	--	--	--	2	1	17.00	-	6.70	8.93	11000	
Low Dispersion																												
14,000,000	3.80	--	--	--	23/04/2010	29/06/1999	4815	ALPHA REAL ESTATE SA(CR)	5.87	-4.55 ↓	6.15 19/06/2014	5.87	5.87	5.87	5.87	5.87	30@5.87	208@6.14	24.54	2013	50	2	293.50	82,180.00	4.69	7.10	8637	
63,900,000	3.00	--	--	--	23/06/2003	04/11/2008	4816	ASTIR PALACE SA (CR)	3.81	-- ▬	3.81 19/06/2014	--	--	--	--	--	126@3.75	306@3.80	--	2013	--	--	--	243,459.00	3.45	4.08	5753	
90,902,904	0.800	--	--	--	09/08/2004	08/03/2006	4814	ATHENA SA (CR)	0.154	-- ▬	0.154 17/06/2014	--	--	--	--	--	400@0.133	--	--	2013	--	--	--	13,999.05	0.154	0.310	2357	
191,660,320	0.300	--	--	--	20/07/2009	29/12/2010	4817	ATTICA HOLDINGS (CR)	0.668	9.51 ↑	0.610 19/06/2014	0.668	0.668	0.668	0.668	0.668	--	--	--	2013	2,528	7	1,688.70	128,029.09	0.495	0.799	5759	
68,322,221	1.00	--	--	--	08/03/2002	08/04/2013	4986	GENIKI BANK (CR)	7.00	-- ▬	7.00 19/06/2014	--	--	--	--	--	46@7.15	--	--	2013	--	--	--	478,255.55	6.00	15.00	8355	
71,082,707	1.70	--	--	--	01/07/2010	21/11/2012	4820	HERACLES GEN.CEMENT CO. (CR)	1.27	-3.05 ↓	1.31 19/06/2014	1.34	1.27	1.34	1.27	1.27	2559@1.27	178@1.33	--	2013	1,876	9	2,383.36	90,275.04	1.25	1.55	2353	
13,404,440	8.63	--	--	--	02/04/2001	06/03/1992	4822	IONIAN HOTELS SA (CR)	7.00	-- ▬	7.00 05/06/2014	--	--	--	--	--	--	--	-(6)-	2013	--	--	--	93,831.08	6.00	9.90	5753	
2,760,000	7.70	7.6	8.52	--	26/06/2013	16/07/1990	4823	KARELIA TOBACCO CO. SA (CB)	235.00	-- ▬	235.00 17/06/2014	--	--	--	--	--	1@218.00	10@234.00	16.34	2013	--	--	--	648,600.00	180.00	235.00	3785	
30,600,000	0.300	--	--	--	12/06/2008	04/03/2014	5059	KATHIMERINI SA (CR)	0.495	3.13 ↑	0.480 19/06/2014	0.500	0.491	0.500	0.495	0.495	400@0.427	39368@0.490	--	2013	23,601	9	11,691.95	15,147.00	0.357	4.49	5557	
106,980,050	2.25	--	--	--	25/07/2008	24/02/2014	5046	MINOAN LINES SA (CR)	1.50	-- ▬	1.50 18/06/2014	1.50	1.50	1.50	1.50	1.50	20202@1.50	80@1.57	--	2013	133	1	199.50	160,470.08	1.49	2.00	5759	
17,240,776	0.370	--	--	--	14/07/2005	30/09/2003	4827	PERSEUS SA (CR)	0.275	-- ▬	0.275 19/06/2014	--	--	--	--	--	100@0.220	159@0.260	2.46	2013	--	--	--	4,741.21	0.205	0.504	3577	
Surveillance																												
33,301,715	0.320	--	--	--	27/06/2003	08/07/2009	4978	AEGEK (CR)	0.084	20.00 ↑	0.070 19/06/2014	0.084	0.084	0.084	0.084	0.084	10000@0.066	--	--	2013	4,658	9	391.27	2,797.34	0.065	0.136	2357	
14,870,100	0.300	--	--	--	15/05/2008	26/09/2011	4844	ALPHA GRISSIN S.A. (CR)	0.144	-- ▬	0.144 11/06/2014	--	--	--	--	--	--	7000@0.149	--	2013	--	--	--	2,141.29	0.067	0.160	9533	
215,246,452	0.300	--	--	--	25/06/2001	24/09/2001	4446	ALTEC SA (CR)	0.025	-3.85 ↓	0.026 19/06/2014	0.026	0.025	0.026	0.025	0.025	9224@0.025	6685@0.026	--	2013	5,823	7	145.89	5,381.16	0.024	0.040	9533	
2,969,713	0.300	--	--	--	02/07/2008	28/02/2011	4958	ANEK LINES SA (PR, issue '96)	0.170	3.03 ↑	0.165 18/06/2014	0.170	0.170	0.170	0.170	0.170	500@0.159	--	--	2013	500	1	85.00	18,659.65	0.120	0.280	5759	
312,163	0.300	--	--	--	02/07/2008	28/02/2011	4959	ANEK LINES SA (PR, issue '90)	1.15	-- ▬	1.15 17/06/2014	1.15	1.15	1.15	1.15	1.15	470@1.15	37@1.37	--	2013	10	1	11.50	18,659.65	1.15	1.43	5759	
185,373,016	0.300	--	--	--	02/07/2008	28/02/2011	4957	ANEK LINES SA (CR)	0.096	3.23 ↑	0.093 19/06/2014	0.090	0.090	0.098	0.098	0.096	865@0.090	11638@0.098	--	2013	635	3	61.15	18,659.65	0.082	0.141	5759	
81,644,555	0.300	--	--	--	01/07/2008	02/09/2002	5056	ATTI - KAT SA (CR)	0.019	-5.00 ↓	0.020 19/06/2014	0.017	0.017	0.024	0.024	0.019	350@0.024	--	--	2013	595	3	11.17	1,551.25	0.017	0.036	2357	
20,255,805	0.300	--	--	--	22/08/2006	02/08/2010	4881	AXON HOLDING SA (CR)	0.086	-- ▬	0.086 19/06/2014	0.086	0.080	0.086	0.080	0.086	--	2105@0.085	--	2013	4,670	4	400.60	1,742.00	0.040	0.139	4533	
17,579,754	4.16	--	--	--	18/08/2006	02/08/2010	4885	BIOTER SA (CR)	0.172	6.17 ↑	0.162 19/06/2014	0.172	0.131	0.172	0.172	0.172	400@0.130	7625@0.172	--	2013	2,120	5	363.82	3,023.72	0.104	0.203	2357	
12,431,980	0.720	--	--	--	20/06/2003	10/07/2003	4559	COMPUCON SA (CR)	0.044	-- ▬	0.044 19/06/2014	--	--	--	--	--	--	25000@0.051	--	2013	--	--	--	547.01	0.016	0.074	9537	
14,173,104	0.300	--	--	--	11/08/2010	28/11/2013	5055	DIONIC (CR)	0.049	-10.91 ↓	0.055 19/06/2014	0.058	0.045	0.058	0.045	0.049	1193@0.048	1000@0.057	--	2013	14,938	7	736.33	694.48	0.041	0.307	2797	
15,878,748	0.480	--	--	--	10/07/2006	22/03/2004	4960	DOMIKI KRITIS SA (CR)	0.381	-4.75 ↓	0.400 19/06/2014	0.381	0.381	0.381	0.381	0.381	1000@0.330	3985@0.410	--	2013	746	6	284.24	6,049.80	0.264	0.485	2357	
3,961,300	1.28	--	--	--	29/06/2004	03/08/2000	4808	DUROS SA (CR)	0.530	-- ▬	0.530 12/06/2014	--	--	--	--	--	--	4590@0.530	--	2013	--	--	--	---	2,099.49	0.185	0.759	3763
7,085,888	1.59	--	--	--	02/07/1996	06/09/2010	4690	ELVIEMEK (CR)	3.97	-- ▬	3.97 26/02/2014	--	--	--	--	--	--	--	--	2013	--	--	--	---	28,130.98	1.54	3.97	8633
6,000,000	0.600	--	--	--	13/06/2008	08/04/2004	4886	EUROBROKERS S.A. (CR)	0.024	-- ▬	0.024 12/05/2014	--	--	--	--	--	5000@0.028	--	--	2013	--	--	--	---	144.00	0.024	0.052	8534
Hellenic Exchanges – Athens Stock Exchange S.A.																									Section 2, 5/7			
Market Operation Division - Information Services Dept.																												

Number of Outstanding Securities	Nominal Value	Dividends [1]			Date of Last Coupon		Note	Shares	Closing price	% change	Previous closing price/date	Open price	Price min	Price max	Last price	Avg price	Last Bid [7]	Last Ask [7]	P/E after	Year	Volume	Trades	Transactions Value	Company Mkt Value (thou. €)	Year low	Year high	Sector[4]
2011	2012	2013	Dividend [2]	Right																							

Surveillance

21,820,410	0.800	---	---	---	22/05/2008	02/08/2011	4882	EUROMEDICA SA (CR)	0.364	---	-	0.364	12/06/2014	---	---	---	---	---	---	10994@0.362	---	2013	---	---	---	7,942.63	0.240	0.389	4533	
110,097,185	0.300	---	---	---		04/12/2013	5033	Forthnet (CR)	1.06	-0.93	↓	1.07	19/06/2014	1.13	1.06	1.13	1.07	1.06	107@1.06	210@1.07	---	2013	1,868	10	1,985.48	116,703.02	0.874	1.98	9535	
1,270,000	0.300	---	---	---	06/07/2007	06/02/2013	5007	GIRAKIAN PROFIL SA (CB)	2.30	---	-	2.30	11/04/2014	---	---	---	---	---	---	200@2.10	---	2013	---	---	---	2,921.00	1.44	2.63	1757	
179,707,771	0.300	---	---	---	27/06/2002	01/11/2011	4847	HELLAS ONLINE SA (CR)	0.558	11.82	↑	0.499	19/06/2014	0.558	0.558	0.558	0.558	0.558	3000@0.450	502@0.538	72.54	2013	100	1	55.80	100,276.94	0.400	0.670	9537	
30,390,000	0.310	---	---	---	18/08/2008	29/12/2006	4447	HELLENIC FISHFARMING SA (CR)	0.070	-6.67	↓	0.075	19/06/2014	0.089	0.070	0.089	0.070	0.070	---	7434@0.070	---	2013	12,999	8	913.73	2,127.30	0.052	0.119	3573	
1,540,000	0.600	---	---	---	08/08/1994	19/09/2000	5058	J.BOUTARIS & SON HOLD. (PB)	0.008	---	-	0.008	10/06/2014	---	---	---	---	---	4000@0.007	---	---	2013	---	---	---	1,724.54	0.008	0.012	3535	
25,179,640	0.600	---	---	---	08/08/1994	19/09/2000	5057	J.BOUTARIS & SON HOLD. SA (CB)	0.068	19.30	↑	0.057	19/06/2014	0.068	0.068	0.068	0.068	0.068	5000@0.062	2457@0.068	---	2013	14,000	10	951.99	1,724.54	0.041	0.084	3535	
7,125,216	0.650	---	---	---	01/07/2005	14/12/1999	4955	KRE.KA SA (CR)	0.160	---	-	0.160	18/06/2014	---	---	---	---	---	7000@0.135	2000@0.160	---	2013	---	---	---	1,140.03	0.131	0.278	3573	
51,081,030	1.00	---	---	---	20/08/2007	03/09/2007	4912	LAVIPHARM SA (CR)	0.108	---	-	0.108	19/06/2014	---	---	---	---	---	500@0.101	4840@0.112	---	2013	---	---	---	5,516.75	0.100	0.164	4577	
322,925,288	0.300	---	---	---	23/05/2007	10/04/2000	4554	M.J. MAILLIS SA (CR)	0.119	8.18	↑	0.110	19/06/2014	0.119	0.115	0.120	0.120	0.119	8326@0.115	400@0.121	---	2013	70,050	11	8,365.75	38,428.11	0.067	0.144	2723	
4,178,856	1.58	---	---	---	21/07/2011	28/07/2004	4983	MEDICON S.A (CR)	0.302	---	-	0.302	18/06/2014	---	---	---	---	---	1500@0.242	25@0.360	12.45	2013	---	---	---	1,262.01	0.251	0.952	4535	
255,459,600	0.300	---	---	---	26/06/2000	03/12/2010	4833	NEL SA (CR)	0.035	-10.26	↓	0.039	18/06/2014	0.035	0.035	0.035	0.035	0.035	4410@0.033	64975@0.039	---	2013	399	3	13.98	8,941.09	0.030	0.090	5759	
20,231,328	0.600	---	---	---	15/07/2008	25/06/2004	4879	NIKAS SA (CR)	0.180	---	-	0.180	18/06/2014	---	---	---	---	---	2125@0.190	---	---	2013	---	---	---	3,641.64	0.170	0.180	3577	
14,967,940	0.500	---	---	---	21/05/2008	04/01/2008	4956	PASAL DEVELOPMENT S.A. (CR)	0.158	-0.63	↓	0.159	19/06/2014	0.137	0.137	0.161	0.161	0.158	98@0.137	92@0.160	---	2013	700	5	110.30	2,364.93	0.129	0.239	8633	
18,750,000	0.300	---	---	---	02/07/2001	31/12/2012	4985	PEGASUS PUBLISHING S.A. (CR)	0.072	16.13	↑	0.062	19/06/2014	0.072	0.072	0.072	0.072	0.073	17896@0.074	---	---	2013	4	1	0.29	1,350.00	0.045	0.300	5557	
24,319,250	0.300	---	---	---	09/07/2002	04/07/2007	5054	PROODEFTIKH SA (CR)	0.124	11.71	↑	0.111	19/06/2014	0.124	0.124	0.124	0.124	0.124	3300@0.114	2000@0.120	---	2013	500	2	62.00	3,015.59	0.075	0.188	2357	
65,326,268	0.530	---	---	---	04/07/2007	19/07/2006	4750	SATO SA (CR)	0.149	1.36	↑	0.147	19/06/2014	0.150	0.147	0.150	0.147	0.149	2000@0.124	17499@0.140	---	2013	1,000	4	148.80	9,733.61	0.106	0.250	3726	
36,235,184	1.00	---	---	---	01/07/2008	30/07/2012	4961	SELONDA AQUACULTURE SA (CR)	0.098	---	-	0.098	19/06/2014	0.098	0.098	0.098	0.098	0.098	1020@0.087	915@0.103	---	2013	16,310	10	1,598.38	3,551.05	0.089	0.149	3573	
7,914,480	2.50	---	---	---	23/06/2008	29/06/2011	4888	SFAKIANAKIS SA (CR)	0.990	---	-	0.990	19/06/2014	---	---	---	---	---	680@0.990	2000@1.08	---	2013	---	---	---	7,835.34	0.488	1.10	5379	
10,000,000	1.35	---	---	---	24/06/2008	10/05/2005	4887	SIDMA SA (CR)	0.360	20.00	↑	0.300	18/06/2014	0.360	0.360	0.360	0.360	0.360	1185@0.240	499@0.360	---	2013	1	1	0.36	3,600.00	0.240	0.479	1757	
29,060,950	0.340	---	---	---	20/08/2007	24/10/2001	4884	SPIDER METAL INDUSTRY SA (CR)	0.058	---	-	0.058	19/06/2014	---	---	---	---	---	---	2510@0.067	---	---	2013	---	---	---	1,685.54	0.012	0.070	2757
100,793,000	0.300	---	---	---	16/07/2009	05/08/2013	5008	TELETIPOS SA (CR)	0.340	---	-	0.340	24/04/2014	---	---	---	---	---	---	2000@0.330	---	---	2013	---	---	---	34,269.62	0.111	0.345	5553
3,229,566	0.320	---	---	---	22/06/2005	23/09/1999	4629	VARANGIS AVEPE S.A. (CR)	0.600	---	-	0.600	19/06/2014	---	---	---	---	---	---	220@0.600	---	---	2013	---	---	---	1,937.74	0.600	1.00	3726
16,383,428	0.300	---	---	---	25/06/2002	21/06/2013	4997	VARVARESSOS SA (CB)	0.109	---	-	0.109	18/06/2014	---	---	---	---	---	3000@0.088	30@0.130	0.15	2013	---	---	---	1,785.79	0.109	0.293	3763	
13,191,620	0.620	---	---	---	04/08/2010	09/09/2002	4977	YALCO - CONSTANTINOU SA (CB)	0.169	---	-	0.169	27/05/2014	---	---	---	---	---	---	5000@0.167	---	---	2013	---	---	---	2,229.38	0.079	0.241	3722

Under Deletion

9,567,289	0.300	---	---	---	01/07/2004	19/11/2007	5062	MARAC ELECTRONICS (CR)	0.348	---	0.348	29/05/2014	---	---	---	---	---	---	500@0.340	---	2013	---	---	---	3,329.42	0.290	0.356	9578
40,946,303	0.360	---	---	---	18/07/2005	27/11/2007	5053	PC SYSTEMS SA (CR)	0.117	---	0.117	20/05/2014	---	---	---	---	---	---	91850@0.094	---	2013	---	---	---	4,790.72	0.046	0.169	9533
766,000	2.83	---	---	---	01/07/2004	11/12/2012	4937	TRIA ALFA SA (CR)	2.67	---	2.67	13/06/2014	---	---	---	---	---	---	11@2.14	---	2013	---	---	---	2,674.87	2.67	3.33	3763
245,000	2.83	---	---	---	19/07/2010	11/12/2012	4938	TRIA ALFA SA (PR)	2.57	---	2.57	05/06/2014	---	---	---	---	---	---	191@3.07	---	2013	---	---	---	2,674.87	0.969	2.57	3763

Suspension Status

5,025,000	0.300	---	---	---	05/07/2005	14/03/2002	5023	ALSINCO S.A (CR)	0.043	---	0.043	27/11/2013	---	---	---	---	---	---	---	---	---	---	---	---	216.08	0.043	0.043	3763
1,750,955,549	0.600	---	---	---	19/05/2008	08/12/2011	4911	ATE (CR)	0.155	---	0.155	30/07/2012	---	---	---	---	---	---	---	---	---	---	---	---	271,398.11	0.155	0.155	8355
21,382,067	0.300	---	---	---	02/10/2006	15/02/2006	4628	ATERMON (CR)	0.120	---	0.120	31/03/2010	---	---	---	---	---	---	---	---	---	---	---	---	2,565.85	0.120	0.120	5555
105,423,498	0.510	---	---	---	01/07/2004	28/12/2005	4920	AVENIR S.A. (CR)	0.046	---	0.046	30/08/2012	---	---	---	---	---	---	---	---	---	---	---	---	4,849.48	0.046	0.046	5752
33,930,000	0.300	---	---	---	03/07/2006	30/05/2001	4865	BABIS VOVOS SA (CR)	0.304	---	0.304	30/03/2012	---	---	---	---	---	---	---	---	---	---	---	---	10,314.72	0.304	0.304	8633

Number of Outstanding Securities	Nominal Value	Dividends [1]			Date of Last Coupon		Note	Shares	Closing price	% change	Previous closing price/date	Open price	Price min	Price max	Last price	Avg price	Last Bid [7]	Last Ask [7]	P/E after	Year	Volume	Trades	Transactions Value	Company Mkt Value (thou. €)	Year low	Year high	Sector[4]
		2011	2012	2013	Dividend [2]	Right																					
Suspension Status																											
20,121,710	1.21	---	---	---	27/07/1992	12/03/2003	5002	BALKAN R.E. (CR)	0.190	---	0.190	29/08/2013	---	---	---	---	---	---	---	---	---	---	---	3,823.12	0.190	0.190	8633
1,795,140,547	1.00	---	---	---	31/05/2011	19/04/2012	4951	BANK OF CYPRUS (CR)	0.207	---	0.207	15/03/2013	---	---	---	---	---	---	---	---	---	---	---	371,594.09	0.207	0.207	8355
21,920,570	0.300	---	---	---	03/07/2007	13/12/1999	4702	CARDASSILARIS SA (CR)	0.140	---	0.140	30/11/2010	---	---	---	---	---	---	---	---	---	---	---	3,068.88	0.140	0.140	3577
54,547,634	0.500	---	---	---	25/04/2005	21/01/2009	4860	CH.TEGOPOULOS PUBL. SA (CR)	0.038	---	0.038	23/03/2012	---	---	---	---	---	---	---	---	---	---	---	2,072.81	0.038	0.038	5557
30,159,583	0.470	---	---	---	26/06/2008	29/12/2010	5047	DIAS A/C (CR)	0.050	---	0.050	26/03/2014	---	---	---	---	---	---	---	---	---	---	---	1,507.98	0.040	0.092	3573
7,847,611	1.20	---	---	---	01/08/2007	28/09/2011	4939	EDRASIS - C. PSALLIDAS SA (CR)	0.150	---	0.150	19/11/2012	---	---	---	---	---	---	---	---	---	---	---	1,177.14	0.150	0.150	2357
5,750,000	0.300	---	---	---	12/12/2008	12/12/2011	4929	ELECTRONIKI ATHINON SA (CR)	0.480	---	0.480	07/09/2012	---	---	---	---	---	---	---	---	---	---	---	2,760.00	0.480	0.480	5375
24,605,397	0.400	---	---	---	29/06/1995	27/05/2002	4651	EMPORIKOS DESMOS SA (CR)	0.080	---	0.080	28/05/2010	---	---	---	---	---	---	---	---	---	---	---	2,134.04	0.080	0.080	3722
1,182,903	0.400	---	---	---	01/07/1996	27/05/2002	4652	EMPORIKOS DESMOS SA (PR)	0.140	---	0.140	28/09/2009	---	---	---	---	---	---	---	---	---	---	---	2,134.04	0.140	0.140	3722
7,326,648	1.00	---	---	---	26/07/2006	24/07/2001	4921	FINTEXPORT SA (CR)	0.328	---	0.328	29/06/2012	---	---	---	---	---	---	---	---	---	---	---	2,403.14	0.328	0.328	3763
13,692,227	1.47	---	---	---	07/07/2006	08/10/1999	5049	HELLENIC FABRICS SA (CR)	0.117	---	0.117	31/03/2014	---	---	---	---	---	---	---	---	---	---	---	1,601.99	0.089	0.153	3763
24,619,524	0.500	---	---	---	10/10/1986	30/12/2002	4914	KERAMIA-ALLATINI (CR)	0.088	---	0.088	27/08/2012	---	---	---	---	---	---	---	---	---	---	---	2,166.52	0.088	0.088	8633
7,840,373	1.20	---	---	---	18/07/2002	05/03/2003	4765	KLONATEX SA (PR)	0.080	---	0.080	09/05/2011	---	---	---	---	---	---	---	---	---	---	---	1,453.75	0.080	0.080	3763
20,663,047	1.20	---	---	---	21/08/2000	05/03/2003	4764	KLONATEX SA (CR)	0.040	---	0.040	09/05/2011	---	---	---	---	---	---	---	---	---	---	---	1,453.75	0.040	0.040	3763
17,544,600	0.600	---	---	---	03/07/2000	01/08/2000	4868	KOYMBAS SYNERGY GROUP (CR)	0.132	---	0.132	29/03/2012	---	---	---	---	---	---	---	---	---	---	---	2,315.89	0.132	0.132	8775
15,015,000	1.60	---	---	---	01/07/2002	02/02/2000	4603	MAXIM C.M. PERTSINIDIS SA (CB)	0.100	---	0.100	30/11/2009	---	---	---	---	---	---	---	---	---	---	---	1,501.50	0.100	0.100	3763
66,937,526	0.700	---	---	---	13/08/2010	21/05/2003	5003	MICHANIKI SA (CR)	0.100	---	0.100	29/08/2013	---	---	---	---	---	---	---	---	---	---	---	9,186.78	0.100	0.100	2357
25,968,987	0.700	---	---	---	13/08/2010	21/05/2003	5004	MICHANIKI SA (PR)	0.096	---	0.096	29/08/2013	---	---	---	---	---	---	---	---	---	---	---	9,186.78	0.096	0.096	2357
13,555,100	1.00	---	---	---	08/07/2005		4576	MICROLAND COMPUTERS SA (CR)	0.640	---	0.640	14/07/2009	---	---	---	---	---	---	---	---	---	---	---	8,675.26	0.640	0.640	5379
23,463,874	0.800	---	---	---	23/05/2003	21/12/1999	4918	NEORION SA (CR)	0.125	---	0.125	28/08/2012	---	---	---	---	---	---	---	---	---	---	---	2,932.98	0.125	0.125	2753
42,501,273	0.300	---	---	---	26/06/2007	10/08/2009	4993	NUTRIART (CR)	0.049	---	0.049	21/06/2013	---	---	---	---	---	---	---	---	---	---	---	2,082.56	0.049	0.049	3577
20,210,127	1.53	---	---	---	27/06/1997	20/03/2000	5061	PARNASSOS ENTERP. (CR)	0.070	---	0.070	29/05/2014	---	---	---	---	---	---	---	---	---	---	---	1,414.71	0.065	0.172	8775
25,583,146	0.300	---	---	---	25/06/2001	03/12/2008	4723	PETZETAKIS SA (CR)	0.260	---	0.260	28/01/2011	---	---	---	---	---	---	---	---	---	---	---	6,651.62	0.260	0.260	1357
9,550,386	0.500	---	---	---	01/07/1997	12/06/2008	4626	PRAXITELIO SA (CR)	0.390	---	0.390	11/03/2010	---	---	---	---	---	---	---	---	---	---	---	4,430.09	0.390	0.390	4533
1,306,368	0.500	---	---	---	01/07/1997	12/06/2008	4627	PRAXITELIO SA (PR)	0.540	---	0.540	15/12/2009	---	---	---	---	---	---	---	---	---	---	---	4,430.09	0.540	0.540	4533
62,683,822	0.300	---	---	---	27/05/2008	09/01/2006	4830	PROTON BANK S.A. (CR)	0.180	---	0.180	07/10/2011	---	---	---	---	---	---	---	---	---	---	---	11,283.09	0.180	0.180	8355
51,334,286	0.320	---	---	---	03/07/2000	18/12/2007	4548	SAOS (CR)	0.780	---	0.780	27/03/2009	---	---	---	---	---	---	---	---	---	---	---	40,040.74	0.780	0.780	2773
26,408,040	0.300	---	---	---	01/07/1997	26/05/1999	4464	SHEET STEEL SA (CR)	0.120	---	0.120	28/11/2008	---	---	---	---	---	---	---	---	---	---	---	3,168.96	0.120	0.120	1757
60,221,300	0.400	---	---	---	01/07/2002	01/11/2010	5022	SHELMAN SA (CR)	0.080	---	0.080	19/11/2013	---	---	---	---	---	600@0.080	---	---	---	---	---	4,817.70	0.080	0.080	2353
26,262,660	0.900	---	---	---	01/07/2008	24/02/2011	4954	SPRIDER STORES (CR)	0.031	---	0.031	28/03/2013	---	---	---	---	---	---	---	---	---	---	---	814.14	0.031	0.031	5371
144,688,060	0.600	---	---	---	21/04/2008	10/03/2010	4982	T BANK (CR)	0.048	---	0.048	30/11/2011	---	---	---	---	---	---	---	---	---	---	---	6,945.03	0.048	0.048	8355
6,523,780	0.530	---	---	---	01/07/2002	06/03/2001	4971	TECHNICAL PUBLICATIONS SA (CR)	0.006	---	0.006	29/05/2013	---	---	---	---	---	---	---	---	---	---	---	39.14	0.006	0.006	5557
13,920,000	0.320	---	---	---	19/11/2001	01/08/2000	4726	TEXAPRET SA (CR)	0.080	---	0.080	23/02/2011	---	---	---	---	---	---	---	---	---	---	---	1,113.60	0.080	0.080	3763
510,840	1.00	---	---	---	15/07/2008	21/11/2013	5036	TROPEA HOLDING (CR)	2.00	---	0.020	# 30/03/2012	---	---	---	---	---	---	---	---	---	---	---	1,021.68	0.020	2.00	3722
284,465,964	3.70	---	---	---	20/06/2008	15/06/2009	4913	TT HELLENIC POSTBANK (CR)	0.168	---	0.168	30/08/2012	---	---	---	---	---	---	---	---	---	---	---	47,790.28	0.168	0.168	8355
89,616,200	0.300	---	---	---	21/08/2000	28/06/2007	4616	UNITED TEXTILES (CR)	0.050	---	0.050	25/02/2010	---	---	---	---	---	---	---	---	---	---	---	4,480.81	0.050	0.050	3763
71,683,906	0.400	---	---	---	15/06/2005	05/02/2008	4953	XATZIOANNOU (CR)	0.026	---	0.026	28/03/2013	---	---	---	---	---	---	---	---	---	---	---	1,863.78	0.026	0.026	3763

Shares' Notes

Code	Note text
()	- Adjusted dividends.
*	- Last adjusted closing price.
[1]	- Net dividends.
[2]	- The "Date of Last Coupon" for New listings refers to the date company's stocks started to trade in Athex
[3]	- The Company Market Value is referred to the number of outstanding shares
[4]	- Sectors codification can be found in Appendix A
[5]	- The Market Value refers to the total number of shares listed (including their several classes) in the exchange by the company.
[6]	- P/E greater than 100
[7]	- Last view of the Order Book before the end of the trading session
4446	- Transfer to the "Under Supervision" Category as of 20/10/2008.
4447	- Transfer to the "Under Supervision" Category as of 21/10/2008.
4464	- Suspension of trading as of 1/12/2008.
4548	- Suspension of trading as of 1/4/2009.
4554	- Transfer to the "Under Supervision" Category as of 6/4/2009.
4559	- Transfer to the "Under Supervision" Category as of 21/4/2009.
4576	- Suspension of trading as of 14/7/2009.
4603	- Suspension of trading as of 1/12/2009.
4616	- Suspension of trading as of 25/2/2010.
4626	- Suspension of trading as of 1/4/2010.
4627	- Suspension of trading as of 1/4/2010.
4628	- Suspension of trading as of 1/4/2010.
4629	- Transfer to the Under Supervision Category as of 12/4/2010.
4651	- Suspension of trading as of 1/6/2010.
4652	- Suspension of trading as of 1/6/2010.
4690	- Transfer to Surveillance category as of 4/4/2006.
4702	- Suspension of trading as of 1/12/2010.
4723	- Suspension of trading as of 31/1/2011.
4726	- Suspension of trading as of 1/3/2011.
4750	- Transfer to the "Under Surveillance Category" from 8/4/2011.
4764	- Suspension of trading as of 20/5/2011.
4765	- Suspension of trading as of 20/5/2011.
4795	- The final gross (pre-tax) dividend is € 0.30 per share and subject to withholding tax on the full dividend amount, i.e. 0.45 per share, for those shareholders liable to withholding tax, in accordance with the applicable tax law provisions.
4808	- Suspension of trading as of 6/9/2011.
4814	- Transfer to the Low Dispersion Category as of 30/5/2011.
4815	- Transfer to the Low Dispersion Category as of 30/5/2011.
4816	- Transfer to the Low Dispersion Category as of 30/5/2011.
4817	- Transfer to the Low Dispersion Category as of 30/5/2011.
4820	- Transfer to the Low Dispersion category as of 18/4/2008.
4822	- Transfer to the Low Dispersion category as of 30/5/2011.
4823	- Transfer to the Low Dispersion category as of 4/4/2006.
4827	- Transfer to the Low Dispersion category as of 5/5/2010.
4830	- Suspension of trading as of 10/10/2011.
4833	- Transfer to Surveillance category from 6/5/2010.
4844	- Transfer to the Surveillance category from 8/4/2011.
4847	- Transfer to the Surveillance Category as of 3/7/2009.
4860	- Suspension of trading as of 30/3/2012.
4865	- Suspension of trading as of 2/4/2012.
4868	- Suspension of trading as of 2/4/2012.
4879	- Transfer to the Surveillance Category as of 10/4/2012.
4881	- Transfer to the Surveillance Category as of 10/4/2012.
4882	- Transfer to the Surveillance Category as of 10/4/2012.

Shares' Notes

Code	Note text
4884	- Transfer to the Surveillance Category as of 10/4/2012.
4885	- Transfer to the Surveillance Category as of 10/4/2012.
4886	- Transfer to the Surveillance Category as of 10/4/2012.
4887	- Transfer to the Surveillance Category as of 10/4/2012.
4888	- Transfer to the Surveillance Category as of 10/4/2012.
4911	- Lift of suspension from 30/7/2012.
4912	- Transfer to the Surveillance Category as of 31/7/2012.
4913	- Suspension of trading as of 30/8/2012.
4914	- Suspension of trading as of 31/8/2012.
4918	- Suspension of trading as of 31/8/2012.
4920	- Suspension of trading as of 31/8/2012.
4921	- Suspension of trading as of 31/8/2012.
4929	- Suspension of trading as of 1/10/2012.
4937	- Transfer to the UNDER DELETION category as of 30/11/2012.
4938	- Transfer to the UNDER DELETION category as of 30/11/2012.
4939	- Suspension of trading as of 30/11/2012.
4951	- Suspension of trading as of 19/3/2013.
4953	- Suspension of trading as of 2/4/2013.
4954	- Suspension of trading as of 2/4/2013.
4955	- Transfer to the Surveillance Category as from 5/4/2013.
4956	- Transfer to the Surveillance Category as from 5/4/2013.
4957	- Transfer to the Surveillance Category as from 5/4/2013.
4958	- Transfer to the Surveillance Category as from 5/4/2013.
4959	- Transfer to the Surveillance Category as from 5/4/2013.
4960	- Transfer to the Surveillance Category as from 5/4/2013.
4961	- Transfer to the Surveillance Category as from 5/4/2013.
4971	- Suspension of trading as of 3/6/2013.
4977	- Transfer to the "Under Surveillance Category" from 11/6/2013.
4978	- Transfer to the Under Supervision Category as of 11/6/2013.
4982	- Suspension of trading as of 1/12/2011.
4983	- Transfer to the Surveillance Category as of 5/4/2013.
4985	- Transfer to the "Under Surveillance Category" from 8/4/2011.
4986	- Transfer to the Low Dispersion category as of 30/5/2011.
4993	- Suspension of trading as of 21/6/2013 (15:18).
4997	- Transfer to the Under Supervision Category as of 21/12/2009. - The 6,870,053 new (CB) shares, resulting from the recent share capital increase through a rights issue, are not yet admitted to trading on the ATHEX.
5002	- Suspension of trading as of 30/08/2013.
5003	- Suspension of trading as of 30/08/2013.
5004	- Suspension of trading as of 30/08/2013.
5007	- Transfer to the Surveillance category, as of 11/10/2013.
5008	- Transfer to the Surveillance Category from 8/4/2011.
5022	- Suspension of trading as of 2/12/2013.
5023	- Suspension of trading as of 2/12/2013.
5031	- The 612,300 new (CR) shares, resulting from the recent share capital increase through a rights issue, are not yet admitted to trading on the ATHEX.
5033	- Transfer to the Surveillance Category as of 25/11/2011. The 97,144,575 new (CR) shares, resulting from the recent share capital increase through a rights issue, are not yet admitted to trading on the ATHEX.
5036	- The company's share is under suspension of trading as of 2/4/2012. During suspension, the company proceeded and concluded a share reverse split, according to which - after the conclusion of the corporate action - the total number of the company's shares, as well as, the last closing price of 30/03/2012 were adjusted.
5046	- Transfer to the Low Dispersion category as of 8/4/2011.
5047	- Suspension of trading as of 27/3/2014.
5049	- Under suspension of trading as of 1/4/2014.
5053	- Transfer to the UNDER DELETION category as of 10/4/2014.
5054	- Transfer to the Surveillance Category as of 10/4/2014.
5055	- Transfer to the Surveillance Category as of 10/4/2014.

Shares' Notes

Code	Note text
5056	- Transfer to the Under Supervision Category as of 14/4/2014.
5057	- Transfer to the Surveillance Category as of 29/12/2011.
5058	- Transfer to the Surveillance Category as of 29/12/2011.
5059	- Transfer to the Low Dispersion category as of 2/6/2014.
5061	- Suspension of trading as of 2/6/2014.
5062	- Transfer to the UNDER DELETION category as of 4/6/2014.

Securities Blocks Details

Securities	Block Volume	Price	Block Trade Value	Time of approval	Note
MOTOR OIL (CR)	100,000	8.29	828,500.00	11:12:00	20
OPAP (CR)	50,000	13.10	655,000.00	11:22:20	20
OPAP (CR)	50,000	13.10	655,000.00	11:22:50	20
OPAP (CR)	100,000	13.10	1,310,000.00	11:24:39	20
PPC (CR)	50,000	11.90	594,750.00	12:30:43	20
EUROBANK ERGASIAS (CR)	2,220,396	0.395	877,056.42	12:32:13	20
OPAP (CR)	100,000	13.07	1,307,000.00	14:55:33	20
MOTOR OIL (CR)	100,981	8.26	834,103.06	14:57:46	20
OTE (CR)	84,911	12.05	1,023,177.55	15:20:13	20
OTE (CR)	50,000	11.98	599,000.00	16:57:35	20
LAMDA DEVELOPMENT SA (CR)	200,000	4.85	970,000.00	17:01:47	20
LAMDA DEVELOPMENT SA (CR)	146,733	4.85	711,655.05	17:02:32	20
LAMDA DEVELOPMENT SA (CR)	53,267	4.85	258,344.95	17:03:18	20
LAMDA DEVELOPMENT SA (CR)	500,000	4.85	2,425,000.00	17:04:02	20
LAMDA DEVELOPMENT SA (CR)	400,000	4.85	1,940,000.00	17:04:40	20
LAMDA DEVELOPMENT SA (CR)	1,000,000	4.85	4,850,000.00	17:05:45	20
LAMDA DEVELOPMENT SA (CR)	150,000	4.85	727,500.00	17:07:01	20
LAMDA DEVELOPMENT SA (CR)	52,000	4.85	252,200.00	17:07:37	20
LAMDA DEVELOPMENT SA (CR)	52,000	4.85	252,200.00	17:08:01	20
PPC (CR)	67,701	11.90	805,641.90	17:13:12	20

Blocks Notes

2 - SPOT 1 or SPOT 2 Packet	11 - Total Assets > 500 bil
3 - Block with Short Selling	12 - Sell Offer through Athex
4 - Buy to Close Block	13 - Forced Sale of NMOE
6 - Simultaneous Constitution	14 - Restoration Packet
7 - Repurchase Agreement	15 - Market Maker Packet
8 - Dispersion's Achievement (Not Listed)	16 - Short Selling
9 - Dispersion's Achievement (Listed)	18 - SPOT 1 Packet
10 - Share Capital Majority of Greek State (> 50 bil)	20 - Method 6-1 Packet

Shares Rights Details

Occured date	Exercise from	Exercise until	Trading until	Rights	Price min	Price max	Closing price	Last Bid	Last Ask	Volume	Trades	Transactions Value
-----------------	------------------	-------------------	------------------	--------	--------------	--------------	------------------	----------	----------	--------	--------	-----------------------

No Rights Transactions.

Stock Borrowing

Securities	Stock Borrowing through Helex (volume)	Stock Borrowing through OTC (volume) [1]	Totals [2]
ALPHA BANK (CR)	8,704,600	93,920,256	102,624,856
ALPHA BANK (W)	---	7,171	7,171
ATE (CR)	---	69,000	69,000
ATTICA BANK S.A. (CR)	33,000	---	33,000
BANK OF CYPRUS (CR)	---	102,899	102,899
CC HBC AG (CR)	80,800	72,576	153,376
CORINTH PIPEWORKS SA (CR)	9,800	---	9,800
ELLAKTOR (CR)	50,400	---	50,400
EUROBANK ERGASIAS (CR)	377,400	6,664,905	7,042,305
EUROBANK PROPERTIES REIC (CR)	24,700	23,369	48,069
EYDAP S.A. (CR)	29,400	---	29,400
FOLLI FOLLIE (CR)	70,200	12,060	82,260
FOURLIS (CR)	---	3,850	3,850
FRIGOGLASS SA (CR)	2,800	---	2,800
GEK TERNA (CR)	4,100	---	4,100
HELLENIC EXCHANGES-A.S.E. (CR)	400	584,400	584,800
HELLENIC PETROLEUM (CR)	65,800	360,402	426,202
INTRALOT (CR)	9,600	2,000	11,600
JUMBO SA (CR)	99,200	13,030	112,230
KARELIA TOBACCO CO. SA (CB)	---	84	84
LAMDA DEVELOPMENT SA (CR)	---	10,377	10,377
MARFIN INVESTMENT GROUP (CR)	32,500	728,474	760,974
METKA (CR)	50,400	---	50,400
MOTOR OIL (CR)	53,600	34,129	87,729
MYTILINEOS HOLDINGS (CR)	23,500	---	23,500
NATIONAL BANK (CR)	530,300	818,739	1,349,039
OPAP (CR)	162,000	47,750	209,750
OTE (CR)	56,600	178,543	235,143
P.P.A. S.A. (CR)	6,700	660	7,360
PIRAEUS BANK (CR)	209,800	18,225,206	18,435,006
PPC (CR)	119,100	37,804	156,904
TERNA ENERGY (CR)	---	2,532	2,532
TITAN CEMENT (CR)	90,000	84	90,084

Stock Borrowing Notes

[1] - The information concerning OTC Stock Borrowing Transactions is based on the statements of the Dematerialised Securities System (DSS) operators involved and refers to volumes that have been cleared and registered up until the previous working day.

Shares Forced Sales

Securities	Transaction s Volume	Number of Trades	Transactions Value	Note
No Forced Transactions.				

Forced Sales Notes

- 1 - Normal Forced Sale.
- 2 - Forced Sales of Fixed Registered Shares.
- 3 - Forced Sales of Remaining Stock Fractions.

Forced Sales Registered Shares

Securities	Start Date	End Date	Initial Volume	Remaining Volume	Date	Avg price (day)	Avg price (period)	Number of Trades	Transactions Volume	Transactions Value
------------	------------	----------	-------------------	---------------------	------	--------------------	-----------------------	---------------------	------------------------	-----------------------

No Fixed Registered Shares Forced Sales.

Forced Sales Notes

According to Decision 1/380/04.05.2008 of the Hellenic Republic Capital Market Commission, the certificated registered shares that have not been deposited to the issuer for dematerialisation, will be auctioned in the Athens Exchange by the supervising issuer. Forced sales procedure is held according to Article 99A of the Athens Exchange Rulebook. The average price of the period is calculated by dividing the Total transactions value by the Total volume and includes all the transactions made until the current date.

Exchange Traded Funds (ETFs) Characteristics

	Transactions Date (T)	Creation / Redemption	Units (T-1)	New Units (T-1)	Redemptio n Units (T-	Units (T) [1]	Fund Assets [2]	Net Unit Price	Dividen d per	Dividend Date
NBGAM ETF ΓΔ X.A.	20/06/2014	25,000	294,878	---	---	294,878	4,187,836.00	14.2019	---	27/10/2011
ALPHA ETF FTSE Athex Large Cap	20/06/2014	50,000	5,848,618	---	---	5,848,618	24,295,360.00	4.1540	0.05	01/07/2013
NBGAM ETF GREECE & TURKEY 30	20/06/2014	25,000	388,550	---	---	388,550	3,314,462.00	8.5303	---	27/10/2011

ETFs Notes

[1] - Units (T) = Units (T-1) + New Units (T-1) - Redemption Units (T-1)

[2] - The Creation / Redemption Units of T-1 are included.

Corporate Bonds

Num Listed Bonds	Nominal price	Issue price	Today's Rate	Exp. Date	Duration (years)	Note	Coupon attached		Trading	Corporate Bonds	Price min	Price max	Closing price	Previous closing price/date		Volume	Transactions Value	Last order		Date	ear min	Year max
							Common	Preferred										Price	Buy / Sell			
4,150,176	4.77	4.77	5.00	19/03/2015	5	---	18	---	1	MARFIN INVESTMENT GROUP S.A. (Conver to CR shar)	---	---	---	90.0000	04/06/2014	---	---	90.0000	B	20/06/2014	62.5251	91.1000
1,794,284	12.49	9.77	5.31	12/07/2015	8	---	---	---	1	NIREUS S.A. (Convertible to CR shares)	---	---	---	12.0000	29/01/2014	---	---	5.0000	B	17/06/2014	12.0000	12.0000
212,817,904	1.00	1.00	6.30	29/07/2020	7	---	4	---	1	MARFIN INVESTMENT GROUP S.A. SERIES B (BOND)	---	---	---	0.8500	23/08/2013	---	---	1.0010	B	19/06/2014	0.8500	0.8500
2,156,827	1.00	1.00	7.00	29/07/2019	6	---	4	---	1	MARFIN INVESTMENT GROUP S.A. SERIES A (BOND)	---	---	---	1.0000	23/08/2013	---	---	0.9500	B	17/06/2014	1.0000	1.0000

Corporate Bonds Notes

Transactions Volume = (Pieces) * (Nominal Price). Transactions Value = (Pieces) * (Nominal Price) * (price %) + (Accrued interest).
The price of a Bond is stated as a percentage (%) of Bond's Nominal Price.
Nominal Price in Euros (€), except if it is noted differently.

Government Bonds

Number Listed Bonds	Nominal price	Today's Rate	Accrued Interest Calc	Exp. Date [1]	Duration (years)	Note	Coupons Date	Curr. coupon value	Trading Unit	Government Bonds	Price min	Price max	Closing price	Previous closing price/date	Volume	Transactions Value	Price	Last order Buy / Sell	Date
2,658,781,973	1.00	4.30	Actual/Actual	24/02/2023	11	---	24/02	4.30	1	GGB-FXD-240223-11Y-2.000-1.00	---	---	---	---	---	---	---	---	---
2,658,781,973	1.00	4.30	Actual/Actual	24/02/2024	12	---	24/02	4.30	1	GGB-FXD-240224-12Y-2.000-1.00	---	---	---	---	---	---	---	---	---
2,658,781,973	1.00	4.30	Actual/Actual	24/02/2025	13	---	24/02	4.30	1	GGB-FXD-240225-13Y-2.000-1.00	---	---	---	---	---	---	---	---	---
2,658,781,973	1.00	4.30	Actual/Actual	24/02/2026	14	---	24/02	4.30	1	GGB-FXD-240226-14Y-2.000-1.00	---	---	---	---	---	---	---	---	---
2,658,781,973	1.00	4.30	Actual/Actual	24/02/2027	15	---	24/02	4.30	1	GGB-FXD-240227-15Y-2.000-1.00	---	---	---	---	---	---	---	---	---
2,836,034,104	1.00	4.30	Actual/Actual	24/02/2028	16	---	24/02	4.30	1	GGB-FXD-240228-16Y-2.000-1.00	---	---	---	---	---	---	---	---	---
2,836,034,104	1.00	4.30	Actual/Actual	24/02/2029	17	---	24/02	4.30	1	GGB-FXD-240229-17Y-2.000-1.00	---	---	---	---	---	---	---	---	---
2,836,034,104	1.00	4.30	Actual/Actual	24/02/2030	18	---	24/02	4.30	1	GGB-FXD-240230-18Y-2.000-1.00	---	---	---	---	---	---	---	---	---
2,836,034,104	1.00	4.30	Actual/Actual	24/02/2031	19	---	24/02	4.30	1	GGB-FXD-240231-19Y-2.000-1.00	---	---	---	---	---	---	---	---	---
2,836,034,104	1.00	4.30	Actual/Actual	24/02/2032	20	---	24/02	4.30	1	GGB-FXD-240232-20Y-2.000-1.00	---	---	---	---	---	---	---	---	---
2,836,034,104	1.00	4.30	Actual/Actual	24/02/2033	21	---	24/02	4.30	1	GGB-FXD-240233-21Y-2.000-1.00	---	---	---	---	---	---	---	---	---
2,836,034,104	1.00	4.30	Actual/Actual	24/02/2034	22	---	24/02	4.30	1	GGB-FXD-240234-22Y-2.000-1.00	---	---	---	---	---	---	---	---	---
2,836,034,104	1.00	4.30	Actual/Actual	24/02/2035	23	---	24/02	4.30	1	GGB-FXD-240235-23Y-2.000-1.00	---	---	---	---	---	---	---	---	---
2,836,034,104	1.00	4.30	Actual/Actual	24/02/2036	24	---	24/02	4.30	1	GGB-FXD-240236-24Y-2.000-1.00	---	---	---	---	---	---	---	---	---
2,836,034,104	1.00	4.30	Actual/Actual	24/02/2037	25	---	24/02	4.30	1	GGB-FXD-240237-25Y-2.000-1.00	---	---	---	---	---	---	---	---	---
2,836,034,104	1.00	4.30	Actual/Actual	24/02/2038	26	---	24/02	4.30	1	GGB-FXD-240238-26Y-2.000-1.00	---	---	---	---	---	---	---	---	---
2,836,034,104	1.00	4.30	Actual/Actual	24/02/2039	27	---	24/02	4.30	1	GGB-FXD-240239-27Y-2.000-1.00	---	---	---	---	---	---	---	---	---
2,836,034,104	1.00	4.30	Actual/Actual	24/02/2040	28	---	24/02	4.30	1	GGB-FXD-240240-28Y-2.000-1.00	---	---	---	---	---	---	---	---	---
2,836,034,104	1.00	4.30	Actual/Actual	24/02/2041	29	---	24/02	4.30	1	GGB-FXD-240241-29Y-2.000-1.00	---	---	---	---	---	---	---	---	---
2,836,034,104	1.00	4.30	Actual/Actual	24/02/2042	30	---	24/02	4.30	1	GGB-FXD-240242-30Y-2.000-1.00	---	---	---	---	---	---	---	---	---
1,500,000	1,000.00	0.97	FLR Actual/360	10/08/2014	5	---	10/02 - 10/08	---	1	GGB-FRN-100814-05Y-1.762-1000.00	---	---	---	---	---	---	---	---	---
3,000,000	1,000.00	4.75	Actual/Actual	17/04/2019	5	---	17/04	4.75	1	GGB-FXD-170419-05Y-4.750-1,000	---	---	---	---	---	---	---	---	---
78,300	1,000.00	1.16	FLR Actual/360	23/07/2014	5	---	23/01 - 23/07	---	1	GGB-FRN-230714-05Y-2.018-1000.00	---	---	---	---	---	---	---	---	---

Government Bonds Notes

Transactions Volume = (Pieces) * (Nominal Price). Transactions Value = (Pieces) * (Nominal Price) * (price %) + (Accrued interest).
The Value of current coupon for the issues with NV 0.01 euro refers to NV 100 euros
FLR: Floating Interest Rate.
[1] - The Expiration Date of the interest bearing period and the Date for coupon payment.

Bonds in Circulation	Currency / Min nominal traded Value	Coupons Payment Date	Current Coupon Value	Note	Coupon Attached	Trading Unit	Issue Date	Duration (years)	Today's Interest	A.I.C in days	Bonds	Last price of previous days		Last Outcry in Cash (euro)			Trades in Pieces	Life min	Life Max
														Price	Buy / Sell	Date			
Bonds of International Organizations																			
1,000,000	EUR / 1000	21/07	---	---	8	1	21/07/2006	10	5.0 FLR	360	EUROPEAN INVESTMENT BANK BOND	97.50	16/04/2007	---	---	---	---	---	---
Corporate Bonds in Foreign Currency and Euro																			
103,746	GBP / 10	01/12	0.25	---	55	1	01/12/1930	98	2.5	360	National Mortgage Bank	2.27	05/02/1996	2.27	S	05/02/1996	---	2.27	2.27
0	GBP / 10	01/12	0.25	---	57	1	01/12/1928	100	2.5	360	National Mortgage Bank	---	---	---	---	---	---	---	---

Government Bonds Notes

A.I.C: Accrued Interest Calculation base.
FLR: Floating Interest Rate.
The minimum tradeable Nominal Value for all Demeterialised Government Titles is 100 Euros.

State Banks Bonds (one year maturity)

Number Listed Bonds	Nominal value	Initial Rate	Current Rate	Annual Interest	Issue Date	Note	State Banks Bonds	Trading Unit	Yearly Renewals	Last Outcry in Cash (euro) Price	Buy / Sell	Volume
342,560	135.17	2.35	3.92	0.00	31/01/2005	---	H.I.D.B.	1	10	100.00	B	---
2,446	1,182.96	4.90	2.47	29.69	31/05/2008	---	H.I.D.B.	1	7	---	---	---
63,787	1,129.20	5.45	2.47	30.88	31/08/2008	---	H.I.D.B.	1	6	---	---	---

Bonds Notes

The annual renewal of H.I.D.B. Bonds is free of taxes (net rate).
For Bonds issue until 31/05/2014 the accrued interest is capitalized.

Athex & ATHEXClear Members List

Member Name			Stock Market			Derivatives Market			ATHEXClear Member		
Address	Phone	Fax	Market Member	Remote Member	Market Maker	Proprietary	Market Maker	Agent	General Clearing	Direct Clearing	Non Clearing
A. SARRIS SECURITIES S.A.			✓								
6, DRAGATSANIOU STR. ATHINA	(210)-3367700	(210)-3312324									
AGRICULTURAL BANK OF GREECE S.A.							✓			✓	
, 23 PANEPISTIMIOU ATHINA	(210)-3298400	(210)-3298322									
ALPHA FINANCE INVESTMENT SERVICES S.A.			✓		✓		✓			✓	
5, MERLIN STR. ATHINA	(210)-3677400	(210)-3311193									
ALPHA BANK A.E.						✓			✓		
40, STADIOU STR ATHINA	(210)-3265546	(210)-3265811									
	(210)-3260000	(210)-3264116									
ARGUS STOCKBROKERS LTD			✓	✓							
12-14, KENNEDY AVE. S. 303 NICOSIA	(+35722)-22717000	(+35722)-22717070									
ATHENAIKI BROKERAGE FIRM S.A.			✓								
33, STADIOU STR. ATHINA	(210)-3254764	(210)-3254767									
ATLANTIC SECURITIES LIMITED			✓	✓							
37, PRODROMOU STR. NICOSIA	(+35722)-445400	(+35722)-661914									
ATLAS SECURITIES S.A			✓			✓					✓
14 - 16, VERVENON STR.& 125 MICHALAKOPOULOU STR. ATHINA	(210)-3363300	(210)-3238925									
ATTICA BANK S.A.									✓		
23, OMIROU STR. ATHINA	(210)-3669000	(210)-3669410									
54, AKADIMIAS STR. ATHINA	(210)-3390757	(210)-3646090									
AXIA VENTURES GROUP LTD			✓	✓							
10, G. KRANIDIOTI NICOSIA	+357 22 742000	+357 22 742001									
AXON SECURITIES S.A.			✓			✓					✓
48, STADIOU ATHINA	(210)-3363800	(210)-3243903									
BANK OF CYPRUS PUBLIC COMPANY LTD									✓		
170, ALEXANDRAS AVE ATHINA	(210)-6477708	(210)-6477709									
, 51,STASINOU (AG. PARASKEVI, STROVOLOS) NICOSIA	(0035722)-121883	(0035722)-336258									
BETA SECURITIES S.A.			✓		✓	✓	✓			✓	
, BRAILA & 29 ALEXANDRAS AVE ATHINA	(210)-6478900	(210)-6410139									
BNP PARIBAS SECURITIES SERVICES									✓		
94, VAS. SOFIAS AVE ATHINA	(210)-7468500	(210)-7468579									
CAPITAL SECURITIES S.A.			✓			✓					✓
58, MITROPOLEOS STR. ATHINA	(210)-3369700	(210)-3369820									
CFS SECURITIES & INVESTMENT SERVICES S.A.			✓		✓			✓		✓	
3, STADIOU STR. ATHINA	(210)-3360800	(210)-3311854									
CITIGROUP GLOBAL MARKET LTD			✓	✓							
, CITIGROUP CENTRE, CANADA SQUARE, CANARY WHART LONDON	002079864000	002079862266									
CO-OPERATIVE CENTRAL BANK LTD			✓	✓							
8, GRIGORI AFXENTIOU STR. NICOSIA	(+35722)-743300	(+35722)-672083									
CREDIT AGRICOLE CHEUVREUX S.A.				✓							
, 9 QUAI PAUL DOUMER PARIS	33 (0) 1 41 89 70 00										
CREDIT SUISSE SECURITIES (EUROPE) LIMITED			✓	✓							
, ONE CABOT SQUARE LONDON	+44 20 7888 8888	+44 20 7888 1600									
CYCLOS SECURITIES S.A.			✓		✓	✓				✓	
39, PANEPISTIMIOU STR. ATHINA	(210)-3364300	(210)-3239122									
D.A. TSEKOURAS SEC. S.A.			✓								
3, PESMAZOGLOU STR. ATHINA	(210)-3214406	(210)-3211997									
DEUTSCHE BANK A.G.			✓	✓							
70, THEODOR-HEUSS-ALLEE FRANKFURT	0049 69 910 00	0049 69 910 34 225									
DYNAMIC SECURITIES			✓					✓		✓	
6 - 10, CHAR. TRIKOUPi STR. ATHINA	(210)-3677700	(210)-3677777									
EL. PETROPOULAKIS SECURITIES S.A.			✓					✓			✓
9, ARISTIDOU STR. ATHINA	(210)-3213928	(210)-3216810									
EUROBANK EQUITIES S.A.			✓		✓		✓			✓	
10, FILELLINON STR. ATHINA	(210)-3720000	(210)-3720001									
EUROBANK ERGASIAS S.A.									✓		
8, OTHONOS STR. ATHINA	(210)-3337000	(210)-3233866									
	(210)-3337969	(210)-3245916									
EUROCORP SECURITIES S.A.			✓			✓				✓	
14, FILIKIS ETAIRIAS SQ. ATHINA	(210)-7263500	(210)-7263666									
EUOTRUST BROKERAGE S.A.			✓								
13-15, SOPHOCLEOUS STR. ATHINA	(210)-3363100	(210)-3238334									

Athex & ATHEXClear Members List

Member Name			Stock Market			Derivatives Market			ATHEXClear Member		
Address	Phone	Fax	Market Member	Remote Member	Market Maker	Proprietary	Market Maker	Agent	General Clearing	Direct Clearing	Non Clearing
EUROXX SECURITIES S.A.			✓			✓				✓	
7, PALAIOLOGOU STR. CHALANDRI	(210)-6879400	(210)-6879401									
G.A. PERVANAS SECURITIES & INVESTMENT SERVICES CO S.A.			✓			✓					✓
7 - 9, SOPHOCLEOUS STR. ATHINA	(210)-3251875	(210)-3210291									
GENERAL BANK OF GREECE S.A.									✓		
, 109-111, MESOGEION AVE. ATHINA	(210)-3288737	(210)-3288211									
87-89, ERMOY ATHINA	(210)-6976072	(210)-6976079									
GLOBAL CAPITAL SECURITIES AND FINANCIAL SERVICES LTD			✓	✓							
5, LEMESOU AVE. LEMESOS CYPRUS	(+35722)-710710	(+35722)-339332									
GUARDIAN TRUST SECURITIES S.A			✓		✓	✓					✓
15, FILELLINON STR. ATHINA	(210)-3220402	(210)-3220498									
HELLENIC AMERICAN SEC. S.A.			✓			✓					
6, EVRIPIDOU STR. ATHINA	(210)-3311100	(210)-3215968									
HELLENIC BANK (INVESTMENTS) LTD			✓	✓							
31, KYRIAKOY MATSI AVE. NICOSIA	(+35722)-500100	(+35722)-500110									
HSBC BANK PLC									✓		
109-111, MESOGION AVE ATHINA	(210)-6961507	(210)-6929310									
INDEX SECURITIES S.A.			✓								
6, DRAGATSANIOU STR. ATHINA	(210)-3213920	(210)-3213216									
INTERSEC S.A.						✓				✓	
80-88, SYGROU AVE ATHINA	(210)-9203000	(210)-9203052									
INVESTMENT BANK OF GREECE S.A.			✓		✓		✓		✓		
24B, KIFISSIAS AVE MAROUSI	(210)-8171800	(210)-8171889									
32, AIGEIALIAS MAROUSI	(210) 8173000	(210) 8173101									
J. CHR. MAVRIKIS SECURITIES S.A.			✓								
5, SOPHOCLEOUS STR. ATHINA	(210)-3213949	(210)-3217767									
KAPPA SECURITIES S.A.			✓			✓					✓
15, VALAORITOU STR. ATHINA	(210)-3610371	(210)-3641002									
KYPROU SECURITIES S.A.					✓	✓					✓
26, HALKIDONOS & FIDIPPIDOY STR. ATHINA	(210)-8701000	(210)-8701049									
LAIKI FINANCIAL SERVICES LTD			✓	✓							
26, CLR HOUSE, VIROMOS AVE. NICOSIA	(+35722)-898600	(+35722)-680953									
LEON DEPOLAS SECURITIES S.A.			✓					✓			✓
1, CHR. LADA STR. ATHINA	(210)-3213286	(210)-3211618									
MAGNA TRUST SECURITIES S.A			✓					✓			✓
9, FIDIOU STR. ATHINA	(210)-3327503	(210)-3327599									
MEGA EQUITY SECURITIES & FINANCIAL SERVICES LTD			✓	✓							
42-44, GRIBA DIGENI AV. NICOSIA	(+35722)-711711	(+35722)-711811									
MERIT SECURITIES S.A			✓		✓	✓				✓	
38, VAS. KONSTANTINOY STR. ATHINA	(210)-3671800	(210)-3671830									
MERRILL LYNCH			✓	✓							
2, KING EDWARD STREET LONDON	(+4420)-79952000	(+4420)-79954525									
METOCHIKI SECURITIES S.A.			✓								
3, G. GENNADIOY STR. ATHINA	(210)-3306700	(210)-3306709									
MIDAS BROKERAGE S.A.			✓								
5, SOPHOCLEOUS STR. ATHINA	(210)-3253203	(210)-3253205									
N. CHRYSOCHOIDIS STOCK BROKERAGE I.S.S.A.			✓					✓		✓	
7 - 9, SOPHOCLEOUS STR. ATHINA	(210)-3213913	(210)-3216115									
N. SARROS SECURITIES S.A.						✓					
7-9, SOPHOCLEOUS STR. ATHINA	(210)-3705600	(210)-3219992									
NATIONAL BANK OF GREECE S.A.			✓				✓		✓		
86, AIOLOU STR. ATHINA	(210)-3341000	(210)-3228187									
68, AKADIMIAS STR. ATHINA	(210)-3328817	(210)-3328678									
NBG SECURITIES S.A.			✓		✓		✓				✓
68, AKADIMIAS STR. ATHINA	(210)-3328500	(210)-3328565									
NEW PROTON BANK S.A.						✓				✓	
20, ESLIN & AMALIADOS ATHINA	210 6970000	210 6970111									
NUNTIUS SECURITIES S.A			✓					✓			✓
6, DRAGATSANIOU STR. ATHINA	(210)-3350599	(210)-3254846									
PANTELAKIS SEC. S.A.			✓			✓					✓
109-111, MESOGION AVE. ATHINA	(210)-6965000	(210)-6929550									
PEGASUS BROKERAGE FIRM S.A			✓			✓					
17, VALAORITOU STR. ATHINA	(210)-3670700	(210)-3670760									

Athex & ATHEXClear Members List

Member Name			Stock Market			Derivatives Market			ATHEXClear Member		
Address	Phone	Fax	Market Member	Remote Member	Market Maker	Proprietary	Market Maker	Agent	General Clearing	Direct Clearing	Non Clearing
PIRAEUS BANK S.A.			✓					✓	✓		
4, AMERIKIS STR. ATHINA	(210)-3335918	(210)-3254207									
4, AMERIKIS STR. ATHINA	(210)-3335000	(210)-3335079									
PIRAEUS SECURITIES S.A.			✓				✓			✓	
10, STADIOU STR. ATHINA	(210)-3354100	(210)-3233814									
PRELIUM SECURITIES & INVESTMENT SERVICES S.A.			✓			✓					✓
, KIFISSIAS AVE & 1 DAVAKI STR. ATHINA	(210)-3677000	(210)-6920403									
PROCHOICE SECURITIES LTD			✓	✓							
57, SPYROU KYPRIANOY NICOSIA	+357-24-661192	+357-24-662464									
SHARELINK SECURITIES & FINANCIAL SERVICES LTD			✓	✓							
6, ELLINAS HOUSE, THEOTOKI STR. NICOSIA	(+35722)-554200	(+35722)-750852									
SOCIETE GENERALE S.A.			✓	✓		✓					
240-242, KIFISIAS AVE. ATHINA	(210)-6790161	(210)-6728828									
17, COURS VALMY PUTEAUX - LA DEFENSE PARIS	(+33) 142134754	(+33) 142135697									
SOLIDUS SECURITIES S.A.			✓			✓				✓	
64, LOUIZIS RIANKOUR STR. ATHINA	(210)-6925500	(210)-6985421									
ST. EM. LAVRENTAKIS SECURITIES S.A.			✓			✓					✓
7 - 9, SOPHOCLEOUS STR. ATHINA	(210)-3213336	(210)-3246572									
THE CYPRUS INVESTMENT AND SECURITIES CORPORATION LIMITED (CISCO)			✓	✓							
4, EVROU STR. (EUROLIFE HOUSE) NICOSIA	(+35722)-881800	(+35722)-881801									
UBS LIMITED			✓	✓							
1, FINSBURY AVENUE LONDON	(+4420)-79013333	(+4420)-79012345									
Z.G. PORTALAKIS INVESTMENT SERVICES S.A.			✓								
8, PESMAZOGLOU STR. ATHINA	(210)-3214830	(210)-3212024									
KARAMANOF SECURITIES & INV. SERVICES S.A.			✓					✓		✓	
2, SQ. ST. THEODORON ATHINA	(210)-3212947	(210)-3217088									

List of Stocks under Market Making operations

Securities	Stock Category	
	Market Maker	End Market Making
Start Market Making		Suspension Status
CYPRUS POPULAR BANK (CR)		
PIRAEUS SECURITIES S.A.	02/02/2013	01/01/2400
VIOHALCO (CB)		
Suspension Status		
ALPHA FINANCE INVESTMENT SERVICES S.A.	11/02/2013	01/01/2400
EUROBANK EQUITIES S.A.	20/01/2013	01/01/2400
MERIT SECURITIES S.A.	13/12/2012	01/01/2400
ALPHA BANK (CR)		
Main Market		
EUROBANK EQUITIES S.A.	24/10/2012	01/01/2400
INVESTMENT BANK OF GREECE S.A.	08/01/2013	01/01/2400
MERIT SECURITIES S.A.	03/09/2013	01/01/2400
NBG SECURITIES S.A.	15/01/2013	01/01/2400
PIRAEUS SECURITIES S.A.	28/05/2013	01/01/2400
ALUMIL (CR)		
Main Market		
BETA SECURITIES S.A.	18/07/2013	01/01/2400
ATTICA BANK S.A. (CR)		
Main Market		
BETA SECURITIES S.A.	02/06/2014	01/01/2400
BYTE COMPUTER SA (CR)		
Main Market		
MERIT SECURITIES S.A.	04/08/2013	01/01/2400
CC HBC AG (CR)		
Main Market		
EUROBANK EQUITIES S.A.	23/10/2013	01/01/2400
NBG SECURITIES S.A.	29/04/2013	01/01/2400
ELLAKTOR (CR)		
Main Market		
EUROBANK EQUITIES S.A.	01/06/2013	01/01/2400
INVESTMENT BANK OF GREECE S.A.	02/01/2013	01/01/2400
NBG SECURITIES S.A.	25/06/2013	01/01/2400
ELTON SA (CR)		
Main Market		
BETA SECURITIES S.A.	03/09/2013	01/01/2400
EUROBANK ERGASIAS (CR)		
Main Market		
ALPHA FINANCE INVESTMENT SERVICES S.A.	08/01/2013	01/01/2400
EUROBANK EQUITIES S.A.	01/06/2013	01/01/2400
INVESTMENT BANK OF GREECE S.A.	08/01/2013	01/01/2400
PIRAEUS SECURITIES S.A.	28/09/2013	01/01/2400
FOLLI FOLLIE (CR)		
Main Market		
NBG SECURITIES S.A.	17/02/2014	01/01/2400
FRIGOGLASS SA (CR)		
Main Market		
EUROBANK EQUITIES S.A.	23/08/2013	01/01/2400
GEK TERNA (CR)		
Main Market		
INVESTMENT BANK OF GREECE S.A.	02/01/2013	01/01/2400
GR. SARANTIS SA (CR)		
Main Market		
BETA SECURITIES S.A.	14/05/2013	01/01/2400
HELLENIC EXCHANGES-A.S.E. (CR)		
Main Market		
EUROBANK EQUITIES S.A.	01/06/2013	01/01/2400
INVESTMENT BANK OF GREECE S.A.	02/01/2013	01/01/2400
NBG SECURITIES S.A.	25/06/2013	01/01/2400
INTRACOM CONSTR. (CR)		
Main Market		
MERIT SECURITIES S.A.	27/12/2012	01/01/2400
INTRALOT (CR)		
Main Market		
EUROBANK EQUITIES S.A.	01/06/2013	01/01/2400
INVESTMENT BANK OF GREECE S.A.	02/01/2013	01/01/2400
PIRAEUS SECURITIES S.A.	28/09/2013	01/01/2400
MARFIN INVESTMENT GROUP (CR)		
Main Market		
PIRAEUS SECURITIES S.A.	02/02/2013	01/01/2400
MLS MULTIMEDIA SA (CR)		
Main Market		
BETA SECURITIES S.A.	18/07/2013	01/01/2400
MOTOR OIL (CR)		
Main Market		
EUROBANK EQUITIES S.A.	23/10/2012	01/01/2400
NBG SECURITIES S.A.	17/02/2014	01/01/2400
MYTILINEOS HOLDINGS (CR)		
Main Market		
INVESTMENT BANK OF GREECE S.A.	02/01/2013	01/01/2400
NBG SECURITIES S.A.	25/06/2013	01/01/2400
NATIONAL BANK (CR)		
Main Market		
ALPHA FINANCE INVESTMENT SERVICES S.A.	08/01/2013	01/01/2400
EUROBANK EQUITIES S.A.	24/10/2012	01/01/2400
INVESTMENT BANK OF GREECE S.A.	08/01/2013	01/01/2400
MERIT SECURITIES S.A.	03/09/2013	01/01/2400
NBG SECURITIES S.A.	28/02/2013	01/01/2400
PIRAEUS SECURITIES S.A.	08/09/2013	01/01/2400

List of Stocks under Market Making operations

Securities	Stock Category	
	Start Market Making	End Market Making
OPAP (CR)	Main Market	
ALPHA FINANCE INVESTMENT SERVICES S.A.	08/01/2013	01/01/2400
EUROBANK EQUITIES S.A.	24/10/2012	01/01/2400
INVESTMENT BANK OF GREECE S.A.	08/01/2013	01/01/2400
NBG SECURITIES S.A.	15/01/2013	01/01/2400
OTE (CR)	Main Market	
ALPHA FINANCE INVESTMENT SERVICES S.A.	08/01/2013	01/01/2400
EUROBANK EQUITIES S.A.	24/10/2012	01/01/2400
INVESTMENT BANK OF GREECE S.A.	08/01/2013	01/01/2400
NBG SECURITIES S.A.	01/12/2012	01/01/2400
PIRAEUS SECURITIES S.A.	08/09/2013	01/01/2400
PAPOUTSANIS (CR)	Main Market	
BETA SECURITIES S.A.	25/11/2013	01/01/2400
PETROPOULOS PETROS (CR)	Main Market	
BETA SECURITIES S.A.	28/05/2013	01/01/2400
PIRAEUS BANK (CR)	Main Market	
EUROBANK EQUITIES S.A.	23/10/2012	01/01/2400
INVESTMENT BANK OF GREECE S.A.	08/01/2013	01/01/2400
MERIT SECURITIES S.A.	16/09/2013	01/01/2400
NBG SECURITIES S.A.	02/06/2013	01/01/2400
PIRAEUS SECURITIES S.A.	16/02/2013	01/01/2400
PLAISIO COMPUTERS SA (CR)	Main Market	
BETA SECURITIES S.A.	05/05/2014	01/01/2400
PPC (CR)	Main Market	
ALPHA FINANCE INVESTMENT SERVICES S.A.	08/01/2013	01/01/2400
EUROBANK EQUITIES S.A.	23/10/2012	01/01/2400
INVESTMENT BANK OF GREECE S.A.	08/01/2013	01/01/2400
NBG SECURITIES S.A.	26/03/2013	01/01/2400
PIRAEUS SECURITIES S.A.	28/09/2013	01/01/2400
S.KANAKIS SA (CR)	Main Market	
BETA SECURITIES S.A.	01/10/2013	01/01/2400
TITAN CEMENT (CR)	Main Market	
EUROBANK EQUITIES S.A.	23/10/2012	01/01/2400
NBG SECURITIES S.A.	17/02/2014	01/01/2400
VIOHALCO SA/NV (CB)	Main Market	
ALPHA FINANCE INVESTMENT SERVICES S.A.	17/02/2014	01/01/2400
MERIT SECURITIES S.A.	17/03/2014	01/01/2400

Underlying Asset				Derivatives Market																		
Price max	Price min	Closing price	change	Delivery Month	Open price	Price max	Price min	Last price	Closing price	Last Bid	Last Ask	Settlement price	change	Life high	Life low	Trades	Volume	change	Value	change	Open Interest	change
FTSE/Athex Large Cap				(Trade Unit: 1 Index Point x 5€, Cash Settlement)																		
423.17	414.68	423.17	1.67%	June 2014	416.50	418.50	414.25	415.00	415.29	---	---	415.29	-0.29%	448.75	340.50	185	5,391	-74.45%	11,221,813.75	-74.49%	6,108	-27.98%
				July 2014	417.00	421.50	414.00	419.75	418.25	1@419.75	20@420.00	418.25	0.48%	437.00	342.00	416	7,303	-63.00%	15,203,680.00	-63.00%	58,967	4.30%
				August 2014	414.00	417.75	413.00	416.50	416.50	1@418.00	1@420.00	416.50	-0.24%	427.00	366.00	10	83	8200.00%	172,437.50	8170.38%	80	53.85%
				September 2014	411.00	419.75	411.00	419.75	418.25	1@414.50	1@422.00	418.25	0.60%	425.00	343.00	34	290	-68.20%	602,696.25	-68.17%	2,545	11.14%
				December 2014	---	---	---	---	---	---	---	---	---	---	---	---	---	---	---	---	---	---
				March 2015	---	---	---	---	---	---	---	---	---	---	---	---	---	---	---	---	---	---

Daily Official List															Year: 135 Trading Day No: 115									
Section 7: Stock Futures															Friday, 20 June, 2014									
Underlying Asset					Derivatives Market																			
Price max	Price min	Closing price	change		Delivery Month	Open price	Price max	Price min	Last price	Closing price	Last Bid	Last Ask	Settlement price	change	Life high	Life low	Trades	Volume	change	Value	change	Open Interest	change	
ALPHA BANK (CR)					(Contract Size: 100 Securities, Physical Delivery)																			
0.750	0.712	0.750	4.75%		June 2014	0.717	0.720	0.714	0.714	0.714	---	---	0.714	0.00%	0.780	0.561	53	1,473	-71.44%	105,656.70	-71.52%	24,935	-3.94%	
					September 2014	0.720	0.747	0.714	0.738	0.733	30@0.734	35@0.738	0.733	1.52%	0.780	0.635	177	6,183	-16.42%	453,093.80	-15.39%	23,097	-1.44%	
					December 2014	0.720	0.749	0.720	0.749	0.732	10@0.652	---	0.732	-1.88%	0.775	0.616	5	510	---	37,730.00	---	3,710	-11.67%	
					March 2015	---	---	---	---	---	---	---	---	---	---	---	---	---	---	---	---	---	---	
CC HBC AG (CR)					(Contract Size: 100 Securities, Physical Delivery)																			
17.62	17.31	17.62	0.97%		June 2014	17.49	17.53	17.36	17.36	17.40	---	---	17.40	0.64%	18.79	16.29	11	30	-62.50%	52,389.00	-62.41%	160	-8.57%	
					September 2014	17.11	17.27	16.97	17.27	17.22	5@17.28	15@17.35	17.22	0.64%	17.44	16.25	23	84	6.33%	143,888.00	5.68%	458	9.57%	
					December 2014	---	---	---	---	---	---	---	---	---	---	---	---	---	---	---	---	---	---	
					March 2015	---	---	---	---	---	---	---	---	---	---	---	---	---	---	---	---	---	---	
CORINTH PIPEWORKS SA (CR)					(Contract Size: 100 Securities, Physical Delivery)																			
1.72	1.69	1.70	1.19%		June 2014	1.68	1.69	1.68	1.69	1.70	---	---	1.70	0.59%	2.23	1.43	8	246	95.24%	41,572.00	95.63%	115	-53.25%	
					September 2014	1.70	1.75	1.70	1.71	1.73	13@1.70	5@1.75	1.73	1.17%	1.77	1.64	9	248	188.37%	42,414.00	189.28%	698	55.11%	
					December 2014	---	---	---	---	---	---	---	---	---	---	---	---	---	---	---	---	---	---	
					March 2015	---	---	---	---	---	---	---	---	---	---	---	---	---	---	---	---	---	---	
ELLAKTOR (CR)					(Contract Size: 100 Securities, Physical Delivery)																			
4.35	4.11	4.25	2.66%		June 2014	4.17	4.20	4.16	4.18	4.14	---	---	4.14	0.98%	4.20	3.34	14	174	-65.48%	72,622.00	-64.83%	441	-11.62%	
					September 2014	4.21	4.33	4.12	4.30	4.32	5@4.28	2@4.33	4.32	4.60%	4.33	3.95	31	178	-46.71%	75,059.00	-45.51%	1,442	11.70%	
					December 2014	---	---	---	---	---	---	---	---	---	---	---	---	---	---	---	---	---	---	
					March 2015	---	---	---	---	---	---	---	---	---	---	---	---	---	---	---	---	---	---	
EUROBANK ERGASIAS (CR)					(Contract Size: 100 Securities, Physical Delivery)																			
0.407	0.392	0.407	4.36%		June 2014	0.385	0.396	0.385	0.396	0.395	---	---	0.395	1.80%	0.802	0.317	64	2,259	-75.28%	88,651.00	-75.17%	32,510	-4.35%	
					September 2014	0.392	0.405	0.392	0.405	0.404	1@0.401	1@0.406	0.404	4.12%	0.433	0.330	60	2,520	-51.48%	100,742.80	-50.91%	55,901	3.57%	
					December 2014	---	---	---	---	0.419	---	---	0.419	4.23%	0.410	0.322	---	---	---	---	---	---	---	
					March 2015	---	---	---	---	---	---	---	---	---	---	---	---	---	---	---	---	---	---	
EUROBANK PROPERTIES REIC (CR)					(Contract Size: 100 Securities, Physical Delivery)																			
9.30	9.02	9.30	1.09%		June 2014	9.02	9.04	9.02	9.04	9.15	---	---	9.15	2.81%	9.37	7.71	2	10	-33.33%	9,030.00	-33.49%	39	0.00%	
					September 2014	9.05	9.20	9.05	9.20	9.01	3@8.99	5@9.35	9.01	1.12%	9.28	7.97	10	51	45.71%	46,590.00	45.76%	169	15.75%	
					December 2014	---	---	---	---	---	---	---	---	---	---	---	---	---	---	---	---	---	---	
					March 2015	---	---	---	---	---	---	---	---	---	---	---	---	---	---	---	---	---	---	
EYDAP S.A. (CR)					(Contract Size: 100 Securities, Physical Delivery)																			
9.75	9.35	9.75	2.63%		June 2014	9.35	9.36	9.33	9.35	9.39	---	---	9.39	-2.59%	9.77	7.98	6	22	-71.43%	20,571.00	-71.70%	173	-2.81%	
					September 2014	9.43	9.64	9.40	9.61	9.62	5@9.61	1@9.91	9.62	-0.31%	9.71	9.17	14	57	62.86%	54,228.00	64.34%	193	2.12%	
					December 2014	---	---	---	---	---	---	---	---	---	---	---	---	---	---	---	---	---	---	
					March 2015	---	---	---	---	---	---	---	---	---	---	---	---	---	---	---	---	---	---	
FOLLI FOLLIE (CR)					(Contract Size: 100 Securities, Physical Delivery)																			
34.40	32.80	34.40	4.56%		June 2014	33.02	33.81	32.97	33.81	33.75	---	---	33.75	1.87%	33.81	22.77	43	101	114.89%	336,665.00	117.23%	333	-4.58%	
					September 2014	32.78	34.18	32.60	34.18	33.75	1@33.75	1@34.19	33.75	2.83%	34.18	25.27	57	148	252.38%	493,087.00	259.50%	353	28.36%	
					December 2014	---	---	---	---	---	---	---	---	---	---	---	---	---	---	---	---	---	---	
					March 2015	---	---	---	---	---	---	---	---	---	---	---	---	---	---	---	---	---	---	
Hellenic Exchanges – Athens Stock Exchange S.A.															Section 7, 1/4									
Market Operation Division - Information Services Dept.																								

Underlying Asset				Derivatives Market																		
Price max	Price min	Closing price	change	Delivery Month	Open price	Price max	Price min	Last price	Closing price	Last Bid	Last Ask	Settlement price	change	Life high	Life low	Trades	Volume	change	Value	change	Open Interest	change
FRIGOGLASS SA (CR)				(Contract Size: 100 Securities, Physical Delivery)																		
4.10	3.94	3.94	-1.25%	June 2014	3.99	4.02	3.96	3.98	4.02	---	---	4.02	0.75%	5.46	2.99	24	146	-33.33%	58,132.00	-34.08%	522	0.00%
				September 2014	4.02	4.03	3.99	4.00	3.97	5@4.05	1@4.20	3.97	-1.24%	4.18	3.81	14	112	-41.36%	44,871.00	-42.15%	1,057	11.85%
				December 2014	---	---	---	---	---	---	---	---	---	---	---	---	---	---	---	---	---	---
				March 2015	---	---	---	---	---	---	---	---	---	---	---	---	---	---	---	---	---	---
GEK TERNA (CR)				(Contract Size: 100 Securities, Physical Delivery)																		
4.01	3.93	4.00	1.01%	June 2014	3.96	3.99	3.89	3.89	3.94	---	---	3.94	-0.25%	4.23	3.04	34	724	-45.28%	286,435.00	-44.55%	891	-27.68%
				September 2014	4.00	4.05	3.93	4.05	4.02	3@4.04	5@4.05	4.02	1.01%	4.24	3.17	45	806	-35.98%	321,849.00	-35.18%	24,161	2.33%
				December 2014	---	---	---	---	3.99	3@3.98	5@4.10	3.99	1.01%	4.01	3.72	---	---	-100.00%	---	-100.00%	---	-
				March 2015	---	---	---	---	4.11	---	---	4.11	0.98%	4.07	4.06	---	---	---	---	---	5,000	0.00%
HELLENIC EXCHANGES-A.S.E. (CR)				(Contract Size: 100 Securities, Physical Delivery)																		
8.95	8.73	8.83	-0.23%	June 2014	8.87	8.92	8.74	8.74	8.75	---	---	8.75	-1.80%	9.50	7.12	35	171	-57.25%	150,712.00	-57.59%	3,734	-2.17%
				September 2014	8.91	8.99	8.79	8.99	8.94	20@8.86	5@9.00	8.94	-0.22%	9.50	6.95	33	164	-53.67%	145,393.00	-54.01%	7,499	1.96%
				December 2014	---	---	---	---	---	---	---	---	---	---	---	---	---	---	---	---	---	-
				March 2015	---	---	---	---	---	---	---	---	---	---	---	---	---	---	---	---	---	-
HELLENIC PETROLEUM (CR)				(Contract Size: 100 Securities, Physical Delivery)																		
6.31	6.11	6.31	2.27%	June 2014	6.16	6.19	6.11	6.12	6.13	---	---	6.13	-0.16%	9.58	5.10	79	763	-73.54%	470,303.00	-73.36%	160	-80.42%
				September 2014	6.22	6.34	6.15	6.30	6.32	2@6.29	2@6.38	6.32	2.10%	6.34	5.31	122	942	-64.63%	585,793.00	-64.36%	8,320	6.90%
				December 2014	---	---	---	---	6.28	1@6.11	---	6.28	2.11%	6.29	5.46	---	---	-100.00%	---	-100.00%	196	0.00%
				March 2015	---	---	---	---	6.39	---	---	6.39	2.08%	6.10	6.09	---	---	---	---	---	11	0.00%
INTRALOT (CR)				(Contract Size: 100 Securities, Physical Delivery)																		
2.12	2.07	2.07	-2.36%	June 2014	2.06	2.10	2.06	2.09	2.09	---	---	2.09	-0.95%	2.53	1.83	35	508	-35.78%	105,909.00	-36.21%	224	-69.40%
				September 2014	2.07	2.12	2.07	2.11	2.08	20@2.10	10@2.14	2.08	-2.35%	2.16	1.90	30	409	-45.68%	85,918.00	-46.16%	2,186	20.37%
				December 2014	---	---	---	---	---	---	---	---	---	---	---	---	---	---	---	---	---	-
				March 2015	---	---	---	---	---	---	---	---	---	---	---	---	---	---	---	---	---	-
JUMBO SA (CR)				(Contract Size: 100 Securities, Physical Delivery)																		
12.46	12.16	12.46	2.05%	June 2014	12.16	12.32	12.14	12.32	12.24	---	---	12.24	-0.97%	14.22	10.13	5	38	26.67%	46,465.00	27.30%	217	-14.23%
				September 2014	12.24	12.45	12.23	12.45	12.35	10@12.23	3@12.45	12.35	-0.32%	13.00	11.95	22	64	3.23%	78,724.00	4.10%	237	30.22%
				December 2014	---	---	---	---	---	---	---	---	---	---	---	---	---	---	---	---	---	-
				March 2015	---	---	---	---	---	---	---	---	---	---	---	---	---	---	---	---	---	-
MARFIN INVESTMENT GROUP (CR)				(Contract Size: 100 Securities, Physical Delivery)																		
0.484	0.473	0.473	-2.27%	June 2014	0.477	0.492	0.465	0.475	0.475	---	---	0.475	-1.04%	0.573	0.379	76	3,311	-57.32%	158,565.70	-57.47%	2,740	-38.95%
				September 2014	0.487	0.488	0.474	0.483	0.485	20@0.479	5@0.485	0.485	-0.21%	0.520	0.416	63	2,757	-58.68%	133,106.10	-59.01%	25,033	10.14%
				December 2014	---	---	---	---	---	---	---	---	---	---	---	---	---	---	---	---	---	-
				March 2015	---	---	---	---	---	---	---	---	---	---	---	---	---	---	---	---	---	-
METKA (CR)				(Contract Size: 100 Securities, Physical Delivery)																		
13.94	13.53	13.92	-0.14%	June 2014	13.73	13.76	13.53	13.59	13.59	---	---	13.59	0.74%	14.12	10.67	22	90	-28.00%	122,779.00	-28.13%	530	-0.56%
				September 2014	13.75	14.00	13.55	14.00	13.87	2@13.66	3@14.07	13.87	2.29%	14.00	11.41	18	101	2.02%	138,435.00	1.77%	373	7.49%
				December 2014	---	---	---	---	---	---	---	---	---	---	---	---	---	---	---	---	---	-
				March 2015	---	---	---	---	---	---	---	---	---	---	---	---	---	---	---	---	---	-

Daily Official List															Year: 135 Trading Day No: 115									
Section 7: Stock Futures															Friday, 20 June, 2014									
Underlying Asset					Derivatives Market																			
Price max	Price min	Closing price	change	Delivery Month	Open price	Price max	Price min	Last price	Closing price	Last Bid	Last Ask	Settlement price	change	Life high	Life low	Trades	Volume	change	Value	change	Open Interest	change		
(Contract Size: 100 Securities, Physical Delivery)																								
8.33	8.15	8.25	-0.12%	June 2014	8.19	8.30	8.19	8.24	8.25	---	---	8.25	0.61%	10.31	7.75	11	58	-46.79%	47,884.00	-46.49%	189	0.00%		
				September 2014	8.22	8.27	8.16	8.22	8.14	5@8.22	1@8.28	8.14	-0.12%	8.69	7.94	17	66	-14.29%	54,242.00	-13.49%	571	8.35%		
				December 2014	---	---	---	---	---	---	---	---	---	---	---	---	---	---	---	---	---	---		
				March 2015	---	---	---	---	---	---	---	---	---	---	---	---	---	---	---	---	---	---		
(Contract Size: 100 Securities, Physical Delivery)																								
6.77	6.59	6.77	0.59%	June 2014	6.71	6.72	6.58	6.59	6.59	---	---	6.59	-1.49%	7.32	5.32	57	885	-71.21%	589,081.00	-71.28%	954	-39.92%		
				September 2014	6.72	6.80	6.61	6.80	6.77	5@6.71	60@6.80	6.77	0.59%	7.31	5.86	86	1,017	-62.18%	681,844.00	-62.26%	9,422	6.85%		
				December 2014	---	---	---	---	6.72	---	---	6.72	0.60%	7.16	5.58	---	---	---	---	---	1,400	0.00%		
				March 2015	---	---	---	---	---	---	---	---	---	---	---	---	---	---	---	---	---	---		
(Contract Size: 100 Securities, Physical Delivery)																								
2.86	2.83	2.84	-0.70%	June 2014	2.80	2.85	2.80	2.83	2.84	---	---	2.84	-0.35%	4.50	2.00	116	4,616	-21.52%	1,308,371.00	-21.52%	13,051	8.60%		
				September 2014	2.86	2.88	2.84	2.88	2.86	103@2.86	60@2.88	2.86	-0.35%	3.03	2.07	164	5,326	-16.95%	1,521,045.00	-16.84%	36,930	9.47%		
				December 2014	2.84	2.84	2.83	2.83	2.84	---	---	2.84	-3.73%	2.92	2.09	4	100	---	28,370.00	---	2,000	-4.76%		
				March 2015	---	---	---	---	---	---	---	---	---	---	---	---	---	---	---	---	---	---		
(Contract Size: 100 Securities, Physical Delivery)																								
13.63	12.94	13.63	4.44%	June 2014	13.13	13.16	12.97	13.03	13.05	---	---	13.05	-0.53%	13.65	8.84	48	370	13.85%	483,455.00	12.02%	1,015	-15.20%		
				September 2014	13.29	13.56	12.93	13.52	13.18	11@13.52	2@13.54	13.18	0.46%	13.60	9.63	85	479	-23.11%	632,992.00	-22.96%	1,727	3.04%		
				December 2014	---	---	---	---	13.14	---	---	13.14	0.46%	13.34	10.42	---	---	---	---	---	---	---		
				March 2015	---	---	---	---	---	---	---	---	---	---	---	---	---	---	---	---	---	---		
(Contract Size: 100 Securities, Physical Delivery)																								
12.19	11.94	12.00	0.42%	June 2014	12.05	12.18	11.97	12.00	11.99	---	---	11.99	-0.58%	13.20	8.31	127	1,115	-78.85%	1,346,033.00	-78.87%	769	-25.84%		
				September 2014	12.05	12.19	12.00	12.10	12.05	15@12.05	89@12.10	12.05	-0.58%	12.84	9.69	146	1,047	-82.05%	1,265,408.00	-82.12%	9,533	7.16%		
				December 2014	---	---	---	---	11.99	---	---	11.99	-0.58%	11.62	10.15	---	---	---	---	---	---	---		
				March 2015	---	---	---	---	---	---	---	---	---	---	---	---	---	---	---	---	---	---		
(Contract Size: 100 Securities, Physical Delivery)																								
18.57	18.06	18.38	1.32%	June 2014	18.29	18.40	18.08	18.11	18.11	---	---	18.11	-0.06%	20.47	16.07	10	23	-50.00%	41,963.00	-49.28%	144	-11.11%		
				September 2014	18.22	18.47	18.15	18.15	18.42	1@18.14	1@18.50	18.42	1.32%	18.47	17.60	7	13	-48.00%	23,718.00	-47.44%	338	3.36%		
				December 2014	---	---	---	---	---	---	---	---	---	---	---	---	---	---	---	---	---	---		
				March 2015	---	---	---	---	---	---	---	---	---	---	---	---	---	---	---	---	---	---		
(Contract Size: 100 Securities, Physical Delivery)																								
1.80	1.74	1.80	0.00%	June 2014	1.78	1.79	1.75	1.75	1.76	---	---	1.76	0.00%	2.06	1.33	66	1,745	-2.40%	308,114.00	-3.34%	5,487	-7.89%		
				September 2014	1.81	1.81	1.74	1.79	1.78	12@1.78	5@1.79	1.78	0.00%	2.06	1.47	94	2,814	12.92%	498,177.00	11.82%	23,806	5.38%		
				December 2014	---	---	---	---	---	---	---	---	---	---	---	---	---	---	---	---	---	---		
				March 2015	---	---	---	---	---	---	---	---	---	---	---	---	---	---	---	---	---	---		
(Contract Size: 100 Securities, Physical Delivery)																								
11.95	11.77	11.95	1.27%	June 2014	11.79	11.94	11.78	11.85	11.90	---	---	11.90	0.42%	12.77	9.29	119	942	-49.87%	1,120,019.00	-49.60%	935	-41.38%		
				September 2014	11.84	12.03	11.84	11.99	11.94	1@11.98	2@11.99	11.94	0.34%	12.65	9.70	102	749	-53.59%	894,932.00	-53.32%	4,513	13.99%		
				December 2014	11.90	11.95	11.89	11.94	11.95	---	---	11.95	0.76%	12.48	9.54	4	40	29.03%	47,659.00	29.86%	62	-39.22%		
				March 2015	---	---	---	---	---	---	---	---	---	---	---	---	---	---	---	---	---	---		
Hellenic Exchanges – Athens Stock Exchange S.A.															Section 7, 3/4									
Market Operation Division - Information Services Dept.																								

Underlying Asset				Derivatives Market																		
Price max	Price min	Closing price	change	Delivery Month	Open price	Price max	Price min	Last price	Closing price	Last Bid	Last Ask	Settlement price	change	Life high	Life low	Trades	Volume	change	Value	change	Open Interest	change
SIDENOR (CR)				(Contract Size: 100 Securities, Physical Delivery)																		
1.71	1.66	1.71	2.39%	June 2014	1.67	1.69	1.64	1.64	1.67	---	---	1.67	0.00%	2.23	1.41	13	197	-21.20%	32,620.00	-22.44%	111	-54.88%
				September 2014	1.69	1.70	1.66	1.70	1.73	5@1.69	5@1.78	1.73	2.37%	1.77	1.62	12	197	-21.20%	32,996.00	-22.47%	1,018	23.84%
				December 2014	---	---	---	---	---	---	---	---	---	---	---	---	---	---	---	---	---	---
				March 2015	---	---	---	---	---	---	---	---	---	---	---	---	---	---	---	---	---	---
TERNA ENERGY (CR)				(Contract Size: 100 Securities, Physical Delivery)																		
4.23	4.11	4.23	4.44%	June 2014	4.07	4.20	4.07	4.17	4.13	---	---	4.13	1.98%	4.78	3.56	33	228	10.14%	94,236.00	12.77%	1,601	-6.48%
				September 2014	4.19	4.24	4.15	4.21	4.25	1@4.22	1@4.25	4.25	4.42%	4.30	3.88	15	145	-40.57%	60,513.00	-39.16%	3,882	3.00%
				December 2014	---	---	---	---	---	---	---	---	---	---	---	---	---	---	---	---	---	---
				March 2015	---	---	---	---	---	---	---	---	---	---	---	---	---	---	---	---	---	---
TITAN CEMENT (CR)				(Contract Size: 100 Securities, Physical Delivery)																		
25.65	25.05	25.32	-0.63%	June 2014	25.46	25.64	25.37	25.45	25.33	---	---	25.33	-1.36%	26.71	19.40	32	90	23.29%	229,230.00	23.46%	341	-9.55%
				September 2014	25.25	25.49	25.20	25.38	25.38	2@25.15	10@25.36	25.38	-0.63%	26.66	22.38	18	73	563.64%	184,736.00	564.33%	330	17.02%
				December 2014	---	---	---	---	---	---	---	---	---	---	---	---	---	---	---	---	---	---
				March 2015	---	---	---	---	---	---	---	---	---	---	---	---	---	---	---	---	---	---
VIOHALCO SA/NV (CB)				(Contract Size: 100 Securities, Physical Delivery)																		
4.38	4.28	4.38	1.86%	June 2014	4.27	4.33	4.27	4.30	4.35	---	---	4.35	1.87%	5.22	3.84	14	160	8.84%	69,024.00	11.47%	72	-64.88%
				September 2014	4.31	4.43	4.31	4.43	4.38	15@4.32	1@4.47	4.38	1.86%	4.43	4.08	11	149	-5.70%	64,758.00	-3.38%	630	27.53%
				December 2014	---	---	---	---	---	---	---	---	---	---	---	---	---	---	---	---	---	---
				March 2015	---	---	---	---	---	---	---	---	---	---	---	---	---	---	---	---	---	---

FTSE/Athex Large Cap

(Trade Unit: 1 Index Point x 5€ - Exoerise Style: European, Cash Settlement)

Call Options																Put Options																			
Exerise Price	June 2014							July 2014							Other Months		June 2014								July 2014								Other Months		Exerise Price
	Open price	Price max	Price min	Last price	Closing price	Volume	Open Interest	Open price	Price max	Price min	Last price	Closing price	Volume	Open Interest	Volume	Open Interest	Open price	Price max	Price min	Last price	Closing price	Volume	Open Interest	Open price	Price max	Price min	Last price	Closing price	Volume	Open Interest	Volume	Open Interest			
215	-	-	-	-	200.29	-	-	-	-	-	-	-	-	-	-	-	-	-	-	-	-	-	-	-	-	-	-	-	-	-	-	215			
255	-	-	-	-	160.29	-	-	-	-	-	-	-	-	-	-	-	-	-	-	-	-	-	-	-	-	-	-	-	-	-	-	255			
260	-	-	-	-	155.29	-	-	-	-	-	-	-	-	-	-	-	-	-	-	-	-	-	-	-	-	-	-	-	-	-	-	260			
265	-	-	-	-	150.29	-	-	-	-	-	-	-	-	-	-	-	-	-	-	-	-	-	-	-	-	-	-	-	-	-	-	265			
270	-	-	-	-	145.29	-	-	-	-	-	-	-	-	-	-	-	-	-	-	-	-	-	-	-	-	-	-	-	-	-	-	270			
275	-	-	-	-	140.29	-	-	-	-	-	-	-	-	-	-	-	-	-	-	-	-	-	-	-	-	-	-	-	-	-	-	275			
280	-	-	-	-	135.29	-	-	-	-	-	-	-	-	-	-	-	-	-	-	-	-	-	-	-	-	-	-	-	-	-	-	280			
285	-	-	-	-	130.29	-	-	-	-	-	-	-	-	-	-	-	-	-	-	-	-	-	-	-	-	-	-	-	-	-	-	285			
290	-	-	-	-	125.29	-	-	-	-	-	-	-	-	-	-	-	-	-	-	-	-	-	-	-	-	-	-	-	-	-	-	290			
295	-	-	-	-	120.29	-	-	-	-	-	-	-	-	-	-	-	-	-	-	-	-	-	-	-	-	-	-	-	-	-	-	295			
300	-	-	-	-	115.29	-	-	-	-	-	-	-	-	-	-	-	-	-	-	-	-	-	-	-	-	-	-	-	-	-	-	300			
305	-	-	-	-	110.29	-	-	-	-	-	-	-	-	-	-	-	-	-	-	-	-	-	-	-	-	-	-	-	-	-	-	305			
310	-	-	-	-	105.29	-	-	-	-	-	-	-	-	-	-	-	-	-	-	-	-	-	-	-	-	-	-	-	-	-	-	310			
315	-	-	-	-	100.29	-	-	-	-	-	-	-	-	-	-	-	-	-	-	-	-	-	2	-	-	-	-	-	-	-	-	315			
320	-	-	-	-	95.29	-	-	-	-	-	-	-	-	-	-	-	-	-	-	-	-	-	2	-	-	-	-	-	-	-	-	320			
325	-	-	-	-	90.29	-	-	-	-	-	-	-	-	-	-	-	-	-	-	-	-	-	-	-	-	-	-	-	-	-	-	325			
330	-	-	-	-	85.29	-	-	-	-	-	-	-	-	-	-	-	-	-	-	-	-	-	221	-	-	-	-	-	-	-	-	330			
335	-	-	-	-	80.29	-	-	-	-	-	-	-	-	-	-	-	-	-	-	-	-	-	-	-	-	-	-	-	-	-	-	335			
340	-	-	-	-	75.29	-	-	-	-	-	-	-	-	-	-	-	-	-	-	-	-	-	136	-	-	-	-	-	-	-	-	340			
345	-	-	-	-	70.29	-	-	-	-	-	-	73.50	-	1	-	-	-	-	-	-	-	-	20	-	-	-	-	-	-	-	-	345			
350	66.00	66.00	65.50	65.50	65.29	20	-	-	-	-	-	-	-	-	-	-	-	-	-	-	-	-	94	-	-	-	-	-	-	-	-	350			
355	-	-	-	-	60.29	-	-	-	-	-	-	-	-	-	-	-	-	-	-	-	-	-	66	-	-	-	-	-	-	-	-	355			
360	58.00	58.00	55.50	56.00	55.29	96	-	-	-	-	-	-	-	-	-	-	-	-	-	-	-	-	344	-	-	-	-	1.60	-	78	-	360			
365	-	-	-	-	50.29	-	-	-	-	-	-	-	-	-	-	-	-	-	-	-	-	-	-	-	-	-	-	2.20	-	20	-	365			
370	-	-	-	-	45.29	-	-	-	-	-	-	-	-	-	-	-	-	-	-	-	-	-	374	-	-	-	-	-	-	-	-	370			
375	42.75	42.75	42.75	42.75	40.29	9	-	-	-	-	-	-	-	-	-	-	-	-	-	-	-	-	705	-	-	-	-	-	-	-	-	375			
380	37.75	37.75	35.50	35.50	35.29	85	-	-	-	-	-	42.75	-	7	-	-	-	-	-	-	-	-	696	-	-	-	-	4.50	-	102	-	380			
385	-	-	-	-	30.29	-	-	36.25	39.00	36.25	39.00	38.75	4	1	-	-	-	-	-	-	-	-	45	-	-	-	-	5.60	-	38	-	385			
390	26.50	26.50	26.50	26.50	25.29	27	-	-	-	-	-	35.00	-	70	-	-	-	-	-	-	-	-	385	-	-	-	-	6.90	-	324	-	390			
395	-	-	-	-	20.29	-	-	-	-	-	-	-	-	-	-	-	-	-	-	-	-	-	646	-	-	-	-	-	-	-	-	395			
400	17.00	18.00	17.00	17.00	15.29	51	-	25.25	28.00	22.00	28.00	28.25	108	463	-	-	-	-	-	-	-	-	494	-	-	-	-	10.00	-	201	-	400			
405	-	-	-	-	10.29	-	-	23.00	25.00	23.00	25.00	25.25	165	920	-	-	-	-	-	-	-	-	165	-	-	-	-	-	-	-	-	405			
410	7.70	7.70	5.50	5.70	5.29	78	-	-	-	-	-	-	-	-	-	-	-	-	-	-	-	-	525	-	-	-	-	-	-	-	-	410			
415	-	-	-	-	0.29	-	-	-	-	-	-	19.75	-	94	-	-	-	-	-	-	-	-	67	-	-	-	-	-	-	-	-	415			
420	-	-	-	-	-	-	1,010	15.50	15.50	15.50	15.50	17.25	22	414	5.00	5.40	5.00	5.40	4.71	93	-	19.00	19.00	18.00	18.00	19.00	141	91	-	-	420				
425	-	-	-	-	-	-	152	-	-	-	-	15.00	-	11	-	-	-	-	-	-	9.71	-	-	-	-	-	-	-	-	-	-	425			

FTSE/Athex Large Cap

(Trade Unit: 1 Index Point x 5€ - Exercise Style: European, Cash Settlement)

Call Options																Put Options																							
Exercise Price	June 2014							July 2014							Other Months		June 2014								July 2014								Other Months		Exercise Price				
	Open price	Price max	Price min	Last price	Closing price	Volume	Open Interest	Open price	Price max	Price min	Last price	Closing price	Volume	Open Interest	Volume	Open Interest	Open price	Price max	Price min	Last price	Closing price	Volume	Open Interest	Open price	Price max	Price min	Last price	Closing price	Volume	Open Interest	Volume	Open Interest							
430	-	-	-	-	-	-	229	12.00	13.00	12.00	13.00	13.00	115	536			-	-	-	-	14.71	-	-	-	-	-	-	-	-	-	-			430					
435	-	-	-	-	-	-	-	-	-	-	-	-	-	-			-	-	-	-	19.71	-	-	-	-	-	-	-	-	-	-			435					
440	-	-	-	-	-	-	1	-	-	-	-	-	-	-			-	-	-	-	24.71	-	-	32.00	32.00	32.00	32.00	31.50	5	5			440						
445	-	-	-	-	-	-	-	-	-	-	-	-	-	-			-	-	-	-	29.71	-	-	-	-	-	-	-	-	-	-			445					
450	-	-	-	-	-	-	2	-	-	-	-	7.10	-	70			-	-	-	-	34.71	-	-	-	-	-	-	-	-	-	-			450					
455	-	-	-	-	-	-	-	-	-	-	-	-	-	-			-	-	-	-	39.71	-	-	-	-	-	-	-	-	-	-			455					
460	-	-	-	-	-	-	-	-	-	-	-	-	-	-			-	-	-	-	44.71	-	-	-	-	-	-	-	-	-	-			460					
465	-	-	-	-	-	-	-	-	-	-	-	-	-	-			-	-	-	-	49.71	-	-	-	-	-	-	-	-	-	-			465					
Totals:							366	1,394								414	2,587	20	906								93	4,987								146	859	0	290
Nominal Transactions Value:							700,725.00							851,275.00							195,300.00							307,100.00							0.00				
Number of Trades:							28							26							16							7							0				

FTSE/Athex Large Cap

(Trade Unit: 1 Index Point x 5€ - Exoercise Style: European, Cash Settlement)

Call Options																	Put Options																	
Exerise Price	June 2014							July 2014							Other Months			June 2014							July 2014							Other Months		
	Open price	Price max	Price min	Last price	Closing price	Volume	Open Interest	Open price	Price max	Price min	Last price	Closing price	Volume	Open Interest	Volume	Open Interest	Open price	Price max	Price min	Last price	Closing price	Volume	Open Interest	Open price	Price max	Price min	Last price	Closing price	Volume	Open Interest	Volume	Open Interest	Exerise Price	

ALPHA BANK (CR)

(Contract Size: 100 Securities, Exercise Style: American, Physical Delivery)

Call Options																	Put Options																									
June 2014								July 2014								Other Months		June 2014								July 2014								Other Months								
Exerise Price	Open price	Price max	Price min	Last price	Closing price	Volume	Open Interest	Open price	Price max	Price min	Last price	Closing price	Volume	Open Interest	Volume	Open Interest	Open price	Price max	Price min	Last price	Closing price	Volume	Open Interest	Open price	Price max	Price min	Last price	Closing price	Volume	Open Interest	Volume	Open Interest	Exerise Price									
0.100						-	-							-	-													9.29	-	-					0.100							
0.200						-	-							-	-													19.29	-	-					0.200							
0.300						-	-							-	-													29.29	-	-					0.300							
0.400						-	-							-	-													39.29	-	-					0.400							
0.500						-	-							-	-													49.29	-	-					0.500							
0.550						-	-							-	-													54.29	-	-					0.550							
0.600						-	-							-	-													59.29	-	-					0.600							
0.650						-	-							-	-													64.29	-	-					0.650							
0.700						-	-							-	-													69.29	-	-					0.700							
0.750						-	-							-	-													74.29	-	-					0.750							
0.800						-	-							-	-													79.29	-	-					0.800							
0.850						-	-							-	-													84.29	-	-					0.850							
0.900						-	-					0.007		-	10													89.29	-	-					0.900							
0.950						-	-							-	-													94.29	-	-					0.950							
1.00						-	-							-	-													99.29	-	-					1.00							
1.10						-	-							-	-													109.29	-	-					1.10							
Totals:						0	0							0	10	0	0							0	0							0	0	0	0	0						
Nominal Transactions Value:						0.00								0.00		0.00								0.00								0.00		0.00								
Number of Trades:						0								0		0								0								0		0								

NATIONAL BANK (CR)

(Contract Size: 100 Securities, Exercise Style: American, Physical Delivery)

Call Options																	Put Options																																	
June 2014								July 2014						Other Months			June 2014								July 2014						Other Months																			
Exerise Price	Open price	Price max	Price min	Last price	Closing price	Volume	Open Interest	Open price	Price max	Price min	Last price	Closing price	Volume	Open Interest	Volume	Open Interest	Open price	Price max	Price min	Last price	Closing price	Volume	Open Interest	Open price	Price max	Price min	Last price	Closing price	Volume	Open Interest	Volume	Open Interest	Exerise Price																	
1.70	-						-	-						-	-						-	-						-	-						-	-						1.70								
1.80	-						-	-						-	-						-	-						-	-						-	-						-	-						1.80	
1.90	-						-	-						-	-						-	-						-	-						-	-						-	-						1.90	
2.00	-						-	-						-	-						-	-						-	-						-	-						-	-						2.00	
2.20	0.610	0.610	0.610	0.610		140	-							-	-						-	-						-	950						-	-						-	-						2.20	
2.40	-						-	-						-	-						-	-						-	-						-	-						-	-						2.40	
2.50	-						-	-						-	-						-	-						-	-						-	-						-	-						2.50	
2.60	0.210	0.210	0.210	0.210		80	-	0.329						-	5							257.16						-	200						0.060	0.060	0.060	0.060	0.083	1,000	1,000		2.60							
2.70	-						-	-						-	-						-	-						-	-						-	-						-	-						2.70	
2.80	0.002	0.002	0.002	0.002		6	-	0.211						-	15							277.16						-	2,535							-						-	-						2.80	
2.90	-						-	-						-	-						-	-						-	-						-	-						-	-						2.90	
3.00	-						-	-						-	-						-	-						-	-						-	-						-	-						3.00	
3.10	-						-	-						-	-						-	-						-	-						-	-						-	-						3.10	
3.20	-						-	20						-	-						-	-						-	-						-	-						-	-						3.20	
3.30	-						-	-						-	-						-	-						-	-						-	-						-	-						3.30	
3.40	-						-	-						-	-						-	-						-	-						-	-						-	-						3.40	
3.50	-						-	5						-	-						-	-						-	-						-	-						-	-						3.50	
3.60	-						-	-						-	-						-	-						-	-						-	-						-	-						3.60	
3.70	-						-	-						-	-						-	-						-	-						-	-						-	-						3.70	
3.80	-						-	-						-	-						-	-						-	-						-	-						-	-						3.80	
3.90	-						-	-						-	-						-	-						-	-						-	-						-	-						3.90	
4.00	-						-	-						-	-						-	-						-	-						-	-						-	-						4.00	
4.40	-						-	-						-	-						-	-						-	-						-	-						-	-						4.40	
4.80	-						-	-						-	-						-	-						-	-						-	-						-	-						4.80	
5.20	-						-	-						-	-						-	-						-	-						-	-						-	-						5.20	
5.60	-						-	-						-	-						-	-						-	-						-	-						-	-						5.60	
Totals:						226	25							0	20	0	10							0	3,685							1,000	1,000	0	0															
Nominal Transactions Value:												0.00	0.00												0.00													260,000.00							0.00					
Number of Trades:												4	0												0.00													2							0					

OPAP (CR)

(Contract Size: 100 Securities, Exercise Style: American, Physical Delivery)

Call Options																Put Options																				
June 2014								July 2014								Other Months		June 2014								July 2014								Other Months		
Exerise Price	Open price	Price max	Price min	Last price	Closing price	Volume	Open Interest	Open price	Price max	Price min	Last price	Closing price	Volume	Open Interest	Volume	Open Interest	Open price	Price max	Price min	Last price	Closing price	Volume	Open Interest	Open price	Price max	Price min	Last price	Closing price	Volume	Open Interest	Volume	Open Interest	Exerise Price			
4.80						-	-															466.95	-	-					-	-			4.80			
5.20						-	-															506.95	-	-					-	-			5.20			
5.60						-	-															546.95	-	-					-	-			5.60			
6.00						-	-															586.95	-	-					-	-			6.00			
6.40						-	-															626.95	-	-					-	-			6.40			
6.80						-	-															666.95	-	-					-	-			6.80			
7.20						-	-															706.95	-	-					-	-			7.20			
7.60						-	-															746.95	-	-					-	-			7.60			
8.00						-	-															786.95	-	-					-	-			8.00			
8.40						-	-															826.95	-	-					-	-			8.40			
8.80						-	-															866.95	-	-					-	-			8.80			
9.20						-	-															906.95	-	-					-	-			9.20			
9.60						-	-															946.95	-	-					-	-			9.60			
10.00						-	-															986.95	-	-					-	-			10.00			
10.50						-	-															1,036.95	-	-					-	-			10.50			
11.00						-	-															1,086.95	-	15					-	-			11.00			
11.50						-	-															1,136.95	-	-					-	-			11.50			
12.00						-	-					1.74		-	10							1,186.95	-	-					-	-			12.00			
12.50						-	-							-	-							1,236.95	-	-					-	-			12.50			
13.00						-	-					0.974		-	5							1,286.95	-	-					-	-			13.00			
13.50						-	-							-	-							1,336.95	-	-					-	-			13.50			
14.00						-	-							-	-							1,386.95	-	-					-	-			14.00			
14.50						-	-							-	-							1,436.95	-	-					-	-			14.50			
15.00						-	-							-	-							1,486.95	-	-					-	-			15.00			
16.00						-	-							-	-							1,586.95	-	-					-	-			16.00			
Totals:						0	0							0	15	0	95							0	15							0	0			
Nominal Transactions Value:						0.00								0.00		0.00								0.00		0.00		0.00		0.00						
Number of Trades:						0								0		0								0		0		0		0						

Call Options																Put Options																				
June 2014								July 2014								Other Months		June 2014								July 2014								Other Months		
Exerise Price	Open price	Price max	Price min	Last price	Closing price	Volume	Open Interest	Open price	Price max	Price min	Last price	Closing price	Volume	Open Interest	Volume	Open Interest	Open price	Price max	Price min	Last price	Closing price	Volume	Open Interest	Open price	Price max	Price min	Last price	Closing price	Volume	Open Interest	Volume	Open Interest	Exerise Price			
4.00						-	-							-	-																	4.00				
4.40						-	-							-	-																	4.40				
4.80						-	-							-	-																	4.80				
5.20						-	-							-	-																	5.20				
5.60						-	-							-	-																	5.60				
6.00						-	-							-	-																	6.00				
6.40						-	-							-	-																	6.40				
6.80						-	-							-	-																	6.80				
7.20						-	-							-	-																	7.20				
7.60						-	-							-	-																	7.60				
8.00						-	-							-	-																	8.00				
8.40						-	-							-	-																	8.40				
8.80						-	-							-	-																	8.80				
9.20						-	-							-	-																	9.20				
9.60						-	-							-	-																	9.60				
9.80						-	-							-	-																	9.80				
10.00						-	-							-	-																	10.00				
10.50						-	-							-	-																	10.50				
11.00						-	-							-	-																	11.00				
11.50						-	-							-	-																	11.50				
12.00						-	-							-	-																	12.00				
12.50						-	-							-	-																	12.50				
13.00						-	-							-	-																	13.00				
13.50						-	-							-	-																	13.50				
14.00						-	-							-	-																	14.00				
14.50						-	-							-	-																	14.50				
15.00						-	-							-	-																	15.00				
16.00						-	-							-	-																	16.00				
Totals:						0	0							0	0	0	0							0	600							0	0			
Nominal Transactions Value:						0.00								0.00		0.00								0.00								0.00				
Number of Trades:						0								0		0								0								0				

PIRAEUS BANK (CR)

(Contract Size: 100 Securities, Exercise Style: American, Physical Delivery)

Call Options																	Put Options																												
June 2014								July 2014								Other Months		June 2014								July 2014								Other Months											
Exerise Price	Open price	Price max	Price min	Last price	Closing price	Volume	Open Interest	Open price	Price max	Price min	Last price	Closing price	Volume	Open Interest	Volume	Open Interest	Open price	Price max	Price min	Last price	Closing price	Volume	Open Interest	Open price	Price max	Price min	Last price	Closing price	Volume	Open Interest	Volume	Open Interest	Exerise Price												
0.600						-	-							-	-													58.24	-	-				0.600											
0.700						-	-							-	-													68.24	-	-				0.700											
0.800						-	-							-	-													78.24	-	-				0.800											
0.900						-	-							-	-													88.24	-	-				0.900											
1.00						-	-							-	-													98.24	-	-				1.00											
1.10						-	-							-	-													108.24	-	-				1.10											
1.20						-	-							-	-													118.24	-	-				1.20											
1.30						-	-							-	-													128.24	-	-				1.30											
1.40						-	-							-	-													138.24	-	-				1.40											
1.50						-	-							-	-													148.24	-	-				1.50											
1.60						-	-							-	-													158.24	-	-				1.60											
1.70						-	-							-	-													168.24	-	-				1.70											
1.75						-	-							-	-													173.24	-	-				1.75											
1.80						-	-							-	-													178.24	-	-				1.80											
1.85						-	-							-	-													183.24	-	-				1.85											
1.90						-	-							-	-													188.24	-	-				1.90											
1.95						-	-							-	-													193.24	-	-				1.95											
2.00						-	-							-	-													198.24	-	-				2.00											
2.10						-	-							-	-													208.24	-	-				2.10											
2.20						-	-							-	-													218.24	-	-				2.20											
2.30						-	-							-	-													228.24	-	-				2.30											
2.40						-	-							-	-													238.24	-	-				2.40											
2.60						-	-							-	-														-	-				2.60											
2.80						-	-							-	-														-	-				2.80											
Totals:						0	0							0	0	0	0							0	0							0	0	0	0	0	0	0	0						
Nominal Transactions Value:						0.00								0.00		0.00								0.00								0.00		0.00											
Number of Trades:						0								0		0								0								0		0											

PPC (CR)

(Contract Size: 100 Securities, Exercise Style: American, Physical Delivery)

Call Options																	Put Options																												
June 2014								July 2014								Other Months		June 2014								July 2014								Other Months											
Exerise Price	Open price	Price max	Price min	Last price	Closing price	Volume	Open Interest	Open price	Price max	Price min	Last price	Closing price	Volume	Open Interest	Volume	Open Interest	Open price	Price max	Price min	Last price	Closing price	Volume	Open Interest	Open price	Price max	Price min	Last price	Closing price	Volume	Open Interest	Volume	Open Interest	Exerise Price												
4.80						-	-							-	-													468.10	-	-				4.80											
5.20						-	-							-	-													508.10	-	-				5.20											
5.60						-	-							-	-													548.10	-	-				5.60											
6.00						-	-							-	-													588.10	-	-				6.00											
6.40						-	-							-	-													628.10	-	-				6.40											
6.80						-	-							-	-													668.10	-	-				6.80											
7.20						-	-							-	-													708.10	-	-				7.20											
7.60						-	-							-	-													748.10	-	-				7.60											
8.00						-	-							-	-													788.10	-	-				8.00											
8.40						-	-							-	-													828.10	-	-				8.40											
8.80						-	-							-	-													868.10	-	-				8.80											
9.20						-	-							-	-													908.10	-	-				9.20											
9.60						-	-							-	-													948.10	-	-				9.60											
10.00						-	-							-	-													988.10	-	5				10.00											
10.50						-	-							-	-													1,038.10	-	-				10.50											
11.00						-	-							-	-													1,088.10	-	-				11.00											
11.50						-	-							-	-													1,138.10	-	-				11.50											
12.00						-	-							-	-													1,188.10	-	-				12.00											
12.50						-	-							-	-													1,238.10	-	-				12.50											
13.00						-	-							-	-													1,288.10	-	-				13.00											
13.50						-	-							-	-													1,338.10	-	-				13.50											
14.00						-	-							-	-													1,388.10	-	-				14.00											
14.50						-	-							-	-													1,438.10	-	-				14.50											
15.00						-	-							-	-													1,488.10	-	-				15.00											
Totals:						0	0							0	0	0	45							0	5							0	0	0	0	0	0	0	0						
Nominal Transactions Value:						0.00								0.00		0.00								0.00								0.00		0.00											
Number of Trades:						0								0		0								0.00								0		0											

PPC (CR)

(Contract Size: 100 Securities, Excercise Style: American, Physical Delivery)

Exerise Price	Call Options																Put Options																	
	June 2014							July 2014							Other Months		June 2014								July 2014								Other Months	
	Open price	Price max	Price min	Last price	Closing price	Volume	Open Interest	Open price	Price max	Price min	Last price	Closing price	Volume	Open Interest	Volume	Open Interest	Open price	Price max	Price min	Last price	Closing price	Volume	Open Interest	Open price	Price max	Price min	Last price	Closing price	Volume	Open Interest	Volume	Open Interest	Exerise Price	

Securities	Type[4]	Stock Repo [1]						Stock Reverse Repo [2]								Repurchase Agreements [3]							
		Trans. price	chg.	Trades	Volume	Transactions Value	Open Interest[5]	Price max	Price min	Last price	Last Ask	Trades	Volume	Transactions Value	Open Interest[5]	Price max	Price min	Last price	Last Ask	Trades	Volume	Transactions Value	Open Interest[5]
AEGEAN AIRLINES (CR)	SR RA	100.00	---	1	9	7,335.0	63	---	---	---	27@3%	---	---	---	---	---	---	---	---	---	---	---	---
ALPHA BANK (CR)	SR RA	100.16	0.01	---	---	---	122,553	5.00%	5.00%	5.00%	1921@5.5%	2	525	39,375.0	85,732	---	---	---	---	---	---	---	1,839
ALPHA ETF FTSE Athex Large Cap	SR RA	100.00	---	---	---	---	---	---	---	---	---	---	---	---	---	---	---	---	---	---	---	---	3,954
ALUMIL (CR)	RA	---	---	---	---	---	---	---	---	---	---	---	---	---	---	---	---	---	---	---	---	---	---
ATHENS MEDICAL CENTER SA (CR)	SR RA	100.00	---	---	---	---	434	---	---	---	217@3%	---	---	---	---	---	---	---	---	---	---	---	---
ATTICA BANK S.A. (CR)	SR RA	100.02	---	---	---	---	810	---	---	---	318@10%	---	---	---	330	---	---	---	---	---	---	---	---
AUTOHELLAS SA (CR)	SR RA	100.00	---	---	---	---	16	---	---	---	6@3%	---	---	---	---	---	---	---	---	---	---	---	---
BIOKARPET S.A.(CR)	RA	---	---	---	---	---	---	---	---	---	---	---	---	---	---	---	---	---	---	---	---	---	---
CC HBC AG (CR)	SR RA	102.06	0.15	---	---	---	952	---	---	---	1@10%	---	---	---	747	---	---	---	---	---	---	---	30
CENTRIC HOLDINGS (CR)	SR RA	100.00	---	---	---	---	200	---	---	---	149@6.6%	---	---	---	---	---	---	---	---	---	---	---	---
CORINTH PIPEWORKS SA (CR)	SR RA	100.16	0.01	---	---	---	161	---	---	---	2@3.5%	---	---	---	98	---	---	---	---	---	---	---	---
CRETE PLASTICS SA (CR)	SR RA	100.00	---	---	---	---	---	---	---	---	---	---	---	---	---	---	---	---	---	---	---	---	---
CYCLON HELLAS SA (CR)	SR RA	100.00	---	---	---	---	---	---	---	---	---	---	---	---	---	---	---	---	---	---	---	---	---
DROMEAS SA (CR)	SR RA	100.00	---	---	---	---	---	---	---	---	---	---	---	---	---	---	---	---	---	---	---	---	---
ELGEKA SA (CR)	SR RA	100.00	---	---	---	---	---	---	---	---	---	---	---	---	---	---	---	---	---	---	---	---	---
ELLAKTOR (CR)	SR RA	100.09	0.01	---	---	---	2,075	---	---	---	547@3%	---	---	---	490	---	---	---	---	---	---	---	14
ELTON SA (CR)	SR RA	100.00	---	---	---	---	---	---	---	---	---	---	---	---	---	---	---	---	---	---	---	---	---
ELVAL SA. (CB)	SR RA	100.00	---	---	---	---	368	---	---	---	184@3%	---	---	---	---	---	---	---	---	---	---	---	---
EUROBANK ERGASIAS (CR)	SR RA	100.09	0.01	5	4,453	181,237.1	19,245	---	---	---	6453@4.7%	---	---	---	3,738	---	---	---	---	---	---	---	36
EUROBANK PROPERTIES REIC (CR)	SR RA	100.21	0.02	---	---	---	1,177	3.00%	3.00%	3.00%	333@3%	1	17	15,810.0	255	---	---	---	---	---	---	---	9
EUROPEAN RELIANCE INSUR. (CR)	SR RA	100.00	---	---	---	---	---	---	---	---	---	---	---	---	---	---	---	---	---	---	---	---	---
EYDAP S.A. (CR)	SR RA	100.98	0.06	---	---	---	362	---	---	---	---	---	---	---	251	---	---	---	---	---	---	---	32
FOLLI FOLLIE (CR)	SR RA	103.13	0.07	---	---	---	1,127	3.00%	3.00%	3.00%	113@3%	2	150	516,000.0	447	---	---	---	---	---	---	---	403
FOURLIS (CR)	SR RA	100.00	---	---	---	---	109	---	---	---	54@3%	---	---	---	---	---	---	---	---	---	---	---	---
FRIGOGLASS SA (CR)	SR RA	100.50	0.02	---	---	---	71	---	---	---	13@3.5%	---	---	---	28	---	---	---	---	---	---	---	---
GEK TERNA (CR)	SR RA	100.03	---	---	---	---	641	---	---	---	279@3%	---	---	---	41	---	---	---	---	---	---	---	---
GR. SARANTIS SA (CR)	SR RA	100.00	---	---	---	---	56	---	---	---	28@3%	---	---	---	---	---	---	---	---	---	---	---	---
HALKOR SA (CB)	SR RA	100.00	---	---	---	---	505	---	---	---	299@3.2%	---	---	---	---	---	---	---	---	---	---	---	---
HELLENIC EXCHANGES-A.S.E. (CR)	SR RA	100.00	---	---	---	---	5,930	---	---	---	2961@3%	---	---	---	4	---	---	---	---	---	---	---	---
HELLENIC PETROLEUM (CR)	SR RA	100.84	0.03	---	---	---	2,395	---	---	---	564@3%	---	---	---	633	---	---	---	---	---	---	---	25
HYGEIA SA (CR)	SR RA	100.00	---	---	---	---	500	---	---	---	332@5.4%	---	---	---	---	---	---	---	---	---	---	---	---
IASO SA (CR)	SR RA	100.00	---	---	---	---	245	---	---	---	122@3%	---	---	---	---	---	---	---	---	---	---	---	---

Stock Lending Notes

- [1] - Stock Repo: A Contract for selling stocks to HELEX with a Repurchase Right (According to ATHEX BoD Resolution No 17)
- [2] - Stock Reverse Repo: A Contract for buying stocks from HELEX with a Resell Right. (According to ATHEX BoD Resolution No 18)
- [3] - Standardized Repurchase Agreements: A Contract that constitutes a standardized agreement for the purchase or sale of shares, with repurchase or resell pact (According to ATHEX BoD Resolution No 20)
- [4] - Type of products is divided into SR: Stock Repo or Stock Reverse Repo, and RA: Repurchase Agreements.
- [5] - Open Interest in all Series (both tradeable or non-tradeable).

Securities	Type[4]	Stock Repo [1]						Stock Reverse Repo [2]								Repurchase Agreements [3]							
		Trans. price	chg.	Trades	Volume	Transactions Value	Open Interest[5]	Price max	Price min	Last price	Last Ask	Trades	Volume	Transactions Value	Open Interest[5]	Price max	Price min	Last price	Last Ask	Trades	Volume	Transactions Value	Open Interest[5]
IKTINOS HELLAS SA (CR)	SR RA	100.00	---	---	---	---	10	---	---	---	---	---	---	---	---	---	---	---	---	---	---	---	---
INFORM P. LYKOS SA (CR)	SR RA	100.00	---	---	---	---	---	---	---	---	---	---	---	---	---	---	---	---	---	---	---	---	---
INTRACOM CONSTR. (CR)	SR RA	100.00	---	---	---	---	7	---	---	---	---	---	---	---	---	---	---	---	---	---	---	---	---
INTRACOM HOLDINGS (CR)	SR RA	100.00	---	---	---	---	665	---	---	---	332@3%	---	---	---	---	---	---	---	---	---	---	---	---
INTRALOT (CR)	SR RA	100.03	---	---	---	---	1,099	---	---	---	453@3%	---	---	---	96	---	---	---	---	---	---	---	---
J & P - AVAX SA (CR)	SR RA	100.00	---	---	---	---	223	---	---	---	111@3%	---	---	---	---	---	---	---	---	---	---	---	---
JUMBO SA (CR)	SR RA	101.38	0.05	---	---	---	1,345	3.50%	3.50%	3.50%	220@3.5%	1	15	18,690.0	616	---	---	---	---	---	---	---	391
KARATZIS SA (CR)	RA	---	---	---	---	---	---	---	---	---	---	---	---	---	---	---	---	---	---	---	---	---	---
KLEEMAN HELLAS SA (CR)	SR RA	100.00	---	---	---	---	982	---	---	---	491@3%	---	---	---	---	---	---	---	---	---	---	---	---
KLOUKINAS - LAPPAS SA (CR)	SR RA	100.00	---	---	---	---	---	---	---	---	---	---	---	---	---	---	---	---	---	---	---	---	---
KRI-KRI S.A. (CR)	SR RA	100.00	---	---	---	---	550	---	---	---	275@3%	---	---	---	---	---	---	---	---	---	---	---	---
LAMDA DEVELOPMENT SA (CR)	SR RA	100.00	---	---	---	---	---	---	---	---	---	---	---	---	---	---	---	---	---	---	---	---	---
LOULIS MILLS SA (CR)	SR RA	100.00	---	---	---	---	---	---	---	---	---	---	---	---	---	---	---	---	---	---	---	---	---
MARFIN INVESTMENT GROUP (CR)	SR RA	100.01	---	---	---	---	3,852	---	---	---	2167@3.8%	---	---	---	325	---	---	---	---	---	---	---	---
METKA (CR)	SR RA	102.29	0.12	---	---	---	549	---	---	---	---	---	---	---	439	---	---	---	---	---	---	---	65
MLS MULTIMEDIA SA (CR)	SR RA	100.00	---	---	---	---	109	---	---	---	54@3%	---	---	---	---	---	---	---	---	---	---	---	---
MOTOR OIL (CR)	SR RA	100.58	0.02	---	---	---	2,209	3.00%	3.00%	3.00%	558@3%	1	20	16,500.0	546	---	---	---	---	---	---	---	10
MYTILINEOS HOLDINGS (CR)	SR RA	100.06	0.01	---	---	---	3,564	---	---	---	1557@3%	---	---	---	179	---	---	---	---	---	---	---	10
NATIONAL BANK (CR)	SR RA	100.51	0.02	1	100	28,400.0	11,275	---	---	---	132@3.5%	---	---	---	3,903	---	---	---	---	---	---	---	---
NBGAM ETF	SR RA	100.00	---	---	---	---	---	---	---	---	---	---	---	---	---	---	---	---	---	---	---	---	---
NBGAM ETF GREECE & TURKEY 30	SR RA	100.00	---	---	---	---	---	---	---	---	---	---	---	---	---	---	---	---	---	---	---	---	---
NIREFS SA (CR)	SR RA	100.00	---	---	---	---	342	---	---	---	262@8%	---	---	---	---	---	---	---	---	---	---	---	---
OPAP (CR)	SR RA	100.94	0.04	---	---	---	3,802	---	---	---	627@3%	---	---	---	1,274	---	---	---	---	---	---	---	346
OTE (CR)	SR RA	100.12	0.01	---	---	---	4,688	3.00%	3.00%	3.00%	1618@3%	1	200	240,000.0	706	---	---	---	---	---	---	---	40
P.P.A. S.A. (CR)	SR RA	103.31	0.16	---	---	---	14	---	---	---	---	---	---	---	10	---	---	---	---	---	---	---	57
PAPOUTSANIS (CR)	SR RA	100.00	---	---	---	---	---	---	---	---	---	---	---	---	---	---	---	---	---	---	---	---	---
PETROPOULOS PETROS (CR)	RA	---	---	---	---	---	---	---	---	---	---	---	---	---	---	---	---	---	---	---	---	---	---
PIRAEUS BANK (CR)	SR RA	100.10	---	1	584	105,120.0	12,506	3.50%	3.00%	3.50%	1400@3.5%	2	3,900	702,000.0	5,998	---	---	---	---	---	---	---	---
PLAISIO COMPUTERS SA (CR)	RA	---	---	---	---	---	---	---	---	---	---	---	---	---	---	---	---	---	---	---	---	---	---
PPC (CR)	SR RA	101.06	0.06	---	---	---	1,929	---	---	---	31@3.5%	---	---	---	1,172	---	---	---	---	---	---	---	19
QUEST HOLDINGS (CR)	SR RA	100.00	---	---	---	---	---	---	---	---	---	---	---	---	---	---	---	---	---	---	---	---	---
REVOIL (CR)	SR RA	100.00	---	---	---	---	---	---	---	---	---	---	---	---	---	---	---	---	---	---	---	---	---

Stock Lending Notes

- [1] - Stock Repo: A Contract for selling stocks to HELEX with a Repurchase Right (According to ATHEX BoD Resolution No 17)
- [2] - Stock Reverse Repo: A Contract for buying stocks from HELEX with a Resell Right. (According to ATHEX BoD Resolution No 18)
- [3] - Standardized Repurchase Agreements: A Contract that constitutes a standardized agreement for the purchase or sale of shares, with repurchase or resell pact (According to ATHEX BoD Resolution No 20)
- [4] - Type of products is divided into SR: Stock Repo or Stock Reverse Repo, and RA: Repurchase Agreements.
- [5] - Open Interest in all Series (both tradeable or non-tradeable).

Securities	Type[4]	Stock Repo [1]						Stock Reverse Repo [2]								Repurchase Agreements [3]							
		Trans. price	chg.	Trades	Volume	Transactions Value	Open Interest[5]	Price max	Price min	Last price	Last Ask	Trades	Volume	Transactions Value	Open Interest[5]	Price max	Price min	Last price	Last Ask	Trades	Volume	Transactions Value	Open Interest[5]
SELECTED TEXT. IND. ASSOC (CR)	SR RA	100.00	---	---	---	---	---	---	---	---	---	---	---	---	---	---	---	---	---	---	---	---	---
SIDENOR (CR)	SR RA	100.00	---	---	---	---	391	---	---	---	195@3%	---	---	---	---	---	---	---	---	---	---	---	---
TECHNICAL OLYMPIC SA (CR)	SR RA	100.00	---	---	---	---	44	---	---	---	22@3%	---	---	---	---	---	---	---	---	---	---	---	---
TERNA ENERGY (CR)	SR RA	100.00	---	---	---	---	294	---	---	---	147@3%	---	---	---	---	---	---	---	---	---	---	---	---
THESSALONIKA WATER & SEWERAGE	SR RA	100.00	---	---	---	---	1,310	---	---	---	655@3%	---	---	---	---	---	---	---	---	---	---	---	---
THRACE PLASTICS SA (CR)	SR RA	100.00	---	---	---	---	1,010	---	---	---	505@3%	---	---	---	---	---	---	---	---	---	---	---	---
TITAN CEMENT (CR)	SR RA	100.35	0.02	---	---	---	8,843	3.00%	3.00%	3.00%	3509@3%	1	20	50,640.0	911	---	---	---	---	---	---	---	8
TPA SA (CR)	SR RA	100.00	---	---	---	---	46	---	---	---	23@3%	---	---	---	---	---	---	---	---	---	---	---	---
TRASTOR REAL EST. INV. CO.(CR)	SR RA	100.00	---	---	---	---	344	---	---	---	172@3%	---	---	---	---	---	---	---	---	---	---	---	---
VIOHALCO SA/NV (CB)	SR RA	100.76	0.05	---	---	---	261	---	---	---	2@10%	---	---	---	206	---	---	---	---	---	---	---	10

Stock Lending Notes

- [1] - Stock Repo: A Contract for selling stocks to HELEX with a Repurchase Right (According to ATHEX BoD Resolution No 17)
- [2] - Stock Reverse Repo: A Contract for buying stocks from HELEX with a Resell Right. (According to ATHEX BoD Resolution No 18)
- [3] - Standardized Repurchase Agreements: A Contract that constitutes a standardized agreement for the purchase or sale of shares, with repurchase or resell pact (According to ATHEX BoD Resolution No 20)
- [4] - Type of products is divided into SR: Stock Repo or Stock Reverse Repo, and RA: Repurchase Agreements.
- [5] - Open Interest in all Series (both tradeable or non-tradeable).

Sectors codification for listed companies

533	-	Exploration & Production	537	-	Integrated Oil & Gas
1353	-	Commodity Chemicals	1357	-	Specialty Chemicals
1753	-	Aluminum	1755	-	Nonferrous Metals
1757	-	Steel	1775	-	General Mining
2353	-	Building Materials & Fixtures	2357	-	Heavy Construction
2723	-	Containers & Packaging	2727	-	Diversified Industrials
2733	-	Electrical Components & Equipment	2753	-	Commercial Vehicles & Trucks
2757	-	Industrial Machinery	2773	-	Marine Transportation
2777	-	Transportation Services	2791	-	Business Support Services
2797	-	Industrial Suppliers	3535	-	Distillers & Vintners
3537	-	Soft Drinks	3573	-	Farming Fishing & Plantations
3577	-	Food Products	3722	-	Durable Household Products
3726	-	Furnishings	3728	-	Home Construction
3747	-	Toys	3763	-	Clothing & Accessories
3765	-	Footwear	3767	-	Personal Products
3785	-	Tobacco	4533	-	Health Care Providers
4535	-	Medical Equipment	4577	-	Pharmaceuticals
5337	-	Food Retailers & Wholesalers	5371	-	Apparel Retailers
5373	-	Broadline Retailers	5375	-	Home Improvement Retailers
5379	-	Specialty Retailers	5553	-	Broadcasting & Entertainment
5555	-	Media Agencies	5557	-	Publishing
5751	-	Airlines	5752	-	Gambling
5753	-	Hotels	5755	-	Recreational Services
5757	-	Restaurants & Bars	5759	-	Travel & Tourism
6535	-	Fixed Line Telecommunications	6575	-	Mobile Telecommunications
7535	-	Conventional Electricity	7537	-	Alternative Electricity
7577	-	Water	8355	-	Banks
8534	-	Insurance Brokers	8536	-	Property & Casualty Insurance
8633	-	Real Estate Holding & Development	8637	-	Real Estate Services
8671	-	Industrial & Office REITs	8675	-	Specialty REITs
8775	-	Specialty Finance	8777	-	Investment Services
8985	-	Equity Investment Instruments	9533	-	Computer Services
9535	-	Internet	9537	-	Software
9572	-	Computer Hardware	9574	-	Electronic Office Equipment
9578	-	Telecommunications Equipment	11000	-	ETF

