

Daily Official List

Hellenic Exchanges – Athens Stock Exchange S.A.

Monday, 1 September, 2014
Year: 135 Trading Day No: 165

Disclaimer:

Hellenic Exchanges-Athens Exchange endeavours to ensure that the data and other material ("Information") presented on the Daily Official List are accurate and complete, but it is not liable for any errors or omissions of data or /and for the accuracy, credibility, updating and completeness of the aforesaid information nor it has any liability arising directly or indirectly from the use of the above Information.

The Company is not liable for the accuracy of the data included in listed companies' announcements. Only the sender of such an announcement is fully and solely liable for any infringement of third party's rights from the content of such announcement. All contents of the Daily Official List are provided only for information purposes and do not constitute investment advice or solicitation to invest in securities or other products listed for trading on the Exchange.

You acknowledge and agree that the Company is the owner of any property rights related to any Information appearing on the Daily Official List including intellectual property rights copyright, trademarks, etc.

The above data are a property of the Hellenic Exchanges-Athens Exchange and are copyright protected. Users are forbidden to reproduce, modify, copy, sale, transmit or redistribute, by all reproduction means and methods, part or the whole of the above data, without reference to their source.

The commercial exploitation of these data is, also, forbidden by third parties. Hellenic Exchanges-Athens Exchange does not carry any responsibility, direct or indirect, derived from usage or accidental alteration of the above data when used by third parties.

Hellenic Exchanges – Athens Stock Exchange S.A.

110 Athinon Ave., 10442 Athens, Tel: (210) 33.66.800, Fax: (210) 32.13.938

www.athex.gr

Thessalonica Stock Exchange Center (T.S.E.C)

16-18 Katouni Str., Thessalonica 546 25 Tel: (2310) 567.667, Fax: (2310) 530.545

Athex Members Guarantee Fund

14-16 Fidiou Str., Athens 106 78, Tel: (210) 33.04.682, Fax: (210) 33.04.155

Hellenic Republic Capital Market Commission

1 Kolokotroni Str. & 1 Stadiou Str., Athens 10562 Tel: (210) 33.77.100 Fax: (210) 33.77.173

Table of Contents

Section 1: Statistical Figures of Securities and Derivatives Markets

- Summary of Markets
- Athex Indices
- Analytic Figures for Athex Market's Boards and Categories
- Trading Details by Athex Sectors and ETFs Category
- Top 10 best & worst performing Shares
- Derivatives Summary

Section 2: Analytic Figures of Shares Transactions

- Analytic Figures of Shares Transactions
- Shares' Notes

Section 3: Figures of Securities Transactions

- Securities Blocks Details
- Shares Rights Details
- Shares Short Selling
- Stock Borrowing
- Shares Forced Sales
- Forced Sales Registered Shares
- Exchange Traded Funds (ETFs) Characteristics

Section 5: Bonds traded in Fixed Income Assets Market

- Corporate Bonds
- Government Bonds
- Treasury Bills & Zero Coupon Government Bonds
- Government Bonds Traded with the Open Outcry Method
- State Banks Bonds

Section 6: Additional Infos

- Athex & ATHEXClear Members List
- List of Stocks under Market Making operations

Section 7: Derivatives Market Analytic Figures

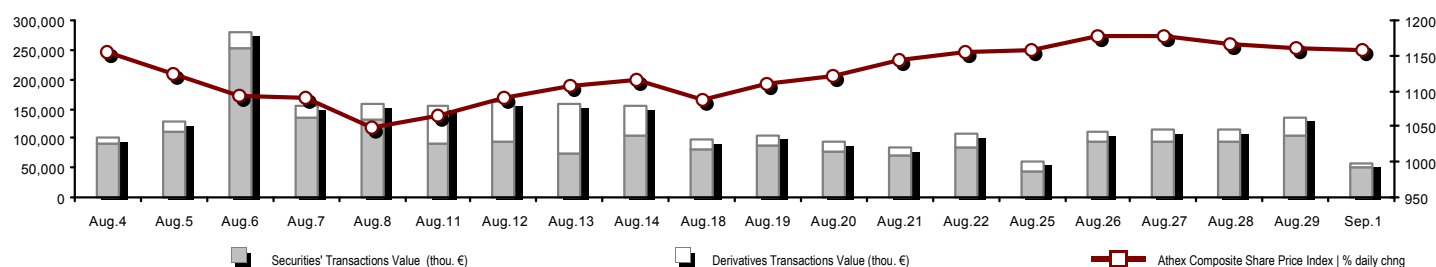
- Index Futures
- Stock Futures
- Index Options
- Stock Options
- Stock Lending Analytic Figures (Repo Contracts)

Appendix A: Sectors codification for listed companies

Section codification follows the corresponding from the Greek version of Daily Official List for reference purposes.

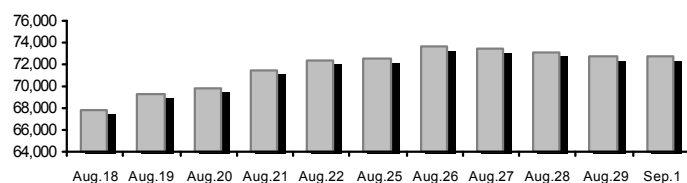
Summary of Markets

Athex Composite Share Price Index vs Shares and Derivatives Transactions Value

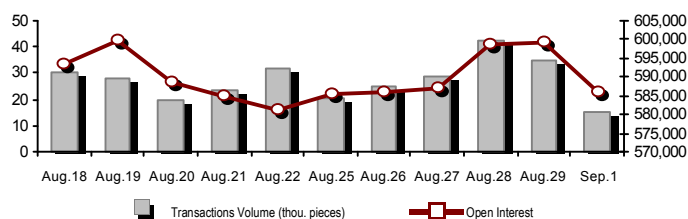


Total Transactions Value (Securities/Derivatives) (thou. €):	58,716.45		
Athex Capitalisation (mill. €) **: 	72,661.11		
Daily change: mill. € %	-121.56 -0.17%		
Yearly Avg Capitalisation: mill. € % chng prev year Avg	72,780.15 40.91%		
Athex Composite Share Price Index % daily chng	1,159.20 -0.22%		
Athex Composite Share Price Index Capitalisation (mill. €)	67,592.26		
Daily change (mill. €)	-47.04		
Securities' Transactions Value (thou. €)	50,165.25	Derivatives Total Open Interest	585,968
Daily change: thou. € %	-54,152.84 -51.91%	in Index Futures % daily chng	46,262 0.25%
YtD Avg Trans. Value: thou. € % chng prev year Avg	136,449.16 57.53%	in Stock Futures % daily chng	274,155 -0.46%
Short Selling Trans. Value: mill. € % in total Value		in Index Options % daily chng	10,701 0.06%
Short Covering Trans. Value: mill. € % in total Value		in Stock Options % daily chng	1,587 0.25%
Transactions Value of Blocks (thou. €)	8,094.01	in Stock Repos/Reverse Repos/RA % daily chng	253,263 -4.84%
Bonds Transactions Value (thou. €)	0.00		
Securities' Transactions Volume (thou. Pieces)	30,133.70	Derivatives Transactions Value (thou. €)	8,551.20
Daily change: thou. pieces %	-39,768.92 -56.89%	Daily change: thou. € %	-22,828.16 -72.75%
YtD Avg Volume: thou. pieces % chng prev year Avg	92,244.87 72.38%	YtD Avg Trans. Value: thou. € % chng prev year Avg	38,977.19 51.46%
Short Selling Volume: thou pieces % in total Volume			
Short Covering Volume: thou. pieces % in total Volume			
Transactions Volume of Blocks (thou. Pieces)	4,204.44	Derivatives Contracts Volume:	14,938
Bonds Transactions Volume (thou. pieces)	0.00	Daily change: pieces %	-20,172 -57.45%
Securities' Trades Number	12,130	YtD Avg Derivatives Contracts % chng prev year Avg	42,139 1.38%
Daily change: number %	-9,962 -45.09%		
YtD Avg Derivatives Trades number % chng prev year Avg	28,619 -3.53%	Derivatives Trades Number:	1,107
Number of Blocks	7	Daily change: number %	-374 -25.25%
Number of Bonds Transactions	0	YtD Avg Derivatives Trades number % chng prev year Avg	2,520 -4.27%

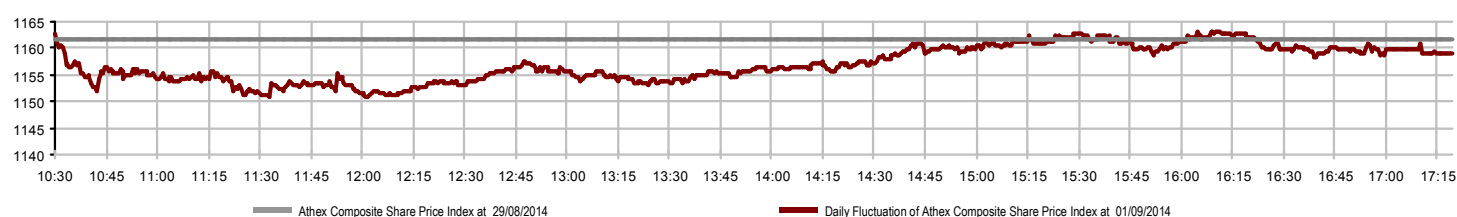
Athex Capitalisation (mill. €) **



Derivatives Transactions Volume and Open Interest



Daily Fluctuation of Athex Composite Share Price Index



Athex Indices

Index name	01/09/2014	29/08/2014	pts.	%	Min	Max	Year min	Year max	Year change
Athex Composite Share Price Index	1,159.20 ↓	1,161.81	-2.61	-0.22%	1,150.66	1,163.03	1,044.23	1,379.42	-0.30% ↓
FTSE/Athex Large Cap	376.19 ↓	376.66	-0.47	-0.12%	372.79	377.45	336.28	445.52	-2.25% ↓
FTSE/ATHEX Custom Capped	1,224.29 ↓	1,230.01	-5.72	-0.47%			1,097.84	1,410.19	-0.43% ↓
FTSE/ATHEX Custom Capped - USD	1,156.18 ↓	1,161.89	-5.71	-0.49%			1,055.85	1,406.66	-4.82% ↓
FTSE/Athex Mid Cap Index	1,053.65 ↑	1,053.59	0.06	0.01%	1,042.80	1,053.65	991.06	1,317.40	-9.70% ↓
FTSE/ATHEX-CSE Banking Index	120.18 ↓	120.24	-0.06	-0.05%	117.56	120.76	101.04	161.54	-11.72% ↓
FTSE/ATHEX Global Traders Index Plus	1,610.74 ↓	1,623.61	-12.87	-0.79%	1,610.38	1,630.23	1,485.51	1,845.84	3.86% ↑
FTSE/ATHEX Global Traders Index	1,828.77 ↓	1,837.64	-8.87	-0.48%	1,823.38	1,839.15	1,664.83	2,152.38	5.44% ↑
FTSE/ATHEX Mid & Small Cap Factor-Weighted Ind	1,307.82 ↑	1,307.43	0.39	0.03%	1,286.57	1,310.23	1,261.50	1,523.02	2.25% ↑
Greece & Turkey 30 Price Index	747.86 ↑	742.27	5.59	0.75%	740.71	749.38	570.55	783.68	15.49% ↑
ATHEX Mid & SmallCap Price Index	3,014.49 ↓	3,031.84	-17.35	-0.57%	2,987.21	3,032.29	2,573.35	3,157.88	17.13% ↑
FTSE/Athex Market Index	901.37 ↓	902.44	-1.07	-0.12%	893.41	904.13	808.04	1,066.17	-2.43% ↓
FTSE Med Index	5,181.51 ↓	5,193.26	-11.75	-0.23%			4,605.95	5,387.08	13.40% ↑
Athex Composite Index Total Return Index	1,688.99 ↓	1,692.80	-3.81	-0.23%	1,676.55	1,694.57	1,520.56	1,998.07	0.32% ↑
FTSE/Athex Large Cap Total Return	509.24 ↓	509.87	-0.63	-0.12%			456.16	605.87	-3.44% ↓
FTSE/ATHEX Large Cap Net Total Return	1,516.61 ↓	1,518.51	-1.90	-0.13%	1,502.92	1,521.71	1,355.72	1,786.28	-1.71% ↓
FTSE/ATHEX Custom Capped Total Return	1,287.10 ↓	1,293.11	-6.02	-0.47%			1,153.69	1,472.79	0.23% ↑
FTSE/ATHEX Custom Capped - USD Total Return	1,215.49 ↓	1,221.50	-6.00	-0.49%			1,110.02	1,469.09	-4.19% ↓
FTSE/Athex Mid Cap Total Return	1,335.41 ↑	1,335.30	0.11	0.01%			1,258.62	1,643.81	-7.53% ↓
FTSE/ATHEX-CSE Banking Total Return Index	112.21 ↓	112.26	-0.05	-0.04%			97.04	153.89	-13.06% ↓
Greece & Turkey 30 Total Return Index	898.28 ↓	904.10	-5.82	-0.64%			697.73	946.62	15.97% ↑
Hellenic Mid & Small Cap Index	1,120.77 ↓	1,124.55	-3.78	-0.34%	1,116.24	1,128.96	1,061.32	1,351.84	0.63% ↑
FTSE/Athex Banks	158.79 ↓	158.86	-0.07	-0.04%	155.33	159.55	133.50	213.44	-11.72% ↓
FTSE/Athex Insurance	1,422.45 ↑	1,401.38	21.07	1.50%	1,380.30	1,422.45	1,274.94	1,749.09	8.00% ↑
FTSE/Athex Financial Services	1,678.75 ↑	1,676.75	2.00	0.12%	1,659.14	1,691.12	1,589.78	2,207.51	-5.08% ↓
FTSE/Athex Industrial Goods & Services	2,994.48 ↑	2,993.67	0.81	0.03%	2,968.01	3,015.39	2,839.79	3,724.87	-7.71% ↓
FTSE/Athex Retail	4,400.93 ↓	4,428.57	-27.64	-0.62%	4,360.00	4,428.57	3,090.34	4,836.94	33.41% ↑
FTSE/ATHEX Real Estate	2,816.98 ↓	2,840.41	-23.43	-0.82%	2,791.37	2,868.39	2,194.73	3,111.71	27.08% ↑
FTSE/Athex Personal & Household Goods	6,232.49 ↑	6,215.58	16.91	0.27%	6,175.85	6,312.66	5,587.54	7,649.84	5.32% ↑
FTSE/Athex Food & Beverage	6,582.66 ↓	6,597.68	-15.02	-0.23%	6,567.66	6,616.00	6,014.35	8,227.06	-16.12% ↓
FTSE/Athex Basic Resources	2,667.68 ↓	2,683.10	-15.42	-0.57%	2,665.56	2,705.45	2,465.13	3,356.44	-3.06% ↓
FTSE/Athex Construction & Materials	2,766.24 ↓	2,796.65	-30.41	-1.09%	2,760.62	2,817.32	2,531.26	3,482.98	3.15% ↑
FTSE/Athex Oil & Gas	2,389.62 ↓	2,443.73	-54.11	-2.21%	2,389.62	2,449.92	2,194.16	3,236.15	-16.65% ↓
FTSE/Athex Chemicals	5,878.86 ↓	5,899.79	-20.93	-0.35%	5,826.22	5,976.74	5,516.28	6,811.96	-1.96% ↓
FTSE/Athex Media	2,474.71 -	2,474.71	0.00	0.00%	2,474.71	2,474.71	1,543.92	2,777.58	60.29% ↑
FTSE/Athex Travel & Leisure	2,053.35 ↑	2,032.56	20.79	1.02%	2,033.41	2,063.62	1,634.38	2,304.69	22.22% ↑
FTSE/Athex Technology	990.77 ↑	988.30	2.47	0.25%	976.36	993.29	786.21	1,134.79	25.82% ↑
FTSE/Athex Telecommunications	3,005.81 ↑	2,994.80	11.01	0.37%	2,948.00	3,025.07	2,532.36	3,633.39	12.93% ↑
FTSE/Athex Utilities	3,927.21 ↓	3,961.39	-34.18	-0.86%	3,913.63	3,956.16	3,308.43	4,471.04	3.55% ↑
FTSE/Athex Health Care	193.20 ↑	192.64	0.56	0.29%	186.87	193.20	176.19	287.11	-13.37% ↓
Athex All Share Index	256.64 ↓	257.06	-0.42	-0.16%			226.62	291.46	8.99% ↑

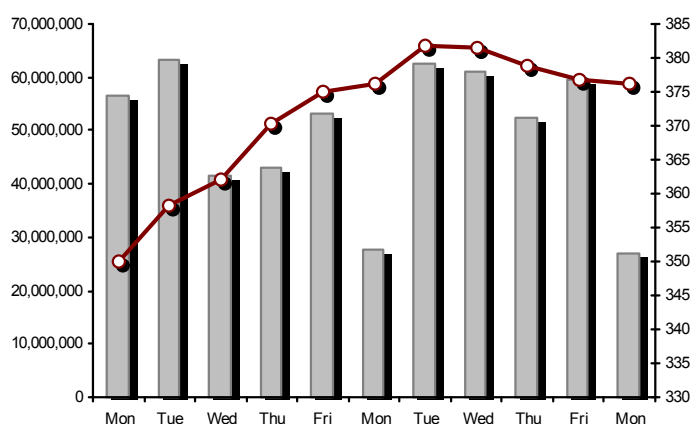
Note 1: Greece & Turkey 30 Pr data is the indicative at 17:20, whereas FTSE/ATHEX Custom Capped, FTSE/ATHEX Custom Capped - USD, FTSE/ATHEX Custom Capped TR, FTSE/ATHEX Custom Capped - USD TR, FTSE/Med 100 & Greece & Turkey 30 Rt closing prices refer to the previous trading day of 29/08/2014.

Note 2: The Hellenic Mid & Small Cap Index is a Customized index calculated by the Athens Exchange.

Athex Indices

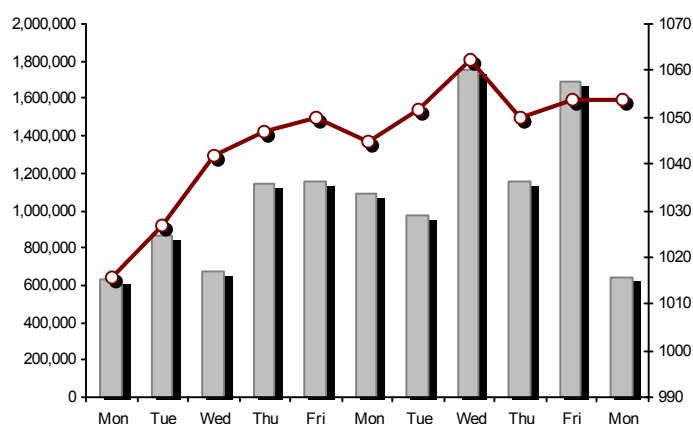
FTSE/Large Cap

01/09/2014: -0.12%



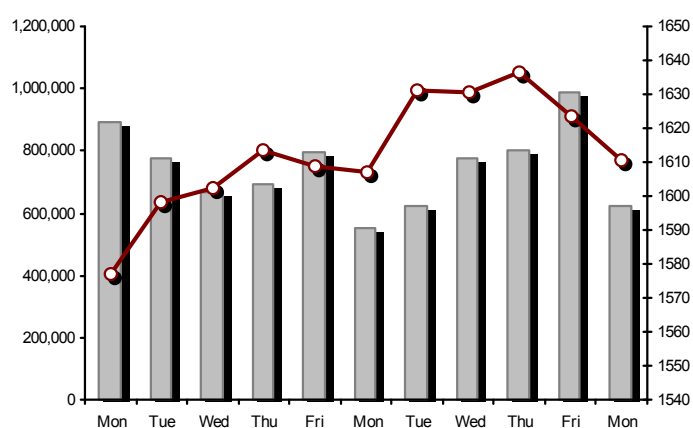
FTSE/Athex Mid Cap Index

01/09/2014: 0.01%



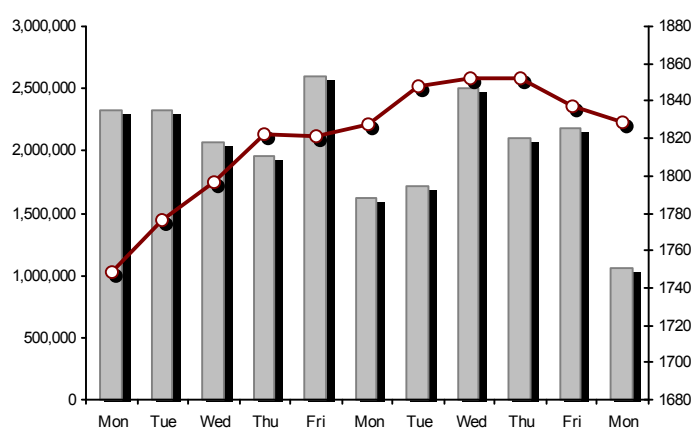
FTSE/ATHEX Global Traders Index Plus

01/09/2014: -0.79%



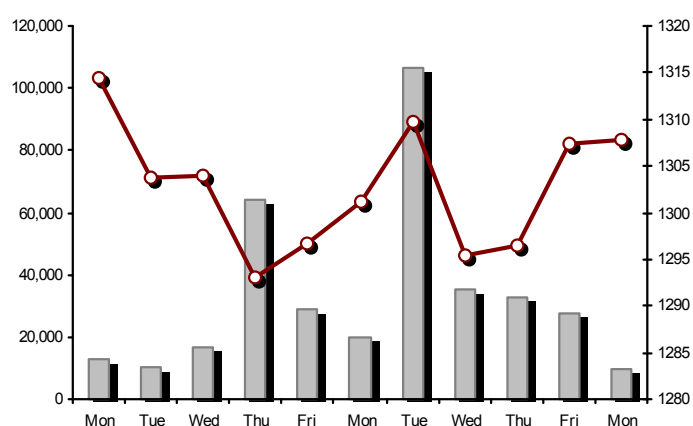
FTSE/ATHEX Global Traders Index

01/09/2014: -0.48%



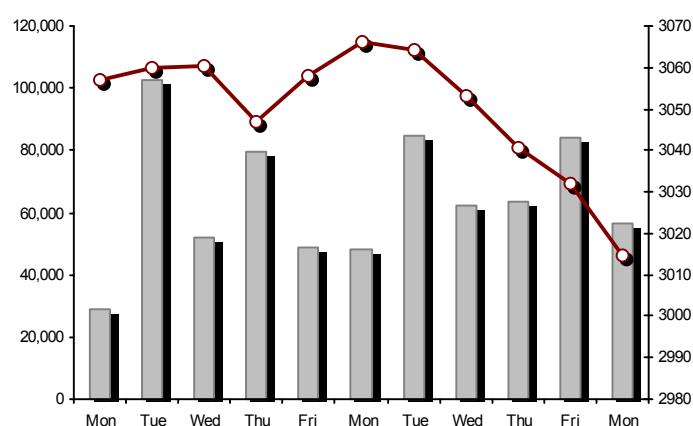
FTSE/ATHEX Mid & Small Cap Factor-Weighted Index

01/09/2014: 0.03%



ATHEX Mid & SmallCap Price Index

01/09/2014: -0.57%



Indices volume of transactions

Indices closing prices

Analytic Figures for Athex Market's Boards and Categories

	Total Traded Securities	Main Market	Low Dispersion	Other Categories (*)	Exchange Traded Funds (ETFs)	Warrants
Totals	131	100	9	16	3	3
Gain / Lose / Same:	52 / 60 / 19	41 / 48 / 11	3 / 4 / 2	6 / 4 / 6	1 / 2 / 0	1 / 2 / 0
Athex Capitalisation (mill. €) **	72,661.11	70,556.03	1,644.41	460.67		
Daily Average Trans/ons Value(thou.€)	136,449.16	128,118.73	47.59	53.00	63.26	8,166.58
Transactions Value	50,165.25	48,502.73	36.14	58.76	0.05	1,567.56
Main Board:	42,071.24	40,738.73	36.14	58.76	0.05	1,237.56
Blocks Board:	8,094.01	7,764.01	0.00	0.00	0.00	330.00
Forced Sales Board:	0.00	0.00	0.00	0.00	0.00	0.00
Special Terms Board:	0.00	0.00	0.00	0.00	0.00	0.00
Daily Average Transactions Volume	92,244,869	85,096,240	21,277	317,381	13,966	6,796,004
Transactions Volume	30,133,700	27,984,313	38,930	509,600	5	1,600,852
Main Board:	25,929,257	24,279,870	38,930	509,600	5	1,100,852
Blocks Board:	4,204,443	3,704,443	0	0	0	500,000
Forced Sales Board:	0	0	0	0	0	0
Special Terms Board:	0	0	0	0	0	0
Daily Average Number of Trades	28,619	26,679	48	132	8	1,752
Number of Trades	12,130	11,464	43	111	3	509
Main Board:	12,123	11,458	43	111	3	508
Blocks Board:	7	6	0	0	0	1
Forced Sales Board:	0	0	0	0	0	0
Special Terms Board:	0	0	0	0	0	0

(*) Summarised Transactions figures for Under Deletion and Under Supervision Categories.(**) The Market Capitalization of the Companies that belong in the Under Supervision Status is not included.

Trading Details by Athex Sectors and ETFs Category

Code	Sectors	Gain / Lose / Same	Number of Trades	Transactions Volume	Transactions Value	% of Total Trans. Value
8300	- Banks	5 / 4 / 1	5,540	26,312,537	26,466,879.74	52.76%
1700	- Basic Resources	3 / 3 / 2	485	129,915	694,932.13	1.39%
1300	- Chemicals	1 / 1 / 1	94	94,164	88,494.54	0.18%
2300	- Construction & Materials	4 / 8 / 4	666	192,103	748,282.97	1.49%
11000	- ETF	1 / 2 / 0	3	5	46.65	0.00%
8700	- Financial Services	1 / 2 / 1	481	374,781	441,473.93	0.88%
3500	- Food & Beverage	4 / 5 / 0	162	56,128	479,680.73	0.96%
4500	- Health Care	2 / 0 / 2	51	25,401	8,950.85	0.02%
2700	- Industrial Goods & Services	8 / 4 / 2	311	440,665	406,202.83	0.81%
8500	- Insurance	1 / 0 / 0	8	1,414	1,884.90	0.00%
5500	- Media	0 / 3 / 0	16	7,151	2,827.17	0.01%
500	- Oil & Gas	0 / 2 / 0	443	82,054	547,595.92	1.09%
3700	- Personal & Household Goods	2 / 11 / 2	542	594,496	4,100,124.10	8.17%
8600	- Real Estate	3 / 3 / 1	439	180,567	250,870.91	0.50%
5300	- Retail	3 / 2 / 0	113	52,812	699,733.58	1.39%
9500	- Technology	6 / 4 / 0	164	56,056	57,172.54	0.11%
6500	- Telecommunications	1 / 0 / 0	724	206,373	2,245,255.86	4.48%
5700	- Travel & Leisure	6 / 3 / 2	1,050	1,013,415	10,249,391.19	20.43%
7500	- Utilities	1 / 3 / 1	838	313,663	2,675,445.81	5.33%

Top 10 best & worst performing Shares

Main Market

With positive Price change	Closing price	change	With negative Price change	Closing price	change
KEKROPS SA (CR)	0.620	23.51% ↑	F.G. EUROPE S.A. (CR)	1.59	-9.14% ↓
AEGEAN AIRLINES (CR)	6.41	3.05% ↑	MOTOR OIL (CR)	7.94	-3.05% ↓
AS COMPANY SA (CR)	0.359	2.57% ↑	TERNA ENERGY (CR)	3.62	-1.90% ↓
J & P - AVAX SA (CR)	1.40	1.45% ↑	BANK OF GREECE (CR)	13.08	-1.65% ↓
METKA (CR)	11.56	1.14% ↑	TITAN CEMENT (CR)	20.00	-1.48% ↓
AUTOHELLAS SA (CR)	8.50	1.07% ↑	PIRAEUS BANK (CR)	1.48	-1.33% ↓
MARFIN INVESTMENT GROUP (CR)	0.403	1.00% ↑	LAMDA DEVELOPMENT SA (CR)	4.61	-1.28% ↓
OPAP (CR)	12.20	0.91% ↑	HELLENIC PETROLEUM (CR)	5.48	-1.26% ↓
JUMBO SA (CR)	11.30	0.89% ↑	VIOHALCO SA/NV (CB)	4.04	-1.22% ↓
ATTICA BANK S.A. (CR)	0.123	0.82% ↑	FOURLIS (CR)	4.93	-1.20% ↓
With the highest Transactions Value	Value (thou. €)	change	With the highest Transactions Volume	Volume	change
NATIONAL BANK (CR)	9,088.27	0.77% ↑	ALPHA BANK (CR)	7,986,960	0.15% ↑
OPAP (CR)	8,996.70	0.91% ↑	EUROBANK ERGASIAS (CR)	7,654,539	0.00% -
PIRAEUS BANK (CR)	7,859.93	-1.33% ↓	PIRAEUS BANK (CR)	5,316,595	-1.33% ↓
ALPHA BANK (CR)	5,249.27	0.15% ↑	NATIONAL BANK (CR)	3,496,102	0.77% ↑
JUMBO SA (CR)	3,869.02	0.89% ↑	OPAP (CR)	736,771	0.91% ↑
PPC (CR)	2,487.60	-0.72% ↓	JUMBO SA (CR)	345,379	0.89% ↑
EUROBANK ERGASIAS (CR)	2,470.49	0.00% -	MARFIN INVESTMENT GROUP (CR)	331,159	1.00% ↑
OTE (CR)	2,245.26	0.37% ↑	ATTICA BANK S.A. (CR)	241,964	0.82% ↑
AEGEAN AIRLINES (CR)	1,173.25	3.05% ↑	PPC (CR)	226,688	-0.72% ↓
FOLLI FOLLIE (CR)	688.76	-0.63% ↓	OTE (CR)	206,373	0.37% ↑

Note: Stocks that are not included in the "Low Dispersion" and "Under Supervision" categories, and the transactions value is more than 10,000 €.

Derivatives Summary

	Number of Trades	Volume	Open Interest	Transactions Value
Index Futures	398	2,633	46,262	4,934,872.50
FTSE/Athex Large Cap	398	2,633	46,262	4,934,872.50
Stock Futures	678	10,283	274,155	2,710,744.38
ALPHA BANK (CR)	44	1,449	28,659	94,956.20
CC HBC AG (CR)	1	1	374	1,762.00
CORINTH PIPEWORKS SA (CR)	0	0	727	0.00
ELLAKTOR (CR)	17	70	2,634	24,065.00
EUROBANK ERGASIAS (CR)	19	2,679	71,921	85,763.20
EUROBANK PROPERTIES REIC (CR)	5	21	382	19,318.00
EYDAP S.A. (CR)	6	8	391	7,437.00
FOLLI FOLLIE (CR)	7	27	317	84,337.00
FRIGOGLASS SA (CR)	3	3	1,135	948.00
GEK TERNA (CR)	9	45	24,970	15,497.00
HELLENIC EXCHANGES-A.S.E. (CR)	21	171	11,318	125,066.72
HELLENIC PETROLEUM (CR)	11	25	8,494	13,811.00
INTRALOT (CR)	2	13	1,833	2,314.00
JUMBO SA (CR)	12	50	638	56,226.00
MARFIN INVESTMENT GROUP (CR)	16	217	26,571	8,722.00
METKA (CR)	9	33	654	37,707.00
MOTOR OIL (CR)	10	22	351	17,815.00
MYTILINEOS HOLDINGS (CR)	49	226	10,371	140,172.00
NATIONAL BANK (CR)	153	2,307	31,343	600,455.00
OPAP (CR)	28	105	1,881	128,268.00
OTE (CR)	88	476	12,687	518,656.00
P.P.A. S.A. (CR)	1	1	473	1,685.00
PIRAEUS BANK (CR)	89	1,974	25,656	291,935.00
PPC (CR)	55	314	4,513	344,254.00
SIDENOR (CR)	0	0	1,112	0.00
TERNA ENERGY (CR)	1	1	3,715	370.26
TITAN CEMENT (CR)	21	44	689	88,799.00
VIOHALCO SA/NV (CB)	1	1	346	405.00
Index Options	2	10	10,701	19,250.00
FTSE/Athex Large Cap	2	10	10,701	19,250.00
Stock Options	13	1,050	1,587	294,000.00
ALPHA BANK (CR)	0	0	0	0.00
NATIONAL BANK (CR)	13	1,050	1,550	294,000.00
OPAP (CR)	0	0	0	0.00
OTE (CR)	0	0	7	0.00
PIRAEUS BANK (CR)	0	0	0	0.00
PPC (CR)	0	0	30	0.00
Stock Repos - Stock Reverse Repos - Repurchase Agreements	16	962	253,263	592,332.00
Stock Reverse Repos	14	686	26,416	486,369.00
Stock Repos	0	0	218,096	0.00
Repurchase Agreement	2	276	8,751	105,963.00
Total Derivatives Traded	1,107	14,938	585,968	8,551,198.88

Number of Outstanding Securities	Nominal Value	Dividends [1]			Date of Last Coupon		Note	Shares	Closing price	% change	Previous closing price/date	Open price	Price min	Price max	Last price	Avg price	Last Bid [7]	Last Ask [7]	P/E after	Year	Volume	Trades	Transactions Value	Company Mkt Value (thou. €)	Year low	Year high	Sector[4]
		2011	2012	2013	Dividend [2]	Right																					
Warrants																											
1,143,803,533	---	---	---		11/06/2013	---	ALPHA BANK (W)	1.64	1.24 ↑	1.62	29/08/2014	1.58	1.56	1.66	1.64	1.61	8311@1.63	9390@1.64	3.79	2013	539,924	219	868,576.29	8,516,962.93	1.13	2.15	8355
245,748,459	---	---	---		27/06/2013	---	NATIONAL BANK (W)	0.652	-1.36 ↓	0.661	29/08/2014	0.660	0.635	0.661	0.652	0.645	18@0.650	1778@0.652	1.45	2013	164,571	130	106,221.28	9,292,183.53	0.462	1.59	8355
843,640,590	---	---	---		03/07/2013	---	PIRAEUS BANK (W)	0.655	-3.68 ↓	0.680	29/08/2014	0.699	0.654	0.700	0.655	0.663	50000@0.655	85185@0.660	0.70	2013	896,357	160	592,766.63	9,030,929.98	0.575	1.15	8355

Warrants

71,417,100	0.650	---	---	---	26/05/2010	27/06/2014	---	AEGEAN AIRLINES (CR)	6.41	3.05 ↑	6.22 29/08/2014	6.07	6.07	6.41	6.41	6.27	500@6.35	200@6.42	6.90	2013	187,239	273	1,173,251.42	457,783.61	5.02	8.65	5751
11,178,000	1.25	---	---	---	21/04/2010	18/12/2013	---	AEOLIAN INVESTMENT FUND (CR)	0.900	-1.10 ↓	0.910 28/08/2014	0.900	0.900	0.900	0.900	0.900	150@0.900	200@0.950	12.35	2013	150	1	135.00	10,060.20	0.700	1.09	8985
13,000,000	1.00	---	---	---	01/08/2007	07/04/2000	---	AKRITAS SA (CR)	0.270	---	0.270 21/08/2014	---	---	---	---	---	---	40@0.243	---	2013	---	---	---	3,510.00	0.100	0.324	2353
5,000,000	2.00	---	---	---	03/06/2009	01/09/2014	5068	ALCO HELLAS SA (CR)	0.760	---	0.152 # 29/08/2014	---	---	---	---	---	---	---	---	---	---	---	---	3,800.00	0.710	2.09	1753
12,769,059,858	0.300	---	---	---	07/04/2008	13/05/2013	---	ALPHA BANK (CR)	0.667	0.15 ↑	0.666 29/08/2014	0.655	0.643	0.667	0.667	0.657	5000@0.663	25513@0.667	1.54	2013	7,986,960	1,281	5,249,265.30	8,516,962.93	0.531	0.784	8355
22,016,250	0.370	---	---	---	15/07/2009	11/05/2000	---	ALUMIL (CR)	0.310	---	0.310 29/08/2014	0.319	0.280	0.319	0.310	0.289	---	785@0.300	---	2013	2,500	25	721.40	6,825.04	0.245	0.660	1753
417,608	16.00	---	---	0.8	29/04/2014	05/03/2013	---	ANDROMEDA SA (CR)	21.70	---	21.70 29/08/2014	21.70	21.70	21.70	21.70	21.70	192@21.70	10@23.47	6.56	2013	8	2	173.60	9,062.09	20.08	23.99	8985
26,252,040	0.380	---	---	---	08/07/2010	10/02/2014	---	AS COMPANY SA (CR)	0.359	2.57 ↑	0.350 29/08/2014	0.350	0.350	0.359	0.359	0.354	5000@0.355	500@0.367	21.56	2013	30,653	28	10,840.90	9,424.48	0.299	0.413	5379
86,735,980	0.310	---	---	---	06/07/2009	02/01/2002	---	ATHENS MEDICAL CENTER SA (CR)	0.764	0.66 ↑	0.759 29/08/2014	0.721	0.721	0.764	0.764	0.744	500@0.731	1001@0.764	---	2013	3,044	8	2,263.32	66,266.29	0.677	0.930	4533
1,045,794,145	0.300	---	---	---	04/06/2008	07/08/2014	---	ATTICA BANK S.A. (CR)	0.123	0.82 ↑	0.122 29/08/2014	0.119	0.119	0.123	0.123	0.121	5000@0.121	12000@0.125	---	2013	241,964	61	29,281.20	128,632.68	0.102	0.277	8355
15,300,000	0.300	---	---	---	30/07/2009	13/12/1999	---	ATTICA PUBLICATIONS SA (CR)	1.59	---	1.59 19/03/2014	---	---	---	---	---	---	961@1.49	45.88	2013	---	---	---	24,327.00	1.44	2.15	5557
45,457,464	0.700	---	---	---	01/07/2008	01/03/2010	---	AUDIO VISUAL ENTERPRISES (CR)	0.335	---	0.335 28/08/2014	---	---	---	---	---	---	838@0.325	---	2013	---	---	---	15,228.25	0.209	0.376	5553
12,120,000	0.320	(0.45)	---	---	30/04/2012	22/11/2013	---	AUTOHELLAS SA (CR)	8.50	1.07 ↑	8.41 29/08/2014	8.41	8.40	8.50	8.50	8.46	40@8.42	151@8.50	34.67	2013	1,920	28	16,241.19	103,020.00	7.50	11.20	5759
19,864,886	5.60	0.67	0.5376	0.672	05/03/2014	02/07/2008	---	BANK OF GREECE (CR)	13.08	-1.65 ↓	13.30 29/08/2014	13.30	12.92	13.30	13.18	13.02	5@13.06	150@13.16	---	---	15,524	124	202,075.53	259,832.71	12.80	16.53	8355
23,986,500	1.05	---	---	---	26/06/2009	15/03/2000	---	BIOKARPET S.A.(CR)	0.516	-3.91 ↓	0.537 29/08/2014	0.530	0.515	0.530	0.515	0.521	300@0.510	1000@0.530	---	2013	1,700	6	885.60	12,377.03	0.461	0.880	3726
15,842,391	1.51	---	---	---	15/07/2009	12/05/2000	---	BITROS HOLDING SA (CR)	0.220	---	0.220 29/08/2014	---	---	---	---	---	300@0.201	700@0.220	---	2013	---	---	---	3,485.33	0.158	0.559	1757
15,816,009	0.300	---	---	---	01/07/2009	17/07/2000	---	BYTE COMPUTER SA (CR)	0.565	---	0.565 28/08/2014	---	---	---	---	---	150@0.560	350@0.574	---	2013	---	---	---	8,936.05	0.432	0.666	9533
367,747,133	6.70	---	0.34	0.354	09/07/2014	29/04/2013	---	CC HBC AG (CR)	17.61	-0.23 ↓	17.65 29/08/2014	17.59	17.57	17.70	17.61	17.61	609@17.64	500@17.79	---	---	26,275	83	462,802.89	6,476,027.01	16.01	22.00	3537
101,123,806	0.360	---	---	---	22/07/2010	28/06/2011	---	CENTRIC HOLDINGS (CR)	0.260	2.36 ↑	0.254 29/08/2014	0.247	0.245	0.264	0.260	0.252	1000@0.246	2000@0.259	12.74	2013	12,500	8	3,147.70	26,292.19	0.220	0.390	5752
4,034,950	0.680	---	---	---	01/07/2005	30/12/2010	---	CHATZIKRANIOTIS & SONS SA (CR)	0.199	---	0.199 28/08/2014	---	---	---	---	---	842@0.185	500@0.202	---	2013	---	---	---	802.96	0.155	0.420	3577
124,170,201	0.780	---	---	---	28/06/2002	07/02/2005	---	CORINTH PIPEWORKS SA (CR)	1.38	0.73 ↑	1.37 29/08/2014	1.39	1.35	1.39	1.38	1.36	207@1.36	193@1.38	---	2013	8,567	23	11,683.93	171,354.88	1.28	2.30	1757
9,907,500	0.300	---	---	---	06/10/2005	13/02/2002	---	CPI SA (CR)	0.219	---	0.219 26/08/2014	---	---	---	---	---	---	807@0.206	---	2013	---	---	---	2,169.74	0.133	0.295	9572
27,379,200	0.520	---	---	0.1	24/07/2014	18/09/2013	---	CRETE PLASTICS SA (CR)	5.00	---	5.00 29/08/2014	---	---	---	---	---	245@4.92	150@5.14	15.02	2013	---	---	---	136,896.00	4.80	5.54	1357
15,000,000	0.300	---	---	---	06/07/2007	18/07/2000	---	DAIOS PLASTICS SA (CR)	2.29	---	2.29 27/08/2014	---	---	---	---	---	---	180@2.33	---	2013	---	---	---	34,350.00	1.66	2.30	1357
34,720,000	0.310	---	---	---	16/06/2010	01/08/2007	---	DROMEAS SA (CR)	0.240	-5.51 ↓	0.254 29/08/2014	0.240	0.240	0.240	0.240	0.240	2000@0.234	990@0.240	---	2013	1,010	2	242.40	8,332.80	0.223	0.400	3726
3,873,120	0.300	---	---	---	07/07/2008	04/10/2012	---	DRUCKFARBEN HELLAS (CR)	0.950	---	0.950 27/08/2014	---	---	---	---	---	---	---	---	2013	---	---	---	3,679.46	0.810	1.95	1357
11,250,000	0.560	---	---	---	26/07/2010	16/06/1999	---	EKTER SA (CR)	0.580	-3.97 ↓	0.604 29/08/2014	0.580	0.580	0.580	0.580	0.580	100@0.560	5450@0.580	---	2013	50	1	29.00	6,525.00	0.555	0.990	2357
32,188,050	1.04	---	---	---	21/07/2008	20/01/2000	---	EL D. MOUZAKIS SA (CB)	0.349	---	0.349 28/08/2014	---	---	---	---	---	---	676@0.348	---	2013	---	---	---	11,233.63	0.171	0.475	3763
18,435,000	1.00	---	---	---	07/07/2009	10/09/2010	---	ELASTRON (CR)	0.789	---	0.789 29/08/2014	---	---	---	---	---	15@0.711	165@0.788	---	2013	---	---	---	14,545.22	0.650	1.00	1757
31,734,530	1.60	---	---	---	09/07/2007	19/07/2006	---	ELGEKA SA (CR)	0.416	---	0.416 29/08/2014	---	---	---	---	---	---	17@0.409	---	2013	---	---	---	13,201.56	0.238	0.488	3577
23,828,130	0.500	---	---	---	07/07/2010	17/02/2009	---	ELINOIL S.A. (CR)	1.21	---	1.21 08/08/2014	---	---	---	---	---	---	220@1.21	---	2013	---	---	---	28,832.04	0.790	1.50	537
177,001,313	1.03	---	---	---	05/07/2011	20/12/2007	---	ELLAKTOR (CR)	3.44	-1.15 ↓	3.48 29/08/2014	3.48	3.41	3.48	3.44	3.44	172@3.44	1030@3.45	---	2013	43,739	150	150,397.70	608,884.52	3.06	4.35	2357
82,667,000	0.300	---	---	---	22/07/2014		---	ELTECH ANEMOS S.A. (CR)	1.41	---	1.41 29/08/2014	1.42	1.38	1.43	1.41	1.40	8250@1.40	4185@1.41	---	---	75,755	92	106,165.63	116,560.47	1.34	1.70	7537

Number of Outstanding Securities	Nominal Value	Dividends [1]			Date of Last Coupon		Note	Shares	Closing price	% change	Previous closing price/date	Open price	Price min	Price max	Last price	Avg price	Last Bid [7]	Last Ask [7]	P/E after	Year	Volume	Trades	Transactions Value	Company Mkt Value (thou. €)	Year low	Year high	Sector[4]
		2011	2012	2013	Dividend [2]	Right																					
Main Market																											
26,730,187	0.600	---	---	0.05	23/06/2014	30/12/2010	---	ELTON SA (CR)	1.07	0.94 ↑	1.06 29/08/2014	1.06	1.04	1.07	1.07	1.06	190@1.06	847@1.07	11.03	2013	1,556	20	1,640.99	28,601.30	0.990	1.40	1353
14,050,971	0.340	---	---	---	06/07/2011	17/10/2002	---	ELTRAK SA (CR)	1.89	---	1.89 28/08/2014	---	---	---	---	---	200@1.72	600@1.88	---	2013	---	---	---	26,556.34	1.40	2.03	2753
124,100,815	0.300	---	0.08	---	30/05/2014	07/07/2000	---	ELVAL SA. (CB)	1.71	---	1.71 29/08/2014	1.63	1.63	1.71	1.71	1.70	100@1.66	309@1.71	49.86	2013	518	3	879.58	212,212.39	1.55	2.15	1753
13,230,000	0.300	---	---	---	11/08/2010	28/08/2013	---	ELVE SA (CR)	0.616	---	0.616 29/08/2014	---	---	---	---	---	200@0.569	124@0.599	---	2013	---	---	---	8,149.68	0.528	0.690	3763
30,009,210	0.310	---	---	---	27/06/2008	26/06/2000	---	ETEM SA (CB)	0.242	-5.47 ↓	0.256 29/08/2014	0.240	0.240	0.242	0.242	0.240	2140@0.242	1990@0.256	---	2013	2,124	2	510.48	7,262.23	0.163	0.400	1753
14,707,876,542	0.300	---	---	---	02/05/2008	13/06/2013	---	EUROBANK ERGASIAS (CR)	0.323	---	0.323 29/08/2014	0.326	0.317	0.326	0.323	0.323	1598975@0.323	5000@0.325	---	2013	7,654,539	927	2,470,489.20	4,750,644.12	0.295	0.630	8355
101,260,000	2.13	0.4067	---	0.1821	17/04/2014	08/01/2014	---	EUROBANK PROPERTIES REIC (CR)	9.15	-0.97 ↓	9.24 29/08/2014	9.36	9.08	9.36	9.15	9.23	10@9.15	200@9.18	---	2013	10,962	143	101,219.63	926,529.00	6.65	9.82	8675
7,959,900	0.600	---	---	---	02/06/2010	10/12/2013	5031	EUROCONSULTANTS S.A. (CR)	2.47	2.92 ↑	2.40 29/08/2014	2.47	2.47	2.47	2.47	2.47	300@2.17	490@2.47	72.58	2013	10	1	24.70	19,660.95	1.98	2.87	2791
27,503,677	0.600	0.05	0.1	---	11/07/2013	18/10/1999	---	EUROPEAN RELIANCE INSUR. (CR)	1.35	1.50 ↑	1.33 29/08/2014	1.31	1.31	1.35	1.35	1.33	292@1.35	1000@1.38	3.91	2013	1,414	8	1,884.90	37,129.96	1.21	1.66	8536
13,673,200	0.880	---	---	---	18/07/2008	26/07/2001	---	EVROFARMA SA (CR)	0.370	---	0.370 28/08/2014	---	---	---	---	---	---	900@0.377	---	2013	---	---	---	5,059.08	0.224	0.455	3577
106,500,000	0.600	0.05	0.15	0.36	05/05/2014	28/01/2000	---	EYDAP S.A. (CR)	9.33	-1.16 ↓	9.44 29/08/2014	9.44	9.29	9.44	9.33	9.37	500@9.31	80@9.37	12.79	2013	7,085	95	66,417.96	993,645.00	7.06	9.95	7577
52,800,154	0.300	---	---	0.2	20/08/2014	21/06/2004	---	F.G. EUROPE S.A. (CR)	1.59	-9.14 ↓	1.75 29/08/2014	1.70	1.59	1.70	1.59	1.65	200@1.59	2018@1.61	28.69	2013	63,364	61	104,346.90	83,952.24	0.580	1.95	3722
10,203,575	0.730	---	---	---	16/07/2007	18/10/1999	---	FIERATEX SA (CR)	0.253	---	0.253 27/08/2014	---	---	---	---	---	---	8800@0.256	---	2013	---	---	---	2,581.50	0.121	0.430	3763
11,720,024	0.540	---	---	0.0394	21/08/2014	07/08/2014	---	FLEXOPACK SA (CR)	2.88	---	2.88 28/08/2014	---	---	---	---	---	100@2.73	100@2.88	13.63	2013	---	---	---	33,753.67	2.62	3.50	2723
4,181,450	0.500	---	---	---	21/08/2000	05/03/2002	---	FLOUR MILLS SARANTOPOULOS SA	0.900	5.88 ↑	0.850 14/08/2014	0.900	0.900	0.900	0.900	0.900	80@0.900	---	2013	120	1	108.00	3,763.31	0.702	1.14	3577	
66,948,210	0.300	---	---	---	14/07/2009	31/12/2010	---	FOLLI FOLLIE (CR)	31.30	-0.63 ↓	31.50 29/08/2014	31.50	31.01	31.51	31.30	31.29	233@31.25	30@31.44	4.85	2013	22,008	80	688,757.75	2,095,478.97	21.90	34.40	5379
50,992,322	1.00	---	---	---	21/06/2010	16/07/2002	---	FOURLIS (CR)	4.93	-1.20 ↓	4.99 29/08/2014	5.00	4.86	5.00	4.93	4.91	518@4.90	26@4.93	2013	19,310	93	94,728.27	251,392.15	3.86	6.01	3722	
50,593,832	0.300	---	---	---	07/07/2010	07/09/2011	---	FRIGOGLASS SA (CR)	3.17	-0.94 ↓	3.20 29/08/2014	3.16	3.15	3.20	3.17	3.17	100@3.16	450@3.20	2013	1,687	27	5,340.75	160,382.45	3.00	5.63	2757	
77,376,446	0.340	---	---	---	23/05/2005	18/08/2011	---	G.E. DIMITRIOU (CR)	0.013	-13.33 ↓	0.015 29/08/2014	0.013	0.013	0.015	0.013	0.013	10000@0.015	9000@0.014	2013	120,001	7	1,560.02	1,005.89	0.012	0.041	3722	
14,076,360	0.370	---	---	---	19/08/2008	22/07/2003	---	GALAXIDI S.A. (CR)	0.200	---	0.200 27/08/2014	---	---	---	---	---	400@0.201	---	2013	---	---	---	2,815.27	0.200	0.419	3573	
94,462,368	0.570	---	---	---	01/08/2011	02/01/2009	---	GEK TERNA (CR)	3.46	---	3.46 29/08/2014	3.46	3.41	3.46	3.46	3.45	2773@3.42	1734@3.46	2013	53,284	128	183,681.84	326,839.79	3.08	4.21	2357	
8,418,750	0.300	0.15	0.29	---	05/06/2013	27/06/2012	---	GEKE SA (CB)	5.81	---	5.81 29/08/2014	---	---	---	---	---	160@5.41	100@6.10	91.87	2013	---	---	---	48,912.94	5.40	7.20	5753
24,060,000	0.300	0.017	---	0.017	07/07/2014	21/01/2000	---	GEN. COMMERCIAL & IND.SA (CR)	0.400	---	0.400 28/08/2014	---	---	---	---	---	500@0.362	359@0.399	28.76	2013	---	---	---	9,624.00	0.327	0.455	2797
34,770,982	1.55	---	---	0.3	17/01/2014	27/07/2000	---	GR. SARANTIS SA (CR)	7.80	-2.01 ↓	7.96 29/08/2014	8.00	7.70	8.00	7.80	7.81	50@7.64	565@7.80	7.39	2013	730	9	5,698.40	271,213.66	6.06	8.24	3767
8,340,750	1.20	---	---	---	25/06/2009	30/07/2001	---	HAIDEMENOS SA (CR)	0.425	---	0.425 29/08/2014	---	---	---	---	---	700@0.383	---	2013	---	---	---	3,544.82	0.334	0.760	2791	
101,279,627	0.380	---	---	---	26/06/2008	14/07/2006	---	HALKOR SA (CB)	0.468	1.74 ↑	0.460 29/08/2014	0.464	0.464	0.468	0.468	0.465	1500@0.458	560@0.467	2013	3,650	3	1,698.20	47,398.87	0.451	0.912	1755	
36,748,909	0.730	---	---	---	15/12/2005	13/12/2006	---	HEL. SUGAR INDUSTRY SA (CB)	0.430	-2.05 ↓	0.439 29/08/2014	0.445	0.430	0.445	0.430	0.432	2004@0.425	500@0.444	2013	1,096	6	473.03	15,802.03	0.411	1.10	3577	
29,546,360	0.710	---	---	---	20/06/2008	23/08/2000	---	HELLENIC CABLES SA (CR)	1.30	-2.99 ↓	1.34 29/08/2014	1.26	1.23	1.35	1.30	1.31	35@1.30	400@1.32	2013	4,495	15	5,899.25	38,410.27	1.23	2.00	2733	
65,368,563	0.560	0.11	0.09	---	03/06/2013	16/07/2014	---	HELLENIC EXCHANGES-A.S.E. (CR)	7.08	-0.28 ↓	7.10 29/08/2014	7.04	7.04	7.14	7.08	7.10	307@7.08	500@7.14	-(6)-	2013	43,464	222	308,459.49	462,809.43	6.71	9.52	8777
305,635,185	2.18	0.45	0.15	---	16/08/2013	01/10/2003	4795	HELLENIC PETROLEUM (CR)	5.48	-1.26 ↓	5.55 29/08/2014	5.54	5.47	5.58	5.48	5.51	5183@5.48	200@5.50	2013	45,341	194	249,845.49	1,674,880.81	5.11	8.13	537	
305,732,436	0.410	---	---	---	08/07/2009	28/09/2011	---	HYGEIA SA (CR)	0.288	---	0.288 29/08/2014	0.284	0.284	0.288	0.288	0.285	1378@0.285	3000@0.289	2013	19,507	39	5,560.03	88,050.94	0.268	0.508	4533	
53,155,053	0.440	---	---	---	21/07/2010	16/07/2008	---	IASO SA (CR)	1.13	0.89 ↑	1.12 29/08/2014	1.13	1.11	1.13	1.13	1.11	4300@1.11	200@1.12	2013	750	3	833.50	60,065.21	1.04	1.99	4533	
8,298,467	0.400	---	---	---	30/08/1993	08/05/2013	---	IDEAL GROUP SA (CR)	0.787	---	0.787 28/08/2014	---	---	---	---	---	548@0.710	1452@0.819	-(6)-	2013	---	---	---	6,530.89	0.538	1.00	9574
28,580,100	0.400	0.02	---	0.025	18/08/2014	10/10/2013	---	IKTINOS HELLAS SA (CR)	1.36	-0.73 ↓	1.37 29/08/2014	1.37	1.32	1.40	1.36	1.37	1050@1.34	1084@1.36	8.32	2013	19,360	109	26,501.56	38,868.94	1.32	1.84	2353
9,000,000	0.880	---	---	---	15/05/2009	07/12/2010	---	ILYDA S.A. (CR)	0.723	---	0.723 12/08/2014	---	---	---	---	---	---	191@0.679	---	2013	---	---	---	6,507.00	0.350	0.789	9537
20,578,374	0.620	---	---	---	02/06/2011	05/05/1999	---	INFORM P. LYKOS SA (CR)	1.60	---	1.60 27/08/2014	---	---	---	---	---	300@1.53	1000@1.64	2013	---	---	---	32,925.40	1.36	1.90	2791	
11,233,200	0.730	---	---	---	12/07/2010	30/07/1999	---	INTERTECH SA (CR)	0.298	---	0.298 29/08/2014	---	---	---	---	---	4000@0.270	895@0.309	2013	---	---	---	3,347.49	0.210	0.510	9572	
34,986,430	0.440	---	---	---	25/07/2008	23/02/2010	---	INTERWOOD-XYLEMPORIA (CR)	0.125	---	0.125 07/08/2014	---	---	---	---	---	---	10000@0.125	---	2013	---	---	---	4,873.84	0.081	0.159	2353

Number of Outstanding Securities	Nominal Value	Dividends [1]			Date of Last Coupon		Note	Shares	Closing price	% change	Previous closing price/date	Open price	Price min	Price max	Last price	Avg price	Last Bid [7]	Last Ask [7]	P/E after	Year	Volume	Trades	Transactions Value	Company Mkt Value (thou. €)	Year low	Year high	Sector[4]
2011	2012	2013	Dividend [2]	Right																							

Main Market

2,566,836	0.440	---	---	---	13/08/2010	09/01/2007	---	INTERWOOD-XYLEMPORIA (PR)	0.195	---	-	0.195	17/02/2014	---	---	---	---	---	---	---	---	2013	---	---	---	4,873.84	0.195	0.200	2353		
23,154,250	1.36	---	---	---	12/08/2008	02/08/2010	---	INTRACOM CONSTR. (CR)	0.900	---	-	0.900	29/08/2014	0.905	0.880	0.905	0.900	0.895	111@0.879	31@0.900	---	2013	4,114	20	3,683.96	20,838.83	0.801	1.32	2357		
133,025,996	1.41	---	---	---	03/07/2007	07/01/2002	---	INTRACOM HOLDINGS (CR)	0.675	0.15	↑	0.674	29/08/2014	0.664	0.664	0.680	0.675	0.670	200@0.672	1530@0.675	---	2013	39,412	92	26,421.66	89,792.55	0.526	0.900	9578		
158,961,721	0.300	0.0035	0.0026	---	30/05/2013	14/11/2007	---	INTRALOT (CR)	1.78	0.57	↑	1.77	29/08/2014	1.77	1.75	1.79	1.78	1.77	1461@1.78	1855@1.79	---	2013	23,968	103	42,424.42	282,951.86	1.63	2.51	5752		
77,654,850	0.580	---	---	---	01/07/2011	21/02/2003	---	J & P - AVAX SA (CR)	1.40	1.45	↑	1.38	29/08/2014	1.41	1.36	1.41	1.40	1.40	2200@1.38	2527@1.40	---	2013	14,534	51	20,307.22	108,716.79	1.30	2.02	2357		
136,059,759	1.19	---	---	---	23/12/2010	05/03/2014	---	JUMBO SA (CR)	11.30	0.89	↑	11.20	29/08/2014	11.20	11.16	11.42	11.30	11.26	83@11.16	80@11.37	20.85	2013	345,379	297	3,869,024.89	1,537,475.28	9.76	14.40	3747		
9,742,920	0.400	0.01	0.01	0.01	08/08/2014	14/07/2000	---	KARAMOLEGOS SA (CR)	1.62	---	-	1.62	29/08/2014	---	---	---	---	---	---	1000@1.61	---	---	2013	---	---	---	15,783.53	0.912	1.78	3577	
14,679,792	1.68	---	---	---	24/06/2014	04/09/2000	---	KARATZIS SA (CR)	3.46	0.29	↑	3.45	29/08/2014	3.46	3.46	3.46	3.46	3.46	30@3.32	37@3.36	10.39	2013	171	3	591.66	50,792.08	2.92	4.50	2723		
13,202,756	0.350	---	---	---	01/07/2004	05/08/2014	---	KEKROPS SA (CR)	0.620	23.51	↑	0.502	29/08/2014	0.502	0.502	0.628	0.620	0.570	1000@0.611	50@0.623	---	2013	147,185	249	83,890.01	8,185.71	0.470	1.11	8633		
7,595,160	0.600	---	---	---	08/08/2008	18/08/2010	---	KIRIAKOULIS SHIPPING SA (CR)	0.676	---	-	0.676	29/08/2014	---	---	---	---	---	---	200@0.669	43.88	2013	---	---	---	---	5,134.33	0.492	1.08	5759	
23,648,700	0.350	---	---	---	13/07/2011	29/07/2014	---	KLEEMAN HELLAS SA (CR)	2.04	-2.39	↓	2.09	29/08/2014	2.04	2.04	2.08	2.04	2.05	200@2.04	177@2.07	72.11	2013	422	6	862.81	48,243.35	1.89	2.58	2757		
40,219,218	0.300	---	---	---	25/05/2009	09/07/2013	---	KLOUKINAS - LAPPAS SA (CR)	0.570	-4.68	↓	0.598	28/08/2014	0.560	0.560	0.574	0.570	0.563	150@0.550	8@0.570	---	2013	3,660	5	2,059.74	22,924.95	0.539	0.780	2357		
21,224,340	0.420	---	---	---	02/07/2008	25/04/2006	---	KORDELLOS BROS SA (CR)	0.310	---	-	0.310	21/08/2014	---	---	---	---	---	---	4031@0.279	---	---	2013	---	---	---	6,579.55	0.171	0.359	1757	
13,586,500	0.390	---	---	---	25/06/2010	28/05/2008	---	KORRES (CR)	3.50	---	-	3.50	29/08/2014	---	---	---	---	---	---	100@3.48	200@3.68	---	2013	---	---	---	47,552.75	2.84	3.69	3767	
29,480,000	0.420	---	---	---	19/07/2010	01/08/2007	---	KRETA FARM SA (CR)	0.672	1.05	↑	0.665	29/08/2014	0.650	0.601	0.675	0.674	0.648	207@0.650	258@0.650	---	2013	12,593	21	8,157.77	19,810.56	0.380	0.690	3577		
33,065,136	0.380	---	---	---	06/07/2009	16/09/2013	---	KRI-KRI S.A. (CR)	1.77	-1.12	↓	1.79	29/08/2014	1.77	1.77	1.77	1.77	1.77	2000@1.76	204@1.77	11.42	2013	1,500	4	2,655.00	58,525.29	1.65	2.07	3577		
15,804,800	0.330	---	---	---	15/06/2010	12/03/2004	---	KTIMA KOSTAS LAZARIDIS SA (CR)	0.425	---	-	0.425	25/08/2014	---	---	---	---	---	---	254@0.423	---	---	2013	---	---	---	6,717.04	0.305	0.575	3535	
24,474,815	1.15	---	---	---	19/08/2008	30/01/2014	---	KYRIAKIDIS MARBLES SA (CR)	2.39	0.84	↑	2.37	29/08/2014	2.33	2.33	2.39	2.39	2.37	82@2.38	1201@2.40	5.62	2013	2,051	10	4,866.88	58,494.81	1.07	2.60	2353		
79,706,464	0.300	---	---	---	30/05/2007	23/06/2014	---	LAMDA DEVELOPMENT SA (CR)	4.61	-1.28	↓	4.67	29/08/2014	4.56	4.53	4.64	4.61	4.56	300@4.56	97@4.61	---	2013	4,965	26	22,645.67	367,446.80	4.10	6.35	8633		
21,364,000	1.12	---	---	---	05/07/2010	10/08/2005	---	LAMPASA HOTEL SA (CR)	18.59	-1.12	↓	18.80	29/08/2014	18.10	17.90	18.60	18.59	18.22	50@17.30	95@18.59	-(6)-	2013	480	21	8,745.97	397,156.76	15.60	19.00	5753		
5,939,268	0.620	---	---	---	10/07/2003	03/01/2002	---	LANAKAM SA (CR)	1.14	-9.52	↓	1.26	06/08/2014	1.14	1.14	1.14	1.14	1.14	---	115@1.18	---	2013	2,000	2	2,280.00	6,770.77	0.485	1.40	3763		
7,734,375	1.00	---	---	---	09/07/2007	07/01/2011	---	LIVANIS SA (CR)	0.198	-5.71	↓	0.210	28/08/2014	0.198	0.198	0.198	0.198	0.198	---	248@0.198	---	2013	252	1	49.90	1,531.41	0.158	0.242	5557		
4,740,000	0.860	---	---	---	---	14/03/2003	---	LOGISMOS S.A. (CR)	0.484	---	-	0.484	14/08/2014	---	---	---	---	---	---	701@0.532	65.18	2013	---	---	---	---	2,294.16	0.335	0.709	9533	
17,125,062	0.640	---	---	---	01/06/2010	02/08/2011	---	LOULIS MILLS SA (CR)	2.55	-1.54	↓	2.59	27/08/2014	2.40	2.40	2.55	2.55	2.43	200@2.34	45@2.55	---	2013	250	3	607.50	43,668.91	2.26	3.30	3577		
770,452,803	0.300	---	---	---	26/04/2007	29/08/2014	---	MARFIN INVESTMENT GROUP (CR)	0.403	1.00	↑	0.399	29/08/2014	0.399	0.393	0.406	0.403	0.401	1886@0.403	5000@0.406	---	2013	331,159	256	132,705.84	310,492.48	0.372	0.572	8775		
9,819,370	0.690	---	---	---	14/08/2007	09/01/2004	---	MATHIOS REFRACTORY SA (CR)	0.375	---	-	0.375	14/08/2014	---	---	---	---	---	---	900@0.369	---	---	2013	---	---	---	3,682.26	0.250	0.488	2353	
468,700	---	---	0.47	---	27/02/2014	21/05/2004	---	MERMEREN KOMB. A.D. PR. (GDR)	4.19	6.08	↑	3.95	27/08/2014	4.34	4.00	4.34	4.20	4.14	125@4.08	71@4.20	2.04	2013	1,233	9	5,105.48	1,963.85	3.45	4.70	1775		
51,950,600	0.320	0.75	0.25	0.3	20/06/2014	21/10/2005	---	METKA (CR)	11.56	1.14	↑	11.43	29/08/2014	11.64	11.37	11.64	11.56	11.48	20@11.41	500@11.58	13.52	2013	16,055	125	184,242.18	600,548.94	10.46	14.29	2757		
10,500,000	0.900	---	---	---	24/06/2008	19/12/2013	---	MEVACO SA (CR)	1.20	---	-	1.20	27/08/2014	---	---	---	---	---	1000@1.20	2000@1.32	---	2013	---	---	---	---	12,600.00	1.05	1.35	2757	
14,074,000	3.00	0.25	---	---	02/03/2012	23/07/2009	---	MIG REAL ESTATE (CR)	3.03	---	-	3.03	29/08/2014	3.03	3.03	3.03	3.03	3.03	5630@3.03	1500@3.08	-(6)-	2013	12,305	11	37,284.15	42,644.22	1.50	3.05	8671		
6,700,000	0.800	---	---	0.16	26/05/2014	29/05/2014	---	MILLS KEPENOS (CR)	1.34	9.84	↑	1.22	29/08/2014	1.30	1.30	1.34	1.34	1.32	73@1.34	---	7.30	2013	427	3	564.07	8,978.00	0.991	2.50	3577		
6,200,000	0.500	---	---	---	22/06/2010	01/11/1995	---	MINERVA KNITWEAR SA (CB)	0.459	---	-	0.459	16/06/2014	---	---	---	---	---	---	170@0.430	---	---	2013	---	---	---	---	2,845.80	0.396	0.689	3763
12,417,000	0.370	---	---	---	28/07/2008	06/09/2011	---	MLS MULTIMEDIA SA (CR)	4.81	-0.21	↓	4.82	29/08/2014	4.78	4.70	4.82	4.81	4.78	100@4.73	545@4.81	51.01	2013	4,000	24	19,111.80	59,725.77	3.28	4.82	9537		
4,588,137	16.00	---	---	---	30/06/2005	17/08/2011	---	MOCHLOS SA (CR)	1.42	---	-	1.42	29/08/2014	1.49	1.34	1.49	1.43	1.37	100@1.35	40@1.43	---	2013	1,351	10	1,846.05	6,515.15	1.17	2.05	2357		
11,700,000	0.590	---	---	---	02/06/2009	24/07/2012	---	MOTODYNAMICS S.A. (CR)	0.340	---	-	0.340	29/08/2014	---	---	---	---	---	646@0.290	854@0.329	---	2013	---	---	---	---	3,978.00	0.280	0.447	5379	
110,782,980	0.750	0.4	0.3	0.2	26/06/2014	04/11/2013	---	MOTOR OIL (CR)	7.94	-3.05	↓	8.19	29/08/2014	8.19	7.94	8.19	7.94	8.11	674@7.94	3209@8.05	-(6)-	2013	36,713	249	297,750.43	879,616.86	7.15	10.30	533		
116,915,862	1.07	---	---	---	11/05/2009	06/07/2011	---	MYTILINEOS HOLDINGS (CR)	6.14	-0.65	↓	6.18	29/08/2014	6.18	6.14	6.24	6.14	6.18	2290@6.13	2894@6.20	---	2013	108,458	398	670,742.65	717,863.39	5.38	7.32	1755		
8,321,682	0.670	---	---	---	17/08/2007	23/11/1999	---	N. LEVEDERIS SA (CB)	0.240	---	-	0.240	19/06/2014	---	---	---	---	---	---	10@0.220	---	---	2013	---	---	---	---	3,604.63	0.196	0.255	1757

Number of Outstanding Securities	Nominal Value	Dividends [1]			Date of Last Coupon		Note	Shares	Closing price	% change	Previous closing price/date	Open price	Price min	Price max	Last price	Avg price	Last Bid [7]	Last Ask [7]	P/E after	Year	Volume	Trades	Transactions Value	Company Mkt Value (thou. €)	Year low	Year high	Sector[4]
		2011	2012	2013	Dividend [2]	Right																					
Main Market																											
2,160,524	0.670	0.0435	0.0436	0.0436	18/08/2014	23/11/1999	--	N. LEVEDERIS SA (PB)	0.744	-- -	0.744 26/03/2014	--	--	--	--	--	--	924@0.670	--	2013	--	--	--	3,604.63	0.566	0.779	1757
11,510,102	0.890	--	--	--	24/06/2005	06/10/1999	--	NAFPAKTOS TEXTILE IND. SA (CB)	0.260	-9.72 ↓	0.288 28/08/2014	0.288	0.260	0.288	0.260	0.279	698@0.260	400@0.279	--	2013	590	3	164.60	2,992.63	0.209	0.397	3763
6,340,000	0.600	--	--	--	30/11/2009	12/07/2000	--	NAKAS MUSIC	0.800	-4.76 ↓	0.840 28/08/2014	0.756	0.756	0.800	0.800	0.769	160@0.756	264@0.800	--	2013	100	3	76.92	5,072.00	0.526	1.62	5379
3,533,149,631	0.300	--	--	--	16/05/2008	24/05/2013	--	NATIONAL BANK (CR)	2.63	0.77 ↑	2.61 29/08/2014	2.58	2.53	2.66	2.63	2.60	499678@2.63	60@2.64	5.85	2013	3,496,102	1,526	9,088,268.24	9,292,183.53	1.98	4.31	8355
23,935,280	0.300	--	--	--	29/06/2009	13/06/2000	--	NAYTEMPORIKI PUBLISHING SA(CR)	0.260	-- -	0.260 22/08/2014	--	--	--	--	--	2000@0.182	2000@0.257	--	2013	--	--	--	6,223.17	0.130	0.479	5557
27,848,000	0.300	0.0132	0.0137	0.004	18/08/2014	02/09/2003	--	NEWSPHONE HELLAS SA (CR)	0.304	-- -	0.304 29/08/2014	--	--	--	--	--	7000@0.296	1000@0.303	27.31	2013	--	--	--	8,465.79	0.271	0.468	2791
6,132,500	1.25	--	--	--	24/06/2011	19/06/2001	--	NEXANS HELLAS SA (CR)	2.11	-- -	2.11 28/08/2014	--	--	--	--	--	100@1.94	949@2.08	--	2013	--	--	--	12,939.58	1.91	2.40	2733
63,697,153	1.34	--	--	--	08/07/2008	10/11/2008	--	NIREFS SA (CR)	0.188	5.62 ↑	0.178 29/08/2014	0.180	0.172	0.188	0.188	0.176	25@0.173	1275@0.188	--	2013	12,715	20	2,243.12	11,975.06	0.160	0.362	3573
319,000,000	0.300	0.72	0.57	0.25	27/05/2014	25/04/2001	--	OPAP (CR)	12.20	0.91 ↑	12.09 29/08/2014	12.19	12.10	12.30	12.20	12.21	10299@12.15	100@12.24	27.28	2013	736,771	584	8,996,697.94	3,891,800.00	9.33	13.65	5752
490,150,389	2.83	--	--	--	28/06/2011	18/06/1998	--	OTE (CR)	10.92	0.37 ↑	10.88 29/08/2014	10.71	10.71	10.99	10.92	10.88	1500@10.90	100@10.95	--	2013	206,373	724	2,245,255.86	5,352,442.25	9.16	13.20	6535
25,000,000	2.00	0.01	0.05	0.12	17/07/2014	08/08/2003	--	P.P.A. S.A. (CR)	16.90	0.30 ↑	16.85 29/08/2014	16.85	16.65	16.99	16.90	16.81	450@16.75	16@16.88	52.52	2013	515	34	8,656.94	422,500.00	15.65	20.89	2777
4,971,466	1.46	--	--	--	04/07/2007	08/10/2003	--	PAIRIS SA (CR)	0.300	29.87 ↑	0.231 27/08/2014	0.300	0.300	0.300	0.300	0.300	300@0.208	--	--	2013	16	1	4.80	1,491.44	0.200	0.355	2723
3,953,090	0.900	--	--	--	02/07/2001	05/12/2012	--	PAPERPACK (CR)	0.927	2.66 ↑	0.903 29/08/2014	0.927	0.927	0.927	0.927	0.927	1000@0.820	1000@0.920	4.79	2013	35	1	32.45	3,664.51	0.680	1.15	2723
50,797,369	0.310	--	--	--	17/08/2000	12/10/2010	--	PAPOUTSANIS (CR)	0.495	-0.40 ↓	0.497 29/08/2014	0.499	0.459	0.499	0.495	0.470	200@0.448	2695@0.495	--	2013	2,064	16	969.46	25,144.70	0.395	0.604	3767
7,070,400	0.930	--	--	--	18/05/2010	12/05/2011	--	PETROPOULOS PETROS (CR)	2.28	-- -	2.28 29/08/2014	2.28	2.28	2.28	2.28	2.28	50@2.23	330@2.28	55.40	2013	100	2	228.00	16,120.51	1.43	2.34	2753
6,101,979,715	0.300	--	--	--	16/05/2008	05/06/2013	--	PIRAEUS BANK (CR)	1.48	-1.33 ↓	1.50 29/08/2014	1.52	1.45	1.52	1.48	1.48	129510@1.47	129275@1.48	1.58	2013	5,316,595	1,111	7,859,933.47	9,030,929.98	1.19	2.11	8355
22,080,000	0.320	0.08	0.12	0.2	21/05/2014	03/10/2000	--	PLAISIO COMPUTERS SA (CR)	7.50	0.13 ↑	7.49 29/08/2014	7.50	7.30	7.60	7.50	7.40	50@7.38	95@7.40	11.69	2013	342	10	2,531.20	165,600.00	5.80	7.98	9572
232,000,000	4.60	--	0.025	--	22/07/2013	12/12/2001	--	PPC (CR)	10.97	-0.72 ↓	11.05 29/08/2014	11.00	10.89	11.02	10.97	10.97	1075@10.93	7634@10.98	--	2013	226,688	577	2,487,596.18	2,545,040.00	9.08	12.75	7535
11,812,193	0.450	--	--	--	24/07/2009	15/11/2006	--	PROFILE SA (CR)	0.798	3.77 ↑	0.769 29/08/2014	0.777	0.772	0.800	0.798	0.789	59@0.761	140@0.798	15.36	2013	192	13	151.43	9,426.13	0.750	1.05	9533
27,345,120	0.470	--	--	--	18/07/2005	26/02/2014	--	QUALITY & RELIABILITY SA (CR)	0.644	0.31 ↑	0.642 29/08/2014	0.659	0.644	0.659	0.644	0.649	200@0.629	1952@0.644	85.64	2013	322	4	208.86	17,610.26	0.378	0.740	9533
11,962,443	0.500	--	--	--	05/09/2008	12/12/2013	--	QUEST HOLDINGS (CR)	5.20	0.39 ↑	5.18 29/08/2014	5.28	5.00	5.28	5.18	5.21	100@5.19	100@5.24	--	2013	332	6	1,729.18	62,204.70	4.21	6.30	9533
57,434,884	1.31	--	--	--	05/06/2008	12/06/2009	--	REDS S.A. (CR)	0.502	-6.34 ↓	0.536 28/08/2014	0.502	0.502	0.502	0.502	0.502	613@0.503	50@0.516	--	2013	500	1	251.00	28,832.31	0.484	0.827	8633
22,280,000	0.300	--	--	--	11/04/2011	23/02/2007	--	REVOIL (CR)	0.510	0.79 ↑	0.506 29/08/2014	0.510	0.510	0.510	0.510	0.510	500@0.408	140@0.508	--	2013	1	1	0.51	11,362.80	0.427	0.720	5379
7,500,000	0.480	--	0.0024	0.0863	13/08/2014	10/02/2014	--	S.KANAKIS SA (CR)	1.83	-1.08 ↓	1.85 29/08/2014	1.86	1.78	1.86	1.83	1.80	2@1.82	99@1.83	9.42	2013	1,152	21	2,069.35	13,725.00	1.70	1.99	3577
52,067,296	0.300	--	--	--	23/12/2003	24/01/2007	--	SELECTED TEXT. IND. ASSOC (CR)	0.251	-1.18 ↓	0.254 29/08/2014	0.240	0.230	0.251	0.251	0.244	490@0.230	4099@0.251	--	2013	9,050	11	2,207.05	13,068.89	0.172	0.355	3763
96,243,908	0.410	--	--	--	26/06/2008	17/07/2000	--	SIDENOR (CR)	1.25	-1.58 ↓	1.27 29/08/2014	1.25	1.23	1.28	1.25	1.25	6@1.25	1000@1.29	--	2013	2,865	22	3,590.41	120,304.89	1.21	2.26	1757
6,456,530	1.60	--	--	--	29/06/2001	02/08/2010	--	SPACE HELLAS SA (CR)	1.49	-- -	1.49 21/08/2014	--	--	--	--	--	--	174@1.46	--	2013	--	--	--	9,620.23	1.13	1.87	9578
28,438,268	0.300	--	--	--	21/08/2006	24/11/1999	--	SPIROY AGRICULTURE SA (CR)	0.349	-- -	0.349 29/08/2014	--	--	--	--	--	--	300@0.349	--	2013	--	--	--	9,924.96	0.206	0.388	1357
33,125,000	5.00	--	--	--	03/07/2006	18/08/2010	--	TECHNICAL OLYMPIC SA (CR)	1.54	-1.91 ↓	1.57 29/08/2014	1.63	1.50	1.63	1.54	1.54	100@1.51	190@1.53	--	2013	3,520	17	5,406.10	51,012.50	1.36	2.29	3728
109,314,400	0.300 (0.0589)	--	--	--	28/05/2012	09/07/2014	--	TERNA ENERGY (CR)	3.62	-1.90 ↓	3.69 29/08/2014	3.69	3.61	3.69	3.62	3.63	3720@3.61	21@3.62	-(6)-	2013	3,676	66	13,356.50	395,718.13	3.34	4.86	7537
36,300,000	1.12	0.188	0.162	0.285	14/08/2014	12/12/2007	--	THESSALONIKA WATER & SEWERAGE	4.19	1.95 ↑	4.11 29/08/2014	4.23	4.12	4.23	4.19	4.16	150@4.14	99@4.19	11.60	2013	459	8	1,909.54	152,097.00	4.00	5.66	7577
45,094,620	0.500	--	0.0467	0.05	28/04/2014	01/11/1999	--	THRACE PLASTICS SA (CR)	1.04	-0.95 ↓	1.05 29/08/2014	1.05	1.03	1.07	1.04	1.04	5@1.04	17380@1.05	--	2013	64,668	62	67,295.55	46,898.40	1.03	1.39	1357
77,063,568	4.00	--	--	--	25/06/2014	25/06/2004	--	TITAN CEMENT (CR)	20.00	-1.48 ↓	20.30 29/08/2014	20.55	20.00	20.55	20.00	20.08	7355@20.00	300@20.12	--	2013	16,104	115	323,421.48	1,618,777.51	18.12	26.80	2353
7,568,960	4.00	--	--	--	25/06/2014	25/06/2004	--	TITAN CEMENT CO. (PR)	10.24	-0.58 ↓	10.30 29/08/2014	9.92	9.83	10.26	10.24	9.99	500@9.90	370@10.25	--	2013	2,660	34	26,579.10	1,618,777.51	8.53	10.50	2353
10,080,000	3.00	0.4	1.5	0.6	13/08/2014	27/08/2001	--	TPA SA (CR)	28.00	0.14 ↑	27.96 29/08/2014	27.53	27.53	28.01	28.00	27.99	37@27.52	103@28.00	15.52	2013	3,715	10	103,969.25	282,240.00	22.20	31.40	2777
54,888,240	1.13	0.1	0.1	0.09	25/04/2014</																						

Number of Outstanding Securities	Nominal Value	Dividends [1]			Date of Last Coupon		Note	Shares	Closing price	% change	Previous closing price/date		Open price	Price min	Price max	Last price	Avg price	Last Bid [7]	Last Ask [7]	P/E after	Year	Volume	Trades	Transactions Value	Company Mkt Value (thou. €)	Year low	Year high	Sector[4]
2011	2012	2013	Dividend [2]	Right																								

Main Market

219,611,308	---	---	---	14/02/2014	---	VIOHALCO SA/NV (CB)	4.04	-1.22 ↓	4.09	29/08/2014	4.10	4.02	4.10	4.04	4.04	1410@4.03	195@4.04	---	---	---	---	14,020	52	56,642.53	887,229.68	3.68	5.19	2727
4,968,600	2.88	---	---	01/07/1998	14/12/1998	---	VIS SA (CR)	0.940	---	0.940	30/07/2014	---	---	---	---	---	---	300@0.939	---	---	---	---	---	---	4,670.48	0.517	0.980	2723
6,325,000	0.600	---	---	02/05/2014	17/02/2014	---	VOGIATZOGLOU SYSTEMS SA (CR)	1.24	---	1.24	28/08/2014	---	---	---	---	---	---	686@1.24	---	---	---	---	---	---	7,843.00	0.770	2.27	2797

Exchange Traded Funds (ETFs)

5,848,618	---	---	---	24/01/2008	---	ALPHA ETF FTSE Athex Large Cap	3.77	-1.31 ↓	3.82	29/08/2014	3.77	3.77	3.77	3.77	3.77	78@3.77	---	---	---	---	---	1	1	3.77	-	3.38	4.55	11000
294,878	---	---	---	29/06/2009	---	NBGAM ETF	12.84	-0.70 ↓	12.93	29/08/2014	12.84	12.84	12.84	12.84	12.84	---	499@14.50	---	---	---	---	2	1	25.68	-	11.75	15.10	11000
388,550	---	---	---	03/11/2010	---	NBGAM ETF GREECE & TURKEY 30	8.60	0.35 ↑	8.57	29/08/2014	8.60	8.60	8.60	8.60	8.60	---	---	---	---	---	---	2	1	17.20	-	6.70	9.00	11000

Low Dispersion

14,000,000	4.15	---	---	---	23/04/2010	29/06/1999	4815	ALPHA REAL ESTATE SA(CR)	5.70	1.79 ↑	5.60	29/08/2014	5.70	5.70	5.70	5.70	5.70	200@5.16	200@5.69	23.83	2013	---	150	2	855.00	79,800.00	4.69	7.10	8637
63,900,000	3.00	---	---	---	23/06/2003	04/11/2008	4816	ASTIR PALACE SA (CR)	3.80	-1.04 ↓	3.84	29/08/2014	3.80	3.80	3.80	3.80	3.80	948@3.76	300@3.83	---	2013	---	500	3	1,900.00	242,820.00	3.45	4.08	5753
90,902,904	0.800	---	---	---	09/08/2004	08/03/2006	4814	ATHENA SA (CR)	0.290	---	0.290	26/08/2014	---	---	---	---	---	---	1000@0.288	---	2013	---	---	---	---	26,361.84	0.133	0.310	2357
191,660,320	0.300	---	---	---	20/07/2009	29/12/2010	4817	ATTICA HOLDINGS (CR)	0.596	1.19 ↑	0.589	29/08/2014	0.589	0.589	0.599	0.599	0.596	1000@0.570	4142@0.590	---	2013	---	2,911	8	1,734.36	114,229.55	0.495	0.799	5759
26,664,840	0.470	---	---	0.007	26/06/2014	12/07/1999	5067	CYCLON HELLAS SA (CR)	0.700	---	0.700	29/08/2014	0.700	0.700	0.700	0.700	0.700	2365766@0.700	6000@0.720	36.24	2013	---	27,940	12	19,558.00	18,665.39	0.450	0.720	1357
68,322,221	1.00	---	---	---	08/03/2002	08/04/2013	4986	GENIKI BANK (CR)	2.60	19.82 ↑	2.17	26/08/2014	2.60	2.60	2.60	2.60	2.60	1599@2.60	---	---	2013	---	1	1	2.60	177,637.77	2.00	15.00	8355
71,082,707	1.70	---	---	---	01/07/2010	21/11/2012	4820	HERACLES GEN.CEMENT CO. (CR)	1.32	-4.35 ↓	1.38	29/08/2014	1.32	1.32	1.32	1.32	1.32	636@1.32	1829@1.40	---	2013	---	7	1	9.24	93,829.17	1.24	1.55	2353
13,404,440	8.63	---	---	---	02/04/2001	06/03/1992	4822	IONIAN HOTELS SA (CR)	7.00	---	7.00	11/08/2014	---	---	---	---	---	---	---	-(6)-	2013	---	---	---	---	93,831.08	6.00	9.90	5753
2,760,000	7.70	7.6	8.52	8.5	30/06/2014	16/07/1990	4823	KARELIA TOBACCO CO. SA (CB)	225.00	---	225.00	29/08/2014	225.00	225.00	225.00	225.00	225.00	12@225.00	10@244.95	15.64	2013	---	38	3	8,550.00	621,000.00	180.00	237.00	3785
30,600,000	0.300	---	---	---	12/06/2008	04/03/2014	5059	KATHIMERINI SA (CR)	0.403	-0.25 ↓	0.404	29/08/2014	0.403	0.398	0.404	0.404	0.403	2000@0.352	491@0.420	---	2013	---	6,883	12	2,776.92	12,331.80	0.311	4.49	5557
106,980,050	2.25	---	---	---	25/07/2008	24/02/2014	5046	MINOAN LINES SA (CR)	1.50	-1.96 ↓	1.53	29/08/2014	1.50	1.50	1.50	1.50	1.50	1000@1.51	1720@1.72	---	2013	---	500	1	750.00	160,470.08	1.49	2.00	5759
17,240,776	0.370	---	---	---	14/07/2005	30/09/2003	4827	PERSEUS SA (CR)	0.199	---	0.199	29/08/2014	---	---	---	---	---	800@0.160	---	1.78	2013	---	---	---	---	3,430.91	0.152	0.504	3577

Surveillance

33,301,715	0.320	---	---	---	27/06/2003	08/07/2009	4978	AEGEK (CR)	0.060	20.00 ↑	0.050	29/08/2014	0.060	0.060	0.060	0.060	0.060	312@0.060	---	---	2013	---	8,188	6	491.28	1,998.10	0.048	0.136	2357
14,870,100	0.300	---	---	---	15/05/2008	26/09/2011	4844	ALPHA GRISSIN S.A. (CR)	0.116	---	0.116	07/08/2014	---	---	---	---	---	2000@0.093	7000@0.135	---	2013	---	---	---	---	1,724.93	0.067	0.160	9533
215,246,452	0.300	---	---	---	25/06/2001	24/09/2001	4446	ALTEC SA (CR)	0.025	-3.85 ↓	0.026	29/08/2014	0.022	0.022	0.026	0.026	0.025	2500@0.025	1823@0.026	---	2013	---	1,897	3	47.73	5,381.16	0.020	0.040	9533
2,969,713	0.300	---	---	---	02/07/2008	28/02/2011	4958	ANEK LINES SA (PR, issue '96)	0.160	---	0.160	21/08/2014	---	---	---	---	---	---	---	---	2013	---	---	---	---	19,371.44	0.120	0.280	5759
312,163	0.300	---	---	---	02/07/2008	28/02/2011	4959	ANEK LINES SA (PR, issue '90)	1.15	---	1.15	26/06/2014	---	---	---	---	---	---	37@1.37	---	2013	---	---	---	---	19,371.44	1.15	1.43	5759
185,373,016	0.300	---	---	---	02/07/2008	28/02/2011	4957	ANEK LINES SA (CR)	0.100	---	0.100	29/08/2014	0.100	0.100	0.100	0.100	0.100	8817@0.100	5000@0.101	---	2013	---	43,583	15	4,358.30	19,371.44	0.076	0.141	5759
81,644,555	0.300	---	---	---	01/07/2008	02/09/2002	5056	ATTI - KAT SA (CR)	0.015	---	0.015	29/08/2014	---	---	---	---	---	7000@0.012	296@0.015	---	2013	---	---	---	---	1,224.67	0.013	0.036	2357
20,255,805	0.300	---	---	---	22/08/2006	02/08/2010	4881	AXON HOLDING SA (CR)	0.055	---	0.055	28/08/2014	---	---	---	---	---	4000@0.044	---	---	2013	---	---	---	---	1,114.07	0.040	0.139	4533
17,579,754	4.16	---	---	---	18/08/2006	02/08/2010	4885	BIOTER SA (CR)	0.216	---	0.216	18/08/2014	---	---	---	---	---	---	5000@0.173	---	2013	---	---	---	---	3,797.23	0.104	0.216	2357
1,130,180	0.440	---	---	---	20/06/2003	02/07/2014	---	COMPUCON SA (CR)	0.101	---	0.101	27/08/2014	---	---	---	---	---	20000@0.102	---	---	2013	---	---	---	---	114.15	0.065	0.814	9537
14,173,104	0.300	---	---	---	11/08/2010	28/11/2013	5055	DIONIC (CR)	0.088	4.76 ↑	0.084	29/08/2014	0.068	0.068	0.088	0.088	0.088	30000@0.084	11654@0.088	---	2013	---	227,556	12	19,942.69	1,247.23	0.041	0.307	2797
15,878,748	0.480	---	---	---	10/07/2006	22/03/2004	4960	DOMIKI KRITIS SA (CR)	0.450	---	0.450	26/08/2014	0.450	0.450	0.450	0.450	0.450	---	500@0.454	---	2013	---	2,500	7	1,125.00	7,145.44	0.264	0.485	2357
3,961,300	1.28	---	---	---	29/06/2004	03/08/2000	4808	DUROS SA (CR)	0.530	---	0.530	23/07/2014	---	---	---	---	---	---	4575@0.475	---	2013	---	---	---	---	2,099.49	0.185	0.759	3763
7,085,888	1.59	---	---	---	02/07/1996	06/09/2010	4690	ELVIEMEK (CR)	3.97	---	3.97	26/02/2014	---	---	---	---	---	---	---	---	2013	---	---	---	---	28,130.98	1.54	3.97	8633

Number of Outstanding Securities	Nominal Value	Dividends [1]			Date of Last Coupon		Note	Shares	Closing price	% change	Previous closing price/date	Open price	Price min	Price max	Last price	Avg price	Last Bid [7]	Last Ask [7]	P/E after	Year	Volume	Trades	Transactions Value	Company Mkt Value (thou. €)	Year low	Year high	Sector[4]
2011	2012	2013	Dividend [2]	Right																							

Surveillance

6,000,000	0.600	---	---	---	13/06/2008	08/04/2004	4886	EUROBROKERS S.A. (CR)	0.024	---	0.024	12/05/2014	---	---	---	---	1000@0.025	---	---	2013	---	---	---	144.00	0.024	0.052	8534
21,820,410	0.800	---	---	---	22/05/2008	02/08/2011	4882	EUROMEDICA SA (CR)	0.390	---	0.390	18/08/2014	---	---	---	---	---	100@0.389	---	2013	---	---	---	8,509.96	0.240	0.390	4533
110,097,185	0.300	---	---	---	04/12/2013		5033	Forthnet (CR)	1.40	-0.71	1.41	29/08/2014	1.40	1.40	1.43	1.43	250@1.43	250@1.47	---	2013	2,469	2	3,464.10	154,136.06	0.874	1.98	9535
1,270,000	0.300	---	---	---	06/07/2007	06/02/2013	5007	GIRAKIAN PROFIL SA (CB)	2.30	---	2.30	11/04/2014	---	---	---	---	---	2500@1.99	---	2013	---	---	---	2,921.00	1.44	2.63	1757
179,707,771	0.300	---	---	---	27/06/2002	01/11/2011	4847	HELLAS ONLINE SA (CR)	0.512	0.20	0.511	29/08/2014	0.512	0.512	0.513	0.512	1010@0.513	5000@0.520	66.56	2013	6,790	9	3,478.38	92,010.38	0.400	0.670	9537
30,390,000	0.310	---	---	---	18/08/2008	29/12/2006	4447	HELLENIC FISHFARMING SA (CR)	0.080	---	0.080	27/08/2014	---	---	---	---	---	30954@0.079	---	2013	---	---	---	2,431.20	0.045	0.119	3573
1,540,000	0.600	---	---	---	08/08/1994	19/09/2000	5058	J.BOUTARIS & SON HOLD. (PB)	0.006	---	0.006	25/08/2014	---	---	---	---	2000@0.005	---	---	2013	---	---	---	2,023.61	0.006	0.012	3535
25,179,640	0.600	---	---	---	08/08/1994	19/09/2000	5057	J.BOUTARIS & SON HOLD. SA (CB)	0.080	---	0.080	25/08/2014	---	---	---	---	---	1236@0.071	---	2013	---	---	---	2,023.61	0.041	0.084	3535
7,125,216	0.650	---	---	---	01/07/2005	14/12/1999	4955	KRE.KA SA (CR)	0.160	---	0.160	12/08/2014	---	---	---	---	2000@0.130	1998@0.170	---	2013	---	---	---	1,140.03	0.129	0.278	3573
51,081,030	1.00	---	---	---	20/08/2007	03/09/2007	4912	LAVIPHARM SA (CR)	0.140	---	0.140	28/08/2014	0.140	0.140	0.140	0.140	1000@0.123	990@0.133	---	2013	2,100	1	294.00	7,151.34	0.100	0.164	4577
322,925,288	0.300	---	---	---	23/05/2007	10/04/2000	4554	M.J. MAILLIS SA (CR)	0.115	---	0.115	29/08/2014	0.115	0.115	0.115	0.115	5390432@0.115	38000@0.120	---	2013	171,868	22	19,764.82	37,136.41	0.067	0.144	2723
4,178,856	1.58	---	---	---	21/07/2011	28/07/2004	4983	MEDICON S.A (CR)	0.700	---	0.700	08/07/2014	---	---	---	---	---	6425@0.560	28.86	2013	---	---	---	2,925.20	0.251	0.952	4535
255,459,600	0.300	---	---	---	26/06/2000	03/12/2010	4833	NEL SA (CR)	0.046	---	0.046	29/08/2014	0.037	0.037	0.046	0.046	3996@0.046	3000@0.055	---	2013	3,043	6	139.89	11,751.14	0.025	0.090	5759
20,231,328	0.600	---	---	---	15/07/2008	25/06/2004	4879	NIKAS SA (CR)	0.200	---	0.200	21/08/2014	---	---	---	---	1000@0.190	---	---	2013	---	---	---	4,046.27	0.170	0.200	3577
14,967,940	0.500	---	---	---	21/05/2008	04/01/2008	4956	PASAL DEVELOPMENT S.A. (CR)	0.200	---	0.200	28/08/2014	---	---	---	---	2000@0.160	700@0.190	---	2013	---	---	---	2,993.59	0.129	0.239	8633
18,750,000	0.300	---	---	---	02/07/2001	31/12/2012	4985	PEGASUS PUBLISHING S.A. (CR)	0.022	-18.52	0.027	28/08/2014	0.022	0.022	0.022	0.022	2984@0.022	---	---	2013	16	3	0.35	412.50	0.020	0.300	5557
24,319,250	0.300	---	---	---	09/07/2002	04/07/2007	5054	PROODEFTIKH SA (CR)	0.112	19.15	0.094	29/08/2014	0.112	0.112	0.112	0.112	3000@0.077	400@0.112	---	2013	13,500	8	1,512.00	2,723.76	0.075	0.188	2357
65,326,268	0.530	---	---	---	04/07/2007	19/07/2006	4750	SATO SA (CR)	0.158	1.93	0.155	29/08/2014	0.155	0.155	0.159	0.158	2000@0.151	7477@0.159	---	2013	25,640	13	4,054.21	10,321.55	0.100	0.250	3726
36,235,184	1.00	---	---	---	01/07/2008	30/07/2012	4961	SELONDA AQUACULTURE SA (CR)	0.104	---	0.104	27/08/2014	---	---	---	---	2200@0.087	500@0.119	---	2013	---	---	---	3,768.46	0.085	0.152	3573
7,914,480	2.50	---	---	---	23/06/2008	29/06/2011	4888	SFAKIANAKIS SA (CR)	1.15	19.17	0.965	31/07/2014	1.15	1.15	1.15	1.15	260@0.773	190@1.15	---	2013	50	1	57.50	9,101.65	0.488	1.15	5379
10,000,000	1.35	---	---	---	24/06/2008	10/05/2005	4887	SIDMA SA (CR)	0.420	---	0.420	28/08/2014	---	---	---	---	---	194@0.360	---	2013	---	---	---	4,200.00	0.240	0.479	1757
29,060,950	0.340	---	---	---	20/08/2007	24/10/2001	4884	SPIDER METAL INDUSTRY SA (CR)	0.046	---	0.046	27/08/2014	---	---	---	---	---	4000@0.046	---	2013	---	---	---	1,336.80	0.012	0.070	2757
100,793,000	0.300	---	---	---	16/07/2009	05/08/2013	5008	TELETIPOS SA (CR)	0.116	---	0.116	29/08/2014	---	---	---	---	999@0.116	---	---	2013	---	---	---	11,691.99	0.111	0.345	5553
3,229,566	0.320	---	---	---	22/06/2005	23/09/1999	4629	VARANGIS AVEPE S.A. (CR)	0.600	---	0.600	19/06/2014	---	---	---	---	---	220@0.600	---	2013	---	---	---	1,937.74	0.600	1.00	3726
16,383,428	0.300	---	---	---	25/06/2002	21/06/2013	4997	VARVARESSOS SA (CB)	0.062	---	0.062	27/08/2014	0.062	0.062	0.062	0.062	21999@0.065	---	0.09	2013	100	2	6.20	1,015.77	0.062	0.293	3763
13,191,620	0.620	---	---	---	04/08/2010	09/09/2002	4977	YALCO - CONSTANTINOU SA (CB)	0.169	---	0.169	30/06/2014	---	---	---	---	---	2899@0.169	---	2013	---	---	---	2,229.38	0.079	0.241	3722

Under Deletion

9,567,289	0.300	---	---	---	01/07/2004	19/11/2007	5062	MARAC ELECTRONICS (CR)	0.348	---	0.348	04/08/2014	---	---	---	---	---	490@0.340	---	2013	---	---	---	3,329.42	0.290	0.356	9578
40,946,303	0.360	---	---	---	18/07/2005	27/11/2007	5053	PC SYSTEMS SA (CR)	0.094	-19.66	0.117	08/07/2014	0.094	0.094	0.094	0.094	---	187849@0.094	---	2013	300	1	28.20	3,848.95	0.046	0.169	9533
766,000	2.83	---	---	---	01/07/2004	11/12/2012	4937	TRIA ALFA SA (CR)	2.29	---	2.29	25/06/2014	---	---	---	---	---	1@2.72	---	2013	---	---	---	2,084.89	1.72	3.33	3763
245,000	2.83	---	---	---	19/07/2010	11/12/2012	4938	TRIA ALFA SA (PR)	1.35	---	1.35	29/07/2014	---	---	---	---	---	1@1.61	---	2013	---	---	---	2,084.89	0.969	2.57	3763

Suspension Status

5,025,000	0.300	---	---	---	05/07/2005	14/03/2002	5023	ALSINCO S.A (CR)	0.043	---	0.043	27/11/2013	---	---	---	---	---	---	---	---	---	---	---	216.08	0.043	0.043	3763
1,750,955,549	0.600	---	---	---	19/05/2008	08/12/2011	4911	ATE (CR)	0.155	---	0.155	30/07/2012	---	---	---	---	---	---	---	---	---	---	---	271,398.11	0.155	0.155	8355
21,382,067	0.300	---	---	---	02/10/2006	15/02/2006	4628	ATERMON (CR)	0.120	---	0.120	31/03/2010	---	---	---	---	---	---	---	---	---	---	---	2,565.85	0.120	0.120	5555
105,423,498	0.510	---	---	---	01/07/2004	28/12/2005	4920	AVENIR S.A. (CR)	0.046	---	0.046	30/08/2012	---	---	---	---	---	---	---	---	---	---	---	4,849.48	0.046	0.046	5752

Number of Outstanding Securities	Nominal Value	Dividends [1]			Date of Last Coupon		Note	Shares	Closing price	% change	Previous closing price/date	Open price	Price min	Price max	Last price	Avg price	Last Bid [7]	Last Ask [7]	P/E after	Year	Volume	Trades	Transactions Value	Company Mkt Value (thou. €)	Year low	Year high	Sector[4]
		2011	2012	2013	Dividend [2]	Right																					
Suspension Status																											
33,930,000	0.300	---	---	---	03/07/2006	30/05/2001	4865	BABIS VOVOS SA (CR)	0.304	---	0.304	30/03/2012	---	---	---	---	---	---	---	---	---	---	---	10,314.72	0.304	0.304	8633
20,121,710	1.21	---	---	---	27/07/1992	12/03/2003	5002	BALKAN R.E. (CR)	0.190	---	0.190	29/08/2013	---	---	---	---	---	---	---	---	---	---	---	3,823.12	0.190	0.190	8633
1,795,140,547	1.00	---	---	---	31/05/2011	19/04/2012	4951	BANK OF CYPRUS (CR)	0.207	---	0.207	15/03/2013	---	---	---	---	---	---	---	---	---	---	---	371,594.09	0.207	0.207	8355
21,920,570	0.300	---	---	---	03/07/2007	13/12/1999	4702	CARDASSILARIS SA (CR)	0.140	---	0.140	30/11/2010	---	---	---	---	---	---	---	---	---	---	---	3,068.88	0.140	0.140	3577
54,547,634	0.500	---	---	---	25/04/2005	21/01/2009	4860	CH.TEGOPOULOS PUBL. SA (CR)	0.038	---	0.038	23/03/2012	---	---	---	---	---	---	---	---	---	---	---	2,072.81	0.038	0.038	5557
30,159,583	0.470	---	---	---	26/06/2008	29/12/2010	5047	DIAS A/C (CR)	0.050	---	0.050	26/03/2014	---	---	---	---	---	---	---	---	---	---	---	1,507.98	0.040	0.092	3573
7,847,611	1.20	---	---	---	01/08/2007	28/09/2011	4939	EDRASIS - C. PSALLIDAS SA (CR)	0.150	---	0.150	19/11/2012	---	---	---	---	---	---	---	---	---	---	---	1,177.14	0.150	0.150	2357
5,750,000	0.300	---	---	---	12/12/2008	12/12/2011	4929	ELECTRONIKI ATHINON SA (CR)	0.480	---	0.480	07/09/2012	---	---	---	---	---	---	---	---	---	---	---	2,760.00	0.480	0.480	5375
24,605,397	0.400	---	---	---	29/06/1995	27/05/2002	4651	EMPORIKOS DESMOS SA (CR)	0.080	---	0.080	28/05/2010	---	---	---	---	---	---	---	---	---	---	---	2,134.04	0.080	0.080	3722
1,182,903	0.400	---	---	---	01/07/1996	27/05/2002	4652	EMPORIKOS DESMOS SA (PR)	0.140	---	0.140	28/09/2009	---	---	---	---	---	---	---	---	---	---	---	2,134.04	0.140	0.140	3722
7,326,648	1.00	---	---	---	26/07/2006	24/07/2001	4921	FINTEXPORT SA (CR)	0.328	---	0.328	29/06/2012	---	---	---	---	---	---	---	---	---	---	---	2,403.14	0.328	0.328	3763
13,692,227	1.47	---	---	---	07/07/2006	08/10/1999	5049	HELLENIC FABRICS SA (CR)	0.117	---	0.117	31/03/2014	---	---	---	---	---	---	---	---	---	---	---	1,601.99	0.089	0.153	3763
24,619,524	0.500	---	---	---	10/10/1986	30/12/2002	4914	KERAMIA-ALLATINI (CR)	0.088	---	0.088	27/08/2012	---	---	---	---	---	---	---	---	---	---	---	2,166.52	0.088	0.088	8633
7,840,373	1.20	---	---	---	18/07/2002	05/03/2003	4765	KLONATEX SA (PR)	0.080	---	0.080	09/05/2011	---	---	---	---	---	---	---	---	---	---	---	1,453.75	0.080	0.080	3763
20,663,047	1.20	---	---	---	21/08/2000	05/03/2003	4764	KLONATEX SA (CR)	0.040	---	0.040	09/05/2011	---	---	---	---	---	---	---	---	---	---	---	1,453.75	0.040	0.040	3763
17,544,600	0.600	---	---	---	03/07/2000	01/08/2000	4868	KOYMBAS SYNERGY GROUP (CR)	0.132	---	0.132	29/03/2012	---	---	---	---	---	---	---	---	---	---	---	2,315.89	0.132	0.132	8775
15,015,000	1.60	---	---	---	01/07/2002	02/02/2000	4603	MAXIM C.M. PERTSINIDIS SA (CB)	0.100	---	0.100	30/11/2009	---	---	---	---	---	---	---	---	---	---	---	1,501.50	0.100	0.100	3763
66,937,526	0.700	---	---	---	13/08/2010	21/05/2003	5003	MICHANIKI SA (CR)	0.100	---	0.100	29/08/2013	---	---	---	---	---	---	---	---	---	---	---	9,186.78	0.100	0.100	2357
25,968,987	0.700	---	---	---	13/08/2010	21/05/2003	5004	MICHANIKI SA (PR)	0.096	---	0.096	29/08/2013	---	---	---	---	---	---	---	---	---	---	---	9,186.78	0.096	0.096	2357
13,555,100	1.00	---	---	---	08/07/2005		4576	MICROLAND COMPUTERS SA (CR)	0.640	---	0.640	14/07/2009	---	---	---	---	---	---	---	---	---	---	---	8,675.26	0.640	0.640	5379
23,463,874	0.800	---	---	---	23/05/2003	21/12/1999	4918	NEORION SA (CR)	0.125	---	0.125	28/08/2012	---	---	---	---	---	---	---	---	---	---	---	2,932.98	0.125	0.125	2753
42,501,273	0.300	---	---	---	26/06/2007	10/08/2009	4993	NUTRIART (CR)	0.049	---	0.049	21/06/2013	---	---	---	---	---	---	---	---	---	---	---	2,082.56	0.049	0.049	3577
20,210,127	1.53	---	---	---	27/06/1997	20/03/2000	5061	PARNASSOS ENTERP. (CR)	0.070	---	0.070	29/05/2014	---	---	---	---	---	---	---	---	---	---	---	1,414.71	0.065	0.172	8775
25,583,146	0.300	---	---	---	25/06/2001	03/12/2008	4723	PETZETAKIS SA (CR)	0.260	---	0.260	28/01/2011	---	---	---	---	---	---	---	---	---	---	---	6,651.62	0.260	0.260	1357
9,550,386	0.500	---	---	---	01/07/1997	12/06/2008	4626	PRAXITELIO SA (CR)	0.390	---	0.390	11/03/2010	---	---	---	---	---	---	---	---	---	---	---	4,430.09	0.390	0.390	4533
1,306,368	0.500	---	---	---	01/07/1997	12/06/2008	4627	PRAXITELIO SA (PR)	0.540	---	0.540	15/12/2009	---	---	---	---	---	---	---	---	---	---	---	4,430.09	0.540	0.540	4533
62,683,822	0.300	---	---	---	27/05/2008	09/01/2006	4830	PROTON BANK S.A. (CR)	0.180	---	0.180	07/10/2011	---	---	---	---	---	---	---	---	---	---	---	11,283.09	0.180	0.180	8355
51,334,286	0.320	---	---	---	03/07/2000	18/12/2007	4548	SAOS (CR)	0.780	---	0.780	27/03/2009	---	---	---	---	---	---	---	---	---	---	---	40,040.74	0.780	0.780	2773
26,408,040	0.300	---	---	---	01/07/1997	26/05/1999	4464	SHEET STEEL SA (CR)	0.120	---	0.120	28/11/2008	---	---	---	---	---	---	---	---	---	---	---	3,168.96	0.120	0.120	1757
60,221,300	0.400	---	---	---	01/07/2002	01/11/2010	5022	SHELMAN SA (CR)	0.080	---	0.080	19/11/2013	---	---	---	---	---	600@0.080	---	---	---	---	---	4,817.70	0.080	0.080	2353
26,262,660	0.900	---	---	---	01/07/2008	24/02/2011	4954	SPRIDER STORES (CR)	0.031	---	0.031	28/03/2013	---	---	---	---	---	---	---	---	---	---	---	814.14	0.031	0.031	5371
144,688,060	0.600	---	---	---	21/04/2008	10/03/2010	4982	T BANK (CR)	0.048	---	0.048	30/11/2011	---	---	---	---	---	---	---	---	---	---	---	6,945.03	0.048	0.048	8355
6,523,780	0.530	---	---	---	01/07/2002	06/03/2001	4971	TECHNICAL PUBLICATIONS SA (CR)	0.006	---	0.006	29/05/2013	---	---	---	---	---	---	---	---	---	---	---	39.14	0.006	0.006	5557
13,920,000	0.320	---	---	---	19/11/2001	01/08/2000	4726	TEXAPRET SA (CR)	0.080	---	0.080	23/02/2011	---	---	---	---	---	---	---	---	---	---	---	1,113.60	0.080	0.080	3763
510,840	1.00	---	---	---	15/07/2008	21/11/2013	5036	TROPEA HOLDING (CR)	2.00	---	0.020	# 30/03/2012	---	---	---	---	---	---	---	---	---	---	---	1,021.68	0.020	2.00	3722
284,465,964	3.70	---	---	---	20/06/2008	15/06/2009	4913	TT HELLENIC POSTBANK (CR)	0.168	---	0.168	30/08/2012	---	---	---	---	---	---	---	---	---	---	---	47,790.28	0.168	0.168	8355
89,616,200	0.300	---	---	---	21/08/2000	28/06/2007	4616	UNITED TEXTILES (CR)	0.050	---	0.050	25/02/2010	---	---	---	---	---	---	---	---	---	---	---	4,480.81	0.050	0.050	3763
71,683,906	0.400	---	---	---	15/06/2005	05/02/2008	4953	XATZIOANNOU (CR)	0.026	---	0.026	28/03/2013	---	---	---	---	---	---	---	---	---	---	---	1,863.78	0.026	0.026	3763

Number of Outstanding Securities	Nominal Value	Dividends [1]			Date of Last Coupon		Note	Shares	Closing price	% change	Previous closing price/date	Open price	Price min	Price max	Last price	Avg price	Last Bid [7]	Last Ask [7]	P/E after	Year	Volume	Trades	Transactions Value	Company Mkt Value (thou. €)	Year low	Year high	Sector[4]
		2011	2012	2013	Dividend [2]	Right																					

Shares' Notes

Code	Note text
()	- Adjusted dividends.
*	- Last adjusted closing price.
[1]	- Net dividends.
[2]	- The "Date of Last Coupon" for New listings refers to the date company's stocks started to trade in Athex
[3]	- The Company Market Value is referred to the number of outstanding shares
[4]	- Sectors codification can be found in Appendix A
[5]	- The Market Value refers to the total number of shares listed (including their several classes) in the exchange by the company.
[6]	- P/E greater than 100
[7]	- Last view of the Order Book before the end of the trading session
4446	- Transfer to the "Under Supervision" Category as of 20/10/2008.
4447	- Transfer to the "Under Supervision" Category as of 21/10/2008.
4464	- Suspension of trading as of 1/12/2008.
4548	- Suspension of trading as of 1/4/2009.
4554	- Transfer to the "Under Supervision" Category as of 6/4/2009.
4576	- Suspension of trading as of 14/7/2009.
4603	- Suspension of trading as of 1/12/2009.
4616	- Suspension of trading as of 25/2/2010.
4626	- Suspension of trading as of 1/4/2010.
4627	- Suspension of trading as of 1/4/2010.
4628	- Suspension of trading as of 1/4/2010.
4629	- Transfer to the Under Supervision Category as of 12/4/2010.
4651	- Suspension of trading as of 1/6/2010.
4652	- Suspension of trading as of 1/6/2010.
4690	- Transfer to Surveillance category as of 4/4/2006.
4702	- Suspension of trading as of 1/12/2010.
4723	- Suspension of trading as of 31/1/2011.
4726	- Suspension of trading as of 1/3/2011.
4750	- Transfer to the "Under Surveillance Category" from 8/4/2011.
4764	- Suspension of trading as of 20/5/2011.
4765	- Suspension of trading as of 20/5/2011.
4795	- The final gross (pre-tax) dividend is € 0.30 per share and subject to withholding tax on the full dividend amount, i.e. 0,45 per share, for those shareholders liable to withholding tax, in accordance with the applicable tax law provisions.
4808	- Suspension of trading as of 6/9/2011.
4814	- Transfer to the Low Dispersion Category as of 30/5/2011.
4815	- Transfer to the Low Dispersion Category as of 30/5/2011.
4816	- Transfer to the Low Dispersion Category as of 30/5/2011.
4817	- Transfer to the Low Dispersion Category as of 30/5/2011.
4820	- Transfer to the Low Dispersion category as of 18/4/2008.
4822	- Transfer to the Low Dispersion category as of 30/5/2011.
4823	- Transfer to the Low Dispersion category as of 4/4/2006.
4827	- Transfer to the Low Dispersion category as of 5/5/2010.
4830	- Suspension of trading as of 10/10/2011.
4833	- Transfer to Surveillance category from 6/5/2010.
4844	- Transfer to the Surveillance category from 8/4/2011.
4847	- Transfer to the Surveillance Category as of 3/7/2009.
4860	- Suspension of trading as of 30/3/2012.
4865	- Suspension of trading as of 2/4/2012.
4868	- Suspension of trading as of 2/4/2012.
4879	- Transfer to the Surveillance Category as of 10/4/2012.
4881	- Transfer to the Surveillance Category as of 10/4/2012.
4882	- Transfer to the Surveillance Category as of 10/4/2012.
4884	- Transfer to the Surveillance Category as of 10/4/2012.

Shares' Notes

Code	Note text
4885	- Transfer to the Surveillance Category as of 10/4/2012.
4886	- Transfer to the Surveillance Category as of 10/4/2012.
4887	- Transfer to the Surveillance Category as of 10/4/2012.
4888	- Transfer to the Surveillance Category as of 10/4/2012.
4911	- Lift of suspension from 30/7/2012.
4912	- Transfer to the Surveillance Category as of 31/7/2012.
4913	- Suspension of trading as of 30/8/2012.
4914	- Suspension of trading as of 31/8/2012.
4918	- Suspension of trading as of 31/8/2012.
4920	- Suspension of trading as of 31/8/2012.
4921	- Suspension of trading as of 31/8/2012.
4929	- Suspension of trading as of 1/10/2012.
4937	- Transfer to the UNDER DELETION category as of 30/11/2012.
4938	- Transfer to the UNDER DELETION category as of 30/11/2012.
4939	- Suspension of trading as of 30/11/2012.
4951	- Suspension of trading as of 19/3/2013.
4953	- Suspension of trading as of 2/4/2013.
4954	- Suspension of trading as of 2/4/2013.
4955	- Transfer to the Surveillance Category as from 5/4/2013.
4956	- Transfer to the Surveillance Category as from 5/4/2013.
4957	- Transfer to the Surveillance Category as from 5/4/2013.
4958	- Transfer to the Surveillance Category as from 5/4/2013.
4959	- Transfer to the Surveillance Category as from 5/4/2013.
4960	- Transfer to the Surveillance Category as from 5/4/2013.
4961	- Transfer to the Surveillance Category as from 5/4/2013.
4971	- Suspension of trading as of 3/6/2013.
4977	- Transfer to the "Under Surveillance Category" from 11/6/2013.
4978	- Transfer to the Under Supervision Category as of 11/6/2013.
4982	- Suspension of trading as of 1/12/2011.
4983	- Transfer to the Surveillance Category as of 5/4/2013.
4985	- Transfer to the "Under Surveillance Category" from 8/4/2011.
4986	- Transfer to the Low Dispersion category as of 30/5/2011.
4993	- Suspension of trading as of 21/6/2013 (15:18).
4997	- Transfer to the Under Supervision Category as of 21/12/2009. - The 6,870,053 new (CB) shares, resulting from the recent share capital increase through a rights issue, are not yet admitted to trading on the ATHEX.
5002	- Suspension of trading as of 30/08/2013.
5003	- Suspension of trading as of 30/08/2013.
5004	- Suspension of trading as of 30/08/2013.
5007	- Transfer to the Surveillance category, as of 11/10/2013.
5008	- Transfer to the Surveillance Category from 8/4/2011.
5022	- Suspension of trading as of 2/12/2013.
5023	- Suspension of trading as of 2/12/2013.
5031	- The 612,300 new (CR) shares, resulting from the recent share capital increase through a rights issue, are not yet admitted to trading on the ATHEX.
5033	- Transfer to the Surveillance Category as of 25/11/2011. The 97,144,575new (CR) shares, resulting from the recent share capital increase through a rights issue, are not yet admitted to trading on the ATHEX.
5036	- The company's share is under suspension of trading as of 2/4/2012. During suspension, the company proceeded and concluded a share reverse split, according to which - after the conclusion of the corporate action - the total number of the company's shares, as well as, the last closing price of 30/03/2012 were adjusted.
5046	- Transfer to the Low Dispersion category as of 8/4/2011.
5047	- Suspension of trading as of 27/3/2014.
5049	- Under suspension of trading as of 1/4/2014.
5053	- Transfer to the UNDER DELETION category as of 10/4/2014.
5054	- Transfer to the Surveillance Category as of 10/4/2014.
5055	- Transfer to the Surveillance Category as of 10/4/2014.
5056	- Transfer to the Under Supervision Category as of 14/4/2014.

Shares' Notes

Code	Note text
5057	- Transfer to the Surveillance Category as of 29/12/2011.
5058	- Transfer to the Surveillance Category as of 29/12/2011.
5059	- Transfer to the Low Dispersion category as of 2/6/2014.
5061	- Suspension of trading as of 2/6/2014.
5062	- Transfer to the UNDER DELETION category as of 4/6/2014.
5067	- Transfer to the Low Dispersion Category as of 1/9/2014.
5068	- Shares' reverse split in progress. Temporary suspension of trading: 01/09/2014. Start date of trading of the 5.000.000 (CR) shares, with adjusted start share price of € 0.760 is set at 05/09/2014.

Securities Blocks Details

Securities	Block Volume	Price	Block Trade Value	Time of approval	Note
OPAP (CR)	159,000	12.20	1,939,800.00	10:36:32	20
JUMBO SA (CR)	282,631	11.19	3,162,640.89	12:05:51	20
PIRAEUS BANK (W)	500,000	0.660	330,000.00	12:09:22	20
PIRAEUS BANK (CR)	250,000	1.48	368,750.00	16:56:56	20
FOLLI FOLLIE (CR)	12,812	31.30	401,015.60	16:57:52	20
EUROBANK ERGASIAS (CR)	2,600,000	0.323	839,800.00	17:18:09	20
NATIONAL BANK (CR)	400,000	2.63	1,052,000.00	17:19:11	20

Blocks Notes

2 - SPOT 1 or SPOT 2 Packet	11 - Total Assets > 500 bil
3 - Block with Short Selling	12 - Sell Offer through Athex
4 - Buy to Close Block	13 - Forced Sale of NMOE
6 - Simultaneous Constitution	14 - Restoration Packet
7 - Repurchase Agreement	15 - Market Maker Packet
8 - Dispersion's Achievement (Not Listed)	16 - Short Selling
9 - Dispersion's Achievement (Listed)	18 - SPOT 1 Packet
10 - Share Capital Majority of Greek State (> 50 bil)	20 - Method 6-1 Packet

Shares Rights Details

Occured date	Exercise from	Exercise until	Trading until	Rights	Price min	Price max	Closing price	Last Bid	Last Ask	Volume	Trades	Transactions Value
-----------------	------------------	-------------------	------------------	--------	--------------	--------------	------------------	----------	----------	--------	--------	-----------------------

No Rights Transactions.

Stock Borrowing

Securities	Stock Borrowing through Helex (volume)	Stock Borrowing through OTC (volume) [1]	Totals [2]
ALPHA BANK (CR)	1,544,900	71,130,619	72,675,519
ALPHA BANK (W)	---	36,300	36,300
ATE (CR)	---	69,000	69,000
BANK OF CYPRUS (CR)	---	102,899	102,899
CC HBC AG (CR)	11,900	72,576	84,476
CORINTH PIPEWORKS SA (CR)	200	---	200
ELLAKTOR (CR)	16,300	---	16,300
EUROBANK ERGASIAS (CR)	383,400	9,051,855	9,435,255
EUROBANK PROPERTIES REIC (CR)	13,800	42,516	56,316
EYDAP S.A. (CR)	20,700	---	20,700
FOLLI FOLLIE (CR)	42,400	600,620	643,020
FOURLIS (CR)	6,700	5,243	11,943
FRIGOGLASS SA (CR)	2,800	---	2,800
GEK TERNA (CR)	5,300	---	5,300
HELLENIC EXCHANGES-A.S.E. (CR)	16,100	---	16,100
HELLENIC PETROLEUM (CR)	341,700	244,290	585,990
INTRALOT (CR)	5,000	2,000	7,000
JUMBO SA (CR)	6,900	---	6,900
LAMDA DEVELOPMENT SA (CR)	---	10,377	10,377
MARFIN INVESTMENT GROUP (CR)	30,200	728,474	758,674
METKA (CR)	4,900	---	4,900
MOTOR OIL (CR)	31,700	53,129	84,829
MYTILINEOS HOLDINGS (CR)	4,200	---	4,200
NATIONAL BANK (CR)	163,200	1,558,592	1,721,792
OPAP (CR)	69,100	14,215	83,315
OTE (CR)	189,000	195,734	384,734
P.P.A. S.A. (CR)	1,000	20	1,020
PIRAEUS BANK (CR)	739,100	18,239,205	18,978,305
PPC (CR)	126,200	24,804	151,004
TERNA ENERGY (CR)	3,100	2,000	5,100
TITAN CEMENT (CR)	59,500	1,640	61,140
TPA SA (CR)	700	---	700

Stock Borrowing Notes

[1] - The information concerning OTC Stock Borrowing Transactions is based on the statements of the Dematerialised Securities System (DSS) operators involved and refers to volumes that have been cleared and registered up until the previous working day.

Shares Forced Sales

Securities	Transaction s Volume	Number of Trades	Transactions Value	Note
No Forced Transactions.				

Forced Sales Notes

- 1 - Normal Forced Sale.
- 2 - Forced Sales of Fixed Registered Shares.
- 3 - Forced Sales of Remaining Stock Fractions.

Forced Sales Registered Shares

Securities	Start Date	End Date	Initial Volume	Remaining Volume	Date	Avg price (day)	Avg price (period)	Number of Trades	Transactions Volume	Transactions Value
------------	------------	----------	-------------------	---------------------	------	--------------------	-----------------------	---------------------	------------------------	-----------------------

No Fixed Registered Shares Forced Sales.

Forced Sales Notes

According to Decision 1/380/04.05.2008 of the Hellenic Republic Capital Market Commission, the certificated registered shares that have not been deposited to the issuer for dematerialisation, will be auctioned in the Athens Exchange by the supervising issuer. Forced sales procedure is held according to Article 99A of the Athens Exchange Rulebook. The average price of the period is calculated by dividing the Total transactions value by the Total volume and includes all the transactions made until the current date.

Exchange Traded Funds (ETFs) Characteristics

	Transactions Date (T)	Creation / Redemption	Units (T-1)	New Units (T-1)	Redemptio n Units (T-	Units (T) [1]	Fund Assets [2]	Net Unit Price	Dividen d per	Dividend Date
NBGAM ETF ΓΔ X.A.	01/09/2014	25,000	294,878	---	---	294,878	3,791,714.00	12.8586	---	27/10/2011
ALPHA ETF FTSE Athex Large Cap	01/09/2014	50,000	5,848,618	---	---	5,848,618	22,052,690.00	3.7706	0.05	01/07/2013
NBGAM ETF GREECE & TURKEY 30	01/09/2014	25,000	388,550	---	---	388,550	3,317,198.00	8.5374	---	27/10/2011

ETFs Notes

[1] - Units (T) = Units (T-1) + New Units (T-1) - Redemption Units (T-1)

[2] - The Creation / Redemption Units of T-1 are included.

Corporate Bonds

Num Listed Bonds	Nominal price	Issue price	Today's Rate	Exp. Date	Duration (years)	Note	Coupon attached		Trading	Corporate Bonds	Price min	Price max	Closing price	Previous closing price/date		Volume	Transactions Value	Last order		Date	ear min	Year max
							Common	Preferred										Price	Buy / Sell			
251,835,900	1.00	1.00	7.00	29/07/2019	5	---	1	---	1	MARFIN INVESTMENT GROUP S.A. SERIES A1 (BOND)	---	---	---	---	---	---	---	---	S	---	100.0000	100.0000
4,122,910	4.77	4.77	5.00	19/03/2015	5	---	18	---	1	MARFIN INVESTMENT GROUP S.A. (Conver to CR shar)	---	---	---	4.7760	30/07/2014	---	---	34.0000	B	29/08/2014	4.7761	94.8000
1,794,284	12.49	9.77	5.16	12/07/2015	8	---	---	---	1	NIREUS S.A. (Convertible to CR shares)	---	---	---	12.0000	29/01/2014	---	---	30.0000	B	29/08/2014	12.0000	12.0000
212,802,006	1.00	1.00	6.30	29/07/2020	7	---	5	---	1	MARFIN INVESTMENT GROUP S.A. SERIES B (BOND)	---	---	---	0.8500	23/08/2013	---	---	30.0000	B	29/08/2014	0.8500	0.8500
2,156,827	1.00	1.00	7.00	29/07/2019	6	---	5	---	1	MARFIN INVESTMENT GROUP S.A. SERIES A (BOND)	---	---	---	1.0000	23/08/2013	---	---	30.0000	B	29/08/2014	1.0000	1.0000

Corporate Bonds Notes

Transactions Volume = (Pieces) * (Nominal Price). Transactions Value = (Pieces) * (Nominal Price) * (price %) + (Accrued interest).
The price of a Bond is stated as a percentage (%) of Bond's Nominal Price.
Nominal Price in Euros (€), except if it is noted differently.

Government Bonds

Number Listed Bonds	Nominal price	Today's Rate	Accrued Interest Calc	Exp. Date [1]	Duration (years)	Note	Coupons Date	Curr. coupon value	Trading Unit	Government Bonds	Price min	Price max	Closing price	Previous closing price/date	Volume	Transactions Value	Price	Last order Buy / Sell	Date
2,658,781,973	1.00	4.30	Actual/Actual	24/02/2023	11	---	24/02	4.30	1	GGB-FXD-240223-11Y-2.000-1.00	---	---	---	---	---	---	---	---	---
2,658,781,973	1.00	4.30	Actual/Actual	24/02/2024	12	---	24/02	4.30	1	GGB-FXD-240224-12Y-2.000-1.00	---	---	---	---	---	---	---	---	---
2,658,781,973	1.00	4.30	Actual/Actual	24/02/2025	13	---	24/02	4.30	1	GGB-FXD-240225-13Y-2.000-1.00	---	---	---	---	---	---	---	---	---
2,658,781,973	1.00	4.30	Actual/Actual	24/02/2026	14	---	24/02	4.30	1	GGB-FXD-240226-14Y-2.000-1.00	---	---	---	---	---	---	---	---	---
2,658,781,973	1.00	4.30	Actual/Actual	24/02/2027	15	---	24/02	4.30	1	GGB-FXD-240227-15Y-2.000-1.00	---	---	---	---	---	---	---	---	---
2,836,034,104	1.00	4.30	Actual/Actual	24/02/2028	16	---	24/02	4.30	1	GGB-FXD-240228-16Y-2.000-1.00	---	---	---	---	---	---	---	---	---
2,836,034,104	1.00	4.30	Actual/Actual	24/02/2029	17	---	24/02	4.30	1	GGB-FXD-240229-17Y-2.000-1.00	---	---	---	---	---	---	---	---	---
2,836,034,104	1.00	4.30	Actual/Actual	24/02/2030	18	---	24/02	4.30	1	GGB-FXD-240230-18Y-2.000-1.00	---	---	---	---	---	---	---	---	---
2,836,034,104	1.00	4.30	Actual/Actual	24/02/2031	19	---	24/02	4.30	1	GGB-FXD-240231-19Y-2.000-1.00	---	---	---	---	---	---	---	---	---
2,836,034,104	1.00	4.30	Actual/Actual	24/02/2032	20	---	24/02	4.30	1	GGB-FXD-240232-20Y-2.000-1.00	---	---	---	---	---	---	---	---	---
2,836,034,104	1.00	4.30	Actual/Actual	24/02/2033	21	---	24/02	4.30	1	GGB-FXD-240233-21Y-2.000-1.00	---	---	---	---	---	---	---	---	---
2,836,034,104	1.00	4.30	Actual/Actual	24/02/2034	22	---	24/02	4.30	1	GGB-FXD-240234-22Y-2.000-1.00	---	---	---	---	---	---	---	---	---
2,836,034,104	1.00	4.30	Actual/Actual	24/02/2035	23	---	24/02	4.30	1	GGB-FXD-240235-23Y-2.000-1.00	---	---	---	---	---	---	---	---	---
2,836,034,104	1.00	4.30	Actual/Actual	24/02/2036	24	---	24/02	4.30	1	GGB-FXD-240236-24Y-2.000-1.00	---	---	---	---	---	---	---	---	---
2,836,034,104	1.00	4.30	Actual/Actual	24/02/2037	25	---	24/02	4.30	1	GGB-FXD-240237-25Y-2.000-1.00	---	---	---	---	---	---	---	---	---
2,836,034,104	1.00	4.30	Actual/Actual	24/02/2038	26	---	24/02	4.30	1	GGB-FXD-240238-26Y-2.000-1.00	---	---	---	---	---	---	---	---	---
2,836,034,104	1.00	4.30	Actual/Actual	24/02/2039	27	---	24/02	4.30	1	GGB-FXD-240239-27Y-2.000-1.00	---	---	---	---	---	---	---	---	---
2,836,034,104	1.00	4.30	Actual/Actual	24/02/2040	28	---	24/02	4.30	1	GGB-FXD-240240-28Y-2.000-1.00	---	---	---	---	---	---	---	---	---
2,836,034,104	1.00	4.30	Actual/Actual	24/02/2041	29	---	24/02	4.30	1	GGB-FXD-240241-29Y-2.000-1.00	---	---	---	---	---	---	---	---	---
2,836,034,104	1.00	4.30	Actual/Actual	24/02/2042	30	---	24/02	4.30	1	GGB-FXD-240242-30Y-2.000-1.00	---	---	---	---	---	---	---	---	---
3,000,000	1,000.00	4.75	Actual/Actual	17/04/2019	5	---	17/04	4.75	1	GGB-FXD-170419-05Y-4.750-1,000	---	---	---	---	---	---	---	---	---
1,500,000	1,000.00	3.38	Actual/Actual	17/07/2017	3	---	17/07	3.38	1	GGB-FXD-170717-03Y-3.375-1,000	---	---	---	---	---	---	---	---	---

Government Bonds Notes

Transactions Volume = (Pieces) * (Nominal Price). Transactions Value = (Pieces) * (Nominal Price) * (price %) + (Accrued interest).
The Value of current coupon for the issues with NV 0.01 euro refers to NV 100 euros
FLR: Floating Interest Rate.
[1] - The Expiration Date of the interest bearing period and the Date for coupon payment.

Bonds in Circulation	Currency / Min nominal traded Value	Coupons Payment Date	Current Coupon Value	Note	Coupon Attached	Trading Unit	Issue Date	Duration (years)	Today's Interest	A.I.C in days	Bonds	Last price of previous days	Last Outcry in Cash (euro) Price	Buy / Sell	Date	Trades in Pieces	Life min	Life Max
Bonds of International Organizations																		
1,000,000	EUR / 1000	21/07	---	---	9	1	21/07/2006	10	5.0 FLR	360	EUROPEAN INVESTMENT BANK BOND	97.50	16/04/2007	---	---	---	---	---
Corporate Bonds in Foreign Currency and Euro																		
103,746	GBP / 10	01/12	0.25	---	55	1	01/12/1930	98	2.5	360	National Mortgage Bank	2.27	05/02/1996	2.27	S	05/02/1996	---	2.27
0	GBP / 10	01/12	0.25	---	57	1	01/12/1928	100	2.5	360	National Mortgage Bank	---	---	---	---	---	---	---

Government Bonds Notes

A.I.C: Accrued Interest Calculation base.
FLR: Floating Interest Rate.
The minimum tradeable Nominal Value for all Demeterialised Government Titles is 100 Euros.

State Banks Bonds (one year maturity)

Number Listed Bonds	Nominal value	Initial Rate	Current Rate	Annual Interest	Issue Date	Note	State Banks Bonds	Trading Unit	Yearly Renewals	Last Outcry in Cash (euro) Price	Buy / Sell	Volume
342,560	135.17	2.35	3.92	0.00	31/01/2005	---	H.I.D.B.	1	10	100.00	B	---
2,446	1,182.96	4.90	2.47	29.69	31/05/2008	---	H.I.D.B.	1	7	---	---	---

Bonds Notes

The annual renewal of H.I.D.B. Bonds is free of taxes (net rate).
For Bonds issue until 29/08/2014 the accrued interest is capitalized.

Athex & ATHEXClear Members List

Member Name			Stock Market			Derivatives Market			ATHEXClear Member		
Address	Phone	Fax	Market Member	Remote Member	Market Maker	Proprietary	Market Maker	Agent	General Clearing	Direct Clearing	Non Clearing
A. SARRIS SECURITIES S.A.			✓								
6, DRAGATSANIOU STR. ATHINA	(210)-3367700	(210)-3312324									
AGRICULTURAL BANK OF GREECE S.A.							✓			✓	
, 23 PANEPISTIMIOU ATHINA	(210)-3298400	(210)-3298322									
ALPHA FINANCE INVESTMENT SERVICES S.A.			✓		✓		✓			✓	
5, MERLIN STR. ATHINA	(210)-3677400	(210)-3311193									
ALPHA BANK A.E.						✓			✓		
40, STADIOU STR ATHINA	(210)-3265546	(210)-3265811									
	(210)-3260000	(210)-3264116									
ARGUS STOCKBROKERS LTD			✓	✓							
12-14, KENNEDY AVE. S. 303 NICOSIA	(+35722)-22717000	(+35722)-22717070									
ATHENAIKI BROKERAGE FIRM S.A.			✓								
33, STADIOU STR. ATHINA	(210)-3254764	(210)-3254767									
ATLANTIC SECURITIES LIMITED			✓	✓							
37, PRODROMOU STR. NICOSIA	(+35722)-445400	(+35722)-661914									
ATLAS SECURITIES S.A			✓			✓					✓
14 - 16, VERVENON STR.& 125 MICHALAKOPOULOU STR. ATHINA	(210)-3363300	(210)-3238925									
ATTICA BANK S.A.									✓		
23, OMIROU STR. ATHINA	(210)-3669000	(210)-3669410									
54, AKADIMIAS STR. ATHINA	(210)-3390757	(210)-3646090									
AXIA VENTURES GROUP LTD			✓	✓							
10, G. KRANIDIOTI NICOSIA	+357 22 742000	+357 22 742001									
AXON SECURITIES S.A.			✓			✓					✓
48, STADIOU ATHINA	(210)-3363800	(210)-3243903									
BANK OF CYPRUS PUBLIC COMPANY LTD									✓		
170, ALEXANDRAS AVE ATHINA	(210)-6477708	(210)-6477709									
, 51,STASINOY (AG. PARASKEVI, STROVOLOS) NICOSIA	(0035722)-121883	(0035722)-336258									
BETA SECURITIES S.A.			✓		✓	✓	✓			✓	
, BRAILA & 29 ALEXANDRAS AVE ATHINA	(210)-6478900	(210)-6410139									
BNP PARIBAS SECURITIES SERVICES									✓		
94, VAS. SOFIAS AVE ATHINA	(210)-7468500	(210)-7468579									
CAPITAL SECURITIES S.A.			✓			✓					✓
58, MITROPOLEOS STR. ATHINA	(210)-3369700	(210)-3369820									
CFS SECURITIES & INVESTMENT SERVICES S.A.			✓		✓			✓		✓	
3, STADIOU STR. ATHINA	(210)-3360800	(210)-3311854									
CITIGROUP GLOBAL MARKET LTD			✓	✓							
, CITIGROUP CENTRE, CANADA SQUARE, CANARY WHART LONDON	002079864000	002079862266									
CO-OPERATIVE CENTRAL BANK LTD			✓	✓							
8, GRIGORI AFXENTIOU STR. NICOSIA	(+35722)-743300	(+35722)-672083									
CREDIT AGRICOLE CHEUVREUX S.A.				✓							
, 9 QUAI PAUL DOUMER PARIS	33 (0) 1 41 89 70 00										
CREDIT SUISSE SECURITIES (EUROPE) LIMITED			✓	✓							
, ONE CABOT SQUARE LONDON	+44 20 7888 8888	+44 20 7888 1600									
CYCLOS SECURITIES S.A.			✓		✓	✓				✓	
39, PANEPISTIMIOU STR. ATHINA	(210)-3364300	(210)-3239122									
D.A. TSEKOURAS SEC. S.A.			✓								
3, PESMAZOGLOU STR. ATHINA	(210)-3214406	(210)-3211997									
DEUTSCHE BANK A.G.			✓	✓							
70, THEODOR-HEUSS-ALLEE FRANKFURT	0049 69 910 00	0049 69 910 34 225									
DYNAMIC SECURITIES			✓					✓		✓	
6 - 10, CHAR. TRIKOUPY STR. ATHINA	(210)-3677700	(210)-3677777									
EL. PETROPOULAKIS SECURITIES S.A.			✓					✓			✓
9, ARISTIDOU STR. ATHINA	(210)-3213928	(210)-3216810									
EUROBANK EQUITIES S.A.			✓		✓		✓			✓	
10, FILELLINON STR. ATHINA	(210)-3720000	(210)-3720001									
EUROBANK ERGASIAS S.A.									✓		
8, OTHONOS STR. ATHINA	(210)-3337000	(210)-3233866									
	(210)-3337969	(210)-3245916									
EUROCORP SECURITIES S.A.			✓			✓				✓	
14, FILIKIS ETAIRIAS SQ. ATHINA	(210)-7263500	(210)-7263666									
EUOTRUST BROKERAGE S.A.			✓								
13-15, SOPHOCLEOUS STR. ATHINA	(210)-3363100	(210)-3238334									

Athex & ATHEXClear Members List

Member Name			Stock Market			Derivatives Market			ATHEXClear Member		
Address	Phone	Fax	Market Member	Remote Member	Market Maker	Proprietary	Market Maker	Agent	General Clearing	Direct Clearing	Non Clearing
EUROXX SECURITIES S.A.			✓			✓				✓	
7, PALAIOLOGOU STR. CHALANDRI	(210)-6879400	(210)-6879401									
G.A. PERVANAS SECURITIES & INVESTMENT SERVICES CO S.A.			✓			✓					✓
7 - 9, SOPHOCLEOUS STR. ATHINA	(210)-3251875	(210)-3210291									
GENERAL BANK OF GREECE S.A.									✓		
, 109-111, MESOGEION AVE. ATHINA	(210)-3288737	(210)-3288211									
87-89, ERMOY ATHINA	(210)-6976072	(210)-6976079									
GLOBAL CAPITAL SECURITIES AND FINANCIAL SERVICES LTD			✓	✓							
5, LEMESOU AVE. LEMESOS CYPRUS	(+35722)-710710	(+35722)-339332									
GUARDIAN TRUST SECURITIES S.A			✓		✓	✓					✓
15, FILELLINON STR. ATHINA	(210)-3220402	(210)-3220498									
HELLENIC AMERICAN SEC. S.A.			✓			✓					
6, EVRIPIDOU STR. ATHINA	(210)-3311100	(210)-3215968									
HELLENIC BANK (INVESTMENTS) LTD			✓	✓							
31, KYRIAKOY MATSI AVE. NICOSIA	(+35722)-500100	(+35722)-500110									
HSBC BANK PLC									✓		
109-111, MESOGION AVE ATHINA	(210)-6961507	(210)-6929310									
INDEX SECURITIES S.A.			✓								
6, DRAGATSANIOU STR. ATHINA	(210)-3213920	(210)-3213216									
INTERSEC S.A.						✓				✓	
80-88, SYGROU AVE ATHINA	(210)-9203000	(210)-9203052									
INVESTMENT BANK OF GREECE S.A.			✓		✓		✓		✓		
24B, KIFISSIAS AVE MAROUSI	(210)-8171800	(210)-8171889									
32, AIGEIALIAS MAROUSI	(210) 8173000	(210) 8173101									
J. CHR. MAVRIKIS SECURITIES S.A.			✓								
5, SOPHOCLEOUS STR. ATHINA	(210)-3213949	(210)-3217767									
KAPPA SECURITIES S.A.			✓			✓					✓
15, VALAORITOU STR. ATHINA	(210)-3610371	(210)-3641002									
KYPROU SECURITIES S.A.					✓	✓					✓
26, HALKIDONOS & FIDIPPIDOY STR. ATHINA	(210)-8701000	(210)-8701049									
LAIKI FINANCIAL SERVICES LTD			✓	✓							
26, CLR HOUSE, VIROMOS AVE. NICOSIA	(+35722)-898600	(+35722)-680953									
LEON DEPOLAS SECURITIES S.A.			✓					✓			✓
1, CHR. LADA STR. ATHINA	(210)-3213286	(210)-3211618									
MAGNA TRUST SECURITIES S.A			✓					✓			✓
9, FIDIOU STR. ATHINA	(210)-3327503	(210)-3327599									
MEGA EQUITY SECURITIES & FINANCIAL SERVICES LTD			✓	✓							
42-44, GRIBA DIGENI AV. NICOSIA	(+35722)-711711	(+35722)-711811									
MERIT SECURITIES S.A			✓		✓	✓				✓	
38, VAS. KONSTANTINOY STR. ATHINA	(210)-3671800	(210)-3671830									
MERRILL LYNCH			✓	✓							
2, KING EDWARD STREET LONDON	(+4420)-79952000	(+4420)-79954525									
METOCHIKI SECURITIES S.A.			✓								
3, G. GENNADIOY STR. ATHINA	(210)-3306700	(210)-3306709									
MIDAS BROKERAGE S.A.			✓								
5, SOPHOCLEOUS STR. ATHINA	(210)-3253203	(210)-3253205									
N. CHRYSOCHOIDIS STOCK BROKERAGE I.S.S.A.			✓					✓		✓	
7 - 9, SOPHOCLEOUS STR. ATHINA	(210)-3213913	(210)-3216115									
N. SARROS SECURITIES S.A.						✓					
7-9, SOPHOCLEOUS STR. ATHINA	(210)-3705600	(210)-3219992									
NATIONAL BANK OF GREECE S.A.			✓				✓		✓		
86, AIOLOU STR. ATHINA	(210)-3341000	(210)-3228187									
68, AKADIMIAS STR. ATHINA	(210)-3328817	(210)-3328678									
NBG SECURITIES S.A.			✓		✓		✓				✓
68, AKADIMIAS STR. ATHINA	(210)-3328500	(210)-3328565									
NEW PROTON BANK S.A.						✓				✓	
20, ESLIN & AMALIADOS ATHINA	210 6970000	210 6970111									
NUNTIUS SECURITIES S.A			✓					✓			✓
6, DRAGATSANIOU STR. ATHINA	(210)-3350599	(210)-3254846									
PANTELAKIS SEC. S.A.			✓			✓					✓
109-111, MESOGION AVE. ATHINA	(210)-6965000	(210)-6929550									
PEGASUS BROKERAGE FIRM S.A			✓			✓					
17, VALAORITOU STR. ATHINA	(210)-3670700	(210)-3670760									

Athex & ATHEXClear Members List

Member Name			Stock Market			Derivatives Market			ATHEXClear Member		
Address	Phone	Fax	Market Member	Remote Member	Market Maker	Proprietary	Market Maker	Agent	General Clearing	Direct Clearing	Non Clearing
PIRAEUS BANK S.A.			✓					✓	✓		
4, AMERIKIS STR. ATHINA	(210)-3335918	(210)-3254207									
4, AMERIKIS STR. ATHINA	(210)-3335000	(210)-3335079									
PIRAEUS SECURITIES S.A.			✓				✓			✓	
10, STADIOU STR. ATHINA	(210)-3354100	(210)-3233814									
PRELIUM SECURITIES & INVESTMENT SERVICES S.A.			✓			✓					✓
, KIFISSIAS AVE & 1 DAVAKI STR. ATHINA	(210)-3677000	(210)-6920403									
PROCHOICE SECURITIES LTD			✓	✓							
57, SPYROU KYPRIANOY NICOSIA	+357-24-661192	+357-24-662464									
SHARELINK SECURITIES & FINANCIAL SERVICES LTD			✓	✓							
6, ELLINAS HOUSE, THEOTOKI STR. NICOSIA	(+35722)-554200	(+35722)-750852									
SOCIETE GENERALE S.A.			✓	✓		✓					
240-242, KIFISIAS AVE. ATHINA	(210)-6790161	(210)-6728828									
17, COURS VALMY PUTEAUX - LA DEFENSE PARIS	(+33) 142134754	(+33) 142135697									
SOLIDUS SECURITIES S.A.			✓			✓				✓	
64, LOUIZIS RIANKOUR STR. ATHINA	(210)-6925500	(210)-6985421									
ST. EM. LAVRENTAKIS SECURITIES S.A.			✓			✓					✓
7 - 9, SOPHOCLEOUS STR. ATHINA	(210)-3213336	(210)-3246572									
THE CYPRUS INVESTMENT AND SECURITIES CORPORATION LIMITED (CISCO)			✓	✓							
4, EVROU STR. (EUROLIFE HOUSE) NICOSIA	(+35722)-881800	(+35722)-881801									
UBS LIMITED			✓	✓							
1, FINSBURY AVENUE LONDON	(+4420)-79013333	(+4420)-79012345									
Z.G. PORTALAKIS INVESTMENT SERVICES S.A.			✓								
8, PESMAZOGLOU STR. ATHINA	(210)-3214830	(210)-3212024									
KARAMANOF SECURITIES & INV. SERVICES S.A.			✓					✓		✓	
2, SQ. ST THEODORON ATHINA	(210)-3212947	(210)-3217088									

List of Stocks under Market Making operations

Securities	Stock Category	
	Market Maker	
	Start Market Making	End Market Making
CYPRUS POPULAR BANK (CR)	Suspension Status	
PIRAEUS SECURITIES S.A.	02/02/2013	01/01/2400
VIOHALCO (CB)	Suspension Status	
ALPHA FINANCE INVESTMENT SERVICES S.A.	11/02/2013	01/01/2400
EUROBANK EQUITIES S.A.	20/01/2013	01/01/2400
MERIT SECURITIES S.A.	13/12/2012	01/01/2400
ALPHA BANK (CR)	Main Market	
EUROBANK EQUITIES S.A.	24/10/2012	01/01/2400
HELLENIC AMERICAN SEC. S.A.	25/07/2014	01/01/2400
INVESTMENT BANK OF GREECE S.A.	08/01/2013	01/01/2400
MERIT SECURITIES S.A.	03/09/2013	01/01/2400
NBG SECURITIES S.A.	15/01/2013	01/01/2400
PIRAEUS SECURITIES S.A.	28/05/2013	01/01/2400
ALUMIL (CR)	Main Market	
BETA SECURITIES S.A.	18/07/2013	01/01/2400
ATTICA BANK S.A. (CR)	Main Market	
BETA SECURITIES S.A.	02/06/2014	01/01/2400
EUROBANK EQUITIES S.A.	25/07/2014	01/01/2400
HELLENIC AMERICAN SEC. S.A.	25/07/2014	01/01/2400
BYTE COMPUTER SA (CR)	Main Market	
MERIT SECURITIES S.A.	04/08/2013	01/01/2400
CC HBC AG (CR)	Main Market	
EUROBANK EQUITIES S.A.	23/10/2013	01/01/2400
NBG SECURITIES S.A.	29/04/2013	01/01/2400
ELLAKTOR (CR)	Main Market	
EUROBANK EQUITIES S.A.	01/06/2013	01/01/2400
INVESTMENT BANK OF GREECE S.A.	02/01/2013	01/01/2400
NBG SECURITIES S.A.	25/06/2013	01/01/2400
ELTECH ANEMOS S.A. (CR)	Main Market	
EUROBANK EQUITIES S.A.	22/07/2014	01/01/2400
ELTON SA (CR)	Main Market	
BETA SECURITIES S.A.	03/09/2013	01/01/2400
EUROBANK ERGASIAS (CR)	Main Market	
ALPHA FINANCE INVESTMENT SERVICES S.A.	08/01/2013	01/01/2400
EUROBANK EQUITIES S.A.	01/06/2013	01/01/2400
HELLENIC AMERICAN SEC. S.A.	25/07/2014	01/01/2400
INVESTMENT BANK OF GREECE S.A.	08/01/2013	01/01/2400
PIRAEUS SECURITIES S.A.	28/09/2013	01/01/2400
EUROCONSULTANTS S.A. (CR)	Main Market	
EUROBANK EQUITIES S.A.	22/07/2014	01/01/2400
FOLLI FOLLIE (CR)	Main Market	
NBG SECURITIES S.A.	17/02/2014	01/01/2400
GEK TERNA (CR)	Main Market	
INVESTMENT BANK OF GREECE S.A.	02/01/2013	01/01/2400
GR. SARANTIS SA (CR)	Main Market	
BETA SECURITIES S.A.	14/05/2013	01/01/2400
HELLENIC EXCHANGES-A.S.E. (CR)	Main Market	
EUROBANK EQUITIES S.A.	01/06/2013	01/01/2400
HELLENIC AMERICAN SEC. S.A.	01/09/2014	01/01/2400
INVESTMENT BANK OF GREECE S.A.	02/01/2013	01/01/2400
NBG SECURITIES S.A.	25/06/2013	01/01/2400
INTRACOM CONSTR. (CR)	Main Market	
MERIT SECURITIES S.A.	27/12/2012	01/01/2400
INTRALOT (CR)	Main Market	
EUROBANK EQUITIES S.A.	01/06/2013	01/01/2400
INVESTMENT BANK OF GREECE S.A.	02/01/2013	01/01/2400
PIRAEUS SECURITIES S.A.	28/09/2013	01/01/2400
MARFIN INVESTMENT GROUP (CR)	Main Market	
HELLENIC AMERICAN SEC. S.A.	25/07/2014	01/01/2400
PIRAEUS SECURITIES S.A.	02/02/2013	01/01/2400
MLS MULTIMEDIA SA (CR)	Main Market	
BETA SECURITIES S.A.	18/07/2013	01/01/2400
MOTOR OIL (CR)	Main Market	
EUROBANK EQUITIES S.A.	23/10/2012	01/01/2400
HELLENIC AMERICAN SEC. S.A.	01/09/2014	01/01/2400
NBG SECURITIES S.A.	17/02/2014	01/01/2400

List of Stocks under Market Making operations

Securities	Stock Category	
	Start Market Making	End Market Making
Market Maker		
MYTILINEOS HOLDINGS (CR)	Main Market	
HELLENIC AMERICAN SEC. S.A.	25/07/2014	01/01/2400
INVESTMENT BANK OF GREECE S.A.	02/01/2013	01/01/2400
NBG SECURITIES S.A.	25/06/2013	01/01/2400
NATIONAL BANK (CR)	Main Market	
ALPHA FINANCE INVESTMENT SERVICES S.A.	08/01/2013	01/01/2400
EUROBANK EQUITIES S.A.	24/10/2012	01/01/2400
HELLENIC AMERICAN SEC. S.A.	25/07/2014	01/01/2400
INVESTMENT BANK OF GREECE S.A.	08/01/2013	01/01/2400
MERIT SECURITIES S.A.	03/09/2013	01/01/2400
NBG SECURITIES S.A.	28/02/2013	01/01/2400
PIRAEUS SECURITIES S.A.	08/09/2013	01/01/2400
OPAP (CR)	Main Market	
ALPHA FINANCE INVESTMENT SERVICES S.A.	08/01/2013	01/01/2400
EUROBANK EQUITIES S.A.	24/10/2012	01/01/2400
HELLENIC AMERICAN SEC. S.A.	25/07/2014	01/01/2400
INVESTMENT BANK OF GREECE S.A.	08/01/2013	01/01/2400
NBG SECURITIES S.A.	15/01/2013	01/01/2400
OTE (CR)	Main Market	
ALPHA FINANCE INVESTMENT SERVICES S.A.	08/01/2013	01/01/2400
EUROBANK EQUITIES S.A.	24/10/2012	01/01/2400
HELLENIC AMERICAN SEC. S.A.	25/07/2014	01/01/2400
INVESTMENT BANK OF GREECE S.A.	08/01/2013	01/01/2400
NBG SECURITIES S.A.	01/12/2012	01/01/2400
PIRAEUS SECURITIES S.A.	08/09/2013	01/01/2400
PAPOUTSANIS (CR)	Main Market	
BETA SECURITIES S.A.	25/11/2013	01/01/2400
PETROPOULOS PETROS (CR)	Main Market	
BETA SECURITIES S.A.	28/05/2013	01/01/2400
PIRAEUS BANK (CR)	Main Market	
EUROBANK EQUITIES S.A.	23/10/2012	01/01/2400
HELLENIC AMERICAN SEC. S.A.	25/07/2014	01/01/2400
INVESTMENT BANK OF GREECE S.A.	08/01/2013	01/01/2400
MERIT SECURITIES S.A.	16/09/2013	01/01/2400
NBG SECURITIES S.A.	02/06/2013	01/01/2400
PIRAEUS SECURITIES S.A.	16/02/2013	01/01/2400
PLAISIO COMPUTERS SA (CR)	Main Market	
BETA SECURITIES S.A.	05/05/2014	01/01/2400
PPC (CR)	Main Market	
ALPHA FINANCE INVESTMENT SERVICES S.A.	08/01/2013	01/01/2400
EUROBANK EQUITIES S.A.	23/10/2012	01/01/2400
HELLENIC AMERICAN SEC. S.A.	01/09/2014	01/01/2400
INVESTMENT BANK OF GREECE S.A.	08/01/2013	01/01/2400
NBG SECURITIES S.A.	26/03/2013	01/01/2400
PIRAEUS SECURITIES S.A.	28/09/2013	01/01/2400
PROFILE SA (CR)	Main Market	
EUROBANK EQUITIES S.A.	23/06/2014	01/01/2400
S.KANAKIS SA (CR)	Main Market	
BETA SECURITIES S.A.	01/10/2013	01/01/2400
TITAN CEMENT (CR)	Main Market	
EUROBANK EQUITIES S.A.	23/10/2012	01/01/2400
NBG SECURITIES S.A.	17/02/2014	01/01/2400
VIOHALCO SA/NV (CB)	Main Market	
ALPHA FINANCE INVESTMENT SERVICES S.A.	17/02/2014	01/01/2400
MERIT SECURITIES S.A.	17/03/2014	01/01/2400

Underlying Asset				Derivatives Market																		
Price max	Price min	Closing price	change	Delivery Month	Open price	Price max	Price min	Last price	Closing price	Last Bid	Last Ask	Settlement price	change	Life high	Life low	Trades	Volume	change	Value	change	Open Interest	change
FTSE/Athex Large Cap				(Trade Unit: 1 Index Point x 5€, Cash Settlement)																		
377.45	372.79	376.19	-0.12%	September 2014	377.00	377.75	372.50	376.00	377.50	5@375.50	4@376.00	377.50	-0.13%	425.00	336.00	385	2,568	-75.00%	4,812,882.50	-75.39%	45,355	0.25%
				October 2014	373.50	377.00	373.00	376.25	377.50	5@375.75	4@376.75	377.50	-0.13%	392.25	343.75	13	65	-97.88%	121,990.00	-97.91%	544	0.93%
				November 2014	---	---	---	---	376.75	1@370.25	1@384.00	376.75	-0.13%	358.75	351.00	---	---	---	---	---	21	0.00%
				December 2014	---	---	---	---	382.50	2@362.25	---	382.50	-0.13%	384.25	343.50	---	---	-100.00%	---	-100.00%	342	0.00%
				March 2015	---	---	---	---	---	---	---	---	---	---	---	---	---	---	---	---	---	---
				June 2015	---	---	---	---	---	---	---	---	---	---	---	---	---	---	---	---	---	---

Underlying Asset				Derivatives Market																		
Price max	Price min	Closing price	change	Delivery Month	Open price	Price max	Price min	Last price	Closing price	Last Bid	Last Ask	Settlement price	change	Life high	Life low	Trades	Volume	change	Value	change	Open Interest	change
ALPHA BANK (CR)				(Contract Size: 100 Securities, Physical Delivery)																		
0.667	0.643	0.667	0.15%	September 2014	0.660	0.664	0.650	0.664	0.662	10@0.660	50@0.664	0.662	0.15%	0.780	0.530	44	1,449	-60.69%	94,956.20	-61.04%	28,656	-0.10%
				December 2014	---	---	---	---	0.661	1@0.605	50@0.674	0.661	0.15%	0.775	0.615	---	---	-100.00%	---	-100.00%	3	0.00%
				March 2015	---	---	---	---	---	---	---	---	---	---	---	---	---	---	---	---	---	---
				June 2015	---	---	---	---	---	---	---	---	---	---	---	---	---	---	---	---	---	---
CC HBC AG (CR)				(Contract Size: 100 Securities, Physical Delivery)																		
17.70	17.57	17.61	-0.23%	September 2014	17.62	17.62	17.62	17.62	17.72	5@17.58	5@17.65	17.72	-0.23%	17.93	16.10	1	1	-85.71%	1,762.00	-85.82%	374	0.00%
				December 2014	---	---	---	---	---	---	---	---	---	---	---	---	---	---	---	---	---	---
				March 2015	---	---	---	---	---	---	---	---	---	---	---	---	---	---	---	---	---	---
				June 2015	---	---	---	---	---	---	---	---	---	---	---	---	---	---	---	---	---	---
CORINTH PIPEWORKS SA (CR)				(Contract Size: 100 Securities, Physical Delivery)																		
1.39	1.35	1.38	0.73%	September 2014	---	---	---	---	1.36	---	---	1.36	0.74%	1.77	1.31	---	---	---	---	---	717	0.00%
				December 2014	---	---	---	---	1.40	---	---	1.40	0.72%	1.43	1.43	---	---	---	---	---	10	0.00%
				March 2015	---	---	---	---	---	---	---	---	---	---	---	---	---	---	---	---	---	---
				June 2015	---	---	---	---	---	---	---	---	---	---	---	---	---	---	---	---	---	---
ELLAKTOR (CR)				(Contract Size: 100 Securities, Physical Delivery)																		
3.48	3.41	3.44	-1.15%	September 2014	3.47	3.47	3.40	3.43	3.43	10@3.42	1@3.49	3.43	-0.29%	4.33	3.23	16	69	-42.50%	23,715.00	-44.29%	2,633	-1.02%
				December 2014	3.50	3.50	3.50	3.50	3.47	---	1@3.53	3.47	2.36%	3.56	3.49	1	1	---	350.00	---	1	---
				March 2015	---	---	---	---	---	---	---	---	---	---	---	---	---	---	---	---	---	---
				June 2015	---	---	---	---	---	---	---	---	---	---	---	---	---	---	---	---	---	---
EUROBANK ERGASIAS (CR)				(Contract Size: 100 Securities, Physical Delivery)																		
0.326	0.317	0.323	0.00%	September 2014	0.324	0.327	0.317	0.325	0.328	50@0.323	2@0.327	0.328	0.00%	0.433	0.297	17	2,419	7.46%	77,468.20	3.84%	66,743	-2.02%
				December 2014	0.320	0.320	0.320	0.320	0.331	10@0.322	---	0.331	-0.90%	0.410	0.308	1	10	-99.23%	320.00	-99.28%	4,928	0.20%
				March 2015	0.319	0.319	0.319	0.319	0.326	---	---	0.326	0.00%	0.336	0.314	1	250	-83.33%	7,975.00	-83.62%	250	---
				June 2015	---	---	---	---	---	---	---	---	---	---	---	---	---	---	---	---	---	---
EUROBANK PROPERTIES REIC (CR)				(Contract Size: 100 Securities, Physical Delivery)																		
9.36	9.08	9.15	-0.97%	September 2014	9.20	9.25	9.15	9.15	9.10	1@9.01	5@9.21	9.10	-0.98%	9.87	7.97	5	21	2000.00%	19,318.00	2004.36%	382	2.41%
				December 2014	---	---	---	---	---	---	---	---	---	---	---	---	---	---	---	---	---	---
				March 2015	---	---	---	---	---	---	---	---	---	---	---	---	---	---	---	---	---	---
				June 2015	---	---	---	---	---	---	---	---	---	---	---	---	---	---	---	---	---	---
EYDAP S.A. (CR)				(Contract Size: 100 Securities, Physical Delivery)																		
9.44	9.29	9.33	-1.16%	September 2014	9.31	9.33	9.23	9.23	9.29	1@9.23	11@9.70	9.29	-1.17%	9.91	9.06	6	8	-74.19%	7,437.00	-74.89%	391	0.77%
				December 2014	---	---	---	---	---	---	---	---	---	---	---	---	---	---	---	---	---	---
				March 2015	---	---	---	---	---	---	---	---	---	---	---	---	---	---	---	---	---	---
				June 2015	---	---	---	---	---	---	---	---	---	---	---	---	---	---	---	---	---	---
FOLLI FOLLIE (CR)				(Contract Size: 100 Securities, Physical Delivery)																		
31.51	31.01	31.30	-0.63%	September 2014	31.27	31.30	31.08	31.28	31.07	1@31.02	2@31.38	31.07	-0.64%	34.18	25.27	7	27	-73.53%	84,337.00	-74.12%	317	-2.16%
				December 2014	---	---	---	---	---	---	1@32.19	---	---	---	---	---	---	---	---	---	---	---
				March 2015	---	---	---	---	---	---	---	---	---	---	---	---	---	---	---	---	---	---
				June 2015	---	---	---	---	---	---	---	---	---	---	---	---	---	---	---	---	---	---

Underlying Asset				Derivatives Market																		
Price max	Price min	Closing price	change	Delivery Month	Open price	Price max	Price min	Last price	Closing price	Last Bid	Last Ask	Settlement price	change	Life high	Life low	Trades	Volume	change	Value	change	Open Interest	change
FRIGOGLASS SA (CR)				(Contract Size: 100 Securities, Physical Delivery)																		
3.20	3.15	3.17	-0.94%	September 2014	3.16	3.18	3.14	3.18	3.17	4@3.18	15@3.38	3.17	-0.94%	4.18	3.10	3	3	-81.25%	948.00	-81.55%	1,135	-0.18%
				December 2014	---	---	---	---	---	10@3.10	15@3.42	---	---	---	---	---	---	---	---	---	---	---
				March 2015	---	---	---	---	---	---	---	---	---	---	---	---	---	---	---	---	---	---
				June 2015	---	---	---	---	---	---	---	---	---	---	---	---	---	---	---	---	---	---
GEK TERNA (CR)				(Contract Size: 100 Securities, Physical Delivery)																		
3.46	3.41	3.46	0.00%	September 2014	3.44	3.46	3.43	3.43	3.52	8@3.40	8@3.44	3.52	0.00%	4.24	3.17	9	45	-83.75%	15,497.00	-83.64%	17,460	-0.14%
				December 2014	---	---	---	---	3.49	---	---	3.49	0.00%	4.01	3.72	---	---	---	---	---	---	---
				March 2015	---	---	---	---	4.32	20@3.45	---	4.32	0.00%	4.07	3.43	---	---	---	---	---	7,510	0.00%
				June 2015	---	---	---	---	---	---	---	---	---	---	---	---	---	---	---	---	---	---
HELLENIC EXCHANGES-A.S.E. (CR)				(Contract Size: 103 Securities, Physical Delivery)																		
7.14	7.04	7.08	-0.28%	September 2014	7.21	7.22	7.03	7.09	7.13	1@7.06	5@7.10	7.13	-0.28%	9.22	6.70	21	171	2.40%	125,066.72	1.51%	4,741	1.13%
				December 2014	---	---	---	---	7.08	1@6.70	5@7.18	7.08	-0.28%	8.39	7.30	---	---	---	---	---	3,577	0.00%
				March 2015	---	---	---	---	---	---	---	---	---	---	---	---	---	---	---	---	---	---
				June 2015	---	---	---	---	7.23	---	---	7.23	-0.28%	7.45	7.45	---	---	---	---	---	3,000	0.00%
HELLENIC PETROLEUM (CR)				(Contract Size: 100 Securities, Physical Delivery)																		
5.58	5.47	5.48	-1.26%	September 2014	5.53	5.53	5.50	5.50	5.51	5@5.50	3@5.57	5.51	-2.30%	6.37	5.11	11	25	-70.59%	13,811.00	-71.29%	8,494	0.07%
				December 2014	---	---	---	---	5.52	3@5.48	---	5.52	-2.30%	6.29	5.13	---	---	---	---	---	---	---
				March 2015	---	---	---	---	5.52	---	---	5.52	-2.30%	6.18	5.50	---	---	---	---	---	---	---
				June 2015	---	---	---	---	---	---	---	---	---	---	---	---	---	---	---	---	---	---
INTRALOT (CR)				(Contract Size: 100 Securities, Physical Delivery)																		
1.79	1.75	1.78	0.57%	September 2014	1.78	1.78	1.78	1.78	1.81	12@1.78	23@1.80	1.81	0.56%	2.16	1.63	2	13	-70.45%	2,314.00	-70.63%	1,833	0.16%
				December 2014	---	---	---	---	---	---	---	---	---	---	---	---	---	---	---	---	---	---
				March 2015	---	---	---	---	---	---	---	---	---	---	---	---	---	---	---	---	---	---
				June 2015	---	---	---	---	---	---	---	---	---	---	---	---	---	---	---	---	---	---
JUMBO SA (CR)				(Contract Size: 100 Securities, Physical Delivery)																		
11.42	11.16	11.30	0.89%	September 2014	11.28	11.30	11.17	11.24	11.24	5@11.15	2@11.32	11.24	2.37%	13.00	9.81	12	50	-69.33%	56,226.00	-69.34%	638	-1.09%
				December 2014	---	---	---	---	---	---	---	---	---	---	---	---	---	---	---	---	---	---
				March 2015	---	---	---	---	---	---	---	---	---	---	---	---	---	---	---	---	---	---
				June 2015	---	---	---	---	---	---	---	---	---	---	---	---	---	---	---	---	---	---
MARFIN INVESTMENT GROUP (CR)				(Contract Size: 100 Securities, Physical Delivery)																		
0.406	0.393	0.403	1.00%	September 2014	0.403	0.405	0.397	0.405	0.409	50@0.403	25@0.407	0.409	0.99%	0.520	0.375	16	217	-7.66%	8,722.00	-8.80%	26,567	0.48%
				December 2014	---	---	---	---	0.411	20@0.360	---	0.411	0.98%	0.414	0.414	---	---	---	---	---	4	0.00%
				March 2015	---	---	---	---	---	---	---	---	---	---	---	---	---	---	---	---	---	---
				June 2015	---	---	---	---	---	---	---	---	---	---	---	---	---	---	---	---	---	---
METKA (CR)				(Contract Size: 100 Securities, Physical Delivery)																		
11.64	11.37	11.56	1.14%	September 2014	11.41	11.52	11.41	11.52	11.69	5@11.43	1@11.53	11.69	1.12%	14.00	10.51	9	33	83.33%	37,707.00	79.89%	654	-2.68%
				December 2014	---	---	---	---	---	4@11.37	---	---	---	---	---	---	---	---	---	---	---	---
				March 2015	---	---	---	---	---	---	---	---	---	---	---	---	---	---	---	---	---	---
				June 2015	---	---	---	---	---	---	---	---	---	---	---	---	---	---	---	---	---	---

Underlying Asset				Derivatives Market																		
Price max	Price min	Closing price	change	Delivery Month	Open price	Price max	Price min	Last price	Closing price	Last Bid	Last Ask	Settlement price	change	Life high	Life low	Trades	Volume	change	Value	change	Open Interest	change
MOTOR OIL (CR)				(Contract Size: 100 Securities, Physical Delivery)																		
8.19	7.94	7.94	-3.05%	September 2014	8.13	8.14	8.00	8.00	8.06	1@7.98	1@8.12	8.06	-1.59%	8.69	7.14	10	22	-69.44%	17,815.00	-69.71%	351	-4.10%
				December 2014	---	---	---	---	---	---	---	---	---	---	---	---	---	---	---	---	---	---
				March 2015	---	---	---	---	---	---	---	---	---	---	---	---	---	---	---	---	---	---
				June 2015	---	---	---	---	---	---	---	---	---	---	---	---	---	---	---	---	---	---
MYTILINEOS HOLDINGS (CR)				(Contract Size: 100 Securities, Physical Delivery)																		
6.24	6.14	6.14	-0.65%	September 2014	6.20	6.24	6.16	6.17	6.19	3@6.16	2@6.18	6.19	-0.32%	7.31	5.63	47	201	28.03%	124,688.00	26.66%	8,946	0.98%
				December 2014	6.19	6.20	6.19	6.20	6.18	3@6.13	2@6.25	6.18	-0.32%	7.16	5.58	2	25	-37.50%	15,484.00	-38.49%	1,425	-1.72%
				March 2015	---	---	---	---	---	---	---	---	---	---	---	---	---	---	---	---	---	---
				June 2015	---	---	---	---	---	---	---	---	---	---	---	---	---	---	---	---	---	---
NATIONAL BANK (CR)				(Contract Size: 100 Securities, Physical Delivery)																		
2.66	2.53	2.63	0.77%	September 2014	2.60	2.66	2.54	2.64	2.65	7@2.63	79@2.64	2.65	1.53%	3.03	2.07	153	2,307	-31.38%	600,455.00	-32.96%	31,216	-0.27%
				December 2014	---	---	---	---	2.73	2@2.50	79@2.66	2.73	1.49%	2.92	2.09	---	---	---	---	---	127	0.00%
				March 2015	---	---	---	---	---	---	---	---	---	---	---	---	---	---	---	---	---	---
				June 2015	---	---	---	---	---	---	---	---	---	---	---	---	---	---	---	---	---	---
OPAP (CR)				(Contract Size: 100 Securities, Physical Delivery)																		
12.30	12.10	12.20	0.91%	September 2014	12.18	12.30	12.13	12.20	12.22	2@12.19	5@12.26	12.22	0.49%	13.60	9.63	28	105	-59.30%	128,268.00	-59.30%	1,881	-1.16%
				December 2014	---	---	---	---	12.22	---	5@12.38	12.22	0.49%	13.34	10.42	---	---	---	---	---	---	---
				March 2015	---	---	---	---	---	---	---	---	---	---	---	---	---	---	---	---	---	---
				June 2015	---	---	---	---	---	---	---	---	---	---	---	---	---	---	---	---	---	---
OTE (CR)				(Contract Size: 100 Securities, Physical Delivery)																		
10.99	10.71	10.92	0.37%	September 2014	10.78	11.00	10.75	10.91	11.00	3@10.91	10@10.96	11.00	0.36%	12.84	9.21	88	476	-3.05%	518,656.00	-3.25%	12,687	-0.10%
				December 2014	---	---	---	---	11.04	---	10@11.05	11.04	0.36%	11.62	9.49	---	---	---	---	---	---	---
				March 2015	---	---	---	---	---	---	---	---	---	---	---	---	---	---	---	---	---	---
				June 2015	---	---	---	---	---	---	---	---	---	---	---	---	---	---	---	---	---	---
P.P.A. S.A. (CR)				(Contract Size: 100 Securities, Physical Delivery)																		
16.99	16.65	16.90	0.30%	September 2014	16.85	16.85	16.85	16.85	17.02	2@16.67	1@17.50	17.02	0.29%	18.99	16.10	1	1	-83.33%	1,685.00	-83.28%	473	-0.21%
				December 2014	---	---	---	---	---	---	---	---	---	---	---	---	---	---	---	---	---	---
				March 2015	---	---	---	---	---	---	---	---	---	---	---	---	---	---	---	---	---	---
				June 2015	---	---	---	---	---	---	---	---	---	---	---	---	---	---	---	---	---	---
PIRAEUS BANK (CR)				(Contract Size: 100 Securities, Physical Delivery)																		
1.52	1.45	1.48	-1.33%	September 2014	1.50	1.51	1.46	1.47	1.50	293@1.47	172@1.49	1.50	-1.32%	2.06	1.20	86	1,971	-44.51%	291,487.00	-46.49%	25,648	-0.72%
				December 2014	1.50	1.50	1.48	1.48	1.51	6@1.42	172@1.51	1.51	-1.31%	1.50	1.44	3	3	---	448.00	---	8	60.00%
				March 2015	---	---	---	---	---	---	---	---	---	---	---	---	---	---	---	---	---	---
				June 2015	---	---	---	---	---	---	---	---	---	---	---	---	---	---	---	---	---	---
PPC (CR)				(Contract Size: 100 Securities, Physical Delivery)																		
11.02	10.89	10.97	-0.72%	September 2014	11.00	11.03	10.90	10.97	11.01	5@10.96	2@11.00	11.01	-0.72%	12.65	9.70	55	314	-1.88%	344,254.00	-2.30%	4,433	0.02%
				December 2014	---	---	---	---	11.24	5@10.92	---	11.24	-0.71%	12.48	9.54	---	---	---	---	---	40	0.00%
				March 2015	---	---	---	---	11.14	---	---	11.14	-0.71%	11.28	11.08	---	---	-100.00%	---	-100.00%	40	0.00%
				June 2015	---	---	---	---	---	---	---	---	---	---	---	---	---	---	---	---	---	---

Underlying Asset				Derivatives Market																		
Price max	Price min	Closing price	change	Delivery Month	Open price	Price max	Price min	Last price	Closing price	Last Bid	Last Ask	Settlement price	change	Life high	Life low	Trades	Volume	change	Value	change	Open Interest	change
SIDENOR (CR)				(Contract Size: 100 Securities, Physical Delivery)																		
1.28	1.23	1.25	-1.58%	September 2014	---	---	---	---	1.28	1@1.25	15@1.28	1.28	-1.54%	1.77	1.23	---	---	-100.00%	---	-100.00%	1,112	0.00%
				December 2014	---	---	---	---	---	---	15@1.31	---	---	---	---	---	---	---	---	---	---	---
				March 2015	---	---	---	---	---	---	---	---	---	---	---	---	---	---	---	---	---	---
				June 2015	---	---	---	---	---	---	---	---	---	---	---	---	---	---	---	---	---	---
TERNA ENERGY (CR)				(Contract Size: 102 Securities, Physical Delivery)																		
3.69	3.61	3.62	-1.90%	September 2014	3.63	3.63	3.63	3.63	3.65	2@3.50	1@3.92	3.65	-1.88%	4.22	3.36	1	1	-66.67%	370.26	-67.99%	3,715	0.03%
				December 2014	---	---	---	---	---	---	---	---	---	---	---	---	---	---	---	---	---	---
				March 2015	---	---	---	---	---	---	---	---	---	---	---	---	---	---	---	---	---	---
				June 2015	---	---	---	---	---	---	---	---	---	---	---	---	---	---	---	---	---	---
TITAN CEMENT (CR)				(Contract Size: 100 Securities, Physical Delivery)																		
20.55	20.00	20.00	-1.48%	September 2014	20.20	20.34	19.81	19.81	20.26	1@19.81	1@20.10	20.26	-1.46%	26.66	18.23	21	44	-34.33%	88,799.00	-35.70%	669	2.45%
				December 2014	---	---	---	---	20.09	1@20.00	---	20.09	-1.47%	21.10	21.02	---	---	---	---	---	20	0.00%
				March 2015	---	---	---	---	---	---	---	---	---	---	---	---	---	---	---	---	---	---
				June 2015	---	---	---	---	---	---	---	---	---	---	---	---	---	---	---	---	---	---
VIOHALCO SA/NV (CB)				(Contract Size: 100 Securities, Physical Delivery)																		
4.10	4.02	4.04	-1.22%	September 2014	4.05	4.05	4.05	4.05	4.00	1@3.90	5@4.06	4.00	-1.23%	4.52	3.70	1	1	-80.00%	405.00	-80.15%	346	-0.29%
				December 2014	---	---	---	---	---	---	5@4.11	---	---	---	---	---	---	---	---	---	---	---
				March 2015	---	---	---	---	---	---	---	---	---	---	---	---	---	---	---	---	---	---
				June 2015	---	---	---	---	---	---	---	---	---	---	---	---	---	---	---	---	---	---

Daily Official List																	Year: 135 Trading Day No: 165																				
Section 7: Index Options																	Monday, 1 September, 2014																				
FTSE/Athex Large Cap																	(Trade Unit: 1 Index Point x 5€ - Exoerise Style: European, Cash Settlement)																				
Call Options																	Put Options																				
Exerise Price	September 2014							October 2014							Other Months		September 2014							October 2014							Other Months		Exerise Price				
	Open price	Price max	Price min	Last price	Closing price	Volume	Open Interest	Open price	Price max	Price min	Last price	Closing price	Volume	Open Interest	Volume	Open Interest	Open price	Price max	Price min	Last price	Closing price	Volume	Open Interest	Open price	Price max	Price min	Last price	Closing price	Volume	Open Interest	Volume	Open Interest					
215	-	-	-	-	162.00	-	30	-	-	-	-	-	-	-	-	-	-	-	-	-	-	-	-	-	-	-	-	-	-	-	-	215					
300	-	-	-	-	77.50	-	80	-	-	-	-	-	-	-	-	-	-	-	-	-	-	-	-	-	-	-	-	-	-	-	-	300					
310	-	-	-	-	-	-	-	-	-	-	-	-	-	-	-	-	-	-	-	-	-	-	-	-	-	-	-	-	-	-	-	310					
315	-	-	-	-	-	-	-	-	-	-	-	-	-	-	-	-	-	-	-	-	-	-	-	-	-	-	-	-	-	-	-	315					
320	-	-	-	-	-	-	-	-	-	-	-	-	-	-	-	-	-	-	-	-	0.33	-	1	-	-	-	-	-	-	-	-	320					
325	-	-	-	-	-	-	-	-	-	-	-	-	-	-	-	-	-	-	-	-	0.53	-	1	-	-	-	-	-	-	-	-	325					
330	-	-	-	-	-	-	-	-	-	-	-	-	-	-	-	-	-	-	-	-	0.81	-	52	-	-	-	-	-	-	-	-	330					
335	-	-	-	-	-	-	-	-	-	-	-	-	-	-	-	-	-	-	-	-	1.20	-	379	-	-	-	-	-	-	-	-	335					
340	-	-	-	-	39.25	-	2	-	-	-	-	-	-	-	-	-	-	-	-	-	1.70	-	129	-	-	-	-	4.90	-	4	-	340					
345	-	-	-	-	35.00	-	226	-	-	-	-	38.50	-	20	-	-	-	-	-	-	2.40	-	149	-	-	-	-	6.00	-	11	-	345					
350	-	-	-	-	30.75	-	18	-	-	-	-	-	-	-	-	-	-	-	-	-	3.40	-	687	-	-	-	-	7.40	-	21	-	350					
355	-	-	-	-	27.00	-	52	-	-	-	-	-	-	-	-	-	-	-	-	-	4.50	-	103	-	-	-	-	-	-	-	-	355					
360	-	-	-	-	23.25	-	222	-	-	-	-	28.00	-	20	-	-	-	-	-	-	5.90	-	314	-	-	-	-	10.75	-	2	-	360					
365	-	-	-	-	20.00	-	77	-	-	-	-	-	-	-	-	-	-	-	-	-	7.60	-	39	-	-	-	-	12.75	-	40	-	365					
370	-	-	-	-	17.00	-	226	-	-	-	-	22.25	-	220	-	-	-	-	-	-	9.60	-	316	-	-	-	-	14.75	-	1	-	370					
375	-	-	-	-	14.25	-	346	-	-	-	-	-	-	-	-	-	-	-	-	-	11.75	-	11	-	-	-	-	-	-	-	-	375					
380	-	-	-	-	12.00	-	1,201	-	-	-	-	17.25	-	430	-	-	-	-	-	-	14.50	-	51	-	-	-	-	19.75	-	1	-	380					
385	7.00	7.00	7.00	7.00	9.80	8	117	-	-	-	-	15.25	-	2	-	-	17.75	17.75	17.75	17.75	17.25	2	134	-	-	-	-	-	-	-	-	385					
390	-	-	-	-	8.00	-	127	-	-	-	-	-	-	-	-	-	-	-	-	-	20.50	-	98	-	-	-	-	-	-	-	-	390					
395	-	-	-	-	6.40	-	134	-	-	-	-	-	-	-	-	-	-	-	-	-	-	-	-	-	-	-	-	-	-	-	-	395					
400	-	-	-	-	5.10	-	3,713	-	-	-	-	9.90	-	2	-	-	-	-	-	-	-	-	-	-	-	-	-	-	-	-	-	400					
405	-	-	-	-	-	-	-	-	-	-	-	-	-	-	-	-	-	-	-	-	-	-	-	-	-	-	-	-	-	-	-	405					
410	-	-	-	-	3.10	-	11	-	-	-	-	-	-	-	-	-	-	-	-	-	-	-	-	-	-	-	-	-	-	-	-	410					
415	-	-	-	-	-	-	-	-	-	-	-	-	-	-	-	-	-	-	-	-	-	-	-	-	-	-	-	-	-	-	-	415					
420	-	-	-	-	1.80	-	15	-	-	-	-	-	-	-	-	-	-	-	-	-	-	-	-	-	-	-	-	-	-	-	-	420					
425	-	-	-	-	-	-	-	-	-	-	-	-	-	-	-	-	-	-	-	-	-	-	-	-	-	-	-	-	-	-	-	425					
430	-	-	-	-	1.00	-	290	-	-	-	-	-	-	-	-	-	-	-	-	-	-	-	-	-	-	-	-	-	-	-	-	430					
435	-	-	-	-	0.76	-	136	-	-	-	-	-	-	-	-	-	-	-	-	-	-	-	-	-	-	-	-	-	-	-	-	435					
440	-	-	-	-	0.56	-	400	-	-	-	-	-	-	-	-	-	-	-	-	-	63.00	-	5	-	-	-	-	-	-	-	-	-	440				
445	-	-	-	-	-	-	-	-	-	-	-	-	-	-	-	-	-	-	-	-	-	-	-	-	-	-	-	-	-	-	-	445					
450	-	-	-	-	-	-	-	-	-	-	-	-	-	-	-	-	-	-	-	-	72.50	-	35	-	-	-	-	-	-	-	-	450					
455	-	-	-	-	-	-	-	-	-	-	-	-	-	-	-	-	-	-	-	-	-	-	-	-	-	-	-	-	-	-	-	455					
460	-	-	-	-	-	-	-	-	-	-	-	-	-	-	-	-	-	-	-	-	-	-	-	-	-	-	-	-	-	-	-	460					
465	-	-	-	-	-	-	-	-	-	-	-	-	-	-	-	-	-	-	-	-	-	-	-	-	-	-	-	-	-	-	-	465					
Totals:							8	7,423								0	694	0	0	2							2,504	0							80	0	0
Nominal Transactions Value:							15,400.00							0.00							0.00	3,850.00							0.00							0.00	
Number of Trades:							1							0							0	1							0							0	

Hellenic Exchanges – Athens Stock Exchange S.A.

Market Operation Division - Information Services Dept.

Section 7, 1/2

FTSE/Athex Large Cap

(Trade Unit: 1 Index Point x 5€ - Exoercise Style: European, Cash Settlement)

Call Options																	Put Options																				
Exerise Price	September 2014							October 2014							Other Months			September 2014										October 2014							Other Months		
	Open price	Price max	Price min	Last price	Closing price	Volume	Open Interest	Open price	Price max	Price min	Last price	Closing price	Volume	Open Interest	Volume	Open Interest	Open price	Price max	Price min	Last price	Closing price	Volume	Open Interest	Open price	Price max	Price min	Last price	Closing price	Volume	Open Interest	Volume	Open Interest	Exerise Price				

ALPHA BANK (CR)

(Contract Size: 100 Securities, Exercise Style: American, Physical Delivery)

Call Options																	Put Options																		
Exerise Price	September 2014							October 2014							Other Months		September 2014							October 2014							Other Months		Exerise Price		
	Open price	Price max	Price min	Last price	Closing price	Volume	Open Interest	Open price	Price max	Price min	Last price	Closing price	Volume	Open Interest	Volume	Open Interest	Open price	Price max	Price min	Last price	Closing price	Volume	Open Interest	Open price	Price max	Price min	Last price	Closing price	Volume	Open Interest	Volume	Open Interest			
0.100							-	-							-	-									-	-									0.100
0.200							-	-							-	-									-	-									0.200
0.300							-	-							-	-									-	-									0.300
0.400							-	-							-	-									-	-									0.400
0.450							-	-							-	-									-	-									0.450
0.500							-	-							-	-									-	-									0.500
0.550							-	-							-	-									-	-									0.550
0.600							-	-							-	-									-	-									0.600
0.650							-	-							-	-									-	-									0.650
0.700							-	-							-	-									-	-									0.700
0.750							-	-							-	-									-	-									0.750
0.800							-	-							-	-									-	-									0.800
0.850							-	-							-	-									-	-									0.850
0.900							-	-							-	-									-	-									0.900
0.950							-	-							-	-									-	-									0.950
1.00							-	-							-	-									-	-									1.00
1.10							-	-							-	-									-	-									1.10
Totals:						0	0							0	0	0	0							0	0							0	0		
Nominal Transactions Value:						0.00								0.00		0.00								0.00								0.00			
Number of Trades:						0								0		0								0								0			

NATIONAL BANK (CR)

(Contract Size: 100 Securities, Exercise Style: American, Physical Delivery)

Call Options																	Put Options																																	
September 2014																	October 2014																	Other Months																
Exerise Price	Open price	Price max	Price min	Last price	Closing price	Volume	Open Interest	Open price	Price max	Price min	Last price	Closing price	Volume	Open Interest	Volume	Open Interest	Open price	Price max	Price min	Last price	Closing price	Volume	Open Interest	Open price	Price max	Price min	Last price	Closing price	Volume	Open Interest	Volume	Open Interest	Exerise Price																	
1.80						-	-																-	-									1.80																	
1.90						-	-																-	-									1.90																	
2.00						-	-																-	-									2.00																	
2.10						-	-																-	-									2.10																	
2.20						-	-																-	-									2.20																	
2.30						-	-																-	-									2.30																	
2.40						-	-																-	-									2.40																	
2.50						-	-																-	-									2.50																	
2.60						-	-																-	-									2.60																	
2.70					0.073	-	300																-	-									2.70																	
2.80	0.050	0.051	0.050	0.051	0.041	1,050	1,050																-	-									2.80																	
2.90						-	-																-	-									2.90																	
3.00						-	-																-	-									3.00																	
3.10						-	-																-	-									3.10																	
3.20						-	-																-	-									3.20																	
3.30						-	-																-	-									3.30																	
3.40						-	-																-	-									3.40																	
3.60						-	-																-	-									3.60																	
3.80						-	-																-	-									3.80																	
4.00						-	-																-	-									4.00																	
4.40						-	-																-	-									4.40																	
4.80						-	-																-	-									4.80																	
5.20						-	-																-	-									5.20																	
5.60						-	-																-	-									5.60																	
Totals:						1,050	1,350							0	0	0	0							0	200							0	0																	
Nominal Transactions Value:						294,000.00						0.00	0.00							0.00	0.00			0.00	0.00																									
Number of Trades:						13						0	0							0	0																													

OPAP (CR)

(Contract Size: 100 Securities, Exercise Style: American, Physical Delivery)

Call Options																	Put Options																			
September 2014																	October 2014																	Other Months		
Exerise Price	Open price	Price max	Price min	Last price	Closing price	Volume	Open Interest	Open price	Price max	Price min	Last price	Closing price	Volume	Open Interest	Volume	Open Interest	Open price	Price max	Price min	Last price	Closing price	Volume	Open Interest	Open price	Price max	Price min	Last price	Closing price	Volume	Open Interest	Volume	Open Interest	Exerise Price			
6.40						-	-							-	-							-	-						-	-		6.40				
6.80						-	-							-	-							-	-						-	-		6.80				
7.20						-	-							-	-							-	-						-	-		7.20				
7.60						-	-							-	-							-	-						-	-		7.60				
8.00						-	-							-	-							-	-						-	-		8.00				
8.40						-	-							-	-							-	-						-	-		8.40				
8.80						-	-							-	-							-	-						-	-		8.80				
9.20						-	-							-	-							-	-						-	-		9.20				
9.60						-	-							-	-							-	-						-	-		9.60				
10.00						-	-							-	-							-	-						-	-		10.00				
10.50						-	-							-	-							-	-						-	-		10.50				
11.00						-	-							-	-							-	-						-	-		11.00				
11.50						-	-							-	-							-	-						-	-		11.50				
12.00						-	-							-	-							-	-						-	-		12.00				
12.50						-	-							-	-							-	-						-	-		12.50				
13.00						-	-							-	-							-	-						-	-		13.00				
13.50						-	-							-	-							-	-						-	-		13.50				
14.00						-	-							-	-							-	-						-	-		14.00				
14.50						-	-							-	-							-	-						-	-		14.50				
15.00						-	-							-	-							-	-						-	-		15.00				
16.00						-	-							-	-							-	-						-	-		16.00				
17.00						-	-							-	-							-	-						-	-		17.00				
18.00						-	-							-	-							-	-						-	-		18.00				
Totals:						0	0							0	0	0	0							0	0							0	0			
Nominal Transactions Value:						0.00								0.00		0.00							0.00								0.00	0				
Number of Trades:						0								0		0							0								0	0				

OTE (CR)

(Contract Size: 100 Securities, Exercise Style: American, Physical Delivery)

Call Options																Put Options																	
September 2014																October 2014																Other Months	
Exerise Price	Open price	Price max	Price min	Last price	Closing price	Volume	Open Interest	Open price	Price max	Price min	Last price	Closing price	Volume	Open Interest	Volume	Open Interest	Open price	Price max	Price min	Last price	Closing price	Volume	Open Interest	Open price	Price max	Price min	Last price	Closing price	Volume	Open Interest	Volume	Open Interest	Exerise Price
5.60						-	-						-	-								-	-					-	-			5.60	
6.00						-	-						-	-								-	-					-	-			6.00	
6.40						-	-						-	-								-	-					-	-			6.40	
6.80						-	-						-	-								-	-					-	-			6.80	
7.20						-	-						-	-								-	-					-	-			7.20	
7.60						-	-						-	-								-	-					-	-			7.60	
8.00						-	-						-	-								-	-					-	-			8.00	
8.40						-	-						-	-								-	-					-	-			8.40	
8.80						-	-						-	-								-	-					-	-			8.80	
9.20						-	-						-	-								-	-					-	-			9.20	
9.40						-	-						-	-								-	-					-	-			9.40	
9.60						-	-						-	-								-	-					-	-			9.60	
9.80						-	-						-	-								-	-					-	-			9.80	
10.00						-	-						-	-								-	-					-	-			10.00	
10.50					0.591	-	5						-	-								-	-					-	-			10.50	
11.00					0.305	-	2						-	-								-	-					-	-			11.00	
11.50						-	-						-	-								-	-					-	-			11.50	
12.00						-	-						-	-								-	-					-	-			12.00	
12.50						-	-						-	-								-	-					-	-			12.50	
13.00						-	-						-	-								-	-					-	-			13.00	
13.50						-	-						-	-								-	-					-	-			13.50	
14.00						-	-						-	-								-	-					-	-			14.00	
15.00						-	-						-	-								-	-					-	-			15.00	
16.00						-	-						-	-								-	-					-	-			16.00	
Totals:						0	7							0	0	0	0							0	0							0	0
Nominal Transactions Value:						0.00								0.00		0.00								0.00								0.00	
Number of Trades:						0								0		0								0								0	

PIRAEUS BANK (CR)

(Contract Size: 100 Securities, Exercise Style: American, Physical Delivery)

Call Options																	Put Options																
September 2014																	October 2014																
Other Months																	September 2014																
Other Months																	October 2014																
Exerise Price	Open price	Price max	Price min	Last price	Closing price	Volume	Open Interest	Open price	Price max	Price min	Last price	Closing price	Volume	Open Interest	Volume	Open Interest	Open price	Price max	Price min	Last price	Closing price	Volume	Open Interest	Open price	Price max	Price min	Last price	Closing price	Volume	Open Interest	Volume	Open Interest	Exerise Price
0.800						-	-						-	-								-	-					-	-			0.800	
0.900						-	-						-	-								-	-					-	-			0.900	
1.00						-	-						-	-								-	-					-	-			1.00	
1.10						-	-						-	-								-	-					-	-			1.10	
1.20						-	-						-	-								-	-					-	-			1.20	
1.30						-	-						-	-								-	-					-	-			1.30	
1.35						-	-						-	-								-	-					-	-			1.35	
1.40						-	-						-	-								-	-					-	-			1.40	
1.45						-	-						-	-								-	-					-	-			1.45	
1.50						-	-						-	-								-	-					-	-			1.50	
1.55						-	-						-	-								-	-					-	-			1.55	
1.60						-	-						-	-								-	-					-	-			1.60	
1.65						-	-						-	-								-	-					-	-			1.65	
1.70						-	-						-	-								-	-					-	-			1.70	
1.75						-	-						-	-								-	-					-	-			1.75	
1.80						-	-						-	-								-	-					-	-			1.80	
1.85						-	-						-	-								-	-					-	-			1.85	
1.90						-	-						-	-								-	-					-	-			1.90	
1.95						-	-						-	-								-	-					-	-			1.95	
2.00						-	-						-	-								-	-					-	-			2.00	
2.10						-	-						-	-								-	-					-	-			2.10	
2.20						-	-						-	-								-	-					-	-			2.20	
2.30						-	-						-	-								-	-					-	-			2.30	
2.40						-	-						-	-								-	-					-	-			2.40	
2.60						-	-						-	-								-	-					-	-			2.60	
2.80						-	-						-	-								-	-					-	-			2.80	
Totals:						0	0							0	0	0	0							0	0							0	0
Nominal Transactions Value:						0.00								0.00		0.00							0.00								0.00	0.00	
Number of Trades:						0								0		0							0								0	0	

PPC (CR)

(Contract Size: 100 Securities, Exercise Style: American, Physical Delivery)

Call Options																	Put Options																			
September 2014																	October 2014																			
Other Months																	September 2014																			
October 2014																	October 2014																			
Exercise Price	Open price	Price max	Price min	Last price	Closing price	Volume	Open Interest	Open price	Price max	Price min	Last price	Closing price	Volume	Open Interest	Volume	Open Interest	Open price	Price max	Price min	Last price	Closing price	Volume	Open Interest	Open price	Price max	Price min	Last price	Closing price	Volume	Open Interest	Volume	Open Interest	Exercise Price			
4.80					6.18	-	30									-	-									-	-									4.80
6.40						-	-									-	-									-	-									6.40
6.80						-	-									-	-									-	-									6.80
7.20						-	-									-	-									-	-									7.20
7.60						-	-									-	-									-	-									7.60
8.00						-	-									-	-									-	-									8.00
8.40						-	-									-	-									-	-									8.40
8.80						-	-									-	-									-	-									8.80
9.20						-	-									-	-									-	-									9.20
9.40						-	-									-	-									-	-									9.40
9.60						-	-									-	-									-	-									9.60
9.80						-	-									-	-									-	-									9.80
10.00						-	-									-	-									-	-									10.00
10.50						-	-									-	-									-	-									10.50
11.00						-	-									-	-									-	-									11.00
11.50						-	-									-	-									-	-									11.50
12.00						-	-									-	-									-	-									12.00
12.50						-	-									-	-									-	-									12.50
13.00						-	-									-	-									-	-									13.00
13.50						-	-									-	-									-	-									13.50
14.00						-	-									-	-									-	-									14.00
15.00						-	-									-	-									-	-									15.00
16.00						-	-									-	-									-	-									16.00
Totals:						0	30							0	0	0	0							0	0							0	0	0	0	0
Nominal Transactions Value:						0.00								0.00		0.00							0.00								0.00					
Number of Trades:						0								0		0							0								0					

PPC (CR)

(Contract Size: 100 Securities, Excercise Style: American, Physical Delivery)

Call Options																Put Options																	
Exerise Price	September 2014							October 2014							Other Months		September 2014								October 2014						Other Months		Exerise Price
	Open price	Price max	Price min	Last price	Closing price	Volume	Open Interest	Open price	Price max	Price min	Last price	Closing price	Volume	Open Interest	Volume	Open Interest	Open price	Price max	Price min	Last price	Closing price	Volume	Open Interest	Open price	Price max	Price min	Last price	Closing price	Volume	Open Interest	Volume	Open Interest	

Securities	Type[4]	Stock Repo [1]						Stock Reverse Repo [2]								Repurchase Agreements [3]							
		Trans. price	chg.	Trades	Volume	Transactions Value	Open Interest[5]	Price max	Price mii	Last price	Last Ask	Trades	Volume	Transactions Value	Open Interest[5]	Price max	Price min	Last price	Last Ask	Trades	Volume	Transactions Value	Open Interest[5]
AEGEAN AIRLINES (CR)	SR RA	100.00	---	---	---	---	64	---	---	---	32@3%	---	---	---	---	---	---	---	---	---	---	---	---
ALPHA BANK (CR)	SR RA	100.00	-0.04	---	---	---	121,857	---	---	---	50683@3%	---	---	---	14,431	---	---	---	---	---	---	1,018	
ALPHA ETF FTSE Athex Large Cap	SR RA	100.00	---	---	---	---	---	---	---	---	---	---	---	---	---	---	---	---	---	---	---	3,554	
ALUMIL (CR)	RA	---	---	---	---	---	---	---	---	---	---	---	---	---	---	---	---	---	---	---	---	---	
ATHENS MEDICAL CENTER SA (CR)	SR RA	100.00	---	---	---	---	434	---	---	---	217@3%	---	---	---	---	---	---	---	---	---	---	---	
ATTICA BANK S.A. (CR)	SR RA	100.00	---	---	---	---	910	---	---	---	728@10%	---	---	---	---	---	---	---	---	---	---	---	
AUTOHELLAS SA (CR)	SR RA	100.00	---	---	---	---	16	---	---	---	6@3%	---	---	---	---	---	---	---	---	---	---	---	
BIOKARPET S.A.(CR)	RA	---	---	---	---	---	---	---	---	---	---	---	---	---	---	---	---	---	---	---	---	---	
CC HBC AG (CR)	SR RA	100.32	-3.09	---	---	---	160	---	---	---	8@3.5%	---	---	---	91	---	---	---	---	---	---	28	
CENTRIC HOLDINGS (CR)	SR RA	100.00	---	---	---	---	200	---	---	---	151@7.1%	---	---	---	---	---	---	---	---	---	---	---	
CORINTH PIPEWORKS SA (CR)	SR RA	100.00	---	---	---	---	161	---	---	---	78@3%	---	---	---	2	---	---	---	---	---	---	---	
CRETE PLASTICS SA (CR)	SR RA	100.00	---	---	---	---	---	---	---	---	---	---	---	---	---	---	---	---	---	---	---	---	
CYCLON HELLAS SA (CR)	SR RA	100.00	---	---	---	---	---	---	---	---	---	---	---	---	---	---	---	---	---	---	---	---	
DROMEAS SA (CR)	SR RA	100.00	---	---	---	---	---	---	---	---	---	---	---	---	---	---	---	---	---	---	---	---	
ELGEKA SA (CR)	SR RA	100.00	---	---	---	---	10	---	---	---	---	---	---	---	---	---	---	---	---	---	---	---	
ELLAKTOR (CR)	SR RA	100.00	-0.07	---	---	---	2,075	3.00%	3.00%	3.00%	883@3%	1	5	1,720.0	154	---	---	---	---	---	---	14	
ELTON SA (CR)	SR RA	100.00	---	---	---	---	---	---	---	---	---	---	---	---	---	---	---	---	---	---	---	---	
ELVAL SA. (CB)	SR RA	100.00	---	---	---	---	368	---	---	---	184@3%	---	---	---	---	---	---	---	---	---	---	---	
EUROBANK ERGASIAS (CR)	SR RA	100.01	-0.02	---	---	---	19,480	---	---	---	10227@5.6%	---	---	---	789	---	---	---	---	---	---	36	
EUROBANK PROPERTIES REIC (CR)	SR RA	100.03	-0.44	---	---	---	1,135	---	---	---	438@3%	---	---	---	129	---	---	---	---	---	---	9	
EUROPEAN RELIANCE INSUR. (CR)	SR RA	100.00	---	---	---	---	---	---	---	---	---	---	---	---	---	---	---	---	---	---	---	---	
EYDAP S.A. (CR)	SR RA	100.12	-1.63	---	---	---	362	---	---	---	49@3.5%	---	---	---	175	---	---	---	---	---	---	32	
FOLLI FOLLIE (CR)	SR RA	100.30	-2.78	---	---	---	1,128	3.00%	3.00%	3.00%	137@3%	5	10	31,300.0	427	---	---	---	---	---	---	7	
FOURLIS (CR)	SR RA	100.08	-0.69	---	---	---	109	---	---	---	4@4%	---	---	---	67	---	---	---	---	---	---	---	
FRIGOGLASS SA (CR)	SR RA	100.05	-0.35	---	---	---	70	---	---	---	7@3%	---	---	---	28	---	---	---	---	---	---	---	
GEK TERNA (CR)	SR RA	100.01	-0.04	---	---	---	641	---	---	---	267@3%	---	---	---	53	---	---	---	---	---	---	---	
GR. SARANTIS SA (CR)	SR RA	100.00	---	---	---	---	60	---	---	---	30@3%	---	---	---	---	---	---	---	---	---	---	---	
HALKOR SA (CB)	SR RA	100.00	---	---	---	---	505	---	---	---	331@4%	---	---	---	---	---	---	---	---	---	---	---	
HELLENIC EXCHANGES-A.S.E. (CR)	SR RA	100.01	-0.04	---	---	---	5,930	3.00%	3.00%	3.00%	2729@3%	1	75	53,100.0	236	3.00%	3.00%	3.00%	---	1	75	53,100.0	75
HELLENIC PETROLEUM (CR)	SR RA	100.20	-1.13	---	---	---	2,459	---	---	---	2@10%	---	---	---	1,485	---	---	---	---	---	---	1,452	
HYGEIA SA (CR)	SR RA	100.00	---	---	---	---	500	---	---	---	354@6.3%	---	---	---	---	---	---	---	---	---	---	---	
IASO SA (CR)	SR RA	100.00	---	---	---	---	246	---	---	---	123@3%	---	---	---	---	---	---	---	---	---	---	---	

Stock Lending Notes

- [1] - Stock Repo: A Contract for selling stocks to HELEX with a Repurchase Right (According to ATHEX BoD Resolution No 17)
- [2] - Stock Reverse Repo: A Contract for buying stocks from HELEX with a Resell Right. (According to ATHEX BoD Resolution No 18)
- [3] - Standardized Repurchase Agreements: A Contract that constitutes a standardized agreement for the purchase or sale of shares, with repurchase or resell pact (According to ATHEX BoD Resolution No 20)
- [4] - Type of products is divided into SR: Stock Repo or Stock Reverse Repo, and RA: Repurchase Agreements.
- [5] - Open Interest in all Series (both tradeable or non-tradeable).

Securities	Type[4]	Stock Repo [1]						Stock Reverse Repo [2]								Repurchase Agreements [3]							
		Trans. price	chg.	Trades	Volume	Transactions Value	Open Interest[5]	Price max	Price min	Last price	Last Ask	Trades	Volume	Transactions Value	Open Interest[5]	Price max	Price min	Last price	Last Ask	Trades	Volume	Transactions Value	Open Interest[5]
IKTINOS HELLAS SA (CR)	SR RA	100.00	---	---	---	---	10	---	---	---	---	---	---	---	---	---	---	---	---	---	---	---	---
INFORM P. LYKOS SA (CR)	SR RA	100.00	---	---	---	---	3	---	---	---	---	---	---	---	---	---	---	---	---	---	---	---	---
INTRACOM CONSTR. (CR)	SR RA	100.00	---	---	---	---	7	---	---	---	---	---	---	---	---	---	---	---	---	---	---	---	---
INTRACOM HOLDINGS (CR)	SR RA	100.00	---	---	---	---	665	---	---	---	332@3%	---	---	---	---	---	---	---	---	---	---	---	---
INTRALOT (CR)	SR RA	100.00	-0.02	---	---	---	1,039	3.00%	3.00%	3.00%	420@3%	1	49	8,722.0	99	---	---	---	---	---	---	---	---
J & P - AVAX SA (CR)	SR RA	100.00	---	---	---	---	223	---	---	---	111@3%	---	---	---	---	---	---	---	---	---	---	---	---
JUMBO SA (CR)	SR RA	100.01	-0.07	---	---	---	1,345	---	---	---	614@3%	---	---	---	58	---	---	---	---	---	---	---	11
KARATZIS SA (CR)	RA	---	---	---	---	---	---	---	---	---	---	---	---	---	---	---	---	---	---	---	---	---	---
KLEEMAN HELLAS SA (CR)	SR RA	100.00	---	---	---	---	982	---	---	---	491@3%	---	---	---	---	---	---	---	---	---	---	---	---
KLOUKINAS - LAPPAS SA (CR)	SR RA	100.00	---	---	---	---	---	---	---	---	---	---	---	---	---	---	---	---	---	---	---	---	---
KRI-KRI S.A. (CR)	SR RA	100.00	---	---	---	---	550	---	---	---	275@3%	---	---	---	---	---	---	---	---	---	---	---	---
LAMDA DEVELOPMENT SA (CR)	SR RA	100.00	---	---	---	---	---	---	---	---	---	---	---	---	---	---	---	---	---	---	---	---	---
LOULIS MILLS SA (CR)	SR RA	100.00	---	---	---	---	---	---	---	---	---	---	---	---	---	---	---	---	---	---	---	---	---
MARFIN INVESTMENT GROUP (CR)	SR RA	100.00	-0.03	---	---	---	2,183	---	---	---	1197@4.6%	---	---	---	270	---	---	---	---	---	---	---	---
METKA (CR)	SR RA	100.06	-0.57	---	---	---	617	---	---	---	264@3%	---	---	---	44	---	---	---	---	---	---	---	5
MLS MULTIMEDIA SA (CR)	SR RA	100.00	---	---	---	---	109	---	---	---	54@3%	---	---	---	---	---	---	---	---	---	---	---	---
MOTOR OIL (CR)	SR RA	100.03	-0.23	---	---	---	2,209	3.00%	3.00%	3.00%	792@3%	1	5	3,970.0	312	---	---	---	---	---	---	---	10
MYTILINEOS HOLDINGS (CR)	SR RA	100.00	-0.01	---	---	---	3,562	3.00%	3.00%	3.00%	1746@3%	1	4	2,456.0	36	---	---	---	---	---	---	---	10
NATIONAL BANK (CR)	SR RA	100.01	-0.18	---	---	---	12,082	3.00%	3.00%	3.00%	1143@3%	2	245	64,435.0	1,867	3.00%	3.00%	3.00%	---	1	201	52,863.0	201
NBGAM ETF	SR RA	100.00	---	---	---	---	---	---	---	---	---	---	---	---	---	---	---	---	---	---	---	---	---
NBGAM ETF GREECE & TURKEY 30	SR RA	100.00	---	---	---	---	---	---	---	---	---	---	---	---	---	---	---	---	---	---	---	---	---
NIREFS SA (CR)	SR RA	100.00	---	---	---	---	346	---	---	---	276@10%	---	---	---	---	---	---	---	---	---	---	---	---
OPAP (CR)	SR RA	100.02	-0.23	---	---	---	3,782	---	---	---	1646@3%	---	---	---	245	---	---	---	---	---	---	---	446
OTE (CR)	SR RA	100.07	-0.12	---	---	---	4,638	3.00%	3.00%	3.00%	979@3%	1	151	164,892.0	1,340	---	---	---	---	---	---	---	712
P.P.A. S.A. (CR)	SR RA	100.48	-3.89	---	---	---	14	---	---	---	---	---	---	---	10	---	---	---	---	---	---	---	---
PAPOUTSANIS (CR)	SR RA	100.00	---	---	---	---	---	---	---	---	---	---	---	---	---	---	---	---	---	---	---	---	---
PETROPOULOS PETROS (CR)	RA	---	---	---	---	---	---	---	---	---	---	---	---	---	---	---	---	---	---	---	---	---	---
PIRAEUS BANK (CR)	SR RA	100.03	-0.02	---	---	---	11,538	---	---	---	186@4%	---	---	---	3,033	---	---	---	---	---	---	---	---
PLAISIO COMPUTERS SA (CR)	RA	---	---	---	---	---	---	---	---	---	---	---	---	---	---	---	---	---	---	---	---	---	---
PPC (CR)	SR RA	100.02	-0.15	---	---	---	1,938	3.00%	3.00%	3.00%	686@3%	1	142	155,774.0	283	---	---	---	---	---	---	---	1,123
PROFILE SA (CR)	RA	---	---	---	---	---	---	---	---	---	---	---	---	---	---	---	---	---	---	---	---	---	---
QUALITY & RELIABILITY SA (CR)	RA	---	---	---	---	---	---	---	---	---	---	---	---	---	---	---	---	---	---	---	---	---	---

Stock Lending Notes

- [1] - Stock Repo: A Contract for selling stocks to HELEX with a Repurchase Right (According to ATHEX BoD Resolution No 17)
- [2] - Stock Reverse Repo: A Contract for buying stocks from HELEX with a Resell Right. (According to ATHEX BoD Resolution No 18)
- [3] - Standardized Repurchase Agreements: A Contract that constitutes a standardized agreement for the purchase or sale of shares, with repurchase or resell pact (According to ATHEX BoD Resolution No 20)
- [4] - Type of products is divided into SR: Stock Repo or Stock Reverse Repo, and RA: Repurchase Agreements.
- [5] - Open Interest in all Series (both tradeable or non-tradeable).

Securities	Type[4]	Stock Repo [1]						Stock Reverse Repo [2]								Repurchase Agreements [3]							
		Trans. price	chg.	Trades	Volume	Transactions Value	Open Interest[5]	Price max	Price min	Last price	Last Ask	Trades	Volume	Transactions Value	Open Interest[5]	Price max	Price min	Last price	Last Ask	Trades	Volume	Transactions Value	Open Interest[5]
QUEST HOLDINGS (CR)	SR RA	100.00	---	---	---	---	---	---	---	---	---	---	---	---	---	---	---	---	---	---	---	---	---
REVOIL (CR)	SR RA	100.00	---	---	---	---	---	---	---	---	---	---	---	---	---	---	---	---	---	---	---	---	---
SELECTED TEXT. IND. ASSOC (CR)	SR RA	100.00	---	---	---	---	---	---	---	---	---	---	---	---	---	---	---	---	---	---	---	---	---
SIDENOR (CR)	SR RA	100.00	---	---	---	---	391	---	---	---	195@3%	---	---	---	---	---	---	---	---	---	---	---	---
TECHNICAL OLYMPIC SA (CR)	SR RA	100.00	---	---	---	---	44	---	---	---	22@3%	---	---	---	---	---	---	---	---	---	---	---	---
TERNA ENERGY (CR)	SR RA	100.01	-0.04	---	---	---	303	---	---	---	120@3%	---	---	---	31	---	---	---	---	---	---	---	---
THESSALONIKA WATER & SEWERAGE	SR RA	100.00	-0.01	---	---	---	341	---	---	---	224@3%	---	---	---	---	---	---	---	---	---	---	---	---
THRACE PLASTICS SA (CR)	SR RA	100.00	---	---	---	---	1,010	---	---	---	505@3%	---	---	---	---	---	---	---	---	---	---	---	---
TITAN CEMENT (CR)	SR RA	100.04	-0.34	---	---	---	8,634	---	---	---	3730@3%	---	---	---	587	---	---	---	---	---	---	---	8
TPA SA (CR)	SR RA	100.12	-0.85	---	---	---	46	---	---	---	16@3%	---	---	---	7	---	---	---	---	---	---	---	---
TRASTOR REAL EST. INV. CO.(CR)	SR RA	100.00	---	---	---	---	344	---	---	---	172@3%	---	---	---	---	---	---	---	---	---	---	---	---
VIOHALCO SA/NV (CB)	SR RA	100.06	-0.52	---	---	---	261	---	---	---	34@3.5%	---	---	---	127	---	---	---	---	---	---	---	---

Stock Lending Notes

- [1] - Stock Repo: A Contract for selling stocks to HELEX with a Repurchase Right (According to ATHEX BoD Resolution No 17)
- [2] - Stock Reverse Repo: A Contract for buying stocks from HELEX with a Resell Right. (According to ATHEX BoD Resolution No 18)
- [3] - Standardized Repurchase Agreements: A Contract that constitutes a standardized agreement for the purchase or sale of shares, with repurchase or resell pact (According to ATHEX BoD Resolution No 20)
- [4] - Type of products is divided into SR: Stock Repo or Stock Reverse Repo, and RA: Repurchase Agreements.
- [5] - Open Interest in all Series (both tradeable or non-tradeable).

Sectors codification for listed companies

533	-	Exploration & Production	537	-	Integrated Oil & Gas
1353	-	Commodity Chemicals	1357	-	Specialty Chemicals
1753	-	Aluminum	1755	-	Nonferrous Metals
1757	-	Steel	1775	-	General Mining
2353	-	Building Materials & Fixtures	2357	-	Heavy Construction
2723	-	Containers & Packaging	2727	-	Diversified Industrials
2733	-	Electrical Components & Equipment	2753	-	Commercial Vehicles & Trucks
2757	-	Industrial Machinery	2773	-	Marine Transportation
2777	-	Transportation Services	2791	-	Business Support Services
2797	-	Industrial Suppliers	3535	-	Distillers & Vintners
3537	-	Soft Drinks	3573	-	Farming Fishing & Plantations
3577	-	Food Products	3722	-	Durable Household Products
3726	-	Furnishings	3728	-	Home Construction
3747	-	Toys	3763	-	Clothing & Accessories
3765	-	Footwear	3767	-	Personal Products
3785	-	Tobacco	4533	-	Health Care Providers
4535	-	Medical Equipment	4577	-	Pharmaceuticals
5337	-	Food Retailers & Wholesalers	5371	-	Apparel Retailers
5373	-	Broadline Retailers	5375	-	Home Improvement Retailers
5379	-	Specialty Retailers	5553	-	Broadcasting & Entertainment
5555	-	Media Agencies	5557	-	Publishing
5751	-	Airlines	5752	-	Gambling
5753	-	Hotels	5755	-	Recreational Services
5757	-	Restaurants & Bars	5759	-	Travel & Tourism
6535	-	Fixed Line Telecommunications	6575	-	Mobile Telecommunications
7535	-	Conventional Electricity	7537	-	Alternative Electricity
7577	-	Water	8355	-	Banks
8534	-	Insurance Brokers	8536	-	Property & Casualty Insurance
8633	-	Real Estate Holding & Development	8637	-	Real Estate Services
8671	-	Industrial & Office REITs	8675	-	Specialty REITs
8775	-	Specialty Finance	8777	-	Investment Services
8985	-	Equity Investment Instruments	9533	-	Computer Services
9535	-	Internet	9537	-	Software
9572	-	Computer Hardware	9574	-	Electronic Office Equipment
9578	-	Telecommunications Equipment	11000	-	ETF

