

Daily Official List

Hellenic Exchanges – Athens Stock Exchange S.A.

Thursday, 4 September, 2014

Year: 135 Trading Day No: 168

ΕΛΛΗΝΙΚΑ ΧΡΗΜΑΤΙΣΤΗΡΙΑ - ΧΡΗΜΑΤΙΣΤΗΡΙΟ ΑΘΗΝΩΝ

ΑΝΩΝΥΜΗ ΕΤΑΙΡΕΙΑ ΣΥΜΜΕΤΟΧΩΝ

HELLENIC EXCHANGES – ATHENS STOCK EXCHANGE

Disclaimer:

Hellenic Exchanges-Athens Exchange endeavours to ensure that the data and other material ("Information") presented on the Daily Official List are accurate and complete, but it is not liable for any errors or omissions of data or /and for the accuracy, credibility, updating and completeness of the aforesaid information nor it has any liability arising directly or indirectly from the use of the above Information.

The Company is not liable for the accuracy of the data included in listed companies' announcements. Only the sender of such an announcement is fully and solely liable for any infringement of third party's rights from the content of such announcement. All contents of the Daily Official List are provided only for information purposes and do not constitute investment advice or solicitation to invest in securities or other products listed for trading on the Exchange.

You acknowledge and agree that the Company is the owner of any property rights related to any Information appearing on the Daily Official List including intellectual property rights copyright, trademarks, etc.

The above data are a property of the Hellenic Exchanges-Athens Exchange and are copyright protected. Users are forbidden to reproduce, modify, copy, sale, transmit or redistribute, by all reproduction means and methods, part or the whole of the above data, without reference to their source.

The commercial exploitation of these data is, also, forbidden by third parties. Hellenic Exchanges-Athens Exchange does not carry any responsibility, direct or indirect, derived from usage or accidental alteration of the above data when used by third parties.

Hellenic Exchanges – Athens Stock Exchange S.A.

110 Athinon Ave., 10442 Athens, Tel: (210) 33.66.800, Fax: (210) 32.13.938

www.athex.gr

Thessalonica Stock Exchange Center (T.S.E.C)

16-18 Katouni Str., Thessalonica 546 25 Tel: (2310) 567.667, Fax: (2310) 530.545

Athex Members Guarantee Fund

14-16 Fidiou Str., Athens 106 78, Tel: (210) 33.04.682, Fax: (210) 33.04.155

Hellenic Republic Capital Market Commission

1 Kolokotroni Str. & 1 Stadiou Str., Athens 10562 Tel: (210) 33.77.100 Fax: (210) 33.77.173

Table of Contents

Section 1: Statistical Figures of Securities and Derivatives Markets

Summary of Markets

Athex Indices

Analytic Figures for Athex Market's Boards and Categories

Trading Details by Athex Sectors and ETFs Category

Top 10 best & worst performing Shares

Derivatives Summary

Section 2: Analytic Figures of Shares Transactions

Analytic Figures of Shares Transactions

Shares' Notes

Section 3: Figures of Securities Transactions

Securities Blocks Details

Shares Rights Details

Shares Short Selling

Stock Borrowing

Shares Forced Sales

Forced Sales Registered Shares

Exchange Traded Funds (ETFs) Characteristics

Section 5: Bonds traded in Fixed Income Assets Market

Corporate Bonds

Government Bonds

Treasury Bills & Zero Coupon Government Bonds

Government Bonds Traded with the Open Outcry Method

State Banks Bonds

Section 6: Additional Infos

Athex & ATHEXClear Members List

List of Stocks under Market Making operations

Section 7: Derivatives Market Analytic Figures

Index Futures

Stock Futures

Index Options

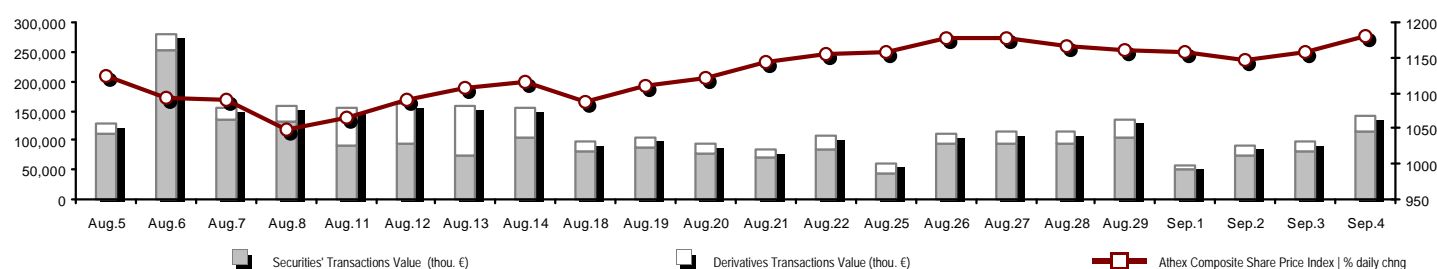
Stock Options

Stock Lending Analytic Figures (Repo Contracts)

Appendix A: Sectors codification for listed companies

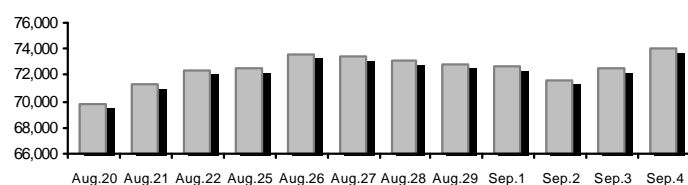
Summary of Markets

Athex Composite Share Price Index vs Shares and Derivatives Transactions Value

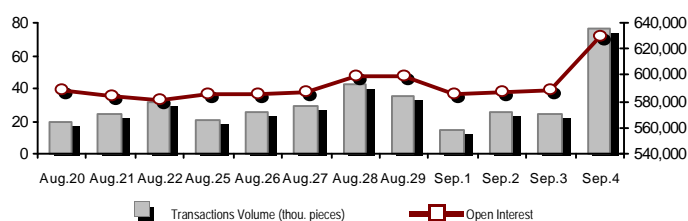


Total Transactions Value (Securities/Derivatives) (thou. €):		141,650.08	
Athex Capitalisation (mill. €) **: 74,078.05		Derivatives Total Open Interest: 630,068	
Daily change: mill. € %: 1,591.43 2.20%		in Index Futures % daily chng: 47,422 -0.69%	
Yearly Avg Capitalisation: mill. € % chng prev year Avg: 72,778.80 40.91%		in Stock Futures % daily chng: 276,917 0.45%	
Athex Composite Share Price Index % daily chng: 1,181.41 1.92%		in Index Options % daily chng: 11,375 3.09%	
Athex Composite Share Price Index Capitalisation (mill. €): 68,906.15		in Stock Options % daily chng: 2,307 -0.69%	
Daily change (mill. €): 1,599.04		in Stock Repos/Reverse Repos/RA % daily chng: 292,047 16.01%	
Securities' Transactions Value (thou. €): 115,464.89		Derivatives Transactions Value (thou. €): 26,185.19	
Daily change: thou. € %: 34,588.16 42.77%		Daily change: thou. € %: 9,145.47 53.67%	
YtD Avg Trans. Value: thou. € % chng prev year Avg: 135,622.83 56.58%		YtD Avg Trans. Value: thou. € % chng prev year Avg: 38,642.97 50.16%	
Short Selling Trans. Value: mill. € % in total Value			
Short Covering Trans. Value: mill. € % in total Value			
Transactions Value of Blocks (thou. €): 13,256.69			
Bonds Transactions Value (thou. €): 0.00			
Securities' Transactions Volume (thou. Pieces): 93,419.02		Derivatives Contracts Volume: 76,131	
Daily change: thou. pieces %: 39,838.65 74.35%		Daily change: pieces %: 52,433 221.25%	
YtD Avg Volume: thou. pieces % chng prev year Avg: 91,793.90 71.53%		YtD Avg Derivatives Contracts % chng prev year Avg: 42,134 1.36%	
Short Selling Volume: thou pieces % in total Volume			
Short Covering Volume: thou. pieces % in total Volume			
Transactions Volume of Blocks (thou. Pieces): 8,839.19			
Bonds Transactions Volume (thou. pieces): 0.00			
Securities' Trades Number: 24,649		Derivatives Trades Number: 2,574	
Daily change: number %: 4,429 21.90%		Daily change: number %: 654 34.06%	
YtD Avg Derivatives Trades number % chng prev year Avg: 28,486 -3.98%		YtD Avg Derivatives Trades number % chng prev year Avg: 2,513 -4.54%	
Number of Blocks: 17			
Number of Bonds Transactions: 0			

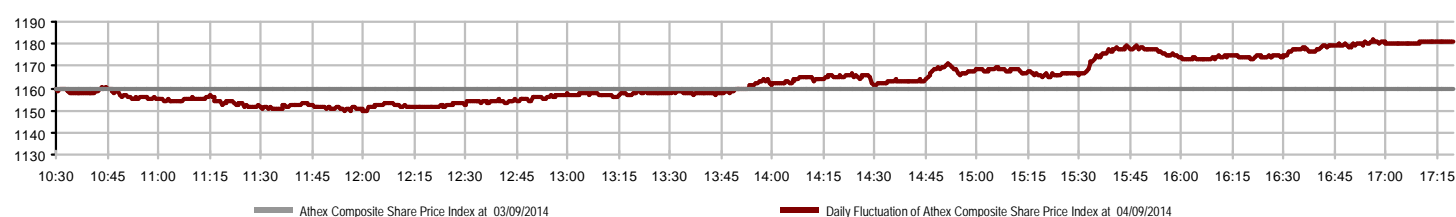
Athex Capitalisation (mill. €) **



Derivatives Transactions Volume and Open Interest



Daily Fluctuation of Athex Composite Share Price Index



Athex Indices

Index name	04/09/2014	03/09/2014	pts.	%	Min	Max	Year min	Year max	Year change
Athex Composite Share Price Index	1,181.41 #	1,159.13	22.28	1.92%	1,149.87	1,181.56	1,044.23	1,379.42	1.61% #
FTSE/Athex Large Cap	384.15 #	375.85	8.30	2.21%	372.79	384.40	336.28	445.52	-0.18% €
FTSE/ATHEX Custom Capped	1,219.70 #	1,207.17	12.52	1.04%			1,097.84	1,410.19	-0.81% €
FTSE/ATHEX Custom Capped - USD	1,148.82 #	1,135.73	13.09	1.15%			1,055.85	1,406.66	-5.43% €
FTSE/Athex Mid Cap Index	1,057.73 #	1,049.76	7.97	0.76%	1,048.47	1,059.31	991.06	1,317.40	-9.35% €
FTSE/ATHEX-CSE Banking Index	124.17 #	118.77	5.40	4.55%	117.65	124.44	101.04	161.54	-8.79% €
FTSE/ATHEX Global Traders Index Plus	1,620.40 #	1,615.10	5.30	0.33%	1,599.76	1,623.73	1,485.51	1,845.84	4.48% #
FTSE/ATHEX Global Traders Index	1,840.86 #	1,831.42	9.44	0.52%	1,814.76	1,845.65	1,664.83	2,152.38	6.14% #
FTSE/ATHEX Mid & Small Cap Factor-Weighted Ind	1,295.84 #	1,281.94	13.90	1.08%	1,280.71	1,295.91	1,261.50	1,523.02	1.31% #
Greece & Turkey 30 Price Index	767.02 #	749.74	17.28	2.30%	745.83	767.87	570.55	783.68	18.45% #
ATHEX Mid & SmallCap Price Index	2,958.69 €	2,977.60	-18.91	-0.64%	2,947.24	2,984.79	2,573.35	3,157.88	14.96% #
FTSE/Athex Market Index	919.77 #	900.42	19.35	2.15%	893.44	920.26	808.04	1,066.17	-0.44% €
FTSE Med Index	5,212.85 #	5,202.64	10.21	0.20%			4,605.95	5,387.08	14.08% #
Athex Composite Index Total Return Index	1,721.36 #	1,688.89	32.47	1.92%	1,675.39	1,721.58	1,520.56	1,998.07	2.25% #
FTSE/Athex Large Cap Total Return	520.02 #	508.78	11.24	2.21%			456.16	605.87	-1.39% €
FTSE/ATHEX Large Cap Net Total Return	1,548.70 #	1,515.25	33.45	2.21%	1,502.92	1,549.73	1,355.72	1,786.28	0.37% #
FTSE/ATHEX Custom Capped Total Return	1,282.27 #	1,269.10	13.16	1.04%			1,153.69	1,472.79	-0.15% €
FTSE/ATHEX Custom Capped - USD Total Return	1,207.76 #	1,194.00	13.77	1.15%			1,110.02	1,469.09	-4.80% €
FTSE/Athex Mid Cap Total Return	1,340.59 #	1,330.49	10.10	0.76%			1,258.62	1,643.81	-7.18% €
FTSE/ATHEX-CSE Banking Total Return Index	115.93 #	110.89	5.04	4.55%			97.04	153.89	-10.18% €
Greece & Turkey 30 Total Return Index	907.33 #	895.54	11.79	1.32%			697.73	946.62	17.14% #
Hellenic Mid & Small Cap Index	1,122.94 #	1,116.83	6.11	0.55%	1,109.35	1,122.94	1,061.32	1,351.84	0.82% #
FTSE/Athex Banks	164.05 #	156.92	7.13	4.54%	155.45	164.41	133.50	213.44	-8.80% €
FTSE/Athex Insurance	1,443.52 #	1,422.45	21.07	1.48%	1,422.45	1,475.13	1,274.94	1,749.09	9.60% #
FTSE/Athex Financial Services	1,710.57 #	1,675.39	35.18	2.10%	1,658.09	1,710.57	1,589.78	2,207.51	-3.28% €
FTSE/Athex Industrial Goods & Services	2,990.68 €	3,008.02	-17.34	-0.58%	2,959.61	3,011.50	2,839.79	3,724.87	-7.83% €
FTSE/Athex Retail	4,407.25 €	4,428.69	-21.44	-0.48%	4,363.22	4,457.35	3,090.34	4,836.94	33.60% #
FTSE/ATHEX Real Estate	2,822.33 #	2,815.96	6.37	0.23%	2,793.44	2,837.93	2,194.73	3,111.71	27.32% #
FTSE/Athex Personal & Household Goods	6,221.23 €	6,281.96	-60.73	-0.97%	6,218.32	6,346.11	5,587.54	7,649.84	5.13% #
FTSE/Athex Food & Beverage	6,803.34 #	6,716.65	86.69	1.29%	6,646.41	6,839.47	6,014.35	8,227.06	-13.31% €
FTSE/Athex Basic Resources	2,859.65 #	2,749.93	109.72	3.99%	2,723.86	2,859.65	2,465.13	3,356.44	3.92% #
FTSE/Athex Construction & Materials	2,778.35 #	2,757.59	20.76	0.75%	2,722.70	2,793.70	2,531.26	3,482.98	3.61% #
FTSE/Athex Oil & Gas	2,381.35 #	2,379.46	1.89	0.08%	2,345.68	2,400.07	2,194.16	3,236.15	-16.93% €
FTSE/Athex Chemicals	5,829.61 #	5,752.66	76.95	1.34%	5,773.59	5,945.04	5,516.28	6,811.96	-2.78% €
FTSE/Athex Media	2,474.71 #	2,393.45	81.26	3.40%	2,393.45	2,474.71	1,543.92	2,777.58	60.29% #
FTSE/Athex Travel & Leisure	2,070.90 #	2,054.84	16.06	0.78%	2,055.58	2,079.79	1,634.38	2,304.69	23.27% #
FTSE/Athex Technology	990.44 €	991.68	-1.24	-0.13%	977.55	1,003.16	786.21	1,134.79	25.78% #
FTSE/Athex Telecommunications	3,027.83 #	3,000.30	27.53	0.92%	2,978.28	3,052.60	2,532.36	3,633.39	13.75% #
FTSE/Athex Utilities	3,955.37 #	3,951.12	4.25	0.11%	3,917.97	3,974.13	3,308.43	4,471.04	4.29% #
FTSE/Athex Health Care	188.38 €	192.14	-3.76	-1.96%	188.38	193.25	176.19	287.11	-15.53% €
Athex All Share Index	262.07 #	256.49	5.58	2.18%			226.62	291.46	11.30% #

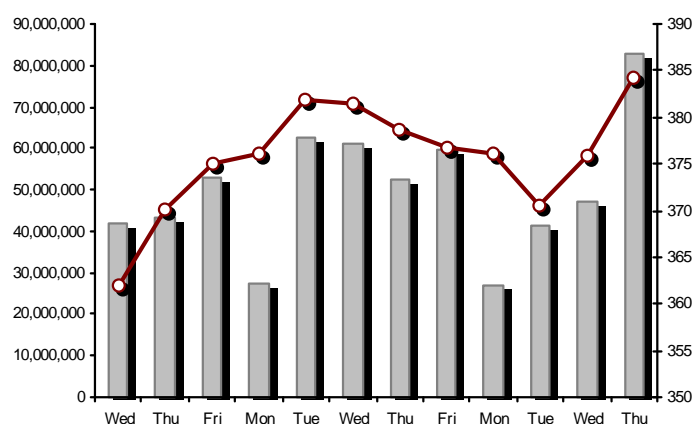
Note 1: Greece & Turkey 30 Pr data is the indicative at 17:20, whereas FTSE/ATHEX Custom Capped, FTSE/ATHEX Custom Capped - USD, FTSE/ATHEX Custom Capped TR, FTSE/ATHEX Custom Capped - USD TR, FTSE/Med 100 & Greece & Turkey 30 Rt closing prices refer to the previous trading day of 03/09/2014.

Note 2: The Hellenic Mid & Small Cap Index is a Customized index calculated by the Athens Exchange.

Athex Indices

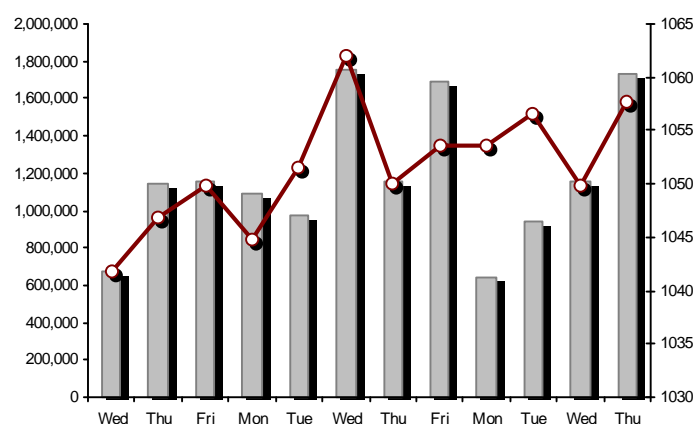
FTSE/Large Cap

04/09/2014: 2.21%



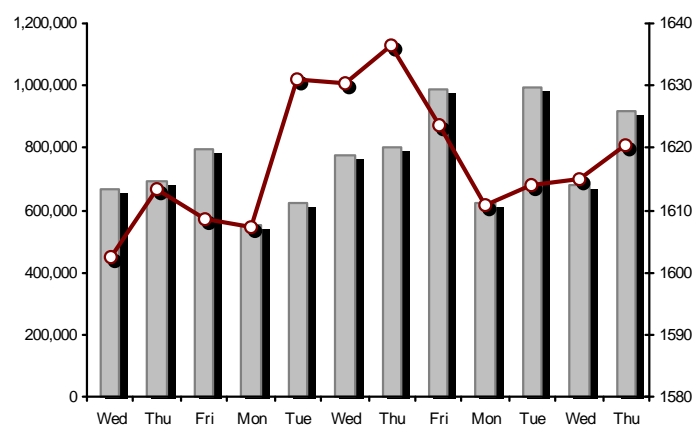
FTSE/Athex Mid Cap Index

04/09/2014: 0.76%



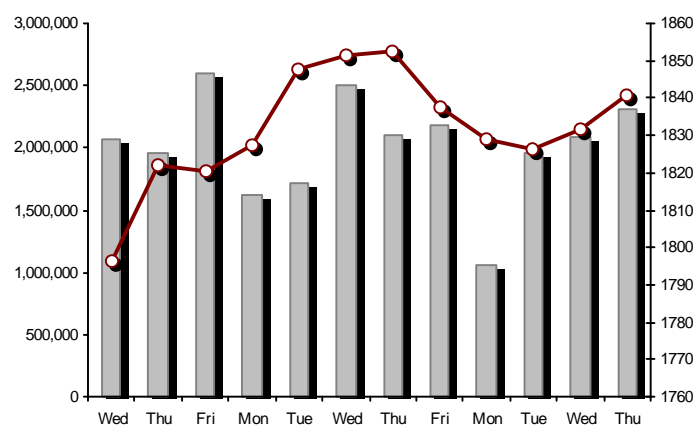
FTSE/ATHEX Global Traders Index Plus

04/09/2014: 0.33%



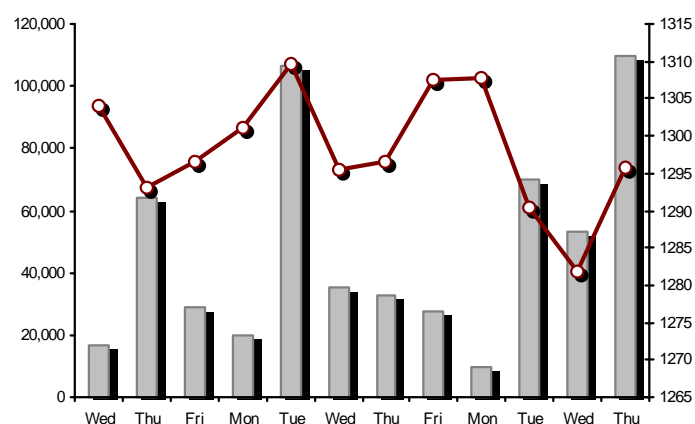
FTSE/ATHEX Global Traders Index

04/09/2014: 0.52%



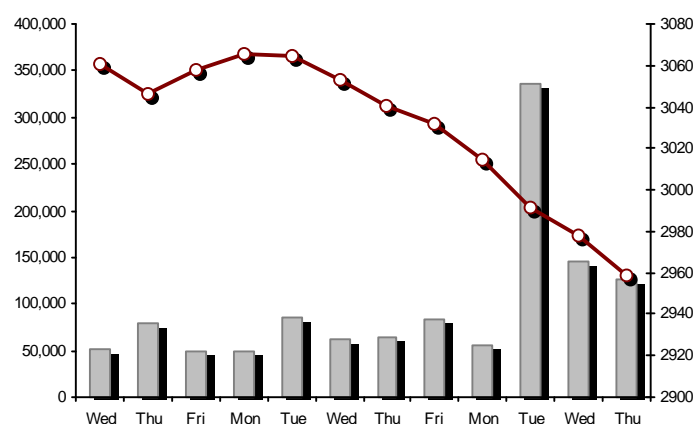
FTSE/ATHEX Mid & Small Cap Factor-Weighted Index

04/09/2014: 1.08%



ATHEX Mid & SmallCap Price Index

04/09/2014: -0.64%



Indices volume of transactions

Indices closing prices

Analytic Figures for Athex Market's Boards and Categories

	Total Traded Securities	Main Market	Low Dispersion	Other Categories (*)	Exchange Traded Funds (ETFs)	Warrants
Totals	142	110	9	17	3	3
Gain / Lose / Same:	65 / 49 / 28	52 / 38 / 20	2 / 4 / 3	5 / 7 / 5	3 / 0 / 0	3 / 0 / 0
Athex Capitalisation (mill. €) **	74,078.05	71,855.84	1,763.74	458.47		
Daily Average Trans/ons Value(thou.€)	135,622.83	127,333.00	47.37	53.09	62.17	8,127.20
Transactions Value	115,464.89	108,714.14	34.30	25.60	6.95	6,683.91
Main Board:	102,208.20	97,032.45	34.30	25.60	6.95	5,108.91
Blocks Board:	13,256.69	11,681.69	0.00	0.00	0.00	1,575.00
Forced Sales Board:	0.00	0.00	0.00	0.00	0.00	0.00
Special Terms Board:	0.00	0.00	0.00	0.00	0.00	0.00
Daily Average Transactions Volume	91,793,899	84,629,587	21,538	320,712	13,728	6,808,334
Transactions Volume	93,419,018	84,955,642	29,091	218,919	1,848	8,213,518
Main Board:	84,579,830	78,616,454	29,091	218,919	1,848	5,713,518
Blocks Board:	8,839,188	6,339,188	0	0	0	2,500,000
Forced Sales Board:	0	0	0	0	0	0
Special Terms Board:	0	0	0	0	0	0
Daily Average Number of Trades	28,486	26,559	48	132	8	1,740
Number of Trades	24,649	22,823	62	85	5	1,674
Main Board:	24,632	22,809	62	85	5	1,671
Blocks Board:	17	14	0	0	0	3
Forced Sales Board:	0	0	0	0	0	0
Special Terms Board:	0	0	0	0	0	0

(*) Summarised Transactions figures for Under Deletion and Under Supervision Categories.(**) The Market Capitalization of the Companies that belong in the Under Supervision Status is not included.

Trading Details by Athex Sectors and ETFs Category

Code	Sectors	Gain / Lose / Same	Number of Trades	Transactions Volume	Transactions Value	% of Total Trans. Value
8300	- Banks	9 / 1 / 0	11,846	87,190,112	78,585,656.05	68.06%
1700	- Basic Resources	4 / 4 / 2	1,290	408,064	2,318,533.54	2.01%
1300	- Chemicals	3 / 0 / 2	94	72,925	83,596.31	0.07%
2300	- Construction & Materials	6 / 4 / 5	1,152	286,747	1,629,532.93	1.41%
11000	- ETF	3 / 0 / 0	5	1,848	6,948.75	0.01%
8700	- Financial Services	3 / 0 / 0	1,468	1,527,829	2,096,567.65	1.82%
3500	- Food & Beverage	6 / 3 / 2	282	148,876	976,715.77	0.85%
4500	- Health Care	4 / 2 / 0	80	82,515	30,813.74	0.03%
2700	- Industrial Goods & Services	5 / 7 / 5	1,154	483,772	1,981,672.15	1.72%
8500	- Insurance	1 / 0 / 0	20	9,395	12,823.35	0.01%
5500	- Media	1 / 2 / 1	13	12,138	4,294.77	0.00%
500	- Oil & Gas	1 / 1 / 0	1,307	455,306	2,617,027.78	2.27%
3700	- Personal & Household Goods	6 / 6 / 4	529	485,154	4,349,124.18	3.77%
8600	- Real Estate	2 / 5 / 1	326	77,763	239,244.68	0.21%
5300	- Retail	1 / 3 / 0	268	63,828	614,464.59	0.53%
9500	- Technology	3 / 4 / 3	233	103,527	115,679.10	0.10%
6500	- Telecommunications	1 / 0 / 0	1,072	522,721	5,730,371.73	4.96%
5700	- Travel & Leisure	4 / 6 / 1	1,938	1,039,950	11,225,684.60	9.72%
7500	- Utilities	2 / 1 / 2	1,572	446,548	2,846,138.83	2.46%

Top 10 best & worst performing Shares

Main Market					
With positive Price change	Closing price	change	With negative Price change	Closing price	change
KRI-KRI S.A. (CR)	1.99	11.80% #	KEKROPS SA (CR)	0.670	-4.29% Ⓔ
PETROPOULOS PETROS (CR)	2.39	8.64% #	METKA (CR)	11.44	-2.22% Ⓔ
EUROBANK ERGASIAS (CR)	0.349	5.44% #	JUMBO SA (CR)	11.27	-2.00% Ⓔ
PIRAEUS BANK (CR)	1.47	5.00% #	INTRALOT (CR)	1.77	-1.67% Ⓔ
NATIONAL BANK (CR)	2.71	4.63% #	LAMDA DEVELOPMENT SA (CR)	4.50	-1.10% Ⓔ
MYTILINEOS HOLDINGS (CR)	6.63	4.41% #	TERNA ENERGY (CR)	3.60	-0.83% Ⓔ
EKTER SA (CR)	0.615	3.36% #	FRIGOGLASS SA (CR)	3.17	-0.63% Ⓔ
ATTICA BANK S.A. (CR)	0.128	3.23% #	MOTOR OIL (CR)	7.81	-0.51% Ⓔ
ALPHA BANK (CR)	0.690	2.99% #	FOLLI FOLLIE (CR)	31.35	-0.48% Ⓔ
FOURLIS (CR)	4.99	2.68% #	AEGEAN AIRLINES (CR)	6.54	-0.46% Ⓔ
With the highest Transactions Value	Value (thou. €)	change	With the highest Transactions Volume	Volume	change
NATIONAL BANK (CR)	24,451.69	4.63% #	EUROBANK ERGASIAS (CR)	28,810,299	5.44% #
PIRAEUS BANK (CR)	19,884.30	5.00% #	ALPHA BANK (CR)	25,639,247	2.99% #
ALPHA BANK (CR)	17,516.38	2.99% #	PIRAEUS BANK (CR)	13,957,283	5.00% #
OPAP (CR)	10,785.57	1.07% #	NATIONAL BANK (CR)	9,222,155	4.63% #
EUROBANK ERGASIAS (CR)	9,798.84	5.44% #	ATTICA BANK S.A. (CR)	1,341,248	3.23% #
OTE (CR)	5,730.37	0.92% #	MARFIN INVESTMENT GROUP (CR)	1,307,401	1.78% #
JUMBO SA (CR)	4,156.67	-2.00% Ⓔ	OPAP (CR)	877,287	1.07% #
MYTILINEOS HOLDINGS (CR)	2,260.83	4.41% #	OTE (CR)	522,721	0.92% #
HELLENIC PETROLEUM (CR)	2,206.69	0.73% #	HELLENIC PETROLEUM (CR)	402,833	0.73% #
PPC (CR)	1,885.83	0.00% ↘	JUMBO SA (CR)	365,590	-2.00% Ⓔ

Note: Stocks that are not included in the "Low Dispersion" and "Under Supervision" categories, and the transactions value is more than 10,000 €.

Derivatives Summary

	Number of Trades	Volume	Open Interest	Transactions Value
Index Futures	817	8,011	47,422	15,206,113.75
FTSE/Athex Large Cap	817	8,011	47,422	15,206,113.75
Stock Futures	1,685	26,691	276,917	6,378,185.67
ALPHA BANK (CR)	225	6,773	29,889	463,524.00
CC HBC AG (CR)	6	8	391	14,480.00
CORINTH PIPEWORKS SA (CR)	3	66	798	9,402.00
ELLAKTOR (CR)	9	34	2,501	11,647.00
EUROBANK ERGASIAS (CR)	116	5,640	70,338	191,500.50
EUROBANK PROPERTIES REIC (CR)	4	10	378	9,166.00
EYDAP S.A. (CR)	9	32	418	29,130.00
FOLLI FOLLIE (CR)	17	47	323	147,434.00
FRIGOGLASS SA (CR)	6	23	1,158	7,322.00
GEK TERNA (CR)	21	118	24,926	41,437.00
HELLENIC EXCHANGES-A.S.E. (CR)	42	146	11,232	109,001.81
HELLENIC PETROLEUM (CR)	64	194	8,476	106,677.00
INTRALOT (CR)	5	39	1,816	6,902.00
JUMBO SA (CR)	11	30	421	34,311.00
MARFIN INVESTMENT GROUP (CR)	34	349	26,861	13,879.40
METKA (CR)	13	28	650	32,377.00
MOTOR OIL (CR)	15	49	338	38,451.00
MYTILINEOS HOLDINGS (CR)	164	999	10,033	651,602.00
NATIONAL BANK (CR)	309	4,613	31,376	1,225,457.00
OPAP (CR)	56	297	2,107	366,039.00
OTE (CR)	184	1,038	12,462	1,140,211.00
P.P.A. S.A. (CR)	8	16	471	26,925.00
PIRAEUS BANK (CR)	202	5,371	28,917	771,927.00
PPC (CR)	119	606	4,615	678,431.00
SIDENOR (CR)	1	5	1,081	645.00
TERNA ENERGY (CR)	8	27	3,873	9,942.96
TITAN CEMENT (CR)	32	117	722	233,908.00
VIOHALCO SA/NV (CB)	2	16	346	6,456.00
Index Options	57	842	11,375	1,586,325.00
FTSE/Athex Large Cap	57	842	11,375	1,586,325.00
Stock Options	0	0	2,307	0.00
ALPHA BANK (CR)	0	0	0	0.00
NATIONAL BANK (CR)	0	0	2,170	0.00
OPAP (CR)	0	0	0	0.00
OTE (CR)	0	0	107	0.00
PIRAEUS BANK (CR)	0	0	0	0.00
PPC (CR)	0	0	30	0.00
Stock Repos - Stock Reverse Repos - Repurchase Agreements	15	40,587	292,047	3,014,561.00
Stock Reverse Repos	9	40,094	65,295	2,844,180.00
Stock Repos	5	393	217,699	58,481.00
Repurchase Agreement	1	100	9,053	111,900.00
Total Derivatives Traded	2,574	76,131	630,068	26,185,185.42

Number of Outstanding Securities	Nominal Value	Dividends [1]			Date of Last Dividend [2]	Coupon Right	Note	Shares	Closing price	% change	Previous closing price/date	Open price	Price min	Price max	Last price	Avg price	Last Bid [7]	Last Ask [7]	P/E after	Year	Volume	Trades	Transactions Value	Company Mkt Value (thou. €)	Year low	Year high	Sector[4]
1,143,803,533		---	---	---		11/06/2013	---	ALPHA BANK (W)	1.78	7.88 #	1.65 03/09/2014	1.64	1.62	1.78	1.78	1.70	2250@1.74	11572@1.78	4.11	2013	1,335,186	814	2,275,124.40	8,810,651.30	1.13	2.15	8355
245,748,459		---	---	---		27/06/2013	---	NATIONAL BANK (W)	0.677	4.15 #	0.650 03/09/2014	0.640	0.640	0.687	0.677	0.673	1200@0.675	6696@0.677	1.51	2013	458,560	221	308,647.96	9,574,835.50	0.462	1.59	8355
843,640,590		---	---	---		03/07/2013	---	PIRAEUS BANK (W)	0.654	2.35 #	0.639 03/09/2014	0.641	0.618	0.657	0.654	0.644	18000@0.651	17293@0.654	0.70	2013	6,419,772	639	4,100,133.22	8,969,910.18	0.575	1.15	8355

Warrants

71,417,100	0.650	---	---	---	26/05/2010	27/06/2014	---	AEGEAN AIRLINES (CR)	6.54	-0.46	€ 6.57	03/09/2014	6.59	6.49	6.59	6.54	6.53	100@6.51	450@6.57	7.04	2013	27,475	132	179,430.13	467,067.83	5.02	8.65	5751
11,178,000	1.25	---	---	---	21/04/2010	18/12/2013	---	AEOLIAN INVESTMENT FUND (CR)	0.923	2.56	# 0.900	02/09/2014	0.935	0.923	0.940	0.923	0.937	5@0.923	200@0.938	12.66	2013	1,890	5	1,771.67	10,317.29	0.700	1.09	8985
13,000,000	1.00	---	---	---	01/08/2007	07/04/2000	---	AKRITAS SA (CR)	0.270	---	↘ 0.270	21/08/2014	---	---	---	---	---	---	50@0.243	---	2013	---	---	---	3,510.00	0.100	0.324	2353
5,000,000	2.00	---	---	---	03/06/2009	01/09/2014	5068	ALCO HELLAS SA (CR)	0.760	---	↘ 0.152	# 29/08/2014	---	---	---	---	---	---	---	---	2013	---	---	---	3,800.00	0.710	2.09	1753
12,769,059,858	0.300	---	---	---	07/04/2008	13/05/2013	---	ALPHA BANK (CR)	0.690	2.99	# 0.670	03/09/2014	0.670	0.664	0.700	0.690	0.684	233933@0.690	1000@0.692	1.59	2013	25,639,247	3,244	17,516,384.15	8,810,651.30	0.531	0.784	8355
22,016,250	0.370	---	---	---	15/07/2009	11/05/2000	---	ALUMIL (CR)	0.292	-4.89	€ 0.307	03/09/2014	0.320	0.291	0.320	0.291	0.300	50@0.286	900@0.289	---	2013	242	5	72.50	6,428.75	0.245	0.660	1753
417,608	16.00	---	---	0.8	29/04/2014	05/03/2013	---	ANDROMEDA SA (CR)	21.70	---	↘ 21.70	01/09/2014	---	---	---	---	---	200@21.70	10@23.37	6.56	2013	---	---	---	9,062.09	20.08	23.99	8985
26,252,040	0.380	---	---	---	08/07/2010	10/02/2014	---	AS COMPANY SA (CR)	0.374	-1.06	€ 0.378	03/09/2014	0.370	0.361	0.378	0.374	0.369	3400@0.361	500@0.378	22.46	2013	16,166	26	5,966.98	9,818.26	0.299	0.413	5379
86,735,980	0.310	---	---	---	06/07/2009	02/01/2002	---	ATHENS MEDICAL CENTER SA (CR)	0.741	-5.12	€ 0.781	02/09/2014	0.741	0.741	0.741	0.741	0.741	351@0.741	732@0.774	---	2013	2,000	9	1,482.00	64,271.36	0.677	0.930	4533
1,045,794,145	0.300	---	---	---	04/06/2008	07/08/2014	---	ATTICA BANK S.A. (CR)	0.128	3.23	# 0.124	03/09/2014	0.123	0.120	0.128	0.128	0.125	1111@0.126	184677@0.128	---	2013	1,341,248	171	167,740.47	133,861.65	0.102	0.277	8355
15,300,000	0.300	---	---	---	30/07/2009	13/12/1999	---	ATTICA PUBLICATIONS SA (CR)	1.59	---	↘ 1.59	19/03/2014	---	---	---	---	---	---	961@1.49	45.88	2013	---	---	---	24,327.00	1.44	2.15	5557
45,457,464	0.700	---	---	---	01/07/2008	01/03/2010	---	AUDIO VISUAL ENTERPRISES (CR)	0.335	3.40	# 0.324	03/09/2014	0.335	0.335	0.335	0.335	0.335	---	2951@0.330	---	2013	20	1	6.70	15,228.25	0.209	0.376	5553
12,120,000	0.320	(0.45)	---	---	30/04/2012	22/11/2013	---	AUTOHELLAS SA (CR)	9.19	1.10	# 9.09	03/09/2014	9.08	9.00	9.25	9.19	9.15	178@9.00	207@9.19	37.49	2013	6,400	44	58,575.10	111,382.80	7.50	11.20	5759
19,864,886	5.60	0.67	0.5376	0.672	05/03/2014	02/07/2008	---	BANK OF GREECE (CR)	12.98	-0.15	€ 13.00	03/09/2014	13.28	12.95	13.28	12.98	13.02	90@12.98	1175@13.00	---	---	6,361	82	82,791.07	257,846.22	12.80	16.53	8355
23,986,500	1.05	---	---	---	26/06/2009	15/03/2000	---	BIOKARPET S.A.(CR)	0.500	-1.19	€ 0.506	03/09/2014	0.500	0.500	0.500	0.500	0.500	800@0.490	2539@0.499	---	2013	270	3	135.00	11,993.25	0.461	0.880	3726
15,842,391	1.51	---	---	---	15/07/2009	12/05/2000	---	BITROS HOLDING SA (CR)	0.200	-4.76	€ 0.210	03/09/2014	0.201	0.200	0.201	0.200	0.200	300@0.191	5600@0.200	---	2013	2,500	2	500.50	3,168.48	0.158	0.559	1757
15,816,009	0.300	---	---	---	01/07/2009	17/07/2000	---	BYTE COMPUTER SA (CR)	0.570	---	↘ 0.570	03/09/2014	0.570	0.570	0.570	0.570	0.570	350@0.555	350@0.575	---	2013	7,500	4	4,275.00	9,015.13	0.432	0.666	9533
367,747,133	6.70	---	0.34	0.354	09/07/2014	29/04/2013	---	CC HBC AG (CR)	18.20	1.22	# 17.98	03/09/2014	17.83	17.79	18.31	18.20	18.09	210@18.19	1000@18.25	---	---	47,822	151	865,094.10	6,692,997.82	16.01	22.00	3537
101,123,806	0.360	---	---	---	22/07/2010	28/06/2011	---	CENTRIC HOLDINGS (CR)	0.248	0.81	# 0.246	03/09/2014	0.236	0.236	0.248	0.248	0.242	1500@0.239	2000@0.246	12.15	2013	5,200	4	1,259.60	25,078.70	0.220	0.390	5752
4,034,950	0.680	---	---	---	01/07/2005	30/12/2010	---	CHATZIKRANIOTIS & SONS SA (CR)	0.190	-5.00	€ 0.200	03/09/2014	0.182	0.182	0.190	0.190	0.182	10@0.182	985@0.190	---	2013	2,515	3	457.85	766.64	0.155	0.420	3577
124,170,201	0.780	---	---	---	28/06/2002	07/02/2005	---	CORINTH PIPEWORKS SA (CR)	1.41	2.17	# 1.38	03/09/2014	1.36	1.34	1.41	1.41	1.38	200@1.39	625@1.41	---	2013	17,692	57	24,430.80	175,079.98	1.28	2.30	1757
9,907,500	0.300	---	---	---	06/10/2005	13/02/2002	---	CPI SA (CR)	0.219	---	↘ 0.219	26/08/2014	---	---	---	---	---	---	1500@0.200	---	2013	---	---	---	2,169.74	0.133	0.295	9572
27,379,200	0.520	---	---	0.1	24/07/2014	18/09/2013	---	CRETE PLASTICS SA (CR)	4.94	0.61	# 4.91	03/09/2014	4.92	4.92	4.94	4.94	4.94	15@4.89	235@4.91	14.84	2013	3,180	9	15,701.60	135,253.25	4.80	5.54	1357
15,000,000	0.300	---	---	---	06/07/2007	18/07/2000	---	DAIOS PLASTICS SA (CR)	2.29	---	↘ 2.29	27/08/2014	---	---	---	---	---	---	54@2.28	---	2013	---	---	---	34,350.00	1.66	2.30	1357
34,720,000	0.310	---	---	---	16/06/2010	01/08/2007	---	DROMEAS SA (CR)	0.238	3.48	# 0.230	03/09/2014	0.230	0.226	0.243	0.238	0.234	27000@0.230	30@0.230	---	2013	9,240	15	2,162.26	8,263.36	0.223	0.400	3726
3,873,120	0.300	---	---	---	07/07/2008	04/10/2012	---	DRUCKFARBEN HELLAS (CR)	0.950	---	↘ 0.950	03/09/2014	---	---	---	---	---	---	---	---	2013	---	---	---	3,679.46	0.810	1.95	1357
11,250,000	0.560	---	---	---	26/07/2010	16/06/1999	---	EKTER SA (CR)	0.615	3.36	# 0.595	03/09/2014	0.595	0.595	0.620	0.615	0.600	192@0.605	2480@0.615	---	2013	32,324	22	19,397.02	6,918.75	0.555	0.990	2357
32,188,050	1.04	---	---	---	21/07/2008	20/01/2000	---	EL. D. MOUZAKIS SA (CB)	0.349	---	↘ 0.349	28/08/2014	---	---	---	---	---	---	370@0.339	---	2013	---	---	---	11,233.63	0.171	0.475	3763
18,435,000	1.00	---	---	---	07/07/2009	10/09/2010	---	ELASTRON (CR)	0.660	-2.94	€ 0.680	03/09/2014	0.660	0.660	0.680	0.660	0.662	200@0.659	1300@0.670	---	2013	8,214	21	5,441.72	12,167.10	0.650	1.00	1757
31,734,530	1.60	---	---	---	09/07/2007	19/07/2006	---	ELGEKA SA (CR)	0.400	-8.68	€ 0.438	03/09/2014	0.400	0.400	0.400	0.400	0.400	2000@0.355	1999@0.400	---	2013	165	3	66.00	12,693.81	0.238	0.488	3577
23,828,130	0.500	---	---	---	07/07/2010	17/02/2009	---	ELINOIL S.A. (CR)	1.21	---	↘ 1.21	08/08/2014	---	---	---	---	---	---	220@1.21	---	2013	---	---	---	28,832.04	0.790	1.50	537
177,001,313	1.03	---	---	---	05/07/2011	20/12/2007	---	ELLAKTOR (CR)	3.45	1.47	# 3.40	03/09/2014	3.39	3.37	3.47	3.45	3.43	300@3.44	8161@3.46	---	2013	98,982	376	339,478.36	610,654.53	3.06	4.35	2357
82,667,000	0.300	---	---	---		22/07/2014	---	ELTECH ANEMOS S.A. (CR)	1.47	0.69	# 1.46	03/09/2014	1.45	1.42	1.48	1.47	1.46	54350@1.46	2130@1.47	---	---	145,727	125	211,991.03	121,520.49	1.34	1.70	7537

Number of Outstanding Securities	Nominal Value	Dividends [1]			Date of Last Coupon		Note	Shares	Closing price	% change	Previous closing price/date	Open price	Price min	Price max	Last price	Avg price	Last Bid [7]	Last Ask [7]	P/E after	Year	Volume	Trades	Transactions Value	Company Mkt Value (thou. €)	Year low	Year high	Sector[4]		
		2011	2012	2013	Dividend [2]	Right																							
Main Market																													
26,730,187	0.600	---	---	0.05	23/06/2014	30/12/2010	---	ELTON SA (CR)	1.02	---	↘	1.02	03/09/2014	1.04	1.01	1.04	1.02	1.01	1500@1.00	1693@1.02	10.52	2013	1,800	11	1,819.20	27,264.79	0.990	1.40	1353
14,050,971	0.340	---	---	---	06/07/2011	17/10/2002	---	ELTRAK SA (CR)	1.72	-6.52	⬇	1.84	03/09/2014	1.84	1.72	1.84	1.72	1.75	186@1.72	1000@1.81	---	2013	650	10	1,139.20	24,167.67	1.40	2.03	2753
124,100,815	0.300	---	0.08	---	30/05/2014	07/07/2000	---	ELVAL SA. (CB)	1.71	---	↘	1.71	03/09/2014	1.71	1.71	1.71	1.71	1.71	170@1.67	1900@1.72	49.86	2013	342	5	584.82	212,212.39	1.55	2.15	1753
13,230,000	0.300	---	---	---	11/08/2010	28/08/2013	---	ELVE SA (CR)	0.614	3.37	#	0.594	03/09/2014	0.566	0.566	0.627	0.600	0.595	500@0.569	20@0.590	---	2013	850	10	505.96	8,123.22	0.528	0.690	3763
30,009,210	0.310	---	---	---	27/06/2008	26/06/2000	---	ETEM SA (CB)	0.246	-0.81	⬇	0.248	03/09/2014	0.248	0.245	0.249	0.246	0.248	376@0.246	400@0.250	---	2013	2,074	5	514.07	7,382.27	0.163	0.400	1753
14,707,876,542	0.300	---	---	---	02/05/2008	13/06/2013	---	EUROBANK ERGASIAS (CR)	0.349	5.44	#	0.331	03/09/2014	0.332	0.330	0.349	0.349	0.341	3500@0.347	1289868@0.350	---	2013	28,810,299	1,889	9,798,841.39	5,133,048.91	0.295	0.630	8355
101,260,000	2.13	0.4067	---	0.1821	17/04/2014	08/01/2014	---	EUROBANK PROPERTIES REIC (CR)	9.21	0.44	#	9.17	03/09/2014	9.17	9.09	9.24	9.20	9.17	1299@9.19	733@9.22	---	2013	9,793	129	89,774.10	932,604.60	6.65	9.82	8675
7,959,900	0.600	---	---	---	02/06/2010	10/12/2013	5031	EUROCONSULTANTS S.A. (CR)	2.35	-4.86	⬇	2.47	01/09/2014	2.43	2.35	2.43	2.35	2.38	300@2.15	360@2.40	69.05	2013	240	8	570.10	18,705.77	1.98	2.87	2791
27,503,677	0.600	0.05	0.1	---	11/07/2013	18/10/1999	---	EUROPEAN RELIANCE INSUR. (CR)	1.37	1.48	#	1.35	03/09/2014	1.38	1.35	1.40	1.37	1.37	662@1.36	382@1.37	3.97	2013	9,395	20	12,823.35	37,680.04	1.21	1.66	8536
13,673,200	0.880	---	---	---	18/07/2008	26/07/2001	---	EVROFARMA SA (CR)	0.370	---	↘	0.370	28/08/2014	---	---	---	---	---	---	220@0.359	---	2013	---	---	---	5,059.08	0.224	0.455	3577
106,500,000	0.600	0.05	0.15	0.36	05/05/2014	28/01/2000	---	EYDAP S.A. (CR)	9.10	0.77	#	9.03	03/09/2014	9.15	9.01	9.18	9.10	9.07	2180@9.02	6762@9.10	12.48	2013	48,658	440	441,252.22	969,150.00	7.06	9.95	7577
52,800,154	0.300	---	---	0.2	20/08/2014	21/06/2004	---	F.G. EUROPE S.A. (CR)	1.59	---	↘	1.59	02/09/2014	1.57	1.56	1.60	1.59	1.58	300@1.57	1550@1.60	28.69	2013	2,000	6	3,154.00	83,952.24	0.580	1.95	3722
10,203,575	0.730	---	---	---	16/07/2007	18/10/1999	---	FIERATEX SA (CR)	0.253	---	↘	0.253	27/08/2014	---	---	---	---	---	---	900@0.247	---	2013	---	---	---	2,581.50	0.121	0.430	3763
11,720,024	0.540	---	---	0.0394	21/08/2014	07/08/2014	---	FLEXOPACK SA (CR)	2.87	2.14	#	2.81	03/09/2014	2.86	2.73	2.87	2.87	2.76	400@2.74	182@2.87	13.59	2013	678	8	1,868.76	33,636.47	2.62	3.50	2723
4,181,450	0.500	---	---	---	21/08/2000	05/03/2002	---	FLOUR MILLS SARANTOPOULOS SA	0.900	---	↘	0.900	01/09/2014	---	---	---	---	---	---	---	---	2013	---	---	---	3,763.31	0.702	1.14	3577
66,948,210	0.300	---	---	---	14/07/2009	31/12/2010	---	FOLLI FOLLIE (CR)	31.35	-0.48	⬇	31.50	03/09/2014	31.70	31.03	31.70	31.35	31.33	592@31.29	245@31.36	4.86	2013	19,092	195	598,208.13	2,098,826.38	21.90	34.40	5379
50,992,322	1.00	---	---	---	21/06/2010	16/07/2002	---	FOURLIS (CR)	4.99	2.68	#	4.86	03/09/2014	4.94	4.85	4.99	4.99	4.92	400@4.92	495@5.00	---	2013	32,300	93	158,983.58	254,451.69	3.86	6.01	3722
50,593,832	0.300	---	---	---	07/07/2010	07/09/2011	---	FRIGOGLASS SA (CR)	3.17	-0.63	⬇	3.19	03/09/2014	3.16	3.07	3.20	3.17	3.14	670@3.15	50@3.19	---	2013	29,647	142	93,158.21	160,382.45	3.00	5.63	2757
77,376,446	0.340	---	---	---	23/05/2005	18/08/2011	---	G.E. DIMITRIOU (CR)	0.016	6.67	#	0.015	03/09/2014	0.015	0.015	0.016	0.016	0.015	20000@0.013	35636@0.016	---	2013	32,000	8	492.00	1,238.02	0.012	0.041	3722
14,076,360	0.370	---	---	---	19/08/2008	22/07/2003	---	GALAXIDI S.A. (CR)	0.200	---	↘	0.200	27/08/2014	---	---	---	---	---	300@0.206	---	---	2013	---	---	---	2,815.27	0.200	0.419	3573
94,462,368	0.570	---	---	---	01/08/2011	02/01/2009	---	GEK TERNA (CR)	3.55	2.31	#	3.47	03/09/2014	3.43	3.40	3.55	3.55	3.49	300@3.53	1150@3.56	---	2013	61,642	211	214,955.01	335,341.41	3.08	4.21	2357
8,418,750	0.300	0.15	0.29	---	05/06/2013	27/06/2012	---	GEKE SA (CB)	6.25	---	↘	6.25	02/09/2014	---	---	---	---	---	---	70@6.20	98.82	2013	---	---	---	52,617.19	5.40	7.20	5753
24,060,000	0.300	0.017	---	0.017	07/07/2014	21/01/2000	---	GEN. COMMERCIAL & IND.SA (CR)	0.363	---	↘	0.363	02/09/2014	---	---	---	---	---	3000@0.359	625@0.398	26.10	2013	---	---	---	8,733.78	0.327	0.455	2797
34,770,982	1.55	---	---	0.3	17/01/2014	27/07/2000	---	GR. SARANTIS SA (CR)	7.67	2.27	#	7.50	03/09/2014	7.67	7.52	7.74	7.67	7.67	105@7.55	299@7.68	7.27	2013	415	9	3,182.36	266,693.43	6.06	8.24	3767
8,340,750	1.20	---	---	---	25/06/2009	30/07/2001	---	HAIDEMENOS SA (CR)	0.383	---	↘	0.383	02/09/2014	---	---	---	---	---	780@0.381	---	---	2013	---	---	---	3,194.51	0.334	0.760	2791
101,279,627	0.380	---	---	---	26/06/2008	14/07/2006	---	HALKOR SA (CB)	0.470	---	↘	0.470	03/09/2014	0.470	0.469	0.470	0.470	0.470	2100@0.470	1000@0.473	---	2013	15,200	9	7,143.80	47,601.42	0.451	0.912	1755
36,748,909	0.730	---	---	---	15/12/2005	13/12/2006	---	HEL. SUGAR INDUSTRY SA (CB)	0.420	1.21	#	0.415	03/09/2014	0.415	0.411	0.425	0.420	0.416	87@0.411	3430@0.425	---	2013	10,142	18	4,220.90	15,434.54	0.411	1.10	3577
29,546,360	0.710	---	---	---	20/06/2008	23/08/2000	---	HELLENIC CABLES SA (CR)	1.32	2.33	#	1.29	03/09/2014	1.26	1.25	1.32	1.32	1.30	250@1.29	2796@1.30	---	2013	2,580	13	3,343.60	39,001.20	1.23	2.00	2733
65,368,563	0.560	0.11	0.09	---	03/06/2013	16/07/2014	---	HELLENIC EXCHANGES-A.S.E. (CR)	7.30	2.24	#	7.14	03/09/2014	7.10	7.09	7.30	7.30	7.23	280@7.27	1250@7.31	-(6)-	2013	218,538	667	1,579,886.40	477,190.51	6.71	9.52	8777
305,635,185	2.18	0.45	0.15	---	16/08/2013	01/10/2003	4795	HELLENIC PETROLEUM (CR)	5.54	0.73	#	5.50	03/09/2014	5.50	5.39	5.60	5.54	5.48	1@5.51	50@5.55	---	2013	402,833	1,017	2,206,688.87	1,693,218.92	5.11	8.13	537
305,732,436	0.410	---	---	---	08/07/2009	28/09/2011	---	HYGEIA SA (CR)	0.282	0.71	#	0.280	03/09/2014	0.280	0.276	0.283	0.282	0.280	590@0.283	6000@0.284	---	2013	70,200	56	19,662.47	86,216.55	0.268	0.508	4533
53,155,053	0.440	---	---	---	21/07/2010	16/07/2008	---	IASO SA (CR)	1.15	1.77	#	1.13	03/09/2014	1.12	1.11	1.15	1.15	1.13	2239@1.12	5405@1.15	---	2013	8,360	10	9,474.60	61,128.31	1.04	1.99	4533
8,298,467	0.400	---	---	---	30/08/1993	08/05/2013	---	IDEAL GROUP SA (CR)	0.780	---	↘	0.780	03/09/2014	---	---	---	---	---	---	70@0.817	-(6)-	2013	---	---	---	6,472.80	0.538	1.00	9574
28,580,100	0.400	0.02	---	0.025	18/08/2014	10/10/2013	---	IKTINOS HELLAS SA (CR)	1.39	1.46	#	1.37	03/09/2014	1.37	1.37	1.39	1.39	1.38	1000@1.34	340@1.38	8.50	2013	650	3	895.90	39,726.34	1.32	1.84	2353
9,000,000	0.900	---	---	---	15/05/2009	07/12/2010	---	ILYDA S.A. (CR)	0.723	---	↘	0.723	12/08/2014	---	---	---	---	---	---	718@0.651	---	2013	---	---	---	6,507.00	0.350	0.7	

Number of Outstanding Securities	Nominal Value	Dividends [1]			Date of Last Coupon Dividend [2]		Note	Shares	Closing price	% change	Previous closing price/date	Open price	Price min	Price max	Last price	Avg price	Last Bid [7]	Last Ask [7]	P/E after	Year	Volume	Trades	Transactions Value	Company Mkt Value (thou. €)	Year low	Year high	Sector[4]
--	------------------	---------------	--	--	-------------------------------------	--	------	--------	------------------	----------	--------------------------------	---------------	--------------	--------------	---------------	--------------	-----------------	--------------	--------------	------	--------	--------	-----------------------	--------------------------------	-------------	--------------	---------------

Main Market

2,566,836	0.440	---	---	---	13/08/2010	09/01/2007	---	INTERWOOD-XYLEMPORIA (PR)	0.195	---	↘	0.195	17/02/2014	---	---	---	---	---	---	---	2013	---	---	---	4,873.84	0.195	0.200	2353			
23,154,250	1.36	---	---	---	12/08/2008	02/08/2010	---	INTRACOM CONSTR. (CR)	0.871	-0.68	€	0.877	03/09/2014	0.870	0.870	0.880	0.871	0.876	33@0.870	434@0.880	---	2013	2,156	33	1,888.73	20,167.35	0.801	1.32	2357		
133,025,996	1.41	---	---	---	03/07/2007	07/01/2002	---	INTRACOM HOLDINGS (CR)	0.666	---	↘	0.666	03/09/2014	0.672	0.660	0.672	0.666	0.667	1000@0.665	908@0.670	---	2013	63,030	103	42,027.23	88,595.31	0.526	0.900	9578		
158,961,721	0.300	0.0035	0.0026	---	30/05/2013	14/11/2007	---	INTRALOT (CR)	1.77	-1.67	€	1.80	03/09/2014	1.78	1.74	1.80	1.77	1.77	2614@1.77	4779@1.80	---	2013	104,207	283	184,434.98	281,362.25	1.63	2.51	5752		
77,654,850	0.580	---	---	---	01/07/2011	21/02/2003	---	J & P - AVAX SA (CR)	1.38	---	↘	1.38	03/09/2014	1.38	1.35	1.38	1.38	1.36	200@1.36	235@1.38	---	2013	8,280	50	11,281.74	107,163.69	1.30	2.02	2357		
136,059,759	1.19	---	---	---	23/12/2010	05/03/2014	---	JUMBO SA (CR)	11.27	-2.00	€	11.50	03/09/2014	11.34	11.27	11.60	11.27	11.37	1400@11.26	1171@11.32	20.79	2013	365,590	288	4,156,671.97	1,533,393.48	9.76	14.40	3747		
9,742,920	0.400	0.01	0.01	0.01	08/08/2014	14/07/2000	---	KARAMOLEGOS SA (CR)	1.62	---	↘	1.62	29/08/2014	---	---	---	---	---	---	1000@1.60	---	---	2013	---	---	---	15,783.53	0.912	1.78	3577	
14,679,792	1.68	---	---	---	24/06/2014	04/09/2000	---	KARATZIS SA (CR)	3.43	3.94	#	3.30	03/09/2014	3.31	3.30	3.43	3.43	3.35	50@3.37	80@3.43	10.30	2013	100	6	335.30	50,351.69	2.92	4.50	2723		
13,202,756	0.350	---	---	---	01/07/2004	05/08/2014	---	KEKROPS SA (CR)	0.670	-4.29	€	0.700	03/09/2014	0.700	0.660	0.700	0.670	0.671	900@0.661	500@0.690	---	2013	34,152	77	22,903.92	8,845.85	0.470	1.11	8633		
7,595,160	0.600	---	---	---	08/08/2008	18/08/2010	---	KIRIAKOULIS SHIPPING SA (CR)	0.679	-0.15	€	0.680	02/09/2014	0.620	0.620	0.679	0.679	0.622	---	549@0.678	44.08	2013	280	3	174.19	5,157.11	0.492	1.08	5759		
23,648,700	0.350	---	---	---	13/07/2011	29/07/2014	---	KLEEMAN HELLAS SA (CR)	2.05	---	↘	2.05	03/09/2014	2.06	2.01	2.08	2.05	2.03	5324@2.05	500@2.07	72.47	2013	13,832	49	28,139.05	48,479.84	1.89	2.58	2757		
40,219,218	0.300	---	---	---	25/05/2009	09/07/2013	---	KLOUKINAS - LAPPAS SA (CR)	0.598	6.79	#	0.560	03/09/2014	0.560	0.560	0.598	0.597	0.561	51@0.560	46@0.597	---	2013	7,100	7	3,981.69	24,051.09	0.521	0.780	2357		
21,224,340	0.420	---	---	---	02/07/2008	25/04/2006	---	KORDELLOS BROS SA (CR)	0.310	---	↘	0.310	21/08/2014	---	---	---	---	---	---	1198@0.299	---	---	2013	---	---	---	6,579.55	0.171	0.359	1757	
13,586,500	0.390	---	---	---	25/06/2010	28/05/2008	---	KORRES (CR)	3.70	-1.33	€	3.75	03/09/2014	3.75	3.70	3.75	3.70	3.72	43@3.70	536@3.75	---	2013	587	4	2,184.40	50,270.05	2.84	3.77	3767		
29,480,000	0.420	---	---	---	19/07/2010	01/08/2007	---	KRETA FARM SA (CR)	0.621	-0.48	€	0.624	03/09/2014	0.640	0.606	0.640	0.634	0.613	330@0.608	833@0.630	---	2013	8,770	28	5,375.31	18,307.08	0.380	0.690	3577		
33,065,136	0.380	---	---	---	06/07/2009	16/09/2013	---	KRI-KRI S.A. (CR)	1.99	11.80	#	1.78	03/09/2014	1.84	1.83	2.00	1.99	1.95	89@1.97	300@2.00	12.84	2013	48,550	54	94,817.24	65,799.62	1.65	2.07	3577		
15,804,800	0.330	---	---	---	15/06/2010	12/03/2004	---	KTIMA KOSTAS LAZARIDIS SA (CR)	0.425	---	↘	0.425	25/08/2014	---	---	---	---	---	---	254@0.400	---	---	2013	---	---	---	6,717.04	0.305	0.575	3535	
24,474,815	1.15	---	---	---	19/08/2008	30/01/2014	---	KYRIAKIDIS MARBLES SA (CR)	2.38	---	↘	2.38	03/09/2014	2.37	2.37	2.38	2.38	2.38	3100@2.35	2006@2.38	5.60	2013	1,825	12	4,338.50	58,250.06	1.07	2.60	2353		
79,706,464	0.300	---	---	---	30/05/2007	23/06/2014	---	LAMDA DEVELOPMENT SA (CR)	4.50	-1.10	€	4.55	03/09/2014	4.62	4.50	4.62	4.50	4.51	250@4.49	1688@4.54	---	2013	25,362	89	114,462.68	358,679.09	4.10	6.35	8633		
21,364,000	1.12	---	---	---	05/07/2010	10/08/2005	---	LAMPSA HOTEL SA (CR)	18.08	-1.53	€	18.36	03/09/2014	17.62	17.62	18.36	18.08	18.06	30@17.72	94@18.08	-(6)-	2013	189	12	3,413.96	386,261.12	15.60	19.00	5753		
5,939,268	0.620	---	---	---	10/07/2003	03/01/2002	---	LANAKAM SA (CR)	1.14	---	↘	1.14	01/09/2014	---	---	---	---	---	---	2500@1.10	---	---	2013	---	---	---	6,770.77	0.485	1.40	3763	
7,734,375	1.00	---	---	---	09/07/2007	07/01/2011	---	LIVANIS SA (CR)	0.217	---	↘	0.217	02/09/2014	---	---	---	---	---	---	1667@0.210	---	---	2013	---	---	---	1,678.36	0.158	0.242	5557	
4,740,000	0.860	---	---	---	14/03/2003	---	---	LOGISMOS S.A. (CR)	0.484	---	↘	0.484	14/08/2014	---	---	---	---	---	---	1@0.531	65.18	2013	---	---	---	---	2,294.16	0.335	0.709	9533	
17,125,062	0.640	---	---	---	01/06/2010	02/08/2011	---	LOULIS MILLS SA (CR)	2.50	4.60	#	2.39	03/09/2014	2.40	2.40	2.50	2.50	2.42	200@2.33	629@2.50	---	2013	430	7	1,042.10	42,812.66	2.26	3.30	3577		
770,452,803	0.300	---	---	---	26/04/2007	29/08/2014	---	MARFIN INVESTMENT GROUP (CR)	0.400	1.78	#	0.393	03/09/2014	0.392	0.385	0.402	0.400	0.394	15057@0.399	20500@0.402	---	2013	1,307,401	796	514,909.58	308,181.12	0.372	0.572	8775		
9,819,370	0.690	---	---	---	14/08/2007	09/01/2004	---	MATHIOS REFRACTORY SA (CR)	0.375	---	↘	0.375	14/08/2014	---	---	---	---	---	---	400@0.359	---	---	2013	---	---	---	3,682.26	0.250	0.488	2353	
468,700	---	0.47	---	---	27/02/2014	21/05/2004	---	MERMEREN KOMB. A.D. PR. (GDR)	4.20	1.70	#	4.13	03/09/2014	4.20	4.20	4.30	4.20	4.21	100@4.20	170@4.29	2.05	2013	360	3	1,517.00	1,968.54	3.45	4.70	1775		
51,950,600	0.320	0.75	0.25	0.3	20/06/2014	21/10/2005	---	METKA (CR)	11.44	-2.22	€	11.70	03/09/2014	11.73	11.40	11.73	11.44	11.50	50@11.43	10000@11.50	13.38	2013	102,864	432	1,183,873.19	594,314.86	10.46	14.29	2757		
10,500,000	0.900	---	---	---	24/06/2008	19/12/2013	---	MEVACO SA (CR)	1.11	---	↘	1.11	03/09/2014	---	---	---	---	---	200@1.07	200@1.20	---	2013	---	---	---	---	11,655.00	1.05	1.35	2757	
14,074,000	3.00	0.25	---	---	02/03/2012	23/07/2009	---	MIG REAL ESTATE (CR)	3.03	---	↘	3.03	03/09/2014	3.03	3.03	3.03	3.03	3.03	790@3.03	715@3.06	-(6)-	2013	1,500	3	4,545.00	42,644.22	1.50	3.05	8671		
6,700,000	0.800	---	---	0.16	26/05/2014	29/05/2014	---	MILLS KEPENOS (CR)	1.38	---	↘	1.38	02/09/2014	---	---	---	---	---	250@1.27	1530@1.34	7.52	2013	---	---	---	---	9,246.00	0.991	2.50	3577	
6,200,000	0.500	---	---	---	22/06/2010	01/11/1995	---	MINERVA KNITWEAR SA (CB)	0.459	---	↘	0.459	16/06/2014	---	---	---	---	---	---	300@0.429	---	---	2013	---	---	---	---	2,845.80	0.396	0.689	3763
12,417,000	0.370	---	---	---	28/07/2008	06/09/2011	---	MLS MULTIMEDIA SA (CR)	4.80	-0.41	€	4.82	03/09/2014	4.82	4.71	4.82	4.80	4.77	150@4.75	1078@4.80	50.90	2013	6,624	28	31,616.61	59,601.60	3.28	4.82	9537		
4,588,137	16.00	---	---	---	30/06/2005	17/08/2011	---	MOCHLOS SA (CR)	1.33	6.40	#	1.25	03/09/2014	1.19	1.19	1.34	1.34	1.32	90@1.28	3@1.30	---	2013	351	13	464.51	6,102.22	1.17	2.05	2357		
11,700,000	0.590	---	---	---	02/06/2009	24/07/2012	---	MOTODYNAMICS S.A. (CR)	0.300	5.26	#	0.285	03/09/2014	0.299	0.299	0.301	0.300	0.300	871@0.300	150@0.306	---	2013	17,929	10	5,378.00	3,510.00	0.280	0.447	5379		
110,782,980	0.750	0.4	0.3	0.2	26/06/2014	04/11/2013	---	MOTOR OIL (CR)	7.81	-0.51	€	7.85	03/09/2014	7.82	7.75	7.87	7.81	7.82	51@7.80	915@7.82	-(6)-	2013	52,473	290	410,338.91	865,215.07	7.15	10.30	533		
116,915,862	1.07	---	---	---	11/05/2009	06/07/2011	---	MYTILINEOS HOLDINGS (CR)	6.63	4.41	#	6.35	03/09/2014	6.28	6.28	6.63	6.63	6.50	1000@6.60	3796@6.64	---	2013	347,807	1,150	2,260,827.43	775,152.17	5.38	7.32	1755		
8,321,682	0.670	---	---	---	17/08/2007	23/11/1999	---	N. LEVEDERIS SA (CB)	0.240	---	↘	0.240	19/06/2014	---	---	---	---	---	---	70@0.216	---	---	2013	---	---	---	---	3,604.63	0.196	0.255	1757

Number of Outstanding Securities	Nominal Value	Dividends [1]			Date of Last Coupon Dividend [2]		Note	Shares	Closing price	% change	Previous closing price/date	Open price	Price min	Price max	Last price	Avg price	Last Bid [7]	Last Ask [7]	P/E after	Year	Volume	Trades	Transactions Value	Company Mkt Value (thou. €)	Year low	Year high	Sector[4]
2,160,524	0.670	0.0435	0.0436	0.0436	18/08/2014	23/11/1999	---	N. LEVEDERIS SA (PB)	0.744	---	↘ 0.744 26/03/2014	---	---	---	---	---	---	7924@0.670	---	2013	---	---	---	3,604.63	0.566	0.779	1757
11,510,102	0.890	---	---	---	24/06/2005	06/10/1999	---	NAFPAKTOS TEXTILE IND. SA (CB)	0.260	---	↘ 0.260 01/09/2014	---	---	---	---	---	---	2@0.234	---	2013	---	---	---	2,992.63	0.209	0.397	3763
6,340,000	0.600	---	---	---	30/11/2009	12/07/2000	---	NAKAS MUSIC	0.792	---	↘ 0.792 03/09/2014	---	---	---	---	---	100@0.713	20@0.792	---	2013	---	---	---	5,021.28	0.526	1.62	5379
3,533,149,631	0.300	---	---	---	16/05/2008	24/05/2013	---	NATIONAL BANK (CR)	2.71	4.63	# 2.59 03/09/2014	2.60	2.55	2.71	2.71	2.66	4714@2.70	152691@2.72	6.03	2013	9,222,155	2,322	24,451,691.55	9,574,835.50	1.98	4.31	8355
23,935,280	0.300	---	---	---	29/06/2009	13/06/2000	---	NAYTEMPORIKI PUBLISHING SA(CR)	0.242	-5.10	€ 0.255 03/09/2014	0.238	0.238	0.249	0.249	0.239	500@0.181	650@0.249	---	2013	5,050	5	1,207.04	5,792.34	0.130	0.479	5557
27,848,000	0.300	0.0132	0.0137	0.004	18/08/2014	02/09/2003	---	NEWSPHONE HELLAS SA (CR)	0.306	---	↘ 0.306 03/09/2014	---	---	---	---	---	485@0.284	500@0.314	27.49	2013	---	---	---	8,521.49	0.271	0.468	2791
6,132,500	1.25	---	---	---	24/06/2011	19/06/2001	---	NEXANS HELLAS SA (CR)	2.05	---	↘ 2.05 03/09/2014	2.05	2.05	2.05	2.05	2.05	100@1.90	100@2.08	---	2013	50	2	102.50	12,571.63	1.91	2.40	2733
63,697,153	1.34	---	---	---	08/07/2008	10/11/2008	---	NIREFS SA (CR)	0.178	---	↘ 0.178 03/09/2014	0.170	0.170	0.178	0.178	0.177	248@0.178	2000@0.180	---	2013	24,257	10	4,285.77	11,338.09	0.160	0.362	3573
319,000,000	0.300	0.72	0.57	0.25	27/05/2014	25/04/2001	---	OPAP (CR)	12.30	1.07	# 12.17 03/09/2014	12.27	12.20	12.37	12.30	12.29	20@12.29	1115@12.34	27.50	2013	877,287	1,432	10,785,573.74	3,923,700.00	9.33	13.65	5752
490,150,389	2.83	---	---	---	28/06/2011	18/06/1998	---	OTE (CR)	11.00	0.92	# 10.90 03/09/2014	10.85	10.82	11.10	11.00	10.96	50@10.97	2391@11.01	---	2013	522,721	1,072	5,730,371.73	5,391,654.28	9.16	13.20	6535
25,000,000	2.00	0.01	0.05	0.12	17/07/2014	08/08/2003	---	P.P.A. S.A. (CR)	17.10	2.39	# 16.70 03/09/2014	16.60	16.53	17.10	17.10	16.71	50@16.68	114@17.10	53.14	2013	11,554	106	193,084.66	427,500.00	15.65	20.89	2777
4,971,466	1.46	---	---	---	04/07/2007	08/10/2003	---	PAIRIS SA (CR)	0.300	---	↘ 0.300 01/09/2014	---	---	---	---	---	800@0.210	750@0.290	---	2013	---	---	---	1,491.44	0.200	0.355	2723
3,953,090	0.900	---	---	---	02/07/2001	05/12/2012	---	PAPERPACK (CR)	0.914	-0.65	€ 0.920 03/09/2014	0.900	0.870	0.914	0.914	0.874	220@0.872	139@0.914	4.72	2013	1,312	7	1,147.21	3,613.12	0.680	1.15	2723
50,797,369	0.310	---	---	---	17/08/2000	12/10/2010	---	PAPOUTSANIS (CR)	0.435	-4.61	€ 0.456 03/09/2014	0.460	0.422	0.470	0.435	0.456	1500@0.411	493@0.435	---	2013	16,927	47	7,710.54	22,096.86	0.395	0.604	3767
7,070,400	0.930	---	---	---	18/05/2010	12/05/2011	---	PETROPOULOS PETROS (CR)	2.39	8.64	# 2.20 03/09/2014	2.20	2.17	2.39	2.39	2.26	1000@2.30	353@2.39	58.07	2013	64,394	120	145,457.53	16,898.26	1.43	2.39	2753
6,101,979,715	0.300	---	---	---	16/05/2008	05/06/2013	---	PIRAEUS BANK (CR)	1.47	5.00	# 1.40 03/09/2014	1.40	1.37	1.48	1.47	1.42	235950@1.46	213782@1.48	1.57	2013	13,957,283	2,463	19,884,297.36	8,969,910.18	1.19	2.11	8355
22,080,000	0.320	0.08	0.12	0.2	21/05/2014	03/10/2000	---	PLAISIO COMPUTERS SA (CR)	7.27	0.97	# 7.20 03/09/2014	7.15	7.03	7.27	7.27	7.11	100@7.06	20@7.27	11.33	2013	3,200	33	22,747.61	160,521.60	5.80	7.98	9572
232,000,000	4.60	---	0.025	---	22/07/2013	12/12/2001	---	PPC (CR)	11.19	---	↘ 11.19 03/09/2014	11.20	11.06	11.28	11.19	11.18	18975@11.18	5@11.24	---	2013	168,758	710	1,885,834.03	2,596,080.00	9.08	12.75	7535
11,812,193	0.450	---	---	---	24/07/2009	15/11/2006	---	PROFILE SA (CR)	0.775	-0.51	€ 0.779 03/09/2014	0.789	0.760	0.789	0.775	0.764	815@0.754	100@0.775	14.92	2013	3,286	21	2,510.61	9,154.45	0.750	1.05	9533
27,345,120	0.470	---	---	---	18/07/2005	26/02/2014	---	QUALITY & RELIABILITY SA (CR)	0.613	-0.65	€ 0.617 03/09/2014	0.633	0.600	0.633	0.613	0.604	200@0.610	824@0.613	81.52	2013	4,010	15	2,423.46	16,762.56	0.378	0.740	9533
11,962,443	0.500	---	---	---	05/09/2008	12/12/2013	---	QUEST HOLDINGS (CR)	5.50	---	↘ 5.50 03/09/2014	5.73	5.16	5.73	5.50	5.49	105@5.50	100@5.64	---	2013	1,445	15	7,927.50	65,793.44	4.21	6.30	9533
57,434,884	1.31	---	---	---	05/06/2008	12/06/2009	---	REDS S.A. (CR)	0.502	-3.46	€ 0.520 03/09/2014	0.510	0.501	0.515	0.515	0.508	464@0.501	980@0.515	---	2013	3,772	7	1,914.80	28,832.31	0.484	0.827	8633
22,280,000	0.300	---	---	---	11/04/2011	23/02/2007	---	REVOIL (CR)	0.453	-3.62	€ 0.470 03/09/2014	0.504	0.445	0.504	0.453	0.462	438@0.445	23@0.329	---	2013	10,641	37	4,911.48	10,092.84	0.427	0.720	5379
7,500,000	0.480	---	0.0024	0.0863	13/08/2014	10/02/2014	---	S.KANAKIS SA (CR)	1.83	0.55	# 1.82 03/09/2014	1.86	1.83	1.86	1.83	1.83	500@1.76	1000@1.84	9.42	2013	225	4	412.50	13,725.00	1.70	1.99	3577
52,067,296	0.300	---	---	---	23/12/2003	24/01/2007	---	SELECTED TEXT. IND. ASSOC (CR)	0.220	3.77	# 0.212 03/09/2014	0.231	0.200	0.231	0.220	0.213	4250@0.200	3750@0.220	---	2013	21,350	17	4,550.80	11,454.81	0.172	0.355	3763
96,243,908	0.410	---	---	---	26/06/2008	17/07/2000	---	SIDENOR (CR)	1.30	1.56	# 1.28 03/09/2014	1.28	1.25	1.31	1.30	1.28	11@1.29	433@1.30	---	2013	13,633	33	17,500.90	125,117.08	1.21	2.26	1757
6,456,530	1.60	---	---	---	29/06/2001	02/08/2010	---	SPACE HELLAS SA (CR)	1.49	---	↘ 1.49 21/08/2014	---	---	---	---	---	---	70@1.47	---	2013	---	---	---	9,620.23	1.13	1.87	9578
28,438,268	0.300	---	---	---	21/08/2006	24/11/1999	---	SPIROY AGRICULTURE SA (CR)	0.348	8.75	# 0.320 03/09/2014	0.288	0.288	0.348	0.348	0.305	---	100@0.335	---	2013	350	2	106.80	9,896.52	0.206	0.388	1357
33,125,000	5.00	---	---	---	03/07/2006	18/08/2010	---	TECHNICAL OLYMPIC SA (CR)	1.61	---	↘ 1.61 03/09/2014	1.53	1.53	1.64	1.61	1.59	430@1.56	292@1.61	---	2013	1,555	20	2,467.35	53,331.25	1.36	2.29	3728
109,314,400	0.300 (0.0589)	---	---	---	28/05/2012	09/07/2014	---	TERNA ENERGY (CR)	3.60	-0.83	€ 3.63 03/09/2014	3.57	3.55	3.64	3.60	3.60	1400@3.58	2000@3.61	-(6)-	2013	69,513	229	249,924.48	393,531.84	3.34	4.86	7537
36,300,000	1.12	0.188	0.162	0.285	14/08/2014	12/12/2007	---	THESSALONIKA WATER & SEWERAGE	4.07	---	↘ 4.07 03/09/2014	4.17	4.07	4.18	4.07	4.11	520@4.06	1046@4.07	11.27	2013	13,892	68	57,137.07	147,741.00	4.00	5.66	7577
45,094,620	0.500	---	0.0467	0.05	28/04/2014	01/11/1999	---	THRACE PLASTICS SA (CR)	1.05	1.94	# 1.03 03/09/2014	1.05	1.03	1.08	1.05	1.05	3525@1.04	51626@1.06	---	2013	53,377	51	56,016.11	47,349.35	1.03	1.39	1357
77,063,568	4.00	---	---	---	25/06/2014	25/06/2004	---	TITAN CEMENT (CR)	20.00	---	↘ 20.00 03/09/2014	19.91	19.71	20.27	20.00	20.00	500@19.95	500@20.09	---	2013	51,296	392	1,025,645.58	1,616,960.96	18.12	26.80	2353
7,568,960	4.00	---	---	---	25/06/2014	25/06/2004	---	TITAN CEMENT CO. (PR)	10.00	---	↘ 10.00 03/09/2014	10.00	10.00	10.00	10.00	10.00	65@10.00	370@10.17	---	2013	135	2	1,350.00	1,616,960.96	8.53	10.50	2353
10,080,000	3.00	0.4	1.5	0.6	13/08/2014	27/08/2001	---	TPA SA (CR)	27.66	---	↘ 27.66 03/09/2014	27.65	27.65	27.66	27.66	27.66	80@27.28	99@27.66	15.33	2013	228	4	6,305.98	278,812.80	22.20	31.40	2777
54,888,240	1.13	0.1	0.1	0.09	25/04/2014	22/03/2006	---	TRASTOR REAL EST. INV. CO.(CR)	1.10	4.76	# 1.05 03/09/2014	1.03	1.03	1.12	1.10	1.09	1100@1.06	1990@1.10	---	2013	2,536	15	2,767.28	60,377.06	0.935	1.33	8671
15,627,315	0.300	---	---	---	16/11/1992	03/12/2012	---	UNIBIOS (CR)	0.291	-1.69	€ 0.296 03/09/2014	0.299	0.271	0.299	0.291	0.289	10@0.290	3814@0.291	---	2013	19,490	18	5,629.27	4,547.55	0.185	0.404	2353
18,810,000	0.400	---	---	---	08/07/2010	14/11/2007	---	VARVERIS - MODA BAGNO SA (CR)	0.226	---	↘ 0.226 02/09/2014	---	---	---	---	---	---	996@0.223	---	2013	---	---	---	4,251.06	0.168	0.279	2353

Number of Outstanding Securities	Nominal Value	Dividends [1]			Date of Last Coupon Dividend [2]	Right	Note	Shares	Closing price	% change	Previous closing price/date	Open price	Price min	Price max	Last price	Avg price	Last Bid [7]	Last Ask [7]	P/E after	Year	Volume	Trades	Transactions Value	Company Mkt Value (thou. €)	Year low	Year high	Sector[4]
--	------------------	---------------	--	--	-------------------------------------	-------	------	--------	------------------	----------	--------------------------------	---------------	--------------	--------------	---------------	--------------	-----------------	--------------	--------------	------	--------	--------	-----------------------	--------------------------------	-------------	--------------	---------------

Main Market

219,611,308	---	---	---	14/02/2014	---	VIOHALCO SA/NV (CB)	4.08	-0.24	€	4.09	03/09/2014	4.04	4.00	4.08	4.08	4.04	14@4.07	780@4.09	---	---	74,635	201	301,229.61	896,014.14	3.68	5.19	2727
4,968,600	2.88	---	---	01/07/1998	14/12/1998	---	0.940	---	↘	0.940	30/07/2014	---	---	---	---	---	---	587@0.846	---	2013	---	---	---	4,670.48	0.517	0.980	2723
6,325,000	0.600	---	---	02/05/2014	17/02/2014	---	1.07	-4.46	€	1.12	03/09/2014	1.01	1.01	1.07	1.07	1.02	---	210@1.05	---	2013	170	3	173.50	6,767.75	0.770	2.27	2797

Exchange Traded Funds (ETFs)

5,848,618	---	---	---	24/01/2008	---			ALPHA ETF FTSE Athex Large Cap	3.84	2.00	#	3.76	03/09/2014	3.73	3.73	3.84	3.84	3.75	---	147@3.84	---	---	1,844	3	6,904.99	-	3.38	4.55	11000
294,878	---	---	---	29/06/2009	---			NBGAM ETF	13.06	2.03	#	12.80	03/09/2014	13.06	13.06	13.06	13.06	13.06	---	499@14.50	---	---	2	1	26.12	-	11.75	15.10	11000
388,550	---	---	---	03/11/2010	---			NBGAM ETF GREECE & TURKEY 30	8.82	2.32	#	8.62	03/09/2014	8.82	8.82	8.82	8.82	8.82	---	---	---	---	2	1	17.64	-	6.70	9.00	11000

Low Dispersion

14,000,000	4.15	---	---	23/04/2010	29/06/1999	4815		ALPHA REAL ESTATE SA(CR)	5.22	-5.09	€	5.50	02/09/2014	5.20	5.20	5.50	5.31	5.22	100@5.31	46@5.49	21.82	2013	548	5	2,860.90	73,080.00	4.69	7.10	8637
63,900,000	3.00	---	---	23/06/2003	04/11/2008	4816		ASTIR PALACE SA (CR)	3.90	---	↘	3.90	03/09/2014	3.90	3.90	3.90	3.90	3.90	100@3.83	148@3.90	---	2013	750	4	2,925.00	249,210.00	3.45	4.08	5753
90,902,904	0.800	---	---	09/08/2004	08/03/2006	4814		ATHENA SA (CR)	0.290	---	↘	0.290	26/08/2014	---	---	---	---	---	---	2200@0.250	---	2013	---	---	---	26,361.84	0.133	0.310	2357
191,660,320	0.300	---	---	20/07/2009	29/12/2010	4817		ATTICA HOLDINGS (CR)	0.567	-2.07	€	0.579	03/09/2014	0.510	0.510	0.579	0.579	0.567	400@0.515	299@0.569	---	2013	1,210	6	686.10	108,671.40	0.495	0.799	5759
26,664,840	0.470	---	---	26/06/2014	12/07/1999	5067		CYCLON HELLAS SA (CR)	0.700	---	↘	0.700	03/09/2014	0.700	0.700	0.700	0.700	0.700	2282589@0.700	150@0.800	36.24	2013	14,218	21	9,952.60	18,665.39	0.450	0.720	1357
68,322,221	1.00	---	---	08/03/2002	08/04/2013	4986		GENIKI BANK (CR)	4.48	19.79	#	3.74	03/09/2014	4.48	4.48	4.48	4.48	4.48	1099@4.48	---	---	2013	1	1	4.48	306,083.55	2.00	15.00	8355
71,082,707	1.70	---	---	01/07/2010	21/11/2012	4820		HERACLES GEN.CEMENT CO. (CR)	1.33	---	↘	1.33	02/09/2014	1.33	1.33	1.33	1.33	1.33	264@1.32	236@1.40	---	2013	65	1	86.45	94,540.00	1.24	1.55	2353
13,404,440	8.63	---	---	02/04/2001	06/03/1992	4822		IONIAN HOTELS SA (CR)	7.00	---	↘	7.00	11/08/2014	---	---	---	---	---	---	---	-(6)-	2013	---	---	---	93,831.08	6.00	9.90	5753
2,760,000	7.70	7.6	8.52	30/06/2014	16/07/1990	4823		KARELIA TOBACCO CO. SA (CB)	222.00	-9.35	€	244.90	02/09/2014	222.00	222.00	222.00	222.00	222.00	7@222.50	8@235.00	15.43	2013	30	5	6,660.00	612,720.00	180.00	244.90	3785
30,600,000	0.300	---	---	12/06/2008	04/03/2014	5059		KATHIMERINI SA (CR)	0.440	-1.35	€	0.446	03/09/2014	0.440	0.440	0.440	0.440	0.440	5055@0.360	899@0.438	---	2013	7,000	5	3,080.00	13,464.00	0.311	4.49	5557
106,980,050	2.25	---	---	25/07/2008	24/02/2014	5046		MINOAN LINES SA (CR)	1.53	7.75	#	1.42	03/09/2014	1.50	1.50	1.64	1.64	1.53	717@1.52	200@1.63	---	2013	5,269	14	8,043.50	163,679.48	1.42	2.00	5759
17,240,776	0.370	---	---	14/07/2005	30/09/2003	4827		PERSEUS SA (CR)	0.199	---	↘	0.199	29/08/2014	---	---	---	---	---	700@0.160	250@0.238	1.78	2013	---	---	---	3,430.91	0.152	0.504	3577

Surveillance

33,301,715	0.320	---	---	---	27/06/2003	08/07/2009	4978	AEGEK (CR)	0.068	---	↘	0.068	03/09/2014	---	---	---	---	---	1510@0.056	90@0.060	---	2013	---	---	---	2,264.52	0.048	0.136	2357
14,870,100	0.300	---	---	---	15/05/2008	26/09/2011	4844	ALPHA GRISSIN S.A. (CR)	0.116	---	↘	0.116	07/08/2014	---	---	---	---	---	2000@0.093	2500@0.110	---	2013	---	---	---	1,724.93	0.067	0.160	9533
215,246,452	0.300	---	---	---	25/06/2001	24/09/2001	4446	ALTEC SA (CR)	0.022	-8.33	€	0.024	03/09/2014	0.022	0.022	0.022	0.022	0.022	28999@0.023	500@0.024	---	2013	12,500	4	275.00	4,735.42	0.020	0.040	9533
2,969,713	0.300	---	---	---	02/07/2008	28/02/2011	4958	ANEK LINES SA (PR, Issue '96)	0.160	---	↘	0.160	21/08/2014	---	---	---	---	---	---	---	---	2013	---	---	---	19,371.44	0.120	0.280	5759
312,163	0.300	---	---	---	02/07/2008	28/02/2011	4959	ANEK LINES SA (PR, Issue '90)	1.15	---	↘	1.15	26/06/2014	---	---	---	---	---	---	37@1.37	---	2013	---	---	---	19,371.44	1.15	1.43	5759
185,373,016	0.300	---	---	---	02/07/2008	28/02/2011	4957	ANEK LINES SA (CR)	0.100	-0.99	€	0.101	03/09/2014	0.100	0.100	0.100	0.100	0.100	2317@0.100	10716@0.104	---	2013	11,683	4	1,168.30	19,371.44	0.076	0.141	5759
81,644,555	0.300	---	---	---	01/07/2008	02/09/2002	5056	ATTI - KAT SA (CR)	0.010	-9.09	€	0.011	03/09/2014	0.009	0.009	0.011	0.011	0.010	2998@0.013	---	---	2013	1,417	5	13.58	816.45	0.009	0.036	2357
20,255,805	0.300	---	---	---	22/08/2006	02/08/2010	4881	AXON HOLDING SA (CR)	0.044	18.92	#	0.037	03/09/2014	0.044	0.044	0.044	0.044	0.044	350@0.044	---	---	2013	900	1	39.60	891.26	0.037	0.139	4533
17,579,754	4.16	---	---	---	18/08/2006	02/08/2010	4885	BIOTER SA (CR)	0.216	---	↘	0.216	18/08/2014	---	---	---	---	---	---	3000@0.202	---	2013	---	---	---	3,797.23	0.104	0.216	2357
1,130,180	0.440	---	---	---	20/06/2003	02/07/2014	---	COMPUCON SA (CR)	0.101	---	↘	0.101	02/09/2014	---	---	---	---	---	19999@0.102	---	---	2013	---	---	---	114.15	0.065	0.814	9537
14,173,104	0.300	---	---	---	11/08/2010	28/11/2013	5055	DIONIC (CR)	0.068	---	↘	0.068	03/09/2014	---	---	---	---	---	4300@0.063	3000@0.075	---	2013	---	---	---	963.77	0.041	0.307	2797
15,878,748	0.480	---	---	---	10/07/2006	22/03/2004	4960	DOMIKI KRITIS SA (CR)	0.450	---	↘	0.450	01/09/2014	---	---	---	---	---	200@0.360	5000@0.420	---	2013	---	---	---	7,145.44	0.264	0.485	2357
3,961,300	1.28	---	---	---	29/06/2004	03/08/2000	4808	DUROS SA (CR)	0.530	---	↘	0.530	23/07/2014	---	---	---	---	---	---	4575@0.475	---	2013	---	---	---	2,099.49	0.185	0.759	3763
7,085,888	1.59	---	---	---	02/07/1996	06/09/2010	4690	ELVIEMEK (CR)	3.97	---	↘	3.97	26/02/2014	---	---	---	---	---	---	---	---	2013	---	---	---	28,130.98	1.54	3.97	8633

Number of Outstanding Securities	Nominal Value	Dividends [1]			Date of Last Coupon Dividend [2]		Note	Shares	Closing price	% change	Previous closing price/date	Open price	Price min	Price max	Last price	Avg price	Last Bid [7]	Last Ask [7]	P/E after	Year	Volume	Trades	Transactions Value	Company Mkt Value (thou. €)	Year low	Year high	Sector[4]
--	------------------	---------------	--	--	-------------------------------------	--	------	--------	------------------	----------	--------------------------------	---------------	--------------	--------------	---------------	--------------	-----------------	--------------	--------------	------	--------	--------	-----------------------	--------------------------------	-------------	--------------	---------------

Surveillance

6,000,000	0.600	---	---	---	13/06/2008	08/04/2004	4886	EUROBROKERS S.A. (CR)	0.024	---	↘	0.024	12/05/2014	---	---	---	---	---	1000@0.025	---	---	2013	---	---	---	144.00	0.024	0.052	8534
21,820,410	0.800	---	---	---	22/05/2008	02/08/2011	4882	EUROMEDICA SA (CR)	0.403	---	↘	0.403	02/09/2014	---	---	---	---	---	---	---	---	2013	---	---	---	8,793.63	0.240	0.403	4533
110,097,185	0.300	---	---	---	04/12/2013		5033	Forthnet (CR)	1.42	1.43	#	1.40	03/09/2014	1.40	1.40	1.42	1.42	1.42	80@1.42	250@1.47	---	2013	967	5	1,372.20	156,338.00	0.874	1.98	9535
1,270,000	0.300	---	---	---	06/07/2007	06/02/2013	5007	GIRAKIAN PROFIL SA (CB)	2.30	---	↘	2.30	11/04/2014	---	---	---	---	---	---	25@1.84	---	2013	---	---	---	2,921.00	1.44	2.63	1757
179,707,771	0.300	---	---	---	27/06/2002	01/11/2011	4847	HELLAS ONLINE SA (CR)	0.522	1.56	#	0.514	03/09/2014	0.538	0.515	0.538	0.515	0.522	835@0.515	2400@0.519	67.86	2013	965	5	503.88	93,807.46	0.400	0.670	9537
30,390,000	0.310	---	---	---	18/08/2008	29/12/2006	4447	HELLENIC FISHFARMING SA (CR)	0.080	---	↘	0.080	03/09/2014	---	---	---	---	---	2000@0.064	34678@0.080	---	2013	---	---	---	2,431.20	0.045	0.119	3573
1,540,000	0.600	---	---	---	08/08/1994	19/09/2000	5058	J.BOUTARIS & SON HOLD. (PB)	0.005	---	↘	0.005	03/09/2014	---	---	---	---	---	2000@0.005	---	---	2013	---	---	---	1,770.27	0.005	0.012	3535
25,179,640	0.600	---	---	---	08/08/1994	19/09/2000	5057	J.BOUTARIS & SON HOLD. SA (CB)	0.070	---	↘	0.070	03/09/2014	---	---	---	---	---	6305@0.056	5000@0.070	---	2013	---	---	---	1,770.27	0.041	0.084	3535
7,125,216	0.650	---	---	---	01/07/2005	14/12/1999	4955	KRE.KA SA (CR)	0.164	2.50	#	0.160	12/08/2014	0.164	0.164	0.164	0.164	0.164	1000@0.150	3700@0.164	---	2013	5,000	2	820.00	1,168.54	0.129	0.278	3573
51,081,030	1.00	---	---	---	20/08/2007	03/09/2007	4912	LAVIPHARM SA (CR)	0.139	5.30	#	0.132	03/09/2014	0.139	0.139	0.139	0.139	0.139	8000@0.118	39490@0.137	---	2013	1,035	3	143.87	7,100.26	0.100	0.164	4577
322,925,288	0.300	---	---	---	23/05/2007	10/04/2000	4554	M.J. MAILLIS SA (CR)	0.115	---	↘	0.115	03/09/2014	0.115	0.115	0.115	0.115	0.115	5074817@0.115	10000@0.116	---	2013	180,190	39	20,721.85	37,136.41	0.067	0.144	2723
4,178,856	1.58	---	---	---	21/07/2011	28/07/2004	4983	MEDICON S.A (CR)	0.560	-20.00	€	0.700	08/07/2014	0.560	0.560	0.560	0.560	0.560	---	13330@0.560	23.09	2013	20	1	11.20	2,340.16	0.251	0.952	4535
255,459,600	0.300	---	---	---	26/06/2000	03/12/2010	4833	NEL SA (CR)	0.037	---	↘	0.037	03/09/2014	---	---	---	---	---	34410@0.031	19@0.044	---	2013	---	---	---	9,452.01	0.025	0.090	5759
20,231,328	0.600	---	---	---	15/07/2008	25/06/2004	4879	NIKAS SA (CR)	0.200	---	↘	0.200	21/08/2014	---	---	---	---	---	1000@0.190	---	---	2013	---	---	---	4,046.27	0.170	0.200	3577
14,967,940	0.500	---	---	---	21/05/2008	04/01/2008	4956	PASAL DEVELOPMENT S.A. (CR)	0.160	-19.60	€	0.199	03/09/2014	0.160	0.160	0.160	0.160	0.160	---	4900@0.160	---	2013	100	1	16.00	2,394.87	0.129	0.239	8633
18,750,000	0.300	---	---	---	02/07/2001	31/12/2012	4985	PEGASUS PUBLISHING S.A. (CR)	0.015	---	↘	0.015	03/09/2014	0.015	0.015	0.018	0.018	0.015	2@0.018	---	---	2013	68	2	1.03	281.25	0.015	0.300	5557
24,319,250	0.300	---	---	---	09/07/2002	04/07/2007	5054	PROODEFTIKH SA (CR)	0.122	-8.96	€	0.134	03/09/2014	0.120	0.120	0.125	0.125	0.122	250@0.115	29082@0.125	---	2013	1,034	7	126.59	2,966.95	0.075	0.188	2357
65,326,268	0.530	---	---	---	04/07/2007	19/07/2006	4750	SATO SA (CR)	0.130	---	↘	0.130	03/09/2014	0.130	0.130	0.130	0.130	0.130	2000@0.131	24350@0.156	---	2013	2,000	2	260.00	8,492.41	0.100	0.250	3726
36,235,184	1.00	---	---	---	01/07/2008	30/07/2012	4961	SELONDA AQUACULTURE SA (CR)	0.124	---	↘	0.124	02/09/2014	0.124	0.124	0.124	0.124	0.124	1000@0.105	1714@0.124	---	2013	1,000	2	124.00	4,493.16	0.085	0.152	3573
7,914,480	2.50	---	---	---	23/06/2008	29/06/2011	4888	SFAKIANAKIS SA (CR)	1.15	---	↘	1.15	01/09/2014	---	---	---	---	---	---	200@1.15	---	2013	---	---	---	9,101.65	0.488	1.15	5379
10,000,000	1.35	---	---	---	24/06/2008	10/05/2005	4887	SIDMA SA (CR)	0.420	---	↘	0.420	28/08/2014	---	---	---	---	---	---	194@0.360	---	2013	---	---	---	4,200.00	0.240	0.479	1757
29,060,950	0.340	---	---	---	20/08/2007	24/10/2001	4884	SPIDER METAL INDUSTRY SA (CR)	0.046	---	↘	0.046	27/08/2014	---	---	---	---	---	---	4860@0.037	---	2013	---	---	---	1,336.80	0.012	0.070	2757
100,793,000	0.300	---	---	---	16/07/2009	05/08/2013	5008	TELETIPOS SA (CR)	0.116	---	↘	0.116	29/08/2014	---	---	---	---	---	999@0.116	---	---	2013	---	---	---	11,691.99	0.111	0.345	5553
3,229,566	0.320	---	---	---	22/06/2005	23/09/1999	4629	VARANGIS AVEPE S.A. (CR)	0.600	---	↘	0.600	19/06/2014	---	---	---	---	---	---	220@0.600	---	2013	---	---	---	1,937.74	0.600	1.00	3726
16,383,428	0.300	---	---	---	25/06/2002	21/06/2013	4997	VARVARESSOS SA (CB)	0.062	---	↘	0.062	02/09/2014	0.062	0.062	0.062	0.062	0.062	4980@0.070	---	0.09	2013	20	1	1.24	1,015.77	0.062	0.293	3763
13,191,620	0.620	---	---	---	04/08/2010	09/09/2002	4977	YALCO - CONSTANTINOU SA (CB)	0.136	-19.53	€	0.169	30/06/2014	0.136	0.136	0.136	0.136	0.136	---	1980@0.136	---	2013	20	1	2.72	1,794.06	0.079	0.241	3722

9,567,289	0.300	---	---	---	01/07/2004	19/11/2007	5062	MARAC ELECTRONICS (CR)	0.348	---	↘	0.348	04/08/2014	---	---	---	---	---	---	480@0.309	---	2013	---	---	---	3,329.42	0.290	0.356	9578
40,946,303	0.360	---	---	---	18/07/2005	27/11/2007	5053	PC SYSTEMS SA (CR)	0.094	---	↘	0.094	01/09/2014	---	---	---	---	---	---	187899@0.094	---	2013	---	---	---	3,848.95	0.046	0.169	9533
766,000	2.83	---	---	---	01/07/2004	11/12/2012	4937	TRIA ALFA SA (CR)	2.29	---	↘	2.29	25/06/2014	---	---	---	---	---	---	1@2.72	---	2013	---	---	---	2,084.89	1.72	3.33	3763
245,000	2.83	---	---	---	19/07/2010	11/12/2012	4938	TRIA ALFA SA (PR)	1.35	---	↘	1.35	29/07/2014	---	---	---	---	---	---	1@1.61	---	2013	---	---	---	2,084.89	0.969	2.57	3763

Suspension Status

5,025,000	0.300	---	---	---	05/07/2005	14/03/2002	5023	ALSINCO S.A (CR)	0.043	---	↘	0.043	27/11/2013	---	---	---	---	---	---	---	---	---	---	---	216.08	0.043	0.043	3763
1,750,955,549	0.600	---	---	---	19/05/2008	08/12/2011	4911	ATE (CR)	0.155	---	↘	0.155	30/07/2012	---	---	---	---	---	---	---	---	---	---	---	271,398.11	0.155	0.155	8355
21,382,067	0.300	---	---	---	02/10/2006	15/02/2006	4628	ATERMON (CR)	0.120	---	↘	0.120	31/03/2010	---	---	---	---	---	---	---	---	---	---	---	2,565.85	0.120	0.120	5555
105,423,498	0.510	---	---	---	01/07/2004	28/12/2005	4920	AVENIR S.A. (CR)	0.046	---	↘	0.046	30/08/2012	---	---	---	---	---	---	---	---	---	---	---	4,849.48	0.046	0.046	5752

Number of Outstanding Securities	Nominal Value	Dividends [1]			Date of Last Coupon		Note	Shares	Closing price	% change	Previous closing price/date	Open price	Price min	Price max	Last price	Avg price	Last Bid [7]	Last Ask [7]	P/E after	Year	Volume	Trades	Transactions Value	Company Mkt Value (thou. €)	Year low	Year high	Sector[4]
		2011	2012	2013	Dividend [2]	Right																					
Suspension Status																											
33,930,000	0.300	---	---	---	03/07/2006	30/05/2001	4865	BABIS VOVOS SA (CR)	0.304	---	↘ 0.304	30/03/2012	---	---	---	---	---	---	---	---	---	---	---	10,314.72	0.304	0.304	8633
20,121,710	1.21	---	---	---	27/07/1992	12/03/2003	5002	BALKAN R.E. (CR)	0.190	---	↘ 0.190	29/08/2013	---	---	---	---	---	---	---	---	---	---	---	3,823.12	0.190	0.190	8633
1,795,140,547	1.00	---	---	---	31/05/2011	19/04/2012	4951	BANK OF CYPRUS (CR)	0.207	---	↘ 0.207	15/03/2013	---	---	---	---	---	---	---	---	---	---	---	371,594.09	0.207	0.207	8355
21,920,570	0.300	---	---	---	03/07/2007	13/12/1999	4702	CARDASSILARIS SA (CR)	0.140	---	↘ 0.140	30/11/2010	---	---	---	---	---	---	---	---	---	---	---	3,068.88	0.140	0.140	3577
54,547,634	0.500	---	---	---	25/04/2005	21/01/2009	4860	CH.TEGOPOULOS PUBL. SA (CR)	0.038	---	↘ 0.038	23/03/2012	---	---	---	---	---	---	---	---	---	---	---	2,072.81	0.038	0.038	5557
30,159,583	0.470	---	---	---	26/06/2008	29/12/2010	5047	DIAS A/C (CR)	0.050	---	↘ 0.050	26/03/2014	---	---	---	---	---	---	---	---	---	---	---	1,507.98	0.040	0.092	3573
7,847,611	1.20	---	---	---	01/08/2007	28/09/2011	4939	EDRASIS - C. PSALLIDAS SA (CR)	0.150	---	↘ 0.150	19/11/2012	---	---	---	---	---	---	---	---	---	---	---	1,177.14	0.150	0.150	2357
5,750,000	0.300	---	---	---	12/12/2008	12/12/2011	4929	ELECTRONIKI ATHINON SA (CR)	0.480	---	↘ 0.480	07/09/2012	---	---	---	---	---	---	---	---	---	---	---	2,760.00	0.480	0.480	5375
24,605,397	0.400	---	---	---	29/06/1995	27/05/2002	4651	EMPORIKOS DESMOS SA (CR)	0.080	---	↘ 0.080	28/05/2010	---	---	---	---	---	---	---	---	---	---	---	2,134.04	0.080	0.080	3722
1,182,903	0.400	---	---	---	01/07/1996	27/05/2002	4652	EMPORIKOS DESMOS SA (PR)	0.140	---	↘ 0.140	28/09/2009	---	---	---	---	---	---	---	---	---	---	---	2,134.04	0.140	0.140	3722
7,326,648	1.00	---	---	---	26/07/2006	24/07/2001	4921	FINTEXPORT SA (CR)	0.328	---	↘ 0.328	29/06/2012	---	---	---	---	---	---	---	---	---	---	---	2,403.14	0.328	0.328	3763
13,692,227	1.47	---	---	---	07/07/2006	08/10/1999	5049	HELLENIC FABRICS SA (CR)	0.117	---	↘ 0.117	31/03/2014	---	---	---	---	---	---	---	---	---	---	---	1,601.99	0.089	0.153	3763
24,619,524	0.500	---	---	---	10/10/1986	30/12/2002	4914	KERAMIA-ALLATINI (CR)	0.088	---	↘ 0.088	27/08/2012	---	---	---	---	---	---	---	---	---	---	---	2,166.52	0.088	0.088	8633
7,840,373	1.20	---	---	---	18/07/2002	05/03/2003	4765	KLONATEX SA (PR)	0.080	---	↘ 0.080	09/05/2011	---	---	---	---	---	---	---	---	---	---	---	1,453.75	0.080	0.080	3763
20,663,047	1.20	---	---	---	21/08/2000	05/03/2003	4764	KLONATEX SA (CR)	0.040	---	↘ 0.040	09/05/2011	---	---	---	---	---	---	---	---	---	---	---	1,453.75	0.040	0.040	3763
17,544,600	0.600	---	---	---	03/07/2000	01/08/2000	4868	KOYMBAS SYNERGY GROUP (CR)	0.132	---	↘ 0.132	29/03/2012	---	---	---	---	---	---	---	---	---	---	---	2,315.89	0.132	0.132	8775
15,015,000	1.60	---	---	---	01/07/2002	02/02/2000	4603	MAXIM C.M. PERTSINIDIS SA (CB)	0.100	---	↘ 0.100	30/11/2009	---	---	---	---	---	---	---	---	---	---	---	1,501.50	0.100	0.100	3763
66,937,526	0.700	---	---	---	13/08/2010	21/05/2003	5003	MICHANIKI SA (CR)	0.100	---	↘ 0.100	29/08/2013	---	---	---	---	---	---	---	---	---	---	---	9,186.78	0.100	0.100	2357
25,968,987	0.700	---	---	---	13/08/2010	21/05/2003	5004	MICHANIKI SA (PR)	0.096	---	↘ 0.096	29/08/2013	---	---	---	---	---	---	---	---	---	---	---	9,186.78	0.096	0.096	2357
13,555,100	1.00	---	---	---	08/07/2005		4576	MICROLAND COMPUTERS SA (CR)	0.640	---	↘ 0.640	14/07/2009	---	---	---	---	---	---	---	---	---	---	---	8,675.26	0.640	0.640	5379
23,463,874	0.800	---	---	---	23/05/2003	21/12/1999	4918	NEORION SA (CR)	0.125	---	↘ 0.125	28/08/2012	---	---	---	---	---	---	---	---	---	---	---	2,932.98	0.125	0.125	2753
42,501,273	0.300	---	---	---	26/06/2007	10/08/2009	4993	NUTRIART (CR)	0.049	---	↘ 0.049	21/06/2013	---	---	---	---	---	---	---	---	---	---	---	2,082.56	0.049	0.049	3577
20,210,127	1.53	---	---	---	27/06/1997	20/03/2000	5061	PARNASSOS ENTERP. (CR)	0.070	---	↘ 0.070	29/05/2014	---	---	---	---	---	---	---	---	---	---	---	1,414.71	0.065	0.172	8775
25,583,146	0.300	---	---	---	25/06/2001	03/12/2008	4723	PETZETAKIS SA (CR)	0.260	---	↘ 0.260	28/01/2011	---	---	---	---	---	---	---	---	---	---	---	6,651.62	0.260	0.260	1357
9,550,386	0.500	---	---	---	01/07/1997	12/06/2008	4626	PRAXITELIO SA (CR)	0.390	---	↘ 0.390	11/03/2010	---	---	---	---	---	---	---	---	---	---	---	4,430.09	0.390	0.390	4533
1,306,368	0.500	---	---	---	01/07/1997	12/06/2008	4627	PRAXITELIO SA (PR)	0.540	---	↘ 0.540	15/12/2009	---	---	---	---	---	---	---	---	---	---	---	4,430.09	0.540	0.540	4533
62,683,822	0.300	---	---	---	27/05/2008	09/01/2006	4830	PROTON BANK S.A. (CR)	0.180	---	↘ 0.180	07/10/2011	---	---	---	---	---	---	---	---	---	---	---	11,283.09	0.180	0.180	8355
51,334,286	0.320	---	---	---	03/07/2000	18/12/2007	4548	SAOS (CR)	0.780	---	↘ 0.780	27/03/2009	---	---	---	---	---	---	---	---	---	---	---	40,040.74	0.780	0.780	2773
26,408,040	0.300	---	---	---	01/07/1997	26/05/1999	4464	SHEET STEEL SA (CR)	0.120	---	↘ 0.120	28/11/2008	---	---	---	---	---	---	---	---	---	---	---	3,168.96	0.120	0.120	1757
60,221,300	0.400	---	---	---	01/07/2002	01/11/2010	5022	SHELMAN SA (CR)	0.080	---	↘ 0.080	19/11/2013	---	---	---	---	---	600@0.080	---	---	---	---	---	4,817.70	0.080	0.080	2353
26,262,660	0.900	---	---	---	01/07/2008	24/02/2011	4954	SPRIDER STORES (CR)	0.031	---	↘ 0.031	28/03/2013	---	---	---	---	---	---	---	---	---	---	---	814.14	0.031	0.031	5371
144,688,060	0.600	---	---	---	21/04/2008	10/03/2010	4982	T BANK (CR)	0.048	---	↘ 0.048	30/11/2011	---	---	---	---	---	---	---	---	---	---	---	6,945.03	0.048	0.048	8355
6,523,780	0.530	---	---	---	01/07/2002	06/03/2001	4971	TECHNICAL PUBLICATIONS SA (CR)	0.006	---	↘ 0.006	29/05/2013	---	---	---	---	---	---	---	---	---	---	---	39.14	0.006	0.006	5557
13,920,000	0.320	---	---	---	19/11/2001	01/08/2000	4726	TEXAPRET SA (CR)	0.080	---	↘ 0.080	23/02/2011	---	---	---	---	---	---	---	---	---	---	---	1,113.60	0.080	0.080	3763
510,840	1.00	---	---	---	15/07/2008	21/11/2013	5036	TROPEA HOLDING (CR)	2.00	---	↘ 0.020	# 30/03/2012	---	---	---	---	---	---	---	---	---	---	---	1,021.68	0.020	2.00	3722
284,465,964	3.70	---	---	---	20/06/2008	15/06/2009	4913	TT HELLENIC POSTBANK (CR)	0.168	---	↘ 0.168	30/08/2012	---	---	---	---	---	---	---	---	---	---	---	47,790.28	0.168	0.168	8355
89,616,200	0.300	---	---	---	21/08/2000	28/06/2007	4616	UNITED TEXTILES (CR)	0.050	---	↘ 0.050	25/02/2010	---	---	---	---	---	---	---	---	---	---	---	4,480.81	0.050	0.050	3763
71,683,906	0.400	---	---	---	15/06/2005	05/02/2008	4953	XATZIOANNOU (CR)	0.026	---	↘ 0.026	28/03/2013	---	---	---	---	---	---	---	---	---	---	---	1,863.78	0.026	0.026	3763

Shares' Notes

Code	Note text
()	- Adjusted dividends.
*	- Last adjusted closing price.
[1]	- Net dividends.
[2]	- The "Date of Last Coupon" for New listings refers to the date company's stocks started to trade in Athex
[3]	- The Company Market Value is referred to the number of outstanding shares
[4]	- Sectors codification can be found in Appendix A
[5]	- The Market Value refers to the total number of shares listed (including their several classes) in the exchange by the company.
[6]	- P/E greater than 100
[7]	- Last view of the Order Book before the end of the trading session
4446	- Transfer to the "Under Supervision" Category as of 20/10/2008.
4447	- Transfer to the "Under Supervision" Category as of 21/10/2008.
4464	- Suspension of trading as of 1/12/2008.
4548	- Suspension of trading as of 1/4/2009.
4554	- Transfer to the "Under Supervision" Category as of 6/4/2009.
4576	- Suspension of trading as of 14/7/2009.
4603	- Suspension of trading as of 1/12/2009.
4616	- Suspension of trading as of 25/2/2010.
4626	- Suspension of trading as of 1/4/2010.
4627	- Suspension of trading as of 1/4/2010.
4628	- Suspension of trading as of 1/4/2010.
4629	- Transfer to the Under Supervision Category as of 12/4/2010.
4651	- Suspension of trading as of 1/6/2010.
4652	- Suspension of trading as of 1/6/2010.
4690	- Transfer to Surveillance category as of 4/4/2006.
4702	- Suspension of trading as of 1/12/2010.
4723	- Suspension of trading as of 31/1/2011.
4726	- Suspension of trading as of 1/3/2011.
4750	- Transfer to the "Under Surveillance Category" from 8/4/2011.
4764	- Suspension of trading as of 20/5/2011.
4765	- Suspension of trading as of 20/5/2011.
4795	- The final gross (pre-tax) dividend is € 0.30 per share and subject to withholding tax on the full dividend amount, i.e. 0,45 per share, for those shareholders liable to withholding tax, in accordance with the applicable tax law provisions.
4808	- Suspension of trading as of 6/9/2011.
4814	- Transfer to the Low Dispersion Category as of 30/5/2011.
4815	- Transfer to the Low Dispersion Category as of 30/5/2011.
4816	- Transfer to the Low Dispersion Category as of 30/5/2011.
4817	- Transfer to the Low Dispersion Category as of 30/5/2011.
4820	- Transfer to the Low Dispersion category as of 18/4/2008.
4822	- Transfer to the Low Dispersion category as of 30/5/2011.
4823	- Transfer to the Low Dispersion category as of 4/4/2006.
4827	- Transfer to the Low Dispersion category as of 5/5/2010.
4830	- Suspension of trading as of 10/10/2011.
4833	- Transfer to Surveillance category from 6/5/2010.
4844	- Transfer to the Surveillance category from 8/4/2011.
4847	- Transfer to the Surveillance Category as of 3/7/2009.
4860	- Suspension of trading as of 30/3/2012.
4865	- Suspension of trading as of 2/4/2012.
4868	- Suspension of trading as of 2/4/2012.
4879	- Transfer to the Surveillance Category as of 10/4/2012.
4881	- Transfer to the Surveillance Category as of 10/4/2012.
4882	- Transfer to the Surveillance Category as of 10/4/2012.
4884	- Transfer to the Surveillance Category as of 10/4/2012.

Shares' Notes

Code	Note text
4885	- Transfer to the Surveillance Category as of 10/4/2012.
4886	- Transfer to the Surveillance Category as of 10/4/2012.
4887	- Transfer to the Surveillance Category as of 10/4/2012.
4888	- Transfer to the Surveillance Category as of 10/4/2012.
4911	- Lift of suspension from 30/7/2012.
4912	- Transfer to the Surveillance Category as of 31/7/2012.
4913	- Suspension of trading as of 30/8/2012.
4914	- Suspension of trading as of 31/8/2012.
4918	- Suspension of trading as of 31/8/2012.
4920	- Suspension of trading as of 31/8/2012.
4921	- Suspension of trading as of 31/8/2012.
4929	- Suspension of trading as of 1/10/2012.
4937	- Transfer to the UNDER DELETION category as of 30/11/2012.
4938	- Transfer to the UNDER DELETION category as of 30/11/2012.
4939	- Suspension of trading as of 30/11/2012.
4951	- Suspension of trading as of 19/3/2013.
4953	- Suspension of trading as of 2/4/2013.
4954	- Suspension of trading as of 2/4/2013.
4955	- Transfer to the Surveillance Category as from 5/4/2013.
4956	- Transfer to the Surveillance Category as from 5/4/2013.
4957	- Transfer to the Surveillance Category as from 5/4/2013.
4958	- Transfer to the Surveillance Category as from 5/4/2013.
4959	- Transfer to the Surveillance Category as from 5/4/2013.
4960	- Transfer to the Surveillance Category as from 5/4/2013.
4961	- Transfer to the Surveillance Category as from 5/4/2013.
4971	- Suspension of trading as of 3/6/2013.
4977	- Transfer to the "Under Surveillance Category" from 11/6/2013.
4978	- Transfer to the Under Supervision Category as of 11/6/2013.
4982	- Suspension of trading as of 1/12/2011.
4983	- Transfer to the Surveillance Category as of 5/4/2013.
4985	- Transfer to the "Under Surveillance Category" from 8/4/2011.
4986	- Transfer to the Low Dispersion category as of 30/5/2011.
4993	- Suspension of trading as of 21/6/2013 (15:18).
4997	- Transfer to the Under Supervision Category as of 21/12/2009. - The 6,870,053 new (CB) shares, resulting from the recent share capital increase through a rights issue, are not yet admitted to trading on the ATHEX.
5002	- Suspension of trading as of 30/08/2013.
5003	- Suspension of trading as of 30/08/2013.
5004	- Suspension of trading as of 30/08/2013.
5007	- Transfer to the Surveillance category, as of 11/10/2013.
5008	- Transfer to the Surveillance Category from 8/4/2011.
5022	- Suspension of trading as of 2/12/2013.
5023	- Suspension of trading as of 2/12/2013.
5031	- The 612,300 new (CR) shares, resulting from the recent share capital increase through a rights issue, are not yet admitted to trading on the ATHEX.
5033	- Transfer to the Surveillance Category as of 25/11/2011. The 97,144,575new (CR) shares, resulting from the recent share capital increase through a rights issue, are not yet admitted to trading on the ATHEX.
5036	- The company's share is under suspension of trading as of 2/4/2012. During suspension, the company proceeded and concluded a share reverse split, according to which - after the conclusion of the corporate action - the total number of the company's shares, as well as, the last closing price of 30/03/2012 were adjusted.
5046	- Transfer to the Low Dispersion category as of 8/4/2011.
5047	- Suspension of trading as of 27/3/2014.
5049	- Under suspension of trading as of 1/4/2014.
5053	- Transfer to the UNDER DELETION category as of 10/4/2014.
5054	- Transfer to the Surveillance Category as of 10/4/2014.
5055	- Transfer to the Surveillance Category as of 10/4/2014.
5056	- Transfer to the Under Supervision Category as of 14/4/2014.

Shares' Notes

Code	Note text
5057	- Transfer to the Surveillance Category as of 29/12/2011.
5058	- Transfer to the Surveillance Category as of 29/12/2011.
5059	- Transfer to the Low Dispersion category as of 2/6/2014.
5061	- Suspension of trading as of 2/6/2014.
5062	- Transfer to the UNDER DELETION category as of 4/6/2014.
5067	- Transfer to the Low Dispersion Category as of 1/9/2014.
5068	- Shares' reverse split in progress. Temporary suspension of trading: 01/09/2014. Start date of trading of the 5.000.000 (CR) shares, with adjusted start share price of € 0.760 is set at 05/09/2014.

Securities Blocks Details

Securities	Block Volume	Price	Block Trade Value	Time of approval	Note
ALPHA BANK (CR)	500,000	0.668	333,750.00	11:04:08	20
PIRAEUS BANK (W)	1,500,000	0.630	945,000.00	11:10:02	20
NATIONAL BANK (CR)	232,153	2.55	591,990.15	11:10:32	20
PIRAEUS BANK (W)	500,000	0.630	315,000.00	11:16:10	20
JUMBO SA (CR)	250,739	11.37	2,850,902.43	11:31:23	20
ALPHA BANK (CR)	400,000	0.668	267,200.00	11:34:32	20
PIRAEUS BANK (W)	500,000	0.630	315,000.00	14:15:55	20
PIRAEUS BANK (CR)	300,000	1.43	427,500.00	14:22:34	20
EUROBANK ERGASIAS (CR)	3,000,000	0.335	1,005,000.00	14:32:01	20
NATIONAL BANK (CR)	150,000	2.64	395,250.00	15:04:28	20
NATIONAL BANK (CR)	150,000	2.64	395,250.00	15:16:17	20
PIRAEUS BANK (CR)	250,000	1.46	365,000.00	15:42:57	20
PIRAEUS BANK (CR)	500,000	1.43	715,500.00	15:55:56	20
NATIONAL BANK (CR)	320,000	2.66	849,600.00	16:14:55	20
OPAP (CR)	50,000	12.31	615,500.00	16:33:52	20
METKA (CR)	47,992	11.53	553,107.80	16:34:39	20
OPAP (CR)	188,304	12.30	2,316,139.20	17:19:23	20

Blocks Notes

2 - SPOT 1 or SPOT 2 Packet	11 - Total Assets > 500 bil
3 - Block with Short Selling	12 - Sell Offer through Athex
4 - Buy to Close Block	13 - Forced Sale of NMOE
6 - Simultaneous Constitution	14 - Restoration Packet
7 - Repurchase Agreement	15 - Market Maker Packet
8 - Dispersion's Achievement (Not Listed)	16 - Short Selling
9 - Dispersion's Achievement (Listed)	18 - SPOT 1 Packet
10 - Share Capital Majority of Greek State (> 50 bil)	20 - Method 6-1 Packet

Shares Rights Details

Occured date	Exercise from	Exercise until	Trading until	Rights	Price min	Price max	Closing price	Last Bid	Last Ask	Volume	Trades	Transactions Value
-----------------	------------------	-------------------	------------------	--------	--------------	--------------	------------------	----------	----------	--------	--------	-----------------------

No Rights Transactions.

Stock Borrowing

Securities	Stock Borrowing through Helex (volume)	Stock Borrowing through OTC (volume) [1]	Totals [2]
ALPHA BANK (CR)	1,544,900	71,130,619	72,675,519
ALPHA BANK (W)	---	36,300	36,300
ATE (CR)	---	69,000	69,000
BANK OF CYPRUS (CR)	---	102,899	102,899
CC HBC AG (CR)	11,900	72,576	84,476
CORINTH PIPEWORKS SA (CR)	200	---	200
ELLAKTOR (CR)	16,800	---	16,800
EUROBANK ERGASIAS (CR)	57,100	8,559,867	8,616,967
EUROBANK PROPERTIES REIC (CR)	11,600	42,516	54,116
EYDAP S.A. (CR)	19,000	---	19,000
FOLLI FOLLIE (CR)	43,100	590,360	633,460
FOURLIS (CR)	6,700	5,243	11,943
FRIGOGLASS SA (CR)	2,800	---	2,800
GEK TERNA (CR)	7,600	---	7,600
HELLENIC EXCHANGES-A.S.E. (CR)	15,900	7,420	23,320
HELLENIC PETROLEUM (CR)	293,200	244,465	537,665
INTRALOT (CR)	8,000	2,000	10,000
JUMBO SA (CR)	7,400	---	7,400
LAMDA DEVELOPMENT SA (CR)	---	10,377	10,377
MARFIN INVESTMENT GROUP (CR)	27,000	728,474	755,474
METKA (CR)	4,900	3	4,903
MOTOR OIL (CR)	32,200	53,129	85,329
MYTILINEOS HOLDINGS (CR)	4,600	---	4,600
NATIONAL BANK (CR)	158,100	1,554,258	1,712,358
OPAP (CR)	69,100	14,215	83,315
OTE (CR)	209,500	248,089	457,589
P.P.A. S.A. (CR)	1,000	---	1,000
PIRAEUS BANK (CR)	288,300	18,630,209	18,918,509
PPC (CR)	150,900	24,877	175,777
TERNA ENERGY (CR)	3,100	2,337	5,437
TITAN CEMENT (CR)	59,000	1,640	60,640

Stock Borrowing Notes

[1] - The information concerning OTC Stock Borrowing Transactions is based on the statements of the Dematerialised Securities System (DSS) operators involved and refers to volumes that have been cleared and registered up until the previous working day.

Shares Forced Sales

Securities	Transaction s Volume	Number of Trades	Transactions Value	Note
No Forced Transactions.				

Forced Sales Notes

- 1 - Normal Forced Sale.
- 2 - Forced Sales of Fixed Registered Shares.
- 3 - Forced Sales of Remaining Stock Fractions.

Forced Sales Registered Shares

Securities	Start Date	End Date	Initial Volume	Remaining Volume	Date	Avg price (day)	Avg price (period)	Number of Trades	Transactions Volume	Transactions Value
------------	------------	----------	-------------------	---------------------	------	--------------------	-----------------------	---------------------	------------------------	-----------------------

No Fixed Registered Shares Forced Sales.

Forced Sales Notes

According to Decision 1/380/04.05.2008 of the Hellenic Republic Capital Market Commission, the certificated registered shares that have not been deposited to the issuer for dematerialisation, will be auctioned in the Athens Exchange by the supervising issuer. Forced sales procedure is held according to Article 99A of the Athens Exchange Rulebook. The average price of the period is calculated by dividing the Total transactions value by the Total volume and includes all the transactions made until the current date.

Exchange Traded Funds (ETFs) Characteristics

	Transactions Date (T)	Creation / Redemption	Units (T-1)	New Units (T-1)	Redemptio n Units (T-	Units (T) [1]	Fund Assets [2]	Net Unit Price	Dividen d per	Dividend Date
NBGAM ETF ΓΔ Χ.Α.	04/09/2014	25,000	294,878	---	---	294,878	3,782,974.00	12.8289	---	27/10/2011
ALPHA ETF FTSE Athex Large Cap	04/09/2014	50,000	5,848,618	---	---	5,848,618	22,004,530.00	3.7623	0.05	01/07/2013
NBGAM ETF GREECE & TURKEY 30	04/09/2014	25,000	388,550	---	---	388,550	3,355,130.00	8.6350	---	27/10/2011

ETFs Notes

[1] - Units (T) = Units (T-1) + New Units (T-1) - Redemption Units (T-1)

[2] - The Creation / Redemption Units of T-1 are included.

Corporate Bonds

Num Listed Bonds	Nominal price	Issue price	Today's Rate	Exp. Date	Duration (years)	Note	Coupon attached		Trading	Corporate Bonds	Price min	Price max	Closing price	Previous closing price/date	Volume	Transactions Value	Last order		Date	ear min	Year max
							Common	Preferred									Price	Buy / Sell			
251,835,900	1.00	1.00	7.00	29/07/2019	5	---	1	---	1	MARFIN INVESTMENT GROUP S.A. SERIES A1 (BOND)	---	---	---	---	---	---	---	S	---	100.0000	100.0000
4,122,910	4.77	4.77	5.00	19/03/2015	5	---	18	---	1	MARFIN INVESTMENT GROUP S.A. (Conver to CR shar)	---	---	---	30.0000 03/09/2014	---	---	41.0000	B	04/09/2014	4.7761	94.8000
1,794,284	12.49	9.77	5.16	12/07/2015	8	---	---	---	1	NIREUS S.A. (Convertible to CR shares)	---	---	---	12.0000 29/01/2014	---	---	20.0000	B	04/09/2014	12.0000	12.0000
212,802,006	1.00	1.00	6.30	29/07/2020	7	---	5	---	1	MARFIN INVESTMENT GROUP S.A. SERIES B (BOND)	---	---	---	0.8500 23/08/2013	---	---	30.0000	B	04/09/2014	0.8500	0.8500
2,156,827	1.00	1.00	7.00	29/07/2019	6	---	5	---	1	MARFIN INVESTMENT GROUP S.A. SERIES A (BOND)	---	---	---	1.0000 23/08/2013	---	---	30.0000	B	04/09/2014	1.0000	1.0000

Corporate Bonds Notes

Transactions Volume = (Pieces) * (Nominal Price). Transactions Value = (Pieces) * (Nominal Price) * (price %) + (Accrued interest).
The price of a Bond is stated as a percentage (%) of Bond's Nominal Price.
Nominal Price in Euros (€), except if it is noted differently.

Government Bonds

Number Listed Bonds	Nominal price	Today's Rate	Accrued Interest Calc	Exp. Date [1]	Duration (years)	Note	Coupons Date	Curr. coupon value	Trading Unit	Government Bonds	Price min	Price max	Closing price	Previous closing price/date	Volume	Transactions Value	Price	Last order Buy / Sell	Date
2,658,781,973	1.00	4.30	Actual/Actual	24/02/2023	11	---	24/02	4.30	1	GGB-FXD-240223-11Y-2.000-1.00	---	---	---	---	---	---	---	---	---
2,658,781,973	1.00	4.30	Actual/Actual	24/02/2024	12	---	24/02	4.30	1	GGB-FXD-240224-12Y-2.000-1.00	---	---	---	---	---	---	---	---	---
2,658,781,973	1.00	4.30	Actual/Actual	24/02/2025	13	---	24/02	4.30	1	GGB-FXD-240225-13Y-2.000-1.00	---	---	---	---	---	---	---	---	---
2,658,781,973	1.00	4.30	Actual/Actual	24/02/2026	14	---	24/02	4.30	1	GGB-FXD-240226-14Y-2.000-1.00	---	---	---	---	---	---	---	---	---
2,658,781,973	1.00	4.30	Actual/Actual	24/02/2027	15	---	24/02	4.30	1	GGB-FXD-240227-15Y-2.000-1.00	---	---	---	---	---	---	---	---	---
2,836,034,104	1.00	4.30	Actual/Actual	24/02/2028	16	---	24/02	4.30	1	GGB-FXD-240228-16Y-2.000-1.00	---	---	---	---	---	---	---	---	---
2,836,034,104	1.00	4.30	Actual/Actual	24/02/2029	17	---	24/02	4.30	1	GGB-FXD-240229-17Y-2.000-1.00	---	---	---	---	---	---	---	---	---
2,836,034,104	1.00	4.30	Actual/Actual	24/02/2030	18	---	24/02	4.30	1	GGB-FXD-240230-18Y-2.000-1.00	---	---	---	---	---	---	---	---	---
2,836,034,104	1.00	4.30	Actual/Actual	24/02/2031	19	---	24/02	4.30	1	GGB-FXD-240231-19Y-2.000-1.00	---	---	---	---	---	---	---	---	---
2,836,034,104	1.00	4.30	Actual/Actual	24/02/2032	20	---	24/02	4.30	1	GGB-FXD-240232-20Y-2.000-1.00	---	---	---	---	---	---	---	---	---
2,836,034,104	1.00	4.30	Actual/Actual	24/02/2033	21	---	24/02	4.30	1	GGB-FXD-240233-21Y-2.000-1.00	---	---	---	---	---	---	---	---	---
2,836,034,104	1.00	4.30	Actual/Actual	24/02/2034	22	---	24/02	4.30	1	GGB-FXD-240234-22Y-2.000-1.00	---	---	---	---	---	---	---	---	---
2,836,034,104	1.00	4.30	Actual/Actual	24/02/2035	23	---	24/02	4.30	1	GGB-FXD-240235-23Y-2.000-1.00	---	---	---	---	---	---	---	---	---
2,836,034,104	1.00	4.30	Actual/Actual	24/02/2036	24	---	24/02	4.30	1	GGB-FXD-240236-24Y-2.000-1.00	---	---	---	---	---	---	---	---	---
2,836,034,104	1.00	4.30	Actual/Actual	24/02/2037	25	---	24/02	4.30	1	GGB-FXD-240237-25Y-2.000-1.00	---	---	---	---	---	---	---	---	---
2,836,034,104	1.00	4.30	Actual/Actual	24/02/2038	26	---	24/02	4.30	1	GGB-FXD-240238-26Y-2.000-1.00	---	---	---	---	---	---	---	---	---
2,836,034,104	1.00	4.30	Actual/Actual	24/02/2039	27	---	24/02	4.30	1	GGB-FXD-240239-27Y-2.000-1.00	---	---	---	---	---	---	---	---	---
2,836,034,104	1.00	4.30	Actual/Actual	24/02/2040	28	---	24/02	4.30	1	GGB-FXD-240240-28Y-2.000-1.00	---	---	---	---	---	---	---	---	---
2,836,034,104	1.00	4.30	Actual/Actual	24/02/2041	29	---	24/02	4.30	1	GGB-FXD-240241-29Y-2.000-1.00	---	---	---	---	---	---	---	---	---
2,836,034,104	1.00	4.30	Actual/Actual	24/02/2042	30	---	24/02	4.30	1	GGB-FXD-240242-30Y-2.000-1.00	---	---	---	---	---	---	---	---	---
3,000,000	1,000.00	4.75	Actual/Actual	17/04/2019	5	---	17/04	4.75	1	GGB-FXD-170419-05Y-4.750-1,000	---	---	---	---	---	---	---	---	---
1,500,000	1,000.00	3.38	Actual/Actual	17/07/2017	3	---	17/07	3.38	1	GGB-FXD-170717-03Y-3.375-1,000	---	---	---	---	---	---	---	---	---

Government Bonds Notes

Transactions Volume = (Pieces) * (Nominal Price). Transactions Value = (Pieces) * (Nominal Price) * (price %) + (Accrued interest).
The Value of current coupon for the issues with NV 0.01 euro refers to NV 100 euros
FLR: Floating Interest Rate.
[1] - The Expiration Date of the interest bearing period and the Date for coupon payment.

Bonds in Circulation	Currency / Min nominal traded Value	Coupons Payment Date	Current Coupon Value	Note	Coupon Attached	Trading Unit	Issue Date	Duration (years)	Today's Interest	A.I.C in days	Bonds	Last price of previous days	Last Outcry in Cash (euro) Price	Buy / Sell	Trades in Pieces	Life min	Life Max
Bonds of International Organizations																	
1,000,000	EUR / 1000	21/07	---	---	9	1	21/07/2006	10	5.0 FLR	360	EUROPEAN INVESTMENT BANK BOND	97.50	16/04/2007	---	---	---	---
Corporate Bonds in Foreign Currency and Euro																	
103,746	GBP / 10	01/12	0.25	---	55	1	01/12/1930	98	2.5	360	National Mortgage Bank	2.27	05/02/1996	2.27	S	05/02/1996	2.27
0	GBP / 10	01/12	0.25	---	57	1	01/12/1928	100	2.5	360	National Mortgage Bank	---	---	---	---	---	---

Government Bonds Notes

A.I.C: Accrued Interest Calculation base.
FLR: Floating Interest Rate.
The minimum tradeable Nominal Value for all Demeterialised Government Titles is 100 Euros.

State Banks Bonds (one year maturity)

Number Listed Bonds	Nominal value	Initial Rate	Current Rate	Annual Interest	Issue Date	Note	State Banks Bonds	Trading Unit	Yearly Renewals	Last Outcry in Cash (euro) Price	Buy / Sell	Volume
342,560	135.17	2.35	3.92	0.00	31/01/2005	---	H.I.D.B.	1	10	100.00	B	---
2,446	1,182.96	4.90	2.47	29.69	31/05/2008	---	H.I.D.B.	1	7	---	---	---

Bonds Notes

The annual renewal of H.I.D.B. Bonds is free of taxes (net rate).
For Bonds issue until 29/08/2014 the accrued interest is capitalized.

Athex & ATHEXClear Members List

Member Name			Stock Market			Derivatives Market			ATHEXClear Member		
Address	Phone	Fax	Market Member	Remote Member	Market Maker	Proprietary	Market Maker	Agent	General Clearing	Direct Clearing	Non Clearing
A. SARRIS SECURITIES S.A.			a								
6, DRAGATSANIOU STR. ATHINA	(210)-3367700	(210)-3312324									
AGRICULTURAL BANK OF GREECE S.A.							a			a	
, 23 PANEPISTIMIOU ATHINA	(210)-3298400	(210)-3298322									
ALPHA FINANCE INVESTMENT SERVICES S.A.			a		a		a			a	
5, MERLIN STR. ATHINA	(210)-3677400	(210)-3311193									
ALPHA BANK A.E.						a			a		
40, STADIOU STR ATHINA	(210)-3265546	(210)-3265811									
	(210)-3260000	(210)-3264116									
ARGUS STOCKBROKERS LTD			a	a							
12-14, KENNEDY AVE. S. 303 NICOSIA	(+35722)-22717000	(+35722)-22717070									
ATHENAIKI BROKERAGE FIRM S.A.			a								
33, STADIOU STR. ATHINA	(210)-3254764	(210)-3254767									
ATLANTIC SECURITIES LIMITED			a	a							
37, PRODROMOU STR. NICOSIA	(+35722)-445400	(+35722)-661914									
ATLAS SECURITIES S.A			a			a					a
14 - 16, VERVENON STR.& 125 MICHALAKOPOULOU STR. ATHINA	(210)-3363300	(210)-3238925									
ATTICA BANK S.A.									a		
23, OMIROU STR. ATHINA	(210)-3669000	(210)-3669410									
54, AKADIMIAS STR. ATHINA	(210)-3390757	(210)-3646090									
AXIA VENTURES GROUP LTD			a	a							
10, G. KRANIDIOTI NICOSIA	+357 22 742000	+357 22 742001									
AXON SECURITIES S.A.			a			a					a
48, STADIOU ATHINA	(210)-3363800	(210)-3243903									
BANK OF CYPRUS PUBLIC COMPANY LTD									a		
170, ALEXANDRAS AVE ATHINA	(210)-6477708	(210)-6477709									
, 51,STASINOY (AG. PARASKEVI, STROVOLOS) NICOSIA	(0035722)-121883	(0035722)-336258									
BETA SECURITIES S.A.			a		a	a	a			a	
, BRAILA & 29 ALEXANDRAS AVE ATHINA	(210)-6478900	(210)-6410139									
BNP PARIBAS SECURITIES SERVICES									a		
94, VAS. SOFIAS AVE ATHINA	(210)-7468500	(210)-7468579									
CAPITAL SECURITIES S.A.			a			a					a
58, MITROPOLEOS STR. ATHINA	(210)-3369700	(210)-3369820									
CFS SECURITIES & INVESTMENT SERVICES S.A.			a		a			a		a	
3, STADIOU STR. ATHINA	(210)-3360800	(210)-3311854									
CITIGROUP GLOBAL MARKET LTD			a	a							
, CITIGROUP CENTRE, CANADA SQUARE, CANARY WHART LONDON	002079864000	002079862266									
CO-OPERATIVE CENTRAL BANK LTD			a	a							
8, GRIGORI AFXENTIOU STR. NICOSIA	(+35722)-743300	(+35722)-672083									
CREDIT AGRICOLE CHEUVREUX S.A.				a							
, 9 QUAI PAUL DOUMER PARIS	33 (0) 1 41 89 70 00										
CREDIT SUISSE SECURITIES (EUROPE) LIMITED			a	a							
, ONE CABOT SQUARE LONDON	+44 20 7888 8888	+44 20 7888 1600									
CYCLOS SECURITIES S.A.			a		a	a				a	
39, PANEPISTIMIOU STR. ATHINA	(210)-3364300	(210)-3239122									
D.A. TSEKOURAS SEC. S.A.			a								
, PSEMAZOGLOY 3	(210)-3214406	(210)-3211997									
DEUTSCHE BANK A.G.			a	a							
70, THEODOR-HEUSS-ALLEE FRANKFURT	0049 69 910 00	0049 69 910 34 225									
DYNAMIC SECURITIES			a					a		a	
6 - 10, CHAR. TRIKOUPY STR. ATHINA	(210)-3677700	(210)-3677777									
EL. PETROPOULAKIS SECURITIES S.A.			a					a			a
9, ARISTIDOU STR. ATHINA	(210)-3213928	(210)-3216810									
EUROBANK EQUITIES S.A.			a		a		a			a	
10, FILELLINON STR. ATHINA	(210)-3720000	(210)-3720001									
EUROBANK ERGASIAS S.A.									a		
8, OTHONOS STR. ATHINA	(210)-3337000	(210)-3233866									
	(210)-3337969	(210)-3245916									
EUROCORP SECURITIES S.A.			a			a				a	
14, FILIKIS ETAIRIAS SQ. ATHINA	(210)-7263500	(210)-7263666									
EUOTRUST BROKERAGE S.A.			a								
13-15, SOPHOCLEOUS STR. ATHINA	(210)-3363100	(210)-3238334									

Athex & ATHEXClear Members List

Member Name			Stock Market			Derivatives Market			ATHEXClear Member		
Address	Phone	Fax	Market Member	Remote Member	Market Maker	Proprietary	Market Maker	Agent	General Clearing	Direct Clearing	Non Clearing
EUROXX SECURITIES S.A.			a			a				a	
7, PALAIOLOGOU STR. CHALANDRI	(210)-6879400	(210)-6879401									
G.A. PERVANAS SECURITIES & INVESTMENT SERVICES CO S.A.			a			a					a
7 - 9, SOPHOCLEOUS STR. ATHINA	(210)-3251875	(210)-3210291									
GENERAL BANK OF GREECE S.A.									a		
, 109-111, MESOGEION AVE. ATHINA	(210)-3288737	(210)-3288211									
87-89, ERMOY ATHINA	(210)-6976072	(210)-6976079									
GLOBAL CAPITAL SECURITIES AND FINANCIAL SERVICES LTD			a	a							
5, LEMESOU AVE. LEMESOS CYPRUS	(+35722)-710710	(+35722)-339332									
GUARDIAN TRUST SECURITIES S.A			a		a	a					a
15, FILELLINON STR. ATHINA	(210)-3220402	(210)-3220498									
HELLENIC AMERICAN SEC. S.A.			a			a					
6, EVRIPIDOU STR. ATHINA	(210)-3311100	(210)-3215968									
HELLENIC BANK (INVESTMENTS) LTD			a	a							
31, KYRIAKOY MATSI AVE. NICOSIA	(+35722)-500100	(+35722)-500110									
HSBC BANK PLC									a		
109-111, MESOGION AVE ATHINA	(210)-6961507	(210)-6929310									
INDEX SECURITIES S.A.			a								
6, DRAGATSANIOU STR. ATHINA	(210)-3213920	(210)-3213216									
INTERSEC S.A.						a				a	
80-88, SYGROU AVE ATHINA	(210)-9203000	(210)-9203052									
INVESTMENT BANK OF GREECE S.A.			a		a		a		a		
24B, KIFISSIAS AVE MAROUSI	(210)-8171800	(210)-8171889									
32, AIGEIALIAS MAROUSI	(210) 8173000	(210) 8173101									
J. CHR. MAVRIKIS SECURITIES S.A.			a								
5, SOPHOCLEOUS STR. ATHINA	(210)-3213949	(210)-3217767									
KAPPA SECURITIES S.A.			a			a					a
15, VALAORITOU STR. ATHINA	(210)-3610371	(210)-3641002									
KYPROU SECURITIES S.A.					a	a					a
26, HALKIDONOS & FIDIPPIDOY STR. ATHINA	(210)-8701000	(210)-8701049									
LAIKI FINANCIAL SERVICES LTD			a	a							
26, CLR HOUSE, VIRONOS AVE. NICOSIA	(+35722)-898600	(+35722)-680953									
LEON DEPOLAS SECURITIES S.A.			a					a			a
1, CHR. LADA STR. ATHINA	(210)-3213286	(210)-3211618									
MAGNA TRUST SECURITIES S.A			a					a			a
9, FIDIOU STR. ATHINA	(210)-3327503	(210)-3327599									
MEGA EQUITY SECURITIES & FINANCIAL SERVICES LTD			a	a							
42-44, GRIBA DIGENI AV. NICOSIA	(+35722)-711711	(+35722)-711811									
MERIT SECURITIES S.A			a		a	a				a	
38, VAS. KONSTANTINOY STR. ATHINA	(210)-3671800	(210)-3671830									
MERRILL LYNCH			a	a							
2, KING EDWARD STREET LONDON	(+4420)-79952000	(+4420)-79954525									
METOCHIKI SECURITIES S.A.			a								
3, G. GENNADIOY STR. ATHINA	(210)-3306700	(210)-3306709									
MIDAS BROKERAGE S.A.			a								
5, SOPHOCLEOUS STR. ATHINA	(210)-3253203	(210)-3253205									
N. CHRYSSOCHOIDIS STOCK BROKERAGE I.S.S.A.			a					a		a	
7 - 9, SOPHOCLEOUS STR. ATHINA	(210)-3213913	(210)-3216115									
N. SARROS SECURITIES S.A.						a					
7-9, SOPHOCLEOUS STR. ATHINA	(210)-3705600	(210)-3219992									
NATIONAL BANK OF GREECE S.A.			a				a		a		
86, AIOLOU STR. ATHINA	(210)-3341000	(210)-3228187									
68, AKADIMIAS STR. ATHINA	(210)-3328817	(210)-3328678									
NBG SECURITIES S.A.			a		a		a				a
68, AKADIMIAS STR. ATHINA	(210)-3328500	(210)-3328565									
NEW PROTON BANK S.A.						a				a	
20, ESLIN & AMALIADOS ATHINA	210 6970000	210 6970111									
NUNTIUS SECURITIES S.A			a					a			a
6, DRAGATSANIOU STR. ATHINA	(210)-3350599	(210)-3254846									
PANTELAKIS SEC. S.A.			a			a					a
109-111, MESOGION AVE. ATHINA	(210)-6965000	(210)-6929550									
PEGASUS BROKERAGE FIRM S.A			a			a					
17, VALAORITOU STR. ATHINA	(210)-3670700	(210)-3670760									

Athex & ATHEXClear Members List

Member Name			Stock Market			Derivatives Market			ATHEXClear Member		
Address	Phone	Fax	Market Member	Remote Member	Market Maker	Proprietary	Market Maker	Agent	General Clearing	Direct Clearing	Non Clearing
PIRAEUS BANK S.A.			a					a	a		
4, AMERIKIS STR ATHINA	(210)-3335918	(210)-3254207									
4, AMERIKIS STR. ATHINA	(210)-3335000	(210)-3335079									
PIRAEUS SECURITIES S.A.			a				a			a	
10, STADIOU STR. ATHINA	(210)-3354100	(210)-3233814									
PRELIUM SECURITIES & INVESTMENT SERVICES S.A.			a			a					a
, KIFISSIAS AVE & 1 DAVAKI STR ATHINA	(210)-3677000	(210)-6920403									
PROCHOICE SECURITIES LTD			a	a							
57, SPYROU KYPRIANOY NICOSIA	+357-24-661192	+357-24-662464									
SHARELINK SECURITIES & FINANCIAL SERVICES LTD			a	a							
6, ELLINAS HOUSE, THEOTOKI STR. NICOSIA	(+35722)-554200	(+35722)-750852									
SOCIETE GENERALE S.A.			a	a		a					
240-242, KIFISIAS AVE ATHINA	(210)-6790161	(210)-6728828									
17, COURS VALMY PUTEAUX - LA DEFENSE PARIS	(+33) 142134754	(+33) 142135697									
SOLIDUS SECURITIES S.A.			a			a				a	
64, LOUIZIS RIANKOUR STR. ATHINA	(210)-6925500	(210)-6985421									
ST. EM. LAVRENTAKIS SECURITIES S.A.			a			a					a
7 - 9, SOPHOCLEOUS STR. ATHINA	(210)-3213336	(210)-3246572									
THE CYPRUS INVESTMENT AND SECURITIES CORPORATION LIMITED (CISCO)			a	a							
4, EVROU STR. (EUROLIFE HOUSE) NICOSIA	(+35722)-881800	(+35722)-881801									
UBS LIMITED			a	a							
1, FINSBURY AVENUE LONDON	(+4420)-79013333	(+4420)-79012345									
Z.G. PORTALAKIS INVESTMENT SERVICES S.A.			a								
8, PESMAZOGLOU STR. ATHINA	(210)-3214830	(210)-3212024									
KARAMANOF SECURITIES & INV. SERVICES S.A.			a					a		a	
2, SQ. ST THEODORON ATHINA	(210)-3212947	(210)-3217088									

List of Stocks under Market Making operations

Securities		Stock Category	
Market Maker		Start Market Making	End Market Making
CYPRUS POPULAR BANK (CR)		Suspension Status	
PIRAEUS SECURITIES S.A.		02/02/2013	01/01/2400
VIOHALCO (CB)		Suspension Status	
ALPHA FINANCE INVESTMENT SERVICES S.A.		11/02/2013	01/01/2400
EUROBANK EQUITIES S.A.		20/01/2013	01/01/2400
MERIT SECURITIES S.A		13/12/2012	01/01/2400
ALPHA BANK (CR)		Main Market	
EUROBANK EQUITIES S.A.		24/10/2012	01/01/2400
HELLENIC AMERICAN SEC. S.A.		25/07/2014	01/01/2400
INVESTMENT BANK OF GREECE S.A.		08/01/2013	01/01/2400
MERIT SECURITIES S.A		03/09/2013	01/01/2400
NBG SECURITIES S.A.		15/01/2013	01/01/2400
PIRAEUS SECURITIES S.A.		28/05/2013	01/01/2400
ALUMIL (CR)		Main Market	
BETA SECURITIES S.A.		18/07/2013	01/01/2400
ATTICA BANK S.A. (CR)		Main Market	
BETA SECURITIES S.A.		02/06/2014	01/01/2400
EUROBANK EQUITIES S.A.		25/07/2014	01/01/2400
HELLENIC AMERICAN SEC. S.A.		25/07/2014	01/01/2400
BYTE COMPUTER SA (CR)		Main Market	
MERIT SECURITIES S.A		04/08/2013	01/01/2400
CC HBC AG (CR)		Main Market	
EUROBANK EQUITIES S.A.		23/10/2013	01/01/2400
NBG SECURITIES S.A.		29/04/2013	01/01/2400
ELLAKTOR (CR)		Main Market	
EUROBANK EQUITIES S.A.		01/06/2013	01/01/2400
INVESTMENT BANK OF GREECE S.A.		02/01/2013	01/01/2400
NBG SECURITIES S.A.		25/06/2013	01/01/2400
ELTECH ANEMOS S.A. (CR)		Main Market	
EUROBANK EQUITIES S.A.		22/07/2014	01/01/2400
ELTON SA (CR)		Main Market	
BETA SECURITIES S.A.		03/09/2013	01/01/2400
EUROBANK ERGASIAS (CR)		Main Market	
ALPHA FINANCE INVESTMENT SERVICES S.A.		08/01/2013	01/01/2400
EUROBANK EQUITIES S.A.		01/06/2013	01/01/2400
HELLENIC AMERICAN SEC. S.A.		25/07/2014	01/01/2400
INVESTMENT BANK OF GREECE S.A.		08/01/2013	01/01/2400
PIRAEUS SECURITIES S.A.		28/09/2013	01/01/2400
EUROCONSULTANTS S.A. (CR)		Main Market	
EUROBANK EQUITIES S.A.		22/07/2014	01/01/2400
FOLLI FOLLIE (CR)		Main Market	
NBG SECURITIES S.A.		17/02/2014	01/01/2400
GEK TERNA (CR)		Main Market	
INVESTMENT BANK OF GREECE S.A.		02/01/2013	01/01/2400
GR. SARANTIS SA (CR)		Main Market	
BETA SECURITIES S.A.		14/05/2013	01/01/2400
HELLENIC EXCHANGES-A.S.E. (CR)		Main Market	
EUROBANK EQUITIES S.A.		01/06/2013	01/01/2400
HELLENIC AMERICAN SEC. S.A.		01/09/2014	01/01/2400
INVESTMENT BANK OF GREECE S.A.		02/01/2013	01/01/2400
NBG SECURITIES S.A.		25/06/2013	01/01/2400
INTRACOM CONSTR. (CR)		Main Market	
MERIT SECURITIES S.A		27/12/2012	01/01/2400
INTRALOT (CR)		Main Market	
EUROBANK EQUITIES S.A.		01/06/2013	01/01/2400
INVESTMENT BANK OF GREECE S.A.		02/01/2013	01/01/2400
PIRAEUS SECURITIES S.A.		28/09/2013	01/01/2400
MARFIN INVESTMENT GROUP (CR)		Main Market	
HELLENIC AMERICAN SEC. S.A.		25/07/2014	01/01/2400
PIRAEUS SECURITIES S.A.		02/02/2013	01/01/2400
MLS MULTIMEDIA SA (CR)		Main Market	
BETA SECURITIES S.A.		18/07/2013	01/01/2400
MOTOR OIL (CR)		Main Market	
EUROBANK EQUITIES S.A.		23/10/2012	01/01/2400
HELLENIC AMERICAN SEC. S.A.		01/09/2014	01/01/2400
NBG SECURITIES S.A.		17/02/2014	01/01/2400

List of Stocks under Market Making operations

Securities	Stock Category	
	Start Market Making	End Market Making
Market Maker		
MYTILINEOS HOLDINGS (CR)	Main Market	
HELLENIC AMERICAN SEC. S.A.	25/07/2014	01/01/2400
INVESTMENT BANK OF GREECE S.A.	02/01/2013	01/01/2400
NBG SECURITIES S.A.	25/06/2013	01/01/2400
NATIONAL BANK (CR)	Main Market	
ALPHA FINANCE INVESTMENT SERVICES S.A.	08/01/2013	01/01/2400
EUROBANK EQUITIES S.A.	24/10/2012	01/01/2400
HELLENIC AMERICAN SEC. S.A.	25/07/2014	01/01/2400
INVESTMENT BANK OF GREECE S.A.	08/01/2013	01/01/2400
MERIT SECURITIES S.A.	03/09/2013	01/01/2400
NBG SECURITIES S.A.	28/02/2013	01/01/2400
PIRAEUS SECURITIES S.A.	08/09/2013	01/01/2400
OPAP (CR)	Main Market	
ALPHA FINANCE INVESTMENT SERVICES S.A.	08/01/2013	01/01/2400
EUROBANK EQUITIES S.A.	24/10/2012	01/01/2400
HELLENIC AMERICAN SEC. S.A.	25/07/2014	01/01/2400
INVESTMENT BANK OF GREECE S.A.	08/01/2013	01/01/2400
NBG SECURITIES S.A.	15/01/2013	01/01/2400
OTE (CR)	Main Market	
ALPHA FINANCE INVESTMENT SERVICES S.A.	08/01/2013	01/01/2400
EUROBANK EQUITIES S.A.	24/10/2012	01/01/2400
HELLENIC AMERICAN SEC. S.A.	25/07/2014	01/01/2400
INVESTMENT BANK OF GREECE S.A.	08/01/2013	01/01/2400
NBG SECURITIES S.A.	01/12/2012	01/01/2400
PIRAEUS SECURITIES S.A.	08/09/2013	01/01/2400
PAPOUTSANIS (CR)	Main Market	
BETA SECURITIES S.A.	25/11/2013	01/01/2400
PETROPOULOS PETROS (CR)	Main Market	
BETA SECURITIES S.A.	28/05/2013	01/01/2400
PIRAEUS BANK (CR)	Main Market	
EUROBANK EQUITIES S.A.	23/10/2012	01/01/2400
HELLENIC AMERICAN SEC. S.A.	25/07/2014	01/01/2400
INVESTMENT BANK OF GREECE S.A.	08/01/2013	01/01/2400
MERIT SECURITIES S.A.	16/09/2013	01/01/2400
NBG SECURITIES S.A.	02/06/2013	01/01/2400
PIRAEUS SECURITIES S.A.	16/02/2013	01/01/2400
PLAISIO COMPUTERS SA (CR)	Main Market	
BETA SECURITIES S.A.	05/05/2014	01/01/2400
PPC (CR)	Main Market	
ALPHA FINANCE INVESTMENT SERVICES S.A.	08/01/2013	01/01/2400
EUROBANK EQUITIES S.A.	23/10/2012	01/01/2400
HELLENIC AMERICAN SEC. S.A.	01/09/2014	01/01/2400
INVESTMENT BANK OF GREECE S.A.	08/01/2013	01/01/2400
NBG SECURITIES S.A.	26/03/2013	01/01/2400
PIRAEUS SECURITIES S.A.	28/09/2013	01/01/2400
PROFILE SA (CR)	Main Market	
EUROBANK EQUITIES S.A.	23/06/2014	01/01/2400
S.KANAKIS SA (CR)	Main Market	
BETA SECURITIES S.A.	01/10/2013	01/01/2400
TITAN CEMENT (CR)	Main Market	
EUROBANK EQUITIES S.A.	23/10/2012	01/01/2400
NBG SECURITIES S.A.	17/02/2014	01/01/2400
VIOHALCO SA/NV (CB)	Main Market	
ALPHA FINANCE INVESTMENT SERVICES S.A.	17/02/2014	01/01/2400
MERIT SECURITIES S.A.	17/03/2014	01/01/2400

Underlying Asset				Derivatives Market																		
Price max	Price min	Closing price	change	Delivery Month	Open price	Price max	Price min	Last price	Closing price	Last Bid	Last Ask	Settlement price	change	Life high	Life low	Trades	Volume	change	Value	change	Open Interest	change
FTSE/Athex Large Cap				(Trade Unit: 1 Index Point x 5€, Cash Settlement)																		
384.40	372.79	384.15	2.21%	September 2014	376.00	386.50	372.75	386.25	384.00	111@386.00	24@386.25	384.00	2.33%	425.00	336.00	765	7,737	39.33%	14,686,420.00	40.85%	46,203	-0.89%
				October 2014	378.00	386.50	374.25	386.50	384.50	111@386.25	24@387.00	384.50	2.33%	392.25	343.75	52	274	246.84%	519,693.75	250.36%	831	11.54%
				November 2014	---	---	---	---	383.25	30@383.00	20@389.00	383.25	2.34%	358.75	351.00	---	---	---	---	---	21	0.00%
				December 2014	---	---	---	---	390.25	2@362.25	---	390.25	2.36%	384.25	343.50	---	---	-100.00%	---	-100.00%	367	0.00%
				March 2015	---	---	---	---	---	---	---	---	---	---	---	---	---	---	---	---	---	---
				June 2015	---	---	---	---	---	---	---	---	---	---	---	---	---	---	---	---	---	---

Underlying Asset				Derivatives Market																		
Price max	Price min	Closing price	change	Delivery Month	Open price	Price max	Price min	Last price	Closing price	Last Bid	Last Ask	Settlement price	change	Life high	Life low	Trades	Volume	change	Value	change	Open Interest	change
ALPHA BANK (CR)				(Contract Size: 100 Securities, Physical Delivery)																		
0.700	0.664	0.690	2.99%	September 2014	0.659	0.702	0.659	0.696	0.697	5@0.696	19@0.697	0.697	4.50%	0.780	0.530	220	6,648	68.39%	454,940.10	74.49%	29,747	2.34%
				December 2014	0.680	0.695	0.680	0.695	0.694	14@0.681	3@0.695	0.694	4.20%	0.775	0.615	5	125	861.54%	8,583.90	891.79%	142	358.06%
				March 2015	---	---	---	---	---	---	---	---	---	---	---	---	---	---	---	---	---	---
				June 2015	---	---	---	---	---	---	---	---	---	---	---	---	---	---	---	---	---	---
CC HBC AG (CR)				(Contract Size: 100 Securities, Physical Delivery)																		
18.31	17.79	18.20	1.22%	September 2014	18.00	18.30	18.00	18.30	18.31	5@18.14	1@18.22	18.31	1.22%	18.30	16.10	6	8	-84.00%	14,480.00	-83.83%	391	1.30%
				December 2014	---	---	---	---	---	---	1@18.49	---	---	---	---	---	---	---	---	---	---	---
				March 2015	---	---	---	---	---	---	---	---	---	---	---	---	---	---	---	---	---	---
				June 2015	---	---	---	---	---	---	---	---	---	---	---	---	---	---	---	---	---	---
CORINTH PIPEWORKS SA (CR)				(Contract Size: 100 Securities, Physical Delivery)																		
1.41	1.34	1.41	2.17%	September 2014	---	---	---	---	1.39	7@1.40	10@1.44	1.39	2.21%	1.77	1.31	---	---	---	---	---	717	0.00%
				December 2014	1.42	1.43	1.42	1.43	1.41	---	10@1.46	1.41	2.17%	1.43	1.42	3	66	---	9,402.00	---	81	440.00%
				March 2015	---	---	---	---	---	---	---	---	---	---	---	---	---	---	---	---	---	---
				June 2015	---	---	---	---	---	---	---	---	---	---	---	---	---	---	---	---	---	---
ELLAKTOR (CR)				(Contract Size: 100 Securities, Physical Delivery)																		
3.47	3.37	3.45	1.47%	September 2014	3.40	3.46	3.40	3.46	3.41	7@3.39	2@3.46	3.41	1.49%	4.33	3.23	9	34	-69.91%	11,647.00	-69.90%	2,499	-0.64%
				December 2014	---	---	---	---	3.41	3@3.38	2@3.50	3.41	1.49%	3.56	3.40	---	---	-100.00%	---	-100.00%	2	0.00%
				March 2015	---	---	---	---	---	---	---	---	---	---	---	---	---	---	---	---	---	---
				June 2015	---	---	---	---	---	---	---	---	---	---	---	---	---	---	---	---	---	---
EUROBANK ERGASIAS (CR)				(Contract Size: 100 Securities, Physical Delivery)																		
0.349	0.330	0.349	5.44%	September 2014	0.334	0.350	0.333	0.350	0.348	50@0.348	559@0.350	0.348	4.50%	0.433	0.297	114	5,386	267.14%	182,962.10	278.02%	64,660	-3.04%
				December 2014	0.346	0.346	0.346	0.346	0.347	1@0.336	559@0.360	0.347	3.27%	0.410	0.308	1	4	---	138.40	---	4,928	0.00%
				March 2015	0.336	0.336	0.336	0.336	0.348	---	---	0.348	4.82%	0.336	0.314	1	250	---	8,400.00	---	750	50.00%
				June 2015	---	---	---	---	---	---	---	---	---	---	---	---	---	---	---	---	---	---
EUROBANK PROPERTIES REIC (CR)				(Contract Size: 100 Securities, Physical Delivery)																		
9.24	9.09	9.21	0.44%	September 2014	9.17	9.17	9.15	9.17	9.16	1@8.78	1@9.25	9.16	0.44%	9.87	7.97	4	10	400.00%	9,166.00	399.78%	378	0.53%
				December 2014	---	---	---	---	---	2@9.03	---	---	---	---	---	---	---	---	---	---	---	---
				March 2015	---	---	---	---	---	---	---	---	---	---	---	---	---	---	---	---	---	---
				June 2015	---	---	---	---	---	---	---	---	---	---	---	---	---	---	---	---	---	---
EYDAP S.A. (CR)				(Contract Size: 100 Securities, Physical Delivery)																		
9.18	9.01	9.10	0.77%	September 2014	9.04	9.16	9.04	9.05	9.06	1@9.09	5@9.20	9.06	0.78%	9.91	9.04	9	32	52.38%	29,130.00	51.92%	418	3.47%
				December 2014	---	---	---	---	---	---	---	---	---	---	---	---	---	---	---	---	---	---
				March 2015	---	---	---	---	---	---	---	---	---	---	---	---	---	---	---	---	---	---
				June 2015	---	---	---	---	---	---	---	---	---	---	---	---	---	---	---	---	---	---
FOLLI FOLLIE (CR)				(Contract Size: 100 Securities, Physical Delivery)																		
31.70	31.03	31.35	-0.48%	September 2014	31.40	31.54	31.12	31.47	31.47	2@31.35	1@31.69	31.47	0.64%	34.18	25.27	17	47	487.50%	147,434.00	483.55%	323	1.89%
				December 2014	---	---	---	---	---	5@30.90	1@32.19	---	---	---	---	---	---	---	---	---	---	---
				March 2015	---	---	---	---	---	---	---	---	---	---	---	---	---	---	---	---	---	---
				June 2015	---	---	---	---	---	---	---	---	---	---	---	---	---	---	---	---	---	---

Underlying Asset				Derivatives Market																		
Price max	Price min	Closing price	change	Delivery Month	Open price	Price max	Price min	Last price	Closing price	Last Bid	Last Ask	Settlement price	change	Life high	Life low	Trades	Volume	change	Value	change	Open Interest	change
FRIGOGLASS SA (CR)				(Contract Size: 100 Securities, Physical Delivery)																		
3.20	3.07	3.17	-0.63%	September 2014	3.22	3.23	3.13	3.13	3.17	10@3.13	3@3.53	3.17	-0.63%	4.18	3.10	5	20	100.00%	6,368.00	97.76%	1,155	1.49%
				December 2014	3.18	3.18	3.18	3.18	3.21	10@3.12	3@3.57	3.21	---	3.18	3.18	1	3	---	954.00	---	3	---
				March 2015	---	---	---	---	---	---	---	---	---	---	---	---	---	---	---	---	---	---
				June 2015	---	---	---	---	---	---	---	---	---	---	---	---	---	---	---	---	---	---
GEK TERNA (CR)				(Contract Size: 100 Securities, Physical Delivery)																		
3.55	3.40	3.55	2.31%	September 2014	3.46	3.57	3.45	3.57	3.54	5@3.52	5@3.58	3.54	0.28%	4.24	3.17	21	118	-15.71%	41,437.00	-14.46%	17,416	0.05%
				December 2014	---	---	---	---	3.51	---	5@3.62	3.51	0.29%	4.01	3.72	---	---	---	---	---	---	---
				March 2015	---	---	---	---	4.35	---	---	4.35	0.23%	4.07	3.43	---	---	---	---	---	7,510	0.00%
				June 2015	---	---	---	---	---	---	---	---	---	---	---	---	---	---	---	---	---	---
HELLENIC EXCHANGES-A.S.E. (CR)				(Contract Size: 103 Securities, Physical Delivery)																		
7.30	7.09	7.30	2.24%	September 2014	7.20	7.33	7.18	7.33	7.36	20@7.28	11@7.34	7.36	2.22%	9.22	6.70	40	131	-38.50%	97,862.36	-37.81%	4,612	0.52%
				December 2014	7.21	7.21	7.21	7.21	7.21	1@7.21	---	7.21	0.00%	8.39	7.17	2	15	---	11,139.45	---	3,620	0.42%
				March 2015	---	---	---	---	---	---	---	---	---	---	---	---	---	---	---	---	---	---
				June 2015	---	---	---	---	7.46	---	---	7.46	2.19%	7.45	7.45	---	---	---	---	---	3,000	0.00%
HELLENIC PETROLEUM (CR)				(Contract Size: 100 Securities, Physical Delivery)																		
5.60	5.39	5.54	0.73%	September 2014	5.48	5.59	5.41	5.59	5.56	10@5.57	2@5.60	5.56	1.09%	6.37	5.11	56	180	24.14%	98,908.00	23.11%	8,208	0.75%
				December 2014	5.53	5.63	5.46	5.63	5.63	7@5.58	2@5.67	5.63	1.62%	6.29	5.13	8	14	250.00%	7,769.00	246.83%	268	5.51%
				March 2015	---	---	---	---	5.57	---	---	5.57	1.09%	6.18	5.50	---	---	---	---	---	---	---
				June 2015	---	---	---	---	---	---	---	---	---	---	---	---	---	---	---	---	---	---
INTRALOT (CR)				(Contract Size: 100 Securities, Physical Delivery)																		
1.80	1.74	1.77	-1.67%	September 2014	1.75	1.82	1.73	1.82	1.80	2@1.79	1@1.82	1.80	-1.64%	2.16	1.63	5	39	129.41%	6,902.00	125.48%	1,816	0.17%
				December 2014	---	---	---	---	---	5@1.47	1@1.84	---	---	---	---	---	---	---	---	---	---	---
				March 2015	---	---	---	---	---	---	---	---	---	---	---	---	---	---	---	---	---	---
				June 2015	---	---	---	---	---	---	---	---	---	---	---	---	---	---	---	---	---	---
JUMBO SA (CR)				(Contract Size: 100 Securities, Physical Delivery)																		
11.60	11.27	11.27	-2.00%	September 2014	11.43	11.59	11.38	11.42	11.21	2@11.29	5@11.52	11.21	-2.01%	13.00	9.81	10	29	-92.91%	33,156.00	-92.91%	421	-1.86%
				December 2014	11.55	11.55	11.55	11.55	11.17	---	5@11.63	11.17	-3.87%	11.55	11.50	1	1	0.00%	1,155.00	0.43%	---	-100.00%
				March 2015	---	---	---	---	---	---	---	---	---	---	---	---	---	---	---	---	---	---
				June 2015	---	---	---	---	---	---	---	---	---	---	---	---	---	---	---	---	---	---
MARFIN INVESTMENT GROUP (CR)				(Contract Size: 100 Securities, Physical Delivery)																		
0.402	0.385	0.400	1.78%	September 2014	0.392	0.405	0.386	0.405	0.402	15@0.401	1@0.405	0.402	0.75%	0.520	0.375	31	343	757.50%	13,638.80	759.62%	26,851	0.46%
				December 2014	0.400	0.402	0.400	0.402	0.402	5@0.403	1@0.415	0.402	0.25%	0.414	0.400	3	6	---	240.60	---	10	150.00%
				March 2015	---	---	---	---	---	---	---	---	---	---	---	---	---	---	---	---	---	---
				June 2015	---	---	---	---	---	---	---	---	---	---	---	---	---	---	---	---	---	---
METKA (CR)				(Contract Size: 100 Securities, Physical Delivery)																		
11.73	11.40	11.44	-2.22%	September 2014	11.70	11.70	11.47	11.55	11.57	5@11.46	1@11.60	11.57	-2.20%	14.00	10.51	13	28	-3.45%	32,377.00	-3.83%	650	4.00%
				December 2014	---	---	---	---	---	4@11.42	---	---	---	---	---	---	---	---	---	---	---	---
				March 2015	---	---	---	---	---	---	---	---	---	---	---	---	---	---	---	---	---	---
				June 2015	---	---	---	---	---	---	---	---	---	---	---	---	---	---	---	---	---	---

Underlying Asset				Derivatives Market																		
Price max	Price min	Closing price	change	Delivery Month	Open price	Price max	Price min	Last price	Closing price	Last Bid	Last Ask	Settlement price	change	Life high	Life low	Trades	Volume	change	Value	change	Open Interest	change
MOTOR OIL (CR)				(Contract Size: 100 Securities, Physical Delivery)																		
7.87	7.75	7.81	-0.51%	September 2014	7.82	7.99	7.77	7.99	7.93	1@7.83	1@7.98	7.93	-0.50%	8.69	7.14	15	49	58.06%	38,451.00	55.14%	337	2.43%
				December 2014	---	---	---	---	8.07	3@7.80	1@8.07	8.07	-0.49%	8.20	8.20	---	---	-100.00%	---	-100.00%	1	0.00%
				March 2015	---	---	---	---	---	---	---	---	---	---	---	---	---	---	---	---	---	---
				June 2015	---	---	---	---	---	---	---	---	---	---	---	---	---	---	---	---	---	---
MYTILINEOS HOLDINGS (CR)				(Contract Size: 100 Securities, Physical Delivery)																		
6.63	6.28	6.63	4.41%	September 2014	6.36	6.69	6.33	6.69	6.59	5@6.69	2@6.70	6.59	3.78%	7.31	5.63	164	999	216.14%	651,602.00	227.37%	8,632	-3.71%
				December 2014	---	---	---	---	6.56	5@6.66	---	6.56	3.80%	7.16	5.58	---	---	-100.00%	---	-100.00%	1,401	0.00%
				March 2015	---	---	---	---	---	---	---	---	---	---	---	---	---	---	---	---	---	---
				June 2015	---	---	---	---	---	---	---	---	---	---	---	---	---	---	---	---	---	---
NATIONAL BANK (CR)				(Contract Size: 100 Securities, Physical Delivery)																		
2.71	2.55	2.71	4.63%	September 2014	2.58	2.73	2.56	2.73	2.70	68@2.71	10@2.72	2.70	5.06%	3.03	2.07	297	4,573	9.85%	1,214,840.00	13.71%	31,194	0.28%
				December 2014	2.65	2.70	2.60	2.70	2.69	68@2.68	1@2.71	2.69	5.08%	2.92	2.09	12	40	300.00%	10,617.00	319.64%	182	21.33%
				March 2015	---	---	---	---	---	---	---	---	---	---	---	---	---	---	---	---	---	---
				June 2015	---	---	---	---	---	---	---	---	---	---	---	---	---	---	---	---	---	---
OPAP (CR)				(Contract Size: 100 Securities, Physical Delivery)																		
12.37	12.20	12.30	1.07%	September 2014	12.26	12.39	12.19	12.34	12.33	10@12.34	1@12.39	12.33	0.49%	13.60	9.63	54	222	43.23%	273,514.00	44.12%	2,030	5.51%
				December 2014	12.32	12.37	12.32	12.37	12.31	---	1@12.44	12.31	-0.08%	13.34	10.42	2	75	3650.00%	92,525.00	3664.24%	77	3750.00%
				March 2015	---	---	---	---	---	---	---	---	---	---	---	---	---	---	---	---	---	---
				June 2015	---	---	---	---	---	---	---	---	---	---	---	---	---	---	---	---	---	---
OTE (CR)				(Contract Size: 100 Securities, Physical Delivery)																		
11.10	10.82	11.00	0.92%	September 2014	10.92	11.10	10.82	11.10	11.04	10@11.06	1@11.10	11.04	1.56%	12.84	9.21	180	1,011	14.11%	1,110,839.00	15.00%	12,416	-0.75%
				December 2014	10.87	11.05	10.86	11.05	11.06	11@11.00	1@11.19	11.06	1.94%	11.62	9.49	4	27	-62.50%	29,372.00	-62.50%	46	-34.29%
				March 2015	---	---	---	---	---	---	---	---	---	---	---	---	---	---	---	---	---	---
				June 2015	---	---	---	---	---	---	---	---	---	---	---	---	---	---	---	---	---	---
P.P.A. S.A. (CR)				(Contract Size: 100 Securities, Physical Delivery)																		
17.10	16.53	17.10	2.39%	September 2014	16.76	16.94	16.69	16.94	17.02	2@16.85	1@17.00	17.02	2.41%	18.99	16.10	8	16	700.00%	26,925.00	707.10%	471	0.00%
				December 2014	---	---	---	---	---	1@16.69	---	---	---	---	---	---	---	---	---	---	---	---
				March 2015	---	---	---	---	---	---	---	---	---	---	---	---	---	---	---	---	---	---
				June 2015	---	---	---	---	---	---	---	---	---	---	---	---	---	---	---	---	---	---
PIRAEUS BANK (CR)				(Contract Size: 100 Securities, Physical Delivery)																		
1.48	1.37	1.47	5.00%	September 2014	1.41	1.48	1.37	1.48	1.47	37@1.48	92@1.49	1.47	5.00%	2.06	1.20	198	5,343	59.83%	767,887.00	63.64%	28,810	6.81%
				December 2014	1.42	1.47	1.42	1.47	1.46	39@1.46	92@1.51	1.46	4.29%	1.50	1.38	4	28	-34.88%	4,040.00	-32.52%	107	10.31%
				March 2015	---	---	---	---	---	---	---	---	---	---	---	---	---	---	---	---	---	---
				June 2015	---	---	---	---	---	---	---	---	---	---	---	---	---	---	---	---	---	---
PPC (CR)				(Contract Size: 100 Securities, Physical Delivery)																		
11.28	11.06	11.19	0.00%	September 2014	11.19	11.32	11.08	11.27	11.24	10@11.25	5@11.32	11.24	0.45%	12.65	9.70	117	566	38.73%	634,031.00	38.62%	4,564	3.52%
				December 2014	11.10	11.10	11.10	11.10	11.23	7@11.21	1@11.29	11.23	0.36%	12.48	9.54	1	20	1900.00%	22,200.00	1875.09%	31	-39.22%
				March 2015	11.10	11.10	11.10	11.10	11.23	---	1@11.38	11.23	-0.80%	11.28	11.08	1	20	---	22,200.00	---	20	-50.00%
				June 2015	---	---	---	---	---	---	---	---	---	---	---	---	---	---	---	---	---	---

Underlying Asset				Derivatives Market																		
Price max	Price min	Closing price	change	Delivery Month	Open price	Price max	Price min	Last price	Closing price	Last Bid	Last Ask	Settlement price	change	Life high	Life low	Trades	Volume	change	Value	change	Open Interest	change
SIDENOR (CR)				(Contract Size: 100 Securities, Physical Delivery)																		
1.31	1.25	1.30	1.56%	September 2014	1.29	1.29	1.29	1.29	1.33	1@1.28	4@1.33	1.33	1.53%	1.77	1.23	1	5	-61.54%	645.00	-61.24%	1,081	-0.46%
				December 2014	---	---	---	---	---	1@1.25	4@1.35	---	---	---	---	---	---	---	---	---	---	---
				March 2015	---	---	---	---	---	---	---	---	---	---	---	---	---	---	---	---	---	---
				June 2015	---	---	---	---	---	---	---	---	---	---	---	---	---	---	---	---	---	---
TERNA ENERGY (CR)				(Contract Size: 102 Securities, Physical Delivery)																		
3.64	3.55	3.60	-0.83%	September 2014	3.60	3.62	3.59	3.59	3.61	2@3.58	10@3.93	3.61	-0.82%	4.22	3.36	8	27	68.75%	9,942.96	67.90%	3,873	0.47%
				December 2014	---	---	---	---	---	---	---	---	---	---	---	---	---	---	---	---	---	---
				March 2015	---	---	---	---	---	---	---	---	---	---	---	---	---	---	---	---	---	---
				June 2015	---	---	---	---	---	---	---	---	---	---	---	---	---	---	---	---	---	---
TITAN CEMENT (CR)				(Contract Size: 100 Securities, Physical Delivery)																		
20.27	19.71	20.00	0.00%	September 2014	20.00	20.19	19.72	20.07	20.11	3@20.06	1@20.19	20.11	0.30%	26.66	18.23	30	112	67.16%	223,971.00	65.74%	712	6.43%
				December 2014	19.87	19.88	19.87	19.88	20.07	---	1@21.70	20.07	-0.55%	21.10	19.87	2	5	-66.67%	9,937.00	-67.16%	10	-33.33%
				March 2015	---	---	---	---	---	---	---	---	---	---	---	---	---	---	---	---	---	---
				June 2015	---	---	---	---	---	---	---	---	---	---	---	---	---	---	---	---	---	---
VIOHALCO SA/NV (CB)				(Contract Size: 100 Securities, Physical Delivery)																		
4.08	4.00	4.08	-0.24%	September 2014	4.02	4.04	4.02	4.04	4.04	2@4.00	1@4.10	4.04	-0.25%	4.52	3.70	2	16	220.00%	6,456.00	220.40%	346	0.00%
				December 2014	---	---	---	---	---	---	1@4.15	---	---	---	---	---	---	---	---	---	---	---
				March 2015	---	---	---	---	---	---	---	---	---	---	---	---	---	---	---	---	---	---
				June 2015	---	---	---	---	---	---	---	---	---	---	---	---	---	---	---	---	---	---

FTSE/Athex Large Cap

(Trade Unit: 1 Index Point x 5€ - Exercise Style: European, Cash Settlement)

Call Options																	Put Options																								
Exercise Price	September 2014							October 2014							Other Months		September 2014							October 2014							Other Months		Exercise Price								
	Open price	Price max	Price min	Last price	Closing price	Volume	Open Interest	Open price	Price max	Price min	Last price	Closing price	Volume	Open Interest	Volume	Open Interest	Open price	Price max	Price min	Last price	Closing price	Volume	Open Interest	Open price	Price max	Price min	Last price	Closing price	Volume	Open Interest	Volume	Open Interest									
215	-	-	-	-	169.00	-	30	-	-	-	-	-	-	-	-	-	-	-	-	-	-	-	-	-	-	-	-	-	-	-	-	-	215								
300	-	-	-	-	84.00	-	80	-	-	-	-	-	-	-	-	-	-	-	-	-	-	-	-	-	-	-	-	-	-	-	-	-	300								
310	-	-	-	-	-	-	-	-	-	-	-	-	-	-	-	-	-	-	-	-	-	-	-	-	-	-	-	-	-	-	-	-	310								
315	-	-	-	-	-	-	-	-	-	-	-	-	-	-	-	-	-	-	-	-	-	-	-	-	-	-	-	-	-	-	-	-	315								
320	-	-	-	-	-	-	-	-	-	-	-	-	-	-	-	-	-	-	-	-	0.05	-	1	-	-	-	-	-	-	-	-	-	320								
325	-	-	-	-	-	-	-	-	-	-	-	-	-	-	-	-	-	-	-	-	0.09	-	1	-	-	-	-	-	-	-	-	-	325								
330	-	-	-	-	-	-	-	-	-	-	-	-	-	-	-	-	-	-	-	-	0.16	-	52	-	-	-	-	-	-	-	-	-	330								
335	-	-	-	-	-	-	-	-	-	-	-	-	-	-	-	-	-	-	-	-	0.29	-	379	-	-	-	-	-	-	-	-	-	335								
340	-	-	-	-	44.50	-	2	-	-	-	-	-	-	-	-	-	-	-	-	-	0.49	-	129	-	-	-	-	3.50	-	4	-	-	340								
345	-	-	-	-	39.75	-	226	-	-	-	-	43.75	-	20	-	-	-	-	-	-	0.79	-	149	-	-	-	-	4.40	-	11	-	-	345								
350	-	-	-	-	35.25	-	18	-	-	-	-	-	-	-	-	-	2.00	2.00	2.00	2.00	1.20	28	675	-	-	-	-	5.50	-	21	-	-	350								
355	-	-	-	-	30.75	-	52	-	-	-	-	-	-	-	-	-	2.80	2.80	2.80	2.80	1.90	100	303	-	-	-	-	-	-	-	-	-	355								
360	26.75	26.75	26.75	26.75	26.75	5	222	-	-	-	-	32.75	-	20	-	-	5.00	5.00	3.00	3.00	2.70	3	379	-	-	-	-	8.20	-	2	-	-	360								
365	23.00	23.00	23.00	23.00	22.75	14	61	-	-	-	-	-	-	-	-	-	-	-	-	-	3.80	-	39	-	-	-	-	9.90	-	40	-	-	365								
370	13.25	13.25	13.25	13.25	19.25	22	248	27.25	27.25	27.25	27.25	26.25	1	220	-	-	5.00	5.00	4.80	4.80	5.20	65	400	-	-	-	-	11.75	-	1	-	-	370								
375	9.00	16.50	9.00	16.50	16.00	180	270	-	-	-	-	-	-	-	-	-	8.50	8.50	8.50	8.50	7.00	5	8	-	-	-	-	-	-	-	-	-	375								
380	12.50	13.50	12.50	13.50	13.00	65	1,143	-	-	-	-	20.75	-	430	-	-	-	-	-	-	9.10	-	51	-	-	-	-	16.25	-	1	-	-	380								
385	6.00	10.50	6.00	10.50	10.50	144	238	-	-	-	-	18.25	-	2	-	-	9.80	12.50	9.80	12.50	11.50	2	104	-	-	-	-	-	-	-	-	-	385								
390	4.00	7.10	4.00	7.10	8.40	152	470	-	-	-	-	16.00	-	2	-	-	15.00	15.00	13.00	13.00	14.25	55	129	-	-	-	-	-	-	-	-	-	390								
395	-	-	-	-	6.50	-	134	-	-	-	-	-	-	-	-	-	-	-	-	-	-	-	-	-	-	-	-	-	-	-	-	-	395								
400	-	-	-	-	5.00	-	3,713	12.00	12.00	12.00	12.00	12.00	1	3	-	-	-	-	-	-	-	-	-	-	-	-	-	-	-	-	-	-	400								
405	-	-	-	-	-	-	-	-	-	-	-	-	-	-	-	-	-	-	-	-	-	-	-	-	-	-	-	-	-	-	-	-	405								
410	-	-	-	-	2.80	-	11	-	-	-	-	-	-	-	-	-	-	-	-	-	-	-	-	-	-	-	-	-	-	-	-	-	410								
415	-	-	-	-	-	-	-	-	-	-	-	-	-	-	-	-	-	-	-	-	-	-	-	-	-	-	-	-	-	-	-	-	415								
420	-	-	-	-	1.50	-	15	-	-	-	-	-	-	-	-	-	-	-	-	-	-	-	-	-	-	-	-	-	-	-	-	-	420								
425	-	-	-	-	-	-	-	-	-	-	-	-	-	-	-	-	-	-	-	-	-	-	-	-	-	-	-	-	-	-	-	-	425								
430	-	-	-	-	0.73	-	290	-	-	-	-	-	-	-	-	-	-	-	-	-	-	-	-	-	-	-	-	-	-	-	-	-	430								
435	-	-	-	-	0.50	-	136	-	-	-	-	-	-	-	-	-	-	-	-	-	-	-	-	-	-	-	-	-	-	-	-	-	435								
440	-	-	-	-	0.34	-	400	-	-	-	-	-	-	-	-	-	-	-	-	-	56.50	-	5	-	-	-	-	-	-	-	-	-	-	440							
445	-	-	-	-	-	-	-	-	-	-	-	-	-	-	-	-	-	-	-	-	-	-	-	-	-	-	-	-	-	-	-	-	445								
450	-	-	-	-	-	-	-	-	-	-	-	-	-	-	-	-	-	-	-	-	66.00	-	35	-	-	-	-	-	-	-	-	-	-	450							
455	-	-	-	-	-	-	-	-	-	-	-	-	-	-	-	-	-	-	-	-	-	-	-	-	-	-	-	-	-	-	-	-	455								
460	-	-	-	-	-	-	-	-	-	-	-	-	-	-	-	-	-	-	-	-	-	-	-	-	-	-	-	-	-	-	-	-	460								
465	-	-	-	-	-	-	-	-	-	-	-	-	-	-	-	-	-	-	-	-	-	-	-	-	-	-	-	-	-	-	-	-	465								
Totals:						582	7,759							2	697	0	0							258	2,839							0	80	0	0						
Nominal Transactions Value:																																									
Number of Trades:																																									

ALPHA BANK (CR) (Contract Size: 100 Securities, Exercise Style: American, Physical Delivery)

Call Options																	Put Options																									
September 2014								October 2014								Other Months	September 2014								October 2014								Other Months									
Exercise Price	Open price	Price max	Price min	Last price	Closing price	Volume	Open Interest	Open price	Price max	Price min	Last price	Closing price	Volume	Open Interest	Volume	Open Interest	Open price	Price max	Price min	Last price	Closing price	Volume	Open Interest	Open price	Price max	Price min	Last price	Closing price	Volume	Open Interest	Volume	Open Interest	Exercise Price									
0.100						-	-							-	-							-	-						-	-				0.100								
0.200						-	-							-	-							-	-						-	-				0.200								
0.300						-	-							-	-							-	-						-	-				0.300								
0.400						-	-							-	-							-	-						-	-				0.400								
0.450						-	-							-	-							-	-						-	-				0.450								
0.500						-	-							-	-							-	-						-	-				0.500								
0.550						-	-							-	-							-	-						-	-				0.550								
0.600						-	-							-	-							-	-						-	-				0.600								
0.650						-	-							-	-							-	-						-	-				0.650								
0.700						-	-							-	-							-	-						-	-				0.700								
0.750						-	-							-	-							-	-						-	-				0.750								
0.800						-	-							-	-							-	-						-	-				0.800								
0.850						-	-							-	-							-	-						-	-				0.850								
0.900						-	-							-	-							-	-						-	-				0.900								
0.950						-	-							-	-							-	-						-	-				0.950								
1.00						-	-							-	-							-	-						-	-				1.00								
1.10						-	-							-	-							-	-						-	-				1.10								
Totals:						0	0							0	0	0	0							0	0							0	0	0	0	0						
Nominal Transactions Value:						0.00								0.00		0.00	0.00							0.00								0.00		0.00	0.00							
Number of Trades:						0								0		0	0							0								0		0	0							

NATIONAL BANK (CR)

(Contract Size: 100 Securities, Exercise Style: American, Physical Delivery)

Call Options																	Put Options																			
September 2014								October 2014								Other Months		September 2014								October 2014								Other Months		
Exercise Price	Open price	Price max	Price min	Last price	Closing price	Volume	Open Interest	Open price	Price max	Price min	Last price	Closing price	Volume	Open Interest	Volume	Open Interest	Open price	Price max	Price min	Last price	Closing price	Volume	Open Interest	Open price	Price max	Price min	Last price	Closing price	Volume	Open Interest	Volume	Open Interest	Exercise Price			
1.80						-	-							-	-							-	-					-	-				1.80			
1.90						-	-							-	-							-	-					-	-				1.90			
2.00						-	-							-	-							-	-					-	-				2.00			
2.10						-	-							-	-							-	-					-	-				2.10			
2.20						-	-							-	-							-	-					-	-				2.20			
2.30						-	-							-	-							-	-					-	-				2.30			
2.40						-	-							-	-						0.005	-	200					-	-				2.40			
2.50						-	-							-	-							-	-					-	-				2.50			
2.60					0.150	-	320							-	-							-	-					-	-				2.60			
2.70					0.089	-	300							-	-							-	-					-	-				2.70			
2.80					0.047	-	1,350							-	-							-	-					-	-				2.80			
2.90						-	-							-	-							-	-					-	-				2.90			
3.00						-	-							-	-							-	-					-	-				3.00			
3.10						-	-							-	-							-	-					-	-				3.10			
3.20						-	-							-	-							-	-					-	-				3.20			
3.30						-	-							-	-							-	-					-	-				3.30			
3.40						-	-							-	-							-	-					-	-				3.40			
3.60						-	-							-	-							-	-					-	-				3.60			
3.80						-	-							-	-							-	-					-	-				3.80			
4.00						-	-							-	-							-	-					-	-				4.00			
4.40						-	-							-	-							-	-					-	-				4.40			
4.80						-	-							-	-							-	-					-	-				4.80			
5.20						-	-							-	-							-	-					-	-				5.20			
5.60						-	-							-	-							-	-					-	-				5.60			
Totals:						0	1,970							0	0	0	0							0	200							0	0	0	0	
Nominal Transactions Value:						0.00								0.00	0.00									0.00								0.00	0.00			
Number of Trades:						0								0	0									0.00								0		0		

OPAP (CR)

(Contract Size: 100 Securities, Exercise Style: American, Physical Delivery)

Call Options																	Put Options																																	
September 2014																	October 2014																	Other Months																
Exerise Price	Open price	Price max	Price min	Last price	Closing price	Volume	Open Interest	Open price	Price max	Price min	Last price	Closing price	Volume	Open Interest	Volume	Open Interest	Open price	Price max	Price min	Last price	Closing price	Volume	Open Interest	Open price	Price max	Price min	Last price	Closing price	Volume	Open Interest	Volume	Open Interest	Exerise Price																	
6.40						-	-							-	-							-	-						-	-		6.40																		
6.80						-	-							-	-							-	-						-	-		6.80																		
7.20						-	-							-	-							-	-						-	-		7.20																		
7.60						-	-							-	-							-	-						-	-		7.60																		
8.00						-	-							-	-							-	-						-	-		8.00																		
8.40						-	-							-	-							-	-						-	-		8.40																		
8.80						-	-							-	-							-	-						-	-		8.80																		
9.20						-	-							-	-							-	-						-	-		9.20																		
9.60						-	-							-	-							-	-						-	-		9.60																		
10.00						-	-							-	-							-	-						-	-		10.00																		
10.50						-	-							-	-							-	-						-	-		10.50																		
11.00						-	-							-	-							-	-						-	-		11.00																		
11.50						-	-							-	-							-	-						-	-		11.50																		
12.00						-	-							-	-							-	-						-	-		12.00																		
12.50						-	-							-	-							-	-						-	-		12.50																		
13.00						-	-							-	-							-	-						-	-		13.00																		
13.50						-	-							-	-							-	-						-	-		13.50																		
14.00						-	-							-	-							-	-						-	-		14.00																		
14.50						-	-							-	-							-	-						-	-		14.50																		
15.00						-	-							-	-							-	-						-	-		15.00																		
16.00						-	-							-	-							-	-						-	-		16.00																		
17.00						-	-							-	-							-	-						-	-		17.00																		
18.00						-	-							-	-							-	-						-	-		18.00																		
Totals:						0	0							0	0	0	0							0	0							0	0																	
Nominal Transactions Value:						0.00								0.00		0.00							0.00								0.00	0																		
Number of Trades:						0								0		0							0								0	0																		

OTE (CR)

(Contract Size: 100 Securities, Exercise Style: American, Physical Delivery)

Call Options																	Put Options																							
	September 2014							October 2014							Other Months			September 2014							October 2014							Other Months								
Exerise Price	Open price	Price max	Price min	Last price	Closing price	Volume	Open Interest	Open price	Price max	Price min	Last price	Closing price	Volume	Open Interest	Volume	Open Interest	Open price	Price max	Price min	Last price	Closing price	Volume	Open Interest	Open price	Price max	Price min	Last price	Closing price	Volume	Open Interest	Volume	Open Interest	Exerise Price							
5.60							-	-							-	-										-	-							-	-				5.60	
6.00							-	-							-	-										-	-							-	-				6.00	
6.40							-	-							-	-										-	-							-	-				6.40	
6.80							-	-							-	-										-	-							-	-				6.80	
7.20							-	-							-	-										-	-							-	-				7.20	
7.60							-	-							-	-										-	-							-	-				7.60	
8.00							-	-							-	-										-	-							-	-				8.00	
8.40							-	-							-	-										-	-							-	-				8.40	
8.80							-	-							-	-										-	-							-	-				8.80	
9.20							-	-							-	-										-	-							-	-				9.20	
9.40							-	-							-	-										-	-							-	-				9.40	
9.60							-	-							-	-										-	-							-	-				9.60	
9.80							-	-							-	-										-	-							-	-				9.80	
10.00							-	-							-	-										-	-							-	-				10.00	
10.50							0.685	-	5							-	-										-	-							-	-				10.50
11.00							0.387	-	2							-	-										-	-							-	-				11.00
11.50							-	-							0.473	-	100										-	-							-	-				11.50
12.00							-	-							-	-										-	-							-	-				12.00	
12.50							-	-							-	-										-	-							-	-				12.50	
13.00							-	-							-	-										-	-							-	-				13.00	
13.50							-	-							-	-										-	-							-	-				13.50	
14.00							-	-							-	-										-	-							-	-				14.00	
15.00							-	-							-	-										-	-							-	-				15.00	
16.00							-	-							-	-										-	-							-	-				16.00	
Totals:						0	7							0	100	0	0							0	0							0	0	0	0	0	0	0	0	
Nominal Transactions Value:						0.00								0.00		0.00								0.00								0.00		0.00		0.00				
Number of Trades:						0								0		0								0								0		0		0				

PIRAEUS BANK (CR)

(Contract Size: 100 Securities, Exercise Style: American, Physical Delivery)

Call Options																	Put Options																									
September 2014								October 2014								Other Months		September 2014								October 2014								Other Months								
Exerise Price	Open price	Price max	Price min	Last price	Closing price	Volume	Open Interest	Open price	Price max	Price min	Last price	Closing price	Volume	Open Interest	Volume	Open Interest	Open price	Price max	Price min	Last price	Closing price	Volume	Open Interest	Open price	Price max	Price min	Last price	Closing price	Volume	Open Interest	Volume	Open Interest	Exerise Price									
0.800						-	-							-	-							-	-						-	-				0.800								
0.900						-	-							-	-							-	-						-	-				0.900								
1.00						-	-							-	-							-	-						-	-				1.00								
1.10						-	-							-	-							-	-						-	-				1.10								
1.20						-	-							-	-							-	-						-	-				1.20								
1.30						-	-							-	-							-	-						-	-				1.30								
1.35						-	-							-	-							-	-						-	-				1.35								
1.40						-	-							-	-							-	-						-	-				1.40								
1.45						-	-							-	-							-	-						-	-				1.45								
1.50						-	-							-	-							-	-						-	-				1.50								
1.55						-	-							-	-							-	-						-	-				1.55								
1.60						-	-							-	-							-	-						-	-				1.60								
1.65						-	-							-	-							-	-						-	-				1.65								
1.70						-	-							-	-							-	-						-	-				1.70								
1.75						-	-							-	-							-	-						-	-				1.75								
1.80						-	-							-	-							-	-						-	-				1.80								
1.85						-	-							-	-							-	-						-	-				1.85								
1.90						-	-							-	-							-	-						-	-				1.90								
1.95						-	-							-	-							-	-						-	-				1.95								
2.00						-	-							-	-							-	-						-	-				2.00								
2.10						-	-							-	-							-	-						-	-				2.10								
2.20						-	-							-	-							-	-						-	-				2.20								
2.30						-	-							-	-							-	-						-	-				2.30								
2.40						-	-							-	-							-	-						-	-				2.40								
2.60						-	-							-	-							-	-						-	-				2.60								
2.80						-	-							-	-							-	-						-	-				2.80								
Totals:						0	0							0	0	0	0							0	0							0	0	0	0	0						
Nominal Transactions Value:						0.00								0.00		0.00								0.00								0.00		0.00								
Number of Trades:						0								0		0								0								0		0								

PPC (CR)

(Contract Size: 100 Securities, Exercise Style: American, Physical Delivery)

Call Options																	Put Options																									
	September 2014							October 2014							Other Months		September 2014											October 2014							Other Months							
Exercise Price	Open price	Price max	Price min	Last price	Closing price	Volume	Open Interest	Open price	Price max	Price min	Last price	Closing price	Volume	Open Interest	Volume	Open Interest	Open price	Price max	Price min	Last price	Closing price	Volume	Open Interest	Open price	Price max	Price min	Last price	Closing price	Volume	Open Interest	Volume	Open Interest	Exercise Price									
4.80	6.40						-	30							-	-			-						-							-	-					4.80				
6.40							-	-							-	-									-	-							-	-					6.40			
6.80							-	-							-	-									-	-							-	-					6.80			
7.20							-	-							-	-									-	-							-	-					7.20			
7.60							-	-							-	-									-	-							-	-					7.60			
8.00							-	-							-	-									-	-							-	-					8.00			
8.40							-	-							-	-									-	-							-	-					8.40			
8.80							-	-							-	-									-	-							-	-					8.80			
9.20							-	-							-	-									-	-							-	-					9.20			
9.40							-	-							-	-									-	-							-	-					9.40			
9.60							-	-							-	-									-	-							-	-					9.60			
9.80							-	-							-	-									-	-							-	-					9.80			
10.00							-	-							-	-									-	-							-	-					10.00			
10.50							-	-							-	-									-	-							-	-					10.50			
11.00							-	-							-	-									-	-							-	-					11.00			
11.50							-	-							-	-									-	-							-	-					11.50			
12.00							-	-							-	-									-	-							-	-					12.00			
12.50							-	-							-	-									-	-							-	-					12.50			
13.00							-	-							-	-									-	-							-	-					13.00			
13.50							-	-							-	-									-	-							-	-					13.50			
14.00							-	-							-	-									-	-							-	-					14.00			
15.00							-	-							-	-									-	-							-	-					15.00			
16.00							-	-							-	-									-	-							-	-					16.00			
Totals:						0	30							0	0	0	0							0	0							0	0							0	0	
Nominal Transactions Value:						0.00								0.00	0.00	0.00								0.00	0.00							0.00	0.00									
Number of Trades:						0								0	0	0								0	0							0	0									

Securities	Type[4]	Stock Repo [1]						Stock Reverse Repo [2]								Repurchase Agreements [3]							
		Trans. price	chg.	Trades	Volume	Transactions Value	Open Interest[5]	Price max	Price min	Last price	Last Ask	Trades	Volume	Transactions Value	Open Interest[5]	Price max	Price min	Last price	Last Ask	Trades	Volume	Transactions Value	Open Interest[5]
AEGEAN AIRLINES (CR)	SR RA	100.00	---	---	---	---	64	---	---	---	32@3%	---	---	---	---	---	---	---	---	---	---	---	---
ALPHA BANK (CR)	SR RA	100.00	---	---	---	---	121,857	3.00%	3.00%	3.00%	10153@3%	2	40,000	2,760,000.0	54,431	---	---	---	---	---	---	---	1,018
ALPHA ETF FTSE Athex Large Cap	SR RA	100.00	---	---	---	---	---	---	---	---	---	---	---	---	---	---	---	---	---	---	---	---	3,554
ALUMIL (CR)	RA	---	---	---	---	---	---	---	---	---	---	---	---	---	---	---	---	---	---	---	---	---	---
ATHENS MEDICAL CENTER SA (CR)	SR RA	100.00	---	---	---	---	434	---	---	---	217@3%	---	---	---	---	---	---	---	---	---	---	---	---
ATTICA BANK S.A. (CR)	SR RA	100.00	---	---	---	---	910	---	---	---	728@10%	---	---	---	---	---	---	---	---	---	---	---	---
AUTOHELLAS SA (CR)	SR RA	100.00	---	---	---	---	16	---	---	---	6@3%	---	---	---	---	---	---	---	---	---	---	---	---
BIOKARPET S.A.(CR)	RA	---	---	---	---	---	---	---	---	---	---	---	---	---	---	---	---	---	---	---	---	---	---
CC HBC AG (CR)	SR RA	100.64	0.11	---	---	---	160	---	---	---	8@3.5%	---	---	---	91	---	---	---	---	---	---	---	28
CENTRIC HOLDINGS (CR)	SR RA	100.00	---	---	---	---	200	---	---	---	151@7.4%	---	---	---	---	---	---	---	---	---	---	---	---
CORINTH PIPEWORKS SA (CR)	SR RA	100.00	---	---	---	---	161	---	---	---	78@3%	---	---	---	2	---	---	---	---	---	---	---	---
CRETE PLASTICS SA (CR)	SR RA	100.00	---	---	---	---	---	---	---	---	---	---	---	---	---	---	---	---	---	---	---	---	---
DROMEAS SA (CR)	SR RA	100.00	---	---	---	---	---	---	---	---	---	---	---	---	---	---	---	---	---	---	---	---	---
ELGEKA SA (CR)	SR RA	100.00	---	---	---	---	10	---	---	---	---	---	---	---	---	---	---	---	---	---	---	---	---
ELLAKTOR (CR)	SR RA	100.01	---	---	---	---	2,075	---	---	---	883@3%	---	---	---	145	---	---	---	---	---	---	---	14
ELVAL SA. (CB)	SR RA	100.00	---	---	---	---	368	---	---	---	184@3%	---	---	---	---	---	---	---	---	---	---	---	---
EUROBANK ERGASIAS (CR)	SR RA	100.01	---	---	---	---	19,480	---	---	---	13354@5.5%	---	---	---	535	---	---	---	---	---	---	---	36
EUROBANK PROPERTIES REIC (CR)	SR RA	100.06	0.01	---	---	---	1,135	3.00%	3.00%	3.00%	458@3%	1	2	1,842.0	94	---	---	---	---	---	---	---	9
EUROPEAN RELIANCE INSUR. (CR)	SR RA	100.00	---	---	---	---	---	---	---	---	---	---	---	---	---	---	---	---	---	---	---	---	---
EYDAP S.A. (CR)	SR RA	100.24	0.04	1	22	20,020.0	384	3.50%	3.50%	3.50%	43@3.5%	3	23	20,930.0	135	---	---	---	---	---	---	---	32
F.G. EUROPE S.A. (CR)	SR RA	100.00	---	---	---	---	---	---	---	---	---	---	---	---	---	---	---	---	---	---	---	---	---
FOLLI FOLLIE (CR)	SR RA	100.60	0.10	---	---	---	1,128	---	---	---	140@3%	---	---	---	418	---	---	---	---	---	---	---	7
FOURLIS (CR)	SR RA	100.16	0.03	---	---	---	109	---	---	---	4@4%	---	---	---	67	---	---	---	---	---	---	---	---
FRIGOGLASS SA (CR)	SR RA	100.09	0.02	---	---	---	70	---	---	---	7@3%	---	---	---	28	---	---	---	---	---	---	---	---
GEK TERNA (CR)	SR RA	100.02	0.01	---	---	---	641	---	---	---	244@3%	---	---	---	76	---	---	---	---	---	---	---	---
GR. SARANTIS SA (CR)	SR RA	100.00	---	---	---	---	60	---	---	---	30@3%	---	---	---	---	---	---	---	---	---	---	---	---
HALKOR SA (CB)	SR RA	100.00	---	---	---	---	505	---	---	---	329@3.9%	---	---	---	---	---	---	---	---	---	---	---	---
HELLENIC EXCHANGES-A.S.E. (CR)	SR RA	100.01	---	---	---	---	5,930	3.00%	3.00%	3.00%	2798@3%	1	8	5,840.0	167	---	---	---	---	---	---	---	---
HELLENIC PETROLEUM (CR)	SR RA	100.37	0.06	1	26	14,404.0	2,485	3.50%	3.50%	3.50%	29@3.5%	1	23	12,742.0	1,503	---	---	---	---	---	---	---	1,452
HYGEIA SA (CR)	SR RA	100.00	---	---	---	---	500	---	---	---	357@6.5%	---	---	---	---	---	---	---	---	---	---	---	---
IASO SA (CR)	SR RA	100.00	---	---	---	---	246	---	---	---	123@3%	---	---	---	---	---	---	---	---	---	---	---	---
IKTINOS HELLAS SA (CR)	SR RA	100.00	---	---	---	---	10	---	---	---	---	---	---	---	---	---	---	---	---	---	---	---	---

Stock Lending Notes

- [1] - Stock Repo: A Contract for selling stocks to HELEX with a Repurchase Right (According to ATHEX BoD Resolution No 17)
- [2] - Stock Reverse Repo: A Contract for buying stocks from HELEX with a Resell Right. (According to ATHEX BoD Resolution No 18)
- [3] - Standardized Repurchase Agreements: A Contract that constitutes a standardized agreement for the purchase or sale of shares, with repurchase or resell pact (According to ATHEX BoD Resolution No 20)
- [4] - Type of products is divided into SR: Stock Repo or Stock Reverse Repo, and RA: Repurchase Agreements.
- [5] - Open Interest in all Series (both tradeable or non-tradeable).

Securities	Type[4]	Stock Repo [1]						Stock Reverse Repo [2]								Repurchase Agreements [3]							
		Trans. price	chg.	Trades	Volume	Transactions Value	Open Interest[5]	Price max	Price min	Last price	Last Ask	Trades	Volume	Transactions Value	Open Interest[5]	Price max	Price min	Last price	Last Ask	Trades	Volume	Transactions Value	Open Interest[5]
INFORM P. LYKOS SA (CR)	SR RA	100.00	---	---	---	---	3	---	---	---	---	---	---	---	---	---	---	---	---	---	---	---	---
INTRACOM CONSTR. (CR)	SR RA	100.00	---	---	---	---	7	---	---	---	---	---	---	---	---	---	---	---	---	---	---	---	---
INTRACOM HOLDINGS (CR)	SR RA	100.00	---	---	---	---	665	---	---	---	332@3%	---	---	---	---	---	---	---	---	---	---	---	---
INTRALOT (CR)	SR RA	100.01	---	---	---	---	1,039	---	---	---	439@3%	---	---	---	69	---	---	---	---	---	---	---	---
J & P - AVAX SA (CR)	SR RA	100.00	---	---	---	---	223	---	---	---	111@3%	---	---	---	---	---	---	---	---	---	---	---	---
JUMBO SA (CR)	SR RA	100.02	---	---	---	---	1,345	3.00%	3.00%	3.00%	571@3%	1	38	42,826.0	56	---	---	---	---	---	---	---	11
KARATZIS SA (CR)	RA	---	---	---	---	---	---	---	---	---	---	---	---	---	---	---	---	---	---	---	---	---	---
KLEEMAN HELLAS SA (CR)	SR RA	100.00	---	---	---	---	---	---	---	---	---	---	---	---	---	---	---	---	---	---	---	---	---
KRI-KRI S.A. (CR)	SR RA	100.00	---	---	---	---	550	---	---	---	275@3%	---	---	---	---	---	---	---	---	---	---	---	---
LAMDA DEVELOPMENT SA (CR)	SR RA	100.00	---	---	---	---	---	---	---	---	---	---	---	---	---	---	---	---	---	---	---	---	---
MARFIN INVESTMENT GROUP (CR)	SR RA	100.01	---	1	270	10,800.0	2,873	---	---	---	1518@4.6%	---	---	---	270	---	---	---	---	---	---	---	---
METKA (CR)	SR RA	100.13	0.02	---	---	---	617	---	---	---	264@3%	---	---	---	44	---	---	---	---	---	---	---	5
MLS MULTIMEDIA SA (CR)	SR RA	100.00	---	---	---	---	109	---	---	---	54@3%	---	---	---	---	---	---	---	---	---	---	---	---
MOTOR OIL (CR)	SR RA	100.06	0.01	---	---	---	2,209	---	---	---	792@3%	---	---	---	312	---	---	---	---	---	---	---	10
MYTILINEOS HOLDINGS (CR)	SR RA	100.00	---	---	---	---	3,562	---	---	---	1745@3%	---	---	---	30	---	---	---	---	---	---	---	10
NATIONAL BANK (CR)	SR RA	100.01	---	1	18	4,878.0	12,100	---	---	---	1439@3%	---	---	---	1,581	---	---	---	---	---	---	---	201
NBGAM ETF	SR RA	100.00	---	---	---	---	---	---	---	---	---	---	---	---	---	---	---	---	---	---	---	---	---
NBGAM ETF GREECE & TURKEY 30	SR RA	100.00	---	---	---	---	---	---	---	---	---	---	---	---	---	---	---	---	---	---	---	---	---
NIREFS SA (CR)	SR RA	100.00	---	---	---	---	346	---	---	---	276@10%	---	---	---	---	---	---	---	---	---	---	---	---
OPAP (CR)	SR RA	100.04	0.01	---	---	---	3,782	---	---	---	1646@3%	---	---	---	185	---	---	---	---	---	---	---	446
OTE (CR)	SR RA	100.14	0.02	---	---	---	4,638	---	---	---	1115@3%	---	---	---	1,138	---	---	---	---	---	---	---	891
P.P.A. S.A. (CR)	SR RA	100.95	0.16	---	---	---	14	---	---	---	---	---	---	---	10	---	---	---	---	---	---	---	---
PAPOUTSANIS (CR)	SR RA	100.00	---	---	---	---	---	---	---	---	---	---	---	---	---	---	---	---	---	---	---	---	---
PETROPOULOS PETROS (CR)	RA	---	---	---	---	---	---	---	---	---	---	---	---	---	---	---	---	---	---	---	---	---	---
PIRAEUS BANK (CR)	SR RA	100.04	0.01	1	57	8,379.0	11,595	---	---	---	2886@3%	---	---	---	2,883	---	---	---	---	---	---	---	---
PLAISIO COMPUTERS SA (CR)	RA	---	---	---	---	---	---	---	---	---	---	---	---	---	---	---	---	---	---	---	---	---	---
PPC (CR)	SR RA	100.06	0.01	---	---	---	1,938	---	---	---	681@3%	---	---	---	288	0.01%	0.01%	0.01%	---	1	100	111,900.0	1,321
PROFILE SA (CR)	RA	---	---	---	---	---	---	---	---	---	---	---	---	---	---	---	---	---	---	---	---	---	---
QUALITY & RELIABILITY SA (CR)	RA	---	---	---	---	---	---	---	---	---	---	---	---	---	---	---	---	---	---	---	---	---	---
QUEST HOLDINGS (CR)	SR RA	100.00	---	---	---	---	---	---	---	---	---	---	---	---	---	---	---	---	---	---	---	---	---
SIDENOR (CR)	SR RA	100.00	---	---	---	---	391	---	---	---	195@3%	---	---	---	---	---	---	---	---	---	---	---	---
TECHNICAL OLYMPIC SA (CR)	SR RA	100.00	---	---	---	---	44	---	---	---	22@3%	---	---	---	---	---	---	---	---	---	---	---	---

Stock Lending Notes

- [1] - Stock Repo: A Contract for selling stocks to HELEX with a Repurchase Right (According to ATHEX BoD Resolution No 17)
- [2] - Stock Reverse Repo: A Contract for buying stocks from HELEX with a Resell Right. (According to ATHEX BoD Resolution No 18)
- [3] - Standardized Repurchase Agreements: A Contract that constitutes a standardized agreement for the purchase or sale of shares, with repurchase or resell pact (According to ATHEX BoD Resolution No 20)
- [4] - Type of products is divided into SR: Stock Repo or Stock Reverse Repo, and RA: Repurchase Agreements.
- [5] - Open Interest in all Series (both tradeable or non-tradeable).

Securities	Type[4]	Stock Repo [1]						Stock Reverse Repo [2]								Repurchase Agreements [3]							
		Trans. price	chg.	Trades	Volume	Transactions Value	Open Interest[5]	Price max	Price min	Last price	Last Ask	Trades	Volume	Transactions Value	Open Interest[5]	Price max	Price min	Last price	Last Ask	Trades	Volume	Transactions Value	Open Interest[5]
TERNA ENERGY (CR)	SR RA	100.02	---	---	---	---	303	---	---	---	120@3%	---	---	---	31	---	---	---	---	---	---	---	---
THESSALONIKA WATER & SEWERAGE	SR RA	100.01	---	---	---	---	113	---	---	---	17@3%	---	---	---	---	---	---	---	---	---	---	---	---
THRACE PLASTICS SA (CR)	SR RA	100.00	---	---	---	---	1,010	---	---	---	505@3%	---	---	---	---	---	---	---	---	---	---	---	---
TITAN CEMENT (CR)	SR RA	100.08	0.01	---	---	---	8,634	---	---	---	3735@3%	---	---	---	579	---	---	---	---	---	---	---	8
TPA SA (CR)	SR RA	100.16	---	---	---	---	46	---	---	---	23@3%	---	---	---	---	---	---	---	---	---	---	---	---
TRASTOR REAL EST. INV. CO.(CR)	SR RA	100.00	---	---	---	---	344	---	---	---	172@3%	---	---	---	---	---	---	---	---	---	---	---	---
VIOHALCO SA/NV (CB)	SR RA	100.11	0.02	---	---	---	261	---	---	---	34@3.5%	---	---	---	127	---	---	---	---	---	---	---	---

Stock Lending Notes

- [1] - Stock Repo: A Contract for selling stocks to HELEX with a Repurchase Right (According to ATHEX BoD Resolution No 17)
- [2] - Stock Reverse Repo: A Contract for buying stocks from HELEX with a Resell Right. (According to ATHEX BoD Resolution No 18)
- [3] - Standardized Repurchase Agreements: A Contract that constitutes a standardized agreement for the purchase or sale of shares, with repurchase or resell pact (According to ATHEX BoD Resolution No 20)
- [4] - Type of products is divided into SR: Stock Repo or Stock Reverse Repo, and RA: Repurchase Agreements.
- [5] - Open Interest in all Series (both tradeable or non-tradeable).

Sectors codification for listed companies

533	-	Exploration & Production	537	-	Integrated Oil & Gas
1353	-	Commodity Chemicals	1357	-	Specialty Chemicals
1753	-	Aluminum	1755	-	Nonferrous Metals
1757	-	Steel	1775	-	General Mining
2353	-	Building Materials & Fixtures	2357	-	Heavy Construction
2723	-	Containers & Packaging	2727	-	Diversified Industrials
2733	-	Electrical Components & Equipment	2753	-	Commercial Vehicles & Trucks
2757	-	Industrial Machinery	2773	-	Marine Transportation
2777	-	Transportation Services	2791	-	Business Support Services
2797	-	Industrial Suppliers	3535	-	Distillers & Vintners
3537	-	Soft Drinks	3573	-	Farming Fishing & Plantations
3577	-	Food Products	3722	-	Durable Household Products
3726	-	Furnishings	3728	-	Home Construction
3747	-	Toys	3763	-	Clothing & Accessories
3765	-	Footwear	3767	-	Personal Products
3785	-	Tobacco	4533	-	Health Care Providers
4535	-	Medical Equipment	4577	-	Pharmaceuticals
5337	-	Food Retailers & Wholesalers	5371	-	Apparel Retailers
5373	-	Broadline Retailers	5375	-	Home Improvement Retailers
5379	-	Specialty Retailers	5553	-	Broadcasting & Entertainment
5555	-	Media Agencies	5557	-	Publishing
5751	-	Airlines	5752	-	Gambling
5753	-	Hotels	5755	-	Recreational Services
5757	-	Restaurants & Bars	5759	-	Travel & Tourism
6535	-	Fixed Line Telecommunications	6575	-	Mobile Telecommunications
7535	-	Conventional Electricity	7537	-	Alternative Electricity
7577	-	Water	8355	-	Banks
8534	-	Insurance Brokers	8536	-	Property & Casualty Insurance
8633	-	Real Estate Holding & Development	8637	-	Real Estate Services
8671	-	Industrial & Office REITs	8675	-	Specialty REITs
8775	-	Specialty Finance	8777	-	Investment Services
8985	-	Equity Investment Instruments	9533	-	Computer Services
9535	-	Internet	9537	-	Software
9572	-	Computer Hardware	9574	-	Electronic Office Equipment
9578	-	Telecommunications Equipment	11000	-	ETF

