

Daily Official List

Hellenic Exchanges – Athens Stock Exchange S.A.

Wednesday, 22 October, 2014

Year: 135 Trading Day No: 202

ΕΛΛΗΝΙΚΑ ΧΡΗΜΑΤΙΣΤΗΡΙΑ - ΧΡΗΜΑΤΙΣΤΗΡΙΟ ΑΘΗΝΩΝ

ΑΝΩΝΥΜΗ ΕΤΑΙΡΕΙΑ ΣΥΜΜΕΤΟΧΩΝ

HELLENIC EXCHANGES – ATHENS STOCK EXCHANGE

Disclaimer:

Hellenic Exchanges-Athens Exchange endeavours to ensure that the data and other material ("Information") presented on the Daily Official List are accurate and complete, but it is not liable for any errors or omissions of data or /and for the accuracy, credibility, updating and completeness of the aforesaid information nor it has any liability arising directly or indirectly from the use of the above Information.

The Company is not liable for the accuracy of the data included in listed companies' announcements. Only the sender of such an announcement is fully and solely liable for any infringement of third party's rights from the content of such announcement. All contents of the Daily Official List are provided only for information purposes and do not constitute investment advice or solicitation to invest in securities or other products listed for trading on the Exchange.

You acknowledge and agree that the Company is the owner of any property rights related to any Information appearing on the Daily Official List including intellectual property rights copyright, trademarks, etc.

The above data are a property of the Hellenic Exchanges-Athens Exchange and are copyright protected. Users are forbidden to reproduce, modify, copy, sale, transmit or redistribute, by all reproduction means and methods, part or the whole of the above data, without reference to their source.

The commercial exploitation of these data is, also, forbidden by third parties. Hellenic Exchanges-Athens Exchange does not carry any responsibility, direct or indirect, derived from usage or accidental alteration of the above data when used by third parties.

Hellenic Exchanges – Athens Stock Exchange S.A.

110 Athinon Ave., 10442 Athens, Tel: (210) 33.66.800, Fax: (210) 32.13.938

www.athex.gr

Thessalonica Stock Exchange Center (T.S.E.C)

16-18 Katouni Str., Thessalonica 546 25 Tel: (2310) 567.667, Fax: (2310) 530.545

Athex Members Guarantee Fund

14-16 Fidiou Str., Athens 106 78, Tel: (210) 33.04.682, Fax: (210) 33.04.155

Hellenic Republic Capital Market Commission

1 Kolokotroni Str. & 1 Stadiou Str., Athens 10562 Tel: (210) 33.77.100 Fax: (210) 33.77.173

Table of Contents

Section 1: Statistical Figures of Securities and Derivatives Markets

Summary of Markets

Athex Indices

Analytic Figures for Athex Market's Boards and Categories

Trading Details by Athex Sectors and ETFs Category

Top 10 best & worst performing Shares

Derivatives Summary

Section 2: Analytic Figures of Shares Transactions

Analytic Figures of Shares Transactions

Shares' Notes

Section 3: Figures of Securities Transactions

Securities Blocks Details

Shares Rights Details

Shares Short Selling

Stock Borrowing

Shares Forced Sales

Forced Sales Registered Shares

Exchange Traded Funds (ETFs) Characteristics

Section 5: Bonds traded in Fixed Income Assets Market

Corporate Bonds

Government Bonds

Treasury Bills & Zero Coupon Government Bonds

Government Bonds Traded with the Open Outcry Method

State Banks Bonds

Section 6: Additional Infos

Athex & ATHEXClear Members List

List of Stocks under Market Making operations

Equity Investment Instruments Acknowledgements

Section 7: Derivatives Market Analytic Figures

Index Futures

Stock Futures

Index Options

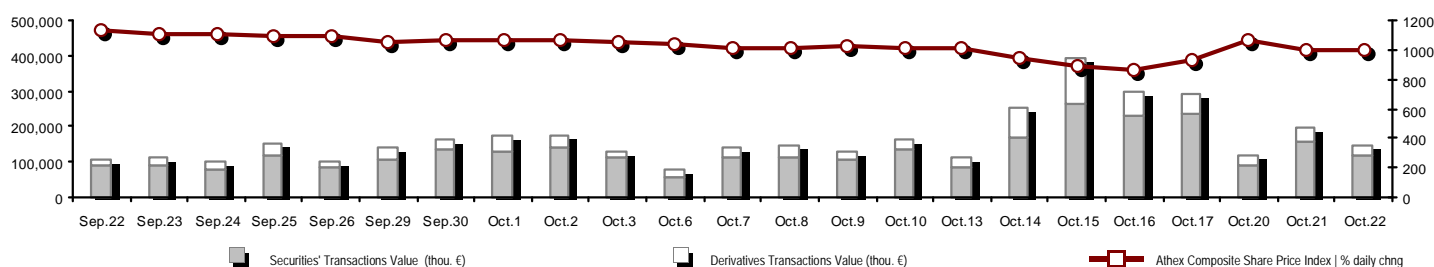
Stock Options

Stock Lending Analytic Figures (Repo Contracts)

Appendix A: Sectors codification for listed companies

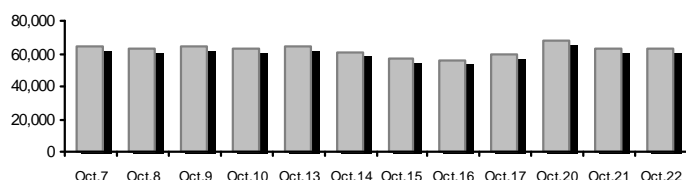
Summary of Markets

Athex Composite Share Price Index vs Shares and Derivatives Transactions Value

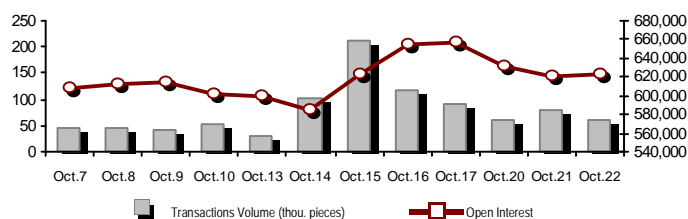


Total Transactions Value (Securities/Derivatives) (thou. €):	147,828.02				
Athex Capitalisation (mill. €) **:	63,125.36		Derivatives Total Open Interest	621,865	
Daily change: mill. € %	-149.41	-0.24%	in Index Futures % daily chng	40,143	-1.22%
Yearly Avg Capitalisation: mill. € % chng prev year Avg	71,897.50	39.21%	in Stock Futures % daily chng	277,210	0.88%
Athex Composite Share Price Index % daily chng	993.73	-0.14%	in Index Options % daily chng	8,391	6.82%
Athex Composite Share Price Index Capitalisation (mill. €)	58,351.06		in Stock Options % daily chng	1,360	-1.22%
Daily change (mill. €)	-146.67		in Stock Repos/Reverse Repos/RA % daily chng	294,761	-0.27%
Securities' Transactions Value (thou. €)	120,666.90		Derivatives Transactions Value (thou. €)	27,161.13	
Daily change: thou. € %	-38,024.07	-23.96%	Daily change: thou. € %	-13,124.30	-32.58%
YtD Avg Trans. Value: thou. € % chng prev year Avg	133,247.75	53.83%	YtD Avg Trans. Value: thou. € % chng prev year Avg	39,815.09	54.71%
Short Selling Trans. Value: mill. € % in total Value					
Short Covering Trans. Value: mill. € % in total Value					
Transactions Value of Blocks (thou. €)	5,672.31				
Bonds Transactions Value (thou. €)	0.00				
Securities' Transactions Volume (thou. Pieces)	85,619.32		Derivatives Contracts Volume:	59,879	
Daily change: thou. pieces %	-44,615.53	-34.26%	Daily change: pieces %	-20,056	-25.09%
YtD Avg Volume: thou. pieces % chng prev year Avg	93,240.42	74.24%	YtD Avg Derivatives Contracts % chng prev year Avg	46,884	12.79%
Short Selling Volume: thou pieces % in total Volume					
Short Covering Volume: thou. pieces % in total Volume					
Transactions Volume of Blocks (thou. Pieces)	1,576.00				
Bonds Transactions Volume (thou. pieces)	0.00				
Securities' Trades Number	31,441		Derivatives Trades Number:	3,469	
Daily change: number %	-11,030	-25.97%	Daily change: number %	-686	-16.51%
YtD Avg Derivatives Trades number % chng prev year Avg	28,887	-2.62%	YtD Avg Derivatives Trades number % chng prev year Avg	2,656	0.90%
Number of Blocks	5				
Number of Bonds Transactions	0				

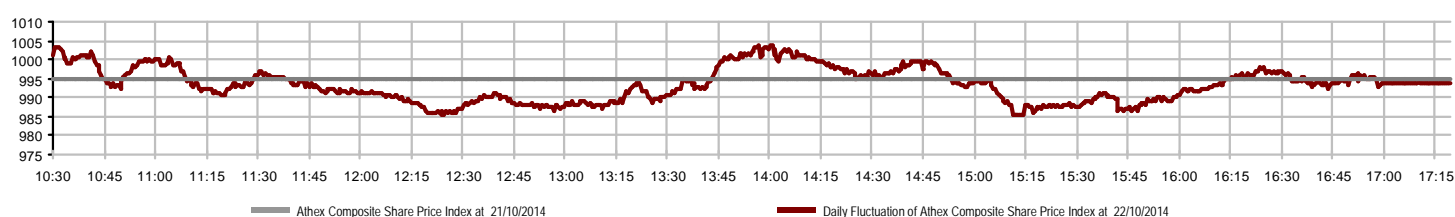
Athex Capitalisation (mill. €) **



Derivatives Transactions Volume and Open Interest



Daily Fluctuation of Athex Composite Share Price Index



Athex Indices

Index name	22/10/2014	21/10/2014	pts.	%	Min	Max	Year min	Year max	Year change
Athex Composite Share Price Index	993.73	995.10	-1.37	-0.14%	985.20	1,003.66	852.87	1,379.42	-14.53%
FTSE/Athex Large Cap	324.42	324.65	-0.23	-0.07%	321.16	327.48	277.08	445.52	-15.70%
FTSE/ATHEX Custom Capped	1,053.68	995.53	58.16	5.84%			918.15	1,410.19	-14.31%
FTSE/ATHEX Custom Capped - USD	961.64	912.20	49.44	5.42%			841.30	1,406.66	-20.84%
FTSE/Athex Mid Cap Index	898.11	896.98	1.13	0.13%	892.76	909.60	794.31	1,317.40	-23.03%
FTSE/ATHEX-CSE Banking Index	104.06	104.17	-0.11	-0.11%	102.16	106.19	81.95	161.54	-23.56%
FTSE/ATHEX Global Traders Index Plus	1,451.57	1,456.70	-5.13	-0.35%	1,445.85	1,475.98	1,252.49	1,845.84	-6.40%
FTSE/ATHEX Global Traders Index	1,600.94	1,608.72	-7.78	-0.48%	1,595.67	1,623.37	1,404.09	2,152.38	-7.69%
FTSE/ATHEX Mid & Small Cap Factor-Weighted Ind	1,196.67	1,205.45	-8.78	-0.73%	1,188.85	1,213.33	1,153.09	1,523.02	-6.44%
Greece & Turkey 30 Price Index	685.90	683.98	1.92	0.28%	679.72	687.60	570.55	783.68	5.92%
ATHEX Mid & SmallCap Price Index	2,595.83	2,591.01	4.82	0.19%	2,567.82	2,600.85	2,414.58	3,157.88	0.86%
FTSE/Athex Market Index	777.20	777.71	-0.51	-0.07%	769.62	784.35	665.36	1,066.17	-15.87%
FTSE Med Index	5,009.14	4,913.73	95.41	1.94%			4,605.95	5,387.08	9.62%
Athex Composite Index Total Return Index	1,449.23	1,449.89	-0.66	-0.05%	1,436.79	1,463.71	1,242.66	1,998.07	-13.92%
FTSE/Athex Large Cap Total Return	439.10	439.73	-0.63	-0.14%			382.47	605.87	-16.74%
FTSE/ATHEX Large Cap Net Total Return	1,308.75	1,308.82	-0.07	-0.01%	1,295.58	1,321.09	1,117.05	1,786.28	-15.18%
FTSE/ATHEX Custom Capped Total Return	1,107.74	1,046.60	61.14	5.84%			965.25	1,472.79	-13.74%
FTSE/ATHEX Custom Capped - USD Total Return	1,010.97	959.00	51.97	5.42%			884.46	1,469.09	-20.31%
FTSE/Athex Mid Cap Total Return	1,141.96	1,140.52	1.44	0.13%			1,035.42	1,643.81	-20.93%
FTSE/ATHEX-CSE Banking Total Return Index	97.10	97.20	-0.10	-0.10%			82.88	153.89	-24.77%
Greece & Turkey 30 Total Return Index	827.89	797.67	30.22	3.79%			697.73	946.62	6.89%
Hellenic Mid & Small Cap Index	931.34	935.11	-3.77	-0.40%	926.93	940.80	818.89	1,351.84	-16.38%
FTSE/Athex Banks	137.49	137.63	-0.14	-0.10%	134.98	140.31	108.27	213.44	-23.57%
FTSE/Athex Insurance	1,496.21	1,496.21	0.00	0.00%	1,475.13	1,496.21	1,274.94	1,749.09	13.60%
FTSE/Athex Financial Services	1,283.06	1,274.62	8.44	0.66%	1,263.58	1,297.35	1,075.28	2,207.51	-27.45%
FTSE/Athex Industrial Goods & Services	2,408.39	2,460.41	-52.02	-2.11%	2,408.39	2,472.80	2,183.14	3,724.87	-25.78%
FTSE/Athex Retail	3,889.51	3,956.43	-66.92	-1.69%	3,879.47	4,069.40	3,090.34	4,836.94	17.91%
FTSE/ATHEX Real Estate	2,751.76	2,702.24	49.52	1.83%	2,635.43	2,754.54	2,194.73	3,111.71	24.14%
FTSE/Athex Personal & Household Goods	5,144.95	5,287.85	-142.90	-2.70%	5,144.95	5,307.84	4,506.00	7,649.84	-13.05%
FTSE/Athex Food & Beverage	6,308.88	6,217.11	91.77	1.48%	6,128.62	6,308.89	5,805.55	8,227.06	-19.61%
FTSE/Athex Basic Resources	2,555.38	2,512.92	42.46	1.69%	2,506.86	2,579.71	2,132.68	3,356.44	-7.14%
FTSE/Athex Construction & Materials	2,494.81	2,444.50	50.31	2.06%	2,434.10	2,502.87	2,098.97	3,482.98	-6.97%
FTSE/Athex Oil & Gas	2,011.90	2,052.67	-40.77	-1.99%	2,011.90	2,085.67	1,779.67	3,236.15	-29.82%
FTSE/Athex Chemicals	5,380.98	5,323.27	57.71	1.08%	5,290.33	5,439.16	4,844.03	6,811.96	-10.26%
FTSE/Athex Media	1,994.54	1,846.80	147.74	8.00%	1,662.12	1,994.54	1,543.92	2,777.58	29.19%
FTSE/Athex Travel & Leisure	1,664.50	1,641.54	22.96	1.40%	1,619.23	1,682.84	1,369.61	2,304.69	-0.92%
FTSE/Athex Technology	800.56	790.87	9.69	1.23%	784.62	802.14	706.84	1,134.79	1.67%
FTSE/Athex Telecommunications	2,711.28	2,758.07	-46.79	-1.70%	2,692.01	2,780.10	2,347.94	3,633.39	1.86%
FTSE/Athex Utilities	2,555.97	2,599.80	-43.83	-1.69%	2,531.93	2,658.82	2,215.83	4,471.04	-32.61%
FTSE/Athex Health Care	168.92	170.41	-1.49	-0.87%	168.17	171.15	154.03	287.11	-24.25%
Athex All Share Index	223.48	224.04	-0.55	-0.25%			196.74	291.46	-5.09%

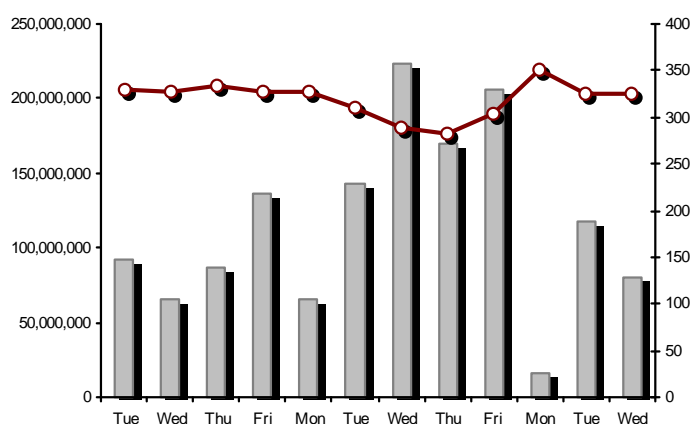
Note 1: Greece & Turkey 30 Pr data is the indicative at 17:20, whereas FTSE/ATHEX Custom Capped, FTSE/ATHEX Custom Capped - USD, FTSE/ATHEX Custom Capped TR, FTSE/ATHEX Custom Capped - USD TR, FTSE/Med 100 & Greece & Turkey 30 Rt closing prices refer to the previous trading day of 21/10/2014.

Note 2: The Hellenic Mid & Small Cap Index is a Customized index calculated by the Athens Exchange.

Athex Indices

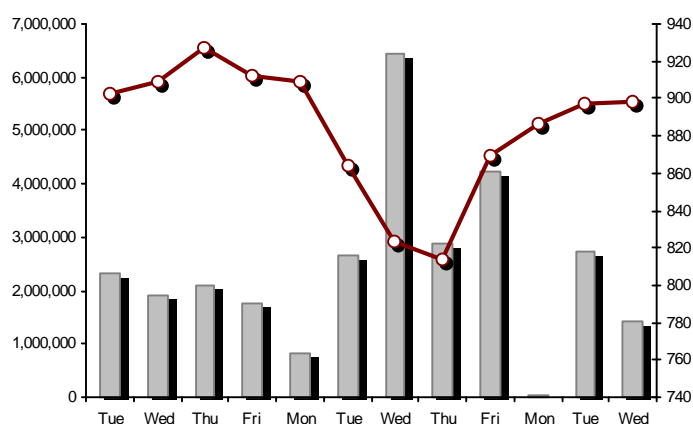
FTSE/Large Cap

22/10/2014: -0.07%



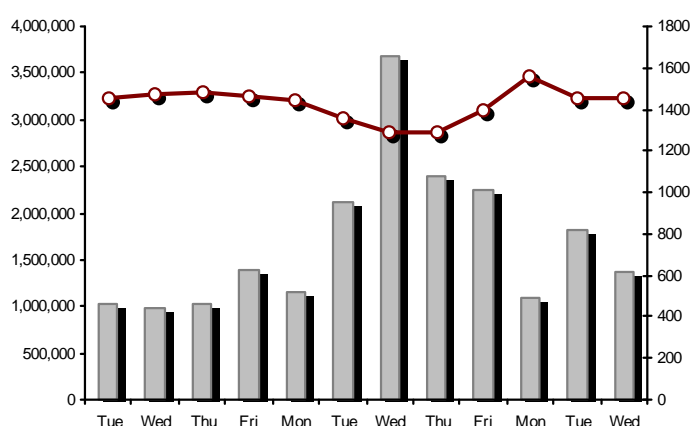
FTSE/Athex Mid Cap Index

22/10/2014: 0.13%



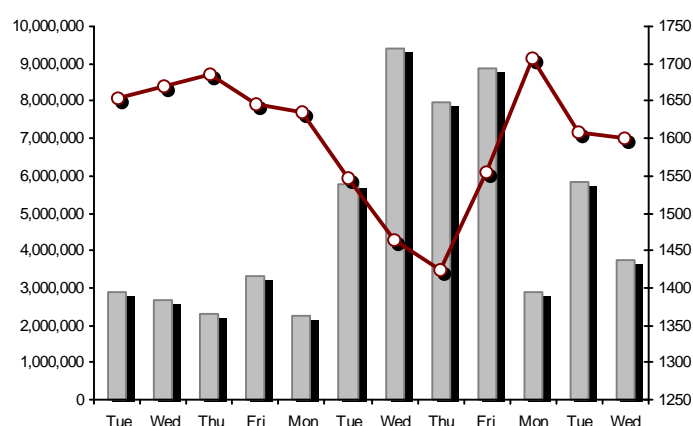
FTSE/ATHEX Global Traders Index Plus

22/10/2014: -0.35%



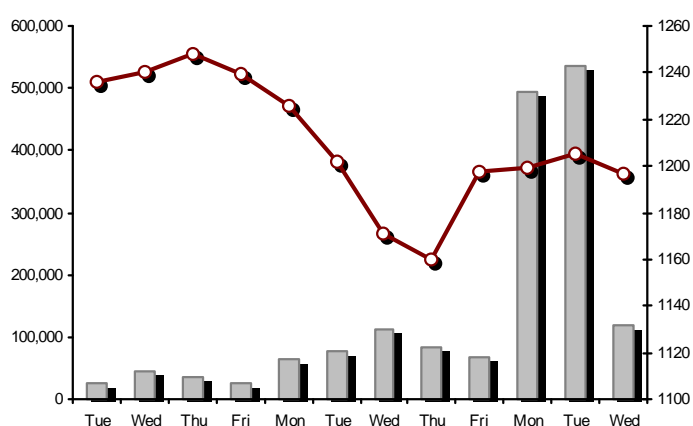
FTSE/ATHEX Global Traders Index

22/10/2014: -0.48%



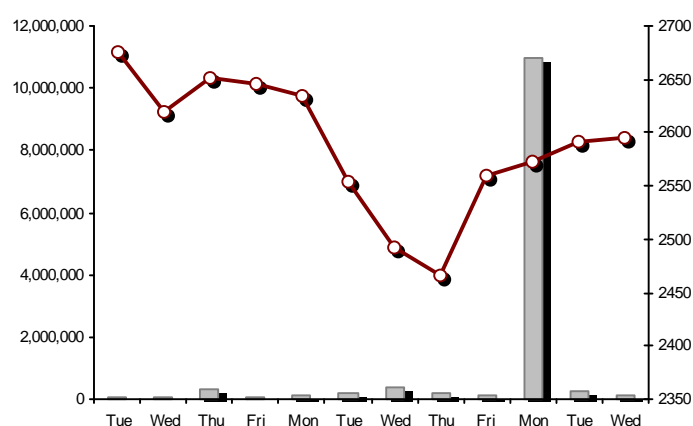
FTSE/ATHEX Mid & Small Cap Factor-Weighted Index

22/10/2014: -0.73%



ATHEX Mid & SmallCap Price Index

22/10/2014: 0.19%



Indices volume of transactions

Indices closing prices

Analytic Figures for Athex Market's Boards and Categories

	Total Traded Securities	Main Market	Low Dispersion	Other Categories (*)	Exchange Traded Funds (ETFs)	Warrants
Totals	139	111	6	18	1	3
Gain / Lose / Same:	57 / 69 / 13	46 / 59 / 6	0 / 5 / 1	8 / 4 / 6	0 / 1 / 0	3 / 0 / 0
Athex Capitalisation (mill. €) **	63,125.36	60,903.09	1,808.10	414.16		
Daily Average Trans/ons Value(thou.€)	170,254.35	162,412.46	47.29	57.32	56.49	7,680.80
Transactions Value	120,666.90	118,150.69	22.37	35.15	65.79	2,392.89
Main Board:	114,994.59	112,478.38	22.37	35.15	65.79	2,392.89
Blocks Board:	5,672.31	5,672.31	0.00	0.00	0.00	0.00
Forced Sales Board:	0.00	0.00	0.00	0.00	0.00	0.00
Special Terms Board:	0.00	0.00	0.00	0.00	0.00	0.00
Daily Average Transactions Volume	93,223,754	86,464,195	21,768	365,030	12,943	6,359,819
Transactions Volume	85,619,321	81,924,174	28,378	115,957	20,224	3,530,588
Main Board:	84,043,321	80,348,174	28,378	115,957	20,224	3,530,588
Blocks Board:	1,576,000	1,576,000	0	0	0	0
Forced Sales Board:	0	0	0	0	0	0
Special Terms Board:	0	0	0	0	0	0
Daily Average Number of Trades	28,877	27,027	47	132	7	1,663
Number of Trades	31,441	29,751	37	84	4	1,565
Main Board:	31,436	29,746	37	84	4	1,565
Blocks Board:	5	5	0	0	0	0
Forced Sales Board:	0	0	0	0	0	0
Special Terms Board:	0	0	0	0	0	0

(*) Summarised Transactions figures for Under Deletion and Under Supervision Categories. (**) The Market Capitalization of the Companies that belong in the Under Supervision Status is not included.

Trading Details by Athex Sectors and ETFs Category

Code	Sectors	Gain / Lose / Same	Number of Trades	Transactions Volume	Transactions Value	% of Total Trans. Value
8300	- Banks	4 / 5 / 0	13,717	76,720,312	77,108,568.70	63.90%
1700	- Basic Resources	4 / 8 / 0	1,384	650,649	3,020,107.87	2.50%
1300	- Chemicals	2 / 1 / 2	42	35,152	27,685.58	0.02%
2300	- Construction & Materials	4 / 8 / 2	1,671	828,659	5,800,655.13	4.81%
11000	- ETF	0 / 1 / 0	4	20,224	65,790.00	0.05%
8700	- Financial Services	1 / 2 / 0	1,867	2,559,736	2,687,266.32	2.23%
3500	- Food & Beverage	6 / 5 / 1	201	74,165	582,775.64	0.48%
4500	- Health Care	2 / 1 / 2	108	163,850	37,895.98	0.03%
2700	- Industrial Goods & Services	5 / 10 / 1	983	221,688	1,146,205.27	0.95%
8500	- Insurance	0 / 0 / 1	8	12,844	17,981.64	0.01%
5500	- Media	2 / 3 / 0	27	7,853	2,388.20	0.00%
500	- Oil & Gas	0 / 2 / 0	1,007	338,152	1,765,952.09	1.46%
3700	- Personal & Household Goods	8 / 4 / 3	1,149	611,665	2,429,073.65	2.01%
8600	- Real Estate	4 / 3 / 0	318	128,472	431,632.48	0.36%
5300	- Retail	3 / 1 / 0	504	113,528	2,705,738.46	2.24%
9500	- Technology	7 / 4 / 0	360	255,817	190,706.03	0.16%
6500	- Telecommunications	0 / 1 / 0	1,785	903,551	8,989,620.87	7.45%
5700	- Travel & Leisure	5 / 5 / 1	1,946	768,001	6,217,616.85	5.15%
7500	- Utilities	0 / 5 / 0	4,357	1,185,003	7,439,216.64	6.17%

Top 10 best & worst performing Shares

Main Market					
With positive Price change	Closing price	change	With negative Price change	Closing price	change
ELVE SA (CR)	0.663	15.50% #	METKA (CR)	8.92	-4.09% €
REDS S.A. (CR)	0.518	5.71% #	JUMBO SA (CR)	9.25	-4.05% €
NATIONAL BANK (CR)	2.29	5.05% #	PIRAEUS BANK (CR)	1.22	-3.94% €
ELLAKTOR (CR)	2.78	3.35% #	EYDAP S.A. (CR)	6.12	-3.77% €
INTRACOM HOLDINGS (CR)	0.480	3.23% #	SIDENOR (CR)	1.00	-2.91% €
FOURLIS (CR)	3.71	3.06% #	PROFILE SA (CR)	0.643	-2.43% €
MEVACO SA (CR)	1.09	2.83% #	EUROBANK ERGASIAS (CR)	0.283	-2.41% €
LAMDA DEVELOPMENT SA (CR)	3.63	2.54% #	MARFIN INVESTMENT GROUP (CR)	0.243	-2.41% €
TITAN CEMENT (CR)	19.90	2.42% #	FRIGOGLOSS SA (CR)	2.60	-2.26% €
MYTILINEOS HOLDINGS (CR)	5.90	2.25% #	MOTOR OIL (CR)	6.56	-2.09% €
With the highest Transactions Value	Value (thou. €)	change	With the highest Transactions Volume	Volume	change
NATIONAL BANK (CR)	30,578.91	5.05% #	ALPHA BANK (CR)	23,741,114	-0.82% €
PIRAEUS BANK (CR)	25,626.29	-3.94% €	PIRAEUS BANK (CR)	20,767,328	-3.94% €
ALPHA BANK (CR)	14,261.24	-0.82% €	EUROBANK ERGASIAS (CR)	14,469,494	-2.41% €
OTE (CR)	8,989.62	-1.70% €	NATIONAL BANK (CR)	13,629,915	5.05% #
PPC (CR)	6,517.70	-1.14% €	MARFIN INVESTMENT GROUP (CR)	2,197,174	-2.41% €
OPAP (CR)	5,934.44	1.66% #	PPC (CR)	920,183	-1.14% €
TITAN CEMENT (CR)	4,289.47	2.42% #	OTE (CR)	903,551	-1.70% €
EUROBANK ERGASIAS (CR)	4,156.14	-2.41% €	OPAP (CR)	607,938	1.66% #
MYTILINEOS HOLDINGS (CR)	2,764.60	2.25% #	ATTICA BANK S.A. (CR)	577,165	-1.37% €
FOLLI FOLLIE (CR)	2,700.81	-1.71% €	MYTILINEOS HOLDINGS (CR)	471,087	2.25% #

Note: Stocks that are not included in the "Low Dispersion" and "Under Supervision" categories, and the transactions value is more than 10,000 €.

Derivatives Summary

	Number of Trades	Volume	Open Interest	Transactions Value
Index Futures	787	9,374	40,143	15,111,357.50
FTSE/Athex Large Cap	787	9,374	40,143	15,111,357.50
Stock Futures	2,617	49,351	277,210	10,488,921.90
ALPHA BANK (CR)	258	11,735	38,248	706,082.40
CC HBC AG (CR)	1	3	908	4,950.00
CORINTH PIPEWORKS SA (CR)	4	155	1,057	24,939.00
ELLAKTOR (CR)	49	214	1,894	58,158.00
EUROBANK ERGASIAS (CR)	83	7,149	61,927	205,420.90
EYDAP S.A. (CR)	13	60	863	38,415.00
FOLLI FOLLIE (CR)	37	86	253	242,079.87
FRIGOGLASS SA (CR)	7	39	727	10,184.00
GEK TERNA (CR)	71	450	12,466	115,489.00
GRIVALIA PROPERTIES (CR)	8	16	307	14,534.00
HELLENIC EXCHANGES-A.S.E. (CR)	76	371	2,649	226,016.03
HELLENIC PETROLEUM (CR)	77	311	7,090	148,882.00
INTRALOT (CR)	5	8	1,255	1,024.00
JUMBO SA (CR)	47	217	668	205,957.00
MARFIN INVESTMENT GROUP (CR)	27	318	26,361	7,858.70
METKA (CR)	30	115	752	106,363.00
MOTOR OIL (CR)	21	42	338	28,093.00
MYTILINEOS HOLDINGS (CR)	158	655	7,717	384,670.00
NATIONAL BANK (CR)	389	11,718	32,423	2,624,256.00
OPAP (CR)	154	774	2,451	752,605.00
OTE (CR)	200	815	8,032	812,215.00
P.P.A. S.A. (CR)	8	24	609	36,265.00
PIRAEUS BANK (CR)	287	10,826	52,670	1,343,592.00
PPC (CR)	536	3,050	10,137	2,160,535.00
SIDENOR (CR)	3	11	900	1,145.00
TERNA ENERGY (CR)	12	53	3,777	13,996.00
TITAN CEMENT (CR)	48	104	421	205,427.00
VIOHALCO SA/NV (CB)	8	32	310	9,770.00
Index Options	60	898	8,391	1,402,775.00
FTSE/Athex Large Cap	60	898	8,391	1,402,775.00
Stock Options	0	0	1,360	0.00
ALPHA BANK (CR)	0	0	0	0.00
NATIONAL BANK (CR)	0	0	905	0.00
OPAP (CR)	0	0	100	0.00
OTE (CR)	0	0	75	0.00
PIRAEUS BANK (CR)	0	0	0	0.00
PPC (CR)	0	0	280	0.00
Stock Repos - Stock Reverse Repos - Repurchase Agreements	5	256	294,761	158,073.10
Stock Reverse Repos	4	181	66,915	87,573.10
Stock Repos	0	0	211,059	0.00
Repurchase Agreement	1	75	16,787	70,500.00
Total Derivatives Traded	3,469	59,879	621,865	27,161,127.50

Number of Outstanding Securities	Nominal Value	Dividends [1]			Date of Last Dividend [2]	Coupon Right	Note	Shares	Closing price	% change	Previous closing price/date		Open price	Price min	Price max	Last price	Avg price	Last Bid [7]	Last Ask [7]	P/E after	Year	Volume	Trades	Transactions Value	Company Mkt Value (thou. €)	Year low	Year high	Sector[4]
1,143,803,533		---	---	---	11/06/2013		---	ALPHA BANK (W)	1.30	1.56 #	1.28	21/10/2014	1.28	1.28	1.33	1.30	1.30	41690@1.30	75@1.31	3.00	2013	938,717	318	1,221,390.65	7,686,974.03	0.750	2.15	8355
245,748,459		---	---	---	27/06/2013		---	NATIONAL BANK (W)	0.450	7.14 #	0.420	21/10/2014	0.420	0.420	0.460	0.450	0.451	500@0.448	22823@0.450	1.00	2013	1,009,999	701	455,197.61	8,090,912.65	0.250	1.59	8355
843,640,590		---	---	---	03/07/2013		---	PIRAEUS BANK (W)	0.450	7.14 #	0.420	21/10/2014	0.435	0.421	0.475	0.450	0.453	3300@0.447	17101@0.450	0.48	2013	1,581,872	546	716,303.62	7,444,415.25	0.240	1.15	8355

Warrants

71,417,100	0.650	---	---	---	26/05/2010	27/06/2014	---	AEGEAN AIRLINES (CR)	6.29	-1.26	€	6.37	21/10/2014	6.48	6.25	6.48	6.30	6.30	10@6.26	34@6.35	6.77	2013	17,085	98	107,583.65	449,213.56	5.02	8.65	5751
11,178,000	1.25	---	---	---	21/04/2010	18/12/2013	---	AEOLIAN INVESTMENT FUND (CR)	0.815	-2.98	€	0.840	20/10/2014	0.805	0.805	0.815	0.815	0.813	300@0.815	500@0.820	11.18	2013	500	4	406.51	9,110.07	0.700	1.09	8985
13,000,000	1.00	---	---	---	01/08/2007	07/04/2000	---	AKRITAS SA (CR)	0.237	---	γ	0.237	20/10/2014	---	---	---	---	---	---	400@0.260	---	2013	---	---	---	3,081.00	0.100	0.325	2353
5,000,000	0.400	---	---	---	03/06/2009	01/09/2014	---	ALCO HELLAS SA (CR)	0.448	2.28	#	0.438	21/10/2014	0.400	0.400	0.450	0.450	0.428	250@0.385	460@0.450	---	2013	2,150	7	920.93	2,240.00	0.362	2.09	1753
12,769,059,858	0.300	---	---	---	07/04/2008	13/05/2013	---	ALPHA BANK (CR)	0.602	-0.82	€	0.607	21/10/2014	0.614	0.588	0.620	0.602	0.600	42666@0.600	53100@0.603	1.39	2013	23,741,114	4,097	14,261,236.72	7,686,974.03	0.468	0.784	8355
22,016,250	0.370	---	---	---	15/07/2009	11/05/2000	---	ALUMIL (CR)	0.275	-1.79	€	0.280	21/10/2014	0.280	0.274	0.280	0.275	0.276	50@0.268	1749@0.275	---	2013	200	7	55.15	6,054.47	0.209	0.660	1753
417,608	16.00	---	---	0.8	29/04/2014	05/03/2013	---	ANDROMEDA SA (CR)	20.01	---	γ	20.01	15/10/2014	---	---	---	---	---	---	1010@21.99	6.05	2013	---	---	---	8,356.34	20.01	23.99	8985
26,252,040	0.380	---	---	---	08/07/2010	10/02/2014	---	AS COMPANY SA (CR)	0.325	3.83	#	0.313	21/10/2014	0.321	0.321	0.326	0.325	0.323	5250@0.311	3@0.325	19.52	2013	11,000	10	3,550.81	8,531.91	0.291	0.413	5379
86,735,980	0.310	---	---	---	06/07/2009	02/01/2002	---	ATHENS MEDICAL CENTER SA (CR)	0.783	---	γ	0.783	21/10/2014	0.783	0.783	0.783	0.783	0.783	1830@0.784	3203@0.810	---	2013	16	1	12.53	67,914.27	0.677	0.930	4533
1,045,794,145	0.300	---	---	---	04/06/2008	07/08/2014	---	ATTICA BANK S.A. (CR)	0.072	-1.37	€	0.073	21/10/2014	0.074	0.071	0.075	0.072	0.072	25000@0.071	35163@0.072	---	2013	577,165	136	41,482.73	75,297.18	0.055	0.277	8355
15,300,000	0.300	---	---	---	30/07/2009	13/12/1999	---	ATTICA PUBLICATIONS SA (CR)	1.35	---	γ	1.35	13/10/2014	---	---	---	---	---	---	3000@1.35	38.95	2013	---	---	---	20,655.00	1.35	2.15	5557
45,457,464	0.700	---	---	---	01/07/2008	01/03/2010	---	AUDIO VISUAL ENTERPRISES (CR)	0.270	8.00	#	0.250	21/10/2014	0.226	0.225	0.270	0.269	0.226	---	898@0.269	---	2013	2,714	10	612.13	12,273.52	0.209	0.376	5553
12,120,000	0.320	(0.45)	---	---	30/04/2012	22/11/2013	---	AUTOHELLAS SA (CR)	7.65	0.13	#	7.64	21/10/2014	7.52	7.51	7.65	7.65	7.60	1000@7.56	100@7.74	31.20	2013	1,582	8	12,026.60	92,718.00	6.90	11.20	5759
19,864,886	5.60	0.67	0.5376	0.672	05/03/2014	02/07/2008	---	BANK OF GREECE (CR)	10.96	-0.36	€	11.00	21/10/2014	10.94	10.92	11.10	10.92	10.96	60@10.93	300@10.98	---	---	4,708	67	51,612.35	217,719.15	9.80	16.53	8355
23,986,500	1.05	---	---	---	26/06/2009	15/03/2000	---	BIOKARPET S.A.(CR)	0.298	13.31	#	0.263	21/10/2014	0.260	0.255	0.305	0.305	0.280	200@0.290	700@0.309	---	2013	2,810	16	785.85	7,147.98	0.255	0.880	3726
15,842,391	1.51	---	---	---	15/07/2009	12/05/2000	---	BITROS HOLDING SA (CR)	0.215	-2.27	€	0.220	21/10/2014	0.198	0.198	0.215	0.215	0.203	500@0.198	495@0.215	---	2013	20	2	4.05	3,406.11	0.158	0.559	1757
15,816,009	0.300	---	---	---	01/07/2009	17/07/2000	---	BYTE COMPUTER SA (CR)	0.490	---	γ	0.490	21/10/2014	---	---	---	---	---	100@0.480	100@0.499	---	2013	---	---	---	7,749.84	0.432	0.666	9533
367,747,133	6.70	---	0.34	0.354	09/07/2014	29/04/2013	---	CC HBC AG (CR)	16.88	1.50	#	16.63	21/10/2014	16.39	16.39	16.88	16.88	16.60	773@16.60	693@16.88	---	---	32,730	126	543,271.73	6,207,571.61	15.53	22.00	3537
101,123,806	0.360	---	---	---	22/07/2010	28/06/2011	---	CENTRIC HOLDINGS (CR)	0.188	-2.59	€	0.193	21/10/2014	0.185	0.162	0.189	0.189	0.166	3000@0.176	2000@0.187	9.21	2013	12,516	20	2,081.65	19,011.28	0.162	0.390	5752
4,034,950	0.680	---	---	---	01/07/2005	30/12/2010	---	CHATZIKRANIOTIS & SONS SA (CR)	0.210	---	γ	0.210	21/10/2014	---	---	---	---	---	2000@0.191	1750@0.220	---	2013	---	---	---	847.34	0.155	0.420	3577
124,170,201	0.780	---	---	---	28/06/2002	07/02/2005	---	CORINTH PIPEWORKS SA (CR)	1.58	-1.25	€	1.60	21/10/2014	1.60	1.55	1.62	1.58	1.58	4015@1.57	8150@1.58	---	2013	140,970	117	223,215.01	196,188.92	1.28	2.30	1757
9,907,500	0.300	---	---	---	06/10/2005	13/02/2002	---	CPI SA (CR)	0.235	---	γ	0.235	16/10/2014	---	---	---	---	---	2000@0.212	200@0.227	20.28	2014	---	---	---	2,328.26	0.133	0.295	9572
27,379,200	0.520	---	---	0.1	24/07/2014	18/09/2013	---	CRETE PLASTICS SA (CR)	4.71	-3.68	€	4.89	21/10/2014	4.71	4.71	4.71	4.71	4.71	200@4.71	550@4.94	14.14	2013	20	2	94.20	128,956.03	4.60	5.54	1357
15,000,000	0.300	---	---	---	06/07/2007	18/07/2000	---	DAIOS PLASTICS SA (CR)	2.16	---	γ	2.16	21/10/2014	---	---	---	---	---	450@1.99	100@2.16	---	2013	---	---	---	32,400.00	1.66	2.30	1357
34,720,000	0.310	---	---	---	16/06/2010	01/08/2007	---	DROMEAS SA (CR)	0.170	3.66	#	0.164	21/10/2014	0.170	0.170	0.170	0.170	0.170	500@0.157	1090@0.170	---	2013	10	1	1.70	5,902.40	0.131	0.400	3726
3,873,120	0.300	---	---	---	07/07/2008	04/10/2012	---	DRUCKFARBEN HELLAS (CR)	0.990	---	γ	0.990	09/10/2014	---	---	---	---	---	---	---	---	2013	---	---	---	3,834.39	0.810	1.95	1357
11,250,000	0.560	---	---	---	26/07/2010	16/06/1999	---	EKTER SA (CR)	0.500	---	γ	0.500	21/10/2014	---	---	---	---	---	300@0.459	1000@0.560	---	2013	---	---	---	5,625.00	0.416	0.990	2357
32,188,050	1.04	---	---	---	21/07/2008	20/01/2000	---	EL. D. MOUZAKIS SA (CB)	0.220	---	γ	0.220	21/10/2014	---	---	---	---	---	---	1000@0.220	---	2013	---	---	---	7,081.37	0.171	0.475	3763
18,435,000	1.00	---	---	---	07/07/2009	10/09/2010	---	ELASTRON (CR)	0.628	-0.32	€	0.630	21/10/2014	0.600	0.600	0.628	0.628	0.607	1@0.605	365@0.628	---	2013	465	4	282.40	11,577.18	0.542	1.00	1757
31,734,530	1.60	---	---	---	09/07/2007	19/07/2006	---	ELGEKA SA (CR)	0.388	9.92	#	0.353	21/10/2014	0.388	0.388	0.388	0.388	0.390	---	596@0.329	---	2013	1	1	0.39	12,313.00	0.238	0.488	3577
23,828,130	0.500	---	---	---	07/07/2010	17/02/2009	---	ELINOIL S.A. (CR)	1.21	---	γ	1.21	13/10/2014	---	---	---	---	---	---	300@1.19	---	2013	---	---	---	28,832.04	0.790	1.50	537
177,001,313	1.03	---	---	---	05/07/2011	20/12/2007	---	ELLAKTOR (CR)	2.78	3.35	#	2.69	21/10/2014	2.70	2.65	2.78	2.78	2.73	1000@2.74	1994@2.78	---	2013	190,408	397	519,894.61	492,063.65	2.35	4.35	2357
82,667,000	0.300	---	---	---	22/07/2014		---	ELTECH ANEMOS S.A. (CR)	1.17	-1.68	€	1.19	21/10/2014	1.20	1.16	1.20	1.17	1.18	5407@1.17	3000@1.19	---	---	65,601	55	77,475.22	96,720.39	0.980	1.70	7537

Number of Outstanding Securities	Nominal Value	Dividends [1]			Date of Last Coupon		Note	Shares	Closing price	% change	Previous closing price/date	Open price	Price min	Price max	Last price	Avg price	Last Bid [7]	Last Ask [7]	P/E after	Year	Volume	Trades	Transactions Value	Company Mkt Value (thou. €)	Year low	Year high	Sector[4]	
		2011	2012	2013	Dividend [2]	Right																						
Main Market																												
26,730,187	0.600	---	---	0.05	23/06/2014	30/12/2010	---	ELTON SA (CR)	0.920	---	↘ 0.920	21/10/2014	0.940	0.902	0.940	0.920	0.923	50@0.902	4644@0.919	9.49	2013	120	6	110.81	24,591.77	0.840	1.40	1353
14,050,971	0.340	---	---	---	06/07/2011	17/10/2002	---	ELTRAK SA (CR)	1.31	---	↘ 1.31	21/10/2014	---	---	---	---	---	200@1.32	300@1.39	---	2013	---	---	---	18,406.77	1.23	2.03	2753
124,100,815	0.300	---	0.08	---	30/05/2014	07/07/2000	---	ELVAL SA. (CB)	1.38	-1.43	€ 1.40	21/10/2014	1.42	1.34	1.42	1.38	1.37	150@1.35	90@1.38	40.24	2013	2,374	18	3,253.44	171,259.12	1.21	2.15	1753
13,230,000	0.300	---	---	---	11/08/2010	28/08/2013	---	ELVE SA (CR)	0.663	15.50	# 0.574	21/10/2014	0.578	0.578	0.715	0.663	0.668	500@0.638	351@0.402	---	2013	75,222	103	50,250.15	8,771.49	0.526	0.715	3763
30,009,210	0.310	---	---	---	27/06/2008	26/06/2000	---	ETEM SA (CB)	0.205	-6.82	€ 0.220	21/10/2014	0.229	0.205	0.230	0.205	0.219	1500@0.206	2400@0.230	---	2013	5,290	5	1,156.84	6,151.89	0.163	0.400	1753
14,707,876,542	0.300	---	---	---	02/05/2008	13/06/2013	---	EUROBANK ERGASIAS (CR)	0.283	-2.41	€ 0.290	21/10/2014	0.295	0.282	0.297	0.283	0.287	21500@0.282	979288@0.283	---	2013	14,469,494	1,666	4,156,141.53	4,162,329.06	0.202	0.630	8355
7,959,900	0.600	---	---	---	02/06/2010	10/12/2013	5031	EUROCONSULTANTS S.A. (CR)	1.64	-0.61	€ 1.65	17/10/2014	1.65	1.64	1.65	1.64	1.65	100@1.55	150@1.64	48.19	2013	100	2	164.50	13,054.24	1.58	2.87	2791
27,503,677	0.600	0.05	0.1	---	11/07/2013	18/10/1999	---	EUROPEAN RELIANCE INSUR. (CR)	1.42	---	↘ 1.42	21/10/2014	1.40	1.40	1.42	1.42	1.40	10040@1.40	98@1.42	4.12	2013	12,844	8	17,981.64	39,055.22	1.21	1.66	8536
13,673,200	0.880	---	---	---	18/07/2008	26/07/2001	---	EVROFARMA SA (CR)	0.305	---	↘ 0.305	21/10/2014	---	---	---	---	---	---	20@0.300	---	2013	---	---	---	4,170.33	0.224	0.455	3577
106,500,000	0.600	0.05	0.15	0.36	05/05/2014	28/01/2000	---	EYDAP S.A. (CR)	6.12	-3.77	€ 6.36	21/10/2014	6.36	6.12	6.48	6.12	6.30	379@6.12	817@6.17	8.39	2013	86,181	540	542,646.33	651,780.00	5.67	9.95	7577
52,800,154	0.300	---	---	0.2	20/08/2014	21/06/2004	---	F.G. EUROPE S.A. (CR)	1.04	---	↘ 1.04	21/10/2014	1.04	1.02	1.06	1.02	1.05	100@1.01	150@1.04	18.77	2013	600	7	628.00	54,912.16	0.580	1.95	3722
10,203,575	0.730	---	---	---	16/07/2007	18/10/1999	---	FIERATEX SA (CR)	0.198	10.00	# 0.180	21/10/2014	0.198	0.198	0.198	0.198	0.198	2000@0.163	800@0.198	---	2013	210	1	41.58	2,020.31	0.121	0.430	3763
11,720,024	0.540	---	---	0.0394	21/08/2014	07/08/2014	---	FLEXOPACK SA (CR)	2.40	-1.24	€ 2.43	21/10/2014	2.48	2.35	2.48	2.46	2.42	150@2.39	40@2.46	11.36	2013	1,060	10	2,562.92	28,128.06	2.31	3.50	2723
4,181,450	0.500	---	---	---	21/08/2000	05/03/2002	---	FLOUR MILLS SARANTOPOULOS SA	0.950	---	↘ 0.950	16/10/2014	---	---	---	---	---	---	230@0.949	---	2013	---	---	---	3,972.38	0.689	1.14	3577
66,948,210	0.300	---	---	---	14/07/2009	23/09/2014	---	FOLLI FOLLIE (CR)	27.00	-1.71	€ 27.47	21/10/2014	27.47	26.93	28.27	27.00	27.22	456@26.92	239@27.05	4.18	2013	99,214	466	2,700,807.68	1,807,601.67	21.90	34.40	5379
50,992,322	1.07	---	---	---	21/06/2010	16/07/2002	---	FOURLIS (CR)	3.71	3.06	# 3.60	21/10/2014	3.70	3.68	3.82	3.71	3.75	5363@3.68	500@3.72	---	2013	263,683	388	988,015.40	189,181.51	3.33	6.01	3722
50,593,832	0.300	---	---	---	07/07/2010	07/09/2011	---	FRIGOGLASS SA (CR)	2.60	-2.26	€ 2.66	21/10/2014	2.67	2.55	2.70	2.60	2.62	530@2.58	958@2.60	---	2013	25,190	95	66,038.05	131,543.96	2.17	5.63	2757
77,376,446	0.340	---	---	---	23/05/2005	18/08/2011	---	G.E. DIMITRIOU (CR)	0.011	---	↘ 0.011	21/10/2014	0.010	0.009	0.012	0.011	0.010	18500@0.010	19900@0.011	---	2013	48,103	9	481.13	851.14	0.009	0.041	3722
14,076,360	0.370	---	---	---	19/08/2008	22/07/2003	---	GALAXIDI S.A. (CR)	0.400	---	↘ 0.400	20/10/2014	---	---	---	---	---	---	267@0.440	---	2013	---	---	---	5,630.54	0.200	0.439	3573
94,462,368	0.570	---	---	---	01/08/2011	02/01/2009	---	GEK TERNA (CR)	2.57	-0.77	€ 2.59	21/10/2014	2.60	2.49	2.62	2.57	2.57	20500@2.56	100@2.58	---	2013	374,418	625	961,092.73	242,768.29	2.21	4.21	2357
8,418,750	0.300	0.15	0.29	---	05/06/2013	27/06/2012	---	GEKE SA (CB)	6.71	---	↘ 6.71	15/10/2014	---	---	---	---	---	---	140@6.69	-(6)-	2013	---	---	---	56,489.81	5.04	7.20	5753
24,060,000	0.300	0.017	---	0.017	07/07/2014	21/01/2000	---	GEN. COMMERCIAL & IND.SA (CR)	0.348	2.35	# 0.340	21/10/2014	0.332	0.332	0.348	0.348	0.336	450@0.332	448@0.348	25.02	2013	600	4	201.60	8,372.88	0.327	0.455	2797
34,770,982	1.55	---	---	0.3	17/01/2014	27/07/2000	---	GR. SARANTIS SA (CR)	7.80	---	↘ 7.80	21/10/2014	7.80	7.80	7.80	7.80	7.80	50@7.65	138@7.73	7.39	2013	20	1	156.00	271,213.66	6.06	8.24	3767
101,260,000	2.13	0.4067	---	0.1821	17/04/2014	08/01/2014	---	GRIVALIA PROPERTIES (CR)	9.40	1.84	# 9.23	21/10/2014	9.30	8.92	9.40	9.40	9.34	150@9.12	19323@9.40	---	2013	20,945	101	195,547.57	951,844.00	6.65	9.82	8675
8,340,750	1.20	---	---	---	25/06/2009	30/07/2001	---	HAIDEMENOS SA (CR)	0.385	---	↘ 0.385	17/10/2014	---	---	---	---	---	200@0.347	2998@0.385	---	2013	---	---	---	3,211.19	0.334	0.760	2791
101,279,627	0.380	---	---	---	26/06/2008	14/07/2006	---	HALKOR SA (CB)	0.397	0.25	# 0.396	21/10/2014	0.393	0.391	0.408	0.397	0.395	700@0.391	450@0.407	---	2013	3,918	16	1,547.19	40,208.01	0.340	0.912	1755
36,748,909	0.730	---	---	---	15/12/2005	13/12/2006	---	HEL. SUGAR INDUSTRY SA (CB)	0.319	-0.31	€ 0.320	21/10/2014	0.300	0.300	0.319	0.319	0.314	8500@0.315	1000@0.320	---	2014	3,100	10	974.35	11,722.90	0.260	1.10	3577
29,546,360	0.710	---	---	---	20/06/2008	23/08/2000	---	HELLENIC CABLES SA (CR)	0.997	-0.20	€ 0.999	21/10/2014	0.943	0.943	1.02	0.997	0.958	190@0.956	197@0.996	---	2013	647	6	619.94	29,457.72	0.900	2.00	2733
65,368,563	0.560	0.11	0.09	---	03/06/2013	16/07/2014	---	HELLENIC EXCHANGES-A.S.E. (CR)	5.96	1.71	# 5.86	21/10/2014	5.86	5.84	6.04	5.96	5.93	1200@5.96	1000@5.99	-(6)-	2013	362,062	1,115	2,146,398.98	389,596.64	4.95	9.52	8777
305,635,185	2.18	0.45	0.15	---	16/08/2013	01/10/2003	4795	HELLENIC PETROLEUM (CR)	4.71	-1.88	€ 4.80	21/10/2014	4.77	4.70	4.89	4.71	4.79	2185@4.70	1070@4.77	---	2013	262,516	626	1,257,962.62	1,439,541.72	4.08	8.13	537
305,732,436	0.410	---	---	---	08/07/2009	28/09/2011	---	HYGEIA SA (CR)	0.217	-1.81	€ 0.221	21/10/2014	0.223	0.215	0.223	0.217	0.218	6000@0.216	3150@0.220	---	2013	132,460	95	28,941.88	66,343.94	0.190	0.508	4533
53,155,053	0.440	---	---	---	21/07/2010	16/07/2008	---	IASO SA (CR)	0.904	0.44	# 0.900	21/10/2014	0.880	0.880	0.904	0.904	0.881	4790@0.880	230@0.904	---	2013	7,930	6	6,989.88	48,052.17	0.770	1.99	4533
8,298,467	0.400	---	---	---	30/08/1993	08/05/2013	---	IDEAL GROUP SA (CR)	0.949	7.84	# 0.880	20/10/2014	0.949	0.949	0.949	0.949	0.949	---	500@0.919	-(6)-	2013	33	1	31.32	7,875.25	0.538	1.00	9574
28,580,100	0.400	0.02	---	0.025	18/08/2014	10/10/2013	---	IKTINOS HELLAS SA (CR)	1.49	-0.67	€ 1.50	21/10/2014	1.50	1.45	1.53	1.49	1.48	1079@1.45	4385@1.50	9.12	2013	9,996	58	14,811.86	42,584.35	1.32	1.84	2353
9,090,000	0.900	---	---	---	15/05/2009	13/10/2014	5072	ILYDA S.A. (CR)	0.739	---	↘ 0.739	16/10/2014	---	---	---	---	---	---	271@0.674	---	2013	---	---	---	6,717.51	0.350	0.789	9537

Number of Outstanding Securities	Nominal Value	Dividends [1]			Date of Last Coupon Dividend [2]		Note	Shares	Closing price	% change	Previous closing price/date	Open price	Price min	Price max	Last price	Avg price	Last Bid [7]	Last Ask [7]	P/E after	Year	Volume	Trades	Transactions Value	Company Mkt Value (thou. €)	Year low	Year high	Sector[4]
--	------------------	---------------	--	--	-------------------------------------	--	------	--------	------------------	----------	--------------------------------	---------------	--------------	--------------	---------------	--------------	-----------------	--------------	--------------	------	--------	--------	-----------------------	--------------------------------	-------------	--------------	---------------

Main Market

2,566,836	0.440	---	---	---	13/08/2010	09/01/2007	---	INTERWOOD-XYLEMPORIA (PR)	0.195	---	↘	0.195	17/02/2014	---	---	---	---	---	---	---	---	2013	---	---	---	5,678.52	0.195	0.200	2353	
23,154,250	1.36	---	---	---	12/08/2008	02/08/2010	---	INTRACOM CONSTR. (CR)	0.612	-2.08	€	0.625	21/10/2014	0.605	0.605	0.618	0.606	0.609	600@0.606	900@0.615	---	2013	1,815	12	1,104.69	14,170.40	0.457	1.32	2357	
133,025,996	1.41	---	---	---	03/07/2007	07/01/2002	---	INTRACOM HOLDINGS (CR)	0.480	3.23	#	0.465	21/10/2014	0.479	0.465	0.485	0.480	0.476	4000@0.474	3578@0.480	---	2013	138,679	148	66,073.61	63,852.48	0.400	0.900	9578	
158,961,721	0.300	0.0035	0.0026	---	30/05/2013	14/11/2007	---	INTRALOT (CR)	1.31	1.55	#	1.29	21/10/2014	1.30	1.25	1.32	1.31	1.29	10600@1.30	1295@1.31	---	2013	120,378	410	155,400.04	208,239.85	1.08	2.51	5752	
77,654,850	0.580	---	---	---	01/07/2011	21/02/2003	---	J & P - AVAX SA (CR)	1.04	-0.95	€	1.05	21/10/2014	1.02	1.02	1.07	1.04	1.04	330@1.03	700@1.06	---	2013	2,811	15	2,929.45	80,761.04	0.910	2.02	2357	
136,059,759	1.19	---	---	---	22/10/2014	05/03/2014	---	JUMBO SA (CR)	9.25	-4.05	€	9.64	21/10/2014	9.60	9.25	9.60	9.25	9.46	2200@9.25	500@9.45	17.22	2014	143,805	512	1,360,195.02	1,258,552.77	7.95	14.40	3747	
9,742,920	0.400	0.01	0.01	0.01	08/08/2014	14/07/2000	---	KARAMOLEGOS SA (CR)	1.61	---	↘	1.61	21/10/2014	---	---	---	---	---	---	1000@1.61	---	---	---	---	15,686.10	0.912	1.78	3577		
14,679,792	1.68	---	---	---	24/06/2014	04/09/2000	---	KARATZIS SA (CR)	3.30	0.92	#	3.27	21/10/2014	3.30	3.30	3.30	3.30	3.30	50@3.20	970@3.25	9.91	2013	25	1	82.50	48,443.31	2.92	4.50	2723	
13,202,756	0.350	---	---	---	01/07/2004	05/08/2014	---	KEKROPS SA (CR)	0.480	-5.32	€	0.507	21/10/2014	0.510	0.470	0.510	0.480	0.478	500@0.474	116@0.480	---	2013	16,904	51	8,084.41	6,337.32	0.426	1.11	8633	
7,595,160	0.600	---	---	---	08/08/2008	18/08/2010	---	KIRIAKOULIS SHIPPING SA (CR)	0.646	---	↘	0.646	21/10/2014	---	---	---	---	---	---	500@0.644	41.94	2013	---	---	---	4,906.47	0.492	1.08	5759	
23,648,700	0.350	---	---	---	13/07/2011	29/07/2014	---	KLEEMAN HELLAS SA (CR)	1.85	---	↘	1.85	21/10/2014	---	---	---	---	---	1392@1.73	45@1.83	65.40	2013	---	---	---	43,750.10	1.50	2.58	2757	
40,219,218	0.300	---	---	---	25/05/2009	09/07/2013	---	KLOUKINAS - LAPPAS SA (CR)	0.519	-2.99	€	0.535	21/10/2014	0.548	0.507	0.548	0.519	0.510	50@0.504	6439@0.518	---	2013	1,402	10	715.37	20,873.77	0.424	0.780	2357	
21,224,340	0.420	---	---	---	02/07/2008	25/04/2006	---	KORDELLOS BROS SA (CR)	0.220	---	↘	0.220	21/10/2014	---	---	---	---	---	---	1985@0.233	---	---	---	---	4,669.35	0.169	0.359	1757		
13,586,500	0.390	---	---	---	25/06/2010	28/05/2008	---	KORRES (CR)	3.49	---	↘	3.49	21/10/2014	---	---	---	---	---	300@3.23	7@3.47	---	2013	---	---	---	47,416.89	2.84	3.93	3767	
29,480,000	0.420	---	---	---	19/07/2010	01/08/2007	---	KRETA FARM SA (CR)	0.551	-1.96	€	0.562	21/10/2014	0.540	0.540	0.551	0.551	0.541	86@0.551	250@0.577	---	2013	4,337	6	2,346.56	16,243.48	0.380	0.690	3577	
33,065,136	0.380	---	---	---	06/07/2009	16/09/2013	---	KRI-KRI S.A. (CR)	1.91	0.53	#	1.90	21/10/2014	1.92	1.86	1.92	1.90	1.88	1050@1.90	59@1.91	12.32	2013	18,450	24	34,740.57	63,154.41	1.65	2.07	3577	
15,804,800	0.330	---	---	---	15/06/2010	12/03/2004	---	KTIMA KOSTAS LAZARIDIS SA (CR)	0.370	3.93	#	0.356	17/10/2014	0.370	0.370	0.370	0.370	0.370	---	145@0.370	---	---	2013	55	2	20.35	5,847.78	0.297	0.575	3535
24,474,815	0.980	---	---	---	19/08/2008	15/09/2014	---	KYRIAKIDIS MARBLES SA (CR)	2.08	-0.48	€	2.09	21/10/2014	2.09	2.02	2.09	2.08	2.06	1264@2.02	996@2.08	4.89	2013	2,481	13	5,113.99	50,907.62	1.07	2.60	2353	
79,706,464	0.300	---	---	---	30/05/2007	23/06/2014	---	LAMDA DEVELOPMENT SA (CR)	3.63	2.54	#	3.54	21/10/2014	3.56	3.50	3.67	3.63	3.58	200@3.57	49@3.66	---	2013	57,475	108	206,009.64	289,334.46	3.19	6.35	8633	
21,364,000	1.12	---	---	---	05/07/2010	10/08/2005	---	LAMPSA HOTEL SA (CR)	18.39	0.93	#	18.22	21/10/2014	18.39	18.39	18.39	18.39	18.39	100@17.90	19@18.39	-(6)-	2013	50	2	919.50	392,883.96	15.60	19.00	5753	
5,939,268	0.620	---	---	---	10/07/2003	03/01/2002	---	LANAKAM SA (CR)	1.16	---	↘	1.16	13/10/2014	---	---	---	---	---	---	2300@1.05	---	---	---	---	6,889.55	0.485	1.40	3763		
7,734,375	1.00	---	---	---	09/07/2007	07/01/2011	---	LIVANIS SA (CR)	0.210	---	↘	0.210	13/10/2014	---	---	---	---	---	---	1577@0.210	---	---	---	---	1,624.22	0.158	0.242	5557		
4,740,000	0.860	---	---	---	14/03/2003	---	---	LOGISMOS S.A. (CR)	0.477	---	↘	0.477	17/10/2014	---	---	---	---	---	---	560@0.466	64.23	2013	---	---	---	2,260.98	0.335	0.709	9533	
17,125,062	0.640	---	---	---	01/06/2010	02/08/2011	---	LOULIS MILLS SA (CR)	2.40	---	↘	2.40	21/10/2014	---	---	---	---	---	100@2.29	200@2.40	---	2013	---	---	---	41,100.15	2.22	3.30	3577	
937,122,261	0.300	---	---	---	26/04/2007	29/08/2014	---	MARFIN INVESTMENT GROUP (CR)	0.243	-2.41	€	0.249	21/10/2014	0.252	0.241	0.253	0.243	0.246	25550@0.242	3031@0.244	---	2013	2,197,174	748	540,460.83	227,720.71	0.204	0.572	8775	
9,819,370	0.690	---	---	---	14/08/2007	09/01/2004	---	MATHIOS REFRACTORY SA (CR)	0.447	---	↘	0.447	13/10/2014	---	---	---	---	---	---	999@0.430	---	---	---	---	4,389.26	0.250	0.488	2353		
468,700	---	0.47	---	---	27/02/2014	21/05/2004	---	MERMEREN KOMB. A.D. PR. (GDR)	5.39	0.56	#	5.36	21/10/2014	5.38	5.38	5.39	5.39	5.38	56@4.45	165@5.35	2.63	2013	150	2	807.05	2,526.29	3.45	5.64	1775	
51,950,600	0.320	0.75	0.25	0.3	20/06/2014	21/10/2005	---	METKA (CR)	8.92	-4.09	€	9.30	21/10/2014	9.30	8.92	9.44	8.92	9.14	160@8.91	1340@9.02	10.43	2013	78,964	535	721,934.27	463,399.35	8.14	14.29	2757	
10,500,000	0.900	---	---	---	24/06/2008	19/12/2013	---	MEVACO SA (CR)	1.09	2.83	#	1.06	21/10/2014	1.06	1.06	1.09	1.09	1.08	600@0.971	42@1.15	---	2013	10,350	4	11,158.00	11,445.00	1.03	1.35	2757	
14,074,000	3.00	0.25	---	---	02/03/2012	23/07/2009	---	MIG REAL ESTATE (CR)	2.63	1.94	#	2.58	21/10/2014	2.61	2.61	2.63	2.63	2.62	194@2.63	40@2.80	-(6)-	2013	705	11	1,849.45	37,014.62	1.50	3.09	8671	
6,700,000	0.800	---	---	0.16	26/05/2014	29/05/2014	---	MILLS KEPENOS (CR)	1.59	---	↘	1.59	20/10/2014	---	---	---	---	---	---	200@1.59	8.66	2013	---	---	---	10,653.00	0.991	2.50	3577	
6,200,000	0.500	---	---	---	22/06/2010	01/11/1995	---	MINERVA KNITWEAR SA (CB)	0.368	-15.79	€	0.437	17/10/2014	0.307	0.306	0.442	0.309	0.307	998@0.309	1000@0.389	---	2013	7,588	16	2,331.84	2,281.60	0.262	0.689	3763	
12,417,000	0.370	---	---	---	28/07/2008	06/09/2011	---	MLS MULTIMEDIA SA (CR)	4.48	1.13	#	4.43	21/10/2014	4.42	4.32	4.48	4.48	4.39	22@4.40	839@4.48	47.51	2013	11,128	55	48,884.14	55,628.16	3.28	4.82	9537	
4,588,137	16.00	---	---	---	30/06/2005	17/08/2011	---	MOCHLOS SA (CR)	1.28	-1.54	€	1.30	21/10/2014	1.20	1.20	1.28	1.28	1.20	1200@1.21	297@1.28	---	2013	1,033	9	1,241.24	5,872.82	1.16	2.05	2357	
11,700,000	0.590	---	---	---	02/06/2009	24/07/2012	---	MOTODYNAMICS S.A. (CR)	0.300	---	↘	0.300	21/10/2014	---	---	---	---	---	500@0.281	331@0.330	---	2013	---	---	---	3,510.00	0.263	0.447	5379	
110,782,980	0.750	0.4	0.3	0.2	26/06/2014	04/11/2013	---	MOTOR OIL (CR)	6.56	-2.09	€	6.70	21/10/2014	6.70	6.56	6.84	6.56	6.72	67@6.55	50@6.62	-(6)-	2013	75,636	381	507,989.47	726,736.35	5.80	10.30	533	
116,915,862	1.07	---	---	---	11/05/2009	06/07/2011	---	MYTILINEOS HOLDINGS (CR)	5.90	2.25	#	5.77	21/10/2014	5.85	5.76	5.95	5.90	5.87	13095@5.90	227@5.91	---	2013	471,087	1,142	2,764,601.91	689,803.59	4.92	7.32	1755	
8,321,682	0.670	---	---	---	17/08/2007	23/11/1999	---	N. LEVEDERIS SA (CB)	0.230	---	↘	0.230	13/10/2014	---	---	---	---	---	---	1000@0.239	---	---	---	---	3,210.30	0.196	0.255	1757		

Number of Outstanding Securities	Nominal Value	Dividends [1]			Date of Last Coupon Dividend [2]		Note	Shares	Closing price	% change	Previous closing price/date	Open price	Price min	Price max	Last price	Avg price	Last Bid [7]	Last Ask [7]	P/E after	Year	Volume	Trades	Transactions Value	Company Mkt Value (thou. €)	Year low	Year high	Sector[4]
2,160,524	0.670	0.0435	0.0436	0.0436	18/08/2014	23/11/1999	---	N. LEVEDERIS SA (PB)	0.600	-0.50	€ 0.603	16/10/2014	0.600	0.600	0.600	0.600	---	1000@0.599	---	2013	5	1	3.00	3,210.30	0.566	0.779	1757
11,510,102	0.890	---	---	---	24/06/2005	06/10/1999	---	NAFPAKTOS TEXTILE IND. SA (CB)	0.248	8.30	# 0.229	21/10/2014	0.248	0.248	0.248	0.248	300@0.212	1540@0.247	---	2013	355	1	88.04	2,854.51	0.207	0.397	3763
6,340,000	0.600	---	---	---	30/11/2009	12/07/2000	---	NAKAS MUSIC	0.776	7.93	# 0.719	21/10/2014	0.710	0.710	0.789	0.776	200@0.650	100@0.776	24.12	2014	560	7	434.40	4,919.84	0.526	1.62	5379
3,533,149,631	0.300	---	---	---	16/05/2008	24/05/2013	---	NATIONAL BANK (CR)	2.29	5.05	# 2.18	21/10/2014	2.23	2.18	2.29	2.29	15012@2.28	51178@2.29	5.09	2013	13,629,915	3,372	30,578,913.99	8,090,912.65	1.80	4.31	8355
23,935,280	0.300	---	---	---	29/06/2009	13/06/2000	---	NAYTEMPORIKI PUBLISHING SA(CR)	0.171	-8.56	€ 0.187	16/10/2014	0.172	0.171	0.172	0.171	300@0.172	50@0.187	---	2013	1,016	5	174.04	4,092.93	0.130	0.479	5557
27,848,000	0.300	0.0132	0.0137	0.004	18/08/2014	02/09/2003	---	NEWSPHONE HELLAS SA (CR)	0.269	---	↘ 0.269	21/10/2014	---	---	---	---	1000@0.246	610@0.270	24.17	2013	---	---	---	7,491.11	0.250	0.468	2791
6,132,500	1.25	---	---	---	24/06/2011	19/06/2001	---	NEXANS HELLAS SA (CR)	1.75	4.79	# 1.67	17/10/2014	1.77	1.75	1.79	1.75	100@1.70	1@1.75	---	2013	550	6	975.50	10,731.88	1.61	2.40	2733
63,697,153	1.34	---	---	---	08/07/2008	10/11/2008	---	NIREFS SA (CR)	0.126	-10.00	€ 0.140	21/10/2014	0.140	0.126	0.140	0.126	525@0.126	1900@0.140	---	2013	6,525	16	838.65	8,025.84	0.120	0.362	3573
319,000,000	0.300	0.72	0.57	0.25	27/05/2014	25/04/2001	---	OPAP (CR)	9.80	1.66	# 9.64	21/10/2014	9.64	9.47	9.93	9.80	151@9.80	750@9.87	21.91	2013	607,938	1,388	5,934,435.63	3,126,200.00	7.97	13.65	5752
490,150,389	2.83	---	---	---	28/06/2011	18/06/1998	---	OTE (CR)	9.85	-1.70	€ 10.02	21/10/2014	10.02	9.78	10.11	9.85	20000@9.80	13329@9.84	---	2013	903,551	1,785	8,989,620.87	4,827,981.33	8.53	13.20	6535
25,000,000	2.00	0.01	0.05	0.12	17/07/2014	08/08/2003	---	P.P.A. S.A. (CR)	15.25	-0.84	€ 15.38	21/10/2014	15.38	14.81	15.40	15.25	8@15.14	1027@15.25	47.39	2013	7,212	123	109,655.95	381,250.00	14.00	20.89	2777
4,971,466	1.46	---	---	---	04/07/2007	08/10/2003	---	PAIRIS SA (CR)	0.244	---	↘ 0.244	17/10/2014	---	---	---	---	---	10000@0.230	---	2013	---	---	---	1,213.04	0.183	0.355	2723
3,953,090	0.900	---	---	---	02/07/2001	05/12/2012	---	PAPERPACK (CR)	0.799	1.14	# 0.790	17/10/2014	0.799	0.799	0.799	0.799	1000@0.680	2659@0.799	4.13	2013	40	1	31.96	3,158.52	0.680	1.15	2723
50,797,369	0.310	---	---	---	17/08/2000	12/10/2010	---	PAPOUTSANIS (CR)	0.378	-10.00	€ 0.420	21/10/2014	0.420	0.378	0.420	0.378	---	4098@0.378	---	2013	6,502	12	2,464.59	19,201.41	0.374	0.604	3767
7,070,400	0.930	---	---	---	18/05/2010	12/05/2011	---	PETROPOULOS PETROS (CR)	2.55	-0.78	€ 2.57	21/10/2014	2.53	2.52	2.57	2.55	50@2.52	130@2.55	61.96	2013	520	10	1,311.26	18,029.52	1.43	2.58	2753
6,101,979,715	0.300	---	---	---	16/05/2008	05/06/2013	---	PIRAEUS BANK (CR)	1.22	-3.94	€ 1.27	21/10/2014	1.27	1.20	1.29	1.22	156819@1.21	451244@1.22	1.31	2013	20,767,328	2,814	25,626,289.50	7,444,415.25	1.00	2.11	8355
22,080,000	0.320	0.08	0.12	0.2	21/05/2014	03/10/2000	---	PLAISIO COMPUTERS SA (CR)	6.60	-1.05	€ 6.67	21/10/2014	6.75	6.48	6.75	6.60	331@6.50	80@6.70	10.29	2013	1,165	14	7,687.92	145,728.00	5.80	7.98	9572
232,000,000	4.60	---	0.025	---	22/07/2013	12/12/2001	---	PPC (CR)	6.96	-1.14	€ 7.04	21/10/2014	7.16	6.83	7.27	6.96	1050@6.96	992@6.98	---	2013	920,183	3,298	6,517,700.79	1,614,720.00	5.92	12.75	7535
11,812,193	0.450	---	---	---	24/07/2009	15/11/2006	---	PROFILE SA (CR)	0.643	-2.43	€ 0.659	21/10/2014	0.648	0.616	0.650	0.643	2500@0.632	294@0.643	12.38	2013	58,606	103	37,074.45	7,595.24	0.616	1.05	9533
27,345,120	0.470	---	---	---	18/07/2005	26/02/2014	---	QUALITY & RELIABILITY SA (CR)	0.554	-3.65	€ 0.575	21/10/2014	0.575	0.541	0.575	0.554	200@0.541	178@0.554	73.67	2013	822	5	455.38	15,149.20	0.378	0.740	9533
11,962,443	0.500	---	---	---	05/09/2008	12/12/2013	---	QUEST HOLDINGS (CR)	4.93	-2.76	€ 5.07	21/10/2014	4.89	4.89	4.93	4.93	15@5.10	225@5.08	---	2013	257	4	1,259.97	58,974.84	4.21	6.30	9533
57,434,884	1.31	---	---	---	05/06/2008	12/06/2009	---	REDS S.A. (CR)	0.518	5.71	# 0.490	21/10/2014	0.500	0.492	0.519	0.518	1500@0.500	72@0.516	---	2013	26,588	34	13,455.16	29,751.27	0.431	0.827	8633
22,280,000	0.300	---	---	---	11/04/2011	23/02/2007	---	REVOIL (CR)	0.354	1.72	# 0.348	21/10/2014	0.352	0.331	0.354	0.354	251@0.333	243@0.354	---	2013	2,754	21	945.57	7,887.12	0.285	0.720	5379
7,500,000	0.480	---	0.0024	0.0863	13/08/2014	10/02/2014	---	S.KANAKIS SA (CR)	1.77	7.27	# 1.65	21/10/2014	1.77	1.77	1.77	1.77	50@1.67	1335@1.75	9.11	2013	50	1	88.50	13,275.00	1.58	1.99	3577
52,067,296	0.300	---	---	---	23/12/2003	24/01/2007	---	SELECTED TEXT. IND. ASSOC (CR)	0.190	-7.32	€ 0.205	21/10/2014	0.205	0.180	0.205	0.190	1000@0.184	300@0.195	---	2014	51,703	40	9,542.24	9,892.79	0.155	0.355	3763
96,243,908	0.410	---	---	---	26/06/2008	17/07/2000	---	SIDENOR (CR)	1.00	-2.91	€ 1.03	21/10/2014	1.05	1.00	1.05	1.00	900@0.998	500@1.02	---	2013	24,020	63	24,260.90	96,243.91	0.780	2.26	1757
6,456,530	1.60	---	---	---	29/06/2001	02/08/2010	---	SPACE HELLAS SA (CR)	1.56	4.00	# 1.50	21/10/2014	1.56	1.56	1.56	1.56	198@1.41	350@1.50	---	2013	5	1	7.80	10,072.19	1.13	1.87	9578
28,438,268	0.300	---	---	---	21/08/2006	24/11/1999	---	SPIROY AGRICULTURE SA (CR)	0.309	6.55	# 0.290	21/10/2014	0.300	0.300	0.309	0.301	100@0.261	300@0.300	---	2013	400	2	120.45	8,787.42	0.206	0.388	1357
33,125,000	5.00	---	---	---	03/07/2006	18/08/2010	---	TECHNICAL OLYMPIC SA (CR)	1.31	0.77	# 1.30	21/10/2014	1.29	1.26	1.34	1.30	1750@1.29	184@1.30	---	2013	10,942	40	14,083.19	43,393.75	1.25	2.29	3728
109,314,400	0.300	(0.0589)	---	---	28/05/2012	09/07/2014	---	TERNA ENERGY (CR)	2.69	-0.37	€ 2.70	21/10/2014	2.66	2.60	2.70	2.69	30@2.63	695@2.68	-(6)-	2013	111,225	441	295,092.75	294,055.74	2.19	4.86	7537
36,300,000	1.12	0.188	0.162	0.285	14/08/2014	12/12/2007	---	THESSALONIKA WATER & SEWERAGE	3.45	-1.15	€ 3.49	21/10/2014	3.49	3.45	3.55	3.45	100@3.44	500@3.54	9.55	2013	1,813	23	6,301.55	125,235.00	3.08	5.66	7577
45,094,620	0.500	---	0.0467	0.05	28/04/2014	01/11/1999	---	THRACE PLASTICS SA (CR)	0.979	1.56	# 0.964	21/10/2014	0.951	0.951	0.985	0.979	800@0.955	875@0.979	---	2013	12,112	16	11,610.12	44,147.63	0.861	1.39	1357
77,063,568	4.00	---	---	---	25/06/2014	25/06/2004	---	TITAN CEMENT (CR)	19.90	2.42	# 19.43	21/10/2014	19.43	19.43	20.00	19.90	420@19.80	1165@20.00	---	2013	215,940	490	4,289,467.77	1,604,561.85	16.10	26.80	2353
7,568,960	4.00	---	---	---	25/06/2014	25/06/2004	---	TITAN CEMENT CO. (PR)	9.38	0.21	# 9.36	21/10/2014	9.38	9.38	9.38	9.38	118@8.80	50@9.38	---	2013	32	1	300.16	1,604,561.85	8.32	10.50	2353
10,080,000	3.00	0.4	1.5	0.6	13/08/2014	27/08/2001	---	TPA SA (CR)	23.19	---	↘ 23.19	21/10/2014	---	---	---	---	12@22.60	500@23.00	12.85	2013	---	---	---	233,755.20	21.00	31.40	2777
54,888,240	1.13	0.1	0.1	0.09	25/04/2014	22/03/2006	---	TRASTOR REAL EST. INV. CO.(CR)	1.08	-0.92	€ 1.09	21/10/2014	1.08	1.07	1.09	1.08	620@1.07	1990@1.08	---	2013	5,765	10	6,202.95	59,279.30	0.935	1.33	8671
15,627,315	0.300	---	---	---	16/11/1992	03/12/2012	---	UNIBIOS (CR)	0.203	0.49	# 0.202	21/10/2014	0.192	0.191	0.206	0.203	800@0.197	1398@0.202	---	2013	17,718	30	3,565.98	3,172.34	0.180	0.404	2353
18,810,000	0.400	---	---	---	08/07/2010	14/11/2007	---	VARVERIS - MODA BAGNO SA (CR)	0.196	---	↘ 0.196	21/10/2014	---	---	---	---	1000@0.146	8500@0.194	---	2013	---	---	---	3,686.76	0.147	0.279	2353

Number of Outstanding Securities	Nominal Value	Dividends [1]			Date of Last Coupon Dividend [2]	Coupon Right	Note	Shares	Closing price	% change	Previous closing price/date	Open price	Price min	Price max	Last price	Avg price	Last Bid [7]	Last Ask [7]	P/E after	Year	Volume	Trades	Transactions Value	Company Mkt Value (thou. €)	Year low	Year high	Sector[4]
--	------------------	---------------	--	--	-------------------------------------	-----------------	------	--------	------------------	----------	--------------------------------	---------------	--------------	--------------	---------------	--------------	-----------------	--------------	--------------	------	--------	--------	-----------------------	--------------------------------	-------------	--------------	---------------

Main Market

219,611,308	---	---	---	14/02/2014	---	VIOHALCO SA/NV (CB)	3.06	-0.97	€ 3.09	21/10/2014	3.05	3.01	3.11	3.06	3.08	1000@3.03	2@3.06	---	---	73,799	168	227,209.98	672,010.60	2.59	5.19	2727	
4,968,600	2.88	---	---	01/07/1998	14/12/1998	---	VIS SA (CR)	0.934	---	↘ 0.934	13/10/2014	---	---	---	---	---	150@0.933	---	2013	---	---	---	4,640.67	0.517	0.980	2723	
6,325,000	0.600	---	---	02/05/2014	17/02/2014	---	VOGIATZOGLOU SYSTEMS SA (CR)	0.860	-6.93	€ 0.924	14/10/2014	0.850	0.850	0.860	0.860	0.851	---	200@0.959	---	2013	950	6	808.90	5,439.50	0.696	2.27	2797

Exchange Traded Funds (ETFs)

5,848,618	---	---	---	24/01/2008	---	ALPHA ETF FTSE Athex Large Cap	3.25	-0.15	€	3.26	21/10/2014	3.25	3.25	3.27	3.25	3.25	276@3.23	---	---	---	20,224	4	65,790.00	-	2.78	4.55	11000
294,878	---	---	---	29/06/2009	---	NBGAM ETF	11.00	---	↘	11.00	21/10/2014	---	---	---	---	---	---	---	---	---	---	---	---	-	9.61	15.10	11000
388,550	---	---	---	03/11/2010	---	NBGAM ETF GREECE & TURKEY 30	8.00	---	↘	8.00	21/10/2014	---	---	---	---	---	---	---	---	---	---	---	---	-	6.70	9.00	11000

Low Dispersion

14,000,000	4.15	---	---	---	23/04/2010	29/06/1999	4815	ALPHA REAL ESTATE SA(CR)	5.37	-1.47	€ 5.45	21/10/2014	5.44	5.35	5.44	5.35	5.37	191@5.35	47@5.73	22.45	2013	90	3	483.30	75,180.00	4.69	7.10	8637
63,900,000	3.00	---	---	---	23/06/2003	04/11/2008	4816	ASTIR PALACE SA (CR)	3.84	-1.03	€ 3.88	21/10/2014	3.83	3.83	3.89	3.84	3.84	496@3.83	850@3.89	---	2013	1,050	4	4,029.50	245,376.00	3.41	4.08	5753
90,902,904	0.800	---	---	---	09/08/2004	08/03/2006	4814	ATHENA SA (CR)	0.290	---	↘ 0.290	10/10/2014	---	---	---	---	---	3779@0.270	---	2013	---	---	---	26,361.84	0.133	0.310	2357	
191,660,320	0.300	---	---	---	20/07/2009	29/12/2010	4817	ATTICA HOLDINGS (CR)	0.495	-0.60	€ 0.498	21/10/2014	0.470	0.470	0.496	0.495	0.495	489@0.483	515@0.496	---	2013	611	4	302.47	94,871.86	0.445	0.799	5759
26,664,840	0.470	---	---	0.007	26/06/2014	12/07/1999	5067	CYCLON HELLAS SA (CR)	0.700	---	↘ 0.700	21/10/2014	0.700	0.700	0.700	0.700	0.700	1740105@0.700	---	36.24	2013	22,500	16	15,750.00	18,665.39	0.450	0.720	1357
68,322,221	1.00	---	---	---	08/03/2002	08/04/2013	4986	GENIKI BANK (CR)	6.01	---	↘ 6.01	21/10/2014	---	---	---	---	---	160@6.30	38@6.76	---	2013	---	---	---	410,616.55	2.00	15.00	8355
71,082,707	1.70	---	---	---	01/07/2010	21/11/2012	4820	HERACLES GEN.CEMENT CO. (CR)	1.40	---	↘ 1.40	21/10/2014	---	---	---	---	---	1000@1.27	525@1.40	---	2013	---	---	---	99,515.79	1.24	1.55	2353
13,404,440	8.63	---	---	---	02/04/2001	06/03/1992	4822	IONIAN HOTELS SA (CR)	7.00	-2.78	€ 7.20	15/09/2014	7.00	7.00	7.00	7.00	7.00	20@7.03	150@8.00	-(6)-	2013	30	2	210.00	93,831.08	6.00	9.90	5753
2,760,000	7.70	7.6	8.52	8.5	30/06/2014	16/07/1990	4823	KARELIA TOBACCO CO. SA (CB)	204.00	---	↘ 204.00	21/10/2014	---	---	---	---	---	3@195.00	100@204.00	14.18	2013	---	---	---	563,040.00	180.00	244.90	3785
30,600,000	0.300	---	---	---	12/06/2008	04/03/2014	5059	KATHIMERINI SA (CR)	0.390	-5.80	€ 0.414	21/10/2014	0.360	0.360	0.420	0.420	0.390	1000@0.401	1000@0.420	---	2013	4,097	8	1,598.78	11,934.00	0.311	4.49	5557
106,980,050	2.25	---	---	---	25/07/2008	24/02/2014	5046	MINOAN LINES SA (CR)	1.50	---	↘ 1.50	21/10/2014	---	---	---	---	---	36982@1.50	9900@1.60	---	2013	---	---	---	160,470.08	1.42	2.00	5759
17,240,776	0.370	---	---	---	14/07/2005	30/09/2003	4827	PERSEUS SA (CR)	0.478	---	↘ 0.478	01/10/2014	---	---	---	---	---	393@0.449	4.27	2013	---	---	---	---	8,241.09	0.152	0.504	3577

Surveillance

33,301,715	0.320	---	---	---	27/06/2003	08/07/2009	4978	AEGEK (CR)	0.050	-1.96	€ 0.051	21/10/2014	0.042	0.042	0.051	0.051	0.050	2058@0.052	2484@0.061	---	2013	5,605	7	281.78	1,665.09	0.042	0.136	2357
14,870,100	0.300	---	---	---	15/05/2008	26/09/2011	4844	ALPHA GRISSIN S.A. (CR)	0.060	---	↘ 0.060	17/10/2014	---	---	---	---	---	3000@0.060	---	---	2013	---	---	---	892.21	0.060	0.160	9533
215,246,452	0.300	---	---	---	25/06/2001	24/09/2001	4446	ALTEC SA (CR)	0.024	14.29	# 0.021	21/10/2014	0.020	0.020	0.024	0.024	0.024	7808@0.020	4923@0.023	---	2013	3,074	4	73.74	5,165.91	0.017	0.040	9533
2,969,713	0.300	---	---	---	02/07/2008	28/02/2011	4958	ANEK LINES SA (PR, Issue '96)	0.128	---	↘ 0.128	17/10/2014	---	---	---	---	---	620@0.133	---	---	2013	---	---	---	18,164.17	0.120	0.280	5759
312,163	0.300	---	---	---	02/07/2008	28/02/2011	4959	ANEK LINES SA (PR, Issue '90)	1.15	---	↘ 1.15	26/06/2014	---	---	---	---	---	---	37@1.37	---	2013	---	---	---	18,164.17	1.15	1.43	5759
185,373,016	0.300	---	---	---	02/07/2008	28/02/2011	4957	ANEK LINES SA (CR)	0.094	6.82	# 0.088	21/10/2014	0.100	0.090	0.100	0.090	0.094	12778@0.082	1033@0.089	---	2013	6,671	8	626.10	18,164.17	0.073	0.141	5759
81,644,555	0.300	---	---	---	01/07/2008	02/09/2002	5056	ATTI - KAT SA (CR)	0.019	---	↘ 0.019	16/10/2014	0.019	0.019	0.019	0.019	0.019	---	18240@0.018	---	2013	4,500	2	85.50	1,551.25	0.009	0.036	2357
20,255,805	0.300	---	---	---	22/08/2006	02/08/2010	4881	AXON HOLDING SA (CR)	0.063	5.00	# 0.060	20/10/2014	0.060	0.060	0.065	0.065	0.063	28990@0.065	---	---	2013	13,444	4	851.69	1,276.12	0.037	0.139	4533
17,579,754	4.16	---	---	---	18/08/2006	02/08/2010	4885	BIOTER SA (CR)	0.200	---	↘ 0.200	20/10/2014	---	---	---	---	---	---	16@0.160	---	2013	---	---	---	3,515.95	0.104	0.216	2357
1,130,180	0.440	---	---	---	20/06/2003	02/07/2014	---	COMPUCON SA (CR)	0.041	---	↘ 0.041	21/10/2014	---	---	---	---	---	2000@0.033	---	---	2013	---	---	---	46.34	0.041	0.814	9537
14,173,104	0.300	---	---	---	11/08/2010	28/11/2013	5055	DIONIC (CR)	0.070	---	↘ 0.070	21/10/2014	---	---	---	---	---	3000@0.056	5000@0.067	---	2013	---	---	---	992.12	0.041	0.307	2797
15,878,748	0.480	---	---	---	10/07/2006	22/03/2004	4960	DOMKI KRITIS SA (CR)	0.402	---	↘ 0.402	15/10/2014	---	---	---	---	---	---	1000@0.350	---	2013	---	---	---	6,383.26	0.264	0.485	2357
3,961,300	1.28	---	---	---	29/06/2004	03/08/2000	4808	DUROS SA (CR)	0.530	---	↘ 0.530	23/07/2014	---	---	---	---	---	---	270@0.549	---	2013	---	---	---	2,099.49	0.185	0.759	3763
7,085,888	1.59	---	---	---	02/07/1996	06/09/2010	4690	ELVIEMEK (CR)	3.97	---	↘ 3.97	26/02/2014	---	---	---	---	---	---	---	---	2013	---	---	---	28,130.98	1.54	3.97	8633

Number of Outstanding Securities	Nominal Value	Dividends [1]			Date of Last Coupon Dividend [2]		Note	Shares	Closing price	% change	Previous closing price/date	Open price	Price min	Price max	Last price	Avg price	Last Bid [7]	Last Ask [7]	P/E after	Year	Volume	Trades	Transactions Value	Company Mkt Value (thou. €)	Year low	Year high	Sector[4]
--	------------------	---------------	--	--	-------------------------------------	--	------	--------	------------------	----------	--------------------------------	---------------	--------------	--------------	---------------	--------------	-----------------	--------------	--------------	------	--------	--------	-----------------------	--------------------------------	-------------	--------------	---------------

Surveillance

6,000,000	0.600	---	---	---	13/06/2008	08/04/2004	4886	EUROBROKERS S.A. (CR)	0.024	---	↘	0.024	12/05/2014	---	---	---	---	---	1000@0.024	---	---	2013	---	---	---	144.00	0.024	0.052	8534	
21,820,410	0.800	---	---	---	22/05/2008	02/08/2011	4882	EUROMEDICA SA (CR)	0.403	---	↘	0.403	02/09/2014	---	---	---	---	---	---	---	---	2013	---	---	---	8,793.63	0.240	0.403	4533	
110,097,185	0.300	---	---	---	04/12/2013		5033	Forthnet (CR)	1.25	5.93	#	1.18	21/10/2014	1.15	1.15	1.29	1.29	1.25	1152@1.15	630@1.29	---	2013	10,348	15	12,959.00	137,621.48	0.874	1.98	9535	
1,270,000	0.300	---	---	---	06/07/2007	06/02/2013	5007	GIRAKIAN PROFIL SA (CB)	1.00	---	↘	1.00	15/10/2014	---	---	---	---	---	300@0.800	5@1.19	---	2013	---	---	---	1,270.00	0.889	2.63	1757	
179,707,771	0.300	---	---	---	27/06/2002	01/11/2011	4847	HELLAS ONLINE SA (CR)	0.511	0.59	#	0.508	21/10/2014	0.511	0.511	0.511	0.511	0.511	5000@0.423	900@0.525	66.43	2013	31,700	10	16,198.70	91,830.67	0.400	0.670	9537	
30,390,000	0.310	---	---	---	18/08/2008	29/12/2006	4447	HELLENIC FISHFARMING SA (CR)	0.072	-7.69	€	0.078	17/10/2014	0.075	0.070	0.075	0.070	0.072	---	2094@0.070	---	2013	900	4	65.01	2,188.08	0.045	0.119	3573	
1,540,000	0.600	---	---	---	08/08/1994	19/09/2000	5058	J.BOUTARIS & SON HOLD. (PB)	0.006	20.00	#	0.005	03/09/2014	0.006	0.006	0.006	0.006	0.006	3500@0.006	---	---	2013	500	1	3.00	1,368.94	0.005	0.012	3535	
25,179,640	0.600	---	---	---	08/08/1994	19/09/2000	5057	J.BOUTARIS & SON HOLD. SA (CB)	0.054	-15.63	€	0.064	20/10/2014	0.060	0.052	0.060	0.052	0.054	3005@0.052	1998@0.060	---	2013	7,000	7	380.00	1,368.94	0.041	0.086	3535	
7,125,216	0.650	---	---	---	01/07/2005	14/12/1999	4955	KRE.KA SA (CR)	0.169	---	↘	0.169	10/10/2014	---	---	---	---	---	3700@0.137	3700@0.168	---	2013	---	---	---	1,204.16	0.118	0.278	3573	
51,081,030	1.00	---	---	---	20/08/2007	03/09/2007	4912	LAVIPHARM SA (CR)	0.110	---	↘	0.110	21/10/2014	0.110	0.110	0.110	0.110	0.110	2000@0.101	495@0.118	---	2013	10,000	2	1,100.00	5,618.91	0.100	0.164	4577	
322,925,288	0.300	---	---	---	23/05/2007	10/04/2000	4554	M.J. MAILLIS SA (CR)	0.115	---	↘	0.115	21/10/2014	0.115	0.115	0.115	0.115	0.115	6929605@0.115	19900@0.138	---	2013	20,970	7	2,411.55	37,136.41	0.067	0.144	2723	
4,178,856	1.58	---	---	---	21/07/2011	28/07/2004	4983	MEDICON S.A (CR)	0.420	---	↘	0.420	16/10/2014	---	---	---	---	---	---	2735@0.420	17.32	2013	---	---	---	1,755.12	0.251	0.952	4535	
255,459,600	0.300	---	---	---	26/06/2000	03/12/2010	4833	NEL SA (CR)	0.019	---	↘	0.019	21/10/2014	0.019	0.019	0.019	0.019	0.019	10000@0.021	---	---	2013	90	2	1.71	4,853.73	0.016	0.090	5759	
20,231,328	0.600	---	---	---	15/07/2008	25/06/2004	4879	NIKAS SA (CR)	0.190	---	↘	0.190	14/10/2014	---	---	---	---	---	958@0.190	---	---	2013	---	---	---	3,843.95	0.170	0.200	3577	
14,967,940	0.500	---	---	---	21/05/2008	04/01/2008	4956	PASAL DEVELOPMENT S.A. (CR)	0.145	---	↘	0.145	21/10/2014	---	---	---	---	---	3000@0.116	4990@0.144	---	2013	---	---	---	2,170.35	0.110	0.239	8633	
18,750,000	0.300	---	---	---	02/07/2001	31/12/2012	4985	PEGASUS PUBLISHING S.A. (CR)	0.031	19.23	#	0.026	21/10/2014	0.031	0.031	0.031	0.031	0.030	29998@0.031	---	---	2013	2	2	0.06	581.25	0.015	0.300	5557	
24,319,250	0.300	---	---	---	09/07/2002	04/07/2007	5054	PROODEFTIKH SA (CR)	0.100	---	↘	0.100	21/10/2014	0.100	0.100	0.100	0.100	0.100	---	1000@0.098	---	2013	500	2	50.00	2,431.93	0.066	0.188	2357	
65,326,268	0.530	---	---	---	04/07/2007	19/07/2006	4750	SATO SA (CR)	0.080	17.65	#	0.068	21/10/2014	0.068	0.068	0.081	0.081	0.080	17500@0.070	---	---	2013	112	2	8.92	5,226.10	0.068	0.250	3726	
36,235,184	1.00	---	---	---	01/07/2008	30/07/2012	4961	SELONDA AQUACULTURE SA (CR)	0.090	---	↘	0.090	21/10/2014	0.090	0.090	0.090	0.090	0.090	1000@0.080	4384@0.090	---	2013	517	3	46.53	3,261.17	0.073	0.152	3573	
7,914,480	2.50	---	---	---	23/06/2008	29/06/2011	4888	SFAKIANAKIS SA (CR)	0.670	---	↘	0.670	15/10/2014	---	---	---	---	---	10@0.700	---	---	2013	---	---	---	5,302.70	0.488	1.15	5379	
10,000,000	1.35	---	---	---	24/06/2008	10/05/2005	4887	SIDMA SA (CR)	0.225	---	↘	0.225	17/10/2014	---	---	---	---	---	800@0.181	100@0.270	---	2013	---	---	---	2,250.00	0.200	0.520	1757	
29,060,950	0.340	---	---	---	20/08/2007	24/10/2001	4884	SPIDER METAL INDUSTRY SA (CR)	0.016	---	↘	0.016	14/10/2014	---	---	---	---	---	3000@0.013	---	---	2013	---	---	---	464.98	0.012	0.070	2757	
100,793,000	0.300	---	---	---	16/07/2009	05/08/2013	5008	TELETIPOS SA (CR)	0.133	-19.88	€	0.166	21/10/2014	0.133	0.133	0.133	0.133	0.133	700@0.140	---	---	2013	24	2	3.19	13,405.47	0.111	0.345	5553	
3,229,566	0.320	---	---	---	22/06/2005	23/09/1999	4629	VARANGIS AVEPE S.A. (CR)	0.600	---	↘	0.600	19/06/2014	---	---	---	---	---	---	220@0.600	---	---	2013	---	---	---	1,937.74	0.600	1.00	3726
16,383,428	0.300	---	---	---	25/06/2002	21/06/2013	4997	VARVARESSOS SA (CB)	0.140	---	↘	0.140	14/10/2014	---	---	---	---	---	40@0.112	4000@0.168	0.19	2013	---	---	---	2,293.68	0.062	0.293	3763	
13,191,620	0.620	---	---	---	04/08/2010	09/09/2002	4977	YALCO - CONSTANTINOU SA (CB)	0.070	---	↘	0.070	02/10/2014	---	---	---	---	---	3000@0.056	700@0.084	---	2013	---	---	---	923.41	0.052	0.241	3722	

Under Deletion

9,567,289	0.300	---	---	---	01/07/2004	19/11/2007	5062	MARAC ELECTRONICS (CR)	0.280	---	↘	0.280	07/10/2014	---	---	---	---	---	6428@0.280	---	2013	---	---	---	2,678.84	0.280	0.356	9578
40,946,303	0.360	---	---	---	18/07/2005	27/11/2007	5053	PC SYSTEMS SA (CR)	0.040	---	↘	0.040	20/10/2014	---	---	---	---	4000@0.032	---	---	2013	---	---	---	1,637.85	0.040	0.169	9533
766,000	1.50	---	---	---	01/07/2004	11/12/2012	4937	TRIA ALFA SA (CR)	2.29	---	↘	2.29	25/06/2014	---	---	---	---	---	500@2.73	---	2013	---	---	---	2,084.89	1.72	3.33	3763
245,000	1.50	---	---	---	19/07/2010	11/12/2012	4938	TRIA ALFA SA (PR)	1.35	---	↘	1.35	16/09/2014	---	---	---	---	---	200@1.62	---	2013	---	---	---	2,084.89	0.969	2.57	3763

Suspension Status

5,025,000	0.300	---	---	---	05/07/2005	14/03/2002	5023	ALSINCO S.A (CR)	0.043	---	↘	0.043	27/11/2013	---	---	---	---	---	---	---	---	---	---	---	216.08	0.043	0.043	3763
1,750,955,549	0.600	---	---	---	19/05/2008	08/12/2011	4911	ATE (CR)	0.155	---	↘	0.155	30/07/2012	---	---	---	---	---	---	---	---	---	---	---	271,398.11	0.155	0.155	8355
21,382,067	0.300	---	---	---	02/10/2006	15/02/2006	4628	ATERMON (CR)	0.120	---	↘	0.120	31/03/2010	---	---	---	---	---	---	---	---	---	---	---	2,565.85	0.120	0.120	5555
105,423,498	0.510	---	---	---	01/07/2004	28/12/2005	4920	AVENIR S.A. (CR)	0.046	---	↘	0.046	30/08/2012	---	---	---	---	---	---	---	---	---	---	---	4,849.48	0.046	0.046	5752

Number of Outstanding Securities	Nominal Value	Dividends [1]			Date of Last Coupon		Note	Shares	Closing price	% change	Previous closing price/date	Open price	Price min	Price max	Last price	Avg price	Last Bid [7]	Last Ask [7]	P/E after	Year	Volume	Trades	Transactions Value	Company Mkt Value (thou. €)	Year low	Year high	Sector[4]
		2011	2012	2013	Dividend [2]	Right																					
Suspension Status																											
33,930,000	0.300	---	---	---	03/07/2006	30/05/2001	4865	BABIS VOVOS SA (CR)	0.304	---	↘ 0.304	30/03/2012	---	---	---	---	---	---	---	---	---	---	---	10,314.72	0.304	0.304	8633
20,121,710	1.21	---	---	---	27/07/1992	12/03/2003	5002	BALKAN R.E. (CR)	0.190	---	↘ 0.190	29/08/2013	---	---	---	---	---	---	---	---	---	---	---	3,823.12	0.190	0.190	8633
1,795,140,547	1.00	---	---	---	31/05/2011	19/04/2012	4951	BANK OF CYPRUS (CR)	0.207	---	↘ 0.207	15/03/2013	---	---	---	---	---	---	---	---	---	---	---	371,594.09	0.207	0.207	8355
21,920,570	0.300	---	---	---	03/07/2007	13/12/1999	4702	CARDASSILARIS SA (CR)	0.140	---	↘ 0.140	30/11/2010	---	---	---	---	---	---	---	---	---	---	---	3,068.88	0.140	0.140	3577
54,547,634	0.500	---	---	---	25/04/2005	21/01/2009	4860	CH.TEGOPOULOS PUBL. SA (CR)	0.038	---	↘ 0.038	23/03/2012	---	---	---	---	---	---	---	---	---	---	---	2,072.81	0.038	0.038	5557
30,159,583	0.470	---	---	---	26/06/2008	29/12/2010	5047	DIAS A/C (CR)	0.050	---	↘ 0.050	26/03/2014	---	---	---	---	---	---	---	---	---	---	---	1,507.98	0.040	0.092	3573
7,847,611	1.20	---	---	---	01/08/2007	28/09/2011	4939	EDRASIS - C. PSALLIDAS SA (CR)	0.150	---	↘ 0.150	19/11/2012	---	---	---	---	---	---	---	---	---	---	---	1,177.14	0.150	0.150	2357
5,750,000	0.300	---	---	---	12/12/2008	12/12/2011	4929	ELECTRONIKI ATHINON SA (CR)	0.480	---	↘ 0.480	07/09/2012	---	---	---	---	---	---	---	---	---	---	---	2,760.00	0.480	0.480	5375
24,605,397	0.400	---	---	---	29/06/1995	27/05/2002	4651	EMPORIKOS DESMOS SA (CR)	0.080	---	↘ 0.080	28/05/2010	---	---	---	---	---	---	---	---	---	---	---	2,134.04	0.080	0.080	3722
1,182,903	0.400	---	---	---	01/07/1996	27/05/2002	4652	EMPORIKOS DESMOS SA (PR)	0.140	---	↘ 0.140	28/09/2009	---	---	---	---	---	---	---	---	---	---	---	2,134.04	0.140	0.140	3722
7,326,648	1.00	---	---	---	26/07/2006	24/07/2001	4921	FINTEXPOR SA (CR)	0.328	---	↘ 0.328	29/06/2012	---	---	---	---	---	---	---	---	---	---	---	2,403.14	0.328	0.328	3763
13,692,227	1.47	---	---	---	07/07/2006	08/10/1999	5049	HELLENIC FABRICS SA (CR)	0.117	---	↘ 0.117	31/03/2014	---	---	---	---	---	---	---	---	---	---	---	1,601.99	0.089	0.153	3763
24,619,524	0.500	---	---	---	10/10/1986	30/12/2002	4914	KERAMIA-ALLATINI (CR)	0.088	---	↘ 0.088	27/08/2012	---	---	---	---	---	---	---	---	---	---	---	2,166.52	0.088	0.088	8633
7,840,373	1.20	---	---	---	18/07/2002	05/03/2003	4765	KLONATEX SA (PR)	0.080	---	↘ 0.080	09/05/2011	---	---	---	---	---	---	---	---	---	---	---	1,453.75	0.080	0.080	3763
20,663,047	1.20	---	---	---	21/08/2000	05/03/2003	4764	KLONATEX SA (CR)	0.040	---	↘ 0.040	09/05/2011	---	---	---	---	---	---	---	---	---	---	---	1,453.75	0.040	0.040	3763
17,544,600	0.600	---	---	---	03/07/2000	01/08/2000	4868	KOYMBAS SYNERGY GROUP (CR)	0.132	---	↘ 0.132	29/03/2012	---	---	---	---	---	---	---	---	---	---	---	2,315.89	0.132	0.132	8775
15,015,000	1.60	---	---	---	01/07/2002	02/02/2000	4603	MAXIM C.M. PERTSINIDIS SA (CB)	0.100	---	↘ 0.100	30/11/2009	---	---	---	---	---	---	---	---	---	---	---	1,501.50	0.100	0.100	3763
66,937,526	0.700	---	---	---	13/08/2010	21/05/2003	5003	MICHANIKI SA (CR)	0.100	---	↘ 0.100	29/08/2013	---	---	---	---	---	---	---	---	---	---	---	9,186.78	0.100	0.100	2357
25,968,987	0.700	---	---	---	13/08/2010	21/05/2003	5004	MICHANIKI SA (PR)	0.096	---	↘ 0.096	29/08/2013	---	---	---	---	---	---	---	---	---	---	---	9,186.78	0.096	0.096	2357
13,555,100	1.00	---	---	---	08/07/2005		4576	MICROLAND COMPUTERS SA (CR)	0.640	---	↘ 0.640	14/07/2009	---	---	---	---	---	---	---	---	---	---	---	8,675.26	0.640	0.640	5379
23,463,874	0.800	---	---	---	23/05/2003	21/12/1999	4918	NEORION SA (CR)	0.125	---	↘ 0.125	28/08/2012	---	---	---	---	---	---	---	---	---	---	---	2,932.98	0.125	0.125	2753
42,501,273	0.300	---	---	---	26/06/2007	10/08/2009	4993	NUTRIART (CR)	0.049	---	↘ 0.049	21/06/2013	---	---	---	---	---	---	---	---	---	---	---	2,082.56	0.049	0.049	3577
20,210,127	1.53	---	---	---	27/06/1997	20/03/2000	5061	PARNASSOS ENTERP. (CR)	0.070	---	↘ 0.070	29/05/2014	---	---	---	---	---	---	---	---	---	---	---	1,414.71	0.065	0.172	8775
25,583,146	0.300	---	---	---	25/06/2001	03/12/2008	4723	PETZETAKIS SA (CR)	0.260	---	↘ 0.260	28/01/2011	---	---	---	---	---	---	---	---	---	---	---	6,651.62	0.260	0.260	1357
9,550,386	0.500	---	---	---	01/07/1997	12/06/2008	4626	PRAXITELIO SA (CR)	0.390	---	↘ 0.390	11/03/2010	---	---	---	---	---	---	---	---	---	---	---	4,430.09	0.390	0.390	4533
1,306,368	0.500	---	---	---	01/07/1997	12/06/2008	4627	PRAXITELIO SA (PR)	0.540	---	↘ 0.540	15/12/2009	---	---	---	---	---	---	---	---	---	---	---	4,430.09	0.540	0.540	4533
62,683,822	0.300	---	---	---	27/05/2008	09/01/2006	4830	PROTON BANK S.A. (CR)	0.180	---	↘ 0.180	07/10/2011	---	---	---	---	---	---	---	---	---	---	---	11,283.09	0.180	0.180	8355
51,334,286	0.320	---	---	---	03/07/2000	18/12/2007	4548	SAOS (CR)	0.780	---	↘ 0.780	27/03/2009	---	---	---	---	---	---	---	---	---	---	---	40,040.74	0.780	0.780	2773
26,408,040	0.300	---	---	---	01/07/1997	26/05/1999	4464	SHEET STEEL SA (CR)	0.120	---	↘ 0.120	28/11/2008	---	---	---	---	---	---	---	---	---	---	---	3,168.96	0.120	0.120	1757
60,221,300	0.400	---	---	---	01/07/2002	01/11/2010	5022	SHELMAN SA (CR)	0.080	---	↘ 0.080	19/11/2013	---	---	---	---	---	600@0.080	---	---	---	---	---	4,817.70	0.080	0.080	2353
26,262,660	0.900	---	---	---	01/07/2008	24/02/2011	4954	SPRIDER STORES (CR)	0.031	---	↘ 0.031	28/03/2013	---	---	---	---	---	---	---	---	---	---	---	814.14	0.031	0.031	5371
144,688,060	0.600	---	---	---	21/04/2008	10/03/2010	4982	T BANK (CR)	0.048	---	↘ 0.048	30/11/2011	---	---	---	---	---	---	---	---	---	---	---	6,945.03	0.048	0.048	8355
6,523,780	0.530	---	---	---	01/07/2002	06/03/2001	4971	TECHNICAL PUBLICATIONS SA (CR)	0.006	---	↘ 0.006	29/05/2013	---	---	---	---	---	---	---	---	---	---	---	39.14	0.006	0.006	5557
13,920,000	0.320	---	---	---	19/11/2001	01/08/2000	4726	TEXAPRET SA (CR)	0.080	---	↘ 0.080	23/02/2011	---	---	---	---	---	---	---	---	---	---	---	1,113.60	0.080	0.080	3763
510,840	1.00	---	---	---	15/07/2008	21/11/2013	5036	TROPEA HOLDING (CR)	2.00	---	↘ 0.020	# 30/03/2012	---	---	---	---	---	---	---	---	---	---	---	1,021.68	0.020	2.00	3722
284,465,964	3.70	---	---	---	20/06/2008	15/06/2009	4913	TT HELLENIC POSTBANK (CR)	0.168	---	↘ 0.168	30/08/2012	---	---	---	---	---	---	---	---	---	---	---	47,790.28	0.168	0.168	8355
89,616,200	0.300	---	---	---	21/08/2000	28/06/2007	4616	UNITED TEXTILES (CR)	0.050	---	↘ 0.050	25/02/2010	---	---	---	---	---	---	---	---	---	---	---	4,480.81	0.050	0.050	3763
71,683,906	0.400	---	---	---	15/06/2005	05/02/2008	4953	XATZIOANNOU (CR)	0.026	---	↘ 0.026	28/03/2013	---	---	---	---	---	---	---	---	---	---	---	1,863.78	0.026	0.026	3763

Shares' Notes

Code	Note text
()	- Adjusted dividends.
*	- Last adjusted closing price.
[1]	- Net dividends.
[2]	- The "Date of Last Coupon" for New listings refers to the date company's stocks started to trade in Athex
[3]	- The Company Market Value is referred to the number of outstanding shares
[4]	- Sectors codification can be found in Appendix A
[5]	- The Market Value refers to the total number of shares listed (including their several classes) in the exchange by the company.
[6]	- P/E greater than 100
[7]	- Last view of the Order Book before the end of the trading session
4446	- Transfer to the "Under Supervision" Category as of 20/10/2008.
4447	- Transfer to the "Under Supervision" Category as of 21/10/2008.
4464	- Suspension of trading as of 1/12/2008.
4548	- Suspension of trading as of 1/4/2009.
4554	- Transfer to the "Under Supervision" Category as of 6/4/2009.
4576	- Suspension of trading as of 14/7/2009.
4603	- Suspension of trading as of 1/12/2009.
4616	- Suspension of trading as of 25/2/2010.
4626	- Suspension of trading as of 1/4/2010.
4627	- Suspension of trading as of 1/4/2010.
4628	- Suspension of trading as of 1/4/2010.
4629	- Transfer to the Under Supervision Category as of 12/4/2010.
4651	- Suspension of trading as of 1/6/2010.
4652	- Suspension of trading as of 1/6/2010.
4690	- Transfer to Surveillance category as of 4/4/2006.
4702	- Suspension of trading as of 1/12/2010.
4723	- Suspension of trading as of 31/1/2011.
4726	- Suspension of trading as of 1/3/2011.
4750	- Transfer to the "Under Surveillance Category" from 8/4/2011.
4764	- Suspension of trading as of 20/5/2011.
4765	- Suspension of trading as of 20/5/2011.
4795	- The final gross (pre-tax) dividend is € 0.30 per share and subject to withholding tax on the full dividend amount, i.e. 0,45 per share, for those shareholders liable to withholding tax, in accordance with the applicable tax law provisions.
4808	- Suspension of trading as of 6/9/2011.
4814	- Transfer to the Low Dispersion Category as of 30/5/2011.
4815	- Transfer to the Low Dispersion Category as of 30/5/2011.
4816	- Transfer to the Low Dispersion Category as of 30/5/2011.
4817	- Transfer to the Low Dispersion Category as of 30/5/2011.
4820	- Transfer to the Low Dispersion category as of 18/4/2008.
4822	- Transfer to the Low Dispersion category as of 30/5/2011.
4823	- Transfer to the Low Dispersion category as of 4/4/2006.
4827	- Transfer to the Low Dispersion category as of 5/5/2010.
4830	- Suspension of trading as of 10/10/2011.
4833	- Transfer to Surveillance category from 6/5/2010.
4844	- Transfer to the Surveillance category from 8/4/2011.
4847	- Transfer to the Surveillance Category as of 3/7/2009.
4860	- Suspension of trading as of 30/3/2012.
4865	- Suspension of trading as of 2/4/2012.
4868	- Suspension of trading as of 2/4/2012.
4879	- Transfer to the Surveillance Category as of 10/4/2012.
4881	- Transfer to the Surveillance Category as of 10/4/2012.
4882	- Transfer to the Surveillance Category as of 10/4/2012.
4884	- Transfer to the Surveillance Category as of 10/4/2012.

Shares' Notes

Code	Note text
4885	- Transfer to the Surveillance Category as of 10/4/2012.
4886	- Transfer to the Surveillance Category as of 10/4/2012.
4887	- Transfer to the Surveillance Category as of 10/4/2012.
4888	- Transfer to the Surveillance Category as of 10/4/2012.
4911	- Lift of suspension from 30/7/2012.
4912	- Transfer to the Surveillance Category as of 31/7/2012.
4913	- Suspension of trading as of 30/8/2012.
4914	- Suspension of trading as of 31/8/2012.
4918	- Suspension of trading as of 31/8/2012.
4920	- Suspension of trading as of 31/8/2012.
4921	- Suspension of trading as of 31/8/2012.
4929	- Suspension of trading as of 1/10/2012.
4937	- Transfer to the UNDER DELETION category as of 30/11/2012.
4938	- Transfer to the UNDER DELETION category as of 30/11/2012.
4939	- Suspension of trading as of 30/11/2012.
4951	- Suspension of trading as of 19/3/2013.
4953	- Suspension of trading as of 2/4/2013.
4954	- Suspension of trading as of 2/4/2013.
4955	- Transfer to the Surveillance Category as from 5/4/2013.
4956	- Transfer to the Surveillance Category as from 5/4/2013.
4957	- Transfer to the Surveillance Category as from 5/4/2013.
4958	- Transfer to the Surveillance Category as from 5/4/2013.
4959	- Transfer to the Surveillance Category as from 5/4/2013.
4960	- Transfer to the Surveillance Category as from 5/4/2013.
4961	- Transfer to the Surveillance Category as from 5/4/2013.
4971	- Suspension of trading as of 3/6/2013.
4977	- Transfer to the "Under Surveillance Category" from 11/6/2013.
4978	- Transfer to the Under Supervision Category as of 11/6/2013.
4982	- Suspension of trading as of 1/12/2011.
4983	- Transfer to the Surveillance Category as of 5/4/2013.
4985	- Transfer to the "Under Surveillance Category" from 8/4/2011.
4986	- Transfer to the Low Dispersion category as of 30/5/2011.
4993	- Suspension of trading as of 21/6/2013 (15:18).
4997	- Transfer to the Under Supervision Category as of 21/12/2009. - The 6,870,053 new (CB) shares, resulting from the recent share capital increase through a rights issue, are not yet admitted to trading on the ATHEX.
5002	- Suspension of trading as of 30/08/2013.
5003	- Suspension of trading as of 30/08/2013.
5004	- Suspension of trading as of 30/08/2013.
5007	- Transfer to the Surveillance category, as of 11/10/2013.
5008	- Transfer to the Surveillance Category from 8/4/2011.
5022	- Suspension of trading as of 2/12/2013.
5023	- Suspension of trading as of 2/12/2013.
5031	- The 612,300 new (CR) shares, resulting from the recent share capital increase through a rights issue, are not yet admitted to trading on the ATHEX.
5033	- Transfer to the Surveillance Category as of 25/11/2011. The 97,144,575new (CR) shares, resulting from the recent share capital increase through a rights issue, are not yet admitted to trading on the ATHEX.
5036	- The company's share is under suspension of trading as of 2/4/2012. During suspension, the company proceeded and concluded a share reverse split, according to which - after the conclusion of the corporate action - the total number of the company's shares, as well as, the last closing price of 30/03/2012 were adjusted.
5046	- Transfer to the Low Dispersion category as of 8/4/2011.
5047	- Suspension of trading as of 27/3/2014.
5049	- Under suspension of trading as of 1/4/2014.
5053	- Transfer to the UNDER DELETION category as of 10/4/2014.
5054	- Transfer to the Surveillance Category as of 10/4/2014.
5055	- Transfer to the Surveillance Category as of 10/4/2014.
5056	- Transfer to the Under Supervision Category as of 14/4/2014.

Shares' Notes

Code	Note text
5057	- Transfer to the Surveillance Category as of 29/12/2011.
5058	- Transfer to the Surveillance Category as of 29/12/2011.
5059	- Transfer to the Low Dispersion category as of 2/6/2014.
5061	- Suspension of trading as of 2/6/2014.
5062	- Transfer to the UNDER DELETION category as of 4/6/2014.
5067	- Transfer to the Low Dispersion Category as of 1/9/2014.
5069	- Suspension of trading as of 1/10/2014.
5072	- Share capital increase in progress through a rights issue. Rights' trading period on ATHEX:16/10/2014 - 24/10/2014, pre-emption rights' subscription period: 16/10/2014 - 30/10/2014

Securities Blocks Details

Securities	Block Volume	Price	Block Trade Value	Time of approval	Note
OTE (CR)	100,000	9.98	998,000.00	10:33:31	20
ALPHA BANK (CR)	1,000,000	0.610	610,000.00	10:55:28	20
NATIONAL BANK (CR)	250,000	2.21	552,500.00	12:04:57	20
OTE (CR)	100,000	10.00	1,000,000.00	12:42:49	20
TITAN CEMENT (CR)	126,000	19.94	2,511,810.00	14:15:07	20

Blocks Notes

2 - SPOT 1 or SPOT 2 Packet	11 - Total Assets > 500 bil
3 - Block with Short Selling	12 - Sell Offer through Athex
4 - Buy to Close Block	13 - Forced Sale of NMOE
6 - Simultaneous Constitution	14 - Restoration Packet
7 - Repurchase Agreement	15 - Market Maker Packet
8 - Dispersion's Achievement (Not Listed)	16 - Short Selling
9 - Dispersion's Achievement (Listed)	18 - SPOT 1 Packet
10 - Share Capital Majority of Greek State (> 50 bil)	20 - Method 6-1 Packet

Shares Rights Details

Occured date	Exercise from	Exercise until	Trading until	Rights	Price min	Price max	Closing price	Last Bid	Last Ask	Volume	Trades	Transactions Value
13/10/2014	16/10/2014	30/10/2014	24/10/2014	ILYDA S.A. (CR)	0.001	0.001	0.001	---	268842@0.001	20,000	3	20.00

Stock Borrowing

Securities	Stock Borrowing through Helex (volume)	Stock Borrowing through OTC (volume) [1]	Totals [2]
AEGEAN AIRLINES (CR)	1,000	---	1,000
ALPHA BANK (CR)	2,968,700	105,717,774	108,686,474
ALPHA BANK (W)	---	36,300	36,300
ATE (CR)	---	69,000	69,000
ATTICA BANK S.A. (CR)	72,800	---	72,800
BANK OF CYPRUS (CR)	---	102,899	102,899
CC HBC AG (CR)	131,500	73,131	204,631
ELLAKTOR (CR)	20,800	---	20,800
EUROBANK ERGASIAS (CR)	2,320,300	65,140,800	67,461,100
EYDAP S.A. (CR)	40,000	---	40,000
FOLLI FOLLIE (CR)	93,800	726,319	820,119
FOURLIS (CR)	---	3,850	3,850
FRIGOGLASS SA (CR)	4,000	---	4,000
GEK TERNA (CR)	51,200	---	51,200
GRIVALIA PROPERTIES (CR)	31,800	49,543	81,343
HELLENIC EXCHANGES-A.S.E. (CR)	8,100	300	8,400
HELLENIC PETROLEUM (CR)	74,100	195,502	269,602
INTRALOT (CR)	72,200	40,193	112,393
JUMBO SA (CR)	68,900	637,849	706,749
LAMDA DEVELOPMENT SA (CR)	---	10,377	10,377
MARFIN INVESTMENT GROUP (CR)	84,900	728,474	813,374
METKA (CR)	8,500	---	8,500
MOTOR OIL (CR)	56,800	64,000	120,800
MYTILINEOS HOLDINGS (CR)	16,100	---	16,100
NATIONAL BANK (CR)	401,000	9,877,847	10,278,847
OPAP (CR)	228,900	19,247	248,147
OTE (CR)	185,300	610,707	796,007
P.P.A. S.A. (CR)	1,000	---	1,000
PIRAEUS BANK (CR)	833,800	32,318,613	33,152,413
PPC (CR)	183,100	2,024,804	2,207,904
SIDENOR (CR)	5,000	---	5,000
TERNA ENERGY (CR)	4,400	26,126	30,526
TITAN CEMENT (CR)	97,200	1,640	98,840
YALCO - CONSTANTINOUS SA (CB)	---	8,000	8,000

Stock Borrowing Notes

[1] - The information concerning OTC Stock Borrowing Transactions is based on the statements of the Dematerialised Securities System (DSS) operators involved and refers to volumes that have been cleared and registered up until the previous working day.

Shares Forced Sales

Securities	Transaction s Volume	Number of Trades	Transactions Value	Note
No Forced Transactions.				

Forced Sales Notes

- 1 - Normal Forced Sale.
- 2 - Forced Sales of Fixed Registered Shares.
- 3 - Forced Sales of Remaining Stock Fractions.

Forced Sales Registered Shares

Securities	Start Date	End Date	Initial Volume	Remaining Volume	Date	Avg price (day)	Avg price (period)	Number of Trades	Transactions Volume	Transactions Value
------------	------------	----------	-------------------	---------------------	------	--------------------	-----------------------	---------------------	------------------------	-----------------------

No Fixed Registered Shares Forced Sales.

Forced Sales Notes

According to Decision 1/380/04.05.2008 of the Hellenic Republic Capital Market Commission, the certificated registered shares that have not been deposited to the issuer for dematerialisation, will be auctioned in the Athens Exchange by the supervising issuer. Forced sales procedure is held according to Article 99A of the Athens Exchange Rulebook. The average price of the period is calculated by dividing the Total transactions value by the Total volume and includes all the transactions made until the current date.

Exchange Traded Funds (ETFs) Characteristics

	Transactions Date (T)	Creation / Redemption	Units (T-1)	New Units (T-1)	Redemptio n Units (T-	Units (T) [1]	Fund Assets [2]	Net Unit Price	Dividen d per	Dividend Date
NBGAM ETF ΓΔ Χ.Α.	22/10/2014	25,000	294,878	---	---	294,878	3,251,135.00	11.0254	---	27/10/2011
ALPHA ETF FTSE Athex Large Cap	22/10/2014	50,000	5,848,618	---	---	5,848,618	19,021,600.00	3.2523	0.05	01/07/2013
NBGAM ETF GREECE & TURKEY 30	22/10/2014	25,000	388,550	---	---	388,550	3,100,199.00	7.9789	---	27/10/2011

ETFs Notes

[1] - Units (T) = Units (T-1) + New Units (T-1) - Redemption Units (T-1)

[2] - The Creation / Redemption Units of T-1 are included.

Corporate Bonds

Num Listed Bonds	Nominal price	Issue price	Today's Rate	Exp. Date	Duration (years)	Note	Coupon attached		Trading	Corporate Bonds	Price min	Price max	Closing price	Previous closing price/date		Volume	Transactions Value	Last order		Date	ear min	Year max
							Common	Preferred										Price	Buy / Sell			
4,122,910	4.77	4.77	5.00	19/03/2015	5	---	19	---	1	MARFIN INVESTMENT GROUP S.A. (Conver to CR shar)	---	---	---	40.0000	16/10/2014	---	---	40.0000	B	22/10/2014	4.7761	94.8000
1,794,284	12.49	9.77	5.08	12/07/2015	8	---	---	---	1	NIREUS S.A. (Convertible to CR shares)	---	---	---	12.0000	29/01/2014	---	---	10.0000	B	06/10/2014	12.0000	12.0000
212,801,311	1.00	1.00	6.30	29/07/2020	7	---	5	---	1	MARFIN INVESTMENT GROUP S.A. SERIES B (BOND)	---	---	---	0.8500	23/08/2013	---	---	1.0000	B	22/10/2014	0.8500	0.8500
163,991,598	1.00	1.00	7.00	29/07/2019	6	---	5	---	1	MARFIN INVESTMENT GROUP S.A. SERIES A (BOND)	---	---	---	1.0000	23/08/2013	---	---	1.0000	B	22/10/2014	1.0000	1.0000

Corporate Bonds Notes

Transactions Volume = (Pieces) * (Nominal Price). Transactions Value = (Pieces) * (Nominal Price) * (price %) + (Accrued interest).
The price of a Bond is stated as a percentage (%) of Bond's Nominal Price.
Nominal Price in Euros (€), except if it is noted differently.

Government Bonds

Number Listed Bonds	Nominal price	Today's Rate	Accrued Interest Calc	Exp. Date [1]	Duration (years)	Note	Coupons Date	Curr. coupon value	Trading Unit	Government Bonds	Price min	Price max	Closing price	Previous closing price/date	Volume	Transactions Value	Price	Last order Buy / Sell	Date
2,658,781,973	1.00	4.30	Actual/Actual	24/02/2023	11	---	24/02	4.30	1	GGB-FXD-240223-11Y-2.000-1.00	---	---	---	---	---	---	---	---	---
2,658,781,973	1.00	4.30	Actual/Actual	24/02/2024	12	---	24/02	4.30	1	GGB-FXD-240224-12Y-2.000-1.00	---	---	---	---	---	---	---	---	---
2,658,781,973	1.00	4.30	Actual/Actual	24/02/2025	13	---	24/02	4.30	1	GGB-FXD-240225-13Y-2.000-1.00	---	---	---	---	---	---	---	---	---
2,658,781,973	1.00	4.30	Actual/Actual	24/02/2026	14	---	24/02	4.30	1	GGB-FXD-240226-14Y-2.000-1.00	---	---	---	---	---	---	---	---	---
2,658,781,973	1.00	4.30	Actual/Actual	24/02/2027	15	---	24/02	4.30	1	GGB-FXD-240227-15Y-2.000-1.00	---	---	---	---	---	---	---	---	---
2,836,034,104	1.00	4.30	Actual/Actual	24/02/2028	16	---	24/02	4.30	1	GGB-FXD-240228-16Y-2.000-1.00	---	---	---	---	---	---	---	---	---
2,836,034,104	1.00	4.30	Actual/Actual	24/02/2029	17	---	24/02	4.30	1	GGB-FXD-240229-17Y-2.000-1.00	---	---	---	---	---	---	---	---	---
2,836,034,104	1.00	4.30	Actual/Actual	24/02/2030	18	---	24/02	4.30	1	GGB-FXD-240230-18Y-2.000-1.00	---	---	---	---	---	---	---	---	---
2,836,034,104	1.00	4.30	Actual/Actual	24/02/2031	19	---	24/02	4.30	1	GGB-FXD-240231-19Y-2.000-1.00	---	---	---	---	---	---	---	---	---
2,836,034,104	1.00	4.30	Actual/Actual	24/02/2032	20	---	24/02	4.30	1	GGB-FXD-240232-20Y-2.000-1.00	---	---	---	---	---	---	---	---	---
2,836,034,104	1.00	4.30	Actual/Actual	24/02/2033	21	---	24/02	4.30	1	GGB-FXD-240233-21Y-2.000-1.00	---	---	---	---	---	---	---	---	---
2,836,034,104	1.00	4.30	Actual/Actual	24/02/2034	22	---	24/02	4.30	1	GGB-FXD-240234-22Y-2.000-1.00	---	---	---	---	---	---	---	---	---
2,836,034,104	1.00	4.30	Actual/Actual	24/02/2035	23	---	24/02	4.30	1	GGB-FXD-240235-23Y-2.000-1.00	---	---	---	---	---	---	---	---	---
2,836,034,104	1.00	4.30	Actual/Actual	24/02/2036	24	---	24/02	4.30	1	GGB-FXD-240236-24Y-2.000-1.00	---	---	---	---	---	---	---	---	---
2,836,034,104	1.00	4.30	Actual/Actual	24/02/2037	25	---	24/02	4.30	1	GGB-FXD-240237-25Y-2.000-1.00	---	---	---	---	---	---	---	---	---
2,836,034,104	1.00	4.30	Actual/Actual	24/02/2038	26	---	24/02	4.30	1	GGB-FXD-240238-26Y-2.000-1.00	---	---	---	---	---	---	---	---	---
2,836,034,104	1.00	4.30	Actual/Actual	24/02/2039	27	---	24/02	4.30	1	GGB-FXD-240239-27Y-2.000-1.00	---	---	---	---	---	---	---	---	---
2,836,034,104	1.00	4.30	Actual/Actual	24/02/2040	28	---	24/02	4.30	1	GGB-FXD-240240-28Y-2.000-1.00	---	---	---	---	---	---	---	---	---
2,836,034,104	1.00	4.30	Actual/Actual	24/02/2041	29	---	24/02	4.30	1	GGB-FXD-240241-29Y-2.000-1.00	---	---	---	---	---	---	---	---	---
2,836,034,104	1.00	4.30	Actual/Actual	24/02/2042	30	---	24/02	4.30	1	GGB-FXD-240242-30Y-2.000-1.00	---	---	---	---	---	---	---	---	---
742,153	1,000.00	0.93	FLR Actual/360	10/08/2019	5	---	10/02 - 10/08	---	1	GGB-FLT-100819-05Y-0.934-1,000	---	---	---	---	---	---	---	---	---
4,030,827	1,000.00	4.75	Actual/Actual	17/04/2019	5	---	17/04	4.75	1	GGB-FXD-170419-05Y-4.750-1,000	---	---	---	---	---	---	---	---	---
2,089,066	1,000.00	3.38	Actual/Actual	17/07/2017	3	---	17/07	3.38	1	GGB-FXD-170717-03Y-3.375-1,000	---	---	---	---	---	---	---	---	---

Government Bonds Notes

Transactions Volume = (Pieces) * (Nominal Price). Transactions Value = (Pieces) * (Nominal Price) * (price %) + (Accrued interest).
The Value of current coupon for the issues with NV 0.01 euro refers to NV 100 euros
FLR: Floating Interest Rate.
[1] - The Expiration Date of the interest bearing period and the Date for coupon payment.

Bonds in Circulation	Currency / Min nominal traded Value	Coupons Payment Date	Current Coupon Value	Note	Coupon Attached	Trading Unit	Issue Date	Duration (years)	Today's Interest	A.I.C in days	Bonds	Last price of previous days	Last Outcry in Cash (euro) Price	Buy / Sell	Trades in Pieces	Life min	Life Max
Bonds of International Organizations																	
1,000,000	EUR / 1000	21/07	---	---	9	1	21/07/2006	10	5.0 FLR	360	EUROPEAN INVESTMENT BANK BOND	97.50	16/04/2007	---	---	---	---
Corporate Bonds in Foreign Currency and Euro																	
103,746	GBP / 10	01/12	0.25	---	55	1	01/12/1930	98	2.5	360	National Mortgage Bank	2.27	05/02/1996	2.27	S	05/02/1996	2.27
0	GBP / 10	01/12	0.25	---	57	1	01/12/1928	100	2.5	360	National Mortgage Bank	---	---	---	---	---	---

Government Bonds Notes

A.I.C: Accrued Interest Calculation base.
FLR: Floating Interest Rate.
The minimum tradeable Nominal Value for all Demeterialised Government Titles is 100 Euros.

State Banks Bonds (one year maturity)

Number Listed Bonds	Nominal value	Initial Rate	Current Rate	Annual Interest	Issue Date	Note	State Banks Bonds	Trading Unit	Yearly Renewals	Last Outcry in Cash (euro) Price	Buy / Sell	Volume
342,560	135.17	2.35	3.92	0.00	31/01/2005	---	H.I.D.B.	1	10	100.00	B	---
2,446	1,182.96	4.90	2.47	29.69	31/05/2008	---	H.I.D.B.	1	7	---	---	---

Bonds Notes

The annual renewal of H.I.D.B. Bonds is free of taxes (net rate).
For Bonds issue until 30/09/2014 the accrued interest is capitalized.

Athex & ATHEXClear Members List

Member Name			Stock Market			Derivatives Market			ATHEXClear Member		
Address	Phone	Fax	Market Member	Remote Member	Market Maker	Proprietary	Market Maker	Agent	General Clearing	Direct Clearing	Non Clearing
A. SARRIS SECURITIES S.A.			a								
6, DRAGATSANIOU STR. ATHINA	(210)-3367700	(210)-3312324									
AGRICULTURAL BANK OF GREECE S.A.							a			a	
, 23 PANEPISTIMIOU ATHINA	(210)-3298400	(210)-3298322									
ALPHA FINANCE INVESTMENT SERVICES S.A.			a		a		a			a	
5, MERLIN STR. ATHINA	(210)-3677400	(210)-3311193									
ALPHA BANK A.E.						a			a		
40, STADIOU STR ATHINA	(210)-3265546	(210)-3265811									
	(210)-3260000	(210)-3264116									
ARGUS STOCKBROKERS LTD			a	a							
12-14, KENNEDY AVE. S. 303 NICOSIA	(+35722)-22717000	(+35722)-22717070									
ATHENAIKI BROKERAGE FIRM S.A.			a								
33, STADIOU STR. ATHINA	(210)-3254764	(210)-3254767									
ATLANTIC SECURITIES LIMITED			a	a							
37, PRODROMOU STR. NICOSIA	(+35722)-445400	(+35722)-661914									
ATLAS SECURITIES S.A			a			a					a
14 - 16, VERVERNON STR.& 125 MICHALAKOPOULOU STR. ATHINA	(210)-3363300	(210)-3238925									
ATTICA BANK S.A.									a		
23, OMIROU STR. ATHINA	(210)-3669000	(210)-3669410									
54, AKADIMIAS STR. ATHINA	(210)-3390757	(210)-3646090									
AXIA VENTURES GROUP LTD			a	a							
10, G. KRANIDIOTI NICOSIA	+357 22 742000	+357 22 742001									
AXON SECURITIES S.A.			a			a					a
48, STADIOU ATHINA	(210)-3363800	(210)-3243903									
BANK OF CYPRUS PUBLIC COMPANY LTD									a		
170, ALEXANDRAS AVE ATHINA	(210)-6477708	(210)-6477709									
, 51,STASINOY (AG. PARASKEVI, STROVOLOS) NICOSIA	(0035722)-121883	(0035722)-336258									
BETA SECURITIES S.A.			a		a	a	a			a	
, BRAILA & 29 ALEXANDRAS AVE ATHINA	(210)-6478900	(210)-6410139									
BNP PARIBAS SECURITIES SERVICES									a		
94, VAS. SOFIAS AVE ATHINA	(210)-7468500	(210)-7468579									
CAPITAL SECURITIES S.A.			a			a					a
58, MITROPOLEOS STR. ATHINA	(210)-3369700	(210)-3369820									
CFS SECURITIES & INVESTMENT SERVICES S.A.			a		a			a		a	
3, STADIOU STR. ATHINA	(210)-3360800	(210)-3311854									
CITIGROUP GLOBAL MARKET LTD			a	a							
, CITIGROUP CENTRE, CANADA SQUARE, CANARY WHART LONDON	002079864000	002079862266									
CO-OPERATIVE CENTRAL BANK LTD			a	a							
8, GRIGORI AFXENTIOU STR. NICOSIA	(+35722)-743300	(+35722)-672083									
CREDIT AGRICOLE CHEUVREUX S.A.				a							
, 9 QUAI PAUL DOUMER PARIS	33 (0) 1 41 89 70 00										
CREDIT SUISSE SECURITIES (EUROPE) LIMITED			a	a							
, ONE CABOT SQUARE LONDON	+44 20 7888 8888	+44 20 7888 1600									
CYCLOS SECURITIES S.A.			a		a	a				a	
39, PANEPISTIMIOU STR. ATHINA	(210)-3364300	(210)-3239122									
D.A. TSEKOURAS SEC. S.A.			a								
, PSEMAZOGLOY 3	(210)-3214406	(210)-3211997									
DEUTSCHE BANK A.G.			a	a							
70, THEODOR-HEUSS-ALLEE FRANKFURT	0049 69 910 00	0049 69 910 34 225									
DYNAMIC SECURITIES			a					a		a	
6 - 10, CHAR. TRIKOUPY STR. ATHINA	(210)-3677700	(210)-3677777									
EL. PETROPOULAKIS SECURITIES S.A.			a					a			a
9, ARISTIDOU STR. ATHINA	(210)-3213928	(210)-3216810									
EUROBANK EQUITIES S.A.			a		a		a			a	
10, FILELLINON STR. ATHINA	(210)-3720000	(210)-3720001									
EUROBANK ERGASIAS S.A.									a		
8, OTHONOS STR. ATHINA	(210)-3337000	(210)-3233866									
	(210)-3337969	(210)-3245916									
EUROCORP SECURITIES S.A.			a			a				a	
14, FILIKIS ETAIRIAS SQ. ATHINA	(210)-7263500	(210)-7263666									
EUOTRUST BROKERAGE S.A.			a								
13-15, SOPHOCLEOUS STR. ATHINA	(210)-3363100	(210)-3238334									

Athex & ATHEXClear Members List

Member Name			Stock Market			Derivatives Market			ATHEXClear Member		
Address	Phone	Fax	Market Member	Remote Member	Market Maker	Proprietary	Market Maker	Agent	General Clearing	Direct Clearing	Non Clearing
EUROXX SECURITIES S.A.			a			a				a	
7, PALAIOLOGOU STR. CHALANDRI	(210)-6879400	(210)-6879401									
G.A. PERVANAS SECURITIES & INVESTMENT SERVICES CO S.A.			a			a					a
7 - 9, SOPHOCLEOUS STR. ATHINA	(210)-3251875	(210)-3210291									
GENERAL BANK OF GREECE S.A.									a		
, 109-111, MESOGEION AVE. ATHINA	(210)-3288737	(210)-3288211									
87-89, ERMOY ATHINA	(210)-6976072	(210)-6976079									
GLOBAL CAPITAL SECURITIES AND FINANCIAL SERVICES LTD			a	a							
5, LEMESOU AVE. LEMESOS CYPRUS	(+35722)-710710	(+35722)-339332									
GUARDIAN TRUST SECURITIES S.A			a		a	a					a
15, FILELLINON STR. ATHINA	(210)-3220402	(210)-3220498									
HELLENIC AMERICAN SEC. S.A.			a			a					
6, EVRIPIDOU STR. ATHINA	(210)-3311100	(210)-3215968									
HELLENIC BANK (INVESTMENTS) LTD			a	a							
31, KYRIAKOY MATSI AVE. NICOSIA	(+35722)-500100	(+35722)-500110									
HSBC BANK PLC									a		
109-111, MESOGION AVE ATHINA	(210)-6961507	(210)-6929310									
INDEX SECURITIES S.A.			a								
6, DRAGATSANIOU STR. ATHINA	(210)-3213920	(210)-3213216									
INTERSEC S.A.						a				a	
80-88, SYGROU AVE ATHINA	(210)-9203000	(210)-9203052									
INVESTMENT BANK OF GREECE S.A.			a		a		a		a		
24B, KIFISSIAS AVE MAROUSI	(210)-8171800	(210)-8171889									
32, AIGEIALIAS MAROUSI	(210) 8173000	(210) 8173101									
J. CHR. MAVRIKIS SECURITIES S.A.			a								
5, SOPHOCLEOUS STR. ATHINA	(210)-3213949	(210)-3217767									
KAPPA SECURITIES S.A.			a			a					a
15, VALAORITOU STR. ATHINA	(210)-3610371	(210)-3641002									
KYPROU SECURITIES S.A.					a	a					a
26, HALKIDONOS & FIDIPPIDOY STR. ATHINA	(210)-8701000	(210)-8701049									
LAIKI FINANCIAL SERVICES LTD			a	a							
26, CLR HOUSE, VIRONOS AVE. NICOSIA	(+35722)-898600	(+35722)-680953									
LEON DEPOLAS SECURITIES S.A.			a					a			a
1, CHR. LADA STR. ATHINA	(210)-3213286	(210)-3211618									
MAGNA TRUST SECURITIES S.A			a					a			a
9, FIDIOU STR. ATHINA	(210)-3327503	(210)-3327599									
MEGA EQUITY SECURITIES & FINANCIAL SERVICES LTD			a	a							
42-44, GRIBA DIGENI AV. NICOSIA	(+35722)-711711	(+35722)-711811									
MERIT SECURITIES S.A			a		a	a				a	
38, VAS. KONSTANTINOY STR. ATHINA	(210)-3671800	(210)-3671830									
MERRILL LYNCH			a	a							
2, KING EDWARD STREET LONDON	(+4420)-79952000	(+4420)-79954525									
METOCHIKI SECURITIES S.A.			a								
3, G. GENNADIOY STR. ATHINA	(210)-3306700	(210)-3306709									
MIDAS BROKERAGE S.A.			a								
5, SOPHOCLEOUS STR. ATHINA	(210)-3253203	(210)-3253205									
N. CHRYSSOCHOIDIS STOCK BROKERAGE I.S.S.A.			a					a		a	
7 - 9, SOPHOCLEOUS STR. ATHINA	(210)-3213913	(210)-3216115									
N. SARROS SECURITIES S.A.						a					
7-9, SOPHOCLEOUS STR. ATHINA	(210)-3705600	(210)-3219992									
NATIONAL BANK OF GREECE S.A.			a				a		a		
86, AIOLOU STR. ATHINA	(210)-3341000	(210)-3228187									
68, AKADIMIAS STR. ATHINA	(210)-3328817	(210)-3328678									
NBG SECURITIES S.A.			a		a		a				a
68, AKADIMIAS STR. ATHINA	(210)-3328500	(210)-3328565									
NEW PROTON BANK S.A.						a				a	
20, ESLIN & AMALIADOS ATHINA	210 6970000	210 6970111									
NUNTIUS SECURITIES S.A			a					a			a
6, DRAGATSANIOU STR. ATHINA	(210)-3350599	(210)-3254846									
PANTELAKIS SEC. S.A.			a			a					a
109-111, MESOGION AVE. ATHINA	(210)-6965000	(210)-6929550									
PEGASUS BROKERAGE FIRM S.A			a			a					
17, VALAORITOU STR. ATHINA	(210)-3670700	(210)-3670760									

Athex & ATHEXClear Members List

Member Name			Stock Market			Derivatives Market			ATHEXClear Member		
Address	Phone	Fax	Market Member	Remote Member	Market Maker	Proprietary	Market Maker	Agent	General Clearing	Direct Clearing	Non Clearing
PIRAEUS BANK S.A.			a					a	a		
4, AMERIKIS STR ATHINA	(210)-3335918	(210)-3254207									
4, AMERIKIS STR. ATHINA	(210)-3335000	(210)-3335079									
PIRAEUS SECURITIES S.A.			a				a			a	
10, STADIOU STR. ATHINA	(210)-3354100	(210)-3233814									
PRELIUM SECURITIES & INVESTMENT SERVICES S.A.			a			a					a
, KIFISSIAS AVE & 1 DAVAKI STR ATHINA	(210)-3677000	(210)-6920403									
PROCHOICE SECURITIES LTD			a	a							
57, SPYROU KYPRIANOY NICOSIA	+357-24-661192	+357-24-662464									
SHARELINK SECURITIES & FINANCIAL SERVICES LTD			a	a							
6, ELLINAS HOUSE, THEOTOKI STR. NICOSIA	(+35722)-554200	(+35722)-750852									
SOCIETE GENERALE S.A.			a	a		a					
240-242, KIFISIAS AVE ATHINA	(210)-6790161	(210)-6728828									
17, COURS VALMY PUTEAUX - LA DEFENSE PARIS	(+33) 142134754	(+33) 142135697									
SOLIDUS SECURITIES S.A.			a			a				a	
64, LOUIZIS RIANKOUR STR. ATHINA	(210)-6925500	(210)-6985421									
ST. EM. LAVRENTAKIS SECURITIES S.A.			a			a					a
7 - 9, SOPHOCLEOUS STR. ATHINA	(210)-3213336	(210)-3246572									
THE CYPRUS INVESTMENT AND SECURITIES CORPORATION LIMITED (CISCO)			a	a							
4, EVROU STR. (EUROLIFE HOUSE) NICOSIA	(+35722)-881800	(+35722)-881801									
UBS LIMITED			a	a							
1, FINSBURY AVENUE LONDON	(+4420)-79013333	(+4420)-79012345									
Z.G. PORTALAKIS INVESTMENT SERVICES S.A.			a								
8, PESMAZOGLOU STR. ATHINA	(210)-3214830	(210)-3212024									
KARAMANOF SECURITIES & INV. SERVICES S.A.			a					a		a	
2, SQ. ST THEODORON ATHINA	(210)-3212947	(210)-3217088									

List of Stocks under Market Making operations

Securities	Stock Category	
	Market Maker	Start Market Making End Market Making
CYPRUS POPULAR BANK (CR)		Suspension Status
PIRAEUS SECURITIES S.A.		02/02/2013 01/01/2400
VIOHALCO (CB)		Suspension Status
ALPHA FINANCE INVESTMENT SERVICES S.A.		11/02/2013 01/01/2400
EUROBANK EQUITIES S.A.		20/01/2013 01/01/2400
MERIT SECURITIES S.A		13/12/2012 01/01/2400
ALPHA BANK (CR)		Main Market
EUROBANK EQUITIES S.A.		24/10/2012 01/01/2400
HELLENIC AMERICAN SEC. S.A.		25/07/2014 01/01/2400
INVESTMENT BANK OF GREECE S.A.		08/01/2013 01/01/2400
MERIT SECURITIES S.A		03/09/2013 01/01/2400
NBG SECURITIES S.A.		15/01/2013 01/01/2400
PIRAEUS SECURITIES S.A.		28/05/2013 01/01/2400
ALUMIL (CR)		Main Market
BETA SECURITIES S.A.		18/07/2013 01/01/2400
ATTICA BANK S.A. (CR)		Main Market
BETA SECURITIES S.A.		02/06/2014 01/01/2400
EUROBANK EQUITIES S.A.		25/07/2014 01/01/2400
HELLENIC AMERICAN SEC. S.A.		25/07/2014 01/01/2400
BYTE COMPUTER SA (CR)		Main Market
MERIT SECURITIES S.A		04/08/2013 01/01/2400
CC HBC AG (CR)		Main Market
EUROBANK EQUITIES S.A.		23/10/2013 01/01/2400
NBG SECURITIES S.A.		29/04/2013 01/01/2400
ELLAKTOR (CR)		Main Market
EUROBANK EQUITIES S.A.		01/06/2013 01/01/2400
INVESTMENT BANK OF GREECE S.A.		02/01/2013 01/01/2400
NBG SECURITIES S.A.		25/06/2013 01/01/2400
ELTECH ANEMOS S.A. (CR)		Main Market
EUROBANK EQUITIES S.A.		22/07/2014 01/01/2400
ELTON SA (CR)		Main Market
BETA SECURITIES S.A.		03/09/2013 01/01/2400
EUROBANK ERGASIAS (CR)		Main Market
ALPHA FINANCE INVESTMENT SERVICES S.A.		08/01/2013 01/01/2400
EUROBANK EQUITIES S.A.		01/06/2013 01/01/2400
HELLENIC AMERICAN SEC. S.A.		25/07/2014 01/01/2400
INVESTMENT BANK OF GREECE S.A.		08/01/2013 01/01/2400
PIRAEUS SECURITIES S.A.		28/09/2013 01/01/2400
EUROCONSULTANTS S.A. (CR)		Main Market
EUROBANK EQUITIES S.A.		22/07/2014 01/01/2400
FOLLI FOLLIE (CR)		Main Market
NBG SECURITIES S.A.		17/02/2014 01/01/2400
GEK TERNA (CR)		Main Market
INVESTMENT BANK OF GREECE S.A.		02/01/2013 01/01/2400
GR. SARANTIS SA (CR)		Main Market
BETA SECURITIES S.A.		14/05/2013 01/01/2400
HELLENIC EXCHANGES-A.S.E. (CR)		Main Market
EUROBANK EQUITIES S.A.		01/06/2013 01/01/2400
HELLENIC AMERICAN SEC. S.A.		01/09/2014 01/01/2400
INVESTMENT BANK OF GREECE S.A.		02/01/2013 01/01/2400
NBG SECURITIES S.A.		25/06/2013 01/01/2400
INTRACOM CONSTR. (CR)		Main Market
MERIT SECURITIES S.A		27/12/2012 01/01/2400
INTRALOT (CR)		Main Market
EUROBANK EQUITIES S.A.		01/06/2013 01/01/2400
INVESTMENT BANK OF GREECE S.A.		02/01/2013 01/01/2400
PIRAEUS SECURITIES S.A.		28/09/2013 01/01/2400
MARFIN INVESTMENT GROUP (CR)		Main Market
HELLENIC AMERICAN SEC. S.A.		25/07/2014 01/01/2400
PIRAEUS SECURITIES S.A.		02/02/2013 01/01/2400
MLS MULTIMEDIA SA (CR)		Main Market
BETA SECURITIES S.A.		18/07/2013 01/01/2400
MOTOR OIL (CR)		Main Market
EUROBANK EQUITIES S.A.		23/10/2012 01/01/2400
HELLENIC AMERICAN SEC. S.A.		01/09/2014 01/01/2400
NBG SECURITIES S.A.		17/02/2014 01/01/2400

List of Stocks under Market Making operations

Securities Market Maker	Stock Category	
	Start Market Making	End Market Making
MYTILINEOS HOLDINGS (CR)	Main Market	
HELLENIC AMERICAN SEC. S.A.	25/07/2014	01/01/2400
INVESTMENT BANK OF GREECE S.A.	02/01/2013	01/01/2400
NBG SECURITIES S.A.	25/06/2013	01/01/2400
NATIONAL BANK (CR)	Main Market	
ALPHA FINANCE INVESTMENT SERVICES S.A.	08/01/2013	01/01/2400
EUROBANK EQUITIES S.A.	24/10/2012	01/01/2400
HELLENIC AMERICAN SEC. S.A.	25/07/2014	01/01/2400
INVESTMENT BANK OF GREECE S.A.	08/01/2013	01/01/2400
MERIT SECURITIES S.A.	03/09/2013	01/01/2400
NBG SECURITIES S.A.	28/02/2013	01/01/2400
PIRAEUS SECURITIES S.A.	08/09/2013	01/01/2400
OPAP (CR)	Main Market	
ALPHA FINANCE INVESTMENT SERVICES S.A.	08/01/2013	01/01/2400
EUROBANK EQUITIES S.A.	24/10/2012	01/01/2400
HELLENIC AMERICAN SEC. S.A.	25/07/2014	01/01/2400
INVESTMENT BANK OF GREECE S.A.	08/01/2013	01/01/2400
NBG SECURITIES S.A.	15/01/2013	01/01/2400
OTE (CR)	Main Market	
ALPHA FINANCE INVESTMENT SERVICES S.A.	08/01/2013	01/01/2400
EUROBANK EQUITIES S.A.	24/10/2012	01/01/2400
HELLENIC AMERICAN SEC. S.A.	25/07/2014	01/01/2400
INVESTMENT BANK OF GREECE S.A.	08/01/2013	01/01/2400
NBG SECURITIES S.A.	01/12/2012	01/01/2400
PIRAEUS SECURITIES S.A.	08/09/2013	01/01/2400
PAPOUTSANIS (CR)	Main Market	
BETA SECURITIES S.A.	25/11/2013	01/01/2400
PETROPOULOS PETROS (CR)	Main Market	
BETA SECURITIES S.A.	28/05/2013	01/01/2400
PIRAEUS BANK (CR)	Main Market	
EUROBANK EQUITIES S.A.	23/10/2012	01/01/2400
HELLENIC AMERICAN SEC. S.A.	25/07/2014	01/01/2400
INVESTMENT BANK OF GREECE S.A.	08/01/2013	01/01/2400
MERIT SECURITIES S.A.	16/09/2013	01/01/2400
NBG SECURITIES S.A.	02/06/2013	01/01/2400
PIRAEUS SECURITIES S.A.	16/02/2013	01/01/2400
PLAISIO COMPUTERS SA (CR)	Main Market	
BETA SECURITIES S.A.	05/05/2014	01/01/2400
PPC (CR)	Main Market	
ALPHA FINANCE INVESTMENT SERVICES S.A.	08/01/2013	01/01/2400
EUROBANK EQUITIES S.A.	23/10/2012	01/01/2400
HELLENIC AMERICAN SEC. S.A.	01/09/2014	01/01/2400
INVESTMENT BANK OF GREECE S.A.	08/01/2013	01/01/2400
NBG SECURITIES S.A.	26/03/2013	01/01/2400
PIRAEUS SECURITIES S.A.	28/09/2013	01/01/2400
PROFILE SA (CR)	Main Market	
EUROBANK EQUITIES S.A.	23/06/2014	01/01/2400
REDS S.A. (CR)	Main Market	
EUROBANK EQUITIES S.A.	05/09/2014	01/01/2400
S.KANAKIS SA (CR)	Main Market	
BETA SECURITIES S.A.	01/10/2013	01/01/2400
TITAN CEMENT (CR)	Main Market	
EUROBANK EQUITIES S.A.	23/10/2012	01/01/2400
NBG SECURITIES S.A.	17/02/2014	01/01/2400
VIOHALCO SA/NV (CB)	Main Market	
ALPHA FINANCE INVESTMENT SERVICES S.A.	17/02/2014	01/01/2400
MERIT SECURITIES S.A.	17/03/2014	01/01/2400

Equity Investment Instruments Acknowledgements

Portfolio Investments Company Name	NAV per Share	Share Price	Premium/ Discount
AEOLIAN INVESTMENT FUND S.A.	1.37	0.84	-38.69%
ALPHA TRUST ANDROMEDA SA	24.01	20.01	-16.67%

Acknowledgements Notes

According to the Decision of the Capital Market Commission 4/278/12.08.2003 Portfolio Investment Companies are required to notify the Athens Exchange on the 10th, 20th and last working day of each month the Net Asset Value (NAV) of their shares as well as Premium or Discount in relation to their market value.

Underlying Asset				Derivatives Market																		
Price max	Price min	Closing price	change	Delivery Month	Open price	Price max	Price min	Last price	Closing price	Last Bid	Last Ask	Settlement price	change	Life high	Life low	Trades	Volume	change	Value	change	Open Interest	change
FTSE/Athex Large Cap				(Trade Unit: 1 Index Point x 5€, Cash Settlement)																		
327.48	321.16	324.42	-0.07%	November 2014	325.25	326.50	318.25	321.00	322.75	2@320.75	2@321.00	322.75	-0.08%	389.75	266.75	767	9,193	-41.50%	14,819,706.25	-40.74%	37,847	-1.41%
				December 2014	324.50	324.75	320.25	321.75	323.25	1@320.50	2@322.25	323.25	-0.31%	387.50	269.25	17	140	-77.38%	225,603.75	-76.98%	2,114	2.13%
				January 2015	---	---	---	---	323.25	1@318.50	1@327.00	323.25	-0.08%	305.50	305.50	---	---	---	---	---	1	0.00%
				March 2015	319.50	323.50	319.50	323.50	323.25	8@228.00	---	323.25	-0.92%	324.25	295.00	3	41	-31.67%	66,047.50	-32.01%	181	0.56%
				June 2015	---	---	---	---	---	---	---	---	---	---	---	---	---	---	---	---	---	---
				September 2015	---	---	---	---	---	---	---	---	---	---	---	---	---	---	---	---	---	---

Underlying Asset				Derivatives Market																		
Price max	Price min	Closing price	change	Delivery Month	Open price	Price max	Price min	Last price	Closing price	Last Bid	Last Ask	Settlement price	change	Life high	Life low	Trades	Volume	change	Value	change	Open Interest	change
ALPHA BANK (CR)				(Contract Size: 100 Securities, Physical Delivery)																		
0.620	0.588	0.602	-0.82%	December 2014	0.619	0.620	0.590	0.602	0.598	205@0.598	100@0.601	0.598	-1.81%	0.775	0.467	258	11,735	-0.20%	706,082.40	-1.17%	38,248	14.71%
				March 2015	---	---	---	---	---	---	100@0.621	---	---	---	---	---	---	---	---	---	---	---
				June 2015	---	---	---	---	---	---	---	---	---	---	---	---	---	---	---	---	---	---
				September 2015	---	---	---	---	---	---	---	---	---	---	---	---	---	---	---	---	---	---
CC HBC AG (CR)				(Contract Size: 100 Securities, Physical Delivery)																		
16.88	16.39	16.88	1.50%	December 2014	16.50	16.50	16.50	16.50	16.53	4@16.50	1@16.77	16.53	1.47%	17.90	15.40	1	3	-96.63%	4,950.00	-96.58%	908	-0.33%
				March 2015	---	---	---	---	---	---	---	---	---	---	---	---	---	---	---	---	---	---
				June 2015	---	---	---	---	---	---	---	---	---	---	---	---	---	---	---	---	---	---
				September 2015	---	---	---	---	---	---	---	---	---	---	---	---	---	---	---	---	---	---
CORINTH PIPEWORKS SA (CR)				(Contract Size: 100 Securities, Physical Delivery)																		
1.62	1.55	1.58	-1.25%	December 2014	1.60	1.61	1.56	1.61	1.57	3@1.56	25@1.61	1.57	-1.26%	1.61	1.26	4	155	29.17%	24,939.00	31.34%	1,057	-12.21%
				March 2015	---	---	---	---	---	---	---	---	---	---	---	---	---	---	---	---	---	---
				June 2015	---	---	---	---	---	---	---	---	---	---	---	---	---	---	---	---	---	---
				September 2015	---	---	---	---	---	---	---	---	---	---	---	---	---	---	---	---	---	---
ELLAKTOR (CR)				(Contract Size: 100 Securities, Physical Delivery)																		
2.78	2.65	2.78	3.35%	December 2014	2.74	2.78	2.67	2.76	2.82	8@2.70	3@2.78	2.82	3.30%	3.59	2.38	49	214	40.79%	58,158.00	46.24%	1,894	-4.78%
				March 2015	---	---	---	---	---	---	---	---	---	---	---	---	---	---	---	---	---	---
				June 2015	---	---	---	---	---	---	---	---	---	---	---	---	---	---	---	---	---	---
				September 2015	---	---	---	---	---	---	---	---	---	---	---	---	---	---	---	---	---	---
EUROBANK ERGASIAS (CR)				(Contract Size: 100 Securities, Physical Delivery)																		
0.297	0.282	0.283	-2.41%	December 2014	0.295	0.295	0.282	0.283	0.280	300@0.282	100@0.283	0.280	-2.44%	0.410	0.200	83	7,149	-39.14%	205,420.90	-38.35%	61,527	-5.19%
				March 2015	---	---	---	---	0.280	---	100@0.293	0.280	-2.44%	0.352	0.243	---	---	---	---	---	400	0.00%
				June 2015	---	---	---	---	---	---	---	---	---	---	---	---	---	---	---	---	---	---
				September 2015	---	---	---	---	---	---	---	---	---	---	---	---	---	---	---	---	---	---
EYDAP S.A. (CR)				(Contract Size: 100 Securities, Physical Delivery)																		
6.48	6.12	6.12	-3.77%	December 2014	6.41	6.49	6.29	6.30	6.01	18@6.15	3@6.47	6.01	-3.84%	9.05	5.70	13	60	-59.73%	38,415.00	-59.96%	863	0.82%
				March 2015	---	---	---	---	---	---	---	---	---	---	---	---	---	---	---	---	---	---
				June 2015	---	---	---	---	---	---	---	---	---	---	---	---	---	---	---	---	---	---
				September 2015	---	---	---	---	---	---	---	---	---	---	---	---	---	---	---	---	---	---
FOLLI FOLLIE (CR)				(Contract Size: 103 Securities, Physical Delivery)																		
28.27	26.93	27.00	-1.71%	December 2014	27.39	28.15	26.95	26.95	27.09	2@26.72	1@27.29	27.09	-1.99%	30.54	22.60	37	86	22.86%	242,079.87	22.45%	253	11.95%
				March 2015	---	---	---	---	---	---	---	---	---	---	---	---	---	---	---	---	---	---
				June 2015	---	---	---	---	---	---	---	---	---	---	---	---	---	---	---	---	---	---
				September 2015	---	---	---	---	---	---	---	---	---	---	---	---	---	---	---	---	---	---
FRIGOGLASS SA (CR)				(Contract Size: 100 Securities, Physical Delivery)																		
2.70	2.55	2.60	-2.26%	December 2014	2.65	2.66	2.57	2.66	2.55	2@2.54	2@2.65	2.55	-2.30%	3.20	2.17	7	39	69.57%	10,184.00	65.59%	727	-2.68%
				March 2015	---	---	---	---	---	---	---	---	---	---	---	---	---	---	---	---	---	---
				June 2015	---	---	---	---	---	---	---	---	---	---	---	---	---	---	---	---	---	---
				September 2015	---	---	---	---	---	---	---	---	---	---	---	---	---	---	---	---	---	---

Underlying Asset				Derivatives Market																		
Price max	Price min	Closing price	change	Delivery Month	Open price	Price max	Price min	Last price	Closing price	Last Bid	Last Ask	Settlement price	change	Life high	Life low	Trades	Volume	change	Value	change	Open Interest	change
GEK TERNA (CR)				(Contract Size: 100 Securities, Physical Delivery)																		
2.62	2.49	2.57	-0.77%	December 2014	2.57	2.61	2.51	2.57	2.55	5@2.54	20@2.60	2.55	-0.78%	4.01	2.11	69	439	-46.00%	112,649.00	-45.38%	7,876	-1.64%
				March 2015	2.50	2.68	2.50	2.68	2.68	5@2.57	30@2.67	2.68	4.28%	4.11	2.38	2	11	-98.91%	2,840.00	-98.88%	4,590	-0.02%
				June 2015	---	---	---	---	---	---	---	---	---	---	---	---	---	---	---	---	---	---
				September 2015	---	---	---	---	---	---	---	---	---	---	---	---	---	---	---	---	---	---
GRIVALIA PROPERTIES (CR)				(Contract Size: 100 Securities, Physical Delivery)																		
9.40	8.92	9.40	1.84%	December 2014	8.98	9.14	8.98	9.14	9.14	1@8.85	1@9.34	9.14	-0.11%	9.50	8.02	8	16	-78.08%	14,534.00	-77.45%	307	0.00%
				March 2015	---	---	---	---	---	---	---	---	---	---	---	---	---	---	---	---	---	---
				June 2015	---	---	---	---	---	---	---	---	---	---	---	---	---	---	---	---	---	---
				September 2015	---	---	---	---	---	---	---	---	---	---	---	---	---	---	---	---	---	---
HELLENIC EXCHANGES-A.S.E. (CR)				(Contract Size: 103 Securities, Physical Delivery)																		
6.04	5.84	5.96	1.71%	December 2014	5.85	6.03	5.85	6.03	6.01	2@5.96	1@6.04	6.01	2.56%	8.39	4.75	72	341	20.49%	208,061.03	23.18%	2,639	-8.05%
				March 2015	6.00	6.01	5.97	5.97	6.10	---	---	6.10	3.39%	7.01	5.35	4	30	200.00%	17,955.00	204.84%	10	-75.00%
				June 2015	---	---	---	---	5.95	---	---	5.95	2.59%	7.45	5.50	---	---	---	---	---	---	---
				September 2015	---	---	---	---	---	---	---	---	---	---	---	---	---	---	---	---	---	---
HELLENIC PETROLEUM (CR)				(Contract Size: 100 Securities, Physical Delivery)																		
4.89	4.70	4.71	-1.88%	December 2014	4.84	4.87	4.70	4.71	4.75	4@4.66	5@4.76	4.75	0.00%	6.29	3.99	77	311	-49.92%	148,882.00	-48.62%	7,090	-1.94%
				March 2015	---	---	---	---	4.73	---	---	4.73	0.00%	6.18	5.50	---	---	---	---	---	---	---
				June 2015	---	---	---	---	---	---	---	---	---	---	---	---	---	---	---	---	---	---
				September 2015	---	---	---	---	---	---	---	---	---	---	---	---	---	---	---	---	---	---
INTRALOT (CR)				(Contract Size: 100 Securities, Physical Delivery)																		
1.32	1.25	1.31	1.55%	December 2014	1.27	1.31	1.26	1.31	1.26	30@1.29	3@1.32	1.26	1.61%	1.82	1.09	5	8	-88.24%	1,024.00	-88.23%	1,255	-0.24%
				March 2015	---	---	---	---	---	---	---	---	---	---	---	---	---	---	---	---	---	---
				June 2015	---	---	---	---	---	---	---	---	---	---	---	---	---	---	---	---	---	---
				September 2015	---	---	---	---	---	---	---	---	---	---	---	---	---	---	---	---	---	---
JUMBO SA (CR)				(Contract Size: 100 Securities, Physical Delivery)																		
9.60	9.25	9.25	-4.05%	December 2014	9.66	9.66	9.30	9.30	8.99	16@9.26	10@9.48	8.99	-4.06%	11.84	7.87	47	217	-47.46%	205,957.00	-45.60%	668	-2.05%
				March 2015	---	---	---	---	---	---	---	---	---	---	---	---	---	---	---	---	---	---
				June 2015	---	---	---	---	---	---	---	---	---	---	---	---	---	---	---	---	---	---
				September 2015	---	---	---	---	---	---	---	---	---	---	---	---	---	---	---	---	---	---
MARFIN INVESTMENT GROUP (CR)				(Contract Size: 100 Securities, Physical Delivery)																		
0.253	0.241	0.243	-2.41%	December 2014	0.254	0.255	0.244	0.244	0.245	50@0.243	60@0.248	0.245	-0.81%	0.420	0.205	27	318	-67.58%	7,858.70	-67.75%	26,361	0.75%
				March 2015	---	---	---	---	---	---	---	---	---	---	---	---	---	---	---	---	---	---
				June 2015	---	---	---	---	---	---	---	---	---	---	---	---	---	---	---	---	---	---
				September 2015	---	---	---	---	---	---	---	---	---	---	---	---	---	---	---	---	---	---
METKA (CR)				(Contract Size: 100 Securities, Physical Delivery)																		
9.44	8.92	8.92	-4.09%	December 2014	9.40	9.41	8.97	8.97	8.95	3@8.95	5@9.20	8.95	-4.07%	11.68	8.18	30	115	2.68%	106,363.00	3.17%	752	1.35%
				March 2015	---	---	---	---	---	---	---	---	---	---	---	---	---	---	---	---	---	---
				June 2015	---	---	---	---	---	---	---	---	---	---	---	---	---	---	---	---	---	---
				September 2015	---	---	---	---	---	---	---	---	---	---	---	---	---	---	---	---	---	---

Underlying Asset				Derivatives Market																		
Price max	Price min	Closing price	change	Delivery Month	Open price	Price max	Price min	Last price	Closing price	Last Bid	Last Ask	Settlement price	change	Life high	Life low	Trades	Volume	change	Value	change	Open Interest	change
MOTOR OIL (CR)				(Contract Size: 100 Securities, Physical Delivery)																		
6.84	6.56	6.56	-2.09%	December 2014	6.67	6.80	6.61	6.61	6.56	1@6.55	1@6.72	6.56	-2.09%	8.33	5.85	21	42	-23.64%	28,093.00	-22.42%	338	-2.03%
				March 2015	---	---	---	---	6.53	---	---	6.53	-2.10%	6.88	6.48	---	---	-100.00%	---	-100.00%	---	---
				June 2015	---	---	---	---	6.53	---	---	6.53	-2.10%	6.71	6.48	---	---	-100.00%	---	-100.00%	---	---
				September 2015	---	---	---	---	---	---	---	---	---	---	---	---	---	---	---	---	---	---
MYTILINEOS HOLDINGS (CR)				(Contract Size: 100 Securities, Physical Delivery)																		
5.95	5.76	5.90	2.25%	December 2014	5.83	5.95	5.78	5.89	5.95	1@5.89	4@5.91	5.95	2.23%	7.16	4.91	157	635	40.80%	372,770.00	43.94%	7,697	0.27%
				March 2015	5.95	5.95	5.95	5.95	6.05	---	---	6.05	3.24%	6.20	5.12	1	20	---	11,900.00	---	20	---
				June 2015	---	---	---	---	---	---	---	---	---	---	---	---	---	---	---	---	---	---
				September 2015	---	---	---	---	---	---	---	---	---	---	---	---	---	---	---	---	---	---
NATIONAL BANK (CR)				(Contract Size: 100 Securities, Physical Delivery)																		
2.29	2.18	2.29	5.05%	December 2014	2.24	2.29	2.18	2.29	2.27	2@2.28	305@2.29	2.27	3.18%	2.92	1.80	389	11,718	2.14%	2,624,256.00	6.47%	32,423	-7.30%
				March 2015	---	---	---	---	2.31	10@1.58	---	2.31	3.13%	2.70	1.96	---	---	---	---	---	---	---
				June 2015	---	---	---	---	---	---	---	---	---	---	---	---	---	---	---	---	---	---
				September 2015	---	---	---	---	---	---	---	---	---	---	---	---	---	---	---	---	---	---
OPAP (CR)				(Contract Size: 100 Securities, Physical Delivery)																		
9.93	9.47	9.80	1.66%	December 2014	9.60	9.87	9.48	9.79	9.83	10@9.75	3@9.79	9.83	3.36%	13.34	7.95	154	774	-2.27%	752,605.00	1.80%	2,451	-10.61%
				March 2015	---	---	---	---	9.89	---	---	9.89	3.34%	12.19	8.30	---	---	---	---	---	---	---
				June 2015	---	---	---	---	---	---	---	---	---	---	---	---	---	---	---	---	---	---
				September 2015	---	---	---	---	---	---	---	---	---	---	---	---	---	---	---	---	---	---
OTE (CR)				(Contract Size: 100 Securities, Physical Delivery)																		
10.11	9.78	9.85	-1.70%	December 2014	10.01	10.13	9.78	9.84	9.83	2@9.84	1@9.86	9.83	-2.38%	11.83	8.53	200	815	-40.64%	812,215.00	-40.39%	8,032	2.57%
				March 2015	---	---	---	---	9.98	---	1@9.96	9.98	-2.35%	10.79	8.77	---	---	-100.00%	---	-100.00%	---	---
				June 2015	---	---	---	---	9.93	---	---	9.93	-2.36%	10.55	10.37	---	---	---	---	---	---	---
				September 2015	---	---	---	---	---	---	---	---	---	---	---	---	---	---	---	---	---	---
P.P.A. S.A. (CR)				(Contract Size: 100 Securities, Physical Delivery)																		
15.40	14.81	15.25	-0.84%	December 2014	15.21	15.21	15.04	15.13	14.85	3@14.82	1@15.35	14.85	-0.87%	17.13	14.10	8	24	200.00%	36,265.00	196.14%	609	1.84%
				March 2015	---	---	---	---	---	---	---	---	---	---	---	---	---	---	---	---	---	---
				June 2015	---	---	---	---	---	---	---	---	---	---	---	---	---	---	---	---	---	---
				September 2015	---	---	---	---	---	---	---	---	---	---	---	---	---	---	---	---	---	---
PIRAEUS BANK (CR)				(Contract Size: 100 Securities, Physical Delivery)																		
1.29	1.20	1.22	-3.94%	December 2014	1.30	1.30	1.20	1.23	1.22	162@1.22	329@1.23	1.22	-3.94%	1.60	1.00	287	10,826	-28.76%	1,343,592.00	-28.16%	52,615	7.45%
				March 2015	---	---	---	---	1.24	---	329@1.25	1.24	-3.88%	1.35	1.08	---	---	---	---	---	50	0.00%
				June 2015	---	---	---	---	1.24	---	---	1.24	-3.88%	1.21	1.12	---	---	-100.00%	---	-100.00%	5	0.00%
				September 2015	---	---	---	---	---	---	---	---	---	---	---	---	---	---	---	---	---	---
PPC (CR)				(Contract Size: 100 Securities, Physical Delivery)																		
7.27	6.83	6.96	-1.14%	December 2014	7.15	7.30	6.86	7.02	6.97	1@6.98	4@7.02	6.97	-0.71%	12.48	5.94	532	3,005	44.40%	2,128,195.00	48.72%	10,127	5.27%
				March 2015	7.28	7.28	7.06	7.06	7.09	---	---	7.09	0.14%	11.32	6.27	4	45	80.00%	32,340.00	85.86%	10	-60.00%
				June 2015	---	---	---	---	---	---	---	---	---	---	---	---	---	---	---	---	---	---
				September 2015	---	---	---	---	---	---	---	---	---	---	---	---	---	---	---	---	---	---

Underlying Asset				Derivatives Market																		
Price max	Price min	Closing price	change	Delivery Month	Open price	Price max	Price min	Last price	Closing price	Last Bid	Last Ask	Settlement price	change	Life high	Life low	Trades	Volume	change	Value	change	Open Interest	change
SIDENOR (CR)				(Contract Size: 100 Securities, Physical Delivery)																		
1.05	1.00	1.00	-2.91%	December 2014	1.04	1.05	1.04	1.05	1.02	1@0.990	5@1.02	1.02	-2.86%	1.48	0.810	3	11	-77.55%	1,145.00	-77.04%	900	-1.21%
				March 2015	---	---	---	---	---	---	---	---	---	---	---	---	---	---	---	---	---	---
				June 2015	---	---	---	---	---	---	---	---	---	---	---	---	---	---	---	---	---	---
				September 2015	---	---	---	---	---	---	---	---	---	---	---	---	---	---	---	---	---	---
TERNA ENERGY (CR)				(Contract Size: 100 Securities, Physical Delivery)																		
2.70	2.60	2.69	-0.37%	December 2014	2.65	2.69	2.61	2.69	2.69	5@2.63	17@2.70	2.69	1.89%	3.67	2.23	12	53	-19.70%	13,996.00	-18.83%	3,777	-0.97%
				March 2015	---	---	---	---	---	---	---	---	---	---	---	---	---	---	---	---	---	---
				June 2015	---	---	---	---	---	---	---	---	---	---	---	---	---	---	---	---	---	---
				September 2015	---	---	---	---	---	---	---	---	---	---	---	---	---	---	---	---	---	---
TITAN CEMENT (CR)				(Contract Size: 100 Securities, Physical Delivery)																		
20.00	19.43	19.90	2.42%	December 2014	19.70	19.93	19.51	19.93	20.20	1@19.62	1@19.95	20.20	2.43%	21.10	16.38	48	104	-58.40%	205,427.00	-57.29%	421	-2.32%
				March 2015	---	---	---	---	---	---	---	---	---	---	---	---	---	---	---	---	---	---
				June 2015	---	---	---	---	---	---	---	---	---	---	---	---	---	---	---	---	---	---
				September 2015	---	---	---	---	---	---	---	---	---	---	---	---	---	---	---	---	---	---
VIOHALCO SA/NV (CB)				(Contract Size: 100 Securities, Physical Delivery)																		
3.11	3.01	3.06	-0.97%	December 2014	3.05	3.10	3.03	3.05	3.08	10@2.93	4@3.05	3.08	-0.96%	4.20	2.60	8	32	113.33%	9,770.00	113.83%	310	-8.82%
				March 2015	---	---	---	---	---	---	---	---	---	---	---	---	---	---	---	---	---	---
				June 2015	---	---	---	---	---	---	---	---	---	---	---	---	---	---	---	---	---	---
				September 2015	---	---	---	---	---	---	---	---	---	---	---	---	---	---	---	---	---	---

FTSE/Athex Large Cap

(Trade Unit: 1 Index Point x 5€ - Exercise Style: European, Cash Settlement)

Call Options																	Put Options																		
Exercise Price	November 2014							December 2014							Other Months		November 2014								December 2014								Other Months		Exercise Price
	Open price	Price max	Price min	Last price	Closing price	Volume	Open Interest	Open price	Price max	Price min	Last price	Closing price	Volume	Open Interest	Volume	Open Interest	Open price	Price max	Price min	Last price	Closing price	Volume	Open Interest	Open price	Price max	Price min	Last price	Closing price	Volume	Open Interest	Volume	Open Interest			
215	-	-	-	-	-	-	-	-	-	-	-	-	-	-	-	-	-	-	-	-	-	-	-	-	-	-	-	-	-	-	-	215			
255	-	-	-	-	-	-	-	-	-	-	-	-	-	-	-	-	-	-	-	-	-	-	-	-	-	-	-	-	-	-	-	255			
260	-	-	-	-	-	-	-	-	-	-	-	-	-	-	-	-	-	-	-	-	0.17	-	3	-	-	-	-	-	-	-	-	260			
265	-	-	-	-	-	-	-	-	-	-	-	-	-	-	-	-	-	-	-	-	0.29	-	1	-	-	-	-	-	-	-	-	265			
270	-	-	-	-	53.00	-	20	-	-	-	-	-	-	-	-	-	-	-	-	-	0.47	-	466	-	-	-	-	-	-	-	-	270			
275	-	-	-	-	-	-	-	-	-	-	-	-	-	-	-	-	-	-	-	-	-	-	-	-	-	-	-	-	-	-	-	275			
280	-	-	-	-	-	-	-	-	-	-	-	-	-	-	-	-	-	-	-	-	1.10	-	192	-	-	-	-	-	-	-	-	280			
285	-	-	-	-	39.25	-	3	-	-	-	-	-	-	-	-	-	-	-	-	-	1.60	-	11	-	-	-	-	-	-	-	-	285			
290	-	-	-	-	35.00	-	53	-	-	-	-	-	-	-	-	-	-	-	-	-	2.30	-	1,342	-	-	-	-	-	-	-	-	290			
295	31.50	32.75	28.75	28.75	31.00	7	358	-	-	-	-	-	-	-	-	-	-	-	-	-	3.20	-	1	-	-	-	-	-	-	-	-	295			
300	28.00	28.75	25.00	25.00	27.00	40	364	-	-	-	-	31.00	-	80	-	-	4.00	4.00	4.00	4.00	4.30	302	672	-	-	-	-	-	-	-	-	300			
305	23.50	23.50	21.25	21.25	23.50	30	151	-	-	-	-	-	-	-	-	-	-	-	-	-	5.70	-	2	-	-	-	-	-	-	-	-	305			
310	19.75	19.75	19.75	19.75	20.00	2	4	-	-	-	-	-	-	-	-	-	-	-	-	-	7.40	-	15	-	-	-	-	-	-	-	-	310			
315	17.50	18.00	14.50	18.00	17.00	126	388	-	-	-	-	-	-	-	-	-	-	-	-	-	9.40	-	61	-	-	-	-	-	-	-	-	315			
320	14.50	15.75	14.50	15.00	14.50	23	50	-	-	-	-	19.25	-	5	-	-	12.00	12.00	8.00	11.00	11.75	237	276	-	-	-	-	-	-	-	-	320			
325	-	-	-	-	12.00	-	70	-	-	-	-	-	-	-	-	-	-	-	-	-	14.25	-	1	-	-	-	-	-	-	-	-	325			
330	7.70	9.40	6.50	9.40	9.90	123	114	-	-	-	-	14.75	-	222	-	-	18.00	18.00	17.50	17.50	17.00	8	33	-	-	-	-	-	-	-	-	330			
335	-	-	-	-	-	-	-	-	-	-	-	-	-	-	-	-	-	-	-	-	20.25	-	21	-	-	-	-	-	-	-	-	335			
340	-	-	-	-	6.50	-	1,517	-	-	-	-	-	-	-	-	-	-	-	-	-	-	-	-	-	-	-	-	-	-	-	-	340			
345	-	-	-	-	-	-	-	-	-	-	-	-	-	-	-	-	-	-	-	-	-	-	-	-	-	-	-	-	-	-	-	345			
350	-	-	-	-	-	-	-	-	-	-	-	-	-	-	-	-	-	-	-	-	-	-	-	-	-	-	-	-	-	-	-	350			
355	-	-	-	-	-	-	-	-	-	-	-	-	-	-	-	-	-	-	-	-	35.25	-	45	-	-	-	-	-	-	-	-	355			
360	-	-	-	-	2.50	-	1	-	-	-	-	5.80	-	201	-	-	-	-	-	-	-	-	-	-	-	-	-	-	-	-	-	360			
365	-	-	-	-	1.90	-	55	-	-	-	-	-	-	-	-	-	-	-	-	-	44.00	-	838	-	-	-	-	-	-	-	-	365			
370	-	-	-	-	1.40	-	8	-	-	-	-	-	-	-	-	-	-	-	-	-	-	-	-	-	-	-	-	-	-	-	-	370			
375	-	-	-	-	1.10	-	2	-	-	-	-	-	-	-	-	-	-	-	-	-	-	-	-	-	-	-	-	-	-	-	-	375			
380	-	-	-	-	0.80	-	4	-	-	-	-	2.80	-	500	-	-	-	-	-	-	-	-	-	-	-	-	-	-	-	-	-	380			
385	-	-	-	-	-	-	-	-	-	-	-	2.30	-	200	-	-	-	-	-	-	-	-	-	-	-	-	-	-	-	-	-	385			
390	-	-	-	-	0.43	-	1	-	-	-	-	-	-	-	-	-	-	-	-	-	-	-	-	-	-	-	-	-	-	-	-	390			
395	-	-	-	-	-	-	-	-	-	-	-	-	-	-	-	-	-	-	-	-	-	-	-	-	-	-	-	-	-	-	-	395			
400	-	-	-	-	-	-	-	-	-	-	-	-	-	-	-	-	-	-	-	-	-	-	-	-	-	-	-	-	-	-	-	400			
405	-	-	-	-	-	-	-	-	-	-	-	-	-	-	-	-	-	-	-	-	-	-	-	-	-	-	-	-	-	-	-	405			
410	-	-	-	-	-	-	-	-	-	-	-	-	-	-	-	-	-	-	-	-	-	-	-	-	-	-	-	-	-	-	-	410			
415	-	-	-	-	-	-	-	-	-	-	-	-	-	-	-	-	-	-	-	-	-	-	-	-	-	-	-	-	-	-	-	415			
420	-	-	-	-	-	-	-	-	-	-	-	-	-	-	-	-	-	-	-	-	-	-	-	-	-	-	-	-	-	-	-	420			
425	-	-	-	-	-	-	-	-	-	-	-	-	-	-	-	-	-	-	-	-	-	-	-	-	-	-	-	-	-	-	-	425			

FTSE/Athex Large Cap

(Trade Unit: 1 Index Point x 5€ - Exercise Style: European, Cash Settlement)

Call Options																	Put Options																					
Exercise Price	November 2014							December 2014							Other Months		November 2014							December 2014							Other Months		Exercise Price					
	Open price	Price max	Price min	Last price	Closing price	Volume	Open Interest	Open price	Price max	Price min	Last price	Closing price	Volume	Open Interest	Volume	Open Interest	Open price	Price max	Price min	Last price	Closing price	Volume	Open Interest	Open price	Price max	Price min	Last price	Closing price	Volume	Open Interest	Volume	Open Interest						
430	-	-	-	-	-	-	-	-	-	-	-	-	-	-			-	-	-	-	-	-	-	-	-	-	-	-	-	-	-		430					
435	-	-	-	-	-	-	-	-	-	-	-	-	-	-			-	-	-	-	-	-	-	-	-	-	-	-	-	-	-		435					
440	-	-	-	-	-	-	-	-	-	-	-	-	-	-			-	-	-	-	-	-	-	-	-	-	116.00	-	5	-	-		440					
445	-	-	-	-	-	-	-	-	-	-	-	-	-	-			-	-	-	-	-	-	-	-	-	-	-	-	-	-	-		445					
450	-	-	-	-	-	-	-	-	-	-	-	-	-	-			-	-	-	-	-	-	-	-	-	-	126.00	-	35	-	-		450					
455	-	-	-	-	-	-	-	-	-	-	-	-	-	-			-	-	-	-	-	-	-	-	-	-	-	-	-	-	-		455					
460	-	-	-	-	-	-	-	-	-	-	-	-	-	-			-	-	-	-	-	-	-	-	-	-	-	-	-	-	-		460					
465	-	-	-	-	-	-	-	-	-	-	-	-	-	-			-	-	-	-	-	-	-	-	-	-	-	-	-	-	-		465					
Totals:							351	3,163								0	1,208	0	0	547							3,980								0	40	0	0
Nominal Transactions Value:														0.00		0.00			845,400.00																0.00		0.00	
Number of Trades:														0		0			15																0		0	

ALPHA BANK (CR)

(Contract Size: 100 Securities, Exercise Style: American, Physical Delivery)

Call Options																	Put Options														
November 2014																	December 2014														
November 2014																	December 2014														
Exerise Price	Open price	Price max	Price min	Last price	Closing price	Volume	Open Interest	Open price	Price max	Price min	Last price	Closing price	Volume	Open Interest	Volume	Open Interest	Open price	Price max	Price min	Last price	Closing price	Volume	Open Interest	Open price	Price max	Price min	Last price	Closing price	Volume	Open Interest	Exerise Price
0.100						-	-							-	-								-	-							0.100
0.200						-	-							-	-								-	-							0.200
0.300						-	-							-	-								-	-							0.300
0.400						-	-							-	-								-	-							0.400
0.450						-	-							-	-								-	-							0.450
0.500						-	-							-	-								-	-							0.500
0.550						-	-							-	-								-	-							0.550
0.600						-	-							-	-								-	-							0.600
0.650						-	-							-	-								-	-							0.650
0.700						-	-							-	-								-	-							0.700
0.750						-	-							-	-								-	-							0.750
0.800						-	-							-	-								-	-							0.800
0.850						-	-							-	-								-	-							0.850
0.900						-	-							-	-								-	-							0.900
1.00						-	-							-	-								-	-							1.00
1.10						-	-							-	-								-	-							1.10
1.20						-	-							-	-								-	-							1.20
1.30						-	-							-	-								-	-							1.30
1.40						-	-							-	-								-	-							1.40
1.50						-	-							-	-								-	-							1.50
Totals:						0	0							0	0	0	0						0	0					0	0	
Nominal Transactions Value:							0.00							0.00		0.00							0.00						0.00		
Number of Trades:							0							0		0							0						0		

NATIONAL BANK (CR)

(Contract Size: 100 Securities, Exercise Style: American, Physical Delivery)

Call Options																	Put Options																			
November 2014								December 2014								Other Months		November 2014								December 2014								Other Months		
Exercise Price	Open price	Price max	Price min	Last price	Closing price	Volume	Open Interest	Open price	Price max	Price min	Last price	Closing price	Volume	Open Interest	Volume	Open Interest	Open price	Price max	Price min	Last price	Closing price	Volume	Open Interest	Open price	Price max	Price min	Last price	Closing price	Volume	Open Interest	Volume	Open Interest	Exercise Price			
0.800						-	-							-	-							-	-						-	-			0.800			
0.900						-	-							-	-							-	-						-	-			0.900			
1.00						-	-							-	-							-	-						-	-			1.00			
1.10						-	-							-	-							-	-						-	-			1.10			
1.20						-	-							-	-							-	-						-	-			1.20			
1.30						-	-							-	-							-	-						-	-			1.30			
1.40						-	-							-	-							-	-						-	-			1.40			
1.50						-	-							-	-							-	-						-	-			1.50			
1.60						-	-							-	-							-	-						-	-			1.60			
1.70						-	-							-	-							-	-						-	-			1.70			
1.80						-	-							-	-							-	-						-	-			1.80			
1.90						-	-							-	-							-	-						-	-			1.90			
2.00						-	-							-	-							-	-						-	-			2.00			
2.10						-	-							-	-							-	-						-	-			2.10			
2.20					0.228	-	5							-	-							-	-						-	-			2.20			
2.30						-	-							-	-							-	-				0.209	-	-				2.30			
2.40						-	-							-	-						0.241	-	700				0.267	-	-				2.40			
2.50						-	-							-	-							-	-						-	-			2.50			
2.60						-	-							-	-							-	-						-	-			2.60			
2.70						-	-							-	-							-	-						-	-			2.70			
2.80						-	-							-	-							-	-						-	-			2.80			
2.90						-	-							-	-							-	-						-	-			2.90			
3.00						-	-							-	-							-	-						-	-			3.00			
3.10						-	-							-	-							-	-						-	-			3.10			
3.20						-	-							-	-							-	-						-	-			3.20			
3.40						-	-							-	-							-	-						-	-			3.40			
3.60						-	-							-	-							-	-						-	-			3.60			
3.80						-	-							-	-							-	-						-	-			3.80			
4.00						-	-							-	-							-	-						-	-			4.00			
4.40						-	-							-	-							-	-						-	-			4.40			
4.80						-	-							-	-							-	-						-	-			4.80			
5.20						-	-							-	-							-	-						-	-			5.20			
5.60						-	-							-	-							-	-						-	-			5.60			
Totals:						0	5							0	0	0	0							0	700							0	200	0	0	
Nominal Transactions Value:						0.00								0.00		0.00								0.00								0.00				
Number of Trades:						0								0		0								0								0				

OPAP (CR) (Contract Size: 100 Securities, Exercise Style: American, Physical Delivery)

Call Options																	Put Options																			
November 2014								December 2014								Other Months		November 2014								December 2014								Other Months		
Exerise Price	Open price	Price max	Price min	Last price	Closing price	Volume	Open Interest	Open price	Price max	Price min	Last price	Closing price	Volume	Open Interest	Volume	Open Interest	Open price	Price max	Price min	Last price	Closing price	Volume	Open Interest	Open price	Price max	Price min	Last price	Closing price	Volume	Open Interest	Volume	Open Interest	Exerise Price			
4.40						-	-							-	-							-	-						-	-			4.40			
4.80						-	-							-	-							-	-						-	-			4.80			
5.20						-	-							-	-							-	-						-	-			5.20			
5.60						-	-							-	-							-	-						-	-			5.60			
6.00						-	-							-	-							-	-						-	-			6.00			
6.40						-	-							-	-							-	-						-	-			6.40			
6.80						-	-							-	-							-	-						-	-			6.80			
7.20						-	-							-	-							-	-						-	-			7.20			
7.60						-	-							-	-							-	-						-	-			7.60			
8.00						-	-							-	-							-	-						-	-			8.00			
8.40						-	-							-	-							-	-						-	-			8.40			
8.80						-	-							-	-							-	-						-	-			8.80			
9.20						-	-							-	-							-	-						-	-			9.20			
9.60						-	-							-	-							-	-						-	-			9.60			
10.00						-	-							-	-							-	-						-	-			10.00			
10.50						-	-							-	-							-	-						-	-			10.50			
11.00					0.130	-	100							-	-							-	-						-	-			11.00			
11.50						-	-							-	-							-	-						-	-			11.50			
12.00						-	-							-	-							-	-						-	-			12.00			
12.50						-	-							-	-							-	-						-	-			12.50			
13.00						-	-							-	-							-	-						-	-			13.00			
13.50						-	-							-	-							-	-						-	-			13.50			
14.00						-	-							-	-							-	-						-	-			14.00			
14.50						-	-							-	-							-	-						-	-			14.50			
15.00						-	-							-	-							-	-						-	-			15.00			
16.00						-	-							-	-							-	-						-	-			16.00			
17.00						-	-							-	-							-	-						-	-			17.00			
18.00						-	-							-	-							-	-						-	-			18.00			
Totals:						0	100							0	0	0	0							0	0							0	0			
Nominal Transactions Value:						0.00								0.00		0.00								0.00								0.00				
Number of Trades:						0								0		0								0								0				

OTE (CR)

(Contract Size: 100 Securities, Exercise Style: American, Physical Delivery)

Call Options																	Put Options																			
November 2014								December 2014								Other Months		November 2014								December 2014								Other Months		
Exerise Price	Open price	Price max	Price min	Last price	Closing price	Volume	Open Interest	Open price	Price max	Price min	Last price	Closing price	Volume	Open Interest	Volume	Open Interest	Open price	Price max	Price min	Last price	Closing price	Volume	Open Interest	Open price	Price max	Price min	Last price	Closing price	Volume	Open Interest	Volume	Open Interest	Exerise Price			
5.20						-	-							-	-							-	-						-	-			5.20			
5.60						-	-							-	-							-	-						-	-			5.60			
6.00						-	-							-	-							-	-						-	-			6.00			
6.40						-	-							-	-							-	-						-	-			6.40			
6.80						-	-							-	-							-	-						-	-			6.80			
7.20						-	-							-	-							-	-						-	-			7.20			
7.60						-	-							-	-							-	-						-	-			7.60			
8.00						-	-							-	-							-	-						-	-			8.00			
8.40						-	-							-	-							-	-						-	-			8.40			
8.80						-	-							-	-							-	-						-	-			8.80			
9.20						-	-							-	-							-	-						-	-			9.20			
9.40						-	-					0.911		-	5							-	-						-	-			9.40			
9.60						-	-					0.798		-	5							-	-						-	-			9.60			
9.80						-	-					0.694		-	5							-	-				0.600		-	-			9.80			
10.00						-	-							-	-							-	-				0.709		-	-			10.00			
10.50						-	-							-	-							-	-						-	-			10.50			
11.00					0.121	-	10							-	-							-	-				1.38		-	-			11.00			
11.50					0.058	-	10					0.174		-	5							1.69	-	10					-	-			11.50			
12.00						-	-					0.108		-	10							-	-						-	-			12.00			
12.50						-	-							-	-							-	-						-	-			12.50			
13.00						-	-							-	-							-	-						-	-			13.00			
14.00						-	-							-	-							-	-						-	-			14.00			
15.00						-	-							-	-							-	-						-	-			15.00			
16.00						-	-							-	-							-	-						-	-			16.00			
17.00						-	-							-	-							-	-						-	-			17.00			
18.00						-	-							-	-							-	-						-	-			18.00			
Totals:						0	20							0	30	0	0							0	10							0	15	0	0	
Nominal Transactions Value:						0.00								0.00		0.00								0.00								0.00				
Number of Trades:						0								0		0								0.00								0				

PIRAEUS BANK (CR)

(Contract Size: 100 Securities, Exercise Style: American, Physical Delivery)

Call Options																	Put Options																			
November 2014								December 2014								Other Months		November 2014								December 2014								Other Months		
Exercise Price	Open price	Price max	Price min	Last price	Closing price	Volume	Open Interest	Open price	Price max	Price min	Last price	Closing price	Volume	Open Interest	Volume	Open Interest	Open price	Price max	Price min	Last price	Closing price	Volume	Open Interest	Open price	Price max	Price min	Last price	Closing price	Volume	Open Interest	Volume	Open Interest	Exercise Price			
0.100						-	-							-	-							-	-						-	-			0.100			
0.200						-	-							-	-							-	-						-	-			0.200			
0.300						-	-							-	-							-	-						-	-			0.300			
0.400						-	-							-	-							-	-						-	-			0.400			
0.500						-	-							-	-							-	-						-	-			0.500			
0.600						-	-							-	-							-	-						-	-			0.600			
0.700						-	-							-	-							-	-						-	-			0.700			
0.800						-	-							-	-							-	-						-	-			0.800			
0.900						-	-							-	-							-	-						-	-			0.900			
1.00						-	-							-	-							-	-						-	-			1.00			
1.10						-	-							-	-							-	-						-	-			1.10			
1.20						-	-							-	-							-	-						-	-			1.20			
1.30						-	-							-	-							-	-						-	-			1.30			
1.35						-	-							-	-							-	-						-	-			1.35			
1.40						-	-							-	-							-	-						-	-			1.40			
1.45						-	-							-	-							-	-						-	-			1.45			
1.50						-	-							-	-							-	-						-	-			1.50			
1.55						-	-							-	-							-	-						-	-			1.55			
1.60						-	-							-	-							-	-						-	-			1.60			
1.65						-	-							-	-							-	-						-	-			1.65			
1.70						-	-							-	-							-	-						-	-			1.70			
1.75						-	-							-	-							-	-						-	-			1.75			
1.80						-	-							-	-							-	-						-	-			1.80			
1.90						-	-							-	-							-	-						-	-			1.90			
2.00						-	-							-	-							-	-						-	-			2.00			
2.20						-	-							-	-							-	-						-	-			2.20			
2.40						-	-							-	-							-	-						-	-			2.40			
2.60						-	-							-	-							-	-						-	-			2.60			
2.80						-	-							-	-							-	-						-	-			2.80			
Totals:						0	0							0	0	0	0							0	0							0	0	0	0	
Nominal Transactions Value:						0.00								0.00		0.00								0.00								0.00				
Number of Trades:						0								0		0								0								0				

PPC (CR)

(Contract Size: 100 Securities, Exercise Style: American, Physical Delivery)

Call Options																	Put Options																				
	November 2014							December 2014							Other Months		November 2014											December 2014							Other Months		
Exercise Price	Open price	Price max	Price min	Last price	Closing price	Volume	Open Interest	Open price	Price max	Price min	Last price	Closing price	Volume	Open Interest	Volume	Open Interest	Open price	Price max	Price min	Last price	Closing price	Volume	Open Interest	Open price	Price max	Price min	Last price	Closing price	Volume	Open Interest	Volume	Open Interest	Exercise Price				
3.20						-	-							-	-							-	-						-	-			3.20				
3.40						-	-							-	-							-	-						-	-			3.40				
3.60						-	-							-	-							-	-						-	-			3.60				
3.80						-	-							-	-							-	-						-	-			3.80				
4.00						-	-							-	-							-	-						-	-			4.00				
4.40						-	-							-	-							-	-						-	-			4.40				
4.80						-	-							-	-							-	-						-	-			4.80				
5.20						-	-							-	-							-	-						-	-			5.20				
5.60						-	-							-	-							-	-						-	-			5.60				
6.00						-	-							-	-							-	-						-	-			6.00				
6.40					0.689	-	10							-	-							-	-						-	-			6.40				
6.80					0.428	-	20							-	-							-	-						-	-			6.80				
7.20					0.243	-	10							-	-							-	-						-	-			7.20				
7.60						-	-							-	-							-	-						-	-			7.60				
8.00						-	-							-	-							-	-						-	-			8.00				
8.40						-	-							-	-							-	-						-	-			8.40				
8.80						-	-							-	-							-	-						-	-			8.80				
9.20						-	-							-	-							-	-						-	-			9.20				
9.40						-	-							-	-							-	-						-	-			9.40				
9.60						-	-							-	-							-	-						-	-			9.60				
9.80						-	-							-	-							-	-						-	-			9.80				
10.00						-	240							-	-							-	-						-	-			10.00				
10.50						-	-							-	-							-	-						-	-			10.50				
11.00						-	-							-	-							-	-						-	-			11.00				
11.50						-	-							-	-							-	-						-	-			11.50				
12.00						-	-							-	-							-	-						-	-			12.00				
12.50						-	-							-	-							-	-						-	-			12.50				
13.00						-	-							-	-							-	-						-	-			13.00				
13.50						-	-							-	-							-	-						-	-			13.50				
14.00						-	-							-	-							-	-						-	-			14.00				
15.00						-	-							-	-							-	-						-	-			15.00				
16.00						-	-							-	-							-	-						-	-			16.00				
Totals:						0	280							0	0	0	0							0	0							0	0				
Nominal Transactions Value:						0.00								0.00		0.00								0.00								0.00					
Number of Trades:						0								0		0								0								0					

Securities	Type[4]	Stock Repo [1]						Stock Reverse Repo [2]								Repurchase Agreements [3]							
		Trans. price	chg.	Trades	Volume	Transactions Value	Open Interest[5]	Price max	Price min	Last price	Last Ask	Trades	Volume	Transactions Value	Open Interest[5]	Price max	Price min	Last price	Last Ask	Trades	Volume	Transactions Value	Open Interest[5]
AEGEAN AIRLINES (CR)	SR RA	100.02	0.01	---	---	---	64	---	---	---	22@3%	---	---	---	10	---	---	---	---	---	---	---	---
ALPHA BANK (CR)	SR RA	100.04	---	---	---	---	115,607	---	---	---	32763@3%	---	---	---	28,508	---	---	---	---	---	---	---	1,140
ALPHA ETF FTSE Athex Large Cap	SR RA	100.00	---	---	---	---	---	---	---	---	---	---	---	---	---	---	---	---	---	---	---	---	3,554
ALUMIL (CR)	RA	---	---	---	---	---	---	---	---	---	---	---	---	---	---	---	---	---	---	---	---	---	---
ATHENS MEDICAL CENTER SA (CR)	SR RA	100.00	---	---	---	---	434	---	---	---	217@3%	---	---	---	---	---	---	---	---	---	---	---	---
ATTICA BANK S.A. (CR)	SR RA	100.02	---	---	---	---	910	---	---	---	---	---	---	---	728	---	---	---	---	---	---	---	---
AUTOHELLAS SA (CR)	SR RA	100.00	---	---	---	---	16	---	---	---	6@3%	---	---	---	---	---	---	---	---	---	---	---	---
BIOKARPET S.A.(CR)	RA	---	---	---	---	---	---	---	---	---	---	---	---	---	---	---	---	---	---	---	---	---	---
CC HBC AG (CR)	SR RA	103.88	0.17	---	---	---	96	---	---	---	---	---	---	---	91	---	---	---	---	---	---	---	1,218
CENTRIC HOLDINGS (CR)	SR RA	100.00	---	---	---	---	200	---	---	---	158@9.4%	---	---	---	---	---	---	---	---	---	---	---	---
CORINTH PIPEWORKS SA (CR)	SR RA	100.04	---	---	---	---	161	---	---	---	80@3%	---	---	---	---	---	---	---	---	---	---	---	---
CRETE PLASTICS SA (CR)	SR RA	100.00	---	---	---	---	---	---	---	---	---	---	---	---	---	---	---	---	---	---	---	---	---
DROMEAS SA (CR)	SR RA	100.00	---	---	---	---	---	---	---	---	---	---	---	---	---	---	---	---	---	---	---	---	---
ELGEKA SA (CR)	SR RA	100.00	---	---	---	---	10	---	---	---	---	---	---	---	---	---	---	---	---	---	---	---	---
ELLAKTOR (CR)	SR RA	100.07	---	---	---	---	2,075	---	---	---	847@3%	---	---	---	190	---	---	---	---	---	---	---	18
ELVAL SA. (CB)	SR RA	100.00	---	---	---	---	368	---	---	---	184@3%	---	---	---	---	---	---	---	---	---	---	---	---
EUROBANK ERGASIAS (CR)	SR RA	100.11	---	---	---	---	20,012	---	---	---	21@9.8%	---	---	---	15,988	---	---	---	---	---	---	---	7,179
EUROPEAN RELIANCE INSUR. (CR)	SR RA	100.00	---	---	---	---	---	---	---	---	---	---	---	---	---	---	---	---	---	---	---	---	---
EYDAP S.A. (CR)	SR RA	101.20	0.05	---	---	---	384	---	---	---	6@5.5%	---	---	---	267	---	---	---	---	---	---	---	133
F.G. EUROPE S.A. (CR)	SR RA	100.00	---	---	---	---	---	---	---	---	---	---	---	---	---	---	---	---	---	---	---	---	---
FOLLI FOLLIE (CR)	SR RA	105.53	0.26	---	---	---	1,128	---	---	---	5@9%	---	---	---	880	---	---	---	---	---	---	---	58
FOURLIS (CR)	SR RA	100.45	---	---	---	---	109	---	---	---	43@3%	---	---	---	---	---	---	---	---	---	---	---	---
FRIGOGLASS SA (CR)	SR RA	100.29	0.02	---	---	---	70	---	---	---	---	---	---	---	40	---	---	---	---	---	---	---	---
GEK TERNA (CR)	SR RA	100.20	0.02	---	---	---	641	---	---	---	---	---	---	---	512	---	---	---	---	---	---	---	---
GR. SARANTIS SA (CR)	SR RA	100.00	---	---	---	---	60	---	---	---	30@3%	---	---	---	---	---	---	---	---	---	---	---	---
GRIVALIA PROPERTIES (CR)	SR RA	100.24	0.02	---	---	---	1,135	3.00%	3.00%	3.00%	184@3%	1	75	70,500.0	383	3.00%	3.00%	3.00%	---	1	75	70,500.0	85
HALKOR SA (CB)	SR RA	100.00	---	---	---	---	505	---	---	---	346@4.6%	---	---	---	---	---	---	---	---	---	---	---	---
HELLENIC EXCHANGES-A.S.E. (CR)	SR RA	100.09	---	---	---	---	5,930	---	---	---	2886@3%	---	---	---	79	---	---	---	---	---	---	---	2
HELLENIC PETROLEUM (CR)	SR RA	100.90	0.04	---	---	---	2,490	3.00%	3.00%	3.00%	521@3%	1	10	4,710.0	124	---	---	---	---	---	---	---	27
HYGEIA SA (CR)	SR RA	100.00	---	---	---	---	500	---	---	---	384@8.2%	---	---	---	---	---	---	---	---	---	---	---	---
IASO SA (CR)	SR RA	100.00	---	---	---	---	247	---	---	---	123@3%	---	---	---	---	---	---	---	---	---	---	---	---
IKTINOS HELLAS SA (CR)	SR RA	100.00	---	---	---	---	10	---	---	---	---	---	---	---	---	---	---	---	---	---	---	---	---

Stock Lending Notes

- [1] - Stock Repo: A Contract for selling stocks to HELEX with a Repurchase Right (According to ATHEX BoD Resolution No 17)
- [2] - Stock Reverse Repo: A Contract for buying stocks from HELEX with a Resell Right. (According to ATHEX BoD Resolution No 18)
- [3] - Standardized Repurchase Agreements: A Contract that constitutes a standardized agreement for the purchase or sale of shares, with repurchase or resell pact (According to ATHEX BoD Resolution No 20)
- [4] - Type of products is divided into SR: Stock Repo or Stock Reverse Repo, and RA: Repurchase Agreements.
- [5] - Open Interest in all Series (both tradeable or non-tradeable).

Securities	Type[4]	Stock Repo [1]						Stock Reverse Repo [2]								Repurchase Agreements [3]							
		Trans. price	chg.	Trades	Volume	Transactions Value	Open Interest[5]	Price max	Price min	Last price	Last Ask	Trades	Volume	Transactions Value	Open Interest[5]	Price max	Price min	Last price	Last Ask	Trades	Volume	Transactions Value	Open Interest[5]
INFORM P. LYKOS SA (CR)	SR RA	100.00	---	---	---	---	3	---	---	---	---	---	---	---	---	---	---	---	---	---	---	---	---
INTRACOM CONSTR. (CR)	SR RA	100.00	---	---	---	---	7	---	---	---	---	---	---	---	---	---	---	---	---	---	---	---	---
INTRACOM HOLDINGS (CR)	SR RA	100.00	---	---	---	---	665	---	---	---	433@3.9%	---	---	---	---	---	---	---	---	---	---	---	---
INTRALOT (CR)	SR RA	100.08	0.01	---	---	---	919	---	---	---	---	---	---	---	719	---	---	---	---	---	---	---	3
J & P - AVAX SA (CR)	SR RA	100.03	---	---	---	---	235	---	---	---	117@3%	---	---	---	---	---	---	---	---	---	---	---	---
JUMBO SA (CR)	SR RA	101.02	0.04	---	---	---	1,345	---	---	---	161@3.5%	---	---	---	678	---	---	---	---	---	---	---	11
KARATZIS SA (CR)	RA	---	---	---	---	---	---	---	---	---	---	---	---	---	---	---	---	---	---	---	---	---	---
KLEEMAN HELLAS SA (CR)	SR RA	100.00	---	---	---	---	---	---	---	---	---	---	---	---	---	---	---	---	---	---	---	---	---
KRI-KRI S.A. (CR)	SR RA	100.00	---	---	---	---	550	---	---	---	275@3%	---	---	---	---	---	---	---	---	---	---	---	---
LAMDA DEVELOPMENT SA (CR)	SR RA	100.00	---	---	---	---	---	---	---	---	---	---	---	---	---	---	---	---	---	---	---	---	---
MARFIN INVESTMENT GROUP (CR)	SR RA	100.05	---	---	---	---	2,928	7.30%	7.30%	7.30%	1331@7.3%	1	47	1,142.1	885	---	---	---	---	---	---	---	11
METKA (CR)	SR RA	100.59	0.03	---	---	---	569	---	---	---	205@3%	---	---	---	79	---	---	---	---	---	---	---	6
MLS MULTIMEDIA SA (CR)	SR RA	100.00	---	---	---	---	109	---	---	---	54@3%	---	---	---	---	---	---	---	---	---	---	---	---
MOTOR OIL (CR)	SR RA	100.35	0.01	---	---	---	1,818	---	---	---	353@3%	---	---	---	496	---	---	---	---	---	---	---	12
MYTILINEOS HOLDINGS (CR)	SR RA	100.03	---	---	---	---	3,562	---	---	---	1661@3%	---	---	---	120	---	---	---	---	---	---	---	13
NATIONAL BANK (CR)	SR RA	100.08	---	---	---	---	12,042	3.50%	3.50%	3.50%	3355@3.5%	1	49	11,221.0	3,959	---	---	---	---	---	---	---	146
NBGAM ETF	SR RA	100.00	---	---	---	---	---	---	---	---	---	---	---	---	---	---	---	---	---	---	---	---	---
NBGAM ETF GREECE & TURKEY 30	SR RA	100.00	---	---	---	---	---	---	---	---	---	---	---	---	---	---	---	---	---	---	---	---	---
NIREFS SA (CR)	SR RA	100.00	---	---	---	---	346	---	---	---	276@10%	---	---	---	---	---	---	---	---	---	---	---	---
OPAP (CR)	SR RA	100.93	0.04	---	---	---	3,798	---	---	---	108@3%	---	---	---	1,791	---	---	---	---	---	---	---	498
OTE (CR)	SR RA	100.46	0.01	---	---	---	4,638	---	---	---	1353@3%	---	---	---	642	---	---	---	---	---	---	---	887
P.P.A. S.A. (CR)	SR RA	105.37	0.30	---	---	---	14	---	---	---	---	---	---	---	10	---	---	---	---	---	---	---	---
PAPOUTSANIS (CR)	SR RA	100.00	---	---	---	---	---	---	---	---	---	---	---	---	---	---	---	---	---	---	---	---	---
PETROPOULOS PETROS (CR)	RA	---	---	---	---	---	---	---	---	---	---	---	---	---	---	---	---	---	---	---	---	---	---
PIRAEUS BANK (CR)	SR RA	100.23	0.01	---	---	---	11,598	---	---	---	124@6%	---	---	---	8,244	---	---	---	---	---	---	---	44
PLAISIO COMPUTERS SA (CR)	RA	---	---	---	---	---	---	---	---	---	---	---	---	---	---	---	---	---	---	---	---	---	---
PPC (CR)	SR RA	100.17	0.01	---	---	---	1,928	---	---	---	735@3%	---	---	---	229	---	---	---	---	---	---	---	1,602
PROFILE SA (CR)	RA	---	---	---	---	---	---	---	---	---	---	---	---	---	---	---	---	---	---	---	---	---	---
QUALITY & RELIABILITY SA (CR)	RA	---	---	---	---	---	---	---	---	---	---	---	---	---	---	---	---	---	---	---	---	---	---
QUEST HOLDINGS (CR)	SR RA	100.00	---	---	---	---	---	---	---	---	---	---	---	---	---	---	---	---	---	---	---	---	---
SIDENOR (CR)	SR RA	100.03	---	---	---	---	407	---	---	---	153@3%	---	---	---	50	---	---	---	---	---	---	---	---
TECHNICAL OLYMPIC SA (CR)	SR RA	100.00	---	---	---	---	44	---	---	---	22@3%	---	---	---	---	---	---	---	---	---	---	---	---

Stock Lending Notes

- [1] - Stock Repo: A Contract for selling stocks to HELEX with a Repurchase Right (According to ATHEX BoD Resolution No 17)
- [2] - Stock Reverse Repo: A Contract for buying stocks from HELEX with a Resell Right. (According to ATHEX BoD Resolution No 18)
- [3] - Standardized Repurchase Agreements: A Contract that constitutes a standardized agreement for the purchase or sale of shares, with repurchase or resell pact (According to ATHEX BoD Resolution No 20)
- [4] - Type of products is divided into SR: Stock Repo or Stock Reverse Repo, and RA: Repurchase Agreements.
- [5] - Open Interest in all Series (both tradeable or non-tradeable).

Securities	Type[4]	Stock Repo [1]						Stock Reverse Repo [2]								Repurchase Agreements [3]							
		Trans. price	chg.	Trades	Volume	Transactions Value	Open Interest[5]	Price max	Price min	Last price	Last Ask	Trades	Volume	Transactions Value	Open Interest[5]	Price max	Price min	Last price	Last Ask	Trades	Volume	Transactions Value	Open Interest[5]
TERNA ENERGY (CR)	SR RA	100.05	0.01	---	---	---	308	---	---	---	111@3%	---	---	---	43	---	---	---	---	---	---	---	1
THESSALONIKA WATER & SEWERAGE	SR RA	100.00	---	---	---	---	113	---	---	---	5@3%	---	---	---	---	---	---	---	---	---	---	---	---
THRACE PLASTICS SA (CR)	SR RA	100.00	---	---	---	---	1,010	---	---	---	505@3%	---	---	---	---	---	---	---	---	---	---	---	---
TITAN CEMENT (CR)	SR RA	100.33	0.02	---	---	---	8,634	---	---	---	3354@3%	---	---	---	963	---	---	---	---	---	---	---	9
TPA SA (CR)	SR RA	100.00	---	---	---	---	46	---	---	---	23@3%	---	---	---	---	---	---	---	---	---	---	---	---
TRASTOR REAL EST. INV. CO.(CR)	SR RA	100.00	---	---	---	---	---	---	---	---	---	---	---	---	---	---	---	---	---	---	---	---	---
VIOHALCO SA/NV (CB)	SR RA	100.62	0.03	---	---	---	261	---	---	---	1@10%	---	---	---	207	---	---	---	---	---	---	---	130

Stock Lending Notes

- [1] - Stock Repo: A Contract for selling stocks to HELEX with a Repurchase Right (According to ATHEX BoD Resolution No 17)
- [2] - Stock Reverse Repo: A Contract for buying stocks from HELEX with a Resell Right. (According to ATHEX BoD Resolution No 18)
- [3] - Standardized Repurchase Agreements: A Contract that constitutes a standardized agreement for the purchase or sale of shares, with repurchase or resell pact (According to ATHEX BoD Resolution No 20)
- [4] - Type of products is divided into SR: Stock Repo or Stock Reverse Repo, and RA: Repurchase Agreements.
- [5] - Open Interest in all Series (both tradeable or non-tradeable).

Sectors codification for listed companies

533	-	Exploration & Production	537	-	Integrated Oil & Gas
1353	-	Commodity Chemicals	1357	-	Specialty Chemicals
1753	-	Aluminum	1755	-	Nonferrous Metals
1757	-	Steel	1775	-	General Mining
2353	-	Building Materials & Fixtures	2357	-	Heavy Construction
2723	-	Containers & Packaging	2727	-	Diversified Industrials
2733	-	Electrical Components & Equipment	2753	-	Commercial Vehicles & Trucks
2757	-	Industrial Machinery	2773	-	Marine Transportation
2777	-	Transportation Services	2791	-	Business Support Services
2797	-	Industrial Suppliers	3535	-	Distillers & Vintners
3537	-	Soft Drinks	3573	-	Farming Fishing & Plantations
3577	-	Food Products	3722	-	Durable Household Products
3726	-	Furnishings	3728	-	Home Construction
3747	-	Toys	3763	-	Clothing & Accessories
3765	-	Footwear	3767	-	Personal Products
3785	-	Tobacco	4533	-	Health Care Providers
4535	-	Medical Equipment	4577	-	Pharmaceuticals
5337	-	Food Retailers & Wholesalers	5371	-	Apparel Retailers
5373	-	Broadline Retailers	5375	-	Home Improvement Retailers
5379	-	Specialty Retailers	5553	-	Broadcasting & Entertainment
5555	-	Media Agencies	5557	-	Publishing
5751	-	Airlines	5752	-	Gambling
5753	-	Hotels	5755	-	Recreational Services
5757	-	Restaurants & Bars	5759	-	Travel & Tourism
6535	-	Fixed Line Telecommunications	6575	-	Mobile Telecommunications
7535	-	Conventional Electricity	7537	-	Alternative Electricity
7577	-	Water	8355	-	Banks
8534	-	Insurance Brokers	8536	-	Property & Casualty Insurance
8633	-	Real Estate Holding & Development	8637	-	Real Estate Services
8671	-	Industrial & Office REITs	8675	-	Specialty REITs
8775	-	Specialty Finance	8777	-	Investment Services
8985	-	Equity Investment Instruments	9533	-	Computer Services
9535	-	Internet	9537	-	Software
9572	-	Computer Hardware	9574	-	Electronic Office Equipment
9578	-	Telecommunications Equipment	11000	-	ETF

