

# Daily Official List

Hellenic Exchanges – Athens Stock Exchange S.A.

Monday, 3 November, 2014  
Year: 135 Trading Day No: 209

**Disclaimer:**

Hellenic Exchanges-Athens Exchange endeavours to ensure that the data and other material ("Information") presented on the Daily Official List are accurate and complete, but it is not liable for any errors or omissions of data or /and for the accuracy, credibility, updating and completeness of the aforesaid information nor it has any liability arising directly or indirectly from the use of the above Information.

The Company is not liable for the accuracy of the data included in listed companies' announcements. Only the sender of such an announcement is fully and solely liable for any infringement of third party's rights from the content of such announcement. All contents of the Daily Official List are provided only for information purposes and do not constitute investment advice or solicitation to invest in securities or other products listed for trading on the Exchange.

You acknowledge and agree that the Company is the owner of any property rights related to any Information appearing on the Daily Official List including intellectual property rights copyright, trademarks, etc.

The above data are a property of the Hellenic Exchanges-Athens Exchange and are copyright protected. Users are forbidden to reproduce, modify, copy, sale, transmit or redistribute, by all reproduction means and methods, part or the whole of the above data, without reference to their source.

The commercial exploitation of these data is, also, forbidden by third parties. Hellenic Exchanges-Athens Exchange does not carry any responsibility, direct or indirect, derived from usage or accidental alteration of the above data when used by third parties.

---

**Hellenic Exchanges – Athens Stock Exchange S.A.**

110 Athinon Ave., 10442 Athens, Tel: (210) 33.66.800, Fax: (210) 32.13.938

[www.athex.gr](http://www.athex.gr)

---

**Thessalonica Stock Exchange Center (T.S.E.C)**

16-18 Katouni Str., Thessalonica 546 25 Tel: (2310) 567.667, Fax: (2310) 530.545

**Athex Members Guarantee Fund**

14-16 Fidiou Str., Athens 106 78, Tel: (210) 33.04.682, Fax: (210) 33.04.155

**Hellenic Republic Capital Market Commission**

1 Kolokotroni Str. & 1 Stadiou Str., Athens 10562 Tel: (210) 33.77.100 Fax: (210) 33.77.173

---

**Table of Contents**

---

**Section 1: Statistical Figures of Securities and Derivatives Markets**

Summary of Markets

Athex Indices

Analytic Figures for Athex Market's Boards and Categories

Trading Details by Athex Sectors and ETFs Category

Top 10 best &amp; worst performing Shares

Derivatives Summary

**Section 2: Analytic Figures of Shares Transactions**

Analytic Figures of Shares Transactions

Shares' Notes

**Section 3: Figures of Securities Transactions**

Securities Blocks Details

Shares Rights Details

Shares Short Selling

Stock Borrowing

Shares Forced Sales

Forced Sales Registered Shares

Exchange Traded Funds (ETFs) Characteristics

**Section 5: Bonds traded in Fixed Income Assets Market**

Corporate Bonds

Government Bonds

Treasury Bills &amp; Zero Coupon Government Bonds

Government Bonds Traded with the Open Outcry Method

State Banks Bonds

**Section 6: Additional Infos**

Athex &amp; ATHEXClear Members List

List of Stocks under Market Making operations

**Section 7: Derivatives Market Analytic Figures**

Index Futures

Stock Futures

Index Options

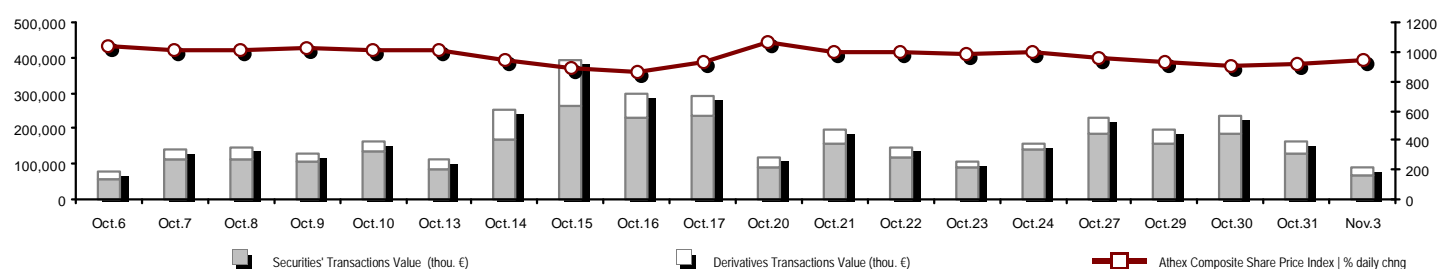
Stock Options

Stock Lending Analytic Figures (Repo Contracts)

**Appendix A: Sectors codification for listed companies**

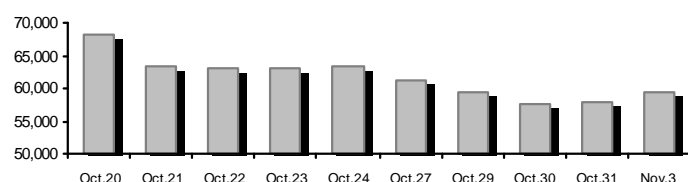
## Summary of Markets

Athex Composite Share Price Index vs Shares and Derivatives Transactions Value

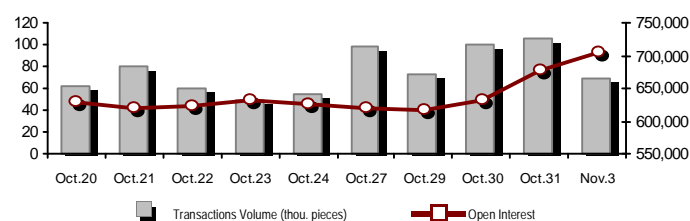


Total Transactions Value (Securities/Derivatives) (thou. €):		91,923.84	
Athex Capitalisation (mill. €) **:		59,306.22	
Daily change: mill. €   %		1,353.88	2.34%
Yearly Avg Capitalisation: mill. €   % chng prev year Avg		71,507.89	38.45%
Athex Composite Share Price Index   % daily chng		939.25	2.56%
Athex Composite Share Price Index Capitalisation (mill. €)		54,814.66	
Daily change (mill. €)		1,306.59	
Securities' Transactions Value (thou. €)		67,481.90	
Daily change: thou. €   %		-61,520.95	-47.69%
YtD Avg Trans. Value: thou. €   % chng prev year Avg		133,370.58	53.98%
Short Selling Trans. Value: mill. €   % in total Value		0.00	0.00%
Short Covering Trans. Value: mill. €   % in total Value		2.02	0.00%
Transactions Value of Blocks (thou. €)		6,604.52	
Bonds Transactions Value (thou. €)		0.00	
Securities' Transactions Volume (thou. Pieces)		61,384.83	
Daily change: thou. pieces   %		-56,930.09	-48.12%
YtD Avg Volume: thou. pieces   % chng prev year Avg		94,307.12	76.23%
Short Selling Volume: thou pieces   % in total Volume		0.00	0.00%
Short Covering Volume: thou. pieces   % in total Volume		2.00	0.00%
Transactions Volume of Blocks (thou. Pieces)		12,448.33	
Bonds Transactions Volume (thou. pieces)		0.00	
Securities' Trades Number		23,203	
Daily change: number   %		-13,531	-36.84%
YtD Avg Derivatives Trades number   % chng prev year Avg		29,110	-1.87%
Number of Blocks		5	
Number of Bonds Transactions		0	
		Derivatives Total Open Interest	
		704,106	
		in Index Futures   % daily chng	
		45,823	
		in Stock Futures   % daily chng	
		258,546	
		in Index Options   % daily chng	
		12,622	
		in Stock Options   % daily chng	
		1,675	
		in Stock Repos/Reverse Repos/RA   % daily chng	
		385,440	
		Derivatives Transactions Value (thou. €)	
		24,441.93	
		Daily change: thou. €   %	
		-12,192.18	
		-33.28%	
		YtD Avg Trans. Value: thou. €   % chng prev year Avg	
		39,550.73	
		53.69%	
		Derivatives Contracts Volume:	
		69,185	
		Daily change: pieces   %	
		-35,799	
		-34.10%	
		YtD Avg Derivatives Contracts   % chng prev year Avg	
		47,938	
		15.33%	
		Derivatives Trades Number:	
		2,915	
		Daily change: number   %	
		-698	
		-19.32%	
		YtD Avg Derivatives Trades number   % chng prev year Avg	
		2,700	
		2.60%	

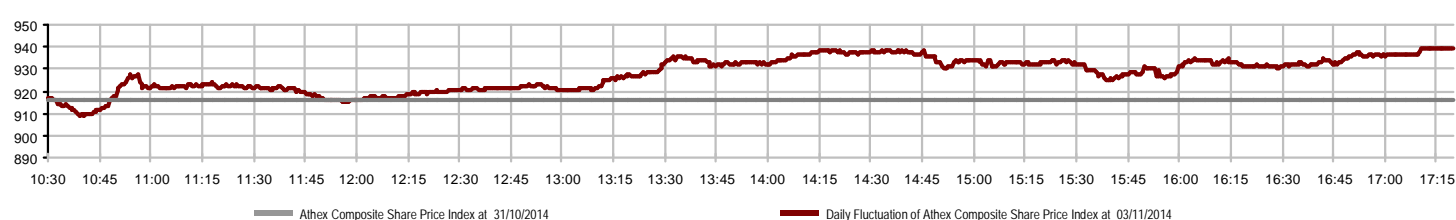
Athex Capitalisation (mill. €) \*\*



Derivatives Transactions Volume and Open Interest



Daily Fluctuation of Athex Composite Share Price Index



## Athex Indices

Index name	03/11/2014	31/10/2014	pts.	%	Min	Max	Year min	Year max	Year change
Athex Composite Share Price Index	939.25 #	915.83	23.42	2.56%	909.21	939.58	852.87	1,379.42	-19.22% €
FTSE/Athex Large Cap	307.11 #	299.27	7.84	2.62%	296.89	307.21	277.08	445.52	-20.20% €
FTSE/ATHEX Custom Capped	964.97 #	956.35	8.62	0.90%			918.15	1,410.19	-21.52% €
FTSE/ATHEX Custom Capped - USD	866.80 #	865.40	1.40	0.16%			841.30	1,406.66	-28.64% €
FTSE/Athex Mid Cap Index	836.09 #	826.42	9.67	1.17%	823.70	840.98	794.31	1,317.40	-28.34% €
FTSE/ATHEX-CSE Banking Index	94.80 #	93.75	1.05	1.12%	91.87	95.13	81.95	161.54	-30.37% €
FTSE/ATHEX Global Traders Index Plus	1,360.91 #	1,329.04	31.87	2.40%	1,327.44	1,361.92	1,252.49	1,845.84	-12.25% €
FTSE/ATHEX Global Traders Index	1,501.84 #	1,449.76	52.08	3.59%	1,445.86	1,502.20	1,404.09	2,152.38	-13.41% €
FTSE/ATHEX Mid & Small Cap Factor-Weighted Ind	1,156.52 #	1,147.04	9.48	0.83%	1,148.74	1,161.82	1,142.99	1,523.02	-9.58% €
Greece & Turkey 30 Price Index	691.94 €	693.66	-1.72	-0.25%	690.08	697.77	570.55	783.68	6.86% #
ATHEX Mid & SmallCap Price Index	2,546.76 #	2,538.36	8.40	0.33%	2,530.05	2,561.52	2,414.58	3,157.88	-1.04% €
FTSE/Athex Market Index	735.50 #	717.23	18.27	2.55%	711.73	735.76	665.36	1,066.17	-20.38% €
FTSE Med Index	5,016.21 #	5,001.29	14.92	0.30%			4,605.95	5,387.08	9.78% #
Athex Composite Index Total Return Index	1,369.78 #	1,335.63	34.15	2.56%	1,325.97	1,370.26	1,242.66	1,998.07	-18.64% €
FTSE/Athex Large Cap Total Return	416.55 #	405.91	10.64	2.62%			382.47	605.87	-21.01% €
FTSE/ATHEX Large Cap Net Total Return	1,238.90 #	1,207.28	31.62	2.62%	1,197.69	1,239.32	1,117.05	1,786.28	-19.71% €
FTSE/ATHEX Custom Capped Total Return	1,015.38 #	1,006.31	9.08	0.90%			965.25	1,472.79	-20.93% €
FTSE/ATHEX Custom Capped - USD Total Return	912.09 #	910.61	1.48	0.16%			884.46	1,469.09	-28.11% €
FTSE/Athex Mid Cap Total Return	1,073.99 #	1,061.57	12.42	1.17%			1,035.42	1,643.81	-25.64% €
FTSE/ATHEX-CSE Banking Total Return Index	88.38 #	87.40	0.98	1.12%			82.88	153.89	-31.53% €
Greece & Turkey 30 Total Return Index	839.75 #	832.53	7.22	0.87%			697.73	946.62	8.42% #
Hellenic Mid & Small Cap Index	854.19 #	827.61	26.58	3.21%	825.32	854.68	818.89	1,351.84	-23.31% €
FTSE/Athex Banks	125.25 #	123.86	1.39	1.12%	121.38	125.69	108.27	213.44	-30.37% €
FTSE/Athex Insurance	1,506.74 #	1,496.21	10.53	0.70%	1,475.13	1,506.74	1,274.94	1,749.09	14.40% #
FTSE/Athex Financial Services	1,201.25 #	1,145.73	55.52	4.85%	1,149.30	1,203.85	1,075.28	2,207.51	-32.08% €
FTSE/Athex Industrial Goods & Services	2,110.86 #	2,059.88	50.98	2.47%	2,066.65	2,164.60	2,059.88	3,724.87	-34.94% €
FTSE/Athex Retail	3,784.56 #	3,760.45	24.11	0.64%	3,759.76	3,817.88	3,090.34	4,836.94	14.73% #
FTSE/ATHEX Real Estate	2,613.55 #	2,540.86	72.69	2.86%	2,512.35	2,621.94	2,194.73	3,111.71	17.90% #
FTSE/Athex Personal & Household Goods	5,049.85 #	4,773.72	276.13	5.78%	4,739.62	5,050.58	4,506.00	7,649.84	-14.66% €
FTSE/Athex Food & Beverage	6,437.69 #	6,379.51	58.18	0.91%	6,437.58	6,530.86	5,805.55	8,227.06	-17.97% €
FTSE/Athex Basic Resources	2,337.09 #	2,217.29	119.80	5.40%	2,194.94	2,337.09	2,132.68	3,356.44	-15.07% €
FTSE/Athex Construction & Materials	2,264.73 #	2,146.73	118.00	5.50%	2,118.71	2,265.45	2,098.97	3,482.98	-15.55% €
FTSE/Athex Oil & Gas	1,817.10 #	1,771.90	45.20	2.55%	1,755.42	1,832.81	1,706.21	3,236.15	-36.62% €
FTSE/Athex Chemicals	5,115.95 #	5,064.17	51.78	1.02%	5,065.93	5,189.05	4,844.03	6,811.96	-14.68% €
FTSE/Athex Media	2,142.29 ~	2,142.29	0.00	0.00%	2,142.29	2,142.29	1,543.92	2,777.58	38.76% #
FTSE/Athex Travel & Leisure	1,707.26 #	1,645.96	61.30	3.72%	1,620.27	1,710.67	1,369.61	2,304.69	1.62% #
FTSE/Athex Technology	739.46 #	714.99	24.47	3.42%	711.74	743.48	706.84	1,134.79	-6.09% €
FTSE/Athex Telecommunications	2,603.93 #	2,480.07	123.86	4.99%	2,480.07	2,603.93	2,347.94	3,633.39	-2.17% €
FTSE/Athex Utilities	2,367.97 #	2,239.49	128.48	5.74%	2,218.42	2,367.97	2,044.48	4,471.04	-37.57% €
FTSE/Athex Health Care	156.98 €	158.93	-1.95	-1.23%	155.24	160.04	151.44	287.11	-29.61% €
Athex All Share Index	210.07 #	205.33	4.75	2.31%			196.74	291.46	-10.78% €

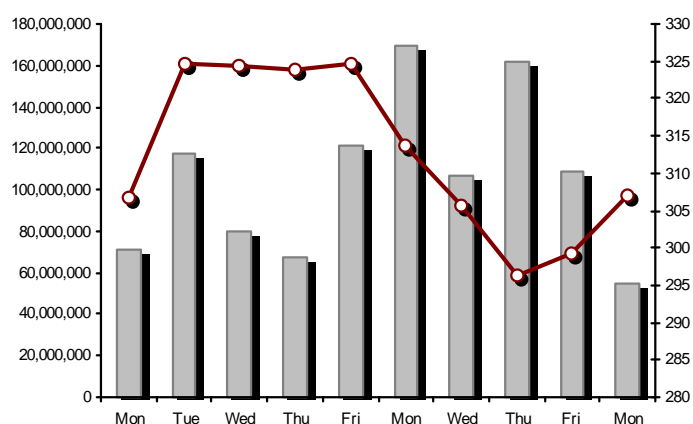
Note 1: Greece & Turkey 30 Pr data is the indicative at 17:20, whereas FTSE/ATHEX Custom Capped, FTSE/ATHEX Custom Capped - USD, FTSE/ATHEX Custom Capped TR, FTSE/ATHEX Custom Capped - USD TR, FTSE/Med 100 & Greece & Turkey 30 Rt closing prices refer to the previous trading day of 31/10/2014.

Note 2: The Hellenic Mid & Small Cap Index is a Customized index calculated by the Athens Exchange.

## Athex Indices

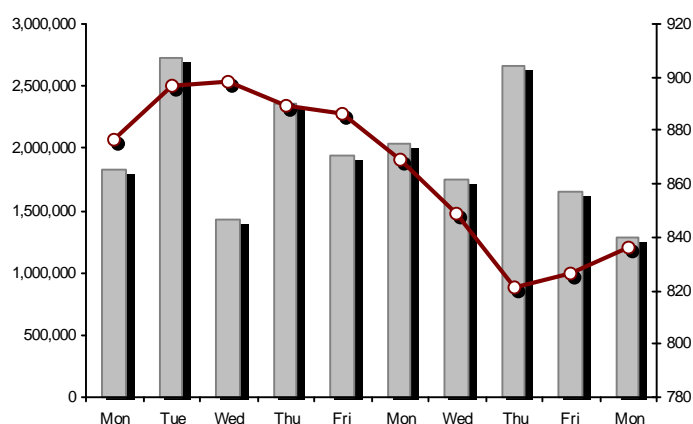
FTSE/Large Cap

03/11/2014: 2.62%



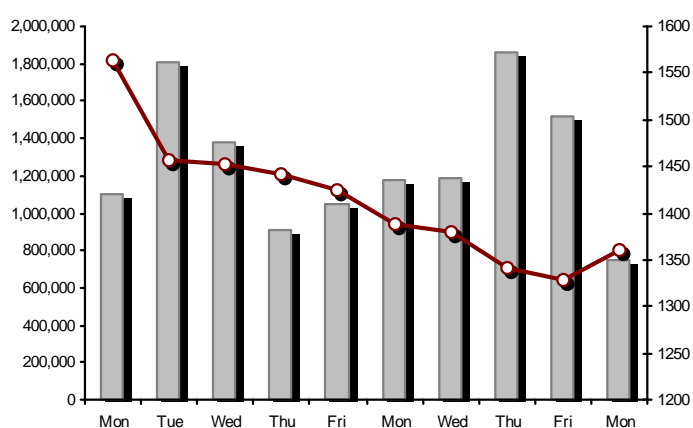
FTSE/Athex Mid Cap Index

03/11/2014: 1.17%



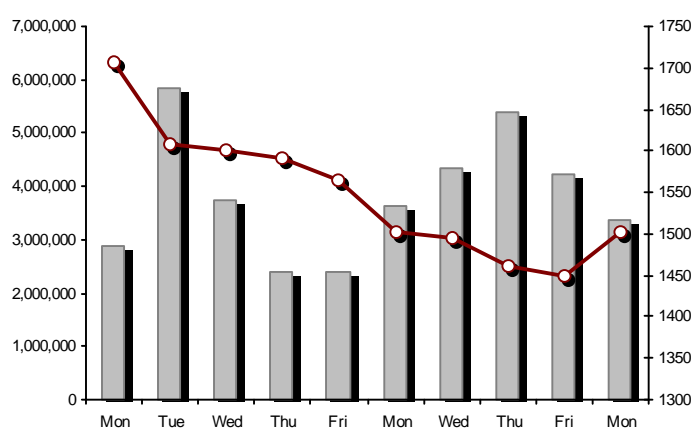
FTSE/ATHEX Global Traders Index Plus

03/11/2014: 2.40%



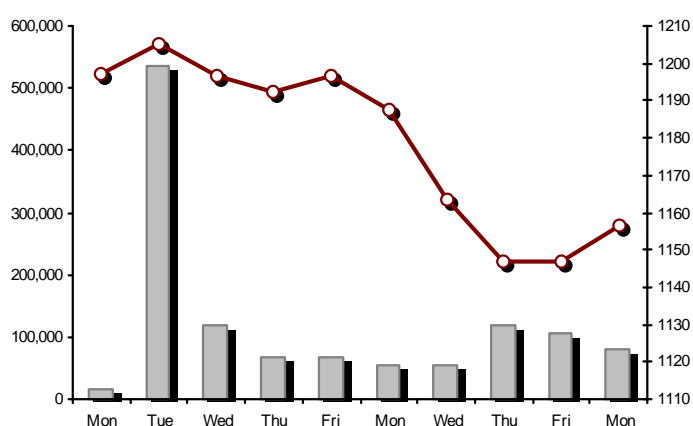
FTSE/ATHEX Global Traders Index

03/11/2014: 3.59%



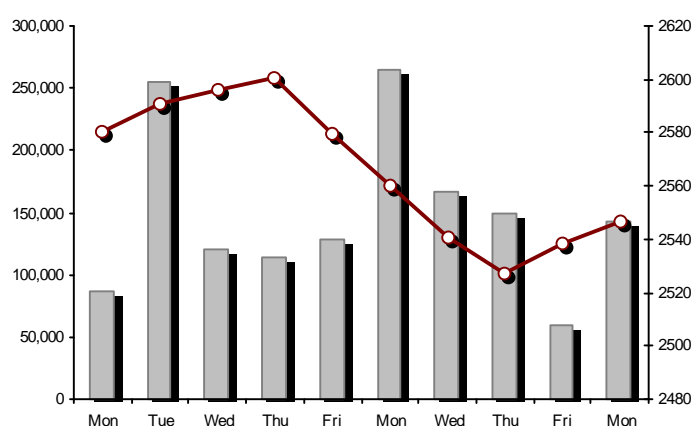
FTSE/ATHEX Mid &amp; Small Cap Factor-Weighted Index

03/11/2014: 0.83%



ATHEX Mid &amp; SmallCap Price Index

03/11/2014: 0.33%



Indices volume of transactions

Indices closing prices

## Analytic Figures for Athex Market's Boards and Categories

	Total Traded Securities	Main Market	Low Dispersion	Other Categories (*)	Exchange Traded Funds (ETFs)	Warrants
Totals	133	104	6	17	3	3
Gain / Lose / Same:	84 / 33 / 16	68 / 25 / 11	3 / 2 / 1	8 / 5 / 4	2 / 1 / 0	3 / 0 / 0
Athex Capitalisation (mill. €) **	59,306.22	57,166.67	1,738.62	400.93		
Daily Average Trans/ons Value(thou.€)	133,370.58	161,306.02	47.50	55.75	65.30	7,674.68
Transactions Value	67,481.90	64,545.67	29.75	4.84	9.91	2,891.74
Main Board:	60,877.38	58,863.37	29.75	4.84	9.91	1,969.51
Blocks Board:	6,604.52	5,682.30	0.00	0.00	0.00	922.22
Forced Sales Board:	0.00	0.00	0.00	0.00	0.00	0.00
Special Terms Board:	0.00	0.00	0.00	0.00	0.00	0.00
Daily Average Transactions Volume	94,307,122	87,441,980	22,273	355,639	14,742	6,472,488
Transactions Volume	61,384,828	57,145,421	15,989	54,391	2,684	4,166,343
Main Board:	48,936,499	46,348,892	15,989	54,391	2,684	2,514,543
Blocks Board:	12,448,329	10,796,529	0	0	0	1,651,800
Forced Sales Board:	0	0	0	0	0	0
Special Terms Board:	0	0	0	0	0	0
Daily Average Number of Trades	29,110	27,238	47	129	7	1,688
Number of Trades	23,203	22,044	34	46	7	1,072
Main Board:	23,198	22,041	34	46	7	1,070
Blocks Board:	5	3	0	0	0	2
Forced Sales Board:	0	0	0	0	0	0
Special Terms Board:	0	0	0	0	0	0

(\*) Summarised Transactions figures for Under Deletion and Under Supervision Categories. (\*\*) The Market Capitalization of the Companies that belong in the Under Supervision Status is not included.

## Trading Details by Athex Sectors and ETFs Category

Code	Sectors	Gain / Lose / Same	Number of Trades	Transactions Volume	Transactions Value	% of Total Trans. Value
8300	- Banks	7 / 2 / 1	8,257	54,647,432	39,460,981.18	58.48%
1700	- Basic Resources	6 / 2 / 0	1,142	273,624	1,254,106.50	1.86%
1300	- Chemicals	3 / 0 / 1	18	3,129	3,662.82	0.01%
2300	- Construction & Materials	8 / 4 / 2	1,597	949,730	2,538,314.06	3.76%
11000	- ETF	2 / 1 / 0	7	2,684	9,910.67	0.01%
8700	- Financial Services	2 / 1 / 0	1,336	1,255,771	1,505,571.87	2.23%
3500	- Food & Beverage	3 / 6 / 4	303	192,181	882,068.95	1.31%
4500	- Health Care	2 / 2 / 0	107	93,163	26,341.88	0.04%
2700	- Industrial Goods & Services	11 / 2 / 3	1,416	271,804	1,187,717.43	1.76%
8500	- Insurance	1 / 0 / 0	12	28,650	40,362.50	0.06%
5500	- Media	1 / 0 / 0	2	1,000	120.00	0.00%
500	- Oil & Gas	2 / 0 / 0	800	182,162	832,015.68	1.23%
3700	- Personal & Household Goods	6 / 6 / 1	957	487,610	2,109,251.36	3.13%
8600	- Real Estate	4 / 2 / 1	507	203,159	807,374.12	1.20%
5300	- Retail	2 / 1 / 0	348	91,117	818,431.23	1.21%
9500	- Technology	13 / 1 / 0	384	374,946	191,642.53	0.28%
6500	- Telecommunications	1 / 0 / 0	1,816	693,438	6,461,356.42	9.57%
5700	- Travel & Leisure	5 / 3 / 3	1,596	651,167	5,246,430.70	7.77%
7500	- Utilities	5 / 0 / 0	2,598	982,061	4,106,244.39	6.08%

## Top 10 best &amp; worst performing Shares

## Main Market

With positive Price change	Closing price	change	With negative Price change	Closing price	change
GEK TERNA (CR)	2.22	8.82% #	REVOIL (CR)	0.346	-5.72% ⚡
TERNA ENERGY (CR)	2.49	8.73% #	EUROBANK ERGASIAS (CR)	0.272	-1.81% ⚡
PROFILE SA (CR)	0.510	8.05% #	ATTICA BANK S.A. (CR)	0.061	-1.61% ⚡
ELLAKTOR (CR)	2.41	7.11% #	LAMDA DEVELOPMENT SA (CR)	3.30	-1.49% ⚡
INTRALOT (CR)	1.21	7.08% #	HYGEIA SA (CR)	0.184	-0.54% ⚡
JUMBO SA (CR)	9.35	6.86% #	AEGEAN AIRLINES (CR)	6.92	-0.43% ⚡
MYTILINEOS HOLDINGS (CR)	5.43	5.85% #	KORRES (CR)	3.40	-0.29% ⚡
PPC (CR)	6.40	5.61% #	GR. SARANTIS SA (CR)	6.99	-0.14% ⚡
EYDAP S.A. (CR)	5.80	5.26% #			
HELLENIC EXCHANGES-A.S.E. (CR)	5.64	5.03% #			
With the highest Transactions Value	Value (thou. €)	change	With the highest Transactions Volume	Volume	change
ALPHA BANK (CR)	15,313.69	4.42% #	ALPHA BANK (CR)	28,867,353	4.42% #
NATIONAL BANK (CR)	10,702.52	2.08% #	EUROBANK ERGASIAS (CR)	8,412,956	-1.81% ⚡
PIRAEUS BANK (CR)	8,176.12	0.00% ↘	PIRAEUS BANK (CR)	7,111,600	0.00% ↘
OTE (CR)	6,461.36	4.99% #	NATIONAL BANK (CR)	5,553,345	2.08% #
OPAP (CR)	4,816.69	3.93% #	MARFIN INVESTMENT GROUP (CR)	1,024,304	4.26% #
PPC (CR)	3,079.77	5.61% #	OTE (CR)	693,438	4.99% #
EUROBANK ERGASIAS (CR)	2,322.29	-1.81% ⚡	ATTICA BANK S.A. (CR)	533,695	-1.61% ⚡
HELLENIC EXCHANGES-A.S.E. (CR)	1,285.18	5.03% #	PPC (CR)	491,149	5.61% #
MYTILINEOS HOLDINGS (CR)	1,201.35	5.85% #	OPAP (CR)	485,531	3.93% #
JUMBO SA (CR)	1,038.17	6.86% #	GEK TERNA (CR)	442,229	8.82% #

Note: Stocks that are not included in the "Low Dispersion" and "Under Supervision" categories, and the transactions value is more than 10,000 €.



## Derivatives Summary

	Number of Trades	Volume	Open Interest	Transactions Value
Index Futures	925	9,650	45,823	14,492,993.75
FTSE/Athex Large Cap	925	9,650	45,823	14,492,993.75
Stock Futures	1,823	26,883	258,546	5,725,285.65
ALPHA BANK (CR)	131	4,184	40,221	221,938.00
CC HBC AG (CR)	2	2	1,251	3,418.00
CORINTH PIPEWORKS SA (CR)	0	0	906	0.00
ELLAKTOR (CR)	18	98	1,892	23,343.00
EUROBANK ERGASIAS (CR)	99	6,027	69,849	165,927.90
EYDAP S.A. (CR)	13	20	640	11,344.00
FOLLI FOLLIE (CR)	15	28	286	75,903.79
FRIGOGLASS SA (CR)	11	50	647	11,302.00
GEK TERNA (CR)	71	776	11,503	163,787.00
GRIVALIA PROPERTIES (CR)	23	91	178	79,223.00
HELLENIC EXCHANGES-A.S.E. (CR)	66	265	1,973	151,803.46
HELLENIC PETROLEUM (CR)	79	235	6,457	98,102.00
INTRALOT (CR)	14	35	1,074	4,077.00
JUMBO SA (CR)	48	218	575	195,373.00
MARFIN INVESTMENT GROUP (CR)	19	857	25,962	18,535.50
METKA (CR)	32	129	757	105,579.00
MOTOR OIL (CR)	9	19	335	11,215.00
MYTILINEOS HOLDINGS (CR)	94	369	7,150	196,225.00
NATIONAL BANK (CR)	175	3,056	32,187	584,921.00
OPAP (CR)	189	787	1,866	760,579.00
OTE (CR)	191	1,259	7,518	1,169,110.00
P.P.A. S.A. (CR)	5	6	600	7,571.00
PIRAEUS BANK (CR)	212	6,954	32,155	797,557.00
PPC (CR)	228	1,022	8,019	634,774.00
SIDENOR (CR)	0	0	820	0.00
TERNA ENERGY (CR)	34	277	3,008	65,065.00
TITAN CEMENT (CR)	35	89	439	160,788.00
VIOHALCO SA/NV (CB)	10	30	278	7,824.00
Index Options	80	596	12,622	890,000.00
FTSE/Athex Large Cap	80	596	12,622	890,000.00
Stock Options	3	500	1,675	100,000.00
ALPHA BANK (CR)	0	0	0	0.00
NATIONAL BANK (CR)	3	500	1,205	100,000.00
OPAP (CR)	0	0	100	0.00
OTE (CR)	0	0	75	0.00
PIRAEUS BANK (CR)	0	0	0	0.00
PPC (CR)	0	0	295	0.00
Stock Repos - Stock Reverse Repos - Repurchase Agreements	84	31,556	385,440	3,233,654.60
Stock Reverse Repos	76	30,402	101,611	3,013,238.60
Stock Repos	1	98	256,742	91,630.00
Repurchase Agreement	7	1,056	27,087	128,786.00
Total Derivatives Traded	2,915	69,185	704,106	24,441,934.00

Number of Outstanding Securities	Nominal Value	Dividends [1]			Date of Last Coupon		Note	Shares	Closing price	% change	Previous closing price/date	Open price	Price min	Price max	Last price	Avg price	Last Bid [7]	Last Ask [7]	P/E after	Year	Volume	Trades	Transactions Value	Company Mkt Value (thou. €)	Year low	Year high	Sector[ 4]
		2011	2012	2013	Dividend [2]	Right																					
Warrants																											
1,143,803,533		---	---	---	11/06/2013	---	ALPHA BANK (W)	1.30	1.56 #	1.28	31/10/2014	1.23	1.23	1.30	1.30	1.27	10650@1.29	180055@1.30	3.00	2013	1,230,449	437	1,557,222.99	6,933,599.50	0.750	2.15	8355
245,748,459		---	---	---	27/06/2013	---	NATIONAL BANK (W)	0.387	1.84 #	0.380	31/10/2014	0.389	0.365	0.389	0.387	0.380	400@0.383	450@0.387	0.86	2013	257,810	235	97,960.29	6,924,973.28	0.250	1.59	8355
843,640,590		---	---	---	03/07/2013	---	PIRAEUS BANK (W)	0.470	2.17 #	0.460	31/10/2014	0.460	0.450	0.471	0.470	0.464	30@0.468	179881@0.470	0.50	2013	2,678,084	400	1,236,552.57	7,078,296.47	0.240	1.15	8355

## Main Market

71,417,100	0.650	---	---	---	26/05/2010	27/06/2014	---	AEGEAN AIRLINES (CR)	6.92	-0.43	€	6.95	31/10/2014	6.90	6.71	6.97	6.92	6.90	100@6.91	3288@6.92	7.45	2013	38.859	177	268,255.71	494,206.33	5.02	8.65	5751
11,178,000	1.25	---	---	---	21/04/2010	18/12/2013	---	AEOLIAN INVESTMENT FUND (CR)	0.800	-5.88	€	0.850	31/10/2014	0.800	0.800	0.800	0.800	0.800	200@0.771	500@0.850	10.98	2013	800	2	640.00	8,942.40	0.700	1.09	8985
13,000,000	1.00	---	---	---	01/08/2007	07/04/2000	---	AKRITAS SA (CR)	0.265	---	↘	0.265	30/10/2014	---	---	---	---	---	---	700@0.258	---	2013	---	---	---	3,445.00	0.100	0.325	2353
5,000,000	0.400	---	---	---	03/06/2009	01/09/2014	---	ALCO HELLAS SA (CR)	0.376	---	↘	0.376	31/10/2014	---	---	---	---	---	300@0.337	1@0.408	---	2013	---	---	---	1,880.00	0.332	2.09	1753
12,769,059,858	0.300	---	---	---	07/04/2008	13/05/2013	---	ALPHA BANK (CR)	0.543	4.42	#	0.520	31/10/2014	0.528	0.514	0.544	0.543	0.533	12500@0.540	21100@0.544	1.25	2013	28,867,353	2,480	15,313,692.37	6,933,599.50	0.468	0.784	8355
22,016,250	0.370	---	---	---	15/07/2009	11/05/2000	---	ALUMIL (CR)	0.270	-5.26	€	0.285	31/10/2014	0.285	0.244	0.285	0.270	0.253	1000@0.223	72@0.269	---	2013	3,730	48	944.15	5,944.39	0.209	0.660	1753
417,608	16.00	---	---	0.8	29/04/2014	05/03/2013	---	ANDROMEDA SA (CR)	20.01	---	↘	20.01	15/10/2014	---	---	---	---	---	10@19.03	85@21.99	6.05	2013	---	---	---	8,356.34	20.01	23.99	8985
26,252,040	0.380	---	---	---	08/07/2010	10/02/2014	---	AS COMPANY SA (CR)	0.322	1.58	#	0.317	29/10/2014	0.322	0.322	0.322	0.322	0.320	20157@0.300	817@0.322	19.34	2013	1	1	0.32	8,453.16	0.291	0.413	5379
86,735,980	0.310	---	---	---	06/07/2009	02/01/2002	---	ATHENS MEDICAL CENTER SA (CR)	0.786	-1.75	€	0.800	31/10/2014	0.764	0.764	0.800	0.786	0.799	20@0.786	1000@0.800	---	2013	10,999	16	8,782.81	68,174.48	0.677	0.930	4533
1,045,794,145	0.300	---	---	---	04/06/2008	07/08/2014	---	ATTICA BANK S.A. (CR)	0.061	-1.61	€	0.062	31/10/2014	0.062	0.061	0.063	0.061	0.061	54625@0.061	6637@0.062	---	2013	533,695	81	32,802.27	63,793.44	0.055	0.277	8355
15,300,000	0.300	---	---	---	30/07/2009	13/12/1999	---	ATTICA PUBLICATIONS SA (CR)	1.35	---	↘	1.35	13/10/2014	---	---	---	---	---	---	953@1.34	38.95	2013	---	---	---	20,655.00	1.35	2.15	5557
45,457,464	0.700	---	---	---	01/07/2008	01/03/2010	---	AUDIO VISUAL ENTERPRISES (CR)	0.290	---	↘	0.290	29/10/2014	---	---	---	---	---	---	6996@0.261	---	2013	---	---	---	13,182.66	0.209	0.376	5553
12,120,000	0.320	(0.45)	---	---	30/04/2012	22/11/2013	---	AUTOHELLAS SA (CR)	8.23	4.44	#	7.88	31/10/2014	8.00	8.00	8.34	8.34	8.14	100@8.10	90@8.33	33.57	2013	1,841	12	14,976.20	99,747.60	6.90	11.20	5759
19,864,886	5.60	0.67	0.5376	0.672	05/03/2014	02/07/2008	---	BANK OF GREECE (CR)	10.30	1.48	#	10.15	31/10/2014	10.10	10.10	10.44	10.30	10.20	24@10.17	184@10.30	---	---	2,139	42	21,815.38	204,608.33	9.80	16.53	8355
23,986,500	1.05	---	---	---	26/06/2009	15/03/2000	---	BIOKARPET S.A.(CR)	0.200	-9.09	€	0.220	31/10/2014	0.222	0.200	0.222	0.200	0.201	1700@0.200	200@0.210	---	2013	18,380	28	3,691.75	4,797.30	0.200	0.880	3726
15,842,391	1.51	---	---	---	15/07/2009	12/05/2000	---	BITROS HOLDING SA (CR)	0.199	0.50	#	0.198	31/10/2014	0.180	0.180	0.200	0.199	0.187	---	950@0.199	---	2013	3,100	4	578.95	3,152.64	0.158	0.559	1757
15,816,009	0.300	---	---	---	01/07/2009	17/07/2000	---	BYTE COMPUTER SA (CR)	0.455	1.11	#	0.450	31/10/2014	0.455	0.455	0.455	0.455	0.455	50@0.455	250@0.460	---	2013	150	2	68.25	7,196.28	0.432	0.666	9533
367,747,133	6.70	---	0.34	0.354	09/07/2014	29/04/2013	---	CC HBC AG (CR)	17.24	0.94	#	17.08	31/10/2014	17.31	17.24	17.49	17.24	17.38	50@16.80	656@17.43	---	---	45,407	161	789,137.87	6,339,960.57	15.53	22.00	3537
101,123,806	0.360	---	---	---	22/07/2010	28/06/2011	---	CENTRIC HOLDINGS (CR)	0.217	0.93	#	0.215	27/10/2014	0.215	0.215	0.217	0.217	0.216	3000@0.163	2564@0.199	10.63	2013	8,000	3	1,728.00	21,943.87	0.162	0.390	5752
4,034,950	0.680	---	---	---	01/07/2005	30/12/2010	---	CHATZIKRANIOVIS & SONS SA (CR)	0.220	10.00	#	0.200	31/10/2014	0.219	0.219	0.220	0.220	0.219	800@0.190	801@0.210	---	2013	1,750	2	384.00	887.69	0.155	0.420	3577
124,170,201	0.780	---	---	---	28/06/2002	07/02/2005	---	CORINTH PIPEWORKS SA (CR)	1.33	2.31	#	1.30	31/10/2014	1.31	1.31	1.35	1.33	1.33	11658@1.33	3027@1.35	---	2013	17,866	60	23,805.50	165,146.37	1.28	2.30	1757
9,907,500	0.300	---	---	---	06/10/2005	13/02/2002	---	CPI SA (CR)	0.235	---	↘	0.235	16/10/2014	---	---	---	---	---	---	200@0.229	20.28	2014	---	---	---	2,328.26	0.133	0.295	9572
27,379,200	0.520	---	---	0.1	24/07/2014	18/09/2013	---	CRETE PLASTICS SA (CR)	4.85	---	↘	4.85	30/10/2014	---	---	---	---	---	300@4.46	500@4.90	14.56	2013	---	---	---	132,789.12	4.60	5.54	1357
15,000,000	0.300	---	---	---	06/07/2007	18/07/2000	---	DAIOS PLASTICS SA (CR)	2.20	---	↘	2.20	31/10/2014	2.00	2.00	2.20	2.20	2.04	100@2.04	50@2.10	---	2013	820	8	1,674.00	33,000.00	1.66	2.30	1357
34,720,000	0.310	---	---	---	16/06/2010	01/08/2007	---	DROMEAS SA (CR)	0.179	8.48	#	0.165	31/10/2014	0.179	0.179	0.179	0.179	0.179	400@0.147	2702@0.177	---	2013	10	1	1.79	6,214.88	0.131	0.400	3726
3,873,120	0.300	---	---	---	07/07/2008	04/10/2012	---	DRUCKFARBEN HELLAS (CR)	0.990	---	↘	0.990	09/10/2014	---	---	---	---	---	751@0.891	750@0.961	---	2013	---	---	---	3,834.39	0.810	1.95	1357
11,250,000	0.560	---	---	---	26/07/2010	16/06/1999	---	EKTER SA (CR)	0.500	---	↘	0.500	31/10/2014	---	---	---	---	---	2000@0.450	1000@0.514	---	2013	---	---	---	5,625.00	0.416	0.990	2357
32,188,050	1.04	---	---	---	21/07/2008	20/01/2000	---	EL. D. MOUZAKIS SA (CB)	0.220	---	↘	0.220	30/10/2014	---	---	---	---	---	---	5200@0.199	---	2013	---	---	---	7,081.37	0.171	0.475	3763
18,435,000	1.00	---	---	---	07/07/2009	10/09/2010	---	ELASTRON (CR)	0.595	---	↘	0.595	31/10/2014	---	---	---	---	---	400@0.531	500@0.599	---	2013	---	---	---	10,968.83	0.535	1.00	1757
31,734,530	1.60	---	---	---	09/07/2007	19/07/2006	---	ELGEKA SA (CR)	0.311	-9.85	€	0.345	31/10/2014	0.316	0.311	0.316	0.311	0.311	---	1000@0.340	---	2013	759	4	236.34	9,869.44	0.238	0.488	3577
23,828,130	0.500	---	---	---	07/07/2010	17/02/2009	---	ELINOIL S.A. (CR)	1.21	---	↘	1.21	13/10/2014	---	---	---	---	---	---	1250@1.20	---	2013	---	---	---	28,832.04	0.790	1.50	537
177,001,313	1.03	---	---	---	05/07/2011	20/12/2007	---	ELLAKTOR (CR)	2.41	7.11	#	2.25	31/10/2014	2.23	2.22	2.45	2.41	2.36	69@2.37	2660@2.42	---	2013	422,953	530	996,270.07	426,573.16	2.09	4.35	2357
82,667,000	0.300	---	---	---	22/07/2014	---	---	ELTECH ANEMOS S.A. (CR)	0.990	0.71	#	0.983	31/10/2014	0.990	0.970	1.03	0.990	0.995	100@0.986	29000@0.995	---	---	257,079	196	255,873.90	81,840.33	0.970	1.70	7537

Number of Outstanding Securities	Nominal Value	Dividends [1]			Date of Last Coupon		Note	Shares	Closing price	% change	Previous closing price/date	Open price	Price min	Price max	Last price	Avg price	Last Bid [7]	Last Ask [7]	P/E after	Year	Volume	Trades	Transactions Value	Company Mkt Value (thou. €)	Year low	Year high	Sector[ 4]
		2011	2012	2013	Dividend [2]	Right																					
Main Market																											
26,730,187	0.600	---	---	0.05	23/06/2014	30/12/2010	---	ELTON SA (CR)	0.940	0.11 #	0.939 31/10/2014	0.940	0.940	0.940	0.940	0.940	60@0.870	9700@0.890	9.69	2013	20	1	18.80	25,126.38	0.840	1.40	1353
14,050,971	0.340	---	---	---	06/07/2011	17/10/2002	---	ELTRAK SA (CR)	1.35	-3.57 €	1.40 31/10/2014	1.35	1.35	1.35	1.35	1.35	200@1.26	6002@1.35	---	2013	4,000	2	5,400.00	18,968.81	1.23	2.03	2753
124,100,815	0.300	---	0.08	---	30/05/2014	07/07/2000	---	ELVAL SA. (CB)	1.20	0.84 #	1.19 31/10/2014	1.18	1.18	1.24	1.20	1.20	250@1.19	34@1.20	34.99	2013	8,024	28	9,622.40	148,920.98	1.18	2.15	1753
13,230,000	0.300	---	---	---	11/08/2010	28/08/2013	---	ELVE SA (CR)	0.500	-1.96 €	0.510 31/10/2014	0.497	0.495	0.501	0.501	0.498	1000@0.502	1000@0.512	---	2013	13,058	10	6,504.46	6,615.00	0.495	0.715	3763
30,009,210	0.310	---	---	---	27/06/2008	26/06/2000	---	ETEM SA (CB)	0.233	---	0.233 30/10/2014	---	---	---	---	---	---	2400@0.230	---	2013	---	---	---	6,992.15	0.163	0.400	1753
14,707,876,542	0.300	---	---	---	02/05/2008	13/06/2013	---	EUROBANK ERGASIAS (CR)	0.272	-1.81 €	0.277 31/10/2014	0.275	0.264	0.287	0.272	0.276	10114@0.360	10000@0.275	---	2013	8,412,956	1,262	2,322,285.14	4,000,542.42	0.202	0.630	8355
7,959,900	0.600	---	---	---	02/06/2010	10/12/2013	5031	EUROCONSULTANTS S.A. (CR)	1.63	3.16 #	1.58 31/10/2014	1.58	1.58	1.63	1.63	1.59	110@1.51	288@1.65	47.90	2013	250	3	397.50	12,974.64	1.55	2.87	2791
27,503,677	0.600	0.05	0.1	---	11/07/2013	18/10/1999	---	EUROPEAN RELIANCE INSUR. (CR)	1.43	0.70 #	1.42 31/10/2014	1.40	1.40	1.43	1.43	1.41	4442@1.42	2530@1.43	4.15	2013	28,650	12	40,362.50	39,330.26	1.21	1.66	8536
13,673,200	0.880	---	---	---	18/07/2008	26/07/2001	---	EVROFARMA SA (CR)	0.330	---	0.330 31/10/2014	---	---	---	---	---	---	840@0.297	---	2013	---	---	---	4,512.16	0.224	0.455	3577
106,500,000	0.600	0.05	0.15	0.36	05/05/2014	28/01/2000	---	EYDAP S.A. (CR)	5.80	5.26 #	5.51 31/10/2014	5.51	5.51	5.83	5.80	5.72	9116@5.76	5329@5.80	7.95	2013	62,307	431	356,569.34	617,700.00	5.00	9.95	7577
52,800,154	0.300	---	---	0.2	20/08/2014	21/06/2004	---	F.G. EUROPE S.A. (CR)	1.03	0.98 #	1.02 31/10/2014	1.00	0.995	1.03	1.03	1.01	150@0.995	50@1.03	18.59	2013	450	7	453.75	54,384.16	0.580	1.95	3722
10,203,575	0.730	---	---	---	16/07/2007	18/10/1999	---	FIERATEX SA (CR)	0.213	---	0.213 29/10/2014	---	---	---	---	---	---	500@0.211	---	2013	---	---	---	2,173.36	0.121	0.430	3763
11,720,024	0.540	---	---	0.0394	21/08/2014	07/08/2014	---	FLEXOPACK SA (CR)	2.31	---	2.31 30/10/2014	2.45	2.30	2.45	2.37	2.32	300@2.21	25@2.37	10.93	2013	1,140	5	2,643.00	27,073.26	2.30	3.50	2723
4,181,450	0.500	---	---	---	21/08/2000	05/03/2002	---	FLOUR MILLS SARANTOPOULOS SA	0.950	---	0.950 24/10/2014	---	---	---	---	---	---	350@0.949	---	2013	---	---	---	3,972.38	0.689	1.14	3577
66,948,210	0.300	---	---	---	14/07/2009	23/09/2014	---	FOLLI FOLLIE (CR)	26.27	0.65 #	26.10 31/10/2014	26.39	26.10	26.50	26.27	26.28	3369@26.27	8373@26.30	4.07	2013	30,342	272	797,513.99	1,758,729.48	21.90	34.40	5379
50,992,322	1.07	---	---	---	21/06/2010	16/07/2002	---	FOURLIS (CR)	3.28	4.46 #	3.14 31/10/2014	3.13	3.07	3.32	3.28	3.22	2894@3.28	400@3.29	---	2013	285,552	202	919,564.41	167,254.82	3.07	6.01	3722
50,593,832	0.300	---	---	---	07/07/2010	07/09/2011	---	FRIGOGLASS SA (CR)	2.25	1.81 #	2.21 31/10/2014	2.25	2.21	2.33	2.25	2.27	350@2.24	40483@2.25	---	2013	46,060	150	104,323.16	113,836.12	2.17	5.63	2757
77,376,446	0.340	---	---	---	23/05/2005	18/08/2011	---	G.E. DIMITRIOU (CR)	0.010	---	0.010 31/10/2014	---	---	---	---	---	20000@0.009	14500@0.011	---	2013	---	---	---	773.76	0.009	0.041	3722
14,076,360	0.370	---	---	---	19/08/2008	22/07/2003	---	GALAXIDI S.A. (CR)	0.330	---	0.330 30/10/2014	0.320	0.320	0.330	0.330	0.330	3390@0.330	---	2013	5,110	3	1,685.20	4,645.20	0.200	0.439	3573	
94,462,368	0.570	---	---	---	01/08/2011	02/01/2009	---	GEK TERNA (CR)	2.22	8.82 #	2.04 31/10/2014	2.04	2.02	2.22	2.22	2.14	3426@2.17	10318@2.20	---	2013	442,229	675	947,536.93	209,706.46	1.92	4.21	2357
8,418,750	0.300	0.15	0.29	---	05/06/2013	27/06/2012	---	GEKE SA (CB)	6.05	---	6.05 31/10/2014	---	---	---	---	---	140@5.60	140@6.53	95.66	2013	---	---	---	50,933.44	5.04	7.20	5753
24,060,000	0.300	0.017	---	0.017	07/07/2014	21/01/2000	---	GEN. COMMERCIAL & IND.SA (CR)	0.340	---	0.340 30/10/2014	0.340	0.340	0.340	0.340	0.340	1000@0.332	3000@0.350	24.45	2013	3,000	1	1,020.00	8,180.40	0.327	0.455	2797
34,770,982	1.55	---	---	0.3	17/01/2014	27/07/2000	---	GR. SARANTIS SA (CR)	6.99	-0.14 €	7.00 31/10/2014	7.16	6.90	7.16	6.99	6.97	415@6.92	100@7.02	6.63	2013	9,535	89	66,451.55	243,049.16	6.06	8.24	3767
101,260,000	2.13	0.4067	---	0.1821	17/04/2014	08/01/2014	---	GRIVALIA PROPERTIES (CR)	8.95	3.83 #	8.62 31/10/2014	8.50	8.50	9.23	8.95	8.91	79@8.88	823@8.95	---	2013	46,246	267	411,896.10	906,277.00	6.65	9.82	8675
8,340,750	1.20	---	---	---	25/06/2009	30/07/2001	---	HAIDEMENOS SA (CR)	0.385	---	0.385 30/10/2014	---	---	---	---	---	400@0.347	---	2013	---	---	---	3,211.19	0.334	0.760	2791	
101,279,627	0.380	---	---	---	26/06/2008	14/07/2006	---	HALKOR SA (CB)	0.346	5.81 #	0.327 31/10/2014	0.330	0.321	0.346	0.346	0.329	150@0.330	150@0.343	---	2013	5,600	18	1,843.20	35,042.75	0.313	0.912	1755
36,748,909	0.730	---	---	---	15/12/2005	13/12/2006	---	HEL. SUGAR INDUSTRY SA (CB)	0.279	-2.45 €	0.286 31/10/2014	0.290	0.250	0.290	0.270	0.255	1500@0.250	4833@0.270	---	2014	16,606	18	4,242.39	10,252.95	0.250	1.10	3577
29,546,360	0.710	---	---	---	20/06/2008	23/08/2000	---	HELLENIC CABLES SA (CR)	0.914	1.78 #	0.898 31/10/2014	0.899	0.899	0.914	0.914	0.903	50@0.900	782@0.914	---	2013	300	4	271.00	27,005.37	0.864	2.00	2733
65,368,563	0.560	0.11	0.09	---	03/06/2013	16/07/2014	---	HELLENIC EXCHANGES-A.S.E. (CR)	5.64	5.03 #	5.37 31/10/2014	5.40	5.40	5.68	5.64	5.57	100@5.63	1843@5.64	-(6)-	2013	230,667	863	1,285,175.41	368,678.70	4.95	9.52	8777
305,635,185	2.18	0.45	0.15	---	16/08/2013	01/10/2003	4795	HELLENIC PETROLEUM (CR)	4.25	3.66 #	4.10 31/10/2014	4.10	4.02	4.28	4.25	4.21	1800@4.22	50@4.26	---	2013	143,222	552	602,205.49	1,298,949.54	4.00	8.13	537
305,732,436	0.410	---	---	---	08/07/2009	28/09/2011	---	HYGEIA SA (CR)	0.184	-0.54 €	0.185 31/10/2014	0.182	0.181	0.188	0.184	0.185	8000@0.183	6000@0.185	---	2013	78,760	78	14,604.01	56,254.77	0.180	0.508	4533
53,155,053	0.440	---	---	---	21/07/2010	16/07/2008	---	IASO SA (CR)	0.889	1.02 #	0.880 31/10/2014	0.860	0.860	0.889	0.889	0.870	1210@0.881	750@0.889	---	2013	3,384	11	2,945.46	47,254.84	0.770	1.99	4533
8,298,467	0.400	---	---	---	30/08/1993	08/05/2013	---	IDEAL GROUP SA (CR)	0.897	-1.32 €	0.909 30/10/2014	0.875	0.875	0.897	0.897	0.883	100@0.875	100@0.894	-(6)-	2013	140	2	123.60	7,443.72	0.538	1.00	9574
28,580,100	0.400	0.02	---	0.025	18/08/2014	10/10/2013	---	IKTINOS HELLAS SA (CR)	1.46	2.10 #	1.43 31/10/2014	1.43	1.42	1.48	1.46	1.46	1810@1.42	360@1.46	8.93	2013	5,020	26	7,321.10	41,726.95	1.32	1.84	2353
9,090,000	0.900	---	---	---	15/05/2009	13/10/2014	5073	ILYDA S.A. (CR)	0.739	---	0.739 16/10/2014	---	---	---	---	---	---	6194@0.666	---	2013	---	---	---	6,717.51	0.350	0.789	9537
20,578,374	0.620	---	---	---	02/06/2011	05/05/1999	---	INFORM P. LYKOS SA (CR)	1.44	---	1.44 31/10/2014	---	---	---	---	---	185@1.37	1000@1.44	---	2013	---	---	---	29,632.86	1.36	1.90	2791
11,233,200	0.730	---	---	---	12/07/2010	30/07/1999	---	INTERTECH SA (CR)	0.327	4.47 #	0.313 30/10/2014	0.282	0.282	0.327	0.327	0.302	146@0.282	28@0.327	---	2013	90						

Number of Outstanding Securities	Nominal Value	Dividends [1]			Date of Last Coupon		Note	Shares	Closing price	% change	Previous closing price/date	Open price	Price min	Price max	Last price	Avg price	Last Bid [7]	Last Ask [7]	P/E after	Year	Volume	Trades	Transactions Value	Company Mkt Value (thou. €)	Year low	Year high	Sector[ 4]		
		2011	2012	2013	Dividend [2]	Right																							
Main Market																													
2,566,836	0.440	---	---	---	13/08/2010	09/01/2007	---	INTERWOOD-XYLEMPORIA (PR)	0.195	---	↘ 0.195	17/02/2014	---	---	---	---	---	---	---	2013	---	---	---	6,168.33	0.195	0.200	2353		
23,154,250	1.36	---	---	---	12/08/2008	02/08/2010	---	INTRACOM CONSTR. (CR)	0.600	2.04	# 0.588	31/10/2014	0.590	0.580	0.605	0.605	0.591	550@0.600	89@0.605	---	2013	3,861	8	2,281.66	13,892.55	0.457	1.32	2357	
133,025,996	1.41	---	---	---	03/07/2007	07/01/2002	---	INTRACOM HOLDINGS (CR)	0.417	3.99	# 0.401	31/10/2014	0.406	0.394	0.422	0.417	0.411	800@0.412	2000@0.418	---	2013	100,758	150	41,447.24	55,471.84	0.394	0.900	9578	
158,961,721	0.300	0.0035	0.0026	---	30/05/2013	14/11/2007	---	INTRALOT (CR)	1.21	7.08	# 1.13	31/10/2014	1.15	1.15	1.22	1.21	1.18	2000@1.19	4020@1.21	---	2013	100,304	240	118,713.60	192,343.68	1.08	2.51	5752	
77,654,850	0.580	---	---	---	01/07/2011	21/02/2003	---	J & P - AVAX SA (CR)	0.870	3.08	# 0.844	31/10/2014	0.820	0.820	0.878	0.870	0.864	30@0.868	175@0.870	---	2013	20,335	52	17,567.10	67,559.72	0.820	2.02	2357	
136,059,759	1.19	---	---	---	22/10/2014	05/03/2014	---	JUMBO SA (CR)	9.35	6.86	# 8.75	31/10/2014	8.65	8.65	9.37	9.35	9.12	50@9.34	1280@9.36	17.40	2014	113,794	551	1,038,172.98	1,272,158.75	7.95	14.40	3747	
9,742,920	0.400	0.01	0.01	0.01	08/08/2014	14/07/2000	---	KARAMOLEGOS SA (CR)	1.47	---	↘ 1.47	31/10/2014	1.45	1.45	1.49	1.45	1.47	2000@1.43	50@1.48	---	2013	49,100	54	72,127.00	14,322.09	0.912	1.78	3577	
14,679,792	1.68	---	---	---	24/06/2014	04/09/2000	---	KARATZIS SA (CR)	3.30	8.20	# 3.05	31/10/2014	3.30	3.30	3.30	3.30	3.30	50@3.09	50@3.10	9.91	2013	11	1	36.30	48,443.31	2.92	4.50	2723	
13,202,756	0.350	---	---	---	01/07/2004	05/08/2014	---	KEKROPS SA (CR)	0.365	3.11	# 0.354	31/10/2014	0.333	0.333	0.368	0.368	0.355	300@0.340	1000@0.366	---	2013	3,555	9	1,261.72	4,819.01	0.333	1.11	8633	
7,595,160	0.600	---	---	---	08/08/2008	18/08/2010	---	KIRIAKOULIS SHIPPING SA (CR)	0.646	---	↘ 0.646	21/10/2014	---	---	---	---	---	---	349@0.640	41.94	2013	---	---	---	4,906.47	0.492	1.08	5759	
23,648,700	0.350	---	---	---	13/07/2011	29/07/2014	---	KLEEMAN HELLAS SA (CR)	1.67	1.83	# 1.64	31/10/2014	1.62	1.62	1.67	1.67	1.66	300@1.62	1100@1.66	59.03	2013	1,000	3	1,655.00	39,493.33	1.50	2.58	2757	
40,219,218	0.300	---	---	---	25/05/2009	09/07/2013	---	KLOUKINAS - LAPPAS SA (CR)	0.550	---	↘ 0.550	31/10/2014	0.550	0.550	0.550	0.550	0.550	60@0.529	2700@0.549	---	2013	50	1	27.50	22,120.57	0.424	0.780	2357	
21,224,340	0.420	---	---	---	02/07/2008	25/04/2006	---	KORDELLOS BROS SA (CR)	0.220	---	↘ 0.220	21/10/2014	---	---	---	---	---	---	640@0.220	---	---	2013	---	---	---	4,669.35	0.169	0.359	1757
13,586,500	0.390	---	---	---	25/06/2010	28/05/2008	---	KORRES (CR)	3.40	-0.29	€ 3.41	31/10/2014	3.41	3.37	3.41	3.40	3.40	200@3.31	180@3.45	---	2013	15,520	18	52,764.02	46,194.10	2.84	3.93	3767	
29,480,000	0.420	---	---	---	19/07/2010	01/08/2007	---	KRETA FARM SA (CR)	0.561	---	↘ 0.561	31/10/2014	0.580	0.561	0.588	0.561	0.571	500@0.551	60@0.588	---	2013	500	5	285.57	16,538.28	0.380	0.690	3577	
33,065,136	0.380	---	---	---	06/07/2009	16/09/2013	---	KRI-KRI S.A. (CR)	1.85	-1.60	€ 1.88	31/10/2014	1.80	1.80	1.85	1.85	1.82	300@1.81	185@1.84	11.94	2013	1,710	13	3,109.60	61,170.50	1.65	2.07	3577	
15,804,800	0.330	---	---	---	15/06/2010	12/03/2004	---	KTIMA KOSTAS LAZARIDIS SA (CR)	0.338	---	↘ 0.338	31/10/2014	---	---	---	---	---	---	295@0.370	---	---	2013	---	---	---	5,342.02	0.297	0.575	3535
24,474,815	0.980	---	---	---	19/08/2008	15/09/2014	---	KYRIAKIDIS MARBLES SA (CR)	2.02	3.59	# 1.95	31/10/2014	1.95	1.95	2.02	2.02	1.95	1737@1.95	494@2.02	4.75	2013	207	4	404.11	49,439.13	1.07	2.60	2353	
79,706,464	0.300	---	---	---	30/05/2007	23/06/2014	---	LAMDA DEVELOPMENT SA (CR)	3.30	-1.49	€ 3.35	31/10/2014	3.33	3.25	3.35	3.30	3.29	1580@3.31	1148@3.37	---	2013	106,036	169	348,971.58	263,031.33	3.19	6.35	8633	
21,364,000	1.12	---	---	---	05/07/2010	10/08/2005	---	LAMPSA HOTEL SA (CR)	18.10	---	↘ 18.10	30/10/2014	17.41	17.41	18.10	18.10	17.80	100@17.40	50@18.08	-(6)-	2013	150	3	2,670.50	386,688.40	15.60	19.00	5753	
5,939,268	0.620	---	---	---	10/07/2003	03/01/2002	---	LANAKAM SA (CR)	1.16	---	↘ 1.16	13/10/2014	---	---	---	---	---	---	189@1.09	---	---	2013	---	---	---	6,889.55	0.485	1.40	3763
7,734,375	1.00	---	---	---	09/07/2007	07/01/2011	---	LIVANIS SA (CR)	0.210	---	↘ 0.210	13/10/2014	---	---	---	---	---	---	1000@0.200	---	---	2013	---	---	---	1,624.22	0.158	0.242	5557
4,740,000	0.860	---	---	---	14/03/2003	---	---	LOGISMOS S.A. (CR)	0.477	---	↘ 0.477	29/10/2014	---	---	---	---	---	---	560@0.477	64.23	2013	---	---	---	2,260.98	0.335	0.709	9533	
17,125,062	0.640	---	---	---	01/06/2010	02/08/2011	---	LOULIS MILLS SA (CR)	2.31	-0.86	€ 2.33	30/10/2014	2.39	2.31	2.39	2.31	2.39	31@2.31	100@2.37	---	2013	2,000	3	4,772.00	39,558.89	2.20	3.30	3577	
937,122,261	0.300	---	---	---	26/04/2007	29/08/2014	---	MARFIN INVESTMENT GROUP (CR)	0.220	4.26	# 0.211	31/10/2014	0.213	0.209	0.220	0.220	0.215	4400@0.216	13425@0.220	---	2013	1,024,304	471	219,756.46	206,166.90	0.204	0.572	8775	
9,819,370	0.690	---	---	---	14/08/2007	09/01/2004	---	MATHIOS REFRACTORY SA (CR)	0.447	---	↘ 0.447	13/10/2014	---	---	---	---	---	---	1300@0.444	---	---	2013	---	---	---	4,389.26	0.250	0.488	2353
468,700	---	0.47	---	---	27/02/2014	21/05/2004	---	MERMEREN KOMB. A.D. PR. (GDR)	5.37	-1.83	€ 5.47	27/10/2014	5.46	5.30	5.50	5.39	5.41	335@5.23	168@5.39	2.62	2013	1,546	9	8,356.80	2,516.92	3.45	5.64	1775	
51,950,600	0.320	0.75	0.25	0.3	20/06/2014	21/10/2005	---	METKA (CR)	8.12	4.10	# 7.80	31/10/2014	7.95	7.84	8.40	8.12	8.19	7508@8.15	78@8.16	9.49	2013	89,401	691	732,098.39	421,838.87	7.40	14.29	2757	
10,500,000	0.900	---	---	---	24/06/2008	19/12/2013	---	MEVACO SA (CR)	1.03	---	↘ 1.03	29/10/2014	---	---	---	---	---	200@0.956	2@1.12	---	2013	---	---	---	10,815.00	1.00	1.35	2757	
6,700,000	0.800	---	---	0.16	26/05/2014	29/05/2014	---	MILLS KEPENOS (CR)	1.59	---	↘ 1.59	23/10/2014	---	---	---	---	---	---	300@1.67	8.66	2013	---	---	---	10,653.00	0.991	2.50	3577	
6,200,000	0.500	---	---	---	22/06/2010	01/11/1995	---	MINERVA KNITWEAR SA (CB)	0.427	---	↘ 0.427	31/10/2014	---	---	---	---	---	---	5800@0.385	---	---	2013	---	---	---	2,647.40	0.262	0.689	3763
12,417,000	0.370	---	---	---	28/07/2008	06/09/2011	---	MLS MULTIMEDIA SA (CR)	4.30	2.14	# 4.21	31/10/2014	4.21	4.18	4.30	4.30	4.23	100@4.20	700@4.27	45.60	2013	5,260	31	22,235.69	53,393.10	3.28	4.82	9537	
4,588,137	16.00	---	---	---	30/06/2005	17/08/2011	---	MOCHLOS SA (CR)	0.960	-27.82	€ 1.33	31/10/2014	1.17	0.960	1.17	0.960	1.07	847@0.960	802@1.15	---	2013	6,565	29	7,039.00	4,404.61	0.960	2.05	2357	
11,700,000	0.590	---	---	---	02/06/2009	24/07/2012	---	MOTODYNAMICS S.A. (CR)	0.300	---	↘ 0.300	30/10/2014	---	---	---	---	---	---	300@0.271	9636@0.300	---	2013	---	---	---	3,510.00	0.263	0.447	5379
110,782,980	0.750	0.4	0.3	0.2	26/06/2014	04/11/2013	---	MOTOR OIL (CR)	5.93	1.54	# 5.84	31/10/2014	5.84	5.84	6.00	5.93	5.90	600@5.90	3467@5.93	-(6)-	2013	38,940	248	229,810.19	656,943.07	5.52	10.30	533	
116,915,862	1.07	---	---	---	11/05/2009	06/07/2011	---	MYTILINEOS HOLDINGS (CR)	5.43	5.85	# 5.13	31/10/2014	5.15	5.07	5.43	5.43	5.33	104@5.40	2540@5.43	---	2013	225,409	937	1,201,346.38	634,853.13	4.92	7.32	1755	
8,321,682	0.670	---	---	---	17/08/2007	23/11/1999	---	N. LEVEDERIS SA (CB)	0.230	---	↘ 0.230	13/10/2014	---	---	---	---	---	---	300@0.236	---	---	2013	---	---	---	3,210.30	0.196	0.255	1757
2,160,524	0.670	0.0435	0.																										

Number of Outstanding Securities	Nominal Value	Dividends [1]			Date of Last Coupon Dividend [2]		Note	Shares	Closing price	% change	Previous closing price/date	Open price	Price min	Price max	Last price	Avg price	Last Bid [7]	Last Ask [7]	P/E after	Year	Volume	Trades	Transactions Value	Company Mkt Value (thou. €)	Year low	Year high	Sector[ 4]
11,510,102	0.890	---	---	---	24/06/2005	06/10/1999	---	NAFPAKTOS TEXTILE IND. SA (CB)	0.234	-6.40	€ 0.250 24/10/2014	0.225	0.225	0.234	0.234	0.227	10@0.225	46@0.234	---	2013	2,035	5	462.33	2,693.36	0.207	0.397	3763
6,340,000	0.600	---	---	---	30/11/2009	12/07/2000	---	NAKAS MUSIC	0.810	---	↘ 0.810 23/10/2014	---	---	---	---	---	96@0.731	412@0.810	25.17	2014	---	---	---	5,135.40	0.526	1.62	5379
3,533,149,631	0.300	---	---	---	16/05/2008	24/05/2013	---	NATIONAL BANK (CR)	1.96	2.08	# 1.92 31/10/2014	1.93	1.88	1.96	1.96	1.93	129161@1.95	85400@1.97	4.36	2013	5,553,345	1,739	10,702,522.18	6,924,973.28	1.80	4.31	8355
23,935,280	0.300	---	---	---	29/06/2009	13/06/2000	---	NAYTEMPORIKI PUBLISHING SA(CR)	0.177	---	↘ 0.177 24/10/2014	---	---	---	---	---	284@0.162	17@0.193	---	2013	---	---	---	4,236.54	0.130	0.479	5557
27,848,000	0.300	0.0132	0.0137	0.004	18/08/2014	02/09/2003	---	NEWSPHONE HELLAS SA (CR)	0.272	---	↘ 0.272 31/10/2014	---	---	---	---	---	750@0.252	1900@0.269	24.44	2013	---	---	---	7,574.66	0.250	0.468	2791
6,132,500	1.25	---	---	---	24/06/2011	19/06/2001	---	NEXANS HELLAS SA (CR)	1.74	-0.57	€ 1.75 31/10/2014	1.61	1.60	1.75	1.75	1.70	100@1.61	80@1.74	---	2013	750	13	1,271.30	10,670.55	1.60	2.40	2733
63,697,153	1.34	---	---	---	08/07/2008	10/11/2008	---	NIREFS SA (CR)	0.100	-0.99	€ 0.101 31/10/2014	0.105	0.096	0.105	0.100	0.099	8500@0.098	9330@0.100	---	2013	51,670	31	5,110.00	6,369.72	0.095	0.362	3573
319,000,000	0.300	0.72	0.57	0.25	27/05/2014	25/04/2001	---	OPAP (CR)	10.05	3.93	# 9.67 31/10/2014	9.60	9.50	10.08	10.05	9.92	300@10.02	25148@10.05	22.47	2013	485,531	1,137	4,816,687.53	3,205,950.00	7.97	13.65	5752
490,150,389	2.83	---	---	---	28/06/2011	18/06/1998	---	OTE (CR)	9.46	4.99	# 9.01 31/10/2014	9.01	9.01	9.46	9.46	9.32	2518@9.42	5010@9.48	---	2013	693,438	1,816	6,461,356.42	4,636,822.68	8.53	13.20	6535
25,000,000	2.00	0.01	0.05	0.12	17/07/2014	08/08/2003	---	P.P.A. S.A. (CR)	12.37	0.57	# 12.30 31/10/2014	12.25	12.24	12.78	12.37	12.41	12@12.35	26@12.44	38.44	2013	5,836	183	72,421.57	309,250.00	12.24	20.89	2777
4,971,466	1.46	---	---	---	04/07/2007	08/10/2003	---	PAIRIS SA (CR)	0.220	---	↘ 0.220 29/10/2014	---	---	---	---	---	---	10000@0.200	---	2013	---	---	---	1,093.72	0.183	0.355	2723
3,953,090	0.900	---	---	---	02/07/2001	05/12/2012	---	PAPERPACK (CR)	0.812	---	↘ 0.812 30/10/2014	---	---	---	---	---	1000@0.660	600@0.788	4.20	2013	---	---	---	3,209.91	0.581	1.15	2723
50,797,369	0.310	---	---	---	17/08/2000	12/10/2010	---	PAPOUTSANIS (CR)	0.420	---	↘ 0.420 31/10/2014	0.420	0.420	0.420	0.420	0.420	60@0.402	19999@0.420	---	2013	20	2	8.40	21,334.89	0.353	0.604	3767
7,070,400	0.930	---	---	---	18/05/2010	12/05/2011	---	PETROPOULOS PETROS (CR)	2.64	1.93	# 2.59 31/10/2014	2.55	2.55	2.64	2.64	2.59	250@2.56	1096@2.64	64.14	2013	3,875	43	10,038.01	18,665.86	1.43	2.64	2753
6,101,979,715	0.300	---	---	---	16/05/2008	05/06/2013	---	PIRAEUS BANK (CR)	1.16	---	↘ 1.16 31/10/2014	1.15	1.12	1.17	1.16	1.15	66900@1.15	101433@1.17	1.24	2013	7,111,600	1,580	8,176,122.99	7,078,296.47	1.00	2.11	8355
22,080,000	0.320	0.08	0.12	0.2	21/05/2014	03/10/2000	---	PLAISIO COMPUTERS SA (CR)	6.28	2.61	# 6.12 31/10/2014	6.17	6.14	6.28	6.28	6.23	50@6.18	317@6.28	9.79	2013	800	16	4,986.56	138,662.40	5.80	7.98	9572
232,000,000	4.60	---	0.025	---	22/07/2013	12/12/2001	---	PPC (CR)	6.40	5.61	# 6.06 31/10/2014	6.09	5.97	6.40	6.40	6.27	500@6.36	110@6.40	---	2013	491,149	1,373	3,079,765.64	1,484,800.00	5.50	12.75	7535
11,812,193	0.450	---	---	---	24/07/2009	15/11/2006	---	PROFILE SA (CR)	0.510	8.05	# 0.472 31/10/2014	0.468	0.442	0.520	0.510	0.461	6001@0.510	300@0.520	9.82	2013	264,300	169	121,722.91	6,024.22	0.442	1.05	9533
27,345,120	0.470	---	---	---	18/07/2005	26/02/2014	---	QUALITY & RELIABILITY SA (CR)	0.545	4.41	# 0.522 31/10/2014	0.545	0.545	0.545	0.545	0.545	150@0.473	5700@0.497	72.48	2013	170	2	92.65	14,903.09	0.378	0.740	9533
11,962,443	0.500	---	---	---	05/09/2008	12/12/2013	---	QUEST HOLDINGS (CR)	5.14	3.42	# 4.97 31/10/2014	5.13	5.13	5.14	5.14	5.13	30@4.81	47@5.12	---	2013	110	3	564.40	61,486.96	4.21	6.30	9533
57,434,884	1.31	---	---	---	05/06/2008	12/06/2009	---	REDS S.A. (CR)	0.501	2.04	# 0.491 31/10/2014	0.488	0.479	0.510	0.499	0.494	370@0.499	450@0.508	---	2013	14,214	28	7,023.87	28,774.88	0.431	0.827	8633
22,280,000	0.300	---	---	---	11/04/2011	23/02/2007	---	REVOIL (CR)	0.346	-5.72	€ 0.367 31/10/2014	0.370	0.320	0.385	0.346	0.344	1000@0.323	250@0.348	---	2013	60,774	75	20,916.92	7,708.88	0.285	0.720	5379
7,500,000	0.480	---	0.0024	0.0863	13/08/2014	10/02/2014	---	S.KANAKIS SA (CR)	1.78	1.71	# 1.75 31/10/2014	1.78	1.78	1.78	1.78	1.78	60@1.69	1500@1.73	9.17	2013	20	1	35.60	13,350.00	1.58	1.99	3577
52,067,296	0.300	---	---	---	23/12/2003	24/01/2007	---	SELECTED TEXT. IND. ASSOC (CR)	0.190	11.11	# 0.171 31/10/2014	0.187	0.185	0.190	0.190	0.188	100@0.170	27@0.190	---	2014	12,367	23	2,322.34	9,892.79	0.140	0.355	3763
96,243,908	0.410	---	---	---	26/06/2008	17/07/2000	---	SIDENOR (CR)	0.921	1.77	# 0.905 31/10/2014	0.900	0.898	0.926	0.918	0.911	400@0.906	1350@0.918	---	2013	8,349	38	7,609.12	88,640.64	0.780	2.26	1757
6,456,530	1.60	---	---	---	29/06/2001	02/08/2010	---	SPACE HELLAS SA (CR)	1.66	1.84	# 1.63 31/10/2014	1.66	1.66	1.66	1.66	1.66	---	2500@1.65	---	2013	2	1	3.32	10,717.84	1.13	1.87	9578
28,438,268	0.300	---	---	---	21/08/2006	24/11/1999	---	SPIROY AGRICULTURE SA (CR)	0.299	7.17	# 0.279 31/10/2014	0.299	0.299	0.299	0.299	0.299	300@0.253	400@0.294	---	2013	150	1	44.85	8,503.04	0.206	0.388	1357
33,125,000	5.00	---	---	---	03/07/2006	18/08/2010	---	TECHNICAL OLYMPIC SA (CR)	1.27	4.10	# 1.22 31/10/2014	1.13	1.13	1.33	1.27	1.31	1500@1.24	708@1.26	---	2013	14,185	18	18,552.34	42,068.75	1.10	2.29	3728
109,314,400	0.300 (0.0589)	---	---	---	28/05/2012	09/07/2014	---	TERNA ENERGY (CR)	2.49	8.73	# 2.29 31/10/2014	2.23	2.23	2.49	2.49	2.37	2000@2.44	3000@2.50	-(6)-	2013	161,749	557	383,682.70	272,192.86	2.06	4.86	7537
36,300,000	1.12	0.188	0.162	0.285	14/08/2014	12/12/2007	---	THESSALONIKA WATER & SEWERAGE	3.17	3.60	# 3.06 31/10/2014	3.10	3.05	3.18	3.17	3.11	2@3.16	1234@3.17	8.77	2013	9,777	41	30,352.81	115,071.00	3.00	5.66	7577
45,094,620	0.500	---	0.0467	0.05	28/04/2014	01/11/1999	---	THRACE PLASTICS SA (CR)	0.901	1.46	# 0.888 31/10/2014	0.899	0.897	0.920	0.918	0.900	270@0.900	600@0.919	---	2013	2,139	8	1,925.17	40,630.25	0.853	1.39	1357
77,063,568	4.00	---	---	---	25/06/2014	25/06/2004	---	TITAN CEMENT (CR)	18.53	4.75	# 17.69 31/10/2014	17.37	17.37	18.53	18.53	18.00	744@18.21	208@18.53	---	2013	30,943	237	556,880.49	1,494,973.21	16.10	26.80	2353
7,568,960	4.00	---	---	---	25/06/2014	25/06/2004	---	TITAN CEMENT CO. (PR)	8.85	---	↘ 8.85 31/10/2014	---	---	---	---	---	30@8.77	30@9.28	---	2013	---	---	---	1,494,973.21	8.32	10.50	2353
10,080,000	3.00	0.4	1.5	0.6	13/08/2014	27/08/2001	---	TPA SA (CR)	20.03	0.15	# 20.00 31/10/2014	21.19	20.00	21.19	20.00	20.69	20@20.01	60@20.20	11.10	2013	467	12	9,661.18	201,902.40	20.00	31.40	2777
54,888,240	1.13	0.1	0.1	0.09	25/04/2014	22/03/2006	---	TRASTOR REAL EST. INV. CO.(CR)	1.08	---	↘ 1.08 31/10/2014	1.09	1.07	1.11	1.08	1.09	2505@1.07	1190@1.09	---	2013	29,105	17	31,706.55	59,279.30	0.935	1.33	8671
15,627,315	0.300	---	---	---	16/11/1992	03/12/2012	---	UNIBIOS (CR)	0.190	-5.00	€ 0.200 31/10/2014	0.200	0.185	0.200	0.190	0.186	809@0.185	460@0.195	---	2013	13,641	25	2,537.07	2,969.19	0.180	0.404	2353
18,810,000	0.400	---	---	---	08/07/2010	14/11/2007	---	VARVERIS - MODA BAGNO SA (CR)	0.195	---	↘ 0.195 31/10/2014	---	---	---	---	---	---	1897@0.190	---	2013	---	---	---	3,667.95	0.141	0.279	2353
219,611,308	---	---	---	---	14/02/2014	---	---	VIOHALCO SA/INV (CB)	2.63	3.14	# 2.55 31/10/2014	2.55	2.55	2.66	2.63	2.59	2500@2.62	1150@2.64	---	---	94,185	297	244,005.65	577,577.74	2.55	5.19	2727

Number of Outstanding Securities	Nominal Value	Dividends [1]			Date of Last Coupon Dividend [2]		Date of Last Coupon Right	Note	Shares	Closing price	% change	Previous closing price/date	Open price	Price min	Price max	Last price	Avg price	Last Bid [7]	Last Ask [7]	P/E after	Year	Volume	Trades	Transactions Value	Company Mkt Value (thou. €)	Year low	Year high	Sector[ 4]
--	------------------	---------------	--	--	-------------------------------------	--	------------------------------	------	--------	------------------	----------	--------------------------------	---------------	--------------	--------------	---------------	--------------	-----------------	--------------	--------------	------	--------	--------	-----------------------	--------------------------------	-------------	--------------	---------------

Main Market

4,968,600	2.88	---	---	---	01/07/1998	14/12/1998	---	VIS SA (CR)		0.934	---	↘ 0.934	13/10/2014	---	---	---	---	---	12@0.932	---	2013	---	---	---	4,640.67	0.517	0.980	2723
6,325,000	0.600	---	---	---	02/05/2014	17/02/2014	---	VOGIATZOGLOU SYSTEMS SA (CR)		0.942	---	↘ 0.942	30/10/2014	---	---	---	---	---	500@0.932	---	2013	---	---	---	5,958.15	0.696	2.27	2797

Exchange Traded Funds (ETFs)

5,848,618		---	---	---		24/01/2008	---	ALPHA ETF FTSE Athex Large Cap		3.07	1.99	#	3.01	31/10/2014	3.01	3.01	3.07	3.07	3.03	100@3.06	43@3.09	---	---	2,433	4	7,378.83	-	2.60	4.55	11000
294,878		---	---	---		29/06/2009	---	NBGAM ETF		10.40	2.36	#	10.16	31/10/2014	10.10	10.10	10.40	10.40	10.10	---	---	---	---	249	2	2,515.50	-	9.61	15.10	11000
388,550		---	---	---		03/11/2010	---	NBGAM ETF GREECE & TURKEY 30		8.17	-0.12	€	8.18	31/10/2014	8.17	8.17	8.17	8.17	8.17	---	201@8.18	---	---	2	1	16.34	-	6.70	9.00	11000

Low Dispersion

14,000,000	4.15	---	---	---	23/04/2010	29/06/1999	4815	ALPHA REAL ESTATE SA(CR)		5.75	---	↘	5.75	31/10/2014	---	---	---	---	---	60@5.01	200@5.82	24.04	2013	---	---	---	80,500.00	4.69	7.10	8637
63,900,000	3.00	---	---	---	23/06/2003	04/11/2008	4816	ASTIR PALACE SA (CR)		3.85	1.58	#	3.79	31/10/2014	3.85	3.85	3.85	3.85	3.85	500@3.70	500@3.80	---	2013	4,000	6	15,400.00	246,015.00	3.41	4.08	5753
90,902,904	0.800	---	---	---	09/08/2004	08/03/2006	4814	ATHENA SA (CR)		0.290	---	↘	0.290	10/10/2014	---	---	---	---	---	---	1800@0.284	---	2013	---	---	---	26,361.84	0.133	0.310	2357
191,660,320	0.300	---	---	---	20/07/2009	29/12/2010	4817	ATTICA HOLDINGS (CR)		0.498	-9.45	€	0.550	27/10/2014	0.500	0.490	0.500	0.490	0.498	4611@0.490	500@0.500	---	2013	6,889	7	3,427.50	95,446.84	0.445	0.799	5759
68,322,221	1.00	---	---	---	08/03/2002	08/04/2013	4986	GENIKI BANK (CR)		5.00	4.17	#	4.80	30/10/2014	5.00	5.00	5.00	5.00	5.00	30@5.00	---	---	2013	1	1	5.00	341,611.11	2.00	15.00	8355
71,082,707	1.70	---	---	---	01/07/2010	21/11/2012	4820	HERACLES GEN.CEMENT CO. (CR)		1.26	-3.08	€	1.30	30/10/2014	1.26	1.26	1.26	1.26	1.26	200@1.28	65@1.39	---	2013	200	2	252.00	89,564.21	1.24	1.55	2353
13,404,440	8.63	---	---	---	02/04/2001	06/03/1992	4822	IONIAN HOTELS SA (CR)		7.00	---	↘	7.00	23/10/2014	---	---	---	---	---	---	25@8.40	-(6)-	2013	---	---	---	93,831.08	6.00	9.90	5753
2,760,000	7.70	7.6	8.52	8.5	30/06/2014	16/07/1990	4823	KARELIA TOBACCO CO. SA (CB)		195.00	---	↘	195.00	30/10/2014	---	---	---	---	---	40@160.25	10@194.90	13.56	2013	---	---	---	538,200.00	180.00	244.90	3785
30,600,000	0.300	---	---	---	12/06/2008	04/03/2014	5059	KATHIMERINI SA (CR)		0.459	---	↘	0.459	29/10/2014	---	---	---	---	---	1000@0.411	2002@0.449	---	2013	---	---	---	14,045.40	0.311	4.49	5557
14,074,000	3.00	0.25	---	---	02/03/2012	23/07/2009	5075	MIG REAL ESTATE (CR)		3.15	1.61	#	3.10	31/10/2014	3.20	3.10	3.20	3.10	3.16	459919@3.10	235@3.18	-(6)-	2013	2,004	13	6,322.40	44,333.10	1.50	3.20	8671
106,980,050	2.25	---	---	---	25/07/2008	24/02/2014	5046	MINOAN LINES SA (CR)		1.50	---	↘	1.50	31/10/2014	1.50	1.50	1.50	1.50	1.50	29645@1.50	3000@1.72	---	2013	2,895	5	4,342.50	160,470.08	1.42	2.00	5759
17,240,776	0.370	---	---	---	14/07/2005	30/09/2003	4827	PERSEUS SA (CR)		0.478	---	↘	0.478	01/10/2014	---	---	---	---	---	---	200@0.399	4.27	2013	---	---	---	8,241.09	0.152	0.504	3577

Surveillance

33,301,715	0.320	---	---	---	27/06/2003	08/07/2009	4978	AEGEK (CR)		0.051	---	↘	0.051	31/10/2014	0.051	0.051	0.051	0.051	0.051	3994@0.051	15878@0.061	---	2013	226	2	11.53	1,698.39	0.042	0.136	2357
14,870,100	0.300	---	---	---	15/05/2008	26/09/2011	4844	ALPHA GRISSIN S.A. (CR)		0.060	---	↘	0.060	17/10/2014	---	---	---	---	---	2000@0.048	---	---	2013	---	---	---	892.21	0.060	0.160	9533
215,246,452	0.300	---	---	---	25/06/2001	24/09/2001	4446	ALTEC SA (CR)		0.023	15.00	#	0.020	30/10/2014	0.023	0.023	0.023	0.023	0.023	5000@0.019	17095@0.024	---	2013	1,636	1	37.63	4,950.67	0.017	0.040	9533
2,969,713	0.300	---	---	---	02/07/2008	28/02/2011	4958	ANEK LINES SA (PR, Issue '96)		0.131	---	↘	0.131	31/10/2014	---	---	---	---	---	680@0.131	---	---	2013	---	---	---	17,431.59	0.120	0.280	5759
312,163	0.300	---	---	---	02/07/2008	28/02/2011	4959	ANEK LINES SA (PR, Issue '90)		1.15	---	↘	1.15	26/06/2014	---	---	---	---	---	---	40@0.920	---	2013	---	---	---	17,431.59	1.15	1.43	5759
185,373,016	0.300	---	---	---	02/07/2008	28/02/2011	4957	ANEK LINES SA (CR)		0.090	-1.10	€	0.091	31/10/2014	0.090	0.090	0.090	0.090	0.090	1000@0.085	10087@0.089	---	2013	2,500	4	225.00	17,431.59	0.073	0.141	5759
81,644,555	0.300	---	---	---	01/07/2008	02/09/2002	5056	ATTI - KAT SA (CR)		0.018	12.50	#	0.016	30/10/2014	0.018	0.018	0.018	0.018	0.018	4000@0.013	10536@0.018	---	2013	1,000	2	18.00	1,469.60	0.009	0.036	2357
20,255,805	0.300	---	---	---	22/08/2006	02/08/2010	4881	AXON HOLDING SA (CR)		0.075	---	↘	0.075	27/10/2014	---	---	---	---	---	---	13000@0.090	---	2013	---	---	---	1,519.19	0.037	0.139	4533
17,579,754	4.16	---	---	---	18/08/2006	02/08/2010	4885	BIOTER SA (CR)		0.195	---	↘	0.195	24/10/2014	---	---	---	---	---	---	12425@0.195	---	2013	---	---	---	3,428.05	0.104	0.216	2357
1,130,180	0.440	---	---	---	20/06/2003	02/07/2014	---	COMPUCON SA (CR)		0.032	---	↘	0.032	30/10/2014	---	---	---	---	---	850@0.036	---	---	2013	---	---	---	36.17	0.027	0.814	9537
14,173,104	0.300	---	---	---	11/08/2010	28/11/2013	5055	DIONIC (CR)		0.063	3.28	#	0.061	31/10/2014	0.063	0.063	0.063	0.063	0.063	2500@0.052	7700@0.063	---	2013	9	1	0.57	892.91	0.041	0.307	2797
15,878,748	0.480	---	---	---	10/07/2006	22/03/2004	4960	DOMIKI KRITIS SA (CR)		0.325	---	↘	0.325	29/10/2014	---	---	---	---	---	200@0.260	129@0.390	---	2013	---	---	---	5,160.59	0.264	0.485	2357
3,961,300	1.28	---	---	---	29/06/2004	03/08/2000	4808	DUROS SA (CR)		0.530	---	↘	0.530	23/07/2014	---	---	---	---	---	---	270@0.545	---	2013	---	---	---	2,099.49	0.185	0.759	3763
7,085,888	1.59	---	---	---	02/07/1996	06/09/2010	4690	ELVIEMEK (CR)		3.97	---	↘	3.97	26/02/2014	---	---	---	---	---	---	---	---	2013	---	---	---	28,130.98	1.54	3.97	8633
6,000,000	0.600	---	---	---	13/06/2008	08/04/2004	4886	EUROBROKERS S.A. (CR)		0.024	---	↘	0.024	12/05/2014	---	---	---	---	---	1000@0.024	---	---	2013	---	---	---	144.00	0.024	0.052	8534

Number of Outstanding Securities	Nominal Value	Dividends [1]			Date of Last Dividend [2]	Coupon Right	Note	Shares	Closing price	% change	Previous closing price/date	Open price	Price min	Price max	Last price	Avg price	Last Bid [7]	Last Ask [7]	P/E after	Year	Volume	Trades	Transactions Value	Company Value (thou. €)	Mkt Value (thou. €)	Year low	Year high	Sector[4]
----------------------------------	---------------	---------------	--	--	---------------------------	--------------	------	--------	---------------	----------	-----------------------------	------------	-----------	-----------	------------	-----------	--------------	--------------	-----------	------	--------	--------	--------------------	-------------------------	---------------------	----------	-----------	-----------

Surveillance

21,820,410	0.800	---	---	---	22/05/2008	02/08/2011	4882	EUROMEDICA SA (CR)	0.403	---	↘	0.403	02/09/2014	---	---	---	---	---	---	---	2013	---	---	---	8,793.63	0.240	0.403	4533		
110,097,185	0.300	---	---	---		04/12/2013	5033	Forthnet (CR)	1.17	9.35	#	1.07	31/10/2014	1.17	1.17	1.17	1.17	1.17	500@1.03	470@1.17	---	2013	30	1	35.10	128,813.71	0.874	1.98	9535	
1,270,000	0.300	---	---	---	06/07/2007	06/02/2013	5007	GIRAKIAN PROFIL SA (CB)	1.00	---	↘	1.00	15/10/2014	---	---	---	---	---	140@0.801	100@1.00	---	2013	---	---	---	1,270.00	0.889	2.63	1757	
179,707,771	0.300	---	---	---	27/06/2002	01/11/2011	4847	HELLAS ONLINE SA (CR)	0.500	2.04	#	0.490	31/10/2014	0.500	0.500	0.500	0.500	0.500	100@0.500	500@0.510	65.00	2013	500	2	250.00	89,853.89	0.400	0.670	9537	
30,390,000	0.310	---	---	---	18/08/2008	29/12/2006	4447	HELLENIC FISHFARMING SA (CR)	0.080	---	↘	0.080	27/10/2014	---	---	---	---	---	---	2094@0.075	---	---	2013	---	---	---	2,431.20	0.045	0.119	3573
1,540,000	0.600	---	---	---	08/08/1994	19/09/2000	5058	J.BOUTARIS & SON HOLD. (PB)	0.006	---	↘	0.006	22/10/2014	---	---	---	---	---	3000@0.005	---	---	2013	---	---	---	865.35	0.005	0.012	3535	
25,179,640	0.600	---	---	---	08/08/1994	19/09/2000	5057	J.BOUTARIS & SON HOLD. SA (CB)	0.034	-19.05	↘	0.042	31/10/2014	0.034	0.034	0.034	0.034	0.034	20000@0.036	500@0.050	---	2013	10,000	3	340.00	865.35	0.034	0.086	3535	
7,125,216	0.650	---	---	---	01/07/2005	14/12/1999	4955	KRE.KA SA (CR)	0.169	---	↘	0.169	24/10/2014	---	---	---	---	---	400@0.137	3500@0.168	---	2013	---	---	---	1,204.16	0.118	0.278	3573	
51,081,030	1.00	---	---	---	20/08/2007	03/09/2007	4912	LAVIPHARM SA (CR)	0.124	---	↘	0.124	31/10/2014	---	---	---	---	---	7149@0.100	900@0.119	---	2013	---	---	---	6,334.05	0.100	0.164	4577	
322,925,288	0.300	---	---	---	23/05/2007	10/04/2000	4554	M.J. MAILLIS SA (CR)	0.115	---	↘	0.115	31/10/2014	0.115	0.115	0.115	0.115	0.115	6834065@0.115	400@0.120	---	2013	21,520	7	2,474.80	37,136.41	0.067	0.144	2723	
4,178,856	1.58	---	---	---	21/07/2011	28/07/2004	4983	MEDICON S.A (CR)	0.480	14.29	#	0.420	27/10/2014	0.480	0.480	0.480	0.480	0.480	---	1190@0.420	19.79	2013	20	2	9.60	2,005.85	0.251	0.952	4535	
255,459,600	0.300	---	---	---	26/06/2000	03/12/2010	4833	NEL SA (CR)	0.021	---	↘	0.021	29/10/2014	0.021	0.021	0.021	0.021	0.021	5000@0.022	---	---	2013	198	2	4.16	5,364.65	0.016	0.090	5759	
20,231,328	0.600	---	---	---	15/07/2008	25/06/2004	4879	NIKAS SA (CR)	0.170	---	↘	0.170	23/10/2014	---	---	---	---	---	---	---	---	---	2013	---	---	---	3,439.33	0.170	0.200	3577
14,967,940	0.500	---	---	---	21/05/2008	04/01/2008	4956	PASAL DEVELOPMENT S.A. (CR)	0.096	-20.00	↘	0.120	30/10/2014	0.096	0.096	0.096	0.096	0.096	1450@0.096	9000@0.118	---	2013	1,999	4	191.90	1,436.92	0.096	0.239	8633	
18,750,000	0.300	---	---	---	02/07/2001	31/12/2012	4985	PEGASUS PUBLISHING S.A. (CR)	0.037	---	↘	0.037	31/10/2014	---	---	---	---	---	26000@0.040	---	---	2013	---	---	---	693.75	0.015	0.300	5557	
24,319,250	0.300	---	---	---	09/07/2002	04/07/2007	5054	PROODEFTIKH SA (CR)	0.067	-19.28	↘	0.083	29/10/2014	0.067	0.067	0.067	0.067	0.067	3999@0.067	1086@0.082	---	2013	2,500	4	167.50	1,629.39	0.066	0.188	2357	
65,326,268	0.530	---	---	---	04/07/2007	19/07/2006	4750	SATO SA (CR)	0.111	-15.91	↘	0.132	29/10/2014	0.110	0.110	0.148	0.148	0.111	7396@0.110	3484@0.148	---	2013	2,704	3	301.24	7,251.22	0.068	0.250	3726	
36,235,184	1.00	---	---	---	01/07/2008	30/07/2012	4961	SELONDA AQUACULTURE SA (CR)	0.080	---	↘	0.080	30/10/2014	0.080	0.066	0.080	0.080	0.080	1499@0.066	4500@0.092	---	2013	7,549	5	603.38	2,898.81	0.066	0.152	3573	
7,914,480	2.50	---	---	---	23/06/2008	29/06/2011	4888	SFAKIANAKIS SA (CR)	0.670	---	↘	0.670	31/10/2014	---	---	---	---	---	698@0.670	220@0.780	---	2013	---	---	---	5,302.70	0.488	1.15	5379	
10,000,000	1.35	---	---	---	24/06/2008	10/05/2005	4887	SIDMA SA (CR)	0.218	---	↘	0.218	29/10/2014	---	---	---	---	---	1300@0.176	210@0.261	---	2013	---	---	---	2,180.00	0.200	0.520	1757	
29,060,950	0.340	---	---	---	20/08/2007	24/10/2001	4884	SPIDER METAL INDUSTRY SA (CR)	0.013	---	↘	0.013	31/10/2014	---	---	---	---	---	3000@0.011	---	---	2013	---	---	---	377.79	0.012	0.070	2757	
100,793,000	0.300	---	---	---	16/07/2009	05/08/2013	5008	TELETIPOS SA (CR)	0.120	2.56	#	0.117	23/10/2014	0.120	0.120	0.120	0.120	0.120	900@0.094	---	---	2013	1,000	2	120.00	12,095.16	0.111	0.345	5553	
3,229,566	0.320	---	---	---	22/06/2005	23/09/1999	4629	VARANGIS AVEPE S.A. (CR)	0.600	---	↘	0.600	19/06/2014	---	---	---	---	---	---	220@0.600	---	---	2013	---	---	---	1,937.74	0.600	1.00	3726
16,383,428	0.300	---	---	---	25/06/2002	21/06/2013	4997	VARVARESSOS SA (CB)	0.140	---	↘	0.140	14/10/2014	---	---	---	---	---	---	3000@0.168	0.19	2013	---	---	---	2,293.68	0.062	0.293	3763	
13,191,620	0.620	---	---	---	04/08/2010	09/09/2002	4977	YALCO - CONSTANTINOU SA (CB)	0.056	---	↘	0.056	30/10/2014	---	---	---	---	---	3000@0.045	---	---	2013	---	---	---	738.73	0.052	0.241	3722	

Under Deletion

9,567,289	0.300	---	---	---	01/07/2004	19/11/2007	5062	MARAC ELECTRONICS (CR)	0.280	---	↘	0.280	07/10/2014	---	---	---	---	---	---	2100@0.280	---	2013	---	---	---	2,678.84	0.280	0.356	9578
40,946,303	0.360	---	---	---	18/07/2005	27/11/2007	5053	PC SYSTEMS SA (CR)	0.048	20.00	#	0.040	31/10/2014	0.048	0.048	0.048	0.048	0.048	3000@0.032	---	---	2013	1,000	1	48.00	1,965.42	0.040	0.169	9533
766,000	1.50	---	---	---	01/07/2004	11/12/2012	4937	TRIA ALFA SA (CR)	2.29	---	↘	2.29	25/06/2014	---	---	---	---	---	---	1@2.72	---	2013	---	---	---	2,084.89	1.72	3.33	3763
245,000	1.50	---	---	---	19/07/2010	11/12/2012	4938	TRIA ALFA SA (PR)	1.35	---	↘	1.35	16/09/2014	---	---	---	---	---	---	1@1.58	---	2013	---	---	---	2,084.89	0.969	2.57	3763

Suspension Status

5,025,000	0.300	---	---	---	05/07/2005	14/03/2002	5023	ALSINCO S.A (CR)	0.043	---	↘	0.043	27/11/2013	---	---	---	---	---	---	---	---	---	---	---	---	---	216.08	0.043	0.043	3763
1,750,955,549	0.600	---	---	---	19/05/2008	08/12/2011	4911	ATE (CR)	0.155	---	↘	0.155	30/07/2012	---	---	---	---	---	---	---	---	---	---	---	---	---	271,398.11	0.155	0.155	8355
21,382,067	0.300	---	---	---	02/10/2006	15/02/2006	4628	ATERMON (CR)	0.120	---	↘	0.120	31/03/2010	---	---	---	---	---	---	---	---	---	---	---	---	---	2,565.85	0.120	0.120	5555
105,423,498	0.510	---	---	---	01/07/2004	28/12/2005	4920	AVENIR S.A. (CR)	0.046	---	↘	0.046	30/08/2012	---	---	---	---	---	---	---	---	---	---	---	---	---	4,849.48	0.046	0.046	5752
33,930,000	0.300	---	---	---	03/07/2006	30/05/2001	4865	BABIS VOVOS SA (CR)	0.304	---	↘	0.304	30/03/2012	---	---	---	---	---	---	---	---	---	---	---	---	---	10,314.72	0.304	0.304	8633

Number of Outstanding Securities	Nominal Value	Dividends [1]			Date of Last Coupon		Note	Shares	Closing price	% change	Previous closing price/date	Open price	Price min	Price max	Last price	Avg price	Last Bid [7]	Last Ask [7]	P/E after	Year	Volume	Trades	Transactions Value	Company Mkt Value (thou. €)	Year low	Year high	Sector[ 4]
		2011	2012	2013	Dividend [2]	Right																					
Suspension Status																											
20,121,710	1.21	---	---	---	27/07/1992	12/03/2003	5002	BALKAN R.E. (CR)	0.190	---	↘ 0.190	29/08/2013	---	---	---	---	---	---	---	---	---	---	---	3,823.12	0.190	0.190	8633
1,795,140,547	1.00	---	---	---	31/05/2011	19/04/2012	4951	BANK OF CYPRUS (CR)	0.207	---	↘ 0.207	15/03/2013	---	---	---	---	---	---	---	---	---	---	---	371,594.09	0.207	0.207	8355
21,920,570	0.300	---	---	---	03/07/2007	13/12/1999	4702	CARDASSILARIS SA (CR)	0.140	---	↘ 0.140	30/11/2010	---	---	---	---	---	---	---	---	---	---	---	3,068.88	0.140	0.140	3577
54,547,634	0.500	---	---	---	25/04/2005	21/01/2009	4860	CH.TEGOPOULOS PUBL. SA (CR)	0.038	---	↘ 0.038	23/03/2012	---	---	---	---	---	---	---	---	---	---	---	2,072.81	0.038	0.038	5557
26,664,840	0.470	---	---	0.007	26/06/2014	12/07/1999	5074	CYCLON HELLAS SA (CR)	0.700	---	↘ 0.700	30/10/2014	---	---	---	---	1543489@0.700	---	---	---	---	---	---	18,665.39	0.450	0.720	1357
30,159,583	0.470	---	---	---	26/06/2008	29/12/2010	5047	DIAS A/C (CR)	0.050	---	↘ 0.050	26/03/2014	---	---	---	---	---	---	---	---	---	---	---	1,507.98	0.040	0.092	3573
7,847,611	1.20	---	---	---	01/08/2007	28/09/2011	4939	EDRASIS - C. PSALLIDAS SA (CR)	0.150	---	↘ 0.150	19/11/2012	---	---	---	---	---	---	---	---	---	---	---	1,177.14	0.150	0.150	2357
5,750,000	0.300	---	---	---	12/12/2008	12/12/2011	4929	ELECTRONIKI ATHINON SA (CR)	0.480	---	↘ 0.480	07/09/2012	---	---	---	---	---	---	---	---	---	---	---	2,760.00	0.480	0.480	5375
24,605,397	0.400	---	---	---	29/06/1995	27/05/2002	4651	EMPORIKOS DESMOS SA (CR)	0.080	---	↘ 0.080	28/05/2010	---	---	---	---	---	---	---	---	---	---	---	2,134.04	0.080	0.080	3722
1,182,903	0.400	---	---	---	01/07/1996	27/05/2002	4652	EMPORIKOS DESMOS SA (PR)	0.140	---	↘ 0.140	28/09/2009	---	---	---	---	---	---	---	---	---	---	---	2,134.04	0.140	0.140	3722
7,326,648	1.00	---	---	---	26/07/2006	24/07/2001	4921	FINTEXPOR SA (CR)	0.328	---	↘ 0.328	29/06/2012	---	---	---	---	---	---	---	---	---	---	---	2,403.14	0.328	0.328	3763
13,692,227	1.47	---	---	---	07/07/2006	08/10/1999	5049	HELLENIC FABRICS SA (CR)	0.117	---	↘ 0.117	31/03/2014	---	---	---	---	---	---	---	---	---	---	---	1,601.99	0.089	0.153	3763
24,619,524	0.500	---	---	---	10/10/1986	30/12/2002	4914	KERAMIA-ALLATINI (CR)	0.088	---	↘ 0.088	27/08/2012	---	---	---	---	---	---	---	---	---	---	---	2,166.52	0.088	0.088	8633
7,840,373	1.20	---	---	---	18/07/2002	05/03/2003	4765	KLONATEX SA (PR)	0.080	---	↘ 0.080	09/05/2011	---	---	---	---	---	---	---	---	---	---	---	1,453.75	0.080	0.080	3763
20,663,047	1.20	---	---	---	21/08/2000	05/03/2003	4764	KLONATEX SA (CR)	0.040	---	↘ 0.040	09/05/2011	---	---	---	---	---	---	---	---	---	---	---	1,453.75	0.040	0.040	3763
17,544,600	0.600	---	---	---	03/07/2000	01/08/2000	4868	KOYMBAS SYNERGY GROUP (CR)	0.132	---	↘ 0.132	29/03/2012	---	---	---	---	---	---	---	---	---	---	---	2,315.89	0.132	0.132	8775
15,015,000	1.60	---	---	---	01/07/2002	02/02/2000	4603	MAXIM C.M. PERTSINIDIS SA (CB)	0.100	---	↘ 0.100	30/11/2009	---	---	---	---	---	---	---	---	---	---	---	1,501.50	0.100	0.100	3763
66,937,526	0.700	---	---	---	13/08/2010	21/05/2003	5003	MICHANIKI SA (CR)	0.100	---	↘ 0.100	29/08/2013	---	---	---	---	---	---	---	---	---	---	---	9,186.78	0.100	0.100	2357
25,968,987	0.700	---	---	---	13/08/2010	21/05/2003	5004	MICHANIKI SA (PR)	0.096	---	↘ 0.096	29/08/2013	---	---	---	---	---	---	---	---	---	---	---	9,186.78	0.096	0.096	2357
13,555,100	1.00	---	---	---	08/07/2005		4576	MICROLAND COMPUTERS SA (CR)	0.640	---	↘ 0.640	14/07/2009	---	---	---	---	---	---	---	---	---	---	---	8,675.26	0.640	0.640	5379
23,463,874	0.800	---	---	---	23/05/2003	21/12/1999	4918	NEORION SA (CR)	0.125	---	↘ 0.125	28/08/2012	---	---	---	---	---	---	---	---	---	---	---	2,932.98	0.125	0.125	2753
42,501,273	0.300	---	---	---	26/06/2007	10/08/2009	4993	NUTRIART (CR)	0.049	---	↘ 0.049	21/06/2013	---	---	---	---	---	---	---	---	---	---	---	2,082.56	0.049	0.049	3577
20,210,127	1.53	---	---	---	27/06/1997	20/03/2000	5061	PARNASSOS ENTERP. (CR)	0.070	---	↘ 0.070	29/05/2014	---	---	---	---	---	---	---	---	---	---	---	1,414.71	0.065	0.172	8775
25,583,146	0.300	---	---	---	25/06/2001	03/12/2008	4723	PETZETAKIS SA (CR)	0.260	---	↘ 0.260	28/01/2011	---	---	---	---	---	---	---	---	---	---	---	6,651.62	0.260	0.260	1357
9,550,386	0.500	---	---	---	01/07/1997	12/06/2008	4626	PRAXITELIO SA (CR)	0.390	---	↘ 0.390	11/03/2010	---	---	---	---	---	---	---	---	---	---	---	4,430.09	0.390	0.390	4533
1,306,368	0.500	---	---	---	01/07/1997	12/06/2008	4627	PRAXITELIO SA (PR)	0.540	---	↘ 0.540	15/12/2009	---	---	---	---	---	---	---	---	---	---	---	4,430.09	0.540	0.540	4533
62,683,822	0.300	---	---	---	27/05/2008	09/01/2006	4830	PROTON BANK S.A. (CR)	0.180	---	↘ 0.180	07/10/2011	---	---	---	---	---	---	---	---	---	---	---	11,283.09	0.180	0.180	8355
51,334,286	0.320	---	---	---	03/07/2000	18/12/2007	4548	SAOS (CR)	0.780	---	↘ 0.780	27/03/2009	---	---	---	---	---	---	---	---	---	---	---	40,040.74	0.780	0.780	2773
26,408,040	0.300	---	---	---	01/07/1997	26/05/1999	4464	SHEET STEEL SA (CR)	0.120	---	↘ 0.120	28/11/2008	---	---	---	---	---	---	---	---	---	---	---	3,168.96	0.120	0.120	1757
60,221,300	0.400	---	---	---	01/07/2002	01/11/2010	5022	SHELMAN SA (CR)	0.080	---	↘ 0.080	19/11/2013	---	---	---	---	---	600@0.080	---	---	---	---	---	4,817.70	0.080	0.080	2353
26,262,660	0.900	---	---	---	01/07/2008	24/02/2011	4954	SPRIDER STORES (CR)	0.031	---	↘ 0.031	28/03/2013	---	---	---	---	---	---	---	---	---	---	---	814.14	0.031	0.031	5371
144,688,060	0.600	---	---	---	21/04/2008	10/03/2010	4982	T BANK (CR)	0.048	---	↘ 0.048	30/11/2011	---	---	---	---	---	---	---	---	---	---	---	6,945.03	0.048	0.048	8355
6,523,780	0.530	---	---	---	01/07/2002	06/03/2001	4971	TECHNICAL PUBLICATIONS SA (CR)	0.006	---	↘ 0.006	29/05/2013	---	---	---	---	---	---	---	---	---	---	---	39.14	0.006	0.006	5557
13,920,000	0.320	---	---	---	19/11/2001	01/08/2000	4726	TEXAPRET SA (CR)	0.080	---	↘ 0.080	23/02/2011	---	---	---	---	---	---	---	---	---	---	---	1,113.60	0.080	0.080	3763
510,840	1.00	---	---	---	15/07/2008	21/11/2013	5036	TROPEA HOLDING (CR)	2.00	---	↘ 0.020	# 30/03/2012	---	---	---	---	---	---	---	---	---	---	---	1,021.68	0.020	2.00	3722
284,465,964	3.70	---	---	---	20/06/2008	15/06/2009	4913	TT HELLENIC POSTBANK (CR)	0.168	---	↘ 0.168	30/08/2012	---	---	---	---	---	---	---	---	---	---	---	47,790.28	0.168	0.168	8355
89,616,200	0.300	---	---	---	21/08/2000	28/06/2007	4616	UNITED TEXTILES (CR)	0.050	---	↘ 0.050	25/02/2010	---	---	---	---	---	---	---	---	---	---	---	4,480.81	0.050	0.050	3763
71,683,906	0.400	---	---	---	15/06/2005	05/02/2008	4953	XATZIOANNOU (CR)	0.026	---	↘ 0.026	28/03/2013	---	---	---	---	---	---	---	---	---	---	---	1,863.78	0.026	0.026	3763



## Shares' Notes

Code	Note text
( )	- Adjusted dividends.
*	- Last adjusted closing price.
[1]	- Net dividends.
[2]	- The "Date of Last Coupon" for New listings refers to the date company's stocks started to trade in Athex
[3]	- The Company Market Value is referred to the number of outstanding shares
[4]	- Sectors codification can be found in Appendix A
[5]	- The Market Value refers to the total number of shares listed (including their several classes) in the exchange by the company.
[6]	- P/E greater than 100
[7]	- Last view of the Order Book before the end of the trading session
4446	- Transfer to the "Under Supervision" Category as of 20/10/2008.
4447	- Transfer to the "Under Supervision" Category as of 21/10/2008.
4464	- Suspension of trading as of 1/12/2008.
4548	- Suspension of trading as of 1/4/2009.
4554	- Transfer to the "Under Supervision" Category as of 6/4/2009.
4576	- Suspension of trading as of 14/7/2009.
4603	- Suspension of trading as of 1/12/2009.
4616	- Suspension of trading as of 25/2/2010.
4626	- Suspension of trading as of 1/4/2010.
4627	- Suspension of trading as of 1/4/2010.
4628	- Suspension of trading as of 1/4/2010.
4629	- Transfer to the Under Supervision Category as of 12/4/2010.
4651	- Suspension of trading as of 1/6/2010.
4652	- Suspension of trading as of 1/6/2010.
4690	- Transfer to Surveillance category as of 4/4/2006.
4702	- Suspension of trading as of 1/12/2010.
4723	- Suspension of trading as of 31/1/2011.
4726	- Suspension of trading as of 1/3/2011.
4750	- Transfer to the "Under Surveillance Category" from 8/4/2011.
4764	- Suspension of trading as of 20/5/2011.
4765	- Suspension of trading as of 20/5/2011.
4795	- The final gross (pre-tax) dividend is € 0.30 per share and subject to withholding tax on the full dividend amount, i.e. 0,45 per share, for those shareholders liable to withholding tax, in accordance with the applicable tax law provisions.
4808	- Suspension of trading as of 6/9/2011.
4814	- Transfer to the Low Dispersion Category as of 30/5/2011.
4815	- Transfer to the Low Dispersion Category as of 30/5/2011.
4816	- Transfer to the Low Dispersion Category as of 30/5/2011.
4817	- Transfer to the Low Dispersion Category as of 30/5/2011.
4820	- Transfer to the Low Dispersion category as of 18/4/2008.
4822	- Transfer to the Low Dispersion category as of 30/5/2011.
4823	- Transfer to the Low Dispersion category as of 4/4/2006.
4827	- Transfer to the Low Dispersion category as of 5/5/2010.
4830	- Suspension of trading as of 10/10/2011.
4833	- Transfer to Surveillance category from 6/5/2010.
4844	- Transfer to the Surveillance category from 8/4/2011.
4847	- Transfer to the Surveillance Category as of 3/7/2009.
4860	- Suspension of trading as of 30/3/2012.
4865	- Suspension of trading as of 2/4/2012.
4868	- Suspension of trading as of 2/4/2012.
4879	- Transfer to the Surveillance Category as of 10/4/2012.
4881	- Transfer to the Surveillance Category as of 10/4/2012.
4882	- Transfer to the Surveillance Category as of 10/4/2012.
4884	- Transfer to the Surveillance Category as of 10/4/2012.

## Shares' Notes

Code	Note text
4885	- Transfer to the Surveillance Category as of 10/4/2012.
4886	- Transfer to the Surveillance Category as of 10/4/2012.
4887	- Transfer to the Surveillance Category as of 10/4/2012.
4888	- Transfer to the Surveillance Category as of 10/4/2012.
4911	- Lift of suspension from 30/7/2012.
4912	- Transfer to the Surveillance Category as of 31/7/2012.
4913	- Suspension of trading as of 30/8/2012.
4914	- Suspension of trading as of 31/8/2012.
4918	- Suspension of trading as of 31/8/2012.
4920	- Suspension of trading as of 31/8/2012.
4921	- Suspension of trading as of 31/8/2012.
4929	- Suspension of trading as of 1/10/2012.
4937	- Transfer to the UNDER DELETION category as of 30/11/2012.
4938	- Transfer to the UNDER DELETION category as of 30/11/2012.
4939	- Suspension of trading as of 30/11/2012.
4951	- Suspension of trading as of 19/3/2013.
4953	- Suspension of trading as of 2/4/2013.
4954	- Suspension of trading as of 2/4/2013.
4955	- Transfer to the Surveillance Category as from 5/4/2013.
4956	- Transfer to the Surveillance Category as from 5/4/2013.
4957	- Transfer to the Surveillance Category as from 5/4/2013.
4958	- Transfer to the Surveillance Category as from 5/4/2013.
4959	- Transfer to the Surveillance Category as from 5/4/2013.
4960	- Transfer to the Surveillance Category as from 5/4/2013.
4961	- Transfer to the Surveillance Category as from 5/4/2013.
4971	- Suspension of trading as of 3/6/2013.
4977	- Transfer to the "Under Surveillance Category" from 11/6/2013.
4978	- Transfer to the Under Supervision Category as of 11/6/2013.
4982	- Suspension of trading as of 1/12/2011.
4983	- Transfer to the Surveillance Category as of 5/4/2013.
4985	- Transfer to the "Under Surveillance Category" from 8/4/2011.
4986	- Transfer to the Low Dispersion category as of 30/5/2011.
4993	- Suspension of trading as of 21/6/2013 (15:18).
4997	- Transfer to the Under Supervision Category as of 21/12/2009. - The 6,870,053 new (CB) shares, resulting from the recent share capital increase through a rights issue, are not yet admitted to trading on the ATHEX.
5002	- Suspension of trading as of 30/08/2013.
5003	- Suspension of trading as of 30/08/2013.
5004	- Suspension of trading as of 30/08/2013.
5007	- Transfer to the Surveillance category, as of 11/10/2013.
5008	- Transfer to the Surveillance Category from 8/4/2011.
5022	- Suspension of trading as of 2/12/2013.
5023	- Suspension of trading as of 2/12/2013.
5031	- The 612,300 new (CR) shares, resulting from the recent share capital increase through a rights issue, are not yet admitted to trading on the ATHEX.
5033	- Transfer to the Surveillance Category as of 25/11/2011. The 97,144,575new (CR) shares, resulting from the recent share capital increase through a rights issue, are not yet admitted to trading on the ATHEX.
5036	- The company's share is under suspension of trading as of 2/4/2012. During suspension, the company proceeded and concluded a share reverse split, according to which - after the conclusion of the corporate action - the total number of the company's shares, as well as, the last closing price of 30/03/2012 were adjusted.
5046	- Transfer to the Low Dispersion category as of 8/4/2011.
5047	- Suspension of trading as of 27/3/2014.
5049	- Under suspension of trading as of 1/4/2014.
5053	- Transfer to the UNDER DELETION category as of 10/4/2014.
5054	- Transfer to the Surveillance Category as of 10/4/2014.
5055	- Transfer to the Surveillance Category as of 10/4/2014.
5056	- Transfer to the Under Supervision Category as of 14/4/2014.

---

Shares' Notes

---

Code	Note text
5057	- Transfer to the Surveillance Category as of 29/12/2011.
5058	- Transfer to the Surveillance Category as of 29/12/2011.
5059	- Transfer to the Low Dispersion category as of 2/6/2014.
5061	- Suspension of trading as of 2/6/2014.
5062	- Transfer to the UNDER DELETION category as of 4/6/2014.
5069	- Suspension of trading as of 1/10/2014.
5073	- The 90,000 new (CR) shares, resulting from the recent share capital increase through a rights issue, are not yet admitted to trading on the ATHEX.
5074	- Suspension of trading as of 31/10/2014.
5075	- Transfer to the "Low Dispersion" Category as of 31/10/2014.

## Securities Blocks Details

Securities	Block Volume	Price	Block Trade Value	Time of approval	Note
ALPHA BANK (W)	210,900	1.23	259,407.00	10:32:16	20
PIRAEUS BANK (W)	1,440,900	0.460	662,814.00	10:43:44	20
ALPHA BANK (CR)	627,529	0.522	327,570.14	10:48:00	20
ALPHA BANK (CR)	500,000	0.528	264,000.00	15:53:56	20
ALPHA BANK (CR)	9,669,000	0.527	5,090,728.50	16:41:38	20

## Blocks Notes

2 - SPOT 1 or SPOT 2 Packet	11 - Total Assets > 500 bil
3 - Block with Short Selling	12 - Sell Offer through Athex
4 - Buy to Close Block	13 - Forced Sale of NMOE
6 - Simultaneous Constitution	14 - Restoration Packet
7 - Repurchase Agreement	15 - Market Maker Packet
8 - Dispersion's Achievement (Not Listed)	16 - Short Selling
9 - Dispersion's Achievement (Listed)	18 - SPOT 1 Packet
10 - Share Capital Majority of Greek State (> 50 bil)	20 - Method 6-1 Packet

Shares Rights Details

Occured date	Exercise from	Exercise until	Trading until	Rights	Price min	Price max	Closing price	Last Bid	Last Ask	Volume	Trades	Transactions Value
-----------------	------------------	-------------------	------------------	--------	--------------	--------------	------------------	----------	----------	--------	--------	-----------------------

No Rights Transactions.

**Shares Short Selling**

Securities	Transactions Value	Transactions Volume	% of Total Volume	Short Covering Trans. Value	Short Covering Volume	% of Total Volume
ELTECH ANEMOS S.A. (CR)	---	---	---	2,020.00	2,000	0.78

**Short Selling Notes**

[1] - The Hellenic Capital Markets Commission (HCMC) has decided to prohibit the short selling only in relation to shares of credit institutions admitted to trading on the Athens Exchange and comprising the FTSE/ATHEX - CSE Banking Index, for a period of three(3) months and more specifically from February1, 2013 until April 30, 2013.

## Stock Borrowing

Securities	Stock Borrowing through Helex (volume)	Stock Borrowing through OTC (volume) [1]	Totals [2]
AEGEAN AIRLINES (CR)	4,800	---	4,800
ALPHA BANK (CR)	3,060,100	85,208,996	88,269,096
ALPHA BANK (W)	---	36,300	36,300
ATE (CR)	---	69,000	69,000
ATTICA BANK S.A. (CR)	72,800	---	72,800
BANK OF CYPRUS (CR)	---	102,899	102,899
CC HBC AG (CR)	180,600	75,131	255,731
ELLAKTOR (CR)	50,200	---	50,200
EUROBANK ERGASIAS (CR)	3,276,100	29,392,735	32,668,835
EYDAP S.A. (CR)	52,700	---	52,700
FOLLI FOLLIE (CR)	120,800	726,319	847,119
FOURLIS (CR)	6,600	3,850	10,450
FRIGOGLASS SA (CR)	2,800	---	2,800
GEK TERNA (CR)	51,200	---	51,200
GRIVALIA PROPERTIES (CR)	28,900	49,543	78,443
HELLENIC EXCHANGES-A.S.E. (CR)	11,100	300	11,400
HELLENIC PETROLEUM (CR)	17,300	193,402	210,702
INTRALOT (CR)	82,200	30,193	112,393
JUMBO SA (CR)	76,600	---	76,600
LAMDA DEVELOPMENT SA (CR)	---	10,377	10,377
MARFIN INVESTMENT GROUP (CR)	110,100	728,474	838,574
METKA (CR)	10,600	---	10,600
MOTOR OIL (CR)	47,700	34,000	81,700
MYTILINEOS HOLDINGS (CR)	15,100	1,000	16,100
NATIONAL BANK (CR)	410,400	6,512,637	6,923,037
OPAP (CR)	353,700	21,093	374,793
OTE (CR)	338,400	217,262	555,662
P.P.A. S.A. (CR)	1,000	---	1,000
PIRAEUS BANK (CR)	933,300	23,882,872	24,816,172
PPC (CR)	182,500	2,084,784	2,267,284
SIDENOR (CR)	5,000	---	5,000
TERNA ENERGY (CR)	6,500	24,970	31,470
TITAN CEMENT (CR)	101,800	3,204	105,004
YALCO - CONSTANTINOI SA (CB)	---	8,000	8,000

## Stock Borrowing Notes

[1] - The information concerning OTC Stock Borrowing Transactions is based on the statements of the Dematerialised Securities System (DSS) operators involved and refers to volumes that have been cleared and registered up until the previous working day.

Shares Forced Sales

Securities	Transaction s Volume	Number of Trades	Transactions Value	Note
No Forced Transactions.				

Forced Sales Notes

- 1 - Normal Forced Sale.
- 2 - Forced Sales of Fixed Registered Shares.
- 3 - Forced Sales of Remaining Stock Fractions.



**Forced Sales Registered Shares**

Securities	Start Date	End Date	Initial Volume	Remaining Volume	Date	Avg price (day)	Avg price (period)	Number of Trades	Transactions Volume	Transactions Value
------------	------------	----------	-------------------	---------------------	------	--------------------	-----------------------	---------------------	------------------------	-----------------------

No Fixed Registered Shares Forced Sales.

**Forced Sales Notes**

According to Decision 1/380/04.05.2008 of the Hellenic Republic Capital Market Commission, the certificated registered shares that have not been deposited to the issuer for dematerialisation, will be auctioned in the Athens Exchange by the supervising issuer. Forced sales procedure is held according to Article 99A of the Athens Exchange Rulebook. The average price of the period is calculated by dividing the Total transactions value by the Total volume and includes all the transactions made until the current date.

## Exchange Traded Funds (ETFs) Characteristics

	Transactions Date (T)	Creation / Redemption	Units (T-1)	New Units (T-1)	Redemptio n Units (T-	Units (T) [1]	Fund Assets [2]	Net Unit Price	Dividen d per	Dividend Date
NBGAM ETF ΓΔ Χ.Α.	03/11/2014	25,000	294,878	---	---	294,878	2,997,205.00	10.1642	---	27/10/2011
ALPHA ETF FTSE Athex Large Cap	03/11/2014	50,000	5,848,618	---	---	5,848,618	17,557,160.00	3.0019	0.05	01/07/2013
NBGAM ETF GREECE & TURKEY 30	03/11/2014	25,000	388,550	---	---	388,550	3,175,781.00	8.1734	---	27/10/2011

## ETFs Notes

[1] - Units (T) = Units (T-1) + New Units (T-1) - Redemption Units (T-1)

[2] - The Creation / Redemption Units of T-1 are included.

Corporate Bonds

Num Listed Bonds	Nominal price	Issue price	Today's Rate	Exp. Date	Duration (years)	Note	Coupon attached		Trading	Corporate Bonds	Price min	Price max	Closing price	Previous closing price/date		Volume	Transactions Value	Last order		Date	ear min	Year max
							Common	Preferred										Price	Buy / Sell			
4,122,910	4.77	4.77	5.00	19/03/2015	5	---	19	---	1	MARFIN INVESTMENT GROUP S.A. (Conver to CR shar)	---	---	---	40.0000	16/10/2014	---	---	40.0000	B	03/11/2014	4.7761	94.8000
1,794,284	12.49	9.77	5.08	12/07/2015	8	---	---	---	1	NIREUS S.A. (Convertible to CR shares)	---	---	---	12.0000	29/01/2014	---	---	10.0000	B	06/10/2014	12.0000	12.0000
212,801,311	1.00	1.00	6.30	29/07/2020	7	---	6	---	1	MARFIN INVESTMENT GROUP S.A. SERIES B (BOND)	---	---	---	0.8500	23/08/2013	---	---	1.0000	B	03/11/2014	0.8500	0.8500
163,991,598	1.00	1.00	7.00	29/07/2019	6	---	6	---	1	MARFIN INVESTMENT GROUP S.A. SERIES A (BOND)	---	---	---	1.0000	23/08/2013	---	---	1.0000	B	03/11/2014	1.0000	1.0000

Corporate Bonds Notes

Transactions Volume = (Pieces) \* (Nominal Price). Transactions Value = (Pieces) \* (Nominal Price) \* (price %) + (Accrued interest).  
The price of a Bond is stated as a percentage (%) of Bond's Nominal Price.  
Nominal Price in Euros (€), except if it is noted differently.

Government Bonds

Number Listed Bonds	Nominal price	Today's Rate	Accrued Interest Calc	Exp. Date [1]	Duration (years)	Note	Coupons Date	Curr. coupon value	Trading Unit	Government Bonds	Price min	Price max	Closing price	Previous closing price/date	Volume	Transactions Value	Price	Last order Buy / Sell	Date
2,658,781,973	1.00	4.30	Actual/Actual	24/02/2023	11	---	24/02	4.30	1	GGB-FXD-240223-11Y-2.000-1.00	---	---	---	---	---	---	---	---	---
2,658,781,973	1.00	4.30	Actual/Actual	24/02/2024	12	---	24/02	4.30	1	GGB-FXD-240224-12Y-2.000-1.00	---	---	---	---	---	---	---	---	---
2,658,781,973	1.00	4.30	Actual/Actual	24/02/2025	13	---	24/02	4.30	1	GGB-FXD-240225-13Y-2.000-1.00	---	---	---	---	---	---	---	---	---
2,658,781,973	1.00	4.30	Actual/Actual	24/02/2026	14	---	24/02	4.30	1	GGB-FXD-240226-14Y-2.000-1.00	---	---	---	---	---	---	---	---	---
2,658,781,973	1.00	4.30	Actual/Actual	24/02/2027	15	---	24/02	4.30	1	GGB-FXD-240227-15Y-2.000-1.00	---	---	---	---	---	---	---	---	---
2,836,034,104	1.00	4.30	Actual/Actual	24/02/2028	16	---	24/02	4.30	1	GGB-FXD-240228-16Y-2.000-1.00	---	---	---	---	---	---	---	---	---
2,836,034,104	1.00	4.30	Actual/Actual	24/02/2029	17	---	24/02	4.30	1	GGB-FXD-240229-17Y-2.000-1.00	---	---	---	---	---	---	---	---	---
2,836,034,104	1.00	4.30	Actual/Actual	24/02/2030	18	---	24/02	4.30	1	GGB-FXD-240230-18Y-2.000-1.00	---	---	---	---	---	---	---	---	---
2,836,034,104	1.00	4.30	Actual/Actual	24/02/2031	19	---	24/02	4.30	1	GGB-FXD-240231-19Y-2.000-1.00	---	---	---	---	---	---	---	---	---
2,836,034,104	1.00	4.30	Actual/Actual	24/02/2032	20	---	24/02	4.30	1	GGB-FXD-240232-20Y-2.000-1.00	---	---	---	---	---	---	---	---	---
2,836,034,104	1.00	4.30	Actual/Actual	24/02/2033	21	---	24/02	4.30	1	GGB-FXD-240233-21Y-2.000-1.00	---	---	---	---	---	---	---	---	---
2,836,034,104	1.00	4.30	Actual/Actual	24/02/2034	22	---	24/02	4.30	1	GGB-FXD-240234-22Y-2.000-1.00	---	---	---	---	---	---	---	---	---
2,836,034,104	1.00	4.30	Actual/Actual	24/02/2035	23	---	24/02	4.30	1	GGB-FXD-240235-23Y-2.000-1.00	---	---	---	---	---	---	---	---	---
2,836,034,104	1.00	4.30	Actual/Actual	24/02/2036	24	---	24/02	4.30	1	GGB-FXD-240236-24Y-2.000-1.00	---	---	---	---	---	---	---	---	---
2,836,034,104	1.00	4.30	Actual/Actual	24/02/2037	25	---	24/02	4.30	1	GGB-FXD-240237-25Y-2.000-1.00	---	---	---	---	---	---	---	---	---
2,836,034,104	1.00	4.30	Actual/Actual	24/02/2038	26	---	24/02	4.30	1	GGB-FXD-240238-26Y-2.000-1.00	---	---	---	---	---	---	---	---	---
2,836,034,104	1.00	4.30	Actual/Actual	24/02/2039	27	---	24/02	4.30	1	GGB-FXD-240239-27Y-2.000-1.00	---	---	---	---	---	---	---	---	---
2,836,034,104	1.00	4.30	Actual/Actual	24/02/2040	28	---	24/02	4.30	1	GGB-FXD-240240-28Y-2.000-1.00	---	---	---	---	---	---	---	---	---
2,836,034,104	1.00	4.30	Actual/Actual	24/02/2041	29	---	24/02	4.30	1	GGB-FXD-240241-29Y-2.000-1.00	---	---	---	---	---	---	---	---	---
2,836,034,104	1.00	4.30	Actual/Actual	24/02/2042	30	---	24/02	4.30	1	GGB-FXD-240242-30Y-2.000-1.00	---	---	---	---	---	---	---	---	---
742,153	1,000.00	0.93	FLR Actual/360	10/08/2019	5	---	10/02 - 10/08	---	1	GGB-FLT-100819-05Y-0.934-1,000	---	---	---	---	---	---	---	---	---
4,030,827	1,000.00	4.75	Actual/Actual	17/04/2019	5	---	17/04	4.75	1	GGB-FXD-170419-05Y-4.750-1,000	---	---	---	---	---	---	---	---	---
2,089,066	1,000.00	3.38	Actual/Actual	17/07/2017	3	---	17/07	3.38	1	GGB-FXD-170717-03Y-3.375-1,000	---	---	---	---	---	---	---	---	---

Government Bonds Notes

Transactions Volume = (Pieces) \* (Nominal Price). Transactions Value = (Pieces) \* (Nominal Price) \* (price %) + (Accrued interest).

The Value of current coupon for the issues with NV 0.01 euro refers to NV 100 euros

FLR: Floating Interest Rate.

[1] - The Expiration Date of the interest bearing period and the Date for coupon payment.

Bonds in Circulation	Currency / Min nominal traded Value	Coupons Payment Date	Current Coupon Value	Note	Coupon Attached	Trading Unit	Issue Date	Duration (years)	Today's Interest	A.I.C in days	Bonds	Last price of previous days	Last Outcry in Cash (euro) Price	Buy / Sell	Trades in Pieces	Life min	Life Max
Bonds of International Organizations																	
1,000,000	EUR / 1000	21/07	---	---	9	1	21/07/2006	10	5.0 FLR	360	EUROPEAN INVESTMENT BANK BOND	97.50	16/04/2007	---	---	---	---
Corporate Bonds in Foreign Currency and Euro																	
103,746	GBP / 10	01/12	0.25	---	55	1	01/12/1930	98	2.5	360	National Mortgage Bank	2.27	05/02/1996	2.27	S	05/02/1996	2.27
0	GBP / 10	01/12	0.25	---	57	1	01/12/1928	100	2.5	360	National Mortgage Bank	---	---	---	---	---	---

Government Bonds Notes

A.I.C: Accrued Interest Calculation base.  
FLR: Floating Interest Rate.  
The minimum tradeable Nominal Value for all Demeterialised Government Titles is 100 Euros.

State Banks Bonds (one year maturity)

Number Listed Bonds	Nominal value	Initial Rate	Current Rate	Annual Interest	Issue Date	Note	State Banks Bonds	Trading Unit	Yearly Renewals	Last Outcry in Cash (euro) Price	Buy / Sell	Volume
342,560	135.17	2.35	3.92	0.00	31/01/2005	---	H.I.D.B.	1	10	100.00	B	---
2,446	1,182.96	4.90	2.47	29.69	31/05/2008	---	H.I.D.B.	1	7	---	---	---

Bonds Notes

The annual renewal of H.I.D.B. Bonds is free of taxes (net rate).  
For Bonds issue until 31/10/2014 the accrued interest is capitalized.

Athex & ATHEXClear Members List

Member Name			Stock Market			Derivatives Market			ATHEXClear Member		
Address	Phone	Fax	Market Member	Remote Member	Market Maker	Proprietary	Market Maker	Agent	General Clearing	Direct Clearing	Non Clearing
A. SARRIS SECURITIES S.A.			a								
6, DRAGATSANIOU STR. ATHINA	(210)-3367700	(210)-3312324									
AGRICULTURAL BANK OF GREECE S.A.							a			a	
, 23 PANEPISTIMIOU ATHINA	(210)-3298400	(210)-3298322									
ALPHA FINANCE INVESTMENT SERVICES S.A.			a		a		a			a	
5, MERLIN STR. ATHINA	(210)-3677400	(210)-3311193									
ALPHA BANK A.E.						a			a		
40, STADIOU STR ATHINA	(210)-3265546	(210)-3265811									
	(210)-3260000	(210)-3264116									
ARGUS STOCKBROKERS LTD			a	a							
12-14, KENNEDY AVE. S. 303 NICOSIA	(+35722)-22717000	(+35722)-22717070									
ATHENAIKI BROKERAGE FIRM S.A.			a								
33, STADIOU STR. ATHINA	(210)-3254764	(210)-3254767									
ATLANTIC SECURITIES LIMITED			a	a							
37, PRODROMOU STR. NICOSIA	(+35722)-445400	(+35722)-661914									
ATLAS SECURITIES S.A			a			a					a
14 - 16, VERVENON STR.& 125 MICHALAKOPOULOU STR. ATHINA	(210)-3363300	(210)-3238925									
ATTICA BANK S.A.									a		
23, OMIROU STR. ATHINA	(210)-3669000	(210)-3669410									
54, AKADIMIAS STR. ATHINA	(210)-3390757	(210)-3646090									
AXIA VENTURES GROUP LTD			a	a							
10, G. KRANIDIOTI NICOSIA	+357 22 742000	+357 22 742001									
AXON SECURITIES S.A.			a			a					a
48, STADIOU ATHINA	(210)-3363800	(210)-3243903									
BANK OF CYPRUS PUBLIC COMPANY LTD									a		
170, ALEXANDRAS AVE ATHINA	(210)-6477708	(210)-6477709									
, 51,STASINOU (AG. PARASKEVI, STROVOLOS) NICOSIA	(0035722)-121883	(0035722)-336258									
BETA SECURITIES S.A.			a		a	a	a			a	
, BRAILA & 29 ALEXANDRAS AVE ATHINA	(210)-6478900	(210)-6410139									
BNP PARIBAS SECURITIES SERVICES									a		
94, VAS. SOFIAS AVE ATHINA	(210)-7468500	(210)-7468579									
CAPITAL SECURITIES S.A.			a			a					a
58, MITROPOLEOS STR. ATHINA	(210)-3369700	(210)-3369820									
CFS SECURITIES & INVESTMENT SERVICES S.A.			a		a			a		a	
3, STADIOU STR. ATHINA	(210)-3360800	(210)-3311854									
CITIGROUP GLOBAL MARKET LTD			a	a							
, CITIGROUP CENTRE, CANADA SQUARE, CANARY WHART LONDON	002079864000	002079862266									
CO-OPERATIVE CENTRAL BANK LTD			a	a							
8, GRIGORI AFXENTIOU STR. NICOSIA	(+35722)-743300	(+35722)-672083									
CREDIT AGRICOLE CHEUVREUX S.A.				a							
, 9 QUAI PAUL DOUMER PARIS	33 (0) 1 41 89 70 00										
CREDIT SUISSE SECURITIES (EUROPE) LIMITED			a	a							
, ONE CABOT SQUARE LONDON	+44 20 7888 8888	+44 20 7888 1600									
CYCLOS SECURITIES S.A.			a		a	a				a	
39, PANEPISTIMIOU STR. ATHINA	(210)-3364300	(210)-3239122									
D.A. TSEKOURAS SEC. S.A.			a								
, PSEMAZOGLOY 3	(210)-3214406	(210)-3211997									
DEUTSCHE BANK A.G.			a	a							
70, THEODOR-HEUSS-ALLEE FRANKFURT	0049 69 910 00	0049 69 910 34 225									
DYNAMIC SECURITIES			a					a		a	
6 - 10, CHAR. TRIKOUPH STR. ATHINA	(210)-3677700	(210)-3677777									
EL. PETROPOULAKIS SECURITIES S.A.			a					a			a
9, ARISTIDOU STR. ATHINA	(210)-3213928	(210)-3216810									
EUROBANK EQUITIES S.A.			a		a		a			a	
10, FILELLINON STR. ATHINA	(210)-3720000	(210)-3720001									
EUROBANK ERGASIAS S.A.									a		
8, OTHONOS STR. ATHINA	(210)-3337000	(210)-3233866									
	(210)-3337969	(210)-3245916									
EUROCORP SECURITIES S.A.			a			a				a	
14, FILIKIS ETAIRIAS SQ. ATHINA	(210)-7263500	(210)-7263666									
EUOTRUST BROKERAGE S.A.			a								
13-15, SOPHOCLEOUS STR. ATHINA	(210)-3363100	(210)-3238334									

Athex & ATHEXClear Members List

Member Name			Stock Market			Derivatives Market			ATHEXClear Member		
Address	Phone	Fax	Market Member	Remote Member	Market Maker	Proprietary	Market Maker	Agent	General Clearing	Direct Clearing	Non Clearing
EUROXX SECURITIES S.A.			a			a				a	
7, PALAIOLOGOU STR. CHALANDRI	(210)-6879400	(210)-6879401									
G.A. PERVANAS SECURITIES & INVESTMENT SERVICES CO S.A.			a			a					a
7 - 9, SOPHOCLEOUS STR. ATHINA	(210)-3251875	(210)-3210291									
GENERAL BANK OF GREECE S.A.									a		
, 109-111, MESOGEION AVE. ATHINA	(210)-3288737	(210)-3288211									
87-89, ERMOY ATHINA	(210)-6976072	(210)-6976079									
GLOBAL CAPITAL SECURITIES AND FINANCIAL SERVICES LTD			a	a							
5, LEMESOU AVE. LEMESOS CYPRUS	(+35722)-710710	(+35722)-339332									
GUARDIAN TRUST SECURITIES S.A			a		a	a					a
15, FILELLINON STR. ATHINA	(210)-3220402	(210)-3220498									
HELLENIC AMERICAN SEC. S.A.			a			a					
6, EVRIPIDOU STR. ATHINA	(210)-3311100	(210)-3215968									
HELLENIC BANK (INVESTMENTS) LTD			a	a							
31, KYRIAKOY MATSI AVE. NICOSIA	(+35722)-500100	(+35722)-500110									
HSBC BANK PLC									a		
109-111, MESOGION AVE ATHINA	(210)-6961507	(210)-6929310									
INDEX SECURITIES S.A.			a								
6, DRAGATSANIOU STR. ATHINA	(210)-3213920	(210)-3213216									
INTERSEC S.A.						a				a	
80-88, SYGROU AVE ATHINA	(210)-9203000	(210)-9203052									
INVESTMENT BANK OF GREECE S.A.			a		a		a		a		
24B, KIFISSIAS AVE MAROUSI	(210)-8171800	(210)-8171889									
32, AIGEIALIAS MAROUSI	(210) 8173000	(210) 8173101									
J. CHR. MAVRIKIS SECURITIES S.A.			a								
5, SOPHOCLEOUS STR. ATHINA	(210)-3213949	(210)-3217767									
KAPPA SECURITIES S.A.			a			a					a
15, VALAORITOU STR. ATHINA	(210)-3610371	(210)-3641002									
KYPROU SECURITIES S.A.					a	a					a
26, HALKIDONOS & FIDIPPIDOY STR. ATHINA	(210)-8701000	(210)-8701049									
LAIKI FINANCIAL SERVICES LTD			a	a							
26, CLR HOUSE, VIRONOS AVE. NICOSIA	(+35722)-898600	(+35722)-680953									
LEON DEPOLAS SECURITIES S.A.			a					a			a
1, CHR. LADA STR. ATHINA	(210)-3213286	(210)-3211618									
MAGNA TRUST SECURITIES S.A			a					a			a
9, FIDIOU STR. ATHINA	(210)-3327503	(210)-3327599									
MEGA EQUITY SECURITIES & FINANCIAL SERVICES LTD			a	a							
42-44, GRIBA DIGENI AV. NICOSIA	(+35722)-711711	(+35722)-711811									
MERIT SECURITIES S.A			a		a	a				a	
38, VAS. KONSTANTINOY STR. ATHINA	(210)-3671800	(210)-3671830									
MERRILL LYNCH			a	a							
2, KING EDWARD STREET LONDON	(+4420)-79952000	(+4420)-79954525									
METOCHIKI SECURITIES S.A.			a								
3, G. GENNADIOY STR. ATHINA	(210)-3306700	(210)-3306709									
MIDAS BROKERAGE S.A.			a								
5, SOPHOCLEOUS STR. ATHINA	(210)-3253203	(210)-3253205									
N. CHRYSSOCHOIDIS STOCK BROKERAGE I.S.S.A.			a					a		a	
7 - 9, SOPHOCLEOUS STR. ATHINA	(210)-3213913	(210)-3216115									
N. SARROS SECURITIES S.A.						a					
7-9, SOPHOCLEOUS STR. ATHINA	(210)-3705600	(210)-3219992									
NATIONAL BANK OF GREECE S.A.			a				a		a		
86, AIOLOU STR. ATHINA	(210)-3341000	(210)-3228187									
68, AKADIMIAS STR. ATHINA	(210)-3328817	(210)-3328678									
NBG SECURITIES S.A.			a		a		a				a
68, AKADIMIAS STR. ATHINA	(210)-3328500	(210)-3328565									
NEW PROTON BANK S.A.						a				a	
20, ESLIN & AMALIADOS ATHINA	210 6970000	210 6970111									
NUNTIUS SECURITIES S.A			a					a			a
6, DRAGATSANIOU STR. ATHINA	(210)-3350599	(210)-3254846									
PANTELAKIS SEC. S.A.			a			a					a
109-111, MESOGION AVE. ATHINA	(210)-6965000	(210)-6929550									
PEGASUS BROKERAGE FIRM S.A			a			a					
17, VALAORITOU STR. ATHINA	(210)-3670700	(210)-3670760									



Athex & ATHEXClear Members List

Member Name			Stock Market			Derivatives Market			ATHEXClear Member		
Address	Phone	Fax	Market Member	Remote Member	Market Maker	Proprietary	Market Maker	Agent	General Clearing	Direct Clearing	Non Clearing
PIRAEUS BANK S.A.			a					a	a		
4, AMERIKIS STR ATHINA	(210)-3335918	(210)-3254207									
4, AMERIKIS STR. ATHINA	(210)-3335000	(210)-3335079									
PIRAEUS SECURITIES S.A.			a				a			a	
10, STADIOU STR. ATHINA	(210)-3354100	(210)-3233814									
PRELIUM SECURITIES & INVESTMENT SERVICES S.A.			a			a					a
, KIFISSIAS AVE & 1 DAVAKI STR ATHINA	(210)-3677000	(210)-6920403									
PROCHOICE SECURITIES LTD			a	a							
57, SPYROU KYPRIANOY NICOSIA	+357-24-661192	+357-24-662464									
SHARELINK SECURITIES & FINANCIAL SERVICES LTD			a	a							
6, ELLINAS HOUSE, THEOTOKI STR. NICOSIA	(+35722)-554200	(+35722)-750852									
SOCIETE GENERALE S.A.			a	a		a					
240-242, KIFISIAS AVE ATHINA	(210)-6790161	(210)-6728828									
17, COURS VALMY PUTEAUX - LA DEFENSE PARIS	(+33) 142134754	(+33) 142135697									
SOLIDUS SECURITIES S.A.			a			a				a	
64, LOUIZIS RIANKOUR STR. ATHINA	(210)-6925500	(210)-6985421									
ST. EM. LAVRENTAKIS SECURITIES S.A.			a			a					a
7 - 9, SOPHOCLEOUS STR. ATHINA	(210)-3213336	(210)-3246572									
THE CYPRUS INVESTMENT AND SECURITIES CORPORATION LIMITED (CISCO)			a	a							
4, EVROU STR. (EUROLIFE HOUSE) NICOSIA	(+35722)-881800	(+35722)-881801									
UBS LIMITED			a	a							
1, FINSBURY AVENUE LONDON	(+4420)-79013333	(+4420)-79012345									
Z.G. PORTALAKIS INVESTMENT SERVICES S.A.			a								
8, PESMAZOGLOU STR. ATHINA	(210)-3214830	(210)-3212024									
KARAMANOF SECURITIES & INV. SERVICES S.A.			a					a		a	
2, SQ. ST THEODORON ATHINA	(210)-3212947	(210)-3217088									

## List of Stocks under Market Making operations

Securities		Stock Category	
Market Maker		Start Market Making	End Market Making
CYPRUS POPULAR BANK (CR)		Suspension Status	
PIRAEUS SECURITIES S.A.		02/02/2013	01/01/2400
VIOHALCO (CB)		Suspension Status	
ALPHA FINANCE INVESTMENT SERVICES S.A.		11/02/2013	01/01/2400
EUROBANK EQUITIES S.A.		20/01/2013	01/01/2400
MERIT SECURITIES S.A		13/12/2012	01/01/2400
ALPHA BANK (CR)		Main Market	
EUROBANK EQUITIES S.A.		24/10/2012	01/01/2400
HELLENIC AMERICAN SEC. S.A.		25/07/2014	01/01/2400
INVESTMENT BANK OF GREECE S.A.		08/01/2013	01/01/2400
MERIT SECURITIES S.A		03/09/2013	01/01/2400
NBG SECURITIES S.A.		15/01/2013	01/01/2400
PIRAEUS SECURITIES S.A.		28/05/2013	01/01/2400
ALUMIL (CR)		Main Market	
BETA SECURITIES S.A.		18/07/2013	01/01/2400
ATTICA BANK S.A. (CR)		Main Market	
BETA SECURITIES S.A.		02/06/2014	01/01/2400
EUROBANK EQUITIES S.A.		25/07/2014	01/01/2400
HELLENIC AMERICAN SEC. S.A.		25/07/2014	01/01/2400
BYTE COMPUTER SA (CR)		Main Market	
MERIT SECURITIES S.A		04/08/2013	01/01/2400
CC HBC AG (CR)		Main Market	
EUROBANK EQUITIES S.A.		23/10/2013	01/01/2400
NBG SECURITIES S.A.		29/04/2013	01/01/2400
ELLAKTOR (CR)		Main Market	
EUROBANK EQUITIES S.A.		01/06/2013	01/01/2400
INVESTMENT BANK OF GREECE S.A.		02/01/2013	01/01/2400
NBG SECURITIES S.A.		25/06/2013	01/01/2400
ELTECH ANEMOS S.A. (CR)		Main Market	
EUROBANK EQUITIES S.A.		22/07/2014	01/01/2400
ELTON SA (CR)		Main Market	
BETA SECURITIES S.A.		03/09/2013	01/01/2400
EUROBANK ERGASIAS (CR)		Main Market	
ALPHA FINANCE INVESTMENT SERVICES S.A.		08/01/2013	01/01/2400
EUROBANK EQUITIES S.A.		01/06/2013	01/01/2400
HELLENIC AMERICAN SEC. S.A.		25/07/2014	01/01/2400
INVESTMENT BANK OF GREECE S.A.		08/01/2013	01/01/2400
PIRAEUS SECURITIES S.A.		28/09/2013	01/01/2400
EUROCONSULTANTS S.A. (CR)		Main Market	
EUROBANK EQUITIES S.A.		22/07/2014	01/01/2400
FOLLI FOLLIE (CR)		Main Market	
NBG SECURITIES S.A.		17/02/2014	01/01/2400
GEK TERNA (CR)		Main Market	
INVESTMENT BANK OF GREECE S.A.		02/01/2013	01/01/2400
GR. SARANTIS SA (CR)		Main Market	
BETA SECURITIES S.A.		14/05/2013	01/01/2400
HELLENIC EXCHANGES-A.S.E. (CR)		Main Market	
EUROBANK EQUITIES S.A.		01/06/2013	01/01/2400
HELLENIC AMERICAN SEC. S.A.		01/09/2014	01/01/2400
INVESTMENT BANK OF GREECE S.A.		02/01/2013	01/01/2400
NBG SECURITIES S.A.		25/06/2013	01/01/2400
INTRACOM CONSTR. (CR)		Main Market	
MERIT SECURITIES S.A		27/12/2012	01/01/2400
INTRALOT (CR)		Main Market	
EUROBANK EQUITIES S.A.		01/06/2013	01/01/2400
INVESTMENT BANK OF GREECE S.A.		02/01/2013	01/01/2400
PIRAEUS SECURITIES S.A.		28/09/2013	01/01/2400
MARFIN INVESTMENT GROUP (CR)		Main Market	
HELLENIC AMERICAN SEC. S.A.		25/07/2014	01/01/2400
PIRAEUS SECURITIES S.A.		02/02/2013	01/01/2400
MLS MULTIMEDIA SA (CR)		Main Market	
BETA SECURITIES S.A.		18/07/2013	01/01/2400
MOTOR OIL (CR)		Main Market	
EUROBANK EQUITIES S.A.		23/10/2012	01/01/2400
HELLENIC AMERICAN SEC. S.A.		01/09/2014	01/01/2400
NBG SECURITIES S.A.		17/02/2014	01/01/2400

## List of Stocks under Market Making operations

Securities Market Maker	Stock Category	
	Start Market Making	End Market Making
<b>MYTILINEOS HOLDINGS (CR)</b>	<b>Main Market</b>	
HELLENIC AMERICAN SEC. S.A.	25/07/2014	01/01/2400
INVESTMENT BANK OF GREECE S.A.	02/01/2013	01/01/2400
NBG SECURITIES S.A.	25/06/2013	01/01/2400
<b>NATIONAL BANK (CR)</b>	<b>Main Market</b>	
ALPHA FINANCE INVESTMENT SERVICES S.A.	08/01/2013	01/01/2400
EUROBANK EQUITIES S.A.	24/10/2012	01/01/2400
HELLENIC AMERICAN SEC. S.A.	25/07/2014	01/01/2400
INVESTMENT BANK OF GREECE S.A.	08/01/2013	01/01/2400
MERIT SECURITIES S.A.	03/09/2013	01/01/2400
NBG SECURITIES S.A.	28/02/2013	01/01/2400
PIRAEUS SECURITIES S.A.	08/09/2013	01/01/2400
<b>OPAP (CR)</b>	<b>Main Market</b>	
ALPHA FINANCE INVESTMENT SERVICES S.A.	08/01/2013	01/01/2400
EUROBANK EQUITIES S.A.	24/10/2012	01/01/2400
HELLENIC AMERICAN SEC. S.A.	25/07/2014	01/01/2400
INVESTMENT BANK OF GREECE S.A.	08/01/2013	01/01/2400
NBG SECURITIES S.A.	15/01/2013	01/01/2400
<b>OTE (CR)</b>	<b>Main Market</b>	
ALPHA FINANCE INVESTMENT SERVICES S.A.	08/01/2013	01/01/2400
EUROBANK EQUITIES S.A.	24/10/2012	01/01/2400
HELLENIC AMERICAN SEC. S.A.	25/07/2014	01/01/2400
INVESTMENT BANK OF GREECE S.A.	08/01/2013	01/01/2400
NBG SECURITIES S.A.	01/12/2012	01/01/2400
PIRAEUS SECURITIES S.A.	08/09/2013	01/01/2400
<b>PAPOUTSANIS (CR)</b>	<b>Main Market</b>	
BETA SECURITIES S.A.	25/11/2013	01/01/2400
<b>PETROPOULOS PETROS (CR)</b>	<b>Main Market</b>	
BETA SECURITIES S.A.	28/05/2013	01/01/2400
<b>PIRAEUS BANK (CR)</b>	<b>Main Market</b>	
EUROBANK EQUITIES S.A.	23/10/2012	01/01/2400
HELLENIC AMERICAN SEC. S.A.	25/07/2014	01/01/2400
INVESTMENT BANK OF GREECE S.A.	08/01/2013	01/01/2400
MERIT SECURITIES S.A.	16/09/2013	01/01/2400
NBG SECURITIES S.A.	02/06/2013	01/01/2400
PIRAEUS SECURITIES S.A.	16/02/2013	01/01/2400
<b>PLAISIO COMPUTERS SA (CR)</b>	<b>Main Market</b>	
BETA SECURITIES S.A.	05/05/2014	01/01/2400
<b>PPC (CR)</b>	<b>Main Market</b>	
ALPHA FINANCE INVESTMENT SERVICES S.A.	08/01/2013	01/01/2400
EUROBANK EQUITIES S.A.	23/10/2012	01/01/2400
HELLENIC AMERICAN SEC. S.A.	01/09/2014	01/01/2400
INVESTMENT BANK OF GREECE S.A.	08/01/2013	01/01/2400
NBG SECURITIES S.A.	26/03/2013	01/01/2400
PIRAEUS SECURITIES S.A.	28/09/2013	01/01/2400
<b>PROFILE SA (CR)</b>	<b>Main Market</b>	
EUROBANK EQUITIES S.A.	23/06/2014	01/01/2400
<b>REDS S.A. (CR)</b>	<b>Main Market</b>	
EUROBANK EQUITIES S.A.	05/09/2014	01/01/2400
<b>S.KANAKIS SA (CR)</b>	<b>Main Market</b>	
BETA SECURITIES S.A.	01/10/2013	01/01/2400
<b>TITAN CEMENT (CR)</b>	<b>Main Market</b>	
EUROBANK EQUITIES S.A.	23/10/2012	01/01/2400
NBG SECURITIES S.A.	17/02/2014	01/01/2400
<b>VIOHALCO SA/NV (CB)</b>	<b>Main Market</b>	
ALPHA FINANCE INVESTMENT SERVICES S.A.	17/02/2014	01/01/2400
MERIT SECURITIES S.A.	17/03/2014	01/01/2400

Underlying Asset				Derivatives Market																		
Price max	Price min	Closing price	change	Delivery Month	Open price	Price max	Price min	Last price	Closing price	Last Bid	Last Ask	Settlement price	change	Life high	Life low	Trades	Volume	change	Value	change	Open Interest	change
FTSE/Athex Large Cap				(Trade Unit: 1 Index Point x 5€, Cash Settlement)																		
307.21	296.89	307.11	2.62%	November 2014	295.50	304.75	294.00	302.00	302.25	20@302.00	59@302.50	302.25	2.28%	389.75	266.75	851	8,737	-27.00%	13,118,251.25	-26.23%	41,060	2.79%
				December 2014	292.75	304.00	292.75	302.50	301.75	20@301.25	59@302.25	301.75	2.99%	387.50	269.25	71	899	-50.90%	1,353,967.50	-50.13%	4,504	2.85%
				January 2015	295.50	300.00	295.50	300.00	300.00	5@297.25	5@308.00	300.00	2.13%	315.00	285.00	2	12	-80.33%	17,775.00	-80.21%	74	17.46%
				March 2015	300.00	300.00	300.00	300.00	300.25	1@275.00	---	300.25	0.59%	324.25	295.00	1	2	---	3,000.00	---	185	1.09%
				June 2015	---	---	---	---	---	---	---	---	---	---	---	---	---	---	---	---	---	---
				September 2015	---	---	---	---	---	---	---	---	---	---	---	---	---	---	---	---	---	---

Underlying Asset				Derivatives Market																		
Price max	Price min	Closing price	change	Delivery Month	Open price	Price max	Price min	Last price	Closing price	Last Bid	Last Ask	Settlement price	change	Life high	Life low	Trades	Volume	change	Value	change	Open Interest	change
ALPHA BANK (CR)				(Contract Size: 100 Securities, Physical Delivery)																		
0.544	0.514	0.543	4.42%	December 2014	0.523	0.544	0.520	0.542	0.542	100@0.540	5@0.542	0.542	3.44%	0.775	0.467	131	4,184	-54.06%	221,938.00	-53.70%	40,221	1.35%
				March 2015	---	---	---	---	---	---	5@0.552	---	---	---	---	---	---	---	---	---	---	---
				June 2015	---	---	---	---	0.552	---	---	0.552	3.37%	0.649	0.601	---	---	---	---	---	---	---
				September 2015	---	---	---	---	---	---	---	---	---	---	---	---	---	---	---	---	---	---
CC HBC AG (CR)				(Contract Size: 100 Securities, Physical Delivery)																		
17.49	17.24	17.24	0.94%	December 2014	17.08	17.10	17.08	17.10	16.88	1@16.17	1@17.18	16.88	0.96%	17.90	15.40	2	2	-77.78%	3,418.00	-77.59%	1,251	-0.16%
				March 2015	---	---	---	---	---	---	---	---	---	---	---	---	---	---	---	---	---	---
				June 2015	---	---	---	---	---	---	---	---	---	---	---	---	---	---	---	---	---	---
				September 2015	---	---	---	---	---	---	---	---	---	---	---	---	---	---	---	---	---	---
CORINTH PIPEWORKS SA (CR)				(Contract Size: 100 Securities, Physical Delivery)																		
1.35	1.31	1.33	2.31%	December 2014	---	---	---	---	1.32	---	1@1.36	1.32	2.33%	1.61	1.26	---	---	---	---	---	906	0.00%
				March 2015	---	---	---	---	---	---	---	---	---	---	---	---	---	---	---	---	---	---
				June 2015	---	---	---	---	---	---	---	---	---	---	---	---	---	---	---	---	---	---
				September 2015	---	---	---	---	---	---	---	---	---	---	---	---	---	---	---	---	---	---
ELLAKTOR (CR)				(Contract Size: 100 Securities, Physical Delivery)																		
2.45	2.22	2.41	7.11%	December 2014	2.23	2.47	2.23	2.41	2.44	5@2.36	1@2.42	2.44	7.02%	3.59	2.14	18	98	19.51%	23,343.00	23.40%	1,892	0.32%
				March 2015	---	---	---	---	---	---	---	---	---	---	---	---	---	---	---	---	---	---
				June 2015	---	---	---	---	---	---	---	---	---	---	---	---	---	---	---	---	---	---
				September 2015	---	---	---	---	---	---	---	---	---	---	---	---	---	---	---	---	---	---
EUROBANK ERGASIAS (CR)				(Contract Size: 100 Securities, Physical Delivery)																		
0.287	0.264	0.272	-1.81%	December 2014	0.268	0.285	0.264	0.273	0.273	100@0.272	180@0.273	0.273	-1.44%	0.410	0.200	99	6,027	64.81%	165,927.90	68.19%	69,449	-0.67%
				March 2015	---	---	---	---	0.278	---	180@0.283	0.278	-1.42%	0.352	0.243	---	---	---	---	---	400	0.00%
				June 2015	---	---	---	---	---	---	---	---	---	---	---	---	---	---	---	---	---	---
				September 2015	---	---	---	---	---	---	---	---	---	---	---	---	---	---	---	---	---	---
EYDAP S.A. (CR)				(Contract Size: 100 Securities, Physical Delivery)																		
5.83	5.51	5.80	5.26%	December 2014	5.51	5.77	5.51	5.76	5.79	1@5.70	2@5.82	5.79	5.27%	9.05	4.98	13	20	-86.30%	11,344.00	-85.68%	640	-1.99%
				March 2015	---	---	---	---	---	---	---	---	---	---	---	---	---	---	---	---	---	---
				June 2015	---	---	---	---	---	---	---	---	---	---	---	---	---	---	---	---	---	---
				September 2015	---	---	---	---	---	---	---	---	---	---	---	---	---	---	---	---	---	---
FOLLI FOLLIE (CR)				(Contract Size: 103 Securities, Physical Delivery)																		
26.50	26.10	26.27	0.65%	December 2014	26.25	26.50	26.16	26.26	26.19	1@26.20	1@26.75	26.19	0.65%	30.54	22.60	15	28	-53.33%	75,903.79	-53.80%	286	2.88%
				March 2015	---	---	---	---	---	---	---	---	---	---	---	---	---	---	---	---	---	---
				June 2015	---	---	---	---	---	---	---	---	---	---	---	---	---	---	---	---	---	---
				September 2015	---	---	---	---	---	---	---	---	---	---	---	---	---	---	---	---	---	---
FRIGOGLASS SA (CR)				(Contract Size: 100 Securities, Physical Delivery)																		
2.33	2.21	2.25	1.81%	December 2014	2.29	2.31	2.12	2.12	2.28	2@2.17	4@2.33	2.28	1.79%	3.20	2.12	11	50	233.33%	11,302.00	233.88%	647	-1.67%
				March 2015	---	---	---	---	---	---	---	---	---	---	---	---	---	---	---	---	---	---
				June 2015	---	---	---	---	---	---	---	---	---	---	---	---	---	---	---	---	---	---
				September 2015	---	---	---	---	---	---	---	---	---	---	---	---	---	---	---	---	---	---

Underlying Asset				Derivatives Market																		
Price max	Price min	Closing price	change	Delivery Month	Open price	Price max	Price min	Last price	Closing price	Last Bid	Last Ask	Settlement price	change	Life high	Life low	Trades	Volume	change	Value	change	Open Interest	change
GEK TERNA (CR)				(Contract Size: 100 Securities, Physical Delivery)																		
2.22	2.02	2.22	8.82%	December 2014	2.05	2.22	2.05	2.22	2.29	2@2.17	10@2.21	2.29	9.05%	4.01	1.92	71	776	42.65%	163,787.00	45.80%	6,925	2.41%
				March 2015	---	---	---	---	2.53	2@2.16	10@2.25	2.53	9.05%	4.11	2.02	---	---	-100.00%	---	-100.00%	4,578	0.00%
				June 2015	---	---	---	---	---	---	---	---	---	---	---	---	---	---	---	---	---	---
				September 2015	---	---	---	---	---	---	---	---	---	---	---	---	---	---	---	---	---	---
GRIVALIA PROPERTIES (CR)				(Contract Size: 100 Securities, Physical Delivery)																		
9.23	8.50	8.95	3.83%	December 2014	8.58	9.00	8.57	8.82	8.53	1@8.77	1@9.11	8.53	3.77%	9.50	8.02	23	91	-1.09%	79,223.00	2.24%	178	-17.97%
				March 2015	---	---	---	---	---	---	---	---	---	---	---	---	---	---	---	---	---	---
				June 2015	---	---	---	---	---	---	---	---	---	---	---	---	---	---	---	---	---	---
				September 2015	---	---	---	---	---	---	---	---	---	---	---	---	---	---	---	---	---	---
HELLENIC EXCHANGES-A.S.E. (CR)				(Contract Size: 103 Securities, Physical Delivery)																		
5.68	5.40	5.64	5.03%	December 2014	5.36	5.66	5.36	5.64	5.64	2@5.64	1@5.65	5.64	5.03%	8.39	4.75	66	265	69.87%	151,803.46	77.26%	1,973	-3.14%
				March 2015	---	---	---	---	5.70	---	---	5.70	4.97%	7.01	5.35	---	---	---	---	---	---	---
				June 2015	---	---	---	---	5.59	---	---	5.59	5.08%	7.45	5.50	---	---	---	---	---	---	---
				September 2015	---	---	---	---	---	---	---	---	---	---	---	---	---	---	---	---	---	---
HELLENIC PETROLEUM (CR)				(Contract Size: 100 Securities, Physical Delivery)																		
4.28	4.02	4.25	3.66%	December 2014	4.07	4.26	4.07	4.24	4.23	1@4.18	4@4.24	4.23	3.68%	6.29	3.84	79	235	-15.16%	98,102.00	-13.70%	6,457	-1.78%
				March 2015	---	---	---	---	4.21	---	---	4.21	3.69%	6.18	5.50	---	---	---	---	---	---	---
				June 2015	---	---	---	---	---	---	---	---	---	---	---	---	---	---	---	---	---	---
				September 2015	---	---	---	---	---	---	---	---	---	---	---	---	---	---	---	---	---	---
INTRALOT (CR)				(Contract Size: 100 Securities, Physical Delivery)																		
1.22	1.15	1.21	7.08%	December 2014	1.12	1.18	1.12	1.18	1.19	5@1.15	1@1.19	1.19	7.21%	1.82	1.09	14	35	6.06%	4,077.00	6.25%	1,074	0.56%
				March 2015	---	---	---	---	---	---	---	---	---	---	---	---	---	---	---	---	---	---
				June 2015	---	---	---	---	---	---	---	---	---	---	---	---	---	---	---	---	---	---
				September 2015	---	---	---	---	---	---	---	---	---	---	---	---	---	---	---	---	---	---
JUMBO SA (CR)				(Contract Size: 100 Securities, Physical Delivery)																		
9.37	8.65	9.35	6.86%	December 2014	8.70	9.30	8.69	9.30	9.23	5@9.27	3@9.33	9.23	6.83%	11.84	7.87	48	218	54.61%	195,373.00	60.02%	575	3.60%
				March 2015	---	---	---	---	---	---	---	---	---	---	---	---	---	---	---	---	---	---
				June 2015	---	---	---	---	---	---	---	---	---	---	---	---	---	---	---	---	---	---
				September 2015	---	---	---	---	---	---	---	---	---	---	---	---	---	---	---	---	---	---
MARFIN INVESTMENT GROUP (CR)				(Contract Size: 100 Securities, Physical Delivery)																		
0.220	0.209	0.220	4.26%	December 2014	0.212	0.221	0.212	0.220	0.222	4@0.220	4@0.222	0.222	4.23%	0.420	0.205	19	857	-2.17%	18,535.50	-3.14%	25,962	-0.09%
				March 2015	---	---	---	---	---	---	---	---	---	---	---	---	---	---	---	---	---	---
				June 2015	---	---	---	---	---	---	---	---	---	---	---	---	---	---	---	---	---	---
				September 2015	---	---	---	---	---	---	---	---	---	---	---	---	---	---	---	---	---	---
METKA (CR)				(Contract Size: 100 Securities, Physical Delivery)																		
8.40	7.84	8.12	4.10%	December 2014	7.90	8.36	7.90	8.17	8.22	1@8.15	2@8.37	8.22	4.05%	11.68	7.49	32	129	53.57%	105,579.00	58.90%	757	-0.26%
				March 2015	---	---	---	---	---	---	---	---	---	---	---	---	---	---	---	---	---	---
				June 2015	---	---	---	---	---	---	---	---	---	---	---	---	---	---	---	---	---	---
				September 2015	---	---	---	---	---	---	---	---	---	---	---	---	---	---	---	---	---	---

Underlying Asset				Derivatives Market																		
Price max	Price min	Closing price	change	Delivery Month	Open price	Price max	Price min	Last price	Closing price	Last Bid	Last Ask	Settlement price	change	Life high	Life low	Trades	Volume	change	Value	change	Open Interest	change
MOTOR OIL (CR)				(Contract Size: 100 Securities, Physical Delivery)																		
6.00	5.84	5.93	1.54%	December 2014	5.86	5.98	5.86	5.89	5.91	1@5.93	1@6.80	5.91	1.55%	8.33	5.51	9	19	-58.70%	11,215.00	-57.73%	335	0.90%
				March 2015	---	---	---	---	5.88	---	---	5.88	1.55%	6.88	6.48	---	---	---	---	---	---	---
				June 2015	---	---	---	---	5.88	---	---	5.88	1.55%	6.71	6.48	---	---	---	---	---	---	---
				September 2015	---	---	---	---	---	---	---	---	---	---	---	---	---	---	---	---	---	---
MYTILINEOS HOLDINGS (CR)				(Contract Size: 100 Securities, Physical Delivery)																		
5.43	5.07	5.43	5.85%	December 2014	5.22	5.42	5.18	5.42	5.49	10@5.37	5@5.40	5.49	5.78%	7.16	4.91	93	344	3.61%	182,850.00	4.43%	7,150	-2.23%
				March 2015	---	---	---	---	5.47	---	---	5.47	5.80%	6.20	5.12	---	---	-100.00%	---	-100.00%	---	---
				June 2015	5.35	5.35	5.35	5.35	5.51	---	---	5.51	5.76%	6.08	5.19	1	25	-44.44%	13,375.00	-43.54%	---	-100.00%
				September 2015	---	---	---	---	---	---	---	---	---	---	---	---	---	---	---	---	---	---
NATIONAL BANK (CR)				(Contract Size: 100 Securities, Physical Delivery)																		
1.96	1.88	1.96	2.08%	December 2014	1.90	1.97	1.86	1.97	1.94	32@1.96	55@1.97	1.94	2.11%	2.92	1.80	175	3,056	-61.56%	584,921.00	-61.49%	32,187	0.26%
				March 2015	---	---	---	---	1.98	10@1.58	55@2.00	1.98	2.06%	2.70	1.96	---	---	---	---	---	---	---
				June 2015	---	---	---	---	---	---	---	---	---	---	---	---	---	---	---	---	---	---
				September 2015	---	---	---	---	---	---	---	---	---	---	---	---	---	---	---	---	---	---
OPAP (CR)				(Contract Size: 100 Securities, Physical Delivery)																		
10.08	9.50	10.05	3.93%	December 2014	9.47	10.00	9.32	9.86	9.86	6@9.85	10@9.90	9.86	6.02%	13.34	7.95	189	787	-28.32%	760,579.00	-25.76%	1,866	-6.70%
				March 2015	---	---	---	---	9.92	---	10@10.01	9.92	5.98%	12.19	8.30	---	---	---	---	---	---	---
				June 2015	---	---	---	---	---	---	---	---	---	---	---	---	---	---	---	---	---	---
				September 2015	---	---	---	---	---	---	---	---	---	---	---	---	---	---	---	---	---	---
OTE (CR)				(Contract Size: 100 Securities, Physical Delivery)																		
9.46	9.01	9.46	4.99%	December 2014	9.10	9.47	9.02	9.44	9.35	1@9.42	1@9.44	9.35	2.97%	11.83	8.53	191	1,259	2.11%	1,169,110.00	3.30%	7,518	-4.00%
				March 2015	---	---	---	---	9.41	---	---	9.41	2.95%	10.79	8.77	---	---	---	---	---	---	---
				June 2015	---	---	---	---	9.44	---	---	9.44	2.94%	10.55	10.37	---	---	---	---	---	---	---
				September 2015	---	---	---	---	---	---	---	---	---	---	---	---	---	---	---	---	---	---
P.P.A. S.A. (CR)				(Contract Size: 100 Securities, Physical Delivery)																		
12.78	12.24	12.37	0.57%	December 2014	12.50	12.74	12.50	12.64	12.44	1@12.35	1@12.88	12.44	0.57%	17.13	12.35	5	6	-88.00%	7,571.00	-88.24%	600	0.17%
				March 2015	---	---	---	---	---	---	---	---	---	---	---	---	---	---	---	---	---	---
				June 2015	---	---	---	---	---	---	---	---	---	---	---	---	---	---	---	---	---	---
				September 2015	---	---	---	---	---	---	---	---	---	---	---	---	---	---	---	---	---	---
PIRAEUS BANK (CR)				(Contract Size: 100 Securities, Physical Delivery)																		
1.17	1.12	1.16	0.00%	December 2014	1.15	1.17	1.12	1.17	1.16	40@1.16	104@1.17	1.16	1.75%	1.60	1.00	212	6,954	-15.99%	797,557.00	-16.19%	32,050	-2.78%
				March 2015	---	---	---	---	1.17	---	104@1.18	1.17	1.74%	1.37	1.08	---	---	---	---	---	100	0.00%
				June 2015	---	---	---	---	1.18	---	---	1.18	1.72%	1.21	1.12	---	---	---	---	---	5	0.00%
				September 2015	---	---	---	---	---	---	---	---	---	---	---	---	---	---	---	---	---	---
PPC (CR)				(Contract Size: 100 Securities, Physical Delivery)																		
6.40	5.97	6.40	5.61%	December 2014	6.10	6.40	5.97	6.38	6.38	14@6.37	6@6.38	6.38	5.45%	12.48	5.51	228	1,022	-63.85%	634,774.00	-62.58%	8,019	-2.05%
				March 2015	---	---	---	---	6.39	2@5.55	---	6.39	5.45%	11.32	6.00	---	---	-100.00%	---	-100.00%	---	---
				June 2015	---	---	---	---	6.39	---	---	6.39	5.45%	6.70	6.00	---	---	-100.00%	---	-100.00%	---	---
				September 2015	---	---	---	---	---	---	---	---	---	---	---	---	---	---	---	---	---	---

Underlying Asset				Derivatives Market																		
Price max	Price min	Closing price	change	Delivery Month	Open price	Price max	Price min	Last price	Closing price	Last Bid	Last Ask	Settlement price	change	Life high	Life low	Trades	Volume	change	Value	change	Open Interest	change
SIDENOR (CR)				(Contract Size: 100 Securities, Physical Delivery)																		
0.926	0.898	0.921	1.77%	December 2014	---	---	---	---	0.940	1@0.850	4@0.920	0.940	1.73%	1.48	0.810	---	---	-100.00%	---	-100.00%	820	0.00%
				March 2015	---	---	---	---	---	---	---	---	---	---	---	---	---	---	---	---	---	---
				June 2015	---	---	---	---	---	---	---	---	---	---	---	---	---	---	---	---	---	---
				September 2015	---	---	---	---	---	---	---	---	---	---	---	---	---	---	---	---	---	---
TERNA ENERGY (CR)				(Contract Size: 100 Securities, Physical Delivery)																		
2.49	2.23	2.49	8.73%	December 2014	2.30	2.48	2.30	2.48	2.47	1@2.38	9@2.47	2.47	8.81%	3.67	2.05	34	277	385.96%	65,065.00	398.05%	3,008	-7.36%
				March 2015	---	---	---	---	---	---	---	---	---	---	---	---	---	---	---	---	---	---
				June 2015	---	---	---	---	---	---	---	---	---	---	---	---	---	---	---	---	---	---
				September 2015	---	---	---	---	---	---	---	---	---	---	---	---	---	---	---	---	---	---
TITAN CEMENT (CR)				(Contract Size: 100 Securities, Physical Delivery)																		
18.53	17.37	18.53	4.75%	December 2014	17.67	18.40	17.51	18.40	18.08	1@18.20	4@18.40	18.08	3.73%	21.10	16.38	35	89	-42.95%	160,788.00	-42.30%	439	-3.52%
				March 2015	---	---	---	---	---	---	---	---	---	---	---	---	---	---	---	---	---	---
				June 2015	---	---	---	---	---	---	---	---	---	---	---	---	---	---	---	---	---	---
				September 2015	---	---	---	---	---	---	---	---	---	---	---	---	---	---	---	---	---	---
VIOHALCO SA/NV (CB)				(Contract Size: 100 Securities, Physical Delivery)																		
2.66	2.55	2.63	3.14%	December 2014	2.59	2.63	2.59	2.63	2.65	1@2.60	2@2.64	2.65	3.11%	4.20	2.59	10	30	1400.00%	7,824.00	1393.13%	278	1.46%
				March 2015	---	---	---	---	---	---	---	---	---	---	---	---	---	---	---	---	---	---
				June 2015	---	---	---	---	---	---	---	---	---	---	---	---	---	---	---	---	---	---
				September 2015	---	---	---	---	---	---	---	---	---	---	---	---	---	---	---	---	---	---



## FTSE/Athex Large Cap

(Trade Unit: 1 Index Point x 5€ - Exercise Style: European, Cash Settlement)

Call Options																	Put Options																		
	November 2014							December 2014							Other Months		November 2014								December 2014								Other Months		
Exercise Price	Open price	Price max	Price min	Last price	Closing price	Volume	Open Interest	Open price	Price max	Price min	Last price	Closing price	Volume	Open Interest	Volume	Open Interest	Open price	Price max	Price min	Last price	Closing price	Volume	Open Interest	Open price	Price max	Price min	Last price	Closing price	Volume	Open Interest	Volume	Open Interest	Exercise Price		
215	-	-	-	-	-	-	-	-	-	-	-	-	-	-	-	-	-	-	-	-	-	-	-	-	-	-	-	-	-	-	-	215			
255	-	-	-	-	-	-	-	-	-	-	-	-	-	-	-	-	-	-	-	-	-	-	-	-	-	-	-	-	-	-	-	255			
260	-	-	-	-	-	-	-	-	-	-	-	-	-	-	-	-	-	-	-	-	0.24	-	3	-	-	-	-	-	-	-	-	260			
265	-	-	-	-	-	-	-	-	-	-	-	-	-	-	-	-	-	-	-	-	0.44	-	1	-	-	-	-	-	-	-	-	265			
270	-	-	-	-	-	-	-	-	-	-	-	35.75	-	50	-	-	-	-	-	-	0.77	-	469	-	-	-	-	-	-	-	-	270			
275	-	-	-	-	-	-	-	-	-	-	-	-	-	-	-	-	-	-	-	-	-	-	-	-	-	-	-	-	-	-	-	275			
280	-	-	-	-	-	-	-	-	-	-	-	-	-	-	-	-	2.50	2.50	2.50	2.50	2.00	4	210	-	-	-	-	-	-	-	-	280			
285	-	-	-	-	-	-	-	-	-	-	-	-	-	-	-	-	4.00	4.00	4.00	4.00	3.10	10	51	-	-	-	-	-	-	-	-	285			
290	-	-	-	-	16.75	-	53	-	-	-	-	-	-	-	-	-	7.00	7.00	4.80	4.80	4.40	7	1,294	-	-	-	-	10.25	-	1	-	290			
295	13.50	14.75	12.00	14.00	13.50	243	250	-	-	-	-	-	-	-	-	-	10.00	10.00	10.00	10.00	6.20	1	13	-	-	-	-	12.50	-	30	-	295			
300	11.00	11.75	11.00	11.75	10.50	3	441	-	-	-	-	16.75	-	141	-	-	8.50	10.00	8.50	9.00	8.40	214	949	-	-	-	-	15.00	-	10	-	300			
305	7.20	9.00	7.00	8.60	8.20	94	145	-	-	-	-	-	-	-	-	-	-	-	-	-	11.00	-	132	-	-	-	-	-	-	-	-	305			
310	5.50	8.00	5.50	7.00	6.20	15	171	-	-	-	-	12.25	-	1,500	-	-	-	-	-	-	14.00	-	100	-	-	-	-	-	-	-	-	310			
315	-	-	-	-	4.60	-	383	-	-	-	-	10.50	-	30	-	-	-	-	-	-	17.25	-	21	-	-	-	-	-	-	-	-	315			
320	3.50	4.60	3.50	4.60	3.40	3	1,366	9.00	9.00	9.00	9.00	8.80	2	67	-	-	-	-	-	-	21.00	-	376	-	-	-	-	27.00	-	1	-	320			
325	-	-	-	-	2.40	-	199	-	-	-	-	-	-	-	-	-	-	-	-	-	25.00	-	1	-	-	-	-	-	-	-	-	325			
330	-	-	-	-	1.70	-	413	-	-	-	-	6.10	-	222	-	-	-	-	-	-	29.25	-	33	-	-	-	-	-	-	-	-	330			
335	-	-	-	-	-	-	-	-	-	-	-	-	-	-	-	-	-	-	-	-	33.75	-	71	-	-	-	-	-	-	-	-	335			
340	-	-	-	-	0.75	-	1,522	-	-	-	-	-	-	-	-	-	-	-	-	-	-	-	-	-	-	-	-	-	-	-	-	340			
345	-	-	-	-	-	-	-	-	-	-	-	3.40	-	30	-	-	-	-	-	-	-	-	-	-	-	-	-	-	-	-	-	345			
350	-	-	-	-	-	-	-	-	-	-	-	-	-	-	-	-	-	-	-	-	-	-	-	-	-	-	-	-	-	-	-	350			
355	-	-	-	-	-	-	-	-	-	-	-	-	-	-	-	-	-	-	-	-	53.00	-	20	-	-	-	-	-	-	-	-	355			
360	-	-	-	-	0.12	-	1	-	-	-	-	1.80	-	204	-	-	-	-	-	-	-	-	-	-	-	-	-	-	-	-	-	360			
365	-	-	-	-	0.07	-	55	-	-	-	-	-	-	-	-	-	-	-	-	-	62.50	-	838	-	-	-	-	-	-	-	-	365			
370	-	-	-	-	0.04	-	8	-	-	-	-	-	-	-	-	-	-	-	-	-	-	-	-	-	-	-	-	-	-	-	-	370			
375	-	-	-	-	0.02	-	2	-	-	-	-	-	-	-	-	-	-	-	-	-	-	-	-	-	-	-	-	-	-	-	-	375			
380	-	-	-	-	0.01	-	4	-	-	-	-	0.72	-	500	-	-	-	-	-	-	-	-	-	-	-	-	-	-	-	-	-	380			
385	-	-	-	-	-	-	-	-	-	-	-	0.57	-	200	-	-	-	-	-	-	-	-	-	-	-	-	-	-	-	-	-	385			
390	-	-	-	-	-	-	1	-	-	-	-	-	-	-	-	-	-	-	-	-	-	-	-	-	-	-	-	-	-	-	-	390			
395	-	-	-	-	-	-	-	-	-	-	-	-	-	-	-	-	-	-	-	-	-	-	-	-	-	-	-	-	-	-	-	395			
400	-	-	-	-	-	-	-	-	-	-	-	-	-	-	-	-	-	-	-	-	-	-	-	-	-	-	-	-	-	-	-	400			
405	-	-	-	-	-	-	-	-	-	-	-	-	-	-	-	-	-	-	-	-	-	-	-	-	-	-	-	-	-	-	-	405			
410	-	-	-	-	-	-	-	-	-	-	-	-	-	-	-	-	-	-	-	-	-	-	-	-	-	-	-	-	-	-	-	410			
415	-	-	-	-	-	-	-	-	-	-	-	-	-	-	-	-	-	-	-	-	-	-	-	-	-	-	-	-	-	-	-	415			
420	-	-	-	-	-	-	-	-	-	-	-	-	-	-	-	-	-	-	-	-	-	-	-	-	-	-	-	-	-	-	-	420			
425	-	-	-	-	-	-	-	-	-	-	-	-	-	-	-	-	-	-	-	-	-	-	-	-	-	-	-	-	-	-	-	425			

FTSE/Athex Large Cap

(Trade Unit: 1 Index Point x 5€ - Exercise Style: European, Cash Settlement)

Call Options																	Put Options																					
Exercise Price	November 2014							December 2014							Other Months		November 2014							December 2014							Other Months		Exercise Price					
	Open price	Price max	Price min	Last price	Closing price	Volume	Open Interest	Open price	Price max	Price min	Last price	Closing price	Volume	Open Interest	Volume	Open Interest	Open price	Price max	Price min	Last price	Closing price	Volume	Open Interest	Open price	Price max	Price min	Last price	Closing price	Volume	Open Interest	Volume	Open Interest						
430	-	-	-	-	-	-	-	-	-	-	-	-	-	-	-	-	-	-	-	-	-	-	-	-	-	-	-	-	-	-	-	430						
435	-	-	-	-	-	-	-	-	-	-	-	-	-	-	-	-	-	-	-	-	-	-	-	-	-	-	-	-	-	-	-	435						
440	-	-	-	-	-	-	-	-	-	-	-	-	-	-	-	-	-	-	-	-	-	-	-	-	-	-	138.00	-	5	-	-	440						
445	-	-	-	-	-	-	-	-	-	-	-	-	-	-	-	-	-	-	-	-	-	-	-	-	-	-	-	-	-	-	-	445						
450	-	-	-	-	-	-	-	-	-	-	-	-	-	-	-	-	-	-	-	-	-	-	-	-	-	-	148.00	-	35	-	-	450						
455	-	-	-	-	-	-	-	-	-	-	-	-	-	-	-	-	-	-	-	-	-	-	-	-	-	-	-	-	-	-	-	455						
460	-	-	-	-	-	-	-	-	-	-	-	-	-	-	-	-	-	-	-	-	-	-	-	-	-	-	-	-	-	-	-	460						
465	-	-	-	-	-	-	-	-	-	-	-	-	-	-	-	-	-	-	-	-	-	-	-	-	-	-	-	-	-	-	-	465						
Totals:							358	5,014								2	2,944	0	0	236							4,582								0	82	0	0
Nominal Transactions Value:							534,325.00							3,200.00							352,475.00							0.00							0.00		0.00	
Number of Trades:							64							1							15							0							0		0	

ALPHA BANK (CR) (Contract Size: 100 Securities, Exercise Style: American, Physical Delivery)

Call Options																	Put Options																
Exercise Price	November 2014							December 2014							Other Months		November 2014							December 2014							Other Months		Exercise Price
	Open price	Price max	Price min	Last price	Closing price	Volume	Open Interest	Open price	Price max	Price min	Last price	Closing price	Volume	Open Interest	Volume	Open Interest	Open price	Price max	Price min	Last price	Closing price	Volume	Open Interest	Open price	Price max	Price min	Last price	Closing price	Volume	Open Interest	Volume	Open Interest	
0.100						-	-							-	-							-	-						-	-			0.100
0.200						-	-							-	-							-	-						-	-			0.200
0.300						-	-							-	-							-	-						-	-			0.300
0.400						-	-							-	-							-	-						-	-			0.400
0.450						-	-							-	-							-	-						-	-			0.450
0.500						-	-							-	-							-	-						-	-			0.500
0.550						-	-							-	-							-	-						-	-			0.550
0.600						-	-							-	-							-	-						-	-			0.600
0.650						-	-							-	-							-	-						-	-			0.650
0.700						-	-							-	-							-	-						-	-			0.700
0.750						-	-							-	-							-	-						-	-			0.750
0.800						-	-							-	-							-	-						-	-			0.800
0.850						-	-							-	-							-	-						-	-			0.850
0.900						-	-							-	-							-	-						-	-			0.900
1.00						-	-							-	-							-	-						-	-			1.00
1.10						-	-							-	-							-	-						-	-			1.10
1.20						-	-							-	-							-	-						-	-			1.20
1.30						-	-							-	-							-	-						-	-			1.30
1.40						-	-							-	-							-	-						-	-			1.40
1.50						-	-							-	-							-	-						-	-			1.50
Totals:						0	0							0	0	0	0					0	0					0	0	0	0	0	0
Nominal Transactions Value:						0.00								0.00	0.00							0.00					0.00		0.00		0.00		
Number of Trades:						0								0	0	0						0.00					0		0		0		

NATIONAL BANK (CR)

(Contract Size: 100 Securities, Exercise Style: American, Physical Delivery)

Call Options																	Put Options																		
November 2014																	December 2014																		
Exercise Price	Open price	Price max	Price min	Last price	Closing price	Volume	Open Interest	Open price	Price max	Price min	Last price	Closing price	Volume	Open Interest	Volume	Open Interest	Open price	Price max	Price min	Last price	Closing price	Volume	Open Interest	Open price	Price max	Price min	Last price	Closing price	Volume	Open Interest	Volume	Open Interest	Exercise Price		
0.800						-	-							-	-								-	-								0.800			
0.900						-	-							-	-								-	-								0.900			
1.00						-	-							-	-								-	-								1.00			
1.10						-	-							-	-								-	-								1.10			
1.20						-	-							-	-								-	-								1.20			
1.30						-	-							-	-								-	-								1.30			
1.40						-	-							-	-								-	-								1.40			
1.50						-	-							-	-								-	-								1.50			
1.60						-	-							-	-								-	-								1.60			
1.70						-	-							-	-								-	-								1.70			
1.80						-	-							-	-								-	-								1.80			
1.90						-	-							-	-								-	-								1.90			
2.00						-	-							-	-								-	-								2.00			
2.10						-	-							-	-								-	-								2.10			
2.20					0.069	-	5							-	-								-	-									2.20		
2.30						-	-							-	-								-	-								2.30			
2.40						-	-							-	-	0.500	0.500	0.500	0.500	0.470	100	600											2.40		
2.50						-	-							-	-								-	-								2.50			
2.60						-	-							-	-								-	-								2.60			
2.70						-	-							-	-								-	-								2.70			
2.80						-	-							-	-								-	-								2.80			
2.90						-	-							-	-								-	-								2.90			
3.00						-	-							-	-								-	-								3.00			
3.10						-	-							-	-								-	-								3.10			
3.20						-	-							-	-								-	-								3.20			
3.40						-	-							-	-								-	-								3.40			
3.60						-	-							-	-								-	-								3.60			
3.80						-	-							-	-								-	-								3.80			
4.00						-	-							-	-								-	-								4.00			
4.40						-	-							-	-								-	-								4.40			
4.80						-	-							-	-								-	-								4.80			
5.20						-	-							-	-								-	-								5.20			
5.60						-	-							-	-								-	-								5.60			
Totals:						0	5							0	0	200	200							100	600							0	200	200	200
Nominal Transactions Value:						0.00								0.00		40,000.00								24,000.00								0.00		36,000.00	
Number of Trades:						0								0		1								1.00								0		1	

OPAP (CR)

(Contract Size: 100 Securities, Exercise Style: American, Physical Delivery)

Call Options																	Put Options																			
November 2014								December 2014								Other Months		November 2014								December 2014								Other Months		
Exercise Price	Open price	Price max	Price min	Last price	Closing price	Volume	Open Interest	Open price	Price max	Price min	Last price	Closing price	Volume	Open Interest	Volume	Open Interest	Open price	Price max	Price min	Last price	Closing price	Volume	Open Interest	Open price	Price max	Price min	Last price	Closing price	Volume	Open Interest	Volume	Open Interest	Exercise Price			
4.40						-	-						-	-								-	-					-	-				4.40			
4.80						-	-						-	-								-	-					-	-				4.80			
5.20						-	-						-	-								-	-					-	-				5.20			
5.60						-	-						-	-								-	-					-	-				5.60			
6.00						-	-						-	-								-	-					-	-				6.00			
6.40						-	-						-	-								-	-					-	-				6.40			
6.80						-	-						-	-								-	-					-	-				6.80			
7.20						-	-						-	-								-	-					-	-				7.20			
7.60						-	-						-	-								-	-					-	-				7.60			
8.00						-	-						-	-								-	-					-	-				8.00			
8.40						-	-						-	-								-	-					-	-				8.40			
8.80						-	-						-	-								-	-					-	-				8.80			
9.20						-	-						-	-								-	-					-	-				9.20			
9.60						-	-						-	-								-	-					-	-				9.60			
10.00						-	-						-	-								-	-					-	-				10.00			
10.50						-	-						-	-								-	-					-	-				10.50			
11.00					0.103	-	100						-	-								-	-					-	-				11.00			
11.50						-	-						-	-								-	-					-	-				11.50			
12.00						-	-						-	-								-	-					-	-				12.00			
12.50						-	-						-	-								-	-					-	-				12.50			
13.00						-	-						-	-								-	-					-	-				13.00			
13.50						-	-						-	-								-	-					-	-				13.50			
14.00						-	-						-	-								-	-					-	-				14.00			
14.50						-	-						-	-								-	-					-	-				14.50			
15.00						-	-						-	-								-	-					-	-				15.00			
16.00						-	-						-	-								-	-					-	-				16.00			
17.00						-	-						-	-								-	-					-	-				17.00			
18.00						-	-						-	-								-	-					-	-				18.00			
Totals:						0	100							0	0	0	0							0	0							0	0			
Nominal Transactions Value:						0.00								0.00		0.00								0.00								0.00				
Number of Trades:						0								0		0								0								0				

OTE (CR)

(Contract Size: 100 Securities, Exercise Style: American, Physical Delivery)

Call Options																	Put Options																								
November 2014								December 2014								Other Months		November 2014								December 2014								Other Months							
Exercise Price	Open price	Price max	Price min	Last price	Closing price	Volume	Open Interest	Open price	Price max	Price min	Last price	Closing price	Volume	Open Interest	Volume	Open Interest	Open price	Price max	Price min	Last price	Closing price	Volume	Open Interest	Open price	Price max	Price min	Last price	Closing price	Volume	Open Interest	Volume	Open Interest	Exercise Price								
5.20							-	-							-	-									-	-									5.20						
5.60							-	-							-	-									-	-									5.60						
6.00							-	-							-	-									-	-									6.00						
6.40							-	-							-	-									-	-									6.40						
6.80							-	-							-	-									-	-									6.80						
7.20							-	-							-	-									-	-									7.20						
7.60							-	-							-	-									-	-									7.60						
8.00							-	-							-	-									-	-									8.00						
8.40							-	-							-	-									-	-									8.40						
8.80							-	-							-	-									-	-									8.80						
9.20							-	-							-	-									-	-									9.20						
9.40							-	-							0.601	-	5									-	-									9.40					
9.60							-	-							0.509	-	5									-	-									9.60					
9.80							-	-							0.425	-	5									-	-			0.731	-	-							9.80		
10.00							-	-							-	-									-	-			0.859	-	-							10.00			
10.50							-	-							-	-									-	-			-	-							10.50				
11.00							0.019	-	10							-	-									-	-			1.63	-	-							11.00		
11.50							0.005	-	10							0.069	-	5									2.04	-	10			-	-							11.50	
12.00							-	-							0.037	-	10									-	-			-	-							12.00			
12.50							-	-							-	-									-	-			-	-							12.50				
13.00							-	-							-	-									-	-			-	-							13.00				
14.00							-	-							-	-									-	-			-	-							14.00				
15.00							-	-							-	-									-	-			-	-							15.00				
16.00							-	-							-	-									-	-			-	-							16.00				
17.00							-	-							-	-									-	-			-	-							17.00				
18.00							-	-							-	-									-	-			-	-							18.00				
Totals:						0	20							0	30	0	0							0	10							0	15	0	0						
Nominal Transactions Value:						0.00								0.00		0.00								0.00								0.00									
Number of Trades:						0								0		0								0.00								0									

PIRAEUS BANK (CR)

(Contract Size: 100 Securities, Exercise Style: American, Physical Delivery)

Call Options																	Put Options																			
November 2014								December 2014								Other Months		November 2014								December 2014								Other Months		
Exercise Price	Open price	Price max	Price min	Last price	Closing price	Volume	Open Interest	Open price	Price max	Price min	Last price	Closing price	Volume	Open Interest	Volume	Open Interest	Open price	Price max	Price min	Last price	Closing price	Volume	Open Interest	Open price	Price max	Price min	Last price	Closing price	Volume	Open Interest	Volume	Open Interest	Exercise Price			
0.100						-	-							-	-							-	-						-	-			0.100			
0.200						-	-							-	-							-	-						-	-			0.200			
0.300						-	-							-	-							-	-						-	-			0.300			
0.400						-	-							-	-							-	-						-	-			0.400			
0.500						-	-							-	-							-	-						-	-			0.500			
0.600						-	-							-	-							-	-						-	-			0.600			
0.700						-	-							-	-							-	-						-	-			0.700			
0.800						-	-							-	-							-	-						-	-			0.800			
0.900						-	-							-	-							-	-						-	-			0.900			
1.00						-	-							-	-							-	-						-	-			1.00			
1.10						-	-							-	-							-	-						-	-			1.10			
1.20						-	-							-	-							-	-						-	-			1.20			
1.30						-	-							-	-							-	-						-	-			1.30			
1.35						-	-							-	-							-	-						-	-			1.35			
1.40						-	-							-	-							-	-						-	-			1.40			
1.45						-	-							-	-							-	-						-	-			1.45			
1.50						-	-							-	-							-	-						-	-			1.50			
1.55						-	-							-	-							-	-						-	-			1.55			
1.60						-	-							-	-							-	-						-	-			1.60			
1.65						-	-							-	-							-	-						-	-			1.65			
1.70						-	-							-	-							-	-						-	-			1.70			
1.75						-	-							-	-							-	-						-	-			1.75			
1.80						-	-							-	-							-	-						-	-			1.80			
1.90						-	-							-	-							-	-						-	-			1.90			
2.00						-	-							-	-							-	-						-	-			2.00			
2.20						-	-							-	-							-	-						-	-			2.20			
2.40						-	-							-	-							-	-						-	-			2.40			
2.60						-	-							-	-							-	-						-	-			2.60			
2.80						-	-							-	-							-	-						-	-			2.80			
Totals:						0	0							0	0	0	0							0	0							0	0			
Nominal Transactions Value:						0.00								0.00		0.00								0.00								0.00				
Number of Trades:						0								0		0								0								0				

PPC (CR)

(Contract Size: 100 Securities, Exercise Style: American, Physical Delivery)

Call Options																	Put Options																			
November 2014								December 2014								Other Months		November 2014								December 2014								Other Months		
Exercise Price	Open price	Price max	Price min	Last price	Closing price	Volume	Open Interest	Open price	Price max	Price min	Last price	Closing price	Volume	Open Interest	Volume	Open Interest	Open price	Price max	Price min	Last price	Closing price	Volume	Open Interest	Open price	Price max	Price min	Last price	Closing price	Volume	Open Interest	Volume	Open Interest	Exercise Price			
3.20						-	-							-	-							-	-						-	-			3.20			
3.40						-	-							-	-							-	-						-	-			3.40			
3.60						-	-							-	-							-	-						-	-			3.60			
3.80						-	-							-	-							-	-						-	-			3.80			
4.00						-	-							-	-							-	-						-	-			4.00			
4.40						-	-							-	-							-	-						-	-			4.40			
4.80						-	-							-	-							-	-						-	-			4.80			
5.20						-	-							-	-							-	-						-	-			5.20			
5.60						-	-					0.903		-	15							-	-						-	-			5.60			
6.00						-	-							-	-							-	-						-	-			6.00			
6.40					0.254	-	10							-	-							-	-						-	-			6.40			
6.80					0.108	-	20							-	-							-	-						-	-			6.80			
7.20					0.038	-	10							-	-							-	-						-	-			7.20			
7.60						-	-							-	-							-	-						-	-			7.60			
8.00						-	-							-	-							-	-						-	-			8.00			
8.40						-	-							-	-							-	-						-	-			8.40			
8.80						-	-							-	-							-	-						-	-			8.80			
9.20						-	-							-	-							-	-						-	-			9.20			
9.40						-	-							-	-							-	-						-	-			9.40			
9.60						-	-							-	-							-	-						-	-			9.60			
9.80						-	-							-	-							-	-						-	-			9.80			
10.00						-	240							-	-							-	-						-	-			10.00			
10.50						-	-							-	-							-	-						-	-			10.50			
11.00						-	-							-	-							-	-						-	-			11.00			
11.50						-	-							-	-							-	-						-	-			11.50			
12.00						-	-							-	-							-	-						-	-			12.00			
12.50						-	-							-	-							-	-						-	-			12.50			
13.00						-	-							-	-							-	-						-	-			13.00			
13.50						-	-							-	-							-	-						-	-			13.50			
14.00						-	-							-	-							-	-						-	-			14.00			
15.00						-	-							-	-							-	-						-	-			15.00			
16.00						-	-							-	-							-	-						-	-			16.00			
Totals:						0	280							0	15	0	0							0	0							0	0			
Nominal Transactions Value:						0.00								0.00		0.00								0.00								0.00				
Number of Trades:						0								0		0								0								0				



Securities		Stock Repo [1]						Stock Reverse Repo [2]						Repurchase Agreements [3]									
		Trans. price	chg.	Trades	Volume	Transactions Value	Open Interest[5]	Price max	Price min	Last price	Last Ask	Trades	Volume	Transactions Value	Open Interest[5]	Price max	Price min	Last price	Last Ask	Trades	Volume	Transactions Value	Open Interest[5]
AEGEAN AIRLINES (CR)	SR RA	100.14	0.02	---	---	---	64	---	---	---	1@8%	---	---	---	38	10.00%	10.00%	10.00%	---	1	10	6,920.0	10
ALPHA BANK (CR)	SR RA	100.01	-0.05	---	---	---	115,607	---	---	---	44808@3.5%	---	---	---	29,411	---	---	---	---	---	---	---	133
ALPHA ETF FTSE Athex Large Cap	SR RA	100.00	---	---	---	---	---	---	---	---	---	---	---	---	---	---	---	---	---	---	---	---	3,554
ALUMIL (CR)	RA	---	---	---	---	---	---	---	---	---	---	---	---	---	---	---	---	---	---	---	---	---	---
ATHENS MEDICAL CENTER SA (CR)	SR RA	100.00	---	---	---	---	434	---	---	---	217@3%	---	---	---	---	---	---	---	---	---	---	---	---
ATTICA BANK S.A. (CR)	SR RA	100.01	-0.03	---	---	---	1,035	---	---	---	100@10%	---	---	---	728	---	---	---	---	---	---	---	---
AUTOHELLAS SA (CR)	SR RA	100.00	---	---	---	---	16	---	---	---	6@3%	---	---	---	---	---	---	---	---	---	---	---	---
BIOKARPET S.A.(CR)	RA	---	---	---	---	---	---	---	---	---	---	---	---	---	---	---	---	---	---	---	---	---	---
CC HBC AG (CR)	SR RA	100.05	-5.14	---	---	---	966	10.00%	3.00%	10.00%	---	17	681	1,174,044.0	772	---	---	---	---	---	---	---	1,708
CENTRIC HOLDINGS (CR)	SR RA	100.00	---	---	---	---	200	---	---	---	155@8.4%	---	---	---	---	---	---	---	---	---	---	---	---
CORINTH PIPEWORKS SA (CR)	SR RA	100.00	-0.04	---	---	---	161	---	---	---	80@3%	---	---	---	---	---	---	---	---	---	---	---	---
CRETE PLASTICS SA (CR)	SR RA	100.00	---	---	---	---	---	---	---	---	---	---	---	---	---	---	---	---	---	---	---	---	---
DROMEAS SA (CR)	SR RA	100.00	---	---	---	---	---	---	---	---	---	---	---	---	---	---	---	---	---	---	---	---	---
ELGEKA SA (CR)	SR RA	100.00	---	---	---	---	10	---	---	---	---	---	---	---	---	---	---	---	---	---	---	---	---
ELLAKTOR (CR)	SR RA	100.01	-0.09	---	---	---	2,072	3.00%	3.00%	3.00%	523@3%	1	30	7,230.0	514	---	---	---	---	---	---	---	4
ELVAL SA. (CB)	SR RA	100.00	---	---	---	---	368	---	---	---	184@3%	---	---	---	---	---	---	---	---	---	---	---	---
EUROBANK ERGASIAS (CR)	SR RA	100.00	-0.17	---	---	---	56,031	7.50%	6.50%	7.50%	521@8%	4	26,488	720,473.6	42,512	---	---	---	---	---	---	---	16,701
EUROPEAN RELIANCE INSUR. (CR)	SR RA	100.00	---	---	---	---	---	---	---	---	---	---	---	---	---	---	---	---	---	---	---	---	---
EYDAP S.A. (CR)	SR RA	100.14	-1.53	---	---	---	484	4.50%	3.50%	4.50%	9@5%	3	43	24,940.0	327	---	---	---	---	---	---	---	233
F.G. EUROPE S.A. (CR)	SR RA	100.00	---	---	---	---	---	---	---	---	---	---	---	---	---	---	---	---	---	---	---	---	---
FOLLI FOLLIE (CR)	SR RA	100.83	-6.58	---	---	---	1,131	---	---	---	---	---	---	---	904	---	---	---	---	---	---	---	297
FOURLIS (CR)	SR RA	100.05	-0.48	---	---	---	109	---	---	---	2@3.5%	---	---	---	66	---	---	---	---	---	---	---	---
FRIGOGLASS SA (CR)	SR RA	100.03	-0.39	---	---	---	75	---	---	---	2@3%	---	---	---	28	---	---	---	---	---	---	---	---
GEK TERNA (CR)	SR RA	100.07	-0.32	---	---	---	641	---	---	---	---	---	---	---	512	3.00%	3.00%	3.00%	---	1	5	1,110.0	5
GR. SARANTIS SA (CR)	SR RA	100.00	---	---	---	---	60	---	---	---	30@3%	---	---	---	---	---	---	---	---	---	---	---	---
GRIVALIA PROPERTIES (CR)	SR RA	100.05	-0.38	---	---	---	1,135	3.00%	3.00%	3.00%	228@3%	2	60	53,700.0	339	---	---	---	---	---	---	---	1
HALKOR SA (CB)	SR RA	100.00	---	---	---	---	505	---	---	---	363@5.6%	---	---	---	---	---	---	---	---	---	---	---	---
HELLENIC EXCHANGES-A.S.E. (CR)	SR RA	100.00	-0.10	---	---	---	5,930	3.00%	3.00%	3.00%	2831@3%	1	25	14,100.0	134	---	---	---	---	---	---	---	18
HELLENIC PETROLEUM (CR)	SR RA	100.01	-0.89	---	---	---	2,490	3.00%	3.00%	3.00%	1092@3%	1	7	2,975.0	153	---	---	---	---	---	---	---	2
HYGEIA SA (CR)	SR RA	100.00	---	---	---	---	500	---	---	---	400@9.8%	---	---	---	---	---	---	---	---	---	---	---	---
IASO SA (CR)	SR RA	100.00	---	---	---	---	247	---	---	---	123@3%	---	---	---	---	---	---	---	---	---	---	---	---
IKTINOS HELLAS SA (CR)	SR RA	100.00	---	---	---	---	10	---	---	---	---	---	---	---	---	---	---	---	---	---	---	---	---

Stock Lending Notes

- [1] - Stock Repo: A Contract for selling stocks to HELEX with a Repurchase Right (According to ATHEX BoD Resolution No 17)
- [2] - Stock Reverse Repo: A Contract for buying stocks from HELEX with a Resell Right. (According to ATHEX BoD Resolution No 18)
- [3] - Standardized Repurchase Agreements: A Contract that constitutes a standardized agreement for the purchase or sale of shares, with repurchase or resell pact (According to ATHEX BoD Resolution No 20)
- [4] - Type of products is divided into SR: Stock Repo or Stock Reverse Repo, and RA: Repurchase Agreements.
- [5] - Open Interest in all Series (both tradeable or non-tradeable).

Securities	Type[4]	Stock Repo [1]						Stock Reverse Repo [2]								Repurchase Agreements [3]							
		Trans. price	chg.	Trades	Volume	Transactions Value	Open Interest[5]	Price max	Price min	Last price	Last Ask	Trades	Volume	Transactions Value	Open Interest[5]	Price max	Price min	Last price	Last Ask	Trades	Volume	Transactions Value	Open Interest[5]
INFORM P. LYKOS SA (CR)	SR RA	100.00	---	---	---	---	3	---	---	---	---	---	---	---	---	---	---	---	---	---	---	---	---
INTRACOM CONSTR. (CR)	SR RA	100.00	---	---	---	---	7	---	---	---	---	---	---	---	---	---	---	---	---	---	---	---	---
INTRACOM HOLDINGS (CR)	SR RA	100.00	---	---	---	---	665	---	---	---	452@4.5%	---	---	---	---	---	---	---	---	---	---	---	---
INTRALOT (CR)	SR RA	100.03	-0.13	---	---	---	944	---	---	---	---	---	---	---	719	---	---	---	---	---	---	---	103
J & P - AVAX SA (CR)	SR RA	100.00	-0.03	---	---	---	235	---	---	---	117@3%	---	---	---	---	---	---	---	---	---	---	---	---
JUMBO SA (CR)	SR RA	100.11	-1.29	1	98	91,630.0	1,888	---	---	---	362@3.5%	---	---	---	755	---	---	---	---	---	---	---	---
KARATZIS SA (CR)	RA	---	---	---	---	---	---	---	---	---	---	---	---	---	---	---	---	---	---	---	---	---	---
KLEEMAN HELLAS SA (CR)	SR RA	100.00	---	---	---	---	---	---	---	---	---	---	---	---	---	---	---	---	---	---	---	---	---
KRI-KRI S.A. (CR)	SR RA	100.00	---	---	---	---	550	---	---	---	275@3%	---	---	---	---	---	---	---	---	---	---	---	---
LAMDA DEVELOPMENT SA (CR)	SR RA	100.00	---	---	---	---	---	---	---	---	---	---	---	---	---	---	---	---	---	---	---	---	---
MARFIN INVESTMENT GROUP (CR)	SR RA	100.01	-0.06	---	---	---	2,928	8.60%	8.60%	8.60%	1203@8.6%	1	4	88.0	1,092	---	---	---	---	---	---	---	13
METKA (CR)	SR RA	100.08	-0.74	---	---	---	669	---	---	---	234@3%	---	---	---	94	---	---	---	---	---	---	---	6
MLS MULTIMEDIA SA (CR)	SR RA	100.00	---	---	---	---	109	---	---	---	54@3%	---	---	---	---	---	---	---	---	---	---	---	---
MOTOR OIL (CR)	SR RA	100.04	-0.46	---	---	---	1,818	---	---	---	444@3%	---	---	---	465	---	---	---	---	---	---	---	2
MYTILINEOS HOLDINGS (CR)	SR RA	100.00	-0.05	---	---	---	3,562	---	---	---	1643@3%	---	---	---	138	---	---	---	---	---	---	---	3
NATIONAL BANK (CR)	SR RA	100.01	-0.13	---	---	---	16,057	---	---	---	14@3%	---	---	---	2,500	---	---	---	---	---	---	---	104
NBGAM ETF	SR RA	100.00	---	---	---	---	---	---	---	---	---	---	---	---	---	---	---	---	---	---	---	---	---
NBGAM ETF GREECE & TURKEY 30	SR RA	100.00	---	---	---	---	---	---	---	---	---	---	---	---	---	---	---	---	---	---	---	---	---
NIREFS SA (CR)	SR RA	100.00	---	---	---	---	346	---	---	---	276@10%	---	---	---	---	---	---	---	---	---	---	---	---
OPAP (CR)	SR RA	100.19	-1.13	---	---	---	4,718	9.00%	4.00%	9.00%	36@9.5%	16	665	668,325.0	3,671	---	---	---	---	---	---	---	473
OTE (CR)	SR RA	100.12	-0.50	---	---	---	4,643	3.50%	3.50%	3.50%	370@3.5%	1	32	30,272.0	2,529	---	---	---	---	---	---	---	847
P.P.A. S.A. (CR)	SR RA	100.90	-6.63	---	---	---	14	---	---	---	---	---	---	---	10	---	---	---	---	---	---	---	---
PAPOUTSANIS (CR)	SR RA	100.00	---	---	---	---	---	---	---	---	---	---	---	---	---	---	---	---	---	---	---	---	---
PETROPOULOS PETROS (CR)	RA	---	---	---	---	---	---	---	---	---	---	---	---	---	---	---	---	---	---	---	---	---	---
PIRAEUS BANK (CR)	SR RA	100.03	-0.28	---	---	---	14,405	10.00%	4.00%	10.00%	---	14	2,240	259,840.0	11,524	6.00%	4.00%	6.00%	---	5	1,041	120,756.0	1,090
PLAISIO COMPUTERS SA (CR)	RA	---	---	---	---	---	---	---	---	---	---	---	---	---	---	---	---	---	---	---	---	---	---
PPC (CR)	SR RA	100.02	-0.22	---	---	---	1,928	---	---	---	741@3%	---	---	---	223	---	---	---	---	---	---	---	1,583
PROFILE SA (CR)	RA	---	---	---	---	---	---	---	---	---	---	---	---	---	---	---	---	---	---	---	---	---	---
QUALITY & RELIABILITY SA (CR)	RA	---	---	---	---	---	---	---	---	---	---	---	---	---	---	---	---	---	---	---	---	---	---
QUEST HOLDINGS (CR)	SR RA	100.00	---	---	---	---	---	---	---	---	---	---	---	---	---	---	---	---	---	---	---	---	---
SIDENOR (CR)	SR RA	100.01	-0.03	---	---	---	407	---	---	---	153@3%	---	---	---	50	---	---	---	---	---	---	---	---
TECHNICAL OLYMPIC SA (CR)	SR RA	100.00	---	---	---	---	44	---	---	---	22@3%	---	---	---	---	---	---	---	---	---	---	---	---

## Stock Lending Notes

[1] - Stock Repo: A Contract for selling stocks to HELEX with a Repurchase Right (According to ATHEX BoD Resolution No 17)

[2] - Stock Reverse Repo: A Contract for buying stocks from HELEX with a Resell Right. (According to ATHEX BoD Resolution No 18)

[3] - Standardized Repurchase Agreements: A Contract that constitutes a standardized agreement for the purchase or sale of shares, with repurchase or resell pact (According to ATHEX BoD Resolution No 20)

[4] - Type of products is divided into SR: Stock Repo or Stock Reverse Repo, and RA: Repurchase Agreements.

[5] - Open Interest in all Series (both tradeable or non-tradeable).

Securities	Type[4]	Stock Repo [1]						Stock Reverse Repo [2]								Repurchase Agreements [3]							
		Trans. price	chg.	Trades	Volume	Transactions Value	Open Interest[5]	Price max	Price min	Last price	Last Ask	Trades	Volume	Transactions Value	Open Interest[5]	Price max	Price min	Last price	Last Ask	Trades	Volume	Transactions Value	Open Interest[5]
TERNA ENERGY (CR)	SR RA	100.02	-0.05	---	---	---	317	---	---	---	94@3%	---	---	---	64	---	---	---	---	---	---	---	1
THESSALONIKA WATER & SEWERAGE	SR RA	100.00	---	---	---	---	113	---	---	---	5@3%	---	---	---	---	---	---	---	---	---	---	---	---
THRACE PLASTICS SA (CR)	SR RA	100.00	---	---	---	---	1,010	---	---	---	505@3%	---	---	---	---	---	---	---	---	---	---	---	---
TITAN CEMENT (CR)	SR RA	100.06	-0.45	---	---	---	8,634	3.00%	3.00%	3.00%	3293@3%	1	15	27,795.0	1,019	---	---	---	---	---	---	---	1
TPA SA (CR)	SR RA	100.00	---	---	---	---	46	---	---	---	23@3%	---	---	---	---	---	---	---	---	---	---	---	---
TRASTOR REAL EST. INV. CO.(CR)	SR RA	100.00	---	---	---	---	---	---	---	---	---	---	---	---	---	---	---	---	---	---	---	---	---
VIOHALCO SA/NV (CB)	SR RA	100.07	-0.85	---	---	---	401	10.00%	3.50%	10.00%	---	14	112	29,456.0	320	---	---	---	---	---	---	---	195

Stock Lending Notes

- [1] - Stock Repo: A Contract for selling stocks to HELEX with a Repurchase Right (According to ATHEX BoD Resolution No 17)
- [2] - Stock Reverse Repo: A Contract for buying stocks from HELEX with a Resell Right. (According to ATHEX BoD Resolution No 18)
- [3] - Standardized Repurchase Agreements: A Contract that constitutes a standardized agreement for the purchase or sale of shares, with repurchase or resell pact (According to ATHEX BoD Resolution No 20)
- [4] - Type of products is divided into SR: Stock Repo or Stock Reverse Repo, and RA: Repurchase Agreements.
- [5] - Open Interest in all Series (both tradeable or non-tradeable).

## Sectors codification for listed companies

533	-	Exploration & Production	537	-	Integrated Oil & Gas
1353	-	Commodity Chemicals	1357	-	Specialty Chemicals
1753	-	Aluminum	1755	-	Nonferrous Metals
1757	-	Steel	1775	-	General Mining
2353	-	Building Materials & Fixtures	2357	-	Heavy Construction
2723	-	Containers & Packaging	2727	-	Diversified Industrials
2733	-	Electrical Components & Equipment	2753	-	Commercial Vehicles & Trucks
2757	-	Industrial Machinery	2773	-	Marine Transportation
2777	-	Transportation Services	2791	-	Business Support Services
2797	-	Industrial Suppliers	3535	-	Distillers & Vintners
3537	-	Soft Drinks	3573	-	Farming Fishing & Plantations
3577	-	Food Products	3722	-	Durable Household Products
3726	-	Furnishings	3728	-	Home Construction
3747	-	Toys	3763	-	Clothing & Accessories
3765	-	Footwear	3767	-	Personal Products
3785	-	Tobacco	4533	-	Health Care Providers
4535	-	Medical Equipment	4577	-	Pharmaceuticals
5337	-	Food Retailers & Wholesalers	5371	-	Apparel Retailers
5373	-	Broadline Retailers	5375	-	Home Improvement Retailers
5379	-	Specialty Retailers	5553	-	Broadcasting & Entertainment
5555	-	Media Agencies	5557	-	Publishing
5751	-	Airlines	5752	-	Gambling
5753	-	Hotels	5755	-	Recreational Services
5757	-	Restaurants & Bars	5759	-	Travel & Tourism
6535	-	Fixed Line Telecommunications	6575	-	Mobile Telecommunications
7535	-	Conventional Electricity	7537	-	Alternative Electricity
7577	-	Water	8355	-	Banks
8534	-	Insurance Brokers	8536	-	Property & Casualty Insurance
8633	-	Real Estate Holding & Development	8637	-	Real Estate Services
8671	-	Industrial & Office REITs	8675	-	Specialty REITs
8775	-	Specialty Finance	8777	-	Investment Services
8985	-	Equity Investment Instruments	9533	-	Computer Services
9535	-	Internet	9537	-	Software
9572	-	Computer Hardware	9574	-	Electronic Office Equipment
9578	-	Telecommunications Equipment	11000	-	ETF

