

Daily Official List

Hellenic Exchanges – Athens Stock Exchange S.A.

Friday, 14 November, 2014
Year: 135 Trading Day No: 218

Disclaimer:

Hellenic Exchanges-Athens Exchange endeavours to ensure that the data and other material ("Information") presented on the Daily Official List are accurate and complete, but it is not liable for any errors or omissions of data or /and for the accuracy, credibility, updating and completeness of the aforesaid information nor it has any liability arising directly or indirectly from the use of the above Information.

The Company is not liable for the accuracy of the data included in listed companies' announcements. Only the sender of such an announcement is fully and solely liable for any infringement of third party's rights from the content of such announcement. All contents of the Daily Official List are provided only for information purposes and do not constitute investment advice or solicitation to invest in securities or other products listed for trading on the Exchange.

You acknowledge and agree that the Company is the owner of any property rights related to any Information appearing on the Daily Official List including intellectual property rights copyright, trademarks, etc.

The above data are a property of the Hellenic Exchanges-Athens Exchange and are copyright protected. Users are forbidden to reproduce, modify, copy, sale, transmit or redistribute, by all reproduction means and methods, part or the whole of the above data, without reference to their source.

The commercial exploitation of these data is, also, forbidden by third parties. Hellenic Exchanges-Athens Exchange does not carry any responsibility, direct or indirect, derived from usage or accidental alteration of the above data when used by third parties.

Hellenic Exchanges – Athens Stock Exchange S.A.

110 Athinon Ave., 10442 Athens, Tel: (210) 33.66.800, Fax: (210) 32.13.938

www.athex.gr

Thessalonica Stock Exchange Center (T.S.E.C)

16-18 Katouni Str., Thessalonica 546 25 Tel: (2310) 567.667, Fax: (2310) 530.545

Athex Members Guarantee Fund

14-16 Fidiou Str., Athens 106 78, Tel: (210) 33.04.682, Fax: (210) 33.04.155

Hellenic Republic Capital Market Commission

1 Kolokotroni Str. & 1 Stadiou Str., Athens 10562 Tel: (210) 33.77.100 Fax: (210) 33.77.173

Table of Contents

Section 1: Statistical Figures of Securities and Derivatives Markets

- Summary of Markets
- Athex Indices
- Analytic Figures for Athex Market's Boards and Categories
- Trading Details by Athex Sectors and ETFs Category
- Top 10 best & worst performing Shares
- Derivatives Summary

Section 2: Analytic Figures of Shares Transactions

- Analytic Figures of Shares Transactions
- Shares' Notes

Section 3: Figures of Securities Transactions

- Securities Blocks Details
- Shares Rights Details
- Shares Short Selling
- Stock Borrowing
- Shares Forced Sales
- Forced Sales Registered Shares
- Exchange Traded Funds (ETFs) Characteristics

Section 5: Bonds traded in Fixed Income Assets Market

- Corporate Bonds
- Government Bonds
- Treasury Bills & Zero Coupon Government Bonds
- Government Bonds Traded with the Open Outcry Method
- State Banks Bonds

Section 6: Additional Infos

- Athex & ATHEXClear Members List
- List of Stocks under Market Making operations

Section 7: Derivatives Market Analytic Figures

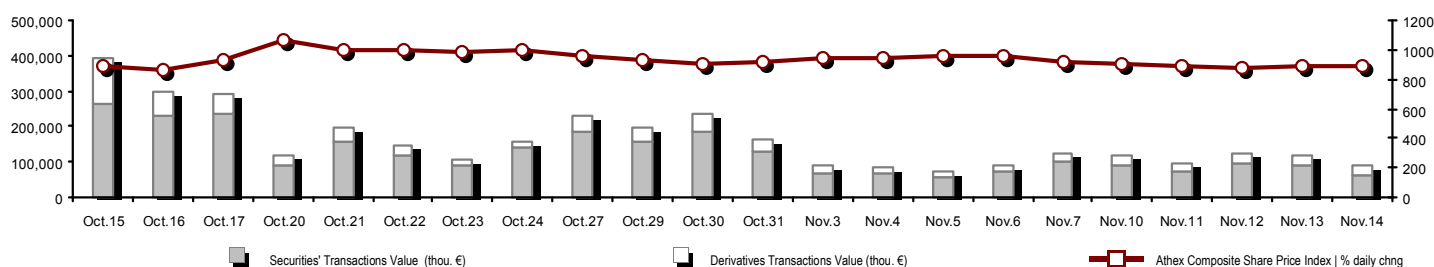
- Index Futures
- Stock Futures
- Index Options
- Stock Options
- Stock Lending Analytic Figures (Repo Contracts)

Appendix A: Sectors codification for listed companies

Section codification follows the corresponding from the Greek version of Daily Official List for reference purposes.

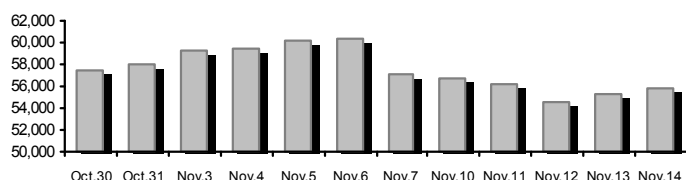
Summary of Markets

Athex Composite Share Price Index vs Shares and Derivatives Transactions Value

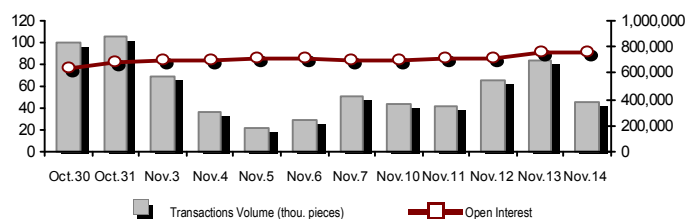


Total Transactions Value (Securities/Derivatives) (thou. €):	90,775.03		
Athex Capitalisation (mill. €) **: 	55,788.10		
Daily change: mill. € %	542.08	0.98%	
Yearly Avg Capitalisation: mill. € % chng prev year Avg	70,921.44	37.32%	
Athex Composite Share Price Index % daily chng	890.74	0.81%	
Athex Composite Share Price Index Capitalisation (mill. €)	51,436.21		
Daily change (mill. €)	536.15		
Securities' Transactions Value (thou. €)	60,317.67		
Daily change: thou. € %	-29,721.14	-33.01%	
YtD Avg Trans. Value: thou. € % chng prev year Avg	131,112.61	51.37%	
Short Selling Trans. Value: mill. € % in total Value			
Short Covering Trans. Value: mill. € % in total Value			
Transactions Value of Blocks (thou. €)	3,518.45		
Bonds Transactions Value (thou. €)	0.00		
Securities' Transactions Volume (thou. Pieces)	58,243.01		
Daily change: thou. pieces %	-23,973.98	-29.16%	
YtD Avg Volume: thou. pieces % chng prev year Avg	93,404.36	74.54%	
Short Selling Volume: thou pieces % in total Volume			
Short Covering Volume: thou. pieces % in total Volume			
Transactions Volume of Blocks (thou. Pieces)	5,364.03		
Bonds Transactions Volume (thou. pieces)	0.00		
Securities' Trades Number	23,727		
Daily change: number %	-1,968	-7.66%	
YtD Avg Derivatives Trades number % chng prev year Avg	28,965	-2.36%	
Number of Blocks	12		
Number of Bonds Transactions	0		
		Derivatives Total Open Interest	763,606
		in Index Futures % daily chng	50,793 -1.33%
		in Stock Futures % daily chng	258,870 1.87%
		in Index Options % daily chng	17,673 2.08%
		in Stock Options % daily chng	1,515 -1.33%
		in Stock Repos/Reverse Repos/RA % daily chng	434,755 1.05%
		Derivatives Transactions Value (thou. €)	30,457.36
		Daily change: thou. € %	320.29 1.06%
		YtD Avg Trans. Value: thou. € % chng prev year Avg	38,909.04 51.19%
		Derivatives Contracts Volume:	45,767
		Daily change: pieces %	-38,034 -45.39%
		YtD Avg Derivatives Contracts % chng prev year Avg	47,880 15.19%
		Derivatives Trades Number:	2,934
		Daily change: number %	102 3.60%
		YtD Avg Derivatives Trades number % chng prev year Avg	2,708 2.88%

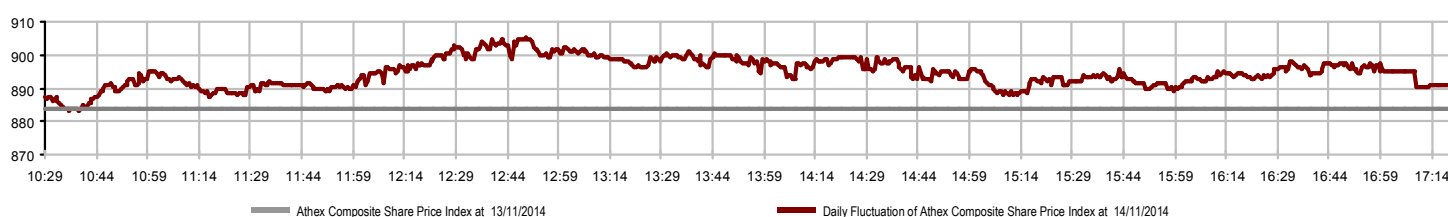
Athex Capitalisation (mill. €) **



Derivatives Transactions Volume and Open Interest



Daily Fluctuation of Athex Composite Share Price Index



Athex Indices

Index name	14/11/2014	13/11/2014	pts.	%	Min	Max	Year min	Year max	Year change
Athex Composite Share Price Index	890.74 ↑	883.54	7.20	0.81%	883.26	905.06	852.87	1,379.42	-23.39% ↓
FTSE/Athex Large Cap	287.85 ↑	285.35	2.50	0.88%	284.96	292.45	277.08	445.52	-25.20% ↓
FTSE/ATHEX Custom Capped	931.28 ↑	917.90	13.38	1.46%			917.90	1,410.19	-24.26% ↓
FTSE/ATHEX Custom Capped - USD	832.90 ↑	821.10	11.80	1.44%			821.10	1,406.66	-31.44% ↓
FTSE/Athex Mid Cap Index	843.91 ↑	831.77	12.14	1.46%	832.09	848.00	794.31	1,317.40	-27.67% ↓
FTSE/ATHEX-CSE Banking Index	84.55 ↑	83.96	0.59	0.70%	83.74	86.69	81.76	161.54	-37.89% ↓
FTSE/ATHEX Global Traders Index Plus	1,333.66 ↑	1,325.88	7.78	0.59%	1,326.65	1,358.27	1,252.49	1,845.84	-14.00% ↓
FTSE/ATHEX Global Traders Index	1,467.84 ↑	1,443.54	24.30	1.68%	1,447.04	1,482.93	1,404.09	2,152.38	-15.37% ↓
FTSE/ATHEX Mid & Small Cap Factor-Weighted Ind	1,136.45 ↑	1,116.29	20.16	1.81%	1,120.61	1,143.35	1,115.99	1,523.02	-11.15% ↓
Greece & Turkey 30 Price Index	686.18 ↑	679.21	6.97	1.03%	678.09	686.18	570.55	783.68	5.97% ↑
ATHEX Mid & SmallCap Price Index	2,514.48 ↓	2,529.51	-15.03	-0.59%	2,479.25	2,555.44	2,414.58	3,157.88	-2.30% ↓
FTSE/Athex Market Index	691.66 ↑	685.54	6.12	0.89%	684.89	702.30	665.36	1,066.17	-25.13% ↓
FTSE Med Index	5,103.08 ↑	5,090.47	12.61	0.25%			4,605.95	5,387.08	11.68% ↑
Athex Composite Index Total Return Index	1,299.03 ↑	1,288.53	10.50	0.81%	1,288.12	1,319.92	1,242.66	1,998.07	-22.84% ↓
FTSE/Athex Large Cap Total Return	389.90 ↑	386.51	3.39	0.88%			382.21	605.87	-26.07% ↓
FTSE/ATHEX Large Cap Net Total Return	1,161.22 ↑	1,151.13	10.09	0.88%	1,149.58	1,179.77	1,117.05	1,786.28	-24.74% ↓
FTSE/ATHEX Custom Capped Total Return	979.93 ↑	965.85	14.08	1.46%			965.25	1,472.79	-23.69% ↓
FTSE/ATHEX Custom Capped - USD Total Return	876.41 ↑	863.99	12.42	1.44%			863.99	1,469.09	-30.92% ↓
FTSE/Athex Mid Cap Total Return	1,073.06 ↑	1,057.62	15.44	1.46%			1,035.42	1,643.81	-25.70% ↓
FTSE/ATHEX-CSE Banking Total Return Index	78.90 ↑	78.35	0.55	0.70%			76.41	153.89	-38.87% ↓
Greece & Turkey 30 Total Return Index	822.25 ↑	813.99	8.26	1.01%			697.73	946.62	6.16% ↑
Hellenic Mid & Small Cap Index	843.96 ↑	831.82	12.14	1.46%	832.92	853.54	818.89	1,351.84	-24.23% ↓
FTSE/Athex Banks	111.71 ↑	110.93	0.78	0.70%	110.64	114.53	108.02	213.44	-37.90% ↓
FTSE/Athex Insurance	1,475.13 ↓	1,496.21	-21.08	-1.41%	1,475.13	1,517.28	1,274.94	1,749.09	12.00% ↑
FTSE/Athex Financial Services	1,166.84 ↓	1,167.16	-0.32	-0.03%	1,166.84	1,196.71	1,075.28	2,207.51	-34.02% ↓
FTSE/Athex Industrial Goods & Services	2,133.31 ↑	2,102.11	31.20	1.48%	2,100.40	2,152.95	2,053.00	3,724.87	-34.25% ↓
FTSE/Athex Retail	3,592.80 ↓	3,601.47	-8.67	-0.24%	3,592.80	3,713.34	3,090.34	4,836.94	8.91% ↑
FTSE/ATHEX Real Estate	2,476.30 ↑	2,417.95	58.35	2.41%	2,378.32	2,532.30	2,194.73	3,111.71	11.71% ↑
FTSE/Athex Personal & Household Goods	5,009.00 ↓	5,153.53	-144.53	-2.80%	5,009.00	5,229.49	4,506.00	7,649.84	-15.35% ↓
FTSE/Athex Food & Beverage	6,458.91 ↓	6,464.16	-5.25	-0.08%	6,378.99	6,483.57	5,805.55	8,227.06	-17.70% ↓
FTSE/Athex Basic Resources	2,436.83 ↑	2,420.46	16.37	0.68%	2,419.41	2,478.36	2,132.68	3,356.44	-11.45% ↓
FTSE/Athex Construction & Materials	2,241.51 ↑	2,198.84	42.67	1.94%	2,201.11	2,281.30	2,098.97	3,482.98	-16.41% ↓
FTSE/Athex Oil & Gas	1,815.51 ↑	1,747.31	68.20	3.90%	1,752.55	1,831.39	1,706.21	3,236.15	-36.67% ↓
FTSE/Athex Chemicals	5,018.78 ↓	5,064.39	-45.61	-0.90%	5,002.99	5,064.39	4,844.03	6,811.96	-16.31% ↓
FTSE/Athex Media	2,201.38 ↑	2,142.29	59.09	2.76%	2,201.38	2,216.16	1,543.92	2,777.58	42.58% ↑
FTSE/Athex Travel & Leisure	1,568.23 ↑	1,540.23	28.00	1.82%	1,535.90	1,580.53	1,369.61	2,304.69	-6.65% ↓
FTSE/Athex Technology	718.75 ↑	711.99	6.76	0.95%	707.84	720.04	692.82	1,134.79	-8.72% ↓
FTSE/Athex Telecommunications	2,422.26 ↑	2,356.20	66.06	2.80%	2,353.45	2,427.77	2,328.67	3,633.39	-9.00% ↓
FTSE/Athex Utilities	2,293.20 ↑	2,246.50	46.70	2.08%	2,262.72	2,334.67	2,044.48	4,471.04	-39.54% ↓
FTSE/Athex Health Care	168.97 ↑	168.04	0.93	0.55%	166.18	170.09	151.44	287.11	-24.23% ↓
Athex All Share Index	197.65 ↑	195.75	1.91	0.97%			193.57	291.46	-16.06% ↓

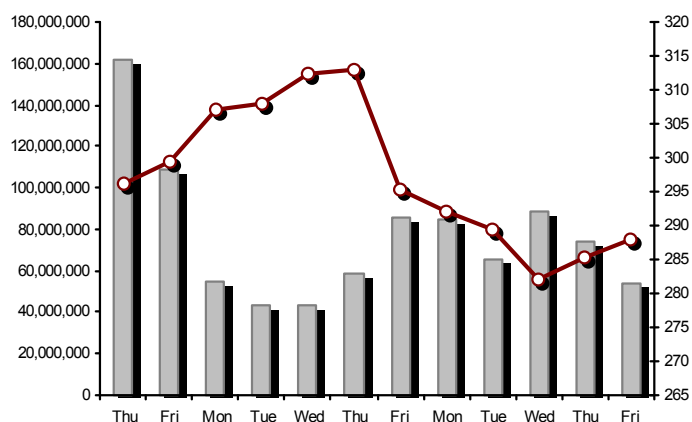
Note 1: Greece & Turkey 30 Pr data is the indicative at 17:20, whereas FTSE/ATHEX Custom Capped, FTSE/ATHEX Custom Capped - USD, FTSE/ATHEX Custom Capped TR, FTSE/ATHEX Custom Capped - USD TR, FTSE/Med 100 & Greece & Turkey 30 Rt closing prices refer to the previous trading day of 13/11/2014.

Note 2: The Hellenic Mid & Small Cap Index is a Customized index calculated by the Athens Exchange.

Athex Indices

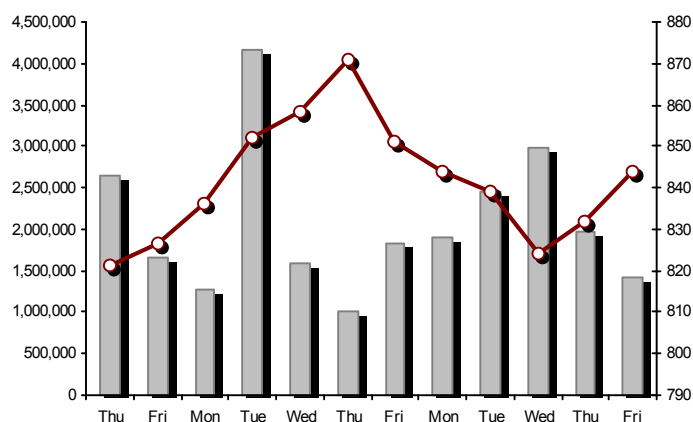
FTSE/Large Cap

14/11/2014: 0.88%



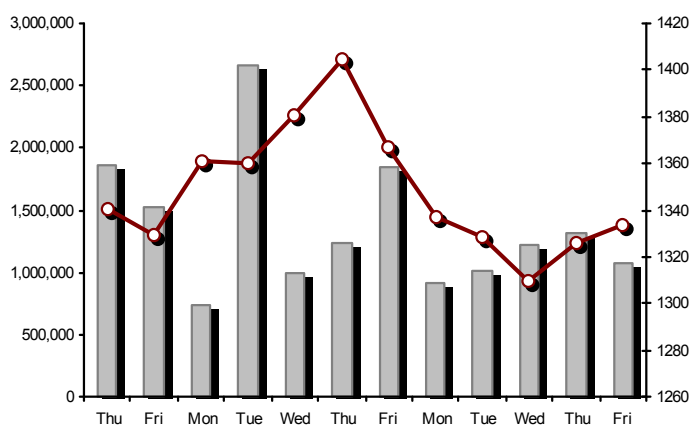
FTSE/Athex Mid Cap Index

14/11/2014: 1.46%



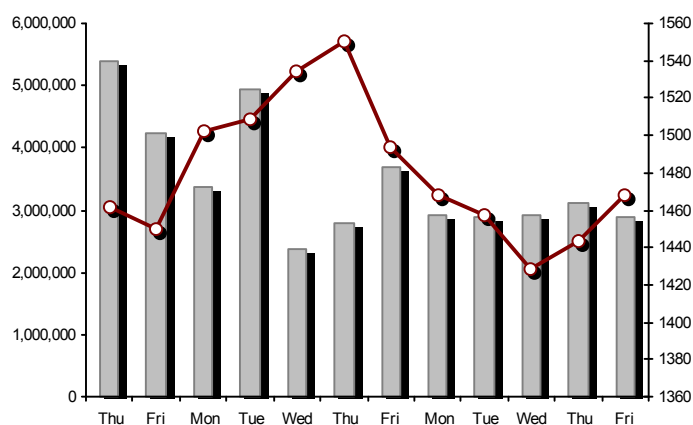
FTSE/ATHEX Global Traders Index Plus

14/11/2014: 0.59%



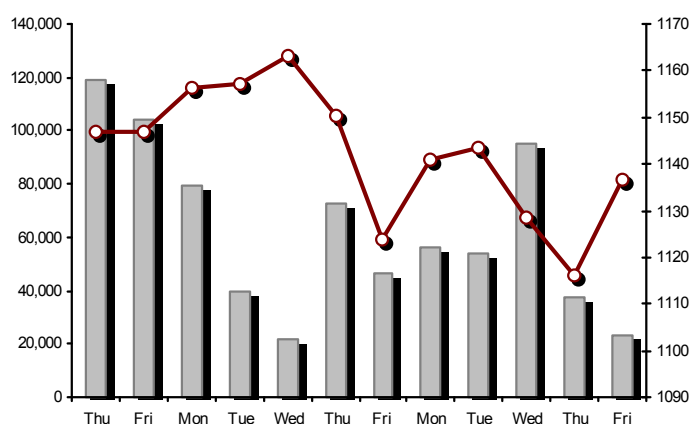
FTSE/ATHEX Global Traders Index

14/11/2014: 1.68%



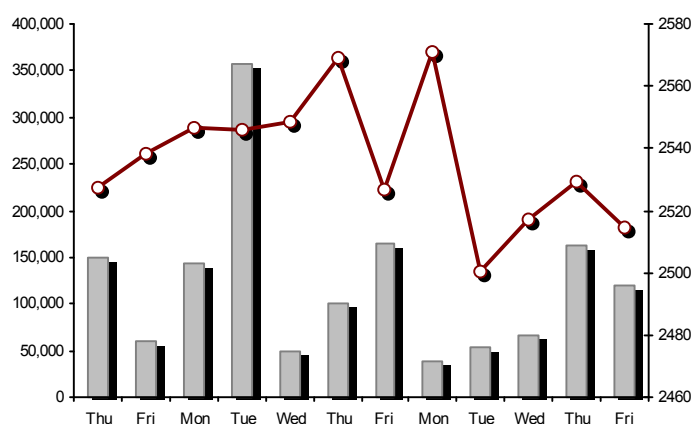
FTSE/ATHEX Mid & Small Cap Factor-Weighted Index

14/11/2014: 1.81%



ATHEX Mid & SmallCap Price Index

14/11/2014: -0.59%



Indices volume of transactions

Indices closing prices

Analytic Figures for Athex Market's Boards and Categories

	Total Traded Securities	Main Market	Low Dispersion	Other Categories (*)	Exchange Traded Funds (ETFs)	Warrants
Totals	126	102	7	12	2	3
Gain / Lose / Same:	68 / 36 / 22	55 / 30 / 17	3 / 1 / 3	7 / 3 / 2	2 / 0 / 0	1 / 2 / 0
Athex Capitalisation (mill. €) **	55,788.10	53,672.82	1,721.33	393.95		
Daily Average Trans/ons Value(thou.€)	131,112.61	157,793.66	47.51	56.00	63.84	7,453.17
Transactions Value	60,317.67	58,679.95	23.21	38.79	144.30	1,431.43
Main Board:	56,799.22	55,161.49	23.21	38.79	144.30	1,431.43
Blocks Board:	3,518.45	3,518.45	0.00	0.00	0.00	0.00
Forced Sales Board:	0.00	0.00	0.00	0.00	0.00	0.00
Special Terms Board:	0.00	0.00	0.00	0.00	0.00	0.00
Daily Average Transactions Volume	93,404,356	86,691,480	21,923	354,106	14,411	6,322,435
Transactions Volume	58,243,005	55,500,282	10,455	328,337	19,700	2,384,231
Main Board:	52,878,975	50,136,252	10,455	328,337	19,700	2,384,231
Blocks Board:	5,364,030	5,364,030	0	0	0	0
Forced Sales Board:	0	0	0	0	0	0
Special Terms Board:	0	0	0	0	0	0
Daily Average Number of Trades	28,965	27,113	47	129	7	1,669
Number of Trades	23,727	22,336	38	146	2	1,205
Main Board:	23,715	22,324	38	146	2	1,205
Blocks Board:	12	12	0	0	0	0
Forced Sales Board:	0	0	0	0	0	0
Special Terms Board:	0	0	0	0	0	0

(*) Summarised Transactions figures for Under Deletion and Under Supervision Categories.(**) The Market Capitalization of the Companies that belong in the Under Supervision Status is not included.

Trading Details by Athex Sectors and ETFs Category

Code	Sectors	Gain / Lose / Same	Number of Trades	Transactions Volume	Transactions Value	% of Total Trans. Value
8300	- Banks	5 / 2 / 3	7,972	52,313,244	33,527,678.82	55.59%
1700	- Basic Resources	6 / 4 / 0	1,011	329,579	1,344,594.36	2.23%
1300	- Chemicals	1 / 1 / 0	19	2,647	9,094.89	0.02%
2300	- Construction & Materials	9 / 5 / 1	1,781	515,541	1,697,190.27	2.81%
11000	- ETF	2 / 0 / 0	2	19,700	144,298.00	0.24%
8700	- Financial Services	2 / 1 / 1	1,369	959,831	1,005,206.29	1.67%
3500	- Food & Beverage	6 / 3 / 2	354	84,313	1,162,518.36	1.93%
4500	- Health Care	3 / 1 / 0	77	123,286	29,247.80	0.05%
2700	- Industrial Goods & Services	4 / 5 / 4	1,505	513,669	880,122.85	1.46%
8500	- Insurance	0 / 1 / 0	6	1,706	2,394.52	0.00%
5500	- Media	2 / 0 / 0	4	1,901	666.40	0.00%
500	- Oil & Gas	2 / 0 / 0	1,476	266,515	1,286,381.46	2.13%
3700	- Personal & Household Goods	4 / 2 / 5	764	181,752	942,054.00	1.56%
8600	- Real Estate	2 / 3 / 1	568	118,152	574,160.99	0.95%
5300	- Retail	2 / 2 / 0	615	68,071	1,071,731.76	1.78%
9500	- Technology	6 / 5 / 2	220	115,767	82,283.97	0.14%
6500	- Telecommunications	1 / 0 / 0	1,630	823,698	7,193,037.00	11.93%
5700	- Travel & Leisure	6 / 1 / 3	2,198	935,171	5,238,892.51	8.69%
7500	- Utilities	5 / 0 / 0	2,156	868,462	4,126,115.11	6.84%

Top 10 best & worst performing Shares

Main Market

With positive Price change	Closing price	change	With negative Price change	Closing price	change
TPA SA (CR)	21.01	9.43% ↑	JUMBO SA (CR)	9.11	-4.10% ↓
BIOKARPET S.A.(CR)	0.222	8.82% ↑	FRIGOGLOSS SA (CR)	1.89	-1.56% ↓
HELLENIC PETROLEUM (CR)	4.25	4.94% ↑	CORINTH PIPEWORKS SA (CR)	1.15	-0.86% ↓
P.P.A. S.A. (CR)	14.09	4.84% ↑	LAMDA DEVELOPMENT SA (CR)	4.10	-0.73% ↓
ELLAKTOR (CR)	2.25	4.17% ↑	J & P - AVAX SA (CR)	0.759	-0.65% ↓
TERNA ENERGY (CR)	2.55	4.08% ↑	FOLLI FOLLIE (CR)	24.94	-0.24% ↓
ELVAL SA. (CB)	1.14	3.64% ↑	HELLENIC EXCHANGES-A.S.E. (CR)	5.50	-0.18% ↓
GRIVALIA PROPERTIES (CR)	7.96	3.38% ↑	CC HBC AG (CR)	17.29	-0.12% ↓
MOTOR OIL (CR)	5.92	2.96% ↑			
FOURLIS (CR)	3.64	2.82% ↑			
With the highest Transactions Value	Value (thou. €)	change	With the highest Transactions Volume	Volume	change
NATIONAL BANK (CR)	11,972.22	0.00% -	ALPHA BANK (CR)	18,413,798	1.21% ↑
ALPHA BANK (CR)	9,297.98	1.21% ↑	EUROBANK ERGASIAS (CR)	17,495,774	0.84% ↑
OTE (CR)	7,193.04	2.80% ↑	NATIONAL BANK (CR)	7,002,088	0.00% -
PIRAEUS BANK (CR)	6,498.71	0.96% ↑	PIRAEUS BANK (CR)	6,173,430	0.96% ↑
OPAP (CR)	4,543.27	1.89% ↑	ATTICA BANK S.A. (CR)	842,473	1.92% ↑
EUROBANK ERGASIAS (CR)	4,268.38	0.84% ↑	OTE (CR)	823,698	2.80% ↑
PPC (CR)	3,347.93	2.61% ↑	MARFIN INVESTMENT GROUP (CR)	809,867	0.48% ↑
MYTILINEOS HOLDINGS (CR)	1,252.23	0.69% ↑	PPC (CR)	567,187	2.61% ↑
CC HBC AG (CR)	1,157.25	-0.12% ↓	OPAP (CR)	497,399	1.89% ↑
FOLLI FOLLIE (CR)	1,063.57	-0.24% ↓	INTRALOT (CR)	343,691	0.00% -

Note: Stocks that are not included in the "Low Dispersion" and "Under Supervision" categories, and the transactions value is more than 10,000 €.

Derivatives Summary

	Number of Trades	Volume	Open Interest	Transactions Value
Index Futures	1,121	15,776	50,793	22,728,180.00
FTSE/Athex Large Cap	1,121	15,776	50,793	22,728,180.00
Stock Futures	1,735	24,792	258,870	5,569,279.92
ALPHA BANK (CR)	182	5,492	40,411	276,598.10
CC HBC AG (CR)	21	99	1,223	169,640.00
CORINTH PIPEWORKS SA (CR)	4	6	786	703.00
ELLAKTOR (CR)	19	97	1,781	21,795.00
EUROBANK ERGASIAS (CR)	46	3,256	69,447	79,429.90
EYDAP S.A. (CR)	48	196	550	121,221.00
FOLLI FOLLIE (CR)	10	16	327	41,606.85
FRIGOGLASS SA (CR)	8	23	668	4,406.00
GEK TERNA (CR)	28	214	10,506	44,972.00
GRIVALIA PROPERTIES (CR)	24	50	152	39,577.00
HELLENIC EXCHANGES-A.S.E. (CR)	32	93	1,648	53,373.57
HELLENIC PETROLEUM (CR)	63	241	5,917	100,084.00
INTRALOT (CR)	6	35	1,092	3,771.00
JUMBO SA (CR)	80	247	635	230,534.00
MARFIN INVESTMENT GROUP (CR)	12	265	25,495	5,665.50
METKA (CR)	34	146	612	131,180.00
MOTOR OIL (CR)	21	52	356	30,695.00
MYTILINEOS HOLDINGS (CR)	91	521	6,358	305,385.00
NATIONAL BANK (CR)	244	5,736	35,332	981,825.00
OPAP (CR)	94	380	2,069	341,321.00
OTE (CR)	247	1,560	7,599	1,363,142.00
P.P.A. S.A. (CR)	6	15	575	20,455.00
PIRAEUS BANK (CR)	135	4,801	34,540	502,183.00
PPC (CR)	207	916	6,929	541,711.00
SIDENOR (CR)	6	32	744	2,391.00
TERNA ENERGY (CR)	33	198	2,346	49,930.00
TITAN CEMENT (CR)	22	49	454	93,346.00
VIOHALCO SA/NV (CB)	12	56	318	12,339.00
Index Options	41	637	17,673	927,350.00
FTSE/Athex Large Cap	41	637	17,673	927,350.00
Stock Options	0	0	1,515	0.00
ALPHA BANK (CR)	0	0	0	0.00
NATIONAL BANK (CR)	0	0	1,045	0.00
OPAP (CR)	0	0	100	0.00
OTE (CR)	0	0	75	0.00
PIRAEUS BANK (CR)	0	0	0	0.00
PPC (CR)	0	0	295	0.00
Stock Repos - Stock Reverse Repos - Repurchase Agreements	37	4,562	434,755	1,232,546.30
Stock Reverse Repos	16	3,858	118,769	606,816.00
Stock Repos	2	31	257,332	18,950.00
Repurchase Agreement	19	673	58,654	606,780.30
Total Derivatives Traded	2,934	45,767	763,606	30,457,356.22

Number of Outstanding Securities	Nominal Value	Dividends [1]			Date of Last Coupon		Note	Shares	Closing price	% change	Previous closing price/date	Open price	Price min	Price max	Last price	Avg price	Last Bid [7]	Last Ask [7]	P/E after	Year	Volume	Trades	Transactions Value	Company Mkt Value (thou. €)	Year low	Year high	Sector[4]
		2011	2012	2013	Dividend [2]	Right																					
Warrants																											
1,143,803,533	---	---	---		11/06/2013	---	ALPHA BANK (W)	1.02	4.08 ↑	0.980	13/11/2014	0.980	0.975	1.04	1.02	1.01	35002@1.01	3990@1.02	2.36	2013	965,498	603	977,143.53	6,397,298.99	0.750	2.15	8355
245,748,459	---	---	---		27/06/2013	---	NATIONAL BANK (W)	0.287	-2.71 ↓	0.295	13/11/2014	0.299	0.281	0.303	0.287	0.291	6200@0.282	14990@0.287	0.64	2013	557,990	368	162,644.02	6,006,354.37	0.250	1.59	8355
843,640,590	---	---	---		03/07/2013	---	PIRAEUS BANK (W)	0.325	-5.52 ↓	0.344	13/11/2014	0.368	0.325	0.368	0.325	0.339	7467@0.325	2900@0.327	0.35	2013	860,743	234	291,646.20	6,407,078.70	0.240	1.15	8355

Warrants

71,417,100	0.650	---	---	---	26/05/2010	27/06/2014	---	AEGEAN AIRLINES (CR)	6.95	2.21 ↑	6.80	13/11/2014	6.80	6.71	6.97	6.95	6.86	50@6.73	255@6.95	7.48	2013	43,973	269	301,833.62	496,348.85	5.02	8.65	5751
11,178,000	1.25	---	---	---	21/04/2010	18/12/2013	---	AEOLIAN INVESTMENT FUND (CR)	0.860	6.17 ↑	0.810	11/11/2014	0.731	0.731	0.860	0.860	0.801	100@0.751	78@0.860	11.80	2013	310	4	248.25	9,613.08	0.700	1.09	8985
13,000,000	1.00	---	---	---	01/08/2007	07/04/2000	---	AKRITAS SA (CR)	0.225	-10.00 ↓	0.250	07/11/2014	0.225	0.225	0.225	0.225	0.225	---	700@0.260	---	2013	1,830	2	411.75	2,925.00	0.100	0.325	2353
5,000,000	0.400	---	---	---	03/06/2009	01/09/2014	---	ALCO HELLAS SA (CR)	0.363	-6.44 ↓	0.388	13/11/2014	0.306	0.306	0.364	0.363	0.353	105@0.350	90@0.359	---	2013	967	11	341.67	1,815.00	0.306	2.09	1753
12,769,059,858	0.300	---	---	---	07/04/2008	13/05/2013	---	ALPHA BANK (CR)	0.501	1.21 ↑	0.495	13/11/2014	0.494	0.491	0.516	0.501	0.506	44500@0.500	250@0.504	1.16	2013	18,413,798	2,148	9,297,980.59	6,397,298.99	0.468	0.784	8355
22,016,250	0.370	---	---	---	15/07/2009	11/05/2000	---	ALUMIL (CR)	0.270	-3.23 ↓	0.279	13/11/2014	0.280	0.250	0.280	0.270	0.252	38@0.279	100@0.279	---	2013	1,789	10	450.55	5,944.39	0.209	0.660	1753
417,608	16.00	---	---	0.8	29/04/2014	05/03/2013	---	ANDROMEDA SA (CR)	19.03	---	19.03	06/11/2014	19.03	19.03	19.03	19.03	19.03	4@19.11	4@20.90	5.75	2013	1	1	19.03	7,947.08	19.03	23.99	8985
26,252,040	0.380	---	---	---	08/07/2010	10/02/2014	---	AS COMPANY SA (CR)	0.319	0.63 ↑	0.317	13/11/2014	0.310	0.310	0.321	0.319	0.318	10000@0.311	833@0.319	19.16	2013	20,505	13	6,513.59	8,374.40	0.291	0.413	5379
86,735,980	0.310	---	---	---	06/07/2009	02/01/2002	---	ATHENS MEDICAL CENTER SA (CR)	0.800	0.63 ↑	0.795	13/11/2014	0.800	0.800	0.800	0.800	0.800	1500@0.783	7750@0.987	---	2013	3,679	4	2,943.20	69,388.78	0.677	0.930	4533
1,045,794,145	0.300	---	---	---	04/06/2008	07/08/2014	---	ATTICA BANK S.A. (CR)	0.053	1.92 ↑	0.052	13/11/2014	0.052	0.051	0.054	0.053	0.053	5000@0.052	3670@0.053	---	2013	842,473	150	44,411.41	55,427.09	0.050	0.277	8355
15,300,000	0.300	---	---	---	30/07/2009	13/12/1999	---	ATTICA PUBLICATIONS SA (CR)	1.35	---	1.35	13/10/2014	---	---	---	---	---	---	953@1.34	38.95	2013	---	---	---	20,655.00	1.35	2.15	5557
45,457,464	0.700	---	---	---	01/07/2008	01/03/2010	---	AUDIO VISUAL ENTERPRISES (CR)	0.298	2.76 ↑	0.290	11/11/2014	0.300	0.298	0.300	0.298	0.298	---	4000@0.278	---	2013	1,001	2	298.30	13,546.32	0.209	0.376	5553
12,120,000	0.320	(0.45)	---	---	30/04/2012	22/11/2013	---	AUTOHELLAS SA (CR)	8.54	2.52 ↑	8.33	13/11/2014	8.25	8.25	8.54	8.54	8.26	967@8.25	18@8.54	34.83	2013	102	3	842.08	103,504.80	6.90	11.20	5759
19,864,886	5.60	0.67	0.5376	0.672	05/03/2014	02/07/2008	---	BANK OF GREECE (CR)	10.23	---	10.23	13/11/2014	10.23	10.20	10.38	10.23	10.27	62@10.15	55@10.25	---	---	1,387	20	14,238.50	203,217.78	9.80	16.53	8355
23,986,500	1.05	---	---	---	26/06/2009	15/03/2000	---	BIOKARPET S.A.(CR)	0.222	8.82 ↑	0.204	13/11/2014	0.205	0.205	0.224	0.224	0.217	1502@0.224	---	---	2013	47,524	65	10,305.48	5,325.00	0.197	0.880	3726
15,842,391	1.51	---	---	---	15/07/2009	12/05/2000	---	BITROS HOLDING SA (CR)	0.209	7.18 ↑	0.195	13/11/2014	0.195	0.178	0.209	0.209	0.179	200@0.184	462@0.199	---	2013	523	7	93.84	3,311.06	0.158	0.559	1757
15,816,009	0.300	---	---	---	01/07/2009	17/07/2000	---	BYTE COMPUTER SA (CR)	0.455	1.11 ↑	0.450	13/11/2014	0.455	0.455	0.455	0.455	0.455	100@0.450	100@0.455	---	2013	100	1	45.50	7,196.28	0.432	0.666	9533
367,747,133	6.70	---	0.34	0.354	09/07/2014	29/04/2013	---	CC HBC AG (CR)	17.29	-0.12 ↓	17.31	13/11/2014	17.13	17.08	17.36	17.29	17.20	118@17.28	2731@17.29	---	---	67,271	318	1,157,249.72	6,358,347.93	15.53	22.00	3537
101,123,806	0.360	---	---	---	22/07/2010	28/06/2011	---	CENTRIC HOLDINGS (CR)	0.175	---	0.175	13/11/2014	---	---	---	---	---	2000@0.141	1000@0.175	8.57	2013	---	---	---	17,696.67	0.162	0.390	5752
4,034,950	0.680	---	---	---	01/07/2005	30/12/2010	---	CHATZIKRANIOTIS & SONS SA (CR)	0.215	13.16 ↑	0.190	13/11/2014	0.215	0.215	0.215	0.215	0.215	300@0.186	761@0.209	---	2013	200	2	43.01	867.51	0.155	0.420	3577
124,170,201	0.780	---	---	---	28/06/2002	07/02/2005	---	CORINTH PIPEWORKS SA (CR)	1.15	-0.86 ↓	1.16	13/11/2014	1.15	1.15	1.19	1.15	1.17	800@1.14	5446@1.16	---	2013	26,660	73	31,084.60	142,795.73	1.15	2.30	1757
9,907,500	0.300	---	---	---	06/10/2005	13/02/2002	---	CPI SA (CR)	0.235	---	0.235	16/10/2014	---	---	---	---	---	---	200@0.235	20.28	2014	---	---	---	2,328.26	0.133	0.295	9572
27,379,200	0.520	---	---	0.1	24/07/2014	18/09/2013	---	CRETE PLASTICS SA (CR)	4.68	4.46 ↑	4.48	13/11/2014	4.64	4.64	4.70	4.70	4.68	100@4.44	100@4.69	14.05	2013	1,780	9	8,323.65	128,134.66	4.40	5.54	1357
15,000,000	0.300	---	---	---	06/07/2007	18/07/2000	---	DAIOS PLASTICS SA (CR)	2.35	---	2.35	13/11/2014	---	---	---	---	---	100@2.01	114@2.92	---	2013	---	---	---	35,250.00	1.66	2.35	1357
34,720,000	0.310	---	---	---	16/06/2010	01/08/2007	---	DROMEAS SA (CR)	0.185	---	0.185	10/11/2014	---	---	---	---	---	100@0.146	8500@0.184	---	2013	---	---	---	6,423.20	0.131	0.400	3726
3,873,120	0.300	---	---	---	07/07/2008	04/10/2012	---	DRUCKFARBEN HELLAS (CR)	0.990	---	0.990	09/10/2014	---	---	---	---	---	---	440@1.00	---	2013	---	---	---	3,834.39	0.810	1.95	1357
11,250,000	0.560	---	---	---	26/07/2010	16/06/1999	---	EKTER SA (CR)	0.501	-0.20 ↓	0.502	13/11/2014	0.450	0.450	0.507	0.500	0.504	500@0.500	7606@0.507	---	2013	1,510	8	761.51	5,636.25	0.416	0.990	2357
32,188,050	1.04	---	---	---	21/07/2008	20/01/2000	---	EL D. MOUZAKIS SA (CB)	0.209	-1.88 ↓	0.213	13/11/2014	0.220	0.192	0.220	0.209	0.201	500@0.193	300@0.209	---	2013	13,391	45	2,691.46	6,727.30	0.171	0.475	3763
18,435,000	1.00	---	---	---	07/07/2009	10/09/2010	---	ELASTRON (CR)	0.570	-11.63 ↓	0.645	13/11/2014	0.560	0.560	0.615	0.570	0.586	398@0.570	373@0.615	---	2013	1,172	11	687.06	10,507.95	0.520	1.00	1757
31,734,530	1.60	---	---	---	09/07/2007	19/07/2006	---	ELGEKA SA (CR)	0.305	---	0.305	13/11/2014	---	---	---	---	---	202@0.278	3500@0.300	---	2013	---	---	---	9,679.03	0.238	0.488	3577
23,828,130	0.500	---	---	---	07/07/2010	17/02/2009	---	ELINOIL S.A. (CR)	1.10	---	1.10	12/11/2014	---	---	---	---	---	---	600@1.10	---	2013	---	---	---	26,210.94	0.790	1.50	537
177,001,313	1.03	---	---	---	05/07/2011	20/12/2007	---	ELLAKTOR (CR)	2.25	4.17 ↑	2.16	13/11/2014	2.16	2.15	2.32	2.25	2.27	297@2.23	1958@2.26	---	2013	225,620	543	512,000.33	398,252.95	2.05	4.35	2357
82,667,000	0.300	---	---	---	22/07/2014	---	---	ELTECH ANEMOS S.A. (CR)	0.997	2.26 ↑	0.975	13/11/2014	0.970	0.970	1.01	0.997	0.997	1000@0.990	4700@0.997	---	---	60,955	76	60,779.97	82,419.00	0.960	1.70	7537

Number of Outstanding Securities	Nominal Value	Dividends [1]			Date of Last Coupon		Note	Shares	Closing price	% change	Previous closing price/date	Open price	Price min	Price max	Last price	Avg price	Last Bid [7]	Last Ask [7]	P/E after	Year	Volume	Trades	Transactions Value	Company Mkt Value (thou. €)	Year low	Year high	Sector[4]	
		2011	2012	2013	Dividend [2]	Right																						
Main Market																												
26,730,187	0.600	---	---	0.05	23/06/2014	30/12/2010	---	ELTON SA (CR)	0.889	-2.84 ↓	0.915 13/11/2014	0.915	0.880	0.915	0.889	0.890	---	971@0.889	9.17	2013	867	10	771.24	23,763.14	0.840	1.40	1353	
14,050,971	0.340	---	---	---	06/07/2011	17/10/2002	---	ELTRAK SA (CR)	1.31	---	1.31 13/11/2014	1.31	1.31	1.31	1.31	1.31	100@1.18	30@1.31	---	2013	20	1	26.20	18,406.77	1.20	2.03	2753	
124,100,815	0.300	---	0.08	---	30/05/2014	07/07/2000	---	ELVAL SA. (CB)	1.14	3.64 ↑	1.10 13/11/2014	1.13	1.13	1.17	1.14	1.15	50@1.14	500@1.16	33.24	2013	11,050	25	12,688.22	141,474.93	1.10	2.15	1753	
13,230,000	0.300	---	---	---	11/08/2010	28/08/2013	---	ELVE SA (CR)	0.512	---	0.512 13/11/2014	0.512	0.512	0.512	0.512	0.512	1000@0.510	1087@0.526	---	2013	500	1	256.00	6,773.76	0.495	0.715	3763	
30,009,210	0.310	---	---	---	27/06/2008	26/06/2000	---	ETEM SA (CB)	0.195	---	0.195 12/11/2014	---	---	---	---	---	300@0.177	1888@0.195	---	2013	---	---	---	5,851.80	0.163	0.400	1753	
14,707,876,542	0.300	---	---	---	02/05/2008	13/06/2013	---	EUROBANK ERGASIAS (CR)	0.240	0.84 ↑	0.238 13/11/2014	0.240	0.239	0.250	0.240	0.244	177060@0.239	117946@0.242	---	2013	17,495,774	1,266	4,268,379.43	3,529,890.37	0.202	0.630	8355	
7,959,900	0.600	---	---	---	02/06/2010	10/12/2013	5031	EUROCONSULTANTS S.A. (CR)	1.63	---	1.63 13/11/2014	---	---	---	---	---	---	610@1.65	47.90	2013	---	---	---	12,974.64	1.54	2.87	2791	
27,503,677	0.600	0.05	0.1	---	11/07/2013	18/10/1999	---	EUROPEAN RELIANCE INSUR. (CR)	1.40	-1.41 ↓	1.42 13/11/2014	1.44	1.40	1.44	1.40	1.40	7398@1.40	398@1.42	4.06	2013	1,706	6	2,394.52	38,505.15	1.21	1.66	8536	
13,673,200	0.880	---	---	---	18/07/2008	26/07/2001	---	EVROFARMA SA (CR)	0.280	7.69 ↑	0.260 13/11/2014	0.234	0.234	0.280	0.280	0.237	120@0.234	975@0.280	---	2013	405	3	95.92	3,828.50	0.224	0.455	3577	
106,500,000	0.600	0.05	0.15	0.36	05/05/2014	28/01/2000	---	EYDAP S.A. (CR)	6.26	0.32 ↑	6.24 13/11/2014	6.24	6.24	6.48	6.26	6.37	409@6.26	16@6.43	8.58	2013	28,439	361	181,231.37	666,690.00	5.00	9.95	7577	
52,800,154	0.300	---	---	0.2	20/08/2014	21/06/2004	---	F.G. EUROPE S.A. (CR)	0.990	---	0.990 13/11/2014	---	---	---	---	---	50@0.980	90@0.990	17.86	2013	---	---	---	52,272.15	0.580	1.95	3722	
10,203,575	0.730	---	---	---	16/07/2007	18/10/1999	---	FIERATEX SA (CR)	0.209	---	0.209 11/11/2014	---	---	---	---	---	---	698@0.209	---	2013	---	---	---	2,132.55	0.121	0.430	3763	
11,720,024	0.540	---	---	0.0394	21/08/2014	07/08/2014	---	FLEXOPACK SA (CR)	2.41	---	2.41 13/11/2014	---	---	---	---	---	300@2.31	49@2.40	11.41	2013	---	---	---	28,245.26	2.26	3.50	2723	
4,181,450	0.500	---	---	---	21/08/2000	05/03/2002	---	FLOUR MILLS SARANTOPOULOS SA	0.950	---	0.950 24/10/2014	---	---	---	---	---	---	690@0.940	---	2013	---	---	---	3,972.38	0.689	1.14	3577	
66,948,210	0.300	---	---	---	14/07/2009	23/09/2014	---	FOLLI FOLLIE (CR)	24.94	-0.24 ↓	25.00 13/11/2014	25.00	24.94	25.80	24.94	25.24	14@24.94	30@25.39	3.86	2013	42,135	590	1,063,572.85	1,669,688.36	21.90	34.40	5379	
50,992,322	1.07	---	---	---	21/06/2010	16/07/2002	---	FOURLIS (CR)	3.64	2.82 ↑	3.54 13/11/2014	3.60	3.58	3.65	3.64	3.62	100@3.59	136@3.65	---	2013	12,737	51	46,120.62	185,612.05	3.07	6.01	3722	
50,593,832	0.300	---	---	---	07/07/2010	07/09/2011	---	FRIGOGLASS SA (CR)	1.89	-1.56 ↓	1.92 13/11/2014	1.94	1.88	1.94	1.89	1.90	100@1.88	3342@1.91	---	2013	121,438	216	230,483.33	95,622.34	1.86	5.63	2757	
77,376,446	0.340	---	---	---	23/05/2005	18/08/2011	---	G.E. DIMITRIOU (CR)	0.010	---	0.010 13/11/2014	0.010	0.010	0.010	0.010	0.010	20000@0.008	32180@0.010	---	2013	4,000	1	40.00	773.76	0.007	0.041	3722	
14,076,360	0.370	---	---	---	19/08/2008	22/07/2003	---	GALAXIDI S.A. (CR)	0.320	---	0.320 13/11/2014	---	---	---	---	---	---	14000@0.330	---	2013	---	---	---	4,504.44	0.200	0.439	3573	
94,462,368	0.570	---	---	---	01/08/2011	02/01/2009	---	GEK TERNA (CR)	2.10	1.94 ↑	2.06 13/11/2014	2.08	2.05	2.12	2.10	2.09	497@2.09	2916@2.10	---	2013	178,611	622	373,592.22	198,370.97	1.92	4.21	2357	
8,418,750	0.300	0.15	0.29	---	05/06/2013	27/06/2012	---	GEKE SA (CB)	6.00	---	6.00 07/11/2014	---	---	---	---	---	40@5.41	140@6.57	94.87	2013	---	---	---	50,512.50	5.04	7.20	5753	
24,060,000	0.300	0.017	---	0.017	07/07/2014	21/01/2000	---	GEN. COMMERCIAL & IND.SA (CR)	0.330	---	0.330 13/11/2014	---	---	---	---	---	1000@0.320	1000@0.355	23.73	2013	---	---	---	7,939.80	0.327	0.455	2797	
34,770,982	1.55	---	---	0.3	17/01/2014	27/07/2000	---	GR. SARANTIS SA (CR)	7.00	---	7.00 13/11/2014	7.15	6.72	7.15	7.00	6.90	350@6.85	50@7.05	6.63	2013	1,004	20	6,922.22	243,396.87	6.06	8.24	3767	
101,260,000	2.13	0.4067	---	0.1821	17/04/2014	08/01/2014	---	GRIVALIA PROPERTIES (CR)	7.96	3.38 ↑	7.70 13/11/2014	7.53	7.53	8.17	7.96	7.98	550@7.96	652@8.00	---	2013	41,859	327	333,938.32	806,029.60	6.65	9.82	8675	
8,340,750	1.20	---	---	---	25/06/2009	30/07/2001	---	HAIDEMENOS SA (CR)	0.385	---	0.385 30/10/2014	---	---	---	---	---	300@0.347	---	---	2013	---	---	---	3,211.19	0.334	0.760	2791	
101,279,627	0.380	---	---	---	26/06/2008	14/07/2006	---	HALKOR SA (CB)	0.338	1.81 ↑	0.332 13/11/2014	0.332	0.330	0.340	0.338	0.332	200@0.330	900@0.339	---	2013	28,169	28	9,347.03	34,232.51	0.313	0.912	1755	
36,748,909	0.730	---	---	---	15/12/2005	13/12/2006	---	HEL. SUGAR INDUSTRY SA (CB)	0.274	-0.36 ↓	0.275 13/11/2014	0.250	0.250	0.274	0.274	0.270	1000@0.258	959@0.274	---	2014	6,100	6	1,647.40	10,069.20	0.240	1.10	3577	
29,546,360	0.710	---	---	---	20/06/2008	23/08/2000	---	HELLENIC CABLES SA (CR)	0.830	-4.60 ↓	0.870 13/11/2014	0.815	0.815	0.830	0.830	0.819	933@0.830	500@0.865	---	2013	670	9	548.60	24,523.48	0.795	2.00	2733	
65,368,563	0.560	0.11	0.09	---	03/06/2013	16/07/2014	---	HELLENIC EXCHANGES-A.S.E. (CR)	5.50	-0.18 ↓	5.51 13/11/2014	5.55	5.50	5.66	5.50	5.56	1000@5.49	750@5.58	-(6)-	2013	149,653	850	832,443.48	359,527.10	4.95	9.52	8777	
305,635,185	2.18	0.45	0.15	---	16/08/2013	01/10/2003	4795	HELLENIC PETROLEUM (CR)	4.25	4.94 ↑	4.05 13/11/2014	4.08	4.05	4.25	4.25	4.17	200@4.20	1334@4.23	---	2013	166,133	944	692,583.22	1,298,949.54	4.00	8.13	537	
305,732,436	0.410	---	---	---	08/07/2009	28/09/2011	---	HYGEIA SA (CR)	0.212	0.47 ↑	0.211 13/11/2014	0.213	0.206	0.216	0.212	0.211	4000@0.205	1367@0.212	---	2013	115,356	68	24,291.23	64,815.28	0.172	0.508	4533	
53,155,053	0.440	---	---	---	21/07/2010	16/07/2008	---	IASO SA (CR)	0.867	-2.25 ↓	0.887 13/11/2014	0.867	0.867	0.890	0.867	0.873	1500@0.867	500@0.895	---	2013	2,000	3	1,745.50	46,085.43	0.770	1.99	4533	
8,298,467	0.400	---	---	---	30/08/1993	08/05/2013	---	IDEAL GROUP SA (CR)	0.895	-0.22 ↓	0.897 13/11/2014	0.895	0.895	0.895	0.895	0.895	---	700@0.894	-(6)-	2013	150	3	134.26	7,427.13	0.538	1.00	9574	
28,580,100	0.400	0.02	---	0.025	18/08/2014	10/10/2013	---	IKTINOS HELLAS SA (CR)	1.46	---	1.46 13/11/2014	1.45	1.45	1.46	1.46	1.45	1000@1.38	500@1.42	8.93	2013	500	2	725.10	41,726.95	1.32	1.84	2353	
9,090,000	0.900	---	---	---	15/05/2009	13/10/2014	5073	ILYDA S.A. (CR)	0.739	---	0.739 16/10/2014	---	---	---	---	---	---	45555@0.666	---	2013	---	---	---	6,717.51	0.350	0.789	9537	
20,578,374	0.620	---	---	---	02/06/2011	05/05/1999	---	INFORM P. LYKOS SA (CR)	1.45	---	1.45 13/11/2014	---	---	---	---	---	800@1.28	211@1.48	---	2013	---	---	---	29,838.64	1.32	1.90	2791	
11,233,200	0.730	---	---	---	12/07/2010	30/07/1999	---	INTERTECH SA (CR)	0.299	-5.08 ↓	0.315 12/11/2014	0.284	0.284	0.299	0.299	0.292	---	177@0.299	---	2013	1,837	7	537.13	3,358.73	0.171	0.510	9572	
34,986,430	0.440	---	---	---	25/07/2/																							

Number of Outstanding Securities	Nominal Value	Dividends [1]			Date of Last Coupon		Note	Shares	Closing price	% change	Previous closing price/date	Open price	Price min	Price max	Last price	Avg price	Last Bid [7]	Last Ask [7]	P/E after	Year	Volume	Trades	Transactions Value	Company Mkt Value (thou. €)	Year low	Year high	Sector[4]		
		2011	2012	2013	Dividend [2]	Right																							
Main Market																													
2,566,836	0.440	---	---	---	13/08/2010	09/01/2007	---	INTERWOOD-XYLEMPORIA (PR)	0.195	---	-	0.195	17/02/2014	---	---	---	---	---	17289@0.196	---	2013	---	---	---	6,133.35	0.195	0.200	2353	
23,154,250	1.36	---	---	---	12/08/2008	02/08/2010	---	INTRACOM CONSTR. (CR)	0.570	2.52	↑	0.556	13/11/2014	0.570	0.564	0.580	0.570	0.570	439@0.564	600@0.570	---	2013	1,400	6	797.80	13,197.92	0.457	1.32	2357
133,025,996	1.41	---	---	---	03/07/2007	07/01/2002	---	INTRACOM HOLDINGS (CR)	0.396	1.80	↑	0.389	13/11/2014	0.395	0.385	0.399	0.396	0.390	545@0.385	1250@0.397	---	2013	90,905	85	35,495.66	52,678.29	0.370	0.900	9578
158,961,721	0.300	0.0035	0.0026	---	30/05/2013	14/11/2007	---	INTRALOT (CR)	1.05	---	-	1.05	13/11/2014	1.05	1.04	1.10	1.05	1.08	50131@1.05	5066@1.07	---	2013	343,691	719	369,857.34	166,909.81	1.03	2.51	5752
77,654,850	0.580	---	---	---	01/07/2011	21/02/2003	---	J & P - AVAX SA (CR)	0.759	-0.65	↓	0.764	13/11/2014	0.765	0.750	0.788	0.759	0.763	130@0.753	1500@0.771	---	2013	29,825	30	22,770.50	58,940.03	0.737	2.02	2357
136,059,759	1.19	---	---	---	22/10/2014	05/03/2014	---	JUMBO SA (CR)	9.11	-4.10	↓	9.50	13/11/2014	9.50	9.11	9.63	9.11	9.31	1500@9.10	600@9.14	16.95	2014	93,237	552	868,180.49	1,239,504.40	7.95	14.40	3747
9,742,920	0.400	0.01	0.01	0.01	08/08/2014	14/07/2000	---	KARAMOLEGOS SA (CR)	1.43	---	-	1.43	13/11/2014	1.43	1.43	1.43	1.43	1.43	1500@1.43	589@1.54	---	2013	500	1	715.00	13,932.38	0.912	1.78	3577
14,679,792	1.68	---	---	---	24/06/2014	04/09/2000	---	KARATZIS SA (CR)	3.30	3.13	↑	3.20	13/11/2014	3.30	3.30	3.30	3.30	3.30	50@3.09	50@3.14	9.91	2013	10	1	33.00	48,443.31	2.92	4.50	2723
13,202,756	0.350	---	---	---	01/07/2004	05/08/2014	---	KEKROPS SA (CR)	0.356	10.90	↑	0.321	13/11/2014	0.393	0.330	0.393	0.356	0.345	4700@0.330	550@0.378	---	2013	3,152	10	1,088.59	4,700.18	0.296	1.11	8633
7,595,160	0.600	---	---	---	08/08/2008	18/08/2010	---	KIRIAKOULIS SHIPPING SA (CR)	0.649	---	-	0.649	05/11/2014	---	---	---	---	---	---	100@0.629	42.13	2013	---	---	---	4,929.26	0.492	1.08	5759
23,648,700	0.350	---	---	---	13/07/2011	29/07/2014	---	KLEEMAN HELLAS SA (CR)	1.70	-6.59	↓	1.82	13/11/2014	1.70	1.70	1.70	1.70	1.70	200@1.65	1000@1.70	60.09	2013	500	2	850.00	40,202.79	1.50	2.58	2757
40,219,218	0.300	---	---	---	25/05/2009	09/07/2013	---	KLOUKINAS - LAPPAS SA (CR)	0.527	0.19	↑	0.526	13/11/2014	0.527	0.527	0.527	0.527	0.527	50@0.504	1000@0.522	---	2013	50	1	26.35	21,195.53	0.424	0.780	2357
21,224,340	0.420	---	---	---	02/07/2008	25/04/2006	---	KORDELLOS BROS SA (CR)	0.229	---	-	0.229	04/11/2014	---	---	---	---	---	---	500@0.210	---	2013	---	---	---	4,860.37	0.169	0.359	1757
13,586,500	0.390	---	---	---	25/06/2010	28/05/2008	---	KORRES (CR)	3.44	1.18	↑	3.40	13/11/2014	3.32	3.32	3.44	3.44	3.44	5000@3.40	240@3.44	---	2013	271	3	930.92	46,737.56	2.84	3.93	3767
29,480,000	0.420	---	---	---	19/07/2010	01/08/2007	---	KRETA FARM SA (CR)	0.561	-2.77	↓	0.577	13/11/2014	0.577	0.547	0.577	0.561	0.558	800@0.550	281@0.562	---	2013	848	9	472.93	16,538.28	0.380	0.690	3577
33,065,136	0.380	---	---	---	06/07/2009	16/09/2013	---	KRI-KRI S.A. (CR)	1.82	2.25	↑	1.78	10/11/2014	1.82	1.82	1.82	1.82	1.82	600@1.75	155@1.82	11.74	2013	45	1	81.90	60,178.55	1.65	2.07	3577
15,804,800	0.330	---	---	---	15/06/2010	12/03/2004	---	KTIMA KOSTAS LAZARIDIS SA (CR)	0.396	---	-	0.396	13/11/2014	---	---	---	---	---	---	100@0.388	---	2013	---	---	---	6,258.70	0.297	0.575	3535
24,474,815	0.980	---	---	---	19/08/2008	15/09/2014	---	KYRIAKIDIS MARBLES SA (CR)	1.90	0.53	↑	1.89	13/11/2014	2.07	1.89	2.07	1.90	1.93	300@1.89	38@1.90	4.47	2013	2,336	43	4,506.03	46,502.15	1.07	2.60	2353
79,706,464	0.300	---	---	---	30/05/2007	23/06/2014	---	LAMDA DEVELOPMENT SA (CR)	4.10	-0.73	↓	4.13	13/11/2014	4.10	4.01	4.21	4.10	4.14	800@4.03	10@4.09	---	2013	54,031	177	223,868.18	326,796.50	3.19	6.35	8633
21,364,000	1.12	---	---	---	05/07/2010	10/08/2005	---	LAMPSA HOTEL SA (CR)	18.08	---	-	18.08	10/11/2014	---	---	---	---	---	30@17.21	200@18.08	-(6)-	2013	---	---	---	386,261.12	15.60	19.00	5753
5,939,268	0.620	---	---	---	10/07/2003	03/01/2002	---	LANAKAM SA (CR)	1.16	---	-	1.16	13/10/2014	---	---	---	---	---	---	2661@1.05	---	2013	---	---	---	6,889.55	0.485	1.40	3763
7,734,375	1.00	---	---	---	09/07/2007	07/01/2011	---	LIVANIS SA (CR)	0.210	---	-	0.210	13/10/2014	---	---	---	---	---	---	4200@0.209	---	2013	---	---	---	1,624.22	0.158	0.242	5557
4,740,000	0.860	---	---	---	14/03/2003	---	---	LOGISMOS S.A. (CR)	0.477	---	-	0.477	29/10/2014	---	---	---	---	---	---	7560@0.477	64.23	2013	---	---	---	2,260.98	0.335	0.709	9533
17,125,062	0.640	---	---	---	01/06/2010	02/08/2011	---	LOULIS MILLS SA (CR)	2.29	4.09	↑	2.20	13/11/2014	2.10	2.10	2.29	2.29	2.11	500@2.14	169@2.29	---	2013	520	3	1,095.80	39,216.39	2.08	3.30	3577
937,122,261	0.300	---	---	---	26/04/2007	29/08/2014	---	MARFIN INVESTMENT GROUP (CR)	0.211	0.48	↑	0.210	13/11/2014	0.212	0.210	0.217	0.211	0.213	40000@0.210	500@0.213	---	2013	809,867	514	172,495.53	197,732.80	0.204	0.572	8775
9,819,370	0.690	---	---	---	14/08/2007	09/01/2004	---	MATHIOS REFRACTORY SA (CR)	0.489	---	-	0.489	11/11/2014	---	---	---	---	---	---	1900@0.458	---	2013	---	---	---	4,801.67	0.250	0.489	2353
468,700	---	0.47	---	---	27/02/2014	21/05/2004	---	MERMEREN KOMB. A.D. PR. (GDR)	6.30	0.48	↑	6.27	13/11/2014	6.26	6.02	6.48	6.30	6.31	133@6.02	818@6.30	3.07	2013	782	19	4,930.25	2,952.81	3.45	6.58	1775
51,950,600	0.320	0.75	0.25	0.3	20/06/2014	21/10/2005	---	METKA (CR)	8.95	0.45	↑	8.91	13/11/2014	8.84	8.84	9.10	8.95	8.98	1000@8.90	309@9.09	10.46	2013	39,392	429	356,215.03	464,957.87	7.40	14.29	2757
10,500,000	0.900	---	---	---	24/06/2008	19/12/2013	---	MEVACO SA (CR)	1.04	---	-	1.04	12/11/2014	---	---	---	---	---	300@1.04	2@1.17	---	2013	---	---	---	10,920.00	1.00	1.35	2757
6,700,000	0.800	---	---	0.16	26/05/2014	29/05/2014	---	MILLS KEPENOS (CR)	1.59	---	-	1.59	23/10/2014	---	---	---	---	---	---	760@1.69	8.66	2013	---	---	---	10,653.00	0.991	2.50	3577
6,200,000	0.500	---	---	---	22/06/2010	01/11/1995	---	MINERVA KNITWEAR SA (CB)	0.282	---	-	0.282	13/11/2014	---	---	---	---	---	300@0.254	2000@0.310	---	2013	---	---	---	1,748.40	0.262	0.689	3763
12,417,000	0.370	---	---	---	28/07/2008	06/09/2011	---	MLS MULTIMEDIA SA (CR)	4.35	---	-	4.35	13/11/2014	4.35	4.28	4.36	4.35	4.33	100@4.29	4627@4.35	46.13	2013	8,100	58	35,035.97	54,013.95	3.28	4.82	9537
4,588,137	16.00	---	---	---	30/06/2005	17/08/2011	---	MOCHLOS SA (CR)	1.00	-4.76	↓	1.05	13/11/2014	1.35	1.00	1.35	1.00	1.01	70@0.931	125@1.00	---	2013	1,030	4	1,040.50	4,588.14	0.856	2.05	2357
11,700,000	0.590	---	---	---	02/06/2009	24/07/2012	---	MOTODYNAMICS S.A. (CR)	0.324	9.09	↑	0.297	13/11/2014	0.324	0.324	0.324	0.324	0.320	1319@0.252	681@0.299	---	2013	1	1	0.32	3,790.80	0.260	0.447	5379
110,782,980	0.750	0.4	0.3	0.2	26/06/2014	04/11/2013	---	MOTOR OIL (CR)	5.92	2.96	↑	5.75	13/11/2014	5.80	5.77	6.02	5.92	5.91	1968@5.92	1454@6.02	-(6)-	2013	100,382	532	593,798.24	655,835.24	5.52	10.30	533
116,915,862	1.07	---	---	---	11/05/2009	06/07/2011	---	MYTILINEOS HOLDINGS (CR)	5.81	0.69	↑	5.77	13/11/2014	5.77	5.77	5.91	5.81	5.84	25000@5.80	1383@5.82	---	2013	214,337	725	1,252,230.14	679,281.16	4.92	7.32	1755
8,321,682	0.670	---	---	---	17/08/2007	23/11/1999	---	N. LEVEDERIS SA (CB)	0.230	---	-	0.230	13/10/2014	---	---	---	---												

Number of Outstanding Securities	Nominal Value	Dividends [1]			Date of Last Coupon		Note	Shares	Closing price	% change	Previous closing price/date	Open price	Price min	Price max	Last price	Avg price	Last Bid [7]	Last Ask [7]	P/E after	Year	Volume	Trades	Transactions Value	Company Mkt Value (thou. €)	Year low	Year high	Sector[4]	
		2011	2012	2013	Dividend [2]	Right																						
Main Market																												
11,510,102	0.890	---	---	---	24/06/2005	06/10/1999	---	NAFPAKTOS TEXTILE IND. SA (CB)	0.282	---	0.282	13/11/2014	---	---	---	---	---	300@0.198	700@0.280	---	2013	---	---	---	3,245.85	0.204	0.397	3763
6,340,000	0.600	---	---	---	30/11/2009	12/07/2000	---	NAKAS MUSIC	0.594	---	0.594	12/11/2014	---	---	---	---	---	100@0.539	---	18.46	2014	---	---	---	3,765.96	0.526	1.62	5379
3,533,149,631	0.300	---	---	---	16/05/2008	24/05/2013	---	NATIONAL BANK (CR)	1.70	---	1.70	13/11/2014	1.72	1.68	1.74	1.70	1.71	119250@1.69	30000@1.71	3.78	2013	7,002,088	1,952	11,972,216.73	6,006,354.37	1.59	4.31	8355
23,935,280	0.300	---	---	---	29/06/2009	13/06/2000	---	NAYTEMPORIKI PUBLISHING SA(CR)	0.177	---	0.177	24/10/2014	---	---	---	---	---	284@0.161	97@0.173	---	2013	---	---	---	4,236.54	0.130	0.479	5557
27,848,000	0.300	0.0132	0.0137	0.004	18/08/2014	02/09/2003	---	NEWSPHONE HELLAS SA (CR)	0.262	-0.76 ↓	0.264	13/11/2014	0.249	0.249	0.262	0.262	0.250	900@0.251	597@0.262	23.54	2013	4,001	5	998.28	7,296.18	0.245	0.468	2791
6,132,500	1.25	---	---	---	24/06/2011	19/06/2001	---	NEXANS HELLAS SA (CR)	1.73	---	1.73	13/11/2014	---	---	---	---	---	100@1.56	300@1.78	---	2013	---	---	---	10,609.23	1.60	2.40	2733
63,697,153	1.34	---	---	---	08/07/2008	10/11/2008	---	NIREFS SA (CR)	0.145	7.41 ↑	0.135	13/11/2014	0.149	0.137	0.149	0.145	0.140	636@0.137	1280@0.145	---	2013	6,404	8	899.68	9,236.09	0.092	0.362	3573
319,000,000	0.300	0.72	0.57	0.25	27/05/2014	25/04/2001	---	OPAP (CR)	9.17	1.89 ↑	9.00	13/11/2014	8.97	8.97	9.24	9.17	9.15	920@9.15	100@9.20	20.50	2013	497,399	1,161	4,543,269.58	2,925,230.00	7.97	13.65	5752
490,150,389	2.83	---	---	---	28/06/2011	18/06/1998	---	OTE (CR)	8.80	2.80 ↑	8.56	13/11/2014	8.66	8.54	8.83	8.80	8.73	1100@8.70	150@8.81	---	2013	823,698	1,630	7,193,037.00	4,313,323.42	8.46	13.20	6535
25,000,000	2.00	0.01	0.05	0.12	17/07/2014	08/08/2003	---	P.P.A. S.A. (CR)	14.09	4.84 ↑	13.44	13/11/2014	13.35	13.25	14.10	14.09	13.66	500@13.70	4@14.10	43.78	2013	5,046	245	68,916.03	352,250.00	12.24	20.89	2777
4,971,466	1.46	---	---	---	04/07/2007	08/10/2003	---	PAIRIS SA (CR)	0.199	---	0.199	13/11/2014	---	---	---	---	---	700@0.143	9000@0.200	---	2013	---	---	---	989.32	0.155	0.355	2723
3,953,090	0.900	---	---	---	02/07/2001	05/12/2012	---	PAPERPACK (CR)	0.836	---	0.836	13/11/2014	---	---	---	---	---	1000@0.800	250@0.830	4.32	2013	---	---	---	3,304.78	0.581	1.15	2723
50,797,369	0.310	---	---	---	17/08/2000	12/10/2010	---	PAPOUTSANIS (CR)	0.420	---	0.420	13/11/2014	0.420	0.420	0.420	0.420	0.420	60@0.391	80@0.405	---	2013	200	6	84.00	21,334.89	0.352	0.604	3767
7,070,400	0.930	---	---	---	18/05/2010	12/05/2011	---	PETROPOULOS PETROS (CR)	2.70	---	2.70	13/11/2014	2.65	2.65	2.70	2.70	2.67	200@2.64	567@2.69	65.60	2013	305	8	813.50	19,090.08	1.43	2.75	2753
6,101,979,715	0.300	---	---	---	16/05/2008	05/06/2013	---	PIRAEUS BANK (CR)	1.05	0.96 ↑	1.04	13/11/2014	1.05	1.03	1.07	1.05	1.05	246873@1.05	442522@1.06	1.12	2013	6,173,430	1,226	6,498,714.75	6,407,078.70	1.00	2.11	8355
22,080,000	0.320	0.08	0.12	0.2	21/05/2014	03/10/2000	---	PLAISIO COMPUTERS SA (CR)	6.05	---	6.05	13/11/2014	6.09	6.03	6.09	6.05	6.04	150@5.96	705@6.05	9.43	2013	500	10	3,021.56	133,584.00	5.71	7.98	9572
232,000,000	4.60	---	0.025	---	22/07/2013	12/12/2001	---	PPC (CR)	5.90	2.61 ↑	5.75	13/11/2014	5.87	5.79	6.00	5.90	5.90	200@5.89	605@5.99	---	2013	567,187	1,119	3,347,931.14	1,368,800.00	5.50	12.75	7535
11,812,193	0.450	---	---	---	24/07/2009	15/11/2006	---	PROFILE SA (CR)	0.500	2.04 ↑	0.490	13/11/2014	0.495	0.480	0.505	0.500	0.490	402@0.481	1558@0.512	9.62	2013	1,242	13	608.04	5,906.10	0.442	1.05	9533
27,345,120	0.470	---	---	---	18/07/2005	26/02/2014	---	QUALITY & RELIABILITY SA (CR)	0.484	-1.43 ↓	0.491	13/11/2014	0.494	0.451	0.494	0.484	0.468	100@0.453	215@0.483	64.36	2013	5,410	26	2,532.58	13,235.04	0.378	0.740	9533
11,962,443	0.500	---	---	---	05/09/2008	12/12/2013	---	QUEST HOLDINGS (CR)	4.94	0.41 ↑	4.92	13/11/2014	4.94	4.94	4.94	4.94	4.94	100@4.75	429@4.90	---	2013	55	3	271.70	59,094.47	4.21	6.30	9533
57,434,884	1.31	---	---	---	05/06/2008	12/06/2009	---	REDS S.A. (CR)	0.501	-5.29 ↓	0.529	13/11/2014	0.520	0.492	0.520	0.492	0.503	100@0.510	150@0.510	---	2013	11,630	35	5,845.67	28,774.88	0.431	0.827	8633
22,280,000	0.300	---	---	---	11/04/2011	23/02/2007	---	REVOIL (CR)	0.301	-1.95 ↓	0.307	13/11/2014	0.307	0.301	0.307	0.301	0.303	500@0.290	600@0.301	---	2013	5,430	11	1,645.00	6,706.28	0.270	0.720	5379
7,500,000	0.480	---	0.0024	0.0863	13/08/2014	10/02/2014	---	S.KANAKIS SA (CR)	2.15	---	2.15	13/11/2014	2.15	2.15	2.15	2.15	2.15	50@1.93	500@1.94	11.07	2013	20	1	43.00	16,125.00	1.58	2.15	3577
52,067,296	0.300	---	---	---	23/12/2003	24/01/2007	---	SELECTED TEXT. IND. ASSOC (CR)	0.200	---	0.200	13/11/2014	0.191	0.191	0.211	0.200	0.199	130@0.190	4000@0.212	---	2014	4,068	6	809.21	10,413.46	0.140	0.355	3763
96,243,908	0.410	---	---	---	26/06/2008	17/07/2000	---	SIDENOR (CR)	0.750	2.04 ↑	0.735	13/11/2014	0.743	0.720	0.758	0.750	0.742	500@0.745	3000@0.754	---	2013	44,130	102	32,741.00	72,182.93	0.718	2.26	1757
6,456,530	1.60	---	---	---	29/06/2001	02/08/2010	---	SPACE HELLAS SA (CR)	1.92	9.71 ↑	1.75	13/11/2014	1.92	1.92	1.92	1.92	1.92	300@1.24	208@1.60	---	2013	50	1	96.00	12,396.54	1.13	1.92	9578
28,438,268	0.300	---	---	---	21/08/2006	24/11/1999	---	SPIROY AGRICULTURE SA (CR)	0.299	---	0.299	13/11/2014	---	---	---	---	---	---	400@0.299	---	2013	---	---	---	8,503.04	0.206	0.388	1357
33,125,000	5.00	---	---	---	03/07/2006	18/08/2010	---	TECHNICAL OLYMPIC SA (CR)	1.19	0.85 ↑	1.18	13/11/2014	1.18	1.18	1.20	1.19	1.19	1300@1.16	8066@1.19	---	2013	4,820	14	5,713.60	39,418.75	1.10	2.29	3728
109,314,400	0.300 (0.0589)	---	---	---	28/05/2012	09/07/2014	---	TERNA ENERGY (CR)	2.55	4.08 ↑	2.45	13/11/2014	2.44	2.41	2.59	2.55	2.52	1000@2.49	3780@2.50	-(6)-	2013	209,309	564	528,255.59	278,751.72	2.06	4.86	7537
36,300,000	1.12	0.188	0.162	0.285	14/08/2014	12/12/2007	---	THESSALONIKA WATER & SEWERAGE	3.10	0.32 ↑	3.09	13/11/2014	3.04	3.04	3.13	3.10	3.08	50@3.09	289@3.13	8.58	2013	2,572	36	7,917.04	112,530.00	3.00	5.66	7577
45,094,620	0.500	---	0.0467	0.05	28/04/2014	01/11/1999	---	THRACE PLASTICS SA (CR)	0.899	---	0.899	13/11/2014	---	---	---	---	---	150@0.865	635@0.889	---	2013	---	---	---	40,540.06	0.853	1.39	1357
77,063,568	4.00	---	---	---	25/06/2014	25/06/2004	---	TITAN CEMENT (CR)	18.96	1.39 ↑	18.70	13/11/2014	18.70	18.70	19.25	18.96	19.09	343@18.96	5@19.26	---	2013	40,631	480	775,497.84	1,528,034.86	16.10	26.80	2353
7,568,960	4.00	---	---	---	25/06/2014	25/06/2004	---	TITAN CEMENT CO. (PR)	8.84	---	8.84	12/11/2014	---	---	---	---	---	70@8.60	100@8.98	---	2013	---	---	---	1,528,034.86	8.32	10.50	2353
10,080,000	3.00	0.4	1.5	0.6	13/08/2014	27/08/2001	---	TPA SA (CR)	21.01	9.43 ↑	19.20	13/11/2014	20.40	20.25	21.11	21.11	20.63	60@20.40	1@21.12	11.64	2013	850	52	17,535.29	211,780.80	19.10	31.40	2777
54,888,240	1.13	0.1	0.1	0.09	25/04/2014	22/03/2006	---	TRASTOR REAL EST. INV. CO.(CR)	1.11	-0.89 ↓	1.12	13/11/2014	1.12	1.10	1.13	1.11	1.11	1400@1.10	3065@1.11	---	2013	6,900	16	7,622.23	60,925.95	0.935	1.33	8671
15,627,315	0.300	---	---	---	16/11/1992	03/12/2012	---	UNIBIOS (CR)	0.187	-1.06 ↓	0.189	13/11/2014	0.184	0.180	0.188	0.187	0.181	500@0.160	9999@0.185	---	2013	18,620	24	3,364.65	2,922.31	0.179	0.404	2

Number of Outstanding Securities	Nominal Value	Dividends [1]			Date of Last Coupon		Note	Shares	Closing price	% change	Previous closing price/date	Open price	Price min	Price max	Last price	Avg price	Last Bid [7]	Last Ask [7]	P/E after	Year	Volume	Trades	Transactions Value	Company Mkt Value (thou. €)	Year low	Year high	Sector[4]
2011	2012	2013	Dividend [2]	Right																							

Main Market

4,968,600	2.88	---	---	---	01/07/1998	14/12/1998	---	VIS SA (CR)	0.841	---	0.841	12/11/2014	---	---	---	---	200@0.758	12@0.922	---	2013	---	---	---	4,178.59	0.517	0.980	2723
6,325,000	0.600	---	---	---	02/05/2014	17/02/2014	---	VOGIATZOGLOU SYSTEMS SA (CR)	1.00	---	1.00	10/11/2014	---	---	---	---	---	200@0.978	---	2013	---	---	---	6,325.00	0.696	2.27	2797

Exchange Traded Funds (ETFs)

5,848,618	---	---	---	24/01/2008	---	ALPHA ETF FTSE Athex Large Cap	2.90	2.11	↑	2.84	13/11/2014	2.90	2.90	2.90	2.90	2.90	71000@2.88	71000@2.91	---	---	3,000	1	8,694.00	-	2.60	4.55	11000
294,878	---	---	---	29/06/2009	---	NBGAM ETF	9.82	---	-	9.82	13/11/2014	---	---	---	---	---	25000@9.85	25000@10.01	---	---	---	---	---	-	9.61	15.10	11000
388,550	---	---	---	03/11/2010	---	NBGAM ETF GREECE & TURKEY 30	8.12	0.62	↑	8.07	13/11/2014	8.12	8.12	8.12	8.12	8.12	25000@8.05	25000@8.18	---	---	16,700	1	135,604.00	-	6.70	9.00	11000

Low Dispersion

14,000,000	4.15	---	---	---	23/04/2010	29/06/1999	4815	ALPHA REAL ESTATE SA(CR)	5.21	---	-	5.21	13/11/2014	---	---	---	---	---	300@5.05	200@5.34	21.78	2013	---	---	---	72,940.00	4.69	7.10	8637
63,900,000	3.00	---	---	---	23/06/2003	04/11/2008	4816	ASTIR PALACE SA (CR)	3.92	-0.76	↓	3.95	13/11/2014	3.95	3.90	3.95	3.91	3.92	328@3.91	776@3.95	---	2013	3,791	17	14,846.81	250,488.00	3.41	4.08	5753
90,902,904	0.800	---	---	---	09/08/2004	08/03/2006	4814	ATHENA SA (CR)	0.290	---	-	0.290	10/10/2014	---	---	---	---	---	---	1849@0.276	---	2013	---	---	---	26,361.84	0.133	0.310	2357
191,660,320	0.300	---	---	---	20/07/2009	29/12/2010	4817	ATTICA HOLDINGS (CR)	0.496	1.22	↑	0.490	13/11/2014	0.490	0.490	0.500	0.500	0.496	997@0.490	948@0.500	---	2013	1,584	5	786.16	95,063.52	0.445	0.799	5759
68,322,221	1.00	---	---	---	08/03/2002	08/04/2013	4986	GENIKI BANK (CR)	4.82	---	-	4.82	11/11/2014	4.82	4.82	4.82	4.82	4.82	64@5.78	---	---	2013	63	5	303.66	329,313.11	2.00	15.00	8355
71,082,707	1.70	---	---	---	01/07/2010	21/11/2012	4820	HERACLES GEN.CEMENT CO. (CR)	1.27	0.79	↑	1.26	12/11/2014	1.26	1.26	1.27	1.27	1.27	122@1.27	760@1.35	---	2013	878	3	1,114.30	90,275.04	1.24	1.55	2353
13,404,440	8.63	---	---	---	02/04/2001	06/03/1992	4822	IONIAN HOTELS SA (CR)	7.00	---	-	7.00	23/10/2014	---	---	---	---	---	200@5.60	25@8.40	-(6)-	2013	---	---	---	93,831.08	6.00	9.90	5753
2,760,000	7.70	7.6	8.52	8.5	30/06/2014	16/07/1990	4823	KARELIA TOBACCO CO. SA (CB)	195.00	---	-	195.00	13/11/2014	---	---	---	---	---	3@169.00	30@210.00	13.56	2013	---	---	---	538,200.00	180.00	244.90	3785
30,600,000	0.300	---	---	---	12/06/2008	04/03/2014	5059	KATHIMERINI SA (CR)	0.409	2.51	↑	0.399	13/11/2014	0.409	0.409	0.409	0.409	0.409	1709@0.346	998@0.409	---	2013	900	2	368.10	12,515.40	0.311	4.49	5557
14,074,000	3.00	0.25	---	---	02/03/2012	23/07/2009	5075	MIG REAL ESTATE (CR)	3.10	---	-	3.10	13/11/2014	3.10	3.10	3.10	3.10	3.10	449854@3.10	4215@3.19	-(6)-	2013	580	3	1,798.00	43,629.40	1.50	3.20	8671
106,980,050	2.25	---	---	---	25/07/2008	24/02/2014	5046	MINOAN LINES SA (CR)	1.50	---	-	1.50	13/11/2014	1.50	1.50	1.50	1.50	1.50	23960@1.50	1383@1.55	---	2013	2,659	3	3,988.50	160,470.08	1.42	2.00	5759
17,240,776	0.370	---	---	---	14/07/2005	30/09/2003	4827	PERSEUS SA (CR)	0.478	---	-	0.478	01/10/2014	---	---	---	---	---	---	200@0.399	4.27	2013	---	---	---	8,241.09	0.152	0.504	3577

Surveillance

33,301,715	0.320	---	---	---	27/06/2003	08/07/2009	4978	AEGEK (CR)	0.047	4.44	↑	0.045	13/11/2014	0.054	0.042	0.054	0.042	0.047	1321@0.042	1910@0.053	---	2013	12,200	11	572.39	1,565.18	0.038	0.136	2357	
14,870,100	0.300	---	---	---	15/05/2008	26/09/2011	4844	ALPHA GRISSIN S.A. (CR)	0.060	---	-	0.060	17/10/2014	---	---	---	---	---	2000@0.048	8640@0.060	---	2013	---	---	---	892.21	0.060	0.160	9533	
215,246,452	0.300	---	---	---	25/06/2001	24/09/2001	4446	ALTEC SA (CR)	0.022	-12.00	↓	0.025	13/11/2014	0.022	0.022	0.022	0.022	0.022	4476@0.022	315@0.023	---	2013	524	1	11.53	4,735.42	0.017	0.040	9533	
2,969,713	0.300	---	---	---	02/07/2008	28/02/2011	4958	ANEK LINES SA (PR, issue '96)	0.131	---	-	0.131	10/11/2014	0.131	0.131	0.131	0.131	0.131	687@0.131	---	---	2013	260	2	34.06	17,246.22	0.120	0.280	5759	
312,163	0.300	---	---	---	02/07/2008	28/02/2011	4959	ANEK LINES SA (PR, issue '90)	1.15	---	-	1.15	26/06/2014	---	---	---	---	---	---	16@1.20	---	---	2013	---	---	---	17,246.22	1.15	1.43	5759
185,373,016	0.300	---	---	---	02/07/2008	28/02/2011	4957	ANEK LINES SA (CR)	0.089	3.49	↑	0.086	12/11/2014	0.090	0.085	0.090	0.085	0.088	50360@0.085	28916@0.090	---	2013	35,939	8	3,179.83	17,246.22	0.073	0.141	5759	
81,644,555	0.300	---	---	---	01/07/2008	02/09/2002	5056	ATTI - KAT SA (CR)	0.018	12.50	↑	0.016	13/11/2014	0.018	0.018	0.018	0.018	0.018	---	9999@0.018	---	---	2013	500	2	9.00	1,469.60	0.009	0.036	2357
20,255,805	0.300	---	---	---	22/08/2006	02/08/2010	4881	AXON HOLDING SA (CR)	0.040	---	-	0.040	13/11/2014	---	---	---	---	---	398@0.033	---	---	2013	---	---	---	810.23	0.037	0.139	4533	
17,579,754	4.16	---	---	---	18/08/2006	02/08/2010	4885	BIOTER SA (CR)	0.195	---	-	0.195	24/10/2014	---	---	---	---	---	---	185@0.170	---	---	2013	---	---	---	3,428.05	0.104	0.216	2357
1,130,180	0.440	---	---	---	20/06/2003	02/07/2014	---	COMPUCON SA (CR)	0.032	---	-	0.032	30/10/2014	---	---	---	---	---	2300@0.037	---	---	2013	---	---	---	---	36.17	0.027	0.814	9537
14,173,104	0.300	---	---	---	11/08/2010	28/11/2013	5055	DIONIC (CR)	0.058	-4.92	↓	0.061	13/11/2014	0.058	0.058	0.070	0.059	0.058	249@0.059	3950@0.061	---	2013	6,000	6	349.55	822.04	0.041	0.307	2797	
15,878,748	0.480	---	---	---	10/07/2006	22/03/2004	4960	DOMIKI KRITIS SA (CR)	0.312	---	-	0.312	12/11/2014	---	---	---	---	---	300@0.250	300@0.350	---	2013	---	---	---	---	4,954.17	0.264	0.485	2357
3,961,300	1.28	---	---	---	29/06/2004	03/08/2000	4808	DUROS SA (CR)	0.585	---	-	0.585	06/11/2014	---	---	---	---	---	---	8@0.530	---	---	2013	---	---	---	2,317.36	0.185	0.759	3763
7,085,888	1.59	---	---	---	02/07/1996	06/09/2010	4690	ELVIEMEK (CR)	3.97	---	-	3.97	26/02/2014	---	---	---	---	---	---	---	---	2013	---	---	---	---	28,130.98	1.54	3.97	8633
6,000,000	0.600	---	---	---	13/06/2008	08/04/2004	4886	EUROBROKERS S.A. (CR)	0.024	---	-	0.024	12/05/2014	---	---	---	---	---	1000@0.024	---	---	2013	---	---	---	---	144.00	0.024	0.052	8534

Number of Outstanding Securities	Nominal Value	Dividends [1]			Date of Last Coupon		Note	Shares	Closing price	% change	Previous closing price/date	Open price	Price min	Price max	Last price	Avg price	Last Bid [7]	Last Ask [7]	P/E after	Year	Volume	Trades	Transactions Value	Company Mkt Value (thou. €)	Year low	Year high	Sector[4]
		2011	2012	2013	Dividend [2]	Right																					

Surveillance

21,820,410	0.800	---	---	---	22/05/2008	02/08/2011	4882	EUROMEDICA SA (CR)	0.403	---	-	0.403	13/11/2014	---	---	---	---	---	---	---	---	2013	---	---	---	8,793.63	0.240	0.403	4533	
110,097,185	0.300	---	---	---		04/12/2013	5033	Forthnet (CR)	1.00	4.60	↑	0.956	13/11/2014	1.04	1.00	1.04	1.00	1.00	200@0.851	500@1.03	---	2013	2,094	7	2,094.04	110,097.19	0.874	1.98	9535	
1,270,000	0.300	---	---	---	06/07/2007	06/02/2013	5007	GIRAKIAN PROFIL SA (CB)	0.750	---	-	0.750	11/11/2014	---	---	---	---	---	310@0.600	---	---	2013	---	---	---	952.50	0.750	2.63	1757	
179,707,771	0.300	---	---	---	27/06/2002	01/11/2011	4847	HELLAS ONLINE SA (CR)	0.500	-4.58	↓	0.524	13/11/2014	0.500	0.500	0.500	0.500	0.500	5000@0.492	1100@0.509	65.00	2013	4,800	5	2,400.00	89,853.89	0.400	0.670	9537	
30,390,000	0.310	---	---	---	18/08/2008	29/12/2006	4447	HELLENIC FISHFARMING SA (CR)	0.096	---	-	0.096	13/11/2014	---	---	---	---	---	---	24400@0.089	---	2013	---	---	---	2,917.44	0.045	0.119	3573	
1,540,000	0.600	---	---	---	08/08/1994	19/09/2000	5058	J.BOUTARIS & SON HOLD. (PB)	0.006	---	-	0.006	22/10/2014	---	---	---	---	---	2000@0.005	---	---	2013	---	---	---	764.63	0.005	0.012	3535	
25,179,640	0.600	---	---	---	08/08/1994	19/09/2000	5057	J.BOUTARIS & SON HOLD. SA (CB)	0.030	---	-	0.030	05/11/2014	---	---	---	---	---	1000@0.030	---	---	2013	---	---	---	764.63	0.030	0.086	3535	
7,125,216	0.650	---	---	---	01/07/2005	14/12/1999	4955	KRE.KA SA (CR)	0.165	---	-	0.165	13/11/2014	---	---	---	---	---	200@0.160	5306@0.164	---	2013	---	---	---	1,175.66	0.118	0.278	3573	
51,081,030	1.00	---	---	---	20/08/2007	03/09/2007	4912	LAVIPHARM SA (CR)	0.119	5.31	↑	0.113	13/11/2014	0.119	0.119	0.119	0.119	0.119	2000@0.094	1700@0.116	---	2013	2,251	2	267.87	6,078.64	0.098	0.164	4577	
322,925,288	0.300	---	---	---	23/05/2007	10/04/2000	4554	M.J. MAILLIS SA (CR)	0.115	---	-	0.115	13/11/2014	0.115	0.115	0.115	0.115	0.115	6958105@0.115	1384@0.120	---	2013	255,996	89	29,439.55	37,136.41	0.067	0.144	2723	
4,178,856	1.58	---	---	---	21/07/2011	28/07/2004	4983	MEDICON S.A (CR)	0.480	---	-	0.480	03/11/2014	---	---	---	---	---	---	1190@0.384	19.79	2013	---	---	---	---	2,005.85	0.251	0.952	4535
255,459,600	0.300	---	---	---	26/06/2000	03/12/2010	4833	NEL SA (CR)	0.044	15.79	↑	0.038	13/11/2014	0.044	0.044	0.045	0.045	0.044	170@0.043	3239@0.045	---	2013	5,773	11	254.53	11,240.22	0.016	0.090	5759	
20,231,328	0.600	---	---	---	15/07/2008	25/06/2004	4879	NIKAS SA (CR)	0.170	---	-	0.170	06/11/2014	---	---	---	---	---	1000@0.150	---	---	2013	---	---	---	---	3,439.33	0.170	0.200	3577
14,967,940	0.500	---	---	---	21/05/2008	04/01/2008	4956	PASAL DEVELOPMENT S.A. (CR)	0.088	---	-	0.088	12/11/2014	---	---	---	---	---	10000@0.080	---	---	2013	---	---	---	---	1,317.18	0.088	0.239	8633
18,750,000	0.300	---	---	---	02/07/2001	31/12/2012	4985	PEGASUS PUBLISHING S.A. (CR)	0.040	---	-	0.040	13/11/2014	---	---	---	---	---	25982@0.040	2@0.048	---	2013	---	---	---	---	750.00	0.015	0.300	5557
24,319,250	0.300	---	---	---	09/07/2002	04/07/2007	5054	PROODEFTIKH SA (CR)	0.076	---	-	0.076	13/11/2014	---	---	---	---	---	3000@0.061	4990@0.090	---	2013	---	---	---	---	1,848.26	0.064	0.188	2357
65,326,268	0.530	---	---	---	04/07/2007	19/07/2006	4750	SATO SA (CR)	0.120	---	-	0.120	12/11/2014	---	---	---	---	---	---	1012@0.110	---	2013	---	---	---	---	7,839.15	0.068	0.250	3726
36,235,184	1.00	---	---	---	01/07/2008	30/07/2012	4961	SELONDA AQUACULTURE SA (CR)	0.087	17.57	↑	0.074	13/11/2014	0.087	0.087	0.087	0.087	0.087	3550@0.073	110@0.087	---	2013	2,000	2	174.00	3,152.46	0.066	0.152	3573	
7,914,480	2.50	---	---	---	23/06/2008	29/06/2011	4888	SFAKIANAKIS SA (CR)	0.670	---	-	0.670	10/11/2014	---	---	---	---	---	1085@0.670	1029@0.750	---	2013	---	---	---	---	5,302.70	0.488	1.15	5379
10,000,000	1.35	---	---	---	24/06/2008	10/05/2005	4887	SIDMA SA (CR)	0.300	---	-	0.300	13/11/2014	---	---	---	---	---	---	410@0.358	---	2013	---	---	---	---	3,000.00	0.200	0.520	1757
29,060,950	0.340	---	---	---	20/08/2007	24/10/2001	4884	SPIDER METAL INDUSTRY SA (CR)	0.011	---	-	0.011	11/11/2014	---	---	---	---	---	3000@0.009	---	---	2013	---	---	---	---	319.67	0.011	0.070	2757
100,793,000	0.300	---	---	---	16/07/2009	05/08/2013	5008	TELETIPOS SA (CR)	0.172	---	-	0.172	05/11/2014	---	---	---	---	---	---	900@0.206	---	2013	---	---	---	---	17,336.40	0.111	0.345	5553
3,229,566	0.320	---	---	---	22/06/2005	23/09/1999	4629	VARANGIS AVEPE S.A. (CR)	0.600	---	-	0.600	19/06/2014	---	---	---	---	---	---	163@0.590	---	2013	---	---	---	---	1,937.74	0.600	1.00	3726
16,383,428	0.300	---	---	---	25/06/2002	21/06/2013	4997	VARVARESSOS SA (CB)	0.161	---	-	0.161	04/11/2014	---	---	---	---	---	---	33000@0.193	0.22	2013	---	---	---	---	2,637.73	0.062	0.293	3763
13,191,620	0.620	---	---	---	04/08/2010	09/09/2002	4977	YALCO - CONSTANTINOU SA (CB)	0.080	---	-	0.080	12/11/2014	---	---	---	---	---	---	3000@0.096	---	2013	---	---	---	---	1,055.33	0.052	0.241	3722

Under Deletion

9,567,289	0.300	---	---	---	01/07/2004	19/11/2007	5062	MARAC ELECTRONICS (CR)	0.280	---	0.280	07/10/2014	---	---	---	---	---	1800@0.298	---	2013	---	---	---	2,678.84	0.280	0.356	9578
40,946,303	0.360	---	---	---	18/07/2005	27/11/2007	5053	PC SYSTEMS SA (CR)	0.041	---	0.041	11/11/2014	---	---	---	---	1200@0.035	90@0.040	---	2013	---	---	---	1,678.80	0.039	0.169	9533
766,000	1.50	---	---	---	01/07/2004	11/12/2012	4937	TRIA ALFA SA (CR)	2.29	---	2.29	25/06/2014	---	---	---	---	---	500@2.29	---	2013	---	---	---	2,084.89	1.72	3.33	3763
245,000	1.50	---	---	---	19/07/2010	11/12/2012	4938	TRIA ALFA SA (PR)	1.35	---	1.35	16/09/2014	---	---	---	---	---	139@1.60	---	2013	---	---	---	2,084.89	0.969	2.57	3763

Suspension Status

5,025,000	0.300	---	---	---	05/07/2005	14/03/2002	5023	ALSINCO S.A (CR)	0.043	---	0.043	27/11/2013	---	---	---	---	---	---	---	---	---	---	---	216.08	0.043	0.043	3763
1,750,955,549	0.600	---	---	---	19/05/2008	08/12/2011	4911	ATE (CR)	0.155	---	0.155	30/07/2012	---	---	---	---	---	---	---	---	---	---	---	271,398.11	0.155	0.155	8355
21,382,067	0.300	---	---	---	02/10/2006	15/02/2006	4628	ATERMON (CR)	0.120	---	0.120	31/03/2010	---	---	---	---	---	---	---	---	---	---	---	2,565.85	0.120	0.120	5555
105,423,498	0.510	---	---	---	01/07/2004	28/12/2005	4920	AVENIR S.A. (CR)	0.046	---	0.046	30/08/2012	---	---	---	---	---	---	---	---	---	---	---	4,849.48	0.046	0.046	5752
33,930,000	0.300	---	---	---	03/07/2006	30/05/2001	4865	BABIS VOVOS SA (CR)	0.304	---	0.304	30/03/2012	---	---	---	---	---	---	---	---	---	---	---	10,314.72	0.304	0.304	8633

Daily Official List

Year: 135 Trading Day No: 218

Friday, 14 November, 2014

Section 2: Analytic Figures of Shares Transactions

Number of Outstanding Securities	Nominal Value	Dividends [1]			Date of Last Coupon		Note	Shares	Closing price	% change	Previous closing price/date	Open price	Price min	Price max	Last price	Avg price	Last Bid [7]	Last Ask [7]	P/E after	Year	Volume	Trades	Transactions Value	Company Mkt Value (thou. €)	Year low	Year high	Sector[4]
Suspension Status																											
20,121,710	1.21	---	---	---	27/07/1992	12/03/2003	5002	BALKAN R.E. (CR)	0.190	---	0.190	29/08/2013	---	---	---	---	---	---	---	---	---	---	---	3,823.12	0.190	0.190	8633
1,795,140,547	1.00	---	---	---	31/05/2011	19/04/2012	4951	BANK OF CYPRUS (CR)	0.207	---	0.207	15/03/2013	---	---	---	---	---	---	---	---	---	---	---	371,594.09	0.207	0.207	8355
21,920,570	0.300	---	---	---	03/07/2007	13/12/1999	4702	CARDASSILARIS SA (CR)	0.140	---	0.140	30/11/2010	---	---	---	---	---	---	---	---	---	---	---	3,068.88	0.140	0.140	3577
54,547,634	0.500	---	---	---	25/04/2005	21/01/2009	4860	CH.TEGOPOULOS PUBL. SA (CR)	0.038	---	0.038	23/03/2012	---	---	---	---	---	---	---	---	---	---	---	2,072.81	0.038	0.038	5557
26,664,840	0.470	---	---	0.007	26/06/2014	12/07/1999	5074	CYCLON HELLAS SA (CR)	0.700	---	0.700	30/10/2014	---	---	---	---	---	---	---	---	---	---	---	18,665.39	0.450	0.720	1357
30,159,583	0.470	---	---	---	26/06/2008	29/12/2010	5047	DIAS A/C (CR)	0.050	---	0.050	26/03/2014	---	---	---	---	---	---	---	---	---	---	---	1,507.98	0.040	0.092	3573
7,847,611	1.20	---	---	---	01/08/2007	28/09/2011	4939	EDRASIS - C. PSALLIDAS SA (CR)	0.150	---	0.150	19/11/2012	---	---	---	---	---	---	---	---	---	---	---	1,177.14	0.150	0.150	2357
5,750,000	0.300	---	---	---	12/12/2008	12/12/2011	4929	ELECTRONIKI ATHINON SA (CR)	0.480	---	0.480	07/09/2012	---	---	---	---	---	---	---	---	---	---	---	2,760.00	0.480	0.480	5375
24,605,397	0.400	---	---	---	29/06/1995	27/05/2002	4651	EMPORIKOS DESMOS SA (CR)	0.080	---	0.080	28/05/2010	---	---	---	---	---	---	---	---	---	---	---	2,134.04	0.080	0.080	3722
1,182,903	0.400	---	---	---	01/07/1996	27/05/2002	4652	EMPORIKOS DESMOS SA (PR)	0.140	---	0.140	28/09/2009	---	---	---	---	---	---	---	---	---	---	---	2,134.04	0.140	0.140	3722
7,326,648	1.00	---	---	---	26/07/2006	24/07/2001	4921	FINTEXPORT SA (CR)	0.328	---	0.328	29/06/2012	---	---	---	---	---	---	---	---	---	---	---	2,403.14	0.328	0.328	3763
13,692,227	1.47	---	---	---	07/07/2006	08/10/1999	5049	HELLENIC FABRICS SA (CR)	0.117	---	0.117	31/03/2014	---	---	---	---	---	---	---	---	---	---	---	1,601.99	0.089	0.153	3763
24,619,524	0.500	---	---	---	10/10/1986	30/12/2002	4914	KERAMIA-ALLATINI (CR)	0.088	---	0.088	27/08/2012	---	---	---	---	---	---	---	---	---	---	---	2,166.52	0.088	0.088	8633
7,840,373	1.20	---	---	---	18/07/2002	05/03/2003	4765	KLONATEX SA (PR)	0.080	---	0.080	09/05/2011	---	---	---	---	---	---	---	---	---	---	---	1,453.75	0.080	0.080	3763
20,663,047	1.20	---	---	---	21/08/2000	05/03/2003	4764	KLONATEX SA (CR)	0.040	---	0.040	09/05/2011	---	---	---	---	---	---	---	---	---	---	---	1,453.75	0.040	0.040	3763
17,544,600	0.600	---	---	---	03/07/2000	01/08/2000	4868	KOYMBAS SYNERGY GROUP (CR)	0.132	---	0.132	29/03/2012	---	---	---	---	---	---	---	---	---	---	---	2,315.89	0.132	0.132	8775
15,015,000	1.60	---	---	---	01/07/2002	02/02/2000	4603	MAXIM C.M. PERTSINIDIS SA (CB)	0.100	---	0.100	30/11/2009	---	---	---	---	---	---	---	---	---	---	---	1,501.50	0.100	0.100	3763
66,937,526	0.700	---	---	---	13/08/2010	21/05/2003	5003	MICHANIKI SA (CR)	0.100	---	0.100	29/08/2013	---	---	---	---	---	---	---	---	---	---	---	9,186.78	0.100	0.100	2357
25,968,987	0.700	---	---	---	13/08/2010	21/05/2003	5004	MICHANIKI SA (PR)	0.096	---	0.096	29/08/2013	---	---	---	---	---	---	---	---	---	---	---	9,186.78	0.096	0.096	2357
13,555,100	1.00	---	---	---	08/07/2005		4576	MICROLAND COMPUTERS SA (CR)	0.640	---	0.640	14/07/2009	---	---	---	---	---	---	---	---	---	---	---	8,675.26	0.640	0.640	5379
23,463,874	0.800	---	---	---	23/05/2003	21/12/1999	4918	NEORION SA (CR)	0.125	---	0.125	28/08/2012	---	---	---	---	---	---	---	---	---	---	---	2,932.98	0.125	0.125	2753
42,501,273	0.300	---	---	---	26/06/2007	10/08/2009	4993	NUTRIART (CR)	0.049	---	0.049	21/06/2013	---	---	---	---	---	---	---	---	---	---	---	2,082.56	0.049	0.049	3577
20,210,127	1.53	---	---	---	27/06/1997	20/03/2000	5061	PARNASSOS ENTERP. (CR)	0.070	---	0.070	29/05/2014	---	---	---	---	---	---	---	---	---	---	---	1,414.71	0.065	0.172	8775
25,583,146	0.300	---	---	---	25/06/2001	03/12/2008	4723	PETZETAKIS SA (CR)	0.260	---	0.260	28/01/2011	---	---	---	---	---	---	---	---	---	---	---	6,651.62	0.260	0.260	1357
9,550,386	0.500	---	---	---	01/07/1997	12/06/2008	4626	PRAXITELIO SA (CR)	0.390	---	0.390	11/03/2010	---	---	---	---	---	---	---	---	---	---	---	4,430.09	0.390	0.390	4533
1,306,368	0.500	---	---	---	01/07/1997	12/06/2008	4627	PRAXITELIO SA (PR)	0.540	---	0.540	15/12/2009	---	---	---	---	---	---	---	---	---	---	---	4,430.09	0.540	0.540	4533
62,683,822	0.300	---	---	---	27/05/2008	09/01/2006	4830	PROTON BANK S.A. (CR)	0.180	---	0.180	07/10/2011	---	---	---	---	---	---	---	---	---	---	---	11,283.09	0.180	0.180	8355
51,334,286	0.320	---	---	---	03/07/2000	18/12/2007	4548	SAOS (CR)	0.780	---	0.780	27/03/2009	---	---	---	---	---	---	---	---	---	---	---	40,040.74	0.780	0.780	2773
26,408,040	0.300	---	---	---	01/07/1997	26/05/1999	4464	SHEET STEEL SA (CR)	0.120	---	0.120	28/11/2008	---	---	---	---	---	---	---	---	---	---	---	3,168.96	0.120	0.120	1757
60,221,300	0.400	---	---	---	01/07/2002	01/11/2010	5022	SHELMAN SA (CR)	0.080	---	0.080	19/11/2013	---	---	---	---	---	600@0.080	---	---	---	---	---	4,817.70	0.080	0.080	2353
26,262,660	0.900	---	---	---	01/07/2008	24/02/2011	4954	SPRIDER STORES (CR)	0.031	---	0.031	28/03/2013	---	---	---	---	---	---	---	---	---	---	---	814.14	0.031	0.031	5371
144,688,060	0.600	---	---	---	21/04/2008	10/03/2010	4982	T BANK (CR)	0.048	---	0.048	30/11/2011	---	---	---	---	---	---	---	---	---	---	---	6,945.03	0.048	0.048	8355
6,523,780	0.530	---	---	---	01/07/2002	06/03/2001	4971	TECHNICAL PUBLICATIONS SA (CR)	0.006	---	0.006	29/05/2013	---	---	---	---	---	---	---	---	---	---	---	39.14	0.006	0.006	5557
13,920,000	0.320	---	---	---	19/11/2001	01/08/2000	4726	TEXAPRET SA (CR)	0.080	---	0.080	23/02/2011	---	---	---	---	---	---	---	---	---	---	---	1,113.60	0.080	0.080	3763
510,840	1.00	---	---	---	15/07/2008	21/11/2013	5036	TROPEA HOLDING (CR)	2.00	---	0.020	# 30/03/2012	---	---	---	---	---	---	---	---	---	---	---	1,021.68	0.020	2.00	3722
284,465,964	3.70	---	---	---	20/06/2008	15/06/2009	4913	TT HELLENIC POSTBANK (CR)	0.168	---	0.168	30/08/2012	---	---	---	---	---	---	---	---	---	---	---	47,790.28	0.168	0.168	8355
89,616,200	0.300	---	---	---	21/08/2000	28/06/2007	4616	UNITED TEXTILES (CR)	0.050	---	0.050	25/02/2010	---	---	---	---	---	---	---	---	---	---	---	4,480.81	0.050	0.050	3763
71,683,906	0.400	---	---	---	15/06/2005	05/02/2008	4953	XATZIOANNOU (CR)	0.026	---	0.026	28/03/2013	---	---	---	---	---	---	---	---	---	---	---	1,863.78	0.026	0.026	3763

Number of Outstanding Securities	Nominal Value	Dividends [1]			Date of Last Coupon		Note	Shares	Closing price	% change	Previous closing price/date	Open price	Price min	Price max	Last price	Avg price	Last Bid [7]	Last Ask [7]	P/E after	Year	Volume	Trades	Transactions Value	Company Mkt Value (thou. €)	Year low	Year high	Sector[4]
		2011	2012	2013	Dividend [2]	Right																					

Shares' Notes

Code	Note text
()	- Adjusted dividends.
*	- Last adjusted closing price.
[1]	- Net dividends.
[2]	- The "Date of Last Coupon" for New listings refers to the date company's stocks started to trade in Athex
[3]	- The Company Market Value is referred to the number of outstanding shares
[4]	- Sectors codification can be found in Appendix A
[5]	- The Market Value refers to the total number of shares listed (including their several classes) in the exchange by the company.
[6]	- P/E greater than 100
[7]	- Last view of the Order Book before the end of the trading session
4446	- Transfer to the "Under Supervision" Category as of 20/10/2008.
4447	- Transfer to the "Under Supervision" Category as of 21/10/2008.
4464	- Suspension of trading as of 1/12/2008.
4548	- Suspension of trading as of 1/4/2009.
4554	- Transfer to the "Under Supervision" Category as of 6/4/2009.
4576	- Suspension of trading as of 14/7/2009.
4603	- Suspension of trading as of 1/12/2009.
4616	- Suspension of trading as of 25/2/2010.
4626	- Suspension of trading as of 1/4/2010.
4627	- Suspension of trading as of 1/4/2010.
4628	- Suspension of trading as of 1/4/2010.
4629	- Transfer to the Under Supervision Category as of 12/4/2010.
4651	- Suspension of trading as of 1/6/2010.
4652	- Suspension of trading as of 1/6/2010.
4690	- Transfer to Surveillance category as of 4/4/2006.
4702	- Suspension of trading as of 1/12/2010.
4723	- Suspension of trading as of 31/1/2011.
4726	- Suspension of trading as of 1/3/2011.
4750	- Transfer to the "Under Surveillance Category" from 8/4/2011.
4764	- Suspension of trading as of 20/5/2011.
4765	- Suspension of trading as of 20/5/2011.
4795	- The final gross (pre-tax) dividend is € 0.30 per share and subject to withholding tax on the full dividend amount, i.e. 0,45 per share, for those shareholders liable to withholding tax, in accordance with the applicable tax law provisions.
4808	- Suspension of trading as of 6/9/2011.
4814	- Transfer to the Low Dispersion Category as of 30/5/2011.
4815	- Transfer to the Low Dispersion Category as of 30/5/2011.
4816	- Transfer to the Low Dispersion Category as of 30/5/2011.
4817	- Transfer to the Low Dispersion Category as of 30/5/2011.
4820	- Transfer to the Low Dispersion category as of 18/4/2008.
4822	- Transfer to the Low Dispersion category as of 30/5/2011.
4823	- Transfer to the Low Dispersion category as of 4/4/2006.
4827	- Transfer to the Low Dispersion category as of 5/5/2010.
4830	- Suspension of trading as of 10/10/2011.
4833	- Transfer to Surveillance category from 6/5/2010.
4844	- Transfer to the Surveillance category from 8/4/2011.
4847	- Transfer to the Surveillance Category as of 3/7/2009.
4860	- Suspension of trading as of 30/3/2012.
4865	- Suspension of trading as of 2/4/2012.
4868	- Suspension of trading as of 2/4/2012.
4879	- Transfer to the Surveillance Category as of 10/4/2012.
4881	- Transfer to the Surveillance Category as of 10/4/2012.
4882	- Transfer to the Surveillance Category as of 10/4/2012.
4884	- Transfer to the Surveillance Category as of 10/4/2012.

Shares' Notes

Code	Note text
4885	- Transfer to the Surveillance Category as of 10/4/2012.
4886	- Transfer to the Surveillance Category as of 10/4/2012.
4887	- Transfer to the Surveillance Category as of 10/4/2012.
4888	- Transfer to the Surveillance Category as of 10/4/2012.
4911	- Lift of suspension from 30/7/2012.
4912	- Transfer to the Surveillance Category as of 31/7/2012.
4913	- Suspension of trading as of 30/8/2012.
4914	- Suspension of trading as of 31/8/2012.
4918	- Suspension of trading as of 31/8/2012.
4920	- Suspension of trading as of 31/8/2012.
4921	- Suspension of trading as of 31/8/2012.
4929	- Suspension of trading as of 1/10/2012.
4937	- Transfer to the UNDER DELETION category as of 30/11/2012.
4938	- Transfer to the UNDER DELETION category as of 30/11/2012.
4939	- Suspension of trading as of 30/11/2012.
4951	- Suspension of trading as of 19/3/2013.
4953	- Suspension of trading as of 2/4/2013.
4954	- Suspension of trading as of 2/4/2013.
4955	- Transfer to the Surveillance Category as from 5/4/2013.
4956	- Transfer to the Surveillance Category as from 5/4/2013.
4957	- Transfer to the Surveillance Category as from 5/4/2013.
4958	- Transfer to the Surveillance Category as from 5/4/2013.
4959	- Transfer to the Surveillance Category as from 5/4/2013.
4960	- Transfer to the Surveillance Category as from 5/4/2013.
4961	- Transfer to the Surveillance Category as from 5/4/2013.
4971	- Suspension of trading as of 3/6/2013.
4977	- Transfer to the "Under Surveillance Category" from 11/6/2013.
4978	- Transfer to the Under Supervision Category as of 11/6/2013.
4982	- Suspension of trading as of 1/12/2011.
4983	- Transfer to the Surveillance Category as of 5/4/2013.
4985	- Transfer to the "Under Surveillance Category" from 8/4/2011.
4986	- Transfer to the Low Dispersion category as of 30/5/2011.
4993	- Suspension of trading as of 21/6/2013 (15:18).
4997	- Transfer to the Under Supervision Category as of 21/12/2009. - The 6,870,053 new (CB) shares, resulting from the recent share capital increase through a rights issue, are not yet admitted to trading on the ATHEX.
5002	- Suspension of trading as of 30/08/2013.
5003	- Suspension of trading as of 30/08/2013.
5004	- Suspension of trading as of 30/08/2013.
5007	- Transfer to the Surveillance category, as of 11/10/2013.
5008	- Transfer to the Surveillance Category from 8/4/2011.
5022	- Suspension of trading as of 2/12/2013.
5023	- Suspension of trading as of 2/12/2013.
5031	- The 612,300 new (CR) shares, resulting from the recent share capital increase through a rights issue, are not yet admitted to trading on the ATHEX.
5033	- Transfer to the Surveillance Category as of 25/11/2011. The 97,144,575new (CR) shares, resulting from the recent share capital increase through a rights issue, are not yet admitted to trading on the ATHEX.
5036	- The company's share is under suspension of trading as of 2/4/2012. During suspension, the company proceeded and concluded a share reverse split, according to which - after the conclusion of the corporate action - the total number of the company's shares, as well as, the last closing price of 30/03/2012 were adjusted.
5046	- Transfer to the Low Dispersion category as of 8/4/2011.
5047	- Suspension of trading as of 27/3/2014.
5049	- Under suspension of trading as of 1/4/2014.
5053	- Transfer to the UNDER DELETION category as of 10/4/2014.
5054	- Transfer to the Surveillance Category as of 10/4/2014.
5055	- Transfer to the Surveillance Category as of 10/4/2014.
5056	- Transfer to the Under Supervision Category as of 14/4/2014.

Shares' Notes

Code	Note text
5057	- Transfer to the Surveillance Category as of 29/12/2011.
5058	- Transfer to the Surveillance Category as of 29/12/2011.
5059	- Transfer to the Low Dispersion category as of 2/6/2014.
5061	- Suspension of trading as of 2/6/2014.
5062	- Transfer to the UNDER DELETION category as of 4/6/2014.
5069	- Suspension of trading as of 1/10/2014.
5073	- The 90,000 new (CR) shares, resulting from the recent share capital increase through a rights issue, are not yet admitted to trading on the ATHEX.
5074	- Suspension of trading as of 31/10/2014.
5075	- Transfer to the "Low Dispersion" Category as of 31/10/2014.

Securities Blocks Details

Securities	Block Volume	Price	Block Trade Value	Time of approval	Note
NATIONAL BANK (CR)	315,817	1.71	540,047.07	10:31:07	20
OPAP (CR)	57,500	9.03	519,225.00	10:50:25	20
ALPHA BANK (CR)	1,000,000	0.500	500,000.00	11:12:18	20
EUROBANK ERGASIAS (CR)	1,340,000	0.243	325,620.00	11:13:20	20
ALPHA BANK (CR)	1,000,000	0.499	499,000.00	11:23:51	20
EUROBANK ERGASIAS (CR)	1,340,000	0.241	322,940.00	11:24:11	20
PPC (CR)	50,000	5.90	295,000.00	14:06:47	20
NATIONAL BANK (CR)	250,000	1.71	427,500.00	15:14:54	20
FRIGOGLASS SA (CR)	533	1.98	1,055.34	16:30:25	18
EYDAP S.A. (CR)	500	6.60	3,300.00	16:31:36	18
MOTOR OIL (CR)	1,680	6.17	10,365.60	16:32:54	18
METKA (CR)	8,000	9.30	74,400.00	16:38:40	18

Blocks Notes

2 - SPOT 1 or SPOT 2 Packet	11 - Total Assets > 500 bil
3 - Block with Short Selling	12 - Sell Offer through Athex
4 - Buy to Close Block	13 - Forced Sale of NMOE
6 - Simultaneous Constitution	14 - Restoration Packet
7 - Repurchase Agreement	15 - Market Maker Packet
8 - Dispersion's Achievement (Not Listed)	16 - Short Selling
9 - Dispersion's Achievement (Listed)	18 - SPOT 1 Packet
10 - Share Capital Majority of Greek State (> 50 bil)	20 - Method 6-1 Packet

Shares Rights Details

Occured date	Exercise from	Exercise until	Trading until	Rights	Price min	Price max	Closing price	Last Bid	Last Ask	Volume	Trades	Transactions Value
-----------------	------------------	-------------------	------------------	--------	--------------	--------------	------------------	----------	----------	--------	--------	-----------------------

No Rights Transactions.

Stock Borrowing

Securities	Stock Borrowing through Helex (volume)	Stock Borrowing through OTC (volume) [1]	Totals [2]
ALPHA BANK (CR)	3,664,900	81,919,712	85,584,612
ALPHA BANK (W)	---	36,300	36,300
ATE (CR)	---	69,000	69,000
ATTICA BANK S.A. (CR)	72,800	---	72,800
BANK OF CYPRUS (CR)	---	102,899	102,899
CC HBC AG (CR)	244,300	75,131	319,431
ELLAKTOR (CR)	77,700	25,409	103,109
EUROBANK ERGASIAS (CR)	8,528,600	23,923,130	32,451,730
EYDAP S.A. (CR)	63,800	12,000	75,800
FOLLI FOLLIE (CR)	140,100	925,467	1,065,567
FOURLIS (CR)	6,600	3,850	10,450
FRIGOGLASS SA (CR)	2,800	---	2,800
GEK TERNA (CR)	9,200	---	9,200
GRIVALIA PROPERTIES (CR)	56,800	67,409	124,209
HELLENIC EXCHANGES-A.S.E. (CR)	14,800	300	15,100
HELLENIC PETROLEUM (CR)	18,600	196,652	215,252
INTRALOT (CR)	137,400	10,000	147,400
JUMBO SA (CR)	158,400	5,388	163,788
LAMDA DEVELOPMENT SA (CR)	---	10,377	10,377
MARFIN INVESTMENT GROUP (CR)	286,100	728,474	1,014,574
METKA (CR)	17,300	4,731	22,031
MOTOR OIL (CR)	60,300	43,820	104,120
MYTILINEOS HOLDINGS (CR)	14,200	1,000	15,200
NATIONAL BANK (CR)	318,400	521,557	839,957
OPAP (CR)	415,900	21,093	436,993
OTE (CR)	350,200	205,960	556,160
P.P.A. S.A. (CR)	1,000	---	1,000
PIRAEUS BANK (CR)	1,893,700	18,947,397	20,841,097
PPC (CR)	247,300	2,066,364	2,313,664
SIDENOR (CR)	5,000	---	5,000
TERNA ENERGY (CR)	7,200	---	7,200
TITAN CEMENT (CR)	130,400	13,704	144,104
YALCO - CONSTANTINOI SA (CB)	---	8,000	8,000

Stock Borrowing Notes

[1] - The information concerning OTC Stock Borrowing Transactions is based on the statements of the Dematerialised Securities System (DSS) operators involved and refers to volumes that have been cleared and registered up until the previous working day.

Shares Forced Sales

Securities	Transaction s Volume	Number of Trades	Transactions Value	Note
No Forced Transactions.				

Forced Sales Notes

- 1 - Normal Forced Sale.
- 2 - Forced Sales of Fixed Registered Shares.
- 3 - Forced Sales of Remaining Stock Fractions.

Forced Sales Registered Shares

Securities	Start Date	End Date	Initial Volume	Remaining Volume	Date	Avg price (day)	Avg price (period)	Number of Trades	Transactions Volume	Transactions Value
------------	------------	----------	-------------------	---------------------	------	--------------------	-----------------------	---------------------	------------------------	-----------------------

No Fixed Registered Shares Forced Sales.

Forced Sales Notes

According to Decision 1/380/04.05.2008 of the Hellenic Republic Capital Market Commission, the certificated registered shares that have not been deposited to the issuer for dematerialisation, will be auctioned in the Athens Exchange by the supervising issuer. Forced sales procedure is held according to Article 99A of the Athens Exchange Rulebook. The average price of the period is calculated by dividing the Total transactions value by the Total volume and includes all the transactions made until the current date.

Exchange Traded Funds (ETFs) Characteristics

	Transactions Date (T)	Creation / Redemption	Units (T-1)	New Units (T-1)	Redemptio n Units (T-	Units (T) [1]	Fund Assets [2]	Net Unit Price	Dividen d per	Dividend Date
NBGAM ETF ΓΔ Χ.Α.	14/11/2014	25,000	294,878	---	---	294,878	2,892,560.00	9.8093	---	27/10/2011
ALPHA ETF FTSE Athex Large Cap	14/11/2014	50,000	5,848,618	---	---	5,848,618	16,751,680.00	2.8642	0.05	01/07/2013
NBGAM ETF GREECE & TURKEY 30	14/11/2014	25,000	388,550	---	---	388,550	3,135,355.00	8.0694	---	27/10/2011

ETFs Notes

[1] - Units (T) = Units (T-1) + New Units (T-1) - Redemption Units (T-1)

[2] - The Creation / Redemption Units of T-1 are included.

Corporate Bonds

Num Listed Bonds	Nominal price	Issue price	Today's Rate	Exp. Date	Duration (years)	Note	Coupon attached		Trading	Corporate Bonds	Price min	Price max	Closing price	Previous closing price/date		Volume	Transactions Value	Last order		Date	ear min	Year max
							Common	Preferred										Price	Buy / Sell			
4,122,910	4.77	4.77	5.00	19/03/2015	5	---	19	---	1	MARFIN INVESTMENT GROUP S.A. (Conver to CR shar)	---	---	---	90.0000	04/11/2014	---	---	40.0000	B	13/11/2014	4.7761	94.8000
1,794,284	12.49	9.77	5.08	12/07/2015	8	---	---	---	1	NIREUS S.A. (Convertible to CR shares)	---	---	---	12.0000	29/01/2014	---	---	12.0000	B	12/11/2014	12.0000	12.0000
212,801,311	1.00	1.00	6.30	29/07/2020	7	---	6	---	1	MARFIN INVESTMENT GROUP S.A. SERIES B (BOND)	---	---	---	0.8500	23/08/2013	---	---	1.0000	B	14/11/2014	0.8500	0.8500
163,991,598	1.00	1.00	7.00	29/07/2019	6	---	6	---	1	MARFIN INVESTMENT GROUP S.A. SERIES A (BOND)	---	---	---	1.0000	23/08/2013	---	---	1.0000	B	14/11/2014	1.0000	1.0000

Corporate Bonds Notes

Transactions Volume = (Pieces) * (Nominal Price). Transactions Value = (Pieces) * (Nominal Price) * (price %) + (Accrued interest).
The price of a Bond is stated as a percentage (%) of Bond's Nominal Price.
Nominal Price in Euros (€), except if it is noted differently.

Government Bonds

Number Listed Bonds	Nominal price	Today's Rate	Accrued Interest Calc	Exp. Date [1]	Duration (years)	Note	Coupons Date	Curr. coupon value	Trading Unit	Government Bonds	Price min	Price max	Closing price	Previous closing price/date	Volume	Transactions Value	Price	Last order Buy / Sell	Date
2,658,781,973	1.00	4.30	Actual/Actual	24/02/2023	11	---	24/02	4.30	1	GGB-FXD-240223-11Y-2.000-1.00	---	---	---	---	---	---	---	---	---
2,658,781,973	1.00	4.30	Actual/Actual	24/02/2024	12	---	24/02	4.30	1	GGB-FXD-240224-12Y-2.000-1.00	---	---	---	---	---	---	---	---	---
2,658,781,973	1.00	4.30	Actual/Actual	24/02/2025	13	---	24/02	4.30	1	GGB-FXD-240225-13Y-2.000-1.00	---	---	---	---	---	---	---	---	---
2,658,781,973	1.00	4.30	Actual/Actual	24/02/2026	14	---	24/02	4.30	1	GGB-FXD-240226-14Y-2.000-1.00	---	---	---	---	---	---	---	---	---
2,658,781,973	1.00	4.30	Actual/Actual	24/02/2027	15	---	24/02	4.30	1	GGB-FXD-240227-15Y-2.000-1.00	---	---	---	---	---	---	---	---	---
2,836,034,104	1.00	4.30	Actual/Actual	24/02/2028	16	---	24/02	4.30	1	GGB-FXD-240228-16Y-2.000-1.00	---	---	---	---	---	---	---	---	---
2,836,034,104	1.00	4.30	Actual/Actual	24/02/2029	17	---	24/02	4.30	1	GGB-FXD-240229-17Y-2.000-1.00	---	---	---	---	---	---	---	---	---
2,836,034,104	1.00	4.30	Actual/Actual	24/02/2030	18	---	24/02	4.30	1	GGB-FXD-240230-18Y-2.000-1.00	---	---	---	---	---	---	---	---	---
2,836,034,104	1.00	4.30	Actual/Actual	24/02/2031	19	---	24/02	4.30	1	GGB-FXD-240231-19Y-2.000-1.00	---	---	---	---	---	---	---	---	---
2,836,034,104	1.00	4.30	Actual/Actual	24/02/2032	20	---	24/02	4.30	1	GGB-FXD-240232-20Y-2.000-1.00	---	---	---	---	---	---	---	---	---
2,836,034,104	1.00	4.30	Actual/Actual	24/02/2033	21	---	24/02	4.30	1	GGB-FXD-240233-21Y-2.000-1.00	---	---	---	---	---	---	---	---	---
2,836,034,104	1.00	4.30	Actual/Actual	24/02/2034	22	---	24/02	4.30	1	GGB-FXD-240234-22Y-2.000-1.00	---	---	---	---	---	---	---	---	---
2,836,034,104	1.00	4.30	Actual/Actual	24/02/2035	23	---	24/02	4.30	1	GGB-FXD-240235-23Y-2.000-1.00	---	---	---	---	---	---	---	---	---
2,836,034,104	1.00	4.30	Actual/Actual	24/02/2036	24	---	24/02	4.30	1	GGB-FXD-240236-24Y-2.000-1.00	---	---	---	---	---	---	---	---	---
2,836,034,104	1.00	4.30	Actual/Actual	24/02/2037	25	---	24/02	4.30	1	GGB-FXD-240237-25Y-2.000-1.00	---	---	---	---	---	---	---	---	---
2,836,034,104	1.00	4.30	Actual/Actual	24/02/2038	26	---	24/02	4.30	1	GGB-FXD-240238-26Y-2.000-1.00	---	---	---	---	---	---	---	---	---
2,836,034,104	1.00	4.30	Actual/Actual	24/02/2039	27	---	24/02	4.30	1	GGB-FXD-240239-27Y-2.000-1.00	---	---	---	---	---	---	---	---	---
2,836,034,104	1.00	4.30	Actual/Actual	24/02/2040	28	---	24/02	4.30	1	GGB-FXD-240240-28Y-2.000-1.00	---	---	---	---	---	---	---	---	---
2,836,034,104	1.00	4.30	Actual/Actual	24/02/2041	29	---	24/02	4.30	1	GGB-FXD-240241-29Y-2.000-1.00	---	---	---	---	---	---	---	---	---
2,836,034,104	1.00	4.30	Actual/Actual	24/02/2042	30	---	24/02	4.30	1	GGB-FXD-240242-30Y-2.000-1.00	---	---	---	---	---	---	---	---	---
742,153	1,000.00	0.93	FLR Actual/360	10/08/2019	5	---	10/02 - 10/08	---	1	GGB-FLT-100819-05Y-0.934-1,000	---	---	---	---	---	---	---	---	---
4,030,827	1,000.00	4.75	Actual/Actual	17/04/2019	5	---	17/04	4.75	1	GGB-FXD-170419-05Y-4.750-1,000	---	---	---	---	---	---	---	---	---
2,089,066	1,000.00	3.38	Actual/Actual	17/07/2017	3	---	17/07	3.38	1	GGB-FXD-170717-03Y-3.375-1,000	---	---	---	---	---	---	---	---	---

Government Bonds Notes

Transactions Volume = (Pieces) * (Nominal Price). Transactions Value = (Pieces) * (Nominal Price) * (price %) + (Accrued interest).

The Value of current coupon for the issues with NV 0.01 euro refers to NV 100 euros

FLR: Floating Interest Rate.

[1] - The Expiration Date of the interest bearing period and the Date for coupon payment.

Bonds in Circulation	Currency / Min nominal traded Value	Coupons Payment Date	Current Coupon Value	Note	Coupon Attached	Trading Unit	Issue Date	Duration (years)	Today's Interest	A.I.C in days	Bonds	Last price of previous days	Last Outcry in Cash (euro) Price	Buy / Sell	Date	Trades in Pieces	Life min	Life Max
Bonds of International Organizations																		
1,000,000	EUR / 1000	21/07	---	---	9	1	21/07/2006	10	5.0 FLR	360	EUROPEAN INVESTMENT BANK BOND	97.50	16/04/2007	---	---	---	---	---
Corporate Bonds in Foreign Currency and Euro																		
103,746	GBP / 10	01/12	0.25	---	55	1	01/12/1930	98	2.5	360	National Mortgage Bank	2.27	05/02/1996	2.27	S	05/02/1996	---	2.27
0	GBP / 10	01/12	0.25	---	57	1	01/12/1928	100	2.5	360	National Mortgage Bank	---	---	---	---	---	---	---

Government Bonds Notes

A.I.C: Accrued Interest Calculation base.
FLR: Floating Interest Rate.
The minimum tradeable Nominal Value for all Demeterialised Government Titles is 100 Euros.

State Banks Bonds (one year maturity)

Number Listed Bonds	Nominal value	Initial Rate	Current Rate	Annual Interest	Issue Date	Note	State Banks Bonds	Trading Unit	Yearly Renewals	Last Outcry in Cash (euro) Price	Buy / Sell	Volume
342,560	135.17	2.35	3.92	0.00	31/01/2005	---	H.I.D.B.	1	10	100.00	B	---
2,446	1,182.96	4.90	2.47	29.69	31/05/2008	---	H.I.D.B.	1	7	---	---	---

Bonds Notes

The annual renewal of H.I.D.B. Bonds is free of taxes (net rate).
For Bonds issue until 31/10/2014 the accrued interest is capitalized.

Athex & ATHEXClear Members List

Member Name			Stock Market			Derivatives Market			ATHEXClear Member		
Address	Phone	Fax	Market Member	Remote Member	Market Maker	Proprietary	Market Maker	Agent	General Clearing	Direct Clearing	Non Clearing
A. SARRIS SECURITIES S.A.			✓								
6, DRAGATSANIOU STR. ATHINA	(210)-3367700	(210)-3312324									
AGRICULTURAL BANK OF GREECE S.A.							✓			✓	
, 23 PANEPISTIMIOU ATHINA	(210)-3298400	(210)-3298322									
ALPHA FINANCE INVESTMENT SERVICES S.A.			✓		✓		✓			✓	
5, MERLIN STR. ATHINA	(210)-3677400	(210)-3311193									
ALPHA BANK A.E.						✓			✓		
40, STADIOU STR ATHINA	(210)-3265546	(210)-3265811									
	(210)-3260000	(210)-3264116									
ARGUS STOCKBROKERS LTD			✓	✓							
12-14, KENNEDY AVE. S. 303 NICOSIA	(+35722)-22717000	(+35722)-22717070									
ATHENAIKI BROKERAGE FIRM S.A.			✓								
33, STADIOU STR. ATHINA	(210)-3254764	(210)-3254767									
ATLANTIC SECURITIES LIMITED			✓	✓							
37, PRODROMOU STR. NICOSIA	(+35722)-445400	(+35722)-661914									
ATLAS SECURITIES S.A			✓			✓					✓
14 - 16, VERVENON STR.& 125 MICHALAKOPOULOU STR. ATHINA	(210)-3363300	(210)-3238925									
ATTICA BANK S.A.									✓		
23, OMIROU STR. ATHINA	(210)-3669000	(210)-3669410									
54, AKADIMIAS STR. ATHINA	(210)-3390757	(210)-3646090									
AXIA VENTURES GROUP LTD			✓	✓							
10, G. KRANIDIOTI NICOSIA	+357 22 742000	+357 22 742001									
AXON SECURITIES S.A.			✓			✓					✓
48, STADIOU ATHINA	(210)-3363800	(210)-3243903									
BANK OF CYPRUS PUBLIC COMPANY LTD									✓		
170, ALEXANDRAS AVE ATHINA	(210)-6477708	(210)-6477709									
, 51,STASINOU (AG. PARASKEVI, STROVOLOS) NICOSIA	(0035722)-121883	(0035722)-336258									
BETA SECURITIES S.A.			✓		✓	✓	✓			✓	
, BRAILA & 29 ALEXANDRAS AVE ATHINA	(210)-6478900	(210)-6410139									
BNP PARIBAS SECURITIES SERVICES									✓		
94, VAS. SOFIAS AVE ATHINA	(210)-7468500	(210)-7468579									
CAPITAL SECURITIES S.A.			✓			✓					✓
58, MITROPOLEOS STR. ATHINA	(210)-3369700	(210)-3369820									
CFS SECURITIES & INVESTMENT SERVICES S.A.			✓		✓			✓		✓	
3, STADIOU STR. ATHINA	(210)-3360800	(210)-3311854									
CITIGROUP GLOBAL MARKET LTD			✓	✓							
, CITIGROUP CENTRE, CANADA SQUARE, CANARY WHART LONDON	002079864000	002079862266									
CO-OPERATIVE CENTRAL BANK LTD			✓	✓							
8, GRIGORI AFXENTIOU STR. NICOSIA	(+35722)-743300	(+35722)-672083									
CREDIT AGRICOLE CHEUVREUX S.A.				✓							
, 9 QUAI PAUL DOUMER PARIS	33 (0) 1 41 89 70 00										
CREDIT SUISSE SECURITIES (EUROPE) LIMITED			✓	✓							
, ONE CABOT SQUARE LONDON	+44 20 7888 8888	+44 20 7888 1600									
CYCLOS SECURITIES S.A.			✓		✓	✓				✓	
39, PANEPISTIMIOU STR. ATHINA	(210)-3364300	(210)-3239122									
D.A. TSEKOURAS SEC. S.A.			✓								
, PESMAZOGLOY 3	(210)-3214406	(210)-3211997									
DEUTSCHE BANK A.G.			✓	✓							
70, THEODOR-HEUSS-ALLEE FRANKFURT	0049 69 910 00	0049 69 910 34 225									
DYNAMIC SECURITIES			✓					✓		✓	
6 - 10, CHAR. TRIKOUPi STR. ATHINA	(210)-3677700	(210)-3677777									
EL. PETROPOULAKIS SECURITIES S.A.			✓					✓			✓
9, ARISTIDOU STR. ATHINA	(210)-3213928	(210)-3216810									
EUROBANK EQUITIES S.A.			✓		✓		✓			✓	
10, FILELLINON STR. ATHINA	(210)-3720000	(210)-3720001									
EUROBANK ERGASIAS S.A.									✓		
8, OTHONOS STR. ATHINA	(210)-3337000	(210)-3233866									
	(210)-3337969	(210)-3245916									
EUROCORP SECURITIES S.A.			✓			✓				✓	
14, FILIKIS ETAIRIAS SQ. ATHINA	(210)-7263500	(210)-7263666									
EUOTRUST BROKERAGE S.A.			✓								
13-15, SOPHOCLEOUS STR. ATHINA	(210)-3363100	(210)-3238334									

Athex & ATHEXClear Members List

Member Name			Stock Market			Derivatives Market			ATHEXClear Member		
Address	Phone	Fax	Market Member	Remote Member	Market Maker	Proprietary	Market Maker	Agent	General Clearing	Direct Clearing	Non Clearing
EUROXX SECURITIES S.A.			✓			✓				✓	
7, PALAIOLOGOU STR. CHALANDRI	(210)-6879400	(210)-6879401									
G.A. PERVANAS SECURITIES & INVESTMENT SERVICES CO S.A.			✓			✓					✓
7 - 9, SOPHOCLEOUS STR. ATHINA	(210)-3251875	(210)-3210291									
GENERAL BANK OF GREECE S.A.									✓		
, 109-111, MESOGEION AVE. ATHINA	(210)-3288737	(210)-3288211									
87-89, ERMOY ATHINA	(210)-6976072	(210)-6976079									
GLOBAL CAPITAL SECURITIES AND FINANCIAL SERVICES LTD			✓	✓							
5, LEMESOU AVE. LEMESOS CYPRUS	(+35722)-710710	(+35722)-339332									
GUARDIAN TRUST SECURITIES S.A			✓		✓	✓					✓
15, FILELLINON STR. ATHINA	(210)-3220402	(210)-3220498									
HELLENIC AMERICAN SEC. S.A.			✓			✓					
6, EVRIPIDOU STR. ATHINA	(210)-3311100	(210)-3215968									
HELLENIC BANK (INVESTMENTS) LTD			✓	✓							
31, KYRIAKOY MATSI AVE. NICOSIA	(+35722)-500100	(+35722)-500110									
HSBC BANK PLC									✓		
109-111, MESOGION AVE ATHINA	(210)-6961507	(210)-6929310									
INDEX SECURITIES S.A.			✓								
6, DRAGATSANIOU STR. ATHINA	(210)-3213920	(210)-3213216									
INTERSEC S.A.						✓				✓	
80-88, SYGROU AVE ATHINA	(210)-9203000	(210)-9203052									
INVESTMENT BANK OF GREECE S.A.			✓		✓		✓		✓		
24B, KIFISSIAS AVE MAROUSI	(210)-8171800	(210)-8171889									
32, AIGEIALIAS MAROUSI	(210) 8173000	(210) 8173101									
J. CHR. MAVRIKIS SECURITIES S.A.			✓								
5, SOPHOCLEOUS STR. ATHINA	(210)-3213949	(210)-3217767									
KAPPA SECURITIES S.A.			✓			✓					✓
15, VALAORITOU STR. ATHINA	(210)-3610371	(210)-3641002									
KYPROU SECURITIES S.A.					✓	✓					✓
26, HALKIDONOS & FIDIPPIDOY STR. ATHINA	(210)-8701000	(210)-8701049									
LAIKI FINANCIAL SERVICES LTD			✓	✓							
26, CLR HOUSE, VIROMOS AVE. NICOSIA	(+35722)-898600	(+35722)-680953									
LEON DEPOLAS SECURITIES S.A.			✓					✓			✓
1, CHR. LADA STR. ATHINA	(210)-3213286	(210)-3211618									
MAGNA TRUST SECURITIES S.A			✓					✓			✓
9, FIDIOU STR. ATHINA	(210)-3327503	(210)-3327599									
MEGA EQUITY SECURITIES & FINANCIAL SERVICES LTD			✓	✓							
42-44, GRIBA DIGENI AV. NICOSIA	(+35722)-711711	(+35722)-711811									
MERIT SECURITIES S.A			✓		✓	✓				✓	
38, VAS. KONSTANTINOY STR. ATHINA	(210)-3671800	(210)-3671830									
MERRILL LYNCH			✓	✓							
2, KING EDWARD STREET LONDON	(+4420)-79952000	(+4420)-79954525									
METOCHIKI SECURITIES S.A.			✓								
3, G. GENNADIOY STR. ATHINA	(210)-3306700	(210)-3306709									
MIDAS BROKERAGE S.A.			✓								
5, SOPHOCLEOUS STR. ATHINA	(210)-3253203	(210)-3253205									
N. CHRYSOCHOIDIS STOCK BROKERAGE I.S.S.A.			✓					✓		✓	
7 - 9, SOPHOCLEOUS STR. ATHINA	(210)-3213913	(210)-3216115									
N. SARROS SECURITIES S.A.						✓					
7-9, SOPHOCLEOUS STR. ATHINA	(210)-3705600	(210)-3219992									
NATIONAL BANK OF GREECE S.A.			✓				✓		✓		
86, AIOLOU STR. ATHINA	(210)-3341000	(210)-3228187									
68, AKADIMIAS STR. ATHINA	(210)-3328817	(210)-3328678									
NBG SECURITIES S.A.			✓		✓		✓				✓
68, AKADIMIAS STR. ATHINA	(210)-3328500	(210)-3328565									
NEW PROTON BANK S.A.						✓				✓	
20, ESLIN & AMALIADOS ATHINA	210 6970000	210 6970111									
NUNTIUS SECURITIES S.A			✓					✓			✓
6, DRAGATSANIOU STR. ATHINA	(210)-3350599	(210)-3254846									
PANTELAKIS SEC. S.A.			✓			✓					✓
109-111, MESOGION AVE. ATHINA	(210)-6965000	(210)-6929550									
PEGASUS BROKERAGE FIRM S.A			✓			✓					
17, VALAORITOU STR. ATHINA	(210)-3670700	(210)-3670760									

Athex & ATHEXClear Members List

Member Name			Stock Market			Derivatives Market			ATHEXClear Member		
Address	Phone	Fax	Market Member	Remote Member	Market Maker	Proprietary	Market Maker	Agent	General Clearing	Direct Clearing	Non Clearing
PIRAEUS BANK S.A.			✓					✓	✓		
4, AMERIKIS STR. ATHINA	(210)-3335918	(210)-3254207									
4, AMERIKIS STR. ATHINA	(210)-3335000	(210)-3335079									
PIRAEUS SECURITIES S.A.			✓				✓			✓	
10, STADIOU STR. ATHINA	(210)-3354100	(210)-3233814									
PRELIUM SECURITIES & INVESTMENT SERVICES S.A.			✓			✓					✓
, KIFISSIAS AVE & 1 DAVAKI STR. ATHINA	(210)-3677000	(210)-6920403									
PROCHOICE SECURITIES LTD			✓	✓							
57, SPYROU KYPRIANOY NICOSIA	+357-24-661192	+357-24-662464									
SHARELINK SECURITIES & FINANCIAL SERVICES LTD			✓	✓							
6, ELLINAS HOUSE, THEOTOKI STR. NICOSIA	(+35722)-554200	(+35722)-750852									
SOCIETE GENERALE S.A.			✓	✓		✓					
240-242, KIFISIAS AVE. ATHINA	(210)-6790161	(210)-6728828									
17, COURS VALMY PUTEAUX - LA DEFENSE PARIS	(+33) 142134754	(+33) 142135697									
SOLIDUS SECURITIES S.A.			✓			✓				✓	
64, LOUIZIS RIANKOUR STR. ATHINA	(210)-6925500	(210)-6985421									
ST. EM. LAVRENTAKIS SECURITIES S.A.			✓			✓					✓
7 - 9, SOPHOCLEOUS STR. ATHINA	(210)-3213336	(210)-3246572									
THE CYPRUS INVESTMENT AND SECURITIES CORPORATION LIMITED (CISCO)			✓	✓							
4, EVROU STR. (EUROLIFE HOUSE) NICOSIA	(+35722)-881800	(+35722)-881801									
UBS LIMITED			✓	✓							
1, FINSBURY AVENUE LONDON	(+4420)-79013333	(+4420)-79012345									
Z.G. PORTALAKIS INVESTMENT SERVICES S.A.			✓								
8, PESMAZOGLOU STR. ATHINA	(210)-3214830	(210)-3212024									
KARAMANOF SECURITIES & INV. SERVICES S.A.			✓					✓		✓	
2, SQ. ST THEODORON ATHINA	(210)-3212947	(210)-3217088									

List of Stocks under Market Making operations

Securities	Stock Category	
	Start Market Making	End Market Making
CYPRUS POPULAR BANK (CR)	Suspension Status	
PIRAEUS SECURITIES S.A.	02/02/2013	01/01/2400
VIOHALCO (CB)	Suspension Status	
ALPHA FINANCE INVESTMENT SERVICES S.A.	11/02/2013	01/01/2400
EUROBANK EQUITIES S.A.	20/01/2013	01/01/2400
MERIT SECURITIES S.A.	13/12/2012	01/01/2400
ALPHA BANK (CR)	Main Market	
EUROBANK EQUITIES S.A.	24/10/2012	01/01/2400
HELLENIC AMERICAN SEC. S.A.	25/07/2014	01/01/2400
INVESTMENT BANK OF GREECE S.A.	08/01/2013	01/01/2400
MERIT SECURITIES S.A.	03/09/2013	01/01/2400
NBG SECURITIES S.A.	15/01/2013	01/01/2400
PIRAEUS SECURITIES S.A.	28/05/2013	01/01/2400
ALUMIL (CR)	Main Market	
BETA SECURITIES S.A.	18/07/2013	01/01/2400
ATTICA BANK S.A. (CR)	Main Market	
BETA SECURITIES S.A.	02/06/2014	01/01/2400
EUROBANK EQUITIES S.A.	25/07/2014	01/01/2400
HELLENIC AMERICAN SEC. S.A.	25/07/2014	01/01/2400
BYTE COMPUTER SA (CR)	Main Market	
MERIT SECURITIES S.A.	04/08/2013	01/01/2400
CC HBC AG (CR)	Main Market	
EUROBANK EQUITIES S.A.	23/10/2013	01/01/2400
NBG SECURITIES S.A.	29/04/2013	01/01/2400
ELLAKTOR (CR)	Main Market	
EUROBANK EQUITIES S.A.	01/06/2013	01/01/2400
INVESTMENT BANK OF GREECE S.A.	02/01/2013	01/01/2400
NBG SECURITIES S.A.	25/06/2013	01/01/2400
ELTECH ANEMOS S.A. (CR)	Main Market	
EUROBANK EQUITIES S.A.	22/07/2014	01/01/2400
ELTON SA (CR)	Main Market	
BETA SECURITIES S.A.	03/09/2013	01/01/2400
EUROBANK ERGASIAS (CR)	Main Market	
ALPHA FINANCE INVESTMENT SERVICES S.A.	08/01/2013	01/01/2400
EUROBANK EQUITIES S.A.	01/06/2013	01/01/2400
HELLENIC AMERICAN SEC. S.A.	25/07/2014	01/01/2400
INVESTMENT BANK OF GREECE S.A.	08/01/2013	01/01/2400
PIRAEUS SECURITIES S.A.	28/09/2013	01/01/2400
EUROCONSULTANTS S.A. (CR)	Main Market	
EUROBANK EQUITIES S.A.	22/07/2014	01/01/2400
FOLLI FOLLIE (CR)	Main Market	
NBG SECURITIES S.A.	17/02/2014	01/01/2400
GEK TERNA (CR)	Main Market	
INVESTMENT BANK OF GREECE S.A.	02/01/2013	01/01/2400
GR. SARANTIS SA (CR)	Main Market	
BETA SECURITIES S.A.	14/05/2013	01/01/2400
HELLENIC EXCHANGES-A.S.E. (CR)	Main Market	
EUROBANK EQUITIES S.A.	01/06/2013	01/01/2400
HELLENIC AMERICAN SEC. S.A.	01/09/2014	01/01/2400
INVESTMENT BANK OF GREECE S.A.	02/01/2013	01/01/2400
NBG SECURITIES S.A.	25/06/2013	01/01/2400
INTRACOM CONSTR. (CR)	Main Market	
MERIT SECURITIES S.A.	27/12/2012	01/01/2400
INTRALOT (CR)	Main Market	
EUROBANK EQUITIES S.A.	01/06/2013	01/01/2400
INVESTMENT BANK OF GREECE S.A.	02/01/2013	01/01/2400
PIRAEUS SECURITIES S.A.	28/09/2013	01/01/2400
MARFIN INVESTMENT GROUP (CR)	Main Market	
HELLENIC AMERICAN SEC. S.A.	25/07/2014	01/01/2400
PIRAEUS SECURITIES S.A.	02/02/2013	01/01/2400
MLS MULTIMEDIA SA (CR)	Main Market	
BETA SECURITIES S.A.	18/07/2013	01/01/2400
MOTOR OIL (CR)	Main Market	
EUROBANK EQUITIES S.A.	23/10/2012	01/01/2400
HELLENIC AMERICAN SEC. S.A.	01/09/2014	01/01/2400
NBG SECURITIES S.A.	17/02/2014	01/01/2400

List of Stocks under Market Making operations

Securities	Stock Category	
	Start Market Making	End Market Making
Market Maker		
MYTILINEOS HOLDINGS (CR)	Main Market	
HELLENIC AMERICAN SEC. S.A.	25/07/2014	01/01/2400
INVESTMENT BANK OF GREECE S.A.	02/01/2013	01/01/2400
NBG SECURITIES S.A.	25/06/2013	01/01/2400
NATIONAL BANK (CR)	Main Market	
ALPHA FINANCE INVESTMENT SERVICES S.A.	08/01/2013	01/01/2400
EUROBANK EQUITIES S.A.	24/10/2012	01/01/2400
HELLENIC AMERICAN SEC. S.A.	25/07/2014	01/01/2400
INVESTMENT BANK OF GREECE S.A.	08/01/2013	01/01/2400
MERIT SECURITIES S.A.	03/09/2013	01/01/2400
NBG SECURITIES S.A.	28/02/2013	01/01/2400
PIRAEUS SECURITIES S.A.	08/09/2013	01/01/2400
OPAP (CR)	Main Market	
ALPHA FINANCE INVESTMENT SERVICES S.A.	08/01/2013	01/01/2400
EUROBANK EQUITIES S.A.	24/10/2012	01/01/2400
HELLENIC AMERICAN SEC. S.A.	25/07/2014	01/01/2400
INVESTMENT BANK OF GREECE S.A.	08/01/2013	01/01/2400
NBG SECURITIES S.A.	15/01/2013	01/01/2400
OTE (CR)	Main Market	
ALPHA FINANCE INVESTMENT SERVICES S.A.	08/01/2013	01/01/2400
EUROBANK EQUITIES S.A.	24/10/2012	01/01/2400
HELLENIC AMERICAN SEC. S.A.	25/07/2014	01/01/2400
INVESTMENT BANK OF GREECE S.A.	08/01/2013	01/01/2400
NBG SECURITIES S.A.	01/12/2012	01/01/2400
PIRAEUS SECURITIES S.A.	08/09/2013	01/01/2400
PAPOUTSANIS (CR)	Main Market	
BETA SECURITIES S.A.	25/11/2013	01/01/2400
PETROPOULOS PETROS (CR)	Main Market	
BETA SECURITIES S.A.	28/05/2013	01/01/2400
PIRAEUS BANK (CR)	Main Market	
EUROBANK EQUITIES S.A.	23/10/2012	01/01/2400
HELLENIC AMERICAN SEC. S.A.	25/07/2014	01/01/2400
INVESTMENT BANK OF GREECE S.A.	08/01/2013	01/01/2400
MERIT SECURITIES S.A.	16/09/2013	01/01/2400
NBG SECURITIES S.A.	02/06/2013	01/01/2400
PIRAEUS SECURITIES S.A.	16/02/2013	01/01/2400
PLAISIO COMPUTERS SA (CR)	Main Market	
BETA SECURITIES S.A.	05/05/2014	01/01/2400
PPC (CR)	Main Market	
ALPHA FINANCE INVESTMENT SERVICES S.A.	08/01/2013	01/01/2400
EUROBANK EQUITIES S.A.	23/10/2012	01/01/2400
HELLENIC AMERICAN SEC. S.A.	01/09/2014	01/01/2400
INVESTMENT BANK OF GREECE S.A.	08/01/2013	01/01/2400
NBG SECURITIES S.A.	26/03/2013	01/01/2400
PIRAEUS SECURITIES S.A.	28/09/2013	01/01/2400
PROFILE SA (CR)	Main Market	
EUROBANK EQUITIES S.A.	23/06/2014	01/01/2400
REDS S.A. (CR)	Main Market	
EUROBANK EQUITIES S.A.	05/09/2014	01/01/2400
S.KANAKIS SA (CR)	Main Market	
BETA SECURITIES S.A.	01/10/2013	01/01/2400
TITAN CEMENT (CR)	Main Market	
EUROBANK EQUITIES S.A.	23/10/2012	01/01/2400
NBG SECURITIES S.A.	17/02/2014	01/01/2400
VIOHALCO SA/NV (CB)	Main Market	
ALPHA FINANCE INVESTMENT SERVICES S.A.	17/02/2014	01/01/2400
MERIT SECURITIES S.A.	17/03/2014	01/01/2400

Underlying Asset				Derivatives Market																		
Price max	Price min	Closing price	change	Delivery Month	Open price	Price max	Price min	Last price	Closing price	Last Bid	Last Ask	Settlement price	change	Life high	Life low	Trades	Volume	change	Value	change	Open Interest	change
FTSE/Athex Large Cap				(Trade Unit: 1 Index Point x 5€, Cash Settlement)																		
292.45	284.96	287.85	0.88%	November 2014	285.75	292.00	282.25	287.75	288.50	22@287.50	18@287.75	288.50	1.50%	389.75	266.75	847	11,393	37.28%	16,426,090.00	40.17%	40,629	-5.68%
				December 2014	284.00	291.50	284.00	286.75	288.00	10@287.00	18@287.25	288.00	1.59%	387.50	269.25	270	4,350	15.54%	6,255,167.50	17.59%	9,853	21.34%
				January 2015	284.00	289.50	284.00	289.50	286.75	10@285.00	44@291.50	286.75	0.88%	315.00	281.50	4	33	57.14%	46,922.50	58.68%	126	31.25%
				March 2015	---	---	---	---	286.75	1@275.00	---	286.75	1.50%	324.25	295.00	---	---	---	---	---	185	0.00%
				June 2015	---	---	---	---	---	---	---	---	---	---	---	---	---	---	---	---	---	---
				September 2015	---	---	---	---	---	---	---	---	---	---	---	---	---	---	---	---	---	---

Underlying Asset				Derivatives Market																		
Price max	Price min	Closing price	change	Delivery Month	Open price	Price max	Price min	Last price	Closing price	Last Bid	Last Ask	Settlement price	change	Life high	Life low	Trades	Volume	change	Value	change	Open Interest	change
ALPHA BANK (CR)				(Contract Size: 100 Securities, Physical Delivery)																		
0.516	0.491	0.501	1.21%	December 2014	0.500	0.516	0.490	0.501	0.506	50@0.499	209@0.501	0.506	2.02%	0.775	0.467	182	5,492	26.17%	276,598.10	29.42%	40,411	3.68%
				March 2015	---	---	---	---	---	---	209@0.511	---	---	---	---	---	---	---	---	---	---	---
				June 2015	---	---	---	---	0.515	---	---	0.515	1.98%	0.649	0.601	---	---	---	---	---	---	---
				September 2015	---	---	---	---	---	---	---	---	---	---	---	---	---	---	---	---	---	---
CC HBC AG (CR)				(Contract Size: 100 Securities, Physical Delivery)																		
17.36	17.08	17.29	-0.12%	December 2014	16.95	17.32	16.95	17.17	16.94	1@16.95	50@17.27	16.94	-0.12%	17.90	15.40	21	99	106.25%	169,640.00	106.66%	1,223	0.33%
				March 2015	---	---	---	---	---	---	---	---	---	---	---	---	---	---	---	---	---	---
				June 2015	---	---	---	---	---	---	---	---	---	---	---	---	---	---	---	---	---	---
				September 2015	---	---	---	---	---	---	---	---	---	---	---	---	---	---	---	---	---	---
CORINTH PIPEWORKS SA (CR)				(Contract Size: 100 Securities, Physical Delivery)																		
1.19	1.15	1.15	-0.86%	December 2014	1.18	1.20	1.15	1.15	1.14	27@1.15	1@1.20	1.14	-0.87%	1.61	1.15	4	6	---	703.00	---	786	0.26%
				March 2015	---	---	---	---	---	---	---	---	---	---	---	---	---	---	---	---	---	---
				June 2015	---	---	---	---	---	---	---	---	---	---	---	---	---	---	---	---	---	---
				September 2015	---	---	---	---	---	---	---	---	---	---	---	---	---	---	---	---	---	---
ELLAKTOR (CR)				(Contract Size: 100 Securities, Physical Delivery)																		
2.32	2.15	2.25	4.17%	December 2014	2.20	2.30	2.16	2.26	2.26	4@2.26	3@2.27	2.26	3.20%	3.59	2.06	19	97	-25.38%	21,795.00	-20.09%	1,781	0.68%
				March 2015	---	---	---	---	---	---	---	---	---	---	---	---	---	---	---	---	---	---
				June 2015	---	---	---	---	---	---	---	---	---	---	---	---	---	---	---	---	---	---
				September 2015	---	---	---	---	---	---	---	---	---	---	---	---	---	---	---	---	---	---
EUROBANK ERGASIAS (CR)				(Contract Size: 100 Securities, Physical Delivery)																		
0.250	0.239	0.240	0.84%	December 2014	0.241	0.248	0.238	0.243	0.243	60@0.240	200@0.244	0.243	2.10%	0.410	0.200	46	3,256	-5.24%	79,429.90	-2.37%	69,047	-0.05%
				March 2015	---	---	---	---	0.248	---	200@0.254	0.248	2.06%	0.352	0.243	---	---	---	---	---	400	0.00%
				June 2015	---	---	---	---	---	---	---	---	---	---	---	---	---	---	---	---	---	---
				September 2015	---	---	---	---	---	---	---	---	---	---	---	---	---	---	---	---	---	---
EYDAP S.A. (CR)				(Contract Size: 100 Securities, Physical Delivery)																		
6.48	6.24	6.26	0.32%	December 2014	6.13	6.40	6.02	6.23	6.27	1@6.14	7@6.36	6.27	3.98%	9.05	4.98	48	196	151.28%	121,221.00	161.78%	550	3.97%
				March 2015	---	---	---	---	---	---	7@6.43	---	---	---	---	---	---	---	---	---	---	---
				June 2015	---	---	---	---	---	---	---	---	---	---	---	---	---	---	---	---	---	---
				September 2015	---	---	---	---	---	---	---	---	---	---	---	---	---	---	---	---	---	---
FOLLI FOLLIE (CR)				(Contract Size: 103 Securities, Physical Delivery)																		
25.80	24.94	24.94	-0.24%	December 2014	24.95	25.55	24.95	25.15	24.46	1@24.80	1@25.39	24.46	-0.24%	30.54	22.60	10	16	-79.75%	41,606.85	-78.98%	327	-1.51%
				March 2015	---	---	---	---	---	---	---	---	---	---	---	---	---	---	---	---	---	---
				June 2015	---	---	---	---	---	---	---	---	---	---	---	---	---	---	---	---	---	---
				September 2015	---	---	---	---	---	---	---	---	---	---	---	---	---	---	---	---	---	---
FRIGOGLASS SA (CR)				(Contract Size: 100 Securities, Physical Delivery)																		
1.94	1.88	1.89	-1.56%	December 2014	1.91	1.92	1.89	1.89	1.92	1@1.89	5@1.94	1.92	-1.54%	3.20	1.86	8	23	-60.34%	4,406.00	-61.38%	668	3.25%
				March 2015	---	---	---	---	---	---	---	---	---	---	---	---	---	---	---	---	---	---
				June 2015	---	---	---	---	---	---	---	---	---	---	---	---	---	---	---	---	---	---
				September 2015	---	---	---	---	---	---	---	---	---	---	---	---	---	---	---	---	---	---

Underlying Asset				Derivatives Market																		
Price max	Price min	Closing price	change	Delivery Month	Open price	Price max	Price min	Last price	Closing price	Last Bid	Last Ask	Settlement price	change	Life high	Life low	Trades	Volume	change	Value	change	Open Interest	change
GEK TERNA (CR)				(Contract Size: 100 Securities, Physical Delivery)																		
2.12	2.05	2.10	1.94%	December 2014	2.08	2.13	2.07	2.11	2.15	35@2.10	5@2.13	2.15	1.90%	4.01	1.92	28	214	-14.74%	44,972.00	-11.96%	5,822	0.57%
				March 2015	---	---	---	---	2.25	35@2.09	5@2.17	2.25	1.81%	4.11	1.84	---	---	-100.00%	---	-100.00%	4,684	0.00%
				June 2015	---	---	---	---	---	---	---	---	---	---	---	---	---	---	---	---	---	---
				September 2015	---	---	---	---	---	---	---	---	---	---	---	---	---	---	---	---	---	---
GRIVALIA PROPERTIES (CR)				(Contract Size: 100 Securities, Physical Delivery)																		
8.17	7.53	7.96	3.38%	December 2014	7.79	8.05	7.73	7.97	7.89	1@7.90	1@8.48	7.89	3.41%	9.50	7.48	24	50	400.00%	39,577.00	418.02%	152	-2.56%
				March 2015	---	---	---	---	---	---	---	---	---	---	---	---	---	---	---	---	---	---
				June 2015	---	---	---	---	---	---	---	---	---	---	---	---	---	---	---	---	---	---
				September 2015	---	---	---	---	---	---	---	---	---	---	---	---	---	---	---	---	---	---
HELLENIC EXCHANGES-A.S.E. (CR)				(Contract Size: 103 Securities, Physical Delivery)																		
5.66	5.50	5.50	-0.18%	December 2014	5.53	5.65	5.53	5.55	5.45	5@5.55	1@5.60	5.45	-0.18%	8.39	4.75	32	93	-46.55%	53,373.57	-45.49%	1,648	0.43%
				March 2015	---	---	---	---	5.54	5@5.30	---	5.54	-0.18%	7.01	5.35	---	---	---	---	---	---	---
				June 2015	---	---	---	---	5.40	---	---	5.40	-0.18%	7.45	5.50	---	---	---	---	---	---	---
				September 2015	---	---	---	---	---	---	---	---	---	---	---	---	---	---	---	---	---	---
HELLENIC PETROLEUM (CR)				(Contract Size: 100 Securities, Physical Delivery)																		
4.25	4.05	4.25	4.94%	December 2014	4.07	4.20	4.06	4.20	4.30	1@4.16	1@4.21	4.30	4.88%	6.29	3.84	63	241	102.52%	100,084.00	108.27%	5,917	-1.00%
				March 2015	---	---	---	---	4.28	2@3.93	1@4.26	4.28	4.90%	6.18	5.50	---	---	---	---	---	---	---
				June 2015	---	---	---	---	---	---	---	---	---	---	---	---	---	---	---	---	---	---
				September 2015	---	---	---	---	---	---	---	---	---	---	---	---	---	---	---	---	---	---
INTRALOT (CR)				(Contract Size: 100 Securities, Physical Delivery)																		
1.10	1.04	1.05	0.00%	December 2014	1.07	1.09	1.04	1.04	1.03	8@1.04	10@1.14	1.03	0.00%	1.82	1.04	6	35	-7.89%	3,771.00	-6.22%	1,092	-0.27%
				March 2015	---	---	---	---	---	---	---	---	---	---	---	---	---	---	---	---	---	---
				June 2015	---	---	---	---	---	---	---	---	---	---	---	---	---	---	---	---	---	---
				September 2015	---	---	---	---	---	---	---	---	---	---	---	---	---	---	---	---	---	---
JUMBO SA (CR)				(Contract Size: 100 Securities, Physical Delivery)																		
9.63	9.11	9.11	-4.10%	December 2014	9.49	9.61	9.14	9.14	9.26	10@9.16	1@9.24	9.26	-1.70%	11.84	7.87	80	247	6.93%	230,534.00	5.87%	635	-6.34%
				March 2015	---	---	---	---	---	---	---	---	---	---	---	---	---	---	---	---	---	---
				June 2015	---	---	---	---	---	---	---	---	---	---	---	---	---	---	---	---	---	---
				September 2015	---	---	---	---	---	---	---	---	---	---	---	---	---	---	---	---	---	---
MARFIN INVESTMENT GROUP (CR)				(Contract Size: 100 Securities, Physical Delivery)																		
0.217	0.210	0.211	0.48%	December 2014	0.212	0.216	0.210	0.213	0.216	45@0.213	11@0.218	0.216	0.47%	0.420	0.204	12	265	-51.29%	5,665.50	-50.87%	25,495	-0.82%
				March 2015	---	---	---	---	---	---	11@0.228	---	---	---	---	---	---	---	---	---	---	---
				June 2015	---	---	---	---	---	---	---	---	---	---	---	---	---	---	---	---	---	---
				September 2015	---	---	---	---	---	---	---	---	---	---	---	---	---	---	---	---	---	---
METKA (CR)				(Contract Size: 100 Securities, Physical Delivery)																		
9.10	8.84	8.95	0.45%	December 2014	8.99	9.06	8.90	9.01	8.98	2@8.95	2@9.04	8.98	0.45%	11.68	7.49	34	146	175.47%	131,180.00	182.06%	612	3.03%
				March 2015	---	---	---	---	---	---	---	---	---	---	---	---	---	---	---	---	---	---
				June 2015	---	---	---	---	---	---	---	---	---	---	---	---	---	---	---	---	---	---
				September 2015	---	---	---	---	---	---	---	---	---	---	---	---	---	---	---	---	---	---

Underlying Asset				Derivatives Market																		
Price max	Price min	Closing price	change	Delivery Month	Open price	Price max	Price min	Last price	Closing price	Last Bid	Last Ask	Settlement price	change	Life high	Life low	Trades	Volume	change	Value	change	Open Interest	change
MOTOR OIL (CR)				(Contract Size: 100 Securities, Physical Delivery)																		
6.02	5.77	5.92	2.96%	December 2014	5.75	6.06	5.75	5.78	5.89	10@5.92	5@6.05	5.89	2.97%	8.33	5.51	21	52	-37.35%	30,695.00	-35.02%	356	-0.28%
				March 2015	---	---	---	---	5.86	---	---	5.86	2.99%	6.88	6.48	---	---	---	---	---	---	---
				June 2015	---	---	---	---	5.86	---	---	5.86	2.99%	6.71	6.48	---	---	---	---	---	---	---
				September 2015	---	---	---	---	---	---	---	---	---	---	---	---	---	---	---	---	---	---
MYTILINEOS HOLDINGS (CR)				(Contract Size: 100 Securities, Physical Delivery)																		
5.91	5.77	5.81	0.69%	December 2014	5.79	5.92	5.76	5.82	5.86	2@5.82	1@5.84	5.86	2.09%	7.16	4.91	91	521	48.86%	305,385.00	52.96%	6,358	-1.99%
				March 2015	---	---	---	---	5.84	5@5.30	1@5.91	5.84	2.10%	6.20	5.12	---	---	---	---	---	---	---
				June 2015	---	---	---	---	5.93	---	---	5.93	2.07%	6.08	5.19	---	---	---	---	---	---	---
				September 2015	---	---	---	---	---	---	---	---	---	---	---	---	---	---	---	---	---	---
NATIONAL BANK (CR)				(Contract Size: 100 Securities, Physical Delivery)																		
1.74	1.68	1.70	0.00%	December 2014	1.74	1.74	1.68	1.70	1.72	407@1.69	72@1.70	1.72	1.18%	2.92	1.59	242	5,636	-56.45%	964,275.00	-54.94%	35,332	3.75%
				March 2015	---	---	---	---	1.76	10@1.25	72@1.72	1.76	1.15%	2.70	1.96	---	---	---	---	---	---	---
				June 2015	1.76	1.76	1.75	1.75	1.76	1@1.49	1@1.90	1.76	4.14%	1.76	1.68	2	100	0.00%	17,550.00	4.15%	---	-100.00%
				September 2015	---	---	---	---	---	---	---	---	---	---	---	---	---	---	---	---	---	---
OPAP (CR)				(Contract Size: 100 Securities, Physical Delivery)																		
9.24	8.97	9.17	1.89%	December 2014	8.84	9.11	8.84	8.96	9.04	2@8.98	1@9.06	9.04	2.49%	13.34	7.95	94	380	-30.78%	341,321.00	-30.73%	2,069	1.52%
				March 2015	---	---	---	---	9.10	---	---	9.10	2.48%	12.19	8.30	---	---	---	---	---	---	---
				June 2015	---	---	---	---	---	---	---	---	---	---	---	---	---	---	---	---	---	---
				September 2015	---	---	---	---	---	---	---	---	---	---	---	---	---	---	---	---	---	---
OTE (CR)				(Contract Size: 100 Securities, Physical Delivery)																		
8.83	8.54	8.80	2.80%	December 2014	8.61	8.82	8.57	8.80	8.79	10@8.79	1@8.82	8.79	2.21%	11.83	8.47	247	1,560	3.45%	1,363,142.00	4.18%	7,519	-3.43%
				March 2015	---	---	---	---	8.91	---	1@8.92	8.91	2.18%	10.79	8.77	---	---	---	---	---	40	0.00%
				June 2015	---	---	---	---	8.94	---	---	8.94	2.17%	10.55	9.63	---	---	---	---	---	40	0.00%
				September 2015	---	---	---	---	---	---	---	---	---	---	---	---	---	---	---	---	---	---
P.P.A. S.A. (CR)				(Contract Size: 100 Securities, Physical Delivery)																		
14.10	13.25	14.09	4.84%	December 2014	13.60	14.07	13.52	14.00	14.08	1@13.70	5@14.00	14.08	4.84%	17.13	12.35	6	15	-76.19%	20,455.00	-75.70%	575	-1.37%
				March 2015	---	---	---	---	---	---	---	---	---	---	---	---	---	---	---	---	---	---
				June 2015	---	---	---	---	---	---	---	---	---	---	---	---	---	---	---	---	---	---
				September 2015	---	---	---	---	---	---	---	---	---	---	---	---	---	---	---	---	---	---
PIRAEUS BANK (CR)				(Contract Size: 100 Securities, Physical Delivery)																		
1.07	1.03	1.05	0.96%	December 2014	1.05	1.06	1.02	1.04	1.04	160@1.04	58@1.05	1.04	-0.95%	1.60	0.999	135	4,801	-42.92%	502,183.00	-42.11%	34,435	8.51%
				March 2015	---	---	---	---	1.05	---	58@1.06	1.05	-0.94%	1.37	1.08	---	---	---	---	---	100	0.00%
				June 2015	---	---	---	---	1.06	---	---	1.06	-0.93%	1.21	1.12	---	---	---	---	---	5	0.00%
				September 2015	---	---	---	---	---	---	---	---	---	---	---	---	---	---	---	---	---	---
PPC (CR)				(Contract Size: 100 Securities, Physical Delivery)																		
6.00	5.79	5.90	2.61%	December 2014	5.88	6.01	5.79	5.94	5.97	1@5.93	8@5.94	5.97	2.75%	12.48	5.51	207	916	-32.05%	541,711.00	-30.27%	6,929	2.53%
				March 2015	---	---	---	---	5.98	---	---	5.98	2.75%	11.32	6.00	---	---	---	---	---	---	---
				June 2015	---	---	---	---	5.98	---	---	5.98	2.75%	6.70	6.00	---	---	---	---	---	---	---
				September 2015	---	---	---	---	---	---	---	---	---	---	---	---	---	---	---	---	---	---

Underlying Asset				Derivatives Market																		
Price max	Price min	Closing price	change	Delivery Month	Open price	Price max	Price min	Last price	Closing price	Last Bid	Last Ask	Settlement price	change	Life high	Life low	Trades	Volume	change	Value	change	Open Interest	change
SIDENOR (CR)				(Contract Size: 100 Securities, Physical Delivery)																		
0.758	0.720	0.750	2.04%	December 2014	0.740	0.760	0.740	0.760	0.765	2@0.712	2@0.735	0.765	2.00%	1.48	0.720	6	32	6.67%	2,391.00	9.38%	744	-2.23%
				March 2015	---	---	---	---	---	---	---	---	---	---	---	---	---	---	---	---	---	---
				June 2015	---	---	---	---	---	---	---	---	---	---	---	---	---	---	---	---	---	---
				September 2015	---	---	---	---	---	---	---	---	---	---	---	---	---	---	---	---	---	---
TERNA ENERGY (CR)				(Contract Size: 100 Securities, Physical Delivery)																		
2.59	2.41	2.55	4.08%	December 2014	2.42	2.56	2.42	2.55	2.54	15@2.43	103@2.53	2.54	5.39%	3.67	2.05	33	198	280.77%	49,930.00	299.25%	2,346	-5.97%
				March 2015	---	---	---	---	---	---	100@2.58	---	---	---	---	---	---	---	---	---	---	---
				June 2015	---	---	---	---	---	---	---	---	---	---	---	---	---	---	---	---	---	---
				September 2015	---	---	---	---	---	---	---	---	---	---	---	---	---	---	---	---	---	---
TITAN CEMENT (CR)				(Contract Size: 100 Securities, Physical Delivery)																		
19.25	18.70	18.96	1.39%	December 2014	18.94	19.19	18.89	19.09	19.01	1@18.91	4@19.15	19.01	1.39%	21.10	16.38	22	49	-56.64%	93,346.00	-56.02%	454	2.48%
				March 2015	---	---	---	---	---	---	---	---	---	---	---	---	---	---	---	---	---	---
				June 2015	---	---	---	---	---	---	---	---	---	---	---	---	---	---	---	---	---	---
				September 2015	---	---	---	---	---	---	---	---	---	---	---	---	---	---	---	---	---	---
VIOHALCO SA/NV (CB)				(Contract Size: 100 Securities, Physical Delivery)																		
2.26	2.14	2.17	0.00%	December 2014	2.20	2.24	2.19	2.19	2.11	1@2.16	1@2.21	2.11	0.00%	4.20	2.16	12	56	600.00%	12,339.00	593.59%	318	18.22%
				March 2015	---	---	---	---	---	---	---	---	---	---	---	---	---	---	---	---	---	---
				June 2015	---	---	---	---	---	---	---	---	---	---	---	---	---	---	---	---	---	---
				September 2015	---	---	---	---	---	---	---	---	---	---	---	---	---	---	---	---	---	---

FTSE/Athex Large Cap

(Trade Unit: 1 Index Point x 5€ - Exercise Style: European, Cash Settlement)

Call Options																	Put Options																	
November 2014								December 2014							Other Months		November 2014								December 2014							Other Months		
Exercise Price	Open price	Price max	Price min	Last price	Closing price	Volume	Open Interest	Open price	Price max	Price min	Last price	Closing price	Volume	Open Interest	Volume	Open Interest	Open price	Price max	Price min	Last price	Closing price	Volume	Open Interest	Open price	Price max	Price min	Last price	Closing price	Volume	Open Interest	Volume	Open Interest	Exercise Price	
215	-	-	-	-	-	-	-	-	-	-	-	-	-	-	-	-	-	-	-	-	-	-	-	-	-	-	-	-	-	-	-	215		
250	-	-	-	-	-	-	-	-	-	-	-	-	-	-	-	-	-	-	-	-	-	-	-	-	-	-	-	-	-	-	-	250		
255	-	-	-	-	-	-	-	-	-	-	-	-	-	-	-	-	-	-	-	-	-	-	-	-	-	-	-	-	-	-	-	255		
260	-	-	-	-	-	-	-	-	-	-	-	-	-	-	-	-	-	-	-	-	0.14	-	3	-	-	-	-	-	-	-	-	-	260	
265	-	-	-	-	-	-	-	-	-	-	-	-	-	-	-	-	-	-	-	-	0.35	-	1	-	-	-	-	-	-	-	-	-	265	
270	-	-	-	-	-	-	-	-	-	-	-	24.25	-	50	-	-	1.00	1.00	1.00	1.00	0.76	38	455	-	-	-	-	-	-	-	-	-	270	
275	-	-	-	-	15.00	-	1	-	-	-	-	-	-	-	-	-	1.50	1.50	1.50	1.50	1.50	7	7	8.50	8.50	7.50	7.50	8.20	200	230	-	-	275	
280	11.50	12.75	11.50	11.50	11.25	20	119	-	-	-	-	18.25	-	231	-	-	2.50	2.50	2.50	2.50	2.70	2	221	-	-	-	-	10.25	-	2	-	-	280	
285	-	-	-	-	8.00	-	66	-	-	-	-	-	-	-	-	-	-	-	-	-	4.50	-	58	-	-	-	-	12.50	-	11	-	-	285	
290	7.80	7.80	4.50	4.50	5.40	61	804	12.00	14.75	12.00	14.75	13.00	31	32	-	-	9.00	9.00	6.00	6.00	6.90	6	1,283	-	-	-	-	15.00	-	11	-	-	290	
295	3.00	3.00	3.00	3.00	3.50	2	240	-	-	-	-	11.00	-	20	-	-	-	-	-	-	10.00	-	17	-	-	-	-	18.00	-	40	-	-	295	
300	2.20	2.30	2.00	2.00	2.10	19	888	6.50	7.50	6.50	7.50	9.10	135	266	-	-	11.00	15.75	11.00	15.75	13.50	5	1,035	-	-	-	-	21.00	-	10	-	-	300	
305	-	-	-	-	1.20	-	120	-	-	-	-	7.50	-	1,000	-	-	-	-	-	-	17.75	-	268	-	-	-	-	24.50	-	21	-	-	305	
310	-	-	-	-	0.66	-	555	5.50	10.00	5.50	7.00	6.10	56	1,640	-	-	22.00	22.00	19.75	19.75	22.25	4	130	-	-	-	-	28.00	-	2	-	-	310	
315	-	-	-	-	0.33	-	437	1.50	1.50	1.50	1.50	5.00	1	31	-	-	-	-	-	-	26.75	-	26	-	-	-	-	-	-	-	-	-	315	
320	-	-	-	-	0.16	-	1,203	-	-	-	-	4.00	-	168	-	-	-	-	-	-	31.75	-	178	-	-	-	-	36.00	-	1	-	-	320	
325	-	-	-	-	0.07	-	236	-	-	-	-	-	-	-	-	-	-	-	-	-	36.50	-	1	-	-	-	-	-	-	-	-	-	325	
330	-	-	-	-	0.03	-	413	-	-	-	-	2.50	-	222	-	-	-	-	-	-	41.50	-	34	-	-	-	-	-	-	-	-	-	330	
335	-	-	-	-	-	-	-	-	-	-	-	-	-	-	-	-	-	-	-	-	46.50	-	50	-	-	-	-	-	-	-	-	-	335	
340	-	-	-	-	-	-	1,522	-	-	-	-	1.50	-	30	-	-	-	-	-	-	-	-	-	-	-	-	-	-	-	-	-	-	340	
345	-	-	-	-	-	-	-	-	-	-	-	1.20	-	31	-	-	-	-	-	-	-	-	-	-	-	-	-	-	-	-	-	-	345	
350	-	-	-	-	-	-	-	-	-	-	-	-	-	-	-	-	-	-	-	-	-	-	-	-	-	-	-	-	-	-	-	-	350	
355	-	-	-	-	-	-	-	-	-	-	-	-	-	-	-	-	-	-	-	-	66.50	-	20	-	-	-	-	-	-	-	-	-	-	355
360	-	-	-	-	-	-	1	-	-	-	-	0.52	-	204	-	-	-	-	-	-	-	-	-	-	-	-	-	-	-	-	-	-	-	360
365	-	-	-	-	-	-	55	-	-	-	-	-	-	-	-	-	-	-	-	-	76.50	-	838	-	-	-	-	-	-	-	-	-	-	365
370	-	-	-	-	-	-	8	-	-	-	-	-	-	-	-	-	-	-	-	-	-	-	-	-	-	-	-	-	-	-	-	-	370	
375	-	-	-	-	-	-	2	-	-	-	-	-	-	-	-	-	-	-	-	-	-	-	-	-	-	-	-	-	-	-	-	-	375	
380	-	-	-	-	-	-	4	-	-	-	-	0.16	-	500	-	-	-	-	-	-	-	-	-	-	-	-	-	-	-	-	-	-	380	
385	-	-	-	-	-	-	-	-	-	-	-	0.12	-	200	-	-	-	-	-	-	-	-	-	-	-	-	-	-	-	-	-	-	385	
390	-	-	-	-	-	-	1	-	-	-	-	-	-	-	-	-	-	-	-	-	-	-	-	-	-	-	-	-	-	-	-	-	390	
395	-	-	-	-	-	-	-	-	-	-	-	-	-	-	-	-	-	-	-	-	-	-	-	-	-	-	-	-	-	-	-	-	395	
400	-	-	-	-	-	-	-	-	-	-	-	-	-	-	-	-	-	-	-	-	-	-	-	-	-	-	-	-	-	-	-	-	400	
405	-	-	-	-	-	-	-	-	-	-	-	-	-	-	-	-	-	-	-	-	-	-	-	-	-	-	-	-	-	-	-	-	405	
410	-	-	-	-	-	-	-	-	-	-	-	-	-	-	-	-	-	-	-	-	-	-	-	-	-	-	-	-	-	-	-	-	410	
415	-	-	-	-	-	-	-	-	-	-	-	-	-	-	-	-	-	-	-	-	-	-	-	-	-	-	-	-	-	-	-	-	415	
420	-	-	-	-	-	-	-	-	-	-	-	-	-	-	-	-	-	-	-	-	-	-	-	-	-	-	-	-	-	-	-	-	420	

FTSE/Athex Large Cap

(Trade Unit: 1 Index Point x 5€ - Exoerise Style: European, Cash Settlement)

Call Options																	Put Options																
	November 2014							December 2014							Other Months		November 2014							December 2014							Other Months		
Exerise Price	Open price	Price max	Price min	Last price	Closing price	Volume	Open Interest	Open price	Price max	Price min	Last price	Closing price	Volume	Open Interest	Volume	Open Interest	Open price	Price max	Price min	Last price	Closing price	Volume	Open Interest	Open price	Price max	Price min	Last price	Closing price	Volume	Open Interest	Volume	Open Interest	Exerise Price
425	-	-	-	-	-	-	-	-	-	-	-	-	-	-			-	-	-	-	-	-	-	-	-	-	-	-	-	-	-	425	
430	-	-	-	-	-	-	-	-	-	-	-	-	-	-			-	-	-	-	-	-	-	-	-	-	-	-	-	-	-	430	
435	-	-	-	-	-	-	-	-	-	-	-	-	-	-			-	-	-	-	-	-	-	-	-	-	-	-	-	-	-	435	
440	-	-	-	-	-	-	-	-	-	-	-	-	-	-			-	-	-	-	-	-	-	-	-	-	152.00	-	5	-	-	440	
445	-	-	-	-	-	-	-	-	-	-	-	-	-	-			-	-	-	-	-	-	-	-	-	-	-	-	-	-	-	445	
450	-	-	-	-	-	-	-	-	-	-	-	-	-	-			-	-	-	-	-	-	-	-	-	-	162.00	-	35	-	-	450	
455	-	-	-	-	-	-	-	-	-	-	-	-	-	-			-	-	-	-	-	-	-	-	-	-	-	-	-	-	-	455	
460	-	-	-	-	-	-	-	-	-	-	-	-	-	-			-	-	-	-	-	-	-	-	-	-	-	-	-	-	-	460	
465	-	-	-	-	-	-	-	-	-	-	-	-	-	-			-	-	-	-	-	-	-	-	-	-	-	-	-	-	-	465	
Totals:						102	6,675						223	4,625	50	1,380						62	4,625					200	368	0	0		
Nominal Transactions Value:							147,900.00						335,825.00		82,500.00							86,125.00						275,000.00		0.00			
Number of Trades:						14						9		1								13					4		0				

FTSE/Athex Large Cap

(Trade Unit: 1 Index Point x 5€ - Exoercise Style: European, Cash Settlement)

Call Options																	Put Options																				
Exerise Price	November 2014							December 2014							Other Months			November 2014										December 2014							Other Months		
	Open price	Price max	Price min	Last price	Closing price	Volume	Open Interest	Open price	Price max	Price min	Last price	Closing price	Volume	Open Interest	Volume	Open Interest	Open price	Price max	Price min	Last price	Closing price	Volume	Open Interest	Open price	Price max	Price min	Last price	Closing price	Volume	Open Interest	Volume	Open Interest	Exerise Price				

ALPHA BANK (CR)

(Contract Size: 100 Securities, Exercise Style: American, Physical Delivery)

Call Options																	Put Options																
Exercise Price	November 2014							December 2014							Other Months		November 2014							December 2014							Other Months		Exercise Price
	Open price	Price max	Price min	Last price	Closing price	Volume	Open Interest	Open price	Price max	Price min	Last price	Closing price	Volume	Open Interest	Volume	Open Interest	Open price	Price max	Price min	Last price	Closing price	Volume	Open Interest	Open price	Price max	Price min	Last price	Closing price	Volume	Open Interest	Volume	Open Interest	
0.100						-	-							-	-							-	-						-	-			0.100
0.200						-	-							-	-							-	-						-	-			0.200
0.300						-	-							-	-							-	-						-	-			0.300
0.400						-	-							-	-							-	-						-	-			0.400
0.450						-	-							-	-							-	-						-	-			0.450
0.500						-	-							-	-							-	-						-	-			0.500
0.550						-	-							-	-							-	-						-	-			0.550
0.600						-	-							-	-							-	-						-	-			0.600
0.650						-	-							-	-							-	-						-	-			0.650
0.700						-	-							-	-							-	-						-	-			0.700
0.750						-	-							-	-							-	-						-	-			0.750
0.800						-	-							-	-							-	-						-	-			0.800
0.850						-	-							-	-							-	-						-	-			0.850
0.900						-	-							-	-							-	-						-	-			0.900
1.00						-	-							-	-							-	-						-	-			1.00
1.10						-	-							-	-							-	-						-	-			1.10
1.20						-	-							-	-							-	-						-	-			1.20
1.30						-	-							-	-							-	-						-	-			1.30
1.40						-	-							-	-							-	-						-	-			1.40
1.50						-	-							-	-							-	-						-	-			1.50
Totals:						0	0							0	0	0	0					0	0						0	0	0	0	
Nominal Transactions Value:						0.00								0.00	0.00							0.00						0.00	0.00		0.00		
Number of Trades:						0								0	0							0.00						0		0			

NATIONAL BANK (CR)

(Contract Size: 100 Securities, Exercise Style: American, Physical Delivery)

Call Options																	Put Options																
November 2014																	December 2014																
December 2014																	Other Months																
Exercise Price	Open price	Price max	Price min	Last price	Closing price	Volume	Open Interest	Open price	Price max	Price min	Last price	Closing price	Volume	Open Interest	Volume	Open Interest	Open price	Price max	Price min	Last price	Closing price	Volume	Open Interest	Open price	Price max	Price min	Last price	Closing price	Volume	Open Interest	Volume	Open Interest	Exercise Price
0.800						-	-							-	-							-	-						-	-		0.800	
0.900						-	-							-	-							-	-						-	-		0.900	
1.00						-	-							-	-							-	-						-	-		1.00	
1.10						-	-							-	-							-	-						-	-		1.10	
1.20						-	-							-	-							-	-						-	-		1.20	
1.30						-	-							-	-							-	-						-	-		1.30	
1.40						-	-							-	-							-	-						-	-		1.40	
1.50						-	-							-	-							-	-						-	-		1.50	
1.60						-	-							-	-							-	-						-	-		1.60	
1.70						-	-							-	-							-	-						-	-		1.70	
1.80						-	-							-	-							-	-						-	-		1.80	
1.90						-	-							-	-							-	-						-	-		1.90	
2.00						-	-							-	-							-	-						-	-		2.00	
2.10						-	-							-	-							-	-						-	-		2.10	
2.20					0.001	-	5							-	-							-	-						-	-		2.20	
2.30						-	-							-	-							-	-						-	-		2.30	
2.40						-	-							-	-							-	-						-	-		2.40	
2.50						-	-							-	-							-	-						-	-		2.50	
2.60						-	-							-	-							-	-						-	-		2.60	
2.70						-	-							-	-							-	-						-	-		2.70	
2.80						-	-							-	-							-	-						-	-		2.80	
2.90						-	-							-	-							-	-						-	-		2.90	
3.00						-	-							-	-							-	-						-	-		3.00	
3.10						-	-							-	-							-	-						-	-		3.10	
3.20						-	-							-	-							-	-						-	-		3.20	
3.40						-	-							-	-							-	-						-	-		3.40	
3.60						-	-							-	-							-	-						-	-		3.60	
3.80						-	-							-	-							-	-						-	-		3.80	
4.00						-	-							-	-							-	-						-	-		4.00	
4.40						-	-							-	-							-	-						-	-		4.40	
4.80						-	-							-	-							-	-						-	-		4.80	
5.20						-	-							-	-							-	-						-	-		5.20	
5.60						-	-							-	-							-	-						-	-		5.60	
Totals:						0	5							0	0	0	240							0	400							0	200
Nominal Transactions Value:						0.00								0.00		0.00								0.00		0.00		0.00					
Number of Trades:						0								0		0								0		0		0					

OPAP (CR)

(Contract Size: 100 Securities, Exercise Style: American, Physical Delivery)

Call Options																	Put Options																			
November 2014																	December 2014																	Other Months		
Exerise Price	Open price	Price max	Price min	Last price	Closing price	Volume	Open Interest	Open price	Price max	Price min	Last price	Closing price	Volume	Open Interest	Volume	Open Interest	Open price	Price max	Price min	Last price	Closing price	Volume	Open Interest	Open price	Price max	Price min	Last price	Closing price	Volume	Open Interest	Volume	Open Interest	Exerise Price			
4.40						-	-						-	-								-	-					-	-			4.40				
4.80						-	-						-	-								-	-					-	-			4.80				
5.20						-	-						-	-								-	-					-	-			5.20				
5.60						-	-						-	-								-	-					-	-			5.60				
6.00						-	-						-	-								-	-					-	-			6.00				
6.40						-	-						-	-								-	-					-	-			6.40				
6.80						-	-						-	-								-	-					-	-			6.80				
7.20						-	-						-	-								-	-					-	-			7.20				
7.60						-	-						-	-								-	-					-	-			7.60				
8.00						-	-						-	-								-	-					-	-			8.00				
8.40						-	-						-	-								-	-					-	-			8.40				
8.80						-	-						-	-								-	-					-	-			8.80				
9.20						-	-						-	-								-	-					-	-			9.20				
9.60						-	-						-	-								-	-					-	-			9.60				
10.00						-	-						-	-								-	-					-	-			10.00				
10.50						-	-						-	-								-	-					-	-			10.50				
11.00					0.002	-	100						-	-								-	-					-	-			11.00				
11.50						-	-						-	-								-	-					-	-			11.50				
12.00						-	-						-	-								-	-					-	-			12.00				
12.50						-	-						-	-								-	-					-	-			12.50				
13.00						-	-						-	-								-	-					-	-			13.00				
13.50						-	-						-	-								-	-					-	-			13.50				
14.00						-	-						-	-								-	-					-	-			14.00				
14.50						-	-						-	-								-	-					-	-			14.50				
15.00						-	-						-	-								-	-					-	-			15.00				
16.00						-	-						-	-								-	-					-	-			16.00				
17.00						-	-						-	-								-	-					-	-			17.00				
18.00						-	-						-	-								-	-					-	-			18.00				
Totals:						0	100							0	0	0	0							0	0							0	0			
Nominal Transactions Value:						0.00						0.00						0.00						0.00												
Number of Trades:						0						0						0																		

OTE (CR)

(Contract Size: 100 Securities, Exercise Style: American, Physical Delivery)

Call Options																Put Options																				
November 2014								December 2014								Other Months		November 2014								December 2014								Other Months		
Exercise Price	Open price	Price max	Price min	Last price	Closing price	Volume	Open Interest	Open price	Price max	Price min	Last price	Closing price	Volume	Open Interest	Volume	Open Interest	Open price	Price max	Price min	Last price	Closing price	Volume	Open Interest	Open price	Price max	Price min	Last price	Closing price	Volume	Open Interest	Volume	Open Interest	Exercise Price			
5.20						-	-						-	-								-	-					-	-			5.20				
5.60						-	-						-	-								-	-					-	-			5.60				
6.00						-	-						-	-								-	-					-	-			6.00				
6.40						-	-						-	-								-	-					-	-			6.40				
6.80						-	-						-	-								-	-					-	-			6.80				
7.20						-	-						-	-								-	-					-	-			7.20				
7.60						-	-						-	-								-	-					-	-			7.60				
8.00						-	-						-	-								-	-					-	-			8.00				
8.40						-	-						-	-								-	-					-	-			8.40				
8.80						-	-						-	-								-	-					-	-			8.80				
9.20						-	-						-	-								-	-					-	-			9.20				
9.40						-	-					0.235	-	5								-	-					-	-			9.40				
9.60						-	-					0.182	-	5								-	-					-	-			9.60				
9.80						-	-					0.138	-	5								-	-				1.12	-	-			9.80				
10.00						-	-						-	-								-	-				1.28	-	-			10.00				
10.50						-	-						-	-								-	-					-	-			10.50				
11.00						-	10						-	-								-	-				2.21	-	-			11.00				
11.50						-	10					0.009	-	5								2.70	-	10				-	-			11.50				
12.00						-	-					0.004	-	10								-	-					-	-			12.00				
12.50						-	-						-	-								-	-					-	-			12.50				
13.00						-	-						-	-								-	-					-	-			13.00				
14.00						-	-						-	-								-	-					-	-			14.00				
15.00						-	-						-	-								-	-					-	-			15.00				
16.00						-	-						-	-								-	-					-	-			16.00				
17.00						-	-						-	-								-	-					-	-			17.00				
18.00						-	-						-	-								-	-					-	-			18.00				
Totals:						0	20							0	30	0	0							0	10							0	15	0	0	
Nominal Transactions Value:						0.00								0.00		0.00								0.00								0.00				
Number of Trades:						0								0		0								0.00								0		0		

PIRAEUS BANK (CR)

(Contract Size: 100 Securities, Exercise Style: American, Physical Delivery)

Call Options																	Put Options																			
November 2014								December 2014								Other Months		November 2014								December 2014								Other Months		
Exerise Price	Open price	Price max	Price min	Last price	Closing price	Volume	Open Interest	Open price	Price max	Price min	Last price	Closing price	Volume	Open Interest	Volume	Open Interest	Open price	Price max	Price min	Last price	Closing price	Volume	Open Interest	Open price	Price max	Price min	Last price	Closing price	Volume	Open Interest	Volume	Open Interest	Exerise Price			
0.100						-	-							-	-							-	-						-	-			0.100			
0.200						-	-							-	-							-	-						-	-			0.200			
0.300						-	-							-	-							-	-						-	-			0.300			
0.400						-	-							-	-							-	-						-	-			0.400			
0.500						-	-							-	-							-	-						-	-			0.500			
0.600						-	-							-	-							-	-						-	-			0.600			
0.700						-	-							-	-							-	-						-	-			0.700			
0.800						-	-							-	-							-	-						-	-			0.800			
0.900						-	-							-	-							-	-						-	-			0.900			
1.00						-	-							-	-							-	-						-	-			1.00			
1.10						-	-							-	-							-	-						-	-			1.10			
1.20						-	-							-	-							-	-						-	-			1.20			
1.30						-	-							-	-							-	-						-	-			1.30			
1.35						-	-							-	-							-	-						-	-			1.35			
1.40						-	-							-	-							-	-						-	-			1.40			
1.45						-	-							-	-							-	-						-	-			1.45			
1.50						-	-							-	-							-	-						-	-			1.50			
1.55						-	-							-	-							-	-						-	-			1.55			
1.60						-	-							-	-							-	-						-	-			1.60			
1.65						-	-							-	-							-	-						-	-			1.65			
1.70						-	-							-	-							-	-						-	-			1.70			
1.75						-	-							-	-							-	-						-	-			1.75			
1.80						-	-							-	-							-	-						-	-			1.80			
1.90						-	-							-	-							-	-						-	-			1.90			
2.00						-	-							-	-							-	-						-	-			2.00			
2.20						-	-							-	-							-	-						-	-			2.20			
2.40						-	-							-	-							-	-						-	-			2.40			
2.60						-	-							-	-							-	-						-	-			2.60			
2.80						-	-							-	-							-	-						-	-			2.80			
Totals:						0	0							0	0	0	0							0	0							0	0	0	0	
Nominal Transactions Value:						0.00								0.00		0.00								0.00								0.00				
Number of Trades:						0								0		0								0								0				

PPC (CR)

(Contract Size: 100 Securities, Exercise Style: American, Physical Delivery)

Call Options																Put Options																				
November 2014								December 2014								Other Months		November 2014								December 2014								Other Months		
Exercise Price	Open price	Price max	Price min	Last price	Closing price	Volume	Open Interest	Open price	Price max	Price min	Last price	Closing price	Volume	Open Interest	Volume	Open Interest	Open price	Price max	Price min	Last price	Closing price	Volume	Open Interest	Open price	Price max	Price min	Last price	Closing price	Volume	Open Interest	Volume	Open Interest	Exercise Price			
3.20						-	-						-	-								-	-					-	-			3.20				
3.40						-	-						-	-								-	-					-	-			3.40				
3.60						-	-						-	-								-	-					-	-			3.60				
3.80						-	-						-	-								-	-					-	-			3.80				
4.00						-	-						-	-								-	-					-	-			4.00				
4.40						-	-						-	-								-	-					-	-			4.40				
4.80						-	-						-	-								-	-					-	-			4.80				
5.20						-	-						-	-								-	-					-	-			5.20				
5.60						-	-					0.476	-	15								-	-					-	-			5.60				
6.00						-	-						-	-								-	-					-	-			6.00				
6.40					0.061	-	10						-	-								-	-					-	-			6.40				
6.80					0.016	-	20						-	-								-	-					-	-			6.80				
7.20					0.004	-	10						-	-								-	-					-	-			7.20				
7.60						-	-						-	-								-	-					-	-			7.60				
8.00						-	-						-	-								-	-					-	-			8.00				
8.40						-	-						-	-								-	-					-	-			8.40				
8.80						-	-						-	-								-	-					-	-			8.80				
9.20						-	-						-	-								-	-					-	-			9.20				
9.40						-	-						-	-								-	-					-	-			9.40				
9.60						-	-						-	-								-	-					-	-			9.60				
9.80						-	-						-	-								-	-					-	-			9.80				
10.00						-	240						-	-								-	-					-	-			10.00				
10.50						-	-						-	-								-	-					-	-			10.50				
11.00						-	-						-	-								-	-					-	-			11.00				
11.50						-	-						-	-								-	-					-	-			11.50				
12.00						-	-						-	-								-	-					-	-			12.00				
12.50						-	-						-	-								-	-					-	-			12.50				
13.00						-	-						-	-								-	-					-	-			13.00				
13.50						-	-						-	-								-	-					-	-			13.50				
14.00						-	-						-	-								-	-					-	-			14.00				
15.00						-	-						-	-								-	-					-	-			15.00				
16.00						-	-						-	-								-	-					-	-			16.00				
Totals:						0	280						0	15	0	0						0	0					0	0	0	0					
Nominal Transactions Value:						0.00							0.00	0.00								0.00					0.00	0.00			0.00					
Number of Trades:						0							0	0								0.00					0	0			0					

PPC (CR)

(Contract Size: 100 Securities, Excercise Style: American, Physical Delivery)

Call Options																Put Options																	
Exerise Price	November 2014							December 2014							Other Months		November 2014							December 2014							Other Months		Exerise Price
	Open price	Price max	Price min	Last price	Closing price	Volume	Open Interest	Open price	Price max	Price min	Last price	Closing price	Volume	Open Interest	Volume	Open Interest	Open price	Price max	Price min	Last price	Closing price	Volume	Open Interest	Open price	Price max	Price min	Last price	Closing price	Volume	Open Interest	Volume	Open Interest	

Securities	Type[4]	Stock Repo [1]						Stock Reverse Repo [2]								Repurchase Agreements [3]							
		Trans. price	chg.	Trades	Volume	Transactions Value	Open Interest[5]	Price max	Price min	Last price	Last Ask	Trades	Volume	Transactions Value	Open Interest[5]	Price max	Price min	Last price	Last Ask	Trades	Volume	Transactions Value	Open Interest[5]
AEGEAN AIRLINES (CR)	SR RA	100.18	---	---	---	---	294	---	---	---	147@3%	---	---	---	---	---	---	---	---	---	---	---	---
ALPHA BANK (CR)	SR RA	100.03	---	---	---	---	115,607	3.70%	3.70%	3.70%	36122@3.7%	1	3,400	170,340.0	39,831	1.50%	1.50%	1.50%	---	1	38	1,903.8	317
ALPHA ETF FTSE Athex Large Cap	SR RA	100.00	---	---	---	---	---	---	---	---	---	---	---	---	---	---	---	---	---	---	---	---	2,990
ALUMIL (CR)	RA	---	---	---	---	---	---	---	---	---	---	---	---	---	---	---	---	---	---	---	---	---	---
ATHENS MEDICAL CENTER SA (CR)	SR RA	100.00	---	---	---	---	434	---	---	---	217@3%	---	---	---	---	---	---	---	---	---	---	---	---
ATTICA BANK S.A. (CR)	SR RA	100.01	---	---	---	---	1,035	---	---	---	100@10%	---	---	---	728	---	---	---	---	---	---	---	---
AUTOHELLAS SA (CR)	SR RA	100.00	---	---	---	---	16	---	---	---	6@3%	---	---	---	---	---	---	---	---	---	---	---	---
BIOKARPET S.A.(CR)	RA	---	---	---	---	---	---	---	---	---	---	---	---	---	---	---	---	---	---	---	---	---	---
CC HBC AG (CR)	SR RA	101.81	0.17	---	---	---	966	---	---	---	---	---	---	---	772	6.00%	1.50%	6.00%	---	2	202	349,258.0	1,808
CENTRIC HOLDINGS (CR)	SR RA	100.00	---	---	---	---	200	---	---	---	160@10%	---	---	---	---	---	---	---	---	---	---	---	---
CORINTH PIPEWORKS SA (CR)	SR RA	100.00	---	---	---	---	161	---	---	---	80@3%	---	---	---	---	---	---	---	---	---	---	---	---
CRETE PLASTICS SA (CR)	SR RA	100.00	---	---	---	---	---	---	---	---	---	---	---	---	---	---	---	---	---	---	---	---	---
DROMEAS SA (CR)	SR RA	100.00	---	---	---	---	---	---	---	---	---	---	---	---	---	---	---	---	---	---	---	---	---
ELGEKA SA (CR)	SR RA	100.00	---	---	---	---	10	---	---	---	---	---	---	---	---	---	---	---	---	---	---	---	---
ELLAKTOR (CR)	SR RA	100.07	0.01	---	---	---	2,072	---	---	---	265@3%	---	---	---	759	1.50%	1.50%	1.50%	---	1	1	225.0	12
ELVAL SA. (CB)	SR RA	100.00	---	---	---	---	368	---	---	---	184@3%	---	---	---	---	---	---	---	---	---	---	---	---
EUROBANK ERGASIAS (CR)	SR RA	100.08	0.01	---	---	---	56,031	---	---	---	---	---	---	---	44,824	1.50%	1.50%	1.50%	---	1	81	1,944.0	40,507
EUROPEAN RELIANCE INSUR. (CR)	SR RA	100.00	---	---	---	---	---	---	---	---	---	---	---	---	---	---	---	---	---	---	---	---	---
EYDAP S.A. (CR)	SR RA	100.75	0.06	1	30	18,780.0	514	---	---	---	---	---	---	---	384	---	---	---	---	---	---	---	254
F.G. EUROPE S.A. (CR)	SR RA	100.00	---	---	---	---	---	---	---	---	---	---	---	---	---	---	---	---	---	---	---	---	---
FOLLI FOLLIE (CR)	SR RA	103.86	0.27	---	---	---	1,131	---	---	---	---	---	---	---	904	1.50%	1.50%	1.50%	---	1	1	2,494.0	498
FOURLIS (CR)	SR RA	100.26	0.02	---	---	---	109	---	---	---	1@3.5%	---	---	---	66	---	---	---	---	---	---	---	---
FRIGOGLASS SA (CR)	SR RA	100.14	0.01	---	---	---	75	---	---	---	9@3%	---	---	---	28	---	---	---	---	---	---	---	---
GEK TERNA (CR)	SR RA	100.18	---	---	---	---	642	3.00%	3.00%	3.00%	219@3%	1	10	2,100.0	102	---	---	---	---	---	---	---	---
GR. SARANTIS SA (CR)	SR RA	100.00	---	---	---	---	60	---	---	---	30@3%	---	---	---	---	---	---	---	---	---	---	---	---
GRIVALIA PROPERTIES (CR)	SR RA	100.30	0.03	---	---	---	1,135	---	---	---	141@3.5%	---	---	---	567	---	---	---	---	---	---	---	1
HALKOR SA (CB)	SR RA	100.00	---	---	---	---	505	---	---	---	360@5.5%	---	---	---	---	---	---	---	---	---	---	---	---
HELLENIC EXCHANGES-A.S.E. (CR)	SR RA	100.01	---	---	---	---	5,930	---	---	---	2820@3%	---	---	---	145	1.50%	1.50%	1.50%	---	1	1	550.0	4
HELLENIC PETROLEUM (CR)	SR RA	100.04	0.01	---	---	---	2,490	---	---	---	1062@3%	---	---	---	183	1.50%	1.50%	1.50%	---	1	1	425.0	4
HYGEIA SA (CR)	SR RA	100.00	---	---	---	---	500	---	---	---	389@8.6%	---	---	---	---	---	---	---	---	---	---	---	---
IASO SA (CR)	SR RA	100.00	---	---	---	---	247	---	---	---	123@3%	---	---	---	---	---	---	---	---	---	---	---	---
IKTINOS HELLAS SA (CR)	SR RA	100.00	---	---	---	---	10	---	---	---	---	---	---	---	---	---	---	---	---	---	---	---	---

Stock Lending Notes

- [1] - Stock Repo: A Contract for selling stocks to HELEX with a Repurchase Right (According to ATHEX BoD Resolution No 17)
- [2] - Stock Reverse Repo: A Contract for buying stocks from HELEX with a Resell Right. (According to ATHEX BoD Resolution No 18)
- [3] - Standardized Repurchase Agreements: A Contract that constitutes a standardized agreement for the purchase or sale of shares, with repurchase or resell pact (According to ATHEX BoD Resolution No 20)
- [4] - Type of products is divided into SR: Stock Repo or Stock Reverse Repo, and RA: Repurchase Agreements.
- [5] - Open Interest in all Series (both tradeable or non-tradeable).

Securities	Type[4]	Stock Repo [1]						Stock Reverse Repo [2]								Repurchase Agreements [3]							
		Trans. price	chg.	Trades	Volume	Transactions Value	Open Interest[5]	Price max	Price mii	Last price	Last Ask	Trades	Volume	Transactions Value	Open Interest[5]	Price max	Price min	Last price	Last Ask	Trades	Volume	Transactions Value	Open Interest[5]
INFORM P. LYKOS SA (CR)	SR RA	100.00	---	---	---	---	3	---	---	---	---	---	---	---	---	---	---	---	---	---	---	---	---
INTRACOM CONSTR. (CR)	SR RA	100.00	---	---	---	---	7	---	---	---	---	---	---	---	---	---	---	---	---	---	---	---	---
INTRACOM HOLDINGS (CR)	SR RA	100.00	---	---	---	---	665	---	---	---	458@4.7%	---	---	---	---	---	---	---	---	---	---	---	---
INTRALOT (CR)	SR RA	100.12	0.01	---	---	---	961	---	---	---	---	---	---	719	1.50%	1.50%	1.50%	---	1	1	105.0	656	
J & P - AVAX SA (CR)	SR RA	100.00	---	---	---	---	235	---	---	---	117@3%	---	---	---	---	---	---	---	---	---	---	---	---
JUMBO SA (CR)	SR RA	100.56	0.06	---	---	---	2,202	7.50%	6.00%	7.50%	20@8%	7	87	79,257.0	1,671	---	---	---	---	---	---	---	---
KARATZIS SA (CR)	RA	---	---	---	---	---	---	---	---	---	---	---	---	---	---	---	---	---	---	---	---	---	---
KLEEMAN HELLAS SA (CR)	SR RA	100.00	---	---	---	---	---	---	---	---	---	---	---	---	---	---	---	---	---	---	---	---	---
KRI-KRI S.A. (CR)	SR RA	100.00	---	---	---	---	550	---	---	---	275@3%	---	---	---	---	---	---	---	---	---	---	---	---
LAMDA DEVELOPMENT SA (CR)	SR RA	100.00	---	---	---	---	---	---	---	---	---	---	---	---	---	---	---	---	---	---	---	---	---
MARFIN INVESTMENT GROUP (CR)	SR RA	100.06	0.01	---	---	---	2,928	---	---	---	---	---	---	2,342	1.50%	1.50%	1.50%	---	1	5	105.5	524	
METKA (CR)	SR RA	100.37	0.03	---	---	---	669	---	---	---	163@3%	---	---	164	---	---	---	---	---	---	---	---	2
MLS MULTIMEDIA SA (CR)	SR RA	100.00	---	---	---	---	109	---	---	---	54@3%	---	---	---	---	---	---	---	---	---	---	---	---
MOTOR OIL (CR)	SR RA	100.21	0.02	---	---	---	1,818	3.00%	3.00%	3.00%	187@3%	3	122	72,224.0	722	---	---	---	---	---	---	---	3
MYTILINEOS HOLDINGS (CR)	SR RA	100.02	---	---	---	---	3,562	---	---	---	1643@3%	---	---	138	1.50%	1.50%	1.50%	---	1	1	581.0	5	
NATIONAL BANK (CR)	SR RA	100.05	0.01	1	1	170.0	16,033	---	---	---	946@3%	---	---	3,062	1.50%	1.50%	1.50%	---	1	15	2,550.0	137	
NBGAM ETF	SR RA	100.00	---	---	---	---	---	---	---	---	---	---	---	---	---	---	---	---	---	---	---	---	---
NBGAM ETF GREECE & TURKEY 30	SR RA	100.00	---	---	---	---	---	---	---	---	---	---	---	---	---	---	---	---	---	---	---	---	---
NIREFS SA (CR)	SR RA	100.00	---	---	---	---	346	---	---	---	276@10%	---	---	---	---	---	---	---	---	---	---	---	---
OPAP (CR)	SR RA	101.17	0.09	---	---	---	4,718	---	---	---	19@9%	---	---	3,684	6.00%	1.50%	6.00%	---	2	252	231,084.0	727	
OTE (CR)	SR RA	100.60	0.05	---	---	---	4,651	3.50%	3.50%	3.50%	203@3.5%	1	47	41,360.0	2,699	1.50%	1.50%	1.50%	---	1	2	1,760.0	852
P.P.A. S.A. (CR)	SR RA	104.19	0.29	---	---	---	14	---	---	---	---	---	---	10	---	---	---	---	---	---	---	---	---
PAPOUTSANIS (CR)	SR RA	100.00	---	---	---	---	---	---	---	---	---	---	---	---	---	---	---	---	---	---	---	---	---
PETROPOULOS PETROS (CR)	RA	---	---	---	---	---	---	---	---	---	---	---	---	---	---	---	---	---	---	---	---	---	---
PIRAEUS BANK (CR)	SR RA	100.17	0.02	---	---	---	14,409	---	---	---	---	---	---	11,527	1.50%	1.50%	1.50%	---	1	20	2,100.0	7,430	
PLAISIO COMPUTERS SA (CR)	RA	---	---	---	---	---	---	---	---	---	---	---	---	---	---	---	---	---	---	---	---	---	---
PPC (CR)	SR RA	100.17	0.03	---	---	---	1,930	3.50%	3.50%	3.50%	317@3.5%	1	85	50,150.0	888	1.50%	1.50%	1.50%	---	1	1	590.0	1,671
PROFILE SA (CR)	RA	---	---	---	---	---	---	---	---	---	---	---	---	---	---	---	---	---	---	---	---	---	---
QUALITY & RELIABILITY SA (CR)	RA	---	---	---	---	---	---	---	---	---	---	---	---	---	---	---	---	---	---	---	---	---	---
QUEST HOLDINGS (CR)	SR RA	100.00	---	---	---	---	---	---	---	---	---	---	---	---	---	---	---	---	---	---	---	---	---
SIDENOR (CR)	SR RA	100.02	---	---	---	---	407	---	---	---	153@3%	---	---	50	---	---	---	---	---	---	---	---	---
TECHNICAL OLYMPIC SA (CR)	SR RA	100.00	---	---	---	---	44	---	---	---	22@3%	---	---	---	---	---	---	---	---	---	---	---	---

Stock Lending Notes

- [1] - Stock Repo: A Contract for selling stocks to HELEX with a Repurchase Right (According to ATHEX BoD Resolution No 17)
- [2] - Stock Reverse Repo: A Contract for buying stocks from HELEX with a Resell Right. (According to ATHEX BoD Resolution No 18)
- [3] - Standardized Repurchase Agreements: A Contract that constitutes a standardized agreement for the purchase or sale of shares, with repurchase or resell pact (According to ATHEX BoD Resolution No 20)
- [4] - Type of products is divided into SR: Stock Repo or Stock Reverse Repo, and RA: Repurchase Agreements.
- [5] - Open Interest in all Series (both tradeable or non-tradeable).

Securities	Type[4]	Stock Repo [1]						Stock Reverse Repo [2]								Repurchase Agreements [3]							
		Trans. price	chg.	Trades	Volume	Transactions Value	Open Interest[5]	Price max	Price min	Last price	Last Ask	Trades	Volume	Transactions Value	Open Interest[5]	Price max	Price min	Last price	Last Ask	Trades	Volume	Transactions Value	Open Interest[5]
TERNA ENERGY (CR)	SR RA	100.07	0.01	---	---	---	325	3.00%	3.00%	3.00%	84@3%	1	7	1,785.0	78	1.50%	1.50%	1.50%	---	1	1	255.0	2
THESSALONIKA WATER & SEWERAGE	SR RA	100.00	---	---	---	---	113	---	---	---	5@3%	---	---	---	---	---	---	---	---	---	---	---	---
THRACE PLASTICS SA (CR)	SR RA	100.00	---	---	---	---	1,010	---	---	---	505@3%	---	---	---	---	---	---	---	---	---	---	---	---
TITAN CEMENT (CR)	SR RA	100.30	0.02	---	---	---	8,634	3.00%	3.00%	3.00%	2915@3%	1	100	189,600.0	1,402	---	---	---	---	---	---	---	2
TPA SA (CR)	SR RA	100.00	---	---	---	---	46	---	---	---	23@3%	---	---	---	---	---	---	---	---	---	---	---	---
TRASTOR REAL EST. INV. CO.(CR)	SR RA	100.00	---	---	---	---	---	---	---	---	---	---	---	---	---	---	---	---	---	---	---	---	---
VIOHALCO SA/NV (CB)	SR RA	100.45	0.03	---	---	---	401	---	---	---	---	---	---	---	320	6.00%	6.00%	6.00%	---	1	50	10,850.0	248

Stock Lending Notes

- [1] - Stock Repo: A Contract for selling stocks to HELEX with a Repurchase Right (According to ATHEX BoD Resolution No 17)
- [2] - Stock Reverse Repo: A Contract for buying stocks from HELEX with a Resell Right. (According to ATHEX BoD Resolution No 18)
- [3] - Standardized Repurchase Agreements: A Contract that constitutes a standardized agreement for the purchase or sale of shares, with repurchase or resell pact (According to ATHEX BoD Resolution No 20)
- [4] - Type of products is divided into SR: Stock Repo or Stock Reverse Repo, and RA: Repurchase Agreements.
- [5] - Open Interest in all Series (both tradeable or non-tradeable).

Sectors codification for listed companies

533	-	Exploration & Production	537	-	Integrated Oil & Gas
1353	-	Commodity Chemicals	1357	-	Specialty Chemicals
1753	-	Aluminum	1755	-	Nonferrous Metals
1757	-	Steel	1775	-	General Mining
2353	-	Building Materials & Fixtures	2357	-	Heavy Construction
2723	-	Containers & Packaging	2727	-	Diversified Industrials
2733	-	Electrical Components & Equipment	2753	-	Commercial Vehicles & Trucks
2757	-	Industrial Machinery	2773	-	Marine Transportation
2777	-	Transportation Services	2791	-	Business Support Services
2797	-	Industrial Suppliers	3535	-	Distillers & Vintners
3537	-	Soft Drinks	3573	-	Farming Fishing & Plantations
3577	-	Food Products	3722	-	Durable Household Products
3726	-	Furnishings	3728	-	Home Construction
3747	-	Toys	3763	-	Clothing & Accessories
3765	-	Footwear	3767	-	Personal Products
3785	-	Tobacco	4533	-	Health Care Providers
4535	-	Medical Equipment	4577	-	Pharmaceuticals
5337	-	Food Retailers & Wholesalers	5371	-	Apparel Retailers
5373	-	Broadline Retailers	5375	-	Home Improvement Retailers
5379	-	Specialty Retailers	5553	-	Broadcasting & Entertainment
5555	-	Media Agencies	5557	-	Publishing
5751	-	Airlines	5752	-	Gambling
5753	-	Hotels	5755	-	Recreational Services
5757	-	Restaurants & Bars	5759	-	Travel & Tourism
6535	-	Fixed Line Telecommunications	6575	-	Mobile Telecommunications
7535	-	Conventional Electricity	7537	-	Alternative Electricity
7577	-	Water	8355	-	Banks
8534	-	Insurance Brokers	8536	-	Property & Casualty Insurance
8633	-	Real Estate Holding & Development	8637	-	Real Estate Services
8671	-	Industrial & Office REITs	8675	-	Specialty REITs
8775	-	Specialty Finance	8777	-	Investment Services
8985	-	Equity Investment Instruments	9533	-	Computer Services
9535	-	Internet	9537	-	Software
9572	-	Computer Hardware	9574	-	Electronic Office Equipment
9578	-	Telecommunications Equipment	11000	-	ETF

