

# Daily Official List

Hellenic Exchanges – Athens Stock Exchange S.A.

Friday, 12 December, 2014  
Year: 135 Trading Day No: 238

**Disclaimer:**

Hellenic Exchanges-Athens Exchange endeavours to ensure that the data and other material ("Information") presented on the Daily Official List are accurate and complete, but it is not liable for any errors or omissions of data or /and for the accuracy, credibility, updating and completeness of the aforesaid information nor it has any liability arising directly or indirectly from the use of the above Information.

The Company is not liable for the accuracy of the data included in listed companies' announcements. Only the sender of such an announcement is fully and solely liable for any infringement of third party's rights from the content of such announcement. All contents of the Daily Official List are provided only for information purposes and do not constitute investment advice or solicitation to invest in securities or other products listed for trading on the Exchange.

You acknowledge and agree that the Company is the owner of any property rights related to any Information appearing on the Daily Official List including intellectual property rights copyright, trademarks, etc.

The above data are a property of the Hellenic Exchanges-Athens Exchange and are copyright protected. Users are forbidden to reproduce, modify, copy, sale, transmit or redistribute, by all reproduction means and methods, part or the whole of the above data, without reference to their source.

The commercial exploitation of these data is, also, forbidden by third parties. Hellenic Exchanges-Athens Exchange does not carry any responsibility, direct or indirect, derived from usage or accidental alteration of the above data when used by third parties.

---

**Hellenic Exchanges – Athens Stock Exchange S.A.**

110 Athinon Ave., 10442 Athens, Tel: (210) 33.66.800, Fax: (210) 32.13.938

[www.athex.gr](http://www.athex.gr)

---

**Thessalonica Stock Exchange Center (T.S.E.C)**

16-18 Katouni Str., Thessalonica 546 25 Tel: (2310) 567.667, Fax: (2310) 530.545

**Athex Members Guarantee Fund**

14-16 Fidiou Str., Athens 106 78, Tel: (210) 33.04.682, Fax: (210) 33.04.155

**Hellenic Republic Capital Market Commission**

1 Kolokotroni Str. & 1 Stadiou Str., Athens 10562 Tel: (210) 33.77.100 Fax: (210) 33.77.173

---

**Table of Contents**

---

**Section 1: Statistical Figures of Securities, Derivatives and Lending**

- Summary of Markets
- Athex Indices
- Analytic Figures for Athex Market's Boards and Categories
- Trading Details by Athex Sectors and Financial Instruments (ETFs)
- Top 10 best & worst performing Shares
- Derivatives Summary

**Section 2: Analytic Figures of Shares Transactions**

- Analytic Figures of Shares Transactions
- Shares' Notes

**Section 3: Figures of Securities Transactions**

- Securities Blocks Details
- Shares Rights Details
- Shares Short Selling
- Stock Borrowing
- Shares Forced Sales
- Forced Sales Registered Shares
- Exchange Traded Funds (ETFs) Characteristics

**Section 5: Bonds traded in Fixed Income Assets Market**

- Corporate Bonds
- Government Bonds
- Treasury Bills & Zero Coupon Government Bonds
- Government Bonds Traded with the Open Outcry Method
- State Banks Bonds

**Section 6: Additional Infos**

- Athex & ATHEXClear Members List
- List of Stocks under Market Making operations

- Equity Investment Instruments Acknowledgements

**Section 7: Derivatives Market Analytic Figures**

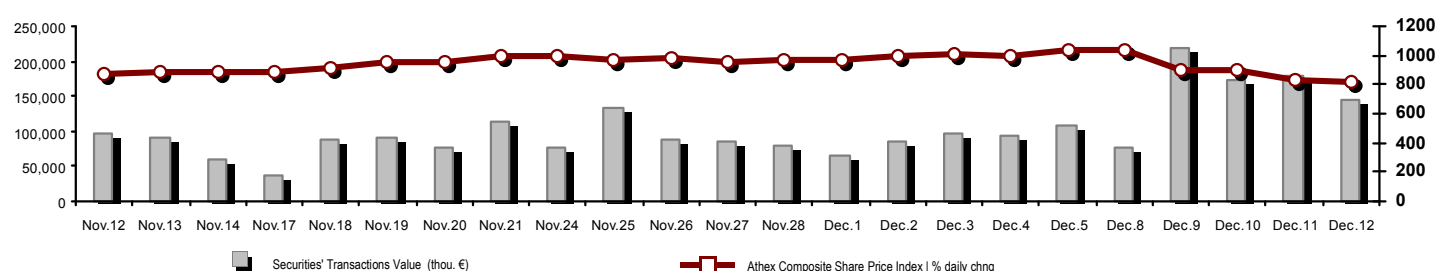
- Index Futures
- Stock Futures
- Index Options
- Stock Options
- Stock Lending Analytic Figures

**Appendix A: Sectors codification for listed companies**

Section codification follows the corresponding from the Greek version of Daily Official List for reference purposes.

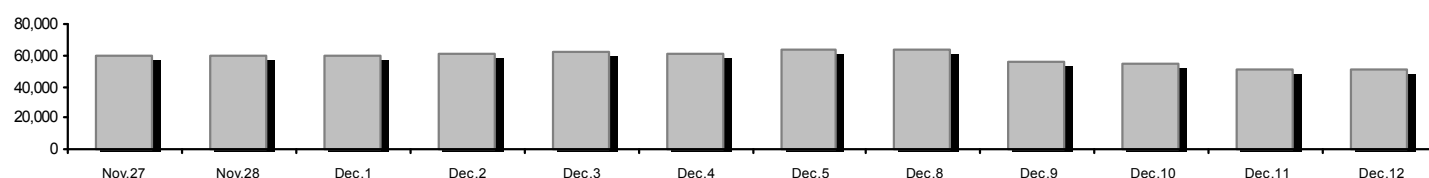
## Summary of Markets

Athex Composite Share Price Index vs Shares and Derivatives Transactions Value

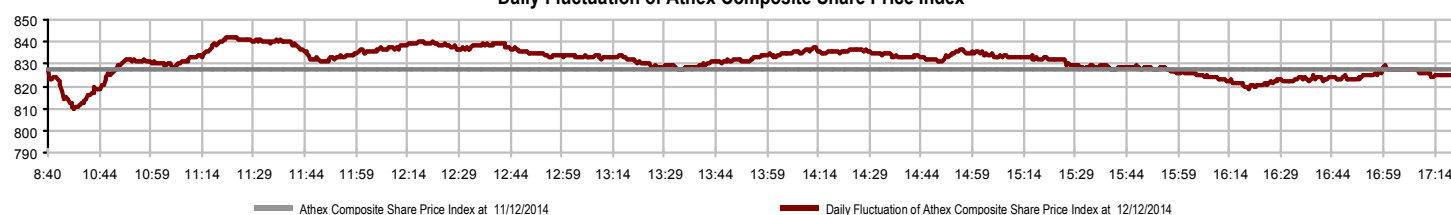


<b>Total Transactions Value (thou. €):</b>	<b>145,528.81</b>		
<b>Athex Capitalisation (mill. €) **: </b>	<b>50,976.09</b>	<b>Derivatives Total Open Interest</b>	<b>263,262</b>
Daily change: mill. €   %	-113.86 -0.22%	in Index Futures   % daily chng	43,425 19.23%
Yearly Avg Capitalisation: mill. €   % chng prev year Avg	69,915.03 35.37%	in Stock Futures   % daily chng	205,575 -1.65%
<b>Athex Composite Share Price Index   % daily chng</b>	<b>824.49 -0.42%</b>	in Index Options   % daily chng	12,782 0.82%
<b>Athex Composite Share Price Index Capitalisation (mill. €)</b>	<b>47,602.21</b>	in Stock Options   % daily chng	1,480 19.23%
Daily change (mill. €)	-74.99		
<b>Securities' Transactions Value (thou. €)</b>	<b>145,528.81</b>	<b>Derivatives Contracts Volume:</b>	<b>53,783</b>
Daily change: thou. €   %	-34,738.95 -19.27%	Daily change: pieces   %	-401,888 -88.20%
YtD Avg Trans. Value: thou. €   % chng prev year Avg	128,979.77 48.91%	YtD Avg Derivatives Contracts   % chng prev year Avg	54,946 32.19%
Short Selling Trans. Value: mill. €   % in total Value		<b>Derivatives Trades Number:</b>	<b>5,451</b>
Short Covering Trans. Value: mill. €   % in total Value		Daily change: number   %	-1,198 -18.02%
<b>Transactions Value of Blocks (thou. €)</b>	<b>18,178.16</b>	YtD Avg Derivatives Trades number   % chng prev year Avg	2,794 6.16%
<b>Bonds Transactions Value (thou. €)</b>	<b>0.00</b>		
<b>Securities' Transactions Volume (thou. Pieces)</b>	<b>167,288.38</b>	<b>Lending Total Open Interest</b>	<b>9,133,523</b>
Daily change: thou. pieces   %	-36,477.78 -17.90%	Daily change: pieces   %	1,081,416 13.43%
YtD Avg Volume: thou. pieces   % chng prev year Avg	94,506.99 76.60%	<b>Lending Contracts Volume(Multilateral/Bilateral)</b>	<b>1,170,497</b>
Short Selling Volume: thou pieces   % in total Volume		Daily change: pieces   %	780,936 208.49%
Short Covering Volume: thou. pieces   % in total Volume		<b>Multilateral Lending</b>	1,155,497
<b>Transactions Volume of Blocks (thou. Pieces)</b>	<b>15,391.38</b>	<b>Bilateral Lending</b>	15,000
<b>Bonds Transactions Volume (thou. pieces)</b>	<b>0.00</b>		
<b>Securities' Trades Number</b>	<b>42,913</b>	<b>Lending Trades Number:</b>	<b>170</b>
Daily change: number   %	-5,904 -12.09%	Daily change: thou. €   %	-1,198 -18.02%
YtD Avg Derivatives Trades number   % chng prev year Avg	29,053 -2.06%	<b>Multilateral Lending Trades Number</b>	168
<b>Number of Blocks</b>	<b>14</b>	<b>Bilateral Lending Trades Number</b>	2
<b>Number of Bonds Transactions</b>	<b>0</b>		

Athex Capitalisation (mill. €) \*\*



Daily Fluctuation of Athex Composite Share Price Index





## Athex Indices

Index name	12/12/2014	11/12/2014	pts.	%	Min	Max	Year min	Year max	Year change
Athex Composite Share Price Index	824.49 ↓	827.98	-3.49	-0.42%	810.05	842.08	810.05	1,379.42	-29.09% ↓
FTSE/Athex Large Cap	265.75 ↓	266.34	-0.59	-0.22%	260.89	271.74	260.89	445.52	-30.95% ↓
FTSE/ATHEX Custom Capped	874.95 ↓	946.29	-71.34	-7.54%			874.95	1,410.19	-28.84% ↓
FTSE/ATHEX Custom Capped - USD	776.75 ↓	842.39	-65.64	-7.79%			776.75	1,406.66	-36.06% ↓
FTSE/Athex Mid Cap Index	731.90 ↑	725.27	6.63	0.91%	723.06	743.86	716.86	1,317.40	-37.27% ↓
FTSE/ATHEX-CSE Banking Index	75.01 ↑	74.96	0.05	0.07%	73.47	77.86	73.00	161.54	-44.90% ↓
FTSE/ATHEX Global Traders Index Plus	1,266.95 ↓	1,268.60	-1.65	-0.13%	1,249.97	1,291.81	1,249.97	1,845.84	-18.31% ↓
FTSE/ATHEX Global Traders Index	1,407.01 ↑	1,401.31	5.70	0.41%	1,380.28	1,429.72	1,380.28	2,152.38	-18.88% ↓
FTSE/ATHEX Mid & Small Cap Factor-Weighted Ind	1,069.07 ↑	1,068.47	0.60	0.06%	1,061.80	1,081.28	1,057.44	1,523.02	-16.42% ↓
Greece & Turkey 30 Price Index	667.13 ↓	685.55	-18.42	-2.69%	664.35	683.43	570.55	783.68	3.03% ↑
ATHEX Mid & SmallCap Price Index	2,304.43 ↓	2,338.57	-34.14	-1.46%	2,282.65	2,384.16	2,282.65	3,157.88	-10.46% ↓
FTSE/Athex Market Index	636.90 ↓	638.04	-1.14	-0.18%	625.46	650.85	625.46	1,066.17	-31.06% ↓
FTSE Med Index	4,988.91 ↓	5,047.45	-58.53	-1.16%			4,605.95	5,387.08	9.18% ↑
Athex Composite Index Total Return Index	1,202.47 ↓	1,207.56	-5.09	-0.42%	1,181.41	1,228.12	1,181.41	1,998.07	-28.57% ↓
FTSE/Athex Large Cap Total Return	359.97 ↓	360.77	-0.80	-0.22%			359.97	605.87	-31.74% ↓
FTSE/ATHEX Large Cap Net Total Return	1,072.05 ↓	1,074.44	-2.39	-0.22%	1,052.44	1,096.24	1,052.44	1,786.28	-30.52% ↓
FTSE/ATHEX Custom Capped Total Return	920.66 ↓	995.72	-75.07	-7.54%			920.66	1,472.79	-28.31% ↓
FTSE/ATHEX Custom Capped - USD Total Return	817.33 ↓	886.40	-69.07	-7.79%			817.33	1,469.09	-35.58% ↓
FTSE/Athex Mid Cap Total Return	930.63 ↑	922.20	8.43	0.91%			922.20	1,643.81	-35.56% ↓
FTSE/ATHEX-CSE Banking Total Return Index	69.99 ↑	69.94	0.05	0.07%			69.94	153.89	-45.77% ↓
Greece & Turkey 30 Total Return Index	829.92 ↓	849.17	-19.25	-2.27%			697.73	946.62	7.15% ↑
Hellenic Mid & Small Cap Index	753.54 ↓	757.09	-3.55	-0.47%	743.50	768.28	743.50	1,351.84	-32.34% ↓
FTSE/Athex Banks	99.10 ↑	99.04	0.06	0.06%	97.07	102.87	96.46	213.44	-44.91% ↓
FTSE/Athex Insurance	1,464.60 ↑	1,401.38	63.22	4.51%	1,369.77	1,464.60	1,274.94	1,749.09	11.20% ↑
FTSE/Athex Financial Services	1,026.27 ↓	1,046.72	-20.45	-1.95%	1,011.33	1,071.39	1,011.33	2,207.51	-41.97% ↓
FTSE/Athex Industrial Goods & Services	1,863.24 ↓	1,866.66	-3.42	-0.18%	1,828.67	1,892.88	1,828.67	3,724.87	-42.58% ↓
FTSE/Athex Retail	3,743.34 ↑	3,714.18	29.16	0.79%	3,558.01	3,896.38	3,090.34	4,836.94	13.48% ↑
FTSE/ATHEX Real Estate	2,285.09 ↓	2,390.64	-105.55	-4.42%	2,279.15	2,390.64	2,194.73	3,111.71	3.09% ↑
FTSE/Athex Personal & Household Goods	4,645.01 ↑	4,562.55	82.46	1.81%	4,442.86	4,742.37	4,442.86	7,649.84	-21.50% ↓
FTSE/Athex Food & Beverage	5,988.37 ↓	6,209.24	-220.87	-3.56%	5,975.43	6,209.65	5,805.55	8,227.06	-23.70% ↓
FTSE/Athex Basic Resources	1,986.06 ↓	2,016.81	-30.75	-1.52%	1,971.42	2,106.04	1,971.42	3,356.44	-27.83% ↓
FTSE/Athex Construction & Materials	2,161.50 ↑	2,154.83	6.67	0.31%	2,127.23	2,207.92	2,098.97	3,482.98	-19.40% ↓
FTSE/Athex Oil & Gas	1,810.11 ↓	1,856.75	-46.64	-2.51%	1,793.93	1,856.75	1,706.21	3,236.15	-36.86% ↓
FTSE/Athex Chemicals	4,765.21 ↓	4,790.38	-25.17	-0.53%	4,681.45	4,978.76	4,681.45	6,811.96	-20.53% ↓
FTSE/Athex Media	2,290.03 -	2,290.03	0.00	0.00%	2,290.03	2,290.03	1,543.92	2,777.58	48.33% ↑
FTSE/Athex Travel & Leisure	1,461.80 ↑	1,432.45	29.35	2.05%	1,419.84	1,492.26	1,369.61	2,304.69	-12.99% ↓
FTSE/Athex Technology	655.84 ↑	630.73	25.11	3.98%	625.08	655.96	622.75	1,134.79	-16.71% ↓
FTSE/Athex Telecommunications	2,367.21 ↑	2,298.40	68.81	2.99%	2,284.63	2,400.24	2,232.33	3,633.39	-11.06% ↓
FTSE/Athex Utilities	2,056.33 ↓	2,080.92	-24.59	-1.18%	2,001.82	2,151.96	2,001.82	4,471.04	-45.78% ↓
FTSE/Athex Health Care	130.06 ↑	124.51	5.55	4.46%	124.51	138.79	124.51	287.11	-41.68% ↓
Athex All Share Index	179.11 ↓	179.52	-0.41	-0.23%			179.11	291.46	-23.93% ↓

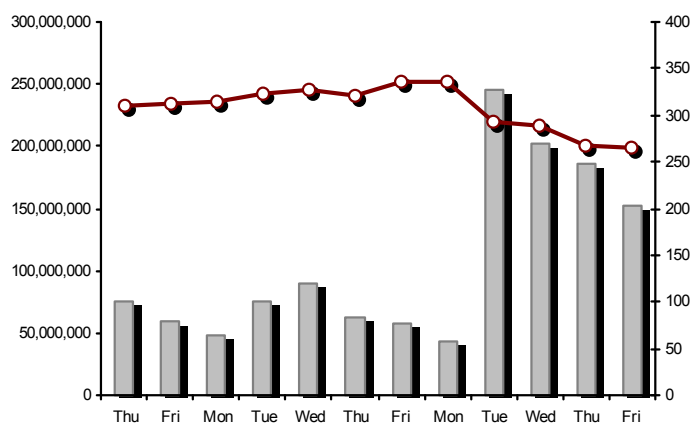
Note 1: Greece & Turkey 30 Pr data is the indicative at 17:20, whereas FTSE/ATHEX Custom Capped, FTSE/ATHEX Custom Capped - USD, FTSE/ATHEX Custom Capped TR, FTSE/ATHEX Custom Capped - USD TR, FTSE/Med 100 & Greece & Turkey 30 Rt closing prices refer to the previous trading day of 11/12/2014.

Note 2: The Hellenic Mid & Small Cap Index is a Customized index calculated by the Athens Exchange.

## Athex Indices

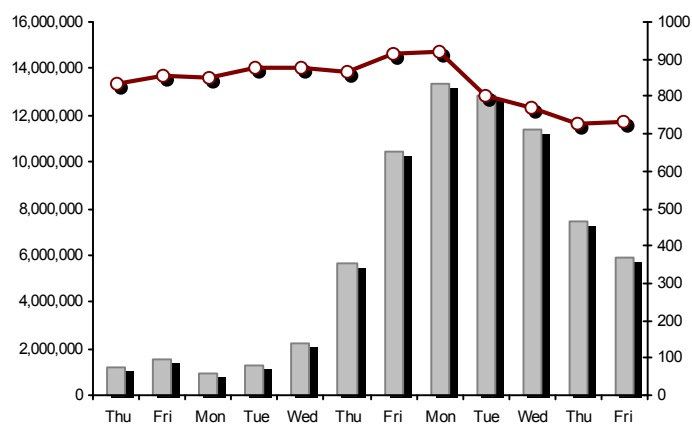
FTSE/Large Cap

12/12/2014: -0.22%



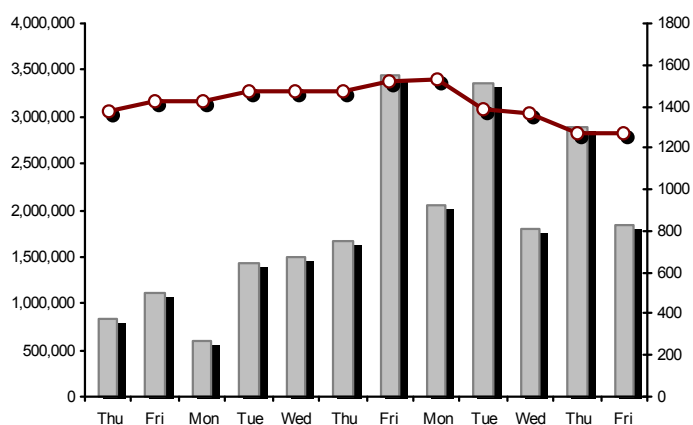
FTSE/Athex Mid Cap Index

12/12/2014: 0.91%



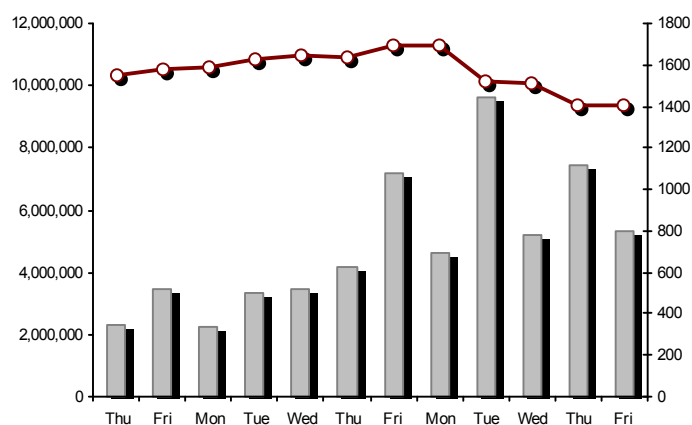
FTSE/ATHEX Global Traders Index Plus

12/12/2014: -0.13%



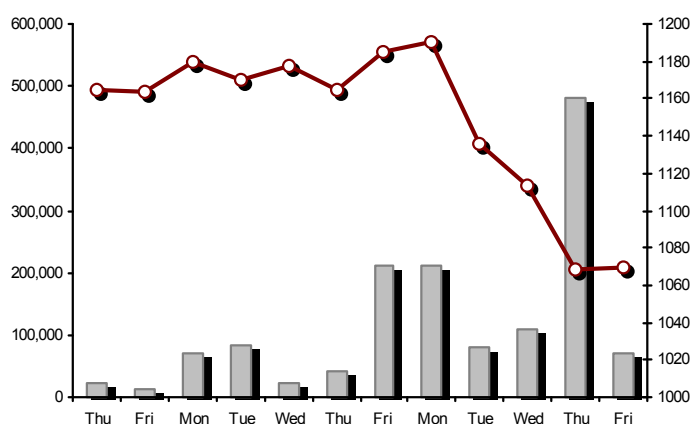
FTSE/ATHEX Global Traders Index

12/12/2014: 0.41%



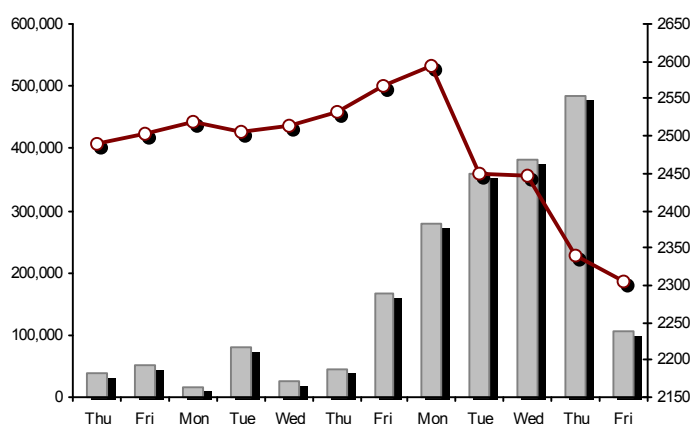
FTSE/ATHEX Mid &amp; Small Cap Factor-Weighted Index

12/12/2014: 0.06%



ATHEX Mid &amp; SmallCap Price Index

12/12/2014: -1.46%



Indices volume of transactions

Indices closing prices

## Analytic Figures for Athex Market's Boards and Categories

	Total Traded Securities	Main Market	Low Dispersion	Other Categories (*)	Exchange Traded Funds (ETFs)	Warrants
<b>Totals</b>	<b>136</b>	<b>113</b>	<b>6</b>	<b>12</b>	<b>2</b>	<b>3</b>
Gain / Lose / Same:	56 / 67 / 13	48 / 55 / 10	2 / 2 / 2	4 / 7 / 1	1 / 1 / 0	1 / 2 / 0
<b>Athex Capitalisation (mill. €) **</b>	<b>50,976.09</b>	<b>49,243.46</b>	<b>1,388.58</b>	<b>344.05</b>		
Daily Average Trans/ons Value(thou.€)	128,979.77	152,896.00	45.67	317.67	62.54	7,076.97
<b>Transactions Value</b>	<b>145,528.81</b>	<b>140,235.67</b>	<b>14.58</b>	<b>20.02</b>	<b>18.15</b>	<b>5,240.37</b>
Main Board:	127,350.64	123,069.98	14.58	20.02	18.15	4,227.90
Blocks Board:	18,178.16	17,165.69	0.00	0.00	0.00	1,012.47
Forced Sales Board:	0.00	0.00	0.00	0.00	0.00	0.00
Special Terms Board:	0.00	0.00	0.00	0.00	0.00	0.00
Daily Average Transactions Volume	94,506,990	87,408,988	21,305	887,396	14,327	6,174,973
<b>Transactions Volume</b>	<b>167,288,378</b>	<b>158,945,995</b>	<b>11,319</b>	<b>93,056</b>	<b>2,004</b>	<b>8,236,004</b>
Main Board:	151,896,995	144,570,239	11,319	93,056	2,004	7,220,377
Blocks Board:	15,391,383	14,375,756	0	0	0	1,015,627
Forced Sales Board:	0	0	0	0	0	0
Special Terms Board:	0	0	0	0	0	0
Daily Average Number of Trades	29,053	27,224	45	125	7	1,652
<b>Number of Trades</b>	<b>42,913</b>	<b>41,028</b>	<b>31</b>	<b>53</b>	<b>3</b>	<b>1,798</b>
Main Board:	42,899	41,017	31	53	3	1,795
Blocks Board:	14	11	0	0	0	3
Forced Sales Board:	0	0	0	0	0	0
Special Terms Board:	0	0	0	0	0	0

(\*) Summarised Transactions figures for Under Deletion and Under Supervision Categories.(\*\*) The Market Capitalization of the Companies that belong in the Under Supervision Status is not included.

## Trading Details by Athex Sectors and Financial Instruments (ETFs)

Code	Sectors	Gain / Lose / Same	Number of Trades	Transactions Volume	Transactions Value	% of Total Trans. Value
8300	- Banks	5 / 3 / 1	16,178	152,418,884	77,246,181.17	53.08%
1700	- Basic Resources	3 / 7 / 1	1,876	644,298	2,600,956.11	1.79%
1300	- Chemicals	1 / 1 / 1	167	23,058	22,433.23	0.02%
2300	- Construction & Materials	9 / 5 / 3	3,064	1,185,523	3,903,702.08	2.68%
12000	- Financial Instruments	1 / 1 / 0	3	2,004	18,154.14	0.01%
8700	- Financial Services	1 / 2 / 0	2,673	3,820,280	3,627,731.79	2.49%
3500	- Food & Beverage	6 / 5 / 0	549	232,867	2,631,180.40	1.81%
4500	- Health Care	2 / 2 / 0	190	278,772	107,503.74	0.07%
2700	- Industrial Goods & Services	9 / 9 / 0	1,966	320,617	1,123,545.22	0.77%
8500	- Insurance	1 / 0 / 0	27	26,127	35,089.10	0.02%
5500	- Media	1 / 1 / 1	6	1,055	441.26	0.00%
500	- Oil & Gas	0 / 3 / 0	1,699	401,246	2,100,700.19	1.44%
3700	- Personal & Household Goods	4 / 8 / 1	1,806	533,986	4,128,672.58	2.84%
8600	- Real Estate	2 / 3 / 2	718	186,013	648,316.14	0.45%
5300	- Retail	3 / 1 / 0	1,128	123,600	2,698,521.62	1.85%
9500	- Technology	4 / 5 / 2	418	522,237	182,893.04	0.13%
6500	- Telecommunications	1 / 0 / 0	2,477	1,573,115	13,435,031.18	9.23%
5700	- Travel & Leisure	1 / 8 / 1	3,839	3,454,124	25,136,033.22	17.27%
7500	- Utilities	2 / 3 / 0	4,129	1,540,572	5,881,719.18	4.04%



## Top 10 best &amp; worst performing Shares

## Main Market

With positive Price change	Closing price	change	With negative Price change	Closing price	change
INTRACOM HOLDINGS (CR)	0.320	13.47% ↑	KLOUKINAS - LAPPAS SA (CR)	0.477	-9.83% ↓
EUROPEAN RELIANCE INSUR. (CR)	1.39	4.51% ↑	GRIVALIA PROPERTIES (CR)	7.55	-7.02% ↓
HYGEIA SA (CR)	0.164	4.46% ↑	TECHNICAL OLYMPIC SA (CR)	0.989	-5.81% ↓
FRIGOGLASS SA (CR)	1.47	4.26% ↑	TRASTOR REAL EST. INV. CO.(CR)	0.991	-5.62% ↓
EUROCONSULTANTS S.A. (CR)	1.47	3.52% ↑	MARFIN INVESTMENT GROUP (CR)	0.164	-4.09% ↓
OTE (CR)	8.60	2.99% ↑	REDS S.A. (CR)	0.452	-3.83% ↓
OPAP (CR)	8.43	2.68% ↑	CC HBC AG (CR)	16.04	-3.61% ↓
ATHENS MEDICAL CENTER SA (CR)	0.800	2.56% ↑	MOTOR OIL (CR)	6.60	-2.80% ↓
KRI-KRI S.A. (CR)	1.74	2.35% ↑	ELTECH ANEMOS S.A. (CR)	0.696	-2.66% ↓
JUMBO SA (CR)	8.70	2.35% ↑	VIOHALCO SA/NV (CB)	1.91	-2.55% ↓
With the highest Transactions Value	Value (thou. €)	change	With the highest Transactions Volume	Volume	change
ALPHA BANK (CR)	26,930.23	1.73% ↑	ALPHA BANK (CR)	58,071,979	1.73% ↑
OPAP (CR)	23,902.37	2.68% ↑	EUROBANK ERGASIAS (CR)	53,523,233	-2.33% ↓
NATIONAL BANK (CR)	18,185.49	0.69% ↑	PIRAEUS BANK (CR)	16,126,778	0.00% -
PIRAEUS BANK (CR)	15,305.86	0.00% -	NATIONAL BANK (CR)	12,331,981	0.69% ↑
OTE (CR)	13,435.03	2.99% ↑	ATTICA BANK S.A. (CR)	4,125,144	1.96% ↑
EUROBANK ERGASIAS (CR)	11,330.38	-2.33% ↓	MARFIN INVESTMENT GROUP (CR)	3,206,927	-4.09% ↓
PPC (CR)	4,769.00	-1.47% ↓	OPAP (CR)	2,818,629	2.68% ↑
JUMBO SA (CR)	4,001.62	2.35% ↑	OTE (CR)	1,573,115	2.99% ↑
HELLENIC EXCHANGES-A.S.E. (CR)	3,077.75	-1.38% ↓	PPC (CR)	864,439	-1.47% ↓
FOLLI FOLLIE (CR)	2,692.77	0.77% ↑	HELLENIC EXCHANGES-A.S.E. (CR)	612,454	-1.38% ↓

Note: Stocks that are not included in the "Low Dispersion" and "Under Supervision" categories, and the transactions value is more than 10,000 €.

**Derivatives Summary**

	Number of Trades	Volume	Open Interest
<b>Index Futures</b>	<b>2,427</b>	<b>20,851</b>	<b>43,425</b>
FTSE/Athex Large Cap	2,427	20,851	43,425
<b>Stock Futures</b>	<b>2,976</b>	<b>32,687</b>	<b>205,575</b>
ALPHA BANK (CR)	179	4,274	29,476
CC HBC AG (CR)	17	22	968
CORINTH PIPEWORKS SA (CR)	7	48	563
ELLAKTOR (CR)	74	536	1,196
EUROBANK ERGASIAS (CR)	64	2,599	64,254
EYDAP S.A. (CR)	14	46	361
FOLLI FOLLIE (CR)	47	126	328
FRIGOGLOSS SA (CR)	11	114	697
GEK TERNA (CR)	106	813	8,578
GRIVALIA PROPERTIES (CR)	18	57	168
HELLENIC EXCHANGES-A.S.E. (CR)	73	400	1,476
HELLENIC PETROLEUM (CR)	72	635	4,648
INTRALOT (CR)	8	67	676
JUMBO SA (CR)	80	277	458
MARFIN INVESTMENT GROUP (CR)	51	1,037	23,441
METKA (CR)	19	106	374
MOTOR OIL (CR)	41	119	376
MYTILINEOS HOLDINGS (CR)	216	815	5,482
NATIONAL BANK (CR)	558	10,245	24,504
OPAP (CR)	145	546	2,353
OTE (CR)	349	1,663	5,870
P.P.A. S.A. (CR)	19	68	363
PIRAEUS BANK (CR)	303	6,070	20,538
PPC (CR)	433	1,791	5,196
SIDENOR (CR)	9	53	772
TERNA ENERGY (CR)	18	66	1,499
TITAN CEMENT (CR)	35	55	433
VIOHALCO SA/NV (CB)	10	39	527
<b>Index Options</b>	<b>47</b>	<b>235</b>	<b>12,782</b>
FTSE/Athex Large Cap	47	235	12,782
<b>Stock Options</b>	<b>1</b>	<b>10</b>	<b>1,480</b>
ALPHA BANK (CR)	0	0	0
NATIONAL BANK (CR)	1	10	1,250
OPAP (CR)	0	0	0
OTE (CR)	0	0	195
PIRAEUS BANK (CR)	0	0	0
PPC (CR)	0	0	35
<b>Total Derivatives Traded</b>	<b>5,451</b>	<b>53,783</b>	<b>263,262</b>

Number of Outstanding Securities	Nominal Value	Dividends [1]			Date of Last Coupon		Note	Shares	Closing price	% change	Previous closing price/date	Open price	Price min	Price max	Last price	Avg price	Last Bid [7]	Last Ask [7]	P/E after	Year	Volume	Trades	Transactions Value	Company Mkt Value (thou. €)	Year low	Year high	Sector[ 4]
		2011	2012	2013	Dividend [2]	Right																					
Warrants																											
1,143,803,533	---	---	---		11/06/2013	---	ALPHA BANK (W)	1.00	2.04 ↑	0.980	11/12/2014	0.927	0.925	1.02	1.00	---	---	---	2.31	2013	4,364,374	909	4,328,339.09	6,001,458.13	0.750	2.15	8355
245,748,459	---	---	---		27/06/2013	---	NATIONAL BANK (W)	0.197	-1.00 ↓	0.199	11/12/2014	0.190	0.190	0.210	0.197	---	---	---	0.44	2013	478,953	252	96,597.86	5,158,398.46	0.188	1.59	8355
843,640,590	---	---	---		03/07/2013	---	PIRAEUS BANK (W)	0.223	-8.98 ↓	0.245	11/12/2014	0.230	0.221	0.255	0.223	---	---	---	0.24	2013	3,392,677	637	815,438.01	5,674,841.13	0.199	1.15	8355

Warrants

71,417,100	0.650	---	---	---	26/05/2010	27/06/2014	---	AEGEAN AIRLINES (CR)	7.20	-1.37 ↓	7.30	11/12/2014	7.10	7.05	7.40	7.20	---	---	7.75	2013	92,422	793	671,656.73	514,203.12	5.02	8.65	5751
11,178,000	1.25	---	---	---	21/04/2010	18/12/2013	---	AEOLIAN INVESTMENT FUND (CR)	0.840	8.81 ↑	0.772	11/12/2014	0.770	0.770	0.840	0.840	---	---	11.53	2013	899	7	734.87	9,389.52	0.700	1.09	8985
13,000,000	1.00	---	---	---	01/08/2007	07/04/2000	---	AKRITAS SA (CR)	0.134	-9.46 ↓	0.148	11/12/2014	0.134	0.134	0.134	0.134	---	---	---	2013	10	1	1.34	1,742.00	0.100	0.325	2353
12,769,059,858	0.300	---	---	---	07/04/2008	13/05/2013	---	ALPHA BANK (CR)	0.470	1.73 ↑	0.462	11/12/2014	0.460	0.447	0.474	0.470	---	---	1.09	2013	58,071,979	4,690	26,930,229.00	6,001,458.13	0.443	0.784	8355
22,016,250	0.370	---	---	---	15/07/2009	11/05/2000	---	ALUMIL (CR)	0.250	---	0.250	11/12/2014	0.250	0.230	0.250	0.250	---	---	---	2013	482	7	118.05	5,504.06	0.209	0.660	1753
417,608	16.00	---	---	0.8	29/04/2014	05/03/2013	---	ANDROMEDA SA (CR)	17.33	---	17.33	11/12/2014	---	---	---	---	---	---	5.24	2013	---	---	---	7,237.15	17.33	23.99	8985
26,252,040	0.380	---	---	---	08/07/2010	10/02/2014	---	AS COMPANY SA (CR)	0.290	2.84 ↑	0.282	11/12/2014	0.265	0.265	0.298	0.298	---	---	17.42	2013	15,485	18	4,379.01	7,613.09	0.265	0.413	5379
86,735,980	0.310	---	---	---	06/07/2009	02/01/2002	---	ATHENS MEDICAL CENTER SA (CR)	0.800	2.56 ↑	0.780	11/12/2014	0.780	0.780	0.800	0.800	---	---	---	2013	84,871	51	67,675.06	69,388.78	0.677	0.930	4533
1,045,794,145	0.300	---	---	---	04/06/2008	07/08/2014	---	ATTICA BANK S.A. (CR)	0.052	1.96 ↑	0.051	11/12/2014	0.051	0.050	0.055	0.052	---	---	---	2013	4,125,144	408	217,956.51	54,381.30	0.050	0.277	8355
15,300,000	0.300	---	---	---	30/07/2009	13/12/1999	---	ATTICA PUBLICATIONS SA (CR)	1.29	---	1.29	11/12/2014	---	---	---	---	---	---	37.22	2013	---	---	---	19,737.00	1.10	2.15	5557
45,457,464	0.700	---	---	---	01/07/2008	01/03/2010	---	AUDIO VISUAL ENTERPRISES (CR)	0.310	---	0.310	11/12/2014	---	---	---	---	---	---	---	2013	---	---	---	14,091.81	0.209	0.376	5553
12,120,000	0.320	(0.45)	---	---	30/04/2012	22/11/2013	---	AUTOHELLAS SA (CR)	8.12	-1.22 ↓	8.22	11/12/2014	8.25	8.10	8.25	8.10	---	---	33.12	2013	7,093	20	58,073.33	98,414.40	6.90	11.20	5759
19,864,886	5.60	0.67	0.5376	0.672	05/03/2014	02/07/2008	---	BANK OF GREECE (CR)	9.60	0.84 ↑	9.52	11/12/2014	9.50	9.35	9.79	9.60	---	---	---	---	3,765	49	35,885.02	190,702.91	9.35	16.53	8355
23,986,500	1.05	---	---	---	26/06/2009	15/03/2000	---	BIOKARPET S.A.(CR)	0.220	1.38 ↑	0.217	11/12/2014	0.215	0.215	0.245	0.220	---	---	---	2013	1,517	15	332.66	5,277.03	0.197	0.880	3726
15,842,391	1.51	---	---	---	15/07/2009	12/05/2000	---	BITROS HOLDING SA (CR)	0.205	-5.09 ↓	0.216	11/12/2014	0.205	0.205	0.205	0.205	---	---	---	2013	366	1	75.03	3,247.69	0.158	0.559	1757
15,816,009	0.300	---	---	---	01/07/2009	17/07/2000	---	BYTE COMPUTER SA (CR)	0.400	4.17 ↑	0.384	11/12/2014	0.375	0.365	0.400	0.400	---	---	---	2013	1,100	9	419.15	6,326.40	0.361	0.666	9533
367,747,133	6.70	---	0.34	0.354	09/07/2014	29/04/2013	---	CC HBC AG (CR)	16.04	-3.61 ↓	16.64	11/12/2014	16.23	16.01	16.27	16.04	---	---	---	---	159,719	428	2,571,853.51	5,898,664.01	15.53	22.00	3537
101,123,806	0.360	---	---	---	22/07/2010	28/06/2011	---	CENTRIC HOLDINGS (CR)	0.196	-3.92 ↓	0.204	11/12/2014	0.210	0.187	0.221	0.193	---	---	9.60	2013	29,780	35	6,157.09	19,820.27	0.162	0.390	5752
4,034,950	0.680	---	---	---	01/07/2005	30/12/2010	---	CHATZIKRANIOTIS & SONS SA (CR)	0.220	29.41 ↑	0.170	11/12/2014	0.220	0.220	0.220	0.220	---	---	---	2013	100	1	22.00	887.69	0.155	0.420	3577
124,170,201	0.780	---	---	---	28/06/2002	07/02/2005	---	CORINTH PIPEWORKS SA (CR)	0.839	-1.29 ↓	0.850	11/12/2014	0.840	0.820	0.876	0.839	---	---	---	2013	85,843	175	72,961.65	104,178.80	0.820	2.30	1757
9,907,500	0.300	---	---	---	06/10/2005	13/02/2002	---	CPI SA (CR)	0.237	---	0.237	11/12/2014	---	---	---	---	---	---	20.45	2014	---	---	---	2,348.08	0.133	0.295	9572
27,379,200	0.520	---	---	0.1	24/07/2014	18/09/2013	---	CRETE PLASTICS SA (CR)	5.00	---	5.00	11/12/2014	4.85	4.85	5.00	5.00	---	---	15.02	2013	700	7	3,448.20	136,896.00	4.40	5.54	1357
15,000,000	0.300	---	---	---	06/07/2007	18/07/2000	---	DAIOS PLASTICS SA (CR)	2.35	---	2.35	11/12/2014	---	---	---	---	---	---	---	2013	---	---	---	35,250.00	1.66	2.35	1357
34,720,000	0.310	---	---	---	16/06/2010	01/08/2007	---	DROMEAS SA (CR)	0.155	1.97 ↑	0.152	11/12/2014	0.144	0.144	0.155	0.155	---	---	---	2013	1,710	5	263.95	5,381.60	0.131	0.400	3726
3,873,120	0.300	---	---	---	07/07/2008	04/10/2012	---	DRUCKFARBEN HELLAS (CR)	0.900	---	0.900	11/12/2014	---	---	---	---	---	---	---	2013	---	---	---	3,485.81	0.810	1.95	1357
11,250,000	0.560	---	---	---	26/07/2010	16/06/1999	---	EKTER SA (CR)	0.398	-2.93 ↓	0.410	11/12/2014	0.410	0.383	0.420	0.400	---	---	---	2013	11,688	16	4,698.80	4,477.50	0.383	0.990	2357
32,188,050	1.04	---	---	---	21/07/2008	20/01/2000	---	EL. D. MOUZAKIS SA (CB)	0.218	---	0.218	11/12/2014	---	---	---	---	---	---	---	2013	---	---	---	7,016.99	0.155	0.475	3763
18,435,000	1.00	---	---	---	07/07/2009	10/09/2010	---	ELASTRON (CR)	0.489	11.64 ↑	0.438	11/12/2014	0.457	0.457	0.489	0.489	---	---	---	2013	1,976	7	938.71	9,014.72	0.400	1.00	1757
31,734,530	1.60	---	---	---	09/07/2007	19/07/2006	---	ELGEKA SA (CR)	0.254	17.59 ↑	0.216	11/12/2014	0.221	0.211	0.254	0.254	---	---	---	2013	1,600	6	366.60	8,060.57	0.211	0.488	3577
23,828,130	0.500	---	---	---	07/07/2010	17/02/2009	---	ELINOIL S.A. (CR)	0.655	-29.87 ↓	0.934	11/12/2014	0.655	0.655	0.655	0.655	---	---	---	2013	50	2	32.75	15,607.43	0.655	1.50	537
177,001,313	1.03	---	---	---	05/07/2011	20/12/2007	---	ELLAKTOR (CR)	2.11	0.96 ↑	2.09	11/12/2014	2.06	2.05	2.23	2.11	---	---	---	2013	560,308	1,216	1,207,042.91	373,472.77	2.04	4.35	2357
82,667,000	0.300	---	---	---	22/07/2014	---	ELTECH ANEMOS S.A. (CR)	0.696	-2.66 ↓	0.715	11/12/2014	0.710	0.680	0.730	0.696	---	---	---	---	---	391,279	312	276,021.41	57,536.23	0.680	1.70	7537
26,730,187	0.600	---	---	0.05	23/06/2014	30/12/2010	---	ELTON SA (CR)	0.830	0.12 ↑	0.829	11/12/2014	0.829	0.802	0.864	0.830	---	---	8.56	2013	12,665	131	10,567.41	22,186.06	0.802	1.40	1353

Number of Outstanding Securities	Nominal Value	Dividends [1]			Date of Last Coupon		Note	Shares	Closing price	% change	Previous closing price/date	Open price	Price min	Price max	Last price	Avg price	Last Bid [7]	Last Ask [7]	P/E after	Year	Volume	Trades	Transactions Value	Company Mkt Value (thou. €)	Year low	Year high	Sector[ 4]
		2011	2012	2013	Dividend [2]	Right																					
Main Market																											
14,050,971	0.340	---	---	---	06/07/2011	17/10/2002	---	ELTRAK SA (CR)	1.38	---	1.38	11/12/2014	---	---	---	---	---	---	---	2013	---	---	---	19,390.34	1.15	2.03	2753
125,562,262	0.320	---	---	---	30/05/2014	02/12/2014	---	ELVAL SA. (CB)	0.980	-0.10 ↓	0.981	11/12/2014	0.950	0.950	0.999	0.980	---	---	28.59	2013	4,594	22	4,530.24	123,051.02	0.950	2.15	1753
13,230,000	0.300	---	---	---	11/08/2010	24/11/2014	---	ELVE SA (CR)	0.412	-1.67 ↓	0.419	11/12/2014	0.396	0.396	0.415	0.415	---	---	---	2013	5,497	14	2,236.76	5,450.76	0.373	0.715	3763
14,707,876,542	0.300	---	---	---	02/05/2008	13/06/2013	---	EUROBANK ERGASIAS (CR)	0.210	-2.33 ↓	0.215	11/12/2014	0.213	0.203	0.221	0.210	---	---	---	2013	53,523,233	3,542	11,330,384.24	3,088,654.07	0.202	0.630	8355
7,959,900	0.600	---	---	---	02/06/2010	10/12/2013	5031	EUROCONSULTANTS S.A. (CR)	1.47	3.52 ↑	1.42	11/12/2014	1.39	1.28	1.49	1.47	---	---	43.19	2013	44,154	84	62,021.78	11,701.05	1.28	2.87	2791
27,503,677	0.600	0.05	0.1	---	11/07/2013	18/10/1999	---	EUROPEAN RELIANCE INSUR. (CR)	1.39	4.51 ↑	1.33	11/12/2014	1.33	1.30	1.39	1.39	---	---	4.03	2013	26,127	27	35,089.10	38,230.11	1.21	1.66	8536
13,673,200	0.880	---	---	---	18/07/2008	26/07/2001	---	EVROFARMA SA (CR)	0.222	---	0.222	11/12/2014	---	---	---	---	---	---	---	2013	---	---	---	3,035.45	0.186	0.455	3577
106,500,000	0.600	0.05	0.15	0.36	05/05/2014	28/01/2000	---	EYDAP S.A. (CR)	5.62	-1.23 ↓	5.69	11/12/2014	5.50	5.45	5.78	5.62	---	---	7.70	2013	67,571	569	375,780.20	598,530.00	5.00	9.95	7577
52,800,154	0.300	---	---	0.2	20/08/2014	21/06/2004	---	F.G. EUROPE S.A. (CR)	0.747	-10.00 ↓	0.830	11/12/2014	0.810	0.747	0.810	0.747	---	---	13.48	2013	2,828	9	2,139.37	39,441.72	0.580	1.95	3722
10,203,575	0.730	---	---	---	16/07/2007	18/10/1999	---	FIERATEX SA (CR)	0.228	---	0.228	11/12/2014	---	---	---	---	---	---	---	2013	---	---	---	2,326.42	0.121	0.430	3763
11,720,024	0.540	---	---	0.0394	21/08/2014	07/08/2014	---	FLEXOPACK SA (CR)	2.04	6.81 ↑	1.91	11/12/2014	2.09	2.04	2.09	2.04	---	---	9.66	2013	501	3	1,032.09	23,908.85	1.91	3.50	2723
4,181,450	0.500	---	---	---	21/08/2000	05/03/2002	---	FLOUR MILLS SARANTOPOULOS SA	0.950	---	0.950	11/12/2014	---	---	---	---	---	---	---	2013	---	---	---	3,972.38	0.689	1.14	3577
66,948,210	0.300	---	---	---	14/07/2009	23/09/2014	---	FOLLI FOLLIE (CR)	26.00	0.77 ↑	25.80	11/12/2014	25.25	24.30	27.09	26.00	---	---	4.03	2013	102,710	1,100	2,692,767.58	1,740,653.46	21.90	34.40	5379
50,992,322	1.07	---	---	---	21/06/2010	16/07/2002	---	FOURLIS (CR)	3.15	-0.94 ↓	3.18	11/12/2014	3.20	3.10	3.30	3.15	---	---	---	2013	25,732	61	81,548.65	160,625.81	2.98	6.01	3722
50,593,832	0.300	---	---	---	07/07/2010	07/09/2011	---	FRIGOGLASS SA (CR)	1.47	4.26 ↑	1.41	11/12/2014	1.41	1.41	1.47	1.47	---	---	---	2013	53,922	186	77,981.74	74,372.93	1.38	5.63	2757
77,376,446	0.340	---	---	---	23/05/2005	18/08/2011	---	G.E. DIMITRIOU (CR)	0.016	---	0.016	11/12/2014	0.016	0.016	0.016	0.016	---	---	---	2013	90	1	1.44	1,238.02	0.007	0.041	3722
14,076,360	0.370	---	---	---	19/08/2008	22/07/2003	---	GALAXIDI S.A. (CR)	0.290	---	0.290	11/12/2014	---	---	---	---	---	---	---	2013	---	---	---	4,082.14	0.200	0.439	3573
94,462,368	0.570	---	---	---	01/08/2011	02/01/2009	---	GEK TERNA (CR)	1.98	0.51 ↑	1.97	11/12/2014	1.99	1.95	2.06	1.98	---	---	---	2013	414,399	1,043	832,326.10	187,035.49	1.90	4.21	2357
8,418,750	0.300	0.15	0.29	---	05/06/2013	27/06/2012	---	GEKE SA (CB)	5.00	-9.09 ↓	5.50	11/12/2014	5.00	5.00	5.00	5.00	---	---	79.06	2013	70	2	350.00	42,093.75	5.00	7.20	5753
24,060,000	0.300	0.017	---	0.017	07/07/2014	21/01/2000	---	GEN. COMMERCIAL & IND.SA (CR)	0.315	4.65 ↑	0.301	11/12/2014	0.325	0.302	0.325	0.315	---	---	22.65	2013	9,900	14	3,087.23	7,578.90	0.300	0.455	2797
34,770,982	1.55	---	---	0.3	17/01/2014	27/07/2000	---	GR. SARANTIS SA (CR)	7.11	2.60 ↑	6.93	11/12/2014	6.93	6.93	7.11	7.11	---	---	6.74	2013	1,171	9	8,174.38	247,221.68	6.06	8.24	3767
101,260,000	2.13	0.4067	---	0.1821	17/04/2014	08/01/2014	---	GRIVALIA PROPERTIES (CR)	7.55	-7.02 ↓	8.12	11/12/2014	7.60	7.55	8.00	7.55	---	---	---	2013	61,021	519	473,953.97	764,513.00	6.65	9.82	8675
8,340,750	1.20	---	---	---	25/06/2009	30/07/2001	---	HAIDEMENOS SA (CR)	0.306	-2.86 ↓	0.315	11/12/2014	0.306	0.306	0.306	0.306	---	---	---	2013	11	1	3.37	2,552.27	0.306	0.760	2791
101,279,627	0.380	---	---	---	26/06/2008	14/07/2006	---	HALKOR SA (CB)	0.295	1.72 ↑	0.290	11/12/2014	0.280	0.280	0.310	0.297	---	---	---	2013	4,950	17	1,443.30	29,877.49	0.280	0.912	1755
36,748,909	0.730	---	---	---	15/12/2005	13/12/2006	---	HEL. SUGAR INDUSTRY SA (CB)	0.272	1.49 ↑	0.268	11/12/2014	0.250	0.250	0.280	0.272	---	---	---	2014	14,770	37	3,918.62	9,995.70	0.240	1.10	3577
29,546,360	0.710	---	---	---	20/06/2008	23/08/2000	---	HELLENIC CABLES SA (CR)	0.698	-5.80 ↓	0.741	11/12/2014	0.710	0.691	0.721	0.698	---	---	---	2013	5,804	28	4,124.51	20,623.36	0.691	2.00	2733
65,368,563	0.560	0.11	0.09	---	03/06/2013	16/07/2014	---	HELLENIC EXCHANGES-A.S.E. (CR)	5.01	-1.38 ↓	5.08	11/12/2014	5.08	4.87	5.16	5.01	---	---	-(6)-	2013	612,454	1,605	3,077,752.37	327,496.50	4.87	9.52	8777
305,635,185	2.18	0.45	0.15	---	16/08/2013	01/10/2003	4795	HELLENIC PETROLEUM (CR)	3.70	-2.12 ↓	3.78	11/12/2014	3.75	3.66	3.86	3.70	---	---	---	2013	192,899	1,038	722,005.27	1,130,850.18	3.66	8.13	537
305,732,436	0.410	---	---	---	08/07/2009	28/09/2011	---	HYGEIA SA (CR)	0.164	4.46 ↑	0.157	11/12/2014	0.162	0.161	0.175	0.164	---	---	---	2013	165,050	106	27,514.08	50,140.12	0.157	0.508	4533
53,155,053	0.440	---	---	---	24/11/2014	16/07/2008	---	IASO SA (CR)	0.819	-1.32 ↓	0.830	11/12/2014	0.860	0.818	0.860	0.819	---	---	---	2013	13,150	19	10,789.30	43,533.99	0.770	1.99	4533
8,298,467	0.400	---	---	---	30/08/1993	08/05/2013	---	IDEAL GROUP SA (CR)	0.949	---	0.949	11/12/2014	---	---	---	---	---	---	-(6)-	2013	---	---	---	7,875.25	0.538	1.00	9574
28,580,100	0.400	0.02	---	0.025	18/08/2014	10/10/2013	---	IKTINOS HELLAS SA (CR)	1.18	-3.28 ↓	1.22	11/12/2014	1.19	1.16	1.24	1.18	---	---	7.22	2013	3,150	13	3,751.50	33,724.52	1.12	1.84	2353
9,090,000	0.900	---	---	---	15/05/2009	13/10/2014	5073	ILYDA S.A. (CR)	0.739	---	0.739	11/12/2014	---	---	---	---	---	---	---	2013	---	---	---	6,717.51	0.350	0.789	9537
20,578,374	0.620	---	---	---	02/06/2011	05/05/1999	---	INFORM P. LYKOS SA (CR)	1.44	1.41 ↑	1.42	11/12/2014	1.50	1.39	1.50	1.44	---	---	---	2013	3,741	18	5,241.48	29,632.86	1.32	1.90	2791
11,233,200	0.730	---	---	---	12/07/2010	30/07/1999	---	INTERTECH SA (CR)	0.290	-9.66 ↓	0.321	11/12/2014	0.290	0.290	0.290	0.290	---	---	---	2013	100	1	29.00	3,257.63	0.171	0.510	9572
34,986,430	0.440	---	---	---	25/07/2008	23/02/2010	---	INTERWOOD-XYLEMPORIA (CR)	0.161	---	0.161	11/12/2014	---	---	---	---	---	---	---	2013	---	---	---	6,133.35	0.081	0.178	2353
2,566,836	0.440	---	---	---	13/08/2010	09/01/2007	---	INTERWOOD-XYLEMPORIA (PR)	0.195	---	0.195	11/12/2014	---	---	---	---	---	---	---	2013	---	---	---	6,133.35	0.195	0.200	2353
23,154,250	1.36	---	---	---	12/08/2008	02/08/2010	---	INTRACOM CONSTR. (CR)	0.419	-0.47 ↓	0.421	11/12/2014	0.412	0.400	0.425	0.420	---	---	---	2013	8,300	24	3,451.46	9,701.63	0.390	1.32	2357

Number of Outstanding Securities	Nominal Value	Dividends [1]			Date of Last Coupon		Note	Shares	Closing price	% change	Previous closing price/date	Open price	Price min	Price max	Last price	Avg price	Last Bid [7]	Last Ask [7]	P/E after	Year	Volume	Trades	Transactions Value	Company Mkt Value (thou. €)	Year low	Year high	Sector[ 4]	
		2011	2012	2013	Dividend [2]	Right																						
Main Market																												
133,025,996	1.41	---	---	---	03/07/2007	07/01/2002	---	INTRACOM HOLDINGS (CR)	0.320	13.47 ↑	0.282 11/12/2014	0.270	0.270	0.322	0.320	---	---	---	---	2013	443,675	321	131,965.72	42,568.32	0.270	0.900	9578	
158,961,721	0.300	0.0035	0.0026	---	30/05/2013	14/11/2007	---	INTRALOT (CR)	1.00	---	1.00 11/12/2014	1.00	1.00	1.05	1.00	---	---	---	---	2013	486,317	341	489,282.16	158,961.72	0.990	2.51	5752	
77,654,850	0.580	---	---	---	01/07/2011	21/02/2003	---	J & P - AVAX SA (CR)	0.566	1.98 ↑	0.555 11/12/2014	0.556	0.555	0.570	0.566	---	---	---	---	2013	40,530	53	22,861.63	43,952.65	0.545	2.02	2357	
136,059,759	1.19	---	---	---	22/10/2014	05/03/2014	---	JUMBO SA (CR)	8.70	2.35 ↑	8.50 11/12/2014	8.50	8.25	8.90	8.70	---	---	---	16.19	2014	462,828	1,594	4,001,618.61	1,183,719.90	7.95	14.40	3747	
9,742,920	0.400	0.01	0.01	0.01	08/08/2014	14/07/2000	---	KARAMOLEGOS SA (CR)	1.35	-6.90 ↓	1.45 11/12/2014	1.38	1.35	1.38	1.35	---	---	---	---	2013	1,712	3	2,341.20	13,152.94	0.912	1.98	3577	
14,679,792	1.68	---	---	---	24/06/2014	04/09/2000	---	KARATZIS SA (CR)	2.94	-2.00 ↓	3.00 11/12/2014	3.05	2.89	3.05	2.94	---	---	---	8.83	2013	246	8	720.30	43,158.59	2.77	4.50	2723	
13,202,756	0.350	---	---	---	01/07/2004	05/08/2014	---	KEKROPS SA (CR)	0.254	---	0.254 11/12/2014	0.250	0.250	0.254	0.254	---	---	---	---	2013	3,770	5	955.06	3,353.50	0.250	1.11	8633	
7,595,160	0.600	---	---	---	08/08/2008	18/08/2010	---	KIRIAKOULIS SHIPPING SA (CR)	0.638	---	0.638 11/12/2014	---	---	---	---	---	---	---	41.42	2013	---	---	---	4,845.71	0.492	1.08	5759	
23,648,700	0.350	---	---	---	13/07/2011	29/07/2014	---	KLEEMAN HELLAS SA (CR)	1.57	1.95 ↑	1.54 11/12/2014	1.69	1.35	1.69	1.57	---	---	---	55.50	2013	6,765	34	10,334.97	37,128.46	1.35	2.58	2757	
40,219,218	0.300	---	---	---	25/05/2009	09/07/2013	---	KLOUKINAS - LAPPAS SA (CR)	0.477	-9.83 ↓	0.529 11/12/2014	0.540	0.477	0.540	0.477	---	---	---	---	2013	28,910	19	13,791.46	19,184.57	0.424	0.780	2357	
21,224,340	0.420	---	---	---	02/07/2008	25/04/2006	---	KORDELLOS BROS SA (CR)	0.259	---	0.259 11/12/2014	---	---	---	---	---	---	---	---	2013	---	---	---	5,497.10	0.169	0.359	1757	
13,586,500	0.390	---	---	---	25/06/2010	28/05/2008	---	KORRES (CR)	3.47	-0.86 ↓	3.50 11/12/2014	3.55	3.40	3.55	3.47	---	---	---	---	2013	1,979	11	6,738.09	47,145.16	2.84	3.93	3767	
29,480,000	0.420	---	---	---	19/07/2010	01/08/2007	---	KRETA FARM SA (CR)	0.452	0.22 ↑	0.451 11/12/2014	0.451	0.451	0.460	0.451	---	---	---	---	2013	2,470	5	1,116.67	13,324.96	0.380	0.690	3577	
33,065,136	0.380	---	---	---	06/07/2009	16/09/2013	---	KRI-KRI S.A. (CR)	1.74	2.35 ↑	1.70 11/12/2014	1.72	1.65	1.74	1.74	---	---	---	11.23	2013	27,614	15	46,753.05	57,533.34	1.63	2.07	3577	
15,804,800	0.330	---	---	---	15/06/2010	12/03/2004	---	KTIMA KOSTAS LAZARIDIS SA (CR)	0.479	---	0.479 11/12/2014	---	---	---	---	---	---	---	---	2013	---	---	---	7,570.50	0.297	0.575	3535	
24,474,815	0.980	---	---	---	19/08/2008	15/09/2014	---	KYRIAKIDIS MARBLES SA (CR)	1.72	2.38 ↑	1.68 11/12/2014	1.66	1.66	1.79	1.70	---	---	---	4.05	2013	3,433	33	5,867.04	42,096.68	1.07	2.60	2353	
79,706,464	0.300	---	---	---	30/05/2007	23/06/2014	---	LAMDA DEVELOPMENT SA (CR)	3.40	2.10 ↑	3.33 11/12/2014	3.30	3.30	3.49	3.40	---	---	---	---	2013	30,728	87	104,430.96	271,001.98	3.19	6.35	8633	
21,364,000	1.12	---	---	---	05/07/2010	10/08/2005	---	LAMPSPA HOTEL SA (CR)	17.21	-4.39 ↓	18.00 11/12/2014	16.81	16.81	17.90	17.90	---	---	---	-(6)-	2013	70	5	1,237.23	367,674.44	15.60	19.00	5753	
5,939,268	0.620	---	---	---	10/07/2003	03/01/2002	---	LANAKAM SA (CR)	1.16	---	1.16 11/12/2014	---	---	---	---	---	---	---	---	2013	---	---	---	6,889.55	0.485	1.40	3763	
7,734,375	1.00	---	---	---	09/07/2007	07/01/2011	---	LIVANIS SA (CR)	0.210	---	0.210 11/12/2014	---	---	---	---	---	---	---	---	2013	---	---	---	1,624.22	0.158	0.242	5557	
4,740,000	0.860	---	---	---	14/03/2003	---	---	LOGISMOS S.A. (CR)	0.515	---	0.515 11/12/2014	---	---	---	---	---	---	---	69.35	2013	---	---	---	2,441.10	0.335	0.709	9533	
17,125,062	0.640	---	---	---	01/06/2010	02/08/2011	---	LOULIS MILLS SA (CR)	1.82	-1.62 ↓	1.85 11/12/2014	1.76	1.76	1.82	1.82	---	---	---	---	2013	850	7	1,522.20	31,167.61	1.72	3.30	3577	
937,122,261	0.300	---	---	---	26/04/2007	29/08/2014	---	MARFIN INVESTMENT GROUP (CR)	0.164	-4.09 ↓	0.171 11/12/2014	0.172	0.163	0.180	0.164	---	---	---	---	2013	3,206,927	1,061	549,244.55	153,688.05	0.163	0.572	8775	
9,819,370	0.690	---	---	---	14/08/2007	09/01/2004	---	MATHIOS REFRACTORY SA (CR)	0.476	---	0.476 11/12/2014	---	---	---	---	---	---	---	---	2013	---	---	---	4,674.02	0.250	0.530	2353	
468,700	---	0.47	0.65	---	04/12/2014	21/05/2004	---	MERMEREN KOMB. A.D. PR. (GDR)	6.45	0.31 ↑	6.43 11/12/2014	6.43	6.43	6.48	6.44	---	---	---	3.15	2013	349	7	2,249.21	3,023.12	3.45	6.88	1775	
51,950,600	0.320	0.75	0.25	0.3	20/06/2014	21/10/2005	---	METKA (CR)	8.01	0.12 ↑	8.00 11/12/2014	7.90	7.85	8.15	8.01	---	---	---	9.37	2013	65,637	553	526,238.04	416,124.31	7.40	14.29	2757	
10,500,000	0.900	---	---	---	24/06/2008	19/12/2013	---	MEVACO SA (CR)	0.950	-3.06 ↓	0.980 11/12/2014	0.990	0.908	0.990	0.950	---	---	---	---	2013	800	6	773.58	9,975.00	0.908	1.35	2757	
6,700,000	0.800	---	---	0.16	26/05/2014	29/05/2014	---	MILLS KEPENOS (CR)	1.85	---	1.85 11/12/2014	---	---	---	---	---	---	---	10.08	2013	---	---	---	12,395.00	0.991	2.50	3577	
6,200,000	0.500	---	---	---	22/06/2010	01/11/1995	---	MINERVA KNITWEAR SA (CB)	0.310	---	0.310 11/12/2014	---	---	---	---	---	---	---	---	2013	---	---	---	1,922.00	0.262	0.689	3763	
12,417,000	0.370	---	---	---	28/07/2008	06/09/2011	---	MLS MULTIMEDIA SA (CR)	4.20	2.19 ↑	4.11 11/12/2014	4.12	4.08	4.20	4.20	---	---	---	44.54	2013	3,677	18	15,227.03	52,151.40	3.28	4.82	9537	
4,588,137	16.00	---	---	---	30/06/2005	17/08/2011	---	MOCHLOS SA (CR)	0.987	---	0.987 11/12/2014	---	---	---	---	---	---	---	---	2013	---	---	---	4,528.49	0.651	2.05	2357	
11,700,000	0.590	---	---	---	02/06/2009	24/07/2012	---	MOTODYNAMICS S.A. (CR)	0.300	---	0.300 11/12/2014	---	---	---	---	---	---	---	---	2013	---	---	---	3,510.00	0.260	0.447	5379	
110,782,980	0.750	0.4	0.3	0.2	26/06/2014	04/11/2013	---	MOTOR OIL (CR)	6.60	-2.80 ↓	6.79 11/12/2014	6.61	6.55	6.70	6.60	---	---	---	-(6)-	2013	208,297	659	1,378,662.17	731,167.67	5.52	10.30	533	
116,915,862	1.07	---	---	---	11/05/2009	06/07/2011	---	MYTILINEOS HOLDINGS (CR)	4.79	-1.64 ↓	4.87 11/12/2014	4.85	4.75	5.09	4.79	---	---	---	---	2013	505,509	1,570	2,498,691.58	560,026.98	4.75	7.32	1755	
8,321,682	0.670	---	---	---	17/08/2007	23/11/1999	---	N. LEVEDERIS SA (CB)	0.180	-14.29 ↓	0.210 11/12/2014	0.180	0.180	0.180	0.180	---	---	---	---	2013	204	2	36.72	2,686.19	0.180	0.255	1757	
2,160,524	0.670	0.0435	0.0436	0.0436	18/08/2014	23/11/1999	---	N. LEVEDERIS SA (PB)	0.550	---	0.550 11/12/2014	---	---	---	---	---	---	---	---	2013	---	---	---	2,686.19	0.550	0.779	1757	
11,510,102	0.890	---	---	---	24/06/2005	06/10/1999	---	NAFPAKTOS TEXTILE IND. SA (CB)	0.219	-9.88 ↓	0.243 11/12/2014	0.219	0.219	0.219	0.219	---	---	---	---	2013	500	1	109.50	2,520.71	0.175	0.397	3763	
6,340,000	0.600	---	---	---	30/11/2009	12/07/2000	---	NAKAS MUSIC	1.04	---	1.04 11/12/2014	---	---	---	---	---	---	---	32.32	2014	---	---	---	6,593.60	0.526	1.62	5379	

Daily Official List																									Year: 135 Trading Day No: 238			
Section 2: Analytic Figures of Shares Transactions																									Friday, 12 December, 2014			
Number of Outstanding Securities	Nominal Value	Dividends [1]			Date of Last Coupon		Note	Shares	Closing price	% change	Previous closing price/date	Open price	Price min	Price max	Last price	Avg price	Last Bid [7]	Last Ask [7]	P/E after	Year	Volume	Trades	Transactions Value	Company Mkt Value (thou. €)	Year low	Year high	Sector[ 4]	
		2011	2012	2013	Dividend [2]	Right																						
Main Market																												
3,533,149,631	0.300	---	---	---	16/05/2008	24/05/2013	---	NATIONAL BANK (CR)	1.46	0.69 ↑	1.45 11/12/2014	1.41	1.40	1.51	1.46	---	---	---	3.25	2013	12,331,981	2,797	18,185,487.37	5,158,398.46	1.38	4.31	8355	
23,935,280	0.300	---	---	---	29/06/2009	13/06/2000	---	NAYTEMPORIKI PUBLISHING SA(CR)	0.108	-9.24 ↓	0.119 11/12/2014	0.108	0.108	0.108	0.108	---	---	---	---	2013	40	1	4.32	2,585.01	0.108	0.479	5557	
27,848,000	0.300	0.0132	0.0137	0.004	18/08/2014	02/09/2003	---	NEWSPHONE HELLAS SA (CR)	0.245	---	0.245 11/12/2014	---	---	---	---	---	---	---	22.01	2013	---	---	---	6,822.76	0.222	0.468	2791	
6,132,500	1.25	---	---	---	24/06/2011	19/06/2001	---	NEXANS HELLAS SA (CR)	1.57	-3.09 ↓	1.62 11/12/2014	1.47	1.47	1.59	1.59	---	---	---	---	2013	410	6	613.90	9,628.03	1.46	2.40	2733	
63,697,153	1.34	---	---	---	08/07/2008	10/11/2008	---	NIREFS SA (CR)	0.095	-9.52 ↓	0.105 11/12/2014	0.095	0.095	0.102	0.095	---	---	---	---	2013	23,100	29	2,249.91	6,051.23	0.080	0.362	3573	
319,000,000	0.300	0.72	0.57	0.25	27/05/2014	25/04/2001	---	OPAP (CR)	8.43	2.68 ↑	8.21 11/12/2014	8.20	8.15	8.70	8.43	---	---	---	18.85	2013	2,818,629	2,623	23,902,367.03	2,689,170.00	7.97	13.65	5752	
490,150,389	2.83	---	---	---	28/06/2011	18/06/1998	---	OTE (CR)	8.60	2.99 ↑	8.35 11/12/2014	8.30	8.30	8.74	8.60	---	---	---	---	2013	1,573,115	2,477	13,435,031.18	4,215,293.35	8.10	13.20	6535	
25,000,000	2.00	0.01	0.05	0.12	17/07/2014	08/08/2003	---	P.P.A. S.A. (CR)	11.33	-1.91 ↓	11.55 11/12/2014	10.80	10.50	11.60	11.33	---	---	---	35.21	2013	16,080	462	180,855.34	283,250.00	10.50	20.89	2777	
4,971,466	1.46	---	---	---	04/07/2007	08/10/2003	---	PAIRIS SA (CR)	0.170	-4.49 ↓	0.178 11/12/2014	0.170	0.161	0.170	0.170	---	---	---	---	2013	11,468	7	1,949.52	845.15	0.140	0.355	2723	
3,953,090	0.900	---	---	---	02/07/2001	05/12/2012	---	PAPERPACK (CR)	0.873	2.11 ↑	0.855 11/12/2014	0.873	0.873	0.873	0.873	---	---	---	4.51	2013	3	1	2.62	3,451.05	0.581	1.15	2723	
50,797,369	0.310	---	---	---	17/08/2000	12/10/2010	---	PAPOUTSANIS (CR)	0.389	-1.77 ↓	0.396 11/12/2014	0.417	0.380	0.417	0.389	---	---	---	---	2013	464	11	181.57	19,760.18	0.352	0.604	3767	
7,070,400	0.930	---	---	---	18/05/2010	12/05/2011	---	PETROPOULOS PETROS (CR)	3.04	0.33 ↑	3.03 11/12/2014	2.97	2.97	3.05	3.04	---	---	---	73.86	2013	2,268	28	6,814.16	21,494.02	1.43	3.12	2753	
6,101,979,715	0.300	---	---	---	16/05/2008	05/06/2013	---	PIRAEUS BANK (CR)	0.930	---	0.930 11/12/2014	0.920	0.911	0.995	0.930	---	---	---	1.00	2013	16,126,778	2,894	15,305,864.07	5,674,841.13	0.905	2.11	8355	
22,080,000	0.320	0.08	0.12	0.2	21/05/2014	03/10/2000	---	PLAISIO COMPUTERS SA (CR)	5.67	-0.53 ↓	5.70 11/12/2014	5.87	5.60	5.87	5.67	---	---	---	8.84	2013	360	8	2,044.70	125,193.60	5.50	7.98	9572	
232,000,000	4.60	---	0.025	---	22/07/2013	12/12/2001	---	PPC (CR)	5.38	-1.47 ↓	5.46 11/12/2014	5.45	5.23	5.75	5.38	---	---	---	---	2013	864,439	2,435	4,769,002.43	1,248,160.00	5.23	12.75	7535	
11,812,193	0.450	---	---	---	24/07/2009	15/11/2006	---	PROFILE SA (CR)	0.447	-2.61 ↓	0.459 11/12/2014	0.445	0.445	0.500	0.450	---	---	---	8.60	2013	6,550	22	2,967.00	5,280.05	0.442	1.05	9533	
27,345,120	0.470	---	---	---	18/07/2005	26/02/2014	---	QUALITY & RELIABILITY SA (CR)	0.479	---	0.479 11/12/2014	0.479	0.475	0.479	0.479	---	---	---	63.70	2013	12,266	8	5,871.81	13,098.31	0.378	0.740	9533	
11,962,443	0.500	---	---	---	05/09/2008	12/12/2013	---	QUEST HOLDINGS (CR)	4.66	---	4.66 11/12/2014	4.59	4.41	4.66	4.66	---	---	---	---	2013	1,700	14	7,889.12	55,744.98	4.21	6.30	9533	
57,434,884	1.31	---	---	---	05/06/2008	12/06/2009	---	REDS S.A. (CR)	0.452	-3.83 ↓	0.470 11/12/2014	0.470	0.448	0.470	0.450	---	---	---	---	2013	41,411	23	18,681.60	25,960.57	0.431	0.827	8633	
22,280,000	0.300	---	---	---	11/04/2011	23/02/2007	---	REVOIL (CR)	0.255	2.82 ↑	0.248 11/12/2014	0.250	0.250	0.266	0.255	---	---	---	---	2013	5,395	9	1,358.03	5,681.40	0.231	0.720	5379	
7,500,000	0.480	---	0.0024	0.0863	13/08/2014	10/02/2014	---	S.KANAKIS SA (CR)	1.88	8.67 ↑	1.73 11/12/2014	1.88	1.77	1.88	1.88	---	---	---	9.68	2013	571	13	1,013.48	14,100.00	1.58	2.15	3577	
52,067,296	0.300	---	---	---	23/12/2003	24/01/2007	---	SELECTED TEXT. IND. ASSOC (CR)	0.208	-0.48 ↓	0.209 11/12/2014	0.214	0.200	0.214	0.200	---	---	---	---	2014	4,784	5	1,004.26	10,830.00	0.140	0.355	3763	
96,243,908	0.410	---	---	---	26/06/2008	17/07/2000	---	SIDENOR (CR)	0.500	-0.79 ↓	0.504 11/12/2014	0.504	0.500	0.526	0.500	---	---	---	---	2013	38,304	64	19,619.07	48,121.95	0.500	2.26	1757	
6,456,530	1.60	---	---	---	29/06/2001	02/08/2010	---	SPACE HELLAS SA (CR)	1.91	---	1.91 11/12/2014	---	---	---	---	---	---	---	---	2013	---	---	---	12,331.97	1.13	2.06	9578	
28,438,268	0.300	---	---	---	21/08/2006	24/11/1999	---	SPIROY AGRICULTURE SA (CR)	0.299	---	0.299 11/12/2014	---	---	---	---	---	---	---	---	2013	---	---	---	8,503.04	0.206	0.388	1357	
33,125,000	5.00	---	---	---	03/07/2006	18/08/2010	---	TECHNICAL OLYMPIC SA (CR)	0.989	-5.81 ↓	1.05 11/12/2014	0.965	0.965	1.04	0.989	---	---	---	---	2013	24,886	70	24,323.34	32,760.63	0.965	2.29	3728	
109,314,400	0.300 (0.0589)	---	---	---	28/05/2012	09/07/2014	---	TERNA ENERGY (CR)	2.09	0.97 ↑	2.07 11/12/2014	2.03	1.96	2.11	2.09	---	---	---	-(6)-	2013	198,841	741	409,717.03	228,467.10	1.96	4.86	7537	
36,300,000	1.12	0.188	0.162	0.285	14/08/2014	12/12/2007	---	THESSALONIKA WATER & SEWERAGE	2.73	1.11 ↑	2.70 11/12/2014	2.70	2.69	2.87	2.73	---	---	---	7.56	2013	18,442	72	51,198.11	99,099.00	2.67	5.66	7577	
45,094,620	0.500	---	0.0467	0.05	28/04/2014	01/11/1999	---	THRACE PLASTICS SA (CR)	0.860	-0.81 ↓	0.867 11/12/2014	0.870	0.851	0.900	0.860	---	---	---	---	2013	9,693	29	8,417.62	38,781.37	0.851	1.39	1357	
77,063,568	4.00	---	---	---	25/06/2014	25/06/2004	---	TITAN CEMENT (CR)	18.76	0.05 ↑	18.75 11/12/2014	18.75	18.50	19.14	18.76	---	---	---	---	2013	92,656	611	1,741,452.09	1,511,562.49	16.10	26.80	2353	
7,568,960	4.00	---	---	---	25/06/2014	25/06/2004	---	TITAN CEMENT CO. (PR)	8.70	---	8.70 11/12/2014	8.60	8.35	8.70	8.70	---	---	---	---	2013	7,190	14	61,423.30	1,511,562.49	8.30	10.50	2353	
10,080,000	3.00	0.4	1.5	0.6	13/08/2014	27/08/2001	---	TPA SA (CR)	19.65	-0.30 ↓	19.71 11/12/2014	19.12	18.90	20.15	19.65	---	---	---	10.89	2013	2,764	83	54,596.68	198,072.00	18.90	31.40	2777	
54,888,240	1.13	0.1	0.1	0.09	25/04/2014	22/03/2006	---	TRASTOR REAL EST. INV. CO.(CR)	0.991	-5.62 ↓	1.05 11/12/2014	1.01	0.963	1.01	0.991	---	---	---	---	2013	48,518	78	48,030.05	54,394.25	0.874	1.33	8671	
15,627,315	0.300	---	---	---	16/11/1992	03/12/2012	---	UNIBIOS (CR)	0.170	6.25 ↑	0.160 11/12/2014	0.170	0.170	0.170	0.170	---	---	---	---	2013	300	2	51.00	2,656.64	0.153	0.404	2353	
18,810,000	0.400	---	---	---	08/07/2010	14/11/2007	---	VARVERIS - MODA BAGNO SA (CR)	0.165	---	0.165 11/12/2014	0.149	0.149	0.165	0.165	---	---	---	---	2013	2,199	7	327.70	3,103.65	0.141	0.279	2353	
219,611,308	---	---	---	---	14/02/2014	---	---	VIOHALCO SA/NV (CB)	1.91	-2.55 ↓	1.96 11/12/2014	1.95	1.90	2.04	1.91	---	---	---	---	---	---	96,143	444	187,153.91	419,457.60	1.90	5.19	2727
4,968,600	2.88	---	---	---	01/07/1998	14/12/1998	---	VIS SA (CR)	0.758	---	0.758 11/12/2014	---	---	---	---	---	---	---	---	2013	---	---	---	3,766.20	0.517	0.980	2723	
6,325,000	0.600	---	---	---	02/05/2014	17/02/2014	---	VOGIATZOGLOU SYSTEMS SA (CR)	0.876	---	0.876 11/12/2014	---	---	---	---	---	---	---	---	2013	---	---	---	5,540.70	0.696	2.27	2797	

Number of Outstanding Securities	Nominal Value	Dividends [1]			Date of Last Coupon		Note	Shares	Closing price	% change	Previous closing price/date		Open price	Price min	Price max	Last price	Avg price	Last Bid [7]	Last Ask [7]	P/E after	Year	Volume	Trades	Transactions Value	Company Mkt Value (thou. €)	Year low	Year high	Sector[ 4]
2011	2012	2013	Dividend [2]	Right																								

Exchange Traded Funds (ETFs)

5,848,618	---	---	---	24/01/2008	---	ALPHA ETF FTSE Athex Large Cap	2.67	---	-	2.67	11/12/2014	---	---	---	---	---	---	---	---	---	---	---	---	---	---	2.60	4.55	12003
294,878	---	---	---	29/06/2009	---	NBGAM ETF	9.18	0.22	↑	9.16	11/12/2014	9.06	9.06	9.18	9.18	---	---	---	---	---	---	2,002	2	18,138.36	---	9.06	15.10	12003
388,550	---	---	---	03/11/2010	---	NBGAM ETF GREECE & TURKEY 30	7.89	-2.11	↓	8.06	11/12/2014	7.89	7.89	7.89	7.89	---	---	---	---	---	---	2	1	15.78	---	6.70	9.00	12003

Low Dispersion

14,000,000	4.15	---	---	23/04/2010	29/06/1999	4815	ALPHA REAL ESTATE SA(CR)	5.00	0.81	↑	4.96	11/12/2014	5.00	5.00	5.00	5.00	---	---	---	20.90	2013	270	4	1,350.00	70,000.00	4.69	7.10	8637
63,900,000	3.00	---	---	23/06/2003	04/11/2008	4816	ASTIR PALACE SA (CR)	3.45	-2.82	↓	3.55	11/12/2014	3.45	3.45	3.45	3.45	---	---	---	---	2013	1,093	7	3,770.85	220,455.00	3.34	4.08	5753
90,902,904	0.800	---	---	09/08/2004	08/03/2006	4814	ATHENA SA (CR)	0.328	---	-	0.328	11/12/2014	---	---	---	---	---	---	---	---	2013	---	---	---	29,816.15	0.133	0.328	2357
191,660,320	0.300	---	---	20/07/2009	29/12/2010	4817	ATTICA HOLDINGS (CR)	0.512	-5.18	↓	0.540	11/12/2014	0.512	0.512	0.512	0.512	---	---	---	---	2013	3,650	7	1,868.80	98,130.08	0.445	0.799	5759
71,082,707	1.70	---	---	01/07/2010	21/11/2012	4820	HERACLES GEN.CEMENT CO. (CR)	1.25	---	-	1.25	11/12/2014	1.25	1.24	1.25	1.24	---	---	---	---	2013	5,000	7	6,240.00	88,853.38	1.24	1.55	2353
13,404,440	8.63	---	---	02/04/2001	06/03/1992	4822	IONIAN HOTELS SA (CR)	7.25	---	-	7.25	11/12/2014	---	---	---	---	---	---	---	-(6)-	2013	---	---	---	97,182.19	6.00	9.90	5753
2,760,000	7.70	7.6	8.52	8.5	30/06/2014	16/07/1990	4823	KARELIA TOBACCO CO. SA (CB)	201.00	---	-	201.00	11/12/2014	---	---	---	---	---	---	13.97	2013	---	---	---	554,760.00	180.00	244.90	3785
30,600,000	0.300	---	---	12/06/2008	04/03/2014	5059	KATHIMERINI SA (CR)	0.432	4.35	↑	0.414	11/12/2014	0.432	0.432	0.432	0.432	---	---	---	---	2013	1,011	4	436.75	13,219.20	0.311	4.49	5557
14,074,000	3.00	0.25	---	02/03/2012	23/07/2009	5075	MIG REAL ESTATE (CR)	3.10	---	-	3.10	11/12/2014	3.10	3.10	3.10	3.10	---	---	---	-(6)-	2013	295	2	914.50	43,629.40	1.50	3.20	8671
106,980,050	2.25	---	---	25/07/2008	24/02/2014	5046	MINOAN LINES SA (CR)	1.50	---	-	1.50	11/12/2014	---	---	---	---	---	---	---	---	2013	---	---	---	160,470.08	1.42	2.00	5759
17,240,776	0.370	---	---	14/07/2005	30/09/2003	4827	PERSEUS SA (CR)	0.700	---	-	0.700	11/12/2014	---	---	---	---	---	---	---	6.26	2013	---	---	---	12,068.54	0.152	0.700	3577

Surveillance

33,301,715	0.320	---	---	27/06/2003	08/07/2009	4978	AEGEK (CR)	0.064	18.52	↑	0.054	11/12/2014	0.064	0.064	0.064	0.064	---	---	---	---	2013	6,000	2	384.00	2,131.31	0.038	0.136	2357
14,870,100	0.300	---	---	15/05/2008	26/09/2011	4844	ALPHA GRISSIN S.A. (CR)	0.048	---	-	0.048	11/12/2014	---	---	---	---	---	---	---	---	2013	---	---	---	713.76	0.048	0.160	9533
215,246,452	0.300	---	---	25/06/2001	24/09/2001	4446	ALTEC SA (CR)	0.020	-9.09	↓	0.022	11/12/2014	0.026	0.020	0.026	0.020	---	---	---	---	2013	25,001	3	500.03	4,304.93	0.017	0.040	9533
2,969,713	0.300	---	---	02/07/2008	28/02/2011	4958	ANEK LINES SA (PR, issue '96)	0.131	---	-	0.131	11/12/2014	---	---	---	---	---	---	---	---	2013	---	---	---	16,504.73	0.120	0.280	5759
312,163	0.300	---	---	02/07/2008	28/02/2011	4959	ANEK LINES SA (PR, issue '90)	1.15	---	-	1.15	11/12/2014	---	---	---	---	---	---	---	---	2013	---	---	---	16,504.73	1.15	1.43	5759
185,373,016	0.300	---	---	02/07/2008	28/02/2011	4957	ANEK LINES SA (CR)	0.085	-1.16	↓	0.086	11/12/2014	0.086	0.084	0.086	0.084	---	---	---	---	2013	15,000	6	1,270.00	16,504.73	0.070	0.141	5759
81,644,555	0.300	---	---	01/07/2008	02/09/2002	5056	ATTI - KAT SA (CR)	0.020	17.65	↑	0.017	11/12/2014	0.020	0.020	0.020	0.020	---	---	---	---	2013	1,400	2	28.00	1,632.89	0.009	0.036	2357
20,255,805	0.300	---	---	22/08/2006	02/08/2010	4881	AXON HOLDING SA (CR)	0.020	---	-	0.020	11/12/2014	---	---	---	---	---	---	---	---	2013	---	---	---	405.12	0.020	0.139	4533
17,579,754	4.16	---	---	18/08/2006	02/08/2010	4885	BIOTER SA (CR)	0.188	---	-	0.188	11/12/2014	---	---	---	---	---	---	---	---	2013	---	---	---	3,304.99	0.104	0.216	2357
1,130,180	0.440	---	---	20/06/2003	02/07/2014	---	COMPUCON SA (CR)	0.013	---	-	0.013	11/12/2014	---	---	---	---	---	---	---	---	2013	---	---	---	14.69	0.013	0.814	9537
14,173,104	0.300	---	---	11/08/2010	28/11/2013	5055	DIONIC (CR)	0.072	---	-	0.072	11/12/2014	---	---	---	---	---	---	---	---	2013	---	---	---	1,020.46	0.041	0.307	2797
15,878,748	0.480	---	---	10/07/2006	22/03/2004	4960	DOMIKI KRITIS SA (CR)	0.330	---	-	0.330	11/12/2014	---	---	---	---	---	---	---	---	2013	---	---	---	5,239.99	0.250	0.485	2357
3,961,300	1.28	---	---	29/06/2004	03/08/2000	5080	DUROS SA (CR)	0.585	---	-	0.585	11/12/2014	---	---	---	---	---	---	---	---	2013	---	---	---	2,317.36	0.185	0.759	3763
7,085,888	1.59	---	---	02/07/1996	06/09/2010	4690	ELVIMEK (CR)	3.97	---	-	3.97	11/12/2014	---	---	---	---	---	---	---	---	2013	---	---	---	28,130.98	1.54	3.97	8633
6,000,000	0.600	---	---	13/06/2008	08/04/2004	4886	EUROBROKERS S.A. (CR)	0.020	---	-	0.020	11/12/2014	---	---	---	---	---	---	---	---	2013	---	---	---	120.00	0.020	0.052	8534
21,820,410	0.800	---	---	22/05/2008	02/08/2011	4882	EUROMEDICA SA (CR)	0.400	---	-	0.400	11/12/2014	---	---	---	---	---	---	---	---	2013	---	---	---	8,728.16	0.240	0.403	4533
110,097,185	0.300	---	---	04/12/2013	5033	Forthnet (CR)	0.808	3.59	↑	0.780	11/12/2014	0.790	0.790	0.810	0.810	---	---	---	---	---	2013	2,808	6	2,269.48	88,958.53	0.780	1.98	9535
1,270,000	0.300	---	---	06/07/2007	06/02/2013	5007	GIRAKIAN PROFIL SA (CB)	0.385	---	-	0.385	11/12/2014	---	---	---	---	---	---	---	---	2013	---	---	---	488.95	0.385	2.63	1757
179,707,771	0.300	---	---	27/06/2002	01/11/2011	4847	HELLAS ONLINE SA (CR)	0.548	-0.18	↓	0.549	11/12/2014	0.550	0.546	0.550	0.546	---	---	---	71.24	2013	25,000	8	13,710.00	98,479.86	0.400	0.670	9537
30,390,000	0.310	---	---	18/08/2008	29/12/2006	4447	HELLENIC FISHFARMING SA (CR)	0.092	---	-	0.092	11/12/2014	---	---	---	---	---	---	---	---	2013	---	---	---	2,795.88	0.045	0.119	3573

Number of Outstanding Securities	Nominal Value	Dividends [1]			Date of Last Coupon		Note	Shares	Closing price	% change	Previous closing price/date	Open price	Price min	Price max	Last price	Avg price	Last Bid [7]	Last Ask [7]	P/E after	Year	Volume	Trades	Transactions Value	Company Mkt Value (thou. €)	Year low	Year high	Sector[ 4]
		2011	2012	2013	Dividend [2]	Right																					
Surveillance																											
1,540,000	0.600	---	---	---	08/08/1994	19/09/2000	5058	J.BOUTARIS & SON HOLD. (PB)	0.006	---	0.006	11/12/2014	---	---	---	---	---	---	---	2013	---	---	---	840.17	0.005	0.012	3535
25,179,640	0.600	---	---	---	08/08/1994	19/09/2000	5057	J.BOUTARIS & SON HOLD. SA (CB)	0.033	---	0.033	11/12/2014	---	---	---	---	---	---	---	2013	---	---	---	840.17	0.030	0.086	3535
7,125,216	0.650	---	---	---	01/07/2005	14/12/1999	4955	KRE.KA SA (CR)	0.188	---	0.188	11/12/2014	---	---	---	---	---	---	---	2013	---	---	---	1,339.54	0.118	0.278	3573
51,081,030	1.00	---	---	---	20/08/2007	03/09/2007	4912	LAVIPHARM SA (CR)	0.097	-17.09 ↓	0.117	11/12/2014	0.096	0.096	0.105	0.097	---	---	---	2013	15,701	14	1,525.30	4,954.86	0.093	0.164	4577
4,178,856	1.58	---	---	---	21/07/2011	28/07/2004	4983	MEDICON S.A (CR)	0.368	---	0.368	11/12/2014	---	---	---	---	---	---	15.17	2013	---	---	---	1,537.82	0.251	0.952	4535
255,459,600	0.300	---	---	---	26/06/2000	03/12/2010	4833	NEL SA (CR)	0.024	---	0.024	11/12/2014	---	---	---	---	---	---	---	2013	---	---	---	6,131.03	0.016	0.090	5759
20,231,328	0.600	---	---	---	15/07/2008	25/06/2004	4879	NIKAS SA (CR)	0.150	---	0.150	11/12/2014	---	---	---	---	---	---	---	2013	---	---	---	3,034.70	0.150	0.200	3577
14,967,940	0.500	---	---	---	21/05/2008	04/01/2008	4956	PASAL DEVELOPMENT S.A. (CR)	0.107	---	0.107	11/12/2014	---	---	---	---	---	---	---	2013	---	---	---	1,601.57	0.078	0.239	8633
18,750,000	0.300	---	---	---	02/07/2001	31/12/2012	4985	PEGASUS PUBLISHING S.A. (CR)	0.048	---	0.048	11/12/2014	0.048	0.048	0.048	0.048	---	---	---	2013	4	1	0.19	900.00	0.015	0.300	5557
24,319,250	0.300	---	---	---	09/07/2002	04/07/2007	5054	PROODEFTIKH SA (CR)	0.075	17.19 ↑	0.064	11/12/2014	0.075	0.075	0.075	0.075	---	---	---	2013	50	1	3.75	1,823.94	0.054	0.188	2357
65,326,268	0.530	---	---	---	04/07/2007	19/07/2006	4750	SATO SA (CR)	0.124	---	0.124	11/12/2014	---	---	---	---	---	---	---	2013	---	---	---	8,100.46	0.068	0.250	3726
36,235,184	1.00	---	---	---	01/07/2008	30/07/2012	4961	SELONDA AQUACULTURE SA (CR)	0.064	-14.67 ↓	0.075	11/12/2014	0.060	0.060	0.075	0.075	---	---	---	2013	361	5	23.16	2,319.05	0.060	0.152	3573
7,914,480	2.50	---	---	---	23/06/2008	29/06/2011	4888	SFAKIANAKIS SA (CR)	1.70	-1.16 ↓	1.72	11/12/2014	1.70	1.70	1.70	1.70	---	---	---	2013	10	1	17.00	13,454.62	0.488	1.72	5379
10,000,000	1.35	---	---	---	24/06/2008	10/05/2005	4887	SIDMA SA (CR)	0.170	-16.26 ↓	0.203	11/12/2014	0.220	0.163	0.220	0.163	---	---	---	2013	1,721	4	292.55	1,700.00	0.163	0.520	1757
29,060,950	0.340	---	---	---	20/08/2007	24/10/2001	4884	SPIDER METAL INDUSTRY SA (CR)	0.009	---	0.009	11/12/2014	---	---	---	---	---	---	---	2013	---	---	---	261.55	0.009	0.070	2757
100,793,000	0.300	---	---	---	16/07/2009	05/08/2013	5008	TELETIPOS SA (CR)	0.181	---	0.181	11/12/2014	---	---	---	---	---	---	---	2013	---	---	---	18,243.53	0.111	0.345	5553
3,229,566	0.320	---	---	---	22/06/2005	23/09/1999	4629	VARANGIS AVEPE S.A. (CR)	0.520	---	0.520	11/12/2014	---	---	---	---	---	---	---	2013	---	---	---	1,679.37	0.520	1.00	3726
16,383,428	0.300	---	---	---	25/06/2002	21/06/2013	4997	VARVARESSOS SA (CB)	0.161	---	0.161	11/12/2014	---	---	---	---	---	---	0.22	2013	---	---	---	2,637.73	0.062	0.293	3763
13,191,620	0.620	---	---	---	04/08/2010	09/09/2002	4977	YALCO - CONSTANTINOU SA (CB)	0.120	---	0.120	11/12/2014	---	---	---	---	---	---	---	2013	---	---	---	1,582.99	0.052	0.241	3722

Under Deletion																											
9,567,289	0.300	---	---	---	01/07/2004	19/11/2007	5062	MARAC ELECTRONICS (CR)	0.298	---	0.298	11/12/2014	---	---	---	---	---	---	---	2013	---	---	---	2,851.05	0.280	0.356	9578
40,946,303	0.360	---	---	---	18/07/2005	27/11/2007	5053	PC SYSTEMS SA (CR)	0.041	---	0.041	11/12/2014	---	---	---	---	---	---	---	2013	---	---	---	1,678.80	0.039	0.169	9533
766,000	1.50	---	---	---	01/07/2004	11/12/2012	4937	TRIA ALFA SA (CR)	2.29	---	2.29	11/12/2014	---	---	---	---	---	---	---	2013	---	---	---	2,084.89	1.72	3.33	3763
245,000	1.50	---	---	---	19/07/2010	11/12/2012	4938	TRIA ALFA SA (PR)	1.35	---	1.35	11/12/2014	---	---	---	---	---	---	---	2013	---	---	---	2,084.89	0.969	2.57	3763

Suspension Status																											
5,000,000	0.400	---	---	---	03/06/2009	01/09/2014	5079	ALCO HELLAS SA (CR)	0.307	---	0.307	11/12/2014	---	---	---	---	---	---	---	---	---	---	---	1,535.00	0.303	2.09	1753
5,025,000	0.300	---	---	---	05/07/2005	14/03/2002	5023	ALSINCO S.A (CR)	0.043	---	0.043	11/12/2014	---	---	---	---	---	---	---	---	---	---	---	216.08	0.043	0.043	3763
1,750,955,549	0.600	---	---	---	19/05/2008	08/12/2011	4911	ATE (CR)	0.155	---	0.155	11/12/2014	---	---	---	---	---	---	---	---	---	---	---	271,398.11	0.155	0.155	8355
21,382,067	0.300	---	---	---	02/10/2006	15/02/2006	4628	ATERMON (CR)	0.120	---	0.120	11/12/2014	---	---	---	---	---	---	---	---	---	---	---	2,565.85	0.120	0.120	5555
105,423,498	0.510	---	---	---	01/07/2004	28/12/2005	4920	AVENIR S.A. (CR)	0.046	---	0.046	11/12/2014	---	---	---	---	---	---	---	---	---	---	---	4,849.48	0.046	0.046	5752
33,930,000	0.300	---	---	---	03/07/2006	30/05/2001	4865	BABIS VOVOS SA (CR)	0.304	---	0.304	11/12/2014	---	---	---	---	---	---	---	---	---	---	---	10,314.72	0.304	0.304	8633
20,121,710	1.21	---	---	---	27/07/1992	12/03/2003	5002	BALKAN R.E. (CR)	0.190	---	0.190	11/12/2014	---	---	---	---	---	---	---	---	---	---	---	3,823.12	0.190	0.190	8633
1,795,140,547	1.00	---	---	---	31/05/2011	19/04/2012	4951	BANK OF CYPRUS (CR)	0.207	---	0.207	11/12/2014	---	---	---	---	---	---	---	---	---	---	---	371,594.09	0.207	0.207	8355
21,920,570	0.300	---	---	---	03/07/2007	13/12/1999	4702	CARDASSILARIS SA (CR)	0.140	---	0.140	11/12/2014	---	---	---	---	---	---	---	---	---	---	---	3,068.88	0.140	0.140	3577
54,547,634	0.500	---	---	---	25/04/2005	21/01/2009	4860	CH.TEGOPOULOS PUBL. SA (CR)	0.038	---	0.038	11/12/2014	---	---	---	---	---	---	---	---	---	---	---	2,072.81	0.038	0.038	5557
30,159,583	0.470	---	---	---	26/06/2008	29/12/2010	5047	DIAS A/C (CR)	0.050	---	0.050	11/12/2014	---	---	---	---	---	---	---	---	---	---	---	1,507.98	0.040	0.092	3573



## Daily Official List

Year: 135 Trading Day No: 238

## Section 2: Analytic Figures of Shares Transactions

Friday, 12 December, 2014

Number of Outstanding Securities	Nominal Value	Dividends [1]			Date of Last Coupon		Note	Shares	Closing price	% change	Previous closing price/date	Open price	Price min	Price max	Last price	Avg price	Last Bid [7]	Last Ask [7]	P/E after	Year	Volume	Trades	Transactions Value	Company Mkt Value (thou. €)	Year low	Year high	Sector[ 4]	
		2011	2012	2013	Dividend [2]	Right																						
Suspension Status																												
7,847,611	1.20	---	---	---	01/08/2007	28/09/2011	4939	EDRASIS - C. PSALLIDAS SA (CR)	0.150	---	0.150	11/12/2014	---	---	---	---	---	---	---	---	---	---	---	---	1,177.14	0.150	0.150	2357
5,750,000	0.300	---	---	---	12/12/2008	12/12/2011	4929	ELECTRONIKI ATHINON SA (CR)	0.480	---	0.480	11/12/2014	---	---	---	---	---	---	---	---	---	---	---	---	2,760.00	0.480	0.480	5375
24,605,397	0.400	---	---	---	29/06/1995	27/05/2002	4651	EMPORIKOS DESMOS SA (CR)	0.080	---	0.080	11/12/2014	---	---	---	---	---	---	---	---	---	---	---	---	2,134.04	0.080	0.080	3722
1,182,903	0.400	---	---	---	01/07/1996	27/05/2002	4652	EMPORIKOS DESMOS SA (PR)	0.140	---	0.140	11/12/2014	---	---	---	---	---	---	---	---	---	---	---	---	2,134.04	0.140	0.140	3722
7,326,648	1.00	---	---	---	26/07/2006	24/07/2001	4921	FINTEXPORT SA (CR)	0.328	---	0.328	11/12/2014	---	---	---	---	---	---	---	---	---	---	---	---	2,403.14	0.328	0.328	3763
13,692,227	1.47	---	---	---	07/07/2006	08/10/1999	5049	HELLENIC FABRICS SA (CR)	0.117	---	0.117	11/12/2014	---	---	---	---	---	---	---	---	---	---	---	---	1,601.99	0.089	0.153	3763
24,619,524	0.500	---	---	---	10/10/1986	30/12/2002	4914	KERAMIA-ALLATINI (CR)	0.088	---	0.088	11/12/2014	---	---	---	---	---	---	---	---	---	---	---	---	2,166.52	0.088	0.088	8633
7,840,373	1.20	---	---	---	18/07/2002	05/03/2003	4765	KLONATEX SA (PR)	0.080	---	0.080	11/12/2014	---	---	---	---	---	---	---	---	---	---	---	---	1,453.75	0.080	0.080	3763
20,663,047	1.20	---	---	---	21/08/2000	05/03/2003	4764	KLONATEX SA (CR)	0.040	---	0.040	11/12/2014	---	---	---	---	---	---	---	---	---	---	---	---	1,453.75	0.040	0.040	3763
17,544,600	0.600	---	---	---	03/07/2000	01/08/2000	4868	KOYMBAS SYNERGY GROUP (CR)	0.132	---	0.132	11/12/2014	---	---	---	---	---	---	---	---	---	---	---	---	2,315.89	0.132	0.132	8775
15,015,000	1.60	---	---	---	01/07/2002	02/02/2000	4603	MAXIM C.M. PERTSINIDIS SA (CB)	0.100	---	0.100	11/12/2014	---	---	---	---	---	---	---	---	---	---	---	---	1,501.50	0.100	0.100	3763
66,937,526	0.700	---	---	---	13/08/2010	21/05/2003	5003	MICHANIKI SA (CR)	0.100	---	0.100	11/12/2014	---	---	---	---	---	---	---	---	---	---	---	---	9,186.78	0.100	0.100	2357
25,968,987	0.700	---	---	---	13/08/2010	21/05/2003	5004	MICHANIKI SA (PR)	0.096	---	0.096	11/12/2014	---	---	---	---	---	---	---	---	---	---	---	---	9,186.78	0.096	0.096	2357
13,555,100	1.00	---	---	---		08/07/2005	4576	MICROLAND COMPUTERS SA (CR)	0.640	---	0.640	11/12/2014	---	---	---	---	---	---	---	---	---	---	---	---	8,675.26	0.640	0.640	5379
23,463,874	0.800	---	---	---	23/05/2003	21/12/1999	4918	NEORION SA (CR)	0.125	---	0.125	11/12/2014	---	---	---	---	---	---	---	---	---	---	---	---	2,932.98	0.125	0.125	2753
42,501,273	0.300	---	---	---	26/06/2007	10/08/2009	4993	NUTRIART (CR)	0.049	---	0.049	11/12/2014	---	---	---	---	---	---	---	---	---	---	---	---	2,082.56	0.049	0.049	3577
20,210,127	1.53	---	---	---	27/06/1997	20/03/2000	5061	PARNASSOS ENTERP. (CR)	0.070	---	0.070	11/12/2014	---	---	---	---	---	---	---	---	---	---	---	---	1,414.71	0.065	0.172	8775
25,583,146	0.300	---	---	---	25/06/2001	03/12/2008	4723	PETZETAKIS SA (CR)	0.260	---	0.260	11/12/2014	---	---	---	---	---	---	---	---	---	---	---	---	6,651.62	0.260	0.260	1357
9,550,386	0.500	---	---	---	01/07/1997	12/06/2008	4626	PRAXITELIO SA (CR)	0.390	---	0.390	11/12/2014	---	---	---	---	---	---	---	---	---	---	---	---	4,430.09	0.390	0.390	4533
1,306,368	0.500	---	---	---	01/07/1997	12/06/2008	4627	PRAXITELIO SA (PR)	0.540	---	0.540	11/12/2014	---	---	---	---	---	---	---	---	---	---	---	---	4,430.09	0.540	0.540	4533
62,683,822	0.300	---	---	---	27/05/2008	09/01/2006	4830	PROTON BANK S.A. (CR)	0.180	---	0.180	11/12/2014	---	---	---	---	---	---	---	---	---	---	---	---	11,283.09	0.180	0.180	8355
51,334,286	0.320	---	---	---	03/07/2000	18/12/2007	4548	SAOS (CR)	0.780	---	0.780	11/12/2014	---	---	---	---	---	---	---	---	---	---	---	---	40,040.74	0.780	0.780	2773
26,408,040	0.300	---	---	---	01/07/1997	26/05/1999	4464	SHEET STEEL SA (CR)	0.120	---	0.120	11/12/2014	---	---	---	---	---	---	---	---	---	---	---	---	3,168.96	0.120	0.120	1757
60,221,300	0.400	---	---	---	01/07/2002	01/11/2010	5022	SHELMAN SA (CR)	0.080	---	0.080	11/12/2014	---	---	---	---	---	---	---	---	---	---	---	---	4,817.70	0.080	0.080	2353
26,262,660	0.900	---	---	---	01/07/2008	24/02/2011	4954	SPRIDER STORES (CR)	0.031	---	0.031	11/12/2014	---	---	---	---	---	---	---	---	---	---	---	---	814.14	0.031	0.031	5371
144,688,060	0.600	---	---	---	21/04/2008	10/03/2010	4982	T BANK (CR)	0.048	---	0.048	11/12/2014	---	---	---	---	---	---	---	---	---	---	---	---	6,945.03	0.048	0.048	8355
6,523,780	0.530	---	---	---	01/07/2002	06/03/2001	4971	TECHNICAL PUBLICATIONS SA (CR)	0.006	---	0.006	11/12/2014	---	---	---	---	---	---	---	---	---	---	---	---	39.14	0.006	0.006	5557
13,920,000	0.320	---	---	---	19/11/2001	01/08/2000	4726	TEXAPRET SA (CR)	0.080	---	0.080	11/12/2014	---	---	---	---	---	---	---	---	---	---	---	---	1,113.60	0.080	0.080	3763
510,840	1.00	---	---	---	15/07/2008	21/11/2013	5036	TROPEA HOLDING (CR)	2.00	---	2.00	11/12/2014	---	---	---	---	---	---	---	---	---	---	---	---	1,021.68	0.020	2.00	3722
284,465,964	3.70	---	---	---	20/06/2008	15/06/2009	4913	TT HELLENIC POSTBANK (CR)	0.168	---	0.168	11/12/2014	---	---	---	---	---	---	---	---	---	---	---	---	47,790.28	0.168	0.168	8355
89,616,200	0.300	---	---	---	21/08/2000	28/06/2007	4616	UNITED TEXTILES (CR)	0.050	---	0.050	11/12/2014	---	---	---	---	---	---	---	---	---	---	---	---	4,480.81	0.050	0.050	3763
71,683,906	0.400	---	---	---	15/06/2005	05/02/2008	4953	XATZIOANNOU (CR)	0.026	---	0.026	11/12/2014	---	---	---	---	---	---	---	---	---	---	---	---	1,863.78	0.026	0.026	3763

## Shares' Notes

Code	Note text
( )	- Adjusted dividends.
*	- Last adjusted closing price.
[1]	- Net dividends.
[2]	- The "Date of Last Coupon" for New listings refers to the date company's stocks started to trade in Athex
[3]	- The Company Market Value is referred to the number of outstanding shares
[4]	- Sectors codification can be found in Appendix A
[5]	- The Market Value refers to the total number of shares listed (including their several classes) in the exchange by the company.
[6]	- P/E greater than 100
[7]	- Last view of the Order Book before the end of the trading session
4446	- Transfer to the "Under Supervision" Category as of 20/10/2008.
4447	- Transfer to the "Under Supervision" Category as of 21/10/2008.
4464	- Suspension of trading as of 1/12/2008.
4548	- Suspension of trading as of 1/4/2009.
4576	- Suspension of trading as of 14/7/2009.
4603	- Suspension of trading as of 1/12/2009.
4616	- Suspension of trading as of 25/2/2010.
4626	- Suspension of trading as of 1/4/2010.
4627	- Suspension of trading as of 1/4/2010.
4628	- Suspension of trading as of 1/4/2010.
4629	- Transfer to the Under Supervision Category as of 12/4/2010.
4651	- Suspension of trading as of 1/6/2010.
4652	- Suspension of trading as of 1/6/2010.
4690	- Transfer to Surveillance category as of 4/4/2006.
4702	- Suspension of trading as of 1/12/2010.
4723	- Suspension of trading as of 31/1/2011.
4726	- Suspension of trading as of 1/3/2011.
4750	- Transfer to the "Under Surveillance Category" from 8/4/2011.
4764	- Suspension of trading as of 20/5/2011.
4765	- Suspension of trading as of 20/5/2011.
4795	- The final gross (pre-tax) dividend is € 0.30 per share and subject to withholding tax on the full dividend amount, i.e. 0,45 per share, for those shareholders liable to withholding tax, in accordance with the applicable tax law provisions.
4814	- Transfer to the Low Dispersion Category as of 30/5/2011.
4815	- Transfer to the Low Dispersion Category as of 30/5/2011.
4816	- Transfer to the Low Dispersion Category as of 30/5/2011.
4817	- Transfer to the Low Dispersion Category as of 30/5/2011.
4820	- Transfer to the Low Dispersion category as of 18/4/2008.
4822	- Transfer to the Low Dispersion category as of 30/5/2011.
4823	- Transfer to the Low Dispersion category as of 4/4/2006.
4827	- Transfer to the Low Dispersion category as of 5/5/2010.
4830	- Suspension of trading as of 10/10/2011.
4833	- Transfer to Surveillance category from 6/5/2010.
4844	- Transfer to the Surveillance category from 8/4/2011.
4847	- Transfer to the Surveillance Category as of 3/7/2009.
4860	- Suspension of trading as of 30/3/2012.
4865	- Suspension of trading as of 2/4/2012.
4868	- Suspension of trading as of 2/4/2012.
4879	- Transfer to the Surveillance Category as of 10/4/2012.
4881	- Transfer to the Surveillance Category as of 10/4/2012.
4882	- Transfer to the Surveillance Category as of 10/4/2012.
4884	- Transfer to the Surveillance Category as of 10/4/2012.
4885	- Transfer to the Surveillance Category as of 10/4/2012.
4886	- Transfer to the Surveillance Category as of 10/4/2012.

## Shares' Notes

Code	Note text
4887	- Transfer to the Surveillance Category as of 10/4/2012.
4888	- Transfer to the Surveillance Category as of 10/4/2012.
4911	- Lift of suspension from 30/7/2012.
4912	- Transfer to the Surveillance Category as of 31/7/2012.
4913	- Suspension of trading as of 30/8/2012.
4914	- Suspension of trading as of 31/8/2012.
4918	- Suspension of trading as of 31/8/2012.
4920	- Suspension of trading as of 31/8/2012.
4921	- Suspension of trading as of 31/8/2012.
4929	- Suspension of trading as of 1/10/2012.
4937	- Transfer to the UNDER DELETION category as of 30/11/2012.
4938	- Transfer to the UNDER DELETION category as of 30/11/2012.
4939	- Suspension of trading as of 30/11/2012.
4951	- Suspension of trading as of 19/3/2013.
4953	- Suspension of trading as of 2/4/2013.
4954	- Suspension of trading as of 2/4/2013.
4955	- Transfer to the Surveillance Category as from 5/4/2013.
4956	- Transfer to the Surveillance Category as from 5/4/2013.
4957	- Transfer to the Surveillance Category as from 5/4/2013.
4958	- Transfer to the Surveillance Category as from 5/4/2013.
4959	- Transfer to the Surveillance Category as from 5/4/2013.
4960	- Transfer to the Surveillance Category as from 5/4/2013.
4961	- Transfer to the Surveillance Category as from 5/4/2013.
4971	- Suspension of trading as of 3/6/2013.
4977	- Transfer to the "Under Surveillance Category" from 11/6/2013.
4978	- Transfer to the Under Supervision Category as of 11/6/2013.
4982	- Suspension of trading as of 1/12/2011.
4983	- Transfer to the Surveillance Category as of 5/4/2013.
4985	- Transfer to the "Under Surveillance Category" from 8/4/2011.
4993	- Suspension of trading as of 21/6/2013 (15:18).
4997	- Transfer to the Under Supervision Category as of 21/12/2009. - The 6,870,053 new (CB) shares, resulting from the recent share capital increase through a rights issue, are not yet admitted to trading on the ATHEX.
5002	- Suspension of trading as of 30/08/2013.
5003	- Suspension of trading as of 30/08/2013.
5004	- Suspension of trading as of 30/08/2013.
5007	- Transfer to the Surveillance category, as of 11/10/2013.
5008	- Transfer to the Surveillance Category from 8/4/2011.
5022	- Suspension of trading as of 2/12/2013.
5023	- Suspension of trading as of 2/12/2013.
5031	- The 612,300 new (CR) shares, resulting from the recent share capital increase through a rights issue, are not yet admitted to trading on the ATHEX.
5033	- Transfer to the Surveillance Category as of 25/11/2011. The 97,144,575 new (CR) shares, resulting from the recent share capital increase through a rights issue, are not yet admitted to trading on the ATHEX.
5036	- The company's share is under suspension of trading as of 2/4/2012. During suspension, the company proceeded and concluded a share reverse split, according to which - after the conclusion of the corporate action - the total number of the company's shares, as well as, the last closing price of 30/03/2012 were adjusted.
5046	- Transfer to the Low Dispersion category as of 8/4/2011.
5047	- Suspension of trading as of 27/3/2014.
5049	- Under suspension of trading as of 1/4/2014.
5053	- Transfer to the UNDER DELETION category as of 10/4/2014.
5054	- Transfer to the Surveillance Category as of 10/4/2014.
5055	- Transfer to the Surveillance Category as of 10/4/2014.
5056	- Transfer to the Under Supervision Category as of 14/4/2014.
5057	- Transfer to the Surveillance Category as of 29/12/2011.
5058	- Transfer to the Surveillance Category as of 29/12/2011.
5059	- Transfer to the Low Dispersion category as of 2/6/2014.

**Shares' Notes**

Code	Note text
5061	- Suspension of trading as of 2/6/2014.
5062	- Transfer to the UNDER DELETION category as of 4/6/2014.
5069	- Suspension of trading as of 1/10/2014.
5073	- The 90,000 new (CR) shares, resulting from the recent share capital increase through a rights issue, are not yet admitted to trading on the ATHEX.
5075	- Transfer to the "Low Dispersion" Category as of 31/10/2014.
5079	- Suspension of trading from 1/12/2014.
5080	- Suspension of trading as of 6/9/2011.

## Securities Blocks Details

Securities	Block Volume	Price	Block Trade Value	Time of approval	Note
MYTILINEOS HOLDINGS (CR)	80,000	5.02	401,600.00	10:56:43	20
NATIONAL BANK (CR)	755,000	1.49	1,121,175.00	11:05:34	20
OPAP (CR)	50,000	8.51	425,250.00	11:13:17	20
EUROBANK ERGASIAS (CR)	2,305,000	0.220	507,100.00	11:22:56	20
OPAP (CR)	500,000	8.51	4,252,500.00	13:28:10	20
OPAP (CR)	130,078	8.51	1,106,963.78	13:37:17	20
OPAP (CR)	255,678	8.56	2,188,603.68	13:45:27	20
ALPHA BANK (W)	400,000	1.00	400,000.00	15:50:46	20
ALPHA BANK (W)	315,627	0.990	312,470.73	16:25:44	20
JUMBO SA (CR)	50,000	8.75	437,500.00	16:35:32	20
ALPHA BANK (W)	300,000	1.00	300,000.00	16:45:41	20
ALPHA BANK (CR)	5,000,000	0.462	2,310,000.00	16:55:36	20
ALPHA BANK (CR)	5,000,000	0.458	2,290,000.00	17:03:58	20
OPAP (CR)	250,000	8.50	2,125,000.00	17:15:40	20

## Blocks Notes

2 - SPOT 1 or SPOT 2 Packet	11 - Total Assets > 500 bil
3 - Block with Short Selling	12 - Sell Offer through Athex
4 - Buy to Close Block	13 - Forced Sale of NMOE
6 - Simultaneous Constitution	14 - Restoration Packet
7 - Repurchase Agreement	15 - Market Maker Packet
8 - Dispersion's Achievement (Not Listed)	16 - Short Selling
9 - Dispersion's Achievement (Listed)	18 - SPOT 1 Packet
10 - Share Capital Majority of Greek State (> 50 bil)	20 - Method 6-1 Packet

Shares Rights Details

Occured date	Exercise from	Exercise until	Trading until	Rights	Price min	Price max	Closing price	Last Bid	Last Ask	Volume	Trades	Transactions Value
-----------------	------------------	-------------------	------------------	--------	--------------	--------------	------------------	----------	----------	--------	--------	-----------------------

No Rights Transactions.

**Shares Forced Sales**

Securities	Transaction s Volume	Number of Trades	Transactions Value	Note
No Forced Transactions.				

**Forced Sales Notes**

- 1 - Normal Forced Sale.
- 2 - Forced Sales of Fixed Registered Shares.
- 3 - Forced Sales of Remaining Stock Fractions.

**Forced Sales Registered Shares**

Securities	Start Date	End Date	Initial Volume	Remaining Volume	Date	Avg price (day)	Avg price (period)	Number of Trades	Transactions Volume	Transactions Value
------------	------------	----------	-------------------	---------------------	------	--------------------	-----------------------	---------------------	------------------------	-----------------------

**No Fixed Registered Shares Forced Sales.**

**Forced Sales Notes**

According to Decision 1/380/04.05.2008 of the Hellenic Republic Capital Market Commission, the certificated registered shares that have not been deposited to the issuer for dematerialisation, will be auctioned in the Athens Exchange by the supervising issuer. Forced sales procedure is held according to Article 99A of the Athens Exchange Rulebook. The average price of the period is calculated by dividing the Total transactions value by the Total volume and includes all the transactions made until the current date.



## Exchange Traded Funds (ETFs) Characteristics

	Transactions Date (T)	Creation / Redemption	Units (T-1)	New Units (T-1)	Redemptio n Units (T-	Units (T) [1]	Fund Assets [2]	Net Unit Price	Dividen d per	Dividend Date
NBGAM ETF ΓΔ X.A.	12/12/2014	25,000	294,878	---	---	294,878	2,712,386.00	9.1983	---	27/10/2011
ALPHA ETF FTSE Athex Large Cap	12/12/2014	50,000	5,848,618	---	---	5,848,618	15,631,810.00	2.6727	0.05	01/07/2013
NBGAM ETF GREECE & TURKEY 30	12/12/2014	25,000	388,550	---	---	388,550	3,138,360.00	8.0771	---	27/10/2011

## ETFs Notes

[1] - Units (T) = Units (T-1) + New Units (T-1) - Redemption Units (T-1)

[2] - The Creation / Redemption Units of T-1 are included.

Corporate Bonds

Num Listed Bonds	Nominal price	Issue price	Today's Rate	Exp. Date	Duration (years)	Note	Coupon attached		Trading	Corporate Bonds	Price min	Price max	Closing price	Previous closing price/date		Volume	Transactions Value	Last order		Date	ear min	Year max
							Common	Preferred										Price	Buy / Sell			
4,122,910	4.77	4.77	5.00	19/03/2015	5	---	19	---	1	MARFIN INVESTMENT GROUP S.A. (Conver to CR shar)	---	---	---	90.0000	04/11/2014	---	---	81.0000	B	28/11/2014	4.7761	94.8000
1,794,284	12.49	9.77	5.08	12/07/2015	8	---	---	---	1	NIREUS S.A. (Convertible to CR shares)	---	---	---	12.0000	29/01/2014	---	---	11.0000	B	17/11/2014	12.0000	12.0000
212,801,311	1.00	1.00	6.30	29/07/2020	7	---	6	---	1	MARFIN INVESTMENT GROUP S.A. SERIES B (BOND)	---	---	---	0.8500	23/08/2013	---	---	1.0000	B	28/11/2014	0.8500	0.8500
163,991,598	1.00	1.00	7.00	29/07/2019	6	---	6	---	1	MARFIN INVESTMENT GROUP S.A. SERIES A (BOND)	---	---	---	1.0000	23/08/2013	---	---	1.0000	B	28/11/2014	1.0000	1.0000

Corporate Bonds Notes

Transactions Volume = (Pieces) \* (Nominal Price). Transactions Value = (Pieces) \* (Nominal Price) \* (price %) + (Accrued interest).  
The price of a Bond is stated as a percentage (%) of Bond's Nominal Price.  
Nominal Price in Euros (€), except if it is noted differently.

Government Bonds

Number Listed Bonds	Nominal price	Today's Rate	Accrued Interest Calc	Exp. Date [1]	Duration (years)	Note	Coupons Date	Curr. coupon value	Trading Unit	Government Bonds	Price min	Price max	Closing price	Previous closing price/date	Volume	Transactions Value	Price	Last order Buy / Sell	Date
2,658,781,973	1.00	4.30	Actual/Actual	24/02/2023	11	---	24/02	4.30	1	GGB-FXD-240223-11Y-2.000-1.00	---	---	---	---	---	---	---	---	---
2,658,781,973	1.00	4.30	Actual/Actual	24/02/2024	12	---	24/02	4.30	1	GGB-FXD-240224-12Y-2.000-1.00	---	---	---	---	---	---	---	---	---
2,658,781,973	1.00	4.30	Actual/Actual	24/02/2025	13	---	24/02	4.30	1	GGB-FXD-240225-13Y-2.000-1.00	---	---	---	---	---	---	---	---	---
2,658,781,973	1.00	4.30	Actual/Actual	24/02/2026	14	---	24/02	4.30	1	GGB-FXD-240226-14Y-2.000-1.00	---	---	---	---	---	---	---	---	---
2,658,781,973	1.00	4.30	Actual/Actual	24/02/2027	15	---	24/02	4.30	1	GGB-FXD-240227-15Y-2.000-1.00	---	---	---	---	---	---	---	---	---
2,836,034,104	1.00	4.30	Actual/Actual	24/02/2028	16	---	24/02	4.30	1	GGB-FXD-240228-16Y-2.000-1.00	---	---	---	---	---	---	---	---	---
2,836,034,104	1.00	4.30	Actual/Actual	24/02/2029	17	---	24/02	4.30	1	GGB-FXD-240229-17Y-2.000-1.00	---	---	---	---	---	---	---	---	---
2,836,034,104	1.00	4.30	Actual/Actual	24/02/2030	18	---	24/02	4.30	1	GGB-FXD-240230-18Y-2.000-1.00	---	---	---	---	---	---	---	---	---
2,836,034,104	1.00	4.30	Actual/Actual	24/02/2031	19	---	24/02	4.30	1	GGB-FXD-240231-19Y-2.000-1.00	---	---	---	---	---	---	---	---	---
2,836,034,104	1.00	4.30	Actual/Actual	24/02/2032	20	---	24/02	4.30	1	GGB-FXD-240232-20Y-2.000-1.00	---	---	---	---	---	---	---	---	---
2,836,034,104	1.00	4.30	Actual/Actual	24/02/2033	21	---	24/02	4.30	1	GGB-FXD-240233-21Y-2.000-1.00	---	---	---	---	---	---	---	---	---
2,836,034,104	1.00	4.30	Actual/Actual	24/02/2034	22	---	24/02	4.30	1	GGB-FXD-240234-22Y-2.000-1.00	---	---	---	---	---	---	---	---	---
2,836,034,104	1.00	4.30	Actual/Actual	24/02/2035	23	---	24/02	4.30	1	GGB-FXD-240235-23Y-2.000-1.00	---	---	---	---	---	---	---	---	---
2,836,034,104	1.00	4.30	Actual/Actual	24/02/2036	24	---	24/02	4.30	1	GGB-FXD-240236-24Y-2.000-1.00	---	---	---	---	---	---	---	---	---
2,836,034,104	1.00	4.30	Actual/Actual	24/02/2037	25	---	24/02	4.30	1	GGB-FXD-240237-25Y-2.000-1.00	---	---	---	---	---	---	---	---	---
2,836,034,104	1.00	4.30	Actual/Actual	24/02/2038	26	---	24/02	4.30	1	GGB-FXD-240238-26Y-2.000-1.00	---	---	---	---	---	---	---	---	---
2,836,034,104	1.00	4.30	Actual/Actual	24/02/2039	27	---	24/02	4.30	1	GGB-FXD-240239-27Y-2.000-1.00	---	---	---	---	---	---	---	---	---
2,836,034,104	1.00	4.30	Actual/Actual	24/02/2040	28	---	24/02	4.30	1	GGB-FXD-240240-28Y-2.000-1.00	---	---	---	---	---	---	---	---	---
2,836,034,104	1.00	4.30	Actual/Actual	24/02/2041	29	---	24/02	4.30	1	GGB-FXD-240241-29Y-2.000-1.00	---	---	---	---	---	---	---	---	---
2,836,034,104	1.00	4.30	Actual/Actual	24/02/2042	30	---	24/02	4.30	1	GGB-FXD-240242-30Y-2.000-1.00	---	---	---	---	---	---	---	---	---
742,153	1,000.00	0.93	FLR Actual/360	10/08/2019	5	---	10/02 - 10/08	---	1	GGB-FLT-100819-05Y-0.934-1,000	---	---	---	---	---	---	---	---	---
4,030,827	1,000.00	4.75	Actual/Actual	17/04/2019	5	---	17/04	4.75	1	GGB-FXD-170419-05Y-4.750-1,000	---	---	---	---	---	---	---	---	---
2,089,066	1,000.00	3.38	Actual/Actual	17/07/2017	3	---	17/07	3.38	1	GGB-FXD-170717-03Y-3.375-1,000	---	---	---	---	---	---	---	---	---

Government Bonds Notes

Transactions Volume = (Pieces) \* (Nominal Price). Transactions Value = (Pieces) \* (Nominal Price) \* (price %) + (Accrued interest).  
The Value of current coupon for the issues with NV 0.01 euro refers to NV 100 euros  
FLR: Floating Interest Rate.  
[1] - The Expiration Date of the interest bearing period and the Date for coupon payment.

Bonds in Circulation	Currency / Min nominal traded Value	Coupons Payment Date	Current Coupon Value	Note	Coupon Attached	Trading Unit	Issue Date	Duration (years)	Today's Interest	A.I.C in days	Bonds	Last price of previous days		Last Outcry in Cash (euro)			Trades in Pieces	Life min	Life Max
														Price	Buy / Sell	Date			
Bonds of International Organizations																			
1,000,000	EUR / 1000	21/07	---	---	9	1	21/07/2006	10	5.0 FLR	360	EUROPEAN INVESTMENT BANK BOND	97.50	16/04/2007	---	---	---	---	---	---
Corporate Bonds in Foreign Currency and Euro																			
103,746	GBP / 10	01/12	0.25	---	56	1	01/12/1930	98	2.5	360	National Mortgage Bank	2.27	05/02/1996	2.27	S	05/02/1996	---	2.27	2.27
0	GBP / 10	01/12	0.25	---	58	1	01/12/1928	100	2.5	360	National Mortgage Bank	---	---	---	---	---	---	---	---

Government Bonds Notes

A.I.C: Accrued Interest Calculation base.  
FLR: Floating Interest Rate.  
The minimum tradeable Nominal Value for all Demeterialised Government Titles is 100 Euros.

State Banks Bonds (one year maturity)

Number Listed Bonds	Nominal value	Initial Rate	Current Rate	Annual Interest	Issue Date	Note	State Banks Bonds	Trading Unit	Yearly Renewals	Last Outcry in Cash (euro) Price	Buy / Sell	Volume
342,560	135.17	2.35	3.92	0.00	31/01/2005	---	H.I.D.B.	1	10	100.00	B	---
2,446	1,182.96	4.90	2.47	29.69	31/05/2008	---	H.I.D.B.	1	7	---	---	---

Bonds Notes

The annual renewal of H.I.D.B. Bonds is free of taxes (net rate).  
For Bonds issue until 30/11/2014 the accrued interest is capitalized.

Athex & ATHEXClear Members List

Member Name			Stock Market			Derivatives Market			ATHEXClear Member		
Address	Phone	Fax	Market Member	Remote Member	Market Maker	Proprietary	Market Maker	Agent	General Clearing	Direct Clearing	Non Clearing
A. SARRIS SECURITIES S.A.			✓								
6, DRAGATSANIOU STR. ATHINA	(210)-3367700	(210)-3312324									
AGRICULTURAL BANK OF GREECE S.A.							✓			✓	
, 23 PANEPISTIMIOU ATHINA	(210)-3298400	(210)-3298322									
ALPHA FINANCE INVESTMENT SERVICES S.A.			✓		✓		✓			✓	
5, MERLIN STR. ATHINA	(210)-3677400	(210)-3311193									
ALPHA BANK A.E.						✓			✓		
40, STADIOU STR ATHINA	(210)-3265546	(210)-3265811									
	(210)-3260000	(210)-3264116									
ARGUS STOCKBROKERS LTD			✓	✓							
12-14, KENNEDY AVE. S. 303 NICOSIA	(+35722)-22717000	(+35722)-22717070									
ATHENAIKI BROKERAGE FIRM S.A.			✓								
33, STADIOU STR. ATHINA	(210)-3254764	(210)-3254767									
ATLANTIC SECURITIES LIMITED			✓	✓							
37, PRODROMOU STR. NICOSIA	(+35722)-445400	(+35722)-661914									
ATLAS SECURITIES S.A			✓			✓					✓
14 - 16, VERVENON STR.& 125 MICHALAKOPOULOU STR. ATHINA	(210)-3363300	(210)-3238925									
ATTICA BANK S.A.									✓		
23, OMIROU STR. ATHINA	(210)-3669000	(210)-3669410									
54, AKADIMIAS STR. ATHINA	(210)-3390757	(210)-3646090									
AXIA VENTURES GROUP LTD			✓	✓							
10, G. KRANIDIOTI NICOSIA	+357 22 742000	+357 22 742001									
AXON SECURITIES S.A.			✓			✓					✓
48, STADIOU ATHINA	(210)-3363800	(210)-3243903									
BANK OF CYPRUS PUBLIC COMPANY LTD									✓		
, 51,STASINOU (AG. PARASKEVI, STROVOLOS) NICOSIA	(0035722)-121883	(0035722)-336258									
170, ALEXANDRAS AVE ATHINA	(210)-6477708	(210)-6477709									
BETA SECURITIES S.A.			✓		✓	✓	✓			✓	
, BRAILA & 29 ALEXANDRAS AVE ATHINA	(210)-6478900	(210)-6410139									
BNP PARIBAS SECURITIES SERVICES									✓		
94, VAS. SOFIAS AVE ATHINA	(210)-7468500	(210)-7468579									
CAPITAL SECURITIES S.A.			✓			✓					✓
58, MITROPOLEOS STR. ATHINA	(210)-3369700	(210)-3369820									
CFS SECURITIES & INVESTMENT SERVICES S.A.			✓		✓			✓		✓	
3, STADIOU STR. ATHINA	(210)-3360800	(210)-3311854									
CITIGROUP GLOBAL MARKET LTD			✓	✓							
, CITIGROUP CENTRE, CANADA SQUARE, CANARY WHART LONDON	002079864000	002079862266									
CO-OPERATIVE CENTRAL BANK LTD			✓	✓							
8, GRIGORI AFXENTIOU STR. NICOSIA	(+35722)-743300	(+35722)-672083									
CREDIT AGRICOLE CHEUVREUX S.A.				✓							
, 9 QUAI PAUL DOUMER PARIS	33 (0) 1 41 89 70 00										
CREDIT SUISSE SECURITIES (EUROPE) LIMITED			✓	✓							
, ONE CABOT SQUARE LONDON	+44 20 7888 8888	+44 20 7888 1600									
CYCLOS SECURITIES S.A.			✓		✓	✓				✓	
39, PANEPISTIMIOU STR. ATHINA	(210)-3364300	(210)-3239122									
D.A. TSEKOURAS SEC. S.A.			✓								
, PESMAZOGLOY 3	(210)-3214406	(210)-3211997									
DEUTSCHE BANK A.G.			✓	✓							
70, THEODOR-HEUSS-ALLEE FRANKFURT	0049 69 910 00	0049 69 910 34 225									
DYNAMIC SECURITIES			✓					✓		✓	
6 - 10, CHAR. TRIKOUPi STR. ATHINA	(210)-3677700	(210)-3677777									
EL. PETROPOULAKIS SECURITIES S.A.			✓					✓			✓
9, ARISTIDOU STR. ATHINA	(210)-3213928	(210)-3216810									
EUROBANK EQUITIES S.A.			✓		✓		✓			✓	
10, FILELLINON STR. ATHINA	(210)-3720000	(210)-3720001									
EUROBANK ERGASIAS S.A.									✓		
8, OTHONOS STR. ATHINA	(210)-3337000	(210)-3233866									
	(210)-3337969	(210)-3245916									
EUROCORP SECURITIES S.A.			✓			✓				✓	
14, FILIKIS ETAIRIAS SQ. ATHINA	(210)-7263500	(210)-7263666									
EUOTRUST BROKERAGE S.A.			✓								
13-15, SOPHOCLEOUS STR. ATHINA	(210)-3363100	(210)-3238334									

Athex & ATHEXClear Members List

Member Name			Stock Market			Derivatives Market			ATHEXClear Member		
Address	Phone	Fax	Market Member	Remote Member	Market Maker	Proprietary	Market Maker	Agent	General Clearing	Direct Clearing	Non Clearing
EUROXX SECURITIES S.A.			✓			✓				✓	
7, PALAIOLOGOU STR. CHALANDRI	(210)-6879400	(210)-6879401									
G.A. PERVANAS SECURITIES & INVESTMENT SERVICES CO S.A.			✓			✓					✓
7 - 9, SOPHOCLEOUS STR. ATHINA	(210)-3251875	(210)-3210291									
GLOBAL CAPITAL SECURITIES AND FINANCIAL SERVICES LTD			✓	✓							
5, LEMESOU AVE. LEMESOS CYPRUS	(+35722)-710710	(+35722)-339332									
GUARDIAN TRUST SECURITIES S.A			✓		✓	✓					✓
15, FILELLINON STR. ATHINA	(210)-3220402	(210)-3220498									
HELLENIC AMERICAN SEC. S.A.			✓			✓					
6, EVRIPIDOU STR. ATHINA	(210)-3311100	(210)-3215968									
HELLENIC BANK (INVESTMENTS) LTD			✓	✓							
31, KYRIAKOY MATSI AVE. NICOSIA	(+35722)-500100	(+35722)-500110									
HSBC BANK PLC									✓		
109-111, MESOGION AVE ATHINA	(210)-6961507	(210)-6929310									
INDEX SECURITIES S.A.			✓								
6, DRAGATSANIOU STR. ATHINA	(210)-3213920	(210)-3213216									
INTERSEC S.A.						✓				✓	
80-88, SYGROU AVE ATHINA	(210)-9203000	(210)-9203052									
INVESTMENT BANK OF GREECE S.A.			✓		✓		✓		✓		
32, AIGEIALIAS MAROUSI	(210) 8173000	(210) 8173101									
24B, KIFISSIAS AVE MAROUSI	(210)-8171800	(210)-8171889									
J. CHR. MAVRIKIS SECURITIES S.A.			✓								
5, SOPHOCLEOUS STR. ATHINA	(210)-3213949	(210)-3217767									
KAPPA SECURITIES S.A.			✓			✓					✓
15, VALAORITOU STR. ATHINA	(210)-3610371	(210)-3641002									
KYPROU SECURITIES S.A.					✓	✓					✓
26, HALKIDONOS & FIDIPPIDOY STR. ATHINA	(210)-8701000	(210)-8701049									
LAIKI FINANCIAL SERVICES LTD			✓	✓							
26, CLR HOUSE, VIRONOS AVE. NICOSIA	(+35722)-898600	(+35722)-680953									
LEON DEPOLAS SECURITIES S.A.			✓					✓			✓
1, CHR. LADA STR. ATHINA	(210)-3213286	(210)-3211618									
MAGNA TRUST SECURITIES S.A			✓					✓			✓
9, FIDIOU STR. ATHINA	(210)-3327503	(210)-3327599									
MEGA EQUITY SECURITIES & FINANCIAL SERVICES LTD			✓	✓							
42-44, GRIBA DIGENI AV. NICOSIA	(+35722)-711711	(+35722)-711811									
MERIT SECURITIES S.A			✓		✓	✓				✓	
38, VAS. KONSTANTINOU STR. ATHINA	(210)-3671800	(210)-3671830									
MERRILL LYNCH			✓	✓							
2, KING EDWARD STREET LONDON	(+4420)-79952000	(+4420)-79954525									
METOCHIKI SECURITIES S.A.			✓								
3, G. GENNADIOU STR. ATHINA	(210)-3306700	(210)-3306709									
MIDAS BROKERAGE S.A.			✓								
5, SOPHOCLEOUS STR. ATHINA	(210)-3253203	(210)-3253205									
N. CHRYSOCHOIDIS STOCK BROKERAGE I.S.S.A.			✓					✓		✓	
7 - 9, SOPHOCLEOUS STR. ATHINA	(210)-3213913	(210)-3216115									
N. SARROS SECURITIES S.A.						✓					
7-9, SOPHOCLEOUS STR. ATHINA	(210)-3705600	(210)-3219992									
NATIONAL BANK OF GREECE S.A.			✓				✓		✓		
86, AIOLOU STR. ATHINA	(210)-3341000	(210)-3228187									
68, AKADIMIAS STR. ATHINA	(210)-3328817	(210)-3328678									
NBG SECURITIES S.A.			✓		✓		✓				✓
68, AKADIMIAS STR. ATHINA	(210)-3328500	(210)-3328565									
NEW PROTON BANK S.A.						✓				✓	
20, ESLIN & AMALIADOS ATHINA	210 6970000	210 6970111									
NUNTIUS SECURITIES S.A			✓					✓			✓
6, DRAGATSANIOU STR. ATHINA	(210)-3350599	(210)-3254846									
PANTELAKIS SEC. S.A.			✓			✓					✓
109-111, MESOGION AVE. ATHINA	(210)-6965000	(210)-6929550									
PEGASUS BROKERAGE FIRM S.A			✓			✓					
17, VALAORITOU STR. ATHINA	(210)-3670700	(210)-3670760									
PIRAEUS BANK S.A.			✓					✓	✓		
4, AMERIKIS STR ATHINA	(210)-3335918	(210)-3254207									
4, AMERIKIS STR. ATHINA	(210)-3335000	(210)-3335079									

## Athex &amp; ATHEXClear Members List

Member Name			Stock Market			Derivatives Market			ATHEXClear Member		
Address	Phone	Fax	Market Member	Remote Member	Market Maker	Proprietary	Market Maker	Agent	General Clearing	Direct Clearing	Non Clearing
<b>PIRAEUS SECURITIES S.A.</b>			✓				✓			✓	
10, STADIOU STR. ATHINA	(210)-3354100	(210)-3233814									
<b>PRELIUM SECURITIES &amp; INVESTMENT SERVICES S.A.</b>			✓			✓					✓
, KIFISSIAS AVE & 1 DAVAKI STR ATHINA	(210)-3677000	(210)-6920403									
<b>PROCHOICE SECURITIES LTD</b>			✓	✓							
57, SPYROU KYPRIANOY NICOSIA	+357-24-661192	+357-24-662464									
<b>SHARELINK SECURITIES &amp; FINANCIAL SERVICES LTD</b>			✓	✓							
6, ELLINAS HOUSE, THEOTOKI STR. NICOSIA	(+35722)-554200	(+35722)-750852									
<b>SOCIETE GENERALE S.A.</b>			✓	✓		✓					
17, COURS VALMY PUTEAUX - LA DEFENSE PARIS	(+33) 142134754	(+33) 142135697									
240-242, KIFISIAS AVE ATHINA	(210)-6790161	(210)-6728828									
<b>SOLIDUS SECURITIES S.A</b>			✓			✓				✓	
64, LOUIZIS RIANKOUR STR. ATHINA	(210)-6925500	(210)-6985421									
<b>ST. EM. LAVRENTAKIS SECURITIES S.A.</b>			✓			✓					✓
7 - 9, SOPHOCLEOUS STR. ATHINA	(210)-3213336	(210)-3246572									
<b>THE CYPRUS INVESTMENT AND SECURITIES CORPORATION LIMITED (CISCO)</b>			✓	✓							
4, EVROU STR. (EUROLIFE HOUSE) NICOSIA	(+35722)-881800	(+35722)-881801									
<b>UBS LIMITED</b>			✓	✓							
1, FINSBURY AVENUE LONDON	(+4420)-79013333	(+4420)-79012345									
<b>Z.G. PORTALAKIS INVESTMENT SERVICES S.A.</b>			✓								
8, PESMAZOGLOU STR. ATHINA	(210)-3214830	(210)-3212024									
<b>KARAMANOF SECURITIES &amp; INV. SERVICES S.A.</b>			✓					✓		✓	
2, SQ. ST THEODORON ATHINA	(210)-3212947	(210)-3217088									



## List of Stocks under Market Making operations

Securities	Stock Category	
	Market Maker	
	Start Market Making	End Market Making
<b>CYPRUS POPULAR BANK (CR)</b>	<b>Suspension Status</b>	
PIRAEUS SECURITIES S.A.	02/02/2013	01/01/2400
<b>VIOHALCO (CB)</b>	<b>Suspension Status</b>	
ALPHA FINANCE INVESTMENT SERVICES S.A.	11/02/2013	01/01/2400
EUROBANK EQUITIES S.A.	20/01/2013	01/01/2400
MERIT SECURITIES S.A.	13/12/2012	01/01/2400
<b>ALPHA BANK (CR)</b>	<b>Main Market</b>	
EUROBANK EQUITIES S.A.	24/10/2012	01/01/2400
HELLENIC AMERICAN SEC. S.A.	25/07/2014	01/01/2400
INVESTMENT BANK OF GREECE S.A.	08/01/2013	01/01/2400
MERIT SECURITIES S.A.	03/09/2013	01/01/2400
NBG SECURITIES S.A.	15/01/2013	01/01/2400
PIRAEUS SECURITIES S.A.	28/05/2013	01/01/2400
<b>ALUMIL (CR)</b>	<b>Main Market</b>	
BETA SECURITIES S.A.	18/07/2013	01/01/2400
<b>ATTICA BANK S.A. (CR)</b>	<b>Main Market</b>	
BETA SECURITIES S.A.	02/06/2014	01/01/2400
EUROBANK EQUITIES S.A.	25/07/2014	01/01/2400
HELLENIC AMERICAN SEC. S.A.	25/07/2014	01/01/2400
<b>BYTE COMPUTER SA (CR)</b>	<b>Main Market</b>	
MERIT SECURITIES S.A.	04/08/2013	01/01/2400
<b>CC HBC AG (CR)</b>	<b>Main Market</b>	
EUROBANK EQUITIES S.A.	23/10/2013	01/01/2400
NBG SECURITIES S.A.	29/04/2013	01/01/2400
<b>ELLAKTOR (CR)</b>	<b>Main Market</b>	
EUROBANK EQUITIES S.A.	01/06/2013	01/01/2400
INVESTMENT BANK OF GREECE S.A.	02/01/2013	01/01/2400
NBG SECURITIES S.A.	25/06/2013	01/01/2400
<b>ELTECH ANEMOS S.A. (CR)</b>	<b>Main Market</b>	
EUROBANK EQUITIES S.A.	22/07/2014	01/01/2400
<b>ELTON SA (CR)</b>	<b>Main Market</b>	
BETA SECURITIES S.A.	03/09/2013	01/01/2400
<b>EUROBANK ERGASIAS (CR)</b>	<b>Main Market</b>	
ALPHA FINANCE INVESTMENT SERVICES S.A.	08/01/2013	01/01/2400
EUROBANK EQUITIES S.A.	01/06/2013	01/01/2400
HELLENIC AMERICAN SEC. S.A.	25/07/2014	01/01/2400
INVESTMENT BANK OF GREECE S.A.	08/01/2013	01/01/2400
PIRAEUS SECURITIES S.A.	28/09/2013	01/01/2400
<b>EUROCONSULTANTS S.A. (CR)</b>	<b>Main Market</b>	
EUROBANK EQUITIES S.A.	22/07/2014	01/01/2400
<b>FOLLI FOLLIE (CR)</b>	<b>Main Market</b>	
NBG SECURITIES S.A.	17/02/2014	01/01/2400
<b>GEK TERNA (CR)</b>	<b>Main Market</b>	
INVESTMENT BANK OF GREECE S.A.	02/01/2013	01/01/2400
<b>GR. SARANTIS SA (CR)</b>	<b>Main Market</b>	
BETA SECURITIES S.A.	14/05/2013	01/01/2400
<b>HELLENIC EXCHANGES-A.S.E. (CR)</b>	<b>Main Market</b>	
EUROBANK EQUITIES S.A.	01/06/2013	01/01/2400
HELLENIC AMERICAN SEC. S.A.	01/09/2014	01/01/2400
INVESTMENT BANK OF GREECE S.A.	02/01/2013	01/01/2400
NBG SECURITIES S.A.	25/06/2013	01/01/2400
<b>INTRACOM CONSTR. (CR)</b>	<b>Main Market</b>	
MERIT SECURITIES S.A.	27/12/2012	01/01/2400
<b>INTRALOT (CR)</b>	<b>Main Market</b>	
EUROBANK EQUITIES S.A.	01/06/2013	01/01/2400
INVESTMENT BANK OF GREECE S.A.	02/01/2013	01/01/2400
PIRAEUS SECURITIES S.A.	28/09/2013	01/01/2400
<b>LAMDA DEVELOPMENT SA (CR)</b>	<b>Main Market</b>	
EUROBANK EQUITIES S.A.	08/12/2014	01/01/2400
<b>MARFIN INVESTMENT GROUP (CR)</b>	<b>Main Market</b>	
HELLENIC AMERICAN SEC. S.A.	25/07/2014	01/01/2400
PIRAEUS SECURITIES S.A.	02/02/2013	01/01/2400
<b>MLS MULTIMEDIA SA (CR)</b>	<b>Main Market</b>	
BETA SECURITIES S.A.	18/07/2013	01/01/2400
<b>MOTOR OIL (CR)</b>	<b>Main Market</b>	
EUROBANK EQUITIES S.A.	23/10/2012	01/01/2400
HELLENIC AMERICAN SEC. S.A.	01/09/2014	01/01/2400
NBG SECURITIES S.A.	17/02/2014	01/01/2400

## List of Stocks under Market Making operations

Securities	Stock Category	
	Start Market Making	End Market Making
<b>MYTILINEOS HOLDINGS (CR)</b>	<b>Main Market</b>	
HELLENIC AMERICAN SEC. S.A.	25/07/2014	01/01/2400
INVESTMENT BANK OF GREECE S.A.	02/01/2013	01/01/2400
NBG SECURITIES S.A.	25/06/2013	01/01/2400
<b>NATIONAL BANK (CR)</b>	<b>Main Market</b>	
ALPHA FINANCE INVESTMENT SERVICES S.A.	08/01/2013	01/01/2400
EUROBANK EQUITIES S.A.	24/10/2012	01/01/2400
HELLENIC AMERICAN SEC. S.A.	25/07/2014	01/01/2400
INVESTMENT BANK OF GREECE S.A.	08/01/2013	01/01/2400
MERIT SECURITIES S.A.	03/09/2013	01/01/2400
NBG SECURITIES S.A.	28/02/2013	01/01/2400
PIRAEUS SECURITIES S.A.	08/09/2013	01/01/2400
<b>OPAP (CR)</b>	<b>Main Market</b>	
ALPHA FINANCE INVESTMENT SERVICES S.A.	08/01/2013	01/01/2400
EUROBANK EQUITIES S.A.	24/10/2012	01/01/2400
HELLENIC AMERICAN SEC. S.A.	25/07/2014	01/01/2400
INVESTMENT BANK OF GREECE S.A.	08/01/2013	01/01/2400
NBG SECURITIES S.A.	15/01/2013	01/01/2400
<b>OTE (CR)</b>	<b>Main Market</b>	
ALPHA FINANCE INVESTMENT SERVICES S.A.	08/01/2013	01/01/2400
EUROBANK EQUITIES S.A.	24/10/2012	01/01/2400
HELLENIC AMERICAN SEC. S.A.	25/07/2014	01/01/2400
INVESTMENT BANK OF GREECE S.A.	08/01/2013	01/01/2400
NBG SECURITIES S.A.	01/12/2012	01/01/2400
PIRAEUS SECURITIES S.A.	08/09/2013	01/01/2400
<b>PAPOUTSANIS (CR)</b>	<b>Main Market</b>	
BETA SECURITIES S.A.	25/11/2013	01/01/2400
<b>PETROPOULOS PETROS (CR)</b>	<b>Main Market</b>	
BETA SECURITIES S.A.	28/05/2013	01/01/2400
<b>PIRAEUS BANK (CR)</b>	<b>Main Market</b>	
EUROBANK EQUITIES S.A.	23/10/2012	01/01/2400
HELLENIC AMERICAN SEC. S.A.	25/07/2014	01/01/2400
INVESTMENT BANK OF GREECE S.A.	08/01/2013	01/01/2400
MERIT SECURITIES S.A.	16/09/2013	01/01/2400
NBG SECURITIES S.A.	02/06/2013	01/01/2400
PIRAEUS SECURITIES S.A.	16/02/2013	01/01/2400
<b>PLAISIO COMPUTERS SA (CR)</b>	<b>Main Market</b>	
BETA SECURITIES S.A.	05/05/2014	01/01/2400
<b>PPC (CR)</b>	<b>Main Market</b>	
ALPHA FINANCE INVESTMENT SERVICES S.A.	08/01/2013	01/01/2400
EUROBANK EQUITIES S.A.	23/10/2012	01/01/2400
HELLENIC AMERICAN SEC. S.A.	01/09/2014	01/01/2400
INVESTMENT BANK OF GREECE S.A.	08/01/2013	01/01/2400
NBG SECURITIES S.A.	26/03/2013	01/01/2400
PIRAEUS SECURITIES S.A.	28/09/2013	01/01/2400
<b>PROFILE SA (CR)</b>	<b>Main Market</b>	
EUROBANK EQUITIES S.A.	23/06/2014	01/01/2400
<b>REDS S.A. (CR)</b>	<b>Main Market</b>	
EUROBANK EQUITIES S.A.	05/09/2014	01/01/2400
<b>S.KANAKIS SA (CR)</b>	<b>Main Market</b>	
BETA SECURITIES S.A.	01/10/2013	01/01/2400
<b>TITAN CEMENT (CR)</b>	<b>Main Market</b>	
EUROBANK EQUITIES S.A.	23/10/2012	01/01/2400
NBG SECURITIES S.A.	17/02/2014	01/01/2400
<b>VIOHALCO SA/NV (CB)</b>	<b>Main Market</b>	
ALPHA FINANCE INVESTMENT SERVICES S.A.	17/02/2014	01/01/2400
MERIT SECURITIES S.A.	17/03/2014	01/01/2400

**Equity Investment Instruments Acknowledgements**

Portfolio Investments Company Name	NAV per Share	Share Price	Premium/ Discount
AEOLIAN INVESTMENT FUND S.A.	1.34	0.85	-36.57%
ALPHA TRUST ANDROMEDA SA	22.71	17.33	-23.70%

**Acknowledgements Notes**

According to the Decision of the Capital Market Commission 4/278/12.08.2003 Portfolio Investment Companies are required to notify the Athens Exchange on the 10th, 20th and last working day of each month the Net Asset Value (NAV) of their shares as well as Premium or Discount in relation to their market value.

Underlying Asset				Derivatives Market																
Price max	Price min	Closing price	change	Delivery Month	Open price	Price max	Price min	Last price	Closing price	Last Bid	Last Ask	Settlement price	change	Life high	Life low	Trades	Volume	change	Open Interest	change
FTSE/Athex Large Cap				(Trade Unit: 1 Index Point x 5€, Cash Settlement)																
271.74	260.89	265.75	-0.22%	December 2014	256.00	270.75	254.00	256.50	256.50	---	---	258.50	---	341.25	254.00	2,001	17,634	---	37,837	---
				January 2015	250.75	269.50	250.75	258.00	258.00	---	---	255.75	---	340.00	250.75	421	3,158	---	4,824	---
				February 2015	258.00	258.00	258.00	258.00	258.00	---	---	258.00	---	332.75	---	1	1	---	494	---
				March 2015	273.00	273.00	258.00	258.00	258.00	---	---	272.00	---	328.00	---	4	58	---	270	---
				June 2015	---	---	---	---	268.00	---	---	---	---	---	---	---	---	---	---	---
				September 2015	---	---	---	---	268.00	---	---	---	---	---	---	---	---	---	---	---

Underlying Asset				Derivatives Market																
Price max	Price min	Closing price	change	Delivery Month	Open price	Price max	Price min	Last price	Closing price	Last Bid	Last Ask	Settlement price	change	Life high	Life low	Trades	Volume	change	Open Interest	change
ALPHA BANK (CR)				(Contract Size: 100 Securities, Physical Delivery)																
0.474	0.447	0.470	1.73%	December 2014	0.456	0.473	0.448	0.460	0.460	---	---	0.460	---	0.580	0.446	167	3,784	---	27,267	---
				March 2015	0.474	0.475	0.451	0.454	0.454	---	---	0.456	---	0.555	---	12	490	---	2,209	---
				June 2015	---	---	---	---	0.467	---	---	0.467	---	---	---	---	---	---	---	---
				September 2015	---	---	---	---	0.469	---	---	---	---	---	---	---	---	---	---	---
CC HBC AG (CR)				(Contract Size: 100 Securities, Physical Delivery)																
16.27	16.01	16.04	-3.61%	December 2014	16.28	16.28	16.10	16.10	16.10	---	---	15.69	---	18.30	16.10	13	18	---	956	---
				March 2015	16.29	16.29	16.11	16.12	16.12	---	---	15.69	---	17.10	---	4	4	---	12	---
				June 2015	---	---	---	---	16.82	---	---	---	---	---	---	---	---	---	---	---
				September 2015	---	---	---	---	16.55	---	---	---	---	---	---	---	---	---	---	---
CORINTH PIPEWORKS SA (CR)				(Contract Size: 100 Securities, Physical Delivery)																
0.876	0.820	0.839	-1.29%	December 2014	0.844	0.846	0.844	0.846	0.846	---	---	0.831	---	1.25	---	4	26	---	540	---
				March 2015	0.870	0.870	0.856	0.856	0.856	---	---	0.841	---	1.01	---	3	22	---	23	---
				June 2015	---	---	---	---	0.859	---	---	---	---	---	---	---	---	---	---	---
				September 2015	---	---	---	---	0.863	---	---	---	---	---	---	---	---	---	---	---
ELLAKTOR (CR)				(Contract Size: 100 Securities, Physical Delivery)																
2.23	2.05	2.11	0.96%	December 2014	2.07	2.20	2.05	2.16	2.16	---	---	2.14	---	2.85	2.05	64	492	---	1,132	---
				March 2015	2.14	2.19	2.14	2.19	2.19	---	---	2.15	---	2.75	---	10	44	---	64	---
				June 2015	---	---	---	---	2.11	---	---	---	---	---	---	---	---	---	---	---
				September 2015	---	---	---	---	2.12	---	---	---	---	---	---	---	---	---	---	---
EUROBANK ERGASIAS (CR)				(Contract Size: 100 Securities, Physical Delivery)																
0.221	0.203	0.210	-2.33%	December 2014	0.227	0.227	0.205	0.206	0.206	---	---	0.210	---	0.279	0.204	58	2,337	---	62,168	---
				March 2015	0.210	0.210	0.205	0.206	0.206	---	---	0.208	---	0.267	---	6	262	---	2,086	---
				June 2015	---	---	---	---	0.217	---	---	0.214	---	0.277	---	---	---	---	---	---
				September 2015	---	---	---	---	0.218	---	---	---	---	---	---	---	---	---	---	---
EYDAP S.A. (CR)				(Contract Size: 100 Securities, Physical Delivery)																
5.78	5.45	5.62	-1.23%	December 2014	5.60	5.73	5.56	5.57	5.57	---	---	5.64	---	7.48	5.56	13	44	---	353	---
				March 2015	5.50	5.50	5.50	5.50	5.50	---	---	5.64	---	5.80	---	1	2	---	8	---
				June 2015	---	---	---	---	5.37	---	---	---	---	---	---	---	---	---	---	---
				September 2015	---	---	---	---	5.35	---	---	---	---	---	---	---	---	---	---	---
FOLLI FOLLIE (CR)				(Contract Size: 103 Securities, Physical Delivery)																
27.09	24.30	26.00	0.77%	December 2014	25.28	27.07	25.15	26.61	26.61	---	---	26.12	---	32.15	25.15	37	99	---	303	---
				March 2015	26.53	26.99	26.30	26.61	26.61	---	---	25.99	---	29.90	---	10	27	---	25	---
				June 2015	---	---	---	---	26.07	---	---	---	---	---	---	---	---	---	---	---
				September 2015	---	---	---	---	26.20	---	---	---	---	---	---	---	---	---	---	---
FRIGOGLASS SA (CR)				(Contract Size: 100 Securities, Physical Delivery)																
1.47	1.41	1.47	4.26%	December 2014	1.43	1.47	1.43	1.44	1.44	---	---	1.47	---	2.05	1.38	8	67	---	603	---
				March 2015	1.44	1.44	1.44	1.44	1.44	---	---	1.48	---	2.02	---	3	47	---	94	---
				June 2015	---	---	---	---	1.42	---	---	---	---	---	---	---	---	---	---	---
				September 2015	---	---	---	---	1.43	---	---	---	---	---	---	---	---	---	---	---

Underlying Asset				Derivatives Market																
Price max	Price min	Closing price	change	Delivery Month	Open price	Price max	Price min	Last price	Closing price	Last Bid	Last Ask	Settlement price	change	Life high	Life low	Trades	Volume	change	Open Interest	change
GEK TERNA (CR)				(Contract Size: 100 Securities, Physical Delivery)																
2.06	1.95	1.98	0.51%	December 2014	1.97	2.04	1.96	1.96	1.96	---	---	2.03	---	2.76	1.93	66	392	---	2,444	---
				March 2015	2.05	2.19	1.99	2.01	2.01	---	---	2.16	---	2.80	---	39	371	---	6,034	---
				June 2015	2.03	2.03	2.03	2.03	2.03	---	---	2.03	---	2.73	---	1	50	---	100	---
				September 2015	---	---	---	---	2.00	---	---	---	---	---	---	---	---	---	---	---
GRIVALIA PROPERTIES (CR)				(Contract Size: 100 Securities, Physical Delivery)																
8.00	7.55	7.55	-7.02%	December 2014	7.88	7.88	7.72	7.73	7.73	---	---	7.46	---	8.89	7.72	15	54	---	163	---
				March 2015	7.84	7.91	7.84	7.91	7.91	---	---	7.47	---	8.40	---	3	3	---	5	---
				June 2015	---	---	---	---	8.03	---	---	---	---	---	---	---	---	---	---	---
				September 2015	---	---	---	---	8.07	---	---	---	---	---	---	---	---	---	---	---
HELLENIC EXCHANGES-A.S.E. (CR)				(Contract Size: 103 Securities, Physical Delivery)																
5.16	4.87	5.01	-1.38%	December 2014	4.95	5.17	4.91	5.03	5.03	---	---	4.98	---	6.41	4.91	64	274	---	1,235	---
				March 2015	5.52	5.52	5.06	5.08	5.08	---	---	4.99	---	6.30	---	9	126	---	241	---
				June 2015	---	---	---	---	5.04	---	---	4.94	---	---	---	---	---	---	---	---
				September 2015	---	---	---	---	5.07	---	---	---	---	---	---	---	---	---	---	---
HELLENIC PETROLEUM (CR)				(Contract Size: 100 Securities, Physical Delivery)																
3.86	3.66	3.70	-2.12%	December 2014	3.77	3.82	3.66	3.73	3.73	---	---	3.69	---	4.93	3.66	58	368	---	4,240	---
				March 2015	3.80	3.80	3.69	3.69	3.69	---	---	3.71	---	4.75	---	14	267	---	408	---
				June 2015	---	---	---	---	3.82	---	---	---	---	---	---	---	---	---	---	---
				September 2015	---	---	---	---	3.69	---	---	---	---	---	---	---	---	---	---	---
INTRALOT (CR)				(Contract Size: 100 Securities, Physical Delivery)																
1.05	1.00	1.00	0.00%	December 2014	1.00	1.05	1.00	1.05	1.05	---	---	0.970	---	1.27	0.970	6	57	---	646	---
				March 2015	1.02	1.02	1.02	1.02	1.02	---	---	0.988	---	1.15	---	2	10	---	30	---
				June 2015	---	---	---	---	1.01	---	---	---	---	---	---	---	---	---	---	---
				September 2015	---	---	---	---	1.02	---	---	---	---	---	---	---	---	---	---	---
JUMBO SA (CR)				(Contract Size: 100 Securities, Physical Delivery)																
8.90	8.25	8.70	2.35%	December 2014	8.36	8.82	8.32	8.63	8.63	---	---	8.62	---	11.20	8.32	48	158	---	233	---
				March 2015	8.43	8.77	8.43	8.51	8.51	---	---	8.56	---	10.90	---	32	119	---	225	---
				June 2015	---	---	---	---	8.59	---	---	---	---	---	---	---	---	---	---	---
				September 2015	---	---	---	---	8.63	---	---	---	---	---	---	---	---	---	---	---
MARFIN INVESTMENT GROUP (CR)				(Contract Size: 100 Securities, Physical Delivery)																
0.180	0.163	0.164	-4.09%	December 2014	0.168	0.180	0.160	0.168	0.168	---	---	0.160	---	0.250	0.160	45	910	---	22,585	---
				March 2015	0.174	0.178	0.165	0.165	0.165	---	---	0.162	---	0.250	---	6	127	---	856	---
				June 2015	---	---	---	---	0.173	---	---	---	---	---	---	---	---	---	---	---
				September 2015	---	---	---	---	0.174	---	---	---	---	---	---	---	---	---	---	---
METKA (CR)				(Contract Size: 100 Securities, Physical Delivery)																
8.15	7.85	8.01	0.12%	December 2014	7.94	8.12	7.94	7.99	7.99	---	---	8.01	---	9.75	7.91	14	66	---	329	---
				March 2015	7.99	8.10	7.99	8.10	8.10	---	---	8.05	---	8.44	---	5	40	---	45	---
				June 2015	---	---	---	---	8.08	---	---	---	---	---	---	---	---	---	---	---
				September 2015	---	---	---	---	7.82	---	---	---	---	---	---	---	---	---	---	---

Underlying Asset				Derivatives Market																
Price max	Price min	Closing price	change	Delivery Month	Open price	Price max	Price min	Last price	Closing price	Last Bid	Last Ask	Settlement price	change	Life high	Life low	Trades	Volume	change	Open Interest	change
MOTOR OIL (CR)				(Contract Size: 100 Securities, Physical Delivery)																
6.70	6.55	6.60	-2.80%	December 2014	6.59	6.69	6.59	6.62	6.62	---	---	6.33	---	7.88	6.42	34	108	---	352	-
				March 2015	6.58	6.65	6.58	6.65	6.65	---	---	6.30	---	6.80	---	7	11	---	24	-
				June 2015	---	---	---	---	6.86	---	---	6.30	---	---	---	---	---	---	---	-
				September 2015	---	---	---	---	6.70	---	---	---	---	---	---	---	---	---	---	-
MYTILINEOS HOLDINGS (CR)				(Contract Size: 100 Securities, Physical Delivery)																
5.09	4.75	4.79	-1.64%	December 2014	4.93	5.08	4.76	4.78	4.78	---	---	4.77	---	6.40	4.76	196	745	---	5,310	-
				March 2015	5.11	5.11	4.75	4.78	4.78	---	---	4.78	---	6.20	---	18	60	---	117	-
				June 2015	4.91	5.06	4.91	5.06	5.06	---	---	4.85	---	6.43	---	2	10	---	55	-
				September 2015	---	---	---	---	4.95	---	---	---	---	---	---	---	---	---	---	-
NATIONAL BANK (CR)				(Contract Size: 100 Securities, Physical Delivery)																
1.51	1.40	1.46	0.69%	December 2014	1.43	1.52	1.40	1.46	1.46	---	---	1.47	---	2.09	1.38	510	9,225	---	22,923	-
				March 2015	1.45	1.52	1.44	1.48	1.48	---	---	1.47	---	1.90	---	48	1,020	---	1,581	-
				June 2015	---	---	---	---	1.47	---	---	1.46	---	2.10	---	---	---	---	---	-
				September 2015	---	---	---	---	1.47	---	---	---	---	---	---	---	---	---	---	-
OPAP (CR)				(Contract Size: 100 Securities, Physical Delivery)																
8.70	8.15	8.43	2.68%	December 2014	8.23	8.63	8.18	8.57	8.57	---	---	8.43	---	11.34	8.18	130	482	---	2,199	-
				March 2015	8.43	8.51	8.22	8.38	8.38	---	---	8.34	---	10.50	---	15	64	---	154	-
				June 2015	---	---	---	---	8.05	---	---	8.54	---	---	---	---	---	---	---	-
				September 2015	---	---	---	---	8.09	---	---	---	---	---	---	---	---	---	---	-
OTE (CR)				(Contract Size: 100 Securities, Physical Delivery)																
8.74	8.30	8.60	2.99%	December 2014	8.30	8.71	8.20	8.60	8.60	---	---	8.59	---	10.51	8.12	311	1,458	---	5,691	-
				March 2015	8.45	8.69	8.45	8.59	8.59	---	---	8.57	---	10.09	---	38	205	---	179	-
				June 2015	---	---	---	---	8.44	---	---	8.64	---	10.57	---	---	---	---	---	-
				September 2015	---	---	---	---	8.48	---	---	---	---	---	---	---	---	---	---	-
P.P.A. S.A. (CR)				(Contract Size: 100 Securities, Physical Delivery)																
11.60	10.50	11.33	-1.91%	December 2014	11.50	11.50	11.15	11.15	11.15	---	---	11.01	---	15.34	11.15	7	32	---	314	-
				March 2015	11.40	11.46	11.15	11.15	11.15	---	---	10.97	---	13.20	---	12	36	---	49	-
				June 2015	---	---	---	---	11.67	---	---	---	---	---	---	---	---	---	---	-
				September 2015	---	---	---	---	11.61	---	---	---	---	---	---	---	---	---	---	-
PIRAEUS BANK (CR)				(Contract Size: 100 Securities, Physical Delivery)																
0.995	0.911	0.930	0.00%	December 2014	0.940	0.990	0.916	0.931	0.931	---	---	0.942	---	1.34	0.916	281	5,695	---	19,624	-
				March 2015	0.974	0.990	0.930	0.935	0.935	---	---	0.941	---	1.34	---	22	375	---	909	-
				June 2015	---	---	---	---	0.940	---	---	0.951	---	---	---	---	---	---	5	-
				September 2015	---	---	---	---	0.945	---	---	---	---	---	---	---	---	---	---	-
PPC (CR)				(Contract Size: 100 Securities, Physical Delivery)																
5.75	5.23	5.38	-1.47%	December 2014	5.02	5.73	5.02	5.49	5.49	---	---	5.47	---	7.97	5.02	412	1,668	---	4,429	-
				March 2015	5.35	5.67	5.35	5.44	5.44	---	---	5.48	---	7.94	---	21	123	---	767	-
				June 2015	---	---	---	---	5.52	---	---	5.47	---	8.06	---	---	---	---	---	-
				September 2015	---	---	---	---	5.52	---	---	---	---	---	---	---	---	---	---	-

Underlying Asset				Derivatives Market																
Price max	Price min	Closing price	change	Delivery Month	Open price	Price max	Price min	Last price	Closing price	Last Bid	Last Ask	Settlement price	change	Life high	Life low	Trades	Volume	change	Open Interest	change
SIDENOR (CR)				(Contract Size: 100 Securities, Physical Delivery)																
0.526	0.500	0.500	-0.79%	December 2014	0.504	0.504	0.492	0.492	0.492	---	---	0.521	---	0.752	---	6	33	---	752	-
				March 2015	0.514	0.514	0.502	0.502	0.502	---	---	0.531	---	0.514	---	3	20	---	20	-
				June 2015	---	---	---	---	0.509	---	---	---	---	---	---	---	---	---	---	-
				September 2015	---	---	---	---	0.512	---	---	---	---	---	---	---	---	---	---	-
TERNA ENERGY (CR)				(Contract Size: 100 Securities, Physical Delivery)																
2.11	1.96	2.09	0.97%	December 2014	2.03	2.07	1.99	2.07	2.07	---	---	2.03	---	2.81	1.96	15	46	---	1,484	-
				March 2015	2.11	2.11	2.11	2.11	2.11	---	---	2.09	---	2.11	---	3	20	---	15	-
				June 2015	---	---	---	---	2.03	---	---	---	---	---	---	---	---	---	---	-
				September 2015	---	---	---	---	2.04	---	---	---	---	---	---	---	---	---	---	-
TITAN CEMENT (CR)				(Contract Size: 100 Securities, Physical Delivery)																
19.14	18.50	18.76	0.05%	December 2014	18.48	19.02	18.48	18.85	18.85	---	---	18.74	---	21.53	18.48	22	40	---	405	-
				March 2015	18.72	19.00	18.63	18.85	18.85	---	---	18.73	---	20.97	---	13	15	---	28	-
				June 2015	---	---	---	---	18.95	---	---	---	---	---	---	---	---	---	---	-
				September 2015	---	---	---	---	18.94	---	---	---	---	---	---	---	---	---	---	-
VIOHALCO SA/NV (CB)				(Contract Size: 100 Securities, Physical Delivery)																
2.04	1.90	1.91	-2.55%	December 2014	1.97	1.98	1.90	1.96	1.96	---	---	1.90	---	2.44	1.88	10	39	---	526	-
				March 2015	---	---	---	---	1.97	---	---	1.90	---	2.02	---	---	---	---	1	-
				June 2015	---	---	---	---	1.98	---	---	---	---	---	---	---	---	---	---	-
				September 2015	---	---	---	---	1.99	---	---	---	---	---	---	---	---	---	---	-



FTSE/Athex Large Cap

(Trade Unit: 1 Index Point x 5€ - Exoerise Style: European, Cash Settlement)

Call Options																	Put Options																
Exerise Price	December 2014							January 2015							Other Months		December 2014							January 2015							Other Months		Exerise Price
	Open price	Price max	Price min	Last price	Closing price	Volume	Open Interest	Open price	Price max	Price min	Last price	Closing price	Volume	Open Interest	Volume	Open Interest	Open price	Price max	Price min	Last price	Closing price	Volume	Open Interest	Open price	Price max	Price min	Last price	Closing price	Volume	Open Interest	Volume	Open Interest	
215	0.00	0.00	0.00	-	51.50	-	-	-	-	-	-	-	-	-	-	-	0.00	0.00	0.00	-	0.01	-	-	-	-	-	-	-	-	-	-	-	215
250	-	-	-	-	-	-	-	0.00	0.00	0.00	-	24.25	-	-	-	-	-	-	-	-	-	-	-	14.00	14.00	13.00	13.00	13.00	2	3	-	-	250
255	12.50	16.00	12.00	15.00	15.00	72	72	-	-	-	-	-	-	-	-	-	12.50	16.00	6.00	8.50	8.50	2	3	-	-	-	-	-	-	-	-	-	255
260	0.00	0.00	0.00	-	10.50	-	-	0.00	0.00	0.00	-	18.25	-	-	-	-	0.00	0.00	8.00	8.00	8.00	18	26	0.00	0.00	0.00	-	11.50	-	1	-	-	260
265	12.00	13.00	10.00	10.00	10.00	55	60	-	-	-	-	-	-	-	-	-	12.00	13.00	8.00	8.00	8.00	1	3	-	-	-	-	-	-	-	-	-	265
270	5.90	5.90	5.90	5.90	5.90	10	53	16.50	16.50	15.00	15.00	15.00	4	4	-	-	5.90	5.90	12.00	12.00	12.00	5	12	0.00	0.00	0.00	-	16.50	-	61	-	-	270
275	0.00	0.00	0.00	-	3.60	-	-	0.00	0.00	0.00	-	11.25	-	1	-	-	0.00	0.00	0.00	-	12.25	-	635	0.00	0.00	0.00	-	19.50	-	-	-	-	275
280	4.40	4.40	3.50	3.50	3.50	13	224	0.00	0.00	0.00	-	9.50	-	-	-	-	4.40	4.40	20.00	25.00	25.00	9	41	0.00	0.00	0.00	-	22.50	-	77	-	-	280
285	3.00	3.00	3.00	3.00	3.00	1	390	0.00	0.00	0.00	-	7.90	-	31	-	-	3.00	3.00	0.00	-	20.00	-	19	0.00	0.00	0.00	-	26.00	-	41	-	-	285
290	0.00	0.00	0.00	-	0.85	-	145	0.00	0.00	0.00	-	6.50	-	-	-	-	0.00	0.00	35.00	35.00	35.00	5	497	0.00	0.00	0.00	-	29.50	-	20	-	-	290
295	0.00	0.00	0.00	-	0.48	-	266	0.00	0.00	0.00	-	5.40	-	-	-	-	0.00	0.00	0.00	-	29.00	-	21	0.00	0.00	0.00	-	33.50	-	40	-	-	295
300	0.00	0.00	0.00	-	0.26	-	381	9.00	9.00	9.00	9.00	9.00	10	30	-	-	0.00	0.00	0.00	-	33.75	-	38	0.00	0.00	0.00	-	37.50	-	20	-	-	300
305	0.00	0.00	0.00	-	0.14	-	1,065	0.00	0.00	0.00	-	3.60	-	-	-	-	0.00	0.00	45.50	45.50	45.50	5	39	0.00	0.00	0.00	-	41.50	-	20	-	-	305
310	0.00	0.00	0.00	-	0.07	-	1,785	4.00	4.00	4.00	4.00	4.00	10	323	-	-	0.00	0.00	60.00	60.00	60.00	1	149	0.00	0.00	0.00	-	46.00	-	20	-	-	310
315	0.00	0.00	0.00	-	0.03	-	177	0.00	0.00	0.00	-	2.30	-	105	-	-	0.00	0.00	60.00	60.00	60.00	1	493	0.00	0.00	0.00	-	50.50	-	4	-	-	315
320	0.00	0.00	0.00	-	0.01	-	275	0.00	0.00	0.00	-	1.80	-	1,908	-	-	0.00	0.00	60.00	60.00	60.00	1	121	0.00	0.00	0.00	-	55.00	-	40	-	-	320
325	0.00	0.00	0.00	-	0.01	-	72	0.00	0.00	0.00	-	1.40	-	20	-	-	0.00	0.00	0.00	-	58.50	-	40	0.00	0.00	0.00	-	59.50	-	40	-	-	325
330	0.00	0.00	0.00	-	0.01	-	913	0.00	0.00	0.00	-	1.10	-	140	-	-	0.00	0.00	0.00	-	63.50	-	43	0.00	0.00	0.00	-	64.00	-	40	-	-	330
335	0.00	0.00	0.00	-	0.57	-	-	0.00	0.00	0.00	-	0.89	-	20	-	-	0.00	0.00	0.00	-	68.50	-	2	0.00	0.00	0.00	-	69.00	-	20	-	-	335
340	0.00	0.00	0.00	-	0.01	-	382	0.00	0.00	0.00	-	0.69	-	1	-	-	0.00	0.00	0.00	-	73.50	-	-	0.00	0.00	0.00	-	73.50	-	20	-	-	340
345	0.00	0.00	0.00	-	0.01	-	33	0.00	0.00	0.00	-	0.53	-	-	-	-	0.00	0.00	0.00	-	78.50	-	-	0.00	0.00	0.00	-	78.50	-	-	-	-	345
350	0.00	0.00	0.00	-	0.01	-	293	0.00	0.00	0.00	-	0.41	-	10	-	-	0.00	0.00	0.00	-	83.50	-	-	0.00	0.00	0.00	-	83.50	-	-	-	-	350
355	0.00	0.00	0.00	-	0.09	-	-	-	-	-	-	-	-	-	-	-	0.00	0.00	0.00	-	88.50	-	-	-	-	-	-	-	-	-	-	-	355
360	0.00	0.00	0.00	-	0.01	-	204	-	-	-	-	-	-	-	-	-	0.00	0.00	0.00	-	93.50	-	-	-	-	-	-	-	-	-	-	-	360
365	0.00	0.00	0.00	-	0.03	-	-	-	-	-	-	-	-	-	-	-	0.00	0.00	0.00	-	98.50	-	-	-	-	-	-	-	-	-	-	-	365
370	0.00	0.00	0.00	-	0.01	-	-	-	-	-	-	-	-	-	-	-	0.00	0.00	0.00	-	103.00	-	-	-	-	-	-	-	-	-	-	-	370
375	0.00	0.00	0.00	-	0.01	-	-	-	-	-	-	-	-	-	-	-	0.00	0.00	0.00	-	108.00	-	-	-	-	-	-	-	-	-	-	-	375
380	0.00	0.00	0.00	-	0.01	-	500	-	-	-	-	-	-	-	-	-	0.00	0.00	0.00	-	113.00	-	-	-	-	-	-	-	-	-	-	-	380
385	0.00	0.00	0.00	-	0.01	-	200	-	-	-	-	-	-	-	-	-	0.00	0.00	0.00	-	118.00	-	-	-	-	-	-	-	-	-	-	-	385
390	0.00	0.00	0.00	-	0.52	-	-	-	-	-	-	-	-	-	-	-	0.00	0.00	0.00	-	123.00	-	-	-	-	-	-	-	-	-	-	-	390
395	0.00	0.00	0.00	-	0.36	-	-	-	-	-	-	-	-	-	-	-	0.00	0.00	0.00	-	128.00	-	-	-	-	-	-	-	-	-	-	-	395
400	0.00	0.00	0.00	-	0.25	-	-	-	-	-	-	-	-	-	-	-	0.00	0.00	0.00	-	133.00	-	-	-	-	-	-	-	-	-	-	-	400
405	0.00	0.00	0.00	-	0.17	-	-	-	-	-	-	-	-	-	-	-	0.00	0.00	0.00	-	138.00	-	-	-	-	-	-	-	-	-	-	-	405
410	0.00	0.00	0.00	-	0.11	-	-	-	-	-	-	-	-	-	-	-	0.00	0.00	0.00	-	143.00	-	-	-	-	-	-	-	-	-	-	-	410
415	0.00	0.00	0.00	-	0.07	-	-	-	-	-	-	-	-	-	-	-	0.00	0.00	0.00	-	148.00	-	-	-	-	-	-	-	-	-	-	-	415
420	0.00	0.00	0.00	-	0.05	-	-	-	-	-	-	-	-	-	-	-	0.00	0.00	0.00	-	153.00	-	-	-	-	-	-	-	-	-	-	-	420

FTSE/Athex Large Cap

(Trade Unit: 1 Index Point x 5€ - Exercise Style: European, Cash Settlement)

Call Options																	Put Options																		
Exerise Price	December 2014							January 2015							Other Months		December 2014								January 2015								Other Months		Exerise Price
	Open price	Price max	Price min	Last price	Closing price	Volume	Open Interest	Open price	Price max	Price min	Last price	Closing price	Volume	Open Interest	Volume	Open Interest	Open price	Price max	Price min	Last price	Closing price	Volume	Open Interest	Open price	Price max	Price min	Last price	Closing price	Volume	Open Interest	Volume	Open Interest			
425	0.00	0.00	0.00	-	0.03	-	-	-	-	-	-	-	-	-	-	-	0.00	0.00	0.00	-	158.00	-	-	-	-	-	-	-	-	-	-	-	425		
430	0.00	0.00	0.00	-	0.02	-	-	-	-	-	-	-	-	-	-	-	0.00	0.00	0.00	-	163.00	-	-	-	-	-	-	-	-	-	-	-	430		
435	0.00	0.00	0.00	-	0.01	-	-	-	-	-	-	-	-	-	-	-	0.00	0.00	0.00	-	168.00	-	-	-	-	-	-	-	-	-	-	-	435		
440	0.00	0.00	0.00	-	0.01	-	-	-	-	-	-	-	-	-	-	-	0.00	0.00	0.00	-	173.00	-	5	-	-	-	-	-	-	-	-	-	440		
445	0.00	0.00	0.00	-	0.01	-	-	-	-	-	-	-	-	-	-	-	0.00	0.00	0.00	-	178.00	-	-	-	-	-	-	-	-	-	-	-	445		
450	0.00	0.00	0.00	-	0.01	-	-	-	-	-	-	-	-	-	-	-	0.00	0.00	0.00	-	183.00	-	35	-	-	-	-	-	-	-	-	-	450		
455	0.00	0.00	0.00	-	0.01	-	-	-	-	-	-	-	-	-	-	-	0.00	0.00	0.00	-	188.00	-	-	-	-	-	-	-	-	-	-	-	455		
460	0.00	0.00	0.00	-	0.01	-	-	-	-	-	-	-	-	-	-	-	0.00	0.00	0.00	-	193.00	-	-	-	-	-	-	-	-	-	-	-	460		
465	0.00	0.00	0.00	-	0.01	-	-	-	-	-	-	-	-	-	-	-	0.00	0.00	0.00	-	198.00	-	-	-	-	-	-	-	-	-	-	-	465		
Totals:						151	7,490							24	2,593	10	10							48	2,222							2	467	0	0
Number of Trades:						21								7		1								16								2		0	

FTSE/Athex Large Cap

(Trade Unit: 1 Index Point x 5€ - Excoercise Style: European, Cash Settlement)

Call Options																	Put Options																	
Exerise Price	December 2014							January 2015							Other Months			December 2014							January 2015							Other Months		
	Open price	Price max	Price min	Last price	Closing price	Volume	Open Interest	Open price	Price max	Price min	Last price	Closing price	Volume	Open Interest	Volume	Open Interest	Open price	Price max	Price min	Last price	Closing price	Volume	Open Interest	Open price	Price max	Price min	Last price	Closing price	Volume	Open Interest	Volume	Open Interest	Exerise Price	

ALPHA BANK (CR)

(Contract Size: 100 Securities, Exercise Style: American, Physical Delivery)

Call Options																Put Options																				
December 2014								January 2015								Other Months		December 2014								January 2015								Other Months		
Exercise Price	Open price	Price max	Price min	Last price	Closing price	Volume	Open Interest	Open price	Price max	Price min	Last price	Closing price	Volume	Open Interest	Volume	Open Interest	Open price	Price max	Price min	Last price	Closing price	Volume	Open Interest	Open price	Price max	Price min	Last price	Closing price	Volume	Open Interest	Volume	Open Interest	Exercise Price			
0.100	0.000	0.000	0.000		0.362	-	-						-	-			0.000	0.000	0.000		0.001	-	-					-	-			0.001				
0.200	0.000	0.000	0.000		0.262	-	-	0.000	0.000	0.000		0.262	-	-			0.000	0.000	0.000		0.001	-	-	0.000	0.000	0.000		0.001	-	-			0.002			
0.300	0.000	0.000	0.000		0.162	-	-	0.000	0.000	0.000		0.164	-	-			0.000	0.000	0.000		0.001	-	-	0.000	0.000	0.000		0.001	-	-			0.003			
0.400	0.000	0.000	0.000		0.065	-	-	0.000	0.000	0.000		0.081	-	-			0.000	0.000	0.000		0.003	-	-	0.000	0.000	0.000		0.018	-	-			0.004			
0.450	0.000	0.000	0.000		0.028	-	-						-	-			0.000	0.000	0.000		0.016	-	-					-	-			0.005				
0.500	0.000	0.000	0.000		0.008	-	-	0.000	0.000	0.000		0.031	-	-			0.000	0.000	0.000		0.046	-	-	0.000	0.000	0.000		0.068	-	-			0.005			
0.550	0.000	0.000	0.000		0.002	-	-						-	-			0.000	0.000	0.000		0.090	-	-					-	-			0.006				
0.600	0.000	0.000	0.000		0.002	-	-	0.000	0.000	0.000		0.010	-	-			0.000	0.000	0.000		0.138	-	-	0.000	0.000	0.000		0.147	-	-			0.006			
0.650	0.000	0.000	0.000		0.009	-	-						-	-			0.000	0.000	0.000		0.188	-	-					-	-			0.007				
0.700	0.000	0.000	0.000		0.004	-	-	0.000	0.000	0.000		0.003	-	-			0.000	0.000	0.000		0.238	-	-	0.000	0.000	0.000		0.240	-	-			0.007			
0.750	0.000	0.000	0.000		0.001	-	-						-	-			0.000	0.000	0.000		0.288	-	-					-	-			0.008				
0.800	0.000	0.000	0.000		0.001	-	-	0.000	0.000	0.000		0.001	-	-			0.000	0.000	0.000		0.338	-	-	0.000	0.000	0.000		0.338	-	-			0.008			
0.850	0.000	0.000	0.000		0.001	-	-						-	-			0.000	0.000	0.000		0.388	-	-					-	-			0.009				
0.900	0.000	0.000	0.000		0.001	-	-	0.000	0.000	0.000		0.001	-	-			0.000	0.000	0.000		0.438	-	-	0.000	0.000	0.000		0.438	-	-			0.009			
1.000	0.000	0.000	0.000		0.001	-	-	0.000	0.000	0.000		0.001	-	-			0.000	0.000	0.000		0.538	-	-	0.000	0.000	0.000		0.538	-	-			0.010			
1.100	0.000	0.000	0.000		0.001	-	-						-	-			0.000	0.000	0.000		0.638	-	-					-	-			0.011				
1.200	0.000	0.000	0.000		0.001	-	-						-	-			0.000	0.000	0.000		0.738	-	-					-	-			0.012				
1.300	0.000	0.000	0.000		0.001	-	-						-	-			0.000	0.000	0.000		0.838	-	-					-	-			0.013				
1.400	0.000	0.000	0.000		0.001	-	-						-	-			0.000	0.000	0.000		0.938	-	-					-	-			0.014				
1.500	0.000	0.000	0.000		0.001	-	-						-	-			0.000	0.000	0.000		1.04	-	-					-	-			0.015				
Totals:						0	0						0	0	0	0						0	0					0	0	0	0					
Number of Trades:						0							0		0							0.00						0		0						

NATIONAL BANK (CR)

(Contract Size: 100 Securities, Exercise Style: American, Physical Delivery)

Call Options																	Put Options																		
December 2014																	January 2015																		
Other Months																	December 2014																		
Exercise Price	Open price	Price max	Price min	Last price	Closing price	Volume	Open Interest	Open price	Price max	Price min	Last price	Closing price	Volume	Open Interest	Volume	Open Interest	Open price	Price max	Price min	Last price	Closing price	Volume	Open Interest	Open price	Price max	Price min	Last price	Closing price	Volume	Open Interest	Volume	Open Interest	Exercise Price		
0.800	0.000	0.000	0.000		0.650	-	-						-	-			0.000	0.000	0.000		0.001	-	-					-	-			0.008			
0.900	0.000	0.000	0.000		0.550	-	-						-	-			0.000	0.000	0.000		0.001	-	-					-	-			0.009			
1.000	0.000	0.000	0.000		0.451	-	-						-	-			0.000	0.000	0.000		0.001	-	-					-	-			0.010			
1.100	0.000	0.000	0.000		0.352	-	-						-	-			0.000	0.000	0.000		0.001	-	-					-	-			0.011			
1.200	0.000	0.000	0.000		0.256	-	-						-	-			0.000	0.000	0.000		0.006	-	-					-	-			0.012			
1.300	0.000	0.000	0.000		0.171	-	-						-	-			0.000	0.000	0.000		0.021	-	-					-	-			0.013			
1.400	0.000	0.000	0.000		0.103	-	-	0.000	0.000	0.000		0.187	-	-			0.000	0.000	0.000		0.052	-	-	0.000	0.000	0.000		0.134	-	-			0.014		
1.500	0.000	0.000	0.000		0.055	-	-	0.000	0.000	0.000		0.142	-	20			0.000	0.000	0.000		0.105	-	-	0.000	0.000	0.000		0.189	-	-			0.015		
1.600	0.000	0.000	0.000		0.027	-	-	0.000	0.000	0.000		0.106	-	30			0.000	0.000	0.000		0.176	-	-	0.000	0.000	0.000		0.253	-	-			0.016		
1.700	0.000	0.000	0.000		0.012	-	-	0.000	0.000	0.000		0.078	-	-			0.000	0.000	0.000		0.261	-	-	0.000	0.000	0.000		0.325	-	-			0.017		
1.800	0.000	0.000	0.000		0.005	-	-	0.000	0.000	0.000		0.058	-	-			0.000	0.000	0.000		0.354	-	-	0.000	0.000	0.000		0.405	-	-			0.018		
1.900	0.000	0.000	0.000		0.002	-	-	0.000	0.000	0.000		0.042	-	20			0.000	0.000	0.000		0.451	-	-	0.000	0.000	0.000		0.489	-	-			0.019		
2.000	0.000	0.000	0.000		0.001	-	50	0.000	0.000	0.000		0.029	-	220			0.000	0.000	0.000		0.550	-	-	0.000	0.000	0.000		0.576	-	-			0.020		
2.100	0.000	0.000	0.000		0.005	-	-						-	-			0.000	0.000	0.000		0.650	-	-					-	-			0.021			
2.200	0.000	0.000	0.000		0.002	-	-	0.000	0.000	0.000		0.015	-	-			0.000	0.000	0.000		0.750	-	-	0.000	0.000	0.000		0.762	-	-			0.022		
2.300	0.000	0.000	0.000		0.001	-	-						-	-			0.000	0.000	0.000		0.850	-	100					-	-			0.023			
2.400	0.000	0.000	0.000		0.032	-	-	0.000	0.000	0.000		0.007	-	-			0.000	0.000	0.000		0.950	-	100	0.000	0.000	0.000		0.955	-	-			0.024		
2.500	0.000	0.000	0.000		0.020	-	-						-	-			0.000	0.000	0.000		1.05	-	-					-	-			0.025			
2.600	0.000	0.000	0.000		0.012	-	-	0.000	0.000	0.000		0.004	-	-			0.000	0.000	0.000		1.15	-	-	0.000	0.000	0.000		1.15	-	-			0.026		
2.700	0.000	0.000	0.000		0.007	-	-						-	-			0.000	0.000	0.000		1.25	-	-					-	-			0.027			
2.800	0.000	0.000	0.000		0.005	-	-	0.000	0.000	0.000		0.002	-	-			0.000	0.000	0.000		1.35	-	-	0.000	0.000	0.000		1.35	-	-			0.028		
2.900	0.000	0.000	0.000		0.003	-	-						-	-			0.000	0.000	0.000		1.45	-	-					-	-			0.029			
3.000	0.000	0.000	0.000		0.001	-	-	0.000	0.000	0.000		0.001	-	-			0.000	0.000	0.000		1.55	-	-	0.000	0.000	0.000		1.55	-	-			0.030		
3.100	0.000	0.000	0.000		0.001	-	-						-	-			0.000	0.000	0.000		1.65	-	-					-	-			0.031			
3.200	0.000	0.000	0.000		0.001	-	-						-	-			0.000	0.000	0.000		1.75	-	-					-	-			0.032			
3.400	0.000	0.000	0.000		0.001	-	-						-	-			0.000	0.000	0.000		1.95	-	-					-	-			0.034			
3.600	0.000	0.000	0.000		0.001	-	-						-	-			0.000	0.000	0.000		2.15	-	-					-	-			0.036			
3.800	0.000	0.000	0.000		0.001	-	-						-	-			0.000	0.000	0.000		2.35	-	-					-	-			0.038			
4.000	0.000	0.000	0.000		0.001	-	-						-	-			0.000	0.000	0.000		2.55	-	-					-	-			0.040			
4.400	0.000	0.000	0.000		0.001	-	-						-	-			0.000	0.000	0.000		2.95	-	-					-	-			0.044			
4.800	0.000	0.000	0.000		0.001	-	-						-	-			0.000	0.000	0.000		3.35	-	-					-	-			0.048			
5.200	0.000	0.000	0.000		0.001	-	-						-	-			0.000	0.000	0.000		3.75	-	-					-	-			0.052			
5.600	0.000	0.000	0.000		0.001	-	-						-	-			0.000	0.000	0.000		4.15	-	-					-	-			0.056			
Totals:						0	50							0	290	10	10							0	200							0	700	0	0
Number of Trades:						0								0		1								0.00								0		0	

OPAP (CR)

(Contract Size: 100 Securities, Exercise Style: American, Physical Delivery)

Call Options																	Put Options																	
December 2014							January 2015							Other Months			December 2014							January 2015							Other Months			
Exercise Price	Open price	Price max	Price min	Last price	Closing price	Volume	Open Interest	Open price	Price max	Price min	Last price	Closing price	Volume	Open Interest	Volume	Open Interest	Open price	Price max	Price min	Last price	Closing price	Volume	Open Interest	Open price	Price max	Price min	Last price	Closing price	Volume	Open Interest	Volume	Open Interest	Exercise Price	
4.400	0.000	0.000	0.000		3.81	-	-						-	-			0.000	0.000	0.000		0.001	-	-				-	-				0.044		
4.800	0.000	0.000	0.000		3.41	-	-						-	-			0.000	0.000	0.000		0.001	-	-				-	-				0.048		
5.200	0.000	0.000	0.000		3.01	-	-						-	-			0.000	0.000	0.000		0.001	-	-				-	-				0.052		
5.600	0.000	0.000	0.000		2.61	-	-						-	-			0.000	0.000	0.000		0.001	-	-				-	-				0.056		
6.000	0.000	0.000	0.000		2.21	-	-						-	-			0.000	0.000	0.000		0.001	-	-				-	-				0.060		
6.400	0.000	0.000	0.000		1.81	-	-						-	-			0.000	0.000	0.000		0.001	-	-				-	-				0.064		
6.800	0.000	0.000	0.000		1.41	-	-						-	-			0.000	0.000	0.000		0.001	-	-				-	-				0.068		
7.200	0.000	0.000	0.000		1.02	-	-	0.000	0.000	0.000		1.14	-	-			0.000	0.000	0.000		0.006	-	-	0.000	0.000	0.000		0.114	-	-			0.072	
7.600	0.000	0.000	0.000		0.648	-	-	0.000	0.000	0.000		0.845	-	-			0.000	0.000	0.000		0.035	-	-	0.000	0.000	0.000		0.220	-	-			0.076	
8.000	0.000	0.000	0.000		0.347	-	-	0.000	0.000	0.000		0.602	-	-			0.000	0.000	0.000		0.133	-	-	0.000	0.000	0.000		0.377	-	-			0.080	
8.400	0.000	0.000	0.000		0.147	-	-	0.000	0.000	0.000		0.411	-	-			0.000	0.000	0.000		0.334	-	-	0.000	0.000	0.000		0.586	-	-			0.084	
8.800	0.000	0.000	0.000		0.049	-	-	0.000	0.000	0.000		0.269	-	-			0.000	0.000	0.000		0.636	-	-	0.000	0.000	0.000		0.843	-	-			0.088	
9.200	0.000	0.000	0.000		0.012	-	-	0.000	0.000	0.000		0.169	-	-			0.000	0.000	0.000		1.00	-	-	0.000	0.000	0.000		1.14	-	-			0.092	
9.600	0.000	0.000	0.000		0.002	-	-	0.000	0.000	0.000		0.102	-	-			0.000	0.000	0.000		1.39	-	-	0.000	0.000	0.000		1.48	-	-			0.096	
10.000	0.000	0.000	0.000		0.104	-	-	0.000	0.000	0.000		0.059	-	-			0.000	0.000	0.000		1.79	-	-	0.000	0.000	0.000		1.84	-	-			0.100	
10.500	0.000	0.000	0.000		0.029	-	-						-	-			0.000	0.000	0.000		2.29	-	-				-	-				0.105		
11.000	0.000	0.000	0.000		0.006	-	-	0.000	0.000	0.000		0.013	-	-			0.000	0.000	0.000		2.79	-	-	0.000	0.000	0.000		2.79	-	-			0.110	
11.500	0.000	0.000	0.000		0.001	-	-						-	-			0.000	0.000	0.000		3.29	-	-				-	-				0.115		
12.000	0.000	0.000	0.000		0.116	-	-	0.000	0.000	0.000		0.002	-	-			0.000	0.000	0.000		3.79	-	-	0.000	0.000	0.000		3.79	-	-			0.120	
12.500	0.000	0.000	0.000		0.049	-	-						-	-			0.000	0.000	0.000		4.29	-	-				-	-				0.125		
13.000	0.000	0.000	0.000		0.017	-	-	0.000	0.000	0.000		0.005	-	-			0.000	0.000	0.000		4.79	-	-	0.000	0.000	0.000		4.79	-	-			0.130	
13.500	0.000	0.000	0.000		0.006	-	-						-	-			0.000	0.000	0.000		5.29	-	-				-	-				0.135		
14.000	0.000	0.000	0.000		0.002	-	-						-	-			0.000	0.000	0.000		5.79	-	-				-	-				0.140		
14.500	0.000	0.000	0.000		0.001	-	-						-	-			0.000	0.000	0.000		6.29	-	-				-	-				0.145		
15.000	0.000	0.000	0.000		0.001	-	-						-	-			0.000	0.000	0.000		6.79	-	-				-	-				0.150		
16.000	0.000	0.000	0.000		0.001	-	-						-	-			0.000	0.000	0.000		7.79	-	-				-	-				0.160		
17.000						-	-						-	-								-	-				-	-				0.170		
18.000						-	-						-	-								-	-				-	-				0.180		
Totals:							0	0							0	0	0	0							0	0							0	0
Number of Trades:							0								0		0								0.00								0	0

OTE (CR)

(Contract Size: 100 Securities, Exercise Style: American, Physical Delivery)

Call Options																	Put Options																			
December 2014								January 2015								Other Months		December 2014								January 2015								Other Months		
Exercise Price	Open price	Price max	Price min	Last price	Closing price	Volume	Open Interest	Open price	Price max	Price min	Last price	Closing price	Volume	Open Interest	Volume	Open Interest	Open price	Price max	Price min	Last price	Closing price	Volume	Open Interest	Open price	Price max	Price min	Last price	Closing price	Volume	Open Interest	Volume	Open Interest	Exercise Price			
5.200	0.000	0.000	0.000		3.15	-	-						-	-			0.000	0.000	0.000		0.001	-	-					-	-				0.052			
5.600	0.000	0.000	0.000		2.75	-	-						-	-			0.000	0.000	0.000		0.001	-	-					-	-				0.056			
6.000	0.000	0.000	0.000		2.35	-	-						-	-			0.000	0.000	0.000		0.001	-	-					-	-				0.060			
6.400	0.000	0.000	0.000		1.95	-	-						-	-			0.000	0.000	0.000		0.001	-	-					-	-				0.064			
6.800	0.000	0.000	0.000		1.55	-	-						-	-			0.000	0.000	0.000		0.001	-	-					-	-				0.068			
7.200	0.000	0.000	0.000		1.15	-	-						-	-			0.000	0.000	0.000		0.001	-	-					-	-				0.072			
7.600	0.000	0.000	0.000		0.768	-	-	0.000	0.000	0.000		0.925	-	-			0.000	0.000	0.000		0.015	-	-	0.000	0.000	0.000		0.160	-	-				0.076		
8.000	0.000	0.000	0.000		0.430	-	-	0.000	0.000	0.000		0.656	-	-			0.000	0.000	0.000		0.077	-	-	0.000	0.000	0.000		0.290	-	-				0.080		
8.400	0.000	0.000	0.000		0.190	-	-	0.000	0.000	0.000		0.445	-	-			0.000	0.000	0.000		0.236	-	-	0.000	0.000	0.000		0.479	-	-				0.084		
8.800	0.000	0.000	0.000		0.062	-	-	0.000	0.000	0.000		0.289	-	-			0.000	0.000	0.000		0.509	-	-	0.000	0.000	0.000		0.723	-	-				0.088		
9.200	0.000	0.000	0.000		0.015	-	-	0.000	0.000	0.000		0.178	-	-			0.000	0.000	0.000		0.863	-	-	0.000	0.000	0.000		1.01	-	-				0.092		
9.400	0.000	0.000	0.000		0.007	-	5						-	-			0.000	0.000	0.000		1.05	-	-					-	-				0.094			
9.600	0.000	0.000	0.000		0.003	-	5	0.000	0.000	0.000		0.105	-	-			0.000	0.000	0.000		1.25	-	-	0.000	0.000	0.000		1.34	-	-				0.096		
9.800	0.000	0.000	0.000		0.001	-	5						-	-			0.000	0.000	0.000		1.45	-	5					-	-				0.098			
10.000	0.000	0.000	0.000		0.037	-	-	0.000	0.000	0.000		0.059	-	-			0.000	0.000	0.000		1.65	-	5	0.000	0.000	0.000		1.70	-	-				0.100		
10.500	0.000	0.000	0.000		0.007	-	-						-	-			0.000	0.000	0.000		2.15	-	-					-	-				0.105			
11.000	0.000	0.000	0.000		0.001	-	-	0.000	0.000	0.000		0.011	-	150			0.000	0.000	0.000		2.65	-	5	0.000	0.000	0.000		2.65	-	-				0.110		
11.500	0.000	0.000	0.000		0.001	-	5						-	-			0.000	0.000	0.000		3.15	-	-					-	-				0.115			
12.000	0.000	0.000	0.000		0.001	-	10	0.000	0.000	0.000		0.002	-	-			0.000	0.000	0.000		3.65	-	-	0.000	0.000	0.000		3.65	-	-				0.120		
12.500	0.000	0.000	0.000		0.003	-	-						-	-			0.000	0.000	0.000		4.15	-	-					-	-				0.125			
13.000	0.000	0.000	0.000		0.001	-	-	0.000	0.000	0.000		0.001	-	-			0.000	0.000	0.000		4.65	-	-	0.000	0.000	0.000		4.65	-	-				0.130		
14.000	0.000	0.000	0.000		0.001	-	-	0.000	0.000	0.000		0.007	-	-			0.000	0.000	0.000		5.65	-	-	0.000	0.000	0.000		5.65	-	-				0.140		
15.000	0.000	0.000	0.000		0.001	-	-						-	-			0.000	0.000	0.000		6.65	-	-					-	-				0.150			
16.000	0.000	0.000	0.000		0.001	-	-						-	-			0.000	0.000	0.000		7.65	-	-					-	-				0.160			
17.000	0.000	0.000	0.000		0.001	-	-						-	-			0.000	0.000	0.000		8.65	-	-					-	-				0.170			
18.000	0.000	0.000	0.000		0.001	-	-						-	-			0.000	0.000	0.000		9.65	-	-					-	-				0.180			
Totals:						0	30						0	150	0	0						0	15						0	0	0	0				
Number of Trades:						0							0		0							0.00							0		0					

PIRAEUS BANK (CR)

(Contract Size: 100 Securities, Exercise Style: American, Physical Delivery)

Call Options																	Put Options																			
December 2014								January 2015								Other Months		December 2014								January 2015								Other Months		
Exerise Price	Open price	Price max	Price min	Last price	Closing price	Volume	Open Interest	Open price	Price max	Price min	Last price	Closing price	Volume	Open Interest	Volume	Open Interest	Open price	Price max	Price min	Last price	Closing price	Volume	Open Interest	Open price	Price max	Price min	Last price	Closing price	Volume	Open Interest	Volume	Open Interest	Exerise Price			
0.100	0.000	0.000	0.000		0.830	-	-						-	-			0.000	0.000	0.000		0.001	-	-					-	-			0.001				
0.200	0.000	0.000	0.000		0.730	-	-						-	-			0.000	0.000	0.000		0.001	-	-					-	-			0.002				
0.300	0.000	0.000	0.000		0.630	-	-						-	-			0.000	0.000	0.000		0.001	-	-					-	-			0.003				
0.400	0.000	0.000	0.000		0.530	-	-						-	-			0.000	0.000	0.000		0.001	-	-					-	-			0.004				
0.500	0.000	0.000	0.000		0.430	-	-						-	-			0.000	0.000	0.000		0.001	-	-					-	-			0.005				
0.600	0.000	0.000	0.000		0.330	-	-						-	-			0.000	0.000	0.000		0.002	-	-					-	-			0.006				
0.700	0.000	0.000	0.000		0.231	-	-	0.000	0.000	0.000		0.245	-	-			0.000	0.000	0.000		0.006	-	-	0.000	0.000	0.000		0.013	-	-			0.007			
0.800	0.000	0.000	0.000		0.136	-	-	0.000	0.000	0.000		0.169	-	-			0.000	0.000	0.000		0.005	-	-	0.000	0.000	0.000		0.037	-	-			0.008			
0.900	0.000	0.000	0.000		0.061	-	-	0.000	0.000	0.000		0.110	-	-			0.000	0.000	0.000		0.030	-	-	0.000	0.000	0.000		0.078	-	-			0.009			
1.000	0.000	0.000	0.000		0.020	-	-	0.000	0.000	0.000		0.067	-	-			0.000	0.000	0.000		0.089	-	-	0.000	0.000	0.000		0.135	-	-			0.010			
1.100	0.000	0.000	0.000		0.004	-	-	0.000	0.000	0.000		0.040	-	-			0.000	0.000	0.000		0.174	-	-	0.000	0.000	0.000		0.208	-	-			0.011			
1.200	0.000	0.000	0.000		0.001	-	-	0.000	0.000	0.000		0.023	-	-			0.000	0.000	0.000		0.271	-	-	0.000	0.000	0.000		0.291	-	-			0.012			
1.300	0.000	0.000	0.000		0.011	-	-	0.000	0.000	0.000		0.013	-	-			0.000	0.000	0.000		0.370	-	-	0.000	0.000	0.000		0.381	-	-			0.013			
1.350	0.000	0.000	0.000		0.006	-	-						-	-			0.000	0.000	0.000		0.420	-	-					-	-			0.014				
1.400	0.000	0.000	0.000		0.003	-	-	0.000	0.000	0.000		0.007	-	-			0.000	0.000	0.000		0.470	-	-	0.000	0.000	0.000		0.475	-	-			0.014			
1.450	0.000	0.000	0.000		0.002	-	-						-	-			0.000	0.000	0.000		0.520	-	-					-	-			0.015				
1.500	0.000	0.000	0.000		0.001	-	-	0.000	0.000	0.000		0.004	-	-			0.000	0.000	0.000		0.570	-	-	0.000	0.000	0.000		0.572	-	-			0.015			
1.550	0.000	0.000	0.000		0.017	-	-						-	-			0.000	0.000	0.000		0.620	-	-					-	-			0.016				
1.600	0.000	0.000	0.000		0.012	-	-	0.000	0.000	0.000		0.002	-	-			0.000	0.000	0.000		0.670	-	-	0.000	0.000	0.000		0.671	-	-			0.016			
1.650	0.000	0.000	0.000		0.008	-	-						-	-			0.000	0.000	0.000		0.720	-	-					-	-			0.017				
1.700	0.000	0.000	0.000		0.005	-	-	0.000	0.000	0.000		0.001	-	-			0.000	0.000	0.000		0.770	-	-	0.000	0.000	0.000		0.770	-	-			0.017			
1.750	0.000	0.000	0.000		0.003	-	-						-	-			0.000	0.000	0.000		0.820	-	-					-	-			0.018				
1.800	0.000	0.000	0.000		0.002	-	-						-	-			0.000	0.000	0.000		0.870	-	-					-	-			0.018				
1.900	0.000	0.000	0.000		0.001	-	-						-	-			0.000	0.000	0.000		0.970	-	-					-	-			0.019				
2.000	0.000	0.000	0.000		0.026	-	-						-	-			0.000	0.000	0.000		1.07	-	-					-	-			0.020				
2.200	0.000	0.000	0.000		0.015	-	-						-	-			0.000	0.000	0.000		1.27	-	-					-	-			0.022				
2.400	0.000	0.000	0.000		0.009	-	-						-	-			0.000	0.000	0.000		1.47	-	-					-	-			0.024				
2.600						-	-						-	-								-	-					-	-			0.026				
2.800						-	-						-	-								-	-					-	-			0.028				
Totals:						0	0						0	0	0	0						0	0					0	0	0	0					
Number of Trades:						0							0		0							0.00						0		0						



PPC (CR)

(Contract Size: 100 Securities, Exercise Style: American, Physical Delivery)

Call Options																	Put Options																	
December 2014							January 2015							Other Months			December 2014							January 2015							Other Months			
Exerise Price	Open price	Price max	Price min	Last price	Closing price	Volume	Open Interest	Open price	Price max	Price min	Last price	Closing price	Volume	Open Interest	Volume	Open Interest	Open price	Price max	Price min	Last price	Closing price	Volume	Open Interest	Open price	Price max	Price min	Last price	Closing price	Volume	Open Interest	Volume	Open Interest	Exerise Price	
3.200	0.000	0.000	0.000		2.26	-	-						-	-			0.000	0.000	0.000		0.001	-	-					-	-			0.032		
3.400	0.000	0.000	0.000		2.06	-	-						-	-			0.000	0.000	0.000		0.001	-	-					-	-			0.034		
3.600	0.000	0.000	0.000		1.86	-	-						-	-			0.000	0.000	0.000		0.001	-	-					-	-			0.036		
3.800	0.000	0.000	0.000		1.66	-	-						-	-			0.000	0.000	0.000		0.001	-	-					-	-			0.038		
4.000	0.000	0.000	0.000		1.46	-	-						-	-			0.000	0.000	0.000		0.001	-	-					-	-			0.040		
4.400	0.000	0.000	0.000		1.06	-	-						-	-			0.000	0.000	0.000		0.001	-	-					-	-			0.044		
4.800	0.000	0.000	0.000		0.665	-	-	0.000	0.000	0.000		0.731	-	-			0.000	0.000	0.000		0.002	-	-	0.000	0.000	0.000		0.061	-	-			0.048	
5.200	0.000	0.000	0.000		0.305	-	-	0.000	0.000	0.000		0.442	-	-			0.000	0.000	0.000		0.043	-	-	0.000	0.000	0.000		0.172	-	-			0.052	
5.600	0.000	0.000	0.000		0.083	-	-	0.000	0.000	0.000		0.238	-	-			0.000	0.000	0.000		0.220	-	-	0.000	0.000	0.000		0.368	-	-			0.056	
6.000	0.000	0.000	0.000		0.011	-	-	0.000	0.000	0.000		0.114	-	-			0.000	0.000	0.000		0.549	-	-	0.000	0.000	0.000		0.644	-	-			0.060	
6.400	0.000	0.000	0.000		0.001	-	-	0.000	0.000	0.000		0.048	-	-			0.000	0.000	0.000		0.940	-	-	0.000	0.000	0.000		0.979	-	-			0.064	
6.800	0.000	0.000	0.000		0.010	-	-	0.000	0.000	0.000		0.018	-	-			0.000	0.000	0.000		1.34	-	-	0.000	0.000	0.000		1.35	-	-			0.068	
7.200	0.000	0.000	0.000		0.002	-	-	0.000	0.000	0.000		0.006	-	25			0.000	0.000	0.000		1.74	-	-	0.000	0.000	0.000		1.74	-	-			0.072	
7.600	0.000	0.000	0.000		0.214	-	-	0.000	0.000	0.000		0.002	-	-			0.000	0.000	0.000		2.14	-	-	0.000	0.000	0.000		2.14	-	-			0.076	
8.000	0.000	0.000	0.000		0.088	-	-	0.000	0.000	0.000		0.001	-	-			0.000	0.000	0.000		2.54	-	-	0.000	0.000	0.000		2.54	-	-			0.080	
8.400	0.000	0.000	0.000		0.030	-	-	0.000	0.000	0.000		0.001	-	-			0.000	0.000	0.000		2.94	-	-	0.000	0.000	0.000		2.94	-	-			0.084	
8.800	0.000	0.000	0.000		0.008	-	-	0.000	0.000	0.000		0.070	-	-			0.000	0.000	0.000		3.34	-	-	0.000	0.000	0.000		3.34	-	-			0.088	
9.200	0.000	0.000	0.000		0.002	-	-						-	-			0.000	0.000	0.000		3.74	-	-					-	-			0.092		
9.400	0.000	0.000	0.000		0.001	-	-						-	-			0.000	0.000	0.000		3.94	-	-					-	-			0.094		
9.600	0.000	0.000	0.000		0.001	-	-						-	-			0.000	0.000	0.000		4.14	-	-					-	-			0.096		
9.800	0.000	0.000	0.000		0.001	-	-						-	-			0.000	0.000	0.000		4.34	-	-					-	-			0.098		
10.000	0.000	0.000	0.000		0.001	-	-						-	-			0.000	0.000	0.000		4.54	-	-					-	-			0.100		
10.500	0.000	0.000	0.000		0.001	-	-						-	-			0.000	0.000	0.000		5.04	-	-					-	-			0.105		
11.000	0.000	0.000	0.000		0.001	-	-						-	-			0.000	0.000	0.000		5.54	-	-					-	-			0.110		
11.500	0.000	0.000	0.000		0.001	-	-						-	-			0.000	0.000	0.000		6.04	-	-					-	-			0.115		
12.000	0.000	0.000	0.000		0.001	-	-						-	-			0.000	0.000	0.000		6.54	-	-					-	-			0.120		
12.500	0.000	0.000	0.000		0.001	-	-						-	-			0.000	0.000	0.000		7.04	-	-					-	-			0.125		
13.000	0.000	0.000	0.000		0.001	-	-						-	-			0.000	0.000	0.000		7.54	-	-					-	-			0.130		
13.500	0.000	0.000	0.000		0.001	-	-						-	-			0.000	0.000	0.000		8.04	-	-					-	-			0.135		
14.000	0.000	0.000	0.000		0.001	-	-						-	-			0.000	0.000	0.000		8.54	-	-					-	-			0.140		
15.000	0.000	0.000	0.000		0.001	-	-						-	-			0.000	0.000	0.000		9.54	-	-					-	-			0.150		
16.000						-	-						-	-								-	-					-	-			0.160		
Totals:							0	0								0	25	0	10								0	0	0	0	0			
Number of Trades:							0								0								0.00								0	0		

PPC (CR)

(Contract Size: 100 Securities, Excercise Style: American, Physical Delivery)

Call Options																Put Options																	
Exerise Price	December 2014							January 2015							Other Months		December 2014								January 2015						Other Months		Exerise Price
	Open price	Price max	Price min	Last price	Closing price	Volume	Open Interest	Open price	Price max	Price min	Last price	Closing price	Volume	Open Interest	Volume	Open Interest	Open price	Price max	Price min	Last price	Closing price	Volume	Open Interest	Open price	Price max	Price min	Last price	Closing price	Volume	Open Interest	Volume	Open Interest	

Lending Products	Underlying Title	Multilateral Transactions[1]					Bilateral Transactions[2]		Stock Borrowing through OTC (volume)[3]
		Open Interest[5]	Volume(Offered)	Average Weighted	Transactions volume	Average Weighted	Transactions Volume	Average Weighte	Transactions Volume
AEGNBOR	AEGEAN AIRLINES (CR)	22,251	4,986	3.86%	4,986	3.86%	---	---	---
ALPHABOR	ALPHA BANK (CR)	2,408,620	6,874,638	3.31%	415,300	2.65%	---	---	34,946,637
AETFBOR	ALPHA ETF FTSE Athex Large Cap	---	---	---	---	---	---	---	---
ALMYBOR	ALUMIL (CR)	---	---	---	---	---	---	---	---
IATRBOR	ATHENS MEDICAL CENTER SA (CR)	---	35,597	5.31%	---	---	---	---	---
TATTBOR	ATTICA BANK S.A. (CR)	---	51,999	5.31%	---	---	---	---	---
OTOELBOR	AUTOHELLAS SA (CR)	---	---	---	---	---	---	---	---
BIOKABOR	BIOKARPET S.A.(CR)	---	---	---	---	---	---	---	---
EEEBOR	CC HBC AG (CR)	50,856	858	8.56%	858	8.56%	12,000	5.00%	75,131
CENTRBOR	CENTRIC HOLDINGS (CR)	---	16,000	5.31%	---	---	---	---	---
SOLKBOR	CORINTH PIPEWORKS SA (CR)	---	---	---	---	---	---	---	---
PLAKRBOR	CRETE PLASTICS SA (CR)	---	---	---	---	---	---	---	---
DROMEBOB	DROMEAS SA (CR)	---	---	---	---	---	---	---	---
ELGEBOR	ELGEKA SA (CR)	---	---	---	---	---	---	---	---
ELLAKTORBOR	ELLAKTOR (CR)	57,128	60,789	3.31%	22,419	2.70%	---	---	---
ELBABOR	ELVAL SA. (CB)	---	31,999	5.31%	---	---	---	---	---
EUROBBOR	EUROBANK ERGASIAS (CR)	4,184,745	565,514	5.31%	355,000	4.71%	---	---	9,538,590
EUPICBOR	EUROPEAN RELIANCE INSUR. (CR)	---	---	---	---	---	---	---	---
EYDAPBOR	EYDAP S.A. (CR)	30,483	64	8.16%	64	8.16%	3,000	5.00%	149,870
FGEBOR	F.G. EUROPE S.A. (CR)	---	---	---	---	---	---	---	---
FFGRPBOR	FOLLI FOLLIE (CR)	89,916	12,797	4.68%	216	2.65%	---	---	758,478
FOYRKBOR	FOURLIS (CR)	---	4,728	5.31%	---	---	---	---	3,850
FRIGOBOR	FRIGOGLASS SA (CR)	2,600	---	---	---	---	---	---	---
GEKTERNABOR	GEK TERNA (CR)	13,422	18,721	3.31%	224	2.65%	---	---	7,980
SARBOR	GR. SARANTIS SA (CR)	---	---	---	---	---	---	---	---
EUPROBOR	GRIVALIA PROPERTIES (CR)	42,856	73,489	3.31%	24,231	2.65%	---	---	51,931
XAKOBOR	HALKOR SA (CB)	---	34,398	5.31%	---	---	---	---	---
EXAEBOR	HELLENIC EXCHANGES-A.S.E. (CR)	22,754	393,268	3.31%	12,143	2.65%	---	---	200
ELPEBOR	HELLENIC PETROLEUM (CR)	17,505	182,299	5.31%	10,505	3.36%	---	---	64,271
HYGEIABOR	HYGEIA SA (CR)	---	46,299	5.31%	---	---	---	---	---
IASOBOR	IASO SA (CR)	---	21,721	5.31%	---	---	---	---	---

Stock Lending Notes

[1] - Multilateral contracts Lending or Borrowing as per Methods 8-1, 8-2 and 8-3-3 (According to ATHEX BoD Resolution No.17)

[2] - Bilateral Contracts Lending or Borrowing as per Methods 8-3-1 and 8-3-2 (According to ATHEX BoD Resolution No.20 )

[3] - The information concerning OTC Stock Borrowing Transactions is based on the statements of the Dematerialised Securities System (DSS) operators involved and refers to volumes that have been cleared and registered up until the previous working day.

[4] - Average Price (Volume weighted)

[5] - The Data concerning Open Interest before the start of trading session

Lending Products	Underlying Title	Multilateral Transactions[1]					Bilateral Transactions[2]		Stock Borrowing through OTC (volume)[3]
		Open Interest[5]	Volume(Offered)	Average Weighted	Transactions volume	Average Weighted	Transactions Volume	Average Weighte	Transactions Volume
IKTINBOR	IKTINOS HELLAS SA (CR)	---	---	---	---	---	---	---	---
LYKBOR	INFORM P. LYKOS SA (CR)	---	---	---	---	---	---	---	---
INKATBOR	INTRACOM CONSTR. (CR)	---	---	---	---	---	---	---	---
INTRKBOR	INTRACOM HOLDINGS (CR)	---	78,799	5.31%	---	---	---	---	---
INLOTBOR	INTRALOT (CR)	31,574	26,562	3.31%	8,757	2.65%	---	---	---
AVAXBOR	J & P - AVAX SA (CR)	---	17,686	5.31%	---	---	---	---	---
BELABOR	JUMBO SA (CR)	70,658	121,321	5.31%	16,642	3.74%	---	---	---
KARTZBOR	KARATZIS SA (CR)	---	---	---	---	---	---	---	---
KLEMBOR	KLEEMAN HELLAS SA (CR)	---	---	---	---	---	---	---	---
KRIBOR	KRI-KRI S.A. (CR)	---	45,001	5.31%	---	---	---	---	---
LAMDABOR	LAMDA DEVELOPMENT SA (CR)	---	---	---	---	---	---	---	16,377
MIGBOR	MARFIN INVESTMENT GROUP (CR)	49,091	69,598	3.31%	3,253	2.65%	---	---	744,474
METKKBOR	METKA (CR)	20,684	22,914	4.24%	5,584	3.11%	---	---	---
MLSBOR	MLS MULTIMEDIA SA (CR)	---	---	---	---	---	---	---	---
MOHBOR	MOTOR OIL (CR)	58,833	54,524	3.31%	10,356	2.65%	---	---	34,300
MYTILBOR	MYTILINEOS HOLDINGS (CR)	6,024	201,807	3.31%	524	2.65%	---	---	---
ETEBOR	NATIONAL BANK (CR)	390,530	637,108	5.31%	170,156	4.10%	---	---	2,843,427
ETFASEBOR	NBGAM ETF	---	---	---	---	---	---	---	---
ETFGT30PBOR	NBGAM ETF GREECE & TURKEY 30	---	---	---	---	---	---	---	---
NIRBOR	NIREFS SA (CR)	---	---	---	---	---	---	---	---
OPAPBOR	OPAP (CR)	307,279	108,730	3.55%	73,480	3.13%	---	---	94,598
HTOBOR	OTE (CR)	260,456	18,798	6.15%	1,556	4.32%	---	---	406,479
PPABOR	P.P.A. S.A. (CR)	700	---	---	---	---	---	---	---
PAPBOR	PAPOUTSANIS (CR)	---	---	---	---	---	---	---	---
PETROBOR	PETROPOULOS PETROS (CR)	---	---	---	---	---	---	---	---
TPEIRBOR	PIRAEUS BANK (CR)	800,458	227	7.15%	227	7.15%	---	---	24,776,463
PLAISBOR	PLAISIO COMPUTERS SA (CR)	---	---	---	---	---	---	---	---
PPCBOR	PPC (CR)	119,278	4,868	8.94%	4,550	8.86%	---	---	24,804
PROFBOR	PROFILE SA (CR)	---	---	---	---	---	---	---	---
QUALBOR	QUALITY & RELIABILITY SA (CR)	---	---	---	---	---	---	---	---
QUESTBOR	QUEST HOLDINGS (CR)	---	43	5.30%	---	---	---	---	---

Stock Lending Notes

[1] - Multilateral contracts Lending or Borrowing as per Methods 8-1, 8-2 and 8-3-3 (According to ATHEX BoD Resolution No.17)

[2] - Bilateral Contracts Lending or Borrowing as per Methods 8-3-1 and 8-3-2 (According to ATHEX BoD Resolution No.20 )

[3] - The information concerning OTC Stock Borrowing Transactions is based on the statements of the Dematerialised Securities System (DSS) operators involved and refers to volumes that have been cleared and registered up until the previous working day.

[4] - Average Price (Volume weighted)

[5] - The Data concerning Open Interest before the start of trading session

Lending Products	Underlying Title	Multilateral Transactions[1]					Bilateral Transactions[2]		Stock Borrowing through OTC (volume)[3]
		Open Interest[5]	Volume(Offered)	Average Weighted	Transactions volume	Average Weighted	Transactions Volume	Average Weighte	Transactions Volume
SIDEBOR	SIDENOR (CR)	---	22,240	5.31%	---	---	---	---	---
OLYMPBOR	TECHNICAL OLYMPIC SA (CR)	---	---	---	---	---	---	---	---
TENERGYBOR	TERNA ENERGY (CR)	10,922	9,003	5.16%	2,222	3.89%	---	---	---
EYAPSBOR	THESSALONIKA WATER & SEWERAGE	---	159	5.31%	---	---	---	---	---
PLATBOR	THRACE PLASTICS SA (CR)	---	24,799	5.31%	---	---	---	---	---
TITKBOR	TITAN CEMENT (CR)	33,954	244,244	3.31%	5,998	2.65%	---	---	4,515
OLTHBOR	TPA SA (CR)	---	3,278	5.31%	---	---	---	---	---
TRASTORBOR	TRASTOR REAL EST. INV. CO.(CR)	---	---	---	---	---	---	---	---
VIOBOR	VIOHALCO SA/NV (CB)	29,946	11,358	5.31%	6,246	4.58%	---	---	---

Stock Lending Notes

[1] - Multilateral contracts Lending or Borrowing as per Methods 8-1, 8-2 and 8-3-3 (According to ATHEX BoD Resolution No.17)

[2] - Billateral Contracts Lending or Borrowing as per Methods 8-3-1 and 8-3-2 (According to ATHEX BoD Resolution No.20 )

[3] - The information concerning OTC Stock Borrowing Transactions is based on the statements of the Dematerialised Securities System (DSS) operators involved and refers to volumes that have been cleared and registered up until the previous working day.

[4] - Average Price (Volume weighted)

[5] - The Data concerning Open Interest before the start of trading session

**Sectors codification for listed companies**

533	-	Exploration & Production	537	-	Integrated Oil & Gas
1353	-	Commodity Chemicals	1357	-	Specialty Chemicals
1753	-	Aluminum	1755	-	Nonferrous Metals
1757	-	Steel	1775	-	General Mining
2353	-	Building Materials & Fixtures	2357	-	Heavy Construction
2723	-	Containers & Packaging	2727	-	Diversified Industrials
2733	-	Electrical Components & Equipment	2753	-	Commercial Vehicles & Trucks
2757	-	Industrial Machinery	2773	-	Marine Transportation
2777	-	Transportation Services	2791	-	Business Support Services
2797	-	Industrial Suppliers	3535	-	Distillers & Vintners
3537	-	Soft Drinks	3573	-	Farming Fishing & Plantations
3577	-	Food Products	3722	-	Durable Household Products
3726	-	Furnishings	3728	-	Home Construction
3747	-	Toys	3763	-	Clothing & Accessories
3765	-	Footwear	3767	-	Personal Products
3785	-	Tobacco	4533	-	Health Care Providers
4535	-	Medical Equipment	4577	-	Pharmaceuticals
5337	-	Food Retailers & Wholesalers	5371	-	Apparel Retailers
5373	-	Broadline Retailers	5375	-	Home Improvement Retailers
5379	-	Specialty Retailers	5553	-	Broadcasting & Entertainment
5555	-	Media Agencies	5557	-	Publishing
5751	-	Airlines	5752	-	Gambling
5753	-	Hotels	5755	-	Recreational Services
5757	-	Restaurants & Bars	5759	-	Travel & Tourism
6535	-	Fixed Line Telecommunications	6575	-	Mobile Telecommunications
7535	-	Conventional Electricity	7537	-	Alternative Electricity
7577	-	Water	8355	-	Banks
8534	-	Insurance Brokers	8536	-	Property & Casualty Insurance
8633	-	Real Estate Holding & Development	8637	-	Real Estate Services
8671	-	Industrial & Office REITs	8675	-	Specialty REITs
8775	-	Specialty Finance	8777	-	Investment Services
8985	-	Equity Investment Instruments	9533	-	Computer Services
9535	-	Internet	9537	-	Software
9572	-	Computer Hardware	9574	-	Electronic Office Equipment
9578	-	Telecommunications Equipment	12003	-	ETF

