

# Daily Official List

Hellenic Exchanges – Athens Stock Exchange S.A.

Monday, 22 December, 2014  
Year: 135 Trading Day No: 244

**Disclaimer:**

Hellenic Exchanges-Athens Exchange endeavours to ensure that the data and other material ("Information") presented on the Daily Official List are accurate and complete, but it is not liable for any errors or omissions of data or /and for the accuracy, credibility, updating and completeness of the aforesaid information nor it has any liability arising directly or indirectly from the use of the above Information.

The Company is not liable for the accuracy of the data included in listed companies' announcements. Only the sender of such an announcement is fully and solely liable for any infringement of third party's rights from the content of such announcement. All contents of the Daily Official List are provided only for information purposes and do not constitute investment advice or solicitation to invest in securities or other products listed for trading on the Exchange.

You acknowledge and agree that the Company is the owner of any property rights related to any Information appearing on the Daily Official List including intellectual property rights copyright, trademarks, etc.

The above data are a property of the Hellenic Exchanges-Athens Exchange and are copyright protected. Users are forbidden to reproduce, modify, copy, sale, transmit or redistribute, by all reproduction means and methods, part or the whole of the above data, without reference to their source.

The commercial exploitation of these data is, also, forbidden by third parties. Hellenic Exchanges-Athens Exchange does not carry any responsibility, direct or indirect, derived from usage or accidental alteration of the above data when used by third parties.

---

**Hellenic Exchanges – Athens Stock Exchange S.A.**

110 Athinon Ave., 10442 Athens, Tel: (210) 33.66.800, Fax: (210) 32.13.938

[www.athex.gr](http://www.athex.gr)

---

**Thessalonica Stock Exchange Center (T.S.E.C)**

16-18 Katouni Str., Thessalonica 546 25 Tel: (2310) 567.667, Fax: (2310) 530.545

**Athex Members Guarantee Fund**

14-16 Fidiou Str., Athens 106 78, Tel: (210) 33.04.682, Fax: (210) 33.04.155

**Hellenic Republic Capital Market Commission**

1 Kolokotroni Str. & 1 Stadiou Str., Athens 10562 Tel: (210) 33.77.100 Fax: (210) 33.77.173

---

**Table of Contents**

---

**Section 1: Statistical Figures of Securities, Derivatives and Lending**

- Summary of Markets
- Athex Indices
- Analytic Figures for Athex Market's Boards and Categories
- Trading Details by Athex Sectors and Financial Instruments (ETFs)
- Top 10 best & worst performing Shares
- Derivatives Summary

**Section 2: Analytic Figures of Shares Transactions**

- Analytic Figures of Shares Transactions
- Shares' Notes

**Section 3: Figures of Securities Transactions**

- Securities Blocks Details
- Shares Rights Details
- Shares Short Selling
- Stock Borrowing
- Shares Forced Sales
- Forced Sales Registered Shares
- Exchange Traded Funds (ETFs) Characteristics

**Section 5: Bonds traded in Fixed Income Assets Market**

- Corporate Bonds
- Government Bonds
- Treasury Bills & Zero Coupon Government Bonds
- Government Bonds Traded with the Open Outcry Method
- State Banks Bonds

**Section 6: Additional Infos**

- Athex & ATHEXClear Members List
- List of Stocks under Market Making operations

**Section 7: Derivatives Market Analytic Figures**

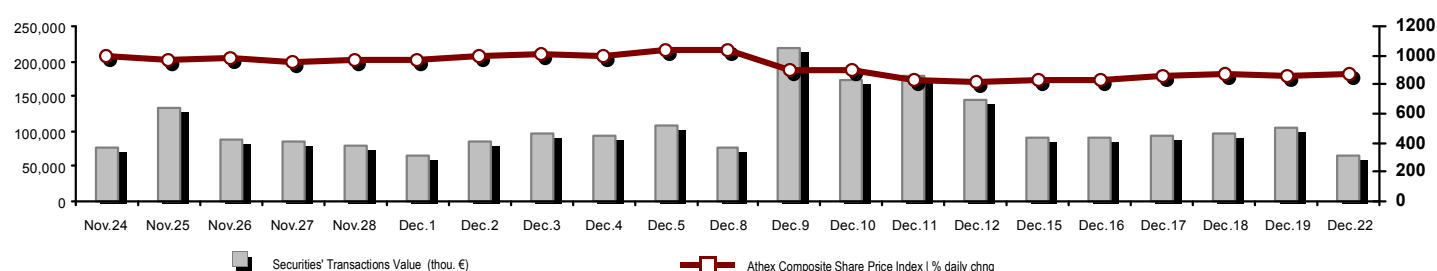
- Index Futures
- Stock Futures
- Index Options
- Stock Options
- Stock Lending Analytic Figures

**Appendix A: Sectors codification for listed companies**

Section codification follows the corresponding from the Greek version of Daily Official List for reference purposes.

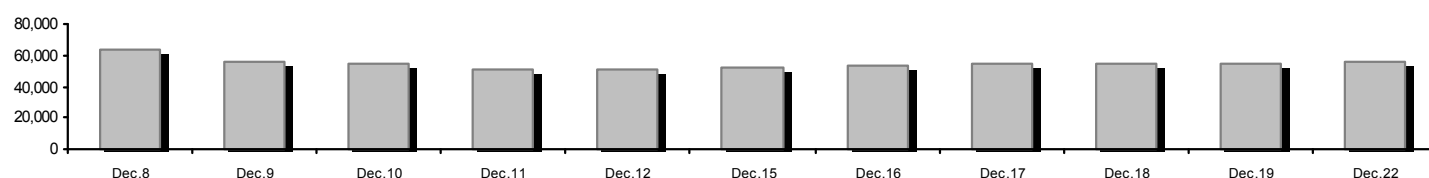
## Summary of Markets

Athex Composite Share Price Index vs Shares and Derivatives Transactions Value

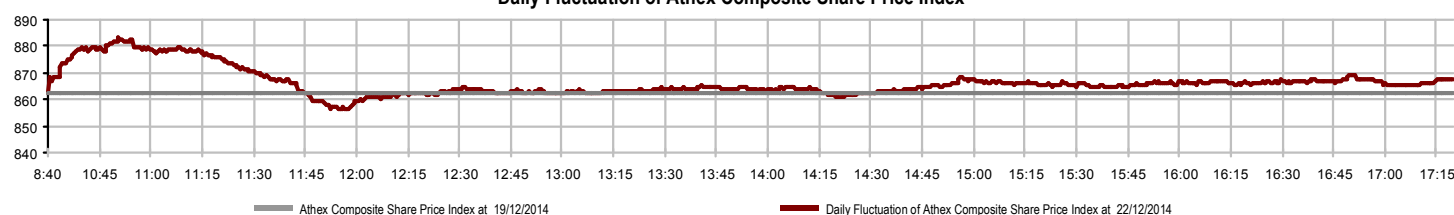


<b>Total Transactions Value (thou. €):</b>	<b>64,964.73</b>		
<b>Athex Capitalisation (mill. €) **: 804.59 1.47%</b>	<b>55,459.19</b>		
Daily change: mill. €   %	804.59 1.47%		
Yearly Avg Capitalisation: mill. €   % chng prev year Avg	69,526.18 34.61%		
<b>Athex Composite Share Price Index   % daily chng 867.84 0.63%</b>	<b>867.84</b>		
<b>Athex Composite Share Price Index Capitalisation (mill. €) 50,048.45</b>	<b>50,048.45</b>		
Daily change (mill. €)	562.73		
<b>Securities' Transactions Value (thou. €) 64,964.73</b>	<b>64,964.73</b>		
Daily change: thou. €   %	-40,697.72 -38.52%		
YtD Avg Trans. Value: thou. €   % chng prev year Avg	128,016.64 47.80%		
Short Selling Trans. Value: mill. €   % in total Value			
Short Covering Trans. Value: mill. €   % in total Value			
<b>Transactions Value of Blocks (thou. €) 8,117.23</b>	<b>8,117.23</b>		
<b>Bonds Transactions Value (thou. €) 0.00</b>	<b>0.00</b>		
<b>Securities' Transactions Volume (thou. Pieces) 87,227.13</b>	<b>87,227.13</b>		
Daily change: thou. pieces   %	-35,298.01 -28.81%		
YtD Avg Volume: thou. pieces   % chng prev year Avg	94,775.68 77.11%		
Short Selling Volume: thou pieces   % in total Volume			
Short Covering Volume: thou. pieces   % in total Volume			
<b>Transactions Volume of Blocks (thou. Pieces) 9,607.97</b>	<b>9,607.97</b>		
<b>Bonds Transactions Volume (thou. pieces) 0.00</b>	<b>0.00</b>		
<b>Securities' Trades Number 21,227</b>	<b>21,227</b>		
Daily change: number   %	-7,011 -24.83%		
YtD Avg Derivatives Trades number   % chng prev year Avg	28,993 -2.27%		
<b>Number of Blocks 13</b>	<b>13</b>		
<b>Number of Bonds Transactions 0</b>	<b>0</b>		
		<b>Derivatives Total Open Interest 214,871</b>	
		in Index Futures   % daily chng	44,805 -19.69%
		in Stock Futures   % daily chng	164,192 -38.88%
		in Index Options   % daily chng	4,635 -67.28%
		in Stock Options   % daily chng	1,239 -19.69%
		<b>Derivatives Contracts Volume: 15,281</b>	
		Daily change: pieces   %	-181,980 -92.25%
		YtD Avg Derivatives Contracts   % chng prev year Avg	65,152 56.74%
		<b>Derivatives Trades Number: 2,295</b>	
		Daily change: number   %	-3,157 -57.91%
		YtD Avg Derivatives Trades number   % chng prev year Avg	2,839 7.85%
		<b>Lending Total Open Interest 10,596,516</b>	
		Daily change: pieces   %	212,759 2.05%
		<b>Lending Contracts Volume(Multilateral/Bilateral) 1,674,554</b>	
		Daily change: pieces   %	107,154 88.78%
		<b>Multilateral Lending 227,856</b>	
		<b>Bilateral Lending 1,446,698</b>	
		<b>Lending Trades Number: 92</b>	
		Daily change: thou. €   %	-3,157 -57.91%
		<b>Multilateral Lending Trades Number 80</b>	
		<b>Bilateral Lending Trades Number 12</b>	

Athex Capitalisation (mill. €) \*\*



Daily Fluctuation of Athex Composite Share Price Index



## Athex Indices

Index name	22/12/2014	19/12/2014	pts.	%	Min	Max	Year min	Year max	Year change
Athex Composite Share Price Index	867.84 ↑	862.40	5.44	0.63%	856.31	883.02	810.05	1,379.42	-25.36% ↓
FTSE/Athex Large Cap	279.64 ↑	275.64	4.00	1.45%	274.67	282.97	260.89	445.52	-27.34% ↓
FTSE/ATHEX Custom Capped	908.17 ↓	921.36	-13.19	-1.43%			870.47	1,410.19	-26.14% ↓
FTSE/ATHEX Custom Capped - USD	798.49 ↓	811.14	-12.65	-1.56%			776.75	1,406.66	-34.27% ↓
FTSE/Athex Mid Cap Index	775.00 ↓	776.48	-1.48	-0.19%	767.11	788.05	716.86	1,317.40	-33.58% ↓
FTSE/ATHEX-CSE Banking Index	78.21 ↑	77.38	0.83	1.07%	76.71	79.47	73.00	161.54	-42.55% ↓
FTSE/ATHEX Global Traders Index Plus	1,314.29 ↑	1,313.62	0.67	0.05%	1,299.11	1,340.11	1,249.97	1,845.84	-15.25% ↓
FTSE/ATHEX Global Traders Index	1,489.01 ↑	1,487.22	1.79	0.12%	1,466.01	1,512.81	1,380.28	2,152.38	-14.15% ↓
FTSE/ATHEX Mid & Small Cap Factor-Weighted Ind	1,097.73 ↑	1,093.94	3.79	0.35%	1,080.87	1,103.88	1,056.77	1,523.02	-14.18% ↓
Greece & Turkey 30 Price Index	694.20 ↑	681.74	12.46	1.83%	681.22	694.60	570.55	783.68	7.21% ↑
ATHEX Mid & SmallCap Price Index	2,382.55 ↑	2,375.89	6.66	0.28%	2,344.76	2,385.53	2,268.61	3,157.88	-7.42% ↓
FTSE/Athex Market Index	670.10 ↑	660.93	9.17	1.39%	658.52	678.10	625.46	1,066.17	-27.46% ↓
FTSE Med Index	5,029.53 ↑	5,016.93	12.60	0.25%			4,605.95	5,387.08	10.07% ↑
Athex Composite Index Total Return Index	1,265.70 ↑	1,257.76	7.94	0.63%	1,248.88	1,287.83	1,181.41	1,998.07	-24.82% ↓
FTSE/Athex Large Cap Total Return	379.10 ↑	373.37	5.73	1.53%			359.97	605.87	-28.11% ↓
FTSE/ATHEX Large Cap Net Total Return	1,128.11 ↑	1,111.96	16.15	1.45%	1,108.04	1,141.51	1,052.44	1,786.28	-26.89% ↓
FTSE/ATHEX Custom Capped Total Return	955.61 ↓	969.49	-13.88	-1.43%			915.94	1,472.79	-25.59% ↓
FTSE/ATHEX Custom Capped - USD Total Return	840.20 ↓	853.52	-13.32	-1.56%			817.33	1,469.09	-33.77% ↓
FTSE/Athex Mid Cap Total Return	985.42 ↓	987.30	-1.88	-0.19%			922.20	1,643.81	-31.77% ↓
FTSE/ATHEX-CSE Banking Total Return Index	72.98 ↑	72.21	0.77	1.07%			69.94	153.89	-43.46% ↓
Greece & Turkey 30 Total Return Index	825.31 ↑	824.34	0.97	0.12%			697.73	946.62	6.55% ↑
Hellenic Mid & Small Cap Index	796.12 ↓	801.05	-4.93	-0.62%	790.40	816.77	743.50	1,351.84	-28.52% ↓
FTSE/Athex Banks	103.34 ↑	102.24	1.10	1.08%	101.36	105.00	96.46	213.44	-42.55% ↓
FTSE/Athex Insurance	1,475.13 ↑	1,454.06	21.07	1.45%	1,454.06	1,475.13	1,274.94	1,749.09	12.00% ↑
FTSE/Athex Financial Services	1,020.10 ↓	1,035.03	-14.93	-1.44%	1,020.10	1,060.35	978.87	2,207.51	-42.32% ↓
FTSE/Athex Industrial Goods & Services	1,979.93 ↓	2,004.88	-24.95	-1.24%	1,967.23	2,022.60	1,828.67	3,724.87	-38.98% ↓
FTSE/Athex Retail	3,782.16 ↑	3,771.94	10.22	0.27%	3,671.68	3,888.03	3,090.34	4,836.94	14.65% ↑
FTSE/ATHEX Real Estate	2,347.66 ↓	2,392.51	-44.85	-1.87%	2,347.66	2,443.14	2,194.73	3,111.71	5.91% ↑
FTSE/Athex Personal & Household Goods	4,865.75 ↓	4,955.08	-89.33	-1.80%	4,861.29	5,043.91	4,442.86	7,649.84	-17.77% ↓
FTSE/Athex Food & Beverage	5,931.31 ↑	5,803.91	127.40	2.20%	5,803.91	5,949.82	5,512.51	8,227.06	-24.42% ↓
FTSE/Athex Basic Resources	2,108.48 ↓	2,163.10	-54.62	-2.53%	2,108.48	2,202.40	1,971.42	3,356.44	-23.38% ↓
FTSE/Athex Construction & Materials	2,339.41 ↑	2,328.89	10.52	0.45%	2,311.51	2,428.06	2,098.97	3,482.98	-12.76% ↓
FTSE/Athex Oil & Gas	1,819.88 ↓	1,887.30	-67.42	-3.57%	1,815.12	1,892.54	1,706.21	3,236.15	-36.52% ↓
FTSE/Athex Chemicals	5,182.04 ↓	5,239.69	-57.65	-1.10%	5,182.04	5,301.10	4,681.45	6,811.96	-13.58% ↓
FTSE/Athex Media	2,290.03 -	2,290.03	0.00	0.00%	2,290.03	2,290.03	1,543.92	2,777.58	48.33% ↑
FTSE/Athex Travel & Leisure	1,637.56 ↑	1,561.41	76.15	4.88%	1,558.20	1,642.00	1,369.61	2,304.69	-2.53% ↓
FTSE/Athex Technology	709.12 ↑	701.33	7.79	1.11%	679.06	709.21	622.75	1,134.79	-9.95% ↓
FTSE/Athex Telecommunications	2,598.43 ↑	2,491.08	107.35	4.31%	2,491.08	2,598.43	2,232.33	3,633.39	-2.38% ↓
FTSE/Athex Utilities	2,345.64 ↑	2,297.42	48.22	2.10%	2,276.01	2,447.04	2,001.82	4,471.04	-38.15% ↓
FTSE/Athex Health Care	142.75 ↑	141.96	0.79	0.56%	140.37	148.30	124.51	287.11	-35.99% ↓
Athex All Share Index	194.91 ↑	192.03	2.88	1.50%			179.11	291.46	-17.23% ↓

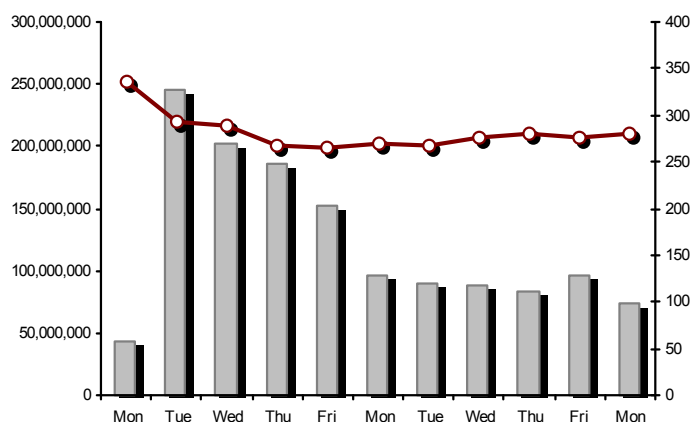
Note 1: Greece & Turkey 30 Pr data is the indicative at 17:20, whereas FTSE/ATHEX Custom Capped, FTSE/ATHEX Custom Capped - USD, FTSE/ATHEX Custom Capped TR, FTSE/ATHEX Custom Capped - USD TR, FTSE/Med 100 & Greece & Turkey 30 Rt closing prices refer to the previous trading day of 19/12/2014.

Note 2: The Hellenic Mid & Small Cap Index is a Customized index calculated by the Athens Exchange.

## Athex Indices

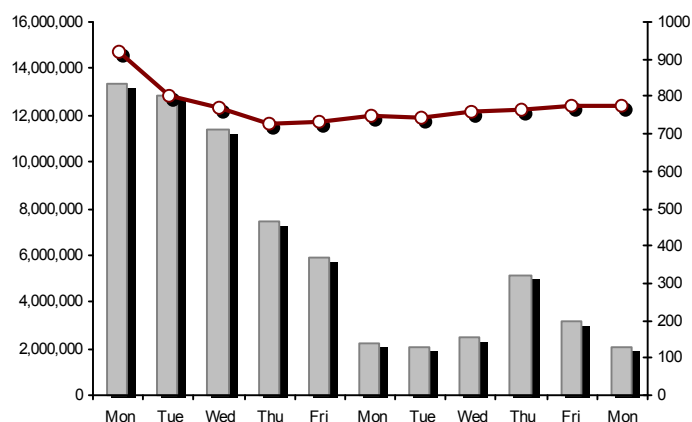
FTSE/Large Cap

22/12/2014: 1.45%



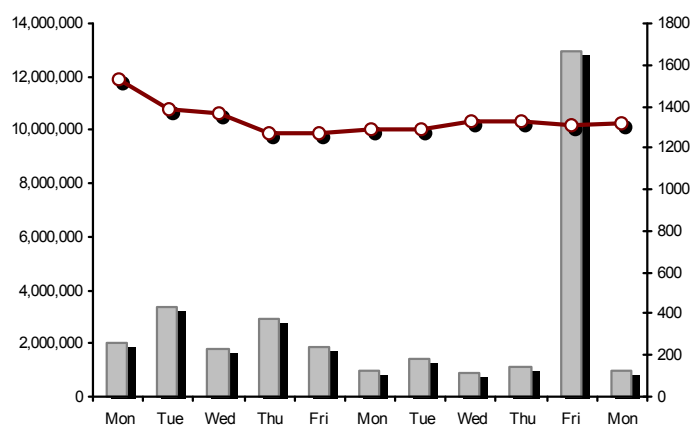
FTSE/Athex Mid Cap Index

22/12/2014: -0.19%



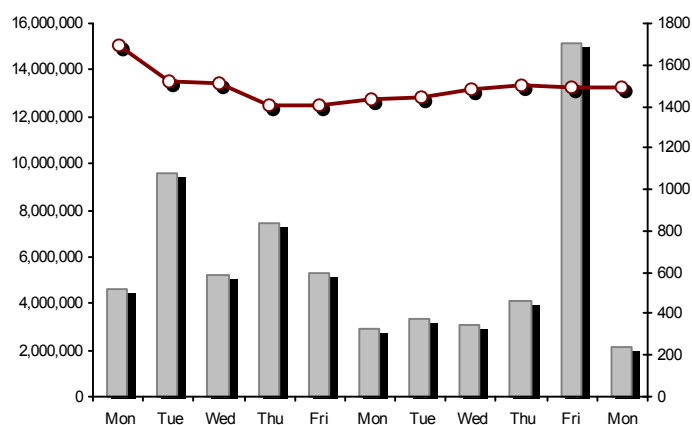
FTSE/ATHEX Global Traders Index Plus

22/12/2014: 0.05%



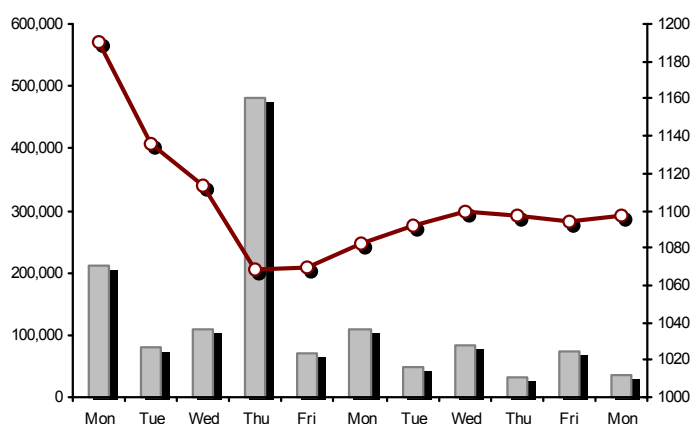
FTSE/ATHEX Global Traders Index

22/12/2014: 0.12%



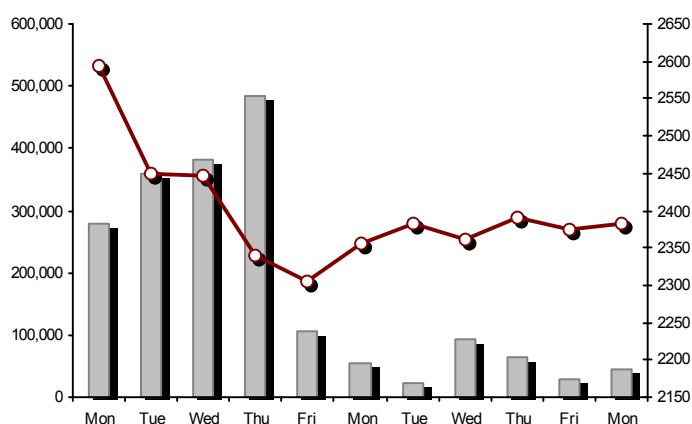
FTSE/ATHEX Mid &amp; Small Cap Factor-Weighted Index

22/12/2014: 0.35%



ATHEX Mid &amp; SmallCap Price Index

22/12/2014: 0.28%



Indices volume of transactions

Indices closing prices

## Analytic Figures for Athex Market's Boards and Categories

	Total Traded Securities	Main Market	Low Dispersion	Other Categories (*)	Exchange Traded Funds (ETFs)	Warrants
<b>Totals</b>	<b>131</b>	<b>106</b>	<b>6</b>	<b>13</b>	<b>3</b>	<b>3</b>
Gain / Lose / Same:	60 / 57 / 14	50 / 47 / 9	1 / 2 / 3	6 / 5 / 2	2 / 1 / 0	1 / 2 / 0
<b>Athex Capitalisation (mill. €) **</b>	<b>55,459.19</b>	<b>53,695.52</b>	<b>1,400.69</b>	<b>362.98</b>		
Daily Average Trans/ons Value(thou.€)	128,016.64	151,302.00	45.27	310.11	61.27	6,944.46
<b>Transactions Value</b>	<b>64,964.73</b>	<b>63,548.04</b>	<b>13.10</b>	<b>13.06</b>	<b>12.21</b>	<b>1,378.31</b>
Main Board:	56,847.50	55,879.12	13.10	13.06	12.21	929.99
Blocks Board:	8,117.23	7,668.91	0.00	0.00	0.00	448.32
Forced Sales Board:	0.00	0.00	0.00	0.00	0.00	0.00
Special Terms Board:	0.00	0.00	0.00	0.00	0.00	0.00
Daily Average Transactions Volume	94,775,682	87,744,572	21,798	867,589	14,072	6,127,650
<b>Transactions Volume</b>	<b>87,227,130</b>	<b>83,060,690</b>	<b>21,991</b>	<b>128,534</b>	<b>4,389</b>	<b>4,011,526</b>
Main Board:	77,619,160	73,896,620	21,991	128,534	4,389	3,567,626
Blocks Board:	9,607,970	9,164,070	0	0	0	443,900
Forced Sales Board:	0	0	0	0	0	0
Special Terms Board:	0	0	0	0	0	0
Daily Average Number of Trades	28,993	27,178	45	123	7	1,639
<b>Number of Trades</b>	<b>21,227</b>	<b>20,023</b>	<b>23</b>	<b>66</b>	<b>3</b>	<b>1,112</b>
Main Board:	21,214	20,012	23	66	3	1,110
Blocks Board:	13	11	0	0	0	2
Forced Sales Board:	0	0	0	0	0	0
Special Terms Board:	0	0	0	0	0	0

(\*) Summarised Transactions figures for Under Deletion and Under Supervision Categories.(\*\*) The Market Capitalization of the Companies that belong in the Under Supervision Status is not included.

## Trading Details by Athex Sectors and Financial Instruments (ETFs)

Code	Sectors	Gain / Lose / Same	Number of Trades	Transactions Volume	Transactions Value	% of Total Trans. Value
8300	- Banks	4 / 5 / 1	9,928	82,102,208	43,656,137.96	67.20%
1700	- Basic Resources	3 / 5 / 1	846	316,282	1,337,458.42	2.06%
1300	- Chemicals	1 / 2 / 0	18	8,645	7,529.44	0.01%
2300	- Construction & Materials	4 / 9 / 2	1,387	554,363	1,954,429.55	3.01%
12000	- Financial Instruments	2 / 1 / 0	3	4,389	12,212.65	0.02%
8700	- Financial Services	2 / 1 / 0	868	1,222,602	903,405.40	1.39%
3500	- Food & Beverage	7 / 3 / 0	210	132,043	683,641.60	1.05%
4500	- Health Care	2 / 0 / 2	48	70,860	30,354.41	0.05%
2700	- Industrial Goods & Services	6 / 7 / 1	954	227,826	754,177.95	1.16%
8500	- Insurance	1 / 0 / 0	8	4,147	5,783.80	0.01%
5500	- Media	3 / 0 / 0	11	20,494	9,127.24	0.01%
500	- Oil & Gas	0 / 2 / 1	572	240,219	1,318,751.35	2.03%
3700	- Personal & Household Goods	5 / 6 / 4	796	229,908	1,601,978.36	2.47%
8600	- Real Estate	2 / 5 / 1	304	103,055	420,510.85	0.65%
5300	- Retail	5 / 0 / 0	617	62,031	1,398,170.65	2.15%
9500	- Technology	6 / 5 / 1	266	315,484	169,560.29	0.26%
6500	- Telecommunications	1 / 0 / 0	826	253,076	2,330,146.02	3.59%
5700	- Travel & Leisure	3 / 4 / 0	1,781	655,213	4,773,978.50	7.35%
7500	- Utilities	3 / 2 / 0	1,784	704,285	3,597,378.36	5.54%

## Top 10 best &amp; worst performing Shares

Main Market					
With positive Price change	Closing price	change	With negative Price change	Closing price	change
BANK OF CYPRUS (CR)	0.226	14.72% ↑	SPACE HELLAS SA (CR)	1.72	-9.95% ↓
KORRES (CR)	3.70	7.25% ↑	KLEEMAN HELLAS SA (CR)	1.41	-5.37% ↓
OPAP (CR)	9.55	6.11% ↑	AEGEAN AIRLINES (CR)	7.30	-5.20% ↓
QUALITY & RELIABILITY SA (CR)	0.486	5.65% ↑	ATTICA BANK S.A. (CR)	0.047	-4.08% ↓
INTRALOT (CR)	1.15	5.51% ↑	HELLENIC PETROLEUM (CR)	3.94	-3.67% ↓
OTE (CR)	9.44	4.31% ↑	ELLAKTOR (CR)	2.39	-3.63% ↓
KYRIAKIDIS MARBLES SA (CR)	1.56	4.00% ↑	MOTOR OIL (CR)	6.35	-3.49% ↓
NATIONAL BANK (CR)	1.58	3.95% ↑	LAMDA DEVELOPMENT SA (CR)	3.71	-3.13% ↓
SIDENOR (CR)	0.516	3.82% ↑	IKTINOS HELLAS SA (CR)	1.24	-3.13% ↓
KRI-KRI S.A. (CR)	1.82	3.41% ↑	MYTILINEOS HOLDINGS (CR)	5.10	-2.86% ↓
With the highest Transactions Value	Value (thou. €)	change	With the highest Transactions Volume	Volume	change
NATIONAL BANK (CR)	16,295.92	3.95% ↑	EUROBANK ERGASIAS (CR)	29,510,221	0.00% -
ALPHA BANK (CR)	10,623.57	-2.45% ↓	ALPHA BANK (CR)	22,206,538	-2.45% ↓
PIRAEUS BANK (CR)	7,667.03	2.04% ↑	NATIONAL BANK (CR)	10,434,985	3.95% ↑
EUROBANK ERGASIAS (CR)	6,086.52	0.00% -	PIRAEUS BANK (CR)	7,732,306	2.04% ↑
OPAP (CR)	4,102.56	6.11% ↑	BANK OF CYPRUS (CR)	6,770,221	14.72% ↑
PPC (CR)	2,696.33	2.82% ↑	ATTICA BANK S.A. (CR)	1,434,364	-4.08% ↓
OTE (CR)	2,330.15	4.31% ↑	MARFIN INVESTMENT GROUP (CR)	1,077,423	0.60% ↑
BANK OF CYPRUS (CR)	1,517.03	14.72% ↑	PPC (CR)	439,911	2.82% ↑
JUMBO SA (CR)	1,434.55	-1.71% ↓	OPAP (CR)	437,454	6.11% ↑
FOLLI FOLLIE (CR)	1,394.96	0.27% ↑	OTE (CR)	253,076	4.31% ↑

Note: Stocks that are not included in the "Low Dispersion" and "Under Supervision" categories, and the transactions value is more than 10,000 €.

**Derivatives Summary**

	Number of Trades	Volume	Open Interest
<b>Index Futures</b>	<b>924</b>	<b>5,516</b>	<b>44,805</b>
FTSE/Athex Large Cap	924	5,516	44,805
<b>Stock Futures</b>	<b>1,339</b>	<b>9,325</b>	<b>164,192</b>
ALPHA BANK (CR)	61	1,393	21,661
CC HBC AG (CR)	4	4	104
CORINTH PIPEWORKS SA (CR)	0	0	479
ELLAKTOR (CR)	70	226	1,069
EUROBANK ERGASIAS (CR)	18	249	51,111
EYDAP S.A. (CR)	0	0	97
FOLLI FOLLIE (CR)	27	61	91
FRIGOGLASS SA (CR)	3	5	600
GEK TERNA (CR)	6	17	7,104
GRIVALIA PROPERTIES (CR)	9	36	24
HELLENIC EXCHANGES-A.S.E. (CR)	16	53	1,013
HELLENIC PETROLEUM (CR)	16	69	3,515
INTRALOT (CR)	2	10	492
JUMBO SA (CR)	26	78	618
MARFIN INVESTMENT GROUP (CR)	21	402	22,026
METKA (CR)	16	72	370
MOTOR OIL (CR)	7	31	124
MYTILINEOS HOLDINGS (CR)	49	159	4,412
NATIONAL BANK (CR)	271	2,931	19,797
OPAP (CR)	125	485	1,018
OTE (CR)	148	583	5,318
P.P.A. S.A. (CR)	4	12	284
PIRAEUS BANK (CR)	142	1,404	15,252
PPC (CR)	262	932	4,186
SIDENOR (CR)	1	16	786
TERNA ENERGY (CR)	4	20	1,830
TITAN CEMENT (CR)	28	66	384
VIOHALCO SA/NV (CB)	3	11	427
<b>Index Options</b>	<b>27</b>	<b>406</b>	<b>4,635</b>
FTSE/Athex Large Cap	27	406	4,635
<b>Stock Options</b>	<b>5</b>	<b>34</b>	<b>1,239</b>
ALPHA BANK (CR)	0	0	0
NATIONAL BANK (CR)	0	0	1,000
OPAP (CR)	0	0	0
OTE (CR)	2	15	185
PIRAEUS BANK (CR)	0	0	0
PPC (CR)	3	19	54
<b>Total Derivatives Traded</b>	<b>2,295</b>	<b>15,281</b>	<b>214,871</b>

Number of Outstanding Securities	Nominal Value	Dividends [1]			Date of Last Coupon		Note	Shares	Closing price	% change	Previous closing price/date	Open price	Price min	Price max	Last price	Avg price	Last Bid [7]	Last Ask [7]	P/E after	Year	Volume	Trades	Transactions Value	Company Mkt Value (thou. €)	Year low	Year high	Sector[ 4]
		2011	2012	2013	Dividend [2]	Right																					
Warrants																											
1,141,747,967	---	---	---		11/06/2013	---	ALPHA BANK (W)	1.04	0.97 ↑	1.03	19/12/2014	0.971	0.908	1.05	1.04	---	---	---	2.40	2013	678,276	173	687,741.28	6,103,610.61	0.750	2.15	8355
245,748,459	---	---	---		27/06/2013	---	NATIONAL BANK (W)	0.175	-6.42 ↓	0.187	19/12/2014	0.175	0.171	0.190	0.175	---	---	---	0.39	2013	357,664	169	64,586.66	5,582,376.42	0.171	1.59	8355
843,640,590	---	---	---		03/07/2013	---	PIRAEUS BANK (W)	0.209	-1.88 ↓	0.213	19/12/2014	0.219	0.200	0.219	0.209	---	---	---	0.22	2013	2,975,586	770	625,986.39	6,101,979.72	0.199	1.15	8355

Warrants

71,417,100	0.650	---	---	---	26/05/2010	27/06/2014	---	AEGEAN AIRLINES (CR)	7.30	-5.20 ↓	7.70 19/12/2014	7.54	7.20	7.80	7.30	---	---	---	7.86	2013	70,192	309	527,285.17	521,344.83	5.02	8.65	5751
11,178,000	1.12	---	---	---	21/04/2010	15/12/2014	---	AEOLIAN INVESTMENT FUND (CR)	0.745	0.40 ↑	0.742 19/12/2014	0.740	0.740	0.745	0.745	---	---	---	10.22	2013	2,258	5	1,676.14	8,327.61	0.691	1.09	8985
13,000,000	1.00	---	---	---	01/08/2007	07/04/2000	---	AKRITAS SA (CR)	0.084	-9.68 ↓	0.093 19/12/2014	0.084	0.084	0.084	0.084	---	---	---	---	2013	20	2	1.68	1,092.00	0.084	0.325	2353
12,769,059,858	0.300	---	---	---	07/04/2008	13/05/2013	---	ALPHA BANK (CR)	0.478	-2.45 ↓	0.490 19/12/2014	0.490	0.471	0.498	0.478	---	---	---	1.10	2013	22,206,538	3,027	10,623,574.69	6,103,610.61	0.443	0.784	8355
22,016,250	0.370	---	---	---	15/07/2009	11/05/2000	---	ALUMIL (CR)	0.258	-1.90 ↓	0.263 19/12/2014	0.267	0.237	0.267	0.258	---	---	---	---	2013	3,402	22	828.23	5,680.19	0.209	0.660	1753
417,608	16.00	---	---	0.8	29/04/2014	05/03/2013	---	ANDROMEDA SA (CR)	17.33	---	17.33 19/12/2014	---	---	---	---	---	---	---	5.24	2013	---	---	---	7,237.15	16.26	23.99	8985
26,252,040	0.380	---	---	---	08/07/2010	10/02/2014	---	AS COMPANY SA (CR)	0.310	0.32 ↑	0.309 19/12/2014	0.310	0.310	0.310	0.310	---	---	---	18.62	2013	2,000	2	620.00	8,138.13	0.265	0.413	5379
86,735,980	0.310	---	---	---	06/07/2009	02/01/2002	---	ATHENS MEDICAL CENTER SA (CR)	0.800	---	0.800 19/12/2014	0.800	0.800	0.800	0.800	---	---	---	---	2013	3,000	2	2,400.00	69,388.78	0.677	0.930	4533
1,045,794,145	0.300	---	---	---	04/06/2008	07/08/2014	---	ATTICA BANK S.A. (CR)	0.047	-4.08 ↓	0.049 19/12/2014	0.050	0.046	0.050	0.047	---	---	---	---	2013	1,434,364	155	67,819.10	49,152.32	0.046	0.277	8355
15,300,000	0.300	---	---	---	30/07/2009	13/12/1999	---	ATTICA PUBLICATIONS SA (CR)	1.29	---	1.29 19/12/2014	---	---	---	---	---	---	---	37.22	2013	---	---	---	19,737.00	1.10	2.15	5557
45,457,464	0.700	---	---	---	01/07/2008	01/03/2010	---	AUDIO VISUAL ENTERPRISES (CR)	0.310	---	0.310 19/12/2014	---	---	---	---	---	---	---	---	2013	---	---	---	14,091.81	0.209	0.376	5553
12,120,000	0.320	(0.45)	---	---	30/04/2012	22/11/2013	---	AUTOHELLAS SA (CR)	8.26	-0.12 ↓	8.27 19/12/2014	8.68	8.26	8.68	8.26	---	---	---	33.69	2013	10	2	84.70	100,111.20	6.90	11.20	5759
8,922,377,345	0.100	---	---	---	31/05/2011	16/12/2014	4857	BANK OF CYPRUS (CR)	0.226	14.72 ↑	0.197 19/12/2014	0.200	0.200	0.233	0.226	---	---	---	---	2013	6,770,221	760	1,517,027.64	2,016,457.28	0.173	0.233	8355
19,864,886	5.60	0.67	0.5376	0.672	05/03/2014	02/07/2008	---	BANK OF GREECE (CR)	9.62	-2.73 ↓	9.89 19/12/2014	10.00	9.62	10.00	9.62	---	---	---	---	---	2,047	37	19,925.00	191,100.20	9.35	16.53	8355
23,986,500	1.05	---	---	---	26/06/2009	15/03/2000	---	BIOKARPET S.A.(CR)	0.203	-3.33 ↓	0.210 19/12/2014	0.204	0.203	0.204	0.203	---	---	---	---	2013	250	2	50.85	4,869.26	0.197	0.880	3726
15,842,391	1.51	---	---	---	15/07/2009	12/05/2000	---	BITROS HOLDING SA (CR)	0.176	0.57 ↑	0.175 19/12/2014	0.165	0.165	0.176	0.176	---	---	---	---	2013	219	3	38.52	2,788.26	0.158	0.559	1757
15,816,009	0.300	---	---	---	01/07/2009	17/07/2000	---	BYTE COMPUTER SA (CR)	0.445	-1.11 ↓	0.450 19/12/2014	0.445	0.445	0.445	0.445	---	---	---	---	2013	150	1	66.75	7,038.12	0.361	0.666	9533
367,747,133	6.70	---	0.34	0.354	09/07/2014	29/04/2013	---	CC HBC AG (CR)	15.88	2.19 ↑	15.54 19/12/2014	15.77	15.58	15.93	15.85	---	---	---	---	---	41,752	160	659,630.89	5,839,824.47	14.75	22.00	3537
101,123,806	0.360	---	---	---	22/07/2010	28/06/2011	---	CENTRIC HOLDINGS (CR)	0.198	3.13 ↑	0.192 19/12/2014	0.211	0.183	0.211	0.198	---	---	---	9.70	2013	13,500	17	2,597.72	20,022.51	0.162	0.390	5752
4,034,950	0.680	---	---	---	01/07/2005	30/12/2010	---	CHATZIKRANIOTIS & SONS SA (CR)	0.200	---	0.200 19/12/2014	---	---	---	---	---	---	---	---	2013	---	---	---	806.99	0.155	0.420	3577
124,170,201	0.780	---	---	---	28/06/2002	07/02/2005	---	CORINTH PIPEWORKS SA (CR)	0.863	-0.81 ↓	0.870 19/12/2014	0.900	0.863	0.925	0.863	---	---	---	---	2013	9,491	42	8,260.24	107,158.88	0.804	2.30	1757
9,907,500	0.300	---	---	---	06/10/2005	13/02/2002	---	CPI SA (CR)	0.232	---	0.232 19/12/2014	---	---	---	---	---	---	---	20.02	2014	---	---	---	2,298.54	0.133	0.295	9572
27,379,200	0.520	---	---	0.1	24/07/2014	18/09/2013	---	CRETE PLASTICS SA (CR)	5.00	---	5.00 19/12/2014	---	---	---	---	---	---	---	15.02	2013	---	---	---	136,896.00	4.40	5.54	1357
15,000,000	0.300	---	---	---	06/07/2007	18/07/2000	---	DAIOS PLASTICS SA (CR)	2.35	---	2.35 19/12/2014	---	---	---	---	---	---	---	---	2013	---	---	---	35,250.00	1.66	2.35	1357
34,720,000	0.310	---	---	---	16/06/2010	01/08/2007	---	DROMEAS SA (CR)	0.153	2.69 ↑	0.149 19/12/2014	0.153	0.153	0.153	0.153	---	---	---	---	2013	5	1	0.77	5,312.16	0.131	0.400	3726
3,873,120	0.300	---	---	---	07/07/2008	04/10/2012	---	DRUCKFARBEN HELLAS (CR)	0.900	---	0.900 19/12/2014	---	---	---	---	---	---	---	---	2013	---	---	---	3,485.81	0.810	1.95	1357
11,250,000	0.560	---	---	---	26/07/2010	16/06/1999	---	EKTER SA (CR)	0.415	---	0.415 19/12/2014	---	---	---	---	---	---	---	---	2013	---	---	---	4,668.75	0.383	0.990	2357
32,188,050	1.04	---	---	---	21/07/2008	20/01/2000	---	EL D. MOUZAKIS SA (CB)	0.219	---	0.219 19/12/2014	---	---	---	---	---	---	---	---	2013	---	---	---	7,049.18	0.153	0.475	3763
18,435,000	1.00	---	---	---	07/07/2009	10/09/2010	---	ELASTRON (CR)	0.575	---	0.575 19/12/2014	---	---	---	---	---	---	---	---	2013	---	---	---	10,600.13	0.400	1.00	1757
31,734,530	1.60	---	---	---	09/07/2007	19/07/2006	---	ELGEKA SA (CR)	0.254	---	0.254 19/12/2014	---	---	---	---	---	---	---	---	2013	---	---	---	8,060.57	0.211	0.488	3577
23,828,130	0.500	---	---	---	07/07/2010	17/02/2009	---	ELINOIL S.A. (CR)	0.930	---	0.930 19/12/2014	0.930	0.930	0.930	0.930	---	---	---	---	2013	1,100	1	1,023.00	22,160.16	0.655	1.50	537
177,001,313	1.03	---	---	---	05/07/2011	20/12/2007	---	ELLAKTOR (CR)	2.39	-3.63 ↓	2.48 19/12/2014	2.48	2.39	2.58	2.39	---	---	---	---	2013	206,826	439	513,906.09	423,033.14	2.04	4.35	2357
82,667,000	0.300	---	---	---		22/07/2014	---	ELTECH ANEMOS S.A. (CR)	0.690	0.58 ↑	0.686 19/12/2014	0.700	0.690	0.710	0.690	---	---	---	---	---	37,956	55	26,384.36	57,040.23	0.680	1.70	7537

Number of Outstanding Securities	Nominal Value	Dividends [1]			Date of Last Coupon		Note	Shares	Closing price	% change	Previous closing price/date	Open price	Price min	Price max	Last price	Avg price	Last Bid [7]	Last Ask [7]	P/E after	Year	Volume	Trades	Transactions Value	Company Mkt Value (thou. €)	Year low	Year high	Sector[ 4]	
		2011	2012	2013	Dividend [2]	Right																						
Main Market																												
26,730,187	0.600	---	---	0.05	23/06/2014	30/12/2010	---	ELTON SA (CR)	0.936	1.19 ↑	0.925 19/12/2014	0.960	0.936	0.960	0.936	---	---	---	9.65	2013	100	2	94.80	25,019.46	0.802	1.40	1353	
14,050,971	0.340	---	---	---	06/07/2011	17/10/2002	---	ELTRAK SA (CR)	1.37	---	1.37 19/12/2014	---	---	---	---	---	---	---	---	2013	---	---	---	19,249.83	1.15	2.03	2753	
125,562,262	0.320	---	---	---	30/05/2014	02/12/2014	---	ELVAL SA. (CB)	1.06	-1.85 ↓	1.08 19/12/2014	1.10	1.01	1.10	1.09	---	---	---	30.92	2013	10,565	41	11,035.71	133,096.00	0.950	2.15	1753	
13,230,000	0.300	---	---	---	11/08/2010	24/11/2014	---	ELVE SA (CR)	0.400	---	0.400 19/12/2014	---	---	---	---	---	---	---	---	2013	---	---	---	5,292.00	0.373	0.715	3763	
14,707,876,542	0.300	---	---	---	02/05/2008	13/06/2013	---	EUROBANK ERGASIAS (CR)	0.207	---	0.207 19/12/2014	0.213	0.203	0.213	0.207	---	---	---	---	2013	29,510,221	1,832	6,086,523.37	3,044,530.44	0.201	0.630	8355	
7,959,900	0.600	---	---	---	02/06/2010	10/12/2013	5031	EUROCONSULTANTS S.A. (CR)	1.27	-2.31 ↓	1.30 19/12/2014	1.24	1.17	1.27	1.27	---	---	---	37.32	2013	2,490	16	3,109.00	10,109.07	1.14	2.87	2791	
27,503,677	0.600	0.05	0.1	---	11/07/2013	18/10/1999	---	EUROPEAN RELIANCE INSUR. (CR)	1.40	1.45 ↑	1.38 19/12/2014	1.38	1.38	1.40	1.40	---	---	---	4.06	2013	4,147	8	5,783.80	38,505.15	1.21	1.66	8536	
13,673,200	0.880	---	---	---	18/07/2008	26/07/2001	---	EVROFARMA SA (CR)	0.220	---	0.220 19/12/2014	---	---	---	---	---	---	---	---	2013	---	---	---	3,008.10	0.186	0.455	3577	
106,500,000	0.600	0.05	0.15	0.36	05/05/2014	28/01/2000	---	EYDAP S.A. (CR)	6.50	1.56 ↑	6.40 19/12/2014	7.47	6.50	7.47	6.50	---	---	---	8.91	2013	75,155	252	515,651.04	692,250.00	5.00	9.95	7577	
52,800,154	0.300	---	---	0.2	20/08/2014	21/06/2004	---	F.G. EUROPE S.A. (CR)	0.501	9.15 ↑	0.459 19/12/2014	0.443	0.443	0.504	0.501	---	---	---	9.04	2013	13,370	37	6,661.55	26,452.88	0.443	1.95	3722	
10,203,575	0.730	---	---	---	16/07/2007	18/10/1999	---	FIERATEX SA (CR)	0.228	---	0.228 19/12/2014	0.206	0.206	0.228	0.228	---	---	---	---	2013	4,000	5	888.68	2,326.42	0.121	0.430	3763	
11,720,024	0.540	---	---	0.0394	21/08/2014	07/08/2014	---	FLEXOPACK SA (CR)	2.09	0.48 ↑	2.08 19/12/2014	2.07	2.06	2.10	2.09	---	---	---	9.89	2013	825	8	1,709.65	24,494.85	1.91	3.50	2723	
4,181,450	0.500	---	---	---	21/08/2000	05/03/2002	---	FLOUR MILLS SARANTOPOULOS SA	0.950	---	0.950 19/12/2014	---	---	---	---	---	---	---	---	2013	---	---	---	3,972.38	0.689	1.14	3577	
66,948,210	0.300	---	---	---	14/07/2009	23/09/2014	---	FOLLI FOLLIE (CR)	26.27	0.27 ↑	26.20 19/12/2014	26.79	25.50	27.01	26.27	---	---	---	4.07	2013	53,156	602	1,394,955.87	1,758,729.48	21.90	34.40	5379	
50,992,322	1.07	---	---	---	21/06/2010	16/07/2002	---	FOURLIS (CR)	3.11	-2.51 ↓	3.19 19/12/2014	3.20	3.11	3.20	3.11	---	---	---	---	2013	10,733	45	33,834.83	158,586.12	2.98	6.01	3722	
50,593,832	0.300	---	---	---	07/07/2010	07/09/2011	---	FRIGOGLASS SA (CR)	1.61	2.55 ↑	1.57 19/12/2014	1.57	1.56	1.68	1.61	---	---	---	---	2013	52,795	200	85,113.87	81,456.07	1.38	5.63	2757	
77,376,446	0.340	---	---	---	23/05/2005	18/08/2011	---	G.E. DIMITRIOU (CR)	0.020	---	0.020 19/12/2014	---	---	---	---	---	---	---	---	2013	---	---	---	1,547.53	0.007	0.041	3722	
14,076,360	0.370	---	---	---	19/08/2008	22/07/2003	---	GALAXIDI S.A. (CR)	0.319	---	0.319 19/12/2014	---	---	---	---	---	---	---	---	2013	---	---	---	4,490.36	0.200	0.439	3573	
94,462,368	0.570	---	---	---	01/08/2011	02/01/2009	---	GEK TERNA (CR)	2.18	-1.36 ↓	2.21 19/12/2014	2.21	2.15	2.23	2.18	---	---	---	---	2013	224,961	430	493,976.28	205,927.96	1.90	4.21	2357	
8,418,750	0.300	0.15	0.29	---	05/06/2013	27/06/2012	---	GEKE SA (CB)	5.50	---	5.50 19/12/2014	---	---	---	---	---	---	---	86.96	2013	---	---	---	46,303.13	5.00	7.20	5753	
24,060,000	0.300	0.017	---	0.017	07/07/2014	21/01/2000	---	GEN. COMMERCIAL & IND.SA (CR)	0.330	---	0.330 19/12/2014	---	---	---	---	---	---	---	23.73	2013	---	---	---	7,939.80	0.293	0.455	2797	
34,770,982	1.55	---	---	0.3	17/01/2014	27/07/2000	---	GR. SARANTIS SA (CR)	7.20	-0.41 ↓	7.23 19/12/2014	7.23	7.00	7.23	7.20	---	---	---	6.82	2013	450	8	3,156.43	250,351.07	6.06	8.24	3767	
101,260,000	2.13	0.4067	---	0.1821	17/04/2014	08/01/2014	---	GRIVALIA PROPERTIES (CR)	7.55	-1.31 ↓	7.65 19/12/2014	7.70	7.55	7.95	7.55	---	---	---	---	2013	48,299	213	372,814.94	764,513.00	6.65	9.82	8675	
8,340,750	1.20	---	---	---	25/06/2009	30/07/2001	---	HAIDEMENOS SA (CR)	0.300	---	0.300 19/12/2014	---	---	---	---	---	---	---	---	2013	---	---	---	2,502.23	0.281	0.760	2791	
101,279,627	0.380	---	---	---	26/06/2008	14/07/2006	---	HALKOR SA (CB)	0.308	---	0.308 19/12/2014	0.326	0.295	0.326	0.310	---	---	---	---	2013	14,090	25	4,260.68	31,194.13	0.280	0.912	1755	
36,748,909	0.730	---	---	---	15/12/2005	13/12/2006	---	HEL. SUGAR INDUSTRY SA (CB)	0.279	-2.79 ↓	0.287 19/12/2014	0.279	0.279	0.279	0.279	---	---	---	---	2014	50	1	13.95	10,252.95	0.238	1.10	3577	
29,546,360	0.710	---	---	---	20/06/2008	23/08/2000	---	HELLENIC CABLES SA (CR)	0.731	7.50 ↑	0.680 19/12/2014	0.680	0.680	0.731	0.731	---	---	---	---	2013	1,513	7	1,031.54	21,598.39	0.640	2.00	2733	
65,368,563	0.560	0.11	0.09	---	03/06/2013	16/07/2014	---	HELLENIC EXCHANGES-A.S.E. (CR)	4.94	-1.98 ↓	5.04 19/12/2014	5.04	4.94	5.14	4.94	---	---	---	-(6)-	2013	142,921	497	717,918.99	322,920.70	4.82	9.52	8777	
305,635,185	2.18	0.45	0.15	---	16/08/2013	01/10/2003	4795	HELLENIC PETROLEUM (CR)	3.94	-3.67 ↓	4.09 19/12/2014	4.09	3.94	4.10	3.94	---	---	---	---	2013	96,090	322	386,713.42	1,204,202.63	3.66	8.13	537	
305,732,436	0.410	---	---	---	08/07/2009	28/09/2011	---	HYGEIA SA (CR)	0.180	0.56 ↑	0.179 19/12/2014	0.186	0.177	0.187	0.180	---	---	---	---	2013	38,506	33	7,000.62	55,031.84	0.157	0.508	4533	
53,155,053	0.440	---	---	---	24/11/2014	16/07/2008	---	IASO SA (CR)	0.812	1.25 ↑	0.802 19/12/2014	0.800	0.790	0.815	0.810	---	---	---	---	2013	25,754	12	20,521.79	43,161.90	0.770	1.99	4533	
8,298,467	0.400	---	---	---	30/08/1993	08/05/2013	---	IDEAL GROUP SA (CR)	1.04	---	1.04 19/12/2014	---	---	---	---	---	---	---	-(6)-	2013	---	---	---	8,630.41	0.538	1.04	9574	
28,580,100	0.400	0.02	---	0.025	18/08/2014	10/10/2013	---	IKTINOS HELLAS SA (CR)	1.24	-3.13 ↓	1.28 19/12/2014	1.22	1.21	1.27	1.24	---	---	---	7.59	2013	32,280	64	39,236.10	35,439.32	1.12	1.84	2353	
9,090,000	0.900	---	---	---	15/05/2009	13/10/2014	5073	ILYDA S.A. (CR)	0.739	---	0.739 19/12/2014	---	---	---	---	---	---	---	---	2013	---	---	---	6,717.51	0.350	0.789	9537	
20,578,374	0.620	---	---	---	02/06/2011	05/05/1999	---	INFORM P. LYKOS SA (CR)	1.54	---	1.54 19/12/2014	---	---	---	---	---	---	---	---	2013	---	---	---	31,690.70	1.32	1.90	2791	
11,233,200	0.730	---	---	---	12/07/2010	30/07/1999	---	INTERTECH SA (CR)	0.312	---	0.312 19/12/2014	---	---	---	---	---	---	---	---	2013	---	---	---	3,504.76	0.171	0.510	9572	
34,986,430	0.440	---	---	---	25/07/2008	23/02/2010	---	INTERWOOD-XYLEMPORIA (CR)	0.161	---	0.161 19/12/2014	---	---	---	---	---	---	---	---	2013	---	---	---	6,133.35	0.081	0.178	2353	
2,566,836	0.440	---	---	---	13/08/2010	09/01/2007	---	INTERWOOD-XYLEMPORIA (PR)	0.195	---	0.195 19/12/2014	---	---	---	---	---	---	---	---	2013	---	---	---	6,133.35	0.195	0.200	2353	

Number of Outstanding Securities	Nominal Value	Dividends [1]			Date of Last Coupon		Note	Shares	Closing price	% change	Previous closing price/date	Open price	Price min	Price max	Last price	Avg price	Last Bid [7]	Last Ask [7]	P/E after	Year	Volume	Trades	Transactions Value	Company Mkt Value (thou. €)	Year low	Year high	Sector[ 4]
		2011	2012	2013	Dividend [2]	Right																					
Main Market																											
23,154,250	1.36	---	---	---	12/08/2008	02/08/2010	---	INTRACOM CONSTR. (CR)	0.442	-3.07 ↓	0.456 19/12/2014	0.460	0.440	0.465	0.440	---	---	---	---	2013	2,100	9	957.50	10,234.18	0.390	1.32	2357
133,025,996	1.41	---	---	---	03/07/2007	07/01/2002	---	INTRACOM HOLDINGS (CR)	0.381	2.97 ↑	0.370 19/12/2014	0.357	0.352	0.384	0.381	---	---	---	---	2013	229,276	113	86,013.17	50,682.90	0.270	0.900	9578
158,961,721	0.300	0.0035	0.0026	---	30/05/2013	14/11/2007	---	INTRALOT (CR)	1.15	5.51 ↑	1.09 19/12/2014	1.06	1.06	1.15	1.15	---	---	---	---	2013	124,070	214	139,407.65	182,805.98	0.990	2.51	5752
77,654,850	0.580	---	---	---	01/07/2011	21/02/2003	---	J & P - AVAX SA (CR)	0.600	-4.91 ↓	0.631 19/12/2014	0.585	0.585	0.600	0.600	---	---	---	---	2013	3,946	3	2,322.60	46,592.91	0.541	2.02	2357
136,059,759	1.19	---	---	---	22/10/2014	05/03/2014	---	JUMBO SA (CR)	9.20	-1.71 ↓	9.36 19/12/2014	9.25	9.17	9.55	9.20	---	---	---	17.12	2014	154,718	626	1,434,545.43	1,251,749.78	7.95	14.40	3747
9,742,920	0.400	0.01	0.01	0.01	08/08/2014	14/07/2000	---	KARAMOLEGOS SA (CR)	1.50	---	1.50 19/12/2014	---	---	---	---	---	---	---	---	2013	---	---	---	14,614.38	0.912	1.98	3577
14,679,792	1.68	---	---	---	24/06/2014	04/09/2000	---	KARATZIS SA (CR)	2.91	---	2.91 19/12/2014	2.91	2.91	2.91	2.91	---	---	---	8.74	2013	30	2	87.30	42,718.19	2.77	4.50	2723
13,202,756	0.350	---	---	---	01/07/2004	05/08/2014	---	KEKROPS SA (CR)	0.256	-4.12 ↓	0.267 19/12/2014	0.255	0.244	0.260	0.260	---	---	---	---	2013	18,750	27	4,733.45	3,379.91	0.242	1.11	8633
7,595,160	0.600	---	---	---	08/08/2008	18/08/2010	---	KIRIAKOULIS SHIPPING SA (CR)	0.638	---	0.638 19/12/2014	---	---	---	---	---	---	---	41.42	2013	---	---	---	4,845.71	0.492	1.08	5759
23,648,700	0.350	---	---	---	13/07/2011	29/07/2014	---	KLEEMAN HELLAS SA (CR)	1.41	-5.37 ↓	1.49 19/12/2014	1.42	1.40	1.52	1.41	---	---	---	49.84	2013	44,838	130	64,750.61	33,344.67	1.35	2.58	2757
40,219,218	0.300	---	---	---	25/05/2009	09/07/2013	---	KLOUKINAS - LAPPAS SA (CR)	0.471	1.73 ↑	0.463 19/12/2014	0.474	0.460	0.474	0.471	---	---	---	---	2013	121	3	55.95	18,943.25	0.424	0.780	2357
21,224,340	0.420	---	---	---	02/07/2008	25/04/2006	---	KORDELLOS BROS SA (CR)	0.249	-3.86 ↓	0.259 19/12/2014	0.234	0.234	0.249	0.249	---	---	---	---	2013	3,700	5	901.53	5,284.86	0.169	0.359	1757
13,586,500	0.390	---	---	---	25/06/2010	28/05/2008	---	KORRES (CR)	3.70	7.25 ↑	3.45 19/12/2014	3.30	3.30	3.74	3.70	---	---	---	---	2013	31,450	28	114,455.94	50,270.05	2.84	3.93	3767
29,480,000	0.420	---	---	---	19/07/2010	01/08/2007	---	KRETA FARM SA (CR)	0.460	0.44 ↑	0.458 19/12/2014	0.460	0.460	0.460	0.460	---	---	---	---	2013	100	2	46.00	13,560.80	0.380	0.690	3577
33,065,136	0.380	---	---	---	06/07/2009	16/09/2013	---	KRI-KRI S.A. (CR)	1.82	3.41 ↑	1.76 19/12/2014	1.75	1.75	1.82	1.82	---	---	---	11.74	2013	9,000	12	16,180.36	60,178.55	1.63	2.07	3577
15,804,800	0.330	---	---	---	15/06/2010	12/03/2004	---	KTIMA KOSTAS LAZARIDIS SA (CR)	0.432	-9.81 ↓	0.479 19/12/2014	0.432	0.432	0.432	0.432	---	---	---	---	2013	520	1	224.64	6,827.67	0.297	0.575	3535
24,474,815	0.980	---	---	---	19/08/2008	15/09/2014	---	KYRIAKIDIS MARBLES SA (CR)	1.56	4.00 ↑	1.50 19/12/2014	1.53	1.50	1.56	1.56	---	---	---	3.67	2013	6,915	18	10,519.34	38,180.71	1.07	2.60	2353
79,706,464	0.300	---	---	---	30/05/2007	23/06/2014	---	LAMDA DEVELOPMENT SA (CR)	3.71	-3.13 ↓	3.83 19/12/2014	3.90	3.63	3.90	3.71	---	---	---	---	2013	6,233	34	23,237.18	295,710.98	3.19	6.35	8633
21,364,000	1.12	---	---	---	05/07/2010	10/08/2005	---	LAMPSPA HOTEL SA (CR)	17.75	---	17.75 19/12/2014	---	---	---	---	---	---	---	-(6)-	2013	---	---	---	379,211.00	15.60	19.00	5753
5,939,268	0.620	---	---	---	10/07/2003	03/01/2002	---	LANAKAM SA (CR)	1.16	---	1.16 19/12/2014	---	---	---	---	---	---	---	---	2013	---	---	---	6,889.55	0.485	1.40	3763
7,734,375	1.00	---	---	---	09/07/2007	07/01/2011	---	LIVANIS SA (CR)	0.210	---	0.210 19/12/2014	---	---	---	---	---	---	---	---	2013	---	---	---	1,624.22	0.158	0.242	5557
4,740,000	0.860	---	---	---	14/03/2003	---	---	LOGISMOS S.A. (CR)	0.515	---	0.515 19/12/2014	---	---	---	---	---	---	---	69.35	2013	---	---	---	2,441.10	0.335	0.709	9533
17,125,062	0.640	---	---	---	01/06/2010	02/08/2011	---	LOULIS MILLS SA (CR)	1.66	1.84 ↑	1.63 19/12/2014	1.66	1.66	1.66	1.66	---	---	---	---	2013	50	1	83.00	28,427.60	1.59	3.30	3577
937,122,261	0.300	---	---	---	26/04/2007	29/08/2014	---	MARFIN INVESTMENT GROUP (CR)	0.168	0.60 ↑	0.167 19/12/2014	0.169	0.167	0.176	0.168	---	---	---	---	2013	1,077,423	366	183,810.27	157,436.54	0.150	0.572	8775
9,819,370	0.690	---	---	---	14/08/2007	09/01/2004	---	MATHIOS REFRACTORY SA (CR)	0.440	-7.56 ↓	0.476 19/12/2014	0.429	0.429	0.440	0.440	---	---	---	---	2013	2,200	4	954.84	4,320.52	0.250	0.530	2353
468,700	---	0.47	0.65	0.42	04/12/2014	21/05/2004	---	MERMEREN KOMB. A.D. PR. (GDR)	6.25	3.48 ↑	6.04 19/12/2014	6.22	6.22	6.30	6.30	---	---	---	3.05	2013	500	5	3,117.95	2,929.38	3.45	7.20	1775
51,950,600	0.320	0.75	0.25	0.3	20/06/2014	21/10/2005	---	METKA (CR)	8.91	-2.09 ↓	9.10 19/12/2014	9.23	8.91	9.23	8.91	---	---	---	10.42	2013	31,827	169	288,855.15	462,879.85	7.40	14.29	2757
10,500,000	0.900	---	---	---	24/06/2008	19/12/2013	---	MEVACO SA (CR)	1.00	1.21 ↑	0.988 19/12/2014	1.00	1.00	1.00	1.00	---	---	---	---	2013	150	1	150.00	10,500.00	0.901	1.35	2757
6,700,000	0.800	---	---	0.16	26/05/2014	29/05/2014	---	MILLS KEPENOS (CR)	1.70	1.19 ↑	1.68 19/12/2014	1.70	1.70	1.70	1.70	---	---	---	9.26	2013	580	1	986.00	11,390.00	0.991	2.50	3577
6,200,000	0.500	---	---	---	22/06/2010	01/11/1995	---	MINERVA KNITWEAR SA (CB)	0.250	-9.42 ↓	0.276 19/12/2014	0.250	0.250	0.250	0.250	---	---	---	---	2013	119	3	29.75	1,550.00	0.250	0.689	3763
12,417,000	0.370	---	---	---	28/07/2008	06/09/2011	---	MLS MULTIMEDIA SA (CR)	4.15	0.24 ↑	4.14 19/12/2014	4.14	4.08	4.18	4.15	---	---	---	44.01	2013	8,558	37	35,214.51	51,530.55	3.28	4.82	9537
4,588,137	16.00	---	---	---	30/06/2005	17/08/2011	---	MOCHLOS SA (CR)	1.16	---	1.16 19/12/2014	---	---	---	---	---	---	---	---	2013	---	---	---	5,322.24	0.651	2.05	2357
11,700,000	0.590	---	---	---	02/06/2009	24/07/2012	---	MOTODYNAMICS S.A. (CR)	0.290	3.57 ↑	0.280 19/12/2014	0.290	0.290	0.290	0.290	---	---	---	---	2013	1,000	1	290.00	3,393.00	0.260	0.447	5379
110,782,980	0.750	0.4	0.3	0.2	26/06/2014	04/11/2013	---	MOTOR OIL (CR)	6.35	-3.49 ↓	6.58 19/12/2014	6.58	6.28	6.60	6.35	---	---	---	-(6)-	2013	143,029	249	931,014.93	703,471.92	5.52	10.30	533
116,915,862	1.07	---	---	---	11/05/2009	06/07/2011	---	MYTILINEOS HOLDINGS (CR)	5.10	-2.86 ↓	5.25 19/12/2014	5.32	5.10	5.35	5.10	---	---	---	---	2013	246,797	645	1,295,271.44	596,270.90	4.75	7.32	1755
8,321,682	0.670	---	---	---	17/08/2007	23/11/1999	---	N. LEVEDERIS SA (CB)	0.180	---	0.180 19/12/2014	---	---	---	---	---	---	---	---	2013	---	---	---	2,567.36	0.180	0.255	1757
2,160,524	0.670	0.0435	0.0436	0.0436	18/08/2014	23/11/1999	---	N. LEVEDERIS SA (PB)	0.495	---	0.495 19/12/2014	---	---	---	---	---	---	---	---	2013	---	---	---	2,567.36	0.495	0.779	1757
11,510,102	0.890	---	---	---	24/06/2005	06/10/1999	---	NAFPAKTOS TEXTILE IND. SA (CB)	0.235	9.30 ↑	0.215 19/12/2014	0.196	0.196	0.235	0.235	---	---	---	---	2013	486	2	112.81	2,704.87	0.175	0.397	3763

Daily Official List																								Year: 135 Trading Day No: 244				
Section 2: Analytic Figures of Shares Transactions																								Monday, 22 December, 2014				
Number of Outstanding Securities	Nominal Value	Dividends [1]			Date of Last Coupon		Note	Shares	Closing price	% change	Previous closing price/date	Open price	Price min	Price max	Last price	Avg price	Last Bid [7]	Last Ask [7]	P/E after	Year	Volume	Trades	Transactions Value	Company Mkt Value (thou. €)	Year low	Year high	Sector[ 4]	
2011	2012	2013	Dividend [2]	Right																								
Main Market																												
6,340,000	0.600	---	---	---	30/11/2009	12/07/2000	---	NAKAS MUSIC	1.04	---	-	1.04	19/12/2014	---	---	---	---	---	---	32.32	2014	---	---	---	6,593.60	0.526	1.62	5379
3,533,149,631	0.300	---	---	---	16/05/2008	24/05/2013	---	NATIONAL BANK (CR)	1.58	3.95	↑	1.52	19/12/2014	1.54	1.52	1.59	1.58	---	---	3.52	2013	10,434,985	1,691	16,295,924.21	5,582,376.42	1.38	4.31	8355
23,935,280	0.300	---	---	---	29/06/2009	13/06/2000	---	NAYTEMPORIKI PUBLISHING SA(CR)	0.141	9.30	↑	0.129	19/12/2014	0.141	0.141	0.141	0.141	---	---	---	2013	100	1	14.10	3,374.87	0.108	0.479	5557
27,848,000	0.300	0.0132	0.0137	0.004	18/08/2014	02/09/2003	---	NEWSPHONE HELLAS SA (CR)	0.238	9.17	↑	0.218	19/12/2014	0.202	0.202	0.238	0.238	---	---	21.38	2013	511	2	103.26	6,627.82	0.202	0.468	2791
6,132,500	1.25	---	---	---	24/06/2011	19/06/2001	---	NEXANS HELLAS SA (CR)	1.57	---	-	1.57	19/12/2014	---	---	---	---	---	---	---	2013	---	---	---	9,628.03	1.46	2.40	2733
319,000,000	0.300	0.72	0.57	0.25	27/05/2014	25/04/2001	---	OPAP (CR)	9.55	6.11	↑	9.00	19/12/2014	9.00	9.00	9.55	9.55	---	---	21.35	2013	437,454	1,228	4,102,562.26	3,046,450.00	7.97	13.65	5752
490,150,389	2.83	---	---	---	28/06/2011	18/06/1998	---	OTE (CR)	9.44	4.31	↑	9.05	19/12/2014	9.24	9.05	9.44	9.44	---	---	---	2013	253,076	826	2,330,146.02	4,627,019.67	8.10	13.20	6535
25,000,000	2.00	0.01	0.05	0.12	17/07/2014	08/08/2003	---	P.P.A. S.A. (CR)	11.91	-0.75	↓	12.00	19/12/2014	11.90	11.61	12.39	11.90	---	---	37.01	2013	10,178	127	121,990.84	297,750.00	10.50	20.89	2777
4,971,466	1.46	---	---	---	04/07/2007	08/10/2003	---	PAIRIS SA (CR)	0.152	---	-	0.152	19/12/2014	---	---	---	---	---	---	---	2013	---	---	---	755.66	0.140	0.355	2723
3,953,090	0.900	---	---	---	02/07/2001	05/12/2012	---	PAPERPACK (CR)	0.825	-0.48	↓	0.829	19/12/2014	0.825	0.825	0.825	0.825	---	---	4.26	2013	70	2	57.75	3,261.30	0.581	1.15	2723
50,797,369	0.310	---	---	---	17/08/2000	12/10/2010	---	PAPOUTSANIS (CR)	0.380	---	-	0.380	19/12/2014	0.380	0.380	0.380	0.380	---	---	---	2013	100	2	38.00	19,303.00	0.352	0.604	3767
7,070,400	0.930	---	---	---	18/05/2010	12/05/2011	---	PETROPOULOS PETROS (CR)	3.17	0.63	↑	3.15	19/12/2014	3.10	3.09	3.17	3.17	---	---	77.02	2013	978	14	3,055.60	22,413.17	1.43	3.17	2753
6,101,979,715	0.300	---	---	---	16/05/2008	05/06/2013	---	PIRAEUS BANK (CR)	1.00	2.04	↑	0.980	19/12/2014	0.994	0.970	1.02	1.00	---	---	1.07	2013	7,732,306	1,314	7,667,029.62	6,101,979.72	0.855	2.11	8355
22,080,000	0.320	0.08	0.12	0.2	21/05/2014	03/10/2000	---	PLAISIO COMPUTERS SA (CR)	5.99	-0.17	↓	6.00	19/12/2014	6.15	5.84	6.15	5.99	---	---	9.34	2013	317	6	1,863.24	132,259.20	5.50	7.98	9572
232,000,000	4.60	---	0.025	---	22/07/2013	12/12/2001	---	PPC (CR)	6.19	2.82	↑	6.02	19/12/2014	6.10	5.90	6.24	6.19	---	---	---	2013	439,911	1,166	2,696,326.76	1,436,080.00	5.23	12.75	7535
11,812,193	0.450	---	---	---	24/07/2009	15/11/2006	---	PROFILE SA (CR)	0.452	0.44	↑	0.450	19/12/2014	0.450	0.436	0.455	0.455	---	---	8.70	2013	970	11	430.85	5,339.11	0.420	1.05	9533
27,345,120	0.470	---	---	---	18/07/2005	26/02/2014	---	QUALITY & RELIABILITY SA (CR)	0.486	5.65	↑	0.460	19/12/2014	0.459	0.448	0.490	0.486	---	---	64.63	2013	45,210	66	21,118.15	13,289.73	0.378	0.740	9533
11,962,443	0.500	---	---	---	05/09/2008	12/12/2013	---	QUEST HOLDINGS (CR)	5.07	---	-	5.07	19/12/2014	4.67	4.67	5.07	5.07	---	---	---	2013	1,525	12	7,700.25	60,649.59	4.20	6.30	9533
57,434,884	1.31	---	---	---	05/06/2008	12/06/2009	---	REDS S.A. (CR)	0.480	1.48	↑	0.473	19/12/2014	0.478	0.478	0.480	0.480	---	---	---	2013	1,100	4	527.76	27,568.74	0.431	0.827	8633
22,280,000	0.300	---	---	---	11/04/2011	23/02/2007	---	REVOIL (CR)	0.230	2.68	↑	0.224	19/12/2014	0.235	0.230	0.244	0.230	---	---	---	2013	5,460	6	1,263.28	5,124.40	0.220	0.720	5379
7,500,000	0.480	---	0.0024	0.0863	13/08/2014	10/02/2014	---	S.KANAKIS SA (CR)	1.97	6.49	↑	1.85	19/12/2014	1.97	1.97	1.97	1.97	---	---	10.14	2013	20	1	39.40	14,775.00	1.58	2.15	3577
52,067,296	0.300	---	---	---	23/12/2003	24/01/2007	---	SELECTED TEXT. IND. ASSOC (CR)	0.215	2.87	↑	0.209	19/12/2014	0.209	0.209	0.215	0.215	---	---	---	2014	8,005	7	1,682.50	11,194.47	0.140	0.355	3763
96,243,908	0.410	---	---	---	26/06/2008	17/07/2000	---	SIDENOR (CR)	0.516	3.82	↑	0.497	19/12/2014	0.510	0.481	0.528	0.516	---	---	---	2013	27,518	58	13,744.12	49,661.86	0.460	2.26	1757
6,456,530	1.60	---	---	---	29/06/2001	02/08/2010	---	SPACE HELLAS SA (CR)	1.72	-9.95	↓	1.91	19/12/2014	1.91	1.72	1.91	1.72	---	---	---	2013	7,520	6	14,142.70	11,105.23	1.13	2.06	9578
28,438,268	0.300	---	---	---	21/08/2006	24/11/1999	---	SPIROY AGRICULTURE SA (CR)	0.289	-3.34	↓	0.299	19/12/2014	0.285	0.285	0.289	0.289	---	---	---	2013	700	2	199.90	8,218.66	0.206	0.388	1357
33,125,000	5.00	---	---	---	03/07/2006	18/08/2010	---	TECHNICAL OLYMPIC SA (CR)	0.980	-1.90	↓	0.999	19/12/2014	0.970	0.950	0.980	0.980	---	---	---	2013	5,215	26	4,985.82	32,462.50	0.930	2.29	3728
109,314,400	0.300 (0.0589)	---	---	---	28/05/2012	09/07/2014	---	TERNA ENERGY (CR)	2.28	-0.87	↓	2.30	19/12/2014	2.30	2.22	2.31	2.28	---	---	-(6)-	2013	117,313	244	266,002.37	249,236.83	1.96	4.86	7537
36,300,000	1.12	0.188	0.162	0.285	14/08/2014	12/12/2007	---	THESSALONIKA WATER & SEWERAGE	2.70	-0.74	↓	2.72	19/12/2014	2.80	2.70	2.84	2.70	---	---	7.47	2013	33,950	67	93,013.83	98,010.00	2.67	5.66	7577
45,094,620	0.500	---	0.0467	0.05	28/04/2014	01/11/1999	---	THRACE PLASTICS SA (CR)	0.920	-2.13	↓	0.940	19/12/2014	0.920	0.920	0.930	0.920	---	---	---	2013	7,845	14	7,234.74	41,487.05	0.851	1.39	1357
77,063,568	4.00	---	---	---	25/06/2014	25/06/2004	---	TITAN CEMENT (CR)	20.03	2.35	↑	19.57	19/12/2014	20.10	19.60	20.60	20.03	---	---	---	2013	44,296	365	884,851.27	1,611,249.77	16.10	26.80	2353
7,568,960	4.00	---	---	---	25/06/2014	25/06/2004	---	TITAN CEMENT CO. (PR)	8.94	-0.67	↓	9.00	19/12/2014	8.80	8.80	8.94	8.94	---	---	---	2013	450	4	4,015.50	1,611,249.77	8.30	10.50	2353
10,080,000	3.00	0.4	1.5	0.6	13/08/2014	27/08/2001	---	TPA SA (CR)	20.49	-0.73	↓	20.64	19/12/2014	20.79	20.00	20.95	20.49	---	---	11.36	2013	1,660	23	33,472.00	206,539.20	18.90	31.40	2777
54,888,240	1.13	0.1	0.1	0.09	25/04/2014	22/03/2006	---	TRASTOR REAL EST. INV. CO.(CR)	0.995	-0.40	↓	0.999	19/12/2014	1.00	0.990	1.01	0.995	---	---	---	2013	17,023	18	16,995.02	54,613.80	0.874	1.33	8671
15,627,315	0.300	---	---	---	16/11/1992	03/12/2012	---	UNIBIOS (CR)	0.170	---	-	0.170	19/12/2014	0.170	0.170	0.170	0.170	---	---	---	2013	20	1	3.40	2,656.64	0.130	0.404	2353
18,810,000	0.400	---	---	---	08/07/2010	14/11/2007	---	VARVERIS - MODA BAGNO SA (CR)	0.130	4.00	↑	0.125	19/12/2014	0.116	0.113	0.130	0.130	---	---	---	2013	28,685	41	3,274.66	2,445.30	0.113	0.279	2353
219,611,308	---	---	---	---	14/02/2014	---	---	VIOHALCO SA/ NV (CB)	1.89	-2.07	↓	1.93	19/12/2014	1.90	1.84	1.94	1.89	---	---	---	---	79,961	253	150,691.38	415,065.37	1.78	5.19	2727
4,968,600	2.88	---	---	---	01/07/1998	14/12/1998	---	VIS SA (CR)	0.758	---	-	0.758	19/12/2014	---	---	---	---	---	---	---	2013	---	---	---	3,766.20	0.517	0.980	2723
6,325,000	0.600	---	---	---	02/05/2014	17/02/2014	---	VOGIATZOGLOU SYSTEMS SA (CR)	0.860	---	-	0.860	19/12/2014	---	---	---	---	---	---	---	2013	---	---	---	5,439.50	0.696	2.27	2797

Number of Outstanding Securities	Nominal Value	Dividends [1]			Date of Last Coupon		Note	Shares	Closing price	% change	Previous closing price/date	Open price	Price min	Price max	Last price	Avg price	Last Bid [7]	Last Ask [7]	P/E after	Year	Volume	Trades	Transactions Value	Company Mkt Value (thou. €)	Year low	Year high	Sector[ 4]
2011	2012	2013	Dividend [2]	Right																							

Exchange Traded Funds (ETFs)

5,848,618	---	---	---	24/01/2008	---	ALPHA ETF FTSE Athex Large Cap	2.78	-0.82 ↓	2.80	19/12/2014	2.78	2.78	2.78	2.78	---	---	---	---	---	---	4,385	1	12,177.15	---	2.60	4.55	12003
294,878	---	---	---	29/06/2009	---	NBGAM ETF	9.63	0.21 ↑	9.61	19/12/2014	9.63	9.63	9.63	9.63	---	---	---	---	---	---	2	1	19.26	---	9.06	15.10	12003
388,550	---	---	---	03/11/2010	---	NBGAM ETF GREECE & TURKEY 30	8.12	1.63 ↑	7.99	19/12/2014	8.12	8.12	8.12	8.12	---	---	---	---	---	---	2	1	16.24	---	6.70	9.00	12003

Low Dispersion

14,000,000	4.15	---	---	---	23/04/2010	29/06/1999	4815	ALPHA REAL ESTATE SA(CR)	4.64	-3.33 ↓	4.80	19/12/2014	4.34	4.34	4.79	4.79	---	---	---	19.40	2013	150	4	695.50	64,960.00	4.34	7.10	8637
63,900,000	3.00	---	---	---	23/06/2003	04/11/2008	4816	ASTIR PALACE SA (CR)	3.51	-1.13 ↓	3.55	19/12/2014	3.41	3.41	3.58	3.50	---	---	---	---	2013	348	7	1,221.68	224,289.00	3.26	4.08	5753
90,902,904	0.800	---	---	---	09/08/2004	08/03/2006	4814	ATHENA SA (CR)	0.328	---	0.328	19/12/2014	0.328	0.328	0.328	0.328	---	---	---	---	2013	1,000	1	328.00	29,816.15	0.133	0.328	2357
191,660,320	0.300	---	---	---	20/07/2009	29/12/2010	4817	ATTICA HOLDINGS (CR)	0.540	---	0.540	19/12/2014	---	---	---	---	---	---	---	---	2013	---	---	---	103,496.57	0.445	0.799	5759
71,082,707	1.70	---	---	---	01/07/2010	21/11/2012	4820	HERACLES GEN.CEMENT CO. (CR)	1.20	---	1.20	19/12/2014	---	---	---	---	---	---	---	---	2013	---	---	---	85,299.25	1.20	1.55	2353
13,404,440	8.63	---	---	---	02/04/2001	06/03/1992	4822	IONIAN HOTELS SA (CR)	7.25	---	7.25	19/12/2014	---	---	---	---	---	---	---	-(6)-	2013	---	---	---	97,182.19	6.00	9.90	5753
2,760,000	7.70	7.6	8.52	8.5	30/06/2014	16/07/1990	4823	KARELIA TOBACCO CO. SA (CB)	205.00	---	205.00	19/12/2014	205.00	205.00	205.00	205.00	---	---	---	14.25	2013	7	2	1,435.00	565,800.00	180.00	244.90	3785
30,600,000	0.300	---	---	---	12/06/2008	04/03/2014	5059	KATHIMERINI SA (CR)	0.447	2.76 ↑	0.435	19/12/2014	0.440	0.440	0.449	0.448	---	---	---	---	2013	20,386	8	9,112.68	13,678.20	0.311	4.49	5557
14,074,000	3.00	0.25	---	---	02/03/2012	23/07/2009	5075	MIG REAL ESTATE (CR)	3.10	---	3.10	19/12/2014	3.10	3.10	3.10	3.10	---	---	---	-(6)-	2013	100	1	310.00	43,629.40	1.50	3.20	8671
106,980,050	2.25	---	---	---	25/07/2008	24/02/2014	5046	MINOAN LINES SA (CR)	1.50	---	1.50	19/12/2014	---	---	---	---	---	---	---	---	2013	---	---	---	160,470.08	1.42	2.00	5759
17,240,776	0.370	---	---	---	14/07/2005	30/09/2003	4827	PERSEUS SA (CR)	0.700	---	0.700	19/12/2014	---	---	---	---	---	---	---	6.26	2013	---	---	---	12,068.54	0.152	0.700	3577

Surveillance

33,301,715	0.320	---	---	27/06/2003	08/07/2009	4978	AEGEK (CR)	0.049	-2.00 ↓	0.050	19/12/2014	0.041	0.041	0.050	0.050	---	---	---	---	2013	543	3	26.34	1,631.78	0.038	0.136	2357
14,870,100	0.300	---	---	15/05/2008	26/09/2011	4844	ALPHA GRISSIN S.A. (CR)	0.048	---	0.048	19/12/2014	---	---	---	---	---	---	---	---	2013	---	---	---	713.76	0.048	0.160	9533
215,246,452	0.300	---	---	25/06/2001	24/09/2001	4446	ALTEC SA (CR)	0.024	4.35 ↑	0.023	19/12/2014	0.024	0.024	0.024	0.024	---	---	---	---	2013	18,194	5	436.66	5,165.91	0.017	0.040	9533
2,969,713	0.300	---	---	02/07/2008	28/02/2011	4958	ANEK LINES SA (PR, issue '96)	0.131	---	0.131	19/12/2014	---	---	---	---	---	---	---	---	2013	---	---	---	16,504.73	0.120	0.280	5759
312,163	0.300	---	---	02/07/2008	28/02/2011	4959	ANEK LINES SA (PR, issue '90)	1.15	---	1.15	19/12/2014	---	---	---	---	---	---	---	---	2013	---	---	---	16,504.73	1.15	1.43	5759
185,373,016	0.300	---	---	02/07/2008	28/02/2011	4957	ANEK LINES SA (CR)	0.085	-5.56 ↓	0.090	19/12/2014	0.085	0.085	0.085	0.085	---	---	---	---	2013	9,639	4	819.32	16,504.73	0.070	0.141	5759
81,644,555	0.300	---	---	01/07/2008	02/09/2002	5056	ATTI - KAT SA (CR)	0.024	---	0.024	19/12/2014	---	---	---	---	---	---	---	---	2013	---	---	---	1,959.47	0.009	0.036	2357
20,255,805	0.300	---	---	22/08/2006	02/08/2010	4881	AXON HOLDING SA (CR)	0.024	---	0.024	19/12/2014	---	---	---	---	---	---	---	---	2013	---	---	---	486.14	0.020	0.139	4533
17,579,754	4.16	---	---	18/08/2006	02/08/2010	4885	BIOTER SA (CR)	0.188	---	0.188	19/12/2014	---	---	---	---	---	---	---	---	2013	---	---	---	3,304.99	0.104	0.216	2357
1,130,180	0.440	---	---	20/06/2003	02/07/2014	---	COMPUCON SA (CR)	0.013	---	0.013	19/12/2014	---	---	---	---	---	---	---	---	2013	---	---	---	14.69	0.013	0.814	9537
14,173,104	0.300	---	---	11/08/2010	28/11/2013	5055	DIONIC (CR)	0.083	---	0.083	19/12/2014	---	---	---	---	---	---	---	---	2013	---	---	---	1,176.37	0.041	0.307	2797
15,878,748	0.480	---	---	10/07/2006	22/03/2004	4960	DOMIKI KRITIS SA (CR)	0.330	---	0.330	19/12/2014	---	---	---	---	---	---	---	---	2013	---	---	---	5,239.99	0.250	0.485	2357
3,961,300	1.28	---	---	29/06/2004	03/08/2000	5080	DUROS SA (CR)	0.585	---	0.585	19/12/2014	---	---	---	---	---	---	---	---	2013	---	---	---	2,317.36	0.185	0.759	3763
7,085,888	1.59	---	---	02/07/1996	06/09/2010	4690	ELVIMEK (CR)	3.97	---	3.97	19/12/2014	---	---	---	---	---	---	---	---	2013	---	---	---	28,130.98	1.54	3.97	8633
6,000,000	0.600	---	---	13/06/2008	08/04/2004	4886	EUROBROKERS S.A. (CR)	0.020	---	0.020	19/12/2014	---	---	---	---	---	---	---	---	2013	---	---	---	120.00	0.020	0.052	8534
21,820,410	0.800	---	---	22/05/2008	02/08/2011	4882	EUROMEDICA SA (CR)	0.400	---	0.400	19/12/2014	---	---	---	---	---	---	---	---	2013	---	---	---	8,728.16	0.240	0.403	4533
110,097,185	0.300	---	---	04/12/2013	---	5033	Forthnet (CR)	0.884	-7.92 ↓	0.960	19/12/2014	0.860	0.860	0.900	0.900	---	---	---	---	2013	2,307	5	2,040.06	97,325.91	0.780	1.98	9535
1,270,000	0.300	---	---	06/07/2007	06/02/2013	5007	GIRAKIAN PROFIL SA (CB)	0.308	---	0.308	19/12/2014	---	---	---	---	---	---	---	---	2013	---	---	---	391.16	0.308	2.63	1757
179,707,771	0.300	---	---	27/06/2002	01/11/2011	4847	HELLAS ONLINE SA (CR)	0.536	-2.37 ↓	0.549	19/12/2014	0.536	0.536	0.536	0.536	---	---	---	69.68	2013	957	2	512.95	96,323.37	0.400	0.670	9537
30,390,000	0.310	---	---	18/08/2008	29/12/2006	4447	HELLENIC FISHFARMING SA (CR)	0.092	---	0.092	19/12/2014	---	---	---	---	---	---	---	---	2013	---	---	---	2,795.88	0.045	0.119	3573

Number of Outstanding Securities	Nominal Value	Dividends [1]			Date of Last Coupon		Note	Shares	Closing price	% change	Previous closing price/date	Open price	Price min	Price max	Last price	Avg price	Last Bid [7]	Last Ask [7]	P/E after	Year	Volume	Trades	Transactions Value	Company Mkt Value (thou. €)	Year low	Year high	Sector[ 4]
		2011	2012	2013	Dividend [2]	Right																					
Surveillance																											
1,540,000	0.600	---	---	---	08/08/1994	19/09/2000	5058	J.BOUTARIS & SON HOLD. (PB)	0.006	---	0.006	19/12/2014	---	---	---	---	---	---	---	2013	---	---	---	840.17	0.005	0.012	3535
25,179,640	0.600	---	---	---	08/08/1994	19/09/2000	5057	J.BOUTARIS & SON HOLD. SA (CB)	0.033	---	0.033	19/12/2014	---	---	---	---	---	---	---	2013	---	---	---	840.17	0.030	0.086	3535
7,125,216	0.650	---	---	---	01/07/2005	14/12/1999	4955	KRE.KA SA (CR)	0.188	---	0.188	19/12/2014	---	---	---	---	---	---	---	2013	---	---	---	1,339.54	0.118	0.278	3573
51,081,030	1.00	---	---	---	20/08/2007	03/09/2007	4912	LAVIPHARM SA (CR)	0.120	---	0.120	19/12/2014	0.120	0.120	0.120	0.120	---	---	---	2013	3,600	1	432.00	6,129.72	0.090	0.164	4577
4,178,856	1.58	---	---	---	21/07/2011	28/07/2004	4983	MEDICON S.A (CR)	0.397	---	0.397	19/12/2014	---	---	---	---	---	---	16.37	2013	---	---	---	1,659.01	0.251	0.952	4535
255,459,600	0.300	---	---	---	26/06/2000	03/12/2010	4833	NEL SA (CR)	0.024	---	0.024	19/12/2014	---	---	---	---	---	---	---	2013	---	---	---	6,131.03	0.016	0.090	5759
20,231,328	0.600	---	---	---	15/07/2008	25/06/2004	4879	NIKAS SA (CR)	0.120	---	0.120	19/12/2014	---	---	---	---	---	---	---	2013	---	---	---	2,427.76	0.120	0.200	3577
63,697,153	1.34	---	---	---	08/07/2008	10/11/2008	5081	NIREFS SA (CR)	0.081	-2.41 ↓	0.083	19/12/2014	0.083	0.080	0.083	0.081	---	---	---	2013	78,311	26	6,334.23	5,159.47	0.080	0.362	3573
14,967,940	0.500	---	---	---	21/05/2008	04/01/2008	4956	PASAL DEVELOPMENT S.A. (CR)	0.105	19.32 ↑	0.088	19/12/2014	0.105	0.105	0.105	0.105	---	---	---	2013	11,400	3	1,197.00	1,571.63	0.069	0.239	8633
18,750,000	0.300	---	---	---	02/07/2001	31/12/2012	4985	PEGASUS PUBLISHING S.A. (CR)	0.057	18.75 ↑	0.048	19/12/2014	0.057	0.057	0.057	0.057	---	---	---	2013	8	2	0.46	1,068.75	0.015	0.300	5557
24,319,250	0.300	---	---	---	09/07/2002	04/07/2007	5054	PROODEFTIKH SA (CR)	0.083	---	0.083	19/12/2014	---	---	---	---	---	---	---	2013	---	---	---	2,018.50	0.054	0.188	2357
65,326,268	0.530	---	---	---	04/07/2007	19/07/2006	4750	SATO SA (CR)	0.100	---	0.100	19/12/2014	0.100	0.100	0.100	0.100	---	---	---	2013	1,000	2	100.00	6,532.63	0.068	0.250	3726
36,235,184	1.00	---	---	---	01/07/2008	30/07/2012	4961	SELONDA AQUACULTURE SA (CR)	0.062	6.90 ↑	0.058	19/12/2014	0.051	0.051	0.069	0.069	---	---	---	2013	1,660	5	103.13	2,246.58	0.051	0.152	3573
7,914,480	2.50	---	---	---	23/06/2008	29/06/2011	4888	SFAKIANAKIS SA (CR)	2.51	9.13 ↑	2.30	19/12/2014	2.70	2.50	2.70	2.50	---	---	---	2013	415	6	1,041.50	19,865.34	0.488	2.70	5379
10,000,000	1.35	---	---	---	24/06/2008	10/05/2005	4887	SIDMA SA (CR)	0.260	---	0.260	19/12/2014	---	---	---	---	---	---	---	2013	---	---	---	2,600.00	0.163	0.520	1757
29,060,950	0.340	---	---	---	20/08/2007	24/10/2001	4884	SPIDER METAL INDUSTRY SA (CR)	0.009	---	0.009	19/12/2014	---	---	---	---	---	---	---	2013	---	---	---	261.55	0.009	0.070	2757
100,793,000	0.300	---	---	---	16/07/2009	05/08/2013	5008	TELETIPOS SA (CR)	0.181	---	0.181	19/12/2014	---	---	---	---	---	---	---	2013	---	---	---	18,243.53	0.111	0.345	5553
3,229,566	0.320	---	---	---	22/06/2005	23/09/1999	4629	VARANGIS AVEPE S.A. (CR)	0.520	---	0.520	19/12/2014	---	---	---	---	---	---	---	2013	---	---	---	1,679.37	0.520	1.00	3726
16,383,428	0.300	---	---	---	25/06/2002	21/06/2013	4997	VARVARESSOS SA (CB)	0.161	---	0.161	19/12/2014	---	---	---	---	---	---	0.22	2013	---	---	---	2,637.73	0.062	0.293	3763
13,191,620	0.620	---	---	---	04/08/2010	09/09/2002	4977	YALCO - CONSTANTINOU SA (CB)	0.120	---	0.120	19/12/2014	---	---	---	---	---	---	---	2013	---	---	---	1,582.99	0.052	0.241	3722

Under Deletion																											
9,567,289	0.300	---	---	---	01/07/2004	19/11/2007	5062	MARAC ELECTRONICS (CR)	0.298	---	0.298	19/12/2014	---	---	---	---	---	---	---	2013	---	---	---	2,851.05	0.280	0.356	9578
40,946,303	0.360	---	---	---	18/07/2005	27/11/2007	5053	PC SYSTEMS SA (CR)	0.042	20.00 ↑	0.035	19/12/2014	0.042	0.042	0.042	0.042	---	---	---	2013	500	2	21.00	1,719.74	0.033	0.169	9533
766,000	1.50	---	---	---	01/07/2004	11/12/2012	4937	TRIA ALFA SA (CR)	2.29	---	2.29	19/12/2014	---	---	---	---	---	---	---	2013	---	---	---	2,084.89	1.72	3.33	3763
245,000	1.50	---	---	---	19/07/2010	11/12/2012	4938	TRIA ALFA SA (PR)	1.35	---	1.35	19/12/2014	---	---	---	---	---	---	---	2013	---	---	---	2,084.89	0.969	2.57	3763

Suspension Status																											
5,000,000	0.400	---	---	---	03/06/2009	01/09/2014	5079	ALCO HELLAS SA (CR)	0.307	---	0.307	19/12/2014	---	---	---	---	---	---	---	---	---	---	---	1,535.00	0.303	2.09	1753
5,025,000	0.300	---	---	---	05/07/2005	14/03/2002	5023	ALSINCO S.A (CR)	0.043	---	0.043	19/12/2014	---	---	---	---	---	---	---	---	---	---	---	216.08	0.043	0.043	3763
1,750,955,549	0.600	---	---	---	19/05/2008	08/12/2011	4911	ATE (CR)	0.155	---	0.155	19/12/2014	---	---	---	---	---	---	---	---	---	---	---	271,398.11	0.155	0.155	8355
21,382,067	0.300	---	---	---	02/10/2006	15/02/2006	4628	ATERMON (CR)	0.120	---	0.120	19/12/2014	---	---	---	---	---	---	---	---	---	---	---	2,565.85	0.120	0.120	5555
105,423,498	0.510	---	---	---	01/07/2004	28/12/2005	4920	AVENIR S.A. (CR)	0.046	---	0.046	19/12/2014	---	---	---	---	---	---	---	---	---	---	---	4,849.48	0.046	0.046	5752
33,930,000	0.300	---	---	---	03/07/2006	30/05/2001	4865	BABIS VOVOS SA (CR)	0.304	---	0.304	19/12/2014	---	---	---	---	---	---	---	---	---	---	---	10,314.72	0.304	0.304	8633
20,121,710	1.21	---	---	---	27/07/1992	12/03/2003	5002	BALKAN R.E. (CR)	0.190	---	0.190	19/12/2014	---	---	---	---	---	---	---	---	---	---	---	3,823.12	0.190	0.190	8633
21,920,570	0.300	---	---	---	03/07/2007	13/12/1999	4702	CARDASSILARIS SA (CR)	0.140	---	0.140	19/12/2014	---	---	---	---	---	---	---	---	---	---	---	3,068.88	0.140	0.140	3577
54,547,634	0.500	---	---	---	25/04/2005	21/01/2009	4860	CH.TEGOPOULOS PUBL. SA (CR)	0.038	---	0.038	19/12/2014	---	---	---	---	---	---	---	---	---	---	---	2,072.81	0.038	0.038	5557
30,159,583	0.470	---	---	---	26/06/2008	29/12/2010	5047	DIAS A/C (CR)	0.050	---	0.050	19/12/2014	---	---	---	---	---	---	---	---	---	---	---	1,507.98	0.040	0.092	3573

## Daily Official List

Year: 135 Trading Day No: 244

## Section 2: Analytic Figures of Shares Transactions

Monday, 22 December, 2014

Number of Outstanding Securities	Nominal Value	Dividends [1]			Date of Last Coupon		Note	Shares	Closing price	% change	Previous closing price/date	Open price	Price min	Price max	Last price	Avg price	Last Bid [7]	Last Ask [7]	P/E after	Year	Volume	Trades	Transactions Value	Company Mkt Value (thou. €)	Year low	Year high	Sector[ 4]	
		2011	2012	2013	Dividend [2]	Right																						
Suspension Status																												
7,847,611	1.20	---	---	---	01/08/2007	28/09/2011	4939	EDRASIS - C. PSALLIDAS SA (CR)	0.150	---	0.150	19/12/2014	---	---	---	---	---	---	---	---	---	---	---	---	1,177.14	0.150	0.150	2357
5,750,000	0.300	---	---	---	12/12/2008	12/12/2011	4929	ELECTRONIKI ATHINON SA (CR)	0.480	---	0.480	19/12/2014	---	---	---	---	---	---	---	---	---	---	---	---	2,760.00	0.480	0.480	5375
24,605,397	0.400	---	---	---	29/06/1995	27/05/2002	4651	EMPORIKOS DESMOS SA (CR)	0.080	---	0.080	19/12/2014	---	---	---	---	---	---	---	---	---	---	---	---	2,134.04	0.080	0.080	3722
1,182,903	0.400	---	---	---	01/07/1996	27/05/2002	4652	EMPORIKOS DESMOS SA (PR)	0.140	---	0.140	19/12/2014	---	---	---	---	---	---	---	---	---	---	---	---	2,134.04	0.140	0.140	3722
7,326,648	1.00	---	---	---	26/07/2006	24/07/2001	4921	FINTEXPORT SA (CR)	0.328	---	0.328	19/12/2014	---	---	---	---	---	---	---	---	---	---	---	---	2,403.14	0.328	0.328	3763
13,692,227	1.47	---	---	---	07/07/2006	08/10/1999	5049	HELLENIC FABRICS SA (CR)	0.117	---	0.117	19/12/2014	---	---	---	---	---	---	---	---	---	---	---	---	1,601.99	0.089	0.153	3763
24,619,524	0.500	---	---	---	10/10/1986	30/12/2002	4914	KERAMIA-ALLATINI (CR)	0.088	---	0.088	19/12/2014	---	---	---	---	---	---	---	---	---	---	---	---	2,166.52	0.088	0.088	8633
7,840,373	1.20	---	---	---	18/07/2002	05/03/2003	4765	KLONATEX SA (PR)	0.080	---	0.080	19/12/2014	---	---	---	---	---	---	---	---	---	---	---	---	1,453.75	0.080	0.080	3763
20,663,047	1.20	---	---	---	21/08/2000	05/03/2003	4764	KLONATEX SA (CR)	0.040	---	0.040	19/12/2014	---	---	---	---	---	---	---	---	---	---	---	---	1,453.75	0.040	0.040	3763
17,544,600	0.600	---	---	---	03/07/2000	01/08/2000	4868	KOYMBAS SYNERGY GROUP (CR)	0.132	---	0.132	19/12/2014	---	---	---	---	---	---	---	---	---	---	---	---	2,315.89	0.132	0.132	8775
15,015,000	1.60	---	---	---	01/07/2002	02/02/2000	4603	MAXIM C.M. PERTSINIDIS SA (CB)	0.100	---	0.100	19/12/2014	---	---	---	---	---	---	---	---	---	---	---	---	1,501.50	0.100	0.100	3763
66,937,526	0.700	---	---	---	13/08/2010	21/05/2003	5003	MICHANIKI SA (CR)	0.100	---	0.100	19/12/2014	---	---	---	---	---	---	---	---	---	---	---	---	9,186.78	0.100	0.100	2357
25,968,987	0.700	---	---	---	13/08/2010	21/05/2003	5004	MICHANIKI SA (PR)	0.096	---	0.096	19/12/2014	---	---	---	---	---	---	---	---	---	---	---	---	9,186.78	0.096	0.096	2357
13,555,100	1.00	---	---	---		08/07/2005	4576	MICROLAND COMPUTERS SA (CR)	0.640	---	0.640	19/12/2014	---	---	---	---	---	---	---	---	---	---	---	---	8,675.26	0.640	0.640	5379
23,463,874	0.800	---	---	---	23/05/2003	21/12/1999	4918	NEORION SA (CR)	0.125	---	0.125	19/12/2014	---	---	---	---	---	---	---	---	---	---	---	---	2,932.98	0.125	0.125	2753
42,501,273	0.300	---	---	---	26/06/2007	10/08/2009	4993	NUTRIART (CR)	0.049	---	0.049	19/12/2014	---	---	---	---	---	---	---	---	---	---	---	---	2,082.56	0.049	0.049	3577
20,210,127	1.53	---	---	---	27/06/1997	20/03/2000	5061	PARNASSOS ENTERP. (CR)	0.070	---	0.070	19/12/2014	---	---	---	---	---	---	---	---	---	---	---	---	1,414.71	0.065	0.172	8775
25,583,146	0.300	---	---	---	25/06/2001	03/12/2008	4723	PETZETAKIS SA (CR)	0.260	---	0.260	19/12/2014	---	---	---	---	---	---	---	---	---	---	---	---	6,651.62	0.260	0.260	1357
9,550,386	0.500	---	---	---	01/07/1997	12/06/2008	4626	PRAXITELIO SA (CR)	0.390	---	0.390	19/12/2014	---	---	---	---	---	---	---	---	---	---	---	---	4,430.09	0.390	0.390	4533
1,306,368	0.500	---	---	---	01/07/1997	12/06/2008	4627	PRAXITELIO SA (PR)	0.540	---	0.540	19/12/2014	---	---	---	---	---	---	---	---	---	---	---	---	4,430.09	0.540	0.540	4533
62,683,822	0.300	---	---	---	27/05/2008	09/01/2006	4830	PROTON BANK S.A. (CR)	0.180	---	0.180	19/12/2014	---	---	---	---	---	---	---	---	---	---	---	---	11,283.09	0.180	0.180	8355
51,334,286	0.320	---	---	---	03/07/2000	18/12/2007	4548	SAOS (CR)	0.780	---	0.780	19/12/2014	---	---	---	---	---	---	---	---	---	---	---	---	40,040.74	0.780	0.780	2773
26,408,040	0.300	---	---	---	01/07/1997	26/05/1999	4464	SHEET STEEL SA (CR)	0.120	---	0.120	19/12/2014	---	---	---	---	---	---	---	---	---	---	---	---	3,168.96	0.120	0.120	1757
60,221,300	0.400	---	---	---	01/07/2002	01/11/2010	5022	SHELMAN SA (CR)	0.080	---	0.080	19/12/2014	---	---	---	---	---	---	---	---	---	---	---	---	4,817.70	0.080	0.080	2353
26,262,660	0.900	---	---	---	01/07/2008	24/02/2011	4954	SPRIDER STORES (CR)	0.031	---	0.031	19/12/2014	---	---	---	---	---	---	---	---	---	---	---	---	814.14	0.031	0.031	5371
144,688,060	0.600	---	---	---	21/04/2008	10/03/2010	4982	T BANK (CR)	0.048	---	0.048	19/12/2014	---	---	---	---	---	---	---	---	---	---	---	---	6,945.03	0.048	0.048	8355
6,523,780	0.530	---	---	---	01/07/2002	06/03/2001	4971	TECHNICAL PUBLICATIONS SA (CR)	0.006	---	0.006	19/12/2014	---	---	---	---	---	---	---	---	---	---	---	---	39.14	0.006	0.006	5557
13,920,000	0.320	---	---	---	19/11/2001	01/08/2000	4726	TEXAPRET SA (CR)	0.080	---	0.080	19/12/2014	---	---	---	---	---	---	---	---	---	---	---	---	1,113.60	0.080	0.080	3763
510,840	1.00	---	---	---	15/07/2008	21/11/2013	5036	TROPEA HOLDING (CR)	2.00	---	2.00	19/12/2014	---	---	---	---	---	---	---	---	---	---	---	---	1,021.68	0.020	2.00	3722
284,465,964	3.70	---	---	---	20/06/2008	15/06/2009	4913	TT HELLENIC POSTBANK (CR)	0.168	---	0.168	19/12/2014	---	---	---	---	---	---	---	---	---	---	---	---	47,790.28	0.168	0.168	8355
89,616,200	0.300	---	---	---	21/08/2000	28/06/2007	4616	UNITED TEXTILES (CR)	0.050	---	0.050	19/12/2014	---	---	---	---	---	---	---	---	---	---	---	---	4,480.81	0.050	0.050	3763
71,683,906	0.400	---	---	---	15/06/2005	05/02/2008	4953	XATZIOANNOU (CR)	0.026	---	0.026	19/12/2014	---	---	---	---	---	---	---	---	---	---	---	---	1,863.78	0.026	0.026	3763

## Shares' Notes

Code	Note text
( )	- Adjusted dividends.
*	- Last adjusted closing price.
[1]	- Net dividends.
[2]	- The "Date of Last Coupon" for New listings refers to the date company's stocks started to trade in Athex
[3]	- The Company Market Value is referred to the number of outstanding shares
[4]	- Sectors codification can be found in Appendix A
[5]	- The Market Value refers to the total number of shares listed (including their several classes) in the exchange by the company.
[6]	- P/E greater than 100
[7]	- Last view of the Order Book before the end of the trading session
4446	- Transfer to the "Under Supervision" Category as of 20/10/2008.
4447	- Transfer to the "Under Supervision" Category as of 21/10/2008.
4464	- Suspension of trading as of 1/12/2008.
4548	- Suspension of trading as of 1/4/2009.
4576	- Suspension of trading as of 14/7/2009.
4603	- Suspension of trading as of 1/12/2009.
4616	- Suspension of trading as of 25/2/2010.
4626	- Suspension of trading as of 1/4/2010.
4627	- Suspension of trading as of 1/4/2010.
4628	- Suspension of trading as of 1/4/2010.
4629	- Transfer to the Under Supervision Category as of 12/4/2010.
4651	- Suspension of trading as of 1/6/2010.
4652	- Suspension of trading as of 1/6/2010.
4690	- Transfer to Surveillance category as of 4/4/2006.
4702	- Suspension of trading as of 1/12/2010.
4723	- Suspension of trading as of 31/1/2011.
4726	- Suspension of trading as of 1/3/2011.
4750	- Transfer to the "Under Surveillance Category" from 8/4/2011.
4764	- Suspension of trading as of 20/5/2011.
4765	- Suspension of trading as of 20/5/2011.
4795	- The final gross (pre-tax) dividend is € 0.30 per share and subject to withholding tax on the full dividend amount, i.e. 0,45 per share, for those shareholders liable to withholding tax, in accordance with the applicable tax law provisions.
4814	- Transfer to the Low Dispersion Category as of 30/5/2011.
4815	- Transfer to the Low Dispersion Category as of 30/5/2011.
4816	- Transfer to the Low Dispersion Category as of 30/5/2011.
4817	- Transfer to the Low Dispersion Category as of 30/5/2011.
4820	- Transfer to the Low Dispersion category as of 18/4/2008.
4822	- Transfer to the Low Dispersion category as of 30/5/2011.
4823	- Transfer to the Low Dispersion category as of 4/4/2006.
4827	- Transfer to the Low Dispersion category as of 5/5/2010.
4830	- Suspension of trading as of 10/10/2011.
4833	- Transfer to Surveillance category from 6/5/2010.
4844	- Transfer to the Surveillance category from 8/4/2011.
4847	- Transfer to the Surveillance Category as of 3/7/2009.
4857	- The 793,906,274 new (CR) shares, resulting from the recent share capital increase through a rights issue, are not yet admitted to trading on the ATHEX.
4860	- Suspension of trading as of 30/3/2012.
4865	- Suspension of trading as of 2/4/2012.
4868	- Suspension of trading as of 2/4/2012.
4879	- Transfer to the Surveillance Category as of 10/4/2012.
4881	- Transfer to the Surveillance Category as of 10/4/2012.
4882	- Transfer to the Surveillance Category as of 10/4/2012.
4884	- Transfer to the Surveillance Category as of 10/4/2012.
4885	- Transfer to the Surveillance Category as of 10/4/2012.

## Shares' Notes

Code	Note text
4886	- Transfer to the Surveillance Category as of 10/4/2012.
4887	- Transfer to the Surveillance Category as of 10/4/2012.
4888	- Transfer to the Surveillance Category as of 10/4/2012.
4911	- Lift of suspension from 30/7/2012.
4912	- Transfer to the Surveillance Category as of 31/7/2012.
4913	- Suspension of trading as of 30/8/2012.
4914	- Suspension of trading as of 31/8/2012.
4918	- Suspension of trading as of 31/8/2012.
4920	- Suspension of trading as of 31/8/2012.
4921	- Suspension of trading as of 31/8/2012.
4929	- Suspension of trading as of 1/10/2012.
4937	- Transfer to the UNDER DELETION category as of 30/11/2012.
4938	- Transfer to the UNDER DELETION category as of 30/11/2012.
4939	- Suspension of trading as of 30/11/2012.
4953	- Suspension of trading as of 2/4/2013.
4954	- Suspension of trading as of 2/4/2013.
4955	- Transfer to the Surveillance Category as from 5/4/2013.
4956	- Transfer to the Surveillance Category as from 5/4/2013.
4957	- Transfer to the Surveillance Category as from 5/4/2013.
4958	- Transfer to the Surveillance Category as from 5/4/2013.
4959	- Transfer to the Surveillance Category as from 5/4/2013.
4960	- Transfer to the Surveillance Category as from 5/4/2013.
4961	- Transfer to the Surveillance Category as from 5/4/2013.
4971	- Suspension of trading as of 3/6/2013.
4977	- Transfer to the "Under Surveillance Category" from 11/6/2013.
4978	- Transfer to the Under Supervision Category as of 11/6/2013.
4982	- Suspension of trading as of 1/12/2011.
4983	- Transfer to the Surveillance Category as of 5/4/2013.
4985	- Transfer to the "Under Surveillance Category" from 8/4/2011.
4993	- Suspension of trading as of 21/6/2013 (15:18).
4997	- Transfer to the Under Supervision Category as of 21/12/2009. - The 6,870,053 new (CB) shares, resulting from the recent share capital increase through a rights issue, are not yet admitted to trading on the ATHEX.
5002	- Suspension of trading as of 30/08/2013.
5003	- Suspension of trading as of 30/08/2013.
5004	- Suspension of trading as of 30/08/2013.
5007	- Transfer to the Surveillance category, as of 11/10/2013.
5008	- Transfer to the Surveillance Category from 8/4/2011.
5022	- Suspension of trading as of 2/12/2013.
5023	- Suspension of trading as of 2/12/2013.
5031	- The 612,300 new (CR) shares, resulting from the recent share capital increase through a rights issue, are not yet admitted to trading on the ATHEX.
5033	- Transfer to the Surveillance Category as of 25/11/2011. The 97,144,575 new (CR) shares, resulting from the recent share capital increase through a rights issue, are not yet admitted to trading on the ATHEX.
5036	- The company's share is under suspension of trading as of 2/4/2012. During suspension, the company proceeded and concluded a share reverse split, according to which - after the conclusion of the corporate action - the total number of the company's shares, as well as, the last closing price of 30/03/2012 were adjusted.
5046	- Transfer to the Low Dispersion category as of 8/4/2011.
5047	- Suspension of trading as of 27/3/2014.
5049	- Under suspension of trading as of 1/4/2014.
5053	- Transfer to the UNDER DELETION category as of 10/4/2014.
5054	- Transfer to the Surveillance Category as of 10/4/2014.
5055	- Transfer to the Surveillance Category as of 10/4/2014.
5056	- Transfer to the Under Supervision Category as of 14/4/2014.
5057	- Transfer to the Surveillance Category as of 29/12/2011.
5058	- Transfer to the Surveillance Category as of 29/12/2011.
5059	- Transfer to the Low Dispersion category as of 2/6/2014.

**Shares' Notes**

Code	Note text
5061	- Suspension of trading as of 2/6/2014.
5062	- Transfer to the UNDER DELETION category as of 4/6/2014.
5069	- Suspension of trading as of 1/10/2014.
5073	- The 90,000 new (CR) shares, resulting from the recent share capital increase through a rights issue, are not yet admitted to trading on the ATHEX.
5075	- Transfer to the "Low Dispersion" Category as of 31/10/2014.
5079	- Suspension of trading from 1/12/2014.
5080	- Suspension of trading as of 6/9/2011.
5081	- Transfer to the Surveillance category, as of 19/12/2014.

## Securities Blocks Details

Securities	Block Volume	Price	Block Trade Value	Time of approval	Note
OTE (CR)	35,100	9.24	324,324.00	10:31:18	20
NATIONAL BANK (CR)	10,000	1.53	15,300.00	11:59:22	18
ALPHA BANK (W)	403,900	1.01	405,919.50	12:37:34	20
BANK OF CYPRUS (CR)	50,000	0.230	11,500.00	12:41:48	18
NATIONAL BANK (CR)	2,232,977	1.56	3,472,279.24	12:49:53	20
PIRAEUS BANK (CR)	679,180	0.990	672,388.20	13:08:18	20
ALPHA BANK (CR)	768,498	0.474	364,268.05	13:59:28	20
PIRAEUS BANK (CR)	260,000	0.979	254,540.00	14:05:54	20
ALPHA BANK (CR)	1,000,000	0.474	474,000.00	15:20:56	20
EUROBANK ERGASIAS (CR)	3,000,000	0.205	615,000.00	16:09:15	20
PIRAEUS BANK (CR)	535,735	0.988	529,038.31	16:46:56	20
ALPHA BANK (W)	40,000	1.06	42,400.00	16:50:52	18
NATIONAL BANK (CR)	592,580	1.58	936,276.40	17:15:03	20

## Blocks Notes

2 - SPOT 1 or SPOT 2 Packet	11 - Total Assets > 500 bil
3 - Block with Short Selling	12 - Sell Offer through Athex
4 - Buy to Close Block	13 - Forced Sale of NMOE
6 - Simultaneous Constitution	14 - Restoration Packet
7 - Repurchase Agreement	15 - Market Maker Packet
8 - Dispersion's Achievement (Not Listed)	16 - Short Selling
9 - Dispersion's Achievement (Listed)	18 - SPOT 1 Packet
10 - Share Capital Majority of Greek State (> 50 bil)	20 - Method 6-1 Packet

Shares Rights Details

Occured date	Exercise from	Exercise until	Trading until	Rights	Price min	Price max	Closing price	Last Bid	Last Ask	Volume	Trades	Transactions Value
-----------------	------------------	-------------------	------------------	--------	--------------	--------------	------------------	----------	----------	--------	--------	-----------------------

No Rights Transactions.

**Shares Short Selling**

Securities	Transactions Value	Transactions Volume	% of Total Volume	Short Covering Trans. Value	Short Covering Volume	% of Total Volume
No Short Sales Transactions.						

**Short Selling Notes**

[1] - The Hellenic Capital Markets Commission (HCMC) has decided to prohibit the short selling only in relation to shares of credit institutions admitted to trading on the Athens Exchange and comprising the FTSE/ATHEX - CSE Banking Index, for a period of three(3) months and more specifically from February1, 2013 until April 30, 2013.

Shares Forced Sales

Securities	Transaction s Volume	Number of Trades	Transactions Value	Note
No Forced Transactions.				

Forced Sales Notes

- 1 - Normal Forced Sale.
- 2 - Forced Sales of Fixed Registered Shares.
- 3 - Forced Sales of Remaining Stock Fractions.

**Forced Sales Registered Shares**

Securities	Start Date	End Date	Initial Volume	Remaining Volume	Date	Avg price (day)	Avg price (period)	Number of Trades	Transactions Volume	Transactions Value
------------	------------	----------	-------------------	---------------------	------	--------------------	-----------------------	---------------------	------------------------	-----------------------

**No Fixed Registered Shares Forced Sales.**

**Forced Sales Notes**

According to Decision 1/380/04.05.2008 of the Hellenic Republic Capital Market Commission, the certificated registered shares that have not been deposited to the issuer for dematerialisation, will be auctioned in the Athens Exchange by the supervising issuer. Forced sales procedure is held according to Article 99A of the Athens Exchange Rulebook. The average price of the period is calculated by dividing the Total transactions value by the Total volume and includes all the transactions made until the current date.

## Exchange Traded Funds (ETFs) Characteristics

	Transactions Date (T)	Creation / Redemption	Units (T-1)	New Units (T-1)	Redemptio n Units (T-	Units (T) [1]	Fund Assets [2]	Net Unit Price	Dividen d per	Dividend Date
NBGAM ETF ΓΔ Χ.Α.	22/12/2014	25,000	294,878	---	---	294,878	2,823,591.00	9.5755	#####	27/10/2011
ALPHA ETF FTSE Athex Large Cap	22/12/2014	50,000	5,848,618	---	---	5,848,618	16,178,410.00	2.7662	0.05	01/07/2013
NBGAM ETF GREECE & TURKEY 30	22/12/2014	25,000	388,550	---	---	388,550	3,110,405.00	8.0052	---	27/10/2011

## ETFs Notes

[1] - Units (T) = Units (T-1) + New Units (T-1) - Redemption Units (T-1)

[2] - The Creation / Redemption Units of T-1 are included.

Corporate Bonds

Num Listed Bonds	Nominal price	Issue price	Today's Rate	Exp. Date	Duration (years)	Note	Coupon attached		Trading	Corporate Bonds	Price min	Price max	Closing price	Previous closing price/date		Volume	Transactions Value	Last order		Date	ear min	Year max
							Common	Preferred										Price	Buy / Sell			
4,122,910	4.77	4.77	5.00	19/03/2015	5	---	20	---	1	MARFIN INVESTMENT GROUP S.A. (Conver to CR shar)	---	---	---	90.0000	19/12/2014	---	---	81.0000	B	28/11/2014	4.7761	94.8000
1,794,284	12.49	9.77	5.08	12/07/2015	8	---	---	---	1	NIREUS S.A. (Convertible to CR shares)	---	---	---	12.0000	29/01/2014	---	---	11.0000	B	17/11/2014	12.0000	12.0000
212,801,311	1.00	1.00	6.30	29/07/2020	7	---	6	---	1	MARFIN INVESTMENT GROUP S.A. SERIES B (BOND)	---	---	---	0.8500	23/08/2013	---	---	1.0000	B	28/11/2014	0.8500	0.8500
163,991,598	1.00	1.00	7.00	29/07/2019	6	---	6	---	1	MARFIN INVESTMENT GROUP S.A. SERIES A (BOND)	---	---	---	1.0000	23/08/2013	---	---	1.0000	B	28/11/2014	1.0000	1.0000

Corporate Bonds Notes

Transactions Volume = (Pieces) \* (Nominal Price). Transactions Value = (Pieces) \* (Nominal Price) \* (price %) + (Accrued interest).  
The price of a Bond is stated as a percentage (%) of Bond's Nominal Price.  
Nominal Price in Euros (€), except if it is noted differently.

Government Bonds

Number Listed Bonds	Nominal price	Today's Rate	Accrued Interest Calc	Exp. Date [1]	Duration (years)	Note	Coupons Date	Curr. coupon value	Trading Unit	Government Bonds	Price min	Price max	Closing price	Previous closing price/date	Volume	Transactions Value	Price	Last order Buy / Sell	Date
2,658,781,973	1.00	4.30	Actual/Actual	24/02/2023	11	---	24/02	4.30	1	GGB-FXD-240223-11Y-2.000-1.00	---	---	---	---	---	---	---	---	---
2,658,781,973	1.00	4.30	Actual/Actual	24/02/2024	12	---	24/02	4.30	1	GGB-FXD-240224-12Y-2.000-1.00	---	---	---	---	---	---	---	---	---
2,658,781,973	1.00	4.30	Actual/Actual	24/02/2025	13	---	24/02	4.30	1	GGB-FXD-240225-13Y-2.000-1.00	---	---	---	---	---	---	---	---	---
2,658,781,973	1.00	4.30	Actual/Actual	24/02/2026	14	---	24/02	4.30	1	GGB-FXD-240226-14Y-2.000-1.00	---	---	---	---	---	---	---	---	---
2,658,781,973	1.00	4.30	Actual/Actual	24/02/2027	15	---	24/02	4.30	1	GGB-FXD-240227-15Y-2.000-1.00	---	---	---	---	---	---	---	---	---
2,836,034,104	1.00	4.30	Actual/Actual	24/02/2028	16	---	24/02	4.30	1	GGB-FXD-240228-16Y-2.000-1.00	---	---	---	---	---	---	---	---	---
2,836,034,104	1.00	4.30	Actual/Actual	24/02/2029	17	---	24/02	4.30	1	GGB-FXD-240229-17Y-2.000-1.00	---	---	---	---	---	---	---	---	---
2,836,034,104	1.00	4.30	Actual/Actual	24/02/2030	18	---	24/02	4.30	1	GGB-FXD-240230-18Y-2.000-1.00	---	---	---	---	---	---	---	---	---
2,836,034,104	1.00	4.30	Actual/Actual	24/02/2031	19	---	24/02	4.30	1	GGB-FXD-240231-19Y-2.000-1.00	---	---	---	---	---	---	---	---	---
2,836,034,104	1.00	4.30	Actual/Actual	24/02/2032	20	---	24/02	4.30	1	GGB-FXD-240232-20Y-2.000-1.00	---	---	---	---	---	---	---	---	---
2,836,034,104	1.00	4.30	Actual/Actual	24/02/2033	21	---	24/02	4.30	1	GGB-FXD-240233-21Y-2.000-1.00	---	---	---	---	---	---	---	---	---
2,836,034,104	1.00	4.30	Actual/Actual	24/02/2034	22	---	24/02	4.30	1	GGB-FXD-240234-22Y-2.000-1.00	---	---	---	---	---	---	---	---	---
2,836,034,104	1.00	4.30	Actual/Actual	24/02/2035	23	---	24/02	4.30	1	GGB-FXD-240235-23Y-2.000-1.00	---	---	---	---	---	---	---	---	---
2,836,034,104	1.00	4.30	Actual/Actual	24/02/2036	24	---	24/02	4.30	1	GGB-FXD-240236-24Y-2.000-1.00	---	---	---	---	---	---	---	---	---
2,836,034,104	1.00	4.30	Actual/Actual	24/02/2037	25	---	24/02	4.30	1	GGB-FXD-240237-25Y-2.000-1.00	---	---	---	---	---	---	---	---	---
2,836,034,104	1.00	4.30	Actual/Actual	24/02/2038	26	---	24/02	4.30	1	GGB-FXD-240238-26Y-2.000-1.00	---	---	---	---	---	---	---	---	---
2,836,034,104	1.00	4.30	Actual/Actual	24/02/2039	27	---	24/02	4.30	1	GGB-FXD-240239-27Y-2.000-1.00	---	---	---	---	---	---	---	---	---
2,836,034,104	1.00	4.30	Actual/Actual	24/02/2040	28	---	24/02	4.30	1	GGB-FXD-240240-28Y-2.000-1.00	---	---	---	---	---	---	---	---	---
2,836,034,104	1.00	4.30	Actual/Actual	24/02/2041	29	---	24/02	4.30	1	GGB-FXD-240241-29Y-2.000-1.00	---	---	---	---	---	---	---	---	---
2,836,034,104	1.00	4.30	Actual/Actual	24/02/2042	30	---	24/02	4.30	1	GGB-FXD-240242-30Y-2.000-1.00	---	---	---	---	---	---	---	---	---
742,153	1,000.00	0.93	FLR Actual/360	10/08/2019	5	---	10/02 - 10/08	---	1	GGB-FLT-100819-05Y-0.934-1,000	---	---	---	---	---	---	---	---	---
4,030,827	1,000.00	4.75	Actual/Actual	17/04/2019	5	---	17/04	4.75	1	GGB-FXD-170419-05Y-4.750-1,000	---	---	---	---	---	---	---	---	---
2,089,066	1,000.00	3.38	Actual/Actual	17/07/2017	3	---	17/07	3.38	1	GGB-FXD-170717-03Y-3.375-1,000	---	---	---	---	---	---	---	---	---

Government Bonds Notes

Transactions Volume = (Pieces) \* (Nominal Price). Transactions Value = (Pieces) \* (Nominal Price) \* (price %) + (Accrued interest).

The Value of current coupon for the issues with NV 0.01 euro refers to NV 100 euros

FLR: Floating Interest Rate.

[1] - The Expiration Date of the interest bearing period and the Date for coupon payment.

Bonds in Circulation	Currency / Min nominal traded Value	Coupons Payment Date	Current Coupon Value	Note	Coupon Attached	Trading Unit	Issue Date	Duration (years)	Today's Interest	A.I.C in days	Bonds	Last price of previous days	Last Outcry in Cash (euro) Price	Buy / Sell	Trades in Date	Life min	Life Max
Bonds of International Organizations																	
1,000,000	EUR / 1000	21/07	---	---	9	1	21/07/2006	10	5.0 FLR	360	EUROPEAN INVESTMENT BANK BOND	97.50	16/04/2007	---	---	---	---
Corporate Bonds in Foreign Currency and Euro																	
103,746	GBP / 10	01/12	0.25	---	56	1	01/12/1930	98	2.5	360	National Mortgage Bank	2.27	05/02/1996	2.27	S	05/02/1996	2.27
0	GBP / 10	01/12	0.25	---	58	1	01/12/1928	100	2.5	360	National Mortgage Bank	---	---	---	---	---	---

Government Bonds Notes

A.I.C: Accrued Interest Calculation base.  
FLR: Floating Interest Rate.  
The minimum tradeable Nominal Value for all Demeterialised Government Titles is 100 Euros.

State Banks Bonds (one year maturity)

Number Listed Bonds	Nominal value	Initial Rate	Current Rate	Annual Interest	Issue Date	Note	State Banks Bonds	Trading Unit	Yearly Renewals	Last Outcry in Cash (euro) Price	Buy / Sell	Volume
342,560	135.17	2.35	3.92	0.00	31/01/2005	---	H.I.D.B.	1	10	100.00	B	---
2,446	1,182.96	4.90	2.47	29.69	31/05/2008	---	H.I.D.B.	1	7	---	---	---

Bonds Notes

The annual renewal of H.I.D.B. Bonds is free of taxes (net rate).  
For Bonds issue until 30/11/2014 the accrued interest is capitalized.

Athex & ATHEXClear Members List

Member Name			Stock Market			Derivatives Market			ATHEXClear Member		
Address	Phone	Fax	Market Member	Remote Member	Market Maker	Proprietary	Market Maker	Agent	General Clearing	Direct Clearing	Non Clearing
A. SARRIS SECURITIES S.A.			✓								
6, DRAGATSANIOU STR. ATHINA	(210)-3367700	(210)-3312324									
AGRICULTURAL BANK OF GREECE S.A.							✓			✓	
, 23 PANEPISTIMIOU ATHINA	(210)-3298400	(210)-3298322									
ALPHA FINANCE INVESTMENT SERVICES S.A.			✓		✓		✓			✓	
5, MERLIN STR. ATHINA	(210)-3677400	(210)-3311193									
ALPHA BANK A.E.						✓			✓		
40, STADIOU STR ATHINA	(210)-3265546	(210)-3265811									
	(210)-3260000	(210)-3264116									
ARGUS STOCKBROKERS LTD			✓	✓							
12-14, KENNEDY AVE. S. 303 NICOSIA	(+35722)-22717000	(+35722)-22717070									
ATHENAIKI BROKERAGE FIRM S.A.			✓								
33, STADIOU STR. ATHINA	(210)-3254764	(210)-3254767									
ATLANTIC SECURITIES LIMITED			✓	✓							
37, PRODROMOU STR. NICOSIA	(+35722)-445400	(+35722)-661914									
ATLAS SECURITIES S.A			✓			✓					✓
14 - 16, VERVERNON STR.& 125 MICHALAKOPOULOU STR. ATHINA	(210)-3363300	(210)-3238925									
ATTICA BANK S.A.									✓		
23, OMIROU STR. ATHINA	(210)-3669000	(210)-3669410									
54, AKADIMIAS STR. ATHINA	(210)-3390757	(210)-3646090									
AXIA VENTURES GROUP LTD			✓	✓							
10, G. KRANIDIOTI NICOSIA	+357 22 742000	+357 22 742001									
AXON SECURITIES S.A.			✓			✓					✓
48, STADIOU ATHINA	(210)-3363800	(210)-3243903									
BANK OF CYPRUS PUBLIC COMPANY LTD									✓		
, 51,STASINOU (AG. PARASKEVI, STROVOLOS) NICOSIA	(0035722)-121883	(0035722)-336258									
170, ALEXANDRAS AVE ATHINA	(210)-6477708	(210)-6477709									
BETA SECURITIES S.A.			✓		✓	✓	✓			✓	
, BRAILA & 29 ALEXANDRAS AVE ATHINA	(210)-6478900	(210)-6410139									
BNP PARIBAS SECURITIES SERVICES									✓		
94, VAS. SOFIAS AVE ATHINA	(210)-7468500	(210)-7468579									
CAPITAL SECURITIES S.A.			✓			✓					✓
58, MITROPOLEOS STR. ATHINA	(210)-3369700	(210)-3369820									
CFS SECURITIES & INVESTMENT SERVICES S.A.			✓		✓			✓		✓	
3, STADIOU STR. ATHINA	(210)-3360800	(210)-3311854									
CITIGROUP GLOBAL MARKET LTD			✓	✓							
, CITIGROUP CENTRE, CANADA SQUARE, CANARY WHART LONDON	002079864000	002079862266									
CO-OPERATIVE CENTRAL BANK LTD			✓	✓							
8, GRIGORI AFXENTIOU STR. NICOSIA	(+35722)-743300	(+35722)-672083									
CREDIT AGRICOLE CHEUVREUX S.A.				✓							
, 9 QUAI PAUL DOUMER PARIS	33 (0) 1 41 89 70 00										
CREDIT SUISSE SECURITIES (EUROPE) LIMITED			✓	✓							
, ONE CABOT SQUARE LONDON	+44 20 7888 8888	+44 20 7888 1600									
CYCLOS SECURITIES S.A.			✓		✓	✓				✓	
39, PANEPISTIMIOU STR. ATHINA	(210)-3364300	(210)-3239122									
D.A. TSEKOURAS SEC. S.A.			✓								
, PESMAZOGLOY 3	(210)-3214406	(210)-3211997									
DEUTSCHE BANK A.G.			✓	✓							
70, THEODOR-HEUSS-ALLEE FRANKFURT	0049 69 910 00	0049 69 910 34 225									
DYNAMIC SECURITIES			✓					✓		✓	
6 - 10, CHAR. TRIKOUPi STR. ATHINA	(210)-3677700	(210)-3677777									
EL. PETROPOULAKIS SECURITIES S.A.			✓					✓			✓
9, ARISTIDOU STR. ATHINA	(210)-3213928	(210)-3216810									
EUROBANK EQUITIES S.A.			✓		✓		✓			✓	
10, FILELLINON STR. ATHINA	(210)-3720000	(210)-3720001									
EUROBANK ERGASIAS S.A.									✓		
8, OTHONOS STR. ATHINA	(210)-3337000	(210)-3233866									
	(210)-3337969	(210)-3245916									
EUROCORP SECURITIES S.A.			✓			✓				✓	
14, FILIKIS ETAIRIAS SQ. ATHINA	(210)-7263500	(210)-7263666									
EUOTRUST BROKERAGE S.A.			✓								
13-15, SOPHOCLEOUS STR. ATHINA	(210)-3363100	(210)-3238334									

Athex & ATHEXClear Members List

Member Name			Stock Market			Derivatives Market			ATHEXClear Member		
Address	Phone	Fax	Market Member	Remote Member	Market Maker	Proprietary	Market Maker	Agent	General Clearing	Direct Clearing	Non Clearing
EUROXX SECURITIES S.A.			✓			✓				✓	
7, PALAIOLOGOU STR. CHALANDRI	(210)-6879400	(210)-6879401									
G.A. PERVANAS SECURITIES & INVESTMENT SERVICES CO S.A.			✓			✓					✓
7 - 9, SOPHOCLEOUS STR. ATHINA	(210)-3251875	(210)-3210291									
GLOBAL CAPITAL SECURITIES AND FINANCIAL SERVICES LTD			✓	✓							
5, LEMESOU AVE. LEMESOS CYPRUS	(+35722)-710710	(+35722)-339332									
GUARDIAN TRUST SECURITIES S.A			✓		✓	✓					✓
15, FILELLINON STR. ATHINA	(210)-3220402	(210)-3220498									
HELLENIC AMERICAN SEC. S.A.			✓			✓					
6, EVRIPIDOU STR. ATHINA	(210)-3311100	(210)-3215968									
HELLENIC BANK (INVESTMENTS) LTD			✓	✓							
31, KYRIAKOY MATSI AVE. NICOSIA	(+35722)-500100	(+35722)-500110									
HSBC BANK PLC									✓		
109-111, MESOGION AVE ATHINA	(210)-6961507	(210)-6929310									
INDEX SECURITIES S.A.			✓								
6, DRAGATSANIOU STR. ATHINA	(210)-3213920	(210)-3213216									
INTERSEC S.A.						✓				✓	
80-88, SYGROU AVE ATHINA	(210)-9203000	(210)-9203052									
INVESTMENT BANK OF GREECE S.A.			✓		✓		✓		✓		
32, AIGEIALIAS MAROUSI	(210) 8173000	(210) 8173101									
24B, KIFISSIAS AVE MAROUSI	(210)-8171800	(210)-8171889									
J. CHR. MAVRIKIS SECURITIES S.A.			✓								
5, SOPHOCLEOUS STR. ATHINA	(210)-3213949	(210)-3217767									
KAPPA SECURITIES S.A.			✓			✓					✓
15, VALAORITOU STR. ATHINA	(210)-3610371	(210)-3641002									
KYPROU SECURITIES S.A.					✓	✓					✓
26, HALKIDONOS & FIDIPPIDOY STR. ATHINA	(210)-8701000	(210)-8701049									
LAIKI FINANCIAL SERVICES LTD			✓	✓							
26, CLR HOUSE, VIRONOS AVE. NICOSIA	(+35722)-898600	(+35722)-680953									
LEON DEPOLAS SECURITIES S.A.			✓					✓			✓
1, CHR. LADA STR. ATHINA	(210)-3213286	(210)-3211618									
MAGNA TRUST SECURITIES S.A			✓					✓			✓
9, FIDIOU STR. ATHINA	(210)-3327503	(210)-3327599									
MEGA EQUITY SECURITIES & FINANCIAL SERVICES LTD			✓	✓							
42-44, GRIBA DIGENI AV. NICOSIA	(+35722)-711711	(+35722)-711811									
MERIT SECURITIES S.A			✓		✓	✓				✓	
38, VAS. KONSTANTINOU STR. ATHINA	(210)-3671800	(210)-3671830									
MERRILL LYNCH			✓	✓							
2, KING EDWARD STREET LONDON	(+4420)-79952000	(+4420)-79954525									
METOCHIKI SECURITIES S.A.			✓								
3, G. GENNADIOU STR. ATHINA	(210)-3306700	(210)-3306709									
MIDAS BROKERAGE S.A.			✓								
5, SOPHOCLEOUS STR. ATHINA	(210)-3253203	(210)-3253205									
N. CHRYSOCHOIDIS STOCK BROKERAGE I.S.S.A.			✓					✓		✓	
7 - 9, SOPHOCLEOUS STR. ATHINA	(210)-3213913	(210)-3216115									
N. SARROS SECURITIES S.A.						✓					
7-9, SOPHOCLEOUS STR. ATHINA	(210)-3705600	(210)-3219992									
NATIONAL BANK OF GREECE S.A.			✓				✓		✓		
86, AIOLOU STR. ATHINA	(210)-3341000	(210)-3228187									
68, AKADIMIAS STR. ATHINA	(210)-3328817	(210)-3328678									
NBG SECURITIES S.A.			✓		✓		✓				✓
68, AKADIMIAS STR. ATHINA	(210)-3328500	(210)-3328565									
NEW PROTON BANK S.A.						✓				✓	
20, ESLIN & AMALIADOS ATHINA	210 6970000	210 6970111									
NUNTIUS SECURITIES S.A			✓					✓			✓
6, DRAGATSANIOU STR. ATHINA	(210)-3350599	(210)-3254846									
PANTELAKIS SEC. S.A.			✓			✓					✓
109-111, MESOGION AVE. ATHINA	(210)-6965000	(210)-6929550									
PEGASUS BROKERAGE FIRM S.A			✓			✓					
17, VALAORITOU STR. ATHINA	(210)-3670700	(210)-3670760									
PIRAEUS BANK S.A.			✓					✓	✓		
4, AMERIKIS STR ATHINA	(210)-3335918	(210)-3254207									
4, AMERIKIS STR. ATHINA	(210)-3335000	(210)-3335079									

Athex & ATHEXClear Members List

Member Name			Stock Market			Derivatives Market			ATHEXClear Member		
Address	Phone	Fax	Market Member	Remote Member	Market Maker	Proprietary	Market Maker	Agent	General Clearing	Direct Clearing	Non Clearing
PIRAEUS SECURITIES S.A.			✓				✓			✓	
10, STADIOU STR. ATHINA	(210)-3354100	(210)-3233814									
PRELIUM SECURITIES & INVESTMENT SERVICES S.A.			✓			✓					✓
, KIFISSIAS AVE & 1 DAVAKI STR ATHINA	(210)-3677000	(210)-6920403									
PROCHOICE SECURITIES LTD			✓	✓							
57, SPYROY KYPRIANOY NICOSIA	+357-24-661192	+357-24-662464									
SHARELINK SECURITIES & FINANCIAL SERVICES LTD			✓	✓							
6, ELLINAS HOUSE, THEOTOKI STR. NICOSIA	(+35722)-554200	(+35722)-750852									
SOCIETE GENERALE S.A.			✓	✓		✓					
17, COURS VALMY PUTEAUX - LA DEFENSE PARIS	(+33) 142134754	(+33) 142135697									
240-242, KIFISIAS AVE ATHINA	(210)-6790161	(210)-6728828									
SOLIDUS SECURITIES S.A			✓			✓				✓	
64, LOUIZIS RIANKOUR STR. ATHINA	(210)-6925500	(210)-6985421									
ST. EM. LAVRENTAKIS SECURITIES S.A.			✓			✓					✓
7 - 9, SOPHOCLEOUS STR. ATHINA	(210)-3213336	(210)-3246572									
THE CYPRUS INVESTMENT AND SECURITIES CORPORATION LIMITED (CISCO)			✓	✓							
4, EVROU STR. (EUROLIFE HOUSE) NICOSIA	(+35722)-881800	(+35722)-881801									
UBS LIMITED			✓	✓							
1, FINSBURY AVENUE LONDON	(+4420)-79013333	(+4420)-79012345									
Z.G. PORTALAKIS INVESTMENT SERVICES S.A.			✓								
8, PESMAZOGLOU STR. ATHINA	(210)-3214830	(210)-3212024									
KARAMANOF SECURITIES & INV. SERVICES S.A.			✓					✓		✓	
2, SQ. ST THEODORON ATHINA	(210)-3212947	(210)-3217088									

## List of Stocks under Market Making operations

Securities	Stock Category	
	Start Market Making	End Market Making
<b>CYPRUS POPULAR BANK (CR)</b>	<b>Suspension Status</b>	
PIRAEUS SECURITIES S.A.	02/02/2013	01/01/2400
<b>VIOHALCO (CB)</b>	<b>Suspension Status</b>	
ALPHA FINANCE INVESTMENT SERVICES S.A.	11/02/2013	01/01/2400
EUROBANK EQUITIES S.A.	20/01/2013	01/01/2400
MERIT SECURITIES S.A.	13/12/2012	01/01/2400
<b>ALPHA BANK (CR)</b>	<b>Main Market</b>	
EUROBANK EQUITIES S.A.	24/10/2012	01/01/2400
HELLENIC AMERICAN SEC. S.A.	25/07/2014	01/01/2400
INVESTMENT BANK OF GREECE S.A.	08/01/2013	01/01/2400
MERIT SECURITIES S.A.	03/09/2013	01/01/2400
NBG SECURITIES S.A.	15/01/2013	01/01/2400
PIRAEUS SECURITIES S.A.	28/05/2013	01/01/2400
<b>ALUMIL (CR)</b>	<b>Main Market</b>	
BETA SECURITIES S.A.	18/07/2013	01/01/2400
<b>ATTICA BANK S.A. (CR)</b>	<b>Main Market</b>	
BETA SECURITIES S.A.	02/06/2014	01/01/2400
EUROBANK EQUITIES S.A.	25/07/2014	01/01/2400
HELLENIC AMERICAN SEC. S.A.	25/07/2014	01/01/2400
<b>BYTE COMPUTER SA (CR)</b>	<b>Main Market</b>	
MERIT SECURITIES S.A.	04/08/2013	01/01/2400
<b>CC HBC AG (CR)</b>	<b>Main Market</b>	
EUROBANK EQUITIES S.A.	23/10/2013	01/01/2400
NBG SECURITIES S.A.	29/04/2013	01/01/2400
<b>ELLAKTOR (CR)</b>	<b>Main Market</b>	
EUROBANK EQUITIES S.A.	01/06/2013	01/01/2400
INVESTMENT BANK OF GREECE S.A.	02/01/2013	01/01/2400
NBG SECURITIES S.A.	25/06/2013	01/01/2400
<b>ELTECH ANEMOS S.A. (CR)</b>	<b>Main Market</b>	
EUROBANK EQUITIES S.A.	22/07/2014	01/01/2400
<b>ELTON SA (CR)</b>	<b>Main Market</b>	
BETA SECURITIES S.A.	03/09/2013	01/01/2400
<b>EUROBANK ERGASIAS (CR)</b>	<b>Main Market</b>	
ALPHA FINANCE INVESTMENT SERVICES S.A.	08/01/2013	01/01/2400
EUROBANK EQUITIES S.A.	01/06/2013	01/01/2400
HELLENIC AMERICAN SEC. S.A.	25/07/2014	01/01/2400
INVESTMENT BANK OF GREECE S.A.	08/01/2013	01/01/2400
PIRAEUS SECURITIES S.A.	28/09/2013	01/01/2400
<b>EUROCONSULTANTS S.A. (CR)</b>	<b>Main Market</b>	
EUROBANK EQUITIES S.A.	22/07/2014	01/01/2400
<b>FOLLI FOLLIE (CR)</b>	<b>Main Market</b>	
NBG SECURITIES S.A.	17/02/2014	01/01/2400
<b>GEK TERNA (CR)</b>	<b>Main Market</b>	
INVESTMENT BANK OF GREECE S.A.	02/01/2013	01/01/2400
<b>GR. SARANTIS SA (CR)</b>	<b>Main Market</b>	
BETA SECURITIES S.A.	14/05/2013	01/01/2400
<b>HELLENIC EXCHANGES-A.S.E. (CR)</b>	<b>Main Market</b>	
EUROBANK EQUITIES S.A.	01/06/2013	01/01/2400
HELLENIC AMERICAN SEC. S.A.	01/09/2014	01/01/2400
INVESTMENT BANK OF GREECE S.A.	02/01/2013	01/01/2400
NBG SECURITIES S.A.	25/06/2013	01/01/2400
<b>INTRACOM CONSTR. (CR)</b>	<b>Main Market</b>	
MERIT SECURITIES S.A.	27/12/2012	01/01/2400
<b>INTRALOT (CR)</b>	<b>Main Market</b>	
EUROBANK EQUITIES S.A.	01/06/2013	01/01/2400
INVESTMENT BANK OF GREECE S.A.	02/01/2013	01/01/2400
PIRAEUS SECURITIES S.A.	28/09/2013	01/01/2400
<b>LAMDA DEVELOPMENT SA (CR)</b>	<b>Main Market</b>	
EUROBANK EQUITIES S.A.	08/12/2014	01/01/2400
<b>MARFIN INVESTMENT GROUP (CR)</b>	<b>Main Market</b>	
HELLENIC AMERICAN SEC. S.A.	25/07/2014	01/01/2400
PIRAEUS SECURITIES S.A.	02/02/2013	01/01/2400
<b>MLS MULTIMEDIA SA (CR)</b>	<b>Main Market</b>	
BETA SECURITIES S.A.	18/07/2013	01/01/2400
<b>MOTOR OIL (CR)</b>	<b>Main Market</b>	
EUROBANK EQUITIES S.A.	23/10/2012	01/01/2400
HELLENIC AMERICAN SEC. S.A.	01/09/2014	01/01/2400
NBG SECURITIES S.A.	17/02/2014	01/01/2400

## List of Stocks under Market Making operations

Securities	Stock Category	
	Start Market Making	End Market Making
Market Maker		
<b>MYTILINEOS HOLDINGS (CR)</b>	<b>Main Market</b>	
HELLENIC AMERICAN SEC. S.A.	25/07/2014	01/01/2400
INVESTMENT BANK OF GREECE S.A.	02/01/2013	01/01/2400
NBG SECURITIES S.A.	25/06/2013	01/01/2400
<b>NATIONAL BANK (CR)</b>	<b>Main Market</b>	
ALPHA FINANCE INVESTMENT SERVICES S.A.	08/01/2013	01/01/2400
EUROBANK EQUITIES S.A.	24/10/2012	01/01/2400
HELLENIC AMERICAN SEC. S.A.	25/07/2014	01/01/2400
INVESTMENT BANK OF GREECE S.A.	08/01/2013	01/01/2400
MERIT SECURITIES S.A.	03/09/2013	01/01/2400
NBG SECURITIES S.A.	28/02/2013	01/01/2400
PIRAEUS SECURITIES S.A.	08/09/2013	01/01/2400
<b>OPAP (CR)</b>	<b>Main Market</b>	
ALPHA FINANCE INVESTMENT SERVICES S.A.	08/01/2013	01/01/2400
EUROBANK EQUITIES S.A.	24/10/2012	01/01/2400
HELLENIC AMERICAN SEC. S.A.	25/07/2014	01/01/2400
INVESTMENT BANK OF GREECE S.A.	08/01/2013	01/01/2400
NBG SECURITIES S.A.	15/01/2013	01/01/2400
<b>OTE (CR)</b>	<b>Main Market</b>	
ALPHA FINANCE INVESTMENT SERVICES S.A.	08/01/2013	01/01/2400
EUROBANK EQUITIES S.A.	24/10/2012	01/01/2400
HELLENIC AMERICAN SEC. S.A.	25/07/2014	01/01/2400
INVESTMENT BANK OF GREECE S.A.	08/01/2013	01/01/2400
NBG SECURITIES S.A.	01/12/2012	01/01/2400
PIRAEUS SECURITIES S.A.	08/09/2013	01/01/2400
<b>PAPOUTSANIS (CR)</b>	<b>Main Market</b>	
BETA SECURITIES S.A.	25/11/2013	01/01/2400
<b>PETROPOULOS PETROS (CR)</b>	<b>Main Market</b>	
BETA SECURITIES S.A.	28/05/2013	01/01/2400
<b>PIRAEUS BANK (CR)</b>	<b>Main Market</b>	
EUROBANK EQUITIES S.A.	23/10/2012	01/01/2400
HELLENIC AMERICAN SEC. S.A.	25/07/2014	01/01/2400
INVESTMENT BANK OF GREECE S.A.	08/01/2013	01/01/2400
MERIT SECURITIES S.A.	16/09/2013	01/01/2400
NBG SECURITIES S.A.	02/06/2013	01/01/2400
PIRAEUS SECURITIES S.A.	16/02/2013	01/01/2400
<b>PLAISIO COMPUTERS SA (CR)</b>	<b>Main Market</b>	
BETA SECURITIES S.A.	05/05/2014	01/01/2400
<b>PPC (CR)</b>	<b>Main Market</b>	
ALPHA FINANCE INVESTMENT SERVICES S.A.	08/01/2013	01/01/2400
EUROBANK EQUITIES S.A.	23/10/2012	01/01/2400
HELLENIC AMERICAN SEC. S.A.	01/09/2014	01/01/2400
INVESTMENT BANK OF GREECE S.A.	08/01/2013	01/01/2400
NBG SECURITIES S.A.	26/03/2013	01/01/2400
PIRAEUS SECURITIES S.A.	28/09/2013	01/01/2400
<b>PROFILE SA (CR)</b>	<b>Main Market</b>	
EUROBANK EQUITIES S.A.	23/06/2014	01/01/2400
<b>REDS S.A. (CR)</b>	<b>Main Market</b>	
EUROBANK EQUITIES S.A.	05/09/2014	01/01/2400
<b>S.KANAKIS SA (CR)</b>	<b>Main Market</b>	
BETA SECURITIES S.A.	01/10/2013	01/01/2400
<b>TITAN CEMENT (CR)</b>	<b>Main Market</b>	
EUROBANK EQUITIES S.A.	23/10/2012	01/01/2400
NBG SECURITIES S.A.	17/02/2014	01/01/2400
<b>VIOHALCO SA/NV (CB)</b>	<b>Main Market</b>	
ALPHA FINANCE INVESTMENT SERVICES S.A.	17/02/2014	01/01/2400
MERIT SECURITIES S.A.	17/03/2014	01/01/2400

Underlying Asset				Derivatives Market																
Price max	Price min	Closing price	change	Delivery Month	Open price	Price max	Price min	Last price	Closing price	Last Bid	Last Ask	Settlement price	change	Life high	Life low	Trades	Volume	change	Open Interest	change
FTSE/Athex Large Cap				(Trade Unit: 1 Index Point x 5€, Cash Settlement)																
282.97	274.67	279.64	1.45%	January 2015	270.00	274.25	262.00	274.25	274.25	---	---	272.75	---	340.00	250.75	876	4,862	---	43,808	---
				February 2015	269.25	273.00	259.50	273.00	273.00	---	---	270.75	---	332.75	---	32	477	---	602	---
				March 2015	273.00	273.00	265.00	270.00	270.00	---	---	275.75	---	328.00	---	16	177	---	395	---
				June 2015	---	---	---	---	277.50	---	---	---	---	---	---	---	---	---	---	---
				September 2015	---	---	---	---	277.50	---	---	---	---	---	---	---	---	---	---	---
				December 2015	---	---	---	---	278.50	---	---	---	---	---	---	---	---	---	---	---

Underlying Asset				Derivatives Market																
Price max	Price min	Closing price	change	Delivery Month	Open price	Price max	Price min	Last price	Closing price	Last Bid	Last Ask	Settlement price	change	Life high	Life low	Trades	Volume	change	Open Interest	change
ALPHA BANK (CR)				(Contract Size: 100 Securities, Physical Delivery)																
0.498	0.471	0.478	-2.45%	March 2015	0.481	0.482	0.472	0.478	0.478	---	---	0.480	---	0.555	---	61	1,393	---	21,661	---
				June 2015	---	---	---	---	0.495	---	---	0.492	---	---	---	---	---	---	---	---
				September 2015	---	---	---	---	0.497	---	---	---	---	---	---	---	---	---	---	---
				December 2015	---	---	---	---	0.500	---	---	---	---	---	---	---	---	---	---	---
CC HBC AG (CR)				(Contract Size: 100 Securities, Physical Delivery)																
15.93	15.58	15.88	2.19%	March 2015	15.59	15.59	15.30	15.30	15.30	---	---	15.53	---	17.10	---	4	4	---	104	---
				June 2015	---	---	---	---	15.70	---	---	---	---	---	---	---	---	---	---	---
				September 2015	---	---	---	---	15.43	---	---	---	---	---	---	---	---	---	---	---
				December 2015	---	---	---	---	15.50	---	---	---	---	---	---	---	---	---	---	---
CORINTH PIPEWORKS SA (CR)				(Contract Size: 100 Securities, Physical Delivery)																
0.925	0.863	0.863	-0.81%	March 2015	---	---	---	---	0.874	---	---	0.865	---	1.01	---	---	---	---	404	---
				June 2015	---	---	---	---	0.879	---	---	0.875	---	0.890	---	---	---	---	75	---
				September 2015	---	---	---	---	0.883	---	---	---	---	---	---	---	---	---	---	---
				December 2015	---	---	---	---	0.888	---	---	---	---	---	---	---	---	---	---	---
ELLAKTOR (CR)				(Contract Size: 100 Securities, Physical Delivery)																
2.58	2.39	2.39	-3.63%	March 2015	2.48	2.52	2.36	2.44	2.44	---	---	2.32	---	2.75	---	70	226	---	1,069	---
				June 2015	---	---	---	---	2.51	---	---	---	---	---	---	---	---	---	---	---
				September 2015	---	---	---	---	2.52	---	---	---	---	---	---	---	---	---	---	---
				December 2015	---	---	---	---	2.53	---	---	---	---	---	---	---	---	---	---	---
EUROBANK ERGASIAS (CR)				(Contract Size: 100 Securities, Physical Delivery)																
0.213	0.203	0.207	0.00%	March 2015	0.207	0.207	0.202	0.207	0.207	---	---	0.206	---	0.267	---	18	249	---	51,111	---
				June 2015	---	---	---	---	0.209	---	---	0.212	---	0.277	---	---	---	---	---	---
				September 2015	---	---	---	---	0.210	---	---	---	---	---	---	---	---	---	---	---
				December 2015	---	---	---	---	0.211	---	---	---	---	---	---	---	---	---	---	---
EYDAP S.A. (CR)				(Contract Size: 100 Securities, Physical Delivery)																
7.47	6.50	6.50	1.56%	March 2015	---	---	---	---	6.43	---	---	6.45	---	6.43	---	---	---	---	97	---
				June 2015	---	---	---	---	6.08	---	---	---	---	---	---	---	---	---	---	---
				September 2015	---	---	---	---	6.07	---	---	---	---	---	---	---	---	---	---	---
				December 2015	---	---	---	---	6.10	---	---	---	---	---	---	---	---	---	---	---
FOLLI FOLLIE (CR)				(Contract Size: 100 Securities, Physical Delivery)																
27.01	25.50	26.27	0.27%	March 2015	26.42	26.83	25.69	26.14	26.14	---	---	26.41	---	29.90	---	27	61	---	91	---
				June 2015	---	---	---	---	26.46	---	---	---	---	---	---	---	---	---	---	---
				September 2015	---	---	---	---	26.60	---	---	---	---	---	---	---	---	---	---	---
				December 2015	---	---	---	---	26.73	---	---	---	---	---	---	---	---	---	---	---
FRIGOGLASS SA (CR)				(Contract Size: 100 Securities, Physical Delivery)																
1.68	1.56	1.61	2.55%	March 2015	1.61	1.64	1.61	1.64	1.64	---	---	1.62	---	2.02	---	3	5	---	600	---
				June 2015	---	---	---	---	1.59	---	---	---	---	---	---	---	---	---	---	---
				September 2015	---	---	---	---	1.59	---	---	---	---	---	---	---	---	---	---	---
				December 2015	---	---	---	---	1.60	---	---	---	---	---	---	---	---	---	---	---

Underlying Asset				Derivatives Market																
Price max	Price min	Closing price	change	Delivery Month	Open price	Price max	Price min	Last price	Closing price	Last Bid	Last Ask	Settlement price	change	Life high	Life low	Trades	Volume	change	Open Interest	change
GEK TERNA (CR)				(Contract Size: 100 Securities, Physical Delivery)																
2.23	2.15	2.18	-1.36%	March 2015	2.24	2.24	2.19	2.19	2.19	---	---	2.23	---	2.80	---	6	17	---	7,054	-
				June 2015	---	---	---	---	2.23	---	---	2.22	---	2.73	---	---	---	---	50	-
				September 2015	---	---	---	---	2.24	---	---	---	---	---	---	---	---	---	---	-
				December 2015	---	---	---	---	2.25	---	---	---	---	---	---	---	---	---	---	-
GRIVALIA PROPERTIES (CR)				(Contract Size: 100 Securities, Physical Delivery)																
7.95	7.55	7.55	-1.31%	March 2015	7.72	7.82	7.71	7.75	7.75	---	---	7.47	---	8.40	---	9	36	---	24	-
				June 2015	---	---	---	---	7.55	---	---	---	---	---	---	---	---	---	---	-
				September 2015	---	---	---	---	7.59	---	---	---	---	---	---	---	---	---	---	-
				December 2015	---	---	---	---	7.62	---	---	---	---	---	---	---	---	---	---	-
HELLENIC EXCHANGES-A.S.E. (CR)				(Contract Size: 100 Securities, Physical Delivery)																
5.14	4.94	4.94	-1.98%	March 2015	5.14	5.14	4.96	4.96	4.96	---	---	4.92	---	6.30	---	16	53	---	1,013	-
				June 2015	---	---	---	---	5.00	---	---	4.87	---	---	---	---	---	---	---	-
				September 2015	---	---	---	---	5.03	---	---	---	---	---	---	---	---	---	---	-
				December 2015	---	---	---	---	5.05	---	---	---	---	---	---	---	---	---	---	-
HELLENIC PETROLEUM (CR)				(Contract Size: 100 Securities, Physical Delivery)																
4.10	3.94	3.94	-3.67%	March 2015	4.04	4.04	3.97	3.97	3.97	---	---	3.95	---	4.75	---	16	69	---	3,515	-
				June 2015	---	---	---	---	4.13	---	---	---	---	---	---	---	---	---	---	-
				September 2015	---	---	---	---	4.00	---	---	---	---	---	---	---	---	---	---	-
				December 2015	---	---	---	---	4.02	---	---	---	---	---	---	---	---	---	---	-
INTRALOT (CR)				(Contract Size: 100 Securities, Physical Delivery)																
1.15	1.06	1.15	5.51%	March 2015	1.10	1.10	1.10	1.10	1.10	---	---	1.14	---	1.15	---	2	10	---	492	-
				June 2015	---	---	---	---	1.10	---	---	---	---	---	---	---	---	---	---	-
				September 2015	---	---	---	---	1.11	---	---	---	---	---	---	---	---	---	---	-
				December 2015	---	---	---	---	1.11	---	---	---	---	---	---	---	---	---	---	-
JUMBO SA (CR)				(Contract Size: 100 Securities, Physical Delivery)																
9.55	9.17	9.20	-1.71%	March 2015	9.32	9.47	9.13	9.16	9.16	---	---	9.08	---	10.90	---	26	78	---	618	-
				June 2015	---	---	---	---	9.45	---	---	---	---	---	---	---	---	---	---	-
				September 2015	---	---	---	---	9.50	---	---	---	---	---	---	---	---	---	---	-
				December 2015	---	---	---	---	9.37	---	---	---	---	---	---	---	---	---	---	-
MARFIN INVESTMENT GROUP (CR)				(Contract Size: 100 Securities, Physical Delivery)																
0.176	0.167	0.168	0.60%	March 2015	0.175	0.176	0.170	0.170	0.170	---	---	0.168	---	0.250	---	21	402	---	22,026	-
				June 2015	---	---	---	---	0.169	---	---	---	---	---	---	---	---	---	---	-
				September 2015	---	---	---	---	0.170	---	---	---	---	---	---	---	---	---	---	-
				December 2015	---	---	---	---	0.170	---	---	---	---	---	---	---	---	---	---	-
METKA (CR)				(Contract Size: 100 Securities, Physical Delivery)																
9.23	8.91	8.91	-2.09%	March 2015	9.04	9.13	8.96	9.01	9.01	---	---	8.92	---	9.30	---	16	72	---	370	-
				June 2015	---	---	---	---	9.19	---	---	---	---	---	---	---	---	---	---	-
				September 2015	---	---	---	---	8.94	---	---	---	---	---	---	---	---	---	---	-
				December 2015	---	---	---	---	8.98	---	---	---	---	---	---	---	---	---	---	-

Underlying Asset				Derivatives Market																
Price max	Price min	Closing price	change	Delivery Month	Open price	Price max	Price min	Last price	Closing price	Last Bid	Last Ask	Settlement price	change	Life high	Life low	Trades	Volume	change	Open Interest	change
MOTOR OIL (CR)				(Contract Size: 100 Securities, Physical Delivery)																
6.60	6.28	6.35	-3.49%	March 2015	6.63	6.63	6.34	6.38	6.38	---	---	6.06	---	6.80	---	7	31	---	124	---
				June 2015	---	---	---	---	6.65	---	---	6.06	---	---	---	---	---	---	---	---
				September 2015	---	---	---	---	6.48	---	---	---	---	---	---	---	---	---	---	---
				December 2015	---	---	---	---	6.51	---	---	---	---	---	---	---	---	---	---	---
MYTILINEOS HOLDINGS (CR)				(Contract Size: 100 Securities, Physical Delivery)																
5.35	5.10	5.10	-2.86%	March 2015	5.29	5.30	5.11	5.13	5.13	---	---	5.05	---	6.20	---	49	159	---	4,387	---
				June 2015	---	---	---	---	5.30	---	---	5.12	---	6.43	---	---	---	---	25	---
				September 2015	---	---	---	---	5.33	---	---	---	---	---	---	---	---	---	---	---
				December 2015	---	---	---	---	5.36	---	---	---	---	---	---	---	---	---	---	---
NATIONAL BANK (CR)				(Contract Size: 100 Securities, Physical Delivery)																
1.59	1.52	1.58	3.95%	March 2015	1.52	1.56	1.49	1.55	1.55	---	---	1.54	---	1.90	---	271	2,931	---	19,797	---
				June 2015	---	---	---	---	1.54	---	---	1.53	---	2.10	---	---	---	---	---	---
				September 2015	---	---	---	---	1.54	---	---	---	---	---	---	---	---	---	---	---
				December 2015	---	---	---	---	1.55	---	---	---	---	---	---	---	---	---	---	---
OPAP (CR)				(Contract Size: 100 Securities, Physical Delivery)																
9.55	9.00	9.55	6.11%	March 2015	9.12	9.25	8.86	9.05	9.05	---	---	9.03	---	10.50	---	125	485	---	1,018	---
				June 2015	---	---	---	---	8.84	---	---	9.24	---	---	---	---	---	---	---	---
				September 2015	---	---	---	---	8.89	---	---	---	---	---	---	---	---	---	---	---
				December 2015	---	---	---	---	8.93	---	---	---	---	---	---	---	---	---	---	---
OTE (CR)				(Contract Size: 100 Securities, Physical Delivery)																
9.44	9.05	9.44	4.31%	March 2015	9.10	9.25	8.99	9.25	9.25	---	---	9.15	---	10.09	---	148	583	---	5,318	---
				June 2015	---	---	---	---	9.14	---	---	9.22	---	10.57	---	---	---	---	---	---
				September 2015	---	---	---	---	9.19	---	---	---	---	---	---	---	---	---	---	---
				December 2015	---	---	---	---	9.23	---	---	---	---	---	---	---	---	---	---	---
P.P.A. S.A. (CR)				(Contract Size: 100 Securities, Physical Delivery)																
12.39	11.61	11.91	-0.75%	March 2015	12.00	12.00	11.80	11.92	11.92	---	---	11.75	---	13.20	---	4	12	---	284	---
				June 2015	---	---	---	---	12.12	---	---	---	---	---	---	---	---	---	---	---
				September 2015	---	---	---	---	12.06	---	---	---	---	---	---	---	---	---	---	---
				December 2015	---	---	---	---	12.12	---	---	---	---	---	---	---	---	---	---	---
PIRAEUS BANK (CR)				(Contract Size: 100 Securities, Physical Delivery)																
1.02	0.970	1.00	2.04%	March 2015	0.988	0.995	0.954	0.977	0.977	---	---	0.972	---	1.34	---	142	1,404	---	15,247	---
				June 2015	---	---	---	---	0.990	---	---	0.986	---	1.00	---	---	---	---	5	---
				September 2015	---	---	---	---	0.995	---	---	---	---	---	---	---	---	---	---	---
				December 2015	---	---	---	---	1.00	---	---	---	---	---	---	---	---	---	---	---
PPC (CR)				(Contract Size: 100 Securities, Physical Delivery)																
6.24	5.90	6.19	2.82%	March 2015	6.12	6.18	5.86	6.07	6.07	---	---	6.06	---	7.94	---	262	932	---	4,186	---
				June 2015	---	---	---	---	6.08	---	---	6.05	---	8.06	---	---	---	---	---	---
				September 2015	---	---	---	---	6.08	---	---	---	---	---	---	---	---	---	---	---
				December 2015	---	---	---	---	6.11	---	---	---	---	---	---	---	---	---	---	---

Underlying Asset				Derivatives Market																
Price max	Price min	Closing price	change	Delivery Month	Open price	Price max	Price min	Last price	Closing price	Last Bid	Last Ask	Settlement price	change	Life high	Life low	Trades	Volume	change	Open Interest	change
SIDENOR (CR)				(Contract Size: 100 Securities, Physical Delivery)																
0.528	0.481	0.516	3.82%	March 2015	0.528	0.528	0.528	0.528	0.528	---	---	0.548	---	0.528	---	1	16	---	786	-
				June 2015	---	---	---	---	0.502	---	---	---	---	---	---	---	---	---	---	-
				September 2015	---	---	---	---	0.505	---	---	---	---	---	---	---	---	---	---	-
				December 2015	---	---	---	---	0.507	---	---	---	---	---	---	---	---	---	---	-
TERNA ENERGY (CR)				(Contract Size: 100 Securities, Physical Delivery)																
2.31	2.22	2.28	-0.87%	March 2015	2.21	2.22	2.19	2.22	2.22	---	---	2.28	---	2.30	---	4	20	---	1,030	-
				June 2015	---	---	---	---	2.26	---	---	2.27	---	2.24	---	---	---	---	800	-
				September 2015	---	---	---	---	2.27	---	---	---	---	---	---	---	---	---	---	-
				December 2015	---	---	---	---	2.29	---	---	---	---	---	---	---	---	---	---	-
TITAN CEMENT (CR)				(Contract Size: 100 Securities, Physical Delivery)																
20.60	19.60	20.03	2.35%	March 2015	20.24	20.30	19.51	20.13	20.13	---	---	20.04	---	20.97	---	28	66	---	384	-
				June 2015	---	---	---	---	19.77	---	---	---	---	---	---	---	---	---	---	-
				September 2015	---	---	---	---	19.77	---	---	---	---	---	---	---	---	---	---	-
				December 2015	---	---	---	---	19.87	---	---	---	---	---	---	---	---	---	---	-
VIOHALCO SA/NV (CB)				(Contract Size: 100 Securities, Physical Delivery)																
1.94	1.84	1.89	-2.07%	March 2015	1.84	1.84	1.83	1.83	1.83	---	---	1.87	---	2.02	---	3	11	---	427	-
				June 2015	---	---	---	---	1.95	---	---	---	---	---	---	---	---	---	---	-
				September 2015	---	---	---	---	1.96	---	---	---	---	---	---	---	---	---	---	-
				December 2015	---	---	---	---	1.97	---	---	---	---	---	---	---	---	---	---	-

FTSE/Athex Large Cap

(Trade Unit: 1 Index Point x 5€ - Exoerchise Style: European, Cash Settlement)

Call Options																	Put Options																
Exerise Price	January 2015							February 2015							Other Months		January 2015							February 2015							Other Months		Exerise Price
	Open price	Price max	Price min	Last price	Closing price	Volume	Open Interest	Open price	Price max	Price min	Last price	Closing price	Volume	Open Interest	Volume	Open Interest	Open price	Price max	Price min	Last price	Closing price	Volume	Open Interest	Open price	Price max	Price min	Last price	Closing price	Volume	Open Interest	Volume	Open Interest	
180	88.00	88.00	88.00	88.00	88.00	50	50	-	-	-	-	-	-	-	-	-	88.00	88.00	0.00	-	0.39	-	-	-	-	-	-	-	-	-	-	-	180
250	0.00	0.00	0.00	-	29.75	-	-	0.00	0.00	0.00	-	39.00	-	-	-	-	0.00	0.00	11.00	13.00	13.00	94	135	0.00	0.00	0.00	-	24.25	-	-	-	-	250
255	0.00	0.00	0.00	-	26.75	-	-	0.00	0.00	0.00	-	36.50	-	-	-	-	0.00	0.00	0.00	-	15.25	-	-	0.00	0.00	0.00	-	26.75	-	-	-	-	255
260	0.00	0.00	0.00	-	24.25	-	40	0.00	0.00	0.00	-	34.00	-	-	-	-	0.00	0.00	0.00	-	17.75	-	21	0.00	0.00	0.00	-	29.25	-	-	-	-	260
265	0.00	0.00	0.00	-	21.75	-	-	0.00	0.00	0.00	-	31.75	-	-	-	-	0.00	0.00	0.00	-	20.25	-	-	0.00	0.00	0.00	-	32.00	-	-	-	-	265
270	22.00	22.00	22.00	22.00	22.00	50	50	0.00	0.00	0.00	-	29.75	-	-	-	-	22.00	22.00	0.00	-	23.00	-	81	0.00	0.00	0.00	-	35.00	-	-	-	-	270
275	0.00	0.00	0.00	-	17.25	-	55	0.00	0.00	0.00	-	27.75	-	-	-	-	0.00	0.00	0.00	-	25.75	-	-	0.00	0.00	0.00	-	38.00	-	-	-	-	275
280	0.00	0.00	0.00	-	15.50	-	163	0.00	0.00	0.00	-	25.75	-	-	-	-	0.00	0.00	0.00	-	29.00	-	98	0.00	0.00	0.00	-	41.00	-	-	-	-	280
285	15.00	15.00	15.00	15.00	15.00	25	67	0.00	0.00	0.00	-	24.00	-	-	-	-	15.00	15.00	0.00	-	32.25	-	41	0.00	0.00	0.00	-	44.25	-	-	-	-	285
290	13.50	14.00	13.50	14.00	14.00	2	26	0.00	0.00	0.00	-	22.50	-	-	-	-	13.50	14.00	0.00	-	35.50	-	20	0.00	0.00	0.00	-	47.50	-	-	-	-	290
295	0.00	0.00	0.00	-	10.75	-	5	0.00	0.00	0.00	-	20.75	-	-	-	-	0.00	0.00	0.00	-	39.25	-	40	0.00	0.00	0.00	-	51.00	-	-	-	-	295
300	11.00	11.00	11.00	11.00	11.00	25	91	0.00	0.00	0.00	-	19.25	-	-	-	-	11.00	11.00	0.00	-	43.00	-	20	0.00	0.00	0.00	-	54.50	-	-	-	-	300
305	0.00	0.00	0.00	-	8.30	-	-	0.00	0.00	0.00	-	18.00	-	-	-	-	0.00	0.00	0.00	-	46.75	-	20	0.00	0.00	0.00	-	58.00	-	-	-	-	305
310	7.50	7.50	7.50	7.50	7.50	50	286	0.00	0.00	0.00	-	16.75	-	10	-	-	7.50	7.50	0.00	-	50.50	-	40	0.00	0.00	0.00	-	61.50	-	-	-	-	310
315	0.00	0.00	0.00	-	6.40	-	604	0.00	0.00	0.00	-	15.50	-	-	-	-	0.00	0.00	0.00	-	55.00	-	4	0.00	0.00	0.00	-	65.50	-	-	-	-	315
320	5.80	5.80	5.80	5.80	5.80	100	1,988	0.00	0.00	0.00	-	14.25	-	-	-	-	5.80	5.80	0.00	-	59.00	-	40	0.00	0.00	0.00	-	69.50	-	-	-	-	320
325	0.00	0.00	0.00	-	4.80	-	20	0.00	0.00	0.00	-	13.25	-	-	-	-	0.00	0.00	0.00	-	63.00	-	40	0.00	0.00	0.00	-	73.50	-	-	-	-	325
330	0.00	0.00	0.00	-	4.20	-	160	0.00	0.00	0.00	-	12.25	-	-	-	-	0.00	0.00	0.00	-	67.50	-	40	0.00	0.00	0.00	-	77.50	-	-	-	-	330
335	0.00	0.00	0.00	-	3.60	-	20	0.00	0.00	0.00	-	11.25	-	-	-	-	0.00	0.00	0.00	-	72.00	-	20	0.00	0.00	0.00	-	81.50	-	-	-	-	335
340	0.00	0.00	0.00	-	3.10	-	1	0.00	0.00	0.00	-	10.50	-	-	-	-	0.00	0.00	0.00	-	76.50	-	20	0.00	0.00	0.00	-	85.50	-	-	-	-	340
345	0.00	0.00	0.00	-	2.70	-	-	0.00	0.00	0.00	-	9.70	-	-	-	-	0.00	0.00	0.00	-	81.00	-	-	0.00	0.00	0.00	-	89.50	-	-	-	-	345
350	0.00	0.00	0.00	-	2.30	-	11	-	-	-	-	-	-	-	-	-	0.00	0.00	0.00	-	85.50	-	-	-	-	-	-	-	-	-	-	350	
355	-	-	-	-	-	-	-	-	-	-	-	-	-	-	-	-	-	-	-	-	-	-	-	-	-	-	-	-	-	-	-	355	
360	-	-	-	-	-	-	-	-	-	-	-	-	-	-	-	-	-	-	-	-	-	-	-	-	-	-	-	-	-	-	-	360	
365	-	-	-	-	-	-	-	-	-	-	-	-	-	-	-	-	-	-	-	-	-	-	-	-	-	-	-	-	-	-	-	365	
370	-	-	-	-	-	-	-	-	-	-	-	-	-	-	-	-	-	-	-	-	-	-	-	-	-	-	-	-	-	-	-	370	
375	-	-	-	-	-	-	-	-	-	-	-	-	-	-	-	-	-	-	-	-	-	-	-	-	-	-	-	-	-	-	-	375	
380	-	-	-	-	-	-	-	-	-	-	-	-	-	-	-	-	-	-	-	-	-	-	-	-	-	-	-	-	-	-	-	380	
385	-	-	-	-	-	-	-	-	-	-	-	-	-	-	-	-	-	-	-	-	-	-	-	-	-	-	-	-	-	-	-	385	
390	-	-	-	-	-	-	-	-	-	-	-	-	-	-	-	-	-	-	-	-	-	-	-	-	-	-	-	-	-	-	-	390	
395	-	-	-	-	-	-	-	-	-	-	-	-	-	-	-	-	-	-	-	-	-	-	-	-	-	-	-	-	-	-	-	395	
400	-	-	-	-	-	-	-	-	-	-	-	-	-	-	-	-	-	-	-	-	-	-	-	-	-	-	-	-	-	-	-	400	
405	-	-	-	-	-	-	-	-	-	-	-	-	-	-	-	-	-	-	-	-	-	-	-	-	-	-	-	-	-	-	-	405	
410	-	-	-	-	-	-	-	-	-	-	-	-	-	-	-	-	-	-	-	-	-	-	-	-	-	-	-	-	-	-	-	410	
415	-	-	-	-	-	-	-	-	-	-	-	-	-	-	-	-	-	-	-	-	-	-	-	-	-	-	-	-	-	-	-	415	
420	-	-	-	-	-	-	-	-	-	-	-	-	-	-	-	-	-	-	-	-	-	-	-	-	-	-	-	-	-	-	-	420	

FTSE/Athex Large Cap

(Trade Unit: 1 Index Point x 5€ - Exercise Style: European, Cash Settlement)

Call Options																	Put Options																						
Exercise Price	January 2015							February 2015							Other Months		January 2015							February 2015							Other Months		Exercise Price						
	Open price	Price max	Price min	Last price	Closing price	Volume	Open Interest	Open price	Price max	Price min	Last price	Closing price	Volume	Open Interest	Volume	Open Interest	Open price	Price max	Price min	Last price	Closing price	Volume	Open Interest	Open price	Price max	Price min	Last price	Closing price	Volume	Open Interest	Volume	Open Interest							
425	-	-	-	-	-	-	-	-	-	-	-	-	-	-			-	-	-	-	-	-	-	-	-	-	-	-	-	-	-	425							
430	-	-	-	-	-	-	-	-	-	-	-	-	-	-			-	-	-	-	-	-	-	-	-	-	-	-	-	-	-	430							
435	-	-	-	-	-	-	-	-	-	-	-	-	-	-			-	-	-	-	-	-	-	-	-	-	-	-	-	-	-	435							
440	0.00	0.00	0.00	-	0.12	-	-	-	-	-	-	-	-	-			0.00	0.00	168.00	168.00	168.00	10	15	-	-	-	-	-	-	-	-	-	440						
445	-	-	-	-	-	-	-	-	-	-	-	-	-	-			-	-	-	-	-	-	-	-	-	-	-	-	-	-	-	445							
450	-	-	-	-	-	-	-	-	-	-	-	-	-	-			-	-	-	-	-	-	-	-	-	-	-	-	-	-	-	450							
455	-	-	-	-	-	-	-	-	-	-	-	-	-	-			-	-	-	-	-	-	-	-	-	-	-	-	-	-	-	455							
Totals:							302	3,637								0	10	0	0								104	695								0	0	0	293
Number of Trades:							10									0		0									17									0		0	

FTSE/Athex Large Cap

(Trade Unit: 1 Index Point x 5€ - Exoercise Style: European, Cash Settlement)

Call Options																	Put Options																					
Exerise Price	January 2015							February 2015							Other Months			January 2015										February 2015							Other Months			Exerise Price
	Open price	Price max	Price min	Last price	Closing price	Volume	Open Interest	Open price	Price max	Price min	Last price	Closing price	Volume	Open Interest	Volume	Open Interest	Open price	Price max	Price min	Last price	Closing price	Volume	Open Interest	Open price	Price max	Price min	Last price	Closing price	Volume	Open Interest	Volume	Open Interest						

ALPHA BANK (CR)

(Contract Size: 100 Securities, Exercise Style: American, Physical Delivery)

Call Options																Put Options																	
Exercise Price	January 2015							February 2015							Other Months		January 2015							February 2015							Other Months		Exercise Price
	Open price	Price max	Price min	Last price	Closing price	Volume	Open Interest	Open price	Price max	Price min	Last price	Closing price	Volume	Open Interest	Volume	Open Interest	Open price	Price max	Price min	Last price	Closing price	Volume	Open Interest	Open price	Price max	Price min	Last price	Closing price	Volume	Open Interest	Volume	Open Interest	
0.100	0.000	0.000	0.000		0.390	-	-	0.000	0.000	0.000		0.390	-	-			0.000	0.000	0.000		0.001	-	-	0.000	0.000	0.000		0.001	-	-			0.001
0.200	0.000	0.000	0.000		0.290	-	-	0.000	0.000	0.000		0.291	-	-			0.000	0.000	0.000		0.001	-	-	0.000	0.000	0.000		0.001	-	-			0.002
0.300	0.000	0.000	0.000		0.191	-	-	0.000	0.000	0.000		0.195	-	-			0.000	0.000	0.000		0.001	-	-	0.000	0.000	0.000		0.003	-	-			0.003
0.400	0.000	0.000	0.000		0.100	-	-	0.000	0.000	0.000		0.114	-	-			0.000	0.000	0.000		0.009	-	-	0.000	0.000	0.000		0.023	-	-			0.004
0.500	0.000	0.000	0.000		0.039	-	-	0.000	0.000	0.000		0.060	-	-			0.000	0.000	0.000		0.048	-	-	0.000	0.000	0.000		0.068	-	-			0.005
0.600	0.000	0.000	0.000		0.011	-	-	0.000	0.000	0.000		0.029	-	-			0.000	0.000	0.000		0.121	-	-	0.000	0.000	0.000		0.137	-	-			0.006
0.700	0.000	0.000	0.000		0.003	-	-	0.000	0.000	0.000		0.013	-	-			0.000	0.000	0.000		0.212	-	-	0.000	0.000	0.000		0.222	-	-			0.007
0.800	0.000	0.000	0.000		0.001	-	-	0.000	0.000	0.000		0.006	-	-			0.000	0.000	0.000		0.310	-	-	0.000	0.000	0.000		0.314	-	-			0.008
0.900	0.000	0.000	0.000		0.001	-	-	0.000	0.000	0.000		0.003	-	-			0.000	0.000	0.000		0.410	-	-	0.000	0.000	0.000		0.411	-	-			0.009
1.000	0.000	0.000	0.000		0.001	-	-	0.000	0.000	0.000		0.001	-	-			0.000	0.000	0.000		0.510	-	-	0.000	0.000	0.000		0.510	-	-			0.010
1.100						-	-						-	-								-	-					-	-			0.011	
Totals:						0	0							0	0	0	0							0	0							0	0
Number of Trades:						0								0		0	0.00							0								0	

**NATIONAL BANK (CR)**

(Contract Size: 100 Securities, Exercise Style: American, Physical Delivery)

Call Options																Put Options																				
January 2015								February 2015								Other Months		January 2015								February 2015								Other Months		
Exerise Price	Open price	Price max	Price min	Last price	Closing price	Volume	Open Interest	Open price	Price max	Price min	Last price	Closing price	Volume	Open Interest	Volume	Open Interest	Open price	Price max	Price min	Last price	Closing price	Volume	Open Interest	Open price	Price max	Price min	Last price	Closing price	Volume	Open Interest	Volume	Open Interest	Exerise Price			
1.100	0.000	0.000	0.000		0.429	-	-	0.000	0.000	0.000		0.457	-	-			0.000	0.000	0.000		0.008	-	-	0.000	0.000	0.000		0.033	-	-			0.011			
1.200	0.000	0.000	0.000		0.340	-	-	0.000	0.000	0.000		0.380	-	-			0.000	0.000	0.000		0.019	-	-	0.000	0.000	0.000		0.056	-	-			0.012			
1.300	0.000	0.000	0.000		0.262	-	-	0.000	0.000	0.000		0.313	-	-			0.000	0.000	0.000		0.040	-	-	0.000	0.000	0.000		0.088	-	-			0.013			
1.400	0.000	0.000	0.000		0.194	-	-	0.000	0.000	0.000		0.253	-	-			0.000	0.000	0.000		0.072	-	-	0.000	0.000	0.000		0.129	-	-			0.014			
1.500	0.000	0.000	0.000		0.139	-	20	0.000	0.000	0.000		0.204	-	10			0.000	0.000	0.000		0.117	-	-	0.000	0.000	0.000		0.179	-	-			0.015			
1.600	0.000	0.000	0.000		0.097	-	30	0.000	0.000	0.000		0.163	-	-			0.000	0.000	0.000		0.174	-	500	0.000	0.000	0.000		0.238	-	-			0.016			
1.700	0.000	0.000	0.000		0.065	-	-	0.000	0.000	0.000		0.128	-	-			0.000	0.000	0.000		0.243	-	-	0.000	0.000	0.000		0.303	-	-			0.017			
1.800	0.000	0.000	0.000		0.043	-	-	0.000	0.000	0.000		0.100	-	-			0.000	0.000	0.000		0.321	-	200	0.000	0.000	0.000		0.375	-	-			0.018			
1.900	0.000	0.000	0.000		0.028	-	20	0.000	0.000	0.000		0.079	-	-			0.000	0.000	0.000		0.405	-	-	0.000	0.000	0.000		0.453	-	-			0.019			
2.000	0.000	0.000	0.000		0.018	-	220	0.000	0.000	0.000		0.060	-	-			0.000	0.000	0.000		0.495	-	-	0.000	0.000	0.000		0.534	-	-			0.020			
2.200	0.000	0.000	0.000		0.006	-	-	0.000	0.000	0.000		0.035	-	-			0.000	0.000	0.000		0.684	-	-	0.000	0.000	0.000		0.710	-	-			0.022			
2.400	0.000	0.000	0.000		0.002	-	-	0.000	0.000	0.000		0.020	-	-			0.000	0.000	0.000		0.881	-	-	0.000	0.000	0.000		0.895	-	-			0.024			
2.600	0.000	0.000	0.000		0.001	-	-	0.000	0.000	0.000		0.012	-	-			0.000	0.000	0.000		1.08	-	-	0.000	0.000	0.000		1.09	-	-			0.026			
2.800	0.000	0.000	0.000		0.002	-	-	0.000	0.000	0.000		0.007	-	-			0.000	0.000	0.000		1.28	-	-	0.000	0.000	0.000		1.28	-	-			0.028			
3.000	0.000	0.000	0.000		0.001	-	-						-	-			0.000	0.000	0.000		1.48	-	-				-	-			0.030					
3.200						-	-						-	-								-	-				-	-				0.032				
3.400						-	-						-	-								-	-				-	-				0.034				
3.600						-	-						-	-								-	-				-	-				0.036				
3.800						-	-						-	-								-	-				-	-				0.038				
4.000						-	-						-	-								-	-				-	-				0.040				
4.400						-	-						-	-								-	-				-	-				0.044				
4.800						-	-						-	-								-	-				-	-				0.048				
5.200						-	-						-	-								-	-				-	-				0.052				
5.600						-	-						-	-								-	-				-	-				0.056				
Totals:													0	10	0	0						0	700					0	0	0	0					
Number of Trades:													0		0							0.00						0		0						

**OPAP (CR)**

(Contract Size: 100 Securities, Exercise Style: American, Physical Delivery)

Call Options																	Put Options																	
January 2015								February 2015						Other Months			January 2015								February 2015						Other Months			
Exerise Price	Open price	Price max	Price min	Last price	Closing price	Volume	Open Interest	Open price	Price max	Price min	Last price	Closing price	Volume	Open Interest	Volume	Open Interest	Open price	Price max	Price min	Last price	Closing price	Volume	Open Interest	Open price	Price max	Price min	Last price	Closing price	Volume	Open Interest	Volume	Open Interest	Exerise Price	
7.200	0.000	0.000	0.000		1.83	-	-	0.000	0.000	0.000		1.90	-	-			0.000	0.000	0.000		0.016	-	-	0.000	0.000	0.000		0.075	-	-			0.072	
7.600	0.000	0.000	0.000		1.46	-	-	0.000	0.000	0.000		1.57	-	-			0.000	0.000	0.000		0.044	-	-	0.000	0.000	0.000		0.139	-	-			0.076	
8.000	0.000	0.000	0.000		1.11	-	-	0.000	0.000	0.000		1.26	-	-			0.000	0.000	0.000		0.102	-	-	0.000	0.000	0.000		0.235	-	-			0.080	
8.400	0.000	0.000	0.000		0.813	-	-	0.000	0.000	0.000		0.996	-	-			0.000	0.000	0.000		0.200	-	-	0.000	0.000	0.000		0.368	-	-			0.084	
8.800	0.000	0.000	0.000		0.568	-	-	0.000	0.000	0.000		0.770	-	-			0.000	0.000	0.000		0.355	-	-	0.000	0.000	0.000		0.541	-	-			0.088	
9.200	0.000	0.000	0.000		0.377	-	-	0.000	0.000	0.000		0.582	-	-			0.000	0.000	0.000		0.563	-	-	0.000	0.000	0.000		0.752	-	-			0.092	
9.600	0.000	0.000	0.000		0.236	-	-	0.000	0.000	0.000		0.429	-	-			0.000	0.000	0.000		0.823	-	-	0.000	0.000	0.000		1.00	-	-			0.096	
10.000	0.000	0.000	0.000		0.140	-	-	0.000	0.000	0.000		0.308	-	-			0.000	0.000	0.000		1.13	-	-	0.000	0.000	0.000		1.28	-	-			0.100	
11.000	0.000	0.000	0.000		0.032	-	-	0.000	0.000	0.000		0.127	-	-			0.000	0.000	0.000		2.02	-	-	0.000	0.000	0.000		2.10	-	-			0.110	
12.000	0.000	0.000	0.000		0.005	-	-	0.000	0.000	0.000		0.048	-	-			0.000	0.000	0.000		3.00	-	-	0.000	0.000	0.000		3.03	-	-			0.120	
13.000	0.000	0.000	0.000		0.001	-	-	0.000	0.000	0.000		0.016	-	-			0.000	0.000	0.000		4.00	-	-	0.000	0.000	0.000		4.00	-	-			0.130	
14.000						-	-						-	-								-	-					-	-				0.140	
15.000						-	-						-	-								-	-					-	-				0.150	
16.000						-	-						-	-								-	-					-	-				0.160	
17.000						-	-						-	-								-	-					-	-				0.170	
18.000						-	-						-	-								-	-					-	-				0.180	
Totals:						0	0						0	0	0	0						0	0					0	0	0	0			
Number of Trades:						0							0		0							0.00						0		0				

**OTE (CR)**

(Contract Size: 100 Securities, Exercise Style: American, Physical Delivery)

Call Options																	Put Options																			
January 2015								February 2015								Other Months		January 2015								February 2015								Other Months		Exercise Price
Exercise Price	Open price	Price max	Price min	Last price	Closing price	Volume	Open Interest	Open price	Price max	Price min	Last price	Closing price	Volume	Open Interest	Volume	Open Interest	Open price	Price max	Price min	Last price	Closing price	Volume	Open Interest	Open price	Price max	Price min	Last price	Closing price	Volume	Open Interest	Volume	Open Interest				
7.600	0.000	0.000	0.000		1.50	-	-	0.000	0.000	0.000		1.62	-	-			0.000	0.000	0.000		0.037	-	-	0.000	0.000	0.000		0.144	-	-			0.076			
8.000	0.000	0.000	0.000		1.15	-	-	0.000	0.000	0.000		1.32	-	-			0.000	0.000	0.000		0.091	-	-	0.000	0.000	0.000		0.240	-	-			0.080			
8.400	0.000	0.000	0.000		0.845	-	-	0.000	0.000	0.000		1.05	-	-			0.000	0.000	0.000		0.182	-	-	0.000	0.000	0.000		0.372	-	-			0.084			
8.800	0.000	0.000	0.000		0.591	-	-	0.000	0.000	0.000		0.820	-	-			0.000	0.000	0.000		0.328	-	5	0.000	0.000	0.000		0.541	-	-			0.088			
9.200	0.000	0.000	0.000		0.394	-	-	0.000	0.000	0.000		0.627	-	-			0.599	0.610	0.599	0.610	0.610	15	15	0.000	0.000	0.000		0.748	-	-			0.092			
9.600	0.000	0.000	0.000		0.248	-	15	0.000	0.000	0.000		0.468	-	-			0.000	0.000	0.000		0.785	-	-	0.000	0.000	0.000		0.988	-	-			0.096			
10.000	0.000	0.000	0.000		0.148	-	-	0.000	0.000	0.000		0.345	-	-			0.000	0.000	0.000		1.08	-	-	0.000	0.000	0.000		1.27	-	-			0.100			
11.000	0.000	0.000	0.000		0.033	-	150	0.000	0.000	0.000		0.151	-	-			0.000	0.000	0.000		1.97	-	-	0.000	0.000	0.000		2.07	-	-			0.110			
12.000	0.000	0.000	0.000		0.005	-	-	0.000	0.000	0.000		0.059	-	-			0.000	0.000	0.000		2.95	-	-	0.000	0.000	0.000		2.99	-	-			0.120			
13.000	0.000	0.000	0.000		0.001	-	-	0.000	0.000	0.000		0.021	-	-			0.000	0.000	0.000		3.95	-	-	0.000	0.000	0.000		3.95	-	-			0.130			
14.000	0.000	0.000	0.000		0.007	-	-	0.000	0.000	0.000		0.007	-	-			0.000	0.000	0.000		4.95	-	-	0.000	0.000	0.000		4.95	-	-			0.140			
15.000						-	-						-	-								-	-					-	-				0.150			
16.000						-	-						-	-								-	-					-	-				0.160			
Totals:						0	165							0	0	0	0							0	20							0	0	0	0	
Number of Trades:						0								0		0								2.00								0		0		

**PIRAEUS BANK (CR)**

(Contract Size: 100 Securities, Exercise Style: American, Physical Delivery)

Call Options																	Put Options																		
January 2015							February 2015							Other Months			January 2015							February 2015							Other Months				
Exercise Price	Open price	Price max	Price min	Last price	Closing price	Volume	Open Interest	Open price	Price max	Price min	Last price	Closing price	Volume	Open Interest	Volume	Open Interest	Open price	Price max	Price min	Last price	Closing price	Volume	Open Interest	Open price	Price max	Price min	Last price	Closing price	Volume	Open Interest	Volume	Open Interest	Exercise Price		
0.600	0.000	0.000	0.000		0.382	-	-	0.000	0.000	0.000		0.390	-	-			0.000	0.000	0.000		0.001	-	-	0.000	0.000	0.000		0.008	-	-			0.006		
0.700	0.000	0.000	0.000		0.287	-	-	0.000	0.000	0.000		0.306	-	-			0.000	0.000	0.000		0.005	-	-	0.000	0.000	0.000		0.023	-	-			0.007		
0.800	0.000	0.000	0.000		0.201	-	-	0.000	0.000	0.000		0.232	-	-			0.000	0.000	0.000		0.020	-	-	0.000	0.000	0.000		0.049	-	-			0.008		
0.900	0.000	0.000	0.000		0.131	-	-	0.000	0.000	0.000		0.172	-	-			0.000	0.000	0.000		0.050	-	-	0.000	0.000	0.000		0.089	-	-			0.009		
1.000	0.000	0.000	0.000		0.080	-	-	0.000	0.000	0.000		0.125	-	-			0.000	0.000	0.000		0.099	-	-	0.000	0.000	0.000		0.142	-	-			0.010		
1.100	0.000	0.000	0.000		0.046	-	-	0.000	0.000	0.000		0.089	-	-			0.000	0.000	0.000		0.164	-	-	0.000	0.000	0.000		0.206	-	-			0.011		
1.200	0.000	0.000	0.000		0.025	-	-	0.000	0.000	0.000		0.062	-	-			0.000	0.000	0.000		0.243	-	-	0.000	0.000	0.000		0.279	-	-			0.012		
1.300	0.000	0.000	0.000		0.013	-	-	0.000	0.000	0.000		0.043	-	-			0.000	0.000	0.000		0.332	-	-	0.000	0.000	0.000		0.359	-	-			0.013		
1.400	0.000	0.000	0.000		0.006	-	-	0.000	0.000	0.000		0.030	-	-			0.000	0.000	0.000		0.425	-	-	0.000	0.000	0.000		0.446	-	-			0.014		
1.500	0.000	0.000	0.000		0.003	-	-	0.000	0.000	0.000		0.021	-	-			0.000	0.000	0.000		0.522	-	-	0.000	0.000	0.000		0.537	-	-			0.015		
1.600	0.000	0.000	0.000		0.001	-	-	0.000	0.000	0.000		0.014	-	-			0.000	0.000	0.000		0.621	-	-	0.000	0.000	0.000		0.630	-	-			0.016		
1.700	0.000	0.000	0.000		0.001	-	-						-	-			0.000	0.000	0.000		0.720	-	-				-	-				0.017			
1.800						-	-						-	-								-	-				-	-					0.018		
1.900						-	-						-	-								-	-				-	-					0.019		
2.000						-	-						-	-								-	-				-	-					0.020		
2.200						-	-						-	-								-	-				-	-					0.022		
2.400						-	-						-	-								-	-				-	-					0.024		
2.600						-	-						-	-								-	-				-	-					0.026		
2.800						-	-						-	-								-	-				-	-					0.028		
Totals:						0	0							0	0	0	0							0	0							0	0	0	0
Number of Trades:						0								0		0								0.00								0		0	

## PPC (CR)

(Contract Size: 100 Securities, Exercise Style: American, Physical Delivery)

Call Options																	Put Options																
January 2015							February 2015							Other Months			January 2015							February 2015							Other Months		
Exerise Price	Open price	Price max	Price min	Last price	Closing price	Volume	Open Interest	Open price	Price max	Price min	Last price	Closing price	Volume	Open Interest	Volume	Open Interest	Open price	Price max	Price min	Last price	Closing price	Volume	Open Interest	Open price	Price max	Price min	Last price	Closing price	Volume	Open Interest	Volume	Open Interest	Exerise Price
4.400	0.000	0.000	0.000		1.63	-	-	0.000	0.000	0.000		1.65	-	-			0.000	0.000	0.000		0.001	-	-	0.000	0.000	0.000		0.010	-	-			0.044
4.800	0.000	0.000	0.000		1.23	-	-	0.000	0.000	0.000		1.27	-	-			0.000	0.000	0.000		0.005	-	-	0.000	0.000	0.000		0.036	-	-			0.048
5.200	0.000	0.000	0.000		0.856	-	-	0.000	0.000	0.000		0.933	-	-			0.000	0.000	0.000		0.028	-	-	0.000	0.000	0.000		0.096	-	-			0.052
5.600	0.000	0.000	0.000		0.530	-	-	0.000	0.000	0.000		0.650	-	-			0.000	0.000	0.000		0.102	-	-	0.000	0.000	0.000		0.211	-	-			0.056
6.000	0.000	0.000	0.000		0.285	-	-	0.000	0.000	0.000		0.423	-	-			0.000	0.000	0.000		0.256	-	-	0.491	0.491	0.491	0.491	0.491	2	2			0.060
6.400	0.000	0.000	0.000		0.132	-	-	0.000	0.000	0.000		0.263	-	-			0.602	0.602	0.602	0.602	0.602	15	15	0.000	0.000	0.000		0.623	-	-			0.064
6.800	0.000	0.000	0.000		0.053	-	-	0.000	0.000	0.000		0.154	-	10			0.000	0.000	0.000		0.825	-	-	0.000	0.000	0.000		0.915	-	-			0.068
7.200	0.000	0.000	0.000		0.019	-	25	0.401	0.401	0.401	0.401	0.401	2	2			0.000	0.000	0.000		1.19	-	-	0.000	0.000	0.000		1.25	-	-			0.072
7.600	0.000	0.000	0.000		0.006	-	-	0.000	0.000	0.000		0.045	-	-			0.000	0.000	0.000		1.58	-	-	0.000	0.000	0.000		1.61	-	-			0.076
8.000	0.000	0.000	0.000		0.001	-	-	0.000	0.000	0.000		0.022	-	-			0.000	0.000	0.000		1.98	-	-	0.000	0.000	0.000		1.99	-	-			0.080
8.400	0.000	0.000	0.000		0.002	-	-	0.000	0.000	0.000		0.011	-	-			0.000	0.000	0.000		2.38	-	-	0.000	0.000	0.000		2.38	-	-			0.084
8.800	0.000	0.000	0.000		0.001	-	-						-	-			0.000	0.000	0.000		2.78	-	-					-	-			0.088	
9.200						-	-						-	-								-	-					-	-			0.092	
9.600						-	-						-	-								-	-					-	-			0.096	
10.000						-	-						-	-								-	-					-	-			0.100	
11.000						-	-						-	-								-	-					-	-			0.110	
12.000						-	-						-	-								-	-					-	-			0.120	
13.000						-	-						-	-								-	-					-	-			0.130	
14.000						-	-						-	-								-	-					-	-			0.140	
15.000						-	-						-	-								-	-					-	-			0.150	
16.000						-	-						-	-								-	-					-	-			0.160	
Totals:						0	25						2	12	0	0						0	15						2	2	0	0	
Number of Trades:						0							1		0							1.00						1		0			

PPC (CR)

(Contract Size: 100 Securities, Excercise Style: American, Physical Delivery)

Call Options																Put Options																		
Exerise Price	January 2015							February 2015							Other Months		January 2015								February 2015							Other Months		Exerise Price
	Open price	Price max	Price min	Last price	Closing price	Volume	Open Interest	Open price	Price max	Price min	Last price	Closing price	Volume	Open Interest	Volume	Open Interest	Open price	Price max	Price min	Last price	Closing price	Volume	Open Interest	Open price	Price max	Price min	Last price	Closing price	Volume	Open Interest	Volume	Open Interest		

Lending Products	Underlying Title	Multilateral Transactions[1]					Bilateral Transactions[2]		Stock Borrowing through OTC (volume)[3]
		Open Interest[5]	Volume(Offered)	Average Weighted	Transactions volume	Average Weighted	Transactions Volume	Average Weighte	Transactions Volume
AEGNBOR	AEGEAN AIRLINES (CR)	23,327	138	3.31%	---	---	---	---	---
ALPHABOR	ALPHA BANK (CR)	3,083,270	5,524,388	3.31%	170,000	2.65%	---	---	37,083,881
AETFBOR	ALPHA ETF FTSE Athex Large Cap	---	---	---	---	---	---	---	---
ALMYBOR	ALUMIL (CR)	---	---	---	---	---	---	---	---
IATRBOR	ATHENS MEDICAL CENTER SA (CR)	---	35,597	5.31%	---	---	---	---	---
TATTBOR	ATTICA BANK S.A. (CR)	---	70,001	5.31%	---	---	---	---	---
OTOELBOR	AUTOHELLAS SA (CR)	---	---	---	---	---	---	---	---
BIOKABOR	BIOKARPET S.A.(CR)	---	---	---	---	---	---	---	---
EEEBOR	CC HBC AG (CR)	51,249	151	8.95%	151	8.95%	---	---	75,131
CENTRBOR	CENTRIC HOLDINGS (CR)	---	16,000	5.31%	---	---	---	---	---
SOLKBOR	CORINTH PIPEWORKS SA (CR)	---	---	---	---	---	---	---	---
PLAKRBOR	CRETE PLASTICS SA (CR)	---	---	---	---	---	---	---	---
DROMEBOB	DROMEAS SA (CR)	---	---	---	---	---	---	---	---
ELGEBOR	ELGEKA SA (CR)	---	---	---	---	---	---	---	---
ELLAKTORBOR	ELLAKTOR (CR)	113,476	8,058	9.49%	8,058	9.49%	198	10.15%	---
ELBABOR	ELVAL SA. (CB)	10,000	24,000	5.31%	---	---	---	---	---
EUROBBOR	EUROBANK ERGASIAS (CR)	4,286,945	73,856	5.16%	---	---	800,000	5.00%	9,538,590
EUPICBOR	EUROPEAN RELIANCE INSUR. (CR)	---	---	---	---	---	---	---	---
EYDAPBOR	EYDAP S.A. (CR)	31,347	1,848	9.25%	1,848	9.25%	---	---	10,800
FGEBOR	F.G. EUROPE S.A. (CR)	---	---	---	---	---	---	---	---
FFGRPBOR	FOLLI FOLLIE (CR)	99,062	2,718	6.65%	2,718	6.65%	---	---	707,010
FOYRKBOR	FOURLIS (CR)	---	4,728	5.31%	---	---	---	---	3,850
FRIGOBOR	FRIGOGLASS SA (CR)	2,100	---	---	---	---	---	---	---
GEKTERNABOR	GEK TERNA (CR)	14,318	18,786	5.31%	---	---	---	---	---
SARBOR	GR. SARANTIS SA (CR)	---	---	---	---	---	---	---	---
EUPROBOR	GRIVALIA PROPERTIES (CR)	49,559	40,757	4.24%	---	---	---	---	41,931
XAKOBOR	HALKOR SA (CB)	---	34,398	5.31%	---	---	---	---	---
EXAEBOR	HELLENIC EXCHANGES-A.S.E. (CR)	70,893	417,886	3.31%	---	---	---	---	200
ELPEBOR	HELLENIC PETROLEUM (CR)	22,504	168,193	5.31%	---	---	---	---	64,271
HYGEIABOR	HYGEIA SA (CR)	---	46,299	5.31%	---	---	---	---	---
IASOBOR	IASO SA (CR)	---	21,721	5.31%	---	---	---	---	---

Stock Lending Notes

[1] - Multilateral contracts Lending or Borrowing as per Methods 8-1, 8-2 and 8-3-3 (According to ATHEX BoD Resolution No.17)

[2] - Bilateral Contracts Lending or Borrowing as per Methods 8-3-1 and 8-3-2 (According to ATHEX BoD Resolution No.20 )

[3] - The information concerning OTC Stock Borrowing Transactions is based on the statements of the Dematerialised Securities System (DSS) operators involved and refers to volumes that have been cleared and registered up until the previous working day.

[4] - Average Price (Volume weighted)

[5] - The Data concerning Open Interest before the start of trading session

Lending Products	Underlying Title	Multilateral Transactions[1]					Bilateral Transactions[2]		Stock Borrowing through OTC (volume)[3]
		Open Interest[5]	Volume(Offered)	Average Weighted	Transactions volume	Average Weighted	Transactions Volume	Average Weighte	Transactions Volume
IKTINBOR	IKTINOS HELLAS SA (CR)	---	---	---	---	---	---	---	---
LYKBOR	INFORM P. LYKOS SA (CR)	---	---	---	---	---	---	---	---
INKATBOR	INTRACOM CONSTR. (CR)	---	---	---	---	---	---	---	---
INTRKBOR	INTRACOM HOLDINGS (CR)	---	104,199	5.31%	---	---	---	---	---
INLOTBOR	INTRALOT (CR)	34,574	38,356	5.31%	---	---	---	---	---
AVAXBOR	J & P - AVAX SA (CR)	---	17,686	5.31%	---	---	---	---	---
BELABOR	JUMBO SA (CR)	141,852	32,070	3.86%	15,000	3.15%	---	---	---
KARTZBOR	KARATZIS SA (CR)	---	---	---	---	---	---	---	---
KLEMBOR	KLEEMAN HELLAS SA (CR)	---	---	---	---	---	---	---	---
KRIBOR	KRI-KRI S.A. (CR)	---	45,001	5.31%	---	---	---	---	---
LAMDABOR	LAMDA DEVELOPMENT SA (CR)	---	---	---	---	---	---	---	20,877
MIGBOR	MARFIN INVESTMENT GROUP (CR)	63,595	51,841	3.31%	---	---	100,000	5.00%	744,474
METKKBOR	METKA (CR)	30,315	9,379	3.31%	---	---	---	---	---
MLSBOR	MLS MULTIMEDIA SA (CR)	---	---	---	---	---	---	---	---
MOHBOR	MOTOR OIL (CR)	76,867	2,823	4.24%	1,397	3.50%	---	---	34,300
MYTILBOR	MYTILINEOS HOLDINGS (CR)	18,810	197,097	3.31%	10,000	2.65%	---	---	---
ETEBOR	NATIONAL BANK (CR)	771,424	1,005	5.66%	---	---	201,500	4.96%	2,617,509
ETFASEBOR	NBGAM ETF	---	---	---	---	---	---	---	---
ETFGT30PBOR	NBGAM ETF GREECE & TURKEY 30	---	---	---	---	---	---	---	---
OPAPBOR	OPAP (CR)	350,230	37,628	9.49%	---	---	70,000	5.00%	208,251
HTOBOR	OTE (CR)	282,796	1,757	7.64%	1,500	7.38%	130,000	5.62%	450,109
PPABOR	P.P.A. S.A. (CR)	700	---	---	---	---	---	---	---
PAPBOR	PAPOUTSANIS (CR)	---	---	---	---	---	---	---	---
PETROBOR	PETROPOULOS PETROS (CR)	---	---	---	---	---	---	---	---
TPEIRBOR	PIRAEUS BANK (CR)	664,014	1	9.65%	---	---	95,000	4.00%	26,679,586
PLAISBOR	PLAISIO COMPUTERS SA (CR)	---	---	---	---	---	---	---	---
PPCBOR	PPC (CR)	145,461	99	9.52%	99	9.52%	50,000	5.00%	32,192
PROFBOR	PROFILE SA (CR)	---	---	---	---	---	---	---	---
QUALBOR	QUALITY & RELIABILITY SA (CR)	---	---	---	---	---	---	---	---
QUESTBOR	QUEST HOLDINGS (CR)	---	43	5.30%	---	---	---	---	---
SIDEBOR	SIDENOR (CR)	4,500	22,240	5.31%	4,500	3.92%	---	---	---

Stock Lending Notes

[1] - Multilateral contracts Lending or Borrowing as per Methods 8-1, 8-2 and 8-3-3 (According to ATHEX BoD Resolution No.17)

[2] - Bilateral Contracts Lending or Borrowing as per Methods 8-3-1 and 8-3-2 (According to ATHEX BoD Resolution No.20 )

[3] - The information concerning OTC Stock Borrowing Transactions is based on the statements of the Dematerialised Securities System (DSS) operators involved and refers to volumes that have been cleared and registered up until the previous working day.

[4] - Average Price (Volume weighted)

[5] - The Data concerning Open Interest before the start of trading session

Lending Products	Underlying Title	Multilateral Transactions[1]					Bilateral Transactions[2]		Stock Borrowing through OTC (volume)[3]
		Open Interest[5]	Volume(Offered)	Average Weighted	Transactions volume	Average Weighted	Transactions Volume	Average Weighte	Transactions Volume
OLYMPBOR	TECHNICAL OLYMPIC SA (CR)	---	---	---	---	---	---	---	---
TENERGYBOR	TERNA ENERGY (CR)	13,900	5,167	3.86%	400	2.65%	---	---	2,000
EYAPSBOR	THESSALONIKA WATER & SEWERAGE	---	159	5.31%	---	---	---	---	---
PLATBOR	THRACE PLASTICS SA (CR)	---	24,799	5.31%	---	---	---	---	---
TITKBOR	TITAN CEMENT (CR)	102,522	175,212	3.31%	10,200	2.65%	---	---	247,742
OLTHBOR	TPA SA (CR)	35	3,278	5.31%	35	2.86%	---	---	---
TRASTORBOR	TRASTOR REAL EST. INV. CO.(CR)	---	---	---	---	---	---	---	---
VIOBOR	VIOHALCO SA/NV (CB)	36,871	2,383	3.31%	1,950	3.07%	---	---	---

Stock Lending Notes

[1] - Multilateral contracts Lending or Borrowing as per Methods 8-1, 8-2 and 8-3-3 (According to ATHEX BoD Resolution No.17)

[2] - Billateral Contracts Lending or Borrowing as per Methods 8-3-1 and 8-3-2 (According to ATHEX BoD Resolution No.20 )

[3] - The information concerning OTC Stock Borrowing Transactions is based on the statements of the Dematerialised Securities System (DSS) operators involved and refers to volumes that have been cleared and registered up until the previous working day.

[4] - Average Price (Volume weighted)

[5] - The Data concerning Open Interest before the start of trading session

**Sectors codification for listed companies**

533	-	Exploration & Production	537	-	Integrated Oil & Gas
1353	-	Commodity Chemicals	1357	-	Specialty Chemicals
1753	-	Aluminum	1755	-	Nonferrous Metals
1757	-	Steel	1775	-	General Mining
2353	-	Building Materials & Fixtures	2357	-	Heavy Construction
2723	-	Containers & Packaging	2727	-	Diversified Industrials
2733	-	Electrical Components & Equipment	2753	-	Commercial Vehicles & Trucks
2757	-	Industrial Machinery	2773	-	Marine Transportation
2777	-	Transportation Services	2791	-	Business Support Services
2797	-	Industrial Suppliers	3535	-	Distillers & Vintners
3537	-	Soft Drinks	3573	-	Farming Fishing & Plantations
3577	-	Food Products	3722	-	Durable Household Products
3726	-	Furnishings	3728	-	Home Construction
3747	-	Toys	3763	-	Clothing & Accessories
3765	-	Footwear	3767	-	Personal Products
3785	-	Tobacco	4533	-	Health Care Providers
4535	-	Medical Equipment	4577	-	Pharmaceuticals
5337	-	Food Retailers & Wholesalers	5371	-	Apparel Retailers
5373	-	Broadline Retailers	5375	-	Home Improvement Retailers
5379	-	Specialty Retailers	5553	-	Broadcasting & Entertainment
5555	-	Media Agencies	5557	-	Publishing
5751	-	Airlines	5752	-	Gambling
5753	-	Hotels	5755	-	Recreational Services
5757	-	Restaurants & Bars	5759	-	Travel & Tourism
6535	-	Fixed Line Telecommunications	6575	-	Mobile Telecommunications
7535	-	Conventional Electricity	7537	-	Alternative Electricity
7577	-	Water	8355	-	Banks
8534	-	Insurance Brokers	8536	-	Property & Casualty Insurance
8633	-	Real Estate Holding & Development	8637	-	Real Estate Services
8671	-	Industrial & Office REITs	8675	-	Specialty REITs
8775	-	Specialty Finance	8777	-	Investment Services
8985	-	Equity Investment Instruments	9533	-	Computer Services
9535	-	Internet	9537	-	Software
9572	-	Computer Hardware	9574	-	Electronic Office Equipment
9578	-	Telecommunications Equipment	12003	-	ETF

