

Daily Official List

Hellenic Exchanges – Athens Stock Exchange S.A.

Wednesday, 18 February, 2015

Year: 136 Trading Day No: 33

ΕΛΛΗΝΙΚΑ ΧΡΗΜΑΤΙΣΤΗΡΙΑ - ΧΡΗΜΑΤΙΣΤΗΡΙΟ ΑΘΗΝΩΝ

ΑΝΩΝΥΜΗ ΕΤΑΙΡΕΙΑ ΣΥΜΜΕΤΟΧΩΝ

HELLENIC EXCHANGES – ATHENS STOCK EXCHANGE

Disclaimer:

Hellenic Exchanges-Athens Exchange endeavours to ensure that the data and other material ("Information") presented on the Daily Official List are accurate and complete, but it is not liable for any errors or omissions of data or /and for the accuracy, credibility, updating and completeness of the aforesaid information nor it has any liability arising directly or indirectly from the use of the above Information.

The Company is not liable for the accuracy of the data included in listed companies' announcements. Only the sender of such an announcement is fully and solely liable for any infringement of third party's rights from the content of such announcement. All contents of the Daily Official List are provided only for information purposes and do not constitute investment advice or solicitation to invest in securities or other products listed for trading on the Exchange.

You acknowledge and agree that the Company is the owner of any property rights related to any Information appearing on the Daily Official List including intellectual property rights copyright, trademarks, etc.

The above data are a property of the Hellenic Exchanges-Athens Exchange and are copyright protected. Users are forbidden to reproduce, modify, copy, sale, transmit or redistribute, by all reproduction means and methods, part or the whole of the above data, without reference to their source.

The commercial exploitation of these data is, also, forbidden by third parties. Hellenic Exchanges-Athens Exchange does not carry any responsibility, direct or indirect, derived from usage or accidental alteration of the above data when used by third parties.

Hellenic Exchanges – Athens Stock Exchange S.A.

110 Athinon Ave., 10442 Athens, Tel: (210) 33.66.800, Fax: (210) 32.13.938

www.athex.gr

Thessalonica Stock Exchange Center (T.S.E.C)

16-18 Katouni Str., Thessalonica 546 25 Tel: (2310) 567.667, Fax: (2310) 530.545

Athex Members Guarantee Fund

14-16 Fidiou Str., Athens 106 78, Tel: (210) 33.04.682, Fax: (210) 33.04.155

Hellenic Republic Capital Market Commission

1 Kolokotroni Str. & 1 Stadiou Str., Athens 10562 Tel: (210) 33.77.100 Fax: (210) 33.77.173

Table of Contents

Section 1: Statistical Figures of Securities, Derivatives and Lending

Summary of Markets

Athex Indices

Analytic Figures for Athex Market's Boards and Categories

Trading Details by Athex Sectors and Financial Instruments (ETFs)

Top 10 best & worst performing Shares

Derivatives Summary

Section 2: Analytic Figures of Shares Transactions

Analytic Figures of Shares Transactions

Shares' Notes

Section 3: Figures of Securities Transactions

Securities Blocks Details

Shares Rights Details

Shares Short Selling

Stock Borrowing

Shares Forced Sales

Forced Sales Registered Shares

Exchange Traded Funds (ETFs) Characteristics

Section 5: Bonds traded in Fixed Income Assets Market

Corporate Bonds

Government Bonds

Treasury Bills & Zero Coupon Government Bonds

Government Bonds Traded with the Open Outcry Method

State Banks Bonds

Section 6: Additional Infos

Athex & ATHEXClear Members List

List of Stocks under Market Making operations

Section 7: Derivatives Market Analytic Figures

Index Futures

Stock Futures

Index Options

Stock Options

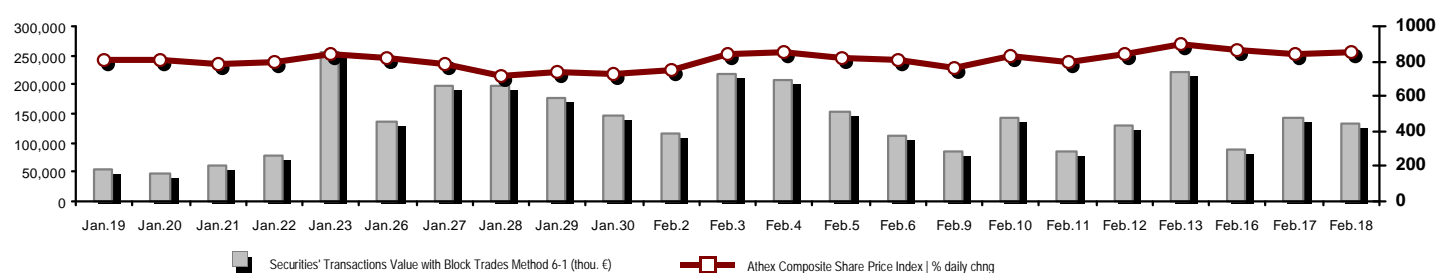
Stock Lending Analytic Figures

Appendix A: Sectors codification for listed companies

Section codification follows the corresponding from the Greek version of Daily Official List for reference purposes.

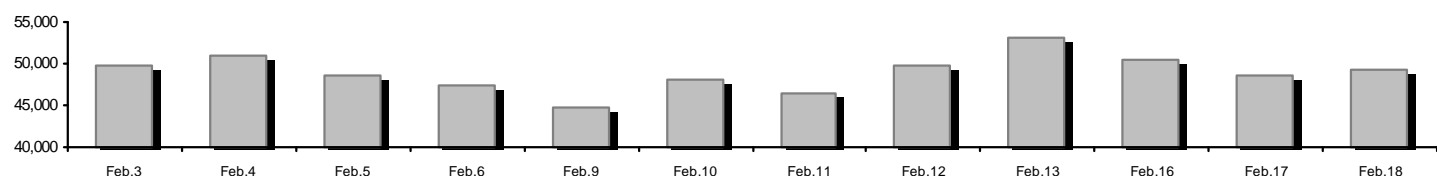
Summary of Markets

Athex Composite Share Price Index vs Shares and Derivatives Transactions Value

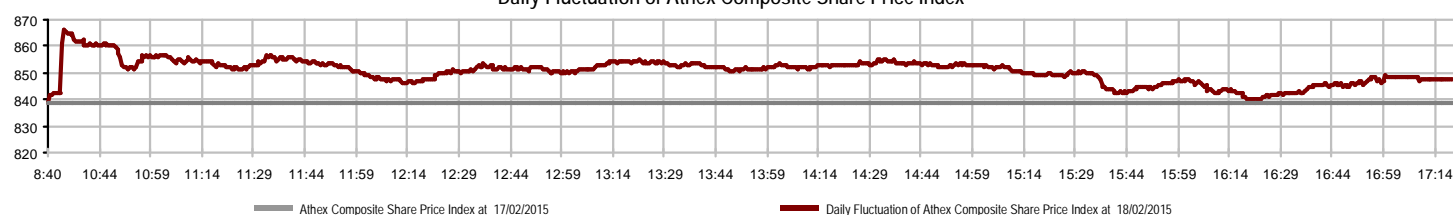


Athex Capitalisation (mill. €) **: 49,364.51		Derivatives Total Open Interest 323,277	
Daily change: mill. € % 677.91 1.39%		in Index Futures % daily chng 49,000 3.69%	
Yearly Avg Capitalisation: mill. € % chng prev year Avg 49,364.91 -28.73%		in Stock Futures % daily chng 262,968 -1.67%	
Athex Composite Share Price Index % daily chng 847.53 1.06%		in Index Options % daily chng 10,623 11.81%	
Athex Composite Share Price Index Capitalisation (mill. €) 44,344.80		in Stock Options % daily chng 686 11.36%	
Daily change (mill. €) 713.27			
Securities' Transactions Value with Block Trades Method 6-1 (133,593.24		Derivatives Contracts Volume: 114,745	
Daily change: thou. € % -9,943.04 -6.93%		Daily change: pieces % -16,350 -12.47%	
YtD Avg Trans. Value: thou. € % chng prev year Avg 120,547.54 -5.12%		YtD Avg Derivatives Contracts % chng prev year Avg 68,603 25.16%	
Blocks Transactions Value of Method 6-1 (thou. €) 10,866.42		Derivatives Trades Number: 4,123	
Blocks Transactions Value of Method 6-2 & 6-3 (thou. €) 6.72		Daily change: number % -2,660 -39.22%	
Bonds Transactions Value (thou. €) 1.52		YtD Avg Derivatives Trades number % chng prev year Avg 5,085 21.77%	
Securities' Transactions Volume (thou. Pieces) 223,100.37		Lending Total Open Interest 12,819,631	
Daily change: thou. pieces % -21,490.09 -8.79%		Daily change: pieces % -28,496 -0.22%	
YtD Avg Volume: thou. pieces % chng prev year Avg 186,887.16 96.70%		Lending Volume (Multilateral/Bilateral) 221,529	
Blocks Transactions Volume of Method 6-1 (thou. Pieces) 18,016.64		Daily change: pieces % 187,780 556.40%	
Blocks Transactions Volume of Method 6-2 & 6-3 (thou. Pieces) 2.86		Multilateral Lending 743	
Bonds Transactions Volume (thou. pieces) 1.67		Bilateral Lending 220,786	
Securities' Trades Number 36,977		Lending Trades Number: 23	
Daily change: number % -11,918 -24.37%		Daily change: thou. € % -29 -55.77%	
YtD Avg Derivatives Trades number % chng prev year Avg 38,153 32.09%		Multilateral Lending Trades Number 20	
Number of Blocks Method 6-1 13		Bilateral Lending Trades Number 3	
Number of Blocks Method 6-2 & 6-3 1			
Number of Bonds Transactions 1			

Athex Capitalisation (mill. €) **



Daily Fluctuation of Athex Composite Share Price Index



Athex Indices

Index name	18/02/2015	17/02/2015	pts.	%	Min	Max	Year min	Year max	Year change
Athex Composite Share Price Index	847.53 #	838.61	8.92	1.06%	838.61	865.97	708.61	912.85	2.58% #
FTSE/Athex Large Cap	250.73 #	248.05	2.68	1.08%	248.05	258.74	209.48	278.37	-5.33% €
FTSE/ATHEX Custom Capped	847.46 €	873.26	-25.81	-2.96%			724.23	912.09	-2.74% €
FTSE/ATHEX Custom Capped - USD	692.58 €	714.02	-21.44	-3.00%			588.87	758.95	-8.38% €
FTSE/Athex Mid Cap Index	871.70 #	862.48	9.22	1.07%	862.42	878.33	717.54	894.88	12.76% #
FTSE/ATHEX-CSE Banking Index	565.19 #	534.96	30.23	5.65%	534.96	591.47	402.80	774.70	-22.36% €
FTSE/ATHEX Global Traders Index Plus	1,528.70 #	1,523.83	4.87	0.32%	1,517.69	1,548.00	1,227.52	1,566.60	19.16% #
FTSE/ATHEX Global Traders Index	1,557.61 #	1,555.94	1.67	0.11%	1,548.06	1,587.89	1,344.70	1,655.36	8.28% #
FTSE/ATHEX Mid & Small Cap Factor-Weighted Ind	1,179.00 #	1,165.61	13.39	1.15%	1,164.59	1,186.70	1,076.89	1,196.47	7.56% #
Greece & Turkey 30 Price Index	666.59 #	656.05	10.54	1.61%	651.94	668.52	631.70	768.95	-1.95% €
ATHEX Mid & SmallCap Price Index	2,526.88 #	2,497.32	29.56	1.18%	2,490.02	2,540.41	2,372.76	2,573.09	3.57% #
FTSE/Athex Market Index	606.79 #	600.31	6.48	1.08%	600.31	625.17	507.68	670.82	-4.61% €
FTSE Med Index	5,254.18 €	5,284.37	-30.19	-0.57%			4,930.94	5,290.19	4.31% #
Athex Composite Index Total Return Index	1,241.14 #	1,228.08	13.06	1.06%	1,228.08	1,268.16	1,037.71	1,336.80	2.77% #
FTSE/Athex Large Cap Total Return	341.05 #	337.41	3.64	1.08%			285.87	368.94	-5.08% €
FTSE/ATHEX Large Cap Net Total Return	1,015.45 #	1,004.61	10.84	1.08%	1,004.61	1,047.89	848.38	1,127.40	-5.10% €
FTSE/ATHEX Custom Capped Total Return	893.33 €	920.54	-27.21	-2.96%			763.44	961.47	-2.56% €
FTSE/ATHEX Custom Capped - USD Total Return	730.08 €	752.67	-22.60	-3.00%			620.75	798.60	-8.21% €
FTSE/Athex Mid Cap Total Return	1,108.39 #	1,096.67	11.72	1.07%			928.33	1,137.37	12.77% #
FTSE/ATHEX-CSE Banking Total Return Index	527.05 #	498.86	28.19	5.65%			380.70	708.30	-22.40% €
Greece & Turkey 30 Total Return Index	794.61 €	816.34	-21.73	-2.66%			770.92	919.96	-3.46% €
Hellenic Mid & Small Cap Index	894.73 #	882.65	12.08	1.37%	882.65	899.18	716.61	919.27	16.32% #
FTSE/Athex Banks	746.75 #	706.82	39.93	5.65%	706.82	781.47	532.20	1,023.60	-22.36% €
FTSE/Athex Insurance	1,443.52 ~	1,443.52	0.00	0.00%	1,422.45	1,443.52	1,369.77	1,538.35	-1.44% €
FTSE/Athex Financial Services	1,224.32 #	1,193.48	30.84	2.58%	1,193.48	1,257.11	926.91	1,347.37	22.24% #
FTSE/Athex Industrial Goods & Services	2,380.99 #	2,310.72	70.27	3.04%	2,310.72	2,395.46	1,881.51	2,423.61	21.85% #
FTSE/Athex Retail	4,197.53 €	4,361.10	-163.57	-3.75%	4,174.63	4,418.41	3,336.67	4,531.02	10.40% #
FTSE/ATHEX Real Estate	2,348.40 €	2,351.12	-2.72	-0.12%	2,321.30	2,365.16	2,181.63	2,437.06	2.92% #
FTSE/Athex Personal & Household Goods	5,309.76 #	5,309.60	0.16	0.00%	5,301.99	5,477.73	3,847.16	5,680.33	16.63% #
FTSE/Athex Food & Beverage	5,900.50 €	5,966.38	-65.88	-1.10%	5,711.11	6,003.37	5,066.70	6,066.14	0.73% #
FTSE/Athex Basic Resources	2,682.43 #	2,558.58	123.85	4.84%	2,558.58	2,682.43	1,753.11	2,753.69	39.12% #
FTSE/Athex Construction & Materials	2,565.44 €	2,580.92	-15.48	-0.60%	2,550.32	2,613.67	2,059.46	2,705.46	17.42% #
FTSE/Athex Oil & Gas	1,991.90 #	1,942.13	49.77	2.56%	1,942.13	2,001.59	1,618.74	2,103.57	9.76% #
FTSE/Athex Chemicals	6,836.79 #	6,745.80	90.99	1.35%	6,682.88	6,836.79	4,784.62	6,836.79	33.46% #
FTSE/Athex Media	1,625.18 #	1,477.44	147.74	10.00%	1,477.44	1,625.18	1,359.24	2,061.03	-21.15% €
FTSE/Athex Travel & Leisure	1,516.51 €	1,551.66	-35.15	-2.27%	1,512.66	1,609.80	1,238.26	1,741.96	-1.08% €
FTSE/Athex Technology	733.68 #	733.02	0.66	0.09%	724.91	736.72	659.36	756.07	1.05% #
FTSE/Athex Telecommunications	2,064.43 €	2,091.95	-27.52	-1.32%	2,064.43	2,185.54	1,995.61	2,573.65	-17.58% €
FTSE/Athex Utilities	2,324.12 €	2,327.73	-3.61	-0.16%	2,273.55	2,396.43	1,711.47	2,396.43	10.75% #
FTSE/Athex Health Care	137.20 #	133.24	3.96	2.97%	133.24	141.17	115.79	153.06	-4.95% €
Athex All Share Index	173.45 #	171.05	2.39	1.40%			146.74	188.55	-6.72% €
Hellenic Corporate Bond Index	88.71 €	89.98	-1.26	-1.40%			87.18	94.45	-5.49% €
Hellenic Corporate Bond Price Index	86.64 €	87.92	-1.28	-1.45%			85.19	92.77	-6.34% €

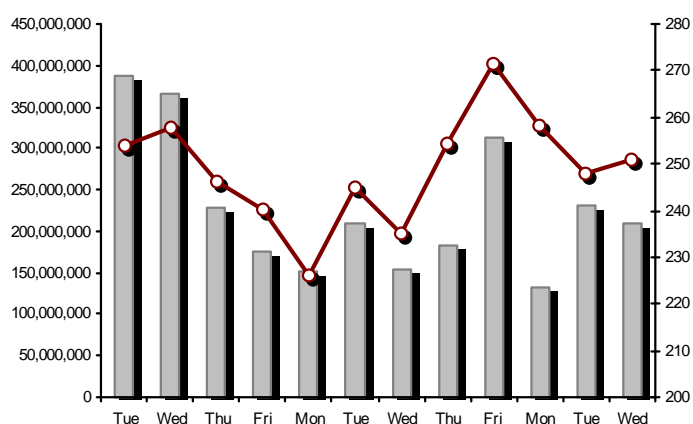
Note 1: Greece & Turkey 30 Pr data is the indicative at 17:20, whereas FTSE/ATHEX Custom Capped, FTSE/ATHEX Custom Capped - USD, FTSE/ATHEX Custom Capped TR, FTSE/ATHEX Custom Capped - USD TR, FTSE/Med 100 & Greece & Turkey 30 Rt., Hellenic Corporate Bond Price Index, Hellenic Corporate Bond Index closing prices refer to the previous trading day of 16/02/2015.

Note 2: The Hellenic Mid & Small Cap Index is a Customized index calculated by the Athens Exchange.

Athex Indices

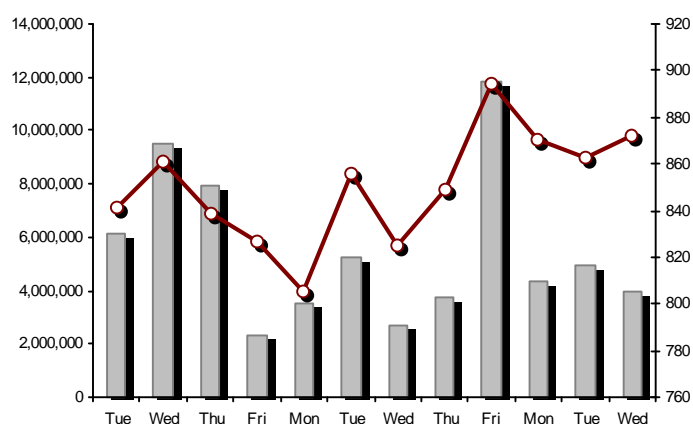
FTSE/Large Cap

18/02/2015: 1.08%



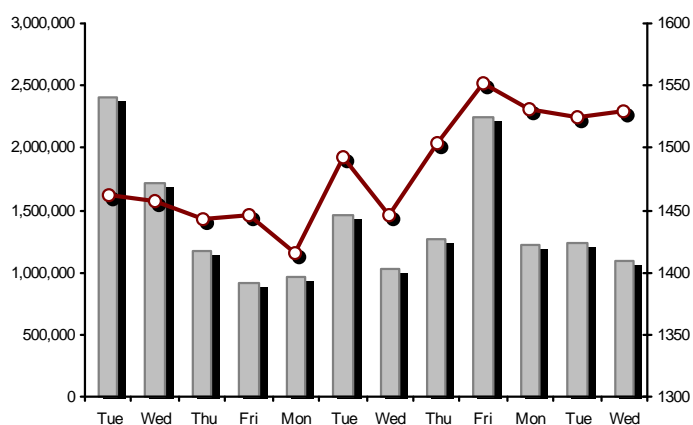
FTSE/Athex Mid Cap Index

18/02/2015: 1.07%



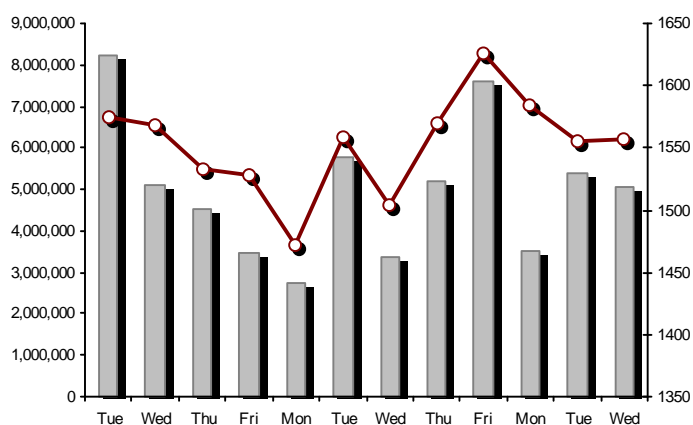
FTSE/ATHEX Global Traders Index Plus

18/02/2015: 0.32%



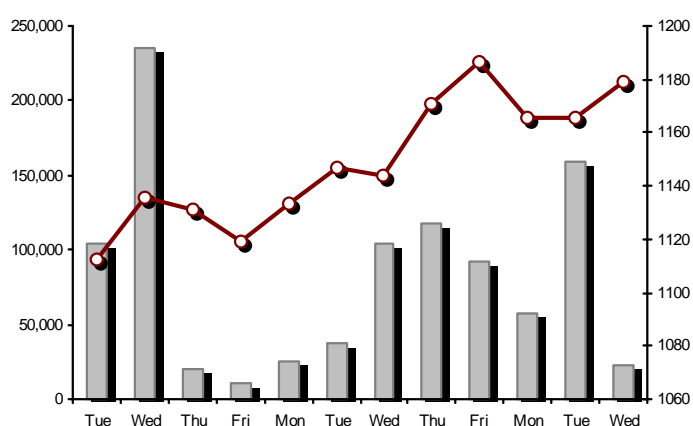
FTSE/ATHEX Global Traders Index

18/02/2015: 0.11%



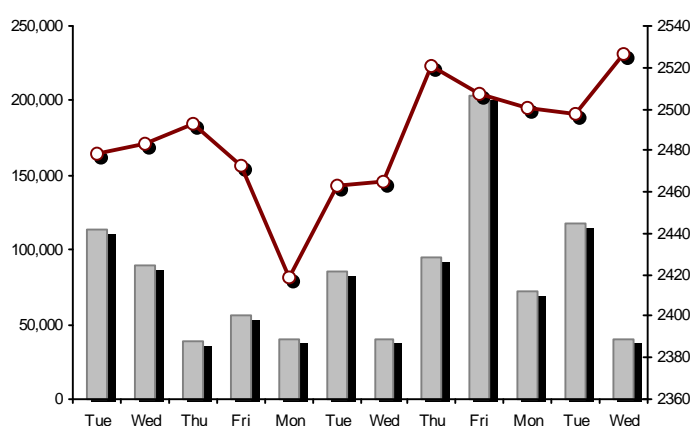
FTSE/ATHEX Mid & Small Cap Factor-Weighted Index

18/02/2015: 1.15%



ATHEX Mid & SmallCap Price Index

18/02/2015: 1.18%



Indices volume of transactions

Indices closing prices

Analytic Figures for Athex Market's Boards and Categories

	Total Traded Securities	Main Market	Low Dispersion	Other Categories (*)	Exchange Traded Funds (ETFs)	Warrants
Totals	141	110	5	20	3	3
Gain / Lose / Same:	80 / 42 / 19	61 / 33 / 16	2 / 3 / 0	12 / 5 / 3	2 / 1 / 0	3 / 0 / 0
Athex Capitalisation (mill. €) **	49,364.51	47,627.90	1,402.60	334.01		
Daily Average Trans/ons Value(thou.€)	120,547.54	117,331.55	84.45	33.44	40.25	3,068.46
Transactions Value	133,599.96	130,701.88	1,172.13	7.98	17.33	1,700.65
Main Board:	122,726.82	120,997.54	3.33	7.98	17.33	1,700.65
Blocks Board:	10,873.14	9,704.34	1,168.80	0.00	0.00	0.00
Forced Sales Board:	0.00	0.00	0.00	0.00	0.00	0.00
Special Terms Board:	0.00	0.00	0.00	0.00	0.00	0.00
Daily Average Transactions Volume	186,887,155	177,625,409	136,200	136,938	15,939	8,980,725
Transactions Volume	223,103,226	214,944,793	2,175,520	112,973	6,858	5,863,082
Main Board:	205,083,731	199,097,782	3,036	112,973	6,858	5,863,082
Blocks Board:	18,019,495	15,847,011	2,172,484	0	0	0
Forced Sales Board:	0	0	0	0	0	0
Special Terms Board:	0	0	0	0	0	0
Daily Average Number of Trades	38,153	36,151	34	71	8	1,890
Number of Trades	36,978	35,460	18	79	8	1,413
Main Board:	36,964	35,447	17	79	8	1,413
Blocks Board:	14	13	1	0	0	0
Forced Sales Board:	0	0	0	0	0	0
Special Terms Board:	0	0	0	0	0	0

(*) Summarised Transactions figures for Under Deletion and Under Supervision Categories.(**) The Market Capitalization of the Companies that belong in the Under Supervision Status is not included.

Trading Details by Athex Sectors and Financial Instruments (ETFs)

Code	Sectors	Gain / Lose / Same	Number of Trades	Transactions Volume	Transactions Value	% of Total Trans. Value
8300	- Banks	9 / 1 / 0	20,659	212,563,538	81,442,740.54	60.96%
1700	- Basic Resources	6 / 2 / 2	1,010	364,192	1,671,223.53	1.25%
1300	- Chemicals	2 / 1 / 0	86	36,778	48,921.74	0.04%
2300	- Construction & Materials	8 / 4 / 4	1,696	837,858	3,439,778.42	2.57%
12000	- Financial Instruments	2 / 1 / 0	8	6,858	17,326.00	0.01%
8700	- Financial Services	2 / 1 / 0	1,118	1,005,660	2,080,615.70	1.56%
3500	- Food & Beverage	7 / 4 / 1	313	126,518	1,325,745.95	0.99%
4500	- Health Care	6 / 1 / 0	62	84,039	14,092.48	0.01%
2700	- Industrial Goods & Services	10 / 4 / 4	1,150	429,229	1,734,218.38	1.30%
8500	- Insurance	0 / 0 / 1	7	3,751	5,115.71	0.00%
5500	- Media	3 / 1 / 0	13	424	135.47	0.00%
500	- Oil & Gas	1 / 1 / 1	1,165	316,770	1,773,171.15	1.33%
3700	- Personal & Household Goods	9 / 2 / 1	591	262,402	2,015,644.21	1.51%
8600	- Real Estate	3 / 1 / 2	489	138,134	758,218.29	0.57%
5300	- Retail	0 / 4 / 0	658	89,741	2,268,635.65	1.70%
9500	- Technology	6 / 3 / 3	153	63,289	63,644.14	0.05%
6500	- Telecommunications	0 / 1 / 0	3,382	2,832,298	21,800,224.74	16.32%
5700	- Travel & Leisure	4 / 7 / 0	2,375	3,253,928	9,666,379.46	7.24%
7500	- Utilities	2 / 3 / 0	2,043	687,819	3,474,126.23	2.60%

Top 10 best & worst performing Shares

Main Market					
With positive Price change	Closing price	change	With negative Price change	Closing price	change
VIOHALCO SA/NV (CB)	3.54	7.93% #	FOLLI FOLLIE (CR)	29.16	-3.76% Ⓔ
ATTICA BANK S.A. (CR)	0.070	7.69% #	KLEEMAN HELLAS SA (CR)	1.57	-3.68% Ⓔ
HELLENIC PETROLEUM (CR)	4.12	7.29% #	OPAP (CR)	8.40	-3.00% Ⓔ
CORINTH PIPEWORKS SA (CR)	1.19	7.21% #	TERNA ENERGY (CR)	2.66	-2.92% Ⓔ
NATIONAL BANK (CR)	1.26	6.78% #	PPC (CR)	5.90	-1.34% Ⓔ
EUROBANK ERGASIAS (CR)	0.156	6.12% #	OTE (CR)	7.50	-1.32% Ⓔ
MARFIN INVESTMENT GROUP (CR)	0.174	6.10% #	CC HBC AG (CR)	15.80	-1.13% Ⓔ
MYTILINEOS HOLDINGS (CR)	6.42	4.90% #	BANK OF CYPRUS (CR)	0.177	-1.12% Ⓔ
PIRAEUS BANK (CR)	0.603	4.87% #	TITAN CEMENT (CR)	23.50	-1.05% Ⓔ
ALPHA BANK (CR)	0.343	4.26% #	MOTOR OIL (CR)	7.20	-0.69% Ⓔ
With the highest Transactions Value	Value (thou. €)	change	With the highest Transactions Volume	Volume	change
NATIONAL BANK (CR)	30,686.03	6.78% #	EUROBANK ERGASIAS (CR)	106,007,297	6.12% #
OTE (CR)	21,800.22	-1.32% Ⓔ	ALPHA BANK (CR)	46,169,573	4.26% #
EUROBANK ERGASIAS (CR)	16,643.94	6.12% #	PIRAEUS BANK (CR)	26,179,614	4.87% #
PIRAEUS BANK (CR)	16,041.38	4.87% #	NATIONAL BANK (CR)	24,298,336	6.78% #
ALPHA BANK (CR)	15,993.40	4.26% #	ATTICA BANK S.A. (CR)	3,501,559	7.69% #
OPAP (CR)	8,080.78	-3.00% Ⓔ	OTE (CR)	2,832,298	-1.32% Ⓔ
PPC (CR)	2,434.33	-1.34% Ⓔ	OPAP (CR)	937,289	-3.00% Ⓔ
FOLLI FOLLIE (CR)	2,264.49	-3.76% Ⓔ	MARFIN INVESTMENT GROUP (CR)	687,409	6.10% #
HELLENIC EXCHANGES-A.S.E. (CR)	1,963.38	1.82% #	BANK OF CYPRUS (CR)	540,565	-1.12% Ⓔ
TITAN CEMENT (CR)	1,928.07	-1.05% Ⓔ	GEK TERNA (CR)	415,630	1.00% #

Note: Stocks that are not included in the "Low Dispersion" and "Under Supervision" categories, and the transactions value is more than 10,000 €.

Derivatives Summary

	Number of Trades	Volume	Open Interest
Index Futures	1,270	61,348	49,000
FTSE/Athex Large Cap	1,270	61,348	49,000
Stock Futures	2,783	51,819	262,968
ALPHA BANK (CR)	296	7,455	45,379
CC HBC AG (CR)	23	41	160
CORINTH PIPEWORKS SA (CR)	15	35	478
ELLAKTOR (CR)	27	178	1,528
EUROBANK ERGASIAS (CR)	275	15,897	79,280
EYDAP S.A. (CR)	1	1	152
FOLLI FOLLIE (CR)	9	21	239
FRIGOGLASS SA (CR)	5	11	393
GEK TERNA (CR)	30	173	7,358
GRIVALIA PROPERTIES (CR)	0	0	183
HELLENIC EXCHANGES-A.S.E. (CR)	41	92	1,468
HELLENIC PETROLEUM (CR)	41	97	4,038
INTRALOT (CR)	4	14	444
JUMBO SA (CR)	21	71	636
MARFIN INVESTMENT GROUP (CR)	48	1,687	27,217
METKA (CR)	21	60	320
MOTOR OIL (CR)	8	24	432
MYTILINEOS HOLDINGS (CR)	86	222	3,110
NATIONAL BANK (CR)	678	11,738	20,842
OPAP (CR)	184	828	1,420
OTE (CR)	341	2,281	8,606
P.P.A. S.A. (CR)	8	10	189
PIRAEUS BANK (CR)	364	9,907	52,679
PPC (CR)	198	844	3,135
SIDENOR (CR)	4	19	654
TERNA ENERGY (CR)	6	19	1,587
TITAN CEMENT (CR)	19	38	693
VIOHALCO SA/NV (CB)	30	56	348
Index Options	64	1,503	10,623
FTSE/Athex Large Cap	64	1,503	10,623
Stock Options	6	75	686
ALPHA BANK (CR)	0	0	40
NATIONAL BANK (CR)	1	5	387
OPAP (CR)	0	0	0
OTE (CR)	0	0	45
PIRAEUS BANK (CR)	5	70	115
PPC (CR)	0	0	99
Total Derivatives Traded	4,123	114,745	323,277

Number of Outstanding Securities	Nominal Value	Dividends [1]			Date of Last Dividend [2]	Coupon Right	Note	Shares	Closing price	% change	Previous closing price/date	Open price	Price min	Price max	Last price	Avg price	Last Bid [7]	Last Ask [7]	P/E after	Year	Volume	Trades	Transactions Value[8]	Company Mkt Value (thou. €)	Year low	Year high	Sector[4]
1,141,747,967	---	---	---	---	11/06/2013	---	---	ALPHA BANK (W)	0.540	2.86 #	0.525 17/02/2015	0.577	0.528	0.595	0.540	---	---	---	1.25	2013	1,731,617	473	957,980.01	4,379,787.53	0.290	0.979	8355
245,748,459	---	---	---	---	27/06/2013	---	---	NATIONAL BANK (W)	0.205	5.67 #	0.194 17/02/2015	0.200	0.190	0.222	0.205	---	---	---	0.46	2013	1,489,012	452	308,541.10	4,451,768.54	0.100	0.235	8355
843,637,022	---	---	---	---	03/07/2013	---	---	PIRAEUS BANK (W)	0.160	4.57 #	0.153 17/02/2015	0.154	0.154	0.177	0.160	---	---	---	0.17	2013	2,642,453	488	434,124.34	3,679,493.77	0.083	0.220	8355

Warrants

71,417,100	0.650	---	---	---	26/05/2010	27/06/2014	---	AEGEAN AIRLINES (CR)	7.54	0.53 #	7.50 17/02/2015	7.58	7.40	7.59	7.54	---	---	---	8.12	2013	46,914	230	353,592.81	538,484.93	6.40	8.08	5751
11,178,000	1.12	---	---	---	21/04/2010	15/12/2014	---	AEOLIAN INVESTMENT FUND (CR)	0.702	---	↘ 0.702 17/02/2015	---	---	---	---	---	---	---	9.63	2013	---	---	---	7,846.96	0.595	0.769	8985
13,000,000	1.00	---	---	---	01/08/2007	07/04/2000	---	AKRITAS SA (CR)	0.072	---	↘ 0.072 17/02/2015	0.072	0.072	0.072	0.072	---	---	---	---	2013	10	1	0.72	936.00	0.066	0.125	2353
12,769,059,858	0.300	---	---	---	07/04/2008	13/05/2013	---	ALPHA BANK (CR)	0.343	4.26 #	0.329 17/02/2015	0.352	0.339	0.358	0.343	---	---	---	0.79	2013	46,169,573	5,745	15,993,397.18	4,379,787.53	0.259	0.510	8355
22,016,250	0.370	---	---	---	15/07/2009	11/05/2000	---	ALUMIL (CR)	0.282	-2.76	↕ 0.290 17/02/2015	0.298	0.270	0.304	0.282	---	---	---	---	2013	787	19	219.94	6,208.58	0.218	0.320	1753
417,608	16.00	---	0.8	---	29/04/2014	05/03/2013	---	ANDROMEDA SA (CR)	17.36	-8.10	↕ 18.89 17/02/2015	17.36	17.36	17.36	17.36	---	---	---	---	2014	8	2	138.88	7,249.67	17.23	19.06	8985
26,252,040	0.380	---	---	---	08/07/2010	10/02/2014	---	AS COMPANY SA (CR)	0.319	-1.24	↕ 0.323 17/02/2015	0.315	0.315	0.319	0.319	---	---	---	19.16	2013	5,000	4	1,583.00	8,374.40	0.263	0.330	5379
86,735,980	0.310	---	---	---	06/07/2009	02/01/2002	---	ATHENS MEDICAL CENTER SA (CR)	0.840	5.00 #	0.800 17/02/2015	0.840	0.840	0.840	0.840	---	---	---	---	2013	1	1	0.84	72,858.22	0.716	0.850	4533
1,045,794,145	0.300	---	---	---	04/06/2008	07/08/2014	---	ATTICA BANK S.A. (CR)	0.070	7.69 #	0.065 17/02/2015	0.072	0.067	0.073	0.070	---	---	---	---	2013	3,501,559	373	242,909.41	73,205.59	0.040	0.084	8355
15,300,000	0.300	---	---	---	30/07/2009	13/12/1999	---	ATTICA PUBLICATIONS SA (CR)	1.53	---	↘ 1.53 17/02/2015	---	---	---	---	---	---	---	44.15	2013	---	---	---	23,409.00	1.29	1.53	5557
45,457,464	0.700	---	---	---	01/07/2008	01/03/2010	---	AUDIO VISUAL ENTERPRISES (CR)	0.220	10.00 #	0.200 17/02/2015	0.220	0.220	0.220	0.220	---	---	---	---	2013	50	1	11.00	10,000.64	0.184	0.277	5553
12,120,000	0.320	---	---	---	30/04/2012	22/11/2013	---	AUTOHELLAS SA (CR)	9.68	-0.21	↕ 9.70 17/02/2015	8.81	8.81	9.68	9.68	---	---	---	39.48	2013	14	4	126.40	117,321.60	8.30	9.78	5759
8,922,944,533	0.100	---	---	---	31/05/2011	02/02/2015	4857	BANK OF CYPRUS (CR)	0.177	-1.12	↕ 0.179 17/02/2015	0.183	0.176	0.183	0.177	---	---	---	---	2013	540,565	129	96,383.34	1,579,361.18	0.165	0.219	8355
19,864,886	5.60	0.5376	0.672	---	05/03/2014	02/07/2008	---	BANK OF GREECE (CR)	10.99	2.81 #	10.69 17/02/2015	10.60	10.60	10.99	10.99	---	---	---	---	---	3,512	56	38,060.29	218,315.10	8.88	11.32	8355
23,986,500	1.05	---	---	---	26/06/2009	15/03/2000	---	BIOKARPET S.A.(CR)	0.200	---	↘ 0.200 17/02/2015	---	---	---	---	---	---	---	---	2013	---	---	---	4,797.30	0.170	0.215	3726
15,842,391	1.51	---	---	---	15/07/2009	12/05/2000	---	BITROS HOLDING SA (CR)	0.383	---	↘ 0.383 17/02/2015	---	---	---	---	---	---	---	---	2013	---	---	---	6,067.64	0.144	0.383	1757
15,816,009	0.300	---	---	---	01/07/2009	17/07/2000	---	BYTE COMPUTER SA (CR)	0.380	1.33 #	0.375 17/02/2015	0.375	0.375	0.380	0.380	---	---	---	---	2013	550	3	208.00	6,010.08	0.346	0.445	9533
367,747,133	6.70	0.34	0.354	---	09/07/2014	29/04/2013	---	CC HBC AG (CR)	15.80	-1.13	↕ 15.98 17/02/2015	16.00	15.29	16.10	15.80	---	---	---	---	---	82,975	213	1,303,018.19	5,810,404.70	13.55	16.25	3537
101,123,806	0.360	---	---	---	22/07/2010	28/06/2011	---	CENTRIC HOLDINGS (CR)	0.162	1.25 #	0.160 17/02/2015	0.168	0.162	0.168	0.162	---	---	---	7.94	2013	6,000	3	972.30	16,382.06	0.140	0.215	5752
4,034,950	0.680	---	---	---	01/07/2005	30/12/2010	---	CHATZIKRANIOTIS & SONS SA (CR)	0.185	4.52 #	0.177 17/02/2015	0.185	0.185	0.185	0.185	---	---	---	---	2013	500	1	92.50	746.47	0.125	0.200	3577
124,170,201	0.780	---	---	---	28/06/2002	07/02/2005	---	CORINTH PIPEWORKS SA (CR)	1.19	7.21 #	1.11 17/02/2015	1.10	1.08	1.19	1.19	---	---	---	---	2013	57,888	138	66,849.93	147,762.54	0.756	1.19	1757
9,907,500	0.300	---	---	---	06/10/2005	13/02/2002	---	CPI SA (CR)	0.190	---	↘ 0.190 17/02/2015	---	---	---	---	---	---	---	16.40	2014	---	---	---	1,882.43	0.190	0.234	9572
27,379,200	0.520	---	0.1	---	24/07/2014	18/09/2013	---	CRETE PLASTICS SA (CR)	5.31	-0.93	↕ 5.36 17/02/2015	5.10	5.10	5.31	5.31	---	---	---	15.95	2013	165	2	844.65	145,383.55	4.60	5.64	1357
15,000,000	0.300	---	---	---	06/07/2007	18/07/2000	---	DAIOS PLASTICS SA (CR)	2.49	---	↘ 2.49 17/02/2015	---	---	---	---	---	---	---	---	2013	---	---	---	37,350.00	2.25	2.50	1357
34,720,000	0.310	---	---	---	16/06/2010	01/08/2007	---	DROMEAS SA (CR)	0.138	6.15 #	0.130 17/02/2015	0.139	0.138	0.139	0.138	---	---	---	---	2013	1,502	2	207.28	4,791.36	0.113	0.160	3726
3,873,120	0.300	---	---	---	07/07/2008	04/10/2012	---	DRUCKFARBEN HELLAS (CR)	0.900	---	↘ 0.900 17/02/2015	---	---	---	---	---	---	---	---	2013	---	---	---	3,485.81	0.900	0.900	1357
11,250,000	0.560	---	---	---	26/07/2010	16/06/1999	---	EKTER SA (CR)	0.461	---	↘ 0.461 17/02/2015	---	---	---	---	---	---	---	---	2013	---	---	---	5,186.25	0.387	0.471	2357
32,188,050	1.04	---	---	---	21/07/2008	20/01/2000	---	EL. D. MOUZAKIS SA (CB)	0.290	---	↘ 0.290 17/02/2015	---	---	---	---	---	---	---	---	2013	---	---	---	9,334.53	0.240	0.290	3763
18,435,000	1.00	---	---	---	07/07/2009	10/09/2010	---	ELASTRON (CR)	0.597	-3.71	↕ 0.620 17/02/2015	0.600	0.597	0.600	0.597	---	---	---	---	2013	1,700	2	1,017.30	11,005.70	0.476	0.697	1757
31,734,530	1.60	---	---	---	09/07/2007	19/07/2006	---	ELGEKA SA (CR)	0.274	7.03 #	0.256 17/02/2015	0.200	0.200	0.274	0.274	---	---	---	---	2013	1,144	15	297.04	8,695.26	0.155	0.274	3577
23,828,130	0.500	---	---	---	07/07/2010	17/02/2009	---	ELINOIL S.A. (CR)	0.880	---	↘ 0.880 17/02/2015	0.880	0.880	0.880	0.880	---	---	---	---	2013	800	1	704.00	20,968.75	0.880	0.968	537
177,001,313	1.03	---	---	---	05/07/2011	20/12/2007	---	ELLAKTOR (CR)	2.29	---	↘ 2.29 17/02/2015	2.29	2.24	2.33	2.29	---	---	---	---	2013	272,612	458	623,190.15	405,333.01	1.67	2.55	2357
82,667,000	0.300	---	---	---	22/07/2014	---	---	ELTECH ANEMOS S.A. (CR)	0.770	1.72 #	0.757 17/02/2015	0.790	0.758	0.790	0.770	---	---	---	---	---	62,310	71	47,888.11	63,653.59	0.598	0.790	7537

Number of Outstanding Securities	Nominal Value	Dividends [1]			Date of Last Coupon		Note	Shares	Closing price	% change	Previous closing price/date	Open price	Price min	Price max	Last price	Avg price	Last Bid [7]	Last Ask [7]	P/E after	Year	Volume	Trades	Transactions Value[8]	Company Mkt Value (thou. €)	Year low	Year high	Sector[4]
		2012	2013	2014	Dividend [2]	Right																					
Main Market																											
26,730,187	0.600	---	0.05	---	23/06/2014	30/12/2010	---	ELTON SA (CR)	0.980	0.82 #	0.972 17/02/2015	0.980	0.980	0.980	0.980	---	---	---	10.10	2013	33	1	32.34	26,195.58	0.862	0.990	1353
14,050,971	0.340	---	---	---	06/07/2011	17/10/2002	---	ELTRAK SA (CR)	1.15	-4.17 €	1.20 17/02/2015	1.20	1.14	1.20	1.15	---	---	---	---	2013	700	5	838.28	16,158.62	1.07	1.25	2753
125,562,262	0.320	---	---	---	30/05/2014	02/12/2014	---	ELVAL SA. (CB)	1.30	4.00 #	1.25 17/02/2015	1.30	1.27	1.31	1.30	---	---	---	37.92	2013	7,370	21	9,538.00	163,230.94	0.965	1.34	1753
13,230,000	0.300	---	---	---	11/08/2010	24/11/2014	---	ELVE SA (CR)	0.445	2.06 #	0.436 17/02/2015	0.426	0.426	0.445	0.445	---	---	---	---	2013	1,000	4	437.40	5,887.35	0.390	0.484	3763
14,707,876,542	0.300	---	---	---	02/05/2008	13/06/2013	---	EUROBANK ERGASIAS (CR)	0.156	6.12 #	0.147 17/02/2015	0.163	0.152	0.164	0.156	---	---	---	---	2013	106,007,297	3,664	16,643,938.86	2,294,428.74	0.100	0.209	8355
7,959,900	0.600	---	---	---	02/06/2010	10/12/2013	5031	EUROCONSULTANTS S.A. (CR)	1.93	1.58 #	1.90 17/02/2015	1.93	1.84	1.98	1.93	---	---	---	56.71	2013	1,275	16	2,454.54	15,362.61	1.80	2.22	2791
27,503,677	0.630	0.1	---	---	11/07/2013	18/10/1999	---	EUROPEAN RELIANCE INSUR. (CR)	1.37	---	1.37 17/02/2015	1.37	1.35	1.37	1.37	---	---	---	3.97	2013	3,751	7	5,115.71	37,680.04	1.30	1.46	8536
13,673,200	0.880	---	---	---	18/07/2008	26/07/2001	---	EVROFARMA SA (CR)	0.299	---	0.299 17/02/2015	---	---	---	---	---	---	---	---	2013	---	---	---	4,088.29	0.198	0.313	3577
106,500,000	0.600	0.15	0.36	---	05/05/2014	28/01/2000	---	EYDAP S.A. (CR)	6.60	3.61 #	6.37 17/02/2015	6.50	6.44	6.62	6.60	---	---	---	9.05	2013	103,389	546	677,592.58	702,900.00	5.00	6.67	7577
52,800,154	0.300	---	0.2	---	20/08/2014	21/06/2004	---	F.G. EUROPE S.A. (CR)	0.490	3.16 #	0.475 17/02/2015	0.480	0.480	0.490	0.490	---	---	---	8.84	2013	1,000	4	487.00	25,872.08	0.406	0.559	3722
10,203,575	0.730	---	---	---	16/07/2007	18/10/1999	---	FIERATEX SA (CR)	0.180	9.09 #	0.165 17/02/2015	0.180	0.180	0.180	0.180	---	---	---	---	2013	140	2	25.20	1,836.64	0.108	0.228	3763
11,720,024	0.540	---	0.0394	---	21/08/2014	07/08/2014	---	FLEXOPACK SA (CR)	2.69	10.25 #	2.44 17/02/2015	2.79	2.69	2.79	2.69	---	---	---	12.73	2013	3	2	8.17	31,526.86	1.91	2.79	2723
4,181,450	0.500	---	---	---	21/08/2000	05/03/2002	---	FLOUR MILLS SARANTOPOULOS SA	0.950	---	0.950 17/02/2015	---	---	---	---	---	---	---	---	2013	---	---	---	3,972.38	0.950	0.950	3577
66,948,210	0.300	---	---	---	14/07/2009	23/09/2014	---	FOLLI FOLLIE (CR)	29.16	-3.76 €	30.30 17/02/2015	30.70	29.00	30.70	29.16	---	---	---	4.52	2013	76,991	618	2,264,490.32	1,952,209.80	23.15	31.50	5379
50,992,322	1.07	---	---	---	21/06/2010	16/07/2002	---	FOURLIS (CR)	3.34	0.60 #	3.32 17/02/2015	3.40	3.27	3.40	3.34	---	---	---	---	2013	73,466	125	247,062.56	170,314.36	2.73	3.60	3722
50,593,832	0.300	---	---	---	07/07/2010	07/09/2011	---	FRIGOGLASS SA (CR)	1.75	2.34 #	1.71 17/02/2015	1.72	1.70	1.75	1.75	---	---	---	---	2013	31,101	77	53,859.77	88,539.21	1.55	1.95	2757
77,376,446	0.340	---	---	---	23/05/2005	18/08/2011	---	G.E. DIMITRIOU (CR)	0.018	---	0.018 17/02/2015	---	---	---	---	---	---	---	---	2013	---	---	---	1,392.78	0.014	0.020	3722
14,076,360	0.370	---	---	---	19/08/2008	22/07/2003	---	GALAXIDI S.A. (CR)	0.183	---	0.183 17/02/2015	---	---	---	---	---	---	---	---	2013	---	---	---	2,575.97	0.180	0.350	3573
94,462,368	0.570	---	---	---	01/08/2011	02/01/2009	---	GEK TERNA (CR)	2.02	1.00 #	2.00 17/02/2015	2.08	2.00	2.11	2.02	---	---	---	---	2013	415,630	590	844,394.78	190,813.98	1.68	2.31	2357
8,418,750	0.300	0.46	---	---	21/01/2015	27/06/2012	---	GEKE SA (CB)	6.12	---	6.12 17/02/2015	---	---	---	---	---	---	---	96.77	2013	---	---	---	51,522.75	4.80	6.12	5753
24,060,000	0.300	---	0.017	---	07/07/2014	21/01/2000	---	GEN. COMMERCIAL & IND.SA (CR)	0.367	7.94 #	0.340 17/02/2015	0.311	0.311	0.367	0.367	---	---	---	26.39	2013	805	2	250.64	8,830.02	0.265	0.420	2797
34,770,982	1.55	---	0.3	---	17/01/2014	27/07/2000	---	GR. SARANTIS SA (CR)	7.20	---	7.20 17/02/2015	7.20	7.00	7.20	7.20	---	---	---	6.82	2013	135	6	955.58	250,351.07	6.76	7.70	3767
101,260,000	2.13	---	0.1821	0.1	05/01/2015	08/01/2014	---	GRIVALIA PROPERTIES (CR)	8.00	---	8.00 17/02/2015	8.00	7.80	8.05	8.00	---	---	---	20.92	2014	85,282	374	680,014.09	810,080.00	7.35	8.64	8675
8,340,750	1.20	---	---	---	25/06/2009	30/07/2001	---	HAIDEMENOS SA (CR)	0.583	---	0.583 17/02/2015	---	---	---	---	---	---	---	---	2013	---	---	---	4,862.66	0.210	0.583	2791
101,279,627	0.380	---	---	---	26/06/2008	14/07/2006	---	HALKOR SA (CB)	0.372	---	0.372 17/02/2015	0.375	0.372	0.384	0.372	---	---	---	---	2013	3,623	12	1,355.26	37,676.02	0.244	0.392	1755
36,748,909	0.730	---	---	---	15/12/2005	13/12/2006	---	HEL. SUGAR INDUSTRY SA (CB)	0.290	-1.70 €	0.295 17/02/2015	0.294	0.270	0.295	0.290	---	---	---	---	2014	11,207	17	3,229.22	10,657.18	0.173	0.327	3577
29,546,360	0.710	---	---	---	20/06/2008	23/08/2000	---	HELLENIC CABLES SA (CR)	0.900	-2.17 €	0.920 17/02/2015	0.920	0.900	0.920	0.900	---	---	---	---	2013	1,500	6	1,359.00	26,591.72	0.603	0.989	2733
65,368,563	0.740	0.09	---	---	03/06/2013	16/07/2014	---	HELLENIC EXCHANGES-A.S.E. (CR)	6.15	1.82 #	6.04 17/02/2015	6.17	6.03	6.36	6.15	---	---	---	-(6)-	2013	318,243	799	1,963,375.52	402,016.66	4.42	6.79	8777
305,635,185	2.18	0.15	---	---	31/12/2014	01/10/2003	4795	HELLENIC PETROLEUM (CR)	4.12	7.29 #	3.84 17/02/2015	4.00	3.95	4.12	4.12	---	---	---	---	2013	162,233	665	654,445.19	1,259,216.96	3.41	4.41	537
305,732,436	0.410	---	---	---	08/07/2009	28/09/2011	---	HYGEIA SA (CR)	0.173	2.98 #	0.168 17/02/2015	0.176	0.171	0.178	0.175	---	---	---	---	2013	59,082	43	10,366.88	52,891.71	0.146	0.193	4533
53,155,053	0.440	---	---	---	24/11/2014	16/07/2008	---	IASO SA (CR)	0.800	-3.03 €	0.825 17/02/2015	0.800	0.800	0.800	0.800	---	---	---	---	2013	1,163	7	930.40	42,524.04	0.690	0.900	4533
8,298,467	0.400	---	---	---	30/08/1993	08/05/2013	---	IDEAL GROUP SA (CR)	1.06	---	1.06 17/02/2015	---	---	---	---	---	---	---	-(6)-	2013	---	---	---	8,796.38	0.668	1.06	9574
28,580,100	0.400	---	0.025	---	18/08/2014	10/10/2013	---	IKTINOS HELLAS SA (CR)	1.17	-2.50 €	1.20 17/02/2015	1.17	1.14	1.17	1.14	---	---	---	7.16	2013	5,771	12	6,649.07	33,438.72	1.04	1.30	2353
9,090,000	0.900	---	---	---	15/05/2009	13/10/2014	5073	ILYDA S.A. (CR)	0.666	---	0.666 17/02/2015	---	---	---	---	---	---	---	---	2013	---	---	---	6,053.94	0.666	0.739	9537
20,578,374	0.620	---	---	---	02/06/2011	05/05/1999	---	INFORM P. LYKOS SA (CR)	1.66	---	1.66 17/02/2015	---	---	---	---	---	---	---	---	2013	---	---	---	34,160.10	1.42	1.78	2791
11,233,200	0.730	---	---	---	12/07/2010	30/07/1999	---	INTERTECH SA (CR)	0.237	-5.58 €	0.251 17/02/2015	0.275	0.226	0.275	0.249	---	---	---	---	2013	6,972	17	1,619.60	2,662.27	0.208	0.308	9572
34,986,430	0.440	---	---	---	25/07/2008	23/02/2010	---	INTERWOOD-XYLEMPORIA (CR)	0.119	---	0.119 17/02/2015	---	---	---	---	---	---	---	---	2013	---	---	---	4,663.92	0.119	0.145	2353
2,566,836	0.440	---	---	---	13/08/2010	09/01/2007	---	INTERWOOD-XYLEMPORIA (PR)	0.195	---	0.195 17/02/2015	---	---	---	---	---	---	---	---	2013	---	---	---	4,663.92	0.195	0.195	2353

Number of Outstanding Securities	Nominal Value	Dividends [1]			Date of Last Coupon Dividend [2]		Note	Shares	Closing price	% change	Previous closing price/date	Open price	Price min	Price max	Last price	Avg price	Last Bid [7]	Last Ask [7]	P/E after	Year	Volume	Trades	Transactions Value[8]	Company Mkt Value (thou. €)	Year low	Year high	Sector[4]
23,154,250	1.36	---	---	---	12/08/2008	02/08/2010	---	INTRACOM CONSTR. (CR)	0.520	0.58 #	0.517 17/02/2015	0.569	0.501	0.569	0.558	---	---	---	---	2013	5,772	19	3,003.66	12,040.21	0.415	0.600	2357
133,025,996	1.41	---	---	---	03/07/2007	07/01/2002	---	INTRACOM HOLDINGS (CR)	0.438	1.86 #	0.430 17/02/2015	0.430	0.425	0.440	0.438	---	---	---	---	2013	39,053	46	17,035.33	58,265.39	0.345	0.476	9578
158,961,721	0.300	0.0026	---	---	30/05/2013	14/11/2007	---	INTRALOT (CR)	1.63	1.24 #	1.61 17/02/2015	1.65	1.61	1.66	1.63	---	---	---	---	2013	35,190	75	57,578.39	259,107.61	1.05	1.70	5752
77,654,850	0.580	---	---	---	01/07/2011	21/02/2003	---	J & P - AVAX SA (CR)	0.618	1.31 #	0.610 17/02/2015	0.629	0.605	0.630	0.618	---	---	---	---	2013	17,774	29	11,039.29	47,990.70	0.485	0.658	2357
136,059,759	1.19	---	0.18	0.18	23/12/2014	05/03/2014	---	JUMBO SA (CR)	10.09	-0.10 €	10.10 17/02/2015	10.23	10.09	10.44	10.09	---	---	---	18.78	2014	172,809	405	1,757,732.91	1,372,842.97	7.06	10.89	3747
9,742,920	0.400	0.01	0.01	---	08/08/2014	14/07/2000	---	KARAMELOGOS SA (CR)	1.62	---	1.62 17/02/2015	---	---	---	---	---	---	---	---	2013	---	---	---	15,783.53	1.62	1.62	3577
14,679,792	1.68	---	---	---	24/06/2014	04/09/2000	---	KARATZIS SA (CR)	3.49	---	3.49 17/02/2015	3.49	3.30	3.49	3.49	---	---	---	10.48	2013	227	18	761.02	51,232.47	2.89	3.50	2723
13,202,756	0.350	---	---	---	01/07/2004	05/08/2014	---	KEKROPS SA (CR)	0.390	---	0.390 17/02/2015	0.390	0.390	0.399	0.390	---	---	---	---	2013	1,150	4	448.95	5,149.07	0.247	0.419	8633
7,595,160	0.600	---	---	---	08/08/2008	18/08/2010	---	KIRIAKOULIS SHIPPING SA (CR)	0.538	---	0.538 17/02/2015	---	---	---	---	---	---	---	34.92	2013	---	---	---	4,086.20	0.416	0.638	5759
23,648,700	0.350	---	---	---	13/07/2011	29/07/2014	---	KLEEMAN HELLAS SA (CR)	1.57	-3.68 €	1.63 17/02/2015	1.62	1.56	1.62	1.57	---	---	---	55.50	2013	159,483	264	252,721.14	37,128.46	1.22	1.78	2757
40,219,218	0.300	---	---	---	25/05/2009	09/07/2013	---	KLOUKINAS - LAPPAS SA (CR)	0.408	-5.56 €	0.432 17/02/2015	0.438	0.394	0.438	0.408	---	---	---	---	2013	14,323	44	5,671.86	16,409.44	0.380	0.470	2357
21,224,340	0.420	---	---	---	02/07/2008	25/04/2006	---	KORDELLOS BROS SA (CR)	0.200	---	0.200 17/02/2015	0.182	0.180	0.200	0.200	---	---	---	---	2013	6,169	13	1,137.86	4,244.87	0.180	0.250	1757
13,586,500	0.390	---	---	---	25/06/2010	28/05/2008	---	KORRES (CR)	3.50	2.94 #	3.40 17/02/2015	3.21	3.21	3.50	3.50	---	---	---	---	2013	250	2	817.00	47,552.75	3.15	3.80	3767
29,480,000	0.420	---	---	---	19/07/2010	01/08/2007	---	KRETA FARM SA (CR)	0.484	5.22 #	0.460 17/02/2015	0.460	0.460	0.484	0.484	---	---	---	---	2013	3,500	20	1,669.68	14,268.32	0.355	0.520	3577
33,065,136	0.380	---	---	---	06/07/2009	16/09/2013	---	KRI-KRI S.A. (CR)	1.75	0.58 #	1.74 17/02/2015	1.72	1.72	1.75	1.75	---	---	---	11.29	2013	7,080	6	12,309.52	57,863.99	1.60	1.86	3577
15,804,800	0.330	---	---	---	15/06/2010	12/03/2004	---	KTIMA KOSTAS LAZARIDIS SA (CR)	0.396	---	0.396 17/02/2015	---	---	---	---	---	---	---	---	2013	---	---	---	6,258.70	0.297	0.396	3535
23,719,554	0.980	---	---	---	19/08/2008	15/09/2014	---	KYRIAKIDIS MARBLES SA (CR)	1.95	3.18 #	1.89 17/02/2015	1.90	1.90	1.99	1.95	---	---	---	4.59	2013	1,544	10	2,933.79	46,253.13	1.61	1.99	2353
79,721,775	0.300	---	---	---	30/05/2007	23/06/2014	---	LAMDA DEVELOPMENT SA (CR)	3.23	-0.61 €	3.25 17/02/2015	3.33	3.20	3.36	3.23	---	---	---	---	2013	11,599	56	38,248.73	257,501.33	2.46	3.79	8633
21,364,000	1.12	---	---	---	05/07/2010	10/08/2005	---	LAMPSPA HOTEL SA (CR)	17.89	---	17.89 17/02/2015	---	---	---	---	---	---	---	-(6)-	2013	---	---	---	382,201.96	16.32	18.00	5753
5,939,268	0.620	---	---	---	10/07/2003	03/01/2002	---	LANAKAM SA (CR)	0.990	---	0.990 17/02/2015	---	---	---	---	---	---	---	---	2013	---	---	---	5,879.88	0.990	1.16	3763
7,734,375	1.00	---	---	---	09/07/2007	07/01/2011	---	LIVANIS SA (CR)	0.189	---	0.189 17/02/2015	---	---	---	---	---	---	---	---	2013	---	---	---	1,461.80	0.117	0.210	5557
4,740,000	0.860	---	---	---	14/03/2003	---	---	LOGISMOS S.A. (CR)	0.294	---	0.294 17/02/2015	---	---	---	---	---	---	---	39.59	2013	---	---	---	1,393.56	0.294	0.515	9533
17,125,062	0.940	---	---	---	01/06/2010	02/02/2015	---	LOULIS MILLS SA (CR)	2.00	---	2.00 17/02/2015	1.89	1.88	2.00	2.00	---	---	---	---	2013	570	5	1,121.50	34,250.12	1.64	2.35	3577
937,122,261	0.300	---	---	---	26/04/2007	29/08/2014	---	MARFIN INVESTMENT GROUP (CR)	0.174	6.10 #	0.164 17/02/2015	0.170	0.167	0.174	0.174	---	---	---	---	2013	687,409	317	117,101.30	163,059.27	0.150	0.206	8775
9,819,370	0.690	---	---	---	14/08/2007	09/01/2004	---	MATHIOS REFRACTORY SA (CR)	0.277	---	0.277 17/02/2015	---	---	---	---	---	---	---	---	2013	---	---	---	2,719.97	0.199	0.322	2353
468,700	0.47	0.65	0.15	0.15	04/12/2014	21/05/2004	---	MERMEREN KOMB. A.D. PR. (GDR)	6.99	0.58 #	6.95 17/02/2015	6.42	6.42	6.99	6.99	---	---	---	3.41	2013	637	14	4,279.83	3,276.21	5.91	7.25	1775
51,950,600	0.320	0.25	0.3	---	20/06/2014	21/10/2005	---	METKA (CR)	9.60	2.02 #	9.41 17/02/2015	9.60	9.48	9.90	9.60	---	---	---	11.22	2013	90,131	276	867,252.03	498,725.76	8.36	10.50	2757
10,500,000	0.950	---	---	---	24/06/2008	19/12/2013	---	MEVACO SA (CR)	0.920	---	0.920 17/02/2015	0.920	0.920	0.920	0.920	---	---	---	---	2013	1,100	2	1,012.00	9,660.00	0.900	1.02	2757
6,700,000	0.800	---	0.16	---	26/05/2014	29/05/2014	---	MILLS KEPENOS (CR)	1.17	-7.87 €	1.27 17/02/2015	1.17	1.17	1.18	1.17	---	---	---	6.37	2013	2,000	5	2,342.00	7,839.00	1.17	2.14	3577
6,200,000	0.500	---	---	---	22/06/2010	01/11/1995	---	MINERVA KNITWEAR SA (CB)	0.300	---	0.300 17/02/2015	---	---	---	---	---	---	---	---	2013	---	---	---	1,860.00	0.225	0.300	3763
12,417,000	0.370	---	---	---	28/07/2008	06/09/2011	---	MLS MULTIMEDIA SA (CR)	4.01	0.25 #	4.00 17/02/2015	4.02	3.96	4.02	4.01	---	---	---	42.52	2013	8,026	22	32,155.07	49,792.17	3.91	4.25	9537
4,588,137	16.00	---	---	---	30/06/2005	17/08/2011	---	MOCHLOS SA (CR)	0.729	-0.14 €	0.730 17/02/2015	0.671	0.671	0.729	0.729	---	---	---	---	2013	467	3	338.70	3,344.75	0.671	1.05	2357
11,700,000	0.590	---	---	---	02/06/2009	24/07/2012	---	MOTODYNAMICS S.A. (CR)	0.300	---	0.300 17/02/2015	---	---	---	---	---	---	---	---	2013	---	---	---	3,510.00	0.261	0.300	5379
110,782,980	0.750	0.3	0.2	---	26/06/2014	04/11/2013	---	MOTOR OIL (CR)	7.20	-0.69 €	7.25 17/02/2015	7.30	7.16	7.43	7.20	---	---	---	-(6)-	2013	153,737	499	1,118,021.96	797,637.46	5.64	7.60	533
116,915,862	1.07	---	---	---	11/05/2009	06/07/2011	---	MYTILINEOS HOLDINGS (CR)	6.42	4.90 #	6.12 17/02/2015	6.30	6.19	6.42	6.42	---	---	---	---	2013	246,549	730	1,555,074.35	750,599.83	4.18	6.69	1755
8,321,682	0.670	---	---	---	17/08/2007	23/11/1999	---	N. LEVEDERIS SA (CB)	0.180	---	0.180 17/02/2015	---	---	---	---	---	---	---	---	2013	---	---	---	2,401.00	0.162	0.220	1757
2,160,524	0.670	0.0436	0.0436	---	18/08/2014	23/11/1999	---	N. LEVEDERIS SA (PB)	0.418	10.00 #	0.380 17/02/2015	0.418	0.418	0.418	0.418	---	---	---	---	2013	5	1	2.09	2,401.00	0.380	0.495	1757
11,510,102	0.890	---	---	---	24/06/2005	06/10/1999	---	NAFPAKTOS TEXTILE IND. SA (CB)	0.265	-0.38 €	0.266 17/02/2015	0.240	0.240	0.265	0.265	---	---	---	---	2013	276	2	66.74	3,050.18	0.193	0.302	3763

Number of Outstanding Securities	Nominal Value	Dividends [1]			Date of Last Coupon		Note	Shares	Closing price	% change	Previous closing price/date	Open price	Price min	Price max	Last price	Avg price	Last Bid [7]	Last Ask [7]	P/E after	Year	Volume	Trades	Transactions Value[8]	Company Mkt Value (thou. €)	Year low	Year high	Sector[4]		
		2012	2013	2014	Dividend [2]	Right																							
Main Market																													
6,340,000	0.600	---	---	---	30/11/2009	12/07/2000	---	NAKAS MUSIC	0.663	-6.09	€ 0.706	17/02/2015	0.770	0.638	0.770	0.653	---	---	---	20.60	2014	1,220	13	825.08	4,203.42	0.461	1.04	5379	
3,533,149,631	0.300	---	---	---	16/05/2008	24/05/2013	---	NATIONAL BANK (CR)	1.26	6.78	# 1.18	17/02/2015	1.33	1.22	1.33	1.26	---	---	---	2.80	2013	24,298,336	3,928	30,686,025.63	4,451,768.54	0.790	1.55	8355	
23,935,280	0.300	---	---	---	29/06/2009	13/06/2000	---	NAYTEMPORIKI PUBLISHING SA(CR)	0.183	8.93	# 0.168	17/02/2015	0.153	0.153	0.183	0.183	---	---	---	---	2013	180	3	30.54	4,380.16	0.117	0.186	5557	
27,848,000	0.300	0.0137	0.004	---	18/08/2014	02/09/2003	---	NEWSPHONE HELLAS SA (CR)	0.260	---	↘ 0.260	17/02/2015	---	---	---	---	---	---	23.36	2013	---	---	---	7,240.48	0.205	0.290	2791		
6,132,500	1.25	---	---	---	24/06/2011	19/06/2001	---	NEXANS HELLAS SA (CR)	1.70	---	↘ 1.70	17/02/2015	1.70	1.70	1.70	1.70	---	---	---	---	2013	51	1	86.70	10,425.25	1.57	1.77	2733	
319,000,000	0.300	0.57	0.25	0.2017	12/01/2015	25/04/2001	---	OPAP (CR)	8.40	-3.00	€ 8.66	17/02/2015	9.00	8.39	9.05	8.40	---	---	---	18.78	2013	937,289	2,042	8,080,780.64	2,679,600.00	6.75	9.90	5752	
490,150,389	2.83	---	---	---	28/06/2011	18/06/1998	---	OTE (CR)	7.50	-1.32	€ 7.60	17/02/2015	7.90	7.50	7.95	7.50	---	---	---	---	2013	2,832,298	3,382	21,800,224.74	3,676,127.92	7.25	9.35	6535	
25,000,000	2.00	0.05	0.12	---	17/07/2014	08/08/2003	---	P.P.A. S.A. (CR)	13.54	1.81	# 13.30	17/02/2015	13.30	13.07	13.88	13.54	---	---	---	42.07	2013	5,646	91	76,295.38	338,500.00	9.67	14.00	2777	
4,971,466	1.46	---	---	---	04/07/2007	08/10/2003	---	PAIRIS SA (CR)	0.140	-30.00	€ 0.200	17/02/2015	0.140	0.140	0.140	0.140	---	---	---	---	2013	300	2	42.00	696.01	0.118	0.200	2723	
3,953,090	0.900	---	---	---	02/07/2001	05/12/2012	---	PAPERPACK (CR)	0.860	5.52	# 0.815	17/02/2015	0.860	0.860	0.860	0.860	---	---	---	4.44	2013	5	1	4.30	3,399.66	0.684	0.879	2723	
50,797,369	0.310	---	---	---	17/08/2000	12/10/2010	---	PAPOUTSANIS (CR)	0.349	3.87	# 0.336	17/02/2015	0.340	0.339	0.349	0.349	---	---	---	---	2013	524	5	181.82	17,728.28	0.287	0.430	3767	
7,070,400	0.930	---	---	---	18/05/2010	12/05/2011	---	PETROPOULOS PETROS (CR)	3.37	1.20	# 3.33	17/02/2015	3.26	3.26	3.38	3.37	---	---	---	81.88	2013	763	15	2,521.91	23,827.25	2.98	3.42	2753	
6,101,979,715	0.300	---	---	---	16/05/2008	05/06/2013	---	PIRAEUS BANK (CR)	0.603	4.87	# 0.575	17/02/2015	0.630	0.593	0.635	0.603	---	---	---	0.65	2013	26,179,614	5,351	16,041,380.38	3,679,493.77	0.470	1.01	8355	
22,080,000	0.330	0.12	0.2	---	21/05/2014	03/10/2000	---	PLAISIO COMPUTERS SA (CR)	5.97	-2.93	€ 6.15	17/02/2015	6.18	5.91	6.18	5.97	---	---	---	9.31	2013	1,120	24	6,685.01	131,817.60	5.03	6.25	9572	
232,000,000	4.60	0.025	---	---	22/07/2013	12/12/2001	---	PPC (CR)	5.90	-1.34	€ 5.98	17/02/2015	6.20	5.72	6.20	5.90	---	---	---	---	2013	406,265	1,086	2,434,329.41	1,368,800.00	4.25	6.25	7535	
11,812,193	0.470	---	---	---	24/07/2009	15/11/2006	---	PROFILE SA (CR)	0.490	0.62	# 0.487	17/02/2015	0.490	0.480	0.490	0.490	---	---	---	9.43	2013	915	7	444.11	5,787.97	0.450	0.527	9533	
27,345,120	0.470	---	---	---	18/07/2005	26/02/2014	---	QUALITY & RELIABILITY SA (CR)	0.459	2.00	# 0.450	17/02/2015	0.485	0.436	0.485	0.459	---	---	---	61.04	2013	4,633	18	2,040.48	12,551.41	0.392	0.560	9533	
11,962,443	0.500	---	---	---	05/09/2008	12/12/2013	---	QUEST HOLDINGS (CR)	4.99	---	↘ 4.99	17/02/2015	4.74	4.74	5.00	5.00	---	---	---	---	2013	470	6	2,341.80	59,692.59	4.39	5.35	9533	
57,434,884	1.31	---	---	---	05/06/2008	12/06/2009	---	REDS S.A. (CR)	0.471	2.17	# 0.461	17/02/2015	0.460	0.439	0.474	0.474	---	---	---	---	2013	1,757	16	801.86	27,051.83	0.405	0.516	8633	
22,280,000	0.300	---	---	---	11/04/2011	23/02/2007	---	REVOIL (CR)	0.266	-1.11	€ 0.269	17/02/2015	0.266	0.261	0.269	0.266	---	---	---	---	2013	6,530	23	1,737.25	5,926.48	0.212	0.403	5379	
7,500,000	0.480	0.0024	0.0863	---	13/08/2014	10/02/2014	---	S.KANAKIS SA (CR)	1.97	5.35	# 1.87	17/02/2015	1.97	1.97	1.97	1.97	---	---	---	10.14	2013	100	2	197.00	14,775.00	1.74	2.10	3577	
52,067,296	0.300	---	---	---	23/12/2003	24/01/2007	---	SELECTED TEXT. IND. ASSOC (CR)	0.246	---	↘ 0.246	17/02/2015	---	---	---	---	---	---	---	---	2014	---	---	---	12,808.55	0.172	0.273	3763	
96,243,908	0.410	---	---	---	26/06/2008	17/07/2000	---	SIDENOR (CR)	0.818	3.41	# 0.791	17/02/2015	0.791	0.790	0.819	0.818	---	---	---	---	2013	39,464	60	31,748.97	78,727.52	0.492	0.819	1757	
6,456,530	1.61	---	---	---	29/06/2001	02/08/2010	---	SPACE HELLAS SA (CR)	1.94	---	↘ 1.94	17/02/2015	---	---	---	---	---	---	---	---	2013	---	---	---	12,525.67	1.87	1.96	9578	
28,438,268	0.300	---	---	---	21/08/2006	24/11/1999	---	SPIROY AGRICULTURE SA (CR)	0.289	---	↘ 0.289	17/02/2015	---	---	---	---	---	---	---	---	2013	---	---	---	8,218.66	0.261	0.290	1357	
33,125,000	5.00	---	---	---	03/07/2006	18/08/2010	---	TECHNICAL OLYMPIC SA (CR)	0.899	1.24	# 0.888	17/02/2015	0.850	0.850	0.899	0.899	---	---	---	---	2013	8,636	31	7,541.84	29,779.38	0.676	1.01	3728	
109,314,400	0.300	---	---	---	28/05/2012	09/07/2014	---	TERNA ENERGY (CR)	2.66	-2.92	€ 2.74	17/02/2015	2.88	2.65	2.88	2.66	---	---	---	-(6)-	2013	113,156	324	306,318.04	290,776.30	1.70	2.88	7537	
36,300,000	1.12	0.162	0.285	---	14/08/2014	12/12/2007	---	THESSALONIKA WATER & SEWERAGE	2.95	-0.67	€ 2.97	17/02/2015	2.93	2.93	2.99	2.95	---	---	---	8.17	2013	2,699	16	7,998.09	107,085.00	2.44	3.14	7577	
45,094,620	0.660	0.0467	0.05	---	20/01/2015	01/11/1999	---	THRACE PLASTICS SA (CR)	1.33	1.53	# 1.31	17/02/2015	1.32	1.29	1.33	1.33	---	---	---	---	2013	36,580	83	48,044.75	59,975.84	0.849	1.33	1357	
77,063,568	4.00	---	---	---	25/06/2014	25/06/2004	---	TITAN CEMENT (CR)	23.50	-1.05	€ 23.75	17/02/2015	23.80	23.41	24.00	23.50	---	---	---	---	2013	81,807	478	1,928,073.04	1,879,190.18	18.42	24.95	2353	
7,568,960	4.00	---	---	---	25/06/2014	25/06/2004	---	TITAN CEMENT CO. (PR)	9.01	---	↘ 9.01	17/02/2015	9.01	9.00	9.01	9.01	---	---	---	---	2013	1,365	7	12,294.10	1,879,190.18	7.45	9.32	2353	
10,080,000	3.00	1.5	0.6	---	13/08/2014	27/08/2001	---	TPA SA (CR)	20.10	---	↘ 20.10	17/02/2015	20.10	20.10	20.10	20.10	---	---	---	11.14	2013	557	4	11,195.70	202,608.00	17.00	23.95	2777	
54,888,240	1.13	0.1	0.09	---	25/04/2014	22/03/2006	---	TRASTOR REAL EST. INV. CO.(CR)	1.05	1.94	# 1.03	17/02/2015	1.03	1.03	1.07	1.05	---	---	---	---	2013	36,846	36	38,554.66	57,632.65	0.900	1.07	8671	
15,627,315	0.300	---	---	---	16/11/1992	03/12/2012	---	UNIBIOS (CR)	0.145	3.57	# 0.140	17/02/2015	0.148	0.117	0.148	0.145	---	---	---	---	2013	7,446	20	1,007.27	2,265.96	0.104	0.180	2353	
18,810,000	0.400	---	---	---	08/07/2010	14/11/2007	---	VARVERIS - MODA BAGNO SA (CR)	0.172	7.50	# 0.160	17/02/2015	0.179	0.150	0.179	0.172	---	---	---	---	2013	1,108	16	188.81	3,235.32	0.100	0.183	2353	
219,611,308	---	---	---	---	14/02/2014	---	---	VIOHALCO SA/NV (CB)	3.54	7.93	# 3.28	17/02/2015	3.33	3.30	3.54	3.54	---	---	---	---	---	---	134,982	366	463,526.40	777,424.03	1.79	3.54	2727
4,968,600	2.88	---	---	---	01/07/1998	14/12/1998	---	VIS SA (CR)	0.878	---	↘ 0.878	17/02/2015	---	---	---	---	---	---	---	---	2013	---	---	---	4,362.43	0.723	0.878	2723	
6,325,000	0.600	---	---	---	02/05/2014	17/02/2014	---	VOGIATZOGLOU SYSTEMS SA (CR)	0.990	---	↘ 0.990	17/02/2015	---	---	---	---	---	---	---	---	2013	---	---	---	6,261.75	0.871	1.00	2797	

Number of Outstanding Securities	Nominal Value	Dividends [1]			Date of Last Coupon		Note	Shares	Closing price	% change	Previous closing price/date	Open price	Price min	Price max	Last price	Avg price	Last Bid [7]	Last Ask [7]	P/E after	Year	Volume	Trades	Transactions Value[8]	Company Mkt Value (thou. €)	Year low	Year high	Sector[4]	
		2012	2013	2014	Dividend [2]	Right																						
Exchange Traded Funds (ETFs)																												
5,848,618		---	---	---	24/01/2008	---	ALPHA ETF FTSE Athex Large Cap		2.50	-0.60 %	2.51 17/02/2015	2.58	2.50	2.58	2.50	---	---	---	---	---	---	6,854	6	17,291.48	---	2.13	2.78	12003
294,878		---	---	---	29/06/2009	---	NBGAM ETF		9.43	0.32 %	9.40 17/02/2015	9.43	9.43	9.43	9.43	---	---	---	---	---	---	2	1	18.86	---	7.97	9.93	12003
388,550		---	---	---	03/11/2010	---	NBGAM ETF GREECE & TURKEY 30		7.83	0.90 %	7.76 17/02/2015	7.83	7.83	7.83	7.83	---	---	---	---	---	---	2	1	15.66	---	7.51	8.90	12003

Exchange Traded Funds (ETFs)

14,000,000	4.15	---	---	---	23/04/2010	29/06/1999	4815	ALPHA REAL ESTATE SA(CR)	4.41	---	↘ 4.41 17/02/2015	---	---	---	---	---	---	---	18.44	2013	---	---	---	61,740.00	3.80	5.49	8637
63,900,000	3.00	---	---	---	23/06/2003	04/11/2008	4816	ASTIR PALACE SA (CR)	2.75	-6.14 €	2.93 17/02/2015	2.75	2.75	2.75	2.75	---	---	---	---	2013	100	1	275.00	175,725.00	2.50	3.60	5753
90,902,904	0.800	---	---	---	09/08/2004	08/03/2006	4814	ATHENA SA (CR)	0.328	---	↘ 0.328 17/02/2015	---	---	---	---	---	---	---	---	2013	---	---	---	29,816.15	0.328	0.328	2357
191,660,320	0.300	---	---	---	20/07/2009	29/12/2010	4817	ATTICA HOLDINGS (CR)	0.504	-6.32 €	0.538 17/02/2015	0.538	0.501	0.538	0.501	---	---	---	---	2013	2,174,684	5	1,169,905.99	96,596.80	0.416	0.589	5759
71,082,707	1.70	---	---	---	01/07/2010	21/11/2012	4820	HERACLES GEN.CEMENT CO. (CR)	1.29	---	↘ 1.29 17/02/2015	---	---	---	---	---	---	---	---	2013	---	---	---	91,696.69	1.20	1.34	2353
13,404,440	8.63	---	---	---	02/04/2001	06/03/1992	4822	IONIAN HOTELS SA (CR)	5.01	-16.50 €	6.00 17/02/2015	5.01	5.01	5.01	5.01	---	---	---	88.95	2013	250	4	1,252.50	67,156.24	5.01	7.25	5753
2,760,000	7.70	8.52	8.5	---	30/06/2014	16/07/1990	4823	KARELIA TOBACCO CO. SA (CB)	218.95	---	↘ 218.95 17/02/2015	---	---	---	---	---	---	---	15.22	2013	---	---	---	604,302.00	200.05	225.00	3785
30,600,000	0.300	---	---	---	12/06/2008	04/03/2014	5059	KATHIMERINI SA (CR)	0.502	19.52 #	0.420 17/02/2015	0.502	0.502	0.502	0.502	---	---	---	---	2013	186	7	93.37	15,361.20	0.352	0.588	5557
14,074,000	3.00	---	---	---	02/03/2012	23/07/2009	5075	MIG REAL ESTATE (CR)	2.60	---	↘ 2.60 17/02/2015	---	---	---	---	---	---	---	-(6)-	2013	---	---	---	36,592.40	2.60	3.45	8671
106,980,050	2.25	---	---	---	25/07/2008	24/02/2014	5046	MINOAN LINES SA (CR)	2.00	1.52 #	1.97 17/02/2015	2.00	2.00	2.00	2.00	---	---	---	---	2013	300	1	600.00	213,960.10	1.43	2.00	5759
17,240,776	0.370	---	---	---	14/07/2005	30/09/2003	4827	PERSEUS SA (CR)	0.560	---	↘ 0.560 17/02/2015	---	---	---	---	---	---	---	5.01	2013	---	---	---	9,654.83	0.560	0.700	3577

Surveillance

33,301,715	0.320	---	---	---	27/06/2003	08/07/2009	4978	AEGEK (CR)	0.074	15.63 #	0.064 17/02/2015	0.074	0.074	0.074	0.074	---	---	---	---	2013	5,350	4	395.90	2,464.33	0.032	0.074	2357
14,870,100	0.300	---	---	---	15/05/2008	26/09/2011	4844	ALPHA GRISSIN S.A. (CR)	0.039	---	↘ 0.039 17/02/2015	---	---	---	---	---	---	---	---	2013	---	---	---	579.93	0.039	0.048	9533
215,246,452	0.300	---	---	---	25/06/2001	24/09/2001	4446	ALTEC SA (CR)	0.023	---	↘ 0.023 17/02/2015	0.023	0.023	0.023	0.023	---	---	---	---	2013	189	3	4.35	4,950.67	0.017	0.030	9533
2,969,713	0.300	---	---	---	02/07/2008	28/02/2011	4958	ANEK LINES SA (PR, Issue '96)	0.133	---	↘ 0.133 17/02/2015	---	---	---	---	---	---	---	---	2013	---	---	---	16,696.04	0.131	0.133	5759
312,163	0.300	---	---	---	02/07/2008	28/02/2011	4959	ANEK LINES SA (PR, Issue '90)	1.15	---	↘ 1.15 17/02/2015	---	---	---	---	---	---	---	---	2013	---	---	---	16,696.04	1.15	1.15	5759
185,373,016	0.300	---	---	---	02/07/2008	28/02/2011	4957	ANEK LINES SA (CR)	0.086	-3.37 €	0.089 17/02/2015	0.072	0.072	0.087	0.087	---	---	---	---	2013	1,048	3	90.46	16,696.04	0.063	0.093	5759
81,644,555	0.300	---	---	---	01/07/2008	02/09/2002	5056	ATTI - KAT SA (CR)	0.016	14.29 #	0.014 17/02/2015	0.016	0.012	0.016	0.012	---	---	---	---	2013	549	2	8.59	1,306.31	0.009	0.037	2357
20,255,805	0.300	---	---	---	22/08/2006	02/08/2010	4881	AXON HOLDING SA (CR)	0.027	12.50 #	0.024 17/02/2015	0.024	0.024	0.028	0.028	---	---	---	---	2013	1,050	3	28.20	546.91	0.022	0.030	4533
17,579,754	4.16	---	---	---	18/08/2006	02/08/2010	4885	BIOTER SA (CR)	0.239	---	↘ 0.239 17/02/2015	---	---	---	---	---	---	---	---	2013	---	---	---	4,201.56	0.160	0.250	2357
1,130,180	0.440	---	---	---	20/06/2003	02/07/2014	---	COMPUCON SA (CR)	0.006	---	↘ 0.006 17/02/2015	0.006	0.006	0.006	0.006	---	---	---	---	2013	50	1	0.30	6.78	0.006	0.010	9537
14,173,104	0.300	---	---	---	11/08/2010	28/11/2013	5055	DIONIC (CR)	0.049	16.67 #	0.042 17/02/2015	0.049	0.049	0.049	0.049	---	---	---	---	2013	600	2	29.40	694.48	0.042	0.086	2797
15,878,748	0.480	---	---	---	10/07/2006	22/03/2004	4960	DOMIKI KRITIS SA (CR)	0.300	---	↘ 0.300 17/02/2015	---	---	---	---	---	---	---	---	2013	---	---	---	4,763.62	0.264	0.333	2357
3,961,300	1.28	---	---	---	29/06/2004	03/08/2000	5080	DUROS SA (CR)	0.585	---	↘ 0.585 17/02/2015	---	---	---	---	---	---	---	---	2013	---	---	---	2,317.36	0.585	0.585	3763
7,085,888	1.59	---	---	---	02/07/1996	06/09/2010	4690	ELVIEMEK (CR)	3.97	---	↘ 3.97 17/02/2015	---	---	---	---	---	---	---	---	2013	---	---	---	28,130.98	3.97	3.97	8633
6,000,000	0.600	---	---	---	13/06/2008	08/04/2004	4886	EUROBROKERS S.A. (CR)	0.013	---	↘ 0.013 17/02/2015	---	---	---	---	---	---	---	---	2013	---	---	---	78.00	0.013	0.020	8534
21,820,410	0.800	---	---	---	22/05/2008	02/08/2011	4882	EUROMEDICA SA (CR)	0.430	10.26 #	0.390 17/02/2015	0.430	0.430	0.430	0.430	---	---	---	---	2013	100	1	43.00	9,382.78	0.320	0.430	4533
110,097,185	0.300	---	---	---	04/12/2013		5033	Forthnet (CR)	0.847	2.29 #	0.828 17/02/2015	0.847	0.847	0.847	0.847	---	---	---	---	2013	1,310	5	1,109.57	93,252.32	0.765	1.19	9535
1,270,000	0.300	---	---	---	06/07/2007	06/02/2013	5007	GIRAKIAN PROFIL SA (CB)	0.295	---	↘ 0.295 17/02/2015	---	---	---	---	---	---	---	---	2013	---	---	---	374.65	0.247	0.350	1757
179,707,771	0.300	---	---	---	27/06/2002	01/11/2011	4847	HELLAS ONLINE SA (CR)	0.520	-2.07 €	0.531 17/02/2015	0.520	0.520	0.520	0.520	---	---	---	67.60	2013	1	1	0.52	93,448.04	0.516	0.550	9537
30,390,000	0.310	---	---	---	18/08/2008	29/12/2006	4447	HELLENIC FISHFARMING SA (CR)	0.050	4.17 #	0.048 17/02/2015	0.057	0.039	0.057	0.057	---	---	---	---	2013	2,500	6	124.50	1,519.50	0.039	0.078	3573

Number of Outstanding Securities	Nominal Value	Dividends [1]			Date of Last Coupon		Note	Shares	Closing price	% change	Previous closing price/date	Open price	Price min	Price max	Last price	Avg price	Last Bid [7]	Last Ask [7]	P/E after	Year	Volume	Trades	Transactions Value[8]	Company Mkt Value (thou. €)	Year low	Year high	Sector[4]
		2012	2013	2014	Dividend [2]	Right																					
Surveillance																											
1,540,000	0.600	---	---	---	08/08/1994	19/09/2000	5058	J.BOUTARIS & SON HOLD. (PB)	0.006	---	↘ 0.006	17/02/2015	---	---	---	---	---	---	---	2013	---	---	---	764.63	0.006	0.006	3535
25,179,640	0.600	---	---	---	08/08/1994	19/09/2000	5057	J.BOUTARIS & SON HOLD. SA (CB)	0.030	---	↘ 0.030	17/02/2015	---	---	---	---	---	---	---	2013	---	---	---	764.63	0.030	0.037	3535
7,125,216	0.650	---	---	---	01/07/2005	14/12/1999	4955	KRE.KA SA (CR)	0.167	---	↘ 0.167	17/02/2015	---	---	---	---	---	---	---	2013	---	---	---	1,189.91	0.101	0.225	3573
51,081,030	1.00	---	---	---	20/08/2007	03/09/2007	4912	LAVIPHARM SA (CR)	0.120	0.84	# 0.119	17/02/2015	0.120	0.120	0.125	0.125	---	---	---	2013	22,634	6	2,719.56	6,129.72	0.086	0.139	4577
4,178,856	1.58	---	---	---	21/07/2011	28/07/2004	4983	MEDICON S.A (CR)	0.400	4.71	# 0.382	17/02/2015	0.400	0.400	0.400	0.400	---	---	16.49	2013	9	1	3.60	1,671.54	0.331	0.475	4535
255,459,600	0.300	---	---	---	26/06/2000	03/12/2010	4833	NEL SA (CR)	0.023	-8.00	€ 0.025	17/02/2015	0.020	0.020	0.030	0.030	---	---	---	2013	52,139	7	1,204.97	5,875.57	0.009	0.030	5759
20,231,328	0.600	---	---	---	15/07/2008	25/06/2004	4879	NIKAS SA (CR)	0.120	---	↘ 0.120	17/02/2015	---	---	---	---	---	---	---	2013	---	---	---	2,427.76	0.120	0.120	3577
63,697,153	1.34	---	---	---	08/07/2008	10/11/2008	5081	NIREFS SA (CR)	0.088	-1.12	€ 0.089	17/02/2015	0.089	0.088	0.089	0.088	---	---	---	2013	9,542	18	842.60	5,605.35	0.072	0.106	3573
14,967,940	0.500	---	---	---	21/05/2008	04/01/2008	4956	PASAL DEVELOPMENT S.A. (CR)	0.100	12.36	# 0.089	17/02/2015	0.100	0.100	0.100	0.100	---	---	---	2013	1,500	3	150.00	1,496.79	0.060	0.101	8633
18,750,000	0.300	---	---	---	02/07/2001	31/12/2012	4985	PEGASUS PUBLISHING S.A. (CR)	0.070	-5.40	€ 0.074	17/02/2015	0.070	0.070	0.070	0.070	---	---	---	2013	8	2	0.56	1,312.50	0.057	0.099	5557
24,319,250	0.300	---	---	---	09/07/2002	04/07/2007	5054	PROODEFTIKH SA (CR)	0.093	---	↘ 0.093	17/02/2015	0.093	0.093	0.093	0.093	---	---	---	2013	6,330	3	588.69	2,261.69	0.057	0.116	2357
65,326,268	0.530	---	---	---	04/07/2007	19/07/2006	4750	SATO SA (CR)	0.048	4.35	# 0.046	17/02/2015	0.038	0.038	0.050	0.050	---	---	---	2013	2,664	3	128.88	3,135.66	0.033	0.115	3726
36,235,184	1.00	---	---	---	01/07/2008	30/07/2012	4961	SELONDA AQUACULTURE SA (CR)	0.093	1.09	# 0.092	17/02/2015	0.093	0.093	0.093	0.093	---	---	---	2013	5,400	5	502.20	3,369.87	0.065	0.099	3573
7,914,480	0.300	---	---	---	23/06/2008	29/06/2011	4888	SFAKIANAKIS SA (CR)	1.84	---	↘ 1.84	17/02/2015	---	---	---	---	---	---	---	2013	---	---	---	14,562.64	1.84	2.58	5379
10,000,000	1.35	---	---	---	24/06/2008	10/05/2005	4887	SIDMA SA (CR)	0.309	---	↘ 0.309	17/02/2015	---	---	---	---	---	---	---	2013	---	---	---	3,090.00	0.271	0.312	1757
29,060,950	0.340	---	---	---	20/08/2007	24/10/2001	4884	SPIDER METAL INDUSTRY SA (CR)	0.005	---	↘ 0.005	17/02/2015	---	---	---	---	---	---	---	2013	---	---	---	145.30	0.005	0.008	2757
100,793,000	0.300	---	---	---	16/07/2009	05/08/2013	5008	TELETIPOS SA (CR)	0.033	---	↘ 0.033	17/02/2015	---	---	---	---	---	---	---	2013	---	---	---	3,326.17	0.033	0.108	5553
3,229,566	0.320	---	---	---	22/06/2005	23/09/1999	4629	VARANGIS AVEPE S.A. (CR)	0.520	---	↘ 0.520	17/02/2015	---	---	---	---	---	---	---	2013	---	---	---	1,679.37	0.520	0.520	3726
16,383,428	0.300	---	---	---	25/06/2002	21/06/2013	4997	VARVARESSOS SA (CB)	0.129	---	↘ 0.129	17/02/2015	---	---	---	---	---	---	0.18	2013	---	---	---	2,113.46	0.129	0.161	3763
13,191,620	0.620	---	---	---	04/08/2010	09/09/2002	4977	YALCO - CONSTANTINOU SA (CB)	0.189	---	↘ 0.189	17/02/2015	---	---	---	---	---	---	---	2013	---	---	---	2,493.22	0.120	0.189	3722

Under Deletion																											
9,567,289	0.300	---	---	---	01/07/2004	19/11/2007	5062	MARAC ELECTRONICS (CR)	0.298	---	↘ 0.298	17/02/2015	---	---	---	---	---	---	---	2013	---	---	---	2,851.05	0.298	0.298	9578
40,946,303	0.360	---	---	---	18/07/2005	27/11/2007	5053	PC SYSTEMS SA (CR)	0.049	---	↘ 0.049	17/02/2015	---	---	---	---	---	---	---	2013	---	---	---	2,006.37	0.049	0.098	9533
766,000	1.50	---	---	---	01/07/2004	11/12/2012	4937	TRIA ALFA SA (CR)	1.90	---	↘ 1.90	17/02/2015	---	---	---	---	---	---	---	2013	---	---	---	1,786.15	1.90	2.29	3763
245,000	1.50	---	---	---	19/07/2010	11/12/2012	4938	TRIA ALFA SA (PR)	1.35	---	↘ 1.35	17/02/2015	---	---	---	---	---	---	---	2013	---	---	---	1,786.15	1.35	1.35	3763

Suspension Status																											
5,000,000	0.400	---	---	---	03/06/2009	01/09/2014	5079	ALCO HELLAS SA (CR)	0.307	---	↘ 0.307	17/02/2015	---	---	---	---	---	---	---	---	---	---	---	1,535.00	0.307	0.307	1753
5,025,000	0.300	---	---	---	05/07/2005	14/03/2002	5023	ALSINCO S.A (CR)	0.043	---	↘ 0.043	17/02/2015	---	---	---	---	---	---	---	---	---	---	---	216.08	0.043	0.043	3763
1,750,955,549	0.600	---	---	---	19/05/2008	08/12/2011	4911	ATE (CR)	0.155	---	↘ 0.155	17/02/2015	---	---	---	---	---	---	---	---	---	---	---	271,398.11	0.155	0.155	8355
21,382,067	0.300	---	---	---	02/10/2006	15/02/2006	4628	ATERMON (CR)	0.120	---	↘ 0.120	17/02/2015	---	---	---	---	---	---	---	---	---	---	---	2,565.85	0.120	0.120	5555
105,423,498	0.510	---	---	---	01/07/2004	28/12/2005	4920	AVENIR S.A. (CR)	0.046	---	↘ 0.046	17/02/2015	---	---	---	---	---	---	---	---	---	---	---	4,849.48	0.046	0.046	5752
33,930,000	0.300	---	---	---	03/07/2006	30/05/2001	4865	BABIS VOVOS SA (CR)	0.304	---	↘ 0.304	17/02/2015	---	---	---	---	---	---	---	---	---	---	---	10,314.72	0.304	0.304	8633
20,121,710	1.21	---	---	---	27/07/1992	12/03/2003	5002	BALKAN R.E. (CR)	0.190	---	↘ 0.190	17/02/2015	---	---	---	---	---	---	---	---	---	---	---	3,823.12	0.190	0.190	8633
21,920,570	0.300	---	---	---	03/07/2007	13/12/1999	4702	CARDASSILARIS SA (CR)	0.140	---	↘ 0.140	17/02/2015	---	---	---	---	---	---	---	---	---	---	---	3,068.88	0.140	0.140	3577
54,547,634	0.500	---	---	---	25/04/2005	21/01/2009	4860	CH.TEGOPOULOS PUBL. SA (CR)	0.038	---	↘ 0.038	17/02/2015	---	---	---	---	---	---	---	---	---	---	---	2,072.81	0.038	0.038	5557
30,159,583	0.470	---	---	---	26/06/2008	29/12/2010	5047	DIAS A/C (CR)	0.050	---	↘ 0.050	17/02/2015	---	---	---	---	---	---	---	---	---	---	---	1,507.98	0.050	0.050	3573

Number of Outstanding Securities	Nominal Value	Dividends [1]			Date of Last Coupon		Note	Shares	Closing price	% change	Previous closing price/date	Open price	Price min	Price max	Last price	Avg price	Last Bid [7]	Last Ask [7]	P/E after	Year	Volume	Trades	Transactions Value[8]	Company Mkt Value (thou. €)	Year low	Year high	Sector[4]
		2012	2013	2014	Dividend [2]	Right																					
Suspension Status																											
7,847,611	1.20	---	---	---	01/08/2007	28/09/2011	4939	EDRASIS - C. PSALLIDAS SA (CR)	0.150	---	0.150	17/02/2015	---	---	---	---	---	---	---	---	---	---	---	1,177.14	0.150	0.150	2357
5,750,000	0.300	---	---	---	12/12/2008	12/12/2011	4929	ELECTRONIKI ATHINON SA (CR)	0.480	---	0.480	17/02/2015	---	---	---	---	---	---	---	---	---	---	---	2,760.00	0.480	0.480	5375
24,605,397	0.400	---	---	---	29/06/1995	27/05/2002	4651	EMPORIKOS DESMOS SA (CR)	0.080	---	0.080	17/02/2015	---	---	---	---	---	---	---	---	---	---	---	2,134.04	0.080	0.080	3722
1,182,903	0.400	---	---	---	01/07/1996	27/05/2002	4652	EMPORIKOS DESMOS SA (PR)	0.140	---	0.140	17/02/2015	---	---	---	---	---	---	---	---	---	---	---	2,134.04	0.140	0.140	3722
7,326,648	1.00	---	---	---	26/07/2006	24/07/2001	4921	FINTEXPORT SA (CR)	0.328	---	0.328	17/02/2015	---	---	---	---	---	---	---	---	---	---	---	2,403.14	0.328	0.328	3763
13,692,227	1.47	---	---	---	07/07/2006	08/10/1999	5049	HELLENIC FABRICS SA (CR)	0.117	---	0.117	17/02/2015	---	---	---	---	---	---	---	---	---	---	---	1,601.99	0.117	0.117	3763
24,619,524	0.500	---	---	---	10/10/1986	30/12/2002	4914	KERAMIA-ALLATINI (CR)	0.088	---	0.088	17/02/2015	---	---	---	---	---	---	---	---	---	---	---	2,166.52	0.088	0.088	8633
7,840,373	1.20	---	---	---	18/07/2002	05/03/2003	4765	KLONATEX SA (PR)	0.080	---	0.080	17/02/2015	---	---	---	---	---	---	---	---	---	---	---	1,453.75	0.080	0.080	3763
20,663,047	1.20	---	---	---	21/08/2000	05/03/2003	4764	KLONATEX SA (CR)	0.040	---	0.040	17/02/2015	---	---	---	---	---	---	---	---	---	---	---	1,453.75	0.040	0.040	3763
17,544,600	0.600	---	---	---	03/07/2000	01/08/2000	4868	KOYMBAS SYNERGY GROUP (CR)	0.132	---	0.132	17/02/2015	---	---	---	---	---	---	---	---	---	---	---	2,315.89	0.132	0.132	8775
15,015,000	1.60	---	---	---	01/07/2002	02/02/2000	4603	MAXIM C.M. PERTSINIDIS SA (CB)	0.100	---	0.100	17/02/2015	---	---	---	---	---	---	---	---	---	---	---	1,501.50	0.100	0.100	3763
66,937,526	0.700	---	---	---	13/08/2010	21/05/2003	5003	MICHANIKI SA (CR)	0.100	---	0.100	17/02/2015	---	---	---	---	---	---	---	---	---	---	---	9,186.78	0.100	0.100	2357
25,968,987	0.700	---	---	---	13/08/2010	21/05/2003	5004	MICHANIKI SA (PR)	0.096	---	0.096	17/02/2015	---	---	---	---	---	---	---	---	---	---	---	9,186.78	0.096	0.096	2357
13,555,100	1.00	---	---	---		08/07/2005	4576	MICROLAND COMPUTERS SA (CR)	0.640	---	0.640	17/02/2015	---	---	---	---	---	---	---	---	---	---	---	8,675.26	0.640	0.640	5379
23,463,874	0.800	---	---	---	23/05/2003	21/12/1999	4918	NEORION SA (CR)	0.125	---	0.125	17/02/2015	---	---	---	---	---	---	---	---	---	---	---	2,932.98	0.125	0.125	2753
42,501,273	0.300	---	---	---	26/06/2007	10/08/2009	4993	NUTRIART (CR)	0.049	---	0.049	17/02/2015	---	---	---	---	---	---	---	---	---	---	---	2,082.56	0.049	0.049	3577
20,210,127	1.53	---	---	---	27/06/1997	20/03/2000	5061	PARNASSOS ENTERP. (CR)	0.070	---	0.070	17/02/2015	---	---	---	---	---	---	---	---	---	---	---	1,414.71	0.070	0.070	8775
25,583,146	0.300	---	---	---	25/06/2001	03/12/2008	4723	PETZETAKIS SA (CR)	0.260	---	0.260	17/02/2015	---	---	---	---	---	---	---	---	---	---	---	6,651.62	0.260	0.260	1357
9,550,386	0.500	---	---	---	01/07/1997	12/06/2008	4626	PRAXITELIO SA (CR)	0.390	---	0.390	17/02/2015	---	---	---	---	---	---	---	---	---	---	---	4,430.09	0.390	0.390	4533
1,306,368	0.500	---	---	---	01/07/1997	12/06/2008	4627	PRAXITELIO SA (PR)	0.540	---	0.540	17/02/2015	---	---	---	---	---	---	---	---	---	---	---	4,430.09	0.540	0.540	4533
62,683,822	0.300	---	---	---	27/05/2008	09/01/2006	4830	PROTON BANK S.A. (CR)	0.180	---	0.180	17/02/2015	---	---	---	---	---	---	---	---	---	---	---	11,283.09	0.180	0.180	8355
51,334,286	0.320	---	---	---	03/07/2000	18/12/2007	4548	SAOS (CR)	0.780	---	0.780	17/02/2015	---	---	---	---	---	---	---	---	---	---	---	40,040.74	0.780	0.780	2773
26,408,040	0.300	---	---	---	01/07/1997	26/05/1999	4464	SHEET STEEL SA (CR)	0.120	---	0.120	17/02/2015	---	---	---	---	---	---	---	---	---	---	---	3,168.96	0.120	0.120	1757
60,221,300	0.400	---	---	---	01/07/2002	01/11/2010	5022	SHELMAN SA (CR)	0.080	---	0.080	17/02/2015	---	---	---	---	---	---	---	---	---	---	---	4,817.70	0.080	0.080	2353
26,262,660	0.900	---	---	---	01/07/2008	24/02/2011	4954	SPRIDER STORES (CR)	0.031	---	0.031	17/02/2015	---	---	---	---	---	---	---	---	---	---	---	814.14	0.031	0.031	5371
144,688,060	0.600	---	---	---	21/04/2008	10/03/2010	4982	T BANK (CR)	0.048	---	0.048	17/02/2015	---	---	---	---	---	---	---	---	---	---	---	6,945.03	0.048	0.048	8355
6,523,780	0.530	---	---	---	01/07/2002	06/03/2001	4971	TECHNICAL PUBLICATIONS SA (CR)	0.006	---	0.006	17/02/2015	---	---	---	---	---	---	---	---	---	---	---	39.14	0.006	0.006	5557
13,920,000	0.320	---	---	---	19/11/2001	01/08/2000	4726	TEXAPRET SA (CR)	0.080	---	0.080	17/02/2015	---	---	---	---	---	---	---	---	---	---	---	1,113.60	0.080	0.080	3763
510,840	1.00	---	---	---	15/07/2008	21/11/2013	5036	TROPEA HOLDING (CR)	2.00	---	2.00	17/02/2015	---	---	---	---	---	---	---	---	---	---	---	1,021.68	2.00	2.00	3722
284,465,964	3.70	---	---	---	20/06/2008	15/06/2009	4913	TT HELLENIC POSTBANK (CR)	0.168	---	0.168	17/02/2015	---	---	---	---	---	---	---	---	---	---	---	47,790.28	0.168	0.168	8355
89,616,200	0.300	---	---	---	21/08/2000	28/06/2007	4616	UNITED TEXTILES (CR)	0.050	---	0.050	17/02/2015	---	---	---	---	---	---	---	---	---	---	---	4,480.81	0.050	0.050	3763
71,683,906	0.400	---	---	---	15/06/2005	05/02/2008	4953	XATZIOANNOU (CR)	0.026	---	0.026	17/02/2015	---	---	---	---	---	---	---	---	---	---	---	1,863.78	0.026	0.026	3763

Shares' Notes

Code	Note text
()	- Adjusted dividends.
*	- Last adjusted closing price.
[1]	- Net dividends.
[2]	- The "Date of Last Coupon" for New listings refers to the date company's stocks started to trade in Athex
[3]	- The Company Market Value is referred to the number of outstanding shares
[4]	- Sectors codification can be found in Appendix A
[5]	- The Market Value refers to the total number of shares listed (including their several classes) in the exchange by the company.
[6]	- P/E greater than 100
[7]	- Last view of the Order Book before the end of the trading session
[8]	- All Blocks Methods' Transactions Value are included.
4446	- Transfer to the "Under Supervision" Category as of 20/10/2008.
4447	- Transfer to the "Under Supervision" Category as of 21/10/2008.
4464	- Suspension of trading as of 1/12/2008.
4548	- Suspension of trading as of 1/4/2009.
4576	- Suspension of trading as of 14/7/2009.
4603	- Suspension of trading as of 1/12/2009.
4616	- Suspension of trading as of 25/2/2010.
4626	- Suspension of trading as of 1/4/2010.
4627	- Suspension of trading as of 1/4/2010.
4628	- Suspension of trading as of 1/4/2010.
4629	- Transfer to the Under Supervision Category as of 12/4/2010.
4651	- Suspension of trading as of 1/6/2010.
4652	- Suspension of trading as of 1/6/2010.
4690	- Transfer to Surveillance category as of 4/4/2006.
4702	- Suspension of trading as of 1/12/2010.
4723	- Suspension of trading as of 31/1/2011.
4726	- Suspension of trading as of 1/3/2011.
4750	- Transfer to the "Under Surveillance Category" from 8/4/2011.
4764	- Suspension of trading as of 20/5/2011.
4765	- Suspension of trading as of 20/5/2011.
4795	- The final gross (pre-tax) dividend is € 0.30 per share and subject to withholding tax on the full dividend amount, i.e. 0,45 per share, for those shareholders liable to withholding tax, in accordance with the applicable tax law provisions.
4814	- Transfer to the Low Dispersion Category as of 30/5/2011.
4815	- Transfer to the Low Dispersion Category as of 30/5/2011.
4816	- Transfer to the Low Dispersion Category as of 30/5/2011.
4817	- Transfer to the Low Dispersion Category as of 30/5/2011.
4820	- Transfer to the Low Dispersion category as of 18/4/2008.
4822	- Transfer to the Low Dispersion category as of 30/5/2011.
4823	- Transfer to the Low Dispersion category as of 4/4/2006.
4827	- Transfer to the Low Dispersion category as of 5/5/2010.
4830	- Suspension of trading as of 10/10/2011.
4833	- Transfer to Surveillance category from 6/5/2010.
4844	- Transfer to the Surveillance category from 8/4/2011.
4847	- Transfer to the Surveillance Category as of 3/7/2009.
4857	- The 793,906,274 new (CR) shares, resulting from the recent share capital increase through a rights issue, are not yet admitted to trading on the ATHEX.
4860	- Suspension of trading as of 30/3/2012.
4865	- Suspension of trading as of 2/4/2012.
4868	- Suspension of trading as of 2/4/2012.
4879	- Transfer to the Surveillance Category as of 10/4/2012.
4881	- Transfer to the Surveillance Category as of 10/4/2012.
4882	- Transfer to the Surveillance Category as of 10/4/2012.
4884	- Transfer to the Surveillance Category as of 10/4/2012.

Shares' Notes

Code	Note text
4885	- Transfer to the Surveillance Category as of 10/4/2012.
4886	- Transfer to the Surveillance Category as of 10/4/2012.
4887	- Transfer to the Surveillance Category as of 10/4/2012.
4888	- Transfer to the Surveillance Category as of 10/4/2012.
4911	- Lift of suspension from 30/7/2012.
4912	- Transfer to the Surveillance Category as of 31/7/2012.
4913	- Suspension of trading as of 30/8/2012.
4914	- Suspension of trading as of 31/8/2012.
4918	- Suspension of trading as of 31/8/2012.
4920	- Suspension of trading as of 31/8/2012.
4921	- Suspension of trading as of 31/8/2012.
4929	- Suspension of trading as of 1/10/2012.
4937	- Transfer to the UNDER DELETION category as of 30/11/2012.
4938	- Transfer to the UNDER DELETION category as of 30/11/2012.
4939	- Suspension of trading as of 30/11/2012.
4953	- Suspension of trading as of 2/4/2013.
4954	- Suspension of trading as of 2/4/2013.
4955	- Transfer to the Surveillance Category as from 5/4/2013.
4956	- Transfer to the Surveillance Category as from 5/4/2013.
4957	- Transfer to the Surveillance Category as from 5/4/2013.
4958	- Transfer to the Surveillance Category as from 5/4/2013.
4959	- Transfer to the Surveillance Category as from 5/4/2013.
4960	- Transfer to the Surveillance Category as from 5/4/2013.
4961	- Transfer to the Surveillance Category as from 5/4/2013.
4971	- Suspension of trading as of 3/6/2013.
4977	- Transfer to the "Under Surveillance Category" from 11/6/2013.
4978	- Transfer to the Under Supervision Category as of 11/6/2013.
4982	- Suspension of trading as of 1/12/2011.
4983	- Transfer to the Surveillance Category as of 5/4/2013.
4985	- Transfer to the "Under Surveillance Category" from 8/4/2011.
4993	- Suspension of trading as of 21/6/2013 (15:18).
4997	- Transfer to the Under Supervision Category as of 21/12/2009. - The 6,870,053 new (CB) shares, resulting from the recent share capital increase through a rights issue, are not yet admitted to trading on the ATHEX.
5002	- Suspension of trading as of 30/08/2013.
5003	- Suspension of trading as of 30/08/2013.
5004	- Suspension of trading as of 30/08/2013.
5007	- Transfer to the Surveillance category, as of 11/10/2013.
5008	- Transfer to the Surveillance Category from 8/4/2011.
5022	- Suspension of trading as of 2/12/2013.
5023	- Suspension of trading as of 2/12/2013.
5031	- The 612,300 new (CR) shares, resulting from the recent share capital increase through a rights issue, are not yet admitted to trading on the ATHEX.
5033	- Transfer to the Surveillance Category as of 25/11/2011. The 97,144,575new (CR) shares, resulting from the recent share capital increase through a rights issue, are not yet admitted to trading on the ATHEX.
5036	- The company's share is under suspension of trading as of 2/4/2012. During suspension, the company proceeded and concluded a share reverse split, according to which - after the conclusion of the corporate action - the total number of the company's shares, as well as, the last closing price of 30/03/2012 were adjusted.
5046	- Transfer to the Low Dispersion category as of 8/4/2011.
5047	- Suspension of trading as of 27/3/2014.
5049	- Under suspension of trading as of 1/4/2014.
5053	- Transfer to the UNDER DELETION category as of 10/4/2014.
5054	- Transfer to the Surveillance Category as of 10/4/2014.
5055	- Transfer to the Surveillance Category as of 10/4/2014.
5056	- Transfer to the Under Supervision Category as of 14/4/2014.
5057	- Transfer to the Surveillance Category as of 29/12/2011.
5058	- Transfer to the Surveillance Category as of 29/12/2011.

Shares' Notes

Code	Note text
5059	- Transfer to the Low Dispersion category as of 2/6/2014.
5061	- Suspension of trading as of 2/6/2014.
5062	- Transfer to the UNDER DELETION category as of 4/6/2014.
5069	- Suspension of trading as of 1/10/2014.
5073	- The 90,000 new (CR) shares, resulting from the recent share capital increase through a rights issue, are not yet admitted to trading on the ATHEX.
5075	- Transfer to the "Low Dispersion" Category as of 31/10/2014.
5079	- Suspension of trading from 1/12/2014.
5080	- Suspension of trading as of 6/9/2011.
5081	- Transfer to the Surveillance category, as of 19/12/2014.

Securities Blocks Details

Securities	Block Volume	Price	Block Trade Value	Time of approval	Note
OPAP (CR)	43,532	9.00	391,788.00	10:40:23	20
PIRAEUS BANK (CR)	1,000,000	0.622	621,500.00	10:52:05	20
ALPHA BANK (CR)	3,000,000	0.345	1,033,500.00	11:17:36	20
OTE (CR)	140,619	7.81	1,097,531.30	11:32:43	20
OTE (CR)	85,000	7.81	663,425.00	11:34:44	20
OTE (CR)	215,000	7.81	1,678,075.00	11:43:03	20
ATTICA HOLDINGS (CR)	2,172,484	0.538	1,168,796.39	12:01:53	20
EUROBANK ERGASIAS (CR)	2,000,000	0.159	317,000.00	13:10:09	20
OPAP (CR)	100,000	8.68	868,000.00	13:32:15	20
EUROBANK ERGASIAS (CR)	7,600,000	0.160	1,212,200.00	14:29:02	20
ALPHA BANK (CR)	1,000,000	0.350	350,000.00	14:38:20	20
ELLAKTOR (CR)	2,860	2.35	6,721.00	15:53:18	18
OTE (CR)	100,000	7.59	759,000.00	16:16:24	20
NATIONAL BANK (CR)	560,000	1.26	705,600.00	17:14:26	20

Blocks Notes

- 9 - Method 6-1 / Special Fees
- 10 - Method 6-1 / Special Fees, SDS
- 14 - Method 6-3 / Settlement, Incomplete Buy and Sell
- 18 - Method 6-2 / SPOT 1
- 19 - Method 6-2 / SPOT 2
- 20 - Method 6-1 and Method 6-1 Same Day Settlement
- 21 - Other Pre-agreed

Shares Rights Details

Occured date	Exercise from	Exercise until	Trading until	Rights	Price min	Price max	Closing price	Last Bid	Last Ask	Volume	Trades	Transactions Value
-----------------	------------------	-------------------	------------------	--------	--------------	--------------	------------------	----------	----------	--------	--------	-----------------------

No Rights Transactions.

Shares Forced Sales

Securities	Transaction s Volume	Number of Trades	Transactions Value	Note
No Forced Transactions.				

Forced Sales Notes

1 - Normal Forced Sale.

2 - Forced Sales of Fixed Registered Shares.

3 - Forced Sales of Remaining Stock Fractions.

Forced Sales Registered Shares

Securities	Start Date	End Date	Initial Volume	Remaining Volume	Date	Avg price (day)	Avg price (period)	Number of Trades	Transactions Volume	Transactions Value
------------	------------	----------	-------------------	---------------------	------	--------------------	-----------------------	---------------------	------------------------	-----------------------

No Fixed Registered Shares Forced Sales.

Forced Sales Notes

According to Decision 1/380/04.05.2008 of the Hellenic Republic Capital Market Commission, the certificated registered shares that have not been deposited to the issuer for dematerialisation, will be auctioned in the Athens Exchange by the supervising issuer. Forced sales procedure is held according to Article 99A of the Athens Exchange Rulebook. The average price of the period is calculated by dividing the Total transactions value by the Total volume and includes all the transactions made until the current date.

Exchange Traded Funds (ETFs) Characteristics

	Transactions Date (T)	Creation / Redemption	Units (T-1)	New Units (T-1)	Redemptio n Units (T-	Units (T) [1]	Fund Assets [2]	Net Unit Price	Dividen d per	Dividend Date
NBGAM ETF ΓΔ Χ.Α.	18/02/2015	25,000	294,878	---	---	294,878	2,756,659.00	9.3485	---	27/10/2011
ALPHA ETF FTSE Athex Large Cap	18/02/2015	50,000	5,848,618	---	---	5,848,618	14,663,800.00	2.5072	0.05	01/07/2013
NBGAM ETF GREECE & TURKEY 30	18/02/2015	25,000	388,550	---	---	388,550	2,996,053.00	7.7109	---	27/10/2011

ETFs Notes

[1] - Units (T) = Units (T-1) + New Units (T-1) - Redemption Units (T-1)

[2] - The Creation / Redemption Units of T-1 are included.

Corporate Bonds

Num Listed Bonds	Nominal price	Issue price	Today's Rate	Exp. Date	Duration (years)	Note	Coupon attached		Trading	Corporate Bonds	Price min	Price max	Closing price	Previous closing price/date		Volume	Transactions Value	Last order		Date	ear min	Year max
							Common	Preferred										Price	Buy / Sell			
4,122,910	4.77	4.77	5.00	19/03/2015	5	---	20	---	1	MARFIN INVESTMENT GROUP S.A. (Conver to CR shar)	90.0000	90.0000	90.0000	90.0000	12/01/2015	1,670	1,517.16	81.0000	B	28/11/2014	90.0000	90.0000
1,794,284	12.49	9.77	5.05	12/07/2015	8	---	---	---	1	NIREUS S.A. (Convertible to CR shares)	---	---	---	12.0000	29/01/2014	---	---	11.0000	B	17/11/2014	12.0000	12.0000
212,801,311	1.00	1.00	6.30	29/07/2020	7	---	7	---	1	MARFIN INVESTMENT GROUP S.A. SERIES B (BOND)	---	---	---	0.8500	23/08/2013	---	---	1.0000	B	28/11/2014	0.8500	0.8500
163,991,598	1.00	1.00	7.00	29/07/2019	6	---	7	---	1	MARFIN INVESTMENT GROUP S.A. SERIES A (BOND)	---	---	---	1.0000	23/08/2013	---	---	1.0000	B	28/11/2014	1.0000	1.0000

Corporate Bonds Notes

Transactions Volume = (Pieces) * (Nominal Price). Transactions Value = (Pieces) * (Nominal Price) * (price %) + (Accrued interest).
The price of a Bond is stated as a percentage (%) of Bond's Nominal Price.
Nominal Price in Euros (€), except if it is noted differently.

Government Bonds

Number Listed Bonds	Nominal price	Today's Rate	Accrued Interest Calc	Exp. Date [1]	Duration (years)	Note	Coupons Date	Curr. coupon value	Trading Unit	Government Bonds	Price min	Price max	Closing price	Previous closing price/date	Volume	Transactions Value	Price	Last order Buy / Sell	Date
2,658,781,973	1.00	4.30	Actual/Actual	24/02/2023	11	---	24/02	4.30	1	GGB-FXD-240223-11Y-2.000-1.00	---	---	---	10.0000 28/01/2015	---	---	---	---	---
2,658,781,973	1.00	4.30	Actual/Actual	24/02/2024	12	---	24/02	4.30	1	GGB-FXD-240224-12Y-2.000-1.00	---	---	---	10.0000 28/01/2015	---	---	---	---	---
2,658,781,973	1.00	4.30	Actual/Actual	24/02/2025	13	---	24/02	4.30	1	GGB-FXD-240225-13Y-2.000-1.00	---	---	---	10.0000 28/01/2015	---	---	---	---	---
2,658,781,973	1.00	4.30	Actual/Actual	24/02/2026	14	---	24/02	4.30	1	GGB-FXD-240226-14Y-2.000-1.00	---	---	---	10.0000 28/01/2015	---	---	---	---	---
2,658,781,973	1.00	4.30	Actual/Actual	24/02/2027	15	---	24/02	4.30	1	GGB-FXD-240227-15Y-2.000-1.00	---	---	---	10.0000 28/01/2015	---	---	---	---	---
2,836,034,104	1.00	4.30	Actual/Actual	24/02/2028	16	---	24/02	4.30	1	GGB-FXD-240228-16Y-2.000-1.00	---	---	---	10.0000 28/01/2015	---	---	---	---	---
2,836,034,104	1.00	4.30	Actual/Actual	24/02/2029	17	---	24/02	4.30	1	GGB-FXD-240229-17Y-2.000-1.00	---	---	---	10.0000 28/01/2015	---	---	---	---	---
2,836,034,104	1.00	4.30	Actual/Actual	24/02/2030	18	---	24/02	4.30	1	GGB-FXD-240230-18Y-2.000-1.00	---	---	---	10.0000 28/01/2015	---	---	---	---	---
2,836,034,104	1.00	4.30	Actual/Actual	24/02/2031	19	---	24/02	4.30	1	GGB-FXD-240231-19Y-2.000-1.00	---	---	---	10.0000 28/01/2015	---	---	---	---	---
2,836,034,104	1.00	4.30	Actual/Actual	24/02/2032	20	---	24/02	4.30	1	GGB-FXD-240232-20Y-2.000-1.00	---	---	---	10.0000 28/01/2015	---	---	---	---	---
2,836,034,104	1.00	4.30	Actual/Actual	24/02/2033	21	---	24/02	4.30	1	GGB-FXD-240233-21Y-2.000-1.00	---	---	---	10.0000 28/01/2015	---	---	---	---	---
2,836,034,104	1.00	4.30	Actual/Actual	24/02/2034	22	---	24/02	4.30	1	GGB-FXD-240234-22Y-2.000-1.00	---	---	---	10.0000 28/01/2015	---	---	---	---	---
2,836,034,104	1.00	4.30	Actual/Actual	24/02/2035	23	---	24/02	4.30	1	GGB-FXD-240235-23Y-2.000-1.00	---	---	---	10.0000 28/01/2015	---	---	---	---	---
2,836,034,104	1.00	4.30	Actual/Actual	24/02/2036	24	---	24/02	4.30	1	GGB-FXD-240236-24Y-2.000-1.00	---	---	---	10.0000 28/01/2015	---	---	---	---	---
2,836,034,104	1.00	4.30	Actual/Actual	24/02/2037	25	---	24/02	4.30	1	GGB-FXD-240237-25Y-2.000-1.00	---	---	---	10.0000 28/01/2015	---	---	---	---	---
2,836,034,104	1.00	4.30	Actual/Actual	24/02/2038	26	---	24/02	4.30	1	GGB-FXD-240238-26Y-2.000-1.00	---	---	---	10.0000 28/01/2015	---	---	---	---	---
2,836,034,104	1.00	4.30	Actual/Actual	24/02/2039	27	---	24/02	4.30	1	GGB-FXD-240239-27Y-2.000-1.00	---	---	---	10.0000 28/01/2015	---	---	---	---	---
2,836,034,104	1.00	4.30	Actual/Actual	24/02/2040	28	---	24/02	4.30	1	GGB-FXD-240240-28Y-2.000-1.00	---	---	---	10.0000 28/01/2015	---	---	---	---	---
2,836,034,104	1.00	4.30	Actual/Actual	24/02/2041	29	---	24/02	4.30	1	GGB-FXD-240241-29Y-2.000-1.00	---	---	---	10.0000 28/01/2015	---	---	---	---	---
2,836,034,104	1.00	4.30	Actual/Actual	24/02/2042	30	---	24/02	4.30	1	GGB-FXD-240242-30Y-2.000-1.00	---	---	---	10.0000 28/01/2015	---	---	---	---	---
742,153	1,000.00	0.93	FLR Actual/360	10/08/2019	5	---	10/02 - 10/08	---	1	GGB-FLT-100819-05Y-0.934-1,000	---	---	---	---	---	---	---	---	---
4,030,827	1,000.00	4.75	Actual/Actual	17/04/2019	5	---	17/04	4.75	1	GGB-FXD-170419-05Y-4.750-1,000	---	---	---	---	---	---	---	---	---
2,089,066	1,000.00	3.38	Actual/Actual	17/07/2017	3	---	17/07	3.38	1	GGB-FXD-170717-03Y-3.375-1,000	---	---	---	---	---	---	---	---	---

Government Bonds Notes

Transactions Volume = (Pieces) * (Nominal Price). Transactions Value = (Pieces) * (Nominal Price) * (price %) + (Accrued interest).
The Value of current coupon for the issues with NV 0.01 euro refers to NV 100 euros
FLR: Floating Interest Rate.
[1] - The Expiration Date of the interest bearing period and the Date for coupon payment.

Bonds in Circulation	Currency / Min nominal traded Value	Coupons Payment Date	Current Coupon Value	Note	Coupon Attached	Trading Unit	Issue Date	Duration (years)	Today's Interest	A.I.C in days	Bonds	Last price of previous days	Last Outcry in Cash (euro) Price	Buy / Sell	Trades in Pieces	Life min	Life Max
Bonds of International Organizations																	
1,000,000	EUR / 1000	21/07	---	---	9	1	21/07/2006	10	5.0 FLR	360	EUROPEAN INVESTMENT BANK BOND	97.50	16/04/2007	---	---	---	---
Corporate Bonds in Foreign Currency and Euro																	
103,746	GBP / 10	01/12	0.25	---	56	1	01/12/1930	98	2.5	360	National Mortgage Bank	2.27	05/02/1996	2.27	S	05/02/1996	2.27
0	GBP / 10	01/12	0.25	---	58	1	01/12/1928	100	2.5	360	National Mortgage Bank	---	---	---	---	---	---

Government Bonds Notes

A.I.C: Accrued Interest Calculation base.
FLR: Floating Interest Rate.
The minimum tradeable Nominal Value for all Demeterialised Government Titles is 100 Euros.

State Banks Bonds (one year maturity)

Number Listed Bonds	Nominal value	Initial Rate	Current Rate	Annual Interest	Issue Date	Note	State Banks Bonds	Trading Unit	Yearly Renewals	Last Outcry in Cash (euro) Price	Buy / Sell	Volume
2,446	1,182.96	4.90	2.47	29.69	31/05/2008	---	H.I.D.B.	1	7	---	---	---

Bonds Notes

The annual renewal of H.I.D.B. Bonds is free of taxes (net rate).
For Bonds issue until 30/01/2015 the accrued interest is capitalized.

Athex & ATHEXClear Members List

Member Name			Stock Market			Derivatives Market		ATHEXClear Member		
Address	Phone	Fax	Market Member	Remote Member	Market Maker	Proprietary	Market Maker	General Clearing	Direct Clearing	Non Clearing
A. SARRIS SECURITIES S.A.			a							
6, DRAGATSANIOU STR. ATHINA	(210)-3367700	(210)-3312324								
ALPHA FINANCE INVESTMENT SERVICES S.A.			a		a		a		a	
5, MERLIN STR. ATHINA	(210)-3677400	(210)-3311193								
ALPHA BANK A.E.								a		
40, STADIOU STR ATHINA	(210)-3265546	(210)-3265811								
	(210)-3260000	(210)-3264116								
ARGUS STOCKBROKERS LTD			a	a		a				
12-14, KENNEDY AVE, S. 303 NICOSIA	(+35722)-22717000	(+35722)-22717070								
ATLANTIC SECURITIES LIMITED			a	a						
37, PRODROMOU STR. NICOSIA	(+35722)-445400	(+35722)-661914								
ATLAS SECURITIES S.A			a			a				a
14 - 16, VERNENON STR.& 125 MICHALAKOPOULOU STR. ATHINA	(210)-3363300	(210)-3238925								
ATTICA BANK S.A.								a		
23, OMIROU STR. ATHINA	(210)-3669000	(210)-3669410								
54, AKADIMIAS STR. ATHINA	(210)-3390757	(210)-3646090								
AXIA VENTURES GROUP LTD			a	a						
10, G. KRANIDIOTI NICOSIA	+357 22 742000	+357 22 742001								
AXON SECURITIES S.A.			a			a				a
48, STADIOU ATHINA	(210)-3363800	(210)-3243903								
BANK OF CYPRUS PUBLIC COMPANY LTD								a		
, 51,STASINOU (AG. PARASKEVI, STROVOLOS) NICOSIA	(0035722)-121883	(0035722)-336258								
170, ALEXANDRAS AVE ATHINA	(210)-6477708	(210)-6477709								
BETA SECURITIES S.A.			a		a		a		a	
, BRAILA & 29 ALEXANDRAS AVE ATHINA	(210)-6478900	(210)-6410139								
BNP PARIBAS SECURITIES SERVICES								a		
94, VAS. SOFIAS AVE ATHINA	(210)-7468500	(210)-7468579								
CAPITAL SECURITIES S.A.			a			a				a
58, MITROPOLEOS STR. ATHINA	(210)-3369700	(210)-3369820								
CFS SECURITIES & INVESTMENT SERVICES S.A.			a			a			a	
3, STADIOU STR. ATHINA	(210)-3360800	(210)-3311854								
CITIBANK INTERNATIONAL PLC (ATHENS BRANCH)								a		
8, OTONOS ATHINA	(210)-9293084	(210)-9293461								
CITIGROUP GLOBAL MARKET LTD			a	a						
, CITIGROUP CENTRE, CANADA SQUARE, CANARY WHART LONDON	002079864000	002079862266								
CREDIT SUISSE SECURITIES (EUROPE) LIMITED			a	a						
, ONE CABOT SQUARE LONDON	+44 20 7888 8888	+44 20 7888 1600								
CYCLOS SECURITIES S.A.			a			a			a	
39, PANEPISTIMIOU STR. ATHINA	(210)-3364300	(210)-3239122								
D.A. TSEKOURAS SEC. S.A.			a							
, PESMAZOGLOY 3	(210)-3214406	(210)-3211997								
DEUTSCHE BANK A.G.			a	a		a				
70, THEODOR-HEUSS-ALLEE FRANKFURT	0049 69 910 00	0049 69 910 34 225								
DYNAMIC SECURITIES			a			a			a	
6 - 10, CHAR. TRIKOUPH STR. ATHINA	(210)-3677700	(210)-3677777								
EL. PETROPOULAKIS SECURITIES S.A.			a			a				a
9, ARISTIDOU STR. ATHINA	(210)-3213928	(210)-3216810								
EUROBANK EQUITIES S.A.			a		a		a		a	
10, FILELLINON STR. ATHINA	(210)-3720000	(210)-3720001								
EUROBANK ERGASIAS S.A.								a		
8, OTHONOS STR. ATHINA	(210)-3337000	(210)-3233866								
	(210)-3337969	(210)-3245916								
EUROCORP SECURITIES S.A.			a			a			a	
14, FILIKIS ETAIRIAS SQ. ATHINA	(210)-7263500	(210)-7263666								
EUOTRUST BROKERAGE S.A.			a							
13-15, SOPHOCLEOUS STR. ATHINA	(210)-3363100	(210)-3238334								
EUROXX SECURITIES S.A.			a			a			a	
7, PALAIOLOGOU STR. CHALANDRI	(210)-6879400	(210)-6879401								
G.A. PERVANAS SECURITIES & INVESTMENT SERVICES CO S.A.			a							a
7 - 9, SOPHOCLEOUS STR. ATHINA	(210)-3251875	(210)-3210291								
GLOBAL CAPITAL SECURITIES AND FINANCIAL SERVICES LTD			a	a						
5, LEMESOU AVE. LEMESOS CYPRUS	(+35722)-710710	(+35722)-339332								

Athex & ATHEXClear Members List

Member Name			Stock Market			Derivatives Market		ATHEXClear Member		
Address	Phone	Fax	Market Member	Remote Member	Market Maker	Proprietary	Market Maker	General Clearing	Direct Clearing	Non Clearing
GUARDIAN TRUST SECURITIES S.A			a			a				a
15, FILELLINON STR. ATHINA	(210)-3220402	(210)-3220498								
HELLENIC AMERICAN SEC. S.A.			a		a	a			a	
6, EVRIPIDOU STR. ATHINA	(210)-3311100	(210)-3215968								
HELLENIC BANK (INVESTMENTS) LTD			a	a						
31, KYRIAKOY MATSI AVE. NICOSIA	(+35722)-500100	(+35722)-500110								
HSBC BANK PLC								a		
109-111, MESOGION AVE ATHINA	(210)-6961507	(210)-6929310								
INDEX SECURITIES S.A.			a							
6, DRAGATSANIOU STR. ATHINA	(210)-3213920	(210)-3213216								
INVESTMENT BANK OF GREECE S.A.			a		a		a	a		
32, AIGEIALIAS MAROUSI	(210) 8173000	(210) 8173101								
24B, KIFISSIAS AVE MAROUSI	(210)-8171800	(210)-8171889								
J. CHR. MAVRIKIS SECURITIES S.A.			a							
5, SOPHOCLEOUS STR. ATHINA	(210)-3213949	(210)-3217767								
KAPPA SECURITIES S.A.			a			a				a
15, VALAORITOU STR. ATHINA	(210)-3610371	(210)-3641002								
KYPROU SECURITIES S.A.										a
26, HALKIDONOS & FIDIPIIDOY STR. ATHINA	(210)-8701000	(210)-8701049								
LAIKI FINANCIAL SERVICES LTD			a	a						
26, CLR HOUSE, VIRONOS AVE. NICOSIA	(+35722)-898600	(+35722)-680953								
LEON DEPOLAS SECURITIES S.A.			a			a				a
1, CHR. LADA STR. ATHINA	(210)-3213286	(210)-3211618								
MAGNA TRUST SECURITIES S.A			a							a
9, FIDIOU STR. ATHINA	(210)-3327503	(210)-3327599								
MEGA EQUITY SECURITIES & FINANCIAL SERVICES LTD			a	a		a				
42-44, GRIBA DIGENI AV. NICOSIA	(+35722)-711711	(+35722)-711811								
MERIT SECURITIES S.A			a		a	a			a	
38, VAS. KONSTANTINOU STR. ATHINA	(210)-3671800	(210)-3671830								
MERRILL LYNCH			a	a						
2, KING EDWARD STREET LONDON	(+4420)-79952000	(+4420)-79954525								
MIDAS BROKERAGE S.A.			a							
5, SOPHOCLEOUS STR. ATHINA	(210)-3253203	(210)-3253205								
N. CHRYSSOCHOIDIS STOCK BROKERAGE I.S.S.A.			a			a			a	
7 - 9, SOPHOCLEOUS STR. ATHINA	(210)-3213913	(210)-3216115								
NATIONAL BANK OF GREECE S.A.			a			a		a		
86, AIOLOU STR. ATHINA	(210)-3341000	(210)-3228187								
68, AKADIMIAS STR. ATHINA	(210)-3328817	(210)-3328678								
NBG SECURITIES S.A.			a		a		a			a
68, AKADIMIAS STR. ATHINA	(210)-3328500	(210)-3328565								
NUNTIUS SECURITIES S.A			a							a
6, DRAGATSANIOU STR. ATHINA	(210)-3350599	(210)-3254846								
PANTELAKIS SEC. S.A.			a			a				a
109-111, MESOGION AVE. ATHINA	(210)-6965000	(210)-6929550								
PEGASUS BROKERAGE FIRM S.A			a			a				
17, VALAORITOU STR. ATHINA	(210)-3670700	(210)-3670760								
PIRAEUS BANK S.A.			a		a			a		
4, AMERIKIS STR. ATHINA	(210)-3335000	(210)-3335079								
4, AMERIKIS STR ATHINA	(210)-3335918	(210)-3254207								
PIRAEUS SECURITIES S.A.			a				a		a	
10, STADIOU STR. ATHINA	(210)-3354100	(210)-3233814								
PRELIUM SECURITIES & INVESTMENT SERVICES S.A.			a			a				a
, KIFISSIAS AVE & 1 DAVAKI STR ATHINA	(210)-3677000	(210)-6920403								
PROCHOICE SECURITIES LTD			a	a						
57, SPYROY KYPRIANOU NICOSIA	+357-24-661192	+357-24-662464								
SHARELINK SECURITIES & FINANCIAL SERVICES LTD			a	a		a				
6, ELLINAS HOUSE, THEOTOKI STR. NICOSIA	(+35722)-554200	(+35722)-750852								
SOCIETE GENERALE S.A.			a	a		a				
17, COURS VALMY PUTEAUX - LA DEFENSE PARIS	(+33) 142134754	(+33) 142135697								
240-242, KIFISIAS AVE ATHINA	(210)-6790161	(210)-6728828								
SOLIDUS SECURITIES S.A			a			a			a	
64, LOUIZIS RIANKOUR STR. ATHINA	(210)-6925500	(210)-6985421								

Athex & ATHEXClear Members List

Member Name			Stock Market			Derivatives Market		ATHEXClear Member		
Address	Phone	Fax	Market Member	Remote Member	Market Maker	Proprietary	Market Maker	General Clearing	Direct Clearing	Non Clearing
ST. EM. LAVRENTAKIS SECURITIES S.A.			a			a				a
7 - 9, SOPHOCLEOUS STR. ATHINA	(210)-3213336	(210)-3246572								
THE CYPRUS INVESTMENT AND SECURITIES CORPORATION LIMITED (CISCO)			a	a						
4, EVROU STR. (EUROLIFE HOUSE) NICOSIA	(+35722)-881800	(+35722)-881801								
UBS LIMITED			a	a						
1, FINSBURY AVENUE LONDON	(+4420)-79013333	(+4420)-79012345								
KARAMANOF SECURITIES & INV. SERVICES S.A.			a			a				
2, SQ. ST THEODORON ATHINA	(210)-3212947	(210)-3217088								

List of Stocks under Market Making operations

Securities	Stock Category
Market Maker	Start Market Making
CYPRUS POPULAR BANK (CR)	Suspension Status
PIRAEUS SECURITIES S.A.	02/02/2013
VIOHALCO (CB)	Suspension Status
ALPHA FINANCE INVESTMENT SERVICES S.A.	11/02/2013
EUROBANK EQUITIES S.A.	20/01/2013
MERIT SECURITIES S.A	13/12/2012
ALPHA BANK (CR)	Main Market
EUROBANK EQUITIES S.A.	24/10/2012
HELLENIC AMERICAN SEC. S.A.	25/07/2014
INVESTMENT BANK OF GREECE S.A.	08/01/2013
MERIT SECURITIES S.A	03/09/2013
NBG SECURITIES S.A.	15/01/2013
PIRAEUS SECURITIES S.A.	28/05/2013
ALUMIL (CR)	Main Market
BETA SECURITIES S.A.	18/07/2013
ATTICA BANK S.A. (CR)	Main Market
BETA SECURITIES S.A.	02/06/2014
EUROBANK EQUITIES S.A.	25/07/2014
HELLENIC AMERICAN SEC. S.A.	25/07/2014
BYTE COMPUTER SA (CR)	Main Market
MERIT SECURITIES S.A	04/08/2013
CC HBC AG (CR)	Main Market
EUROBANK EQUITIES S.A.	23/10/2013
NBG SECURITIES S.A.	29/04/2013
ELLAKTOR (CR)	Main Market
EUROBANK EQUITIES S.A.	01/06/2013
INVESTMENT BANK OF GREECE S.A.	02/01/2013
NBG SECURITIES S.A.	25/06/2013
ELTECH ANEMOS S.A. (CR)	Main Market
EUROBANK EQUITIES S.A.	22/07/2014
ELTON SA (CR)	Main Market
BETA SECURITIES S.A.	03/09/2013
EUROBANK ERGASIAS (CR)	Main Market
ALPHA FINANCE INVESTMENT SERVICES S.A.	08/01/2013
EUROBANK EQUITIES S.A.	01/06/2013
HELLENIC AMERICAN SEC. S.A.	25/07/2014
INVESTMENT BANK OF GREECE S.A.	08/01/2013
PIRAEUS SECURITIES S.A.	28/09/2013
EUROCONSULTANTS S.A. (CR)	Main Market
EUROBANK EQUITIES S.A.	22/07/2014
FOLLI FOLLIE (CR)	Main Market
NBG SECURITIES S.A.	17/02/2014
FRIGOGLOSS SA (CR)	Main Market
EUROBANK EQUITIES S.A.	27/10/2014
GEK TERNA (CR)	Main Market
INVESTMENT BANK OF GREECE S.A.	02/01/2013
GR. SARANTIS SA (CR)	Main Market
BETA SECURITIES S.A.	14/05/2013
HELLENIC EXCHANGES-A.S.E. (CR)	Main Market
EUROBANK EQUITIES S.A.	01/06/2013
HELLENIC AMERICAN SEC. S.A.	01/09/2014
INVESTMENT BANK OF GREECE S.A.	02/01/2013
NBG SECURITIES S.A.	25/06/2013
INTRALOT (CR)	Main Market
EUROBANK EQUITIES S.A.	01/06/2013
INVESTMENT BANK OF GREECE S.A.	02/01/2013
PIRAEUS SECURITIES S.A.	28/09/2013
KRETA FARM SA (CR)	Main Market
EUROBANK EQUITIES S.A.	17/11/2014
LAMDA DEVELOPMENT SA (CR)	Main Market
EUROBANK EQUITIES S.A.	08/12/2014
MARFIN INVESTMENT GROUP (CR)	Main Market
HELLENIC AMERICAN SEC. S.A.	25/07/2014
PIRAEUS SECURITIES S.A.	02/02/2013
MLS MULTIMEDIA SA (CR)	Main Market
BETA SECURITIES S.A.	18/07/2013

List of Stocks under Market Making operations

Securities	Stock Category
Market Maker	Start Market Making
MOTOR OIL (CR)	Main Market
EUROBANK EQUITIES S.A.	23/10/2012
HELLENIC AMERICAN SEC. S.A.	01/09/2014
NBG SECURITIES S.A.	17/02/2014
MYTILINEOS HOLDINGS (CR)	Main Market
HELLENIC AMERICAN SEC. S.A.	25/07/2014
INVESTMENT BANK OF GREECE S.A.	02/01/2013
NBG SECURITIES S.A.	25/06/2013
NATIONAL BANK (CR)	Main Market
ALPHA FINANCE INVESTMENT SERVICES S.A.	08/01/2013
EUROBANK EQUITIES S.A.	24/10/2012
HELLENIC AMERICAN SEC. S.A.	25/07/2014
INVESTMENT BANK OF GREECE S.A.	08/01/2013
MERIT SECURITIES S.A.	03/09/2013
NBG SECURITIES S.A.	28/02/2013
PIRAEUS SECURITIES S.A.	08/09/2013
OPAP (CR)	Main Market
ALPHA FINANCE INVESTMENT SERVICES S.A.	08/01/2013
EUROBANK EQUITIES S.A.	24/10/2012
HELLENIC AMERICAN SEC. S.A.	25/07/2014
INVESTMENT BANK OF GREECE S.A.	08/01/2013
NBG SECURITIES S.A.	15/01/2013
OTE (CR)	Main Market
ALPHA FINANCE INVESTMENT SERVICES S.A.	08/01/2013
EUROBANK EQUITIES S.A.	24/10/2012
HELLENIC AMERICAN SEC. S.A.	25/07/2014
INVESTMENT BANK OF GREECE S.A.	08/01/2013
NBG SECURITIES S.A.	01/12/2012
PIRAEUS SECURITIES S.A.	08/09/2013
PAPOUTSANIS (CR)	Main Market
BETA SECURITIES S.A.	25/11/2013
PETROPOULOS PETROS (CR)	Main Market
BETA SECURITIES S.A.	28/05/2013
PIRAEUS BANK (CR)	Main Market
EUROBANK EQUITIES S.A.	23/10/2012
HELLENIC AMERICAN SEC. S.A.	25/07/2014
INVESTMENT BANK OF GREECE S.A.	08/01/2013
MERIT SECURITIES S.A.	16/09/2013
NBG SECURITIES S.A.	02/06/2013
PIRAEUS SECURITIES S.A.	16/02/2013
PLAISIO COMPUTERS SA (CR)	Main Market
BETA SECURITIES S.A.	05/05/2014
PPC (CR)	Main Market
ALPHA FINANCE INVESTMENT SERVICES S.A.	08/01/2013
EUROBANK EQUITIES S.A.	23/10/2012
HELLENIC AMERICAN SEC. S.A.	01/09/2014
INVESTMENT BANK OF GREECE S.A.	08/01/2013
NBG SECURITIES S.A.	26/03/2013
PIRAEUS SECURITIES S.A.	28/09/2013
PROFILE SA (CR)	Main Market
EUROBANK EQUITIES S.A.	23/06/2014
REDS S.A. (CR)	Main Market
EUROBANK EQUITIES S.A.	05/09/2014
S.KANAKIS SA (CR)	Main Market
BETA SECURITIES S.A.	01/10/2013
TITAN CEMENT (CR)	Main Market
EUROBANK EQUITIES S.A.	23/10/2012
NBG SECURITIES S.A.	17/02/2014
VIOHALCO SA/NV (CB)	Main Market
ALPHA FINANCE INVESTMENT SERVICES S.A.	17/02/2014
MERIT SECURITIES S.A.	17/03/2014

Underlying Asset				Derivatives Market													
Price max	Price min	Closing price	change	Delivery Month	Open price	Price max	Price min	Last price	Closing price	Last Bid	Last Ask	Settlement price	Life high	Life low	Trades	Volume	Open Interest
FTSE/Athex Large Cap				(Trade Unit: 1 Index Point x 5€, Cash Settlement)													
258.74	248.05	250.73	1.08%	February 2015	257.00	260.00	247.25	250.75	250.75	---	---	250.50	332.75	---	625	29,567	19,343
				March 2015	255.00	261.75	247.00	250.50	250.50	---	---	250.50	328.00	---	644	31,780	29,646
				April 2015	252.50	252.50	252.50	252.50	252.50	---	---	251.75	262.75	---	1	1	8
				June 2015	---	---	---	---	248.75	---	---	249.50	---	237.00	---	---	3
				September 2015	---	---	---	---	248.50	---	---	---	---	---	---	---	---
				December 2015	---	---	---	---	249.50	---	---	---	---	---	---	---	---

Underlying Asset				Derivatives Market													
Price max	Price min	Closing price	change	Delivery Month	Open price	Price max	Price min	Last price	Closing price	Last Bid	Last Ask	Settlement price	Life high	Life low	Trades	Volume	Open Interest
ALPHA BANK (CR)				(Contract Size: 100 Securities, Physical Delivery)													
0.358	0.339	0.343	4.26%	March 2015	0.359	0.359	0.340	0.341	0.341	---	---	0.345	0.555	---	291	6,455	45,078
				June 2015	---	---	---	---	0.331	---	---	0.352	---	0.405	---	---	51
				September 2015	0.353	0.353	0.347	0.353	0.353	---	---	0.348	0.403	---	5	1,000	250
				December 2015	---	---	---	---	0.335	---	---	---	---	---	---	---	---
CC HBC AG (CR)				(Contract Size: 100 Securities, Physical Delivery)													
16.10	15.29	15.80	-1.13%	March 2015	15.76	15.89	15.31	15.89	15.89	---	---	15.76	17.10	---	23	41	160
				June 2015	---	---	---	---	16.09	---	---	---	---	---	---	---	---
				September 2015	---	---	---	---	15.82	---	---	---	---	---	---	---	---
				December 2015	---	---	---	---	15.90	---	---	---	---	---	---	---	---
CORINTH PIPEWORKS SA (CR)				(Contract Size: 100 Securities, Physical Delivery)													
1.19	1.08	1.19	7.21%	March 2015	1.12	1.17	1.11	1.14	1.14	---	---	1.18	1.17	---	15	35	403
				June 2015	---	---	---	---	1.12	---	---	1.43	---	0.999	---	---	75
				September 2015	---	---	---	---	1.12	---	---	---	---	---	---	---	---
				December 2015	---	---	---	---	1.13	---	---	---	---	---	---	---	---
ELLAKTOR (CR)				(Contract Size: 100 Securities, Physical Delivery)													
2.33	2.24	2.29	0.00%	March 2015	2.33	2.33	2.25	2.28	2.28	---	---	2.27	2.75	---	27	178	1,528
				June 2015	---	---	---	---	2.31	---	---	---	---	---	---	---	---
				September 2015	---	---	---	---	2.32	---	---	---	---	---	---	---	---
				December 2015	---	---	---	---	2.33	---	---	---	---	---	---	---	---
EUROBANK ERGASIAS (CR)				(Contract Size: 100 Securities, Physical Delivery)													
0.164	0.152	0.156	6.12%	March 2015	0.160	0.164	0.152	0.156	0.156	---	---	0.158	0.267	---	272	13,897	78,959
				June 2015	---	---	---	---	0.148	---	---	0.158	---	0.277	---	---	321
				September 2015	0.163	0.163	0.155	0.155	0.155	---	---	0.160	0.163	---	3	2,000	---
				December 2015	---	---	---	---	0.149	---	---	---	---	---	---	---	---
EYDAP S.A. (CR)				(Contract Size: 100 Securities, Physical Delivery)													
6.62	6.44	6.60	3.61%	March 2015	6.50	6.50	6.50	6.50	6.50	---	---	6.55	6.70	---	1	1	152
				June 2015	---	---	---	---	6.03	---	---	---	---	---	---	---	---
				September 2015	---	---	---	---	6.02	---	---	---	---	---	---	---	---
				December 2015	---	---	---	---	6.05	---	---	---	---	---	---	---	---
FOLLI FOLLIE (CR)				(Contract Size: 100 Securities, Physical Delivery)													
30.70	29.00	29.16	-3.76%	March 2015	30.41	30.41	29.34	29.34	29.34	---	---	29.25	31.00	---	9	21	237
				June 2015	---	---	---	---	30.51	---	---	28.13	---	23.52	---	---	2
				September 2015	---	---	---	---	30.66	---	---	---	---	---	---	---	---
				December 2015	---	---	---	---	30.81	---	---	---	---	---	---	---	---
FRIGOGLASS SA (CR)				(Contract Size: 100 Securities, Physical Delivery)													
1.75	1.70	1.75	2.34%	March 2015	1.71	1.72	1.71	1.71	1.71	---	---	1.73	2.02	---	5	11	393
				June 2015	---	---	---	---	1.72	---	---	---	---	---	---	---	---
				September 2015	---	---	---	---	1.73	---	---	---	---	---	---	---	---
				December 2015	---	---	---	---	1.74	---	---	---	---	---	---	---	---

Underlying Asset				Derivatives Market													
Price max	Price min	Closing price	change	Delivery Month	Open price	Price max	Price min	Last price	Closing price	Last Bid	Last Ask	Settlement price	Life high	Life low	Trades	Volume	Open Interest
GEK TERNA (CR)				(Contract Size: 100 Securities, Physical Delivery)													
2.11	2.00	2.02	1.00%	March 2015	2.08	2.08	2.01	2.03	2.03	---	---	2.05	2.80	---	30	173	7,358
				June 2015	---	---	---	---	2.01	---	---	2.05	---	2.73	---	---	---
				September 2015	---	---	---	---	2.02	---	---	---	---	---	---	---	---
				December 2015	---	---	---	---	2.03	---	---	---	---	---	---	---	---
GRIVALIA PROPERTIES (CR)				(Contract Size: 100 Securities, Physical Delivery)													
8.05	7.80	8.00	0.00%	March 2015	---	---	---	---	8.01	---	---	7.86	8.45	---	---	---	183
				June 2015	---	---	---	---	7.87	---	---	---	---	---	---	---	---
				September 2015	---	---	---	---	7.91	---	---	---	---	---	---	---	---
				December 2015	---	---	---	---	7.96	---	---	---	---	---	---	---	---
HELLENIC EXCHANGES-A.S.E. (CR)				(Contract Size: 100 Securities, Physical Delivery)													
6.36	6.03	6.15	1.82%	March 2015	6.26	6.33	6.09	6.12	6.12	---	---	6.14	6.77	---	41	92	1,468
				June 2015	---	---	---	---	5.99	---	---	6.04	---	---	---	---	---
				September 2015	---	---	---	---	6.02	---	---	---	---	---	---	---	---
				December 2015	---	---	---	---	6.05	---	---	---	---	---	---	---	---
HELLENIC PETROLEUM (CR)				(Contract Size: 100 Securities, Physical Delivery)													
4.12	3.95	4.12	7.29%	March 2015	4.00	4.09	3.98	4.09	4.09	---	---	4.07	4.75	---	41	97	4,038
				June 2015	---	---	---	---	3.87	---	---	---	---	---	---	---	---
				September 2015	---	---	---	---	3.74	---	---	---	---	---	---	---	---
				December 2015	---	---	---	---	3.75	---	---	---	---	---	---	---	---
INTRALOT (CR)				(Contract Size: 100 Securities, Physical Delivery)													
1.66	1.61	1.63	1.24%	March 2015	1.66	1.66	1.62	1.63	1.63	---	---	1.61	1.71	---	4	14	444
				June 2015	---	---	---	---	1.62	---	---	---	---	---	---	---	---
				September 2015	---	---	---	---	1.63	---	---	---	---	---	---	---	---
				December 2015	---	---	---	---	1.64	---	---	---	---	---	---	---	---
JUMBO SA (CR)				(Contract Size: 100 Securities, Physical Delivery)													
10.44	10.09	10.09	-0.10%	March 2015	10.13	10.27	10.08	10.11	10.11	---	---	10.13	10.90	---	21	71	636
				June 2015	---	---	---	---	10.17	---	---	---	---	---	---	---	---
				September 2015	---	---	---	---	10.22	---	---	---	---	---	---	---	---
				December 2015	---	---	---	---	10.09	---	---	---	---	---	---	---	---
MARFIN INVESTMENT GROUP (CR)				(Contract Size: 100 Securities, Physical Delivery)													
0.174	0.167	0.174	6.10%	March 2015	0.170	0.175	0.170	0.175	0.175	---	---	0.181	0.250	---	48	1,687	27,209
				June 2015	---	---	---	---	0.165	---	---	0.185	0.188	---	---	---	8
				September 2015	---	---	---	---	0.166	---	---	---	---	---	---	---	---
				December 2015	---	---	---	---	0.167	---	---	---	---	---	---	---	---
METKA (CR)				(Contract Size: 100 Securities, Physical Delivery)													
9.90	9.48	9.60	2.02%	March 2015	9.55	9.87	9.52	9.57	9.57	---	---	9.79	10.42	---	21	60	320
				June 2015	---	---	---	---	9.47	---	---	---	---	---	---	---	---
				September 2015	---	---	---	---	9.22	---	---	---	---	---	---	---	---
				December 2015	---	---	---	---	9.27	---	---	---	---	---	---	---	---

Underlying Asset				Derivatives Market													
Price max	Price min	Closing price	change	Delivery Month	Open price	Price max	Price min	Last price	Closing price	Last Bid	Last Ask	Settlement price	Life high	Life low	Trades	Volume	Open Interest
MOTOR OIL (CR)				(Contract Size: 100 Securities, Physical Delivery)													
7.43	7.16	7.20	-0.69%	March 2015	7.34	7.34	7.22	7.22	7.22	---	---	7.27	7.55	---	8	24	432
				June 2015	---	---	---	---	7.30	---	---	7.27	---	---	---	---	---
				September 2015	---	---	---	---	7.14	---	---	---	---	---	---	---	---
				December 2015	---	---	---	---	7.17	---	---	---	---	---	---	---	---
MYTILINEOS HOLDINGS (CR)				(Contract Size: 100 Securities, Physical Delivery)													
6.42	6.19	6.42	4.90%	March 2015	6.30	6.44	6.20	6.44	6.44	---	---	6.36	6.67	---	86	222	3,110
				June 2015	---	---	---	---	6.16	---	---	6.47	6.43	---	---	---	---
				September 2015	---	---	---	---	6.19	---	---	6.57	5.52	---	---	---	---
				December 2015	---	---	---	---	6.22	---	---	---	---	---	---	---	---
NATIONAL BANK (CR)				(Contract Size: 100 Securities, Physical Delivery)													
1.33	1.22	1.26	6.78%	March 2015	1.18	1.32	1.18	1.27	1.27	---	---	1.26	1.90	---	678	11,738	20,781
				June 2015	---	---	---	---	1.19	---	---	1.29	2.10	---	---	---	61
				September 2015	---	---	---	---	1.19	---	---	1.29	1.42	---	---	---	---
				December 2015	---	---	---	---	1.20	---	---	---	---	---	---	---	---
OPAP (CR)				(Contract Size: 100 Securities, Physical Delivery)													
9.05	8.39	8.40	-3.00%	March 2015	9.00	9.03	8.40	8.40	8.40	---	---	8.51	10.50	---	184	828	1,415
				June 2015	---	---	---	---	8.47	---	---	8.51	8.84	---	---	---	3
				September 2015	---	---	---	---	8.51	---	---	8.51	8.82	---	---	---	2
				December 2015	---	---	---	---	8.56	---	---	---	---	---	---	---	---
OTE (CR)				(Contract Size: 100 Securities, Physical Delivery)													
7.95	7.50	7.50	-1.32%	March 2015	7.95	7.98	7.51	7.59	7.59	---	---	7.64	10.09	---	340	2,276	8,406
				June 2015	8.03	8.03	8.03	8.03	8.03	---	---	7.76	10.57	---	1	5	95
				September 2015	---	---	---	---	7.69	---	---	7.73	8.44	---	---	---	105
				December 2015	---	---	---	---	7.73	---	---	---	---	---	---	---	---
P.P.A. S.A. (CR)				(Contract Size: 100 Securities, Physical Delivery)													
13.88	13.07	13.54	1.81%	March 2015	13.46	13.58	13.15	13.15	13.15	---	---	13.55	14.05	---	8	10	189
				June 2015	---	---	---	---	13.39	---	---	---	---	---	---	---	---
				September 2015	---	---	---	---	13.34	---	---	---	---	---	---	---	---
				December 2015	---	---	---	---	13.40	---	---	---	---	---	---	---	---
PIRAEUS BANK (CR)				(Contract Size: 100 Securities, Physical Delivery)													
0.635	0.593	0.603	4.87%	March 2015	0.614	0.635	0.593	0.603	0.603	---	---	0.604	1.34	---	359	9,107	51,973
				June 2015	---	---	---	---	0.579	---	---	0.618	1.00	---	---	---	6
				September 2015	0.625	0.639	0.617	0.617	0.617	---	---	0.612	0.733	---	5	800	700
				December 2015	---	---	---	---	0.585	---	---	---	---	---	---	---	---
PPC (CR)				(Contract Size: 100 Securities, Physical Delivery)													
6.20	5.72	5.90	-1.34%	March 2015	6.20	6.23	5.77	5.87	5.87	---	---	6.01	7.94	---	198	844	3,135
				June 2015	---	---	---	---	6.02	---	---	6.04	8.06	---	---	---	---
				September 2015	---	---	---	---	6.02	---	---	---	---	---	---	---	---
				December 2015	---	---	---	---	6.05	---	---	---	---	---	---	---	---

Underlying Asset				Derivatives Market													
Price max	Price min	Closing price	change	Delivery Month	Open price	Price max	Price min	Last price	Closing price	Last Bid	Last Ask	Settlement price	Life high	Life low	Trades	Volume	Open Interest
SIDENOR (CR)				(Contract Size: 100 Securities, Physical Delivery)													
0.819	0.790	0.818	3.41%	March 2015	0.809	0.809	0.779	0.803	0.803	---	---	0.820	0.820	---	4	19	654
				June 2015	---	---	---	---	0.796	---	---	---	---	---	---	---	---
				September 2015	---	---	---	---	0.800	---	---	---	---	---	---	---	---
				December 2015	---	---	---	---	0.804	---	---	---	---	---	---	---	---
TERNA ENERGY (CR)				(Contract Size: 100 Securities, Physical Delivery)													
2.88	2.65	2.66	-2.92%	March 2015	2.68	2.68	2.67	2.67	2.67	---	---	2.67	2.79	---	6	19	787
				June 2015	---	---	---	---	2.70	---	---	3.34	2.47	---	---	---	800
				September 2015	---	---	---	---	2.71	---	---	---	---	---	---	---	---
				December 2015	---	---	---	---	2.73	---	---	---	---	---	---	---	---
TITAN CEMENT (CR)				(Contract Size: 100 Securities, Physical Delivery)													
24.00	23.41	23.50	-1.05%	March 2015	24.39	24.39	23.46	23.50	23.50	---	---	23.51	24.50	---	19	38	693
				June 2015	---	---	---	---	23.91	---	---	---	---	---	---	---	---
				September 2015	---	---	---	---	23.93	---	---	---	---	---	---	---	---
				December 2015	---	---	---	---	24.05	---	---	---	---	---	---	---	---
VIOHALCO SA/NV (CB)				(Contract Size: 100 Securities, Physical Delivery)													
3.54	3.30	3.54	7.93%	March 2015	3.36	3.52	3.35	3.52	3.52	---	---	3.45	3.52	---	30	56	348
				June 2015	---	---	---	---	3.30	---	---	---	---	---	---	---	---
				September 2015	---	---	---	---	3.32	---	---	---	---	---	---	---	---
				December 2015	---	---	---	---	3.34	---	---	---	---	---	---	---	---

FTSE/Athex Large Cap

(Trade Unit: 1 Index Point x 5€ - Excercise Style: European, Cash Settlement)

Call Options																	Put Options																
Exerise Price	February 2015							March 2015							Other Months		February 2015							March 2015							Other Months		Exerise Price
	Open price	Price max	Price min	Last price	Closing price	Volume	Open Interest	Open price	Price max	Price min	Last price	Closing price	Volume	Open Interest	Volume	Open Interest	Open price	Price max	Price min	Last price	Closing price	Volume	Open Interest	Open price	Price max	Price min	Last price	Closing price	Volume	Open Interest	Volume	Open Interest	
180	0.00	0.00	0.00	-	70.00	-	51	0.00	0.00	0.00	-	72.50	-	-			0.00	0.00	0.00	-	0.01	-	-	0.00	0.00	0.00	-	3.20	-	-			180
185	0.00	0.00	0.00	-	65.00	-	-	0.00	0.00	0.00	-	68.50	-	-			0.00	0.00	0.00	-	0.38	-	-	0.00	0.00	0.00	-	4.00	-	-			185
190	0.00	0.00	0.00	-	60.00	-	-	0.00	0.00	0.00	-	64.50	-	-			0.00	0.00	0.00	-	0.01	-	1	0.00	0.00	0.00	-	4.90	-	-			190
195	0.00	0.00	0.00	-	55.00	-	-	0.00	0.00	0.00	-	60.50	-	-			0.00	0.00	0.00	-	0.01	-	-	0.00	0.00	0.00	-	5.90	-	-			195
200	0.00	0.00	0.00	-	50.00	-	-	0.00	0.00	0.00	-	56.50	-	-			0.00	0.00	0.00	-	0.01	-	4	0.00	0.00	0.00	-	7.10	-	1,084			200
205	0.00	0.00	0.00	-	45.00	-	-	0.00	0.00	0.00	-	53.00	-	-			0.00	0.00	0.00	-	0.01	-	2	0.00	0.00	0.00	-	8.40	-	1			205
210	0.00	0.00	0.00	-	40.00	-	4	0.00	0.00	0.00	-	49.25	-	-			0.00	0.00	0.00	-	0.03	-	21	0.00	0.00	0.00	-	9.90	-	205			210
215	0.00	0.00	0.00	-	35.00	-	219	0.00	0.00	0.00	-	46.00	-	-			0.00	0.00	0.00	-	0.09	-	65	0.00	0.00	0.00	-	11.50	-	90			215
220	0.00	0.00	0.00	-	30.25	-	134	0.00	0.00	0.00	-	42.75	-	25			0.00	0.00	0.00	-	0.22	-	357	0.00	0.00	0.00	-	13.25	-	13			220
225	0.00	0.00	0.00	-	25.50	-	21	0.00	0.00	0.00	-	39.75	-	22			0.00	0.00	0.00	-	0.47	-	27	0.00	0.00	0.00	-	15.25	-	-			225
230	0.00	0.00	0.00	-	21.00	-	102	0.00	0.00	0.00	-	36.75	-	61			0.00	0.00	1.50	1.50	1.50	7	185	0.00	0.00	0.00	-	17.25	-	-			230
235	0.00	0.00	0.00	-	16.75	-	55	35.00	35.00	35.00	35.00	35.00	4	46			0.00	0.00	0.00	-	1.70	-	16	0.00	0.00	0.00	-	19.50	-	84			235
240	0.00	0.00	0.00	-	13.00	-	322	0.00	0.00	0.00	-	31.50	-	110			0.00	0.00	0.00	-	3.00	-	71	0.00	0.00	0.00	-	22.00	-	38			240
245	13.75	14.00	12.50	12.50	12.50	161	144	30.00	30.00	30.00	30.00	30.00	20	20			13.75	14.00	4.50	4.50	4.50	100	182	0.00	0.00	0.00	-	24.50	-	40			245
250	12.00	12.00	10.00	10.00	10.00	11	145	26.50	26.50	26.50	26.50	26.50	20	173			12.00	12.00	6.00	6.00	6.00	2	236	26.00	26.00	26.00	26.00	26.00	6	49			250
255	8.00	8.00	8.00	8.00	8.00	2	384	0.00	0.00	0.00	-	24.50	-	200			8.00	8.00	12.00	12.00	12.00	1	189	28.00	28.00	28.00	28.00	28.00	6	250			255
260	4.50	4.50	4.50	4.50	4.50	1	119	24.00	25.00	23.00	23.00	23.00	80	122			4.50	4.50	14.00	14.00	14.00	1	72	32.50	32.75	31.75	31.75	31.75	160	100			260
265	0.00	0.00	0.00	-	2.00	-	26	0.00	0.00	0.00	-	20.75	-	16			0.00	0.00	0.00	-	17.00	-	2	0.00	0.00	0.00	-	36.25	-	-			265
270	4.00	4.00	3.00	3.00	3.00	921	1,017	0.00	0.00	0.00	-	19.00	-	205			4.00	4.00	0.00	-	21.25	-	21	0.00	0.00	0.00	-	39.50	-	50			270
275	0.00	0.00	0.00	-	0.72	-	275	0.00	0.00	0.00	-	17.25	-	-			0.00	0.00	0.00	-	25.75	-	21	0.00	0.00	0.00	-	42.75	-	-			275
280	0.00	0.00	0.00	-	0.40	-	213	0.00	0.00	0.00	-	15.75	-	5			0.00	0.00	0.00	-	30.50	-	-	0.00	0.00	0.00	-	46.25	-	-			280
285	0.00	0.00	0.00	-	0.22	-	203	0.00	0.00	0.00	-	14.50	-	5			0.00	0.00	0.00	-	35.25	-	-	0.00	0.00	0.00	-	50.00	-	1			285
290	0.00	0.00	0.00	-	0.11	-	-	0.00	0.00	0.00	-	13.25	-	50			0.00	0.00	0.00	-	40.00	-	-	0.00	0.00	0.00	-	53.50	-	-			290
295	0.00	0.00	0.00	-	0.06	-	-	0.00	0.00	0.00	-	12.00	-	-			0.00	0.00	0.00	-	45.00	-	-	0.00	0.00	0.00	-	57.50	-	-			295
300	0.00	0.00	0.00	-	0.03	-	2,369	0.00	0.00	0.00	-	11.00	-	230			0.00	0.00	0.00	-	50.00	-	-	0.00	0.00	0.00	-	61.50	-	-			300
305	0.00	0.00	0.00	-	0.01	-	-	0.00	0.00	0.00	-	9.90	-	-			0.00	0.00	0.00	-	55.00	-	-	0.00	0.00	0.00	-	65.50	-	-			305
310	0.00	0.00	0.00	-	0.01	-	10	0.00	0.00	0.00	-	9.00	-	-			0.00	0.00	0.00	-	60.00	-	-	0.00	0.00	0.00	-	69.50	-	2			310
315	0.00	0.00	0.00	-	0.80	-	-	0.00	0.00	0.00	-	8.20	-	-			0.00	0.00	0.00	-	65.00	-	-	0.00	0.00	0.00	-	73.50	-	-			315
320	0.00	0.00	0.00	-	0.01	-	30	0.00	0.00	0.00	-	7.40	-	-			0.00	0.00	0.00	-	70.00	-	-	0.00	0.00	0.00	-	78.00	-	-			320
325	0.00	0.00	0.00	-	0.40	-	-	0.00	0.00	0.00	-	6.70	-	-			0.00	0.00	0.00	-	75.00	-	-	0.00	0.00	0.00	-	82.00	-	-			325
330	0.00	0.00	0.00	-	0.28	-	-	0.00	0.00	0.00	-	6.10	-	-			0.00	0.00	0.00	-	80.00	-	-	0.00	0.00	0.00	-	86.50	-	-			330
335	0.00	0.00	0.00	-	0.19	-	-	0.00	0.00	0.00	-	5.50	-	-			0.00	0.00	0.00	-	85.00	-	-	0.00	0.00	0.00	-	91.00	-	-			335
340	0.00	0.00	0.00	-	0.13	-	-	0.00	0.00	0.00	-	5.00	-	-			0.00	0.00	0.00	-	90.00	-	-	0.00	0.00	0.00	-	95.50	-	-			340
345	0.00	0.00	0.00	-	0.09	-	-	0.00	0.00	0.00	-	4.50	-	-			0.00	0.00	0.00	-	95.00	-	-	0.00	0.00	0.00	-	100.00	-	-			345
350	-	-	-	-	-	-	-	0.00	0.00	0.00	-	4.10	-	-			-	-	-	-	-	-	-	0.00	0.00	0.00	-	104.00	-	-			350
355	-	-	-	-	-	-	-	0.00	0.00	0.00	-	3.70	-	-			-	-	-	-	-	-	-	0.00	0.00	0.00	-	109.00	-	-			355

FTSE/Athex Large Cap

(Trade Unit: 1 Index Point x 5€ - Exercise Style: European, Cash Settlement)

Call Options																	Put Options																		
Exercise Price	February 2015							March 2015							Other Months		February 2015								March 2015							Other Months		Exercise Price	
	Open price	Price max	Price min	Last price	Closing price	Volume	Open Interest	Open price	Price max	Price min	Last price	Closing price	Volume	Open Interest	Volume	Open Interest	Open price	Price max	Price min	Last price	Closing price	Volume	Open Interest	Open price	Price max	Price min	Last price	Closing price	Volume	Open Interest	Volume	Open Interest			
360	-	-	-	-	-	-	-	0.00	0.00	0.00	-	3.30	-	-			-	-	-	-	-	-	-	0.00	0.00	0.00	-	114.00	-	-			360		
365	-	-	-	-	-	-	-	0.00	0.00	0.00	-	3.00	-	-			-	-	-	-	-	-	-	0.00	0.00	0.00	-	118.00	-	-			365		
370	-	-	-	-	-	-	-	0.00	0.00	0.00	-	2.70	-	-			-	-	-	-	-	-	-	0.00	0.00	0.00	-	123.00	-	-			370		
375	-	-	-	-	-	-	-	0.00	0.00	0.00	-	2.40	-	-			-	-	-	-	-	-	-	0.00	0.00	0.00	-	128.00	-	-			375		
380	-	-	-	-	-	-	-	0.00	0.00	0.00	-	2.20	-	-			-	-	-	-	-	-	-	0.00	0.00	0.00	-	132.00	-	-			380		
385	-	-	-	-	-	-	-	0.00	0.00	0.00	-	2.00	-	-			-	-	-	-	-	-	-	0.00	0.00	0.00	-	137.00	-	-			385		
390	-	-	-	-	-	-	-	0.00	0.00	0.00	-	1.80	-	-			-	-	-	-	-	-	-	0.00	0.00	0.00	-	142.00	-	-			390		
395	-	-	-	-	-	-	-	0.00	0.00	0.00	-	1.60	-	-			-	-	-	-	-	-	-	0.00	0.00	0.00	-	147.00	-	-			395		
400	-	-	-	-	-	-	-	0.00	0.00	0.00	-	1.40	-	-			-	-	-	-	-	-	-	0.00	0.00	0.00	-	152.00	-	-			400		
405	-	-	-	-	-	-	-	0.00	0.00	0.00	-	1.30	-	-			-	-	-	-	-	-	-	0.00	0.00	0.00	-	157.00	-	-			405		
410	-	-	-	-	-	-	-	0.00	0.00	0.00	-	1.10	-	-			-	-	-	-	-	-	-	0.00	0.00	0.00	-	161.00	-	-			410		
415	-	-	-	-	-	-	-	0.00	0.00	0.00	-	1.00	-	-			-	-	-	-	-	-	-	0.00	0.00	0.00	-	166.00	-	-			415		
420	-	-	-	-	-	-	-	0.00	0.00	0.00	-	0.92	-	-			-	-	-	-	-	-	-	0.00	0.00	0.00	-	171.00	-	-			420		
425	-	-	-	-	-	-	-	0.00	0.00	0.00	-	0.83	-	-			-	-	-	-	-	-	-	0.00	0.00	0.00	-	176.00	-	-			425		
430	-	-	-	-	-	-	-	0.00	0.00	0.00	-	0.74	-	-			-	-	-	-	-	-	-	0.00	0.00	0.00	-	181.00	-	-			430		
435	-	-	-	-	-	-	-	0.00	0.00	0.00	-	0.67	-	-			-	-	-	-	-	-	-	0.00	0.00	0.00	-	186.00	-	-			435		
440	0.00	0.00	0.00	-	0.02	-	-	0.00	0.00	0.00	-	0.60	-	-			0.00	0.00	0.00	-	190.00	-	-	0.00	0.00	0.00	-	191.00	-	-			440		
445	-	-	-	-	-	-	-	0.00	0.00	0.00	-	0.53	-	-			-	-	-	-	-	-	-	0.00	0.00	0.00	-	196.00	-	-			445		
450	-	-	-	-	-	-	-	0.00	0.00	0.00	-	0.48	-	-			-	-	-	-	-	-	-	0.00	0.00	0.00	-	201.00	-	11			450		
455	-	-	-	-	-	-	-	0.00	0.00	0.00	-	0.43	-	-			-	-	-	-	-	-	-	0.00	0.00	0.00	-	206.00	-	-			455		
Totals:						1,096	5,843							124	1,290	0	0							111	1,472							172	2,018	0	0
Number of Trades:						39								9		0								6								10		0	

ALPHA BANK (CR)

(Contract Size: 100 Securities, Exercise Style: American, Physical Delivery)

Call Options																Put Options																				
February 2015								March 2015								Other Months		February 2015								March 2015								Other Months		
Exerise Price	Open price	Price max	Price min	Last price	Closing price	Volume	Open Interest	Open price	Price max	Price min	Last price	Closing price	Volume	Open Interest	Volume	Open Interest	Open price	Price max	Price min	Last price	Closing price	Volume	Open Interest	Open price	Price max	Price min	Last price	Closing price	Volume	Open Interest	Volume	Open Interest	Exerise Price			
0.100	0.000	0.000	0.000		0.229	-	-	0.000	0.000	0.000		0.229	-	-			0.000	0.000	0.000		0.001	-	-	0.000	0.000	0.000		0.001	-	-			0.001			
0.200	0.000	0.000	0.000		0.129	-	-	0.000	0.000	0.000		0.130	-	-			0.000	0.000	0.000		0.001	-	-	0.000	0.000	0.000		0.001	-	-			0.002			
0.300	0.000	0.000	0.000		0.031	-	-	0.000	0.000	0.000		0.051	-	-			0.000	0.000	0.000		0.002	-	-	0.000	0.000	0.000		0.022	-	-			0.003			
0.400	0.000	0.000	0.000		0.017	-	-	0.000	0.000	0.000		0.014	-	40			0.000	0.000	0.000		0.071	-	-	0.000	0.000	0.000		0.085	-	-			0.004			
0.500	0.000	0.000	0.000		0.001	-	-	0.000	0.000	0.000		0.003	-	-			0.000	0.000	0.000		0.171	-	-	0.000	0.000	0.000		0.174	-	-			0.005			
0.600	0.000	0.000	0.000		0.001	-	-	0.000	0.000	0.000		0.001	-	-			0.000	0.000	0.000		0.271	-	-	0.000	0.000	0.000		0.271	-	-			0.006			
0.700	0.000	0.000	0.000		0.001	-	-	0.000	0.000	0.000		0.001	-	-			0.000	0.000	0.000		0.371	-	-	0.000	0.000	0.000		0.371	-	-			0.007			
0.800	0.000	0.000	0.000		0.001	-	-	0.000	0.000	0.000		0.001	-	-			0.000	0.000	0.000		0.471	-	-	0.000	0.000	0.000		0.471	-	-			0.008			
0.900	0.000	0.000	0.000		0.001	-	-	0.000	0.000	0.000		0.001	-	-			0.000	0.000	0.000		0.571	-	-	0.000	0.000	0.000		0.571	-	-			0.009			
1.000	0.000	0.000	0.000		0.001	-	-	0.000	0.000	0.000		0.001	-	-			0.000	0.000	0.000		0.671	-	-	0.000	0.000	0.000		0.671	-	-			0.010			
1.100						-	-	0.000	0.000	0.000		0.001	-	-								-	-	0.000	0.000	0.000		0.771	-	-			0.011			
Totals:						0	0						0	40	0	0						0	0					0	0	0	0					
Number of Trades:						0							0		0							0.00						0		0						

NATIONAL BANK (CR)

(Contract Size: 100 Securities, Exercise Style: American, Physical Delivery)

Call Options																	Put Options																			
February 2015								March 2015								Other Months		February 2015								March 2015								Other Months		
Exerise Price	Open price	Price max	Price min	Last price	Closing price	Volume	Open Interest	Open price	Price max	Price min	Last price	Closing price	Volume	Open Interest	Volume	Open Interest	Open price	Price max	Price min	Last price	Closing price	Volume	Open Interest	Open price	Price max	Price min	Last price	Closing price	Volume	Open Interest	Volume	Open Interest	Exerise Price			
0.600	0.000	0.000	0.000		0.580	-	-	0.000	0.000	0.000		0.582	-	-			0.000	0.000	0.000		0.001	-	-	0.000	0.000	0.000		0.003	-	-			0.006			
0.700	0.000	0.000	0.000		0.480	-	-	0.000	0.000	0.000		0.484	-	-			0.000	0.000	0.000		0.002	-	-	0.000	0.000	0.000		0.003	-	-			0.007			
0.800	0.000	0.000	0.000		0.380	-	-	0.000	0.000	0.000		0.391	-	-			0.000	0.000	0.000		0.003	-	-	0.000	0.000	0.000		0.009	-	-			0.008			
0.900	0.000	0.000	0.000		0.280	-	-	0.000	0.000	0.000		0.306	-	-			0.000	0.000	0.000		0.017	-	-	0.000	0.000	0.000		0.024	-	-			0.009			
1.000	0.000	0.000	0.000		0.181	-	-	0.300	0.300	0.300	0.300	0.300	5	15			0.000	0.000	0.000		0.001	-	-	0.000	0.000	0.000		0.050	-	-			0.010			
1.100	0.000	0.000	0.000		0.091	-	-	0.000	0.000	0.000		0.170	-	-			0.000	0.000	0.000		0.011	-	-	0.000	0.000	0.000		0.088	-	-			0.011			
1.200	0.000	0.000	0.000		0.032	-	22	0.000	0.000	0.000		0.122	-	-			0.000	0.000	0.000		0.052	-	-	0.000	0.000	0.000		0.140	-	-			0.012			
1.300	0.000	0.000	0.000		0.007	-	-	0.000	0.000	0.000		0.085	-	20			0.000	0.000	0.000		0.127	-	-	0.000	0.000	0.000		0.203	-	-			0.013			
1.400	0.000	0.000	0.000		0.001	-	-	0.000	0.000	0.000		0.058	-	-			0.000	0.000	0.000		0.221	-	-	0.000	0.000	0.000		0.276	-	-			0.014			
1.500	0.000	0.000	0.000		0.001	-	10	0.000	0.000	0.000		0.039	-	-			0.000	0.000	0.000		0.320	-	-	0.000	0.000	0.000		0.357	-	-			0.015			
1.600	0.000	0.000	0.000		0.009	-	-	0.000	0.000	0.000		0.026	-	-			0.000	0.000	0.000		0.420	-	-	0.000	0.000	0.000		0.444	-	-			0.016			
1.700	0.000	0.000	0.000		0.003	-	-	0.000	0.000	0.000		0.017	-	-			0.000	0.000	0.000		0.520	-	-	0.000	0.000	0.000		0.535	-	-			0.017			
1.800	0.000	0.000	0.000		0.001	-	-	0.000	0.000	0.000		0.011	-	-			0.000	0.000	0.000		0.620	-	-	0.000	0.000	0.000		0.629	-	-			0.018			
1.900	0.000	0.000	0.000		0.005	-	-	0.000	0.000	0.000		0.007	-	-			0.000	0.000	0.000		0.720	-	-	0.000	0.000	0.000		0.725	-	-			0.019			
2.000	0.000	0.000	0.000		0.003	-	-	0.000	0.000	0.000		0.004	-	-			0.000	0.000	0.000		0.820	-	-	0.000	0.000	0.000		0.823	-	-			0.020			
2.200	0.000	0.000	0.000		0.001	-	-	0.000	0.000	0.000		0.002	-	-			0.000	0.000	0.000		1.02	-	-	0.000	0.000	0.000		1.02	-	-			0.022			
2.400	0.000	0.000	0.000		0.001	-	-	0.000	0.000	0.000		0.001	-	-			0.000	0.000	0.000		1.22	-	-	0.000	0.000	0.000		1.22	-	-			0.024			
2.600	0.000	0.000	0.000		0.001	-	-	0.000	0.000	0.000		0.002	-	-			0.000	0.000	0.000		1.42	-	-	0.000	0.000	0.000		1.42	-	-			0.026			
2.800	0.000	0.000	0.000		0.001	-	-	0.000	0.000	0.000		0.001	-	-			0.000	0.000	0.000		1.62	-	-	0.000	0.000	0.000		1.62	-	-			0.028			
3.000						-	-	0.000	0.000	0.000		0.001	-	-								-	-	0.000	0.000	0.000		1.82	-	-			0.030			
3.200						-	-	0.000	0.000	0.000		0.001	-	-								-	-	0.000	0.000	0.000		2.02	-	-			0.032			
3.400						-	-	0.000	0.000	0.000		0.001	-	-								-	-	0.000	0.000	0.000		2.22	-	-			0.034			
3.600						-	-	0.000	0.000	0.000		0.001	-	-								-	-	0.000	0.000	0.000		2.42	-	-			0.036			
3.800						-	-	0.000	0.000	0.000		0.001	-	-								-	-	0.000	0.000	0.000		2.62	-	-			0.038			
4.000						-	-	0.000	0.000	0.000		0.001	-	-								-	-	0.000	0.000	0.000		2.82	-	-			0.040			
4.400						-	-	0.000	0.000	0.000		0.001	-	-								-	-	0.000	0.000	0.000		3.22	-	-			0.044			
4.800						-	-	0.000	0.000	0.000		0.001	-	-								-	-	0.000	0.000	0.000		3.62	-	-			0.048			
5.200						-	-	0.000	0.000	0.000		0.002	-	-								-	-	0.000	0.000	0.000		4.02	-	-			0.052			
5.600						-	-	0.000	0.000	0.000		0.001	-	-								-	-	0.000	0.000	0.000		4.42	-	-			0.056			
Totals:						0	32							5	35	0	0							0	0							0	320	0	0	
Number of Trades:						0								1		0								0.00								0		0		

OPAP (CR)

(Contract Size: 100 Securities, Exercise Style: American, Physical Delivery)

Call Options																	Put Options																				
Exercise Price	February 2015							March 2015							Other Months		February 2015											March 2015							Other Months		Exercise Price
	Open price	Price max	Price min	Last price	Closing price	Volume	Open Interest	Open price	Price max	Price min	Last price	Closing price	Volume	Open Interest	Volume	Open Interest	Open price	Price max	Price min	Last price	Closing price	Volume	Open Interest	Open price	Price max	Price min	Last price	Closing price	Volume	Open Interest	Volume	Open Interest					
6.000	0.000	0.000	0.000		2.66	-	-	0.000	0.000	0.000		2.68	-	-			0.000	0.000	0.000		0.001	-	-	0.000	0.000	0.000		0.012	-	-			0.060				
6.400	0.000	0.000	0.000		2.26	-	-	0.000	0.000	0.000		2.30	-	-			0.000	0.000	0.000		0.001	-	-	0.000	0.000	0.000		0.031	-	-			0.064				
6.800	0.000	0.000	0.000		1.86	-	-	0.000	0.000	0.000		1.94	-	-			0.000	0.000	0.000		0.006	-	-	0.000	0.000	0.000		0.066	-	-			0.068				
7.200	0.000	0.000	0.000		1.46	-	-	0.000	0.000	0.000		1.60	-	-			0.000	0.000	0.000		0.023	-	-	0.000	0.000	0.000		0.126	-	-			0.072				
7.600	0.000	0.000	0.000		1.06	-	-	0.000	0.000	0.000		1.29	-	-			0.000	0.000	0.000		0.003	-	-	0.000	0.000	0.000		0.217	-	-			0.076				
8.000	0.000	0.000	0.000		0.684	-	-	0.000	0.000	0.000		1.02	-	-			0.000	0.000	0.000		0.023	-	-	0.000	0.000	0.000		0.345	-	-			0.080				
8.400	0.000	0.000	0.000		0.363	-	-	0.000	0.000	0.000		0.787	-	-			0.000	0.000	0.000		0.102	-	-	0.000	0.000	0.000		0.513	-	-			0.084				
8.800	0.000	0.000	0.000		0.149	-	-	0.000	0.000	0.000		0.594	-	-			0.000	0.000	0.000		0.288	-	-	0.000	0.000	0.000		0.720	-	-			0.088				
9.200	0.000	0.000	0.000		0.046	-	-	0.000	0.000	0.000		0.437	-	-			0.000	0.000	0.000		0.585	-	-	0.000	0.000	0.000		0.963	-	-			0.092				
9.600	0.000	0.000	0.000		0.010	-	-	0.000	0.000	0.000		0.315	-	-			0.000	0.000	0.000		0.949	-	-	0.000	0.000	0.000		1.24	-	-			0.096				
10.000	0.000	0.000	0.000		0.002	-	-	0.000	0.000	0.000		0.227	-	-			0.000	0.000	0.000		1.34	-	-	0.000	0.000	0.000		1.55	-	-			0.100				
11.000	0.000	0.000	0.000		0.061	-	-	0.000	0.000	0.000		0.090	-	-			0.000	0.000	0.000		2.34	-	-	0.000	0.000	0.000		2.42	-	-			0.110				
12.000	0.000	0.000	0.000		0.007	-	-	0.000	0.000	0.000		0.032	-	-			0.000	0.000	0.000		3.34	-	-	0.000	0.000	0.000		3.36	-	-			0.120				
13.000	0.000	0.000	0.000		0.002	-	-	0.000	0.000	0.000		0.011	-	-			0.000	0.000	0.000		4.34	-	-	0.000	0.000	0.000		4.34	-	-			0.130				
14.000						-	-	0.000	0.000	0.000		0.003	-	-								-	-	0.000	0.000	0.000		5.34	-	-			0.140				
15.000						-	-	0.000	0.000	0.000		0.001	-	-								-	-	0.000	0.000	0.000		6.34	-	-			0.150				
16.000						-	-	0.000	0.000	0.000		0.007	-	-								-	-	0.000	0.000	0.000		7.34	-	-			0.160				
17.000						-	-						-	-								-	-					-	-			0.170					
18.000						-	-						-	-								-	-					-	-			0.180					
Totals:							0	0				0	0	0	0						0	0					0	0	0	0							
Number of Trades:							0					0		0								0.00					0		0								

OTE (CR)

(Contract Size: 100 Securities, Exercise Style: American, Physical Delivery)

Call Options																	Put Options																			
February 2015								March 2015								Other Months		February 2015								March 2015								Other Months		
Exerise Price	Open price	Price max	Price min	Last price	Closing price	Volume	Open Interest	Open price	Price max	Price min	Last price	Closing price	Volume	Open Interest	Volume	Open Interest	Open price	Price max	Price min	Last price	Closing price	Volume	Open Interest	Open price	Price max	Price min	Last price	Closing price	Volume	Open Interest	Volume	Open Interest	Exerise Price			
6.400	0.000	0.000	0.000		1.20	-	-	0.000	0.000	0.000		1.33	-	-			0.000	0.000	0.000		0.008	-	-	0.000	0.000	0.000		0.124	-	-			0.064			
6.800	0.000	0.000	0.000		0.808	-	-	0.000	0.000	0.000		1.03	-	-			0.000	0.000	0.000		0.007	-	-	0.000	0.000	0.000		0.223	-	-			0.068			
7.200	0.000	0.000	0.000		0.450	-	-	0.000	0.000	0.000		0.778	-	-			0.000	0.000	0.000		0.048	-	-	0.000	0.000	0.000		0.366	-	-			0.072			
7.600	0.000	0.000	0.000		0.189	-	-	0.000	0.000	0.000		0.568	-	-			0.000	0.000	0.000		0.187	-	-	0.000	0.000	0.000		0.556	-	-			0.076			
8.000	0.000	0.000	0.000		0.056	-	-	0.000	0.000	0.000		0.404	-	-			0.000	0.000	0.000		0.455	-	-	0.000	0.000	0.000		0.792	-	-			0.080			
8.400	0.000	0.000	0.000		0.011	-	-	0.000	0.000	0.000		0.281	-	5			0.000	0.000	0.000		0.811	-	30	0.000	0.000	0.000		1.07	-	-			0.084			
8.800	0.000	0.000	0.000		0.002	-	-	0.000	0.000	0.000		0.191	-	-			0.000	0.000	0.000		1.20	-	-	0.000	0.000	0.000		1.38	-	-			0.088			
9.200	0.000	0.000	0.000		0.116	-	-	0.000	0.000	0.000		0.127	-	-			0.000	0.000	0.000		1.60	-	-	0.000	0.000	0.000		1.71	-	-			0.092			
9.600	0.000	0.000	0.000		0.050	-	-	0.000	0.000	0.000		0.082	-	-			0.000	0.000	0.000		2.00	-	10	0.000	0.000	0.000		2.07	-	-			0.096			
10.000	0.000	0.000	0.000		0.020	-	-	0.000	0.000	0.000		0.051	-	-			0.000	0.000	0.000		2.40	-	-	0.000	0.000	0.000		2.44	-	-			0.100			
11.000	0.000	0.000	0.000		0.001	-	-	0.000	0.000	0.000		0.014	-	-			0.000	0.000	0.000		3.40	-	-	0.000	0.000	0.000		3.41	-	-			0.110			
12.000	0.000	0.000	0.000		0.003	-	-	0.000	0.000	0.000		0.004	-	-			0.000	0.000	0.000		4.40	-	-	0.000	0.000	0.000		4.40	-	-			0.120			
13.000	0.000	0.000	0.000		0.004	-	-	0.000	0.000	0.000		0.001	-	-			0.000	0.000	0.000		5.40	-	-	0.000	0.000	0.000		5.40	-	-			0.130			
14.000	0.000	0.000	0.000		0.001	-	-	0.000	0.000	0.000		0.008	-	-			0.000	0.000	0.000		6.40	-	-	0.000	0.000	0.000		6.40	-	-			0.140			
15.000						-	-	0.000	0.000	0.000		0.003	-	-								-	-	0.000	0.000	0.000		7.40	-	-			0.150			
16.000						-	-	0.000	0.000	0.000		0.001	-	-								-	-	0.000	0.000	0.000		8.40	-	-			0.160			
Totals:						0	0						0	5	0	0						0	40					0	0	0	0					
Number of Trades:						0							0		0							0.00					0		0							

PIRAEUS BANK (CR)

(Contract Size: 100 Securities, Exercise Style: American, Physical Delivery)

Call Options																	Put Options																																											
February 2015														March 2015														Other Months		February 2015														March 2015														Other Months		
Exercise Price	Open price	Price max	Price min	Last price	Closing price	Volume	Open Interest	Open price	Price max	Price min	Last price	Closing price	Volume	Open Interest	Volume	Open Interest	Open price	Price max	Price min	Last price	Closing price	Volume	Open Interest	Open price	Price max	Price min	Last price	Closing price	Volume	Open Interest	Volume	Open Interest	Exercise Price																											
0.300	0.000	0.000	0.000		0.275	-	-	0.000	0.000	0.000		0.276	-	-			0.000	0.000	0.000		0.001	-	-	0.000	0.000	0.000		0.001	-	-			0.003																											
0.400	0.000	0.000	0.000		0.175	-	-	0.000	0.000	0.000		0.181	-	-			0.000	0.000	0.000		0.001	-	-	0.000	0.000	0.000		0.006	-	-			0.004																											
0.500	0.000	0.000	0.000		0.076	-	-	0.165	0.165	0.165	0.165	0.165	10	10			0.000	0.000	0.000		0.001	-	-	0.000	0.000	0.000		0.029	-	-			0.005																											
0.600	0.000	0.000	0.000		0.010	-	-	0.100	0.100	0.085	0.085	0.085	20	65			0.000	0.000	0.000		0.035	-	-	0.000	0.000	0.000		0.077	-	-			0.006																											
0.700	0.000	0.000	0.000		0.045	-	-	0.065	0.065	0.055	0.055	0.055	40	40			0.000	0.000	0.000		0.125	-	-	0.000	0.000	0.000		0.149	-	-			0.007																											
0.800	0.000	0.000	0.000		0.010	-	-	0.000	0.000	0.000		0.011	-	-			0.000	0.000	0.000		0.225	-	-	0.000	0.000	0.000		0.235	-	-			0.008																											
0.900	0.000	0.000	0.000		0.001	-	-	0.000	0.000	0.000		0.004	-	-			0.000	0.000	0.000		0.325	-	-	0.000	0.000	0.000		0.328	-	-			0.009																											
1.000	0.000	0.000	0.000		0.018	-	-	0.000	0.000	0.000		0.002	-	-			0.000	0.000	0.000		0.425	-	-	0.000	0.000	0.000		0.426	-	-			0.010																											
1.100	0.000	0.000	0.000		0.008	-	-	0.000	0.000	0.000		0.001	-	-			0.000	0.000	0.000		0.525	-	-	0.000	0.000	0.000		0.525	-	-			0.011																											
1.200	0.000	0.000	0.000		0.003	-	-	0.000	0.000	0.000		0.003	-	-			0.000	0.000	0.000		0.625	-	-	0.000	0.000	0.000		0.625	-	-			0.012																											
1.300	0.000	0.000	0.000		0.001	-	-	0.000	0.000	0.000		0.001	-	-			0.000	0.000	0.000		0.725	-	-	0.000	0.000	0.000		0.725	-	-			0.013																											
1.400	0.000	0.000	0.000		0.001	-	-	0.000	0.000	0.000		0.001	-	-			0.000	0.000	0.000		0.825	-	-	0.000	0.000	0.000		0.825	-	-			0.014																											
1.500	0.000	0.000	0.000		0.001	-	-	0.000	0.000	0.000		0.004	-	-			0.000	0.000	0.000		0.925	-	-	0.000	0.000	0.000		0.925	-	-			0.015																											
1.600	0.000	0.000	0.000		0.001	-	-	0.000	0.000	0.000		0.002	-	-			0.000	0.000	0.000		1.03	-	-	0.000	0.000	0.000		1.03	-	-			0.016																											
1.700						-	-	0.000	0.000	0.000		0.001	-	-								-	-	0.000	0.000	0.000		1.13	-	-			0.017																											
1.800						-	-	0.000	0.000	0.000		0.001	-	-								-	-	0.000	0.000	0.000		1.23	-	-			0.018																											
1.900						-	-	0.000	0.000	0.000		0.001	-	-								-	-	0.000	0.000	0.000		1.33	-	-			0.019																											
2.000						-	-	0.000	0.000	0.000		0.001	-	-								-	-	0.000	0.000	0.000		1.43	-	-			0.020																											
2.200						-	-	0.000	0.000	0.000		0.001	-	-								-	-	0.000	0.000	0.000		1.63	-	-			0.022																											
2.400						-	-	0.000	0.000	0.000		0.001	-	-								-	-	0.000	0.000	0.000		1.83	-	-			0.024																											
2.600						-	-	0.000	0.000	0.000		0.001	-	-								-	-	0.000	0.000	0.000		2.03	-	-			0.026																											
2.800						-	-	0.000	0.000	0.000		0.001	-	-								-	-	0.000	0.000	0.000		2.23	-	-			0.028																											
Totals:						0	0							70	115	0	0							0	0							0	0	0	0																									
Number of Trades:						0							5	0								0.00							0	0																														

PPC (CR)

(Contract Size: 100 Securities, Exercise Style: American, Physical Delivery)

Call Options																	Put Options																
February 2015																	March 2015																
Other Months																	February 2015																
																	March 2015																
Exercise Price	Open price	Price max	Price min	Last price	Closing price	Volume	Open Interest	Open price	Price max	Price min	Last price	Closing price	Volume	Open Interest	Volume	Open Interest	Open price	Price max	Price min	Last price	Closing price	Volume	Open Interest	Open price	Price max	Price min	Last price	Closing price	Volume	Open Interest	Volume	Open Interest	Exercise Price
3.600						-	-						-	-								-	-						-	-		0.036	
3.800	0.000	0.000	0.000		2.18	-	-	0.000	0.000	0.000		2.19	-	-			0.000	0.000	0.000		0.001	-	-	0.000	0.000	0.000		0.001	-	-		0.038	
4.000	0.000	0.000	0.000		1.98	-	-	0.000	0.000	0.000		1.99	-	-			0.000	0.000	0.000		0.002	-	-	0.000	0.000	0.000		0.003	-	-		0.040	
4.400	0.000	0.000	0.000		1.58	-	-	0.000	0.000	0.000		1.60	-	-			0.000	0.000	0.000		0.015	-	-	0.000	0.000	0.000		0.014	-	-		0.044	
4.800	0.000	0.000	0.000		1.18	-	-	0.000	0.000	0.000		1.24	-	-			0.000	0.000	0.000		0.001	-	-	0.000	0.000	0.000		0.047	-	-		0.048	
5.200	0.000	0.000	0.000		0.783	-	-	0.000	0.000	0.000		0.905	-	-			0.000	0.000	0.000		0.002	-	50	0.000	0.000	0.000		0.117	-	-		0.052	
5.600	0.000	0.000	0.000		0.414	-	-	0.000	0.000	0.000		0.630	-	-			0.000	0.000	0.000		0.034	-	5	0.000	0.000	0.000		0.241	-	-		0.056	
6.000	0.000	0.000	0.000		0.151	-	-	0.000	0.000	0.000		0.413	-	5			0.000	0.000	0.000		0.170	-	22	0.000	0.000	0.000		0.424	-	-		0.060	
6.400	0.000	0.000	0.000		0.034	-	5	0.000	0.000	0.000		0.260	-	-			0.000	0.000	0.000		0.453	-	-	0.000	0.000	0.000		0.670	-	-		0.064	
6.800	0.000	0.000	0.000		0.004	-	10	0.000	0.000	0.000		0.155	-	-			0.000	0.000	0.000		0.824	-	-	0.000	0.000	0.000		0.965	-	-		0.068	
7.200	0.000	0.000	0.000		0.001	-	2	0.000	0.000	0.000		0.088	-	-			0.000	0.000	0.000		1.22	-	-	0.000	0.000	0.000		1.30	-	-		0.072	
7.600	0.000	0.000	0.000		0.006	-	-	0.000	0.000	0.000		0.047	-	-			0.000	0.000	0.000		1.62	-	-	0.000	0.000	0.000		1.66	-	-		0.076	
8.000	0.000	0.000	0.000		0.001	-	-	0.000	0.000	0.000		0.025	-	-			0.000	0.000	0.000		2.02	-	-	0.000	0.000	0.000		2.04	-	-		0.080	
8.400	0.000	0.000	0.000		0.003	-	-	0.000	0.000	0.000		0.012	-	-			0.000	0.000	0.000		2.42	-	-	0.000	0.000	0.000		2.43	-	-		0.084	
8.800						-	-	0.000	0.000	0.000		0.006	-	-								-	-	0.000	0.000	0.000		2.82	-	-		0.088	
9.200						-	-	0.000	0.000	0.000		0.003	-	-								-	-	0.000	0.000	0.000		3.22	-	-		0.092	
9.600						-	-	0.000	0.000	0.000		0.001	-	-								-	-	0.000	0.000	0.000		3.62	-	-		0.096	
10.000						-	-	0.000	0.000	0.000		0.001	-	-								-	-	0.000	0.000	0.000		4.02	-	-		0.100	
11.000						-	-	0.000	0.000	0.000		0.001	-	-								-	-	0.000	0.000	0.000		5.02	-	-		0.110	
12.000						-	-	0.000	0.000	0.000		0.001	-	-								-	-	0.000	0.000	0.000		6.02	-	-		0.120	
13.000						-	-	0.000	0.000	0.000		0.003	-	-								-	-	0.000	0.000	0.000		7.02	-	-		0.130	
14.000						-	-	0.000	0.000	0.000		0.001	-	-								-	-	0.000	0.000	0.000		8.02	-	-		0.140	
15.000						-	-	0.000	0.000	0.000		0.001	-	-								-	-	0.000	0.000	0.000		9.02	-	-		0.150	
16.000						-	-						-	-								-	-					-	-			0.160	
Totals:						0	17						0	5	0	0						0	77					0	0	0	0		
Number of Trades:						0							0		0							0.00					0		0				

Lending Products	Underlying Title	Multilateral Transactions[1]					Bilateral Transactions[2]		Stock Borrowing through OTC (volume)[3]
		Open Interest[5]	Volume(Offered)	Average Weighted	Transactions volume	Average Weighted	Transactions Volume	Average Weighted	Transactions Volume
AEGNBOR	AEGEAN AIRLINES (CR)	15,990	335	5.31%	---	---	---	---	1,001
ALPHABOR	ALPHA BANK (CR)	5,441,885	1,473,341	5.31%	---	---	---	---	50,669,350
AETFBOR	ALPHA ETF FTSE Athex Large Cap	---	---	---	---	---	20,000	1.50%	---
ALMYBOR	ALUMIL (CR)	---	---	---	---	---	---	---	---
IATRBOR	ATHENS MEDICAL CENTER SA (CR)	---	38,078	5.31%	---	---	---	---	---
TATTBOR	ATTICA BANK S.A. (CR)	---	166,570	5.31%	---	---	---	---	---
OTOELBOR	AUTOHELLAS SA (CR)	---	958	5.31%	---	---	---	---	---
BIOKABOR	BIOKARPET S.A.(CR)	---	---	---	---	---	---	---	---
EEEBOR	CC HBC AG (CR)	52,777	358	8.56%	358	8.56%	---	---	74,576
CENTRBOR	CENTRIC HOLDINGS (CR)	---	16,000	5.31%	---	---	---	---	---
SOLKBOR	CORINTH PIPEWORKS SA (CR)	---	2,000	5.31%	---	---	---	---	---
PLAKRBOR	CRETE PLASTICS SA (CR)	---	---	---	---	---	---	---	---
DROMEBOB	DROMEAS SA (CR)	---	---	---	---	---	---	---	---
ELGEBOR	ELGEKA SA (CR)	---	---	---	---	---	---	---	---
ELLAKTORBOR	ELLAKTOR (CR)	134,960	178	8.57%	---	---	---	---	---
ELBABOR	ELVAL SA. (CB)	---	28,624	5.31%	---	---	---	---	---
EUROBBOR	EUROBANK ERGASIAS (CR)	4,040,716	153,438	5.31%	---	---	---	---	29,260,506
EUPICBOR	EUROPEAN RELIANCE INSUR. (CR)	---	---	---	---	---	---	---	---
EYDAPBOR	EYDAP S.A. (CR)	27,599	---	---	---	---	---	---	17,150
FGEBOB	F.G. EUROPE S.A. (CR)	---	---	---	---	---	---	---	---
FFGRPBOR	FOLLI FOLLIE (CR)	58,332	20	9.60%	20	10.15%	---	---	993,527
FOYRKBOR	FOURLIS (CR)	---	3,128	5.31%	---	---	---	---	3,850
FRIGOBOR	FRIGOGLASS SA (CR)	6,810	1,912	5.31%	200	3.62%	---	---	---
GEKTERNABOR	GEK TERNA (CR)	24,760	9,854	5.31%	---	---	---	---	---
SARBOR	GR. SARANTIS SA (CR)	---	---	---	---	---	---	---	---
EUPROBOR	GRIVALIA PROPERTIES (CR)	58,067	25,831	5.31%	---	---	786	10.00%	51,401
XAKOBOR	HALKOR SA (CB)	---	48,551	5.31%	---	---	---	---	---
EXAEBOR	HELLENIC EXCHANGES-A.S.E. (CR)	141,196	375,282	5.31%	---	---	---	---	130,000
ELPEBOR	HELLENIC PETROLEUM (CR)	21,839	188,860	5.31%	---	---	---	---	54,771
HYGEIABOR	HYGEIA SA (CR)	---	48,700	5.31%	---	---	---	---	---
IASOBOR	IASO SA (CR)	---	21,721	5.31%	---	---	---	---	---

Stock Lending Notes

[1] - Multilateral contracts Lending or Borrowing as per Methods 8-1, 8-2 and 8-3-3 (According to ATHEX BoD Resolution No.17)

[2] - Bilateral Contracts Lending or Borrowing as per Methods 8-3-1 and 8-3-2 (According to ATHEX BoD Resolution No.20)

[3] - The information concerning OTC Stock Borrowing Transactions is based on the statements of the Dematerialised Securities System (DSS) operators involved and refers to volumes that have been cleared and registered up until the previous working day.

[4] - Average Price (Volume weighted)

[5] - The Data concerning Open Interest before the start of trading session

Lending Products	Underlying Title	Multilateral Transactions[1]					Bilateral Transactions[2]		Stock Borrowing through OTC (volume)[3]
		Open Interest[5]	Volume(Offered)	Average Weighted	Transactions volume	Average Weighted	Transactions Volume	Average Weighted	Transactions Volume
IKTINBOR	IKTINOS HELLAS SA (CR)	---	---	---	---	---	---	---	---
LYKBOR	INFORM P. LYKOS SA (CR)	---	483	5.31%	---	---	---	---	---
INKATBOR	INTRACOM CONSTR. (CR)	---	---	---	---	---	---	---	---
INTRKBOR	INTRACOM HOLDINGS (CR)	---	105,450	5.31%	---	---	---	---	---
INLOTBOR	INTRALOT (CR)	49,474	35,554	5.31%	---	---	---	---	3,000
AVAXBOR	J & P - AVAX SA (CR)	---	20,175	5.31%	---	---	---	---	---
BELABOR	JUMBO SA (CR)	153,115	2,641	5.31%	---	---	---	---	9,293
KARTZBOR	KARATZIS SA (CR)	---	---	---	---	---	---	---	---
KLEMBOR	KLEEMAN HELLAS SA (CR)	---	17,510	5.31%	---	---	---	---	---
KRIBOR	KRI-KRI S.A. (CR)	---	46,268	5.31%	---	---	---	---	---
LAMDABOR	LAMDA DEVELOPMENT SA (CR)	---	---	---	---	---	---	---	16,377
MIGBOR	MARFIN INVESTMENT GROUP (CR)	47,243	109,793	5.31%	---	---	---	---	744,474
METKKBOR	METKA (CR)	22,511	3,711	5.31%	---	---	---	---	---
MLSBOR	MLS MULTIMEDIA SA (CR)	---	7,920	5.31%	---	---	---	---	---
MOHBOR	MOTOR OIL (CR)	106,572	333	8.56%	---	---	---	---	34,300
MYTILBOR	MYTILINEOS HOLDINGS (CR)	53,390	131,376	5.31%	---	---	---	---	---
ETEBOR	NATIONAL BANK (CR)	752,457	29,670	5.31%	---	---	200,000	10.00%	2,459,108
ETFASEBOR	NBGAM ETF	---	---	---	---	---	---	---	---
ETFGT30PBOR	NBGAM ETF GREECE & TURKEY 30	---	---	---	---	---	---	---	---
OPAPBOR	OPAP (CR)	306,085	1,980	6.65%	---	---	---	---	1,179,206
HTOBOR	OTE (CR)	271,033	3,443	3.86%	---	---	---	---	437,443
PPABOR	P.P.A. S.A. (CR)	714	---	---	---	---	---	---	151
PAPBOR	PAPOUTSANIS (CR)	---	---	---	---	---	---	---	---
PETROBOR	PETROPOULOS PETROS (CR)	---	---	---	---	---	---	---	---
TPEIRBOR	PIRAEUS BANK (CR)	696,313	3,316	5.31%	---	---	---	---	31,985,172
PLAISBOR	PLAISIO COMPUTERS SA (CR)	---	---	---	---	---	---	---	---
PPCBOR	PPC (CR)	142,110	780	8.56%	---	---	---	---	711,525
PROFBOR	PROFILE SA (CR)	---	---	---	---	---	---	---	---
QUALBOR	QUALITY & RELIABILITY SA (CR)	---	---	---	---	---	---	---	---
QUESTBOR	QUEST HOLDINGS (CR)	---	822	5.31%	---	---	---	---	---
SIDEBOR	SIDENOR (CR)	2,001	27,566	5.31%	---	---	---	---	---

Stock Lending Notes

[1] - Multilateral contracts Lending or Borrowing as per Methods 8-1, 8-2 and 8-3-3 (According to ATHEX BoD Resolution No.17)

[2] - Billateral Contracts Lending or Borrowing as per Methods 8-3-1 and 8-3-2 (According to ATHEX BoD Resolution No.20)

[3] - The information concerning OTC Stock Borrowing Transactions is based on the statements of the Dematerialised Securities System (DSS) operators involved and refers to volumes that have been cleared and registered up until the previous working day.

[4] - Average Price (Volume weighted)

[5] - The Data concerning Open Interest before the start of trading session

Lending Products	Underlying Title	Multilateral Transactions[1]					Bilateral Transactions[2]		Stock Borrowing through OTC (volume)[3]
		Open Interest[5]	Volume(Offered)	Average Weighted	Transactions volume	Average Weighted	Transactions Volume	Average Weighted	Transactions Volume
OLYMPBOR	TECHNICAL OLYMPIC SA (CR)	---	---	---	---	---	---	---	---
TENERGYBOR	TERNA ENERGY (CR)	10,811	17,632	5.31%	---	---	---	---	---
EYAPSBOR	THESSALONIKA WATER & SEWERAGE	---	159	5.31%	---	---	---	---	---
PLATBOR	THRACE PLASTICS SA (CR)	---	36,559	5.31%	---	---	---	---	---
TITKBOR	TITAN CEMENT (CR)	146,205	103,909	3.31%	165	2.65%	---	---	342,054
OLTHBOR	TPA SA (CR)	---	3,278	5.31%	---	---	---	---	---
TRASTORBOR	TRASTOR REAL EST. INV. CO.(CR)	---	7,580	5.31%	---	---	---	---	---
VIOBOR	VIOHALCO SA/NV (CB)	34,666	---	---	---	---	---	---	---

Stock Lending Notes

[1] - Multilateral contracts Lending or Borrowing as per Methods 8-1, 8-2 and 8-3-3 (According to ATHEX BoD Resolution No.17)

[2] - Bilateral Contracts Lending or Borrowing as per Methods 8-3-1 and 8-3-2 (According to ATHEX BoD Resolution No.20)

[3] - The information concerning OTC Stock Borrowing Transactions is based on the statements of the Dematerialised Securities System (DSS) operators involved and refers to volumes that have been cleared and registered up until the previous working day.

[4] - Average Price (Volume weighted)

[5] - The Data concerning Open Interest before the start of trading session

Sectors codification for listed companies

533	-	Exploration & Production	537	-	Integrated Oil & Gas
1353	-	Commodity Chemicals	1357	-	Specialty Chemicals
1753	-	Aluminum	1755	-	Nonferrous Metals
1757	-	Steel	1775	-	General Mining
2353	-	Building Materials & Fixtures	2357	-	Heavy Construction
2723	-	Containers & Packaging	2727	-	Diversified Industrials
2733	-	Electrical Components & Equipment	2753	-	Commercial Vehicles & Trucks
2757	-	Industrial Machinery	2773	-	Marine Transportation
2777	-	Transportation Services	2791	-	Business Support Services
2797	-	Industrial Suppliers	3535	-	Distillers & Vintners
3537	-	Soft Drinks	3573	-	Farming Fishing & Plantations
3577	-	Food Products	3722	-	Durable Household Products
3726	-	Furnishings	3728	-	Home Construction
3747	-	Toys	3763	-	Clothing & Accessories
3765	-	Footwear	3767	-	Personal Products
3785	-	Tobacco	4533	-	Health Care Providers
4535	-	Medical Equipment	4577	-	Pharmaceuticals
5337	-	Food Retailers & Wholesalers	5371	-	Apparel Retailers
5373	-	Broadline Retailers	5375	-	Home Improvement Retailers
5379	-	Specialty Retailers	5553	-	Broadcasting & Entertainment
5555	-	Media Agencies	5557	-	Publishing
5751	-	Airlines	5752	-	Gambling
5753	-	Hotels	5755	-	Recreational Services
5757	-	Restaurants & Bars	5759	-	Travel & Tourism
6535	-	Fixed Line Telecommunications	6575	-	Mobile Telecommunications
7535	-	Conventional Electricity	7537	-	Alternative Electricity
7577	-	Water	8355	-	Banks
8534	-	Insurance Brokers	8536	-	Property & Casualty Insurance
8633	-	Real Estate Holding & Development	8637	-	Real Estate Services
8671	-	Industrial & Office REITs	8675	-	Specialty REITs
8775	-	Specialty Finance	8777	-	Investment Services
8985	-	Equity Investment Instruments	9533	-	Computer Services
9535	-	Internet	9537	-	Software
9572	-	Computer Hardware	9574	-	Electronic Office Equipment
9578	-	Telecommunications Equipment	12003	-	ETF

