

**Disclaimer:**

Hellenic Exchanges-Athens Exchange endeavours to ensure that the data and other material ("Information") presented on the Daily Official List are accurate and complete, but it is not liable for any errors or omissions of data or /and for the accuracy, credibility, updating and completeness of the aforesaid information nor it has any liability arising directly or indirectly from the use of the above Information.

The Company is not liable for the accuracy of the data included in listed companies' announcements. Only the sender of such an announcement is fully and solely liable for any infringement of third party's rights from the content of such announcement. All contents of the Daily Official List are provided only for information purposes and do not constitute investment advice or solicitation to invest in securities or other products listed for trading on the Exchange.

You acknowledge and agree that the Company is the owner of any property rights related to any Information appearing on the Daily Official List including intellectual property rights copyright, trademarks, etc.

The above data are a property of the Hellenic Exchanges-Athens Exchange and are copyright protected. Users are forbidden to reproduce, modify, copy, sale, transmit or redistribute, by all reproduction means and methods, part or the whole of the above data, without reference to their source.

The commercial exploitation of these data is, also, forbidden by third parties. Hellenic Exchanges-Athens Exchange does not carry any responsibility, direct or indirect, derived from usage or accidental alteration of the above data when used by third parties.

---

**Hellenic Exchanges – Athens Stock Exchange S.A.**

110 Athinon Ave., 10442 Athens, Tel: (210) 33.66.800, Fax: (210) 32.13.938

[www.athex.gr](http://www.athex.gr)

---

**Thessalonica Stock Exchange Center (T.S.E.C)**

16-18 Katouni Str., Thessalonica 546 25 Tel: (2310) 567.667, Fax: (2310) 530.545

**Athex Members Guarantee Fund**

14-16 Fidiou Str., Athens 106 78, Tel: (210) 33.04.682, Fax: (210) 33.04.155

**Hellenic Republic Capital Market Commission**

1 Kolokotroni Str. & 1 Stadiou Str., Athens 10562 Tel: (210) 33.77.100 Fax: (210) 33.77.173

---

Table of Contents

---

**Section 1: Statistical Figures of Securities, Derivatives and Lending**

Summary of Markets

Athex Indices

Analytic Figures for Athex Market's Boards and Categories

Trading Details by Athex Sectors and Financial Instruments (ETFs)

Top 10 best &amp; worst performing Shares

Derivatives Summary

**Section 2: Analytic Figures of Shares Transactions**

Analytic Figures of Shares Transactions

Shares' Notes

**Section 3: Figures of Securities Transactions**

Securities Blocks Details

Shares Rights Details

Shares Short Selling

Stock Borrowing

Shares Forced Sales

Forced Sales Registered Shares

Exchange Traded Funds (ETFs) Characteristics

**Section 5: Bonds traded in Fixed Income Assets Market**

Corporate Bonds

Government Bonds

Treasury Bills &amp; Zero Coupon Government Bonds

Government Bonds Traded with the Open Outcry Method

State Banks Bonds

**Section 6: Additional Infos**

Athex &amp; ATHEXClear Members List

List of Stocks under Market Making operations

**Section 7: Derivatives Market Analytic Figures**

Index Futures

Stock Futures

Index Options

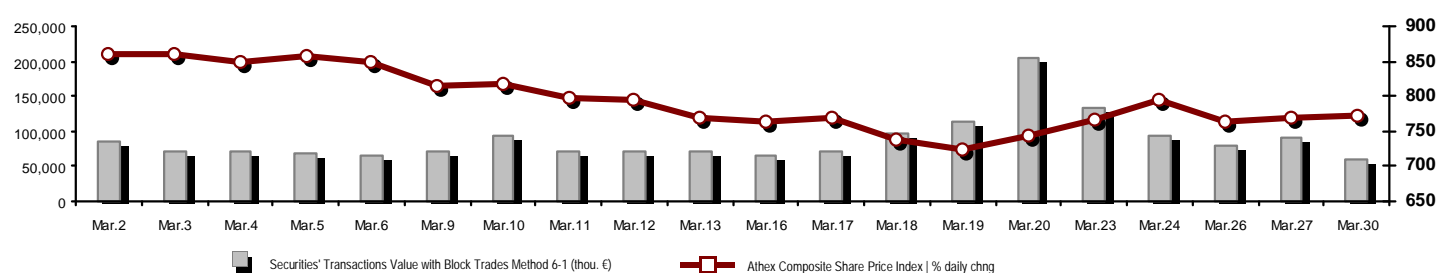
Stock Options

Stock Lending Analytic Figures

**Appendix A: Sectors codification for listed companies**

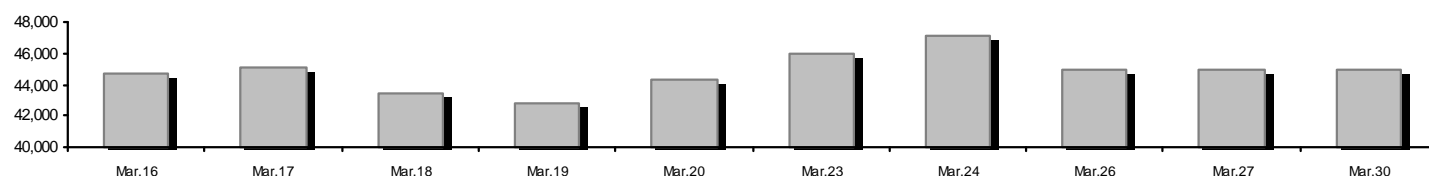
## Summary of Markets

Athex Composite Share Price Index vs Shares and Derivatives Transactions Value

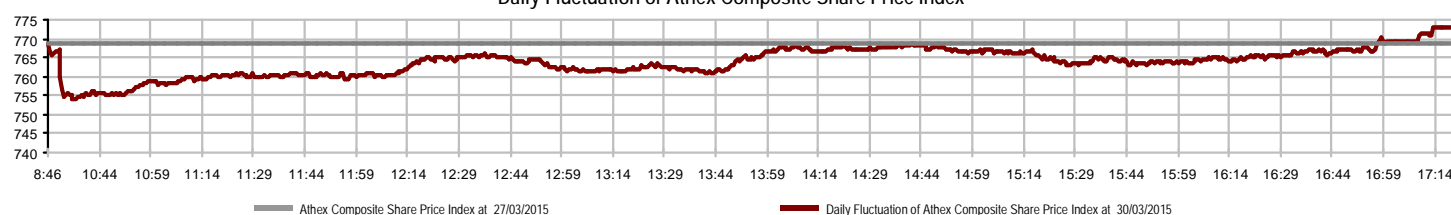


Athex Capitalisation (mill. €) **: 44,967.75		Derivatives Total Open Interest: 555,309	
Daily change: mill. €   %: -42.79 -0.10%		in Index Futures   % daily chng: 41,507 1.91%	
Yearly Avg Capitalisation: mill. €   % chng prev year Avg: 48,715.19 -29.67%		in Stock Futures   % daily chng: 510,848 -0.05%	
Athex Composite Share Price Index   % daily chng: 772.71 0.53%		in Index Options   % daily chng: 2,544 2.13%	
Athex Composite Share Price Index Capitalisation (mill. €): 39,785.69		in Stock Options   % daily chng: 410 0.00%	
Daily change (mill. €): -31.37			
Securities' Transactions Value with Block Trades Method 6-1 (thou. €): 58,967.96		Derivatives Contracts Volume: 35,543	
Daily change: thou. €   %: -32,989.80 -35.87%		Daily change: pieces   %: -33,379 -48.43%	
YtD Avg Trans. Value: thou. €   % chng prev year Avg: 115,757.15 -8.89%		YtD Avg Derivatives Contracts   % chng prev year Avg: 81,945 49.50%	
Blocks Transactions Value of Method 6-1 (thou. €): 2,237.74		Derivatives Trades Number: 2,540	
Blocks Transactions Value of Method 6-2 & 6-3 (thou. €): 60.23		Daily change: number   %: -1,047 -29.19%	
Bonds Transactions Value (thou. €): 0.00		YtD Avg Derivatives Trades number   % chng prev year Avg: 4,833 15.72%	
Securities' Transactions Volume (thou. Pieces): 126,171.97		Lending Total Open Interest: 2,065,983	
Daily change: thou. pieces   %: -167,732.43 -57.07%		Daily change: pieces   %: 18,084 0.88%	
YtD Avg Volume: thou. pieces   % chng prev year Avg: 204,767.77 115.52%		Lending Volume (Multilateral/Bilateral): 20,084	
Blocks Transactions Volume of Method 6-1 (thou. Pieces): 270.40		Daily change: pieces   %: -155,278 -88.55%	
Blocks Transactions Volume of Method 6-2 & 6-3 (thou. Pieces): 152.95		Multilateral Lending: 20,084	
Bonds Transactions Volume (thou. pieces): 0.00		Bilateral Lending: 0	
Securities' Trades Number: 23,430		Lending Trades Number: 7	
Daily change: number   %: -7,225 -23.57%		Daily change: thou. €   %: -19 -73.08%	
YtD Avg Derivatives Trades number   % chng prev year Avg: 36,447 26.18%		Multilateral Lending Trades Number: 7	
Number of Blocks Method 6-1: 2		Bilateral Lending Trades Number: 0	
Number of Blocks Method 6-2 & 6-3: 2			
Number of Bonds Transactions: 0			

Athex Capitalisation (mill. €) \*\*



Daily Fluctuation of Athex Composite Share Price Index



## Athex Indices

Index name	30/03/2015	27/03/2015	pts.	%	Min	Max	Year min	Year max	Year change
Athex Composite Share Price Index	772.71 #	768.67	4.04	0.53%	754.01	772.71	708.61	945.81	-6.47% €
FTSE/Athex Large Cap	228.29 #	227.09	1.20	0.53%	222.76	228.29	209.48	283.37	-13.81% €
FTSE/ATHEX Custom Capped	777.45 #	775.88	1.56	0.20%			724.23	956.79	-10.77% €
FTSE/ATHEX Custom Capped - USD	607.03 €	607.36	-0.34	-0.06%			558.48	777.68	-19.70% €
FTSE/Athex Mid Cap Index	797.52 €	810.33	-12.81	-1.58%	795.52	811.78	717.54	984.77	3.17% #
FTSE/ATHEX-CSE Banking Index	417.44 €	426.43	-8.99	-2.11%	398.40	426.43	391.43	774.70	-42.66% €
FTSE/ATHEX Global Traders Index Plus	1,420.94 €	1,423.06	-2.12	-0.15%	1,403.78	1,425.50	1,227.52	1,604.84	10.76% #
FTSE/ATHEX Global Traders Index	1,468.92 €	1,480.76	-11.84	-0.80%	1,457.60	1,480.76	1,344.70	1,698.65	2.11% #
FTSE/ATHEX Mid & Small Cap Factor-Weighted Ind	1,173.52 €	1,183.16	-9.64	-0.81%	1,167.00	1,183.16	1,076.89	1,223.09	7.06% #
Greece & Turkey 30 Price Index	623.86 #	612.34	11.52	1.88%	611.55	623.94	595.05	768.95	-8.24% €
ATHEX Mid & SmallCap Price Index	2,452.23 €	2,469.61	-17.38	-0.70%	2,436.88	2,474.81	2,372.76	2,635.74	0.51% #
FTSE/Athex Market Index	553.16 #	550.86	2.30	0.42%	540.90	553.16	507.68	685.04	-13.04% €
FTSE Med Index	5,668.96 #	5,663.80	5.16	0.09%			4,930.94	5,755.15	12.55% #
Athex Composite Index Total Return Index	1,132.56 #	1,126.64	5.92	0.53%	1,105.15	1,132.56	1,037.71	1,385.07	-6.22% €
FTSE/Athex Large Cap Total Return	310.80 #	309.17	1.63	0.53%			285.87	382.72	-13.50% €
FTSE/ATHEX Large Cap Net Total Return	925.01 #	920.15	4.86	0.53%	902.58	925.01	848.38	1,147.63	-13.56% €
FTSE/ATHEX Custom Capped Total Return	820.34 #	818.69	1.65	0.20%			763.44	1,008.59	-10.52% €
FTSE/ATHEX Custom Capped - USD Total Return	640.52 €	640.87	-0.35	-0.06%			589.29	819.78	-19.47% €
FTSE/Athex Mid Cap Total Return	1,014.04 €	1,030.33	-16.29	-1.58%			928.33	1,231.75	3.17% #
FTSE/ATHEX-CSE Banking Total Return Index	389.27 €	397.66	-8.39	-2.11%			368.97	708.30	-42.69% €
Greece & Turkey 30 Total Return Index	741.77 €	747.42	-5.65	-0.76%			722.97	919.96	-9.88% €
Hellenic Mid & Small Cap Index	794.11 #	787.60	6.51	0.83%	778.00	794.70	716.61	994.59	3.23% #
FTSE/Athex Banks	551.54 €	563.42	-11.88	-2.11%	526.38	563.42	517.18	1,023.60	-42.66% €
FTSE/Athex Insurance	1,369.77 €	1,390.84	-21.07	-1.51%	1,296.01	1,422.45	1,296.01	1,538.35	-6.47% €
FTSE/Athex Financial Services	935.04 €	978.54	-43.50	-4.45%	931.79	978.54	926.91	1,400.60	-6.64% €
FTSE/Athex Industrial Goods & Services	2,126.38 #	2,073.69	52.69	2.54%	2,073.69	2,127.58	1,881.51	2,660.41	8.82% #
FTSE/Athex Retail	4,015.64 #	3,858.03	157.61	4.09%	3,830.81	4,015.64	3,336.67	4,531.02	5.62% #
FTSE/ATHEX Real Estate	2,371.33 #	2,357.80	13.53	0.57%	2,345.81	2,387.51	2,181.63	2,800.26	3.92% #
FTSE/Athex Personal & Household Goods	4,997.87 #	4,684.06	313.81	6.70%	4,684.06	4,997.87	3,847.16	5,680.33	9.78% #
FTSE/Athex Food & Beverage	6,309.16 #	6,147.88	161.28	2.62%	6,129.18	6,309.16	5,066.70	6,309.16	7.70% #
FTSE/Athex Basic Resources	2,353.86 #	2,304.96	48.90	2.12%	2,240.68	2,353.86	1,753.11	2,916.96	22.07% #
FTSE/Athex Construction & Materials	2,214.63 #	2,214.00	0.63	0.03%	2,166.58	2,238.98	2,059.46	2,705.46	1.36% #
FTSE/Athex Oil & Gas	1,857.11 €	1,894.10	-36.99	-1.95%	1,798.58	1,894.10	1,618.74	2,208.30	2.33% #
FTSE/Athex Chemicals	6,934.68 #	6,892.81	41.87	0.61%	6,857.72	7,046.72	4,784.62	7,336.99	35.37% #
FTSE/Athex Media	1,920.67 ~	1,920.67	0.00	0.00%	1,920.67	1,920.67	1,359.24	2,061.03	-6.81% €
FTSE/Athex Travel & Leisure	1,498.06 #	1,450.97	47.09	3.25%	1,444.74	1,499.03	1,238.26	1,741.96	-2.29% €
FTSE/Athex Technology	695.89 €	702.88	-6.99	-0.99%	687.83	703.56	659.36	786.22	-4.16% €
FTSE/Athex Telecommunications	2,287.39 €	2,391.98	-104.59	-4.37%	2,287.39	2,391.98	1,995.61	2,606.68	-8.68% €
FTSE/Athex Utilities	2,120.66 #	2,108.77	11.89	0.56%	2,007.15	2,120.66	1,711.47	2,830.02	1.06% #
FTSE/Athex Health Care	114.20 €	116.58	-2.38	-2.04%	111.03	116.58	111.03	163.37	-20.88% €
Athex All Share Index	157.89 €	158.02	-0.13	-0.08%			146.74	196.00	-15.08% €
Hellenic Corporate Bond Index	89.04 #	88.91	0.12	0.14%			87.18	94.45	-5.14% €
Hellenic Corporate Bond Price Index	86.42 #	86.31	0.11	0.13%			85.00	92.77	-6.59% €

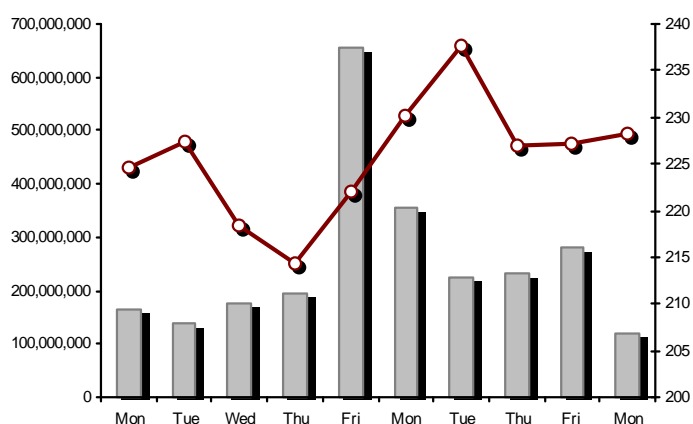
Note 1: Greece & Turkey 30 Pr data is the indicative at 17:20, whereas FTSE/ATHEX Custom Capped, FTSE/ATHEX Custom Capped - USD, FTSE/ATHEX Custom Capped TR, FTSE/ATHEX Custom Capped - USD TR, FTSE/Med 100 & Greece & Turkey 30 Rt., Hellenic Corporate Bond Price Index, Hellenic Corporate Bond Index closing prices refer to the previous trading day of 26/03/2015.

Note 2: The Hellenic Mid & Small Cap Index is a Customized index calculated by the Athens Exchange.

## Athex Indices

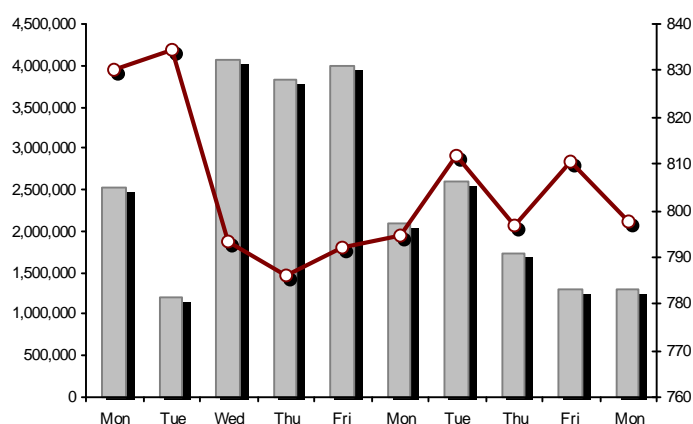
FTSE/Large Cap

30/03/2015: 0.53%



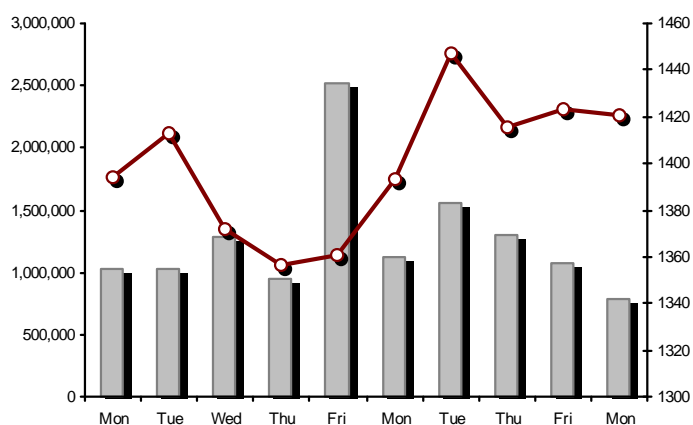
FTSE/Athex Mid Cap Index

30/03/2015: -1.58%



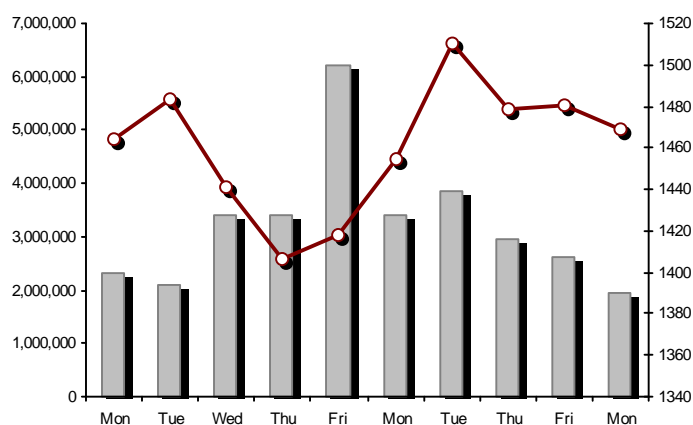
FTSE/ATHEX Global Traders Index Plus

30/03/2015: -0.15%



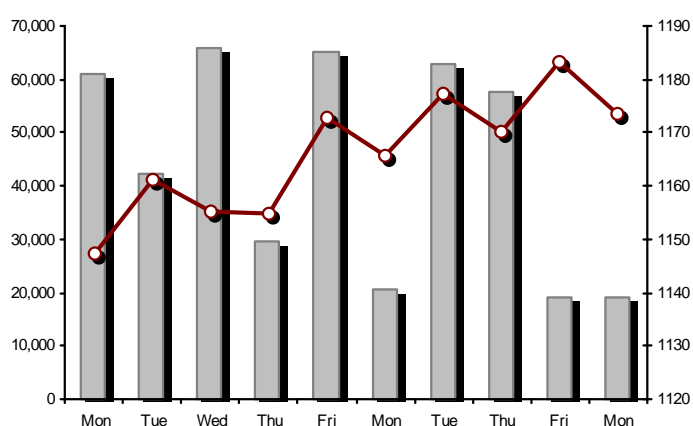
FTSE/ATHEX Global Traders Index

30/03/2015: -0.80%



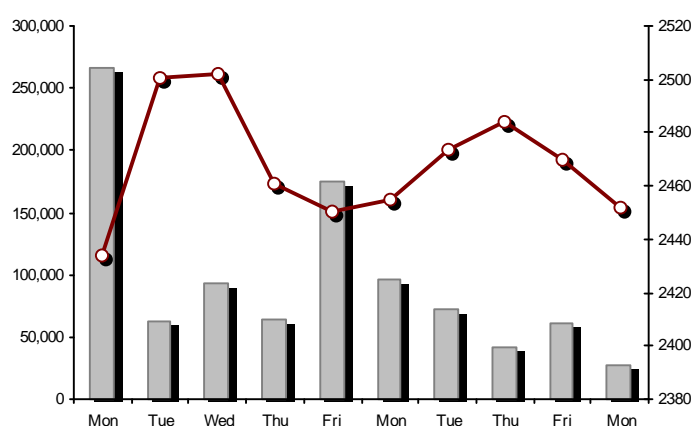
FTSE/ATHEX Mid &amp; Small Cap Factor-Weighted Index

30/03/2015: -0.81%



ATHEX Mid &amp; SmallCap Price Index

30/03/2015: -0.70%



Indices volume of transactions

Indices closing prices

## Analytic Figures for Athex Market's Boards and Categories

	Total Traded Securities	Main Market	Low Dispersion	Other Categories (*)	Exchange Traded Funds (ETFs)	Warrants
Totals	128	99	6	18	2	3
Gain / Lose / Same:	44 / 66 / 18	32 / 54 / 13	1 / 2 / 3	8 / 8 / 2	2 / 0 / 0	1 / 2 / 0
Athex Capitalisation (mill. €) **	44,967.75	43,187.61	1,446.20	333.93		
Daily Average Trans/ons Value(thou.€)	115,757.15	113,116.66	65.07	141.24	38.05	2,602.07
Transactions Value	59,028.19	58,232.06	1.62	73.35	0.03	721.12
Main Board:	56,730.21	55,934.09	1.62	73.35	0.03	721.12
Blocks Board 6_2_3:	2,297.97	2,297.97	0.00	0.00	0.00	0.00
Forced Sales Board:	0.00	0.00	0.00	0.00	0.00	0.00
Special Terms Board:	0.00	0.00	0.00	0.00	0.00	0.00
Daily Average Transactions Volume	204,767,775	196,690,545	82,330	358,685	13,309	7,904,999
Transactions Volume	126,324,921	123,144,438	1,741	304,223	4	2,874,515
Main Board:	125,901,567	122,721,084	1,741	304,223	4	2,874,515
Blocks Board 6_2_3:	423,354	423,354	0	0	0	0
Forced Sales Board:	0	0	0	0	0	0
Special Terms Board:	0	0	0	0	0	0
Daily Average Number of Trades	36,447	34,509	36	85	7	1,811
Number of Trades	23,432	22,457	10	140	2	823
Main Board:	23,428	22,453	10	140	2	823
Blocks Board 6_2_3:	4	4	0	0	0	0
Forced Sales Board:	0	0	0	0	0	0
Special Terms Board:	0	0	0	0	0	0

(\*) Summarised Transactions figures for Under Deletion and Under Supervision Categories.(\*\*) The Market Capitalization of the Companies that belong in the Under Supervision Status is not included.

## Trading Details by Athex Sectors and Financial Instruments (ETFs)

Code	Sectors	Gain / Lose / Same	Number of Trades	Transactions Volume	Transactions Value	% of Total Trans. Value
8300	- Banks	2 / 7 / 1	12,717	115,938,988	33,479,391.12	56.72%
1700	- Basic Resources	5 / 4 / 1	564	198,415	836,148.24	1.42%
1300	- Chemicals	2 / 1 / 1	49	10,103	13,274.97	0.02%
2300	- Construction & Materials	7 / 8 / 2	881	498,251	1,623,943.13	2.75%
12000	- Financial Instruments	2 / 0 / 0	2	4	31.80	0.00%
8700	- Financial Services	1 / 2 / 1	1,602	6,446,563	1,519,352.83	2.57%
3500	- Food & Beverage	4 / 7 / 0	118	111,147	371,206.81	0.63%
4500	- Health Care	1 / 2 / 2	104	118,687	51,669.59	0.09%
2700	- Industrial Goods & Services	6 / 5 / 4	946	221,221	1,669,500.70	2.83%
8500	- Insurance	0 / 1 / 0	19	4,137	5,174.67	0.01%
5500	- Media	0 / 0 / 1	1	4	1.41	0.00%
500	- Oil & Gas	0 / 2 / 0	568	160,073	820,160.77	1.39%
3700	- Personal & Household Goods	2 / 7 / 1	1,090	367,959	2,294,973.59	3.89%
8600	- Real Estate	3 / 4 / 0	158	50,230	184,078.43	0.31%
5300	- Retail	1 / 0 / 1	539	96,758	2,582,662.84	4.38%
9500	- Technology	3 / 6 / 2	164	130,642	97,284.99	0.16%
6500	- Telecommunications	0 / 1 / 0	1,093	524,003	4,422,449.47	7.49%
5700	- Travel & Leisure	4 / 5 / 1	1,633	1,134,045	7,716,802.44	13.07%
7500	- Utilities	1 / 4 / 0	1,184	313,691	1,340,078.37	2.27%

## Top 10 best &amp; worst performing Shares

Main Market					
With positive Price change	Closing price	change	With negative Price change	Closing price	change
JUMBO SA (CR)	9.68	8.16% #	MARFIN INVESTMENT GROUP (CR)	0.125	-11.35% Ⓔ
P.P.A. S.A. (CR)	11.70	7.54% #	ALPHA BANK (CR)	0.281	-6.33% Ⓔ
ELLAKTOR (CR)	1.90	7.34% #	ATTICA BANK S.A. (CR)	0.054	-5.26% Ⓔ
OPAP (CR)	8.39	4.87% #	AEGEAN AIRLINES (CR)	7.10	-4.70% Ⓔ
FOLLI FOLLIE (CR)	27.89	4.11% #	OTE (CR)	8.31	-4.37% Ⓔ
GEK TERNA (CR)	1.65	3.77% #	FOURLIS (CR)	2.70	-3.57% Ⓔ
VIOHALCO SA/NV (CB)	2.91	3.56% #	TERNA ENERGY (CR)	2.25	-3.43% Ⓔ
CC HBC AG (CR)	16.91	2.67% #	GR. SARANTIS SA (CR)	7.51	-3.10% Ⓔ
MYTILINEOS HOLDINGS (CR)	5.68	2.53% #	MOTOR OIL (CR)	7.00	-3.05% Ⓔ
METKA (CR)	8.84	2.20% #	ATHENS MEDICAL CENTER SA (CR)	0.777	-2.88% Ⓔ
With the highest Transactions Value	Value (thou. €)	change	With the highest Transactions Volume	Volume	change
NATIONAL BANK (CR)	14,370.24	-0.90% Ⓔ	EUROBANK ERGASIAS (CR)	56,120,428	-1.03% Ⓔ
ALPHA BANK (CR)	7,181.22	-6.33% Ⓔ	ALPHA BANK (CR)	25,170,724	-6.33% Ⓔ
OPAP (CR)	6,835.50	4.87% #	PIRAEUS BANK (CR)	17,165,387	0.88% #
PIRAEUS BANK (CR)	5,668.15	0.88% #	NATIONAL BANK (CR)	13,238,459	-0.90% Ⓔ
EUROBANK ERGASIAS (CR)	5,286.52	-1.03% Ⓔ	MARFIN INVESTMENT GROUP (CR)	6,300,721	-11.35% Ⓔ
OTE (CR)	4,422.45	-4.37% Ⓔ	OPAP (CR)	825,738	4.87% #
FOLLI FOLLIE (CR)	2,581.92	4.11% #	BANK OF CYPRUS (CR)	685,995	0.00% ~
JUMBO SA (CR)	1,805.78	8.16% #	ATTICA BANK S.A. (CR)	675,496	-5.26% Ⓔ
P.P.A. S.A. (CR)	1,188.58	7.54% #	OTE (CR)	524,003	-4.37% Ⓔ
TITAN CEMENT (CR)	1,062.35	-1.95% Ⓔ	INTRALOT (CR)	213,925	-1.95% Ⓔ

Note: Stocks that are not included in the "Low Dispersion" and "Under Supervision" categories, and the transactions value is more than 10,000 €.

## Derivatives Summary

	Number of Trades	Volume	Open Interest
Index Futures	620	3,891	41,507
FTSE/Athex Large Cap	620	3,891	41,507
Stock Futures	1,908	31,555	510,848
ALPHA BANK (CR)	275	5,359	51,488
CC HBC AG (CR)	3	3	56
CORINTH PIPEWORKS SA (CR)	4	10	521
ELLAKTOR (CR)	27	130	1,499
EUROBANK ERGASIAS (CR)	175	8,044	228,711
EYDAP S.A. (CR)	32	95	404
FOLLI FOLLIE (CR)	20	123	62
FRIGOGLASS SA (CR)	0	0	330
GEK TERNA (CR)	38	178	7,872
GRIVALIA PROPERTIES (CR)	0	0	101
HELLENIC EXCHANGES-A.S.E. (CR)	34	105	1,794
HELLENIC PETROLEUM (CR)	21	51	4,814
INTRALOT (CR)	1	5	340
JUMBO SA (CR)	56	122	396
MARFIN INVESTMENT GROUP (CR)	72	1,082	30,061
METKA (CR)	12	40	327
MOTOR OIL (CR)	31	96	154
MYTILINEOS HOLDINGS (CR)	22	77	4,065
NATIONAL BANK (CR)	307	4,729	42,125
OPAP (CR)	85	414	1,549
OTE (CR)	155	568	5,430
P.P.A. S.A. (CR)	20	31	337
PIRAEUS BANK (CR)	328	9,727	122,541
PPC (CR)	135	402	3,670
SIDENOR (CR)	0	0	572
TERNA ENERGY (CR)	37	127	1,273
TITAN CEMENT (CR)	14	31	201
VIOHALCO SA/NV (CB)	4	6	155
Index Options	12	97	2,544
FTSE/Athex Large Cap	12	97	2,544
Stock Options	0	0	410
ALPHA BANK (CR)	0	0	0
NATIONAL BANK (CR)	0	0	180
OPAP (CR)	0	0	0
OTE (CR)	0	0	0
PIRAEUS BANK (CR)	0	0	230
PPC (CR)	0	0	0
Total Derivatives Traded	2,540	35,543	555,309



Number of Outstanding Securities	Nominal Value	Dividends [1]			Date of Last Dividend [2]	Coupon Right	Note	Shares	Closing price	% change	Previous closing price/date	Open price	Price min	Price max	Last price	Avg price	Last Bid [7]	Last Ask [7]	P/E after	Year	Volume	Trades	Transactions Value[8]	Company Mkt Value (thou. €)	Year low	Year high	Sector[ 4]
1,141,747,967		---	---	---		11/06/2013	---	ALPHA BANK (W)	0.470	6.58 #	0.441 27/03/2015	0.420	0.414	0.470	0.470	0.435	---	---	1.03	2013	1,267,352	406	551,389.05	3,588,105.82	0.290	0.979	8355
245,748,459		---	---	---		27/06/2013	---	NATIONAL BANK (W)	0.192	-1.03 €	0.194 27/03/2015	0.180	0.178	0.194	0.192	0.185	---	---	0.44	2013	182,784	91	33,885.25	3,886,464.59	0.100	0.320	8355
843,637,022		---	---	---		03/07/2013	---	PIRAEUS BANK (W)	0.101	-0.98 €	0.102 27/03/2015	0.099	0.090	0.101	0.101	0.095	---	---	0.10	2013	1,424,379	326	135,845.96	2,092,979.04	0.083	0.252	8355

Warrants

71,417,100	0.650	---	---	---	26/05/2010	27/06/2014	---	AEGEAN AIRLINES (CR)	7.10	-4.70 €	7.45 27/03/2015	7.21	7.08	7.40	7.10	7.15	---	---	9.33	2014	77,204	178	551,931.88	507,061.41	6.40	8.08	5751
11,178,000	1.12	---	---	---	21/04/2010	15/12/2014	---	AEOLIAN INVESTMENT FUND (CR)	0.729	5.81 #	0.689 27/03/2015	0.624	0.624	0.729	0.729	0.624	---	---	---	2014	401	4	250.33	8,148.76	0.595	0.769	8985
13,000,000	1.00	---	---	---	01/08/2007	07/04/2000	---	AKRITAS SA (CR)	0.049	-9.26 €	0.054 27/03/2015	0.049	0.049	0.049	0.049	0.049	---	---	---	2014	20	2	0.98	637.00	0.049	0.125	2353
12,769,059,858	0.300	---	---	---	07/04/2008	13/05/2013	---	ALPHA BANK (CR)	0.281	-6.33 €	0.300 27/03/2015	0.292	0.277	0.294	0.281	0.285	---	---	0.63	2013	25,170,724	3,364	7,181,222.46	3,588,105.82	0.259	0.510	8355
22,016,250	0.370	---	---	---	15/07/2009	11/05/2000	---	ALUMIL (CR)	0.317	-3.94 €	0.330 27/03/2015	0.326	0.317	0.326	0.317	0.326	---	---	---	2014	1,743	7	567.71	6,979.15	0.218	0.348	1753
417,608	16.00	---	0.8	---	29/04/2014	05/03/2013	---	ANDROMEDA SA (CR)	18.00	---	18.00 27/03/2015	18.00	18.00	18.00	18.00	18.00	---	---	---	2014	28	1	504.00	7,516.94	16.37	20.00	8985
26,252,040	0.380	---	---	---	08/07/2010	10/02/2014	---	AS COMPANY SA (CR)	0.328	---	0.328 27/03/2015	---	---	---	---	---	---	---	4.58	2014	---	---	---	8,610.67	0.263	0.344	5379
86,735,980	0.310	---	---	---	06/07/2009	02/01/2002	---	ATHENS MEDICAL CENTER SA (CR)	0.777	-2.88 €	0.800 27/03/2015	0.786	0.777	0.800	0.777	0.786	---	---	---	2014	49,895	45	39,218.27	67,393.86	0.681	0.990	4533
1,045,794,145	0.300	---	---	---	04/06/2008	07/08/2014	---	ATTICA BANK S.A. (CR)	0.054	-5.26 €	0.057 27/03/2015	0.056	0.052	0.056	0.054	0.054	---	---	---	2013	675,496	138	36,713.60	56,472.88	0.040	0.084	8355
15,300,000	0.300	---	---	---	30/07/2009	13/12/1999	---	ATTICA PUBLICATIONS SA (CR)	1.40	---	1.40 27/03/2015	---	---	---	---	---	---	---	50.50	2014	---	---	---	21,420.00	1.29	1.60	5557
45,457,464	0.700	---	---	---	01/07/2008	01/03/2010	---	AUDIO VISUAL ENTERPRISES (CR)	0.260	---	0.260 27/03/2015	---	---	---	---	---	---	---	---	2014	---	---	---	11,818.94	0.184	0.277	5553
12,157,500	0.320	---	---	---	30/04/2012	22/11/2013	---	AUTOHELLAS SA (CR)	10.25	1.79 #	10.07 27/03/2015	10.25	10.25	10.25	10.25	10.25	---	---	12.98	2014	200	1	2,050.00	124,614.38	8.30	10.80	5759
8,922,944,533	0.100	---	---	---	31/05/2011	02/02/2015	4857	BANK OF CYPRUS (CR)	0.200	---	0.200 27/03/2015	0.200	0.197	0.200	0.200	0.199	---	---	---	2014	685,995	70	136,699.46	1,784,588.91	0.165	0.219	8355
19,864,886	5.60	0.5376	0.672	0.672	05/03/2015	02/07/2008	---	BANK OF GREECE (CR)	9.81	-2.29 €	10.04 27/03/2015	10.00	9.80	10.00	9.81	9.86	---	---	---	---	7,984	57	78,727.30	194,874.53	8.88	12.17	8355
23,986,500	1.05	---	---	---	26/06/2009	15/03/2000	---	BIOKARPET S.A.(CR)	0.235	---	0.235 27/03/2015	---	---	---	---	---	---	---	---	2014	---	---	---	5,636.83	0.170	0.260	3726
15,842,391	1.51	---	---	---	15/07/2009	12/05/2000	---	BITROS HOLDING SA (CR)	0.335	---	0.335 27/03/2015	---	---	---	---	---	---	---	---	2014	---	---	---	5,307.20	0.144	0.383	1757
15,816,009	0.300	---	---	---	01/07/2009	17/07/2000	---	BYTE COMPUTER SA (CR)	0.360	---	0.360 27/03/2015	---	---	---	---	---	---	---	5.49	2014	---	---	---	5,693.76	0.346	0.445	9533
367,819,247	6.70	0.34	0.354	---	09/07/2014	29/04/2013	---	CC HBC AG (CR)	16.91	2.67 #	16.47 27/03/2015	16.47	16.42	16.91	16.91	16.54	---	---	---	---	21,752	58	359,736.81	6,219,823.47	13.55	16.91	3537
101,123,806	0.360	---	---	---	22/07/2010	28/06/2011	---	CENTRIC HOLDINGS (CR)	0.160	-5.88 €	0.170 27/03/2015	0.184	0.159	0.184	0.160	0.161	---	---	8.33	2013	7,248	8	1,167.43	16,179.81	0.140	0.215	5752
4,034,950	0.680	---	---	---	01/07/2005	30/12/2010	---	CHATZIKRANIOTIS & SONS SA (CR)	0.157	25.60 #	0.125 27/03/2015	0.157	0.157	0.157	0.157	0.157	---	---	---	2014	100	2	15.70	633.49	0.120	0.200	3577
124,170,201	0.780	---	---	---	28/06/2002	07/02/2005	---	CORINTH PIPEWORKS SA (CR)	0.999	-3.01 €	1.03 27/03/2015	0.990	0.975	1.00	0.999	0.990	---	---	---	2014	9,380	32	9,283.75	124,046.03	0.756	1.31	1757
9,907,500	0.300	---	---	---	06/10/2005	13/02/2002	---	CPI SA (CR)	0.138	---	0.138 27/03/2015	---	---	---	---	---	---	---	11.91	2014	---	---	---	1,367.24	0.126	0.234	9572
27,379,200	0.520	---	0.1	---	24/07/2014	18/09/2013	---	CRETE PLASTICS SA (CR)	5.28	---	5.28 27/03/2015	---	---	---	---	---	---	---	15.30	2014	---	---	---	144,562.18	4.60	5.64	1357
15,000,000	0.300	---	---	---	06/07/2007	18/07/2000	---	DAIOS PLASTICS SA (CR)	2.55	---	2.55 27/03/2015	2.45	2.45	2.55	2.55	2.45	---	---	-(6)-	2014	1,150	2	2,822.50	38,250.00	2.25	2.58	1357
34,720,000	0.310	---	---	---	16/06/2010	01/08/2007	---	DROMEAS SA (CR)	0.130	---	0.130 27/03/2015	---	---	---	---	---	---	---	---	2014	---	---	---	4,513.60	0.100	0.162	3726
3,873,120	0.300	---	---	---	07/07/2008	04/10/2012	---	DRUCKFARBEN HELLAS (CR)	0.729	---	0.729 27/03/2015	---	---	---	---	---	---	---	---	2014	---	---	---	2,823.50	0.729	0.900	1357
11,250,000	0.560	---	---	---	26/07/2010	16/06/1999	---	EKTER SA (CR)	0.400	-14.89 €	0.470 27/03/2015	0.391	0.391	0.415	0.400	0.397	---	---	---	2014	4,893	17	1,943.60	4,500.00	0.380	0.518	2357
32,188,050	1.04	---	---	---	21/07/2008	20/01/2000	---	EL. D. MOUZAKIS SA (CB)	0.273	---	0.273 27/03/2015	---	---	---	---	---	---	---	---	2013	---	---	---	8,787.34	0.240	0.290	3763
18,435,000	1.00	---	---	---	07/07/2009	10/09/2010	---	ELASTRON (CR)	0.439	---	0.439 27/03/2015	---	---	---	---	---	---	---	---	2014	---	---	---	8,092.97	0.370	0.697	1757
31,734,530	1.60	---	---	---	09/07/2007	19/07/2006	---	ELGEKA SA (CR)	0.283	---	0.283 27/03/2015	---	---	---	---	---	---	---	---	2014	---	---	---	8,980.87	0.155	0.283	3577
23,828,130	0.500	---	---	---	07/07/2010	17/02/2009	---	ELINOIL S.A. (CR)	0.690	---	0.690 27/03/2015	---	---	---	---	---	---	---	18.81	2014	---	---	---	16,441.41	0.675	0.968	537
177,001,313	1.03	---	---	---	05/07/2011	20/12/2007	---	ELLAKTOR (CR)	1.90	7.34 #	1.77 27/03/2015	1.66	1.66	1.90	1.90	1.78	---	---	---	2014	154,383	256	274,457.37	336,302.49	1.56	2.62	2357
82,667,000	0.300	---	---	---		22/07/2014	---	ELTECH ANEMOS S.A. (CR)	0.593	-2.79 €	0.610 27/03/2015	0.590	0.572	0.604	0.593	0.591	---	---	10.47	2014	44,100	98	26,051.79	49,021.53	0.572	0.845	7537

Number of Outstanding Securities	Nominal Value	Dividends [1]			Date of Last Coupon		Note	Shares	Closing price	% change	Previous closing price/date	Open price	Price min	Price max	Last price	Avg price	Last Bid [7]	Last Ask [7]	P/E after	Year	Volume	Trades	Transactions Value[8]	Company Mkt Value (thou. €)	Year low	Year high	Sector[ 4]	
		2012	2013	2014	Dividend [2]	Right																						
Main Market																												
26,730,187	0.600	---	0.05	---	23/06/2014	30/12/2010	---	ELTON SA (CR)	0.970	-2.02	€ 0.990	27/03/2015	0.990	0.929	0.990	0.970	0.934	---	---	10.60	2014	1,622	20	1,514.84	25,928.28	0.862	0.990	1353
14,050,971	0.340	---	---	---	06/07/2011	17/10/2002	---	ELTRAK SA (CR)	1.40	2.19	# 1.37	27/03/2015	1.31	1.31	1.40	1.40	1.33	---	---	---	2014	119	2	158.41	19,671.36	1.07	1.40	2753
125,562,262	0.320	---	---	---	30/05/2014	02/12/2014	---	ELVAL SA. (CB)	1.18	0.86	# 1.17	27/03/2015	1.14	1.13	1.18	1.18	1.17	---	---	8.56	2014	1,205	10	1,414.40	148,163.47	0.965	1.41	1753
13,230,000	0.300	---	---	---	11/08/2010	24/11/2014	---	ELVE SA (CR)	0.417	-0.71	€ 0.420	27/03/2015	0.417	0.417	0.417	0.417	0.417	---	---	0.93	2014	250	3	104.25	5,516.91	0.390	0.484	3763
14,707,876,542	0.300	---	---	---	02/05/2008	13/06/2013	---	EUROBANK ERGASIAS (CR)	0.096	-1.03	€ 0.097	27/03/2015	0.091	0.091	0.097	0.096	0.094	---	---	---	2013	56,120,428	1,503	5,286,515.93	1,411,956.15	0.085	0.209	8355
7,959,900	0.600	---	---	---	02/06/2010	10/12/2013	5031	EUROCONSULTANTS S.A. (CR)	1.89	---	↘ 1.89	27/03/2015	---	---	---	---	---	---	---	-(6)-	2014	---	---	---	15,044.21	1.77	2.22	2791
27,503,677	0.630	0.1	---	---	11/07/2013	18/10/1999	---	EUROPEAN RELIANCE INSUR. (CR)	1.30	-1.52	€ 1.32	27/03/2015	1.35	1.23	1.35	1.30	1.25	---	---	3.60	2014	4,137	19	5,174.67	35,754.78	1.23	1.46	8536
13,673,200	0.880	---	---	---	18/07/2008	26/07/2001	---	EVROFARMA SA (CR)	0.340	---	↘ 0.340	27/03/2015	---	---	---	---	---	---	---	---	2014	---	---	---	4,648.89	0.198	0.373	3577
106,500,000	0.600	0.15	0.36	---	05/05/2014	28/01/2000	---	EYDAP S.A. (CR)	5.20	-1.70	€ 5.29	27/03/2015	5.09	5.09	5.32	5.20	5.21	---	---	13.58	2014	53,541	313	278,792.47	553,800.00	5.00	7.35	7577
52,800,154	0.300	---	0.2	---	20/08/2014	21/06/2004	---	F.G. EUROPE S.A. (CR)	0.480	---	↘ 0.480	27/03/2015	---	---	---	---	---	---	---	---	2014	---	---	---	25,344.07	0.406	0.562	3722
10,203,575	0.730	---	---	---	16/07/2007	18/10/1999	---	FIERATEX SA (CR)	0.113	---	↘ 0.113	27/03/2015	---	---	---	---	---	---	---	---	2014	---	---	---	1,153.00	0.097	0.228	3763
11,720,024	0.540	---	0.0394	---	21/08/2014	07/08/2014	---	FLEXOPACK SA (CR)	2.49	---	↘ 2.49	27/03/2015	2.49	2.49	2.49	2.49	2.49	---	---	7.66	2014	5	1	12.45	29,182.86	1.91	2.79	2723
4,181,450	0.500	---	---	---	21/08/2000	05/03/2002	---	FLOUR MILLS SARANTOPOULOS SA	0.950	---	↘ 0.950	27/03/2015	---	---	---	---	---	---	---	---	2014	---	---	---	3,972.38	0.950	0.950	3577
66,948,210	0.300	---	---	---	14/07/2009	23/09/2014	---	FOLLI FOLLIE (CR)	27.89	4.11	# 26.79	27/03/2015	26.79	26.60	27.89	27.89	27.51	---	---	---	2014	93,858	529	2,581,923.34	1,867,185.58	23.15	31.50	5379
50,992,322	1.07	---	---	---	21/06/2010	16/07/2002	---	FOURLIS (CR)	2.70	-3.57	€ 2.80	27/03/2015	2.80	2.69	2.86	2.70	2.74	---	---	---	2014	167,338	420	459,107.52	137,679.27	2.62	3.70	3722
50,593,832	0.300	---	---	---	07/07/2010	07/09/2011	---	FRIGOGLASS SA (CR)	1.69	---	↘ 1.69	27/03/2015	1.65	1.63	1.72	1.70	1.68	---	---	---	2014	10,527	44	17,669.83	85,503.58	1.55	1.95	2757
77,376,446	0.340	---	---	---	23/05/2005	18/08/2011	---	G.E. DIMITRIOU (CR)	0.025	-3.85	€ 0.026	27/03/2015	0.025	0.025	0.025	0.025	0.025	---	---	---	2014	36	1	0.90	1,934.41	0.014	0.030	3722
14,076,360	0.370	---	---	---	19/08/2008	22/07/2003	---	GALAXIDI S.A. (CR)	0.200	---	↘ 0.200	27/03/2015	---	---	---	---	---	---	---	6.72	2014	---	---	---	2,815.27	0.168	0.350	3573
94,462,368	0.570	---	---	---	01/08/2011	02/01/2009	---	GEK TERNA (CR)	1.65	3.77	# 1.59	27/03/2015	1.58	1.52	1.66	1.65	1.61	---	---	---	2013	145,138	298	233,765.85	155,862.91	1.52	2.47	2357
8,418,750	0.300	0.46	---	---	21/01/2015	27/06/2012	---	GEKE SA (CB)	4.30	---	↘ 4.30	27/03/2015	---	---	---	---	---	---	---	---	2014	---	---	---	36,200.63	4.30	6.12	5753
24,060,000	0.300	---	0.017	---	07/07/2014	21/01/2000	---	GEN. COMMERCIAL & IND.SA (CR)	0.328	5.81	# 0.310	27/03/2015	0.286	0.286	0.328	0.328	0.289	---	---	11.41	2014	810	3	234.18	7,891.68	0.265	0.420	2797
34,770,982	1.55	---	0.3	---	17/01/2014	27/07/2000	---	GR. SARANTIS SA (CR)	7.51	-3.10	€ 7.75	27/03/2015	7.03	7.03	7.60	7.51	7.36	---	---	16.49	2014	3,455	33	25,440.12	261,130.07	6.70	7.85	3767
101,260,000	2.13	---	0.1821	0.3037	19/03/2015	08/01/2014	---	GRIVALIA PROPERTIES (CR)	7.65	1.06	# 7.57	27/03/2015	7.56	7.43	7.69	7.65	7.64	---	---	19.88	2014	12,483	73	95,374.08	774,639.00	7.34	9.00	8675
8,340,750	1.20	---	---	---	25/06/2009	30/07/2001	---	HAIDEMENOS SA (CR)	0.968	---	↘ 0.968	27/03/2015	---	---	---	---	---	---	---	---	2014	---	---	---	8,073.85	0.210	0.968	2791
101,279,627	0.380	---	---	---	26/06/2008	14/07/2006	---	HALKOR SA (CB)	0.335	-0.30	€ 0.336	27/03/2015	0.330	0.320	0.335	0.334	0.330	---	---	---	2014	7,700	18	2,541.71	33,928.68	0.244	0.455	1755
29,546,360	0.710	---	---	---	20/06/2008	23/08/2000	---	HELLENIC CABLES SA (CR)	0.677	-7.13	€ 0.729	27/03/2015	0.682	0.675	0.682	0.680	0.678	---	---	---	2014	10,709	10	7,259.05	20,002.89	0.603	0.989	2733
65,368,563	0.740	0.09	---	---	03/06/2013	16/07/2014	---	HELLENIC EXCHANGES-A.S.E. (CR)	4.76	-2.86	€ 4.90	27/03/2015	4.70	4.69	4.79	4.76	4.74	---	---	29.56	2014	145,413	521	689,790.56	311,154.36	4.42	6.80	8777
305,635,185	2.18	0.15	---	---	31/12/2014	01/10/2003	4795	HELLENIC PETROLEUM (CR)	3.62	-0.27	€ 3.63	27/03/2015	3.50	3.49	3.62	3.62	3.57	---	---	---	2014	86,468	289	308,895.62	1,106,399.37	3.40	4.66	537
305,732,436	0.410	---	---	---	08/07/2009	28/09/2011	---	HYGEIA SA (CR)	0.144	-2.04	€ 0.147	27/03/2015	0.142	0.140	0.147	0.144	0.144	---	---	---	2014	62,248	47	8,934.78	44,025.47	0.140	0.206	4533
53,155,053	0.440	---	---	---	24/11/2014	16/07/2008	---	IASO SA (CR)	0.760	---	↘ 0.760	27/03/2015	0.810	0.760	0.810	0.760	0.761	---	---	---	2013	4,204	6	3,201.04	40,397.84	0.690	0.900	4533
8,298,467	0.400	---	---	---	30/08/1993	08/05/2013	---	IDEAL GROUP SA (CR)	0.965	3.76	# 0.930	27/03/2015	0.965	0.965	0.965	0.965	0.965	---	---	---	2014	15	1	14.48	8,008.02	0.668	1.16	9574
28,580,100	0.400	---	0.025	---	18/08/2014	10/10/2013	---	IKTINOS HELLAS SA (CR)	1.01	-6.48	€ 1.08	27/03/2015	1.00	1.00	1.04	1.01	1.01	---	---	10.03	2014	8,046	46	8,133.42	28,865.90	1.00	1.30	2353
9,090,000	0.900	---	---	---	15/05/2009	13/10/2014	---	ILYDA S.A. (CR)	0.666	---	↘ 0.666	27/03/2015	---	---	---	---	---	---	---	---	2014	---	---	---	6,053.94	0.666	0.739	9537
20,578,374	0.620	---	---	---	02/06/2011	05/05/1999	---	INFORM P. LYKOS SA (CR)	1.73	-1.70	€ 1.76	27/03/2015	1.79	1.69	1.79	1.73	1.72	---	---	---	2013	2,969	32	5,095.31	35,600.59	1.42	1.94	2791
11,233,200	0.730	---	---	---	12/07/2010	30/07/1999	---	INTERTECH SA (CR)	0.274	---	↘ 0.274	27/03/2015	---	---	---	---	---	---	---	---	2014	---	---	---	3,077.90	0.169	0.308	9572
34,986,430	0.440	---	---	---	25/07/2008	23/02/2010	---	INTERWOOD-XYLEMPORIA (CR)	0.085	---	↘ 0.085	27/03/2015	---	---	---	---	---	---	---	---	2014	---	---	---	3,474.38	0.059	0.145	2353
2,566,836	0.440	---	---	---	13/08/2010	09/01/2007	---	INTERWOOD-XYLEMPORIA (PR)	0.195	---	↘ 0.195	27/03/2015	---	---	---	---	---	---	---	---	2014	---	---	---	3,474.38	0.195	0.195	2353
23,154,250	1.36	---	---	---	12/08/2008	02/08/2010	---	INTRACOM CONSTR. (CR)	0.489	-2.00	€ 0.499	27/03/2015	0.480	0.470	0.490	0.489	0.475	---	---	3.83	2014	1,666	11	791.30	11,322.43	0.370	0.610	2357

Number of Outstanding Securities	Nominal Value	Dividends [1]			Date of Last Coupon Dividend [2]		Note	Shares	Closing price	% change	Previous closing price/date	Open price	Price min	Price max	Last price	Avg price	Last Bid [7]	Last Ask [7]	P/E after	Year	Volume	Trades	Transactions Value[8]	Company Mkt Value (thou. €)	Year low	Year high	Sector[ 4]
----------------------------------	---------------	---------------	--	--	----------------------------------	--	------	--------	---------------	----------	-----------------------------	------------	-----------	-----------	------------	-----------	--------------	--------------	-----------	------	--------	--------	-----------------------	-----------------------------	----------	-----------	------------

Main Market

133,025,996	1.41	---	---	---	03/07/2007	07/01/2002	---	INTRACOM HOLDINGS (CR)	0.405	-1.22	€ 0.410	27/03/2015	0.400	0.390	0.410	0.405	0.407	---	---	---	2013	18,981	18	7,723.05	53,875.53	0.345	0.511	9578
158,961,721	0.300	0.0026	---	---	30/05/2013	14/11/2007	---	INTRALOT (CR)	1.51	-1.95	€ 1.54	27/03/2015	1.51	1.47	1.56	1.51	1.52	---	---	---	2014	213,925	322	324,914.43	240,032.20	1.05	1.80	5752
77,654,850	0.580	---	---	---	01/07/2011	21/02/2003	---	J & P - AVAX SA (CR)	0.435	-2.47	€ 0.446	27/03/2015	0.403	0.403	0.446	0.435	0.431	---	---	---	2013	9,455	16	4,075.51	33,779.86	0.403	0.660	2357
136,059,759	1.19	---	0.18	0.18	23/12/2014	05/03/2014	---	JUMBO SA (CR)	9.68	8.16	# 8.95	27/03/2015	9.29	9.03	9.68	9.68	9.36	---	---	18.02	2014	192,972	587	1,805,781.98	1,317,058.47	7.06	10.98	3747
9,742,920	0.400	0.01	0.01	---	08/08/2014	14/07/2000	---	KARAMOLEGOS SA (CR)	2.00	5.82	# 1.89	27/03/2015	2.00	2.00	2.00	2.00	2.00	---	---	18.26	2014	1	1	2.00	19,485.84	1.57	2.00	3577
14,679,792	1.68	---	---	---	24/06/2014	04/09/2000	---	KARATZIS SA (CR)	3.63	---	↘ 3.63	27/03/2015	---	---	---	---	---	---	---	8.78	2014	---	---	---	53,287.64	2.89	3.65	2723
13,202,756	0.350	---	---	---	01/07/2004	05/08/2014	---	KEKROPS SA (CR)	0.319	---	↘ 0.319	27/03/2015	---	---	---	---	---	---	---	---	2014	---	---	---	4,211.68	0.247	0.424	8633
7,595,160	0.600	---	---	---	08/08/2008	18/08/2010	---	KIRIAKOULIS SHIPPING SA (CR)	0.480	2.13	# 0.470	27/03/2015	0.480	0.480	0.480	0.480	0.480	---	---	22.72	2013	50	1	24.00	3,645.68	0.340	0.638	5759
23,648,700	0.350	---	---	---	13/07/2011	29/07/2014	---	KLEEMAN HELLAS SA (CR)	1.75	1.16	# 1.73	27/03/2015	1.72	1.71	1.77	1.75	1.74	---	---	6.52	2014	4,319	21	7,528.38	41,385.23	1.22	1.84	2757
40,219,218	0.300	---	---	---	25/05/2009	09/07/2013	---	KLOUKINAS - LAPPAS SA (CR)	0.370	2.78	# 0.360	27/03/2015	0.360	0.330	0.375	0.370	0.341	---	---	---	2014	7,898	31	2,696.08	14,881.11	0.330	0.470	2357
21,224,340	0.420	---	---	---	02/07/2008	25/04/2006	---	KORDELLOS BROS SA (CR)	0.247	---	↘ 0.247	27/03/2015	---	---	---	---	---	---	---	---	2014	---	---	---	5,242.41	0.180	0.250	1757
13,586,500	0.390	---	---	---	25/06/2010	28/05/2008	---	KORRES (CR)	3.40	0.30	# 3.39	27/03/2015	3.39	3.38	3.40	3.40	3.39	---	---	---	2014	770	6	2,607.00	46,194.10	3.10	3.80	3767
29,480,000	0.420	---	---	---	19/07/2010	01/08/2007	---	KRETA FARM SA (CR)	0.400	-3.61	€ 0.415	27/03/2015	0.408	0.400	0.408	0.401	0.402	---	---	10.99	2014	680	9	273.54	11,792.00	0.355	0.520	3577
33,065,136	0.380	---	---	---	06/07/2009	16/09/2013	---	KRI-KRI S.A. (CR)	1.70	-3.95	€ 1.77	27/03/2015	1.74	1.70	1.74	1.70	1.72	---	---	16.20	2014	2,020	3	3,474.80	56,210.73	1.60	1.86	3577
15,804,800	0.330	---	---	---	15/06/2010	12/03/2004	---	KTIMA KOSTAS LAZARIDIS SA (CR)	0.329	---	↘ 0.329	27/03/2015	---	---	---	---	---	---	---	---	2014	---	---	---	5,199.78	0.276	0.396	3535
23,719,554	0.980	---	---	0.1006	19/03/2015	15/09/2014	---	KYRIAKIDIS MARBLES SA (CR)	2.30	-1.29	€ 2.33	27/03/2015	2.25	2.25	2.32	2.32	2.29	---	---	8.74	2014	3,610	5	8,273.20	54,554.97	1.61	2.41	2353
79,721,775	0.300	---	---	---	30/05/2007	23/06/2014	---	LAMDA DEVELOPMENT SA (CR)	3.61	-0.55	€ 3.63	27/03/2015	3.63	3.54	3.68	3.61	3.61	---	---	---	2014	17,753	54	64,057.88	287,795.61	2.46	4.63	8633
21,364,000	1.12	---	---	---	05/07/2010	10/08/2005	---	LAMPSPA HOTEL SA (CR)	17.50	---	↘ 17.50	27/03/2015	---	---	---	---	---	---	---	-(6)-	2013	---	---	---	373,870.00	16.10	18.00	5753
5,939,268	0.620	---	---	---	10/07/2003	03/01/2002	---	LANAKAM SA (CR)	0.990	---	↘ 0.990	27/03/2015	---	---	---	---	---	---	---	---	2014	---	---	---	5,879.88	0.990	1.16	3763
7,734,375	1.00	---	---	---	09/07/2007	07/01/2011	---	LIVANIS SA (CR)	0.170	---	↘ 0.170	27/03/2015	---	---	---	---	---	---	---	---	2014	---	---	---	1,314.84	0.117	0.210	5557
4,740,000	0.860	---	---	---	14/03/2003	---	---	LOGISMOS S.A. (CR)	0.300	---	↘ 0.300	27/03/2015	---	---	---	---	---	---	---	---	2014	---	---	---	1,422.00	0.216	0.515	9533
17,125,062	0.940	---	---	---	01/06/2010	02/02/2015	---	LOULIS MILLS SA (CR)	2.08	---	↘ 2.08	27/03/2015	---	---	---	---	---	---	---	10.17	2014	---	---	---	35,620.13	1.64	2.35	3577
937,122,261	0.300	---	---	---	26/04/2007	29/08/2014	---	MARFIN INVESTMENT GROUP (CR)	0.125	-11.35	€ 0.141	27/03/2015	0.132	0.125	0.139	0.125	0.132	---	---	---	2014	6,300,721	1,076	828,807.94	117,140.28	0.125	0.232	8775
9,819,370	0.690	---	---	---	14/08/2007	09/01/2004	---	MATHIOS REFRACTORY SA (CR)	0.336	---	↘ 0.336	27/03/2015	---	---	---	---	---	---	---	---	2014	---	---	---	3,299.31	0.199	0.360	2353
468,700	0.47	0.65	0.15	0.15	04/12/2014	21/05/2004	---	MERMEREN KOMB. A.D. PR. (GDR)	7.38	0.27	# 7.36	27/03/2015	7.30	7.30	7.39	7.30	7.30	---	---	0.49	2014	2,250	6	16,429.50	3,459.01	5.91	8.15	1775
51,950,600	0.320	0.25	0.3	---	20/06/2014	21/10/2005	---	METKA (CR)	8.84	2.20	# 8.65	27/03/2015	8.65	8.60	8.84	8.84	8.75	---	---	6.12	2014	25,436	177	222,617.08	459,243.30	8.35	10.50	2757
10,500,000	0.950	---	---	---	24/06/2008	19/12/2013	---	MEVACO SA (CR)	0.980	-4.85	€ 1.03	27/03/2015	1.00	0.980	1.00	0.980	0.990	---	---	---	2014	2,000	2	1,980.00	10,290.00	0.701	1.20	2757
6,700,000	0.800	---	0.16	---	26/05/2014	29/05/2014	---	MILLS KEPENOS (CR)	1.80	---	↘ 1.80	27/03/2015	---	---	---	---	---	---	---	7.82	2014	---	---	---	12,060.00	1.17	2.14	3577
6,200,000	0.500	---	---	---	22/06/2010	01/11/1995	---	MINERVA KNITWEAR SA (CB)	0.292	---	↘ 0.292	27/03/2015	---	---	---	---	---	---	---	---	2014	---	---	---	1,810.40	0.225	0.300	3763
12,417,000	0.370	---	---	---	28/07/2008	06/09/2011	---	MLS MULTIMEDIA SA (CR)	4.00	---	↘ 4.00	27/03/2015	3.98	3.92	4.00	4.00	3.99	---	---	29.30	2014	3,877	24	15,477.30	49,668.00	3.86	4.25	9537
4,588,137	16.00	---	---	---	30/06/2005	17/08/2011	---	MOCHLOS SA (CR)	0.750	---	↘ 0.750	27/03/2015	---	---	---	---	---	---	---	---	2014	---	---	---	3,441.10	0.659	1.05	2357
11,700,000	0.590	---	---	---	02/06/2009	24/07/2012	---	MOTODYNAMICS S.A. (CR)	0.300	---	↘ 0.300	27/03/2015	---	---	---	---	---	---	---	---	2014	---	---	---	3,510.00	0.199	0.300	5379
110,782,980	0.750	0.3	0.2	---	26/06/2014	04/11/2013	---	MOTOR OIL (CR)	7.00	-3.05	€ 7.22	27/03/2015	6.90	6.78	7.08	7.00	6.95	---	---	---	2014	73,605	279	511,265.15	775,480.86	5.64	8.07	533
116,915,862	1.07	---	---	---	11/05/2009	06/07/2011	---	MYTILINEOS HOLDINGS (CR)	5.68	2.53	# 5.54	27/03/2015	5.38	5.37	5.68	5.68	5.51	---	---	---	2014	143,026	415	787,424.18	664,082.10	4.18	6.97	1755
8,321,682	0.670	---	---	---	17/08/2007	23/11/1999	---	N. LEVEDERIS SA (CB)	0.140	-14.11	€ 0.163	27/03/2015	0.140	0.140	0.140	0.140	0.140	---	---	---	2014	300	2	42.00	2,465.67	0.126	0.220	1757
2,160,524	0.670	0.0436	0.0436	---	18/08/2014	23/11/1999	---	N. LEVEDERIS SA (PB)	0.602	9.65	# 0.549	27/03/2015	0.602	0.602	0.602	0.602	0.602	---	---	---	2014	5	1	3.01	2,465.67	0.380	0.609	1757
11,510,102	0.890	---	---	---	24/06/2005	06/10/1999	---	NAFPAKTOS TEXTILE IND. SA (CB)	0.251	---	↘ 0.251	27/03/2015	---	---	---	---	---	---	---	---	2014	---	---	---	2,889.04	0.193	0.302	3763
6,340,000	0.600	---	---	---	30/11/2009	12/07/2000	---	NAKAS MUSIC	0.750	---	↘ 0.750	27/03/2015	---	---	---	---	---	---	---	23.31	2014	---	---	---	4,755.00	0.461	1.05	5379

Number of Outstanding Securities	Nominal Value	Dividends [1]			Date of Last Coupon Dividend [2]		Date of Right	Note	Shares	Closing price	% change	Previous closing price/date	Open price	Price min	Price max	Last price	Avg price	Last Bid [7]	Last Ask [7]	P/E after	Year	Volume	Trades	Transactions Value[8]	Company Mkt Value (thou. €)	Year low	Year high	Sector[ 4]
3,533,149,631	0.300	---	---	---	16/05/2008	24/05/2013	---	---	NATIONAL BANK (CR)	1.10	-0.90	€ 1.11 27/03/2015	1.06	1.03	1.14	1.10	1.09	---	---	2.45	2013	13,238,459	2,941	14,370,239.25	3,886,464.59	0.790	1.72	8355
23,935,280	0.300	---	---	---	29/06/2009	13/06/2000	---	---	NAYTEMPORIKI PUBLISHING SA(CR)	0.160	---	↘ 0.160 27/03/2015	---	---	---	---	---	---	---	---	2014	---	---	---	3,829.64	0.117	0.200	5557
27,848,000	0.300	0.0137	0.004	---	18/08/2014	02/09/2003	---	---	NEWSPHONE HELLAS SA (CR)	0.300	---	↘ 0.300 27/03/2015	---	---	---	---	---	---	---	27.41	2014	---	---	---	8,354.40	0.176	0.300	2791
6,132,500	1.25	---	---	---	24/06/2011	19/06/2001	---	---	NEXANS HELLAS SA (CR)	1.45	---	↘ 1.45 27/03/2015	1.44	1.38	1.45	1.45	1.44	---	---	---	2014	699	7	1,004.85	8,892.13	1.38	1.77	2733
319,000,000	0.300	0.57	0.25	0.2017	12/01/2015	25/04/2001	---	---	OPAP (CR)	8.39	4.87	# 8.00 27/03/2015	8.30	8.19	8.39	8.39	8.28	---	---	14.41	2014	825,738	1,105	6,835,501.36	2,676,410.00	6.75	9.90	5752
490,150,389	2.83	---	---	---	28/06/2011	18/06/1998	---	---	OTE (CR)	8.31	-4.37	€ 8.69 27/03/2015	8.69	8.30	8.69	8.31	8.44	---	---	36.73	2014	524,003	1,093	4,422,449.47	4,073,149.73	7.25	9.47	6535
25,000,000	2.00	0.05	0.12	---	17/07/2014	08/08/2003	---	---	P.P.A. S.A. (CR)	11.70	7.54	# 10.88 27/03/2015	12.00	11.65	12.00	11.70	11.89	---	---	41.40	2014	100,004	428	1,188,578.71	292,500.00	9.67	16.40	2777
4,971,466	1.46	---	---	---	04/07/2007	08/10/2003	---	---	PAIRIS SA (CR)	0.171	---	↘ 0.171 27/03/2015	---	---	---	---	---	---	---	---	2014	---	---	---	850.12	0.106	0.236	2723
3,953,090	0.900	---	---	---	02/07/2001	05/12/2012	---	---	PAPERPACK (CR)	0.871	-2.14	€ 0.890 27/03/2015	0.935	0.865	0.935	0.871	0.870	---	---	2.72	2014	1,078	17	937.64	3,443.14	0.684	0.960	2723
50,797,369	0.310	---	---	---	17/08/2000	12/10/2010	---	---	PAPOUTSANIS (CR)	0.379	-4.53	€ 0.397 27/03/2015	0.398	0.376	0.398	0.379	0.382	---	---	---	2014	532	11	203.05	19,252.20	0.287	0.439	3767
7,070,400	0.930	---	---	---	18/05/2010	12/05/2011	---	---	PETROPOULOS PETROS (CR)	3.36	-0.59	€ 3.38 27/03/2015	3.32	3.32	3.40	3.35	3.38	---	---	20.76	2014	1,350	12	4,557.75	23,756.54	2.98	3.50	2753
6,101,979,715	0.300	---	---	---	16/05/2008	05/06/2013	---	---	PIRAEUS BANK (CR)	0.343	0.88	# 0.340 27/03/2015	0.315	0.309	0.344	0.343	0.330	---	---	0.38	2013	17,165,387	3,821	5,668,152.86	2,092,979.04	0.301	1.01	8355
22,080,000	0.330	0.12	0.2	---	21/05/2014	03/10/2000	---	---	PLAISIO COMPUTERS SA (CR)	5.70	-1.55	€ 5.79 27/03/2015	5.81	5.70	5.81	5.70	5.77	---	---	7.99	2014	3,000	23	17,312.76	125,856.00	5.03	6.25	9572
232,000,000	4.60	0.025	---	---	22/07/2013	12/12/2001	---	---	PPC (CR)	5.80	2.11	# 5.68 27/03/2015	5.35	5.35	5.80	5.80	5.65	---	---	38.63	2014	161,136	456	909,687.53	1,345,600.00	4.25	7.65	7535
11,812,193	0.470	---	---	0.02	26/03/2015	15/11/2006	---	---	PROFILE SA (CR)	0.389	-2.26	€ 0.398 27/03/2015	0.387	0.379	0.390	0.389	0.383	---	---	7.05	2013	2,370	20	907.08	4,594.94	0.370	0.527	9533
27,345,120	0.470	---	---	---	18/07/2005	26/02/2014	---	---	QUALITY & RELIABILITY SA (CR)	0.412	-1.43	€ 0.418 27/03/2015	0.418	0.389	0.418	0.412	0.404	---	---	60.24	2013	3,321	33	1,342.16	11,266.19	0.290	0.560	9533
11,962,443	0.500	---	---	---	05/09/2008	12/12/2013	---	---	QUEST HOLDINGS (CR)	4.80	-0.83	€ 4.84 27/03/2015	4.88	4.79	4.88	4.80	4.80	---	---	25.54	2014	355	5	1,703.60	57,419.73	4.39	5.35	9533
57,434,884	1.31	---	---	---	05/06/2008	12/06/2009	---	---	REDS S.A. (CR)	0.386	-3.26	€ 0.399 27/03/2015	0.398	0.371	0.398	0.390	0.380	---	---	---	2014	1,200	8	455.65	22,169.87	0.371	0.516	8633
22,280,000	0.300	---	---	---	11/04/2011	23/02/2007	---	---	REVOIL (CR)	0.255	---	↘ 0.255 27/03/2015	0.255	0.255	0.255	0.255	0.255	---	---	---	2014	2,900	10	739.50	5,681.40	0.212	0.403	5379
7,500,000	0.480	0.0024	0.0863	---	13/08/2014	10/02/2014	---	---	S.KANAKIS SA (CR)	1.96	-0.51	€ 1.97 27/03/2015	1.97	1.93	1.97	1.96	1.96	---	---	8.66	2014	113	5	221.67	14,700.00	1.67	2.10	3577
52,067,296	0.300	---	---	---	23/12/2003	24/01/2007	---	---	SELECTED TEXT. IND. ASSOC (CR)	0.241	---	↘ 0.241 27/03/2015	0.241	0.241	0.241	0.241	0.241	---	---	---	2014	420	1	101.22	12,548.22	0.172	0.273	3763
96,243,908	0.410	---	---	---	26/06/2008	17/07/2000	---	---	SIDENOR (CR)	0.599	---	↘ 0.599 27/03/2015	0.564	0.550	0.599	0.599	0.572	---	---	---	2014	31,922	68	18,256.62	57,650.10	0.492	0.927	1757
6,456,530	1.61	---	---	---	29/06/2001	02/08/2010	---	---	SPACE HELLAS SA (CR)	1.58	1.93	# 1.55 27/03/2015	1.58	1.58	1.58	1.58	1.58	---	---	4.17	2014	1	1	1.58	10,201.32	1.43	1.96	9578
28,438,268	0.300	---	---	---	21/08/2006	24/11/1999	---	---	SPIROY AGRICULTURE SA (CR)	0.300	0.33	# 0.299 27/03/2015	0.300	0.300	0.300	0.300	0.300	---	---	---	2014	1,000	1	300.00	8,531.48	0.261	0.357	1357
33,125,000	5.00	---	---	---	03/07/2006	18/08/2010	---	---	TECHNICAL OLYMPIC SA (CR)	0.779	-3.35	€ 0.806 27/03/2015	0.726	0.726	0.801	0.779	0.747	---	---	---	2014	2,176	27	1,626.25	25,804.38	0.676	1.01	3728
109,314,400	0.300	---	---	---	28/05/2012	09/07/2014	---	---	TERNA ENERGY (CR)	2.25	-3.43	€ 2.33 27/03/2015	2.26	2.21	2.37	2.25	2.25	---	---	---	2014	48,771	273	109,940.50	245,957.40	1.70	2.95	7537
36,300,000	1.12	0.162	0.285	---	14/08/2014	12/12/2007	---	---	THESSALONIKA WATER & SEWERAGE	2.51	-2.71	€ 2.58 27/03/2015	2.58	2.50	2.60	2.50	2.54	---	---	6.94	2014	6,143	44	15,606.08	91,113.00	2.44	3.35	7577
45,094,620	0.660	0.0467	0.05	---	20/01/2015	01/11/1999	---	---	THRACE PLASTICS SA (CR)	1.36	1.49	# 1.34 27/03/2015	1.34	1.34	1.38	1.36	1.36	---	---	---	2014	6,331	26	8,637.63	61,328.68	0.849	1.46	1357
77,063,568	4.00	---	---	---	25/06/2014	25/06/2004	---	---	TITAN PLASTIC (CR)	20.58	-1.95	€ 20.99 27/03/2015	20.99	20.40	20.99	20.58	20.61	---	---	19.72	2014	51,542	137	1,062,346.13	1,660,068.35	18.42	24.95	2353
7,568,960	4.00	---	---	---	25/06/2014	25/06/2004	---	---	TITAN CEMENT CO. (PR)	9.79	0.93	# 9.70 27/03/2015	9.04	9.04	9.79	9.79	9.36	---	---	9.19	2014	1,617	19	15,135.53	1,660,068.35	7.45	10.05	2353
10,080,000	3.00	1.5	0.6	---	13/08/2014	27/08/2001	---	---	TPA SA (CR)	17.00	---	↘ 17.00 27/03/2015	17.10	16.85	17.78	17.00	17.04	---	---	8.00	2014	2,695	59	45,922.23	171,360.00	16.35	23.95	2777
54,888,240	1.13	0.1	0.09	---	25/04/2014	22/03/2006	---	---	TRASTOR REAL EST. INV. CO.(CR)	1.34	1.52	# 1.32 27/03/2015	1.31	1.31	1.34	1.34	1.33	---	---	---	2014	17,471	17	23,201.32	73,550.24	0.900	1.35	8671
15,627,315	0.300	---	---	---	16/11/1992	03/12/2012	---	---	UNIBIOS (CR)	0.100	---	↘ 0.100 27/03/2015	0.085	0.085	0.100	0.100	0.099	---	---	---	2014	3,433	8	341.41	1,562.73	0.081	0.180	2353
18,810,000	0.400	---	---	---	08/07/2010	14/11/2007	---	---	VARVERIS - MODA BAGNO SA (CR)	0.121	-9.70	€ 0.134 27/03/2015	0.121	0.121	0.121	0.121	0.121	---	---	---	2013	30	1	3.63	2,276.01	0.091	0.184	2353
219,611,308	---	---	---	---	---	14/02/2014	---	---	VIOHALCO SANV (CB)	2.91	3.56	# 2.81 27/03/2015	2.81	2.76	2.91	2.91	2.84	---	---	---	---	58,501	131	165,944.83	639,068.91	1.79	4.11	2727
4,968,600	2.88	---	---	---	01/07/1998	14/12/1998	---	---	VIS SA (CR)	0.461	---	↘ 0.461 27/03/2015	---	---	---	---	---	---	---	---	2014	---	---	---	2,290.52	0.461	1.34	2723
6,325,000	0.600	---	---	---	02/05/2014	17/02/2014	---	---	VOGIATZOGLOU SYSTEMS SA (CR)	0.984	---	↘ 0.984 27/03/2015	---	---	---	---	---	---	---	28.68	2014	---	---	---	6,223.80	0.871	1.00	2797

Number of Outstanding Securities	Nominal Value	Dividends [1]			Date of Last Coupon		Note	Shares	Closing price	% change	Previous closing price/date	Open price	Price min	Price max	Last price	Avg price	Last Bid [7]	Last Ask [7]	P/E after	Year	Volume	Trades	Transactions Value[8]	Company Mkt Value (thou. €)	Year low	Year high	Sector[ 4]	
		2012	2013	2014	Dividend [2]	Right																						
Exchange Traded Funds (ETFs)																												
5,848,618		---	---	---	24/01/2008	---	ALPHA ETF FTSE Athex Large Cap	2.30	---	↘	2.30	27/03/2015	---	---	---	---	---	---	---	---	---	---	---	---	---	2.13	2.84	12003
294,878		---	---	---	29/06/2009	---	NBGAM ETF	8.57	0.12	#	8.56	27/03/2015	8.57	8.57	8.57	8.57	8.57	---	---	---	---	2	1	17.14	---	7.97	10.37	12003
388,550		---	---	---	03/11/2010	---	NBGAM ETF GREECE & TURKEY 30	7.33	1.10	#	7.25	27/03/2015	7.33	7.33	7.33	7.33	7.33	---	---	---	---	2	1	14.66	---	7.06	8.90	12003

Low Dispersion

14,000,000	4.15	---	---	---	23/04/2010	29/06/1999	4815	ALPHA REAL ESTATE SA(CR)	5.30	18.57	#	4.47	27/03/2015	5.30	5.30	5.30	5.30	5.30	---	---	31.16	2014	1	1	5.30	74,200.00	3.80	5.49	8637
63,900,000	3.00	---	---	---	23/06/2003	04/11/2008	4816	ASTIR PALACE SA (CR)	2.15	---	↘	2.15	27/03/2015	---	---	---	---	---	---	---	---	2014	---	---	---	137,385.00	2.10	3.60	5753
90,902,904	0.800	---	---	---	09/08/2004	08/03/2006	4814	ATHENA SA (CR)	0.328	---	↘	0.328	27/03/2015	---	---	---	---	---	---	---	---	2013	---	---	---	29,816.15	0.328	0.328	2357
191,660,320	0.300	---	---	---	20/07/2009	29/12/2010	4817	ATTICA HOLDINGS (CR)	0.461	-7.43	€	0.498	27/03/2015	0.461	0.461	0.461	0.461	0.461	---	---	---	2014	1,317	3	607.14	88,355.41	0.416	0.589	5759
71,082,707	1.70	---	---	---	01/07/2010	21/11/2012	4820	HERACLES GEN.CEMENT CO. (CR)	1.15	---	↘	1.15	27/03/2015	1.15	1.15	1.15	1.15	1.15	---	---	---	2014	31	1	35.65	81,745.11	1.15	1.40	2353
13,404,440	8.63	---	---	---	02/04/2001	06/03/1992	4822	IONIAN HOTELS SA (CR)	5.50	---	↘	5.50	27/03/2015	---	---	---	---	---	---	---	---	2014	---	---	---	73,724.42	4.98	7.25	5753
2,760,000	11.83	8.52	8.5	---	30/06/2014	16/07/1990	4823	KARELIA TOBACCO CO. SA (CB)	250.00	---	↘	250.00	27/03/2015	---	---	---	---	---	---	---	---	2014	---	---	---	690,000.00	198.05	298.00	3785
30,600,000	0.300	---	---	---	12/06/2008	04/03/2014	5059	KATHIMERINI SA (CR)	0.352	---	↘	0.352	27/03/2015	0.352	0.352	0.352	0.352	0.353	---	---	---	2014	4	1	1.41	10,771.20	0.289	0.588	5557
14,074,000	3.00	---	---	---	02/03/2012	23/07/2009	5075	MIG REAL ESTATE (CR)	2.60	-0.38	€	2.61	27/03/2015	2.60	2.60	2.60	2.60	2.60	---	---	---	2013	322	3	837.20	36,592.40	2.08	3.45	8671
106,980,050	2.25	---	---	---	25/07/2008	24/02/2014	5046	MINOAN LINES SA (CR)	2.00	---	↘	2.00	27/03/2015	2.00	2.00	2.00	2.00	2.00	---	---	---	2014	66	1	132.00	213,960.10	1.43	2.00	5759
17,240,776	0.370	---	---	---	14/07/2005	30/09/2003	4827	PERSEUS SA (CR)	0.560	---	↘	0.560	27/03/2015	---	---	---	---	---	---	---	---	2014	---	---	---	9,654.83	0.560	0.700	3577

Surveillance

33,301,715	0.320	---	---	---	27/06/2003	08/07/2009	4978	AEGEK (CR)	0.048	20.00	#	0.040	27/03/2015	0.048	0.039	0.048	0.039	0.047	---	---	---	---	---	---	2014	2,126	5	100.91	1,598.48	0.032	0.074	2357
5,000,000	0.400	---	---	---	03/06/2009	01/09/2014	5082	ALCO HELLAS SA (CR)	0.210	18.64	#	0.177	27/03/2015	0.212	0.180	0.212	0.212	0.210	---	---	---	---	---	---	2013	884	5	185.36	1,050.00	0.130	0.307	1753
14,870,100	0.300	---	---	---	15/05/2008	26/09/2011	4844	ALPHA GRISSIN S.A. (CR)	0.032	---	↘	0.032	27/03/2015	---	---	---	---	---	---	---	---	---	---	---	2014	---	---	---	475.84	0.032	0.048	9533
215,246,452	0.300	---	---	---	25/06/2001	24/09/2001	4446	ALTEC SA (CR)	0.024	4.35	#	0.023	27/03/2015	0.022	0.022	0.024	0.024	0.024	---	---	---	---	---	---	2014	5,500	5	131.33	5,165.91	0.017	0.030	9533
2,969,713	0.300	---	---	---	02/07/2008	28/02/2011	4958	ANEK LINES SA (PR, issue '96)	0.123	---	↘	0.123	27/03/2015	---	---	---	---	---	---	---	---	---	---	---	2014	---	---	---	12,264.21	0.110	0.133	5759
312,163	0.300	---	---	---	02/07/2008	28/02/2011	4959	ANEK LINES SA (PR, issue '90)	1.30	---	↘	1.30	27/03/2015	---	---	---	---	---	---	---	---	---	---	---	2014	---	---	---	12,264.21	1.15	1.30	5759
185,373,016	0.300	---	---	---	02/07/2008	28/02/2011	4957	ANEK LINES SA (CR)	0.062	-8.82	€	0.068	27/03/2015	0.067	0.060	0.067	0.066	0.062	---	---	---	---	---	---	2014	5,249	7	327.44	12,264.21	0.056	0.093	5759
81,644,555	0.300	---	---	---	01/07/2008	02/09/2002	5056	ATTI - KAT SA (CR)	0.013	8.33	#	0.012	27/03/2015	0.013	0.013	0.013	0.013	0.013	---	---	---	---	---	---	2014	33,903	8	440.74	1,061.38	0.009	0.037	2357
20,255,805	0.300	---	---	---	22/08/2006	02/08/2010	4881	AXON HOLDING SA (CR)	0.046	2.22	#	0.045	27/03/2015	0.040	0.040	0.050	0.050	0.046	---	---	---	---	---	---	2013	340	3	15.50	931.77	0.022	0.050	4533
17,579,754	4.16	---	---	---	18/08/2006	02/08/2010	4885	BIOTER SA (CR)	0.162	8.00	#	0.150	27/03/2015	0.151	0.130	0.162	0.130	0.162	---	---	---	---	---	---	2014	70,460	20	11,401.82	2,847.92	0.128	0.250	2357
1,130,180	0.440	---	---	---	20/06/2003	02/07/2014	---	COMPUCON SA (CR)	0.006	---	↘	0.006	27/03/2015	---	---	---	---	---	---	---	---	---	---	---	2014	---	---	---	6.78	0.005	0.010	9537
14,173,104	0.300	---	---	---	11/08/2010	28/11/2013	5055	DIONIC (CR)	0.064	---	↘	0.064	27/03/2015	---	---	---	---	---	---	---	---	---	---	---	2014	---	---	---	907.08	0.037	0.086	2797
15,878,748	0.480	---	---	---	10/07/2006	22/03/2004	4960	DOMKI KRITIS SA (CR)	0.272	---	↘	0.272	27/03/2015	---	---	---	---	---	---	---	---	---	---	---	2013	---	---	---	4,319.02	0.216	0.340	2357
3,961,300	1.28	---	---	---	29/06/2004	03/08/2000	5080	DUROS SA (CR)	0.300	---	↘	0.300	27/03/2015	---	---	---	---	---	---	---	---	---	---	---	2014	---	---	---	1,188.39	0.300	0.585	3763
7,085,888	1.59	---	---	---	02/07/1996	06/09/2010	4690	ELVIMEK (CR)	3.97	---	↘	3.97	27/03/2015	---	---	---	---	---	---	---	---	---	---	---	2014	---	---	---	28,130.98	3.97	3.97	8633
6,000,000	0.600	---	---	---	13/06/2008	08/04/2004	4886	EUROBROKERS S.A. (CR)	0.011	---	↘	0.011	27/03/2015	---	---	---	---	---	---	---	---	---	---	---	2013	---	---	---	66.00	0.011	0.020	8534
21,820,410	0.800	---	---	---	22/05/2008	02/08/2011	4882	EUROMEDICA SA (CR)	0.430	---	↘	0.430	27/03/2015	---	---	---	---	---	---	---	---	---	---	---	2014	---	---	---	9,382.78	0.320	0.430	4533
110,097,185	0.300	---	---	---	04/12/2013		5033	Forthnet (CR)	0.690	-5.87	€	0.733	27/03/2015	0.611	0.611	0.730	0.730	0.690	---	---	---	---	---	---	2013	1,480	6	1,020.90	75,967.06	0.610	1.19	9535
1,270,000	0.300	---	---	---	06/07/2007	06/02/2013	5007	GIRAKIAN PROFIL SA (CB)	0.295	---	↘	0.295	27/03/2015	---	---	---	---	---	---	---	---	---	---	---	2014	---	---	---	374.65	0.247	0.350	1757
36,748,909	0.730	---	---	---	15/12/2005	13/12/2006	5083	HEL. SUGAR INDUSTRY SA (CB)	0.220	-2.22	€	0.225	27/03/2015	0.220	0.220	0.220	0.220	0.220	---	---	---	---	---	---	2014	800	2	176.00	8,084.76	0.141	0.327	3577

Number of Outstanding Securities	Nominal Value	Dividends [1]			Date of Last Coupon Dividend [2]		Note	Shares	Closing price	% change	Previous closing price/date	Open price	Price min	Price max	Last price	Avg price	Last Bid [7]	Last Ask [7]	P/E after	Year	Volume	Trades	Transactions Value[8]	Company Mkt Value (thou. €)	Year low	Year high	Sector[ 4]
----------------------------------	---------------	---------------	--	--	----------------------------------	--	------	--------	---------------	----------	-----------------------------	------------	-----------	-----------	------------	-----------	--------------	--------------	-----------	------	--------	--------	-----------------------	-----------------------------	----------	-----------	------------

Surveillance

179,707,771	0.300	---	---	---	27/06/2002	01/11/2011	4847	HELLAS ONLINE SA (CR)	0.563	---	↘	0.563	27/03/2015	0.563	0.563	0.563	0.563	0.563	---	---	---	2014	91,742	28	51,650.75	101,175.48	0.516	0.563	9537
30,390,000	0.310	---	---	---	18/08/2008	29/12/2006	4447	HELLENIC FISHFARMING SA (CR)	0.055	-8.33	☒	0.060	27/03/2015	0.060	0.050	0.060	0.050	0.055	---	---	---	2014	1,900	4	104.00	1,671.45	0.026	0.078	3573
1,540,000	0.600	---	---	---	08/08/1994	19/09/2000	5058	J.BOUTARIS & SON HOLD. (PB)	0.006	---	↘	0.006	27/03/2015	---	---	---	---	---	---	---	---	2013	---	---	---	412.11	0.005	0.007	3535
25,179,640	0.600	---	---	---	08/08/1994	19/09/2000	5057	J.BOUTARIS & SON HOLD. SA (CB)	0.016	---	↘	0.016	27/03/2015	---	---	---	---	---	---	---	---	2013	---	---	---	412.11	0.016	0.037	3535
7,125,216	0.650	---	---	---	01/07/2005	14/12/1999	4955	KRE.KA SA (CR)	0.171	---	↘	0.171	27/03/2015	---	---	---	---	---	---	---	---	2014	---	---	---	1,218.41	0.101	0.225	3573
51,081,030	1.00	---	---	---	20/08/2007	03/09/2007	4912	LAVIPHARM SA (CR)	0.150	---	↘	0.150	27/03/2015	0.150	0.150	0.150	0.150	0.150	---	---	---	2013	2,000	3	300.00	7,662.15	0.086	0.170	4577
4,419,616	1.58	---	---	---	21/07/2011	04/03/2015	4983	MEDICON S.A (CR)	0.324	---	↘	0.324	27/03/2015	---	---	---	---	---	---	1.86	2014	---	---	---	---	1,431.96	0.245	0.453	4535
255,459,600	0.300	---	---	---	26/06/2000	03/12/2010	4833	NEL SA (CR)	0.048	4.35	#	0.046	27/03/2015	0.055	0.037	0.055	0.053	0.048	---	---	---	2013	3,048	7	146.76	12,262.06	0.009	0.064	5759
20,231,328	0.600	---	---	---	15/07/2008	25/06/2004	4879	NIKAS SA (CR)	0.123	6.96	#	0.115	27/03/2015	0.123	0.123	0.123	0.123	0.123	---	---	---	2014	10,000	2	1,230.00	2,488.45	0.115	0.123	3577
63,697,153	1.34	---	---	---	08/07/2008	10/11/2008	5081	NIREFS SA (CR)	0.097	-2.02	☒	0.099	27/03/2015	0.103	0.090	0.103	0.092	0.097	---	---	---	2014	29,890	25	2,899.92	6,178.62	0.067	0.106	3573
14,967,940	0.500	---	---	---	21/05/2008	04/01/2008	4956	PASAL DEVELOPMENT S.A. (CR)	0.147	-6.96	☒	0.158	27/03/2015	0.147	0.147	0.147	0.147	0.147	---	---	---	2014	1,000	2	147.00	2,200.29	0.060	0.158	8633
18,750,000	0.300	---	---	---	02/07/2001	31/12/2012	4985	PEGASUS PUBLISHING S.A. (CR)	0.227	---	↘	0.227	27/03/2015	---	---	---	---	---	---	---	---	2014	---	---	---	4,256.25	0.057	0.283	5557
24,319,250	0.300	---	---	---	09/07/2002	04/07/2007	5054	PROODEFTIKH SA (CR)	0.100	---	↘	0.100	27/03/2015	---	---	---	---	---	---	3.78	2014	---	---	---	---	2,431.93	0.057	0.116	2357
65,326,268	0.530	---	---	---	04/07/2007	19/07/2006	4750	SATO SA (CR)	0.048	---	↘	0.048	27/03/2015	---	---	---	---	---	---	---	---	2014	---	---	---	3,135.66	0.024	0.115	3726
36,235,184	1.00	---	---	---	01/07/2008	30/07/2012	4961	SELONDA AQUACULTURE SA (CR)	0.070	-1.41	☒	0.071	27/03/2015	0.070	0.070	0.070	0.070	0.070	---	---	---	2013	43,891	7	3,072.37	2,536.46	0.050	0.099	3573
7,914,480	0.300	---	---	---	23/06/2008	29/06/2011	4888	SFAKIANAKIS SA (CR)	1.70	---	↘	1.70	27/03/2015	---	---	---	---	---	---	---	---	2014	---	---	---	13,454.62	1.12	2.58	5379
10,000,000	1.35	---	---	---	24/06/2008	10/05/2005	4887	SIDMA SA (CR)	0.370	---	↘	0.370	27/03/2015	---	---	---	---	---	---	---	---	2014	---	---	---	3,700.00	0.271	0.370	1757
29,060,950	0.340	---	---	---	20/08/2007	24/10/2001	4884	SPIDER METAL INDUSTRY SA (CR)	0.007	---	↘	0.007	27/03/2015	---	---	---	---	---	---	---	---	2014	---	---	---	203.43	0.005	0.008	2757
100,793,000	0.300	---	---	---	16/07/2009	05/08/2013	5008	TELETIPOS SA (CR)	0.019	---	↘	0.019	27/03/2015	---	---	---	---	---	---	---	---	2014	---	---	---	1,915.07	0.019	0.108	5553
3,229,566	0.320	---	---	---	22/06/2005	23/09/1999	4629	VARANGIS AVEPE S.A. (CR)	0.520	---	↘	0.520	27/03/2015	---	---	---	---	---	---	---	---	2013	---	---	---	1,679.37	0.520	0.520	3726
16,383,428	0.300	---	---	---	25/06/2002	21/06/2013	4997	VARVARESSOS SA (CB)	0.130	-18.75	☒	0.160	27/03/2015	0.130	0.130	0.130	0.130	0.130	---	---	2.49	2014	10	1	1.30	2,129.85	0.096	0.165	3763
13,191,620	0.620	---	---	---	04/08/2010	09/09/2002	4977	YALCO - CONSTANTINOU SA (CB)	0.106	---	↘	0.106	27/03/2015	---	---	---	---	---	---	---	---	2014	---	---	---	1,398.31	0.079	0.189	3722

Under Deletion

9,567,289	0.300	---	---	---	01/07/2004	19/11/2007	5062	MARAC ELECTRONICS (CR)	0.298	---	↘	0.298	27/03/2015	---	---	---	---	---	---	---	---	2014	---	---	---	2,851.05	0.298	0.298	9578
40,946,303	0.360	---	---	---	18/07/2005	27/11/2007	5053	PC SYSTEMS SA (CR)	0.049	---	↘	0.049	27/03/2015	---	---	---	---	---	---	---	---	2014	---	---	---	2,006.37	0.040	0.098	9533
766,000	1.50	---	---	---	01/07/2004	11/12/2012	4937	TRIA ALFA SA (CR)	1.80	---	↘	1.80	27/03/2015	---	---	---	---	---	---	---	---	2014	---	---	---	1,709.55	1.80	2.29	3763
245,000	1.50	---	---	---	19/07/2010	11/12/2012	4938	TRIA ALFA SA (PR)	1.35	---	↘	1.35	27/03/2015	---	---	---	---	---	---	---	---	2014	---	---	---	1,709.55	1.35	1.35	3763

Suspension Status

5,025,000	0.300	---	---	---	05/07/2005	14/03/2002	5023	ALSINCO S.A (CR)	0.043	---	↘	0.043	27/03/2015	---	---	---	---	---	---	---	---	---	---	---	---	216.08	0.043	0.043	3763
1,750,955,549	0.600	---	---	---	19/05/2008	08/12/2011	4911	ATE (CR)	0.155	---	↘	0.155	27/03/2015	---	---	---	---	---	---	---	---	---	---	---	---	271,398.11	0.155	0.155	8355
21,382,067	0.300	---	---	---	02/10/2006	15/02/2006	4628	ATERMON (CR)	0.120	---	↘	0.120	27/03/2015	---	---	---	---	---	---	---	---	---	---	---	---	2,565.85	0.120	0.120	5555
105,423,498	0.510	---	---	---	01/07/2004	28/12/2005	4920	AVENIR S.A. (CR)	0.046	---	↘	0.046	27/03/2015	---	---	---	---	---	---	---	---	---	---	---	---	4,849.48	0.046	0.046	5752
33,930,000	0.300	---	---	---	03/07/2006	30/05/2001	4865	BABIS VOVOS SA (CR)	0.304	---	↘	0.304	27/03/2015	---	---	---	---	---	---	---	---	---	---	---	---	10,314.72	0.304	0.304	8633
20,121,710	1.21	---	---	---	27/07/1992	12/03/2003	5002	BALKAN R.E. (CR)	0.190	---	↘	0.190	27/03/2015	---	---	---	---	---	---	---	---	---	---	---	---	3,823.12	0.190	0.190	8633
21,920,570	0.300	---	---	---	03/07/2007	13/12/1999	4702	CARDASSILARIS SA (CR)	0.140	---	↘	0.140	27/03/2015	---	---	---	---	---	---	---	---	---	---	---	---	3,068.88	0.140	0.140	3577
54,547,634	0.500	---	---	---	25/04/2005	21/01/2009	4860	CH.TEGOPOULOS PUBL. SA (CR)	0.038	---	↘	0.038	27/03/2015	---	---	---	---	---	---	---	---	---	---	---	---	2,072.81	0.038	0.038	5557

Number of Outstanding Securities	Nominal Value	Dividends [1]			Date of Last Coupon Dividend [2]	Date of Last Coupon Right	Note	Shares	Closing price	% change	Previous closing price/date	Open price	Price min	Price max	Last price	Avg price	Last Bid [7]	Last Ask [7]	P/E after	Year	Volume	Trades	Transactions Value[8]	Company Mkt Value (thou. €)	Year low	Year high	Sector[ 4]
30,159,583	0.470	---	---	---	26/06/2008	29/12/2010	5047	DIAS A/C (CR)	0.050	---	0.050	27/03/2015	---	---	---	---	---	---	---	---	---	---	---	1,507.98	0.050	0.050	3573
7,847,611	1.20	---	---	---	01/08/2007	28/09/2011	4939	EDRASIS - C. PSALLIDAS SA (CR)	0.150	---	0.150	27/03/2015	---	---	---	---	---	---	---	---	---	---	---	1,177.14	0.150	0.150	2357
5,750,000	0.300	---	---	---	12/12/2008	12/12/2011	4929	ELECTRONIKI ATHINON SA (CR)	0.480	---	0.480	27/03/2015	---	---	---	---	---	---	---	---	---	---	---	2,760.00	0.480	0.480	5375
24,605,397	0.400	---	---	---	29/06/1995	27/05/2002	4651	EMPORIKOS DESMOS SA (CR)	0.080	---	0.080	27/03/2015	---	---	---	---	---	---	---	---	---	---	---	2,134.04	0.080	0.080	3722
1,182,903	0.400	---	---	---	01/07/1996	27/05/2002	4652	EMPORIKOS DESMOS SA (PR)	0.140	---	0.140	27/03/2015	---	---	---	---	---	---	---	---	---	---	---	2,134.04	0.140	0.140	3722
7,326,648	1.00	---	---	---	26/07/2006	24/07/2001	4921	FINTEXPOT SA (CR)	0.328	---	0.328	27/03/2015	---	---	---	---	---	---	---	---	---	---	---	2,403.14	0.328	0.328	3763
13,692,227	1.47	---	---	---	07/07/2006	08/10/1999	5049	HELLENIC FABRICS SA (CR)	0.117	---	0.117	27/03/2015	---	---	---	---	---	---	---	---	---	---	---	1,601.99	0.117	0.117	3763
24,619,524	0.500	---	---	---	10/10/1986	30/12/2002	4914	KERAMIA-ALLATINI (CR)	0.088	---	0.088	27/03/2015	---	---	---	---	---	---	---	---	---	---	---	2,166.52	0.088	0.088	8633
7,840,373	1.20	---	---	---	18/07/2002	05/03/2003	4765	KLONATEX SA (PR)	0.080	---	0.080	27/03/2015	---	---	---	---	---	---	---	---	---	---	---	1,453.75	0.080	0.080	3763
20,663,047	1.20	---	---	---	21/08/2000	05/03/2003	4764	KLONATEX SA (CR)	0.040	---	0.040	27/03/2015	---	---	---	---	---	---	---	---	---	---	---	1,453.75	0.040	0.040	3763
17,544,600	0.600	---	---	---	03/07/2000	01/08/2000	4868	KOYMBAS SYNERGY GROUP (CR)	0.132	---	0.132	27/03/2015	---	---	---	---	---	---	---	---	---	---	---	2,315.89	0.132	0.132	8775
15,015,000	1.60	---	---	---	01/07/2002	02/02/2000	4603	MAXIM C.M. PERTSINIDIS SA (CB)	0.100	---	0.100	27/03/2015	---	---	---	---	---	---	---	---	---	---	---	1,501.50	0.100	0.100	3763
66,937,526	0.700	---	---	---	13/08/2010	21/05/2003	5003	MICHANIKI SA (CR)	0.100	---	0.100	27/03/2015	---	---	---	---	---	---	---	---	---	---	---	9,186.78	0.100	0.100	2357
25,968,987	0.700	---	---	---	13/08/2010	21/05/2003	5004	MICHANIKI SA (PR)	0.096	---	0.096	27/03/2015	---	---	---	---	---	---	---	---	---	---	---	9,186.78	0.096	0.096	2357
13,555,100	1.00	---	---	---	08/07/2005		4576	MICROLAND COMPUTERS SA (CR)	0.640	---	0.640	27/03/2015	---	---	---	---	---	---	---	---	---	---	---	8,675.26	0.640	0.640	5379
23,463,874	0.800	---	---	---	23/05/2003	21/12/1999	4918	NEORION SA (CR)	0.125	---	0.125	27/03/2015	---	---	---	---	---	---	---	---	---	---	---	2,932.98	0.125	0.125	2753
42,501,273	0.300	---	---	---	26/06/2007	10/08/2009	4993	NUTRIART (CR)	0.049	---	0.049	27/03/2015	---	---	---	---	---	---	---	---	---	---	---	2,082.56	0.049	0.049	3577
20,210,127	1.53	---	---	---	27/06/1997	20/03/2000	5061	PARNASSOS ENTERP. (CR)	0.070	---	0.070	27/03/2015	---	---	---	---	---	---	---	---	---	---	---	1,414.71	0.070	0.070	8775
25,583,146	0.300	---	---	---	25/06/2001	03/12/2008	4723	PETZETAKIS SA (CR)	0.260	---	0.260	27/03/2015	---	---	---	---	---	---	---	---	---	---	---	6,651.62	0.260	0.260	1357
9,550,386	0.500	---	---	---	01/07/1997	12/06/2008	4626	PRAXITELIO SA (CR)	0.390	---	0.390	27/03/2015	---	---	---	---	---	---	---	---	---	---	---	4,430.09	0.390	0.390	4533
1,306,368	0.500	---	---	---	01/07/1997	12/06/2008	4627	PRAXITELIO SA (PR)	0.540	---	0.540	27/03/2015	---	---	---	---	---	---	---	---	---	---	---	4,430.09	0.540	0.540	4533
62,683,822	0.300	---	---	---	27/05/2008	09/01/2006	4830	PROTON BANK S.A. (CR)	0.180	---	0.180	27/03/2015	---	---	---	---	---	---	---	---	---	---	---	11,283.09	0.180	0.180	8355
51,334,286	0.320	---	---	---	03/07/2000	18/12/2007	4548	SAOS (CR)	0.780	---	0.780	27/03/2015	---	---	---	---	---	---	---	---	---	---	---	40,040.74	0.780	0.780	2773
26,408,040	0.300	---	---	---	01/07/1997	26/05/1999	4464	SHEET STEEL SA (CR)	0.120	---	0.120	27/03/2015	---	---	---	---	---	---	---	---	---	---	---	3,168.96	0.120	0.120	1757
60,221,300	0.400	---	---	---	01/07/2002	01/11/2010	5022	SHELMAN SA (CR)	0.080	---	0.080	27/03/2015	---	---	---	---	---	---	---	---	---	---	---	4,817.70	0.080	0.080	2353
26,262,660	0.900	---	---	---	01/07/2008	24/02/2011	4954	SPRIDER STORES (CR)	0.031	---	0.031	27/03/2015	---	---	---	---	---	---	---	---	---	---	---	814.14	0.031	0.031	5371
144,688,060	0.600	---	---	---	21/04/2008	10/03/2010	4982	T BANK (CR)	0.048	---	0.048	27/03/2015	---	---	---	---	---	---	---	---	---	---	---	6,945.03	0.048	0.048	8355
6,523,780	0.530	---	---	---	01/07/2002	06/03/2001	4971	TECHNICAL PUBLICATIONS SA (CR)	0.006	---	0.006	27/03/2015	---	---	---	---	---	---	---	---	---	---	---	39.14	0.006	0.006	5557
13,920,000	0.320	---	---	---	19/11/2001	01/08/2000	4726	TEXAPRET SA (CR)	0.080	---	0.080	27/03/2015	---	---	---	---	---	---	---	---	---	---	---	1,113.60	0.080	0.080	3763
510,840	1.00	---	---	---	15/07/2008	21/11/2013	5036	TROPEA HOLDING (CR)	2.00	---	2.00	27/03/2015	---	---	---	---	---	---	---	---	---	---	---	1,021.68	2.00	2.00	3722
284,465,964	3.70	---	---	---	20/06/2008	15/06/2009	4913	TT HELLENIC POSTBANK (CR)	0.168	---	0.168	27/03/2015	---	---	---	---	---	---	---	---	---	---	---	47,790.28	0.168	0.168	8355
89,616,200	0.300	---	---	---	21/08/2000	28/06/2007	4616	UNITED TEXTILES (CR)	0.050	---	0.050	27/03/2015	---	---	---	---	---	---	---	---	---	---	---	4,480.81	0.050	0.050	3763
71,683,906	0.400	---	---	---	15/06/2005	05/02/2008	4953	XATZIOANNOU (CR)	0.026	---	0.026	27/03/2015	---	---	---	---	---	---	---	---	---	---	---	1,863.78	0.026	0.026	3763

## Shares' Notes

Code	Note text
( )	- Adjusted dividends.
*	- Last adjusted closing price.
[1]	- Net dividends.
[2]	- The "Date of Last Coupon" for New listings refers to the date company's stocks started to trade in Athex
[3]	- The Company Market Value is referred to the number of outstanding shares
[4]	- Sectors codification can be found in Appendix A
[5]	- The Market Value refers to the total number of shares listed (including their several classes) in the exchange by the company.
[6]	- P/E greater than 100
[7]	- Last view of the Order Book before the end of the trading session
[8]	- All Blocks Methods' Transactions Value are included.
4446	- Transfer to the "Under Supervision" Category as of 20/10/2008.
4447	- Transfer to the "Under Supervision" Category as of 21/10/2008.
4464	- Suspension of trading as of 1/12/2008.
4548	- Suspension of trading as of 1/4/2009.
4576	- Suspension of trading as of 14/7/2009.
4603	- Suspension of trading as of 1/12/2009.
4616	- Suspension of trading as of 25/2/2010.
4626	- Suspension of trading as of 1/4/2010.
4627	- Suspension of trading as of 1/4/2010.
4628	- Suspension of trading as of 1/4/2010.
4629	- Transfer to the Under Supervision Category as of 12/4/2010.
4651	- Suspension of trading as of 1/6/2010.
4652	- Suspension of trading as of 1/6/2010.
4690	- Transfer to Surveillance category as of 4/4/2006.
4702	- Suspension of trading as of 1/12/2010.
4723	- Suspension of trading as of 31/1/2011.
4726	- Suspension of trading as of 1/3/2011.
4750	- Transfer to the "Under Surveillance Category" from 8/4/2011.
4764	- Suspension of trading as of 20/5/2011.
4765	- Suspension of trading as of 20/5/2011.
4795	- The final gross (pre-tax) dividend is € 0.30 per share and subject to withholding tax on the full dividend amount, i.e. 0,45 per share, for those shareholders liable to withholding tax, in accordance with the applicable tax law provisions.
4814	- Transfer to the Low Dispersion Category as of 30/5/2011.
4815	- Transfer to the Low Dispersion Category as of 30/5/2011.
4816	- Transfer to the Low Dispersion Category as of 30/5/2011.
4817	- Transfer to the Low Dispersion Category as of 30/5/2011.
4820	- Transfer to the Low Dispersion category as of 18/4/2008.
4822	- Transfer to the Low Dispersion category as of 30/5/2011.
4823	- Transfer to the Low Dispersion category as of 4/4/2006.
4827	- Transfer to the Low Dispersion category as of 5/5/2010.
4830	- Suspension of trading as of 10/10/2011.
4833	- Transfer to Surveillance category from 6/5/2010.
4844	- Transfer to the Surveillance category from 8/4/2011.
4847	- Transfer to the Surveillance Category as of 3/7/2009.
4857	- The 793,906,274 new (CR) shares, resulting from the recent share capital increase through a rights issue, are not yet admitted to trading on the ATHEX.
4860	- Suspension of trading as of 30/3/2012.
4865	- Suspension of trading as of 2/4/2012.
4868	- Suspension of trading as of 2/4/2012.
4879	- Transfer to the Surveillance Category as of 10/4/2012.
4881	- Transfer to the Surveillance Category as of 10/4/2012.
4882	- Transfer to the Surveillance Category as of 10/4/2012.
4884	- Transfer to the Surveillance Category as of 10/4/2012.



## Shares' Notes

Code	Note text
4885	- Transfer to the Surveillance Category as of 10/4/2012.
4886	- Transfer to the Surveillance Category as of 10/4/2012.
4887	- Transfer to the Surveillance Category as of 10/4/2012.
4888	- Transfer to the Surveillance Category as of 10/4/2012.
4911	- Lift of suspension from 30/7/2012.
4912	- Transfer to the Surveillance Category as of 31/7/2012.
4913	- Suspension of trading as of 30/8/2012.
4914	- Suspension of trading as of 31/8/2012.
4918	- Suspension of trading as of 31/8/2012.
4920	- Suspension of trading as of 31/8/2012.
4921	- Suspension of trading as of 31/8/2012.
4929	- Suspension of trading as of 1/10/2012.
4937	- Transfer to the UNDER DELETION category as of 30/11/2012.
4938	- Transfer to the UNDER DELETION category as of 30/11/2012.
4939	- Suspension of trading as of 30/11/2012.
4953	- Suspension of trading as of 2/4/2013.
4954	- Suspension of trading as of 2/4/2013.
4955	- Transfer to the Surveillance Category as from 5/4/2013.
4956	- Transfer to the Surveillance Category as from 5/4/2013.
4957	- Transfer to the Surveillance Category as from 5/4/2013.
4958	- Transfer to the Surveillance Category as from 5/4/2013.
4959	- Transfer to the Surveillance Category as from 5/4/2013.
4960	- Transfer to the Surveillance Category as from 5/4/2013.
4961	- Transfer to the Surveillance Category as from 5/4/2013.
4971	- Suspension of trading as of 3/6/2013.
4977	- Transfer to the "Under Surveillance Category" from 11/6/2013.
4978	- Transfer to the Under Supervision Category as of 11/6/2013.
4982	- Suspension of trading as of 1/12/2011.
4983	- Transfer to the Surveillance Category as of 5/4/2013.
4985	- Transfer to the "Under Surveillance Category" from 8/4/2011.
4993	- Suspension of trading as of 21/6/2013 (15:18).
4997	- Transfer to the Under Supervision Category as of 21/12/2009. - The 6,870,053 new (CB) shares, resulting from the recent share capital increase through a rights issue, are not yet admitted to trading on the ATHEX.
5002	- Suspension of trading as of 30/08/2013.
5003	- Suspension of trading as of 30/08/2013.
5004	- Suspension of trading as of 30/08/2013.
5007	- Transfer to the Surveillance category, as of 11/10/2013.
5008	- Transfer to the Surveillance Category from 8/4/2011.
5022	- Suspension of trading as of 2/12/2013.
5023	- Suspension of trading as of 2/12/2013.
5031	- The 612,300 new (CR) shares, resulting from the recent share capital increase through a rights issue, are not yet admitted to trading on the ATHEX.
5033	- Transfer to the Surveillance Category as of 25/11/2011. The 97,144,575new (CR) shares, resulting from the recent share capital increase through a rights issue, are not yet admitted to trading on the ATHEX.
5036	- The company's share is under suspension of trading as of 2/4/2012. During suspension, the company proceeded and concluded a share reverse split, according to which - after the conclusion of the corporate action - the total number of the company's shares, as well as, the last closing price of 30/03/2012 were adjusted.
5046	- Transfer to the Low Dispersion category as of 8/4/2011.
5047	- Suspension of trading as of 27/3/2014.
5049	- Under suspension of trading as of 1/4/2014.
5053	- Transfer to the UNDER DELETION category as of 10/4/2014.
5054	- Transfer to the Surveillance Category as of 10/4/2014.
5055	- Transfer to the Surveillance Category as of 10/4/2014.
5056	- Transfer to the Under Supervision Category as of 14/4/2014.
5057	- Transfer to the Surveillance Category as of 29/12/2011.
5058	- Transfer to the Surveillance Category as of 29/12/2011.

---

Shares' Notes

---

Code	Note text
5059	- Transfer to the Low Dispersion category as of 2/6/2014.
5061	- Suspension of trading as of 2/6/2014.
5062	- Transfer to the UNDER DELETION category as of 4/6/2014.
5075	- Transfer to the "Low Dispersion" Category as of 31/10/2014.
5080	- Suspension of trading as of 6/9/2011.
5081	- Transfer to the Surveillance category, as of 19/12/2014.
5082	- Transfer to the Surveillance category, as of 26/02/2015.
5083	- Transfer to the Surveillance Category as of 06/03/2015.

## Securities Blocks Details

Securities	Block Volume	Price	Block Trade Value	Time of approval	Note
OPAP (CR)	100,000	8.29	828,500.00	10:38:40	20
PIRAEUS BANK (CR)	152,900	0.392	59,860.35	10:56:32	14
OPAP (CR)	170,404	8.27	1,409,241.08	12:23:34	20
AEGEAN AIRLINES (CR)	50	7.41	370.50	14:02:25	18

## Blocks Notes

9 - Method 6-1 / Special Fees

10 - Method 6-1 / Special Fees, SDS

14 - Method 6-3 / Settlement, Incomplete Buy and Sell

18 - Method 6-2 / SPOT 1

19 - Method 6-2 / SPOT 2

20 - Method 6-1 and Method 6-1 Same Day Settlement

21 - Other Pre-agreed

Shares Rights Details

Occured date	Exercise from	Exercise until	Trading until	Rights	Price min	Price max	Closing price	Last Bid	Last Ask	Volume	Trades	Transactions Value
-----------------	------------------	-------------------	------------------	--------	--------------	--------------	------------------	----------	----------	--------	--------	-----------------------

No Rights Transactions.

---

**Shares Forced Sales**

---

Securities	Transaction s Volume	Number of Trades	Transactions Value	Note
No Forced Transactions.				

---

---

**Forced Sales Notes**

---

- 1 - Normal Forced Sale.
- 2 - Forced Sales of Fixed Registered Shares.
- 3 - Forced Sales of Remaining Stock Fractions.

**Forced Sales Registered Shares**

Securities	Start Date	End Date	Initial Volume	Remaining Volume	Date	Avg price (day)	Avg price (period)	Number of Trades	Transactions Volume	Transactions Value
------------	------------	----------	-------------------	---------------------	------	--------------------	-----------------------	---------------------	------------------------	-----------------------

No Fixed Registered Shares Forced Sales.

**Forced Sales Notes**

According to Decision 1/380/04.05.2008 of the Hellenic Republic Capital Market Commission, the certificated registered shares that have not been deposited to the issuer for dematerialisation, will be auctioned in the Athens Exchange by the supervising issuer. Forced sales procedure is held according to Article 99A of the Athens Exchange Rulebook. The average price of the period is calculated by dividing the Total transactions value by the Total volume and includes all the transactions made until the current date.

## Exchange Traded Funds (ETFs) Characteristics

	Transactions Date (T)	Creation / Redemption	Units (T-1)	New Units (T-1)	Redemptio n Units (T-	Units (T) [1]	Fund Assets [2]	Net Unit Price	Dividen d per	Dividend Date
NBGAM ETF ΓΔ Χ.Α.	30/03/2015	25,000	294,878	---	---	294,878	2,528,490.00	8.5747	---	27/10/2011
ALPHA ETF FTSE Athex Large Cap	30/03/2015	50,000	5,848,618	---	---	5,848,618	13,452,700.00	2.3002	0.05	01/07/2013
NBGAM ETF GREECE & TURKEY 30	30/03/2015	25,000	388,550	---	---	388,550	2,800,386.00	7.2073	---	27/10/2011

## ETFs Notes

[1] - Units (T) = Units (T-1) + New Units (T-1) - Redemption Units (T-1)

[2] - The Creation / Redemption Units of T-1 are included.

Corporate Bonds

Num Listed Bonds	Nominal price	Issue price	Today's Rate	Exp. Date	Duration (years)	Note	Coupon attached		Trading	Corporate Bonds	Price min	Price max	Closing price	Previous closing price/date		Volume	Transactions Value	Last order		Date	ear min	Year max
							Common	Preferred										Price	Buy / Sell			
1,794,284	12.49	9.77	5.03	12/07/2015	8	---	---	---	1	NIREUS S.A. (Convertible to CR shares)	---	---	---	12.0000	29/01/2014	---	---	11.0000	B	17/11/2014	12.0000	12.0000
212,801,311	1.00	1.00	6.30	29/07/2020	7	---	7	---	1	MARFIN INVESTMENT GROUP S.A. SERIES B (BOND)	---	---	---	0.8500	23/08/2013	---	---	1.0000	B	28/11/2014	0.8500	0.8500
163,991,598	1.00	1.00	7.00	29/07/2019	6	---	7	---	1	MARFIN INVESTMENT GROUP S.A. SERIES A (BOND)	---	---	---	1.0000	23/08/2013	---	---	1.0000	B	28/11/2014	1.0000	1.0000

Corporate Bonds Notes

Transactions Volume = (Pieces) \* (Nominal Price). Transactions Value = (Pieces) \* (Nominal Price) \* (price %) + (Accrued interest).  
The price of a Bond is stated as a percentage (%) of Bond's Nominal Price.  
Nominal Price in Euros (€), except if it is noted differently.



Government Bonds

Number Listed Bonds	Nominal price	Today's Rate	Accrued Interest Calc	Exp. Date [1]	Duration (years)	Note	Coupons Date	Curr. coupon value	Trading Unit	Government Bonds	Price min	Price max	Closing price	Previous closing price/date	Volume	Transactions Value	Price	Last order Buy / Sell	Date
1,792,455,803	1.00	4.30	Actual/Actual	24/02/2023	11	---	24/02	4.30	1	GGB-FXD-240223-11Y-2.000-1.00	---	---	---	10.0000 28/01/2015	---	---	---	---	---
1,771,485,249	1.00	4.30	Actual/Actual	24/02/2024	12	---	24/02	4.30	1	GGB-FXD-240224-12Y-2.000-1.00	---	---	---	10.0000 28/01/2015	---	---	---	---	---
1,744,316,583	1.00	4.30	Actual/Actual	24/02/2025	13	---	24/02	4.30	1	GGB-FXD-240225-13Y-2.000-1.00	---	---	---	10.0000 28/01/2015	---	---	---	---	---
1,498,761,836	1.00	4.30	Actual/Actual	24/02/2026	14	---	24/02	4.30	1	GGB-FXD-240226-14Y-2.000-1.00	---	---	---	10.0000 28/01/2015	---	---	---	---	---
1,469,952,920	1.00	4.30	Actual/Actual	24/02/2027	15	---	24/02	4.30	1	GGB-FXD-240227-15Y-2.000-1.00	---	---	---	10.0000 28/01/2015	---	---	---	---	---
1,525,434,082	1.00	4.30	Actual/Actual	24/02/2028	16	---	24/02	4.30	1	GGB-FXD-240228-16Y-2.000-1.00	---	---	---	10.0000 28/01/2015	---	---	---	---	---
1,503,860,546	1.00	4.30	Actual/Actual	24/02/2029	17	---	24/02	4.30	1	GGB-FXD-240229-17Y-2.000-1.00	---	---	---	10.0000 28/01/2015	---	---	---	---	---
1,435,418,132	1.00	4.30	Actual/Actual	24/02/2030	18	---	24/02	4.30	1	GGB-FXD-240230-18Y-2.000-1.00	---	---	---	10.0000 28/01/2015	---	---	---	---	---
1,368,045,727	1.00	4.30	Actual/Actual	24/02/2031	19	---	24/02	4.30	1	GGB-FXD-240231-19Y-2.000-1.00	---	---	---	10.0000 28/01/2015	---	---	---	---	---
1,373,758,194	1.00	4.30	Actual/Actual	24/02/2032	20	---	24/02	4.30	1	GGB-FXD-240232-20Y-2.000-1.00	---	---	---	10.0000 28/01/2015	---	---	---	---	---
1,452,639,893	1.00	4.30	Actual/Actual	24/02/2033	21	---	24/02	4.30	1	GGB-FXD-240233-21Y-2.000-1.00	---	---	---	10.0000 28/01/2015	---	---	---	---	---
1,410,344,954	1.00	4.30	Actual/Actual	24/02/2034	22	---	24/02	4.30	1	GGB-FXD-240234-22Y-2.000-1.00	---	---	---	10.0000 28/01/2015	---	---	---	---	---
1,444,202,190	1.00	4.30	Actual/Actual	24/02/2035	23	---	24/02	4.30	1	GGB-FXD-240235-23Y-2.000-1.00	---	---	---	10.0000 28/01/2015	---	---	---	---	---
1,505,138,031	1.00	4.30	Actual/Actual	24/02/2036	24	---	24/02	4.30	1	GGB-FXD-240236-24Y-2.000-1.00	---	---	---	10.0000 28/01/2015	---	---	---	---	---
1,396,254,095	1.00	4.30	Actual/Actual	24/02/2037	25	---	24/02	4.30	1	GGB-FXD-240237-25Y-2.000-1.00	---	---	---	10.0000 28/01/2015	---	---	---	---	---
1,382,167,704	1.00	4.30	Actual/Actual	24/02/2038	26	---	24/02	4.30	1	GGB-FXD-240238-26Y-2.000-1.00	---	---	---	10.0000 28/01/2015	---	---	---	---	---
1,337,331,257	1.00	4.30	Actual/Actual	24/02/2039	27	---	24/02	4.30	1	GGB-FXD-240239-27Y-2.000-1.00	---	---	---	10.0000 28/01/2015	---	---	---	---	---
1,371,908,706	1.00	4.30	Actual/Actual	24/02/2040	28	---	24/02	4.30	1	GGB-FXD-240240-28Y-2.000-1.00	---	---	---	10.0000 28/01/2015	---	---	---	---	---
1,360,659,778	1.00	4.30	Actual/Actual	24/02/2041	29	---	24/02	4.30	1	GGB-FXD-240241-29Y-2.000-1.00	---	---	---	10.0000 28/01/2015	---	---	---	---	---
1,432,747,403	1.00	4.30	Actual/Actual	24/02/2042	30	---	24/02	4.30	1	GGB-FXD-240242-30Y-2.000-1.00	---	---	---	10.0000 28/01/2015	---	---	---	---	---
742,153	1,000.00	0.93	FLR Actual/360	10/08/2019	5	---	10/02 - 10/08	---	1	GGB-FLT-100819-05Y-0.934-1,000	---	---	---	---	---	---	---	---	---
4,030,827	1,000.00	4.75	Actual/Actual	17/04/2019	5	---	17/04	4.75	1	GGB-FXD-170419-05Y-4.750-1,000	---	---	---	---	---	---	---	---	---
2,089,066	1,000.00	3.38	Actual/Actual	17/07/2017	3	---	17/07	3.38	1	GGB-FXD-170717-03Y-3.375-1,000	---	---	---	---	---	---	---	---	---

Government Bonds Notes

Transactions Volume = (Pieces) \* (Nominal Price). Transactions Value = (Pieces) \* (Nominal Price) \* (price %) + (Accrued interest).  
The Value of current coupon for the issues with NV 0.01 euro refers to NV 100 euros  
FLR: Floating Interest Rate.  
[1] - The Expiration Date of the interest bearing period and the Date for coupon payment.

Bonds in Circulation	Currency / Min nominal traded Value	Coupons Payment Date	Current Coupon Value	Note	Coupon Attached	Trading Unit	Issue Date	Duration (years)	Today's Interest	A.I.C in days	Bonds	Last price of previous days	Last Outcry in Cash (euro) Price	Buy / Sell	Trades in Pieces	Life min	Life Max
Bonds of International Organizations																	
1,000,000	EUR / 1000	21/07	---	---	9	1	21/07/2006	10	5.0 FLR	360	EUROPEAN INVESTMENT BANK BOND	97.50	16/04/2007	---	---	---	---
Corporate Bonds in Foreign Currency and Euro																	
103,746	GBP / 10	01/12	0.25	---	56	1	01/12/1930	98	2.5	360	National Mortgage Bank	2.27	05/02/1996	2.27	S	05/02/1996	2.27
0	GBP / 10	01/12	0.25	---	58	1	01/12/1928	100	2.5	360	National Mortgage Bank	---	---	---	---	---	---

Government Bonds Notes

A.I.C: Accrued Interest Calculation base.  
FLR: Floating Interest Rate.  
The minimum tradeable Nominal Value for all Demeterialised Government Titles is 100 Euros.

State Banks Bonds (one year maturity)

Number Listed Bonds	Nominal value	Initial Rate	Current Rate	Annual Interest	Issue Date	Note	State Banks Bonds	Trading Unit	Yearly Renewals	Last Outcry in Cash (euro) Price	Buy / Sell	Volume
2,446	1,182.96	4.90	2.47	29.69	31/05/2008	---	H.I.D.B.	1	7	---	---	---

Bonds Notes

The annual renewal of H.I.D.B. Bonds is free of taxes (net rate).  
For Bonds issue until 27/02/2015 the accrued interest is capitalized.

Athex & ATHEXClear Members List

Member Name			Stock Market			Derivatives Market		ATHEXClear Member		
Address	Phone	Fax	Market Member	Remote Member	Market Maker	Proprietary	Market Maker	General Clearing	Direct Clearing	Non Clearing
A. SARRIS SECURITIES S.A.			a							
6, DRAGATSANIOU STR. ATHINA	(210)-3367700	(210)-3312324								
ALPHA FINANCE INVESTMENT SERVICES S.A.			a		a		a		a	
5, MERLIN STR. ATHINA	(210)-3677400	(210)-3311193								
ALPHA BANK A.E.								a		
40, STADIOU STR ATHINA	(210)-3265546 (210)-3260000	(210)-3265811 (210)-3264116								
ARGUS STOCKBROKERS LTD			a	a		a				
12-14, KENNEDY AVE, S. 303 NICOSIA	(+35722)-22717000	(+35722)-22717070								
ATLANTIC SECURITIES LIMITED			a	a						
37, PRODROMOU STR. NICOSIA	(+35722)-445400	(+35722)-661914								
ATLAS SECURITIES S.A			a			a				a
14 - 16, VERNON STR.& 125 MICHALAKOPOULOU STR. ATHINA	(210)-3363300	(210)-3238925								
ATTICA BANK S.A.								a		
23, OMIROU STR. ATHINA	(210)-3669000	(210)-3669410								
54, AKADIMIAS STR. ATHINA	(210)-3390757	(210)-3646090								
AXIA VENTURES GROUP LTD			a	a						
10, G. KRANIDIOTI NICOSIA	+357 22 742000	+357 22 742001								
AXON SECURITIES S.A.			a			a				a
48, STADIOU ATHINA	(210)-3363800	(210)-3243903								
BANK OF CYPRUS PUBLIC COMPANY LTD								a		
, 51,STASINOU (AG. PARASKEVI, STROVOLOS) NICOSIA	(0035722)-121883	(0035722)-336258								
170, ALEXANDRAS AVE ATHINA	(210)-6477708	(210)-6477709								
BETA SECURITIES S.A.			a		a		a		a	
, BRAILA & 29 ALEXANDRAS AVE ATHINA	(210)-6478900	(210)-6410139								
BNP PARIBAS SECURITIES SERVICES								a		
94, VAS. SOFIAS AVE ATHINA	(210)-7468500	(210)-7468579								
CAPITAL SECURITIES S.A.			a			a				a
58, MITROPOLEOS STR. ATHINA	(210)-3369700	(210)-3369820								
CFS SECURITIES & INVESTMENT SERVICES S.A.			a			a			a	
3, STADIOU STR. ATHINA	(210)-3360800	(210)-3311854								
CITIBANK INTERNATIONAL PLC (ATHENS BRANCH)								a		
8, OTONOS ATHINA	(210)-9293084	(210)-9293461								
CITIGROUP GLOBAL MARKET LTD			a	a						
, CITIGROUP CENTRE, CANADA SQUARE, CANARY WHART LONDON	002079864000	002079862266								
CREDIT SUISSE SECURITIES (EUROPE) LIMITED			a	a						
, ONE CABOT SQUARE LONDON	+44 20 7888 8888	+44 20 7888 1600								
CYCLOS SECURITIES S.A.			a			a			a	
39, PANEPISTIMIOU STR. ATHINA	(210)-3364300	(210)-3239122								
D.A. TSEKOURAS SEC. S.A.			a							
, PESMAZOGLOY 3	(210)-3214406	(210)-3211997								
DEUTSCHE BANK A.G.			a	a		a				
70, THEODOR-HEUSS-ALLEE FRANKFURT	0049 69 910 00	0049 69 910 34 225								
DYNAMIC SECURITIES			a			a			a	
6 - 10, CHAR. TRIKOUPH STR. ATHINA	(210)-3677700	(210)-3677777								
EL. PETROPOULAKIS SECURITIES S.A.			a			a				a
9, ARISTIDOU STR. ATHINA	(210)-3213928	(210)-3216810								
EUROBANK EQUITIES S.A.			a		a		a		a	
10, FILELLINON STR. ATHINA	(210)-3720000	(210)-3720001								
EUROBANK ERGASIAS S.A.								a		
8, OTHONOS STR. ATHINA	(210)-3337000 (210)-3337969	(210)-3233866 (210)-3245916								
EUROCORP SECURITIES S.A.			a			a			a	
14, FILIKIS ETAIRIAS SQ. ATHINA	(210)-7263500	(210)-7263666								
EUOTRUST BROKERAGE S.A.			a							
13-15, SOPHOCLEOUS STR. ATHINA	(210)-3363100	(210)-3238334								
EUROXX SECURITIES S.A.			a			a			a	
7, PALAIOLOGOU STR. CHALANDRI	(210)-6879400	(210)-6879401								
G.A. PERVANAS SECURITIES & INVESTMENT SERVICES CO S.A.			a							a
7 - 9, SOPHOCLEOUS STR. ATHINA	(210)-3251875	(210)-3210291								
GLOBAL CAPITAL SECURITIES AND FINANCIAL SERVICES LTD			a	a						
5, LEMESOU AVE. LEMESOS CYPRUS	(+35722)-710710	(+35722)-339332								

Athex & ATHEXClear Members List

Member Name			Stock Market			Derivatives Market		ATHEXClear Member		
Address	Phone	Fax	Market Member	Remote Member	Market Maker	Proprietary	Market Maker	General Clearing	Direct Clearing	Non Clearing
GUARDIAN TRUST SECURITIES S.A			a			a				a
15, FILELLINON STR. ATHINA	(210)-3220402	(210)-3220498								
HELLENIC AMERICAN SEC. S.A.			a		a	a			a	
6, EVRIPIDOU STR. ATHINA	(210)-3311100	(210)-3215968								
HELLENIC BANK (INVESTMENTS) LTD			a	a						
31, KYRIAKOY MATSI AVE. NICOSIA	(+35722)-500100	(+35722)-500110								
HSBC BANK PLC								a		
109-111, MESOGION AVE ATHINA	(210)-6961507	(210)-6929310								
INDEX SECURITIES S.A.			a							
6, DRAGATSANIOU STR. ATHINA	(210)-3213920	(210)-3213216								
INVESTMENT BANK OF GREECE S.A.			a		a		a	a		
32, AIGEIALIAS MAROUSI	(210) 8173000	(210) 8173101								
24B, KIFISSIAS AVE MAROUSI	(210)-8171800	(210)-8171889								
J. CHR. MAVRIKIS SECURITIES S.A.			a							
5, SOPHOCLEOUS STR. ATHINA	(210)-3213949	(210)-3217767								
KAPPA SECURITIES S.A.			a			a				a
15, VALAORITOU STR. ATHINA	(210)-3610371	(210)-3641002								
KYPROU SECURITIES S.A.										a
26, HALKIDONOS & FIDIPIIDOY STR. ATHINA	(210)-8701000	(210)-8701049								
LAIKI FINANCIAL SERVICES LTD			a	a						
26, CLR HOUSE, VIRONOS AVE. NICOSIA	(+35722)-898600	(+35722)-680953								
LEON DEPOLAS SECURITIES S.A.			a			a				a
1, CHR. LADA STR. ATHINA	(210)-3213286	(210)-3211618								
MAGNA TRUST SECURITIES S.A			a							a
9, FIDIOU STR. ATHINA	(210)-3327503	(210)-3327599								
MEGA EQUITY SECURITIES & FINANCIAL SERVICES LTD			a	a		a				
42-44, GRIBA DIGENI AV. NICOSIA	(+35722)-711711	(+35722)-711811								
MERIT SECURITIES S.A			a		a	a			a	
38, VAS. KONSTANTINOU STR. ATHINA	(210)-3671800	(210)-3671830								
MERRILL LYNCH			a	a						
2, KING EDWARD STREET LONDON	(+4420)-79952000	(+4420)-79954525								
MIDAS BROKERAGE S.A.			a							
5, SOPHOCLEOUS STR. ATHINA	(210)-3253203	(210)-3253205								
N. CHRYSSOCHOIDIS STOCK BROKERAGE I.S.S.A.			a			a			a	
7 - 9, SOPHOCLEOUS STR. ATHINA	(210)-3213913	(210)-3216115								
NATIONAL BANK OF GREECE S.A.			a			a		a		
86, AIOLOU STR. ATHINA	(210)-3341000	(210)-3228187								
68, AKADIMIAS STR. ATHINA	(210)-3328817	(210)-3328678								
NBG SECURITIES S.A.			a		a		a			a
68, AKADIMIAS STR. ATHINA	(210)-3328500	(210)-3328565								
NUNTIUS SECURITIES S.A			a							a
6, DRAGATSANIOU STR. ATHINA	(210)-3350599	(210)-3254846								
PANTELAKIS SEC. S.A.			a			a				a
109-111, MESOGION AVE. ATHINA	(210)-6965000	(210)-6929550								
PEGASUS BROKERAGE FIRM S.A			a			a				
17, VALAORITOU STR. ATHINA	(210)-3670700	(210)-3670760								
PIRAEUS BANK S.A.			a		a			a		
4, AMERIKIS STR. ATHINA	(210)-3335000	(210)-3335079								
4, AMERIKIS STR ATHINA	(210)-3335918	(210)-3254207								
PIRAEUS SECURITIES S.A.			a				a		a	
10, STADIOU STR. ATHINA	(210)-3354100	(210)-3233814								
PRELIUM SECURITIES & INVESTMENT SERVICES S.A.			a			a				a
, KIFISSIAS AVE & 1 DAVAKI STR ATHINA	(210)-3677000	(210)-6920403								
PROCHOICE SECURITIES LTD			a	a						
57, SPYROY KYPRIANOU NICOSIA	+357-24-661192	+357-24-662464								
SHARELINK SECURITIES & FINANCIAL SERVICES LTD			a	a		a				
6, ELLINAS HOUSE, THEOTOKI STR. NICOSIA	(+35722)-554200	(+35722)-750852								
SOCIETE GENERALE S.A.			a	a		a				
17, COURS VALMY PUTEAUX - LA DEFENSE PARIS	(+33) 142134754	(+33) 142135697								
240-242, KIFISIAS AVE ATHINA	(210)-6790161	(210)-6728828								
SOLIDUS SECURITIES S.A			a			a			a	
64, LOUIZIS RIANKOUR STR. ATHINA	(210)-6925500	(210)-6985421								

## Athex &amp; ATHEXClear Members List

Member Name			Stock Market			Derivatives Market		ATHEXClear Member		
Address	Phone	Fax	Market Member	Remote Member	Market Maker	Proprietary	Market Maker	General Clearing	Direct Clearing	Non Clearing
ST. EM. LAVRENTAKIS SECURITIES S.A.			a			a				a
7 - 9, SOPHOCLEOUS STR. ATHINA	(210)-3213336	(210)-3246572								
THE CYPRUS INVESTMENT AND SECURITIES CORPORATION LIMITED (CISCO)			a	a						
4, EVROU STR. (EUROLIFE HOUSE) NICOSIA	(+35722)-881800	(+35722)-881801								
UBS LIMITED			a	a						
1, FINSBURY AVENUE LONDON	(+4420)-79013333	(+4420)-79012345								
KARAMANOF SECURITIES & INV. SERVICES S.A.			a			a				
2, SQ. ST THEODORON ATHINA	(210)-3212947	(210)-3217088								

## List of Stocks under Market Making operations

Securities	Stock Category
Market Maker	Start Market Making
<b>CYPRUS POPULAR BANK (CR)</b>	<b>Suspension Status</b>
PIRAEUS SECURITIES S.A.	02/02/2013
<b>VIOHALCO (CB)</b>	<b>Suspension Status</b>
ALPHA FINANCE INVESTMENT SERVICES S.A.	11/02/2013
EUROBANK EQUITIES S.A.	20/01/2013
MERIT SECURITIES S.A	13/12/2012
<b>ALPHA BANK (CR)</b>	<b>Main Market</b>
EUROBANK EQUITIES S.A.	24/10/2012
HELLENIC AMERICAN SEC. S.A.	25/07/2014
INVESTMENT BANK OF GREECE S.A.	08/01/2013
MERIT SECURITIES S.A	03/09/2013
NBG SECURITIES S.A.	15/01/2013
PIRAEUS SECURITIES S.A.	28/05/2013
<b>ALUMIL (CR)</b>	<b>Main Market</b>
BETA SECURITIES S.A.	18/07/2013
<b>ATTICA BANK S.A. (CR)</b>	<b>Main Market</b>
BETA SECURITIES S.A.	02/06/2014
EUROBANK EQUITIES S.A.	25/07/2014
HELLENIC AMERICAN SEC. S.A.	25/07/2014
<b>BANK OF CYPRUS (CR)</b>	<b>Main Market</b>
EUROBANK EQUITIES S.A.	23/03/2015
<b>BYTE COMPUTER SA (CR)</b>	<b>Main Market</b>
MERIT SECURITIES S.A	04/08/2013
<b>CC HBC AG (CR)</b>	<b>Main Market</b>
EUROBANK EQUITIES S.A.	23/10/2013
NBG SECURITIES S.A.	29/04/2013
<b>ELLAKTOR (CR)</b>	<b>Main Market</b>
EUROBANK EQUITIES S.A.	01/06/2013
INVESTMENT BANK OF GREECE S.A.	02/01/2013
NBG SECURITIES S.A.	25/06/2013
<b>ELTECH ANEMOS S.A. (CR)</b>	<b>Main Market</b>
EUROBANK EQUITIES S.A.	22/07/2014
<b>ELTON SA (CR)</b>	<b>Main Market</b>
BETA SECURITIES S.A.	03/09/2013
<b>EUROBANK ERGASIAS (CR)</b>	<b>Main Market</b>
ALPHA FINANCE INVESTMENT SERVICES S.A.	08/01/2013
EUROBANK EQUITIES S.A.	01/06/2013
HELLENIC AMERICAN SEC. S.A.	25/07/2014
INVESTMENT BANK OF GREECE S.A.	08/01/2013
PIRAEUS SECURITIES S.A.	28/09/2013
<b>EUROCONSULTANTS S.A. (CR)</b>	<b>Main Market</b>
EUROBANK EQUITIES S.A.	22/07/2014
<b>FOLLI FOLLIE (CR)</b>	<b>Main Market</b>
NBG SECURITIES S.A.	17/02/2014
<b>FRIGOGLASS SA (CR)</b>	<b>Main Market</b>
EUROBANK EQUITIES S.A.	27/10/2014
<b>GEK TERNA (CR)</b>	<b>Main Market</b>
INVESTMENT BANK OF GREECE S.A.	02/01/2013
<b>GR. SARANTIS SA (CR)</b>	<b>Main Market</b>
BETA SECURITIES S.A.	14/05/2013
<b>HELLENIC EXCHANGES-A.S.E. (CR)</b>	<b>Main Market</b>
EUROBANK EQUITIES S.A.	01/06/2013
HELLENIC AMERICAN SEC. S.A.	01/09/2014
INVESTMENT BANK OF GREECE S.A.	02/01/2013
NBG SECURITIES S.A.	25/06/2013
<b>INTRALOT (CR)</b>	<b>Main Market</b>
EUROBANK EQUITIES S.A.	01/06/2013
INVESTMENT BANK OF GREECE S.A.	02/01/2013
PIRAEUS SECURITIES S.A.	28/09/2013
<b>KRETA FARM SA (CR)</b>	<b>Main Market</b>
EUROBANK EQUITIES S.A.	17/11/2014
<b>LAMDA DEVELOPMENT SA (CR)</b>	<b>Main Market</b>
EUROBANK EQUITIES S.A.	08/12/2014
<b>MARFIN INVESTMENT GROUP (CR)</b>	<b>Main Market</b>
EUROBANK EQUITIES S.A.	23/03/2015
HELLENIC AMERICAN SEC. S.A.	25/07/2014
PIRAEUS SECURITIES S.A.	02/02/2013
<b>MLS MULTIMEDIA SA (CR)</b>	<b>Main Market</b>
BETA SECURITIES S.A.	18/07/2013

## List of Stocks under Market Making operations

Securities	Stock Category
Market Maker	Start Market Making
<b>MOTOR OIL (CR)</b>	<b>Main Market</b>
EUROBANK EQUITIES S.A.	23/10/2012
HELLENIC AMERICAN SEC. S.A.	01/09/2014
NBG SECURITIES S.A.	17/02/2014
<b>MYTILINEOS HOLDINGS (CR)</b>	<b>Main Market</b>
HELLENIC AMERICAN SEC. S.A.	25/07/2014
INVESTMENT BANK OF GREECE S.A.	02/01/2013
NBG SECURITIES S.A.	25/06/2013
<b>NATIONAL BANK (CR)</b>	<b>Main Market</b>
ALPHA FINANCE INVESTMENT SERVICES S.A.	08/01/2013
EUROBANK EQUITIES S.A.	24/10/2012
HELLENIC AMERICAN SEC. S.A.	25/07/2014
INVESTMENT BANK OF GREECE S.A.	08/01/2013
MERIT SECURITIES S.A.	03/09/2013
NBG SECURITIES S.A.	28/02/2013
PIRAEUS SECURITIES S.A.	08/09/2013
<b>OPAP (CR)</b>	<b>Main Market</b>
ALPHA FINANCE INVESTMENT SERVICES S.A.	08/01/2013
EUROBANK EQUITIES S.A.	24/10/2012
HELLENIC AMERICAN SEC. S.A.	25/07/2014
INVESTMENT BANK OF GREECE S.A.	08/01/2013
NBG SECURITIES S.A.	15/01/2013
<b>OTE (CR)</b>	<b>Main Market</b>
ALPHA FINANCE INVESTMENT SERVICES S.A.	08/01/2013
EUROBANK EQUITIES S.A.	24/10/2012
HELLENIC AMERICAN SEC. S.A.	25/07/2014
INVESTMENT BANK OF GREECE S.A.	08/01/2013
NBG SECURITIES S.A.	01/12/2012
PIRAEUS SECURITIES S.A.	08/09/2013
<b>PAPOUTSANIS (CR)</b>	<b>Main Market</b>
BETA SECURITIES S.A.	25/11/2013
<b>PETROPOULOS PETROS (CR)</b>	<b>Main Market</b>
BETA SECURITIES S.A.	28/05/2013
<b>PIRAEUS BANK (CR)</b>	<b>Main Market</b>
EUROBANK EQUITIES S.A.	23/10/2012
HELLENIC AMERICAN SEC. S.A.	25/07/2014
INVESTMENT BANK OF GREECE S.A.	08/01/2013
MERIT SECURITIES S.A.	16/09/2013
NBG SECURITIES S.A.	02/06/2013
PIRAEUS SECURITIES S.A.	16/02/2013
<b>PLAISIO COMPUTERS SA (CR)</b>	<b>Main Market</b>
BETA SECURITIES S.A.	05/05/2014
EUROBANK EQUITIES S.A.	02/03/2015
<b>PPC (CR)</b>	<b>Main Market</b>
ALPHA FINANCE INVESTMENT SERVICES S.A.	08/01/2013
EUROBANK EQUITIES S.A.	23/10/2012
HELLENIC AMERICAN SEC. S.A.	01/09/2014
INVESTMENT BANK OF GREECE S.A.	08/01/2013
NBG SECURITIES S.A.	26/03/2013
PIRAEUS SECURITIES S.A.	28/09/2013
<b>PROFILE SA (CR)</b>	<b>Main Market</b>
EUROBANK EQUITIES S.A.	23/06/2014
<b>REDS S.A. (CR)</b>	<b>Main Market</b>
EUROBANK EQUITIES S.A.	05/09/2014
<b>S.KANAKIS SA (CR)</b>	<b>Main Market</b>
BETA SECURITIES S.A.	01/10/2013
<b>TITAN CEMENT (CR)</b>	<b>Main Market</b>
EUROBANK EQUITIES S.A.	23/10/2012
NBG SECURITIES S.A.	17/02/2014
<b>VIOHALCO SA/NV (CB)</b>	<b>Main Market</b>
ALPHA FINANCE INVESTMENT SERVICES S.A.	17/02/2014
MERIT SECURITIES S.A.	17/03/2014



Underlying Asset				Derivatives Market														
Price max	Price min	Closing price	change	Delivery Month	Open price	Price max	Price min	Last price	Closing price	Last Bid	Last Ask	Settlement price	Life high	Life low	Trades	Volume	Open Interest	
FTSE/Athex Large Cap																	(Trade Unit: 1 Index Point x 5€, Cash Settlement)	
228.29	222.76	228.29	0.53%	April 2015	225.00	230.50	221.50	228.25	228.25	---	---	228.25	280.00	---	611	3,862	41,365	
				May 2015	224.50	228.00	224.50	225.00	225.00	---	---	226.50	---	238.25	---	7	23	131
				June 2015	227.00	227.00	224.50	224.50	224.50	---	---	225.00	273.00	---	2	6	11	
				September 2015	---	---	---	---	226.75	---	---	---	---	---	---	---	---	
				December 2015	---	---	---	---	227.75	---	---	---	---	---	---	---	---	
				March 2016	---	---	---	---	229.00	---	---	---	---	---	---	---	---	

Underlying Asset				Derivatives Market													
Price max	Price min	Closing price	change	Delivery Month	Open price	Price max	Price min	Last price	Closing price	Last Bid	Last Ask	Settlement price	Life high	Life low	Trades	Volume	Open Interest
ALPHA BANK (CR)				(Contract Size: 100 Securities, Physical Delivery)													
0.294	0.277	0.281	-6.33%	June 2015	0.293	0.295	0.280	0.288	0.288	---	---	0.288	0.405	---	275	5,359	51,438
				September 2015	---	---	---	---	0.303	---	---	0.290	---	0.403	---	---	50
				December 2015	---	---	---	---	0.304	---	---	---	---	---	---	---	---
				March 2016	---	---	---	---	0.306	---	---	---	---	---	---	---	---
CC HBC AG (CR)				(Contract Size: 100 Securities, Physical Delivery)													
16.91	16.42	16.91	2.67%	June 2015	16.60	16.70	16.60	16.70	16.70	---	---	16.53	16.70	---	3	3	56
				September 2015	---	---	---	---	16.28	---	---	---	---	---	---	---	---
				December 2015	---	---	---	---	16.36	---	---	---	---	---	---	---	---
				March 2016	---	---	---	---	16.45	---	---	---	---	---	---	---	---
CORINTH PIPEWORKS SA (CR)				(Contract Size: 100 Securities, Physical Delivery)													
1.00	0.975	0.999	-3.01%	June 2015	0.977	1.01	0.950	1.01	1.01	---	---	0.980	1.11	---	4	10	521
				September 2015	---	---	---	---	1.04	---	---	---	---	---	---	---	---
				December 2015	---	---	---	---	1.05	---	---	---	---	---	---	---	---
				March 2016	---	---	---	---	1.05	---	---	---	---	---	---	---	---
ELLAKTOR (CR)				(Contract Size: 100 Securities, Physical Delivery)													
1.90	1.66	1.90	7.34%	June 2015	1.74	1.89	1.74	1.89	1.89	---	---	1.93	2.26	---	27	130	1,499
				September 2015	---	---	---	---	1.79	---	---	---	---	---	---	---	---
				December 2015	---	---	---	---	1.80	---	---	---	---	---	---	---	---
				March 2016	---	---	---	---	1.81	---	---	---	---	---	---	---	---
EUROBANK ERGASIAS (CR)				(Contract Size: 100 Securities, Physical Delivery)													
0.097	0.091	0.096	-1.03%	June 2015	0.096	0.098	0.092	0.097	0.097	---	---	0.097	0.277	---	175	8,044	228,711
				September 2015	---	---	---	---	0.098	---	---	0.097	0.176	---	---	---	---
				December 2015	---	---	---	---	0.098	---	---	---	---	---	---	---	---
				March 2016	---	---	---	---	0.099	---	---	---	---	---	---	---	---
EYDAP S.A. (CR)				(Contract Size: 100 Securities, Physical Delivery)													
5.32	5.09	5.20	-1.70%	June 2015	5.06	5.32	5.06	5.09	5.09	---	---	5.12	5.86	---	32	95	404
				September 2015	---	---	---	---	4.91	---	---	---	---	---	---	---	---
				December 2015	---	---	---	---	4.94	---	---	---	---	---	---	---	---
				March 2016	---	---	---	---	4.96	---	---	---	---	---	---	---	---
FOLLI FOLLIE (CR)				(Contract Size: 100 Securities, Physical Delivery)													
27.89	26.60	27.89	4.11%	June 2015	26.99	27.80	26.85	27.80	27.80	---	---	27.40	27.80	---	20	123	62
				September 2015	---	---	---	---	27.05	---	---	---	---	---	---	---	---
				December 2015	---	---	---	---	27.19	---	---	---	---	---	---	---	---
				March 2016	---	---	---	---	27.32	---	---	---	---	---	---	---	---
FRIGOGLASS SA (CR)				(Contract Size: 100 Securities, Physical Delivery)													
1.72	1.63	1.69	0.00%	June 2015	---	---	---	---	1.70	---	---	1.66	1.83	---	---	---	330
				September 2015	---	---	---	---	1.71	---	---	---	---	---	---	---	---
				December 2015	---	---	---	---	1.71	---	---	---	---	---	---	---	---
				March 2016	---	---	---	---	1.72	---	---	---	---	---	---	---	---

Underlying Asset				Derivatives Market													
Price max	Price min	Closing price	change	Delivery Month	Open price	Price max	Price min	Last price	Closing price	Last Bid	Last Ask	Settlement price	Life high	Life low	Trades	Volume	Open Interest
GEK TERNA (CR)				(Contract Size: 100 Securities, Physical Delivery)													
1.66	1.52	1.65	3.77%	June 2015	1.55	1.66	1.55	1.66	1.66	---	---	1.70	2.73	---	38	178	7,872
				September 2015	---	---	---	---	1.61	---	---	---	---	---	---	---	---
				December 2015	---	---	---	---	1.61	---	---	---	---	---	---	---	---
				March 2016	---	---	---	---	1.62	---	---	---	---	---	---	---	---
GRIVALIA PROPERTIES (CR)				(Contract Size: 100 Securities, Physical Delivery)													
7.69	7.43	7.65	1.06%	June 2015	---	---	---	---	7.43	---	---	7.77	7.88	---	---	---	101
				September 2015	---	---	---	---	7.46	---	---	---	---	---	---	---	---
				December 2015	---	---	---	---	7.50	---	---	---	---	---	---	---	---
				March 2016	---	---	---	---	7.54	---	---	---	---	---	---	---	---
HELLENIC EXCHANGES-A.S.E. (CR)				(Contract Size: 100 Securities, Physical Delivery)													
4.79	4.69	4.76	-2.86%	June 2015	4.63	4.71	4.61	4.65	4.65	---	---	4.64	6.02	---	34	105	1,794
				September 2015	---	---	---	---	4.86	---	---	4.64	4.86	---	---	---	---
				December 2015	---	---	---	---	4.88	---	---	---	---	---	---	---	---
				March 2016	---	---	---	---	4.91	---	---	---	---	---	---	---	---
HELLENIC PETROLEUM (CR)				(Contract Size: 100 Securities, Physical Delivery)													
3.62	3.49	3.62	-0.27%	June 2015	3.47	3.62	3.47	3.62	3.62	---	---	3.76	4.07	---	21	51	4,814
				September 2015	---	---	---	---	3.52	---	---	---	---	---	---	---	---
				December 2015	---	---	---	---	3.53	---	---	---	---	---	---	---	---
				March 2016	---	---	---	---	3.55	---	---	---	---	---	---	---	---
INTRALOT (CR)				(Contract Size: 100 Securities, Physical Delivery)													
1.56	1.47	1.51	-1.95%	June 2015	1.55	1.55	1.55	1.55	1.55	---	---	1.54	1.74	---	1	5	340
				September 2015	---	---	---	---	1.55	---	---	---	---	---	---	---	---
				December 2015	---	---	---	---	1.56	---	---	---	---	---	---	---	---
				March 2016	---	---	---	---	1.57	---	---	---	---	---	---	---	---
JUMBO SA (CR)				(Contract Size: 100 Securities, Physical Delivery)													
9.68	9.03	9.68	8.16%	June 2015	9.05	9.48	9.04	9.48	9.48	---	---	9.79	9.91	---	56	122	396
				September 2015	---	---	---	---	9.04	---	---	---	---	---	---	---	---
				December 2015	---	---	---	---	8.90	---	---	---	---	---	---	---	---
				March 2016	---	---	---	---	8.95	---	---	---	---	---	---	---	---
MARFIN INVESTMENT GROUP (CR)				(Contract Size: 100 Securities, Physical Delivery)													
0.139	0.125	0.125	-11.35%	June 2015	0.138	0.138	0.130	0.130	0.130	---	---	0.130	0.232	---	72	1,082	30,061
				September 2015	---	---	---	---	0.142	---	---	---	---	---	---	---	---
				December 2015	---	---	---	---	0.143	---	---	---	---	---	---	---	---
				March 2016	---	---	---	---	0.144	---	---	---	---	---	---	---	---
METKA (CR)				(Contract Size: 100 Securities, Physical Delivery)													
8.84	8.60	8.84	2.20%	June 2015	8.34	8.56	8.34	8.56	8.56	---	---	8.46	9.02	---	12	40	327
				September 2015	---	---	---	---	8.43	---	---	---	---	---	---	---	---
				December 2015	---	---	---	---	8.48	---	---	---	---	---	---	---	---
				March 2016	---	---	---	---	8.52	---	---	---	---	---	---	---	---

Underlying Asset				Derivatives Market													
Price max	Price min	Closing price	change	Delivery Month	Open price	Price max	Price min	Last price	Closing price	Last Bid	Last Ask	Settlement price	Life high	Life low	Trades	Volume	Open Interest
MOTOR OIL (CR)				(Contract Size: 100 Securities, Physical Delivery)													
7.08	6.78	7.00	-3.05%	June 2015	6.84	7.04	6.79	7.04	7.04	---	---	6.94	7.38	---	31	96	154
				September 2015	---	---	---	---	7.09	---	---	---	---	---	---	---	---
				December 2015	---	---	---	---	7.13	---	---	---	---	---	---	---	---
				March 2016	---	---	---	---	7.16	---	---	---	---	---	---	---	---
MYTILINEOS HOLDINGS (CR)				(Contract Size: 100 Securities, Physical Delivery)													
5.68	5.37	5.68	2.53%	June 2015	5.42	5.64	5.40	5.64	5.64	---	---	5.72	6.43	---	22	77	4,065
				September 2015	---	---	---	---	5.59	---	---	5.81	5.79	---	---	---	---
				December 2015	---	---	---	---	5.62	---	---	---	---	---	---	---	---
				March 2016	---	---	---	---	5.65	---	---	---	---	---	---	---	---
NATIONAL BANK (CR)				(Contract Size: 100 Securities, Physical Delivery)													
1.14	1.03	1.10	-0.90%	June 2015	1.04	1.14	1.03	1.10	1.10	---	---	1.09	2.10	---	307	4,729	42,124
				September 2015	---	---	---	---	1.12	---	---	1.11	1.44	---	---	---	1
				December 2015	---	---	---	---	1.13	---	---	---	---	---	---	---	---
				March 2016	---	---	---	---	1.13	---	---	---	---	---	---	---	---
OPAP (CR)				(Contract Size: 100 Securities, Physical Delivery)													
8.39	8.19	8.39	4.87%	June 2015	8.04	8.20	8.00	8.13	8.13	---	---	8.36	9.21	---	84	384	1,509
				September 2015	8.11	8.11	8.11	8.11	8.11	---	---	8.43	9.38	---	1	30	20
				December 2015	---	---	---	---	7.87	---	---	8.26	7.72	---	---	---	20
				March 2016	---	---	---	---	7.91	---	---	---	---	---	---	---	---
OTE (CR)				(Contract Size: 100 Securities, Physical Delivery)													
8.69	8.30	8.31	-4.37%	June 2015	8.66	8.68	8.32	8.38	8.38	---	---	8.39	10.57	---	155	568	5,430
				September 2015	---	---	---	---	8.77	---	---	8.25	9.46	---	---	---	---
				December 2015	---	---	---	---	8.82	---	---	---	---	---	---	---	---
				March 2016	---	---	---	---	8.86	---	---	---	---	---	---	---	---
P.P.A. S.A. (CR)				(Contract Size: 100 Securities, Physical Delivery)													
12.00	11.65	11.70	7.54%	June 2015	11.80	11.90	11.70	11.75	11.75	---	---	11.79	13.90	---	20	31	337
				September 2015	---	---	---	---	10.87	---	---	---	---	---	---	---	---
				December 2015	---	---	---	---	10.92	---	---	---	---	---	---	---	---
				March 2016	---	---	---	---	10.98	---	---	---	---	---	---	---	---
PIRAEUS BANK (CR)				(Contract Size: 100 Securities, Physical Delivery)													
0.344	0.309	0.343	0.88%	June 2015	0.335	0.346	0.310	0.343	0.343	---	---	0.336	1.00	---	318	8,527	121,891
				September 2015	0.317	0.337	0.317	0.337	0.337	---	---	0.338	0.733	---	10	1,200	650
				December 2015	---	---	---	---	0.345	---	---	---	---	---	---	---	---
				March 2016	---	---	---	---	0.347	---	---	---	---	---	---	---	---
PPC (CR)				(Contract Size: 100 Securities, Physical Delivery)													
5.80	5.35	5.80	2.11%	June 2015	5.36	5.72	5.35	5.70	5.70	---	---	5.65	8.06	---	135	402	3,670
				September 2015	---	---	---	---	5.71	---	---	---	---	---	---	---	---
				December 2015	---	---	---	---	5.73	---	---	---	---	---	---	---	---
				March 2016	---	---	---	---	5.76	---	---	---	---	---	---	---	---

Underlying Asset				Derivatives Market													
Price max	Price min	Closing price	change	Delivery Month	Open price	Price max	Price min	Last price	Closing price	Last Bid	Last Ask	Settlement price	Life high	Life low	Trades	Volume	Open Interest
SIDENOR (CR)				(Contract Size: 100 Securities, Physical Delivery)													
0.599	0.550	0.599	0.00%	June 2015	---	---	---	---	0.602	---	---	0.596	0.616	---	---	---	572
				September 2015	---	---	---	---	0.605	---	---	---	---	---	---	---	---
				December 2015	---	---	---	---	0.608	---	---	---	---	---	---	---	---
				March 2016	---	---	---	---	0.611	---	---	---	---	---	---	---	---
TERNA ENERGY (CR)				(Contract Size: 100 Securities, Physical Delivery)													
2.37	2.21	2.25	-3.43%	June 2015	2.27	2.31	2.24	2.24	2.24	---	---	2.41	3.15	---	37	127	1,273
				September 2015	---	---	---	---	2.29	---	---	---	---	---	---	---	---
				December 2015	---	---	---	---	2.30	---	---	---	---	---	---	---	---
				March 2016	---	---	---	---	2.32	---	---	---	---	---	---	---	---
TITAN CEMENT (CR)				(Contract Size: 100 Securities, Physical Delivery)													
20.99	20.40	20.58	-1.95%	June 2015	20.80	20.82	20.61	20.70	20.70	---	---	20.58	22.38	---	14	31	201
				September 2015	---	---	---	---	21.09	---	---	---	---	---	---	---	---
				December 2015	---	---	---	---	21.20	---	---	---	---	---	---	---	---
				March 2016	---	---	---	---	21.31	---	---	---	---	---	---	---	---
VIOHALCO SA/NV (CB)				(Contract Size: 100 Securities, Physical Delivery)													
2.91	2.76	2.91	3.56%	June 2015	2.86	2.90	2.86	2.90	2.90	---	---	2.94	3.20	---	4	6	155
				September 2015	---	---	---	---	2.84	---	---	---	---	---	---	---	---
				December 2015	---	---	---	---	2.85	---	---	---	---	---	---	---	---
				March 2016	---	---	---	---	2.87	---	---	---	---	---	---	---	---

FTSE/Athex Large Cap

(Trade Unit: 1 Index Point x 5€ - Exercise Style: European, Cash Settlement)

Call Options																	Put Options																
Exerise Price	April 2015							May 2015							Other Months		April 2015							May 2015							Other Months		Exerise Price
	Open price	Price max	Price min	Last price	Closing price	Volume	Open Interest	Open price	Price max	Price min	Last price	Closing price	Volume	Open Interest	Volume	Open Interest	Open price	Price max	Price min	Last price	Closing price	Volume	Open Interest	Open price	Price max	Price min	Last price	Closing price	Volume	Open Interest	Volume	Open Interest	
180	-	-	-	-	-	-	-	-	-	-	-	-	-	-	-	-	-	-	-	-	-	-	-	-	-	-	-	-	-	-	-	180	
195	-	-	-	-	-	-	-	-	-	-	-	-	-	-	-	-	-	-	-	-	-	-	-	-	-	-	-	-	-	-	-	195	
200	0.00	0.00	0.00	-	32.25	-	-	-	-	-	-	-	-	-	-	-	0.00	0.00	0.00	-	3.30	-	2	-	-	-	-	-	-	-	-	-	200
205	0.00	0.00	0.00	-	28.50	-	-	0.00	0.00	0.00	-	33.00	-	-	-	-	0.00	0.00	0.00	-	4.50	-	10	0.00	0.00	0.00	-	9.80	-	-	-	-	205
210	0.00	0.00	0.00	-	24.75	-	40	0.00	0.00	0.00	-	30.00	-	-	-	-	0.00	0.00	0.00	-	5.90	-	4	0.00	0.00	0.00	-	11.75	-	-	-	-	210
215	0.00	0.00	0.00	-	21.50	-	40	0.00	0.00	0.00	-	27.00	-	-	-	-	0.00	0.00	0.00	-	7.60	-	6	0.00	0.00	0.00	-	13.75	-	-	-	-	215
220	0.00	0.00	0.00	-	18.50	-	53	0.00	0.00	0.00	-	24.25	-	-	-	-	0.00	0.00	0.00	-	8.30	2	50	0.00	0.00	0.00	-	16.00	-	-	-	-	220
225	14.00	14.00	14.00	14.00	14.00	1	1	0.00	0.00	0.00	-	21.75	-	-	-	-	14.00	14.00	0.00	-	11.75	-	-	0.00	0.00	0.00	-	18.50	-	-	-	-	225
230	12.00	12.50	11.00	12.50	12.50	93	108	0.00	0.00	0.00	-	19.50	-	-	-	-	12.00	12.50	0.00	-	14.25	-	57	0.00	0.00	0.00	-	21.25	-	-	-	-	230
235	8.50	8.50	8.50	8.50	8.50	1	82	0.00	0.00	0.00	-	17.50	-	-	-	-	8.50	8.50	0.00	-	17.25	-	50	0.00	0.00	0.00	-	24.25	-	-	-	-	235
240	0.00	0.00	0.00	-	9.30	-	2	0.00	0.00	0.00	-	15.50	-	-	-	-	0.00	0.00	0.00	-	20.25	-	-	0.00	0.00	0.00	-	27.25	-	-	-	-	240
245	0.00	0.00	0.00	-	7.70	-	402	0.00	0.00	0.00	-	13.75	-	-	-	-	0.00	0.00	0.00	-	23.75	-	1	0.00	0.00	0.00	-	30.50	-	-	-	-	245
250	0.00	0.00	0.00	-	6.30	-	224	0.00	0.00	0.00	-	12.25	-	-	-	-	0.00	0.00	0.00	-	27.25	-	-	0.00	0.00	0.00	-	33.75	-	-	-	-	250
255	0.00	0.00	0.00	-	5.20	-	50	0.00	0.00	0.00	-	10.75	-	-	-	-	0.00	0.00	0.00	-	31.00	-	5	0.00	0.00	0.00	-	37.50	-	-	-	-	255
260	0.00	0.00	0.00	-	4.20	-	151	0.00	0.00	0.00	-	9.40	-	-	-	-	0.00	0.00	0.00	-	35.25	-	-	0.00	0.00	0.00	-	41.00	-	-	-	-	260
265	0.00	0.00	0.00	-	3.30	-	3	0.00	0.00	0.00	-	8.30	-	-	-	-	0.00	0.00	0.00	-	39.25	-	1	0.00	0.00	0.00	-	45.00	-	-	-	-	265
270	0.00	0.00	0.00	-	2.70	-	1,005	0.00	0.00	0.00	-	7.20	-	-	-	-	0.00	0.00	0.00	-	43.50	-	-	0.00	0.00	0.00	-	49.00	-	-	-	-	270
275	0.00	0.00	0.00	-	2.10	-	105	0.00	0.00	0.00	-	6.30	-	-	-	-	0.00	0.00	0.00	-	48.00	-	-	0.00	0.00	0.00	-	53.00	-	-	-	-	275
280	0.00	0.00	0.00	-	1.70	-	-	0.00	0.00	0.00	-	5.50	-	-	-	-	0.00	0.00	0.00	-	52.50	-	-	0.00	0.00	0.00	-	57.00	-	-	-	-	280
285	0.00	0.00	0.00	-	1.30	-	40	0.00	0.00	0.00	-	4.80	-	-	-	-	0.00	0.00	0.00	-	57.00	-	-	0.00	0.00	0.00	-	61.50	-	-	-	-	285
290	0.00	0.00	0.00	-	1.00	-	-	0.00	0.00	0.00	-	4.20	-	-	-	-	0.00	0.00	0.00	-	62.00	-	-	0.00	0.00	0.00	-	66.00	-	-	-	-	290
295	-	-	-	-	-	-	-	-	-	-	-	-	-	-	-	-	-	-	-	-	-	-	-	-	-	-	-	-	-	-	-	295	
300	-	-	-	-	-	-	-	-	-	-	-	-	-	-	-	-	-	-	-	-	-	-	-	-	-	-	-	-	-	-	-	300	
305	-	-	-	-	-	-	-	-	-	-	-	-	-	-	-	-	-	-	-	-	-	-	-	-	-	-	-	-	-	-	-	305	
310	0.00	0.00	0.00	-	0.35	-	-	-	-	-	-	-	-	-	-	-	0.00	0.00	0.00	-	81.50	-	4	-	-	-	-	-	-	-	-	-	310
315	-	-	-	-	-	-	-	-	-	-	-	-	-	-	-	-	-	-	-	-	-	-	-	-	-	-	-	-	-	-	-	315	
320	-	-	-	-	-	-	-	-	-	-	-	-	-	-	-	-	-	-	-	-	-	-	-	-	-	-	-	-	-	-	-	320	
325	-	-	-	-	-	-	-	-	-	-	-	-	-	-	-	-	-	-	-	-	-	-	-	-	-	-	-	-	-	-	-	325	
330	-	-	-	-	-	-	-	-	-	-	-	-	-	-	-	-	-	-	-	-	-	-	-	-	-	-	-	-	-	-	-	330	
335	-	-	-	-	-	-	-	-	-	-	-	-	-	-	-	-	-	-	-	-	-	-	-	-	-	-	-	-	-	-	-	335	
340	-	-	-	-	-	-	-	-	-	-	-	-	-	-	-	-	-	-	-	-	-	-	-	-	-	-	-	-	-	-	-	340	
345	-	-	-	-	-	-	-	-	-	-	-	-	-	-	-	-	-	-	-	-	-	-	-	-	-	-	-	-	-	-	-	345	
350	-	-	-	-	-	-	-	-	-	-	-	-	-	-	-	-	-	-	-	-	-	-	-	-	-	-	-	-	-	-	-	350	
355	-	-	-	-	-	-	-	-	-	-	-	-	-	-	-	-	-	-	-	-	-	-	-	-	-	-	-	-	-	-	-	355	
360	-	-	-	-	-	-	-	-	-	-	-	-	-	-	-	-	-	-	-	-	-	-	-	-	-	-	-	-	-	-	-	360	
365	-	-	-	-	-	-	-	-	-	-	-	-	-	-	-	-	-	-	-	-	-	-	-	-	-	-	-	-	-	-	-	365	

FTSE/Athex Large Cap

(Trade Unit: 1 Index Point x 5€ - Exercise Style: European, Cash Settlement)

Call Options																	Put Options																					
Exerise Price	April 2015							May 2015							Other Months			April 2015										May 2015							Other Months			Exerise Price
	Open price	Price max	Price min	Last price	Closing price	Volume	Open Interest	Open price	Price max	Price min	Last price	Closing price	Volume	Open Interest	Volume	Open Interest	Open price	Price max	Price min	Last price	Closing price	Volume	Open Interest	Open price	Price max	Price min	Last price	Closing price	Volume	Open Interest	Volume	Open Interest						
370	-	-	-	-	-	-	-	-	-	-	-	-	-	-			-	-	-	-	-	-	-	-	-	-	-	-	-	-	-			370				
375	-	-	-	-	-	-	-	-	-	-	-	-	-	-			-	-	-	-	-	-	-	-	-	-	-	-	-	-	-	-			375			
380	-	-	-	-	-	-	-	-	-	-	-	-	-	-			-	-	-	-	-	-	-	-	-	-	-	-	-	-	-	-			380			
385	-	-	-	-	-	-	-	-	-	-	-	-	-	-			-	-	-	-	-	-	-	-	-	-	-	-	-	-	-	-			385			
390	-	-	-	-	-	-	-	-	-	-	-	-	-	-			-	-	-	-	-	-	-	-	-	-	-	-	-	-	-	-			390			
395	-	-	-	-	-	-	-	-	-	-	-	-	-	-			-	-	-	-	-	-	-	-	-	-	-	-	-	-	-	-			395			
400	-	-	-	-	-	-	-	-	-	-	-	-	-	-			-	-	-	-	-	-	-	-	-	-	-	-	-	-	-	-			400			
405	-	-	-	-	-	-	-	-	-	-	-	-	-	-			-	-	-	-	-	-	-	-	-	-	-	-	-	-	-	-			405			
410	-	-	-	-	-	-	-	-	-	-	-	-	-	-			-	-	-	-	-	-	-	-	-	-	-	-	-	-	-	-			410			
415	-	-	-	-	-	-	-	-	-	-	-	-	-	-			-	-	-	-	-	-	-	-	-	-	-	-	-	-	-	-			415			
420	-	-	-	-	-	-	-	-	-	-	-	-	-	-			-	-	-	-	-	-	-	-	-	-	-	-	-	-	-	-			420			
425	-	-	-	-	-	-	-	-	-	-	-	-	-	-			-	-	-	-	-	-	-	-	-	-	-	-	-	-	-	-			425			
430	-	-	-	-	-	-	-	-	-	-	-	-	-	-			-	-	-	-	-	-	-	-	-	-	-	-	-	-	-	-			430			
435	-	-	-	-	-	-	-	-	-	-	-	-	-	-			-	-	-	-	-	-	-	-	-	-	-	-	-	-	-	-			435			
440	-	-	-	-	-	-	-	-	-	-	-	-	-	-			-	-	-	-	-	-	-	-	-	-	-	-	-	-	-	-			440			
445	-	-	-	-	-	-	-	-	-	-	-	-	-	-			-	-	-	-	-	-	-	-	-	-	-	-	-	-	-	-			445			
450	-	-	-	-	-	-	-	-	-	-	-	-	-	-			-	-	-	-	-	-	-	-	-	-	-	-	-	-	-	-			450			
Totals:						95	2,306							0	0	0	24							2	190							0	0	0	24			
Number of Trades:						10								0		0								2								0		0				

ALPHA BANK (CR) (Contract Size: 100 Securities, Exercise Style: American, Physical Delivery)

Call Options																Put Options																				
April 2015								May 2015								Other Months		April 2015								May 2015								Other Months		
Exerise Price	Open price	Price max	Price min	Last price	Closing price	Volume	Open Interest	Open price	Price max	Price min	Last price	Closing price	Volume	Open Interest	Volume	Open Interest	Open price	Price max	Price min	Last price	Closing price	Volume	Open Interest	Open price	Price max	Price min	Last price	Closing price	Volume	Open Interest	Volume	Open Interest	Exerise Price			
0.100	0.000	0.000	0.000		0.200	-	-	0.000	0.000	0.000		0.200	-	-			0.000	0.000	0.000		0.001	-	-	0.000	0.000	0.000		0.001	-	-			0.001			
0.200	0.000	0.000	0.000		0.101	-	-	0.000	0.000	0.000		0.105	-	-			0.000	0.000	0.000		0.001	-	-	0.000	0.000	0.000		0.005	-	-			0.002			
0.300	0.000	0.000	0.000		0.027	-	-	0.000	0.000	0.000		0.041	-	-			0.000	0.000	0.000		0.027	-	-	0.000	0.000	0.000		0.041	-	-			0.003			
0.400	0.000	0.000	0.000		0.004	-	-	0.000	0.000	0.000		0.014	-	-			0.000	0.000	0.000		0.104	-	-	0.000	0.000	0.000		0.113	-	-			0.004			
0.500	0.000	0.000	0.000		0.003	-	-	0.000	0.000	0.000		0.004	-	-			0.000	0.000	0.000		0.200	-	-	0.000	0.000	0.000		0.203	-	-			0.005			
0.600	0.000	0.000	0.000		0.001	-	-	0.000	0.000	0.000		0.001	-	-			0.000	0.000	0.000		0.300	-	-	0.000	0.000	0.000		0.301	-	-			0.006			
0.700	0.000	0.000	0.000		0.001	-	-	0.000	0.000	0.000		0.002	-	-			0.000	0.000	0.000		0.400	-	-	0.000	0.000	0.000		0.400	-	-			0.007			
0.800	0.000	0.000	0.000		0.002	-	-	0.000	0.000	0.000		0.001	-	-			0.000	0.000	0.000		0.500	-	-	0.000	0.000	0.000		0.500	-	-			0.008			
0.900	0.000	0.000	0.000		0.001	-	-						-	-			0.000	0.000	0.000		0.600	-	-				-	-			0.009					
1.000						-	-						-	-								-	-				-	-				0.010				
1.100						-	-						-	-								-	-				-	-				0.011				
Totals:						0	0						0	0	0	0						0	0				0	0	0	0	0	0				
Number of Trades:						0							0		0							0.00					0		0							



## NATIONAL BANK (CR)

(Contract Size: 100 Securities, Exercise Style: American, Physical Delivery)

Call Options																	Put Options																			
April 2015							May 2015							Other Months			April 2015							May 2015							Other Months					
Exerise Price	Open price	Price max	Price min	Last price	Closing price	Volume	Open Interest	Open price	Price max	Price min	Last price	Closing price	Volume	Open Interest	Volume	Open Interest	Open price	Price max	Price min	Last price	Closing price	Volume	Open Interest	Open price	Price max	Price min	Last price	Closing price	Volume	Open Interest	Volume	Open Interest	Exerise Price			
0.600	0.000	0.000	0.000		0.511	-	-						-	-			0.000	0.000	0.000		0.001	-	-					-	-			0.006				
0.700	0.000	0.000	0.000		0.412	-	-						-	-			0.000	0.000	0.000		0.001	-	-					-	-			0.007				
0.800	0.000	0.000	0.000		0.317	-	-	0.000	0.000	0.000		0.342	-	-			0.000	0.000	0.000		0.006	-	-	0.000	0.000	0.000		0.030	-	-			0.008			
0.900	0.000	0.000	0.000		0.230	-	-	0.000	0.000	0.000		0.269	-	-			0.000	0.000	0.000		0.019	-	-	0.000	0.000	0.000		0.057	-	-			0.009			
1.000	0.000	0.000	0.000		0.158	-	30	0.000	0.000	0.000		0.208	-	-			0.000	0.000	0.000		0.047	-	-	0.000	0.000	0.000		0.095	-	-			0.010			
1.100	0.000	0.000	0.000		0.102	-	-	0.000	0.000	0.000		0.158	-	-			0.000	0.000	0.000		0.090	-	-	0.000	0.000	0.000		0.145	-	-			0.011			
1.200	0.000	0.000	0.000		0.062	-	-	0.000	0.000	0.000		0.119	-	-			0.000	0.000	0.000		0.151	-	-	0.000	0.000	0.000		0.206	-	-			0.012			
1.300	0.000	0.000	0.000		0.036	-	150	0.000	0.000	0.000		0.089	-	-			0.000	0.000	0.000		0.225	-	-	0.000	0.000	0.000		0.276	-	-			0.013			
1.400	0.000	0.000	0.000		0.020	-	-	0.000	0.000	0.000		0.066	-	-			0.000	0.000	0.000		0.309	-	-	0.000	0.000	0.000		0.353	-	-			0.014			
1.500	0.000	0.000	0.000		0.011	-	-	0.000	0.000	0.000		0.047	-	-			0.000	0.000	0.000		0.399	-	-	0.000	0.000	0.000		0.434	-	-			0.015			
1.600	0.000	0.000	0.000		0.005	-	-	0.000	0.000	0.000		0.035	-	-			0.000	0.000	0.000		0.494	-	-	0.000	0.000	0.000		0.522	-	-			0.016			
1.700	0.000	0.000	0.000		0.003	-	-	0.000	0.000	0.000		0.025	-	-			0.000	0.000	0.000		0.592	-	-	0.000	0.000	0.000		0.612	-	-			0.017			
1.800	0.000	0.000	0.000		0.001	-	-	0.000	0.000	0.000		0.018	-	-			0.000	0.000	0.000		0.691	-	-	0.000	0.000	0.000		0.705	-	-			0.018			
1.900	0.000	0.000	0.000		0.001	-	-	0.000	0.000	0.000		0.013	-	-			0.000	0.000	0.000		0.790	-	-	0.000	0.000	0.000		0.800	-	-			0.019			
2.000						-	-						-	-								-	-					-	-			0.020				
2.200						-	-						-	-								-	-					-	-			0.022				
2.400						-	-						-	-								-	-					-	-			0.024				
2.600						-	-						-	-								-	-					-	-			0.026				
2.800						-	-						-	-								-	-					-	-			0.028				
3.000						-	-						-	-								-	-					-	-			0.030				
3.200						-	-						-	-								-	-					-	-			0.032				
3.400						-	-						-	-								-	-					-	-			0.034				
3.600						-	-						-	-								-	-					-	-			0.036				
Totals:							0	180								0	0	0	0								0	0				0	0			
Number of Trades:							0								0	0								0.00								0				0

OPAP (CR)

(Contract Size: 100 Securities, Exercise Style: American, Physical Delivery)

Call Options																Put Options																				
April 2015								May 2015								Other Months		April 2015								May 2015								Other Months		
Exercise Price	Open price	Price max	Price min	Last price	Closing price	Volume	Open Interest	Open price	Price max	Price min	Last price	Closing price	Volume	Open Interest	Volume	Open Interest	Open price	Price max	Price min	Last price	Closing price	Volume	Open Interest	Open price	Price max	Price min	Last price	Closing price	Volume	Open Interest	Volume	Open Interest	Exercise Price			
6.000	0.000	0.000	0.000		2.02	-	-										0.000	0.000	0.000		0.018	-	-					-	-			0.060				
6.400	0.000	0.000	0.000		1.65	-	-										0.000	0.000	0.000		0.046	-	-					-	-			0.064				
6.800	0.000	0.000	0.000		1.31	-	-	0.000	0.000	0.000		1.51	-	-			0.000	0.000	0.000		0.102	-	-	0.000	0.000	0.000		0.293	-	-			0.068			
7.200	0.000	0.000	0.000		1.00	-	-	0.000	0.000	0.000		1.25	-	-			0.000	0.000	0.000		0.195	-	-	0.000	0.000	0.000		0.431	-	-			0.072			
7.600	0.000	0.000	0.000		0.740	-	-	0.000	0.000	0.000		1.02	-	-			0.000	0.000	0.000		0.331	-	-	0.000	0.000	0.000		0.601	-	-			0.076			
8.000	0.000	0.000	0.000		0.525	-	-	0.000	0.000	0.000		0.817	-	-			0.000	0.000	0.000		0.517	-	-	0.000	0.000	0.000		0.797	-	-			0.080			
8.400	0.000	0.000	0.000		0.362	-	-	0.000	0.000	0.000		0.658	-	-			0.000	0.000	0.000		0.753	-	-	0.000	0.000	0.000		1.04	-	-			0.084			
8.800	0.000	0.000	0.000		0.241	-	-	0.000	0.000	0.000		0.520	-	-			0.000	0.000	0.000		1.03	-	-	0.000	0.000	0.000		1.30	-	-			0.088			
9.200	0.000	0.000	0.000		0.154	-	-	0.000	0.000	0.000		0.403	-	-			0.000	0.000	0.000		1.35	-	-	0.000	0.000	0.000		1.58	-	-			0.092			
9.600	0.000	0.000	0.000		0.097	-	-	0.000	0.000	0.000		0.318	-	-			0.000	0.000	0.000		1.69	-	-	0.000	0.000	0.000		1.90	-	-			0.096			
10.000	0.000	0.000	0.000		0.059	-	-	0.000	0.000	0.000		0.241	-	-			0.000	0.000	0.000		2.05	-	-	0.000	0.000	0.000		2.22	-	-			0.100			
11.000	0.000	0.000	0.000		0.015	-	-						-	-			0.000	0.000	0.000		3.01	-	-					-	-			0.110				
12.000	0.000	0.000	0.000		0.003	-	-						-	-			0.000	0.000	0.000		4.00	-	-					-	-			0.120				
13.000						-	-						-	-								-	-					-	-			0.130				
14.000						-	-						-	-								-	-					-	-			0.140				
15.000						-	-						-	-								-	-					-	-			0.150				
16.000						-	-						-	-								-	-					-	-			0.160				
17.000						-	-						-	-								-	-					-	-			0.170				
18.000						-	-						-	-								-	-					-	-			0.180				
Totals:						0	0						0	0	0	0						0	0					0	0	0	0					
Number of Trades:							0						0		0							0.00						0		0						

OTE (CR)

(Contract Size: 100 Securities, Exercise Style: American, Physical Delivery)

Call Options																	Put Options																			
April 2015								May 2015								Other Months		April 2015								May 2015								Other Months		
Exercise Price	Open price	Price max	Price min	Last price	Closing price	Volume	Open Interest	Open price	Price max	Price min	Last price	Closing price	Volume	Open Interest	Volume	Open Interest	Open price	Price max	Price min	Last price	Closing price	Volume	Open Interest	Open price	Price max	Price min	Last price	Closing price	Volume	Open Interest	Volume	Open Interest	Exercise Price			
6.000						-	-	0.000	0.000	0.000		2.74	-	-								-	-	0.000	0.000	0.000		0.035	-	-			0.060			
6.400	0.000	0.000	0.000		2.31	-	-	0.000	0.000	0.000		2.38	-	-			0.000	0.000	0.000		0.008	-	-	0.000	0.000	0.000		0.069	-	-			0.064			
6.800	0.000	0.000	0.000		1.92	-	-	0.000	0.000	0.000		2.03	-	-			0.000	0.000	0.000		0.025	-	-	0.000	0.000	0.000		0.122	-	-			0.068			
7.200	0.000	0.000	0.000		1.56	-	-	0.000	0.000	0.000		1.71	-	-			0.000	0.000	0.000		0.060	-	-	0.000	0.000	0.000		0.201	-	-			0.072			
7.600	0.000	0.000	0.000		1.22	-	-	0.000	0.000	0.000		1.42	-	-			0.000	0.000	0.000		0.123	-	-	0.000	0.000	0.000		0.310	-	-			0.076			
8.000	0.000	0.000	0.000		0.925	-	-	0.000	0.000	0.000		1.17	-	-			0.000	0.000	0.000		0.226	-	-	0.000	0.000	0.000		0.455	-	-			0.080			
8.400	0.000	0.000	0.000		0.678	-	-	0.000	0.000	0.000		0.944	-	-			0.000	0.000	0.000		0.379	-	-	0.000	0.000	0.000		0.633	-	-			0.084			
8.800	0.000	0.000	0.000		0.479	-	-	0.000	0.000	0.000		0.751	-	-			0.000	0.000	0.000		0.580	-	-	0.000	0.000	0.000		0.839	-	-			0.088			
9.200	0.000	0.000	0.000		0.326	-	-	0.000	0.000	0.000		0.590	-	-			0.000	0.000	0.000		0.827	-	-	0.000	0.000	0.000		1.08	-	-			0.092			
9.600	0.000	0.000	0.000		0.214	-	-	0.000	0.000	0.000		0.463	-	-			0.000	0.000	0.000		1.11	-	-	0.000	0.000	0.000		1.35	-	-			0.096			
10.000	0.000	0.000	0.000		0.136	-	-	0.000	0.000	0.000		0.354	-	-			0.000	0.000	0.000		1.44	-	-	0.000	0.000	0.000		1.64	-	-			0.100			
11.000	0.000	0.000	0.000		0.038	-	-						-	-			0.000	0.000	0.000		2.34	-	-				-	-			0.110					
12.000	0.000	0.000	0.000		0.009	-	-						-	-			0.000	0.000	0.000		3.31	-	-				-	-			0.120					
13.000						-	-						-	-								-	-				-	-			0.130					
14.000						-	-						-	-								-	-				-	-			0.140					
15.000						-	-						-	-								-	-				-	-			0.150					
16.000						-	-						-	-								-	-				-	-			0.160					
Totals:						0	0						0	0	0	0						0	0				0	0	0	0	0	0				
Number of Trades:						0							0		0							0.00					0		0							

PIRAEUS BANK (CR)

(Contract Size: 100 Securities, Exercise Style: American, Physical Delivery)

Call Options																Put Options																	
Exercise Price	April 2015							May 2015							Other Months		April 2015							May 2015							Other Months		Exercise Price
	Open price	Price max	Price min	Last price	Closing price	Volume	Open Interest	Open price	Price max	Price min	Last price	Closing price	Volume	Open Interest	Volume	Open Interest	Open price	Price max	Price min	Last price	Closing price	Volume	Open Interest	Open price	Price max	Price min	Last price	Closing price	Volume	Open Interest	Volume	Open Interest	
0.100	0.000	0.000	0.000		0.240	-	-	0.000	0.000	0.000		0.240	-	-			0.000	0.000	0.000		0.001	-	-	0.000	0.000	0.000		0.001	-	-			0.001
0.200	0.000	0.000	0.000		0.140	-	-	0.000	0.000	0.000		0.143	-	-			0.000	0.000	0.000		0.001	-	-	0.000	0.000	0.000		0.002	-	-			0.002
0.300	0.000	0.000	0.000		0.053	-	-	0.000	0.000	0.000		0.067	-	-			0.000	0.000	0.000		0.013	-	-	0.000	0.000	0.000		0.027	-	-			0.003
0.400	0.000	0.000	0.000		0.012	-	130	0.000	0.000	0.000		0.027	-	-			0.000	0.000	0.000		0.071	-	-	0.000	0.000	0.000		0.086	-	-			0.004
0.500	0.000	0.000	0.000		0.002	-	100	0.000	0.000	0.000		0.009	-	-			0.000	0.000	0.000		0.161	-	-	0.000	0.000	0.000		0.168	-	-			0.005
0.600	0.000	0.000	0.000		0.002	-	-	0.000	0.000	0.000		0.003	-	-			0.000	0.000	0.000		0.260	-	-	0.000	0.000	0.000		0.262	-	-			0.006
0.700	0.000	0.000	0.000		0.001	-	-	0.000	0.000	0.000		0.001	-	-			0.000	0.000	0.000		0.360	-	-	0.000	0.000	0.000		0.360	-	-			0.007
0.800	0.000	0.000	0.000		0.001	-	-	0.000	0.000	0.000		0.002	-	-			0.000	0.000	0.000		0.460	-	-	0.000	0.000	0.000		0.460	-	-			0.008
0.900	0.000	0.000	0.000		0.002	-	-	0.000	0.000	0.000		0.001	-	-			0.000	0.000	0.000		0.560	-	-	0.000	0.000	0.000		0.560	-	-			0.009
1.000	0.000	0.000	0.000		0.001	-	-	0.000	0.000	0.000		0.001	-	-			0.000	0.000	0.000		0.660	-	-	0.000	0.000	0.000		0.660	-	-			0.010
1.100	0.000	0.000	0.000		0.001	-	-						-	-			0.000	0.000	0.000		0.760	-	-					-	-			0.011	
1.200	0.000	0.000	0.000		0.003	-	-						-	-			0.000	0.000	0.000		0.860	-	-					-	-			0.012	
1.300	0.000	0.000	0.000		0.002	-	-						-	-			0.000	0.000	0.000		0.960	-	-					-	-			0.013	
1.400						-	-						-	-								-	-					-	-			0.014	
1.500						-	-						-	-								-	-					-	-			0.015	
1.600						-	-						-	-								-	-					-	-			0.016	
1.700						-	-						-	-								-	-					-	-			0.017	
1.800						-	-						-	-								-	-					-	-			0.018	
1.900						-	-						-	-								-	-					-	-			0.019	
2.000						-	-						-	-								-	-					-	-			0.020	
2.200						-	-						-	-								-	-					-	-			0.022	
2.400						-	-						-	-								-	-					-	-			0.024	
Totals:						0	230						0	0	0	0						0	0					0	0	0	0		
Number of Trades:						0							0		0							0.00					0		0				

PPC (CR)

(Contract Size: 100 Securities, Exercise Style: American, Physical Delivery)

Call Options																	Put Options																			
April 2015								May 2015								Other Months		April 2015								May 2015								Other Months		
Exercise Price	Open price	Price max	Price min	Last price	Closing price	Volume	Open Interest	Open price	Price max	Price min	Last price	Closing price	Volume	Open Interest	Volume	Open Interest	Open price	Price max	Price min	Last price	Closing price	Volume	Open Interest	Open price	Price max	Price min	Last price	Closing price	Volume	Open Interest	Volume	Open Interest	Exercise Price			
3.600	0.000	0.000	0.000		2.08	-	-						-	-			0.000	0.000	0.000		0.006	-	-					-	-				0.036			
3.800	0.000	0.000	0.000		1.89	-	-						-	-			0.000	0.000	0.000		0.001	-	-					-	-				0.038			
4.000	0.000	0.000	0.000		1.69	-	-	0.000	0.000	0.000		1.72	-	-			0.000	0.000	0.000		0.002	-	-	0.000	0.000	0.000		0.030	-	-				0.040		
4.400	0.000	0.000	0.000		1.30	-	-	0.000	0.000	0.000		1.37	-	-			0.000	0.000	0.000		0.014	-	-	0.000	0.000	0.000		0.076	-	-				0.044		
4.800	0.000	0.000	0.000		0.938	-	-	0.000	0.000	0.000		1.05	-	-			0.000	0.000	0.000		0.052	-	-	0.000	0.000	0.000		0.162	-	-				0.048		
5.200	0.000	0.000	0.000		0.627	-	-	0.000	0.000	0.000		0.787	-	-			0.000	0.000	0.000		0.141	-	-	0.000	0.000	0.000		0.293	-	-				0.052		
5.600	0.000	0.000	0.000		0.388	-	-	0.000	0.000	0.000		0.568	-	-			0.000	0.000	0.000		0.302	-	-	0.000	0.000	0.000		0.474	-	-				0.056		
6.000	0.000	0.000	0.000		0.220	-	-	0.000	0.000	0.000		0.398	-	-			0.000	0.000	0.000		0.534	-	-	0.000	0.000	0.000		0.703	-	-				0.060		
6.400	0.000	0.000	0.000		0.115	-	-	0.000	0.000	0.000		0.273	-	-			0.000	0.000	0.000		0.829	-	-	0.000	0.000	0.000		0.977	-	-				0.064		
6.800	0.000	0.000	0.000		0.055	-	-	0.000	0.000	0.000		0.183	-	-			0.000	0.000	0.000		1.17	-	-	0.000	0.000	0.000		1.29	-	-				0.068		
7.200	0.000	0.000	0.000		0.025	-	-	0.000	0.000	0.000		0.120	-	-			0.000	0.000	0.000		1.54	-	-	0.000	0.000	0.000		1.63	-	-				0.072		
7.600	0.000	0.000	0.000		0.011	-	-	0.000	0.000	0.000		0.077	-	-			0.000	0.000	0.000		1.93	-	-	0.000	0.000	0.000		1.98	-	-				0.076		
8.000	0.000	0.000	0.000		0.004	-	-	0.000	0.000	0.000		0.048	-	-			0.000	0.000	0.000		2.32	-	-	0.000	0.000	0.000		2.35	-	-				0.080		
8.400	0.000	0.000	0.000		0.002	-	-	0.000	0.000	0.000		0.029	-	-			0.000	0.000	0.000		2.72	-	-	0.000	0.000	0.000		2.74	-	-				0.084		
8.800						-	-						-	-								-	-					-	-					0.088		
9.200						-	-						-	-								-	-					-	-					0.092		
9.600						-	-						-	-								-	-					-	-					0.096		
10.000						-	-						-	-								-	-					-	-					0.100		
11.000						-	-						-	-								-	-					-	-					0.110		
12.000						-	-						-	-								-	-					-	-					0.120		
13.000						-	-						-	-								-	-					-	-					0.130		
14.000						-	-						-	-								-	-					-	-					0.140		
15.000						-	-						-	-								-	-					-	-					0.150		
16.000						-	-						-	-								-	-					-	-					0.160		
Totals:						0	0						0	0	0	0						0	0					0	0	0	0	0	0			
Number of Trades:						0							0		0							0.00						0		0						

PPC (CR)

(Contract Size: 100 Securities, Exercise Style: American, Physical Delivery)

Call Options																Put Options																			
Exerise Price	April 2015							May 2015							Other Months		April 2015								May 2015								Other Months		Exerise Price
	Open price	Price max	Price min	Last price	Closing price	Volume	Open Interest	Open price	Price max	Price min	Last price	Closing price	Volume	Open Interest	Volume	Open Interest	Open price	Price max	Price min	Last price	Closing price	Volume	Open Interest	Open price	Price max	Price min	Last price	Closing price	Volume	Open Interest	Volume	Open Interest			

Lending Products	Underlying Title	Multilateral Transactions[1]					Bilateral Transactions[2]		Stock Borrowing through OTC (volume)[3]
		Open Interest[5]	Volume(Offered)	Average Weighted	Transactions volume	Average Weighted	Transactions Volume	Average Weighte	Transactions Volume
AEGNBOR	AEGEAN AIRLINES (CR)	1,548	19,361	5.31%	---	---	---	---	1
ALPHABOR	ALPHA BANK (CR)	957,319	5,085,974	5.31%	---	---	---	---	44,093,300
AETFBOR	ALPHA ETF FTSE Athex Large Cap	---	---	---	---	---	---	---	---
ALMYBOR	ALUMIL (CR)	---	---	---	---	---	---	---	---
IATRBOR	ATHENS MEDICAL CENTER SA (CR)	---	38,078	5.31%	---	---	---	---	---
TATTBOR	ATTICA BANK S.A. (CR)	---	162,569	5.31%	---	---	---	---	---
OTOELBOR	AUTOHELLAS SA (CR)	---	958	5.31%	---	---	---	---	---
BIOKABOR	BIOKARPET S.A.(CR)	---	---	---	---	---	---	---	---
EEEBOR	CC HBC AG (CR)	5,841	80	5.31%	---	---	---	---	72,576
CENTRBOR	CENTRIC HOLDINGS (CR)	---	16,000	5.31%	---	---	---	---	---
SOLKBOR	CORINTH PIPEWORKS SA (CR)	1,331	5,735	5.31%	---	---	---	---	---
PLAKRBOR	CRETE PLASTICS SA (CR)	---	---	---	---	---	---	---	---
DROMEBO	DROMEAS SA (CR)	---	---	---	---	---	---	---	---
ELGEBOR	ELGEKA SA (CR)	---	---	---	---	---	---	---	---
ELLAKTORBOR	ELLAKTOR (CR)	69,510	30,626	3.31%	---	---	---	---	---
ELBABOR	ELVAL SA. (CB)	---	35,344	5.31%	---	---	---	---	---
EUROBBOR	EUROBANK ERGASIAS (CR)	41,245	1,447,959	3.31%	---	---	---	---	101,470,384
EUPICBOR	EUROPEAN RELIANCE INSUR. (CR)	---	---	---	---	---	---	---	---
EYDAPBOR	EYDAP S.A. (CR)	1,570	2,542	3.31%	---	---	---	---	17,780
FGEBOR	F.G. EUROPE S.A. (CR)	---	---	---	---	---	---	---	---
FFGRPBOR	FOLLI FOLLIE (CR)	16,166	58,719	5.31%	---	---	---	---	992,524
FOYRKBOR	FOURLIS (CR)	---	2,329	5.31%	---	---	---	---	3,850
FRIGOBOR	FRIGOGLASS SA (CR)	2,100	5,519	5.31%	---	---	---	---	---
GEKTERNABOR	GEK TERNA (CR)	5,940	23,206	5.31%	---	---	---	---	---
SARBOR	GR. SARANTIS SA (CR)	---	---	---	---	---	---	---	---
EUPROBOR	GRIVALIA PROPERTIES (CR)	3,583	49,718	5.31%	---	---	---	---	57,561
XAKOBOR	HALKOR SA (CB)	---	48,551	5.31%	---	---	---	---	---
EXAEBOR	HELLENIC EXCHANGES-A.S.E. (CR)	17,783	502,596	5.31%	---	---	---	---	130,000
ELPEBOR	HELLENIC PETROLEUM (CR)	1,000	206,628	5.31%	---	---	---	---	66,000
HYGEIABOR	HYGEIA SA (CR)	---	160,700	5.31%	---	---	---	---	---
IASOBOR	IASO SA (CR)	---	27,878	5.31%	---	---	---	---	---

Stock Lending Notes

- [1] - Multilateral contracts Lending or Borrowing as per Methods 8-1, 8-2 and 8-3-3 (According to ATHEX BoD Resolution No.17)
- [2] - Billateral Contracts Lending or Borrowing as per Methods 8-3-1 and 8-3-2 (According to ATHEX BoD Resolution No.20 )
- [3] - The information concerning OTC Stock Borrowing Transactions is based on the statements of the Dematerialised Securities System (DSS) operators involved and refers to volumes that have been cleared and registered up until the previous working day.
- [4] - Average Price (Volume weighted)
- [5] - The Data concerning Open Interest before the start of trading session

Lending Products	Underlying Title	Multilateral Transactions[1]					Bilateral Transactions[2]		Stock Borrowing through OTC (volume)[3]
		Open Interest[5]	Volume(Offered)	Average Weighted	Transactions volume	Average Weighted	Transactions Volume	Average Weighte	Transactions Volume
IKTINBOR	IKTINOS HELLAS SA (CR)	---	---	---	---	---	---	---	---
LYKBOR	INFORM P. LYKOS SA (CR)	---	483	5.31%	---	---	---	---	---
INKATBOR	INTRACOM CONSTR. (CR)	---	---	---	---	---	---	---	---
INTRKBOR	INTRACOM HOLDINGS (CR)	---	109,350	5.31%	---	---	---	---	---
INLOTBOR	INTRALOT (CR)	63,948	21,400	5.31%	---	---	---	---	14,968
AVAXBOR	J & P - AVAX SA (CR)	---	20,175	5.31%	---	---	---	---	---
BELABOR	JUMBO SA (CR)	71,727	69,532	4.68%	1,517	2.65%	---	---	4,012
KARTZBOR	KARATZIS SA (CR)	---	---	---	---	---	---	---	---
KLEMBOR	KLEEMAN HELLAS SA (CR)	---	17,510	5.31%	---	---	---	---	---
KRIBOR	KRI-KRI S.A. (CR)	---	46,268	5.31%	---	---	---	---	---
LAMDABOR	LAMDA DEVELOPMENT SA (CR)	---	---	---	---	---	---	---	10,377
MIGBOR	MARFIN INVESTMENT GROUP (CR)	3,418	154,768	5.31%	400	2.65%	---	---	744,474
METKKBOR	METKA (CR)	27,560	175	5.31%	---	---	---	---	500
MLSBOR	MLS MULTIMEDIA SA (CR)	---	7,920	5.31%	---	---	---	---	---
MOHBOR	MOTOR OIL (CR)	50,467	31,791	3.55%	---	---	---	---	34,600
MYTILBOR	MYTILINEOS HOLDINGS (CR)	10,000	162,501	5.31%	---	---	---	---	1,800
ETEBOR	NATIONAL BANK (CR)	160,805	216,438	5.31%	---	---	---	---	2,260,833
ETFASEBOR	NBGAM ETF	---	---	---	---	---	---	---	---
ETFGT30PBOR	NBGAM ETF GREECE & TURKEY 30	---	---	---	---	---	---	---	---
OPAPBOR	OPAP (CR)	69,089	116,391	5.31%	11,300	4.15%	---	---	783,544
HTOBOR	OTE (CR)	63,258	12,332	3.86%	---	---	---	---	187,819
PPABOR	P.P.A. S.A. (CR)	601	220	5.31%	---	---	---	---	151
PAPBOR	PAPOUTSANIS (CR)	---	---	---	---	---	---	---	---
PETROBOR	PETROPOULOS PETROS (CR)	---	---	---	---	---	---	---	---
TPEIRBOR	PIRAEUS BANK (CR)	316,436	45,559	6.15%	---	---	---	---	31,826,111
PLAISBOR	PLAISIO COMPUTERS SA (CR)	---	---	---	---	---	---	---	---
PPCBOR	PPC (CR)	42,180	87,197	3.86%	6,867	2.65%	---	---	819,109
PROFBOR	PROFILE SA (CR)	---	---	---	---	---	---	---	---
QUALBOR	QUALITY & RELIABILITY SA (CR)	---	---	---	---	---	---	---	---
QUESTBOR	QUEST HOLDINGS (CR)	---	822	5.31%	---	---	---	---	---
SIDEBOR	SIDENOR (CR)	2,031	27,542	5.31%	---	---	---	---	---

Stock Lending Notes

- [1] - Multilateral contracts Lending or Borrowing as per Methods 8-1, 8-2 and 8-3-3 (According to ATHEX BoD Resolution No.17)
- [2] - Billateral Contracts Lending or Borrowing as per Methods 8-3-1 and 8-3-2 (According to ATHEX BoD Resolution No.20 )
- [3] - The information concerning OTC Stock Borrowing Transactions is based on the statements of the Dematerialised Securities System (DSS) operators involved and refers to volumes that have been cleared and registered up until the previous working day.
- [4] - Average Price (Volume weighted)
- [5] - The Data concerning Open Interest before the start of trading session



Lending Products	Underlying Title	Multilateral Transactions[1]					Bilateral Transactions[2]		Stock Borrowing through OTC (volume)[3]
		Open Interest[5]	Volume(Offered)	Average Weighted	Transactions volume	Average Weighted	Transactions Volume	Average Weighted	Transactions Volume
OLYMPBOR	TECHNICAL OLYMPIC SA (CR)	---	---	---	---	---	---	---	---
TENERGYBOR	TERNA ENERGY (CR)	700	28,010	5.31%	---	---	---	---	---
EYAPSBOR	THESSALONIKA WATER & SEWERAGE	---	798	5.31%	---	---	---	---	---
PLATBOR	THRACE PLASTICS SA (CR)	---	42,700	5.31%	---	---	---	---	---
TITKBOR	TITAN CEMENT (CR)	45,400	206,051	3.31%	---	---	---	---	373,899
OLTHBOR	TPA SA (CR)	---	3,438	5.31%	---	---	---	---	---
TRASTORBOR	TRASTOR REAL EST. INV. CO.(CR)	---	14,780	5.31%	---	---	---	---	---
VIOBOR	VIOHALCO SA/NV (CB)	13,427	8,706	5.31%	---	---	---	---	---

Stock Lending Notes

[1] - Multilateral contracts Lending or Borrowing as per Methods 8-1, 8-2 and 8-3-3 (According to ATHEX BoD Resolution No.17)

[2] - Bilateral Contracts Lending or Borrowing as per Methods 8-3-1 and 8-3-2 (According to ATHEX BoD Resolution No.20 )

[3] - The information concerning OTC Stock Borrowing Transactions is based on the statements of the Dematerialised Securities System (DSS) operators involved and refers to volumes that have been cleared and registered up until the previous working day.

[4] - Average Price (Volume weighted)

[5] - The Data concerning Open Interest before the start of trading session

## Sectors codification for listed companies

533	-	Exploration & Production	537	-	Integrated Oil & Gas
1353	-	Commodity Chemicals	1357	-	Specialty Chemicals
1753	-	Aluminum	1755	-	Nonferrous Metals
1757	-	Steel	1775	-	General Mining
2353	-	Building Materials & Fixtures	2357	-	Heavy Construction
2723	-	Containers & Packaging	2727	-	Diversified Industrials
2733	-	Electrical Components & Equipment	2753	-	Commercial Vehicles & Trucks
2757	-	Industrial Machinery	2773	-	Marine Transportation
2777	-	Transportation Services	2791	-	Business Support Services
2797	-	Industrial Suppliers	3535	-	Distillers & Vintners
3537	-	Soft Drinks	3573	-	Farming Fishing & Plantations
3577	-	Food Products	3722	-	Durable Household Products
3726	-	Furnishings	3728	-	Home Construction
3747	-	Toys	3763	-	Clothing & Accessories
3765	-	Footwear	3767	-	Personal Products
3785	-	Tobacco	4533	-	Health Care Providers
4535	-	Medical Equipment	4577	-	Pharmaceuticals
5337	-	Food Retailers & Wholesalers	5371	-	Apparel Retailers
5373	-	Broadline Retailers	5375	-	Home Improvement Retailers
5379	-	Specialty Retailers	5553	-	Broadcasting & Entertainment
5555	-	Media Agencies	5557	-	Publishing
5751	-	Airlines	5752	-	Gambling
5753	-	Hotels	5755	-	Recreational Services
5757	-	Restaurants & Bars	5759	-	Travel & Tourism
6535	-	Fixed Line Telecommunications	6575	-	Mobile Telecommunications
7535	-	Conventional Electricity	7537	-	Alternative Electricity
7577	-	Water	8355	-	Banks
8534	-	Insurance Brokers	8536	-	Property & Casualty Insurance
8633	-	Real Estate Holding & Development	8637	-	Real Estate Services
8671	-	Industrial & Office REITs	8675	-	Specialty REITs
8775	-	Specialty Finance	8777	-	Investment Services
8985	-	Equity Investment Instruments	9533	-	Computer Services
9535	-	Internet	9537	-	Software
9572	-	Computer Hardware	9574	-	Electronic Office Equipment
9578	-	Telecommunications Equipment	12003	-	ETF



**ATHEXGROUP**  
Ομίλος Χρηματιστηρίου Αθηνών