


Daily Official List

Hellenic Exchanges – Athens Stock Exchange S.A.

Thursday, 2 April, 2015
Year: 136 Trading Day No: 62



δελτιο ημερησιων
συναλλαγων
daily official list

Disclaimer:

Hellenic Exchanges-Athens Exchange endeavours to ensure that the data and other material ("Information") presented on the Daily Official List are accurate and complete, but it is not liable for any errors or omissions of data or /and for the accuracy, credibility, updating and completeness of the aforesaid information nor it has any liability arising directly or indirectly from the use of the above Information.

The Company is not liable for the accuracy of the data included in listed companies' announcements. Only the sender of such an announcement is fully and solely liable for any infringement of third party's rights from the content of such announcement. All contents of the Daily Official List are provided only for information purposes and do not constitute investment advice or solicitation to invest in securities or other products listed for trading on the Exchange.

You acknowledge and agree that the Company is the owner of any property rights related to any Information appearing on the Daily Official List including intellectual property rights copyright, trademarks, etc.

The above data are a property of the Hellenic Exchanges-Athens Exchange and are copyright protected. Users are forbidden to reproduce, modify, copy, sale, transmit or redistribute, by all reproduction means and methods, part or the whole of the above data, without reference to their source.

The commercial exploitation of these data is, also, forbidden by third parties. Hellenic Exchanges-Athens Exchange does not carry any responsibility, direct or indirect, derived from usage or accidental alteration of the above data when used by third parties.

Hellenic Exchanges – Athens Stock Exchange S.A.

110 Athinon Ave., 10442 Athens, Tel: (210) 33.66.800, Fax: (210) 32.13.938

www.athex.gr

Thessalonica Stock Exchange Center (T.S.E.C)

16-18 Katouni Str., Thessalonica 546 25 Tel: (2310) 567.667, Fax: (2310) 530.545

Athex Members Guarantee Fund

14-16 Fidiou Str., Athens 106 78, Tel: (210) 33.04.682, Fax: (210) 33.04.155

Hellenic Republic Capital Market Commission

1 Kolokotroni Str. & 1 Stadiou Str., Athens 10562 Tel: (210) 33.77.100 Fax: (210) 33.77.173

Table of Contents

Section 1: Statistical Figures of Securities, Derivatives and Lending

Summary of Markets

Athex Indices

Analytic Figures for Athex Market's Boards and Categories

Trading Details by Athex Sectors and Financial Instruments (ETFs)

Top 10 best & worst performing Shares

Derivatives Summary

Section 2: Analytic Figures of Shares Transactions

Analytic Figures of Shares Transactions

Shares' Notes

Section 3: Figures of Securities Transactions

Securities Blocks Details

Shares Rights Details

Shares Short Selling

Stock Borrowing

Shares Forced Sales

Forced Sales Registered Shares

Exchange Traded Funds (ETFs) Characteristics

Section 5: Bonds traded in Fixed Income Assets Market

Corporate Bonds

Government Bonds

Treasury Bills & Zero Coupon Government Bonds

Government Bonds Traded with the Open Outcry Method

State Banks Bonds

Section 6: Additional Infos

Athex & ATHEXClear Members List

List of Stocks under Market Making operations

Equity Investment Instruments Acknowledgements

Section 7: Derivatives Market Analytic Figures

Index Futures

Stock Futures

Index Options

Stock Options

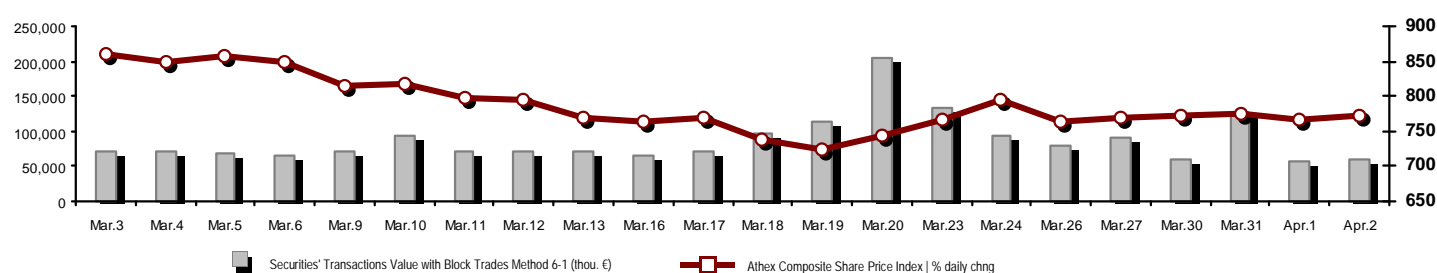
Stock Lending Analytic Figures

Appendix A: Sectors codification for listed companies

Section codification follows the corresponding from the Greek version of Daily Official List for reference purposes.

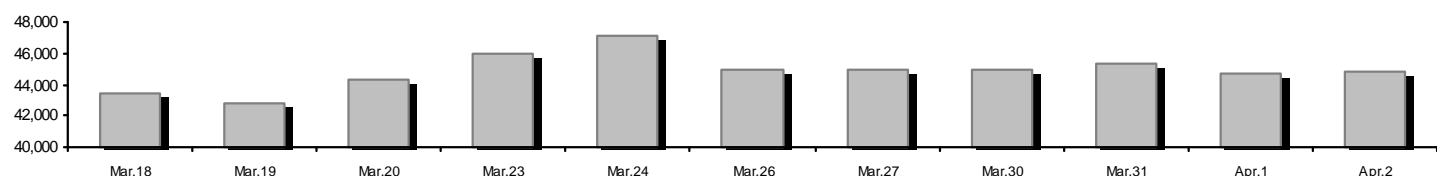
Summary of Markets

Athex Composite Share Price Index vs Shares and Derivatives Transactions Value

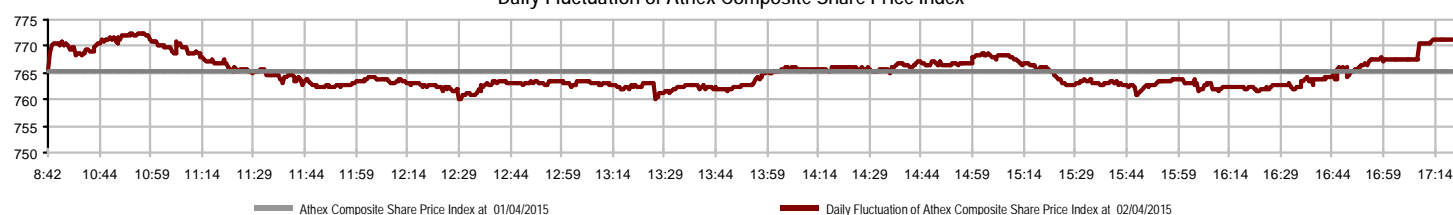


Athex Capitalisation (mill. €) **: 44,886.55		Derivatives Total Open Interest: 584,115	
Daily change: mill. € %: 228.24 0.51%		in Index Futures % daily chng: 40,314 -0.35%	
Yearly Avg Capitalisation: mill. € % chng prev year Avg: 48,532.85 -29.93%		in Stock Futures % daily chng: 540,209 0.76%	
Athex Composite Share Price Index % daily chng: 771.32 0.78%		in Index Options % daily chng: 3,132 3.54%	
Athex Composite Share Price Index Capitalisation (mill. €): 39,741.01		in Stock Options % daily chng: 460 4.55%	
Daily change (mill. €): 240.94			
Securities' Transactions Value with Block Trades Method 6-1 (59,851.10		Derivatives Contracts Volume: 34,550	
Daily change: thou. € %: 2,886.30 5.07%		Daily change: pieces %: -17,474 -33.59%	
YtD Avg Trans. Value: thou. € % chng prev year Avg: 114,067.74 -10.22%		YtD Avg Derivatives Contracts % chng prev year Avg: 80,812 47.43%	
Blocks Transactions Value of Method 6-1 (thou. €): 12,853.21		Derivatives Trades Number: 1,952	
Blocks Transactions Value of Method 6-2 & 6-3 (thou. €): 0.00		Daily change: number %: -453 -18.84%	
Bonds Transactions Value (thou. €): 0.00		YtD Avg Derivatives Trades number % chng prev year Avg: 4,733 13.34%	
Securities' Transactions Volume (thou. Pieces): 118,127.91		Lending Total Open Interest: 1,367,514	
Daily change: thou. pieces %: -19,292.18 -14.04%		Daily change: pieces %: -165,336 -10.79%	
YtD Avg Volume: thou. pieces % chng prev year Avg: 206,390.57 117.23%		Lending Volume (Multilateral/Bilateral): 42,100	
Blocks Transactions Volume of Method 6-1 (thou. Pieces): 20,959.99		Daily change: pieces %: -1,008,038 -95.99%	
Blocks Transactions Volume of Method 6-2 & 6-3 (thou. Pieces): 0.00		Multilateral Lending: 42,100	
Bonds Transactions Volume (thou. pieces): 0.00		Bilateral Lending: 0	
Securities' Trades Number: 18,785		Lending Trades Number: 6	
Daily change: number %: -3,800 -16.83%		Daily change: thou. € %: -11 -64.71%	
YtD Avg Derivatives Trades number % chng prev year Avg: 35,933 24.40%		Multilateral Lending Trades Number: 6	
Number of Blocks Method 6-1: 10		Bilateral Lending Trades Number: 0	
Number of Blocks Method 6-2 & 6-3: 0			
Number of Bonds Transactions: 0			

Athex Capitalisation (mill. €) **



Daily Fluctuation of Athex Composite Share Price Index



Athex Indices

Index name	02/04/2015	01/04/2015	pts.	%	Min	Max	Year min	Year max	Year change
Athex Composite Share Price Index	771.32 #	765.37	5.95	0.78%	760.13	772.41	708.61	945.81	-6.64% €
FTSE/Athex Large Cap	229.56 #	227.36	2.20	0.97%	225.94	230.18	209.48	283.37	-13.33% €
FTSE/ATHEX Custom Capped	778.12 €	788.52	-10.39	-1.32%			724.23	956.79	-10.70% €
FTSE/ATHEX Custom Capped - USD	600.16 €	607.16	-7.00	-1.15%			558.48	777.68	-20.60% €
FTSE/Athex Mid Cap Index	782.29 €	785.07	-2.78	-0.35%	775.47	787.75	717.54	984.77	1.20% #
FTSE/ATHEX-CSE Banking Index	423.70 €	425.52	-1.82	-0.43%	408.85	430.34	391.43	774.70	-41.80% €
FTSE/ATHEX Global Traders Index Plus	1,424.09 #	1,406.23	17.86	1.27%	1,397.62	1,424.59	1,227.52	1,604.84	11.01% #
FTSE/ATHEX Global Traders Index	1,464.83 #	1,450.35	14.48	1.00%	1,442.44	1,464.83	1,344.70	1,698.65	1.83% #
FTSE/ATHEX Mid & Small Cap Factor-Weighted Ind	1,151.73 €	1,155.04	-3.31	-0.29%	1,136.42	1,156.38	1,076.89	1,223.09	5.07% #
Greece & Turkey 30 Price Index	618.84 €	621.29	-2.45	-0.39%	615.88	621.29	595.05	768.95	-8.98% €
ATHEX Mid & SmallCap Price Index	2,386.12 €	2,409.60	-23.48	-0.97%	2,355.74	2,430.81	2,355.74	2,635.74	-2.20% €
FTSE/Athex Market Index	555.57 #	550.66	4.91	0.89%	547.19	557.09	507.68	685.04	-12.67% €
FTSE Med Index	5,746.65 €	5,780.70	-34.05	-0.59%			4,930.94	5,780.70	14.09% #
Athex Composite Index Total Return Index	1,130.52 #	1,121.80	8.72	0.78%	1,114.12	1,132.13	1,037.71	1,385.07	-6.39% €
FTSE/Athex Large Cap Total Return	312.51 #	309.52	2.99	0.97%			285.87	382.72	-13.03% €
FTSE/ATHEX Large Cap Net Total Return	930.14 #	921.25	8.89	0.96%	915.48	932.68	848.38	1,147.63	-13.08% €
FTSE/ATHEX Custom Capped Total Return	821.05 €	832.02	-10.97	-1.32%			763.44	1,008.59	-10.45% €
FTSE/ATHEX Custom Capped - USD Total Return	633.27 €	640.66	-7.38	-1.15%			589.29	819.78	-20.38% €
FTSE/Athex Mid Cap Total Return	994.67 €	998.21	-3.54	-0.35%			928.33	1,231.75	1.20% #
FTSE/ATHEX-CSE Banking Total Return Index	395.10 €	396.80	-1.70	-0.43%			368.97	708.30	-41.83% €
Greece & Turkey 30 Total Return Index	755.13 #	754.18	0.95	0.13%			722.97	919.96	-8.25% €
Hellenic Mid & Small Cap Index	787.98 #	785.62	2.36	0.30%	778.59	790.25	716.61	994.59	2.44% #
FTSE/Athex Banks	559.81 €	562.21	-2.40	-0.43%	540.19	568.59	517.18	1,023.60	-41.80% €
FTSE/Athex Insurance	1,369.77 €	1,411.91	-42.14	-2.98%	1,306.55	1,411.91	1,296.01	1,538.35	-6.47% €
FTSE/Athex Financial Services	948.03 €	961.34	-13.31	-1.38%	944.45	978.22	926.91	1,400.60	-5.35% €
FTSE/Athex Industrial Goods & Services	2,039.57 €	2,044.93	-5.36	-0.26%	2,037.61	2,069.03	1,881.51	2,660.41	4.37% #
FTSE/Athex Retail	3,917.09 €	3,946.27	-29.18	-0.74%	3,902.68	4,032.34	3,336.67	4,531.02	3.02% #
FTSE/ATHEX Real Estate	2,257.44 #	2,229.02	28.42	1.27%	2,224.37	2,266.23	2,181.63	2,800.26	-1.07% €
FTSE/Athex Personal & Household Goods	4,824.19 #	4,786.06	38.13	0.80%	4,673.84	4,852.07	3,847.16	5,680.33	5.97% #
FTSE/Athex Food & Beverage	6,395.48 #	6,232.60	162.88	2.61%	6,232.60	6,488.07	5,066.70	6,488.07	9.18% #
FTSE/Athex Basic Resources	2,459.76 #	2,339.17	120.59	5.16%	2,322.29	2,459.76	1,753.11	2,916.96	27.57% #
FTSE/Athex Construction & Materials	2,246.95 #	2,211.81	35.14	1.59%	2,185.54	2,247.67	2,059.46	2,705.46	2.84% #
FTSE/Athex Oil & Gas	1,810.00 #	1,809.83	0.17	0.01%	1,777.00	1,819.05	1,618.74	2,208.30	-0.27% €
FTSE/Athex Chemicals	6,738.66 #	6,546.52	192.14	2.93%	6,465.58	6,738.66	4,784.62	7,336.99	31.55% #
FTSE/Athex Media	1,920.67 ~	1,920.67	0.00	0.00%	1,920.67	1,920.67	1,359.24	2,061.03	-6.81% €
FTSE/Athex Travel & Leisure	1,570.11 #	1,569.52	0.59	0.04%	1,549.80	1,577.27	1,238.26	1,741.96	2.41% #
FTSE/Athex Technology	714.84 #	711.93	2.91	0.41%	700.47	717.65	659.36	786.22	-1.55% €
FTSE/Athex Telecommunications	2,257.11 #	2,202.06	55.05	2.50%	2,202.06	2,257.11	1,995.61	2,606.68	-9.89% €
FTSE/Athex Utilities	2,045.50 €	2,047.64	-2.14	-0.10%	2,001.08	2,068.79	1,711.47	2,830.02	-2.53% €
FTSE/Athex Health Care	116.58 #	113.41	3.17	2.80%	112.62	118.96	111.03	163.37	-19.23% €
Athex All Share Index	157.76 #	156.97	0.79	0.51%			146.74	196.00	-15.15% €
Hellenic Corporate Bond Index	87.92 €	88.12	-0.19	-0.22%			87.18	94.45	-6.33% €
Hellenic Corporate Bond Price Index	85.17 €	85.38	-0.21	-0.24%			85.00	92.77	-7.93% €

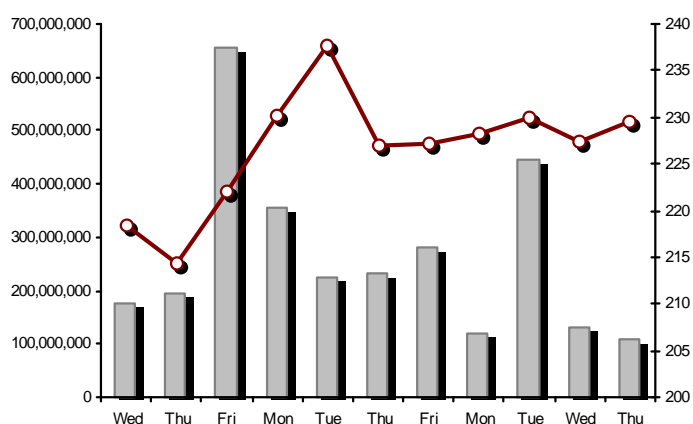
Note 1: Greece & Turkey 30 Pr data is the indicative at 17:20, whereas FTSE/ATHEX Custom Capped, FTSE/ATHEX Custom Capped - USD, FTSE/ATHEX Custom Capped TR, FTSE/ATHEX Custom Capped - USD TR, FTSE/Med 100 & Greece & Turkey 30 Rt., Hellenic Corporate Bond Price Index, Hellenic Corporate Bond Index closing prices refer to the previous trading day of 31/03/2015.

Note 2: The Hellenic Mid & Small Cap Index is a Customized index calculated by the Athens Exchange.

Athex Indices

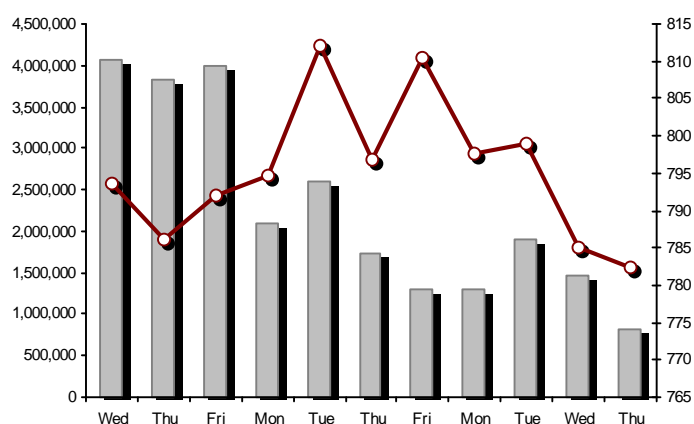
FTSE/Large Cap

02/04/2015: 0.97%



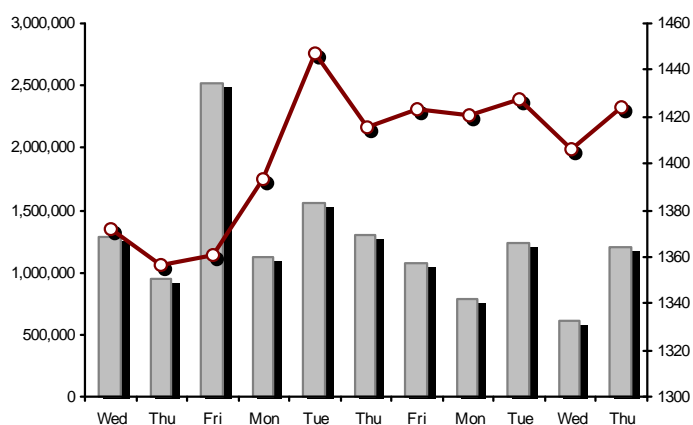
FTSE/Athex Mid Cap Index

02/04/2015: -0.35%



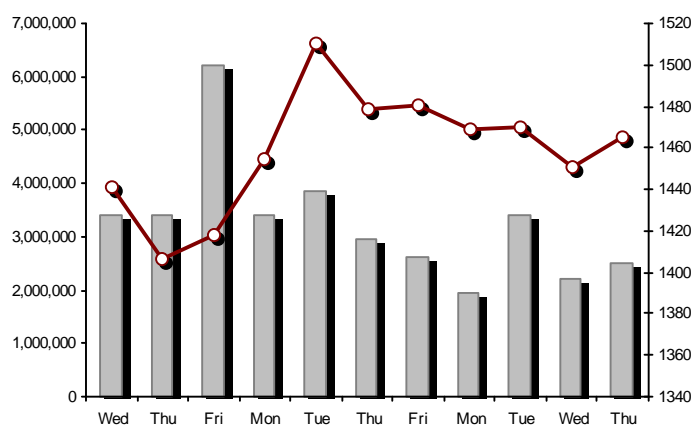
FTSE/ATHEX Global Traders Index Plus

02/04/2015: 1.27%



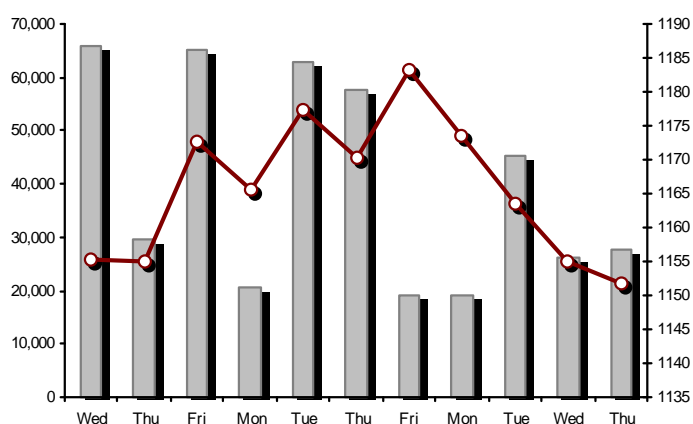
FTSE/ATHEX Global Traders Index

02/04/2015: 1.00%



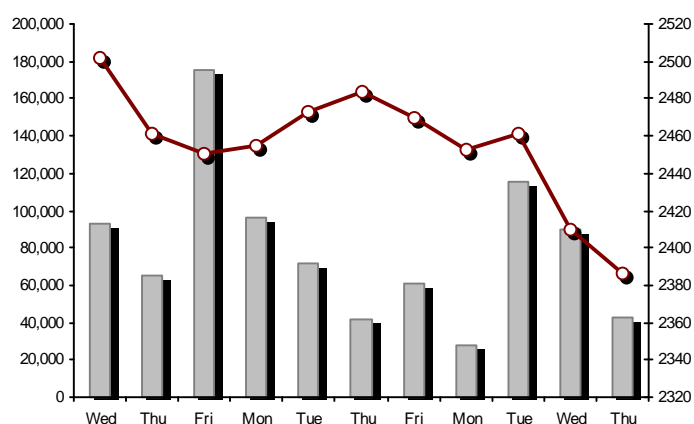
FTSE/ATHEX Mid & Small Cap Factor-Weighted Index

02/04/2015: -0.29%



ATHEX Mid & SmallCap Price Index

02/04/2015: -0.97%



Indices volume of transactions

Indices closing prices

Analytic Figures for Athex Market's Boards and Categories

	Total Traded Securities	Main Market	Low Dispersion	Other Categories (*)	Exchange Traded Funds (ETFs)	Warrants
Totals	135	109	7	14	2	3
Gain / Lose / Same:	63 / 58 / 14	53 / 48 / 8	4 / 2 / 1	6 / 3 / 5	0 / 2 / 0	0 / 3 / 0
Athex Capitalisation (mill. €) **	44,886.55	43,097.84	1,460.22	328.48		
Daily Average Trans/ons Value(thou.€)	114,067.74	111,498.72	62.56	135.33	47.41	2,519.71
Transactions Value	59,851.10	59,328.14	7.42	33.77	0.03	481.74
Main Board:	46,997.88	46,474.92	7.42	33.77	0.03	481.74
Blocks Board 6_2_3:	12,853.21	12,853.21	0.00	0.00	0.00	0.00
Forced Sales Board:	0.00	0.00	0.00	0.00	0.00	0.00
Special Terms Board:	0.00	0.00	0.00	0.00	0.00	0.00
Daily Average Transactions Volume	206,390,568	198,507,502	79,292	348,771	14,114	7,709,334
Transactions Volume	118,127,913	115,645,563	6,529	172,265	4	2,303,552
Main Board:	97,167,922	94,685,572	6,529	172,265	4	2,303,552
Blocks Board 6_2_3:	20,959,991	20,959,991	0	0	0	0
Forced Sales Board:	0	0	0	0	0	0
Special Terms Board:	0	0	0	0	0	0
Daily Average Number of Trades	35,933	34,036	35	85	7	1,771
Number of Trades	18,785	18,071	15	66	2	631
Main Board:	18,775	18,061	15	66	2	631
Blocks Board 6_2_3:	10	10	0	0	0	0
Forced Sales Board:	0	0	0	0	0	0
Special Terms Board:	0	0	0	0	0	0

(*) Summarised Transactions figures for Under Deletion and Under Supervision Categories.(**) The Market Capitalization of the Companies that belong in the Under Supervision Status is not included.

Trading Details by Athex Sectors and Financial Instruments (ETFs)

Code	Sectors	Gain / Lose / Same	Number of Trades	Transactions Volume	Transactions Value	% of Total Trans. Value
8300	- Banks	2 / 7 / 1	9,805	110,581,704	31,694,034.95	52.95%
1700	- Basic Resources	3 / 5 / 1	837	513,668	2,721,435.38	4.55%
1300	- Chemicals	1 / 1 / 0	52	14,086	17,667.95	0.03%
2300	- Construction & Materials	7 / 8 / 2	910	566,574	5,938,434.66	9.92%
12000	- Financial Instruments	0 / 2 / 0	2	4	31.64	0.00%
8700	- Financial Services	1 / 2 / 0	800	2,383,016	958,156.34	1.60%
3500	- Food & Beverage	5 / 4 / 0	126	69,202	469,970.42	0.79%
4500	- Health Care	3 / 0 / 1	48	102,428	44,943.13	0.08%
2700	- Industrial Goods & Services	11 / 5 / 1	852	123,579	789,642.57	1.32%
8500	- Insurance	0 / 1 / 0	29	4,285	5,399.49	0.01%
5500	- Media	1 / 0 / 1	3	2,790	983.85	0.00%
500	- Oil & Gas	1 / 1 / 0	537	203,386	1,057,608.22	1.77%
3700	- Personal & Household Goods	8 / 8 / 0	314	1,517,865	1,574,617.74	2.63%
8600	- Real Estate	4 / 2 / 2	461	208,075	903,502.33	1.51%
5300	- Retail	0 / 4 / 0	562	65,275	1,468,576.12	2.45%
9500	- Technology	8 / 2 / 3	221	88,039	110,561.47	0.18%
6500	- Telecommunications	1 / 0 / 0	899	913,382	7,391,668.51	12.35%
5700	- Travel & Leisure	5 / 3 / 2	1,328	544,237	3,794,638.43	6.34%
7500	- Utilities	2 / 3 / 0	999	226,318	909,223.11	1.52%

Top 10 best & worst performing Shares

Main Market					
With positive Price change	Closing price	change	With negative Price change	Closing price	change
MYTILINEOS HOLDINGS (CR)	5.98	5.84% #	ATTICA BANK S.A. (CR)	0.053	-5.36% ⚡
THRACE PLASTICS SA (CR)	1.32	5.60% #	KYRIAKIDIS MARBLES SA (CR)	2.13	-5.33% ⚡
INFORM P. LYKOS SA (CR)	1.72	3.61% #	ELTECH ANEMOS S.A. (CR)	0.596	-4.94% ⚡
TITAN CEMENT (CR)	21.38	3.49% #	ALPHA BANK (CR)	0.262	-4.73% ⚡
GRIVALIA PROPERTIES (CR)	7.48	3.03% #	ELLAKTOR (CR)	1.74	-3.33% ⚡
EUROBANK ERGASIAS (CR)	0.114	2.70% #	LAMDA DEVELOPMENT SA (CR)	3.22	-2.42% ⚡
CC HBC AG (CR)	17.14	2.64% #	GEK TERNA (CR)	1.72	-2.27% ⚡
OTE (CR)	8.20	2.50% #	HELLENIC EXCHANGES-A.S.E. (CR)	4.76	-1.86% ⚡
IKTINOS HELLAS SA (CR)	1.01	1.92% #	VIOHALCO SA/NV (CB)	2.91	-1.69% ⚡
TPA SA (CR)	16.50	1.66% #	THESSALONIKA WATER & SEWERAGE	2.51	-1.18% ⚡
With the highest Transactions Value	Value (thou. €)	change	With the highest Transactions Volume	Volume	change
PIRAEUS BANK (CR)	10,815.65	1.17% #	EUROBANK ERGASIAS (CR)	39,196,717	2.70% #
NATIONAL BANK (CR)	8,737.04	0.00% ↘	PIRAEUS BANK (CR)	32,547,795	1.17% #
OTE (CR)	7,391.67	2.50% #	ALPHA BANK (CR)	25,088,641	-4.73% ⚡
ALPHA BANK (CR)	6,661.62	-4.73% ⚡	NATIONAL BANK (CR)	8,129,142	0.00% ↘
TITAN CEMENT (CR)	5,522.86	3.49% #	BANK OF CYPRUS (CR)	2,862,957	-0.99% ⚡
EUROBANK ERGASIAS (CR)	4,331.13	2.70% #	MARFIN INVESTMENT GROUP (CR)	2,246,993	0.75% #
OPAP (CR)	3,379.49	0.00% ↘	TECHNICAL OLYMPIC SA (CR)	1,432,246	0.92% #
MYTILINEOS HOLDINGS (CR)	2,690.52	5.84% #	OTE (CR)	913,382	2.50% #
FOLLI FOLLIE (CR)	1,464.98	-0.73% ⚡	MYTILINEOS HOLDINGS (CR)	473,352	5.84% #
TECHNICAL OLYMPIC SA (CR)	1,102.85	0.92% #	ATTICA BANK S.A. (CR)	444,993	-5.36% ⚡

Note: Stocks that are not included in the "Low Dispersion" and "Under Supervision" categories, and the transactions value is more than 10,000 €.

Derivatives Summary

	Number of Trades	Volume	Open Interest
Index Futures	439	2,514	40,314
FTSE/Athex Large Cap	439	2,514	40,314
Stock Futures	1,497	31,891	540,209
ALPHA BANK (CR)	251	10,489	80,336
CC HBC AG (CR)	7	9	58
CORINTH PIPEWORKS SA (CR)	3	13	521
ELLAKTOR (CR)	7	25	1,444
EUROBANK ERGASIAS (CR)	215	10,773	223,015
EYDAP S.A. (CR)	12	21	438
FOLLI FOLLIE (CR)	3	11	63
FRIGOGLASS SA (CR)	1	1	343
GEK TERNA (CR)	37	174	7,818
GRIVALIA PROPERTIES (CR)	0	0	129
HELLENIC EXCHANGES-A.S.E. (CR)	30	63	1,891
HELLENIC PETROLEUM (CR)	8	23	4,851
INTRALOT (CR)	3	29	347
JUMBO SA (CR)	36	77	335
MARFIN INVESTMENT GROUP (CR)	19	154	30,068
METKA (CR)	7	33	330
MOTOR OIL (CR)	16	114	201
MYTILINEOS HOLDINGS (CR)	69	181	3,943
NATIONAL BANK (CR)	156	2,229	44,581
OPAP (CR)	50	259	1,201
OTE (CR)	99	416	6,222
P.P.A. S.A. (CR)	24	94	431
PIRAEUS BANK (CR)	292	6,209	126,044
PPC (CR)	124	440	3,335
SIDENOR (CR)	2	7	569
TERNA ENERGY (CR)	7	16	1,314
TITAN CEMENT (CR)	16	25	212
VIOHALCO SA/NV (CB)	3	6	169
Index Options	15	125	3,132
FTSE/Athex Large Cap	15	125	3,132
Stock Options	1	20	460
ALPHA BANK (CR)	0	0	0
NATIONAL BANK (CR)	0	0	180
OPAP (CR)	0	0	0
OTE (CR)	0	0	0
PIRAEUS BANK (CR)	1	20	280
PPC (CR)	0	0	0
Total Derivatives Traded	1,952	34,550	584,115

Number of Outstanding Securities	Nominal Value	Dividends [1]			Date of Last Dividend [2]	Coupon Right	Note	Shares	Closing price	% change	Previous closing price/date	Open price	Price min	Price max	Last price	Avg price	Last Bid [7]	Last Ask [7]	P/E after	Year	Volume	Trades	Transactions Value[8]	Company Mkt Value (thou. €)	Year low	Year high	Sector[4]
----------------------------------	---------------	---------------	--	--	---------------------------	--------------	------	--------	---------------	----------	-----------------------------	------------	-----------	-----------	------------	-----------	--------------	--------------	-----------	------	--------	--------	-----------------------	-----------------------------	----------	-----------	------------

Warrants

1,141,747,967	---	---	---	---	11/06/2013	---	---	ALPHA BANK (W)	0.441	-10.91	€ 0.495	01/04/2015	0.483	0.432	0.484	0.441	0.445	---	---	---	2014	677,198	334	301,378.15	3,345,493.68	0.290	0.979	8355
245,748,459	---	---	---	---	27/06/2013	---	---	NATIONAL BANK (W)	0.192	-3.52	€ 0.199	01/04/2015	0.192	0.182	0.195	0.192	0.189	---	---	---	2014	270,890	99	51,174.05	3,851,133.10	0.100	0.320	8355
843,637,022	---	---	---	---	03/07/2013	---	---	PIRAEUS BANK (W)	0.097	-1.02	€ 0.098	01/04/2015	0.097	0.093	0.099	0.097	0.095	---	---	---	2014	1,355,464	198	129,183.38	2,105,183.00	0.083	0.252	8355

Main Market

71,417,100	0.650	---	---	---	26/05/2010	27/06/2014	---	AEGEAN AIRLINES (CR)	7.50	0.27	# 7.48	01/04/2015	7.48	7.42	7.54	7.50	7.47	---	---	9.42	2014	29,962	142	223,730.12	535,628.25	6.40	8.08	5751
11,178,000	1.12	---	---	---	21/04/2010	15/12/2014	---	AEOLIAN INVESTMENT FUND (CR)	0.700	-3.98	€ 0.729	01/04/2015	0.700	0.700	0.700	0.700	0.700	---	---	---	2014	700	5	490.00	7,824.60	0.595	0.769	8985
13,000,000	1.00	---	---	---	01/08/2007	07/04/2000	---	AKRITAS SA (CR)	0.044	-8.33	€ 0.048	01/04/2015	0.044	0.044	0.044	0.044	0.044	---	---	---	2014	30	2	1.32	572.00	0.044	0.125	2353
12,769,059,858	0.300	---	---	---	07/04/2008	13/05/2013	---	ALPHA BANK (CR)	0.262	-4.73	€ 0.275	01/04/2015	0.278	0.259	0.280	0.262	0.266	---	---	---	2014	25,088,641	3,159	6,661,624.39	3,345,493.68	0.259	0.510	8355
22,016,250	0.370	---	---	---	15/07/2009	11/05/2000	---	ALUMIL (CR)	0.325	-1.22	€ 0.329	01/04/2015	0.330	0.303	0.330	0.325	0.317	---	---	---	2014	166	6	52.57	7,155.28	0.218	0.348	1753
417,608	16.00	---	0.8	---	29/04/2014	05/03/2013	---	ANDROMEDA SA (CR)	18.00	---	↘ 18.00	01/04/2015	---	---	---	---	---	---	---	---	2014	---	---	---	7,516.94	16.37	20.00	8985
26,252,040	0.380	---	---	---	08/07/2010	10/02/2014	---	AS COMPANY SA (CR)	0.326	-2.98	€ 0.336	01/04/2015	0.340	0.324	0.340	0.333	0.330	---	---	4.58	2014	5,408	14	1,787.22	8,558.17	0.263	0.344	5379
86,735,980	0.310	---	---	---	06/07/2009	02/01/2002	---	ATHENS MEDICAL CENTER SA (CR)	0.798	0.38	# 0.795	01/04/2015	0.770	0.770	0.800	0.800	0.783	---	---	---	2014	46,878	24	36,727.79	69,215.31	0.681	0.990	4533
1,045,794,145	0.300	---	---	---	04/06/2008	07/08/2014	---	ATTICA BANK S.A. (CR)	0.053	-5.36	€ 0.056	01/04/2015	0.056	0.052	0.056	0.053	0.054	---	---	---	2014	444,993	85	23,995.19	55,427.09	0.040	0.084	8355
15,300,000	0.300	---	---	---	30/07/2009	13/12/1999	---	ATTICA PUBLICATIONS SA (CR)	1.40	---	↘ 1.40	01/04/2015	---	---	---	---	---	---	---	50.50	2014	---	---	---	21,420.00	1.29	1.60	5557
45,457,464	0.700	---	---	---	01/07/2008	01/03/2010	---	AUDIO VISUAL ENTERPRISES (CR)	0.260	---	↘ 0.260	01/04/2015	---	---	---	---	---	---	---	---	2014	---	---	---	11,818.94	0.184	0.277	5553
12,157,500	0.320	---	---	---	30/04/2012	22/11/2013	---	AUTOHELLAS SA (CR)	10.26	0.10	# 10.25	01/04/2015	10.25	10.25	10.27	10.25	10.25	---	---	12.38	2014	2,190	10	22,455.67	124,735.95	8.30	10.80	5759
8,922,944,533	0.100	---	---	---	31/05/2011	02/02/2015	4857	BANK OF CYPRUS (CR)	0.200	-0.99	€ 0.202	01/04/2015	0.197	0.193	0.201	0.200	0.199	---	---	---	2014	2,862,957	231	568,371.40	1,784,588.91	0.165	0.219	8355
19,864,886	5.60	0.5376	0.672	0.672	05/03/2015	02/07/2008	---	BANK OF GREECE (CR)	9.39	-1.16	€ 9.50	01/04/2015	9.70	9.31	9.70	9.31	9.42	---	---	---	---	7,907	60	74,480.74	186,531.28	8.88	12.17	8355
23,986,500	1.05	---	---	---	26/06/2009	15/03/2000	---	BIOKARPET S.A.(CR)	0.235	---	↘ 0.235	01/04/2015	---	---	---	---	---	---	---	---	2014	---	---	---	5,636.83	0.170	0.260	3726
15,842,391	1.51	---	---	---	15/07/2009	12/05/2000	---	BITROS HOLDING SA (CR)	0.335	---	↘ 0.335	01/04/2015	---	---	---	---	---	---	---	---	2014	---	---	---	5,307.20	0.144	0.383	1757
15,816,009	0.300	---	---	---	01/07/2009	17/07/2000	---	BYTE COMPUTER SA (CR)	0.368	1.66	# 0.362	01/04/2015	0.350	0.348	0.368	0.368	0.352	---	---	5.54	2014	13,150	16	4,630.10	5,820.29	0.345	0.445	9533
367,819,247	6.70	0.34	0.354	---	09/07/2014	29/04/2013	---	CC HBC AG (CR)	17.14	2.64	# 16.70	01/04/2015	17.00	17.00	17.39	17.14	17.20	---	---	---	---	26,763	64	460,394.55	6,304,421.89	13.55	17.39	3537
101,123,806	0.360	---	---	---	22/07/2010	28/06/2011	---	CENTRIC HOLDINGS (CR)	0.178	4.71	# 0.170	01/04/2015	0.177	0.177	0.178	0.178	0.177	---	---	29.38	2014	3,000	3	531.80	18,000.04	0.140	0.215	5752
4,034,950	0.680	---	---	---	01/07/2005	30/12/2010	---	CHATZIKRANIOTIS & SONS SA (CR)	0.157	---	↘ 0.157	01/04/2015	---	---	---	---	---	---	---	---	2014	---	---	---	633.49	0.120	0.200	3577
124,170,201	0.780	---	---	---	28/06/2002	07/02/2005	---	CORINTH PIPEWORKS SA (CR)	1.01	-0.98	€ 1.02	01/04/2015	0.929	0.929	1.01	1.01	0.977	---	---	---	2014	2,161	34	2,110.68	125,411.90	0.756	1.31	1757
9,907,500	0.300	---	---	---	06/10/2005	13/02/2002	---	CPI SA (CR)	0.138	---	↘ 0.138	01/04/2015	---	---	---	---	---	---	---	11.91	2014	---	---	---	1,367.24	0.126	0.234	9572
27,379,200	0.520	---	0.1	---	24/07/2014	18/09/2013	---	CRETE PLASTICS SA (CR)	5.25	---	↘ 5.25	01/04/2015	---	---	---	---	---	---	---	15.21	2014	---	---	---	143,740.80	4.60	5.64	1357
15,000,000	0.300	---	---	---	06/07/2007	18/07/2000	---	DAIOS PLASTICS SA (CR)	2.55	---	↘ 2.55	01/04/2015	---	---	---	---	---	---	---	-(6)-	2014	---	---	---	38,250.00	2.25	2.58	1357
34,720,000	0.310	---	---	---	16/06/2010	01/08/2007	---	DROMEAS SA (CR)	0.119	-1.65	€ 0.121	01/04/2015	0.103	0.103	0.119	0.119	0.116	---	---	---	2014	658	9	76.23	4,131.68	0.100	0.162	3726
3,873,120	0.300	---	---	---	07/07/2008	04/10/2012	---	DRUCKFARBEN HELLAS (CR)	0.657	---	↘ 0.657	01/04/2015	---	---	---	---	---	---	---	---	2014	---	---	---	2,544.64	0.657	0.900	1357
11,250,000	0.560	---	---	---	26/07/2010	16/06/1999	---	EKTER SA (CR)	0.420	2.44	# 0.410	01/04/2015	0.425	0.420	0.425	0.420	0.424	---	---	---	2014	520	2	220.40	4,725.00	0.380	0.518	2357
32,188,050	1.04	---	---	---	21/07/2008	20/01/2000	---	EL. D. MOUZAKIS SA (CB)	0.270	-3.23	€ 0.279	01/04/2015	0.260	0.260	0.270	0.270	0.268	---	---	---	2014	7,400	4	1,983.65	8,690.77	0.240	0.290	3763
18,435,000	1.00	---	---	---	07/07/2009	10/09/2010	---	ELASTRON (CR)	0.442	-1.34	€ 0.448	01/04/2015	0.440	0.440	0.442	0.442	0.442	---	---	---	2014	2,865	5	1,265.80	8,148.27	0.370	0.697	1757
31,734,530	1.60	---	---	---	09/07/2007	19/07/2006	---	ELGEKA SA (CR)	0.285	---	↘ 0.285	01/04/2015	---	---	---	---	---	---	---	---	2014	---	---	---	9,044.34	0.155	0.285	3577
23,828,130	0.500	---	---	---	07/07/2010	17/02/2009	---	ELINOIL S.A. (CR)	0.700	---	↘ 0.700	01/04/2015	---	---	---	---	---	---	---	17.56	2014	---	---	---	16,679.69	0.621	0.968	537
177,001,313	1.03	---	---	---	05/07/2011	20/12/2007	---	ELLAKTOR (CR)	1.74	-3.33	€ 1.80	01/04/2015	1.80	1.70	1.82	1.74	1.75	---	---	---	2014	106,091	211	185,291.89	307,982.28	1.56	2.62	2357
82,667,000	0.300	---	---	---	22/07/2014	---	---	ELTECH ANEMOS S.A. (CR)	0.596	-4.94	€ 0.627	01/04/2015	0.626	0.588	0.626	0.596	0.602	---	---	10.11	2014	37,750	53	22,738.29	49,269.53	0.572	0.845	7537

Number of Outstanding Securities	Nominal Value	Dividends [1]			Date of Last Coupon		Note	Shares	Closing price	% change	Previous closing price/date	Open price	Price min	Price max	Last price	Avg price	Last Bid [7]	Last Ask [7]	P/E after	Year	Volume	Trades	Transactions Value[8]	Company Mkt Value (thou. €)	Year low	Year high	Sector[4]	
		2012	2013	2014	Dividend [2]	Right																						
Main Market																												
26,730,187	0.600	---	0.05	---	23/06/2014	30/12/2010	---	ELTON SA (CR)	0.946	-4.44	€ 0.990	01/04/2015	0.990	0.900	0.990	0.946	0.930	---	---	10.33	2014	516	8	479.74	25,286.76	0.862	0.990	1353
14,050,971	0.340	---	---	---	06/07/2011	17/10/2002	---	ELTRAK SA (CR)	1.46	4.29	# 1.40	01/04/2015	1.43	1.43	1.46	1.46	1.43	---	---	---	2014	122	2	174.76	20,514.42	1.07	1.46	2753
125,562,262	0.320	---	---	---	30/05/2014	02/12/2014	---	ELVAL SA. (CB)	1.13	---	↘ 1.13	01/04/2015	1.11	1.08	1.14	1.13	1.11	---	---	8.13	2014	7,947	32	8,843.50	141,885.36	0.965	1.41	1753
13,230,000	0.300	---	---	---	11/08/2010	24/11/2014	---	ELVE SA (CR)	0.430	4.37	# 0.412	01/04/2015	0.430	0.430	0.430	0.430	0.430	---	---	0.97	2014	100	2	43.00	5,688.90	0.390	0.484	3763
14,707,876,542	0.300	---	---	---	02/05/2008	13/06/2013	---	EUROBANK ERGASIAS (CR)	0.114	2.70	# 0.111	01/04/2015	0.112	0.107	0.114	0.114	0.110	---	---	---	2014	39,196,717	1,351	4,331,128.43	1,676,697.93	0.085	0.209	8355
7,959,900	0.600	---	---	---	02/06/2010	10/12/2013	5031	EUROCONSULTANTS S.A. (CR)	1.65	-5.71	€ 1.75	01/04/2015	1.90	1.58	1.90	1.61	1.65	---	---	-(6)-	2014	852	14	1,405.80	13,133.84	1.58	2.22	2791
27,503,677	0.630	0.1	---	---	11/07/2013	18/10/1999	---	EUROPEAN RELIANCE INSUR. (CR)	1.30	-2.99	€ 1.34	01/04/2015	1.30	1.24	1.30	1.30	1.26	---	---	3.49	2014	4,285	29	5,399.49	35,754.78	1.23	1.46	8536
13,673,200	0.880	---	---	---	18/07/2008	26/07/2001	---	EVROFARMA SA (CR)	0.340	---	↘ 0.340	01/04/2015	---	---	---	---	---	---	---	---	2014	---	---	---	4,648.89	0.198	0.373	3577
106,500,000	0.600	0.15	0.36	---	05/05/2014	28/01/2000	---	EYDAP S.A. (CR)	5.27	-0.94	€ 5.32	01/04/2015	5.39	5.25	5.40	5.27	5.29	---	---	13.38	2014	50,314	412	266,064.04	561,255.00	5.00	7.35	7577
52,800,154	0.300	---	0.2	---	20/08/2014	21/06/2004	---	F.G. EUROPE S.A. (CR)	0.510	2.00	# 0.500	01/04/2015	0.509	0.509	0.510	0.510	0.510	---	---	---	2014	400	3	203.90	26,928.08	0.406	0.562	3722
10,203,575	0.730	---	---	---	16/07/2007	18/10/1999	---	FIERATEX SA (CR)	0.080	-29.20	€ 0.113	01/04/2015	0.080	0.080	0.080	0.080	0.080	---	---	---	2014	1,900	1	152.00	816.29	0.080	0.228	3763
11,720,024	0.540	---	0.0394	---	21/08/2014	07/08/2014	---	FLEXOPACK SA (CR)	2.50	---	↘ 2.50	01/04/2015	---	---	---	---	---	---	---	7.66	2014	---	---	---	29,300.06	1.91	2.79	2723
4,181,450	0.500	---	---	---	21/08/2000	05/03/2002	---	FLOUR MILLS SARANTOPOULOS SA	0.950	---	↘ 0.950	01/04/2015	---	---	---	---	---	---	---	---	2014	---	---	---	3,972.38	0.950	0.950	3577
66,948,210	0.300	---	---	---	14/07/2009	23/09/2014	---	FOLLI FOLLIE (CR)	27.20	-0.73	€ 27.40	01/04/2015	27.72	27.10	28.00	27.20	27.54	---	---	---	2014	53,187	533	1,464,981.68	1,820,991.31	23.15	31.50	5379
50,992,322	1.07	---	---	---	21/06/2010	16/07/2002	---	FOURLIS (CR)	2.71	0.37	# 2.70	01/04/2015	2.73	2.68	2.73	2.71	2.69	---	---	---	2014	5,860	28	15,789.12	138,189.19	2.62	3.70	3722
50,593,832	0.300	---	---	---	07/07/2010	07/09/2011	---	FRIGOGLASS SA (CR)	1.61	0.63	# 1.60	01/04/2015	1.61	1.59	1.62	1.61	1.61	---	---	---	2014	8,902	35	14,288.00	81,456.07	1.55	1.95	2757
77,376,446	0.340	---	---	---	23/05/2005	18/08/2011	---	G.E. DIMITRIOU (CR)	0.021	-19.23	€ 0.026	01/04/2015	0.024	0.021	0.024	0.021	0.022	---	---	---	2014	9,865	10	218.86	1,624.91	0.014	0.030	3722
14,076,360	0.370	---	---	---	19/08/2008	22/07/2003	---	GALAXIDI S.A. (CR)	0.242	10.00	# 0.220	01/04/2015	0.242	0.242	0.242	0.242	0.242	---	---	8.13	2014	1,000	1	242.00	3,406.48	0.168	0.350	3573
94,462,368	0.570	---	---	---	01/08/2011	02/01/2009	---	GEK TERNA (CR)	1.72	-2.27	€ 1.76	01/04/2015	1.77	1.66	1.77	1.72	1.71	---	---	28.55	2014	95,475	179	162,903.58	162,475.27	1.52	2.47	2357
8,418,750	0.300	0.46	---	---	21/01/2015	27/06/2012	---	GEKE SA (CB)	4.73	---	↘ 4.73	01/04/2015	---	---	---	---	---	---	---	---	2014	---	---	---	39,820.69	4.30	6.12	5753
24,060,000	0.300	---	0.017	---	07/07/2014	21/01/2000	---	GEN. COMMERCIAL & IND.SA (CR)	0.315	-2.78	€ 0.324	01/04/2015	0.323	0.314	0.323	0.315	0.315	---	---	11.09	2014	1,606	6	505.21	7,578.90	0.265	0.420	2797
34,770,982	1.55	---	0.3	---	17/01/2014	27/07/2000	---	GR. SARANTIS SA (CR)	7.79	1.17	# 7.70	01/04/2015	7.79	7.70	7.79	7.79	7.71	---	---	16.49	2014	7,675	11	59,152.83	270,865.95	6.70	7.85	3767
101,260,000	2.13	---	0.1821	0.3037	19/03/2015	08/01/2014	---	GRIVALIA PROPERTIES (CR)	7.48	3.03	# 7.26	01/04/2015	7.40	7.27	7.48	7.48	7.36	---	---	19.56	2014	98,733	346	727,038.51	757,424.80	7.26	9.00	8675
8,340,750	1.20	---	---	---	25/06/2009	30/07/2001	---	HAIDEMENOS SA (CR)	0.968	---	↘ 0.968	01/04/2015	---	---	---	---	---	---	---	---	2014	---	---	---	8,073.85	0.210	0.968	2791
101,279,627	0.380	---	---	---	26/06/2008	14/07/2006	---	HALKOR SA (CB)	0.314	4.67	# 0.300	01/04/2015	0.300	0.300	0.320	0.314	0.302	---	---	---	2014	12,481	21	3,763.17	31,801.80	0.244	0.455	1755
29,546,360	0.710	---	---	---	20/06/2008	23/08/2000	---	HELLENIC CABLES SA (CR)	0.630	-5.97	€ 0.670	01/04/2015	0.680	0.620	0.680	0.630	0.636	---	---	---	2014	9,180	28	5,842.61	18,614.21	0.603	0.989	2733
65,368,563	0.740	0.09	---	---	03/06/2013	16/07/2014	---	HELLENIC EXCHANGES-A.S.E. (CR)	4.76	-1.86	€ 4.85	01/04/2015	4.80	4.73	4.95	4.76	4.82	---	---	30.13	2014	135,323	369	651,643.83	311,154.36	4.42	6.80	8777
305,635,185	2.18	0.15	---	---	31/12/2014	01/10/2003	4795	HELLENIC PETROLEUM (CR)	3.53	-0.84	€ 3.56	01/04/2015	3.50	3.47	3.55	3.53	3.52	---	---	---	2014	100,340	281	352,769.31	1,078,892.20	3.40	4.66	537
305,732,436	0.410	---	---	---	08/07/2009	28/09/2011	---	HYGEIA SA (CR)	0.147	2.80	# 0.143	01/04/2015	0.146	0.142	0.150	0.143	0.146	---	---	---	2014	30,450	21	4,460.74	44,942.67	0.140	0.206	4533
8,298,467	0.400	---	---	---	30/08/1993	08/05/2013	---	IDEAL GROUP SA (CR)	1.04	7.77	# 0.965	01/04/2015	0.869	0.869	1.04	1.04	0.910	---	---	---	2014	25	3	22.75	8,630.41	0.668	1.16	9574
28,580,100	0.400	---	0.025	---	18/08/2014	10/10/2013	---	IKTINOS HELLAS SA (CR)	1.01	1.92	# 0.991	01/04/2015	1.02	0.960	1.02	1.01	0.994	---	---	9.65	2014	38,453	94	38,230.75	28,865.90	0.960	1.30	2353
9,090,000	0.900	---	---	---	15/05/2009	13/10/2014	---	ILYDA S.A. (CR)	0.666	---	↘ 0.666	01/04/2015	---	---	---	---	---	---	---	---	2014	---	---	---	6,053.94	0.666	0.739	9537
20,578,374	0.620	---	---	---	02/06/2011	05/05/1999	---	INFORM P. LYKOS SA (CR)	1.72	3.61	# 1.66	01/04/2015	1.70	1.63	1.72	1.72	1.65	---	---	1.39	2014	7,504	50	12,402.91	35,394.80	1.42	1.94	2791
11,233,200	0.730	---	---	---	12/07/2010	30/07/1999	---	INTERTECH SA (CR)	0.249	-3.11	€ 0.257	01/04/2015	0.184	0.184	0.249	0.249	0.247	---	---	---	2014	1,030	6	254.52	2,797.07	0.169	0.308	9572
34,986,430	0.440	---	---	---	25/07/2008	23/02/2010	---	INTERWOOD-XYLEMPORIA (CR)	0.085	---	↘ 0.085	01/04/2015	---	---	---	---	---	---	---	---	2014	---	---	---	3,474.38	0.059	0.145	2353
2,566,836	0.440	---	---	---	13/08/2010	09/01/2007	---	INTERWOOD-XYLEMPORIA (PR)	0.195	---	↘ 0.195	01/04/2015	---	---	---	---	---	---	---	---	2014	---	---	---	3,474.38	0.195	0.195	2353
23,154,250	1.36	---	---	---	12/08/2008	02/08/2010	---	INTRACOM CONSTR. (CR)	0.460	-5.93	€ 0.489	01/04/2015	0.470	0.460	0.487	0.460	0.466	---	---	3.71	2014	902	11	420.70	10,650.96	0.370	0.610	2357
133,025,996	1.41	---	---	---	03/07/2007	07/01/2002	---	INTRACOM HOLDINGS (CR)	0.427	-0.23	€ 0.428	01/04/2015	0.428	0.420	0.435	0.427	0.429	---	---	---	2014	15,973	41	6,857.12	56,802.10	0.345	0.511	9578

Number of Outstanding Securities	Nominal Value	Dividends [1]			Date of Last Coupon		Note	Shares	Closing price	% change	Previous closing price/date	Open price	Price min	Price max	Last price	Avg price	Last Bid [7]	Last Ask [7]	P/E after	Year	Volume	Trades	Transactions Value[8]	Company Mkt Value (thou. €)	Year low	Year high	Sector[4]		
		2012	2013	2014	Dividend [2]	Right																							
Main Market																													
158,961,721	0.300	0.0026	---	---	30/05/2013	14/11/2007	---	INTRALOT (CR)	1.53	---	↘	1.53	01/04/2015	1.50	1.49	1.54	1.53	1.51	---	---	---	2014	107,196	465	161,960.21	243,211.43	1.05	1.80	5752
77,654,850	0.580	---	---	---	01/07/2011	21/02/2003	---	J & P - AVAX SA (CR)	0.460	1.32	#	0.454	01/04/2015	0.435	0.435	0.478	0.460	0.459	---	---	2.14	2014	9,285	15	4,265.99	35,721.23	0.403	0.660	2357
136,059,759	1.19	---	0.18	0.18	23/12/2014	05/03/2014	---	JUMBO SA (CR)	9.30	0.87	#	9.22	01/04/2015	9.36	8.97	9.36	9.30	9.19	---	---	17.31	2014	42,234	191	388,215.65	1,265,355.76	7.06	10.98	3747
9,742,920	0.400	0.01	0.01	---	08/08/2014	14/07/2000	---	KARAMOLEGOS SA (CR)	2.00	---	↘	2.00	01/04/2015	---	---	---	---	---	---	19.22	2014	---	---	---	19,485.84	1.57	2.00	3577	
14,679,792	1.68	---	---	---	24/06/2014	04/09/2000	---	KARATZIS SA (CR)	3.65	---	↘	3.65	01/04/2015	---	---	---	---	---	---	8.83	2014	---	---	---	53,581.24	2.89	3.65	2723	
13,202,756	0.350	---	---	---	01/07/2004	05/08/2014	---	KEKROPS SA (CR)	0.297	-3.88	€	0.309	01/04/2015	0.309	0.272	0.309	0.297	0.285	---	---	---	2014	1,210	6	344.49	3,921.22	0.247	0.424	8633
7,595,160	0.600	---	---	---	08/08/2008	18/08/2010	---	KIRIAKOULIS SHIPPING SA (CR)	0.420	9.09	#	0.385	01/04/2015	0.420	0.420	0.420	0.420	0.420	---	---	---	2014	50	1	21.00	3,189.97	0.340	0.638	5759
23,648,700	0.350	---	---	---	13/07/2011	31/03/2015	---	KLEEMAN HELLAS SA (CR)	1.60	3.23	#	1.55	01/04/2015	1.59	1.59	1.60	1.60	1.60	---	---	6.44	2014	5,836	15	9,328.10	37,837.92	1.22	1.84	2757
40,219,218	0.300	---	---	---	25/05/2009	09/07/2013	---	KLOUKINAS - LAPPAS SA (CR)	0.369	6.34	#	0.347	01/04/2015	0.369	0.359	0.369	0.369	0.365	---	---	---	2014	168	5	61.39	14,840.89	0.330	0.470	2357
21,224,340	0.420	---	---	---	02/07/2008	25/04/2006	---	KORDELLOS BROS SA (CR)	0.247	---	↘	0.247	01/04/2015	---	---	---	---	---	---	---	---	2014	---	---	---	5,242.41	0.180	0.250	1757
13,586,500	0.390	---	---	---	25/06/2010	28/05/2008	---	KORRES (CR)	3.40	3.34	#	3.29	01/04/2015	3.40	3.40	3.40	3.40	3.40	---	---	---	2014	280	2	952.00	46,194.10	3.10	3.80	3767
29,480,000	0.420	---	---	---	19/07/2010	01/08/2007	---	KRETA FARM SA (CR)	0.420	2.44	#	0.410	01/04/2015	0.410	0.401	0.420	0.420	0.408	---	---	11.54	2014	4,282	18	1,747.52	12,381.60	0.355	0.520	3577
33,065,136	0.380	---	---	---	06/07/2009	16/09/2013	---	KRI-KRI S.A. (CR)	1.75	---	↘	1.75	01/04/2015	---	---	---	---	---	---	16.20	2014	---	---	---	57,863.99	1.60	1.86	3577	
15,804,800	0.330	---	---	---	15/06/2010	12/03/2004	---	KTIMA KOSTAS LAZARIDIS SA (CR)	0.329	---	↘	0.329	01/04/2015	---	---	---	---	---	---	---	---	2014	---	---	---	5,199.78	0.276	0.396	3535
23,719,554	0.980	---	---	0.1006	19/03/2015	15/09/2014	---	KYRIAKIDIS MARBLES SA (CR)	2.13	-5.33	€	2.25	01/04/2015	2.25	2.11	2.25	2.13	2.17	---	---	8.09	2014	6,813	19	14,786.43	50,522.65	1.61	2.41	2353
79,721,775	0.300	---	---	---	30/05/2007	23/06/2014	---	LAMDA DEVELOPMENT SA (CR)	3.22	-2.42	€	3.30	01/04/2015	3.34	3.14	3.34	3.22	3.25	---	---	---	2014	36,548	76	118,750.96	256,704.12	2.46	4.63	8633
21,364,000	1.12	---	---	---	05/07/2010	10/08/2005	---	LAMPESA HOTEL SA (CR)	17.64	-0.90	€	17.80	01/04/2015	17.16	17.16	17.70	17.64	17.45	---	---	-(6)-	2014	150	6	2,617.15	376,860.96	16.10	18.00	5753
5,939,268	0.620	---	---	---	10/07/2003	03/01/2002	---	LANAKAM SA (CR)	0.990	---	↘	0.990	01/04/2015	---	---	---	---	---	---	---	---	2014	---	---	---	5,879.88	0.990	1.16	3763
7,734,375	1.00	---	---	---	09/07/2007	07/01/2011	---	LIVANIS SA (CR)	0.170	---	↘	0.170	01/04/2015	---	---	---	---	---	---	---	---	2014	---	---	---	1,314.84	0.117	0.210	5557
4,740,000	0.860	---	---	---	14/03/2003	---	---	LOGISMOS S.A. (CR)	0.300	---	↘	0.300	01/04/2015	---	---	---	---	---	---	---	---	2014	---	---	---	1,422.00	0.216	0.515	9533
17,125,062	0.940	---	---	---	01/06/2010	02/02/2015	---	LOULIS MILLS SA (CR)	1.92	-1.54	€	1.95	01/04/2015	1.94	1.92	1.94	1.92	1.93	---	---	9.39	2014	300	2	578.60	32,880.12	1.64	2.35	3577
937,122,261	0.300	---	---	---	26/04/2007	29/08/2014	---	MARFIN INVESTMENT GROUP (CR)	0.135	0.75	#	0.134	01/04/2015	0.134	0.134	0.139	0.135	0.136	---	---	---	2014	2,246,993	426	306,022.51	126,511.51	0.125	0.232	8775
9,819,370	0.690	---	---	---	14/08/2007	09/01/2004	---	MATHIOS REFRACTORY SA (CR)	0.336	---	↘	0.336	01/04/2015	---	---	---	---	---	---	---	---	2014	---	---	---	3,299.31	0.199	0.360	2353
468,700	0.47	0.65	0.15	0.15	04/12/2014	21/05/2004	---	MERMEREN KOMB. A.D. PR. (GDR)	7.00	-2.78	€	7.20	01/04/2015	7.02	6.93	7.02	7.00	7.00	---	---	0.48	2014	1,022	8	7,157.23	3,280.90	5.91	8.15	1775
51,950,600	0.320	0.25	0.3	---	20/06/2014	21/10/2005	---	METKA (CR)	8.34	-0.36	€	8.37	01/04/2015	8.60	8.34	8.60	8.34	8.38	---	---	5.86	2014	26,625	330	223,121.35	433,268.00	8.34	10.50	2757
10,500,000	0.950	---	---	---	24/06/2008	19/12/2013	---	MEVACO SA (CR)	1.00	---	↘	1.00	01/04/2015	0.901	0.901	1.00	1.00	0.980	---	---	---	2014	250	4	245.05	10,500.00	0.701	1.20	2757
6,700,000	0.800	---	0.16	---	26/05/2014	29/05/2014	---	MILLS KEPENOS (CR)	1.80	---	↘	1.80	01/04/2015	---	---	---	---	---	---	7.82	2014	---	---	---	12,060.00	1.17	2.14	3577	
6,200,000	0.500	---	---	---	22/06/2010	01/11/1995	---	MINERVA KNITWEAR SA (CB)	0.270	-0.74	€	0.272	01/04/2015	0.270	0.270	0.270	0.270	0.270	---	---	---	2014	5,483	2	1,480.41	1,674.00	0.225	0.300	3763
12,417,000	0.370	---	---	---	28/07/2008	06/09/2011	---	MLS MULTIMEDIA SA (CR)	4.00	1.27	#	3.95	01/04/2015	3.90	3.88	4.00	4.00	3.95	---	---	29.45	2014	9,359	42	36,990.97	49,668.00	3.85	4.25	9537
4,588,137	16.00	---	---	---	30/06/2005	17/08/2011	---	MOCHLOS SA (CR)	0.643	-4.60	€	0.674	01/04/2015	0.472	0.472	0.660	0.643	0.596	---	---	---	2014	454	11	270.50	2,950.17	0.472	1.05	2357
11,700,000	0.590	---	---	---	02/06/2009	24/07/2012	---	MOTODYNAMICS S.A. (CR)	0.270	-10.00	€	0.300	01/04/2015	0.252	0.252	0.299	0.270	0.271	---	---	---	2014	1,310	7	354.97	3,159.00	0.199	0.300	5379
110,782,980	0.750	0.3	0.2	---	26/06/2014	04/11/2013	---	MOTOR OIL (CR)	6.82	0.59	#	6.78	01/04/2015	6.78	6.69	6.89	6.82	6.84	---	---	---	2014	103,046	256	704,838.91	755,539.92	5.64	8.07	533
116,915,862	1.07	---	---	---	11/05/2009	06/07/2011	---	MYTILINEOS HOLDINGS (CR)	5.98	5.84	#	5.65	01/04/2015	5.65	5.59	5.98	5.98	5.68	---	---	---	2014	473,352	684	2,690,524.78	699,156.85	4.18	6.97	1755
8,321,682	0.670	---	---	---	17/08/2007	23/11/1999	---	N. LEVEDERIS SA (CB)	0.140	---	↘	0.140	01/04/2015	---	---	---	---	---	---	---	---	2014	---	---	---	2,595.30	0.126	0.220	1757
2,160,524	0.670	0.0436	0.0436	---	18/08/2014	23/11/1999	---	N. LEVEDERIS SA (PB)	0.662	9.97	#	0.602	01/04/2015	0.662	0.662	0.662	0.662	0.662	---	---	---	2014	5	1	3.31	2,595.30	0.380	0.662	1757
11,510,102	0.890	---	---	---	24/06/2005	06/10/1999	---	NAFPAKTOS TEXTILE IND. SA (CB)	0.226	-9.96	€	0.251	01/04/2015	0.226	0.226	0.226	0.226	0.226	---	---	---	2014	2,000	2	452.00	2,601.28	0.193	0.302	3763
6,340,000	0.600	---	---	---	30/11/2009	12/07/2000	---	NAKAS MUSIC	0.770	---	↘	0.770	01/04/2015	---	---	---	---	---	---	23.93	2014	---	---	---	4,881.80	0.461	1.05	5379	
3,533,149,631	0.300	---	---	---	16/05/2008	24/05/2013	---	NATIONAL BANK (CR)	1.09	---	↘	1.09	01/04/2015	1.10	1.04	1.10	1.09	1.08	---	---	---	2014	8,129,142	1,367	8,737,044.89	3,851,133.10	0.790	1.72	8355

Number of Outstanding Securities	Nominal Value	Dividends [1]			Date of Last Coupon		Note	Shares	Closing price	% change	Previous closing price/date	Open price	Price min	Price max	Last price	Avg price	Last Bid [7]	Last Ask [7]	P/E after	Year	Volume	Trades	Transactions Value[8]	Company Mkt Value (thou. €)	Year low	Year high	Sector[4]	
		2012	2013	2014	Dividend [2]	Right																						
Main Market																												
23,935,280	0.300	---	---	---	29/06/2009	13/06/2000	---	NAYTEMPORIKI PUBLISHING SA(CR)	0.160	---	↘ 0.160	01/04/2015	---	---	---	---	---	---	---	2014	---	---	---	3,829.64	0.117	0.200	5557	
27,848,000	0.300	0.0137	0.004	---	18/08/2014	02/09/2003	---	NEWSPHONE HELLAS SA (CR)	0.240	9.59	# 0.219	01/04/2015	0.202	0.202	0.240	0.240	0.232	---	27.29	2014	101	5	23.43	6,683.52	0.176	0.300	2791	
6,132,500	1.25	---	---	---	24/06/2011	19/06/2001	---	NEXANS HELLAS SA (CR)	1.43	---	↘ 1.43	01/04/2015	---	---	---	---	---	---	---	2014	---	---	---	8,769.48	1.31	1.77	2733	
319,000,000	0.300	0.57	0.25	0.2017	12/01/2015	25/04/2001	---	OPAP (CR)	8.82	---	↘ 8.82	01/04/2015	8.89	8.68	8.89	8.82	8.78	---	14.56	2014	384,910	687	3,379,486.81	2,813,580.00	6.75	9.90	5752	
490,150,389	2.83	---	---	---	28/06/2011	18/06/1998	---	OTE (CR)	8.20	2.50	# 8.00	01/04/2015	8.00	8.00	8.20	8.20	8.09	---	36.51	2014	913,382	899	7,391,668.51	4,019,233.19	7.25	9.47	6535	
25,000,000	2.00	0.05	0.12	---	17/07/2014	08/08/2003	---	P.P.A. S.A. (CR)	10.84	0.37	# 10.80	01/04/2015	10.85	10.67	10.89	10.84	10.77	---	40.07	2014	29,090	212	313,158.95	271,000.00	9.67	16.40	2777	
4,971,466	1.46	---	---	---	04/07/2007	08/10/2003	---	PAIRIS SA (CR)	0.187	9.36	# 0.171	01/04/2015	0.187	0.187	0.187	0.187	0.187	---	---	2014	729	1	136.32	929.66	0.106	0.236	2723	
3,953,090	0.900	---	---	---	02/07/2001	05/12/2012	---	PAPERPACK (CR)	0.918	3.15	# 0.890	01/04/2015	0.899	0.899	0.918	0.918	0.902	---	2.82	2014	2,073	9	1,869.69	3,628.94	0.684	0.960	2723	
50,797,369	0.310	---	---	---	17/08/2000	12/10/2010	---	PAPOUTSANIS (CR)	0.315	-9.74	€ 0.349	01/04/2015	0.349	0.315	0.349	0.315	0.321	---	---	2014	1,554	27	498.35	16,001.17	0.287	0.439	3767	
7,070,400	0.930	---	---	---	18/05/2010	12/05/2011	---	PETROPOULOS PETROS (CR)	3.38	0.30	# 3.37	01/04/2015	3.31	3.31	3.39	3.38	3.37	---	20.82	2014	1,812	22	6,105.61	23,897.95	2.98	3.50	2753	
6,101,979,715	0.300	---	---	---	16/05/2008	05/06/2013	---	PIRAEUS BANK (CR)	0.345	1.17	# 0.341	01/04/2015	0.344	0.326	0.346	0.345	0.332	---	---	2014	32,547,795	2,921	10,815,654.33	2,105,183.00	0.301	1.01	8355	
22,080,000	0.330	0.12	0.2	---	21/05/2014	03/10/2000	---	PLAISIO COMPUTERS SA (CR)	5.82	0.17	# 5.81	01/04/2015	5.87	5.74	5.87	5.82	5.78	---	8.02	2014	6,653	58	38,457.07	128,505.60	5.03	6.25	9572	
232,000,000	4.60	0.025	---	---	22/07/2013	12/12/2001	---	PPC (CR)	5.50	0.18	# 5.49	01/04/2015	5.50	5.32	5.56	5.50	5.45	---	37.28	2014	96,540	326	526,209.83	1,276,000.00	4.25	7.65	7535	
11,812,193	0.470	---	---	0.02	26/03/2015	15/11/2006	---	PROFILE SA (CR)	0.385	4.90	# 0.367	01/04/2015	0.370	0.370	0.385	0.385	0.377	---	10.20	2014	6,809	26	2,567.91	4,547.69	0.366	0.527	9533	
27,345,120	0.470	---	---	---	18/07/2005	26/02/2014	---	QUALITY & RELIABILITY SA (CR)	0.450	3.69	# 0.434	01/04/2015	0.450	0.450	0.450	0.450	0.450	---	16.90	2014	120	3	54.00	12,305.30	0.290	0.560	9533	
11,962,443	0.500	---	---	---	05/09/2008	12/12/2013	---	QUEST HOLDINGS (CR)	4.85	---	↘ 4.85	01/04/2015	4.66	4.50	4.85	4.85	4.67	---	25.59	2014	60	6	280.09	58,017.85	4.39	5.35	9533	
57,434,884	1.31	---	---	---	05/06/2008	12/06/2009	---	REDS S.A. (CR)	0.415	3.49	# 0.401	01/04/2015	0.415	0.415	0.415	0.415	0.415	---	---	2014	1,535	5	637.03	23,835.48	0.371	0.516	8633	
22,280,000	0.300	---	---	---	11/04/2011	23/02/2007	---	REVOIL (CR)	0.270	-1.82	€ 0.275	01/04/2015	0.275	0.270	0.275	0.270	0.270	---	---	2014	5,370	8	1,452.25	6,015.60	0.212	0.403	5379	
7,500,000	0.480	0.0024	0.0863	---	13/08/2014	10/02/2014	---	S.KANAKIS SA (CR)	1.90	-2.56	€ 1.95	01/04/2015	1.96	1.82	1.96	1.90	1.85	---	8.57	2014	1,785	19	3,300.08	14,250.00	1.67	2.10	3577	
52,067,296	0.300	---	---	---	23/12/2003	24/01/2007	---	SELECTED TEXT. IND. ASSOC (CR)	0.238	-1.25	€ 0.241	01/04/2015	0.238	0.238	0.238	0.238	0.238	---	---	2014	200	1	47.60	12,392.02	0.172	0.273	3763	
96,243,908	0.410	---	---	---	26/06/2008	17/07/2000	---	SIDENOR (CR)	0.564	-5.69	€ 0.598	01/04/2015	0.550	0.550	0.580	0.564	0.564	---	---	2014	13,669	46	7,714.34	54,281.56	0.492	0.927	1757	
6,456,530	1.61	---	---	---	29/06/2001	02/08/2010	---	SPACE HELLAS SA (CR)	1.65	4.43	# 1.58	01/04/2015	1.65	1.65	1.65	1.65	1.65	---	4.36	2014	501	4	826.65	10,653.27	1.43	1.96	9578	
28,438,268	0.300	---	---	---	21/08/2006	24/11/1999	---	SPIROY AGRICULTURE SA (CR)	0.310	---	↘ 0.310	01/04/2015	---	---	---	---	---	---	---	2014	---	---	---	8,815.86	0.261	0.357	1357	
33,125,000	5.00	---	---	---	03/07/2006	18/08/2010	---	TECHNICAL OLYMPIC SA (CR)	0.770	0.92	# 0.763	01/04/2015	0.779	0.711	0.780	0.770	0.770	---	---	2014	1,432,246	20	1,102,852.14	25,506.25	0.676	1.01	3728	
109,314,400	0.300	---	---	---	28/05/2012	09/07/2014	---	TERNA ENERGY (CR)	2.12	1.43	# 2.09	01/04/2015	2.09	2.06	2.14	2.12	2.10	---	---	2014	26,203	130	54,935.99	231,746.53	1.70	2.95	7537	
36,300,000	1.12	0.162	0.285	---	14/08/2014	12/12/2007	---	THESSALONIKA WATER & SEWERAGE	2.51	-1.18	€ 2.54	01/04/2015	2.55	2.51	2.56	2.51	2.53	---	6.89	2014	15,511	78	39,274.96	91,113.00	2.44	3.35	7577	
45,094,620	0.660	0.0467	0.05	---	20/01/2015	01/11/1999	---	THRACE PLASTICS SA (CR)	1.32	5.60	# 1.25	01/04/2015	1.26	1.25	1.32	1.32	1.27	---	---	2014	13,570	44	17,188.21	59,524.90	0.849	1.46	1357	
77,063,568	4.00	---	---	---	25/06/2014	25/06/2004	---	TITAN CEMENT (CR)	21.38	3.49	# 20.66	01/04/2015	20.66	20.37	21.38	21.38	20.69	---	19.73	2014	266,985	326	5,522,859.66	1,722,476.10	18.42	24.95	2353	
7,568,960	4.00	---	---	---	25/06/2014	25/06/2004	---	TITAN CEMENT CO. (PR)	9.89	-0.30	€ 9.92	01/04/2015	9.85	9.85	9.91	9.88	9.89	---	9.13	2014	640	12	6,326.56	1,722,476.10	7.45	10.05	2353	
10,080,000	3.00	1.5	0.6	---	13/08/2014	27/08/2001	---	TPA SA (CR)	16.50	1.66	# 16.23	01/04/2015	16.26	16.24	16.60	16.50	16.51	---	7.81	2014	8,580	37	141,676.15	166,320.00	16.23	23.95	2777	
54,888,240	1.13	0.1	0.09	---	25/04/2014	22/03/2006	---	TRASTOR REAL EST. INV. CO.(CR)	1.33	---	↘ 1.33	01/04/2015	1.34	1.32	1.34	1.33	1.33	---	---	2014	39,248	19	52,045.56	73,001.36	0.900	1.35	8671	
15,627,315	0.300	---	---	---	16/11/1992	03/12/2012	---	UNIBIOS (CR)	0.117	6.36	# 0.110	01/04/2015	0.110	0.110	0.117	0.117	0.111	---	---	2014	560	4	62.02	1,828.40	0.081	0.180	2353	
18,810,000	0.400	---	---	---	08/07/2010	14/11/2007	---	VARVERIS - MODA BAGNO SA (CR)	0.099	---	↘ 0.099	01/04/2015	0.099	0.099	0.100	0.100	0.099	---	---	2014	6,315	6	627.28	1,862.19	0.091	0.184	2353	
219,611,308	---	---	---	---	14/02/2014	---	---	VIOHALCO SA/NV (CB)	2.91	-1.69	€ 2.96	01/04/2015	2.91	2.88	2.98	2.91	2.93	---	---	---	---	20,217	80	59,302.93	639,068.91	1.79	4.11	2727
4,968,600	2.88	---	---	---	01/07/1998	14/12/1998	---	VIS SA (CR)	0.557	9.86	# 0.507	01/04/2015	0.557	0.557	0.557	0.557	0.557	---	---	2014	100	2	55.70	2,767.51	0.461	1.34	2723	
6,325,000	0.600	---	---	---	02/05/2014	17/02/2014	---	VOGIATZOGLOU SYSTEMS SA (CR)	0.984	---	↘ 0.984	01/04/2015	---	---	---	---	---	---	28.68	2014	---	---	---	6,223.80	0.871	1.00	2797	

Number of Outstanding Securities	Nominal Value	Dividends [1]			Date of Last Dividend [2]	Coupon Right	Note	Shares	Closing price	% change	Previous closing price/date		Open price	Price min	Price max	Last price	Avg price	Last Bid [7]	Last Ask [7]	P/E after	Year	Volume	Trades	Transactions Value[8]	Company Mkt Value (thou. €)	Year low	Year high	Sector[4]
----------------------------------	---------------	---------------	--	--	---------------------------	--------------	------	--------	---------------	----------	-----------------------------	--	------------	-----------	-----------	------------	-----------	--------------	--------------	-----------	------	--------	--------	-----------------------	-----------------------------	----------	-----------	------------

Exchange Traded Funds (ETFs)

5,848,618	---	---	---	24/01/2008	---	ALPHA ETF FTSE Athex Large Cap	2.32	---	2.32	01/04/2015	---	---	---	---	---	---	---	---	---	---	---	---	---	---	---	---	---	---	---	---	---	---	---	---	---	---	---	---	---	---	---	---	---	---	---	---	---	---	---	---	---	---	---	---	---	---	---	---	---	---	---	---	---	---	---	---	---	---	---	---	---	---	---	---	---	---	---	---	---	---	---	---	---	---	---	---	---	---	---	---	---	---	---	---	---	---	---	---	---	---	---	---	---	---	---	---	---	---	---	---	---	---	---	---	---	---	---	---	---	---	---	---	---	---	---	---	---	---	---	---	---	---	---	---	---	---	---	---	---	---	---	---	---	---	---	---	---	---	---	---	---	---	---	---	---	---	---	---	---	---	---	---	---	---	---	---	---	---	---	---	---	---	---	---	---	---	---	---	---	---	---	---	---	---	---	---	---	---	---	---	---	---	---	---	---	---	---	---	---	---	---	---	---	---	---	---	---	---	---	---	---	---	---	---	---	---	---	---	---	---	---	---	---	---	---	---	---	---	---	---	---	---	---	---	---	---	---	---	---	---	---	---	---	---	---	---	---	---	---	---	---	---	---	---	---	---	---	---	---	---	---	---	---	---	---	---	---	---	---	---	---	---	---	---	---	---	---	---	---	---	---	---	---	---	---	---	---	---	---	---	---	---	---	---	---	---	---	---	---	---	---	---	---	---	---	---	---	---	---	---	---	---	---	---	---	---	---	---	---	---	---	---	---	---	---	---	---	---	---	---	---	---	---	---	---	---	---	---	---	---	---	---	---	---	---	---	---	---	---	---	---	---	---	---	---	---	---	---	---	---	---	---	---	---	---	---	---	---	---	---	---	---	---	---	---	---	---	---	---	---	---	---	---	---	---	---	---	---	---	---	---	---	---	---	---	---	---	---	---	---	---	---	---	---	---	---	---	---	---	---	---	---	---	---	---	---	---	---	---	---	---	---	---	---	---	---	---	---	---	---	---	---	---	---	---	---	---	---	---	---	---	---	---	---	---	---	---	---	---	---	---	---	---	---	---	---	---	---	---	---	---	---	---	---	---	---	---	---	---	---	---	---	---	---	---	---	---	---	---	---	---	---	---	---	---	---	---	---	---	---	---	---	---	---	---	---	---	---	---	---	---	---	---	---	---	---	---	---	---	---	---	---	---	---	---	---	---	---	---	---	---	---	---	---	---	---	---	---	---	---	---	---	---	---	---	---	---	---	---	---	---	---	---	---	---	---	---	---	---	---	---	---	---	---	---	---	---	---	---	---	---	---	---	---	---	---	---	---	---	---	---	---	---	---	---	---	---	---	---	---	---	---	---	---	---	---	---	---	---	---	---	---	---	---	---	---	---	---	---	---	---	---	---	---	---	---	---	---	---	---	---	---	---	---	---	---	---	---	---	---	---	---	---	---	---	---	---	---	---	---	---	---	---	---	---	---	---	---	---	---	---	---	---	---	---	---	---	---	---	---	---	---	---	---	---	---	---	---	---	---	---	---	---	---	---	---	---	---	---	---	---	---	---	---	---	---	---	---	---	---	---	---	---	---	---	---	---	---	---	---	---	---	---	---	---	---	---	---	---	---	---	---	---	---	---	---	---	---	---	---	---	---	---	---	---	---	---	---	---	---	---	---	---	---	---	---	---	---	---	---	---	---	---	---	---	---	---	---	---	---	---	---	---	---	---	---	---	---	---	---	---	---	---	---	---	---	---	---	---	---	---	---	---	---	---	---	---	---	---	---	---	---	---	---	---	---	---	---	---	---	---	---	---	---	---	---	---	---	---	---	---	---	---	---	---	---	---	---	---	---	---	---	---	---	---	---	---	---	---	---	---	---	---	---	---	---	---	---	---	---	---	---	---	---	---	---	---	---	---	---	---	---	---	---	---	---	---	---	---	---	---	---	---	---	---	---	---	---	---	---	---	---	---	---	---	---	---	---	---	---	---	---	---	---	---	---	---	---	---	---	---	---	---	---	---	---	---	---	---	---	---	---	---	---	---	---	---	---	---	---	---	---	---	---	---	---	---	---	---	---	---	---	---	---	---	---	---	---	---	---	---	---	---	---	---	---	---	---	---	---	---	---	---	---	---	---	---	---	---	---	---	---	---	---	---	---	---	---	---	---	---	---	---	---	---	---	---	---	---	---	---	---	---	---	---	---	---	---	---	---	---	---	---	---	---	---	---	---	---	---	---	---	---	---	---	---	---	---	---	---	---	---	---	---	---	---	---	---	---	---	---	---	---	---	---	---	---	---	---	---	---	---	---	---	---	---	---	---	---	---	---	---	---	---	---	---	---	---	---	---	---	---	---	---	---	---	---	---	---	---	---	---	---	---	---	---	---	---	---	---	---	---	---	---	---	---	---	---	---	---	---	---	---	---	---	---	---	---	---	---</
-----------	-----	-----	-----	------------	-----	--------------------------------	------	-----	------	------------	-----	-----	-----	-----	-----	-----	-----	-----	-----	-----	-----	-----	-----	-----	-----	-----	-----	-----	-----	-----	-----	-----	-----	-----	-----	-----	-----	-----	-----	-----	-----	-----	-----	-----	-----	-----	-----	-----	-----	-----	-----	-----	-----	-----	-----	-----	-----	-----	-----	-----	-----	-----	-----	-----	-----	-----	-----	-----	-----	-----	-----	-----	-----	-----	-----	-----	-----	-----	-----	-----	-----	-----	-----	-----	-----	-----	-----	-----	-----	-----	-----	-----	-----	-----	-----	-----	-----	-----	-----	-----	-----	-----	-----	-----	-----	-----	-----	-----	-----	-----	-----	-----	-----	-----	-----	-----	-----	-----	-----	-----	-----	-----	-----	-----	-----	-----	-----	-----	-----	-----	-----	-----	-----	-----	-----	-----	-----	-----	-----	-----	-----	-----	-----	-----	-----	-----	-----	-----	-----	-----	-----	-----	-----	-----	-----	-----	-----	-----	-----	-----	-----	-----	-----	-----	-----	-----	-----	-----	-----	-----	-----	-----	-----	-----	-----	-----	-----	-----	-----	-----	-----	-----	-----	-----	-----	-----	-----	-----	-----	-----	-----	-----	-----	-----	-----	-----	-----	-----	-----	-----	-----	-----	-----	-----	-----	-----	-----	-----	-----	-----	-----	-----	-----	-----	-----	-----	-----	-----	-----	-----	-----	-----	-----	-----	-----	-----	-----	-----	-----	-----	-----	-----	-----	-----	-----	-----	-----	-----	-----	-----	-----	-----	-----	-----	-----	-----	-----	-----	-----	-----	-----	-----	-----	-----	-----	-----	-----	-----	-----	-----	-----	-----	-----	-----	-----	-----	-----	-----	-----	-----	-----	-----	-----	-----	-----	-----	-----	-----	-----	-----	-----	-----	-----	-----	-----	-----	-----	-----	-----	-----	-----	-----	-----	-----	-----	-----	-----	-----	-----	-----	-----	-----	-----	-----	-----	-----	-----	-----	-----	-----	-----	-----	-----	-----	-----	-----	-----	-----	-----	-----	-----	-----	-----	-----	-----	-----	-----	-----	-----	-----	-----	-----	-----	-----	-----	-----	-----	-----	-----	-----	-----	-----	-----	-----	-----	-----	-----	-----	-----	-----	-----	-----	-----	-----	-----	-----	-----	-----	-----	-----	-----	-----	-----	-----	-----	-----	-----	-----	-----	-----	-----	-----	-----	-----	-----	-----	-----	-----	-----	-----	-----	-----	-----	-----	-----	-----	-----	-----	-----	-----	-----	-----	-----	-----	-----	-----	-----	-----	-----	-----	-----	-----	-----	-----	-----	-----	-----	-----	-----	-----	-----	-----	-----	-----	-----	-----	-----	-----	-----	-----	-----	-----	-----	-----	-----	-----	-----	-----	-----	-----	-----	-----	-----	-----	-----	-----	-----	-----	-----	-----	-----	-----	-----	-----	-----	-----	-----	-----	-----	-----	-----	-----	-----	-----	-----	-----	-----	-----	-----	-----	-----	-----	-----	-----	-----	-----	-----	-----	-----	-----	-----	-----	-----	-----	-----	-----	-----	-----	-----	-----	-----	-----	-----	-----	-----	-----	-----	-----	-----	-----	-----	-----	-----	-----	-----	-----	-----	-----	-----	-----	-----	-----	-----	-----	-----	-----	-----	-----	-----	-----	-----	-----	-----	-----	-----	-----	-----	-----	-----	-----	-----	-----	-----	-----	-----	-----	-----	-----	-----	-----	-----	-----	-----	-----	-----	-----	-----	-----	-----	-----	-----	-----	-----	-----	-----	-----	-----	-----	-----	-----	-----	-----	-----	-----	-----	-----	-----	-----	-----	-----	-----	-----	-----	-----	-----	-----	-----	-----	-----	-----	-----	-----	-----	-----	-----	-----	-----	-----	-----	-----	-----	-----	-----	-----	-----	-----	-----	-----	-----	-----	-----	-----	-----	-----	-----	-----	-----	-----	-----	-----	-----	-----	-----	-----	-----	-----	-----	-----	-----	-----	-----	-----	-----	-----	-----	-----	-----	-----	-----	-----	-----	-----	-----	-----	-----	-----	-----	-----	-----	-----	-----	-----	-----	-----	-----	-----	-----	-----	-----	-----	-----	-----	-----	-----	-----	-----	-----	-----	-----	-----	-----	-----	-----	-----	-----	-----	-----	-----	-----	-----	-----	-----	-----	-----	-----	-----	-----	-----	-----	-----	-----	-----	-----	-----	-----	-----	-----	-----	-----	-----	-----	-----	-----	-----	-----	-----	-----	-----	-----	-----	-----	-----	-----	-----	-----	-----	-----	-----	-----	-----	-----	-----	-----	-----	-----	-----	-----	-----	-----	-----	-----	-----	-----	-----	-----	-----	-----	-----	-----	-----	-----	-----	-----	-----	-----	-----	-----	-----	-----	-----	-----	-----	-----	-----	-----	-----	-----	-----	-----	-----	-----	-----	-----	-----	-----	-----	-----	-----	-----	-----	-----	-----	-----	-----	-----	-----	-----	-----	-----	-----	-----	-----	-----	-----	-----	-----	-----	-----	-----	-----	-----	-----	-----	-----	-----	-----	-----	-----	-----	-----	-----	-----	-----	-----	-----	-----	-----	-----	-----	-----	-----	-----	-----	-----	-----	-----	-----	-----	-----	-----	-----	-----	-----	-----	-----	-----	-----	-----	-----	-----	-----	-----	-----	-----	-----	-----	-----	-----	-----	-----	-----	-----	-----	-----	-----	-----	-----	-----	-----	-----	-----	-----	-----	-----	-----	-----	-----	-----	-----	-----	-----	-----	-----	-----	-----	-----	-----	-----	-----	-----	-----	-----	-----	-----	-----	-----	-----	-----	-----	-----	-----	-----	-----	-----	-----	-----	-----	-----	-----	-----	-----	-----	-----	-----	-----	-----	-----	-----	-----	-----	-----	-----	-----	-----	-----	-----	-----	-----	-----	-----	-----	-----	-----	-----	-----	-----	-----	-----	-----	-----	-----	-----	-----	-----	-----	-----	-----	-----	-----	-----	-----	-----	-----	-----	-----	-----	-----	-----	-----	-----	-----	-----	-----	-----	-----	-----	-----	-----	-----	-----	-----	-----	-----	-----	-----	-----	-----	-----	-----	-----	-----	-----	-----	-----	-----	-----	-----	-----	-----	-----	-----	-----	-----	-----	-----	-----	-----	-----	-----	-----	-----	-----	-----	-----	-----	-----	-----	-----	-----	-----	-----	-----	-----	-----	-----	-----	-----	-----	-----	-----	-----	-----	-----	-----	-----	-----	-----	-----	-----	-----	-----	-----	-----	-----	-----	-----	-----	-----	-----	-----	-----	-----	-----	-----	-----	-----	-----	-----	-----	-----	-----	-----	-----	-----	-----	-----	-----	-----	-----	-----	-----	-----	-----	-----	-----	-----	-----	-----	-----	-----	-----	-----	-----	-----	-----	-----	-----	-----	-----	-----	-----	-----	-----	-----	-----	-----	-----	-----	-----	-----	-----	-----	-----	-----	-----	-----	-----	-----	-----	-------

Low Dispersion

14,000,000	4.15	---	---	---	23/04/2010	29/06/1999	4815	ALPHA REAL ESTATE SA(CR)	6.28	8.46	#	5.79	01/04/2015	6.28	6.28	6.28	6.28	6.28	---	---	---	33.80	2014	1	1	6.28	87,920.00	3.80	6.30	8637
63,900,000	3.00	---	---	---	23/06/2003	04/11/2008	4816	ASTIR PALACE SA (CR)	2.20	2.33	#	2.15	01/04/2015	2.20	2.20	2.21	2.20	2.20	---	---	---	---	2014	1,210	5	2,665.00	140,580.00	2.10	3.60	5753
90,902,904	0.800	---	---	---	09/08/2004	08/03/2006	4814	ATHENA SA (CR)	0.328	---	γ	0.328	01/04/2015	---	---	---	---	---	---	---	---	---	2014	---	---	---	29,816.15	0.328	0.328	2357
191,660,320	0.300	---	---	---	20/07/2009	29/12/2010	4817	ATTICA HOLDINGS (CR)	0.451	-0.88	€	0.455	01/04/2015	0.451	0.451	0.451	0.451	0.451	---	---	---	---	2014	528	3	238.13	86,438.80	0.416	0.589	5759
71,082,707	1.70	---	---	---	01/07/2010	21/11/2012	4820	HERACLES GEN.CEMENT CO. (CR)	1.15	---	γ	1.15	01/04/2015	---	---	---	---	---	---	---	---	---	2014	---	---	---	81,745.11	1.15	1.40	2353
13,404,440	8.63	---	---	---	02/04/2001	06/03/1992	4822	IONIAN HOTELS SA (CR)	5.50	---	γ	5.50	01/04/2015	---	---	---	---	---	---	---	---	---	2014	---	---	---	73,724.42	4.98	7.25	5753
2,760,000	11.83	8.52	8.5	---	30/06/2014	16/07/1990	4823	KARELIA TOBACCO CO. SA (CB)	250.00	0.40	#	249.00	01/04/2015	250.00	250.00	250.00	250.00	250.00	---	---	---	11.14	2014	10	1	2,500.00	690,000.00	198.05	298.00	3785
30,600,000	0.300	---	---	---	12/06/2008	04/03/2014	5059	KATHIMERINI SA (CR)	0.360	2.56	#	0.351	01/04/2015	0.351	0.351	0.360	0.360	0.360	---	---	---	---	2014	2,730	2	982.53	11,016.00	0.289	0.588	5557
14,074,000	3.00	---	---	---	02/03/2012	23/07/2009	5075	MIG REAL ESTATE (CR)	2.65	---	γ	2.65	01/04/2015	2.65	2.65	2.65	2.65	2.65	---	---	---	15.12	2014	50	1	132.50	37,296.10	2.08	3.45	8671
106,980,050	2.25	---	---	---	25/07/2008	24/02/2014	5046	MINOAN LINES SA (CR)	2.00	---	γ	2.00	01/04/2015	---	---	---	---	---	---	---	---	---	2014	---	---	---	213,960.10	1.43	2.00	5759
17,240,776	0.370	---	---	---	14/07/2005	30/09/2003	4827	PERSEUS SA (CR)	0.448	-20.00	€	0.560	01/04/2015	0.448	0.448	0.448	0.448	0.448	---	---	---	2.16	2014	2,000	2	896.00	7,723.87	0.448	0.700	3577

Surveillance

33,301,715	0.320	---	---	---	27/06/2003	08/07/2009	4978	AEGEK (CR)	0.050	2.04	#	0.049	01/04/2015	0.050	0.050	0.050	0.050	0.050	---	---	---	---	2014	19,334	5	966.70	1,665.09	0.032	0.074	2357
14,870,100	0.300	---	---	---	15/05/2008	26/09/2011	4844	ALPHA GRISSIN S.A. (CR)	0.032	---	~	0.032	01/04/2015	---	---	---	---	---	---	---	---	---	2014	---	---	---	475.84	0.032	0.048	9533
215,246,452	0.300	---	---	---	25/06/2001	24/09/2001	4446	ALTEC SA (CR)	0.020	---	~	0.020	01/04/2015	0.020	0.020	0.020	0.020	0.020	---	---	---	---	2014	398	3	7.96	4,304.93	0.017	0.030	9533
2,969,713	0.300	---	---	---	02/07/2008	28/02/2011	4958	ANEK LINES SA (PR, issue '96)	0.123	---	~	0.123	01/04/2015	---	---	---	---	---	---	---	---	---	2014	---	---	---	12,264.21	0.110	0.133	5759
312,163	0.300	---	---	---	02/07/2008	28/02/2011	4959	ANEK LINES SA (PR, issue '90)	1.30	---	~	1.30	01/04/2015	---	---	---	---	---	---	---	---	---	2014	---	---	---	12,264.21	1.15	1.30	5759
185,373,016	0.300	---	---	---	02/07/2008	28/02/2011	4957	ANEK LINES SA (CR)	0.062	-4.61	€	0.065	01/04/2015	0.062	0.062	0.062	0.062	0.062	---	---	---	---	2014	15,041	6	932.54	12,264.21	0.056	0.093	5759
81,644,555	0.300	---	---	---	01/07/2008	02/09/2002	5056	ATTI - KAT SA (CR)	0.011	-8.33	€	0.012	01/04/2015	0.010	0.010	0.014	0.014	0.011	---	---	---	---	2014	3,549	4	39.49	898.09	0.009	0.037	2357
20,255,805	0.300	---	---	---	22/08/2006	02/08/2010	4881	AXON HOLDING SA (CR)	0.046	---	~	0.046	01/04/2015	0.046	0.046	0.046	0.046	0.046	---	---	---	---	2014	100	1	4.60	931.77	0.022	0.050	4533
1,130,180	0.440	---	---	---	20/06/2003	02/07/2014	---	COMPUCON SA (CR)	0.006	---	~	0.006	01/04/2015	---	---	---	---	---	---	---	---	---	2014	---	---	---	6.78	0.005	0.010	9537
14,173,104	0.300	---	---	---	11/08/2010	28/11/2013	5055	DIONIC (CR)	0.060	---	~	0.060	01/04/2015	---	---	---	---	---	---	---	---	---	2014	---	---	---	850.39	0.037	0.086	2797
3,961,300	1.28	---	---	---	29/06/2004	03/08/2000	5080	DUROS SA (CR)	0.280	---	~	0.280	01/04/2015	---	---	---	---	---	---	---	---	---	2014	---	---	---	1,109.16	0.240	0.585	3763
7,085,888	1.59	---	---	---	02/07/1996	06/09/2010	4690	ELVIEMEK (CR)	3.97	---	~	3.97	01/04/2015	---	---	---	---	---	---	---	---	---	2014	---	---	---	28,130.98	3.97	3.97	8633
6,000,000	0.600	---	---	---	13/06/2008	08/04/2004	4886	EUROBROKERS S.A. (CR)	0.011	---	~	0.011	01/04/2015	---	---	---	---	---	---	---	---	---	2014	---	---	---	66.00	0.011	0.020	8534
21,820,410	0.800	---	---	---	22/05/2008	02/08/2011	4882	EUROMEDICA SA (CR)	0.430	---	~	0.430	01/04/2015	---	---	---	---	---	---	---	---	---	2014	---	---	---	9,382.78	0.320	0.430	4533
110,097,185	0.300	---	---	---	04/12/2013	5033	Forthnet (CR)	0.704	3.53	#	0.680	01/04/2015	0.670	0.670	0.750	0.750	0.704	---	---	---	---	2013	3,501	4	2,463.35	77,508.42	0.610	1.19	9535	
1,270,000	0.300	---	---	---	06/07/2007	06/02/2013	5007	GIRAKIAN PROFIL SA (CB)	0.295	---	~	0.295	01/04/2015	---	---	---	---	---	---	---	---	---	2014	---	---	---	374.65	0.247	0.350	1757
36,748,909	0.730	---	---	---	15/12/2005	13/12/2006	5083	HEL. SUGAR INDUSTRY SA (CB)	0.249	18.01	#	0.211	01/04/2015	0.249	0.249	0.249	0.249	0.249	---	---	---	---	2014	210	2	52.29	9,150.48	0.141	0.327	3577
179,707,771	0.300	---	---	---	27/06/2002	01/11/2011	4847	HELLAS ONLINE SA (CR)	0.563	---	~	0.563	01/04/2015	0.563	0.563	0.563	0.563	0.563	---	---	---	---	2014	30,460	9	17,148.98	101,175.48	0.516	0.563	9537
30,390,000	0.310	---	---	---	18/08/2008	29/12/2006	4447	HELLENIC FISHFARMING SA (CR)	0.050	---	~	0.050	01/04/2015	---	---	---	---	---	---	---	---	---	2014	---	---	---	1,519.50	0.026	0.078	3573
1,540,000	0.600	---	---	---	08/08/1994	19/09/2000	5058	J.BOUTARIS & SON HOLD. (PB)	0.006	---	~	0.006	01/04/2015	---	---	---	---	---	---	---	---	---	2014	---	---	---	563.19	0.005	0.007	3535

Number of Outstanding Securities	Nominal Value	Dividends [1]			Date of Last Coupon Dividend [2]		Note	Shares	Closing price	% change	Previous closing price/date	Open price	Price min	Price max	Last price	Avg price	Last Bid [7]	Last Ask [7]	P/E after	Year	Volume	Trades	Transactions Value[8]	Company Mkt Value (thou. €)	Year low	Year high	Sector[4]
25,179,640	0.600	---	---	---	08/08/1994	19/09/2000	5057	J.BOUTARIS & SON HOLD. SA (CB)	0.022	---	0.022	01/04/2015	---	---	---	---	---	---	---	2014	---	---	---	563.19	0.016	0.037	3535
7,125,216	0.650	---	---	---	01/07/2005	14/12/1999	4955	KRE.KA SA (CR)	0.171	---	0.171	01/04/2015	---	---	---	---	---	---	---	2014	---	---	---	1,218.41	0.101	0.225	3573
51,081,030	1.00	---	---	---	20/08/2007	03/09/2007	4912	LAVIPHARM SA (CR)	0.150	2.04	#	0.147	01/04/2015	0.150	0.150	0.150	0.150	---	---	2014	25,000	2	3,750.00	7,662.15	0.086	0.171	4577
4,419,616	1.58	---	---	---	21/07/2011	04/03/2015	4983	MEDICON S.A (CR)	0.324	---	0.324	01/04/2015	---	---	---	---	---	---	1.86	2014	---	---	---	1,431.96	0.245	0.453	4535
255,459,600	0.300	---	---	---	26/06/2000	03/12/2010	4833	NEL SA (CR)	0.056	---	0.056	01/04/2015	---	---	---	---	---	---	---	2014	---	---	---	14,305.74	0.009	0.064	5759
20,231,328	0.600	---	---	---	15/07/2008	25/06/2004	4879	NIKAS SA (CR)	0.123	---	0.123	01/04/2015	---	---	---	---	---	---	---	2014	---	---	---	2,488.45	0.115	0.123	3577
63,697,153	1.34	---	---	---	08/07/2008	10/11/2008	5081	NIREFS SA (CR)	0.082	-8.89	0.090	01/04/2015	0.082	0.082	0.089	0.082	0.082	---	---	2014	24,862	10	2,039.38	5,223.17	0.067	0.106	3573
14,967,940	0.500	---	---	---	21/05/2008	04/01/2008	4956	PASAL DEVELOPMENT S.A. (CR)	0.148	19.36	#	0.124	01/04/2015	0.140	0.140	0.148	0.148	---	---	2014	30,750	7	4,547.00	2,215.26	0.060	0.176	8633
18,750,000	0.300	---	---	---	02/07/2001	31/12/2012	4985	PEGASUS PUBLISHING S.A. (CR)	0.227	---	0.227	01/04/2015	---	---	---	---	---	---	---	2014	---	---	---	4,256.25	0.057	0.283	5557
24,319,250	0.300	---	---	---	09/07/2002	04/07/2007	5054	PROODEFTIKH SA (CR)	0.100	---	0.100	01/04/2015	0.100	0.100	0.100	0.100	---	---	3.50	2014	11,000	4	1,100.00	2,431.93	0.057	0.116	2357
65,326,268	0.530	---	---	---	04/07/2007	19/07/2006	4750	SATO SA (CR)	0.039	---	0.039	01/04/2015	---	---	---	---	---	---	---	2014	---	---	---	2,547.72	0.024	0.115	3726
36,235,184	1.00	---	---	---	01/07/2008	30/07/2012	4961	SELONDA AQUACULTURE SA (CR)	0.090	7.14	#	0.084	01/04/2015	0.090	0.090	0.090	0.090	---	0.99	2014	8,000	8	720.00	3,261.17	0.050	0.099	3573
7,914,480	0.300	---	---	---	23/06/2008	29/06/2011	4888	SFAKIANAKIS SA (CR)	1.70	---	1.70	01/04/2015	---	---	---	---	---	---	---	2014	---	---	---	13,454.62	1.12	2.58	5379
10,000,000	1.35	---	---	---	24/06/2008	10/05/2005	4887	SIDMA SA (CR)	0.370	---	0.370	01/04/2015	---	---	---	---	---	---	---	2014	---	---	---	3,700.00	0.271	0.370	1757
100,793,000	0.300	---	---	---	16/07/2009	05/08/2013	5008	TELETIPOS SA (CR)	0.022	---	0.022	01/04/2015	0.022	0.022	0.022	0.022	---	---	---	2014	60	1	1.32	2,217.45	0.019	0.108	5553
3,229,566	0.320	---	---	---	22/06/2005	23/09/1999	4629	VARANGIS AVEPE S.A. (CR)	0.520	---	0.520	01/04/2015	---	---	---	---	---	---	---	2014	---	---	---	1,679.37	0.520	0.520	3726
16,383,428	0.300	---	---	---	25/06/2002	21/06/2013	4997	VARVARESSOS SA (CB)	0.125	---	0.125	01/04/2015	---	---	---	---	---	---	2.96	2014	---	---	---	2,047.93	0.096	0.165	3763
13,191,620	0.620	---	---	---	04/08/2010	09/09/2002	4977	YALCO - CONSTANTINOU SA (CB)	0.106	---	0.106	01/04/2015	---	---	---	---	---	---	---	2014	---	---	---	1,398.31	0.079	0.189	3722

9,567,289	0.300	---	---	---	01/07/2004	19/11/2007	5062	MARAC ELECTRONICS (CR)	0.298	---	0.298	01/04/2015	---	---	---	---	---	---	---	2014	---	---	---	2,851.05	0.298	0.298	9578
40,946,303	0.360	---	---	---	18/07/2005	27/11/2007	5053	PC SYSTEMS SA (CR)	0.049	---	0.049	01/04/2015	---	---	---	---	---	---	---	2014	---	---	---	2,006.37	0.040	0.098	9533
766,000	1.50	---	---	---	01/07/2004	11/12/2012	4937	TRIA ALFA SA (CR)	1.80	---	1.80	01/04/2015	---	---	---	---	---	---	---	2014	---	---	---	1,709.55	1.80	2.29	3763
245,000	1.50	---	---	---	19/07/2010	11/12/2012	4938	TRIA ALFA SA (PR)	1.35	---	1.35	01/04/2015	---	---	---	---	---	---	---	2014	---	---	---	1,709.55	1.35	1.35	3763

5,000,000	0.400	---	---	---	03/06/2009	01/09/2014	5087	ALCO HELLAS SA (CR)	0.180	---	0.180	01/04/2015	---	---	---	---	---	---	---	---	---	---	---	900.00	0.130	0.307	1753
5,025,000	0.300	---	---	---	05/07/2005	14/03/2002	5023	ALSINCO S.A (CR)	0.043	---	0.043	01/04/2015	---	---	---	---	---	---	---	---	---	---	---	216.08	0.043	0.043	3763
1,750,955,549	0.600	---	---	---	19/05/2008	08/12/2011	4911	ATE (CR)	0.155	---	0.155	01/04/2015	---	---	---	---	---	---	---	---	---	---	---	271,398.11	0.155	0.155	8355
21,382,067	0.300	---	---	---	02/10/2006	15/02/2006	4628	ATERMON (CR)	0.120	---	0.120	01/04/2015	---	---	---	---	---	---	---	---	---	---	---	2,565.85	0.120	0.120	5555
105,423,498	0.510	---	---	---	01/07/2004	28/12/2005	4920	AVENIR S.A. (CR)	0.046	---	0.046	01/04/2015	---	---	---	---	---	---	---	---	---	---	---	4,849.48	0.046	0.046	5752
33,930,000	0.300	---	---	---	03/07/2006	30/05/2001	4865	BABIS VOVOs SA (CR)	0.304	---	0.304	01/04/2015	---	---	---	---	---	---	---	---	---	---	---	10,314.72	0.304	0.304	8633
20,121,710	1.21	---	---	---	27/07/1992	12/03/2003	5002	BALKAN R.E. (CR)	0.190	---	0.190	01/04/2015	---	---	---	---	---	---	---	---	---	---	---	3,823.12	0.190	0.190	8633
17,579,754	4.16	---	---	---	18/08/2006	02/08/2010	5086	BIOTER SA (CR)	0.134	---	0.134	01/04/2015	---	---	---	---	---	---	---	---	---	---	---	2,355.69	0.128	0.250	2357
21,920,570	0.300	---	---	---	03/07/2007	13/12/1999	4702	CARDASSILARIS SA (CR)	0.140	---	0.140	01/04/2015	---	---	---	---	---	---	---	---	---	---	---	3,068.88	0.140	0.140	3577
54,547,634	0.500	---	---	---	25/04/2005	21/01/2009	4860	CH.TEGOPOULOS PUBL. SA (CR)	0.038	---	0.038	01/04/2015	---	---	---	---	---	---	---	---	---	---	---	2,072.81	0.038	0.038	5557
30,159,583	0.470	---	---	---	26/06/2008	29/12/2010	5047	DIAS A/C (CR)	0.050	---	0.050	01/04/2015	---	---	---	---	---	---	---	---	---	---	---	1,507.98	0.050	0.050	3573
15,878,748	0.480	---	---	---	10/07/2006	22/03/2004	5085	DOMIKI KRITIS SA (CR)	0.272	---	0.272	01/04/2015	---	---	---	---	---	---	---	---	---	---	---	4,319.02	0.216	0.340	2357

Number of Outstanding Securities	Nominal Value	Dividends [1]			Date of Last Coupon		Note	Shares	Closing price	% change	Previous closing price/date	Open price	Price min	Price max	Last price	Avg price	Last Bid [7]	Last Ask [7]	P/E after	Year	Volume	Trades	Transactions Value[8]	Company Mkt Value (thou. €)	Year low	Year high	Sector[4]	
		2012	2013	2014	Dividend [2]	Right																						
Suspension Status																												
7,847,611	1.20	---	---	---	01/08/2007	28/09/2011	4939	EDRASIS - C. PSALLIDAS SA (CR)	0.150	---	0.150	01/04/2015	---	---	---	---	---	---	---	---	---	---	---	---	1,177.14	0.150	0.150	2357
5,750,000	0.300	---	---	---	12/12/2008	12/12/2011	4929	ELECTRONIKI ATHINON SA (CR)	0.480	---	0.480	01/04/2015	---	---	---	---	---	---	---	---	---	---	---	---	2,760.00	0.480	0.480	5375
24,605,397	0.400	---	---	---	29/06/1995	27/05/2002	4651	EMPORIKOS DESMOS SA (CR)	0.080	---	0.080	01/04/2015	---	---	---	---	---	---	---	---	---	---	---	---	2,134.04	0.080	0.080	3722
1,182,903	0.400	---	---	---	01/07/1996	27/05/2002	4652	EMPORIKOS DESMOS SA (PR)	0.140	---	0.140	01/04/2015	---	---	---	---	---	---	---	---	---	---	---	---	2,134.04	0.140	0.140	3722
7,326,648	1.00	---	---	---	26/07/2006	24/07/2001	4921	FINTEXPORT SA (CR)	0.328	---	0.328	01/04/2015	---	---	---	---	---	---	---	---	---	---	---	---	2,403.14	0.328	0.328	3763
13,692,227	1.47	---	---	---	07/07/2006	08/10/1999	5049	HELLENIC FABRICS SA (CR)	0.117	---	0.117	01/04/2015	---	---	---	---	---	---	---	---	---	---	---	---	1,601.99	0.117	0.117	3763
53,155,053	0.440	---	---	---	24/11/2014	16/07/2008	5084	IASO SA (CR)	0.730	---	0.730	01/04/2015	---	---	---	---	---	---	---	---	---	---	---	---	38,803.19	0.690	0.900	4533
24,619,524	0.500	---	---	---	10/10/1986	30/12/2002	4914	KERAMIA-ALLATINI (CR)	0.088	---	0.088	01/04/2015	---	---	---	---	---	---	---	---	---	---	---	---	2,166.52	0.088	0.088	8633
7,840,373	1.20	---	---	---	18/07/2002	05/03/2003	4765	KLONATEX SA (PR)	0.080	---	0.080	01/04/2015	---	---	---	---	---	---	---	---	---	---	---	---	1,453.75	0.080	0.080	3763
20,663,047	1.20	---	---	---	21/08/2000	05/03/2003	4764	KLONATEX SA (CR)	0.040	---	0.040	01/04/2015	---	---	---	---	---	---	---	---	---	---	---	---	1,453.75	0.040	0.040	3763
17,544,600	0.600	---	---	---	03/07/2000	01/08/2000	4868	KOYMBAS SYNERGY GROUP (CR)	0.132	---	0.132	01/04/2015	---	---	---	---	---	---	---	---	---	---	---	---	2,315.89	0.132	0.132	8775
15,015,000	1.60	---	---	---	01/07/2002	02/02/2000	4603	MAXIM C.M. PERTSINIDIS SA (CB)	0.100	---	0.100	01/04/2015	---	---	---	---	---	---	---	---	---	---	---	---	1,501.50	0.100	0.100	3763
66,937,526	0.700	---	---	---	13/08/2010	21/05/2003	5003	MICHANIKI SA (CR)	0.100	---	0.100	01/04/2015	---	---	---	---	---	---	---	---	---	---	---	---	9,186.78	0.100	0.100	2357
25,968,987	0.700	---	---	---	13/08/2010	21/05/2003	5004	MICHANIKI SA (PR)	0.096	---	0.096	01/04/2015	---	---	---	---	---	---	---	---	---	---	---	---	9,186.78	0.096	0.096	2357
13,555,100	1.00	---	---	---		08/07/2005	4576	MICROLAND COMPUTERS SA (CR)	0.640	---	0.640	01/04/2015	---	---	---	---	---	---	---	---	---	---	---	---	8,675.26	0.640	0.640	5379
23,463,874	0.800	---	---	---	23/05/2003	21/12/1999	4918	NEORION SA (CR)	0.125	---	0.125	01/04/2015	---	---	---	---	---	---	---	---	---	---	---	---	2,932.98	0.125	0.125	2753
42,501,273	0.300	---	---	---	26/06/2007	10/08/2009	4993	NUTRIART (CR)	0.049	---	0.049	01/04/2015	---	---	---	---	---	---	---	---	---	---	---	---	2,082.56	0.049	0.049	3577
20,210,127	1.53	---	---	---	27/06/1997	20/03/2000	5061	PARNASSOS ENTERP. (CR)	0.070	---	0.070	01/04/2015	---	---	---	---	---	---	---	---	---	---	---	---	1,414.71	0.070	0.070	8775
25,583,146	0.300	---	---	---	25/06/2001	03/12/2008	4723	PETZETAKIS SA (CR)	0.260	---	0.260	01/04/2015	---	---	---	---	---	---	---	---	---	---	---	---	6,651.62	0.260	0.260	1357
9,550,386	0.500	---	---	---	01/07/1997	12/06/2008	4626	PRAXITELIO SA (CR)	0.390	---	0.390	01/04/2015	---	---	---	---	---	---	---	---	---	---	---	---	4,430.09	0.390	0.390	4533
1,306,368	0.500	---	---	---	01/07/1997	12/06/2008	4627	PRAXITELIO SA (PR)	0.540	---	0.540	01/04/2015	---	---	---	---	---	---	---	---	---	---	---	---	4,430.09	0.540	0.540	4533
62,683,822	0.300	---	---	---	27/05/2008	09/01/2006	4830	PROTON BANK S.A. (CR)	0.180	---	0.180	01/04/2015	---	---	---	---	---	---	---	---	---	---	---	---	11,283.09	0.180	0.180	8355
25,667,143	0.320	---	---	---	03/07/2000	18/12/2007	4548	SAOS (CR)	1.56	---	1.56	01/04/2015	---	---	---	---	---	---	---	---	---	---	---	---	40,040.74	0.780	0.780	2773
26,408,040	0.300	---	---	---	01/07/1997	26/05/1999	4464	SHEET STEEL SA (CR)	0.120	---	0.120	01/04/2015	---	---	---	---	---	---	---	---	---	---	---	---	3,168.96	0.120	0.120	1757
60,221,300	0.400	---	---	---	01/07/2002	01/11/2010	5022	SHELMAN SA (CR)	0.080	---	0.080	01/04/2015	---	---	---	---	---	---	---	---	---	---	---	---	4,817.70	0.080	0.080	2353
29,060,950	0.340	---	---	---	20/08/2007	24/10/2001	5088	SPIDER METAL INDUSTRY SA (CR)	0.008	---	0.008	01/04/2015	---	---	---	---	---	---	---	---	---	---	---	---	232.49	0.005	0.008	2757
26,262,660	0.900	---	---	---	01/07/2008	24/02/2011	4954	SPRIDER STORES (CR)	0.031	---	0.031	01/04/2015	---	---	---	---	---	---	---	---	---	---	---	---	814.14	0.031	0.031	5371
144,688,060	0.600	---	---	---	21/04/2008	10/03/2010	4982	T BANK (CR)	0.048	---	0.048	01/04/2015	---	---	---	---	---	---	---	---	---	---	---	---	6,945.03	0.048	0.048	8355
6,523,780	0.530	---	---	---	01/07/2002	06/03/2001	4971	TECHNICAL PUBLICATIONS SA (CR)	0.006	---	0.006	01/04/2015	---	---	---	---	---	---	---	---	---	---	---	---	39.14	0.006	0.006	5557
13,920,000	0.320	---	---	---	19/11/2001	01/08/2000	4726	TEXAPRET SA (CR)	0.080	---	0.080	01/04/2015	---	---	---	---	---	---	---	---	---	---	---	---	1,113.60	0.080	0.080	3763
510,840	1.00	---	---	---	15/07/2008	21/11/2013	5036	TROPEA HOLDING (CR)	2.00	---	2.00	01/04/2015	---	---	---	---	---	---	---	---	---	---	---	---	1,021.68	2.00	2.00	3722
284,465,964	3.70	---	---	---	20/06/2008	15/06/2009	4913	TT HELLENIC POSTBANK (CR)	0.168	---	0.168	01/04/2015	---	---	---	---	---	---	---	---	---	---	---	---	47,790.28	0.168	0.168	8355
89,616,200	0.300	---	---	---	21/08/2000	28/06/2007	4616	UNITED TEXTILES (CR)	0.050	---	0.050	01/04/2015	---	---	---	---	---	---	---	---	---	---	---	---	4,480.81	0.050	0.050	3763
71,683,906	0.400	---	---	---	15/06/2005	05/02/2008	4953	XATZIOANNOU (CR)	0.026	---	0.026	01/04/2015	---	---	---	---	---	---	---	---	---	---	---	---	1,863.78	0.026	0.026	3763

Shares' Notes

Code	Note text
()	- Adjusted dividends.
*	- Last adjusted closing price.
[1]	- Net dividends.
[2]	- The "Date of Last Coupon" for New listings refers to the date company's stocks started to trade in Athex
[3]	- The Company Market Value is referred to the number of outstanding shares
[4]	- Sectors codification can be found in Appendix A
[5]	- The Market Value refers to the total number of shares listed (including their several classes) in the exchange by the company.
[6]	- P/E greater than 100
[7]	- Last view of the Order Book before the end of the trading session
[8]	- All Blocks Methods' Transactions Value are included.
4446	- Transfer to the "Under Supervision" Category as of 20/10/2008.
4447	- Transfer to the "Under Supervision" Category as of 21/10/2008.
4464	- Suspension of trading as of 1/12/2008.
4548	- Suspension of trading as of 1/4/2009.
4576	- Suspension of trading as of 14/7/2009.
4603	- Suspension of trading as of 1/12/2009.
4616	- Suspension of trading as of 25/2/2010.
4626	- Suspension of trading as of 1/4/2010.
4627	- Suspension of trading as of 1/4/2010.
4628	- Suspension of trading as of 1/4/2010.
4629	- Transfer to the Under Supervision Category as of 12/4/2010.
4651	- Suspension of trading as of 1/6/2010.
4652	- Suspension of trading as of 1/6/2010.
4690	- Transfer to Surveillance category as of 4/4/2006.
4702	- Suspension of trading as of 1/12/2010.
4723	- Suspension of trading as of 31/1/2011.
4726	- Suspension of trading as of 1/3/2011.
4750	- Transfer to the "Under Surveillance Category" from 8/4/2011.
4764	- Suspension of trading as of 20/5/2011.
4765	- Suspension of trading as of 20/5/2011.
4795	- The final gross (pre-tax) dividend is € 0.30 per share and subject to withholding tax on the full dividend amount, i.e. 0,45 per share, for those shareholders liable to withholding tax, in accordance with the applicable tax law provisions.
4814	- Transfer to the Low Dispersion Category as of 30/5/2011.
4815	- Transfer to the Low Dispersion Category as of 30/5/2011.
4816	- Transfer to the Low Dispersion Category as of 30/5/2011.
4817	- Transfer to the Low Dispersion Category as of 30/5/2011.
4820	- Transfer to the Low Dispersion category as of 18/4/2008.
4822	- Transfer to the Low Dispersion category as of 30/5/2011.
4823	- Transfer to the Low Dispersion category as of 4/4/2006.
4827	- Transfer to the Low Dispersion category as of 5/5/2010.
4830	- Suspension of trading as of 10/10/2011.
4833	- Transfer to Surveillance category from 6/5/2010.
4844	- Transfer to the Surveillance category from 8/4/2011.
4847	- Transfer to the Surveillance Category as of 3/7/2009.
4857	- The 793,906,274 new (CR) shares, resulting from the recent share capital increase through a rights issue, are not yet admitted to trading on the ATHEX.
4860	- Suspension of trading as of 30/3/2012.
4865	- Suspension of trading as of 2/4/2012.
4868	- Suspension of trading as of 2/4/2012.
4879	- Transfer to the Surveillance Category as of 10/4/2012.
4881	- Transfer to the Surveillance Category as of 10/4/2012.
4882	- Transfer to the Surveillance Category as of 10/4/2012.
4886	- Transfer to the Surveillance Category as of 10/4/2012.

Shares' Notes

Code	Note text
4887	- Transfer to the Surveillance Category as of 10/4/2012.
4888	- Transfer to the Surveillance Category as of 10/4/2012.
4911	- Lift of suspension from 30/7/2012.
4912	- Transfer to the Surveillance Category as of 31/7/2012.
4913	- Suspension of trading as of 30/8/2012.
4914	- Suspension of trading as of 31/8/2012.
4918	- Suspension of trading as of 31/8/2012.
4920	- Suspension of trading as of 31/8/2012.
4921	- Suspension of trading as of 31/8/2012.
4929	- Suspension of trading as of 1/10/2012.
4937	- Transfer to the UNDER DELETION category as of 30/11/2012.
4938	- Transfer to the UNDER DELETION category as of 30/11/2012.
4939	- Suspension of trading as of 30/11/2012.
4953	- Suspension of trading as of 2/4/2013.
4954	- Suspension of trading as of 2/4/2013.
4955	- Transfer to the Surveillance Category as from 5/4/2013.
4956	- Transfer to the Surveillance Category as from 5/4/2013.
4957	- Transfer to the Surveillance Category as from 5/4/2013.
4958	- Transfer to the Surveillance Category as from 5/4/2013.
4959	- Transfer to the Surveillance Category as from 5/4/2013.
4961	- Transfer to the Surveillance Category as from 5/4/2013.
4971	- Suspension of trading as of 3/6/2013.
4977	- Transfer to the "Under Surveillance Category" from 11/6/2013.
4978	- Transfer to the Under Supervision Category as of 11/6/2013.
4982	- Suspension of trading as of 1/12/2011.
4983	- Transfer to the Surveillance Category as of 5/4/2013.
4985	- Transfer to the "Under Surveillance Category" from 8/4/2011.
4993	- Suspension of trading as of 21/6/2013 (15:18).
4997	- Transfer to the Under Supervision Category as of 21/12/2009. - The 6,870,053 new (CB) shares, resulting from the recent share capital increase through a rights issue, are not yet admitted to trading on the ATHEX.
5002	- Suspension of trading as of 30/08/2013.
5003	- Suspension of trading as of 30/08/2013.
5004	- Suspension of trading as of 30/08/2013.
5007	- Transfer to the Surveillance category, as of 11/10/2013.
5008	- Transfer to the Surveillance Category from 8/4/2011.
5022	- Suspension of trading as of 2/12/2013.
5023	- Suspension of trading as of 2/12/2013.
5031	- The 612,300 new (CR) shares, resulting from the recent share capital increase through a rights issue, are not yet admitted to trading on the ATHEX.
5033	- Transfer to the Surveillance Category as of 25/11/2011. The 97,144,575new (CR) shares, resulting from the recent share capital increase through a rights issue, are not yet admitted to trading on the ATHEX.
5036	- The company's share is under suspension of trading as of 2/4/2012. During suspension, the company proceeded and concluded a share reverse split, according to which - after the conclusion of the corporate action - the total number of the company's shares, as well as, the last closing price of 30/03/2012 were adjusted.
5046	- Transfer to the Low Dispersion category as of 8/4/2011.
5047	- Suspension of trading as of 27/3/2014.
5049	- Under suspension of trading as of 1/4/2014.
5053	- Transfer to the UNDER DELETION category as of 10/4/2014.
5054	- Transfer to the Surveillance Category as of 10/4/2014.
5055	- Transfer to the Surveillance Category as of 10/4/2014.
5056	- Transfer to the Under Supervision Category as of 14/4/2014.
5057	- Transfer to the Surveillance Category as of 29/12/2011.
5058	- Transfer to the Surveillance Category as of 29/12/2011.
5059	- Transfer to the Low Dispersion category as of 2/6/2014.
5061	- Suspension of trading as of 2/6/2014.
5062	- Transfer to the UNDER DELETION category as of 4/6/2014.

Shares' Notes

Code	Note text
5075	- Transfer to the "Low Dispersion" Category as of 31/10/2014.
5080	- Suspension of trading as of 6/9/2011.
5081	- Transfer to the Surveillance category, as of 19/12/2014.
5083	- Transfer to the Surveillance Category as of 06/03/2015.
5084	- Suspension of trading as of 1/4/2015.
5085	- Suspension of trading as of 1/4/2015.
5086	- Suspension of trading as of 1/4/2015.
5087	- Suspension of trading as of 1/4/2015.
5088	- Suspension of trading as of 1/4/2015.

Securities Blocks Details

Securities	Block Volume	Price	Block Trade Value	Time of approval	Note
GRIVALIA PROPERTIES (CR)	51,440	7.33	376,798.00	10:33:16	20
OTE (CR)	45,529	8.11	369,012.55	11:08:26	20
TITAN CEMENT (CR)	150,000	20.65	3,096,750.00	14:29:04	20
TITAN CEMENT (CR)	20,000	20.50	410,000.00	14:43:33	20
PIRAEUS BANK (CR)	3,000,000	0.332	994,500.00	14:58:14	20
PIRAEUS BANK (CR)	4,000,000	0.331	1,324,000.00	14:58:52	20
PIRAEUS BANK (CR)	11,455,470	0.331	3,786,032.84	15:00:07	20
OTE (CR)	236,000	8.08	1,905,700.00	15:18:19	20
ALPHA BANK (CR)	1,100,000	0.263	289,300.00	16:47:24	20
PIRAEUS BANK (CR)	901,552	0.334	301,118.37	16:47:47	20

Blocks Notes

9 - Method 6-1 / Special Fees

10 - Method 6-1 / Special Fees, SDS

14 - Method 6-3 / Settlement, Incomplete Buy and Sell

18 - Method 6-2 / SPOT 1

19 - Method 6-2 / SPOT 2

20 - Method 6-1 and Method 6-1 Same Day Settlement

21 - Other Pre-agreed

Shares Rights Details

Occured date	Exercise from	Exercise until	Trading until	Rights	Price min	Price max	Closing price	Last Bid	Last Ask	Volume	Trades	Transactions Value
-----------------	------------------	-------------------	------------------	--------	--------------	--------------	------------------	----------	----------	--------	--------	-----------------------

No Rights Transactions.

Shares Forced Sales

Securities	Transaction s Volume	Number of Trades	Transactions Value	Note
No Forced Transactions.				

Forced Sales Notes

1 - Normal Forced Sale.

2 - Forced Sales of Fixed Registered Shares.

3 - Forced Sales of Remaining Stock Fractions.

Forced Sales Registered Shares

Securities	Start Date	End Date	Initial Volume	Remaining Volume	Date	Avg price (day)	Avg price (period)	Number of Trades	Transactions Volume	Transactions Value
------------	------------	----------	-------------------	---------------------	------	--------------------	-----------------------	---------------------	------------------------	-----------------------

No Fixed Registered Shares Forced Sales.

Forced Sales Notes

According to Decision 1/380/04.05.2008 of the Hellenic Republic Capital Market Commission, the certificated registered shares that have not been deposited to the issuer for dematerialisation, will be auctioned in the Athens Exchange by the supervising issuer. Forced sales procedure is held according to Article 99A of the Athens Exchange Rulebook. The average price of the period is calculated by dividing the Total transactions value by the Total volume and includes all the transactions made until the current date.

Exchange Traded Funds (ETFs) Characteristics

	Transactions Date (T)	Creation / Redemption	Units (T-1)	New Units (T-1)	Redemptio n Units (T-	Units (T) [1]	Fund Assets [2]	Net Unit Price	Dividen d per	Dividend Date
NBGAM ETF ΓΔ Χ.Α.	02/04/2015	25,000	294,878	---	---	294,878	2,517,382.00	8.5370	---	27/10/2011
ALPHA ETF FTSE Athex Large Cap	02/04/2015	50,000	5,848,618	---	---	5,848,618	13,467,640.00	2.3027	0.05	01/07/2013
NBGAM ETF GREECE & TURKEY 30	02/04/2015	25,000	388,550	---	---	388,550	2,828,942.00	7.2808	---	27/10/2011

ETFs Notes

[1] - Units (T) = Units (T-1) + New Units (T-1) - Redemption Units (T-1)

[2] - The Creation / Redemption Units of T-1 are included.

Corporate Bonds

Num Listed Bonds	Nominal price	Issue price	Today's Rate	Exp. Date	Duration (years)	Note	Coupon attached		Trading	Corporate Bonds	Price min	Price max	Closing price	Previous closing price/date		Volume	Transactions Value	Last order		Date	ear min	Year max
							Common	Preferred										Price	Buy / Sell			
1,794,284	12.49	9.77	5.03	12/07/2015	8	---	---	---	1	NIREUS S.A. (Convertible to CR shares)	---	---	---	12.0000	29/01/2014	---	---	11.0000	B	17/11/2014	12.0000	12.0000
212,801,311	1.00	1.00	6.30	29/07/2020	7	---	7	---	1	MARFIN INVESTMENT GROUP S.A. SERIES B (BOND)	---	---	---	0.8500	23/08/2013	---	---	1.0000	B	28/11/2014	0.8500	0.8500
163,991,598	1.00	1.00	7.00	29/07/2019	6	---	7	---	1	MARFIN INVESTMENT GROUP S.A. SERIES A (BOND)	---	---	---	1.0000	23/08/2013	---	---	1.0000	B	28/11/2014	1.0000	1.0000

Corporate Bonds Notes

Transactions Volume = (Pieces) * (Nominal Price). Transactions Value = (Pieces) * (Nominal Price) * (price %) + (Accrued interest).
The price of a Bond is stated as a percentage (%) of Bond's Nominal Price.
Nominal Price in Euros (€), except if it is noted differently.

Government Bonds

Number Listed Bonds	Nominal price	Today's Rate	Accrued Interest Calc	Exp. Date [1]	Duration (years)	Note	Coupons Date	Curr. coupon value	Trading Unit	Government Bonds	Price min	Price max	Closing price	Previous closing price/date	Volume	Transactions Value	Price	Last order Buy / Sell	Date
1,792,455,803	1.00	4.30	Actual/Actual	24/02/2023	11	---	24/02	4.30	1	GGB-FXD-240223-11Y-2.000-1.00	---	---	---	10.0000 28/01/2015	---	---	---	---	---
1,771,485,249	1.00	4.30	Actual/Actual	24/02/2024	12	---	24/02	4.30	1	GGB-FXD-240224-12Y-2.000-1.00	---	---	---	10.0000 28/01/2015	---	---	---	---	---
1,744,316,583	1.00	4.30	Actual/Actual	24/02/2025	13	---	24/02	4.30	1	GGB-FXD-240225-13Y-2.000-1.00	---	---	---	10.0000 28/01/2015	---	---	---	---	---
1,498,761,836	1.00	4.30	Actual/Actual	24/02/2026	14	---	24/02	4.30	1	GGB-FXD-240226-14Y-2.000-1.00	---	---	---	10.0000 28/01/2015	---	---	---	---	---
1,469,952,920	1.00	4.30	Actual/Actual	24/02/2027	15	---	24/02	4.30	1	GGB-FXD-240227-15Y-2.000-1.00	---	---	---	10.0000 28/01/2015	---	---	---	---	---
1,525,434,082	1.00	4.30	Actual/Actual	24/02/2028	16	---	24/02	4.30	1	GGB-FXD-240228-16Y-2.000-1.00	---	---	---	10.0000 28/01/2015	---	---	---	---	---
1,503,860,546	1.00	4.30	Actual/Actual	24/02/2029	17	---	24/02	4.30	1	GGB-FXD-240229-17Y-2.000-1.00	---	---	---	10.0000 28/01/2015	---	---	---	---	---
1,435,418,132	1.00	4.30	Actual/Actual	24/02/2030	18	---	24/02	4.30	1	GGB-FXD-240230-18Y-2.000-1.00	---	---	---	10.0000 28/01/2015	---	---	---	---	---
1,368,045,727	1.00	4.30	Actual/Actual	24/02/2031	19	---	24/02	4.30	1	GGB-FXD-240231-19Y-2.000-1.00	---	---	---	10.0000 28/01/2015	---	---	---	---	---
1,373,758,194	1.00	4.30	Actual/Actual	24/02/2032	20	---	24/02	4.30	1	GGB-FXD-240232-20Y-2.000-1.00	---	---	---	10.0000 28/01/2015	---	---	---	---	---
1,452,639,893	1.00	4.30	Actual/Actual	24/02/2033	21	---	24/02	4.30	1	GGB-FXD-240233-21Y-2.000-1.00	---	---	---	10.0000 28/01/2015	---	---	---	---	---
1,410,344,954	1.00	4.30	Actual/Actual	24/02/2034	22	---	24/02	4.30	1	GGB-FXD-240234-22Y-2.000-1.00	---	---	---	10.0000 28/01/2015	---	---	---	---	---
1,444,202,190	1.00	4.30	Actual/Actual	24/02/2035	23	---	24/02	4.30	1	GGB-FXD-240235-23Y-2.000-1.00	---	---	---	10.0000 28/01/2015	---	---	---	---	---
1,505,138,031	1.00	4.30	Actual/Actual	24/02/2036	24	---	24/02	4.30	1	GGB-FXD-240236-24Y-2.000-1.00	---	---	---	10.0000 28/01/2015	---	---	---	---	---
1,396,254,095	1.00	4.30	Actual/Actual	24/02/2037	25	---	24/02	4.30	1	GGB-FXD-240237-25Y-2.000-1.00	---	---	---	10.0000 28/01/2015	---	---	---	---	---
1,382,167,704	1.00	4.30	Actual/Actual	24/02/2038	26	---	24/02	4.30	1	GGB-FXD-240238-26Y-2.000-1.00	---	---	---	10.0000 28/01/2015	---	---	---	---	---
1,337,331,257	1.00	4.30	Actual/Actual	24/02/2039	27	---	24/02	4.30	1	GGB-FXD-240239-27Y-2.000-1.00	---	---	---	10.0000 28/01/2015	---	---	---	---	---
1,371,908,706	1.00	4.30	Actual/Actual	24/02/2040	28	---	24/02	4.30	1	GGB-FXD-240240-28Y-2.000-1.00	---	---	---	10.0000 28/01/2015	---	---	---	---	---
1,360,659,778	1.00	4.30	Actual/Actual	24/02/2041	29	---	24/02	4.30	1	GGB-FXD-240241-29Y-2.000-1.00	---	---	---	10.0000 28/01/2015	---	---	---	---	---
1,432,747,403	1.00	4.30	Actual/Actual	24/02/2042	30	---	24/02	4.30	1	GGB-FXD-240242-30Y-2.000-1.00	---	---	---	10.0000 28/01/2015	---	---	---	---	---
742,153	1,000.00	0.93	FLR Actual/360	10/08/2019	5	---	10/02 - 10/08	---	1	GGB-FLT-100819-05Y-0.934-1,000	---	---	---	---	---	---	---	---	---
4,030,827	1,000.00	4.75	Actual/Actual	17/04/2019	5	---	17/04	4.75	1	GGB-FXD-170419-05Y-4.750-1,000	---	---	---	---	---	---	---	---	---
2,089,066	1,000.00	3.38	Actual/Actual	17/07/2017	3	---	17/07	3.38	1	GGB-FXD-170717-03Y-3.375-1,000	---	---	---	---	---	---	---	---	---

Government Bonds Notes

Transactions Volume = (Pieces) * (Nominal Price). Transactions Value = (Pieces) * (Nominal Price) * (price %) + (Accrued interest).
The Value of current coupon for the issues with NV 0.01 euro refers to NV 100 euros
FLR: Floating Interest Rate.
[1] - The Expiration Date of the interest bearing period and the Date for coupon payment.

Bonds in Circulation	Currency / Min nominal traded Value	Coupons Payment Date	Current Coupon Value	Note	Coupon Attached	Trading Unit	Issue Date	Duration (years)	Today's Interest	A.I.C in days	Bonds	Last price of previous days	Last Outcry in Cash (euro) Price	Buy / Sell	Trades in Pieces	Life min	Life Max
Bonds of International Organizations																	
1,000,000	EUR / 1000	21/07	---	---	9	1	21/07/2006	10	5.0 FLR	360	EUROPEAN INVESTMENT BANK BOND	97.50	16/04/2007	---	---	---	---
Corporate Bonds in Foreign Currency and Euro																	
103,746	GBP / 10	01/12	0.25	---	56	1	01/12/1930	98	2.5	360	National Mortgage Bank	2.27	05/02/1996	2.27	S	05/02/1996	2.27
0	GBP / 10	01/12	0.25	---	58	1	01/12/1928	100	2.5	360	National Mortgage Bank	---	---	---	---	---	---

Government Bonds Notes

A.I.C: Accrued Interest Calculation base.
FLR: Floating Interest Rate.
The minimum tradeable Nominal Value for all Demeterialised Government Titles is 100 Euros.

State Banks Bonds (one year maturity)

Number Listed Bonds	Nominal value	Initial Rate	Current Rate	Annual Interest	Issue Date	Note	State Banks Bonds	Trading Unit	Yearly Renewals	Last Outcry in Cash (euro) Price	Buy / Sell	Volume
2,446	1,182.96	4.90	2.47	29.69	31/05/2008	---	H.I.D.B.	1	7	---	---	---

Bonds Notes

The annual renewal of H.I.D.B. Bonds is free of taxes (net rate).
For Bonds issue until 31/03/2015 the accrued interest is capitalized.

Athex & ATHEXClear Members List

Member Name			Stock Market			Derivatives Market		ATHEXClear Member		
Address	Phone	Fax	Market Member	Remote Member	Market Maker	Proprietary	Market Maker	General Clearing	Direct Clearing	Non Clearing
A. SARRIS SECURITIES S.A.			a							
6, DRAGATSANIOU STR. ATHINA	(210)-3367700	(210)-3312324								
ALPHA FINANCE INVESTMENT SERVICES S.A.			a		a		a		a	
5, MERLIN STR. ATHINA	(210)-3677400	(210)-3311193								
ALPHA BANK A.E.								a		
40, STADIOU STR ATHINA	(210)-3265546	(210)-3265811								
	(210)-3260000	(210)-3264116								
ARGUS STOCKBROKERS LTD			a	a		a				
12-14, KENNEDY AVE, S. 303 NICOSIA	(+35722)-22717000	(+35722)-22717070								
ATLANTIC SECURITIES LIMITED			a	a						
37, PRODROMOU STR. NICOSIA	(+35722)-445400	(+35722)-661914								
ATLAS SECURITIES S.A			a			a				a
14 - 16, VERNON STR.& 125 MICHALAKOPOULOU STR. ATHINA	(210)-3363300	(210)-3238925								
ATTICA BANK S.A.								a		
23, OMIROU STR. ATHINA	(210)-3669000	(210)-3669410								
54, AKADIMIAS STR. ATHINA	(210)-3390757	(210)-3646090								
AXIA VENTURES GROUP LTD			a	a						
10, G. KRANIDIOTI NICOSIA	+357 22 742000	+357 22 742001								
AXON SECURITIES S.A.			a			a				a
48, STADIOU ATHINA	(210)-3363800	(210)-3243903								
BANK OF CYPRUS PUBLIC COMPANY LTD								a		
, 51,STASINOU (AG. PARASKEVI, STROVOLOS) NICOSIA	(0035722)-121883	(0035722)-336258								
170, ALEXANDRAS AVE ATHINA	(210)-6477708	(210)-6477709								
BETA SECURITIES S.A.			a		a		a		a	
, BRAILA & 29 ALEXANDRAS AVE ATHINA	(210)-6478900	(210)-6410139								
BNP PARIBAS SECURITIES SERVICES								a		
94, VAS. SOFIAS AVE ATHINA	(210)-7468500	(210)-7468579								
CAPITAL SECURITIES S.A.			a			a				a
58, MITROPOLEOS STR. ATHINA	(210)-3369700	(210)-3369820								
CFS SECURITIES & INVESTMENT SERVICES S.A.			a			a			a	
3, STADIOU STR. ATHINA	(210)-3360800	(210)-3311854								
CITIBANK INTERNATIONAL PLC (ATHENS BRANCH)								a		
8, OTONOS ATHINA	(210)-9293084	(210)-9293461								
CITIGROUP GLOBAL MARKET LTD			a	a						
, CITIGROUP CENTRE, CANADA SQUARE, CANARY WHART LONDON	002079864000	002079862266								
CREDIT SUISSE SECURITIES (EUROPE) LIMITED			a	a						
, ONE CABOT SQUARE LONDON	+44 20 7888 8888	+44 20 7888 1600								
CYCLOS SECURITIES S.A.			a			a			a	
39, PANEPISTIMIOU STR. ATHINA	(210)-3364300	(210)-3239122								
D.A. TSEKOURAS SEC. S.A.			a							
, PESMAZOGLOY 3	(210)-3214406	(210)-3211997								
DEUTSCHE BANK A.G.			a	a		a				
70, THEODOR-HEUSS-ALLEE FRANKFURT	0049 69 910 00	0049 69 910 34 225								
DYNAMIC SECURITIES			a			a			a	
6 - 10, CHAR. TRIKOUPH STR. ATHINA	(210)-3677700	(210)-3677777								
EL. PETROPOULAKIS SECURITIES S.A.			a			a				a
9, ARISTIDOU STR. ATHINA	(210)-3213928	(210)-3216810								
EUROBANK EQUITIES S.A.			a		a		a		a	
10, FILELLINON STR. ATHINA	(210)-3720000	(210)-3720001								
EUROBANK ERGASIAS S.A.								a		
8, OTHONOS STR. ATHINA	(210)-3337000	(210)-3233866								
	(210)-3337969	(210)-3245916								
EUROCORP SECURITIES S.A.			a			a			a	
14, FILIKIS ETAIRIAS SQ. ATHINA	(210)-7263500	(210)-7263666								
EUOTRUST BROKERAGE S.A.			a							
13-15, SOPHOCLEOUS STR. ATHINA	(210)-3363100	(210)-3238334								
EUROXX SECURITIES S.A.			a			a			a	
7, PALAIOLOGOU STR. CHALANDRI	(210)-6879400	(210)-6879401								
G.A. PERVANAS SECURITIES & INVESTMENT SERVICES CO S.A.			a							a
7 - 9, SOPHOCLEOUS STR. ATHINA	(210)-3251875	(210)-3210291								
GLOBAL CAPITAL SECURITIES AND FINANCIAL SERVICES LTD			a	a						
5, LEMESOU AVE. LEMESOS CYPRUS	(+35722)-710710	(+35722)-339332								

Athex & ATHEXClear Members List

Member Name			Stock Market			Derivatives Market		ATHEXClear Member		
Address	Phone	Fax	Market Member	Remote Member	Market Maker	Proprietary	Market Maker	General Clearing	Direct Clearing	Non Clearing
GUARDIAN TRUST SECURITIES S.A			a			a				a
15, FILELLINON STR. ATHINA	(210)-3220402	(210)-3220498								
HELLENIC AMERICAN SEC. S.A.			a		a	a			a	
6, EVRIPIDOU STR. ATHINA	(210)-3311100	(210)-3215968								
HELLENIC BANK (INVESTMENTS) LTD			a	a						
31, KYRIAKOY MATSI AVE. NICOSIA	(+35722)-500100	(+35722)-500110								
HSBC BANK PLC								a		
109-111, MESOGION AVE ATHINA	(210)-6961507	(210)-6929310								
INDEX SECURITIES S.A.			a							
6, DRAGATSANIOU STR. ATHINA	(210)-3213920	(210)-3213216								
INVESTMENT BANK OF GREECE S.A.			a		a		a	a		
32, AIGEIALIAS MAROUSI	(210) 8173000	(210) 8173101								
24B, KIFISSIAS AVE MAROUSI	(210)-8171800	(210)-8171889								
J. CHR. MAVRIKIS SECURITIES S.A.			a							
5, SOPHOCLEOUS STR. ATHINA	(210)-3213949	(210)-3217767								
KAPPA SECURITIES S.A.			a			a				a
15, VALAORITOU STR. ATHINA	(210)-3610371	(210)-3641002								
KYPROU SECURITIES S.A.										a
26, HALKIDONOS & FIDIPIIDOY STR. ATHINA	(210)-8701000	(210)-8701049								
LAIKI FINANCIAL SERVICES LTD			a	a						
26, CLR HOUSE, VIRONOS AVE. NICOSIA	(+35722)-898600	(+35722)-680953								
LEON DEPOLAS SECURITIES S.A.			a			a				a
1, CHR. LADA STR. ATHINA	(210)-3213286	(210)-3211618								
MAGNA TRUST SECURITIES S.A			a							a
9, FIDIOU STR. ATHINA	(210)-3327503	(210)-3327599								
MEGA EQUITY SECURITIES & FINANCIAL SERVICES LTD			a	a		a				
42-44, GRIBA DIGENI AV. NICOSIA	(+35722)-711711	(+35722)-711811								
MERIT SECURITIES S.A			a		a	a			a	
38, VAS. KONSTANTINOU STR. ATHINA	(210)-3671800	(210)-3671830								
MERRILL LYNCH			a	a						
2, KING EDWARD STREET LONDON	(+4420)-79952000	(+4420)-79954525								
MIDAS BROKERAGE S.A.			a							
5, SOPHOCLEOUS STR. ATHINA	(210)-3253203	(210)-3253205								
N. CHRYSOCHOIDIS STOCK BROKERAGE I.S.S.A.			a			a			a	
7 - 9, SOPHOCLEOUS STR. ATHINA	(210)-3213913	(210)-3216115								
NATIONAL BANK OF GREECE S.A.			a			a		a		
86, AIOLOU STR. ATHINA	(210)-3341000	(210)-3228187								
68, AKADIMIAS STR. ATHINA	(210)-3328817	(210)-3328678								
NBG SECURITIES S.A.			a		a		a			a
68, AKADIMIAS STR. ATHINA	(210)-3328500	(210)-3328565								
NUNTIUS SECURITIES S.A			a							a
6, DRAGATSANIOU STR. ATHINA	(210)-3350599	(210)-3254846								
PANTELAKIS SEC. S.A.			a			a				a
109-111, MESOGION AVE. ATHINA	(210)-6965000	(210)-6929550								
PEGASUS BROKERAGE FIRM S.A			a			a				
17, VALAORITOU STR. ATHINA	(210)-3670700	(210)-3670760								
PIRAEUS BANK S.A.			a		a			a		
4, AMERIKIS STR. ATHINA	(210)-3335000	(210)-3335079								
4, AMERIKIS STR ATHINA	(210)-3335918	(210)-3254207								
PIRAEUS SECURITIES S.A.			a				a		a	
10, STADIOU STR. ATHINA	(210)-3354100	(210)-3233814								
PRELIUM SECURITIES & INVESTMENT SERVICES S.A.			a			a				a
, KIFISSIAS AVE & 1 DAVAKI STR ATHINA	(210)-3677000	(210)-6920403								
PROCHOICE SECURITIES LTD			a	a						
57, SPYROY KYPRIANOU NICOSIA	+357-24-661192	+357-24-662464								
SHARELINK SECURITIES & FINANCIAL SERVICES LTD			a	a		a				
6, ELLINAS HOUSE, THEOTOKI STR. NICOSIA	(+35722)-554200	(+35722)-750852								
SOCIETE GENERALE S.A.			a	a		a				
17, COURS VALMY PUTEAUX - LA DEFENSE PARIS	(+33) 142134754	(+33) 142135697								
240-242, KIFISIAS AVE ATHINA	(210)-6790161	(210)-6728828								
SOLIDUS SECURITIES S.A			a			a			a	
64, LOUIZIS RIANKOUR STR. ATHINA	(210)-6925500	(210)-6985421								

Athex & ATHEXClear Members List

Member Name			Stock Market			Derivatives Market		ATHEXClear Member		
Address	Phone	Fax	Market Member	Remote Member	Market Maker	Proprietary	Market Maker	General Clearing	Direct Clearing	Non Clearing
ST. EM. LAVRENTAKIS SECURITIES S.A.			a			a				a
7 - 9, SOPHOCLEOUS STR. ATHINA	(210)-3213336	(210)-3246572								
THE CYPRUS INVESTMENT AND SECURITIES CORPORATION LIMITED (CISCO)			a	a						
4, EVROU STR. (EUROLIFE HOUSE) NICOSIA	(+35722)-881800	(+35722)-881801								
UBS LIMITED			a	a						
1, FINSBURY AVENUE LONDON	(+4420)-79013333	(+4420)-79012345								
KARAMANOF SECURITIES & INV. SERVICES S.A.			a			a				
2, SQ. ST THEODORON ATHINA	(210)-3212947	(210)-3217088								

List of Stocks under Market Making operations

Securities	Stock Category
Market Maker	Start Market Making
CYPRUS POPULAR BANK (CR)	Suspension Status
PIRAEUS SECURITIES S.A.	02/02/2013
VIOHALCO (CB)	Suspension Status
ALPHA FINANCE INVESTMENT SERVICES S.A.	11/02/2013
EUROBANK EQUITIES S.A.	20/01/2013
MERIT SECURITIES S.A	13/12/2012
ALPHA BANK (CR)	Main Market
EUROBANK EQUITIES S.A.	24/10/2012
HELLENIC AMERICAN SEC. S.A.	25/07/2014
INVESTMENT BANK OF GREECE S.A.	08/01/2013
MERIT SECURITIES S.A	03/09/2013
NBG SECURITIES S.A.	15/01/2013
PIRAEUS SECURITIES S.A.	28/05/2013
ALUMIL (CR)	Main Market
BETA SECURITIES S.A.	18/07/2013
ATTICA BANK S.A. (CR)	Main Market
BETA SECURITIES S.A.	02/06/2014
EUROBANK EQUITIES S.A.	25/07/2014
HELLENIC AMERICAN SEC. S.A.	25/07/2014
BANK OF CYPRUS (CR)	Main Market
EUROBANK EQUITIES S.A.	23/03/2015
BYTE COMPUTER SA (CR)	Main Market
MERIT SECURITIES S.A	04/08/2013
CC HBC AG (CR)	Main Market
EUROBANK EQUITIES S.A.	23/10/2013
NBG SECURITIES S.A.	29/04/2013
ELLAKTOR (CR)	Main Market
EUROBANK EQUITIES S.A.	01/06/2013
INVESTMENT BANK OF GREECE S.A.	02/01/2013
NBG SECURITIES S.A.	25/06/2013
ELTECH ANEMOS S.A. (CR)	Main Market
EUROBANK EQUITIES S.A.	22/07/2014
ELTON SA (CR)	Main Market
BETA SECURITIES S.A.	03/09/2013
EUROBANK ERGASIAS (CR)	Main Market
ALPHA FINANCE INVESTMENT SERVICES S.A.	08/01/2013
EUROBANK EQUITIES S.A.	01/06/2013
HELLENIC AMERICAN SEC. S.A.	25/07/2014
INVESTMENT BANK OF GREECE S.A.	08/01/2013
PIRAEUS SECURITIES S.A.	28/09/2013
EUROCONSULTANTS S.A. (CR)	Main Market
EUROBANK EQUITIES S.A.	22/07/2014
FOLLI FOLLIE (CR)	Main Market
NBG SECURITIES S.A.	17/02/2014
FRIGOGLASS SA (CR)	Main Market
EUROBANK EQUITIES S.A.	27/10/2014
GEK TERNA (CR)	Main Market
INVESTMENT BANK OF GREECE S.A.	02/01/2013
GR. SARANTIS SA (CR)	Main Market
BETA SECURITIES S.A.	14/05/2013
HELLENIC EXCHANGES-A.S.E. (CR)	Main Market
EUROBANK EQUITIES S.A.	01/06/2013
HELLENIC AMERICAN SEC. S.A.	01/09/2014
INVESTMENT BANK OF GREECE S.A.	02/01/2013
NBG SECURITIES S.A.	25/06/2013
INTRALOT (CR)	Main Market
EUROBANK EQUITIES S.A.	01/06/2013
INVESTMENT BANK OF GREECE S.A.	02/01/2013
PIRAEUS SECURITIES S.A.	28/09/2013
KRETA FARM SA (CR)	Main Market
EUROBANK EQUITIES S.A.	17/11/2014
LAMDA DEVELOPMENT SA (CR)	Main Market
EUROBANK EQUITIES S.A.	08/12/2014
MARFIN INVESTMENT GROUP (CR)	Main Market
EUROBANK EQUITIES S.A.	23/03/2015
HELLENIC AMERICAN SEC. S.A.	25/07/2014
PIRAEUS SECURITIES S.A.	02/02/2013
MLS MULTIMEDIA SA (CR)	Main Market
BETA SECURITIES S.A.	18/07/2013

List of Stocks under Market Making operations

Securities	Stock Category
Market Maker	Start Market Making
MOTOR OIL (CR)	Main Market
EUROBANK EQUITIES S.A.	23/10/2012
HELLENIC AMERICAN SEC. S.A.	01/09/2014
NBG SECURITIES S.A.	17/02/2014
MYTILINEOS HOLDINGS (CR)	Main Market
HELLENIC AMERICAN SEC. S.A.	25/07/2014
INVESTMENT BANK OF GREECE S.A.	02/01/2013
NBG SECURITIES S.A.	25/06/2013
NATIONAL BANK (CR)	Main Market
ALPHA FINANCE INVESTMENT SERVICES S.A.	08/01/2013
EUROBANK EQUITIES S.A.	24/10/2012
HELLENIC AMERICAN SEC. S.A.	25/07/2014
INVESTMENT BANK OF GREECE S.A.	08/01/2013
MERIT SECURITIES S.A.	03/09/2013
NBG SECURITIES S.A.	28/02/2013
PIRAEUS SECURITIES S.A.	08/09/2013
OPAP (CR)	Main Market
ALPHA FINANCE INVESTMENT SERVICES S.A.	08/01/2013
EUROBANK EQUITIES S.A.	24/10/2012
HELLENIC AMERICAN SEC. S.A.	25/07/2014
INVESTMENT BANK OF GREECE S.A.	08/01/2013
NBG SECURITIES S.A.	15/01/2013
OTE (CR)	Main Market
ALPHA FINANCE INVESTMENT SERVICES S.A.	08/01/2013
EUROBANK EQUITIES S.A.	24/10/2012
HELLENIC AMERICAN SEC. S.A.	25/07/2014
INVESTMENT BANK OF GREECE S.A.	08/01/2013
NBG SECURITIES S.A.	01/12/2012
PIRAEUS SECURITIES S.A.	08/09/2013
PAPOUTSANIS (CR)	Main Market
BETA SECURITIES S.A.	25/11/2013
PETROPOULOS PETROS (CR)	Main Market
BETA SECURITIES S.A.	28/05/2013
PIRAEUS BANK (CR)	Main Market
EUROBANK EQUITIES S.A.	23/10/2012
HELLENIC AMERICAN SEC. S.A.	25/07/2014
INVESTMENT BANK OF GREECE S.A.	08/01/2013
MERIT SECURITIES S.A.	16/09/2013
NBG SECURITIES S.A.	02/06/2013
PIRAEUS SECURITIES S.A.	16/02/2013
PLAISIO COMPUTERS SA (CR)	Main Market
BETA SECURITIES S.A.	05/05/2014
EUROBANK EQUITIES S.A.	02/03/2015
PPC (CR)	Main Market
ALPHA FINANCE INVESTMENT SERVICES S.A.	08/01/2013
EUROBANK EQUITIES S.A.	23/10/2012
HELLENIC AMERICAN SEC. S.A.	01/09/2014
INVESTMENT BANK OF GREECE S.A.	08/01/2013
NBG SECURITIES S.A.	26/03/2013
PIRAEUS SECURITIES S.A.	28/09/2013
PROFILE SA (CR)	Main Market
EUROBANK EQUITIES S.A.	23/06/2014
REDS S.A. (CR)	Main Market
EUROBANK EQUITIES S.A.	05/09/2014
S.KANAKIS SA (CR)	Main Market
BETA SECURITIES S.A.	01/10/2013
TITAN CEMENT (CR)	Main Market
EUROBANK EQUITIES S.A.	23/10/2012
NBG SECURITIES S.A.	17/02/2014
VIOHALCO SA/NV (CB)	Main Market
ALPHA FINANCE INVESTMENT SERVICES S.A.	17/02/2014
MERIT SECURITIES S.A.	17/03/2014

Equity Investment Instruments Acknowledgements

Portfolio Investments Company Name	NAV per Share	Share Price	Premium/ Discount
AEOLIAN INVESTMENT FUND S.A.	1.13	0.72	-36.28%
ALPHA TRUST ANDROMEDA SA	21.64	18.00	-16.81%

Acknowledgements Notes

According to the Decision of the Capital Market Commission 4/278/12.08.2003 Portfolio Investment Companies are required to notify the Athens Exchange on the 10th, 20th and last working day of each month the Net Asset Value (NAV) of their shares as well as Premium or Discount in relation to their market value.

Underlying Asset				Derivatives Market													
Price max	Price min	Closing price	change	Delivery Month	Open price	Price max	Price min	Last price	Closing price	Last Bid	Last Ask	Settlement price	Life high	Life low	Trades	Volume	Open Interest
FTSE/Athex Large Cap				(Trade Unit: 1 Index Point x 5€, Cash Settlement)													
230.18	225.94	229.56	0.97%	April 2015	228.25	231.25	224.50	231.25	231.25	---	---	227.75	280.00	---	435	2,373	40,074
				May 2015	228.00	230.00	228.00	230.00	230.00	---	---	228.25	238.25	---	4	141	179
				June 2015	---	---	---	---	227.25	---	---	228.50	273.00	---	---	---	61
				September 2015	---	---	---	---	227.00	---	---	---	---	---	---	---	---
				December 2015	---	---	---	---	228.00	---	---	---	---	---	---	---	---
				March 2016	---	---	---	---	229.25	---	---	---	---	---	---	---	---

Underlying Asset				Derivatives Market													
Price max	Price min	Closing price	change	Delivery Month	Open price	Price max	Price min	Last price	Closing price	Last Bid	Last Ask	Settlement price	Life high	Life low	Trades	Volume	Open Interest
ALPHA BANK (CR)				(Contract Size: 100 Securities, Physical Delivery)													
0.280	0.259	0.262	-4.73%	June 2015	0.278	0.281	0.260	0.272	0.272	---	---	0.265	0.405	---	251	10,489	80,286
				September 2015	---	---	---	---	0.278	---	---	0.267	---	0.403	---	---	50
				December 2015	---	---	---	---	0.279	---	---	---	---	---	---	---	---
				March 2016	---	---	---	---	0.280	---	---	---	---	---	---	---	---
CC HBC AG (CR)				(Contract Size: 100 Securities, Physical Delivery)													
17.39	17.00	17.14	2.64%	June 2015	17.30	17.30	17.13	17.16	17.16	---	---	16.75	17.30	---	7	9	58
				September 2015	---	---	---	---	16.51	---	---	---	---	---	---	---	---
				December 2015	---	---	---	---	16.59	---	---	---	---	---	---	---	---
				March 2016	---	---	---	---	16.68	---	---	---	---	---	---	---	---
CORINTH PIPEWORKS SA (CR)				(Contract Size: 100 Securities, Physical Delivery)													
1.01	0.929	1.01	-0.98%	June 2015	0.945	0.977	0.945	0.977	0.977	---	---	0.990	1.11	---	3	13	521
				September 2015	---	---	---	---	1.03	---	---	---	---	---	---	---	---
				December 2015	---	---	---	---	1.03	---	---	---	---	---	---	---	---
				March 2016	---	---	---	---	1.04	---	---	---	---	---	---	---	---
ELLAKTOR (CR)				(Contract Size: 100 Securities, Physical Delivery)													
1.82	1.70	1.74	-3.33%	June 2015	1.78	1.78	1.74	1.76	1.76	---	---	1.77	2.26	---	7	25	1,444
				September 2015	---	---	---	---	1.82	---	---	---	---	---	---	---	---
				December 2015	---	---	---	---	1.83	---	---	---	---	---	---	---	---
				March 2016	---	---	---	---	1.84	---	---	---	---	---	---	---	---
EUROBANK ERGASIAS (CR)				(Contract Size: 100 Securities, Physical Delivery)													
0.114	0.107	0.114	2.70%	June 2015	0.111	0.115	0.107	0.114	0.114	---	---	0.113	0.277	---	213	10,273	223,015
				September 2015	0.112	0.112	0.111	0.111	0.111	---	---	0.114	0.176	---	2	500	---
				December 2015	---	---	---	---	0.113	---	---	---	---	---	---	---	---
				March 2016	---	---	---	---	0.113	---	---	---	---	---	---	---	---
EYDAP S.A. (CR)				(Contract Size: 100 Securities, Physical Delivery)													
5.40	5.25	5.27	-0.94%	June 2015	5.23	5.23	5.13	5.17	5.17	---	---	5.19	5.86	---	12	21	438
				September 2015	---	---	---	---	4.94	---	---	---	---	---	---	---	---
				December 2015	---	---	---	---	4.97	---	---	---	---	---	---	---	---
				March 2016	---	---	---	---	4.99	---	---	---	---	---	---	---	---
FOLLI FOLLIE (CR)				(Contract Size: 100 Securities, Physical Delivery)													
28.00	27.10	27.20	-0.73%	June 2015	27.80	27.80	27.43	27.45	27.45	---	---	26.72	28.03	---	3	11	63
				September 2015	---	---	---	---	27.66	---	---	---	---	---	---	---	---
				December 2015	---	---	---	---	27.80	---	---	---	---	---	---	---	---
				March 2016	---	---	---	---	27.94	---	---	---	---	---	---	---	---
FRIGOGLASS SA (CR)				(Contract Size: 100 Securities, Physical Delivery)													
1.62	1.59	1.61	0.63%	June 2015	1.60	1.60	1.60	1.60	1.60	---	---	1.58	1.83	---	1	1	343
				September 2015	---	---	---	---	1.62	---	---	---	---	---	---	---	---
				December 2015	---	---	---	---	1.62	---	---	---	---	---	---	---	---
				March 2016	---	---	---	---	1.63	---	---	---	---	---	---	---	---

Underlying Asset				Derivatives Market													
Price max	Price min	Closing price	change	Delivery Month	Open price	Price max	Price min	Last price	Closing price	Last Bid	Last Ask	Settlement price	Life high	Life low	Trades	Volume	Open Interest
GEK TERNA (CR)				(Contract Size: 100 Securities, Physical Delivery)													
1.77	1.66	1.72	-2.27%	June 2015	1.74	1.74	1.67	1.70	1.70	---	---	1.73	2.73	---	37	174	7,818
				September 2015	---	---	---	---	1.78	---	---	---	---	---	---	---	---
				December 2015	---	---	---	---	1.79	---	---	---	---	---	---	---	---
				March 2016	---	---	---	---	1.79	---	---	---	---	---	---	---	---
GRIVALIA PROPERTIES (CR)				(Contract Size: 100 Securities, Physical Delivery)													
7.48	7.27	7.48	3.03%	June 2015	---	---	---	---	7.11	---	---	7.59	7.88	---	---	---	129
				September 2015	---	---	---	---	7.15	---	---	---	---	---	---	---	---
				December 2015	---	---	---	---	7.19	---	---	---	---	---	---	---	---
				March 2016	---	---	---	---	7.22	---	---	---	---	---	---	---	---
HELLENIC EXCHANGES-A.S.E. (CR)				(Contract Size: 100 Securities, Physical Delivery)													
4.95	4.73	4.76	-1.86%	June 2015	4.70	4.79	4.59	4.75	4.75	---	---	4.64	6.02	---	30	63	1,891
				September 2015	---	---	---	---	4.81	---	---	4.64	4.86	---	---	---	---
				December 2015	---	---	---	---	4.83	---	---	---	---	---	---	---	---
				March 2016	---	---	---	---	4.85	---	---	---	---	---	---	---	---
HELLENIC PETROLEUM (CR)				(Contract Size: 100 Securities, Physical Delivery)													
3.55	3.47	3.53	-0.84%	June 2015	3.55	3.55	3.49	3.54	3.54	---	---	3.67	4.07	---	8	23	4,851
				September 2015	---	---	---	---	3.44	---	---	---	---	---	---	---	---
				December 2015	---	---	---	---	3.46	---	---	---	---	---	---	---	---
				March 2016	---	---	---	---	3.48	---	---	---	---	---	---	---	---
INTRALOT (CR)				(Contract Size: 100 Securities, Physical Delivery)													
1.54	1.49	1.53	0.00%	June 2015	1.51	1.53	1.51	1.53	1.53	---	---	1.56	1.74	---	3	29	347
				September 2015	---	---	---	---	1.54	---	---	---	---	---	---	---	---
				December 2015	---	---	---	---	1.55	---	---	---	---	---	---	---	---
				March 2016	---	---	---	---	1.56	---	---	---	---	---	---	---	---
JUMBO SA (CR)				(Contract Size: 100 Securities, Physical Delivery)													
9.36	8.97	9.30	0.87%	June 2015	9.26	9.35	9.02	9.30	9.30	---	---	9.33	9.91	---	36	77	335
				September 2015	---	---	---	---	9.31	---	---	---	---	---	---	---	---
				December 2015	---	---	---	---	9.17	---	---	---	---	---	---	---	---
				March 2016	---	---	---	---	9.22	---	---	---	---	---	---	---	---
MARFIN INVESTMENT GROUP (CR)				(Contract Size: 100 Securities, Physical Delivery)													
0.139	0.134	0.135	0.75%	June 2015	0.140	0.141	0.136	0.141	0.141	---	---	0.140	0.232	---	19	154	30,068
				September 2015	---	---	---	---	0.135	---	---	---	---	---	---	---	---
				December 2015	---	---	---	---	0.136	---	---	---	---	---	---	---	---
				March 2016	---	---	---	---	0.137	---	---	---	---	---	---	---	---
METKA (CR)				(Contract Size: 100 Securities, Physical Delivery)													
8.60	8.34	8.34	-0.36%	June 2015	8.13	8.13	8.02	8.06	8.06	---	---	8.04	9.02	---	7	33	330
				September 2015	---	---	---	---	8.15	---	---	---	---	---	---	---	---
				December 2015	---	---	---	---	8.19	---	---	---	---	---	---	---	---
				March 2016	---	---	---	---	8.23	---	---	---	---	---	---	---	---

Underlying Asset				Derivatives Market													
Price max	Price min	Closing price	change	Delivery Month	Open price	Price max	Price min	Last price	Closing price	Last Bid	Last Ask	Settlement price	Life high	Life low	Trades	Volume	Open Interest
MOTOR OIL (CR)				(Contract Size: 100 Securities, Physical Delivery)													
6.89	6.69	6.82	0.59%	June 2015	6.70	6.88	6.70	6.82	6.82	---	---	6.76	7.38	---	16	114	201
				September 2015	---	---	---	---	6.64	---	---	---	---	---	---	---	---
				December 2015	---	---	---	---	6.68	---	---	---	---	---	---	---	---
				March 2016	---	---	---	---	6.71	---	---	---	---	---	---	---	---
MYTILINEOS HOLDINGS (CR)				(Contract Size: 100 Securities, Physical Delivery)													
5.98	5.59	5.98	5.84%	June 2015	5.63	5.97	5.60	5.97	5.97	---	---	5.73	6.43	---	69	181	3,943
				September 2015	---	---	---	---	5.70	---	---	5.82	5.79	---	---	---	---
				December 2015	---	---	---	---	5.73	---	---	---	---	---	---	---	---
				March 2016	---	---	---	---	5.76	---	---	---	---	---	---	---	---
NATIONAL BANK (CR)				(Contract Size: 100 Securities, Physical Delivery)													
1.10	1.04	1.09	0.00%	June 2015	1.10	1.10	1.05	1.10	1.10	---	---	1.08	2.10	---	155	2,029	44,380
				September 2015	1.12	1.12	1.12	1.12	1.12	---	---	1.13	1.44	---	1	200	201
				December 2015	---	---	---	---	1.11	---	---	---	---	---	---	---	---
				March 2016	---	---	---	---	1.11	---	---	---	---	---	---	---	---
OPAP (CR)				(Contract Size: 100 Securities, Physical Delivery)													
8.89	8.68	8.82	0.00%	June 2015	8.57	8.64	8.48	8.61	8.61	---	---	8.50	9.21	---	50	259	1,201
				September 2015	---	---	---	---	8.65	---	---	8.59	9.38	---	---	---	---
				December 2015	---	---	---	---	8.70	---	---	8.59	8.60	---	---	---	---
				March 2016	---	---	---	---	8.74	---	---	---	---	---	---	---	---
OTE (CR)				(Contract Size: 100 Securities, Physical Delivery)													
8.20	8.00	8.20	2.50%	June 2015	8.10	8.22	8.03	8.20	8.20	---	---	8.12	10.57	---	99	416	6,222
				September 2015	---	---	---	---	8.08	---	---	7.98	9.46	---	---	---	---
				December 2015	---	---	---	---	8.12	---	---	---	---	---	---	---	---
				March 2016	---	---	---	---	8.16	---	---	---	---	---	---	---	---
P.P.A. S.A. (CR)				(Contract Size: 100 Securities, Physical Delivery)													
10.89	10.67	10.84	0.37%	June 2015	10.90	11.00	10.71	10.90	10.90	---	---	10.93	13.90	---	24	94	431
				September 2015	---	---	---	---	10.78	---	---	---	---	---	---	---	---
				December 2015	---	---	---	---	10.84	---	---	---	---	---	---	---	---
				March 2016	---	---	---	---	10.89	---	---	---	---	---	---	---	---
PIRAEUS BANK (CR)				(Contract Size: 100 Securities, Physical Delivery)													
0.346	0.326	0.345	1.17%	June 2015	0.350	0.351	0.328	0.348	0.348	---	---	0.339	1.00	---	285	5,459	125,344
				September 2015	0.345	0.348	0.339	0.347	0.347	---	---	0.340	0.733	---	7	750	700
				December 2015	---	---	---	---	0.346	---	---	---	---	---	---	---	---
				March 2016	---	---	---	---	0.348	---	---	---	---	---	---	---	---
PPC (CR)				(Contract Size: 100 Securities, Physical Delivery)													
5.56	5.32	5.50	0.18%	June 2015	5.53	5.54	5.36	5.52	5.52	---	---	5.38	8.06	---	124	440	3,335
				September 2015	---	---	---	---	5.51	---	---	---	---	---	---	---	---
				December 2015	---	---	---	---	5.54	---	---	---	---	---	---	---	---
				March 2016	---	---	---	---	5.57	---	---	---	---	---	---	---	---

Underlying Asset				Derivatives Market													
Price max	Price min	Closing price	change	Delivery Month	Open price	Price max	Price min	Last price	Closing price	Last Bid	Last Ask	Settlement price	Life high	Life low	Trades	Volume	Open Interest
SIDENOR (CR)				(Contract Size: 100 Securities, Physical Delivery)													
0.580	0.550	0.564	-5.69%	June 2015	0.578	0.578	0.578	0.578	0.578	---	---	0.578	0.616	---	2	7	569
				September 2015	---	---	---	---	0.604	---	---	---	---	---	---	---	---
				December 2015	---	---	---	---	0.607	---	---	---	---	---	---	---	---
				March 2016	---	---	---	---	0.610	---	---	---	---	---	---	---	---
TERNA ENERGY (CR)				(Contract Size: 100 Securities, Physical Delivery)													
2.14	2.06	2.12	1.43%	June 2015	2.10	2.13	2.08	2.08	2.08	---	---	2.27	3.15	---	7	16	1,314
				September 2015	---	---	---	---	2.05	---	---	---	---	---	---	---	---
				December 2015	---	---	---	---	2.06	---	---	---	---	---	---	---	---
				March 2016	---	---	---	---	2.07	---	---	---	---	---	---	---	---
TITAN CEMENT (CR)				(Contract Size: 100 Securities, Physical Delivery)													
21.38	20.37	21.38	3.49%	June 2015	20.62	21.43	20.62	21.43	21.43	---	---	21.11	22.38	---	16	25	212
				September 2015	---	---	---	---	20.76	---	---	---	---	---	---	---	---
				December 2015	---	---	---	---	20.86	---	---	---	---	---	---	---	---
				March 2016	---	---	---	---	20.96	---	---	---	---	---	---	---	---
VIOHALCO SA/NV (CB)				(Contract Size: 100 Securities, Physical Delivery)													
2.98	2.88	2.91	-1.69%	June 2015	2.94	2.94	2.90	2.93	2.93	---	---	2.89	3.20	---	3	6	169
				September 2015	---	---	---	---	2.99	---	---	---	---	---	---	---	---
				December 2015	---	---	---	---	3.00	---	---	---	---	---	---	---	---
				March 2016	---	---	---	---	3.02	---	---	---	---	---	---	---	---

FTSE/Athex Large Cap

(Trade Unit: 1 Index Point x 5€ - Exercise Style: European, Cash Settlement)

Call Options																	Put Options																
Exercise Price	April 2015							May 2015							Other Months		April 2015							May 2015							Other Months		Exercise Price
	Open price	Price max	Price min	Last price	Closing price	Volume	Open Interest	Open price	Price max	Price min	Last price	Closing price	Volume	Open Interest	Volume	Open Interest	Open price	Price max	Price min	Last price	Closing price	Volume	Open Interest	Open price	Price max	Price min	Last price	Closing price	Volume	Open Interest	Volume	Open Interest	
180	-	-	-	-	-	-	-	-	-	-	-	-	-	-	-	-	-	-	-	-	-	-	-	-	-	-	-	-	-	-	-	180	
195	-	-	-	-	-	-	-	-	-	-	-	-	-	-	-	-	-	-	-	-	-	-	-	-	-	-	-	-	-	-	-	195	
200	0.00	0.00	0.00	-	30.25	-	-	-	-	-	-	-	-	-	-	-	0.00	0.00	0.00	-	2.10	-	2	-	-	-	-	-	-	-	-	-	200
205	0.00	0.00	0.00	-	26.25	-	-	0.00	0.00	0.00	-	32.75	-	-	-	-	0.00	0.00	0.00	-	3.00	-	10	0.00	0.00	0.00	-	8.60	-	-	-	-	205
210	0.00	0.00	0.00	-	22.50	-	40	0.00	0.00	0.00	-	29.50	-	-	-	-	0.00	0.00	0.00	-	4.20	-	4	0.00	0.00	0.00	-	10.50	-	-	-	-	210
215	0.00	0.00	0.00	-	19.00	-	40	0.00	0.00	0.00	-	26.50	-	-	-	-	0.00	0.00	0.00	-	5.80	-	6	0.00	0.00	0.00	-	12.50	-	-	-	-	215
220	0.00	0.00	0.00	-	16.00	-	53	0.00	0.00	0.00	-	23.75	-	-	-	-	0.00	0.00	0.00	-	7.50	35	79	0.00	0.00	0.00	-	14.50	-	-	-	-	220
225	0.00	0.00	0.00	-	13.25	-	1	0.00	0.00	0.00	-	21.25	-	-	-	-	0.00	0.00	0.00	-	9.90	-	-	0.00	0.00	0.00	-	17.00	-	-	-	-	225
230	11.00	11.00	7.00	10.00	10.00	83	170	0.00	0.00	0.00	-	19.00	-	-	-	-	11.00	11.00	0.00	-	12.50	-	27	0.00	0.00	0.00	-	19.75	-	-	-	-	230
235	0.00	0.00	0.00	-	8.60	-	82	0.00	0.00	0.00	-	16.75	-	-	-	-	0.00	0.00	0.00	-	15.25	-	50	0.00	0.00	0.00	-	22.50	-	-	-	-	235
240	6.00	6.00	6.00	6.00	6.00	7	15	0.00	0.00	0.00	-	14.75	-	-	-	-	6.00	6.00	0.00	-	18.50	-	-	0.00	0.00	0.00	-	25.50	-	-	-	-	240
245	0.00	0.00	0.00	-	5.40	-	410	0.00	0.00	0.00	-	13.00	-	-	-	-	0.00	0.00	0.00	-	22.25	-	1	0.00	0.00	0.00	-	28.75	-	-	-	-	245
250	0.00	0.00	0.00	-	4.20	-	720	0.00	0.00	0.00	-	11.50	-	-	-	-	0.00	0.00	0.00	-	26.00	-	-	0.00	0.00	0.00	-	32.25	-	-	-	-	250
255	0.00	0.00	0.00	-	3.20	-	50	0.00	0.00	0.00	-	10.00	-	-	-	-	0.00	0.00	0.00	-	30.00	-	5	0.00	0.00	0.00	-	35.75	-	-	-	-	255
260	0.00	0.00	0.00	-	2.40	-	161	0.00	0.00	0.00	-	8.70	-	-	-	-	0.00	0.00	0.00	-	34.25	-	-	0.00	0.00	0.00	-	39.50	-	-	-	-	260
265	0.00	0.00	0.00	-	1.80	-	3	0.00	0.00	0.00	-	7.60	-	-	-	-	0.00	0.00	0.00	-	38.50	-	1	0.00	0.00	0.00	-	43.25	-	-	-	-	265
270	0.00	0.00	0.00	-	1.40	-	1,005	0.00	0.00	0.00	-	6.60	-	-	-	-	0.00	0.00	0.00	-	43.00	-	-	0.00	0.00	0.00	-	47.25	-	-	-	-	270
275	0.00	0.00	0.00	-	0.99	-	105	0.00	0.00	0.00	-	5.70	-	-	-	-	0.00	0.00	0.00	-	47.75	-	-	0.00	0.00	0.00	-	51.50	-	-	-	-	275
280	0.00	0.00	0.00	-	0.72	-	-	0.00	0.00	0.00	-	4.90	-	-	-	-	0.00	0.00	0.00	-	52.50	-	-	0.00	0.00	0.00	-	55.50	-	-	-	-	280
285	0.00	0.00	0.00	-	0.52	-	40	0.00	0.00	0.00	-	4.20	-	-	-	-	0.00	0.00	0.00	-	57.00	-	-	0.00	0.00	0.00	-	60.00	-	-	-	-	285
290	0.00	0.00	0.00	-	0.37	-	-	0.00	0.00	0.00	-	3.60	-	-	-	-	0.00	0.00	0.00	-	62.00	-	-	0.00	0.00	0.00	-	64.00	-	-	-	-	290
295	-	-	-	-	-	-	-	-	-	-	-	-	-	-	-	-	-	-	-	-	-	-	-	-	-	-	-	-	-	-	-	295	
300	-	-	-	-	-	-	-	-	-	-	-	-	-	-	-	-	-	-	-	-	-	-	-	-	-	-	-	-	-	-	-	300	
305	-	-	-	-	-	-	-	-	-	-	-	-	-	-	-	-	-	-	-	-	-	-	-	-	-	-	-	-	-	-	-	305	
310	0.00	0.00	0.00	-	0.09	-	-	-	-	-	-	-	-	-	-	-	0.00	0.00	0.00	-	82.00	-	4	-	-	-	-	-	-	-	-	-	310
315	-	-	-	-	-	-	-	-	-	-	-	-	-	-	-	-	-	-	-	-	-	-	-	-	-	-	-	-	-	-	-	315	
320	-	-	-	-	-	-	-	-	-	-	-	-	-	-	-	-	-	-	-	-	-	-	-	-	-	-	-	-	-	-	-	320	
325	-	-	-	-	-	-	-	-	-	-	-	-	-	-	-	-	-	-	-	-	-	-	-	-	-	-	-	-	-	-	-	325	
330	-	-	-	-	-	-	-	-	-	-	-	-	-	-	-	-	-	-	-	-	-	-	-	-	-	-	-	-	-	-	-	330	
335	-	-	-	-	-	-	-	-	-	-	-	-	-	-	-	-	-	-	-	-	-	-	-	-	-	-	-	-	-	-	-	335	
340	-	-	-	-	-	-	-	-	-	-	-	-	-	-	-	-	-	-	-	-	-	-	-	-	-	-	-	-	-	-	-	340	
345	-	-	-	-	-	-	-	-	-	-	-	-	-	-	-	-	-	-	-	-	-	-	-	-	-	-	-	-	-	-	-	345	
350	-	-	-	-	-	-	-	-	-	-	-	-	-	-	-	-	-	-	-	-	-	-	-	-	-	-	-	-	-	-	-	350	
355	-	-	-	-	-	-	-	-	-	-	-	-	-	-	-	-	-	-	-	-	-	-	-	-	-	-	-	-	-	-	-	355	
360	-	-	-	-	-	-	-	-	-	-	-	-	-	-	-	-	-	-	-	-	-	-	-	-	-	-	-	-	-	-	-	360	
365	-	-	-	-	-	-	-	-	-	-	-	-	-	-	-	-	-	-	-	-	-	-	-	-	-	-	-	-	-	-	-	365	

FTSE/Athex Large Cap

(Trade Unit: 1 Index Point x 5€ - Exercise Style: European, Cash Settlement)

Call Options																	Put Options																			
Exercise Price	April 2015							May 2015							Other Months		April 2015							May 2015							Other Months		Exercise Price			
	Open price	Price max	Price min	Last price	Closing price	Volume	Open Interest	Open price	Price max	Price min	Last price	Closing price	Volume	Open Interest	Volume	Open Interest	Open price	Price max	Price min	Last price	Closing price	Volume	Open Interest	Open price	Price max	Price min	Last price	Closing price	Volume	Open Interest	Volume	Open Interest				
370	-	-	-	-	-	-	-	-	-	-	-	-	-	-			-	-	-	-	-	-	-	-	-	-	-	-	-	-	-			370		
375	-	-	-	-	-	-	-	-	-	-	-	-	-	-			-	-	-	-	-	-	-	-	-	-	-	-	-	-	-	-			375	
380	-	-	-	-	-	-	-	-	-	-	-	-	-	-			-	-	-	-	-	-	-	-	-	-	-	-	-	-	-	-			380	
385	-	-	-	-	-	-	-	-	-	-	-	-	-	-			-	-	-	-	-	-	-	-	-	-	-	-	-	-	-	-			385	
390	-	-	-	-	-	-	-	-	-	-	-	-	-	-			-	-	-	-	-	-	-	-	-	-	-	-	-	-	-	-			390	
395	-	-	-	-	-	-	-	-	-	-	-	-	-	-			-	-	-	-	-	-	-	-	-	-	-	-	-	-	-	-			395	
400	-	-	-	-	-	-	-	-	-	-	-	-	-	-			-	-	-	-	-	-	-	-	-	-	-	-	-	-	-	-			400	
405	-	-	-	-	-	-	-	-	-	-	-	-	-	-			-	-	-	-	-	-	-	-	-	-	-	-	-	-	-	-			405	
410	-	-	-	-	-	-	-	-	-	-	-	-	-	-			-	-	-	-	-	-	-	-	-	-	-	-	-	-	-	-			410	
415	-	-	-	-	-	-	-	-	-	-	-	-	-	-			-	-	-	-	-	-	-	-	-	-	-	-	-	-	-	-			415	
420	-	-	-	-	-	-	-	-	-	-	-	-	-	-			-	-	-	-	-	-	-	-	-	-	-	-	-	-	-	-			420	
425	-	-	-	-	-	-	-	-	-	-	-	-	-	-			-	-	-	-	-	-	-	-	-	-	-	-	-	-	-	-			425	
430	-	-	-	-	-	-	-	-	-	-	-	-	-	-			-	-	-	-	-	-	-	-	-	-	-	-	-	-	-	-			430	
435	-	-	-	-	-	-	-	-	-	-	-	-	-	-			-	-	-	-	-	-	-	-	-	-	-	-	-	-	-	-			435	
440	-	-	-	-	-	-	-	-	-	-	-	-	-	-			-	-	-	-	-	-	-	-	-	-	-	-	-	-	-	-			440	
445	-	-	-	-	-	-	-	-	-	-	-	-	-	-			-	-	-	-	-	-	-	-	-	-	-	-	-	-	-	-			445	
450	-	-	-	-	-	-	-	-	-	-	-	-	-	-			-	-	-	-	-	-	-	-	-	-	-	-	-	-	-	-			450	
Totals:						90	2,895							0	0	0	24							35	189							0	0	0	24	
Number of Trades:						8								0		0							7								0		0			

ALPHA BANK (CR) (Contract Size: 100 Securities, Exercise Style: American, Physical Delivery)

Call Options																Put Options																				
April 2015								May 2015								Other Months		April 2015								May 2015								Other Months		
Exerise Price	Open price	Price max	Price min	Last price	Closing price	Volume	Open Interest	Open price	Price max	Price min	Last price	Closing price	Volume	Open Interest	Volume	Open Interest	Open price	Price max	Price min	Last price	Closing price	Volume	Open Interest	Open price	Price max	Price min	Last price	Closing price	Volume	Open Interest	Volume	Open Interest	Exerise Price			
0.100	0.000	0.000	0.000		0.175	-	-	0.000	0.000	0.000		0.175	-	-			0.000	0.000	0.000		0.001	-	-	0.000	0.000	0.000		0.001	-	-			0.001			
0.200	0.000	0.000	0.000		0.076	-	-	0.000	0.000	0.000		0.082	-	-			0.000	0.000	0.000		0.001	-	-	0.000	0.000	0.000		0.007	-	-			0.002			
0.300	0.000	0.000	0.000		0.013	-	-	0.000	0.000	0.000		0.026	-	-			0.000	0.000	0.000		0.037	-	-	0.000	0.000	0.000		0.051	-	-			0.003			
0.400	0.000	0.000	0.000		0.001	-	-	0.000	0.000	0.000		0.007	-	-			0.000	0.000	0.000		0.126	-	-	0.000	0.000	0.000		0.131	-	-			0.004			
0.500	0.000	0.000	0.000		0.001	-	-	0.000	0.000	0.000		0.002	-	-			0.000	0.000	0.000		0.225	-	-	0.000	0.000	0.000		0.226	-	-			0.005			
0.600	0.000	0.000	0.000		0.001	-	-	0.000	0.000	0.000		0.001	-	-			0.000	0.000	0.000		0.325	-	-	0.000	0.000	0.000		0.325	-	-			0.006			
0.700	0.000	0.000	0.000		0.001	-	-	0.000	0.000	0.000		0.002	-	-			0.000	0.000	0.000		0.425	-	-	0.000	0.000	0.000		0.425	-	-			0.007			
0.800	0.000	0.000	0.000		0.001	-	-	0.000	0.000	0.000		0.001	-	-			0.000	0.000	0.000		0.525	-	-	0.000	0.000	0.000		0.525	-	-			0.008			
0.900	0.000	0.000	0.000		0.001	-	-						-	-			0.000	0.000	0.000		0.625	-	-				-	-			0.009					
1.000						-	-						-	-								-	-				-	-				0.010				
1.100						-	-						-	-								-	-				-	-				0.011				
Totals:						0	0							0	0	0	0							0	0							0	0			
Number of Trades:						0								0		0	0.00							0								0				

NATIONAL BANK (CR)

(Contract Size: 100 Securities, Exercise Style: American, Physical Delivery)

Call Options																	Put Options																	
April 2015								May 2015							Other Months		April 2015								May 2015							Other Months		
Exercise Price	Open price	Price max	Price min	Last price	Closing price	Volume	Open Interest	Open price	Price max	Price min	Last price	Closing price	Volume	Open Interest	Volume	Open Interest	Open price	Price max	Price min	Last price	Closing price	Volume	Open Interest	Open price	Price max	Price min	Last price	Closing price	Volume	Open Interest	Volume	Open Interest	Exercise Price	
0.600	0.000	0.000	0.000		0.491	-	-						-	-			0.000	0.000	0.000		0.001	-	-					-	-			0.006		
0.700	0.000	0.000	0.000		0.391	-	-						-	-			0.000	0.000	0.000		0.001	-	-					-	-			0.007		
0.800	0.000	0.000	0.000		0.295	-	-	0.000	0.000	0.000		0.320	-	-			0.000	0.000	0.000		0.005	-	-	0.000	0.000	0.000		0.028	-	-			0.008	
0.900	0.000	0.000	0.000		0.208	-	-	0.000	0.000	0.000		0.247	-	-			0.000	0.000	0.000		0.017	-	-	0.000	0.000	0.000		0.055	-	-			0.009	
1.000	0.000	0.000	0.000		0.136	-	30	0.000	0.000	0.000		0.187	-	-			0.000	0.000	0.000		0.045	-	-	0.000	0.000	0.000		0.095	-	-			0.010	
1.100	0.000	0.000	0.000		0.082	-	-	0.000	0.000	0.000		0.139	-	-			0.000	0.000	0.000		0.091	-	-	0.000	0.000	0.000		0.146	-	-			0.011	
1.200	0.000	0.000	0.000		0.046	-	-	0.000	0.000	0.000		0.101	-	-			0.000	0.000	0.000		0.155	-	-	0.000	0.000	0.000		0.209	-	-			0.012	
1.300	0.000	0.000	0.000		0.024	-	150	0.000	0.000	0.000		0.073	-	-			0.000	0.000	0.000		0.233	-	-	0.000	0.000	0.000		0.280	-	-			0.013	
1.400	0.000	0.000	0.000		0.012	-	-	0.000	0.000	0.000		0.053	-	-			0.000	0.000	0.000		0.321	-	-	0.000	0.000	0.000		0.360	-	-			0.014	
1.500	0.000	0.000	0.000		0.006	-	-	0.000	0.000	0.000		0.037	-	-			0.000	0.000	0.000		0.415	-	-	0.000	0.000	0.000		0.445	-	-			0.015	
1.600	0.000	0.000	0.000		0.003	-	-	0.000	0.000	0.000		0.026	-	-			0.000	0.000	0.000		0.512	-	-	0.000	0.000	0.000		0.533	-	-			0.016	
1.700	0.000	0.000	0.000		0.001	-	-	0.000	0.000	0.000		0.018	-	-			0.000	0.000	0.000		0.610	-	-	0.000	0.000	0.000		0.625	-	-			0.017	
1.800	0.000	0.000	0.000		0.001	-	-	0.000	0.000	0.000		0.013	-	-			0.000	0.000	0.000		0.710	-	-	0.000	0.000	0.000		0.720	-	-			0.018	
1.900	0.000	0.000	0.000		0.001	-	-	0.000	0.000	0.000		0.009	-	-			0.000	0.000	0.000		0.810	-	-	0.000	0.000	0.000		0.816	-	-			0.019	
2.000						-	-						-	-								-	-					-	-			0.020		
2.200						-	-						-	-								-	-					-	-			0.022		
2.400						-	-						-	-								-	-					-	-			0.024		
2.600						-	-						-	-								-	-					-	-			0.026		
2.800						-	-						-	-								-	-					-	-			0.028		
3.000						-	-						-	-								-	-					-	-			0.030		
3.200						-	-						-	-								-	-					-	-			0.032		
3.400						-	-						-	-								-	-					-	-			0.034		
3.600						-	-						-	-								-	-					-	-			0.036		
Totals:													0	0	0	0						0	0					0	0	0	0			
Number of Trades:													0		0							0.00						0		0				

OPAP (CR)

(Contract Size: 100 Securities, Exercise Style: American, Physical Delivery)

Call Options																	Put Options																					
Exerise Price	April 2015							May 2015							Other Months		April 2015								May 2015							Other Months		Exerise Price				
	Open price	Price max	Price min	Last price	Closing price	Volume	Open Interest	Open price	Price max	Price min	Last price	Closing price	Volume	Open Interest	Volume	Open Interest	Open price	Price max	Price min	Last price	Closing price	Volume	Open Interest	Open price	Price max	Price min	Last price	Closing price	Volume	Open Interest	Volume	Open Interest						
6.000	0.000	0.000	0.000		2.83	-	-							-	-			0.000	0.000	0.000		0.001	-	-					-	-								0.060
6.400	0.000	0.000	0.000		2.43	-	-							-	-			0.000	0.000	0.000		0.005	-	-					-	-								0.064
6.800	0.000	0.000	0.000		2.04	-	-	0.000	0.000	0.000		2.17	-	-			0.000	0.000	0.000		0.016	-	-	0.000	0.000	0.000		0.130	-	-							0.068	
7.200	0.000	0.000	0.000		1.67	-	-	0.000	0.000	0.000		1.84	-	-			0.000	0.000	0.000		0.041	-	-	0.000	0.000	0.000		0.206	-	-							0.072	
7.600	0.000	0.000	0.000		1.32	-	-	0.000	0.000	0.000		1.55	-	-			0.000	0.000	0.000		0.094	-	-	0.000	0.000	0.000		0.316	-	-							0.076	
8.000	0.000	0.000	0.000		1.01	-	-	0.000	0.000	0.000		1.30	-	-			0.000	0.000	0.000		0.182	-	-	0.000	0.000	0.000		0.457	-	-							0.080	
8.400	0.000	0.000	0.000		0.741	-	-	0.000	0.000	0.000		1.07	-	-			0.000	0.000	0.000		0.313	-	-	0.000	0.000	0.000		0.626	-	-							0.084	
8.800	0.000	0.000	0.000		0.522	-	-	0.000	0.000	0.000		0.861	-	-			0.000	0.000	0.000		0.494	-	-	0.000	0.000	0.000		0.821	-	-							0.088	
9.200	0.000	0.000	0.000		0.354	-	-	0.000	0.000	0.000		0.699	-	-			0.000	0.000	0.000		0.726	-	-	0.000	0.000	0.000		1.06	-	-							0.092	
9.600	0.000	0.000	0.000		0.231	-	-	0.000	0.000	0.000		0.556	-	-			0.000	0.000	0.000		1.00	-	-	0.000	0.000	0.000		1.31	-	-							0.096	
10.000	0.000	0.000	0.000		0.145	-	-	0.000	0.000	0.000		0.437	-	-			0.000	0.000	0.000		1.32	-	-	0.000	0.000	0.000		1.60	-	-							0.100	
11.000	0.000	0.000	0.000		0.040	-	-						-	-			0.000	0.000	0.000		2.21	-	-					-	-								0.110	
12.000	0.000	0.000	0.000		0.009	-	-						-	-			0.000	0.000	0.000		3.18	-	-					-	-								0.120	
13.000						-	-						-	-								-	-					-	-								0.130	
14.000						-	-						-	-								-	-					-	-								0.140	
15.000						-	-						-	-								-	-					-	-								0.150	
16.000						-	-						-	-								-	-					-	-								0.160	
17.000						-	-						-	-								-	-					-	-								0.170	
18.000						-	-						-	-								-	-					-	-								0.180	
Totals:							0	0				0	0	0	0						0	0					0	0			0	0						
Number of Trades:							0					0		0								0.00						0				0						

OTE (CR)

(Contract Size: 100 Securities, Exercise Style: American, Physical Delivery)

Call Options																	Put Options																			
April 2015								May 2015								Other Months		April 2015								May 2015								Other Months		
Exerise Price	Open price	Price max	Price min	Last price	Closing price	Volume	Open Interest	Open price	Price max	Price min	Last price	Closing price	Volume	Open Interest	Volume	Open Interest	Open price	Price max	Price min	Last price	Closing price	Volume	Open Interest	Open price	Price max	Price min	Last price	Closing price	Volume	Open Interest	Volume	Open Interest	Exerise Price			
6.000						-	-	0.000	0.000	0.000		2.08	-	-								-	-	0.000	0.000	0.000		0.063	-	-			0.060			
6.400	0.000	0.000	0.000		1.62	-	-	0.000	0.000	0.000		1.74	-	-			0.000	0.000	0.000		0.017	-	-	0.000	0.000	0.000		0.121	-	-			0.064			
6.800	0.000	0.000	0.000		1.26	-	-	0.000	0.000	0.000		1.42	-	-			0.000	0.000	0.000		0.051	-	-	0.000	0.000	0.000		0.208	-	-			0.068			
7.200	0.000	0.000	0.000		0.926	-	-	0.000	0.000	0.000		1.15	-	-			0.000	0.000	0.000		0.120	-	-	0.000	0.000	0.000		0.329	-	-			0.072			
7.600	0.000	0.000	0.000		0.648	-	-	0.000	0.000	0.000		0.904	-	-			0.000	0.000	0.000		0.241	-	-	0.000	0.000	0.000		0.486	-	-			0.076			
8.000	0.000	0.000	0.000		0.423	-	-	0.000	0.000	0.000		0.697	-	-			0.000	0.000	0.000		0.417	-	-	0.000	0.000	0.000		0.679	-	-			0.080			
8.400	0.000	0.000	0.000		0.265	-	-	0.000	0.000	0.000		0.535	-	-			0.000	0.000	0.000		0.659	-	-	0.000	0.000	0.000		0.917	-	-			0.084			
8.800	0.000	0.000	0.000		0.156	-	-	0.000	0.000	0.000		0.404	-	-			0.000	0.000	0.000		0.949	-	-	0.000	0.000	0.000		1.19	-	-			0.088			
9.200	0.000	0.000	0.000		0.086	-	-	0.000	0.000	0.000		0.298	-	-			0.000	0.000	0.000		1.28	-	-	0.000	0.000	0.000		1.48	-	-			0.092			
9.600	0.000	0.000	0.000		0.045	-	-	0.000	0.000	0.000		0.214	-	-			0.000	0.000	0.000		1.64	-	-	0.000	0.000	0.000		1.80	-	-			0.096			
10.000	0.000	0.000	0.000		0.022	-	-	0.000	0.000	0.000		0.157	-	-			0.000	0.000	0.000		2.02	-	-	0.000	0.000	0.000		2.14	-	-			0.100			
11.000	0.000	0.000	0.000		0.003	-	-						-	-			0.000	0.000	0.000		3.00	-	-					-	-			0.110				
12.000	0.000	0.000	0.000		0.002	-	-						-	-			0.000	0.000	0.000		4.00	-	-					-	-			0.120				
13.000						-	-						-	-								-	-					-	-			0.130				
14.000						-	-						-	-								-	-					-	-			0.140				
15.000						-	-						-	-								-	-					-	-			0.150				
16.000						-	-						-	-								-	-					-	-			0.160				
Totals:						0	0						0	0	0	0						0	0					0	0	0	0					
Number of Trades:						0							0		0							0.00						0		0						

PIRAEUS BANK (CR)

(Contract Size: 100 Securities, Exercise Style: American, Physical Delivery)

Call Options																	Put Options																
April 2015								May 2015						Other Months			April 2015								May 2015						Other Months		
Exercise Price	Open price	Price max	Price min	Last price	Closing price	Volume	Open Interest	Open price	Price max	Price min	Last price	Closing price	Volume	Open Interest	Volume	Open Interest	Open price	Price max	Price min	Last price	Closing price	Volume	Open Interest	Open price	Price max	Price min	Last price	Closing price	Volume	Open Interest	Volume	Open Interest	Exercise Price
0.100	0.000	0.000	0.000		0.241	-	-	0.000	0.000	0.000		0.241	-	-			0.000	0.000	0.000		0.001	-	-	0.000	0.000	0.000		0.001	-	-			0.001
0.200	0.000	0.000	0.000		0.141	-	-	0.000	0.000	0.000		0.143	-	-			0.000	0.000	0.000		0.001	-	-	0.000	0.000	0.000		0.002	-	-			0.002
0.300	0.000	0.000	0.000		0.051	-	-	0.000	0.000	0.000		0.066	-	-			0.000	0.000	0.000		0.010	-	-	0.000	0.000	0.000		0.024	-	-			0.003
0.400	0.000	0.000	0.000		0.009	-	130	0.040	0.040	0.040	0.040	0.040	20	50			0.000	0.000	0.000		0.067	-	-	0.000	0.000	0.000		0.083	-	-			0.004
0.500	0.000	0.000	0.000		0.001	-	100	0.000	0.000	0.000		0.008	-	-			0.000	0.000	0.000		0.160	-	-	0.000	0.000	0.000		0.166	-	-			0.005
0.600	0.000	0.000	0.000		0.002	-	-	0.000	0.000	0.000		0.003	-	-			0.000	0.000	0.000		0.259	-	-	0.000	0.000	0.000		0.261	-	-			0.006
0.700	0.000	0.000	0.000		0.002	-	-	0.000	0.000	0.000		0.001	-	-			0.000	0.000	0.000		0.359	-	-	0.000	0.000	0.000		0.359	-	-			0.007
0.800	0.000	0.000	0.000		0.001	-	-	0.000	0.000	0.000		0.002	-	-			0.000	0.000	0.000		0.459	-	-	0.000	0.000	0.000		0.459	-	-			0.008
0.900	0.000	0.000	0.000		0.003	-	-	0.000	0.000	0.000		0.001	-	-			0.000	0.000	0.000		0.559	-	-	0.000	0.000	0.000		0.559	-	-			0.009
1.000	0.000	0.000	0.000		0.001	-	-	0.000	0.000	0.000		0.001	-	-			0.000	0.000	0.000		0.659	-	-	0.000	0.000	0.000		0.659	-	-			0.010
1.100	0.000	0.000	0.000		0.001	-	-						-	-			0.000	0.000	0.000		0.759	-	-					-	-			0.011	
1.200	0.000	0.000	0.000		0.002	-	-						-	-			0.000	0.000	0.000		0.859	-	-					-	-			0.012	
1.300	0.000	0.000	0.000		0.001	-	-						-	-			0.000	0.000	0.000		0.959	-	-					-	-			0.013	
1.400					-	-							-	-							-	-						-	-			0.014	
1.500					-	-							-	-							-	-						-	-			0.015	
1.600					-	-							-	-							-	-						-	-			0.016	
1.700					-	-							-	-							-	-						-	-			0.017	
1.800					-	-							-	-							-	-						-	-			0.018	
1.900					-	-							-	-							-	-						-	-			0.019	
2.000					-	-							-	-							-	-						-	-			0.020	
2.200					-	-							-	-							-	-						-	-			0.022	
2.400					-	-							-	-							-	-						-	-			0.024	
Totals:													20	50	0	0						0	0						0	0	0	0	
Number of Trades:													1		0							0.00							0		0		

PPC (CR)

(Contract Size: 100 Securities, Exercise Style: American, Physical Delivery)

Call Options																	Put Options																			
April 2015								May 2015								Other Months		April 2015								May 2015								Other Months		
Exercise Price	Open price	Price max	Price min	Last price	Closing price	Volume	Open Interest	Open price	Price max	Price min	Last price	Closing price	Volume	Open Interest	Volume	Open Interest	Open price	Price max	Price min	Last price	Closing price	Volume	Open Interest	Open price	Price max	Price min	Last price	Closing price	Volume	Open Interest	Volume	Open Interest	Exercise Price			
3.600	0.000	0.000	0.000		1.89	-	-						-	-			0.000	0.000	0.000		0.001	-	-					-	-				0.036			
3.800	0.000	0.000	0.000		1.69	-	-						-	-			0.000	0.000	0.000		0.001	-	-					-	-				0.038			
4.000	0.000	0.000	0.000		1.50	-	-	0.000	0.000	0.000		1.54	-	-			0.000	0.000	0.000		0.002	-	-	0.000	0.000	0.000		0.038	-	-				0.040		
4.400	0.000	0.000	0.000		1.11	-	-	0.000	0.000	0.000		1.20	-	-			0.000	0.000	0.000		0.015	-	-	0.000	0.000	0.000		0.096	-	-				0.044		
4.800	0.000	0.000	0.000		0.755	-	-	0.000	0.000	0.000		0.896	-	-			0.000	0.000	0.000		0.060	-	-	0.000	0.000	0.000		0.195	-	-				0.048		
5.200	0.000	0.000	0.000		0.463	-	-	0.000	0.000	0.000		0.650	-	-			0.000	0.000	0.000		0.169	-	-	0.000	0.000	0.000		0.347	-	-				0.052		
5.600	0.000	0.000	0.000		0.254	-	-	0.000	0.000	0.000		0.456	-	-			0.000	0.000	0.000		0.360	-	-	0.000	0.000	0.000		0.554	-	-				0.056		
6.000	0.000	0.000	0.000		0.124	-	-	0.000	0.000	0.000		0.310	-	-			0.000	0.000	0.000		0.629	-	-	0.000	0.000	0.000		0.807	-	-				0.060		
6.400	0.000	0.000	0.000		0.053	-	-	0.000	0.000	0.000		0.205	-	-			0.000	0.000	0.000		0.959	-	-	0.000	0.000	0.000		1.10	-	-				0.064		
6.800	0.000	0.000	0.000		0.022	-	-	0.000	0.000	0.000		0.132	-	-			0.000	0.000	0.000		1.33	-	-	0.000	0.000	0.000		1.43	-	-				0.068		
7.200	0.000	0.000	0.000		0.007	-	-	0.000	0.000	0.000		0.082	-	-			0.000	0.000	0.000		1.71	-	-	0.000	0.000	0.000		1.78	-	-				0.072		
7.600	0.000	0.000	0.000		0.003	-	-	0.000	0.000	0.000		0.050	-	-			0.000	0.000	0.000		2.11	-	-	0.000	0.000	0.000		2.15	-	-				0.076		
8.000	0.000	0.000	0.000		0.001	-	-	0.000	0.000	0.000		0.031	-	-			0.000	0.000	0.000		2.51	-	-	0.000	0.000	0.000		2.53	-	-				0.080		
8.400	0.000	0.000	0.000		0.002	-	-	0.000	0.000	0.000		0.019	-	-			0.000	0.000	0.000		2.91	-	-	0.000	0.000	0.000		2.92	-	-				0.084		
8.800						-	-						-	-								-	-					-	-				0.088			
9.200						-	-						-	-								-	-					-	-				0.092			
9.600						-	-						-	-								-	-					-	-				0.096			
10.000						-	-						-	-								-	-					-	-				0.100			
11.000						-	-						-	-								-	-					-	-				0.110			
12.000						-	-						-	-								-	-					-	-				0.120			
13.000						-	-						-	-								-	-					-	-				0.130			
14.000						-	-						-	-								-	-					-	-				0.140			
15.000						-	-						-	-								-	-					-	-				0.150			
16.000						-	-						-	-								-	-					-	-				0.160			
Totals:						0	0						0	0	0	0						0	0					0	0	0	0	0	0			
Number of Trades:						0							0		0							0.00						0		0						

Lending Products	Underlying Title	Multilateral Transactions[1]					Bilateral Transactions[2]		Stock Borrowing through OTC (volume)[3]
		Open Interest[5]	Volume(Offered)	Average Weighted	Transactions volume	Average Weighted	Transactions Volume	Average Weighte	Transactions Volume
AEGNBOR	AEGEAN AIRLINES (CR)	248	19,760	5.31%	---	---	---	---	1
ALPHABOR	ALPHA BANK (CR)	843,385	4,935,975	3.31%	---	---	---	---	44,091,620
AETFBOR	ALPHA ETF FTSE Athex Large Cap	---	---	---	---	---	---	---	---
ALMYBOR	ALUMIL (CR)	---	---	---	---	---	---	---	---
IATRBOR	ATHENS MEDICAL CENTER SA (CR)	---	38,078	5.31%	---	---	---	---	---
TATTBOR	ATTICA BANK S.A. (CR)	---	162,569	5.31%	---	---	---	---	---
OTOELBOR	AUTOHELLAS SA (CR)	---	958	5.31%	---	---	---	---	---
BIOKABOR	BIOKARPET S.A.(CR)	---	---	---	---	---	---	---	---
EEEBOR	CC HBC AG (CR)	1,911	16	3.46%	---	---	---	---	72,576
CENTRBOR	CENTRIC HOLDINGS (CR)	---	16,000	5.31%	---	---	---	---	---
SOLKBOR	CORINTH PIPEWORKS SA (CR)	1,331	933	5.31%	---	---	---	---	---
PLAKRBOR	CRETE PLASTICS SA (CR)	---	---	---	---	---	---	---	---
DROMEBO	DROMEAS SA (CR)	---	---	---	---	---	---	---	---
ELGEBOR	ELGEKA SA (CR)	---	---	---	---	---	---	---	---
ELLAKTORBOR	ELLAKTOR (CR)	59,510	30,626	5.31%	---	---	---	---	---
ELBABOR	ELVAL SA. (CB)	---	35,344	5.31%	---	---	---	---	---
EUROBBOR	EUROBANK ERGASIAS (CR)	41,245	1,497,957	5.31%	40,000	3.03%	---	---	87,922,384
EUPICBOR	EUROPEAN RELIANCE INSUR. (CR)	---	---	---	---	---	---	---	---
EYDAPBOR	EYDAP S.A. (CR)	1,200	2,541	5.31%	100	3.23%	---	---	17,780
FGEBOR	F.G. EUROPE S.A. (CR)	---	---	---	---	---	---	---	---
FFGRPBOR	FOLLI FOLLIE (CR)	2,242	62,334	3.31%	---	---	---	---	1,061,184
FOYRKBOR	FOURLIS (CR)	---	2,329	5.31%	---	---	---	---	3,850
FRIGOBOR	FRIGOGLASS SA (CR)	2,100	5,519	5.31%	---	---	---	---	---
GEKTERNABOR	GEK TERNA (CR)	3,940	23,206	5.31%	---	---	---	---	---
SARBOR	GR. SARANTIS SA (CR)	---	---	---	---	---	---	---	---
EUPROBOR	GRIVALIA PROPERTIES (CR)	3,583	49,718	5.31%	---	---	---	---	85,561
XAKOBOR	HALKOR SA (CB)	---	48,551	5.31%	---	---	---	---	---
EXAEBOR	HELLENIC EXCHANGES-A.S.E. (CR)	3,000	502,596	5.31%	---	---	---	---	130,000
ELPEBOR	HELLENIC PETROLEUM (CR)	1,000	204,628	5.31%	---	---	---	---	66,000
HYGEIABOR	HYGEIA SA (CR)	---	48,700	5.31%	---	---	---	---	---
IASOBOR	IASO SA (CR)	---	---	---	---	---	---	---	---

Stock Lending Notes

- [1] - Multilateral contracts Lending or Borrowing as per Methods 8-1, 8-2 and 8-3-3 (According to ATHEX BoD Resolution No.17)
- [2] - Billateral Contracts Lending or Borrowing as per Methods 8-3-1 and 8-3-2 (According to ATHEX BoD Resolution No.20)
- [3] - The information concerning OTC Stock Borrowing Transactions is based on the statements of the Dematerialised Securities System (DSS) operators involved and refers to volumes that have been cleared and registered up until the previous working day.
- [4] - Average Price (Volume weighted)
- [5] - The Data concerning Open Interest before the start of trading session

Lending Products	Underlying Title	Multilateral Transactions[1]					Bilateral Transactions[2]		Stock Borrowing through OTC (volume)[3]
		Open Interest[5]	Volume(Offered)	Average Weighted	Transactions volume	Average Weighted	Transactions Volume	Average Weighte	Transactions Volume
IKTINBOR	IKTINOS HELLAS SA (CR)	---	---	---	---	---	---	---	---
LYKBOR	INFORM P. LYKOS SA (CR)	---	483	5.31%	---	---	---	---	---
INKATBOR	INTRACOM CONSTR. (CR)	---	---	---	---	---	---	---	---
INTRKBOR	INTRACOM HOLDINGS (CR)	---	109,350	5.31%	---	---	---	---	---
INLOTBOR	INTRALOT (CR)	74,808	15,112	4.24%	---	---	---	---	14,968
AVAXBOR	J & P - AVAX SA (CR)	---	20,175	5.31%	---	---	---	---	---
BELABOR	JUMBO SA (CR)	28,019	91,722	3.31%	---	---	---	---	3,760
KARTZBOR	KARATZIS SA (CR)	---	---	---	---	---	---	---	---
KLEMBOR	KLEEMAN HELLAS SA (CR)	---	17,510	5.31%	---	---	---	---	---
KRIBOR	KRI-KRI S.A. (CR)	---	46,268	5.31%	---	---	---	---	---
LAMDABOR	LAMDA DEVELOPMENT SA (CR)	---	---	---	---	---	---	---	10,377
MIGBOR	MARFIN INVESTMENT GROUP (CR)	3,418	112,418	5.31%	---	---	---	---	744,474
METKKBOR	METKA (CR)	6,623	175	5.31%	---	---	---	---	500
MLSBOR	MLS MULTIMEDIA SA (CR)	---	7,920	5.31%	---	---	---	---	---
MOHBOR	MOTOR OIL (CR)	19,182	30,831	3.31%	---	---	---	---	34,600
MYTILBOR	MYTILINEOS HOLDINGS (CR)	5,000	156,902	3.86%	---	---	---	---	1,800
ETEBOR	NATIONAL BANK (CR)	70,274	216,438	5.31%	---	---	---	---	1,854,694
ETFASEBOR	NBGAM ETF	---	---	---	---	---	---	---	---
ETFGT30PBOR	NBGAM ETF GREECE & TURKEY 30	---	---	---	---	---	---	---	---
OPAPBOR	OPAP (CR)	89,007	68,262	3.55%	---	---	---	---	790,541
HTOBOR	OTE (CR)	10,642	20,331	5.31%	---	---	---	---	186,127
PPABOR	P.P.A. S.A. (CR)	162	649	5.30%	---	---	---	---	151
PAPBOR	PAPOUTSANIS (CR)	---	---	---	---	---	---	---	---
PETROBOR	PETROPOULOS PETROS (CR)	---	---	---	---	---	---	---	---
TPEIRBOR	PIRAEUS BANK (CR)	9,636	61,797	5.31%	---	---	---	---	24,228,707
PLAISBOR	PLAISIO COMPUTERS SA (CR)	---	---	---	---	---	---	---	---
PPCBOR	PPC (CR)	34,540	80,035	3.31%	2,000	2.65%	---	---	931,620
PROFBOR	PROFILE SA (CR)	---	---	---	---	---	---	---	---
QUALBOR	QUALITY & RELIABILITY SA (CR)	---	---	---	---	---	---	---	---
QUESTBOR	QUEST HOLDINGS (CR)	---	822	5.31%	---	---	---	---	---
SIDEBOR	SIDENOR (CR)	2,031	27,542	5.31%	---	---	---	---	---

Stock Lending Notes

[1] - Multilateral contracts Lending or Borrowing as per Methods 8-1, 8-2 and 8-3-3 (According to ATHEX BoD Resolution No.17)

[2] - Billateral Contracts Lending or Borrowing as per Methods 8-3-1 and 8-3-2 (According to ATHEX BoD Resolution No.20)

[3] - The information concerning OTC Stock Borrowing Transactions is based on the statements of the Dematerialised Securities System (DSS) operators involved and refers to volumes that have been cleared and registered up until the previous working day.

[4] - Average Price (Volume weighted)

[5] - The Data concerning Open Interest before the start of trading session

Lending Products	Underlying Title	Multilateral Transactions[1]					Bilateral Transactions[2]		Stock Borrowing through OTC (volume)[3]
		Open Interest[5]	Volume(Offered)	Average Weighted	Transactions volume	Average Weighted	Transactions Volume	Average Weighted	Transactions Volume
OLYMPBOR	TECHNICAL OLYMPIC SA (CR)	---	---	---	---	---	---	---	---
TENERGYBOR	TERNA ENERGY (CR)	700	28,010	5.31%	---	---	---	---	---
EYAPSBOR	THESSALONIKA WATER & SEWERAGE	---	798	5.31%	---	---	---	---	---
PLATBOR	THRACE PLASTICS SA (CR)	---	42,700	5.31%	---	---	---	---	---
TITKBOR	TITAN CEMENT (CR)	35,400	202,944	3.31%	---	---	---	---	375,511
OLTHBOR	TPA SA (CR)	---	3,438	5.31%	---	---	---	---	---
TRASTORBOR	TRASTOR REAL EST. INV. CO.(CR)	---	14,780	5.31%	---	---	---	---	---
VIOBOR	VIOHALCO SA/NV (CB)	13,377	8,706	5.31%	---	---	---	---	---

Stock Lending Notes

[1] - Multilateral contracts Lending or Borrowing as per Methods 8-1, 8-2 and 8-3-3 (According to ATHEX BoD Resolution No.17)

[2] - Bilateral Contracts Lending or Borrowing as per Methods 8-3-1 and 8-3-2 (According to ATHEX BoD Resolution No.20)

[3] - The information concerning OTC Stock Borrowing Transactions is based on the statements of the Dematerialised Securities System (DSS) operators involved and refers to volumes that have been cleared and registered up until the previous working day.

[4] - Average Price (Volume weighted)

[5] - The Data concerning Open Interest before the start of trading session

Sectors codification for listed companies

533	-	Exploration & Production	537	-	Integrated Oil & Gas
1353	-	Commodity Chemicals	1357	-	Specialty Chemicals
1753	-	Aluminum	1755	-	Nonferrous Metals
1757	-	Steel	1775	-	General Mining
2353	-	Building Materials & Fixtures	2357	-	Heavy Construction
2723	-	Containers & Packaging	2727	-	Diversified Industrials
2733	-	Electrical Components & Equipment	2753	-	Commercial Vehicles & Trucks
2757	-	Industrial Machinery	2773	-	Marine Transportation
2777	-	Transportation Services	2791	-	Business Support Services
2797	-	Industrial Suppliers	3535	-	Distillers & Vintners
3537	-	Soft Drinks	3573	-	Farming Fishing & Plantations
3577	-	Food Products	3722	-	Durable Household Products
3726	-	Furnishings	3728	-	Home Construction
3747	-	Toys	3763	-	Clothing & Accessories
3765	-	Footwear	3767	-	Personal Products
3785	-	Tobacco	4533	-	Health Care Providers
4535	-	Medical Equipment	4577	-	Pharmaceuticals
5337	-	Food Retailers & Wholesalers	5371	-	Apparel Retailers
5373	-	Broadline Retailers	5375	-	Home Improvement Retailers
5379	-	Specialty Retailers	5553	-	Broadcasting & Entertainment
5555	-	Media Agencies	5557	-	Publishing
5751	-	Airlines	5752	-	Gambling
5753	-	Hotels	5755	-	Recreational Services
5757	-	Restaurants & Bars	5759	-	Travel & Tourism
6535	-	Fixed Line Telecommunications	6575	-	Mobile Telecommunications
7535	-	Conventional Electricity	7537	-	Alternative Electricity
7577	-	Water	8355	-	Banks
8534	-	Insurance Brokers	8536	-	Property & Casualty Insurance
8633	-	Real Estate Holding & Development	8637	-	Real Estate Services
8671	-	Industrial & Office REITs	8675	-	Specialty REITs
8775	-	Specialty Finance	8777	-	Investment Services
8985	-	Equity Investment Instruments	9533	-	Computer Services
9535	-	Internet	9537	-	Software
9572	-	Computer Hardware	9574	-	Electronic Office Equipment
9578	-	Telecommunications Equipment	12003	-	ETF



ATHEXGROUP

Ομίλος Χρηματιστηρίου Αθηνών

Λεωφ. Αθηνών 110 104 42 Αθήνα
110, Athinon Ave. GR 104 42 Athens
tel. (+30)210-33.66.800, fax (+30)210-33.66.101
www.athexgroup.gr