



Daily Official List

Hellenic Exchanges – Athens Stock Exchange S.A.

Monday, 22 June, 2015
Year: 136 Trading Day No: 113



Disclaimer:

Hellenic Exchanges-Athens Exchange endeavours to ensure that the data and other material ("Information") presented on the Daily Official List are accurate and complete, but it is not liable for any errors or omissions of data or /and for the accuracy, credibility, updating and completeness of the aforesaid information nor it has any liability arising directly or indirectly from the use of the above Information.

The Company is not liable for the accuracy of the data included in listed companies' announcements. Only the sender of such an announcement is fully and solely liable for any infringement of third party's rights from the content of such announcement. All contents of the Daily Official List are provided only for information purposes and do not constitute investment advice or solicitation to invest in securities or other products listed for trading on the Exchange.

You acknowledge and agree that the Company is the owner of any property rights related to any Information appearing on the Daily Official List including intellectual property rights copyright, trademarks, etc.

The above data are a property of the Hellenic Exchanges-Athens Exchange and are copyright protected. Users are forbidden to reproduce, modify, copy, sale, transmit or redistribute, by all reproduction means and methods, part or the whole of the above data, without reference to their source.

The commercial exploitation of these data is, also, forbidden by third parties. Hellenic Exchanges-Athens Exchange does not carry any responsibility, direct or indirect, derived from usage or accidental alteration of the above data when used by third parties.

Hellenic Exchanges – Athens Stock Exchange S.A.

110 Athinon Ave., 10442 Athens, Tel: (210) 33.66.800, Fax: (210) 32.13.938

www.athex.gr

Thessalonica Stock Exchange Center (T.S.E.C)

16-18 Katouni Str., Thessalonica 546 25 Tel: (2310) 567.667, Fax: (2310) 530.545

Athex Members Guarantee Fund

14-16 Fidiou Str., Athens 106 78, Tel: (210) 33.04.682, Fax: (210) 33.04.155

Hellenic Republic Capital Market Commission

1 Kolokotroni Str. & 1 Stadiou Str., Athens 10562 Tel: (210) 33.77.100 Fax: (210) 33.77.173

Table of Contents

Section 1: Statistical Figures of Securities, Derivatives and Lending

Summary of Markets

Athex Indices

Analytic Figures for Athex Market's Boards and Categories

Trading Details by Athex Sectors and Financial Instruments (ETFs)

Top 10 best & worst performing Shares

Derivatives Summary

Section 2: Analytic Figures of Shares Transactions

Analytic Figures of Shares Transactions

Shares' Notes

Section 3: Figures of Securities Transactions

Securities Blocks Details

Shares Rights Details

Stock Borrowing

Shares Forced Sales

Forced Sales Registered Shares

Exchange Traded Funds (ETFs) Characteristics

Section 5: Bonds traded in Fixed Income Assets Market

Corporate Bonds

Government Bonds

Treasury Bills & Zero Coupon Government Bonds

Government Bonds Traded with the Open Outcry Method

State Banks Bonds

Section 6: Additional Infos

Athex & ATHEXClear Members List

List of Stocks under Market Making operations

Section 7: Derivatives Market Analytic Figures

Index Futures

Stock Futures

Index Options

Stock Options

Stock Lending Analytic Figures

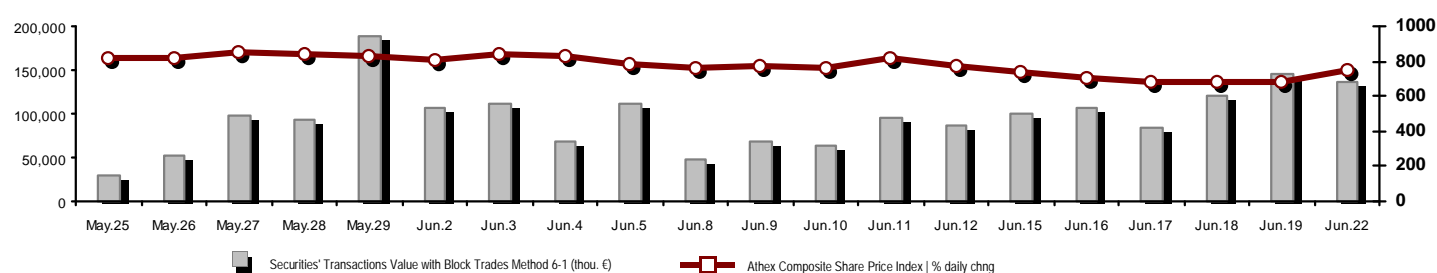
Appendix A: Sectors codification for listed companies

Section codification follows the corresponding from the Greek version of Daily Official List for reference purposes.

Hellenic Exchanges – Athens Stock Exchange S.A.Strategic Communication & Market Analysis Division - Market Analysis Department

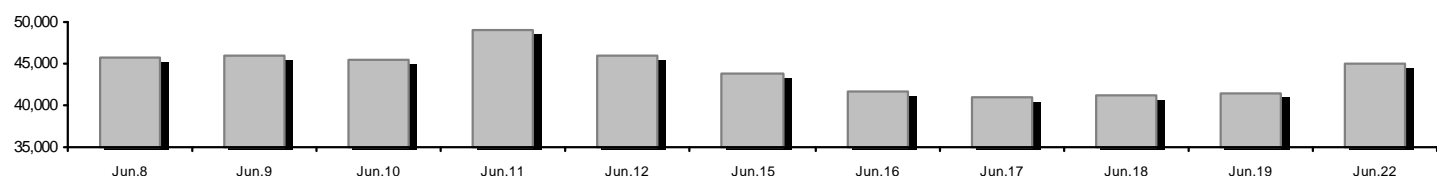
Summary of Markets

Athex Composite Share Price Index vs Shares and Derivatives Transactions Value

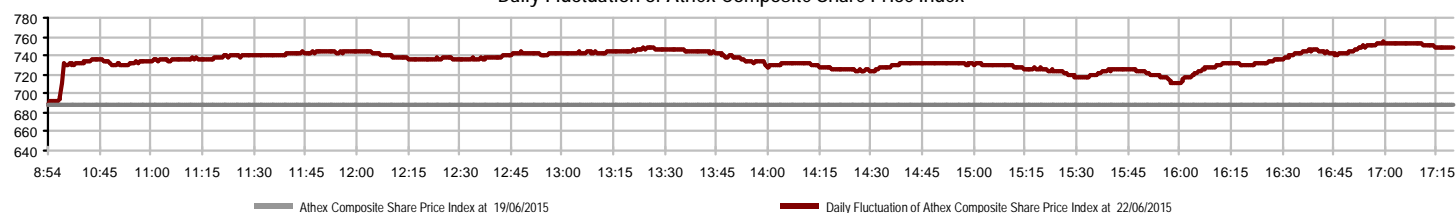


Athex Capitalisation (mill. €) **: 45,007.28	Derivatives Total Open Interest: 304,271
Daily change: mill. € %: 3,651.01 8.83%	in Index Futures % daily chng: 21,781 -40.36%
Yearly Avg Capitalisation: mill. € % chng prev year Avg: 47,562.08 -31.33%	in Stock Futures % daily chng: 278,556 -29.61%
Athex Composite Share Price Index % daily chng: 749.17 9.00%	in Index Options % daily chng: 3,382 -50.93%
Athex Composite Share Price Index Capitalisation (mill. €): 41,678.49	in Stock Options % daily chng: 552 -29.41%
Daily change (mill. €): 3,530.35	
Securities' Transactions Value with Block Trades Method 6-1 (136,863.41	Derivatives Contracts Volume: 109,001
Daily change: thou. € %: -8,250.00 -5.69%	Daily change: pieces %: -116,487 -51.66%
YtD Avg Trans. Value: thou. € % chng prev year Avg: 101,749.63 -19.92%	YtD Avg Derivatives Contracts % chng prev year Avg: 91,323 66.61%
Blocks Transactions Value of Method 6-1 (thou. €): 1,175.51	Derivatives Trades Number: 6,550
Blocks Transactions Value of Method 6-2 & 6-3 (thou. €): 14.79	Daily change: number %: -1,448 -18.10%
Bonds Transactions Value (thou. €): 17.99	YtD Avg Derivatives Trades number % chng prev year Avg: 4,584 9.77%
Securities' Transactions Volume (thou. Pieces): 246,180.67	Lending Total Open Interest: 1,726,405
Daily change: thou. pieces %: -15,768.04 -6.02%	Daily change: pieces %: 705,027 69.03%
YtD Avg Volume: thou. pieces % chng prev year Avg: 188,226.78 98.11%	Lending Volume (Multilateral/Bilateral): 726,053
Blocks Transactions Volume of Method 6-1 (thou. Pieces): 159.63	Daily change: pieces %: 692,966 2094.38%
Blocks Transactions Volume of Method 6-2 & 6-3 (thou. Pieces): 0.82	Multilateral Lending: 714,803
Bonds Transactions Volume (thou. pieces): 163.80	Bilateral Lending: 11,250
Securities' Trades Number: 52,989	Lending Trades Number: 37
Daily change: number %: 8,472 19.03%	Daily change: thou. € %: -8 -17.78%
YtD Avg Derivatives Trades number % chng prev year Avg: 33,574 16.23%	Multilateral Lending Trades Number: 34
Number of Blocks Method 6-1: 2	Bilateral Lending Trades Number: 3
Number of Blocks Method 6-2 & 6-3: 6	
Number of Bonds Transactions: 20	

Athex Capitalisation (mill. €) **



Daily Fluctuation of Athex Composite Share Price Index



Athex Indices

Index name	22/06/2015	19/06/2015	pts.	%	Min	Max	Year min	Year max	Year change
Athex Composite Share Price Index	749.17 #	687.33	61.84	9.00%	687.33	754.99	651.78	945.81	-9.32% €
FTSE/Athex Large Cap	226.15 #	208.19	17.96	8.63%	208.19	228.41	196.83	283.37	-14.62% €
FTSE/ATHEX Custom Capped	719.34 #	716.39	2.96	0.41%			709.75	956.79	-17.44% €
FTSE/ATHEX Custom Capped - USD	584.27 €	585.67	-1.40	-0.24%			548.31	777.68	-22.71% €
FTSE/Athex Mid Cap Index	888.46 #	829.05	59.41	7.17%	829.05	888.46	705.04	984.77	14.93% #
FTSE/ATHEX-CSE Banking Index	452.34 #	374.48	77.86	20.79%	374.48	456.49	319.25	774.70	-37.87% €
FTSE/ATHEX Global Traders Index Plus	1,429.92 #	1,338.55	91.37	6.83%	1,338.55	1,436.39	1,227.52	1,604.84	11.46% #
FTSE/ATHEX Global Traders Index	1,419.20 #	1,336.40	82.80	6.20%	1,336.40	1,427.12	1,252.43	1,698.65	-1.34% €
FTSE/ATHEX Mid & Small Cap Factor-Weighted Ind	1,234.99 #	1,214.01	20.98	1.73%	1,204.06	1,239.02	1,076.89	1,286.48	12.67% #
Greece & Turkey 30 Price Index	592.50 #	569.62	22.88	4.02%	569.61	593.62	552.65	768.95	-12.85% €
ATHEX Mid & SmallCap Price Index	2,351.73 #	2,277.64	74.09	3.25%	2,257.21	2,380.45	2,177.81	2,635.74	-3.60% €
FTSE/Athex Market Index	550.60 #	507.24	43.36	8.55%	507.24	555.82	479.81	685.04	-13.45% €
FTSE Med Index	5,410.81 #	5,384.71	26.10	0.48%			4,930.94	6,069.73	7.42% #
Athex Composite Index Total Return Index	1,107.93 #	1,016.49	91.44	9.00%	1,016.49	1,116.55	963.91	1,385.07	-8.26% €
FTSE/Athex Large Cap Total Return	310.69 #	286.01	24.68	8.63%			283.57	382.72	-13.53% €
FTSE/ATHEX Large Cap Net Total Return	923.97 #	850.56	73.41	8.63%	850.56	933.18	804.16	1,147.63	-13.65% €
FTSE/ATHEX Custom Capped Total Return	765.15 #	762.01	3.14	0.41%			751.27	1,008.59	-16.54% €
FTSE/ATHEX Custom Capped - USD Total Return	621.48 €	622.97	-1.49	-0.24%			578.56	819.78	-21.87% €
FTSE/Athex Mid Cap Total Return	1,140.97 #	1,064.67	76.30	7.17%			908.00	1,231.75	16.08% #
FTSE/ATHEX-CSE Banking Total Return Index	421.82 #	349.21	72.61	20.79%			312.07	708.30	-37.89% €
Greece & Turkey 30 Total Return Index	705.46 #	695.38	10.08	1.45%			688.43	919.96	-14.29% €
Hellenic Mid & Small Cap Index	761.51 #	706.27	55.24	7.82%	706.27	769.30	671.02	994.59	-1.00% €
FTSE/Athex Banks	597.65 #	494.78	102.87	20.79%	494.78	603.14	421.81	1,023.60	-37.86% €
FTSE/Athex Insurance	1,633.18 #	1,580.50	52.68	3.33%	1,580.50	1,633.18	1,222.25	1,780.70	11.51% #
FTSE/Athex Financial Services	897.37 #	764.59	132.78	17.37%	764.59	898.67	699.01	1,400.60	-10.40% €
FTSE/Athex Industrial Goods & Services	2,041.99 #	1,873.25	168.74	9.01%	1,873.25	2,069.56	1,767.13	2,660.41	4.50% #
FTSE/Athex Retail	3,103.64 #	2,787.50	316.14	11.34%	2,787.50	3,103.64	2,667.59	4,531.02	-18.37% €
FTSE/ATHEX Real Estate	2,199.95 #	2,058.18	141.77	6.89%	2,058.18	2,282.74	2,058.18	2,800.26	-3.59% €
FTSE/Athex Personal & Household Goods	3,404.42 #	3,192.93	211.49	6.62%	3,192.93	3,460.22	3,185.61	5,680.33	-25.22% €
FTSE/Athex Food & Beverage	7,418.90 #	7,228.60	190.30	2.63%	7,228.60	7,642.43	5,066.70	7,814.61	26.65% #
FTSE/Athex Basic Resources	2,494.69 #	2,323.72	170.97	7.36%	2,323.72	2,494.69	1,753.11	2,916.96	29.38% #
FTSE/Athex Construction & Materials	2,186.89 #	2,076.80	110.09	5.30%	2,076.80	2,292.75	1,953.89	2,705.46	0.09% #
FTSE/Athex Oil & Gas	2,216.35 #	1,988.58	227.77	11.45%	1,988.58	2,248.10	1,618.74	2,399.45	22.12% #
FTSE/Athex Chemicals	6,960.30 ~	6,960.30	0.00	0.00%	6,863.53	7,347.37	4,784.62	7,561.34	35.87% #
FTSE/Athex Travel & Leisure	1,317.85 #	1,299.64	18.21	1.40%	1,278.49	1,367.18	1,223.34	1,741.96	-14.04% €
FTSE/Athex Technology	702.93 #	676.73	26.20	3.87%	676.73	704.36	636.30	786.22	-3.19% €
FTSE/Athex Telecommunications	2,133.24 #	2,064.43	68.81	3.33%	1,940.56	2,174.53	1,747.88	2,606.68	-14.84% €
FTSE/Athex Utilities	1,806.88 #	1,649.93	156.95	9.51%	1,649.93	1,830.14	1,478.55	2,830.02	-13.90% €
FTSE/Athex Health Care	110.24 #	100.72	9.52	9.45%	100.72	112.62	88.03	163.37	-23.62% €
Athex All Share Index	158.23 #	145.32	12.91	8.88%	158.23	158.23	143.91	196.00	-14.90% €
Hellenic Corporate Bond Index	83.19 #	82.58	0.61	0.74%			82.58	94.45	-11.37% €
Hellenic Corporate Bond Price Index	80.04 #	79.45	0.58	0.74%			79.45	92.77	-13.48% €

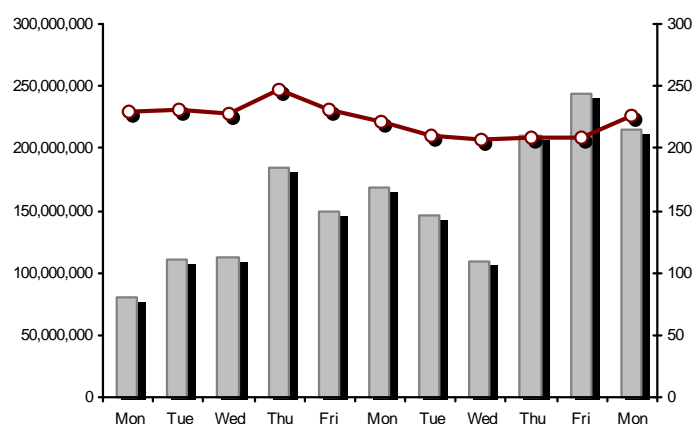
Note 1: Greece & Turkey 30 Pr data is the indicative at 17:20, whereas FTSE/ATHEX Custom Capped, FTSE/ATHEX Custom Capped - USD, FTSE/ATHEX Custom Capped TR, FTSE/ATHEX Custom Capped - USD TR, FTSE/Med 100 & Greece & Turkey 30 Rt., Hellenic Corporate Bond Price Index, Hellenic Corporate Bond Index closing prices refer to the previous trading day of 18/06/2015.

Note 2: The Hellenic Mid & Small Cap Index is a Customized index calculated by the Athens Exchange.

Athex Indices

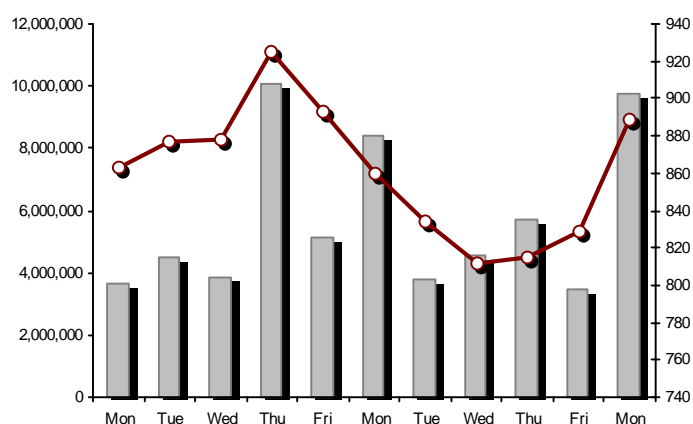
FTSE/Large Cap

22/06/2015: 8.63%



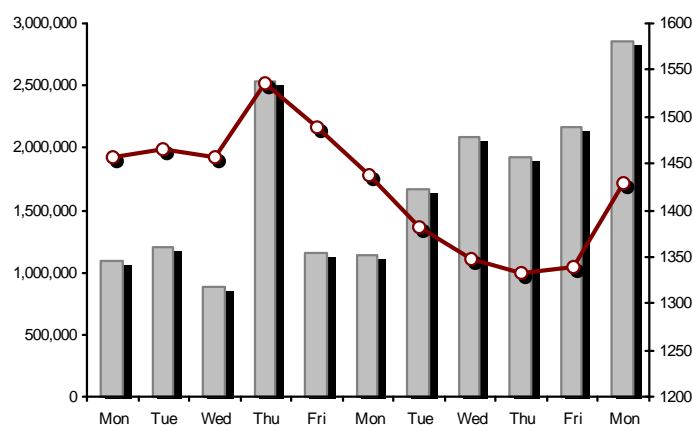
FTSE/Athex Mid Cap Index

22/06/2015: 7.17%



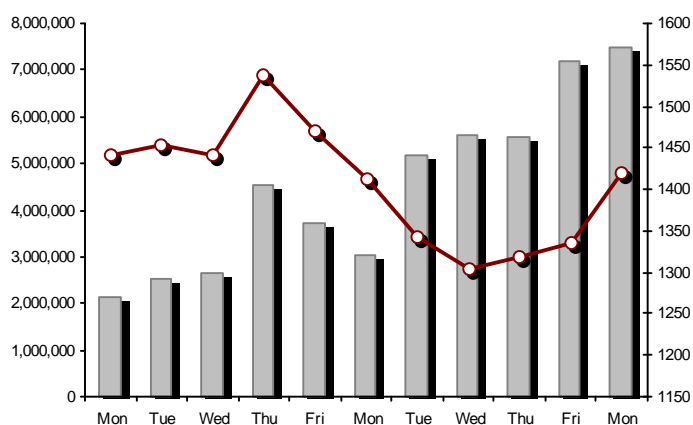
FTSE/ATHEX Global Traders Index Plus

22/06/2015: 6.83%



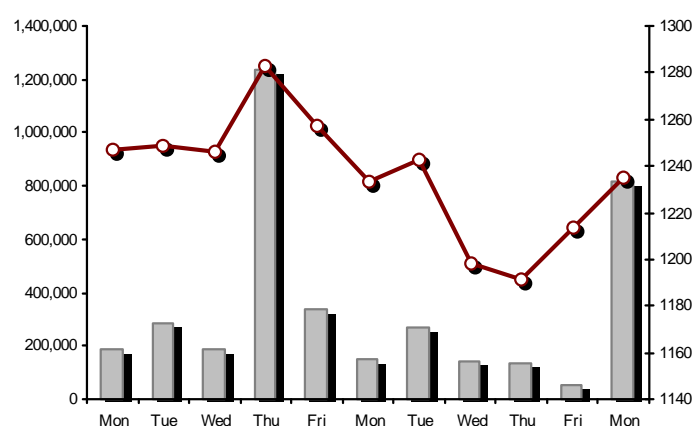
FTSE/ATHEX Global Traders Index

22/06/2015: 6.20%



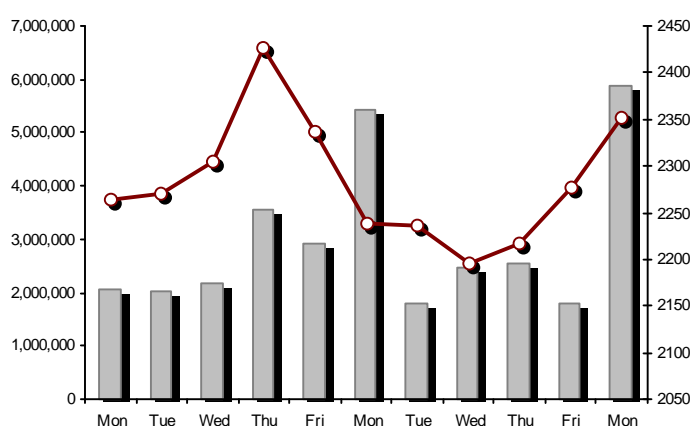
FTSE/ATHEX Mid & Small Cap Factor-Weighted Index

22/06/2015: 1.73%



ATHEX Mid & SmallCap Price Index

22/06/2015: 3.25%



Indices volume of transactions

Indices closing prices

Analytic Figures for Athex Market's Boards and Categories

	Total Traded Securities	Main Market	Low Dispersion	Other Categories (*)	Exchange Traded Funds (ETFs)	Warrants
Totals	129	105	7	11	3	3
Gain / Lose / Same:	93 / 24 / 12	78 / 18 / 9	5 / 1 / 1	4 / 5 / 2	3 / 0 / 0	3 / 0 / 0
Athex Capitalisation (mill. €) **	45,007.28	43,350.91	1,378.84	277.53		
Daily Average Trans/ons Value(thou.€)	101,749.63	99,688.91	47.54	80.07	30.34	2,018.19
Transactions Value	136,878.20	134,095.37	14.28	5.69	28.48	2,734.38
Main Board:	135,687.90	132,905.07	14.28	5.69	28.48	2,734.38
Blocks Board 6_2_3:	1,190.30	1,190.30	0.00	0.00	0.00	0.00
Forced Sales Board:	0.00	0.00	0.00	0.00	0.00	0.00
Special Terms Board:	0.00	0.00	0.00	0.00	0.00	0.00
Daily Average Transactions Volume	188,226,782	179,741,846	47,235	260,193	8,948	8,326,219
Transactions Volume	246,181,491	227,522,143	16,701	107,079	12,407	18,523,161
Main Board:	246,021,037	227,361,689	16,701	107,079	12,407	18,523,161
Blocks Board 6_2_3:	160,454	160,454	0	0	0	0
Forced Sales Board:	0	0	0	0	0	0
Special Terms Board:	0	0	0	0	0	0
Daily Average Number of Trades	33,574	31,867	31	75	6	1,596
Number of Trades	52,995	50,353	35	47	10	2,550
Main Board:	52,987	50,345	35	47	10	2,550
Blocks Board 6_2_3:	8	8	0	0	0	0
Forced Sales Board:	0	0	0	0	0	0
Special Terms Board:	0	0	0	0	0	0

(*) Summarised Transactions figures for Under Deletion and Under Supervision Categories.(**) The Market Capitalization of the Companies that belong in the Under Supervision Status is not included.

Trading Details by Athex Sectors and Financial Instruments (ETFs)

Code	Sectors	Gain / Lose / Same	Number of Trades	Transactions Volume	Transactions Value	% of Total Trans. Value
8300	- Banks	10 / 0 / 0	25,218	230,609,337	66,550,084.28	48.62%
1700	- Basic Resources	8 / 0 / 1	1,323	424,614	1,765,997.70	1.29%
1300	- Chemicals	2 / 0 / 2	50	11,156	19,956.62	0.01%
2300	- Construction & Materials	10 / 5 / 0	2,310	820,746	3,363,815.83	2.46%
12000	- Financial Instruments	3 / 0 / 0	10	12,407	28,483.06	0.02%
8700	- Financial Services	2 / 0 / 1	2,370	4,112,084	3,584,082.34	2.62%
3500	- Food & Beverage	8 / 5 / 0	400	179,370	2,592,858.06	1.89%
4500	- Health Care	2 / 1 / 0	80	92,553	16,883.24	0.01%
2700	- Industrial Goods & Services	12 / 2 / 1	1,791	484,368	2,075,211.80	1.52%
8500	- Insurance	1 / 0 / 0	7	3,878	6,010.90	0.00%
5500	- Media	2 / 1 / 1	20	14,609	4,860.00	0.00%
500	- Oil & Gas	2 / 0 / 0	1,403	469,553	2,737,923.77	2.00%
3700	- Personal & Household Goods	8 / 4 / 1	4,090	2,543,692	14,738,783.51	10.77%
8600	- Real Estate	4 / 0 / 1	760	280,167	1,339,697.59	0.98%
5300	- Retail	4 / 0 / 0	2,129	389,396	7,895,980.34	5.77%
9500	- Technology	4 / 5 / 1	275	96,892	108,248.34	0.08%
6500	- Telecommunications	1 / 0 / 0	2,709	1,362,934	10,332,617.88	7.55%
5700	- Travel & Leisure	5 / 1 / 3	4,538	2,757,703	13,975,764.60	10.21%
7500	- Utilities	5 / 0 / 0	3,512	1,516,032	5,740,940.96	4.19%

Top 10 best & worst performing Shares

Main Market

With positive Price change	Closing price	change	With negative Price change	Closing price	change
ALPHA BANK (CR)	0.255	23.79% #	CENTRIC HOLDINGS (CR)	0.172	-2.82% Ⓔ
PIRAEUS BANK (CR)	0.395	21.17% #	MLS MULTIMEDIA SA (CR)	4.01	-0.74% Ⓔ
NATIONAL BANK (CR)	1.06	20.45% #			
EUROBANK ERGASIAS (CR)	0.146	18.70% #			
MARFIN INVESTMENT GROUP (CR)	0.141	17.50% #			
HELLENIC EXCHANGES-A.S.E. (CR)	4.40	17.33% #			
EUROCONSULTANTS S.A. (CR)	1.26	15.60% #			
VIOHALCO SA/NV (CB)	2.45	15.57% #			
HELLENIC PETROLEUM (CR)	4.67	15.31% #			
SIDENOR (CR)	0.929	14.97% #			
With the highest Transactions Value	Value (thou. €)	change	With the highest Transactions Volume	Volume	change
NATIONAL BANK (CR)	20,204.01	20.45% #	EUROBANK ERGASIAS (CR)	82,545,937	18.70% #
PIRAEUS BANK (CR)	16,335.28	21.17% #	ALPHA BANK (CR)	59,256,286	23.79% #
JUMBO SA (CR)	14,652.91	6.03% #	PIRAEUS BANK (CR)	42,961,454	21.17% #
ALPHA BANK (CR)	14,625.82	23.79% #	NATIONAL BANK (CR)	19,606,850	20.45% #
OPAP (CR)	12,032.95	0.69% #	ATTICA BANK S.A. (CR)	5,780,224	14.52% #
EUROBANK ERGASIAS (CR)	11,751.83	18.70% #	MARFIN INVESTMENT GROUP (CR)	3,367,306	17.50% #
OTE (CR)	10,332.62	3.33% #	JUMBO SA (CR)	2,394,444	6.03% #
FOLLI FOLLIE (CR)	7,894.11	11.40% #	BANK OF CYPRUS (CR)	1,921,198	5.85% #
PPC (CR)	4,924.37	7.81% #	OPAP (CR)	1,653,175	0.69% #
HELLENIC EXCHANGES-A.S.E. (CR)	3,139.05	17.33% #	OTE (CR)	1,362,934	3.33% #

Note: Stocks that are not included in the "Low Dispersion" and "Under Supervision" categories, and the transactions value is more than 10,000 €.

Derivatives Summary

	Number of Trades	Volume	Open Interest
Index Futures	1,406	15,409	21,781
FTSE/Athex Large Cap	1,406	15,409	21,781
Stock Futures	5,061	92,596	278,556
ALPHA BANK (CR)	618	22,180	42,951
CC HBC AG (CR)	22	56	96
CORINTH PIPEWORKS SA (CR)	2	5	698
ELLAKTOR (CR)	48	235	1,397
EUROBANK ERGASIAS (CR)	492	26,921	84,259
EYDAP S.A. (CR)	12	27	213
FOLLI FOLLIE (CR)	78	250	222
FRIGOGLOSS SA (CR)	16	61	684
GEK TERNA (CR)	41	266	7,480
GRIVALIA PROPERTIES (CR)	8	29	117
HELLENIC EXCHANGES-A.S.E. (CR)	195	648	1,433
HELLENIC PETROLEUM (CR)	134	362	3,762
INTRALOT (CR)	6	23	267
JUMBO SA (CR)	374	1,215	2,257
MARFIN INVESTMENT GROUP (CR)	31	936	26,136
METKA (CR)	42	140	408
MOTOR OIL (CR)	32	98	91
MYTILINEOS HOLDINGS (CR)	106	543	3,393
NATIONAL BANK (CR)	589	10,118	30,132
OPAP (CR)	360	1,227	1,581
OTE (CR)	325	994	6,437
P.P.A. S.A. (CR)	34	73	256
PIRAEUS BANK (CR)	748	22,975	53,422
PPC (CR)	559	2,687	8,638
SIDENOR (CR)	0	0	0
TERNA ENERGY (CR)	13	39	1,010
TITAN CEMENT (CR)	94	263	265
VIOHALCO SA/NV (CB)	82	225	951
Index Options	83	996	3,382
FTSE/Athex Large Cap	83	996	3,382
Stock Options	0	0	552
ALPHA BANK (CR)	0	0	0
NATIONAL BANK (CR)	0	0	12
OPAP (CR)	0	0	0
OTE (CR)	0	0	80
PIRAEUS BANK (CR)	0	0	450
PPC (CR)	0	0	10
Total Derivatives Traded	6,550	109,001	304,271

Number of Outstanding Securities	Nominal Value	Dividends [1]			Date of Last Coupon		Note	Shares	Closing price	% change	Previous closing price/date	Open price	Price min	Price max	Last price	Avg price	Last Bid [7]	Last Ask [7]	P/E after	Year	Volume	Trades	Transactions Value[8]	Company Mkt Value (thou. €)	Year low	Year high	Sector[4]
		2012	2013	2014	Dividend [2]	Right																					

Warrants

1,141,734,167	---	---	---	11/06/2013	---	ALPHA BANK (W)			0.393	12.29 #	0.350	19/06/2015	0.370	0.320	0.430	0.393	0.390	---	---	---	2014	2,150,924	760	838,389.33	3,256,110.26	0.290	0.979	8355
245,748,459	---	---	---	27/06/2013	---	NATIONAL BANK (W)			0.205	26.54 #	0.162	19/06/2015	0.170	0.162	0.208	0.205	0.192	---	---	---	2014	1,163,469	318	223,038.63	3,745,138.61	0.100	0.320	8355
843,637,022	---	---	---	03/07/2013	---	PIRAEUS BANK (W)			0.116	20.83 #	0.096	19/06/2015	0.100	0.100	0.117	0.116	0.110	---	---	---	2014	15,208,768	1,472	1,672,951.63	2,410,281.99	0.044	0.252	8355

Main Market

71,417,100	0.650	---	---	0.7	14/05/2015	27/06/2014	---	AEGEAN AIRLINES (CR)			5.85	6.36 #	5.50	19/06/2015	5.80	5.69	6.03	5.85	5.81	---	---	7.35	2014	302,487	941	1,756,225.55	417,790.04	5.40	8.08	5751
11,178,000	1.12	---	---	---	21/04/2010	15/12/2014	---	AEOLIAN INVESTMENT FUND (CR)			0.645	---	0.645	19/06/2015	---	---	---	---	---	---	---	---	2014	---	---	---	7,209.81	0.593	0.769	8985
12,769,059,858	0.300	---	---	---	07/04/2008	13/05/2013	---	ALPHA BANK (CR)			0.255	23.79 #	0.206	19/06/2015	0.239	0.230	0.257	0.255	0.247	---	---	---	2014	59,256,286	5,938	14,625,822.33	3,256,110.26	0.200	0.510	8355
22,016,250	0.370	---	---	---	15/07/2009	11/05/2000	---	ALUMIL (CR)			0.308	1.32 #	0.304	19/06/2015	0.334	0.295	0.334	0.308	0.315	---	---	---	2014	104	5	32.77	6,781.01	0.218	0.348	1753
417,608	16.00	---	0.8	---	29/04/2014	05/03/2013	---	ANDROMEDA SA (CR)			14.80	---	14.80	19/06/2015	14.27	14.27	14.80	14.80	14.79	---	---	---	2014	55	4	813.47	6,180.60	10.11	20.00	8985
26,252,040	0.340	---	---	---	08/07/2010	10/06/2015	---	AS COMPANY SA (CR)			0.360	2.86 #	0.350	19/06/2015	0.350	0.350	0.360	0.360	0.353	---	---	5.06	2014	3,868	4	1,364.48	9,450.73	0.263	0.400	5379
86,735,980	0.310	---	---	---	06/07/2009	02/01/2002	---	ATHENS MEDICAL CENTER SA (CR)			0.784	-0.13	0.785	19/06/2015	0.710	0.710	0.784	0.784	0.710	---	---	---	2014	3,951	3	2,805.28	68,001.01	0.681	0.990	4533
1,045,794,145	0.300	---	---	---	04/06/2008	07/08/2014	---	ATTICA BANK S.A. (CR)			0.071	14.52 #	0.062	19/06/2015	0.068	0.064	0.071	0.071	0.068	---	---	---	2014	5,780,224	492	392,378.91	74,251.38	0.039	0.084	8355
15,300,000	0.300	---	---	---	30/07/2009	13/12/1999	---	ATTICA PUBLICATIONS SA (CR)			0.979	10.00 #	0.890	19/06/2015	0.979	0.979	0.979	0.979	0.980	---	---	35.31	2014	1	1	0.98	14,978.70	0.750	1.60	5557
45,457,464	0.700	---	---	---	01/07/2008	01/03/2010	---	AUDIO VISUAL ENTERPRISES (CR)			0.180	-10.00	0.200	19/06/2015	0.180	0.180	0.185	0.185	0.180	---	---	---	2014	4,595	7	827.11	8,182.34	0.154	0.277	5553
12,157,500	0.320	---	---	0.8	20/05/2015	22/11/2013	---	AUTOHELLAS SA (CR)			11.16	---	11.16	19/06/2015	---	---	---	---	---	---	---	13.47	2014	---	---	---	135,677.70	8.30	13.80	5759
8,922,944,533	0.100	---	---	---	31/05/2011	02/02/2015	4857	BANK OF CYPRUS (CR)			0.199	5.85 #	0.188	19/06/2015	0.190	0.190	0.199	0.199	0.195	---	---	---	2014	1,921,198	201	375,158.79	1,775,665.96	0.165	0.223	8355
19,864,886	5.60	0.5376	0.672	0.672	05/03/2015	02/07/2008	---	BANK OF GREECE (CR)			9.33	3.78 #	8.99	19/06/2015	9.17	9.15	9.35	9.33	9.22	---	---	---	---	14,227	142	131,224.00	185,339.39	8.70	12.17	8355
23,986,500	1.05	---	---	---	26/06/2009	15/03/2000	---	BIOKARPET S.A.(CR)			0.228	---	0.228	19/06/2015	---	---	---	---	---	---	---	---	2014	---	---	---	5,468.92	0.160	0.260	3726
15,842,391	1.51	---	---	---	15/07/2009	12/05/2000	---	BITROS HOLDING SA (CR)			0.265	---	0.265	19/06/2015	---	---	---	---	---	---	---	---	2014	---	---	---	4,198.23	0.144	0.383	1757
15,816,009	0.300	---	---	---	01/07/2009	17/07/2000	---	BYTE COMPUTER SA (CR)			0.397	2.58 #	0.387	19/06/2015	0.397	0.397	0.397	0.397	0.397	---	---	5.97	2014	50	1	19.85	6,278.96	0.340	0.445	9533
367,838,247	6.70	0.34	0.354	---	09/07/2014	29/04/2013	---	CC HBC AG (CR)			19.90	2.63 #	19.39	19/06/2015	20.00	19.51	20.50	19.90	19.99	---	---	---	---	128,157	336	2,561,243.82	7,319,981.12	13.55	20.97	3537
101,123,806	0.360	---	---	---	22/07/2010	28/06/2011	---	CENTRIC HOLDINGS (CR)			0.172	-2.82	0.177	19/06/2015	0.190	0.163	0.203	0.172	0.175	---	---	28.39	2014	768,578	274	134,223.11	17,393.29	0.140	0.299	5752
4,034,950	0.680	---	---	---	01/07/2005	30/12/2010	---	CHATZIKRANIOTIS & SONS SA (CR)			0.129	27.72 #	0.101	19/06/2015	0.129	0.129	0.129	0.129	0.129	---	---	---	2014	650	1	83.85	520.51	0.084	0.200	3577
124,170,201	0.780	---	---	---	28/06/2002	07/02/2005	---	CORINTH PIPEWORKS SA (CR)			1.09	13.54 #	0.960	19/06/2015	0.990	0.990	1.10	1.09	1.07	---	---	---	2014	58,697	130	63,017.16	135,345.52	0.756	1.31	1757
9,907,500	0.300	---	---	---	06/10/2005	13/02/2002	---	CPI SA (CR)			0.188	---	0.188	19/06/2015	---	---	---	---	---	---	---	16.22	2014	---	---	---	1,862.61	0.110	0.234	9572
27,379,200	0.520	---	0.1	---	24/07/2014	18/09/2013	---	CRETE PLASTICS SA (CR)			6.25	---	6.25	19/06/2015	6.00	6.00	6.25	6.25	6.25	---	---	18.11	2014	490	8	3,061.98	171,120.00	4.60	6.35	1357
15,000,000	0.300	---	---	---	06/07/2007	18/07/2000	---	DAIOS PLASTICS SA (CR)			2.70	0.75 #	2.68	19/06/2015	2.61	2.61	2.70	2.70	2.63	---	---	-(6)-	2014	1,860	4	4,888.40	40,500.00	2.25	2.76	1357
34,720,000	0.310	---	---	---	16/06/2010	01/08/2007	---	DROMEAS SA (CR)			0.109	-16.79	0.131	19/06/2015	0.102	0.093	0.130	0.109	0.096	---	---	---	2014	39,423	64	3,780.74	3,784.48	0.093	0.162	3726
3,873,120	0.300	---	---	---	07/07/2008	04/10/2012	---	DRUCKFARBEN HELLAS (CR)			0.480	---	0.480	19/06/2015	---	---	---	---	---	---	---	---	2014	---	---	---	1,859.10	0.480	0.900	1357
11,250,000	0.560	---	---	---	26/07/2010	16/06/1999	---	EKTER SA (CR)			0.384	-1.03	0.388	19/06/2015	0.394	0.383	0.394	0.384	0.387	---	---	---	2014	1,700	4	657.51	4,320.00	0.350	0.518	2357
32,188,050	1.04	---	---	---	21/07/2008	20/01/2000	---	EL. D. MOUZAKIS SA (CB)			0.295	---	0.295	19/06/2015	---	---	---	---	---	---	---	---	2014	---	---	---	9,495.47	0.240	0.295	3763
18,435,000	1.00	---	---	---	07/07/2009	10/09/2010	---	ELASTRON (CR)			0.468	1.74 #	0.460	19/06/2015	0.460	0.460	0.469	0.469	0.465	---	---	---	2014	500	10	232.25	8,627.58	0.351	0.697	1757
31,734,530	1.60	---	---	---	09/07/2007	19/07/2006	---	ELGEKA SA (CR)			0.265	---	0.265	19/06/2015	---	---	---	---	---	---	---	---	2014	---	---	---	8,409.65	0.155	0.285	3577
23,828,130	0.500	---	---	---	07/07/2010	17/02/2009	---	ELINOIL S.A. (CR)			0.950	---	0.950	19/06/2015	---	---	---	---	---	---	---	23.83	2014	---	---	---	22,636.72	0.621	0.968	537
177,001,313	1.03	---	---	---	05/07/2011	20/12/2007	---	ELLAKTOR (CR)			1.78	9.20 #	1.63	19/06/2015	1.73	1.63	1.86	1.78	1.75	---	---	---	2014	317,523	575	556,513.61	315,062.34	1.20	2.62	2357
82,667,000	0.300	---	---	---	22/07/2014	---	---	ELTECH ANEMOS S.A. (CR)			0.724	6.47 #	0.680	19/06/2015	0.714	0.705	0.729	0.724	0.717	---	---	12.28	2014	107,339	144	76,947.51	59,850.91	0.534	0.845	7537
26,730,187	0.600	---	0.05	---	23/06/2014	30/12/2010	---	ELTON SA (CR)			1.04	5.16 #	0.989	19/06/2015	0.990	0.965	1.04	1.04	1.01	---	---	11.36	2014	1,178	11	1,193.27	27,799.39	0.841	1.04	1353

Number of Outstanding Securities	Nominal Value	Dividends [1]			Date of Last Coupon Dividend [2]		Note	Shares	Closing price	% change	Previous closing price/date	Open price	Price min	Price max	Last price	Avg price	Last Bid [7]	Last Ask [7]	P/E after	Year	Volume	Trades	Transactions Value[8]	Company Mkt Value (thou. €)	Year low	Year high	Sector[4]
--	------------------	---------------	--	--	-------------------------------------	--	------	--------	------------------	----------	--------------------------------	---------------	--------------	--------------	---------------	--------------	-----------------	--------------	--------------	------	--------	--------	--------------------------	--------------------------------	-------------	--------------	---------------

Main Market

14,050,971	0.340	---	---	---	06/07/2011	17/10/2002	---	ELTRAK SA (CR)	1.53	---	↘	1.53	19/06/2015	---	---	---	---	---	---	---	2014	---	---	---	21,497.99	1.07	1.61	2753	
125,562,262	0.320	---	---	---	30/05/2014	02/12/2014	---	ELVAL SA. (CB)	1.46	5.04	#	1.39	19/06/2015	1.43	1.40	1.46	1.46	1.43	---	---	10.50	2014	14,557	47	20,838.33	183,320.90	0.965	1.47	1753
13,230,000	0.300	---	---	---	11/08/2010	24/11/2014	---	ELVE SA (CR)	0.522	---	↘	0.522	19/06/2015	---	---	---	---	---	---	---	1.24	2014	---	---	---	6,906.06	0.390	0.546	3763
14,707,876,542	0.300	---	---	---	02/05/2008	13/06/2013	---	EUROBANK ERGASIAS (CR)	0.146	18.70	#	0.123	19/06/2015	0.143	0.134	0.148	0.146	0.142	---	---	---	2014	82,545,937	4,158	11,751,831.17	2,147,349.98	0.080	0.209	8355
7,959,900	0.600	---	---	---	02/06/2010	10/12/2013	5031	EUROCONSULTANTS S.A. (CR)	1.26	15.60	#	1.09	19/06/2015	1.04	1.04	1.29	1.28	1.13	---	---	87.52	2014	56,507	30	63,553.61	10,029.47	1.03	2.22	2791
27,503,677	0.630	0.1	---	---	11/07/2013	18/10/1999	---	EUROPEAN RELIANCE INSUR. (CR)	1.55	3.33	#	1.50	19/06/2015	1.55	1.55	1.55	1.55	1.55	---	---	4.16	2014	3,878	7	6,010.90	42,630.70	1.16	1.69	8536
13,673,200	0.880	---	---	---	18/07/2008	26/07/2001	---	EVROFARMA SA (CR)	0.357	-1.65	⬇	0.363	19/06/2015	0.280	0.280	0.357	0.357	0.351	---	---	---	2014	12	2	4.21	4,881.33	0.198	0.487	3577
106,500,000	0.600	0.15	0.36	0.2	05/05/2015	28/01/2000	---	EYDAP S.A. (CR)	5.45	13.54	#	4.80	19/06/2015	5.08	4.98	5.56	5.45	5.22	---	---	13.83	2014	71,718	448	374,353.37	580,425.00	4.03	7.35	7577
52,800,154	0.300	---	0.2	---	20/08/2014	21/06/2004	---	F.G. EUROPE S.A. (CR)	0.724	3.43	#	0.700	19/06/2015	0.724	0.724	0.724	0.724	0.724	---	---	---	2014	20	1	14.48	38,227.31	0.390	0.904	3722
10,203,575	0.730	---	---	---	16/07/2007	18/10/1999	---	FIERATEX SA (CR)	0.130	---	↘	0.130	19/06/2015	---	---	---	---	---	---	---	---	2014	---	---	---	1,326.46	0.078	0.228	3763
11,720,024	0.540	---	0.0394	---	21/08/2014	07/08/2014	---	FLEXOPACK SA (CR)	2.59	---	↘	2.59	19/06/2015	---	---	---	---	---	---	---	7.94	2014	---	---	---	30,354.86	1.91	2.90	2723
4,181,450	0.500	---	---	---	21/08/2000	05/03/2002	---	FLOUR MILLS SARANTOPOULOS SA	0.900	---	↘	0.900	19/06/2015	---	---	---	---	---	---	---	---	2014	---	---	---	3,763.31	0.855	0.950	3577
66,948,210	0.300	---	---	---	14/07/2009	23/09/2014	---	FOLLI FOLLIE (CR)	21.50	11.40	#	19.30	19/06/2015	20.98	19.82	21.50	21.50	20.56	---	---	---	2014	383,943	2,119	7,894,110.88	1,439,386.52	18.45	31.50	5379
50,992,322	1.07	---	---	---	21/06/2010	16/07/2002	---	FOURLIS (CR)	2.77	10.80	#	2.50	19/06/2015	2.66	2.59	2.82	2.77	2.74	---	---	---	2014	20,552	126	56,372.14	141,248.73	1.90	3.70	3722
50,593,832	0.300	---	---	---	07/07/2010	07/09/2011	---	FRIGOGLASS SA (CR)	1.91	7.91	#	1.77	19/06/2015	1.85	1.80	1.94	1.91	1.89	---	---	---	2014	128,814	242	242,965.61	96,634.22	1.51	2.61	2757
14,076,360	0.370	---	---	---	19/08/2008	22/07/2003	---	GALAXIDI S.A. (CR)	0.492	9.33	#	0.450	19/06/2015	0.492	0.492	0.492	0.492	0.490	---	---	16.53	2014	1	1	0.49	6,925.57	0.168	0.545	3573
100,227,485	0.570	---	---	---	01/08/2011	05/05/2015	---	GEK TERNA (CR)	1.72	8.18	#	1.59	19/06/2015	1.65	1.58	1.78	1.72	1.70	---	---	28.55	2014	276,168	763	470,014.41	172,391.27	1.20	2.47	2357
8,418,750	0.300	0.46	---	---	21/01/2015	27/06/2012	---	GEKE SA (CB)	4.32	---	↘	4.32	19/06/2015	4.32	4.32	4.32	4.32	4.32	---	---	---	2014	150	2	648.00	36,369.00	3.49	6.12	5753
24,060,000	0.300	---	0.017	---	07/07/2014	21/01/2000	---	GEN. COMMERCIAL & IND.SA (CR)	0.380	---	↘	0.380	19/06/2015	---	---	---	---	---	---	---	13.38	2014	---	---	---	9,142.80	0.265	0.420	2797
34,770,982	1.55	---	0.3	0.15	15/05/2015	27/07/2000	---	GR. SARANTIS SA (CR)	7.50	0.94	#	7.43	19/06/2015	7.50	7.38	7.55	7.50	7.51	---	---	15.88	2014	2,212	18	16,621.55	260,782.37	6.70	8.20	3767
101,260,000	2.13	---	0.1821	0.3037	19/03/2015	08/01/2014	---	GRIVALIA PROPERTIES (CR)	6.71	6.51	#	6.30	19/06/2015	6.64	6.59	7.06	6.71	6.78	---	---	17.55	2014	159,092	452	1,078,385.96	679,454.60	6.30	9.00	8675
8,340,750	1.20	---	---	---	25/06/2009	30/07/2001	---	HAIDEMENOS SA (CR)	0.872	---	↘	0.872	19/06/2015	---	---	---	---	---	---	---	---	2014	---	---	---	7,273.13	0.210	0.968	2791
101,279,627	0.380	---	---	---	26/06/2008	14/07/2006	---	HALKOR SA (CB)	0.380	4.97	#	0.362	19/06/2015	0.397	0.372	0.397	0.380	0.376	---	---	---	2014	2,808	10	1,054.50	38,486.26	0.244	0.455	1755
29,546,360	0.710	---	---	---	20/06/2008	23/08/2000	---	HELLENIC CABLES SA (CR)	0.997	4.62	#	0.953	19/06/2015	1.00	0.950	1.07	1.00	0.976	---	---	---	2014	7,202	32	7,031.12	29,457.72	0.560	1.15	2733
65,368,563	0.740	0.09	---	0.21	26/05/2015	16/07/2014	---	HELLENIC EXCHANGES-A.S.E. (CR)	4.40	17.33	#	3.75	19/06/2015	4.06	4.02	4.40	4.40	4.22	---	---	27.85	2014	744,723	1,781	3,139,048.12	287,621.68	3.48	6.80	8777
305,635,185	2.18	0.15	---	---	31/12/2014	01/10/2003	4795	HELLENIC PETROLEUM (CR)	4.67	15.31	#	4.05	19/06/2015	4.25	4.17	4.67	4.67	4.35	---	---	---	2014	261,941	865	1,139,946.79	1,427,316.31	3.40	4.99	537
305,732,436	0.410	---	---	---	08/07/2009	28/09/2011	---	HYGEIA SA (CR)	0.139	9.45	#	0.127	19/06/2015	0.138	0.130	0.142	0.139	0.134	---	---	---	2014	84,473	65	11,318.92	42,496.81	0.111	0.206	4533
53,155,053	0.440	---	---	---	24/11/2014	16/07/2008	---	IASO SA (CR)	0.697	5.61	#	0.660	19/06/2015	0.660	0.650	0.697	0.697	0.668	---	---	---	2014	4,129	12	2,759.04	37,049.07	0.580	0.900	4533
8,298,467	0.400	---	---	---	30/08/1993	08/05/2013	---	IDEAL GROUP SA (CR)	1.04	---	↘	1.04	19/06/2015	---	---	---	---	---	---	---	---	2014	---	---	---	8,630.41	0.668	1.16	9574
28,580,100	0.400	---	0.025	---	18/08/2014	10/10/2013	---	IKTINOS HELLAS SA (CR)	0.958	-0.31	⬇	0.961	19/06/2015	0.998	0.940	0.998	0.958	0.955	---	---	9.16	2014	8,943	51	8,538.22	27,379.74	0.825	1.30	2353
9,090,000	0.900	---	---	---	15/05/2009	13/10/2014	---	ILYDA S.A. (CR)	0.549	---	↘	0.549	19/06/2015	---	---	---	---	---	---	---	---	2014	---	---	---	4,990.41	0.549	0.739	9537
20,578,374	0.620	---	---	0.4	04/06/2015	18/05/2015	---	INFORM P. LYKOS SA (CR)	0.470	-1.05	⬇	0.475	19/06/2015	0.505	0.451	0.510	0.470	0.480	---	---	0.38	2014	2,511	19	1,204.11	9,671.84	0.420	1.94	2791
11,233,200	0.730	---	---	---	12/07/2010	30/07/1999	---	INTERTECH SA (CR)	0.200	---	↘	0.200	19/06/2015	0.200	0.200	0.200	0.200	0.200	---	---	---	2014	982	2	196.40	2,246.64	0.168	0.308	9572
34,986,430	0.440	---	---	---	25/07/2008	23/02/2010	---	INTERWOOD-XYLEMPORIA (CR)	0.110	---	↘	0.110	19/06/2015	---	---	---	---	---	---	---	---	2014	---	---	---	4,349.04	0.059	0.145	2353
2,566,836	0.440	---	---	---	13/08/2010	09/01/2007	---	INTERWOOD-XYLEMPORIA (PR)	0.195	---	↘	0.195	19/06/2015	---	---	---	---	---	---	---	---	2014	---	---	---	4,349.04	0.195	0.195	2353
23,154,250	1.36	---	---	---	12/08/2008	02/08/2010	---	INTRACOM CONSTR. (CR)	0.577	-1.70	⬇	0.587	19/06/2015	0.521	0.521	0.580	0.577	0.564	---	---	4.66	2014	15,601	29	8,805.82	13,360.00	0.364	0.630	2357
133,025,996	1.41	---	---	---	03/07/2007	07/01/2002	---	INTRACOM HOLDINGS (CR)	0.410	6.49	#	0.385	19/06/2015	0.397	0.390	0.417	0.410	0.408	---	---	---	2014	67,670	103	27,618.40	54,540.66	0.345	0.511	9578
158,961,721	0.300	0.0026	---	---	30/05/2013	14/11/2007	---	INTRALOT (CR)	1.60	3.23	#	1.55	19/06/2015	1.55	1.55	1.62	1.60	1.59	---	---	---	2014	27,445	86	43,532.86	254,338.75	1.05	1.86	5752

Number of Outstanding Securities	Nominal Value	Dividends [1]			Date of Last Coupon		Note	Shares	Closing price	% change	Previous closing price/date	Open price	Price min	Price max	Last price	Avg price	Last Bid [7]	Last Ask [7]	P/E after	Year	Volume	Trades	Transactions Value[8]	Company Mkt Value (thou. €)	Year low	Year high	Sector[4]	
		2012	2013	2014	Dividend [2]	Right																						
Main Market																												
77,654,850	0.580	---	---	---	01/07/2011	21/02/2003	---	J & P - AVAX SA (CR)	0.492	14.15 #	0.431 19/06/2015	0.450	0.450	0.508	0.492	0.498	---	---	2.29	2014	84,414	73	42,053.85	38,206.19	0.401	0.660	2357	
136,059,759	1.19	---	0.18	0.18	23/12/2014	05/03/2014	---	JUMBO SA (CR)	6.15	6.03 #	5.80 19/06/2015	6.20	5.97	6.25	6.15	6.12	---	---	11.45	2014	2,394,444	3,815	14,652,910.39	836,767.52	5.80	10.98	3747	
9,742,920	0.400	0.01	0.01	---	08/08/2014	14/07/2000	---	KARAMOLEGOS SA (CR)	2.09	-9.13 €	2.30 19/06/2015	2.09	2.09	2.09	2.09	2.09	---	---	20.08	2014	685	2	1,431.65	20,362.70	1.57	2.42	3577	
14,679,792	1.68	---	---	---	24/06/2014	04/09/2000	---	KARATZIS SA (CR)	3.59	0.28 #	3.58 19/06/2015	3.59	3.59	3.59	3.59	3.59	---	---	8.69	2014	40	1	143.60	52,700.45	2.89	3.70	2723	
13,202,756	0.350	---	---	---	01/07/2004	05/08/2014	---	KEKROPS SA (CR)	0.279	---	0.279 19/06/2015	---	---	---	---	---	---	---	---	---	2014	---	---	---	3,683.57	0.233	0.424	8633
7,595,160	0.600	---	---	---	08/08/2008	18/08/2010	---	KIRIAKOULIS SHIPPING SA (CR)	0.702	---	0.702 19/06/2015	---	---	---	---	---	---	---	---	---	2014	---	---	---	5,331.80	0.340	0.716	5759
23,648,700	0.350	---	---	---	13/07/2011	31/03/2015	---	KLEEMAN HELLAS SA (CR)	1.82	7.06 #	1.70 19/06/2015	1.70	1.70	1.90	1.82	1.75	---	---	7.33	2014	2,357	7	4,116.92	43,040.63	1.22	1.90	2757	
40,219,218	0.300	---	---	---	25/05/2009	09/07/2013	---	KLOUKINAS - LAPPAS SA (CR)	0.350	0.87 #	0.347 19/06/2015	0.347	0.347	0.350	0.350	0.349	---	---	---	2014	200	4	69.70	14,076.73	0.320	0.470	2357	
21,224,340	0.420	---	---	---	02/07/2008	25/04/2006	---	KORDELLOS BROS SA (CR)	0.210	---	0.210 19/06/2015	---	---	---	---	---	---	---	---	---	2014	---	---	---	4,457.11	0.155	0.250	1757
13,586,500	0.390	---	---	---	25/06/2010	28/05/2008	---	KORRES (CR)	4.00	---	4.00 19/06/2015	3.80	3.80	4.00	4.00	3.92	---	---	---	2014	214	8	838.00	54,346.00	3.10	4.25	3767	
29,480,000	0.420	---	---	---	19/07/2010	01/08/2007	---	KRETA FARM SA (CR)	0.429	4.38 #	0.411 19/06/2015	0.437	0.400	0.437	0.429	0.406	---	---	11.79	2014	365	4	148.19	12,646.92	0.355	0.520	3577	
33,065,136	0.380	---	---	---	06/07/2009	16/09/2013	---	KRI-KRI S.A. (CR)	1.78	5.32 #	1.69 19/06/2015	1.74	1.74	1.78	1.75	1.78	---	---	16.48	2014	11,550	14	20,510.00	58,855.94	1.56	1.86	3577	
15,804,800	0.330	---	---	---	15/06/2010	12/03/2004	---	KTIMA KOSTAS LAZARIDIS SA (CR)	0.347	---	0.347 19/06/2015	---	---	---	---	---	---	---	---	---	2014	---	---	---	5,484.27	0.276	0.396	3535
23,719,554	0.980	---	---	0.1006	19/03/2015	15/09/2014	---	KYRIAKIDIS MARBLES SA (CR)	2.40	6.67 #	2.25 19/06/2015	2.48	2.40	2.48	2.40	2.41	---	---	9.12	2014	425	2	1,022.00	56,926.93	1.61	2.49	2353	
79,721,775	0.300	---	---	---	30/05/2007	23/06/2014	---	LAMDA DEVELOPMENT SA (CR)	3.66	7.65 #	3.40 19/06/2015	3.46	3.45	3.73	3.66	3.63	---	---	---	2014	42,637	278	154,579.43	291,781.70	2.46	4.63	8633	
21,364,000	1.12	---	---	---	05/07/2010	10/08/2005	---	LAMPSPA HOTEL SA (CR)	17.30	---	17.30 19/06/2015	---	---	---	---	---	---	---	-(6)-	2014	---	---	---	369,597.20	15.40	18.00	5753	
5,939,268	0.620	---	---	---	10/07/2003	03/01/2002	---	LANAKAM SA (CR)	0.938	---	0.938 19/06/2015	---	---	---	---	---	---	---	---	---	2014	---	---	---	5,571.03	0.891	1.16	3763
7,734,375	1.00	---	---	---	09/07/2007	07/01/2011	---	LIVANIS SA (CR)	0.170	---	0.170 19/06/2015	---	---	---	---	---	---	---	---	---	2014	---	---	---	1,314.84	0.117	0.210	5557
4,740,000	0.860	---	---	---	14/03/2003	---	---	LOGISMOS S.A. (CR)	0.499	---	0.499 19/06/2015	---	---	---	---	---	---	---	---	---	2014	---	---	---	2,365.26	0.216	0.539	9533
17,125,062	0.940	---	---	---	01/06/2010	02/02/2015	---	LOULIS MILLS SA (CR)	1.83	-2.14 €	1.87 19/06/2015	1.99	1.72	2.04	1.83	1.82	---	---	8.95	2014	2,372	10	4,326.44	31,338.86	1.64	2.35	3577	
937,122,261	0.300	---	---	---	26/04/2007	29/08/2014	---	MARFIN INVESTMENT GROUP (CR)	0.141	17.50 #	0.120 19/06/2015	0.133	0.125	0.142	0.141	0.132	---	---	---	2014	3,367,306	585	444,220.75	132,134.24	0.101	0.232	8775	
9,819,370	0.690	---	---	---	14/08/2007	09/01/2004	---	MATHIOS REFRACTORY SA (CR)	0.357	6.25 #	0.336 19/06/2015	0.260	0.260	0.357	0.357	0.337	---	---	---	2014	126	4	42.46	3,505.52	0.189	0.360	2353	
468,700	0.47	0.65	0.15	0.15	04/12/2014	21/05/2004	---	MERMEREN KOMB. A.D. PR. (GDR)	6.99	7.54 #	6.50 19/06/2015	6.99	6.99	6.99	6.99	6.99	---	---	0.48	2014	1	1	6.99	3,276.21	5.91	8.15	1775	
51,950,600	0.320	0.25	0.3	0.5	08/05/2015	21/10/2005	---	METKA (CR)	7.91	8.36 #	7.30 19/06/2015	7.40	7.40	8.01	7.91	7.76	---	---	5.56	2014	155,707	652	1,207,996.53	410,929.25	6.88	10.50	2757	
10,500,000	0.950	---	---	---	24/06/2008	19/12/2013	---	MEVACO SA (CR)	1.16	-3.33 €	1.20 19/06/2015	1.16	1.16	1.16	1.16	1.16	---	---	---	2014	700	1	812.00	12,180.00	0.701	1.20	2757	
6,700,000	0.800	---	0.16	---	26/05/2014	29/05/2014	---	MILLS KEPENOS (CR)	1.92	---	1.92 19/06/2015	---	---	---	---	---	---	---	8.34	2014	---	---	---	12,864.00	1.17	2.14	3577	
6,200,000	0.500	---	---	---	22/06/2010	01/11/1995	---	MINERVA KNITWEAR SA (CB)	0.246	2.07 #	0.241 19/06/2015	0.241	0.241	0.246	0.246	0.244	---	---	---	2014	300	6	73.05	1,525.20	0.225	0.300	3763	
12,417,000	0.370	---	---	---	28/07/2008	06/09/2011	---	MLS MULTIMEDIA SA (CR)	4.01	-0.74 €	4.04 19/06/2015	4.00	3.94	4.10	4.01	3.99	---	---	29.52	2014	8,653	53	34,520.05	49,792.17	3.85	4.25	9537	
11,700,000	0.590	---	---	---	02/06/2009	24/07/2012	---	MOTODYNAMICS S.A. (CR)	0.699	---	0.699 19/06/2015	---	---	---	---	---	---	---	---	---	2014	---	---	---	8,178.30	0.199	0.900	5379
110,782,980	0.750	0.3	0.2	---	26/06/2014	04/11/2013	---	MOTOR OIL (CR)	7.90	8.67 #	7.27 19/06/2015	7.27	7.25	8.20	7.90	7.70	---	---	---	2014	207,612	538	1,597,976.98	875,185.54	5.64	8.76	533	
116,915,862	1.07	---	---	---	11/05/2009	06/07/2011	---	MYTILINEOS HOLDINGS (CR)	5.89	6.70 #	5.52 19/06/2015	5.73	5.52	5.89	5.89	5.75	---	---	---	2014	282,283	994	1,622,593.31	688,634.43	4.18	6.97	1755	
8,321,682	0.670	---	---	---	17/08/2007	23/11/1999	---	N. LEVEDERIS SA (CB)	0.183	---	0.183 19/06/2015	0.183	0.183	0.183	0.183	0.183	---	---	---	2014	37	1	6.77	3,421.97	0.126	0.220	1757	
2,160,524	0.670	0.0436	0.0436	---	18/08/2014	23/11/1999	---	N. LEVEDERIS SA (PB)	0.879	---	0.879 19/06/2015	---	---	---	---	---	---	---	---	---	2014	---	---	---	3,421.97	0.380	0.879	1757
11,510,102	0.890	---	---	---	24/06/2005	06/10/1999	---	NAFPAKTOS TEXTILE IND. SA (CB)	0.271	7.54 #	0.252 19/06/2015	0.271	0.271	0.271	0.271	0.271	---	---	---	2014	50	1	13.55	3,119.24	0.193	0.302	3763	
6,340,000	0.600	---	---	---	30/11/2009	12/07/2000	---	NAKAS MUSIC	0.770	2.67 #	0.750 19/06/2015	0.760	0.760	0.770	0.770	0.769	---	---	23.93	2014	110	2	84.60	4,881.80	0.461	1.05	5379	
3,533,149,631	0.300	---	---	---	16/05/2008	24/05/2013	---	NATIONAL BANK (CR)	1.06	20.45 #	0.880 19/06/2015	0.990	0.990	1.07	1.06	1.03	---	---	---	2014	19,606,850	4,943	20,204,005.81	3,745,138.61	0.790	1.72	8355	
23,935,280	0.300	---	---	---	29/06/2009	13/06/2000	---	NAYTEMPORIKI PUBLISHING SA(CR)	0.137	---	0.137 19/06/2015	---	---	---	---	---	---	---	---	---	2014	---	---	---	3,279.13	0.090	0.200	5557
27,848,000	0.300	0.0137	0.004	---	18/08/2014	02/09/2003	---	NEWSPHONE HELLAS SA (CR)	0.231	0.44 #	0.230 19/06/2015	0.258	0.231	0.258	0.231	0.235	---	---	26.27	2014	3,500	5	822.00	6,432.89	0.176	0.300	2791	

Number of Outstanding Securities	Nominal Value	Dividends [1]			Date of Last Coupon		Note	Shares	Closing price	% change	Previous closing price/date	Open price	Price min	Price max	Last price	Avg price	Last Bid [7]	Last Ask [7]	P/E after	Year	Volume	Trades	Transactions Value[8]	Company Mkt Value (thou. €)	Year low	Year high	Sector[4]		
		2012	2013	2014	Dividend [2]	Coupon Right																							
Main Market																													
6,132,500	1.25	---	---	---	24/06/2011	19/06/2001	---	NEXANS HELLAS SA (CR)	0.950	---	↘	0.950	19/06/2015	0.950	0.950	0.950	0.950	---	---	---	2014	5	1	4.75	5,825.88	0.715	1.77	2733	
319,000,000	0.300	0.57	0.25	0.7017	22/04/2015	25/04/2001	---	OPAP (CR)	7.25	0.69	#	7.20	19/06/2015	7.51	7.00	7.60	7.25	7.28	---	---	11.97	2014	1,653,175	3,214	12,032,953.70	2,312,750.00	6.67	9.90	5752
490,150,389	2.83	---	---	---	28/06/2011	18/06/1998	---	OTE (CR)	7.75	3.33	#	7.50	19/06/2015	7.70	7.03	7.91	7.75	7.58	---	---	34.50	2014	1,362,934	2,709	10,332,617.88	3,798,665.51	6.35	9.47	6535
25,000,000	2.00	0.05	0.12	---	17/07/2014	08/08/2003	---	P.P.A. S.A. (CR)	12.90	5.74	#	12.20	19/06/2015	12.51	12.30	13.12	12.90	12.77	---	---	47.68	2014	17,020	336	217,358.73	322,500.00	9.67	16.40	2777
4,971,466	1.46	---	---	---	04/07/2007	08/10/2003	---	PAIRIS SA (CR)	0.219	---	↘	0.219	19/06/2015	---	---	---	---	---	---	---	2014	---	---	---	1,088.75	0.106	0.253	2723	
3,953,090	0.900	---	---	0.067	27/05/2015	05/12/2012	---	PAPERPACK (CR)	0.999	3.10	#	0.969	19/06/2015	0.999	0.999	0.999	0.999	0.999	---	---	3.07	2014	10	1	9.99	3,949.14	0.684	1.07	2723
50,797,369	0.310	---	---	---	17/08/2000	12/10/2010	---	PAPOUTSANIS (CR)	0.230	-8.00	↗	0.250	19/06/2015	0.262	0.225	0.262	0.230	0.228	---	---	---	2014	2,565	10	585.12	11,683.39	0.225	0.439	3767
7,070,400	0.930	---	---	---	18/05/2010	25/05/2015	---	PETROPOULOS PETROS (CR)	3.78	0.53	#	3.76	19/06/2015	3.70	3.70	3.78	3.78	3.76	---	---	23.28	2014	1,500	16	5,642.17	26,726.11	2.98	3.84	2753
6,101,979,715	0.300	---	---	---	16/05/2008	05/06/2013	---	PIRAEUS BANK (CR)	0.395	21.17	#	0.326	19/06/2015	0.368	0.352	0.404	0.395	0.380	---	---	---	2014	42,961,454	6,794	16,335,283.68	2,410,281.99	0.196	1.01	8355
22,080,000	0.330	0.12	0.2	---	21/05/2014	27/04/2015	---	PLAISIO COMPUTERS SA (CR)	5.23	5.87	#	4.94	19/06/2015	5.02	4.84	5.23	5.23	5.05	---	---	7.21	2014	7,125	58	35,989.37	115,478.40	4.75	6.25	9572
232,000,000	4.60	0.025	---	---	22/07/2013	12/12/2001	---	PPC (CR)	4.14	7.81	#	3.84	19/06/2015	4.10	3.80	4.18	4.14	4.08	---	---	28.06	2014	1,206,892	2,389	4,924,372.16	960,480.00	3.30	7.65	7535
11,812,193	0.470	---	---	0.02	26/03/2015	15/11/2006	---	PROFILE SA (CR)	0.463	-1.91	↗	0.472	19/06/2015	0.461	0.451	0.475	0.463	0.459	---	---	12.26	2014	8,117	21	3,722.71	5,469.05	0.366	0.527	9533
27,345,120	0.470	---	---	---	18/07/2005	26/02/2014	---	QUALITY & RELIABILITY SA (CR)	0.399	-0.25	↗	0.400	19/06/2015	0.415	0.380	0.415	0.399	0.398	---	---	14.98	2014	293	12	116.53	10,910.70	0.290	0.560	9533
11,962,443	0.500	---	---	---	05/09/2008	12/12/2013	---	QUEST HOLDINGS (CR)	4.59	0.88	#	4.55	19/06/2015	4.60	4.39	4.65	4.59	4.53	---	---	24.22	2014	1,199	19	5,432.75	54,907.61	4.14	5.35	9533
57,434,884	1.31	---	---	---	05/06/2008	12/06/2009	---	REDS S.A. (CR)	0.449	2.04	#	0.440	19/06/2015	0.440	0.420	0.459	0.450	0.445	---	---	---	2014	3,250	16	1,445.45	25,788.26	0.348	0.516	8633
22,280,000	0.300	---	---	---	11/04/2011	23/02/2007	---	REVOIL (CR)	0.285	5.56	#	0.270	19/06/2015	0.285	0.285	0.285	0.285	0.285	---	---	---	2014	1,475	4	420.38	6,349.80	0.200	0.403	5379
7,500,000	0.800	0.0024	0.0863	0.1	19/06/2015	10/02/2014	---	S.KANAKIS SA (CR)	1.81	-2.16	↗	1.85	19/06/2015	1.98	1.80	1.98	1.85	1.84	---	---	8.16	2014	563	11	1,035.16	13,575.00	1.67	2.10	3577
52,067,296	0.300	---	---	---	23/12/2003	24/01/2007	---	SELECTED TEXT. IND. ASSOC (CR)	0.200	-7.41	↗	0.216	19/06/2015	0.195	0.195	0.200	0.200	0.200	---	---	---	2014	11,214	7	2,241.82	10,413.46	0.172	0.273	3763
96,243,908	0.410	---	---	---	26/06/2008	17/07/2000	---	SIDENOR (CR)	0.929	14.97	#	0.808	19/06/2015	0.869	0.858	0.929	0.929	0.887	---	---	---	2014	65,627	125	58,215.62	89,410.59	0.462	0.994	1757
6,456,530	1.61	---	---	---	29/06/2001	02/08/2010	---	SPACE HELLAS SA (CR)	1.82	---	↘	1.82	19/06/2015	---	---	---	---	---	---	---	4.81	2014	---	---	---	11,750.88	1.43	1.99	9578
28,438,268	0.300	---	---	---	21/08/2006	24/11/1999	---	SPIROY AGRICULTURE SA (CR)	0.296	---	↘	0.296	19/06/2015	---	---	---	---	---	---	---	---	2014	---	---	---	8,417.73	0.243	0.357	1357
40,693,350	5.00	---	---	---	03/07/2006	26/05/2015	---	TECHNICAL OLYMPIC SA (CR)	0.828	3.50	#	0.800	19/06/2015	0.850	0.790	0.850	0.828	0.813	---	---	---	2014	3,993	19	3,244.67	33,694.09	0.571	1.12	3728
109,314,400	0.300	---	---	---	28/05/2012	09/07/2014	---	TERNA ENERGY (CR)	2.91	9.81	#	2.65	19/06/2015	2.65	2.65	3.04	2.91	2.86	---	---	---	2014	110,016	439	314,049.71	318,104.90	1.70	3.32	7537
36,300,000	1.12	0.162	0.285	---	14/08/2014	12/12/2007	---	THESSALONIKA WATER & SEWERAGE	2.60	4.84	#	2.48	19/06/2015	2.52	2.47	2.60	2.60	2.55	---	---	7.13	2014	20,067	92	51,218.21	94,380.00	2.28	3.35	7577
45,094,620	0.660	0.0467	0.05	0.0225	20/04/2015	01/11/1999	---	THRACE PLASTICS SA (CR)	1.41	---	↘	1.41	19/06/2015	1.43	1.39	1.49	1.41	1.42	---	---	---	2014	7,628	27	10,812.97	63,583.41	0.849	1.53	1357
77,063,568	4.00	---	---	---	25/06/2014	25/06/2004	---	TITAN CEMENT (CR)	20.35	4.09	#	19.55	19/06/2015	20.00	20.00	21.71	20.35	20.91	---	---	18.78	2014	107,474	767	2,247,274.74	1,648,398.90	18.42	24.95	2353
7,568,960	4.00	---	---	---	25/06/2014	25/06/2004	---	TITAN CEMENT CO. (PR)	10.59	5.90	#	10.00	19/06/2015	10.00	9.75	10.59	10.59	10.12	---	---	9.77	2014	2,712	18	27,443.45	1,648,398.90	7.45	10.59	2353
10,080,000	3.00	1.5	0.6	1.95	04/05/2015	27/08/2001	---	TPA SA (CR)	18.98	5.44	#	18.00	19/06/2015	19.50	18.41	19.50	18.98	19.00	---	---	8.98	2014	3,843	21	73,027.12	191,318.40	15.72	23.95	2777
54,888,240	1.13	0.1	0.09	---	25/04/2014	22/03/2006	---	TRASTOR REAL EST. INV. CO.(CR)	1.40	---	↘	1.40	19/06/2015	1.40	1.40	1.41	1.40	1.40	---	---	---	2014	75,187	13	105,281.80	76,843.54	0.900	1.41	8671
15,627,315	0.300	---	---	---	16/11/1992	03/12/2012	---	UNIBIOS (CR)	0.106	3.92	#	0.102	19/06/2015	0.110	0.100	0.110	0.106	0.104	---	---	---	2014	4,085	12	424.67	1,656.50	0.081	0.180	2353
18,810,000	0.400	---	---	---	08/07/2010	14/11/2007	---	VARVERIS - MODA BAGNO SA (CR)	0.123	---	↘	0.123	19/06/2015	---	---	---	---	---	---	---	---	2014	---	---	---	2,313.63	0.081	0.184	2353
219,611,308	---	---	---	---	14/02/2014	---	---	VIOHALCO SA/INV (CB)	2.45	15.57	#	2.12	19/06/2015	2.27	2.21	2.52	2.45	2.39	---	---	---	---	104,652	427	250,523.54	538,047.70	1.79	4.11	2727
4,968,600	2.88	---	---	---	01/07/1998	14/12/1998	---	VIS SA (CR)	0.841	---	↘	0.841	19/06/2015	---	---	---	---	---	---	---	---	2014	---	---	---	4,178.59	0.461	1.34	2723
6,325,000	0.600	---	---	---	02/05/2014	17/02/2014	---	VOGIATZOGLOU SYSTEMS SA (CR)	0.987	---	↘	0.987	19/06/2015	---	---	---	---	---	---	---	28.77	2014	---	---	---	6,242.78	0.836	1.00	2797

Exchange Traded Funds (ETFs)																											
5,848,618	---	---	---	24/01/2008	---	ALPHA ETF FTSE Athex Large Cap	2.32	8.92	#	2.13	19/06/2015	2.18	2.18	2.32	2.32	2.29	---	---	---	---	12,403	8	28,452.08	---	2.05	2.84	12003
294,878	---	---	---	29/06/2009	---	NBGAM ETF	8.43	8.49	#	7.77	19/06/2015	8.43	8.43	8.43	8.43	8.43	---	---	---	---	2	1	16.86	---	6.64	10.37	12003

Number of Outstanding Securities	Nominal Value	Dividends [1]			Date of Last Coupon		Note	Shares	Closing price	% change	Previous closing price/date	Open price	Price min	Price max	Last price	Avg price	Last Bid [7]	Last Ask [7]	P/E after	Year	Volume	Trades	Transactions Value[8]	Company Mkt Value (thou. €)	Year low	Year high	Sector[4]
		2012	2013	2014	Dividend [2]	Right																					

Exchange Traded Funds (ETFs)

388,550	---	---	---	03/11/2010	---	NBGAM ETF GREECE & TURKEY 30	7.06	3.22	#	6.84	19/06/2015	7.06	7.06	7.06	7.06	7.06	---	---	---	---	2	1	14.12	---	6.68	8.90	12003
---------	-----	-----	-----	------------	-----	------------------------------	------	------	---	------	------------	------	------	------	------	------	-----	-----	-----	-----	---	---	-------	-----	------	------	-------

Low Dispersion

14,000,000	4.15	---	---	---	23/04/2010	29/06/1999	4815	ALPHA REAL ESTATE SA(CR)	4.95	2.70	#	4.82	19/06/2015	4.95	4.95	4.95	4.95	4.95	---	---	26.64	2014	1	1	4.95	69,300.00	3.80	6.30	8637
63,900,000	3.00	---	---	---	23/06/2003	04/11/2008	4816	ASTIR PALACE SA (CR)	2.10	5.00	#	2.00	19/06/2015	2.10	2.10	2.10	2.10	2.10	---	---	---	2014	1,531	15	3,215.10	134,190.00	2.00	3.60	5753
90,902,904	0.800	---	---	---	09/08/2004	08/03/2006	4814	ATHENA SA (CR)	0.300	---	↘	0.300	19/06/2015	---	---	---	---	---	---	---	---	2014	---	---	---	27,270.87	0.300	0.328	2357
191,660,320	0.300	---	---	---	20/07/2009	29/12/2010	4817	ATTICA HOLDINGS (CR)	0.520	0.97	#	0.515	19/06/2015	0.520	0.520	0.520	0.520	0.520	---	---	---	2014	2,500	4	1,300.00	99,663.37	0.416	0.589	5759
71,082,707	1.70	---	---	---	01/07/2010	21/11/2012	4820	HERACLES GEN.CEMENT CO. (CR)	1.10	-0.90	€	1.11	19/06/2015	1.11	1.10	1.11	1.10	1.10	---	---	---	2014	829	4	913.00	78,190.98	1.10	1.40	2353
13,404,440	8.63	---	---	---	02/04/2001	06/03/1992	4822	IONIAN HOTELS SA (CR)	5.05	---	↘	5.05	19/06/2015	---	---	---	---	---	---	---	---	2014	---	---	---	67,692.42	4.98	7.25	5753
2,760,000	11.83	8.52	8.5	---	30/06/2014	16/07/1990	4823	KARELIA TOBACCO CO. SA (CB)	230.00	2.22	#	225.00	19/06/2015	230.00	230.00	230.00	230.00	230.00	---	---	10.25	2014	5	1	1,150.00	634,800.00	198.05	298.00	3785
30,600,000	0.300	---	---	---	12/06/2008	04/03/2014	5059	KATHIMERINI SA (CR)	0.403	19.94	#	0.336	19/06/2015	0.403	0.403	0.403	0.403	0.403	---	---	---	2014	10,002	9	4,030.81	12,331.80	0.218	0.588	5557
14,074,000	3.00	---	---	---	02/03/2012	23/07/2009	5075	MIG REAL ESTATE (CR)	2.50	---	↘	2.50	19/06/2015	---	---	---	---	---	---	---	14.27	2014	---	---	---	35,185.00	2.08	3.45	8671
106,980,050	2.25	---	---	---	25/07/2008	24/02/2014	5046	MINOAN LINES SA (CR)	2.00	---	↘	2.00	19/06/2015	2.00	2.00	2.00	2.00	2.00	---	---	---	2014	1,833	1	3,666.00	213,960.10	1.43	2.00	5759
17,240,776	0.370	---	---	---	14/07/2005	30/09/2003	4827	PERSEUS SA (CR)	0.363	---	↘	0.363	19/06/2015	---	---	---	---	---	---	---	1.75	2014	---	---	---	6,258.40	0.300	0.700	3577

Surveillance

33,301,715	0.320	---	---	---	27/06/2003	08/07/2009	4978	AEGEK (CR)	0.052	18.18	#	0.044	19/06/2015	0.052	0.052	0.052	0.052	0.052	---	---	---	2014	46	2	2.39	1,731.69	0.032	0.085	2357
13,000,000	1.00	---	---	---	01/08/2007	07/04/2000	5093	AKRITAS SA (CR)	0.038	---	↘	0.038	19/06/2015	---	---	---	---	---	---	---	---	2014	---	---	---	494.00	0.034	0.125	2353
14,870,100	0.300	---	---	---	15/05/2008	26/09/2011	4844	ALPHA GRISSIN S.A. (CR)	0.045	---	↘	0.045	19/06/2015	---	---	---	---	---	---	---	---	2014	---	---	---	669.15	0.032	0.048	9533
215,246,452	0.300	---	---	---	25/06/2001	24/09/2001	4446	ALTEC SA (CR)	0.018	-5.26	€	0.019	19/06/2015	0.018	0.018	0.018	0.018	0.018	---	---	---	2014	2,000	2	36.00	3,874.44	0.017	0.030	9533
2,969,713	0.300	---	---	---	02/07/2008	28/02/2011	4958	ANEK LINES SA (PR, issue '96)	0.110	---	↘	0.110	19/06/2015	---	---	---	---	---	---	---	---	2014	---	---	---	13,523.22	0.090	0.133	5759
312,163	0.300	---	---	---	02/07/2008	28/02/2011	4959	ANEK LINES SA (PR, issue '90)	1.30	---	↘	1.30	19/06/2015	---	---	---	---	---	---	---	---	2014	---	---	---	13,523.22	1.15	1.30	5759
185,373,016	0.300	---	---	---	02/07/2008	28/02/2011	4957	ANEK LINES SA (CR)	0.069	---	↘	0.069	19/06/2015	0.069	0.069	0.069	0.069	0.070	---	---	---	2014	4	1	0.28	13,523.22	0.047	0.093	5759
20,255,805	0.300	---	---	---	22/08/2006	02/08/2010	4881	AXON HOLDING SA (CR)	0.058	---	↘	0.058	19/06/2015	---	---	---	---	---	---	---	---	2014	---	---	---	1,174.84	0.022	0.066	4533
17,579,754	4.16	---	---	---	18/08/2006	02/08/2010	5097	BIOTER SA (CR)	0.160	---	↘	0.160	19/06/2015	---	---	---	---	---	---	---	---	2014	---	---	---	2,812.76	0.128	0.250	2357
14,173,104	0.300	---	---	---	11/08/2010	28/11/2013	5055	DIONIC (CR)	0.054	---	↘	0.054	19/06/2015	---	---	---	---	---	---	---	---	2014	---	---	---	765.35	0.037	0.086	2797
15,878,748	0.480	---	---	---	10/07/2006	22/03/2004	5095	DOMIKI KRITIS SA (CR)	0.318	---	↘	0.318	19/06/2015	---	---	---	---	---	---	---	---	2014	---	---	---	5,049.44	0.216	0.340	2357
3,961,300	1.28	---	---	---	29/06/2004	03/08/2000	5080	DUROS SA (CR)	0.239	---	↘	0.239	19/06/2015	---	---	---	---	---	---	---	---	2014	---	---	---	946.75	0.145	0.585	3763
7,085,888	1.59	---	---	---	02/07/1996	06/09/2010	4690	ELVIEMEK (CR)	3.97	---	↘	3.97	19/06/2015	---	---	---	---	---	---	---	---	2014	---	---	---	28,130.98	3.97	3.97	8633
6,000,000	0.600	---	---	---	13/06/2008	08/04/2004	4886	EUROBROKERS S.A. (CR)	0.009	---	↘	0.009	19/06/2015	---	---	---	---	---	---	---	---	2014	---	---	---	54.00	0.009	0.020	8534
21,820,410	0.800	---	---	---	22/05/2008	02/08/2011	4882	EUROMEDICA SA (CR)	0.440	---	↘	0.440	19/06/2015	---	---	---	---	---	---	---	---	2014	---	---	---	9,600.98	0.320	0.440	4533
110,097,185	0.300	---	---	---	04/12/2013		5033	Fortnet (CR)	0.743	-1.46	€	0.754	19/06/2015	0.742	0.742	0.900	0.890	0.743	---	---	---	2013	803	4	596.28	81,802.21	0.580	1.19	9535
77,376,446	0.340	---	---	---	23/05/2005	18/08/2011	5094	G.E. DIMITRIOU (CR)	0.014	-6.67	€	0.015	19/06/2015	0.018	0.013	0.018	0.015	0.014	---	---	---	2014	68,700	14	938.00	1,083.27	0.011	0.030	3722
1,270,000	0.300	---	---	---	06/07/2007	06/02/2013	5007	GIRAKIAN PROFIL SA (CB)	0.336	---	↘	0.336	19/06/2015	---	---	---	---	---	---	---	---	2014	---	---	---	426.72	0.247	0.420	1757
36,748,909	0.730	---	---	---	15/12/2005	13/12/2006	5083	HEL. SUGAR INDUSTRY SA (CB)	0.213	1.43	#	0.210	19/06/2015	0.210	0.210	0.230	0.230	0.213	---	---	---	2014	7,809	7	1,664.89	7,827.52	0.141	0.327	3577
1,540,000	0.600	---	---	---	08/08/1994	19/09/2000	5058	J.BOUTARIS & SON HOLD. (PB)	0.006	---	↘	0.006	19/06/2015	---	---	---	---	---	---	---	---	2014	---	---	---	2,023.61	0.005	0.007	3535
25,179,640	0.600	---	---	---	08/08/1994	19/09/2000	5057	J.BOUTARIS & SON HOLD. SA (CB)	0.080	---	↘	0.080	19/06/2015	---	---	---	---	---	---	---	---	2014	---	---	---	2,023.61	0.016	0.119	3535
7,125,216	0.650	---	---	---	01/07/2005	14/12/1999	4955	KRE.KA SA (CR)	0.150	-3.23	€	0.155	19/06/2015	0.150	0.150	0.150	0.150	0.150	---	---	---	2014	250	2	37.50	1,068.78	0.101	0.225	3573

Number of Outstanding Securities	Nominal Value	Dividends [1]			Date of Last Coupon		Note	Shares	Closing price	% change	Previous closing price/date	Open price	Price min	Price max	Last price	Avg price	Last Bid [7]	Last Ask [7]	P/E after	Year	Volume	Trades	Transactions Value[8]	Company Mkt Value (thou. €)	Year low	Year high	Sector[4]	
		2012	2013	2014	Dividend [2]	Right																						
Surveillance																												
51,081,030	1.00	---	---	---	20/08/2007	03/09/2007	4912	LAVIPHARM SA (CR)	0.165	---	↘ 0.165	19/06/2015	---	---	---	---	---	---	---	---	2014	---	---	---	8,428.37	0.086	0.180	4577
4,419,616	1.58	---	---	---	21/07/2011	04/03/2015	4983	MEDICON S.A (CR)	0.322	---	↘ 0.322	19/06/2015	---	---	---	---	---	---	1.84	2014	---	---	---	1,423.12	0.233	0.453	4535	
255,459,600	0.300	---	---	---	26/06/2000	03/12/2010	4833	NEL SA (CR)	0.036	---	↘ 0.036	19/06/2015	---	---	---	---	---	---	---	2014	---	---	---	9,196.55	0.009	0.064	5759	
20,231,328	0.600	---	---	---	15/07/2008	25/06/2004	4879	NIKAS SA (CR)	0.142	---	↘ 0.142	19/06/2015	---	---	---	---	---	---	---	2014	---	---	---	2,872.85	0.115	0.147	3577	
63,697,153	1.34	---	---	---	08/07/2008	10/11/2008	5081	NIREFS SA (CR)	0.092	1.10	# 0.091	19/06/2015	0.092	0.092	0.092	0.092	0.092	---	---	---	2014	110	2	10.12	5,860.14	0.067	0.124	3573
14,967,940	0.500	---	---	---	21/05/2008	04/01/2008	4956	PASAL DEVELOPMENT S.A. (CR)	0.189	---	↘ 0.189	19/06/2015	---	---	---	---	---	---	---	---	2014	---	---	---	2,828.94	0.060	0.189	8633
40,946,303	0.360	---	---	---	18/07/2005	27/11/2007	5089	PC SYSTEMS SA (CR)	0.032	---	↘ 0.032	19/06/2015	---	---	---	---	---	---	---	---	2014	---	---	---	1,310.28	0.032	0.098	9533
18,750,000	0.300	---	---	---	02/07/2001	31/12/2012	4985	PEGASUS PUBLISHING S.A. (CR)	0.100	---	↘ 0.100	19/06/2015	0.100	0.100	0.100	0.100	0.100	---	---	---	2014	11	3	1.10	1,875.00	0.057	0.283	5557
24,319,250	0.300	---	---	---	09/07/2002	04/07/2007	5054	PROODEFTIKH SA (CR)	0.080	-15.79	↘ 0.095	19/06/2015	0.080	0.080	0.080	0.080	0.080	---	2.80	2014	500	2	40.00	1,945.54	0.057	0.116	2357	
65,326,268	0.530	---	---	---	04/07/2007	19/07/2006	4750	SATO SA (CR)	0.119	---	↘ 0.119	19/06/2015	---	---	---	---	---	---	---	---	2014	---	---	---	7,773.83	0.024	0.119	3726
204,235,184	0.300	---	---	---	01/07/2008	30/07/2012	4961	SELONDA AQUACULTURE SA (CR)	0.088	18.92	# 0.074	19/06/2015	0.087	0.087	0.088	0.088	0.088	---	0.97	2014	26,846	8	2,361.74	17,972.70	0.050	0.117	3573	
7,914,480	0.300	---	---	---	23/06/2008	29/06/2011	4888	SFAKIANAKIS SA (CR)	3.95	---	↘ 3.95	19/06/2015	---	---	---	---	---	---	---	---	2014	---	---	---	31,262.20	1.12	4.00	5379
10,000,000	1.35	---	---	---	24/06/2008	10/05/2005	4887	SIDMA SA (CR)	0.444	---	↘ 0.444	19/06/2015	---	---	---	---	---	---	---	---	2014	---	---	---	4,440.00	0.271	0.444	1757
100,793,000	0.300	---	---	---	16/07/2009	05/08/2013	5008	TELETIPOS SA (CR)	0.103	---	↘ 0.103	19/06/2015	---	---	---	---	---	---	---	---	2014	---	---	---	10,381.68	0.019	0.117	5553
16,383,428	0.300	---	---	---	25/06/2002	21/06/2013	4997	VARVARESSOS SA (CB)	0.046	---	↘ 0.046	19/06/2015	---	---	---	---	---	---	1.09	2014	---	---	---	753.64	0.046	0.165	3763	
13,191,620	0.620	---	---	---	04/08/2010	09/09/2002	4977	YALCO - CONSTANTINOU SA (CB)	0.046	---	↘ 0.046	19/06/2015	---	---	---	---	---	---	---	---	2014	---	---	---	606.81	0.046	0.189	3722

Under Deletion																											
1,130,180	0.440	---	---	---	20/06/2003	02/07/2014	5092	COMPUCON SA (CR)	0.010	---	↘ 0.010	19/06/2015	---	---	---	---	---	---	---	2014	---	---	---	11.30	0.005	0.010	9537
9,567,289	0.300	---	---	---	01/07/2004	19/11/2007	5062	MARAC ELECTRONICS (CR)	0.298	---	↘ 0.298	19/06/2015	---	---	---	---	---	---	---	2014	---	---	---	2,851.05	0.298	0.298	9578
766,000	1.50	---	---	---	01/07/2004	11/12/2012	4937	TRIA ALFA SA (CR)	1.80	---	↘ 1.80	19/06/2015	---	---	---	---	---	---	---	2014	---	---	---	1,709.55	1.80	2.29	3763
245,000	1.50	---	---	---	19/07/2010	11/12/2012	4938	TRIA ALFA SA (PR)	1.35	---	↘ 1.35	19/06/2015	---	---	---	---	---	---	---	2014	---	---	---	1,709.55	1.35	1.35	3763
3,229,566	0.320	---	---	---	22/06/2005	23/09/1999	5091	VARANGIS AVEPE S.A. (CR)	0.300	---	↘ 0.300	19/06/2015	---	---	---	---	---	---	---	2014	---	---	---	968.87	0.300	0.520	3726

Suspension Status																											
5,000,000	0.400	---	---	---	03/06/2009	01/09/2014	5087	ALCO HELLAS SA (CR)	0.180	---	↘ 0.180	19/06/2015	---	---	---	---	---	---	---	---	---	---	---	900.00	0.130	0.307	1753
5,025,000	0.300	---	---	---	05/07/2005	14/03/2002	5023	ALSINCO S.A (CR)	0.043	---	↘ 0.043	19/06/2015	---	---	---	---	---	---	---	---	---	---	---	216.08	0.043	0.043	3763
1,750,955,549	0.600	---	---	---	19/05/2008	08/12/2011	4911	ATE (CR)	0.155	---	↘ 0.155	19/06/2015	---	---	---	---	---	---	---	---	---	---	---	271,398.11	0.155	0.155	8355
21,382,067	0.300	---	---	---	02/10/2006	15/02/2006	4628	ATERMON (CR)	0.120	---	↘ 0.120	19/06/2015	---	---	---	---	---	---	---	---	---	---	---	2,565.85	0.120	0.120	5555
81,644,555	0.300	---	---	---	01/07/2008	02/09/2002	5098	ATTI - KAT SA (CR)	0.012	---	↘ 0.012	19/06/2015	---	---	---	---	---	---	---	---	---	---	---	979.73	0.007	0.037	2357
105,423,498	0.510	---	---	---	01/07/2004	28/12/2005	4920	AVENIR S.A. (CR)	0.046	---	↘ 0.046	19/06/2015	---	---	---	---	---	---	---	---	---	---	---	4,849.48	0.046	0.046	5752
33,930,000	0.300	---	---	---	03/07/2006	30/05/2001	4865	BABIS VOVOS SA (CR)	0.304	---	↘ 0.304	19/06/2015	---	---	---	---	---	---	---	---	---	---	---	10,314.72	0.304	0.304	8633
20,121,710	1.21	---	---	---	27/07/1992	12/03/2003	5002	BALKAN R.E. (CR)	0.190	---	↘ 0.190	19/06/2015	---	---	---	---	---	---	---	---	---	---	---	3,823.12	0.190	0.190	8633
21,920,570	0.300	---	---	---	03/07/2007	13/12/1999	4702	CARDASSILARIS SA (CR)	0.140	---	↘ 0.140	19/06/2015	---	---	---	---	---	---	---	---	---	---	---	3,068.88	0.140	0.140	3577
54,547,634	0.500	---	---	---	25/04/2005	21/01/2009	4860	CH.TEGOPOULOS PUBL. SA (CR)	0.038	---	↘ 0.038	19/06/2015	---	---	---	---	---	---	---	---	---	---	---	2,072.81	0.038	0.038	5557
30,159,583	0.470	---	---	---	26/06/2008	29/12/2010	5047	DIAS A/C (CR)	0.050	---	↘ 0.050	19/06/2015	---	---	---	---	---	---	---	---	---	---	---	1,507.98	0.050	0.050	3573
7,847,611	1.20	---	---	---	01/08/2007	28/09/2011	4939	EDRASIS - C. PSALLIDAS SA (CR)	0.150	---	↘ 0.150	19/06/2015	---	---	---	---	---	---	---	---	---	---	---	1,177.14	0.150	0.150	2357
5,750,000	0.300	---	---	---	12/12/2008	12/12/2011	4929	ELECTRONIKI ATHINON SA (CR)	0.480	---	↘ 0.480	19/06/2015	---	---	---	---	---	---	---	---	---	---	---	2,760.00	0.480	0.480	5375

Number of Outstanding Securities	Nominal Value	Dividends [1]			Date of Last Coupon		Note	Shares	Closing price	% change	Previous closing		Open price	Price min	Price max	Last price	Avg price	Last Bid [7]	Last Ask [7]	P/E after	Year	Volume	Trades	Transactions Value[8]	Company Mkt Value (thou. €)	Year low	Year high	Sector[4]	
		2012	2013	2014	Dividend [2]	Right					price/date	price/date																	
Suspension Status																													
24,605,397	0.400	---	---	---	29/06/1995	27/05/2002	4651	EMPORIKOS DESMOS SA (CR)	0.080	---	↴	0.080	19/06/2015	---	---	---	---	---	---	---	---	---	---	---	---	2,134.04	0.080	0.080	3722
1,182,903	0.400	---	---	---	01/07/1996	27/05/2002	4652	EMPORIKOS DESMOS SA (PR)	0.140	---	↴	0.140	19/06/2015	---	---	---	---	---	---	---	---	---	---	---	---	2,134.04	0.140	0.140	3722
7,326,648	1.00	---	---	---	26/07/2006	24/07/2001	4921	FINTEXPORT SA (CR)	0.328	---	↴	0.328	19/06/2015	---	---	---	---	---	---	---	---	---	---	---	---	2,403.14	0.328	0.328	3763
179,707,771	0.300	---	---	---	27/06/2002	01/11/2011	5096	HELLAS ONLINE SA (CR)	0.563	---	↴	0.563	19/06/2015	---	---	---	---	---	---	---	---	---	---	---	---	101,175.48	0.516	0.563	9537
13,692,227	1.47	---	---	---	07/07/2006	08/10/1999	5049	HELLENIC FABRICS SA (CR)	0.117	---	↴	0.117	19/06/2015	---	---	---	---	---	---	---	---	---	---	---	---	1,601.99	0.117	0.117	3763
30,390,000	0.310	---	---	---	18/08/2008	29/12/2006	5099	HELLENIC FISHFARMING SA (CR)	0.070	---	↴	0.070	19/06/2015	---	---	---	---	---	---	---	---	---	---	---	---	2,127.30	0.026	0.078	3573
24,619,524	0.500	---	---	---	10/10/1986	30/12/2002	4914	KERAMIA-ALLATINI (CR)	0.088	---	↴	0.088	19/06/2015	---	---	---	---	---	---	---	---	---	---	---	---	2,166.52	0.088	0.088	8633
7,840,373	1.20	---	---	---	18/07/2002	05/03/2003	4765	KLONATEX SA (PR)	0.080	---	↴	0.080	19/06/2015	---	---	---	---	---	---	---	---	---	---	---	---	1,453.75	0.080	0.080	3763
20,663,047	1.20	---	---	---	21/08/2000	05/03/2003	4764	KLONATEX SA (CR)	0.040	---	↴	0.040	19/06/2015	---	---	---	---	---	---	---	---	---	---	---	---	1,453.75	0.040	0.040	3763
17,544,600	0.600	---	---	---	03/07/2000	01/08/2000	4868	KOYMBAS SYNERGY GROUP (CR)	0.132	---	↴	0.132	19/06/2015	---	---	---	---	---	---	---	---	---	---	---	---	2,315.89	0.132	0.132	8775
15,015,000	1.60	---	---	---	01/07/2002	02/02/2000	4603	MAXIM C.M. PERTSINIDIS SA (CB)	0.100	---	↴	0.100	19/06/2015	---	---	---	---	---	---	---	---	---	---	---	---	1,501.50	0.100	0.100	3763
66,937,526	0.700	---	---	---	13/08/2010	21/05/2003	5003	MICHANIKI SA (CR)	0.100	---	↴	0.100	19/06/2015	---	---	---	---	---	---	---	---	---	---	---	---	9,186.78	0.100	0.100	2357
25,968,987	0.700	---	---	---	13/08/2010	21/05/2003	5004	MICHANIKI SA (PR)	0.096	---	↴	0.096	19/06/2015	---	---	---	---	---	---	---	---	---	---	---	---	9,186.78	0.096	0.096	2357
13,555,100	1.00	---	---	---		08/07/2005	4576	MICROLAND COMPUTERS SA (CR)	0.640	---	↴	0.640	19/06/2015	---	---	---	---	---	---	---	---	---	---	---	---	8,675.26	0.640	0.640	5379
23,463,874	0.800	---	---	---	23/05/2003	21/12/1999	4918	NEORION SA (CR)	0.125	---	↴	0.125	19/06/2015	---	---	---	---	---	---	---	---	---	---	---	---	2,932.98	0.125	0.125	2753
42,501,273	0.300	---	---	---	26/06/2007	10/08/2009	4993	NUTRIART (CR)	0.049	---	↴	0.049	19/06/2015	---	---	---	---	---	---	---	---	---	---	---	---	2,082.56	0.049	0.049	3577
20,210,127	1.53	---	---	---	27/06/1997	20/03/2000	5061	PARNASSOS ENTERP. (CR)	0.070	---	↴	0.070	19/06/2015	---	---	---	---	---	---	---	---	---	---	---	---	1,414.71	0.070	0.070	8775
25,583,146	0.300	---	---	---	25/06/2001	03/12/2008	4723	PETZETAKIS SA (CR)	0.260	---	↴	0.260	19/06/2015	---	---	---	---	---	---	---	---	---	---	---	---	6,651.62	0.260	0.260	1357
9,550,386	0.500	---	---	---	01/07/1997	12/06/2008	4626	PRAXITELIO SA (CR)	0.390	---	↴	0.390	19/06/2015	---	---	---	---	---	---	---	---	---	---	---	---	4,430.09	0.390	0.390	4533
1,306,368	0.500	---	---	---	01/07/1997	12/06/2008	4627	PRAXITELIO SA (PR)	0.540	---	↴	0.540	19/06/2015	---	---	---	---	---	---	---	---	---	---	---	---	4,430.09	0.540	0.540	4533
62,683,822	0.300	---	---	---	27/05/2008	09/01/2006	4830	PROTON BANK S.A. (CR)	0.180	---	↴	0.180	19/06/2015	---	---	---	---	---	---	---	---	---	---	---	---	11,283.09	0.180	0.180	8355
25,667,143	0.320	---	---	---	03/07/2000	18/12/2007	4548	SAOS (CR)	1.56	---	↴	1.56	19/06/2015	---	---	---	---	---	---	---	---	---	---	---	---	40,040.74	1.56	1.56	2773
26,408,040	0.300	---	---	---	01/07/1997	26/05/1999	4464	SHEET STEEL SA (CR)	0.120	---	↴	0.120	19/06/2015	---	---	---	---	---	---	---	---	---	---	---	---	3,168.96	0.120	0.120	1757
60,221,300	0.400	---	---	---	01/07/2002	01/11/2010	5022	SHELMAN SA (CR)	0.080	---	↴	0.080	19/06/2015	---	---	---	---	---	---	---	---	---	---	---	---	4,817.70	0.080	0.080	2353
29,060,950	0.340	---	---	---	20/08/2007	24/10/2001	5088	SPIDER METAL INDUSTRY SA (CR)	0.008	---	↴	0.008	19/06/2015	---	---	---	---	---	---	---	---	---	---	---	---	232.49	0.005	0.008	2757
26,262,660	0.900	---	---	---	01/07/2008	24/02/2011	4954	SPRIDER STORES (CR)	0.031	---	↴	0.031	19/06/2015	---	---	---	---	---	---	---	---	---	---	---	---	814.14	0.031	0.031	5371
144,688,060	0.600	---	---	---	21/04/2008	10/03/2010	4982	T BANK (CR)	0.048	---	↴	0.048	19/06/2015	---	---	---	---	---	---	---	---	---	---	---	---	6,945.03	0.048	0.048	8355
6,523,780	0.530	---	---	---	01/07/2002	06/03/2001	4971	TECHNICAL PUBLICATIONS SA (CR)	0.006	---	↴	0.006	19/06/2015	---	---	---	---	---	---	---	---	---	---	---	---	39.14	0.006	0.006	5557
13,920,000	0.320	---	---	---	19/11/2001	01/08/2000	4726	TEXAPRET SA (CR)	0.080	---	↴	0.080	19/06/2015	---	---	---	---	---	---	---	---	---	---	---	---	1,113.60	0.080	0.080	3763
510,840	1.00	---	---	---	15/07/2008	21/11/2013	5036	TROPEA HOLDING (CR)	2.00	---	↴	2.00	19/06/2015	---	---	---	---	---	---	---	---	---	---	---	---	1,021.68	2.00	2.00	3722
284,465,964	3.70	---	---	---	20/06/2008	15/06/2009	4913	TT HELLENIC POSTBANK (CR)	0.168	---	↴	0.168	19/06/2015	---	---	---	---	---	---	---	---	---	---	---	---	47,790.28	0.168	0.168	8355
89,616,200	0.300	---	---	---	21/08/2000	28/06/2007	4616	UNITED TEXTILES (CR)	0.050	---	↴	0.050	19/06/2015	---	---	---	---	---	---	---	---	---	---	---	---	4,480.81	0.050	0.050	3763
71,683,906	0.400	---	---	---	15/06/2005	05/02/2008	4953	XATZIOANNOU (CR)	0.026	---	↴	0.026	19/06/2015	---	---	---	---	---	---	---	---	---	---	---	---	1,863.78	0.026	0.026	3763

Shares' Notes

Code	Note text
()	- Adjusted dividends.
*	- Last adjusted closing price.
[1]	- Net dividends.
[2]	- The "Date of Last Coupon" for New listings refers to the date company's stocks started to trade in Athex
[3]	- The Company Market Value is referred to the number of outstanding shares
[4]	- Sectors codification can be found in Appendix A
[5]	- The Market Value refers to the total number of shares listed (including their several classes) in the exchange by the company.
[6]	- P/E greater than 100
[7]	- Last view of the Order Book before the end of the trading session
[8]	- All Blocks Methods' Transactions Value are included.
4446	- Transfer to the "Under Supervision" Category as of 20/10/2008.
4464	- Suspension of trading as of 1/12/2008.
4548	- Suspension of trading as of 1/4/2009.
4576	- Suspension of trading as of 14/7/2009.
4603	- Suspension of trading as of 1/12/2009.
4616	- Suspension of trading as of 25/2/2010.
4626	- Suspension of trading as of 1/4/2010.
4627	- Suspension of trading as of 1/4/2010.
4628	- Suspension of trading as of 1/4/2010.
4651	- Suspension of trading as of 1/6/2010.
4652	- Suspension of trading as of 1/6/2010.
4690	- Transfer to Surveillance category as of 4/4/2006.
4702	- Suspension of trading as of 1/12/2010.
4723	- Suspension of trading as of 31/1/2011.
4726	- Suspension of trading as of 1/3/2011.
4750	- Transfer to the "Under Surveillance Category" from 8/4/2011.
4764	- Suspension of trading as of 20/5/2011.
4765	- Suspension of trading as of 20/5/2011.
4795	- The final gross (pre-tax) dividend is € 0.30 per share and subject to withholding tax on the full dividend amount, i.e. 0,45 per share, for those shareholders liable to withholding tax, in accordance with the applicable tax law provisions.
4814	- Transfer to the Low Dispersion Category as of 30/5/2011.
4815	- Transfer to the Low Dispersion Category as of 30/5/2011.
4816	- Transfer to the Low Dispersion Category as of 30/5/2011.
4817	- Transfer to the Low Dispersion Category as of 30/5/2011.
4820	- Transfer to the Low Dispersion category as of 18/4/2008.
4822	- Transfer to the Low Dispersion category as of 30/5/2011.
4823	- Transfer to the Low Dispersion category as of 4/4/2006.
4827	- Transfer to the Low Dispersion category as of 5/5/2010.
4830	- Suspension of trading as of 10/10/2011.
4833	- Transfer to Surveillance category from 6/5/2010.
4844	- Transfer to the Surveillance category from 8/4/2011.
4857	- The 793,906,274 new (CR) shares, resulting from the recent share capital increase through a rights issue, are not yet admitted to trading on the ATHEX.
4860	- Suspension of trading as of 30/3/2012.
4865	- Suspension of trading as of 2/4/2012.
4868	- Suspension of trading as of 2/4/2012.
4879	- Transfer to the Surveillance Category as of 10/4/2012.
4881	- Transfer to the Surveillance Category as of 10/4/2012.
4882	- Transfer to the Surveillance Category as of 10/4/2012.
4886	- Transfer to the Surveillance Category as of 10/4/2012.
4887	- Transfer to the Surveillance Category as of 10/4/2012.
4888	- Transfer to the Surveillance Category as of 10/4/2012.
4911	- Lift of suspension from 30/7/2012.

Shares' Notes

Code	Note text
4912	- Transfer to the Surveillance Category as of 31/7/2012.
4913	- Suspension of trading as of 30/8/2012.
4914	- Suspension of trading as of 31/8/2012.
4918	- Suspension of trading as of 31/8/2012.
4920	- Suspension of trading as of 31/8/2012.
4921	- Suspension of trading as of 31/8/2012.
4929	- Suspension of trading as of 1/10/2012.
4937	- Transfer to the UNDER DELETION category as of 30/11/2012.
4938	- Transfer to the UNDER DELETION category as of 30/11/2012.
4939	- Suspension of trading as of 30/11/2012.
4953	- Suspension of trading as of 2/4/2013.
4954	- Suspension of trading as of 2/4/2013.
4955	- Transfer to the Surveillance Category as from 5/4/2013.
4956	- Transfer to the Surveillance Category as from 5/4/2013.
4957	- Transfer to the Surveillance Category as from 5/4/2013.
4958	- Transfer to the Surveillance Category as from 5/4/2013.
4959	- Transfer to the Surveillance Category as from 5/4/2013.
4961	- Transfer to the Surveillance Category as from 5/4/2013.
4971	- Suspension of trading as of 3/6/2013.
4977	- Transfer to the "Under Surveillance Category" from 11/6/2013.
4978	- Transfer to the Under Supervision Category as of 11/6/2013.
4982	- Suspension of trading as of 1/12/2011.
4983	- Transfer to the Surveillance Category as of 5/4/2013.
4985	- Transfer to the "Under Surveillance Category" from 8/4/2011.
4993	- Suspension of trading as of 21/6/2013 (15:18).
4997	- Transfer to the Under Supervision Category as of 21/12/2009. - The 6,870,053 new (CB) shares, resulting from the recent share capital increase through a rights issue, are not yet admitted to trading on the ATHEX.
5002	- Suspension of trading as of 30/08/2013.
5003	- Suspension of trading as of 30/08/2013.
5004	- Suspension of trading as of 30/08/2013.
5007	- Transfer to the Surveillance category, as of 11/10/2013.
5008	- Transfer to the Surveillance Category from 8/4/2011.
5022	- Suspension of trading as of 2/12/2013.
5023	- Suspension of trading as of 2/12/2013.
5031	- The 612,300 new (CR) shares, resulting from the recent share capital increase through a rights issue, are not yet admitted to trading on the ATHEX.
5033	- Transfer to the Surveillance Category as of 25/11/2011. The 97,144,575new (CR) shares, resulting from the recent share capital increase through a rights issue, are not yet admitted to trading on the ATHEX.
5036	- The company's share is under suspension of trading as of 2/4/2012. During suspension, the company proceeded and concluded a share reverse split, according to which - after the conclusion of the corporate action - the total number of the company's shares, as well as, the last closing price of 30/03/2012 were adjusted.
5046	- Transfer to the Low Dispersion category as of 8/4/2011.
5047	- Suspension of trading as of 27/3/2014.
5049	- Under suspension of trading as of 1/4/2014.
5054	- Transfer to the Surveillance Category as of 10/4/2014.
5055	- Transfer to the Surveillance Category as of 10/4/2014.
5057	- Transfer to the Surveillance Category as of 29/12/2011.
5058	- Transfer to the Surveillance Category as of 29/12/2011.
5059	- Transfer to the Low Dispersion category as of 2/6/2014.
5061	- Suspension of trading as of 2/6/2014.
5062	- Transfer to the UNDER DELETION category as of 4/6/2014.
5075	- Transfer to the "Low Dispersion" Category as of 31/10/2014.
5080	- Suspension of trading as of 6/9/2011.
5081	- Transfer to the Surveillance category, as of 19/12/2014.
5083	- Transfer to the Surveillance Category as of 06/03/2015.
5087	- Suspension of trading as of 1/4/2015.

Shares' Notes

Code	Note text
5088	- Suspension of trading as of 1/4/2015.
5089	- Transfer to the Surveillance Category as of 8/4/2015.
5091	- Transfer to the UNDER DELETION category as of 8/4/2015.
5092	- Transfer to the UNDER DELETION category as of 8/4/2015.
5093	- Transfer to the Surveillance Category as of 8/4/2015.
5094	- Transfer to the Surveillance Category as of 8/4/2015.
5095	- Transfer to the Surveillance Category as from 9/4/2015.
5096	- Suspension of trading as of 28/5/2015.
5097	- Transfer to the Surveillance Category as of 10/4/2012.
5098	- Suspension of trading as of 2/6/2015.
5099	- Suspension of trading as of 3/6/2015.

Securities Blocks Details

Securities	Block Volume	Price	Block Trade Value	Time of approval	Note
GRIVALIA PROPERTIES (CR)	59,634	6.80	405,511.20	14:13:35	20
METKA (CR)	16	8.17	130.72	16:41:20	18
MOTOR OIL (CR)	100,000	7.70	770,000.00	16:43:35	20
CC HBC AG (CR)	670	21.00	14,070.00	16:43:37	18
HELLENIC PETROLEUM (CR)	79	4.64	366.56	16:44:10	18
TERNA ENERGY (CR)	27	2.94	79.38	16:44:51	18
P.P.A. S.A. (CR)	4	13.08	52.32	16:45:28	18
LAMDA DEVELOPMENT SA (CR)	24	3.69	88.56	16:46:05	18

Blocks Notes

9 - Method 6-1 / Special Fees

10 - Method 6-1 / Special Fees, SDS

14 - Method 6-3 / Settlement, Incomplete Buy and Sell

18 - Method 6-2 / SPOT 1

19 - Method 6-2 / SPOT 2

20 - Method 6-1 and Method 6-1 Same Day Settlement

21 - Other Pre-agreed

Shares Rights Details

Occured date	Exercise from	Exercise until	Trading until	Rights	Price min	Price max	Closing price	Last Bid	Last Ask	Volume	Trades	Transactions Value
-----------------	------------------	-------------------	------------------	--------	--------------	--------------	------------------	----------	----------	--------	--------	-----------------------

No Rights Transactions.

Shares Forced Sales

Securities	Transaction s Volume	Number of Trades	Transactions Value	Note
No Forced Transactions.				

Forced Sales Notes

- 1 - Normal Forced Sale.
- 2 - Forced Sales of Fixed Registered Shares.
- 3 - Forced Sales of Remaining Stock Fractions.

Forced Sales Registered Shares

Securities	Start Date	End Date	Initial Volume	Remaining Volume	Date	Avg price (day)	Avg price (period)	Number of Trades	Transactions Volume	Transactions Value
------------	------------	----------	-------------------	---------------------	------	--------------------	-----------------------	---------------------	------------------------	-----------------------

No Fixed Registered Shares Forced Sales.

Forced Sales Notes

According to Decision 1/380/04.05.2008 of the Hellenic Republic Capital Market Commission, the certificated registered shares that have not been deposited to the issuer for dematerialisation, will be auctioned in the Athens Exchange by the supervising issuer. Forced sales procedure is held according to Article 99A of the Athens Exchange Rulebook. The average price of the period is calculated by dividing the Total transactions value by the Total volume and includes all the transactions made until the current date.

Exchange Traded Funds (ETFs) Characteristics

	Transactions Date (T)	Creation / Redemption	Units (T-1)	New Units (T-1)	Redemptio n Units (T-	Units (T) [1]	Fund Assets [2]	Net Unit Price	Dividen d per	Dividend Date
NBGAM ETF ΓΔ Χ.Α.	22/06/2015	25,000	294,878	---	---	294,878	2,275,497.00	7.7167	---	27/10/2011
ALPHA ETF FTSE Athex Large Cap	22/06/2015	50,000	5,848,618	---	---	5,848,618	12,420,210.00	2.1236	0.05	01/07/2013
NBGAM ETF GREECE & TURKEY 30	22/06/2015	25,000	388,550	---	---	388,550	2,643,088.00	6.8024	---	27/10/2011

ETFs Notes

[1] - Units (T) = Units (T-1) + New Units (T-1) - Redemption Units (T-1)

[2] - The Creation / Redemption Units of T-1 are included.

Corporate Bonds

Num Listed Bonds	Nominal price	Issue price	Today's Rate	Exp. Date	Duration (years)	Note	Coupon attached		Trading	Corporate Bonds	Price min	Price max	Closing price	Previous closing price/date		Volume	Transactions Value	Last order		Date	ear min	Year max
							Common	Preferred										Price	Buy / Sell			
1,794,284	12.49	9.77	5.03	12/07/2015	8	---	---	---	1	NIREUS S.A. (Convertible to CR shares)	---	---	---	12.0000	29/01/2014	---	---	11.0000	B	17/11/2014	12.0000	12.0000
212,801,311	1.00	1.00	6.30	29/07/2020	7	---	8	---	1	MARFIN INVESTMENT GROUP S.A. SERIES B (BOND)	---	---	---	0.8500	23/08/2013	---	---	1.0000	B	28/11/2014	0.8500	0.8500
163,991,598	1.00	1.00	7.00	29/07/2019	6	---	8	---	1	MARFIN INVESTMENT GROUP S.A. SERIES A (BOND)	---	---	---	1.0000	23/08/2013	---	---	1.0000	B	28/11/2014	1.0000	1.0000

Corporate Bonds Notes

Transactions Volume = (Pieces) * (Nominal Price). Transactions Value = (Pieces) * (Nominal Price) * (price %) + (Accrued interest).
The price of a Bond is stated as a percentage (%) of Bond's Nominal Price.
Nominal Price in Euros (€), except if it is noted differently.

Government Bonds

Number Listed Bonds	Nominal price	Today's Rate	Accrued Interest Calc	Exp. Date [1]	Duration (years)	Note	Coupons Date	Curr. coupon value	Trading Unit	Government Bonds	Price min	Price max	Closing price	Previous closing price/date	Volume	Transactions Value	Price	Last order Buy / Sell	Date
1,792,455,803	1.00	4.30	Actual/Actual	24/02/2023	11	---	24/02	4.30	1	GGB-FXD-240223-11Y-2.000-1.00	10.0000	10.0000	10.0000	10.0000 28/01/2015	7,800	856.72	---	---	---
1,771,485,249	1.00	4.30	Actual/Actual	24/02/2024	12	---	24/02	4.30	1	GGB-FXD-240224-12Y-2.000-1.00	10.0000	10.0000	10.0000	10.0000 28/01/2015	7,800	856.72	---	---	---
1,744,316,583	1.00	4.30	Actual/Actual	24/02/2025	13	---	24/02	4.30	1	GGB-FXD-240225-13Y-2.000-1.00	10.0000	10.0000	10.0000	10.0000 28/01/2015	7,800	856.72	---	---	---
1,498,761,836	1.00	4.30	Actual/Actual	24/02/2026	14	---	24/02	4.30	1	GGB-FXD-240226-14Y-2.000-1.00	10.0000	10.0000	10.0000	10.0000 28/01/2015	7,800	856.72	---	---	---
1,469,952,920	1.00	4.30	Actual/Actual	24/02/2027	15	---	24/02	4.30	1	GGB-FXD-240227-15Y-2.000-1.00	10.0000	10.0000	10.0000	10.0000 28/01/2015	7,800	856.72	---	---	---
1,525,434,082	1.00	4.30	Actual/Actual	24/02/2028	16	---	24/02	4.30	1	GGB-FXD-240228-16Y-2.000-1.00	10.0000	10.0000	10.0000	10.0000 28/01/2015	8,320	913.84	---	---	---
1,503,860,546	1.00	4.30	Actual/Actual	24/02/2029	17	---	24/02	4.30	1	GGB-FXD-240229-17Y-2.000-1.00	10.0000	10.0000	10.0000	10.0000 28/01/2015	8,320	913.84	---	---	---
1,435,418,132	1.00	4.30	Actual/Actual	24/02/2030	18	---	24/02	4.30	1	GGB-FXD-240230-18Y-2.000-1.00	10.0000	10.0000	10.0000	10.0000 28/01/2015	8,320	913.84	---	---	---
1,368,045,727	1.00	4.30	Actual/Actual	24/02/2031	19	---	24/02	4.30	1	GGB-FXD-240231-19Y-2.000-1.00	10.0000	10.0000	10.0000	10.0000 28/01/2015	8,320	913.84	---	---	---
1,373,758,194	1.00	4.30	Actual/Actual	24/02/2032	20	---	24/02	4.30	1	GGB-FXD-240232-20Y-2.000-1.00	10.0000	10.0000	10.0000	10.0000 28/01/2015	8,320	913.84	---	---	---
1,452,639,893	1.00	4.30	Actual/Actual	24/02/2033	21	---	24/02	4.30	1	GGB-FXD-240233-21Y-2.000-1.00	10.0000	10.0000	10.0000	10.0000 28/01/2015	8,320	913.84	---	---	---
1,410,344,954	1.00	4.30	Actual/Actual	24/02/2034	22	---	24/02	4.30	1	GGB-FXD-240234-22Y-2.000-1.00	10.0000	10.0000	10.0000	10.0000 28/01/2015	8,320	913.84	---	---	---
1,444,202,190	1.00	4.30	Actual/Actual	24/02/2035	23	---	24/02	4.30	1	GGB-FXD-240235-23Y-2.000-1.00	10.0000	10.0000	10.0000	10.0000 28/01/2015	8,320	913.84	---	---	---
1,505,138,031	1.00	4.30	Actual/Actual	24/02/2036	24	---	24/02	4.30	1	GGB-FXD-240236-24Y-2.000-1.00	10.0000	10.0000	10.0000	10.0000 28/01/2015	8,320	913.84	---	---	---
1,396,254,095	1.00	4.30	Actual/Actual	24/02/2037	25	---	24/02	4.30	1	GGB-FXD-240237-25Y-2.000-1.00	10.0000	10.0000	10.0000	10.0000 28/01/2015	8,320	913.84	---	---	---
1,382,167,704	1.00	4.30	Actual/Actual	24/02/2038	26	---	24/02	4.30	1	GGB-FXD-240238-26Y-2.000-1.00	10.0000	10.0000	10.0000	10.0000 28/01/2015	8,320	913.84	---	---	---
1,337,331,257	1.00	4.30	Actual/Actual	24/02/2039	27	---	24/02	4.30	1	GGB-FXD-240239-27Y-2.000-1.00	10.0000	10.0000	10.0000	10.0000 28/01/2015	8,320	913.84	---	---	---
1,371,908,706	1.00	4.30	Actual/Actual	24/02/2040	28	---	24/02	4.30	1	GGB-FXD-240240-28Y-2.000-1.00	10.0000	10.0000	10.0000	10.0000 28/01/2015	8,320	913.84	---	---	---
1,360,659,778	1.00	4.30	Actual/Actual	24/02/2041	29	---	24/02	4.30	1	GGB-FXD-240241-29Y-2.000-1.00	10.0000	10.0000	10.0000	10.0000 28/01/2015	8,320	913.84	---	---	---
1,432,747,403	1.00	4.30	Actual/Actual	24/02/2042	30	---	24/02	4.30	1	GGB-FXD-240242-30Y-2.000-1.00	10.0000	10.0000	10.0000	10.0000 28/01/2015	8,320	913.84	---	---	---
742,153	1,000.00	0.93	FLR Actual/360	10/08/2019	5	---	10/02 - 10/08	---	1	GGB-FLT-100819-05Y-0.934-1,000	---	---	---	---	---	---	---	---	---
4,030,827	1,000.00	4.75	Actual/Actual	17/04/2019	5	---	17/04	4.75	1	GGB-FXD-170419-05Y-4.750-1,000	---	---	---	---	---	---	---	---	---
2,089,066	1,000.00	3.38	Actual/Actual	17/07/2017	3	---	17/07	3.38	1	GGB-FXD-170717-03Y-3.375-1,000	---	---	---	---	---	---	---	---	---

Government Bonds Notes

Transactions Volume = (Pieces) * (Nominal Price). Transactions Value = (Pieces) * (Nominal Price) * (price %) + (Accrued interest).
The Value of current coupon for the issues with NV 0.01 euro refers to NV 100 euros
FLR: Floating Interest Rate.
[1] - The Expiration Date of the interest bearing period and the Date for coupon payment.

Bonds in Circulation	Currency / Min nominal traded Value	Coupons Payment Date	Current Coupon Value	Note	Coupon Attached	Trading Unit	Issue Date	Duration (years)	Today's Interest	A.I.C in days	Bonds	Last price of previous days	Last Outcry in Cash (euro) Price	Buy / Sell	Trades in Pieces	Life min	Life Max
Bonds of International Organizations																	
1,000,000	EUR / 1000	21/07	---	---	9	1	21/07/2006	10	5.0 FLR	360	EUROPEAN INVESTMENT BANK BOND	97.50	16/04/2007	---	---	---	---
Corporate Bonds in Foreign Currency and Euro																	
103,746	GBP / 10	01/12	0.25	---	56	1	01/12/1930	98	2.5	360	National Mortgage Bank	2.27	05/02/1996	2.27	S	05/02/1996	2.27
0	GBP / 10	01/12	0.25	---	58	1	01/12/1928	100	2.5	360	National Mortgage Bank	---	---	---	---	---	---

Government Bonds Notes

A.I.C: Accrued Interest Calculation base.
FLR: Floating Interest Rate.
The minimum tradeable Nominal Value for all Demeterialised Government Titles is 100 Euros.

Athex & ATHEXCclear Members List

Member Name			Stock Market			Derivatives Market		ATHEXCclear Member		
Address	Phone	Fax	Market Member	Remote Member	Market Maker	Proprietary	Market Maker	General Clearing	Direct Clearing	Non Clearing
A. SARRIS SECURITIES S.A.			a							
6, DRAGATSANIOU STR. ATHINA	(210)-3367700	(210)-3312324								
ALPHA FINANCE INVESTMENT SERVICES S.A.			a		a		a		a	
5, MERLIN STR. ATHINA	(210)-3677400	(210)-3311193								
ALPHA BANK A.E.								a		
40, STADIOU STR ATHINA	(210)-3265546	(210)-3265811								
	(210)-3260000	(210)-3264116								
ARGUS STOCKBROKERS LTD			a	a		a				
12-14, KENNEDY AVE, S. 303 NICOSIA	(+35722)-22717000	(+35722)-22717070								
ATLANTIC SECURITIES LIMITED			a	a						
37, PRODROMOU STR. NICOSIA	(+35722)-445400	(+35722)-661914								
ATLAS SECURITIES S.A			a			a				a
14 - 16, VERNENON STR.& 125 MICHALAKOPOULOU STR. ATHINA	(210)-3363300	(210)-3238925								
ATTICA BANK S.A.								a		
54, AKADIMIAS STR. ATHINA	(210)-3390757	(210)-3646090								
23, OMIROU STR. ATHINA	(210)-3669000	(210)-3669410								
AXIA VENTURES GROUP LTD			a	a						
10, G. KRANIDIOTI NICOSIA	+357 22 742000	+357 22 742001								
AXON SECURITIES S.A.			a			a				a
48, STADIOU ATHINA	(210)-3363800	(210)-3243903								
BETA SECURITIES S.A.			a		a		a		a	
, BRAILA & 29 ALEXANDRAS AVE ATHINA	(210)-6478900	(210)-6410139								
BNP PARIBAS SECURITIES SERVICES								a		
94, VAS. SOFIAS AVE ATHINA	(210)-7468500	(210)-7468579								
CAPITAL SECURITIES S.A.			a			a				a
58, MITROPOLEOS STR. ATHINA	(210)-3369700	(210)-3369820								
CFS SECURITIES & INVESTMENT SERVICES S.A.			a			a			a	
3, STADIOU STR. ATHINA	(210)-3360800	(210)-3311854								
CITIGROUP GLOBAL MARKET LTD			a	a						
, CITIGROUP CENTRE, CANADA SQUARE, CANARY WHART LONDON	002079864000	002079862266								
CREDIT SUISSE SECURITIES (EUROPE) LIMITED			a	a						
, ONE CABOT SQUARE LONDON	+44 20 7888 8888	+44 20 7888 1600								
CYCLOS SECURITIES S.A.			a			a			a	
39, PANEPISTIMIOU STR. ATHINA	(210)-3364300	(210)-3239122								
D.A. TSEKOURAS SEC. S.A.			a							
, PESMAZOGLOY 3	(210)-3214406	(210)-3211997								
DELTASTOCK AD									a	
, MEGAPARK OFFICE BUILDING, 6TH FLOOR, OFFICE AREA E, 115G TSARIG										
DEUTSCHE BANK A.G.			a	a		a				
70, THEODOR-HEUSS-ALLEE FRANKFURT	0049 69 910 00	0049 69 910 34 225								
DYNAMIC SECURITIES			a			a			a	
6 - 10, CHAR. TRIKOUPi STR. ATHINA	(210)-3677700	(210)-3677777								
EL. PETROPOULAKIS SECURITIES S.A.			a			a				a
9, ARISTIDOU STR. ATHINA	(210)-3213928	(210)-3216810								
EUROBANK EQUITIES S.A.			a		a		a		a	
10, FILELLINON STR. ATHINA	(210)-3720000	(210)-3720001								
EUROBANK ERGASIAS S.A.								a		
8, OTHONOS STR. ATHINA	(210)-3337000	(210)-3233866								
	(210)-3337969	(210)-3245916								
EUROCORP SECURITIES S.A.			a			a			a	
14, FILIKIS ETAIRIAS SQ. ATHINA	(210)-7263500	(210)-7263666								
EUOTRUST BROKERAGE S.A.			a							
13-15, SOPHOCLEOUS STR. ATHINA	(210)-3363100	(210)-3238334								
EUROXX SECURITIES S.A.			a			a			a	
7, PALAIOLOGOU STR. CHALANDRI	(210)-6879400	(210)-6879401								
G.A. PERVANAS SECURITIES & INVESTMENT SERVICES CO S.A.			a							a
7 - 9, SOPHOCLEOUS STR. ATHINA	(210)-3251875	(210)-3210291								
GLOBAL CAPITAL SECURITIES AND FINANCIAL SERVICES LTD			a	a						
5, LEMESOU AVE. LEMESOS CYPRUS	(+35722)-710710	(+35722)-339332								
GUARDIAN TRUST SECURITIES S.A			a			a				a
15, FILELLINON STR. ATHINA	(210)-3220402	(210)-3220498								
HELLENIC AMERICAN SEC. S.A.			a		a	a			a	
6, EVRIPIDOU STR. ATHINA	(210)-3311100	(210)-3215968								

Athex & ATHEXClear Members List

Member Name			Stock Market			Derivatives Market		ATHEXClear Member		
Address	Phone	Fax	Market Member	Remote Member	Market Maker	Proprietary	Market Maker	General Clearing	Direct Clearing	Non Clearing
HELLENIC BANK (INVESTMENTS) LTD			a	a						
31, KYRIAKOY MATSI AVE. NICOSIA	(+35722)-500100	(+35722)-500110								
HSBC BANK PLC								a		
109-111, MESOGION AVE ATHINA	(210)-6961507	(210)-6929310								
INDEX SECURITIES S.A.			a							
6, DRAGATSANIOU STR. ATHINA	(210)-3213920	(210)-3213216								
INVESTMENT BANK OF GREECE S.A.			a		a		a	a		
32, AIGEIALIAS MAROUSI	(210) 8173000	(210) 8173101								
24B, KIFISSIAS AVE MAROUSI	(210)-8171800	(210)-8171889								
J. CHR. MAVRIKIS SECURITIES S.A.			a							
5, SOPHOCLEOUS STR. ATHINA	(210)-3213949	(210)-3217767								
KAPPA SECURITIES S.A.			a			a				a
15, VALAORITOU STR. ATHINA	(210)-3610371	(210)-3641002								
KYPROU SECURITIES S.A.										a
26, HALKIDONOS & FIDIPPIDOY STR. ATHINA	(210)-8701000	(210)-8701049								
LAIKI FINANCIAL SERVICES LTD			a	a						
26, CLR HOUSE, VIRONOS AVE. NICOSIA	(+35722)-898600	(+35722)-680953								
LEON DEPOLAS SECURITIES S.A.			a		a	a				a
1, CHR. LADA STR. ATHINA	(210)-3213286	(210)-3211618								
MAGNA TRUST SECURITIES S.A			a							a
9, FIDIOU STR. ATHINA	(210)-3327503	(210)-3327599								
MEGA EQUITY SECURITIES & FINANCIAL SERVICES LTD			a	a		a				
42-44, GRIBA DIGENI AV. NICOSIA	(+35722)-711711	(+35722)-711811								
MERIT SECURITIES S.A			a		a	a			a	
38, VAS. KONSTANTINOY STR. ATHINA	(210)-3671800	(210)-3671830								
MERRILL LYNCH			a	a						
2, KING EDWARD STREET LONDON	(+4420)-79952000	(+4420)-79954525								
MIDAS BROKERAGE S.A.			a							
5, SOPHOCLEOUS STR. ATHINA	(210)-3253203	(210)-3253205								
N. CHRYSOCHOIDIS STOCK BROKERAGE I.S.S.A.			a			a			a	
7 - 9, SOPHOCLEOUS STR. ATHINA	(210)-3213913	(210)-3216115								
NATIONAL BANK OF GREECE S.A.			a			a		a		
68, AKADIMIAS STR. ATHINA	(210)-3328817	(210)-3328678								
86, AIOLOU STR. ATHINA	(210)-3341000	(210)-3228187								
NBG SECURITIES S.A.			a		a		a			a
68, AKADIMIAS STR. ATHINA	(210)-3328500	(210)-3328565								
NUNTIUS SECURITIES S.A			a							a
6, DRAGATSANIOU STR. ATHINA	(210)-3350599	(210)-3254846								
PANTELAKIS SEC. S.A.			a			a				a
109-111, MESOGION AVE. ATHINA	(210)-6965000	(210)-6929550								
PEGASUS BROKERAGE FIRM S.A			a			a				
17, VALAORITOU STR. ATHINA	(210)-3670700	(210)-3670760								
PIRAEUS BANK S.A.			a		a	a		a		
4, AMERIKIS STR. ATHINA	(210)-3335000	(210)-3335079								
4, AMERIKIS STR ATHINA	(210)-3335918	(210)-3254207								
PIRAEUS SECURITIES S.A.			a				a		a	
10, STADIOU STR. ATHINA	(210)-3354100	(210)-3233814								
PRELIUM SECURITIES & INVESTMENT SERVICES S.A.			a			a				a
, KIFISSIAS AVE & 1 DAVAKI STR ATHINA	(210)-3677000	(210)-6920403								
PROCHOICE SECURITIES LTD			a	a						
57, SPYROY KYPRIANOY NICOSIA	+357-24-661192	+357-24-662464								
SHARELINK SECURITIES & FINANCIAL SERVICES LTD			a	a		a				
6, ELLINAS HOUSE, THEOTOKI STR. NICOSIA	(+35722)-554200	(+35722)-750852								
SOCIETE GENERALE S.A.			a	a		a				
17, COURS VALMY PUTEAUX - LA DEFENSE PARIS	(+33) 142134754	(+33) 142135697								
240-242, KIFISIAS AVE ATHINA	(210)-6790161	(210)-6728828								
SOLIDUS SECURITIES S.A			a			a			a	
64, LOUZIS RIANKOUR STR. ATHINA	(210)-6925500	(210)-6985421								
SSIF ESTINVEST SA FOCSANI									a	
, 9TH REPUBLICII STREET FOCSANI										
ST. EM. LAVRENTAKIS SECURITIES S.A.			a			a				a
7 - 9, SOPHOCLEOUS STR. ATHINA	(210)-3213336	(210)-3246572								

Athex & ATHEXClear Members List

Member Name			Stock Market			Derivatives Market		ATHEXClear Member		
Address	Phone	Fax	Market Member	Remote Member	Market Maker	Proprietary	Market Maker	General Clearing	Direct Clearing	Non Clearing
THE CYPRUS INVESTMENT AND SECURITIES CORPORATION LIMITED (CISCO)			a	a						
4, EVROU STR. (EUROLIFE HOUSE) NICOSIA	(+35722)-881800	(+35722)-881801								
UBS LIMITED			a	a						
1, FINSBURY AVENUE LONDON	(+4420)-79013333	(+4420)-79012345								
KARAMANOF SECURITIES & INV. SERVICES S.A.			a			a				
2, SQ. ST THEODORON ATHINA	(210)-3212947	(210)-3217088								

List of Stocks under Market Making operations

Securities	Stock Category
Market Maker	Start Market Making
CYPRUS POPULAR BANK (CR)	Suspension Status
PIRAEUS SECURITIES S.A.	02/02/2013
VIOHALCO (CB)	Suspension Status
ALPHA FINANCE INVESTMENT SERVICES S.A.	11/02/2013
EUROBANK EQUITIES S.A.	20/01/2013
MERIT SECURITIES S.A	13/12/2012
ALPHA BANK (CR)	Main Market
EUROBANK EQUITIES S.A.	24/10/2012
HELLENIC AMERICAN SEC. S.A.	25/07/2014
INVESTMENT BANK OF GREECE S.A.	08/01/2013
MERIT SECURITIES S.A	03/09/2013
NBG SECURITIES S.A.	15/01/2013
PIRAEUS SECURITIES S.A.	28/05/2013
ALUMIL (CR)	Main Market
BETA SECURITIES S.A.	18/07/2013
ATTICA BANK S.A. (CR)	Main Market
BETA SECURITIES S.A.	02/06/2014
EUROBANK EQUITIES S.A.	25/07/2014
HELLENIC AMERICAN SEC. S.A.	25/07/2014
BANK OF CYPRUS (CR)	Main Market
EUROBANK EQUITIES S.A.	23/03/2015
NBG SECURITIES S.A.	22/06/2015
BYTE COMPUTER SA (CR)	Main Market
MERIT SECURITIES S.A	04/08/2013
CC HBC AG (CR)	Main Market
EUROBANK EQUITIES S.A.	23/10/2013
NBG SECURITIES S.A.	29/04/2013
PIRAEUS SECURITIES S.A.	04/05/2015
ELLAKTOR (CR)	Main Market
EUROBANK EQUITIES S.A.	01/06/2013
INVESTMENT BANK OF GREECE S.A.	02/01/2013
NBG SECURITIES S.A.	25/06/2013
ELTECH ANEMOS S.A. (CR)	Main Market
EUROBANK EQUITIES S.A.	22/07/2014
ELTON SA (CR)	Main Market
BETA SECURITIES S.A.	03/09/2013
EUROBANK ERGASIAS (CR)	Main Market
ALPHA FINANCE INVESTMENT SERVICES S.A.	08/01/2013
EUROBANK EQUITIES S.A.	01/06/2013
HELLENIC AMERICAN SEC. S.A.	25/07/2014
INVESTMENT BANK OF GREECE S.A.	08/01/2013
PIRAEUS SECURITIES S.A.	28/09/2013
EUROCONSULTANTS S.A. (CR)	Main Market
EUROBANK EQUITIES S.A.	22/07/2014
FOLLI FOLLIE (CR)	Main Market
NBG SECURITIES S.A.	17/02/2014
PIRAEUS SECURITIES S.A.	04/05/2015
FRIGOGLOSS SA (CR)	Main Market
EUROBANK EQUITIES S.A.	27/10/2014
GEK TERNA (CR)	Main Market
INVESTMENT BANK OF GREECE S.A.	02/01/2013
GR. SARANTIS SA (CR)	Main Market
BETA SECURITIES S.A.	14/05/2013
HELLENIC EXCHANGES-A.S.E. (CR)	Main Market
EUROBANK EQUITIES S.A.	01/06/2013
HELLENIC AMERICAN SEC. S.A.	01/09/2014
INVESTMENT BANK OF GREECE S.A.	02/01/2013
NBG SECURITIES S.A.	25/06/2013
PIRAEUS SECURITIES S.A.	04/05/2015
INTRALOT (CR)	Main Market
EUROBANK EQUITIES S.A.	01/06/2013
INVESTMENT BANK OF GREECE S.A.	02/01/2013
PIRAEUS SECURITIES S.A.	28/09/2013
KRETA FARM SA (CR)	Main Market
EUROBANK EQUITIES S.A.	17/11/2014
LAMDA DEVELOPMENT SA (CR)	Main Market
EUROBANK EQUITIES S.A.	08/12/2014

List of Stocks under Market Making operations

Securities	Stock Category
Market Maker	Start Market Making
MARFIN INVESTMENT GROUP (CR)	Main Market
EUROBANK EQUITIES S.A.	23/03/2015
HELLENIC AMERICAN SEC. S.A.	25/07/2014
PIRAEUS SECURITIES S.A.	02/02/2013
MLS MULTIMEDIA SA (CR)	Main Market
BETA SECURITIES S.A.	18/07/2013
MOTOR OIL (CR)	Main Market
EUROBANK EQUITIES S.A.	23/10/2012
HELLENIC AMERICAN SEC. S.A.	01/09/2014
NBG SECURITIES S.A.	17/02/2014
PIRAEUS SECURITIES S.A.	04/05/2015
MYTILINEOS HOLDINGS (CR)	Main Market
HELLENIC AMERICAN SEC. S.A.	25/07/2014
INVESTMENT BANK OF GREECE S.A.	02/01/2013
NBG SECURITIES S.A.	25/06/2013
PIRAEUS SECURITIES S.A.	04/05/2015
NATIONAL BANK (CR)	Main Market
ALPHA FINANCE INVESTMENT SERVICES S.A.	08/01/2013
EUROBANK EQUITIES S.A.	24/10/2012
HELLENIC AMERICAN SEC. S.A.	25/07/2014
INVESTMENT BANK OF GREECE S.A.	08/01/2013
LEON DEPOLAS SECURITIES S.A.	20/04/2015
MERIT SECURITIES S.A.	03/09/2013
NBG SECURITIES S.A.	28/02/2013
PIRAEUS SECURITIES S.A.	08/09/2013
OPAP (CR)	Main Market
ALPHA FINANCE INVESTMENT SERVICES S.A.	08/01/2013
EUROBANK EQUITIES S.A.	24/10/2012
HELLENIC AMERICAN SEC. S.A.	25/07/2014
INVESTMENT BANK OF GREECE S.A.	08/01/2013
NBG SECURITIES S.A.	15/01/2013
PIRAEUS SECURITIES S.A.	04/05/2015
OTE (CR)	Main Market
ALPHA FINANCE INVESTMENT SERVICES S.A.	08/01/2013
EUROBANK EQUITIES S.A.	24/10/2012
HELLENIC AMERICAN SEC. S.A.	25/07/2014
INVESTMENT BANK OF GREECE S.A.	08/01/2013
LEON DEPOLAS SECURITIES S.A.	20/04/2015
NBG SECURITIES S.A.	01/12/2012
PIRAEUS SECURITIES S.A.	08/09/2013
PAPOUTSANIS (CR)	Main Market
BETA SECURITIES S.A.	25/11/2013
PETROPOULOS PETROS (CR)	Main Market
BETA SECURITIES S.A.	28/05/2013
PIRAEUS BANK (CR)	Main Market
EUROBANK EQUITIES S.A.	23/10/2012
HELLENIC AMERICAN SEC. S.A.	25/07/2014
INVESTMENT BANK OF GREECE S.A.	08/01/2013
MERIT SECURITIES S.A.	16/09/2013
NBG SECURITIES S.A.	02/06/2013
PIRAEUS SECURITIES S.A.	16/02/2013
PLAISIO COMPUTERS SA (CR)	Main Market
BETA SECURITIES S.A.	05/05/2014
EUROBANK EQUITIES S.A.	02/03/2015
PPC (CR)	Main Market
ALPHA FINANCE INVESTMENT SERVICES S.A.	08/01/2013
EUROBANK EQUITIES S.A.	23/10/2012
HELLENIC AMERICAN SEC. S.A.	01/09/2014
INVESTMENT BANK OF GREECE S.A.	08/01/2013
NBG SECURITIES S.A.	26/03/2013
PIRAEUS SECURITIES S.A.	28/09/2013
PROFILE SA (CR)	Main Market
EUROBANK EQUITIES S.A.	23/06/2014
REDS S.A. (CR)	Main Market
EUROBANK EQUITIES S.A.	05/09/2014
S.KANAKIS SA (CR)	Main Market
BETA SECURITIES S.A.	01/10/2013

List of Stocks under Market Making operations

Securities		Stock Category
Market Maker	Start Market Making	
TITAN CEMENT (CR)		Main Market
EUROBANK EQUITIES S.A.	23/10/2012	
NBG SECURITIES S.A.	17/02/2014	
PIRAEUS SECURITIES S.A.	04/05/2015	
VIOHALCO SA/NV (CB)		Main Market
ALPHA FINANCE INVESTMENT SERVICES S.A.	17/02/2014	
MERIT SECURITIES S.A	17/03/2014	

Underlying Asset				Derivatives Market														
Price max	Price min	Closing price	change	Delivery Month	Open price	Price max	Price min	Last price	Closing price	Last Bid	Last Ask	Settlement price	Life high	Life low	Trades	Volume	Open Interest	
FTSE/Athex Large Cap				(Trade Unit: 1 Index Point x 5€, Cash Settlement)														
228.41	208.19	226.15	8.63%	July 2015	220.00	229.75	213.50	229.75	229.75	---	---	228.50	262.75	---	1,396	15,303	21,454	
				August 2015	223.50	229.75	218.50	229.75	229.75	---	---	228.50	---	229.75	---	10	106	325
				September 2015	---	---	---	---	207.75	---	---	233.75	216.25	---	---	---	---	2
				December 2015	---	---	---	---	208.75	---	---	---	---	---	---	---	---	---
				March 2016	---	---	---	---	209.75	---	---	---	---	---	---	---	---	---
				June 2016	---	---	---	---	210.75	---	---	---	---	---	---	---	---	---

Underlying Asset				Derivatives Market														
Price max	Price min	Closing price	change	Delivery Month	Open price	Price max	Price min	Last price	Closing price	Last Bid	Last Ask	Settlement price	Life high	Life low	Trades	Volume	Open Interest	
ALPHA BANK (CR)				(Contract Size: 100 Securities, Physical Delivery)														
0.257	0.230	0.255	23.79%	September 2015	0.252	0.270	0.243	0.269	0.269	---	---	0.264	---	0.403	---	608	20,980	41,951
				December 2015	0.266	0.268	0.248	0.256	0.256	---	---	0.259		0.268	---	10	1,200	1,000
				March 2016	---	---	---	---	0.209	---	---	---	---	---	---	---	---	---
				June 2016	---	---	---	---	0.210	---	---	---	---	---	---	---	---	---
CC HBC AG (CR)				(Contract Size: 100 Securities, Physical Delivery)														
20.50	19.51	19.90	2.63%	September 2015	19.99	20.27	19.49	20.27	20.27	---	---	19.45	---	20.50	---	22	56	96
				December 2015	---	---	---	---	19.24	---	---	---			---	---	---	---
				March 2016	---	---	---	---	19.33	---	---	---	---	---	---	---	---	---
				June 2016	---	---	---	---	19.43	---	---	---	---	---	---	---	---	---
CORINTH PIPEWORKS SA (CR)				(Contract Size: 100 Securities, Physical Delivery)														
1.10	0.990	1.09	13.54%	September 2015	1.04	1.05	1.04	1.05	1.05	---	---	1.11	---	1.09	---	2	5	698
				December 2015	---	---	---	---	0.970	---	---	---			---	---	---	---
				March 2016	---	---	---	---	0.975	---	---	---	---	---	---	---	---	---
				June 2016	---	---	---	---	0.979	---	---	---	---	---	---	---	---	---
ELLAKTOR (CR)				(Contract Size: 100 Securities, Physical Delivery)														
1.86	1.63	1.78	9.20%	September 2015	1.76	1.84	1.65	1.84	1.84	---	---	1.81	---	1.85	---	48	235	1,397
				December 2015	---	---	---	---	1.65	---	---	---			---	---	---	---
				March 2016	---	---	---	---	1.65	---	---	---	---	---	---	---	---	---
				June 2016	---	---	---	---	1.66	---	---	---	---	---	---	---	---	---
EUROBANK ERGASIAS (CR)				(Contract Size: 100 Securities, Physical Delivery)														
0.148	0.134	0.146	18.70%	September 2015	0.149	0.158	0.142	0.151	0.151	---	---	0.153	---	0.176	---	492	26,921	83,939
				December 2015	---	---	---	---	0.124	---	---	0.153		0.151	---	---	---	320
				March 2016	---	---	---	---	0.125	---	---	---	---	---	---	---	---	---
				June 2016	---	---	---	---	0.125	---	---	---	---	---	---	---	---	---
EYDAP S.A. (CR)				(Contract Size: 100 Securities, Physical Delivery)														
5.56	4.98	5.45	13.54%	September 2015	5.05	5.46	5.02	5.46	5.46	---	---	5.46	---	5.86	---	12	27	213
				December 2015	---	---	---	---	4.80	---	---	---			---	---	---	---
				March 2016	---	---	---	---	4.82	---	---	---	---	---	---	---	---	---
				June 2016	---	---	---	---	4.85	---	---	---	---	---	---	---	---	---
FOLLI FOLLIE (CR)				(Contract Size: 100 Securities, Physical Delivery)														
21.50	19.82	21.50	11.40%	September 2015	20.40	21.48	19.90	21.48	21.48	---	---	21.06	---	24.05	---	78	250	222
				December 2015	---	---	---	---	19.50	---	---	---			---	---	---	---
				March 2016	---	---	---	---	19.59	---	---	---	---	---	---	---	---	---
				June 2016	---	---	---	---	19.69	---	---	---	---	---	---	---	---	---
FRIGOGLASS SA (CR)				(Contract Size: 100 Securities, Physical Delivery)														
1.94	1.80	1.91	7.91%	September 2015	1.91	1.96	1.85	1.91	1.91	---	---	1.95	---	2.19	---	16	61	684
				December 2015	---	---	---	---	1.79	---	---	---			---	---	---	---
				March 2016	---	---	---	---	1.80	---	---	---	---	---	---	---	---	---
				June 2016	---	---	---	---	1.81	---	---	---	---	---	---	---	---	---

Underlying Asset				Derivatives Market													
Price max	Price min	Closing price	change	Delivery Month	Open price	Price max	Price min	Last price	Closing price	Last Bid	Last Ask	Settlement price	Life high	Life low	Trades	Volume	Open Interest
GEK TERNA (CR)				(Contract Size: 100 Securities, Physical Delivery)													
1.78	1.58	1.72	8.18%	September 2015	1.74	1.79	1.63	1.78	1.78	---	---	1.82	---	1.84	41	266	7,480
				December 2015	---	---	---	---	1.61	---	---	---	---	---	---	---	---
				March 2016	---	---	---	---	1.61	---	---	---	---	---	---	---	---
				June 2016	---	---	---	---	1.62	---	---	---	---	---	---	---	---
GRIVALIA PROPERTIES (CR)				(Contract Size: 100 Securities, Physical Delivery)													
7.06	6.59	6.71	6.51%	September 2015	6.67	6.97	6.67	6.90	6.90	---	---	6.95	---	8.18	8	29	117
				December 2015	---	---	---	---	6.36	---	---	---	---	---	---	---	---
				March 2016	---	---	---	---	6.40	---	---	---	---	---	---	---	---
				June 2016	---	---	---	---	6.43	---	---	---	---	---	---	---	---
HELLENIC EXCHANGES-A.S.E. (CR)				(Contract Size: 100 Securities, Physical Delivery)													
4.40	4.02	4.40	17.33%	September 2015	3.98	4.38	3.98	4.35	4.35	---	---	4.37	---	5.60	195	648	1,433
				December 2015	---	---	---	---	3.79	---	---	---	---	---	---	---	---
				March 2016	---	---	---	---	3.81	---	---	---	---	---	---	---	---
				June 2016	---	---	---	---	3.83	---	---	---	---	---	---	---	---
HELLENIC PETROLEUM (CR)				(Contract Size: 100 Securities, Physical Delivery)													
4.67	4.17	4.67	15.31%	September 2015	4.27	4.70	4.20	4.62	4.62	---	---	4.62	---	4.94	134	362	3,762
				December 2015	---	---	---	---	3.94	---	---	---	---	---	---	---	---
				March 2016	---	---	---	---	3.96	---	---	---	---	---	---	---	---
				June 2016	---	---	---	---	3.98	---	---	---	---	---	---	---	---
INTRALOT (CR)				(Contract Size: 100 Securities, Physical Delivery)													
1.62	1.55	1.60	3.23%	September 2015	1.60	1.63	1.59	1.59	1.59	---	---	1.59	---	1.72	6	23	267
				December 2015	---	---	---	---	1.57	---	---	---	---	---	---	---	---
				March 2016	---	---	---	---	1.57	---	---	---	---	---	---	---	---
				June 2016	---	---	---	---	1.58	---	---	---	---	---	---	---	---
JUMBO SA (CR)				(Contract Size: 100 Securities, Physical Delivery)													
6.25	5.97	6.15	6.03%	September 2015	6.18	6.30	6.00	6.25	6.25	---	---	6.20	---	8.97	374	1,215	2,257
				December 2015	---	---	---	---	5.68	---	---	---	---	---	---	---	---
				March 2016	---	---	---	---	5.71	---	---	---	---	---	---	---	---
				June 2016	---	---	---	---	5.74	---	---	---	---	---	---	---	---
MARFIN INVESTMENT GROUP (CR)				(Contract Size: 100 Securities, Physical Delivery)													
0.142	0.125	0.141	17.50%	September 2015	0.129	0.142	0.124	0.142	0.142	---	---	0.142	---	0.152	31	936	26,136
				December 2015	---	---	---	---	0.121	---	---	---	---	---	---	---	---
				March 2016	---	---	---	---	0.122	---	---	---	---	---	---	---	---
				June 2016	---	---	---	---	0.122	---	---	---	---	---	---	---	---
METKA (CR)				(Contract Size: 100 Securities, Physical Delivery)													
8.01	7.40	7.91	8.36%	September 2015	7.75	7.98	7.59	7.98	7.98	---	---	7.90	---	8.29	42	140	408
				December 2015	---	---	---	---	7.07	---	---	---	---	---	---	---	---
				March 2016	---	---	---	---	7.11	---	---	---	---	---	---	---	---
				June 2016	---	---	---	---	7.15	---	---	---	---	---	---	---	---

Underlying Asset				Derivatives Market															
Price max	Price min	Closing price	change	Delivery Month	Open price	Price max	Price min	Last price	Closing price	Last Bid	Last Ask	Settlement price	Life high	Life low	Trades	Volume	Open Interest		
MOTOR OIL (CR)				(Contract Size: 100 Securities, Physical Delivery)															
8.20	7.25	7.90	8.67%	September 2015	7.63	7.98	7.27	7.98	7.98	---	---	7.98	---	8.36	---	32	98	---	91
				December 2015	---	---	---	---	7.14	---	---	---	---	---	---	---	---	---	---
				March 2016	---	---	---	---	7.18	---	---	---	---	---	---	---	---	---	---
				June 2016	---	---	---	---	7.22	---	---	---	---	---	---	---	---	---	---
MYTILINEOS HOLDINGS (CR)				(Contract Size: 100 Securities, Physical Delivery)															
5.89	5.52	5.89	6.70%	September 2015	5.80	5.88	5.56	5.88	5.88	---	---	5.83	---	6.31	---	100	323	---	3,393
				December 2015	5.90	5.91	5.69	5.73	5.73	---	---	5.92	---	5.91	---	6	220	---	---
				March 2016	---	---	---	---	5.60	---	---	---	---	---	---	---	---	---	---
				June 2016	---	---	---	---	5.63	---	---	---	---	---	---	---	---	---	---
NATIONAL BANK (CR)				(Contract Size: 100 Securities, Physical Delivery)															
1.07	0.990	1.06	20.45%	September 2015	1.03	1.11	0.999	1.11	1.11	---	---	1.10	---	1.44	---	589	10,118	---	30,132
				December 2015	---	---	---	---	0.889	---	---	1.11	---	1.28	---	---	---	---	---
				March 2016	---	---	---	---	0.893	---	---	---	---	---	---	---	---	---	---
				June 2016	---	---	---	---	0.898	---	---	---	---	---	---	---	---	---	---
OPAP (CR)				(Contract Size: 100 Securities, Physical Delivery)															
7.60	7.00	7.25	0.69%	September 2015	7.64	7.68	7.06	7.31	7.31	---	---	7.36	---	9.38	---	358	1,127	---	1,491
				December 2015	7.36	7.36	7.15	7.15	7.15	---	---	7.42	---	8.60	---	2	100	---	90
				March 2016	---	---	---	---	7.31	---	---	---	---	---	---	---	---	---	---
				June 2016	---	---	---	---	7.35	---	---	---	---	---	---	---	---	---	---
OTE (CR)				(Contract Size: 100 Securities, Physical Delivery)															
7.91	7.03	7.75	3.33%	September 2015	7.65	7.88	7.05	7.65	7.65	---	---	7.72	---	9.46	---	325	994	---	6,427
				December 2015	---	---	---	---	7.58	---	---	7.82	---	8.28	---	---	---	---	10
				March 2016	---	---	---	---	7.61	---	---	---	---	---	---	---	---	---	---
				June 2016	---	---	---	---	7.65	---	---	---	---	---	---	---	---	---	---
P.P.A. S.A. (CR)				(Contract Size: 100 Securities, Physical Delivery)															
13.12	12.30	12.90	5.74%	September 2015	12.50	12.98	10.60	12.80	12.80	---	---	12.80	---	14.42	---	34	73	---	256
				December 2015	---	---	---	---	12.20	---	---	---	---	---	---	---	---	---	---
				March 2016	---	---	---	---	12.27	---	---	---	---	---	---	---	---	---	---
				June 2016	---	---	---	---	12.33	---	---	---	---	---	---	---	---	---	---
PIRAEUS BANK (CR)				(Contract Size: 100 Securities, Physical Delivery)															
0.404	0.352	0.395	21.17%	September 2015	0.380	0.421	0.372	0.420	0.420	---	---	0.411	---	0.733	---	742	21,875	---	52,922
				December 2015	0.396	0.396	0.393	0.393	0.393	---	---	0.412	---	0.396	---	6	1,100	---	500
				March 2016	---	---	---	---	0.331	---	---	---	---	---	---	---	---	---	---
				June 2016	---	---	---	---	0.333	---	---	---	---	---	---	---	---	---	---
PPC (CR)				(Contract Size: 100 Securities, Physical Delivery)															
4.18	3.80	4.14	7.81%	September 2015	4.02	4.21	3.80	4.19	4.19	---	---	4.15	---	5.31	---	552	2,562	---	8,608
				December 2015	4.12	4.13	4.10	4.10	4.10	---	---	4.10	---	5.09	---	7	125	---	30
				March 2016	---	---	---	---	3.87	---	---	---	---	---	---	---	---	---	---
				June 2016	---	---	---	---	3.89	---	---	---	---	---	---	---	---	---	---

Underlying Asset				Derivatives Market													
Price max	Price min	Closing price	change	Delivery Month	Open price	Price max	Price min	Last price	Closing price	Last Bid	Last Ask	Settlement price	Life high	Life low	Trades	Volume	Open Interest
SIDENOR (CR)				(Contract Size: 100 Securities, Physical Delivery)													
0.929	0.858	0.929	14.97%	September 2015	---	---	---	---	0.812	---	---	---	---	---	---	---	---
				December 2015	---	---	---	---	0.816	---	---	---	---	---	---	---	---
				March 2016	---	---	---	---	0.820	---	---	---	---	---	---	---	---
TERNA ENERGY (CR)				(Contract Size: 100 Securities, Physical Delivery)													
3.04	2.65	2.91	9.81%	September 2015	2.80	2.98	2.80	2.98	2.98	---	---	2.97	3.26	---	13	39	1,010
				December 2015	---	---	---	---	2.68	---	---	---	---	---	---	---	---
				March 2016	---	---	---	---	2.69	---	---	---	---	---	---	---	---
				June 2016	---	---	---	---	2.70	---	---	---	---	---	---	---	---
TITAN CEMENT (CR)				(Contract Size: 100 Securities, Physical Delivery)													
21.71	20.00	20.35	4.09%	September 2015	20.05	21.49	20.05	20.60	20.60	---	---	20.69	22.44	---	90	236	256
				December 2015	20.24	21.00	20.24	21.00	21.00	---	---	21.00	---	21.00	4	27	9
				March 2016	---	---	---	---	19.75	---	---	---	---	---	---	---	---
				June 2016	---	---	---	---	19.85	---	---	---	---	---	---	---	---
VIOHALCO SA/NV (CB)				(Contract Size: 100 Securities, Physical Delivery)													
2.52	2.21	2.45	15.57%	September 2015	2.24	2.41	2.22	2.37	2.37	---	---	2.36	2.56	---	82	225	951
				December 2015	---	---	---	---	2.14	---	---	---	---	---	---	---	---
				March 2016	---	---	---	---	2.15	---	---	---	---	---	---	---	---
				June 2016	---	---	---	---	2.16	---	---	---	---	---	---	---	---

FTSE/Athex Large Cap

(Trade Unit: 1 Index Point x 5€ - Excercise Style: European, Cash Settlement)

Call Options																	Put Options																	
Exerise Price	July 2015							August 2015							Other Months		July 2015							August 2015							Other Months		Exerise Price	
	Open price	Price max	Price min	Last price	Closing price	Volume	Open Interest	Open price	Price max	Price min	Last price	Closing price	Volume	Open Interest	Volume	Open Interest	Open price	Price max	Price min	Last price	Closing price	Volume	Open Interest	Open price	Price max	Price min	Last price	Closing price	Volume	Open Interest	Volume	Open Interest		
160	0.00	0.00	0.00	-	54.00	-	-	-	-	-	-	-	-	-	-	-	0.00	0.00	0.00	-	2.40	-	150	-	-	-	-	-	-	-	-	-	160	
170	57.50	57.50	57.50	57.50	57.50	38	38	-	-	-	-	-	-	-	-	-	57.50	57.50	0.00	-	4.10	-	500	-	-	-	-	-	-	-	-	-	170	
185	-	-	-	-	-	-	-	-	-	-	-	-	-	-	-	-	-	-	-	-	-	-	-	-	-	-	-	-	-	-	-	-	185	
190	0.00	0.00	0.00	-	31.50	-	-	-	-	-	-	-	-	-	-	-	0.00	0.00	5.00	5.00	5.00	102	109	-	-	-	-	-	-	-	-	-	190	
190	0.00	0.00	0.00	-	31.50	-	-	-	-	-	-	-	-	-	-	-	0.00	0.00	5.00	5.00	5.00	102	109	-	-	-	-	-	-	-	-	-	190	
195	0.00	0.00	0.00	-	28.50	-	-	0.00	0.00	0.00	-	37.25	-	-	-	-	0.00	0.00	0.00	-	11.75	-	2	0.00	0.00	0.00	-	20.75	-	-	-	-	-	195
195	0.00	0.00	0.00	-	28.50	-	-	0.00	0.00	0.00	-	37.25	-	-	-	-	0.00	0.00	0.00	-	11.75	-	2	0.00	0.00	0.00	-	20.75	-	-	-	-	-	195
200	0.00	0.00	0.00	-	25.50	-	2	0.00	0.00	0.00	-	34.75	-	-	-	-	0.00	0.00	7.10	10.00	10.00	10	30	0.00	0.00	0.00	-	23.25	-	-	-	-	-	200
200	0.00	0.00	0.00	-	25.50	-	2	0.00	0.00	0.00	-	34.75	-	-	-	-	0.00	0.00	7.10	10.00	10.00	10	30	0.00	0.00	0.00	-	23.25	-	-	-	-	-	200
205	30.00	30.00	30.00	30.00	30.00	10	4	0.00	0.00	0.00	-	32.25	-	-	-	-	30.00	30.00	0.00	-	16.25	-	-	0.00	0.00	0.00	-	25.75	-	-	-	-	-	205
205	30.00	30.00	30.00	30.00	30.00	10	4	0.00	0.00	0.00	-	32.25	-	-	-	-	30.00	30.00	0.00	-	16.25	-	-	0.00	0.00	0.00	-	25.75	-	-	-	-	-	205
210	0.00	0.00	0.00	-	20.50	-	77	0.00	0.00	0.00	-	30.00	-	-	-	-	0.00	0.00	13.00	13.00	13.00	25	124	0.00	0.00	0.00	-	28.50	-	-	-	-	-	210
210	0.00	0.00	0.00	-	20.50	-	77	0.00	0.00	0.00	-	30.00	-	-	-	-	0.00	0.00	13.00	13.00	13.00	25	124	0.00	0.00	0.00	-	28.50	-	-	-	-	-	210
215	24.00	24.00	20.50	20.50	20.50	3	74	0.00	0.00	0.00	-	28.00	-	-	-	-	24.00	24.00	10.25	13.50	13.50	18	38	26.75	27.25	26.75	26.75	26.75	70	70	-	-	-	215
215	24.00	24.00	20.50	20.50	20.50	3	74	0.00	0.00	0.00	-	28.00	-	-	-	-	24.00	24.00	10.25	13.50	13.50	18	38	26.75	27.25	26.75	26.75	26.75	70	70	-	-	-	215
220	24.00	26.25	17.00	23.00	23.00	507	495	0.00	0.00	0.00	-	26.00	-	-	-	-	24.00	26.25	18.00	21.00	21.00	15	35	30.00	30.00	30.00	30.00	30.00	20	20	-	-	-	220
220	24.00	26.25	17.00	23.00	23.00	507	495	0.00	0.00	0.00	-	26.00	-	-	-	-	24.00	26.25	18.00	21.00	21.00	15	35	30.00	30.00	30.00	30.00	30.00	20	20	-	-	-	220
225	16.00	16.00	14.00	14.00	14.00	2	153	0.00	0.00	0.00	-	24.00	-	-	-	-	16.00	16.00	0.00	-	27.50	-	-	32.75	32.75	32.75	32.75	32.75	20	20	-	-	-	225
225	16.00	16.00	14.00	14.00	14.00	2	153	0.00	0.00	0.00	-	24.00	-	-	-	-	16.00	16.00	0.00	-	27.50	-	-	32.75	32.75	32.75	32.75	32.75	20	20	-	-	-	225
230	16.50	19.75	16.50	16.50	16.50	40	169	0.00	0.00	0.00	-	22.25	-	-	-	-	16.50	19.75	23.00	23.00	23.00	1	32	0.00	0.00	0.00	-	40.75	-	-	-	-	-	230
230	16.50	19.75	16.50	16.50	16.50	40	169	0.00	0.00	0.00	-	22.25	-	-	-	-	16.50	19.75	23.00	23.00	23.00	1	32	0.00	0.00	0.00	-	40.75	-	-	-	-	-	230
235	17.00	18.00	17.00	18.00	18.00	25	26	0.00	0.00	0.00	-	20.75	-	-	-	-	17.00	18.00	25.50	29.00	29.00	2	22	0.00	0.00	0.00	-	44.00	-	-	-	-	-	235
235	17.00	18.00	17.00	18.00	18.00	25	26	0.00	0.00	0.00	-	20.75	-	-	-	-	17.00	18.00	25.50	29.00	29.00	2	22	0.00	0.00	0.00	-	44.00	-	-	-	-	-	235
240	0.00	0.00	0.00	-	9.80	-	26	0.00	0.00	0.00	-	19.00	-	-	-	-	0.00	0.00	0.00	-	38.00	-	40	0.00	0.00	0.00	-	47.50	-	-	-	-	-	240
245	0.00	0.00	0.00	-	8.60	-	-	0.00	0.00	0.00	-	17.75	-	-	-	-	0.00	0.00	0.00	-	41.75	-	120	0.00	0.00	0.00	-	51.00	-	-	-	-	-	245
250	9.00	11.00	9.00	10.00	10.00	68	131	0.00	0.00	0.00	-	16.25	-	-	-	-	9.00	11.00	0.00	-	45.75	-	60	0.00	0.00	0.00	-	54.50	-	-	-	-	-	250
255	0.00	0.00	0.00	-	6.60	-	5	0.00	0.00	0.00	-	15.00	-	-	-	-	0.00	0.00	0.00	-	49.75	-	135	0.00	0.00	0.00	-	58.50	-	-	-	-	-	255
260	0.00	0.00	0.00	-	5.70	-	154	0.00	0.00	0.00	-	14.00	-	-	-	-	0.00	0.00	0.00	-	54.00	-	-	0.00	0.00	0.00	-	62.50	-	-	-	-	-	260
265	0.00	0.00	0.00	-	5.00	-	301	0.00	0.00	0.00	-	13.00	-	-	-	-	0.00	0.00	0.00	-	58.00	-	-	0.00	0.00	0.00	-	66.00	-	-	-	-	-	265
270	0.00	0.00	0.00	-	4.30	-	200	0.00	0.00	0.00	-	12.00	-	-	-	-	0.00	0.00	0.00	-	62.50	-	-	0.00	0.00	0.00	-	70.00	-	-	-	-	-	270
275	-	-	-	-	-	-	-	-	-	-	-	-	-	-	-	-	-	-	-	-	-	-	-	-	-	-	-	-	-	-	-	-	275	
280	-	-	-	-	-	-	-	-	-	-	-	-	-	-	-	-	-	-	-	-	-	-	-	-	-	-	-	-	-	-	-	-	280	
285	-	-	-	-	-	-	-	-	-	-	-	-	-	-	-	-	-	-	-	-	-	-	-	-	-	-	-	-	-	-	-	-	285	
290	-	-	-	-	-	-	-	-	-	-	-	-	-	-	-	-	-	-	-	-	-	-	-	-	-	-	-	-	-	-	-	-	290	
295	-	-	-	-	-	-	-	-	-	-	-	-	-	-	-	-	-	-	-	-	-	-	-	-	-	-	-	-	-	-	-	-	295	
300	0.00	0.00	0.00	-	1.80	-	-	0.00	0.00	0.00	-	7.30	-	-	-	-	0.00	0.00	0.00	-	90.00	-	-	0.00	0.00	0.00	-	95.50	-	-	-	-	-	300

FTSE/Athex Large Cap

(Trade Unit: 1 Index Point x 5€ - Exercise Style: European, Cash Settlement)

Call Options																	Put Options																	
Exercise Price	July 2015							August 2015							Other Months		July 2015							August 2015							Other Months		Exercise Price	
	Open price	Price max	Price min	Last price	Closing price	Volume	Open Interest	Open price	Price max	Price min	Last price	Closing price	Volume	Open Interest	Volume	Open Interest	Open price	Price max	Price min	Last price	Closing price	Volume	Open Interest	Open price	Price max	Price min	Last price	Closing price	Volume	Open Interest	Volume	Open Interest		
305	-	-	-	-	-	-	-	-	-	-	-	-	-	-			-	-	-	-	-	-	-	-	-	-	-	-	-	-	-	305		
310	-	-	-	-	-	-	-	-	-	-	-	-	-	-			-	-	-	-	-	-	-	-	-	-	-	-	-	-	-	310		
315	-	-	-	-	-	-	-	-	-	-	-	-	-	-			-	-	-	-	-	-	-	-	-	-	-	-	-	-	-	315		
320	-	-	-	-	-	-	-	-	-	-	-	-	-	-			-	-	-	-	-	-	-	-	-	-	-	-	-	-	-	320		
325	-	-	-	-	-	-	-	-	-	-	-	-	-	-			-	-	-	-	-	-	-	-	-	-	-	-	-	-	-	325		
330	-	-	-	-	-	-	-	-	-	-	-	-	-	-			-	-	-	-	-	-	-	-	-	-	-	-	-	-	-	330		
335	-	-	-	-	-	-	-	-	-	-	-	-	-	-			-	-	-	-	-	-	-	-	-	-	-	-	-	-	-	335		
340	-	-	-	-	-	-	-	-	-	-	-	-	-	-			-	-	-	-	-	-	-	-	-	-	-	-	-	-	-	340		
345	-	-	-	-	-	-	-	-	-	-	-	-	-	-			-	-	-	-	-	-	-	-	-	-	-	-	-	-	-	345		
350	0.00	0.00	0.00	-	0.36	-	-	0.00	0.00	0.00	-	3.20	-	-			0.00	0.00	0.00	-	138.00	-	-	0.00	0.00	0.00	-	141.00	-	-	-	-	350	
355	-	-	-	-	-	-	-	-	-	-	-	-	-	-			-	-	-	-	-	-	-	-	-	-	-	-	-	-	-	355		
360	-	-	-	-	-	-	-	-	-	-	-	-	-	-			-	-	-	-	-	-	-	-	-	-	-	-	-	-	-	360		
365	-	-	-	-	-	-	-	-	-	-	-	-	-	-			-	-	-	-	-	-	-	-	-	-	-	-	-	-	-	365		
370	-	-	-	-	-	-	-	-	-	-	-	-	-	-			-	-	-	-	-	-	-	-	-	-	-	-	-	-	-	370		
375	-	-	-	-	-	-	-	-	-	-	-	-	-	-			-	-	-	-	-	-	-	-	-	-	-	-	-	-	-	375		
380	-	-	-	-	-	-	-	-	-	-	-	-	-	-			-	-	-	-	-	-	-	-	-	-	-	-	-	-	-	380		
385	-	-	-	-	-	-	-	-	-	-	-	-	-	-			-	-	-	-	-	-	-	-	-	-	-	-	-	-	-	385		
390	-	-	-	-	-	-	-	-	-	-	-	-	-	-			-	-	-	-	-	-	-	-	-	-	-	-	-	-	-	390		
395	-	-	-	-	-	-	-	-	-	-	-	-	-	-			-	-	-	-	-	-	-	-	-	-	-	-	-	-	-	395		
400	-	-	-	-	-	-	-	-	-	-	-	-	-	-			-	-	-	-	-	-	-	-	-	-	-	-	-	-	-	400		
450	-	-	-	-	-	-	-	-	-	-	-	-	-	-			-	-	-	-	-	-	-	-	-	-	-	-	-	-	-	450		
Totals:						693	1,855							0	0	0	0	173						1,397							110	110	20	20
Number of Trades:						55							0	0	0	22						5	1											

ALPHA BANK (CR)

(Contract Size: 100 Securities, Exercise Style: American, Physical Delivery)

Call Options																	Put Options																
July 2015							August 2015							Other Months			July 2015							August 2015							Other Months		
Exerise Price	Open price	Price max	Price min	Last price	Closing price	Volume	Open Interest	Open price	Price max	Price min	Last price	Closing price	Volume	Open Interest	Volume	Open Interest	Open price	Price max	Price min	Last price	Closing price	Volume	Open Interest	Open price	Price max	Price min	Last price	Closing price	Volume	Open Interest	Volume	Open Interest	Exerise Price
0.100	0.000	0.000	0.000		0.106	-	-	0.000	0.000	0.000		0.107	-	-			0.000	0.000	0.000		0.001	-	-	0.000	0.000	0.000		0.001	-	-			0.001
0.100	0.000	0.000	0.000		0.106	-	-	0.000	0.000	0.000		0.107	-	-			0.000	0.000	0.000		0.001	-	-	0.000	0.000	0.000		0.001	-	-			0.001
0.200	0.000	0.000	0.000		0.025	-	-	0.000	0.000	0.000		0.035	-	-			0.000	0.000	0.000		0.018	-	-	0.000	0.000	0.000		0.028	-	-			0.002
0.200	0.000	0.000	0.000		0.025	-	-	0.000	0.000	0.000		0.035	-	-			0.000	0.000	0.000		0.018	-	-	0.000	0.000	0.000		0.028	-	-			0.002
0.300	0.000	0.000	0.000		0.002	-	-	0.000	0.000	0.000		0.009	-	-			0.000	0.000	0.000		0.096	-	-	0.000	0.000	0.000		0.102	-	-			0.003
0.300	0.000	0.000	0.000		0.002	-	-	0.000	0.000	0.000		0.009	-	-			0.000	0.000	0.000		0.096	-	-	0.000	0.000	0.000		0.102	-	-			0.003
0.400	0.000	0.000	0.000		0.001	-	-	0.000	0.000	0.000		0.002	-	-			0.000	0.000	0.000		0.194	-	-	0.000	0.000	0.000		0.195	-	-			0.004
0.400	0.000	0.000	0.000		0.001	-	-	0.000	0.000	0.000		0.002	-	-			0.000	0.000	0.000		0.194	-	-	0.000	0.000	0.000		0.195	-	-			0.004
0.500	0.000	0.000	0.000		0.004	-	-	0.000	0.000	0.000		0.001	-	-			0.000	0.000	0.000		0.294	-	-	0.000	0.000	0.000		0.294	-	-			0.005
0.500	0.000	0.000	0.000		0.004	-	-	0.000	0.000	0.000		0.001	-	-			0.000	0.000	0.000		0.294	-	-	0.000	0.000	0.000		0.294	-	-			0.005
0.600	0.000	0.000	0.000		0.001	-	-	0.000	0.000	0.000		0.001	-	-			0.000	0.000	0.000		0.394	-	-	0.000	0.000	0.000		0.394	-	-			0.006
0.600	0.000	0.000	0.000		0.001	-	-	0.000	0.000	0.000		0.001	-	-			0.000	0.000	0.000		0.394	-	-	0.000	0.000	0.000		0.394	-	-			0.006
0.700						-	-	0.000	0.000	0.000		0.003	-	-								-	-	0.000	0.000	0.000		0.494	-	-			0.007
0.800						-	-						-	-								-	-					-	-			0.008	
0.900						-	-						-	-								-	-					-	-			0.009	
1.000						-	-						-	-								-	-					-	-			0.010	
Totals:						0	0							0	0	0	0							0	0							0	0
Number of Trades:						0								0		0								0.00								0	0

Call Options																	Put Options																			
July 2015								August 2015								Other Months		July 2015								August 2015								Other Months		
Exercise Price	Open price	Price max	Price min	Last price	Closing price	Volume	Open Interest	Open price	Price max	Price min	Last price	Closing price	Volume	Open Interest	Volume	Open Interest	Open price	Price max	Price min	Last price	Closing price	Volume	Open Interest	Open price	Price max	Price min	Last price	Closing price	Volume	Open Interest	Volume	Open Interest	Exercise Price			
0.500						-	-							-	-							-	-						-	-			0.005			
0.600	0.000	0.000	0.000		0.287	-	-							-	-			0.000	0.000	0.000		0.006	-	-					-	-			0.006			
0.600	0.000	0.000	0.000		0.287	-	-							-	-			0.000	0.000	0.000		0.006	-	-					-	-			0.006			
0.700	0.000	0.000	0.000		0.202	-	-	0.000	0.000	0.000		0.234	-	-			0.000	0.000	0.000		0.021	-	-	0.000	0.000	0.000		0.052	-	-			0.007			
0.700	0.000	0.000	0.000		0.202	-	-	0.000	0.000	0.000		0.234	-	-			0.000	0.000	0.000		0.021	-	-	0.000	0.000	0.000		0.052	-	-			0.007			
0.800	0.000	0.000	0.000		0.134	-	-	0.000	0.000	0.000		0.176	-	-			0.000	0.000	0.000		0.053	-	-	0.000	0.000	0.000		0.093	-	-			0.008			
0.800	0.000	0.000	0.000		0.134	-	-	0.000	0.000	0.000		0.176	-	-			0.000	0.000	0.000		0.053	-	-	0.000	0.000	0.000		0.093	-	-			0.008			
0.900	0.000	0.000	0.000		0.084	-	-	0.000	0.000	0.000		0.130	-	-			0.000	0.000	0.000		0.103	-	-	0.000	0.000	0.000		0.148	-	-			0.009			
0.900	0.000	0.000	0.000		0.084	-	-	0.000	0.000	0.000		0.130	-	-			0.000	0.000	0.000		0.103	-	-	0.000	0.000	0.000		0.148	-	-			0.009			
1.000	0.000	0.000	0.000		0.050	-	-	0.000	0.000	0.000		0.095	-	-			0.000	0.000	0.000		0.169	-	-	0.000	0.000	0.000		0.212	-	-			0.010			
1.000	0.000	0.000	0.000		0.050	-	-	0.000	0.000	0.000		0.095	-	-			0.000	0.000	0.000		0.169	-	-	0.000	0.000	0.000		0.212	-	-			0.010			
1.100	0.000	0.000	0.000		0.028	-	-	0.000	0.000	0.000		0.068	-	-			0.000	0.000	0.000		0.247	-	-	0.000	0.000	0.000		0.285	-	-			0.011			
1.100	0.000	0.000	0.000		0.028	-	-	0.000	0.000	0.000		0.068	-	-			0.000	0.000	0.000		0.247	-	-	0.000	0.000	0.000		0.285	-	-			0.011			
1.200	0.000	0.000	0.000		0.016	-	-	0.000	0.000	0.000		0.050	-	12			0.000	0.000	0.000		0.334	-	-	0.000	0.000	0.000		0.366	-	-			0.012			
1.200	0.000	0.000	0.000		0.016	-	-	0.000	0.000	0.000		0.050	-	12			0.000	0.000	0.000		0.334	-	-	0.000	0.000	0.000		0.366	-	-			0.012			
1.300	0.000	0.000	0.000		0.008	-	-	0.000	0.000	0.000		0.036	-	-			0.000	0.000	0.000		0.427	-	-	0.000	0.000	0.000		0.453	-	-			0.013			
1.300	0.000	0.000	0.000		0.008	-	-	0.000	0.000	0.000		0.036	-	-			0.000	0.000	0.000		0.427	-	-	0.000	0.000	0.000		0.453	-	-			0.013			
1.400	0.000	0.000	0.000		0.004	-	-	0.000	0.000	0.000		0.025	-	-			0.000	0.000	0.000		0.523	-	-	0.000	0.000	0.000		0.542	-	-			0.014			
1.500	0.000	0.000	0.000		0.002	-	-	0.000	0.000	0.000		0.018	-	-			0.000	0.000	0.000		0.621	-	-	0.000	0.000	0.000		0.635	-	-			0.015			
1.600						-	-	0.000	0.000	0.000		0.013	-	-								-	-	0.000	0.000	0.000		0.730	-	-			0.016			
1.700						-	-							-	-							-	-					-	-			0.017				
1.800						-	-							-	-							-	-					-	-			0.018				
1.900						-	-							-	-							-	-					-	-			0.019				
2.000						-	-							-	-							-	-					-	-			0.020				
2.200						-	-							-	-							-	-					-	-			0.022				
2.400						-	-							-	-							-	-					-	-			0.024				
2.600						-	-							-	-							-	-					-	-			0.026				
2.800						-	-							-	-							-	-					-	-			0.028				
3.000						-	-							-	-							-	-					-	-			0.030				
3.200						-	-							-	-							-	-					-	-			0.032				
Totals:						0	0						0	12	0	0						0	0					0	0	0	0					
Number of Trades:						0							0		0							0.00					0		0							

OPAP (CR)

(Contract Size: 0 Securities, Exercise Style: American, Physical Delivery)

Call Options																Put Options																				
July 2015								August 2015								Other Months		July 2015								August 2015								Other Months		
Exerise Price	Open price	Price max	Price min	Last price	Closing price	Volume	Open Interest	Open price	Price max	Price min	Last price	Closing price	Volume	Open Interest	Volume	Open Interest	Open price	Price max	Price min	Last price	Closing price	Volume	Open Interest	Open price	Price max	Price min	Last price	Closing price	Volume	Open Interest	Volume	Open Interest	Exerise Price			
5.600						-	-							-	-							-	-					-	-			0.056				
6.000	0.000	0.000	0.000		1.28	-	-	0.000	0.000	0.000		1.43	-	-			0.000	0.000	0.000		0.070	-	-	0.000	0.000	0.000		0.211	-	-		0.060				
6.000	0.000	0.000	0.000		1.28	-	-	0.000	0.000	0.000		1.43	-	-			0.000	0.000	0.000		0.070	-	-	0.000	0.000	0.000		0.211	-	-		0.060				
6.400	0.000	0.000	0.000		0.963	-	-	0.000	0.000	0.000		1.16	-	-			0.000	0.000	0.000		0.153	-	-	0.000	0.000	0.000		0.335	-	-		0.064				
6.400	0.000	0.000	0.000		0.963	-	-	0.000	0.000	0.000		1.16	-	-			0.000	0.000	0.000		0.153	-	-	0.000	0.000	0.000		0.335	-	-		0.064				
6.800	0.000	0.000	0.000		0.692	-	-	0.000	0.000	0.000		0.918	-	-			0.000	0.000	0.000		0.282	-	-	0.000	0.000	0.000		0.495	-	-		0.068				
6.800	0.000	0.000	0.000		0.692	-	-	0.000	0.000	0.000		0.918	-	-			0.000	0.000	0.000		0.282	-	-	0.000	0.000	0.000		0.495	-	-		0.068				
7.200	0.000	0.000	0.000		0.474	-	-	0.000	0.000	0.000		0.713	-	-			0.000	0.000	0.000		0.463	-	-	0.000	0.000	0.000		0.690	-	-		0.072				
7.200	0.000	0.000	0.000		0.474	-	-	0.000	0.000	0.000		0.713	-	-			0.000	0.000	0.000		0.463	-	-	0.000	0.000	0.000		0.690	-	-		0.072				
7.600	0.000	0.000	0.000		0.314	-	-	0.000	0.000	0.000		0.554	-	-			0.000	0.000	0.000		0.704	-	-	0.000	0.000	0.000		0.929	-	-		0.076				
7.600	0.000	0.000	0.000		0.314	-	-	0.000	0.000	0.000		0.554	-	-			0.000	0.000	0.000		0.704	-	-	0.000	0.000	0.000		0.929	-	-		0.076				
8.000	0.000	0.000	0.000		0.200	-	-	0.000	0.000	0.000		0.423	-	-			0.000	0.000	0.000		0.989	-	-	0.000	0.000	0.000		1.20	-	-		0.080				
8.000	0.000	0.000	0.000		0.200	-	-	0.000	0.000	0.000		0.423	-	-			0.000	0.000	0.000		0.989	-	-	0.000	0.000	0.000		1.20	-	-		0.080				
8.400	0.000	0.000	0.000		0.122	-	-	0.000	0.000	0.000		0.315	-	-			0.000	0.000	0.000		1.31	-	-	0.000	0.000	0.000		1.49	-	-		0.084				
8.400	0.000	0.000	0.000		0.122	-	-	0.000	0.000	0.000		0.315	-	-			0.000	0.000	0.000		1.31	-	-	0.000	0.000	0.000		1.49	-	-		0.084				
8.800	0.000	0.000	0.000		0.071	-	-	0.000	0.000	0.000		0.233	-	-			0.000	0.000	0.000		1.66	-	-	0.000	0.000	0.000		1.81	-	-		0.088				
8.800	0.000	0.000	0.000		0.071	-	-	0.000	0.000	0.000		0.233	-	-			0.000	0.000	0.000		1.66	-	-	0.000	0.000	0.000		1.81	-	-		0.088				
9.200	0.000	0.000	0.000		0.040	-	-	0.000	0.000	0.000		0.173	-	-			0.000	0.000	0.000		2.03	-	-	0.000	0.000	0.000		2.15	-	-		0.092				
9.600	0.000	0.000	0.000		0.022	-	-	0.000	0.000	0.000		0.124	-	-			0.000	0.000	0.000		2.41	-	-	0.000	0.000	0.000		2.50	-	-		0.096				
10.000						-	-	0.000	0.000	0.000		0.091	-	-								-	-	0.000	0.000	0.000		2.87	-	-		0.100				
11.000						-	-						-	-								-	-					-	-			0.110				
12.000						-	-						-	-								-	-					-	-			0.120				
13.000						-	-						-	-								-	-					-	-			0.130				
14.000						-	-						-	-								-	-					-	-			0.140				
15.000						-	-						-	-								-	-					-	-			0.150				
16.000						-	-						-	-								-	-					-	-			0.160				
Totals:						0	0						0	0	0	0						0	0					0	0	0	0					
Number of Trades:						0							0		0							0.00					0		0							

OTE (CR)

(Contract Size: 100 Securities, Exercise Style: American, Physical Delivery)

Call Options																Put Options																				
July 2015								August 2015								Other Months		July 2015								August 2015								Other Months		
Exerise Price	Open price	Price max	Price min	Last price	Closing price	Volume	Open Interest	Open price	Price max	Price min	Last price	Closing price	Volume	Open Interest	Volume	Open Interest	Open price	Price max	Price min	Last price	Closing price	Volume	Open Interest	Open price	Price max	Price min	Last price	Closing price	Volume	Open Interest	Volume	Open Interest	Exerise Price			
5.600	0.000	0.000	0.000		1.93	-	-	0.000	0.000	0.000		2.02	-	-			0.000	0.000	0.000		0.020	-	-	0.000	0.000	0.000		0.104	-	-			0.056			
6.000	0.000	0.000	0.000		1.56	-	-	0.000	0.000	0.000		1.70	-	-			0.000	0.000	0.000		0.053	-	-	0.000	0.000	0.000		0.180	-	-			0.060			
6.000	0.000	0.000	0.000		1.56	-	-	0.000	0.000	0.000		1.70	-	-			0.000	0.000	0.000		0.053	-	-	0.000	0.000	0.000		0.180	-	-			0.060			
6.400	0.000	0.000	0.000		1.22	-	-	0.000	0.000	0.000		1.41	-	-			0.000	0.000	0.000		0.114	-	-	0.000	0.000	0.000		0.289	-	-			0.064			
6.400	0.000	0.000	0.000		1.22	-	-	0.000	0.000	0.000		1.41	-	-			0.000	0.000	0.000		0.114	-	-	0.000	0.000	0.000		0.289	-	-			0.064			
6.800	0.000	0.000	0.000		0.924	-	-	0.000	0.000	0.000		1.16	-	-			0.000	0.000	0.000		0.214	-	-	0.000	0.000	0.000		0.433	-	-			0.068			
6.800	0.000	0.000	0.000		0.924	-	-	0.000	0.000	0.000		1.16	-	-			0.000	0.000	0.000		0.214	-	-	0.000	0.000	0.000		0.433	-	-			0.068			
7.200	0.000	0.000	0.000		0.677	-	20	0.000	0.000	0.000		0.934	-	-			0.000	0.000	0.000		0.366	-	-	0.000	0.000	0.000		0.610	-	-			0.072			
7.200	0.000	0.000	0.000		0.677	-	20	0.000	0.000	0.000		0.934	-	-			0.000	0.000	0.000		0.366	-	-	0.000	0.000	0.000		0.610	-	-			0.072			
7.600	0.000	0.000	0.000		0.478	-	60	0.000	0.000	0.000		0.742	-	-			0.000	0.000	0.000		0.567	-	-	0.000	0.000	0.000		0.817	-	-			0.076			
7.600	0.000	0.000	0.000		0.478	-	60	0.000	0.000	0.000		0.742	-	-			0.000	0.000	0.000		0.567	-	-	0.000	0.000	0.000		0.817	-	-			0.076			
8.000	0.000	0.000	0.000		0.326	-	-	0.000	0.000	0.000		0.583	-	-			0.000	0.000	0.000		0.815	-	-	0.000	0.000	0.000		1.06	-	-			0.080			
8.000	0.000	0.000	0.000		0.326	-	-	0.000	0.000	0.000		0.583	-	-			0.000	0.000	0.000		0.815	-	-	0.000	0.000	0.000		1.06	-	-			0.080			
8.400	0.000	0.000	0.000		0.215	-	-	0.000	0.000	0.000		0.458	-	-			0.000	0.000	0.000		1.10	-	-	0.000	0.000	0.000		1.33	-	-			0.084			
8.400	0.000	0.000	0.000		0.215	-	-	0.000	0.000	0.000		0.458	-	-			0.000	0.000	0.000		1.10	-	-	0.000	0.000	0.000		1.33	-	-			0.084			
8.800	0.000	0.000	0.000		0.137	-	-	0.000	0.000	0.000		0.351	-	-			0.000	0.000	0.000		1.43	-	-	0.000	0.000	0.000		1.63	-	-			0.088			
8.800	0.000	0.000	0.000		0.137	-	-	0.000	0.000	0.000		0.351	-	-			0.000	0.000	0.000		1.43	-	-	0.000	0.000	0.000		1.63	-	-			0.088			
9.200	0.000	0.000	0.000		0.084	-	-	0.000	0.000	0.000		0.269	-	-			0.000	0.000	0.000		1.77	-	-	0.000	0.000	0.000		1.94	-	-			0.092			
9.200	0.000	0.000	0.000		0.084	-	-	0.000	0.000	0.000		0.269	-	-			0.000	0.000	0.000		1.77	-	-	0.000	0.000	0.000		1.94	-	-			0.092			
9.600	0.000	0.000	0.000		0.050	-	-	0.000	0.000	0.000		0.206	-	-			0.000	0.000	0.000		2.14	-	-	0.000	0.000	0.000		2.28	-	-			0.096			
10.000						-	-	0.000	0.000	0.000		0.152	-	-								-	-	0.000	0.000	0.000		2.63	-	-			0.100			
11.000						-	-	0.000	0.000	0.000		0.074	-	-								-	-	0.000	0.000	0.000		3.55	-	-			0.110			
12.000						-	-						-	-								-	-					-	-			0.120				
13.000						-	-						-	-								-	-					-	-			0.130				
14.000						-	-						-	-								-	-					-	-			0.140				
15.000						-	-						-	-								-	-					-	-			0.150				
16.000						-	-						-	-								-	-					-	-			0.160				
Totals:							0	80							0	0	0	0							0	0							0	0		
Number of Trades:							0								0		0								0.00								0	0		

PIRAEUS BANK (CR)

(Contract Size: 100 Securities, Exercise Style: American, Physical Delivery)

Call Options																Put Options																				
July 2015								August 2015								Other Months		July 2015								August 2015								Other Months		
Exerise Price	Open price	Price max	Price min	Last price	Closing price	Volume	Open Interest	Open price	Price max	Price min	Last price	Closing price	Volume	Open Interest	Volume	Open Interest	Open price	Price max	Price min	Last price	Closing price	Volume	Open Interest	Open price	Price max	Price min	Last price	Closing price	Volume	Open Interest	Volume	Open Interest	Exerise Price			
0.100	0.000	0.000	0.000		0.226	-	-	0.000	0.000	0.000		0.226	-	-			0.000	0.000	0.000		0.001	-	-	0.000	0.000	0.000		0.001	-	-			0.001			
0.100	0.000	0.000	0.000		0.226	-	-	0.000	0.000	0.000		0.226	-	-			0.000	0.000	0.000		0.001	-	-	0.000	0.000	0.000		0.001	-	-			0.001			
0.200	0.000	0.000	0.000		0.127	-	-	0.000	0.000	0.000		0.132	-	-			0.000	0.000	0.000		0.001	-	-	0.000	0.000	0.000		0.005	-	-			0.002			
0.200	0.000	0.000	0.000		0.127	-	-	0.000	0.000	0.000		0.132	-	-			0.000	0.000	0.000		0.001	-	-	0.000	0.000	0.000		0.005	-	-			0.002			
0.300	0.000	0.000	0.000		0.047	-	150	0.000	0.000	0.000		0.064	-	-			0.000	0.000	0.000		0.021	-	-	0.000	0.000	0.000		0.037	-	-			0.003			
0.300	0.000	0.000	0.000		0.047	-	150	0.000	0.000	0.000		0.064	-	-			0.000	0.000	0.000		0.021	-	-	0.000	0.000	0.000		0.037	-	-			0.003			
0.400	0.000	0.000	0.000		0.012	-	-	0.000	0.000	0.000		0.027	-	-			0.000	0.000	0.000		0.085	-	300	0.000	0.000	0.000		0.100	-	-			0.004			
0.400	0.000	0.000	0.000		0.012	-	-	0.000	0.000	0.000		0.027	-	-			0.000	0.000	0.000		0.085	-	300	0.000	0.000	0.000		0.100	-	-			0.004			
0.500	0.000	0.000	0.000		0.002	-	-	0.000	0.000	0.000		0.011	-	-			0.000	0.000	0.000		0.176	-	-	0.000	0.000	0.000		0.184	-	-			0.005			
0.500	0.000	0.000	0.000		0.002	-	-	0.000	0.000	0.000		0.011	-	-			0.000	0.000	0.000		0.176	-	-	0.000	0.000	0.000		0.184	-	-			0.005			
0.600	0.000	0.000	0.000		0.002	-	-	0.000	0.000	0.000		0.005	-	-			0.000	0.000	0.000		0.274	-	-	0.000	0.000	0.000		0.277	-	-			0.006			
0.600	0.000	0.000	0.000		0.002	-	-	0.000	0.000	0.000		0.005	-	-			0.000	0.000	0.000		0.274	-	-	0.000	0.000	0.000		0.277	-	-			0.006			
0.700	0.000	0.000	0.000		0.008	-	-	0.000	0.000	0.000		0.002	-	-			0.000	0.000	0.000		0.374	-	-	0.000	0.000	0.000		0.375	-	-			0.007			
0.700	0.000	0.000	0.000		0.008	-	-	0.000	0.000	0.000		0.002	-	-			0.000	0.000	0.000		0.374	-	-	0.000	0.000	0.000		0.375	-	-			0.007			
0.800						-	-	0.000	0.000	0.000		0.001	-	-								-	-	0.000	0.000	0.000		0.474	-	-			0.008			
0.900						-	-						-	-								-	-					-	-			0.009				
1.000						-	-						-	-								-	-					-	-			0.010				
1.100						-	-						-	-								-	-					-	-			0.011				
1.200						-	-						-	-								-	-					-	-			0.012				
1.300						-	-						-	-								-	-					-	-			0.013				
1.400						-	-						-	-								-	-					-	-			0.014				
1.500						-	-						-	-								-	-					-	-			0.015				
1.600						-	-						-	-								-	-					-	-			0.016				
1.700						-	-						-	-								-	-					-	-			0.017				
1.800						-	-						-	-								-	-					-	-			0.018				
Totals:						0	150						0	0	0	0						0	300					0	0	0	0					
Number of Trades:						0							0		0							0.00					0		0							

PPC (CR)

(Contract Size: 0 Securities, Exercise Style: American, Physical Delivery)

Call Options																	Put Options																			
July 2015								August 2015								Other Months		July 2015								August 2015								Other Months		Exercise Price
Open price	Price max	Price min	Last price	Closing price	Volume	Open Interest		Open price	Price max	Price min	Last price	Closing price	Volume	Open Interest	Volume	Open Interest	Open price	Price max	Price min	Last price	Closing price	Volume	Open Interest	Open price	Price max	Price min	Last price	Closing price	Volume	Open Interest	Volume	Open Interest				
3.000					-	-							-	-								-	-						-	-			0.030			
3.200	0.000	0.000	0.000	0.712	-	-		0.000	0.000	0.000		0.803	-	-			0.000	0.000	0.000		0.067	-	-		0.000	0.000	0.000	0.178	-	-			0.032			
3.200	0.000	0.000	0.000	0.712	-	-		0.000	0.000	0.000		0.803	-	-			0.000	0.000	0.000		0.067	-	-		0.000	0.000	0.000	0.178	-	-			0.032			
3.400	0.000	0.000	0.000	0.563	-	-		0.000	0.000	0.000		0.675	-	-			0.000	0.000	0.000		0.118	-	-		0.000	0.000	0.000	0.251	-	-			0.034			
3.400	0.000	0.000	0.000	0.563	-	-		0.000	0.000	0.000		0.675	-	-			0.000	0.000	0.000		0.118	-	-		0.000	0.000	0.000	0.251	-	-			0.034			
3.600	0.000	0.000	0.000	0.434	-	-		0.000	0.000	0.000		0.563	-	-			0.000	0.000	0.000		0.189	-	-		0.000	0.000	0.000	0.340	-	-			0.036			
3.600	0.000	0.000	0.000	0.434	-	-		0.000	0.000	0.000		0.563	-	-			0.000	0.000	0.000		0.189	-	-		0.000	0.000	0.000	0.340	-	-			0.036			
3.800	0.000	0.000	0.000	0.327	-	-		0.000	0.000	0.000		0.466	-	-			0.000	0.000	0.000		0.281	-	-		0.000	0.000	0.000	0.443	-	-			0.038			
3.800	0.000	0.000	0.000	0.327	-	-		0.000	0.000	0.000		0.466	-	-			0.000	0.000	0.000		0.281	-	-		0.000	0.000	0.000	0.443	-	-			0.038			
4.000	0.000	0.000	0.000	0.241	-	10		0.000	0.000	0.000		0.383	-	-			0.000	0.000	0.000		0.395	-	-		0.000	0.000	0.000	0.560	-	-			0.040			
4.000	0.000	0.000	0.000	0.241	-	10		0.000	0.000	0.000		0.383	-	-			0.000	0.000	0.000		0.395	-	-		0.000	0.000	0.000	0.560	-	-			0.040			
4.400	0.000	0.000	0.000	0.123	-	-		0.000	0.000	0.000		0.254	-	-			0.000	0.000	0.000		0.677	-	-		0.000	0.000	0.000	0.830	-	-			0.044			
4.400	0.000	0.000	0.000	0.123	-	-		0.000	0.000	0.000		0.254	-	-			0.000	0.000	0.000		0.677	-	-		0.000	0.000	0.000	0.830	-	-			0.044			
4.800	0.000	0.000	0.000	0.056	-	-		0.000	0.000	0.000		0.165	-	-			0.000	0.000	0.000		1.01	-	-		0.000	0.000	0.000	1.14	-	-			0.048			
4.800	0.000	0.000	0.000	0.056	-	-		0.000	0.000	0.000		0.165	-	-			0.000	0.000	0.000		1.01	-	-		0.000	0.000	0.000	1.14	-	-			0.048			
5.200	0.000	0.000	0.000	0.025	-	-		0.000	0.000	0.000		0.105	-	-			0.000	0.000	0.000		1.38	-	-		0.000	0.000	0.000	1.48	-	-			0.052			
5.200	0.000	0.000	0.000	0.025	-	-		0.000	0.000	0.000		0.105	-	-			0.000	0.000	0.000		1.38	-	-		0.000	0.000	0.000	1.48	-	-			0.052			
5.600	0.000	0.000	0.000	0.011	-	-		0.000	0.000	0.000		0.066	-	-			0.000	0.000	0.000		1.77	-	-		0.000	0.000	0.000	1.84	-	-			0.056			
6.000	0.000	0.000	0.000	0.004	-	-		0.000	0.000	0.000		0.041	-	-			0.000	0.000	0.000		2.16	-	-		0.000	0.000	0.000	2.22	-	-			0.060			
6.400	0.000	0.000	0.000	0.001	-	-		0.000	0.000	0.000		0.026	-	-			0.000	0.000	0.000		2.56	-	-		0.000	0.000	0.000	2.60	-	-			0.064			
6.800	0.000	0.000	0.000	0.001	-	-							-	-			0.000	0.000	0.000		2.96	-	-					-	-			0.068				
7.200					-	-							-	-								-	-					-	-			0.072				
7.600					-	-							-	-								-	-					-	-			0.076				
8.000					-	-							-	-								-	-					-	-			0.080				
8.400					-	-							-	-								-	-					-	-			0.084				
8.800					-	-							-	-								-	-					-	-			0.088				
9.200					-	-							-	-								-	-					-	-			0.092				
9.600					-	-							-	-								-	-					-	-			0.096				
10.000					-	-							-	-								-	-					-	-			0.100				
11.000					-	-							-	-								-	-					-	-			0.110				
12.000					-	-							-	-								-	-					-	-			0.120				
13.000					-	-							-	-								-	-					-	-			0.130				
14.000					-	-							-	-								-	-					-	-			0.140				
15.000					-	-							-	-								-	-					-	-			0.150				
Totals:						0	10						0	0		0	0					0	0					0	0		0	0				
Number of Trades:						0							0		0							0.00						0			0					

Lending Products	Underlying Title	Multilateral Transactions[1]					Bilateral Transactions[2]		Stock Borrowing through OTC (volume)[3]
		Open Interest[5]	Volume(Offered)	Average Weighted	Transactions volume	Average Weighted	Transactions Volume	Average Weighte	Transactions Volume
AEGNBOR	AEGEAN AIRLINES (CR)	1,248	18,131	5.31%	1,000	3.35%	---	---	3,777
ALPHABOR	ALPHA BANK (CR)	502,385	8,025,153	5.31%	---	---	---	---	66,830,739
AETFBOR	ALPHA ETF FTSE Athex Large Cap	---	---	---	---	---	---	---	---
ALMYBOR	ALUMIL (CR)	---	---	---	---	---	---	---	---
IATRBOR	ATHENS MEDICAL CENTER SA (CR)	---	40,980	5.31%	---	---	---	---	---
TATTBOR	ATTICA BANK S.A. (CR)	---	---	---	---	---	---	---	---
OTOELBOR	AUTOHELLAS SA (CR)	---	958	5.31%	---	---	---	---	---
BIOKABOR	BIOKARPET S.A.(CR)	---	---	---	---	---	---	---	---
EEEBOR	CC HBC AG (CR)	9,516	55	5.30%	55	5.30%	---	---	71,476
CENTRBOR	CENTRIC HOLDINGS (CR)	---	16,000	5.31%	---	---	---	---	---
SOLKBOR	CORINTH PIPEWORKS SA (CR)	2,331	135	6.67%	---	---	2,000	8.00%	---
PLAKRBOR	CRETE PLASTICS SA (CR)	---	---	---	---	---	---	---	---
DROMEBOB	DROMEAS SA (CR)	---	---	---	---	---	---	---	---
ELGEBOR	ELGEKA SA (CR)	---	---	---	---	---	---	---	---
ELLAKTORBOR	ELLAKTOR (CR)	9,019	66,895	5.31%	---	---	---	---	1,972
ELBABOR	ELVAL SA. (CB)	---	35,344	5.31%	---	---	---	---	---
EUROBBOR	EUROBANK ERGASIAS (CR)	691,838	835,013	5.31%	682,223	4.99%	---	---	46,348,986
EUPICBOR	EUROPEAN RELIANCE INSUR. (CR)	---	---	---	---	---	---	---	---
EYDAPBOR	EYDAP S.A. (CR)	10,109	---	---	---	---	---	---	17,780
FGEBOR	F.G. EUROPE S.A. (CR)	---	---	---	---	---	---	---	---
FFGRPBOR	FOLLI FOLLIE (CR)	3,800	69,357	5.31%	---	---	---	---	984,782
FOYRKBOR	FOURLIS (CR)	1,700	3,603	3.31%	---	---	---	---	3,850
FRIGOBOR	FRIGOGLASS SA (CR)	3,600	4,318	5.31%	---	---	---	---	---
GEKTERNABOR	GEK TERNA (CR)	4,410	27,791	5.31%	---	---	---	---	---
SARBOR	GR. SARANTIS SA (CR)	---	4,199	5.31%	---	---	---	---	---
EUPROBOR	GRIVALIA PROPERTIES (CR)	16,304	84,261	3.86%	12,521	2.69%	---	---	36,035
XAKOBOR	HALKOR SA (CB)	---	50,550	5.31%	---	---	---	---	---
EXAEBOR	HELLENIC EXCHANGES-A.S.E. (CR)	5,000	515,881	5.31%	---	---	---	---	65,000
ELPEBOR	HELLENIC PETROLEUM (CR)	1,500	233,401	5.31%	500	2.65%	---	---	54,053
HYGEIABOR	HYGEIA SA (CR)	---	48,700	5.31%	---	---	---	---	---
IASOBOR	IASO SA (CR)	---	27,878	5.31%	---	---	---	---	---

Stock Lending Notes

- [1] - Multilateral contracts Lending or Borrowing as per Methods 8-1, 8-2 and 8-3-3 (According to ATHEX BoD Resolution No.17)
- [2] - Billateral Contracts Lending or Borrowing as per Methods 8-3-1 and 8-3-2 (According to ATHEX BoD Resolution No.20)
- [3] - The information concerning OTC Stock Borrowing Transactions is based on the statements of the Dematerialised Securities System (DSS) operators involved and refers to volumes that have been cleared and registered up until the previous working day.
- [4] - Average Price (Volume weighted)
- [5] - The Data concerning Open Interest before the start of trading session

Lending Products	Underlying Title	Multilateral Transactions[1]					Bilateral Transactions[2]		Stock Borrowing through OTC (volume)[3]
		Open Interest[5]	Volume(Offered)	Average Weighted	Transactions volume	Average Weighted	Transactions Volume	Average Weighte	Transactions Volume
IKTINBOR	IKTINOS HELLAS SA (CR)	---	---	---	---	---	---	---	---
LYKBOR	INFORM P. LYKOS SA (CR)	---	---	---	---	---	---	---	---
INKATBOR	INTRACOM CONSTR. (CR)	---	---	---	---	---	---	---	---
INTRKBOR	INTRACOM HOLDINGS (CR)	---	168,546	5.31%	---	---	---	---	---
INLOTBOR	INTRALOT (CR)	24,182	42,638	3.31%	---	---	---	---	1,000
AVAXBOR	J & P - AVAX SA (CR)	---	20,175	5.31%	---	---	---	---	---
BELABOR	JUMBO SA (CR)	24,333	136,782	3.31%	---	---	---	---	56,365
KARTZBOR	KARATZIS SA (CR)	---	---	---	---	---	---	---	---
KLEMBOR	KLEEMAN HELLAS SA (CR)	---	23,432	5.31%	---	---	---	---	---
KRIBOR	KRI-KRI S.A. (CR)	---	47,267	5.31%	---	---	---	---	---
LAMDABOR	LAMDA DEVELOPMENT SA (CR)	103	28	4.28%	---	---	---	---	10,377
MIGBOR	MARFIN INVESTMENT GROUP (CR)	5,818	69,885	5.31%	---	---	---	---	744,474
METKKBOR	METKA (CR)	5,120	25,478	4.24%	---	---	---	---	---
MLSBOR	MLS MULTIMEDIA SA (CR)	---	7,920	5.31%	---	---	---	---	---
MOHBOR	MOTOR OIL (CR)	22,600	57,310	5.31%	---	---	---	---	35,050
MYTILBOR	MYTILINEOS HOLDINGS (CR)	3,152	138,318	3.31%	---	---	---	---	---
ETEBOR	NATIONAL BANK (CR)	156,674	138,145	5.31%	10,000	3.42%	---	---	3,794,301
ETFASEBOR	NBGAM ETF	---	---	---	---	---	---	---	---
ETFGT30PBOR	NBGAM ETF GREECE & TURKEY 30	---	---	---	---	---	---	---	---
OPAPBOR	OPAP (CR)	35,107	240,665	3.55%	7,000	2.65%	---	---	53,483
HTOBOR	OTE (CR)	12,892	40,924	3.86%	1,500	2.65%	6,250	2.65%	1,217,684
PPABOR	P.P.A. S.A. (CR)	300	413	5.31%	---	---	---	---	294
PAPBOR	PAPOUTSANIS (CR)	---	---	---	---	---	---	---	---
PETROBOR	PETROPOULOS PETROS (CR)	---	---	---	---	---	---	---	---
TPEIRBOR	PIRAEUS BANK (CR)	29,636	219,869	3.31%	---	---	---	---	17,324,394
PLAISBOR	PLAISIO COMPUTERS SA (CR)	---	---	---	---	---	---	---	---
PPCBOR	PPC (CR)	99,566	20,103	3.86%	---	---	---	---	722,624
PROFBOR	PROFILE SA (CR)	---	---	---	---	---	---	---	---
QUALBOR	QUALITY & RELIABILITY SA (CR)	---	---	---	---	---	---	---	---
QUESTBOR	QUEST HOLDINGS (CR)	---	---	---	---	---	---	---	---
SIDEBOR	SIDENOR (CR)	5,031	25,577	4.24%	---	---	---	---	---

Stock Lending Notes

- [1] - Multilateral contracts Lending or Borrowing as per Methods 8-1, 8-2 and 8-3-3 (According to ATHEX BoD Resolution No.17)
- [2] - Billateral Contracts Lending or Borrowing as per Methods 8-3-1 and 8-3-2 (According to ATHEX BoD Resolution No.20)
- [3] - The information concerning OTC Stock Borrowing Transactions is based on the statements of the Dematerialised Securities System (DSS) operators involved and refers to volumes that have been cleared and registered up until the previous working day.
- [4] - Average Price (Volume weighted)
- [5] - The Data concerning Open Interest before the start of trading session

Lending Products	Underlying Title	Multilateral Transactions[1]					Bilateral Transactions[2]		Stock Borrowing through OTC (volume)[3]
		Open Interest[5]	Volume(Offered)	Average Weighted	Transactions volume	Average Weighted	Transactions Volume	Average Weighted	Transactions Volume
OLYMPBOR	TECHNICAL OLYMPIC SA (CR)	---	245	5.31%	---	---	---	---	---
TENERGYBOR	TERNA ENERGY (CR)	5,523	25,062	5.31%	---	---	---	---	---
EYAPSBOR	THESSALONIKA WATER & SEWERAGE	---	798	5.31%	---	---	---	---	---
PLATBOR	THRACE PLASTICS SA (CR)	---	42,700	5.31%	---	---	---	---	---
TITKBOR	TITAN CEMENT (CR)	4,300	248,208	3.31%	---	---	---	---	315,157
OLTHBOR	TPA SA (CR)	---	3,462	5.31%	---	---	---	---	---
TRASTORBOR	TRASTOR REAL EST. INV. CO.(CR)	5,000	---	---	---	---	---	---	---
VIOBOR	VIOHALCO SA/NV (CB)	24,308	4	9.65%	4	9.65%	3,000	8.00%	---

Stock Lending Notes

[1] - Multilateral contracts Lending or Borrowing as per Methods 8-1, 8-2 and 8-3-3 (According to ATHEX BoD Resolution No.17)

[2] - Bilateral Contracts Lending or Borrowing as per Methods 8-3-1 and 8-3-2 (According to ATHEX BoD Resolution No.20)

[3] - The information concerning OTC Stock Borrowing Transactions is based on the statements of the Dematerialised Securities System (DSS) operators involved and refers to volumes that have been cleared and registered up until the previous working day.

[4] - Average Price (Volume weighted)

[5] - The Data concerning Open Interest before the start of trading session

Sectors codification for listed companies

533	-	Exploration & Production	537	-	Integrated Oil & Gas
1353	-	Commodity Chemicals	1357	-	Specialty Chemicals
1753	-	Aluminum	1755	-	Nonferrous Metals
1757	-	Steel	1775	-	General Mining
2353	-	Building Materials & Fixtures	2357	-	Heavy Construction
2723	-	Containers & Packaging	2727	-	Diversified Industrials
2733	-	Electrical Components & Equipment	2753	-	Commercial Vehicles & Trucks
2757	-	Industrial Machinery	2773	-	Marine Transportation
2777	-	Transportation Services	2791	-	Business Support Services
2797	-	Industrial Suppliers	3535	-	Distillers & Vintners
3537	-	Soft Drinks	3573	-	Farming Fishing & Plantations
3577	-	Food Products	3722	-	Durable Household Products
3726	-	Furnishings	3728	-	Home Construction
3747	-	Toys	3763	-	Clothing & Accessories
3765	-	Footwear	3767	-	Personal Products
3785	-	Tobacco	4533	-	Health Care Providers
4535	-	Medical Equipment	4577	-	Pharmaceuticals
5337	-	Food Retailers & Wholesalers	5371	-	Apparel Retailers
5373	-	Broadline Retailers	5375	-	Home Improvement Retailers
5379	-	Specialty Retailers	5553	-	Broadcasting & Entertainment
5555	-	Media Agencies	5557	-	Publishing
5751	-	Airlines	5752	-	Gambling
5753	-	Hotels	5755	-	Recreational Services
5757	-	Restaurants & Bars	5759	-	Travel & Tourism
6535	-	Fixed Line Telecommunications	6575	-	Mobile Telecommunications
7535	-	Conventional Electricity	7537	-	Alternative Electricity
7577	-	Water	8355	-	Banks
8534	-	Insurance Brokers	8536	-	Property & Casualty Insurance
8633	-	Real Estate Holding & Development	8637	-	Real Estate Services
8671	-	Industrial & Office REITs	8675	-	Specialty REITs
8775	-	Specialty Finance	8777	-	Investment Services
8985	-	Equity Investment Instruments	9533	-	Computer Services
9535	-	Internet	9537	-	Software
9572	-	Computer Hardware	9574	-	Electronic Office Equipment
9578	-	Telecommunications Equipment	12003	-	ETF



ATHEXGROUP

Ομίλος Χρηματιστηρίου Αθηνών