



Daily Official List

Hellenic Exchanges – Athens Stock Exchange S.A.

Thursday, 25 June, 2015
Year: 136 Trading Day No: 116



Disclaimer:

Hellenic Exchanges-Athens Exchange endeavours to ensure that the data and other material ("Information") presented on the Daily Official List are accurate and complete, but it is not liable for any errors or omissions of data or /and for the accuracy, credibility, updating and completeness of the aforesaid information nor it has any liability arising directly or indirectly from the use of the above Information.

The Company is not liable for the accuracy of the data included in listed companies' announcements. Only the sender of such an announcement is fully and solely liable for any infringement of third party's rights from the content of such announcement. All contents of the Daily Official List are provided only for information purposes and do not constitute investment advice or solicitation to invest in securities or other products listed for trading on the Exchange.

You acknowledge and agree that the Company is the owner of any property rights related to any Information appearing on the Daily Official List including intellectual property rights copyright, trademarks, etc.

The above data are a property of the Hellenic Exchanges-Athens Exchange and are copyright protected. Users are forbidden to reproduce, modify, copy, sale, transmit or redistribute, by all reproduction means and methods, part or the whole of the above data, without reference to their source.

The commercial exploitation of these data is, also, forbidden by third parties. Hellenic Exchanges-Athens Exchange does not carry any responsibility, direct or indirect, derived from usage or accidental alteration of the above data when used by third parties.

Hellenic Exchanges – Athens Stock Exchange S.A.

110 Athinon Ave., 10442 Athens, Tel: (210) 33.66.800, Fax: (210) 32.13.938

www.athex.gr

Thessalonica Stock Exchange Center (T.S.E.C)

16-18 Katouni Str., Thessalonica 546 25 Tel: (2310) 567.667, Fax: (2310) 530.545

Athex Members Guarantee Fund

14-16 Fidiou Str., Athens 106 78, Tel: (210) 33.04.682, Fax: (210) 33.04.155

Hellenic Republic Capital Market Commission

1 Kolokotroni Str. & 1 Stadiou Str., Athens 10562 Tel: (210) 33.77.100 Fax: (210) 33.77.173

Table of Contents

Section 1: Statistical Figures of Securities, Derivatives and Lending

Summary of Markets

Athex Indices

Analytic Figures for Athex Market's Boards and Categories

Trading Details by Athex Sectors and Financial Instruments (ETFs)

Top 10 best & worst performing Shares

Derivatives Summary

Section 2: Analytic Figures of Shares Transactions

Analytic Figures of Shares Transactions

Shares' Notes

Section 3: Figures of Securities Transactions

Securities Blocks Details

Shares Rights Details

Stock Borrowing

Shares Forced Sales

Forced Sales Registered Shares

Exchange Traded Funds (ETFs) Characteristics

Section 5: Bonds traded in Fixed Income Assets Market

Corporate Bonds

Government Bonds

Treasury Bills & Zero Coupon Government Bonds

Government Bonds Traded with the Open Outcry Method

State Banks Bonds

Section 6: Additional Infos

Athex & ATHEXClear Members List

List of Stocks under Market Making operations

Section 7: Derivatives Market Analytic Figures

Index Futures

Stock Futures

Index Options

Stock Options

Stock Lending Analytic Figures

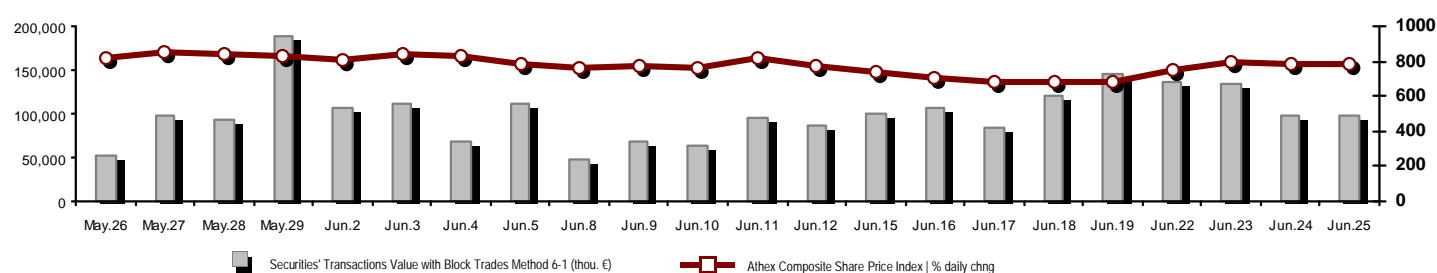
Appendix A: Sectors codification for listed companies

Section codification follows the corresponding from the Greek version of Daily Official List for reference purposes.

Hellenic Exchanges – Athens Stock Exchange S.A.Strategic Communication & Market Analysis Division - Market Analysis Department

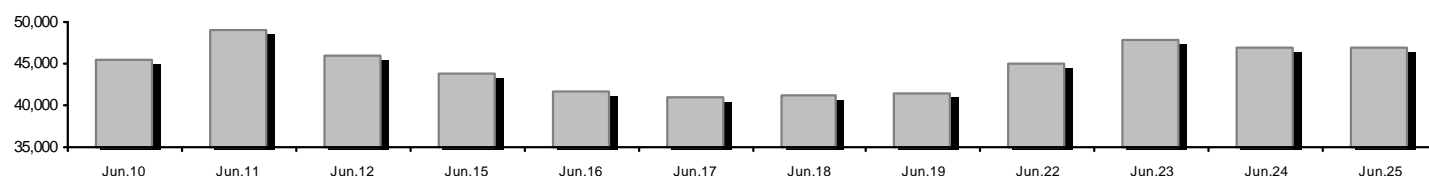
Summary of Markets

Athex Composite Share Price Index vs Shares and Derivatives Transactions Value

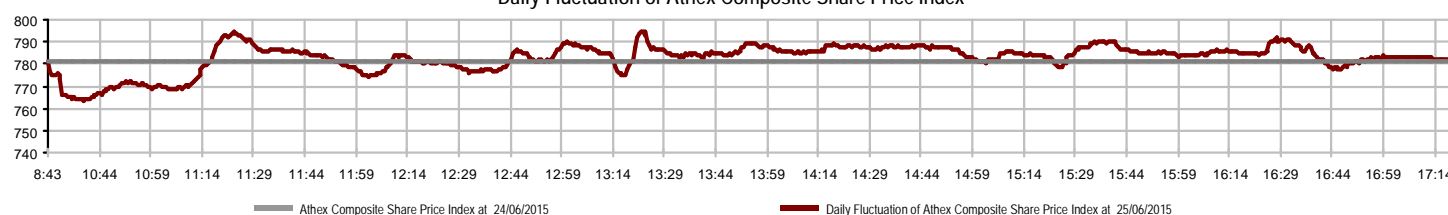


Athex Capitalisation (mill. €) **: 47,002.99			Derivatives Total Open Interest 326,693		
Daily change: mill. € % 127.79 0.27%			in Index Futures % daily chng 23,123 3.50%		
Yearly Avg Capitalisation: mill. € % chng prev year Avg 47,553.32 -31.34%			in Stock Futures % daily chng 298,630 -0.71%		
Athex Composite Share Price Index % daily chng 781.68 0.10%			in Index Options % daily chng 3,840 0.44%		
Athex Composite Share Price Index Capitalisation (mill. €) 43,640.94			in Stock Options % daily chng 1,100 133.05%		
Daily change (mill. €) 124.56					
Securities' Transactions Value with Block Trades Method 6-1 (96,772.87			Derivatives Contracts Volume: 82,516		
Daily change: thou. € % -1,644.52 -1.67%			Daily change: pieces % -5,121 -5.84%		
YtD Avg Trans. Value: thou. € % chng prev year Avg 101,965.98 -19.75%			YtD Avg Derivatives Contracts % chng prev year Avg 91,326 66.62%		
Blocks Transactions Value of Method 6-1 (thou. €) 420.00			Derivatives Trades Number: 5,232		
Blocks Transactions Value of Method 6-2 & 6-3 (thou. €) 97.72			Daily change: number % -396 -7.04%		
Bonds Transactions Value (thou. €) 0.00			YtD Avg Derivatives Trades number % chng prev year Avg 4,612 10.43%		
Securities' Transactions Volume (thou. Pieces) 192,876.28			Lending Total Open Interest 2,658,299		
Daily change: thou. pieces % -6,352.31 -3.19%			Daily change: pieces % 1,034,298 63.69%		
YtD Avg Volume: thou. pieces % chng prev year Avg 188,656.04 98.57%			Lending Volume (Multilateral/Bilateral) 1,171,722		
Blocks Transactions Volume of Method 6-1 (thou. Pieces) 2,000.00			Daily change: pieces % 877,394 298.10%		
Blocks Transactions Volume of Method 6-2 & 6-3 (thou. Pieces) 4.98			Multilateral Lending 1,142,622		
Bonds Transactions Volume (thou. pieces) 0.00			Bilateral Lending 29,100		
Securities' Trades Number 37,474			Lending Trades Number: 66		
Daily change: number % -3,292 -8.08%			Daily change: thou. € % -20 -23.26%		
YtD Avg Derivatives Trades number % chng prev year Avg 33,784 16.96%			Multilateral Lending Trades Number 60		
Number of Blocks Method 6-1 1			Bilateral Lending Trades Number 6		
Number of Blocks Method 6-2 & 6-3 1					
Number of Bonds Transactions 0					

Athex Capitalisation (mill. €) **



Daily Fluctuation of Athex Composite Share Price Index



Athex Indices

Index name	25/06/2015	24/06/2015	pts.	%	Min	Max	Year min	Year max	Year change
Athex Composite Share Price Index	781.68 #	780.90	0.78	0.10%	763.49	794.77	651.78	945.81	-5.39% €
FTSE/Athex Large Cap	237.38 #	235.89	1.49	0.63%	230.27	240.93	196.83	283.37	-10.38% €
FTSE/ATHEX Custom Capped	815.26 €	830.51	-15.25	-1.84%			709.75	956.79	-6.43% €
FTSE/ATHEX Custom Capped - USD	653.73 €	665.91	-12.17	-1.83%			548.31	777.68	-13.52% €
FTSE/Athex Mid Cap Index	899.58 #	894.15	5.43	0.61%	883.73	905.36	705.04	984.77	16.37% #
FTSE/ATHEX-CSE Banking Index	463.82 €	466.58	-2.76	-0.59%	442.98	486.82	319.25	774.70	-36.29% €
FTSE/ATHEX Global Traders Index Plus	1,475.09 €	1,484.63	-9.54	-0.64%	1,461.02	1,497.36	1,227.52	1,604.84	14.98% #
FTSE/ATHEX Global Traders Index	1,489.89 #	1,474.75	15.14	1.03%	1,446.22	1,501.00	1,252.43	1,698.65	3.57% #
FTSE/ATHEX Mid & Small Cap Factor-Weighted Ind	1,270.62 €	1,273.53	-2.91	-0.23%	1,257.31	1,274.04	1,076.89	1,286.48	15.92% #
Greece & Turkey 30 Price Index	606.90 €	607.65	-0.75	-0.12%	605.01	613.21	552.65	768.95	-10.73% €
ATHEX Mid & SmallCap Price Index	2,342.31 €	2,353.27	-10.96	-0.47%	2,312.21	2,360.41	2,177.81	2,635.74	-3.99% €
FTSE/Athex Market Index	576.98 #	573.39	3.59	0.63%	560.12	585.20	479.81	685.04	-9.30% €
FTSE Med Index	5,481.50 €	5,498.56	-17.06	-0.31%			4,930.94	6,069.73	8.82% #
Athex Composite Index Total Return Index	1,157.53 #	1,155.72	1.81	0.16%	1,130.60	1,176.91	963.91	1,385.07	-4.16% €
FTSE/Athex Large Cap Total Return	326.73 #	325.02	1.71	0.53%			283.57	382.72	-9.07% €
FTSE/ATHEX Large Cap Net Total Return	971.47 #	964.45	7.02	0.73%	942.38	986.04	804.16	1,147.63	-9.21% €
FTSE/ATHEX Custom Capped Total Return	867.46 €	883.40	-15.94	-1.80%			751.27	1,008.59	-5.39% €
FTSE/ATHEX Custom Capped - USD Total Return	695.59 €	708.31	-12.72	-1.80%			578.56	819.78	-12.55% €
FTSE/Athex Mid Cap Total Return	1,155.25 #	1,148.28	6.97	0.61%			908.00	1,231.75	17.53% #
FTSE/ATHEX-CSE Banking Total Return Index	432.52 €	435.10	-2.58	-0.59%			312.07	708.30	-36.32% €
Greece & Turkey 30 Total Return Index	752.63 #	752.06	0.57	0.08%			688.43	919.96	-8.56% €
Hellenic Mid & Small Cap Index	798.55 #	794.94	3.61	0.45%	779.40	806.64	671.02	994.59	3.81% #
FTSE/Athex Banks	612.82 €	616.47	-3.65	-0.59%	585.28	643.21	421.81	1,023.60	-36.28% €
FTSE/Athex Insurance	1,717.48 #	1,622.65	94.83	5.84%	1,622.65	1,717.48	1,222.25	1,780.70	17.27% #
FTSE/Athex Financial Services	884.39 €	888.29	-3.90	-0.44%	858.09	920.10	699.01	1,400.60	-11.70% €
FTSE/Athex Industrial Goods & Services	2,103.34 #	2,082.06	21.28	1.02%	2,024.82	2,109.40	1,767.13	2,660.41	7.64% #
FTSE/Athex Retail	3,433.44 €	3,605.45	-172.01	-4.77%	3,433.44	3,609.76	2,667.59	4,531.02	-9.70% €
FTSE/ATHEX Real Estate	2,341.93 €	2,347.70	-5.77	-0.25%	2,288.20	2,421.69	2,058.18	2,800.26	2.63% #
FTSE/Athex Personal & Household Goods	3,977.81 #	3,837.93	139.88	3.64%	3,752.28	4,027.62	3,185.61	5,680.33	-12.62% €
FTSE/Athex Food & Beverage	7,638.35 €	7,638.42	-0.07	0.00%	7,541.46	7,642.26	5,066.70	7,814.61	30.39% #
FTSE/Athex Basic Resources	2,430.32 €	2,443.85	-13.53	-0.55%	2,373.82	2,517.40	1,753.11	2,916.96	26.04% #
FTSE/Athex Construction & Materials	2,236.69 #	2,236.42	0.27	0.01%	2,167.16	2,314.76	1,953.89	2,705.46	2.37% #
FTSE/Athex Oil & Gas	2,294.13 #	2,264.95	29.18	1.29%	2,188.34	2,307.00	1,618.74	2,399.45	26.41% #
FTSE/Athex Chemicals	6,815.14 €	6,911.91	-96.77	-1.40%	6,766.76	7,057.07	4,784.62	7,561.34	33.04% #
FTSE/Athex Travel & Leisure	1,432.81 #	1,394.23	38.58	2.77%	1,360.95	1,473.14	1,223.34	1,741.96	-6.54% €
FTSE/Athex Technology	706.85 €	716.20	-9.35	-1.31%	706.85	716.20	636.30	786.22	-2.65% €
FTSE/Athex Telecommunications	2,295.64 #	2,202.06	93.58	4.25%	2,133.24	2,320.42	1,747.88	2,606.68	-8.35% €
FTSE/Athex Utilities	1,947.22 #	1,923.31	23.91	1.24%	1,871.11	1,975.43	1,478.55	2,830.02	-7.21% €
FTSE/Athex Health Care	112.62 €	115.79	-3.17	-2.74%	107.06	115.79	88.03	163.37	-21.98% €
Athex All Share Index	165.26 #	164.81	0.46	0.28%	165.26	165.26	143.91	196.00	-11.12% €
Hellenic Corporate Bond Index	87.87 €	88.71	-0.83	-0.94%			82.58	94.45	-6.39% €
Hellenic Corporate Bond Price Index	84.56 €	85.39	-0.83	-0.98%			79.45	92.77	-8.60% €

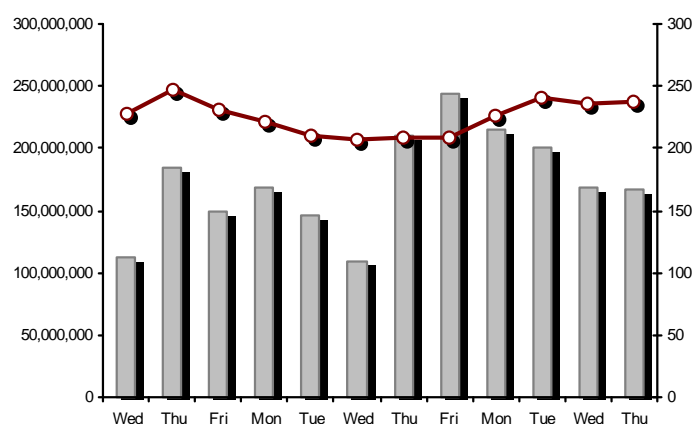
Note 1: Greece & Turkey 30 Pr data is the indicative at 17:20, whereas FTSE/ATHEX Custom Capped, FTSE/ATHEX Custom Capped - USD, FTSE/ATHEX Custom Capped TR, FTSE/ATHEX Custom Capped - USD TR, FTSE/Med 100 & Greece & Turkey 30 Rt., Hellenic Corporate Bond Price Index, Hellenic Corporate Bond Index closing prices refer to the previous trading day of 23/06/2015.

Note 2: The Hellenic Mid & Small Cap Index is a Customized index calculated by the Athens Exchange.

Athex Indices

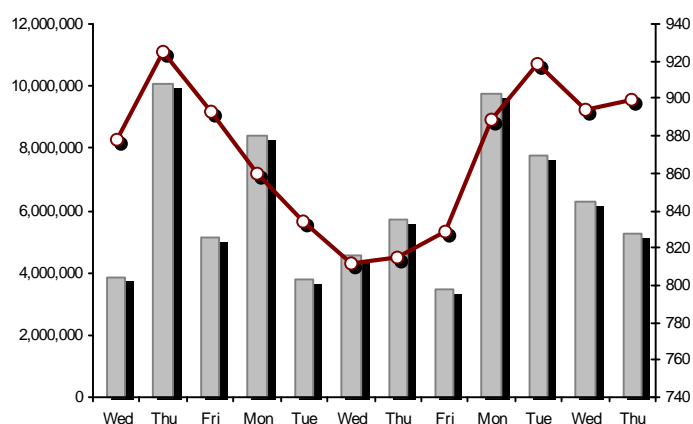
FTSE/Large Cap

25/06/2015: 0.63%



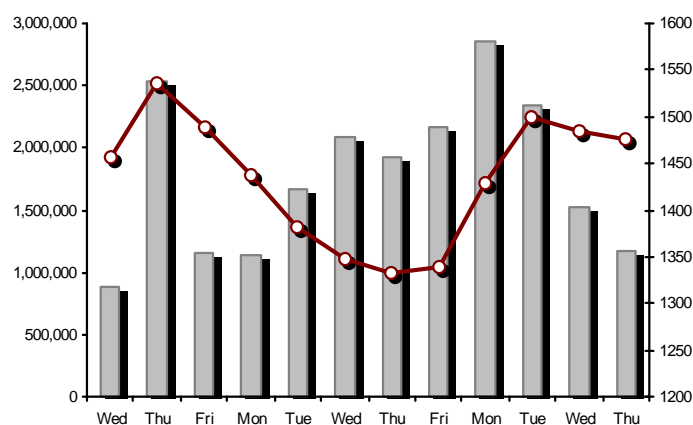
FTSE/Athex Mid Cap Index

25/06/2015: 0.61%



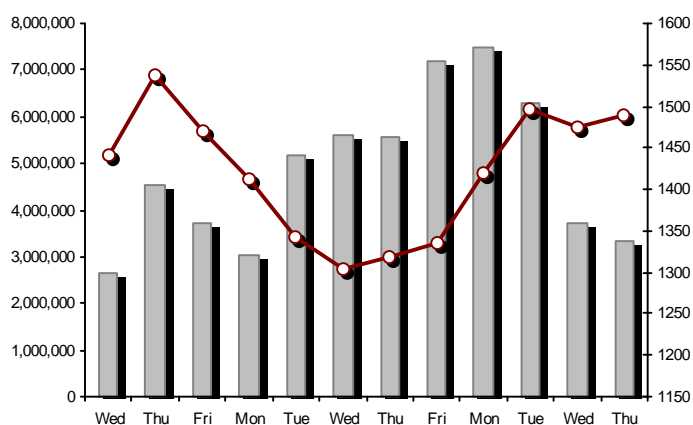
FTSE/ATHEX Global Traders Index Plus

25/06/2015: -0.64%



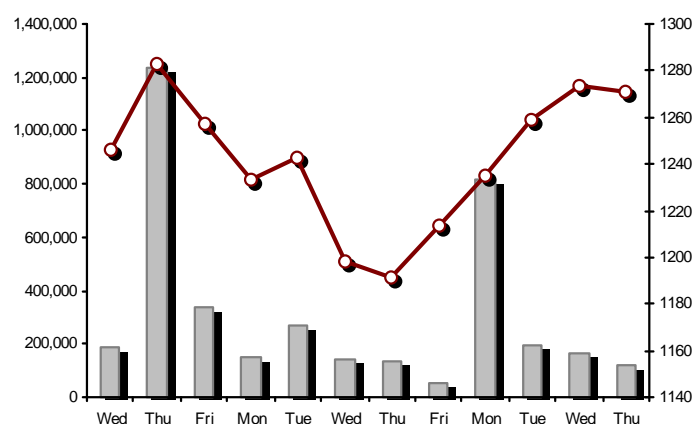
FTSE/ATHEX Global Traders Index

25/06/2015: 1.03%



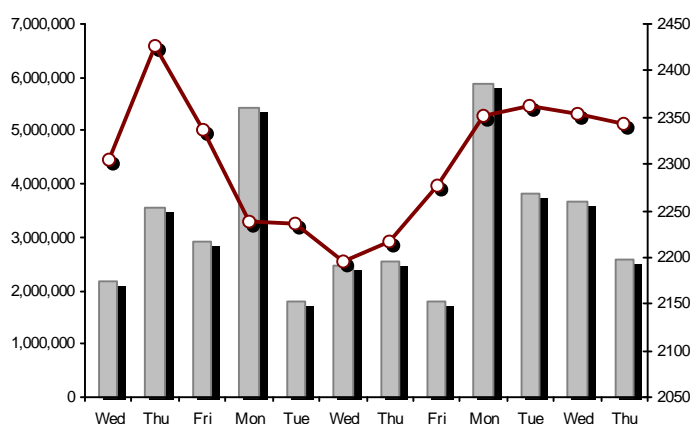
FTSE/ATHEX Mid & Small Cap Factor-Weighted Index

25/06/2015: -0.23%



ATHEX Mid & SmallCap Price Index

25/06/2015: -0.47%



Indices volume of transactions

Indices closing prices

Analytic Figures for Athex Market's Boards and Categories

	Total Traded Securities	Main Market	Low Dispersion	Other Categories (*)	Exchange Traded Funds (ETFs)	Warrants
Totals	112	89	6	11	3	3
Gain / Lose / Same:	48 / 47 / 17	37 / 39 / 13	2 / 2 / 2	4 / 5 / 2	3 / 0 / 0	2 / 1 / 0
Athex Capitalisation (mill. €) **	47,002.99	45,238.32	1,478.44	286.22		
Daily Average Trans/ons Value(thou.€)	101,965.98	99,885.23	48.25	78.27	55.07	2,012.87
Transactions Value	96,870.59	94,699.00	97.68	2.71	0.03	2,071.17
Main Board:	96,352.87	94,181.28	97.68	2.71	0.03	2,071.17
Blocks Board 6_2_3:	517.72	517.72	0.00	0.00	0.00	0.00
Forced Sales Board:	0.00	0.00	0.00	0.00	0.00	0.00
Special Terms Board:	0.00	0.00	0.00	0.00	0.00	0.00
Daily Average Transactions Volume	188,656,044	180,082,436	48,957	256,430	19,263	8,402,713
Transactions Volume	192,881,260	180,004,678	145,952	17,871	5	12,712,754
Main Board:	190,876,276	177,999,694	145,952	17,871	5	12,712,754
Blocks Board 6_2_3:	2,004,984	2,004,984	0	0	0	0
Forced Sales Board:	0	0	0	0	0	0
Special Terms Board:	0	0	0	0	0	0
Daily Average Number of Trades	33,784	32,065	31	75	6	1,609
Number of Trades	37,475	34,788	42	29	3	2,613
Main Board:	37,473	34,786	42	29	3	2,613
Blocks Board 6_2_3:	2	2	0	0	0	0
Forced Sales Board:	0	0	0	0	0	0
Special Terms Board:	0	0	0	0	0	0

(*) Summarised Transactions figures for Under Deletion and Under Supervision Categories.(**) The Market Capitalization of the Companies that belong in the Under Supervision Status is not included.

Trading Details by Athex Sectors and Financial Instruments (ETFs)

Code	Sectors	Gain / Lose / Same	Number of Trades	Transactions Volume	Transactions Value	% of Total Trans. Value
8300	- Banks	3 / 6 / 1	20,926	184,358,266	56,228,773.73	58.05%
1700	- Basic Resources	4 / 3 / 0	993	293,789	1,359,222.12	1.40%
1300	- Chemicals	0 / 2 / 0	135	18,643	19,340.27	0.02%
2300	- Construction & Materials	5 / 6 / 3	1,388	465,134	1,962,999.64	2.03%
12000	- Financial Instruments	3 / 0 / 0	3	5	34.50	0.00%
8700	- Financial Services	0 / 1 / 1	1,503	2,654,007	2,192,628.54	2.26%
3500	- Food & Beverage	3 / 2 / 2	185	100,683	1,685,308.98	1.74%
4500	- Health Care	1 / 3 / 0	30	47,366	6,953.54	0.01%
2700	- Industrial Goods & Services	9 / 4 / 0	1,107	259,909	1,273,616.59	1.31%
8500	- Insurance	1 / 0 / 0	1	10	16.30	0.00%
5500	- Media	0 / 2 / 2	22	97,424	45,981.71	0.05%
500	- Oil & Gas	2 / 1 / 0	876	204,324	1,330,055.28	1.37%
3700	- Personal & Household Goods	4 / 1 / 4	1,742	649,698	4,606,440.06	4.76%
8600	- Real Estate	3 / 3 / 1	600	208,567	1,047,079.43	1.08%
5300	- Retail	0 / 3 / 1	1,013	165,447	3,953,508.16	4.08%
9500	- Technology	4 / 3 / 2	115	63,625	42,781.57	0.04%
6500	- Telecommunications	1 / 0 / 0	1,953	991,046	8,092,988.69	8.35%
5700	- Travel & Leisure	3 / 4 / 0	2,487	1,359,361	9,064,629.20	9.36%
7500	- Utilities	2 / 3 / 0	2,396	943,956	3,958,231.12	4.09%

Top 10 best & worst performing Shares

Main Market					
With positive Price change	Closing price	change	With negative Price change	Closing price	change
INTRALOT (CR)	1.65	4.43% #	IKTINOS HELLAS SA (CR)	0.936	-7.33% Ⓔ
JUMBO SA (CR)	7.36	4.40% #	ELTON SA (CR)	0.999	-4.86% Ⓔ
OTE (CR)	8.34	4.25% #	FOLLI FOLLIE (CR)	23.80	-4.80% Ⓔ
EYDAP S.A. (CR)	6.03	3.97% #	BANK OF CYPRUS (CR)	0.210	-4.54% Ⓔ
OPAP (CR)	7.98	2.97% #	INTRACOM HOLDINGS (CR)	0.418	-2.79% Ⓔ
CORINTH PIPEWORKS SA (CR)	1.08	2.86% #	FRIGOGLASS SA (CR)	2.02	-2.42% Ⓔ
LAMDA DEVELOPMENT SA (CR)	3.99	2.83% #	MARFIN INVESTMENT GROUP (CR)	0.131	-2.24% Ⓔ
CENTRIC HOLDINGS (CR)	0.190	2.70% #	GRIVALIA PROPERTIES (CR)	7.05	-1.95% Ⓔ
VIOHALCO SA/NV (CB)	2.71	2.26% #	ATTICA BANK S.A. (CR)	0.065	-1.52% Ⓔ
SIDENOR (CR)	1.01	2.02% #	EUROBANK ERGASIAS (CR)	0.135	-1.46% Ⓔ
With the highest Transactions Value	Value (thou. €)	change	With the highest Transactions Volume	Volume	change
NATIONAL BANK (CR)	17,868.50	0.00% -	EUROBANK ERGASIAS (CR)	69,790,703	-1.46% Ⓔ
ALPHA BANK (CR)	12,569.47	-0.35% Ⓔ	ALPHA BANK (CR)	44,047,555	-0.35% Ⓔ
PIRAEUS BANK (CR)	12,385.05	-1.05% Ⓔ	PIRAEUS BANK (CR)	32,312,795	-1.05% Ⓔ
EUROBANK ERGASIAS (CR)	9,568.63	-1.46% Ⓔ	NATIONAL BANK (CR)	15,669,452	0.00% -
OPAP (CR)	8,574.18	2.97% #	BANK OF CYPRUS (CR)	7,272,179	-4.54% Ⓔ
OTE (CR)	8,092.99	4.25% #	ATTICA BANK S.A. (CR)	2,550,680	-1.52% Ⓔ
JUMBO SA (CR)	4,538.96	4.40% #	MARFIN INVESTMENT GROUP (CR)	2,227,146	-2.24% Ⓔ
FOLLI FOLLIE (CR)	3,952.71	-4.80% Ⓔ	OPAP (CR)	1,073,645	2.97% #
PPC (CR)	3,149.98	0.45% #	OTE (CR)	991,046	4.25% #
HELLENIC EXCHANGES-A.S.E. (CR)	1,896.99	0.00% -	PPC (CR)	705,624	0.45% #

Note: Stocks that are not included in the "Low Dispersion" and "Under Supervision" categories, and the transactions value is more than 10,000 €.

Derivatives Summary

	Number of Trades	Volume	Open Interest
Index Futures	1,515	15,821	23,123
FTSE/Athex Large Cap	1,515	15,821	23,123
Stock Futures	3,673	65,860	298,630
ALPHA BANK (CR)	439	13,334	40,027
CC HBC AG (CR)	2	2	96
CORINTH PIPEWORKS SA (CR)	0	0	691
ELLAKTOR (CR)	14	70	1,337
EUROBANK ERGASIAS (CR)	331	18,507	94,828
EYDAP S.A. (CR)	16	40	179
FOLLI FOLLIE (CR)	60	135	132
FRIGOGLASS SA (CR)	22	141	793
GEK TERNA (CR)	30	165	7,719
GRIVALIA PROPERTIES (CR)	32	96	68
HELLENIC EXCHANGES-A.S.E. (CR)	113	403	1,596
HELLENIC PETROLEUM (CR)	25	59	3,720
INTRALOT (CR)	2	7	264
JUMBO SA (CR)	192	720	1,205
MARFIN INVESTMENT GROUP (CR)	16	201	27,055
METKA (CR)	10	30	461
MOTOR OIL (CR)	46	134	177
MYTILINEOS HOLDINGS (CR)	110	269	3,807
NATIONAL BANK (CR)	526	11,347	29,517
OPAP (CR)	265	809	1,584
OTE (CR)	317	1,211	5,860
P.P.A. S.A. (CR)	26	78	274
PIRAEUS BANK (CR)	653	16,597	66,642
PPC (CR)	349	1,280	8,354
SIDENOR (CR)	0	0	0
TERNA ENERGY (CR)	1	1	976
TITAN CEMENT (CR)	56	168	318
VIOHALCO SA/NV (CB)	20	56	950
Index Options	37	207	3,840
FTSE/Athex Large Cap	37	207	3,840
Stock Options	7	628	1,100
ALPHA BANK (CR)	0	0	0
NATIONAL BANK (CR)	0	0	12
OPAP (CR)	0	0	0
OTE (CR)	2	120	120
PIRAEUS BANK (CR)	0	0	450
PPC (CR)	5	508	518
Total Derivatives Traded	5,232	82,516	326,693

Number of Outstanding Securities	Nominal Value	Dividends [1]			Date of Last Coupon		Note	Shares	Closing price	% change	Previous closing price/date	Open price	Price min	Price max	Last price	Avg price	Last Bid [7]	Last Ask [7]	P/E after	Year	Volume	Trades	Transactions Value[8]	Company Mkt Value (thou. €)	Year low	Year high	Sector[4]
		2012	2013	2014	Dividend [2]	Right																					
Warrants																											
1,141,734,167	---	---	---		11/06/2013	---	ALPHA BANK (W)	0.423	2.17 #	0.414	24/06/2015	0.402	0.388	0.438	0.423	0.422	---	---	---	2014	1,827,600	1,239	770,484.08	3,639,182.06	0.290	0.979	8355
245,748,459	---	---	---		27/06/2013	---	NATIONAL BANK (W)	0.203	-1.93 €	0.207	24/06/2015	0.199	0.191	0.215	0.203	0.207	---	---	---	2014	609,831	236	126,510.05	4,027,790.58	0.100	0.320	8355
843,637,022	---	---	---		03/07/2013	---	PIRAEUS BANK (W)	0.117	1.74 #	0.115	24/06/2015	0.110	0.103	0.120	0.117	0.114	---	---	---	2014	10,275,323	1,138	1,174,175.68	2,306,548.33	0.044	0.252	8355

Warrants

71,417,100	0.650	---	---	0.7	14/05/2015	27/06/2014	---	AEGEAN AIRLINES (CR)	6.08	-0.16	€	6.09	24/06/2015	5.91	5.91	6.34	6.08	6.09	---	---	7.64	2014	45,316	290	276,078.74	434,215.97	5.40	8.08	5751
11,178,000	1.12	---	---	---	21/04/2010	15/12/2014	---	AEOLIAN INVESTMENT FUND (CR)	0.643	---	↘	0.643	24/06/2015	---	---	---	---	---	---	---	---	2014	---	---	---	7,187.45	0.593	0.769	8985
12,769,059,858	0.300	---	---	---	07/04/2008	13/05/2013	---	ALPHA BANK (CR)	0.285	-0.35	€	0.286	24/06/2015	0.272	0.272	0.301	0.285	0.285	---	---	---	2014	44,047,555	4,988	12,569,465.16	3,639,182.06	0.200	0.510	8355
22,016,250	0.370	---	---	---	15/07/2009	11/05/2000	---	ALUMIL (CR)	0.302	5.97	#	0.285	24/06/2015	0.302	0.302	0.302	0.302	0.302	---	---	---	2014	110	3	33.22	6,648.91	0.218	0.348	1753
417,608	16.00	---	0.8	---	29/04/2014	05/03/2013	---	ANDROMEDA SA (CR)	14.80	---	↘	14.80	24/06/2015	---	---	---	---	---	---	---	---	2014	---	---	---	6,180.60	10.11	20.00	8985
26,252,040	0.340	---	---	---	08/07/2010	10/06/2015	---	AS COMPANY SA (CR)	0.366	---	↘	0.366	24/06/2015	---	---	---	---	---	---	---	5.15	2014	---	---	---	9,608.25	0.263	0.400	5379
86,735,980	0.310	---	---	---	06/07/2009	02/01/2002	---	ATHENS MEDICAL CENTER SA (CR)	0.775	-1.15	€	0.784	24/06/2015	0.775	0.775	0.775	0.775	0.775	---	---	---	2014	250	1	193.75	67,220.38	0.681	0.990	4533
1,045,794,145	0.300	---	---	---	04/06/2008	07/08/2014	---	ATTICA BANK S.A. (CR)	0.065	-1.52	€	0.066	24/06/2015	0.062	0.062	0.067	0.065	0.065	---	---	---	2014	2,550,680	297	166,582.82	67,976.62	0.039	0.084	8355
15,300,000	0.300	---	---	---	30/07/2009	13/12/1999	---	ATTICA PUBLICATIONS SA (CR)	0.882	---	↘	0.882	24/06/2015	---	---	---	---	---	---	---	31.81	2014	---	---	---	13,494.60	0.750	1.60	5557
45,457,464	0.700	---	---	---	01/07/2008	01/03/2010	---	AUDIO VISUAL ENTERPRISES (CR)	0.132	-9.59	€	0.146	24/06/2015	0.132	0.132	0.132	0.132	0.132	---	---	---	2014	4,871	8	642.97	6,000.39	0.132	0.277	5553
12,157,500	0.320	---	---	0.8	20/05/2015	22/11/2013	---	AUTOHELLAS SA (CR)	11.50	---	↘	11.50	24/06/2015	---	---	---	---	---	---	---	13.88	2014	---	---	---	139,811.25	8.30	13.80	5759
8,922,944,533	0.100	---	---	---	31/05/2011	02/02/2015	4857	BANK OF CYPRUS (CR)	0.210	-4.54	€	0.220	24/06/2015	0.220	0.207	0.232	0.210	0.217	---	---	---	2014	7,272,179	724	1,578,854.80	1,873,818.35	0.165	0.232	8355
19,864,886	5.60	0.5376	0.672	0.672	05/03/2015	02/07/2008	---	BANK OF GREECE (CR)	9.60	1.27	#	9.48	24/06/2015	9.31	9.31	9.64	9.64	9.55	---	---	---	---	2,148	47	20,514.63	190,702.91	8.70	12.17	8355
23,986,500	1.05	---	---	---	26/06/2009	15/03/2000	---	BIOKARPET S.A.(CR)	0.228	---	↘	0.228	24/06/2015	---	---	---	---	---	---	---	---	2014	---	---	---	5,468.92	0.160	0.260	3726
15,842,391	1.51	---	---	---	15/07/2009	12/05/2000	---	BITROS HOLDING SA (CR)	0.265	---	↘	0.265	24/06/2015	---	---	---	---	---	---	---	---	2014	---	---	---	4,198.23	0.144	0.383	1757
15,816,009	0.300	---	---	---	01/07/2009	17/07/2000	---	BYTE COMPUTER SA (CR)	0.460	8.24	#	0.425	24/06/2015	0.430	0.430	0.460	0.460	0.457	---	---	6.92	2014	1,100	3	503.00	7,275.36	0.340	0.460	9533
367,838,247	6.70	0.34	0.354	---	09/07/2014	29/04/2013	---	CC HBC AG (CR)	20.49	---	↘	20.49	24/06/2015	20.49	20.23	20.50	20.49	20.42	---	---	---	---	82,076	125	1,676,294.84	7,537,005.68	13.55	20.97	3537
101,123,806	0.360	---	---	---	22/07/2010	28/06/2011	---	CENTRIC HOLDINGS (CR)	0.190	2.70	#	0.185	24/06/2015	0.185	0.174	0.190	0.190	0.188	---	---	31.36	2014	94,000	44	17,628.65	19,213.52	0.140	0.299	5752
4,034,950	0.680	---	---	---	01/07/2005	30/12/2010	---	CHATZIKRANIOTIS & SONS SA (CR)	0.120	9.09	#	0.110	24/06/2015	0.120	0.120	0.120	0.120	0.120	---	---	---	2014	2,490	1	298.80	484.19	0.084	0.200	3577
124,170,201	0.780	---	---	---	28/06/2002	07/02/2005	---	CORINTH PIPEWORKS SA (CR)	1.08	2.86	#	1.05	24/06/2015	1.05	1.02	1.09	1.08	1.07	---	---	---	2014	14,461	53	15,509.25	134,103.82	0.756	1.31	1757
9,907,500	0.300	---	---	---	06/10/2005	13/02/2002	---	CPI SA (CR)	0.188	---	↘	0.188	24/06/2015	---	---	---	---	---	---	---	16.22	2014	---	---	---	1,862.61	0.110	0.234	9572
27,379,200	0.520	---	0.1	---	24/07/2014	18/09/2013	---	CRETE PLASTICS SA (CR)	6.25	---	↘	6.25	24/06/2015	---	---	---	---	---	---	---	18.11	2014	---	---	---	171,120.00	4.60	6.35	1357
15,000,000	0.300	---	---	---	06/07/2007	18/07/2000	---	DAIOS PLASTICS SA (CR)	2.70	---	↘	2.70	24/06/2015	---	---	---	---	---	---	---	-(6)-	2014	---	---	---	40,500.00	2.25	2.76	1357
34,720,000	0.310	---	---	---	16/06/2010	01/08/2007	---	DROMEAS SA (CR)	0.114	---	↘	0.114	24/06/2015	---	---	---	---	---	---	---	---	2014	---	---	---	3,958.08	0.093	0.162	3726
3,873,120	0.300	---	---	---	07/07/2008	04/10/2012	---	DRUCKFARBEN HELLAS (CR)	0.480	---	↘	0.480	24/06/2015	---	---	---	---	---	---	---	---	2014	---	---	---	1,859.10	0.480	0.900	1357
11,250,000	0.560	---	---	---	26/07/2010	16/06/1999	---	EKTER SA (CR)	0.389	---	↘	0.389	24/06/2015	0.388	0.388	0.389	0.389	0.389	---	---	---	2014	2,910	3	1,131.08	4,376.25	0.350	0.518	2357
32,188,050	1.04	---	---	---	21/07/2008	20/01/2000	---	EL. D. MOUZAKIS SA (CB)	0.295	---	↘	0.295	24/06/2015	---	---	---	---	---	---	---	---	2014	---	---	---	9,495.47	0.240	0.295	3763
18,435,000	1.00	---	---	---	07/07/2009	10/09/2010	---	ELASTRON (CR)	0.470	---	↘	0.470	24/06/2015	---	---	---	---	---	---	---	---	2014	---	---	---	8,664.45	0.351	0.697	1757
31,734,530	1.60	---	---	---	09/07/2007	19/07/2006	---	ELGEKA SA (CR)	0.268	---	↘	0.268	24/06/2015	---	---	---	---	---	---	---	---	2014	---	---	---	8,504.85	0.155	0.285	3577
23,828,130	0.500	---	---	---	07/07/2010	17/02/2009	---	ELINOIL S.A. (CR)	0.900	-5.26	€	0.950	24/06/2015	0.900	0.900	0.900	0.900	0.900	---	---	22.57	2014	2,000	1	1,800.00	21,445.32	0.621	0.968	537
177,001,313	1.03	---	---	---	05/07/2011	20/12/2007	---	ELLAKTOR (CR)	1.85	---	↘	1.85	24/06/2015	1.85	1.76	1.85	1.85	1.82	---	---	---	2014	177,344	336	321,884.69	327,452.43	1.20	2.62	2357
82,667,000	0.300	---	---	---	22/07/2014		---	ELTECH ANEMOS S.A. (CR)	0.731	-0.54	€	0.735	24/06/2015	0.720	0.719	0.752	0.731	0.737	---	---	12.40	2014	74,840	96	55,183.11	60,429.58	0.534	0.845	7537
26,730,187	0.600	---	0.05	---	23/06/2014	30/12/2010	---	ELTON SA (CR)	0.999	-4.86	€	1.05	24/06/2015	1.05	0.945	1.05	0.999	0.955	---	---	10.91	2014	15,165	112	14,483.50	26,703.46	0.841	1.05	1353

Number of Outstanding Securities	Nominal Value	Dividends [1]			Date of Last Coupon		Note	Shares	Closing price	% change	Previous closing price/date	Open price	Price min	Price max	Last price	Avg price	Last Bid [7]	Last Ask [7]	P/E after	Year	Volume	Trades	Transactions Value[8]	Company Mkt Value (thou. €)	Year low	Year high	Sector[4]
		2012	2013	2014	Dividend [2]	Right																					
Main Market																											
14,050,971	0.340	---	---	---	06/07/2011	17/10/2002	---	ELTRAK SA (CR)	1.46	---	↘	1.46	24/06/2015	---	---	---	---	---	---	2014	---	---	---	20,514.42	1.07	1.61	2753
125,562,262	0.320	---	---	---	30/05/2014	02/12/2014	---	ELVAL SA. (CB)	1.42	-2.07	€	1.45	24/06/2015	1.37	1.36	1.44	1.42	1.40	10.22	2014	4,022	14	5,622.74	178,298.41	0.965	1.47	1753
13,230,000	0.300	---	---	---	11/08/2010	24/11/2014	---	ELVE SA (CR)	0.522	---	↘	0.522	24/06/2015	---	---	---	---	---	1.24	2014	---	---	---	6,906.06	0.390	0.546	3763
14,707,876,542	0.300	---	---	---	02/05/2008	13/06/2013	---	EUROBANK ERGASIAS (CR)	0.135	-1.46	€	0.137	24/06/2015	0.131	0.129	0.144	0.135	0.137	---	2014	69,790,703	3,232	9,568,633.07	1,985,563.33	0.080	0.209	8355
7,959,900	0.600	---	---	---	02/06/2010	10/12/2013	5031	EUROCONSULTANTS S.A. (CR)	1.43	3.62	#	1.38	24/06/2015	1.34	1.34	1.44	1.44	1.39	99.33	2014	215	5	299.00	11,382.66	1.03	2.22	2791
27,503,677	0.630	0.1	---	---	11/07/2013	18/10/1999	---	EUROPEAN RELIANCE INSUR. (CR)	1.63	5.84	#	1.54	24/06/2015	1.63	1.63	1.63	1.63	1.63	4.37	2014	10	1	16.30	44,830.99	1.16	1.69	8536
13,673,200	0.880	---	---	---	18/07/2008	26/07/2001	---	EVROFARMA SA (CR)	0.300	---	↘	0.300	24/06/2015	0.300	0.300	0.300	0.300	0.300	---	2014	172	3	51.60	4,101.96	0.198	0.487	3577
106,500,000	0.600	0.15	0.36	0.2	05/05/2015	28/01/2000	---	EYDAP S.A. (CR)	6.03	3.97	#	5.80	24/06/2015	5.80	5.54	6.14	6.03	5.92	15.31	2014	90,213	260	534,154.89	642,195.00	4.03	7.35	7577
52,800,154	0.300	---	0.2	---	20/08/2014	21/06/2004	---	F.G. EUROPE S.A. (CR)	0.724	---	↘	0.724	24/06/2015	---	---	---	---	---	---	2014	---	---	---	38,227.31	0.390	0.904	3722
10,203,575	0.730	---	---	---	16/07/2007	18/10/1999	---	FIERATEX SA (CR)	0.130	---	↘	0.130	24/06/2015	---	---	---	---	---	---	2014	---	---	---	1,326.46	0.078	0.228	3763
11,720,024	0.540	---	0.0394	---	21/08/2014	07/08/2014	---	FLEXOPACK SA (CR)	3.20	4.24	#	3.07	24/06/2015	3.20	3.20	3.20	3.20	3.20	9.81	2014	1	1	3.20	37,504.08	1.91	3.20	2723
4,181,450	0.500	---	---	---	21/08/2000	05/03/2002	---	FLOUR MILLS SARANTOPOULOS SA	0.960	---	↘	0.960	24/06/2015	---	---	---	---	---	---	2014	---	---	---	4,014.19	0.855	0.960	3577
66,948,210	0.300	---	---	---	14/07/2009	23/09/2014	---	FOLLI FOLLIE (CR)	23.80	-4.80	€	25.00	24/06/2015	24.93	23.80	25.04	23.80	24.26	---	2014	162,945	1,003	3,952,714.21	1,593,367.40	18.45	31.50	5379
50,992,322	1.07	---	---	---	21/06/2010	16/07/2002	---	FOURLIS (CR)	2.90	---	↘	2.90	24/06/2015	2.85	2.84	2.98	2.88	2.89	---	2014	21,882	84	63,334.20	147,877.73	1.90	3.70	3722
50,593,832	0.300	---	---	---	07/07/2010	07/09/2011	---	FRIGOGLASS SA (CR)	2.02	-2.42	€	2.07	24/06/2015	2.00	2.00	2.09	2.02	2.06	---	2014	77,535	173	159,360.82	102,199.54	1.51	2.61	2757
14,076,360	0.370	---	---	---	19/08/2008	22/07/2003	---	GALAXIDI S.A. (CR)	0.546	---	↘	0.546	24/06/2015	---	---	---	---	---	18.35	2014	---	---	---	7,685.69	0.168	0.548	3573
100,227,485	0.570	---	---	---	01/08/2011	05/05/2015	---	GEK TERNA (CR)	1.75	---	↘	1.75	24/06/2015	1.66	1.64	1.79	1.75	1.74	29.05	2014	179,699	509	312,326.30	175,398.10	1.20	2.47	2357
8,418,750	0.300	0.46	---	---	21/01/2015	27/06/2012	---	GEKE SA (CB)	4.31	-0.23	€	4.32	24/06/2015	4.31	4.31	4.31	4.31	4.31	---	2014	70	1	301.70	36,284.81	3.49	6.12	5753
24,060,000	0.300	---	0.017	---	07/07/2014	21/01/2000	---	GEN. COMMERCIAL & IND.SA (CR)	0.377	-0.26	€	0.378	24/06/2015	0.377	0.377	0.377	0.377	0.380	13.27	2014	1	1	0.38	9,070.62	0.265	0.420	2797
34,770,982	1.55	---	0.3	0.15	15/05/2015	27/07/2000	---	GR. SARANTIS SA (CR)	7.60	---	↘	7.60	24/06/2015	7.60	7.60	7.60	7.60	7.60	16.09	2014	100	2	760.00	264,259.46	6.70	8.20	3767
101,260,000	2.13	---	0.1821	0.3037	19/03/2015	08/01/2014	---	GRIVALIA PROPERTIES (CR)	7.05	-1.95	€	7.19	24/06/2015	6.91	6.91	7.39	7.05	7.08	18.44	2014	85,428	342	604,703.06	713,883.00	6.30	9.00	8675
8,340,750	1.20	---	---	---	25/06/2009	30/07/2001	---	HAIDEMENOS SA (CR)	0.872	---	↘	0.872	24/06/2015	---	---	---	---	---	---	2014	---	---	---	7,273.13	0.210	0.968	2791
101,279,627	0.380	---	---	---	26/06/2008	14/07/2006	---	HALKOR SA (CB)	0.397	1.80	#	0.390	24/06/2015	0.397	0.397	0.397	0.397	0.397	---	2014	530	3	210.41	40,208.01	0.244	0.455	1755
29,546,360	0.710	---	---	---	20/06/2008	23/08/2000	---	HELLENIC CABLES SA (CR)	0.950	---	↘	0.950	24/06/2015	---	---	---	---	---	---	2014	---	---	---	28,069.04	0.560	1.15	2733
65,368,563	0.740	0.09	---	0.21	26/05/2015	16/07/2014	---	HELLENIC EXCHANGES-A.S.E. (CR)	4.40	---	↘	4.40	24/06/2015	4.27	4.26	4.58	4.40	4.44	27.85	2014	426,861	1,019	1,896,992.76	287,621.68	3.48	6.80	8777
305,635,185	2.18	0.15	---	---	31/12/2014	01/10/2003	4795	HELLENIC PETROLEUM (CR)	4.67	1.74	#	4.59	24/06/2015	4.45	4.38	4.68	4.67	4.60	---	2014	96,010	488	441,596.84	1,427,316.31	3.40	4.99	537
305,732,436	0.410	---	---	---	08/07/2009	28/09/2011	---	HYGEIA SA (CR)	0.142	-2.74	€	0.146	24/06/2015	0.135	0.135	0.145	0.142	0.142	---	2014	47,006	27	6,684.13	43,414.01	0.111	0.206	4533
53,155,053	0.440	---	---	---	24/11/2014	16/07/2008	---	IASO SA (CR)	0.720	-0.83	€	0.726	24/06/2015	0.720	0.720	0.720	0.720	0.720	---	2014	100	1	72.00	38,271.64	0.580	0.900	4533
8,298,467	0.400	---	---	---	30/08/1993	08/05/2013	---	IDEAL GROUP SA (CR)	1.04	---	↘	1.04	24/06/2015	---	---	---	---	---	---	2014	---	---	---	8,630.41	0.668	1.16	9574
28,580,100	0.400	---	0.025	---	18/08/2014	10/10/2013	---	IKTINOS HELLAS SA (CR)	0.936	-7.33	€	1.01	24/06/2015	1.01	0.936	1.01	0.936	0.960	8.94	2014	18,250	57	17,516.69	26,750.97	0.825	1.30	2353
9,090,000	0.900	---	---	---	15/05/2009	13/10/2014	---	ILYDA S.A. (CR)	0.549	---	↘	0.549	24/06/2015	---	---	---	---	---	---	2014	---	---	---	4,990.41	0.549	0.739	9537
20,578,374	0.620	---	---	0.4	04/06/2015	18/05/2015	---	INFORM P. LYKOS SA (CR)	0.605	23.47	#	0.490	24/06/2015	0.599	0.599	0.605	0.605	0.600	0.49	2014	2	2	1.20	12,449.92	0.420	1.94	2791
11,233,200	0.730	---	---	---	12/07/2010	30/07/1999	---	INTERTECH SA (CR)	0.180	---	↘	0.180	24/06/2015	---	---	---	---	---	---	2014	---	---	---	2,021.98	0.168	0.308	9572
34,986,430	0.440	---	---	---	25/07/2008	23/02/2010	---	INTERWOOD-XYLEMPORIA (CR)	0.110	---	↘	0.110	24/06/2015	---	---	---	---	---	---	2014	---	---	---	4,349.04	0.059	0.145	2353
2,566,836	0.440	---	---	---	13/08/2010	09/01/2007	---	INTERWOOD-XYLEMPORIA (PR)	0.195	---	↘	0.195	24/06/2015	---	---	---	---	---	---	2014	---	---	---	4,349.04	0.195	0.195	2353
23,154,250	1.36	---	---	---	12/08/2008	02/08/2010	---	INTRACOM CONSTR. (CR)	0.570	-0.87	€	0.575	24/06/2015	0.540	0.540	0.575	0.570	0.549	4.60	2014	2,455	5	1,347.85	13,197.92	0.364	0.630	2357
133,025,996	1.41	---	---	---	03/07/2007	07/01/2002	---	INTRACOM HOLDINGS (CR)	0.418	-2.79	€	0.430	24/06/2015	0.428	0.418	0.430	0.418	0.426	---	2014	53,475	55	22,806.13	55,604.87	0.345	0.511	9578
158,961,721	0.300	0.0026	---	---	30/05/2013	14/11/2007	---	INTRALOT (CR)	1.65	4.43	#	1.58	24/06/2015	1.57	1.51	1.65	1.65	1.60	---	2014	112,296	204	180,077.63	262,286.84	1.05	1.86	5752

Number of Outstanding Securities	Nominal Value	Dividends [1]			Date of Last Coupon		Note	Shares	Closing price	% change	Previous closing price/date	Open price	Price min	Price max	Last price	Avg price	Last Bid [7]	Last Ask [7]	P/E after	Year	Volume	Trades	Transactions Value[8]	Company Mkt Value (thou. €)	Year low	Year high	Sector[4]	
		2012	2013	2014	Dividend [2]	Right																						
Main Market																												
77,654,850	0.580	---	---	---	01/07/2011	21/02/2003	---	J & P - AVAX SA (CR)	0.494	3.78 #	0.476 24/06/2015	0.456	0.451	0.497	0.487	0.459	---	---	2.30	2014	1,150	5	527.95	38,361.50	0.401	0.660	2357	
136,059,759	1.19	---	0.18	0.18	23/12/2014	05/03/2014	---	JUMBO SA (CR)	7.36	4.40 #	7.05 24/06/2015	7.05	6.85	7.49	7.36	7.28	---	---	13.70	2014	623,619	1,623	4,538,963.13	1,001,399.83	5.80	10.98	3747	
9,742,920	0.400	0.01	0.01	---	08/08/2014	14/07/2000	---	KARAMOLEGOS SA (CR)	2.19	--- ↘	2.19 24/06/2015	---	---	---	---	---	---	---	21.04	2014	---	---	---	21,336.99	1.57	2.42	3577	
14,679,792	1.68	---	---	---	24/06/2014	04/09/2000	---	KARATZIS SA (CR)	3.58	--- ↘	3.58 24/06/2015	---	---	---	---	---	---	---	8.66	2014	---	---	---	52,553.66	2.89	3.70	2723	
13,202,756	0.350	---	---	---	01/07/2004	05/08/2014	---	KEKROPS SA (CR)	0.300	20.00 #	0.250 24/06/2015	0.270	0.270	0.300	0.300	0.289	---	---	---	2014	200	7	57.88	3,960.83	0.233	0.424	8633	
7,595,160	0.600	---	---	---	08/08/2008	18/08/2010	---	KIRIAKOULIS SHIPPING SA (CR)	0.702	--- ↘	0.702 24/06/2015	---	---	---	---	---	---	---	---	2014	---	---	---	5,331.80	0.340	0.716	5759	
23,648,700	0.350	---	---	---	13/07/2011	31/03/2015	---	KLEEMAN HELLAS SA (CR)	1.79	0.56 #	1.78 24/06/2015	1.75	1.75	1.79	1.79	1.77	---	---	7.21	2014	1,202	7	2,121.58	42,331.17	1.22	1.90	2757	
40,219,218	0.300	---	---	---	25/05/2009	09/07/2013	---	KLOUKINAS - LAPPAS SA (CR)	0.360	1.41 #	0.355 24/06/2015	0.355	0.342	0.360	0.360	0.355	---	---	---	2014	305	13	108.38	14,478.92	0.320	0.470	2357	
21,224,340	0.420	---	---	---	02/07/2008	25/04/2006	---	KORDELLOS BROS SA (CR)	0.210	--- ↘	0.210 24/06/2015	---	---	---	---	---	---	---	---	2014	---	---	---	4,457.11	0.155	0.250	1757	
13,586,500	0.390	---	---	---	25/06/2010	28/05/2008	---	KORRES (CR)	3.98	2.05 #	3.90 24/06/2015	3.80	3.80	3.98	3.98	3.88	---	---	---	2014	350	3	1,357.00	54,074.27	3.10	4.25	3767	
29,480,000	0.420	---	---	---	19/07/2010	01/08/2007	---	KRETA FARM SA (CR)	0.400	-2.44 €	0.410 24/06/2015	0.413	0.395	0.420	0.400	0.404	---	---	10.99	2014	13,565	32	5,477.37	11,792.00	0.355	0.520	3577	
33,065,136	0.380	---	---	---	06/07/2009	16/09/2013	---	KRI-KRI S.A. (CR)	1.79	--- ↘	1.79 24/06/2015	---	---	---	---	---	---	---	16.57	2014	---	---	---	59,186.59	1.56	1.86	3577	
15,804,800	0.330	---	---	---	15/06/2010	12/03/2004	---	KTIMA KOSTAS LAZARIDIS SA (CR)	0.347	--- ↘	0.347 24/06/2015	---	---	---	---	---	---	---	---	2014	---	---	---	5,484.27	0.276	0.396	3535	
23,719,554	0.980	---	---	0.1006	19/03/2015	15/09/2014	---	KYRIAKIDIS MARBLES SA (CR)	2.35	2.17 #	2.30 24/06/2015	2.30	2.30	2.35	2.33	2.32	---	---	8.93	2014	1,490	11	3,452.95	55,740.95	1.61	2.49	2353	
79,721,775	0.300	---	---	---	30/05/2007	23/06/2014	---	LAMDA DEVELOPMENT SA (CR)	3.99	2.83 #	3.88 24/06/2015	3.97	3.95	4.05	3.99	4.00	---	---	---	2014	103,415	230	413,119.54	318,089.88	2.46	4.63	8633	
21,364,000	1.12	---	---	---	05/07/2010	10/08/2005	---	LAMPSPA HOTEL SA (CR)	17.30	--- ↘	17.30 24/06/2015	---	---	---	---	---	---	---	-(6)-	2014	---	---	---	369,597.20	15.40	18.00	5753	
5,939,268	0.620	---	---	---	10/07/2003	03/01/2002	---	LANAKAM SA (CR)	0.938	--- ↘	0.938 24/06/2015	---	---	---	---	---	---	---	---	2014	---	---	---	5,571.03	0.891	1.16	3763	
7,734,375	1.00	---	---	---	09/07/2007	07/01/2011	---	LIVANIS SA (CR)	0.170	--- ↘	0.170 24/06/2015	---	---	---	---	---	---	---	---	2014	---	---	---	1,314.84	0.117	0.210	5557	
4,740,000	0.860	---	---	---	14/03/2003	---	---	LOGISMOS S.A. (CR)	0.499	--- ↘	0.499 24/06/2015	---	---	---	---	---	---	---	---	2014	---	---	---	2,365.26	0.216	0.539	9533	
17,125,062	0.940	---	---	---	01/06/2010	02/02/2015	---	LOULIS MILLS SA (CR)	1.97	--- ↘	1.97 24/06/2015	---	---	---	---	---	---	---	9.63	2014	---	---	---	33,736.37	1.64	2.35	3577	
937,122,261	0.300	---	---	---	26/04/2007	29/08/2014	---	MARFIN INVESTMENT GROUP (CR)	0.131	-2.24 €	0.134 24/06/2015	0.130	0.127	0.139	0.131	0.133	---	---	---	2014	2,227,146	484	295,635.78	122,763.02	0.101	0.232	8775	
9,819,370	0.690	---	---	---	14/08/2007	09/01/2004	---	MATHIOS REFRACTORY SA (CR)	0.343	--- ↘	0.343 24/06/2015	---	---	---	---	---	---	---	---	2014	---	---	---	3,368.04	0.189	0.360	2353	
468,700	0.47	0.65	1	25/06/2015	21/05/2004	---	---	MERMEREN KOMB. A.D. PR. (GDR)	6.20	-7.05 €	6.67 24/06/2015	6.20	6.20	6.38	6.20	6.20	---	---	0.42	2014	251	3	1,556.38	2,905.94	5.91	8.15	1775	
51,950,600	0.320	0.25	0.3	0.5	08/05/2015	21/10/2005	---	METKA (CR)	7.80	1.17 #	7.71 24/06/2015	7.71	7.60	7.87	7.80	7.78	---	---	5.48	2014	105,083	487	817,145.72	405,214.68	6.88	10.50	2757	
10,500,000	0.950	---	---	---	24/06/2008	19/12/2013	---	MEVACO SA (CR)	1.14	--- ↘	1.14 24/06/2015	---	---	---	---	---	---	---	---	2014	---	---	---	11,970.00	0.701	1.20	2757	
6,700,000	0.800	---	0.16	---	26/05/2014	29/05/2014	---	MILLS KEPENOS (CR)	1.92	--- ↘	1.92 24/06/2015	---	---	---	---	---	---	---	8.34	2014	---	---	---	12,864.00	1.17	2.14	3577	
6,200,000	0.500	---	---	---	22/06/2010	01/11/1995	---	MINERVA KNITWEAR SA (CB)	0.248	0.81 #	0.246 24/06/2015	0.246	0.246	0.248	0.248	0.247	---	---	---	2014	150	3	37.05	1,537.60	0.225	0.300	3763	
12,417,000	0.370	---	---	---	28/07/2008	06/09/2011	---	MLS MULTIMEDIA SA (CR)	4.02	--- ↘	4.02 24/06/2015	3.99	3.99	4.02	4.02	4.00	---	---	29.59	2014	1,450	10	5,806.35	49,916.34	3.85	4.25	9537	
11,700,000	0.590	---	---	---	02/06/2009	24/07/2012	---	MOTODYNAMICS S.A. (CR)	0.695	-0.57 €	0.699 24/06/2015	0.490	0.490	0.695	0.695	0.501	---	---	---	2014	388	5	194.22	8,131.50	0.199	0.900	5379	
110,782,980	0.750	0.3	0.2	---	26/06/2014	04/11/2013	---	MOTOR OIL (CR)	8.39	0.96 #	8.31 24/06/2015	8.10	8.10	8.51	8.39	8.34	---	---	---	2014	106,314	387	886,658.44	929,469.20	5.64	8.76	533	
116,915,862	1.07	---	---	---	11/05/2009	06/07/2011	---	MYTILINEOS HOLDINGS (CR)	5.70	-0.87 €	5.75 24/06/2015	5.58	5.58	5.95	5.70	5.72	---	---	---	2014	224,996	836	1,287,027.65	666,420.41	4.18	6.97	1755	
8,321,682	0.670	---	---	---	17/08/2007	23/11/1999	---	N. LEVEDERIS SA (CB)	0.190	--- ↘	0.190 24/06/2015	---	---	---	---	---	---	---	---	2014	---	---	---	3,480.22	0.126	0.220	1757	
2,160,524	0.670	0.0436	0.0436	---	18/08/2014	23/11/1999	---	N. LEVEDERIS SA (PB)	0.879	--- ↘	0.879 24/06/2015	---	---	---	---	---	---	---	---	2014	---	---	---	3,480.22	0.380	0.879	1757	
11,510,102	0.890	---	---	---	24/06/2005	06/10/1999	---	NAFPAKTOS TEXTILE IND. SA (CB)	0.296	--- ↘	0.296 24/06/2015	---	---	---	---	---	---	---	---	2014	---	---	---	3,406.99	0.193	0.302	3763	
6,340,000	0.600	---	---	---	30/11/2009	12/07/2000	---	NAKAS MUSIC	0.838	-9.99 €	0.931 24/06/2015	0.838	0.838	0.838	0.838	0.838	---	---	26.04	2014	14	2	11.73	5,312.92	0.461	1.05	5379	
3,533,149,631	0.300	---	---	---	16/05/2008	24/05/2013	---	NATIONAL BANK (CR)	1.14	--- ↘	1.14 24/06/2015	1.08	1.07	1.18	1.14	1.14	---	---	---	2014	15,669,452	3,358	17,868,500.63	4,027,790.58	0.790	1.72	8355	
23,935,280	0.300	---	---	---	29/06/2009	13/06/2000	---	NAYTEMPORIKI PUBLISHING SA(CR)	0.137	--- ↘	0.137 24/06/2015	---	---	---	---	---	---	---	---	2014	---	---	---	3,279.13	0.090	0.200	5557	
27,848,000	0.300	0.0137	0.004	---	18/08/2014	02/09/2003	---	NEWSPHONE HELLAS SA (CR)	0.250	--- ↘	0.250 24/06/2015	---	---	---	---	---	---	---	28.43	2014	---	---	---	6,962.00	0.176	0.300	2791	

Number of Outstanding Securities	Nominal Value	Dividends [1]			Date of Last Coupon		Note	Shares	Closing price	% change	Previous closing price/date	Open price	Price min	Price max	Last price	Avg price	Last Bid [7]	Last Ask [7]	P/E after	Year	Volume	Trades	Transactions Value[8]	Company Mkt Value (thou. €)	Year low	Year high	Sector[4]
		2012	2013	2014	Dividend [2]	Right																					
Main Market																											
6,132,500	1.25	---	---	---	24/06/2011	19/06/2001	---	NEXANS HELLAS SA (CR)	0.900	-20.35	€ 1.13 24/06/2015	0.900	0.900	0.900	0.900	0.900	---	---	---	2014	4	1	3.60	5,519.25	0.715	1.77	2733
319,000,000	0.300	0.57	0.25	0.7017	22/04/2015	25/04/2001	---	OPAP (CR)	7.98	2.97	# 7.75 24/06/2015	7.52	7.52	8.29	7.98	7.99	---	---	13.17	2014	1,073,645	1,937	8,574,178.44	2,545,620.00	6.67	9.90	5752
490,150,389	2.83	---	---	0.08	25/06/2015	18/06/1998	---	OTE (CR)	8.34	4.25	# 8.00 24/06/2015	8.00	7.75	8.45	8.34	8.17	---	---	37.13	2014	991,046	1,953	8,092,988.69	4,087,854.24	6.35	9.47	6535
25,000,000	2.00	0.05	0.12	0.099	25/06/2015	08/08/2003	---	P.P.A. S.A. (CR)	13.44	1.66	# 13.22 24/06/2015	12.97	12.93	13.49	13.44	13.20	---	---	49.68	2014	9,484	177	125,198.72	336,000.00	9.67	16.40	2777
4,971,466	1.46	---	---	---	04/07/2007	08/10/2003	---	PAIRIS SA (CR)	0.219	---	↘ 0.219 24/06/2015	---	---	---	---	---	---	---	---	2014	---	---	---	1,088.75	0.106	0.253	2723
3,953,090	0.900	---	---	0.067	27/05/2015	05/12/2012	---	PAPERPACK (CR)	0.995	5.96	# 0.939 24/06/2015	0.938	0.938	0.995	0.995	0.940	---	---	3.06	2014	5,262	13	4,945.75	3,933.32	0.684	1.07	2723
50,797,369	0.310	---	---	---	17/08/2000	12/10/2010	---	PAPOUTSANIS (CR)	0.254	1.60	# 0.250 24/06/2015	0.256	0.242	0.256	0.254	0.244	---	---	---	2014	833	8	203.45	12,902.53	0.225	0.439	3767
7,070,400	0.930	---	---	---	18/05/2010	25/05/2015	---	PETROPOULOS PETROS (CR)	3.77	0.27	# 3.76 24/06/2015	3.70	3.70	3.77	3.77	3.76	---	---	23.22	2014	1,053	7	3,956.31	26,655.41	2.98	3.84	2753
6,101,979,715	0.300	---	---	---	16/05/2008	05/06/2013	---	PIRAEUS BANK (CR)	0.378	-1.05	€ 0.382 24/06/2015	0.365	0.362	0.405	0.378	0.383	---	---	---	2014	32,312,795	5,667	12,385,052.81	2,306,548.33	0.196	1.01	8355
22,080,000	0.330	0.12	0.2	---	21/05/2014	27/04/2015	---	PLAISIO COMPUTERS SA (CR)	5.15	---	↘ 5.15 24/06/2015	5.15	5.11	5.15	5.15	5.11	---	---	7.10	2014	2,006	13	10,251.70	113,712.00	4.75	6.25	9572
232,000,000	4.60	0.025	---	---	22/07/2013	12/12/2001	---	PPC (CR)	4.45	0.45	# 4.43 24/06/2015	4.30	4.27	4.60	4.45	4.46	---	---	30.16	2014	705,624	1,624	3,149,981.10	1,032,400.00	3.30	7.65	7535
11,812,193	0.470	---	---	0.02	26/03/2015	15/11/2006	---	PROFILE SA (CR)	0.452	-2.59	€ 0.464 24/06/2015	0.460	0.450	0.460	0.452	0.457	---	---	11.97	2014	3,219	23	1,469.90	5,339.11	0.366	0.527	9533
27,345,120	0.470	---	---	---	18/07/2005	26/02/2014	---	QUALITY & RELIABILITY SA (CR)	0.418	0.24	# 0.417 24/06/2015	0.418	0.418	0.418	0.418	0.418	---	---	15.70	2014	33	1	13.79	11,430.26	0.290	0.560	9533
11,962,443	0.500	---	---	---	05/09/2008	12/12/2013	---	QUEST HOLDINGS (CR)	4.50	-1.96	€ 4.59 24/06/2015	4.50	4.50	4.50	4.50	4.50	---	---	23.75	2014	120	1	540.00	53,830.99	4.14	5.35	9533
57,434,884	1.31	---	---	---	05/06/2008	12/06/2009	---	REDS S.A. (CR)	0.435	-0.46	€ 0.437 24/06/2015	0.442	0.435	0.447	0.435	0.439	---	---	---	2014	1,450	8	636.90	24,984.17	0.348	0.516	8633
22,280,000	0.300	---	---	---	11/04/2011	23/02/2007	---	REVOIL (CR)	0.280	---	↘ 0.280 24/06/2015	0.280	0.280	0.280	0.280	0.280	---	---	---	2014	2,100	3	588.00	6,238.40	0.200	0.403	5379
7,500,000	0.800	0.0024	0.0863	0.1	19/06/2015	10/02/2014	---	S.KANAKIS SA (CR)	1.85	2.78	# 1.80 24/06/2015	1.92	1.82	1.92	1.88	1.85	---	---	8.34	2014	1,689	19	3,117.42	13,875.00	1.67	2.10	3577
52,067,296	0.300	---	---	---	23/12/2003	24/01/2007	---	SELECTED TEXT. IND. ASSOC (CR)	0.200	---	↘ 0.200 24/06/2015	0.190	0.190	0.200	0.200	0.194	---	---	---	2014	231	2	44.89	10,413.46	0.172	0.273	3763
96,243,908	0.410	---	---	---	26/06/2008	17/07/2000	---	SIDENOR (CR)	1.01	2.02	# 0.990 24/06/2015	0.951	0.951	1.03	1.01	0.997	---	---	---	2014	49,419	81	49,262.47	97,206.35	0.462	1.03	1757
6,456,530	1.61	---	---	---	29/06/2001	02/08/2010	---	SPACE HELLAS SA (CR)	1.82	---	↘ 1.82 24/06/2015	---	---	---	---	---	---	---	4.81	2014	---	---	---	11,750.88	1.43	1.99	9578
28,438,268	0.300	---	---	---	21/08/2006	24/11/1999	---	SPIROY AGRICULTURE SA (CR)	0.296	---	↘ 0.296 24/06/2015	---	---	---	---	---	---	---	---	2014	---	---	---	8,417.73	0.243	0.357	1357
40,693,350	5.00	---	---	---	03/07/2006	26/05/2015	---	TECHNICAL OLYMPIC SA (CR)	0.763	-3.42	€ 0.790 24/06/2015	0.868	0.740	0.868	0.760	0.745	---	---	---	2014	2,333	15	1,736.94	31,049.03	0.571	1.12	3728
109,314,400	0.300	---	---	---	28/05/2012	09/07/2014	---	TERNA ENERGY (CR)	3.07	-0.33	€ 3.08 24/06/2015	3.04	2.95	3.12	3.07	3.05	---	---	---	2014	63,432	350	193,140.32	335,595.21	1.70	3.32	7537
36,300,000	1.12	0.162	0.285	---	14/08/2014	12/12/2007	---	THESSALONIKA WATER & SEWERAGE	2.63	-1.13	€ 2.66 24/06/2015	2.64	2.57	2.69	2.63	2.62	---	---	7.22	2014	9,847	66	25,771.70	95,469.00	2.28	3.35	7577
45,094,620	0.660	0.0467	0.05	0.0225	20/04/2015	01/11/1999	---	THRACE PLASTICS SA (CR)	1.38	-1.43	€ 1.40 24/06/2015	1.40	1.37	1.43	1.38	1.40	---	---	---	2014	3,478	23	4,856.77	62,230.58	0.849	1.53	1357
77,063,568	4.00	---	---	0.1551	24/06/2015	25/06/2004	---	TITAN CEMENT (CR)	20.78	0.05	# 20.77 24/06/2015	20.77	20.23	21.79	20.78	21.17	---	---	19.17	2014	61,212	423	1,295,561.34	1,682,293.13	18.42	24.95	2353
7,568,960	4.00	---	---	0.1551	24/06/2015	25/06/2004	---	TITAN CEMENT CO. (PR)	10.69	---	↘ 10.69 24/06/2015	---	---	---	---	---	---	---	9.86	2014	---	---	---	1,682,293.13	7.45	10.69	2353
10,080,000	3.00	1.5	0.6	1.95	04/05/2015	27/08/2001	---	TPA SA (CR)	19.55	-1.76	€ 19.90 24/06/2015	19.35	19.35	19.56	19.55	19.54	---	---	9.25	2014	134	4	2,617.80	197,064.00	15.72	23.95	2777
15,627,315	0.300	---	---	---	16/11/1992	03/12/2012	---	UNIBIOS (CR)	0.105	-0.94	€ 0.106 24/06/2015	0.100	0.100	0.105	0.105	0.100	---	---	---	2014	1,110	6	111.20	1,640.87	0.081	0.180	2353
18,810,000	0.400	---	---	---	08/07/2010	14/11/2007	---	VARVERIS - MODA BAGNO SA (CR)	0.118	-4.06	€ 0.123 24/06/2015	0.118	0.118	0.119	0.118	0.118	---	---	---	2014	3,170	4	374.26	2,219.58	0.081	0.184	2353
219,611,308	---	---	---	---	14/02/2014	---	---	VIOHALCO SA/NV (CB)	2.71	2.26	# 2.65 24/06/2015	2.47	2.47	2.74	2.71	2.64	---	---	---	---	59,933	229	157,962.51	595,146.64	1.79	4.11	2727
4,968,600	2.88	---	---	---	01/07/1998	14/12/1998	---	VIS SA (CR)	0.841	---	↘ 0.841 24/06/2015	---	---	---	---	---	---	---	---	2014	---	---	---	4,178.59	0.461	1.34	2723
6,325,000	0.600	---	---	---	02/05/2014	17/02/2014	---	VOGIATZOGLOU SYSTEMS SA (CR)	0.987	---	↘ 0.987 24/06/2015	---	---	---	---	---	---	---	28.77	2014	---	---	---	6,242.78	0.836	1.00	2797

Exchange Traded Funds (ETFs)																															
5,848,618	---	---	---	---	24/01/2008	---	ALPHA ETF FTSE Athex Large Cap				2.40	0.71	#	2.38	24/06/2015	2.40	2.40	2.40	2.40	2.40	---	---	---	---	1	1	2.40	---	2.05	2.84	12003
294,878	---	---	---	---	29/06/2009	---	NBGAM ETF				8.77	1.04	#	8.68	24/06/2015	8.77	8.77	8.77	8.77	8.77	---	---	---	---	2	1	17.54	---	6.64	10.37	12003
388,550	---	---	---	---	03/11/2010	---	NBGAM ETF GREECE & TURKEY 30				7.28	0.69	#	7.23	24/06/2015	7.28	7.28	7.28	7.28	7.28	---	---	---	---	2	1	14.56	---	6.68	8.90	12003

Number of Outstanding Securities	Nominal Value	Dividends [1]			Date of Last Coupon Dividend [2]		Note	Shares	Closing price	% change	Previous closing price/date	Open price	Price min	Price max	Last price	Avg price	Last Bid [7]	Last Ask [7]	P/E after	Year	Volume	Trades	Transactions Value[8]	Company Mkt Value (thou. €)	Year low	Year high	Sector[4]
14,000,000	4.15	---	---	---	23/04/2010	29/06/1999	4815	ALPHA REAL ESTATE SA(CR)	4.70	-7.84 €	5.10 24/06/2015	4.70	4.69	4.70	4.70	4.70	---	---	25.30	2014	747	5	3,510.60	65,800.00	3.80	6.30	8637
63,900,000	3.00	---	---	---	23/06/2003	04/11/2008	4816	ASTIR PALACE SA (CR)	2.28	--- γ	2.28 24/06/2015	---	---	---	---	---	---	---	---	2014	---	---	---	145,692.00	2.00	3.60	5753
90,902,904	0.800	---	---	---	09/08/2004	08/03/2006	4814	ATHENA SA (CR)	0.300	--- γ	0.300 24/06/2015	---	---	---	---	---	---	---	---	2014	---	---	---	27,270.87	0.300	0.328	2357
191,660,320	0.300	---	---	---	20/07/2009	29/12/2010	4817	ATTICA HOLDINGS (CR)	0.514	-1.15 €	0.520 24/06/2015	0.500	0.500	0.520	0.514	0.514	---	---	---	2014	31,534	9	16,204.04	98,513.40	0.416	0.589	5759
71,082,707	1.70	---	---	---	01/07/2010	21/11/2012	4820	HERACLES GEN.CEMENT CO. (CR)	1.28	16.36 #	1.10 24/06/2015	1.24	1.20	1.30	1.20	1.29	---	---	---	2014	6,040	9	7,759.00	90,985.86	1.10	1.40	2353
13,404,440	8.63	---	---	---	02/04/2001	06/03/1992	4822	IONIAN HOTELS SA (CR)	5.05	--- γ	5.05 24/06/2015	---	---	---	---	---	---	---	-(6)-	2014	---	---	---	67,692.42	4.98	7.25	5753
2,760,000	11.83	8.52	8.5	9.3	23/06/2015	16/07/1990	4823	KARELIA TOBACCO CO. SA (CB)	230.00	--- γ	230.00 24/06/2015	---	---	---	---	---	---	---	10.25	2014	---	---	---	634,800.00	198.05	298.00	3785
30,600,000	0.300	---	---	---	12/06/2008	04/03/2014	5059	KATHIMERINI SA (CR)	0.500	--- γ	0.500 24/06/2015	0.500	0.500	0.500	0.500	0.500	---	---	---	2014	90,304	11	45,152.00	15,300.00	0.218	0.588	5557
14,074,000	3.00	---	---	---	02/03/2012	23/07/2009	5075	MIG REAL ESTATE (CR)	2.51	0.40 #	2.50 24/06/2015	2.51	2.51	2.51	2.51	2.51	---	---	14.33	2014	715	4	1,794.65	35,325.74	2.08	3.45	8671
106,980,050	2.25	---	---	---	25/07/2008	24/02/2014	5046	MINOAN LINES SA (CR)	2.00	--- γ	2.00 24/06/2015	---	---	---	---	---	---	---	---	2014	---	---	---	213,960.10	1.43	2.00	5759
17,240,776	0.370	---	---	---	14/07/2005	30/09/2003	4827	PERSEUS SA (CR)	0.363	--- γ	0.363 24/06/2015	---	---	---	---	---	---	---	1.75	2014	---	---	---	6,258.40	0.300	0.700	3577
54,888,240	1.13	0.1	0.09	---	25/04/2014	22/03/2006	5100	TRASTOR REAL EST. INV. CO.(CR)	1.40	--- γ	1.40 24/06/2015	1.40	1.40	1.40	1.40	1.40	---	---	---	2014	16,612	4	23,256.80	76,843.54	0.900	1.41	8671

33,301,715	0.320	---	---	---	27/06/2003	08/07/2009	4978	AEGEK (CR)	0.052	-18.75 €	0.064 24/06/2015	0.052	0.052	0.052	0.052	0.052	---	---	---	2014	999	3	51.95	1,731.69	0.032	0.085	2357
13,000,000	1.00	---	---	---	01/08/2007	07/04/2000	5093	AKRITAS SA (CR)	0.038	--- γ	0.038 24/06/2015	---	---	---	---	---	---	---	---	2014	---	---	---	494.00	0.034	0.125	2353
14,870,100	0.300	---	---	---	15/05/2008	26/09/2011	4844	ALPHA GRISSIN S.A. (CR)	0.054	--- γ	0.054 24/06/2015	---	---	---	---	---	---	---	---	2014	---	---	---	802.99	0.032	0.054	9533
215,246,452	0.300	---	---	---	25/06/2001	24/09/2001	4446	ALTEC SA (CR)	0.024	20.00 #	0.020 24/06/2015	0.024	0.024	0.024	0.024	0.024	---	---	---	2014	500	2	12.00	5,165.91	0.017	0.030	9533
2,969,713	0.300	---	---	---	02/07/2008	28/02/2011	4958	ANEK LINES SA (PR, issue '96)	0.110	--- γ	0.110 24/06/2015	---	---	---	---	---	---	---	---	2014	---	---	---	12,596.35	0.090	0.133	5759
312,163	0.300	---	---	---	02/07/2008	28/02/2011	4959	ANEK LINES SA (PR, issue '90)	1.30	--- γ	1.30 24/06/2015	---	---	---	---	---	---	---	---	2014	---	---	---	12,596.35	1.15	1.30	5759
185,373,016	0.300	---	---	---	02/07/2008	28/02/2011	4957	ANEK LINES SA (CR)	0.064	-7.25 €	0.069 24/06/2015	0.064	0.064	0.064	0.064	0.064	---	---	---	2014	2,500	2	160.00	12,596.35	0.047	0.093	5759
20,255,805	0.300	---	---	---	22/08/2006	02/08/2010	4881	AXON HOLDING SA (CR)	0.058	--- γ	0.058 24/06/2015	---	---	---	---	---	---	---	---	2014	---	---	---	1,174.84	0.022	0.066	4533
17,579,754	4.16	---	---	---	18/08/2006	02/08/2010	5097	BIOTER SA (CR)	0.176	--- γ	0.176 24/06/2015	---	---	---	---	---	---	---	---	2014	---	---	---	3,094.04	0.128	0.250	2357
14,173,104	0.300	---	---	---	11/08/2010	28/11/2013	5055	DIONIC (CR)	0.060	--- γ	0.060 24/06/2015	---	---	---	---	---	---	---	---	2014	---	---	---	850.39	0.037	0.086	2797
15,878,748	0.480	---	---	---	10/07/2006	22/03/2004	5095	DOMIKI KRITIS SA (CR)	0.318	--- γ	0.318 24/06/2015	---	---	---	---	---	---	---	---	2014	---	---	---	5,049.44	0.216	0.340	2357
3,961,300	1.28	---	---	---	29/06/2004	03/08/2000	5080	DUROS SA (CR)	0.267	--- γ	0.267 24/06/2015	---	---	---	---	---	---	---	---	2014	---	---	---	1,057.67	0.145	0.585	3763
7,085,888	1.59	---	---	---	02/07/1996	06/09/2010	4690	ELVIEMEK (CR)	3.97	--- γ	3.97 24/06/2015	---	---	---	---	---	---	---	---	2014	---	---	---	28,130.98	3.97	3.97	8633
6,000,000	0.600	---	---	---	13/06/2008	08/04/2004	4886	EUROBROKERS S.A. (CR)	0.009	--- γ	0.009 24/06/2015	---	---	---	---	---	---	---	---	2014	---	---	---	54.00	0.009	0.020	8534
21,820,410	0.800	---	---	---	22/05/2008	02/08/2011	4882	EUROMEDICA SA (CR)	0.440	--- γ	0.440 24/06/2015	---	---	---	---	---	---	---	---	2014	---	---	---	9,600.98	0.320	0.440	4533
110,097,185	0.300	---	---	---		04/12/2013	5033	Forthnet (CR)	0.801	0.12 #	0.800 24/06/2015	0.800	0.800	0.850	0.850	0.801	---	---	---	2013	1,722	7	1,378.70	88,187.85	0.580	1.19	9535
77,376,446	0.340	---	---	---	23/05/2005	18/08/2011	5094	G.E. DIMITRIOU (CR)	0.017	--- γ	0.017 24/06/2015	0.017	0.017	0.017	0.017	0.017	---	---	---	2014	200	2	3.40	1,315.40	0.011	0.030	3722
1,270,000	0.300	---	---	---	06/07/2007	06/02/2013	5007	GIRAKIAN PROFIL SA (CB)	0.336	--- γ	0.336 24/06/2015	---	---	---	---	---	---	---	---	2014	---	---	---	426.72	0.247	0.420	1757
36,748,909	0.730	---	---	---	15/12/2005	13/12/2006	5083	HEL. SUGAR INDUSTRY SA (CB)	0.213	--- γ	0.213 24/06/2015	---	---	---	---	---	---	---	---	2014	---	---	---	7,827.52	0.141	0.327	3577
1,540,000	0.600	---	---	---	08/08/1994	19/09/2000	5058	J.BOUTARIS & SON HOLD. (PB)	0.006	--- γ	0.006 24/06/2015	---	---	---	---	---	---	---	---	2014	---	---	---	2,124.33	0.005	0.007	3535
25,179,640	0.600	---	---	---	08/08/1994	19/09/2000	5057	J.BOUTARIS & SON HOLD. SA (CB)	0.084	--- γ	0.084 24/06/2015	---	---	---	---	---	---	---	---	2014	---	---	---	2,124.33	0.016	0.119	3535
7,125,216	0.650	---	---	---	01/07/2005	14/12/1999	4955	KRE.KA SA (CR)	0.149	--- γ	0.149 24/06/2015	---	---	---	---	---	---	---	---	2014	---	---	---	1,061.66	0.101	0.225	3573
51,081,030	1.00	---	---	---	20/08/2007	03/09/2007	4912	LAVIPHARM SA (CR)	0.160	--- γ	0.160 24/06/2015	---	---	---	---	---	---	---	---	2014	---	---	---	8,172.96	0.086	0.180	4577
4,419,616	1.58	---	---	---	21/07/2011	04/03/2015	4983	MEDICON S.A (CR)	0.366	20.00 #	0.305 24/06/2015	0.366	0.366	0.366	0.366	0.366	---	---	2.10	2014	10	1	3.66	1,617.58	0.233	0.453	4535

Number of Outstanding Securities	Nominal Value	Dividends [1]			Date of Last Coupon		Note	Shares	Closing price	% change	Previous closing price/date	Open price	Price min	Price max	Last price	Avg price	Last Bid [7]	Last Ask [7]	P/E after	Year	Volume	Trades	Transactions Value[8]	Company Mkt Value (thou. €)	Year low	Year high	Sector[4]	
		2012	2013	2014	Dividend [2]	Right																						
Surveillance																												
255,459,600	0.300	---	---	---	26/06/2000	03/12/2010	4833	NEL SA (CR)	0.036	---	↘ 0.036	24/06/2015	---	---	---	---	---	---	---	2014	---	---	---	9,196.55	0.009	0.064	5759	
20,231,328	0.600	---	---	---	15/07/2008	25/06/2004	4879	NIKAS SA (CR)	0.142	---	↘ 0.142	24/06/2015	---	---	---	---	---	---	---	2014	---	---	---	2,872.85	0.115	0.147	3577	
63,697,153	1.34	---	---	---	08/07/2008	10/11/2008	5081	NIREFS SA (CR)	0.100	-3.85	↘ 0.104	24/06/2015	0.090	0.090	0.105	0.105	0.100	---	---	2014	690	4	68.85	6,369.72	0.067	0.124	3573	
14,967,940	0.500	---	---	---	21/05/2008	04/01/2008	4956	PASAL DEVELOPMENT S.A. (CR)	0.166	---	↘ 0.166	24/06/2015	---	---	---	---	---	---	---	2014	---	---	---	2,484.68	0.060	0.189	8633	
40,946,303	0.360	---	---	---	18/07/2005	27/11/2007	5089	PC SYSTEMS SA (CR)	0.035	---	↘ 0.035	24/06/2015	---	---	---	---	---	---	---	2014	---	---	---	1,433.12	0.026	0.098	9533	
18,750,000	0.300	---	---	---	02/07/2001	31/12/2012	4985	PEGASUS PUBLISHING S.A. (CR)	0.100	---	↘ 0.100	24/06/2015	0.100	0.100	0.100	0.100	0.100	---	---	2014	4	1	0.40	1,875.00	0.057	0.283	5557	
24,319,250	0.300	---	---	---	09/07/2002	04/07/2007	5054	PROODEFTIKH SA (CR)	0.094	-2.08	↘ 0.096	24/06/2015	0.094	0.094	0.094	0.094	0.094	---	---	3.29	2014	9,000	4	846.00	2,286.01	0.057	0.116	2357
65,326,268	0.530	---	---	---	04/07/2007	19/07/2006	4750	SATO SA (CR)	0.119	---	↘ 0.119	24/06/2015	---	---	---	---	---	---	---	2014	---	---	---	7,773.83	0.024	0.119	3726	
204,235,184	0.300	---	---	---	01/07/2008	30/07/2012	4961	SELONDA AQUACULTURE SA (CR)	0.100	6.38	# 0.094	24/06/2015	0.100	0.100	0.100	0.100	0.100	---	---	1.10	2014	1	1	0.10	20,423.52	0.050	0.117	3573
7,914,480	0.300	---	---	---	23/06/2008	29/06/2011	4888	SFAKIANAKIS SA (CR)	3.95	---	↘ 3.95	24/06/2015	---	---	---	---	---	---	---	2014	---	---	---	31,262.20	1.12	4.00	5379	
10,000,000	1.35	---	---	---	24/06/2008	10/05/2005	4887	SIDMA SA (CR)	0.444	---	↘ 0.444	24/06/2015	---	---	---	---	---	---	---	2014	---	---	---	4,440.00	0.271	0.444	1757	
100,793,000	0.300	---	---	---	16/07/2009	05/08/2013	5008	TELETIPOS SA (CR)	0.083	-19.42	↘ 0.103	24/06/2015	0.083	0.083	0.083	0.083	0.083	---	---	2014	2,245	2	186.34	8,365.82	0.019	0.117	5553	
16,383,428	0.300	---	---	---	25/06/2002	21/06/2013	4997	VARVARESSOS SA (CB)	0.046	---	↘ 0.046	24/06/2015	---	---	---	---	---	---	1.09	2014	---	---	---	753.64	0.046	0.165	3763	
13,191,620	0.620	---	---	---	04/08/2010	09/09/2002	4977	YALCO - CONSTANTINOU SA (CB)	0.046	---	↘ 0.046	24/06/2015	---	---	---	---	---	---	---	2014	---	---	---	606.81	0.046	0.189	3722	

Under Deletion																											
1,130,180	0.440	---	---	---	20/06/2003	02/07/2014	5092	COMPUCON SA (CR)	0.010	---	↘ 0.010	24/06/2015	---	---	---	---	---	---	---	2014	---	---	---	11.30	0.005	0.010	9537
9,567,289	0.300	---	---	---	01/07/2004	19/11/2007	5062	MARAC ELECTRONICS (CR)	0.298	---	↘ 0.298	24/06/2015	---	---	---	---	---	---	---	2014	---	---	---	2,851.05	0.298	0.298	9578
766,000	1.50	---	---	---	01/07/2004	11/12/2012	4937	TRIA ALFA SA (CR)	1.80	---	↘ 1.80	24/06/2015	---	---	---	---	---	---	---	2014	---	---	---	1,709.55	1.80	2.29	3763
245,000	1.50	---	---	---	19/07/2010	11/12/2012	4938	TRIA ALFA SA (PR)	1.35	---	↘ 1.35	24/06/2015	---	---	---	---	---	---	---	2014	---	---	---	1,709.55	1.35	1.35	3763
3,229,566	0.320	---	---	---	22/06/2005	23/09/1999	5091	VARANGIS AVEPE S.A. (CR)	0.300	---	↘ 0.300	24/06/2015	---	---	---	---	---	---	---	2014	---	---	---	968.87	0.300	0.520	3726

Suspension Status																											
5,000,000	0.400	---	---	---	03/06/2009	01/09/2014	5087	ALCO HELLAS SA (CR)	0.180	---	↘ 0.180	24/06/2015	---	---	---	---	---	---	---	---	---	---	---	900.00	0.130	0.307	1753
5,025,000	0.300	---	---	---	05/07/2005	14/03/2002	5023	ALSINCO S.A (CR)	0.043	---	↘ 0.043	24/06/2015	---	---	---	---	---	---	---	---	---	---	---	216.08	0.043	0.043	3763
1,750,955,549	0.600	---	---	---	19/05/2008	08/12/2011	4911	ATE (CR)	0.155	---	↘ 0.155	24/06/2015	---	---	---	---	---	---	---	---	---	---	---	271,398.11	0.155	0.155	8355
21,382,067	0.300	---	---	---	02/10/2006	15/02/2006	4628	ATERMON (CR)	0.120	---	↘ 0.120	24/06/2015	---	---	---	---	---	---	---	---	---	---	---	2,565.85	0.120	0.120	5555
81,644,555	0.300	---	---	---	01/07/2008	02/09/2002	5098	ATTI - KAT SA (CR)	0.012	---	↘ 0.012	24/06/2015	---	---	---	---	---	---	---	---	---	---	---	979.73	0.007	0.037	2357
105,423,498	0.510	---	---	---	01/07/2004	28/12/2005	4920	AVENIR S.A. (CR)	0.046	---	↘ 0.046	24/06/2015	---	---	---	---	---	---	---	---	---	---	---	4,849.48	0.046	0.046	5752
33,930,000	0.300	---	---	---	03/07/2006	30/05/2001	4865	BABIS VOVOS SA (CR)	0.304	---	↘ 0.304	24/06/2015	---	---	---	---	---	---	---	---	---	---	---	10,314.72	0.304	0.304	8633
20,121,710	1.21	---	---	---	27/07/1992	12/03/2003	5002	BALKAN R.E. (CR)	0.190	---	↘ 0.190	24/06/2015	---	---	---	---	---	---	---	---	---	---	---	3,823.12	0.190	0.190	8633
21,920,570	0.300	---	---	---	03/07/2007	13/12/1999	4702	CARDASSILARIS SA (CR)	0.140	---	↘ 0.140	24/06/2015	---	---	---	---	---	---	---	---	---	---	---	3,068.88	0.140	0.140	3577
54,547,634	0.500	---	---	---	25/04/2005	21/01/2009	4860	CH.TEGOPOULOS PUBL. SA (CR)	0.038	---	↘ 0.038	24/06/2015	---	---	---	---	---	---	---	---	---	---	---	2,072.81	0.038	0.038	5557
30,159,583	0.470	---	---	---	26/06/2008	29/12/2010	5047	DIAS A/C (CR)	0.050	---	↘ 0.050	24/06/2015	---	---	---	---	---	---	---	---	---	---	---	1,507.98	0.050	0.050	3573
7,847,611	1.20	---	---	---	01/08/2007	28/09/2011	4939	EDRASIS - C. PSALLIDAS SA (CR)	0.150	---	↘ 0.150	24/06/2015	---	---	---	---	---	---	---	---	---	---	---	1,177.14	0.150	0.150	2357
5,750,000	0.300	---	---	---	12/12/2008	12/12/2011	4929	ELECTRONIKI ATHINON SA (CR)	0.480	---	↘ 0.480	24/06/2015	---	---	---	---	---	---	---	---	---	---	---	2,760.00	0.480	0.480	5375
24,605,397	0.400	---	---	---	29/06/1995	27/05/2002	4651	EMPORIKOS DESMOS SA (CR)	0.080	---	↘ 0.080	24/06/2015	---	---	---	---	---	---	---	---	---	---	---	2,134.04	0.080	0.080	3722
1,182,903	0.400	---	---	---	01/07/1996	27/05/2002	4652	EMPORIKOS DESMOS SA (PR)	0.140	---	↘ 0.140	24/06/2015	---	---	---	---	---	---	---	---	---	---	---	2,134.04	0.140	0.140	3722

Number of Outstanding Securities	Nominal Value	Dividends [1]			Date of Last Coupon		Note	Shares	Closing price	% change	Previous closing price/date		Open price	Price min	Price max	Last price	Avg price	Last Bid [7]	Last Ask [7]	P/E after	Year	Volume	Trades	Transactions Value[8]	Company Mkt Value (thou. €)	Year low	Year high	Sector[4]	
		2012	2013	2014	Dividend [2]	Right																							
Suspension Status																													
7,326,648	1.00	---	---	---	26/07/2006	24/07/2001	4921	FINTEXPORT SA (CR)	0.328	---	↴	0.328	24/06/2015	---	---	---	---	---	---	---	---	---	---	---	---	2,403.14	0.328	0.328	3763
179,707,771	0.300	---	---	---	27/06/2002	01/11/2011	5096	HELLAS ONLINE SA (CR)	0.563	---	↴	0.563	24/06/2015	---	---	---	---	---	---	---	---	---	---	---	---	101,175.48	0.516	0.563	9537
13,692,227	1.47	---	---	---	07/07/2006	08/10/1999	5049	HELLENIC FABRICS SA (CR)	0.117	---	↴	0.117	24/06/2015	---	---	---	---	---	---	---	---	---	---	---	---	1,601.99	0.117	0.117	3763
30,390,000	0.310	---	---	---	18/08/2008	29/12/2006	5099	HELLENIC FISHFARMING SA (CR)	0.070	---	↴	0.070	24/06/2015	---	---	---	---	---	---	---	---	---	---	---	---	2,127.30	0.026	0.078	3573
24,619,524	0.500	---	---	---	10/10/1986	30/12/2002	4914	KERAMIA-ALLATINI (CR)	0.088	---	↴	0.088	24/06/2015	---	---	---	---	---	---	---	---	---	---	---	---	2,166.52	0.088	0.088	8633
7,840,373	1.20	---	---	---	18/07/2002	05/03/2003	4765	KLONATEX SA (PR)	0.080	---	↴	0.080	24/06/2015	---	---	---	---	---	---	---	---	---	---	---	---	1,453.75	0.080	0.080	3763
20,663,047	1.20	---	---	---	21/08/2000	05/03/2003	4764	KLONATEX SA (CR)	0.040	---	↴	0.040	24/06/2015	---	---	---	---	---	---	---	---	---	---	---	---	1,453.75	0.040	0.040	3763
17,544,600	0.600	---	---	---	03/07/2000	01/08/2000	4868	KOYMBAS SYNERGY GROUP (CR)	0.132	---	↴	0.132	24/06/2015	---	---	---	---	---	---	---	---	---	---	---	---	2,315.89	0.132	0.132	8775
15,015,000	1.60	---	---	---	01/07/2002	02/02/2000	4603	MAXIM C.M. PERTSINIDIS SA (CB)	0.100	---	↴	0.100	24/06/2015	---	---	---	---	---	---	---	---	---	---	---	---	1,501.50	0.100	0.100	3763
66,937,526	0.700	---	---	---	13/08/2010	21/05/2003	5003	MICHANIKI SA (CR)	0.100	---	↴	0.100	24/06/2015	---	---	---	---	---	---	---	---	---	---	---	---	9,186.78	0.100	0.100	2357
25,968,987	0.700	---	---	---	13/08/2010	21/05/2003	5004	MICHANIKI SA (PR)	0.096	---	↴	0.096	24/06/2015	---	---	---	---	---	---	---	---	---	---	---	---	9,186.78	0.096	0.096	2357
13,555,100	1.00	---	---	---	08/07/2005		4576	MICROLAND COMPUTERS SA (CR)	0.640	---	↴	0.640	24/06/2015	---	---	---	---	---	---	---	---	---	---	---	---	8,675.26	0.640	0.640	5379
23,463,874	0.800	---	---	---	23/05/2003	21/12/1999	4918	NEORION SA (CR)	0.125	---	↴	0.125	24/06/2015	---	---	---	---	---	---	---	---	---	---	---	---	2,932.98	0.125	0.125	2753
42,501,273	0.300	---	---	---	26/06/2007	10/08/2009	4993	NUTRIART (CR)	0.049	---	↴	0.049	24/06/2015	---	---	---	---	---	---	---	---	---	---	---	---	2,082.56	0.049	0.049	3577
20,210,127	1.53	---	---	---	27/06/1997	20/03/2000	5061	PARNASSOS ENTERP. (CR)	0.070	---	↴	0.070	24/06/2015	---	---	---	---	---	---	---	---	---	---	---	---	1,414.71	0.070	0.070	8775
25,583,146	0.300	---	---	---	25/06/2001	03/12/2008	4723	PETZETAKIS SA (CR)	0.260	---	↴	0.260	24/06/2015	---	---	---	---	---	---	---	---	---	---	---	---	6,651.62	0.260	0.260	1357
9,550,386	0.500	---	---	---	01/07/1997	12/06/2008	4626	PRAXITELIO SA (CR)	0.390	---	↴	0.390	24/06/2015	---	---	---	---	---	---	---	---	---	---	---	---	4,430.09	0.390	0.390	4533
1,306,368	0.500	---	---	---	01/07/1997	12/06/2008	4627	PRAXITELIO SA (PR)	0.540	---	↴	0.540	24/06/2015	---	---	---	---	---	---	---	---	---	---	---	---	4,430.09	0.540	0.540	4533
62,683,822	0.300	---	---	---	27/05/2008	09/01/2006	4830	PROTON BANK S.A. (CR)	0.180	---	↴	0.180	24/06/2015	---	---	---	---	---	---	---	---	---	---	---	---	11,283.09	0.180	0.180	8355
25,667,143	0.320	---	---	---	03/07/2000	18/12/2007	4548	SAOS (CR)	1.56	---	↴	1.56	24/06/2015	---	---	---	---	---	---	---	---	---	---	---	---	40,040.74	1.56	1.56	2773
26,408,040	0.300	---	---	---	01/07/1997	26/05/1999	4464	SHEET STEEL SA (CR)	0.120	---	↴	0.120	24/06/2015	---	---	---	---	---	---	---	---	---	---	---	---	3,168.96	0.120	0.120	1757
60,221,300	0.400	---	---	---	01/07/2002	01/11/2010	5022	SHELMAN SA (CR)	0.080	---	↴	0.080	24/06/2015	---	---	---	---	---	---	---	---	---	---	---	---	4,817.70	0.080	0.080	2353
29,060,950	0.340	---	---	---	20/08/2007	24/10/2001	5088	SPIDER METAL INDUSTRY SA (CR)	0.008	---	↴	0.008	24/06/2015	---	---	---	---	---	---	---	---	---	---	---	---	232.49	0.005	0.008	2757
26,262,660	0.900	---	---	---	01/07/2008	24/02/2011	4954	SPRIDER STORES (CR)	0.031	---	↴	0.031	24/06/2015	---	---	---	---	---	---	---	---	---	---	---	---	814.14	0.031	0.031	5371
144,688,060	0.600	---	---	---	21/04/2008	10/03/2010	4982	T BANK (CR)	0.048	---	↴	0.048	24/06/2015	---	---	---	---	---	---	---	---	---	---	---	---	6,945.03	0.048	0.048	8355
6,523,780	0.530	---	---	---	01/07/2002	06/03/2001	4971	TECHNICAL PUBLICATIONS SA (CR)	0.006	---	↴	0.006	24/06/2015	---	---	---	---	---	---	---	---	---	---	---	---	39.14	0.006	0.006	5557
13,920,000	0.320	---	---	---	19/11/2001	01/08/2000	4726	TEXAPRET SA (CR)	0.080	---	↴	0.080	24/06/2015	---	---	---	---	---	---	---	---	---	---	---	---	1,113.60	0.080	0.080	3763
510,840	1.00	---	---	---	15/07/2008	21/11/2013	5036	TROPEA HOLDING (CR)	2.00	---	↴	2.00	24/06/2015	---	---	---	---	---	---	---	---	---	---	---	---	1,021.68	2.00	2.00	3722
284,465,964	3.70	---	---	---	20/06/2008	15/06/2009	4913	TT HELLENIC POSTBANK (CR)	0.168	---	↴	0.168	24/06/2015	---	---	---	---	---	---	---	---	---	---	---	---	47,790.28	0.168	0.168	8355
89,616,200	0.300	---	---	---	21/08/2000	28/06/2007	4616	UNITED TEXTILES (CR)	0.050	---	↴	0.050	24/06/2015	---	---	---	---	---	---	---	---	---	---	---	---	4,480.81	0.050	0.050	3763
71,683,906	0.400	---	---	---	15/06/2005	05/02/2008	4953	XATZIOANNOU (CR)	0.026	---	↴	0.026	24/06/2015	---	---	---	---	---	---	---	---	---	---	---	---	1,863.78	0.026	0.026	3763

Shares' Notes

Code	Note text
()	- Adjusted dividends.
*	- Last adjusted closing price.
[1]	- Net dividends.
[2]	- The "Date of Last Coupon" for New listings refers to the date company's stocks started to trade in Athex
[3]	- The Company Market Value is referred to the number of outstanding shares
[4]	- Sectors codification can be found in Appendix A
[5]	- The Market Value refers to the total number of shares listed (including their several classes) in the exchange by the company.
[6]	- P/E greater than 100
[7]	- Last view of the Order Book before the end of the trading session
[8]	- All Blocks Methods' Transactions Value are included.
4446	- Transfer to the "Under Supervision" Category as of 20/10/2008.
4464	- Suspension of trading as of 1/12/2008.
4548	- Suspension of trading as of 1/4/2009.
4576	- Suspension of trading as of 14/7/2009.
4603	- Suspension of trading as of 1/12/2009.
4616	- Suspension of trading as of 25/2/2010.
4626	- Suspension of trading as of 1/4/2010.
4627	- Suspension of trading as of 1/4/2010.
4628	- Suspension of trading as of 1/4/2010.
4651	- Suspension of trading as of 1/6/2010.
4652	- Suspension of trading as of 1/6/2010.
4690	- Transfer to Surveillance category as of 4/4/2006.
4702	- Suspension of trading as of 1/12/2010.
4723	- Suspension of trading as of 31/1/2011.
4726	- Suspension of trading as of 1/3/2011.
4750	- Transfer to the "Under Surveillance Category" from 8/4/2011.
4764	- Suspension of trading as of 20/5/2011.
4765	- Suspension of trading as of 20/5/2011.
4795	- The final gross (pre-tax) dividend is € 0.30 per share and subject to withholding tax on the full dividend amount, i.e. 0,45 per share, for those shareholders liable to withholding tax, in accordance with the applicable tax law provisions.
4814	- Transfer to the Low Dispersion Category as of 30/5/2011.
4815	- Transfer to the Low Dispersion Category as of 30/5/2011.
4816	- Transfer to the Low Dispersion Category as of 30/5/2011.
4817	- Transfer to the Low Dispersion Category as of 30/5/2011.
4820	- Transfer to the Low Dispersion category as of 18/4/2008.
4822	- Transfer to the Low Dispersion category as of 30/5/2011.
4823	- Transfer to the Low Dispersion category as of 4/4/2006.
4827	- Transfer to the Low Dispersion category as of 5/5/2010.
4830	- Suspension of trading as of 10/10/2011.
4833	- Transfer to Surveillance category from 6/5/2010.
4844	- Transfer to the Surveillance category from 8/4/2011.
4857	- The 793,906,274 new (CR) shares, resulting from the recent share capital increase through a rights issue, are not yet admitted to trading on the ATHEX.
4860	- Suspension of trading as of 30/3/2012.
4865	- Suspension of trading as of 2/4/2012.
4868	- Suspension of trading as of 2/4/2012.
4879	- Transfer to the Surveillance Category as of 10/4/2012.
4881	- Transfer to the Surveillance Category as of 10/4/2012.
4882	- Transfer to the Surveillance Category as of 10/4/2012.
4886	- Transfer to the Surveillance Category as of 10/4/2012.
4887	- Transfer to the Surveillance Category as of 10/4/2012.
4888	- Transfer to the Surveillance Category as of 10/4/2012.
4911	- Lift of suspension from 30/7/2012.

Shares' Notes

Code	Note text
4912	- Transfer to the Surveillance Category as of 31/7/2012.
4913	- Suspension of trading as of 30/8/2012.
4914	- Suspension of trading as of 31/8/2012.
4918	- Suspension of trading as of 31/8/2012.
4920	- Suspension of trading as of 31/8/2012.
4921	- Suspension of trading as of 31/8/2012.
4929	- Suspension of trading as of 1/10/2012.
4937	- Transfer to the UNDER DELETION category as of 30/11/2012.
4938	- Transfer to the UNDER DELETION category as of 30/11/2012.
4939	- Suspension of trading as of 30/11/2012.
4953	- Suspension of trading as of 2/4/2013.
4954	- Suspension of trading as of 2/4/2013.
4955	- Transfer to the Surveillance Category as from 5/4/2013.
4956	- Transfer to the Surveillance Category as from 5/4/2013.
4957	- Transfer to the Surveillance Category as from 5/4/2013.
4958	- Transfer to the Surveillance Category as from 5/4/2013.
4959	- Transfer to the Surveillance Category as from 5/4/2013.
4961	- Transfer to the Surveillance Category as from 5/4/2013.
4971	- Suspension of trading as of 3/6/2013.
4977	- Transfer to the "Under Surveillance Category" from 11/6/2013.
4978	- Transfer to the Under Supervision Category as of 11/6/2013.
4982	- Suspension of trading as of 1/12/2011.
4983	- Transfer to the Surveillance Category as of 5/4/2013.
4985	- Transfer to the "Under Surveillance Category" from 8/4/2011.
4993	- Suspension of trading as of 21/6/2013 (15:18).
4997	- Transfer to the Under Supervision Category as of 21/12/2009. - The 6,870,053 new (CB) shares, resulting from the recent share capital increase through a rights issue, are not yet admitted to trading on the ATHEX.
5002	- Suspension of trading as of 30/08/2013.
5003	- Suspension of trading as of 30/08/2013.
5004	- Suspension of trading as of 30/08/2013.
5007	- Transfer to the Surveillance category, as of 11/10/2013.
5008	- Transfer to the Surveillance Category from 8/4/2011.
5022	- Suspension of trading as of 2/12/2013.
5023	- Suspension of trading as of 2/12/2013.
5031	- The 612,300 new (CR) shares, resulting from the recent share capital increase through a rights issue, are not yet admitted to trading on the ATHEX.
5033	- Transfer to the Surveillance Category as of 25/11/2011. The 97,144,575new (CR) shares, resulting from the recent share capital increase through a rights issue, are not yet admitted to trading on the ATHEX.
5036	- The company's share is under suspension of trading as of 2/4/2012. During suspension, the company proceeded and concluded a share reverse split, according to which - after the conclusion of the corporate action - the total number of the company's shares, as well as, the last closing price of 30/03/2012 were adjusted.
5046	- Transfer to the Low Dispersion category as of 8/4/2011.
5047	- Suspension of trading as of 27/3/2014.
5049	- Under suspension of trading as of 1/4/2014.
5054	- Transfer to the Surveillance Category as of 10/4/2014.
5055	- Transfer to the Surveillance Category as of 10/4/2014.
5057	- Transfer to the Surveillance Category as of 29/12/2011.
5058	- Transfer to the Surveillance Category as of 29/12/2011.
5059	- Transfer to the Low Dispersion category as of 2/6/2014.
5061	- Suspension of trading as of 2/6/2014.
5062	- Transfer to the UNDER DELETION category as of 4/6/2014.
5075	- Transfer to the "Low Dispersion" Category as of 31/10/2014.
5080	- Suspension of trading as of 6/9/2011.
5081	- Transfer to the Surveillance category, as of 19/12/2014.
5083	- Transfer to the Surveillance Category as of 06/03/2015.
5087	- Suspension of trading as of 1/4/2015.

Shares' Notes

Code	Note text
5088	- Suspension of trading as of 1/4/2015.
5089	- Transfer to the Surveillance Category as of 8/4/2015.
5091	- Transfer to the UNDER DELETION category as of 8/4/2015.
5092	- Transfer to the UNDER DELETION category as of 8/4/2015.
5093	- Transfer to the Surveillance Category as of 8/4/2015.
5094	- Transfer to the Surveillance Category as of 8/4/2015.
5095	- Transfer to the Surveillance Category as from 9/4/2015.
5096	- Suspension of trading as of 28/5/2015.
5097	- Transfer to the Surveillance Category as of 10/4/2012.
5098	- Suspension of trading as of 2/6/2015.
5099	- Suspension of trading as of 3/6/2015.
5100	- Transfer to the Low Dispersion Category as of 24/6/2015.

Securities Blocks Details

Securities	Block Volume	Price	Block Trade Value	Time of approval	Note
CC HBC AG (CR)	4,984	19.61	97,717.30	16:42:10	14
BANK OF CYPRUS (CR)	2,000,000	0.210	420,000.00	17:16:08	20

Blocks Notes

9 - Method 6-1 / Special Fees

10 - Method 6-1 / Special Fees, SDS

14 - Method 6-3 / Settlement, Incomplete Buy and Sell

18 - Method 6-2 / SPOT 1

19 - Method 6-2 / SPOT 2

20 - Method 6-1 and Method 6-1 Same Day Settlement

21 - Other Pre-agreed

Shares Rights Details

Occured date	Exercise from	Exercise until	Trading until	Rights	Price min	Price max	Closing price	Last Bid	Last Ask	Volume	Trades	Transactions Value
-----------------	------------------	-------------------	------------------	--------	--------------	--------------	------------------	----------	----------	--------	--------	-----------------------

No Rights Transactions.

Shares Forced Sales

Securities	Transaction s Volume	Number of Trades	Transactions Value	Note
No Forced Transactions.				

Forced Sales Notes

- 1 - Normal Forced Sale.
- 2 - Forced Sales of Fixed Registered Shares.
- 3 - Forced Sales of Remaining Stock Fractions.

Forced Sales Registered Shares

Securities	Start Date	End Date	Initial Volume	Remaining Volume	Date	Avg price (day)	Avg price (period)	Number of Trades	Transactions Volume	Transactions Value
------------	------------	----------	----------------	------------------	------	-----------------	--------------------	------------------	---------------------	--------------------

No Fixed Registered Shares Forced Sales.

Forced Sales Notes

According to Decision 1/380/04.05.2008 of the Hellenic Republic Capital Market Commission, the certificated registered shares that have not been deposited to the issuer for dematerialisation, will be auctioned in the Athens Exchange by the supervising issuer. Forced sales procedure is held according to Article 99A of the Athens Exchange Rulebook. The average price of the period is calculated by dividing the Total transactions value by the Total volume and includes all the transactions made until the current date.

Exchange Traded Funds (ETFs) Characteristics

	Transactions Date (T)	Creation / Redemption	Units (T-1)	New Units (T-1)	Redemptio n Units (T-	Units (T) [1]	Fund Assets [2]	Net Unit Price	Dividen d per	Dividend Date
NBGAM ETF ΓΔ Χ.Α.	25/06/2015	25,000	294,878	---	---	294,878	2,580,822.00	8.7522	---	27/10/2011
ALPHA ETF FTSE Athex Large Cap	25/06/2015	50,000	5,848,618	---	---	5,848,618	14,068,190.00	2.4054	0.05	01/07/2013
NBGAM ETF GREECE & TURKEY 30	25/06/2015	25,000	388,550	---	---	388,550	2,824,972.00	7.2706	---	27/10/2011

ETFs Notes

[1] - Units (T) = Units (T-1) + New Units (T-1) - Redemption Units (T-1)

[2] - The Creation / Redemption Units of T-1 are included.

Corporate Bonds

Num Listed Bonds	Nominal price	Issue price	Today's Rate	Exp. Date	Duration (years)	Note	Coupon attached		Trading	Corporate Bonds	Price min	Price max	Closing price	Previous closing price/date		Volume	Transactions Value	Last order		Date	ear min	Year max
							Common	Preferred										Price	Buy / Sell			
1,794,284	12.49	9.77	5.03	12/07/2015	8	---	---	---	1	NIREUS S.A. (Convertible to CR shares)	---	---	---	12.0000	29/01/2014	---	---	11.0000	B	17/11/2014	12.0000	12.0000
212,801,311	1.00	1.00	6.30	29/07/2020	7	---	8	---	1	MARFIN INVESTMENT GROUP S.A. SERIES B (BOND)	---	---	---	0.8500	23/08/2013	---	---	1.0000	B	28/11/2014	0.8500	0.8500
163,991,598	1.00	1.00	7.00	29/07/2019	6	---	8	---	1	MARFIN INVESTMENT GROUP S.A. SERIES A (BOND)	---	---	---	1.0000	23/08/2013	---	---	1.0000	B	28/11/2014	1.0000	1.0000

Corporate Bonds Notes

Transactions Volume = (Pieces) * (Nominal Price). Transactions Value = (Pieces) * (Nominal Price) * (price %) + (Accrued interest).
The price of a Bond is stated as a percentage (%) of Bond's Nominal Price.
Nominal Price in Euros (€), except if it is noted differently.

Government Bonds

Number Listed Bonds	Nominal price	Today's Rate	Accrued Interest Calc	Exp. Date [1]	Duration (years)	Note	Coupons Date	Curr. coupon value	Trading Unit	Government Bonds	Price min	Price max	Closing price	Previous closing price/date	Volume	Transactions Value	Price	Last order Buy / Sell	Date
1,792,455,803	1.00	4.30	Actual/Actual	24/02/2023	11	---	24/02	4.30	1	GGB-FXD-240223-11Y-2.000-1.00	---	---	---	10.0000 22/06/2015	---	---	---	---	---
1,771,485,249	1.00	4.30	Actual/Actual	24/02/2024	12	---	24/02	4.30	1	GGB-FXD-240224-12Y-2.000-1.00	---	---	---	10.0000 22/06/2015	---	---	---	---	---
1,744,316,583	1.00	4.30	Actual/Actual	24/02/2025	13	---	24/02	4.30	1	GGB-FXD-240225-13Y-2.000-1.00	---	---	---	10.0000 22/06/2015	---	---	---	---	---
1,498,761,836	1.00	4.30	Actual/Actual	24/02/2026	14	---	24/02	4.30	1	GGB-FXD-240226-14Y-2.000-1.00	---	---	---	10.0000 22/06/2015	---	---	---	---	---
1,469,952,920	1.00	4.30	Actual/Actual	24/02/2027	15	---	24/02	4.30	1	GGB-FXD-240227-15Y-2.000-1.00	---	---	---	10.0000 22/06/2015	---	---	---	---	---
1,525,434,082	1.00	4.30	Actual/Actual	24/02/2028	16	---	24/02	4.30	1	GGB-FXD-240228-16Y-2.000-1.00	---	---	---	10.0000 22/06/2015	---	---	---	---	---
1,503,860,546	1.00	4.30	Actual/Actual	24/02/2029	17	---	24/02	4.30	1	GGB-FXD-240229-17Y-2.000-1.00	---	---	---	10.0000 22/06/2015	---	---	---	---	---
1,435,418,132	1.00	4.30	Actual/Actual	24/02/2030	18	---	24/02	4.30	1	GGB-FXD-240230-18Y-2.000-1.00	---	---	---	10.0000 22/06/2015	---	---	---	---	---
1,368,045,727	1.00	4.30	Actual/Actual	24/02/2031	19	---	24/02	4.30	1	GGB-FXD-240231-19Y-2.000-1.00	---	---	---	10.0000 22/06/2015	---	---	---	---	---
1,373,758,194	1.00	4.30	Actual/Actual	24/02/2032	20	---	24/02	4.30	1	GGB-FXD-240232-20Y-2.000-1.00	---	---	---	10.0000 22/06/2015	---	---	---	---	---
1,452,639,893	1.00	4.30	Actual/Actual	24/02/2033	21	---	24/02	4.30	1	GGB-FXD-240233-21Y-2.000-1.00	---	---	---	10.0000 22/06/2015	---	---	---	---	---
1,410,344,954	1.00	4.30	Actual/Actual	24/02/2034	22	---	24/02	4.30	1	GGB-FXD-240234-22Y-2.000-1.00	---	---	---	10.0000 22/06/2015	---	---	---	---	---
1,444,202,190	1.00	4.30	Actual/Actual	24/02/2035	23	---	24/02	4.30	1	GGB-FXD-240235-23Y-2.000-1.00	---	---	---	10.0000 22/06/2015	---	---	---	---	---
1,505,138,031	1.00	4.30	Actual/Actual	24/02/2036	24	---	24/02	4.30	1	GGB-FXD-240236-24Y-2.000-1.00	---	---	---	10.0000 22/06/2015	---	---	---	---	---
1,396,254,095	1.00	4.30	Actual/Actual	24/02/2037	25	---	24/02	4.30	1	GGB-FXD-240237-25Y-2.000-1.00	---	---	---	10.0000 22/06/2015	---	---	---	---	---
1,382,167,704	1.00	4.30	Actual/Actual	24/02/2038	26	---	24/02	4.30	1	GGB-FXD-240238-26Y-2.000-1.00	---	---	---	10.0000 22/06/2015	---	---	---	---	---
1,337,331,257	1.00	4.30	Actual/Actual	24/02/2039	27	---	24/02	4.30	1	GGB-FXD-240239-27Y-2.000-1.00	---	---	---	10.0000 22/06/2015	---	---	---	---	---
1,371,908,706	1.00	4.30	Actual/Actual	24/02/2040	28	---	24/02	4.30	1	GGB-FXD-240240-28Y-2.000-1.00	---	---	---	10.0000 22/06/2015	---	---	---	---	---
1,360,659,778	1.00	4.30	Actual/Actual	24/02/2041	29	---	24/02	4.30	1	GGB-FXD-240241-29Y-2.000-1.00	---	---	---	10.0000 22/06/2015	---	---	---	---	---
1,432,747,403	1.00	4.30	Actual/Actual	24/02/2042	30	---	24/02	4.30	1	GGB-FXD-240242-30Y-2.000-1.00	---	---	---	10.0000 22/06/2015	---	---	---	---	---
742,153	1,000.00	0.93	FLR Actual/360	10/08/2019	5	---	10/02 - 10/08	---	1	GGB-FLT-100819-05Y-0.934-1,000	---	---	---	---	---	---	---	---	---
4,030,827	1,000.00	4.75	Actual/Actual	17/04/2019	5	---	17/04	4.75	1	GGB-FXD-170419-05Y-4.750-1,000	---	---	---	---	---	---	---	---	---
2,089,066	1,000.00	3.38	Actual/Actual	17/07/2017	3	---	17/07	3.38	1	GGB-FXD-170717-03Y-3.375-1,000	---	---	---	---	---	---	---	---	---

Government Bonds Notes

Transactions Volume = (Pieces) * (Nominal Price). Transactions Value = (Pieces) * (Nominal Price) * (price %) + (Accrued interest).
The Value of current coupon for the issues with NV 0.01 euro refers to NV 100 euros
FLR: Floating Interest Rate.
[1] - The Expiration Date of the interest bearing period and the Date for coupon payment.

Bonds in Circulation	Currency / Min nominal traded Value	Coupons Payment Date	Current Coupon Value	Note	Coupon Attached	Trading Unit	Issue Date	Duration (years)	Today's Interest	A.I.C in days	Bonds	Last price of previous days	Last Outcry in Cash (euro) Price	Buy / Sell	Trades in Pieces	Life min	Life Max
Bonds of International Organizations																	
1,000,000	EUR / 1000	21/07	---	---	9	1	21/07/2006	10	5.0 FLR	360	EUROPEAN INVESTMENT BANK BOND	97.50	16/04/2007	---	---	---	---
Corporate Bonds in Foreign Currency and Euro																	
103,746	GBP / 10	01/12	0.25	---	56	1	01/12/1930	98	2.5	360	National Mortgage Bank	2.27	05/02/1996	2.27	S	05/02/1996	2.27
0	GBP / 10	01/12	0.25	---	58	1	01/12/1928	100	2.5	360	National Mortgage Bank	---	---	---	---	---	---

Government Bonds Notes

A.I.C: Accrued Interest Calculation base.
FLR: Floating Interest Rate.
The minimum tradeable Nominal Value for all Demeterialised Government Titles is 100 Euros.

Athex & ATHEXClear Members List

Member Name			Stock Market			Derivatives Market		ATHEXCclear Member		
Address	Phone	Fax	Market Member	Remote Member	Market Maker	Proprietary	Market Maker	General Clearing	Direct Clearing	Non Clearing
A. SARRIS SECURITIES S.A.			a							
6, DRAGATSANIOU STR. ATHINA	(210)-3367700	(210)-3312324								
ALPHA FINANCE INVESTMENT SERVICES S.A.			a		a		a		a	
5, MERLIN STR. ATHINA	(210)-3677400	(210)-3311193								
ALPHA BANK A.E.								a		
40, STADIOU STR ATHINA	(210)-3265546	(210)-3265811								
	(210)-3260000	(210)-3264116								
ARGUS STOCKBROKERS LTD			a	a		a				
12-14, KENNEDY AVE, S. 303 NICOSIA	(+35722)-22717000	(+35722)-22717070								
ATLANTIC SECURITIES LIMITED			a	a						
37, PRODROMOU STR. NICOSIA	(+35722)-445400	(+35722)-661914								
ATLAS SECURITIES S.A			a			a				a
14 - 16, VERNENON STR.& 125 MICHALAKOPOULOU STR. ATHINA	(210)-3363300	(210)-3238925								
ATTICA BANK S.A.								a		
54, AKADIMIAS STR. ATHINA	(210)-3390757	(210)-3646090								
23, OMIROU STR. ATHINA	(210)-3669000	(210)-3669410								
AXIA VENTURES GROUP LTD			a	a						
10, G. KRANIDIOTI NICOSIA	+357 22 742000	+357 22 742001								
AXON SECURITIES S.A.			a			a				a
48, STADIOU ATHINA	(210)-3363800	(210)-3243903								
BETA SECURITIES S.A.			a		a		a		a	
, BRAILA & 29 ALEXANDRAS AVE ATHINA	(210)-6478900	(210)-6410139								
BNP PARIBAS SECURITIES SERVICES								a		
94, VAS. SOFIAS AVE ATHINA	(210)-7468500	(210)-7468579								
CAPITAL SECURITIES S.A.			a			a				a
58, MITROPOLEOS STR. ATHINA	(210)-3369700	(210)-3369820								
CFS SECURITIES & INVESTMENT SERVICES S.A.			a			a			a	
3, STADIOU STR. ATHINA	(210)-3360800	(210)-3311854								
CITIGROUP GLOBAL MARKET LTD			a	a						
, CITIGROUP CENTRE, CANADA SQUARE, CANARY WHART LONDON	002079864000	002079862266								
CREDIT SUISSE SECURITIES (EUROPE) LIMITED			a	a						
, ONE CABOT SQUARE LONDON	+44 20 7888 8888	+44 20 7888 1600								
CYCLOS SECURITIES S.A.			a			a			a	
39, PANEPISTIMIOU STR. ATHINA	(210)-3364300	(210)-3239122								
D.A. TSEKOURAS SEC. S.A.			a							
33, STADIOY ATHINA	(210)-3214406	(210)-3211997								
DELTASTOCK AD									a	
, MEGAPARK OFFICE BUILDING, 6TH FLOOR, OFFICE AREA E, 115G TSARIG										
DEUTSCHE BANK A.G.			a	a		a				
, 1 GREAT WINCHESTER STREET LONDON	0049 69 910 00									
DYNAMIC SECURITIES			a			a			a	
6 - 10, CHAR. TRIKOUPi STR. ATHINA	(210)-3677700	(210)-3677777								
EL. PETROPOULAKIS SECURITIES S.A.			a			a				a
9, ARISTIDOU STR. ATHINA	(210)-3213928	(210)-3216810								
EUROBANK EQUITIES S.A.			a		a		a		a	
10, FILELLINON STR. ATHINA	(210)-3720000	(210)-3720001								
EUROBANK ERGASIAS S.A.								a		
8, OTHONOS STR. ATHINA	(210)-3337000	(210)-3233866								
	(210)-3337969	(210)-3245916								
EUROCORP SECURITIES S.A.			a			a			a	
14, FILIKIS ETAIRIAS SQ. ATHINA	(210)-7263500	(210)-7263666								
EUOTRUST BROKERAGE S.A.			a							
13-15, SOPHOCLEOUS STR. ATHINA	(210)-3363100	(210)-3238334								
EUROXX SECURITIES S.A.			a			a			a	
7, PALAIOLOGOU STR. CHALANDRI	(210)-6879400	(210)-6879401								
G.A. PERVANAS SECURITIES & INVESTMENT SERVICES CO S.A.			a							a
7 - 9, SOPHOCLEOUS STR. ATHINA	(210)-3251875	(210)-3210291								
GLOBAL CAPITAL SECURITIES AND FINANCIAL SERVICES LTD			a	a						
5, LEMESOU AVE. LEMESOS CYPRUS	(+35722)-710710	(+35722)-339332								
GUARDIAN TRUST SECURITIES S.A			a			a				a
15, FILELLINON STR. ATHINA	(210)-3220402	(210)-3220498								
HELLENIC AMERICAN SEC. S.A.			a		a	a			a	
6, EVRIPIDOU STR. ATHINA	(210)-3311100	(210)-3215968								

Athex & ATHEXClear Members List

Member Name			Stock Market			Derivatives Market		ATHEXClear Member		
Address	Phone	Fax	Market Member	Remote Member	Market Maker	Proprietary	Market Maker	General Clearing	Direct Clearing	Non Clearing
HELLENIC BANK (INVESTMENTS) LTD			a	a						
31, KYRIAKOY MATSI AVE. NICOSIA	(+35722)-500100	(+35722)-500110								
HSBC BANK PLC								a		
109-111, MESOGION AVE ATHINA	(210)-6961507	(210)-6929310								
INDEX SECURITIES S.A.			a							
6, DRAGATSANIOU STR. ATHINA	(210)-3213920	(210)-3213216								
INVESTMENT BANK OF GREECE S.A.			a		a		a	a		
24B, KIFISSIAS AVE MAROUSI	(210)-8171800	(210)-8171889								
32, AIGEIALIAS MAROUSI	(210) 8173000	(210) 8173101								
J. CHR. MAVRIKIS SECURITIES S.A.			a							
5, SOPHOCLEOUS STR. ATHINA	(210)-3213949	(210)-3217767								
KAPPA SECURITIES S.A.			a			a				a
15, VALAORITOU STR. ATHINA	(210)-3610371	(210)-3641002								
KYPROU SECURITIES S.A.										a
26, HALKIDONOS & FIDIPIIDOY STR. ATHINA	(210)-8701000	(210)-8701049								
LAIKI FINANCIAL SERVICES LTD			a	a						
26, CLR HOUSE, VIRONOS AVE. NICOSIA	(+35722)-898600	(+35722)-680953								
LEON DEPOLAS SECURITIES S.A.			a		a	a				a
1, CHR. LADA STR. ATHINA	(210)-3213286	(210)-3211618								
MAGNA TRUST SECURITIES S.A			a							a
9, FIDIOU STR. ATHINA	(210)-3327503	(210)-3327599								
MEGA EQUITY SECURITIES & FINANCIAL SERVICES LTD			a	a		a				
42-44, GRIBA DIGENI AV. NICOSIA	(+35722)-711711	(+35722)-711811								
MERIT SECURITIES S.A			a		a	a			a	
38, VAS. KONSTANTINOY STR. ATHINA	(210)-3671800	(210)-3671830								
MERRILL LYNCH			a	a						
2, KING EDWARD STREET LONDON	(+4420)-79952000	(+4420)-79954525								
MIDAS BROKERAGE S.A.			a							
5, SOPHOCLEOUS STR. ATHINA	(210)-3253203	(210)-3253205								
N. CHRYSOCHOIDIS STOCK BROKERAGE I.S.S.A.			a			a			a	
7 - 9, SOPHOCLEOUS STR. ATHINA	(210)-3213913	(210)-3216115								
NATIONAL BANK OF GREECE S.A.			a			a		a		
86, AIOLOU STR. ATHINA	(210)-3341000	(210)-3228187								
68, AKADIMIAS STR. ATHINA	(210)-3328817	(210)-3328678								
NBG SECURITIES S.A.			a		a		a			a
68, AKADIMIAS STR. ATHINA	(210)-3328500	(210)-3328565								
NUNTIUS SECURITIES S.A			a							a
6, DRAGATSANIOU STR. ATHINA	(210)-3350599	(210)-3254846								
ONE PLUS CAPITAL LIMITED			a	a		a				
, 75 PRODROMOU AVENUE, ONEWORLD PARKVIEW HOUSE, 3RD FLOOR, 22873760										
PANTELAKIS SEC. S.A.			a			a				a
109-111, MESOGION AVE. ATHINA	(210)-6965000	(210)-6929550								
PEGASUS BROKERAGE FIRM S.A			a			a				
17, VALAORITOU STR. ATHINA	(210)-3670700	(210)-3670760								
PIRAEUS BANK S.A.			a		a	a		a		
4, AMERIKIS STR ATHINA	(210)-3335918	(210)-3254207								
4, AMERIKIS STR. ATHINA	(210)-3335000	(210)-3335079								
PIRAEUS SECURITIES S.A.			a				a		a	
10, STADIOU STR. ATHINA	(210)-3354100	(210)-3233814								
PRELIUM SECURITIES & INVESTMENT SERVICES S.A.			a			a				a
, KIFISSIAS AVE & 1 DAVAKI STR ATHINA	(210)-3677000	(210)-6920403								
PROCHOICE SECURITIES LTD			a	a						
57, SPYROY KYPRIANOY NICOSIA	+357-24-661192	+357-24-662464								
SHARELINK SECURITIES & FINANCIAL SERVICES LTD			a	a		a				
6, ELLINAS HOUSE, THEOTOKI STR. NICOSIA	(+35722)-554200	(+35722)-750852								
SOCIETE GENERALE S.A.			a	a		a				
17, COURS VALMY PUTEAUX - LA DEFENSE PARIS	(+33) 142134754	(+33) 142135697								
240-242, KIFISIAS AVE ATHINA	(210)-6790161	(210)-6728828								
SOLIDUS SECURITIES S.A			a			a			a	
64, LOUIZIS RIANKOUR STR. ATHINA	(210)-6925500	(210)-6985421								
SSIF BROKER SA									a	
, 119 CALEA MOTILOR NAPOCA										

Athex & ATHEXClear Members List

Member Name			Stock Market			Derivatives Market		ATHEXClear Member		
Address	Phone	Fax	Market Member	Remote Member	Market Maker	Proprietary	Market Maker	General Clearing	Direct Clearing	Non Clearing
SSIF ESTINVEST SA									a	
, 9TH REPUBLICII STREET FOCSANI										
SSIF INTERFINBROK COPORATION SA									a	
, STR.CALARASI NR.1 CONSTANTA										
SSIF VIENNA INVESTMENT TRUST SA									a	
, 4 SPLAIUL UNIRII, BUILDING B3, 6TH FLOOR, DISTRICT 4 BUCHAREST										
ST. EM. LAVRENTAKIS SECURITIES S.A.			a			a				a
7 - 9, SOPHOCLEOUS STR. ATHINA	(210)-3213336	(210)-3246572								
THE CYPRUS INVESTMENT AND SECURITIES CORPORATION LIMITED (CISCO)			a	a						
4, EVROU STR. (EUROLIFE HOUSE) NICOSIA	(+35722)-881800	(+35722)-881801								
UBS LIMITED			a	a						
1, FINSBURY AVENUE LONDON	(+4420)-79013333	(+4420)-79012345								
KARAMANOF SECURITIES & INV. SERVICES S.A.			a			a				
2, SQ. ST THEODORON ATHINA	(210)-3212947	(210)-3217088								

List of Stocks under Market Making operations

Securities	Stock Category
Market Maker	Start Market Making
CYPRUS POPULAR BANK (CR)	Suspension Status
PIRAEUS SECURITIES S.A.	02/02/2013
VIOHALCO (CB)	Suspension Status
ALPHA FINANCE INVESTMENT SERVICES S.A.	11/02/2013
EUROBANK EQUITIES S.A.	20/01/2013
MERIT SECURITIES S.A	13/12/2012
ALPHA BANK (CR)	Main Market
EUROBANK EQUITIES S.A.	24/10/2012
HELLENIC AMERICAN SEC. S.A.	25/07/2014
INVESTMENT BANK OF GREECE S.A.	08/01/2013
MERIT SECURITIES S.A	03/09/2013
NBG SECURITIES S.A.	15/01/2013
PIRAEUS SECURITIES S.A.	28/05/2013
ALUMIL (CR)	Main Market
BETA SECURITIES S.A.	18/07/2013
ATTICA BANK S.A. (CR)	Main Market
BETA SECURITIES S.A.	02/06/2014
EUROBANK EQUITIES S.A.	25/07/2014
HELLENIC AMERICAN SEC. S.A.	25/07/2014
BANK OF CYPRUS (CR)	Main Market
EUROBANK EQUITIES S.A.	23/03/2015
NBG SECURITIES S.A.	22/06/2015
BYTE COMPUTER SA (CR)	Main Market
MERIT SECURITIES S.A	04/08/2013
CC HBC AG (CR)	Main Market
EUROBANK EQUITIES S.A.	23/10/2013
NBG SECURITIES S.A.	29/04/2013
PIRAEUS SECURITIES S.A.	04/05/2015
ELLAKTOR (CR)	Main Market
EUROBANK EQUITIES S.A.	01/06/2013
INVESTMENT BANK OF GREECE S.A.	02/01/2013
NBG SECURITIES S.A.	25/06/2013
ELTECH ANEMOS S.A. (CR)	Main Market
EUROBANK EQUITIES S.A.	22/07/2014
ELTON SA (CR)	Main Market
BETA SECURITIES S.A.	03/09/2013
EUROBANK ERGASIAS (CR)	Main Market
ALPHA FINANCE INVESTMENT SERVICES S.A.	08/01/2013
EUROBANK EQUITIES S.A.	01/06/2013
HELLENIC AMERICAN SEC. S.A.	25/07/2014
INVESTMENT BANK OF GREECE S.A.	08/01/2013
PIRAEUS SECURITIES S.A.	28/09/2013
EUROCONSULTANTS S.A. (CR)	Main Market
EUROBANK EQUITIES S.A.	22/07/2014
FOLLI FOLLIE (CR)	Main Market
NBG SECURITIES S.A.	17/02/2014
PIRAEUS SECURITIES S.A.	04/05/2015
FRIGOGLOSS SA (CR)	Main Market
EUROBANK EQUITIES S.A.	27/10/2014
GEK TERNA (CR)	Main Market
INVESTMENT BANK OF GREECE S.A.	02/01/2013
GR. SARANTIS SA (CR)	Main Market
BETA SECURITIES S.A.	14/05/2013
HELLENIC EXCHANGES-A.S.E. (CR)	Main Market
EUROBANK EQUITIES S.A.	01/06/2013
HELLENIC AMERICAN SEC. S.A.	01/09/2014
INVESTMENT BANK OF GREECE S.A.	02/01/2013
NBG SECURITIES S.A.	25/06/2013
PIRAEUS SECURITIES S.A.	04/05/2015
INTRALOT (CR)	Main Market
EUROBANK EQUITIES S.A.	01/06/2013
INVESTMENT BANK OF GREECE S.A.	02/01/2013
PIRAEUS SECURITIES S.A.	28/09/2013
KRETA FARM SA (CR)	Main Market
EUROBANK EQUITIES S.A.	17/11/2014
LAMDA DEVELOPMENT SA (CR)	Main Market
EUROBANK EQUITIES S.A.	08/12/2014

List of Stocks under Market Making operations

Securities	Stock Category
Market Maker	Start Market Making
MARFIN INVESTMENT GROUP (CR)	Main Market
EUROBANK EQUITIES S.A.	23/03/2015
HELLENIC AMERICAN SEC. S.A.	25/07/2014
PIRAEUS SECURITIES S.A.	02/02/2013
MLS MULTIMEDIA SA (CR)	Main Market
BETA SECURITIES S.A.	18/07/2013
MOTOR OIL (CR)	Main Market
EUROBANK EQUITIES S.A.	23/10/2012
HELLENIC AMERICAN SEC. S.A.	01/09/2014
NBG SECURITIES S.A.	17/02/2014
PIRAEUS SECURITIES S.A.	04/05/2015
MYTILINEOS HOLDINGS (CR)	Main Market
HELLENIC AMERICAN SEC. S.A.	25/07/2014
INVESTMENT BANK OF GREECE S.A.	02/01/2013
NBG SECURITIES S.A.	25/06/2013
PIRAEUS SECURITIES S.A.	04/05/2015
NATIONAL BANK (CR)	Main Market
ALPHA FINANCE INVESTMENT SERVICES S.A.	08/01/2013
EUROBANK EQUITIES S.A.	24/10/2012
HELLENIC AMERICAN SEC. S.A.	25/07/2014
INVESTMENT BANK OF GREECE S.A.	08/01/2013
LEON DEPOLAS SECURITIES S.A.	20/04/2015
MERIT SECURITIES S.A.	03/09/2013
NBG SECURITIES S.A.	28/02/2013
PIRAEUS SECURITIES S.A.	08/09/2013
OPAP (CR)	Main Market
ALPHA FINANCE INVESTMENT SERVICES S.A.	08/01/2013
EUROBANK EQUITIES S.A.	24/10/2012
HELLENIC AMERICAN SEC. S.A.	25/07/2014
INVESTMENT BANK OF GREECE S.A.	08/01/2013
NBG SECURITIES S.A.	15/01/2013
PIRAEUS SECURITIES S.A.	04/05/2015
OTE (CR)	Main Market
ALPHA FINANCE INVESTMENT SERVICES S.A.	08/01/2013
EUROBANK EQUITIES S.A.	24/10/2012
HELLENIC AMERICAN SEC. S.A.	25/07/2014
INVESTMENT BANK OF GREECE S.A.	08/01/2013
LEON DEPOLAS SECURITIES S.A.	20/04/2015
NBG SECURITIES S.A.	01/12/2012
PIRAEUS SECURITIES S.A.	08/09/2013
PAPOUTSANIS (CR)	Main Market
BETA SECURITIES S.A.	25/11/2013
PETROPOULOS PETROS (CR)	Main Market
BETA SECURITIES S.A.	28/05/2013
PIRAEUS BANK (CR)	Main Market
EUROBANK EQUITIES S.A.	23/10/2012
HELLENIC AMERICAN SEC. S.A.	25/07/2014
INVESTMENT BANK OF GREECE S.A.	08/01/2013
MERIT SECURITIES S.A.	16/09/2013
NBG SECURITIES S.A.	02/06/2013
PIRAEUS SECURITIES S.A.	16/02/2013
PLAISIO COMPUTERS SA (CR)	Main Market
BETA SECURITIES S.A.	05/05/2014
EUROBANK EQUITIES S.A.	02/03/2015
PPC (CR)	Main Market
ALPHA FINANCE INVESTMENT SERVICES S.A.	08/01/2013
EUROBANK EQUITIES S.A.	23/10/2012
HELLENIC AMERICAN SEC. S.A.	01/09/2014
INVESTMENT BANK OF GREECE S.A.	08/01/2013
NBG SECURITIES S.A.	26/03/2013
PIRAEUS SECURITIES S.A.	28/09/2013
PROFILE SA (CR)	Main Market
EUROBANK EQUITIES S.A.	23/06/2014
REDS S.A. (CR)	Main Market
EUROBANK EQUITIES S.A.	05/09/2014
S.KANAKIS SA (CR)	Main Market
BETA SECURITIES S.A.	01/10/2013

List of Stocks under Market Making operations

Securities		Stock Category
Market Maker	Start Market Making	
TITAN CEMENT (CR)		Main Market
EUROBANK EQUITIES S.A.	23/10/2012	
NBG SECURITIES S.A.	17/02/2014	
PIRAEUS SECURITIES S.A.	04/05/2015	
VIOHALCO SA/NV (CB)		Main Market
ALPHA FINANCE INVESTMENT SERVICES S.A.	17/02/2014	
MERIT SECURITIES S.A	17/03/2014	

Underlying Asset				Derivatives Market													
Price max	Price min	Closing price	change	Delivery Month	Open price	Price max	Price min	Last price	Closing price	Last Bid	Last Ask	Settlement price	Life high	Life low	Trades	Volume	Open Interest
FTSE/Athex Large Cap				(Trade Unit: 1 Index Point x 5€, Cash Settlement)													
240.93	230.27	237.38	0.63%	July 2015	227.00	242.75	226.25	241.50	241.50	---	---	239.00	262.75	---	1,464	15,147	22,571
				August 2015	228.00	242.00	228.00	242.00	242.00	---	---	239.25	---	242.00	49	664	550
				September 2015	241.00	241.00	238.75	238.75	238.75	---	---	238.25	---	241.00	2	10	2
				December 2015	---	---	---	---	236.75	---	---	---	---	---	---	---	---
				March 2016	---	---	---	---	237.75	---	---	---	---	---	---	---	---
				June 2016	---	---	---	---	239.00	---	---	---	---	---	---	---	---

Underlying Asset				Derivatives Market														
Price max	Price min	Closing price	change	Delivery Month	Open price	Price max	Price min	Last price	Closing price	Last Bid	Last Ask	Settlement price	Life high	Life low	Trades	Volume	Open Interest	
ALPHA BANK (CR)				(Contract Size: 100 Securities, Physical Delivery)														
0.301	0.272	0.285	-0.35%	September 2015	0.282	0.309	0.276	0.292	0.292	---	---	0.291	---	0.403	---	438	12,834	40,027
				December 2015	0.293	0.293	0.293	0.293	0.293	---	---	0.293	0.293	---	1	500	---	---
				March 2016	---	---	---	---	0.290	---	---	---	---	---	---	---	---	---
				June 2016	---	---	---	---	0.292	---	---	---	---	---	---	---	---	---
CC HBC AG (CR)				(Contract Size: 100 Securities, Physical Delivery)														
20.50	20.23	20.49	0.00%	September 2015	19.80	19.89	19.80	19.89	19.89	---	---	20.02	---	20.50	---	2	2	96
				December 2015	---	---	---	---	20.34	---	---	---	---	---	---	---	---	---
				March 2016	---	---	---	---	20.45	---	---	---	---	---	---	---	---	---
				June 2016	---	---	---	---	20.55	---	---	---	---	---	---	---	---	---
CORINTH PIPEWORKS SA (CR)				(Contract Size: 100 Securities, Physical Delivery)														
1.09	1.02	1.08	2.86%	September 2015	---	---	---	---	1.06	---	---	1.10	---	1.10	---	---	---	691
				December 2015	---	---	---	---	1.06	---	---	---	---	---	---	---	---	---
				March 2016	---	---	---	---	1.07	---	---	---	---	---	---	---	---	---
				June 2016	---	---	---	---	1.07	---	---	---	---	---	---	---	---	---
ELLAKTOR (CR)				(Contract Size: 100 Securities, Physical Delivery)														
1.85	1.76	1.85	0.00%	September 2015	1.77	1.85	1.77	1.85	1.85	---	---	1.81	---	1.90	---	14	70	1,337
				December 2015	---	---	---	---	1.87	---	---	---	---	---	---	---	---	---
				March 2016	---	---	---	---	1.88	---	---	---	---	---	---	---	---	---
				June 2016	---	---	---	---	1.89	---	---	---	---	---	---	---	---	---
EUROBANK ERGASIAS (CR)				(Contract Size: 100 Securities, Physical Delivery)														
0.144	0.129	0.135	-1.46%	September 2015	0.139	0.155	0.135	0.145	0.145	---	---	0.150	---	0.176	---	327	13,507	94,508
				December 2015	0.140	0.140	0.139	0.139	0.139	---	---	0.140	0.158	---	4	5,000	320	---
				March 2016	---	---	---	---	0.139	---	---	---	---	---	---	---	---	---
				June 2016	---	---	---	---	0.140	---	---	---	---	---	---	---	---	---
EYDAP S.A. (CR)				(Contract Size: 100 Securities, Physical Delivery)														
6.14	5.54	6.03	3.97%	September 2015	5.58	6.03	5.58	5.96	5.96	---	---	6.04	---	6.03	---	16	40	179
				December 2015	---	---	---	---	5.81	---	---	---	---	---	---	---	---	---
				March 2016	---	---	---	---	5.84	---	---	---	---	---	---	---	---	---
				June 2016	---	---	---	---	5.87	---	---	---	---	---	---	---	---	---
FOLLI FOLLIE (CR)				(Contract Size: 100 Securities, Physical Delivery)														
25.04	23.80	23.80	-4.80%	September 2015	24.50	25.05	23.87	24.00	24.00	---	---	23.56	---	25.20	---	60	135	132
				December 2015	---	---	---	---	25.25	---	---	---	---	---	---	---	---	---
				March 2016	---	---	---	---	25.37	---	---	---	---	---	---	---	---	---
				June 2016	---	---	---	---	25.50	---	---	---	---	---	---	---	---	---
FRIGOGLASS SA (CR)				(Contract Size: 100 Securities, Physical Delivery)														
2.09	2.00	2.02	-2.42%	September 2015	2.08	2.10	2.03	2.08	2.08	---	---	2.07	---	2.19	---	22	141	793
				December 2015	---	---	---	---	2.09	---	---	---	---	---	---	---	---	---
				March 2016	---	---	---	---	2.10	---	---	---	---	---	---	---	---	---
				June 2016	---	---	---	---	2.11	---	---	---	---	---	---	---	---	---

Underlying Asset				Derivatives Market														
Price max	Price min	Closing price	change	Delivery Month	Open price	Price max	Price min	Last price	Closing price	Last Bid	Last Ask	Settlement price	Life high	Life low	Trades	Volume	Open Interest	
GEK TERNA (CR)				(Contract Size: 100 Securities, Physical Delivery)														
1.79	1.64	1.75	0.00%	September 2015	1.69	1.77	1.67	1.71	1.71	---	---	1.72	---	1.84	---	30	165	7,719
				December 2015	---	---	---	---	1.77	---	---	---	---	---	---	---	---	---
				March 2016	---	---	---	---	1.78	---	---	---	---	---	---	---	---	---
				June 2016	---	---	---	---	1.78	---	---	---	---	---	---	---	---	---
GRIVALIA PROPERTIES (CR)				(Contract Size: 100 Securities, Physical Delivery)														
7.39	6.91	7.05	-1.95%	September 2015	7.01	7.27	6.99	7.05	7.05	---	---	7.30	---	8.18	---	32	96	68
				December 2015	---	---	---	---	7.26	---	---	---	---	---	---	---	---	---
				March 2016	---	---	---	---	7.30	---	---	---	---	---	---	---	---	---
				June 2016	---	---	---	---	7.33	---	---	---	---	---	---	---	---	---
HELLENIC EXCHANGES-A.S.E. (CR)				(Contract Size: 100 Securities, Physical Delivery)														
4.58	4.26	4.40	0.00%	September 2015	4.30	4.56	4.30	4.45	4.45	---	---	4.44	---	5.60	---	113	403	1,596
				December 2015	---	---	---	---	4.44	---	---	---	---	---	---	---	---	---
				March 2016	---	---	---	---	4.47	---	---	---	---	---	---	---	---	---
				June 2016	---	---	---	---	4.49	---	---	---	---	---	---	---	---	---
HELLENIC PETROLEUM (CR)				(Contract Size: 100 Securities, Physical Delivery)														
4.68	4.38	4.67	1.74%	September 2015	4.40	4.65	4.40	4.65	4.65	---	---	4.62	---	4.94	---	25	59	3,720
				December 2015	---	---	---	---	4.49	---	---	---	---	---	---	---	---	---
				March 2016	---	---	---	---	4.51	---	---	---	---	---	---	---	---	---
				June 2016	---	---	---	---	4.53	---	---	---	---	---	---	---	---	---
INTRALOT (CR)				(Contract Size: 100 Securities, Physical Delivery)														
1.65	1.51	1.65	4.43%	September 2015	1.60	1.66	1.60	1.66	1.66	---	---	1.64	---	1.72	---	2	7	264
				December 2015	---	---	---	---	1.60	---	---	---	---	---	---	---	---	---
				March 2016	---	---	---	---	1.60	---	---	---	---	---	---	---	---	---
				June 2016	---	---	---	---	1.61	---	---	---	---	---	---	---	---	---
JUMBO SA (CR)				(Contract Size: 100 Securities, Physical Delivery)														
7.49	6.85	7.36	4.40%	September 2015	7.00	7.41	6.85	7.32	7.32	---	---	7.42	---	8.97	---	192	720	1,205
				December 2015	---	---	---	---	6.94	---	---	---	---	---	---	---	---	---
				March 2016	---	---	---	---	6.97	---	---	---	---	---	---	---	---	---
				June 2016	---	---	---	---	7.01	---	---	---	---	---	---	---	---	---
MARFIN INVESTMENT GROUP (CR)				(Contract Size: 100 Securities, Physical Delivery)														
0.139	0.127	0.131	-2.24%	September 2015	0.135	0.139	0.132	0.138	0.138	---	---	0.138	---	0.152	---	16	201	27,055
				December 2015	---	---	---	---	0.135	---	---	---	---	---	---	---	---	---
				March 2016	---	---	---	---	0.136	---	---	---	---	---	---	---	---	---
				June 2016	---	---	---	---	0.137	---	---	---	---	---	---	---	---	---
METKA (CR)				(Contract Size: 100 Securities, Physical Delivery)														
7.87	7.60	7.80	1.17%	September 2015	7.64	7.85	7.64	7.80	7.80	---	---	7.79	---	8.29	---	10	30	461
				December 2015	---	---	---	---	7.79	---	---	---	---	---	---	---	---	---
				March 2016	---	---	---	---	7.82	---	---	---	---	---	---	---	---	---
				June 2016	---	---	---	---	7.86	---	---	---	---	---	---	---	---	---

Underlying Asset				Derivatives Market														
Price max	Price min	Closing price	change	Delivery Month	Open price	Price max	Price min	Last price	Closing price	Last Bid	Last Ask	Settlement price	Life high	Life low	Trades	Volume	Open Interest	
MOTOR OIL (CR)				(Contract Size: 100 Securities, Physical Delivery)														
8.51	8.10	8.39	0.96%	September 2015	8.00	8.45	8.00	8.38	8.38	---	---	8.48	---	8.45	---	46	134	177
				December 2015	---	---	---	---	8.19	---	---	---	---	---	---	---	---	---
				March 2016	---	---	---	---	8.23	---	---	---	---	---	---	---	---	---
				June 2016	---	---	---	---	8.28	---	---	---	---	---	---	---	---	---
MYTILINEOS HOLDINGS (CR)				(Contract Size: 100 Securities, Physical Delivery)														
5.95	5.58	5.70	-0.87%	September 2015	5.63	5.90	5.63	5.75	5.75	---	---	5.78	---	6.31	---	110	269	3,807
				December 2015	---	---	---	---	5.81	---	---	5.87	---	5.91	---	---	---	---
				March 2016	---	---	---	---	5.84	---	---	---	---	---	---	---	---	---
				June 2016	---	---	---	---	5.86	---	---	---	---	---	---	---	---	---
NATIONAL BANK (CR)				(Contract Size: 100 Securities, Physical Delivery)														
1.18	1.07	1.14	0.00%	September 2015	1.09	1.19	1.08	1.15	1.15	---	---	1.15	---	1.44	---	522	11,147	29,517
				December 2015	1.19	1.19	1.14	1.17	1.17	---	---	1.16	---	1.28	---	4	200	---
				March 2016	---	---	---	---	1.16	---	---	---	---	---	---	---	---	---
				June 2016	---	---	---	---	1.16	---	---	---	---	---	---	---	---	---
OPAP (CR)				(Contract Size: 100 Securities, Physical Delivery)														
8.29	7.52	7.98	2.97%	September 2015	7.48	8.29	7.48	7.90	7.90	---	---	7.97	---	9.38	---	265	809	1,494
				December 2015	---	---	---	---	7.83	---	---	8.03	---	8.60	---	---	---	90
				March 2016	---	---	---	---	7.87	---	---	---	---	---	---	---	---	---
				June 2016	---	---	---	---	7.90	---	---	---	---	---	---	---	---	---
OTE (CR)				(Contract Size: 100 Securities, Physical Delivery)														
8.45	7.75	8.34	4.25%	September 2015	7.75	8.44	7.75	8.31	8.31	---	---	8.23	---	9.46	---	317	1,211	5,850
				December 2015	---	---	---	---	8.08	---	---	8.35	---	8.28	---	---	---	10
				March 2016	---	---	---	---	8.12	---	---	---	---	---	---	---	---	---
				June 2016	---	---	---	---	8.16	---	---	---	---	---	---	---	---	---
P.P.A. S.A. (CR)				(Contract Size: 100 Securities, Physical Delivery)														
13.49	12.93	13.44	1.66%	September 2015	13.30	13.35	12.82	13.35	13.35	---	---	13.34	---	14.42	---	26	78	274
				December 2015	---	---	---	---	13.23	---	---	---	---	---	---	---	---	---
				March 2016	---	---	---	---	13.30	---	---	---	---	---	---	---	---	---
				June 2016	---	---	---	---	13.36	---	---	---	---	---	---	---	---	---
PIRAEUS BANK (CR)				(Contract Size: 100 Securities, Physical Delivery)														
0.405	0.362	0.378	-1.05%	September 2015	0.377	0.411	0.364	0.391	0.391	---	---	0.393	---	0.733	---	646	14,847	65,391
				December 2015	0.405	0.405	0.392	0.392	0.392	---	---	0.393	---	0.435	---	7	1,750	1,251
				March 2016	---	---	---	---	0.388	---	---	---	---	---	---	---	---	---
				June 2016	---	---	---	---	0.390	---	---	---	---	---	---	---	---	---
PPC (CR)				(Contract Size: 100 Securities, Physical Delivery)														
4.60	4.27	4.45	0.45%	September 2015	4.30	4.61	4.25	4.46	4.46	---	---	4.49	---	5.31	---	349	1,280	8,354
				December 2015	---	---	---	---	4.44	---	---	4.48	---	5.09	---	---	---	---
				March 2016	---	---	---	---	4.47	---	---	---	---	---	---	---	---	---
				June 2016	---	---	---	---	4.49	---	---	---	---	---	---	---	---	---

Underlying Asset				Derivatives Market													
Price max	Price min	Closing price	change	Delivery Month	Open price	Price max	Price min	Last price	Closing price	Last Bid	Last Ask	Settlement price	Life high	Life low	Trades	Volume	Open Interest
SIDENOR (CR)				(Contract Size: 100 Securities, Physical Delivery)													
1.03	0.951	1.01	2.02%	September 2015	---	---	---	---	0.995	---	---	---	---	---	---	---	---
				December 2015	---	---	---	---	1.00	---	---	---	---	---	---	---	---
				March 2016	---	---	---	---	1.00	---	---	---	---	---	---	---	---
TERNA ENERGY (CR)				(Contract Size: 100 Securities, Physical Delivery)													
3.12	2.95	3.07	-0.33%	September 2015	3.07	3.07	3.07	3.07	3.07	---	---	3.13	3.26	---	1	1	976
				December 2015	---	---	---	---	3.11	---	---	---	---	---	---	---	---
				March 2016	---	---	---	---	3.13	---	---	---	---	---	---	---	---
				June 2016	---	---	---	---	3.14	---	---	---	---	---	---	---	---
TITAN CEMENT (CR)				(Contract Size: 100 Securities, Physical Delivery)													
21.79	20.23	20.78	0.05%	September 2015	20.70	21.69	20.70	21.35	21.35	---	---	20.71	22.44	---	56	168	309
				December 2015	---	---	---	---	20.87	---	---	20.71	21.00	---	---	---	9
				March 2016	---	---	---	---	20.98	---	---	---	---	---	---	---	---
				June 2016	---	---	---	---	21.08	---	---	---	---	---	---	---	---
VIOHALCO SA/NV (CB)				(Contract Size: 100 Securities, Physical Delivery)													
2.74	2.47	2.71	2.26%	September 2015	2.45	2.55	2.42	2.49	2.49	---	---	2.57	2.56	---	20	56	950
				December 2015	---	---	---	---	2.68	---	---	---	---	---	---	---	---
				March 2016	---	---	---	---	2.69	---	---	---	---	---	---	---	---
				June 2016	---	---	---	---	2.70	---	---	---	---	---	---	---	---

FTSE/Athex Large Cap

(Trade Unit: 1 Index Point x 5€ - Excercise Style: European, Cash Settlement)

Call Options																	Put Options																
Exerise Price	July 2015							August 2015							Other Months		July 2015							August 2015							Other Months		Exerise Price
	Open price	Price max	Price min	Last price	Closing price	Volume	Open Interest	Open price	Price max	Price min	Last price	Closing price	Volume	Open Interest	Volume	Open Interest	Open price	Price max	Price min	Last price	Closing price	Volume	Open Interest	Open price	Price max	Price min	Last price	Closing price	Volume	Open Interest	Volume	Open Interest	
160	0.00	0.00	0.00	-	73.50	-	-	-	-	-	-	-	-	-	-	-	0.00	0.00	0.00	-	0.30	-	-	-	-	-	-	-	-	-	-	-	160
170	0.00	0.00	0.00	-	64.00	-	38	-	-	-	-	-	-	-	-	-	0.00	0.00	0.00	-	0.71	-	500	-	-	-	-	-	-	-	-	-	170
185	-	-	-	-	-	-	-	-	-	-	-	-	-	-	-	-	-	-	-	-	-	-	-	-	-	-	-	-	-	-	-	-	185
190	0.00	0.00	0.00	-	46.00	-	-	-	-	-	-	-	-	-	-	-	0.00	0.00	0.00	-	2.80	-	428	-	-	-	-	-	-	-	-	-	190
195	0.00	0.00	0.00	-	41.75	-	-	0.00	0.00	0.00	-	49.00	-	-	-	-	0.00	0.00	0.00	-	3.60	-	2	0.00	0.00	0.00	-	11.00	-	-	-	-	195
200	0.00	0.00	0.00	-	38.00	-	2	0.00	0.00	0.00	-	45.75	-	-	-	-	0.00	0.00	0.00	-	4.70	-	30	0.00	0.00	0.00	-	12.50	-	-	-	-	200
205	0.00	0.00	0.00	-	34.25	-	4	0.00	0.00	0.00	-	42.75	-	-	-	-	0.00	0.00	0.00	-	6.00	-	-	0.00	0.00	0.00	-	14.50	-	-	-	-	205
210	35.00	38.00	35.00	38.00	38.00	2	79	0.00	0.00	0.00	-	39.75	-	-	-	-	35.00	38.00	0.00	-	7.50	-	124	0.00	0.00	0.00	-	16.50	-	-	-	-	210
215	0.00	0.00	0.00	-	27.50	-	74	0.00	0.00	0.00	-	37.00	-	-	-	-	0.00	0.00	0.00	-	9.20	-	88	0.00	0.00	0.00	-	18.75	-	70	-	-	215
220	0.00	0.00	0.00	-	24.50	-	407	0.00	0.00	0.00	-	34.25	-	-	-	-	0.00	0.00	9.00	11.00	11.00	5	215	0.00	0.00	0.00	-	21.00	-	20	-	-	220
225	23.50	29.00	23.50	29.00	29.00	4	136	0.00	0.00	0.00	-	31.75	-	-	-	-	23.50	29.00	10.75	10.75	10.75	1	2	0.00	0.00	0.00	-	23.50	-	20	-	-	225
230	19.50	20.25	19.50	20.25	20.25	48	187	0.00	0.00	0.00	-	29.50	-	-	-	-	19.50	20.25	14.50	14.50	14.50	7	59	0.00	0.00	0.00	-	26.25	-	-	-	-	230
235	16.75	20.00	16.75	20.00	20.00	27	10	0.00	0.00	0.00	-	27.25	-	-	-	-	16.75	20.00	0.00	-	18.50	-	22	0.00	0.00	0.00	-	29.00	-	-	-	-	235
240	18.00	19.00	14.00	14.00	14.00	15	93	0.00	0.00	0.00	-	25.00	-	-	-	-	18.00	19.00	0.00	-	21.25	-	41	0.00	0.00	0.00	-	31.75	-	-	-	-	240
245	0.00	0.00	0.00	-	12.75	-	-	0.00	0.00	0.00	-	23.25	-	-	-	-	0.00	0.00	23.00	23.00	23.00	1	122	0.00	0.00	0.00	-	34.75	-	-	-	-	245
250	12.75	12.75	5.60	10.00	10.00	91	185	0.00	0.00	0.00	-	21.25	-	-	-	-	12.75	12.75	0.00	-	27.75	-	61	0.00	0.00	0.00	-	38.00	-	-	-	-	250
255	12.00	12.00	12.00	12.00	12.00	2	6	0.00	0.00	0.00	-	19.75	-	-	-	-	12.00	12.00	0.00	-	31.25	-	136	0.00	0.00	0.00	-	41.25	-	-	-	-	255
260	10.75	10.75	10.75	10.75	10.75	1	155	0.00	0.00	0.00	-	18.00	-	-	-	-	10.75	10.75	0.00	-	34.75	-	-	0.00	0.00	0.00	-	44.75	-	-	-	-	260
265	0.00	0.00	0.00	-	6.90	-	301	0.00	0.00	0.00	-	16.50	-	-	-	-	0.00	0.00	0.00	-	38.50	-	-	0.00	0.00	0.00	-	48.25	-	-	-	-	265
270	0.00	0.00	0.00	-	5.90	-	200	15.00	15.00	15.00	15.00	15.00	3	3	-	-	0.00	0.00	0.00	-	42.50	-	-	0.00	0.00	0.00	-	52.00	-	-	-	-	270
275	-	-	-	-	-	-	-	-	-	-	-	-	-	-	-	-	-	-	-	-	-	-	-	-	-	-	-	-	-	-	-	-	275
280	-	-	-	-	-	-	-	-	-	-	-	-	-	-	-	-	-	-	-	-	-	-	-	-	-	-	-	-	-	-	-	-	280
285	-	-	-	-	-	-	-	-	-	-	-	-	-	-	-	-	-	-	-	-	-	-	-	-	-	-	-	-	-	-	-	-	285
290	-	-	-	-	-	-	-	-	-	-	-	-	-	-	-	-	-	-	-	-	-	-	-	-	-	-	-	-	-	-	-	-	290
295	-	-	-	-	-	-	-	-	-	-	-	-	-	-	-	-	-	-	-	-	-	-	-	-	-	-	-	-	-	-	-	-	295
300	0.00	0.00	0.00	-	2.10	-	-	0.00	0.00	0.00	-	9.00	-	-	-	-	0.00	0.00	0.00	-	68.50	-	-	0.00	0.00	0.00	-	75.50	-	-	-	-	300
305	-	-	-	-	-	-	-	-	-	-	-	-	-	-	-	-	-	-	-	-	-	-	-	-	-	-	-	-	-	-	-	-	305
310	-	-	-	-	-	-	-	-	-	-	-	-	-	-	-	-	-	-	-	-	-	-	-	-	-	-	-	-	-	-	-	-	310
315	-	-	-	-	-	-	-	-	-	-	-	-	-	-	-	-	-	-	-	-	-	-	-	-	-	-	-	-	-	-	-	-	315
320	-	-	-	-	-	-	-	-	-	-	-	-	-	-	-	-	-	-	-	-	-	-	-	-	-	-	-	-	-	-	-	-	320
325	-	-	-	-	-	-	-	-	-	-	-	-	-	-	-	-	-	-	-	-	-	-	-	-	-	-	-	-	-	-	-	-	325
330	-	-	-	-	-	-	-	-	-	-	-	-	-	-	-	-	-	-	-	-	-	-	-	-	-	-	-	-	-	-	-	-	330
335	-	-	-	-	-	-	-	-	-	-	-	-	-	-	-	-	-	-	-	-	-	-	-	-	-	-	-	-	-	-	-	-	335
340	-	-	-	-	-	-	-	-	-	-	-	-	-	-	-	-	-	-	-	-	-	-	-	-	-	-	-	-	-	-	-	-	340
345	-	-	-	-	-	-	-	-	-	-	-	-	-	-	-	-	-	-	-	-	-	-	-	-	-	-	-	-	-	-	-	-	345
350	0.00	0.00	0.00	-	0.29	-	-	0.00	0.00	0.00	-	3.50	-	-	-	-	0.00	0.00	0.00	-	117.00	-	-	0.00	0.00	0.00	-	120.00	-	-	-	-	350

FTSE/Athex Large Cap

(Trade Unit: 1 Index Point x 5€ - Exercise Style: European, Cash Settlement)

Call Options																	Put Options																					
Exerise Price	July 2015							August 2015							Other Months		July 2015								August 2015								Other Months		Exerise Price			
	Open price	Price max	Price min	Last price	Closing price	Volume	Open Interest	Open price	Price max	Price min	Last price	Closing price	Volume	Open Interest	Volume	Open Interest	Open price	Price max	Price min	Last price	Closing price	Volume	Open Interest	Open price	Price max	Price min	Last price	Closing price	Volume	Open Interest	Volume	Open Interest						
355	-	-	-	-	-	-	-	-	-	-	-	-	-	-			-	-	-	-	-	-	-	-	-	-	-	-	-	-			355					
360	-	-	-	-	-	-	-	-	-	-	-	-	-	-			-	-	-	-	-	-	-	-	-	-	-	-	-	-			360					
365	-	-	-	-	-	-	-	-	-	-	-	-	-	-			-	-	-	-	-	-	-	-	-	-	-	-	-	-			365					
370	-	-	-	-	-	-	-	-	-	-	-	-	-	-			-	-	-	-	-	-	-	-	-	-	-	-	-	-			370					
375	-	-	-	-	-	-	-	-	-	-	-	-	-	-			-	-	-	-	-	-	-	-	-	-	-	-	-	-			375					
380	-	-	-	-	-	-	-	-	-	-	-	-	-	-			-	-	-	-	-	-	-	-	-	-	-	-	-	-			380					
385	-	-	-	-	-	-	-	-	-	-	-	-	-	-			-	-	-	-	-	-	-	-	-	-	-	-	-	-			385					
390	-	-	-	-	-	-	-	-	-	-	-	-	-	-			-	-	-	-	-	-	-	-	-	-	-	-	-	-			390					
395	-	-	-	-	-	-	-	-	-	-	-	-	-	-			-	-	-	-	-	-	-	-	-	-	-	-	-	-			395					
400	-	-	-	-	-	-	-	-	-	-	-	-	-	-			-	-	-	-	-	-	-	-	-	-	-	-	-	-			400					
450	-	-	-	-	-	-	-	-	-	-	-	-	-	-			-	-	-	-	-	-	-	-	-	-	-	-	-	-			450					
Totals:													3	3	0	0									14	1,830									0	110	0	20
Number of Trades:													2		0									8										0		0		

ALPHA BANK (CR)

(Contract Size: 100 Securities, Exercise Style: American, Physical Delivery)

Call Options																	Put Options																			
July 2015								August 2015								Other Months		July 2015								August 2015								Other Months		
Exercise Price	Open price	Price max	Price min	Last price	Closing price	Volume	Open Interest	Open price	Price max	Price min	Last price	Closing price	Volume	Open Interest	Volume	Open Interest	Open price	Price max	Price min	Last price	Closing price	Volume	Open Interest	Open price	Price max	Price min	Last price	Closing price	Volume	Open Interest	Volume	Open Interest	Exercise Price			
0.100	0.000	0.000	0.000		0.186	-	-	0.000	0.000	0.000		0.186	-	-			0.000	0.000	0.000		0.001	-	-	0.000	0.000	0.000		0.001	-	-			0.001			
0.200	0.000	0.000	0.000		0.088	-	-	0.000	0.000	0.000		0.095	-	-			0.000	0.000	0.000		0.002	-	-	0.000	0.000	0.000		0.008	-	-			0.002			
0.300	0.000	0.000	0.000		0.021	-	-	0.000	0.000	0.000		0.038	-	-			0.000	0.000	0.000		0.035	-	-	0.000	0.000	0.000		0.051	-	-			0.003			
0.400	0.000	0.000	0.000		0.003	-	-	0.000	0.000	0.000		0.013	-	-			0.000	0.000	0.000		0.116	-	-	0.000	0.000	0.000		0.126	-	-			0.004			
0.500	0.000	0.000	0.000		0.001	-	-	0.000	0.000	0.000		0.004	-	-			0.000	0.000	0.000		0.214	-	-	0.000	0.000	0.000		0.217	-	-			0.005			
0.600	0.000	0.000	0.000		0.002	-	-	0.000	0.000	0.000		0.001	-	-			0.000	0.000	0.000		0.314	-	-	0.000	0.000	0.000		0.315	-	-			0.006			
0.700						-	-	0.000	0.000	0.000		0.001	-	-								-	-	0.000	0.000	0.000		0.414	-	-			0.007			
0.800						-	-						-	-								-	-					-	-			0.008				
0.900						-	-						-	-								-	-					-	-			0.009				
1.000						-	-						-	-								-	-					-	-			0.010				
Totals:						0	0						0	0	0	0						0	0					0	0	0	0					
Number of Trades:						0							0		0							0.00						0		0						

NATIONAL BANK (CR)

(Contract Size: 100 Securities, Exercise Style: American, Physical Delivery)

Call Options																Put Options																	
Exercise Price	July 2015							August 2015							Other Months		July 2015							August 2015							Other Months		Exercise Price
	Open price	Price max	Price min	Last price	Closing price	Volume	Open Interest	Open price	Price max	Price min	Last price	Closing price	Volume	Open Interest	Volume	Open Interest	Open price	Price max	Price min	Last price	Closing price	Volume	Open Interest	Open price	Price max	Price min	Last price	Closing price	Volume	Open Interest	Volume	Open Interest	
0.500						-	-							-	-							-	-					-	-			0.005	
0.600	0.000	0.000	0.000		0.541	-	-						-	-			0.000	0.000	0.000			-	-					-	-			0.006	
0.700	0.000	0.000	0.000		0.442	-	-	0.000	0.000	0.000		0.457	-	-			0.000	0.000	0.000			-	-	0.000	0.000	0.000		0.015	-	-		0.007	
0.800	0.000	0.000	0.000		0.348	-	-	0.000	0.000	0.000		0.375	-	-			0.000	0.000	0.000			-	-	0.000	0.000	0.000		0.033	-	-		0.008	
0.900	0.000	0.000	0.000		0.261	-	-	0.000	0.000	0.000		0.303	-	-			0.000	0.000	0.000			-	-	0.000	0.000	0.000		0.060	-	-		0.009	
1.000	0.000	0.000	0.000		0.187	-	-	0.000	0.000	0.000		0.242	-	-			0.000	0.000	0.000			-	-	0.000	0.000	0.000		0.099	-	-		0.010	
1.100	0.000	0.000	0.000		0.128	-	-	0.000	0.000	0.000		0.191	-	-			0.000	0.000	0.000			-	-	0.000	0.000	0.000		0.147	-	-		0.011	
1.200	0.000	0.000	0.000		0.084	-	-	0.000	0.000	0.000		0.149	-	12			0.000	0.000	0.000			-	-	0.000	0.000	0.000		0.205	-	-		0.012	
1.300	0.000	0.000	0.000		0.052	-	-	0.000	0.000	0.000		0.115	-	-			0.000	0.000	0.000			-	-	0.000	0.000	0.000		0.271	-	-		0.013	
1.400	0.000	0.000	0.000		0.032	-	-	0.000	0.000	0.000		0.088	-	-			0.000	0.000	0.000			-	-	0.000	0.000	0.000		0.344	-	-		0.014	
1.500	0.000	0.000	0.000		0.019	-	-	0.000	0.000	0.000		0.068	-	-			0.000	0.000	0.000			-	-	0.000	0.000	0.000		0.424	-	-		0.015	
1.600						-	-	0.000	0.000	0.000		0.051	-	-			0.000	0.000	0.000			-	-	0.000	0.000	0.000		0.507	-	-		0.016	
1.700						-	-						-	-								-	-					-	-			0.017	
1.800						-	-						-	-								-	-					-	-			0.018	
1.900						-	-						-	-								-	-					-	-			0.019	
2.000						-	-						-	-								-	-					-	-			0.020	
2.200						-	-						-	-								-	-					-	-			0.022	
2.400						-	-						-	-								-	-					-	-			0.024	
2.600						-	-						-	-								-	-					-	-			0.026	
2.800						-	-						-	-								-	-					-	-			0.028	
3.000						-	-						-	-								-	-					-	-			0.030	
3.200						-	-						-	-								-	-					-	-			0.032	
Totals:						0	0						0	12	0	0							0	0					0	0	0	0	
Number of Trades:						0							0		0							0.00						0		0			

OPAP (CR)

(Contract Size: 100 Securities, Exercise Style: American, Physical Delivery)

Call Options																	Put Options																			
July 2015								August 2015								Other Months		July 2015								August 2015								Other Months		Exercise Price
Open price	Price max	Price min	Last price	Closing price	Volume	Open Interest		Open price	Price max	Price min	Last price	Closing price	Volume	Open Interest	Volume	Open Interest	Open price	Price max	Price min	Last price	Closing price	Volume	Open Interest	Open price	Price max	Price min	Last price	Closing price	Volume	Open Interest	Volume	Open Interest				
5.600					-	-							-	-								-	-						-	-			0.056			
6.000	0.000	0.000	0.000	1.78	-	-		0.000	0.000	0.000		1.89	-	-			0.000	0.000	0.000		0.022	-	-		0.000	0.000	0.000		0.117	-	-			0.060		
6.400	0.000	0.000	0.000	1.42	-	-		0.000	0.000	0.000		1.57	-	-			0.000	0.000	0.000		0.058	-	-		0.000	0.000	0.000		0.200	-	-			0.064		
6.800	0.000	0.000	0.000	1.08	-	-		0.000	0.000	0.000		1.28	-	-			0.000	0.000	0.000		0.124	-	-		0.000	0.000	0.000		0.313	-	-			0.068		
7.200	0.000	0.000	0.000	0.799	-	-		0.000	0.000	0.000		1.04	-	-			0.000	0.000	0.000		0.240	-	-		0.000	0.000	0.000		0.463	-	-			0.072		
7.600	0.000	0.000	0.000	0.564	-	-		0.000	0.000	0.000		0.826	-	-			0.000	0.000	0.000		0.405	-	-		0.000	0.000	0.000		0.653	-	-			0.076		
8.000	0.000	0.000	0.000	0.381	-	-		0.000	0.000	0.000		0.649	-	-			0.000	0.000	0.000		0.622	-	-		0.000	0.000	0.000		0.876	-	-			0.080		
8.400	0.000	0.000	0.000	0.246	-	-		0.000	0.000	0.000		0.500	-	-			0.000	0.000	0.000		0.887	-	-		0.000	0.000	0.000		1.13	-	-			0.084		
8.800	0.000	0.000	0.000	0.153	-	-		0.000	0.000	0.000		0.381	-	-			0.000	0.000	0.000		1.19	-	-		0.000	0.000	0.000		1.41	-	-			0.088		
9.200	0.000	0.000	0.000	0.092	-	-		0.000	0.000	0.000		0.291	-	-			0.000	0.000	0.000		1.53	-	-		0.000	0.000	0.000		1.72	-	-			0.092		
9.600	0.000	0.000	0.000	0.053	-	-		0.000	0.000	0.000		0.215	-	-			0.000	0.000	0.000		1.89	-	-		0.000	0.000	0.000		2.04	-	-			0.096		
10.000					-	-		0.000	0.000	0.000		0.161	-	-								-	-		0.000	0.000	0.000		2.39	-	-			0.100		
11.000					-	-							-	-								-	-						-	-			0.110			
12.000					-	-							-	-								-	-						-	-			0.120			
13.000					-	-							-	-								-	-						-	-			0.130			
14.000					-	-							-	-								-	-						-	-			0.140			
15.000					-	-							-	-								-	-						-	-			0.150			
16.000					-	-							-	-								-	-						-	-			0.160			
Totals:					0	0						0	0		0	0						0	0						0	0		0	0			
Number of Trades:					0							0		0								0.00							0		0					

OTE (CR)

(Contract Size: 100 Securities, Exercise Style: American, Physical Delivery)

Call Options																	Put Options																				
July 2015								August 2015								Other Months		July 2015								August 2015								Other Months			
Exercise Price	Open price	Price max	Price min	Last price	Closing price	Volume	Open Interest	Open price	Price max	Price min	Last price	Closing price	Volume	Open Interest	Volume	Open Interest	Open price	Price max	Price min	Last price	Closing price	Volume	Open Interest	Open price	Price max	Price min	Last price	Closing price	Volume	Open Interest	Volume	Open Interest	Exercise Price				
5.600	0.000	0.000	0.000		2.41	-	-	0.000	0.000	0.000		2.48	-	-			0.000	0.000	0.000		0.007	-	-	0.000	0.000	0.000		0.067	-	-			0.056				
6.000	0.000	0.000	0.000		2.03	-	-	0.000	0.000	0.000		2.14	-	-			0.000	0.000	0.000		0.022	-	-	0.000	0.000	0.000		0.119	-	-			0.060				
6.400	0.000	0.000	0.000		1.66	-	-	0.000	0.000	0.000		1.82	-	-			0.000	0.000	0.000		0.055	-	-	0.000	0.000	0.000		0.196	-	-			0.064				
6.800	0.000	0.000	0.000		1.32	-	-	0.000	0.000	0.000		1.53	-	-			0.000	0.000	0.000		0.115	-	-	0.000	0.000	0.000		0.306	-	-			0.068				
7.200	0.000	0.000	0.000		1.02	-	-	0.000	0.000	0.000		1.27	-	-			0.000	0.000	0.000		0.211	-	-	0.000	0.000	0.000		0.448	-	-			0.072				
7.600	0.000	0.000	0.000		0.761	-	-	0.000	0.000	0.000		1.04	-	-			0.000	0.000	0.000		0.351	-	-	0.000	0.000	0.000		0.619	-	-			0.076				
8.000	0.000	0.000	0.000		0.548	-	-	0.000	0.000	0.000		0.839	-	-			0.000	0.000	0.000		0.539	-	-	0.600	0.600	0.600	0.600	0.600	20	20			0.080				
8.400	0.000	0.000	0.000		0.384	-	-	0.000	0.000	0.000		0.681	-	-			0.000	0.000	0.000		0.774	-	-	0.000	0.000	0.000		1.06	-	-			0.084				
8.800	0.000	0.000	0.000		0.261	-	-	0.000	0.000	0.000		0.542	-	-			0.000	0.000	0.000		1.05	-	-	0.000	0.000	0.000		1.32	-	-			0.088				
9.200	0.000	0.000	0.000		0.173	-	-	0.000	0.000	0.000		0.425	-	-			0.000	0.000	0.000		1.36	-	-	0.000	0.000	0.000		1.60	-	-			0.092				
9.600	0.050	0.050	0.050	0.050	0.050	100	100	0.000	0.000	0.000		0.336	-	-			0.000	0.000	0.000		1.70	-	-	0.000	0.000	0.000		1.91	-	-			0.096				
10.000							-	-	0.000	0.000	0.000		0.256	-	-							-	-	0.000	0.000	0.000		2.23	-	-			0.100				
11.000							-	-	0.000	0.000	0.000		0.135	-	-							-	-	0.000	0.000	0.000		3.11	-	-			0.110				
12.000							-	-									-	-							-	-					-	-			0.120		
13.000							-	-									-	-							-	-					-	-			0.130		
14.000							-	-									-	-							-	-					-	-			0.140		
15.000							-	-									-	-							-	-					-	-			0.150		
16.000							-	-									-	-							-	-					-	-			0.160		
Totals:						100	100							0	0	0	0							100	0							20	20	0	0		
Number of Trades:						1							0			0							0.00							1			0				

PIRAEUS BANK (CR)

(Contract Size: 100 Securities, Exercise Style: American, Physical Delivery)

Call Options																	Put Options																			
July 2015								August 2015						Other Months			July 2015								August 2015						Other Months					
Exercise Price	Open price	Price max	Price min	Last price	Closing price	Volume	Open Interest	Open price	Price max	Price min	Last price	Closing price	Volume	Open Interest	Volume	Open Interest	Open price	Price max	Price min	Last price	Closing price	Volume	Open Interest	Open price	Price max	Price min	Last price	Closing price	Volume	Open Interest	Volume	Open Interest	Exercise Price			
0.100	0.000	0.000	0.000		0.282	-	-	0.000	0.000	0.000		0.282	-	-			0.000	0.000	0.000		0.001	-	-	0.000	0.000	0.000		0.001	-	-			0.001			
0.200	0.000	0.000	0.000		0.182	-	-	0.000	0.000	0.000		0.184	-	-			0.000	0.000	0.000		0.001	-	-	0.000	0.000	0.000		0.002	-	-			0.002			
0.300	0.000	0.000	0.000		0.089	-	150	0.000	0.000	0.000		0.103	-	-			0.000	0.000	0.000		0.006	-	-	0.000	0.000	0.000		0.020	-	-			0.003			
0.400	0.000	0.000	0.000		0.029	-	-	0.000	0.000	0.000		0.051	-	-			0.000	0.000	0.000		0.047	-	300	0.000	0.000	0.000		0.068	-	-			0.004			
0.500	0.000	0.000	0.000		0.007	-	-	0.000	0.000	0.000		0.023	-	-			0.000	0.000	0.000		0.124	-	-	0.000	0.000	0.000		0.140	-	-			0.005			
0.600	0.000	0.000	0.000		0.001	-	-	0.000	0.000	0.000		0.010	-	-			0.000	0.000	0.000		0.219	-	-	0.000	0.000	0.000		0.227	-	-			0.006			
0.700	0.000	0.000	0.000		0.002	-	-	0.000	0.000	0.000		0.004	-	-			0.000	0.000	0.000		0.318	-	-	0.000	0.000	0.000		0.321	-	-			0.007			
0.800						-	-	0.000	0.000	0.000		0.002	-	-								-	-	0.000	0.000	0.000		0.419	-	-			0.008			
0.900						-	-						-	-								-	-					-	-			0.009				
1.000						-	-						-	-								-	-					-	-			0.010				
1.100						-	-						-	-								-	-					-	-			0.011				
1.200						-	-						-	-								-	-					-	-			0.012				
1.300						-	-						-	-								-	-					-	-			0.013				
1.400						-	-						-	-								-	-					-	-			0.014				
1.500						-	-						-	-								-	-					-	-			0.015				
1.600						-	-						-	-								-	-					-	-			0.016				
1.700						-	-						-	-								-	-					-	-			0.017				
1.800						-	-						-	-								-	-					-	-			0.018				
Totals:						0	150							0	0	0	0							0	300							0	0	0	0	
Number of Trades:						0								0		0								0.00								0		0		

PPC (CR)

(Contract Size: 100 Securities, Exercise Style: American, Physical Delivery)

Call Options																	Put Options																			
July 2015								August 2015								Other Months		July 2015								August 2015								Other Months		
Exerise Price	Open price	Price max	Price min	Last price	Closing price	Volume	Open Interest	Open price	Price max	Price min	Last price	Closing price	Volume	Open Interest	Volume	Open Interest	Open price	Price max	Price min	Last price	Closing price	Volume	Open Interest	Open price	Price max	Price min	Last price	Closing price	Volume	Open Interest	Volume	Open Interest	Exerise Price			
3.000						-	-						-	-								-	-					-	-			0.030				
3.200	0.000	0.000	0.000		1.25	-	-	0.000	0.000	0.000		1.24	-	-			0.000	0.000	0.000		0.011	-	-	0.000	0.000	0.000		0.001	-	-			0.032			
3.400	0.000	0.000	0.000		1.06	-	-	0.000	0.000	0.000		1.04	-	-			0.000	0.000	0.000		0.024	-	-	0.000	0.000	0.000		0.003	-	-			0.034			
3.600	0.000	0.000	0.000		0.883	-	-	0.000	0.000	0.000		0.841	-	-			0.000	0.000	0.000		0.049	-	-	0.000	0.000	0.000		0.011	-	-			0.036			
3.800	0.000	0.000	0.000		0.722	-	-	0.000	0.000	0.000		0.654	-	-			0.000	0.000	0.000		0.087	-	-	0.000	0.000	0.000		0.030	-	-			0.038			
4.000	0.000	0.000	0.000		0.577	-	10	0.000	0.000	0.000		0.486	-	-			0.000	0.000	0.000		0.142	-	-	0.000	0.000	0.000		0.066	-	-			0.040			
4.400	0.000	0.000	0.000		0.346	-	-	0.655	0.672	0.655	0.672	0.672	8	8			0.000	0.000	0.000		0.311	-	-	0.000	0.000	0.000		0.216	-	-			0.044			
4.800	0.240	0.280	0.240	0.275	0.275	500	500	0.000	0.000	0.000		0.088	-	-			0.000	0.000	0.000		0.557	-	-	0.000	0.000	0.000		0.475	-	-			0.048			
5.200	0.000	0.000	0.000		0.097	-	-	0.000	0.000	0.000		0.028	-	-			0.000	0.000	0.000		0.861	-	-	0.000	0.000	0.000		0.816	-	-			0.052			
5.600	0.000	0.000	0.000		0.047	-	-	0.000	0.000	0.000		0.007	-	-			0.000	0.000	0.000		1.21	-	-	0.000	0.000	0.000		1.20	-	-			0.056			
6.000	0.000	0.000	0.000		0.021	-	-	0.000	0.000	0.000		0.002	-	-			0.000	0.000	0.000		1.59	-	-	0.000	0.000	0.000		1.59	-	-			0.060			
6.400	0.000	0.000	0.000		0.009	-	-	0.000	0.000	0.000		0.051	-	-			0.000	0.000	0.000		1.97	-	-	0.000	0.000	0.000		1.99	-	-			0.064			
6.800	0.000	0.000	0.000		0.004	-	-						-	-			0.000	0.000	0.000		2.37	-	-				-	-					0.068			
7.200					-	-							-	-							-	-					-	-					0.072			
7.600					-	-							-	-							-	-					-	-					0.076			
8.000					-	-							-	-							-	-					-	-					0.080			
8.400					-	-							-	-							-	-					-	-					0.084			
8.800					-	-							-	-							-	-					-	-					0.088			
9.200					-	-							-	-							-	-					-	-					0.092			
9.600					-	-							-	-							-	-					-	-					0.096			
10.000					-	-							-	-							-	-					-	-					0.100			
11.000					-	-							-	-							-	-					-	-					0.110			
12.000					-	-							-	-							-	-					-	-					0.120			
13.000					-	-							-	-							-	-					-	-					0.130			
14.000					-	-							-	-							-	-					-	-					0.140			
15.000					-	-							-	-							-	-					-	-					0.150			
Totals:						500	510						8	8	0	0					500	0					0	0	0	0	0	0				
Number of Trades:						3							2		0						0.00					0		0			0					

Lending Products	Underlying Title	Multilateral Transactions[1]					Bilateral Transactions[2]		Stock Borrowing through OTC (volume)[3]
		Open Interest[5]	Volume(Offered)	Average Weighted	Transactions volume	Average Weighted	Transactions Volume	Average Weighte	Transactions Volume
AEGNBOR	AEGEAN AIRLINES (CR)	2,763	16,530	3.31%	515	2.65%	---	---	3,777
ALPHABOR	ALPHA BANK (CR)	1,602,385	7,941,276	3.31%	1,100,000	2.65%	---	---	42,653,475
AETFBOR	ALPHA ETF FTSE Athex Large Cap	---	---	---	---	---	12,000	1.00%	---
ALMYBOR	ALUMIL (CR)	---	---	---	---	---	---	---	---
IATRBOR	ATHENS MEDICAL CENTER SA (CR)	---	40,980	5.31%	---	---	---	---	---
TATTBOR	ATTICA BANK S.A. (CR)	---	---	---	---	---	---	---	---
OTOELBOR	AUTOHELLAS SA (CR)	---	958	5.31%	---	---	---	---	---
EEEBOR	CC HBC AG (CR)	9,884	355	9.26%	355	9.76%	---	---	71,476
CENTRBOR	CENTRIC HOLDINGS (CR)	---	16,000	5.31%	---	---	---	---	---
SOLKBOR	CORINTH PIPEWORKS SA (CR)	2,492	26	3.36%	26	3.36%	---	---	---
PLAKRBOR	CRETE PLASTICS SA (CR)	---	---	---	---	---	---	---	---
ELLAKTORBOR	ELLAKTOR (CR)	11,665	66,634	3.55%	2,105	2.65%	---	---	108
ELBABOR	ELVAL SA. (CB)	---	35,344	5.31%	---	---	---	---	---
EUROBBOR	EUROBANK ERGASIAS (CR)	383,558	62,767	8.56%	---	---	---	---	1,162,054
EUPICBOR	EUROPEAN RELIANCE INSUR. (CR)	---	---	---	---	---	---	---	---
EYDAPBOR	EYDAP S.A. (CR)	10,109	---	---	---	---	---	---	17,780
FGEBOR	F.G. EUROPE S.A. (CR)	---	---	---	---	---	---	---	---
FFGRPBOR	FOLLI FOLLIE (CR)	14,570	65,169	3.31%	400	2.65%	---	---	678,769
FOYRKBOR	FOURLIS (CR)	1,700	3,600	5.31%	---	---	---	---	3,850
FRIGOBOR	FRIGOGLASS SA (CR)	3,600	4,318	5.31%	---	---	---	---	---
GEKTERNABOR	GEK TERNA (CR)	5,130	29,792	5.31%	1,190	3.23%	---	---	---
SARBOR	GR. SARANTIS SA (CR)	---	4,199	5.31%	---	---	---	---	---
EUPROBOR	GRIVALIA PROPERTIES (CR)	11,463	66,121	3.31%	60	2.65%	---	---	35,067
XAKOBOR	HALKOR SA (CB)	---	50,550	5.31%	---	---	---	---	---
EXAEBOR	HELLENIC EXCHANGES-A.S.E. (CR)	5,985	514,893	3.31%	---	---	---	---	65,000
ELPEBOR	HELLENIC PETROLEUM (CR)	3,160	224,840	3.31%	1,000	2.65%	---	---	54,053
HYGEIABOR	HYGEIA SA (CR)	---	48,700	5.31%	---	---	---	---	---
IASOBOR	IASO SA (CR)	---	27,878	5.31%	---	---	---	---	---
IKTINBOR	IKTINOS HELLAS SA (CR)	---	---	---	---	---	---	---	---
LYKBOR	INFORM P. LYKOS SA (CR)	---	---	---	---	---	---	---	---
INTRKBOR	INTRACOM HOLDINGS (CR)	---	168,546	5.31%	---	---	---	---	---

Stock Lending Notes

- [1] - Multilateral contracts Lending or Borrowing as per Methods 8-1, 8-2 and 8-3-3 (According to ATHEX BoD Resolution No.17)
- [2] - Billateral Contracts Lending or Borrowing as per Methods 8-3-1 and 8-3-2 (According to ATHEX BoD Resolution No.20)
- [3] - The information concerning OTC Stock Borrowing Transactions is based on the statements of the Dematerialised Securities System (DSS) operators involved and refers to volumes that have been cleared and registered up until the previous working day.
- [4] - Average Price (Volume weighted)
- [5] - The Data concerning Open Interest before the start of trading session

Lending Products	Underlying Title	Multilateral Transactions[1]					Bilateral Transactions[2]		Stock Borrowing through OTC (volume)[3]
		Open Interest[5]	Volume(Offered)	Average Weighted	Transactions volume	Average Weighted	Transactions Volume	Average Weighte	Transactions Volume
INLOTBOR	INTRALOT (CR)	21,431	42,638	5.31%	---	---	---	---	1,000
AVAXBOR	J & P - AVAX SA (CR)	---	20,175	5.31%	---	---	---	---	---
BELABOR	JUMBO SA (CR)	25,933	136,281	3.55%	---	---	---	---	6,365
KLEMBOR	KLEEMAN HELLAS SA (CR)	---	23,432	5.31%	---	---	---	---	---
KRIBOR	KRI-KRI S.A. (CR)	---	47,267	5.31%	---	---	---	---	---
LAMDABOR	LAMDA DEVELOPMENT SA (CR)	132	6	7.40%	---	---	500	5.00%	10,377
MIGBOR	MARFIN INVESTMENT GROUP (CR)	5,818	88,864	5.31%	---	---	---	---	744,474
METKKBOR	METKA (CR)	6,405	25,167	3.55%	900	2.65%	500	5.00%	---
MLSBOR	MLS MULTIMEDIA SA (CR)	---	7,920	5.31%	---	---	---	---	---
MOHBOR	MOTOR OIL (CR)	29,544	52,068	3.31%	1,702	2.65%	---	---	34,000
MYTILBOR	MYTILINEOS HOLDINGS (CR)	1,555	136,991	3.55%	---	---	---	---	---
ETEBOR	NATIONAL BANK (CR)	228,674	76,689	3.55%	24,000	2.79%	---	---	1,366,210
ETFASEBOR	NBGAM ETF	---	---	---	---	---	---	---	---
ETFGT30PBOR	NBGAM ETF GREECE & TURKEY 30	---	---	---	---	---	---	---	---
OPAPBOR	OPAP (CR)	33,442	230,329	3.31%	2,000	2.65%	---	---	51,838
HTOBOR	OTE (CR)	66,756	7,444	6.65%	6,600	6.43%	11,000	5.00%	503,192
PPABOR	P.P.A. S.A. (CR)	1,390	79	8.57%	79	10.15%	---	---	151
PAPBOR	PAPOUTSANIS (CR)	---	---	---	---	---	---	---	---
PETROBOR	PETROPOULOS PETROS (CR)	---	---	---	---	---	---	---	---
TPEIRBOR	PIRAEUS BANK (CR)	29,636	250,123	3.31%	---	---	---	---	15,255,384
PLAISBOR	PLAISIO COMPUTERS SA (CR)	---	---	---	---	---	---	---	---
PPCBOR	PPC (CR)	98,556	20,102	5.31%	1,690	3.48%	---	---	642,624
PROFBOR	PROFILE SA (CR)	---	---	---	---	---	---	---	---
QUALBOR	QUALITY & RELIABILITY SA (CR)	---	---	---	---	---	---	---	---
SIDEBOR	SIDENOR (CR)	5,031	25,577	5.31%	---	---	---	---	---
OLYMPBOR	TECHNICAL OLYMPIC SA (CR)	---	245	5.31%	---	---	---	---	---
TENERGYBOR	TERNA ENERGY (CR)	6,178	24,539	3.55%	---	---	---	---	---
EYAPSBOR	THESSALONIKA WATER & SEWERAGE	---	798	5.31%	---	---	---	---	---
PLATBOR	THRACE PLASTICS SA (CR)	---	42,700	5.31%	---	---	---	---	---
TITKBOR	TITAN CEMENT (CR)	5,045	247,464	3.31%	---	---	---	---	3,204
OLTHBOR	TPA SA (CR)	---	3,462	5.31%	---	---	---	---	---

Stock Lending Notes

- [1] - Multilateral contracts Lending or Borrowing as per Methods 8-1, 8-2 and 8-3-3 (According to ATHEX BoD Resolution No.17)
- [2] - Billateral Contracts Lending or Borrowing as per Methods 8-3-1 and 8-3-2 (According to ATHEX BoD Resolution No.20)
- [3] - The information concerning OTC Stock Borrowing Transactions is based on the statements of the Dematerialised Securities System (DSS) operators involved and refers to volumes that have been cleared and registered up until the previous working day.
- [4] - Average Price (Volume weighted)
- [5] - The Data concerning Open Interest before the start of trading session

Lending Products	Underlying Title	Multilateral Transactions[1]					Bilateral Transactions[2]		Stock Borrowing through OTC (volume)[3]
		Open Interest[5]	Volume(Offered)	Average Weighted	Transactions volume	Average Weighted	Transactions Volume	Average Weighte	Transactions Volume
VIOBOR	VIOHALCO SA/NV (CB)	24,309	---	---	---	---	5,100	4.90%	---

Stock Lending Notes

[1] - Multilateral contracts Lending or Borrowing as per Methods 8-1, 8-2 and 8-3-3 (According to ATHEX BoD Resolution No.17)

[2] - Billateral Contracts Lending or Borrowing as per Methods 8-3-1 and 8-3-2 (According to ATHEX BoD Resolution No.20)

[3] - The information concerning OTC Stock Borrowing Transactions is based on the statements of the Dematerialised Securities System (DSS) operators involved and refers to volumes that have been cleared and registered up until the previous working day.

[4] - Average Price (Volume weighted)

[5] - The Data concerning Open Interest before the start of trading session

Sectors codification for listed companies

533	-	Exploration & Production	537	-	Integrated Oil & Gas
1353	-	Commodity Chemicals	1357	-	Specialty Chemicals
1753	-	Aluminum	1755	-	Nonferrous Metals
1757	-	Steel	1775	-	General Mining
2353	-	Building Materials & Fixtures	2357	-	Heavy Construction
2723	-	Containers & Packaging	2727	-	Diversified Industrials
2733	-	Electrical Components & Equipment	2753	-	Commercial Vehicles & Trucks
2757	-	Industrial Machinery	2773	-	Marine Transportation
2777	-	Transportation Services	2791	-	Business Support Services
2797	-	Industrial Suppliers	3535	-	Distillers & Vintners
3537	-	Soft Drinks	3573	-	Farming Fishing & Plantations
3577	-	Food Products	3722	-	Durable Household Products
3726	-	Furnishings	3728	-	Home Construction
3747	-	Toys	3763	-	Clothing & Accessories
3765	-	Footwear	3767	-	Personal Products
3785	-	Tobacco	4533	-	Health Care Providers
4535	-	Medical Equipment	4577	-	Pharmaceuticals
5337	-	Food Retailers & Wholesalers	5371	-	Apparel Retailers
5373	-	Broadline Retailers	5375	-	Home Improvement Retailers
5379	-	Specialty Retailers	5553	-	Broadcasting & Entertainment
5555	-	Media Agencies	5557	-	Publishing
5751	-	Airlines	5752	-	Gambling
5753	-	Hotels	5755	-	Recreational Services
5757	-	Restaurants & Bars	5759	-	Travel & Tourism
6535	-	Fixed Line Telecommunications	6575	-	Mobile Telecommunications
7535	-	Conventional Electricity	7537	-	Alternative Electricity
7577	-	Water	8355	-	Banks
8534	-	Insurance Brokers	8536	-	Property & Casualty Insurance
8633	-	Real Estate Holding & Development	8637	-	Real Estate Services
8671	-	Industrial & Office REITs	8675	-	Specialty REITs
8775	-	Specialty Finance	8777	-	Investment Services
8985	-	Equity Investment Instruments	9533	-	Computer Services
9535	-	Internet	9537	-	Software
9572	-	Computer Hardware	9574	-	Electronic Office Equipment
9578	-	Telecommunications Equipment	12003	-	ETF



ATHEXGROUP
Ομίλος Χρηματιστηρίου Αθηνών