

# Daily Official List

Athens Exchange sa

Thursday, 12 September, 2013

Year: 134 Trading Day No: 172



ΟΜΙΛΟΣ ΕΛΛΗΝΙΚΑ ΧΡΗΜΑΤΙΣΤΗΡΙΑ  
HELLENIC EXCHANGES GROUP

**Disclaimer:**

Athens Exchange (ATHEX) endeavours to ensure that the data and other material ("Information") presented on the Daily Official List are accurate and complete, but it is not liable for any errors or omissions of data or /and for the accuracy, credibility, updating and completeness of the aforesaid information nor it has any liability arising directly or indirectly from the use of the above Information.

ATHEX is not liable for the accuracy of the data included in listed companies' announcements. Only the sender of such an announcement is fully and solely liable for any infringement of third party's rights from the content of such announcement. All contents of the Daily Official List are provided only for information purposes and do not constitute investment advice or solicitation to invest in securities or other products listed for trading on ATHEX.

You acknowledge and agree that ATHEX is the owner of any property rights related to any Information appearing on the Daily Official List including intellectual property rights copyright, trademarks, etc.

The above data are a property of the Athens Exchange and are copyright protected. Users are forbidden to reproduce, modify, copy, sale, transmit or redistribute, by all reproduction means and methods, part or the whole of the above data, without reference to their source.

The commercial exploitation of these data is, also, forbidden by third parties. Athens Exchange does not carry any responsibility, direct or indirect, derived from usage or accidental alteration of the above data when used by third parties.

**Athens Exchange sa**

110 Athinon Ave., 10442 Athens, Tel: (210) 33.66.800, Fax: (210) 32.13.938

[www.athex.gr](http://www.athex.gr)

**Thessalonica Stock Exchange Center (T.S.E.C)**

16-18 Katouni Str., Thessalonica 546 25 Tel: (2310) 567.667, Fax: (2310) 530.545

**Athex Members Guarantee Fund**

14-16 Fidiou Str., Athens 106 78, Tel: (210) 33.04.682, Fax: (210) 33.04.155

**Hellenic Republic Capital Market Commission**

1 Kolokotroni Str. & 1 Stadiou Str., Athens 10562 Tel: (210) 33.77.100 Fax: (210) 33.77.173

---

**Table of Contents**

---

**Section 1: Statistical Figures of Securities and Derivatives Markets**

Summary of Markets

Athex Indices

Analytic Figures for Athex Market's Boards and Categories

Trading Details by Athex Sectors and ETFs Category

Top 10 best &amp; worst performing Shares

Derivatives Summary

**Section 2: Analytic Figures of Shares Transactions**

Analytic Figures of Shares Transactions

Shares' Notes

**Section 3: Figures of Securities Transactions**

Securities Blocks Details

Shares Rights Details

Shares Short Selling

Stock Borrowing

Shares Forced Sales

Forced Sales Registered Shares

Exchange Traded Funds (ETFs) Characteristics

**Section 5: Bonds traded in Fixed Income Assets Market**

Corporate Bonds

Government Bonds

Treasury Bills &amp; Zero Coupon Government Bonds

Government Bonds Traded with the Open Outcry Method

State Banks Bonds

**Section 6: Additional Infos**

Athex &amp; ATHEXClear Members List

List of Stocks under Market Making operations

Equity Investment Instruments Acknowledgements

**Section 7: Derivatives Market Analytic Figures**

Index Futures

Stock Futures

Index Options

Stock Options

Stock Lending Analytic Figures (Repo Contracts)

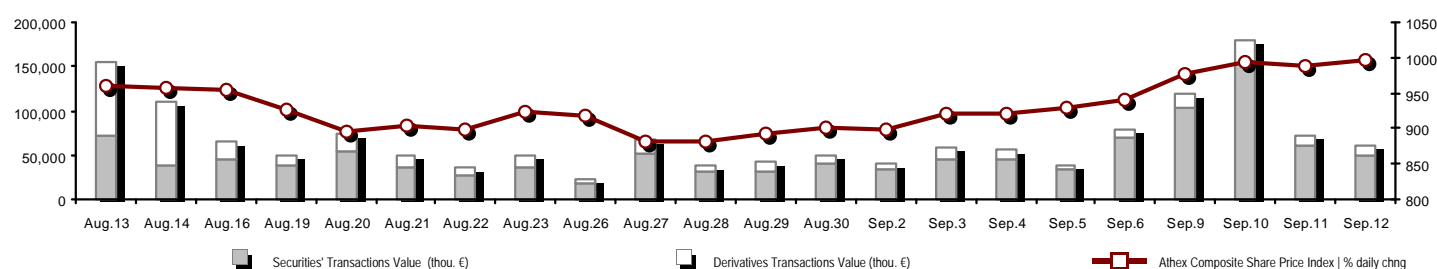
**Appendix A: Sectors codification for listed companies**

---

Section codification follows the corresponding from the Greek version of Daily Official List for reference purposes.

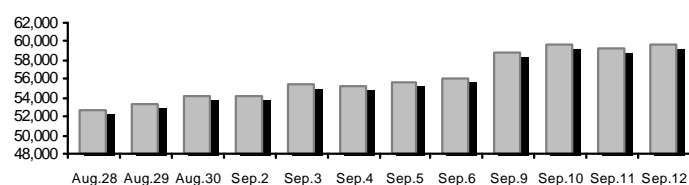
## Summary of Markets

Athex Composite Share Price Index vs Shares and Derivatives Transactions Value

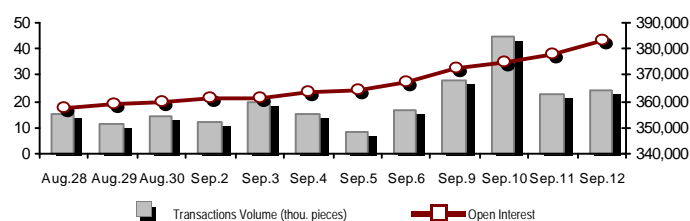


Total Transactions Value (Securities/Derivatives) (thou. €):		59,631.44		
Athex Capitalisation (mill. €) **: 59,714.40			Derivatives Total Open Interest 383,394	
Daily change: mill. €   % 567.51 0.96%			in Index Futures   % daily chng 55,092 0.69%	
Yearly Avg Capitalisation: mill. €   % chng prev year Avg 45,591.99 66.59%			in Stock Futures   % daily chng 158,047 1.79%	
Athex Composite Share Price Index   % daily chng 997.00 0.82%			in Index Options   % daily chng 8,084 0.01%	
Athex Composite Share Price Index Capitalisation (mill. €) 52,642.11			in Stock Options   % daily chng 5,672 0.69%	
Daily change (mill. €) 475.45			in Stock Repos/Reverse Repos/RA   % daily chng 156,499 1.68%	
Securities' Transactions Value (thou. €) 49,789.82			Derivatives Transactions Value (thou. €) 9,841.63	
Daily change: thou. €   % -10,990.84 -18.08%			Daily change: thou. €   % -2,400.95 -19.61%	
YtD Avg Trans. Value: thou. €   % chng prev year Avg 66,050.45 27.33%			YtD Avg Trans. Value: thou. €   % chng prev year Avg 22,200.69 16.32%	
Short Selling Trans. Value: mill. €   % in total Value				
Short Covering Trans. Value: mill. €   % in total Value				
Transactions Value of Blocks (thou. €) 6,210.62				
Bonds Transactions Value (thou. €) 0.37				
Securities' Transactions Volume (thou. Pieces) 28,441.51			Derivatives Contracts Volume: 24,461	
Daily change: thou. pieces   % -6,915.46 -19.56%			Daily change: pieces   % 1,810 7.99%	
YtD Avg Volume: thou. pieces   % chng prev year Avg 50,219.48 1.56%			YtD Avg Derivatives Contracts   % chng prev year Avg 42,385 -34.14%	
Short Selling Volume: thou pieces   % in total Volume				
Short Covering Volume: thou. pieces   % in total Volume				
Transactions Volume of Blocks (thou. Pieces) 3,392.42				
Bonds Transactions Volume (thou. pieces) 1.37				
Securities' Trades Number 20,695			Derivatives Trades Number: 1,814	
Daily change: number   % -3,107 -13.05%			Daily change: number   % -111 -5.77%	
YtD Avg Derivatives Trades number   % chng prev year Avg 29,259 17.94%			YtD Avg Derivatives Trades number   % chng prev year Avg 2,692 -7.63%	
Number of Blocks 7				
Number of Bonds Transactions 1				

Athex Capitalisation (mill. €) \*\*



Derivatives Transactions Volume and Open Interest



Daily Fluctuation of Athex Composite Share Price Index



## Athex Indices

Index name	12/09/2013	11/09/2013	pts.	%	Min	Max	Year min	Year max	Year change
Athex Composite Share Price Index	997.00 #	988.85	8.15	0.82%	981.45	997.00	788.81	1,159.97	9.81% #
FTSE/Athex Large Cap	341.75 #	339.03	2.72	0.80%	335.66	341.75	253.17	410.78	10.36% #
FTSE/ATHEX Custom Capped	1,078.25 €	1,081.41	-3.16	-0.29%			863.84	1,275.55	5.77% #
FTSE/ATHEX Custom Capped - USD	1,028.28 €	1,028.57	-0.29	-0.03%			808.44	1,172.76	6.71% #
FTSE/Athex Mid Cap Index	1,042.27 #	1,033.19	9.08	0.88%	1,030.83	1,044.29	871.32	1,360.26	-8.02% €
FTSE/ATHEX-CSE Banking Index	120.98 #	119.51	1.47	1.23%	117.71	122.23	64.42	278.69	-28.36% €
FTSE/ATHEX Global Traders Index Plus	1,392.04 #	1,390.18	1.86	0.13%	1,378.67	1,392.88	1,082.32	1,484.90	11.60% #
FTSE/ATHEX Global Traders Index	1,469.00 #	1,460.49	8.51	0.58%	1,451.01	1,469.46	1,053.81	1,553.64	18.26% #
FTSE/ATHEX Mid & Small Cap Factor-Weighted Ind	1,218.71 #	1,205.70	13.01	1.08%	1,205.70	1,226.64	1,053.59	1,348.92	-1.64% €
Greece & Turkey 30 Price Index	690.11 #	683.21	6.90	1.01%	677.22	691.89	595.35	927.16	-11.28% €
ATHEX Mid & SmallCap Price Index	2,826.72 #	2,820.73	5.99	0.21%	2,799.64	2,830.27	2,731.31	3,725.74	-9.83% €
FTSE/Athex Market Index	820.84 #	814.36	6.48	0.80%	806.71	820.95	600.87	972.17	11.31% #
FTSE/Med 100	4,270.13 #	4,246.20	23.93	0.56%			4,008.95	4,570.16	3.05% #
Athex Composite Index Total Return Index	1,443.63 #	1,431.83	11.80	0.82%	1,421.11	1,443.63	1,139.79	1,655.57	11.47% #
FTSE/Athex Large Cap Total Return	468.30 #	464.57	3.73	0.80%			366.91	565.68	8.67% #
FTSE/ATHEX Large Cap Net Total Return	1,370.23 #	1,359.31	10.92	0.80%	1,345.81	1,370.23	1,001.98	1,626.24	11.80% #
FTSE/ATHEX Custom Capped Total Return	1,126.10 €	1,129.41	-3.30	-0.29%			895.99	1,311.70	7.47% #
FTSE/ATHEX Custom Capped - USD Total Return	1,073.92 €	1,074.22	-0.31	-0.03%			836.50	1,205.99	8.43% #
FTSE/Athex Mid Cap Total Return	1,290.01 #	1,278.78	11.23	0.88%			1,152.62	1,720.22	-11.77% €
FTSE/ATHEX-CSE Banking Total Return Index	114.71 #	113.32	1.39	1.23%			82.32	289.59	-37.80% €
Greece & Turkey 30 Total Return Index	817.23 €	821.22	-3.99	-0.49%			729.18	1,098.14	-10.81% €
Hellenic Mid & Small Cap Index	979.69 #	971.88	7.81	0.80%	966.52	980.03	737.97	1,071.68	11.74% #
FTSE/Athex Banks	159.85 #	157.90	1.95	1.23%	155.52	161.50	85.08	368.22	-29.36% €
FTSE/Athex Insurance	1,180.11 €	1,201.18	-21.07	-1.75%	1,180.11	1,232.79	1,095.81	1,548.89	-22.22% €
FTSE/Athex Financial Services	1,425.35 #	1,393.65	31.70	2.27%	1,385.09	1,425.35	817.47	1,771.89	8.07% #
FTSE/Athex Industrial Goods & Services	3,554.18 #	3,518.27	35.91	1.02%	3,477.96	3,557.27	2,715.10	4,197.17	9.33% #
FTSE/Athex Retail	2,519.87 #	2,503.25	16.62	0.66%	2,469.08	2,570.33	1,629.12	2,692.44	37.73% #
FTSE/ATHEX Real Estate	1,921.26 €	1,937.86	-16.60	-0.86%	1,873.56	1,953.29	1,491.01	2,108.44	28.86% #
FTSE/Athex Personal & Household Goods	4,430.27 €	4,462.24	-31.97	-0.72%	4,387.11	4,488.02	2,586.10	4,550.67	41.89% #
FTSE/Athex Food & Beverage	8,550.14 #	8,506.21	43.93	0.52%	8,270.12	8,550.14	6,301.12	8,591.23	28.42% #
FTSE/Athex Basic Resources	2,443.65 #	2,393.94	49.71	2.08%	2,392.02	2,456.98	1,674.83	2,901.09	5.17% #
FTSE/Athex Construction & Materials	2,076.62 €	2,084.03	-7.41	-0.36%	2,042.64	2,084.03	1,439.70	2,143.01	13.10% #
FTSE/Athex Oil & Gas	2,795.66 #	2,758.57	37.09	1.34%	2,710.90	2,795.66	2,358.47	3,358.80	-0.62% €
FTSE/Athex Chemicals	6,225.47 €	6,357.79	-132.32	-2.08%	6,191.27	6,381.58	5,194.08	7,961.02	3.42% #
FTSE/Athex Media	1,750.76 ~	1,750.76	0.00	0.00%	1,750.76	1,750.76	716.56	3,560.63	141.84% #
FTSE/Athex Travel & Leisure	1,400.88 #	1,374.43	26.45	1.92%	1,373.65	1,400.88	1,028.61	1,496.38	38.78% #
FTSE/Athex Technology	689.77 #	684.03	5.74	0.84%	680.47	693.61	555.63	886.96	-7.06% €
FTSE/Athex Telecommunications	2,091.95 ~	2,091.95	0.00	0.00%	2,064.43	2,113.97	1,175.35	2,149.76	49.02% #
FTSE/Athex Utilities	2,937.90 #	2,906.43	31.47	1.08%	2,877.09	2,937.90	1,752.55	3,104.53	28.41% #
FTSE/Athex Health Care	245.68 #	242.12	3.56	1.47%	240.79	246.13	172.87	346.05	-12.44% €
Athex All Share Index	212.05 #	210.04	2.01	0.96%			176.43	294.40	-10.40% €

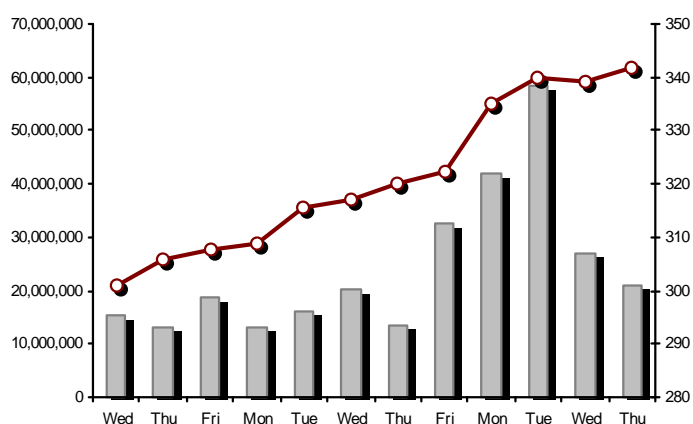
Note 1: Greece & Turkey 30 Pr data is the indicative at 17:20, whereas FTSE/ATHEX Custom Capped, FTSE/ATHEX Custom Capped - USD, FTSE/ATHEX Custom Capped TR, FTSE/ATHEX Custom Capped - USD TR, FTSE/Med 100 & Greece & Turkey 30 Rt closing prices refer to the previous trading day of 11/09/2013.

Note 2: The Hellenic Mid & Small Cap Index is a Customized index calculated by the Athens Exchange.

## Athex Indices

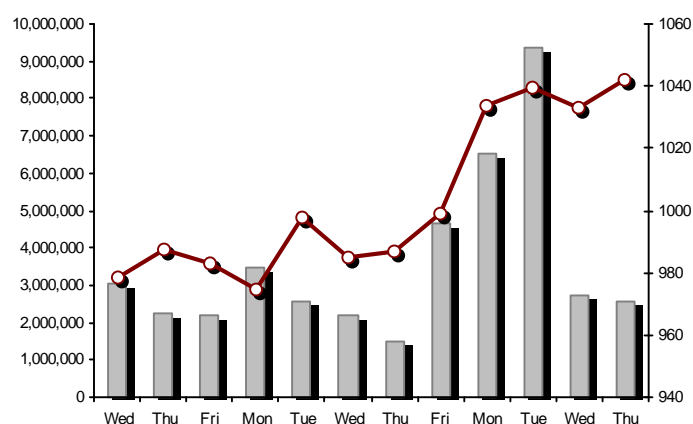
FTSE/Large Cap

12/09/2013: 0.80%



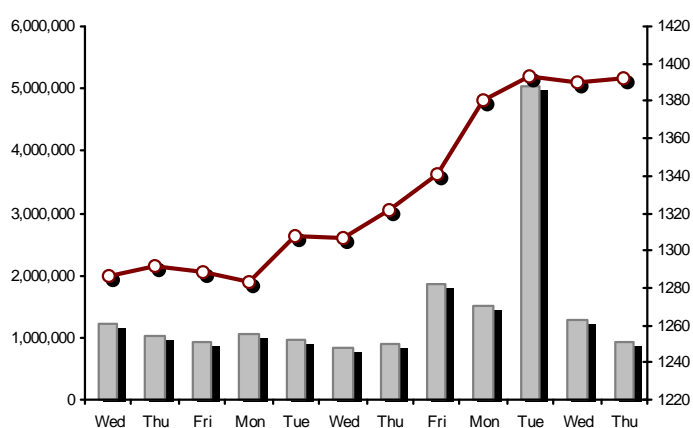
FTSE/Athex Mid Cap Index

12/09/2013: 0.88%



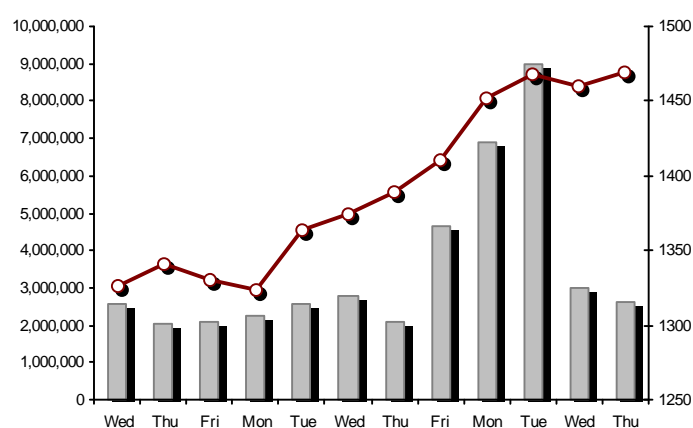
FTSE/ATHEX Global Traders Index Plus

12/09/2013: 0.13%



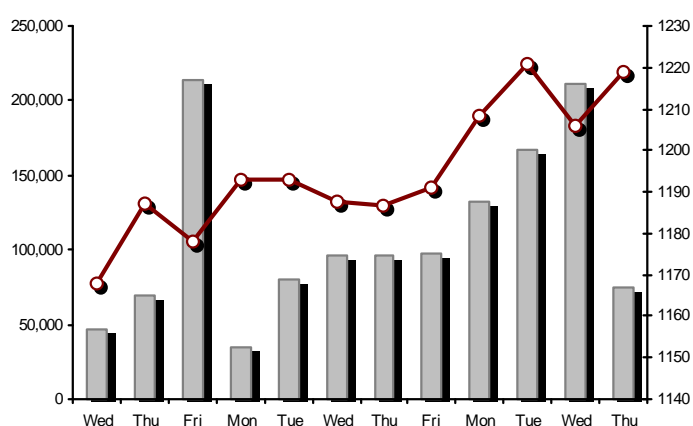
FTSE/ATHEX Global Traders Index

12/09/2013: 0.58%



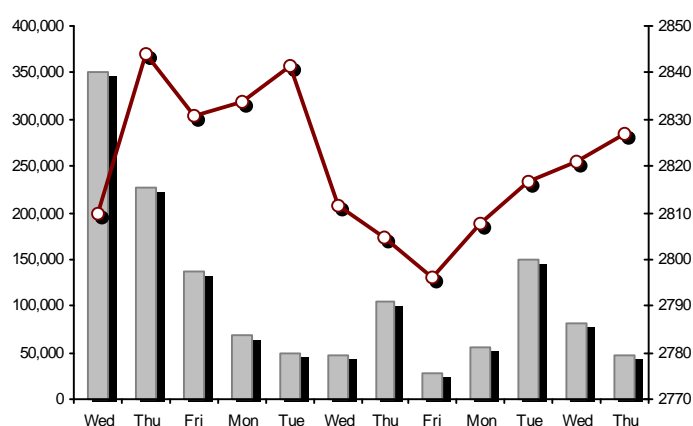
FTSE/ATHEX Mid &amp; Small Cap Factor-Weighted Index

12/09/2013: 1.08%



ATHEX Mid &amp; SmallCap Price Index

12/09/2013: 0.21%



Indices volume of transactions

Indices closing prices

## Analytic Figures for Athex Market's Boards and Categories

	Total Traded Securities	Main Market	Low Dispersion	Other Categories (*)	Exchange Traded Funds (ETFs)	Warrants
Totals	148	110	9	23	3	3
Gain / Lose / Same:	73 / 49 / 26	57 / 35 / 18	2 / 4 / 3	11 / 8 / 4	3 / 0 / 0	0 / 2 / 1
Athex Capitalisation (mill. €) **	59,714.40	57,420.38	1,946.58	347.43		
Daily Average Transactions Value (thou. €)	66,050.45	23,968.07	499.17	79.39	38.83	5,965.07
Transactions Value	49,789.82	46,058.43	22.26	12.17	0.04	3,696.92
Main Board:	43,579.19	40,753.81	22.26	12.17	0.04	2,790.92
Blocks Board:	6,210.62	5,304.62	0.00	0.00	0.00	906.00
Forced Sales Board:	0.00	0.00	0.00	0.00	0.00	0.00
Special Terms Board:	0.00	0.00	0.00	0.00	0.00	0.00
Daily Average Transactions Volume	50,219,478	14,673,992	54,263	429,448	9,696	8,665,756
Transactions Volume	28,441,514	24,166,382	10,913	111,581	5	4,152,633
Main Board:	25,049,096	21,973,964	10,913	111,581	5	2,952,633
Blocks Board:	3,392,418	2,192,418	0	0	0	1,200,000
Forced Sales Board:	0	0	0	0	0	0
Special Terms Board:	0	0	0	0	0	0
Daily Average Number of Trades	29,259	10,683	117	215	8	2,321
Number of Trades	20,695	19,154	50	92	3	1,396
Main Board:	20,688	19,148	50	92	3	1,395
Blocks Board:	7	6	0	0	0	1
Forced Sales Board:	0	0	0	0	0	0
Special Terms Board:	0	0	0	0	0	0

(\*) Summarised Transactions figures for Under Deletion and Under Supervision Categories.

(\*\*) The Market Capitalization of the Companies that belong in the Under Supervision Category is not included.

## Trading Details by Athex Sectors and ETFs Category

Code	Sectors	Gain / Lose / Same	Number of Trades	Transactions Volume	Transactions Value	% of Total Trans. Value
8300	- Banks	6 / 2 / 1	8,660	20,303,894	20,345,901.02	40.86%
1700	- Basic Resources	3 / 5 / 3	1,728	806,201	3,201,331.57	6.43%
1300	- Chemicals	2 / 4 / 0	149	36,744	45,529.68	0.09%
2300	- Construction & Materials	10 / 5 / 3	826	434,273	1,066,008.97	2.14%
11000	- ETF	3 / 0 / 0	3	5	40.91	0.00%
8700	- Financial Services	2 / 2 / 0	1,464	2,975,173	2,004,375.95	4.03%
3500	- Food & Beverage	6 / 3 / 2	464	115,668	1,536,343.40	3.09%
4500	- Health Care	3 / 0 / 1	216	222,121	113,832.67	0.23%
2700	- Industrial Goods & Services	13 / 4 / 6	1,047	477,413	1,636,102.87	3.29%
8500	- Insurance	0 / 1 / 0	11	2,926	3,340.46	0.01%
5500	- Media	0 / 2 / 0	5	534	514.66	0.00%
500	- Oil & Gas	3 / 0 / 0	775	201,779	1,542,112.98	3.10%
3700	- Personal & Household Goods	6 / 5 / 1	476	267,644	1,671,082.54	3.36%
8600	- Real Estate	2 / 5 / 0	142	34,708	140,817.98	0.28%
5300	- Retail	2 / 1 / 0	387	34,413	546,922.76	1.10%
9500	- Technology	5 / 6 / 2	294	226,509	291,845.78	0.59%
6500	- Telecommunications	0 / 0 / 1	906	422,371	3,212,653.60	6.45%
5700	- Travel & Leisure	5 / 2 / 6	1,490	1,268,434	8,289,692.28	16.65%
7500	- Utilities	2 / 2 / 0	1,652	610,704	4,141,365.29	8.32%

## Top 10 best &amp; worst performing Shares

Main Market					
With positive Price change	Closing price	change	With negative Price change	Closing price	change
MARFIN INVESTMENT GROUP (CR)	0.342	7.21% #	ALCO HELLAS SA (CR)	0.380	-4.04% ⚡
DIONIC (CR)	0.081	3.85% #	THRACE PLASTICS SA (CR)	1.27	-1.55% ⚡
BANK OF GREECE (CR)	14.12	3.75% #	HALKOR SA (CB)	0.915	-1.40% ⚡
QUEST HOLDINGS (CR)	1.17	3.54% #	EKTER SA (CR)	0.479	-1.24% ⚡
IASO SA (CR)	1.04	2.97% #	THESSALONIKA WATER & SEWERAGE	5.80	-1.19% ⚡
MYTILINEOS HOLDINGS (CR)	4.88	2.95% #	ELASTRON (CR)	0.682	-1.16% ⚡
EUROBANK ERGASIAS (CR)	0.641	2.89% #	JUMBO SA (CR)	8.70	-1.14% ⚡
LAMDA DEVELOPMENT SA (CR)	4.01	2.56% #	TITAN CEMENT (CR)	16.02	-1.11% ⚡
HYGEIA SA (CR)	0.414	2.47% #	NIREFS SA (CR)	0.414	-0.96% ⚡
INTRALOT (CR)	1.67	2.45% #	INTRACOM HOLDINGS (CR)	0.444	-0.89% ⚡
With the highest Transactions Value	Value (thou. €)	change	With the highest Transactions Volume	Volume	change
PIRAEUS BANK (CR)	8,810.16	0.76% #	ALPHA BANK (CR)	6,831,598	1.56% #
OPAP (CR)	7,823.78	1.91% #	PIRAEUS BANK (CR)	6,629,444	0.76% #
ALPHA BANK (CR)	3,957.10	1.56% #	MARFIN INVESTMENT GROUP (CR)	2,793,520	7.21% #
OTE (CR)	3,212.65	0.00% ↘	EUROBANK ERGASIAS (CR)	1,169,613	2.89% #
MYTILINEOS HOLDINGS (CR)	2,996.96	2.95% #	OPAP (CR)	985,474	1.91% #
PPC (CR)	2,717.88	1.53% #	NATIONAL BANK (CR)	765,871	1.25% #
NATIONAL BANK (CR)	2,457.38	1.25% #	ATTICA BANK S.A. (CR)	720,602	1.13% #
CC HBC AG (CR)	1,504.91	0.53% #	MYTILINEOS HOLDINGS (CR)	621,630	2.95% #
JUMBO SA (CR)	1,465.86	-1.14% ⚡	OTE (CR)	422,371	0.00% ↘
HELLENIC EXCHANGES (CR)	1,064.47	0.32% #	PPC (CR)	343,161	1.53% #

Note: Stocks that are not included in the "Low Dispersion" and "Under Supervision" categories, and the transactions value is more than 10,000 €.



## Derivatives Summary

	Number of Trades	Volume	Open Interest	Transactions Value
Index Futures	289	1,758	55,092	2,991,281.25
FTSE/Athex Large Cap	289	1,758	55,092	2,991,281.25
Stock Futures	1,486	19,761	158,047	5,930,055.86
ALPHA BANK (CR)	212	3,827	19,877	221,695.00
CC HBC AG (CR)	73	191	906	428,927.00
CORINTH PIPEWORKS SA (CR)	6	36	604	7,553.00
ELLAKTOR (CR)	26	1,180	4,579	262,856.00
EUROBANK ERGASIAS (CR)	10	352	15,562	2,848.38
EUROBANK PROPERTIES REIC (CR)	15	60	251	42,179.00
EYDAP S.A. (CR)	16	37	1,755	25,331.00
FOLLI FOLLIE (CR)	2	2	261	3,552.00
FRIGOGLASS SA (CR)	8	146	601	74,686.00
GEK TERNA (CR)	52	1,425	31,596	311,312.00
HELLENIC EXCHANGES (CR)	23	97	4,275	59,441.00
HELLENIC PETROLEUM (CR)	34	213	2,274	163,175.00
INTRALOT (CR)	41	170	3,863	28,088.00
JUMBO SA (CR)	17	67	194	58,563.00
MARFIN INVESTMENT GROUP (CR)	53	835	18,718	28,007.20
METKA (CR)	3	15	502	17,295.00
MOTOR OIL (CR)	14	45	1,001	34,292.00
MYTILINEOS HOLDINGS (CR)	177	1,729	7,283	842,046.00
NATIONAL BANK (CR)	179	1,537	6,354	493,621.00
OPAP (CR)	52	341	4,570	270,448.00
OTE (CR)	115	602	7,419	458,629.00
P.P.A. S.A. (CR)	7	7	595	12,080.00
PIRAEUS BANK (CR)	120	3,694	14,424	491,484.00
PPC (CR)	159	1,031	5,475	816,417.00
SIDENOR (CR)	17	82	1,692	13,590.00
TERNA ENERGY (CR)	10	1,880	2,532	582,936.28
TITAN CEMENT (CR)	25	94	215	150,054.00
VIOHALCO (CB)	20	66	669	28,950.00
Index Options	26	208	8,084	349,275.00
FTSE/Athex Large Cap	26	208	8,084	349,275.00
Stock Options	0	0	5,672	0.00
ALPHA BANK (CR)	0	0	0	0.00
NATIONAL BANK (CR)	0	0	379	0.00
OPAP (CR)	0	0	2,985	0.00
OTE (CR)	0	0	1,863	0.00
PIRAEUS BANK (CR)	0	0	5	0.00
PPC (CR)	0	0	440	0.00
Stock Repos - Stock Reverse Repos - Repurchase Agreements	13	2,734	156,499	571,016.00
Stock Reverse Repos	8	1,527	8,126	403,233.00
Stock Repos	0	0	141,643	0.00
Repurchase Agreement	5	1,207	6,730	167,783.00
Total Derivatives Traded	1,814	24,461	383,394	9,841,628.11

Number of Outstanding Securities	Nominal Value	Dividends [1]			Date of Last Coupon		Note	Shares	Closing price	% change	Previous closing price/date	Open price	Price min	Price max	Last price	Avg price	Last Bid [7]	Last Ask [7]	P/E after	Year	Volume	Trades	Transactions Value	Company Mkt Value (thou. €)	Year low	Year high	Sector[4]	
		2010	2011	2012	Dividend [2]	Right																						
Warrants																												
1,233,503,482		---	---	---	11/06/2013	---	ALPHA BANK (W)		1.10	-0.90	€ 1.11	11/09/2013	1.10	1.08	1.13	1.10	1.11	12465@1.10	24909@1.12	---	2012	1,397,309	551	1,545,046.31	6,389,900.02	0.241	1.17	8355
245,779,626		---	---	---	27/06/2013	---	NATIONAL BANK (W)		0.945	-2.58	€ 0.970	11/09/2013	0.960	0.940	0.980	0.945	0.955	300@0.946	8609@0.950	---	2012	426,821	443	407,639.53	7,741,618.76	0.420	2.00	8355
849,195,130		---	---	---	03/07/2013	---	PIRAEUS BANK (W)		0.740	---	↘ 0.740	11/09/2013	0.730	0.725	0.755	0.740	0.743	2052@0.739	71132@0.740	---	2012	2,328,503	402	1,744,232.76	6,746,515.37	0.290	0.889	8355

Warrants

71,417,100	0.650	---	---	---	26/05/2010	11/07/2007	---	AEGEAN AIRLINES (CR)	4.02	---	↘ 4.02	11/09/2013	3.95	3.95	4.04	4.00	3.99	6699@4.00	394@4.02	---	2012	9,051	61	36,094.50	287,096.74	1.96	4.07	5751	
11,178,000	1.45	---	---	---	21/04/2010	12/05/2011	---	AEOLIAN INVESTMENT FUND (CR)	1.02	-1.92	€ 1.04	11/09/2013	1.02	1.02	1.02	1.02	1.02	150@1.00	500@1.04	8.07	2012	500	2	510.00	11,401.56	0.900	1.17	8985	
13,000,000	1.00	---	---	---	01/08/2007	07/04/2000	---	AKRITAS SA (CR)	0.230	4.54	# 0.220	10/09/2013	0.220	0.220	0.230	0.230	0.221	980@0.235	---	---	2012	97	3	21.44	2,990.00	0.140	0.520	2353	
25,000,000	0.400	---	---	---	03/06/2009	12/07/2013	---	ALCO HELLAS SA (CR)	0.380	-4.04	€ 0.396	11/09/2013	0.396	0.380	0.396	0.380	0.380	2033@0.380	500@0.396	---	2012	52,777	22	20,081.07	9,500.00	0.159	0.599	1753	
10,922,906,012	0.300	---	---	---	07/04/2008	13/05/2013	---	ALPHA BANK (CR)	0.585	1.56	# 0.576	11/09/2013	0.580	0.567	0.592	0.585	0.579	7900@0.574	7200@0.586	---	2012	6,831,598	2,585	3,957,099.76	6,389,900.02	0.161	0.696	8355	
22,016,250	0.370	---	---	---	15/07/2009	11/05/2000	---	ALUMIL (CR)	0.577	---	↘ 0.577	11/09/2013	0.577	0.536	0.577	0.577	0.545	50@0.558	3555@0.576	---	2012	4,816	57	2,624.15	12,703.38	0.360	0.740	1753	
418,000	16.00	---	---	---	22/04/2010	05/03/2013	---	ANDROMEDA SA (CR)	18.95	---	↘ 18.95	11/09/2013	---	---	---	---	---	6@18.57	10@20.80	1.76	2012	---	---	---	7,921.10	17.10	25.41	8985	
21,876,700	0.380	---	---	---	08/07/2010	05/06/2001	---	AS COMPANY SA (CR)	0.338	---	↘ 0.338	10/09/2013	---	---	---	---	---	1050@0.313	1000@0.335	38.62	2012	---	---	---	7,394.32	0.272	0.488	5379	
86,735,980	0.310	---	---	---	06/07/2009	02/01/2002	---	ATHENS MEDICAL CENTER SA (CR)	0.810	---	↘ 0.810	11/09/2013	0.805	0.802	0.810	0.810	0.806	15743@0.802	1549@0.810	---	2012	25,069	19	20,204.81	70,256.14	0.471	0.994	4533	
699,673,060	0.300	---	---	---	04/06/2008	05/06/2013	---	ATTICA BANK S.A. (CR)	0.269	1.13	# 0.266	11/09/2013	0.268	0.263	0.271	0.269	0.267	2000@0.268	153696@0.269	---	2012	720,602	260	192,297.51	188,212.05	0.173	1.06	8355	
45,457,464	0.700	---	---	---	01/07/2008	01/03/2010	---	AUDIO VISUAL ENTERPRISES (CR)	0.237	---	↘ 0.237	10/09/2013	---	---	---	---	---	---	1791@0.237	---	---	2012	---	---	---	10,773.42	0.097	0.482	5553
36,360,000	0.320	---	0.15	---	30/04/2012	05/05/2008	---	AUTOHELLAS SA (CR)	2.30	---	↘ 2.30	11/09/2013	2.35	2.30	2.38	2.30	2.33	100@2.30	500@2.31	12.39	2012	5,400	18	12,558.00	83,628.00	1.50	2.38	5759	
19,864,886	5.60	1.976	0.67	0.5376	06/03/2013	02/07/2008	---	BANK OF GREECE (CR)	14.12	3.75	# 13.61	11/09/2013	13.72	13.69	14.16	14.12	14.01	5@14.07	5@14.14	---	---	34,133	445	478,051.83	280,492.19	11.26	19.19	8355	
23,986,500	1.05	---	---	---	26/06/2009	15/03/2000	---	BIOKARPET S.A.(CR)	0.650	---	↘ 0.650	06/09/2013	---	---	---	---	---	---	1000@0.640	---	---	2012	---	---	---	15,591.23	0.486	0.845	3726
15,842,391	1.51	---	---	---	15/07/2009	12/05/2000	---	BITROS HOLDING SA (CR)	0.621	---	↘ 0.621	01/08/2013	---	---	---	---	---	---	670@0.577	---	---	2012	---	---	---	9,838.12	0.336	0.745	1757
15,816,009	0.300	---	---	---	01/07/2009	17/07/2000	---	BYTE COMPUTER SA (CR)	0.455	-1.30	€ 0.461	10/09/2013	0.455	0.455	0.455	0.455	0.455	100@0.455	100@0.467	---	2012	50	1	22.75	7,196.28	0.351	0.620	9533	
366,491,145	6.70	---	---	0.34	26/06/2013	29/04/2013	---	CC HBC AG (CR)	22.88	0.53	# 22.76	11/09/2013	22.51	22.08	22.88	22.88	22.61	2000@22.75	5000@22.89	---	---	66,575	314	1,504,911.27	8,385,317.40	16.79	22.88	3537	
101,123,806	0.360	---	---	---	22/07/2010	28/06/2011	---	CENTRIC HOLDINGS (CR)	0.226	-0.44	€ 0.227	11/09/2013	0.227	0.225	0.227	0.225	0.227	1000@0.220	9000@0.225	34.29	2012	12,450	10	2,821.15	22,853.98	0.176	0.440	5752	
4,034,950	0.680	---	---	---	01/07/2005	30/12/2010	---	CHATZIKRANIOTIS & SONS SA (CR)	0.130	---	↘ 0.130	10/09/2013	---	---	---	---	---	500@0.123	2000@0.140	---	2012	---	---	---	524.54	0.128	0.522	3577	
124,170,201	0.780	---	---	---	28/06/2002	07/02/2005	---	CORINTH PIPEWORKS SA (CR)	2.09	0.97	# 2.07	11/09/2013	2.05	2.05	2.09	2.09	2.07	5250@2.06	7000@2.10	74.87	2012	38,241	140	79,212.07	259,515.72	1.40	2.59	1757	
9,907,500	0.300	---	---	---	06/10/2005	13/02/2002	---	CPI SA (CR)	0.135	-10.00	€ 0.150	10/09/2013	0.135	0.135	0.135	0.135	0.135	505@0.135	---	---	2012	75	1	10.13	1,337.51	0.133	0.400	9572	
27,379,200	0.610	---	---	---	23/06/2010	05/12/2012	---	CRETE PLASTICS SA (CR)	5.12	-1.54	€ 5.20	11/09/2013	5.10	5.08	5.25	5.12	5.10	300@5.10	200@5.22	14.63	2012	1,372	13	6,999.72	140,181.50	4.40	5.65	1357	
26,664,840	0.470	---	---	---	29/06/2005	12/07/1999	---	CYCLON HELLAS SA (CR)	0.490	-8.92	€ 0.538	11/09/2013	0.500	0.490	0.500	0.490	0.496	200@0.488	335@0.500	---	2012	3,190	5	1,583.10	13,065.77	0.385	0.700	1357	
15,000,000	0.300	---	---	---	06/07/2007	18/07/2000	---	DAIOS PLASTICS SA (CR)	3.67	---	↘ 3.67	03/09/2013	---	---	---	---	---	60@3.31	1547@3.67	---	2012	---	---	---	55,050.00	3.34	5.50	1357	
31,370,399	0.300	---	---	---	11/08/2010	15/02/2012	---	DIONIC (CR)	0.081	3.85	# 0.078	11/09/2013	0.079	0.079	0.084	0.083	0.081	10000@0.080	10000@0.080	---	2012	137,048	112	11,101.20	2,541.00	0.066	0.263	2797	
34,720,000	0.310	---	---	---	16/06/2010	01/08/2007	---	DROMEAS SA (CR)	0.389	0.52	# 0.387	11/09/2013	0.389	0.389	0.389	0.389	0.389	8400@0.353	2260@0.389	---	2012	10	1	3.89	13,506.08	0.218	0.634	3726	
3,873,120	0.300	---	---	---	07/07/2008	04/10/2012	---	DRUCKFARBEN HELLAS (CR)	1.45	18.85	# 1.22	11/09/2013	1.20	1.20	1.45	1.45	1.23	200@1.11	575@1.45	---	2012	200	3	246.25	5,616.02	0.901	2.64	1357	
11,250,000	0.560	---	---	---	26/07/2010	16/06/1999	---	EKTER SA (CR)	0.479	-1.24	€ 0.485	11/09/2013	0.471	0.468	0.480	0.479	0.473	3100@0.471	2000@0.500	8.37	2012	59,170	29	27,970.73	5,388.75	0.400	0.700	2357	
32,188,050	1.04	---	---	---	21/07/2008	20/01/2000	---	EL. D. MOUZAKIS SA (CB)	0.140	---	↘ 0.140	11/09/2013	---	---	---	---	---	630@0.129	19290@0.154	---	2012	---	---	---	4,506.33	0.114	0.330	3763	
18,648,000	1.00	---	---	---	07/07/2009	10/09/2010	---	ELASTRON (CR)	0.682	-1.16	€ 0.690	10/09/2013	0.650	0.641	0.682	0.682	0.656	350@0.651	830@0.682	---	2012	21,810	44	14,304.82	12,717.94	0.518	0.969	1757	
31,734,530	1.60	---	---	---	09/07/2007	19/07/2006	---	ELGEKA SA (CR)	0.466	-2.92	€ 0.480	11/09/2013	0.470	0.462	0.490	0.462	0.476	290@0.462	2000@0.490	---	2012	3,360	5	1,597.92	14,788.29	0.407	0.780	3577	
23,828,130	0.500	---	---	---	07/07/2010	17/02/2009	---	ELINOIL S.A. (CR)	1.26	5.88	# 1.19	06/09/2013	1.26	1.26	1.26	1.26	1.26	200@1.08	190@1.26	---	2012	10	1	12.60	30,023.44	1.02	1.89	537	
177,001,313	1.03	0.0308	---	---	05/07/2011	20/12/2007	---	ELLAKTOR (CR)	2.25	0.45	# 2.24	11/09/2013	2.21	2.18	2.27	2.25	2.23	2563@2.21	2871@2.25	---	2012	170,014	277	379,394.61	398,252.95	1.36	2.50	2357	

Number of Outstanding Securities	Nominal Value	Dividends [1]			Date of Last Coupon Dividend [2]		Note	Shares	Closing price	% change	Previous closing price/date	Open price	Price min	Price max	Last price	Avg price	Last Bid [7]	Last Ask [7]	P/E after	Year	Volume	Trades	Transactions Value	Company Mkt Value (thou. €)	Year low	Year high	Sector[ 4]
26,730,187	0.600	---	---	---	25/06/2009	30/12/2010	---	ELTON SA (CR)	1.16	1.75 #	1.14 11/09/2013	1.14	1.13	1.18	1.16	1.15	100@1.13	3154@1.16	12.13	2012	14,577	86	16,725.25	31,007.02	0.850	1.25	1353
15,146,404	0.340	0.093	---	---	06/07/2011	17/10/2002	---	ELTRAK SA (CR)	1.80	--- ↘	1.80 11/09/2013	1.80	1.80	1.80	1.80	1.80	240@1.62	120@1.78	---	2012	130	1	234.00	27,263.53	1.08	1.90	2753
124,100,815	0.300	---	---	---	27/06/2008	07/07/2000	---	ELVAL SA. (CB)	1.93	--- ↘	1.93 11/09/2013	1.93	1.90	1.96	1.96	1.92	100@1.92	900@1.95	14.91	2012	5,110	16	9,810.63	239,514.57	1.55	2.38	1753
13,230,000	0.300	---	---	---	11/08/2010	28/08/2013	---	ELVE SA (CR)	0.547	5.60 #	0.518 10/09/2013	0.472	0.472	0.556	0.556	0.537	300@0.486	175@0.548	---	2012	1,191	15	639.40	7,236.81	0.423	0.717	3763
30,009,210	0.310	---	---	---	27/06/2008	26/06/2000	---	ETEM SA (CB)	0.406	-1.22 €	0.411 10/09/2013	0.415	0.390	0.415	0.406	0.396	1500@0.400	900@0.409	---	2012	8,481	18	3,356.50	12,183.74	0.328	0.828	1753
4,050,416,865	0.300	---	---	---	02/05/2008	13/06/2013	---	EUROBANK ERGASIAS (CR)	0.641	2.89 #	0.623 11/09/2013	0.631	0.631	0.658	0.641	0.645	16205@0.642	3000@0.643	---	2012	1,169,613	807	753,995.02	2,596,317.21	0.555	6.23	8355
61,000,000	2.13	0.5364	0.4067	---	23/03/2012	20/11/2007	---	EUROBANK PROPERTIES REIC (CR)	7.03	-0.85 €	7.09 11/09/2013	7.15	6.84	7.15	7.03	7.02	66@6.92	38@7.03	---	2012	16,587	94	116,412.90	428,830.00	4.87	7.75	8675
27,503,677	0.600	0.04	0.05	0.1	11/07/2013	18/10/1999	---	EUROPEAN RELIANCE INSUR. (CR)	1.12	-1.75 €	1.14 11/09/2013	1.16	1.12	1.17	1.12	1.14	2074@1.12	850@1.16	3.38	2012	2,926	11	3,340.46	30,804.12	0.973	1.62	8536
13,673,200	0.880	---	---	---	18/07/2008	26/07/2001	---	EVROFARMA SA (CR)	0.318	--- ↘	0.318 09/09/2013	---	---	---	---	---	---	3000@0.309	---	2012	---	---	---	4,348.08	0.209	0.539	3577
106,500,000	0.600	0.04	0.05	0.15	31/07/2013	28/01/2000	---	EYDAP S.A. (CR)	6.89	0.58 #	6.85 11/09/2013	6.73	6.73	6.90	6.89	6.85	300@6.87	21983@6.90	15.66	2012	150,646	282	1,031,574.41	733,785.00	4.65	6.96	7577
52,800,154	0.300	---	---	---	16/04/2010	21/06/2004	---	F.G. EUROPE S.A. (CR)	0.534	--- ↘	0.534 11/09/2013	---	---	---	---	---	2000@0.495	150@0.520	6.47	2012	---	---	---	28,195.28	0.450	0.950	3722
10,203,575	0.730	---	---	---	16/07/2007	18/10/1999	---	FIERATEX SA (CR)	0.126	--- ↘	0.126 11/09/2013	---	---	---	---	---	500@0.117	2880@0.138	---	2012	---	---	---	1,285.65	0.090	0.400	3763
11,720,024	0.530	---	---	---	16/07/2010	29/05/2012	---	FLEXOPACK SA (CR)	3.65	2.82 #	3.55 11/09/2013	3.65	3.65	3.65	3.65	3.65	500@3.55	290@3.63	12.29	2012	10	1	36.50	42,778.09	2.39	5.00	2723
4,181,450	0.500	---	---	---	21/08/2000	05/03/2002	---	FLOUR MILLS SARANTOPOULOS SA	0.900	--- ↘	0.900 04/09/2013	0.900	0.900	0.900	0.900	0.900	320@0.900	---	16.64	2012	320	1	288.00	3,763.31	0.626	1.02	3577
66,948,210	0.300	---	---	---	14/07/2009	31/12/2010	4988	FOLLI FOLLIE (CR)	17.80	0.68 #	17.68 11/09/2013	18.16	17.44	18.16	17.80	17.70	250@17.55	794@17.80	---	2012	30,733	377	543,871.94	1,191,678.14	11.51	19.00	5379
50,992,322	1.00	---	---	---	21/06/2010	16/07/2002	---	FOURLIS (CR)	2.73	0.37 #	2.72 11/09/2013	2.70	2.69	2.73	2.73	2.71	7575@2.70	4342@2.73	---	2012	45,475	113	123,144.60	139,209.04	1.58	2.95	3722
50,592,373	0.300	---	---	---	07/07/2010	07/09/2011	---	FRIGOGLASS SA (CR)	5.10	--- ↘	5.10 11/09/2013	5.05	5.05	5.12	5.10	5.09	1050@5.02	100@5.13	---	2012	116,339	150	590,789.19	258,021.10	3.84	6.26	2757
77,376,446	0.340	---	---	---	23/05/2005	18/08/2011	---	G.E. DIMITRIOU (CR)	0.038	--- ↘	0.038 10/09/2013	---	---	---	---	---	2500@0.035	13000@0.037	---	2012	---	---	---	2,940.30	0.028	0.118	3722
14,076,360	0.370	---	---	---	19/08/2008	22/07/2003	---	GALAXIDI S.A. (CR)	0.290	--- ↘	0.290 11/09/2013	---	---	---	---	---	800@0.282	---	8.25	2012	---	---	---	4,082.14	0.271	0.638	3573
85,882,688	0.570	0.0048	---	---	01/08/2011	02/01/2009	---	GEK TERNA (CR)	2.22	1.83 #	2.18 11/09/2013	2.18	2.15	2.22	2.22	2.19	2400@2.20	8030@2.23	-(6)-	2012	107,702	193	235,517.24	190,659.57	1.40	2.80	2357
24,060,000	0.300	---	0.017	---	18/06/2012	21/01/2000	---	GEN. COMMERCIAL & IND.SA (CR)	0.350	-10.03 €	0.389 11/09/2013	0.342	0.342	0.350	0.350	0.343	100@0.356	321@0.389	---	2012	11	3	3.77	8,421.00	0.256	0.545	2797
34,770,982	1.54	---	---	---	06/07/2010	27/07/2000	---	GR. SARANTIS SA (CR)	5.23	1.36 #	5.16 11/09/2013	5.15	5.15	5.35	5.30	5.24	171@5.19	840@5.30	---	2012	9,471	37	49,628.10	181,852.24	4.05	5.45	3767
8,340,750	1.20	---	---	---	25/06/2009	30/07/2001	---	HAIDEMENOS SA (CR)	0.650	7.79 #	0.603 11/09/2013	0.650	0.650	0.650	0.650	0.650	---	6@0.650	---	2012	5	1	3.25	5,421.49	0.350	0.905	2791
101,279,627	0.380	---	---	---	26/06/2008	14/07/2006	---	HALKOR SA (CB)	0.915	-1.40 €	0.928 11/09/2013	0.896	0.895	0.930	0.915	0.913	550@0.903	899@0.920	---	2012	14,661	41	13,382.83	92,670.86	0.550	1.42	1755
36,748,909	0.730	---	---	---	15/12/2005	13/12/2006	---	HEL. SUGAR INDUSTRY SA (CB)	0.896	-2.08 €	0.915 11/09/2013	0.899	0.896	0.910	0.896	0.906	50@0.896	200@0.904	14.19	2012	3,122	11	2,829.36	32,927.02	0.754	1.74	3577
29,546,360	0.710	---	---	---	20/06/2008	23/08/2000	---	HELLENIC CABLES SA (CR)	1.61	1.26 #	1.59 11/09/2013	1.57	1.57	1.63	1.62	1.61	500@1.59	2450@1.63	---	2012	18,234	40	29,295.87	47,569.64	1.16	2.32	2733
65,368,563	0.790	0.15	0.11	0.09	03/06/2013	26/09/2012	---	HELLENIC EXCHANGES (CR)	6.20	0.32 #	6.18 11/09/2013	6.18	6.08	6.20	6.20	6.15	979@6.08	2301@6.20	27.78	2012	173,123	461	1,064,468.13	405,285.09	3.75	6.97	8777
305,635,185	2.18	0.45	0.45	0.15	16/08/2013	01/10/2003	4795	HELLENIC PETROLEUM (CR)	7.70	1.99 #	7.55 11/09/2013	7.55	7.40	7.71	7.70	7.65	500@7.65	16500@7.70	24.14	2012	125,395	448	959,094.64	2,353,390.92	6.20	9.30	537
305,732,436	0.410	---	---	---	08/07/2009	28/09/2011	---	HYGEIA SA (CR)	0.414	2.47 #	0.404 11/09/2013	0.405	0.403	0.418	0.414	0.411	3600@0.409	1000@0.415	---	2012	176,186	158	72,329.33	126,573.23	0.280	0.795	4533
53,155,053	0.440	---	---	---	21/07/2010	16/07/2008	---	IASO SA (CR)	1.04	2.97 #	1.01 11/09/2013	1.02	1.02	1.06	1.04	1.04	1200@1.02	739@1.05	---	2012	20,366	36	21,227.03	55,281.26	0.850	1.58	4533
8,298,467	0.400	---	---	---	30/08/1993	08/05/2013	---	IDEAL GROUP SA (CR)	0.681	-5.81 €	0.723 11/09/2013	0.723	0.681	0.723	0.681	0.697	130@0.651	212@0.739	-(6)-	2012	53	3	36.94	5,651.26	0.571	1.85	9574
28,580,100	0.400	0.05	0.02	---	20/08/2012	23/02/2007	---	IKTINOS HELLAS SA (CR)	1.54	--- ↘	1.54 11/09/2013	1.54	1.50	1.54	1.54	1.53	400@1.49	590@1.53	14.91	2012	1,400	12	2,135.50	44,013.35	1.16	1.80	2353
9,000,000	0.880	---	---	---	15/05/2009	07/12/2010	---	ILYDA S.A. (CR)	0.559	--- ↘	0.559 05/08/2013	---	---	---	---	---	---	586@0.504	---	2012	---	---	---	5,031.00	0.269	0.650	9537
20,578,374	0.620	0.03	---	---	02/06/2011	05/05/1999	---	INFORM P. LYKOS SA (CR)	1.20	--- ↘	1.20 11/09/2013	1.18	1.17	1.20	1.20	1.18	140@1.18	359@1.20	---	2012	1,001	7	1,179.20	24,694.05	1.10	1.75	2791
11,233,200	0.730	---	---	---	12/07/2010	30/07/1999	---	INTERTECH SA (CR)	0.295	--- ↘	0.295 10/09/2013	---	---	---	---	---	100@0.269	1000@0.295	---	2012	---	---	---	3,313.79	0.223	0.600	9572
34,986,430	0.440	---	---	---	25/07/2008	23/02/2010	---	INTERWOOD-XYLEMPORIA (CR)	0.105	--- ↘	0.105 11/09/2013	---	---	---	---	---	1393@0.113	5000@0.114	---	2012	---	---	---	4,238.28	0.101	0.188	2353
2,566,836	0.440	---	---	---	13/08/2010	09/01/2007	---	INTERWOOD-XYLEMPORIA (PR)	0.220	--- ↘	0.220 26/07/2013	---	---	---	---	---	1393@0.215	1000@0.240	---	2012	---	---	---	4,238.28	0.200	0.315	2353
23,154,250	1.36	---	---	---	12/08/2008	02/08/2010	---	INTRACOM CONSTR. (CR)	0.730	0.41 #	0.727 11/09/2013	0.715	0.715	0.735	0.730	0.721	250@0.711	185@0.730	---	2012	4,478	21	3,230.09	16,902.60	0.580	1.22	2357

Number of Outstanding Securities	Nominal Value	Dividends [1]			Date of Last Coupon Dividend [2]		Note	Shares	Closing price	% change	Previous closing price/date	Open price	Price min	Price max	Last price	Avg price	Last Bid [7]	Last Ask [7]	P/E after	Year	Volume	Trades	Transactions Value	Company Mkt Value (thou. €)	Year low	Year high	Sector[4]
----------------------------------	---------------	---------------	--	--	----------------------------------	--	------	--------	---------------	----------	-----------------------------	------------	-----------	-----------	------------	-----------	--------------	--------------	-----------	------	--------	--------	--------------------	-----------------------------	----------	-----------	-----------

Main Market

133,025,996	1.41	---	---	---	03/07/2007	07/01/2002	---	INTRACOM HOLDINGS (CR)	0.444	-0.89	€ 0.448	11/09/2013	0.447	0.443	0.454	0.444	0.447	4650@0.444	1793@0.450	---	2012	113,696	95	50,869.57	59,063.54	0.321	0.754	9578
158,961,721	0.300	0.0045	0.0035	0.0026	30/05/2013	14/11/2007	---	INTRALOT (CR)	1.67	2.45	# 1.63	11/09/2013	1.63	1.62	1.67	1.67	1.65	5000@1.66	25388@1.67	89.14	2012	238,908	347	394,832.44	265,466.07	1.29	2.41	5752
77,654,850	0.580	0.04	---	---	01/07/2011	21/02/2003	---	J & P - AVAX SA (CR)	1.64	-0.61	€ 1.65	11/09/2013	1.61	1.61	1.65	1.64	1.62	100@1.62	2097@1.64	---	2012	5,074	33	8,224.58	127,353.95	1.05	1.90	2357
129,994,676	1.19	0.189	---	---	23/12/2010	07/09/2012	---	JUMBO SA (CR)	8.70	-1.14	€ 8.80	11/09/2013	8.61	8.60	8.87	8.70	8.69	500@8.68	16559@8.70	14.66	2012	169,081	250	1,465,857.64	1,130,953.68	4.85	9.07	3747
9,742,920	0.400	0.01	0.01	0.01	12/08/2013	14/07/2000	---	KARAMOLEGOS SA (CR)	1.20	---	↘ 1.20	11/09/2013	---	---	---	---	---	---	600@1.20	4.66	2012	---	---	---	11,691.50	1.07	1.83	3577
14,679,792	1.44	0.065	---	---	03/06/2011	04/09/2000	---	KARATZIS SA (CR)	4.59	0.66	# 4.56	11/09/2013	4.49	4.44	4.59	4.59	4.51	500@4.47	645@4.59	15.42	2012	4,060	32	18,322.50	67,380.25	2.55	4.90	2723
3,300,689	0.350	---	---	---	01/07/2004	21/07/1999	---	KEKROPS SA (CR)	1.84	-6.12	€ 1.96	11/09/2013	2.03	1.84	2.03	1.84	1.92	471@1.84	489@2.00	---	2012	1,164	13	2,238.00	6,073.27	1.54	3.79	8633
7,595,160	0.600	---	---	---	08/08/2008	18/08/2010	---	KIRIAKOULIS SHIPPING SA (CR)	0.892	---	↘ 0.892	10/09/2013	---	---	---	---	---	500@0.700	398@0.888	62.15	2012	---	---	---	6,774.88	0.635	1.49	5759
23,648,700	0.330	0.05	---	---	13/07/2011	23/07/2008	---	KLEEMAN HELLAS SA (CR)	1.60	---	↘ 1.60	11/09/2013	1.59	1.59	1.60	1.60	1.60	200@1.54	250@1.59	---	2012	3,200	4	5,115.00	37,837.92	1.20	1.88	2757
40,219,218	0.300	---	---	---	25/05/2009	09/07/2013	---	KLOUKINAS - LAPPAS SA (CR)	0.614	4.78	# 0.586	11/09/2013	0.580	0.580	0.640	0.620	0.613	2000@0.609	615@0.629	---	2012	10,068	12	6,174.08	24,694.60	0.570	0.970	2357
21,224,340	0.420	---	---	---	02/07/2008	25/04/2006	---	KORDELLOS BROS SA (CR)	0.213	---	↘ 0.213	09/09/2013	---	---	---	---	---	1149@0.195	1072@0.233	---	2012	---	---	---	4,520.78	0.195	0.428	1757
13,450,000	0.390	---	---	---	25/06/2010	28/05/2008	---	KORRES (CR)	3.14	1.62	# 3.09	11/09/2013	3.10	3.06	3.14	3.14	3.09	320@3.06	520@3.14	---	2012	1,330	6	4,113.40	42,233.00	2.66	4.87	3767
29,480,000	0.420	---	---	---	19/07/2010	01/08/2007	---	KRETA FARM SA (CR)	0.614	4.78	# 0.586	11/09/2013	0.600	0.600	0.627	0.614	0.616	1305@0.573	448@0.613	---	2012	2,490	11	1,534.70	18,100.72	0.307	0.800	3577
33,065,136	0.440	---	---	---	06/07/2009	02/08/2013	---	KRI-KRI S.A. (CR)	2.14	---	↘ 2.14	11/09/2013	2.10	2.09	2.14	2.14	2.11	311@2.14	200@2.15	15.84	2012	4,112	8	8,684.58	70,759.39	1.52	2.20	3577
15,804,800	0.330	---	---	---	15/06/2010	12/03/2004	---	KTIMA KOSTAS LAZARIDIS SA (CR)	0.324	---	↘ 0.324	10/09/2013	---	---	---	---	---	---	500@0.324	---	2012	---	---	---	5,120.76	0.239	0.488	3535
22,945,139	1.00	---	---	---	19/08/2008	10/09/2012	---	KYRIAKIDIS MARBLES SA (CR)	0.900	---	↘ 0.900	11/09/2013	---	---	---	---	---	176@0.900	260@0.936	88.16	2012	---	---	---	20,650.63	0.630	1.04	2353
44,267,700	0.300	---	---	---	30/05/2007	18/09/2002	---	LAMDA DEVELOPMENT SA (CR)	4.01	2.56	# 3.91	11/09/2013	4.00	4.00	4.03	4.00	4.01	105@3.92	2000@4.00	---	2012	3,477	16	13,927.57	177,513.48	3.50	6.48	8633
5,939,268	0.620	---	---	---	10/07/2003	03/01/2002	---	LANAKAM SA (CR)	0.639	---	↘ 0.639	14/08/2013	---	---	---	---	---	---	4685@0.576	---	2012	---	---	---	3,795.19	0.503	0.869	3763
7,734,375	1.00	---	---	---	09/07/2007	07/01/2011	---	LIVANIS SA (CR)	0.229	---	↘ 0.229	23/08/2013	---	---	---	---	---	---	980@0.229	---	2012	---	---	---	1,771.17	0.144	0.363	5557
4,740,000	0.860	---	---	---	---	14/03/2003	---	LOGISMOS S.A. (CR)	0.500	---	↘ 0.500	27/08/2013	---	---	---	---	---	40@0.351	340@0.450	58.00	2011	---	---	---	2,370.00	0.373	1.23	9533
15,222,276	0.640	---	---	---	01/06/2010	02/08/2011	---	LOULIS MILLS SA (CR)	2.80	---	↘ 2.80	11/09/2013	---	---	---	---	---	1000@2.70	650@2.88	-(6)-	2012	---	---	---	42,622.37	2.08	3.76	3577
770,328,883	0.300	---	---	---	26/04/2007	10/05/2013	---	MARFIN INVESTMENT GROUP (CR)	0.342	7.21	# 0.319	11/09/2013	0.319	0.316	0.344	0.342	0.336	30000@0.339	44748@0.343	---	2012	2,793,520	994	938,839.42	263,452.48	0.175	0.564	8775
9,819,370	0.690	---	---	---	14/08/2007	09/01/2004	---	MATHIOS REFRACTORY SA (CR)	0.260	---	↘ 0.260	11/09/2013	---	---	---	---	---	580@0.182	23@0.250	---	2012	---	---	---	2,553.04	0.180	0.510	2353
468,700	1.0556	---	---	---	21/03/2012	21/05/2004	---	MERMEREN KOMB. A.D. PR. (GDR)	4.31	6.42	# 4.05	11/09/2013	4.31	4.31	4.31	4.31	4.31	55@3.97	100@4.20	1.05	2012	20	1	86.20	2,020.10	3.73	5.19	1775
51,950,600	0.320	0.48	0.75	0.25	10/05/2013	21/10/2005	---	METKA (CR)	11.69	0.86	# 11.59	11/09/2013	11.45	11.45	11.69	11.69	11.53	329@11.53	695@11.69	16.85	2012	17,771	163	204,937.99	607,302.51	9.00	12.78	2757
10,500,000	0.900	---	---	---	24/06/2008	04/07/2012	---	MEVACO SA (CR)	1.37	0.74	# 1.36	11/09/2013	1.35	1.35	1.37	1.37	1.36	110@1.28	400@1.37	9.92	2012	600	2	816.00	14,385.00	1.01	1.58	2757
14,074,000	3.00	0.15	0.25	---	02/03/2012	23/07/2009	---	MIG REAL ESTATE (CR)	1.92	---	↘ 1.92	04/09/2013	---	---	---	---	---	---	100@1.75	---	2012	---	---	---	27,022.08	1.17	1.92	8671
6,200,000	0.500	---	---	---	22/06/2010	01/11/1995	---	MINERVA KNITWEAR SA (CB)	0.776	---	↘ 0.776	05/08/2013	---	---	---	---	---	---	3250@0.699	---	2012	---	---	---	4,811.20	0.530	0.948	3761
12,417,000	0.370	---	---	---	28/07/2008	06/09/2011	---	MLS MULTIMEDIA SA (CR)	3.05	---	↘ 3.05	11/09/2013	3.05	2.98	3.05	3.05	3.02	300@3.00	4270@3.05	40.17	2012	71,271	121	215,297.02	37,871.85	2.60	3.05	9537
4,588,137	16.00	---	---	---	30/06/2005	17/08/2011	---	MOCHLOS SA (CR)	1.65	---	↘ 1.65	11/09/2013	1.68	1.52	1.68	1.65	1.55	991@1.52	499@1.62	---	2012	11	3	17.01	7,570.43	1.12	2.60	2357
11,700,000	0.590	---	---	---	02/06/2009	24/07/2012	---	MOTODYNAMICS S.A. (CR)	0.440	---	↘ 0.440	11/09/2013	---	---	---	---	---	1480@0.311	250@0.432	---	2012	---	---	---	5,148.00	0.211	0.640	5379
110,782,980	0.850	0.25	0.4	0.3	26/06/2013	05/11/2012	---	MOTOR OIL (CR)	7.70	0.52	# 7.66	11/09/2013	7.60	7.54	7.70	7.70	7.63	1500@7.69	7489@7.70	9.40	2012	76,374	326	583,005.74	853,028.95	6.80	9.37	533
116,915,862	1.07	---	---	---	11/05/2009	06/07/2011	---	MYTILINEOS HOLDINGS (CR)	4.88	2.95	# 4.74	11/09/2013	4.74	4.74	4.91	4.88	4.82	2700@4.84	6602@4.89	---	2012	621,630	1,328	2,996,962.88	570,549.41	3.38	5.65	1755
8,321,682	0.670	---	---	---	17/08/2007	23/11/1999	---	N. LEVEDERIS SA (CB)	0.249	---	↘ 0.249	10/09/2013	---	---	---	---	---	2000@0.250	100@0.272	---	2012	---	---	---	3,040.01	0.198	0.658	1757
2,160,524	0.670	0.0435	0.0435	0.0436	16/08/2013	23/11/1999	---	N. LEVEDERIS SA (PB)	0.448	---	↘ 0.448	23/08/2013	---	---	---	---	---	---	222@0.444	---	2012	---	---	---	3,040.01	0.307	0.798	1757
11,510,102	0.890	---	---	---	24/06/2005	06/10/1999	---	NAFPAKTOS TEXTILE IND. SA (CB)	0.400	---	↘ 0.400	04/09/2013	---	---	---	---	---	---	1691@0.360	---	2012	---	---	---	4,604.04	0.232	0.500	3763
6,340,000	0.600	---	---	---	30/11/2009	12/07/2000	---	NAKAS MUSIC	0.900	2.27	# 0.880	11/09/2013	0.900	0.900	0.900	0.900	0.900	---	112@0.900	---	2012	100	2	90.00	5,706.00	0.300	1.04	5379
2,396,785,994	0.300	---	---	---	16/05/2008	24/05/2013	---	NATIONAL BANK (CR)	3.23	1.25	# 3.19	11/09/2013	3.20	3.15	3.26	3.23	3.21	1351@3.19	341@3.23	---	2012	765,871	1,103	2,457,375.48	7,741,618.76	1.83	9.87	8355

Number of Outstanding Securities	Nominal Value	Dividends [1]			Date of Last Coupon		Note	Shares	Closing price	% change	Previous closing price/date	Open price	Price min	Price max	Last price	Avg price	Last Bid [7]	Last Ask [7]	P/E after	Year	Volume	Trades	Transactions Value	Company Mkt Value (thou. €)	Year low	Year high	Sector[ 4]	
		2010	2011	2012	Dividend [2]	Right																						
Main Market																												
23,935,280	0.300	---	---	---	29/06/2009	13/06/2000	---	NAYTEMPORIKI PUBLISHING SA(CR)	0.180	---	↘ 0.180	02/09/2013	---	---	---	---	---	700@0.162	700@0.180	---	2012	---	---	---	4,308.35	0.149	0.360	5557
27,848,000	0.300	0.0301	0.0132	0.0137	21/08/2013	02/09/2003	---	NEWSPHONE HELLAS SA (CR)	0.330	8.20	# 0.305	11/09/2013	0.330	0.330	0.330	0.330	1000@0.307	2000@0.320	8.08	2012	1	1	0.33	9,189.84	0.241	0.592	2791	
6,132,500	1.25	0.1	---	---	24/06/2011	19/06/2001	---	NEXANS HELLAS SA (CR)	2.30	0.44	# 2.29	11/09/2013	2.29	2.29	2.30	2.30	100@2.16	430@2.30	---	2012	200	3	459.48	14,104.75	2.10	3.11	2733	
63,697,153	1.34	---	---	---	08/07/2008	10/11/2008	---	NIREFS SA (CR)	0.414	-0.96	€ 0.418	11/09/2013	0.412	0.408	0.416	0.414	2190@0.413	180@0.417	---	2012	33,714	61	13,877.07	26,370.62	0.380	0.839	3573	
319,000,000	0.300	1.4177	0.72	0.57	28/06/2013	25/04/2001	---	OPAP (CR)	8.00	1.91	# 7.85	11/09/2013	7.90	7.85	8.00	8.00	10000@7.95	150@8.01	4.98	2012	985,474	1,009	7,823,778.98	2,552,000.00	5.49	8.27	5752	
490,150,389	2.39	0.1179	---	---	28/06/2011	18/06/1998	---	OTE (CR)	7.60	---	↘ 7.60	11/09/2013	7.58	7.50	7.70	7.60	1100@7.51	127305@7.60	---	2012	422,371	906	3,212,653.60	3,725,142.96	4.26	7.81	6535	
25,000,000	2.00	0.02	0.01	0.05	18/07/2013	08/08/2003	---	P.P.A. S.A. (CR)	17.30	0.70	# 17.18	11/09/2013	17.03	17.03	17.30	17.30	4@17.09	113@17.37	87.25	2012	3,660	92	62,918.83	432,500.00	14.59	21.68	2777	
4,971,466	1.46	---	---	---	04/07/2007	08/10/2003	---	PAIRIS SA (CR)	0.306	---	↘ 0.306	06/09/2013	---	---	---	---	---	410@0.320	---	2012	---	---	---	1,521.27	0.201	0.605	2723	
3,953,090	0.900	---	---	---	02/07/2001	05/12/2012	---	PAPERPACK (CR)	0.700	-0.71	€ 0.705	11/09/2013	0.700	0.700	0.730	0.700	5@0.700	100@0.709	---	2012	8,226	24	5,838.85	2,767.16	0.500	1.06	2723	
50,797,369	0.310	---	---	---	17/08/2000	12/10/2010	---	PAPOUTSANIS (CR)	0.628	---	↘ 0.628	11/09/2013	---	---	---	---	---	164@0.521	6186@0.627	---	2012	---	---	---	31,900.75	0.361	0.750	3767
7,070,400	0.930	---	---	---	18/05/2010	12/05/2011	---	PETROPOULOS PETROS (CR)	1.55	---	↘ 1.55	11/09/2013	1.54	1.54	1.55	1.54	50@1.50	799@1.52	---	2012	212	6	326.60	10,959.12	1.20	1.74	2753	
5,072,567,951	0.300	---	---	---	16/05/2008	05/06/2013	---	PIRAEUS BANK (CR)	1.33	0.76	# 1.32	11/09/2013	1.32	1.29	1.36	1.33	1.33	49449@1.32	224535@1.33	---	2012	6,629,444	2,064	8,810,162.82	6,746,515.37	0.832	6.28	8355
22,080,000	0.320	0.05	0.08	0.12	22/05/2013	03/10/2000	---	PLAISIO COMPUTERS SA (CR)	5.36	5.10	# 5.10	11/09/2013	5.06	5.06	5.36	5.36	509	500@5.00	20@5.20	11.94	2012	190	4	966.80	118,348.80	3.65	6.25	9572
232,000,000	4.60	0.79	---	0.025	22/07/2013	12/12/2001	---	PPC (CR)	7.99	1.53	# 7.87	11/09/2013	7.87	7.77	7.99	7.99	7.92	50@7.93	21707@8.00	-(6)-	2012	343,161	1,004	2,717,878.72	1,853,680.00	4.55	8.49	7535
11,812,193	0.450	---	---	---	24/07/2009	15/11/2006	---	PROFILE SA (CR)	1.02	---	↘ 1.02	11/09/2013	1.04	0.998	1.04	1.02	1.01	350@0.991	1250@1.03	19.62	2012	800	7	808.60	12,048.44	0.761	1.26	9533
24,319,250	0.300	---	---	---	09/07/2002	04/07/2007	---	PROODEFTIKH SA (CR)	0.135	6.30	# 0.127	11/09/2013	0.128	0.128	0.137	0.135	0.134	2500@0.124	500@0.137	---	2012	2,500	13	334.00	3,283.10	0.054	0.223	2357
6,836,280	1.88	---	---	---	18/07/2005	10/09/2010	---	QUALITY & RELIABILITY SA (CR)	1.80	2.27	# 1.76	11/09/2013	1.86	1.73	1.87	1.80	1.82	340@1.74	400@1.79	---	2012	1,525	7	2,773.25	12,305.30	0.236	1.97	9533
48,069,201	0.400	---	---	---	05/09/2008	21/06/2012	---	QUEST HOLDINGS (CR)	1.17	3.54	# 1.13	11/09/2013	1.15	1.14	1.17	1.17	1.15	100@1.15	1300@1.17	---	2012	16,502	33	18,956.88	56,240.97	0.936	1.39	9533
57,434,884	1.31	---	---	---	05/06/2008	12/06/2009	---	REDS S.A. (CR)	0.500	-1.19	€ 0.506	11/09/2013	0.500	0.500	0.500	0.500	0.500	100@0.490	221@0.507	---	2012	500	2	250.00	28,717.44	0.450	0.949	8633
22,280,000	0.300	0.0329	---	---	11/04/2011	23/02/2007	---	REVOIL (CR)	0.844	-0.71	€ 0.850	11/09/2013	0.828	0.825	0.844	0.844	0.827	300@0.822	620@0.844	---	2012	3,580	8	2,960.82	18,804.32	0.345	1.20	5379
7,500,000	0.560	---	---	---	25/06/2010	10/04/2013	---	S.KANAKIS SA (CR)	1.76	0.57	# 1.75	11/09/2013	1.78	1.73	1.78	1.78	1.76	30@1.73	750@1.77	12.51	2012	1,425	48	2,508.45	13,200.00	1.05	1.90	3577
52,067,296	0.300	---	---	---	23/12/2003	24/01/2007	---	SELECTED TEXT. IND. ASSOC (CR)	0.265	-5.02	€ 0.279	10/09/2013	0.260	0.260	0.278	0.265	0.265	2800@0.260	395@0.279	---	2012	7,065	12	1,869.39	13,797.83	0.232	0.587	3763
96,243,908	0.410	---	---	---	26/06/2008	17/07/2000	---	SIDENOR (CR)	1.66	-0.60	€ 1.67	11/09/2013	1.68	1.64	1.68	1.66	1.66	1000@1.65	2300@1.67	---	2012	36,655	60	60,740.42	159,764.89	1.00	2.39	1757
6,456,530	1.60	---	---	---	29/06/2001	02/08/2010	---	SPACE HELLAS SA (CR)	2.19	---	↘ 2.19	14/06/2013	---	---	---	---	---	---	4564@1.98	70.35	2012	---	---	---	14,139.80	1.25	2.20	9578
28,438,268	0.300	---	---	---	21/08/2006	24/11/1999	---	SPIROY AGRICULTURE SA (CR)	0.318	-3.64	€ 0.330	11/09/2013	0.340	0.318	0.340	0.318	0.319	---	200@0.318	---	2012	2,150	4	684.80	9,043.37	0.252	0.557	1357
33,125,000	5.00	---	---	---	03/07/2006	18/08/2010	---	TECHNICAL OLYMPIC SA (CR)	1.35	1.50	# 1.33	11/09/2013	1.35	1.33	1.37	1.35	1.35	1435@1.34	141@1.36	-(6)-	2012	16,275	31	21,985.42	44,718.75	1.17	2.71	3728
109,319,070	0.300	(0.0399)	(0.0613)	---	28/05/2012	05/08/2013	---	TERNA ENERGY (CR)	3.08	-0.65	€ 3.10	11/09/2013	3.06	3.01	3.08	3.08	3.04	1853@3.05	694@3.08	67.65	2012	103,781	308	315,757.19	336,702.74	2.24	3.73	7537
36,300,000	1.12	0.114	0.188	0.162	16/08/2013	12/12/2007	---	THESSALONIKA WATER & SEWERAGE	5.80	-1.19	€ 5.87	11/09/2013	5.81	5.76	5.90	5.80	5.81	500@5.76	200@5.81	11.90	2012	13,116	58	76,154.97	210,540.00	4.73	6.82	7577
45,094,620	0.500	0.036	---	0.0467	10/06/2013	01/11/1999	---	THRACE PLASTICS SA (CR)	1.27	-1.55	€ 1.29	11/09/2013	1.26	1.26	1.28	1.27	1.27	2000@1.26	3447@1.28	7.31	2012	15,255	38	19,290.56	57,270.17	1.07	1.64	1357
77,063,568	4.00	0.0806	---	---	24/06/2011	25/06/2004	---	TITAN CEMENT (CR)	16.02	-1.11	€ 16.20	11/09/2013	16.20	15.70	16.20	16.02	15.98	3320@16.01	5@16.09	---	2012	24,343	171	389,085.79	1,286,178.67	11.31	16.94	2353
7,568,960	4.00	0.1869	---	---	24/06/2011	25/06/2004	---	TITAN CEMENT CO. (PR)	6.82	1.04	# 6.75	11/09/2013	6.41	6.40	6.85	6.81	6.66	250@6.70	531@6.97	---	2012	1,007	11	6,704.64	1,286,178.67	5.75	7.27	2353
10,080,000	3.00	0.21	0.4	1.5	17/07/2013	27/08/2001	---	TPA SA (CR)	23.70	-0.08	€ 23.72	11/09/2013	23.73	23.70	24.00	23.70	23.73	30@23.70	1024@24.00	12.95	2012	1,621	11	38,473.60	238,896.00	19.00	25.20	2777
54,888,240	1.13	0.1	0.1	0.1	25/04/2013	22/03/2006	---	TRASTOR REAL EST. INV. CO.(CR)	0.771	0.13	# 0.770	11/09/2013	0.780	0.770	0.780	0.780	0.779	3000@0.760	297@0.779	---	2012	8,140	6	6,338.97	42,318.83	0.624	0.829	8671
14,627,315	0.300	---	---	---	16/11/1992	03/12/2012	---	UNIBIOS (CR)	0.247	-0.40	€ 0.248	11/09/2013	0.244	0.241	0.247	0.247	0.245	500@0.241	2584@0.248	---	2012	11,044	23	2,702.48	3,612.95	0.151	0.414	2353
18,810,000	0.400	---	---	---	08/07/2010	14/11/2007	---	VARVERIS - MODA BAGNO SA (CR)	0																			

Number of Outstanding Securities	Nominal Value	Dividends [1]			Date of Last Coupon Dividend [2]	Note	Shares	Closing price	% change	Previous closing price/date	Open price	Price min	Price max	Last price	Avg price	Last Bid [7]	Last Ask [7]	P/E after	Year	Volume	Trades	Transactions Value	Company Mkt Value (thou. €)	Year low	Year high	Sector[ 4]
5,848,618		---	---	---	24/01/2008	---	ALPHA ETF FTSE Athex Large Cap	3.41	0.89 #	3.38 11/09/2013	3.41	3.41	3.41	3.41	3.41	78@3.41	1334@3.42	---	---	1	1	3.41	-	2.49	3.99	11000
294,878		---	---	---	29/06/2009	---	NBGAM ETF	11.00	0.64 #	10.93 11/09/2013	11.00	11.00	11.00	11.00	11.00	---	---	---	---	2	1	22.00	-	8.23	11.75	11000
388,550		---	---	---	03/11/2010	---	NBGAM ETF GREECE & TURKEY 30	7.75	0.39 #	7.72 11/09/2013	7.75	7.75	7.75	7.75	7.75	---	---	---	---	2	1	15.50	-	6.88	10.11	11000

Low Dispersion

14,000,000	3.80	---	---	---	23/04/2010	29/06/1999	4815	ALPHA REAL ESTATE SA(CR)	6.42	-2.13 <b>E</b>	6.56 11/09/2013	6.47	5.26	6.47	5.26	6.42	7@5.26	160@6.97	13.29	2012	140	6	898.54	89,880.00	5.26	7.00	8637
63,900,000	3.00	---	---	---	23/06/2003	04/11/2008	4816	ASTIR PALACE SA (CR)	3.65	---	3.65 11/09/2013	3.70	3.64	3.70	3.65	3.65	250@3.63	100@3.64	---	2012	1,500	13	5,477.00	233,235.00	3.37	4.95	5753
49,152,904	0.800	---	---	---	09/08/2004	08/03/2006	4814	ATHENA SA (CR)	0.330	---	0.330 30/08/2013	---	---	---	---	---	---	3200@0.264	---	2012	---	---	---	16,220.46	0.094	0.340	2357
191,660,320	0.300	---	---	---	20/07/2009	29/12/2010	4817	ATTICA HOLDINGS (CR)	0.304	1.00 #	0.301 11/09/2013	0.304	0.304	0.304	0.304	0.304	1800@0.260	290@0.359	---	2012	3,836	5	1,166.15	58,264.74	0.241	0.588	5759
15,300,000	0.300	---	---	---	30/07/2009	13/12/1999	4893	ATTICA PUBLICATIONS SA (CR)	0.549	---	0.549 06/09/2013	---	---	---	---	---	---	---	---	2012	---	---	---	8,399.70	0.520	1.45	5557
8,418,750	0.300	---	0.15	0.29	05/06/2013	27/06/2012	4828	GEKE SA (CB)	6.68	---	6.68 09/09/2013	6.68	6.68	6.68	6.68	6.68	30@6.68	---	20.98	2012	70	1	467.60	56,237.25	6.59	6.79	5753
68,322,221	1.00	---	---	---	08/03/2002	08/04/2013	4986	GENIKI BANK (CR)	1.80	---	1.80 11/09/2013	---	---	---	---	---	30@2.00	---	---	2012	---	---	---	122,980.00	1.51	8.85	8355
71,082,707	1.70	---	---	---	01/07/2010	21/11/2012	4820	HERACLES GEN.CEMENT CO. (CR)	1.39	2.21 #	1.36 11/09/2013	1.39	1.39	1.39	1.39	1.39	1800@1.36	229@1.39	---	2012	1,000	4	1,390.00	98,804.96	1.20	1.80	2353
13,404,440	8.63	---	---	---	02/04/2001	06/03/1992	4822	IONIAN HOTELS SA (CR)	8.95	---	8.95 10/09/2013	---	---	---	---	---	100@7.16	50@10.74	---	2012	---	---	---	119,969.74	8.40	13.00	5753
2,760,000	7.70	6.3291	7.6	8.52	26/06/2013	16/07/1990	4823	KARELIA TOBACCO CO. SA (CB)	203.00	-0.49 <b>E</b>	204.00 11/09/2013	203.00	203.00	203.00	203.00	203.00	1@201.00	22@203.00	12.33	2012	2	1	406.00	560,280.00	110.00	210.00	3785
17,000,000	0.600	---	---	---	12/06/2008	07/03/2000	4941	KATHIMERINI SA (CR)	0.970	-2.90 <b>E</b>	0.999 11/09/2013	0.999	0.970	0.999	0.970	0.970	---	585@0.970	---	2012	530	4	514.25	16,490.00	0.321	1.00	5557
21,364,000	1.12	---	---	---	05/07/2010	10/08/2005	4824	LAMPSPA HOTEL SA (CR)	19.30	---	19.30 11/09/2013	19.30	19.30	19.30	19.30	19.30	200@15.50	178@19.30	---	2012	250	5	4,825.00	412,325.20	15.00	19.30	5753
6,700,000	0.800	---	---	---	19/07/2010	29/08/2012	4894	MILLS KEPENOS (CR)	1.27	---	1.27 06/09/2013	---	---	---	---	---	500@1.15	40@1.25	7.55	2012	---	---	---	8,509.00	0.777	1.69	3577
70,926,000	2.25	---	---	---	25/07/2008	21/06/2000	4825	MINOAN LINES SA (CR)	1.99	-0.50 <b>E</b>	2.00 11/09/2013	1.96	1.96	2.00	2.00	1.99	221@2.00	140@2.09	---	2012	3,585	11	7,117.76	141,142.74	1.70	2.10	5759
17,240,776	0.370	---	---	---	14/07/2005	30/09/2003	4827	PERSEUS SA (CR)	0.223	---	0.223 30/08/2013	---	---	---	---	---	1990@0.179	1150@0.267	13.00	2012	---	---	---	3,844.69	0.033	0.325	3577

Surveillance

33,301,715	0.320	---	---	---	27/06/2003	08/07/2009	4978	AEGEK (CR)	0.078	---	0.078 11/09/2013	0.078	0.078	0.078	0.078	0.078	2100@0.081	1210@0.091	---	2012	5,918	4	461.60	2,597.53	0.077	0.184	2357
14,870,100	0.300	---	---	---	15/05/2008	26/09/2011	4844	ALPHA GRISSIN S.A. (CR)	0.225	---	0.225 09/08/2013	---	---	---	---	---	---	2500@0.224	---	2012	---	---	---	3,345.77	0.080	0.328	9533
215,246,452	0.300	---	---	---	25/06/2001	24/09/2001	4446	ALTEC SA (CR)	0.038	-7.32 <b>E</b>	0.041 11/09/2013	0.034	0.034	0.040	0.038	0.038	10000@0.036	8000@0.040	---	2012	20,069	12	766.35	8,179.37	0.021	0.062	9533
2,969,713	0.300	---	---	---	02/07/2008	28/02/2011	4958	ANEK LINES SA (PR, issue '96)	0.310	3.33 #	0.300 10/09/2013	0.310	0.310	0.310	0.310	0.310	1000@0.310	---	---	2012	10	1	3.10	17,865.20	0.300	0.770	5759
312,163	0.300	---	---	---	02/07/2008	28/02/2011	4959	ANEK LINES SA (PR, issue '90)	1.43	---	1.43 09/09/2013	---	---	---	---	---	---	---	---	2012	---	---	---	17,865.20	1.43	1.78	5759
185,373,016	0.300	---	---	---	02/07/2008	28/02/2011	4957	ANEK LINES SA (CR)	0.089	---	0.089 11/09/2013	0.089	0.088	0.089	0.088	0.089	28504@0.084	2000@0.087	---	2012	5,300	6	471.40	17,865.20	0.071	0.270	5759
81,644,555	0.300	---	---	---	01/07/2008	02/09/2002	4630	ATTI - KAT SA (CR)	0.028	-20.00 <b>E</b>	0.035 11/09/2013	0.028	0.028	0.028	0.028	0.028	---	3@0.028	---	2012	17,997	8	503.92	2,286.05	0.022	0.088	2357
20,255,805	0.300	---	---	---	22/08/2006	02/08/2010	4881	AXON HOLDING SA (CR)	0.084	---	0.084 11/09/2013	---	---	---	---	---	---	2001@0.100	---	2012	---	---	---	1,701.49	0.050	0.192	4533
17,579,754	4.16	---	---	---	18/08/2006	02/08/2010	4885	BIOTER SA (CR)	0.168	0.60 #	0.167 11/09/2013	0.167	0.167	0.170	0.167	0.168	400@0.134	1680@0.167	---	2012	12,000	8	2,013.01	2,953.40	0.059	0.194	2357
12,431,980	0.720	---	---	---	20/06/2003	10/07/2003	4559	COMPUCON SA (CR)	0.075	---	0.075 11/09/2013	---	---	---	---	---	200@0.075	4916@0.085	---	2012	---	---	---	932.40	0.031	0.100	9537
30,159,583	0.470	---	---	---	26/06/2008	29/12/2010	4962	DIAS A/C (CR)	0.839	---	0.839 04/09/2013	---	---	---	---	---	---	400@0.672	---	2012	---	---	---	25,303.89	0.420	0.845	3573
15,878,748	0.480	---	---	---	10/07/2006	22/03/2004	4960	DOMIKI KRITIS SA (CR)	0.538	---	0.538 26/08/2013	---	---	---	---	---	---	30@0.489	---	2012	---	---	---	8,542.77	0.310	0.800	2357
3,961,300	1.28	---	---	---	29/06/2004	03/08/2000	4808	DUROS SA (CR)	0.970	---	0.970 19/07/2013	---	---	---	---	---	---	310@0.800	---	2012	---	---	---	3,842.46	0.120	0.970	3763
7,085,888	1.59	---	---	---	02/07/1996	06/09/2010	4690	ELVIEMEK (CR)	3.00	---	3.00 05/02/2013	---	---	---	---	---	100@2.40	100@3.60	-(6)-	2012	---	---	---	21,257.66	3.00	3.58	8633
6,000,000	0.600	---	---	---	13/06/2008	08/04/2004	4886	EUROBROKERS S.A. (CR)	0.052	---	0.052 10/09/2013	---	---	---	---	---	2000@0.042	---	---	2012	---	---	---	312.00	0.052	0.333	8534
7,347,600	0.600	---	---	---	02/06/2010	25/02/2010	4889	EUROCONSULTANTS S.A. (CR)	3.08	---	3.08 11/09/2013	---	---	---	---	---	---	200@2.89	---	2012	---	---	---	22,630.61	2.12	3.08	2791

Number of Outstanding Securities	Nominal Value	Dividends [1]			Date of Last Coupon Dividend [2]		Note	Shares	Closing price	% change	Previous closing price/date	Open price	Price min	Price max	Last price	Avg price	Last Bid [7]	Last Ask [7]	P/E after	Year	Volume	Trades	Transactions Value	Company Mkt Value (thou. €)	Year low	Year high	Sector[ 4]
--	------------------	---------------	--	--	-------------------------------------	--	------	--------	------------------	----------	--------------------------------	---------------	--------------	--------------	---------------	--------------	-----------------	--------------	--------------	------	--------	--------	-----------------------	--------------------------------	-------------	--------------	---------------

Surveillance

21,820,410	0.800	---	---	---	22/05/2008	02/08/2011	4882	EUROMEDICA SA (CR)	0.320	---	↘	0.320	06/09/2013	---	---	---	---	---	190@0.256	2000@0.329	---	2012	---	---	---	6,982.53	0.270	0.613	4533
12,952,610	0.300	---	---	---		04/10/2012	4846	Forthnet (CR)	1.09	4.81	#	1.04	11/09/2013	1.09	1.00	1.09	1.00	1.09	680@1.00	1300@1.08	---	2011	1,064	5	1,157.96	14,118.34	0.350	1.43	9535
1,270,000	0.300	---	---	---	06/07/2007	06/02/2013	---	GIRAKIAN PROFIL SA (CB)	2.38	---	↘	2.38	10/09/2013	---	---	---	---	---	---	9@2.15	---	2012	---	---	---	3,022.60	0.900	3.33	1757
179,707,771	0.300	---	---	---	27/06/2002	01/11/2011	4847	HELLAS ONLINE SA (CR)	0.440	2.33	#	0.430	11/09/2013	0.440	0.440	0.440	0.440	0.440	3348@0.371	1950@0.420	---	2012	300	2	132.00	79,071.42	0.271	0.709	9537
13,692,227	1.47	---	---	---	07/07/2006	08/10/1999	4845	HELLENIC FABRICS SA (CR)	0.298	---	↘	0.298	04/09/2013	---	---	---	---	---	---	70@0.280	---	2012	---	---	---	4,080.28	0.180	0.354	3763
30,390,000	0.310	---	---	---	18/08/2008	29/12/2006	4447	HELLENIC FISHFARMING SA (CR)	0.100	---	↘	0.100	11/09/2013	---	---	---	---	---	---	2800@0.118	23.44	2012	---	---	---	3,039.00	0.039	0.137	3573
1,540,000	0.600	---	---	---	08/08/1994	19/09/2000	4855	J.BOUTARIS & SON HOLD. (PB)	0.024	---	↘	0.024	05/08/2013	---	---	---	---	---	1000@0.020	---	---	2012	---	---	---	2,076.51	0.024	0.201	3535
25,179,640	0.600	---	---	---	08/08/1994	19/09/2000	4854	J.BOUTARIS & SON HOLD. SA (CB)	0.081	19.12	#	0.068	11/09/2013	0.081	0.081	0.081	0.081	0.081	999@0.056	1989@0.081	---	2012	200	2	16.20	2,076.51	0.037	0.132	3535
7,125,216	0.650	---	---	---	01/07/2005	14/12/1999	4955	KRE.KA SA (CR)	0.252	---	↘	0.252	12/08/2013	---	---	---	---	---	---	349@0.280	---	2012	---	---	---	1,795.55	0.144	0.580	3573
51,081,030	1.00	---	---	---	20/08/2007	03/09/2007	4912	LAVIPHARM SA (CR)	0.143	4.38	#	0.137	11/09/2013	0.143	0.143	0.143	0.143	0.143	500@0.133	701@0.138	---	2012	500	3	71.50	7,304.59	0.101	0.268	4577
322,925,288	0.300	---	---	---	23/05/2007	10/04/2000	4554	M.J. MAILLIS SA (CR)	0.070	4.48	#	0.067	11/09/2013	0.070	0.068	0.070	0.070	0.070	1420@0.068	9520@0.070	---	2012	11,880	7	830.84	22,604.77	0.056	0.150	2723
9,567,289	0.300	---	---	---	01/07/2004	19/11/2007	4944	MARAC ELECTRONICS (CR)	0.200	---	↘	0.200	11/09/2013	---	---	---	---	---	---	1180@0.210	---	2012	---	---	---	1,913.46	0.068	0.409	9578
4,178,856	1.58	0.22	---	---	21/07/2011	28/07/2004	4983	MEDICON S.A (CR)	0.588	---	↘	0.588	10/09/2013	---	---	---	---	---	600@0.481	180@0.699	---	2012	---	---	---	2,457.17	0.446	1.18	4535
255,459,600	0.300	---	---	---	26/06/2000	03/12/2010	4833	NEL SA (CR)	0.031	3.33	#	0.030	11/09/2013	0.030	0.030	0.032	0.032	0.030	7320@0.026	825@0.030	---	2012	2,600	3	79.20	7,919.25	0.012	0.158	5759
20,231,328	0.600	---	---	---	15/07/2008	25/06/2004	4879	NIKAS SA (CR)	0.298	14.61	#	0.260	06/09/2013	0.298	0.298	0.298	0.298	0.298	280@0.231	497@0.298	---	2012	300	2	89.40	6,028.94	0.230	0.530	3577
20,210,127	1.53	---	---	---	27/06/1997	20/03/2000	5006	PARNASSOS ENTERP. (CR)	0.070	-6.67	€	0.075	11/09/2013	0.069	0.069	0.070	0.070	0.070	6669@0.070	15421@0.075	---	2012	8,030	7	558.40	1,414.71	0.069	0.698	8775
14,967,940	0.500	---	---	---	21/05/2008	04/01/2008	4956	PASAL DEVELOPMENT S.A. (CR)	0.160	-2.44	€	0.164	11/09/2013	0.160	0.160	0.160	0.160	0.160	400@0.136	2650@0.179	---	2012	4,700	5	752.00	2,394.87	0.120	0.414	8633
40,946,303	0.360	---	---	---	18/07/2005	27/11/2007	4856	PC SYSTEMS SA (CR)	0.052	-1.89	€	0.053	11/09/2013	0.052	0.052	0.052	0.052	0.052	5786@0.052	214@0.063	---	2012	914	3	47.53	2,129.21	0.052	0.180	9533
18,750,000	0.300	---	---	---	02/07/2001	31/12/2012	4985	PEGASUS PUBLISHING S.A. (CR)	0.102	-17.74	€	0.124	11/09/2013	0.102	0.102	0.102	0.103	0.103	696@0.102	50@0.148	---	2012	4	1	0.41	1,912.50	0.044	0.610	5557
28,056,518	0.530	---	---	---	04/07/2007	19/07/2006	4750	SATO SA (CR)	0.108	---	↘	0.108	11/09/2013	---	---	---	---	---	---	5000@0.102	---	2012	---	---	---	3,030.10	0.025	0.123	3726
36,235,184	1.00	---	---	---	01/07/2008	30/07/2012	4961	SELONDA AQUACULTURE SA (CR)	0.129	4.03	#	0.124	11/09/2013	0.129	0.129	0.129	0.129	0.129	1816@0.123	50@0.129	---	2012	50	1	6.45	4,674.34	0.119	0.600	3573
7,914,480	2.50	---	---	---	23/06/2008	29/06/2011	4888	SFAKIANAKIS SA (CR)	0.550	---	↘	0.550	09/09/2013	---	---	---	---	---	200@0.442	300@0.660	---	2012	---	---	---	4,352.96	0.364	0.763	5379
60,221,300	0.400	---	---	---	01/07/2002	01/11/2010	4880	SHELMAN SA (CR)	0.130	---	↘	0.130	04/09/2013	---	---	---	---	---	---	4000@0.110	---	2011	---	---	---	7,828.77	0.098	0.280	2353
10,000,000	1.35	---	---	---	24/06/2008	10/05/2005	4887	SIDMA SA (CR)	0.385	---	↘	0.385	10/09/2013	0.385	0.385	0.385	0.385	0.385	40@0.341	2000@0.390	---	2012	2,000	1	770.00	3,850.00	0.380	0.920	1757
29,060,950	0.340	---	---	---	20/08/2007	24/10/2001	4884	SPIDER METAL INDUSTRY SA (CR)	0.057	18.75	#	0.048	11/09/2013	0.057	0.057	0.057	0.060	0.060	2000@0.052	300@0.057	---	2012	1	1	0.06	1,656.47	0.022	0.097	2757
100,793,000	0.300	---	---	---	16/07/2009	05/08/2013	---	TELETIPOS SA (CR)	0.228	---	↘	0.228	10/09/2013	---	---	---	---	---	2400@0.192	650@0.230	---	2012	---	---	---	22,980.80	0.118	0.600	5553
3,229,566	0.320	---	---	---	22/06/2005	23/09/1999	4629	VARANGIS AVEPE S.A. (CR)	0.735	-5.77	€	0.780	12/08/2013	0.740	0.730	0.740	0.730	0.735	---	106@0.730	---	2012	1,893	3	1,391.88	2,373.73	0.206	0.840	3726
17,175,132	0.300	---	---	---	25/06/2002	21/06/2013	4997	VARVARESSOS SA (CB)	0.031	-18.42	€	0.038	10/09/2013	0.031	0.031	0.031	0.031	0.031	10000@0.040	---	---	2012	20	1	0.62	532.43	0.027	0.181	3763
13,191,620	0.620	---	---	---	04/08/2010	09/09/2002	4977	YALCO - CONSTANTINOU SA (CB)	0.129	---	↘	0.129	11/09/2013	0.129	0.129	0.129	0.129	0.129	2000@0.106	4486@0.129	---	2012	15,831	6	2,042.20	1,701.72	0.105	0.210	3722

Under Deletion

5,025,000	0.300	---	---	---	05/07/2005	14/03/2002	4963	ALSINCO S.A (CR)	0.019	---	↘	0.019	09/09/2013	---	---	---	---	---	1@0.022	---	2012	---	---	---	95.48	0.006	0.185	3763
766,000	2.83	---	---	---	01/07/2004	11/12/2012	4937	TRIA ALFA SA (CR)	2.81	---	↘	2.81	23/08/2013	---	---	---	---	1@2.25	1@3.35	---	2012	---	---	---	2,339.15	1.30	4.70	3763
245,000	2.83	---	---	---	19/07/2010	11/12/2012	4938	TRIA ALFA SA (PR)	0.762	---	↘	0.762	11/09/2013	---	---	---	---	98@0.613	50@0.910	---	2012	---	---	---	2,339.15	0.501	1.93	3763

Under Suspension

49,030,011	0.300	---	---	---	19/07/2010	12/05/2011	4875	ALAPIS (CR)	0.041	---	↘	0.041	30/03/2012	---	---	---	---	---	---	---	---	---	---	---	2,010.23	0.041	0.041	4577
1,750,955,549	0.600	---	---	---	19/05/2008	08/12/2011	4911	ATE (CR)	0.155	---	↘	0.155	30/07/2012	---	---	---	---	---	---	---	---	---	---	---	271,398.11	0.155	0.155	8355

Number of Outstanding Securities	Nominal Value	Dividends [1]			Date of Last Coupon		Note	Shares	Closing price	% change	Previous closing price/date	Open price	Price min	Price max	Last price	Avg price	Last Bid [7]	Last Ask [7]	P/E after	Year	Volume	Trades	Transactions Value	Company Mkt Value (thou. €)	Year low	Year high	Sector[ 4]
		2010	2011	2012	Dividend [2]	Right																					
Under Suspension																											
21,382,067	0.300	---	---	---	02/10/2006	15/02/2006	4628	ATERMON (CR)	0.120	---	↘ 0.120	31/03/2010	---	---	---	---	---	---	---	---	---	---	---	2,565.85	0.120	0.120	5555
105,423,498	0.510	---	---	---	01/07/2004	28/12/2005	4920	AVENIR S.A. (CR)	0.046	---	↘ 0.046	30/08/2012	---	---	---	---	---	---	---	---	---	---	---	4,849.48	0.046	0.046	5752
33,930,000	0.300	---	---	---	03/07/2006	30/05/2001	4865	BABIS VOVOS SA (CR)	0.304	---	↘ 0.304	30/03/2012	---	---	---	---	---	---	---	---	---	---	---	10,314.72	0.304	0.304	8633
20,121,710	1.21	---	---	---	27/07/1992	12/03/2003	5002	BALKAN R.E. (CR)	0.190	---	↘ 0.190	29/08/2013	---	---	---	---	---	---	---	---	---	---	---	3,823.12	0.162	0.438	8633
1,795,140,547	1.00	(0.0615)	---	---	31/05/2011	19/04/2012	4951	BANK OF CYPRUS (CR)	0.207	---	↘ 0.207	15/03/2013	---	---	---	---	5000@0.170	---	---	---	---	---	---	371,594.09	0.180	0.282	8355
21,920,570	0.300	---	---	---	03/07/2007	13/12/1999	4702	CARDASSILARIS SA (CR)	0.140	---	↘ 0.140	30/11/2010	---	---	---	---	---	---	---	---	---	---	---	3,068.88	0.140	0.140	3577
54,547,634	0.500	---	---	---	25/04/2005	21/01/2009	4860	CH.TEGOPOULOS PUBL. SA (CR)	0.038	---	↘ 0.038	23/03/2012	---	---	---	---	---	---	---	---	---	---	---	2,072.81	0.038	0.038	5557
33,718,750	0.300	---	---	---	28/05/2008	21/01/2013	4998	DOL SA (CR)	0.640	---	↘ 0.640	25/07/2013	---	---	---	---	---	3118@0.700	---	---	---	---	---	21,580.00	0.244	0.759	5557
7,847,611	1.20	---	---	---	01/08/2007	28/09/2011	4939	EDRASIS - C. PSALLIDAS SA (CR)	0.150	---	↘ 0.150	19/11/2012	---	---	---	---	---	---	---	---	---	---	---	1,177.14	0.150	0.150	2357
5,750,000	0.300	---	---	---	12/12/2008	12/12/2011	4929	ELECTRONIKI ATHINON SA (CR)	0.480	---	↘ 0.480	07/09/2012	---	---	---	---	---	---	---	---	---	---	---	2,760.00	0.480	0.480	5375
24,605,397	0.400	---	---	---	29/06/1995	27/05/2002	4651	EMPORIKOS DESMOS SA (CR)	0.080	---	↘ 0.080	28/05/2010	---	---	---	---	---	---	---	---	---	---	---	2,134.04	0.080	0.080	3722
1,182,903	0.400	---	---	---	01/07/1996	27/05/2002	4652	EMPORIKOS DESMOS SA (PR)	0.140	---	↘ 0.140	28/09/2009	---	---	---	---	---	---	---	---	---	---	---	2,134.04	0.140	0.140	3722
8,593,750	0.300	---	---	---	01/06/2009	20/06/2007	4876	FASHION BOX (CR)	1.30	---	↘ 1.30	23/02/2012	---	---	---	---	---	---	---	---	---	---	---	11,171.88	1.30	1.30	3763
7,326,648	1.00	---	---	---	26/07/2006	24/07/2001	4921	FINTEXPORT SA (CR)	0.328	---	↘ 0.328	29/06/2012	---	---	---	---	---	---	---	---	---	---	---	2,403.14	0.328	0.328	3763
20,860,000	0.300	---	---	---	03/07/2000	13/11/2007	4848	IKONA - IHOS SA (CR)	0.072	---	↘ 0.072	02/12/2011	---	---	---	---	---	---	---	---	---	---	---	1,501.92	0.072	0.072	5379
36,765,744	0.350	---	---	---	16/08/2006	06/06/2011	4869	IMPERIO SA (CR)	0.026	---	↘ 0.026	30/03/2012	---	---	---	---	---	---	---	---	---	---	---	955.91	0.026	0.026	2777
24,619,524	0.500	---	---	---	10/10/1986	30/12/2002	4914	KERAMIA-ALLATINI (CR)	0.088	---	↘ 0.088	27/08/2012	---	---	---	---	---	---	---	---	---	---	---	2,166.52	0.088	0.088	8633
7,840,373	1.20	---	---	---	18/07/2002	05/03/2003	4765	KLONATEX SA (PR)	0.080	---	↘ 0.080	09/05/2011	---	---	---	---	---	---	---	---	---	---	---	1,453.75	0.080	0.080	3763
20,663,047	1.20	---	---	---	21/08/2000	05/03/2003	4764	KLONATEX SA (CR)	0.040	---	↘ 0.040	09/05/2011	---	---	---	---	---	---	---	---	---	---	---	1,453.75	0.040	0.040	3763
17,544,600	0.600	---	---	---	03/07/2000	01/08/2000	4868	KOYMBAS SYNERGY GROUP (CR)	0.132	---	↘ 0.132	29/03/2012	---	---	---	---	---	---	---	---	---	---	---	2,315.89	0.132	0.132	8775
15,015,000	1.60	---	---	---	01/07/2002	02/02/2000	4603	MAXIM C.M. PERTSINIDIS SA (CB)	0.100	---	↘ 0.100	30/11/2009	---	---	---	---	---	---	---	---	---	---	---	1,501.50	0.100	0.100	3763
66,937,526	0.700	---	---	---	13/08/2010	21/05/2003	5003	MICHANIKI SA (CR)	0.100	---	↘ 0.100	29/08/2013	---	---	---	---	---	---	---	---	---	---	---	9,186.78	0.085	0.370	2357
25,968,987	0.700	---	---	---	13/08/2010	21/05/2003	5004	MICHANIKI SA (PR)	0.096	---	↘ 0.096	29/08/2013	---	---	---	---	---	82@0.100	---	---	---	---	---	9,186.78	0.065	0.268	2357
13,555,100	1.00	---	---	---	08/07/2005	---	4576	MICROLAND COMPUTERS SA (CR)	0.640	---	↘ 0.640	14/07/2009	---	---	---	---	---	---	---	---	---	---	---	8,675.26	0.640	0.640	5379
23,463,874	0.800	---	---	---	23/05/2003	21/12/1999	4918	NEORION SA (CR)	0.125	---	↘ 0.125	28/08/2012	---	---	---	---	---	---	---	---	---	---	---	2,932.98	0.125	0.125	2753
42,501,273	0.300	---	---	---	26/06/2007	10/08/2009	4993	NUTRIART (CR)	0.049	---	↘ 0.049	21/06/2013	---	---	---	---	---	---	---	---	---	---	---	2,082.56	0.038	0.114	3577
25,583,146	0.300	---	---	---	25/06/2001	03/12/2008	4723	PETZETAKIS SA (CR)	0.260	---	↘ 0.260	28/01/2011	---	---	---	---	---	---	---	---	---	---	---	6,651.62	0.260	0.260	1357
9,550,386	0.500	---	---	---	01/07/1997	12/06/2008	4626	PRAXITELIO SA (CR)	0.390	---	↘ 0.390	11/03/2010	---	---	---	---	---	---	---	---	---	---	---	4,430.09	0.390	0.390	4533
1,306,368	0.500	---	---	---	01/07/1997	12/06/2008	4627	PRAXITELIO SA (PR)	0.540	---	↘ 0.540	15/12/2009	---	---	---	---	---	---	---	---	---	---	---	4,430.09	0.540	0.540	4533
62,683,822	0.300	---	---	---	27/05/2008	09/01/2006	4830	PROTON BANK S.A. (CR)	0.180	---	↘ 0.180	07/10/2011	---	---	---	---	---	---	---	---	---	---	---	11,283.09	0.180	0.180	8355
23,059,688	0.660	---	---	---	03/07/2008	06/08/2004	4864	RIDENCO SA (CR)	0.032	---	↘ 0.032	30/03/2012	---	---	---	---	---	---	---	---	---	---	---	737.91	0.032	0.032	3765
51,083,993	1.00	---	---	---	15/07/2008	06/08/2003	4867	SANYO HELLAS HOLD. (CR)	0.020	---	↘ 0.020	30/03/2012	---	---	---	---	---	---	---	---	---	---	---	1,021.68	0.020	0.020	3722
51,334,286	0.320	---	---	---	03/07/2000	18/12/2007	4548	SAOS (CR)	0.780	---	↘ 0.780	27/03/2009	---	---	---	---	---	---	---	---	---	---	---	40,040.74	0.780	0.780	2773
26,408,040	0.300	---	---	---	01/07/1997	26/05/1999	4464	SHEET STEEL SA (CR)	0.120	---	↘ 0.120	28/11/2008	---	---	---	---	---	---	---	---	---	---	---	3,168.96	0.120	0.120	1757
26,262,660	0.900	---	---	---	01/07/2008	24/02/2011	4954	SPRIDER STORES (CR)	0.031	---	↘ 0.031	28/03/2013	---	---	---	---	---	---	---	---	---	---	---	814.14	0.025	0.055	5371
144,688,060	0.600	---	---	---	21/04/2008	10/03/2010	4982	T BANK (CR)	0.048	---	↘ 0.048	30/11/2011	---	---	---	---	---	---	---	---	---	---	---	6,945.03	0.048	0.048	8355
6,523,780	0.530	---	---	---	01/07/2002	06/03/2001	4971	TECHNICAL PUBLICATIONS SA (CR)	0.006	---	↘ 0.006	29/05/2013	---	---	---	---	---	---	---	---	---	---	---	39.14	0.006	0.347	5557
13,920,000	0.320	---	---	---	19/11/2001	01/08/2000	4726	TEXAPRET SA (CR)	0.080	---	↘ 0.080	23/02/2011	---	---	---	---	---	---	---	---	---	---	---	1,113.60	0.080	0.080	3763



Number of Outstanding Securities	Nominal Value	Dividends [1]			Date of Last Coupon Dividend [2]		Note	Shares	Closing price	% change	Previous closing price/date	Open price	Price min	Price max	Last price	Avg price	Last Bid [7]	Last Ask [7]	P/E after	Year	Volume	Trades	Transactions Value	Company Mkt Value (thou. €)	Year low	Year high	Sector[ 4]
--	------------------	---------------	--	--	-------------------------------------	--	------	--------	------------------	----------	--------------------------------	---------------	--------------	--------------	---------------	--------------	-----------------	--------------	--------------	------	--------	--------	-----------------------	--------------------------------	-------------	--------------	---------------

Under Suspension

284,465,964	3.70	---	---	---	20/06/2008	15/06/2009	4913	TT HELLENIC POSTBANK (CR)	0.168	---	↘ 0.168	30/08/2012	---	---	---	---	---	---	---	---	---	---	---	47,790.28	0.168	0.168	8355
89,616,200	0.300	---	---	---	21/08/2000	28/06/2007	4616	UNITED TEXTILES (CR)	0.050	---	↘ 0.050	25/02/2010	---	---	---	---	---	---	---	---	---	---	---	4,480.81	0.050	0.050	3763
71,683,906	0.400	---	---	---	15/06/2005	05/02/2008	4953	XATZIOANNOU (CR)	0.026	---	↘ 0.026	28/03/2013	---	---	---	---	---	---	---	---	---	---	---	1,863.78	0.020	0.085	3763

## Shares' Notes

Code	Note text
( )	- Adjusted dividends.
*	- Last adjusted closing price.
[1]	- Net dividends.
[2]	- The "Date of Last Coupon" for New listings refers to the date company's stocks started to trade in Athex
[3]	- The Company Market Value is referred to the number of outstanding shares
[4]	- Sectors codification can be found in Appendix A
[5]	- The Market Value refers to the total number of shares listed (including their several classes) in the exchange by the company.
[6]	- P/E greater than 100
[7]	- Last view of the Order Book before the end of the trading session
4446	- Transfer to the "Under Supervision" Category as of 20/10/2008.
4447	- Transfer to the "Under Supervision" Category as of 21/10/2008.
4464	- Suspension of trading as of 1/12/2008.
4548	- Suspension of trading as of 1/4/2009.
4554	- Transfer to the "Under Supervision" Category as of 6/4/2009.
4559	- Transfer to the "Under Supervision" Category as of 21/4/2009.
4576	- Suspension of trading as of 14/7/2009.
4603	- Suspension of trading as of 1/12/2009.
4616	- Suspension of trading as of 25/2/2010.
4626	- Suspension of trading as of 1/4/2010.
4627	- Suspension of trading as of 1/4/2010.
4628	- Suspension of trading as of 1/4/2010.
4629	- Transfer to the Under Supervision Category as of 12/4/2010.
4630	- Transfer to the Under Supervision Category as of 12/4/2010.
4651	- Suspension of trading as of 1/6/2010.
4652	- Suspension of trading as of 1/6/2010.
4690	- Transfer to Surveillance category as of 4/4/2006.
4702	- Suspension of trading as of 1/12/2010.
4723	- Suspension of trading as of 31/1/2011.
4726	- Suspension of trading as of 1/3/2011.
4750	- Transfer to the "Under Surveillance Category" from 8/4/2011.
4764	- Suspension of trading as of 20/5/2011.
4765	- Suspension of trading as of 20/5/2011.
4795	- The final gross (pre-tax) dividend is € 0.30 per share and subject to withholding tax on the full dividend amount, i.e. 0,45 per share, for those shareholders liable to withholding tax, in accordance with the applicable tax law provisions.
4808	- Suspension of trading as of 6/9/2011.
4814	- Transfer to the Low Dispersion Category as of 30/5/2011.
4815	- Transfer to the Low Dispersion Category as of 30/5/2011.
4816	- Transfer to the Low Dispersion Category as of 30/5/2011.
4817	- Transfer to the Low Dispersion Category as of 30/5/2011.
4820	- Transfer to the Low Dispersion category as of 18/4/2008.
4822	- Transfer to the Low Dispersion category as of 30/5/2011.
4823	- Transfer to the Low Dispersion category as of 4/4/2006.
4824	- Transfer to the Low Dispersion category as of 18/4/2008.
4825	- Transfer to the Low Dispersion category as of 8/4/2011.
4827	- Transfer to the Low Dispersion category as of 5/5/2010.
4828	- Transfer to the Low Dispersion category as of 4/4/2006.
4830	- Suspension of trading as of 10/10/2011.
4833	- Transfer to Surveillance category from 6/5/2010.
4844	- Transfer to the Surveillance category from 8/4/2011.
4845	- Transfer to the Surveillance Category as of 25/11/2011.
4846	- Transfer to the Surveillance Category as of 25/11/2011.
4847	- Transfer to the Surveillance Category as of 3/7/2009.

## Shares' Notes

Code	Note text
4848	- Suspension of trading as of 6/12/2011.
4854	- Transfer to the Surveillance Category as of 29/12/2011.
4855	- Transfer to the Surveillance Category as of 29/12/2011.
4856	- Transfer to the Surveillance Category as of 29/12/2011.
4860	- Suspension of trading as of 30/3/2012.
4864	- Suspension of trading as of 30/3/2012.
4865	- Suspension of trading as of 2/4/2012.
4867	- Suspension of trading as of 2/4/2012.
4868	- Suspension of trading as of 2/4/2012.
4869	- Suspension of trading as of 2/4/2012.
4875	- Suspension of trading as of 2/4/2012.
4876	- Suspension of trading as of 3/4/2012.
4879	- Transfer to the Surveillance Category as of 10/4/2012.
4880	- Transfer to the Surveillance Category as of 10/4/2012.
4881	- Transfer to the Surveillance Category as of 10/4/2012.
4882	- Transfer to the Surveillance Category as of 10/4/2012.
4884	- Transfer to the Surveillance Category as of 10/4/2012.
4885	- Transfer to the Surveillance Category as of 10/4/2012.
4886	- Transfer to the Surveillance Category as of 10/4/2012.
4887	- Transfer to the Surveillance Category as of 10/4/2012.
4888	- Transfer to the Surveillance Category as of 10/4/2012.
4889	- Transfer to the Surveillance Category as of 10/4/2012.
4893	- Transfer to the Low Dispersion category as of 28/5/2012.
4894	- Transfer to the Low Dispersion category as of 28/5/2012.
4911	- Lift of suspension from 30/7/2012.
4912	- Transfer to the Surveillance Category as of 31/7/2012.
4913	- Suspension of trading as of 30/8/2012.
4914	- Suspension of trading as of 31/8/2012.
4918	- Suspension of trading as of 31/8/2012.
4920	- Suspension of trading as of 31/8/2012.
4921	- Suspension of trading as of 31/8/2012.
4929	- Suspension of trading as of 1/10/2012.
4937	- Transfer to the UNDER DELETION category as of 30/11/2012.
4938	- Transfer to the UNDER DELETION category as of 30/11/2012.
4939	- Suspension of trading as of 30/11/2012.
4941	- Transfer to the Low Dispersion category as of 3/12/2012.
4944	- Transfer to the Surveillance Category as of 7/12/2012.
4951	- Suspension of trading as of 19/3/2013.
4953	- Suspension of trading as of 2/4/2013.
4954	- Suspension of trading as of 2/4/2013.
4955	- Transfer to the Surveillance Category as from 5/4/2013.
4956	- Transfer to the Surveillance Category as from 5/4/2013.
4957	- Transfer to the Surveillance Category as from 5/4/2013.
4958	- Transfer to the Surveillance Category as from 5/4/2013.
4959	- Transfer to the Surveillance Category as from 5/4/2013.
4960	- Transfer to the Surveillance Category as from 5/4/2013.
4961	- Transfer to the Surveillance Category as from 5/4/2013.
4962	- Transfer to the Surveillance Category as from 5/4/2013.
4963	- Transfer to the Under Deletion Category as from 5/4/2013.
4971	- Suspension of trading as of 3/6/2013.
4977	- Transfer to the "Under Surveillance Category" from 11/6/2013.
4978	- Transfer to the Under Supervision Category as of 11/6/2013.
4982	- Suspension of trading as of 1/12/2011.

## Shares' Notes

Code	Note text
4983	- Transfer to the Surveillance Category as of 5/4/2013.
4985	- Transfer to the "Under Surveillance Category" from 8/4/2011.
4986	- Transfer to the Low Dispersion category as of 30/5/2011.
4988	- As of June 7, 2013, the name of the company "DUTY FREE SHOPS A CORPORATION OPERATING DFS AND LARGE AND SMALL SCALE INDUSTRIAL OPERATIONS, TECHNIC" on ATHEX changes to "FOLLI FOLLIE S.A.".
4993	- Suspension of trading as of 21/6/2013 (15:18).
4997	- Transfer to the Under Supervision Category as of 21/12/2009. - The 6,870,053 new (CB) shares, resulting from the recent share capital increase through a rights issue, are not yet admitted to trading on the ATHEX.
4998	- Suspension of trading as of 26/7/2013.
5002	- Suspension of trading as of 30/08/2013.
5003	- Suspension of trading as of 30/08/2013.
5004	- Suspension of trading as of 30/08/2013.
5006	- Transfer to the Surveillance Category as of 3/9/2013.

## Securities Blocks Details

Securities	Block Volume	Price	Block Trade Value	Time of approval	Note
FRIGOGLASS SA (CR)	50,000	5.07	253,250.00	10:49:47	20
JUMBO SA (CR)	119,810	8.66	1,037,554.60	15:59:07	20
PIRAEUS BANK (W)	1,200,000	0.755	906,000.00	16:23:46	20
OPAP (CR)	100,000	7.91	791,000.00	16:56:09	20
OPAP (CR)	100,600	7.91	795,746.00	16:56:41	20
PIRAEUS BANK (CR)	1,000,000	1.33	1,333,800.00	17:01:15	20
PIRAEUS BANK (CR)	822,008	1.33	1,093,270.64	17:17:30	20

## Blocks Notes

2 - SPOT 1 or SPOT 2 Packet	11 - Total Assets > 500 bil
3 - Block with Short Selling	12 - Sell Offer through Athex
4 - Buy to Close Block	13 - Forced Sale of NMOE
6 - Simultaneous Constitution	14 - Restoration Packet
7 - Repurchase Agreement	15 - Market Maker Packet
8 - Dispersion's Achievement (Not Listed)	16 - Short Selling
9 - Dispersion's Achievement (Listed)	18 - SPOT 1 Packet
10 - Share Capital Majority of Greek State (> 50 bil)	20 - Method 6-1 Packet

Shares Rights Details

Occured date	Exercise from	Exercise until	Trading until	Rights	Price min	Price max	Closing price	Last Bid	Last Ask	Volume	Trades	Transactions Value
-----------------	------------------	-------------------	------------------	--------	--------------	--------------	------------------	----------	----------	--------	--------	-----------------------

No Rights Transactions.

## Stock Borrowing

Securities	Stock Borrowing through Helex (volume)	Stock Borrowing through OTC (volume) [1]	Totals [2]
ALAPIS (CR)	---	6,250	6,250
ALPHA BANK (CR)	164,500	4,361,835	4,526,335
ATE (CR)	---	69,000	69,000
BANK OF CYPRUS (CR)	---	102,899	102,899
CC HBC AG (CR)	13,800	73,941	87,741
ELLAKTOR (CR)	2,000	---	2,000
EUROBANK ERGASIAS (CR)	22,120	68,406	90,526
EUROBANK PROPERTIES REIC (CR)	6,000	31,215	37,215
EYDAP S.A. (CR)	2,400	---	2,400
FLEXOPACK SA (CR)	---	41,927	41,927
FOLLI FOLLIE (CR)	3,000	15,508	18,508
GEK TERNA (CR)	500	---	500
HELLENIC EXCHANGES (CR)	30,500	---	30,500
HELLENIC PETROLEUM (CR)	49,200	269	49,469
INTRALOT (CR)	30,000	---	30,000
JUMBO SA (CR)	9,900	3,525	13,425
LAMDA DEVELOPMENT SA (CR)	---	10,377	10,377
MARFIN INVESTMENT GROUP (CR)	---	733,474	733,474
METKA (CR)	5,400	---	5,400
MOTOR OIL (CR)	11,700	---	11,700
NATIONAL BANK (CR)	177,100	1,522,830	1,699,930
NBGAM ETF	10,000	---	10,000
NBGAM ETF GREECE & TURKEY 30	3,500	---	3,500
OPAP (CR)	73,200	2,067	75,267
OTE (CR)	82,800	194,116	276,916
PIRAEUS BANK (CR)	120,200	266,976	387,176
PPC (CR)	38,200	---	38,200
TERNA ENERGY (CR)	3,900	---	3,900
TITAN CEMENT (CR)	7,200	55,390	62,590
VIOHALCO (CB)	5,200	---	5,200

## Stock Borrowing Notes

[1] - The information concerning OTC Stock Borrowing Transactions is based on the statements of the Dematerialised Securities System (DSS) operators involved and refers to volumes that have been cleared and registered up until the previous working day.

Shares Forced Sales

Securities	Transaction s Volume	Number of Trades	Transactions Value	Note
No Forced Transactions.				

Forced Sales Notes

- 1 - Normal Forced Sale.
- 2 - Forced Sales of Fixed Registered Shares.
- 3 - Forced Sales of Remaining Stock Fractions.



**Forced Sales Registered Shares**

Securities	Start Date	End Date	Initial Volume	Remaining Volume	Date	Avg price (day)	Avg price (period)	Number of Trades	Transactions Volume	Transactions Value
------------	------------	----------	-------------------	---------------------	------	--------------------	-----------------------	---------------------	------------------------	-----------------------

No Fixed Registered Shares Forced Sales.

**Forced Sales Notes**

According to Decision 1/380/04.05.2008 of the Hellenic Republic Capital Market Commission, the certificated registered shares that have not been deposited to the issuer for dematerialisation, will be auctioned in the Athens Exchange by the supervising issuer. Forced sales procedure is held according to Article 99A of the Athens Exchange Rulebook. The average price of the period is calculated by dividing the Total transactions value by the Total volume and includes all the transactions made until the current date.

## Exchange Traded Funds (ETFs) Characteristics

	Transactions Date (T)	Creation / Redemption	Units (T-1)	New Units (T-1)	Redemptio n Units (T-	Units (T) [1]	Fund Assets [2]	Net Unit Price	Dividen d per	Dividend Date
NBGAM ETF ΓΔ Χ.Α.	12/09/2013	25,000	294,878	---	---	294,878	3,235,825.00	10.9734	---	27/10/2011
ALPHA ETF FTSE Athex Large Cap	12/09/2013	50,000	5,848,618	---	---	5,848,618	19,777,870.00	3.3816	0.05	01/07/2013
NBGAM ETF GREECE & TURKEY 30	12/09/2013	25,000	388,550	---	---	388,550	2,992,715.00	7.7023	---	27/10/2011

## ETFs Notes

[1] - Units (T) = Units (T-1) + New Units (T-1) - Redemption Units (T-1)

[2] - The Creation / Redemption Units of T-1 are included.

Corporate Bonds

Num Listed Bonds	Nominal price	Issue price	Today's Rate	Exp. Date	Duration (years)	Note	Coupon attached		Trading	Corporate Bonds	Price min	Price max	Closing price	Previous closing price/date	Volume	Transactions Value	Last order		Date	ear min	Year max
							Common	Preferred									Price	Buy / Sell			
39,711,653	1.00	1.00	6.00	30/06/2016	5	4786	5	---	1	BANK OF CYPRUS PUBLIC CO. LTD (Convert. to CR sh.)	---	---	---	---	---	---	10.0000	B	13/03/2013	100.0000	100.0000
428,521,983	1.00	1.00	6.50	30/06/2016	5	4785	5	---	1	BANK OF CYPRUS PUBLIC CO. LTD (Convert. to CR sh.)	---	---	---	20.5000	14/03/2013	---	21.0000	B	15/03/2013	19.5000	30.0000
4,150,176	4.77	4.77	5.00	19/03/2015	5	---	14	---	1	MARFIN INVESTMENT GROUP S.A. (Conver to CR shar)	26.0000	26.0000	26.0000	25.4000	12/08/2013	1,374	373.59	B	12/09/2013	0.5000	70.0000
73,088,145	1.00	1.00	5.50	30/06/2014	5	4574	9	---	1	BANK OF CYPRUS PUBLIC CO. LTD (Convert. to CR sh.)	---	---	---	20.0000	08/03/2013	---	21.5000	B	15/03/2013	20.0000	26.0000
1,794,284	12.49	9.77	5.80	12/07/2015	8	---	13	---	1	NIREUS S.A. (Convertible to CR shares)	---	---	---	12.0000	26/07/2013	---	20.0000	B	12/09/2013	11.0000	15.0000
27,283,632	1.00	1.00	1.32	30/06/2018	10	---	11	---	1	BANK OF CYPRUS PUBLIC CO. LTD (Convert. to CR sh.)	---	---	---	33.0000	13/12/2012	---	35.0000	B	15/03/2013	33.0000	33.0000
212,849,265	1.00	1.00	6.30	29/07/2020	7	---	1	---	1	MARFIN INVESTMENT GROUP S.A. SERIES B (BOND)	---	---	---	0.8500	23/08/2013	---	0.5000	B	12/09/2013	0.8500	0.8500
2,156,827	1.00	1.00	7.00	29/07/2019	6	---	1	---	1	MARFIN INVESTMENT GROUP S.A. SERIES A (BOND)	---	---	---	1.0000	23/08/2013	---	1.1200	B	12/09/2013	1.0000	1.0000

4574 - The bonds are of indefinite duration.

4785 - The bonds are of indefinite duration.

4786 - The bonds are of indefinite duration. The Bond's par value, issue price and trading prices are expressed in USA Dollars, whereas its Transactions Value is expressed in Euros.

Corporate Bonds Notes

Transactions Volume = (Pieces) \* (Nominal Price). Transactions Value = (Pieces) \* (Nominal Price) \* (price %) + (Accrued interest).

The price of a Bond is stated as a percentage (%) of Bond's Nominal Price.

Nominal Price in Euros (€), except if it is noted differently.

Government Bonds

Number Listed Bonds	Nominal price	Today's Rate	Accrued Interest Calc	Exp. Date [1]	Duration (years)	Note	Coupons Date	Curr. coupon value	Trading Unit	Government Bonds	Price min	Price max	Closing price	Previous closing price/date	Volume	Transactions Value	Price	Last order Buy / Sell	Date
2,658,781,973	1.00	4.30	Actual/Actual	24/02/2023	11	---	24/02	4.30	1	GGB-FXD-240223-11Y-2.000-1.00	---	---	---	---	---	---	---	---	---
2,658,781,973	1.00	4.30	Actual/Actual	24/02/2024	12	---	24/02	4.30	1	GGB-FXD-240224-12Y-2.000-1.00	---	---	---	---	---	---	---	---	---
2,658,781,973	1.00	4.30	Actual/Actual	24/02/2025	13	---	24/02	4.30	1	GGB-FXD-240225-13Y-2.000-1.00	---	---	---	---	---	---	---	---	---
2,658,781,973	1.00	4.30	Actual/Actual	24/02/2026	14	---	24/02	4.30	1	GGB-FXD-240226-14Y-2.000-1.00	---	---	---	---	---	---	---	---	---
2,658,781,973	1.00	4.30	Actual/Actual	24/02/2027	15	---	24/02	4.30	1	GGB-FXD-240227-15Y-2.000-1.00	---	---	---	---	---	---	---	---	---
2,836,034,104	1.00	4.30	Actual/Actual	24/02/2028	16	---	24/02	4.30	1	GGB-FXD-240228-16Y-2.000-1.00	---	---	---	---	---	---	---	---	---
2,836,034,104	1.00	4.30	Actual/Actual	24/02/2029	17	---	24/02	4.30	1	GGB-FXD-240229-17Y-2.000-1.00	---	---	---	---	---	---	---	---	---
2,836,034,104	1.00	4.30	Actual/Actual	24/02/2030	18	---	24/02	4.30	1	GGB-FXD-240230-18Y-2.000-1.00	---	---	---	---	---	---	---	---	---
2,836,034,104	1.00	4.30	Actual/Actual	24/02/2031	19	---	24/02	4.30	1	GGB-FXD-240231-19Y-2.000-1.00	---	---	---	---	---	---	---	---	---
2,836,034,104	1.00	4.30	Actual/Actual	24/02/2032	20	---	24/02	4.30	1	GGB-FXD-240232-20Y-2.000-1.00	---	---	---	---	---	---	---	---	---
2,836,034,104	1.00	4.30	Actual/Actual	24/02/2033	21	---	24/02	4.30	1	GGB-FXD-240233-21Y-2.000-1.00	---	---	---	---	---	---	---	---	---
2,836,034,104	1.00	4.30	Actual/Actual	24/02/2034	22	---	24/02	4.30	1	GGB-FXD-240234-22Y-2.000-1.00	---	---	---	---	---	---	---	---	---
2,836,034,104	1.00	4.30	Actual/Actual	24/02/2035	23	---	24/02	4.30	1	GGB-FXD-240235-23Y-2.000-1.00	---	---	---	---	---	---	---	---	---
2,836,034,104	1.00	4.30	Actual/Actual	24/02/2036	24	---	24/02	4.30	1	GGB-FXD-240236-24Y-2.000-1.00	---	---	---	---	---	---	---	---	---
2,836,034,104	1.00	4.30	Actual/Actual	24/02/2037	25	---	24/02	4.30	1	GGB-FXD-240237-25Y-2.000-1.00	---	---	---	---	---	---	---	---	---
2,836,034,104	1.00	4.30	Actual/Actual	24/02/2038	26	---	24/02	4.30	1	GGB-FXD-240238-26Y-2.000-1.00	---	---	---	---	---	---	---	---	---
2,836,034,104	1.00	4.30	Actual/Actual	24/02/2039	27	---	24/02	4.30	1	GGB-FXD-240239-27Y-2.000-1.00	---	---	---	---	---	---	---	---	---
2,836,034,104	1.00	4.30	Actual/Actual	24/02/2040	28	---	24/02	4.30	1	GGB-FXD-240240-28Y-2.000-1.00	---	---	---	---	---	---	---	---	---
2,836,034,104	1.00	4.30	Actual/Actual	24/02/2041	29	---	24/02	4.30	1	GGB-FXD-240241-29Y-2.000-1.00	---	---	---	---	---	---	---	---	---
2,836,034,104	1.00	4.30	Actual/Actual	24/02/2042	30	---	24/02	4.30	1	GGB-FXD-240242-30Y-2.000-1.00	---	---	---	---	---	---	---	---	---
1,500,000	1,000.00	0.97	FLR Actual/360	10/08/2014	5	---	10/02 - 10/08	---	1	GGB-FRN-100814-05Y-1.762-1000.00	---	---	---	---	---	---	---	---	---
5,187,186	1,000.00	1.60	FLR Actual/360	21/05/2014	5	---	21/11 - 21/05	---	1	GGB-FRN-210514-05Y-2.734-1000.00	---	---	---	---	---	---	---	---	---
78,300	1,000.00	1.16	FLR Actual/360	23/07/2014	5	---	23/01 - 23/07	---	1	GGB-FRN-230714-05Y-2.018-1000.00	---	---	---	---	---	---	---	---	---

Government Bonds Notes

Transactions Volume = (Pieces) \* (Nominal Price). Transactions Value = (Pieces) \* (Nominal Price) \* (price %) + (Accrued interest).  
The Value of current coupon for the issues with NV 0.01 euro refers to NV 100 euros  
FLR: Floating Interest Rate.  
[1] - The Expiration Date of the interest bearing period and the Date for coupon payment.

Bonds in Circulation	Currency / Min nominal traded Value	Coupons Payment Date	Current Coupon Value	Note	Coupon Attached	Trading Unit	Issue Date	Duration (years)	Today's Interest	A.I.C in days	Bonds	Last price of previous days	Last Outcry in Cash (euro) Price	Buy / Sell	Trades in Pieces	Life min	Life Max
Bonds of International Organizations																	
1,000,000	EUR / 1000	21/07	---	---	8	1	21/07/2006	10	5.0 FLR	360	EUROPEAN INVESTMENT BANK BOND	97.50	16/04/2007	---	---	---	---
Corporate Bonds in Foreign Currency and Euro																	
103,746	GBP / 10	01/12	0.25	---	54	1	01/12/1930	98	2.5	360	National Mortgage Bank	2.27	05/02/1996	2.27	S	05/02/1996	2.27
0	GBP / 10	01/12	0.25	---	56	1	01/12/1928	100	2.5	360	National Mortgage Bank	---	---	---	---	---	---

Government Bonds Notes

A.I.C: Accrued Interest Calculation base.  
FLR: Floating Interest Rate.  
The minimum tradeable Nominal Value for all Demeterialised Government Titles is 100 Euros.

State Banks Bonds (one year maturity)

Number Listed Bonds	Nominal value	Initial Rate	Current Rate	Annual Interest	Issue Date	Note	State Banks Bonds	Trading Unit	Yearly Renewals	Last Outcry in Cash (euro) Price	Buy / Sell	Volume
342,560	130.41	2.35	3.92	0.00	31/01/2005	---	H.I.D.B.	1	9	100.00	B	---
16,015	1,211.71	3.65	2.47	0.00	30/11/2006	---	H.I.D.B.	1	7	---	---	---
2,446	1,154.00	4.90	2.47	28.96	31/05/2008	---	H.I.D.B.	1	6	---	---	---
171,117	1,163.28	5.50	2.47	29.19	31/05/2008	---	H.I.D.B.	1	6	---	---	---
63,787	1,129.20	5.45	2.47	30.88	31/08/2008	---	H.I.D.B.	1	6	---	---	---
5,358	1,108.96	5.45	2.47	27.83	31/10/2008	---	H.I.D.B.	1	5	---	---	---
1,045	1,129.74	5.50	2.47	28.35	31/10/2008	---	H.I.D.B.	1	5	---	---	---
76,077	1,132.45	5.75	2.47	28.42	31/10/2008	---	H.I.D.B.	1	5	---	---	---

Bonds Notes

The annual renewal of H.I.D.B. Bonds is free of taxes (net rate).  
For Bonds issue until 31/07/2013 the accrued interest is capitalized.

Athex & ATHEXClear Members List

Member Name			Stock Market			Derivatives Market			ATHEXClear Member		
Address	Phone	Fax	Market Member	Remote Member	Market Maker	Proprietary	Market Maker	Agent	General Clearing	Direct Clearing	Non Clearing
A. SARRIS SECURITIES S.A.			a								
6, DRAGATSANIOU STR. ATHINA	(210)-3367700	(210)-3312324									
AGRICULTURAL BANK OF GREECE S.A.			a				a			a	
, 23 PANEPISTIMIOU ATHINA	(210)-3298400	(210)-3298322									
ALPHA FINANCE INVESTMENT SERVICES S.A.			a		a		a			a	
5, MERLIN STR. ATHINA	(210)-3677400	(210)-3311193									
ALPHA BANK A.E.						a			a		
40, STADIOU STR ATHINA	(210)-3265546	(210)-3265811									
	(210)-3260000	(210)-3264116									
ARGUS STOCKBROKERS LTD			a	a							
12-14, KENNEDY AVE, S. 303 NICOSIA	(+35722)-22717000	(+35722)-22717070									
ATHENAIKI BROKERAGE FIRM S.A.			a								
33, STADIOU STR. ATHINA	(210)-3254764	(210)-3254767									
ATLANTIC SECURITIES LIMITED			a	a							
37, PRODROMOU STR. NICOSIA	(+35722)-445400	(+35722)-661914									
ATLAS SECURITIES S.A			a			a					a
14 - 16, VERVENON STR.& 125 MICHALAKOPOULOU STR. ATHINA	(210)-3363300	(210)-3238925									
ATTICA BANK S.A.									a		
54, AKADIMIAS STR. ATHINA	(210)-3390757	(210)-3646090									
23, OMIROU STR. ATHINA	(210)-3669000	(210)-3669410									
AXIA VENTURES GROUP LTD			a	a							
10, G. KRANIDIOTI NICOSIA	+357 22 742000	+357 22 742001									
AXON SECURITIES S.A.			a			a					a
48, STADIOU ATHINA	(210)-3363800	(210)-3243903									
BANK OF CYPRUS PUBLIC COMPANY LTD									a		
, 51,STASINOU (AG. PARASKEVI, STROVOLOS) NICOSIA	(0035722)-121883	(0035722)-336258									
170, ALEXANDRAS AVE ATHINA	(210)-6477708	(210)-6477709									
BETA SECURITIES S.A.			a		a	a	a			a	
, BRAILA & 29 ALEXANDRAS AVE ATHINA	(210)-6478900	(210)-6410139									
BNP PARIBAS SECURITIES SERVICES									a		
94, VAS. SOFIAS AVE ATHINA	(210)-7468500	(210)-7468579									
CAPITAL SECURITIES S.A.			a			a					a
58, MITROPOLEOS STR. ATHINA	(210)-3369700	(210)-3369820									
CFS SECURITIES & INVESTMENT SERVICES S.A.			a		a			a		a	
3, STADIOU STR. ATHINA	(210)-3360800	(210)-3311854									
CITIGROUP GLOBAL MARKET LTD			a	a							
, CITIGROUP CENTRE, CANADA SQUARE, CANARY WHART LONDON	002079864000	002079862266									
CO-OPERATIVE CENTRAL BANK LTD			a	a							
8, GRIGORI AFXENTIOU STR. NICOSIA	(+35722)-743300	(+35722)-672083									
CREDIT AGRICOLE CHEUVREUX S.A.			a	a							
, 9 QUAI PAUL DOUMER PARIS	33 (0) 1 41 89 70 00										
CREDIT SUISSE SECURITIES (EUROPE) LIMITED			a	a							
, ONE CABOT SQUARE LONDON	+44 20 7888 8888	+44 20 7888 1600									
CYCLOS SECURITIES S.A.			a		a	a				a	
39, PANEPISTIMIOU STR. ATHINA	(210)-3364300	(210)-3239122									
D.A. TSEKOURAS SEC. S.A.			a								
3, PESMAZOGLOU STR. ATHINA	(210)-3214406	(210)-3211997									
DEUTSCHE BANK S.A.			a	a							
70, THEODOR-HEUSS-ALLEE FRANKFURT	0049 69 910 00	0049 69 910 34 225									
DYNAMIC SECURITIES			a					a		a	
6 - 10, CHAR. TRIKOUPÍ STR. ATHINA	(210)-3677700	(210)-3677777									
EL. PETROPOULAKIS SECURITIES S.A.			a					a			a
9, ARISTIDOU STR. ATHINA	(210)-3213928	(210)-3216810									
EUROBANK EQUITIES S.A.			a		a		a			a	
10, FILELLINON STR. ATHINA	(210)-3720000	(210)-3720001									
EUROBANK ERGASIAS S.A.									a		
8, OTHONOS STR. ATHINA	(210)-3337000	(210)-3233866									
	(210)-3337969	(210)-3245916									
EUROCORP SECURITIES S.A.			a			a				a	
14, FILIKIS ETAIRIAS SQ. ATHINA	(210)-7263500	(210)-7263666									
EUOTRUST BROKERAGE S.A.			a								
13-15, SOPHOCLEOUS STR. ATHINA	(210)-3363100	(210)-3238334									

Athex & ATHEXClear Members List

Member Name			Stock Market			Derivatives Market			ATHEXClear Member		
Address	Phone	Fax	Market Member	Remote Member	Market Maker	Proprietary	Market Maker	Agent	General Clearing	Direct Clearing	Non Clearing
EUROXX SECURITIES S.A.			a			a				a	
7, PALAIOLOGOU STR. CHALANDRI	(210)-6879400	(210)-6879401									
G.A. PERVANAS SECURITIES & INVESTMENT SERVICES CO S.A.			a			a					a
7 - 9, SOPHOCLEOUS STR. ATHINA	(210)-3251875	(210)-3210291									
GENERAL BANK OF GREECE S.A.									a		
87-89, ERMOY ATHINA	(210)-6976072	(210)-6976079									
, 109-111, MESOGEION AVE. ATHINA	(210)-6975000	(210)-6975706									
GLOBAL CAPITAL SECURITIES AND FINANCIAL SERVICES LTD			a	a							
5, LEMESOU AVE. LEMESOS CYPRUS	(+35722)-710710	(+35722)-339332									
GUARDIAN TRUST SECURITIES S.A			a		a	a					a
15, FILELLINON STR. ATHINA	(210)-3220402	(210)-3220498									
HELLENIC AMERICAN SEC. S.A.			a			a					
6, EVRIPIDOU STR. ATHINA	(210)-3311100	(210)-3215968									
HELLENIC BANK (INVESTMENTS) LTD			a	a							
31, KYRIAKOY MATSI AVE. NICOSIA	(+35722)-500100	(+35722)-500110									
HSBC BANK PLC									a		
109-111, MESOGION AVE ATHINA	(210)-6961507	(210)-6929310									
INDEX SECURITIES S.A.			a								
6, DRAGATSANIOU STR. ATHINA	(210)-3213920	(210)-3213216									
INTERSEC S.A.						a				a	
80-88, SYGROU AVE ATHINA	(210)-9203000	(210)-9203052									
INVESTMENT BANK OF GREECE S.A.			a		a		a		a		
32, AIGEIALIAS MAROUSI	(210) 8173000	(210) 8173101									
24B, KIFISSIAS AVE MAROUSI	(210)-8171800	(210)-8171889									
J. CHR. MAVRIKIS SECURITIES S.A.			a								
5, SOPHOCLEOUS STR. ATHINA	(210)-3213949	(210)-3217767									
KAPPA SECURITIES S.A.			a			a					a
15, VALAORITOU STR. ATHINA	(210)-3610371	(210)-3641002									
KYPROU SECURITIES S.A.			a		a	a					a
26, HALKIDONOS & FIDIPPIDOY STR. ATHINA	(210)-8701000	(210)-8701049									
LAIKI FINANCIAL SERVICES LTD			a	a							
26, CLR HOUSE, VIRONOS AVE. NICOSIA	(+35722)-898600	(+35722)-680953									
LEON DEPOLAS SECURITIES S.A.			a					a			a
1, CHR. LADA STR. ATHINA	(210)-3213286	(210)-3211618									
MAGNA TRUST SECURITIES S.A			a					a			a
9, FIDIOU STR. ATHINA	(210)-3327503	(210)-3327599									
MEGA EQUITY SECURITIES & FINANCIAL SERVICES LTD			a	a							
42-44, GRIBA DIGENI AV. NICOSIA	(+35722)-711711	(+35722)-711811									
MERIT SECURITIES S.A			a		a	a				a	
38, VAS. KONSTANTINOY STR. ATHINA	(210)-3671800	(210)-3671830									
MERRILL LYNCH			a	a							
2, KING EDWARD STREET LONDON	(+4420)-79952000	(+4420)-79954525									
METOCHIKI SECURITIES S.A.			a								
3, G. GENNADIOY STR. ATHINA	(210)-3306700	(210)-3306709									
MIDAS BROKERAGE S.A.			a								
5, SOPHOCLEOUS STR. ATHINA	(210)-3253203	(210)-3253205									
N. CHRYSSOCHOIDIS STOCK BROKERAGE I.S.S.A.			a					a		a	
7 - 9, SOPHOCLEOUS STR. ATHINA	(210)-3213913	(210)-3216115									
N. SARROS SECURITIES S.A.						a					
7-9, SOPHOCLEOUS STR. ATHINA	(210)-3705600	(210)-3219992									
NATIONAL BANK OF GREECE / FORMER PROBANK			a								
10, AMERIKIS STR. ATHINA	(210)-3392631	(210)-3392646									
NATIONAL BANK OF GREECE S.A.							a		a		
86, AILOU STR. ATHINA	(210)-3341000	(210)-3228187									
68, AKADIMIAS STR. ATHINA	(210)-3328817	(210)-3328678									
NBG SECURITIES S.A.			a		a		a				a
68, AKADIMIAS STR. ATHINA	(210)-3328500	(210)-3328565									
NEW PROTON BANK S.A.			a			a				a	
20, ESLIN & AMALIADOS ATHINA	210 6970000	210 6970111									
NUNTIOUS SECURITIES S.A			a					a			a
6, DRAGATSANIOU STR. ATHINA	(210)-3350599	(210)-3254846									
OLYMPIA SECURITIES S.A			a								
46B, A. METAXA STR. GLYFADA	(210)-3702500	(210)-3702520									



## Athex &amp; ATHEXClear Members List

Member Name			Stock Market			Derivatives Market			ATHEXClear Member		
Address	Phone	Fax	Market Member	Remote Member	Market Maker	Proprietary	Market Maker	Agent	General Clearing	Direct Clearing	Non Clearing
<b>ORANGE PARTNERS SECURITIES S.A</b>			<b>a</b>								
5, TZORTZ STR. ATHINA	(210)-3300009	(210)-3305240									
<b>PANTELAKIS SEC. S.A.</b>			<b>a</b>			<b>a</b>					<b>a</b>
109-111, MESOGION AVE. ATHINA	(210)-6965000	(210)-6929550									
<b>PEGASUS BROKERAGE FIRM S.A</b>			<b>a</b>			<b>a</b>					
17, VALAORITOU STR. ATHINA	(210)-3670700	(210)-3670760									
<b>PIRAEUS BANK S.A.</b>								<b>a</b>	<b>a</b>		
4, AMERIKIS STR. ATHINA	(210)-3335000	(210)-3335079									
4, AMERIKIS STR ATHINA	(210)-3335918	(210)-3254207									
<b>PIRAEUS SECURITIES S.A.</b>			<b>a</b>				<b>a</b>			<b>a</b>	
10, STADIOU STR. ATHINA	(210)-3354100	(210)-3233814									
<b>PRELIUM SECURITIES &amp; INVESTMENT SERVICES S.A.</b>			<b>a</b>			<b>a</b>					<b>a</b>
, KIFISIAS AVE & 1 DAVAKI STR ATHINA	(210)-3677000	(210)-6920403									
<b>PROCHOICE SECURITIES LTD</b>			<b>a</b>	<b>a</b>							
57, SPYROU KYPRIANOY NICOSIA	+357-24-661192	+357-24-662464									
<b>SHARELINK SECURITIES &amp; FINANCIAL SERVICES LTD</b>			<b>a</b>	<b>a</b>							
6, ELLINAS HOUSE, THEOTOKI STR. NICOSIA	(+35722)-554200	(+35722)-750852									
<b>SOCIETE GENERALE S.A.</b>			<b>a</b>	<b>a</b>		<b>a</b>					
17, COURS VALMY PUTEAUX - LA DEFENSE PARIS	(+33) 142134754	(+33) 142135697									
240-242, KIFISIAS AVE ATHINA	(210)-6790161	(210)-6728828									
<b>SOLIDUS SECURITIES S.A</b>			<b>a</b>			<b>a</b>				<b>a</b>	
64, LOUIZIS RIANKOUR STR. ATHINA	(210)-6925500	(210)-6985421									
<b>SOTIRIADIS SECURITIES S.A.</b>			<b>a</b>								
7, VALAORITOU STR. ATHINA	(210)-3636943	(210)-3601943									
<b>ST. EM. LAVRENTAKIS SECURITIES S.A.</b>			<b>a</b>			<b>a</b>					<b>a</b>
7 - 9, SOPHOCLEOUS STR. ATHINA	(210)-3213336	(210)-3246572									
<b>THE CYPRUS INVESTMENT AND SECURITIES CORPORATION LIMITED (CISCO)</b>			<b>a</b>	<b>a</b>							
4, EVROU STR. (EUROLIFE HOUSE) NICOSIA	(+35722)-881800	(+35722)-881801									
<b>UBS LIMITED</b>			<b>a</b>	<b>a</b>							
1, FINSBURY AVENUE LONDON	(+4420)-79013333	(+4420)-79012345									
<b>Z.G. PORTALAKIS INVESTMENT SERVICES S.A.</b>			<b>a</b>								
8, PESMAZOGLOU STR. ATHINA	(210)-3214830	(210)-3212024									
<b>KARAMANOF SECURITIES &amp; INV. SERVICES S.A.</b>			<b>a</b>					<b>a</b>		<b>a</b>	
2, SQ. ST THEODORON ATHINA	(210)-3212947	(210)-3217088									

## List of Stocks under Market Making operations

Securities Market Maker	Stock Category	
	Start Market Making	End Market Making
<b>BANK OF CYPRUS (CR)</b>	Under Suspension	
EUROBANK EQUITIES S.A.	23/10/2012	22/10/2013
INVESTMENT BANK OF GREECE S.A.	02/01/2013	01/01/2014
<b>COCA - COLA HBC (CR)</b>	Under Suspension	
EUROBANK EQUITIES S.A.	23/10/2012	22/10/2013
INVESTMENT BANK OF GREECE S.A.	08/01/2013	07/01/2014
<b>CYPRUS POPULAR BANK (CR)</b>	Under Suspension	
PIRAEUS SECURITIES S.A.	02/02/2013	01/02/2014
<b>ALPHA BANK (CR)</b>	Main Market	
EUROBANK EQUITIES S.A.	24/10/2012	23/10/2013
INVESTMENT BANK OF GREECE S.A.	08/01/2013	07/01/2014
NBG SECURITIES S.A.	15/01/2013	14/01/2014
PIRAEUS SECURITIES S.A.	28/05/2013	27/05/2014
<b>ALUMIL (CR)</b>	Main Market	
BETA SECURITIES S.A.	18/07/2013	17/07/2014
<b>CC HBC AG (CR)</b>	Main Market	
NBG SECURITIES S.A.	29/04/2013	28/04/2014
<b>ELLAKTOR (CR)</b>	Main Market	
EUROBANK EQUITIES S.A.	01/06/2013	31/05/2014
INVESTMENT BANK OF GREECE S.A.	02/01/2013	01/01/2014
NBG SECURITIES S.A.	25/06/2013	24/06/2014
<b>EUROBANK ERGASIAS (CR)</b>	Main Market	
ALPHA FINANCE INVESTMENT SERVICES S.A.	08/01/2013	07/01/2014
EUROBANK EQUITIES S.A.	01/06/2013	31/05/2014
INVESTMENT BANK OF GREECE S.A.	08/01/2013	07/01/2014
<b>GEK TERNA (CR)</b>	Main Market	
INVESTMENT BANK OF GREECE S.A.	02/01/2013	01/01/2014
<b>GR. SARANTIS SA (CR)</b>	Main Market	
BETA SECURITIES S.A.	14/05/2013	13/05/2014
<b>HELLENIC EXCHANGES (CR)</b>	Main Market	
EUROBANK EQUITIES S.A.	01/06/2013	31/05/2014
INVESTMENT BANK OF GREECE S.A.	02/01/2013	01/01/2014
NBG SECURITIES S.A.	25/06/2013	24/06/2014
<b>INTRACOM CONSTR. (CR)</b>	Main Market	
MERIT SECURITIES S.A.	27/12/2012	26/12/2013
<b>INTRALOT (CR)</b>	Main Market	
EUROBANK EQUITIES S.A.	01/06/2013	31/05/2014
INVESTMENT BANK OF GREECE S.A.	02/01/2013	01/01/2014
<b>MARFIN INVESTMENT GROUP (CR)</b>	Main Market	
PIRAEUS SECURITIES S.A.	02/02/2013	01/02/2014
<b>MLS MULTIMEDIA SA (CR)</b>	Main Market	
BETA SECURITIES S.A.	18/07/2013	17/07/2014
<b>MOTOR OIL (CR)</b>	Main Market	
EUROBANK EQUITIES S.A.	23/10/2012	22/10/2013
<b>MYTILINEOS HOLDINGS (CR)</b>	Main Market	
INVESTMENT BANK OF GREECE S.A.	02/01/2013	01/01/2014
NBG SECURITIES S.A.	25/06/2013	24/06/2014
<b>NATIONAL BANK (CR)</b>	Main Market	
ALPHA FINANCE INVESTMENT SERVICES S.A.	08/01/2013	07/01/2014
EUROBANK EQUITIES S.A.	24/10/2012	23/10/2013
INVESTMENT BANK OF GREECE S.A.	08/01/2013	07/01/2014
NBG SECURITIES S.A.	28/02/2013	27/02/2014
<b>OPAP (CR)</b>	Main Market	
ALPHA FINANCE INVESTMENT SERVICES S.A.	08/01/2013	07/01/2014
EUROBANK EQUITIES S.A.	24/10/2012	23/10/2013
INVESTMENT BANK OF GREECE S.A.	08/01/2013	07/01/2014
NBG SECURITIES S.A.	15/01/2013	14/01/2014
<b>OTE (CR)</b>	Main Market	
ALPHA FINANCE INVESTMENT SERVICES S.A.	08/01/2013	07/01/2014
EUROBANK EQUITIES S.A.	24/10/2012	23/10/2013
INVESTMENT BANK OF GREECE S.A.	08/01/2013	07/01/2014
NBG SECURITIES S.A.	01/12/2012	30/11/2013
<b>PETROPOULOS PETROS (CR)</b>	Main Market	
BETA SECURITIES S.A.	28/05/2013	27/05/2014
<b>PIRAEUS BANK (CR)</b>	Main Market	
EUROBANK EQUITIES S.A.	23/10/2012	22/10/2013
INVESTMENT BANK OF GREECE S.A.	08/01/2013	07/01/2014
NBG SECURITIES S.A.	02/06/2013	01/06/2014
PIRAEUS SECURITIES S.A.	16/02/2013	15/02/2014

## List of Stocks under Market Making operations

Securities	Stock Category	
	Start Market Making	End Market Making
Market Maker		
<b>PPC (CR)</b>	<b>Main Market</b>	
ALPHA FINANCE INVESTMENT SERVICES S.A.	08/01/2013	07/01/2014
EUROBANK EQUITIES S.A.	23/10/2012	22/10/2013
INVESTMENT BANK OF GREECE S.A.	08/01/2013	07/01/2014
NBG SECURITIES S.A.	26/03/2013	25/03/2014
<b>S.KANAKIS SA (CR)</b>	<b>Main Market</b>	
BETA SECURITIES S.A.	01/10/2012	30/09/2013
<b>TITAN CEMENT (CR)</b>	<b>Main Market</b>	
EUROBANK EQUITIES S.A.	23/10/2012	22/10/2013
<b>VIOHALCO (CB)</b>	<b>Main Market</b>	
ALPHA FINANCE INVESTMENT SERVICES S.A.	11/02/2013	10/03/2014
EUROBANK EQUITIES S.A.	20/01/2013	19/01/2014
MERIT SECURITIES S.A	13/12/2012	12/12/2013

## Equity Investment Instruments Acknowledgements

Portfolio Investments Company Name	NAV per Share	Share Price	Premium/ Discount
AEOLIAN INVESTMENT FUND S.A.	1.68	1.02	-39.29%
ALPHA TRUST ANDROMEDA SA	25.23	19.97	-20.85%

## Acknowledgements Notes

According to the Decision of the Capital Market Commission 4/278/12.08.2003 Portfolio Investment Companies are required to notify the Athens Exchange on the 10th, 20th and last working day of each month the Net Asset Value (NAV) of their shares as well as Premium or Discount in relation to their market value.

Underlying Asset				Derivatives Market																		
Price max	Price min	Closing price	change	Delivery Month	Open price	Price max	Price min	Last price	Closing price	Last Bid	Last Ask	Settlement price	change	Life high	Life low	Trades	Volume	change	Value	change	Open Interest	change
FTSE/Athex Large Cap				(Trade Unit: 1 Index Point x 5€, Cash Settlement)																		
341.75	335.66	341.75	0.80%	September 2013	339.50	344.00	337.75	343.50	339.50	6@342.75	7@343.50	339.50	0.00%	346.25	271.00	258	1,548	-57.12%	2,631,667.50	-57.27%	53,379	0.46%
				October 2013	341.75	346.00	340.00	345.75	341.25	6@344.25	8@345.75	341.25	0.07%	347.00	292.25	27	193	244.64%	330,393.75	244.63%	947	13.41%
				November 2013	343.50	343.50	343.25	343.25	343.25	1@341.00	30@357.00	343.25	0.22%	344.25	319.00	2	5	---	8,585.00	---	182	2.82%
				December 2013	344.00	344.00	343.50	343.50	344.75	30@344.00	30@360.00	344.75	0.07%	349.00	276.75	2	12	300.00%	20,635.00	299.90%	584	2.10%
				March 2014	---	---	---	---	---	---	---	---	---	---	---	---	---	---	---	---	---	---
				June 2014	---	---	---	---	---	---	---	---	---	---	---	---	---	---	---	---	---	---

Underlying Asset				Derivatives Market																		
Price max	Price min	Closing price	change	Delivery Month	Open price	Price max	Price min	Last price	Closing price	Last Bid	Last Ask	Settlement price	change	Life high	Life low	Trades	Volume	change	Value	change	Open Interest	change
ALPHA BANK (CR)				(Contract Size: 100 Securities, Physical Delivery)																		
0.592	0.567	0.585	1.56%	September 2013	0.580	0.594	0.569	0.583	0.576	3@0.583	12@0.585	0.576	-1.03%	1.46	0.371	184	3,519	-42.93%	203,810.60	-43.41%	18,269	3.37%
				December 2013	0.585	0.590	0.568	0.575	0.575	10@0.575	1@0.590	0.575	-0.86%	0.608	0.437	28	308	28.87%	17,884.40	27.50%	1,608	12.21%
				March 2014	---	---	---	---	---	---	---	---	---	---	---	---	---	---	---	---	---	---
				June 2014	---	---	---	---	---	---	---	---	---	---	---	---	---	---	---	---	---	---
CC HBC AG (CR)				(Contract Size: 100 Securities, Physical Delivery)																		
22.88	22.08	22.88	0.53%	September 2013	22.56	22.81	22.15	22.81	22.84	12@22.81	1@22.90	22.84	0.53%	22.86	16.93	49	134	2133.33%	300,256.00	2097.10%	778	6.87%
				December 2013	22.53	22.91	22.20	22.88	22.86	5@22.75	1@22.92	22.86	1.02%	22.91	17.90	24	57	5600.00%	128,671.00	5568.33%	128	17.43%
				March 2014	---	---	---	---	---	---	---	---	---	---	---	---	---	---	---	---	---	---
				June 2014	---	---	---	---	---	---	---	---	---	---	---	---	---	---	---	---	---	---
CORINTH PIPEWORKS SA (CR)				(Contract Size: 100 Securities, Physical Delivery)																		
2.09	2.05	2.09	0.97%	September 2013	2.09	2.12	2.08	2.08	2.10	---	18@2.08	2.10	0.96%	2.48	1.94	5	31	24.00%	6,503.00	22.70%	594	0.34%
				December 2013	2.10	2.10	2.10	2.10	2.09	---	18@2.10	2.09	-0.95%	2.16	2.10	1	5	66.67%	1,050.00	66.67%	10	100.00%
				March 2014	---	---	---	---	---	---	---	---	---	---	---	---	---	---	---	---	---	---
				June 2014	---	---	---	---	---	---	---	---	---	---	---	---	---	---	---	---	---	---
ELLAKTOR (CR)				(Contract Size: 100 Securities, Physical Delivery)																		
2.27	2.18	2.25	0.45%	September 2013	2.23	2.26	2.21	2.26	2.21	10@2.24	19@2.27	2.21	-0.90%	2.45	1.73	11	568	194.30%	126,293.00	193.51%	3,715	-13.10%
				December 2013	2.23	2.28	2.22	2.28	2.22	10@2.25	8@2.28	2.22	-1.33%	2.29	2.11	15	612	3500.00%	136,563.00	3486.21%	864	241.50%
				March 2014	---	---	---	---	---	---	---	---	---	---	---	---	---	---	---	---	---	---
				June 2014	---	---	---	---	---	---	---	---	---	---	---	---	---	---	---	---	---	---
EUROBANK ERGASIAS (CR)				(Contract Size: 10 Securities, Physical Delivery)																		
0.658	0.631	0.641	2.89%	September 2013	0.645	0.654	0.640	0.640	0.651	2@0.630	30@0.640	0.651	2.84%	5.00	0.537	7	342	163.08%	2,206.88	170.62%	15,362	-1.23%
				December 2013	0.635	0.645	0.635	0.640	0.646	1@0.623	50@0.674	0.646	2.87%	0.700	0.600	3	10	---	641.50	---	200	5.26%
				March 2014	---	---	---	---	0.649	---	---	0.649	2.85%	0.673	0.619	---	---	---	---	---	---	---
				June 2014	---	---	---	---	---	---	---	---	---	---	---	---	---	---	---	---	---	---
EUROBANK PROPERTIES REIC (CR)				(Contract Size: 100 Securities, Physical Delivery)																		
7.15	6.84	7.03	-0.85%	September 2013	7.10	7.10	6.98	6.98	7.05	10@7.00	5@7.15	7.05	-0.84%	7.67	6.00	13	50	21.95%	35,099.00	22.81%	208	1.96%
				December 2013	7.13	7.13	7.03	7.03	7.09	---	5@7.23	7.09	-0.84%	7.13	6.83	2	10	-56.52%	7,080.00	-55.94%	43	13.16%
				March 2014	---	---	---	---	---	---	---	---	---	---	---	---	---	---	---	---	---	---
				June 2014	---	---	---	---	---	---	---	---	---	---	---	---	---	---	---	---	---	---
EYDAP S.A. (CR)				(Contract Size: 100 Securities, Physical Delivery)																		
6.90	6.73	6.89	0.58%	September 2013	6.85	6.90	6.80	6.90	6.89	8@6.80	8@6.90	6.89	0.58%	6.94	5.58	11	25	-91.69%	17,109.00	-91.64%	1,550	-0.83%
				December 2013	6.87	6.88	6.83	6.88	6.92	19@6.83	1@6.95	6.92	0.73%	6.94	6.31	5	12	-88.57%	8,222.00	-88.49%	205	2.50%
				March 2014	---	---	---	---	---	---	---	---	---	---	---	---	---	---	---	---	---	---
				June 2014	---	---	---	---	---	---	---	---	---	---	---	---	---	---	---	---	---	---
FOLLI FOLLIE (CR)				(Contract Size: 100 Securities, Physical Delivery)																		
18.16	17.44	17.80	0.68%	September 2013	17.76	17.76	17.76	17.76	17.85	1@17.46	1@18.86	17.85	0.68%	18.86	14.68	2	2	-71.43%	3,552.00	-71.23%	255	0.00%
				December 2013	---	---	---	---	17.84	1@17.20	1@19.04	17.84	0.68%	17.45	17.24	---	---	---	---	---	6	0.00%
				March 2014	---	---	---	---	---	---	---	---	---	---	---	---	---	---	---	---	---	---
				June 2014	---	---	---	---	---	---	---	---	---	---	---	---	---	---	---	---	---	---

Underlying Asset				Derivatives Market																		
Price max	Price min	Closing price	change	Delivery Month	Open price	Price max	Price min	Last price	Closing price	Last Bid	Last Ask	Settlement price	change	Life high	Life low	Trades	Volume	change	Value	change	Open Interest	change
FRIGOGLASS SA (CR)				(Contract Size: 100 Securities, Physical Delivery)																		
5.12	5.05	5.10	0.00%	September 2013	5.11	5.11	5.04	5.10	5.19	2@4.96	35@5.12	5.19	0.00%	5.71	4.35	5	16	-15.79%	8,146.00	-15.61%	461	2.22%
				December 2013	5.11	5.12	5.11	5.12	5.23	35@5.03	35@5.20	5.23	0.00%	5.18	5.10	3	130	1200.00%	66,540.00	1199.61%	140	1300.00%
				March 2014	---	---	---	---	---	---	---	---	---	---	---	---	---	---	---	---	---	---
				June 2014	---	---	---	---	---	---	---	---	---	---	---	---	---	---	---	---	---	---
GEK TERNA (CR)				(Contract Size: 100 Securities, Physical Delivery)																		
2.22	2.15	2.22	1.83%	September 2013	2.19	2.21	2.16	2.19	2.25	1@2.19	12@2.22	2.25	1.81%	2.62	1.45	41	790	9.12%	172,037.00	7.24%	14,373	-4.50%
				December 2013	2.22	2.23	2.18	2.21	2.27	1@2.21	12@2.24	2.27	1.79%	2.51	1.57	11	635	-8.76%	139,275.00	-10.53%	1,328	90.80%
				March 2014	---	---	---	---	2.23	---	---	2.23	1.83%	2.50	2.26	---	---	---	---	---	15,895	0.00%
				June 2014	---	---	---	---	---	---	---	---	---	---	---	---	---	---	---	---	---	---
HELLENIC EXCHANGES (CR)				(Contract Size: 100 Securities, Physical Delivery)																		
6.20	6.08	6.20	0.32%	September 2013	6.16	6.19	6.08	6.16	6.14	1@6.10	6@6.19	6.14	0.33%	6.46	3.82	16	72	-32.08%	44,077.00	-32.64%	2,207	-0.90%
				December 2013	6.20	6.20	6.11	6.11	6.16	1@6.12	6@6.24	6.16	0.33%	6.85	4.01	7	25	-7.41%	15,364.00	-8.02%	2,068	1.22%
				March 2014	---	---	---	---	---	---	---	---	---	---	---	---	---	---	---	---	---	---
				June 2014	---	---	---	---	---	---	---	---	---	---	---	---	---	---	---	---	---	---
HELLENIC PETROLEUM (CR)				(Contract Size: 100 Securities, Physical Delivery)																		
7.71	7.40	7.70	1.99%	September 2013	7.49	7.70	7.49	7.69	7.62	5@7.65	2@7.69	7.62	2.01%	9.01	6.00	33	208	57.58%	159,330.00	60.47%	2,235	-2.95%
				December 2013	7.69	7.69	7.69	7.69	7.64	4@7.64	2@7.74	7.64	2.00%	7.72	6.61	1	5	-86.49%	3,845.00	-86.14%	39	0.00%
				March 2014	---	---	---	---	---	---	---	---	---	---	---	---	---	---	---	---	---	---
				June 2014	---	---	---	---	---	---	---	---	---	---	---	---	---	---	---	---	---	---
INTRALOT (CR)				(Contract Size: 100 Securities, Physical Delivery)																		
1.67	1.62	1.67	2.45%	September 2013	1.63	1.68	1.63	1.64	1.67	10@1.66	8@1.67	1.67	2.45%	2.30	1.30	32	130	136.36%	21,464.00	140.47%	3,655	-1.27%
				December 2013	1.64	1.68	1.62	1.68	1.67	10@1.65	8@1.68	1.67	1.83%	1.68	1.57	9	40	566.67%	6,624.00	580.08%	208	16.85%
				March 2014	---	---	---	---	---	---	---	---	---	---	---	---	---	---	---	---	---	---
				June 2014	---	---	---	---	---	---	---	---	---	---	---	---	---	---	---	---	---	---
JUMBO SA (CR)				(Contract Size: 100 Securities, Physical Delivery)																		
8.87	8.60	8.70	-1.14%	September 2013	8.75	8.81	8.68	8.70	8.53	15@8.53	4@8.79	8.53	-1.16%	9.03	7.19	11	47	80.77%	41,084.00	83.05%	126	-3.82%
				December 2013	8.78	8.78	8.66	8.68	8.68	15@8.48	4@8.82	8.68	0.58%	8.78	8.06	6	20	300.00%	17,479.00	303.58%	68	-1.45%
				March 2014	---	---	---	---	---	---	---	---	---	---	---	---	---	---	---	---	---	---
				June 2014	---	---	---	---	---	---	---	---	---	---	---	---	---	---	---	---	---	---
MARFIN INVESTMENT GROUP (CR)				(Contract Size: 100 Securities, Physical Delivery)																		
0.344	0.316	0.342	7.21%	September 2013	0.319	0.342	0.319	0.342	0.343	7@0.338	13@0.343	0.343	7.19%	0.420	0.252	39	554	218.39%	18,594.40	234.31%	18,408	-0.59%
				December 2013	0.327	0.343	0.327	0.343	0.345	6@0.336	4@0.343	0.345	7.14%	0.343	0.317	14	281	2241.67%	9,412.80	2298.78%	310	656.10%
				March 2014	---	---	---	---	---	---	---	---	---	---	---	---	---	---	---	---	---	---
				June 2014	---	---	---	---	---	---	---	---	---	---	---	---	---	---	---	---	---	---
METKA (CR)				(Contract Size: 100 Securities, Physical Delivery)																		
11.69	11.45	11.69	0.86%	September 2013	11.50	11.59	11.50	11.59	11.59	1@11.00	2@11.61	11.59	0.87%	12.18	9.43	3	15	-77.27%	17,295.00	-77.14%	486	-2.02%
				December 2013	---	---	---	---	11.59	1@10.98	2@11.72	11.59	0.87%	11.52	10.52	---	---	-100.00%	---	-100.00%	16	0.00%
				March 2014	---	---	---	---	---	---	---	---	---	---	---	---	---	---	---	---	---	---
				June 2014	---	---	---	---	---	---	---	---	---	---	---	---	---	---	---	---	---	---

Underlying Asset				Derivatives Market																		
Price max	Price min	Closing price	change	Delivery Month	Open price	Price max	Price min	Last price	Closing price	Last Bid	Last Ask	Settlement price	change	Life high	Life low	Trades	Volume	change	Value	change	Open Interest	change
MOTOR OIL (CR)				(Contract Size: 100 Securities, Physical Delivery)																		
7.70	7.54	7.70	0.52%	September 2013	7.57	7.67	7.54	7.66	7.68	10@7.68	3@7.72	7.68	0.52%	8.16	6.66	11	38	18.75%	28,958.00	19.11%	978	0.00%
				December 2013	7.59	7.65	7.59	7.65	7.71	5@7.67	3@7.80	7.71	0.26%	7.72	7.40	3	7	-12.50%	5,334.00	-12.56%	23	21.05%
				March 2014	---	---	---	---	---	---	---	---	---	---	---	---	---	---	---	---	---	---
				June 2014	---	---	---	---	---	---	---	---	---	---	---	---	---	---	---	---	---	---
MYTILINEOS HOLDINGS (CR)				(Contract Size: 100 Securities, Physical Delivery)																		
4.91	4.74	4.88	2.95%	September 2013	4.72	4.92	4.72	4.89	4.87	5@4.87	1@4.89	4.87	2.96%	5.50	3.50	124	764	-22.44%	368,361.00	-19.91%	5,325	0.09%
				December 2013	4.80	4.94	4.78	4.89	4.88	6@4.89	1@4.94	4.88	3.39%	5.28	3.70	49	465	688.14%	225,589.00	717.77%	558	295.74%
				March 2014	4.96	4.99	4.95	4.99	5.02	---	---	5.02	4.15%	4.99	4.43	4	500	-44.44%	248,096.00	-42.81%	1,400	55.56%
				June 2014	---	---	---	---	---	---	---	---	---	---	---	---	---	---	---	---	---	---
NATIONAL BANK (CR)				(Contract Size: 100 Securities, Physical Delivery)																		
3.26	3.15	3.23	1.25%	September 2013	3.18	3.26	3.16	3.25	3.22	6@3.23	12@3.25	3.22	1.26%	3.36	0.344	149	1,238	-31.49%	397,447.00	-32.31%	5,642	-2.03%
				December 2013	3.21	3.25	3.16	3.23	3.18	6@3.22	1@3.25	3.18	0.32%	3.34	2.31	30	299	-11.28%	96,174.00	-11.26%	712	12.30%
				March 2014	---	---	---	---	---	---	---	---	---	---	---	---	---	---	---	---	---	---
				June 2014	---	---	---	---	---	---	---	---	---	---	---	---	---	---	---	---	---	---
OPAP (CR)				(Contract Size: 100 Securities, Physical Delivery)																		
8.00	7.85	8.00	1.91%	September 2013	7.88	8.00	7.88	8.00	7.92	7@8.00	1@8.02	7.92	2.33%	8.00	5.82	41	276	128.10%	218,832.00	132.46%	4,441	-0.25%
				December 2013	7.84	7.99	7.84	7.99	7.92	7@8.01	1@8.05	7.92	2.06%	7.99	6.31	11	65	103.13%	51,616.00	107.11%	129	32.99%
				March 2014	---	---	---	---	---	---	---	---	---	---	---	---	---	---	---	---	---	---
				June 2014	---	---	---	---	---	---	---	---	---	---	---	---	---	---	---	---	---	---
OTE (CR)				(Contract Size: 100 Securities, Physical Delivery)																		
7.70	7.50	7.60	0.00%	September 2013	7.60	7.68	7.51	7.60	7.54	8@7.59	35@7.62	7.54	-0.40%	7.81	4.35	85	478	-43.36%	363,792.00	-43.43%	6,650	0.12%
				December 2013	7.68	7.69	7.52	7.62	7.55	11@7.61	48@7.65	7.55	-0.53%	7.83	4.40	30	124	-65.36%	94,837.00	-65.32%	769	17.05%
				March 2014	---	---	---	---	7.58	---	---	7.58	-0.39%	7.39	6.40	---	---	---	---	---	---	---
				June 2014	---	---	---	---	---	---	---	---	---	---	---	---	---	---	---	---	---	---
P.P.A. S.A. (CR)				(Contract Size: 100 Securities, Physical Delivery)																		
17.30	17.03	17.30	0.70%	September 2013	17.30	17.30	17.23	17.30	17.19	1@17.10	2@17.47	17.19	0.70%	18.68	15.52	3	3	-70.00%	5,183.00	-70.20%	584	-0.17%
				December 2013	17.27	17.27	17.19	17.24	17.20	1@17.15	2@17.48	17.20	1.00%	17.47	16.84	4	4	33.33%	6,897.00	33.07%	11	57.14%
				March 2014	---	---	---	---	---	---	---	---	---	---	---	---	---	---	---	---	---	---
				June 2014	---	---	---	---	---	---	---	---	---	---	---	---	---	---	---	---	---	---
PIRAEUS BANK (CR)				(Contract Size: 100 Securities, Physical Delivery)																		
1.36	1.29	1.33	0.76%	September 2013	1.32	1.36	1.29	1.34	1.33	205@1.33	100@1.34	1.33	-1.48%	1.41	0.169	101	2,716	37.24%	360,372.00	34.56%	11,511	2.12%
				December 2013	1.31	1.35	1.30	1.34	1.34	25@1.33	48@1.34	1.34	-0.74%	1.41	0.231	19	978	256.93%	131,112.00	256.12%	2,913	32.41%
				March 2014	---	---	---	---	1.34	---	---	1.34	-1.47%	1.12	0.924	---	---	---	---	---	---	---
				June 2014	---	---	---	---	---	---	---	---	---	---	---	---	---	---	---	---	---	---
PPC (CR)				(Contract Size: 100 Securities, Physical Delivery)																		
7.99	7.77	7.99	1.53%	September 2013	7.83	8.00	7.82	8.00	7.92	27@7.99	106@8.00	7.92	1.41%	8.47	4.58	121	678	61.05%	536,777.00	62.03%	5,021	-0.89%
				December 2013	7.84	8.00	7.84	8.00	7.95	27@7.98	2@8.01	7.95	1.79%	8.56	5.08	35	228	300.00%	180,440.00	302.63%	379	-20.55%
				March 2014	7.90	7.96	7.90	7.96	7.95	---	---	7.95	2.05%	7.99	6.30	3	125	---	99,200.00	---	75	50.00%
				June 2014	---	---	---	---	---	---	---	---	---	---	---	---	---	---	---	---	---	---



Underlying Asset				Derivatives Market																		
Price max	Price min	Closing price	change	Delivery Month	Open price	Price max	Price min	Last price	Closing price	Last Bid	Last Ask	Settlement price	change	Life high	Life low	Trades	Volume	change	Value	change	Open Interest	change
SIDENOR (CR)				(Contract Size: 100 Securities, Physical Delivery)																		
1.68	1.64	1.66	-0.60%	September 2013	1.64	1.68	1.64	1.65	1.65	10@1.64	28@1.65	1.65	-3.51%	1.82	1.36	10	48	166.67%	7,975.00	163.20%	1,653	-0.54%
				December 2013	1.70	1.70	1.64	1.67	1.67	6@1.65	28@1.67	1.67	-3.47%	1.76	1.58	7	34	1033.33%	5,615.00	998.83%	39	14.71%
				March 2014	---	---	---	---	---	---	---	---	---	---	---	---	---	---	---	---	---	---
				June 2014	---	---	---	---	---	---	---	---	---	---	---	---	---	---	---	---	---	---
TERNA ENERGY (CR)				(Contract Size: 103 Securities, Physical Delivery)																		
3.08	3.01	3.08	-0.65%	September 2013	3.05	3.07	3.00	3.07	3.05	5@3.03	3@3.09	3.05	-0.65%	3.25	2.43	5	931	180.42%	291,980.28	177.42%	1,277	-41.98%
				December 2013	3.11	3.12	3.06	3.12	3.07	2@3.03	---	3.07	-0.97%	3.18	3.06	5	949	222.79%	290,956.00	218.12%	1,255	310.13%
				March 2014	---	---	---	---	---	---	---	---	---	---	---	---	---	---	---	---	---	---
				June 2014	---	---	---	---	---	---	---	---	---	---	---	---	---	---	---	---	---	---
TITAN CEMENT (CR)				(Contract Size: 100 Securities, Physical Delivery)																		
16.20	15.70	16.02	-1.11%	September 2013	15.99	16.00	15.83	15.87	16.17	1@15.83	1@16.45	16.17	-1.10%	16.79	12.22	16	56	30.23%	89,289.00	25.47%	192	-5.42%
				December 2013	16.17	16.17	15.88	15.88	16.20	1@15.78	1@16.40	16.20	-0.92%	16.67	15.02	9	38	58.33%	60,765.00	54.76%	23	-8.00%
				March 2014	---	---	---	---	---	---	---	---	---	---	---	---	---	---	---	---	---	---
				June 2014	---	---	---	---	---	---	---	---	---	---	---	---	---	---	---	---	---	---
VIOHALCO (CB)				(Contract Size: 100 Securities, Physical Delivery)																		
4.46	4.31	4.46	1.83%	September 2013	4.37	4.42	4.33	4.38	4.42	4@4.33	3@4.48	4.42	1.84%	5.19	3.85	18	62	-38.61%	27,204.00	-38.40%	641	5.60%
				December 2013	4.36	4.37	4.36	4.37	4.46	1@4.33	3@4.51	4.46	2.06%	4.53	3.89	2	4	-71.43%	1,746.00	-71.66%	28	16.67%
				March 2014	---	---	---	---	---	---	---	---	---	---	---	---	---	---	---	---	---	---
				June 2014	---	---	---	---	---	---	---	---	---	---	---	---	---	---	---	---	---	---

FTSE/Athex Large Cap

(Trade Unit: 1 Index Point x 5€ - Exercise Style: European, Cash Settlement)

Call Options																	Put Options																						
Exercise Price	September 2013							October 2013							Other Months		September 2013								October 2013								Other Months		Exercise Price				
	Open price	Price max	Price min	Last price	Closing price	Volume	Open Interest	Open price	Price max	Price min	Last price	Closing price	Volume	Open Interest	Volume	Open Interest	Open price	Price max	Price min	Last price	Closing price	Volume	Open Interest	Open price	Price max	Price min	Last price	Closing price	Volume	Open Interest	Volume	Open Interest							
215	-	-	-	-	124.00	-	60	-	-	-	-	-	-	-			-	-	-	-	-	-	-	-	-	-	-	-	-	-	-			215					
230	-	-	-	-	109.00	-	3	-	-	-	-	-	-	-			-	-	-	-	-	-	-	-	-	-	-	-	-	-	-	-			230				
240	-	-	-	-	-	-	-	-	-	-	-	-	-	-			-	-	-	-	-	-	-	-	-	-	-	-	-	-	-	-	-			240			
255	-	-	-	-	-	-	-	-	-	-	-	-	-	-			-	-	-	-	-	-	-	-	-	-	-	-	-	-	-	-	-	-			255		
260	-	-	-	-	-	-	-	-	-	-	-	-	-	-			-	-	-	-	-	-	-	-	-	-	-	-	-	-	-	-	-	-			260		
265	-	-	-	-	-	-	-	-	-	-	-	-	-	-			-	-	-	-	-	-	-	-	-	-	-	-	-	-	-	-	-	-			265		
270	-	-	-	-	-	-	-	-	-	-	-	-	-	-			-	-	-	-	-	-	11	-	-	-	-	-	-	-	-	-	-	-			270		
275	-	-	-	-	-	-	-	-	-	-	-	-	-	-			-	-	-	-	-	-	1	-	-	-	-	-	-	-	-	-	-	-			275		
280	-	-	-	-	59.50	-	173	-	-	-	-	-	-	-			-	-	-	-	-	-	132	-	-	-	-	-	-	-	-	-	-	-	-			280	
285	-	-	-	-	54.50	-	20	-	-	-	-	-	-	-			-	-	-	-	-	-	56	-	-	-	-	1.40	-	1	-	-	-	-			285		
290	-	-	-	-	49.50	-	50	-	-	-	-	-	-	-			-	-	-	-	-	-	107	-	-	-	-	-	-	-	-	-	-	-	-			290	
295	-	-	-	-	44.50	-	1	-	-	-	-	-	-	-			-	-	-	-	-	-	-	-	-	-	-	2.60	-	6	-	-	-	-			295		
300	-	-	-	-	39.50	-	390	-	-	-	-	-	-	-			-	-	-	-	-	-	135	-	-	-	-	3.40	-	13	-	-	-	-	-			300	
305	-	-	-	-	-	-	-	-	-	-	-	40.50	-	15			-	-	-	-	-	0.20	-	685	-	-	-	-	4.30	-	7	-	-	-	-			305	
310	28.00	28.00	28.00	28.00	30.00	1	334	-	-	-	-	36.50	-	20			-	-	-	-	-	0.42	-	76	-	-	-	-	5.40	-	5	-	-	-	-			310	
315	-	-	-	-	25.25	-	634	-	-	-	-	33.00	-	487			-	-	-	-	-	0.80	-	162	-	-	-	-	6.80	-	57	-	-	-	-			315	
320	-	-	-	-	21.00	-	184	-	-	-	-	-	-	-			-	-	-	-	-	1.40	-	92	-	-	-	-	8.30	-	2	-	-	-	-			320	
325	-	-	-	-	16.75	-	60	-	-	-	-	-	-	-			-	-	-	-	-	2.40	-	181	-	-	-	-	10.00	-	22	-	-	-	-			325	
330	15.00	15.00	15.00	15.00	13.25	1	594	-	-	-	-	23.25	-	1			-	-	-	-	-	3.70	-	342	-	-	-	-	-	-	-	-	-	-	-			330	
335	9.00	9.10	7.30	7.90	10.00	120	719	-	-	-	-	-	-	-			4.00	4.50	3.60	3.60	5.60	64	484	-	-	-	-	-	-	-	-	-	-	-	-			335	
340	5.70	9.10	5.70	9.10	7.40	16	309	-	-	-	-	18.00	-	256			-	-	-	-	-	7.90	-	112	-	-	-	-	-	-	-	-	-	-	-			340	
345	5.00	5.00	5.00	5.00	5.30	1	60	-	-	-	-	15.75	-	150			-	-	-	-	-	-	-	-	-	-	-	-	-	-	-	-	-	-	-			345	
350	3.00	3.00	3.00	3.00	3.60	1	55	-	-	-	-	-	-	-			-	-	-	-	-	14.00	-	130	-	-	-	-	-	-	-	-	-	-	-	-			350
355	-	-	-	-	2.40	-	31	-	-	-	-	-	-	-			-	-	-	-	-	-	-	-	-	-	-	-	-	-	-	-	-	-	-			355	
360	-	-	-	-	1.50	-	100	-	-	-	-	-	-	-			21.75	21.75	21.75	21.75	22.00	4	9	-	-	-	-	-	-	-	-	-	-	-	-			360	
365	-	-	-	-	-	-	-	-	-	-	-	-	-	-			-	-	-	-	-	26.50	-	130	-	-	-	-	-	-	-	-	-	-	-	-			365
370	-	-	-	-	0.56	-	1	-	-	-	-	-	-	-			-	-	-	-	-	31.00	-	5	-	-	-	-	-	-	-	-	-	-	-	-			370
375	-	-	-	-	0.32	-	100	-	-	-	-	-	-	-			-	-	-	-	-	-	-	-	-	-	-	-	-	-	-	-	-	-	-	-			375
380	-	-	-	-	0.18	-	30	-	-	-	-	-	-	-			-	-	-	-	-	40.75	-	10	-	-	-	-	-	-	-	-	-	-	-	-			380
385	-	-	-	-	-	-	-	-	-	-	-	-	-	-			-	-	-	-	-	45.50	-	5	-	-	-	-	-	-	-	-	-	-	-	-			385
390	-	-	-	-	-	-	-	-	-	-	-	-	-	-			-	-	-	-	-	-	-	-	-	-	-	-	-	-	-	-	-	-	-			390	
395	-	-	-	-	-	-	-	-	-	-	-	-	-	-			-	-	-	-	-	55.50	-	5	-	-	-	-	-	-	-	-	-	-	-	-			395
400	-	-	-	-	-	-	-	-	-	-	-	-	-	-			-	-	-	-	-	-	-	-	-	-	-	-	-	-	-	-	-	-	-			400	
405	-	-	-	-	-	-	-	-	-	-	-	-	-	-			-	-	-	-	-	-	-	-	-	-	-	-	-	-	-	-	-	-	-	-			405
410	-	-	-	-	-	-	-	-	-	-	-	-	-	-			-	-	-	-	-	-	-	-	-	-	-	-	-	-	-	-	-	-	-	-			410
415	-	-	-	-	-	-	-	-	-	-	-	-	-	-			-	-	-	-	-	-	-	-	-	-	-	-	-	-	-	-	-	-	-	-			415

FTSE/Athex Large Cap

(Trade Unit: 1 Index Point x 5€ - Exercise Style: European, Cash Settlement)

Call Options																	Put Options																		
Exercise Price	September 2013							October 2013							Other Months		September 2013							October 2013							Other Months		Exercise Price		
	Open price	Price max	Price min	Last price	Closing price	Volume	Open Interest	Open price	Price max	Price min	Last price	Closing price	Volume	Open Interest	Volume	Open Interest	Open price	Price max	Price min	Last price	Closing price	Volume	Open Interest	Open price	Price max	Price min	Last price	Closing price	Volume	Open Interest	Volume	Open Interest			
440	-	-	-	-	-	-	-	-	-	-	-	-	-	-	-	-	-	-	-	-	100.00	-	261	-	-	-	-	-	-	-	-	-	440		
1,500	-	-	-	-	-	-	-	-	-	-	-	-	-	-	-	-	-	-	-	-	1,160.00	-	3	-	-	-	-	-	-	-	-	1,500			
Totals:						140	3,908							0	929	0	0							68	3,134							0	113	0	0
Nominal Transactions Value:														0.00		0.00							114,400.00								0.00		0.00		
Number of Trades:														0		0							9								0		0		

ALPHA BANK (CR)

(Contract Size: 100 Securities, Exercise Style: American, Physical Delivery)

Call Options																	Put Options																								
September 2013								October 2013								Other Months		September 2013								October 2013								Other Months							
Exerise Price	Open price	Price max	Price min	Last price	Closing price	Volume	Open Interest	Open price	Price max	Price min	Last price	Closing price	Volume	Open Interest	Volume	Open Interest	Open price	Price max	Price min	Last price	Closing price	Volume	Open Interest	Open price	Price max	Price min	Last price	Closing price	Volume	Open Interest	Volume	Open Interest	Exerise Price								
0.100						-	-							-	-							-	-						-	-				0.100							
0.200						-	-							-	-							-	-						-	-				0.200							
0.300						-	-							-	-							-	-						-	-				0.300							
0.350						-	-							-	-							-	-						-	-				0.350							
0.400						-	-							-	-							-	-						-	-				0.400							
0.450						-	-							-	-							-	-						-	-				0.450							
0.500						-	-							-	-							-	-						-	-				0.500							
0.550						-	-							-	-							-	-						-	-				0.550							
0.600						-	-							-	-							-	-						-	-				0.600							
0.650						-	-							-	-							-	-						-	-				0.650							
0.700						-	-							-	-							-	-						-	-				0.700							
0.800						-	-							-	-							-	-						-	-				0.800							
0.850						-	-							-	-							-	-						-	-				0.850							
0.900						-	-							-	-							-	-						-	-				0.900							
0.950						-	-							-	-							-	-						-	-				0.950							
1.00						-	-							-	-							-	-						-	-				1.00							
1.05						-	-							-	-							-	-						-	-				1.05							
1.10						-	-							-	-							-	-						-	-				1.10							
1.15						-	-							-	-							-	-						-	-				1.15							
1.20						-	-							-	-							-	-						-	-				1.20							
1.30						-	-							-	-							-	-						-	-				1.30							
1.40						-	-							-	-							-	-						-	-				1.40							
1.50						-	-							-	-							-	-						-	-				1.50							
1.60						-	-							-	-							-	-						-	-				1.60							
1.70						-	-							-	-							-	-						-	-				1.70							
1.80						-	-							-	-							-	-						-	-				1.80							
1.90						-	-							-	-							-	-						-	-				1.90							
2.00						-	-							-	-							-	-						-	-				2.00							
2.20						-	-							-	-							-	-						-	-				2.20							
2.40						-	-							-	-							-	-						-	-				2.40							
2.60						-	-							-	-							-	-						-	-				2.60							
2.80						-	-							-	-							-	-						-	-				2.80							
Totals:						0	0							0	0	0	0							0	0							0	0	0	0						
Nominal Transactions Value:						0.00								0.00		0.00								0.00								0.00		0.00							
Number of Trades:						0								0		0								0								0		0							

NATIONAL BANK (CR)

(Contract Size: 100 Securities, Exercise Style: American, Physical Delivery)

Call Options																	Put Options																								
September 2013								October 2013							Other Months		September 2013								October 2013							Other Months									
Exerise Price	Open price	Price max	Price min	Last price	Closing price	Volume	Open Interest	Open price	Price max	Price min	Last price	Closing price	Volume	Open Interest	Volume	Open Interest	Open price	Price max	Price min	Last price	Closing price	Volume	Open Interest	Open price	Price max	Price min	Last price	Closing price	Volume	Open Interest	Volume	Open Interest	Exerise Price								
0.300							-	-							-	-									-	-									-	-			0.300		
0.400							-	-							-	-									-	-									-	-			0.400		
0.500							-	-							-	-									-	-									-	-			0.500		
0.600							-	-							-	-									-	-									-	-			0.600		
0.700							-	-							-	-									-	-									-	-			0.700		
0.750							-	-							-	-									-	-									-	-			0.750		
0.800							-	-							-	-									-	-									-	-			0.800		
0.850							-	-							-	-									-	-									-	-			0.850		
0.900							-	-							-	-									-	-									-	-			0.900		
0.950							-	-							-	-									-	-									-	-			0.950		
1.00							-	-							-	-									-	-									-	-			1.00		
1.05							-	-							-	-									-	-									-	-			1.05		
1.10							-	-							-	-									-	-									-	-			1.10		
1.20							-	-							-	-									-	-									-	-			1.20		
1.30							-	-							-	-									-	-									-	-			1.30		
1.40							-	-							-	-									-	-									-	-			1.40		
1.50							-	-							-	-									-	-									-	-			1.50		
1.60							-	-							-	-									-	-									-	-			1.60		
1.70							-	-							-	-									-	-									-	-			1.70		
1.80							-	-							-	-									-	-									-	-			1.80		
1.90							-	-							-	-									-	-									-	-			1.90		
2.00							-	-							-	-									-	-									-	-			2.00		
2.20							-	-							-	-									-	-									-	-			2.20		
2.40							-	-							-	-									-	-									0.006	-	-			2.40	
2.60							0.632	-	20							-	-									-	-									0.020	-	-			2.60
2.70							-	-							-	-									-	-									-	-			2.70		
2.80							-	-							-	-									-	-									0.050	-	-			2.80	
2.90							-	-							-	-									-	-									-	-			2.90		
3.00							0.256	-	20							0.344	-	120									0.024	-	1							-	-			3.00	
3.10							-	-							-	-									-	-									-	-			3.10		
3.20							0.120	-	116							0.230	-	20									-	-									-	-			3.20
3.30							-	-							-	-									-	-									-	-			3.30		
3.40							-	-							0.146	-	1									-	-									-	-			3.40	
3.60							-	-							0.087	-	1									-	-									-	-			3.60	
3.80							-	-							-	-									-	-									-	-			3.80		
4.00							-	-							-	-									-	-									-	-			4.00		

NATIONAL BANK (CR)

(Contract Size: 100 Securities, Exercise Style: American, Physical Delivery)

Call Options																	Put Options																
Exercise Price	September 2013							October 2013							Other Months		September 2013							October 2013							Other Months		Exercise Price
	Open price	Price max	Price min	Last price	Closing price	Volume	Open Interest	Open price	Price max	Price min	Last price	Closing price	Volume	Open Interest	Volume	Open Interest	Open price	Price max	Price min	Last price	Closing price	Volume	Open Interest	Open price	Price max	Price min	Last price	Closing price	Volume	Open Interest	Volume	Open Interest	
4.40						-	-							-	-							-	-						-	-			4.40
Totals:						0	156						0	142	0	20						0	1					0	60	0	0		
Nominal Transactions Value:							0.00						0.00			0.00						0.00						0.00			0.00		
Number of Trades:							0						0			0						0.00						0			0		

OPAP (CR)

(Contract Size: 100 Securities, Exercise Style: American, Physical Delivery)

Call Options																	Put Options																					
September 2013								October 2013								Other Months		September 2013								October 2013								Other Months				
Exercise Price	Open price	Price max	Price min	Last price	Closing price	Volume	Open Interest	Open price	Price max	Price min	Last price	Closing price	Volume	Open Interest	Volume	Open Interest	Open price	Price max	Price min	Last price	Closing price	Volume	Open Interest	Open price	Price max	Price min	Last price	Closing price	Volume	Open Interest	Volume	Open Interest	Exercise Price					
1.00	7.00				-	270					-				-			-				270					-				-					1.00		
3.20					-	-					-				-								-				-									3.20		
3.40					-	-					-				-								-				-									3.40		
3.60					-	-					-				-								-				-									3.60		
3.80					-	-					-				-								-				-									3.80		
4.00					-	-					-				-								-				-									4.00		
4.40					-	-					-				-								-				-									4.40		
4.80					-	-					-				-								-				-									4.80		
5.20					-	-					-				-								-				-									5.20		
5.60					-	-					-				-								-				-									5.60		
5.80					-	-					-				-								-				-									5.80		
6.00					-	-					-				-												0.010	-	-							6.00		
6.20					-	-					-				-								-				-									6.20		
6.40					-	-									1.65	-	25							-	-					0.030				-	-	6.40		
6.60					-	-					-				-								0.001				-	135					-		-	6.60		
6.80					-	-									1.29	-	25							-	-									-	-	6.80		
7.00					-	-					-				-								-				-									7.00		
7.20					-	-									0.977	-	25							-	-									-	-	7.20		
7.40					-	-					-				-								-				-									7.40		
7.60					-	-									0.706	-	40							-	-									-	-	7.60		
7.80					-	-					-				-								-				-									7.80		
8.00					-	-					-				-								-				-									8.00		
8.20					-	-					-				-								-				-									8.20		
8.40					-	-					-				-								-				-									8.40		
8.80					-	-					-				-								-				-									8.80		
9.00					-	-					-				-								-				-									9.00		
9.20					-	-					-				-								-				-									9.20		
9.40					-	-					-				-								-				-									9.40		
9.60					-	-					-				-								-				-									9.60		
9.80					-	-					-				-								-				-									9.80		
10.00					-	-					-				-								-				-									10.00		
20.00					-	270					-				-								12.00				-	270					-				-	20.00
Totals:						0	540							0	115	0	1,600							0	675							0	55	0	0			
Nominal Transactions Value:						0.00								0.00		0.00								0.00								0.00						
Number of Trades:						0								0		0								0.00								0						

OTE (CR)

(Contract Size: 100 Securities, Exercise Style: American, Physical Delivery)

Call Options																	Put Options																								
September 2013								October 2013								Other Months		September 2013								October 2013								Other Months							
Exercise Price	Open price	Price max	Price min	Last price	Closing price	Volume	Open Interest	Open price	Price max	Price min	Last price	Closing price	Volume	Open Interest	Volume	Open Interest	Open price	Price max	Price min	Last price	Closing price	Volume	Open Interest	Open price	Price max	Price min	Last price	Closing price	Volume	Open Interest	Volume	Open Interest	Exercise Price								
2.60						-	-							-	-							-	-						-	-				2.60							
2.80						-	-							-	-							-	-						-	-				2.80							
3.00						-	-							-	-							-	-						-	-				3.00							
3.20						-	-							-	-							-	-						-	-				3.20							
3.40						-	-							-	-							-	-						-	-				3.40							
3.60						-	-							-	-							-	-						-	-				3.60							
3.80						-	-							-	-							-	-						-	-				3.80							
4.00						-	-							-	-							-	-						-	-				4.00							
4.40						-	-							-	-							-	-						-	-				4.40							
4.80						-	-							-	-							-	-						-	-				4.80							
5.20						-	-							-	-							-	100						-	-				5.20							
5.40						-	-							-	-							-	-						-	-				5.40							
5.60						-	-							-	-							-	1						-	-				5.60							
5.80						-	-							-	-							-	-						-	-				5.80							
6.00						-	-							-	-							-	75						-	-				6.00							
6.20						-	-							-	-							-	-						-	-				6.20							
6.40						-	-							-	-							-	-						-	-				6.40							
6.60						-	-							-	-							-	-						-	-				6.60							
6.80					0.822	-	1							-	-							-	-						-	-				6.80							
7.00						-	-							-	-							-	-						-	-				7.00							
7.20						-	-							-	-							-	-						-	-				7.20							
7.40						-	-							-	-							-	-				0.370	-	-					7.40							
7.60						-	-							-	-							-	-						-	-				7.60							
7.80						-	-							-	-							-	-						-	-				7.80							
8.00					0.092	-	50							-	-							-	-						-	-				8.00							
8.20						-	-							-	-							-	-						-	-				8.20							
8.40						-	-							-	-							-	35			0.824	-	-	-	-				8.40							
8.60						-	-							-	-							-	-						-	-				8.60							
8.80						-	-							-	-							-	-						-	-				8.80							
9.00						-	-							-	-							-	-						-	-				9.00							
9.20						-	-							-	-							-	-						-	-				9.20							
Totals:						0	51							0	0	0	1,600							0	211							0	1	0	0						
Nominal Transactions Value:						0.00								0.00		0.00								0.00								0.00		0.00							
Number of Trades:						0								0		0								0.00								0		0							



PIRAEUS BANK (CR)

(Contract Size: 100 Securities, Exercise Style: American, Physical Delivery)

Call Options																	Put Options																									
September 2013								October 2013								Other Months		September 2013								October 2013								Other Months								
Exerise Price	Open price	Price max	Price min	Last price	Closing price	Volume	Open Interest	Open price	Price max	Price min	Last price	Closing price	Volume	Open Interest	Volume	Open Interest	Open price	Price max	Price min	Last price	Closing price	Volume	Open Interest	Open price	Price max	Price min	Last price	Closing price	Volume	Open Interest	Volume	Open Interest	Exerise Price									
0.500						-	-							-	-							-	-					-	-					0.500								
0.600						-	-							-	-							-	-					-	-					0.600								
0.700						-	-							-	-							-	-					-	-					0.700								
0.800						-	-							-	-							-	-					-	-					0.800								
0.900						-	-							-	-							-	-					-	-					0.900								
1.00						-	-							-	-							-	-					-	-					1.00								
1.05						-	-							-	-							-	-					-	-					1.05								
1.10					0.235	-	5							-	-							-	-					-	-					1.10								
1.15						-	-							-	-							-	-					-	-					1.15								
1.20						-	-							-	-							-	-					-	-					1.20								
1.25						-	-							-	-							-	-					-	-					1.25								
1.30						-	-							-	-							-	-					-	-					1.30								
1.35						-	-							-	-							-	-					-	-					1.35								
1.40						-	-							-	-							-	-					-	-					1.40								
1.50						-	-							-	-							-	-					-	-					1.50								
1.60						-	-							-	-							-	-					-	-					1.60								
1.70						-	-							-	-							-	-					-	-					1.70								
1.80						-	-							-	-							-	-					-	-					1.80								
1.90						-	-							-	-							-	-					-	-					1.90								
Totals:						0	5							0	0	0	0							0	0							0	0	0	0	0						
Nominal Transactions Value:						0.00								0.00		0.00								0.00								0.00		0.00								
Number of Trades:						0								0		0								0								0		0								

PPC (CR) (Contract Size: 100 Securities, Exercise Style: American, Physical Delivery)

Call Options																	Put Options																		
	September 2013							October 2013							Other Months		September 2013							October 2013							Other Months				
Exercise Price	Open price	Price max	Price min	Last price	Closing price	Volume	Open Interest	Open price	Price max	Price min	Last price	Closing price	Volume	Open Interest	Volume	Open Interest	Open price	Price max	Price min	Last price	Closing price	Volume	Open Interest	Open price	Price max	Price min	Last price	Closing price	Volume	Open Interest	Volume	Open Interest	Exercise Price		
3.20						-	-							-	-							-	-						-	-			3.20		
3.40						-	-							-	-							-	-						-	-			3.40		
3.60						-	-							-	-							-	-						-	-			3.60		
3.80						-	-							-	-							-	-						-	-			3.80		
4.00						-	-							-	-							-	-						-	-			4.00		
4.40					3.59	-	30							-	-							-	-						-	-			4.40		
4.80						-	-							-	-							-	-						-	-			4.80		
5.20						-	-							-	-							-	-						-	-			5.20		
5.60						-	-							-	-							-	-						-	-			5.60		
6.00						-	-							-	-							-	-						-	-			6.00		
6.40						-	-							-	-							-	-						-	-			6.40		
6.60						-	-							-	-							-	-						-	-			6.60		
6.80					1.20	-	10							-	-							-	-						-	-			6.80		
7.00						-	-							-	-							-	-						-	-			7.00		
7.20						-	-							-	-							-	-						-	-			7.20		
7.40						-	-							-	-							-	-						-	-			7.40		
7.60						-	-							-	-							-	-						-	-			7.60		
7.80						-	-							-	-							-	-						-	-			7.80		
8.00						-	-							-	-							-	-						-	-			8.00		
8.20						-	-							-	-							-	-						-	-			8.20		
8.40						-	-							-	-							-	-						-	-			8.40		
8.60						-	-							-	-							-	-						-	-			8.60		
8.80						-	-							-	-							-	-						-	-			8.80		
9.00						-	-							-	-							-	-						-	-			9.00		
9.20						-	-							-	-							-	-						-	-			9.20		
9.60						-	-							-	-							-	-						-	-			9.60		
10.00						-	-							-	-							-	-						-	-			10.00		
Totals:						0	40							0	0	0	0							0	400							0	0	0	0
Nominal Transactions Value:						0.00								0.00		0.00								0.00								0.00			
Number of Trades:						0								0		0								0								0			

Securities	Type[4]	Stock Repo [1]						Stock Reverse Repo [2]								Repurchase Agreements [3]							
		Trans. price	chg.	Trades	Volume	Transactions Value	Open Interest[5]	Price max	Price min	Last price	Last Ask	Trades	Volume	Transactions Value	Open Interest[5]	Price max	Price min	Last price	Last Ask	Trades	Volume	Transactions Value	Open Interest[5]
AEGEAN AIRLINES (CR)	SR RA	100.00	---	---	---	---	85	---	---	---	42@3%	---	---	---	---	---	---	---	---	---	---	---	---
ALPHA BANK (CR)	SR RA	100.00	---	---	---	---	54,615	---	---	---	32303@3.2%	---	---	---	83	---	---	---	---	---	---	---	1,562
ALPHA ETF FTSE Athex Large Cap	SR RA	100.00	---	---	---	---	---	---	---	---	---	---	---	---	---	---	---	---	---	---	---	---	1,664
ALUMIL (CR)	RA	---	---	---	---	---	---	---	---	---	---	---	---	---	---	---	---	---	---	---	---	---	---
ATHENS MEDICAL CENTER SA (CR)	SR RA	100.00	---	---	---	---	434	---	---	---	217@3%	---	---	---	---	---	---	---	---	---	---	---	---
AUTOHELLAS SA (CR)	SR RA	100.02	---	---	---	---	51	---	---	---	25@3%	---	---	---	---	---	---	---	---	---	---	---	---
CC HBC AG (CR)	SR RA	100.10	---	---	---	---	1,251	---	---	---	605@3%	---	---	---	20	---	---	---	---	---	---	---	118
CENTRIC HOLDINGS (CR)	SR RA	100.00	---	---	---	---	200	---	---	---	153@8%	---	---	---	---	---	---	---	---	---	---	---	---
CORINTH PIPEWORKS SA (CR)	SR RA	100.00	---	---	---	---	160	---	---	---	80@3%	---	---	---	---	---	---	---	---	---	---	---	---
CRETE PLASTICS SA (CR)	SR RA	100.00	---	---	---	---	---	---	---	---	---	---	---	---	---	---	---	---	---	---	---	---	---
ELLAKTOR (CR)	SR RA	100.01	---	---	---	---	2,403	---	---	---	1181@3%	---	---	---	20	---	---	---	---	---	---	---	---
ELTON SA (CR)	SR RA	100.00	---	---	---	---	50	---	---	---	35@3%	---	---	---	---	---	---	---	---	---	---	---	---
ELVAL SA. (CB)	SR RA	100.01	---	---	---	---	621	---	---	---	310@3%	---	---	---	---	---	---	---	---	---	---	---	---
EUROBANK ERGASIAS (CR)	SR RA	100.09	0.01	---	---	---	1,524	---	---	---	6@3.5%	---	---	---	987	---	---	---	---	---	---	---	28
EUROBANK PROPERTIES REIC (CR)	SR RA	100.04	---	---	---	---	1,639	---	---	---	759@3%	---	---	---	60	---	---	---	---	---	---	---	---
EUROPEAN RELIANCE INSUR. (CR)	SR RA	100.00	---	---	---	---	---	---	---	---	---	---	---	---	---	---	---	---	---	---	---	---	---
EYDAP S.A. (CR)	SR RA	100.02	---	---	---	---	345	---	---	---	164@3%	---	---	---	8	---	---	---	---	---	---	---	16
FOLLI FOLLIE (CR)	SR RA	100.06	0.01	---	---	---	842	---	---	---	401@3%	---	---	---	20	---	---	---	---	---	---	---	10
FOURLIS (CR)	SR RA	100.00	---	---	---	---	195	---	---	---	97@3%	---	---	---	---	---	---	---	---	---	---	---	---
FRIGOGLASS SA (CR)	SR RA	100.03	---	---	---	---	229	---	---	---	114@3%	---	---	---	---	---	---	---	---	---	---	---	---
GEK TERNA (CR)	SR RA	100.00	---	---	---	---	582	---	---	---	286@3%	---	---	---	5	---	---	---	---	---	---	---	---
GR. SARANTIS SA (CR)	SR RA	100.00	---	---	---	---	62	---	---	---	31@3%	---	---	---	---	---	---	---	---	---	---	---	---
HALKOR SA (CB)	SR RA	100.00	---	---	---	---	415	---	---	---	207@3%	---	---	---	---	---	---	---	---	---	---	---	---
HELLENIC CABLES SA (CR)	SR RA	100.00	---	---	---	---	84	---	---	---	42@3%	---	---	---	---	---	---	---	---	---	---	---	---
HELLENIC EXCHANGES (CR)	SR RA	100.05	0.01	---	---	---	5,993	---	---	---	2691@3%	---	---	---	305	---	---	---	---	---	---	---	---
HELLENIC PETROLEUM (CR)	SR RA	100.18	0.01	---	---	---	2,224	---	---	---	666@3%	---	---	---	446	---	---	---	---	---	---	---	46
HYGEIA SA (CR)	SR RA	100.00	---	---	---	---	700	---	---	---	350@4.5%	---	---	---	---	---	---	---	---	---	---	---	---
IASO SA (CR)	SR RA	100.00	---	---	---	---	86	---	---	---	43@3%	---	---	---	---	---	---	---	---	---	---	---	---
IKTINOS HELLAS SA (CR)	SR RA	100.00	---	---	---	---	10	---	---	---	---	---	---	---	---	---	---	---	---	---	---	---	---
INFORM P. LYKOS SA (CR)	SR RA	100.00	---	---	---	---	203	---	---	---	101@3%	---	---	---	---	---	---	---	---	---	---	---	---
INTRACOM CONSTR. (CR)	SR RA	100.00	---	---	---	---	37	---	---	---	18@3%	---	---	---	---	---	---	---	---	---	---	---	---
INTRACOM HOLDINGS (CR)	SR RA	100.00	---	---	---	---	665	---	---	---	442@4.1%	---	---	---	---	---	---	---	---	---	---	---	---

Stock Lending Notes

- [1] - Stock Repo: A Contract for selling stocks to HELEX with a Repurchase Right (According to ATHEX BoD Resolution No 17)
- [2] - Stock Reverse Repo: A Contract for buying stocks from HELEX with a Resell Right. (According to ATHEX BoD Resolution No 18)
- [3] - Standardized Repurchase Agreements: A Contract that constitutes a standardized agreement for the purchase or sale of shares, with repurchase or resell pact (According to ATHEX BoD Resolution No 20)
- [4] - Type of products is divided into SR: Stock Repo or Stock Reverse Repo, and RA: Repurchase Agreements.
- [5] - Open Interest in all Series (both tradeable or non-tradeable).

Securities	Type[4]	Stock Repo [1]						Stock Reverse Repo [2]								Repurchase Agreements [3]							
		Trans. price	chg.	Trades	Volume	Transactions Value	Open Interest[5]	Price max	Price min	Last price	Last Ask	Trades	Volume	Transactions Value	Open Interest[5]	Price max	Price min	Last price	Last Ask	Trades	Volume	Transactions Value	Open Interest[5]
INTRALOT (CR)	SR RA	100.02	---	---	---	---	4,116	---	---	---	1758@3%	---	---	---	240	---	---	---	---	---	---	---	---
J & P - AVAX SA (CR)	SR RA	100.02	---	---	---	---	235	---	---	---	117@3%	---	---	---	---	---	---	---	---	---	---	---	---
JUMBO SA (CR)	SR RA	100.03	---	---	---	---	2,338	---	---	---	1090@3%	---	---	---	79	---	---	---	---	---	---	---	20
KLEEMAN HELLAS SA (CR)	SR RA	100.00	---	---	---	---	982	---	---	---	491@3%	---	---	---	---	---	---	---	---	---	---	---	---
KLOUKINAS - LAPPAS SA (CR)	SR RA	100.00	---	---	---	---	---	---	---	---	---	---	---	---	---	---	---	---	---	---	---	---	---
KORRES (CR)	SR RA	100.00	---	---	---	---	---	---	---	---	---	---	---	---	---	---	---	---	---	---	---	---	---
KRI-KRI S.A. (CR)	SR RA	100.00	---	---	---	---	549	---	---	---	274@3%	---	---	---	---	---	---	---	---	---	---	---	---
LAMDA DEVELOPMENT SA (CR)	SR RA	100.00	---	---	---	---	890	---	---	---	445@3%	---	---	---	---	---	---	---	---	---	---	---	---
LOULIS MILLS SA (CR)	SR RA	100.00	---	---	---	---	---	---	---	---	---	---	---	---	---	---	---	---	---	---	---	---	---
MARFIN INVESTMENT GROUP (CR)	SR RA	100.00	---	---	---	---	1,783	---	---	---	---	---	---	---	---	---	---	---	---	---	---	---	---
METKA (CR)	SR RA	100.09	0.01	---	---	---	611	3.00%	3.00%	3.00%	253@3%	1	7	8,183.0	52	3.00%	3.00%	3.00%	---	1	7	8,183.0	16
MLS MULTIMEDIA SA (CR)	SR RA	100.00	---	---	---	---	99	---	---	---	49@3%	---	---	---	---	---	---	---	---	---	---	---	---
MOTOR OIL (CR)	SR RA	100.07	0.01	---	---	---	2,057	---	---	---	928@3%	---	---	---	100	---	---	---	---	---	---	---	17
MYTILINEOS HOLDINGS (CR)	SR RA	100.00	---	---	---	---	3,875	3.00%	3.00%	3.00%	1887@3%	1	50	24,400.0	50	---	---	---	---	---	---	---	---
NATIONAL BANK (CR)	SR RA	100.05	---	---	---	---	9,061	---	---	---	3105@3%	---	---	---	1,425	---	---	---	---	---	---	---	346
NBGAM ETF	SR RA	100.00	---	---	---	---	---	---	---	---	---	---	---	---	---	---	---	---	---	---	---	---	100
NBGAM ETF GREECE & TURKEY 30	SR RA	100.00	---	---	---	---	---	---	---	---	---	---	---	---	---	---	---	---	---	---	---	---	35
NIREFS SA (CR)	SR RA	100.00	---	---	---	---	326	---	---	---	220@4.4%	---	---	---	---	---	---	---	---	---	---	---	---
OPAP (CR)	SR RA	100.04	---	---	---	---	5,614	---	---	---	2442@3%	---	---	---	365	---	---	---	---	---	---	---	367
OTE (CR)	SR RA	100.14	0.01	---	---	---	5,262	3.00%	3.00%	3.00%	1785@3%	1	120	91,200.0	846	---	---	---	---	---	---	---	103
P.P.A. S.A. (CR)	SR RA	100.00	---	---	---	---	115	---	---	---	57@3%	---	---	---	---	---	---	---	---	---	---	---	---
PETROPOULOS PETROS (CR)	RA	---	---	---	---	---	---	---	---	---	---	---	---	---	---	---	---	---	---	---	---	---	---
PIRAEUS BANK (CR)	SR RA	100.00	---	---	---	---	9,041	3.00%	3.00%	3.00%	2118@3%	4	1,200	159,600.0	2,402	3.00%	3.00%	3.00%	---	4	1,200	159,600.0	2,200
PPC (CR)	SR RA	100.13	0.01	---	---	---	1,932	3.00%	3.00%	3.00%	469@3%	1	150	119,850.0	497	---	---	---	---	---	---	---	35
QUEST HOLDINGS (CR)	SR RA	100.00	---	---	---	---	39	---	---	---	19@3%	---	---	---	---	---	---	---	---	---	---	---	---
REDS S.A. (CR)	SR RA	100.00	---	---	---	---	572	---	---	---	363@3.6%	---	---	---	---	---	---	---	---	---	---	---	---
SELECTED TEXT. IND. ASSOC (CR)	SR RA	100.00	---	---	---	---	100	---	---	---	74@6.5%	---	---	---	---	---	---	---	---	---	---	---	---
SIDENOR (CR)	SR RA	100.00	---	---	---	---	442	---	---	---	221@3%	---	---	---	---	---	---	---	---	---	---	---	---
TECHNICAL OLYMPIC SA (CR)	SR RA	100.00	---	---	---	---	14	---	---	---	50@3%	---	---	---	---	---	---	---	---	---	---	---	---
TERNA ENERGY (CR)	SR RA	100.08	0.01	---	---	---	290	---	---	---	111@3%	---	---	---	34	---	---	---	---	---	---	---	5
THESSALONIKA WATER & SEWERAGE	SR RA	100.00	---	---	---	---	1,270	---	---	---	635@3%	---	---	---	---	---	---	---	---	---	---	---	---
THRACE PLASTICS SA (CR)	SR RA	100.00	---	---	---	---	1,010	---	---	---	505@3%	---	---	---	---	---	---	---	---	---	---	---	---

## Stock Lending Notes

[1] - Stock Repo: A Contract for selling stocks to HELEX with a Repurchase Right (According to ATHEX BoD Resolution No 17)

[2] - Stock Reverse Repo: A Contract for buying stocks from HELEX with a Resell Right. (According to ATHEX BoD Resolution No 18)

[3] - Standardized Repurchase Agreements: A Contract that constitutes a standardized agreement for the purchase or sale of shares, with repurchase or resell pact (According to ATHEX BoD Resolution No 20)

[4] - Type of products is divided into SR: Stock Repo or Stock Reverse Repo, and RA: Repurchase Agreements.

[5] - Open Interest in all Series (both tradeable or non-tradeable).

Securities	Type[4]	Stock Repo [1]						Stock Reverse Repo [2]								Repurchase Agreements [3]							
		Trans. price	chg.	Trades	Volume	Transactions Value	Open Interest[5]	Price max	Price min	Last price	Last Ask	Trades	Volume	Transactions Value	Open Interest[5]	Price max	Price min	Last price	Last Ask	Trades	Volume	Transactions Value	Open Interest[5]
TITAN CEMENT (CR)	SR RA	100.02	---	---	---	---	9,035	---	---	---	4457@3%	---	---	---	60	---	---	---	---	---	---	---	12
TPA SA (CR)	SR RA	100.00	---	---	---	---	6	---	---	---	---	---	---	---	---	---	---	---	---	---	---	---	
TRASTOR REAL EST. INV. CO.(CR)	SR RA	100.00	---	---	---	---	284	---	---	---	142@3%	---	---	---	---	---	---	---	---	---	---	---	
VIOHALCO (CB)	SR RA	100.01	---	---	---	---	3,990	---	---	---	1973@3%	---	---	---	22	---	---	---	---	---	---	30	

Stock Lending Notes

- [1] - Stock Repo: A Contract for selling stocks to HELEX with a Repurchase Right (According to ATHEX BoD Resolution No 17)
- [2] - Stock Reverse Repo: A Contract for buying stocks from HELEX with a Resell Right. (According to ATHEX BoD Resolution No 18)
- [3] - Standardized Repurchase Agreements: A Contract that constitutes a standardized agreement for the purchase or sale of shares, with repurchase or resell pact (According to ATHEX BoD Resolution No 20)
- [4] - Type of products is divided into SR: Stock Repo or Stock Reverse Repo, and RA: Repurchase Agreements.
- [5] - Open Interest in all Series (both tradeable or non-tradeable).

## Sectors codification for listed companies

533	-	Exploration & Production	537	-	Integrated Oil & Gas
1353	-	Commodity Chemicals	1357	-	Specialty Chemicals
1753	-	Aluminum	1755	-	Nonferrous Metals
1757	-	Steel	1775	-	General Mining
2353	-	Building Materials & Fixtures	2357	-	Heavy Construction
2723	-	Containers & Packaging	2727	-	Diversified Industrials
2733	-	Electrical Components & Equipment	2753	-	Commercial Vehicles & Trucks
2757	-	Industrial Machinery	2773	-	Marine Transportation
2777	-	Transportation Services	2791	-	Business Support Services
2797	-	Industrial Suppliers	3535	-	Distillers & Vintners
3537	-	Soft Drinks	3573	-	Farming & Fishing
3577	-	Food Products	3722	-	Durable Household Products
3726	-	Furnishings	3728	-	Home Construction
3747	-	Toys	3763	-	Clothing & Accessories
3765	-	Footwear	3767	-	Personal Products
3785	-	Tobacco	4533	-	Health Care Providers
4535	-	Medical Equipment	4577	-	Pharmaceuticals
5337	-	Food Retailers & Wholesalers	5371	-	Apparel Retailers
5373	-	Broadline Retailers	5375	-	Home Improvement Retailers
5379	-	Specialty Retailers	5553	-	Broadcasting & Entertainment
5555	-	Media Agencies	5557	-	Publishing
5751	-	Airlines	5752	-	Gambling
5753	-	Hotels	5755	-	Recreational Services
5757	-	Restaurants & Bars	5759	-	Travel & Tourism
6535	-	Fixed Line Telecommunications	6575	-	Mobile Telecommunications
7535	-	Conventional Electricity	7537	-	Alternative Electricity
7577	-	Water	8355	-	Banks
8534	-	Insurance Brokers	8536	-	Property & Casualty Insurance
8633	-	Real Estate Holding & Development	8637	-	Real Estate Services
8671	-	Industrial & Office REITs	8675	-	Specialty REITs
8775	-	Specialty Finance	8777	-	Investment Services
8985	-	Equity Investment Instruments	9533	-	Computer Services
9535	-	Internet	9537	-	Software
9572	-	Computer Hardware	9574	-	Electronic Office Equipment
9578	-	Telecommunications Equipment	11000	-	ETF

