

Daily Official List

Athens Exchange sa

Monday, 16 September, 2013
Year: 134 Trading Day No: 174



ΟΜΙΛΟΣ ΕΛΛΗΝΙΚΑ ΧΡΗΜΑΤΙΣΤΗΡΙΑ
HELLENIC EXCHANGES GROUP

Disclaimer:

Athens Exchange (ATHEX) endeavours to ensure that the data and other material ("Information") presented on the Daily Official List are accurate and complete, but it is not liable for any errors or omissions of data or /and for the accuracy, credibility, updating and completeness of the aforesaid information nor it has any liability arising directly or indirectly from the use of the above Information.

ATHEX is not liable for the accuracy of the data included in listed companies' announcements. Only the sender of such an announcement is fully and solely liable for any infringement of third party's rights from the content of such announcement. All contents of the Daily Official List are provided only for information purposes and do not constitute investment advice or solicitation to invest in securities or other products listed for trading on ATHEX.

You acknowledge and agree that ATHEX is the owner of any property rights related to any Information appearing on the Daily Official List including intellectual property rights copyright, trademarks, etc.

The above data are a property of the Athens Exchange and are copyright protected. Users are forbidden to reproduce, modify, copy, sale, transmit or redistribute, by all reproduction means and methods, part or the whole of the above data, without reference to their source.

The commercial exploitation of these data is, also, forbidden by third parties. Athens Exchange does not carry any responsibility, direct or indirect, derived from usage or accidental alteration of the above data when used by third parties.

**Athens Exchange sa**

110 Athinon Ave., 10442 Athens, Tel: (210) 33.66.800, Fax: (210) 32.13.938

www.athex.gr

**Thessalonica Stock Exchange Center (T.S.E.C)**

16-18 Katouni Str., Thessalonica 546 25 Tel: (2310) 567.667, Fax: (2310) 530.545

Athex Members Guarantee Fund

14-16 Fidiou Str., Athens 106 78, Tel: (210) 33.04.682, Fax: (210) 33.04.155

Hellenic Republic Capital Market Commission

1 Kolokotroni Str. & 1 Stadiou Str., Athens 10562 Tel: (210) 33.77.100 Fax: (210) 33.77.173

Table of Contents

Section 1: Statistical Figures of Securities and Derivatives Markets

Summary of Markets

Athex Indices

Analytic Figures for Athex Market's Boards and Categories

Trading Details by Athex Sectors and ETFs Category

Top 10 best & worst performing Shares

Derivatives Summary

Section 2: Analytic Figures of Shares Transactions

Analytic Figures of Shares Transactions

Shares' Notes

Section 3: Figures of Securities Transactions

Securities Blocks Details

Shares Rights Details

Shares Short Selling

Stock Borrowing

Shares Forced Sales

Forced Sales Registered Shares

Exchange Traded Funds (ETFs) Characteristics

Section 5: Bonds traded in Fixed Income Assets Market

Corporate Bonds

Government Bonds

Treasury Bills & Zero Coupon Government Bonds

Government Bonds Traded with the Open Outcry Method

State Banks Bonds

Section 6: Additional Infos

Athex & ATHEXClear Members List

List of Stocks under Market Making operations

Section 7: Derivatives Market Analytic Figures

Index Futures

Stock Futures

Index Options

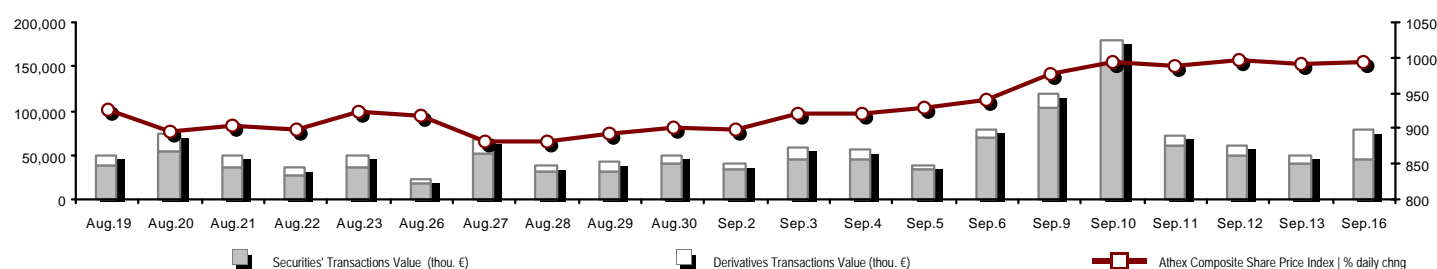
Stock Options

Stock Lending Analytic Figures (Repo Contracts)

Appendix A: Sectors codification for listed companies

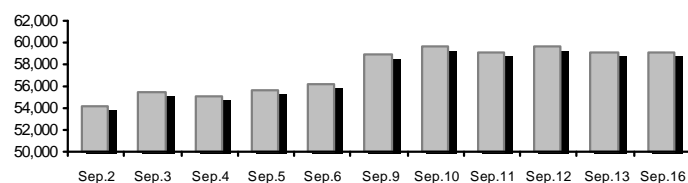
Summary of Markets

Athex Composite Share Price Index vs Shares and Derivatives Transactions Value

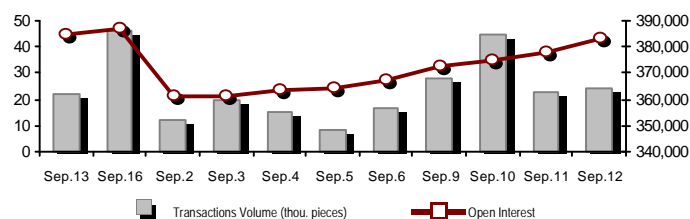


Total Transactions Value (Securities/Derivatives) (thou. €):		79,732.33	
Athex Capitalisation (mill. €) **: 59,079.78		Derivatives Total Open Interest 386,869	
Daily change: mill. € % -40.78 -0.07%		in Index Futures % daily chng 56,863 3.09%	
Yearly Avg Capitalisation: mill. € % chng prev year Avg 45,747.26 67.15%		in Stock Futures % daily chng 162,887 0.66%	
Athex Composite Share Price Index % daily chng 993.23 0.18%		in Index Options % daily chng 8,450 4.62%	
Athex Composite Share Price Index Capitalisation (mill. €) 52,106.76		in Stock Options % daily chng 5,672 3.09%	
Daily change (mill. €) -6.09		in Stock Repos/Reverse Repos/RA % daily chng 152,997 -0.75%	
Securities' Transactions Value (thou. €) 44,524.78		Derivatives Transactions Value (thou. €) 35,207.55	
Daily change: thou. € % 4,056.19 10.02%		Daily change: thou. € % 25,492.80 262.41%	
YtD Avg Trans. Value: thou. € % chng prev year Avg 65,779.72 26.81%		YtD Avg Trans. Value: thou. € % chng prev year Avg 22,203.68 16.33%	
Short Selling Trans. Value: mill. € % in total Value			
Short Covering Trans. Value: mill. € % in total Value			
Transactions Value of Blocks (thou. €) 4,694.49			
Bonds Transactions Value (thou. €) 0.00			
Securities' Transactions Volume (thou. Pieces) 22,329.33		Derivatives Contracts Volume: 46,392	
Daily change: thou. pieces % -4,899.31 -17.99%		Daily change: pieces % 24,669 113.56%	
YtD Avg Volume: thou. pieces % chng prev year Avg 49,927.06 0.97%		YtD Avg Derivatives Contracts % chng prev year Avg 42,289 -34.29%	
Short Selling Volume: thou pieces % in total Volume			
Short Covering Volume: thou. pieces % in total Volume			
Transactions Volume of Blocks (thou. Pieces) 326.46			
Bonds Transactions Volume (thou. pieces) 0.00			
Securities' Trades Number 20,190		Derivatives Trades Number: 2,756	
Daily change: number % 1,421 7.57%		Daily change: number % 1,098 66.22%	
YtD Avg Derivatives Trades number % chng prev year Avg 29,147 17.49%		YtD Avg Derivatives Trades number % chng prev year Avg 2,687 -7.82%	
Number of Blocks 3			
Number of Bonds Transactions 0			

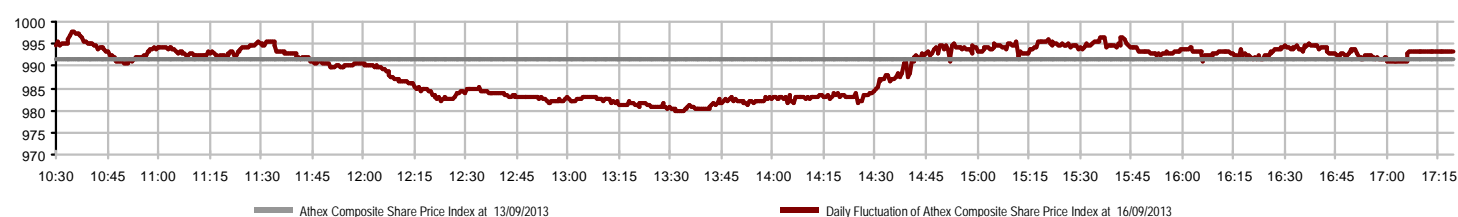
Athex Capitalisation (mill. €) **



Derivatives Transactions Volume and Open Interest



Daily Fluctuation of Athex Composite Share Price Index



Athex Indices

Index name	16/09/2013	13/09/2013	pts.	%	Min	Max	Year min	Year max	Year change
Athex Composite Share Price Index	993.23 #	991.46	1.77	0.18%	979.74	997.72	788.81	1,159.97	9.40% #
FTSE/Athex Large Cap	340.90 #	340.68	0.22	0.06%	337.52	343.19	253.17	410.78	10.08% #
FTSE/ATHEX Custom Capped	1,082.95 €	1,087.88	-4.93	-0.45%			863.84	1,275.55	6.23% #
FTSE/ATHEX Custom Capped - USD	1,029.49 €	1,038.00	-8.51	-0.82%			808.44	1,172.76	6.84% #
FTSE/Athex Mid Cap Index	1,039.47 #	1,032.80	6.67	0.65%	1,023.39	1,047.09	871.32	1,360.26	-8.27% €
FTSE/ATHEX-CSE Banking Index	117.07 €	117.40	-0.33	-0.28%	115.29	119.15	64.42	278.69	-30.67% €
FTSE/ATHEX Global Traders Index Plus	1,378.13 €	1,390.62	-12.49	-0.90%	1,355.05	1,398.39	1,082.32	1,484.90	10.48% #
FTSE/ATHEX Global Traders Index	1,462.08 #	1,462.06	0.02	0.00%	1,439.85	1,473.64	1,053.81	1,553.64	17.70% #
FTSE/ATHEX Mid & Small Cap Factor-Weighted Ind	1,236.02 €	1,236.03	-0.01	0.00%	1,219.55	1,248.71	1,053.59	1,348.92	-0.24% €
Greece & Turkey 30 Price Index	703.98 #	681.94	22.04	3.23%	681.94	705.92	595.35	927.16	-9.49% €
ATHEX Mid & SmallCap Price Index	2,793.99 €	2,821.35	-27.36	-0.97%	2,793.21	2,842.40	2,731.31	3,725.74	-10.87% €
FTSE/Athex Market Index	818.86 #	818.07	0.79	0.10%	810.64	823.75	600.87	972.17	11.04% #
FTSE/Med 100	4,275.53 #	4,269.51	6.02	0.14%			4,008.95	4,570.16	3.19% #
Athex Composite Index Total Return Index	1,438.17 #	1,435.61	2.56	0.18%	1,418.65	1,444.67	1,139.79	1,655.57	11.05% #
FTSE/Athex Large Cap Total Return	467.13 #	466.83	0.30	0.06%			366.91	565.68	8.40% #
FTSE/ATHEX Large Cap Net Total Return	1,366.80 #	1,365.93	0.87	0.06%	1,353.27	1,375.98	1,001.98	1,626.24	11.52% #
FTSE/ATHEX Custom Capped Total Return	1,131.01 €	1,136.17	-5.15	-0.45%			895.99	1,311.70	7.94% #
FTSE/ATHEX Custom Capped - USD Total Return	1,075.18 €	1,084.07	-8.89	-0.82%			836.50	1,205.99	8.56% #
FTSE/Athex Mid Cap Total Return	1,286.55 #	1,278.29	8.26	0.65%			1,152.62	1,720.22	-12.01% €
FTSE/ATHEX-CSE Banking Total Return Index	111.00 €	111.31	-0.31	-0.28%			82.32	289.59	-39.81% €
Greece & Turkey 30 Total Return Index	815.71 €	826.68	-10.97	-1.33%			729.18	1,098.14	-10.97% €
Hellenic Mid & Small Cap Index	979.91 #	979.76	0.15	0.02%	959.88	982.47	737.97	1,071.68	11.77% #
FTSE/Athex Banks	154.68 €	155.11	-0.43	-0.28%	152.33	157.43	85.08	368.22	-31.64% €
FTSE/Athex Insurance	1,211.72 #	1,180.11	31.61	2.68%	1,180.11	1,222.25	1,095.81	1,548.89	-20.14% €
FTSE/Athex Financial Services	1,440.21 €	1,445.85	-5.64	-0.39%	1,414.63	1,446.40	817.47	1,771.89	9.19% #
FTSE/Athex Industrial Goods & Services	3,443.39 €	3,553.58	-110.19	-3.10%	3,379.54	3,560.45	2,715.10	4,197.17	5.93% #
FTSE/Athex Retail	2,596.34 #	2,547.84	48.50	1.90%	2,497.41	2,602.21	1,629.12	2,692.44	41.91% #
FTSE/ATHEX Real Estate	1,906.85 #	1,903.95	2.90	0.15%	1,870.84	1,906.85	1,491.01	2,108.44	27.89% #
FTSE/Athex Personal & Household Goods	4,534.56 #	4,433.65	100.91	2.28%	4,404.62	4,534.56	2,586.10	4,550.67	45.23% #
FTSE/Athex Food & Beverage	8,683.96 €	8,693.82	-9.86	-0.11%	8,605.48	8,871.83	6,301.12	8,871.83	30.43% #
FTSE/Athex Basic Resources	2,385.05 €	2,401.40	-16.35	-0.68%	2,312.08	2,421.09	1,674.83	2,901.09	2.65% #
FTSE/Athex Construction & Materials	2,067.99 €	2,080.72	-12.73	-0.61%	2,030.45	2,115.94	1,439.70	2,143.01	12.63% #
FTSE/Athex Oil & Gas	2,754.92 #	2,749.90	5.02	0.18%	2,718.94	2,754.92	2,358.47	3,358.80	-2.07% €
FTSE/Athex Chemicals	6,107.38 €	6,194.02	-86.64	-1.40%	6,078.50	6,278.12	5,194.08	7,961.02	1.46% #
FTSE/Athex Media	1,647.34 €	1,824.64	-177.30	-9.72%	1,647.34	1,824.64	716.56	3,560.63	127.55% #
FTSE/Athex Travel & Leisure	1,393.82 #	1,393.43	0.39	0.03%	1,368.94	1,411.34	1,028.61	1,496.38	38.08% #
FTSE/Athex Technology	705.61 #	683.51	22.10	3.23%	683.51	708.20	555.63	886.96	-4.93% €
FTSE/Athex Telecommunications	2,113.97 #	2,080.94	33.03	1.59%	2,086.45	2,124.98	1,175.35	2,149.76	50.59% #
FTSE/Athex Utilities	2,962.28 #	2,935.56	26.72	0.91%	2,887.12	2,966.62	1,752.55	3,104.53	29.48% #
FTSE/Athex Health Care	248.51 €	250.29	-1.78	-0.71%	243.16	254.56	172.87	346.05	-11.44% €
Athex All Share Index	209.87 €	209.99	-0.12	-0.06%			176.43	294.40	-11.33% €

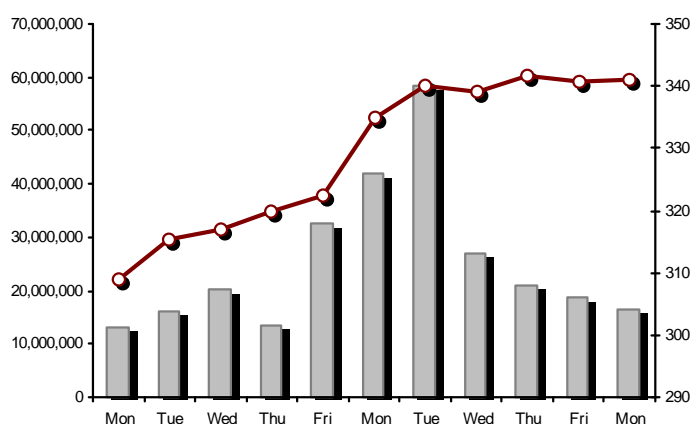
Note 1: Greece & Turkey 30 Pr data is the indicative at 17:20, whereas FTSE/ATHEX Custom Capped, FTSE/ATHEX Custom Capped - USD, FTSE/ATHEX Custom Capped TR, FTSE/ATHEX Custom Capped - USD TR, FTSE/Med 100 & Greece & Turkey 30 Rt closing prices refer to the previous trading day of 13/09/2013.

Note 2: The Hellenic Mid & Small Cap Index is a Customized index calculated by the Athens Exchange.

Athex Indices

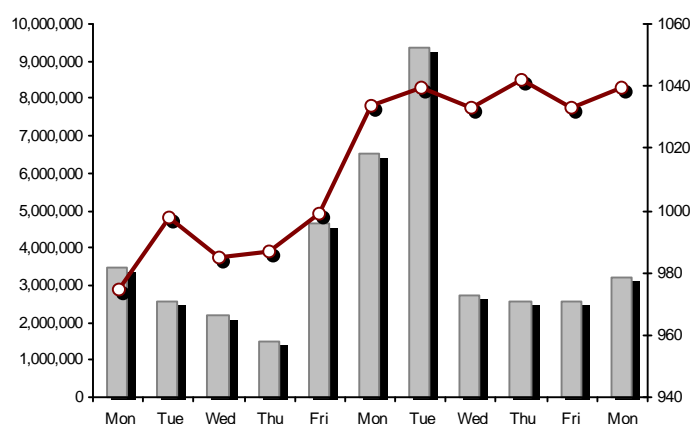
FTSE/Large Cap

16/09/2013: 0.06%



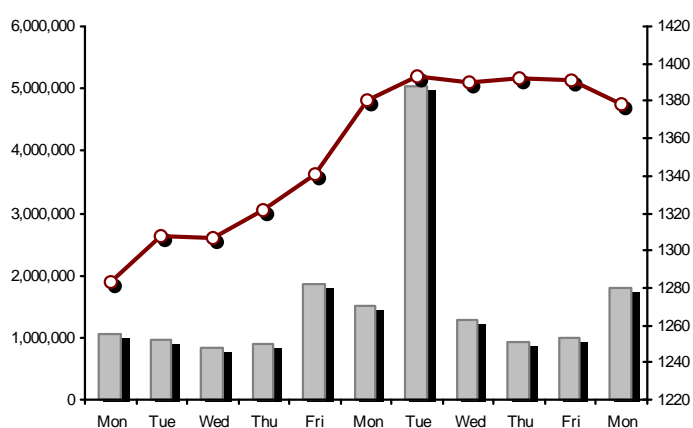
FTSE/Athex Mid Cap Index

16/09/2013: 0.65%



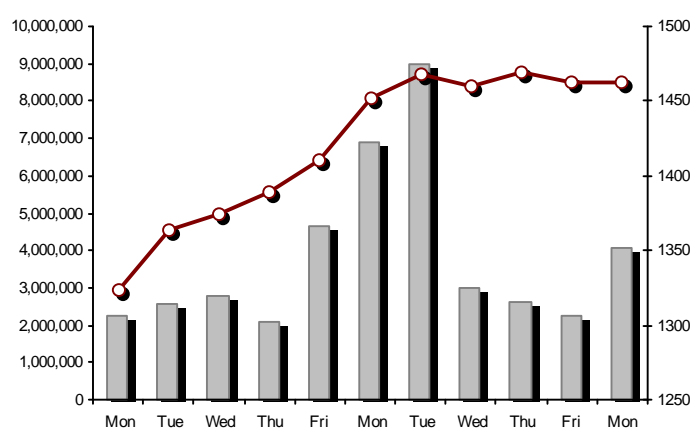
FTSE/ATHEX Global Traders Index Plus

16/09/2013: -0.90%



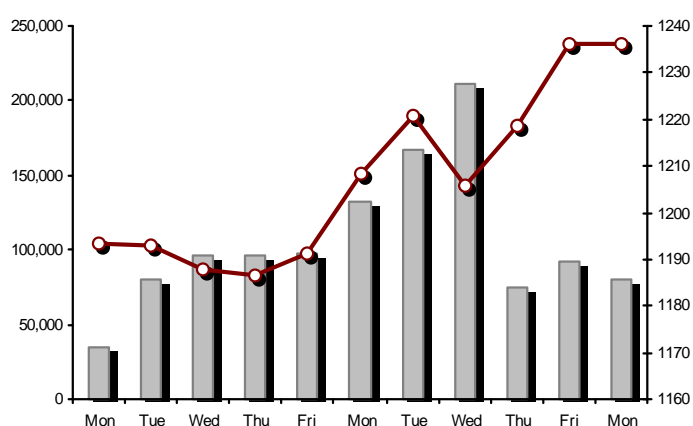
FTSE/ATHEX Global Traders Index

16/09/2013: 0.00%



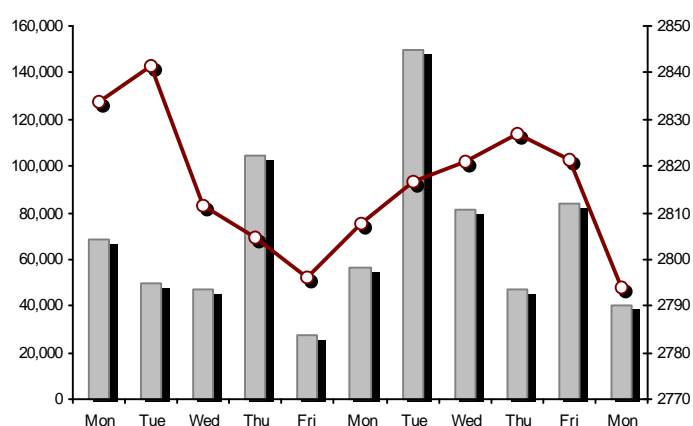
FTSE/ATHEX Mid & Small Cap Factor-Weighted Index

16/09/2013: 0.00%



ATHEX Mid & SmallCap Price Index

16/09/2013: -0.97%



Indices volume of transactions

Indices closing prices

Analytic Figures for Athex Market's Boards and Categories

	Total Traded Securities	Main Market	Low Dispersion	Other Categories (*)	Exchange Traded Funds (ETFs)	Warrants
Totals	152	114	8	25	2	3
Gain / Lose / Same:	55 / 67 / 30	46 / 50 / 18	2 / 3 / 3	5 / 12 / 8	1 / 0 / 1	1 / 2 / 0
Athex Capitalisation (mill. €) **	59,079.78	56,800.06	1,951.39	328.33		
Daily Average Transactions Value (thou. €)	65,779.72	23,692.58	493.61	78.76	38.63	5,887.00
Transactions Value	44,524.78	42,548.80	17.77	9.71	1.76	1,946.74
Main Board:	39,830.29	37,854.32	17.77	9.71	1.76	1,946.74
Blocks Board:	4,694.49	4,694.49	0.00	0.00	0.00	0.00
Forced Sales Board:	0.00	0.00	0.00	0.00	0.00	0.00
Special Terms Board:	0.00	0.00	0.00	0.00	0.00	0.00
Daily Average Transactions Volume	49,927,058	14,505,325	53,711	425,737	9,656	8,518,294
Transactions Volume	22,329,325	20,183,346	4,085	116,296	518	2,025,080
Main Board:	22,002,861	19,856,882	4,085	116,296	518	2,025,080
Blocks Board:	326,464	326,464	0	0	0	0
Forced Sales Board:	0	0	0	0	0	0
Special Terms Board:	0	0	0	0	0	0
Daily Average Number of Trades	29,147	10,560	116	213	8	2,284
Number of Trades	20,190	18,926	38	114	3	1,109
Main Board:	20,187	18,923	38	114	3	1,109
Blocks Board:	3	3	0	0	0	0
Forced Sales Board:	0	0	0	0	0	0
Special Terms Board:	0	0	0	0	0	0

(*) Summarised Transactions figures for Under Deletion and Under Supervision Categories.

(**) The Market Capitalization of the Companies that belong in the Under Supervision Category is not included.

Trading Details by Athex Sectors and ETFs Category

Code	Sectors	Gain / Lose / Same	Number of Trades	Transactions Volume	Transactions Value	% of Total Trans. Value
8300	- Banks	3 / 6 / 1	6,640	14,049,335	14,059,154.85	31.58%
1700	- Basic Resources	1 / 9 / 1	1,800	791,257	1,834,877.42	4.12%
1300	- Chemicals	0 / 2 / 3	157	60,753	107,914.23	0.24%
2300	- Construction & Materials	7 / 7 / 6	988	648,706	1,408,552.58	3.16%
11000	- ETF	1 / 0 / 1	3	518	1,761.57	0.00%
8700	- Financial Services	2 / 3 / 0	1,395	2,327,415	1,589,277.71	3.57%
3500	- Food & Beverage	6 / 3 / 2	565	185,411	1,582,248.40	3.55%
4500	- Health Care	2 / 2 / 1	124	119,968	65,782.53	0.15%
2700	- Industrial Goods & Services	8 / 7 / 4	1,817	495,541	1,483,221.66	3.33%
8500	- Insurance	1 / 0 / 1	15	8,735	9,690.10	0.02%
5500	- Media	2 / 3 / 0	14	2,081	636.08	0.00%
500	- Oil & Gas	1 / 2 / 0	698	240,308	1,808,955.81	4.06%
3700	- Personal & Household Goods	5 / 5 / 3	724	514,804	1,811,221.28	4.07%
8600	- Real Estate	3 / 3 / 1	165	32,680	100,115.84	0.22%
5300	- Retail	2 / 2 / 0	266	254,399	4,572,811.03	10.27%
9500	- Technology	6 / 4 / 3	543	552,835	292,362.25	0.66%
6500	- Telecommunications	1 / 0 / 0	938	485,597	3,725,776.23	8.37%
5700	- Travel & Leisure	1 / 8 / 3	1,498	772,433	4,565,471.85	10.25%
7500	- Utilities	3 / 1 / 0	1,840	786,549	5,504,947.67	12.36%

Top 10 best & worst performing Shares

Main Market					
With positive Price change	Closing price	change	With negative Price change	Closing price	change
PAPERPACK (CR)	0.919	20.45% #	VIOHALCO (CB)	4.12	-7.62% Ⓔ
UNIBIOS (CR)	0.275	11.79% #	MARFIN INVESTMENT GROUP (CR)	0.354	-4.06% Ⓔ
INTRACOM HOLDINGS (CR)	0.479	7.40% #	HELLENIC CABLES SA (CR)	1.52	-3.80% Ⓔ
EYDAP S.A. (CR)	7.50	4.75% #	HALKOR SA (CB)	0.860	-2.49% Ⓔ
GR. SARANTIS SA (CR)	5.38	2.48% #	THRACE PLASTICS SA (CR)	1.20	-2.44% Ⓔ
PIRAEUS BANK (CR)	1.30	2.36% #	TERNA ENERGY (CR)	3.03	-2.26% Ⓔ
JUMBO SA (CR)	8.90	2.30% #	MLS MULTIMEDIA SA (CR)	3.06	-2.24% Ⓔ
FOURLIS (CR)	2.80	2.19% #	MOTOR OIL (CR)	7.52	-1.96% Ⓔ
FOLLI FOLLIE (CR)	18.35	1.94% #	ATTICA BANK S.A. (CR)	0.260	-1.89% Ⓔ
HELLENIC PETROLEUM (CR)	7.64	1.87% #	SIDENOR (CR)	1.58	-1.86% Ⓔ
With the highest Transactions Value	Value (thou. €)	change	With the highest Transactions Volume	Volume	change
PIRAEUS BANK (CR)	5,087.49	2.36% #	ALPHA BANK (CR)	5,639,364	-1.75% Ⓔ
FOLLI FOLLIE (CR)	4,570.46	1.94% #	PIRAEUS BANK (CR)	3,973,603	2.36% #
OPAP (CR)	4,093.68	-0.12% Ⓔ	MARFIN INVESTMENT GROUP (CR)	2,193,046	-4.06% Ⓔ
OTE (CR)	3,725.78	1.59% #	NATIONAL BANK (CR)	975,102	-1.58% Ⓔ
EYDAP S.A. (CR)	3,644.44	4.75% #	ATTICA BANK S.A. (CR)	819,419	-1.89% Ⓔ
ALPHA BANK (CR)	3,189.60	-1.75% Ⓔ	EUROBANK ERGASIAS (CR)	604,003	0.16% #
NATIONAL BANK (CR)	3,059.63	-1.58% Ⓔ	INTRACOM HOLDINGS (CR)	517,807	7.40% #
CC HBC AG (CR)	1,540.77	-0.13% Ⓔ	OPAP (CR)	513,958	-0.12% Ⓔ
MOTOR OIL (CR)	1,424.90	-1.96% Ⓔ	EYDAP S.A. (CR)	495,062	4.75% #
PPC (CR)	1,392.86	0.25% #	OTE (CR)	485,597	1.59% #

Note: Stocks that are not included in the "Low Dispersion" and "Under Supervision" categories, and the transactions value is more than 10,000 €.

Derivatives Summary

	Number of Trades	Volume	Open Interest	Transactions Value
Index Futures	736	14,441	56,863	24,738,072.50
FTSE/Athex Large Cap	736	14,441	56,863	24,738,072.50
Stock Futures	1,975	30,924	162,887	9,358,783.83
ALPHA BANK (CR)	195	5,037	21,551	286,141.70
CC HBC AG (CR)	33	92	937	215,457.00
CORINTH PIPEWORKS SA (CR)	15	71	721	14,221.00
ELLAKTOR (CR)	31	318	4,623	70,314.00
EUROBANK ERGASIAS (CR)	11	149	15,510	1,087.35
EUROBANK PROPERTIES REIC (CR)	9	34	255	23,569.00
EYDAP S.A. (CR)	150	1,310	1,186	953,838.00
FOLLI FOLLIE (CR)	2	2	266	3,632.00
FRIGOGLASS SA (CR)	12	90	642	45,809.00
GEK TERNA (CR)	85	4,491	32,644	976,578.00
HELLENIC EXCHANGES (CR)	46	340	4,305	207,964.00
HELLENIC PETROLEUM (CR)	25	107	2,342	80,926.00
INTRALOT (CR)	33	703	3,756	113,258.00
JUMBO SA (CR)	14	55	193	48,196.00
MARFIN INVESTMENT GROUP (CR)	102	5,239	19,088	187,812.70
METKA (CR)	20	81	519	93,635.00
MOTOR OIL (CR)	16	50	1,029	37,785.00
MYTILINEOS HOLDINGS (CR)	159	1,367	7,557	652,944.00
NATIONAL BANK (CR)	193	2,953	6,713	933,577.00
OPAP (CR)	90	1,052	4,687	837,108.00
OTE (CR)	192	2,100	8,085	1,611,761.00
P.P.A. S.A. (CR)	20	48	630	82,429.00
PIRAEUS BANK (CR)	130	2,853	14,898	365,125.00
PPC (CR)	200	1,549	5,501	1,215,768.00
SIDENOR (CR)	59	440	1,602	69,317.00
TERNA ENERGY (CR)	10	30	2,560	9,289.08
TITAN CEMENT (CR)	29	60	227	96,505.00
VIOHALCO (CB)	94	303	860	124,737.00
Index Options	38	525	8,450	880,625.00
FTSE/Athex Large Cap	38	525	8,450	880,625.00
Stock Options	0	0	5,672	0.00
ALPHA BANK (CR)	0	0	0	0.00
NATIONAL BANK (CR)	0	0	379	0.00
OPAP (CR)	0	0	2,985	0.00
OTE (CR)	0	0	1,863	0.00
PIRAEUS BANK (CR)	0	0	5	0.00
PPC (CR)	0	0	440	0.00
Stock Repos - Stock Reverse Repos - Repurchase Agreements	7	502	152,997	230,070.00
Stock Reverse Repos	6	429	7,171	171,889.00
Stock Repos	0	0	140,023	0.00
Repurchase Agreement	1	73	5,803	58,181.00
Total Derivatives Traded	2,756	46,392	386,869	35,207,551.33

Number of Outstanding Securities	Nominal Value	Dividends [1]			Date of Last Coupon		Note	Shares	Closing price	% change	Previous closing price/date	Open price	Price min	Price max	Last price	Avg price	Last Bid [7]	Last Ask [7]	P/E after	Year	Volume	Trades	Transactions Value	Company Mkt Value (thou. €)	Year low	Year high	Sector[4]	
		2010	2011	2012	Dividend [2]	Right																						
Warrants																												
1,233,503,482		---	---	---	11/06/2013	---	ALPHA BANK (W)		1.05	1.94	# 1.03	13/09/2013	1.03	0.991	1.06	1.05	1.02	500@1.04	25532@1.05	---	2012	1,369,516	542	1,391,623.68	6,138,673.18	0.241	1.17	8355
245,779,626		---	---	---	27/06/2013	---	NATIONAL BANK (W)		0.928	-0.11	€ 0.929	13/09/2013	0.920	0.901	0.949	0.928	0.927	558@0.928	5020@0.929	---	2012	391,409	327	363,021.54	7,454,004.44	0.420	2.00	8355
849,195,130		---	---	---	03/07/2013	---	PIRAEUS BANK (W)		0.730	-0.95	€ 0.737	13/09/2013	0.710	0.690	0.742	0.730	0.727	560@0.729	5026@0.730	---	2012	264,155	240	192,096.13	6,594,338.34	0.290	0.889	8355

Warrants

71,417,100	0.650	---	---	---	26/05/2010	11/07/2007	---	AEGEAN AIRLINES (CR)	4.00	---	↘ 4.00	13/09/2013	4.00	4.00	4.05	4.00	4.02	247@4.00	50@4.02	---	2012	27,621	86	110,914.04	285,668.40	1.96	4.10	5751
11,178,000	1.45	---	---	---	21/04/2010	12/05/2011	---	AEOLIAN INVESTMENT FUND (CR)	0.990	-2.94	€ 1.02	13/09/2013	0.990	0.990	0.990	0.990	0.990	250@1.00	500@1.04	7.83	2012	250	1	247.50	11,066.22	0.900	1.17	8985
13,000,000	1.00	---	---	---	01/08/2007	07/04/2000	---	AKRITAS SA (CR)	0.217	-9.58	€ 0.240	13/09/2013	0.217	0.217	0.217	0.217	0.217	214@0.217	---	---	2012	40	2	8.68	2,821.00	0.140	0.520	2353
25,000,000	0.400	---	---	---	03/06/2009	12/07/2013	---	ALCO HELLAS SA (CR)	0.382	-7.28	€ 0.412	13/09/2013	0.400	0.375	0.420	0.378	0.389	1000@0.379	30@0.390	---	2012	9,581	54	3,729.06	9,550.00	0.159	0.599	1753
10,922,906,012	0.300	---	---	---	07/04/2008	13/05/2013	---	ALPHA BANK (CR)	0.562	-1.75	€ 0.572	13/09/2013	0.572	0.555	0.577	0.562	0.566	70491@0.562	400@0.565	---	2012	5,639,364	1,954	3,189,604.85	6,138,673.18	0.161	0.696	8355
22,016,250	0.370	---	---	---	15/07/2009	11/05/2000	---	ALUMIL (CR)	0.560	-0.53	€ 0.563	13/09/2013	0.563	0.552	0.563	0.560	0.558	50@0.532	39@0.533	---	2012	116	4	64.71	12,329.10	0.360	0.740	1753
418,000	16.00	---	---	---	22/04/2010	05/03/2013	---	ANDROMEDA SA (CR)	18.41	0.44	# 18.33	13/09/2013	18.52	18.41	18.52	18.41	18.44	26@18.41	500@20.16	1.71	2012	33	4	608.52	7,695.38	17.10	25.41	8985
21,876,700	0.380	---	---	---	08/07/2010	05/06/2001	---	AS COMPANY SA (CR)	0.337	-0.30	€ 0.338	13/09/2013	0.320	0.320	0.337	0.337	0.323	1050@0.302	150@0.337	38.51	2012	1,800	2	581.10	7,372.45	0.272	0.488	5379
86,735,980	0.310	---	---	---	06/07/2009	02/01/2002	---	ATHENS MEDICAL CENTER SA (CR)	0.801	---	↘ 0.801	13/09/2013	0.801	0.801	0.801	0.801	0.801	7585@0.801	1000@0.805	---	2012	18,415	9	14,750.42	69,475.52	0.471	0.994	4533
699,673,060	0.300	---	---	---	04/06/2008	05/06/2013	---	ATTICA BANK S.A. (CR)	0.260	-1.89	€ 0.265	13/09/2013	0.270	0.258	0.270	0.260	0.263	19300@0.259	5000@0.265	---	2012	819,419	218	215,497.86	181,915.00	0.173	1.06	8355
45,457,464	0.700	---	---	---	01/07/2008	01/03/2010	---	AUDIO VISUAL ENTERPRISES (CR)	0.223	-9.72	€ 0.247	13/09/2013	0.223	0.223	0.223	0.223	0.223	---	5210@0.223	---	2012	1,680	2	374.64	10,137.01	0.097	0.482	5553
36,360,000	0.320	---	0.15	---	30/04/2012	05/05/2008	---	AUTOHELLAS SA (CR)	2.32	-0.86	€ 2.34	13/09/2013	2.30	2.28	2.36	2.36	2.30	50@2.32	257@2.36	12.50	2012	3,273	13	7,528.98	84,355.20	1.50	2.38	5759
19,864,886	5.60	1.976	0.67	0.5376	06/03/2013	02/07/2008	---	BANK OF GREECE (CR)	14.49	-0.69	€ 14.59	13/09/2013	14.55	14.40	14.70	14.49	14.56	50@14.41	49@14.54	---	---	12,740	172	185,545.47	287,842.20	11.26	19.19	8355
23,986,500	1.05	---	---	---	26/06/2009	15/03/2000	---	BIOKARPET S.A.(CR)	0.650	---	↘ 0.650	06/09/2013	---	---	---	---	---	---	1850@0.598	---	2012	---	---	---	15,591.23	0.486	0.845	3726
15,842,391	1.51	---	---	---	15/07/2009	12/05/2000	---	BITROS HOLDING SA (CR)	0.621	---	↘ 0.621	01/08/2013	---	---	---	---	---	---	540@0.577	---	2012	---	---	---	9,838.12	0.336	0.745	1757
15,816,009	0.300	---	---	---	01/07/2009	17/07/2000	---	BYTE COMPUTER SA (CR)	0.460	1.10	# 0.455	12/09/2013	0.460	0.460	0.460	0.460	0.460	100@0.450	450@0.460	---	2012	50	1	23.00	7,275.36	0.351	0.620	9533
366,491,145	6.70	---	---	0.34	26/06/2013	29/04/2013	---	CC HBC AG (CR)	23.24	-0.13	€ 23.27	13/09/2013	23.33	23.03	23.75	23.24	23.46	7500@23.24	76@23.45	---	---	65,690	392	1,540,769.46	8,517,254.21	16.79	23.75	3537
101,123,806	0.360	---	---	---	22/07/2010	28/06/2011	---	CENTRIC HOLDINGS (CR)	0.216	-4.00	€ 0.225	13/09/2013	0.215	0.207	0.220	0.216	0.215	500@0.215	9000@0.230	32.77	2012	5,249	12	1,127.69	21,842.74	0.176	0.440	5752
4,034,950	0.680	---	---	---	01/07/2005	30/12/2010	---	CHATZIKRANIOTIS & SONS SA (CR)	0.130	---	↘ 0.130	13/09/2013	0.123	0.121	0.130	0.130	0.125	1000@0.122	1500@0.140	---	2012	30,300	9	3,801.41	524.54	0.121	0.522	3577
124,170,201	0.780	---	---	---	28/06/2002	07/02/2005	---	CORINTH PIPEWORKS SA (CR)	2.05	-1.44	€ 2.08	13/09/2013	2.08	1.95	2.08	2.05	2.00	2033@2.01	1471@2.05	73.44	2012	288,982	552	576,538.51	254,548.91	1.40	2.59	1757
9,907,500	0.300	---	---	---	06/10/2005	13/02/2002	---	CPI SA (CR)	0.135	---	↘ 0.135	12/09/2013	---	---	---	---	---	790@0.136	---	---	2012	---	---	---	1,337.51	0.133	0.400	9572
27,379,200	0.610	---	---	---	23/06/2010	05/12/2012	---	CRETE PLASTICS SA (CR)	5.06	-1.17	€ 5.12	12/09/2013	5.10	4.96	5.21	5.06	5.10	54@5.06	325@5.12	14.46	2012	8,821	48	44,972.96	138,538.75	4.40	5.65	1357
26,664,840	0.470	---	---	---	29/06/2005	12/07/1999	---	CYCLON HELLAS SA (CR)	0.530	---	↘ 0.530	13/09/2013	---	---	---	---	---	510@0.456	2000@0.525	---	2012	---	---	---	14,132.37	0.385	0.700	1357
15,000,000	0.300	---	---	---	06/07/2007	18/07/2000	---	DAIOS PLASTICS SA (CR)	3.67	---	↘ 3.67	03/09/2013	---	---	---	---	---	50@3.31	105@3.67	---	2012	---	---	---	55,050.00	3.34	5.50	1357
31,370,399	0.300	---	---	---	11/08/2010	15/02/2012	---	DIONIC (CR)	0.084	2.44	# 0.082	13/09/2013	0.082	0.080	0.085	0.084	0.083	13500@0.081	9100@0.084	---	2012	77,560	69	6,404.49	2,635.11	0.066	0.263	2797
34,720,000	0.310	---	---	---	16/06/2010	01/08/2007	---	DROMEAS SA (CR)	0.392	0.77	# 0.389	12/09/2013	0.390	0.390	0.395	0.392	0.392	900@0.353	4530@0.370	---	2012	6,029	4	2,363.72	13,610.24	0.218	0.634	3726
3,873,120	0.300	---	---	---	07/07/2008	04/10/2012	---	DRUCKFARBEN HELLAS (CR)	1.40	---	↘ 1.40	13/09/2013	1.30	1.30	1.40	1.40	1.30	1700@1.30	170@1.40	---	2012	305	6	397.00	5,422.37	0.901	2.64	1357
11,250,000	0.560	---	---	---	26/07/2010	16/06/1999	---	EKTER SA (CR)	0.480	-0.83	€ 0.484	13/09/2013	0.470	0.470	0.480	0.480	0.470	5000@0.470	2000@0.481	8.38	2012	10,300	11	4,843.50	5,400.00	0.400	0.700	2357
32,188,050	1.04	---	---	---	21/07/2008	20/01/2000	---	EL. D. MOUZAKIS SA (CB)	0.141	---	↘ 0.141	13/09/2013	---	---	---	---	---	3000@0.140	820@0.153	---	2012	---	---	---	4,538.52	0.114	0.330	3763
18,648,000	1.00	---	---	---	07/07/2009	10/09/2010	---	ELASTRON (CR)	0.638	0.63	# 0.634	13/09/2013	0.648	0.620	0.659	0.638	0.629	10@0.632	335@0.638	---	2012	2,120	22	1,334.10	11,897.42	0.518	0.969	1757
31,734,530	1.60	---	---	---	09/07/2007	19/07/2006	---	ELGEKA SA (CR)	0.440	---	↘ 0.440	13/09/2013	---	---	---	---	---	99@0.424	1000@0.480	---	2012	---	---	---	13,963.19	0.407	0.780	3577
23,828,130	0.500	---	---	---	07/07/2010	17/02/2009	---	ELINOIL S.A. (CR)	1.14	-9.52	€ 1.26	12/09/2013	1.14	1.14	1.14	1.14	1.14	199@1.14	200@1.27	---	2012	1	1	1.14	27,164.07	1.02	1.89	537
177,001,313	1.03	0.0308	---	---	05/07/2011	20/12/2007	---	ELLAKTOR (CR)	2.23	---	↘ 2.23	13/09/2013	2.23	2.15	2.23	2.23	2.20	3372@2.19	4928@2.24	---	2012	104,784	241	230,388.71	394,712.93	1.36	2.50	2357

Number of Outstanding Securities	Nominal Value	Dividends [1]			Date of Last Coupon		Note	Shares	Closing price	% change	Previous closing price/date	Open price	Price min	Price max	Last price	Avg price	Last Bid [7]	Last Ask [7]	P/E after	Year	Volume	Trades	Transactions Value	Company Mkt Value (thou. €)	Year low	Year high	Sector[4]		
		2010	2011	2012	Dividend [2]	Right																							
Main Market																													
26,730,187	0.600	---	---	---	25/06/2009	30/12/2010	---	ELTON SA (CR)	1.16	---	↘	1.16	13/09/2013	1.16	1.13	1.18	1.16	1.15	100@1.14	2237@1.16	12.13	2012	1,010	21	1,162.62	31,007.02	0.850	1.25	1353
15,146,404	0.340	0.093	---	---	06/07/2011	17/10/2002	---	ELTRAK SA (CR)	1.80	---	↘	1.80	13/09/2013	1.79	1.79	1.80	1.80	1.79	200@1.62	70@1.79	---	2012	140	2	251.10	27,263.53	1.08	1.90	2753
124,100,815	0.300	---	---	---	27/06/2008	07/07/2000	---	ELVAL SA. (CB)	1.93	---	↘	1.93	13/09/2013	1.93	1.85	1.95	1.93	1.90	500@1.88	2500@1.94	14.91	2012	30,529	112	58,072.51	239,514.57	1.55	2.38	1753
13,230,000	0.300	---	---	---	11/08/2010	28/08/2013	---	ELVE SA (CR)	0.539	-1.46	☒	0.547	12/09/2013	0.510	0.501	0.539	0.539	0.512	300@0.501	20@0.530	---	2012	2,753	11	1,409.30	7,130.97	0.423	0.717	3763
30,009,210	0.310	---	---	---	27/06/2008	26/06/2000	---	ETEM SA (CB)	0.379	-4.05	☒	0.395	13/09/2013	0.381	0.376	0.381	0.379	0.378	20@0.388	100@0.388	---	2012	11,170	17	4,224.56	11,373.49	0.328	0.828	1753
4,050,416,865	0.300	---	---	---	02/05/2008	13/06/2013	---	EUROBANK ERGASIAS (CR)	0.625	0.16	#	0.624	13/09/2013	0.623	0.610	0.628	0.625	0.620	35190@0.623	6300@0.627	---	2012	604,003	424	374,593.42	2,531,510.54	0.555	6.23	8355
61,000,000	2.13	0.5364	0.4067	---	23/03/2012	20/11/2007	---	EUROBANK PROPERTIES REIC (CR)	6.98	0.14	#	6.97	13/09/2013	6.97	6.84	6.98	6.98	6.94	520@6.88	2550@7.00	---	2012	12,467	120	86,486.75	425,780.00	4.87	7.75	8675
27,503,677	0.600	0.04	0.05	0.1	11/07/2013	18/10/1999	---	EUROPEAN RELIANCE INSUR. (CR)	1.15	2.68	#	1.12	13/09/2013	1.14	1.12	1.16	1.16	1.14	120@1.15	1955@1.16	3.47	2012	8,485	13	9,677.10	31,629.23	0.973	1.62	8536
13,673,200	0.880	---	---	---	18/07/2008	26/07/2001	---	EVROFARMA SA (CR)	0.318	---	↘	0.318	09/09/2013	---	---	---	---	---	---	1000@0.299	---	2012	---	---	---	4,348.08	0.209	0.539	3577
106,500,000	0.600	0.04	0.05	0.15	31/07/2013	28/01/2000	---	EYDAP S.A. (CR)	7.50	4.75	#	7.16	13/09/2013	7.25	7.10	7.57	7.50	7.36	2000@7.49	2500@7.51	17.05	2012	495,062	847	3,644,439.55	798,750.00	4.65	7.57	7577
52,800,154	0.300	---	---	---	16/04/2010	21/06/2004	---	F.G. EUROPE S.A. (CR)	0.530	-0.75	☒	0.534	11/09/2013	0.529	0.529	0.530	0.530	0.530	1000@0.492	1600@0.529	6.42	2012	580	4	307.11	27,984.08	0.450	0.950	3722
10,203,575	0.730	---	---	---	16/07/2007	18/10/1999	---	FIERATEX SA (CR)	0.126	---	↘	0.126	13/09/2013	---	---	---	---	---	1000@0.119	333@0.134	---	2012	---	---	---	1,285.65	0.090	0.400	3763
11,720,024	0.530	---	---	---	16/07/2010	29/05/2012	---	FLEXOPACK SA (CR)	3.87	3.48	#	3.74	13/09/2013	3.88	3.87	3.88	3.87	3.87	200@3.51	90@3.85	13.03	2012	60	2	232.30	45,356.49	2.39	5.00	2723
4,181,450	0.500	---	---	---	21/08/2000	05/03/2002	---	FLOUR MILLS SARANTOPOULOS SA	0.900	---	↘	0.900	12/09/2013	---	---	---	---	---	---	---	16.64	2012	---	---	---	3,763.31	0.626	1.02	3577
66,948,210	0.300	---	---	---	14/07/2009	31/12/2010	4988	FOLLI FOLLIE (CR)	18.35	1.94	#	18.00	13/09/2013	18.00	17.64	18.39	18.35	18.02	10@18.06	49@18.38	---	2012	250,469	252	4,570,458.81	1,228,499.65	11.51	19.00	5379
50,992,322	1.00	---	---	---	21/06/2010	16/07/2002	---	FOURLIS (CR)	2.80	2.19	#	2.74	13/09/2013	2.73	2.72	2.91	2.80	2.80	1350@2.79	1@2.81	---	2012	434,135	418	1,216,861.62	142,778.50	1.58	2.95	3722
50,592,373	0.300	---	---	---	07/07/2010	07/09/2011	---	FRIGOGLASS SA (CR)	5.11	-0.39	☒	5.13	13/09/2013	5.09	5.00	5.14	5.11	5.08	600@5.09	61@5.11	---	2012	10,524	107	53,493.04	258,527.03	3.84	6.26	2757
77,376,446	0.340	---	---	---	23/05/2005	18/08/2011	---	G.E. DIMITRIOU (CR)	0.035	---	↘	0.035	13/09/2013	---	---	---	---	---	1000@0.035	500@0.038	---	2012	---	---	---	2,708.18	0.028	0.118	3722
14,076,360	0.370	---	---	---	19/08/2008	22/07/2003	---	GALAXIDI S.A. (CR)	0.300	---	↘	0.300	13/09/2013	---	---	---	---	---	2000@0.282	3000@0.300	8.53	2012	---	---	---	4,222.91	0.271	0.638	3573
85,882,688	0.570	0.0048	---	---	01/08/2011	02/01/2009	---	GEK TERNA (CR)	2.18	0.93	#	2.16	13/09/2013	2.16	2.13	2.21	2.18	2.16	6438@2.15	2305@2.17	-(6)-	2012	230,686	261	499,184.29	187,224.26	1.40	2.80	2357
24,060,000	0.300	---	0.017	---	18/06/2012	21/01/2000	---	GEN. COMMERCIAL & IND.SA (CR)	0.347	-13.03	☒	0.399	13/09/2013	0.347	0.347	0.347	0.347	0.347	200@0.361	100@0.395	---	2012	600	2	208.20	8,348.82	0.256	0.545	2797
34,770,982	1.54	---	---	---	06/07/2010	27/07/2000	---	GR. SARANTIS SA (CR)	5.38	2.48	#	5.25	13/09/2013	5.39	5.23	5.39	5.38	5.27	150@5.30	720@5.38	---	2012	6,221	10	32,753.34	187,067.88	4.05	5.45	3767
8,340,750	1.20	---	---	---	25/06/2009	30/07/2001	---	HAIDEMENOS SA (CR)	0.757	8.45	#	0.698	13/09/2013	0.757	0.757	0.757	0.758	---	---	425@0.757	---	2012	5	1	3.79	6,313.95	0.350	0.905	2791
101,279,627	0.380	---	---	---	26/06/2008	14/07/2006	---	HALKOR SA (CB)	0.860	-2.49	☒	0.882	13/09/2013	0.880	0.826	0.882	0.860	0.843	7248@0.860	400@0.865	---	2012	113,353	228	95,534.51	87,100.48	0.550	1.42	1755
36,748,909	0.730	---	---	---	15/12/2005	13/12/2006	---	HEL. SUGAR INDUSTRY SA (CB)	0.891	0.79	#	0.884	13/09/2013	0.880	0.880	0.892	0.891	0.884	500@0.884	203@0.891	14.11	2012	8,294	33	7,333.97	32,743.28	0.754	1.74	3577
29,546,360	0.710	---	---	---	20/06/2008	23/08/2000	---	HELLENIC CABLES SA (CR)	1.52	-3.80	☒	1.58	13/09/2013	1.56	1.47	1.56	1.52	1.51	400@1.51	745@1.54	---	2012	17,760	82	26,845.26	44,910.47	1.16	2.32	2733
65,368,563	0.790	0.15	0.11	0.09	03/06/2013	26/09/2012	---	HELLENIC EXCHANGES (CR)	6.20	1.31	#	6.12	13/09/2013	6.04	6.04	6.20	6.20	6.12	468@6.17	43@6.20	27.78	2012	131,686	405	805,700.73	405,285.09	3.75	6.97	8777
305,635,185	2.18	0.45	0.45	0.15	16/08/2013	01/10/2003	4795	HELLENIC PETROLEUM (CR)	7.64	1.87	#	7.50	13/09/2013	7.50	7.48	7.65	7.64	7.55	851@7.55	4450@7.64	23.95	2012	50,883	323	384,054.07	2,335,052.81	6.20	9.30	537
305,732,436	0.410	---	---	---	08/07/2009	28/09/2011	---	HYGEIA SA (CR)	0.425	-1.16	☒	0.430	13/09/2013	0.442	0.410	0.442	0.425	0.425	1600@0.420	1500@0.425	---	2012	87,764	79	37,336.93	129,936.29	0.280	0.795	4533
53,155,053	0.440	---	---	---	21/07/2010	16/07/2008	---	IASO SA (CR)	1.16	1.75	#	1.14	13/09/2013	1.14	1.08	1.16	1.16	1.13	100@1.10	2331@1.16	---	2012	11,989	31	13,492.78	61,659.86	0.850	1.58	4533
8,298,467	0.400	---	---	---	30/08/1993	08/05/2013	---	IDEAL GROUP SA (CR)	0.722	-0.41	☒	0.725	13/09/2013	0.725	0.720	0.730	0.720	0.723	10@0.720	941@0.742	-(6)-	2012	854	9	617.07	5,991.49	0.571	1.85	9574
28,580,100	0.400	0.05	0.02	---	20/08/2012	23/02/2007	---	IKTINOS HELLAS SA (CR)	1.52	---	↘	1.52	13/09/2013	1.52	1.49	1.52	1.49	1.51	490@1.49	869@1.50	14.71	2012	7,705	11	11,651.30	43,441.75	1.16	1.80	2353
9,000,000	0.880	---	---	---	15/05/2009	07/12/2010	---	ILYDA S.A. (CR)	0.559	---	↘	0.559	05/08/2013	---	---	---	---	---	---	586@0.504	---	2012	---	---	---	5,031.00	0.269	0.650	9537
20,578,374	0.620	0.03	---	---	02/06/2011	05/05/1999	---	INFORM P. LYKOS SA (CR)	1.22	---	↘	1.22	13/09/2013	---	---	---	---	---	130@1.18	255@1.22	---								

Number of Outstanding Securities	Nominal Value	Dividends [1]			Date of Last Coupon Dividend [2]		Note	Shares	Closing price	% change	Previous closing price/date	Open price	Price min	Price max	Last price	Avg price	Last Bid [7]	Last Ask [7]	P/E after	Year	Volume	Trades	Transactions Value	Company Mkt Value (thou. €)	Year low	Year high	Sector[4]
----------------------------------	---------------	---------------	--	--	----------------------------------	--	------	--------	---------------	----------	-----------------------------	------------	-----------	-----------	------------	-----------	--------------	--------------	-----------	------	--------	--------	--------------------	-----------------------------	----------	-----------	------------

Main Market

133,025,996	1.41	---	---	---	03/07/2007	07/01/2002	---	INTRACOM HOLDINGS (CR)	0.479	7.40 #	0.446 13/09/2013	0.460	0.450	0.484	0.479	0.466	2500@0.476	10000@0.480	---	2012	517,807	420	241,263.36	63,719.45	0.321	0.754	9578
158,961,721	0.300	0.0045	0.0035	0.0026	30/05/2013	14/11/2007	---	INTRALOT (CR)	1.64	1.86 #	1.61 13/09/2013	1.64	1.60	1.65	1.64	1.63	6050@1.62	9189@1.64	87.54	2012	208,295	302	338,753.84	260,697.22	1.29	2.41	5752
77,654,850	0.580	0.04	---	---	01/07/2011	21/02/2003	---	J & P - AVAX SA (CR)	1.65	---	1.65 13/09/2013	1.65	1.63	1.69	1.65	1.65	6700@1.63	295@1.65	---	2012	27,332	27	45,112.99	128,130.50	1.05	1.90	2357
129,994,676	1.19	0.189	---	---	23/12/2010	07/09/2012	---	JUMBO SA (CR)	8.90	2.30 #	8.70 13/09/2013	8.73	8.61	8.90	8.90	8.81	2189@8.80	4@8.91	15.00	2012	62,277	249	548,737.75	1,156,952.62	4.85	9.07	3747
9,742,920	0.400	0.01	0.01	0.01	12/08/2013	14/07/2000	---	KARAMOLEGOS SA (CR)	1.20	---	1.20 11/09/2013	---	---	---	---	---	300@1.08	961@1.19	4.66	2012	---	---	---	11,691.50	1.07	1.83	3577
14,679,792	1.44	0.065	---	---	03/06/2011	04/09/2000	---	KARATZIS SA (CR)	4.60	---	4.60 13/09/2013	4.53	4.52	4.60	4.60	4.57	150@4.53	156@4.60	15.45	2012	350	7	1,598.50	67,527.04	2.55	4.90	2723
3,300,689	0.350	---	---	---	01/07/2004	21/07/1999	---	KEKROPS SA (CR)	1.91	1.60 #	1.88 13/09/2013	1.91	1.91	1.91	1.91	1.91	200@1.76	98@1.89	---	2012	43	3	82.13	6,304.32	1.54	3.79	8633
7,595,160	0.600	---	---	---	08/08/2008	18/08/2010	---	KIRIAKOULIS SHIPPING SA (CR)	0.844	-5.38	0.892 10/09/2013	0.696	0.696	0.888	0.844	0.838	31@0.790	123@0.844	58.81	2012	985	28	825.67	6,410.32	0.635	1.49	5759
23,648,700	0.330	0.05	---	---	13/07/2011	23/07/2008	---	KLEEMAN HELLAS SA (CR)	1.57	---	1.57 13/09/2013	1.50	1.50	1.57	1.57	1.54	323@1.55	296@1.57	---	2012	1,528	8	2,357.63	37,128.46	1.20	1.88	2757
40,219,218	0.300	---	---	---	25/05/2009	09/07/2013	---	KLOUKINAS - LAPPAS SA (CR)	0.644	---	0.644 13/09/2013	0.644	0.644	0.644	0.644	0.643	144@0.630	12900@0.644	---	2012	6	1	3.86	25,901.18	0.570	0.970	2357
21,224,340	0.420	---	---	---	02/07/2008	25/04/2006	---	KORDELLOS BROS SA (CR)	0.234	---	0.234 13/09/2013	---	---	---	---	---	700@0.218	200@0.240	---	2012	---	---	---	4,966.50	0.195	0.428	1757
13,450,000	0.390	---	---	---	25/06/2010	28/05/2008	---	KORRES (CR)	3.11	3.67 #	3.00 13/09/2013	3.11	2.94	3.11	3.11	3.02	100@2.98	199@3.11	---	2012	91	7	274.55	41,829.50	2.66	4.87	3767
29,480,000	0.420	---	---	---	19/07/2010	01/08/2007	---	KRETA FARM SA (CR)	0.610	0.49 #	0.607 13/09/2013	0.600	0.582	0.610	0.610	0.600	5597@0.582	448@0.609	---	2012	3,646	9	2,188.87	17,982.80	0.307	0.800	3577
33,065,136	0.380	---	---	---	06/07/2009	16/09/2013	---	KRI-KRI S.A. (CR)	2.12	2.42 #	2.13 # 13/09/2013	2.12	2.12	2.12	2.12	2.12	10@2.03	2000@2.09	15.70	2012	100	1	212.00	70,098.09	1.52	2.20	3577
15,804,800	0.330	---	---	---	15/06/2010	12/03/2004	---	KTIMA KOSTAS LAZARIDIS SA (CR)	0.324	---	0.324 10/09/2013	---	---	---	---	---	---	200@0.322	---	2012	---	---	---	5,120.76	0.239	0.488	3535
22,945,139	0.920	---	---	---	19/08/2008	16/09/2013	---	KYRIAKIDIS MARBLES SA (CR)	0.820	0.86 #	0.893 # 13/09/2013	0.870	0.820	0.870	0.820	0.862	184@0.870	368@0.870	80.32	2012	1,352	4	1,165.24	18,815.01	0.630	1.04	2353
44,267,700	0.300	---	---	---	30/05/2007	18/09/2002	---	LAMDA DEVELOPMENT SA (CR)	4.02	-0.25	4.03 13/09/2013	4.00	4.00	4.02	4.02	4.01	200@3.84	2490@4.00	---	2012	1,000	3	4,007.26	177,956.15	3.50	6.48	8633
5,939,268	0.620	---	---	---	10/07/2003	03/01/2002	---	LANAKAM SA (CR)	0.639	---	0.639 14/08/2013	---	---	---	---	---	---	4385@0.576	---	2012	---	---	---	3,795.19	0.503	0.869	3763
7,734,375	1.00	---	---	---	09/07/2007	07/01/2011	---	LIVANIS SA (CR)	0.229	---	0.229 23/08/2013	---	---	---	---	---	---	667@0.207	---	2012	---	---	---	1,771.17	0.144	0.363	5557
4,740,000	0.860	---	---	---	14/03/2003	---	---	LOGISMOS S.A. (CR)	0.550	10.00 #	0.500 27/08/2013	0.450	0.450	0.550	0.550	0.473	10@0.450	250@0.540	63.80	2011	440	3	208.00	2,607.00	0.373	1.23	9533
15,222,276	0.640	---	---	---	01/06/2010	02/08/2011	---	LOULIS MILLS SA (CR)	2.74	-4.53	2.87 13/09/2013	2.74	2.74	2.74	2.74	2.74	51@2.74	500@2.81	-(6)-	2012	200	1	548.00	41,709.04	2.08	3.76	3577
770,328,883	0.300	---	---	---	26/04/2007	10/05/2013	---	MARFIN INVESTMENT GROUP (CR)	0.354	-4.06	0.369 13/09/2013	0.369	0.348	0.369	0.354	0.357	17500@0.353	1@0.355	---	2012	2,193,046	983	782,550.56	272,696.42	0.175	0.564	8775
9,819,370	0.690	---	---	---	14/08/2007	09/01/2004	---	MATHIOS REFRACTORY SA (CR)	0.262	0.77 #	0.260 13/09/2013	0.262	0.262	0.262	0.262	0.262	930@0.182	3000@0.265	---	2012	208	1	54.50	2,572.67	0.180	0.510	2353
468,700	1.0556	---	---	---	21/03/2012	21/05/2004	---	MERMEREN KOMB. A.D. PR. (GDR)	4.03	-5.40	4.26 13/09/2013	3.85	3.84	4.03	4.03	3.93	237@4.03	10@4.18	0.98	2012	455	9	1,785.75	1,888.86	3.73	5.19	1775
51,950,600	0.320	0.48	0.75	0.25	10/05/2013	21/10/2005	---	METKA (CR)	11.53	-1.20	11.67 13/09/2013	11.68	11.37	11.70	11.53	11.52	20@11.45	60@11.53	16.62	2012	9,084	130	104,654.95	598,990.42	9.00	12.78	2757
10,500,000	0.900	---	---	---	24/06/2008	04/07/2012	---	MEVACO SA (CR)	1.37	---	1.37 12/09/2013	---	---	---	---	---	50@1.28	250@1.35	9.92	2012	---	---	---	14,385.00	1.01	1.58	2757
14,074,000	3.00	0.15	0.25	---	02/03/2012	23/07/2009	---	MIG REAL ESTATE (CR)	1.56	-9.83	1.73 13/09/2013	1.56	1.56	1.56	1.56	1.56	---	100@1.64	---	2012	420	5	655.20	21,955.44	1.17	1.92	8671
6,200,000	0.500	---	---	---	22/06/2010	01/11/1995	---	MINERVA KNITWEAR SA (CB)	0.776	---	0.776 05/08/2013	---	---	---	---	---	---	3070@0.699	---	2012	---	---	---	4,811.20	0.530	0.948	3763
12,417,000	0.370	---	---	---	28/07/2008	06/09/2011	---	MLS MULTIMEDIA SA (CR)	3.06	-2.24	3.13 13/09/2013	3.09	3.02	3.10	3.06	3.06	100@3.04	805@3.07	40.30	2012	11,740	53	35,901.47	37,996.02	2.60	3.13	9537
4,588,137	16.00	---	---	---	30/06/2005	17/08/2011	---	MOCHLOS SA (CR)	1.69	4.32 #	1.62 13/09/2013	1.85	1.51	1.85	1.69	1.62	285@1.59	100@1.70	---	2012	2,387	55	3,871.65	7,753.95	1.12	2.60	2357
11,700,000	0.590	---	---	---	02/06/2009	24/07/2012	---	MOTODYNAMICS S.A. (CR)	0.440	---	0.440 11/09/2013	---	---	---	---	---	1400@0.308	1518@0.440	---	2012	---	---	---	5,148.00	0.211	0.640	5379
110,782,980	0.850	0.25	0.4	0.3	26/06/2013	05/11/2012	---	MOTOR OIL (CR)	7.52	-1.96	7.67 13/09/2013	7.67	7.48	7.67	7.52	7.53	100@7.49	14504@7.52	9.18	2012	189,424	374	1,424,900.60	833,088.01	6.80	9.37	533
116,915,862	1.07	---	---	---	11/05/2009	06/07/2011	---	MYTILINEOS HOLDINGS (CR)	4.79	-0.21	4.80 13/09/2013	4.84	4.67	4.85	4.79	4.75	50@4.77	178@4.79	---	2012	180,732	477	858,988.01	560,026.98	3.38	5.65	1755
8,321,682	0.670	---	---	---	17/08/2007	23/11/1999	---	N. LEVEDERIS SA (CB)	0.250	---	0.250 13/09/2013	---	---	---	---	---	585@0.250	500@0.275	---	2012	---	---	---	3,048.34	0.198	0.658	1757
2,160,524	0.670	0.0435	0.0435	0.0436	16/08/2013	23/11/1999	---	N. LEVEDERIS SA (PB)	0.448	---	0.448 23/08/2013	---	---	---	---	---	---	467@0.404	---	2012	---	---	---	3,048.34	0.307	0.798	1757
11,510,102	0.890	---	---	---	24/06/2005	06/10/1999	---	NAFPAKTOS TEXTILE IND. SA (CB)	0.400	---	0.400 04/09/2013	---	---	---	---	---	---	3691@0.360	---	2012	---	---	---	4,604.04	0.232	0.500	3763
6,340,000	0.600	---	---	---	30/11/2009	12/07/2000	---	NAKAS MUSIC	0.990	10.00 #	0.900 12/09/2013	0.810	0.810	0.990	0.990	0.930	---	---	---	2012	30	3	27.90	6,276.60	0.300	1.04	5379
2,396,785,994	0.300	---	---	---	16/05/2008	24/05/2013	---	NATIONAL BANK (CR)	3.11	-1.58	3.16 13/09/2013	3.16	3.10	3.21	3.11	3.14	10360@3.10	15927@3.12	---	2012	975,102	1,169	3,059,625.75	7,454,004.44	1.83	9.87	8355

Number of Outstanding Securities	Nominal Value	Dividends [1]			Date of Last Coupon Dividend [2]		Note	Shares	Closing price	% change	Previous closing price/date	Open price	Price min	Price max	Last price	Avg price	Last Bid [7]	Last Ask [7]	P/E after	Year	Volume	Trades	Transactions Value	Company Mkt Value (thou. €)	Year low	Year high	Sector[4]
23,935,280	0.300	---	---	---	29/06/2009	13/06/2000	---	NAYTEMPORIKI PUBLISHING SA(CR)	0.194	7.78 #	0.180 02/09/2013	0.164	0.164	0.194	0.194	0.179	300@0.166	460@0.194	---	2012	80	2	14.32	4,643.44	0.149	0.360	5557
27,848,000	0.300	0.0301	0.0132	0.0137	21/08/2013	02/09/2003	---	NEWSPHONE HELLAS SA (CR)	0.305	-9.50 €	0.337 13/09/2013	0.349	0.305	0.349	0.305	0.305	8321@0.305	3000@0.335	7.47	2012	12,001	7	3,660.36	8,493.64	0.241	0.592	2791
6,132,500	1.25	0.1	---	---	24/06/2011	19/06/2001	---	NEXANS HELLAS SA (CR)	2.30	--- ↘	2.30 12/09/2013	---	---	---	---	---	550@2.12	90@2.29	---	2012	---	---	---	14,104.75	2.10	3.11	2733
63,697,153	1.34	---	---	---	08/07/2008	10/11/2008	---	NIREFS SA (CR)	0.417	-1.19 €	0.422 13/09/2013	0.429	0.405	0.430	0.417	0.412	292@0.410	48@0.417	---	2012	59,492	93	24,500.73	26,561.71	0.380	0.839	3573
319,000,000	0.300	1.4177	0.72	0.57	28/06/2013	25/04/2001	---	OPAP (CR)	7.97	-0.12 €	7.98 13/09/2013	8.00	7.81	8.08	7.97	7.97	100@7.90	100@7.98	4.96	2012	513,958	1,026	4,093,677.55	2,542,430.00	5.49	8.27	5752
490,150,389	2.39	0.1179	---	---	28/06/2011	18/06/1998	---	OTE (CR)	7.68	1.59 #	7.56 13/09/2013	7.62	7.58	7.72	7.68	7.67	10000@7.61	42493@7.68	---	2012	485,597	938	3,725,776.23	3,764,354.99	4.26	7.81	6535
25,000,000	2.00	0.02	0.01	0.05	18/07/2013	08/08/2003	---	P.P.A. S.A. (CR)	17.33	0.29 #	17.28 13/09/2013	17.21	17.00	17.34	17.33	17.15	5@17.23	44@17.30	87.40	2012	3,597	93	61,672.11	433,250.00	14.59	21.68	2777
4,971,466	1.46	---	---	---	04/07/2007	08/10/2003	---	PAIRIS SA (CR)	0.306	--- ↘	0.306 06/09/2013	---	---	---	---	---	220@0.276	230@0.336	---	2012	---	---	---	1,521.27	0.201	0.605	2723
3,953,090	0.900	---	---	---	02/07/2001	05/12/2012	---	PAPERPACK (CR)	0.919	20.45 #	0.763 13/09/2013	0.800	0.790	0.949	0.919	0.872	255@0.925	100@0.949	---	2012	16,836	54	14,678.33	3,632.89	0.500	1.06	2723
50,797,369	0.310	---	---	---	17/08/2000	12/10/2010	---	PAPOUTSANIS (CR)	0.628	--- ↘	0.628 11/09/2013	---	---	---	---	---	3000@0.530	14756@0.625	---	2012	---	---	---	31,900.75	0.361	0.750	3767
7,070,400	0.930	---	---	---	18/05/2010	12/05/2011	---	PETROPOULOS PETROS (CR)	1.55	0.65 #	1.54 13/09/2013	1.55	1.50	1.55	1.55	1.51	100@1.50	499@1.54	---	2012	2,106	19	3,170.86	10,959.12	1.20	1.74	2753
5,072,567,951	0.300	---	---	---	16/05/2008	05/06/2013	---	PIRAEUS BANK (CR)	1.30	2.36 #	1.27 13/09/2013	1.28	1.25	1.32	1.30	1.28	56055@1.29	85679@1.30	---	2012	3,973,603	1,592	5,087,494.31	6,594,338.34	0.832	6.28	8355
22,080,000	0.320	0.05	0.08	0.12	22/05/2013	03/10/2000	---	PLAISIO COMPUTERS SA (CR)	5.10	0.99 #	5.05 13/09/2013	5.10	5.10	5.10	5.10	5.10	320@5.00	346@5.10	11.36	2012	109	2	555.90	112,608.00	3.65	6.25	9572
232,000,000	4.60	0.79	---	0.025	22/07/2013	12/12/2001	---	PPC (CR)	7.90	0.25 #	7.88 13/09/2013	7.84	7.71	7.98	7.90	7.84	2@7.87	7673@7.90	-(6)-	2012	177,752	571	1,392,857.99	1,832,800.00	4.55	8.49	7535
11,812,193	0.450	---	---	---	24/07/2009	15/11/2006	---	PROFILE SA (CR)	1.00	-0.99 €	1.01 13/09/2013	1.00	0.975	1.00	0.998	0.985	540@0.958	459@0.998	19.24	2012	3,039	13	2,994.85	11,812.19	0.761	1.26	9533
24,319,250	0.300	---	---	---	09/07/2002	04/07/2007	---	PROODEFTIKH SA (CR)	0.141	-2.08 €	0.144 13/09/2013	0.135	0.135	0.143	0.141	0.141	500@0.139	390@0.141	---	2012	6,250	8	883.05	3,429.01	0.054	0.223	2357
6,836,280	1.88	---	---	---	18/07/2005	10/09/2010	---	QUALITY & RELIABILITY SA (CR)	1.80	--- ↘	1.80 13/09/2013	1.82	1.80	1.82	1.80	1.80	340@1.74	355@1.80	---	2012	690	7	1,244.00	12,305.30	0.236	1.97	9533
48,069,201	0.400	---	---	---	05/09/2008	21/06/2012	---	QUEST HOLDINGS (CR)	1.23	2.50 #	1.20 13/09/2013	1.15	1.15	1.23	1.23	1.17	1070@1.20	600@1.23	---	2012	7,280	14	8,543.50	59,125.12	0.936	1.39	9533
57,434,884	1.31	---	---	---	05/06/2008	12/06/2009	---	REDS S.A. (CR)	0.515	1.98 #	0.505 13/09/2013	0.506	0.500	0.520	0.515	0.504	500@0.495	650@0.514	---	2012	9,950	20	5,017.65	29,578.97	0.450	0.949	8633
22,280,000	0.300	0.0329	---	---	11/04/2011	23/02/2007	---	REVOIL (CR)	0.830	-1.78 €	0.845 13/09/2013	0.840	0.813	0.840	0.830	0.830	500@0.817	1000@0.829	---	2012	2,100	9	1,743.22	18,492.40	0.345	1.20	5379
7,500,000	0.560	---	---	---	25/06/2010	10/04/2013	---	S.KANAKIS SA (CR)	1.90	5.56 #	1.80 13/09/2013	1.83	1.83	1.90	1.90	1.84	10@1.81	1787@1.81	13.51	2012	343	15	630.63	14,250.00	1.05	1.90	3577
52,067,296	0.300	---	---	---	23/12/2003	24/01/2007	---	SELECTED TEXT. IND. ASSOC (CR)	0.263	--- ↘	0.263 13/09/2013	---	---	---	---	---	1000@0.255	1500@0.263	---	2012	---	---	---	13,693.70	0.232	0.587	3763
96,243,908	0.410	---	---	---	26/06/2008	17/07/2000	---	SIDENOR (CR)	1.58	-1.86 €	1.61 13/09/2013	1.61	1.47	1.62	1.58	1.53	1245@1.55	2250@1.60	---	2012	152,604	317	234,065.52	152,065.37	1.00	2.39	1757
6,456,530	1.60	---	---	---	29/06/2001	02/08/2010	---	SPACE HELLAS SA (CR)	2.19	--- ↘	2.19 14/06/2013	---	---	---	---	---	---	5814@1.98	70.35	2012	---	---	---	14,139.80	1.25	2.20	9578
28,438,268	0.300	---	---	---	21/08/2006	24/11/1999	---	SPIROY AGRICULTURE SA (CR)	0.320	--- ↘	0.320 13/09/2013	0.288	0.288	0.320	0.320	0.292	300@0.288	190@0.319	---	2012	450	2	131.20	9,100.25	0.252	0.557	1357
33,125,000	5.00	---	---	---	03/07/2006	18/08/2010	---	TECHNICAL OLYMPIC SA (CR)	1.37	--- ↘	1.37 13/09/2013	1.43	1.35	1.43	1.37	1.37	250@1.34	6549@1.38	-(6)-	2012	2,301	11	3,150.43	45,381.25	1.17	2.71	3728
109,319,070	0.300 (0.0399)	(0.0613)	---	---	28/05/2012	05/08/2013	---	TERNA ENERGY (CR)	3.03	-2.26 €	3.10 13/09/2013	3.10	2.99	3.10	3.03	3.03	742@3.02	800@3.06	66.55	2012	72,891	289	221,187.12	331,236.78	2.24	3.73	7537
36,300,000	1.12	0.114	0.188	0.162	16/08/2013	12/12/2007	---	THESSALONIKA WATER & SEWERAGE	6.10	0.99 #	6.04 13/09/2013	6.00	5.91	6.10	6.10	6.03	83@6.06	713@6.10	12.52	2012	40,844	133	246,463.01	221,430.00	4.73	6.82	7577
45,094,620	0.500	0.036	---	0.0467	10/06/2013	01/11/1999	---	THRACE PLASTICS SA (CR)	1.20	-2.44 €	1.23 13/09/2013	1.23	1.19	1.25	1.20	1.22	3070@1.20	500@1.23	6.91	2012	50,167	80	61,250.45	54,113.54	1.07	1.64	1357
77,063,568	4.00	0.0806	---	---	24/06/2011	25/06/2004	---	TITAN CEMENT (CR)	16.00	-1.24 €	16.20 13/09/2013	16.65	15.75	16.65	16.00	16.03	4@15.96	1375@15.99	---	2012	34,200	216	548,245.57	1,284,107.57	11.31	16.94	2353
7,568,960	4.00	0.1869	---	---	24/06/2011	25/06/2004	---	TITAN CEMENT CO. (PR)	6.75	-1.03 €	6.82 13/09/2013	6.75	6.75	6.75	6.75	6.75	250@6.71	80@6.80	---	2012	600	2	4,050.00	1,284,107.57	5.75	7.27	2353
10,080,000	3.00	0.21	0.4	1.5	17/07/2013	27/08/2001	---	TPA SA (CR)	24.24	2.71 #	23.60 13/09/2013	23.50	23.50	24.35	24.24	23.61	10@23.53	234@23.99	13.25	2012	212	5	5,005.00	244,339.20	19.00	25.20	2777
54,888,240	1.13	0.1	0.1	0.1	25/04/2013	22/03/2006	---	TRASTOR REAL EST. INV. CO.(CR)	0.752	--- ↘	0.752 13/09/2013	0.780	0.750	0.780	0.752	0.752	1838@0.752	1000@0.770	---	2012	4,190	6	3,152.31	41,275.96	0.624	0.829	8671
14,627,315	0.300	---	---	---	16/11/1992	03/12/2012	---	UNIBIOS (CR)	0.275	11.79 #	0.246 13/09/2013	0.250	0.247	0.283	0.275	0.267	7000@0.270	2200@0.280	---	2012	203,198	100	54,301.95	4,022.51	0.151	0.414	2353
18,810,000	0.400	---	---	---	08/07/2010	14/11/2007	---	VARVERIS - MODA BAGNO SA (CR)	0.269	-5.61 €	0.285 12/09/2013	0.257	0.257	0.269	0.269	0.258	---	93@0.269	---	2012	407	11	104.99	5,059.89	0.242	0.419	2353
199,474,091	0.300	---	---	---	03/07/2009	24/03/2000	---	VIOHALCO (CB)	4.12	-7.62 €	4.46 13/09/2013	4.48	3.99	4.48	4.12	4.15	502@4.11	3000@4.14	---	2012	287,846	1,194	1,195,093.76	821,833.25	3.06	5.70	2727
4,968,600	2.88	---	---	---	01/07/1998	14/12/1998	---	VIS SA (CR)	0.738	--- ↘	0.738 12/09/2013	---	---	---	---	---	170@0.665	---	---	2012	---	---	---	3,666.83	0.490	1.01	2723
6,325,000	0.600	---	---	---	19/07/2010	25/07/2012	---	VOGIATZOGLOU SYSTEMS SA (CR)	1.00	2.78 #	0.973 12/09/2013	0.879	0.879	1.00	1.00	0.900	50@0.879	601@0.990	---	2012	350	4	314.91	6,325.00	0.810	1.21	2797

Number of Outstanding Securities	Nominal Value	Dividends [1]			Date of Last Coupon		Note	Shares	Closing price	% change	Previous closing price/date	Open price	Price min	Price max	Last price	Avg price	Last Bid [7]	Last Ask [7]	P/E after	Year	Volume	Trades	Transactions Value	Company Mkt Value (thou. €)	Year low	Year high	Sector[4]	
		2010	2011	2012	Dividend [2]	Right																						
Exchange Traded Funds (ETFs)																												
5,848,618		---	---	---	24/01/2008	---	ALPHA ETF FTSE Athex Large Cap	3.40	---	↘	3.40	13/09/2013	3.38	3.38	3.40	3.40	3.38	---	70@3.40	---	---	516	2	1,745.65	-	2.49	3.99	11000
294,878		---	---	---	29/06/2009	---	NBGAM ETF	11.00	---	↘	11.00	12/09/2013	---	---	---	---	---	---	---	---	---	---	---	-	8.23	11.75	11000	
388,550		---	---	---	03/11/2010	---	NBGAM ETF GREECE & TURKEY 30	7.96	2.71	#	7.75	12/09/2013	7.96	7.96	7.96	7.96	7.96	---	---	---	---	2	1	15.92	-	6.88	10.11	11000

Low Dispersion

14,000,000	3.80	---	---	---	23/04/2010	29/06/1999	4815	ALPHA REAL ESTATE SA(CR)	6.50	---	↘	6.50	13/09/2013	---	---	---	---	---	100@6.51	500@6.97	13.45	2012	---	---	---	91,000.00	5.26	7.00	8637
63,900,000	3.00	---	---	---	23/06/2003	04/11/2008	4816	ASTIR PALACE SA (CR)	3.64	-0.55	€	3.66	13/09/2013	3.65	3.63	3.65	3.64	3.64	300@3.62	348@3.65	---	2012	2,030	15	7,394.20	232,596.00	3.37	4.95	5753
49,152,904	0.800	---	---	---	09/08/2004	08/03/2006	4814	ATHENA SA (CR)	0.264	---	↘	0.264	13/09/2013	---	---	---	---	---	---	200@0.212	---	2012	---	---	---	12,976.37	0.094	0.340	2357
191,660,320	0.300	---	---	---	20/07/2009	29/12/2010	4817	ATTICA HOLDINGS (CR)	0.301	-0.99	€	0.304	13/09/2013	0.301	0.301	0.301	0.301	0.301	570@0.301	300@0.355	---	2012	170	1	51.17	57,689.76	0.241	0.588	5759
15,300,000	0.300	---	---	---	30/07/2009	13/12/1999	4893	ATTICA PUBLICATIONS SA (CR)	0.549	---	↘	0.549	06/09/2013	---	---	---	---	---	---	---	---	2012	---	---	---	8,399.70	0.520	1.45	5557
8,418,750	0.300	---	0.15	0.29	05/06/2013	27/06/2012	4828	GEKE SA (CB)	6.68	---	↘	6.68	12/09/2013	---	---	---	---	---	100@6.68	---	20.98	2012	---	---	---	56,237.25	6.59	6.79	5753
68,322,221	1.00	---	---	---	08/03/2002	08/04/2013	4986	GENIKI BANK (CR)	2.16	---	↘	2.16	13/09/2013	2.16	2.16	2.16	2.16	2.16	126@2.16	---	---	2012	24	2	51.84	147,576.00	1.51	8.85	8355
71,082,707	1.70	---	---	---	01/07/2010	21/11/2012	4820	HERACLES GEN.CEMENT CO. (CR)	1.39	1.46	#	1.37	13/09/2013	1.39	1.39	1.39	1.39	1.39	200@1.38	950@1.40	---	2012	164	1	227.96	98,804.96	1.20	1.80	2353
13,404,440	8.63	---	---	---	02/04/2001	06/03/1992	4822	IONIAN HOTELS SA (CR)	8.95	---	↘	8.95	13/09/2013	---	---	---	---	---	28@8.95	96@10.74	---	2012	---	---	---	119,969.74	8.40	13.00	5753
2,760,000	7.70	6.3291	7.6	8.52	26/06/2013	16/07/1990	4823	KARELIA TOBACCO CO. SA (CB)	196.95	-2.98	€	203.00	12/09/2013	196.20	196.20	199.00	196.95	196.95	4@198.00	9@204.90	11.96	2012	27	5	5,317.75	543,582.00	110.00	210.00	3785
17,000,000	0.600	---	---	---	12/06/2008	07/03/2000	4941	KATHIMERINI SA (CR)	0.817	5.28	#	0.776	13/09/2013	0.830	0.810	0.830	0.810	0.817	350@0.624	497@0.809	---	2012	300	6	245.00	13,889.00	0.321	1.00	5557
21,364,000	1.12	---	---	---	05/07/2010	10/08/2005	4824	LAMPSPA HOTEL SA (CR)	19.40	---	↘	19.40	13/09/2013	19.40	19.40	19.40	19.40	19.40	200@16.00	867@19.00	---	2012	100	1	1,940.00	414,461.60	15.00	19.40	5753
6,700,000	0.800	---	---	---	19/07/2010	29/08/2012	4894	MILLS KEPENOS (CR)	1.27	---	↘	1.27	06/09/2013	---	---	---	---	---	130@1.02	300@1.24	7.55	2012	---	---	---	8,509.00	0.777	1.69	3577
70,926,000	2.25	---	---	---	25/07/2008	21/06/2000	4825	MINOAN LINES SA (CR)	2.00	---	↘	2.00	13/09/2013	2.00	2.00	2.00	2.00	2.00	30@2.00	---	---	2012	1,270	7	2,540.00	141,852.00	1.70	2.10	5759
17,240,776	0.370	---	---	---	14/07/2005	30/09/2003	4827	PERSEUS SA (CR)	0.223	---	↘	0.223	30/08/2013	---	---	---	---	---	1990@0.180	1050@0.267	13.00	2012	---	---	---	3,844.69	0.033	0.325	3577

Surveillance

33,301,715	0.320	---	---	---	27/06/2003	08/07/2009	4978	AEGEK (CR)	0.078	---	↘	0.078	13/09/2013	0.078	0.078	0.078	0.078	0.078	1398@0.080	2000@0.089	---	2012	2,002	3	156.16	2,597.53	0.077	0.184	2357
14,870,100	0.300	---	---	---	15/05/2008	26/09/2011	4844	ALPHA GRISSIN S.A. (CR)	0.225	---	↘	0.225	09/08/2013	---	---	---	---	---	---	500@0.224	---	2012	---	---	---	3,345.77	0.080	0.328	9533
215,246,452	0.300	---	---	---	25/06/2001	24/09/2001	4446	ALTEC SA (CR)	0.041	17.14	#	0.035	13/09/2013	0.031	0.031	0.042	0.042	0.041	7500@0.032	14896@0.042	---	2012	3,807	8	156.51	8,825.10	0.021	0.062	9533
2,969,713	0.300	---	---	---	02/07/2008	28/02/2011	4958	ANEK LINES SA (PR, issue '96)	0.310	---	↘	0.310	12/09/2013	---	---	---	---	---	---	---	---	2012	---	---	---	16,382.22	0.300	0.770	5759
312,163	0.300	---	---	---	02/07/2008	28/02/2011	4959	ANEK LINES SA (PR, issue '90)	1.43	---	↘	1.43	09/09/2013	---	---	---	---	---	---	---	---	2012	---	---	---	16,382.22	1.43	1.78	5759
185,373,016	0.300	---	---	---	02/07/2008	28/02/2011	4957	ANEK LINES SA (CR)	0.081	-4.71	€	0.085	13/09/2013	0.081	0.081	0.083	0.083	0.081	416@0.083	17500@0.088	---	2012	8,582	6	695.31	16,382.22	0.071	0.270	5759
81,644,555	0.300	---	---	---	01/07/2008	02/09/2002	4630	ATTI - KAT SA (CR)	0.030	---	↘	0.030	13/09/2013	0.034	0.028	0.034	0.028	0.030	---	30000@0.028	---	2012	9,590	6	284.06	2,449.34	0.022	0.088	2357
20,255,805	0.300	---	---	---	22/08/2006	02/08/2010	4881	AXON HOLDING SA (CR)	0.068	-19.05	€	0.084	11/09/2013	0.068	0.068	0.068	0.068	0.068	53897@0.068	---	---	2012	600	3	40.80	1,377.39	0.050	0.192	4533
17,579,754	4.16	---	---	---	18/08/2006	02/08/2010	4885	BIOTER SA (CR)	0.170	0.59	#	0.169	13/09/2013	0.160	0.160	0.172	0.172	0.170	697@0.160	1249@0.172	---	2012	2,502	7	424.32	2,988.56	0.059	0.194	2357
12,431,980	0.720	---	---	---	20/06/2003	10/07/2003	4559	COMPUCON SA (CR)	0.075	---	↘	0.075	11/09/2013	---	---	---	---	---	---	4916@0.085	---	2012	---	---	---	932.40	0.031	0.100	9537
30,159,583	0.470	---	---	---	26/06/2008	29/12/2010	4962	DIAS A/C (CR)	0.839	---	↘	0.839	04/09/2013	---	---	---	---	---	---	400@0.672	---	2012	---	---	---	25,303.89	0.420	0.845	3573
15,878,748	0.480	---	---	---	10/07/2006	22/03/2004	4960	DOMIKI KRITIS SA (CR)	0.538	---	↘	0.538	26/08/2013	---	---	---	---	---	---	130@0.479	---	2012	---	---	---	8,542.77	0.310	0.800	2357
3,961,300	1.28	---	---	---	29/06/2004	03/08/2000	4808	DUROS SA (CR)	0.800	-17.53	€	0.970	19/07/2013	0.800	0.800	0.800	0.800	0.800	---	310@0.800	---	2012	10	1	8.00	3,169.04	0.120	0.970	3763
7,085,888	1.59	---	---	---	02/07/1996	06/09/2010	4690	ELVIEK (CR)	3.00	---	↘	3.00	05/02/2013	---	---	---	---	---	---	100@3.60	-(6)-	2012	---	---	---	21,257.66	3.00	3.58	8633
6,000,000	0.600	---	---	---	13/06/2008	08/04/2004	4886	EUROBROKERS S.A. (CR)	0.052	---	↘	0.052	10/09/2013	0.052	0.052	0.052	0.052	0.052	2399@0.052	---	---	2012	250	2	13.00	312.00	0.052	0.333	8534
7,347,600	0.600	---	---	---	02/06/2010	25/02/2010	4889	EUROCONSULTANTS S.A. (CR)	3.08	---	↘	3.08	11/09/2013	---	---	---	---	---	---	290@2.99	---	2012	---	---	---	22,630.61	2.12	3.08	2791

Number of Outstanding Securities	Nominal Value	Dividends [1]			Date of Last Coupon		Note	Shares	Closing price	% change	Previous closing price/date	Open price	Price min	Price max	Last price	Avg price	Last Bid [7]	Last Ask [7]	P/E after	Year	Volume	Trades	Transactions Value	Company Mkt Value (thou. €)	Year low	Year high	Sector[4]	
		2010	2011	2012	Dividend [2]	Right																						
Surveillance																												
21,820,410	0.800	---	---	---	22/05/2008	02/08/2011	4882	EUROMEDICA SA (CR)	0.320	---	↘ 0.320	06/09/2013	---	---	---	---	100@0.315	4850@0.320	---	2012	---	---	---	6,982.53	0.270	0.613	4533	
12,952,610	0.300	---	---	---		04/10/2012	4846	Forthnet (CR)	1.09	-0.91	€ 1.10	13/09/2013	1.09	1.09	1.09	1.09	400@0.891	179@1.07	---	2011	100	2	109.00	14,118.34	0.350	1.43	9535	
1,270,000	0.300	---	---	---	06/07/2007	06/02/2013	---	GIRAKIAN PROFIL SA (CB)	2.38	---	↘ 2.38	10/09/2013	---	---	---	---	---	250@2.28	---	2012	---	---	---	3,022.60	0.900	3.33	1757	
179,707,771	0.300	---	---	---	27/06/2002	01/11/2011	4847	HELLAS ONLINE SA (CR)	0.400	---	↘ 0.400	13/09/2013	---	---	---	---	2798@0.371	500@0.439	---	2012	---	---	---	71,883.11	0.271	0.709	9537	
13,692,227	1.47	---	---	---	07/07/2006	08/10/1999	4845	HELLENIC FABRICS SA (CR)	0.298	---	↘ 0.298	04/09/2013	---	---	---	---	---	350@0.295	---	2012	---	---	---	4,080.28	0.180	0.354	3763	
30,390,000	0.310	---	---	---	18/08/2008	29/12/2006	4447	HELLENIC FISHFARMING SA (CR)	0.112	12.00	# 0.100	11/09/2013	0.112	0.112	0.112	0.112	200@0.080	19999@0.112	26.25	2012	500	4	56.00	3,403.68	0.039	0.137	3573	
1,540,000	0.600	---	---	---	08/08/1994	19/09/2000	4855	J.BOUTARIS & SON HOLD. (PB)	0.024	---	↘ 0.024	05/08/2013	---	---	---	---	1000@0.020	---	---	2012	---	---	---	1,673.64	0.024	0.201	3535	
25,179,640	0.600	---	---	---	08/08/1994	19/09/2000	4854	J.BOUTARIS & SON HOLD. SA (CB)	0.065	---	↘ 0.065	13/09/2013	---	---	---	---	1500@0.053	1998@0.077	---	2012	---	---	---	1,673.64	0.037	0.132	3535	
7,125,216	0.650	---	---	---	01/07/2005	14/12/1999	4955	KRE.KA SA (CR)	0.289	14.68	# 0.252	12/08/2013	0.289	0.289	0.289	0.289	---	1796@0.287	---	2012	200	2	57.80	2,059.19	0.144	0.580	3573	
51,081,030	1.00	---	---	---	20/08/2007	03/09/2007	4912	LAVIPHARM SA (CR)	0.135	1.50	# 0.133	13/09/2013	0.130	0.130	0.138	0.138	2000@0.130	1800@0.138	---	2012	1,200	2	161.60	6,895.94	0.101	0.268	4577	
322,925,288	0.300	---	---	---	23/05/2007	10/04/2000	4554	M.J. MAILLIS SA (CR)	0.065	-7.14	€ 0.070	13/09/2013	0.067	0.064	0.067	0.064	6279@0.059	2998@0.064	---	2012	54,482	30	3,548.57	20,990.14	0.056	0.150	2723	
9,567,289	0.300	---	---	---	01/07/2004	19/11/2007	4944	MARAC ELECTRONICS (CR)	0.200	---	↘ 0.200	11/09/2013	---	---	---	---	---	1527@0.200	---	2012	---	---	---	1,913.46	0.068	0.409	9578	
4,178,856	1.58	0.22	---	---	21/07/2011	28/07/2004	4983	MEDICON S.A (CR)	0.588	---	↘ 0.588	10/09/2013	---	---	---	---	300@0.471	80@0.704	---	2012	---	---	---	2,457.17	0.446	1.18	4535	
255,459,600	0.300	---	---	---	26/06/2000	03/12/2010	4833	NEL SA (CR)	0.026	-3.70	€ 0.027	13/09/2013	0.026	0.026	0.026	0.026	10000@0.027	9000@0.031	---	2012	900	1	23.40	6,641.95	0.012	0.158	5759	
20,231,328	0.600	---	---	---	15/07/2008	25/06/2004	4879	NIKAS SA (CR)	0.298	---	↘ 0.298	12/09/2013	---	---	---	---	320@0.239	994@0.298	---	2012	---	---	---	6,028.94	0.230	0.530	3577	
20,210,127	1.53	---	---	---	27/06/1997	20/03/2000	5006	PARNASSOS ENTERP. (CR)	0.071	-4.05	€ 0.074	13/09/2013	0.071	0.071	0.071	0.071	600@0.071	2000@0.074	---	2012	2,400	2	170.40	1,434.92	0.069	0.698	8775	
14,967,940	0.500	---	---	---	21/05/2008	04/01/2008	4956	PASAL DEVELOPMENT S.A. (CR)	0.155	-3.13	€ 0.160	12/09/2013	0.186	0.129	0.186	0.155	340@0.129	260@0.161	---	2012	4,610	8	714.54	2,320.03	0.120	0.414	8633	
40,946,303	0.360	---	---	---	18/07/2005	27/11/2007	4856	PC SYSTEMS SA (CR)	0.061	---	↘ 0.061	13/09/2013	0.061	0.061	0.061	0.061	1000@0.049	3000@0.060	---	2012	5,399	4	329.34	2,497.72	0.052	0.180	9533	
18,750,000	0.300	---	---	---	02/07/2001	31/12/2012	4985	PEGASUS PUBLISHING S.A. (CR)	0.068	-20.00	€ 0.085	13/09/2013	0.068	0.068	0.068	0.068	686@0.068	---	---	2012	14	3	0.95	1,275.00	0.044	0.610	5557	
28,056,518	0.530	---	---	---	04/07/2007	19/07/2006	4750	SATO SA (CR)	0.108	---	↘ 0.108	13/09/2013	0.108	0.108	0.108	0.108	---	5000@0.101	---	2012	50	2	5.40	3,030.10	0.025	0.123	3726	
36,235,184	1.00	---	---	---	01/07/2008	30/07/2012	4961	SELONDA AQUACULTURE SA (CR)	0.129	---	↘ 0.129	12/09/2013	0.129	0.129	0.140	0.129	98@0.129	1331@0.140	---	2012	16,646	6	2,149.53	4,674.34	0.119	0.600	3573	
7,914,480	2.50	---	---	---	23/06/2008	29/06/2011	4888	SFAKIANAKIS SA (CR)	0.550	---	↘ 0.550	09/09/2013	---	---	---	---	300@0.550	400@0.660	---	2012	---	---	---	4,352.96	0.364	0.763	5379	
60,221,300	0.400	---	---	---	01/07/2002	01/11/2010	4880	SHELMAN SA (CR)	0.130	---	↘ 0.130	04/09/2013	---	---	---	---	---	4000@0.110	---	2011	---	---	---	7,828.77	0.098	0.280	2353	
10,000,000	1.35	---	---	---	24/06/2008	10/05/2005	4887	SIDMA SA (CR)	0.335	-12.99	€ 0.385	12/09/2013	0.334	0.334	0.385	0.385	334	797@0.334	1985@0.385	---	2012	1,615	8	540.18	3,350.00	0.334	0.920	1757
29,060,950	0.340	---	---	---	20/08/2007	24/10/2001	4884	SPIDER METAL INDUSTRY SA (CR)	0.057	---	↘ 0.057	13/09/2013	0.057	0.057	0.057	0.057	---	800@0.060	---	2012	500	1	28.50	1,656.47	0.022	0.097	2757	
100,793,000	0.300	---	---	---	16/07/2009	05/08/2013	---	TELETIPOS SA (CR)	0.167	-18.54	€ 0.205	13/09/2013	0.167	0.167	0.167	0.167	6193@0.167	6750@0.246	---	2012	7	1	1.17	16,832.43	0.118	0.600	5553	
3,229,566	0.320	---	---	---	22/06/2005	23/09/1999	4629	VARANGIS AVEPE S.A. (CR)	0.735	---	↘ 0.735	12/09/2013	---	---	---	---	---	925@0.700	---	2012	---	---	---	2,373.73	0.206	0.840	3726	
17,175,132	0.300	---	---	---	25/06/2002	21/06/2013	4997	VARVARESSOS SA (CB)	0.037	---	↘ 0.037	13/09/2013	0.037	0.037	0.037	0.037	50@0.044	---	---	2012	30	1	1.11	635.48	0.027	0.181	3763	
13,191,620	0.620	---	---	---	04/08/2010	09/09/2002	4977	YALCO - CONSTANTINOU SA (CB)	0.104	-19.38	€ 0.129	12/09/2013	0.104	0.104	0.104	0.104	600@0.109	400@0.151	---	2012	300	1	31.20	1,371.93	0.104	0.210	3722	

5,025,000	0.300	---	---	---	05/07/2005	14/03/2002	4963	ALSINCO S.A (CR)	0.019	---	↘ 0.019	09/09/2013	---	---	---	---	---	---	---	2012	---	---	---	95.48	0.006	0.185	3763
766,000	2.83	---	---	---	01/07/2004	11/12/2012	4937	TRIA ALFA SA (CR)	2.81	---	↘ 2.81	23/08/2013	---	---	---	---	---	1@3.35	---	2012	---	---	---	2,339.15	1.30	4.70	3763
245,000	2.83	---	---	---	19/07/2010	11/12/2012	4938	TRIA ALFA SA (PR)	0.762	---	↘ 0.762	11/09/2013	---	---	---	---	640@0.610	---	---	2012	---	---	---	2,339.15	0.501	1.93	3763

49,030,011	0.300	---	---	---	19/07/2010	12/05/2011	4875	ALAPIS (CR)	0.041	---	↘ 0.041	30/03/2012	---	---	---	---	---	---	---	---	---	---	---	2,010.23	0.041	0.041	4577
1,750,955,549	0.600	---	---	---	19/05/2008	08/12/2011	4911	ATE (CR)	0.155	---	↘ 0.155	30/07/2012	---	---	---	---	---	---	---	---	---	---	---	271,398.11	0.155	0.155	8355

Number of Outstanding Securities	Nominal Value	Dividends [1]			Date of Last Coupon		Note	Shares	Closing price	% change	Previous closing price/date	Open price	Price min	Price max	Last price	Avg price	Last Bid [7]	Last Ask [7]	P/E after	Year	Volume	Trades	Transactions Value	Company Mkt Value (thou. €)	Year low	Year high	Sector[4]
		2010	2011	2012	Dividend [2]	Right																					
Under Suspension																											
21,382,067	0.300	---	---	---	02/10/2006	15/02/2006	4628	ATERMON (CR)	0.120	---	↘ 0.120	31/03/2010	---	---	---	---	---	---	---	---	---	---	---	2,565.85	0.120	0.120	5555
105,423,498	0.510	---	---	---	01/07/2004	28/12/2005	4920	AVENIR S.A. (CR)	0.046	---	↘ 0.046	30/08/2012	---	---	---	---	---	---	---	---	---	---	---	4,849.48	0.046	0.046	5752
33,930,000	0.300	---	---	---	03/07/2006	30/05/2001	4865	BABIS VOVOS SA (CR)	0.304	---	↘ 0.304	30/03/2012	---	---	---	---	---	---	---	---	---	---	---	10,314.72	0.304	0.304	8633
20,121,710	1.21	---	---	---	27/07/1992	12/03/2003	5002	BALKAN R.E. (CR)	0.190	---	↘ 0.190	29/08/2013	---	---	---	---	---	---	---	---	---	---	---	3,823.12	0.162	0.438	8633
1,795,140,547	1.00	(0.0615)	---	---	31/05/2011	19/04/2012	4951	BANK OF CYPRUS (CR)	0.207	---	↘ 0.207	15/03/2013	---	---	---	---	5000@0.170	---	---	---	---	---	---	371,594.09	0.180	0.282	8355
21,920,570	0.300	---	---	---	03/07/2007	13/12/1999	4702	CARDASSILARIS SA (CR)	0.140	---	↘ 0.140	30/11/2010	---	---	---	---	---	---	---	---	---	---	---	3,068.88	0.140	0.140	3577
54,547,634	0.500	---	---	---	25/04/2005	21/01/2009	4860	CH.TEGOPOULOS PUBL. SA (CR)	0.038	---	↘ 0.038	23/03/2012	---	---	---	---	---	---	---	---	---	---	---	2,072.81	0.038	0.038	5557
33,718,750	0.300	---	---	---	28/05/2008	21/01/2013	4998	DOL SA (CR)	0.640	---	↘ 0.640	25/07/2013	---	---	---	---	---	3118@0.700	---	---	---	---	---	21,580.00	0.244	0.759	5557
7,847,611	1.20	---	---	---	01/08/2007	28/09/2011	4939	EDRASIS - C. PSALLIDAS SA (CR)	0.150	---	↘ 0.150	19/11/2012	---	---	---	---	---	---	---	---	---	---	---	1,177.14	0.150	0.150	2357
5,750,000	0.300	---	---	---	12/12/2008	12/12/2011	4929	ELECTRONIKI ATHINON SA (CR)	0.480	---	↘ 0.480	07/09/2012	---	---	---	---	---	---	---	---	---	---	---	2,760.00	0.480	0.480	5375
24,605,397	0.400	---	---	---	29/06/1995	27/05/2002	4651	EMPORIKOS DESMOS SA (CR)	0.080	---	↘ 0.080	28/05/2010	---	---	---	---	---	---	---	---	---	---	---	2,134.04	0.080	0.080	3722
1,182,903	0.400	---	---	---	01/07/1996	27/05/2002	4652	EMPORIKOS DESMOS SA (PR)	0.140	---	↘ 0.140	28/09/2009	---	---	---	---	---	---	---	---	---	---	---	2,134.04	0.140	0.140	3722
8,593,750	0.300	---	---	---	01/06/2009	20/06/2007	4876	FASHION BOX (CR)	1.30	---	↘ 1.30	23/02/2012	---	---	---	---	---	---	---	---	---	---	---	11,171.88	1.30	1.30	3763
7,326,648	1.00	---	---	---	26/07/2006	24/07/2001	4921	FINTEXPORT SA (CR)	0.328	---	↘ 0.328	29/06/2012	---	---	---	---	---	---	---	---	---	---	---	2,403.14	0.328	0.328	3763
20,860,000	0.300	---	---	---	03/07/2000	13/11/2007	4848	IKONA - IHOS SA (CR)	0.072	---	↘ 0.072	02/12/2011	---	---	---	---	---	---	---	---	---	---	---	1,501.92	0.072	0.072	5379
36,765,744	0.350	---	---	---	16/08/2006	06/06/2011	4869	IMPERIO SA (CR)	0.026	---	↘ 0.026	30/03/2012	---	---	---	---	---	---	---	---	---	---	---	955.91	0.026	0.026	2777
24,619,524	0.500	---	---	---	10/10/1986	30/12/2002	4914	KERAMIA-ALLATINI (CR)	0.088	---	↘ 0.088	27/08/2012	---	---	---	---	---	---	---	---	---	---	---	2,166.52	0.088	0.088	8633
7,840,373	1.20	---	---	---	18/07/2002	05/03/2003	4765	KLONATEX SA (PR)	0.080	---	↘ 0.080	09/05/2011	---	---	---	---	---	---	---	---	---	---	---	1,453.75	0.080	0.080	3763
20,663,047	1.20	---	---	---	21/08/2000	05/03/2003	4764	KLONATEX SA (CR)	0.040	---	↘ 0.040	09/05/2011	---	---	---	---	---	---	---	---	---	---	---	1,453.75	0.040	0.040	3763
17,544,600	0.600	---	---	---	03/07/2000	01/08/2000	4868	KOYMBAS SYNERGY GROUP (CR)	0.132	---	↘ 0.132	29/03/2012	---	---	---	---	---	---	---	---	---	---	---	2,315.89	0.132	0.132	8775
15,015,000	1.60	---	---	---	01/07/2002	02/02/2000	4603	MAXIM C.M. PERTSINIDIS SA (CB)	0.100	---	↘ 0.100	30/11/2009	---	---	---	---	---	---	---	---	---	---	---	1,501.50	0.100	0.100	3763
66,937,526	0.700	---	---	---	13/08/2010	21/05/2003	5003	MICHANIKI SA (CR)	0.100	---	↘ 0.100	29/08/2013	---	---	---	---	---	---	---	---	---	---	---	9,186.78	0.085	0.370	2357
25,968,987	0.700	---	---	---	13/08/2010	21/05/2003	5004	MICHANIKI SA (PR)	0.096	---	↘ 0.096	29/08/2013	---	---	---	---	---	---	---	---	---	---	---	9,186.78	0.065	0.268	2357
13,555,100	1.00	---	---	---		08/07/2005	4576	MICROLAND COMPUTERS SA (CR)	0.640	---	↘ 0.640	14/07/2009	---	---	---	---	---	---	---	---	---	---	---	8,675.26	0.640	0.640	5379
23,463,874	0.800	---	---	---	23/05/2003	21/12/1999	4918	NEORION SA (CR)	0.125	---	↘ 0.125	28/08/2012	---	---	---	---	---	---	---	---	---	---	---	2,932.98	0.125	0.125	2753
42,501,273	0.300	---	---	---	26/06/2007	10/08/2009	4993	NUTRIART (CR)	0.049	---	↘ 0.049	21/06/2013	---	---	---	---	---	---	---	---	---	---	---	2,082.56	0.038	0.114	3577
25,583,146	0.300	---	---	---	25/06/2001	03/12/2008	4723	PETZETAKIS SA (CR)	0.260	---	↘ 0.260	28/01/2011	---	---	---	---	---	---	---	---	---	---	---	6,651.62	0.260	0.260	1357
9,550,386	0.500	---	---	---	01/07/1997	12/06/2008	4626	PRAXITELIO SA (CR)	0.390	---	↘ 0.390	11/03/2010	---	---	---	---	---	---	---	---	---	---	---	4,430.09	0.390	0.390	4533
1,306,368	0.500	---	---	---	01/07/1997	12/06/2008	4627	PRAXITELIO SA (PR)	0.540	---	↘ 0.540	15/12/2009	---	---	---	---	---	---	---	---	---	---	---	4,430.09	0.540	0.540	4533
62,683,822	0.300	---	---	---	27/05/2008	09/01/2006	4830	PROTON BANK S.A. (CR)	0.180	---	↘ 0.180	07/10/2011	---	---	---	---	---	---	---	---	---	---	---	11,283.09	0.180	0.180	8355
23,059,688	0.660	---	---	---	03/07/2008	06/08/2004	4864	RIDENCO SA (CR)	0.032	---	↘ 0.032	30/03/2012	---	---	---	---	---	---	---	---	---	---	---	737.91	0.032	0.032	3765
51,083,993	1.00	---	---	---	15/07/2008	06/08/2003	4867	SANYO HELLAS HOLD. (CR)	0.020	---	↘ 0.020	30/03/2012	---	---	---	---	---	---	---	---	---	---	---	1,021.68	0.020	0.020	3722
51,334,286	0.320	---	---	---	03/07/2000	18/12/2007	4548	SAOS (CR)	0.780	---	↘ 0.780	27/03/2009	---	---	---	---	---	---	---	---	---	---	---	40,040.74	0.780	0.780	2773
26,408,040	0.300	---	---	---	01/07/1997	26/05/1999	4464	SHEET STEEL SA (CR)	0.120	---	↘ 0.120	28/11/2008	---	---	---	---	---	---	---	---	---	---	---	3,168.96	0.120	0.120	1757
26,262,660	0.900	---	---	---	01/07/2008	24/02/2011	4954	SPRIDER STORES (CR)	0.031	---	↘ 0.031	28/03/2013	---	---	---	---	---	---	---	---	---	---	---	814.14	0.025	0.055	5371
144,688,060	0.600	---	---	---	21/04/2008	10/03/2010	4982	T BANK (CR)	0.048	---	↘ 0.048	30/11/2011	---	---	---	---	---	---	---	---	---	---	---	6,945.03	0.048	0.048	8355
6,523,780	0.530	---	---	---	01/07/2002	06/03/2001	4971	TECHNICAL PUBLICATIONS SA (CR)	0.006	---	↘ 0.006	29/05/2013	---	---	---	---	---	---	---	---	---	---	---	39.14	0.006	0.347	5557
13,920,000	0.320	---	---	---	19/11/2001	01/08/2000	4726	TEXAPRET SA (CR)	0.080	---	↘ 0.080	23/02/2011	---	---	---	---	---	---	---	---	---	---	---	1,113.60	0.080	0.080	3763

Number of Outstanding Securities	Nominal Value	Dividends [1]			Date of Last Coupon		Note	Shares	Closing price	% change	Previous closing price/date	Open price	Price min	Price max	Last price	Avg price	Last Bid [7]	Last Ask [7]	P/E after	Year	Volume	Trades	Transactions Value	Company Mkt Value (thou. €)	Year low	Year high	Sector[4]
--	------------------	---------------	--	--	---------------------	--	------	--------	------------------	----------	--------------------------------	---------------	--------------	--------------	---------------	--------------	-----------------	--------------	--------------	------	--------	--------	-----------------------	--------------------------------	-------------	--------------	---------------

Under Suspension

284,465,964	3.70	---	---	---	20/06/2008	15/06/2009	4913	TT HELLENIC POSTBANK (CR)	0.168	---	↘ 0.168	30/08/2012	---	---	---	---	---	---	---	---	---	---	---	47,790.28	0.168	0.168	8355
89,616,200	0.300	---	---	---	21/08/2000	28/06/2007	4616	UNITED TEXTILES (CR)	0.050	---	↘ 0.050	25/02/2010	---	---	---	---	---	---	---	---	---	---	---	4,480.81	0.050	0.050	3763
71,683,906	0.400	---	---	---	15/06/2005	05/02/2008	4953	XATZIOANNOU (CR)	0.026	---	↘ 0.026	28/03/2013	---	---	---	---	---	---	---	---	---	---	---	1,863.78	0.020	0.085	3763

Shares' Notes

Code	Note text
()	- Adjusted dividends.
*	- Last adjusted closing price.
[1]	- Net dividends.
[2]	- The "Date of Last Coupon" for New listings refers to the date company's stocks started to trade in Athex
[3]	- The Company Market Value is referred to the number of outstanding shares
[4]	- Sectors codification can be found in Appendix A
[5]	- The Market Value refers to the total number of shares listed (including their several classes) in the exchange by the company.
[6]	- P/E greater than 100
[7]	- Last view of the Order Book before the end of the trading session
4446	- Transfer to the "Under Supervision" Category as of 20/10/2008.
4447	- Transfer to the "Under Supervision" Category as of 21/10/2008.
4464	- Suspension of trading as of 1/12/2008.
4548	- Suspension of trading as of 1/4/2009.
4554	- Transfer to the "Under Supervision" Category as of 6/4/2009.
4559	- Transfer to the "Under Supervision" Category as of 21/4/2009.
4576	- Suspension of trading as of 14/7/2009.
4603	- Suspension of trading as of 1/12/2009.
4616	- Suspension of trading as of 25/2/2010.
4626	- Suspension of trading as of 1/4/2010.
4627	- Suspension of trading as of 1/4/2010.
4628	- Suspension of trading as of 1/4/2010.
4629	- Transfer to the Under Supervision Category as of 12/4/2010.
4630	- Transfer to the Under Supervision Category as of 12/4/2010.
4651	- Suspension of trading as of 1/6/2010.
4652	- Suspension of trading as of 1/6/2010.
4690	- Transfer to Surveillance category as of 4/4/2006.
4702	- Suspension of trading as of 1/12/2010.
4723	- Suspension of trading as of 31/1/2011.
4726	- Suspension of trading as of 1/3/2011.
4750	- Transfer to the "Under Surveillance Category" from 8/4/2011.
4764	- Suspension of trading as of 20/5/2011.
4765	- Suspension of trading as of 20/5/2011.
4795	- The final gross (pre-tax) dividend is € 0.30 per share and subject to withholding tax on the full dividend amount, i.e. 0,45 per share, for those shareholders liable to withholding tax, in accordance with the applicable tax law provisions.
4808	- Suspension of trading as of 6/9/2011.
4814	- Transfer to the Low Dispersion Category as of 30/5/2011.
4815	- Transfer to the Low Dispersion Category as of 30/5/2011.
4816	- Transfer to the Low Dispersion Category as of 30/5/2011.
4817	- Transfer to the Low Dispersion Category as of 30/5/2011.
4820	- Transfer to the Low Dispersion category as of 18/4/2008.
4822	- Transfer to the Low Dispersion category as of 30/5/2011.
4823	- Transfer to the Low Dispersion category as of 4/4/2006.
4824	- Transfer to the Low Dispersion category as of 18/4/2008.
4825	- Transfer to the Low Dispersion category as of 8/4/2011.
4827	- Transfer to the Low Dispersion category as of 5/5/2010.
4828	- Transfer to the Low Dispersion category as of 4/4/2006.
4830	- Suspension of trading as of 10/10/2011.
4833	- Transfer to Surveillance category from 6/5/2010.
4844	- Transfer to the Surveillance category from 8/4/2011.
4845	- Transfer to the Surveillance Category as of 25/11/2011.
4846	- Transfer to the Surveillance Category as of 25/11/2011.
4847	- Transfer to the Surveillance Category as of 3/7/2009.

Shares' Notes

Code	Note text
4848	- Suspension of trading as of 6/12/2011.
4854	- Transfer to the Surveillance Category as of 29/12/2011.
4855	- Transfer to the Surveillance Category as of 29/12/2011.
4856	- Transfer to the Surveillance Category as of 29/12/2011.
4860	- Suspension of trading as of 30/3/2012.
4864	- Suspension of trading as of 30/3/2012.
4865	- Suspension of trading as of 2/4/2012.
4867	- Suspension of trading as of 2/4/2012.
4868	- Suspension of trading as of 2/4/2012.
4869	- Suspension of trading as of 2/4/2012.
4875	- Suspension of trading as of 2/4/2012.
4876	- Suspension of trading as of 3/4/2012.
4879	- Transfer to the Surveillance Category as of 10/4/2012.
4880	- Transfer to the Surveillance Category as of 10/4/2012.
4881	- Transfer to the Surveillance Category as of 10/4/2012.
4882	- Transfer to the Surveillance Category as of 10/4/2012.
4884	- Transfer to the Surveillance Category as of 10/4/2012.
4885	- Transfer to the Surveillance Category as of 10/4/2012.
4886	- Transfer to the Surveillance Category as of 10/4/2012.
4887	- Transfer to the Surveillance Category as of 10/4/2012.
4888	- Transfer to the Surveillance Category as of 10/4/2012.
4889	- Transfer to the Surveillance Category as of 10/4/2012.
4893	- Transfer to the Low Dispersion category as of 28/5/2012.
4894	- Transfer to the Low Dispersion category as of 28/5/2012.
4911	- Lift of suspension from 30/7/2012.
4912	- Transfer to the Surveillance Category as of 31/7/2012.
4913	- Suspension of trading as of 30/8/2012.
4914	- Suspension of trading as of 31/8/2012.
4918	- Suspension of trading as of 31/8/2012.
4920	- Suspension of trading as of 31/8/2012.
4921	- Suspension of trading as of 31/8/2012.
4929	- Suspension of trading as of 1/10/2012.
4937	- Transfer to the UNDER DELETION category as of 30/11/2012.
4938	- Transfer to the UNDER DELETION category as of 30/11/2012.
4939	- Suspension of trading as of 30/11/2012.
4941	- Transfer to the Low Dispersion category as of 3/12/2012.
4944	- Transfer to the Surveillance Category as of 7/12/2012.
4951	- Suspension of trading as of 19/3/2013.
4953	- Suspension of trading as of 2/4/2013.
4954	- Suspension of trading as of 2/4/2013.
4955	- Transfer to the Surveillance Category as from 5/4/2013.
4956	- Transfer to the Surveillance Category as from 5/4/2013.
4957	- Transfer to the Surveillance Category as from 5/4/2013.
4958	- Transfer to the Surveillance Category as from 5/4/2013.
4959	- Transfer to the Surveillance Category as from 5/4/2013.
4960	- Transfer to the Surveillance Category as from 5/4/2013.
4961	- Transfer to the Surveillance Category as from 5/4/2013.
4962	- Transfer to the Surveillance Category as from 5/4/2013.
4963	- Transfer to the Under Deletion Category as from 5/4/2013.
4971	- Suspension of trading as of 3/6/2013.
4977	- Transfer to the "Under Surveillance Category" from 11/6/2013.
4978	- Transfer to the Under Supervision Category as of 11/6/2013.
4982	- Suspension of trading as of 1/12/2011.

Shares' Notes

Code	Note text
4983	- Transfer to the Surveillance Category as of 5/4/2013.
4985	- Transfer to the "Under Surveillance Category" from 8/4/2011.
4986	- Transfer to the Low Dispersion category as of 30/5/2011.
4988	- As of June 7, 2013, the name of the company "DUTY FREE SHOPS A CORPORATION OPERATING DFS AND LARGE AND SMALL SCALE INDUSTRIAL OPERATIONS, TECHNIC" on ATHEX changes to "FOLLI FOLLIE S.A.".
4993	- Suspension of trading as of 21/6/2013 (15:18).
4997	- Transfer to the Under Supervision Category as of 21/12/2009. - The 6,870,053 new (CB) shares, resulting from the recent share capital increase through a rights issue, are not yet admitted to trading on the ATHEX.
4998	- Suspension of trading as of 26/7/2013.
5002	- Suspension of trading as of 30/08/2013.
5003	- Suspension of trading as of 30/08/2013.
5004	- Suspension of trading as of 30/08/2013.
5006	- Transfer to the Surveillance Category as of 3/9/2013.

Securities Blocks Details

Securities	Block Volume	Price	Block Trade Value	Time of approval	Note
FOLLI FOLLIE (CR)	207,840	18.30	3,802,432.80	10:43:42	20
MOTOR OIL (CR)	49,736	7.52	374,014.72	14:27:18	20
MOTOR OIL (CR)	68,888	7.52	518,037.76	15:53:24	20

Blocks Notes

2 - SPOT 1 or SPOT 2 Packet	11 - Total Assets > 500 bil
3 - Block with Short Selling	12 - Sell Offer through Athex
4 - Buy to Close Block	13 - Forced Sale of NMOE
6 - Simultaneous Constitution	14 - Restoration Packet
7 - Repurchase Agreement	15 - Market Maker Packet
8 - Dispersion's Achievement (Not Listed)	16 - Short Selling
9 - Dispersion's Achievement (Listed)	18 - SPOT 1 Packet
10 - Share Capital Majority of Greek State (> 50 bil)	20 - Method 6-1 Packet

Shares Rights Details

Occured date	Exercise from	Exercise until	Trading until	Rights	Price min	Price max	Closing price	Last Bid	Last Ask	Volume	Trades	Transactions Value
-----------------	------------------	-------------------	------------------	--------	--------------	--------------	------------------	----------	----------	--------	--------	-----------------------

No Rights Transactions.

Stock Borrowing

Securities	Stock Borrowing through Helex (volume)	Stock Borrowing through OTC (volume) [1]	Totals [2]
ALAPIS (CR)	---	6,250	6,250
ALPHA BANK (CR)	164,500	4,361,835	4,526,335
ATE (CR)	---	69,000	69,000
BANK OF CYPRUS (CR)	---	102,899	102,899
CC HBC AG (CR)	13,800	73,941	87,741
ELLAKTOR (CR)	2,000	---	2,000
EUROBANK ERGASIAS (CR)	22,120	68,406	90,526
EUROBANK PROPERTIES REIC (CR)	6,000	31,215	37,215
EYDAP S.A. (CR)	2,400	---	2,400
FLEXOPACK SA (CR)	---	41,927	41,927
FOLLI FOLLIE (CR)	3,000	15,508	18,508
GEK TERNA (CR)	500	---	500
HELLENIC EXCHANGES (CR)	20,500	---	20,500
HELLENIC PETROLEUM (CR)	19,200	269	19,469
INTRALOT (CR)	24,000	---	24,000
JUMBO SA (CR)	9,900	3,525	13,425
LAMDA DEVELOPMENT SA (CR)	---	10,377	10,377
MARFIN INVESTMENT GROUP (CR)	---	733,474	733,474
METKA (CR)	6,100	---	6,100
MOTOR OIL (CR)	1,700	---	1,700
MYTILINEOS HOLDINGS (CR)	10,000	---	10,000
NATIONAL BANK (CR)	177,100	1,522,830	1,699,930
NBGAM ETF	10,000	---	10,000
NBGAM ETF GREECE & TURKEY 30	3,500	---	3,500
OPAP (CR)	78,200	2,067	80,267
OTE (CR)	94,800	109,116	203,916
PIRAEUS BANK (CR)	140,200	266,976	407,176
PPC (CR)	58,200	---	58,200
TERNA ENERGY (CR)	3,900	---	3,900
TITAN CEMENT (CR)	7,200	55,390	62,590
VIOHALCO (CB)	5,200	---	5,200

Stock Borrowing Notes

[1] - The information concerning OTC Stock Borrowing Transactions is based on the statements of the Dematerialised Securities System (DSS) operators involved and refers to volumes that have been cleared and registered up until the previous working day.

Shares Forced Sales

Securities	Transaction s Volume	Number of Trades	Transactions Value	Note
No Forced Transactions.				

Forced Sales Notes

- 1 - Normal Forced Sale.
- 2 - Forced Sales of Fixed Registered Shares.
- 3 - Forced Sales of Remaining Stock Fractions.

Forced Sales Registered Shares

Securities	Start Date	End Date	Initial Volume	Remaining Volume	Date	Avg price (day)	Avg price (period)	Number of Trades	Transactions Volume	Transactions Value
------------	------------	----------	-------------------	---------------------	------	--------------------	-----------------------	---------------------	------------------------	-----------------------

No Fixed Registered Shares Forced Sales.

Forced Sales Notes

According to Decision 1/380/04.05.2008 of the Hellenic Republic Capital Market Commission, the certificated registered shares that have not been deposited to the issuer for dematerialisation, will be auctioned in the Athens Exchange by the supervising issuer. Forced sales procedure is held according to Article 99A of the Athens Exchange Rulebook. The average price of the period is calculated by dividing the Total transactions value by the Total volume and includes all the transactions made until the current date.

Exchange Traded Funds (ETFs) Characteristics

	Transactions Date (T)	Creation / Redemption	Units (T-1)	New Units (T-1)	Redemptio n Units (T-	Units (T) [1]	Fund Assets [2]	Net Unit Price	Dividen d per	Dividend Date
NBGAM ETF ΓΔ Χ.Α.	16/09/2013	25,000	294,878	---	---	294,878	3,244,968.00	11.0044	---	27/10/2011
ALPHA ETF FTSE Athex Large Cap	16/09/2013	50,000	5,848,618	---	---	5,848,618	19,873,330.00	3.3980	0.05	01/07/2013
NBGAM ETF GREECE & TURKEY 30	16/09/2013	25,000	388,550	---	---	388,550	2,982,291.00	7.6754	---	27/10/2011

ETFs Notes

[1] - Units (T) = Units (T-1) + New Units (T-1) - Redemption Units (T-1)

[2] - The Creation / Redemption Units of T-1 are included.

Corporate Bonds

Num Listed Bonds	Nominal price	Issue price	Today's Rate	Exp. Date	Duration (years)	Note	Coupon attached		Trading	Corporate Bonds	Price min	Price max	Closing price	Previous closing price/date	Volume	Transactions Value	Last order		Date	ear min	Year max
							Common	Preferred									Price	Buy / Sell			
39,711,653	1.00	1.00	6.00	30/06/2016	5	4786	5	---	1	BANK OF CYPRUS PUBLIC CO. LTD (Convert. to CR sh.)	---	---	---	---	---	---	10.0000	B	13/03/2013	100.0000	100.0000
428,521,983	1.00	1.00	6.50	30/06/2016	5	4785	5	---	1	BANK OF CYPRUS PUBLIC CO. LTD (Convert. to CR sh.)	---	---	---	20.5000	14/03/2013	---	21.0000	B	15/03/2013	19.5000	30.0000
4,150,176	4.77	4.77	5.00	19/03/2015	5	---	14	---	1	MARFIN INVESTMENT GROUP S.A. (Conver to CR shar)	---	---	---	26.0000	12/09/2013	---	26.0000	B	16/09/2013	0.5000	70.0000
73,088,145	1.00	1.00	5.50	30/06/2014	5	4574	9	---	1	BANK OF CYPRUS PUBLIC CO. LTD (Convert. to CR sh.)	---	---	---	20.0000	08/03/2013	---	21.5000	B	15/03/2013	20.0000	26.0000
1,794,284	12.49	9.77	5.80	12/07/2015	8	---	13	---	1	NIREUS S.A. (Convertible to CR shares)	---	---	---	12.0000	26/07/2013	---	20.0000	B	16/09/2013	11.0000	15.0000
27,283,632	1.00	1.00	1.32	30/06/2018	10	---	11	---	1	BANK OF CYPRUS PUBLIC CO. LTD (Convert. to CR sh.)	---	---	---	33.0000	13/12/2012	---	35.0000	B	15/03/2013	33.0000	33.0000
212,849,265	1.00	1.00	6.30	29/07/2020	7	---	1	---	1	MARFIN INVESTMENT GROUP S.A. SERIES B (BOND)	---	---	---	0.8500	23/08/2013	---	0.5000	B	16/09/2013	0.8500	0.8500
2,156,827	1.00	1.00	7.00	29/07/2019	6	---	1	---	1	MARFIN INVESTMENT GROUP S.A. SERIES A (BOND)	---	---	---	1.0000	23/08/2013	---	1.0100	B	16/09/2013	1.0000	1.0000

4574 - The bonds are of indefinite duration.

4785 - The bonds are of indefinite duration.

4786 - The bonds are of indefinite duration. The Bond's par value, issue price and trading prices are expressed in USA Dollars, whereas its Transactions Value is expressed in Euros.

Corporate Bonds Notes

Transactions Volume = (Pieces) * (Nominal Price). Transactions Value = (Pieces) * (Nominal Price) * (price %) + (Accrued interest).

The price of a Bond is stated as a percentage (%) of Bond's Nominal Price.

Nominal Price in Euros (€), except if it is noted differently.

Government Bonds

Number Listed Bonds	Nominal price	Today's Rate	Accrued Interest Calc	Exp. Date [1]	Duration (years)	Note	Coupons Date	Curr. coupon value	Trading Unit	Government Bonds	Price min	Price max	Closing price	Previous closing price/date	Volume	Transactions Value	Price	Last order Buy / Sell	Date
2,658,781,973	1.00	4.30	Actual/Actual	24/02/2023	11	---	24/02	4.30	1	GGB-FXD-240223-11Y-2.000-1.00	---	---	---	---	---	---	---	---	---
2,658,781,973	1.00	4.30	Actual/Actual	24/02/2024	12	---	24/02	4.30	1	GGB-FXD-240224-12Y-2.000-1.00	---	---	---	---	---	---	---	---	---
2,658,781,973	1.00	4.30	Actual/Actual	24/02/2025	13	---	24/02	4.30	1	GGB-FXD-240225-13Y-2.000-1.00	---	---	---	---	---	---	---	---	---
2,658,781,973	1.00	4.30	Actual/Actual	24/02/2026	14	---	24/02	4.30	1	GGB-FXD-240226-14Y-2.000-1.00	---	---	---	---	---	---	---	---	---
2,658,781,973	1.00	4.30	Actual/Actual	24/02/2027	15	---	24/02	4.30	1	GGB-FXD-240227-15Y-2.000-1.00	---	---	---	---	---	---	---	---	---
2,836,034,104	1.00	4.30	Actual/Actual	24/02/2028	16	---	24/02	4.30	1	GGB-FXD-240228-16Y-2.000-1.00	---	---	---	---	---	---	---	---	---
2,836,034,104	1.00	4.30	Actual/Actual	24/02/2029	17	---	24/02	4.30	1	GGB-FXD-240229-17Y-2.000-1.00	---	---	---	---	---	---	---	---	---
2,836,034,104	1.00	4.30	Actual/Actual	24/02/2030	18	---	24/02	4.30	1	GGB-FXD-240230-18Y-2.000-1.00	---	---	---	---	---	---	---	---	---
2,836,034,104	1.00	4.30	Actual/Actual	24/02/2031	19	---	24/02	4.30	1	GGB-FXD-240231-19Y-2.000-1.00	---	---	---	---	---	---	---	---	---
2,836,034,104	1.00	4.30	Actual/Actual	24/02/2032	20	---	24/02	4.30	1	GGB-FXD-240232-20Y-2.000-1.00	---	---	---	---	---	---	---	---	---
2,836,034,104	1.00	4.30	Actual/Actual	24/02/2033	21	---	24/02	4.30	1	GGB-FXD-240233-21Y-2.000-1.00	---	---	---	---	---	---	---	---	---
2,836,034,104	1.00	4.30	Actual/Actual	24/02/2034	22	---	24/02	4.30	1	GGB-FXD-240234-22Y-2.000-1.00	---	---	---	---	---	---	---	---	---
2,836,034,104	1.00	4.30	Actual/Actual	24/02/2035	23	---	24/02	4.30	1	GGB-FXD-240235-23Y-2.000-1.00	---	---	---	---	---	---	---	---	---
2,836,034,104	1.00	4.30	Actual/Actual	24/02/2036	24	---	24/02	4.30	1	GGB-FXD-240236-24Y-2.000-1.00	---	---	---	---	---	---	---	---	---
2,836,034,104	1.00	4.30	Actual/Actual	24/02/2037	25	---	24/02	4.30	1	GGB-FXD-240237-25Y-2.000-1.00	---	---	---	---	---	---	---	---	---
2,836,034,104	1.00	4.30	Actual/Actual	24/02/2038	26	---	24/02	4.30	1	GGB-FXD-240238-26Y-2.000-1.00	---	---	---	---	---	---	---	---	---
2,836,034,104	1.00	4.30	Actual/Actual	24/02/2039	27	---	24/02	4.30	1	GGB-FXD-240239-27Y-2.000-1.00	---	---	---	---	---	---	---	---	---
2,836,034,104	1.00	4.30	Actual/Actual	24/02/2040	28	---	24/02	4.30	1	GGB-FXD-240240-28Y-2.000-1.00	---	---	---	---	---	---	---	---	---
2,836,034,104	1.00	4.30	Actual/Actual	24/02/2041	29	---	24/02	4.30	1	GGB-FXD-240241-29Y-2.000-1.00	---	---	---	---	---	---	---	---	---
2,836,034,104	1.00	4.30	Actual/Actual	24/02/2042	30	---	24/02	4.30	1	GGB-FXD-240242-30Y-2.000-1.00	---	---	---	---	---	---	---	---	---
1,500,000	1,000.00	0.97	FLR Actual/360	10/08/2014	5	---	10/02 - 10/08	---	1	GGB-FRN-100814-05Y-1.762-1000.00	---	---	---	---	---	---	---	---	---
5,187,186	1,000.00	1.60	FLR Actual/360	21/05/2014	5	---	21/11 - 21/05	---	1	GGB-FRN-210514-05Y-2.734-1000.00	---	---	---	---	---	---	---	---	---
78,300	1,000.00	1.16	FLR Actual/360	23/07/2014	5	---	23/01 - 23/07	---	1	GGB-FRN-230714-05Y-2.018-1000.00	---	---	---	---	---	---	---	---	---

Government Bonds Notes

Transactions Volume = (Pieces) * (Nominal Price). Transactions Value = (Pieces) * (Nominal Price) * (price %) + (Accrued interest).

The Value of current coupon for the issues with NV 0.01 euro refers to NV 100 euros

FLR: Floating Interest Rate.

[1] - The Expiration Date of the interest bearing period and the Date for coupon payment.

Bonds in Circulation	Currency / Min nominal traded Value	Coupons Payment Date	Current Coupon Value	Note	Coupon Attached	Trading Unit	Issue Date	Duration (years)	Today's Interest	A.I.C in days	Bonds	Last price of previous days	Last Outcry in Cash (euro) Price	Buy / Sell	Trades in Pieces	Life min	Life Max
Bonds of International Organizations																	
1,000,000	EUR / 1000	21/07	---	---	8	1	21/07/2006	10	5.0 FLR	360	EUROPEAN INVESTMENT BANK BOND	97.50	16/04/2007	---	---	---	---
Corporate Bonds in Foreign Currency and Euro																	
103,746	GBP / 10	01/12	0.25	---	54	1	01/12/1930	98	2.5	360	National Mortgage Bank	2.27	05/02/1996	2.27	S	05/02/1996	2.27
0	GBP / 10	01/12	0.25	---	56	1	01/12/1928	100	2.5	360	National Mortgage Bank	---	---	---	---	---	---

Government Bonds Notes

A.I.C: Accrued Interest Calculation base.
FLR: Floating Interest Rate.
The minimum tradeable Nominal Value for all Demeterialised Government Titles is 100 Euros.

State Banks Bonds (one year maturity)

Number Listed Bonds	Nominal value	Initial Rate	Current Rate	Annual Interest	Issue Date	Note	State Banks Bonds	Trading Unit	Yearly Renewals	Last Outcry in Cash (euro) Price	Buy / Sell	Volume
342,560	130.41	2.35	3.92	0.00	31/01/2005	---	H.I.D.B.	1	9	100.00	B	---
16,015	1,211.71	3.65	2.47	0.00	30/11/2006	---	H.I.D.B.	1	7	---	---	---
2,446	1,154.00	4.90	2.47	28.96	31/05/2008	---	H.I.D.B.	1	6	---	---	---
171,117	1,163.28	5.50	2.47	29.19	31/05/2008	---	H.I.D.B.	1	6	---	---	---
63,787	1,129.20	5.45	2.47	30.88	31/08/2008	---	H.I.D.B.	1	6	---	---	---
5,358	1,108.96	5.45	2.47	27.83	31/10/2008	---	H.I.D.B.	1	5	---	---	---
1,045	1,129.74	5.50	2.47	28.35	31/10/2008	---	H.I.D.B.	1	5	---	---	---
76,077	1,132.45	5.75	2.47	28.42	31/10/2008	---	H.I.D.B.	1	5	---	---	---

Bonds Notes

The annual renewal of H.I.D.B. Bonds is free of taxes (net rate).
For Bonds issue until 31/07/2013 the accrued interest is capitalized.

Athex & ATHEXClear Members List

Member Name			Stock Market			Derivatives Market			ATHEXCclear Member		
Address	Phone	Fax	Market Member	Remote Member	Market Maker	Proprietary	Market Maker	Agent	General Clearing	Direct Clearing	Non Clearing
A. SARRIS SECURITIES S.A.			a								
6, DRAGATSANIOU STR. ATHINA	(210)-3367700	(210)-3312324									
AGRICULTURAL BANK OF GREECE S.A.							a			a	
, 23 PANEPISTIMIOU ATHINA	(210)-3298400	(210)-3298322									
ALPHA FINANCE INVESTMENT SERVICES S.A.			a		a		a			a	
5, MERLIN STR. ATHINA	(210)-3677400	(210)-3311193									
ALPHA BANK A.E.						a			a		
40, STADIOU STR ATHINA	(210)-3265546	(210)-3265811									
	(210)-3260000	(210)-3264116									
ARGUS STOCKBROKERS LTD			a	a							
12-14, KENNEDY AVE, S. 303 NICOSIA	(+35722)-22717000	(+35722)-22717070									
ATHENAIKI BROKERAGE FIRM S.A.			a								
33, STADIOU STR. ATHINA	(210)-3254764	(210)-3254767									
ATLANTIC SECURITIES LIMITED			a	a							
37, PRODROMOU STR. NICOSIA	(+35722)-445400	(+35722)-661914									
ATLAS SECURITIES S.A			a			a					a
14 - 16, VERVENON STR.& 125 MICHALAKOPOULOU STR. ATHINA	(210)-3363300	(210)-3238925									
ATTICA BANK S.A.									a		
54, AKADIMIAS STR. ATHINA	(210)-3390757	(210)-3646090									
23, OMIROU STR. ATHINA	(210)-3669000	(210)-3669410									
AXIA VENTURES GROUP LTD			a	a							
10, G. KRANIDIOTI NICOSIA	+357 22 742000	+357 22 742001									
AXON SECURITIES S.A.			a			a					a
48, STADIOU ATHINA	(210)-3363800	(210)-3243903									
BANK OF CYPRUS PUBLIC COMPANY LTD									a		
, 51,STASINOU (AG. PARASKEVI, STROVOLOS) NICOSIA	(0035722)-121883	(0035722)-336258									
170, ALEXANDRAS AVE ATHINA	(210)-6477708	(210)-6477709									
BETA SECURITIES S.A.			a		a	a	a			a	
, BRAILA & 29 ALEXANDRAS AVE ATHINA	(210)-6478900	(210)-6410139									
BNP PARIBAS SECURITIES SERVICES									a		
94, VAS. SOFIAS AVE ATHINA	(210)-7468500	(210)-7468579									
CAPITAL SECURITIES S.A.			a			a					a
58, MITROPOLEOS STR. ATHINA	(210)-3369700	(210)-3369820									
CFS SECURITIES & INVESTMENT SERVICES S.A.			a		a			a		a	
3, STADIOU STR. ATHINA	(210)-3360800	(210)-3311854									
CITIGROUP GLOBAL MARKET LTD			a	a							
, CITIGROUP CENTRE, CANADA SQUARE, CANARY WHART LONDON	002079864000	002079862266									
CO-OPERATIVE CENTRAL BANK LTD			a	a							
8, GRIGORI AFXENTIOU STR. NICOSIA	(+35722)-743300	(+35722)-672083									
CREDIT AGRICOLE CHEUVREUX S.A.			a	a							
, 9 QUAI PAUL DOUMER PARIS	33 (0) 1 41 89 70 00										
CREDIT SUISSE SECURITIES (EUROPE) LIMITED			a	a							
, ONE CABOT SQUARE LONDON	+44 20 7888 8888	+44 20 7888 1600									
CYCLOS SECURITIES S.A.			a		a	a				a	
39, PANEPISTIMIOU STR. ATHINA	(210)-3364300	(210)-3239122									
D.A. TSEKOURAS SEC. S.A.			a								
3, PESMAZOGLOU STR. ATHINA	(210)-3214406	(210)-3211997									
DEUTSCHE BANK S.A.			a	a							
70, THEODOR-HEUSS-ALLEE FRANKFURT	0049 69 910 00	0049 69 910 34 225									
DYNAMIC SECURITIES			a					a		a	
6 - 10, CHAR. TRIKOUPH STR. ATHINA	(210)-3677700	(210)-3677777									
EL. PETROPOULAKIS SECURITIES S.A.			a					a			a
9, ARISTIDOU STR. ATHINA	(210)-3213928	(210)-3216810									
EUROBANK EQUITIES S.A.			a		a		a			a	
10, FILELLINON STR. ATHINA	(210)-3720000	(210)-3720001									
EUROBANK ERGASIAS S.A.									a		
8, OTHONOS STR. ATHINA	(210)-3337000	(210)-3233866									
	(210)-3337969	(210)-3245916									
EUROCORP SECURITIES S.A.			a			a				a	
14, FILIKIS ETAIRIAS SQ. ATHINA	(210)-7263500	(210)-7263666									
EUOTRUST BROKERAGE S.A.			a								
13-15, SOPHOCLEOUS STR. ATHINA	(210)-3363100	(210)-3238334									

Athex & ATHEXCclear Members List

Member Name			Stock Market			Derivatives Market			ATHEXCclear Member		
Address	Phone	Fax	Market Member	Remote Member	Market Maker	Proprietary	Market Maker	Agent	General Clearing	Direct Clearing	Non Clearing
EUROXX SECURITIES S.A.			a			a				a	
7, PALAIOLOGOU STR. CHALANDRI	(210)-6879400	(210)-6879401									
G.A. PERVANAS SECURITIES & INVESTMENT SERVICES CO S.A.			a			a					a
7 - 9, SOPHOCLEOUS STR. ATHINA	(210)-3251875	(210)-3210291									
GENERAL BANK OF GREECE S.A.									a		
87-89, ERMOY ATHINA	(210)-6976072	(210)-6976079									
, 109-111, MESOGEION AVE. ATHINA	(210)-6975000	(210)-6975706									
GLOBAL CAPITAL SECURITIES AND FINANCIAL SERVICES LTD			a	a							
5, LEMESOU AVE. LEMESOS CYPRUS	(+35722)-710710	(+35722)-339332									
GUARDIAN TRUST SECURITIES S.A			a		a	a					a
15, FILELLINON STR. ATHINA	(210)-3220402	(210)-3220498									
HELLENIC AMERICAN SEC. S.A.			a			a					
6, EVRIPIDOU STR. ATHINA	(210)-3311100	(210)-3215968									
HELLENIC BANK (INVESTMENTS) LTD			a	a							
31, KYRIAKOY MATSI AVE. NICOSIA	(+35722)-500100	(+35722)-500110									
HSBC BANK PLC									a		
109-111, MESOGION AVE ATHINA	(210)-6961507	(210)-6929310									
INDEX SECURITIES S.A.			a								
6, DRAGATSANIOU STR. ATHINA	(210)-3213920	(210)-3213216									
INTERSEC S.A.						a				a	
80-88, SYGROU AVE ATHINA	(210)-9203000	(210)-9203052									
INVESTMENT BANK OF GREECE S.A.			a		a		a		a		
32, AIGEIALIAS MAROUSI	(210) 8173000	(210) 8173101									
24B, KIFISSIAS AVE MAROUSI	(210)-8171800	(210)-8171889									
J. CHR. MAVRIKIS SECURITIES S.A.			a								
5, SOPHOCLEOUS STR. ATHINA	(210)-3213949	(210)-3217767									
KAPPA SECURITIES S.A.			a			a					a
15, VALAORITOU STR. ATHINA	(210)-3610371	(210)-3641002									
KYPROU SECURITIES S.A.			a		a	a					a
26, HALKIDONOS & FIDIPPIDOY STR. ATHINA	(210)-8701000	(210)-8701049									
LAIKI FINANCIAL SERVICES LTD			a	a							
26, CLR HOUSE, VIRONOS AVE. NICOSIA	(+35722)-898600	(+35722)-680953									
LEON DEPOLAS SECURITIES S.A.			a					a			a
1, CHR. LADA STR. ATHINA	(210)-3213286	(210)-3211618									
MAGNA TRUST SECURITIES S.A			a					a			a
9, FIDIOU STR. ATHINA	(210)-3327503	(210)-3327599									
MEGA EQUITY SECURITIES & FINANCIAL SERVICES LTD			a	a							
42-44, GRIBA DIGENI AV. NICOSIA	(+35722)-711711	(+35722)-711811									
MERIT SECURITIES S.A			a		a	a				a	
38, VAS. KONSTANTINOY STR. ATHINA	(210)-3671800	(210)-3671830									
MERRILL LYNCH			a	a							
2, KING EDWARD STREET LONDON	(+4420)-79952000	(+4420)-79954525									
METOCHIKI SECURITIES S.A.			a								
3, G. GENNADIOY STR. ATHINA	(210)-3306700	(210)-3306709									
MIDAS BROKERAGE S.A.			a								
5, SOPHOCLEOUS STR. ATHINA	(210)-3253203	(210)-3253205									
N. CHRYSOCHOIDIS STOCK BROKERAGE I.S.S.A.			a					a		a	
7 - 9, SOPHOCLEOUS STR. ATHINA	(210)-3213913	(210)-3216115									
N. SARROS SECURITIES S.A.						a					
7-9, SOPHOCLEOUS STR. ATHINA	(210)-3705600	(210)-3219992									
NATIONAL BANK OF GREECE / FORMER PROBANK			a								
10, AMERIKIS STR. ATHINA	(210)-3392631	(210)-3392646									
NATIONAL BANK OF GREECE S.A.							a		a		
86, AILOU STR. ATHINA	(210)-3341000	(210)-3228187									
68, AKADIMIAS STR. ATHINA	(210)-3328817	(210)-3328678									
NBG SECURITIES S.A.			a		a		a				a
68, AKADIMIAS STR. ATHINA	(210)-3328500	(210)-3328565									
NEW PROTON BANK S.A.			a			a				a	
20, ESLIN & AMALIADOS ATHINA	210 6970000	210 6970111									
NUNTIVS SECURITIES S.A			a					a			a
6, DRAGATSANIOU STR. ATHINA	(210)-3350599	(210)-3254846									
OLYMPIA SECURITIES S.A			a								
46B, A. METAXA STR. GLYFADA	(210)-3702500	(210)-3702520									

Athex & ATHEXClear Members List

Member Name			Stock Market			Derivatives Market			ATHEXClear Member		
Address	Phone	Fax	Market Member	Remote Member	Market Maker	Proprietary	Market Maker	Agent	General Clearing	Direct Clearing	Non Clearing
ORANGE PARTNERS SECURITIES S.A			a								
5, TZORTZ STR. ATHINA	(210)-3300009	(210)-3305240									
PANTELAKIS SEC. S.A.			a			a					a
109-111, MESOGION AVE. ATHINA	(210)-6965000	(210)-6929550									
PEGASUS BROKERAGE FIRM S.A			a			a					
17, VALAORITOU STR. ATHINA	(210)-3670700	(210)-3670760									
PIRAEUS BANK S.A.								a	a		
4, AMERIKIS STR. ATHINA	(210)-3335000	(210)-3335079									
4, AMERIKIS STR ATHINA	(210)-3335918	(210)-3254207									
PIRAEUS SECURITIES S.A.			a				a			a	
10, STADIOU STR. ATHINA	(210)-3354100	(210)-3233814									
PRELIUM SECURITIES & INVESTMENT SERVICES S.A.			a			a					a
, KIFISIAS AVE & 1 DAVAKI STR ATHINA	(210)-3677000	(210)-6920403									
PROCHOICE SECURITIES LTD			a	a							
57, SPYROU KYPRIANOY NICOSIA	+357-24-661192	+357-24-662464									
SHARELINK SECURITIES & FINANCIAL SERVICES LTD			a	a							
6, ELLINAS HOUSE, THEOTOKI STR. NICOSIA	(+35722)-554200	(+35722)-750852									
SOCIETE GENERALE S.A.			a	a		a					
17, COURS VALMY PUTEAUX - LA DEFENSE PARIS	(+33) 142134754	(+33) 142135697									
240-242, KIFISIAS AVE ATHINA	(210)-6790161	(210)-6728828									
SOLIDUS SECURITIES S.A			a			a				a	
64, LOUIZIS RIANKOUR STR. ATHINA	(210)-6925500	(210)-6985421									
SOTIRIADIS SECURITIES S.A.			a								
7, VALAORITOU STR. ATHINA	(210)-3636943	(210)-3601943									
ST. EM. LAVRENTAKIS SECURITIES S.A.			a			a					a
7 - 9, SOPHOCLEOUS STR. ATHINA	(210)-3213336	(210)-3246572									
THE CYPRUS INVESTMENT AND SECURITIES CORPORATION LIMITED (CISCO)			a	a							
4, EVROU STR. (EUROLIFE HOUSE) NICOSIA	(+35722)-881800	(+35722)-881801									
UBS LIMITED			a	a							
1, FINSBURY AVENUE LONDON	(+4420)-79013333	(+4420)-79012345									
Z.G. PORTALAKIS INVESTMENT SERVICES S.A.			a								
8, PESMAZOGLOU STR. ATHINA	(210)-3214830	(210)-3212024									
KARAMANOF SECURITIES & INV. SERVICES S.A.			a					a		a	
2, SQ. ST THEODORON ATHINA	(210)-3212947	(210)-3217088									

List of Stocks under Market Making operations

Securities Market Maker	Stock Category	
	Start Market Making	End Market Making
BANK OF CYPRUS (CR)	Under Suspension	
EUROBANK EQUITIES S.A.	23/10/2012	22/10/2013
INVESTMENT BANK OF GREECE S.A.	02/01/2013	01/01/2014
COCA - COLA HBC (CR)	Under Suspension	
EUROBANK EQUITIES S.A.	23/10/2012	22/10/2013
INVESTMENT BANK OF GREECE S.A.	08/01/2013	07/01/2014
CYPRUS POPULAR BANK (CR)	Under Suspension	
PIRAEUS SECURITIES S.A.	02/02/2013	01/02/2014
ALPHA BANK (CR)	Main Market	
EUROBANK EQUITIES S.A.	24/10/2012	23/10/2013
INVESTMENT BANK OF GREECE S.A.	08/01/2013	07/01/2014
NBG SECURITIES S.A.	15/01/2013	14/01/2014
PIRAEUS SECURITIES S.A.	28/05/2013	27/05/2014
ALUMIL (CR)	Main Market	
BETA SECURITIES S.A.	18/07/2013	17/07/2014
CC HBC AG (CR)	Main Market	
NBG SECURITIES S.A.	29/04/2013	28/04/2014
ELLAKTOR (CR)	Main Market	
EUROBANK EQUITIES S.A.	01/06/2013	31/05/2014
INVESTMENT BANK OF GREECE S.A.	02/01/2013	01/01/2014
NBG SECURITIES S.A.	25/06/2013	24/06/2014
EUROBANK ERGASIAS (CR)	Main Market	
ALPHA FINANCE INVESTMENT SERVICES S.A.	08/01/2013	07/01/2014
EUROBANK EQUITIES S.A.	01/06/2013	31/05/2014
INVESTMENT BANK OF GREECE S.A.	08/01/2013	07/01/2014
GEK TERNA (CR)	Main Market	
INVESTMENT BANK OF GREECE S.A.	02/01/2013	01/01/2014
GR. SARANTIS SA (CR)	Main Market	
BETA SECURITIES S.A.	14/05/2013	13/05/2014
HELLENIC EXCHANGES (CR)	Main Market	
EUROBANK EQUITIES S.A.	01/06/2013	31/05/2014
INVESTMENT BANK OF GREECE S.A.	02/01/2013	01/01/2014
NBG SECURITIES S.A.	25/06/2013	24/06/2014
INTRACOM CONSTR. (CR)	Main Market	
MERIT SECURITIES S.A.	27/12/2012	26/12/2013
INTRALOT (CR)	Main Market	
EUROBANK EQUITIES S.A.	01/06/2013	31/05/2014
INVESTMENT BANK OF GREECE S.A.	02/01/2013	01/01/2014
MARFIN INVESTMENT GROUP (CR)	Main Market	
PIRAEUS SECURITIES S.A.	02/02/2013	01/02/2014
MLS MULTIMEDIA SA (CR)	Main Market	
BETA SECURITIES S.A.	18/07/2013	17/07/2014
MOTOR OIL (CR)	Main Market	
EUROBANK EQUITIES S.A.	23/10/2012	22/10/2013
MYTILINEOS HOLDINGS (CR)	Main Market	
INVESTMENT BANK OF GREECE S.A.	02/01/2013	01/01/2014
NBG SECURITIES S.A.	25/06/2013	24/06/2014
NATIONAL BANK (CR)	Main Market	
ALPHA FINANCE INVESTMENT SERVICES S.A.	08/01/2013	07/01/2014
EUROBANK EQUITIES S.A.	24/10/2012	23/10/2013
INVESTMENT BANK OF GREECE S.A.	08/01/2013	07/01/2014
NBG SECURITIES S.A.	28/02/2013	27/02/2014
OPAP (CR)	Main Market	
ALPHA FINANCE INVESTMENT SERVICES S.A.	08/01/2013	07/01/2014
EUROBANK EQUITIES S.A.	24/10/2012	23/10/2013
INVESTMENT BANK OF GREECE S.A.	08/01/2013	07/01/2014
NBG SECURITIES S.A.	15/01/2013	14/01/2014
OTE (CR)	Main Market	
ALPHA FINANCE INVESTMENT SERVICES S.A.	08/01/2013	07/01/2014
EUROBANK EQUITIES S.A.	24/10/2012	23/10/2013
INVESTMENT BANK OF GREECE S.A.	08/01/2013	07/01/2014
NBG SECURITIES S.A.	01/12/2012	30/11/2013
PETROPOULOS PETROS (CR)	Main Market	
BETA SECURITIES S.A.	28/05/2013	27/05/2014
PIRAEUS BANK (CR)	Main Market	
EUROBANK EQUITIES S.A.	23/10/2012	22/10/2013
INVESTMENT BANK OF GREECE S.A.	08/01/2013	07/01/2014
NBG SECURITIES S.A.	02/06/2013	01/06/2014
PIRAEUS SECURITIES S.A.	16/02/2013	15/02/2014

List of Stocks under Market Making operations

Securities	Stock Category	
	Start Market Making	End Market Making
Market Maker		
PPC (CR)	Main Market	
ALPHA FINANCE INVESTMENT SERVICES S.A.	08/01/2013	07/01/2014
EUROBANK EQUITIES S.A.	23/10/2012	22/10/2013
INVESTMENT BANK OF GREECE S.A.	08/01/2013	07/01/2014
NBG SECURITIES S.A.	26/03/2013	25/03/2014
S.KANAKIS SA (CR)	Main Market	
BETA SECURITIES S.A.	01/10/2012	30/09/2013
TITAN CEMENT (CR)	Main Market	
EUROBANK EQUITIES S.A.	23/10/2012	22/10/2013
VIOHALCO (CB)	Main Market	
ALPHA FINANCE INVESTMENT SERVICES S.A.	11/02/2013	10/03/2014
EUROBANK EQUITIES S.A.	20/01/2013	19/01/2014
MERIT SECURITIES S.A	13/12/2012	12/12/2013

Underlying Asset				Derivatives Market																		
Price max	Price min	Closing price	change	Delivery Month	Open price	Price max	Price min	Last price	Closing price	Last Bid	Last Ask	Settlement price	change	Life high	Life low	Trades	Volume	change	Value	change	Open Interest	change
FTSE/Athex Large Cap				(Trade Unit: 1 Index Point x 5€, Cash Settlement)																		
343.19	337.52	340.90	0.06%	September 2013	344.00	345.25	338.50	342.00	341.75	10@341.75	38@342.00	341.75	0.44%	346.25	271.00	434	7,745	419.45%	13,241,001.25	420.81%	50,249	-5.11%
				October 2013	347.00	347.00	339.75	344.00	343.75	10@343.75	29@344.00	343.75	0.44%	347.00	292.25	283	6,484	1037.54%	11,129,526.25	1038.76%	5,610	301.29%
				November 2013	346.50	346.50	346.25	346.25	345.75	1@341.00	---	345.75	0.51%	346.50	319.00	2	40	---	69,275.00	---	222	21.98%
				December 2013	349.25	349.50	344.50	349.00	347.00	1@346.25	5@348.50	347.00	2.44%	349.50	276.75	17	172	319.51%	298,270.00	327.14%	782	25.93%
				March 2014	---	---	---	---	---	---	---	---	---	---	---	---	---	---	---	---	---	---
				June 2014	---	---	---	---	---	---	---	---	---	---	---	---	---	---	---	---	---	---

Underlying Asset				Derivatives Market																		
Price max	Price min	Closing price	change	Delivery Month	Open price	Price max	Price min	Last price	Closing price	Last Bid	Last Ask	Settlement price	change	Life high	Life low	Trades	Volume	change	Value	change	Open Interest	change
ALPHA BANK (CR)				(Contract Size: 100 Securities, Physical Delivery)																		
0.577	0.555	0.562	-1.75%	September 2013	0.578	0.579	0.554	0.568	0.568	15@0.565	20@0.568	0.568	0.00%	1.46	0.371	120	2,933	2.30%	166,470.10	0.84%	17,529	-5.77%
				December 2013	0.576	0.582	0.558	0.566	0.560	19@0.565	29@0.568	0.560	-1.75%	0.608	0.437	75	2,104	150.77%	119,671.60	147.79%	4,022	65.72%
				March 2014	---	---	---	---	---	---	---	---	---	---	---	---	---	---	---	---	---	---
				June 2014	---	---	---	---	---	---	---	---	---	---	---	---	---	---	---	---	---	---
CC HBC AG (CR)				(Contract Size: 100 Securities, Physical Delivery)																		
23.75	23.03	23.24	-0.13%	September 2013	23.19	23.67	23.19	23.39	22.98	1@23.26	14@23.39	22.98	-1.08%	23.67	16.93	16	59	59.46%	137,865.00	62.34%	808	2.67%
				December 2013	23.19	23.74	23.19	23.45	23.11	1@23.10	2@23.49	23.11	-0.13%	23.74	17.90	17	33	106.25%	77,592.00	111.28%	129	-2.27%
				March 2014	---	---	---	---	---	---	---	---	---	---	---	---	---	---	---	---	---	---
				June 2014	---	---	---	---	---	---	---	---	---	---	---	---	---	---	---	---	---	---
CORINTH PIPEWORKS SA (CR)				(Contract Size: 100 Securities, Physical Delivery)																		
2.08	1.95	2.05	-1.44%	September 2013	1.99	2.00	1.96	2.00	2.05	5@1.96	18@2.04	2.05	-1.91%	2.48	1.94	6	30	-84.54%	5,933.00	-85.37%	480	-1.44%
				December 2013	2.02	2.06	2.01	2.03	2.07	5@1.99	18@2.07	2.07	-1.43%	2.16	2.01	9	41	-78.42%	8,288.00	-79.22%	241	20.50%
				March 2014	---	---	---	---	---	---	---	---	---	---	---	---	---	---	---	---	---	---
				June 2014	---	---	---	---	---	---	---	---	---	---	---	---	---	---	---	---	---	---
ELLAKTOR (CR)				(Contract Size: 100 Securities, Physical Delivery)																		
2.23	2.15	2.23	0.00%	September 2013	2.20	2.24	2.16	2.19	2.20	13@2.17	10@2.23	2.20	0.46%	2.45	1.73	19	168	-38.46%	37,025.00	-38.64%	3,363	-3.50%
				December 2013	2.21	2.25	2.18	2.21	2.20	7@2.19	10@2.25	2.20	0.00%	2.29	2.11	12	150	-42.75%	33,289.00	-42.72%	1,260	12.40%
				March 2014	---	---	---	---	---	---	---	---	---	---	---	---	---	---	---	---	---	---
				June 2014	---	---	---	---	---	---	---	---	---	---	---	---	---	---	---	---	---	---
EUROBANK ERGASIAS (CR)				(Contract Size: 10 Securities, Physical Delivery)																		
0.628	0.610	0.625	0.16%	September 2013	0.616	0.620	0.607	0.618	0.637	30@0.595	70@0.630	0.637	0.47%	5.00	0.537	8	146	-44.06%	902.15	-45.87%	15,240	-0.53%
				December 2013	0.616	0.621	0.615	0.621	0.644	20@0.617	50@0.674	0.644	0.16%	0.700	0.600	3	3	-95.71%	185.20	-95.90%	270	0.75%
				March 2014	---	---	---	---	0.633	---	---	0.633	0.16%	0.673	0.619	---	---	---	---	---	---	---
				June 2014	---	---	---	---	---	---	---	---	---	---	---	---	---	---	---	---	---	---
EUROBANK PROPERTIES REIC (CR)				(Contract Size: 100 Securities, Physical Delivery)																		
6.98	6.84	6.98	0.14%	September 2013	6.95	6.95	6.90	6.94	7.03	---	1@6.97	7.03	0.57%	7.67	6.00	7	24	-36.84%	16,634.00	-36.80%	217	3.33%
				December 2013	6.96	6.96	6.91	6.91	7.04	---	1@7.02	7.04	0.14%	7.13	6.83	2	10	---	6,935.00	---	38	-11.63%
				March 2014	---	---	---	---	---	---	---	---	---	---	---	---	---	---	---	---	---	---
				June 2014	---	---	---	---	---	---	---	---	---	---	---	---	---	---	---	---	---	---
EYDAP S.A. (CR)				(Contract Size: 100 Securities, Physical Delivery)																		
7.57	7.10	7.50	4.75%	September 2013	7.25	7.55	7.05	7.49	7.47	1@7.41	5@7.51	7.47	4.92%	7.55	5.58	85	896	188.10%	651,441.00	195.65%	631	-53.26%
				December 2013	7.22	7.61	7.08	7.50	7.49	1@7.46	5@7.56	7.49	4.76%	7.61	6.31	65	414	318.18%	302,397.00	331.33%	555	138.20%
				March 2014	---	---	---	---	---	---	---	---	---	---	---	---	---	---	---	---	---	---
				June 2014	---	---	---	---	---	---	---	---	---	---	---	---	---	---	---	---	---	---
FOLLI FOLLIE (CR)				(Contract Size: 100 Securities, Physical Delivery)																		
18.39	17.64	18.35	1.94%	September 2013	18.22	18.22	18.22	18.22	18.40	5@17.77	2@18.72	18.40	1.94%	18.86	14.68	1	1	-80.00%	1,822.00	-79.59%	260	0.00%
				December 2013	18.10	18.10	18.10	18.10	18.39	5@17.54	2@18.49	18.39	1.94%	18.10	17.24	1	1	---	1,810.00	---	6	0.00%
				March 2014	---	---	---	---	---	---	---	---	---	---	---	---	---	---	---	---	---	---
				June 2014	---	---	---	---	---	---	---	---	---	---	---	---	---	---	---	---	---	---

Underlying Asset				Derivatives Market																		
Price max	Price min	Closing price	change	Delivery Month	Open price	Price max	Price min	Last price	Closing price	Last Bid	Last Ask	Settlement price	change	Life high	Life low	Trades	Volume	change	Value	change	Open Interest	change
FRIGOGLASS SA (CR)				(Contract Size: 100 Securities, Physical Delivery)																		
5.14	5.00	5.11	-0.39%	September 2013	5.04	5.12	5.02	5.09	5.11	1@5.08	1@5.14	5.11	-2.11%	5.71	4.35	6	36	1100.00%	18,311.00	1099.15%	448	-3.45%
				December 2013	5.08	5.12	5.03	5.10	5.12	1@5.10	5@5.15	5.12	-2.48%	5.18	5.03	6	54	980.00%	27,498.00	974.14%	194	33.79%
				March 2014	---	---	---	---	---	---	---	---	---	---	---	---	---	---	---	---	---	---
				June 2014	---	---	---	---	---	---	---	---	---	---	---	---	---	---	---	---	---	---
GEK TERNA (CR)				(Contract Size: 100 Securities, Physical Delivery)																		
2.21	2.13	2.18	0.93%	September 2013	2.16	2.19	2.13	2.15	2.18	12@2.14	5@2.18	2.18	-0.46%	2.62	1.45	56	2,307	40.07%	499,400.00	38.82%	11,551	-15.99%
				December 2013	2.18	2.21	2.14	2.16	2.20	14@2.15	5@2.19	2.20	1.38%	2.51	1.57	29	2,184	27.27%	477,178.00	26.18%	5,198	71.32%
				March 2014	---	---	---	---	2.20	---	---	2.20	1.38%	2.50	2.26	---	---	---	---	---	15,895	0.00%
				June 2014	---	---	---	---	---	---	---	---	---	---	---	---	---	---	---	---	---	---
HELLENIC EXCHANGES (CR)				(Contract Size: 100 Securities, Physical Delivery)																		
6.20	6.04	6.20	1.31%	September 2013	6.10	6.20	6.05	6.20	6.15	3@6.14	2@6.19	6.15	1.49%	6.46	3.82	34	249	632.35%	152,293.00	636.07%	2,091	-5.26%
				December 2013	6.11	6.16	6.08	6.14	6.16	3@6.17	2@6.22	6.16	1.32%	6.85	4.01	12	91	40.00%	55,671.00	40.09%	2,214	3.85%
				March 2014	---	---	---	---	---	---	---	---	---	---	---	---	---	---	---	---	---	---
				June 2014	---	---	---	---	---	---	---	---	---	---	---	---	---	---	---	---	---	---
HELLENIC PETROLEUM (CR)				(Contract Size: 100 Securities, Physical Delivery)																		
7.65	7.48	7.64	1.87%	September 2013	7.50	7.62	7.49	7.60	7.64	1@7.25	1@7.62	7.64	1.60%	9.01	6.00	17	75	114.29%	56,658.00	113.89%	2,248	0.81%
				December 2013	7.53	7.61	7.53	7.59	7.68	1@7.27	1@7.64	7.68	1.86%	7.72	6.61	8	32	-3.03%	24,268.00	-3.50%	94	30.56%
				March 2014	---	---	---	---	---	---	---	---	---	---	---	---	---	---	---	---	---	---
				June 2014	---	---	---	---	---	---	---	---	---	---	---	---	---	---	---	---	---	---
INTRALOT (CR)				(Contract Size: 100 Securities, Physical Delivery)																		
1.65	1.60	1.64	1.86%	September 2013	1.58	1.64	1.58	1.63	1.63	52@1.61	21@1.64	1.63	1.24%	2.30	1.30	24	433	1868.18%	69,684.00	1840.52%	3,262	-10.83%
				December 2013	1.66	1.66	1.59	1.63	1.66	52@1.62	21@1.65	1.66	1.84%	1.68	1.57	9	270	800.00%	43,574.00	786.73%	494	109.32%
				March 2014	---	---	---	---	---	---	---	---	---	---	---	---	---	---	---	---	---	---
				June 2014	---	---	---	---	---	---	---	---	---	---	---	---	---	---	---	---	---	---
JUMBO SA (CR)				(Contract Size: 100 Securities, Physical Delivery)																		
8.90	8.61	8.90	2.30%	September 2013	8.68	8.81	8.67	8.78	8.70	5@8.59	3@8.96	8.70	1.99%	9.03	7.19	7	31	-20.51%	27,087.00	-20.10%	132	6.45%
				December 2013	8.70	8.88	8.70	8.79	8.72	1@8.61	3@8.92	8.72	2.35%	8.88	8.06	7	24	380.00%	21,109.00	385.26%	61	-3.17%
				March 2014	---	---	---	---	---	---	---	---	---	---	---	---	---	---	---	---	---	---
				June 2014	---	---	---	---	---	---	---	---	---	---	---	---	---	---	---	---	---	---
MARFIN INVESTMENT GROUP (CR)				(Contract Size: 100 Securities, Physical Delivery)																		
0.369	0.348	0.354	-4.06%	September 2013	0.366	0.366	0.341	0.356	0.356	4@0.355	50@0.358	0.356	-2.73%	0.420	0.252	54	2,360	57.54%	83,698.90	55.26%	15,521	-12.27%
				December 2013	0.356	0.369	0.351	0.360	0.361	50@0.360	50@0.368	0.361	-3.22%	0.376	0.317	48	2,879	375.87%	104,113.80	369.84%	3,567	382.03%
				March 2014	---	---	---	---	---	---	---	---	---	---	---	---	---	---	---	---	---	---
				June 2014	---	---	---	---	---	---	---	---	---	---	---	---	---	---	---	---	---	---
METKA (CR)				(Contract Size: 100 Securities, Physical Delivery)																		
11.70	11.37	11.53	-1.20%	September 2013	11.66	11.69	11.45	11.46	11.42	10@11.35	2@11.53	11.42	-1.30%	12.18	9.43	16	61	177.27%	70,440.00	176.40%	478	-1.24%
				December 2013	11.62	11.63	11.52	11.52	11.45	10@11.43	2@11.61	11.45	-1.21%	11.63	10.52	4	20	100.00%	23,195.00	100.30%	41	95.24%
				March 2014	---	---	---	---	---	---	---	---	---	---	---	---	---	---	---	---	---	---
				June 2014	---	---	---	---	---	---	---	---	---	---	---	---	---	---	---	---	---	---

Underlying Asset				Derivatives Market																		
Price max	Price min	Closing price	change	Delivery Month	Open price	Price max	Price min	Last price	Closing price	Last Bid	Last Ask	Settlement price	change	Life high	Life low	Trades	Volume	change	Value	change	Open Interest	change
MOTOR OIL (CR)				(Contract Size: 100 Securities, Physical Delivery)																		
7.67	7.48	7.52	-1.96%	September 2013	7.62	7.62	7.51	7.53	7.47	5@7.50	4@7.55	7.47	-2.35%	8.16	6.66	8	25	47.06%	18,886.00	46.02%	972	0.41%
				December 2013	7.52	7.58	7.52	7.53	7.47	3@7.53	1@7.60	7.47	-1.97%	7.72	7.40	8	25	92.31%	18,899.00	90.86%	57	58.33%
				March 2014	---	---	---	---	---	---	---	---	---	---	---	---	---	---	---	---	---	---
				June 2014	---	---	---	---	---	---	---	---	---	---	---	---	---	---	---	---	---	---
MYTILINEOS HOLDINGS (CR)				(Contract Size: 100 Securities, Physical Delivery)																		
4.85	4.67	4.79	-0.21%	September 2013	4.84	4.87	4.67	4.78	4.74	30@4.72	47@4.78	4.74	-1.46%	5.50	3.50	88	730	185.16%	347,696.00	180.69%	5,086	-5.38%
				December 2013	4.88	4.88	4.70	4.79	4.80	30@4.75	30@4.80	4.80	-0.21%	5.28	3.70	71	637	156.85%	305,248.00	154.50%	1,071	68.66%
				March 2014	---	---	---	---	4.95	---	---	4.95	-0.20%	4.99	4.43	---	---	---	---	---	1,400	0.00%
				June 2014	---	---	---	---	---	---	---	---	---	---	---	---	---	---	---	---	---	---
NATIONAL BANK (CR)				(Contract Size: 100 Securities, Physical Delivery)																		
3.21	3.10	3.11	-1.58%	September 2013	3.15	3.20	3.11	3.12	3.11	15@3.11	31@3.13	3.11	-1.27%	3.36	0.344	110	1,658	-3.15%	523,810.00	-4.82%	4,798	-15.87%
				December 2013	3.14	3.21	3.10	3.11	3.12	2@3.11	6@3.12	3.12	-0.95%	3.34	2.31	83	1,295	288.89%	409,767.00	282.93%	1,915	100.94%
				March 2014	---	---	---	---	---	---	---	---	---	---	---	---	---	---	---	---	---	---
				June 2014	---	---	---	---	---	---	---	---	---	---	---	---	---	---	---	---	---	---
OPAP (CR)				(Contract Size: 100 Securities, Physical Delivery)																		
8.08	7.81	7.97	-0.12%	September 2013	8.07	8.07	7.84	7.98	7.93	10@7.95	51@8.02	7.93	0.38%	8.07	5.82	58	575	230.46%	457,223.00	231.14%	4,025	-9.65%
				December 2013	8.00	8.06	7.87	7.97	7.91	11@7.96	52@8.05	7.91	-0.13%	8.06	6.31	32	477	722.41%	379,885.00	723.56%	662	257.84%
				March 2014	---	---	---	---	---	---	---	---	---	---	---	---	---	---	---	---	---	---
				June 2014	---	---	---	---	---	---	---	---	---	---	---	---	---	---	---	---	---	---
OTE (CR)				(Contract Size: 100 Securities, Physical Delivery)																		
7.72	7.58	7.68	1.59%	September 2013	7.67	7.72	7.61	7.69	7.70	21@7.67	48@7.69	7.70	1.72%	7.81	4.35	131	1,295	285.42%	993,208.00	290.15%	6,548	-2.94%
				December 2013	7.67	7.73	7.63	7.69	7.72	21@7.68	78@7.71	7.72	1.58%	7.83	4.40	59	705	386.21%	542,053.00	393.64%	1,537	76.46%
				March 2014	7.65	7.65	7.65	7.65	7.71	---	---	7.71	1.31%	7.65	6.40	2	100	---	76,500.00	---	---	---
				June 2014	---	---	---	---	---	---	---	---	---	---	---	---	---	---	---	---	---	---
P.P.A. S.A. (CR)				(Contract Size: 100 Securities, Physical Delivery)																		
17.34	17.00	17.33	0.29%	September 2013	17.12	17.30	16.91	17.30	17.29	1@17.05	3@17.32	17.29	0.70%	18.68	15.52	19	43	-84.53%	73,794.00	-84.39%	343	-10.91%
				December 2013	17.27	17.27	17.27	17.27	17.35	1@17.26	1@17.48	17.35	0.29%	17.47	16.84	1	5	-98.17%	8,635.00	-98.15%	287	1.77%
				March 2014	---	---	---	---	---	---	---	---	---	---	---	---	---	---	---	---	---	---
				June 2014	---	---	---	---	---	---	---	---	---	---	---	---	---	---	---	---	---	---
PIRAEUS BANK (CR)				(Contract Size: 100 Securities, Physical Delivery)																		
1.32	1.25	1.30	2.36%	September 2013	1.28	1.32	1.24	1.31	1.28	198@1.29	67@1.31	1.28	1.59%	1.41	0.169	77	1,749	-20.17%	222,793.00	-21.04%	10,923	-9.50%
				December 2013	1.27	1.32	1.25	1.30	1.29	100@1.29	200@1.31	1.29	2.38%	1.41	0.231	53	1,104	102.20%	142,332.00	104.06%	3,975	21.60%
				March 2014	---	---	---	---	1.30	---	---	1.30	2.36%	1.12	0.924	---	---	---	---	---	---	---
				June 2014	---	---	---	---	---	---	---	---	---	---	---	---	---	---	---	---	---	---
PPC (CR)				(Contract Size: 100 Securities, Physical Delivery)																		
7.98	7.71	7.90	0.25%	September 2013	7.91	7.96	7.76	7.87	7.84	11@7.85	15@7.87	7.84	0.00%	8.47	4.58	138	892	56.49%	699,923.00	55.61%	4,574	-6.79%
				December 2013	7.91	7.92	7.75	7.87	7.85	11@7.84	10@7.88	7.85	0.26%	8.56	5.08	58	527	113.36%	413,595.00	112.70%	907	99.78%
				March 2014	7.91	7.91	7.80	7.88	7.85	---	---	7.85	-0.25%	7.99	6.30	4	130	420.00%	102,250.00	421.02%	20	-60.00%
				June 2014	---	---	---	---	---	---	---	---	---	---	---	---	---	---	---	---	---	---

Underlying Asset				Derivatives Market																		
Price max	Price min	Closing price	change	Delivery Month	Open price	Price max	Price min	Last price	Closing price	Last Bid	Last Ask	Settlement price	change	Life high	Life low	Trades	Volume	change	Value	change	Open Interest	change
SIDENOR (CR)				(Contract Size: 100 Securities, Physical Delivery)																		
1.62	1.47	1.58	-1.86%	September 2013	1.60	1.61	1.48	1.53	1.55	1@1.50	5@1.56	1.55	-3.13%	1.82	1.36	40	281	116.15%	43,961.00	106.08%	1,280	-16.50%
				December 2013	1.62	1.62	1.49	1.57	1.58	1@1.52	13@1.58	1.58	-1.86%	1.76	1.49	19	159	19.55%	25,356.00	15.95%	322	87.21%
				March 2014	---	---	---	---	---	---	---	---	---	---	---	---	---	---	---	---	---	---
				June 2014	---	---	---	---	---	---	---	---	---	---	---	---	---	---	---	---	---	---
TERNA ENERGY (CR)				(Contract Size: 103 Securities, Physical Delivery)																		
3.10	2.99	3.03	-2.26%	September 2013	3.06	3.07	3.05	3.06	3.06	10@2.71	5@3.05	3.06	-0.33%	3.25	2.43	4	6	-73.91%	1,891.08	-74.09%	1,266	0.08%
				December 2013	3.03	3.10	3.03	3.10	3.10	5@3.04	1@3.10	3.10	-0.96%	3.18	3.03	6	24	60.00%	7,398.00	58.59%	1,294	1.89%
				March 2014	---	---	---	---	---	---	---	---	---	---	---	---	---	---	---	---	---	---
				June 2014	---	---	---	---	---	---	---	---	---	---	---	---	---	---	---	---	---	---
TITAN CEMENT (CR)				(Contract Size: 100 Securities, Physical Delivery)																		
16.65	15.75	16.00	-1.24%	September 2013	16.32	16.32	15.93	16.01	16.11	1@15.97	1@16.15	16.11	-1.47%	16.79	12.22	23	39	457.14%	62,710.00	452.56%	181	-4.74%
				December 2013	16.20	16.20	15.96	15.96	16.17	1@15.85	1@16.20	16.17	-1.22%	16.67	15.02	6	21	-43.24%	33,795.00	-43.87%	46	31.43%
				March 2014	---	---	---	---	---	---	---	---	---	---	---	---	---	---	---	---	---	---
				June 2014	---	---	---	---	---	---	---	---	---	---	---	---	---	---	---	---	---	---
VIOHALCO (CB)				(Contract Size: 100 Securities, Physical Delivery)																		
4.48	3.99	4.12	-7.62%	September 2013	4.46	4.46	4.01	4.14	4.03	1@4.08	6@4.14	4.03	-7.36%	5.19	3.85	66	196	68.97%	80,671.00	58.47%	701	7.19%
				December 2013	4.34	4.37	4.02	4.11	4.04	1@4.11	26@4.17	4.04	-7.55%	4.53	3.89	28	107	101.89%	44,066.00	88.22%	159	109.21%
				March 2014	---	---	---	---	---	---	---	---	---	---	---	---	---	---	---	---	---	---
				June 2014	---	---	---	---	---	---	---	---	---	---	---	---	---	---	---	---	---	---

FTSE/Athex Large Cap

(Trade Unit: 1 Index Point x 5€ - Exercise Style: European, Cash Settlement)

Call Options																	Put Options																	
	September 2013							October 2013							Other Months			September 2013							October 2013							Other Months		
Exerise Price	Open price	Price max	Price min	Last price	Closing price	Volume	Open Interest	Open price	Price max	Price min	Last price	Closing price	Volume	Open Interest	Volume	Open Interest	Open price	Price max	Price min	Last price	Closing price	Volume	Open Interest	Open price	Price max	Price min	Last price	Closing price	Volume	Open Interest	Volume	Open Interest	Exerise Price	
215	-	-	-	-	127.00	-	60	-	-	-	-	-	-	-			-	-	-	-	-	-	-	-	-	-	-	-	-	-	-	215		
230	-	-	-	-	112.00	-	3	-	-	-	-	-	-	-			-	-	-	-	-	-	-	-	-	-	-	-	-	-	-	230		
240	-	-	-	-	-	-	-	-	-	-	-	-	-	-			-	-	-	-	-	-	-	-	-	-	-	-	-	-	-	240		
255	-	-	-	-	-	-	-	-	-	-	-	-	-	-			-	-	-	-	-	-	-	-	-	-	-	-	-	-	-	255		
260	-	-	-	-	-	-	-	-	-	-	-	-	-	-			-	-	-	-	-	-	-	-	-	-	-	-	-	-	-	260		
265	-	-	-	-	-	-	-	-	-	-	-	-	-	-			-	-	-	-	-	-	-	-	-	-	-	-	-	-	-	265		
270	-	-	-	-	-	-	-	-	-	-	-	-	-	-			-	-	-	-	-	-	11	-	-	-	-	-	-	-	-	270		
275	-	-	-	-	-	-	-	-	-	-	-	-	-	-			-	-	-	-	-	-	1	-	-	-	-	-	-	-	-	275		
280	-	-	-	-	61.50	-	173	-	-	-	-	-	-	-			-	-	-	-	-	-	132	-	-	-	-	-	-	-	-	280		
285	-	-	-	-	56.50	-	20	-	-	-	-	-	-	-			-	-	-	-	-	-	56	-	-	-	-	0.87	-	1	-	285		
290	-	-	-	-	51.50	-	50	-	-	-	-	-	-	-			-	-	-	-	-	-	107	-	-	-	-	-	-	-	-	290		
295	-	-	-	-	46.75	-	1	-	-	-	-	-	-	-			-	-	-	-	-	-	-	-	-	-	-	1.70	-	6	-	295		
300	-	-	-	-	41.75	-	390	-	-	-	-	-	-	-			-	-	-	-	-	-	135	-	-	-	-	2.30	-	13	-	300		
305	-	-	-	-	-	-	-	-	-	-	-	41.75	-	15			-	-	-	-	-	-	685	-	-	-	-	3.10	-	8	-	305		
310	-	-	-	-	31.75	-	334	39.25	39.25	39.25	39.25	37.75	20	20			-	-	-	-	0.02	-	76	-	-	-	-	4.00	-	5	-	310		
315	-	-	-	-	26.75	-	634	34.50	34.50	34.50	34.50	33.75	20	467			-	-	-	-	0.07	-	162	-	-	-	-	5.20	-	57	-	315		
320	24.00	24.00	24.00	24.00	22.00	20	184	-	-	-	-	-	-	-			-	-	-	-	0.21	-	92	-	-	-	-	6.50	-	2	-	320		
325	19.75	19.75	19.75	19.75	17.25	19	60	-	-	-	-	-	-	-			-	-	-	-	0.54	-	181	-	-	-	-	8.10	-	22	-	325		
330	14.25	14.25	14.25	14.25	13.00	10	591	-	-	-	-	23.50	-	1			-	-	-	-	1.20	-	342	12.00	12.75	10.00	10.00	9.90	32	33	-	330		
335	-	-	-	-	9.20	-	679	21.00	21.00	20.00	20.00	20.75	62	62			-	-	-	-	2.40	-	484	13.75	13.75	12.00	12.00	12.00	144	144	-	335		
340	-	-	-	-	6.10	-	310	-	-	-	-	18.00	-	257			6.00	6.00	6.00	6.00	4.30	1	113	15.75	15.75	15.75	15.75	14.25	30	30	-	340		
345	-	-	-	-	3.70	-	70	14.00	15.00	14.00	15.00	15.50	62	190			-	-	-	-	-	-	-	18.25	20.25	17.00	17.00	16.75	100	100	-	345		
350	-	-	-	-	2.10	-	55	12.00	12.00	12.00	12.00	13.25	5	5			-	-	-	-	10.25	-	130	-	-	-	-	-	-	-	-	350		
355	-	-	-	-	1.10	-	31	-	-	-	-	-	-	-			-	-	-	-	-	-	-	-	-	-	-	-	-	-	-	355		
360	-	-	-	-	0.51	-	100	-	-	-	-	-	-	-			-	-	-	-	18.75	-	9	-	-	-	-	-	-	-	-	360		
365	-	-	-	-	-	-	-	-	-	-	-	-	-	-			-	-	-	-	23.50	-	130	-	-	-	-	-	-	-	-	365		
370	-	-	-	-	0.09	-	1	-	-	-	-	-	-	-			-	-	-	-	28.25	-	5	-	-	-	-	-	-	-	-	370		
375	-	-	-	-	0.03	-	100	-	-	-	-	-	-	-			-	-	-	-	-	-	-	-	-	-	-	-	-	-	-	375		
380	-	-	-	-	0.01	-	30	-	-	-	-	-	-	-			-	-	-	-	38.25	-	10	-	-	-	-	-	-	-	-	380		
385	-	-	-	-	-	-	-	-	-	-	-	-	-	-			-	-	-	-	43.25	-	5	-	-	-	-	-	-	-	-	385		
390	-	-	-	-	-	-	-	-	-	-	-	-	-	-			-	-	-	-	-	-	-	-	-	-	-	-	-	-	-	390		
395	-	-	-	-	-	-	-	-	-	-	-	-	-	-			-	-	-	-	53.00	-	5	-	-	-	-	-	-	-	-	395		
400	-	-	-	-	-	-	-	-	-	-	-	-	-	-			-	-	-	-	-	-	-	-	-	-	-	-	-	-	-	400		
405	-	-	-	-	-	-	-	-	-	-	-	-	-	-			-	-	-	-	-	-	-	-	-	-	-	-	-	-	-	405		
410	-	-	-	-	-	-	-	-	-	-	-	-	-	-			-	-	-	-	-	-	-	-	-	-	-	-	-	-	-	410		
415	-	-	-	-	-	-	-	-	-	-	-	-	-	-			-	-	-	-	-	-	-	-	-	-	-	-	-	-	-	415		

FTSE/Athex Large Cap

(Trade Unit: 1 Index Point x 5€ - Exercise Style: European, Cash Settlement)

Call Options																	Put Options																								
Exercise Price	September 2013							October 2013							Other Months		September 2013							October 2013							Other Months		Exercise Price								
	Open price	Price max	Price min	Last price	Closing price	Volume	Open Interest	Open price	Price max	Price min	Last price	Closing price	Volume	Open Interest	Volume	Open Interest	Open price	Price max	Price min	Last price	Closing price	Volume	Open Interest	Open price	Price max	Price min	Last price	Closing price	Volume	Open Interest	Volume	Open Interest									
440	-	-	-	-	-	-	-	-	-	-	-	-	-	-	-	-	-	-	-	-	98.00	-	261	-	-	-	-	-	-	-	-	-	440								
1,500	-	-	-	-	-	-	-	-	-	-	-	-	-	-	-	-	-	-	-	-	1,158.00	-	3	-	-	-	-	-	-	-	-	-	1,500								
Totals:						49	3,876							169	1,017	0	0							1	3,135							306	421	0	1						
Nominal Transactions Value:						79,375.00						282,050.00						0.00						1,700.00						517,500.00						0.00					
Number of Trades:						3						11						0						1						23						0					

FTSE/Athex Large Cap

(Trade Unit: 1 Index Point x 5€ - Exercise Style: European, Cash Settlement)

Call Options																	Put Options																	
Exercise Price	September 2013							October 2013							Other Months			September 2013								October 2013						Other Months		
	Open price	Price max	Price min	Last price	Closing price	Volume	Open Interest	Open price	Price max	Price min	Last price	Closing price	Volume	Open Interest	Volume	Open Interest	Open price	Price max	Price min	Last price	Closing price	Volume	Open Interest	Open price	Price max	Price min	Last price	Closing price	Volume	Open Interest	Volume	Open Interest	Exercise Price	

ALPHA BANK (CR)

(Contract Size: 100 Securities, Exercise Style: American, Physical Delivery)

Call Options																	Put Options																			
September 2013								October 2013								Other Months		September 2013								October 2013								Other Months		
Exercise Price	Open price	Price max	Price min	Last price	Closing price	Volume	Open Interest	Open price	Price max	Price min	Last price	Closing price	Volume	Open Interest	Volume	Open Interest	Open price	Price max	Price min	Last price	Closing price	Volume	Open Interest	Open price	Price max	Price min	Last price	Closing price	Volume	Open Interest	Volume	Open Interest	Exercise Price			
0.100						-	-							-	-							-	-						-	-			0.100			
0.200						-	-							-	-							-	-						-	-			0.200			
0.300						-	-							-	-							-	-						-	-			0.300			
0.350						-	-							-	-							-	-						-	-			0.350			
0.400						-	-							-	-							-	-						-	-			0.400			
0.450						-	-							-	-							-	-						-	-			0.450			
0.500						-	-							-	-							-	-						-	-			0.500			
0.550						-	-							-	-							-	-						-	-			0.550			
0.600						-	-							-	-							-	-						-	-			0.600			
0.650						-	-							-	-							-	-						-	-			0.650			
0.700						-	-							-	-							-	-						-	-			0.700			
0.800						-	-							-	-							-	-						-	-			0.800			
0.850						-	-							-	-							-	-						-	-			0.850			
0.900						-	-							-	-							-	-						-	-			0.900			
0.950						-	-							-	-							-	-						-	-			0.950			
1.00						-	-							-	-							-	-						-	-			1.00			
1.05						-	-							-	-							-	-						-	-			1.05			
1.10						-	-							-	-							-	-						-	-			1.10			
1.15						-	-							-	-							-	-						-	-			1.15			
1.20						-	-							-	-							-	-						-	-			1.20			
1.30						-	-							-	-							-	-						-	-			1.30			
1.40						-	-							-	-							-	-						-	-			1.40			
1.50						-	-							-	-							-	-						-	-			1.50			
1.60						-	-							-	-							-	-						-	-			1.60			
1.70						-	-							-	-							-	-						-	-			1.70			
1.80						-	-							-	-							-	-						-	-			1.80			
1.90						-	-							-	-							-	-						-	-			1.90			
2.00						-	-							-	-							-	-						-	-			2.00			
2.20						-	-							-	-							-	-						-	-			2.20			
2.40						-	-							-	-							-	-						-	-			2.40			
2.60						-	-							-	-							-	-						-	-			2.60			
2.80						-	-							-	-							-	-						-	-			2.80			
Totals:						0	0							0	0	0	0							0	0							0	0			
Nominal Transactions Value:						0.00								0.00		0.00								0.00								0.00				
Number of Trades:						0								0		0								0								0				

NATIONAL BANK (CR)

(Contract Size: 100 Securities, Exercise Style: American, Physical Delivery)

Call Options																	Put Options																					
September 2013							October 2013							Other Months			September 2013							October 2013							Other Months							
Exercise Price	Open price	Price max	Price min	Last price	Closing price	Volume	Open Interest	Open price	Price max	Price min	Last price	Closing price	Volume	Open Interest	Volume	Open Interest	Open price	Price max	Price min	Last price	Closing price	Volume	Open Interest	Open price	Price max	Price min	Last price	Closing price	Volume	Open Interest	Volume	Open Interest	Exercise Price					
0.300							-	-							-	-									-	-							-	-			0.300	
0.400							-	-							-	-										-	-							-	-			0.400
0.500							-	-							-	-										-	-							-	-			0.500
0.600							-	-							-	-										-	-							-	-			0.600
0.700							-	-							-	-										-	-							-	-			0.700
0.750							-	-							-	-										-	-							-	-			0.750
0.800							-	-							-	-										-	-							-	-			0.800
0.850							-	-							-	-										-	-							-	-			0.850
0.900							-	-							-	-										-	-							-	-			0.900
0.950							-	-							-	-										-	-							-	-			0.950
1.00							-	-							-	-										-	-							-	-			1.00
1.05							-	-							-	-										-	-							-	-			1.05
1.10							-	-							-	-										-	-							-	-			1.10
1.20							-	-							-	-										-	-							-	-			1.20
1.30							-	-							-	-										-	-							-	-			1.30
1.40							-	-							-	-										-	-							-	-			1.40
1.50							-	-							-	-										-	-							-	-			1.50
1.60							-	-							-	-										-	-							-	-			1.60
1.70							-	-							-	-										-	-							-	-			1.70
1.80							-	-							-	-										-	-							-	-			1.80
1.90							-	-							-	-										-	-							-	-			1.90
2.00							-	-							-	-										-	-							-	-			2.00
2.20							-	-							-	-										-	-							-	-			2.20
2.40							-	-							-	-												0.008						-	-			2.40
2.60	0.511						-	20							-	-												0.026						-	-			2.60
2.70							-	-							-	-																		-	-			2.70
2.80							-	-							-	-												0.066						-	-			2.80
2.90							-	-							-	-																		-	-			2.90
3.00	0.135						-	20	0.253						-	120				0.024						-	1							-	-			3.00
3.10							-	-							-	-																		-	-			3.10
3.20	0.032						-	116	0.156						-	20																		-	-			3.20
3.30							-	-							-	-																		-	-			3.30
3.40							-	-	0.091						-	1																		-	-			3.40
3.60							-	-	0.049						-	1																		-	-			3.60
3.80							-	-							-	-																		-	-			3.80
4.00							-	-							-	-																		-	-			4.00

NATIONAL BANK (CR)

(Contract Size: 100 Securities, Exercise Style: American, Physical Delivery)

Call Options																	Put Options																
Exercise Price	September 2013							October 2013							Other Months		September 2013							October 2013							Other Months		Exercise Price
	Open price	Price max	Price min	Last price	Closing price	Volume	Open Interest	Open price	Price max	Price min	Last price	Closing price	Volume	Open Interest	Volume	Open Interest	Open price	Price max	Price min	Last price	Closing price	Volume	Open Interest	Open price	Price max	Price min	Last price	Closing price	Volume	Open Interest	Volume	Open Interest	
4.40						-	-							-	-							-	-						-	-			4.40
Totals:						0	156						0	142	0	20						0	1					0	60	0	0		
Nominal Transactions Value:							0.00						0.00			0.00						0.00						0.00			0.00		
Number of Trades:							0						0			0						0.00						0			0		

OPAP (CR)

(Contract Size: 100 Securities, Exercise Style: American, Physical Delivery)

Call Options																	Put Options																			
September 2013								October 2013								Other Months		September 2013								October 2013								Other Months		
Exercise Price	Open price	Price max	Price min	Last price	Closing price	Volume	Open Interest	Open price	Price max	Price min	Last price	Closing price	Volume	Open Interest	Volume	Open Interest	Open price	Price max	Price min	Last price	Closing price	Volume	Open Interest	Open price	Price max	Price min	Last price	Closing price	Volume	Open Interest	Volume	Open Interest	Exercise Price			
1.00	6.97				-	270					-				-			-				270					-				-					1.00
3.20						-	-					-				-									-	-					-	-			3.20	
3.40						-	-					-				-									-	-					-	-			3.40	
3.60						-	-					-				-									-	-					-	-			3.60	
3.80						-	-					-				-									-	-					-	-			3.80	
4.00						-	-					-				-									-	-					-	-			4.00	
4.40						-	-					-				-									-	-					-	-			4.40	
4.80						-	-					-				-									-	-					-	-			4.80	
5.20						-	-					-				-									-	-					-	-			5.20	
5.60						-	-					-				-									-	-					-	-			5.60	
5.80						-	-					-				-									-	-					-	-			5.80	
6.00						-	-					-				-									-	-	0.007				-	-			6.00	
6.20						-	-					-				-									-	-					-	-			6.20	
6.40						-	-					1.61				-	25									-	-	0.024				-	-			6.40
6.60						-	-					-				-									-	135					-	-			6.60	
6.80						-	-					1.25				-	25									-	-					-	-			6.80
7.00						-	-					-				-									-	-					-	-			7.00	
7.20						-	-					0.929				-	25									-	-					-	-			7.20
7.40						-	-					-				-									-	-					-	-			7.40	
7.60						-	-					0.656				-	40									-	-					-	-			7.60
7.80						-	-					-				-									-	-					-	-			7.80	
8.00						-	-					-				-									-	-					-	-			8.00	
8.20						-	-					-				-									-	-					-	-			8.20	
8.40						-	-					-				-									-	-					-	-			8.40	
8.80						-	-					-				-									-	-					-	-			8.80	
9.00						-	-					-				-									-	-					-	-			9.00	
9.20						-	-					-				-									-	-					-	-			9.20	
9.40						-	-					-				-									-	-					-	-			9.40	
9.60						-	-					-				-									-	-					-	-			9.60	
9.80						-	-					-				-									-	-					-	-			9.80	
10.00						-	-					-				-									-	-					-	-			10.00	
20.00						-	270					-				-									12.03	-	270					-	-			20.00
Totals:						0	540							0	115	0	1,600							0	675							0	55	0	0	
Nominal Transactions Value:						0.00								0.00		0.00								0.00								0.00		0.00		
Number of Trades:						0								0		0								0.00								0		0		

OTE (CR)

(Contract Size: 100 Securities, Exercise Style: American, Physical Delivery)

Call Options																	Put Options																								
September 2013								October 2013								Other Months		September 2013								October 2013								Other Months							
Exercise Price	Open price	Price max	Price min	Last price	Closing price	Volume	Open Interest	Open price	Price max	Price min	Last price	Closing price	Volume	Open Interest	Volume	Open Interest	Open price	Price max	Price min	Last price	Closing price	Volume	Open Interest	Open price	Price max	Price min	Last price	Closing price	Volume	Open Interest	Volume	Open Interest	Exercise Price								
2.60						-	-							-	-							-	-						-	-				2.60							
2.80						-	-							-	-							-	-						-	-				2.80							
3.00						-	-							-	-							-	-						-	-				3.00							
3.20						-	-							-	-							-	-						-	-				3.20							
3.40						-	-							-	-							-	-						-	-				3.40							
3.60						-	-							-	-							-	-						-	-				3.60							
3.80						-	-							-	-							-	-						-	-				3.80							
4.00						-	-							-	-							-	-						-	-				4.00							
4.40						-	-							-	-							-	-						-	-				4.40							
4.80						-	-							-	-							-	-						-	-				4.80							
5.20						-	-							-	-							-	100						-	-				5.20							
5.40						-	-							-	-							-	-						-	-				5.40							
5.60						-	-							-	-							-	1						-	-				5.60							
5.80						-	-							-	-							-	-						-	-				5.80							
6.00						-	-							-	-							-	75						-	-				6.00							
6.20						-	-							-	-							-	-						-	-				6.20							
6.40						-	-							-	-							-	-						-	-				6.40							
6.60						-	-							-	-							-	-						-	-				6.60							
6.80					0.884	-	1							-	-							-	-						-	-				6.80							
7.00						-	-							-	-							-	-						-	-				7.00							
7.20						-	-							-	-							-	-						-	-				7.20							
7.40						-	-							-	-							-	-				0.312	-	-					7.40							
7.60						-	-							-	-							-	-						-	-				7.60							
7.80						-	-							-	-							-	-						-	-				7.80							
8.00					0.062	-	50							-	-							-	-						-	-				8.00							
8.20						-	-							-	-							-	-						-	-				8.20							
8.40						-	-							-	-							-	35				0.729	-	-					8.40							
8.60						-	-							-	-							-	-						-	-				8.60							
8.80						-	-							-	-							-	-						-	-				8.80							
9.00						-	-							-	-							-	-						-	-				9.00							
9.20						-	-							-	-							-	-						-	-				9.20							
Totals:						0	51							0	0	0	1,600							0	211							0	1	0	0						
Nominal Transactions Value:						0.00								0.00		0.00								0.00								0.00		0.00							
Number of Trades:						0								0		0								0.00								0		0							

PIRAEUS BANK (CR)

(Contract Size: 100 Securities, Exercise Style: American, Physical Delivery)

Call Options																	Put Options																									
September 2013								October 2013								Other Months		September 2013								October 2013								Other Months								
Exerise Price	Open price	Price max	Price min	Last price	Closing price	Volume	Open Interest	Open price	Price max	Price min	Last price	Closing price	Volume	Open Interest	Volume	Open Interest	Open price	Price max	Price min	Last price	Closing price	Volume	Open Interest	Open price	Price max	Price min	Last price	Closing price	Volume	Open Interest	Volume	Open Interest	Exerise Price									
0.500						-	-							-	-							-	-						-	-				0.500								
0.600						-	-							-	-							-	-						-	-				0.600								
0.700						-	-							-	-							-	-						-	-				0.700								
0.800						-	-							-	-							-	-						-	-				0.800								
0.900						-	-							-	-							-	-						-	-				0.900								
1.00						-	-							-	-							-	-						-	-				1.00								
1.05						-	-							-	-							-	-						-	-				1.05								
1.10					0.200	-	5							-	-							-	-						-	-				1.10								
1.15						-	-							-	-							-	-						-	-				1.15								
1.20						-	-							-	-							-	-						-	-				1.20								
1.25						-	-							-	-							-	-						-	-				1.25								
1.30						-	-							-	-							-	-						-	-				1.30								
1.35						-	-							-	-							-	-						-	-				1.35								
1.40						-	-							-	-							-	-						-	-				1.40								
1.50						-	-							-	-							-	-						-	-				1.50								
1.60						-	-							-	-							-	-						-	-				1.60								
1.70						-	-							-	-							-	-						-	-				1.70								
1.80						-	-							-	-							-	-						-	-				1.80								
1.90						-	-							-	-							-	-						-	-				1.90								
Totals:						0	5							0	0	0	0							0	0							0	0	0	0	0						
Nominal Transactions Value:						0.00								0.00		0.00								0.00								0.00		0.00								
Number of Trades:						0								0		0								0								0		0								

PPC (CR) (Contract Size: 100 Securities, Exercise Style: American, Physical Delivery)

Call Options																	Put Options																						
	September 2013							October 2013							Other Months			September 2013											October 2013							Other Months			
Exercise Price	Open price	Price max	Price min	Last price	Closing price	Volume	Open Interest	Open price	Price max	Price min	Last price	Closing price	Volume	Open Interest	Volume	Open Interest	Open price	Price max	Price min	Last price	Closing price	Volume	Open Interest	Open price	Price max	Price min	Last price	Closing price	Volume	Open Interest	Volume	Open Interest	Exercise Price						
3.20							-	-							-	-										-	-								3.20				
3.40							-	-							-	-										-	-								3.40				
3.60							-	-							-	-										-	-								3.60				
3.80							-	-							-	-										-	-								3.80				
4.00							-	-							-	-										-	-								4.00				
4.40					3.50	-	30							-	-										-	-								4.40					
4.80							-	-							-	-										-	-								4.80				
5.20							-	-							-	-										-	-								5.20				
5.60							-	-							-	-										-	-								5.60				
6.00							-	-							-	-										-	-								6.00				
6.40							-	-							-	-										-	-								6.40				
6.60							-	-							-	-										-	-								6.60				
6.80					1.10	-	10							-	-										-	-								6.80					
7.00							-	-							-	-										-	-								7.00				
7.20							-	-							-	-										0.003	-	400				-	-				7.20		
7.40							-	-							-	-										-	-								7.40				
7.60							-	-							-	-										-	-								7.60				
7.80							-	-							-	-										-	-								7.80				
8.00							-	-							-	-										-	-								8.00				
8.20							-	-							-	-										-	-								8.20				
8.40							-	-							-	-										-	-								8.40				
8.60							-	-							-	-										-	-								8.60				
8.80							-	-							-	-										-	-								8.80				
9.00							-	-							-	-										-	-								9.00				
9.20							-	-							-	-										-	-								9.20				
9.60							-	-							-	-										-	-								9.60				
10.00							-	-							-	-										-	-								10.00				
Totals:						0	40							0	0	0	0							0	400							0	0	0	0				
Nominal Transactions Value:						0.00								0.00		0.00								0.00								0.00		0.00					
Number of Trades:						0								0		0								0.00								0		0					

PPC (CR)

(Contract Size: 100 Securities, Exercise Style: American, Physical Delivery)

Call Options																Put Options																					
Exercise Price	September 2013							October 2013							Other Months			September 2013										October 2013							Other Months		
	Open price	Price max	Price min	Last price	Closing price	Volume	Open Interest	Open price	Price max	Price min	Last price	Closing price	Volume	Open Interest	Volume	Open Interest	Open price	Price max	Price min	Last price	Closing price	Volume	Open Interest	Open price	Price max	Price min	Last price	Closing price	Volume	Open Interest	Volume	Open Interest	Exercise Price				

Securities	Type[4]	Stock Repo [1]						Stock Reverse Repo [2]								Repurchase Agreements [3]							
		Trans. price	chg.	Trades	Volume	Transactions Value	Open Interest[5]	Price max	Price min	Last price	Last Ask	Trades	Volume	Transactions Value	Open Interest[5]	Price max	Price min	Last price	Last Ask	Trades	Volume	Transactions Value	Open Interest[5]
AEGEAN AIRLINES (CR)	SR RA	100.00	---	---	---	---	85	---	---	---	42@3%	---	---	---	---	---	---	---	---	---	---	---	---
ALPHA BANK (CR)	SR RA	100.00	---	---	---	---	54,615	3.20%	3.20%	3.20%	32103@3.2%	1	200	11,240.0	283	---	---	---	---	---	---	---	1,562
ALPHA ETF FTSE Athex Large Cap	SR RA	100.00	---	---	---	---	---	---	---	---	---	---	---	---	---	---	---	---	---	---	---	---	1,664
ALUMIL (CR)	RA	---	---	---	---	---	---	---	---	---	---	---	---	---	---	---	---	---	---	---	---	---	---
ATHENS MEDICAL CENTER SA (CR)	SR RA	100.00	---	---	---	---	434	---	---	---	217@3%	---	---	---	---	---	---	---	---	---	---	---	---
AUTOHELLAS SA (CR)	SR RA	100.02	---	---	---	---	51	---	---	---	25@3%	---	---	---	---	---	---	---	---	---	---	---	---
CC HBC AG (CR)	SR RA	100.11	0.01	---	---	---	1,251	---	---	---	605@3%	---	---	---	20	---	---	---	---	---	---	---	118
CENTRIC HOLDINGS (CR)	SR RA	100.00	---	---	---	---	200	---	---	---	155@8.1%	---	---	---	---	---	---	---	---	---	---	---	---
CORINTH PIPEWORKS SA (CR)	SR RA	100.00	---	---	---	---	160	---	---	---	80@3%	---	---	---	---	---	---	---	---	---	---	---	---
CRETE PLASTICS SA (CR)	SR RA	100.00	---	---	---	---	---	---	---	---	---	---	---	---	---	---	---	---	---	---	---	---	---
ELLAKTOR (CR)	SR RA	100.01	---	---	---	---	2,403	---	---	---	1181@3%	---	---	---	20	---	---	---	---	---	---	---	---
ELTON SA (CR)	SR RA	100.00	---	---	---	---	50	---	---	---	35@3%	---	---	---	---	---	---	---	---	---	---	---	---
ELVAL SA. (CB)	SR RA	100.01	---	---	---	---	621	---	---	---	310@3%	---	---	---	---	---	---	---	---	---	---	---	---
EUROBANK ERGASIAS (CR)	SR RA	100.12	0.03	---	---	---	1,524	---	---	---	6@3.5%	---	---	---	987	---	---	---	---	---	---	---	28
EUROBANK PROPERTIES REIC (CR)	SR RA	100.06	0.01	---	---	---	1,639	---	---	---	759@3%	---	---	---	60	---	---	---	---	---	---	---	---
EUROPEAN RELIANCE INSUR. (CR)	SR RA	100.00	---	---	---	---	---	---	---	---	---	---	---	---	---	---	---	---	---	---	---	---	---
EYDAP S.A. (CR)	SR RA	100.03	0.01	---	---	---	345	---	---	---	164@3%	---	---	---	8	---	---	---	---	---	---	---	16
FOLLI FOLLIE (CR)	SR RA	100.07	0.01	---	---	---	842	---	---	---	401@3%	---	---	---	20	---	---	---	---	---	---	---	10
FOURLIS (CR)	SR RA	100.00	---	---	---	---	195	---	---	---	97@3%	---	---	---	---	---	---	---	---	---	---	---	---
FRIGOGLASS SA (CR)	SR RA	100.03	---	---	---	---	229	---	---	---	114@3%	---	---	---	---	---	---	---	---	---	---	---	---
GEK TERNA (CR)	SR RA	100.00	---	---	---	---	582	---	---	---	286@3%	---	---	---	5	---	---	---	---	---	---	---	---
GR. SARANTIS SA (CR)	SR RA	100.00	---	---	---	---	62	---	---	---	31@3%	---	---	---	---	---	---	---	---	---	---	---	---
HALKOR SA (CB)	SR RA	100.00	---	---	---	---	415	---	---	---	207@3%	---	---	---	---	---	---	---	---	---	---	---	---
HELLENIC CABLES SA (CR)	SR RA	100.00	---	---	---	---	84	---	---	---	42@3%	---	---	---	---	---	---	---	---	---	---	---	---
HELLENIC EXCHANGES (CR)	SR RA	100.06	0.01	---	---	---	5,993	---	---	---	2791@3%	---	---	---	205	---	---	---	---	---	---	---	---
HELLENIC PETROLEUM (CR)	SR RA	100.21	0.01	---	---	---	2,224	---	---	---	966@3%	---	---	---	146	---	---	---	---	---	---	---	46
HYGEIA SA (CR)	SR RA	100.00	---	---	---	---	700	---	---	---	280@4.2%	---	---	---	---	---	---	---	---	---	---	---	---
IASO SA (CR)	SR RA	100.00	---	---	---	---	86	---	---	---	43@3%	---	---	---	---	---	---	---	---	---	---	---	---
IKTINOS HELLAS SA (CR)	SR RA	100.00	---	---	---	---	10	---	---	---	---	---	---	---	---	---	---	---	---	---	---	---	---
INFORM P. LYKOS SA (CR)	SR RA	100.00	---	---	---	---	203	---	---	---	101@3%	---	---	---	---	---	---	---	---	---	---	---	---
INTRACOM CONSTR. (CR)	SR RA	100.00	---	---	---	---	37	---	---	---	18@3%	---	---	---	---	---	---	---	---	---	---	---	---
INTRACOM HOLDINGS (CR)	SR RA	100.00	---	---	---	---	665	---	---	---	442@4.1%	---	---	---	---	---	---	---	---	---	---	---	---

Stock Lending Notes

- [1] - Stock Repo: A Contract for selling stocks to HELEX with a Repurchase Right (According to ATHEX BoD Resolution No 17)
- [2] - Stock Reverse Repo: A Contract for buying stocks from HELEX with a Resell Right. (According to ATHEX BoD Resolution No 18)
- [3] - Standardized Repurchase Agreements: A Contract that constitutes a standardized agreement for the purchase or sale of shares, with repurchase or resell pact (According to ATHEX BoD Resolution No 20)
- [4] - Type of products is divided into SR: Stock Repo or Stock Reverse Repo, and RA: Repurchase Agreements.
- [5] - Open Interest in all Series (both tradeable or non-tradeable).

Securities	Type[4]	Stock Repo [1]						Stock Reverse Repo [2]								Repurchase Agreements [3]							
		Trans. price	chg.	Trades	Volume	Transactions Value	Open Interest[5]	Price max	Price min	Last price	Last Ask	Trades	Volume	Transactions Value	Open Interest[5]	Price max	Price min	Last price	Last Ask	Trades	Volume	Transactions Value	Open Interest[5]
INTRALOT (CR)	SR RA	100.02	---	---	---	---	4,116	---	---	---	1818@3%	---	---	---	240	---	---	---	---	---	---	---	---
J & P - AVAX SA (CR)	SR RA	100.02	---	---	---	---	235	---	---	---	117@3%	---	---	---	---	---	---	---	---	---	---	---	---
JUMBO SA (CR)	SR RA	100.04	---	---	---	---	2,338	---	---	---	1090@3%	---	---	---	79	---	---	---	---	---	---	---	20
KLEEMAN HELLAS SA (CR)	SR RA	100.00	---	---	---	---	982	---	---	---	491@3%	---	---	---	---	---	---	---	---	---	---	---	---
KLOUKINAS - LAPPAS SA (CR)	SR RA	100.00	---	---	---	---	---	---	---	---	---	---	---	---	---	---	---	---	---	---	---	---	---
KORRES (CR)	SR RA	100.00	---	---	---	---	---	---	---	---	---	---	---	---	---	---	---	---	---	---	---	---	---
KRI-KRI S.A. (CR)	SR RA	100.00	---	---	---	---	549	---	---	---	274@3%	---	---	---	---	---	---	---	---	---	---	---	---
LAMDA DEVELOPMENT SA (CR)	SR RA	100.00	---	---	---	---	890	---	---	---	445@3%	---	---	---	---	---	---	---	---	---	---	---	---
LOULIS MILLS SA (CR)	SR RA	100.00	---	---	---	---	---	---	---	---	---	---	---	---	---	---	---	---	---	---	---	---	---
MARFIN INVESTMENT GROUP (CR)	SR RA	100.00	---	---	---	---	1,783	---	---	---	---	---	---	---	---	---	---	---	---	---	---	---	---
METKA (CR)	SR RA	100.12	0.02	---	---	---	591	---	---	---	253@3%	---	---	---	52	---	---	---	---	---	---	---	16
MLS MULTIMEDIA SA (CR)	SR RA	100.00	---	---	---	---	99	---	---	---	49@3%	---	---	---	---	---	---	---	---	---	---	---	---
MOTOR OIL (CR)	SR RA	100.07	---	---	---	---	2,057	---	---	---	1028@3%	---	---	---	---	---	---	---	---	---	---	---	17
MYTILINEOS HOLDINGS (CR)	SR RA	100.00	---	---	---	---	3,875	3.00%	3.00%	3.00%	1777@3%	1	60	28,740.0	160	---	---	---	---	---	---	---	---
NATIONAL BANK (CR)	SR RA	100.07	0.01	---	---	---	9,061	---	---	---	3105@3%	---	---	---	1,425	---	---	---	---	---	---	---	346
NBGAM ETF	SR RA	100.00	---	---	---	---	---	---	---	---	---	---	---	---	---	---	---	---	---	---	---	---	100
NBGAM ETF GREECE & TURKEY 30	SR RA	100.00	---	---	---	---	---	---	---	---	---	---	---	---	---	---	---	---	---	---	---	---	35
NIREFS SA (CR)	SR RA	100.00	---	---	---	---	326	---	---	---	219@4.3%	---	---	---	---	---	---	---	---	---	---	---	---
OPAP (CR)	SR RA	100.06	0.02	---	---	---	5,614	3.00%	3.00%	3.00%	2319@3%	1	73	58,181.0	488	3.00%	3.00%	3.00%	---	1	73	58,181.0	440
OTE (CR)	SR RA	100.18	0.03	---	---	---	5,262	3.00%	3.00%	3.00%	1711@3%	3	96	73,728.0	908	---	---	---	---	---	---	---	103
P.P.A. S.A. (CR)	SR RA	100.00	---	---	---	---	15	---	---	---	57@3%	---	---	---	---	---	---	---	---	---	---	---	---
PETROPOULOS PETROS (CR)	RA	---	---	---	---	---	---	---	---	---	---	---	---	---	---	---	---	---	---	---	---	---	---
PIRAEUS BANK (CR)	SR RA	100.01	---	---	---	---	7,541	---	---	---	3118@3%	---	---	---	1,402	---	---	---	---	---	---	---	1,200
PPC (CR)	SR RA	100.20	0.05	---	---	---	1,932	---	---	---	419@3%	---	---	---	547	---	---	---	---	---	---	---	35
QUEST HOLDINGS (CR)	SR RA	100.00	---	---	---	---	39	---	---	---	19@3%	---	---	---	---	---	---	---	---	---	---	---	---
REDS S.A. (CR)	SR RA	100.00	---	---	---	---	572	---	---	---	363@3.6%	---	---	---	---	---	---	---	---	---	---	---	---
SELECTED TEXT. IND. ASSOC (CR)	SR RA	100.00	---	---	---	---	100	---	---	---	74@6.9%	---	---	---	---	---	---	---	---	---	---	---	---
SIDENOR (CR)	SR RA	100.00	---	---	---	---	442	---	---	---	221@3%	---	---	---	---	---	---	---	---	---	---	---	---
TECHNICAL OLYMPIC SA (CR)	SR RA	100.00	---	---	---	---	14	---	---	---	4@3%	---	---	---	---	---	---	---	---	---	---	---	---
TERNA ENERGY (CR)	SR RA	100.09	0.01	---	---	---	290	---	---	---	111@3%	---	---	---	34	---	---	---	---	---	---	---	5
THESSALONIKA WATER & SEWERAGE	SR RA	100.00	---	---	---	---	1,270	---	---	---	635@3%	---	---	---	---	---	---	---	---	---	---	---	---
THRACE PLASTICS SA (CR)	SR RA	100.00	---	---	---	---	1,010	---	---	---	505@3%	---	---	---	---	---	---	---	---	---	---	---	---

Stock Lending Notes

- [1] - Stock Repo: A Contract for selling stocks to HELEX with a Repurchase Right (According to ATHEX BoD Resolution No 17)
- [2] - Stock Reverse Repo: A Contract for buying stocks from HELEX with a Resell Right. (According to ATHEX BoD Resolution No 18)
- [3] - Standardized Repurchase Agreements: A Contract that constitutes a standardized agreement for the purchase or sale of shares, with repurchase or resell pact (According to ATHEX BoD Resolution No 20)
- [4] - Type of products is divided into SR: Stock Repo or Stock Reverse Repo, and RA: Repurchase Agreements.
- [5] - Open Interest in all Series (both tradeable or non-tradeable).

Securities	Type[4]	Stock Repo [1]						Stock Reverse Repo [2]								Repurchase Agreements [3]							
		Trans. price	chg.	Trades	Volume	Transactions Value	Open Interest[5]	Price max	Price min	Last price	Last Ask	Trades	Volume	Transactions Value	Open Interest[5]	Price max	Price min	Last price	Last Ask	Trades	Volume	Transactions Value	Open Interest[5]
TITAN CEMENT (CR)	SR RA	100.02	---	---	---	---	9,035	---	---	---	4457@3%	---	---	---	60	---	---	---	---	---	---	---	12
TPA SA (CR)	SR RA	100.00	---	---	---	---	6	---	---	---	---	---	---	---	---	---	---	---	---	---	---	---	---
TRASTOR REAL EST. INV. CO.(CR)	SR RA	100.00	---	---	---	---	284	---	---	---	142@3%	---	---	---	---	---	---	---	---	---	---	---	---
VIOHALCO (CB)	SR RA	100.01	---	---	---	---	3,990	---	---	---	1973@3%	---	---	---	22	---	---	---	---	---	---	---	30

Stock Lending Notes

- [1] - Stock Repo: A Contract for selling stocks to HELEX with a Repurchase Right (According to ATHEX BoD Resolution No 17)
- [2] - Stock Reverse Repo: A Contract for buying stocks from HELEX with a Resell Right. (According to ATHEX BoD Resolution No 18)
- [3] - Standardized Repurchase Agreements: A Contract that constitutes a standardized agreement for the purchase or sale of shares, with repurchase or resell pact (According to ATHEX BoD Resolution No 20)
- [4] - Type of products is divided into SR: Stock Repo or Stock Reverse Repo, and RA: Repurchase Agreements.
- [5] - Open Interest in all Series (both tradeable or non-tradeable).

Sectors codification for listed companies

533	-	Exploration & Production	537	-	Integrated Oil & Gas
1353	-	Commodity Chemicals	1357	-	Specialty Chemicals
1753	-	Aluminum	1755	-	Nonferrous Metals
1757	-	Steel	1775	-	General Mining
2353	-	Building Materials & Fixtures	2357	-	Heavy Construction
2723	-	Containers & Packaging	2727	-	Diversified Industrials
2733	-	Electrical Components & Equipment	2753	-	Commercial Vehicles & Trucks
2757	-	Industrial Machinery	2773	-	Marine Transportation
2777	-	Transportation Services	2791	-	Business Support Services
2797	-	Industrial Suppliers	3535	-	Distillers & Vintners
3537	-	Soft Drinks	3573	-	Farming & Fishing
3577	-	Food Products	3722	-	Durable Household Products
3726	-	Furnishings	3728	-	Home Construction
3747	-	Toys	3763	-	Clothing & Accessories
3765	-	Footwear	3767	-	Personal Products
3785	-	Tobacco	4533	-	Health Care Providers
4535	-	Medical Equipment	4577	-	Pharmaceuticals
5337	-	Food Retailers & Wholesalers	5371	-	Apparel Retailers
5373	-	Broadline Retailers	5375	-	Home Improvement Retailers
5379	-	Specialty Retailers	5553	-	Broadcasting & Entertainment
5555	-	Media Agencies	5557	-	Publishing
5751	-	Airlines	5752	-	Gambling
5753	-	Hotels	5755	-	Recreational Services
5757	-	Restaurants & Bars	5759	-	Travel & Tourism
6535	-	Fixed Line Telecommunications	6575	-	Mobile Telecommunications
7535	-	Conventional Electricity	7537	-	Alternative Electricity
7577	-	Water	8355	-	Banks
8534	-	Insurance Brokers	8536	-	Property & Casualty Insurance
8633	-	Real Estate Holding & Development	8637	-	Real Estate Services
8671	-	Industrial & Office REITs	8675	-	Specialty REITs
8775	-	Specialty Finance	8777	-	Investment Services
8985	-	Equity Investment Instruments	9533	-	Computer Services
9535	-	Internet	9537	-	Software
9572	-	Computer Hardware	9574	-	Electronic Office Equipment
9578	-	Telecommunications Equipment	11000	-	ETF

