

# Daily Official List

Athens Exchange sa

Wednesday, 18 September, 2013

Year: 134 Trading Day No: 176



ΟΜΙΛΟΣ ΕΛΛΗΝΙΚΑ ΧΡΗΜΑΤΙΣΤΗΡΙΑ  
HELLENIC EXCHANGES GROUP

**Disclaimer:**

Athens Exchange (ATHEX) endeavours to ensure that the data and other material ("Information") presented on the Daily Official List are accurate and complete, but it is not liable for any errors or omissions of data or /and for the accuracy, credibility, updating and completeness of the aforesaid information nor it has any liability arising directly or indirectly from the use of the above Information.

ATHEX is not liable for the accuracy of the data included in listed companies' announcements. Only the sender of such an announcement is fully and solely liable for any infringement of third party's rights from the content of such announcement. All contents of the Daily Official List are provided only for information purposes and do not constitute investment advice or solicitation to invest in securities or other products listed for trading on ATHEX.

You acknowledge and agree that ATHEX is the owner of any property rights related to any Information appearing on the Daily Official List including intellectual property rights copyright, trademarks, etc.

The above data are a property of the Athens Exchange and are copyright protected. Users are forbidden to reproduce, modify, copy, sale, transmit or redistribute, by all reproduction means and methods, part or the whole of the above data, without reference to their source.

The commercial exploitation of these data is, also, forbidden by third parties. Athens Exchange does not carry any responsibility, direct or indirect, derived from usage or accidental alteration of the above data when used by third parties.

**Athens Exchange sa**

110 Athinon Ave., 10442 Athens, Tel: (210) 33.66.800, Fax: (210) 32.13.938

[www.athex.gr](http://www.athex.gr)

**Thessalonica Stock Exchange Center (T.S.E.C)**

16-18 Katouni Str., Thessalonica 546 25 Tel: (2310) 567.667, Fax: (2310) 530.545

**Athex Members Guarantee Fund**

14-16 Fidiou Str., Athens 106 78, Tel: (210) 33.04.682, Fax: (210) 33.04.155

**Hellenic Republic Capital Market Commission**

1 Kolokotroni Str. & 1 Stadiou Str., Athens 10562 Tel: (210) 33.77.100 Fax: (210) 33.77.173

---

**Table of Contents**

---

**Section 1: Statistical Figures of Securities and Derivatives Markets**

Summary of Markets

Athex Indices

Analytic Figures for Athex Market's Boards and Categories

Trading Details by Athex Sectors and ETFs Category

Top 10 best &amp; worst performing Shares

Derivatives Summary

**Section 2: Analytic Figures of Shares Transactions**

Analytic Figures of Shares Transactions

Shares' Notes

**Section 3: Figures of Securities Transactions**

Securities Blocks Details

Shares Rights Details

Shares Short Selling

Stock Borrowing

Shares Forced Sales

Forced Sales Registered Shares

Exchange Traded Funds (ETFs) Characteristics

**Section 5: Bonds traded in Fixed Income Assets Market**

Corporate Bonds

Government Bonds

Treasury Bills &amp; Zero Coupon Government Bonds

Government Bonds Traded with the Open Outcry Method

State Banks Bonds

**Section 6: Additional Infos**

Athex &amp; ATHEXClear Members List

List of Stocks under Market Making operations

**Section 7: Derivatives Market Analytic Figures**

Index Futures

Stock Futures

Index Options

Stock Options

Stock Lending Analytic Figures (Repo Contracts)

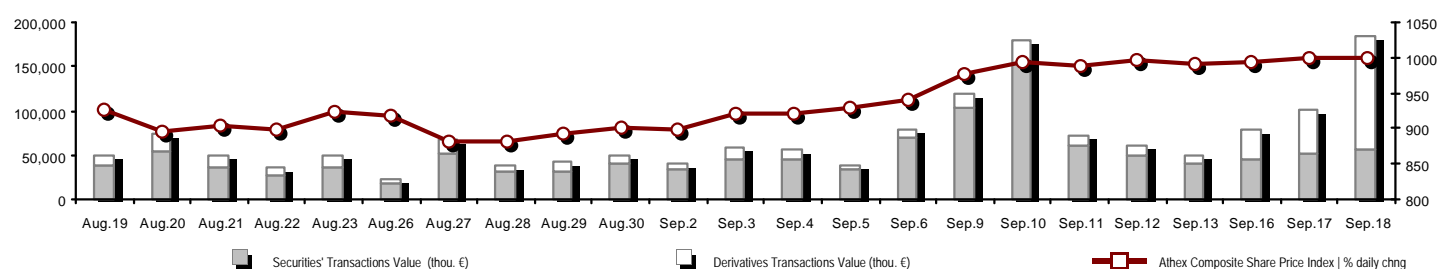
**Appendix A: Sectors codification for listed companies**

---

Section codification follows the corresponding from the Greek version of Daily Official List for reference purposes.

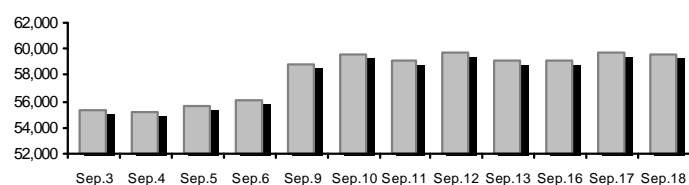
## Summary of Markets

Athex Composite Share Price Index vs Shares and Derivatives Transactions Value

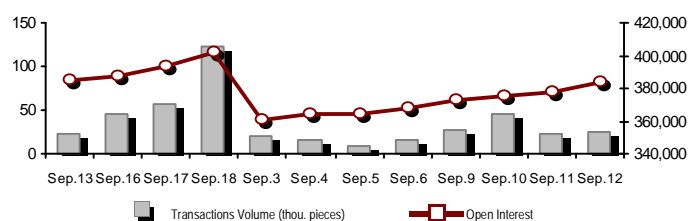


Total Transactions Value (Securities/Derivatives) (thou. €):		183,818.12	
Athex Capitalisation (mill. €) **: 59,554.60		Derivatives Total Open Interest 401,723	
Daily change: mill. €   % -188.05 -0.31%		in Index Futures   % daily chng 64,494 4.75%	
Yearly Avg Capitalisation: mill. €   % chng prev year Avg 45,905.23 67.73%		in Stock Futures   % daily chng 170,848 4.24%	
Athex Composite Share Price Index   % daily chng 1,000.81 0.09%		in Index Options   % daily chng 8,547 0.23%	
Athex Composite Share Price Index Capitalisation (mill. €) 52,552.42		in Stock Options   % daily chng 5,672 4.75%	
Daily change (mill. €) -202.10		in Stock Repos/Reverse Repos/RA   % daily chng 152,162 -0.73%	
Securities' Transactions Value (thou. €) 56,399.72		Derivatives Transactions Value (thou. €) 127,418.40	
Daily change: thou. €   % 4,609.08 8.90%		Daily change: thou. €   % 77,490.59 155.21%	
YtD Avg Trans. Value: thou. €   % chng prev year Avg 65,646.94 26.55%		YtD Avg Trans. Value: thou. €   % chng prev year Avg 22,959.02 20.29%	
Short Selling Trans. Value: mill. €   % in total Value 0.00 0.00%			
Short Covering Trans. Value: mill. €   % in total Value 0.03 0.00%			
Transactions Value of Blocks (thou. €) 8,926.21			
Bonds Transactions Value (thou. €) 0.00			
Securities' Transactions Volume (thou. Pieces) 26,834.01		Derivatives Contracts Volume: 122,932	
Daily change: thou. pieces   % 2,643.78 10.93%		Daily change: pieces   % 66,246 116.86%	
YtD Avg Volume: thou. pieces   % chng prev year Avg 49,649.62 0.41%		YtD Avg Derivatives Contracts   % chng prev year Avg 42,829 -33.45%	
Short Selling Volume: thou pieces   % in total Volume 0.00 0.00%			
Short Covering Volume: thou. pieces   % in total Volume 0.02 0.00%			
Transactions Volume of Blocks (thou. Pieces) 1,139.25			
Bonds Transactions Volume (thou. pieces) 0.00			
Securities' Trades Number 23,447		Derivatives Trades Number: 4,061	
Daily change: number   % 627 2.75%		Daily change: number   % 1,107 37.47%	
YtD Avg Derivatives Trades number   % chng prev year Avg 29,078 17.21%		YtD Avg Derivatives Trades number   % chng prev year Avg 2,696 -7.50%	
Number of Blocks 8			
Number of Bonds Transactions 0			

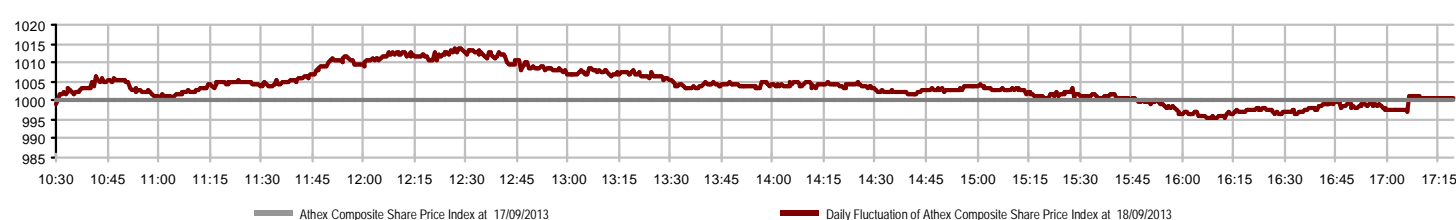
Athex Capitalisation (mill. €) \*\*



Derivatives Transactions Volume and Open Interest



Daily Fluctuation of Athex Composite Share Price Index



## Athex Indices

Index name	18/09/2013	17/09/2013	pts.	%	Min	Max	Year min	Year max	Year change
Athex Composite Share Price Index	1,000.81 #	999.91	0.90	0.09%	995.19	1,013.73	788.81	1,159.97	10.23% #
FTSE/Athex Large Cap	343.16 €	343.97	-0.81	-0.24%	341.44	348.00	253.17	410.78	10.81% #
FTSE/ATHEX Custom Capped	1,093.71 #	1,082.97	10.74	0.99%			863.84	1,275.55	7.28% #
FTSE/ATHEX Custom Capped - USD	1,046.74 #	1,036.74	10.00	0.96%			808.44	1,172.76	8.63% #
FTSE/Athex Mid Cap Index	1,053.51 #	1,044.57	8.94	0.86%	1,044.45	1,062.71	871.32	1,360.26	-7.03% €
FTSE/ATHEX-CSE Banking Index	118.59 €	119.53	-0.94	-0.79%	118.47	122.56	64.42	278.69	-29.77% €
FTSE/ATHEX Global Traders Index Plus	1,393.85 #	1,382.58	11.27	0.82%	1,383.49	1,407.22	1,082.32	1,484.90	11.74% #
FTSE/ATHEX Global Traders Index	1,473.15 #	1,466.24	6.91	0.47%	1,464.49	1,491.60	1,053.81	1,553.64	18.59% #
FTSE/ATHEX Mid & Small Cap Factor-Weighted Ind	1,248.78 #	1,242.08	6.70	0.54%	1,245.25	1,263.24	1,053.59	1,348.92	0.79% #
Greece & Turkey 30 Price Index	706.02 €	706.68	-0.66	-0.09%	704.76	710.27	595.35	927.16	-9.23% €
ATHEX Mid & SmallCap Price Index	2,730.73 €	2,754.00	-23.27	-0.84%	2,714.54	2,768.94	2,714.54	3,725.74	-12.89% €
FTSE/Athex Market Index	824.63 €	826.00	-1.37	-0.17%	820.40	835.82	600.87	972.17	11.82% #
FTSE/Med 100	4,305.84 #	4,302.44	3.40	0.08%			4,008.95	4,570.16	3.92% #
Athex Composite Index Total Return Index	1,449.16 #	1,447.85	1.31	0.09%	1,441.02	1,467.86	1,139.79	1,655.57	11.90% #
FTSE/Athex Large Cap Total Return	470.23 €	471.34	-1.11	-0.24%			366.91	565.68	9.11% #
FTSE/ATHEX Large Cap Net Total Return	1,375.86 €	1,379.11	-3.25	-0.24%	1,368.98	1,395.27	1,001.98	1,626.24	12.26% #
FTSE/ATHEX Custom Capped Total Return	1,142.25 #	1,131.04	11.22	0.99%			895.99	1,311.70	9.01% #
FTSE/ATHEX Custom Capped - USD Total Return	1,093.20 #	1,082.75	10.45	0.96%			836.50	1,205.99	10.38% #
FTSE/Athex Mid Cap Total Return	1,303.94 #	1,292.87	11.07	0.86%			1,152.62	1,720.22	-10.82% €
FTSE/ATHEX-CSE Banking Total Return Index	112.44 €	113.33	-0.89	-0.79%			82.32	289.59	-39.03% €
Greece & Turkey 30 Total Return Index	845.30 #	841.18	4.12	0.49%			729.18	1,098.14	-7.74% €
Hellenic Mid & Small Cap Index	991.18 #	984.03	7.15	0.73%	983.94	998.91	737.97	1,071.68	13.05% #
FTSE/Athex Banks	156.69 €	157.93	-1.24	-0.79%	156.53	161.93	85.08	368.22	-30.75% €
FTSE/Athex Insurance	1,306.55 #	1,232.79	73.76	5.98%	1,232.79	1,338.16	1,095.81	1,548.89	-13.89% €
FTSE/Athex Financial Services	1,452.48 #	1,452.31	0.17	0.01%	1,437.46	1,482.26	817.47	1,771.89	10.12% #
FTSE/Athex Industrial Goods & Services	3,420.70 #	3,404.88	15.82	0.46%	3,395.14	3,467.43	2,715.10	4,197.17	5.23% #
FTSE/Athex Retail	2,630.26 #	2,605.69	24.57	0.94%	2,571.73	2,651.81	1,629.12	2,692.44	43.76% #
FTSE/ATHEX Real Estate	1,917.25 €	1,951.39	-34.14	-1.75%	1,892.52	1,953.96	1,491.01	2,108.44	28.59% #
FTSE/Athex Personal & Household Goods	4,558.88 #	4,536.89	21.99	0.48%	4,484.59	4,588.77	2,586.10	4,588.77	46.01% #
FTSE/Athex Food & Beverage	8,743.44 €	8,850.17	-106.73	-1.21%	8,706.04	8,868.99	6,301.12	8,871.83	31.32% #
FTSE/Athex Basic Resources	2,423.61 #	2,383.24	40.37	1.69%	2,376.70	2,445.74	1,674.83	2,901.09	4.31% #
FTSE/Athex Construction & Materials	2,128.12 #	2,105.67	22.45	1.07%	2,091.37	2,163.55	1,439.70	2,163.55	15.91% #
FTSE/Athex Oil & Gas	2,765.67 €	2,781.61	-15.94	-0.57%	2,752.09	2,804.17	2,358.47	3,358.80	-1.69% €
FTSE/Athex Chemicals	6,111.62 €	6,162.60	-50.98	-0.83%	6,111.62	6,391.11	5,194.08	7,961.02	1.53% #
FTSE/Athex Media	1,551.31 #	1,543.92	7.39	0.48%	1,396.18	1,551.31	716.56	3,560.63	114.29% #
FTSE/Athex Travel & Leisure	1,402.40 #	1,371.36	31.04	2.26%	1,352.67	1,402.40	1,028.61	1,496.38	38.93% #
FTSE/Athex Technology	712.16 €	726.81	-14.65	-2.02%	708.39	729.70	555.63	886.96	-4.05% €
FTSE/Athex Telecommunications	2,078.19 €	2,091.95	-13.76	-0.66%	2,069.93	2,124.98	1,175.35	2,149.76	48.04% #
FTSE/Athex Utilities	2,999.60 €	3,010.11	-10.51	-0.35%	2,979.24	3,027.87	1,752.55	3,104.53	31.11% #
FTSE/Athex Health Care	248.15 €	248.51	-0.36	-0.14%	244.94	251.71	172.87	346.05	-11.56% €
Athex All Share Index	211.55 €	212.20	-0.65	-0.31%			176.43	294.40	-10.62% €

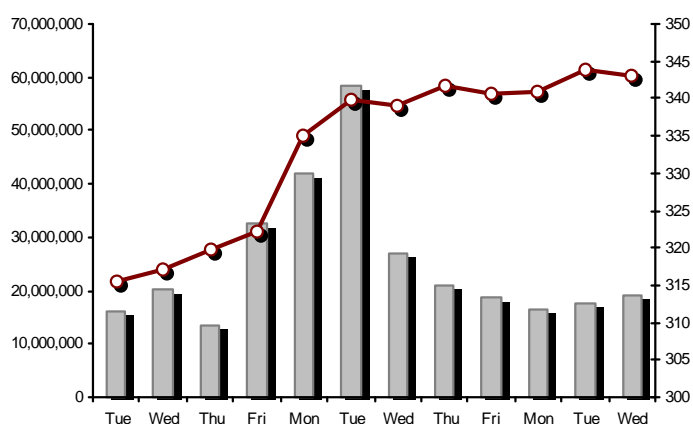
Note 1: Greece & Turkey 30 Pr data is the indicative at 17:20, whereas FTSE/ATHEX Custom Capped, FTSE/ATHEX Custom Capped - USD, FTSE/ATHEX Custom Capped TR, FTSE/ATHEX Custom Capped - USD TR, FTSE/Med 100 & Greece & Turkey 30 Rt closing prices refer to the previous trading day of 17/09/2013.

Note 2: The Hellenic Mid & Small Cap Index is a Customized index calculated by the Athens Exchange.

## Athex Indices

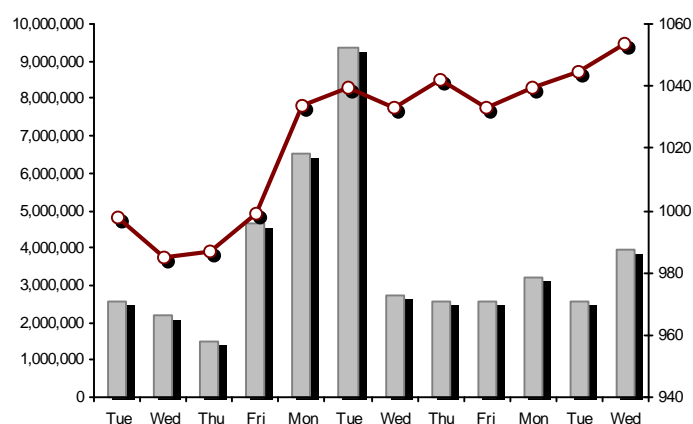
FTSE/Large Cap

18/09/2013: -0.24%



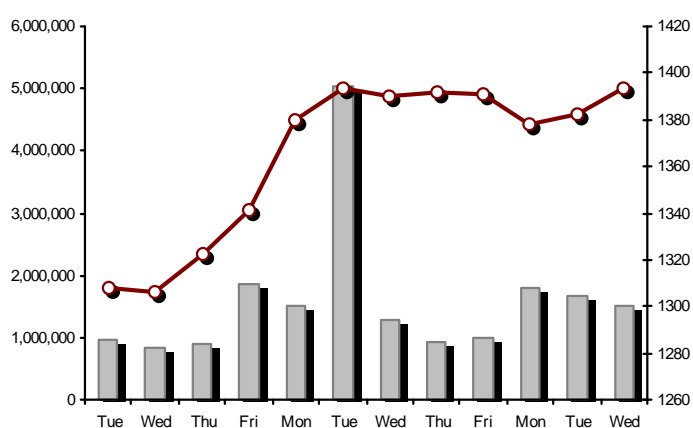
FTSE/Athex Mid Cap Index

18/09/2013: 0.86%



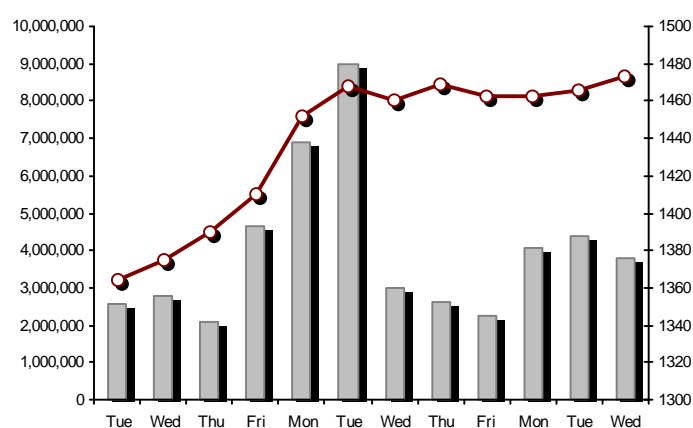
FTSE/ATHEX Global Traders Index Plus

18/09/2013: 0.82%



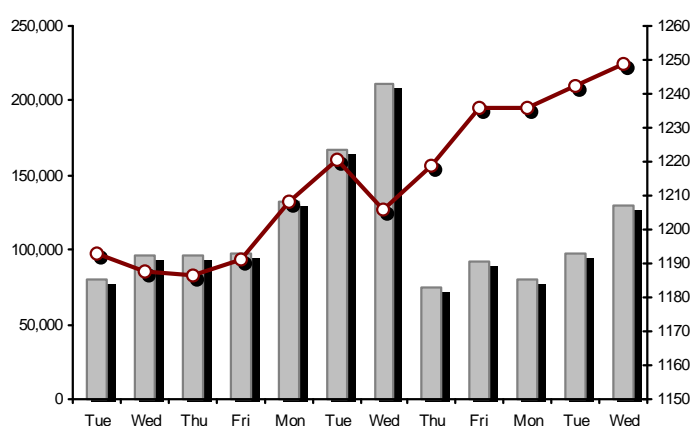
FTSE/ATHEX Global Traders Index

18/09/2013: 0.47%



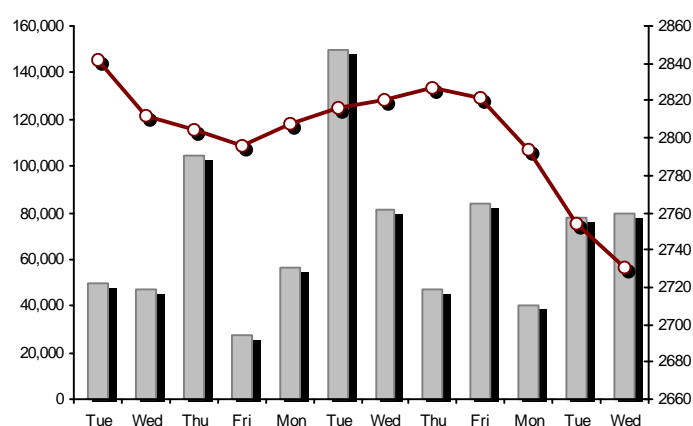
FTSE/ATHEX Mid &amp; Small Cap Factor-Weighted Index

18/09/2013: 0.54%



ATHEX Mid &amp; SmallCap Price Index

18/09/2013: -0.84%



Indices volume of transactions

Indices closing prices

## Analytic Figures for Athex Market's Boards and Categories

	Total Traded Securities	Main Market	Low Dispersion	Other Categories (*)	Exchange Traded Funds (ETFs)	Warrants
Totals	166	125	7	30	1	3
Gain / Lose / Same:	71 / 70 / 25	59 / 51 / 15	1 / 2 / 4	10 / 15 / 5	0 / 1 / 0	1 / 1 / 1
Athex Capitalisation (mill. €) **	59,554.60	57,242.38	1,982.11	330.11		
Daily Average Transactions Value (thou. €)	65,646.94	23,423.34	488.40	79.28	39.97	5,804.98
Transactions Value	56,399.72	53,338.79	17.12	93.33	308.15	2,642.32
Main Board:	47,473.51	44,431.82	17.12	93.33	308.15	2,623.07
Blocks Board:	8,926.21	8,906.96	0.00	0.00	0.00	19.25
Forced Sales Board:	0.00	0.00	0.00	0.00	0.00	0.00
Special Terms Board:	0.00	0.00	0.00	0.00	0.00	0.00
Daily Average Transactions Volume	49,649,616	14,340,492	53,159	423,563	10,065	8,363,742
Transactions Volume	26,834,006	23,786,370	5,117	207,797	90,082	2,744,640
Main Board:	25,694,754	22,672,118	5,117	207,797	90,082	2,719,640
Blocks Board:	1,139,252	1,114,252	0	0	0	25,000
Forced Sales Board:	0	0	0	0	0	0
Special Terms Board:	0	0	0	0	0	0
Daily Average Number of Trades	29,078	10,440	116	212	8	2,254
Number of Trades	23,447	21,952	44	166	5	1,280
Main Board:	23,439	21,945	44	166	5	1,279
Blocks Board:	8	7	0	0	0	1
Forced Sales Board:	0	0	0	0	0	0
Special Terms Board:	0	0	0	0	0	0

(\*) Summarised Transactions figures for Under Deletion and Under Supervision Categories.

(\*\*) The Market Capitalization of the Companies that belong in the Under Supervision Category is not included.

## Trading Details by Athex Sectors and ETFs Category

Code	Sectors	Gain / Lose / Same	Number of Trades	Transactions Volume	Transactions Value	% of Total Trans. Value
8300	- Banks	2 / 6 / 1	6,955	16,466,196	16,758,601.66	29.71%
1700	- Basic Resources	6 / 3 / 3	1,592	679,886	1,824,942.05	3.24%
1300	- Chemicals	2 / 3 / 2	242	101,020	134,407.27	0.24%
2300	- Construction & Materials	8 / 9 / 4	1,605	785,453	2,057,882.66	3.65%
11000	- ETF	0 / 1 / 0	5	90,082	308,154.84	0.55%
8700	- Financial Services	2 / 3 / 0	1,896	2,609,894	3,251,373.62	5.76%
3500	- Food & Beverage	6 / 9 / 2	752	164,527	2,188,562.47	3.88%
4500	- Health Care	2 / 2 / 2	136	684,520	491,511.37	0.87%
2700	- Industrial Goods & Services	13 / 6 / 2	1,952	409,469	1,780,041.40	3.16%
8500	- Insurance	1 / 0 / 0	69	40,727	50,194.91	0.09%
5500	- Media	2 / 1 / 0	27	4,967	1,303.99	0.00%
500	- Oil & Gas	0 / 2 / 0	1,015	131,495	1,006,502.32	1.78%
3700	- Personal & Household Goods	4 / 10 / 3	1,044	502,785	1,883,309.76	3.34%
8600	- Real Estate	3 / 4 / 0	274	71,795	310,376.23	0.55%
5300	- Retail	4 / 1 / 1	427	89,930	1,244,545.57	2.21%
9500	- Technology	6 / 6 / 2	461	497,948	321,750.47	0.57%
6500	- Telecommunications	0 / 1 / 0	1,032	593,886	4,521,465.72	8.02%
5700	- Travel & Leisure	8 / 1 / 3	1,712	2,128,762	12,798,451.31	22.69%
7500	- Utilities	2 / 2 / 0	2,251	780,664	5,466,342.65	9.69%

## Top 10 best &amp; worst performing Shares

Main Market					
With positive Price change	Closing price	change	With negative Price change	Closing price	change
CENTRIC HOLDINGS (CR)	0.248	11.71% #	INTRACOM HOLDINGS (CR)	0.487	-4.70% Ⓔ
FOURLIS (CR)	3.01	7.50% #	HELLENIC CABLES SA (CR)	1.49	-3.87% Ⓔ
EUROPEAN RELIANCE INSUR. (CR)	1.24	5.98% #	MARFIN INVESTMENT GROUP (CR)	0.360	-2.44% Ⓔ
NEXANS HELLAS SA (CR)	2.24	4.67% #	EUROBANK PROPERTIES REIC (CR)	7.01	-1.82% Ⓔ
INTRALOT (CR)	1.72	2.99% #	BANK OF GREECE (CR)	14.30	-1.38% Ⓔ
J & P - AVAX SA (CR)	1.69	2.42% #	SIDENOR (CR)	1.55	-1.27% Ⓔ
MYTILINEOS HOLDINGS (CR)	4.91	2.29% #	CC HBC AG (CR)	23.40	-1.22% Ⓔ
TERNA ENERGY (CR)	3.13	2.29% #	ATTICA BANK S.A. (CR)	0.258	-1.15% Ⓔ
OPAP (CR)	7.98	2.18% #	PPC (CR)	7.89	-1.00% Ⓔ
IKTINOS HELLAS SA (CR)	1.55	1.97% #	NATIONAL BANK (CR)	3.11	-0.95% Ⓔ
P.P.A. S.A. (CR)	17.56	1.97% #			
With the highest Transactions Value	Value (thou. €)	change	With the highest Transactions Volume	Volume	change
OPAP (CR)	11,925.68	2.18% #	ALPHA BANK (CR)	6,010,024	-0.86% Ⓔ
PIRAEUS BANK (CR)	6,348.77	-0.75% Ⓔ	PIRAEUS BANK (CR)	4,723,539	-0.75% Ⓔ
OTE (CR)	4,521.47	-0.66% Ⓔ	MARFIN INVESTMENT GROUP (CR)	2,215,496	-2.44% Ⓔ
ALPHA BANK (CR)	3,514.74	-0.86% Ⓔ	OPAP (CR)	1,526,138	2.18% #
NATIONAL BANK (CR)	3,200.26	-0.95% Ⓔ	ATTICA BANK S.A. (CR)	1,183,560	-1.15% Ⓔ
EYDAP S.A. (CR)	2,726.72	1.01% #	NATIONAL BANK (CR)	1,012,017	-0.95% Ⓔ
HELLENIC EXCHANGES (CR)	2,440.16	1.14% #	EUROBANK ERGASIAS (CR)	774,386	1.13% #
CC HBC AG (CR)	2,131.79	-1.22% Ⓔ	OTE (CR)	593,886	-0.66% Ⓔ
PPC (CR)	2,119.08	-1.00% Ⓔ	ATHENS MEDICAL CENTER SA (CR)	536,435	0.00% ~
MYTILINEOS HOLDINGS (CR)	1,347.34	2.29% #	INTRALOT (CR)	456,608	2.99% #

Note: Stocks that are not included in the "Low Dispersion" and "Under Supervision" categories, and the transactions value is more than 10,000 €.



## Derivatives Summary

	Number of Trades	Volume	Open Interest	Transactions Value
Index Futures	1,119	64,242	64,494	111,674,018.75
FTSE/Athex Large Cap	1,119	64,242	64,494	111,674,018.75
Stock Futures	2,905	57,061	170,848	15,122,671.93
ALPHA BANK (CR)	269	9,039	24,100	529,375.30
CC HBC AG (CR)	53	233	925	546,648.00
CORINTH PIPEWORKS SA (CR)	5	45	717	9,280.00
ELLAKTOR (CR)	71	1,843	5,121	423,118.00
EUROBANK ERGASIAS (CR)	46	4,211	14,384	41,104.87
EUROBANK PROPERTIES REIC (CR)	46	191	294	135,305.00
EYDAP S.A. (CR)	76	340	880	269,022.00
FOLLI FOLLIE (CR)	14	48	261	88,472.00
FRIGOGLASS SA (CR)	41	324	685	164,513.00
GEK TERNA (CR)	236	5,634	34,641	1,288,806.00
HELLENIC EXCHANGES (CR)	91	611	4,285	382,871.00
HELLENIC PETROLEUM (CR)	33	345	2,367	263,156.00
INTRALOT (CR)	130	1,018	3,960	172,359.00
JUMBO SA (CR)	16	144	205	127,445.00
MARFIN INVESTMENT GROUP (CR)	146	9,006	19,066	328,810.00
METKA (CR)	35	197	516	228,515.00
MOTOR OIL (CR)	42	271	983	206,251.00
MYTILINEOS HOLDINGS (CR)	278	3,820	7,763	1,865,988.00
NATIONAL BANK (CR)	215	4,721	6,930	1,507,208.00
OPAP (CR)	161	1,233	4,867	973,200.00
OTE (CR)	231	2,206	8,465	1,690,181.00
P.P.A. S.A. (CR)	75	306	708	539,761.00
PIRAEUS BANK (CR)	215	7,120	17,856	960,582.00
PPC (CR)	214	2,244	5,718	1,787,469.00
SIDENOR (CR)	60	481	1,460	75,749.00
TERNA ENERGY (CR)	39	1,197	2,465	373,729.76
TITAN CEMENT (CR)	19	40	233	65,891.00
VIOHALCO (CB)	48	193	993	77,862.00
Index Options	27	238	8,547	432,200.00
FTSE/Athex Large Cap	27	238	8,547	432,200.00
Stock Options	2	70	5,672	58,800.00
ALPHA BANK (CR)	0	0	0	0.00
NATIONAL BANK (CR)	0	0	379	0.00
OPAP (CR)	0	0	2,985	0.00
OTE (CR)	2	70	1,863	58,800.00
PIRAEUS BANK (CR)	0	0	5	0.00
PPC (CR)	0	0	440	0.00
Stock Repos - Stock Reverse Repos - Repurchase Agreements	8	1,321	152,162	130,710.40
Stock Reverse Repos	5	50	6,292	30,256.40
Stock Repos	3	1,271	141,274	100,454.00
Repurchase Agreement	0	0	4,596	0.00
Total Derivatives Traded	4,061	122,932	401,723	127,418,401.08

Number of Outstanding Securities	Nominal Value	Dividends [1]			Date of Last Coupon		Note	Shares	Closing price	% change	Previous closing price/date	Open price	Price min	Price max	Last price	Avg price	Last Bid [7]	Last Ask [7]	P/E after	Year	Volume	Trades	Transactions Value	Company Mkt Value (thou. €)	Year low	Year high	Sector[ 4]	
		2010	2011	2012	Dividend [2]	Right																						
Warrants																												
1,233,503,482		---	---	---	11/06/2013	---	ALPHA BANK (W)		1.07	---	↘ 1.07	17/09/2013	1.07	1.06	1.10	1.07	1.08	27300@1.07	51018@1.08	---	2012	1,393,713	465	1,506,443.25	6,324,362.58	0.241	1.17	8355
245,779,626		---	---	---	27/06/2013	---	NATIONAL BANK (W)		0.920	-2.13	€ 0.940	17/09/2013	0.940	0.913	0.962	0.920	0.942	994@0.913	21439@0.920	---	2012	686,066	533	646,525.73	7,454,004.44	0.420	2.00	8355
849,195,130		---	---	---	03/07/2013	---	PIRAEUS BANK (W)		0.736	2.22	# 0.720	17/09/2013	0.711	0.711	0.745	0.736	0.735	400@0.733	5671@0.736	---	2012	664,861	282	489,354.78	6,695,789.70	0.290	0.889	8355

Warrants

71,417,100	0.650	---	---	---	26/05/2010	11/07/2007	---	AEGEAN AIRLINES (CR)	4.05	1.50	# 3.99	17/09/2013	4.00	4.00	4.07	4.05	4.04	200@4.02	5@4.05	---	2012	11,446	56	46,227.87	289,239.26	1.96	4.10	5751
11,178,000	1.45	---	---	---	21/04/2010	12/05/2011	---	AEOLIAN INVESTMENT FUND (CR)	1.02	-0.97	€ 1.03	17/09/2013	0.996	0.995	1.04	1.02	1.02	225@0.998	305@1.02	8.07	2012	1,205	7	1,224.11	11,401.56	0.900	1.17	8985
13,000,000	1.00	---	---	---	01/08/2007	07/04/2000	---	AKRITAS SA (CR)	0.177	-9.69	€ 0.196	17/09/2013	0.177	0.177	0.196	0.177	0.182	253@0.177	---	---	2012	80	6	14.54	2,301.00	0.140	0.520	2353
25,000,000	0.400	---	---	---	03/06/2009	12/07/2013	---	ALCO HELLAS SA (CR)	0.423	0.95	# 0.419	17/09/2013	0.410	0.409	0.424	0.423	0.421	350@0.409	4830@0.407	---	2012	125,658	17	52,871.09	10,575.00	0.159	0.599	1753
10,922,906,012	0.300	---	---	---	07/04/2008	13/05/2013	---	ALPHA BANK (CR)	0.579	-0.86	€ 0.584	17/09/2013	0.582	0.575	0.594	0.579	0.585	8955@0.578	53324@0.580	---	2012	6,010,024	2,007	3,514,743.60	6,324,362.58	0.161	0.696	8355
22,016,250	0.370	---	---	---	15/07/2009	11/05/2000	---	ALUMIL (CR)	0.556	---	↘ 0.556	17/09/2013	0.556	0.556	0.556	0.556	0.556	50@0.542	500@0.548	---	2012	50	1	27.80	12,241.04	0.360	0.740	1753
418,000	16.00	---	---	---	22/04/2010	05/03/2013	---	ANDROMEDA SA (CR)	18.08	0.17	# 18.05	17/09/2013	18.08	18.08	18.08	18.08	18.08	10@18.21	10@19.80	1.67	2012	3	1	54.24	7,557.44	17.10	25.41	8985
21,876,700	0.380	---	---	---	08/07/2010	05/06/2001	---	AS COMPANY SA (CR)	0.319	-5.62	€ 0.338	17/09/2013	0.305	0.305	0.330	0.314	0.315	1075@0.314	100@0.329	36.45	2012	19,630	16	6,183.50	6,978.67	0.272	0.488	5379
86,735,980	0.310	---	---	---	06/07/2009	02/01/2002	---	ATHENS MEDICAL CENTER SA (CR)	0.801	---	↘ 0.801	17/09/2013	0.801	0.800	0.801	0.801	0.800	8911@0.801	500@0.808	---	2012	536,435	14	429,177.07	69,475.52	0.471	0.994	4533
699,673,060	0.300	---	---	---	04/06/2008	05/06/2013	---	ATTICA BANK S.A. (CR)	0.258	-1.15	€ 0.261	17/09/2013	0.261	0.256	0.265	0.258	0.260	10000@0.257	22001@0.260	---	2012	1,183,560	311	307,541.50	180,515.65	0.173	1.06	8355
45,457,464	0.700	---	---	---	01/07/2008	01/03/2010	---	AUDIO VISUAL ENTERPRISES (CR)	0.210	0.48	# 0.209	17/09/2013	0.190	0.189	0.210	0.210	0.199	1000@0.200	80@0.210	---	2012	4,391	10	874.00	9,546.07	0.097	0.482	5553
36,360,000	0.320	---	0.15	---	30/04/2012	05/05/2008	---	AUTOHELLAS SA (CR)	2.33	0.43	# 2.32	17/09/2013	2.35	2.32	2.36	2.36	2.34	321@2.32	2602@2.36	12.55	2012	4,285	23	10,028.32	84,718.80	1.50	2.38	5759
19,864,886	5.60	1.976	0.67	0.5376	06/03/2013	02/07/2008	---	BANK OF GREECE (CR)	14.30	-1.38	€ 14.50	17/09/2013	14.30	14.20	14.53	14.30	14.36	120@14.30	172@14.40	---	---	18,030	141	258,824.37	284,067.87	11.26	19.19	8355
23,986,500	1.05	---	---	---	26/06/2009	15/03/2000	---	BIOKARPET S.A.(CR)	0.650	---	↘ 0.650	06/09/2013	---	---	---	---	---	---	1000@0.639	---	2012	---	---	---	15,591.23	0.486	0.845	3726
15,842,391	1.51	---	---	---	15/07/2009	12/05/2000	---	BITROS HOLDING SA (CR)	0.621	---	↘ 0.621	01/08/2013	---	---	---	---	---	---	480@0.569	---	2012	---	---	---	9,838.12	0.336	0.745	1757
15,816,009	0.300	---	---	---	01/07/2009	17/07/2000	---	BYTE COMPUTER SA (CR)	0.472	1.29	# 0.466	17/09/2013	0.472	0.472	0.472	0.472	0.472	100@0.464	50@0.472	---	2012	50	1	23.60	7,465.16	0.351	0.620	9533
366,491,145	6.70	---	---	0.34	26/06/2013	29/04/2013	---	CC HBC AG (CR)	23.40	-1.22	€ 23.69	17/09/2013	23.56	23.30	23.80	23.40	23.51	3000@23.31	2@23.47	---	---	90,690	561	2,131,787.04	8,575,892.79	16.79	23.80	3537
101,123,806	0.360	---	---	---	22/07/2010	28/06/2011	---	CENTRIC HOLDINGS (CR)	0.248	11.71	# 0.222	17/09/2013	0.230	0.230	0.259	0.248	0.246	3000@0.247	2399@0.250	37.63	2012	80,386	87	19,796.88	25,078.70	0.176	0.440	5752
4,034,950	0.680	---	---	---	01/07/2005	30/12/2010	---	CHATZIKRANIOTIS & SONS SA (CR)	0.123	-5.38	€ 0.130	16/09/2013	0.123	0.123	0.130	0.123	0.129	1534@0.123	2700@0.140	---	2012	2,461	5	316.71	496.30	0.121	0.522	3577
124,170,201	0.780	---	---	---	28/06/2002	07/02/2005	---	CORINTH PIPEWORKS SA (CR)	2.04	---	↘ 2.04	17/09/2013	2.05	2.02	2.08	2.04	2.05	3129@2.04	1998@2.06	73.08	2012	89,659	307	183,745.67	253,307.21	1.40	2.59	1757
9,907,500	0.300	---	---	---	06/10/2005	13/02/2002	---	CPI SA (CR)	0.145	7.41	# 0.135	12/09/2013	0.145	0.145	0.145	0.145	0.145	1000@0.148	---	---	2012	1,000	1	145.00	1,436.59	0.133	0.400	9572
27,379,200	0.520	---	---	---	23/06/2010	18/09/2013	---	CRETE PLASTICS SA (CR)	5.20	---	↘ 5.29	# 17/09/2013	5.29	5.10	5.30	5.20	5.17	95@5.10	49@5.27	14.86	2012	2,623	14	13,551.18	142,371.84	4.40	5.65	1357
26,664,840	0.470	---	---	---	29/06/2005	12/07/1999	---	CYCLON HELLAS SA (CR)	0.472	-10.94	€ 0.530	17/09/2013	0.472	0.472	0.472	0.472	0.472	309@0.472	475@0.510	---	2012	100	2	47.20	12,585.80	0.385	0.700	1357
15,000,000	0.300	---	---	---	06/07/2007	18/07/2000	---	DAIOS PLASTICS SA (CR)	3.67	---	↘ 3.67	03/09/2013	3.35	3.35	3.67	3.67	3.40	20@3.32	90@3.67	---	2012	60	2	204.20	55,050.00	3.34	5.50	1357
31,370,399	0.300	---	---	---	11/08/2010	15/02/2012	---	DIONIC (CR)	0.085	1.19	# 0.084	17/09/2013	0.081	0.080	0.085	0.085	0.082	600@0.082	12252@0.085	---	2012	61,312	66	5,042.71	2,666.48	0.066	0.263	2797
34,720,000	0.310	---	---	---	16/06/2010	01/08/2007	---	DROMEAS SA (CR)	0.382	0.53	# 0.380	17/09/2013	0.351	0.351	0.382	0.382	0.357	500@0.353	1000@0.379	---	2012	7,570	10	2,702.86	13,263.04	0.218	0.634	3726
3,873,120	0.300	---	---	---	07/07/2008	04/10/2012	---	DRUCKFARBEN HELLAS (CR)	1.40	-6.67	€ 1.50	17/09/2013	1.65	1.40	1.65	1.40	1.40	4693@1.40	100@1.48	---	2012	308	4	431.45	5,422.37	0.901	2.64	1357
11,250,000	0.560	---	---	---	26/07/2010	16/06/1999	---	EKTER SA (CR)	0.491	0.20	# 0.490	17/09/2013	0.490	0.490	0.500	0.491	0.491	1000@0.490	500@0.503	8.58	2012	119,350	44	58,601.66	5,523.75	0.400	0.700	2357
32,188,050	1.04	---	---	---	21/07/2008	20/01/2000	---	EL. D. MOUZAKIS SA (CB)	0.151	7.86	# 0.140	17/09/2013	0.140	0.140	0.151	0.151	0.142	300@0.137	100@0.150	---	2012	5,300	10	750.80	4,860.40	0.114	0.330	3763
18,648,000	1.00	---	---	---	07/07/2009	10/09/2010	---	ELASTRON (CR)	0.650	7.26	# 0.606	17/09/2013	0.629	0.612	0.650	0.650	0.626	319@0.620	3067@0.650	---	2012	14,281	41	8,937.02	12,121.20	0.518	0.969	1757
31,734,530	1.60	---	---	---	09/07/2007	19/07/2006	---	ELGEKA SA (CR)	0.429	-0.23	€ 0.430	17/09/2013	0.404	0.404	0.429	0.429	0.418	150@0.401	500@0.429	---	2012	900	3	376.10	13,614.11	0.404	0.780	3577
23,828,130	0.500	---	---	---	07/07/2010	17/02/2009	---	ELINOIL S.A. (CR)	1.14	---	↘ 1.14	16/09/2013	---	---	---	---	---	200@1.03	1000@1.20	---	2012	---	---	---	27,164.07	1.02	1.89	537
177,001,313	1.03	0.0308	---	---	05/07/2011	20/12/2007	---	ELLAKTOR (CR)	2.30	---	↘ 2.30	17/09/2013	2.29	2.26	2.34	2.30	2.30	1050@2.27	6852@2.32	---	2012	224,115	477	516,406.69	407,103.02	1.36	2.50	2357

Number of Outstanding Securities	Nominal Value	Dividends [1]			Date of Last Coupon Dividend [2]		Note	Shares	Closing price	% change	Previous closing price/date	Open price	Price min	Price max	Last price	Avg price	Last Bid [7]	Last Ask [7]	P/E after	Year	Volume	Trades	Transactions Value	Company Mkt Value (thou. €)	Year low	Year high	Sector[ 4]
26,730,187	0.600	---	---	---	25/06/2009	30/12/2010	---	ELTON SA (CR)	1.19	0.85 #	1.18 17/09/2013	1.18	1.16	1.24	1.19	1.21	1360@1.16	1486@1.20	12.44	2012	37,806	112	45,554.41	31,808.92	0.850	1.25	1353
15,146,404	0.340	0.093	---	---	06/07/2011	17/10/2002	---	ELTRAK SA (CR)	1.65	--- ↘	1.65 17/09/2013	1.65	1.65	1.65	1.65	1.65	90@1.60	90@1.77	---	2012	260	2	429.00	24,991.57	1.08	1.90	2753
124,100,815	0.300	---	---	---	27/06/2008	07/07/2000	---	ELVAL SA. (CB)	1.88	--- ↘	1.88 17/09/2013	1.88	1.85	1.91	1.88	1.88	1993@1.88	3000@1.89	14.52	2012	55,372	156	104,305.72	233,309.53	1.55	2.38	1753
13,230,000	0.300	---	---	---	11/08/2010	28/08/2013	---	ELVE SA (CR)	0.535	-2.37 €	0.548 17/09/2013	0.530	0.511	0.549	0.549	0.546	390@0.511	127@0.547	---	2012	3,339	13	1,821.47	7,078.05	0.423	0.717	3763
30,009,210	0.310	---	---	---	27/06/2008	26/06/2000	---	ETEM SA (CB)	0.388	-1.27 €	0.393 17/09/2013	0.369	0.369	0.390	0.388	0.379	1750@0.372	100@0.388	---	2012	25,392	36	9,616.70	11,643.57	0.328	0.828	1753
4,050,416,865	0.300	---	---	---	02/05/2008	13/06/2013	---	EUROBANK ERGASIAS (CR)	0.626	1.13 #	0.619 17/09/2013	0.617	0.617	0.634	0.626	0.628	9939@0.626	3000@0.630	---	2012	774,386	405	486,136.49	2,535,560.96	0.555	6.23	8355
61,000,000	2.13	0.5364	0.4067	---	23/03/2012	20/11/2007	---	EUROBANK PROPERTIES REIC (CR)	7.01	-1.82 €	7.14 17/09/2013	7.15	6.92	7.15	7.01	7.03	55@6.99	242@7.01	---	2012	39,214	197	275,698.85	427,610.00	4.87	7.75	8675
27,503,677	0.600	0.04	0.05	0.1	11/07/2013	18/10/1999	---	EUROPEAN RELIANCE INSUR. (CR)	1.24	5.98 #	1.17 17/09/2013	1.19	1.19	1.27	1.25	1.23	2000@1.23	1000@1.24	3.74	2012	40,727	69	50,194.91	34,104.56	0.973	1.62	8536
13,673,200	0.880	---	---	---	18/07/2008	26/07/2001	---	EVROFARMA SA (CR)	0.300	--- ↘	0.300 17/09/2013	---	---	---	---	---	50@0.271	3042@0.300	---	2012	---	---	---	4,101.96	0.209	0.539	3577
106,500,000	0.600	0.04	0.05	0.15	31/07/2013	28/01/2000	---	EYDAP S.A. (CR)	7.98	1.01 #	7.90 17/09/2013	7.90	7.75	8.00	7.98	7.91	50@7.87	3407@7.99	18.14	2012	344,599	919	2,726,722.10	849,870.00	4.65	8.00	7577
52,800,154	0.300	---	---	---	16/04/2010	21/06/2004	---	F.G. EUROPE S.A. (CR)	0.500	--- ↘	0.500 17/09/2013	---	---	---	---	---	150@0.500	1000@0.520	6.05	2012	---	---	---	26,400.08	0.450	0.950	3722
10,203,575	0.730	---	---	---	16/07/2007	18/10/1999	---	FIERATEX SA (CR)	0.121	-9.70 €	0.134 17/09/2013	0.134	0.121	0.134	0.121	0.125	300@0.125	480@0.133	---	2012	3,000	5	376.00	1,234.63	0.090	0.400	3763
11,720,024	0.530	---	---	---	16/07/2010	29/05/2012	---	FLEXOPACK SA (CR)	3.87	--- ↘	3.87 16/09/2013	---	---	---	---	---	200@3.66	134@3.86	13.03	2012	---	---	---	45,356.49	2.39	5.00	2723
4,181,450	0.500	---	---	---	21/08/2000	05/03/2002	---	FLOUR MILLS SARANTOPOULOS SA	0.900	--- ↘	0.900 12/09/2013	---	---	---	---	---	---	---	16.64	2012	---	---	---	3,763.31	0.626	1.02	3577
66,948,210	0.300	---	---	---	14/07/2009	31/12/2010	4988	FOLLI FOLLIE (CR)	18.60	0.98 #	18.42 17/09/2013	18.60	18.16	18.75	18.60	18.61	340@18.43	265@18.60	---	2012	66,457	393	1,235,277.22	1,245,236.71	11.51	19.00	5379
50,992,322	1.00	---	---	---	21/06/2010	16/07/2002	---	FOURLIS (CR)	3.01	7.50 #	2.80 17/09/2013	2.80	2.80	3.08	3.01	2.91	1200@3.00	2500@3.07	---	2012	351,394	496	1,021,546.51	153,486.89	1.58	3.08	3722
50,592,373	0.300	---	---	---	07/07/2010	07/09/2011	---	FRIGOGLASS SA (CR)	5.09	0.20 #	5.08 17/09/2013	5.03	5.03	5.14	5.09	5.09	7@5.04	160@5.10	---	2012	36,683	249	186,581.74	257,515.18	3.84	6.26	2757
77,376,446	0.340	---	---	---	23/05/2005	18/08/2011	---	G.E. DIMITRIOU (CR)	0.038	--- ↘	0.038 17/09/2013	---	---	---	---	---	4000@0.035	20000@0.040	---	2012	---	---	---	2,940.30	0.028	0.118	3722
14,076,360	0.370	---	---	---	19/08/2008	22/07/2003	---	GALAXIDI S.A. (CR)	0.300	0.33 #	0.299 17/09/2013	0.300	0.300	0.300	0.300	0.300	6000@0.280	3000@0.324	8.53	2012	3,000	1	900.00	4,222.91	0.271	0.638	3573
85,882,688	0.570	0.0048	---	---	01/08/2011	02/01/2009	---	GEK TERNA (CR)	2.25	--- ↘	2.25 17/09/2013	2.25	2.24	2.31	2.25	2.28	2520@2.24	1982@2.26	-(6)-	2012	281,817	474	641,335.43	193,236.05	1.40	2.80	2357
24,060,000	0.300	---	0.017	---	18/06/2012	21/01/2000	---	GEN. COMMERCIAL & IND.SA (CR)	0.351	--- ↘	0.351 17/09/2013	---	---	---	---	---	300@0.351	620@0.379	---	2012	---	---	---	8,445.06	0.256	0.545	2797
34,770,982	1.54	---	---	---	06/07/2010	27/07/2000	---	GR. SARANTIS SA (CR)	5.45	-0.18 €	5.46 17/09/2013	5.46	5.26	5.55	5.45	5.40	6@5.26	461@5.45	---	2012	6,417	51	34,674.33	189,501.85	4.05	5.60	3767
8,340,750	1.20	---	---	---	25/06/2009	30/07/2001	---	HAIDEMENOS SA (CR)	0.826	9.12 #	0.757 16/09/2013	0.826	0.826	0.826	0.826	0.830	---	1422@0.682	---	2012	1	1	0.83	6,889.46	0.350	0.905	2791
101,279,627	0.380	---	---	---	26/06/2008	14/07/2006	---	HALKOR SA (CB)	0.842	1.20 #	0.832 17/09/2013	0.838	0.836	0.855	0.836	0.845	1690@0.836	528@0.844	---	2012	36,165	80	30,567.17	85,277.45	0.550	1.42	1755
36,748,909	0.730	---	---	---	15/12/2005	13/12/2006	---	HEL. SUGAR INDUSTRY SA (CB)	0.905	--- ↘	0.905 17/09/2013	0.910	0.883	0.917	0.905	0.901	300@0.895	956@0.905	---	2013	6,589	20	5,939.42	33,257.76	0.754	1.74	3577
29,546,360	0.710	---	---	---	20/06/2008	23/08/2000	---	HELLENIC CABLES SA (CR)	1.49	-3.87 €	1.55 17/09/2013	1.56	1.49	1.56	1.49	1.51	29@1.49	500@1.55	---	2012	7,062	51	10,662.49	44,024.08	1.16	2.32	2733
65,368,563	0.790	0.15	0.11	0.09	03/06/2013	26/09/2012	---	HELLENIC EXCHANGES (CR)	6.23	1.14 #	6.16 17/09/2013	6.20	6.16	6.33	6.23	6.22	500@6.20	2052@6.24	27.91	2012	392,340	882	2,440,162.73	407,246.15	3.75	6.97	8777
305,635,185	2.18	0.45	0.45	0.15	16/08/2013	01/10/2003	4795	HELLENIC PETROLEUM (CR)	7.60	-0.91 €	7.67 17/09/2013	7.70	7.57	7.78	7.60	7.68	433@7.57	10000@7.65	23.82	2012	70,753	664	543,578.31	2,322,827.41	6.20	9.30	537
305,732,436	0.410	---	---	---	08/07/2009	28/09/2011	---	HYGEIA SA (CR)	0.424	-0.23 €	0.425 17/09/2013	0.425	0.415	0.435	0.424	0.427	100@0.415	1310@0.420	---	2012	144,125	107	61,604.52	129,630.55	0.280	0.795	4533
53,155,053	0.440	---	---	---	21/07/2010	16/07/2008	---	IASO SA (CR)	1.20	3.45 #	1.16 17/09/2013	1.20	1.20	1.20	1.20	1.20	400@1.13	850@1.17	---	2012	150	2	180.00	63,786.06	0.850	1.58	4533
8,298,467	0.400	---	---	---	30/08/1993	08/05/2013	---	IDEAL GROUP SA (CR)	0.685	-2.14 €	0.700 17/09/2013	0.700	0.685	0.700	0.685	0.695	6275@0.631	6265@0.685	-(6)-	2012	68	6	47.23	5,684.45	0.571	1.85	9574
28,580,100	0.400	0.05	0.02	---	20/08/2012	23/02/2007	---	IKTINOS HELLAS SA (CR)	1.55	1.97 #	1.52 17/09/2013	1.52	1.47	1.56	1.55	1.51	60@1.52	286@1.54	15.00	2012	18,390	49	27,802.94	44,299.16	1.16	1.80	2353
9,000,000	0.880	---	---	---	15/05/2009	07/12/2010	---	ILYDA S.A. (CR)	0.559	--- ↘	0.559 05/08/2013	---	---	---	---	---	---	698@0.504	---	2012	---	---	---	5,031.00	0.269	0.650	9537
20,578,374	0.620	0.03	---	---	02/06/2011	05/05/1999	---	INFORM P. LYKOS SA (CR)	1.25	2.46 #	1.22 17/09/2013	1.23	1.23	1.26	1.26	1.24	30@1.20	120@1.25	---	2012	271	5	336.06	25,722.97	1.10	1.75	2791
11,233,200	0.730	---	---	---	12/07/2010	30/07/1999	---	INTERTECH SA (CR)	0.303	--- ↘	0.303 17/09/2013	0.303	0.303	0.303	0.303	0.303	150@0.280	270@0.303	---	2012	900	2	272.70	3,403.66	0.223	0.600	9572
34,986,430	0.440	---	---	---	25/07/2008	23/02/2010	---	INTERWOOD-XYLEMPORIA (CR)	0.110	4.76 #	0.105 11/09/2013	0.105	0.105	0.110	0.110	0.109	4274@0.105	5000@0.115	---	2012	5,726	3	626.23	4,413.21	0.101	0.188	2353
2,566,836	0.440	---	---	---	13/08/2010	09/01/2007	---	INTERWOOD-XYLEMPORIA (PR)	0.220	--- ↘	0.220 26/07/2013	---	---	---	---	---	1000@0.219	1000@0.240	---	2012	---	---	---	4,413.21	0.200	0.315	2353
23,154,250	1.36	---	---	---	12/08/2008	02/08/2010	---	INTRACOM CONSTR. (CR)	0.727	-0.14 €	0.728 17/09/2013	0.727	0.722	0.727	0.727	0.724	1343@0.716	784@0.727	---	2012	9,536	12	6,907.19	16,833.14	0.580	1.22	2357

Number of Outstanding Securities	Nominal Value	Dividends [1]			Date of Last Coupon Dividend [2]		Note	Shares	Closing price	% change	Previous closing price/date	Open price	Price min	Price max	Last price	Avg price	Last Bid [7]	Last Ask [7]	P/E after	Year	Volume	Trades	Transactions Value	Company Mkt Value (thou. €)	Year low	Year high	Sector[ 4]
----------------------------------	---------------	---------------	--	--	----------------------------------	--	------	--------	---------------	----------	-----------------------------	------------	-----------	-----------	------------	-----------	--------------	--------------	-----------	------	--------	--------	--------------------	-----------------------------	----------	-----------	------------

Main Market

133,025,996	1.41	---	---	---	03/07/2007	07/01/2002	---	INTRACOM HOLDINGS (CR)	0.487	-4.70	€ 0.511	17/09/2013	0.511	0.485	0.515	0.487	0.500	2500@0.486	3300@0.491	---	2012	390,540	358	195,292.43	64,783.66	0.321	0.754	9578
158,961,721	0.300	0.0045	0.0035	0.0026	30/05/2013	14/11/2007	---	INTRALOT (CR)	1.72	2.99	# 1.67	17/09/2013	1.67	1.66	1.74	1.72	1.71	67598@1.70	1468@1.73	91.81	2012	456,608	582	778,682.91	273,414.16	1.29	2.41	5752
77,654,850	0.580	0.04	---	---	01/07/2011	21/02/2003	---	J & P - AVAX SA (CR)	1.69	2.42	# 1.65	17/09/2013	1.69	1.64	1.70	1.69	1.69	6510@1.66	73@1.69	---	2012	19,198	30	32,407.56	131,236.70	1.05	1.90	2357
129,994,676	1.19	0.189	---	---	23/12/2010	07/09/2012	---	JUMBO SA (CR)	8.85	-0.45	€ 8.89	17/09/2013	8.89	8.74	8.98	8.85	8.85	500@8.78	200@8.87	14.92	2012	87,647	365	775,445.12	1,150,452.88	4.85	9.07	3747
9,742,920	0.400	0.01	0.01	0.01	12/08/2013	14/07/2000	---	KARAMOLEGOS SA (CR)	1.31	2.34	# 1.28	17/09/2013	1.30	1.28	1.31	1.31	1.30	130@1.21	250@1.29	5.09	2012	4,600	12	5,986.78	12,763.23	1.07	1.83	3577
14,679,792	1.44	0.065	---	---	03/06/2011	04/09/2000	---	KARATZIS SA (CR)	4.67	1.52	# 4.60	17/09/2013	4.60	4.60	4.70	4.68	4.65	115@4.45	1575@4.69	15.68	2012	500	11	2,326.64	68,554.63	2.55	4.90	2723
3,300,689	0.350	---	---	---	01/07/2004	21/07/1999	---	KEKROPS SA (CR)	1.89	-1.05	€ 1.91	16/09/2013	1.78	1.78	1.90	1.89	1.84	100@1.80	275@1.89	---	2012	2,369	21	4,346.68	6,238.30	1.54	3.79	8633
7,595,160	0.600	---	---	---	08/08/2008	18/08/2010	---	KIRIAKOULIS SHIPPING SA (CR)	0.880	4.39	# 0.843	17/09/2013	0.751	0.751	0.881	0.880	0.767	49@0.762	25@0.877	61.32	2012	284	11	217.77	6,683.74	0.635	1.49	5759
23,648,700	0.330	0.05	---	---	13/07/2011	23/07/2008	---	KLEEMAN HELLAS SA (CR)	1.60	3.23	# 1.55	17/09/2013	1.56	1.56	1.63	1.60	1.59	300@1.56	17@1.58	---	2012	5,992	23	9,515.48	37,837.92	1.20	1.88	2757
40,219,218	0.300	---	---	---	25/05/2009	09/07/2013	---	KLOUKINAS - LAPPAS SA (CR)	0.625	---	↘ 0.625	17/09/2013	0.650	0.610	0.650	0.625	0.621	100@0.611	4502@0.630	---	2012	5,150	14	3,197.66	25,137.01	0.570	0.970	2357
21,224,340	0.420	---	---	---	02/07/2008	25/04/2006	---	KORDELLOS BROS SA (CR)	0.211	---	↘ 0.211	17/09/2013	---	---	---	---	---	290@0.197	1602@0.230	---	2012	---	---	---	4,478.34	0.195	0.428	1757
13,450,000	0.390	---	---	---	25/06/2010	28/05/2008	---	KORRES (CR)	3.09	-0.32	€ 3.10	17/09/2013	3.09	3.09	3.09	3.09	3.09	20@3.02	300@3.08	---	2012	10,000	1	30,900.00	41,560.50	2.66	4.87	3767
29,480,000	0.420	---	---	---	19/07/2010	01/08/2007	---	KRETA FARM SA (CR)	0.638	3.40	# 0.617	17/09/2013	0.588	0.588	0.638	0.638	0.624	1000@0.612	1690@0.638	---	2012	13,041	40	8,135.93	18,808.24	0.307	0.800	3577
33,065,136	0.380	---	---	---	06/07/2009	16/09/2013	---	KRI-KRI S.A. (CR)	2.08	---	↘ 2.08	17/09/2013	2.08	2.07	2.08	2.08	2.08	210@2.03	3000@2.11	15.40	2012	11,501	11	23,912.08	68,775.48	1.52	2.20	3577
15,804,800	0.330	---	---	---	15/06/2010	12/03/2004	---	KTIMA KOSTAS LAZARIDIS SA (CR)	0.324	---	↘ 0.324	10/09/2013	---	---	---	---	---	---	200@0.322	---	2012	---	---	---	5,120.76	0.239	0.488	3535
22,945,139	0.920	---	---	---	19/08/2008	16/09/2013	---	KYRIAKIDIS MARBLES SA (CR)	0.820	-1.21	€ 0.830	17/09/2013	0.830	0.820	0.830	0.820	0.824	50@0.820	450@0.890	80.32	2012	1,850	6	1,524.50	18,815.01	0.630	1.04	2353
44,267,700	0.300	---	---	---	30/05/2007	18/09/2002	---	LAMDA DEVELOPMENT SA (CR)	4.04	1.25	# 3.99	17/09/2013	4.00	4.00	4.08	4.04	4.01	65@3.89	88@4.00	---	2012	2,702	12	10,834.52	178,841.51	3.50	6.48	8633
5,939,268	0.620	---	---	---	10/07/2003	03/01/2002	---	LANAKAM SA (CR)	0.639	---	↘ 0.639	14/08/2013	---	---	---	---	---	---	300@0.550	---	2012	---	---	---	3,795.19	0.503	0.869	3763
7,734,375	1.00	---	---	---	09/07/2007	07/01/2011	---	LIVANIS SA (CR)	0.229	---	↘ 0.229	23/08/2013	---	---	---	---	---	1000@0.230	900@0.249	---	2012	---	---	---	1,771.17	0.144	0.363	5557
4,740,000	0.860	---	---	---	---	14/03/2003	---	LOGISMOS S.A. (CR)	0.550	---	↘ 0.550	16/09/2013	---	---	---	---	---	---	870@0.499	63.80	2011	---	---	---	2,607.00	0.373	1.23	9533
15,222,276	0.640	---	---	---	01/06/2010	02/08/2011	---	LOULIS MILLS SA (CR)	2.72	-0.73	€ 2.74	16/09/2013	2.73	2.72	2.73	2.72	2.73	200@2.74	300@2.83	-(-)-	2012	401	2	1,093.72	41,404.59	2.08	3.76	3577
770,328,883	0.300	---	---	---	26/04/2007	10/05/2013	---	MARFIN INVESTMENT GROUP (CR)	0.360	-2.44	€ 0.369	17/09/2013	0.372	0.355	0.377	0.360	0.366	10902@0.356	21139@0.360	---	2012	2,215,496	1,003	809,878.99	277,318.40	0.175	0.564	8775
9,819,370	0.690	---	---	---	14/08/2007	09/01/2004	---	MATHIOS REFRACTORY SA (CR)	0.260	-12.46	€ 0.297	17/09/2013	0.260	0.260	0.260	0.260	0.260	2@0.260	980@0.288	---	2012	23	1	5.98	2,553.04	0.180	0.510	2353
468,700	1.0556	---	---	---	21/03/2012	21/05/2004	---	MERMEREN KOMB. A.D. PR. (GDR)	3.99	-6.99	€ 4.29	17/09/2013	4.31	3.99	4.31	3.99	4.09	7@4.01	40@4.27	0.97	2012	10	2	40.86	1,870.11	3.73	5.19	1775
51,950,600	0.320	0.48	0.75	0.25	10/05/2013	21/10/2005	---	METKA (CR)	11.85	1.28	# 11.70	17/09/2013	11.80	11.53	11.85	11.85	11.78	3@11.78	200@11.86	17.08	2012	32,787	347	386,141.36	615,614.61	9.00	12.78	2757
10,500,000	0.900	---	---	---	24/06/2008	04/07/2012	---	MEVACO SA (CR)	1.37	3.79	# 1.32	17/09/2013	1.37	1.37	1.37	1.37	1.37	800@1.32	149@1.36	9.92	2012	1,100	4	1,507.00	14,385.00	1.01	1.58	2757
14,074,000	3.00	0.15	0.25	---	02/03/2012	23/07/2009	---	MIG REAL ESTATE (CR)	1.48	2.78	# 1.44	17/09/2013	1.48	1.47	1.48	1.48	1.48	190@1.47	29@1.52	---	2012	560	7	826.55	20,829.52	1.17	1.92	8671
6,200,000	0.500	---	---	---	22/06/2010	01/11/1995	---	MINERVA KNITWEAR SA (CB)	0.776	---	↘ 0.776	05/08/2013	---	---	---	---	---	---	3000@0.699	---	2012	---	---	---	4,811.20	0.530	0.948	3763
12,417,000	0.370	---	---	---	28/07/2008	06/09/2011	---	MLS MULTIMEDIA SA (CR)	3.07	-0.33	€ 3.08	17/09/2013	3.08	3.02	3.08	3.07	3.05	1@3.02	668@3.07	40.43	2012	12,185	37	37,113.81	38,120.19	2.60	3.13	9537
4,588,137	16.00	---	---	---	30/06/2005	17/08/2011	---	MOCHLOS SA (CR)	1.90	3.82	# 1.83	17/09/2013	1.90	1.90	1.90	1.90	1.90	70@1.76	100@1.80	---	2012	1	1	1.90	8,717.46	1.12	2.60	2357
11,700,000	0.590	---	---	---	02/06/2009	24/07/2012	---	MOTODYNAMICS S.A. (CR)	0.452	2.73	# 0.440	11/09/2013	0.452	0.452	0.452	0.452	0.450	190@0.309	1920@0.448	---	2012	2	1	0.90	5,288.40	0.211	0.640	5379
110,782,980	0.850	0.25	0.4	0.3	26/06/2013	05/11/2012	---	MOTOR OIL (CR)	7.64	-0.13	€ 7.65	17/09/2013	7.66	7.56	7.67	7.64	7.62	2000@7.59	5441@7.64	9.33	2012	60,742	351	462,924.01	846,381.97	6.80	9.37	533
116,915,862	1.07	---	---	---	11/05/2009	06/07/2011	---	MYTILINEOS HOLDINGS (CR)	4.91	2.29	# 4.80	17/09/2013	4.81	4.79	4.94	4.91	4.89	470@4.87	5150@4.92	---	2012	275,779	819	1,347,343.70	574,056.88	3.38	5.65	1755
8,321,682	0.670	---	---	---	17/08/2007	23/11/1999	---	N. LEVEDERIS SA (CB)	0.248	9.74	# 0.226	17/09/2013	0.217	0.217	0.248	0.248	0.231	300@0.228	100@0.246	---	2012	1,830	6	422.41	3,031.69	0.198	0.658	1757
2,160,524	0.670	0.0435	0.0435	0.0436	16/08/2013	23/11/1999	---	N. LEVEDERIS SA (PB)	0.448	---	↘ 0.448	23/08/2013	---	---	---	---	---	---	300@0.404	---	2012	---	---	---	3,031.69	0.307	0.798	1757
11,510,102	0.890	---	---	---	24/06/2005	06/10/1999	---	NAFPAKTOS TEXTILE IND. SA (CB)	0.400	---	↘ 0.400	04/09/2013	0.400	0.400	0.400	0.400	0.400	---	4109@0.360	---	2012	1,050	1	420.00	4,604.04	0.232	0.500	3763
6,340,000	0.600	---	---	---	30/11/2009	12/07/2000	---	NAKAS MUSIC	1.00	1.01	# 0.990	17/09/2013	0.970	0.970	1.00	1.00	0.986	1@0.891	350@1.00	---	2012	331	4	326.27	6,340.00	0.300	1.04	5379
2,396,785,994	0.300	---	---	---	16/05/2008	24/05/2013	---	NATIONAL BANK (CR)	3.11	-0.95	€ 3.14	17/09/2013	3.17	3.10	3.22	3.11	3.16	6714@3.10	32433@3.13	---	2012	1,012,017	1,044	3,200,260.65	7,454,004.44	1.83	9.87	8355

Number of Outstanding Securities	Nominal Value	Dividends [1]			Date of Last Coupon		Note	Shares	Closing price	% change	Previous closing price/date	Open price	Price min	Price max	Last price	Avg price	Last Bid [7]	Last Ask [7]	P/E after	Year	Volume	Trades	Transactions Value	Company Mkt Value (thou. €)	Year low	Year high	Sector[ 4]		
		2010	2011	2012	Dividend [2]	Right																							
Main Market																													
23,935,280	0.300	---	---	---	29/06/2009	13/06/2000	---	NAYTEMPORIKI PUBLISHING SA(CR)	0.194	---	↘	0.194	16/09/2013	---	---	---	---	---	---	700@0.180	---	2012	---	---	---	4,643.44	0.149	0.360	5557
27,848,000	0.300	0.0301	0.0132	0.0137	21/08/2013	02/09/2003	---	NEWSPHONE HELLAS SA (CR)	0.340	1.80	#	0.334	17/09/2013	0.348	0.340	0.348	0.340	0.340	2420@0.306	3000@0.339	8.32	2012	1,001	3	340.35	9,468.32	0.241	0.592	2791
6,132,500	1.25	0.1	---	---	24/06/2011	19/06/2001	---	NEXANS HELLAS SA (CR)	2.24	4.67	#	2.14	17/09/2013	2.14	2.14	2.24	2.24	2.15	120@2.17	150@2.25	---	2012	5,900	6	12,658.00	13,736.80	2.10	3.11	2733
63,697,153	1.34	---	---	---	08/07/2008	10/11/2008	---	NIREFS SA (CR)	0.431	0.23	#	0.430	17/09/2013	0.420	0.417	0.433	0.433	0.425	100@0.418	5398@0.433	---	2012	15,516	45	6,598.35	27,453.47	0.380	0.839	3573
319,000,000	0.300	1.4177	0.72	0.57	28/06/2013	25/04/2001	---	OPAP (CR)	7.98	2.18	#	7.81	17/09/2013	7.69	7.69	7.98	7.98	7.85	12000@7.85	6228@7.99	4.96	2012	1,526,138	903	11,925,681.39	2,545,620.00	5.49	8.27	5752
490,150,389	2.39	0.1179	---	---	28/06/2011	18/06/1998	---	OTE (CR)	7.55	-0.66	€	7.60	17/09/2013	7.60	7.52	7.72	7.55	7.61	450@7.52	17@7.58	---	2012	593,886	1,032	4,521,465.72	3,700,635.44	4.26	7.81	6535
25,000,000	2.00	0.02	0.01	0.05	18/07/2013	08/08/2003	---	P.P.A. S.A. (CR)	17.56	1.97	#	17.22	17/09/2013	17.22	17.22	17.74	17.56	17.55	185@17.56	10@17.59	88.56	2012	19,371	331	339,979.39	439,000.00	14.59	21.68	2777
4,971,466	1.46	---	---	---	04/07/2007	08/10/2003	---	PAIRIS SA (CR)	0.270	-10.00	€	0.300	17/09/2013	0.270	0.270	0.270	0.270	0.270	430@0.271	280@0.309	---	2012	350	1	94.50	1,342.30	0.201	0.605	2723
3,953,090	0.900	---	---	---	02/07/2001	05/12/2012	---	PAPERPACK (CR)	0.876	-4.47	€	0.917	17/09/2013	0.880	0.841	0.900	0.876	0.870	2400@0.843	640@0.880	---	2012	6,837	34	5,949.81	3,462.91	0.500	1.06	2723
50,797,369	0.310	---	---	---	17/08/2000	12/10/2010	---	PAPOUTSANIS (CR)	0.580	-7.64	€	0.628	11/09/2013	0.570	0.570	0.580	0.580	0.571	300@0.560	440@0.580	---	2012	560	4	319.80	29,462.47	0.361	0.750	3767
7,070,400	0.930	---	---	---	18/05/2010	12/05/2011	---	PETROPOULOS PETROS (CR)	1.56	-0.64	€	1.57	17/09/2013	1.58	1.52	1.58	1.56	1.53	53@1.52	28@1.56	---	2012	1,742	31	2,660.04	11,029.82	1.20	1.74	2753
5,072,567,951	0.300	---	---	---	16/05/2008	05/06/2013	---	PIRAEUS BANK (CR)	1.32	-0.75	€	1.33	17/09/2013	1.34	1.32	1.38	1.32	1.34	53574@1.32	6500@1.33	---	2012	4,723,539	1,767	6,348,771.29	6,695,789.70	0.832	6.28	8355
22,080,000	0.320	0.05	0.08	0.12	22/05/2013	03/10/2000	---	PLAISIO COMPUTERS SA (CR)	5.12	2.40	#	5.00	17/09/2013	5.10	5.10	5.12	5.12	5.11	19@5.10	532@5.12	11.40	2012	300	2	1,532.00	113,049.60	3.65	6.25	9752
232,000,000	4.60	0.79	---	0.025	22/07/2013	12/12/2001	---	PPC (CR)	7.89	-1.00	€	7.97	17/09/2013	7.97	7.84	8.01	7.89	7.95	107@7.85	7700@7.90	-(6)-	2012	266,578	813	2,119,080.43	1,830,480.00	4.55	8.49	7535
11,812,193	0.450	---	---	---	24/07/2009	15/11/2006	---	PROFILE SA (CR)	0.981	-1.80	€	0.999	17/09/2013	0.996	0.980	0.996	0.980	0.986	400@0.975	9440@0.980	18.87	2012	2,060	7	2,031.83	11,587.76	0.761	1.26	9533
24,319,250	0.300	---	---	---	09/07/2002	04/07/2007	---	PROODEFTIKH SA (CR)	0.142	-3.40	€	0.147	17/09/2013	0.147	0.130	0.147	0.144	0.135	100@0.135	1499@0.145	---	2012	14,700	27	1,983.45	3,453.33	0.054	0.223	2357
6,836,280	1.88	---	---	---	18/07/2005	10/09/2010	---	QUALITY & RELIABILITY SA (CR)	1.73	---	↘	1.73	17/09/2013	---	---	---	---	---	500@1.68	875@1.72	---	2012	---	---	---	11,826.76	0.236	1.97	9533
48,069,201	0.400	---	---	---	05/09/2008	21/06/2012	---	QUEST HOLDINGS (CR)	1.19	-2.46	€	1.22	17/09/2013	1.24	1.19	1.24	1.19	1.21	1400@1.15	1000@1.19	---	2012	1,698	19	2,058.10	57,202.35	0.936	1.39	9533
57,434,884	1.31	---	---	---	05/06/2008	12/06/2009	---	REDS S.A. (CR)	0.512	0.39	#	0.510	17/09/2013	0.509	0.500	0.515	0.512	0.508	1031@0.500	300@0.512	---	2012	2,969	16	1,509.53	29,406.66	0.450	0.949	8633
22,280,000	0.300	0.0329	---	---	11/04/2011	23/02/2007	---	REVOIL (CR)	0.813	0.12	#	0.812	17/09/2013	0.850	0.800	0.850	0.820	0.808	480@0.800	1900@0.820	---	2012	3,210	10	2,592.68	18,113.64	0.345	1.20	5379
7,500,000	0.560	---	---	---	25/06/2010	10/04/2013	---	S.KANAKIS SA (CR)	1.96	1.55	#	1.93	17/09/2013	1.97	1.95	2.00	1.95	1.97	50@1.90	901@1.95	13.93	2012	842	28	1,659.50	14,700.00	1.05	2.00	3577
52,067,296	0.300	---	---	---	23/12/2003	24/01/2007	---	SELECTED TEXT. IND. ASSOC (CR)	0.269	3.46	#	0.260	17/09/2013	0.252	0.250	0.270	0.269	0.257	700@0.251	1897@0.270	---	2012	19,001	36	4,880.25	14,006.10	0.232	0.587	3763
96,243,908	0.410	---	---	---	26/06/2008	17/07/2000	---	SIDENOR (CR)	1.55	-1.27	€	1.57	17/09/2013	1.59	1.54	1.61	1.55	1.57	4100@1.53	463@1.56	---	2012	55,186	124	86,875.45	149,178.06	1.00	2.39	1757
6,456,530	1.60	---	---	---	29/06/2001	02/08/2010	---	SPACE HELLAS SA (CR)	2.19	---	↘	2.19	14/06/2013	---	---	---	---	---	---	3064@1.98	70.35	2012	---	---	---	14,139.80	1.25	2.20	9578
28,438,268	0.300	---	---	---	21/08/2006	24/11/1999	---	SPIROY AGRICULTURE SA (CR)	0.309	-4.92	€	0.325	17/09/2013	0.309	0.309	0.309	0.309	0.309	200@0.295	500@0.308	---	2012	200	1	61.80	8,787.42	0.252	0.557	1357
33,125,000	5.00	---	---	---	03/07/2006	18/08/2010	---	TECHNICAL OLYMPIC SA (CR)	1.39	-0.71	€	1.40	17/09/2013	1.40	1.34	1.40	1.39	1.38	3@1.38	615@1.39	-(6)-	2012	5,762	39	7,939.12	46,043.75	1.17	2.71	3728
109,319,070	0.300	(0.0399)	(0.0613)	---	28/05/2012	05/08/2013	---	TERNA ENERGY (CR)	3.13	2.29	#	3.06	17/09/2013	3.06	3.04	3.13	3.13	3.10	29000@3.10	2310@3.14	68.75	2012	136,443	379	423,048.83	342,168.69	2.24	3.73	7537
36,300,000	1.12	0.114	0.188	0.162	16/08/2013	12/12/2007	---	THESSALONIKA WATER & SEWERAGE	5.90	-0.84	€	5.95	17/09/2013	5.95	5.90	6.07	5.90	5.98	5412@5.89	30@5.94	12.11	2012	33,044	140	197,491.29	214,170.00	4.73	6.82	7577
45,094,620	0.500	0.036	---	0.0467	10/06/2013	01/11/1999	---	THRACE PLASTICS SA (CR)	1.23	1.65	#	1.21	17/09/2013	1.24	1.22	1.28	1.23	1.24	5787@1.22	705@1.25	7.08	2012	59,923	107	74,557.03	55,466.38	1.07	1.64	1357
77,063,568	4.00	0.0806	---	---	24/06/2011	25/06/2004	---	TITAN CEMENT (CR)	16.46	1.60	#	16.20	17/09/2013	16.04	16.04	16.78	16.46	16.57	1500@16.45	100@16.58	---	2012	44,865	370	743,512.53	1,320,843.53	11.31	16.94	2353
7,568,960	4.00	0.1869	---	---	24/06/2011	25/06/2004	---	TITAN CEMENT CO. (PR)	6.92	0.88	#	6.86	17/09/2013	6.59	6.59	7.10	6.92	6.97	50@6.82	6@7.00	---	2012	2,430	28	16,927.60	1,320,843.53	5.75	7.27	2353
10,080,000	3.00	0.21	0.4	1.5	17/07/2013	27/08/2001	---	TPA SA (CR)	24.00	---	↘	24.00	17/09/2013	24.00	24.00	24.35	24.00	24.00	4021@24.00	10@24.29	13.12	2012	946	7	22,705.35	241,920.00	19.00	25.20	2777
54,888,240	1.13	0.1	0.1	0.1	25/04/2013</																								

Number of Outstanding Securities	Nominal Value	Dividends [1]			Date of Last Coupon Dividend [2]	Note	Shares	Closing price	% change	Previous closing price/date	Open price	Price min	Price max	Last price	Avg price	Last Bid [7]	Last Ask [7]	P/E after	Year	Volume	Trades	Transactions Value	Company Mkt Value (thou. €)	Year low	Year high	Sector[ 4]
5,848,618		---	---	---	24/01/2008	---	ALPHA ETF FTSE Athex Large Cap	3.42	-0.29 <b>€</b>	3.43 17/09/2013	3.46	3.42	3.46	3.42	3.42	---	223@3.48	---	---	90,082	5	308,154.84	-	2.49	3.99	11000
294,878		---	---	---	29/06/2009	---	NBGAM ETF	11.10	---	11.10 17/09/2013	---	---	---	---	---	---	---	---	---	---	---	---	-	8.23	11.75	11000
388,550		---	---	---	03/11/2010	---	NBGAM ETF GREECE & TURKEY 30	7.95	---	7.95 17/09/2013	---	---	---	---	---	---	---	---	---	---	---	---	-	6.88	10.11	11000

Low Dispersion

14,000,000	3.80	---	---	---	23/04/2010	29/06/1999	4815	ALPHA REAL ESTATE SA(CR)	6.51	---	6.51	17/09/2013	---	---	---	---	500@6.51	500@6.98	13.47	2012	---	---	---	91,140.00	5.26	7.00	8637		
63,900,000	3.00	---	---	---	23/06/2003	04/11/2008	4816	ASTIR PALACE SA (CR)	3.64	0.27	#	3.63	17/09/2013	3.62	3.62	3.65	3.62	3.64	192@3.62	400@3.66	---	2012	708	9	2,577.84	232,596.00	3.37	4.95	5753
49,152,904	0.800	---	---	---	09/08/2004	08/03/2006	4814	ATHENA SA (CR)	0.264	---	0.264	13/09/2013	---	---	---	---	---	280@0.263	---	2012	---	---	---	12,976.37	0.094	0.340	2357		
191,660,320	0.300	---	---	---	20/07/2009	29/12/2010	4817	ATTICA HOLDINGS (CR)	0.359	---	0.359	17/09/2013	---	---	---	---	---	1430@0.288	490@0.389	---	2012	---	---	---	68,806.05	0.241	0.588	5759	
15,300,000	0.300	---	---	---	30/07/2009	13/12/1999	4893	ATTICA PUBLICATIONS SA (CR)	0.549	---	0.549	06/09/2013	---	---	---	---	---	---	---	---	2012	---	---	---	8,399.70	0.520	1.45	5557	
8,418,750	0.300	---	0.15	0.29	05/06/2013	27/06/2012	4828	GEKE SA (CB)	6.68	---	6.68	17/09/2013	6.68	6.68	6.68	6.68	6.68	90@6.68	---	20.98	2012	10	1	66.80	56,237.25	6.59	6.79	5753	
68,322,221	1.00	---	---	---	08/03/2002	08/04/2013	4986	GENIKI BANK (CR)	2.16	---	2.16	16/09/2013	---	---	---	---	---	20@2.16	---	---	2012	---	---	---	147,576.00	1.51	8.85	8355	
71,082,707	1.70	---	---	---	01/07/2010	21/11/2012	4820	HERACLES GEN.CEMENT CO. (CR)	1.37	---	1.37	17/09/2013	1.37	1.37	1.37	1.37	1.37	100@1.38	600@1.39	---	2012	847	8	1,160.39	97,383.31	1.20	1.80	2353	
13,404,440	8.63	---	---	---	02/04/2001	06/03/1992	4822	IONIAN HOTELS SA (CR)	8.95	---	8.95	13/09/2013	---	---	---	---	---	100@7.20	96@10.74	---	2012	---	---	---	119,969.74	8.40	13.00	5753	
2,760,000	7.70	6.3291	7.6	8.52	26/06/2013	16/07/1990	4823	KARELIA TOBACCO CO. SA (CB)	205.00	---	205.00	17/09/2013	205.00	205.00	205.00	205.00	205.00	1@203.00	212@205.00	12.45	2012	4	2	820.00	565,800.00	110.00	210.00	3785	
17,000,000	0.600	---	---	---	12/06/2008	07/03/2000	4941	KATHIMERINI SA (CR)	0.792	-6.05	€	0.843	17/09/2013	0.724	0.724	0.801	0.801	0.792	20@0.801	330@0.830	---	2012	540	8	427.92	13,464.00	0.321	1.00	5557
21,364,000	1.12	---	---	---	05/07/2010	10/08/2005	4824	LAMPSPA HOTEL SA (CR)	19.40	---	19.40	17/09/2013	19.40	19.40	19.40	19.40	19.40	100@19.00	75@19.20	---	2012	350	5	6,790.00	414,461.60	15.00	19.40	5753	
6,700,000	0.800	---	---	---	19/07/2010	29/08/2012	4894	MILLS KEPENOS (CR)	1.24	---	1.24	17/09/2013	---	---	---	---	---	240@1.03	127@1.24	7.37	2012	---	---	---	8,308.00	0.777	1.69	3577	
70,926,000	2.25	---	---	---	25/07/2008	21/06/2000	4825	MINOAN LINES SA (CR)	1.99	-0.50	€	2.00	17/09/2013	1.96	1.96	2.00	2.00	1.99	198@1.96	853@2.00	---	2012	2,658	11	5,281.68	141,142.74	1.70	2.10	5759
17,240,776	0.370	---	---	---	14/07/2005	30/09/2003	4827	PERSEUS SA (CR)	0.223	---	0.223	30/08/2013	---	---	---	---	---	---	1150@0.267	13.00	2012	---	---	---	3,844.69	0.033	0.325	3577	

Surveillance

33,301,715	0.320	---	---	---	27/06/2003	08/07/2009	4978	AEGEK (CR)	0.080	-8.05	€ 0.087	17/09/2013	0.081	0.079	0.083	0.080	0.080	12000@0.071	10500@0.094	---	2012	13,312	18	1,060.80	2,664.14	0.077	0.184	2357
14,870,100	0.300	---	---	---	15/05/2008	26/09/2011	4844	ALPHA GRISSIN S.A. (CR)	0.225	---	₹ 0.225	09/08/2013	---	---	---	---	---	---	2500@0.224	---	2012	---	---	---	3,345.77	0.080	0.328	9533
215,246,452	0.300	---	---	---	25/06/2001	24/09/2001	4446	ALTEC SA (CR)	0.039	-7.14	€ 0.042	17/09/2013	0.042	0.038	0.042	0.039	0.039	500@0.039	1270@0.040	---	2012	8,343	9	329.12	8,394.61	0.021	0.062	9533
2,969,713	0.300	---	---	---	02/07/2008	28/02/2011	4958	ANEK LINES SA (PR, issue '96)	0.310	---	₹ 0.310	12/09/2013	---	---	---	---	---	1000@0.310	---	---	2012	---	---	---	16,752.96	0.300	0.770	5759
312,163	0.300	---	---	---	02/07/2008	28/02/2011	4959	ANEK LINES SA (PR, issue '90)	1.43	---	₹ 1.43	09/09/2013	---	---	---	---	---	---	---	---	2012	---	---	---	16,752.96	1.43	1.78	5759
185,373,016	0.300	---	---	---	02/07/2008	28/02/2011	4957	ANEK LINES SA (CR)	0.083	---	₹ 0.083	17/09/2013	0.082	0.082	0.084	0.084	0.083	1667@0.084	30000@0.085	---	2012	31,518	12	2,611.14	16,752.96	0.071	0.270	5759
81,644,555	0.300	---	---	---	01/07/2008	02/09/2002	4630	ATTI - KAT SA (CR)	0.021	-19.23	€ 0.026	17/09/2013	0.025	0.021	0.025	0.021	0.021	---	7140@0.021	---	2012	7,813	7	165.37	1,714.54	0.021	0.088	2357
20,255,805	0.300	---	---	---	22/08/2006	02/08/2010	4881	AXON HOLDING SA (CR)	0.066	---	₹ 0.066	17/09/2013	0.066	0.066	0.066	0.066	0.066	93@0.066	---	2012	95	2	6.27	1,336.88	0.050	0.192	4533	
17,579,754	4.16	---	---	---	18/08/2006	02/08/2010	4885	BIOTER SA (CR)	0.190	4.40	# 0.182	17/09/2013	0.190	0.190	0.190	0.190	0.190	500@0.147	1177@0.182	---	2012	598	2	113.62	3,340.15	0.059	0.194	2357
12,431,980	0.720	---	---	---	20/06/2003	10/07/2003	4559	COMPUCON SA (CR)	0.075	---	₹ 0.075	11/09/2013	---	---	---	---	---	---	1000@0.070	---	2012	---	---	---	932.40	0.031	0.100	9537
30,159,583	0.470	---	---	---	26/06/2008	29/12/2010	4962	DIAS A/C (CR)	0.839	---	₹ 0.839	04/09/2013	---	---	---	---	---	---	400@0.672	---	2012	---	---	---	25,303.89	0.420	0.845	3573
15,878,748	0.480	---	---	---	10/07/2006	22/03/2004	4960	DOMKI KRITIS SA (CR)	0.538	---	₹ 0.538	26/08/2013	---	---	---	---	---	---	15@0.480	---	2012	---	---	---	8,542.77	0.310	0.800	2357
3,961,300	1.28	---	---	---	29/06/2004	03/08/2000	4808	DUROS SA (CR)	0.520	-18.75	€ 0.640	17/09/2013	0.520	0.520	0.520	0.520	0.520	---	180@0.512	---	2012	8	1	4.16	2,059.88	0.120	0.970	3763
7,085,888	1.59	---	---	---	02/07/1996	06/09/2010	4690	ELVIEMEK (CR)	3.00	---	₹ 3.00	05/02/2013	---	---	---	---	---	---	100@3.60	-(6)-	2012	---	---	---	21,257.66	3.00	3.58	8633
6,000,000	0.600	---	---	---	13/06/2008	08/04/2004	4886	EUROBROKERS S.A. (CR)	0.052	---	₹ 0.052	16/09/2013	---	---	---	---	---	3500@0.042	---	2012	---	---	---	---	312.00	0.052	0.333	8534
7,347,600	0.600	---	---	---	02/06/2010	25/02/2010	4889	EUROCONSULTANTS S.A. (CR)	3.08	---	₹ 3.08	11/09/2013	---	---	---	---	---	---	290@2.99	---	2012	---	---	---	22,630.61	2.12	3.08	2791

Number of Outstanding Securities	Nominal Value	Dividends [1]			Date of Last Coupon Dividend [2]		Note	Shares	Closing price	% change	Previous closing price/date	Open price	Price min	Price max	Last price	Avg price	Last Bid [7]	Last Ask [7]	P/E after	Year	Volume	Trades	Transactions Value	Company Mkt Value (thou. €)	Year low	Year high	Sector[ 4]
--	------------------	---------------	--	--	-------------------------------------	--	------	--------	------------------	----------	--------------------------------	---------------	--------------	--------------	---------------	--------------	-----------------	--------------	--------------	------	--------	--------	-----------------------	--------------------------------	-------------	--------------	---------------

Surveillance

21,820,410	0.800	---	---	---	22/05/2008	02/08/2011	4882	EUROMEDICA SA (CR)	0.330	0.61	#	0.328	17/09/2013	0.300	0.300	0.350	0.315	0.330	100@0.310	1600@0.315	---	2012	215	6	71.00	7,200.74	0.270	0.613	4533
12,952,610	0.300	---	---	---		04/10/2012	4846	Forthnet (CR)	1.10	0.92	#	1.09	17/09/2013	1.10	1.10	1.10	1.10	1.10	2339@1.10	100@1.15	---	2011	74,751	14	82,226.10	14,247.87	0.350	1.43	9535
1,270,000	0.300	---	---	---	06/07/2007	06/02/2013	---	GIRAKIAN PROFIL SA (CB)	2.38	---	↘	2.38	10/09/2013	---	---	---	---	---	---	200@2.15	---	2012	---	---	---	3,022.60	0.900	3.33	1757
179,707,771	0.300	---	---	---	27/06/2002	01/11/2011	4847	HELLAS ONLINE SA (CR)	0.400	---	↘	0.400	13/09/2013	0.400	0.400	0.400	0.400	0.400	2798@0.371	2950@0.400	---	2012	1,000	1	400.00	71,883.11	0.271	0.709	9537
13,692,227	1.47	---	---	---	07/07/2006	08/10/1999	4845	HELLENIC FABRICS SA (CR)	0.298	---	↘	0.298	04/09/2013	---	---	---	---	---	---	5000@0.294	---	2012	---	---	---	4,080.28	0.180	0.354	3763
30,390,000	0.310	---	---	---	18/08/2008	29/12/2006	4447	HELLENIC FISHFARMING SA (CR)	0.098	-12.50	€	0.112	16/09/2013	0.098	0.098	0.098	0.098	0.098	---	2799@0.098	22.97	2012	300	2	29.40	2,978.22	0.039	0.137	3573
1,540,000	0.600	---	---	---	08/08/1994	19/09/2000	4855	J.BOUTARIS & SON HOLD. (PB)	0.026	8.33	#	0.024	05/08/2013	0.024	0.024	0.028	0.028	0.026	1510@0.020	---	---	2012	2,990	3	77.72	1,500.46	0.024	0.201	3535
25,179,640	0.600	---	---	---	08/08/1994	19/09/2000	4854	J.BOUTARIS & SON HOLD. SA (CB)	0.058	-10.77	€	0.065	13/09/2013	0.065	0.055	0.065	0.055	0.058	1450@0.055	4437@0.065	---	2012	2,199	4	127.96	1,500.46	0.037	0.132	3535
7,125,216	0.650	---	---	---	01/07/2005	14/12/1999	4955	KRE.KA SA (CR)	0.250	-13.49	€	0.289	16/09/2013	0.250	0.250	0.250	0.250	0.250	---	760@0.248	---	2012	520	1	130.00	1,781.30	0.144	0.580	3573
51,081,030	1.00	---	---	---	20/08/2007	03/09/2007	4912	LAVIPHARM SA (CR)	0.135	-2.17	€	0.138	17/09/2013	0.135	0.135	0.135	0.135	0.135	3641@0.135	300@0.138	---	2012	3,500	5	472.51	6,895.94	0.101	0.268	4577
322,925,288	0.300	---	---	---	23/05/2007	10/04/2000	4554	M.J. MAILLIS SA (CR)	0.068	4.61	#	0.065	17/09/2013	0.069	0.066	0.069	0.068	0.068	7400@0.066	410@0.069	---	2012	16,390	13	1,114.21	21,958.92	0.056	0.150	2723
9,567,289	0.300	---	---	---	01/07/2004	19/11/2007	4944	MARAC ELECTRONICS (CR)	0.263	19.54	#	0.220	17/09/2013	0.263	0.263	0.263	0.263	0.263	---	8134@0.263	---	2012	3	1	0.79	2,516.20	0.068	0.409	9578
4,178,856	1.58	0.22	---	---	21/07/2011	28/07/2004	4983	MEDICON S.A (CR)	0.705	---	↘	0.705	17/09/2013	---	---	---	---	---	170@0.564	121@0.705	---	2012	---	---	---	2,946.09	0.446	1.18	4535
255,459,600	0.300	---	---	---	26/06/2000	03/12/2010	4833	NEL SA (CR)	0.034	13.33	#	0.030	17/09/2013	0.035	0.034	0.035	0.034	0.034	6260@0.028	12119@0.034	---	2012	14,371	12	488.71	8,685.63	0.012	0.158	5759
20,231,328	0.600	---	---	---	15/07/2008	25/06/2004	4879	NIKAS SA (CR)	0.240	-19.46	€	0.298	12/09/2013	0.240	0.240	0.240	0.240	0.240	3@0.240	2500@0.260	---	2012	2,897	5	695.28	4,855.52	0.230	0.530	3577
20,210,127	1.53	---	---	---	27/06/1997	20/03/2000	5006	PARNASSOS ENTERP. (CR)	0.063	-5.97	€	0.067	17/09/2013	0.063	0.063	0.063	0.063	0.063	449@0.063	3334@0.066	---	2012	850	3	53.55	1,273.24	0.063	0.698	8775
14,967,940	0.500	---	---	---	21/05/2008	04/01/2008	4956	PASAL DEVELOPMENT S.A. (CR)	0.150	-19.36	€	0.186	17/09/2013	0.150	0.150	0.150	0.150	0.150	---	498@0.163	---	2012	2,421	6	363.15	2,245.19	0.120	0.414	8633
40,946,303	0.360	---	---	---	18/07/2005	27/11/2007	4856	PC SYSTEMS SA (CR)	0.055	12.25	#	0.049	17/09/2013	0.055	0.055	0.055	0.055	0.055	900@0.049	3000@0.057	---	2012	5,050	3	277.76	2,252.05	0.049	0.180	9533
18,750,000	0.300	---	---	---	02/07/2001	31/12/2012	4985	PEGASUS PUBLISHING S.A. (CR)	0.057	3.64	#	0.055	17/09/2013	0.055	0.055	0.066	0.066	0.058	160491@0.066	---	---	2012	36	9	2.07	1,068.75	0.044	0.610	5557
28,056,518	0.530	---	---	---	04/07/2007	19/07/2006	4750	SATO SA (CR)	0.074	-14.94	€	0.087	17/09/2013	0.074	0.074	0.074	0.074	0.074	1301@0.074	1700@0.099	---	2012	720	3	53.28	2,076.18	0.025	0.123	3726
36,235,184	1.00	---	---	---	01/07/2008	30/07/2012	4961	SELONDA AQUACULTURE SA (CR)	0.131	-7.75	€	0.142	17/09/2013	0.131	0.131	0.131	0.131	0.131	1807@0.126	100@0.133	---	2012	6,080	9	796.48	4,746.81	0.119	0.600	3573
7,914,480	2.50	---	---	---	23/06/2008	29/06/2011	4888	SFAKIANAKIS SA (CR)	0.550	---	↘	0.550	09/09/2013	0.550	0.550	0.550	0.550	0.550	500@0.440	98@0.550	---	2012	300	3	165.00	4,352.96	0.364	0.763	5379
60,221,300	0.400	---	---	---	01/07/2002	01/11/2010	4880	SHELMAN SA (CR)	0.130	---	↘	0.130	04/09/2013	---	---	---	---	---	---	4000@0.110	---	2011	---	---	---	7,828.77	0.098	0.280	2353
10,000,000	1.35	---	---	---	24/06/2008	10/05/2005	4887	SIDMA SA (CR)	0.374	9.36	#	0.342	17/09/2013	0.410	0.350	0.410	0.350	0.374	60@0.323	697@0.350	---	2012	504	3	188.46	3,740.00	0.320	0.920	1757
29,060,950	0.340	---	---	---	20/08/2007	24/10/2001	4884	SPIDER METAL INDUSTRY SA (CR)	0.065	-4.41	€	0.068	17/09/2013	0.065	0.065	0.065	0.065	0.065	---	5999@0.064	---	2012	10,000	2	650.01	1,888.96	0.022	0.097	2757
100,793,000	0.300	---	---	---	16/07/2009	05/08/2013	---	TELETIPOS SA (CR)	0.184	---	↘	0.184	17/09/2013	---	---	---	---	---	8500@0.180	500@0.220	---	2012	---	---	---	18,545.91	0.118	0.600	5553
3,229,566	0.320	---	---	---	22/06/2005	23/09/1999	4629	VARANGIS AVEPE S.A. (CR)	0.700	-4.76	€	0.735	12/09/2013	0.700	0.700	0.700	0.700	0.700	67@0.700	50@0.735	---	2012	933	3	653.10	2,260.70	0.206	0.840	3726
17,175,132	0.300	---	---	---	25/06/2002	21/06/2013	4997	VARVARESSOS SA (CB)	0.037	---	↘	0.037	17/09/2013	0.037	0.037	0.037	0.037	0.037	1980@0.038	---	---	2012	80	4	2.96	635.48	0.027	0.181	3763
13,191,620	0.620	---	---	---	04/08/2010	09/09/2002	4977	YALCO - CONSTANTINOU SA (CB)	0.123	---	↘	0.123	17/09/2013	---	---	---	---	---	1800@0.101	4486@0.122	---	2012	---	---	---	1,622.57	0.104	0.210	3722

Under Deletion

5,025,000	0.300	---	---	---	05/07/2005	14/03/2002	4963	ALSINCO S.A (CR)	0.019	---	↘	0.019	09/09/2013	---	---	---	---	---	1@0.022	---	2012	---	---	---	95.48	0.006	0.185	3763
766,000	2.83	---	---	---	01/07/2004	11/12/2012	4937	TRIA ALFA SA (CR)	2.81	---	↘	2.81	23/08/2013	---	---	---	---	1@2.25	500@3.36	---	2012	---	---	---	2,339.15	1.30	4.70	3763
245,000	2.83	---	---	---	19/07/2010	11/12/2012	4938	TRIA ALFA SA (PR)	0.762	---	↘	0.762	11/09/2013	---	---	---	---	8@0.611	---	---	2012	---	---	---	2,339.15	0.501	1.93	3763

Under Suspension

49,030,011	0.300	---	---	---	19/07/2010	12/05/2011	4875	ALAPIS (CR)	0.041	---	↘	0.041	30/03/2012	---	---	---	---	---	---	---	---	---	---	---	2,010.23	0.041	0.041	4577
1,750,955,549	0.600	---	---	---	19/05/2008	08/12/2011	4911	ATE (CR)	0.155	---	↘	0.155	30/07/2012	---	---	---	---	---	---	---	---	---	---	---	271,398.11	0.155	0.155	8355

Number of Outstanding Securities	Nominal Value	Dividends [1]			Date of Last Coupon		Note	Shares	Closing price	% change	Previous closing price/date	Open price	Price min	Price max	Last price	Avg price	Last Bid [7]	Last Ask [7]	P/E after	Year	Volume	Trades	Transactions Value	Company Mkt Value (thou. €)	Year low	Year high	Sector[ 4]
		2010	2011	2012	Dividend [2]	Right																					
Under Suspension																											
21,382,067	0.300	---	---	---	02/10/2006	15/02/2006	4628	ATERMON (CR)	0.120	---	↘ 0.120	31/03/2010	---	---	---	---	---	---	---	---	---	---	---	2,565.85	0.120	0.120	5555
105,423,498	0.510	---	---	---	01/07/2004	28/12/2005	4920	AVENIR S.A. (CR)	0.046	---	↘ 0.046	30/08/2012	---	---	---	---	---	---	---	---	---	---	---	4,849.48	0.046	0.046	5752
33,930,000	0.300	---	---	---	03/07/2006	30/05/2001	4865	BABIS VOVOS SA (CR)	0.304	---	↘ 0.304	30/03/2012	---	---	---	---	---	---	---	---	---	---	---	10,314.72	0.304	0.304	8633
20,121,710	1.21	---	---	---	27/07/1992	12/03/2003	5002	BALKAN R.E. (CR)	0.190	---	↘ 0.190	29/08/2013	---	---	---	---	---	---	---	---	---	---	---	3,823.12	0.162	0.438	8633
1,795,140,547	1.00	(0.0615)	---	---	31/05/2011	19/04/2012	4951	BANK OF CYPRUS (CR)	0.207	---	↘ 0.207	15/03/2013	---	---	---	---	5000@0.170	---	---	---	---	---	---	371,594.09	0.180	0.282	8355
21,920,570	0.300	---	---	---	03/07/2007	13/12/1999	4702	CARDASSILARIS SA (CR)	0.140	---	↘ 0.140	30/11/2010	---	---	---	---	---	---	---	---	---	---	---	3,068.88	0.140	0.140	3577
54,547,634	0.500	---	---	---	25/04/2005	21/01/2009	4860	CH.TEGOPOULOS PUBL. SA (CR)	0.038	---	↘ 0.038	23/03/2012	---	---	---	---	---	---	---	---	---	---	---	2,072.81	0.038	0.038	5557
33,718,750	0.300	---	---	---	28/05/2008	21/01/2013	4998	DOL SA (CR)	0.640	---	↘ 0.640	25/07/2013	---	---	---	---	---	3118@0.700	---	---	---	---	---	21,580.00	0.244	0.759	5557
7,847,611	1.20	---	---	---	01/08/2007	28/09/2011	4939	EDRASIS - C. PSALLIDAS SA (CR)	0.150	---	↘ 0.150	19/11/2012	---	---	---	---	---	---	---	---	---	---	---	1,177.14	0.150	0.150	2357
5,750,000	0.300	---	---	---	12/12/2008	12/12/2011	4929	ELECTRONIKI ATHINON SA (CR)	0.480	---	↘ 0.480	07/09/2012	---	---	---	---	---	---	---	---	---	---	---	2,760.00	0.480	0.480	5375
24,605,397	0.400	---	---	---	29/06/1995	27/05/2002	4651	EMPORIKOS DESMOS SA (CR)	0.080	---	↘ 0.080	28/05/2010	---	---	---	---	---	---	---	---	---	---	---	2,134.04	0.080	0.080	3722
1,182,903	0.400	---	---	---	01/07/1996	27/05/2002	4652	EMPORIKOS DESMOS SA (PR)	0.140	---	↘ 0.140	28/09/2009	---	---	---	---	---	---	---	---	---	---	---	2,134.04	0.140	0.140	3722
8,593,750	0.300	---	---	---	01/06/2009	20/06/2007	4876	FASHION BOX (CR)	1.30	---	↘ 1.30	23/02/2012	---	---	---	---	---	---	---	---	---	---	---	11,171.88	1.30	1.30	3763
7,326,648	1.00	---	---	---	26/07/2006	24/07/2001	4921	FINTEXPORT SA (CR)	0.328	---	↘ 0.328	29/06/2012	---	---	---	---	---	---	---	---	---	---	---	2,403.14	0.328	0.328	3763
20,860,000	0.300	---	---	---	03/07/2000	13/11/2007	4848	IKONA - IHOS SA (CR)	0.072	---	↘ 0.072	02/12/2011	---	---	---	---	---	---	---	---	---	---	---	1,501.92	0.072	0.072	5379
36,765,744	0.350	---	---	---	16/08/2006	06/06/2011	4869	IMPERIO SA (CR)	0.026	---	↘ 0.026	30/03/2012	---	---	---	---	---	---	---	---	---	---	---	955.91	0.026	0.026	2777
24,619,524	0.500	---	---	---	10/10/1986	30/12/2002	4914	KERAMIA-ALLATINI (CR)	0.088	---	↘ 0.088	27/08/2012	---	---	---	---	---	---	---	---	---	---	---	2,166.52	0.088	0.088	8633
7,840,373	1.20	---	---	---	18/07/2002	05/03/2003	4765	KLONATEX SA (PR)	0.080	---	↘ 0.080	09/05/2011	---	---	---	---	---	---	---	---	---	---	---	1,453.75	0.080	0.080	3763
20,663,047	1.20	---	---	---	21/08/2000	05/03/2003	4764	KLONATEX SA (CR)	0.040	---	↘ 0.040	09/05/2011	---	---	---	---	---	---	---	---	---	---	---	1,453.75	0.040	0.040	3763
17,544,600	0.600	---	---	---	03/07/2000	01/08/2000	4868	KOYMBAS SYNERGY GROUP (CR)	0.132	---	↘ 0.132	29/03/2012	---	---	---	---	---	---	---	---	---	---	---	2,315.89	0.132	0.132	8775
15,015,000	1.60	---	---	---	01/07/2002	02/02/2000	4603	MAXIM C.M. PERTSINIDIS SA (CB)	0.100	---	↘ 0.100	30/11/2009	---	---	---	---	---	---	---	---	---	---	---	1,501.50	0.100	0.100	3763
66,937,526	0.700	---	---	---	13/08/2010	21/05/2003	5003	MICHANIKI SA (CR)	0.100	---	↘ 0.100	29/08/2013	---	---	---	---	---	---	---	---	---	---	---	9,186.78	0.085	0.370	2357
25,968,987	0.700	---	---	---	13/08/2010	21/05/2003	5004	MICHANIKI SA (PR)	0.096	---	↘ 0.096	29/08/2013	---	---	---	---	---	---	---	---	---	---	---	9,186.78	0.065	0.268	2357
13,555,100	1.00	---	---	---		08/07/2005	4576	MICROLAND COMPUTERS SA (CR)	0.640	---	↘ 0.640	14/07/2009	---	---	---	---	---	---	---	---	---	---	---	8,675.26	0.640	0.640	5379
23,463,874	0.800	---	---	---	23/05/2003	21/12/1999	4918	NEORION SA (CR)	0.125	---	↘ 0.125	28/08/2012	---	---	---	---	---	---	---	---	---	---	---	2,932.98	0.125	0.125	2753
42,501,273	0.300	---	---	---	26/06/2007	10/08/2009	4993	NUTRIART (CR)	0.049	---	↘ 0.049	21/06/2013	---	---	---	---	---	---	---	---	---	---	---	2,082.56	0.038	0.114	3577
25,583,146	0.300	---	---	---	25/06/2001	03/12/2008	4723	PETZETAKIS SA (CR)	0.260	---	↘ 0.260	28/01/2011	---	---	---	---	---	---	---	---	---	---	---	6,651.62	0.260	0.260	1357
9,550,386	0.500	---	---	---	01/07/1997	12/06/2008	4626	PRAXITELIO SA (CR)	0.390	---	↘ 0.390	11/03/2010	---	---	---	---	---	---	---	---	---	---	---	4,430.09	0.390	0.390	4533
1,306,368	0.500	---	---	---	01/07/1997	12/06/2008	4627	PRAXITELIO SA (PR)	0.540	---	↘ 0.540	15/12/2009	---	---	---	---	---	---	---	---	---	---	---	4,430.09	0.540	0.540	4533
62,683,822	0.300	---	---	---	27/05/2008	09/01/2006	4830	PROTON BANK S.A. (CR)	0.180	---	↘ 0.180	07/10/2011	---	---	---	---	---	---	---	---	---	---	---	11,283.09	0.180	0.180	8355
23,059,688	0.660	---	---	---	03/07/2008	06/08/2004	4864	RIDENCO SA (CR)	0.032	---	↘ 0.032	30/03/2012	---	---	---	---	---	---	---	---	---	---	---	737.91	0.032	0.032	3765
51,083,993	1.00	---	---	---	15/07/2008	06/08/2003	4867	SANYO HELLAS HOLD. (CR)	0.020	---	↘ 0.020	30/03/2012	---	---	---	---	---	---	---	---	---	---	---	1,021.68	0.020	0.020	3722
51,334,286	0.320	---	---	---	03/07/2000	18/12/2007	4548	SAOS (CR)	0.780	---	↘ 0.780	27/03/2009	---	---	---	---	---	---	---	---	---	---	---	40,040.74	0.780	0.780	2773
26,408,040	0.300	---	---	---	01/07/1997	26/05/1999	4464	SHEET STEEL SA (CR)	0.120	---	↘ 0.120	28/11/2008	---	---	---	---	---	---	---	---	---	---	---	3,168.96	0.120	0.120	1757
26,262,660	0.900	---	---	---	01/07/2008	24/02/2011	4954	SPRIDER STORES (CR)	0.031	---	↘ 0.031	28/03/2013	---	---	---	---	---	---	---	---	---	---	---	814.14	0.025	0.055	5371
144,688,060	0.600	---	---	---	21/04/2008	10/03/2010	4982	T BANK (CR)	0.048	---	↘ 0.048	30/11/2011	---	---	---	---	---	---	---	---	---	---	---	6,945.03	0.048	0.048	8355
6,523,780	0.530	---	---	---	01/07/2002	06/03/2001	4971	TECHNICAL PUBLICATIONS SA (CR)	0.006	---	↘ 0.006	29/05/2013	---	---	---	---	---	---	---	---	---	---	---	39.14	0.006	0.347	5557
13,920,000	0.320	---	---	---	19/11/2001	01/08/2000	4726	TEXAPRET SA (CR)	0.080	---	↘ 0.080	23/02/2011	---	---	---	---	---	---	---	---	---	---	---	1,113.60	0.080	0.080	3763



Number of Outstanding Securities	Nominal Value	Dividends [1]			Date of Last Coupon Dividend [2]		Note	Shares	Closing price	% change	Previous closing price/date	Open price	Price min	Price max	Last price	Avg price	Last Bid [7]	Last Ask [7]	P/E after	Year	Volume	Trades	Transactions Value	Company Mkt Value (thou. €)	Year low	Year high	Sector[ 4]
--	------------------	---------------	--	--	-------------------------------------	--	------	--------	------------------	----------	--------------------------------	---------------	--------------	--------------	---------------	--------------	-----------------	--------------	--------------	------	--------	--------	-----------------------	--------------------------------	-------------	--------------	---------------

Under Suspension

284,465,964	3.70	---	---	---	20/06/2008	15/06/2009	4913	TT HELLENIC POSTBANK (CR)	0.168	---	↘ 0.168	30/08/2012	---	---	---	---	---	---	---	---	---	---	---	47,790.28	0.168	0.168	8355
89,616,200	0.300	---	---	---	21/08/2000	28/06/2007	4616	UNITED TEXTILES (CR)	0.050	---	↘ 0.050	25/02/2010	---	---	---	---	---	---	---	---	---	---	---	4,480.81	0.050	0.050	3763
71,683,906	0.400	---	---	---	15/06/2005	05/02/2008	4953	XATZIOANNOU (CR)	0.026	---	↘ 0.026	28/03/2013	---	---	---	---	---	---	---	---	---	---	---	1,863.78	0.020	0.085	3763

## Shares' Notes

Code	Note text
( )	- Adjusted dividends.
*	- Last adjusted closing price.
[1]	- Net dividends.
[2]	- The "Date of Last Coupon" for New listings refers to the date company's stocks started to trade in Athex
[3]	- The Company Market Value is referred to the number of outstanding shares
[4]	- Sectors codification can be found in Appendix A
[5]	- The Market Value refers to the total number of shares listed (including their several classes) in the exchange by the company.
[6]	- P/E greater than 100
[7]	- Last view of the Order Book before the end of the trading session
4446	- Transfer to the "Under Supervision" Category as of 20/10/2008.
4447	- Transfer to the "Under Supervision" Category as of 21/10/2008.
4464	- Suspension of trading as of 1/12/2008.
4548	- Suspension of trading as of 1/4/2009.
4554	- Transfer to the "Under Supervision" Category as of 6/4/2009.
4559	- Transfer to the "Under Supervision" Category as of 21/4/2009.
4576	- Suspension of trading as of 14/7/2009.
4603	- Suspension of trading as of 1/12/2009.
4616	- Suspension of trading as of 25/2/2010.
4626	- Suspension of trading as of 1/4/2010.
4627	- Suspension of trading as of 1/4/2010.
4628	- Suspension of trading as of 1/4/2010.
4629	- Transfer to the Under Supervision Category as of 12/4/2010.
4630	- Transfer to the Under Supervision Category as of 12/4/2010.
4651	- Suspension of trading as of 1/6/2010.
4652	- Suspension of trading as of 1/6/2010.
4690	- Transfer to Surveillance category as of 4/4/2006.
4702	- Suspension of trading as of 1/12/2010.
4723	- Suspension of trading as of 31/1/2011.
4726	- Suspension of trading as of 1/3/2011.
4750	- Transfer to the "Under Surveillance Category" from 8/4/2011.
4764	- Suspension of trading as of 20/5/2011.
4765	- Suspension of trading as of 20/5/2011.
4795	- The final gross (pre-tax) dividend is € 0.30 per share and subject to withholding tax on the full dividend amount, i.e. 0,45 per share, for those shareholders liable to withholding tax, in accordance with the applicable tax law provisions.
4808	- Suspension of trading as of 6/9/2011.
4814	- Transfer to the Low Dispersion Category as of 30/5/2011.
4815	- Transfer to the Low Dispersion Category as of 30/5/2011.
4816	- Transfer to the Low Dispersion Category as of 30/5/2011.
4817	- Transfer to the Low Dispersion Category as of 30/5/2011.
4820	- Transfer to the Low Dispersion category as of 18/4/2008.
4822	- Transfer to the Low Dispersion category as of 30/5/2011.
4823	- Transfer to the Low Dispersion category as of 4/4/2006.
4824	- Transfer to the Low Dispersion category as of 18/4/2008.
4825	- Transfer to the Low Dispersion category as of 8/4/2011.
4827	- Transfer to the Low Dispersion category as of 5/5/2010.
4828	- Transfer to the Low Dispersion category as of 4/4/2006.
4830	- Suspension of trading as of 10/10/2011.
4833	- Transfer to Surveillance category from 6/5/2010.
4844	- Transfer to the Surveillance category from 8/4/2011.
4845	- Transfer to the Surveillance Category as of 25/11/2011.
4846	- Transfer to the Surveillance Category as of 25/11/2011.
4847	- Transfer to the Surveillance Category as of 3/7/2009.

## Shares' Notes

Code	Note text
4848	- Suspension of trading as of 6/12/2011.
4854	- Transfer to the Surveillance Category as of 29/12/2011.
4855	- Transfer to the Surveillance Category as of 29/12/2011.
4856	- Transfer to the Surveillance Category as of 29/12/2011.
4860	- Suspension of trading as of 30/3/2012.
4864	- Suspension of trading as of 30/3/2012.
4865	- Suspension of trading as of 2/4/2012.
4867	- Suspension of trading as of 2/4/2012.
4868	- Suspension of trading as of 2/4/2012.
4869	- Suspension of trading as of 2/4/2012.
4875	- Suspension of trading as of 2/4/2012.
4876	- Suspension of trading as of 3/4/2012.
4879	- Transfer to the Surveillance Category as of 10/4/2012.
4880	- Transfer to the Surveillance Category as of 10/4/2012.
4881	- Transfer to the Surveillance Category as of 10/4/2012.
4882	- Transfer to the Surveillance Category as of 10/4/2012.
4884	- Transfer to the Surveillance Category as of 10/4/2012.
4885	- Transfer to the Surveillance Category as of 10/4/2012.
4886	- Transfer to the Surveillance Category as of 10/4/2012.
4887	- Transfer to the Surveillance Category as of 10/4/2012.
4888	- Transfer to the Surveillance Category as of 10/4/2012.
4889	- Transfer to the Surveillance Category as of 10/4/2012.
4893	- Transfer to the Low Dispersion category as of 28/5/2012.
4894	- Transfer to the Low Dispersion category as of 28/5/2012.
4911	- Lift of suspension from 30/7/2012.
4912	- Transfer to the Surveillance Category as of 31/7/2012.
4913	- Suspension of trading as of 30/8/2012.
4914	- Suspension of trading as of 31/8/2012.
4918	- Suspension of trading as of 31/8/2012.
4920	- Suspension of trading as of 31/8/2012.
4921	- Suspension of trading as of 31/8/2012.
4929	- Suspension of trading as of 1/10/2012.
4937	- Transfer to the UNDER DELETION category as of 30/11/2012.
4938	- Transfer to the UNDER DELETION category as of 30/11/2012.
4939	- Suspension of trading as of 30/11/2012.
4941	- Transfer to the Low Dispersion category as of 3/12/2012.
4944	- Transfer to the Surveillance Category as of 7/12/2012.
4951	- Suspension of trading as of 19/3/2013.
4953	- Suspension of trading as of 2/4/2013.
4954	- Suspension of trading as of 2/4/2013.
4955	- Transfer to the Surveillance Category as from 5/4/2013.
4956	- Transfer to the Surveillance Category as from 5/4/2013.
4957	- Transfer to the Surveillance Category as from 5/4/2013.
4958	- Transfer to the Surveillance Category as from 5/4/2013.
4959	- Transfer to the Surveillance Category as from 5/4/2013.
4960	- Transfer to the Surveillance Category as from 5/4/2013.
4961	- Transfer to the Surveillance Category as from 5/4/2013.
4962	- Transfer to the Surveillance Category as from 5/4/2013.
4963	- Transfer to the Under Deletion Category as from 5/4/2013.
4971	- Suspension of trading as of 3/6/2013.
4977	- Transfer to the "Under Surveillance Category" from 11/6/2013.
4978	- Transfer to the Under Supervision Category as of 11/6/2013.
4982	- Suspension of trading as of 1/12/2011.

## Shares' Notes

Code	Note text
4983	- Transfer to the Surveillance Category as of 5/4/2013.
4985	- Transfer to the "Under Surveillance Category" from 8/4/2011.
4986	- Transfer to the Low Dispersion category as of 30/5/2011.
4988	- As of June 7, 2013, the name of the company "DUTY FREE SHOPS A CORPORATION OPERATING DFS AND LARGE AND SMALL SCALE INDUSTRIAL OPERATIONS, TECHNIC" on ATHEX changes to "FOLLI FOLLIE S.A.".
4993	- Suspension of trading as of 21/6/2013 (15:18).
4997	- Transfer to the Under Supervision Category as of 21/12/2009. - The 6,870,053 new (CB) shares, resulting from the recent share capital increase through a rights issue, are not yet admitted to trading on the ATHEX.
4998	- Suspension of trading as of 26/7/2013.
5002	- Suspension of trading as of 30/08/2013.
5003	- Suspension of trading as of 30/08/2013.
5004	- Suspension of trading as of 30/08/2013.
5006	- Transfer to the Surveillance Category as of 3/9/2013.

## Securities Blocks Details

Securities	Block Volume	Price	Block Trade Value	Time of approval	Note
FOLLI FOLLIE (CR)	19,932	18.53	369,240.30	12:13:48	20
OPAP (CR)	79,320	7.80	618,299.40	13:28:56	20
OPAP (CR)	65,000	7.80	506,675.00	13:35:00	20
OPAP (CR)	100,000	7.80	779,500.00	13:38:59	20
OPAP (CR)	100,000	7.80	779,500.00	13:43:39	20
OPAP (CR)	250,000	7.81	1,951,250.00	14:08:39	20
OPAP (CR)	500,000	7.81	3,902,500.00	14:14:47	20
PIRAEUS BANK (W)	25,000	0.770	19,250.00	15:29:00	18

## Blocks Notes

2 - SPOT 1 or SPOT 2 Packet	11 - Total Assets > 500 bil
3 - Block with Short Selling	12 - Sell Offer through Athex
4 - Buy to Close Block	13 - Forced Sale of NMOE
6 - Simultaneous Constitution	14 - Restoration Packet
7 - Repurchase Agreement	15 - Market Maker Packet
8 - Dispersion's Achievement (Not Listed)	16 - Short Selling
9 - Dispersion's Achievement (Listed)	18 - SPOT 1 Packet
10 - Share Capital Majority of Greek State (> 50 bil)	20 - Method 6-1 Packet

Shares Rights Details

Occured date	Exercise from	Exercise until	Trading until	Rights	Price min	Price max	Closing price	Last Bid	Last Ask	Volume	Trades	Transactions Value
-----------------	------------------	-------------------	------------------	--------	--------------	--------------	------------------	----------	----------	--------	--------	-----------------------

No Rights Transactions.

## Shares Short Selling

Securities	Transactions Value	Transactions Volume	% of Total Volume	Short Covering Trans. Value	Short Covering Volume	% of Total Volume
PETROPOULOS PETROS (CR)	---	---	---	17.38	11	0.63
S.KANAKIS SA (CR)	---	---	---	10.00	5	0.59

## Short Selling Notes

[1] - The Hellenic Capital Markets Commission (HCMC) has decided to prohibit the short selling only in relation to shares of credit institutions admitted to trading on the Athens Exchange and comprising the FTSE/ATHEX - CSE Banking Index, for a period of three(3) months and more specifically from February1, 2013 until April 30, 2013.

## Stock Borrowing

Securities	Stock Borrowing through Helex (volume)	Stock Borrowing through OTC (volume) [1]	Totals [2]
ALAPIS (CR)	---	6,250	6,250
ALPHA BANK (CR)	184,500	4,361,835	4,546,335
ATE (CR)	---	69,000	69,000
BANK OF CYPRUS (CR)	---	102,899	102,899
CC HBC AG (CR)	23,800	75,941	99,741
ELLAKTOR (CR)	2,000	---	2,000
EUROBANK ERGASIAS (CR)	22,220	68,406	90,626
EUROBANK PROPERTIES REIC (CR)	6,000	31,215	37,215
EYDAP S.A. (CR)	2,400	5,000	7,400
FOLLI FOLLIE (CR)	3,000	15,508	18,508
GEK TERNA (CR)	500	---	500
HELLENIC EXCHANGES (CR)	20,500	---	20,500
HELLENIC PETROLEUM (CR)	19,200	269	19,469
INTRALOT (CR)	24,000	---	24,000
JUMBO SA (CR)	9,900	3,525	13,425
LAMDA DEVELOPMENT SA (CR)	---	10,377	10,377
MARFIN INVESTMENT GROUP (CR)	---	733,474	733,474
METKA (CR)	6,100	---	6,100
MOTOR OIL (CR)	1,700	---	1,700
MYTILINEOS HOLDINGS (CR)	16,000	---	16,000
NATIONAL BANK (CR)	181,700	1,522,830	1,704,530
NBGAM ETF	10,000	---	10,000
NBGAM ETF GREECE & TURKEY 30	3,500	---	3,500
OPAP (CR)	100,500	2,067	102,567
OTE (CR)	101,100	109,116	210,216
PIRAEUS BANK (CR)	140,200	266,976	407,176
PPC (CR)	58,200	---	58,200
TERNA ENERGY (CR)	3,900	---	3,900
TITAN CEMENT (CR)	7,200	55,390	62,590
VIOHALCO (CB)	5,200	---	5,200

## Stock Borrowing Notes

[1] - The information concerning OTC Stock Borrowing Transactions is based on the statements of the Dematerialised Securities System (DSS) operators involved and refers to volumes that have been cleared and registered up until the previous working day.



Shares Forced Sales

Securities	Transaction s Volume	Number of Trades	Transactions Value	Note
No Forced Transactions.				

Forced Sales Notes

- 1 - Normal Forced Sale.
- 2 - Forced Sales of Fixed Registered Shares.
- 3 - Forced Sales of Remaining Stock Fractions.

**Forced Sales Registered Shares**

Securities	Start Date	End Date	Initial Volume	Remaining Volume	Date	Avg price (day)	Avg price (period)	Number of Trades	Transactions Volume	Transactions Value
------------	------------	----------	-------------------	---------------------	------	--------------------	-----------------------	---------------------	------------------------	-----------------------

No Fixed Registered Shares Forced Sales.

**Forced Sales Notes**

According to Decision 1/380/04.05.2008 of the Hellenic Republic Capital Market Commission, the certificated registered shares that have not been deposited to the issuer for dematerialisation, will be auctioned in the Athens Exchange by the supervising issuer. Forced sales procedure is held according to Article 99A of the Athens Exchange Rulebook. The average price of the period is calculated by dividing the Total transactions value by the Total volume and includes all the transactions made until the current date.

## Exchange Traded Funds (ETFs) Characteristics

	Transactions Date (T)	Creation / Redemption	Units (T-1)	New Units (T-1)	Redemptio n Units (T-	Units (T) [1]	Fund Assets [2]	Net Unit Price	Dividen d per	Dividend Date
NBGAM ETF ΓΔ Χ.Α.	18/09/2013	25,000	294,878	---	---	294,878	3,271,245.00	11.0936	---	27/10/2011
ALPHA ETF FTSE Athex Large Cap	18/09/2013	50,000	5,848,618	---	---	5,848,618	20,062,340.00	3.4303	0.05	01/07/2013
NBGAM ETF GREECE & TURKEY 30	18/09/2013	25,000	388,550	---	---	388,550	3,090,498.00	7.9539	---	27/10/2011

## ETFs Notes

[1] - Units (T) = Units (T-1) + New Units (T-1) - Redemption Units (T-1)

[2] - The Creation / Redemption Units of T-1 are included.

Corporate Bonds

Num Listed Bonds	Nominal price	Issue price	Today's Rate	Exp. Date	Duration (years)	Note	Coupon attached		Trading	Corporate Bonds	Price min	Price max	Closing price	Previous closing price/date	Volume	Transactions Value	Last order		Date	ear min	Year max
							Common	Preferred									Price	Buy / Sell			
39,711,653	1.00	1.00	6.00	30/06/2016	5	4786	5	---	1	BANK OF CYPRUS PUBLIC CO. LTD (Convert. to CR sh.)	---	---	---	---	---	---	10.0000	B	13/03/2013	100.0000	100.0000
428,521,983	1.00	1.00	6.50	30/06/2016	5	4785	5	---	1	BANK OF CYPRUS PUBLIC CO. LTD (Convert. to CR sh.)	---	---	---	20.5000	14/03/2013	---	21.0000	B	15/03/2013	19.5000	30.0000
4,150,176	4.77	4.77	5.00	19/03/2015	5	---	14	---	1	MARFIN INVESTMENT GROUP S.A. (Conver to CR shar)	---	---	---	26.0000	12/09/2013	---	11.0000	B	17/09/2013	0.5000	70.0000
73,088,145	1.00	1.00	5.50	30/06/2014	5	4574	9	---	1	BANK OF CYPRUS PUBLIC CO. LTD (Convert. to CR sh.)	---	---	---	20.0000	08/03/2013	---	21.5000	B	15/03/2013	20.0000	26.0000
1,794,284	12.49	9.77	5.80	12/07/2015	8	---	13	---	1	NIREUS S.A. (Convertible to CR shares)	---	---	---	12.0000	26/07/2013	---	25.0000	B	18/09/2013	11.0000	15.0000
27,283,632	1.00	1.00	1.32	30/06/2018	10	---	11	---	1	BANK OF CYPRUS PUBLIC CO. LTD (Convert. to CR sh.)	---	---	---	33.0000	13/12/2012	---	35.0000	B	15/03/2013	33.0000	33.0000
212,849,265	1.00	1.00	6.30	29/07/2020	7	---	1	---	1	MARFIN INVESTMENT GROUP S.A. SERIES B (BOND)	---	---	---	0.8500	23/08/2013	---	0.5200	B	18/09/2013	0.8500	0.8500
2,156,827	1.00	1.00	7.00	29/07/2019	6	---	1	---	1	MARFIN INVESTMENT GROUP S.A. SERIES A (BOND)	---	---	---	1.0000	23/08/2013	---	1.0250	B	18/09/2013	1.0000	1.0000

4574 - The bonds are of indefinite duration.

4785 - The bonds are of indefinite duration.

4786 - The bonds are of indefinite duration. The Bond's par value, issue price and trading prices are expressed in USA Dollars, whereas its Transactions Value is expressed in Euros.

Corporate Bonds Notes

Transactions Volume = (Pieces) \* (Nominal Price). Transactions Value = (Pieces) \* (Nominal Price) \* (price %) + (Accrued interest).

The price of a Bond is stated as a percentage (%) of Bond's Nominal Price.

Nominal Price in Euros (€), except if it is noted differently.

Government Bonds

Number Listed Bonds	Nominal price	Today's Rate	Accrued Interest Calc	Exp. Date [1]	Duration (years)	Note	Coupons Date	Curr. coupon value	Trading Unit	Government Bonds	Price min	Price max	Closing price	Previous closing price/date	Volume	Transactions Value	Price	Last order Buy / Sell	Date
2,658,781,973	1.00	4.30	Actual/Actual	24/02/2023	11	---	24/02	4.30	1	GGB-FXD-240223-11Y-2.000-1.00	---	---	---	---	---	---	---	---	---
2,658,781,973	1.00	4.30	Actual/Actual	24/02/2024	12	---	24/02	4.30	1	GGB-FXD-240224-12Y-2.000-1.00	---	---	---	---	---	---	---	---	---
2,658,781,973	1.00	4.30	Actual/Actual	24/02/2025	13	---	24/02	4.30	1	GGB-FXD-240225-13Y-2.000-1.00	---	---	---	---	---	---	---	---	---
2,658,781,973	1.00	4.30	Actual/Actual	24/02/2026	14	---	24/02	4.30	1	GGB-FXD-240226-14Y-2.000-1.00	---	---	---	---	---	---	---	---	---
2,658,781,973	1.00	4.30	Actual/Actual	24/02/2027	15	---	24/02	4.30	1	GGB-FXD-240227-15Y-2.000-1.00	---	---	---	---	---	---	---	---	---
2,836,034,104	1.00	4.30	Actual/Actual	24/02/2028	16	---	24/02	4.30	1	GGB-FXD-240228-16Y-2.000-1.00	---	---	---	---	---	---	---	---	---
2,836,034,104	1.00	4.30	Actual/Actual	24/02/2029	17	---	24/02	4.30	1	GGB-FXD-240229-17Y-2.000-1.00	---	---	---	---	---	---	---	---	---
2,836,034,104	1.00	4.30	Actual/Actual	24/02/2030	18	---	24/02	4.30	1	GGB-FXD-240230-18Y-2.000-1.00	---	---	---	---	---	---	---	---	---
2,836,034,104	1.00	4.30	Actual/Actual	24/02/2031	19	---	24/02	4.30	1	GGB-FXD-240231-19Y-2.000-1.00	---	---	---	---	---	---	---	---	---
2,836,034,104	1.00	4.30	Actual/Actual	24/02/2032	20	---	24/02	4.30	1	GGB-FXD-240232-20Y-2.000-1.00	---	---	---	---	---	---	---	---	---
2,836,034,104	1.00	4.30	Actual/Actual	24/02/2033	21	---	24/02	4.30	1	GGB-FXD-240233-21Y-2.000-1.00	---	---	---	---	---	---	---	---	---
2,836,034,104	1.00	4.30	Actual/Actual	24/02/2034	22	---	24/02	4.30	1	GGB-FXD-240234-22Y-2.000-1.00	---	---	---	---	---	---	---	---	---
2,836,034,104	1.00	4.30	Actual/Actual	24/02/2035	23	---	24/02	4.30	1	GGB-FXD-240235-23Y-2.000-1.00	---	---	---	---	---	---	---	---	---
2,836,034,104	1.00	4.30	Actual/Actual	24/02/2036	24	---	24/02	4.30	1	GGB-FXD-240236-24Y-2.000-1.00	---	---	---	---	---	---	---	---	---
2,836,034,104	1.00	4.30	Actual/Actual	24/02/2037	25	---	24/02	4.30	1	GGB-FXD-240237-25Y-2.000-1.00	---	---	---	---	---	---	---	---	---
2,836,034,104	1.00	4.30	Actual/Actual	24/02/2038	26	---	24/02	4.30	1	GGB-FXD-240238-26Y-2.000-1.00	---	---	---	---	---	---	---	---	---
2,836,034,104	1.00	4.30	Actual/Actual	24/02/2039	27	---	24/02	4.30	1	GGB-FXD-240239-27Y-2.000-1.00	---	---	---	---	---	---	---	---	---
2,836,034,104	1.00	4.30	Actual/Actual	24/02/2040	28	---	24/02	4.30	1	GGB-FXD-240240-28Y-2.000-1.00	---	---	---	---	---	---	---	---	---
2,836,034,104	1.00	4.30	Actual/Actual	24/02/2041	29	---	24/02	4.30	1	GGB-FXD-240241-29Y-2.000-1.00	---	---	---	---	---	---	---	---	---
2,836,034,104	1.00	4.30	Actual/Actual	24/02/2042	30	---	24/02	4.30	1	GGB-FXD-240242-30Y-2.000-1.00	---	---	---	---	---	---	---	---	---
1,500,000	1,000.00	0.97	FLR Actual/360	10/08/2014	5	---	10/02 - 10/08	---	1	GGB-FRN-100814-05Y-1.762-1000.00	---	---	---	---	---	---	---	---	---
5,187,186	1,000.00	1.60	FLR Actual/360	21/05/2014	5	---	21/11 - 21/05	---	1	GGB-FRN-210514-05Y-2.734-1000.00	---	---	---	---	---	---	---	---	---
78,300	1,000.00	1.16	FLR Actual/360	23/07/2014	5	---	23/01 - 23/07	---	1	GGB-FRN-230714-05Y-2.018-1000.00	---	---	---	---	---	---	---	---	---

Government Bonds Notes

Transactions Volume = (Pieces) \* (Nominal Price). Transactions Value = (Pieces) \* (Nominal Price) \* (price %) + (Accrued interest).  
The Value of current coupon for the issues with NV 0.01 euro refers to NV 100 euros  
FLR: Floating Interest Rate.  
[1] - The Expiration Date of the interest bearing period and the Date for coupon payment.

Bonds in Circulation	Currency / Min nominal traded Value	Coupons Payment Date	Current Coupon Value	Note	Coupon Attached	Trading Unit	Issue Date	Duration (years)	Today's Interest	A.I.C in days	Bonds	Last price of previous days	Last Outcry in Cash (euro) Price	Buy / Sell	Trades in Pieces	Life min	Life Max
Bonds of International Organizations																	
1,000,000	EUR / 1000	21/07	---	---	8	1	21/07/2006	10	5.0 FLR	360	EUROPEAN INVESTMENT BANK BOND	97.50	16/04/2007	---	---	---	---
Corporate Bonds in Foreign Currency and Euro																	
103,746	GBP / 10	01/12	0.25	---	54	1	01/12/1930	98	2.5	360	National Mortgage Bank	2.27	05/02/1996	2.27	S	05/02/1996	2.27
0	GBP / 10	01/12	0.25	---	56	1	01/12/1928	100	2.5	360	National Mortgage Bank	---	---	---	---	---	---

Government Bonds Notes

A.I.C: Accrued Interest Calculation base.  
FLR: Floating Interest Rate.  
The minimum tradeable Nominal Value for all Demeterialised Government Titles is 100 Euros.

State Banks Bonds (one year maturity)

Number Listed Bonds	Nominal value	Initial Rate	Current Rate	Annual Interest	Issue Date	Note	State Banks Bonds	Trading Unit	Yearly Renewals	Last Outcry in Cash (euro) Price	Buy / Sell	Volume
342,560	130.41	2.35	3.92	0.00	31/01/2005	---	H.I.D.B.	1	9	100.00	B	---
16,015	1,211.71	3.65	2.47	0.00	30/11/2006	---	H.I.D.B.	1	7	---	---	---
2,446	1,154.00	4.90	2.47	28.96	31/05/2008	---	H.I.D.B.	1	6	---	---	---
171,117	1,163.28	5.50	2.47	29.19	31/05/2008	---	H.I.D.B.	1	6	---	---	---
63,787	1,129.20	5.45	2.47	30.88	31/08/2008	---	H.I.D.B.	1	6	---	---	---
5,358	1,108.96	5.45	2.47	27.83	31/10/2008	---	H.I.D.B.	1	5	---	---	---
1,045	1,129.74	5.50	2.47	28.35	31/10/2008	---	H.I.D.B.	1	5	---	---	---
76,077	1,132.45	5.75	2.47	28.42	31/10/2008	---	H.I.D.B.	1	5	---	---	---

Bonds Notes

The annual renewal of H.I.D.B. Bonds is free of taxes (net rate).  
For Bonds issue until 31/07/2013 the accrued interest is capitalized.

Athex & ATHEXClear Members List

Member Name			Stock Market			Derivatives Market			ATHEXClear Member		
Address	Phone	Fax	Market Member	Remote Member	Market Maker	Proprietary	Market Maker	Agent	General Clearing	Direct Clearing	Non Clearing
A. SARRIS SECURITIES S.A.			a								
6, DRAGATSANIOU STR. ATHINA	(210)-3367700	(210)-3312324									
AGRICULTURAL BANK OF GREECE S.A.							a			a	
, 23 PANEPISTIMIOU ATHINA	(210)-3298400	(210)-3298322									
ALPHA FINANCE INVESTMENT SERVICES S.A.			a		a		a			a	
5, MERLIN STR. ATHINA	(210)-3677400	(210)-3311193									
ALPHA BANK A.E.						a			a		
40, STADIOU STR ATHINA	(210)-3265546	(210)-3265811									
	(210)-3260000	(210)-3264116									
ARGUS STOCKBROKERS LTD			a	a							
12-14, KENNEDY AVE, S. 303 NICOSIA	(+35722)-22717000	(+35722)-22717070									
ATHENAIKI BROKERAGE FIRM S.A.			a								
33, STADIOU STR. ATHINA	(210)-3254764	(210)-3254767									
ATLANTIC SECURITIES LIMITED			a	a							
37, PRODROMOU STR. NICOSIA	(+35722)-445400	(+35722)-661914									
ATLAS SECURITIES S.A			a			a					a
14 - 16, VERVENON STR.& 125 MICHALAKOPOULOU STR. ATHINA	(210)-3363300	(210)-3238925									
ATTICA BANK S.A.									a		
54, AKADIMIAS STR. ATHINA	(210)-3390757	(210)-3646090									
23, OMIROU STR. ATHINA	(210)-3669000	(210)-3669410									
AXIA VENTURES GROUP LTD			a	a							
10, G. KRANIDIOTI NICOSIA	+357 22 742000	+357 22 742001									
AXON SECURITIES S.A.			a			a					a
48, STADIOU ATHINA	(210)-3363800	(210)-3243903									
BANK OF CYPRUS PUBLIC COMPANY LTD									a		
, 51,STASINOU (AG. PARASKEVI, STROVOLOS) NICOSIA	(0035722)-121883	(0035722)-336258									
170, ALEXANDRAS AVE ATHINA	(210)-6477708	(210)-6477709									
BETA SECURITIES S.A.			a		a	a	a			a	
, BRAILA & 29 ALEXANDRAS AVE ATHINA	(210)-6478900	(210)-6410139									
BNP PARIBAS SECURITIES SERVICES									a		
94, VAS. SOFIAS AVE ATHINA	(210)-7468500	(210)-7468579									
CAPITAL SECURITIES S.A.			a			a					a
58, MITROPOLEOS STR. ATHINA	(210)-3369700	(210)-3369820									
CFS SECURITIES & INVESTMENT SERVICES S.A.			a		a			a		a	
3, STADIOU STR. ATHINA	(210)-3360800	(210)-3311854									
CITIGROUP GLOBAL MARKET LTD			a	a							
, CITIGROUP CENTRE, CANADA SQUARE, CANARY WHART LONDON	002079864000	002079862266									
CO-OPERATIVE CENTRAL BANK LTD			a	a							
8, GRIGORI AFXENTIOU STR. NICOSIA	(+35722)-743300	(+35722)-672083									
CREDIT AGRICOLE CHEUVREUX S.A.			a	a							
, 9 QUAI PAUL DOUMER PARIS	33 (0) 1 41 89 70 00										
CREDIT SUISSE SECURITIES (EUROPE) LIMITED			a	a							
, ONE CABOT SQUARE LONDON	+44 20 7888 8888	+44 20 7888 1600									
CYCLOS SECURITIES S.A.			a		a	a				a	
39, PANEPISTIMIOU STR. ATHINA	(210)-3364300	(210)-3239122									
D.A. TSEKOURAS SEC. S.A.			a								
3, PESMAZOGLOU STR. ATHINA	(210)-3214406	(210)-3211997									
DEUTSCHE BANK S.A.			a	a							
70, THEODOR-HEUSS-ALLEE FRANKFURT	0049 69 910 00	0049 69 910 34 225									
DYNAMIC SECURITIES			a					a		a	
6 - 10, CHAR. TRIKOUPÍ STR. ATHINA	(210)-3677700	(210)-3677777									
EL. PETROPOULAKIS SECURITIES S.A.			a					a			a
9, ARISTIDOU STR. ATHINA	(210)-3213928	(210)-3216810									
EUROBANK EQUITIES S.A.			a		a		a			a	
10, FILELLINON STR. ATHINA	(210)-3720000	(210)-3720001									
EUROBANK ERGASIAS S.A.									a		
8, OTHONOS STR. ATHINA	(210)-3337000	(210)-3233866									
	(210)-3337969	(210)-3245916									
EUROCORP SECURITIES S.A.			a			a				a	
14, FILIKIS ETAIRIAS SQ. ATHINA	(210)-7263500	(210)-7263666									
EUOTRUST BROKERAGE S.A.			a								
13-15, SOPHOCLEOUS STR. ATHINA	(210)-3363100	(210)-3238334									



Athex & ATHEXClear Members List

Member Name			Stock Market			Derivatives Market			ATHEXClear Member		
Address	Phone	Fax	Market Member	Remote Member	Market Maker	Proprietary	Market Maker	Agent	General Clearing	Direct Clearing	Non Clearing
EUROXX SECURITIES S.A.			a			a				a	
7, PALAIOLOGOU STR. CHALANDRI	(210)-6879400	(210)-6879401									
G.A. PERVANAS SECURITIES & INVESTMENT SERVICES CO S.A.			a			a					a
7 - 9, SOPHOCLEOUS STR. ATHINA	(210)-3251875	(210)-3210291									
GENERAL BANK OF GREECE S.A.									a		
87-89, ERMOY ATHINA	(210)-6976072	(210)-6976079									
, 109-111, MESOGEION AVE. ATHINA	(210)-6975000	(210)-6975706									
GLOBAL CAPITAL SECURITIES AND FINANCIAL SERVICES LTD			a	a							
5, LEMESOU AVE. LEMESOS CYPRUS	(+35722)-710710	(+35722)-339332									
GUARDIAN TRUST SECURITIES S.A			a		a	a					a
15, FILELLINON STR. ATHINA	(210)-3220402	(210)-3220498									
HELLENIC AMERICAN SEC. S.A.			a			a					
6, EVRIPIDOU STR. ATHINA	(210)-3311100	(210)-3215968									
HELLENIC BANK (INVESTMENTS) LTD			a	a							
31, KYRIAKOY MATSI AVE. NICOSIA	(+35722)-500100	(+35722)-500110									
HSBC BANK PLC									a		
109-111, MESOGION AVE ATHINA	(210)-6961507	(210)-6929310									
INDEX SECURITIES S.A.			a								
6, DRAGATSANIOU STR. ATHINA	(210)-3213920	(210)-3213216									
INTERSEC S.A.						a				a	
80-88, SYGROU AVE ATHINA	(210)-9203000	(210)-9203052									
INVESTMENT BANK OF GREECE S.A.			a		a		a		a		
32, AIGEIALIAS MAROUSI	(210) 8173000	(210) 8173101									
24B, KIFISSIAS AVE MAROUSI	(210)-8171800	(210)-8171889									
J. CHR. MAVRIKIS SECURITIES S.A.			a								
5, SOPHOCLEOUS STR. ATHINA	(210)-3213949	(210)-3217767									
KAPPA SECURITIES S.A.			a			a					a
15, VALAORITOU STR. ATHINA	(210)-3610371	(210)-3641002									
KYPROU SECURITIES S.A.			a		a	a					a
26, HALKIDONOS & FIDIPPIDOY STR. ATHINA	(210)-8701000	(210)-8701049									
LAIKI FINANCIAL SERVICES LTD			a	a							
26, CLR HOUSE, VIRONOS AVE. NICOSIA	(+35722)-898600	(+35722)-680953									
LEON DEPOLAS SECURITIES S.A.			a					a			a
1, CHR. LADA STR. ATHINA	(210)-3213286	(210)-3211618									
MAGNA TRUST SECURITIES S.A			a					a			a
9, FIDIOU STR. ATHINA	(210)-3327503	(210)-3327599									
MEGA EQUITY SECURITIES & FINANCIAL SERVICES LTD			a	a							
42-44, GRIBA DIGENI AV. NICOSIA	(+35722)-711711	(+35722)-711811									
MERIT SECURITIES S.A			a		a	a				a	
38, VAS. KONSTANTINOY STR. ATHINA	(210)-3671800	(210)-3671830									
MERRILL LYNCH			a	a							
2, KING EDWARD STREET LONDON	(+4420)-79952000	(+4420)-79954525									
METOCHIKI SECURITIES S.A.			a								
3, G. GENNADIOY STR. ATHINA	(210)-3306700	(210)-3306709									
MIDAS BROKERAGE S.A.			a								
5, SOPHOCLEOUS STR. ATHINA	(210)-3253203	(210)-3253205									
N. CHRYSOCHOIDIS STOCK BROKERAGE I.S.S.A.			a					a		a	
7 - 9, SOPHOCLEOUS STR. ATHINA	(210)-3213913	(210)-3216115									
N. SARROS SECURITIES S.A.						a					
7-9, SOPHOCLEOUS STR. ATHINA	(210)-3705600	(210)-3219992									
NATIONAL BANK OF GREECE / FORMER PROBANK			a								
10, AMERIKIS STR. ATHINA	(210)-3392631	(210)-3392646									
NATIONAL BANK OF GREECE S.A.							a		a		
86, AILOU STR. ATHINA	(210)-3341000	(210)-3228187									
68, AKADIMIAS STR. ATHINA	(210)-3328817	(210)-3328678									
NBG SECURITIES S.A.			a		a		a				a
68, AKADIMIAS STR. ATHINA	(210)-3328500	(210)-3328565									
NEW PROTON BANK S.A.			a			a				a	
20, ESLIN & AMALIADOS ATHINA	210 6970000	210 6970111									
NUNTIOUS SECURITIES S.A			a					a			a
6, DRAGATSANIOU STR. ATHINA	(210)-3350599	(210)-3254846									
OLYMPIA SECURITIES S.A			a								
46B, A. METAXA STR. GLYFADA	(210)-3702500	(210)-3702520									

## Athex &amp; ATHEXClear Members List

Member Name			Stock Market			Derivatives Market			ATHEXClear Member		
Address	Phone	Fax	Market Member	Remote Member	Market Maker	Proprietary	Market Maker	Agent	General Clearing	Direct Clearing	Non Clearing
ORANGE PARTNERS SECURITIES S.A			a								
5, TZORTZ STR. ATHINA	(210)-3300009	(210)-3305240									
PANTELAKIS SEC. S.A.			a			a					a
109-111, MESOGION AVE. ATHINA	(210)-6965000	(210)-6929550									
PEGASUS BROKERAGE FIRM S.A			a			a					
17, VALAORITOU STR. ATHINA	(210)-3670700	(210)-3670760									
PIRAEUS BANK S.A.								a	a		
4, AMERIKIS STR. ATHINA	(210)-3335000	(210)-3335079									
4, AMERIKIS STR ATHINA	(210)-3335918	(210)-3254207									
PIRAEUS SECURITIES S.A.			a				a			a	
10, STADIOU STR. ATHINA	(210)-3354100	(210)-3233814									
PRELIUM SECURITIES & INVESTMENT SERVICES S.A.			a			a					a
, KIFISIAS AVE & 1 DAVAKI STR ATHINA	(210)-3677000	(210)-6920403									
PROCHOICE SECURITIES LTD			a	a							
57, SPYROU KYPRIANOY NICOSIA	+357-24-661192	+357-24-662464									
SHARELINK SECURITIES & FINANCIAL SERVICES LTD			a	a							
6, ELLINAS HOUSE, THEOTOKI STR. NICOSIA	(+35722)-554200	(+35722)-750852									
SOCIETE GENERALE S.A.			a	a		a					
17, COURS VALMY PUTEAUX - LA DEFENSE PARIS	(+33) 142134754	(+33) 142135697									
240-242, KIFISIAS AVE ATHINA	(210)-6790161	(210)-6728828									
SOLIDUS SECURITIES S.A			a			a				a	
64, LOUIZIS RIANKOUR STR. ATHINA	(210)-6925500	(210)-6985421									
SOTIRIADIS SECURITIES S.A.			a								
7, VALAORITOU STR. ATHINA	(210)-3636943	(210)-3601943									
ST. EM. LAVRENTAKIS SECURITIES S.A.			a			a					a
7 - 9, SOPHOCLEOUS STR. ATHINA	(210)-3213336	(210)-3246572									
THE CYPRUS INVESTMENT AND SECURITIES CORPORATION LIMITED (CISCO)			a	a							
4, EVROU STR. (EUROLIFE HOUSE) NICOSIA	(+35722)-881800	(+35722)-881801									
UBS LIMITED			a	a							
1, FINSBURY AVENUE LONDON	(+4420)-79013333	(+4420)-79012345									
Z.G. PORTALAKIS INVESTMENT SERVICES S.A.			a								
8, PESMAZOGLOU STR. ATHINA	(210)-3214830	(210)-3212024									
KARAMANOF SECURITIES & INV. SERVICES S.A.			a					a		a	
2, SQ. ST THEODORON ATHINA	(210)-3212947	(210)-3217088									

## List of Stocks under Market Making operations

Securities Market Maker	Stock Category	
	Start Market Making	End Market Making
<b>BANK OF CYPRUS (CR)</b>	<b>Under Suspension</b>	
EUROBANK EQUITIES S.A.	23/10/2012	22/10/2013
INVESTMENT BANK OF GREECE S.A.	02/01/2013	01/01/2014
<b>COCA - COLA HBC (CR)</b>	<b>Under Suspension</b>	
EUROBANK EQUITIES S.A.	23/10/2012	22/10/2013
INVESTMENT BANK OF GREECE S.A.	08/01/2013	07/01/2014
<b>CYPRUS POPULAR BANK (CR)</b>	<b>Under Suspension</b>	
PIRAEUS SECURITIES S.A.	02/02/2013	01/02/2014
<b>ALPHA BANK (CR)</b>	<b>Main Market</b>	
EUROBANK EQUITIES S.A.	24/10/2012	23/10/2013
INVESTMENT BANK OF GREECE S.A.	08/01/2013	07/01/2014
NBG SECURITIES S.A.	15/01/2013	14/01/2014
PIRAEUS SECURITIES S.A.	28/05/2013	27/05/2014
<b>ALUMIL (CR)</b>	<b>Main Market</b>	
BETA SECURITIES S.A.	18/07/2013	17/07/2014
<b>CC HBC AG (CR)</b>	<b>Main Market</b>	
NBG SECURITIES S.A.	29/04/2013	28/04/2014
<b>ELLAKTOR (CR)</b>	<b>Main Market</b>	
EUROBANK EQUITIES S.A.	01/06/2013	31/05/2014
INVESTMENT BANK OF GREECE S.A.	02/01/2013	01/01/2014
NBG SECURITIES S.A.	25/06/2013	24/06/2014
<b>EUROBANK ERGASIAS (CR)</b>	<b>Main Market</b>	
ALPHA FINANCE INVESTMENT SERVICES S.A.	08/01/2013	07/01/2014
EUROBANK EQUITIES S.A.	01/06/2013	31/05/2014
INVESTMENT BANK OF GREECE S.A.	08/01/2013	07/01/2014
<b>GEK TERNA (CR)</b>	<b>Main Market</b>	
INVESTMENT BANK OF GREECE S.A.	02/01/2013	01/01/2014
<b>GR. SARANTIS SA (CR)</b>	<b>Main Market</b>	
BETA SECURITIES S.A.	14/05/2013	13/05/2014
<b>HELLENIC EXCHANGES (CR)</b>	<b>Main Market</b>	
EUROBANK EQUITIES S.A.	01/06/2013	31/05/2014
INVESTMENT BANK OF GREECE S.A.	02/01/2013	01/01/2014
NBG SECURITIES S.A.	25/06/2013	24/06/2014
<b>INTRACOM CONSTR. (CR)</b>	<b>Main Market</b>	
MERIT SECURITIES S.A.	27/12/2012	26/12/2013
<b>INTRALOT (CR)</b>	<b>Main Market</b>	
EUROBANK EQUITIES S.A.	01/06/2013	31/05/2014
INVESTMENT BANK OF GREECE S.A.	02/01/2013	01/01/2014
<b>MARFIN INVESTMENT GROUP (CR)</b>	<b>Main Market</b>	
PIRAEUS SECURITIES S.A.	02/02/2013	01/02/2014
<b>MLS MULTIMEDIA SA (CR)</b>	<b>Main Market</b>	
BETA SECURITIES S.A.	18/07/2013	17/07/2014
<b>MOTOR OIL (CR)</b>	<b>Main Market</b>	
EUROBANK EQUITIES S.A.	23/10/2012	22/10/2013
<b>MYTILINEOS HOLDINGS (CR)</b>	<b>Main Market</b>	
INVESTMENT BANK OF GREECE S.A.	02/01/2013	01/01/2014
NBG SECURITIES S.A.	25/06/2013	24/06/2014
<b>NATIONAL BANK (CR)</b>	<b>Main Market</b>	
ALPHA FINANCE INVESTMENT SERVICES S.A.	08/01/2013	07/01/2014
EUROBANK EQUITIES S.A.	24/10/2012	23/10/2013
INVESTMENT BANK OF GREECE S.A.	08/01/2013	07/01/2014
NBG SECURITIES S.A.	28/02/2013	27/02/2014
<b>OPAP (CR)</b>	<b>Main Market</b>	
ALPHA FINANCE INVESTMENT SERVICES S.A.	08/01/2013	07/01/2014
EUROBANK EQUITIES S.A.	24/10/2012	23/10/2013
INVESTMENT BANK OF GREECE S.A.	08/01/2013	07/01/2014
NBG SECURITIES S.A.	15/01/2013	14/01/2014
<b>OTE (CR)</b>	<b>Main Market</b>	
ALPHA FINANCE INVESTMENT SERVICES S.A.	08/01/2013	07/01/2014
EUROBANK EQUITIES S.A.	24/10/2012	23/10/2013
INVESTMENT BANK OF GREECE S.A.	08/01/2013	07/01/2014
NBG SECURITIES S.A.	01/12/2012	30/11/2013
<b>PETROPOULOS PETROS (CR)</b>	<b>Main Market</b>	
BETA SECURITIES S.A.	28/05/2013	27/05/2014
<b>PIRAEUS BANK (CR)</b>	<b>Main Market</b>	
EUROBANK EQUITIES S.A.	23/10/2012	22/10/2013
INVESTMENT BANK OF GREECE S.A.	08/01/2013	07/01/2014
NBG SECURITIES S.A.	02/06/2013	01/06/2014
PIRAEUS SECURITIES S.A.	16/02/2013	15/02/2014

## List of Stocks under Market Making operations

Securities	Stock Category	
	Start Market Making	End Market Making
Market Maker		
<b>PPC (CR)</b>	<b>Main Market</b>	
ALPHA FINANCE INVESTMENT SERVICES S.A.	08/01/2013	07/01/2014
EUROBANK EQUITIES S.A.	23/10/2012	22/10/2013
INVESTMENT BANK OF GREECE S.A.	08/01/2013	07/01/2014
NBG SECURITIES S.A.	26/03/2013	25/03/2014
<b>S.KANAKIS SA (CR)</b>	<b>Main Market</b>	
BETA SECURITIES S.A.	01/10/2012	30/09/2013
<b>TITAN CEMENT (CR)</b>	<b>Main Market</b>	
EUROBANK EQUITIES S.A.	23/10/2012	22/10/2013
<b>VIOHALCO (CB)</b>	<b>Main Market</b>	
ALPHA FINANCE INVESTMENT SERVICES S.A.	11/02/2013	10/03/2014
EUROBANK EQUITIES S.A.	20/01/2013	19/01/2014
MERIT SECURITIES S.A	13/12/2012	12/12/2013

Underlying Asset				Derivatives Market																		
Price max	Price min	Closing price	change	Delivery Month	Open price	Price max	Price min	Last price	Closing price	Last Bid	Last Ask	Settlement price	change	Life high	Life low	Trades	Volume	change	Value	change	Open Interest	change
FTSE/Athex Large Cap				(Trade Unit: 1 Index Point x 5€, Cash Settlement)																		
348.00	341.44	343.16	-0.24%	September 2013	347.00	350.75	342.75	345.00	343.50	88@344.00	17@345.25	343.50	-0.43%	350.75	271.00	578	32,316	189.00%	55,945,895.00	191.83%	29,192	-34.64%
				October 2013	350.00	353.25	345.25	347.75	346.00	22@346.50	2@347.50	346.00	-0.22%	353.25	292.25	480	29,318	173.72%	51,132,093.75	176.70%	31,649	112.85%
				November 2013	352.25	353.25	352.25	352.50	348.50	5@345.00	1@354.00	348.50	0.36%	353.25	319.00	3	31	-65.56%	54,673.75	-64.95%	272	3.82%
				December 2013	353.00	355.25	347.25	351.25	350.50	4@348.00	16@351.25	350.50	0.50%	355.25	276.75	58	2,577	104.52%	4,541,356.25	108.56%	3,381	89.94%
				March 2014	---	---	---	---	---	---	---	---	---	---	---	---	---	---	---	---	---	---
				June 2014	---	---	---	---	---	---	---	---	---	---	---	---	---	---	---	---	---	---

Underlying Asset				Derivatives Market																		
Price max	Price min	Closing price	change	Delivery Month	Open price	Price max	Price min	Last price	Closing price	Last Bid	Last Ask	Settlement price	change	Life high	Life low	Trades	Volume	change	Value	change	Open Interest	change
ALPHA BANK (CR)				(Contract Size: 100 Securities, Physical Delivery)																		
0.594	0.575	0.579	-0.86%	September 2013	0.586	0.592	0.573	0.579	0.579	15@0.574	2@0.579	0.579	-0.17%	1.46	0.371	127	4,233	46.93%	246,675.30	48.93%	14,329	-12.87%
				December 2013	0.583	0.620	0.579	0.580	0.577	50@0.580	50@0.583	0.577	-0.86%	0.620	0.437	141	4,706	207.38%	276,790.00	215.19%	9,671	79.36%
				March 2014	0.591	0.591	0.591	0.591	0.574	---	---	0.574	---	0.591	0.591	1	100	---	5,910.00	---	100	---
				June 2014	---	---	---	---	---	---	---	---	---	---	---	---	---	---	---	---	---	---
CC HBC AG (CR)				(Contract Size: 100 Securities, Physical Delivery)																		
23.80	23.30	23.40	-1.22%	September 2013	23.62	23.62	23.23	23.41	23.23	2@23.18	3@23.48	23.23	-1.36%	23.67	16.93	29	124	933.33%	290,674.00	941.25%	740	-8.75%
				December 2013	23.44	23.61	23.28	23.46	23.27	1@23.16	3@23.53	23.27	-1.23%	23.80	17.90	24	109	419.05%	255,974.00	418.63%	185	39.10%
				March 2014	---	---	---	---	---	---	---	---	---	---	---	---	---	---	---	---	---	---
				June 2014	---	---	---	---	---	---	---	---	---	---	---	---	---	---	---	---	---	---
CORINTH PIPEWORKS SA (CR)				(Contract Size: 100 Securities, Physical Delivery)																		
2.08	2.02	2.04	0.00%	September 2013	2.07	2.07	2.04	2.07	2.03	5@2.01	10@2.07	2.03	0.00%	2.48	1.94	4	35	52.17%	7,200.00	57.38%	447	-2.19%
				December 2013	2.08	2.08	2.08	2.08	2.06	5@2.05	10@2.09	2.06	0.00%	2.16	1.99	1	10	-58.33%	2,080.00	-57.03%	270	3.85%
				March 2014	---	---	---	---	---	---	---	---	---	---	---	---	---	---	---	---	---	---
				June 2014	---	---	---	---	---	---	---	---	---	---	---	---	---	---	---	---	---	---
ELLAKTOR (CR)				(Contract Size: 100 Securities, Physical Delivery)																		
2.34	2.26	2.30	0.00%	September 2013	2.30	2.33	2.27	2.29	2.25	6@2.25	15@2.31	2.25	0.00%	2.45	1.73	32	915	70.07%	209,183.00	73.90%	2,546	-15.42%
				December 2013	2.32	2.35	2.27	2.27	2.27	6@2.27	7@2.32	2.27	0.00%	2.35	2.11	39	928	239.93%	213,935.00	247.62%	2,405	58.96%
				March 2014	---	---	---	---	2.22	---	---	2.22	0.00%	2.23	2.22	---	---	-100.00%	---	-100.00%	170	0.00%
				June 2014	---	---	---	---	---	---	---	---	---	---	---	---	---	---	---	---	---	---
EUROBANK ERGASIAS (CR)				(Contract Size: 10 Securities, Physical Delivery)																		
0.634	0.617	0.626	1.13%	September 2013	0.629	0.630	0.615	0.623	0.636	50@0.622	70@0.625	0.636	1.27%	5.00	0.537	31	3,951	2354.04%	24,630.87	2379.45%	13,844	-8.19%
				December 2013	0.639	0.639	0.628	0.628	0.645	1@0.612	50@0.674	0.645	1.10%	0.700	0.600	15	260	2500.00%	16,474.00	2557.10%	540	92.86%
				March 2014	---	---	---	---	0.634	---	---	0.634	1.12%	0.673	0.619	---	---	---	---	---	---	---
				June 2014	---	---	---	---	---	---	---	---	---	---	---	---	---	---	---	---	---	---
EUROBANK PROPERTIES REIC (CR)				(Contract Size: 100 Securities, Physical Delivery)																		
7.15	6.92	7.01	-1.82%	September 2013	7.11	7.13	7.00	7.00	7.00	5@6.93	1@7.10	7.00	-1.41%	7.67	6.00	25	102	240.00%	72,167.00	243.44%	186	-16.96%
				December 2013	7.12	7.15	7.01	7.01	7.01	5@6.92	1@7.09	7.01	-2.64%	7.15	6.83	21	89	1383.33%	63,138.00	1403.64%	108	151.16%
				March 2014	---	---	---	---	---	---	---	---	---	---	---	---	---	---	---	---	---	---
				June 2014	---	---	---	---	---	---	---	---	---	---	---	---	---	---	---	---	---	---
EYDAP S.A. (CR)				(Contract Size: 100 Securities, Physical Delivery)																		
8.00	7.75	7.98	1.01%	September 2013	7.95	7.98	7.76	7.98	7.96	2@7.92	6@8.00	7.96	1.02%	7.98	5.58	25	139	-47.15%	109,981.00	-46.27%	276	-33.01%
				December 2013	7.93	8.00	7.76	8.00	7.97	2@7.91	7@8.00	7.97	1.01%	8.00	6.31	51	201	-23.57%	159,041.00	-22.95%	604	2.55%
				March 2014	---	---	---	---	---	---	---	---	---	---	---	---	---	---	---	---	---	---
				June 2014	---	---	---	---	---	---	---	---	---	---	---	---	---	---	---	---	---	---
FOLLI FOLLIE (CR)				(Contract Size: 100 Securities, Physical Delivery)																		
18.75	18.16	18.60	0.98%	September 2013	18.45	18.53	18.32	18.50	18.65	1@18.37	1@19.61	18.65	1.08%	18.86	14.68	5	11	-26.67%	20,248.00	-26.29%	249	-0.40%
				December 2013	18.51	18.65	18.28	18.65	18.64	1@17.36	1@18.60	18.64	0.98%	18.65	17.24	9	37	---	68,224.00	---	12	100.00%
				March 2014	---	---	---	---	---	---	---	---	---	---	---	---	---	---	---	---	---	---
				June 2014	---	---	---	---	---	---	---	---	---	---	---	---	---	---	---	---	---	---

Underlying Asset				Derivatives Market																		
Price max	Price min	Closing price	change	Delivery Month	Open price	Price max	Price min	Last price	Closing price	Last Bid	Last Ask	Settlement price	change	Life high	Life low	Trades	Volume	change	Value	change	Open Interest	change
FRIGOGLASS SA (CR)				(Contract Size: 100 Securities, Physical Delivery)																		
5.14	5.03	5.09	0.20%	September 2013	5.15	5.15	5.05	5.09	5.06	1@5.00	20@5.10	5.06	0.20%	5.71	4.35	19	126	113.56%	63,846.00	113.76%	403	-2.42%
				December 2013	5.10	5.15	5.04	5.06	5.09	1@5.06	40@5.11	5.09	0.20%	5.18	5.03	22	198	219.35%	100,667.00	219.95%	282	10.16%
				March 2014	---	---	---	---	---	---	---	---	---	---	---	---	---	---	---	---	---	---
				June 2014	---	---	---	---	---	---	---	---	---	---	---	---	---	---	---	---	---	---
GEK TERNA (CR)				(Contract Size: 100 Securities, Physical Delivery)																		
2.31	2.24	2.25	0.00%	September 2013	2.27	2.31	2.24	2.25	2.26	5@2.24	7@2.26	2.26	0.89%	2.62	1.45	113	2,732	-46.09%	622,304.00	-43.49%	5,877	-9.35%
				December 2013	2.30	2.33	2.26	2.27	2.28	5@2.26	3@2.27	2.28	1.33%	2.51	1.57	123	2,902	-40.80%	666,502.00	-37.97%	12,869	28.32%
				March 2014	---	---	---	---	2.28	---	---	2.28	1.33%	2.50	2.26	---	---	---	---	---	15,895	0.00%
				June 2014	---	---	---	---	---	---	---	---	---	---	---	---	---	---	---	---	---	---
HELLENIC EXCHANGES (CR)				(Contract Size: 100 Securities, Physical Delivery)																		
6.33	6.16	6.23	1.14%	September 2013	6.20	6.31	6.15	6.23	6.18	4@6.15	1@6.24	6.18	1.15%	6.46	3.82	47	347	186.78%	216,894.00	192.91%	1,816	-10.10%
				December 2013	6.21	6.34	6.19	6.20	6.22	3@6.20	1@6.29	6.22	1.14%	6.85	4.01	44	264	438.78%	165,977.00	451.90%	2,469	9.25%
				March 2014	---	---	---	---	---	---	---	---	---	---	---	---	---	---	---	---	---	---
				June 2014	---	---	---	---	---	---	---	---	---	---	---	---	---	---	---	---	---	---
HELLENIC PETROLEUM (CR)				(Contract Size: 100 Securities, Physical Delivery)																		
7.78	7.57	7.60	-0.91%	September 2013	7.61	7.74	7.56	7.56	7.60	3@7.56	1@7.68	7.60	-0.13%	9.01	6.00	20	180	119.51%	136,976.00	120.64%	2,075	-6.11%
				December 2013	7.67	7.78	7.60	7.60	7.64	3@7.60	1@7.72	7.64	-0.91%	7.78	6.61	13	165	179.66%	126,180.00	181.84%	292	111.59%
				March 2014	---	---	---	---	---	---	---	---	---	---	---	---	---	---	---	---	---	---
				June 2014	---	---	---	---	---	---	---	---	---	---	---	---	---	---	---	---	---	---
INTRALOT (CR)				(Contract Size: 100 Securities, Physical Delivery)																		
1.74	1.66	1.72	2.99%	September 2013	1.66	1.73	1.66	1.70	1.71	1@1.71	2@1.73	1.71	3.01%	2.30	1.30	91	730	-33.82%	123,429.00	-32.05%	2,404	-2.71%
				December 2013	1.68	1.74	1.67	1.71	1.72	1@1.72	3@1.74	1.72	1.78%	1.74	1.57	39	288	-66.86%	48,930.00	-65.89%	1,556	18.06%
				March 2014	---	---	---	---	---	---	---	---	---	---	---	---	---	---	---	---	---	---
				June 2014	---	---	---	---	---	---	---	---	---	---	---	---	---	---	---	---	---	---
JUMBO SA (CR)				(Contract Size: 100 Securities, Physical Delivery)																		
8.98	8.74	8.85	-0.45%	September 2013	8.93	8.93	8.78	8.87	8.69	5@8.82	5@9.92	8.69	0.00%	9.03	7.19	9	87	1640.00%	77,097.00	1666.25%	77	-41.67%
				December 2013	8.91	8.91	8.78	8.88	8.67	5@8.78	5@9.88	8.67	-0.46%	8.91	8.06	7	57	470.00%	50,348.00	474.75%	128	80.28%
				March 2014	---	---	---	---	---	---	---	---	---	---	---	---	---	---	---	---	---	---
				June 2014	---	---	---	---	---	---	---	---	---	---	---	---	---	---	---	---	---	---
MARFIN INVESTMENT GROUP (CR)				(Contract Size: 100 Securities, Physical Delivery)																		
0.377	0.355	0.360	-2.44%	September 2013	0.371	0.378	0.351	0.355	0.353	5@0.355	15@0.357	0.353	-1.40%	0.420	0.252	70	4,570	237.02%	165,736.60	240.52%	10,117	-29.36%
				December 2013	0.382	0.382	0.360	0.360	0.359	8@0.360	30@0.366	0.359	-2.45%	0.382	0.317	76	4,436	273.09%	163,073.40	276.65%	8,949	93.41%
				March 2014	---	---	---	---	---	---	---	---	---	---	---	---	---	---	---	---	---	---
				June 2014	---	---	---	---	---	---	---	---	---	---	---	---	---	---	---	---	---	---
METKA (CR)				(Contract Size: 100 Securities, Physical Delivery)																		
11.85	11.53	11.85	1.28%	September 2013	11.71	11.85	11.46	11.85	11.72	1@11.65	1@11.97	11.72	1.56%	12.18	9.43	27	123	251.43%	142,699.00	257.45%	388	-17.45%
				December 2013	11.57	11.84	11.56	11.81	11.77	1@11.75	1@12.05	11.77	1.29%	11.84	10.52	8	74	208.33%	85,816.00	214.71%	128	96.92%
				March 2014	---	---	---	---	---	---	---	---	---	---	---	---	---	---	---	---	---	---
				June 2014	---	---	---	---	---	---	---	---	---	---	---	---	---	---	---	---	---	---

Underlying Asset				Derivatives Market																		
Price max	Price min	Closing price	change	Delivery Month	Open price	Price max	Price min	Last price	Closing price	Last Bid	Last Ask	Settlement price	change	Life high	Life low	Trades	Volume	change	Value	change	Open Interest	change
MOTOR OIL (CR)				(Contract Size: 100 Securities, Physical Delivery)																		
7.67	7.56	7.64	-0.13%	September 2013	7.65	7.66	7.57	7.60	7.55	5@7.48	2@7.61	7.55	-0.40%	8.16	6.66	26	141	151.79%	107,090.00	153.63%	790	-14.41%
				December 2013	7.65	7.71	7.60	7.61	7.59	5@7.51	2@7.67	7.59	-0.13%	7.72	7.40	16	130	584.21%	99,161.00	591.98%	193	153.95%
				March 2014	---	---	---	---	---	---	---	---	---	---	---	---	---	---	---	---	---	---
				June 2014	---	---	---	---	---	---	---	---	---	---	---	---	---	---	---	---	---	---
MYTILINEOS HOLDINGS (CR)				(Contract Size: 100 Securities, Physical Delivery)																		
4.94	4.79	4.91	2.29%	September 2013	4.82	4.93	4.82	4.87	4.86	25@4.85	19@4.88	4.86	1.67%	5.50	3.50	131	1,775	188.62%	863,926.00	195.43%	3,017	-33.30%
				December 2013	4.89	4.96	4.85	4.89	4.89	25@4.87	10@4.90	4.89	1.66%	5.28	3.70	147	2,045	383.45%	1,002,062.00	396.43%	3,346	131.56%
				March 2014	---	---	---	---	5.04	---	---	5.04	1.61%	4.99	4.43	---	---	---	---	---	1,400	0.00%
				June 2014	---	---	---	---	---	---	---	---	---	---	---	---	---	---	---	---	---	---
NATIONAL BANK (CR)				(Contract Size: 100 Securities, Physical Delivery)																		
3.22	3.10	3.11	-0.95%	September 2013	3.17	3.23	3.11	3.11	3.12	28@3.11	4@3.13	3.12	-0.32%	3.36	0.344	98	2,101	114.17%	671,139.00	120.45%	2,597	-38.68%
				December 2013	3.17	3.22	3.10	3.12	3.13	5@3.11	4@3.12	3.13	-0.63%	3.34	2.31	117	2,620	345.58%	836,069.00	354.88%	4,333	81.37%
				March 2014	---	---	---	---	---	---	---	---	---	---	---	---	---	---	---	---	---	---
				June 2014	---	---	---	---	---	---	---	---	---	---	---	---	---	---	---	---	---	---
OPAP (CR)				(Contract Size: 100 Securities, Physical Delivery)																		
7.98	7.69	7.98	2.18%	September 2013	7.84	7.98	7.77	7.97	7.84	36@7.97	10@7.99	7.84	1.29%	8.07	5.82	73	625	25.25%	492,567.00	26.49%	3,326	-11.26%
				December 2013	7.86	8.01	7.80	7.98	7.87	36@7.98	5@8.00	7.87	1.55%	8.06	6.31	88	608	25.88%	480,633.00	27.16%	1,541	42.55%
				March 2014	---	---	---	---	---	---	---	---	---	---	---	---	---	---	---	---	---	---
				June 2014	---	---	---	---	---	---	---	---	---	---	---	---	---	---	---	---	---	---
OTE (CR)				(Contract Size: 100 Securities, Physical Delivery)																		
7.72	7.52	7.55	-0.66%	September 2013	7.68	7.71	7.53	7.54	7.56	31@7.53	90@7.58	7.56	-0.66%	7.81	4.35	101	981	10.60%	750,059.00	10.56%	5,313	-12.92%
				December 2013	7.70	7.75	7.56	7.58	7.60	10@7.57	50@7.61	7.60	-0.52%	7.83	4.40	130	1,225	64.43%	940,122.00	64.48%	3,152	49.45%
				March 2014	---	---	---	---	7.59	---	---	7.59	-0.52%	7.65	6.40	---	---	---	---	---	---	---
				June 2014	---	---	---	---	---	---	---	---	---	---	---	---	---	---	---	---	---	---
P.P.A. S.A. (CR)				(Contract Size: 100 Securities, Physical Delivery)																		
17.74	17.22	17.56	1.97%	September 2013	17.30	17.74	17.30	17.45	17.46	3@17.14	5@17.69	17.46	1.39%	18.68	15.52	34	146	175.47%	256,060.00	181.08%	225	-27.42%
				December 2013	17.50	17.90	17.49	17.60	17.61	3@17.40	5@17.95	17.61	1.27%	17.90	16.84	41	160	175.86%	283,701.00	183.80%	483	48.62%
				March 2014	---	---	---	---	---	---	---	---	---	---	---	---	---	---	---	---	---	---
				June 2014	---	---	---	---	---	---	---	---	---	---	---	---	---	---	---	---	---	---
PIRAEUS BANK (CR)				(Contract Size: 100 Securities, Physical Delivery)																		
1.38	1.32	1.32	-0.75%	September 2013	1.34	1.38	1.31	1.32	1.33	93@1.32	80@1.33	1.33	-0.75%	1.41	0.169	99	2,778	95.77%	373,007.00	100.64%	7,632	-22.40%
				December 2013	1.34	1.39	1.32	1.34	1.34	180@1.32	515@1.34	1.34	0.00%	1.41	0.231	114	4,092	69.02%	553,325.00	73.60%	9,974	62.81%
				March 2014	1.37	1.37	1.37	1.37	1.34	---	---	1.34	-0.74%	1.37	0.924	2	250	---	34,250.00	---	250	---
				June 2014	---	---	---	---	---	---	---	---	---	---	---	---	---	---	---	---	---	---
PPC (CR)				(Contract Size: 100 Securities, Physical Delivery)																		
8.01	7.84	7.89	-1.00%	September 2013	7.99	8.00	7.84	7.89	7.87	15@7.87	14@7.89	7.87	-0.38%	8.47	4.58	92	1,047	68.60%	832,049.00	69.08%	3,424	-19.23%
				December 2013	8.01	8.05	7.88	7.92	7.91	15@7.89	14@7.93	7.91	-0.13%	8.56	5.08	117	1,087	60.80%	868,065.00	61.67%	2,204	61.11%
				March 2014	7.97	8.00	7.89	7.89	7.88	---	---	7.88	-0.25%	8.00	6.30	5	110	10.00%	87,355.00	9.92%	90	-25.00%
				June 2014	---	---	---	---	---	---	---	---	---	---	---	---	---	---	---	---	---	---



Underlying Asset				Derivatives Market																		
Price max	Price min	Closing price	change	Delivery Month	Open price	Price max	Price min	Last price	Closing price	Last Bid	Last Ask	Settlement price	change	Life high	Life low	Trades	Volume	change	Value	change	Open Interest	change
SIDENOR (CR)				(Contract Size: 100 Securities, Physical Delivery)																		
1.61	1.54	1.55	-1.27%	September 2013	1.58	1.60	1.54	1.54	1.54	20@1.53	9@1.57	1.54	0.65%	1.82	1.36	39	290	76.83%	45,537.00	78.69%	863	-24.69%
				December 2013	1.60	1.61	1.55	1.58	1.55	13@1.53	19@1.58	1.55	-1.27%	1.76	1.49	21	191	78.50%	30,212.00	76.48%	597	44.20%
				March 2014	---	---	---	---	---	---	---	---	---	---	---	---	---	---	---	---	---	---
				June 2014	---	---	---	---	---	---	---	---	---	---	---	---	---	---	---	---	---	---
TERNA ENERGY (CR)				(Contract Size: 103 Securities, Physical Delivery)																		
3.13	3.04	3.13	2.29%	September 2013	3.11	3.11	3.04	3.11	3.17	100@3.08	3@3.15	3.17	2.59%	3.25	2.43	26	737	181.30%	232,359.76	188.70%	586	-47.11%
				December 2013	3.07	3.15	3.07	3.10	3.20	11@3.10	2@3.13	3.20	2.24%	3.18	3.00	13	460	235.77%	141,370.00	242.00%	1,879	31.31%
				March 2014	---	---	---	---	---	---	---	---	---	---	---	---	---	---	---	---	---	---
				June 2014	---	---	---	---	---	---	---	---	---	---	---	---	---	---	---	---	---	---
TITAN CEMENT (CR)				(Contract Size: 100 Securities, Physical Delivery)																		
16.78	16.04	16.46	1.60%	September 2013	16.31	16.67	16.25	16.41	16.57	8@16.46	1@16.86	16.57	1.35%	16.79	12.22	11	26	30.00%	42,756.00	34.31%	174	-5.95%
				December 2013	16.35	16.70	16.35	16.45	16.63	8@16.28	1@16.68	16.63	1.59%	16.70	15.02	8	14	133.33%	23,135.00	142.25%	59	25.53%
				March 2014	---	---	---	---	---	---	---	---	---	---	---	---	---	---	---	---	---	---
				June 2014	---	---	---	---	---	---	---	---	---	---	---	---	---	---	---	---	---	---
VIOHALCO (CB)				(Contract Size: 100 Securities, Physical Delivery)																		
4.08	3.95	3.95	-0.50%	September 2013	4.07	4.07	3.97	3.97	3.84	2@3.92	5@4.00	3.84	-0.78%	5.19	3.85	20	91	-42.77%	36,643.00	-41.83%	602	-6.08%
				December 2013	4.03	4.09	3.98	3.98	3.87	2@3.98	5@4.06	3.87	-0.51%	4.53	3.89	28	102	-47.96%	41,219.00	-47.56%	391	24.13%
				March 2014	---	---	---	---	---	---	---	---	---	---	---	---	---	---	---	---	---	---
				June 2014	---	---	---	---	---	---	---	---	---	---	---	---	---	---	---	---	---	---

FTSE/Athex Large Cap

(Trade Unit: 1 Index Point x 5€ - Exercise Style: European, Cash Settlement)

Call Options																	Put Options																			
September 2013								October 2013								Other Months		September 2013								October 2013								Other Months		
Exerise Price	Open price	Price max	Price min	Last price	Closing price	Volume	Open Interest	Open price	Price max	Price min	Last price	Closing price	Volume	Open Interest	Volume	Open Interest	Open price	Price max	Price min	Last price	Closing price	Volume	Open Interest	Open price	Price max	Price min	Last price	Closing price	Volume	Open Interest	Volume	Open Interest	Exerise Price			
215	-	-	-	-	128.00	-	60	-	-	-	-	-	-	-			-	-	-	-	-	-	-	-	-	-	-	-	-	-	-	215				
230	-	-	-	-	113.00	-	3	-	-	-	-	-	-	-			-	-	-	-	-	-	-	-	-	-	-	-	-	-	-	230				
240	-	-	-	-	-	-	-	-	-	-	-	-	-	-			-	-	-	-	-	-	-	-	-	-	-	-	-	-	-	240				
255	-	-	-	-	-	-	-	-	-	-	-	-	-	-			-	-	-	-	-	-	-	-	-	-	-	-	-	-	-	255				
260	-	-	-	-	-	-	-	-	-	-	-	-	-	-			-	-	-	-	-	-	-	-	-	-	-	-	-	-	-	260				
265	-	-	-	-	-	-	-	-	-	-	-	-	-	-			-	-	-	-	-	-	-	-	-	-	-	-	-	-	-	265				
270	-	-	-	-	-	-	-	-	-	-	-	-	-	-			-	-	-	-	-	-	11	-	-	-	-	-	-	-	-	270				
275	-	-	-	-	-	-	-	-	-	-	-	-	-	-			-	-	-	-	-	-	1	-	-	-	-	-	-	-	-	275				
280	-	-	-	-	63.50	-	173	-	-	-	-	-	-	-			-	-	-	-	-	-	132	-	-	-	-	-	-	-	-	280				
285	-	-	-	-	58.50	-	20	-	-	-	-	-	-	-			-	-	-	-	-	-	56	-	-	-	-	0.79	-	1	-	285				
290	-	-	-	-	53.50	-	50	-	-	-	-	-	-	-			-	-	-	-	-	-	107	-	-	-	-	-	-	-	-	290				
295	-	-	-	-	48.50	-	1	-	-	-	-	-	-	-			-	-	-	-	-	-	-	-	-	-	-	1.60	-	6	-	295				
300	50.00	50.00	45.50	45.50	43.50	15	375	-	-	-	-	-	-	-			-	-	-	-	-	-	135	-	-	-	-	2.10	-	13	-	300				
305	-	-	-	-	-	-	-	-	-	-	-	43.75	-	15			-	-	-	-	-	-	685	-	-	-	-	2.80	-	8	-	305				
310	-	-	-	-	33.50	-	334	-	-	-	-	39.50	-	20			-	-	-	-	-	-	76	-	-	-	-	3.70	-	5	-	310				
315	-	-	-	-	28.50	-	634	39.75	39.75	39.75	39.75	35.75	20	467			-	-	-	-	-	-	162	-	-	-	-	4.70	-	57	-	315				
320	-	-	-	-	23.50	-	184	-	-	-	-	-	-	-			-	-	-	-	0.01	-	92	-	-	-	-	6.00	-	2	-	320				
325	-	-	-	-	18.50	-	60	-	-	-	-	-	-	-			-	-	-	-	0.06	-	181	-	-	-	-	7.50	-	22	-	325				
330	15.00	19.25	15.00	16.50	13.75	52	569	-	-	-	-	25.25	-	1			-	-	-	-	0.26	-	342	10.00	10.00	10.00	10.00	9.20	9	42	-	330				
335	14.75	14.75	14.75	14.75	9.40	20	709	-	-	-	-	22.00	-	62			-	-	-	-	0.85	-	484	11.00	11.00	11.00	11.00	11.25	1	146	-	335				
340	10.00	10.00	5.50	5.50	5.70	40	282	-	-	-	-	19.25	-	257			-	-	-	-	2.20	-	113	-	-	-	-	13.25	-	30	-	340				
345	-	-	-	-	3.00	-	70	-	-	-	-	16.75	-	190			-	-	-	-	-	-	-	16.25	16.50	16.25	16.50	15.75	75	175	-	345				
350	-	-	-	-	1.30	-	55	-	-	-	-	14.50	-	50			-	-	-	-	7.80	-	130	-	-	-	-	-	-	-	-	350				
355	-	-	-	-	0.49	-	31	-	-	-	-	-	-	-			-	-	-	-	-	-	-	-	-	-	-	-	-	-	-	355				
360	-	-	-	-	0.15	-	100	-	-	-	-	-	-	-			-	-	-	-	16.75	-	9	-	-	-	-	-	-	-	-	360				
365	-	-	-	-	-	-	-	-	-	-	-	8.90	-	1			-	-	-	-	21.50	-	130	-	-	-	-	-	-	-	-	365				
370	-	-	-	-	0.01	-	1	-	-	-	-	-	-	-			-	-	-	-	26.50	-	5	-	-	-	-	-	-	-	-	370				
375	-	-	-	-	-	-	100	-	-	-	-	-	-	-			-	-	-	-	-	-	-	-	-	-	-	-	-	-	-	375				
380	-	-	-	-	-	-	30	-	-	-	-	-	-	-			-	-	-	-	36.50	-	10	-	-	-	-	-	-	-	-	380				
385	-	-	-	-	-	-	-	-	-	-	-	-	-	-			-	-	-	-	41.50	-	5	-	-	-	-	-	-	-	-	385				
390	-	-	-	-	-	-	-	-	-	-	-	-	-	-			-	-	-	-	-	-	-	-	-	-	-	-	-	-	-	390				
395	-	-	-	-	-	-	-	-	-	-	-	-	-	-			-	-	-	-	51.50	-	5	-	-	-	-	-	-	-	-	395				
400	-	-	-	-	-	-	-	-	-	-	-	-	-	-			-	-	-	-	-	-	-	-	-	-	-	-	-	-	-	400				
405	-	-	-	-	-	-	-	-	-	-	-	-	-	-			-	-	-	-	-	-	-	-	-	-	-	-	-	-	-	405				
410	-	-	-	-	-	-	-	-	-	-	-	-	-	-			-	-	-	-	-	-	-	-	-	-	-	-	-	-	-	410				
415	-	-	-	-	-	-	-	-	-	-	-	-	-	-			-	-	-	-	-	-	-	-	-	-	-	-	-	-	-	415				

FTSE/Athex Large Cap

(Trade Unit: 1 Index Point x 5€ - Exercise Style: European, Cash Settlement)

Call Options																	Put Options																					
September 2013								October 2013								Other Months		September 2013								October 2013								Other Months				
Exerise Price	Open price	Price max	Price min	Last price	Closing price	Volume	Open Interest	Open price	Price max	Price min	Last price	Closing price	Volume	Open Interest	Volume	Open Interest	Open price	Price max	Price min	Last price	Closing price	Volume	Open Interest	Open price	Price max	Price min	Last price	Closing price	Volume	Open Interest	Volume	Open Interest	Exerise Price					
440	-	-	-	-	-	-	-	-	-	-	-	-	-	-	-	-	-	-	-	-	96.50	-	261	-	-	-	-	-	-	-	-	-	440					
1,500	-	-	-	-	-	-	-	-	-	-	-	-	-	-	-	-	1,154.00	1,154.00	1,154.00	1,154.00	-	3	-	-	-	-	-	-	-	-	-	1,500						
Totals:						127	3,841							20	1,063	0	0							3	3,132							85	507	3	4			
Nominal Transactions Value:						209,800.00						31,500.00												22,500.00						145,900.00						22,500.00		
Number of Trades:						16						1						0						1						8						1		

ALPHA BANK (CR)

(Contract Size: 100 Securities, Exercise Style: American, Physical Delivery)

Call Options																	Put Options																									
September 2013								October 2013								Other Months		September 2013								October 2013								Other Months								
Exercise Price	Open price	Price max	Price min	Last price	Closing price	Volume	Open Interest	Open price	Price max	Price min	Last price	Closing price	Volume	Open Interest	Volume	Open Interest	Open price	Price max	Price min	Last price	Closing price	Volume	Open Interest	Open price	Price max	Price min	Last price	Closing price	Volume	Open Interest	Volume	Open Interest	Exercise Price									
0.100						-	-							-	-							-	-						-	-				0.100								
0.200						-	-							-	-							-	-						-	-				0.200								
0.300						-	-							-	-							-	-						-	-				0.300								
0.350						-	-							-	-							-	-						-	-				0.350								
0.400						-	-							-	-							-	-						-	-				0.400								
0.450						-	-							-	-							-	-						-	-				0.450								
0.500						-	-							-	-							-	-						-	-				0.500								
0.550						-	-							-	-							-	-						-	-				0.550								
0.600						-	-							-	-							-	-						-	-				0.600								
0.650						-	-							-	-							-	-						-	-				0.650								
0.700						-	-							-	-							-	-						-	-				0.700								
0.800						-	-							-	-							-	-						-	-				0.800								
0.850						-	-							-	-							-	-						-	-				0.850								
0.900						-	-							-	-							-	-						-	-				0.900								
0.950						-	-							-	-							-	-						-	-				0.950								
1.00						-	-							-	-							-	-						-	-				1.00								
1.05						-	-							-	-							-	-						-	-				1.05								
1.10						-	-							-	-							-	-						-	-				1.10								
1.15						-	-							-	-							-	-						-	-				1.15								
1.20						-	-							-	-							-	-						-	-				1.20								
1.30						-	-							-	-							-	-						-	-				1.30								
1.40						-	-							-	-							-	-						-	-				1.40								
1.50						-	-							-	-							-	-						-	-				1.50								
1.60						-	-							-	-							-	-						-	-				1.60								
1.70						-	-							-	-							-	-						-	-				1.70								
1.80						-	-							-	-							-	-						-	-				1.80								
1.90						-	-							-	-							-	-						-	-				1.90								
2.00						-	-							-	-							-	-						-	-				2.00								
2.20						-	-							-	-							-	-						-	-				2.20								
2.40						-	-							-	-							-	-						-	-				2.40								
2.60						-	-							-	-							-	-						-	-				2.60								
2.80						-	-							-	-							-	-						-	-				2.80								
Totals:						0	0							0	0	0	0							0	0							0	0	0	0	0						
Nominal Transactions Value:						0.00								0.00		0.00								0.00								0.00		0.00								
Number of Trades:						0								0		0								0								0		0								

NATIONAL BANK (CR)

(Contract Size: 100 Securities, Exercise Style: American, Physical Delivery)

Call Options																	Put Options																						
September 2013																	October 2013																						
Exercise Price	Open price	Price max	Price min	Last price	Closing price	Volume	Open Interest	October 2013									Other Months		September 2013									October 2013									Other Months		Exercise Price
								Open price	Price max	Price min	Last price	Closing price	Volume	Open Interest	Volume	Open Interest	Open price	Price max	Price min	Last price	Closing price	Volume	Open Interest	Open price	Price max	Price min	Last price	Closing price	Volume	Open Interest	Volume	Open Interest							
0.300						-	-									-	-																0.300						
0.400						-	-									-	-																0.400						
0.500						-	-									-	-																0.500						
0.600						-	-									-	-																0.600						
0.700						-	-									-	-																0.700						
0.750						-	-									-	-																0.750						
0.800						-	-									-	-																0.800						
0.850						-	-									-	-																0.850						
0.900						-	-									-	-																0.900						
0.950						-	-									-	-																0.950						
1.00						-	-									-	-																1.00						
1.05						-	-									-	-																1.05						
1.10						-	-									-	-																1.10						
1.20						-	-									-	-																1.20						
1.30						-	-									-	-																1.30						
1.40						-	-									-	-																1.40						
1.50						-	-									-	-																1.50						
1.60						-	-									-	-																1.60						
1.70						-	-									-	-																1.70						
1.80						-	-									-	-																1.80						
1.90						-	-									-	-																1.90						
2.00						-	-									-	-																2.00						
2.20						-	-									-	-																2.20						
2.40						-	-									-	-																2.40						
2.60					0.510	-	20									-	-																2.60						
2.70					-	-	-									-	-																2.70						
2.80					-	-	-									-	-																2.80						
2.90					-	-	-									-	-																2.90						
3.00					0.121	-	20					0.244	-	120																			3.00						
3.10					-	-	-									-	-																3.10						
3.20					0.015	-	116					0.147	-	20																			3.20						
3.30					-	-	-									-	-																3.30						
3.40					-	-	-					0.082	-	1																			3.40						
3.60					-	-	-					0.043	-	1																			3.60						
3.80					-	-	-									-	-																3.80						
4.00					-	-	-									-	-																4.00						

NATIONAL BANK (CR)

(Contract Size: 100 Securities, Exercise Style: American, Physical Delivery)

Call Options																	Put Options																			
September 2013								October 2013								Other Months		September 2013								October 2013								Other Months		
Exerise Price	Open price	Price max	Price min	Last price	Closing price	Volume	Open Interest	Open price	Price max	Price min	Last price	Closing price	Volume	Open Interest	Volume	Open Interest	Open price	Price max	Price min	Last price	Closing price	Volume	Open Interest	Open price	Price max	Price min	Last price	Closing price	Volume	Open Interest	Volume	Open Interest	Exerise Price			
4.40						-	-							-	-							-	-						-	-			4.40			
Totals:						0	156						0	142	0	20						0	1					0	60	0	0					
Nominal Transactions Value:							0.00							0.00		0.00							0.00						0.00		0.00					
Number of Trades:							0							0		0							0.00						0		0					

OPAP (CR)

(Contract Size: 100 Securities, Exercise Style: American, Physical Delivery)

Call Options																	Put Options																				
September 2013							October 2013							Other Months		September 2013							October 2013							Other Months							
Exercise Price	Open price	Price max	Price min	Last price	Closing price	Volume	Open Interest	Open price	Price max	Price min	Last price	Closing price	Volume	Open Interest	Volume	Open Interest	Open price	Price max	Price min	Last price	Closing price	Volume	Open Interest	Open price	Price max	Price min	Last price	Closing price	Volume	Open Interest	Volume	Open Interest	Exercise Price				
1.00					6.98	-	270							-	-							-	270					-	-					1.00			
3.20						-	-							-	-								-	-					-	-					3.20		
3.40						-	-							-	-								-	-					-	-					3.40		
3.60						-	-							-	-								-	-					-	-					3.60		
3.80						-	-							-	-								-	-					-	-					3.80		
4.00						-	-							-	-								-	-					-	-					4.00		
4.40						-	-							-	-								-	-					-	-					4.40		
4.80						-	-							-	-								-	-					-	-					4.80		
5.20						-	-							-	-								-	-					-	-					5.20		
5.60						-	-							-	-								-	-					-	-					5.60		
5.80						-	-							-	-								-	-					-	-					5.80		
6.00						-	-							-	-										0.005	-	-			-	-			6.00			
6.20						-	-							-	-								-	-					-	-					6.20		
6.40						-	-							1.61	-	25							-	-					0.019	-	-			6.40			
6.60						-	-							-	-								-	135					-	-					6.60		
6.80						-	-							1.25	-	25							-	-					-	-					6.80		
7.00						-	-							-	-								-	-					-	-					7.00		
7.20						-	-							0.922	-	25							-	-					-	-					7.20		
7.40						-	-							-	-								-	-					-	-					7.40		
7.60						-	-							0.644	-	40							-	-					-	-					7.60		
7.80						-	-							-	-								-	-					-	-					7.80		
8.00						-	-							-	-								-	-					-	-					8.00		
8.20						-	-							-	-								-	-					-	-					8.20		
8.40						-	-							-	-								-	-					-	-					8.40		
8.80						-	-							-	-								-	-					-	-					8.80		
9.00						-	-							-	-								-	-					-	-					9.00		
9.20						-	-							-	-								-	-					-	-					9.20		
9.40						-	-							-	-								-	-					-	-					9.40		
9.60						-	-							-	-								-	-					-	-					9.60		
9.80						-	-							-	-								-	-					-	-					9.80		
10.00						-	-							-	-								-	-					-	-					10.00		
20.00						-	270							-	-								12.02	-	270					-	-					20.00	
Totals:						0	540							0	115	0	1,600							0	675							0	55	0	0		
Nominal Transactions Value:						0.00								0.00		0.00								0.00		0.00		0.00		0.00		0.00					
Number of Trades:						0								0		0								0.00		0		0		0							

OTE (CR)

(Contract Size: 100 Securities, Exercise Style: American, Physical Delivery)

Call Options																	Put Options																								
September 2013								October 2013								Other Months		September 2013								October 2013								Other Months							
Exercise Price	Open price	Price max	Price min	Last price	Closing price	Volume	Open Interest	Open price	Price max	Price min	Last price	Closing price	Volume	Open Interest	Volume	Open Interest	Open price	Price max	Price min	Last price	Closing price	Volume	Open Interest	Open price	Price max	Price min	Last price	Closing price	Volume	Open Interest	Volume	Open Interest	Exercise Price								
2.60						-	-							-	-							-	-						-	-					2.60						
2.80						-	-							-	-							-	-						-	-					2.80						
3.00						-	-							-	-							-	-						-	-					3.00						
3.20						-	-							-	-							-	-						-	-					3.20						
3.40						-	-							-	-							-	-						-	-					3.40						
3.60						-	-							-	-							-	-						-	-					3.60						
3.80						-	-							-	-							-	-						-	-					3.80						
4.00						-	-							-	-							-	-						-	-					4.00						
4.40						-	-							-	-							-	-						-	-					4.40						
4.80						-	-							-	-							-	-						-	-					4.80						
5.20						-	-							-	-							-	100						-	-					5.20						
5.40						-	-							-	-							-	-						-	-					5.40						
5.60						-	-							-	-							-	1						-	-					5.60						
5.80						-	-							-	-							-	-						-	-					5.80						
6.00						-	-							-	-							-	75						-	-					6.00						
6.20						-	-							-	-							-	-						-	-					6.20						
6.40						-	-							-	-							-	-						-	-					6.40						
6.60						-	-							-	-							-	-						-	-					6.60						
6.80					0.752	-	1							-	-							-	-						-	-					6.80						
7.00						-	-							-	-							-	-						-	-					7.00						
7.20						-	-							-	-							-	-						-	-					7.20						
7.40						-	-							-	-							-	-				0.351	-	-						7.40						
7.60						-	-							-	-							-	-						-	-					7.60						
7.80						-	-							-	-							-	-						-	-					7.80						
8.00					0.010	-	50							-	-							-	-						-	-					8.00						
8.20						-	-							-	-							-	-						-	-					8.20						
8.40						-	-							-	-		0.800	0.800	0.800	0.800		35	-					-	-						8.40						
8.60						-	-							-	-							-	-						-	-					8.60						
8.80						-	-							-	-							-	-						-	-					8.80						
9.00						-	-							-	-							-	-						-	-					9.00						
9.20						-	-							-	-							-	-						-	-					9.20						
Totals:						0	51							0	0	0	1,600							35	176							0	1	35	35						
Nominal Transactions Value:						0.00								0.00		0.00								29,400.00								0.00		29,400.00							
Number of Trades:						0								0		0								1.00								0		1							



PIRAEUS BANK (CR)

(Contract Size: 100 Securities, Exercise Style: American, Physical Delivery)

Call Options																	Put Options																
September 2013																	October 2013																
Other Months																	September 2013																
October 2013																	October 2013																
Exercise Price	Open price	Price max	Price min	Last price	Closing price	Volume	Open Interest	Open price	Price max	Price min	Last price	Closing price	Volume	Open Interest	Volume	Open Interest	Open price	Price max	Price min	Last price	Closing price	Volume	Open Interest	Open price	Price max	Price min	Last price	Closing price	Volume	Open Interest	Volume	Open Interest	Exercise Price
0.500						-	-							-	-							-	-						-	-		0.500	
0.600						-	-							-	-							-	-						-	-		0.600	
0.700						-	-							-	-							-	-						-	-		0.700	
0.800						-	-							-	-							-	-						-	-		0.800	
0.900						-	-							-	-							-	-						-	-		0.900	
1.00						-	-							-	-							-	-						-	-		1.00	
1.05						-	-							-	-							-	-						-	-		1.05	
1.10					0.220	-	5							-	-							-	-						-	-		1.10	
1.15						-	-							-	-							-	-						-	-		1.15	
1.20						-	-							-	-							-	-						-	-		1.20	
1.25						-	-							-	-							-	-						-	-		1.25	
1.30						-	-							-	-							-	-						-	-		1.30	
1.35						-	-							-	-							-	-						-	-		1.35	
1.40						-	-							-	-							-	-						-	-		1.40	
1.50						-	-							-	-							-	-						-	-		1.50	
1.60						-	-							-	-							-	-						-	-		1.60	
1.70						-	-							-	-							-	-						-	-		1.70	
1.80						-	-							-	-							-	-						-	-		1.80	
1.90						-	-							-	-							-	-						-	-		1.90	
Totals:						0	5							0	0	0	0							0	0							0	0
Nominal Transactions Value:						0.00								0.00		0.00							0.00								0.00		
Number of Trades:						0								0		0							0								0		

PPC (CR)

(Contract Size: 100 Securities, Exercise Style: American, Physical Delivery)

Call Options																	Put Options																						
	September 2013							October 2013							Other Months			September 2013											October 2013							Other Months			
Exercise Price	Open price	Price max	Price min	Last price	Closing price	Volume	Open Interest	Open price	Price max	Price min	Last price	Closing price	Volume	Open Interest	Volume	Open Interest	Open price	Price max	Price min	Last price	Closing price	Volume	Open Interest	Open price	Price max	Price min	Last price	Closing price	Volume	Open Interest	Volume	Open Interest	Exercise Price						
3.20							-	-							-	-										-	-							-	-				3.20
3.40							-	-							-	-										-	-							-	-				3.40
3.60							-	-							-	-										-	-							-	-				3.60
3.80							-	-							-	-										-	-							-	-				3.80
4.00							-	-							-	-										-	-							-	-				4.00
4.40					3.49	-	30							-	-										-	-							-	-				4.40	
4.80							-	-							-	-										-	-							-	-				4.80
5.20							-	-							-	-										-	-							-	-				5.20
5.60							-	-							-	-										-	-							-	-				5.60
6.00							-	-							-	-										-	-							-	-				6.00
6.40							-	-							-	-										-	-							-	-				6.40
6.60							-	-							-	-										-	-							-	-				6.60
6.80					1.09	-	10							-	-										-	-							-	-				6.80	
7.00							-	-							-	-										-	-							-	-				7.00
7.20							-	-							-	-										-	400							-	-				7.20
7.40							-	-							-	-										-	-							-	-				7.40
7.60							-	-							-	-										-	-							-	-				7.60
7.80							-	-							-	-										-	-							-	-				7.80
8.00							-	-							-	-										-	-							-	-				8.00
8.20							-	-							-	-										-	-							-	-				8.20
8.40							-	-							-	-										-	-							-	-				8.40
8.60							-	-							-	-										-	-							-	-				8.60
8.80							-	-							-	-										-	-							-	-				8.80
9.00							-	-							-	-										-	-							-	-				9.00
9.20							-	-							-	-										-	-							-	-				9.20
9.60							-	-							-	-										-	-							-	-				9.60
10.00							-	-							-	-										-	-							-	-				10.00
Totals:						0	40							0	0	0	0							0	400							0	0	0	0				
Nominal Transactions Value:						0.00								0.00		0.00								0.00								0.00							
Number of Trades:						0								0		0								0								0							

Securities	Type[4]	Stock Repo [1]						Stock Reverse Repo [2]								Repurchase Agreements [3]							
		Trans. price	chg.	Trades	Volume	Transactions Value	Open Interest[5]	Price max	Price min	Last price	Last Ask	Trades	Volume	Transactions Value	Open Interest[5]	Price max	Price min	Last price	Last Ask	Trades	Volume	Transactions Value	Open Interest[5]
AEGEAN AIRLINES (CR)	SR RA	100.00	---	---	---	---	85	---	---	---	42@3%	---	---	---	---	---	---	---	---	---	---	---	---
ALPHA BANK (CR)	SR RA	100.00	---	---	---	---	54,615	---	---	---	31011@3.1%	---	---	---	283	---	---	---	---	---	---	---	1,562
ALPHA ETF FTSE Athex Large Cap	SR RA	100.00	---	---	---	---	---	---	---	---	---	---	---	---	---	---	---	---	---	---	---	---	1,664
ALUMIL (CR)	RA	---	---	---	---	---	---	---	---	---	---	---	---	---	---	---	---	---	---	---	---	---	---
ATHENS MEDICAL CENTER SA (CR)	SR RA	100.00	---	---	---	---	434	---	---	---	217@3%	---	---	---	---	---	---	---	---	---	---	---	---
AUTOHELLAS SA (CR)	SR RA	100.02	---	---	---	---	51	---	---	---	25@3%	---	---	---	---	---	---	---	---	---	---	---	---
CC HBC AG (CR)	SR RA	100.13	0.02	---	---	---	1,251	---	---	---	505@3%	---	---	---	120	---	---	---	---	---	---	---	118
CENTRIC HOLDINGS (CR)	SR RA	100.00	---	---	---	---	200	---	---	---	155@8.2%	---	---	---	---	---	---	---	---	---	---	---	---
CORINTH PIPEWORKS SA (CR)	SR RA	100.00	---	---	---	---	160	---	---	---	80@3%	---	---	---	---	---	---	---	---	---	---	---	---
CRETE PLASTICS SA (CR)	SR RA	100.00	---	---	---	---	---	---	---	---	---	---	---	---	---	---	---	---	---	---	---	---	---
ELLAKTOR (CR)	SR RA	100.01	---	---	---	---	2,403	---	---	---	1181@3%	---	---	---	---	---	---	---	---	---	---	---	---
ELTON SA (CR)	SR RA	100.00	---	---	---	---	50	---	---	---	35@3%	---	---	---	---	---	---	---	---	---	---	---	---
ELVAL SA. (CB)	SR RA	100.01	---	---	---	---	621	---	---	---	310@3%	---	---	---	---	---	---	---	---	---	---	---	---
EUROBANK ERGASIAS (CR)	SR RA	100.13	---	1	970	60,722.0	2,494	3.50%	3.50%	3.50%	1@3.5%	1	4	250.4	992	---	---	---	---	---	---	---	28
EUROBANK PROPERTIES REIC (CR)	SR RA	100.06	---	---	---	---	1,639	---	---	---	759@3%	---	---	---	60	---	---	---	---	---	---	---	---
EUROPEAN RELIANCE INSUR. (CR)	SR RA	100.00	---	---	---	---	---	---	---	---	---	---	---	---	---	---	---	---	---	---	---	---	---
EYDAP S.A. (CR)	SR RA	100.03	---	---	---	---	325	---	---	---	154@3%	---	---	---	8	---	---	---	---	---	---	---	16
FOLLI FOLLIE (CR)	SR RA	100.08	---	---	---	---	842	---	---	---	401@3%	---	---	---	20	---	---	---	---	---	---	---	10
FOURLIS (CR)	SR RA	100.00	---	---	---	---	195	---	---	---	97@3%	---	---	---	---	---	---	---	---	---	---	---	---
FRIGOGLASS SA (CR)	SR RA	100.03	---	---	---	---	229	---	---	---	114@3%	---	---	---	---	---	---	---	---	---	---	---	---
GEK TERNA (CR)	SR RA	100.00	---	---	---	---	582	---	---	---	286@3%	---	---	---	5	---	---	---	---	---	---	---	---
GR. SARANTIS SA (CR)	SR RA	100.00	---	---	---	---	62	---	---	---	31@3%	---	---	---	---	---	---	---	---	---	---	---	---
HALKOR SA (CB)	SR RA	100.00	---	---	---	---	415	---	---	---	207@3%	---	---	---	---	---	---	---	---	---	---	---	---
HELLENIC CABLES SA (CR)	SR RA	100.00	---	---	---	---	84	---	---	---	42@3%	---	---	---	---	---	---	---	---	---	---	---	---
HELLENIC EXCHANGES (CR)	SR RA	100.06	---	---	---	---	5,993	---	---	---	2791@3%	---	---	---	205	---	---	---	---	---	---	---	---
HELLENIC PETROLEUM (CR)	SR RA	100.22	---	---	---	---	2,224	3.00%	3.00%	3.00%	936@3%	1	30	22,800.0	176	---	---	---	---	---	---	---	46
HYGEIA SA (CR)	SR RA	100.00	---	---	---	---	700	---	---	---	280@4.3%	---	---	---	---	---	---	---	---	---	---	---	---
IASO SA (CR)	SR RA	100.00	---	---	---	---	86	---	---	---	43@3%	---	---	---	---	---	---	---	---	---	---	---	---
IKTINOS HELLAS SA (CR)	SR RA	100.00	---	---	---	---	10	---	---	---	---	---	---	---	---	---	---	---	---	---	---	---	---
INFORM P. LYKOS SA (CR)	SR RA	100.00	---	---	---	---	203	---	---	---	101@3%	---	---	---	---	---	---	---	---	---	---	---	---
INTRACOM CONSTR. (CR)	SR RA	100.00	---	---	---	---	37	---	---	---	18@3%	---	---	---	---	---	---	---	---	---	---	---	---
INTRACOM HOLDINGS (CR)	SR RA	100.00	---	---	---	---	665	---	---	---	422@3.6%	---	---	---	---	---	---	---	---	---	---	---	---

Stock Lending Notes

- [1] - Stock Repo: A Contract for selling stocks to HELEX with a Repurchase Right (According to ATHEX BoD Resolution No 17)
- [2] - Stock Reverse Repo: A Contract for buying stocks from HELEX with a Resell Right. (According to ATHEX BoD Resolution No 18)
- [3] - Standardized Repurchase Agreements: A Contract that constitutes a standardized agreement for the purchase or sale of shares, with repurchase or resell pact (According to ATHEX BoD Resolution No 20)
- [4] - Type of products is divided into SR: Stock Repo or Stock Reverse Repo, and RA: Repurchase Agreements.
- [5] - Open Interest in all Series (both tradeable or non-tradeable).

Securities	Type[4]	Stock Repo [1]						Stock Reverse Repo [2]								Repurchase Agreements [3]							
		Trans. price	chg.	Trades	Volume	Transactions Value	Open Interest[5]	Price max	Price min	Last price	Last Ask	Trades	Volume	Transactions Value	Open Interest[5]	Price max	Price min	Last price	Last Ask	Trades	Volume	Transactions Value	Open Interest[5]
INTRALOT (CR)	SR RA	100.03	0.01	---	---	---	4,116	---	---	---	1818@3%	---	---	---	240	---	---	---	---	---	---	---	---
J & P - AVAX SA (CR)	SR RA	100.02	---	---	---	---	235	---	---	---	117@3%	---	---	---	---	---	---	---	---	---	---	---	
JUMBO SA (CR)	SR RA	100.05	---	---	---	---	2,338	---	---	---	1090@3%	---	---	---	79	---	---	---	---	---	---	20	
KLEEMAN HELLAS SA (CR)	SR RA	100.00	---	---	---	---	982	---	---	---	491@3%	---	---	---	---	---	---	---	---	---	---	---	
KLOUKINAS - LAPPAS SA (CR)	SR RA	100.00	---	---	---	---	---	---	---	---	---	---	---	---	---	---	---	---	---	---	---	---	
KORRES (CR)	SR RA	100.00	---	---	---	---	---	---	---	---	---	---	---	---	---	---	---	---	---	---	---	---	
KRI-KRI S.A. (CR)	SR RA	100.00	---	---	---	---	549	---	---	---	274@3%	---	---	---	---	---	---	---	---	---	---	---	
LAMDA DEVELOPMENT SA (CR)	SR RA	100.00	---	---	---	---	890	---	---	---	445@3%	---	---	---	---	---	---	---	---	---	---	---	
LOULIS MILLS SA (CR)	SR RA	100.00	---	---	---	---	---	---	---	---	---	---	---	---	---	---	---	---	---	---	---	---	
MARFIN INVESTMENT GROUP (CR)	SR RA	100.00	---	---	---	---	1,783	---	---	---	---	---	---	---	---	---	---	---	---	---	---	---	
METKA (CR)	SR RA	100.14	0.01	---	---	---	591	---	---	---	243@3%	---	---	---	45	---	---	---	---	---	---	9	
MLS MULTIMEDIA SA (CR)	SR RA	100.00	---	---	---	---	99	---	---	---	49@3%	---	---	---	---	---	---	---	---	---	---	---	
MOTOR OIL (CR)	SR RA	100.07	---	---	---	---	2,057	---	---	---	1028@3%	---	---	---	---	---	---	---	---	---	---	17	
MYTILINEOS HOLDINGS (CR)	SR RA	100.01	0.01	---	---	---	3,875	---	---	---	1777@3%	---	---	---	160	---	---	---	---	---	---	---	
NATIONAL BANK (CR)	SR RA	100.08	---	---	---	---	9,061	3.00%	3.00%	3.00%	3053@3%	1	6	1,866.0	1,477	---	---	---	---	---	---	346	
NBGAM ETF	SR RA	100.00	---	---	---	---	---	---	---	---	---	---	---	---	---	---	---	---	---	---	---	100	
NBGAM ETF GREECE & TURKEY 30	SR RA	100.00	---	---	---	---	---	---	---	---	---	---	---	---	---	---	---	---	---	---	---	35	
NIREFS SA (CR)	SR RA	100.00	---	---	---	---	326	---	---	---	218@4.2%	---	---	---	---	---	---	---	---	---	---	---	
OPAP (CR)	SR RA	100.07	0.01	---	---	---	5,614	---	---	---	2169@3%	---	---	---	638	---	---	---	---	---	---	440	
OTE (CR)	SR RA	100.20	0.01	---	---	---	5,262	3.00%	3.00%	3.00%	1717@3%	1	5	3,775.0	914	---	---	---	---	---	---	103	
P.P.A. S.A. (CR)	SR RA	100.00	---	---	---	---	15	---	---	---	7@3%	---	---	---	---	---	---	---	---	---	---	---	
PETROPOULOS PETROS (CR)	RA	---	---	---	---	---	---	---	---	---	---	---	---	---	---	---	---	---	---	---	---	---	
PIRAEUS BANK (CR)	SR RA	100.02	---	2	301	39,732.0	7,842	---	---	---	2368@3%	---	---	---	202	---	---	---	---	---	---	---	
PPC (CR)	SR RA	100.24	0.02	---	---	---	1,932	---	---	---	419@3%	---	---	---	547	---	---	---	---	---	---	35	
QUEST HOLDINGS (CR)	SR RA	100.00	---	---	---	---	39	---	---	---	19@3%	---	---	---	---	---	---	---	---	---	---	---	
REDS S.A. (CR)	SR RA	100.00	---	---	---	---	572	---	---	---	363@3.6%	---	---	---	---	---	---	---	---	---	---	---	
SELECTED TEXT. IND. ASSOC (CR)	SR RA	100.00	---	---	---	---	100	---	---	---	74@7%	---	---	---	---	---	---	---	---	---	---	---	
SIDENOR (CR)	SR RA	100.00	---	---	---	---	442	---	---	---	221@3%	---	---	---	---	---	---	---	---	---	---	---	
TECHNICAL OLYMPIC SA (CR)	SR RA	100.00	---	---	---	---	14	---	---	---	4@3%	---	---	---	---	---	---	---	---	---	---	---	
TERNA ENERGY (CR)	SR RA	100.10	---	---	---	---	290	3.00%	3.00%	3.00%	106@3%	1	5	1,565.0	39	---	---	---	---	---	---	5	
THESSALONIKA WATER & SEWERAGE	SR RA	100.00	---	---	---	---	1,270	---	---	---	635@3%	---	---	---	---	---	---	---	---	---	---	---	
THRACE PLASTICS SA (CR)	SR RA	100.00	---	---	---	---	1,010	---	---	---	505@3%	---	---	---	---	---	---	---	---	---	---	---	

Stock Lending Notes

- [1] - Stock Repo: A Contract for selling stocks to HELEX with a Repurchase Right (According to ATHEX BoD Resolution No 17)
- [2] - Stock Reverse Repo: A Contract for buying stocks from HELEX with a Resell Right. (According to ATHEX BoD Resolution No 18)
- [3] - Standardized Repurchase Agreements: A Contract that constitutes a standardized agreement for the purchase or sale of shares, with repurchase or resell pact (According to ATHEX BoD Resolution No 20)
- [4] - Type of products is divided into SR: Stock Repo or Stock Reverse Repo, and RA: Repurchase Agreements.
- [5] - Open Interest in all Series (both tradeable or non-tradeable).

Securities	Type[4]	Stock Repo [1]						Stock Reverse Repo [2]								Repurchase Agreements [3]							
		Trans. price	chg.	Trades	Volume	Transactions Value	Open Interest[5]	Price max	Price min	Last price	Last Ask	Trades	Volume	Transactions Value	Open Interest[5]	Price max	Price min	Last price	Last Ask	Trades	Volume	Transactions Value	Open Interest[5]
TITAN CEMENT (CR)	SR RA	100.02	---	---	---	---	9,035	---	---	---	4457@3%	---	---	---	60	---	---	---	---	---	---	---	12
TPA SA (CR)	SR RA	100.00	---	---	---	---	6	---	---	---	---	---	---	---	---	---	---	---	---	---	---	---	---
TRASTOR REAL EST. INV. CO.(CR)	SR RA	100.00	---	---	---	---	284	---	---	---	142@3%	---	---	---	---	---	---	---	---	---	---	---	---
VIOHALCO (CB)	SR RA	100.01	---	---	---	---	3,990	---	---	---	1973@3%	---	---	---	22	---	---	---	---	---	---	---	30

Stock Lending Notes

- [1] - Stock Repo: A Contract for selling stocks to HELEX with a Repurchase Right (According to ATHEX BoD Resolution No 17)
- [2] - Stock Reverse Repo: A Contract for buying stocks from HELEX with a Resell Right. (According to ATHEX BoD Resolution No 18)
- [3] - Standardized Repurchase Agreements: A Contract that constitutes a standardized agreement for the purchase or sale of shares, with repurchase or resell pact (According to ATHEX BoD Resolution No 20)
- [4] - Type of products is divided into SR: Stock Repo or Stock Reverse Repo, and RA: Repurchase Agreements.
- [5] - Open Interest in all Series (both tradeable or non-tradeable).

## Sectors codification for listed companies

533	-	Exploration & Production	537	-	Integrated Oil & Gas
1353	-	Commodity Chemicals	1357	-	Specialty Chemicals
1753	-	Aluminum	1755	-	Nonferrous Metals
1757	-	Steel	1775	-	General Mining
2353	-	Building Materials & Fixtures	2357	-	Heavy Construction
2723	-	Containers & Packaging	2727	-	Diversified Industrials
2733	-	Electrical Components & Equipment	2753	-	Commercial Vehicles & Trucks
2757	-	Industrial Machinery	2773	-	Marine Transportation
2777	-	Transportation Services	2791	-	Business Support Services
2797	-	Industrial Suppliers	3535	-	Distillers & Vintners
3537	-	Soft Drinks	3573	-	Farming & Fishing
3577	-	Food Products	3722	-	Durable Household Products
3726	-	Furnishings	3728	-	Home Construction
3747	-	Toys	3763	-	Clothing & Accessories
3765	-	Footwear	3767	-	Personal Products
3785	-	Tobacco	4533	-	Health Care Providers
4535	-	Medical Equipment	4577	-	Pharmaceuticals
5337	-	Food Retailers & Wholesalers	5371	-	Apparel Retailers
5373	-	Broadline Retailers	5375	-	Home Improvement Retailers
5379	-	Specialty Retailers	5553	-	Broadcasting & Entertainment
5555	-	Media Agencies	5557	-	Publishing
5751	-	Airlines	5752	-	Gambling
5753	-	Hotels	5755	-	Recreational Services
5757	-	Restaurants & Bars	5759	-	Travel & Tourism
6535	-	Fixed Line Telecommunications	6575	-	Mobile Telecommunications
7535	-	Conventional Electricity	7537	-	Alternative Electricity
7577	-	Water	8355	-	Banks
8534	-	Insurance Brokers	8536	-	Property & Casualty Insurance
8633	-	Real Estate Holding & Development	8637	-	Real Estate Services
8671	-	Industrial & Office REITs	8675	-	Specialty REITs
8775	-	Specialty Finance	8777	-	Investment Services
8985	-	Equity Investment Instruments	9533	-	Computer Services
9535	-	Internet	9537	-	Software
9572	-	Computer Hardware	9574	-	Electronic Office Equipment
9578	-	Telecommunications Equipment	11000	-	ETF

