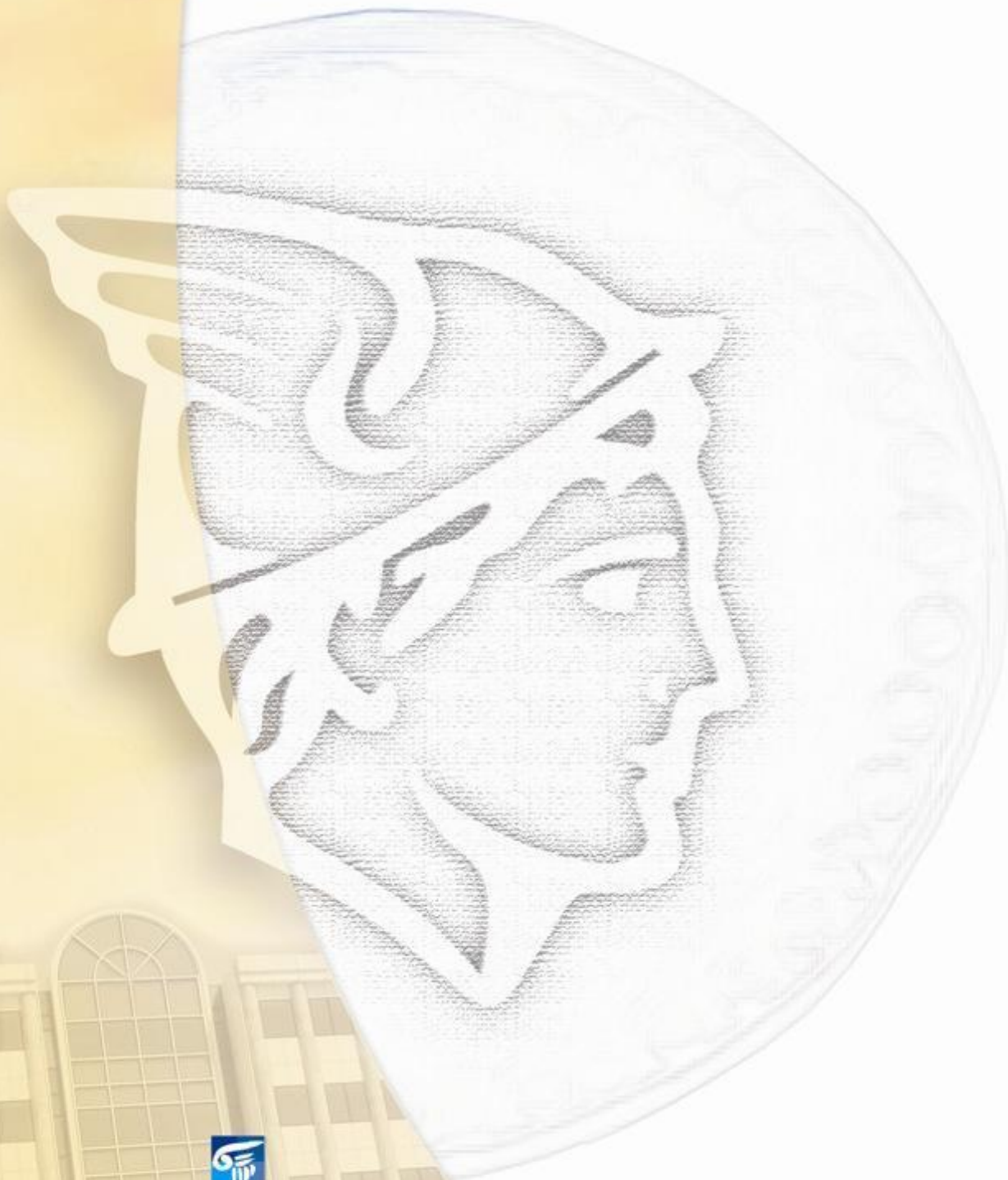


Daily Official List

Athens Exchange sa

Friday, 20 September, 2013
Year: 134 Trading Day No: 178



ΟΜΙΛΟΣ ΕΛΛΗΝΙΚΑ ΧΡΗΜΑΤΙΣΤΗΡΙΑ
HELLENIC EXCHANGES GROUP

Disclaimer:

Athens Exchange (ATHEX) endeavours to ensure that the data and other material ("Information") presented on the Daily Official List are accurate and complete, but it is not liable for any errors or omissions of data or /and for the accuracy, credibility, updating and completeness of the aforesaid information nor it has any liability arising directly or indirectly from the use of the above Information.

ATHEX is not liable for the accuracy of the data included in listed companies' announcements. Only the sender of such an announcement is fully and solely liable for any infringement of third party's rights from the content of such announcement. All contents of the Daily Official List are provided only for information purposes and do not constitute investment advice or solicitation to invest in securities or other products listed for trading on ATHEX.

You acknowledge and agree that ATHEX is the owner of any property rights related to any Information appearing on the Daily Official List including intellectual property rights copyright, trademarks, etc.

The above data are a property of the Athens Exchange and are copyright protected. Users are forbidden to reproduce, modify, copy, sale, transmit or redistribute, by all reproduction means and methods, part or the whole of the above data, without reference to their source.

The commercial exploitation of these data is, also, forbidden by third parties. Athens Exchange does not carry any responsibility, direct or indirect, derived from usage or accidental alteration of the above data when used by third parties.

**Athens Exchange sa**

110 Athinon Ave., 10442 Athens, Tel: (210) 33.66.800, Fax: (210) 32.13.938

www.athex.gr

**Thessalonica Stock Exchange Center (T.S.E.C)**

16-18 Katouni Str., Thessalonica 546 25 Tel: (2310) 567.667, Fax: (2310) 530.545

Athex Members Guarantee Fund

14-16 Fidiou Str., Athens 106 78, Tel: (210) 33.04.682, Fax: (210) 33.04.155

Hellenic Republic Capital Market Commission

1 Kolokotroni Str. & 1 Stadiou Str., Athens 10562 Tel: (210) 33.77.100 Fax: (210) 33.77.173

Table of Contents

Section 1: Statistical Figures of Securities and Derivatives Markets

Summary of Markets

Athex Indices

Analytic Figures for Athex Market's Boards and Categories

Trading Details by Athex Sectors and ETFs Category

Top 10 best & worst performing Shares

Derivatives Summary

Section 2: Analytic Figures of Shares Transactions

Analytic Figures of Shares Transactions

Shares' Notes

Section 3: Figures of Securities Transactions

Securities Blocks Details

Shares Rights Details

Shares Short Selling

Stock Borrowing

Shares Forced Sales

Forced Sales Registered Shares

Exchange Traded Funds (ETFs) Characteristics

Section 5: Bonds traded in Fixed Income Assets Market

Corporate Bonds

Government Bonds

Treasury Bills & Zero Coupon Government Bonds

Government Bonds Traded with the Open Outcry Method

State Banks Bonds

Section 6: Additional Infos

Athex & ATHEXClear Members List

List of Stocks under Market Making operations

Section 7: Derivatives Market Analytic Figures

Index Futures

Stock Futures

Index Options

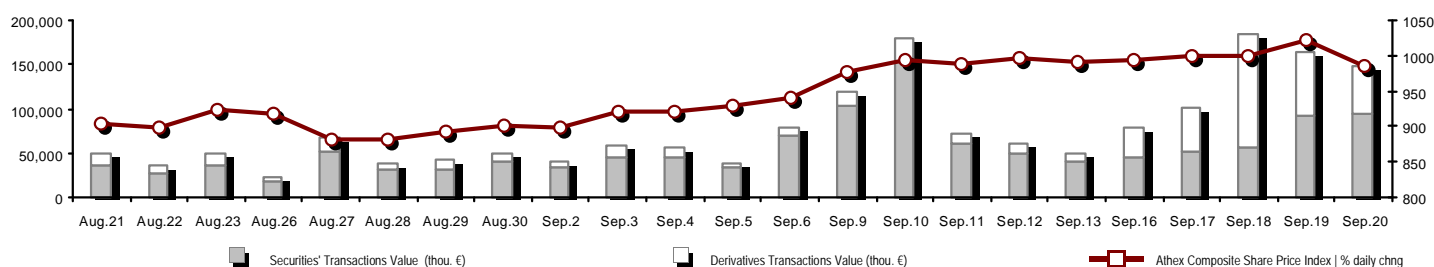
Stock Options

Stock Lending Analytic Figures (Repo Contracts)

Appendix A: Sectors codification for listed companies

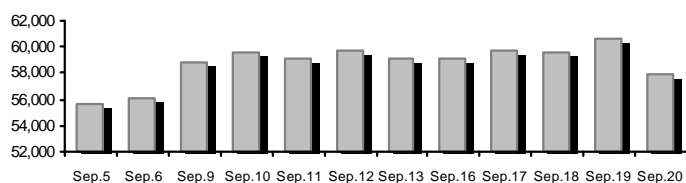
Summary of Markets

Athex Composite Share Price Index vs Shares and Derivatives Transactions Value

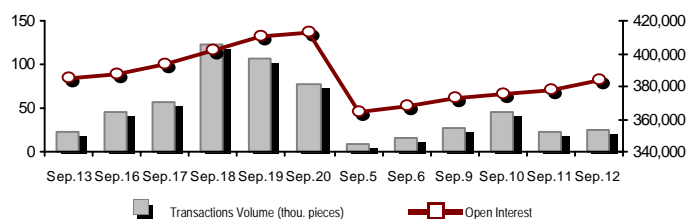


Total Transactions Value (Securities/Derivatives) (thou. €):		147,860.25	
Athex Capitalisation (mill. €) **: 57,893.68		Derivatives Total Open Interest 412,491	
Daily change: mill. € % -2,670.78 -4.41%		in Index Futures % daily chng 65,542 -0.31%	
Yearly Avg Capitalisation: mill. € % chng prev year Avg 46,054.93 68.28%		in Stock Futures % daily chng 179,209 3.68%	
Athex Composite Share Price Index % daily chng 984.04 -3.78%		in Index Options % daily chng 6,285 -27.67%	
Athex Composite Share Price Index Capitalisation (mill. €) 50,949.30		in Stock Options % daily chng 5,076 -0.31%	
Daily change (mill. €) -2,581.42		in Stock Repos/Reverse Repos/RA % daily chng 156,379 -0.42%	
Securities' Transactions Value (thou. €) 95,018.31		Derivatives Transactions Value (thou. €) 52,841.95	
Daily change: thou. € % 3,509.29 3.83%		Daily change: thou. € % -19,882.34 -27.34%	
YtD Avg Trans. Value: thou. € % chng prev year Avg 65,957.24 27.15%		YtD Avg Trans. Value: thou. € % chng prev year Avg 23,406.48 22.63%	
Short Selling Trans. Value: mill. € % in total Value			
Short Covering Trans. Value: mill. € % in total Value			
Transactions Value of Blocks (thou. €) 3,587.60			
Bonds Transactions Value (thou. €) 2.86			
Securities' Transactions Volume (thou. Pieces) 39,165.05		Derivatives Contracts Volume: 76,572	
Daily change: thou. pieces % -3,031.67 -7.18%		Daily change: pieces % -29,696 -27.94%	
YtD Avg Volume: thou. pieces % chng prev year Avg 49,548.84 0.20%		YtD Avg Derivatives Contracts % chng prev year Avg 43,375 -32.60%	
Short Selling Volume: thou pieces % in total Volume			
Short Covering Volume: thou. pieces % in total Volume			
Transactions Volume of Blocks (thou. Pieces) 1,112.91			
Bonds Transactions Volume (thou. pieces) 4.77			
Securities' Trades Number 28,982		Derivatives Trades Number: 4,789	
Daily change: number % -4,475 -13.38%		Daily change: number % 254 5.60%	
YtD Avg Derivatives Trades number % chng prev year Avg 29,102 17.31%		YtD Avg Derivatives Trades number % chng prev year Avg 2,718 -6.74%	
Number of Blocks 6			
Number of Bonds Transactions 1			

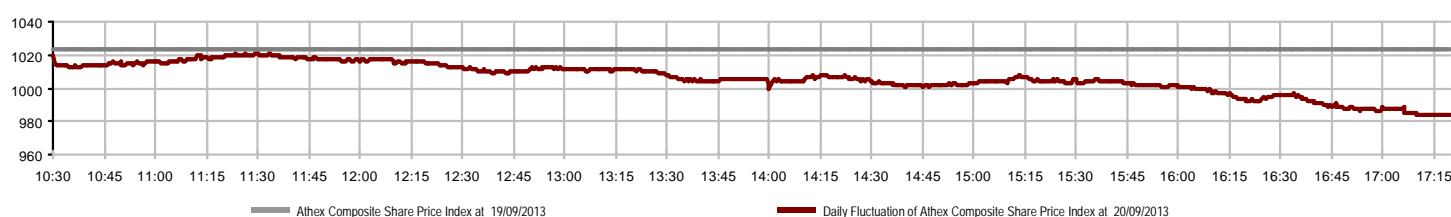
Athex Capitalisation (mill. €) **



Derivatives Transactions Volume and Open Interest



Daily Fluctuation of Athex Composite Share Price Index



Athex Indices

Index name	20/09/2013	19/09/2013	pts.	%	Min	Max	Year min	Year max	Year change
Athex Composite Share Price Index	984.04	1,022.75	-38.71	-3.78%	984.04	1,020.91	788.81	1,159.97	8.39% #
FTSE/Athex Large Cap	334.65	348.74	-14.09	-4.04%	334.65	346.60	253.17	410.78	8.06% #
FTSE/ATHEX Custom Capped	1,112.11	1,091.51	20.60	1.89%			863.84	1,275.55	9.09% #
FTSE/ATHEX Custom Capped - USD	1,079.77	1,044.55	35.22	3.37%			808.44	1,172.76	12.06% #
FTSE/Athex Mid Cap Index	1,046.42	1,069.87	-23.45	-2.19%	1,046.21	1,073.48	871.32	1,360.26	-7.66% €
FTSE/ATHEX-CSE Banking Index	112.96	121.25	-8.29	-6.84%	112.96	121.03	64.42	278.69	-33.11% €
FTSE/ATHEX Global Traders Index Plus	1,414.16	1,435.02	-20.86	-1.45%	1,412.99	1,443.51	1,082.32	1,484.90	13.37% #
FTSE/ATHEX Global Traders Index	1,479.94	1,522.90	-42.96	-2.82%	1,478.17	1,532.29	1,053.81	1,553.64	19.14% #
FTSE/ATHEX Mid & Small Cap Factor-Weighted Ind	1,241.62	1,255.59	-13.97	-1.11%	1,235.40	1,259.02	1,053.59	1,348.92	0.21% #
Greece & Turkey 30 Price Index	724.50	747.48	-22.98	-3.07%	721.00	747.48	595.35	927.16	-6.86% €
ATHEX Mid & SmallCap Price Index	2,763.56	2,785.47	-21.91	-0.79%	2,743.80	2,785.42	2,714.54	3,725.74	-11.84% €
FTSE/Athex Market Index	805.12	838.02	-32.90	-3.93%	805.12	833.19	600.87	972.17	9.18% #
FTSE/Med 100	4,322.59	4,309.49	13.09	0.30%			4,008.95	4,570.16	4.32% #
Athex Composite Index Total Return Index	1,424.87	1,480.91	-56.04	-3.78%	1,424.87	1,478.25	1,139.79	1,655.57	10.02% #
FTSE/Athex Large Cap Total Return	458.57	477.88	-19.31	-4.04%			366.91	565.68	6.41% #
FTSE/ATHEX Large Cap Net Total Return	1,341.75	1,398.26	-56.51	-4.04%	1,341.75	1,389.68	1,001.98	1,626.24	9.47% #
FTSE/ATHEX Custom Capped Total Return	1,161.47	1,139.96	21.51	1.89%			895.99	1,311.70	10.85% #
FTSE/ATHEX Custom Capped - USD Total Return	1,127.70	1,090.92	36.78	3.37%			836.50	1,205.99	13.86% #
FTSE/Athex Mid Cap Total Return	1,295.17	1,324.19	-29.02	-2.19%			1,152.62	1,720.22	-11.42% €
FTSE/ATHEX-CSE Banking Total Return Index	107.10	114.96	-7.86	-6.84%			82.32	289.59	-41.93% €
Greece & Turkey 30 Total Return Index	894.11	845.03	49.08	5.81%			729.18	1,098.14	-2.42% €
Hellenic Mid & Small Cap Index	992.98	1,012.62	-19.64	-1.94%	991.12	1,016.48	737.97	1,071.68	13.26% #
FTSE/Athex Banks	149.25	160.20	-10.95	-6.84%	149.25	159.90	85.08	368.22	-34.04% €
FTSE/Athex Insurance	1,274.94	1,317.08	-42.14	-3.20%	1,264.40	1,359.23	1,095.81	1,548.89	-15.97% €
FTSE/Athex Financial Services	1,436.87	1,488.62	-51.75	-3.48%	1,424.22	1,480.54	817.47	1,771.89	8.94% #
FTSE/Athex Industrial Goods & Services	3,497.05	3,566.77	-69.72	-1.95%	3,486.05	3,582.53	2,715.10	4,197.17	7.58% #
FTSE/Athex Retail	2,671.43	2,691.17	-19.74	-0.73%	2,637.24	2,742.62	1,629.12	2,742.62	46.01% #
FTSE/ATHEX Real Estate	2,041.46	1,952.65	88.81	4.55%	1,950.35	2,041.46	1,491.01	2,108.44	36.92% #
FTSE/Athex Personal & Household Goods	4,461.73	4,663.40	-201.67	-4.32%	4,461.73	4,692.63	2,586.10	4,692.63	42.89% #
FTSE/Athex Food & Beverage	8,189.46	8,583.56	-394.10	-4.59%	8,083.53	8,376.78	6,301.12	8,871.83	23.00% #
FTSE/Athex Basic Resources	2,406.09	2,476.21	-70.12	-2.83%	2,384.45	2,475.00	1,674.83	2,901.09	3.56% #
FTSE/Athex Construction & Materials	2,226.62	2,235.17	-8.55	-0.38%	2,197.67	2,271.30	1,439.70	2,271.30	21.27% #
FTSE/Athex Oil & Gas	2,773.26	2,894.94	-121.68	-4.20%	2,773.26	2,896.68	2,358.47	3,358.80	-1.42% €
FTSE/Athex Chemicals	6,219.37	6,328.04	-108.67	-1.72%	6,083.73	6,380.71	5,194.08	7,961.02	3.32% #
FTSE/Athex Media	1,492.21	1,654.73	-162.52	-9.82%	1,492.21	1,654.73	716.56	3,560.63	106.12% #
FTSE/Athex Travel & Leisure	1,406.39	1,424.83	-18.44	-1.29%	1,401.47	1,440.69	1,028.61	1,496.38	39.33% #
FTSE/Athex Technology	707.10	722.43	-15.33	-2.12%	707.10	724.56	555.63	886.96	-4.73% €
FTSE/Athex Telecommunications	1,981.85	2,119.48	-137.63	-6.49%	1,979.10	2,147.00	1,175.35	2,149.76	41.18% #
FTSE/Athex Utilities	3,024.54	3,074.41	-49.87	-1.62%	2,993.03	3,096.14	1,752.55	3,104.53	32.20% #
FTSE/Athex Health Care	238.53	247.79	-9.26	-3.74%	238.53	248.15	172.87	346.05	-14.99% €
Athex All Share Index	205.64	215.10	-9.46	-4.40%			176.43	294.40	-13.11% €

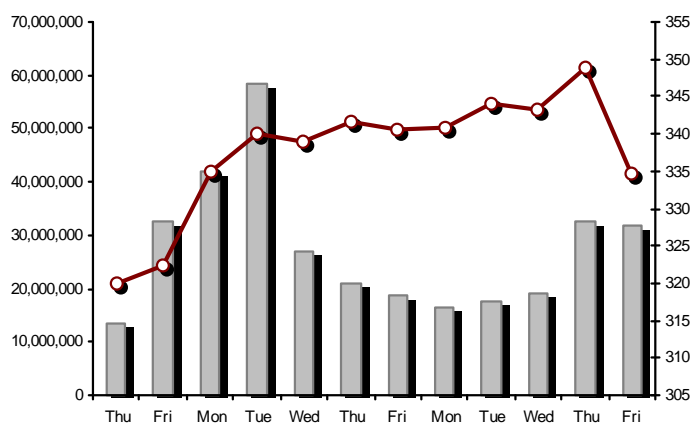
Note 1: Greece & Turkey 30 Pr data is the indicative at 17:20, whereas FTSE/ATHEX Custom Capped, FTSE/ATHEX Custom Capped - USD, FTSE/ATHEX Custom Capped TR, FTSE/ATHEX Custom Capped - USD TR, FTSE/Med 100 & Greece & Turkey 30 Rt closing prices refer to the previous trading day of 19/09/2013.

Note 2: The Hellenic Mid & Small Cap Index is a Customized index calculated by the Athens Exchange.

Athex Indices

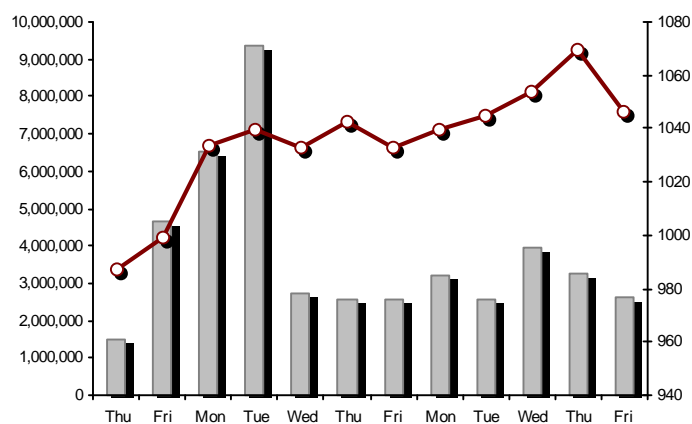
FTSE/Large Cap

20/09/2013: -4.04%



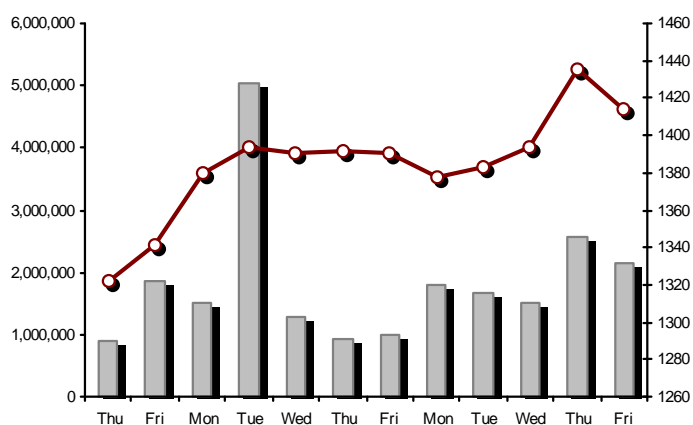
FTSE/Athex Mid Cap Index

20/09/2013: -2.19%



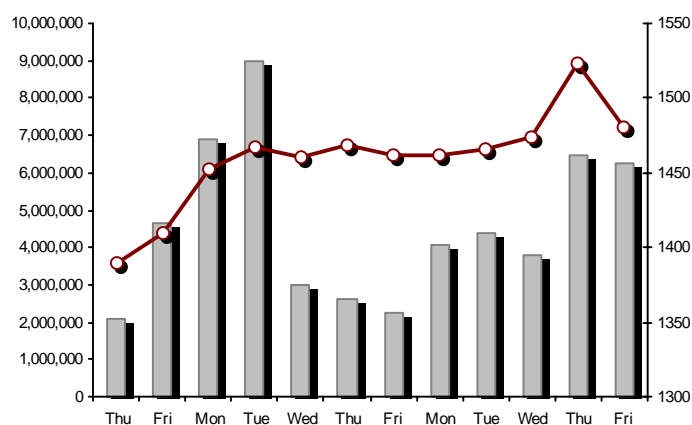
FTSE/ATHEX Global Traders Index Plus

20/09/2013: -1.45%



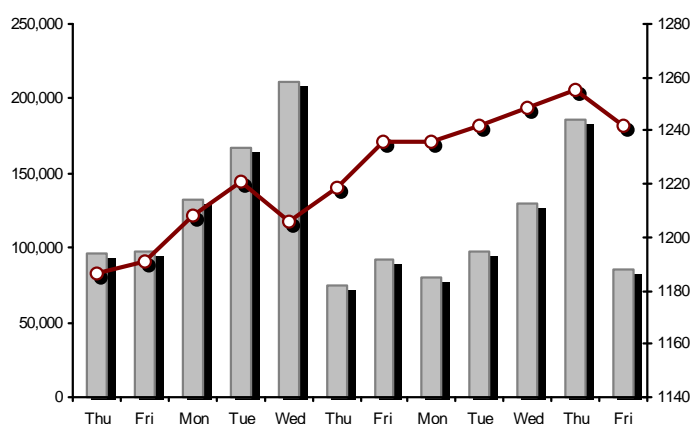
FTSE/ATHEX Global Traders Index

20/09/2013: -2.82%



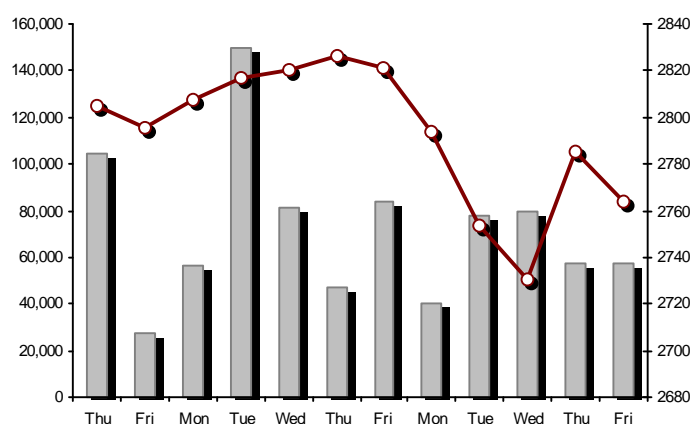
FTSE/ATHEX Mid & Small Cap Factor-Weighted Index

20/09/2013: -1.11%



ATHEX Mid & SmallCap Price Index

20/09/2013: -0.79%



Indices volume of transactions

Indices closing prices

Analytic Figures for Athex Market's Boards and Categories

	Total Traded Securities	Main Market	Low Dispersion	Other Categories (*)	Exchange Traded Funds (ETFs)	Warrants
Totals	148	109	9	24	3	3
Gain / Lose / Same:	27 / 93 / 28	20 / 73 / 16	2 / 5 / 2	5 / 9 / 10	0 / 3 / 0	0 / 3 / 0
Athex Capitalisation (mill. €) **	57,893.68	55,596.64	1,965.71	331.33		
Daily Average Transactions Value (thou. €)	65,957.24	23,160.16	483.48	78.84	40.22	5,757.50
Transactions Value	95,018.31	91,565.28	53.76	60.32	0.80	3,338.13
Main Board:	91,430.71	88,579.82	53.76	60.32	0.80	2,736.00
Blocks Board:	3,587.60	2,985.46	0.00	0.00	0.00	602.13
Forced Sales Board:	0.00	0.00	0.00	0.00	0.00	0.00
Special Terms Board:	0.00	0.00	0.00	0.00	0.00	0.00
Daily Average Transactions Volume	49,548,844	14,179,363	52,696	420,820	10,027	8,256,828
Transactions Volume	39,165,051	35,450,241	11,420	138,846	230	3,564,314
Main Board:	38,052,137	35,138,534	11,420	138,846	230	2,763,107
Blocks Board:	1,112,914	311,707	0	0	0	801,207
Forced Sales Board:	0	0	0	0	0	0
Special Terms Board:	0	0	0	0	0	0
Daily Average Number of Trades	29,102	10,323	115	211	8	2,226
Number of Trades	28,982	27,744	66	115	5	1,052
Main Board:	28,976	27,740	66	115	5	1,050
Blocks Board:	6	4	0	0	0	2
Forced Sales Board:	0	0	0	0	0	0
Special Terms Board:	0	0	0	0	0	0

(*) Summarised Transactions figures for Under Deletion and Under Supervision Categories.

(**) The Market Capitalization of the Companies that belong in the Under Supervision Category is not included.

Trading Details by Athex Sectors and ETFs Category

Code	Sectors	Gain / Lose / Same	Number of Trades	Transactions Volume	Transactions Value	% of Total Trans. Value
8300	- Banks	0 / 9 / 0	8,690	25,316,044	25,901,674.17	27.26%
1700	- Basic Resources	1 / 8 / 2	1,719	718,829	2,598,004.99	2.73%
1300	- Chemicals	1 / 3 / 0	128	50,472	63,967.53	0.07%
2300	- Construction & Materials	4 / 11 / 4	1,947	1,545,136	6,190,569.52	6.52%
11000	- ETF	0 / 3 / 0	5	230	804.37	0.00%
8700	- Financial Services	0 / 2 / 0	1,335	3,258,651	2,826,088.42	2.97%
3500	- Food & Beverage	4 / 6 / 4	1,569	798,984	10,631,719.12	11.19%
4500	- Health Care	2 / 2 / 1	179	127,739	63,543.06	0.07%
2700	- Industrial Goods & Services	5 / 11 / 1	1,957	801,128	3,587,415.18	3.78%
8500	- Insurance	0 / 1 / 0	52	9,720	11,840.02	0.01%
5500	- Media	2 / 2 / 0	24	4,590	1,924.84	0.00%
500	- Oil & Gas	0 / 2 / 0	1,264	433,911	3,351,457.07	3.53%
3700	- Personal & Household Goods	2 / 9 / 4	1,010	490,130	3,006,132.76	3.16%
8600	- Real Estate	1 / 3 / 2	403	178,175	1,269,630.30	1.34%
5300	- Retail	0 / 5 / 1	386	104,736	1,667,595.94	1.76%
9500	- Technology	4 / 5 / 4	328	333,873	218,796.92	0.23%
6500	- Telecommunications	0 / 1 / 0	2,404	1,748,740	13,056,847.24	13.74%
5700	- Travel & Leisure	1 / 7 / 4	2,619	1,977,111	11,244,060.33	11.83%
7500	- Utilities	0 / 3 / 1	2,963	1,266,852	9,326,236.22	9.82%

Top 10 best & worst performing Shares

Main Market					
With positive Price change	Closing price	change	With negative Price change	Closing price	change
KRETA FARM SA (CR)	0.692	6.96% #	CENTRIC HOLDINGS (CR)	0.202	-20.16% Ⓔ
EUROBANK PROPERTIES REIC (CR)	7.50	4.90% #	INFORM P. LYKOS SA (CR)	1.13	-9.60% Ⓔ
TECHNICAL OLYMPIC SA (CR)	1.45	2.84% #	PIRAEUS BANK (CR)	1.24	-8.15% Ⓔ
UNIBIOS (CR)	0.273	1.87% #	ALPHA BANK (CR)	0.551	-7.24% Ⓔ
VIOHALCO (CB)	4.20	0.48% #	OTE (CR)	7.20	-6.49% Ⓔ
LOULIS MILLS SA (CR)	2.73	0.37% #	HYGEIA SA (CR)	0.397	-6.15% Ⓔ
TITAN CEMENT (CR)	17.55	0.29% #	NATIONAL BANK (CR)	2.99	-5.97% Ⓔ
			HELLENIC PETROLEUM (CR)	7.56	-5.85% Ⓔ
			JUMBO SA (CR)	8.60	-5.29% Ⓔ
			MARFIN INVESTMENT GROUP (CR)	0.350	-4.63% Ⓔ
With the highest Transactions Value	Value (thou. €)	change	With the highest Transactions Volume	Volume	change
OTE (CR)	13,056.85	-6.49% Ⓔ	ALPHA BANK (CR)	10,698,578	-7.24% Ⓔ
OPAP (CR)	10,417.72	-0.99% Ⓔ	PIRAEUS BANK (CR)	7,817,280	-8.15% Ⓔ
CC HBC AG (CR)	10,371.44	-4.62% Ⓔ	MARFIN INVESTMENT GROUP (CR)	2,972,575	-4.63% Ⓔ
PIRAEUS BANK (CR)	10,120.37	-8.15% Ⓔ	NATIONAL BANK (CR)	1,797,782	-5.97% Ⓔ
PPC (CR)	6,236.85	-1.84% Ⓔ	OTE (CR)	1,748,740	-6.49% Ⓔ
ALPHA BANK (CR)	6,132.42	-7.24% Ⓔ	OPAP (CR)	1,285,983	-0.99% Ⓔ
NATIONAL BANK (CR)	5,552.04	-5.97% Ⓔ	EUROBANK ERGASIAS (CR)	837,910	-3.18% Ⓔ
TITAN CEMENT (CR)	3,340.05	0.29% #	PPC (CR)	774,051	-1.84% Ⓔ
JUMBO SA (CR)	2,471.25	-5.29% Ⓔ	ELLAKTOR (CR)	745,783	-0.84% Ⓔ
EYDAP S.A. (CR)	2,443.89	0.00% ↘	ATTICA BANK S.A. (CR)	594,488	-1.54% Ⓔ

Note: Stocks that are not included in the "Low Dispersion" and "Under Supervision" categories, and the transactions value is more than 10,000 €.

Derivatives Summary

	Number of Trades	Volume	Open Interest	Transactions Value
Index Futures	1,205	16,879	65,542	29,086,251.25
FTSE/Athex Large Cap	1,205	16,879	65,542	29,086,251.25
Stock Futures	3,468	56,555	179,209	18,650,309.15
ALPHA BANK (CR)	262	10,041	24,240	587,651.90
CC HBC AG (CR)	93	368	981	811,697.00
CORINTH PIPEWORKS SA (CR)	25	575	709	119,384.00
ELLAKTOR (CR)	114	2,858	4,946	669,754.00
EUROBANK ERGASIAS (CR)	56	2,011	12,474	16,227.03
EUROBANK PROPERTIES REIC (CR)	18	33	290	24,179.00
EYDAP S.A. (CR)	92	350	949	276,261.00
FOLLI FOLLIE (CR)	16	47	297	89,160.00
FRIGOGLASS SA (CR)	16	148	715	79,287.00
GEK TERNA (CR)	145	3,206	34,451	745,721.00
HELLENIC EXCHANGES (CR)	108	1,085	4,319	684,206.00
HELLENIC PETROLEUM (CR)	98	534	2,175	418,367.00
INTRALOT (CR)	93	1,131	3,922	195,527.00
JUMBO SA (CR)	47	241	219	216,393.00
MARFIN INVESTMENT GROUP (CR)	151	6,111	25,018	222,268.20
METKA (CR)	45	165	561	198,204.00
MOTOR OIL (CR)	62	225	725	176,820.00
MYTILINEOS HOLDINGS (CR)	226	3,230	7,929	1,595,042.00
NATIONAL BANK (CR)	322	3,904	6,378	1,219,332.00
OPAP (CR)	164	1,453	4,686	1,177,259.00
OTE (CR)	432	6,170	9,737	4,713,649.00
P.P.A. S.A. (CR)	46	171	777	298,545.00
PIRAEUS BANK (CR)	280	7,791	22,165	1,021,381.00
PPC (CR)	323	3,104	4,984	2,517,285.00
SIDENOR (CR)	65	867	1,877	138,658.00
TERNA ENERGY (CR)	32	226	2,597	72,027.02
TITAN CEMENT (CR)	59	112	241	198,067.00
VIOHALCO (CB)	78	398	847	167,957.00
Index Options	102	2,962	6,285	5,042,150.00
FTSE/Athex Large Cap	102	2,962	6,285	5,042,150.00
Stock Options	2	60	5,076	26,400.00
ALPHA BANK (CR)	0	0	0	0.00
NATIONAL BANK (CR)	0	0	339	0.00
OPAP (CR)	0	0	2,445	0.00
OTE (CR)	0	0	1,862	0.00
PIRAEUS BANK (CR)	0	0	0	0.00
PPC (CR)	2	60	430	26,400.00
Stock Repos - Stock Reverse Repos - Repurchase Agreements	12	116	156,379	36,835.40
Stock Reverse Repos	5	50	11,292	26,952.40
Stock Repos	7	66	140,564	9,883.00
Repurchase Agreement	0	0	4,523	0.00
Total Derivatives Traded	4,789	76,572	412,491	52,841,945.80

Number of Outstanding Securities	Nominal Value	Dividends [1]			Date of Last Coupon		Note	Shares	Closing price	% change	Previous closing price/date	Open price	Price min	Price max	Last price	Avg price	Last Bid [7]	Last Ask [7]	P/E after	Year	Volume	Trades	Transactions Value	Company Mkt Value (thou. €)	Year low	Year high	Sector[4]
		2010	2011	2012	Dividend [2]	Right																					
Warrants																											
1,233,503,482	---	---	---		11/06/2013	---	ALPHA BANK (W)	1.04	-3.70	€ 1.08	19/09/2013	1.10	1.03	1.10	1.04	1.07	36078@1.04	52000@1.06	---	2012	1,972,177	464	2,101,856.72	6,018,521.21	0.241	1.17	8355
245,779,626	---	---	---		27/06/2013	---	NATIONAL BANK (W)	0.898	-2.92	€ 0.925	19/09/2013	0.920	0.890	0.940	0.898	0.914	640@0.890	960@0.898	---	2012	269,265	302	245,982.45	7,166,390.12	0.420	2.00	8355
849,195,130	---	---	---		03/07/2013	---	PIRAEUS BANK (W)	0.720	-6.86	€ 0.773	19/09/2013	0.777	0.702	0.777	0.720	0.744	111@0.713	6560@0.720	---	2012	1,322,872	286	990,291.21	6,289,984.26	0.290	0.889	8355

Warrants

71,417,100	0.650	---	---	---	26/05/2010	11/07/2007	---	AEGEAN AIRLINES (CR)	4.10	-0.97	€ 4.14	19/09/2013	4.04	4.04	4.13	4.10	4.09	905@4.10	200@4.12	---	2012	9,395	52	38,395.80	292,810.11	1.96	4.14	5751
11,178,000	1.45	---	---	---	21/04/2010	12/05/2011	---	AEOLIAN INVESTMENT FUND (CR)	1.05	---	γ 1.05	19/09/2013	---	---	---	---	---	200@0.996	1080@1.03	8.31	2012	---	---	---	11,736.90	0.900	1.17	8985
13,000,000	1.00	---	---	---	01/08/2007	07/04/2000	---	AKRITAS SA (CR)	0.162	---	γ 0.162	19/09/2013	0.146	0.146	0.162	0.162	0.157	6350@0.146	---	---	2012	30	2	4.70	2,106.00	0.140	0.520	2353
25,000,000	0.400	---	---	---	03/06/2009	12/07/2013	---	ALCO HELLAS SA (CR)	0.388	-3.96	€ 0.404	19/09/2013	0.415	0.388	0.415	0.400	0.390	500@0.385	320@0.398	---	2012	904	6	352.82	9,700.00	0.159	0.599	1753
10,922,906,012	0.300	---	---	---	07/04/2008	13/05/2013	---	ALPHA BANK (CR)	0.551	-7.24	€ 0.594	19/09/2013	0.594	0.551	0.594	0.551	0.573	202620@0.551	38000@0.560	---	2012	10,698,578	2,663	6,132,423.76	6,018,521.21	0.161	0.696	8355
22,016,250	0.370	---	---	---	15/07/2009	11/05/2000	---	ALUMIL (CR)	0.547	-0.18	€ 0.548	19/09/2013	0.550	0.510	0.550	0.547	0.520	50@0.538	2696@0.547	---	2012	4,021	20	2,092.80	12,042.89	0.360	0.740	1753
418,000	16.00	---	---	---	22/04/2010	05/03/2013	---	ANDROMEDA SA (CR)	18.16	---	γ 18.16	19/09/2013	---	---	---	---	---	9@18.21	60@19.80	1.68	2012	---	---	---	7,590.88	17.10	25.41	8985
21,876,700	0.380	---	---	---	08/07/2010	05/06/2001	---	AS COMPANY SA (CR)	0.306	-9.74	€ 0.339	19/09/2013	0.329	0.305	0.329	0.326	0.308	4892@0.306	984@0.326	34.97	2012	9,486	12	2,922.73	6,694.27	0.272	0.488	5379
86,735,980	0.310	---	---	---	06/07/2009	02/01/2002	---	ATHENS MEDICAL CENTER SA (CR)	0.801	---	γ 0.801	19/09/2013	0.801	0.800	0.801	0.800	0.801	499063@0.800	500@0.806	---	2012	24,630	23	19,725.20	69,475.52	0.471	0.994	4533
699,673,060	0.300	---	---	---	04/06/2008	05/06/2013	---	ATTICA BANK S.A. (CR)	0.256	-1.54	€ 0.260	19/09/2013	0.256	0.256	0.264	0.256	0.258	114670@0.255	18000@0.258	---	2012	594,488	216	153,596.01	179,116.30	0.173	1.06	8355
45,457,464	0.700	---	---	---	01/07/2008	01/03/2010	---	AUDIO VISUAL ENTERPRISES (CR)	0.202	-9.82	€ 0.224	19/09/2013	0.202	0.202	0.220	0.202	0.206	---	503@0.224	---	2012	2,973	5	613.15	9,182.41	0.097	0.482	5553
36,360,000	0.320	---	0.15	---	30/04/2012	05/05/2008	---	AUTOHELLAS SA (CR)	2.37	-0.84	€ 2.39	19/09/2013	2.40	2.36	2.40	2.37	2.39	530@2.35	1010@2.39	12.76	2012	8,780	28	20,952.87	86,173.20	1.50	2.40	5759
19,864,886	5.60	1.976	0.67	0.5376	06/03/2013	02/07/2008	---	BANK OF GREECE (CR)	14.49	-0.48	€ 14.56	19/09/2013	14.88	14.34	14.88	14.49	14.47	1@14.37	60@14.49	---	---	5,692	104	82,384.84	287,842.20	11.26	19.19	8355
23,986,500	1.05	---	---	---	26/06/2009	15/03/2000	---	BIOKARPET S.A.(CR)	0.650	---	γ 0.650	06/09/2013	---	---	---	---	---	---	866@0.599	---	2012	---	---	---	15,591.23	0.486	0.845	3726
15,842,391	1.51	---	---	---	15/07/2009	12/05/2000	---	BITROS HOLDING SA (CR)	0.621	---	γ 0.621	01/08/2013	---	---	---	---	---	---	135@0.569	---	2012	---	---	---	9,838.12	0.336	0.745	1757
15,816,009	0.300	---	---	---	01/07/2009	17/07/2000	---	BYTE COMPUTER SA (CR)	0.480	---	γ 0.480	19/09/2013	0.484	0.470	0.484	0.480	0.474	200@0.465	140@0.480	---	2012	310	4	147.00	7,591.68	0.351	0.620	9533
366,491,145	6.70	---	---	0.34	26/06/2013	29/04/2013	---	CC HBC AG (CR)	21.90	-4.62	€ 22.96	19/09/2013	22.40	21.61	22.40	21.90	21.78	19@21.87	384@21.92	---	---	476,221	1,363	10,371,439.67	8,026,156.08	16.79	23.80	3537
101,123,806	0.360	---	---	---	22/07/2010	28/06/2011	---	CENTRIC HOLDINGS (CR)	0.202	-20.16	€ 0.253	19/09/2013	0.252	0.202	0.254	0.202	0.220	13000@0.201	3000@0.203	30.65	2012	227,469	178	50,054.73	20,427.01	0.176	0.440	5752
4,034,950	0.680	---	---	---	01/07/2005	30/12/2010	---	CHATZIKRANIOTIS & SONS SA (CR)	0.123	---	γ 0.123	18/09/2013	0.123	0.123	0.123	0.123	0.123	400@0.122	5612@0.123	---	2012	4,388	3	539.72	496.30	0.121	0.522	3577
124,170,201	0.780	---	---	---	28/06/2002	07/02/2005	---	CORINTH PIPEWORKS SA (CR)	1.99	-2.93	€ 2.05	19/09/2013	2.05	1.99	2.09	1.99	2.05	9770@1.99	1000@2.00	71.29	2012	132,826	327	271,663.14	247,098.70	1.40	2.59	1757
9,907,500	0.300	---	---	---	06/10/2005	13/02/2002	---	CPI SA (CR)	0.159	---	γ 0.159	19/09/2013	---	---	---	---	---	780@0.147	---	---	2012	---	---	---	1,575.29	0.133	0.400	9572
27,379,200	0.520	---	---	---	23/06/2010	18/09/2013	---	CRETE PLASTICS SA (CR)	5.21	-0.38	€ 5.23	19/09/2013	5.13	5.13	5.21	5.21	5.14	300@5.12	99@5.20	14.89	2012	1,992	3	10,229.36	142,645.63	4.40	5.65	1357
26,664,840	0.470	---	---	---	29/06/2005	12/07/1999	---	CYCLON HELLAS SA (CR)	0.517	-0.58	€ 0.520	19/09/2013	0.485	0.485	0.520	0.517	0.485	409@0.451	400@0.517	---	2012	7,849	11	3,810.13	13,785.72	0.385	0.700	1357
15,000,000	0.300	---	---	---	06/07/2007	18/07/2000	---	DAIOS PLASTICS SA (CR)	3.67	---	γ 3.67	18/09/2013	---	---	---	---	---	---	95@3.67	---	2012	---	---	---	55,050.00	3.34	5.50	1357
31,370,399	0.300	---	---	---	11/08/2010	15/02/2012	---	DIONIC (CR)	0.083	-1.19	€ 0.084	19/09/2013	0.081	0.080	0.085	0.084	0.083	5700@0.079	15000@0.077	---	2012	137,600	85	11,365.50	2,603.74	0.066	0.263	2797
34,720,000	0.310	---	---	---	16/06/2010	01/08/2007	---	DROMEAS SA (CR)	0.360	-4.76	€ 0.378	19/09/2013	0.361	0.350	0.378	0.360	0.358	1000@0.344	3640@0.360	---	2012	13,830	31	4,947.27	12,499.20	0.218	0.634	3726
3,873,120	0.300	---	---	---	07/07/2008	04/10/2012	---	DRUCKFARBEN HELLAS (CR)	1.40	---	γ 1.40	18/09/2013	---	---	---	---	---	900@0.980	135@1.45	---	2012	---	---	---	5,422.37	0.901	2.64	1357
11,250,000	0.560	---	---	---	26/07/2010	16/06/1999	---	EKTER SA (CR)	0.543	---	γ 0.543	19/09/2013	0.567	0.539	0.567	0.539	0.551	2750@0.521	1000@0.535	9.48	2012	16,719	22	9,208.34	6,108.75	0.400	0.700	2357
32,188,050	1.04	---	---	---	21/07/2008	20/01/2000	---	EL. D. MOUZAKIS SA (CB)	0.137	---	γ 0.137	19/09/2013	---	---	---	---	---	500@0.128	200@0.147	---	2012	---	---	---	4,409.76	0.114	0.330	3763
18,648,000	1.00	---	---	---	07/07/2009	10/09/2010	---	ELASTRON (CR)	0.668	---	γ 0.668	19/09/2013	---	---	---	---	---	1000@0.630	930@0.666	---	2012	---	---	---	12,456.86	0.518	0.969	1757
31,734,530	1.60	---	---	---	09/07/2007	19/07/2006	---	ELGEKA SA (CR)	0.468	-0.43	€ 0.470	19/09/2013	0.469	0.423	0.469	0.468	0.468	500@0.424	694@0.468	---	2012	2,020	6	945.96	14,851.76	0.404	0.780	3577
23,828,130	0.500	---	---	---	07/07/2010	17/02/2009	---	ELINOIL S.A. (CR)	1.14	---	γ 1.14	16/09/2013	---	---	---	---	---	500@1.10	200@1.19	---	2012	---	---	---	27,164.07	1.02	1.89	537
177,001,313	1.03	0.0308	---	---	05/07/2011	20/12/2007	---	ELLAKTOR (CR)	2.35	-0.84	€ 2.37	19/09/2013	2.38	2.30	2.38	2.35	2.35	150@2.31	10515@2.35	---	2012	745,783	576	1,749,050.35	415,953.09	1.36	2.50	2357

Number of Outstanding Securities	Nominal Value	Dividends [1]			Date of Last Coupon Dividend [2]		Note	Shares	Closing price	% change	Previous closing price/date	Open price	Price min	Price max	Last price	Avg price	Last Bid [7]	Last Ask [7]	P/E after	Year	Volume	Trades	Transactions Value	Company Mkt Value (thou. €)	Year low	Year high	Sector[4]
26,730,187	0.600	---	---	---	25/06/2009	30/12/2010	---	ELTON SA (CR)	1.20	0.84 #	1.19 19/09/2013	1.20	1.17	1.23	1.20	1.20	100@1.17	1128@1.19	12.54	2012	7,227	41	8,696.91	32,076.22	0.850	1.25	1353
15,146,404	0.340	0.093	---	---	06/07/2011	17/10/2002	---	ELTRAK SA (CR)	1.65	---	1.65 19/09/2013	---	---	---	---	---	130@1.65	500@1.78	---	2012	---	---	---	24,991.57	1.08	1.90	2753
124,100,815	0.300	---	---	---	27/06/2008	07/07/2000	---	ELVAL SA. (CB)	1.90	---	1.90 19/09/2013	1.92	1.88	1.93	1.90	1.90	172@1.90	241@1.91	14.68	2012	18,674	67	35,492.07	235,791.55	1.55	2.38	1753
13,230,000	0.300	---	---	---	11/08/2010	28/08/2013	---	ELVE SA (CR)	0.529	-1.85 €	0.539 19/09/2013	0.511	0.497	0.529	0.529	0.503	100@0.497	390@0.529	---	2012	2,510	6	1,261.79	6,998.67	0.423	0.717	3763
30,009,210	0.310	---	---	---	27/06/2008	26/06/2000	---	ETEM SA (CB)	0.386	-0.26 €	0.387 19/09/2013	0.380	0.380	0.386	0.386	0.383	500@0.366	550@0.385	---	2012	2,550	8	977.10	11,583.56	0.328	0.828	1753
4,050,416,865	0.300	---	---	---	02/05/2008	13/06/2013	---	EUROBANK ERGASIAS (CR)	0.608	-3.18 €	0.628 19/09/2013	0.632	0.608	0.640	0.608	0.624	16640@0.607	4690@0.609	---	2012	837,910	508	522,729.20	2,462,653.45	0.555	6.23	8355
61,000,000	2.13	0.5364	0.4067	---	23/03/2012	20/11/2007	---	EUROBANK PROPERTIES REIC (CR)	7.50	4.90 #	7.15 19/09/2013	7.15	7.15	7.50	7.50	7.32	7670@7.31	135@7.54	---	2012	171,782	361	1,259,038.84	457,500.00	4.87	7.75	8675
27,503,677	0.600	0.04	0.05	0.1	11/07/2013	18/10/1999	---	EUROPEAN RELIANCE INSUR. (CR)	1.21	-3.20 €	1.25 19/09/2013	1.28	1.20	1.29	1.21	1.22	1500@1.19	2500@1.23	3.65	2012	9,720	52	11,840.02	33,279.45	0.973	1.62	8536
13,673,200	0.880	---	---	---	18/07/2008	26/07/2001	---	EVROFARMA SA (CR)	0.300	---	0.300 17/09/2013	0.300	0.270	0.300	0.300	0.290	160@0.270	2917@0.300	---	2012	235	6	68.10	4,101.96	0.209	0.539	3577
106,500,000	0.600	0.04	0.05	0.15	31/07/2013	28/01/2000	---	EYDAP S.A. (CR)	8.00	---	8.00 19/09/2013	8.00	7.70	8.00	8.00	7.87	50@7.88	800@8.05	18.19	2012	310,490	618	2,443,887.47	852,000.00	4.65	8.32	7577
52,800,154	0.300	---	---	---	16/04/2010	21/06/2004	---	F.G. EUROPE S.A. (CR)	0.511	-1.73 €	0.520 19/09/2013	0.520	0.510	0.531	0.510	0.519	230@0.481	500@0.522	6.19	2012	7,200	13	3,737.70	26,980.88	0.450	0.950	3722
10,203,575	0.730	---	---	---	16/07/2007	18/10/1999	---	FIERATEX SA (CR)	0.130	---	0.130 19/09/2013	---	---	---	---	---	650@0.119	500@0.136	---	2012	---	---	---	1,326.46	0.090	0.400	3763
11,720,024	0.530	---	---	---	16/07/2010	29/05/2012	---	FLEXOPACK SA (CR)	3.90	---	3.90 19/09/2013	---	---	---	---	---	300@3.51	200@3.88	13.13	2012	---	---	---	45,708.09	2.39	5.00	2723
4,181,450	0.500	---	---	---	21/08/2000	05/03/2002	---	FLOUR MILLS SARANTOPOULOS SA	0.900	---	0.900 12/09/2013	---	---	---	---	---	---	---	16.64	2012	---	---	---	3,763.31	0.626	1.02	3577
66,948,210	0.300	---	---	---	14/07/2009	31/12/2010	4988	FOLLI FOLLIE (CR)	18.90	-0.68 €	19.03 19/09/2013	19.20	18.65	19.40	18.90	18.79	4695@18.70	1000@18.92	---	2012	88,336	354	1,659,373.38	1,265,321.17	11.51	19.40	5379
50,992,322	1.00	---	---	---	21/06/2010	16/07/2002	---	FOURLIS (CR)	3.07	-1.60 €	3.12 19/09/2013	3.12	3.05	3.16	3.07	3.11	1073@3.05	2590@3.10	---	2012	150,564	290	467,978.52	156,546.43	1.58	3.16	3722
50,592,373	0.300	---	---	---	07/07/2010	07/09/2011	---	FRIGOGLASS SA (CR)	5.24	-3.85 €	5.45 19/09/2013	5.45	5.22	5.45	5.24	5.31	100@5.23	2300@5.32	---	2012	64,144	222	340,654.07	265,104.03	3.84	6.26	2757
77,376,446	0.340	---	---	---	23/05/2005	18/08/2011	---	G.E. DIMITRIOU (CR)	0.038	---	0.038 17/09/2013	---	---	---	---	---	300@0.038	40600@0.041	---	2012	---	---	---	2,940.30	0.028	0.118	3722
14,076,360	0.370	---	---	---	19/08/2008	22/07/2003	---	GALAXIDI S.A. (CR)	0.310	3.33 #	0.300 18/09/2013	0.310	0.310	0.310	0.310	0.310	4000@0.280	3860@0.309	8.81	2012	140	1	43.40	4,363.67	0.271	0.638	3573
85,882,688	0.570	0.0048	---	---	01/08/2011	02/01/2009	---	GEK TERNA (CR)	2.28	-2.98 €	2.35 19/09/2013	2.36	2.27	2.36	2.28	2.30	550@2.27	10727@2.29	-(6)-	2012	444,895	447	1,024,609.15	195,812.53	1.40	2.80	2357
24,060,000	0.300	---	0.017	---	18/06/2012	21/01/2000	---	GEN. COMMERCIAL & IND.SA (CR)	0.385	-0.26 €	0.386 19/09/2013	0.385	0.385	0.385	0.385	0.385	600@0.351	100@0.378	---	2012	1,400	1	539.00	9,263.10	0.256	0.545	2797
34,770,982	1.54	---	---	---	06/07/2010	27/07/2000	---	GR. SARANTIS SA (CR)	5.36	-0.37 €	5.38 19/09/2013	5.33	5.32	5.42	5.36	5.34	365@5.31	141@5.36	---	2012	2,467	31	13,173.31	186,372.46	4.05	5.60	3767
8,340,750	1.20	---	---	---	25/06/2009	30/07/2001	---	HAIDEMENOS SA (CR)	0.826	---	0.826 18/09/2013	---	---	---	---	---	---	844@0.744	---	2012	---	---	---	6,889.46	0.350	0.905	2791
101,279,627	0.380	---	---	---	26/06/2008	14/07/2006	---	HALKOR SA (CB)	0.838	-2.56 €	0.860 19/09/2013	0.875	0.838	0.875	0.838	0.858	2000@0.836	596@0.838	---	2012	31,223	63	26,790.04	84,872.33	0.550	1.42	1755
36,748,909	0.730	---	---	---	15/12/2005	13/12/2006	---	HEL. SUGAR INDUSTRY SA (CB)	0.912	-1.62 €	0.927 19/09/2013	0.944	0.906	0.944	0.926	0.914	230@0.910	513@0.925	---	2013	5,392	28	4,929.13	33,515.01	0.754	1.74	3577
29,546,360	0.710	---	---	---	20/06/2008	23/08/2000	---	HELLENIC CABLES SA (CR)	1.47	-2.00 €	1.50 19/09/2013	1.50	1.47	1.53	1.47	1.50	1497@1.47	3367@1.49	---	2012	15,775	54	23,649.74	43,433.15	1.16	2.32	2733
65,368,563	0.790	0.15	0.11	0.09	03/06/2013	26/09/2012	---	HELLENIC EXCHANGES (CR)	6.21	-2.97 €	6.40 19/09/2013	6.33	6.16	6.35	6.21	6.20	4650@6.16	2144@6.21	27.82	2012	286,076	557	1,772,395.48	405,938.78	3.75	6.97	8777
305,635,185	2.18	0.45	0.45	0.15	16/08/2013	01/10/2003	4795	HELLENIC PETROLEUM (CR)	7.56	-5.85 €	8.03 19/09/2013	8.00	7.56	8.00	7.56	7.68	1392@7.56	100@7.60	23.70	2012	212,542	618	1,633,249.30	2,310,602.00	6.20	9.30	537
305,732,436	0.410	---	---	---	08/07/2009	28/09/2011	---	HYGEIA SA (CR)	0.397	-6.15 €	0.423 19/09/2013	0.420	0.397	0.424	0.397	0.407	300@0.396	1500@0.398	---	2012	99,666	135	40,584.99	121,375.78	0.280	0.795	4533
53,155,053	0.440	---	---	---	21/07/2010	16/07/2008	---	IASO SA (CR)	1.14	-2.56 €	1.17 19/09/2013	1.11	1.11	1.19	1.14	1.13	166@1.12	470@1.14	---	2012	2,798	17	3,169.02	60,596.76	0.850	1.58	4533
8,298,467	0.400	---	---	---	30/08/1993	08/05/2013	---	IDEAL GROUP SA (CR)	0.720	-2.70 €	0.740 19/09/2013	0.740	0.720	0.740	0.720	0.727	59@0.667	16@0.720	-(6)-	2012	60	5	43.60	5,974.90	0.571	1.85	9574
28,580,100	0.400	0.05	0.02	---	20/08/2012	23/02/2007	---	IKTINOS HELLAS SA (CR)	1.53	-1.29 €	1.55 19/09/2013	1.49	1.49	1.54	1.52	1.52	1700@1.49	1650@1.52	14.81	2012	8,560	25	12,990.80	43,727.55	1.16	1.80	2353
9,000,000	0.880	---	---	---	15/05/2009	07/12/2010	---	ILYDA S.A. (CR)	0.559	---	0.559 05/08/2013	---	---	---	---	---	---	190@0.504	---	2012	---	---	---	5,031.00	0.269	0.650	9537
20,578,374	0.620	0.03	---	---	02/06/2011	05/05/1999	---	INFORM P. LYKOS SA (CR)	1.13	-9.60 €	1.25 19/09/2013	1.22	1.13	1.22	1.13	1.15	1100@1.12	50@1.15	---	2012	36,246	92	41,554.58	23,253.56	1.10	1.75	2791
11,233,200	0.730	---	---	---	12/07/2010	30/07/1999	---	INTERTECH SA (CR)	0.310	2.31 #	0.303 19/09/2013	0.307	0.307	0.310	0.310	0.310	100@0.284	100@0.313	---	2012	693	4	214.51	3,482.29	0.223	0.600	9572
34,986,430	0.440	---	---	---	25/07/2008	23/02/2010	---	INTERWOOD-XYLEMPORIA (CR)	0.110	---	0.110 18/09/2013	---	---	---	---	---	4274@0.105	---	---	2012	---	---	---	4,413.21	0.101	0.188	2353
2,566,836	0.440	---	---	---	13/08/2010	09/01/2007	---	INTERWOOD-XYLEMPORIA (PR)	0.220	---	0.220 26/07/2013	---	---	---	---	---	---	1000@0.240	---	2012	---	---	---	4,413.21	0.200	0.315	2353
23,154,250	1.36	---	---	---	12/08/2008	02/08/2010	---	INTRACOM CONSTR. (CR)	0.721	-3.22 €	0.745 19/09/2013	0.769	0.720	0.770	0.720	0.740	500@0.685	500@0.719	---	2012	11,674	82	8,635.66	16,694.21	0.580	1.22	2357

Number of Outstanding Securities	Nominal Value	Dividends [1]			Date of Last Coupon Dividend [2]		Note	Shares	Closing price	% change	Previous closing price/date	Open price	Price min	Price max	Last price	Avg price	Last Bid [7]	Last Ask [7]	P/E after	Year	Volume	Trades	Transactions Value	Company Mkt Value (thou. €)	Year low	Year high	Sector[4]
----------------------------------	---------------	---------------	--	--	----------------------------------	--	------	--------	---------------	----------	-----------------------------	------------	-----------	-----------	------------	-----------	--------------	--------------	-----------	------	--------	--------	--------------------	-----------------------------	----------	-----------	-----------

Main Market

133,025,996	1.41	---	---	---	03/07/2007	07/01/2002	---	INTRACOM HOLDINGS (CR)	0.480	-3.81	€ 0.499	19/09/2013	0.500	0.480	0.500	0.480	0.485	2000@0.478	400@0.483	---	2012	250,629	227	121,628.78	63,852.48	0.321	0.754	9578
158,961,721	0.300	0.0045	0.0035	0.0026	30/05/2013	14/11/2007	---	INTRALOT (CR)	1.70	-3.41	€ 1.76	19/09/2013	1.73	1.67	1.75	1.70	1.70	2050@1.68	11300@1.71	90.74	2012	405,563	530	687,517.96	270,234.93	1.29	2.41	5752
77,654,850	0.580	0.04	---	---	01/07/2011	21/02/2003	---	J & P - AVAX SA (CR)	1.72	---	₺ 1.72	19/09/2013	1.74	1.72	1.75	1.72	1.72	200@1.67	1472@1.71	---	2012	113	3	194.65	133,566.34	1.05	1.90	2357
129,994,676	1.19	0.189	---	---	23/12/2010	07/09/2012	---	JUMBO SA (CR)	8.60	-5.29	€ 9.08	19/09/2013	9.00	8.60	9.16	8.60	8.79	1000@8.55	1000@8.84	14.49	2012	281,052	558	2,471,253.59	1,117,954.21	4.85	9.16	3747
9,742,920	0.400	0.01	0.01	0.01	12/08/2013	14/07/2000	---	KARAMOLEGOS SA (CR)	1.30	---	₺ 1.30	19/09/2013	---	---	---	---	---	1000@1.17	5608@1.30	5.05	2012	---	---	---	12,665.80	1.07	1.83	3577
14,679,792	1.44	0.065	---	---	03/06/2011	04/09/2000	---	KARATZIS SA (CR)	4.68	1.74	# 4.60	19/09/2013	4.60	4.55	4.68	4.68	4.63	100@4.46	200@4.68	15.72	2012	400	4	1,852.50	68,701.43	2.55	4.90	2723
3,300,689	0.350	---	---	---	01/07/2004	21/07/1999	---	KEKROPS SA (CR)	1.90	---	₺ 1.90	19/09/2013	1.89	1.89	1.90	1.90	1.90	170@1.80	687@1.88	---	2012	192	4	363.90	6,271.31	1.54	3.79	8633
7,595,160	0.600	---	---	---	08/08/2008	18/08/2010	---	KIRIAKOULIS SHIPPING SA (CR)	0.888	---	₺ 0.888	19/09/2013	---	---	---	---	---	100@0.685	300@0.879	61.88	2012	---	---	---	6,744.50	0.635	1.49	5759
23,648,700	0.330	0.05	---	---	13/07/2011	23/07/2008	---	KLEEMAN HELLAS SA (CR)	1.61	-3.59	€ 1.67	19/09/2013	1.62	1.61	1.68	1.61	1.64	237@1.60	700@1.61	---	2012	6,650	22	10,878.60	38,074.41	1.20	1.88	2757
40,219,218	0.300	---	---	---	25/05/2009	09/07/2013	---	KLOUKINAS - LAPPAS SA (CR)	0.649	---	₺ 0.649	19/09/2013	---	---	---	---	---	10000@0.620	220@0.646	---	2012	---	---	---	26,102.27	0.570	0.970	2357
21,224,340	0.420	---	---	---	02/07/2008	25/04/2006	---	KORDELLOS BROS SA (CR)	0.201	---	₺ 0.201	19/09/2013	---	---	---	---	---	300@0.186	2602@0.219	---	2012	---	---	---	4,266.09	0.195	0.428	1757
13,450,000	0.390	---	---	---	25/06/2010	28/05/2008	---	KORRES (CR)	3.08	---	₺ 3.08	19/09/2013	3.02	2.95	3.08	3.08	3.01	90@2.94	20@3.08	---	2012	297	11	894.53	41,426.00	2.66	4.87	3767
29,480,000	0.420	---	---	---	19/07/2010	01/08/2007	---	KRETA FARM SA (CR)	0.692	6.96	# 0.647	19/09/2013	0.647	0.647	0.700	0.692	0.678	300@0.676	1363@0.692	---	2012	256,360	71	173,720.90	20,400.16	0.307	0.800	3577
33,065,136	0.380	---	---	---	06/07/2009	16/09/2013	---	KRI-KRI S.A. (CR)	2.05	-3.76	€ 2.13	19/09/2013	2.07	2.01	2.07	2.05	2.04	610@2.01	6374@2.05	15.18	2012	21,602	35	44,091.61	67,783.53	1.52	2.20	3577
15,804,800	0.330	---	---	---	15/06/2010	12/03/2004	---	KTIMA KOSTAS LAZARIDIS SA (CR)	0.324	---	₺ 0.324	10/09/2013	---	---	---	---	---	---	520@0.323	---	2012	---	---	---	5,120.76	0.239	0.488	3535
22,945,139	0.920	---	---	---	19/08/2008	16/09/2013	---	KYRIAKIDIS MARBLES SA (CR)	0.865	-3.67	€ 0.898	19/09/2013	0.880	0.865	0.880	0.865	0.866	300@0.860	891@0.865	84.73	2012	3,432	8	2,973.66	19,847.55	0.630	1.04	2353
44,267,700	0.300	---	---	---	30/05/2007	18/09/2002	---	LAMDA DEVELOPMENT SA (CR)	3.83	-1.54	€ 3.89	19/09/2013	4.00	3.83	4.00	3.83	3.91	400@3.82	70@3.90	---	2012	1,713	20	6,699.61	169,545.29	3.50	6.48	8633
5,939,268	0.620	---	---	---	10/07/2003	03/01/2002	---	LANAKAM SA (CR)	0.639	---	₺ 0.639	14/08/2013	---	---	---	---	---	---	8000@0.575	---	2012	---	---	---	3,795.19	0.503	0.869	3763
7,734,375	1.00	---	---	---	09/07/2007	07/01/2011	---	LIVANIS SA (CR)	0.229	---	₺ 0.229	23/08/2013	---	---	---	---	---	---	600@0.229	---	2012	---	---	---	1,771.17	0.144	0.363	5557
4,740,000	0.860	---	---	---	---	14/03/2003	---	LOGISMOS S.A. (CR)	0.550	---	₺ 0.550	16/09/2013	---	---	---	---	---	---	770@0.499	63.80	2011	---	---	---	2,607.00	0.373	1.23	9533
15,222,276	0.640	---	---	---	01/06/2010	02/08/2011	---	LOULIS MILLS SA (CR)	2.73	0.37	# 2.72	18/09/2013	2.73	2.70	2.73	2.73	2.73	199@2.70	100@2.80	-(-)-	2012	9,900	10	26,989.98	41,556.81	2.08	3.76	3577
770,328,883	0.300	---	---	---	26/04/2007	10/05/2013	---	MARFIN INVESTMENT GROUP (CR)	0.350	-4.63	€ 0.367	19/09/2013	0.367	0.345	0.367	0.350	0.354	30022@0.345	15672@0.352	---	2012	2,972,575	778	1,053,692.94	269,615.11	0.175	0.564	8775
9,819,370	0.690	---	---	---	14/08/2007	09/01/2004	---	MATHIOS REFRACTORY SA (CR)	0.265	---	₺ 0.265	19/09/2013	---	---	---	---	---	500@0.188	4000@0.265	---	2012	---	---	---	2,602.13	0.180	0.510	2353
468,700	1.0556	---	---	---	21/03/2012	21/05/2004	---	MERMEREN KOMB. A.D. PR. (GDR)	4.00	-6.32	€ 4.27	19/09/2013	4.30	3.95	4.30	3.99	3.97	57@3.99	30@4.08	0.98	2012	447	17	1,776.02	1,874.80	3.73	5.19	1775
51,950,600	0.320	0.48	0.75	0.25	10/05/2013	21/10/2005	---	METKA (CR)	11.88	-3.42	€ 12.30	19/09/2013	12.15	11.71	12.25	11.88	11.92	1020@11.82	200@12.15	17.13	2012	83,943	431	1,000,953.14	617,173.13	9.00	12.78	2757
10,500,000	0.900	---	---	---	24/06/2008	04/07/2012	---	MEVACO SA (CR)	1.28	-6.57	€ 1.37	19/09/2013	1.29	1.28	1.29	1.28	1.29	1@1.28	100@1.33	9.27	2012	349	3	449.22	13,440.00	1.01	1.58	2757
14,074,000	3.00	0.15	0.25	---	02/03/2012	23/07/2009	---	MIG REAL ESTATE (CR)	1.47	---	₺ 1.47	19/09/2013	1.48	1.46	1.48	1.46	1.47	365@1.46	90@1.54	---	2012	630	6	927.75	20,688.78	1.17	1.92	8671
6,200,000	0.500	---	---	---	22/06/2010	01/11/1995	---	MINERVA KNITWEAR SA (CB)	0.776	---	₺ 0.776	05/08/2013	---	---	---	---	---	---	1235@0.699	---	2012	---	---	---	4,811.20	0.530	0.948	3763
12,417,000	0.370	---	---	---	28/07/2008	06/09/2011	---	MLS MULTIMEDIA SA (CR)	3.10	0.32	# 3.09	19/09/2013	3.08	3.04	3.10	3.10	3.07	250@3.04	295@3.09	40.83	2012	2,963	26	9,100.80	38,492.70	2.60	3.13	9537
4,588,137	16.00	---	---	---	30/06/2005	17/08/2011	---	MOCHLOS SA (CR)	1.81	-2.69	€ 1.86	19/09/2013	1.78	1.70	1.82	1.82	1.73	99@1.70	350@1.80	---	2012	4,738	38	8,194.48	8,304.53	1.12	2.60	2357
11,700,000	0.590	---	---	---	02/06/2009	24/07/2012	---	MOTODYNAMICS S.A. (CR)	0.304	-6.75	€ 0.326	19/09/2013	0.400	0.304	0.400	0.304	0.333	74@0.304	23@0.401	---	2012	26	4	8.67	3,556.80	0.211	0.640	5379
110,782,980	0.850	0.25	0.4	0.3	26/06/2013	05/11/2012	---	MOTOR OIL (CR)	7.74	-2.03	€ 7.90	19/09/2013	7.85	7.70	7.95	7.74	7.76	150@7.66	9410@7.74	9.45	2012	221,369	646	1,718,207.77	857,460.27	6.80	9.37	533
116,915,862	1.07	---	---	---	11/05/2009	06/07/2011	---	MYTILINEOS HOLDINGS (CR)	4.89	-2.78	€ 5.03	19/09/2013	5.00	4.80	5.00	4.89	4.88	1062@4.82	4800@4.89	---	2012	433,814	1,037	2,115,766.61	571,718.57	3.38	5.65	1755
8,321,682	0.670	---	---	---	17/08/2007	23/11/1999	---	N. LEVEDERIS SA (CB)	0.265	---	₺ 0.265	19/09/2013	---	---	---	---	---	440@0.239	100@0.278	---	2012	---	---	---	3,266.06	0.198	0.658	1757
2,160,524	0.670	0.0435	0.0435	0.0436	16/08/2013	23/11/1999	---	N. LEVEDERIS SA (PB)	0.491	9.60	# 0.448	23/08/2013	0.404	0.404	0.491	0.491	0.408	---	97@0.404	---	2012	116	3	47.29	3,266.06	0.307	0.798	1757
11,510,102	0.890	---	---	---	24/06/2005	06/10/1999	---	NAFPAKTOS TEXTILE IND. SA (CB)	0.400	---	₺ 0.400	18/09/2013	---	---	---	---	---	---	2124@0.360	---	2012	---	---	---	4,604.04	0.232	0.500	3763
6,340,000	0.600	---	---	---	30/11/2009	12/07/2000	---	NAKAS MUSIC	1.00	---	₺ 1.00	19/09/2013	1.00	1.00	1.00	1.00	1.00	10@0.900	261@1.00	---	2012	109	1	109.00	6,340.00	0.300	1.04	5379
2,396,785,994	0.300	---	---	---	16/05/2008	24/05/2013	---	NATIONAL BANK (CR)	2.99	-5.97	€ 3.18	19/09/2013	3.18	2.99	3.18	2.99	3.09	72654@2.99	1311@3.02	---	2012	1,797,782	1,618	5,552,042.65	7,166,390.12	1.83	9.87	8355

Number of Outstanding Securities	Nominal Value	Dividends [1]			Date of Last Coupon		Note	Shares	Closing price	% change	Previous closing price/date	Open price	Price min	Price max	Last price	Avg price	Last Bid [7]	Last Ask [7]	P/E after	Year	Volume	Trades	Transactions Value	Company Mkt Value (thou. €)	Year low	Year high	Sector[4]	
		2010	2011	2012	Dividend [2]	Right																						
Main Market																												
23,935,280	0.300	---	---	---	29/06/2009	13/06/2000	---	NAYTEMPORIKI PUBLISHING SA(CR)	0.185	---	↘ 0.185	19/09/2013	---	---	---	---	---	1300@0.167	500@0.196	---	2012	---	---	---	4,428.03	0.149	0.360	5557
27,848,000	0.300	0.0301	0.0132	0.0137	21/08/2013	02/09/2003	---	NEWSPHONE HELLAS SA (CR)	0.330	---	↘ 0.330	19/09/2013	---	---	---	---	---	300@0.306	48@0.326	8.08	2012	---	---	---	9,189.84	0.241	0.592	2791
6,132,500	1.25	0.1	---	---	24/06/2011	19/06/2001	---	NEXANS HELLAS SA (CR)	2.30	---	↘ 2.30	19/09/2013	---	---	---	---	---	23@2.15	100@2.30	---	2012	---	---	---	14,104.75	2.10	3.11	2733
63,697,153	1.34	---	---	---	08/07/2008	10/11/2008	---	NIREFS SA (CR)	0.415	-4.60	€ 0.435	19/09/2013	0.435	0.415	0.435	0.415	0.421	550@0.413	6475@0.416	---	2012	19,065	30	8,026.65	26,434.32	0.380	0.839	3573
319,000,000	0.300	1.4177	0.72	0.57	28/06/2013	25/04/2001	---	OPAP (CR)	8.02	-0.99	€ 8.10	19/09/2013	8.13	8.00	8.24	8.02	8.10	2671@8.02	4500@8.10	4.99	2012	1,285,983	1,778	10,417,722.15	2,558,380.00	5.49	8.27	5752
490,150,389	2.39	0.1179	---	---	28/06/2011	18/06/1998	---	OTE (CR)	7.20	-6.49	€ 7.70	19/09/2013	7.70	7.19	7.80	7.20	7.46	6993@7.21	1400@7.26	---	2012	1,748,740	2,404	13,056,847.24	3,529,082.80	4.26	7.81	6535
25,000,000	2.00	0.02	0.01	0.05	18/07/2013	08/08/2003	---	P.P.A. S.A. (CR)	17.00	-4.12	€ 17.73	19/09/2013	17.35	16.94	17.82	17.00	17.01	182@16.94	50@17.01	85.74	2012	16,503	179	280,755.39	425,000.00	14.59	21.68	2777
4,971,466	1.46	---	---	---	04/07/2007	08/10/2003	---	PAIRIS SA (CR)	0.269	9.80	# 0.245	19/09/2013	0.269	0.269	0.269	0.269	0.269	990@0.231	10@0.269	---	2012	10	1	2.69	1,337.32	0.201	0.605	2723
3,953,090	0.900	---	---	---	02/07/2001	05/12/2012	---	PAPERPACK (CR)	0.892	-0.33	€ 0.895	19/09/2013	0.894	0.865	0.894	0.892	0.877	360@0.865	500@0.891	---	2012	2,990	7	2,623.57	3,526.16	0.500	1.06	2723
50,797,369	0.310	---	---	---	17/08/2000	12/10/2010	---	PAPOUTSANIS (CR)	0.600	---	↘ 0.600	19/09/2013	0.600	0.600	0.600	0.600	0.600	90@0.523	6990@0.600	---	2012	100	1	60.00	30,478.42	0.361	0.750	3767
7,070,400	0.930	---	---	---	18/05/2010	12/05/2011	---	PETROPOULOS PETROS (CR)	1.58	0.64	# 1.57	19/09/2013	1.58	1.58	1.58	1.58	1.58	150@1.51	146@1.57	---	2012	102	3	161.16	11,171.23	1.20	1.74	2753
5,072,567,951	0.300	---	---	---	16/05/2008	05/06/2013	---	PIRAEUS BANK (CR)	1.24	-8.15	€ 1.35	19/09/2013	1.34	1.24	1.35	1.24	1.30	58407@1.24	3000@1.25	---	2012	7,817,280	2,529	10,120,367.33	6,289,984.26	0.832	6.28	8355
22,080,000	0.320	0.05	0.08	0.12	22/05/2013	03/10/2000	---	PLAISIO COMPUTERS SA (CR)	5.05	-1.56	€ 5.13	19/09/2013	5.10	5.05	5.20	5.05	5.18	10@5.06	296@5.20	11.25	2012	3,650	15	18,917.50	111,504.00	3.65	6.25	9752
232,000,000	4.60	0.79	---	0.025	22/07/2013	12/12/2001	---	PPC (CR)	8.00	-1.84	€ 8.15	19/09/2013	8.21	7.90	8.26	8.00	8.06	2000@7.96	374@7.99	-(6)-	2012	774,051	1,805	6,236,846.20	1,856,000.00	4.55	8.49	7535
11,812,193	0.450	---	---	---	24/07/2009	15/11/2006	---	PROFILE SA (CR)	0.996	0.61	# 0.990	19/09/2013	1.00	0.996	1.00	0.996	0.999	50@0.985	140@0.996	19.16	2012	200	3	199.72	11,764.94	0.761	1.26	9533
24,319,250	0.300	---	---	---	09/07/2002	04/07/2007	---	PROODEFTIKH SA (CR)	0.145	---	↘ 0.145	19/09/2013	---	---	---	---	---	700@0.135	500@0.146	---	2012	---	---	---	3,526.29	0.054	0.223	2357
6,836,280	1.88	---	---	---	18/07/2005	10/09/2010	---	QUALITY & RELIABILITY SA (CR)	1.74	1.16	# 1.72	19/09/2013	1.70	1.70	1.74	1.74	1.72	300@1.45	1305@1.72	---	2012	4,025	3	6,903.50	11,895.13	0.236	1.97	9533
48,069,201	0.400	---	---	---	05/09/2008	21/06/2012	---	QUEST HOLDINGS (CR)	1.12	-5.09	€ 1.18	19/09/2013	1.16	1.12	1.20	1.12	1.15	8200@1.11	500@1.15	---	2012	8,003	17	9,208.97	53,837.51	0.936	1.39	9533
57,434,884	1.31	---	---	---	05/06/2008	12/06/2009	---	REDS S.A. (CR)	0.510	-1.16	€ 0.516	19/09/2013	0.510	0.510	0.510	0.510	0.510	500@0.502	500@0.525	---	2012	1,270	3	647.70	29,291.79	0.450	0.949	8633
22,280,000	0.300	0.0329	---	---	11/04/2011	23/02/2007	---	REVOIL (CR)	0.800	-2.44	€ 0.820	19/09/2013	0.810	0.800	0.810	0.800	0.802	1000@0.797	7@0.800	---	2012	6,080	12	4,874.60	17,824.00	0.345	1.20	5379
7,500,000	0.560	---	---	---	25/06/2010	10/04/2013	---	S.KANAKIS SA (CR)	2.02	---	↘ 2.02	19/09/2013	2.02	2.02	2.02	2.02	2.02	50@1.93	1503@1.97	14.36	2012	201	5	406.02	15,150.00	1.05	2.04	3577
52,067,296	0.300	---	---	---	23/12/2003	24/01/2007	---	SELECTED TEXT. IND. ASSOC (CR)	0.259	-0.77	€ 0.261	19/09/2013	0.260	0.259	0.260	0.259	0.259	450@0.250	304@0.259	---	2012	3,700	9	959.50	13,485.43	0.232	0.587	3763
96,243,908	0.410	---	---	---	26/06/2008	17/07/2000	---	SIDENOR (CR)	1.53	-3.77	€ 1.59	19/09/2013	1.59	1.51	1.63	1.53	1.57	3000@1.52	3000@1.55	---	2012	90,294	165	141,740.30	147,253.18	1.00	2.39	1757
6,456,530	1.60	---	---	---	29/06/2001	02/08/2010	---	SPACE HELLAS SA (CR)	2.19	---	↘ 2.19	14/06/2013	---	---	---	---	---	---	3314@1.98	70.35	2012	---	---	---	14,139.80	1.25	2.20	9578
28,438,268	0.300	---	---	---	21/08/2006	24/11/1999	---	SPIROY AGRICULTURE SA (CR)	0.306	---	↘ 0.306	19/09/2013	---	---	---	---	---	---	100@0.300	---	2012	---	---	---	8,702.11	0.252	0.557	1357
33,125,000	5.00	---	---	---	03/07/2006	18/08/2010	---	TECHNICAL OLYMPIC SA (CR)	1.45	2.84	# 1.41	19/09/2013	1.40	1.36	1.45	1.45	1.40	6501@1.35	854@1.45	-(6)-	2012	10,810	28	15,091.85	48,031.25	1.17	2.71	3728
109,319,070	0.300	(0.0399)	(0.0613)	---	28/05/2012	05/08/2013	---	TERNA ENERGY (CR)	3.10	-2.52	€ 3.18	19/09/2013	3.16	3.07	3.18	3.10	3.12	1201@3.09	3000@3.11	68.09	2012	154,075	339	480,509.11	338,889.12	2.24	3.73	7537
36,300,000	1.12	0.114	0.188	0.162	16/08/2013	12/12/2007	---	THESSALONIKA WATER & SEWERAGE	5.74	-4.33	€ 6.00	19/09/2013	6.00	5.74	6.01	5.74	5.84	4863@5.74	200@5.85	11.78	2012	28,236	201	164,993.44	208,362.00	4.73	6.82	7577
45,094,620	0.500	0.036	---	0.0467	10/06/2013	01/11/1999	---	THRACE PLASTICS SA (CR)	1.23	-3.15	€ 1.27	19/09/2013	1.26	1.22	1.26	1.22	1.23	3632@1.22	700@1.23	7.08	2012	33,404	73	41,231.13	55,466.38	1.07	1.64	1357
77,063,568	4.00	0.0806	---	---	24/06/2011	25/06/2004	---	TITAN CEMENT (CR)	17.55	0.29	# 17.50	19/09/2013	17.60	17.02	18.00	17.55	17.61	185@17.55	11@17.61	---	2012	190,225	587	3,340,049.99	1,406,356.61	11.31	18.00	2353
7,568,960	4.00	0.1869	---	---	24/06/2011	25/06/2004	---	TITAN CEMENT CO. (PR)	7.12	0.28	# 7.10	19/09/2013	7.15	6.90	7.17	7.12	7.02	8@6.90	50@7.12	---	2012	752	19	5,279.95	1,406,356.61	5.75	7.27	2353
10,080,000	3.00	0.21	0.4	1.5	17/07/2013	27/08/2001	---	TPA SA (CR)	24.00	---	↘ 24.00	19/09/2013	24.00	24.00	24.05	24.00	24.00	1763@24.00	300@24.24	13.12	2012	3,114	11	74,742.50	241,920.00	19.00	25.20	2777
54,888,240	1.13	0.1	0.1	0.1	25/04/2013	22/03/2006	---	TRASTOR REAL EST. INV. CO.(CR)	0.760	-1.30	€ 0.770	19/09/2013	0.770	0.748	0.770	0.766	0.754	490@0.756	1245@0.766	---	2012	2,588	9	1,952.50	41,715.06	0.624	0.829	8671
14,627,315	0.300	---	---	---	16/11/1992	03/12/2012	---	UNIBIOS (CR)	0.273	1.87	# 0.268	19/09/2013	0.270	0.265	0.285	0.273	0.275	3000@0.263	2768@0.271	---	2012	100,000	110	27,473.92	3,993.26	0.151	0.414	2353
18,810,000	0.400	---	---	---	08/07/2010	14/11/2007	---	VARVERIS - MODA BAGNO SA (CR)	0.279	7.72	# 0.259	19/09/2013	0.279	0.279	0.279	0.279	0.280	100@0.235	100@0.259	---	2012	1	1	0.28	5,247.99	0.242	0.419	2353
199,474,091	0.300	---	---	---																								

Number of Outstanding Securities	Nominal Value	Dividends [1]			Date of Last Coupon		Note	Shares	Closing price	% change	Previous closing price/date	Open price	Price min	Price max	Last price	Avg price	Last Bid [7]	Last Ask [7]	P/E after	Year	Volume	Trades	Transactions Value	Company Mkt Value (thou. €)	Year low	Year high	Sector[4]		
		2010	2011	2012	Dividend [2]	Right																							
Exchange Traded Funds (ETFs)																													
5,848,618		---	---	---	24/01/2008	---	ALPHA ETF FTSE Athex Large Cap		3.34	-4.11	€ 3.48	19/09/2013	3.39	3.34	3.39	3.34	3.39	50@3.34		---	---	---	226	3	766.09	-	2.49	3.99	11000
294,878		---	---	---	29/06/2009	---	NBGAM ETF		10.97	-3.35	€ 11.35	19/09/2013	10.97	10.97	10.97	10.97	10.97	---		---	---	---	2	1	21.94	-	8.23	11.75	11000
388,550		---	---	---	03/11/2010	---	NBGAM ETF GREECE & TURKEY 30		8.17	-3.31	€ 8.45	19/09/2013	8.17	8.17	8.17	8.17	8.17	---		---	---	---	2	1	16.34	-	6.88	10.11	11000

Low Dispersion

14,000,000	3.80	---	---	---	23/04/2010	29/06/1999	4815	ALPHA REAL ESTATE SA(CR)	6.53	---	↘	6.53	19/09/2013	---	---	---	---	---	50@6.54	500@6.98	13.52	2012	---	---	---	91,420.00	5.26	7.00	8637
63,900,000	3.00	---	---	---	23/06/2003	04/11/2008	4816	ASTIR PALACE SA (CR)	3.60	-1.10	€	3.64	19/09/2013	3.62	3.60	3.62	3.60	3.60	1000@3.55	440@3.58	---	2012	6,520	27	23,481.84	230,040.00	3.37	4.95	5753
49,152,904	0.800	---	---	---	09/08/2004	08/03/2006	4814	ATHENA SA (CR)	0.175	-17.45	€	0.212	19/09/2013	0.175	0.175	0.175	0.175	0.175	5900@0.170	500@0.232	---	2012	500	2	87.51	8,601.76	0.094	0.340	2357
191,660,320	0.300	---	---	---	20/07/2009	29/12/2010	4817	ATTICA HOLDINGS (CR)	0.285	-11.77	€	0.323	19/09/2013	0.300	0.271	0.300	0.299	0.285	318@0.271	250@0.299	---	2012	832	4	236.92	54,623.19	0.241	0.588	5759
15,300,000	0.300	---	---	---	30/07/2009	13/12/1999	4893	ATTICA PUBLICATIONS SA (CR)	0.600	9.29	#	0.549	06/09/2013	0.549	0.549	0.650	0.650	0.600	460@0.550	1960@0.650	---	2012	80	2	47.96	9,180.00	0.520	1.45	5557
8,418,750	0.300	---	0.15	0.29	05/06/2013	27/06/2012	4828	GEKE SA (CB)	6.68	---	↘	6.68	18/09/2013	---	---	---	---	---	100@6.68	---	20.98	2012	---	---	---	56,237.25	6.59	6.79	5753
68,322,221	1.00	---	---	---	08/03/2002	08/04/2013	4986	GENIKI BANK (CR)	2.16	---	↘	2.16	19/09/2013	---	---	---	---	---	---	---	---	2012	---	---	---	147,576.00	1.51	8.85	8355
71,082,707	1.70	---	---	---	01/07/2010	21/11/2012	4820	HERACLES GEN.CEMENT CO. (CR)	1.38	-0.72	€	1.39	19/09/2013	1.38	1.38	1.38	1.38	1.38	528@1.38	400@1.39	---	2012	672	5	927.36	98,094.14	1.20	1.80	2353
13,404,440	8.63	---	---	---	02/04/2001	06/03/1992	4822	IONIAN HOTELS SA (CR)	8.95	---	↘	8.95	13/09/2013	8.95	8.95	8.95	8.95	8.95	65@8.95	96@10.74	---	2012	80	1	716.00	119,969.74	8.40	13.00	5753
2,760,000	7.70	6.3291	7.6	8.52	26/06/2013	16/07/1990	4823	KARELIA TOBACCO CO. SA (CB)	205.00	---	↘	205.00	19/09/2013	205.00	205.00	205.00	205.00	205.00	20@200.00	50@204.50	12.45	2012	121	4	24,805.00	565,800.00	110.00	210.00	3785
17,000,000	0.600	---	---	---	12/06/2008	07/03/2000	4941	KATHIMERINI SA (CR)	0.833	-0.71	€	0.839	19/09/2013	0.840	0.830	0.840	0.830	0.833	20@0.675	993@0.830	---	2012	1,515	13	1,262.45	14,161.00	0.321	1.00	5557
21,364,000	1.12	---	---	---	05/07/2010	10/08/2005	4824	LAMPSPA HOTEL SA (CR)	19.40	---	↘	19.40	19/09/2013	---	---	---	---	---	200@18.00	176@19.40	---	2012	---	---	---	414,461.60	15.00	19.40	5753
6,700,000	0.800	---	---	---	19/07/2010	29/08/2012	4894	MILLS KEPENOS (CR)	1.47	---	↘	1.47	19/09/2013	---	---	---	---	---	1000@1.27	4351@1.47	8.74	2012	---	---	---	9,849.00	0.777	1.69	3577
70,926,000	2.25	---	---	---	25/07/2008	21/06/2000	4825	MINOAN LINES SA (CR)	2.00	1.52	#	1.97	19/09/2013	1.97	1.97	2.00	2.00	2.00	140@1.85	1313@2.00	---	2012	1,100	8	2,198.80	141,852.00	1.70	2.10	5759
17,240,776	0.370	---	---	---	14/07/2005	30/09/2003	4827	PERSEUS SA (CR)	0.223	---	↘	0.223	30/08/2013	---	---	---	---	---	---	1050@0.267	13.00	2012	---	---	---	3,844.69	0.033	0.325	3577

Surveillance

33,301,715	0.320	---	---	---	27/06/2003	08/07/2009	4978	AEGEK (CR)	0.073	-8.75	€	0.080	19/09/2013	0.077	0.066	0.079	0.079	0.073	910@0.068	481@0.079	---	2012	1,231	10	90.31	2,431.03	0.066	0.184	2357
14,870,100	0.300	---	---	---	15/05/2008	26/09/2011	4844	ALPHA GRISSIN S.A. (CR)	0.225	---	↘	0.225	09/08/2013	---	---	---	---	---	---	500@0.225	---	2012	---	---	---	3,345.77	0.080	0.328	9533
215,246,452	0.300	---	---	---	25/06/2001	24/09/2001	4446	ALTEC SA (CR)	0.038	-2.56	€	0.039	19/09/2013	0.044	0.037	0.044	0.037	0.038	4800@0.036	5162@0.042	---	2012	12,000	9	458.01	8,179.37	0.021	0.062	9533
2,969,713	0.300	---	---	---	02/07/2008	28/02/2011	4958	ANEK LINES SA (PR, issue '96)	0.310	---	↘	0.310	12/09/2013	0.310	0.310	0.310	0.310	0.310	32@0.370	---	---	2012	605	1	187.55	17,123.71	0.300	0.770	5759
312,163	0.300	---	---	---	02/07/2008	28/02/2011	4959	ANEK LINES SA (PR, issue '90)	1.43	---	↘	1.43	09/09/2013	---	---	---	---	---	---	35@1.43	---	2012	---	---	---	17,123.71	1.43	1.78	5759
185,373,016	0.300	---	---	---	02/07/2008	28/02/2011	4957	ANEK LINES SA (CR)	0.085	---	↘	0.085	19/09/2013	0.085	0.085	0.086	0.086	0.085	1180@0.081	39878@0.086	---	2012	30,372	10	2,583.76	17,123.71	0.071	0.270	5759
81,644,555	0.300	---	---	---	01/07/2008	02/09/2002	4630	ATTI - KAT SA (CR)	0.020	---	↘	0.020	19/09/2013	0.020	0.019	0.020	0.019	0.020	7689@0.019	68329@0.020	---	2012	12,311	3	243.91	1,632.89	0.018	0.088	2357
20,255,805	0.300	---	---	---	22/08/2006	02/08/2010	4881	AXON HOLDING SA (CR)	0.081	19.12	#	0.068	19/09/2013	0.081	0.081	0.081	0.081	0.081	940@0.071	400@0.081	---	2012	445	2	36.05	1,640.72	0.050	0.192	4533
17,579,754	4.16	---	---	---	18/08/2006	02/08/2010	4885	BIOTER SA (CR)	0.170	-2.86	€	0.175	19/09/2013	0.170	0.170	0.170	0.170	0.170	430@0.153	1374@0.170	---	2012	3,000	6	510.00	2,988.56	0.059	0.194	2357
12,431,980	0.720	---	---	---	20/06/2003	10/07/2003	4559	COMPUCON SA (CR)	0.075	---	↘	0.075	11/09/2013	---	---	---	---	---	---	1000@0.070	---	2012	---	---	---	932.40	0.031	0.100	9537
30,159,583	0.470	---	---	---	26/06/2008	29/12/2010	4962	DIAS A/C (CR)	0.839	---	↘	0.839	04/09/2013	---	---	---	---	---	---	400@0.672	---	2012	---	---	---	25,303.89	0.420	0.845	3573
15,878,748	0.480	---	---	---	10/07/2006	22/03/2004	4960	DOMIKI KRITIS SA (CR)	0.538	---	↘	0.538	26/08/2013	---	---	---	---	---	---	130@0.488	---	2012	---	---	---	8,542.77	0.310	0.800	2357
3,961,300	1.28	---	---	---	29/06/2004	03/08/2000	4808	DUROS SA (CR)	0.447	-14.04	€	0.520	19/09/2013	0.416	0.416	0.448	0.448	0.447	---	1698@0.448	---	2012	1,840	6	823.04	1,770.70	0.120	0.970	3763
7,085,888	1.59	---	---	---	02/07/1996	06/09/2010	4690	ELVIEK (CR)	3.00	---	↘	3.00	05/02/2013	---	---	---	---	---	---	100@3.60	-(6)-	2012	---	---	---	21,257.66	3.00	3.58	8633
6,000,000	0.600	---	---	---	13/06/2008	08/04/2004	4886	EUROBROKERS S.A. (CR)	0.052	---	↘	0.052	16/09/2013	---	---	---	---	---	2000@0.042	---	---	2012	---	---	---	312.00	0.052	0.333	8534
7,347,600	0.600	---	---	---	02/06/2010	25/02/2010	4889	EUROCONSULTANTS S.A. (CR)	3.08	---	↘	3.08	11/09/2013	---	---	---	---	---	---	290@2.99	---	2012	---	---	---	22,630.61	2.12	3.08	2791

Number of Outstanding Securities	Nominal Value	Dividends [1]			Date of Last Coupon Dividend [2]		Note	Shares	Closing price	% change	Previous closing price/date	Open price	Price min	Price max	Last price	Avg price	Last Bid [7]	Last Ask [7]	P/E after	Year	Volume	Trades	Transactions Value	Company Mkt Value (thou. €)	Year low	Year high	Sector[4]
----------------------------------------	------------------	---------------	--	--	-------------------------------------	--	------	--------	------------------	----------	--------------------------------	---------------	--------------	--------------	---------------	--------------	-----------------	--------------	--------------	------	--------	--------	-----------------------	--------------------------------	-------------	--------------	---------------

Surveillance

21,820,410	0.800	---	---	---	22/05/2008	02/08/2011	4882	EUROMEDICA SA (CR)	0.340	---	↘	0.340	19/09/2013	---	---	---	---	---	100@0.335	15880@0.350	---	2012	---	---	---	7,418.94	0.270	0.613	4533
12,952,610	0.300	---	---	---		04/10/2012	4846	Forthnet (CR)	1.07	---	↘	1.07	19/09/2013	1.07	1.07	1.11	1.11	1.07	4128@1.11	200@1.12	---	2011	48,318	11	51,771.14	13,859.29	0.350	1.43	9535
1,270,000	0.300	---	---	---	06/07/2007	06/02/2013	---	GIRAKIAN PROFIL SA (CB)	2.38	---	↘	2.38	10/09/2013	---	---	---	---	---	---	200@2.15	---	2012	---	---	---	3,022.60	0.900	3.33	1757
179,707,771	0.300	---	---	---	27/06/2002	01/11/2011	4847	HELLAS ONLINE SA (CR)	0.416	---	↘	0.416	19/09/2013	---	---	---	---	---	2798@0.371	500@0.439	---	2012	---	---	---	74,758.43	0.271	0.709	9537
13,692,227	1.47	---	---	---	07/07/2006	08/10/1999	4845	HELLENIC FABRICS SA (CR)	0.298	---	↘	0.298	04/09/2013	---	---	---	---	---	---	5500@0.294	---	2012	---	---	---	4,080.28	0.180	0.354	3763
30,390,000	0.310	---	---	---	18/08/2008	29/12/2006	4447	HELLENIC FISHFARMING SA (CR)	0.080	-18.37	⬇	0.098	18/09/2013	0.080	0.080	0.080	0.080	0.080	---	399@0.080	18.75	2012	300	1	24.00	2,431.20	0.039	0.137	3573
1,540,000	0.600	---	---	---	08/08/1994	19/09/2000	4855	J.BOUTARIS & SON HOLD. (PB)	0.026	---	↘	0.026	18/09/2013	---	---	---	---	---	1000@0.021	---	---	2012	---	---	---	1,500.46	0.024	0.201	3535
25,179,640	0.600	---	---	---	08/08/1994	19/09/2000	4854	J.BOUTARIS & SON HOLD. SA (CB)	0.058	---	↘	0.058	18/09/2013	---	---	---	---	---	500@0.051	899@0.069	---	2012	---	---	---	1,500.46	0.037	0.132	3535
7,125,216	0.650	---	---	---	01/07/2005	14/12/1999	4955	KRE.KA SA (CR)	0.250	---	↘	0.250	18/09/2013	0.250	0.250	0.250	0.250	0.250	300@0.200	5000@0.230	---	2012	600	3	150.00	1,781.30	0.144	0.580	3573
51,081,030	1.00	---	---	---	20/08/2007	03/09/2007	4912	LAVIPHARM SA (CR)	0.139	3.73	#	0.134	19/09/2013	0.139	0.139	0.139	0.139	0.139	149@0.131	1965@0.138	---	2012	200	2	27.80	7,100.26	0.101	0.268	4577
322,925,288	0.300	---	---	---	23/05/2007	10/04/2000	4554	M.J. MAILLIS SA (CR)	0.065	-2.99	⬇	0.067	19/09/2013	0.065	0.065	0.067	0.067	0.065	2090@0.065	100@0.067	---	2012	810	2	52.85	20,990.14	0.056	0.150	2723
9,567,289	0.300	---	---	---	01/07/2004	19/11/2007	4944	MARAC ELECTRONICS (CR)	0.263	---	↘	0.263	18/09/2013	0.263	0.263	0.263	0.263	0.263	---	980@0.231	---	2012	20	1	5.26	2,516.20	0.068	0.409	9578
4,178,856	1.58	0.22	---	---	21/07/2011	28/07/2004	4983	MEDICON S.A (CR)	0.841	---	↘	0.841	19/09/2013	---	---	---	---	---	---	3000@0.673	---	2012	---	---	---	3,514.42	0.446	1.18	4535
255,459,600	0.300	---	---	---	26/06/2000	03/12/2010	4833	NEL SA (CR)	0.029	---	↘	0.029	19/09/2013	0.029	0.029	0.029	0.029	0.029	3519@0.029	16267@0.033	---	2012	412	2	11.95	7,408.33	0.012	0.158	5759
20,231,328	0.600	---	---	---	15/07/2008	25/06/2004	4879	NIKAS SA (CR)	0.240	---	↘	0.240	18/09/2013	---	---	---	---	---	3@0.240	2500@0.260	---	2012	---	---	---	4,855.52	0.230	0.530	3577
20,210,127	1.53	---	---	---	27/06/1997	20/03/2000	5006	PARNASSOS ENTERP. (CR)	0.068	---	↘	0.068	19/09/2013	---	---	---	---	---	21000@0.062	3000@0.066	---	2012	---	---	---	1,374.29	0.063	0.698	8775
14,967,940	0.500	---	---	---	21/05/2008	04/01/2008	4956	PASAL DEVELOPMENT S.A. (CR)	0.178	---	↘	0.178	19/09/2013	---	---	---	---	---	2000@0.145	760@0.210	---	2012	---	---	---	2,664.29	0.120	0.414	8633
40,946,303	0.360	---	---	---	18/07/2005	27/11/2007	4856	PC SYSTEMS SA (CR)	0.066	---	↘	0.066	19/09/2013	0.066	0.066	0.066	0.066	0.066	5000@0.055	1000@0.064	---	2012	3,002	3	198.13	2,702.46	0.049	0.180	9533
18,750,000	0.300	---	---	---	02/07/2001	31/12/2012	4985	PEGASUS PUBLISHING S.A. (CR)	0.058	1.75	#	0.057	19/09/2013	0.058	0.058	0.058	0.058	0.058	34496@0.059	---	---	2012	22	4	1.28	1,087.50	0.044	0.610	5557
28,056,518	0.530	---	---	---	04/07/2007	19/07/2006	4750	SATO SA (CR)	0.076	-13.64	⬇	0.088	19/09/2013	0.080	0.071	0.080	0.076	0.076	8800@0.071	499@0.084	---	2012	14,508	16	1,101.44	2,132.30	0.025	0.123	3726
36,235,184	1.00	---	---	---	01/07/2008	30/07/2012	4961	SELONDA AQUACULTURE SA (CR)	0.134	2.29	#	0.131	19/09/2013	0.140	0.123	0.140	0.123	0.134	249@0.123	895@0.130	---	2012	2,560	7	343.98	4,855.51	0.119	0.600	3573
7,914,480	2.50	---	---	---	23/06/2008	29/06/2011	4888	SFAKIANAKIS SA (CR)	0.440	-20.00	⬇	0.550	19/09/2013	0.440	0.440	0.440	0.440	0.440	490@0.440	---	---	2012	699	3	307.56	3,482.37	0.364	0.763	5379
60,221,300	0.400	---	---	---	01/07/2002	01/11/2010	4880	SHELMAN SA (CR)	0.089	-14.42	⬇	0.104	19/09/2013	0.089	0.089	0.089	0.089	0.089	---	300@0.089	---	2011	500	1	44.50	5,359.70	0.089	0.280	2353
10,000,000	1.35	---	---	---	24/06/2008	10/05/2005	4887	SIDMA SA (CR)	0.330	---	↘	0.330	19/09/2013	0.330	0.330	0.330	0.330	0.330	1500@0.320	3000@0.340	---	2012	3,960	6	1,306.80	3,300.00	0.320	0.920	1757
29,060,950	0.340	---	---	---	20/08/2007	24/10/2001	4884	SPIDER METAL INDUSTRY SA (CR)	0.065	---	↘	0.065	18/09/2013	---	---	---	---	---	---	6997@0.065	---	2012	---	---	---	1,888.96	0.022	0.097	2757
100,793,000	0.300	---	---	---	16/07/2009	05/08/2013	---	TELETIPOS SA (CR)	0.220	---	↘	0.220	19/09/2013	---	---	---	---	---	200@0.181	100@0.264	---	2012	---	---	---	22,174.46	0.118	0.600	5553
3,229,566	0.320	---	---	---	22/06/2005	23/09/1999	4629	VARANGIS AVEPE S.A. (CR)	0.700	---	↘	0.700	18/09/2013	---	---	---	---	---	---	500@0.690	---	2012	---	---	---	2,260.70	0.206	0.840	3726
17,175,132	0.300	---	---	---	25/06/2002	21/06/2013	4997	VARVARESSOS SA (CB)	0.040	---	↘	0.040	19/09/2013	0.040	0.040	0.040	0.040	0.040	200@0.045	---	---	2012	1,130	5	45.20	687.01	0.027	0.181	3763
13,191,620	0.620	---	---	---	04/08/2010	09/09/2002	4977	YALCO - CONSTANTINOU SA (CB)	0.120	---	↘	0.120	19/09/2013	---	---	---	---	---	500@0.097	4486@0.118	---	2012	---	---	---	1,582.99	0.104	0.210	3722

Under Deletion

5,025,000	0.300	---	---	---	05/07/2005	14/03/2002	4963	ALSINCO S.A (CR)	0.022	15.79	#	0.019	09/09/2013	0.022	0.022	0.022	0.022	0.020	1@0.022	---	---	2012	1	1	0.02	110.55	0.006	0.185	3763
766,000	2.83	---	---	---	01/07/2004	11/12/2012	4937	TRIA ALFA SA (CR)	2.81	---	↘	2.81	23/08/2013	---	---	---	---	---	1@2.25	1@3.35	---	2012	---	---	---	2,339.15	1.30	4.70	3763
245,000	2.83	---	---	---	19/07/2010	11/12/2012	4938	TRIA ALFA SA (PR)	0.762	---	↘	0.762	11/09/2013	---	---	---	---	---	8@0.611	---	---	2012	---	---	---	2,339.15	0.501	1.93	3763

Under Suspension

49,030,011	0.300	---	---	---	19/07/2010	12/05/2011	4875	ALAPIS (CR)	0.041	---	↘	0.041	30/03/2012	---	---	---	---	---	---	---	---	---	---	---	2,010.23	0.041	0.041	4577
1,750,955,549	0.600	---	---	---	19/05/2008	08/12/2011	4911	ATE (CR)	0.155	---	↘	0.155	30/07/2012	---	---	---	---	---	---	---	---	---	---	---	271,398.11	0.155	0.155	8355

Number of Outstanding Securities	Nominal Value	Dividends [1]			Date of Last Coupon		Note	Shares	Closing price	% change	Previous closing price/date	Open price	Price min	Price max	Last price	Avg price	Last Bid [7]	Last Ask [7]	P/E after	Year	Volume	Trades	Transactions Value	Company Mkt Value (thou. €)	Year low	Year high	Sector[4]
		2010	2011	2012	Dividend [2]	Right																					
Under Suspension																											
21,382,067	0.300	---	---	---	02/10/2006	15/02/2006	4628	ATERMON (CR)	0.120	---	↘ 0.120	31/03/2010	---	---	---	---	---	---	---	---	---	---	---	2,565.85	0.120	0.120	5555
105,423,498	0.510	---	---	---	01/07/2004	28/12/2005	4920	AVENIR S.A. (CR)	0.046	---	↘ 0.046	30/08/2012	---	---	---	---	---	---	---	---	---	---	---	4,849.48	0.046	0.046	5752
33,930,000	0.300	---	---	---	03/07/2006	30/05/2001	4865	BABIS VOVOS SA (CR)	0.304	---	↘ 0.304	30/03/2012	---	---	---	---	---	---	---	---	---	---	---	10,314.72	0.304	0.304	8633
20,121,710	1.21	---	---	---	27/07/1992	12/03/2003	5002	BALKAN R.E. (CR)	0.190	---	↘ 0.190	29/08/2013	---	---	---	---	---	---	---	---	---	---	---	3,823.12	0.162	0.438	8633
1,795,140,547	1.00	(0.0615)	---	---	31/05/2011	19/04/2012	4951	BANK OF CYPRUS (CR)	0.207	---	↘ 0.207	15/03/2013	---	---	---	---	5000@0.170	---	---	---	---	---	---	371,594.09	0.180	0.282	8355
21,920,570	0.300	---	---	---	03/07/2007	13/12/1999	4702	CARDASSILARIS SA (CR)	0.140	---	↘ 0.140	30/11/2010	---	---	---	---	---	---	---	---	---	---	---	3,068.88	0.140	0.140	3577
54,547,634	0.500	---	---	---	25/04/2005	21/01/2009	4860	CH.TEGOPOULOS PUBL. SA (CR)	0.038	---	↘ 0.038	23/03/2012	---	---	---	---	---	---	---	---	---	---	---	2,072.81	0.038	0.038	5557
33,718,750	0.300	---	---	---	28/05/2008	21/01/2013	4998	DOL SA (CR)	0.640	---	↘ 0.640	25/07/2013	---	---	---	---	---	3118@0.700	---	---	---	---	---	21,580.00	0.244	0.759	5557
7,847,611	1.20	---	---	---	01/08/2007	28/09/2011	4939	EDRASIS - C. PSALLIDAS SA (CR)	0.150	---	↘ 0.150	19/11/2012	---	---	---	---	---	---	---	---	---	---	---	1,177.14	0.150	0.150	2357
5,750,000	0.300	---	---	---	12/12/2008	12/12/2011	4929	ELECTRONIKI ATHINON SA (CR)	0.480	---	↘ 0.480	07/09/2012	---	---	---	---	---	---	---	---	---	---	---	2,760.00	0.480	0.480	5375
24,605,397	0.400	---	---	---	29/06/1995	27/05/2002	4651	EMPORIKOS DESMOS SA (CR)	0.080	---	↘ 0.080	28/05/2010	---	---	---	---	---	---	---	---	---	---	---	2,134.04	0.080	0.080	3722
1,182,903	0.400	---	---	---	01/07/1996	27/05/2002	4652	EMPORIKOS DESMOS SA (PR)	0.140	---	↘ 0.140	28/09/2009	---	---	---	---	---	---	---	---	---	---	---	2,134.04	0.140	0.140	3722
8,593,750	0.300	---	---	---	01/06/2009	20/06/2007	4876	FASHION BOX (CR)	1.30	---	↘ 1.30	23/02/2012	---	---	---	---	---	---	---	---	---	---	---	11,171.88	1.30	1.30	3763
7,326,648	1.00	---	---	---	26/07/2006	24/07/2001	4921	FINTEXPORT SA (CR)	0.328	---	↘ 0.328	29/06/2012	---	---	---	---	---	---	---	---	---	---	---	2,403.14	0.328	0.328	3763
20,860,000	0.300	---	---	---	03/07/2000	13/11/2007	4848	IKONA - IHOS SA (CR)	0.072	---	↘ 0.072	02/12/2011	---	---	---	---	---	---	---	---	---	---	---	1,501.92	0.072	0.072	5379
36,765,744	0.350	---	---	---	16/08/2006	06/06/2011	4869	IMPERIO SA (CR)	0.026	---	↘ 0.026	30/03/2012	---	---	---	---	---	---	---	---	---	---	---	955.91	0.026	0.026	2777
24,619,524	0.500	---	---	---	10/10/1986	30/12/2002	4914	KERAMIA-ALLATINI (CR)	0.088	---	↘ 0.088	27/08/2012	---	---	---	---	---	---	---	---	---	---	---	2,166.52	0.088	0.088	8633
7,840,373	1.20	---	---	---	18/07/2002	05/03/2003	4765	KLONATEX SA (PR)	0.080	---	↘ 0.080	09/05/2011	---	---	---	---	---	---	---	---	---	---	---	1,453.75	0.080	0.080	3763
20,663,047	1.20	---	---	---	21/08/2000	05/03/2003	4764	KLONATEX SA (CR)	0.040	---	↘ 0.040	09/05/2011	---	---	---	---	---	---	---	---	---	---	---	1,453.75	0.040	0.040	3763
17,544,600	0.600	---	---	---	03/07/2000	01/08/2000	4868	KOYMBAS SYNERGY GROUP (CR)	0.132	---	↘ 0.132	29/03/2012	---	---	---	---	---	---	---	---	---	---	---	2,315.89	0.132	0.132	8775
15,015,000	1.60	---	---	---	01/07/2002	02/02/2000	4603	MAXIM C.M. PERTSINIDIS SA (CB)	0.100	---	↘ 0.100	30/11/2009	---	---	---	---	---	---	---	---	---	---	---	1,501.50	0.100	0.100	3763
66,937,526	0.700	---	---	---	13/08/2010	21/05/2003	5003	MICHANIKI SA (CR)	0.100	---	↘ 0.100	29/08/2013	---	---	---	---	---	---	---	---	---	---	---	9,186.78	0.085	0.370	2357
25,968,987	0.700	---	---	---	13/08/2010	21/05/2003	5004	MICHANIKI SA (PR)	0.096	---	↘ 0.096	29/08/2013	---	---	---	---	---	---	---	---	---	---	---	9,186.78	0.065	0.268	2357
13,555,100	1.00	---	---	---		08/07/2005	4576	MICROLAND COMPUTERS SA (CR)	0.640	---	↘ 0.640	14/07/2009	---	---	---	---	---	---	---	---	---	---	---	8,675.26	0.640	0.640	5379
23,463,874	0.800	---	---	---	23/05/2003	21/12/1999	4918	NEORION SA (CR)	0.125	---	↘ 0.125	28/08/2012	---	---	---	---	---	---	---	---	---	---	---	2,932.98	0.125	0.125	2753
42,501,273	0.300	---	---	---	26/06/2007	10/08/2009	4993	NUTRIART (CR)	0.049	---	↘ 0.049	21/06/2013	---	---	---	---	---	---	---	---	---	---	---	2,082.56	0.038	0.114	3577
25,583,146	0.300	---	---	---	25/06/2001	03/12/2008	4723	PETZETAKIS SA (CR)	0.260	---	↘ 0.260	28/01/2011	---	---	---	---	---	---	---	---	---	---	---	6,651.62	0.260	0.260	1357
9,550,386	0.500	---	---	---	01/07/1997	12/06/2008	4626	PRAXITELIO SA (CR)	0.390	---	↘ 0.390	11/03/2010	---	---	---	---	---	---	---	---	---	---	---	4,430.09	0.390	0.390	4533
1,306,368	0.500	---	---	---	01/07/1997	12/06/2008	4627	PRAXITELIO SA (PR)	0.540	---	↘ 0.540	15/12/2009	---	---	---	---	---	---	---	---	---	---	---	4,430.09	0.540	0.540	4533
62,683,822	0.300	---	---	---	27/05/2008	09/01/2006	4830	PROTON BANK S.A. (CR)	0.180	---	↘ 0.180	07/10/2011	---	---	---	---	---	---	---	---	---	---	---	11,283.09	0.180	0.180	8355
23,059,688	0.660	---	---	---	03/07/2008	06/08/2004	4864	RIDENCO SA (CR)	0.032	---	↘ 0.032	30/03/2012	---	---	---	---	---	---	---	---	---	---	---	737.91	0.032	0.032	3765
51,083,993	1.00	---	---	---	15/07/2008	06/08/2003	4867	SANYO HELLAS HOLD. (CR)	0.020	---	↘ 0.020	30/03/2012	---	---	---	---	---	---	---	---	---	---	---	1,021.68	0.020	0.020	3722
51,334,286	0.320	---	---	---	03/07/2000	18/12/2007	4548	SAOS (CR)	0.780	---	↘ 0.780	27/03/2009	---	---	---	---	---	---	---	---	---	---	---	40,040.74	0.780	0.780	2773
26,408,040	0.300	---	---	---	01/07/1997	26/05/1999	4464	SHEET STEEL SA (CR)	0.120	---	↘ 0.120	28/11/2008	---	---	---	---	---	---	---	---	---	---	---	3,168.96	0.120	0.120	1757
26,262,660	0.900	---	---	---	01/07/2008	24/02/2011	4954	SPRIDER STORES (CR)	0.031	---	↘ 0.031	28/03/2013	---	---	---	---	---	---	---	---	---	---	---	814.14	0.025	0.055	5371
144,688,060	0.600	---	---	---	21/04/2008	10/03/2010	4982	T BANK (CR)	0.048	---	↘ 0.048	30/11/2011	---	---	---	---	---	---	---	---	---	---	---	6,945.03	0.048	0.048	8355
6,523,780	0.530	---	---	---	01/07/2002	06/03/2001	4971	TECHNICAL PUBLICATIONS SA (CR)	0.006	---	↘ 0.006	29/05/2013	---	---	---	---	---	---	---	---	---	---	---	39.14	0.006	0.347	5557
13,920,000	0.320	---	---	---	19/11/2001	01/08/2000	4726	TEXAPRET SA (CR)	0.080	---	↘ 0.080	23/02/2011	---	---	---	---	---	---	---	---	---	---	---	1,113.60	0.080	0.080	3763

Number of Outstanding Securities	Nominal Value	Dividends [1]			Date of Last Coupon		Note	Shares	Closing price	% change	Previous closing price/date		Open price	Price min	Price max	Last price	Avg price	Last Bid [7]	Last Ask [7]	P/E after	Year	Volume	Trades	Transactions Value	Company Mkt Value (thou. €)	Year low	Year high	Sector[4]
----------------------------------------	------------------	---------------	--	--	---------------------	--	------	--------	------------------	----------	--------------------------------	--	---------------	--------------	--------------	---------------	--------------	-----------------	--------------	--------------	------	--------	--------	-----------------------	--------------------------------	-------------	--------------	---------------

Under Suspension

284,465,964	3.70	---	---	---	20/06/2008	15/06/2009	4913	TT HELLENIC POSTBANK (CR)	0.168	---	↘	0.168	30/08/2012	---	---	---	---	---	---	---	---	---	---	---	47,790.28	0.168	0.168	8355
89,616,200	0.300	---	---	---	21/08/2000	28/06/2007	4616	UNITED TEXTILES (CR)	0.050	---	↘	0.050	25/02/2010	---	---	---	---	---	---	---	---	---	---	---	4,480.81	0.050	0.050	3763
71,683,906	0.400	---	---	---	15/06/2005	05/02/2008	4953	XATZIOANNOU (CR)	0.026	---	↘	0.026	28/03/2013	---	---	---	---	---	---	---	---	---	---	---	1,863.78	0.020	0.085	3763

Shares' Notes

Code	Note text
()	- Adjusted dividends.
*	- Last adjusted closing price.
[1]	- Net dividends.
[2]	- The "Date of Last Coupon" for New listings refers to the date company's stocks started to trade in Athex
[3]	- The Company Market Value is referred to the number of outstanding shares
[4]	- Sectors codification can be found in Appendix A
[5]	- The Market Value refers to the total number of shares listed (including their several classes) in the exchange by the company.
[6]	- P/E greater than 100
[7]	- Last view of the Order Book before the end of the trading session
4446	- Transfer to the "Under Supervision" Category as of 20/10/2008.
4447	- Transfer to the "Under Supervision" Category as of 21/10/2008.
4464	- Suspension of trading as of 1/12/2008.
4548	- Suspension of trading as of 1/4/2009.
4554	- Transfer to the "Under Supervision" Category as of 6/4/2009.
4559	- Transfer to the "Under Supervision" Category as of 21/4/2009.
4576	- Suspension of trading as of 14/7/2009.
4603	- Suspension of trading as of 1/12/2009.
4616	- Suspension of trading as of 25/2/2010.
4626	- Suspension of trading as of 1/4/2010.
4627	- Suspension of trading as of 1/4/2010.
4628	- Suspension of trading as of 1/4/2010.
4629	- Transfer to the Under Supervision Category as of 12/4/2010.
4630	- Transfer to the Under Supervision Category as of 12/4/2010.
4651	- Suspension of trading as of 1/6/2010.
4652	- Suspension of trading as of 1/6/2010.
4690	- Transfer to Surveillance category as of 4/4/2006.
4702	- Suspension of trading as of 1/12/2010.
4723	- Suspension of trading as of 31/1/2011.
4726	- Suspension of trading as of 1/3/2011.
4750	- Transfer to the "Under Surveillance Category" from 8/4/2011.
4764	- Suspension of trading as of 20/5/2011.
4765	- Suspension of trading as of 20/5/2011.
4795	- The final gross (pre-tax) dividend is € 0.30 per share and subject to withholding tax on the full dividend amount, i.e. 0,45 per share, for those shareholders liable to withholding tax, in accordance with the applicable tax law provisions.
4808	- Suspension of trading as of 6/9/2011.
4814	- Transfer to the Low Dispersion Category as of 30/5/2011.
4815	- Transfer to the Low Dispersion Category as of 30/5/2011.
4816	- Transfer to the Low Dispersion Category as of 30/5/2011.
4817	- Transfer to the Low Dispersion Category as of 30/5/2011.
4820	- Transfer to the Low Dispersion category as of 18/4/2008.
4822	- Transfer to the Low Dispersion category as of 30/5/2011.
4823	- Transfer to the Low Dispersion category as of 4/4/2006.
4824	- Transfer to the Low Dispersion category as of 18/4/2008.
4825	- Transfer to the Low Dispersion category as of 8/4/2011.
4827	- Transfer to the Low Dispersion category as of 5/5/2010.
4828	- Transfer to the Low Dispersion category as of 4/4/2006.
4830	- Suspension of trading as of 10/10/2011.
4833	- Transfer to Surveillance category from 6/5/2010.
4844	- Transfer to the Surveillance category from 8/4/2011.
4845	- Transfer to the Surveillance Category as of 25/11/2011.
4846	- Transfer to the Surveillance Category as of 25/11/2011.
4847	- Transfer to the Surveillance Category as of 3/7/2009.

Shares' Notes

Code	Note text
4848	- Suspension of trading as of 6/12/2011.
4854	- Transfer to the Surveillance Category as of 29/12/2011.
4855	- Transfer to the Surveillance Category as of 29/12/2011.
4856	- Transfer to the Surveillance Category as of 29/12/2011.
4860	- Suspension of trading as of 30/3/2012.
4864	- Suspension of trading as of 30/3/2012.
4865	- Suspension of trading as of 2/4/2012.
4867	- Suspension of trading as of 2/4/2012.
4868	- Suspension of trading as of 2/4/2012.
4869	- Suspension of trading as of 2/4/2012.
4875	- Suspension of trading as of 2/4/2012.
4876	- Suspension of trading as of 3/4/2012.
4879	- Transfer to the Surveillance Category as of 10/4/2012.
4880	- Transfer to the Surveillance Category as of 10/4/2012.
4881	- Transfer to the Surveillance Category as of 10/4/2012.
4882	- Transfer to the Surveillance Category as of 10/4/2012.
4884	- Transfer to the Surveillance Category as of 10/4/2012.
4885	- Transfer to the Surveillance Category as of 10/4/2012.
4886	- Transfer to the Surveillance Category as of 10/4/2012.
4887	- Transfer to the Surveillance Category as of 10/4/2012.
4888	- Transfer to the Surveillance Category as of 10/4/2012.
4889	- Transfer to the Surveillance Category as of 10/4/2012.
4893	- Transfer to the Low Dispersion category as of 28/5/2012.
4894	- Transfer to the Low Dispersion category as of 28/5/2012.
4911	- Lift of suspension from 30/7/2012.
4912	- Transfer to the Surveillance Category as of 31/7/2012.
4913	- Suspension of trading as of 30/8/2012.
4914	- Suspension of trading as of 31/8/2012.
4918	- Suspension of trading as of 31/8/2012.
4920	- Suspension of trading as of 31/8/2012.
4921	- Suspension of trading as of 31/8/2012.
4929	- Suspension of trading as of 1/10/2012.
4937	- Transfer to the UNDER DELETION category as of 30/11/2012.
4938	- Transfer to the UNDER DELETION category as of 30/11/2012.
4939	- Suspension of trading as of 30/11/2012.
4941	- Transfer to the Low Dispersion category as of 3/12/2012.
4944	- Transfer to the Surveillance Category as of 7/12/2012.
4951	- Suspension of trading as of 19/3/2013.
4953	- Suspension of trading as of 2/4/2013.
4954	- Suspension of trading as of 2/4/2013.
4955	- Transfer to the Surveillance Category as from 5/4/2013.
4956	- Transfer to the Surveillance Category as from 5/4/2013.
4957	- Transfer to the Surveillance Category as from 5/4/2013.
4958	- Transfer to the Surveillance Category as from 5/4/2013.
4959	- Transfer to the Surveillance Category as from 5/4/2013.
4960	- Transfer to the Surveillance Category as from 5/4/2013.
4961	- Transfer to the Surveillance Category as from 5/4/2013.
4962	- Transfer to the Surveillance Category as from 5/4/2013.
4963	- Transfer to the Under Deletion Category as from 5/4/2013.
4971	- Suspension of trading as of 3/6/2013.
4977	- Transfer to the "Under Surveillance Category" from 11/6/2013.
4978	- Transfer to the Under Supervision Category as of 11/6/2013.
4982	- Suspension of trading as of 1/12/2011.

Shares' Notes

Code	Note text
4983	- Transfer to the Surveillance Category as of 5/4/2013.
4985	- Transfer to the "Under Surveillance Category" from 8/4/2011.
4986	- Transfer to the Low Dispersion category as of 30/5/2011.
4988	- As of June 7, 2013, the name of the company "DUTY FREE SHOPS A CORPORATION OPERATING DFS AND LARGE AND SMALL SCALE INDUSTRIAL OPERATIONS, TECHNIC" on ATHEX changes to "FOLLI FOLLIE S.A.".
4993	- Suspension of trading as of 21/6/2013 (15:18).
4997	- Transfer to the Under Supervision Category as of 21/12/2009. - The 6,870,053 new (CB) shares, resulting from the recent share capital increase through a rights issue, are not yet admitted to trading on the ATHEX.
4998	- Suspension of trading as of 26/7/2013.
5002	- Suspension of trading as of 30/08/2013.
5003	- Suspension of trading as of 30/08/2013.
5004	- Suspension of trading as of 30/08/2013.
5006	- Transfer to the Surveillance Category as of 3/9/2013.

Securities Blocks Details

Securities	Block Volume	Price	Block Trade Value	Time of approval	Note
TITAN CEMENT (CR)	58,739	17.44	1,024,408.16	10:39:42	20
PIRAEUS BANK (W)	400,000	0.765	306,000.00	11:52:16	20
OTE (CR)	102,968	7.60	782,556.80	15:33:44	20
EUROBANK PROPERTIES REIC (CR)	50,000	7.35	367,500.00	16:11:24	20
OPAP (CR)	100,000	8.11	811,000.00	16:18:21	20
PIRAEUS BANK (W)	401,207	0.738	296,130.89	17:16:45	20

Blocks Notes

2 - SPOT 1 or SPOT 2 Packet	11 - Total Assets > 500 bil
3 - Block with Short Selling	12 - Sell Offer through Athex
4 - Buy to Close Block	13 - Forced Sale of NMOE
6 - Simultaneous Constitution	14 - Restoration Packet
7 - Repurchase Agreement	15 - Market Maker Packet
8 - Dispersion's Achievement (Not Listed)	16 - Short Selling
9 - Dispersion's Achievement (Listed)	18 - SPOT 1 Packet
10 - Share Capital Majority of Greek State (> 50 bil)	20 - Method 6-1 Packet

Shares Rights Details

Occured date	Exercise from	Exercise until	Trading until	Rights	Price min	Price max	Closing price	Last Bid	Last Ask	Volume	Trades	Transactions Value
-----------------	------------------	-------------------	------------------	--------	--------------	--------------	------------------	----------	----------	--------	--------	-----------------------

No Rights Transactions.

Stock Borrowing

Securities	Stock Borrowing through Helex (volume)	Stock Borrowing through OTC (volume) [1]	Totals [2]
ALAPIS (CR)	---	6,250	6,250
ALPHA BANK (CR)	684,500	4,361,835	5,046,335
ATE (CR)	---	69,000	69,000
BANK OF CYPRUS (CR)	---	102,899	102,899
CC HBC AG (CR)	23,800	75,941	99,741
EUROBANK ERGASIAS (CR)	22,620	68,406	91,026
EUROBANK PROPERTIES REIC (CR)	6,000	31,215	37,215
EYDAP S.A. (CR)	2,400	5,000	7,400
FOLLI FOLLIE (CR)	3,000	15,508	18,508
GEK TERNA (CR)	500	---	500
HELLENIC EXCHANGES (CR)	20,500	---	20,500
HELLENIC PETROLEUM (CR)	22,200	269	22,469
INTRALOT (CR)	24,000	---	24,000
JUMBO SA (CR)	9,900	3,525	13,425
LAMDA DEVELOPMENT SA (CR)	---	10,377	10,377
MARFIN INVESTMENT GROUP (CR)	---	733,474	733,474
METKA (CR)	7,400	---	7,400
MOTOR OIL (CR)	1,700	---	1,700
MYTILINEOS HOLDINGS (CR)	16,000	---	16,000
NATIONAL BANK (CR)	182,300	1,329,519	1,511,819
NBGAM ETF	10,000	---	10,000
NBGAM ETF GREECE & TURKEY 30	3,500	---	3,500
OPAP (CR)	93,200	2,067	95,267
OTE (CR)	101,600	109,116	210,716
P.P.A. S.A. (CR)	300	---	300
PIRAEUS BANK (CR)	20,200	266,976	287,176
PPC (CR)	58,200	---	58,200
TERNA ENERGY (CR)	4,400	---	4,400
TITAN CEMENT (CR)	7,200	55,390	62,590
VIOHALCO (CB)	5,200	---	5,200

Stock Borrowing Notes

[1] - The information concerning OTC Stock Borrowing Transactions is based on the statements of the Dematerialised Securities System (DSS) operators involved and refers to volumes that have been cleared and registered up until the previous working day.

Shares Forced Sales

Securities	Transaction s Volume	Number of Trades	Transactions Value	Note
------------	-------------------------	---------------------	-----------------------	------

No Forced Transactions.

Forced Sales Notes

1 - Normal Forced Sale.

2 - Forced Sales of Fixed Registered Shares.

3 - Forced Sales of Remaining Stock Fractions.

Forced Sales Registered Shares

Securities	Start Date	End Date	Initial Volume	Remaining Volume	Date	Avg price (day)	Avg price (period)	Number of Trades	Transactions Volume	Transactions Value
------------	------------	----------	-------------------	---------------------	------	--------------------	-----------------------	---------------------	------------------------	-----------------------

No Fixed Registered Shares Forced Sales.

Forced Sales Notes

According to Decision 1/380/04.05.2008 of the Hellenic Republic Capital Market Commission, the certificated registered shares that have not been deposited to the issuer for dematerialisation, will be auctioned in the Athens Exchange by the supervising issuer. Forced sales procedure is held according to Article 99A of the Athens Exchange Rulebook. The average price of the period is calculated by dividing the Total transactions value by the Total volume and includes all the transactions made until the current date.

Exchange Traded Funds (ETFs) Characteristics

	Transactions Date (T)	Creation / Redemption	Units (T-1)	New Units (T-1)	Redemptio n Units (T-	Units (T) [1]	Fund Assets [2]	Net Unit Price	Dividen d per	Dividend Date
NBGAM ETF ΓΔ Χ.Α.	20/09/2013	25,000	294,878	---	---	294,878	3,345,408.00	11.3451	---	27/10/2011
ALPHA ETF FTSE Athex Large Cap	20/09/2013	50,000	5,848,618	---	---	5,848,618	20,338,300.00	3.4775	0.05	01/07/2013
NBGAM ETF GREECE & TURKEY 30	20/09/2013	25,000	388,550	---	---	388,550	3,265,010.00	8.4031	---	27/10/2011

ETFs Notes

[1] - Units (T) = Units (T-1) + New Units (T-1) - Redemption Units (T-1)

[2] - The Creation / Redemption Units of T-1 are included.

Corporate Bonds

Num Listed Bonds	Nominal price	Issue price	Today's Rate	Exp. Date	Duration (years)	Note	Coupon attached		Trading	Corporate Bonds	Price min	Price max	Closing price	Previous closing price/date		Volume	Transactions Value	Last order		Date	ear min	Year max
							Common	Preferred										Price	Buy / Sell			
212,849,265	1.00	1.00	6.30	29/07/2020	7	---	1	---	1	MARFIN INVESTMENT GROUP S.A. SERIES B (BOND)	---	---	---	0.8500	23/08/2013	---	---	1.0000	B	20/09/2013	0.8500	0.8500
2,156,827	1.00	1.00	7.00	29/07/2019	6	---	1	---	1	MARFIN INVESTMENT GROUP S.A. SERIES A (BOND)	---	---	---	1.0000	23/08/2013	---	---	1.0742	B	20/09/2013	1.0000	1.0000
39,711,653	1.00	1.00	6.00	30/06/2016	5	4786	5	---	1	BANK OF CYPRUS PUBLIC CO. LTD (Convert. to CR sh.)	---	---	---	---	---	---	---	10.0000	B	13/03/2013	100.0000	100.0000
428,521,983	1.00	1.00	6.50	30/06/2016	5	4785	5	---	1	BANK OF CYPRUS PUBLIC CO. LTD (Convert. to CR sh.)	---	---	---	20.5000	14/03/2013	---	---	21.0000	B	15/03/2013	19.5000	30.0000
4,150,176	4.77	4.77	5.00	19/03/2015	5	---	15	---	1	MARFIN INVESTMENT GROUP S.A. (Conver to CR shar)	60.0000	60.0000	60.0000	26.0000	12/09/2013	4,770	2,864.65	26.0001	B	20/09/2013	0.5000	70.0000
73,088,145	1.00	1.00	5.50	30/06/2014	5	4574	9	---	1	BANK OF CYPRUS PUBLIC CO. LTD (Convert. to CR sh.)	---	---	---	20.0000	08/03/2013	---	---	21.5000	B	15/03/2013	20.0000	26.0000
1,794,284	12.49	9.77	5.80	12/07/2015	8	---	13	---	1	NIREUS S.A. (Convertible to CR shares)	---	---	---	12.0000	26/07/2013	---	---	25.0000	B	20/09/2013	11.0000	15.0000
27,283,632	1.00	1.00	1.32	30/06/2018	10	---	11	---	1	BANK OF CYPRUS PUBLIC CO. LTD (Convert. to CR sh.)	---	---	---	33.0000	13/12/2012	---	---	35.0000	B	15/03/2013	33.0000	33.0000

4574 - The bonds are of indefinite duration.

4785 - The bonds are of indefinite duration.

4786 - The bonds are of indefinite duration. The Bond's par value, issue price and trading prices are expressed in USA Dollars, whereas its Transactions Value is expressed in Euros.

Corporate Bonds Notes

Transactions Volume = (Pieces) * (Nominal Price). Transactions Value = (Pieces) * (Nominal Price) * (price %) + (Accrued interest).

The price of a Bond is stated as a percentage (%) of Bond's Nominal Price.

Nominal Price in Euros (€), except if it is noted differently.

Government Bonds

Number Listed Bonds	Nominal price	Today's Rate	Accrued Interest Calc	Exp. Date [1]	Duration (years)	Note	Coupons Date	Curr. coupon value	Trading Unit	Government Bonds	Price min	Price max	Closing price	Previous closing price/date	Volume	Transactions Value	Price	Last order Buy / Sell	Date
2,658,781,973	1.00	4.30	Actual/Actual	24/02/2023	11	---	24/02	4.30	1	GGB-FXD-240223-11Y-2.000-1.00	---	---	---	---	---	---	---	---	---
2,658,781,973	1.00	4.30	Actual/Actual	24/02/2024	12	---	24/02	4.30	1	GGB-FXD-240224-12Y-2.000-1.00	---	---	---	---	---	---	---	---	---
2,658,781,973	1.00	4.30	Actual/Actual	24/02/2025	13	---	24/02	4.30	1	GGB-FXD-240225-13Y-2.000-1.00	---	---	---	---	---	---	---	---	---
2,658,781,973	1.00	4.30	Actual/Actual	24/02/2026	14	---	24/02	4.30	1	GGB-FXD-240226-14Y-2.000-1.00	---	---	---	---	---	---	---	---	---
2,658,781,973	1.00	4.30	Actual/Actual	24/02/2027	15	---	24/02	4.30	1	GGB-FXD-240227-15Y-2.000-1.00	---	---	---	---	---	---	---	---	---
2,836,034,104	1.00	4.30	Actual/Actual	24/02/2028	16	---	24/02	4.30	1	GGB-FXD-240228-16Y-2.000-1.00	---	---	---	---	---	---	---	---	---
2,836,034,104	1.00	4.30	Actual/Actual	24/02/2029	17	---	24/02	4.30	1	GGB-FXD-240229-17Y-2.000-1.00	---	---	---	---	---	---	---	---	---
2,836,034,104	1.00	4.30	Actual/Actual	24/02/2030	18	---	24/02	4.30	1	GGB-FXD-240230-18Y-2.000-1.00	---	---	---	---	---	---	---	---	---
2,836,034,104	1.00	4.30	Actual/Actual	24/02/2031	19	---	24/02	4.30	1	GGB-FXD-240231-19Y-2.000-1.00	---	---	---	---	---	---	---	---	---
2,836,034,104	1.00	4.30	Actual/Actual	24/02/2032	20	---	24/02	4.30	1	GGB-FXD-240232-20Y-2.000-1.00	---	---	---	---	---	---	---	---	---
2,836,034,104	1.00	4.30	Actual/Actual	24/02/2033	21	---	24/02	4.30	1	GGB-FXD-240233-21Y-2.000-1.00	---	---	---	---	---	---	---	---	---
2,836,034,104	1.00	4.30	Actual/Actual	24/02/2034	22	---	24/02	4.30	1	GGB-FXD-240234-22Y-2.000-1.00	---	---	---	---	---	---	---	---	---
2,836,034,104	1.00	4.30	Actual/Actual	24/02/2035	23	---	24/02	4.30	1	GGB-FXD-240235-23Y-2.000-1.00	---	---	---	---	---	---	---	---	---
2,836,034,104	1.00	4.30	Actual/Actual	24/02/2036	24	---	24/02	4.30	1	GGB-FXD-240236-24Y-2.000-1.00	---	---	---	---	---	---	---	---	---
2,836,034,104	1.00	4.30	Actual/Actual	24/02/2037	25	---	24/02	4.30	1	GGB-FXD-240237-25Y-2.000-1.00	---	---	---	---	---	---	---	---	---
2,836,034,104	1.00	4.30	Actual/Actual	24/02/2038	26	---	24/02	4.30	1	GGB-FXD-240238-26Y-2.000-1.00	---	---	---	---	---	---	---	---	---
2,836,034,104	1.00	4.30	Actual/Actual	24/02/2039	27	---	24/02	4.30	1	GGB-FXD-240239-27Y-2.000-1.00	---	---	---	---	---	---	---	---	---
2,836,034,104	1.00	4.30	Actual/Actual	24/02/2040	28	---	24/02	4.30	1	GGB-FXD-240240-28Y-2.000-1.00	---	---	---	---	---	---	---	---	---
2,836,034,104	1.00	4.30	Actual/Actual	24/02/2041	29	---	24/02	4.30	1	GGB-FXD-240241-29Y-2.000-1.00	---	---	---	---	---	---	---	---	---
2,836,034,104	1.00	4.30	Actual/Actual	24/02/2042	30	---	24/02	4.30	1	GGB-FXD-240242-30Y-2.000-1.00	---	---	---	---	---	---	---	---	---
1,500,000	1,000.00	0.97	FLR Actual/360	10/08/2014	5	---	10/02 - 10/08	---	1	GGB-FRN-100814-05Y-1.762-1000.00	---	---	---	---	---	---	---	---	---
5,187,186	1,000.00	1.60	FLR Actual/360	21/05/2014	5	---	21/11 - 21/05	---	1	GGB-FRN-210514-05Y-2.734-1000.00	---	---	---	---	---	---	---	---	---
78,300	1,000.00	1.16	FLR Actual/360	23/07/2014	5	---	23/01 - 23/07	---	1	GGB-FRN-230714-05Y-2.018-1000.00	---	---	---	---	---	---	---	---	---

Government Bonds Notes

Transactions Volume = (Pieces) * (Nominal Price). Transactions Value = (Pieces) * (Nominal Price) * (price %) + (Accrued interest).
The Value of current coupon for the issues with NV 0.01 euro refers to NV 100 euros
FLR: Floating Interest Rate.
[1] - The Expiration Date of the interest bearing period and the Date for coupon payment.

Bonds in Circulation	Currency / Min nominal traded Value	Coupons Payment Date	Current Coupon Value	Note	Coupon Attached	Trading Unit	Issue Date	Duration (years)	Today's Interest	A.I.C in days	Bonds	Last price of previous days	Last Outcry in Cash (euro) Price	Buy / Sell	Trades in Pieces	Life min	Life Max
Bonds of International Organizations																	
1,000,000	EUR / 1000	21/07	---	---	8	1	21/07/2006	10	5.0 FLR	360	EUROPEAN INVESTMENT BANK BOND	97.50	16/04/2007	---	---	---	---
Corporate Bonds in Foreign Currency and Euro																	
103,746	GBP / 10	01/12	0.25	---	54	1	01/12/1930	98	2.5	360	National Mortgage Bank	2.27	05/02/1996	2.27	S	05/02/1996	2.27
0	GBP / 10	01/12	0.25	---	56	1	01/12/1928	100	2.5	360	National Mortgage Bank	---	---	---	---	---	---

Government Bonds Notes

A.I.C: Accrued Interest Calculation base.
FLR: Floating Interest Rate.
The minimum tradeable Nominal Value for all Demeterialised Government Titles is 100 Euros.

State Banks Bonds (one year maturity)

Number Listed Bonds	Nominal value	Initial Rate	Current Rate	Annual Interest	Issue Date	Note	State Banks Bonds	Trading Unit	Yearly Renewals	Last Outcry in Cash (euro) Price	Buy / Sell	Volume
342,560	130.41	2.35	3.92	0.00	31/01/2005	---	H.I.D.B.	1	9	100.00	B	---
16,015	1,211.71	3.65	2.47	0.00	30/11/2006	---	H.I.D.B.	1	7	---	---	---
2,446	1,154.00	4.90	2.47	28.96	31/05/2008	---	H.I.D.B.	1	6	---	---	---
171,117	1,163.28	5.50	2.47	29.19	31/05/2008	---	H.I.D.B.	1	6	---	---	---
63,787	1,129.20	5.45	2.47	30.88	31/08/2008	---	H.I.D.B.	1	6	---	---	---
5,358	1,108.96	5.45	2.47	27.83	31/10/2008	---	H.I.D.B.	1	5	---	---	---
1,045	1,129.74	5.50	2.47	28.35	31/10/2008	---	H.I.D.B.	1	5	---	---	---
76,077	1,132.45	5.75	2.47	28.42	31/10/2008	---	H.I.D.B.	1	5	---	---	---

Bonds Notes

The annual renewal of H.I.D.B. Bonds is free of taxes (net rate).
For Bonds issue until 31/07/2013 the accrued interest is capitalized.

Athex & ATHEXClear Members List

Member Name			Stock Market			Derivatives Market			ATHEXClear Member		
Address	Phone	Fax	Market Member	Remote Member	Market Maker	Proprietary	Market Maker	Agent	General Clearing	Direct Clearing	Non Clearing
A. SARRIS SECURITIES S.A.			a								
6, DRAGATSANIOU STR. ATHINA	(210)-3367700	(210)-3312324									
AGRICULTURAL BANK OF GREECE S.A.							a			a	
, 23 PANEPISTIMIOU ATHINA	(210)-3298400	(210)-3298322									
ALPHA FINANCE INVESTMENT SERVICES S.A.			a		a		a			a	
5, MERLIN STR. ATHINA	(210)-3677400	(210)-3311193									
ALPHA BANK A.E.						a			a		
40, STADIOU STR ATHINA	(210)-3265546	(210)-3265811									
	(210)-3260000	(210)-3264116									
ARGUS STOCKBROKERS LTD			a	a							
12-14, KENNEDY AVE, S. 303 NICOSIA	(+35722)-22717000	(+35722)-22717070									
ATHENAIKI BROKERAGE FIRM S.A.			a								
33, STADIOU STR. ATHINA	(210)-3254764	(210)-3254767									
ATLANTIC SECURITIES LIMITED			a	a							
37, PRODROMOU STR. NICOSIA	(+35722)-445400	(+35722)-661914									
ATLAS SECURITIES S.A			a			a					a
14 - 16, VERVENON STR.& 125 MICHALAKOPOULOU STR. ATHINA	(210)-3363300	(210)-3238925									
ATTICA BANK S.A.									a		
54, AKADIMIAS STR. ATHINA	(210)-3390757	(210)-3646090									
23, OMIROU STR. ATHINA	(210)-3669000	(210)-3669410									
AXIA VENTURES GROUP LTD			a	a							
10, G. KRANIDIOTI NICOSIA	+357 22 742000	+357 22 742001									
AXON SECURITIES S.A.			a			a					a
48, STADIOU ATHINA	(210)-3363800	(210)-3243903									
BANK OF CYPRUS PUBLIC COMPANY LTD									a		
, 51,STASINOU (AG. PARASKEVI, STROVOLOS) NICOSIA	(0035722)-121883	(0035722)-336258									
170, ALEXANDRAS AVE ATHINA	(210)-6477708	(210)-6477709									
BETA SECURITIES S.A.			a		a	a	a			a	
, BRAILA & 29 ALEXANDRAS AVE ATHINA	(210)-6478900	(210)-6410139									
BNP PARIBAS SECURITIES SERVICES									a		
94, VAS. SOFIAS AVE ATHINA	(210)-7468500	(210)-7468579									
CAPITAL SECURITIES S.A.			a			a					a
58, MITROPOLEOS STR. ATHINA	(210)-3369700	(210)-3369820									
CFS SECURITIES & INVESTMENT SERVICES S.A.			a		a			a		a	
3, STADIOU STR. ATHINA	(210)-3360800	(210)-3311854									
CITIGROUP GLOBAL MARKET LTD			a	a							
, CITIGROUP CENTRE, CANADA SQUARE, CANARY WHART LONDON	002079864000	002079862266									
CO-OPERATIVE CENTRAL BANK LTD			a	a							
8, GRIGORI AFXENTIOU STR. NICOSIA	(+35722)-743300	(+35722)-672083									
CREDIT AGRICOLE CHEUVREUX S.A.			a	a							
, 9 QUAI PAUL DOUMER PARIS	33 (0) 1 41 89 70 00										
CREDIT SUISSE SECURITIES (EUROPE) LIMITED			a	a							
, ONE CABOT SQUARE LONDON	+44 20 7888 8888	+44 20 7888 1600									
CYCLOS SECURITIES S.A.			a		a	a				a	
39, PANEPISTIMIOU STR. ATHINA	(210)-3364300	(210)-3239122									
D.A. TSEKOURAS SEC. S.A.			a								
3, PESMAZOGLOU STR. ATHINA	(210)-3214406	(210)-3211997									
DEUTSCHE BANK S.A.			a	a							
70, THEODOR-HEUSS-ALLEE FRANKFURT	0049 69 910 00	0049 69 910 34 225									
DYNAMIC SECURITIES			a					a		a	
6 - 10, CHAR. TRIKOUPI STR. ATHINA	(210)-3677700	(210)-3677777									
EL. PETROPOULAKIS SECURITIES S.A.			a					a			a
9, ARISTIDOU STR. ATHINA	(210)-3213928	(210)-3216810									
EUROBANK EQUITIES S.A.			a		a		a			a	
10, FILELLINON STR. ATHINA	(210)-3720000	(210)-3720001									
EUROBANK ERGASIAS S.A.									a		
8, OTHONOS STR. ATHINA	(210)-3337000	(210)-3233866									
	(210)-3337969	(210)-3245916									
EUROCORP SECURITIES S.A.			a			a				a	
14, FILIKIS ETAIRIAS SQ. ATHINA	(210)-7263500	(210)-7263666									
EUOTRUST BROKERAGE S.A.			a								
13-15, SOPHOCLEOUS STR. ATHINA	(210)-3363100	(210)-3238334									

Athex & ATHEXClear Members List

Member Name			Stock Market			Derivatives Market			ATHEXCclear Member		
Address	Phone	Fax	Market Member	Remote Member	Market Maker	Proprietary	Market Maker	Agent	General Clearing	Direct Clearing	Non Clearing
EUROXX SECURITIES S.A.			a			a				a	
7, PALAIOLOGOU STR. CHALANDRI	(210)-6879400	(210)-6879401									
G.A. PERVANAS SECURITIES & INVESTMENT SERVICES CO S.A.			a			a					a
7 - 9, SOPHOCLEOUS STR. ATHINA	(210)-3251875	(210)-3210291									
GENERAL BANK OF GREECE S.A.									a		
87-89, ERMOY ATHINA	(210)-6976072	(210)-6976079									
, 109-111, MESOGEION AVE. ATHINA	(210)-6975000	(210)-6975706									
GLOBAL CAPITAL SECURITIES AND FINANCIAL SERVICES LTD			a	a							
5, LEMESOU AVE. LEMESOS CYPRUS	(+35722)-710710	(+35722)-339332									
GUARDIAN TRUST SECURITIES S.A			a		a	a					a
15, FILELLINON STR. ATHINA	(210)-3220402	(210)-3220498									
HELLENIC AMERICAN SEC. S.A.			a			a					
6, EVRIPIDOU STR. ATHINA	(210)-3311100	(210)-3215968									
HELLENIC BANK (INVESTMENTS) LTD			a	a							
31, KYRIAKOY MATSI AVE. NICOSIA	(+35722)-500100	(+35722)-500110									
HSBC BANK PLC									a		
109-111, MESOGION AVE ATHINA	(210)-6961507	(210)-6929310									
INDEX SECURITIES S.A.			a								
6, DRAGATSANIOU STR. ATHINA	(210)-3213920	(210)-3213216									
INTERSEC S.A.						a				a	
80-88, SYGROU AVE ATHINA	(210)-9203000	(210)-9203052									
INVESTMENT BANK OF GREECE S.A.			a		a		a		a		
32, AIGEIALIAS MAROUSI	(210) 8173000	(210) 8173101									
24B, KIFISSIAS AVE MAROUSI	(210)-8171800	(210)-8171889									
J. CHR. MAVRIKIS SECURITIES S.A.			a								
5, SOPHOCLEOUS STR. ATHINA	(210)-3213949	(210)-3217767									
KAPPA SECURITIES S.A.			a			a					a
15, VALAORITOU STR. ATHINA	(210)-3610371	(210)-3641002									
KYPROU SECURITIES S.A.			a		a	a					a
26, HALKIDONOS & FIDIPPIDOY STR. ATHINA	(210)-8701000	(210)-8701049									
LAIKI FINANCIAL SERVICES LTD			a	a							
26, CLR HOUSE, VIRONOS AVE. NICOSIA	(+35722)-898600	(+35722)-680953									
LEON DEPOLAS SECURITIES S.A.			a					a			a
1, CHR. LADA STR. ATHINA	(210)-3213286	(210)-3211618									
MAGNA TRUST SECURITIES S.A			a					a			a
9, FIDIOU STR. ATHINA	(210)-3327503	(210)-3327599									
MEGA EQUITY SECURITIES & FINANCIAL SERVICES LTD			a	a							
42-44, GRIBA DIGENI AV. NICOSIA	(+35722)-711711	(+35722)-711811									
MERIT SECURITIES S.A			a		a	a				a	
38, VAS. KONSTANTINOY STR. ATHINA	(210)-3671800	(210)-3671830									
MERRILL LYNCH			a	a							
2, KING EDWARD STREET LONDON	(+4420)-79952000	(+4420)-79954525									
METOCHIKI SECURITIES S.A.			a								
3, G. GENNADIOY STR. ATHINA	(210)-3306700	(210)-3306709									
MIDAS BROKERAGE S.A.			a								
5, SOPHOCLEOUS STR. ATHINA	(210)-3253203	(210)-3253205									
N. CHRYSOCHOIDIS STOCK BROKERAGE I.S.S.A.			a					a		a	
7 - 9, SOPHOCLEOUS STR. ATHINA	(210)-3213913	(210)-3216115									
N. SARROS SECURITIES S.A.						a					
7-9, SOPHOCLEOUS STR. ATHINA	(210)-3705600	(210)-3219992									
NATIONAL BANK OF GREECE / FORMER PROBANK			a								
10, AMERIKIS STR. ATHINA	(210)-3392631	(210)-3392646									
NATIONAL BANK OF GREECE S.A.							a		a		
86, AILOU STR. ATHINA	(210)-3341000	(210)-3228187									
68, AKADIMIAS STR. ATHINA	(210)-3328817	(210)-3328678									
NBG SECURITIES S.A.			a		a		a				a
68, AKADIMIAS STR. ATHINA	(210)-3328500	(210)-3328565									
NEW PROTON BANK S.A.			a			a				a	
20, ESLIN & AMALIADOS ATHINA	210 6970000	210 6970111									
NUNTIOUS SECURITIES S.A			a					a			a
6, DRAGATSANIOU STR. ATHINA	(210)-3350599	(210)-3254846									
OLYMPIA SECURITIES S.A			a								
46B, A. METAXA STR. GLYFADA	(210)-3702500	(210)-3702520									

Athex & ATHEXClear Members List

Member Name			Stock Market			Derivatives Market			ATHEXClear Member		
Address	Phone	Fax	Market Member	Remote Member	Market Maker	Proprietary	Market Maker	Agent	General Clearing	Direct Clearing	Non Clearing
ORANGE PARTNERS SECURITIES S.A			a								
5, TZORTZ STR. ATHINA	(210)-3300009	(210)-3305240									
PANTELAKIS SEC. S.A.			a			a					a
109-111, MESOGION AVE. ATHINA	(210)-6965000	(210)-6929550									
PEGASUS BROKERAGE FIRM S.A			a			a					
17, VALAORITOU STR. ATHINA	(210)-3670700	(210)-3670760									
PIRAEUS BANK S.A.								a	a		
4, AMERIKIS STR. ATHINA	(210)-3335000	(210)-3335079									
4, AMERIKIS STR ATHINA	(210)-3335918	(210)-3254207									
PIRAEUS SECURITIES S.A.			a				a			a	
10, STADIOU STR. ATHINA	(210)-3354100	(210)-3233814									
PRELIUM SECURITIES & INVESTMENT SERVICES S.A.			a			a					a
, KIFISIAS AVE & 1 DAVAKI STR ATHINA	(210)-3677000	(210)-6920403									
PROCHOICE SECURITIES LTD			a	a							
57, SPYROU KYPRIANOY NICOSIA	+357-24-661192	+357-24-662464									
SHARELINK SECURITIES & FINANCIAL SERVICES LTD			a	a							
6, ELLINAS HOUSE, THEOTOKI STR. NICOSIA	(+35722)-554200	(+35722)-750852									
SOCIETE GENERALE S.A.			a	a		a					
17, COURS VALMY PUTEAUX - LA DEFENSE PARIS	(+33) 142134754	(+33) 142135697									
240-242, KIFISIAS AVE ATHINA	(210)-6790161	(210)-6728828									
SOLIDUS SECURITIES S.A			a			a				a	
64, LOUIZIS RIANKOUR STR. ATHINA	(210)-6925500	(210)-6985421									
SOTIRIADIS SECURITIES S.A.			a								
7, VALAORITOU STR. ATHINA	(210)-3636943	(210)-3601943									
ST. EM. LAVRENTAKIS SECURITIES S.A.			a			a					a
7 - 9, SOPHOCLEOUS STR. ATHINA	(210)-3213336	(210)-3246572									
THE CYPRUS INVESTMENT AND SECURITIES CORPORATION LIMITED (CISCO)			a	a							
4, EVROU STR. (EUROLIFE HOUSE) NICOSIA	(+35722)-881800	(+35722)-881801									
UBS LIMITED			a	a							
1, FINSBURY AVENUE LONDON	(+4420)-79013333	(+4420)-79012345									
Z.G. PORTALAKIS INVESTMENT SERVICES S.A.			a								
8, PESMAZOGLOU STR. ATHINA	(210)-3214830	(210)-3212024									
KARAMANOF SECURITIES & INV. SERVICES S.A.			a					a		a	
2, SQ. ST THEODORON ATHINA	(210)-3212947	(210)-3217088									

List of Stocks under Market Making operations

Securities Market Maker	Stock Category	
	Start Market Making	End Market Making
BANK OF CYPRUS (CR)	Under Suspension	
EUROBANK EQUITIES S.A.	23/10/2012	22/10/2013
INVESTMENT BANK OF GREECE S.A.	02/01/2013	01/01/2014
COCA - COLA HBC (CR)	Under Suspension	
EUROBANK EQUITIES S.A.	23/10/2012	22/10/2013
INVESTMENT BANK OF GREECE S.A.	08/01/2013	07/01/2014
CYPRUS POPULAR BANK (CR)	Under Suspension	
PIRAEUS SECURITIES S.A.	02/02/2013	01/02/2014
ALPHA BANK (CR)	Main Market	
EUROBANK EQUITIES S.A.	24/10/2012	23/10/2013
INVESTMENT BANK OF GREECE S.A.	08/01/2013	07/01/2014
NBG SECURITIES S.A.	15/01/2013	14/01/2014
PIRAEUS SECURITIES S.A.	28/05/2013	27/05/2014
ALUMIL (CR)	Main Market	
BETA SECURITIES S.A.	18/07/2013	17/07/2014
CC HBC AG (CR)	Main Market	
NBG SECURITIES S.A.	29/04/2013	28/04/2014
ELLAKTOR (CR)	Main Market	
EUROBANK EQUITIES S.A.	01/06/2013	31/05/2014
INVESTMENT BANK OF GREECE S.A.	02/01/2013	01/01/2014
NBG SECURITIES S.A.	25/06/2013	24/06/2014
EUROBANK ERGASIAS (CR)	Main Market	
ALPHA FINANCE INVESTMENT SERVICES S.A.	08/01/2013	07/01/2014
EUROBANK EQUITIES S.A.	01/06/2013	31/05/2014
INVESTMENT BANK OF GREECE S.A.	08/01/2013	07/01/2014
GEK TERNA (CR)	Main Market	
INVESTMENT BANK OF GREECE S.A.	02/01/2013	01/01/2014
GR. SARANTIS SA (CR)	Main Market	
BETA SECURITIES S.A.	14/05/2013	13/05/2014
HELLENIC EXCHANGES (CR)	Main Market	
EUROBANK EQUITIES S.A.	01/06/2013	31/05/2014
INVESTMENT BANK OF GREECE S.A.	02/01/2013	01/01/2014
NBG SECURITIES S.A.	25/06/2013	24/06/2014
INTRACOM CONSTR. (CR)	Main Market	
MERIT SECURITIES S.A.	27/12/2012	26/12/2013
INTRALOT (CR)	Main Market	
EUROBANK EQUITIES S.A.	01/06/2013	31/05/2014
INVESTMENT BANK OF GREECE S.A.	02/01/2013	01/01/2014
MARFIN INVESTMENT GROUP (CR)	Main Market	
PIRAEUS SECURITIES S.A.	02/02/2013	01/02/2014
MLS MULTIMEDIA SA (CR)	Main Market	
BETA SECURITIES S.A.	18/07/2013	17/07/2014
MOTOR OIL (CR)	Main Market	
EUROBANK EQUITIES S.A.	23/10/2012	22/10/2013
MYTILINEOS HOLDINGS (CR)	Main Market	
INVESTMENT BANK OF GREECE S.A.	02/01/2013	01/01/2014
NBG SECURITIES S.A.	25/06/2013	24/06/2014
NATIONAL BANK (CR)	Main Market	
ALPHA FINANCE INVESTMENT SERVICES S.A.	08/01/2013	07/01/2014
EUROBANK EQUITIES S.A.	24/10/2012	23/10/2013
INVESTMENT BANK OF GREECE S.A.	08/01/2013	07/01/2014
NBG SECURITIES S.A.	28/02/2013	27/02/2014
OPAP (CR)	Main Market	
ALPHA FINANCE INVESTMENT SERVICES S.A.	08/01/2013	07/01/2014
EUROBANK EQUITIES S.A.	24/10/2012	23/10/2013
INVESTMENT BANK OF GREECE S.A.	08/01/2013	07/01/2014
NBG SECURITIES S.A.	15/01/2013	14/01/2014
OTE (CR)	Main Market	
ALPHA FINANCE INVESTMENT SERVICES S.A.	08/01/2013	07/01/2014
EUROBANK EQUITIES S.A.	24/10/2012	23/10/2013
INVESTMENT BANK OF GREECE S.A.	08/01/2013	07/01/2014
NBG SECURITIES S.A.	01/12/2012	30/11/2013
PETROPOULOS PETROS (CR)	Main Market	
BETA SECURITIES S.A.	28/05/2013	27/05/2014
PIRAEUS BANK (CR)	Main Market	
EUROBANK EQUITIES S.A.	23/10/2012	22/10/2013
INVESTMENT BANK OF GREECE S.A.	08/01/2013	07/01/2014
NBG SECURITIES S.A.	02/06/2013	01/06/2014
PIRAEUS SECURITIES S.A.	16/02/2013	15/02/2014

List of Stocks under Market Making operations

Securities	Stock Category	
	Start Market Making	End Market Making
Market Maker		
PPC (CR)	Main Market	
ALPHA FINANCE INVESTMENT SERVICES S.A.	08/01/2013	07/01/2014
EUROBANK EQUITIES S.A.	23/10/2012	22/10/2013
INVESTMENT BANK OF GREECE S.A.	08/01/2013	07/01/2014
NBG SECURITIES S.A.	26/03/2013	25/03/2014
S.KANAKIS SA (CR)	Main Market	
BETA SECURITIES S.A.	01/10/2012	30/09/2013
TITAN CEMENT (CR)	Main Market	
EUROBANK EQUITIES S.A.	23/10/2012	22/10/2013
VIOHALCO (CB)	Main Market	
ALPHA FINANCE INVESTMENT SERVICES S.A.	11/02/2013	10/03/2014
EUROBANK EQUITIES S.A.	20/01/2013	19/01/2014
MERIT SECURITIES S.A	13/12/2012	12/12/2013

Underlying Asset				Derivatives Market																		
Price max	Price min	Closing price	change	Delivery Month	Open price	Price max	Price min	Last price	Closing price	Last Bid	Last Ask	Settlement price	change	Life high	Life low	Trades	Volume	change	Value	change	Open Interest	change
FTSE/Athex Large Cap				(Trade Unit: 1 Index Point x 5€, Cash Settlement)																		
346.60	334.65	334.65	-4.04%	September 2013	348.25	348.25	340.50	340.50	337.83	---	---	337.83	-3.48%	351.50	271.00	351	7,141	-48.89%	12,333,982.50	-49.55%	16,311	-19.47%
				October 2013	351.00	351.00	335.00	335.75	336.75	39@335.25	49@336.00	336.75	-4.40%	354.00	292.25	766	9,097	-35.51%	15,638,201.25	-37.08%	44,979	8.20%
				November 2013	350.50	350.50	343.00	343.00	338.50	1@336.00	49@341.00	338.50	-4.11%	354.00	319.00	7	33	-68.27%	57,163.75	-68.89%	357	2.59%
				December 2013	350.00	353.25	340.00	340.00	342.75	26@340.00	1@341.50	342.75	-3.52%	356.75	276.75	81	608	91.19%	1,056,903.75	87.77%	3,895	9.13%
				March 2014	---	---	---	---	---	---	---	---	---	---	---	---	---	---	---	---	---	---
				June 2014	---	---	---	---	---	---	---	---	---	---	---	---	---	---	---	---	---	---

Underlying Asset				Derivatives Market																		
Price max	Price min	Closing price	change	Delivery Month	Open price	Price max	Price min	Last price	Closing price	Last Bid	Last Ask	Settlement price	change	Life high	Life low	Trades	Volume	change	Value	change	Open Interest	change
ALPHA BANK (CR)				(Contract Size: 100 Securities, Physical Delivery)																		
0.594	0.551	0.551	-7.24%	September 2013	0.593	0.593	0.578	0.579	0.574	---	---	0.574	-3.20%	1.46	0.371	68	3,786	-52.27%	221,802.00	-52.99%	7,057	-23.94%
				December 2013	0.591	0.597	0.555	0.564	0.566	86@0.560	5@0.563	0.566	-5.82%	0.620	0.437	192	5,855	-13.44%	342,489.90	-15.00%	16,683	26.75%
				March 2014	---	---	---	---	0.563	---	---	0.563	-5.85%	0.591	0.591	---	---	---	---	---	100	0.00%
				June 2014	0.587	0.587	0.579	0.579	0.559	---	---	0.559	---	0.587	0.579	2	400	---	23,360.00	---	400	---
CC HBC AG (CR)				(Contract Size: 100 Securities, Physical Delivery)																		
22.40	21.61	21.90	-4.62%	September 2013	22.41	22.41	21.90	22.15	21.61	---	---	21.61	-5.22%	23.67	16.93	14	78	-6.02%	172,563.00	-10.27%	705	3.07%
				December 2013	22.81	22.81	21.02	22.00	22.00	10@21.80	10@21.95	22.00	-3.64%	23.80	17.90	79	290	559.09%	639,134.00	528.09%	276	43.75%
				March 2014	---	---	---	---	---	---	---	---	---	---	---	---	---	---	---	---	---	---
				June 2014	---	---	---	---	---	---	---	---	---	---	---	---	---	---	---	---	---	---
CORINTH PIPEWORKS SA (CR)				(Contract Size: 100 Securities, Physical Delivery)																		
2.09	1.99	1.99	-2.93%	September 2013	2.02	2.07	2.02	2.04	2.04	---	---	2.04	0.00%	2.48	1.94	12	286	565.12%	58,926.00	566.43%	118	-70.79%
				December 2013	2.06	2.10	2.05	2.05	2.01	1@1.98	4@2.07	2.01	-2.90%	2.16	1.99	13	289	588.10%	60,458.00	588.51%	591	95.70%
				March 2014	---	---	---	---	---	---	---	---	---	---	---	---	---	---	---	---	---	---
				June 2014	---	---	---	---	---	---	---	---	---	---	---	---	---	---	---	---	---	---
ELLAKTOR (CR)				(Contract Size: 100 Securities, Physical Delivery)																		
2.38	2.30	2.35	-0.84%	September 2013	2.34	2.36	2.29	2.29	2.34	---	---	2.34	0.00%	2.45	1.73	46	1,381	9.78%	322,732.00	10.34%	985	-47.69%
				December 2013	2.36	2.38	2.29	2.33	2.32	5@2.30	5@2.33	2.32	-0.85%	2.38	2.11	68	1,477	42.02%	347,022.00	43.02%	3,791	22.69%
				March 2014	---	---	---	---	2.27	---	---	2.27	-0.87%	2.23	2.22	---	---	---	---	---	170	0.00%
				June 2014	---	---	---	---	---	---	---	---	---	---	---	---	---	---	---	---	---	---
EUROBANK ERGASIAS (CR)				(Contract Size: 10 Securities, Physical Delivery)																		
0.640	0.608	0.608	-3.18%	September 2013	0.627	0.634	0.615	0.620	0.623	---	---	0.623	-0.32%	5.00	0.537	40	1,946	-16.59%	12,159.93	-17.42%	11,729	-11.56%
				December 2013	0.635	0.640	0.614	0.614	0.626	26@0.613	1@0.630	0.626	-3.25%	0.700	0.600	16	65	-69.34%	4,067.10	-70.15%	745	7.66%
				March 2014	---	---	---	---	0.615	---	---	0.615	-3.30%	0.673	0.619	---	---	---	---	---	---	---
				June 2014	---	---	---	---	---	---	---	---	---	---	---	---	---	---	---	---	---	---
EUROBANK PROPERTIES REIC (CR)				(Contract Size: 100 Securities, Physical Delivery)																		
7.50	7.15	7.50	4.90%	September 2013	7.19	7.20	7.18	7.20	7.15	---	---	7.15	-0.28%	7.67	6.00	3	6	-91.55%	4,314.00	-91.36%	142	0.00%
				December 2013	7.24	7.48	7.19	7.48	7.50	1@7.34	2@7.60	7.50	4.90%	7.48	6.83	15	27	-64.94%	19,865.00	-63.27%	148	-0.67%
				March 2014	---	---	---	---	---	---	---	---	---	---	---	---	---	---	---	---	---	---
				June 2014	---	---	---	---	---	---	---	---	---	---	---	---	---	---	---	---	---	---
EYDAP S.A. (CR)				(Contract Size: 100 Securities, Physical Delivery)																		
8.00	7.70	8.00	0.00%	September 2013	7.98	7.98	7.80	7.81	7.85	---	---	7.85	-1.63%	8.22	5.58	27	104	-26.24%	82,460.00	-27.59%	119	-27.44%
				December 2013	7.95	7.97	7.77	7.93	7.89	9@7.92	10@7.97	7.89	-1.25%	8.20	6.31	65	246	-4.28%	193,801.00	-6.74%	830	12.77%
				March 2014	---	---	---	---	---	---	---	---	---	---	---	---	---	---	---	---	---	---
				June 2014	---	---	---	---	---	---	---	---	---	---	---	---	---	---	---	---	---	---
FOLLI FOLLIE (CR)				(Contract Size: 100 Securities, Physical Delivery)																		
19.40	18.65	18.90	-0.68%	September 2013	19.26	19.26	19.13	19.15	18.65	---	---	18.65	-1.27%	19.26	14.68	7	22	-80.18%	42,136.00	-79.94%	181	-6.22%
				December 2013	19.15	19.33	18.54	18.92	18.58	1@18.50	3@19.29	18.58	-2.57%	19.33	17.24	9	25	-77.88%	47,024.00	-78.21%	116	0.87%
				March 2014	---	---	---	---	---	---	---	---	---	---	---	---	---	---	---	---	---	---
				June 2014	---	---	---	---	---	---	---	---	---	---	---	---	---	---	---	---	---	---

Underlying Asset				Derivatives Market																		
Price max	Price min	Closing price	change	Delivery Month	Open price	Price max	Price min	Last price	Closing price	Last Bid	Last Ask	Settlement price	change	Life high	Life low	Trades	Volume	change	Value	change	Open Interest	change
FRIGOGLASS SA (CR)				(Contract Size: 100 Securities, Physical Delivery)																		
5.45	5.22	5.24	-3.85%	September 2013	5.34	5.40	5.34	5.40	5.31	---	---	5.31	-2.21%	5.71	4.35	2	51	-52.78%	27,240.00	-52.57%	410	0.00%
				December 2013	5.34	5.45	5.30	5.30	5.24	5@5.25	5@5.45	5.24	-3.85%	5.45	5.03	14	97	11.49%	52,047.00	12.74%	305	22.98%
				March 2014	---	---	---	---	---	---	---	---	---	---	---	---	---	---	---	---	---	---
				June 2014	---	---	---	---	---	---	---	---	---	---	---	---	---	---	---	---	---	---
GEK TERNA (CR)				(Contract Size: 100 Securities, Physical Delivery)																		
2.36	2.27	2.28	-2.98%	September 2013	2.32	2.35	2.29	2.29	2.30	---	---	2.30	-0.86%	2.62	1.45	52	1,485	2.27%	344,532.00	2.81%	2,996	-32.29%
				December 2013	2.34	2.37	2.27	2.29	2.31	2@2.29	35@2.30	2.31	-1.28%	2.51	1.57	93	1,721	23.64%	401,189.00	23.87%	15,560	10.37%
				March 2014	---	---	---	---	2.31	---	---	2.31	-1.28%	2.50	2.26	---	---	---	---	---	15,895	0.00%
				June 2014	---	---	---	---	---	---	---	---	---	---	---	---	---	---	---	---	---	---
HELLENIC EXCHANGES (CR)				(Contract Size: 100 Securities, Physical Delivery)																		
6.35	6.16	6.21	-2.97%	September 2013	6.31	6.34	6.21	6.24	6.17	---	---	6.17	-2.83%	6.46	3.82	43	498	-24.09%	313,708.00	-24.73%	842	-36.21%
				December 2013	6.36	6.39	6.17	6.19	6.19	12@6.09	5@6.19	6.19	-2.83%	6.85	4.01	65	587	2.26%	370,498.00	1.08%	3,477	14.90%
				March 2014	---	---	---	---	---	---	---	---	---	---	---	---	---	---	---	---	---	---
				June 2014	---	---	---	---	---	---	---	---	---	---	---	---	---	---	---	---	---	---
HELLENIC PETROLEUM (CR)				(Contract Size: 100 Securities, Physical Delivery)																		
8.00	7.56	7.56	-5.85%	September 2013	7.94	7.94	7.77	7.80	7.65	---	---	7.65	-4.02%	9.01	6.00	27	183	-89.46%	143,484.00	-89.50%	518	-23.03%
				December 2013	7.95	7.95	7.65	7.65	7.52	3@7.64	5@7.69	7.52	-5.88%	8.00	6.61	71	351	-71.39%	274,883.00	-71.72%	1,657	20.51%
				March 2014	---	---	---	---	---	---	---	---	---	---	---	---	---	---	---	---	---	---
				June 2014	---	---	---	---	---	---	---	---	---	---	---	---	---	---	---	---	---	---
INTRALOT (CR)				(Contract Size: 100 Securities, Physical Delivery)																		
1.75	1.67	1.70	-3.41%	September 2013	1.73	1.75	1.69	1.69	1.68	---	---	1.68	-4.00%	2.30	1.30	47	647	-24.24%	111,737.00	-24.96%	1,293	-25.77%
				December 2013	1.73	1.76	1.64	1.65	1.70	9@1.65	1@1.70	1.70	-3.41%	1.77	1.57	46	484	-28.30%	83,790.00	-29.23%	2,629	18.85%
				March 2014	---	---	---	---	---	---	---	---	---	---	---	---	---	---	---	---	---	---
				June 2014	---	---	---	---	---	---	---	---	---	---	---	---	---	---	---	---	---	---
JUMBO SA (CR)				(Contract Size: 100 Securities, Physical Delivery)																		
9.16	8.60	8.60	-5.29%	September 2013	9.10	9.18	9.04	9.04	8.80	---	---	8.80	-2.55%	9.18	7.19	8	67	116.13%	60,961.00	118.41%	54	-23.94%
				December 2013	9.07	9.14	8.61	8.61	8.81	1@8.53	10@8.80	8.81	-1.01%	9.14	8.06	39	174	324.39%	155,432.00	320.29%	165	24.06%
				March 2014	---	---	---	---	---	---	---	---	---	---	---	---	---	---	---	---	---	---
				June 2014	---	---	---	---	---	---	---	---	---	---	---	---	---	---	---	---	---	---
MARFIN INVESTMENT GROUP (CR)				(Contract Size: 100 Securities, Physical Delivery)																		
0.367	0.345	0.350	-4.63%	September 2013	0.365	0.368	0.354	0.357	0.354	---	---	0.354	-1.12%	0.420	0.252	79	3,269	-46.25%	118,013.20	-47.23%	8,029	-1.23%
				December 2013	0.368	0.374	0.347	0.347	0.351	13@0.347	7@0.355	0.351	-4.62%	0.382	0.317	72	2,842	-47.13%	104,255.00	-48.07%	16,989	18.90%
				March 2014	---	---	---	---	---	---	---	---	---	---	---	---	---	---	---	---	---	---
				June 2014	---	---	---	---	---	---	---	---	---	---	---	---	---	---	---	---	---	---
METKA (CR)				(Contract Size: 100 Securities, Physical Delivery)																		
12.25	11.71	11.88	-3.42%	September 2013	12.14	12.17	11.76	11.76	11.80	---	---	11.80	-3.20%	12.20	9.43	23	81	-42.14%	97,246.00	-42.52%	298	-12.09%
				December 2013	12.22	12.28	11.82	11.92	11.88	1@11.75	1@11.92	11.88	-3.41%	12.34	10.52	22	84	-25.66%	100,958.00	-26.61%	263	19.00%
				March 2014	---	---	---	---	---	---	---	---	---	---	---	---	---	---	---	---	---	---
				June 2014	---	---	---	---	---	---	---	---	---	---	---	---	---	---	---	---	---	---

Underlying Asset				Derivatives Market																		
Price max	Price min	Closing price	change	Delivery Month	Open price	Price max	Price min	Last price	Closing price	Last Bid	Last Ask	Settlement price	change	Life high	Life low	Trades	Volume	change	Value	change	Open Interest	change
MOTOR OIL (CR)				(Contract Size: 100 Securities, Physical Delivery)																		
7.95	7.70	7.74	-2.03%	September 2013	7.85	7.89	7.82	7.87	7.70	---	---	7.70	-2.41%	8.16	6.66	31	147	-61.72%	115,384.00	-61.55%	360	-28.85%
				December 2013	8.00	8.00	7.77	7.77	7.76	1@7.70	20@7.81	7.76	-2.02%	8.00	7.40	31	78	-55.43%	61,436.00	-55.38%	365	14.78%
				March 2014	---	---	---	---	---	---	---	---	---	---	---	---	---	---	---	---	---	---
				June 2014	---	---	---	---	---	---	---	---	---	---	---	---	---	---	---	---	---	---
MYTILINEOS HOLDINGS (CR)				(Contract Size: 100 Securities, Physical Delivery)																		
5.00	4.80	4.89	-2.78%	September 2013	4.96	5.00	4.87	4.87	4.81	---	---	4.81	-3.80%	5.50	3.50	70	1,368	-7.69%	674,222.00	-8.81%	900	-49.64%
				December 2013	4.98	5.03	4.84	4.84	4.86	20@4.83	3@4.86	4.86	-3.38%	5.28	3.70	153	1,762	13.75%	871,770.00	12.27%	5,529	34.43%
				March 2014	4.92	4.92	4.87	4.87	4.87	---	---	4.87	-2.21%	5.03	4.43	3	100	-50.00%	49,050.00	-50.95%	1,500	7.14%
				June 2014	---	---	---	---	---	---	---	---	---	---	---	---	---	---	---	---	---	---
NATIONAL BANK (CR)				(Contract Size: 100 Securities, Physical Delivery)																		
3.18	2.99	2.99	-5.97%	September 2013	3.15	3.18	3.13	3.14	3.10	---	---	3.10	-1.90%	3.36	0.344	101	1,161	-8.87%	365,834.00	-9.87%	1,222	-34.79%
				December 2013	3.14	3.17	2.99	3.00	3.01	118@3.00	20@3.02	3.01	-5.05%	3.34	2.31	221	2,743	38.54%	853,498.00	35.26%	5,156	1.02%
				March 2014	---	---	---	---	---	---	---	---	---	---	---	---	---	---	---	---	---	---
				June 2014	---	---	---	---	---	---	---	---	---	---	---	---	---	---	---	---	---	---
OPAP (CR)				(Contract Size: 100 Securities, Physical Delivery)																		
8.24	8.00	8.02	-0.99%	September 2013	8.09	8.15	8.02	8.10	8.13	---	---	8.13	0.62%	8.15	5.82	63	628	-63.25%	508,366.00	-63.21%	2,340	-19.14%
				December 2013	8.00	8.24	8.00	8.02	8.06	2@8.02	2@8.06	8.06	-0.62%	8.24	6.31	101	825	104.21%	668,893.00	104.12%	2,346	32.54%
				March 2014	---	---	---	---	---	---	---	---	---	---	---	---	---	---	---	---	---	---
				June 2014	---	---	---	---	---	---	---	---	---	---	---	---	---	---	---	---	---	---
OTE (CR)				(Contract Size: 100 Securities, Physical Delivery)																		
7.80	7.19	7.20	-6.49%	September 2013	7.70	7.81	7.59	7.59	7.55	---	---	7.55	-1.95%	7.81	4.35	123	2,505	9.06%	1,937,010.00	9.02%	2,816	-28.14%
				December 2013	7.73	7.84	7.19	7.23	7.24	85@7.23	41@7.27	7.24	-6.46%	7.84	4.40	309	3,665	52.01%	2,776,639.00	48.19%	6,921	33.02%
				March 2014	---	---	---	---	7.22	---	---	7.22	-6.48%	7.78	6.40	---	---	-100.00%	---	-100.00%	---	---
				June 2014	---	---	---	---	---	---	---	---	---	---	---	---	---	---	---	---	---	---
P.P.A. S.A. (CR)				(Contract Size: 100 Securities, Physical Delivery)																		
17.82	16.94	17.00	-4.12%	September 2013	17.30	17.63	17.15	17.15	16.94	---	---	16.94	-3.31%	18.68	15.52	21	77	92.50%	134,106.00	90.96%	188	-11.32%
				December 2013	17.63	17.79	17.13	17.13	17.13	20@12.00	1@17.16	17.13	-2.73%	17.90	16.84	25	94	154.05%	164,439.00	151.76%	589	13.27%
				March 2014	---	---	---	---	---	---	---	---	---	---	---	---	---	---	---	---	---	---
				June 2014	---	---	---	---	---	---	---	---	---	---	---	---	---	---	---	---	---	---
PIRAEUS BANK (CR)				(Contract Size: 100 Securities, Physical Delivery)																		
1.35	1.24	1.24	-8.15%	September 2013	1.34	1.35	1.28	1.28	1.29	---	---	1.29	-4.44%	1.41	0.169	85	2,457	-58.04%	325,581.00	-59.26%	4,128	-4.18%
				December 2013	1.36	1.36	1.25	1.26	1.26	34@1.26	101@1.27	1.26	-7.35%	1.41	0.231	195	5,334	-14.12%	695,800.00	-18.45%	17,787	19.14%
				March 2014	---	---	---	---	1.26	---	---	1.26	-7.35%	1.37	0.924	---	---	---	---	---	250	0.00%
				June 2014	---	---	---	---	---	---	---	---	---	---	---	---	---	---	---	---	---	---
PPC (CR)				(Contract Size: 100 Securities, Physical Delivery)																		
8.26	7.90	8.00	-1.84%	September 2013	8.15	8.25	7.97	8.06	7.97	---	---	7.97	-1.85%	8.47	4.58	101	1,175	-33.20%	954,862.00	-32.86%	1,396	-28.30%
				December 2013	8.15	8.28	7.91	7.94	7.95	18@7.92	6@7.94	7.95	-2.57%	8.56	5.08	221	1,909	25.18%	1,546,463.00	24.75%	3,528	14.32%
				March 2014	7.98	7.98	7.98	7.98	7.90	---	---	7.90	-2.95%	8.15	6.30	1	20	-60.00%	15,960.00	-60.83%	60	50.00%
				June 2014	---	---	---	---	---	---	---	---	---	---	---	---	---	---	---	---	---	---

Underlying Asset				Derivatives Market																		
Price max	Price min	Closing price	change	Delivery Month	Open price	Price max	Price min	Last price	Closing price	Last Bid	Last Ask	Settlement price	change	Life high	Life low	Trades	Volume	change	Value	change	Open Interest	change
SIDENOR (CR)				(Contract Size: 100 Securities, Physical Delivery)																		
1.63	1.51	1.53	-3.77%	September 2013	1.59	1.63	1.54	1.59	1.58	---	---	1.58	-0.63%	1.82	1.36	30	430	-7.13%	68,482.00	-5.66%	520	-24.42%
				December 2013	1.60	1.63	1.53	1.53	1.54	8@1.50	1@1.56	1.54	-3.75%	1.76	1.49	35	437	15.30%	70,176.00	17.29%	1,357	43.45%
				March 2014	---	---	---	---	---	---	---	---	---	---	---	---	---	---	---	---	---	---
				June 2014	---	---	---	---	---	---	---	---	---	---	---	---	---	---	---	---	---	---
TERNA ENERGY (CR)				(Contract Size: 103 Securities, Physical Delivery)																		
3.18	3.07	3.10	-2.52%	September 2013	3.13	3.14	3.10	3.10	3.12	---	---	3.12	-2.80%	3.25	2.43	11	99	-8.33%	31,862.02	-9.07%	464	-12.95%
				December 2013	3.18	3.18	3.11	3.11	3.17	10@3.04	1@3.12	3.17	-2.46%	3.22	3.00	21	127	-20.63%	40,165.00	-21.10%	2,133	5.07%
				March 2014	---	---	---	---	---	---	---	---	---	---	---	---	---	---	---	---	---	---
				June 2014	---	---	---	---	---	---	---	---	---	---	---	---	---	---	---	---	---	---
TITAN CEMENT (CR)				(Contract Size: 100 Securities, Physical Delivery)																		
18.00	17.02	17.55	0.29%	September 2013	17.82	17.94	17.55	17.63	17.60	---	---	17.60	-0.56%	17.94	12.22	29	61	134.62%	108,137.00	145.09%	103	-32.24%
				December 2013	17.36	17.99	17.36	17.46	17.73	1@17.30	1@17.58	17.73	0.28%	17.99	15.02	30	51	30.77%	89,930.00	36.14%	138	46.81%
				March 2014	---	---	---	---	---	---	---	---	---	---	---	---	---	---	---	---	---	---
				June 2014	---	---	---	---	---	---	---	---	---	---	---	---	---	---	---	---	---	---
VIOHALCO (CB)				(Contract Size: 100 Securities, Physical Delivery)																		
4.28	4.15	4.20	0.48%	September 2013	4.15	4.26	4.15	4.18	4.18	---	---	4.18	2.70%	5.19	3.85	40	184	30.50%	77,328.00	35.06%	333	-33.40%
				December 2013	4.26	4.30	4.17	4.24	4.21	4@4.23	2@4.24	4.21	2.68%	4.53	3.89	38	214	296.30%	90,629.00	304.45%	514	28.18%
				March 2014	---	---	---	---	---	---	---	---	---	---	---	---	---	---	---	---	---	---
				June 2014	---	---	---	---	---	---	---	---	---	---	---	---	---	---	---	---	---	---

FTSE/Athex Large Cap

(Trade Unit: 1 Index Point x 5€ - Exercise Style: European, Cash Settlement)

Call Options																	Put Options																		
Exercise Price	September 2013							October 2013							Other Months		September 2013								October 2013								Other Months		Exercise Price
	Open price	Price max	Price min	Last price	Closing price	Volume	Open Interest	Open price	Price max	Price min	Last price	Closing price	Volume	Open Interest	Volume	Open Interest	Open price	Price max	Price min	Last price	Closing price	Volume	Open Interest	Open price	Price max	Price min	Last price	Closing price	Volume	Open Interest	Volume	Open Interest			
215	132.00	132.00	132.00	132.00	122.83	30	-	-	-	-	-	-	-	-	-	-	-	-	-	-	-	-	-	-	-	-	-	-	-	-	-	-	215		
230	-	-	-	-	107.83	-	-	-	-	-	-	-	-	-	-	-	-	-	-	-	-	-	-	-	-	-	-	-	-	-	-	-	230		
240	-	-	-	-	-	-	-	-	-	-	-	-	-	-	-	-	-	-	-	-	-	-	-	-	-	-	-	-	-	-	-	-	240		
255	-	-	-	-	82.83	-	-	-	-	-	-	-	-	-	-	-	-	-	-	-	-	-	-	-	-	-	-	-	-	-	-	-	255		
260	-	-	-	-	77.83	-	-	-	-	-	-	-	-	-	-	-	-	-	-	-	-	-	-	-	-	-	-	-	-	-	-	-	260		
265	-	-	-	-	72.83	-	-	-	-	-	-	-	-	-	-	-	-	-	-	-	-	-	-	-	-	-	-	-	-	-	-	-	265		
270	-	-	-	-	67.83	-	-	-	-	-	-	-	-	-	-	-	-	-	-	-	-	-	11	-	-	-	-	-	-	-	-	-	270		
275	-	-	-	-	62.83	-	-	-	-	-	-	-	-	-	-	-	-	-	-	-	-	-	1	-	-	-	-	-	-	-	-	-	275		
280	-	-	-	-	57.83	-	-	-	-	-	-	-	-	-	-	-	-	-	-	-	-	-	132	-	-	-	-	-	-	-	-	-	280		
285	-	-	-	-	52.83	-	-	-	-	-	-	-	-	-	-	-	-	-	-	-	-	-	56	-	-	-	-	0.82	-	1	-	-	285		
290	-	-	-	-	47.83	-	-	-	-	-	-	-	-	-	-	-	-	-	-	-	-	-	107	-	-	-	-	-	-	-	-	-	290		
295	-	-	-	-	42.83	-	-	-	-	-	-	-	-	-	-	-	-	-	-	-	-	-	-	-	-	-	1.70	-	6	-	-	295			
300	53.00	53.00	44.50	44.50	37.83	147	-	-	-	-	-	-	-	-	-	-	-	-	-	-	-	-	135	-	-	-	-	2.40	-	13	-	-	300		
305	-	-	-	-	32.83	-	-	-	-	-	-	35.00	-	15	-	-	-	-	-	-	-	-	685	-	-	-	-	3.20	-	8	-	-	305		
310	-	-	-	-	27.83	-	-	-	-	-	-	31.00	-	20	-	-	-	-	-	-	-	-	76	5.60	5.60	5.60	5.60	4.30	1	5	-	-	310		
315	31.75	31.75	28.50	28.50	22.83	434	-	34.50	34.50	34.50	34.50	27.25	20	468	-	-	-	-	-	-	-	-	162	-	-	-	-	5.60	-	57	-	-	315		
320	43.00	43.00	43.00	43.00	17.83	2	-	-	-	-	-	-	-	-	-	-	-	-	-	-	-	-	92	-	-	-	-	7.10	-	2	-	-	320		
325	21.50	21.50	21.50	21.50	12.83	1	-	-	-	-	-	-	-	-	-	-	-	-	-	-	-	-	181	-	-	-	-	8.90	-	22	-	-	325		
330	15.00	16.75	15.00	16.75	7.83	394	-	-	-	-	-	17.75	-	1	-	-	-	-	-	-	-	-	342	12.25	12.25	12.25	12.25	11.00	50	41	-	-	330		
335	9.00	9.00	9.00	9.00	2.83	10	-	-	-	-	-	15.00	-	62	-	-	-	-	-	-	-	-	484	10.00	14.75	9.80	14.75	13.25	685	798	-	-	335		
340	6.00	6.00	4.00	4.00	-	41	255	20.00	20.00	12.50	12.50	12.75	130	367	-	-	0.90	0.90	0.90	0.90	2.17	2	-	12.50	14.50	12.50	14.50	16.00	32	32	-	-	340		
345	5.00	5.00	5.00	5.00	-	10	39	10.00	11.00	10.00	11.00	10.75	3	191	-	-	-	-	-	-	7.17	-	-	17.00	18.00	16.00	18.00	19.00	3	351	-	-	345		
350	-	-	-	-	-	-	35	10.00	10.00	10.00	10.00	8.90	1	50	-	-	6.20	6.20	6.20	6.20	12.17	125	-	15.75	16.75	15.75	16.75	22.00	47	47	-	-	350		
355	-	-	-	-	-	-	31	-	-	-	-	7.30	-	20	-	-	-	-	-	-	17.17	-	-	-	-	-	-	-	-	-	-	-	355		
360	-	-	-	-	-	-	100	-	-	-	-	6.00	-	3	-	-	-	-	-	-	22.17	-	-	21.00	21.00	21.00	21.00	29.25	5	6	-	-	360		
365	-	-	-	-	-	-	-	-	-	-	-	4.80	-	1	-	-	20.00	20.25	20.00	20.25	27.17	120	-	24.00	24.00	24.00	24.00	33.00	10	10	-	-	365		
370	-	-	-	-	-	-	1	-	-	-	-	-	-	-	-	-	-	-	-	-	32.17	-	-	-	-	-	-	-	-	-	-	-	370		
375	-	-	-	-	-	-	100	-	-	-	-	-	-	-	-	-	-	-	-	-	37.17	-	-	-	-	-	-	-	-	-	-	-	375		
380	-	-	-	-	-	-	30	-	-	-	-	-	-	-	-	-	-	-	-	-	42.17	-	-	-	-	-	-	-	-	-	-	-	380		
385	-	-	-	-	-	-	-	-	-	-	-	-	-	-	-	-	-	-	-	-	47.17	-	-	-	-	-	-	-	-	-	-	-	385		
390	-	-	-	-	-	-	-	-	-	-	-	-	-	-	-	-	-	-	-	-	52.17	-	-	-	-	-	-	-	-	-	-	-	390		
395	-	-	-	-	-	-	-	-	-	-	-	-	-	-	-	-	-	-	-	-	57.17	-	-	-	-	-	-	-	-	-	-	-	395		
400	-	-	-	-	-	-	-	-	-	-	-	-	-	-	-	-	-	-	-	-	62.17	-	-	-	-	-	-	-	-	-	-	-	400		
405	-	-	-	-	-	-	-	-	-	-	-	-	-	-	-	-	-	-	-	-	67.17	-	-	-	-	-	-	-	-	-	-	-	405		
410	-	-	-	-	-	-	-	-	-	-	-	-	-	-	-	-	-	-	-	-	72.17	-	-	-	-	-	-	-	-	-	-	-	410		
415	-	-	-	-	-	-	-	-	-	-	-	-	-	-	-	-	-	-	-	-	77.17	-	-	-	-	-	-	-	-	-	-	-	415		

FTSE/Athex Large Cap

(Trade Unit: 1 Index Point x 5€ - Exercise Style: European, Cash Settlement)

Call Options																	Put Options																								
Exercise Price	September 2013							October 2013							Other Months		September 2013							October 2013							Other Months		Exercise Price								
	Open price	Price max	Price min	Last price	Closing price	Volume	Open Interest	Open price	Price max	Price min	Last price	Closing price	Volume	Open Interest	Volume	Open Interest	Open price	Price max	Price min	Last price	Closing price	Volume	Open Interest	Open price	Price max	Price min	Last price	Closing price	Volume	Open Interest	Volume	Open Interest									
440	-	-	-	-	-	-	-	-	-	-	-	-	-	-	-	-	97.00	97.00	97.00	97.00	102.17	30	-	90.00	90.00	90.00	90.00	103.00	30	30	-	-	440								
1,500	-	-	-	-	-	-	-	-	-	-	-	-	-	-	-	-	-	-	-	-	1,162.17	-	-	-	-	-	-	-	-	-	-	-	1,500								
Totals:						1,069	591							154	1,198	34	34							277	2,464							863	1,429	565	569						
Nominal Transactions Value:						1,694,925.00						259,425.00						37,650.00						507,150.00						1,466,500.00						1,076,500.00					
Number of Trades:						22						23						3						5						47						2					

FTSE/Athex Large Cap

(Trade Unit: 1 Index Point x 5€ - Exercise Style: European, Cash Settlement)

Exercise Price	Call Options																Put Options																	
	September 2013							October 2013							Other Months		September 2013								October 2013								Other Months	
	Open price	Price max	Price min	Last price	Closing price	Volume	Open Interest	Open price	Price max	Price min	Last price	Closing price	Volume	Open Interest	Volume	Open Interest	Open price	Price max	Price min	Last price	Closing price	Volume	Open Interest	Open price	Price max	Price min	Last price	Closing price	Volume	Open Interest	Volume	Open Interest	Exercise Price	

ALPHA BANK (CR)

(Contract Size: 100 Securities, Exercise Style: American, Physical Delivery)

Call Options																	Put Options																					
Exercise Price	September 2013							October 2013							Other Months		September 2013										October 2013							Other Months		Exercise Price		
	Open price	Price max	Price min	Last price	Closing price	Volume	Open Interest	Open price	Price max	Price min	Last price	Closing price	Volume	Open Interest	Volume	Open Interest	Open price	Price max	Price min	Last price	Closing price	Volume	Open Interest	Open price	Price max	Price min	Last price	Closing price	Volume	Open Interest	Volume	Open Interest						
0.100							-	-							-	-			9.43					-	-						-	-			0.100			
0.200							-	-							-	-			19.43					-	-						-	-			0.200			
0.300							-	-							-	-			29.43					-	-						-	-			0.300			
0.350							-	-							-	-			34.43					-	-						-	-			0.350			
0.400							-	-							-	-			39.43					-	-						-	-			0.400			
0.450							-	-							-	-			44.43					-	-						-	-			0.450			
0.500							-	-							-	-			49.43					-	-						-	-			0.500			
0.550							-	-							-	-			54.43					-	-						-	-			0.550			
0.600							-	-							-	-			59.43					-	-						-	-			0.600			
0.650							-	-							-	-			64.43					-	-						-	-			0.650			
0.700							-	-							-	-			69.43					-	-						-	-			0.700			
0.800							-	-							-	-			79.43					-	-						-	-			0.800			
0.850							-	-							-	-			84.43					-	-						-	-			0.850			
0.900							-	-							-	-			89.43					-	-						-	-			0.900			
0.950							-	-							-	-			94.43					-	-						-	-			0.950			
1.00							-	-							-	-			99.43					-	-						-	-			1.00			
1.05							-	-							-	-			104.43					-	-						-	-			1.05			
1.10							-	-							-	-			109.43					-	-						-	-			1.10			
1.15							-	-							-	-			114.43					-	-						-	-			1.15			
1.20							-	-							-	-			119.43					-	-						-	-			1.20			
1.30							-	-							-	-			129.43					-	-						-	-			1.30			
1.40							-	-							-	-			139.43					-	-						-	-			1.40			
1.50							-	-							-	-			149.43					-	-						-	-			1.50			
1.60							-	-							-	-			159.43					-	-						-	-			1.60			
1.70							-	-							-	-			169.43					-	-						-	-			1.70			
1.80							-	-							-	-			179.43					-	-						-	-			1.80			
1.90							-	-							-	-			189.43					-	-						-	-			1.90			
2.00							-	-							-	-			199.43					-	-						-	-			2.00			
2.20							-	-							-	-			219.43					-	-						-	-			2.20			
2.40							-	-							-	-			239.43					-	-						-	-			2.40			
2.60							-	-							-	-			259.43					-	-						-	-			2.60			
2.80							-	-							-	-			279.43					-	-						-	-			2.80			
Totals:							0	0							0	0	0	0							0	0							0	0	0	0	0	0
Nominal Transactions Value:							0.00								0.00	0.00	0.00								0.00								0.00	0.00	0.00			
Number of Trades:							0								0	0	0								0.00								0	0	0			

NATIONAL BANK (CR)

(Contract Size: 100 Securities, Exercise Style: American, Physical Delivery)

Call Options																	Put Options																			
September 2013								October 2013								Other Months		September 2013								October 2013								Other Months		
Exercise Price	Open price	Price max	Price min	Last price	Closing price	Volume	Open Interest	Open price	Price max	Price min	Last price	Closing price	Volume	Open Interest	Volume	Open Interest	Open price	Price max	Price min	Last price	Closing price	Volume	Open Interest	Open price	Price max	Price min	Last price	Closing price	Volume	Open Interest	Volume	Open Interest	Exercise Price			
0.300						-	-							-	-							26.90	-	-					-	-			0.300			
0.400						-	-							-	-							36.90	-	-					-	-			0.400			
0.500						-	-							-	-							46.90	-	-					-	-			0.500			
0.600						-	-							-	-							56.90	-	-					-	-			0.600			
0.700						-	-							-	-							66.90	-	-					-	-			0.700			
0.750						-	-							-	-							71.90	-	-					-	-			0.750			
0.800						-	-							-	-							76.90	-	-					-	-			0.800			
0.850						-	-							-	-							81.90	-	-					-	-			0.850			
0.900						-	-							-	-							86.90	-	-					-	-			0.900			
0.950						-	-							-	-							91.90	-	-					-	-			0.950			
1.00						-	-							-	-							96.90	-	-					-	-			1.00			
1.05						-	-							-	-							101.90	-	-					-	-			1.05			
1.10						-	-							-	-							106.90	-	-					-	-			1.10			
1.20						-	-							-	-							116.90	-	-					-	-			1.20			
1.30						-	-							-	-							126.90	-	-					-	-			1.30			
1.40						-	-							-	-							136.90	-	-					-	-			1.40			
1.50						-	-							-	-							146.90	-	-					-	-			1.50			
1.60						-	-							-	-							156.90	-	-					-	-			1.60			
1.70						-	-							-	-							166.90	-	-					-	-			1.70			
1.80						-	-							-	-							176.90	-	-					-	-			1.80			
1.90						-	-							-	-							186.90	-	-					-	-			1.90			
2.00						-	-							-	-							196.90	-	-					-	-			2.00			
2.20						-	-							-	-							216.90	-	-					-	-			2.20			
2.40						-	-							-	-							236.90	-	-			0.011		-	-			2.40			
2.60						-	-							-	-							256.90	-	-			0.037		-	-			2.60			
2.70						-	-							-	-							266.90	-	-					-	-			2.70			
2.80						-	-							-	-							276.90	-	-			0.090		-	-			2.80			
2.90						-	-							-	-							286.90	-	-					-	-			2.90			
3.00						-	-					0.174		-	120							296.90	-	1					-	-			3.00			
3.10						-	-							-	-							306.90	-	-					-	-			3.10			
3.20						-	116					0.098		-	20							316.90	-	-					-	-			3.20			
3.30						-	-							-	-							326.90	-	-					-	-			3.30			
3.40						-	-					0.051		-	1							336.90	-	-					-	-			3.40			
3.60						-	-					0.025		-	1							356.90	-	-					-	-			3.60			
3.80						-	-							-	-							376.90	-	-					-	-			3.80			
4.00						-	-							-	-							396.90	-	-					-	-			4.00			

NATIONAL BANK (CR)

(Contract Size: 100 Securities, Exercise Style: American, Physical Delivery)

Call Options																Put Options																	
Exercise Price	September 2013							October 2013							Other Months		September 2013							October 2013							Other Months		Exercise Price
	Open price	Price max	Price min	Last price	Closing price	Volume	Open Interest	Open price	Price max	Price min	Last price	Closing price	Volume	Open Interest	Volume	Open Interest	Open price	Price max	Price min	Last price	Closing price	Volume	Open Interest	Open price	Price max	Price min	Last price	Closing price	Volume	Open Interest	Volume	Open Interest	
4.40						-	-							-	-																		4.40
	Totals:					0	116						0	142	0	20						0	1					0	60	0	0		
	Nominal Transactions Value:						0.00						0.00		0.00							0.00						0.00		0.00			
	Number of Trades:						0						0		0							0.00						0		0			

OPAP (CR)

(Contract Size: 100 Securities, Exercise Style: American, Physical Delivery)

Call Options																	Put Options																			
September 2013								October 2013								Other Months		September 2013								October 2013								Other Months		
Exercise Price	Open price	Price max	Price min	Last price	Closing price	Volume	Open Interest	Open price	Price max	Price min	Last price	Closing price	Volume	Open Interest	Volume	Open Interest	Open price	Price max	Price min	Last price	Closing price	Volume	Open Interest	Open price	Price max	Price min	Last price	Closing price	Volume	Open Interest	Volume	Open Interest	Exercise Price			
1.00						-	-							-	-							91.87	-	270					-	-			1.00			
3.20						-	-							-	-							311.87	-	-					-	-			3.20			
3.40						-	-							-	-							331.87	-	-					-	-			3.40			
3.60						-	-							-	-							351.87	-	-					-	-			3.60			
3.80						-	-							-	-							371.87	-	-					-	-			3.80			
4.00						-	-							-	-							391.87	-	-					-	-			4.00			
4.40						-	-							-	-							431.87	-	-					-	-			4.40			
4.80						-	-							-	-							471.87	-	-					-	-			4.80			
5.20						-	-							-	-							511.87	-	-					-	-			5.20			
5.60						-	-							-	-							551.87	-	-					-	-			5.60			
5.80						-	-							-	-							571.87	-	-					-	-			5.80			
6.00						-	-							-	-							591.87	-	-			0.004		-	-			6.00			
6.20						-	-							-	-							611.87	-	-					-	-			6.20			
6.40						-	-					1.65		-	25							631.87	-	-			0.016		-	-			6.40			
6.60						-	-							-	-							651.87	-	135					-	-			6.60			
6.80						-	-					1.28		-	25							671.87	-	-					-	-			6.80			
7.00						-	-							-	-							691.87	-	-					-	-			7.00			
7.20						-	-					0.950		-	25							711.87	-	-					-	-			7.20			
7.40						-	-							-	-							731.87	-	-					-	-			7.40			
7.60						-	-					0.665		-	40							751.87	-	-					-	-			7.60			
7.80						-	-							-	-							771.87	-	-					-	-			7.80			
8.00						-	-							-	-							791.87	-	-					-	-			8.00			
8.20						-	-							-	-							811.87	-	-					-	-			8.20			
8.40						-	-							-	-							831.87	-	-					-	-			8.40			
8.80						-	-							-	-							871.87	-	-					-	-			8.80			
9.00						-	-							-	-								-	-					-	-			9.00			
9.20						-	-							-	-							911.87	-	-					-	-			9.20			
9.40						-	-							-	-								-	-					-	-			9.40			
9.60						-	-							-	-							951.87	-	-					-	-			9.60			
9.80						-	-							-	-								-	-					-	-			9.80			
10.00						-	-							-	-								-	-					-	-			10.00			
20.00						-	270							-	-							1,991.87	-	-					-	-			20.00			
Totals:						0	270							0	115	0	1,600							0	405							0	55	0	0	
Nominal Transactions Value:						0.00								0.00		0.00								0.00								0.00		0.00		
Number of Trades:						0								0		0								0								0		0		

OTE (CR)

(Contract Size: 100 Securities, Exercise Style: American, Physical Delivery)

Call Options																	Put Options																								
September 2013								October 2013								Other Months		September 2013								October 2013								Other Months							
Exercise Price	Open price	Price max	Price min	Last price	Closing price	Volume	Open Interest	Open price	Price max	Price min	Last price	Closing price	Volume	Open Interest	Volume	Open Interest	Open price	Price max	Price min	Last price	Closing price	Volume	Open Interest	Open price	Price max	Price min	Last price	Closing price	Volume	Open Interest	Volume	Open Interest	Exercise Price								
2.60						-	-							-	-													252.45	-	-					2.60						
2.80						-	-							-	-													272.45	-	-					2.80						
3.00						-	-							-	-													292.45	-	-					3.00						
3.20						-	-							-	-													312.45	-	-					3.20						
3.40						-	-							-	-													332.45	-	-					3.40						
3.60						-	-							-	-													352.45	-	-					3.60						
3.80						-	-							-	-													372.45	-	-					3.80						
4.00						-	-							-	-													392.45	-	-					4.00						
4.40						-	-							-	-													432.45	-	-					4.40						
4.80						-	-							-	-													472.45	-	-					4.80						
5.20						-	-							-	-													512.45	-	100					5.20						
5.40						-	-							-	-													532.45	-	-					5.40						
5.60						-	-							-	-													552.45	-	1					5.60						
5.80						-	-							-	-													572.45	-	-					5.80						
6.00						-	-							-	-													592.45	-	75					6.00						
6.20						-	-							-	-													612.45	-	-					6.20						
6.40						-	-							-	-													632.45	-	-					6.40						
6.60						-	-							-	-													652.45	-	-					6.60						
6.80						-	-							-	-													672.45	-	-					6.80						
7.00						-	-							-	-													692.45	-	-					7.00						
7.20						-	-							-	-													712.45	-	-					7.20						
7.40						-	-							-	-													732.45	-	-			0.501			7.40					
7.60						-	-							-	-													752.45	-	-					7.60						
7.80						-	-							-	-													772.45	-	-					7.80						
8.00						-	50							-	-													792.45	-	-					8.00						
8.20						-	-							-	-													812.45	-	-					8.20						
8.40						-	-							-	-													832.45	-	-					8.40						
8.60						-	-							-	-														-	-					8.60						
8.80						-	-							-	-													872.45	-	-					8.80						
9.00						-	-							-	-														-	-					9.00						
9.20						-	-							-	-													912.45	-	-					9.20						
Totals:						0	50							0	0	0	1,600							0	176							0	1	0	35						
Nominal Transactions Value:						0.00								0.00		0.00								0.00								0.00		0.00							
Number of Trades:						0								0		0								0								0		0							

PIRAEUS BANK (CR)

(Contract Size: 100 Securities, Exercise Style: American, Physical Delivery)

Call Options																	Put Options																										
September 2013								October 2013								Other Months		September 2013								October 2013								Other Months									
Exerise Price	Open price	Price max	Price min	Last price	Closing price	Volume	Open Interest	Open price	Price max	Price min	Last price	Closing price	Volume	Open Interest	Volume	Open Interest	Open price	Price max	Price min	Last price	Closing price	Volume	Open Interest	Open price	Price max	Price min	Last price	Closing price	Volume	Open Interest	Volume	Open Interest	Exerise Price										
0.500						-	-							-	-							-	-					-	-					0.500									
0.600						-	-							-	-							58.71	-	-					-	-					0.600								
0.700						-	-							-	-							68.71	-	-					-	-					0.700								
0.800						-	-							-	-							78.71	-	-					-	-					0.800								
0.900						-	-							-	-							88.71	-	-					-	-					0.900								
1.00						-	-							-	-							98.71	-	-					-	-					1.00								
1.05						-	-							-	-							103.71	-	-					-	-					1.05								
1.10						-	-							-	-							108.71	-	-					-	-					1.10								
1.15						-	-							-	-							113.71	-	-					-	-					1.15								
1.20						-	-							-	-							118.71	-	-					-	-					1.20								
1.25						-	-							-	-							123.71	-	-					-	-					1.25								
1.30						-	-							-	-							128.71	-	-					-	-					1.30								
1.35						-	-							-	-							133.71	-	-					-	-					1.35								
1.40						-	-							-	-							138.71	-	-					-	-					1.40								
1.50						-	-							-	-							148.71	-	-					-	-					1.50								
1.60						-	-							-	-							158.71	-	-					-	-					1.60								
1.70						-	-							-	-							168.71	-	-					-	-					1.70								
1.80						-	-							-	-							178.71	-	-					-	-					1.80								
1.90						-	-							-	-							188.71	-	-					-	-					1.90								
Totals:						0	0							0	0	0	0							0	0							0	0	0	0	0	0						
Nominal Transactions Value:						0.00								0.00		0.00								0.00								0.00		0.00									
Number of Trades:						0								0		0								0								0		0									

PPC (CR)

(Contract Size: 100 Securities, Exercise Style: American, Physical Delivery)

Call Options																	Put Options																			
September 2013								October 2013								Other Months		September 2013								October 2013								Other Months		
Exercise Price	Open price	Price max	Price min	Last price	Closing price	Volume	Open Interest	Open price	Price max	Price min	Last price	Closing price	Volume	Open Interest	Volume	Open Interest	Open price	Price max	Price min	Last price	Closing price	Volume	Open Interest	Open price	Price max	Price min	Last price	Closing price	Volume	Open Interest	Volume	Open Interest	Exercise Price			
3.20						-	-							-	-							312.03	-	-					-	-			3.20			
3.40						-	-							-	-							332.03	-	-					-	-			3.40			
3.60						-	-							-	-							352.03	-	-					-	-			3.60			
3.80						-	-							-	-							372.03	-	-					-	-			3.80			
4.00						-	-							-	-							392.03	-	-					-	-			4.00			
4.40	3.72	3.72	3.72	3.72		30	-							-	-							432.03	-	-					-	-			4.40			
4.80						-	-							-	-							472.03	-	-					-	-			4.80			
5.20						-	-							-	-							512.03	-	-					-	-			5.20			
5.60						-	-							-	-							552.03	-	-					-	-			5.60			
6.00						-	-							-	-							592.03	-	-					-	-			6.00			
6.40						-	-							-	-							632.03	-	-					-	-			6.40			
6.60						-	-							-	-							652.03	-	-					-	-			6.60			
6.80						-	-							-	-							672.03	-	-					-	-			6.80			
7.00						-	-							-	-							692.03	-	-					-	-			7.00			
7.20						-	-							-	-							712.03	-	400					-	-			7.20			
7.40						-	-							-	-							732.03	-	-					-	-			7.40			
7.60						-	-							-	-							752.03	-	-					-	-			7.60			
7.80						-	-							-	-							772.03	-	-					-	-			7.80			
8.00						-	-							-	-							792.03	-	-					-	-			8.00			
8.20						-	-							-	-							812.03	-	-					-	-			8.20			
8.40						-	-							-	-							832.03	-	-					-	-			8.40			
8.60						-	-							-	-							852.03	-	-					-	-			8.60			
8.80						-	-							-	-							872.03	-	-					-	-			8.80			
9.00						-	-							-	-							892.03	-	-					-	-			9.00			
9.20						-	-							-	-							912.03	-	-					-	-			9.20			
9.60						-	-							-	-							952.03	-	-					-	-			9.60			
10.00						-	-							-	-							992.03	-	-					-	-			10.00			
Totals:						30	0							0	0	30	30							0	400							0	0	0	0	
Nominal Transactions Value:						13,200.00								0.00		13,200.00								0.00								0.00		0.00		
Number of Trades:						1								0		1								0.00								0		0		

PPC (CR)

(Contract Size: 100 Securities, Exercise Style: American, Physical Delivery)

Call Options																	Put Options																
Exercise Price	September 2013							October 2013							Other Months		September 2013								October 2013						Other Months		Exercise Price
	Open price	Price max	Price min	Last price	Closing price	Volume	Open Interest	Open price	Price max	Price min	Last price	Closing price	Volume	Open Interest	Volume	Open Interest	Open price	Price max	Price min	Last price	Closing price	Volume	Open Interest	Open price	Price max	Price min	Last price	Closing price	Volume	Open Interest	Volume	Open Interest	

Securities	Type[4]	Stock Repo [1]						Stock Reverse Repo [2]								Repurchase Agreements [3]							
		Trans. price	chg.	Trades	Volume	Transactions Value	Open Interest[5]	Price max	Price min	Last price	Last Ask	Trades	Volume	Transactions Value	Open Interest[5]	Price max	Price min	Last price	Last Ask	Trades	Volume	Transactions Value	Open Interest[5]
AEGEAN AIRLINES (CR)	SR RA	100.00	---	---	---	---	85	---	---	---	42@3%	---	---	---	---	---	---	---	---	---	---	---	---
ALPHA BANK (CR)	SR RA	100.00	---	---	---	---	54,615	---	---	---	26011@3.1%	---	---	---	5,283	---	---	---	---	---	---	---	1,562
ALPHA ETF FTSE Athex Large Cap	SR RA	100.00	---	---	---	---	---	---	---	---	---	---	---	---	---	---	---	---	---	---	---	---	1,664
ALUMIL (CR)	RA	---	---	---	---	---	---	---	---	---	---	---	---	---	---	---	---	---	---	---	---	---	---
ATHENS MEDICAL CENTER SA (CR)	SR RA	100.00	---	---	---	---	434	---	---	---	217@3%	---	---	---	---	---	---	---	---	---	---	---	---
AUTOHELLAS SA (CR)	SR RA	100.02	---	1	3	711.0	54	---	---	---	25@3%	---	---	---	---	---	---	---	---	---	---	---	---
CC HBC AG (CR)	SR RA	100.17	0.02	---	---	---	1,251	---	---	---	505@3%	---	---	---	120	---	---	---	---	---	---	---	118
CENTRIC HOLDINGS (CR)	SR RA	100.00	---	---	---	---	200	---	---	---	151@7.2%	---	---	---	---	---	---	---	---	---	---	---	---
CORINTH PIPEWORKS SA (CR)	SR RA	100.00	---	---	---	---	160	---	---	---	80@3%	---	---	---	---	---	---	---	---	---	---	---	---
CRETE PLASTICS SA (CR)	SR RA	100.00	---	---	---	---	---	---	---	---	---	---	---	---	---	---	---	---	---	---	---	---	---
ELLAKTOR (CR)	SR RA	100.01	---	---	---	---	2,403	---	---	---	1201@3%	---	---	---	---	---	---	---	---	---	---	---	---
ELTON SA (CR)	SR RA	100.00	---	---	---	---	50	---	---	---	35@3%	---	---	---	---	---	---	---	---	---	---	---	---
ELVAL SA. (CB)	SR RA	100.01	---	---	---	---	621	---	---	---	310@3%	---	---	---	---	---	---	---	---	---	---	---	---
EUROBANK ERGASIAS (CR)	SR RA	100.13	---	---	---	---	2,494	3.00%	3.00%	3.00%	315@3%	1	3	182.4	995	---	---	---	---	---	---	---	28
EUROBANK PROPERTIES REIC (CR)	SR RA	100.07	0.01	---	---	---	1,639	---	---	---	759@3%	---	---	---	60	---	---	---	---	---	---	---	---
EUROPEAN RELIANCE INSUR. (CR)	SR RA	100.00	---	---	---	---	---	---	---	---	---	---	---	---	---	---	---	---	---	---	---	---	---
EYDAP S.A. (CR)	SR RA	100.04	0.01	---	---	---	325	---	---	---	154@3%	---	---	---	8	---	---	---	---	---	---	---	16
FOLLI FOLLIE (CR)	SR RA	100.09	---	---	---	---	842	---	---	---	401@3%	---	---	---	20	---	---	---	---	---	---	---	10
FOURLIS (CR)	SR RA	100.00	---	---	---	---	195	---	---	---	97@3%	---	---	---	---	---	---	---	---	---	---	---	---
FRIGOGLASS SA (CR)	SR RA	100.03	---	---	---	---	229	---	---	---	114@3%	---	---	---	---	---	---	---	---	---	---	---	---
GEK TERNA (CR)	SR RA	100.00	---	---	---	---	582	---	---	---	286@3%	---	---	---	5	---	---	---	---	---	---	---	---
GR. SARANTIS SA (CR)	SR RA	100.00	---	---	---	---	62	---	---	---	31@3%	---	---	---	---	---	---	---	---	---	---	---	---
HALKOR SA (CB)	SR RA	100.00	---	---	---	---	415	---	---	---	207@3%	---	---	---	---	---	---	---	---	---	---	---	---
HELLENIC CABLES SA (CR)	SR RA	100.00	---	---	---	---	84	---	---	---	42@3%	---	---	---	---	---	---	---	---	---	---	---	---
HELLENIC EXCHANGES (CR)	SR RA	100.07	0.01	---	---	---	5,993	3.00%	3.00%	3.00%	2761@3%	1	30	18,630.0	235	---	---	---	---	---	---	---	---
HELLENIC PETROLEUM (CR)	SR RA	100.23	---	---	---	---	2,224	---	---	---	936@3%	---	---	---	176	---	---	---	---	---	---	---	46
HYGEIA SA (CR)	SR RA	100.00	---	---	---	---	700	---	---	---	280@4.3%	---	---	---	---	---	---	---	---	---	---	---	---
IASO SA (CR)	SR RA	100.00	---	---	---	---	86	---	---	---	43@3%	---	---	---	---	---	---	---	---	---	---	---	---
IKTINOS HELLAS SA (CR)	SR RA	100.00	---	---	---	---	10	---	---	---	---	---	---	---	---	---	---	---	---	---	---	---	---
INFORM P. LYKOS SA (CR)	SR RA	100.00	---	---	---	---	203	---	---	---	101@3%	---	---	---	---	---	---	---	---	---	---	---	---
INTRACOM CONSTR. (CR)	SR RA	100.00	---	---	---	---	37	---	---	---	18@3%	---	---	---	---	---	---	---	---	---	---	---	---
INTRACOM HOLDINGS (CR)	SR RA	100.00	---	---	---	---	665	---	---	---	426@3.7%	---	---	---	---	---	---	---	---	---	---	---	---

Stock Lending Notes

- [1] - Stock Repo: A Contract for selling stocks to HELEX with a Repurchase Right (According to ATHEX BoD Resolution No 17)
- [2] - Stock Reverse Repo: A Contract for buying stocks from HELEX with a Resell Right. (According to ATHEX BoD Resolution No 18)
- [3] - Standardized Repurchase Agreements: A Contract that constitutes a standardized agreement for the purchase or sale of shares, with repurchase or resell pact (According to ATHEX BoD Resolution No 20)
- [4] - Type of products is divided into SR: Stock Repo or Stock Reverse Repo, and RA: Repurchase Agreements.
- [5] - Open Interest in all Series (both tradeable or non-tradeable).

Securities	Type[4]	Stock Repo [1]						Stock Reverse Repo [2]								Repurchase Agreements [3]							
		Trans. price	chg.	Trades	Volume	Transactions Value	Open Interest[5]	Price max	Price min	Last price	Last Ask	Trades	Volume	Transactions Value	Open Interest[5]	Price max	Price min	Last price	Last Ask	Trades	Volume	Transactions Value	Open Interest[5]
INTRALOT (CR)	SR RA	100.03	---	---	---	---	4,116	---	---	---	1818@3%	---	---	---	240	---	---	---	---	---	---	---	---
J & P - AVAX SA (CR)	SR RA	100.02	---	---	---	---	235	---	---	---	117@3%	---	---	---	---	---	---	---	---	---	---	---	---
JUMBO SA (CR)	SR RA	100.05	---	---	---	---	2,338	---	---	---	1090@3%	---	---	---	79	---	---	---	---	---	---	---	20
KLEEMAN HELLAS SA (CR)	SR RA	100.00	---	---	---	---	982	---	---	---	491@3%	---	---	---	---	---	---	---	---	---	---	---	---
KLOUKINAS - LAPPAS SA (CR)	SR RA	100.00	---	---	---	---	---	---	---	---	---	---	---	---	---	---	---	---	---	---	---	---	---
KORRES (CR)	SR RA	100.00	---	---	---	---	---	---	---	---	---	---	---	---	---	---	---	---	---	---	---	---	---
KRI-KRI S.A. (CR)	SR RA	100.00	---	---	---	---	549	---	---	---	274@3%	---	---	---	---	---	---	---	---	---	---	---	---
LAMDA DEVELOPMENT SA (CR)	SR RA	100.00	---	---	---	---	890	---	---	---	445@3%	---	---	---	---	---	---	---	---	---	---	---	---
LOULIS MILLS SA (CR)	SR RA	100.00	---	---	---	---	---	---	---	---	---	---	---	---	---	---	---	---	---	---	---	---	---
MARFIN INVESTMENT GROUP (CR)	SR RA	100.00	---	1	9	315.0	1,792	---	---	---	---	---	---	---	---	---	---	---	---	---	---	---	---
METKA (CR)	SR RA	100.17	0.02	---	---	---	591	---	---	---	230@3%	---	---	---	65	---	---	---	---	---	---	---	9
MLS MULTIMEDIA SA (CR)	SR RA	100.00	---	---	---	---	99	---	---	---	49@3%	---	---	---	---	---	---	---	---	---	---	---	---
MOTOR OIL (CR)	SR RA	100.07	---	---	---	---	2,057	---	---	---	1028@3%	---	---	---	---	---	---	---	---	---	---	---	17
MYTILINEOS HOLDINGS (CR)	SR RA	100.01	---	---	---	---	3,875	---	---	---	1777@3%	---	---	---	160	---	---	---	---	---	---	---	---
NATIONAL BANK (CR)	SR RA	100.09	0.01	1	4	1,196.0	9,065	---	---	---	3053@3%	---	---	---	1,477	---	---	---	---	---	---	---	346
NBGAM ETF	SR RA	100.00	---	---	---	---	---	---	---	---	---	---	---	---	---	---	---	---	---	---	---	---	100
NBGAM ETF GREECE & TURKEY 30	SR RA	100.00	---	---	---	---	---	---	---	---	---	---	---	---	---	---	---	---	---	---	---	---	35
NIREFS SA (CR)	SR RA	100.00	---	---	---	---	326	---	---	---	218@4.2%	---	---	---	---	---	---	---	---	---	---	---	---
OPAP (CR)	SR RA	100.09	0.01	---	---	---	4,838	---	---	---	2242@3%	---	---	---	565	---	---	---	---	---	---	---	367
OTE (CR)	SR RA	100.22	0.01	---	---	---	5,262	3.00%	3.00%	3.00%	1710@3%	1	7	5,040.0	921	---	---	---	---	---	---	---	103
P.P.A. S.A. (CR)	SR RA	100.03	0.03	---	---	---	15	---	---	---	4@3%	---	---	---	3	---	---	---	---	---	---	---	---
PETROPOULOS PETROS (CR)	RA	---	---	---	---	---	---	---	---	---	---	---	---	---	---	---	---	---	---	---	---	---	---
PIRAEUS BANK (CR)	SR RA	100.02	---	2	4	496.0	7,846	---	---	---	3719@3%	---	---	---	202	---	---	---	---	---	---	---	---
PPC (CR)	SR RA	100.27	0.01	---	---	---	1,932	---	---	---	419@3%	---	---	---	547	---	---	---	---	---	---	---	35
QUEST HOLDINGS (CR)	SR RA	100.00	---	---	---	---	39	---	---	---	19@3%	---	---	---	---	---	---	---	---	---	---	---	---
REDS S.A. (CR)	SR RA	100.00	---	---	---	---	572	---	---	---	356@3.5%	---	---	---	---	---	---	---	---	---	---	---	---
SELECTED TEXT. IND. ASSOC (CR)	SR RA	100.00	---	---	---	---	100	---	---	---	74@6.9%	---	---	---	---	---	---	---	---	---	---	---	---
SIDENOR (CR)	SR RA	100.00	---	---	---	---	442	---	---	---	221@3%	---	---	---	---	---	---	---	---	---	---	---	---
TECHNICAL OLYMPIC SA (CR)	SR RA	100.00	---	1	43	6,235.0	57	---	---	---	4@3%	---	---	---	---	---	---	---	---	---	---	---	---
TERNA ENERGY (CR)	SR RA	100.11	---	1	3	930.0	293	3.00%	3.00%	3.00%	96@3%	2	10	3,100.0	49	---	---	---	---	---	---	---	5
THESSALONIKA WATER & SEWERAGE	SR RA	100.00	---	---	---	---	1,270	---	---	---	635@3%	---	---	---	---	---	---	---	---	---	---	---	---
THRACE PLASTICS SA (CR)	SR RA	100.00	---	---	---	---	1,010	---	---	---	505@3%	---	---	---	---	---	---	---	---	---	---	---	---

Stock Lending Notes

- [1] - Stock Repo: A Contract for selling stocks to HELEX with a Repurchase Right (According to ATHEX BoD Resolution No 17)
- [2] - Stock Reverse Repo: A Contract for buying stocks from HELEX with a Resell Right. (According to ATHEX BoD Resolution No 18)
- [3] - Standardized Repurchase Agreements: A Contract that constitutes a standardized agreement for the purchase or sale of shares, with repurchase or resell pact (According to ATHEX BoD Resolution No 20)
- [4] - Type of products is divided into SR: Stock Repo or Stock Reverse Repo, and RA: Repurchase Agreements.
- [5] - Open Interest in all Series (both tradeable or non-tradeable).

Securities	Type[4]	Stock Repo [1]						Stock Reverse Repo [2]								Repurchase Agreements [3]							
		Trans. price	chg.	Trades	Volume	Transactions Value	Open Interest[5]	Price max	Price min	Last price	Last Ask	Trades	Volume	Transactions Value	Open Interest[5]	Price max	Price min	Last price	Last Ask	Trades	Volume	Transactions Value	Open Interest[5]
TITAN CEMENT (CR)	SR RA	100.03	---	---	---	---	9,035	---	---	---	4457@3%	---	---	---	60	---	---	---	---	---	---	---	12
TPA SA (CR)	SR RA	100.00	---	---	---	---	6	---	---	---	---	---	---	---	---	---	---	---	---	---	---	---	
TRASTOR REAL EST. INV. CO.(CR)	SR RA	100.00	---	---	---	---	284	---	---	---	142@3%	---	---	---	---	---	---	---	---	---	---	---	
VIOHALCO (CB)	SR RA	100.01	---	---	---	---	3,990	---	---	---	1973@3%	---	---	---	22	---	---	---	---	---	---	30	

Stock Lending Notes

- [1] - Stock Repo: A Contract for selling stocks to HELEX with a Repurchase Right (According to ATHEX BoD Resolution No 17)
- [2] - Stock Reverse Repo: A Contract for buying stocks from HELEX with a Resell Right. (According to ATHEX BoD Resolution No 18)
- [3] - Standardized Repurchase Agreements: A Contract that constitutes a standardized agreement for the purchase or sale of shares, with repurchase or resell pact (According to ATHEX BoD Resolution No 20)
- [4] - Type of products is divided into SR: Stock Repo or Stock Reverse Repo, and RA: Repurchase Agreements.
- [5] - Open Interest in all Series (both tradeable or non-tradeable).

Sectors codification for listed companies

533	-	Exploration & Production	537	-	Integrated Oil & Gas
1353	-	Commodity Chemicals	1357	-	Specialty Chemicals
1753	-	Aluminum	1755	-	Nonferrous Metals
1757	-	Steel	1775	-	General Mining
2353	-	Building Materials & Fixtures	2357	-	Heavy Construction
2723	-	Containers & Packaging	2727	-	Diversified Industrials
2733	-	Electrical Components & Equipment	2753	-	Commercial Vehicles & Trucks
2757	-	Industrial Machinery	2773	-	Marine Transportation
2777	-	Transportation Services	2791	-	Business Support Services
2797	-	Industrial Suppliers	3535	-	Distillers & Vintners
3537	-	Soft Drinks	3573	-	Farming & Fishing
3577	-	Food Products	3722	-	Durable Household Products
3726	-	Furnishings	3728	-	Home Construction
3747	-	Toys	3763	-	Clothing & Accessories
3765	-	Footwear	3767	-	Personal Products
3785	-	Tobacco	4533	-	Health Care Providers
4535	-	Medical Equipment	4577	-	Pharmaceuticals
5337	-	Food Retailers & Wholesalers	5371	-	Apparel Retailers
5373	-	Broadline Retailers	5375	-	Home Improvement Retailers
5379	-	Specialty Retailers	5553	-	Broadcasting & Entertainment
5555	-	Media Agencies	5557	-	Publishing
5751	-	Airlines	5752	-	Gambling
5753	-	Hotels	5755	-	Recreational Services
5757	-	Restaurants & Bars	5759	-	Travel & Tourism
6535	-	Fixed Line Telecommunications	6575	-	Mobile Telecommunications
7535	-	Conventional Electricity	7537	-	Alternative Electricity
7577	-	Water	8355	-	Banks
8534	-	Insurance Brokers	8536	-	Property & Casualty Insurance
8633	-	Real Estate Holding & Development	8637	-	Real Estate Services
8671	-	Industrial & Office REITs	8675	-	Specialty REITs
8775	-	Specialty Finance	8777	-	Investment Services
8985	-	Equity Investment Instruments	9533	-	Computer Services
9535	-	Internet	9537	-	Software
9572	-	Computer Hardware	9574	-	Electronic Office Equipment
9578	-	Telecommunications Equipment	11000	-	ETF

