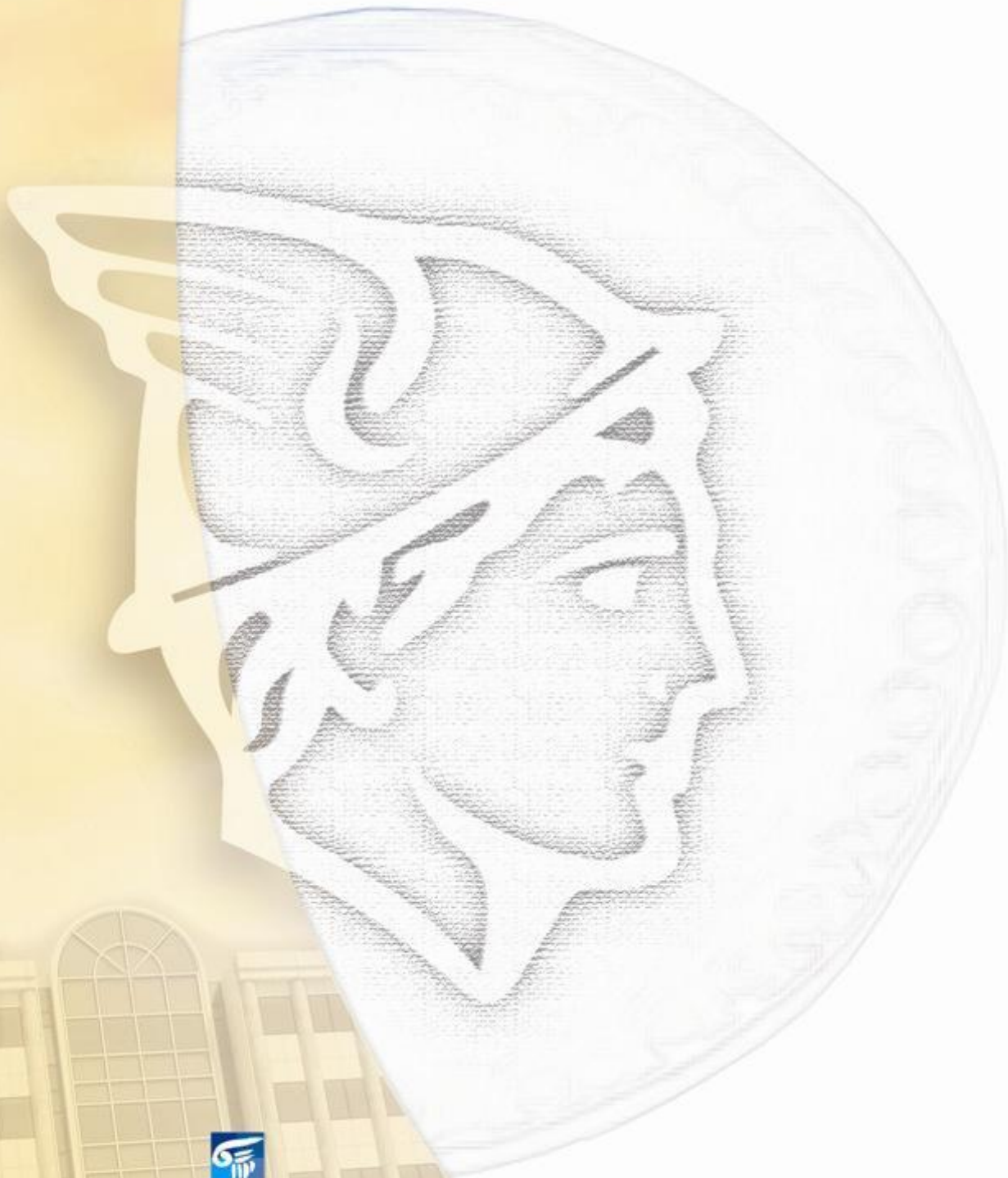


# Daily Official List

Athens Exchange sa

Monday, 23 September, 2013  
Year: 134 Trading Day No: 179



ΟΜΙΛΟΣ ΕΛΛΗΝΙΚΑ ΧΡΗΜΑΤΙΣΤΗΡΙΑ  
HELLENIC EXCHANGES GROUP

**Disclaimer:**

Athens Exchange (ATHEX) endeavours to ensure that the data and other material ("Information") presented on the Daily Official List are accurate and complete, but it is not liable for any errors or omissions of data or /and for the accuracy, credibility, updating and completeness of the aforesaid information nor it has any liability arising directly or indirectly from the use of the above Information.

ATHEX is not liable for the accuracy of the data included in listed companies' announcements. Only the sender of such an announcement is fully and solely liable for any infringement of third party's rights from the content of such announcement. All contents of the Daily Official List are provided only for information purposes and do not constitute investment advice or solicitation to invest in securities or other products listed for trading on ATHEX.

You acknowledge and agree that ATHEX is the owner of any property rights related to any Information appearing on the Daily Official List including intellectual property rights copyright, trademarks, etc.

The above data are a property of the Athens Exchange and are copyright protected. Users are forbidden to reproduce, modify, copy, sale, transmit or redistribute, by all reproduction means and methods, part or the whole of the above data, without reference to their source.

The commercial exploitation of these data is, also, forbidden by third parties. Athens Exchange does not carry any responsibility, direct or indirect, derived from usage or accidental alteration of the above data when used by third parties.

**Athens Exchange sa**

110 Athinon Ave., 10442 Athens, Tel: (210) 33.66.800, Fax: (210) 32.13.938

[www.athex.gr](http://www.athex.gr)

**Thessalonica Stock Exchange Center (T.S.E.C)**

16-18 Katouni Str., Thessalonica 546 25 Tel: (2310) 567.667, Fax: (2310) 530.545

**Athex Members Guarantee Fund**

14-16 Fidiou Str., Athens 106 78, Tel: (210) 33.04.682, Fax: (210) 33.04.155

**Hellenic Republic Capital Market Commission**

1 Kolokotroni Str. & 1 Stadiou Str., Athens 10562 Tel: (210) 33.77.100 Fax: (210) 33.77.173

---

**Table of Contents**

---

**Section 1: Statistical Figures of Securities and Derivatives Markets**

Summary of Markets

Athex Indices

Analytic Figures for Athex Market's Boards and Categories

Trading Details by Athex Sectors and ETFs Category

Top 10 best &amp; worst performing Shares

Derivatives Summary

**Section 2: Analytic Figures of Shares Transactions**

Analytic Figures of Shares Transactions

Shares' Notes

**Section 3: Figures of Securities Transactions**

Securities Blocks Details

Shares Rights Details

Shares Short Selling

Stock Borrowing

Shares Forced Sales

Forced Sales Registered Shares

Exchange Traded Funds (ETFs) Characteristics

**Section 5: Bonds traded in Fixed Income Assets Market**

Corporate Bonds

Government Bonds

Treasury Bills &amp; Zero Coupon Government Bonds

Government Bonds Traded with the Open Outcry Method

State Banks Bonds

**Section 6: Additional Infos**

Athex &amp; ATHEXClear Members List

List of Stocks under Market Making operations

**Section 7: Derivatives Market Analytic Figures**

Index Futures

Stock Futures

Index Options

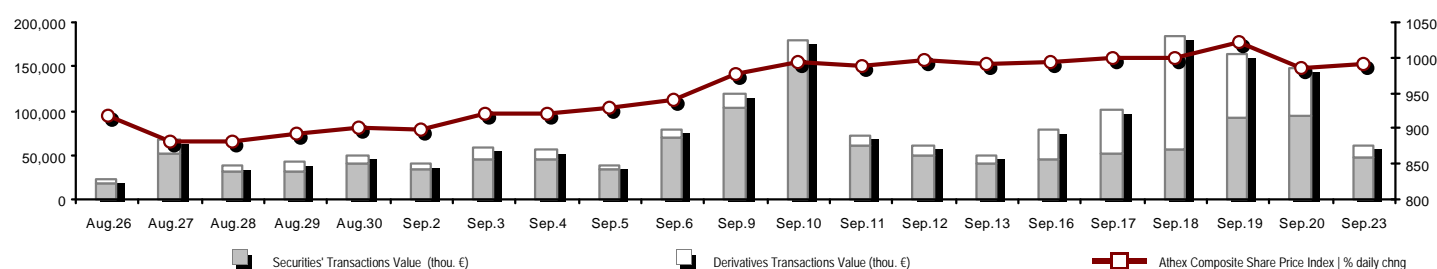
Stock Options

Stock Lending Analytic Figures (Repo Contracts)

**Appendix A: Sectors codification for listed companies**

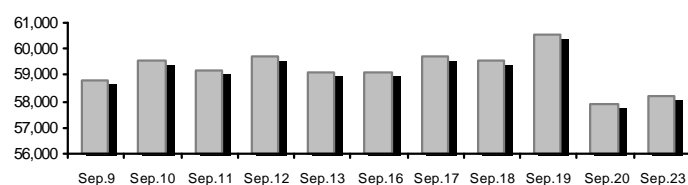
## Summary of Markets

Athex Composite Share Price Index vs Shares and Derivatives Transactions Value

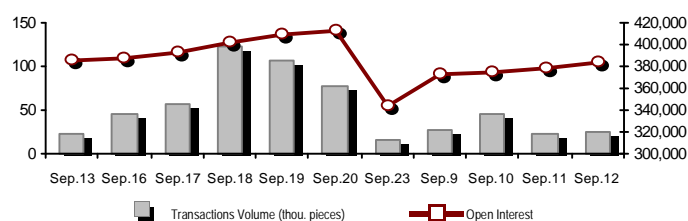


Total Transactions Value (Securities/Derivatives) (thou. €):		59,901.75	
Athex Capitalisation (mill. €) **: 58,215.27		Derivatives Total Open Interest 344,420	
Daily change: mill. €   % 321.59 0.56%		in Index Futures   % daily chng 48,910 -25.38%	
Yearly Avg Capitalisation: mill. €   % chng prev year Avg 46,122.87 68.53%		in Stock Futures   % daily chng 131,199 -26.79%	
Athex Composite Share Price Index   % daily chng 990.32 0.64%		in Index Options   % daily chng 3,673 -41.56%	
Athex Composite Share Price Index Capitalisation (mill. €) 51,282.16		in Stock Options   % daily chng 3,714 -25.38%	
Daily change (mill. €) 332.86		in Stock Repos/Reverse Repos/RA   % daily chng 156,924 0.35%	
Securities' Transactions Value (thou. €) 46,646.30		Derivatives Transactions Value (thou. €) 13,255.44	
Daily change: thou. €   % -48,372.01 -50.91%		Daily change: thou. €   % -39,586.50 -74.91%	
YtD Avg Trans. Value: thou. €   % chng prev year Avg 65,849.36 26.94%		YtD Avg Trans. Value: thou. €   % chng prev year Avg 23,349.77 22.34%	
Short Selling Trans. Value: mill. €   % in total Value 0.00 0.00%			
Short Covering Trans. Value: mill. €   % in total Value 0.17 0.00%			
Transactions Value of Blocks (thou. €) 6,570.32			
Bonds Transactions Value (thou. €) 0.00			
Securities' Transactions Volume (thou. Pieces) 23,130.06		Derivatives Contracts Volume: 15,848	
Daily change: thou. pieces   % -16,034.99 -40.94%		Daily change: pieces   % -60,724 -79.30%	
YtD Avg Volume: thou. pieces   % chng prev year Avg 49,401.25 -0.10%		YtD Avg Derivatives Contracts   % chng prev year Avg 43,222 -32.84%	
Short Selling Volume: thou pieces   % in total Volume 0.00 0.00%			
Short Covering Volume: thou. pieces   % in total Volume 0.30 0.00%			
Transactions Volume of Blocks (thou. Pieces) 3,380.33			
Bonds Transactions Volume (thou. pieces) 0.00			
Securities' Trades Number 16,473		Derivatives Trades Number: 1,680	
Daily change: number   % -12,509 -43.16%		Daily change: number   % -3,109 -64.92%	
YtD Avg Derivatives Trades number   % chng prev year Avg 29,032 17.02%		YtD Avg Derivatives Trades number   % chng prev year Avg 2,712 -6.94%	
Number of Blocks 7			
Number of Bonds Transactions 0			

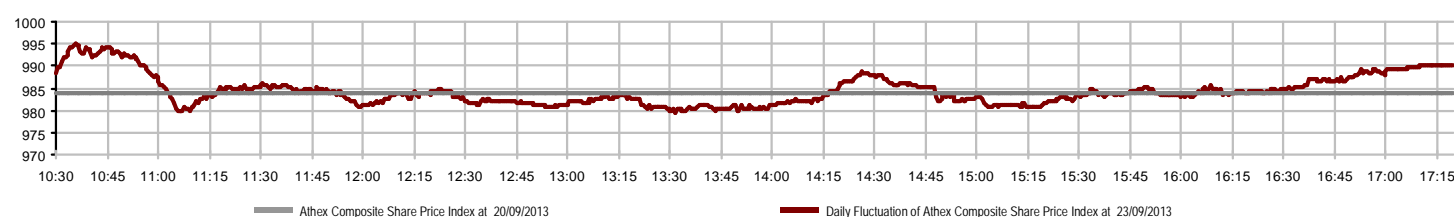
Athex Capitalisation (mill. €) \*\*



Derivatives Transactions Volume and Open Interest



Daily Fluctuation of Athex Composite Share Price Index



## Athex Indices

Index name	23/09/2013	20/09/2013	pts.	%	Min	Max	Year min	Year max	Year change
Athex Composite Share Price Index	990.32 #	984.04	6.28	0.64%	979.33	994.87	788.81	1,159.97	9.08% #
FTSE/Athex Large Cap	336.61 #	334.65	1.96	0.59%	332.84	338.19	253.17	410.78	8.70% #
FTSE/ATHEX Custom Capped	1,066.04 €	1,112.11	-46.07	-4.14%			863.84	1,275.55	4.57% #
FTSE/ATHEX Custom Capped - USD	1,032.53 €	1,079.77	-47.24	-4.38%			808.44	1,172.76	7.15% #
FTSE/Athex Mid Cap Index	1,039.29 €	1,046.42	-7.13	-0.68%	1,035.25	1,056.31	871.32	1,360.26	-8.29% €
FTSE/ATHEX-CSE Banking Index	113.47 #	112.96	0.51	0.45%	112.78	116.31	64.42	278.69	-32.81% €
FTSE/ATHEX Global Traders Index Plus	1,410.13 €	1,414.16	-4.03	-0.28%	1,395.07	1,418.50	1,082.32	1,484.90	13.05% #
FTSE/ATHEX Global Traders Index	1,488.36 #	1,479.94	8.42	0.57%	1,467.57	1,492.89	1,053.81	1,553.64	19.82% #
FTSE/ATHEX Mid & Small Cap Factor-Weighted Ind	1,241.45 €	1,241.62	-0.17	-0.01%	1,223.90	1,243.22	1,053.59	1,348.92	0.20% #
Greece & Turkey 30 Price Index	716.73 €	722.31	-5.58	-0.77%	709.82	723.00	595.35	927.16	-7.86% €
ATHEX Mid & SmallCap Price Index	2,773.24 #	2,763.56	9.68	0.35%	2,759.89	2,785.41	2,714.54	3,725.74	-11.54% €
FTSE/Athex Market Index	809.26 #	805.12	4.14	0.51%	800.83	813.49	600.87	972.17	9.74% #
FTSE/Med 100	4,262.98 €	4,322.59	-59.61	-1.38%			4,008.95	4,570.16	2.88% #
Athex Composite Index Total Return Index	1,433.96 #	1,424.87	9.09	0.64%	1,418.05	1,440.54	1,139.79	1,655.57	10.72% #
FTSE/Athex Large Cap Total Return	461.25 #	458.57	2.68	0.58%			366.91	565.68	7.03% #
FTSE/ATHEX Large Cap Net Total Return	1,349.62 #	1,341.75	7.87	0.59%	1,334.51	1,355.95	1,001.98	1,626.24	10.12% #
FTSE/ATHEX Custom Capped Total Return	1,113.36 €	1,161.47	-48.11	-4.14%			895.99	1,311.70	6.26% #
FTSE/ATHEX Custom Capped - USD Total Return	1,078.36 €	1,127.70	-49.34	-4.38%			836.50	1,205.99	8.88% #
FTSE/Athex Mid Cap Total Return	1,286.35 €	1,295.17	-8.82	-0.68%			1,152.62	1,720.22	-12.02% €
FTSE/ATHEX-CSE Banking Total Return Index	107.58 #	107.10	0.48	0.45%			82.32	289.59	-41.67% €
Greece & Turkey 30 Total Return Index	864.00 €	894.11	-30.11	-3.37%			729.18	1,098.14	-5.70% €
Hellenic Mid & Small Cap Index	988.22 €	992.98	-4.76	-0.48%	980.94	998.11	737.97	1,071.68	12.72% #
FTSE/Athex Banks	149.92 #	149.25	0.67	0.45%	149.00	153.68	85.08	368.22	-33.75% €
FTSE/Athex Insurance	1,264.40 €	1,274.94	-10.54	-0.83%	1,253.86	1,274.94	1,095.81	1,548.89	-16.67% €
FTSE/Athex Financial Services	1,439.45 #	1,436.87	2.58	0.18%	1,419.10	1,447.53	817.47	1,771.89	9.14% #
FTSE/Athex Industrial Goods & Services	3,507.89 #	3,497.05	10.84	0.31%	3,443.74	3,512.99	2,715.10	4,197.17	7.91% #
FTSE/Athex Retail	2,688.87 #	2,671.43	17.44	0.65%	2,576.05	2,709.18	1,629.12	2,742.62	46.97% #
FTSE/ATHEX Real Estate	1,951.99 €	2,041.46	-89.47	-4.38%	1,944.79	2,041.46	1,491.01	2,108.44	30.92% #
FTSE/Athex Personal & Household Goods	4,491.74 #	4,461.73	30.01	0.67%	4,381.03	4,541.10	2,586.10	4,692.63	43.85% #
FTSE/Athex Food & Beverage	8,175.26 €	8,189.46	-14.20	-0.17%	8,055.12	8,222.86	6,301.12	8,871.83	22.79% #
FTSE/Athex Basic Resources	2,375.67 €	2,406.09	-30.42	-1.26%	2,355.05	2,418.17	1,674.83	2,901.09	2.25% #
FTSE/Athex Construction & Materials	2,185.03 €	2,226.62	-41.59	-1.87%	2,148.44	2,229.41	1,439.70	2,271.30	19.01% #
FTSE/Athex Oil & Gas	2,780.50 #	2,773.26	7.24	0.26%	2,738.84	2,801.51	2,358.47	3,358.80	-1.16% €
FTSE/Athex Chemicals	6,071.67 €	6,219.37	-147.70	-2.37%	6,018.13	6,219.37	5,194.08	7,961.02	0.87% #
FTSE/Athex Media	1,625.18 #	1,492.21	132.97	8.91%	1,374.02	1,625.18	716.56	3,560.63	124.49% #
FTSE/Athex Travel & Leisure	1,426.77 #	1,406.39	20.38	1.45%	1,399.84	1,426.77	1,028.61	1,496.38	41.35% #
FTSE/Athex Technology	706.02 €	707.10	-1.08	-0.15%	702.37	712.87	555.63	886.96	-4.87% €
FTSE/Athex Telecommunications	2,080.94 #	1,981.85	99.09	5.00%	2,006.62	2,080.94	1,175.35	2,149.76	48.24% #
FTSE/Athex Utilities	3,026.19 #	3,024.54	1.65	0.05%	2,942.49	3,038.01	1,752.55	3,104.53	32.27% #
FTSE/Athex Health Care	238.41 €	238.53	-0.12	-0.05%	237.70	242.69	172.87	346.05	-15.04% €
Athex All Share Index	206.79 #	205.64	1.15	0.56%			176.43	294.40	-12.63% €

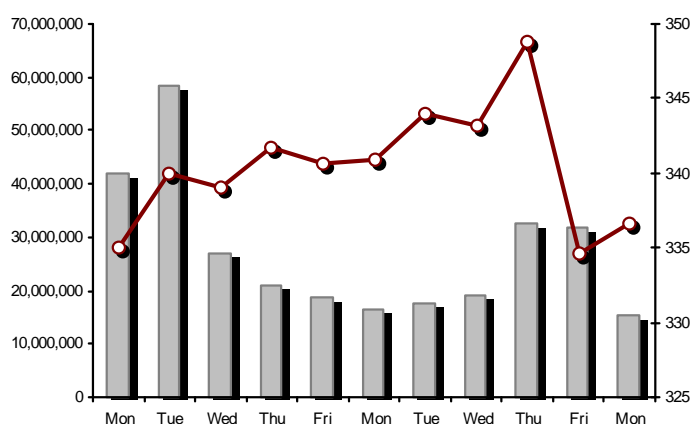
Note 1: Greece & Turkey 30 Pr data is the indicative at 17:20, whereas FTSE/ATHEX Custom Capped, FTSE/ATHEX Custom Capped - USD, FTSE/ATHEX Custom Capped TR, FTSE/ATHEX Custom Capped - USD TR, FTSE/Med 100 & Greece & Turkey 30 Rt closing prices refer to the previous trading day of 20/09/2013.

Note 2: The Hellenic Mid & Small Cap Index is a Customized index calculated by the Athens Exchange.

## Athex Indices

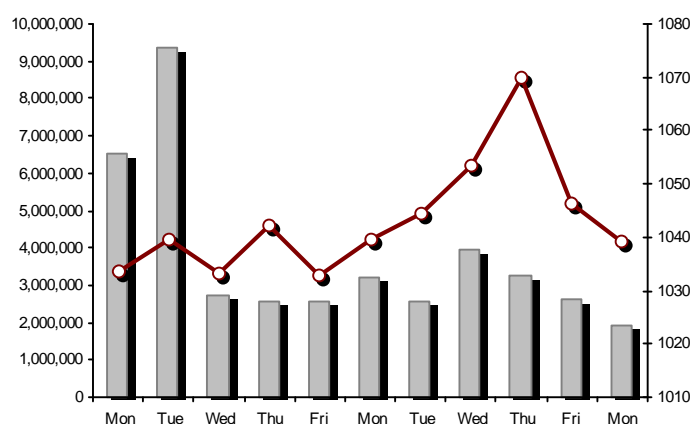
FTSE/Large Cap

23/09/2013: 0.59%



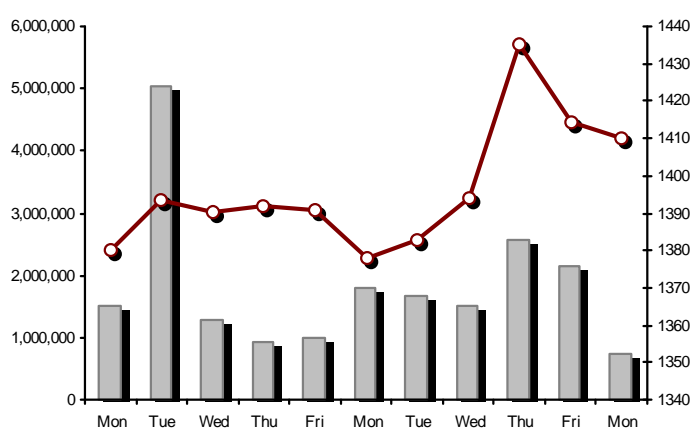
FTSE/Athex Mid Cap Index

23/09/2013: -0.68%



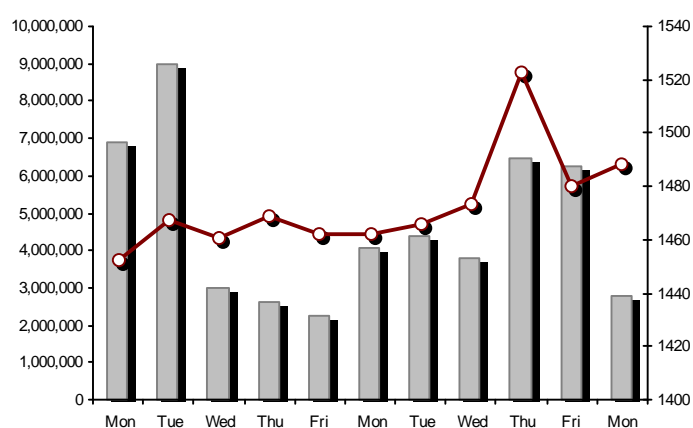
FTSE/ATHEX Global Traders Index Plus

23/09/2013: -0.28%



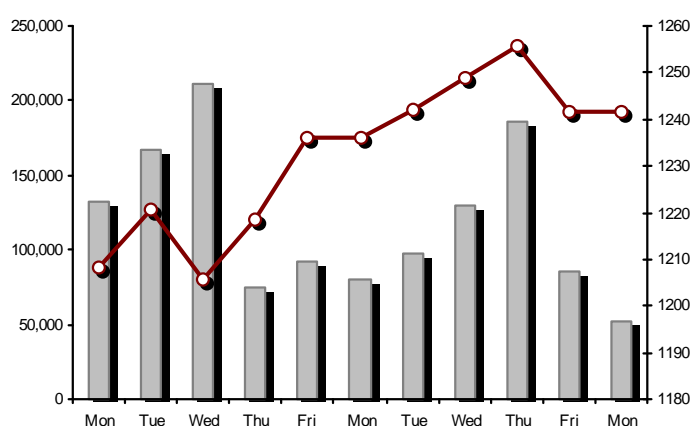
FTSE/ATHEX Global Traders Index

23/09/2013: 0.57%



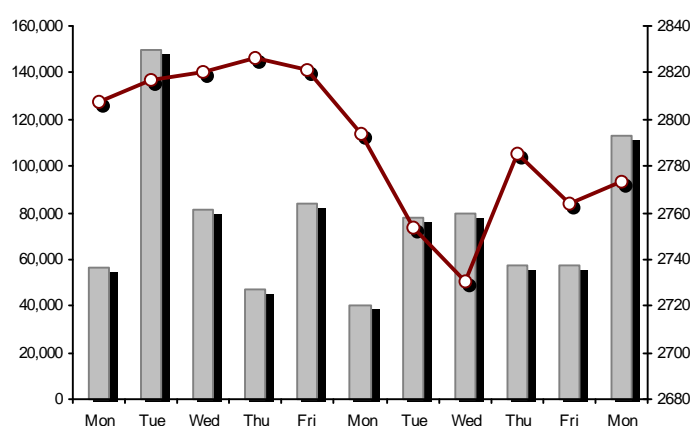
FTSE/ATHEX Mid &amp; Small Cap Factor-Weighted Index

23/09/2013: -0.01%



ATHEX Mid &amp; SmallCap Price Index

23/09/2013: 0.35%



Indices volume of transactions

Indices closing prices

## Analytic Figures for Athex Market's Boards and Categories

	Total Traded Securities	Main Market	Low Dispersion	Other Categories (*)	Exchange Traded Funds (ETFs)	Warrants
Totals	146	107	8	25	3	3
Gain / Lose / Same:	60 / 69 / 17	42 / 53 / 12	3 / 3 / 2	11 / 11 / 3	2 / 1 / 0	2 / 1 / 0
Athex Capitalisation (mill. €) **	58,215.27	55,912.71	1,973.49	329.07		
Daily Average Transactions Value (thou. €)	65,849.36	23,030.77	480.89	78.53	40.00	5,736.51
Transactions Value	46,646.30	42,398.70	19.17	22.54	2.05	4,203.85
Main Board:	40,075.99	37,841.47	19.17	22.54	2.05	2,190.77
Blocks Board:	6,570.32	4,557.23	0.00	0.00	0.00	2,013.09
Forced Sales Board:	0.00	0.00	0.00	0.00	0.00	0.00
Special Terms Board:	0.00	0.00	0.00	0.00	0.00	0.00
Daily Average Transactions Volume	49,401,253	14,100,148	52,442	420,036	9,974	8,213,643
Transactions Volume	23,130,058	17,780,706	7,124	280,435	605	5,061,188
Main Board:	19,749,724	17,144,706	7,124	280,435	605	2,316,854
Blocks Board:	3,380,334	636,000	0	0	0	2,744,334
Forced Sales Board:	0	0	0	0	0	0
Special Terms Board:	0	0	0	0	0	0
Daily Average Number of Trades	29,032	10,266	115	211	8	2,205
Number of Trades	16,473	15,632	46	122	4	669
Main Board:	16,466	15,628	46	122	4	666
Blocks Board:	7	4	0	0	0	3
Forced Sales Board:	0	0	0	0	0	0
Special Terms Board:	0	0	0	0	0	0

(\*) Summarised Transactions figures for Under Deletion and Under Supervision Categories.

(\*\*) The Market Capitalization of the Companies that belong in the Under Supervision Category is not included.

## Trading Details by Athex Sectors and ETFs Category

Code	Sectors	Gain / Lose / Same	Number of Trades	Transactions Volume	Transactions Value	% of Total Trans. Value
8300	- Banks	4 / 3 / 2	5,908	17,040,273	18,812,538.18	40.33%
1700	- Basic Resources	4 / 5 / 1	763	271,214	862,078.20	1.85%
1300	- Chemicals	2 / 4 / 0	79	14,378	19,978.47	0.04%
2300	- Construction & Materials	4 / 9 / 4	1,203	699,589	1,366,623.40	2.93%
11000	- ETF	2 / 1 / 0	4	605	2,045.58	0.00%
8700	- Financial Services	1 / 2 / 0	773	1,223,644	904,391.27	1.94%
3500	- Food & Beverage	4 / 8 / 1	692	199,544	2,462,477.56	5.28%
4500	- Health Care	0 / 3 / 2	111	112,778	55,696.92	0.12%
2700	- Industrial Goods & Services	8 / 7 / 1	979	296,478	1,141,506.58	2.45%
8500	- Insurance	0 / 1 / 0	12	5,585	6,692.75	0.01%
5500	- Media	2 / 2 / 0	10	6,323	1,188.35	0.00%
500	- Oil & Gas	1 / 1 / 0	299	70,887	541,220.00	1.16%
3700	- Personal & Household Goods	7 / 6 / 1	716	200,109	980,124.90	2.10%
8600	- Real Estate	3 / 3 / 1	139	24,452	109,144.26	0.23%
5300	- Retail	4 / 2 / 0	389	138,301	1,297,622.37	2.78%
9500	- Technology	5 / 4 / 2	242	275,759	344,175.32	0.74%
6500	- Telecommunications	1 / 0 / 0	1,398	1,064,686	7,929,188.59	17.00%
5700	- Travel & Leisure	6 / 6 / 2	1,462	1,063,104	6,663,886.64	14.29%
7500	- Utilities	2 / 2 / 0	1,294	422,349	3,145,722.08	6.74%

## Top 10 best &amp; worst performing Shares

Main Market					
With positive Price change	Closing price	change	With negative Price change	Closing price	change
REVOIL (CR)	0.880	10.00% #	EUROBANK PROPERTIES REIC (CR)	7.15	-4.67% Ⓔ
OTE (CR)	7.56	5.00% #	ELLAKTOR (CR)	2.27	-3.40% Ⓔ
CENTRIC HOLDINGS (CR)	0.211	4.46% #	INTRALOT (CR)	1.66	-2.35% Ⓔ
KRI-KRI S.A. (CR)	2.12	3.42% #	FOURLIS (CR)	3.00	-2.28% Ⓔ
EYDAP S.A. (CR)	8.18	2.25% #	HALKOR SA (CB)	0.820	-2.15% Ⓔ
UNIBIOS (CR)	0.279	2.20% #	ATTICA BANK S.A. (CR)	0.251	-1.95% Ⓔ
VIOHALCO (CB)	4.28	1.91% #	GEK TERNA (CR)	2.24	-1.75% Ⓔ
OPAP (CR)	8.17	1.87% #	MYTILINEOS HOLDINGS (CR)	4.82	-1.43% Ⓔ
ALPHA BANK (CR)	0.561	1.81% #	TITAN CEMENT (CR)	17.30	-1.43% Ⓔ
INFORM P. LYKOS SA (CR)	1.15	1.77% #	MOTOR OIL (CR)	7.63	-1.42% Ⓔ
With the highest Transactions Value	Value (thou. €)	change	With the highest Transactions Volume	Volume	change
OTE (CR)	7,929.19	5.00% #	PIRAEUS BANK (CR)	4,725,987	0.00% -
OPAP (CR)	6,391.14	1.87% #	ALPHA BANK (CR)	4,114,282	1.81% #
PIRAEUS BANK (CR)	5,936.46	0.00% -	NATIONAL BANK (CR)	1,950,777	0.00% -
NATIONAL BANK (CR)	5,843.27	0.00% -	MARFIN INVESTMENT GROUP (CR)	1,138,902	1.71% #
CC HBC AG (CR)	2,372.80	-0.18% Ⓔ	OTE (CR)	1,064,686	5.00% #
ALPHA BANK (CR)	2,307.03	1.81% #	ATTICA BANK S.A. (CR)	872,448	-1.95% Ⓔ
PPC (CR)	1,914.02	-0.50% Ⓔ	OPAP (CR)	791,572	1.87% #
FOLLI FOLLIE (CR)	1,235.34	0.53% #	EUROBANK ERGASIAS (CR)	307,702	0.33% #
EYDAP S.A. (CR)	1,061.11	2.25% #	PPC (CR)	243,006	-0.50% Ⓔ
MYTILINEOS HOLDINGS (CR)	671.09	-1.43% Ⓔ	GEK TERNA (CR)	214,269	-1.75% Ⓔ

Note: Stocks that are not included in the "Low Dispersion" and "Under Supervision" categories, and the transactions value is more than 10,000 €.



## Derivatives Summary

	Number of Trades	Volume	Open Interest	Transactions Value
Index Futures	453	4,249	48,910	7,153,376.25
FTSE/Athex Large Cap	453	4,249	48,910	7,153,376.25
Stock Futures	1,132	9,983	131,199	4,065,901.70
ALPHA BANK (CR)	90	1,582	17,818	89,003.20
CC HBC AG (CR)	34	168	337	365,376.00
CORINTH PIPEWORKS SA (CR)	0	0	591	0.00
ELLAKTOR (CR)	41	247	3,928	55,878.00
EUROBANK ERGASIAS (CR)	3	7	751	430.90
EUROBANK PROPERTIES REIC (CR)	32	74	151	53,638.00
EYDAP S.A. (CR)	62	170	886	136,839.00
FOLLI FOLLIE (CR)	23	66	120	122,392.00
FRIGOGLASS SA (CR)	11	50	307	25,801.00
GEK TERNA (CR)	25	71	31,468	15,940.00
HELLENIC EXCHANGES (CR)	15	100	3,422	61,574.00
HELLENIC PETROLEUM (CR)	10	41	1,670	31,244.00
INTRALOT (CR)	11	174	2,780	29,380.00
JUMBO SA (CR)	29	102	155	88,050.00
MARFIN INVESTMENT GROUP (CR)	16	241	16,896	8,409.60
METKA (CR)	6	37	257	43,355.00
MOTOR OIL (CR)	9	26	373	19,933.00
MYTILINEOS HOLDINGS (CR)	32	160	6,941	77,186.00
NATIONAL BANK (CR)	132	1,120	5,295	336,898.00
OPAP (CR)	61	341	2,446	276,190.00
OTE (CR)	210	1,622	7,081	1,206,143.00
P.P.A. S.A. (CR)	0	0	589	0.00
PIRAEUS BANK (CR)	109	2,741	19,086	346,344.00
PPC (CR)	136	729	3,714	574,512.00
SIDENOR (CR)	3	18	1,348	2,771.00
TERNA ENERGY (CR)	3	24	2,137	7,406.00
TITAN CEMENT (CR)	19	47	130	80,764.00
VIOHALCO (CB)	10	25	522	10,444.00
Index Options	72	958	3,673	1,609,625.00
FTSE/Athex Large Cap	72	958	3,673	1,609,625.00
Stock Options	12	56	3,714	43,910.00
ALPHA BANK (CR)	0	0	0	0.00
NATIONAL BANK (CR)	1	1	223	310.00
OPAP (CR)	11	55	1,825	43,600.00
OTE (CR)	0	0	1,636	0.00
PIRAEUS BANK (CR)	0	0	0	0.00
PPC (CR)	0	0	30	0.00
Stock Repos - Stock Reverse Repos - Repurchase Agreements	11	602	156,924	382,631.00
Stock Reverse Repos	7	541	11,777	345,934.00
Stock Repos	3	36	140,600	32,547.00
Repurchase Agreement	1	25	4,547	4,150.00
Total Derivatives Traded	1,680	15,848	344,420	13,255,443.95

Number of Outstanding Securities	Nominal Value	Dividends [1]			Date of Last Dividend [2]	Coupon Right	Note	Shares	Closing price	% change	Previous closing price/date	Open price	Price min	Price max	Last price	Avg price	Last Bid [7]	Last Ask [7]	P/E after	Year	Volume	Trades	Transactions Value	Company Mkt Value (thou. €)	Year low	Year high	Sector[4]
1,233,503,482		---	---	---		11/06/2013	---	ALPHA BANK (W)	1.06	1.92 #	1.04 20/09/2013	1.01	1.01	1.07	1.06	1.04	1@1.05	128730@1.06	---	2012	1,418,091	325	1,479,150.08	6,127,750.27	0.241	1.17	8355
245,779,626		---	---	---		27/06/2013	---	NATIONAL BANK (W)	0.890	-0.89 €	0.898 20/09/2013	0.885	0.884	0.938	0.890	0.893	4652@0.884	5944@0.890	---	2012	341,623	200	305,000.53	7,166,390.12	0.420	2.00	8355
849,195,130		---	---	---		03/07/2013	---	PIRAEUS BANK (W)	0.726	0.83 #	0.720 20/09/2013	0.733	0.720	0.737	0.726	0.730	2420@0.726	300@0.729	---	2012	3,301,474	144	2,419,701.68	6,289,984.26	0.290	0.889	8355

Warrants

71,417,100	0.650	---	---	---	26/05/2010	11/07/2007	---	AEGEAN AIRLINES (CR)	4.12	0.49 #	4.10 20/09/2013	4.05	4.05	4.14	4.12	4.10	90@4.09	50@4.12	---	2012	6,060	49	24,821.03	294,238.45	1.96	4.14	5751
11,178,000	1.45	---	---	---	21/04/2010	12/05/2011	---	AEOLIAN INVESTMENT FUND (CR)	1.05	---	1.05 19/09/2013	---	---	---	---	---	210@1.00	800@1.04	8.31	2012	---	---	---	11,736.90	0.900	1.17	8985
13,000,000	1.00	---	---	---	01/08/2007	07/04/2000	---	AKRITAS SA (CR)	0.148	-8.64 €	0.162 20/09/2013	0.146	0.146	0.148	0.148	0.148	5220@0.148	---	---	2012	440	6	65.06	1,924.00	0.140	0.520	2353
25,000,000	0.400	---	---	---	03/06/2009	12/07/2013	---	ALCO HELLAS SA (CR)	0.395	1.80 #	0.388 20/09/2013	0.385	0.372	0.399	0.395	0.380	99@0.377	495@0.395	---	2012	4,146	27	1,574.76	9,875.00	0.159	0.599	1753
10,922,906,012	0.300	---	---	---	07/04/2008	13/05/2013	---	ALPHA BANK (CR)	0.561	1.81 #	0.551 20/09/2013	0.561	0.552	0.572	0.561	0.561	12913@0.560	2000@0.565	---	2012	4,114,282	1,592	2,307,028.16	6,127,750.27	0.161	0.696	8355
22,016,250	0.370	---	---	---	15/07/2009	11/05/2000	---	ALUMIL (CR)	0.544	-0.55 €	0.547 20/09/2013	0.547	0.535	0.547	0.544	0.541	50@0.531	1945@0.544	---	2012	855	14	462.36	11,976.84	0.360	0.740	1753
418,000	16.00	---	---	---	22/04/2010	05/03/2013	---	ANDROMEDA SA (CR)	18.16	---	18.16 19/09/2013	---	---	---	---	---	99@18.16	510@19.80	1.68	2012	---	---	---	7,590.88	17.10	25.41	8985
21,876,700	0.380	---	---	---	08/07/2010	05/06/2001	---	AS COMPANY SA (CR)	0.350	14.38 #	0.306 20/09/2013	0.350	0.350	0.350	0.350	0.350	4892@0.305	500@0.338	40.00	2012	4	1	1.40	7,656.85	0.272	0.488	5379
86,735,980	0.310	---	---	---	06/07/2009	02/01/2002	---	ATHENS MEDICAL CENTER SA (CR)	0.800	-0.12 €	0.801 20/09/2013	0.800	0.800	0.801	0.800	0.800	479813@0.800	500@0.804	---	2012	29,750	14	23,802.50	69,388.78	0.471	0.994	4533
699,673,060	0.300	---	---	---	04/06/2008	05/06/2013	---	ATTICA BANK S.A. (CR)	0.251	-1.95 €	0.256 20/09/2013	0.260	0.250	0.260	0.251	0.252	330004@0.250	100000@0.252	---	2012	872,448	237	220,144.32	175,617.94	0.173	1.06	8355
45,457,464	0.700	---	---	---	01/07/2008	01/03/2010	---	AUDIO VISUAL ENTERPRISES (CR)	0.220	8.91 #	0.202 20/09/2013	0.190	0.186	0.220	0.220	0.187	1000@0.190	6253@0.220	---	2012	6,150	3	1,153.00	10,000.64	0.097	0.482	5553
36,360,000	0.320	---	0.15	---	30/04/2012	05/05/2008	---	AUTOHELLAS SA (CR)	2.36	-0.42 €	2.37 20/09/2013	2.35	2.33	2.39	2.36	2.36	970@2.35	150@2.38	12.71	2012	2,007	20	4,726.27	85,809.60	1.50	2.40	5759
19,864,886	5.60	1.976	0.67	0.5376	06/03/2013	02/07/2008	---	BANK OF GREECE (CR)	14.36	-0.90 €	14.49 20/09/2013	14.49	14.19	14.55	14.36	14.45	20@14.29	1@14.40	---	---	7,889	78	113,992.13	285,259.76	11.26	19.19	8355
23,986,500	1.05	---	---	---	26/06/2009	15/03/2000	---	BIOKARPET S.A.(CR)	0.650	---	0.650 06/09/2013	---	---	---	---	---	---	866@0.599	---	2012	---	---	---	15,591.23	0.486	0.845	3726
15,842,391	1.51	---	---	---	15/07/2009	12/05/2000	---	BITROS HOLDING SA (CR)	0.621	---	0.621 01/08/2013	---	---	---	---	---	---	480@0.569	---	2012	---	---	---	9,838.12	0.336	0.745	1757
15,816,009	0.300	---	---	---	01/07/2009	17/07/2000	---	BYTE COMPUTER SA (CR)	0.480	---	0.480 20/09/2013	---	---	---	---	---	100@0.475	100@0.485	---	2012	---	---	---	7,591.68	0.351	0.620	9533
366,491,145	6.70	---	---	0.34	26/06/2013	29/04/2013	---	CC HBC AG (CR)	21.86	-0.18 €	21.90 20/09/2013	21.99	21.53	21.99	21.86	21.77	50@21.76	500@21.95	---	---	108,997	521	2,372,795.22	8,011,496.43	16.79	23.80	3537
101,123,806	0.360	---	---	---	22/07/2010	28/06/2011	---	CENTRIC HOLDINGS (CR)	0.211	4.46 #	0.202 20/09/2013	0.205	0.199	0.220	0.211	0.206	2500@0.203	100@0.214	32.01	2012	107,901	82	22,258.72	21,337.12	0.176	0.440	5752
4,034,950	0.680	---	---	---	01/07/2005	30/12/2010	---	CHATZIKRANIOTIS & SONS SA (CR)	0.120	-2.44 €	0.123 20/09/2013	0.121	0.120	0.121	0.120	0.120	1000@0.125	300@0.159	---	2012	10,000	2	1,201.40	484.19	0.120	0.522	3577
124,170,201	0.780	---	---	---	28/06/2002	07/02/2005	---	CORINTH PIPEWORKS SA (CR)	2.00	0.50 #	1.99 20/09/2013	2.00	1.98	2.03	2.00	2.00	4676@1.99	4132@2.01	71.65	2012	45,185	135	90,178.22	248,340.40	1.40	2.59	1757
9,907,500	0.300	---	---	---	06/10/2005	13/02/2002	---	CPI SA (CR)	0.159	---	0.159 19/09/2013	---	---	---	---	---	720@0.144	---	---	2012	---	---	---	1,575.29	0.133	0.400	9572
27,379,200	0.520	---	---	---	23/06/2010	18/09/2013	---	CRETE PLASTICS SA (CR)	5.22	0.19 #	5.21 20/09/2013	5.20	5.17	5.22	5.22	5.19	400@5.11	225@5.22	14.91	2012	1,287	20	6,674.49	142,919.42	4.40	5.65	1357
26,664,840	0.470	---	---	---	29/06/2005	12/07/1999	---	CYCLON HELLAS SA (CR)	0.473	-8.51 €	0.517 20/09/2013	0.517	0.455	0.517	0.473	0.474	301@0.473	100@0.490	---	2012	3,050	13	1,446.64	12,612.47	0.385	0.700	1357
15,000,000	0.300	---	---	---	06/07/2007	18/07/2000	---	DAIOS PLASTICS SA (CR)	3.67	---	3.67 18/09/2013	---	---	---	---	---	---	145@3.67	---	2012	---	---	---	55,050.00	3.34	5.50	1357
31,370,399	0.300	---	---	---	11/08/2010	15/02/2012	---	DIONIC (CR)	0.081	-2.41 €	0.083 20/09/2013	0.078	0.078	0.082	0.081	0.079	4000@0.078	4879@0.080	---	2012	50,855	40	4,040.03	2,541.00	0.066	0.263	2797
34,720,000	0.310	---	---	---	16/06/2010	01/08/2007	---	DROMEAS SA (CR)	0.385	6.94 #	0.360 20/09/2013	0.360	0.360	0.385	0.385	0.367	2770@0.360	500@0.370	---	2012	7,800	10	2,859.59	13,367.20	0.218	0.634	3726
3,873,120	0.300	---	---	---	07/07/2008	04/10/2012	---	DRUCKFARBEN HELLAS (CR)	1.82	30.00 #	1.40 18/09/2013	1.82	1.82	1.82	1.82	1.82	200@1.20	96@1.80	---	2012	500	5	910.00	7,049.08	0.901	2.64	1357
11,250,000	0.560	---	---	---	26/07/2010	16/06/1999	---	EKTER SA (CR)	0.517	-4.79 €	0.543 20/09/2013	0.507	0.500	0.517	0.517	0.505	5134@0.502	150@0.517	9.03	2012	14,031	33	7,080.20	5,816.25	0.400	0.700	2357
32,188,050	1.04	---	---	---	21/07/2008	20/01/2000	---	EL. D. MOUZAKIS SA (CB)	0.137	---	0.137 19/09/2013	---	---	---	---	---	500@0.131	300@0.148	---	2012	---	---	---	4,409.76	0.114	0.330	3763
18,648,000	1.00	---	---	---	07/07/2009	10/09/2010	---	ELASTRON (CR)	0.671	0.45 #	0.668 19/09/2013	0.674	0.666	0.684	0.671	0.671	500@0.651	500@0.674	---	2012	11,800	29	7,917.88	12,512.81	0.518	0.969	1757
31,734,530	1.60	---	---	---	09/07/2007	19/07/2006	---	ELGEKA SA (CR)	0.468	---	0.468 20/09/2013	0.460	0.450	0.469	0.469	0.461	40@0.450	4000@0.469	---	2012	2,960	6	1,366.00	14,851.76	0.404	0.780	3577
23,828,130	0.500	---	---	---	07/07/2010	17/02/2009	---	ELINOIL S.A. (CR)	1.14	---	1.14 16/09/2013	---	---	---	---	---	200@1.03	1000@1.20	---	2012	---	---	---	27,164.07	1.02	1.89	537
177,001,313	1.03	0.0308	---	---	05/07/2011	20/12/2007	---	ELLAKTOR (CR)	2.27	-3.40 €	2.35 20/09/2013	2.35	2.22	2.35	2.27	2.26	57008@2.27	100@2.28	---	2012	190,826	370	431,300.11	401,792.98	1.36	2.50	2357

Number of Outstanding Securities	Nominal Value	Dividends [1]			Date of Last Coupon		Note	Shares	Closing price	% change	Previous closing price/date	Open price	Price min	Price max	Last price	Avg price	Last Bid [7]	Last Ask [7]	P/E after	Year	Volume	Trades	Transactions Value	Company Mkt Value (thou. €)	Year low	Year high	Sector[ 4]	
		2010	2011	2012	Dividend [2]	Right																						
Main Market																												
26,730,187	0.600	---	---	---	25/06/2009	30/12/2010	---	ELTON SA (CR)	1.18	-1.67	€ 1.20	20/09/2013	1.20	1.16	1.20	1.18	1.19	100@1.17	1961@1.18	12.33	2012	741	9	880.35	31,541.62	0.850	1.25	1353
15,146,404	0.340	0.093	---	---	06/07/2011	17/10/2002	---	ELTRAK SA (CR)	1.65	---	↘ 1.65	19/09/2013	1.66	1.65	1.66	1.65	1.66	73@1.65	500@1.78	---	2012	247	2	409.55	24,991.57	1.08	1.90	2753
124,100,815	0.300	---	---	---	27/06/2008	07/07/2000	---	ELVAL SA. (CB)	1.90	---	↘ 1.90	20/09/2013	1.90	1.88	1.90	1.90	1.90	50@1.89	700@1.90	14.68	2012	1,075	11	2,042.22	235,791.55	1.55	2.38	1753
13,230,000	0.300	---	---	---	11/08/2010	28/08/2013	---	ELVE SA (CR)	0.527	-0.38	€ 0.529	20/09/2013	0.491	0.491	0.527	0.527	0.501	175@0.505	190@0.527	---	2012	1,125	7	563.45	6,972.21	0.423	0.717	3763
30,009,210	0.310	---	---	---	27/06/2008	26/06/2000	---	ETEM SA (CB)	0.386	---	↘ 0.386	20/09/2013	---	---	---	---	---	150@0.365	500@0.385	---	2012	---	---	---	11,583.56	0.328	0.828	1753
4,050,416,865	0.300	---	---	---	02/05/2008	13/06/2013	---	EUROBANK ERGASIAS (CR)	0.610	0.33	# 0.608	20/09/2013	0.608	0.605	0.620	0.610	0.610	13385@0.610	995@0.611	---	2012	307,702	211	187,790.00	2,470,754.29	0.555	6.23	8355
61,000,000	2.13	0.5364	0.4067	---	23/03/2012	20/11/2007	---	EUROBANK PROPERTIES REIC (CR)	7.15	-4.67	€ 7.50	20/09/2013	7.30	7.13	7.34	7.15	7.21	2125@7.13	1956@7.24	---	2012	13,784	98	99,337.41	436,150.00	4.87	7.75	8675
27,503,677	0.600	0.04	0.05	0.1	11/07/2013	18/10/1999	---	EUROPEAN RELIANCE INSUR. (CR)	1.20	-0.83	€ 1.21	20/09/2013	1.20	1.19	1.20	1.19	1.20	1000@1.17	540@1.20	3.62	2012	5,585	12	6,692.75	33,004.41	0.973	1.62	8536
13,673,200	0.880	---	---	---	18/07/2008	26/07/2001	---	EVROFARMA SA (CR)	0.300	---	↘ 0.300	20/09/2013	---	---	---	---	---	---	2917@0.300	---	2012	---	---	---	4,101.96	0.209	0.539	3577
106,500,000	0.600	0.04	0.05	0.15	31/07/2013	28/01/2000	---	EYDAP S.A. (CR)	8.18	2.25	# 8.00	20/09/2013	8.00	7.92	8.18	8.18	8.05	413@8.10	100@8.19	18.60	2012	131,743	312	1,061,107.58	871,170.00	4.65	8.32	7577
52,800,154	0.300	---	---	---	16/04/2010	21/06/2004	---	F.G. EUROPE S.A. (CR)	0.519	1.57	# 0.511	20/09/2013	0.480	0.480	0.520	0.520	0.517	1000@0.483	500@0.520	6.28	2012	4,416	8	2,281.65	27,403.28	0.450	0.950	3722
10,203,575	0.730	---	---	---	16/07/2007	18/10/1999	---	FIERATEX SA (CR)	0.120	-7.69	€ 0.130	19/09/2013	0.130	0.120	0.130	0.120	0.129	380@0.120	480@0.136	---	2012	1,050	2	135.30	1,224.43	0.090	0.400	3763
11,720,024	0.530	---	---	---	16/07/2010	29/05/2012	---	FLEXOPACK SA (CR)	3.90	---	↘ 3.90	19/09/2013	---	---	---	---	---	300@3.51	336@3.89	13.13	2012	---	---	---	45,708.09	2.39	5.00	2723
4,181,450	0.500	---	---	---	21/08/2000	05/03/2002	---	FLOUR MILLS SARANTOPOULOS SA	0.900	---	↘ 0.900	12/09/2013	---	---	---	---	---	---	---	16.64	2012	---	---	---	3,763.31	0.626	1.02	3577
66,948,210	0.300	---	---	---	14/07/2009	31/12/2010	4988	FOLLI FOLLIE (CR)	19.00	0.53	# 18.90	20/09/2013	18.90	18.20	19.16	19.00	18.72	300@18.60	100@19.12	---	2012	65,996	198	1,235,339.27	1,272,015.99	11.51	19.40	5379
50,992,322	1.00	---	---	---	21/06/2010	16/07/2002	---	FOURLIS (CR)	3.00	-2.28	€ 3.07	20/09/2013	3.07	2.96	3.07	3.00	3.01	11190@3.00	400@3.05	---	2012	101,037	310	303,687.79	152,976.97	1.58	3.16	3722
50,592,373	0.300	---	---	---	07/07/2010	07/09/2011	---	FRIGOGLASS SA (CR)	5.20	-0.76	€ 5.24	20/09/2013	5.28	5.00	5.28	5.20	5.15	349@5.20	150@5.24	---	2012	12,752	90	65,694.34	263,080.34	3.84	6.26	2757
77,376,446	0.340	---	---	---	23/05/2005	18/08/2011	---	G.E. DIMITRIOU (CR)	0.035	-7.90	€ 0.038	17/09/2013	0.035	0.035	0.035	0.035	0.035	14700@0.035	20500@0.041	---	2012	500	1	17.50	2,708.18	0.028	0.118	3722
14,076,360	0.370	---	---	---	19/08/2008	22/07/2003	---	GALAXIDI S.A. (CR)	0.310	---	↘ 0.310	20/09/2013	---	---	---	---	---	1500@0.290	4000@0.310	8.81	2012	---	---	---	4,363.67	0.271	0.638	3573
85,882,688	0.570	0.0048	---	---	01/08/2011	02/01/2009	---	GEK TERNA (CR)	2.24	-1.75	€ 2.28	20/09/2013	2.28	2.20	2.28	2.24	2.23	8802@2.23	100@2.25	-(6)-	2012	214,269	476	478,025.34	192,377.22	1.40	2.80	2357
24,060,000	0.300	---	0.017	---	18/06/2012	21/01/2000	---	GEN. COMMERCIAL & IND.SA (CR)	0.380	-1.30	€ 0.385	20/09/2013	0.380	0.380	0.380	0.380	0.380	500@0.343	100@0.385	---	2012	11,900	7	4,522.00	9,142.80	0.256	0.545	2797
34,770,982	1.54	---	---	---	06/07/2010	27/07/2000	---	GR. SARANTIS SA (CR)	5.40	0.75	# 5.36	20/09/2013	5.45	5.36	5.45	5.40	5.40	244@5.36	388@5.45	---	2012	8,068	28	43,526.56	187,763.30	4.05	5.60	3767
8,340,750	1.20	---	---	---	25/06/2009	30/07/2001	---	HAIDEMENOS SA (CR)	0.826	---	↘ 0.826	18/09/2013	---	---	---	---	---	---	1641@0.800	---	2012	---	---	---	6,889.46	0.350	0.905	2791
101,279,627	0.380	---	---	---	26/06/2008	14/07/2006	---	HALKOR SA (CB)	0.820	-2.15	€ 0.838	20/09/2013	0.830	0.812	0.854	0.820	0.823	4879@0.820	1140@0.827	---	2012	19,322	64	15,894.51	83,049.29	0.550	1.42	1755
36,748,909	0.730	---	---	---	15/12/2005	13/12/2006	---	HEL. SUGAR INDUSTRY SA (CB)	0.895	-1.86	€ 0.912	20/09/2013	0.880	0.880	0.901	0.895	0.887	396@0.895	673@0.901	---	2013	9,280	35	8,233.08	32,890.27	0.754	1.74	3577
29,546,360	0.710	---	---	---	20/06/2008	23/08/2000	---	HELLENIC CABLES SA (CR)	1.51	2.72	# 1.47	20/09/2013	1.47	1.46	1.51	1.50	1.46	200@1.47	57@1.49	---	2012	2,475	14	3,624.24	44,615.00	1.16	2.32	2733
65,368,563	0.790	0.15	0.11	0.09	03/06/2013	26/09/2012	---	HELLENIC EXCHANGES (CR)	6.18	-0.48	€ 6.21	20/09/2013	6.20	6.10	6.23	6.18	6.15	2017@6.15	1150@6.19	27.69	2012	81,742	305	502,688.47	403,977.72	3.75	6.97	8777
305,635,185	2.18	0.45	0.45	0.15	16/08/2013	01/10/2003	4795	HELLENIC PETROLEUM (CR)	7.68	1.59	# 7.56	20/09/2013	7.56	7.50	7.69	7.68	7.60	250@7.59	78@7.68	24.07	2012	38,444	214	292,317.36	2,347,278.22	6.20	9.30	537
305,732,436	0.410	---	---	---	08/07/2009	28/09/2011	---	HYGEIA SA (CR)	0.397	---	↘ 0.397	20/09/2013	0.398	0.395	0.409	0.397	0.398	1650@0.396	10000@0.399	---	2012	78,149	88	31,120.18	121,375.78	0.280	0.795	4533
53,155,053	0.440	---	---	---	21/07/2010	16/07/2008	---	IASO SA (CR)	1.13	-0.88	€ 1.14	20/09/2013	1.04	1.04	1.13	1.13	1.09	460@1.10	428@1.06	---	2012	144	2	156.24	60,065.21	0.850	1.58	4533
8,298,467	0.400	---	---	---	30/08/1993	08/05/2013	---	IDEAL GROUP SA (CR)	0.740	2.78	# 0.720	20/09/2013	0.741	0.710	0.741	0.740	0.736	240@0.648	383@0.740	-(6)-	2012	112	10	82.48	6,140.87	0.571	1.85	9574
28,580,100	0.400	0.05	0.02	---	20/08/2012	23/02/2007	---	IKTINOS HELLAS SA (CR)	1.53	---	↘ 1.53	20/09/2013	1.52	1.50	1.58	1.53	1.53	50@1.50	2561@1.53	14.81	2012	7,050	26	10,757.53	43,727.55	1.16	1.80	2353
9,000,000	0.880	---	---	---	15/05/2009	07/12/2010	---	ILYDA S.A. (CR)	0.504	-9.84	€ 0.559	05/08/2013	0.504	0.504	0.504	0.504	0.504	---	486@0.504	---	2012	100	1	50.40	4,536.00	0.269	0.650	9537
20,578,374	0.620	0.03	---	---	02/06/2011	05/05/1999	---	INFORM P. LYKOS SA (CR)	1.15	1.77	# 1.13	20/09/2013	1.15	1.11	1.19	1.15	1.15	200@1.11	1060@1.15	---	2012	24,390	60	27,958.00	23,665.13	1.10	1.75	2791
11,233,200	0.730	---	---	---	12/07/2010	30/07/1999	---	INTERTECH SA (CR)	0.310	---	↘ 0.310	20/09/2013	---	---	---	---	---	100@0.281	500@0.315	---	2012	---						

Number of Outstanding Securities	Nominal Value	Dividends [1]			Date of Last Coupon Dividend [2]		Note	Shares	Closing price	% change	Previous closing price/date	Open price	Price min	Price max	Last price	Avg price	Last Bid [7]	Last Ask [7]	P/E after	Year	Volume	Trades	Transactions Value	Company Mkt Value (thou. €)	Year low	Year high	Sector[4]
----------------------------------	---------------	---------------	--	--	----------------------------------	--	------	--------	---------------	----------	-----------------------------	------------	-----------	-----------	------------	-----------	--------------	--------------	-----------	------	--------	--------	--------------------	-----------------------------	----------	-----------	-----------

Main Market

133,025,996	1.41	---	---	---	03/07/2007	07/01/2002	---	INTRACOM HOLDINGS (CR)	0.480	---	↘	0.480	20/09/2013	0.480	0.475	0.489	0.480	0.480	500@0.477	5987@0.482	---	2012	105,413	123	50,644.92	63,852.48	0.321	0.754	9578
158,961,721	0.300	0.0045	0.0035	0.0026	30/05/2013	14/11/2007	---	INTRALOT (CR)	1.66	-2.35	↙	1.70	20/09/2013	1.68	1.65	1.71	1.66	1.67	7533@1.65	900@1.68	88.61	2012	119,300	265	199,738.64	263,876.46	1.29	2.41	5752
77,654,850	0.580	0.04	---	---	01/07/2011	21/02/2003	---	J & P - AVAX SA (CR)	1.71	-0.58	↙	1.72	20/09/2013	1.75	1.66	1.75	1.71	1.69	1000@1.65	450@1.70	---	2012	2,352	17	3,969.85	132,789.79	1.05	1.90	2357
129,994,676	1.19	0.189	---	---	23/12/2010	07/09/2012	---	JUMBO SA (CR)	8.70	1.16	#	8.60	20/09/2013	8.77	8.42	8.80	8.70	8.61	3500@8.55	911@8.76	14.66	2012	72,470	319	623,643.79	1,130,953.68	4.85	9.16	3747
9,742,920	0.400	0.01	0.01	0.01	12/08/2013	14/07/2000	---	KARAMOLEGOS SA (CR)	1.30	---	↘	1.30	19/09/2013	---	---	---	---	---	---	70@1.29	5.05	2012	---	---	---	12,665.80	1.07	1.83	3577
14,679,792	1.44	0.065	---	---	03/06/2011	04/09/2000	---	KARATZIS SA (CR)	4.64	-0.86	↙	4.68	20/09/2013	4.57	4.52	4.64	4.64	4.55	100@4.60	488@4.64	15.58	2012	1,148	14	5,218.56	68,114.23	2.55	4.90	2723
3,300,689	0.350	---	---	---	01/07/2004	21/07/1999	---	KEKROPS SA (CR)	1.85	-2.63	↙	1.90	20/09/2013	1.76	1.76	1.87	1.85	1.84	315@1.79	1000@1.86	---	2012	586	9	1,078.00	6,106.27	1.54	3.79	8633
7,595,160	0.600	---	---	---	08/08/2008	18/08/2010	---	KIRIAKOULIS SHIPPING SA (CR)	0.919	3.49	#	0.888	19/09/2013	0.919	0.919	0.919	0.919	0.920	100@0.700	100@0.888	64.04	2012	1	1	0.92	6,979.95	0.635	1.49	5759
23,648,700	0.330	0.05	---	---	13/07/2011	23/07/2008	---	KLEEMAN HELLAS SA (CR)	1.64	1.86	#	1.61	20/09/2013	1.60	1.60	1.64	1.64	1.60	250@1.59	225@1.64	---	2012	4,922	16	7,886.20	38,783.87	1.20	1.88	2757
40,219,218	0.300	---	---	---	25/05/2009	09/07/2013	---	KLOUKINAS - LAPPAS SA (CR)	0.618	-4.78	↙	0.649	19/09/2013	0.620	0.618	0.639	0.618	0.621	5000@0.587	4602@0.640	---	2012	14,200	17	8,824.40	24,855.48	0.570	0.970	2357
21,224,340	0.420	---	---	---	02/07/2008	25/04/2006	---	KORDELLOS BROS SA (CR)	0.218	8.46	#	0.201	19/09/2013	0.218	0.218	0.218	0.218	0.218	1272@0.185	3043@0.218	---	2012	1,000	1	218.00	4,626.91	0.195	0.428	1757
13,450,000	0.390	---	---	---	25/06/2010	28/05/2008	---	KORRES (CR)	3.08	---	↘	3.08	20/09/2013	---	---	---	---	---	80@2.95	450@3.10	---	2012	---	---	---	41,426.00	2.66	4.87	3767
29,480,000	0.420	---	---	---	19/07/2010	01/08/2007	---	KRETA FARM SA (CR)	0.669	-3.32	↙	0.692	20/09/2013	0.650	0.650	0.690	0.671	0.668	412@0.658	300@0.679	---	2012	5,425	17	3,621.25	19,722.12	0.307	0.800	3577
33,065,136	0.380	---	---	---	06/07/2009	16/09/2013	---	KRI-KRI S.A. (CR)	2.12	3.42	#	2.05	20/09/2013	2.05	2.00	2.14	2.12	2.08	199@2.06	802@2.11	15.70	2012	28,694	38	59,762.39	70,098.09	1.52	2.20	3577
15,804,800	0.330	---	---	---	15/06/2010	12/03/2004	---	KTIMA KOSTAS LAZARIDIS SA (CR)	0.343	5.86	#	0.324	10/09/2013	0.343	0.343	0.343	0.343	0.344	---	460@0.343	---	2012	10	2	3.44	5,421.05	0.239	0.488	3535
22,945,139	0.920	---	---	---	19/08/2008	16/09/2013	---	KYRIAKIDIS MARBLES SA (CR)	0.865	---	↘	0.865	20/09/2013	---	---	---	---	---	1000@0.870	550@0.890	84.73	2012	---	---	---	19,847.55	0.630	1.04	2353
44,267,700	0.300	---	---	---	30/05/2007	18/09/2002	---	LAMDA DEVELOPMENT SA (CR)	3.94	2.87	#	3.83	20/09/2013	3.98	3.80	3.98	3.94	3.85	36@3.80	8@3.90	---	2012	838	20	3,223.36	174,414.74	3.50	6.48	8633
5,939,268	0.620	---	---	---	10/07/2003	03/01/2002	---	LANAKAM SA (CR)	0.639	---	↘	0.639	14/08/2013	---	---	---	---	---	---	12@0.448	---	2012	---	---	---	3,795.19	0.503	0.869	3763
7,734,375	1.00	---	---	---	09/07/2007	07/01/2011	---	LIVANIS SA (CR)	0.229	---	↘	0.229	23/08/2013	---	---	---	---	---	---	1666@0.229	---	2012	---	---	---	1,771.17	0.144	0.363	5557
4,740,000	0.860	---	---	---	---	14/03/2003	---	LOGISMOS S.A. (CR)	0.550	---	↘	0.550	16/09/2013	---	---	---	---	---	---	780@0.499	63.80	2011	---	---	---	2,607.00	0.373	1.23	9533
15,222,276	0.640	---	---	---	01/06/2010	02/08/2011	---	LOULIS MILLS SA (CR)	2.78	1.83	#	2.73	20/09/2013	2.62	2.62	2.78	2.78	2.69	759@2.72	297@2.78	-(6)-	2012	895	8	2,408.79	42,317.93	2.08	3.76	3577
770,328,883	0.300	---	---	---	26/04/2007	10/05/2013	---	MARFIN INVESTMENT GROUP (CR)	0.356	1.71	#	0.350	20/09/2013	0.352	0.348	0.357	0.356	0.353	1000@0.354	33000@0.357	---	2012	1,138,902	466	401,516.80	274,237.08	0.175	0.564	8775
9,819,370	0.690	---	---	---	14/08/2007	09/01/2004	---	MATHIOS REFRACTORY SA (CR)	0.265	---	↘	0.265	19/09/2013	---	---	---	---	---	930@0.186	4000@0.265	---	2012	---	---	---	2,602.13	0.180	0.510	2353
468,700	1.0556	---	---	---	21/03/2012	21/05/2004	---	MERMEREN KOMB. A.D. PR. (GDR)	4.00	---	↘	4.00	20/09/2013	---	---	---	---	---	15@3.93	67@4.17	0.98	2012	---	---	---	1,874.80	3.73	5.19	1775
51,950,600	0.320	0.48	0.75	0.25	10/05/2013	21/10/2005	---	METKA (CR)	11.74	-1.18	↙	11.88	20/09/2013	11.88	11.48	11.96	11.74	11.63	200@11.51	400@11.79	16.92	2012	28,656	194	333,372.18	609,900.04	9.00	12.78	2757
10,500,000	0.900	---	---	---	24/06/2008	04/07/2012	---	MEVACO SA (CR)	1.28	---	↘	1.28	20/09/2013	---	---	---	---	---	110@1.27	53@1.31	9.27	2012	---	---	---	13,440.00	1.01	1.58	2757
14,074,000	3.00	0.15	0.25	---	02/03/2012	23/07/2009	---	MIG REAL ESTATE (CR)	1.47	---	↘	1.47	20/09/2013	---	---	---	---	---	400@1.46	305@1.57	---	2012	---	---	---	20,688.78	1.17	1.92	8671
6,200,000	0.500	---	---	---	22/06/2010	01/11/1995	---	MINERVA KNITWEAR SA (CB)	0.776	---	↘	0.776	05/08/2013	---	---	---	---	---	---	3000@0.699	---	2012	---	---	---	4,811.20	0.530	0.948	3763
12,417,000	0.370	---	---	---	28/07/2008	06/09/2011	---	MLS MULTIMEDIA SA (CR)	3.10	---	↘	3.10	20/09/2013	3.10	3.04	3.10	3.10	3.07	50@3.05	430@3.10	40.83	2012	92,600	53	272,268.10	38,492.70	2.60	3.13	9537
4,588,137	16.00	---	---	---	30/06/2005	17/08/2011	---	MOCHLOS SA (CR)	1.81	---	↘	1.81	20/09/2013	1.79	1.70	1.81	1.81	1.75	351@1.70	226@1.81	---	2012	286	13	500.89	8,304.53	1.12	2.60	2357
11,700,000	0.590	---	---	---	02/06/2009	24/07/2012	---	MOTODYNAMICS S.A. (CR)	0.292	-3.95	↙	0.304	20/09/2013	0.292	0.292	0.292	0.292	0.292	1493@0.310	370@0.391	---	2012	12	2	3.50	3,416.40	0.211	0.640	5379
110,782,980	0.850	0.25	0.4	0.3	26/06/2013	05/11/2012	---	MOTOR OIL (CR)	7.63	-1.42	↙	7.74	20/09/2013	7.74	7.60	7.75	7.63	7.67	210@7.62	1043@7.66	9.32	2012	32,443	85	248,902.64	845,274.14	6.80	9.37	533
116,915,862	1.07	---	---	---	11/05/2009	06/07/2011	---	MYTILINEOS HOLDINGS (CR)	4.82	-1.43	↙	4.89	20/09/2013	4.89	4.76	4.92	4.82	4.83	750@4.81	877@4.85	---	2012	138,979	377	671,090.77	563,534.45	3.38	5.65	1755
8,321,682	0.670	---	---	---	17/08/2007	23/11/1999	---	N. LEVEDERIS SA (CB)	0.265	---	↘	0.265	19/09/2013	---	---	---	---	---	230@0.239	100@0.288	---	2012	---	---	---	3,266.06	0.198	0.658	1757
2,160,524	0.670	0.0435	0.0435	0.0436	16/08/2013	23/11/1999	---	N. LEVEDERIS SA (PB)	0.491	---	↘	0.491	20/09/2013	---	---	---	---	---	---	272@0.442	---	2012	---	---	---	3,266.06	0.307	0.798	1757
11,510,102	0.890	---	---	---	24/06/2005	06/10/1999	---	NAFPAKTOS TEXTILE IND. SA (CB)	0.400	---	↘	0.400	18/09/2013	---	---	---	---	---	---	2955@0.360	---	2012	---	---	---	4,604.04	0.232	0.500	3763
6,340,000	0.600	---	---	---	30/11/2009	12/07/2000	---	NAKAS MUSIC	0.900	-10.00	↙	1.00	20/09/2013	0.900	0.900	0.900	0.900	0.900	---	241@1.00	---	2012	10	1	9.00	5,706.00	0.300	1.04	5379
2,396,785,994	0.300	---	---	---	16/05/2008	24/05/2013	---	NATIONAL BANK (CR)	2.99	---	↘	2.99	20/09/2013	3.03	2.96	3.07	2.99	3.00	50510@2.98	27138@3.00	---	2012	1,950,777	1,518	5,843,271.91	7,166,390.12	1.83	9.87	8355

Number of Outstanding Securities	Nominal Value	Dividends [1]			Date of Last Coupon		Note	Shares	Closing price	% change	Previous closing price/date	Open price	Price min	Price max	Last price	Avg price	Last Bid [7]	Last Ask [7]	P/E after	Year	Volume	Trades	Transactions Value	Company Mkt Value (thou. €)	Year low	Year high	Sector[ 4]	
		2010	2011	2012	Dividend [2]	Right																						
Main Market																												
23,935,280	0.300	---	---	---	29/06/2009	13/06/2000	---	NAYTEMPORIKI PUBLISHING SA(CR)	0.185	---	↘ 0.185	19/09/2013	---	---	---	---	---	500@0.167	500@0.198	---	2012	---	---	---	4,428.03	0.149	0.360	5557
27,848,000	0.300	0.0301	0.0132	0.0137	21/08/2013	02/09/2003	---	NEWSPHONE HELLAS SA (CR)	0.326	-1.21	€ 0.330	19/09/2013	0.307	0.305	0.327	0.326	0.306	200@0.307	485@0.327	7.98	2012	8,536	9	2,615.76	9,078.45	0.241	0.592	2791
6,132,500	1.25	0.1	---	---	24/06/2011	19/06/2001	---	NEXANS HELLAS SA (CR)	2.30	---	↘ 2.30	19/09/2013	---	---	---	---	---	200@2.11	100@2.34	---	2012	---	---	---	14,104.75	2.10	3.11	2733
63,697,153	1.34	---	---	---	08/07/2008	10/11/2008	---	NIREFS SA (CR)	0.409	-1.45	€ 0.415	20/09/2013	0.408	0.405	0.410	0.410	0.409	26@0.408	4031@0.410	---	2012	12,269	25	5,014.63	26,052.14	0.380	0.839	3573
319,000,000	0.300	1.4177	0.72	0.57	28/06/2013	25/04/2001	---	OPAP (CR)	8.17	1.87	# 8.02	20/09/2013	8.02	8.00	8.17	8.17	8.11	14532@8.10	750@8.18	5.08	2012	791,572	985	6,391,138.70	2,606,230.00	5.49	8.27	5752
490,150,389	2.39	0.1179	---	---	28/06/2011	18/06/1998	---	OTE (CR)	7.56	5.00	# 7.20	20/09/2013	7.40	7.29	7.57	7.56	7.44	430@7.50	2397@7.56	---	2012	1,064,686	1,398	7,929,188.59	3,705,536.94	4.26	7.81	6535
25,000,000	2.00	0.02	0.01	0.05	18/07/2013	08/08/2003	---	P.P.A. S.A. (CR)	17.01	0.06	# 17.00	20/09/2013	17.00	16.86	17.14	17.01	16.96	10@16.92	190@17.01	85.79	2012	1,689	45	28,646.55	425,250.00	14.59	21.68	2777
4,971,466	1.46	---	---	---	04/07/2007	08/10/2003	---	PAIRIS SA (CR)	0.269	---	↘ 0.269	20/09/2013	---	---	---	---	---	200@0.251	---	---	2012	---	---	---	1,337.32	0.201	0.605	2723
3,953,090	0.900	---	---	---	02/07/2001	05/12/2012	---	PAPERPACK (CR)	0.895	0.34	# 0.892	20/09/2013	0.900	0.830	0.900	0.895	0.859	2000@0.834	488@0.895	---	2012	7,162	22	6,153.48	3,538.02	0.500	1.06	2723
50,797,369	0.310	---	---	---	17/08/2000	12/10/2010	---	PAPOUTSANIS (CR)	0.600	---	↘ 0.600	20/09/2013	---	---	---	---	---	500@0.550	500@0.595	---	2012	---	---	---	30,478.42	0.361	0.750	3767
7,070,400	0.930	---	---	---	18/05/2010	12/05/2011	---	PETROPOULOS PETROS (CR)	1.60	1.27	# 1.58	20/09/2013	1.58	1.58	1.60	1.60	1.58	100@1.57	681@1.60	---	2012	1,880	43	2,976.88	11,312.64	1.20	1.74	2753
5,072,567,951	0.300	---	---	---	16/05/2008	05/06/2013	---	PIRAEUS BANK (CR)	1.24	---	↘ 1.24	20/09/2013	1.25	1.23	1.29	1.24	1.26	133607@1.23	9364@1.25	---	2012	4,725,987	1,603	5,936,459.37	6,289,984.26	0.832	6.28	8355
22,080,000	0.320	0.05	0.08	0.12	22/05/2013	03/10/2000	---	PLAISIO COMPUTERS SA (CR)	5.04	-0.20	€ 5.05	20/09/2013	5.04	5.02	5.05	5.02	5.04	32@5.02	532@5.10	11.22	2012	1,127	6	5,678.81	111,283.20	3.65	6.25	9572
232,000,000	4.60	0.79	---	0.025	22/07/2013	12/12/2001	---	PPC (CR)	7.96	-0.50	€ 8.00	20/09/2013	7.95	7.70	8.03	7.96	7.88	5@7.94	811@7.97	-(6)-	2012	243,006	766	1,914,021.75	1,846,720.00	4.55	8.49	7535
11,812,193	0.450	---	---	---	24/07/2009	15/11/2006	---	PROFILE SA (CR)	0.981	-1.51	€ 0.996	20/09/2013	0.997	0.980	0.997	0.980	0.984	300@0.972	990@0.980	18.87	2012	840	7	826.15	11,587.76	0.761	1.26	9533
24,319,250	0.300	---	---	---	09/07/2002	04/07/2007	---	PROODEFTIKH SA (CR)	0.146	0.69	# 0.145	19/09/2013	0.130	0.130	0.146	0.146	0.133	1000@0.131	799@0.146	---	2012	12,600	11	1,675.71	3,550.61	0.054	0.223	2357
6,836,280	1.88	---	---	---	18/07/2005	10/09/2010	---	QUALITY & RELIABILITY SA (CR)	1.85	6.32	# 1.74	20/09/2013	1.73	1.73	1.85	1.85	1.76	108@1.74	293@1.73	---	2012	3,323	13	5,833.93	12,647.12	0.236	1.97	9533
48,069,201	0.400	---	---	---	05/09/2008	21/06/2012	---	QUEST HOLDINGS (CR)	1.15	2.68	# 1.12	20/09/2013	1.16	1.13	1.16	1.15	1.14	53@1.15	1000@1.16	---	2012	4,097	6	4,672.55	55,279.58	0.936	1.39	9533
57,434,884	1.31	---	---	---	05/06/2008	12/06/2009	---	REDS S.A. (CR)	0.510	---	↘ 0.510	20/09/2013	0.500	0.500	0.510	0.510	0.506	2000@0.500	400@0.520	---	2012	3,051	3	1,545.13	29,291.79	0.450	0.949	8633
22,280,000	0.300	0.0329	---	---	11/04/2011	23/02/2007	---	REVOIL (CR)	0.880	10.00	# 0.800	20/09/2013	0.780	0.775	0.920	0.880	0.862	27@0.880	477@0.885	---	2012	72,129	185	62,190.00	19,606.40	0.345	1.20	5379
7,500,000	0.560	---	---	---	25/06/2010	10/04/2013	---	S.KANAKIS SA (CR)	1.96	-2.97	€ 2.02	20/09/2013	2.08	1.93	2.08	1.96	1.98	100@1.95	616@1.96	13.93	2012	3,014	16	5,967.61	14,700.00	1.05	2.08	3577
52,067,296	0.300	---	---	---	23/12/2003	24/01/2007	---	SELECTED TEXT. IND. ASSOC (CR)	0.242	-6.56	€ 0.259	20/09/2013	0.242	0.242	0.242	0.242	0.242	500@0.241	550@0.259	---	2012	1,150	3	278.30	12,600.29	0.232	0.587	3763
96,243,908	0.410	---	---	---	26/06/2008	17/07/2000	---	SIDENOR (CR)	1.51	-1.31	€ 1.53	20/09/2013	1.54	1.51	1.54	1.51	1.52	9346@1.51	1300@1.54	---	2012	47,602	102	72,287.93	145,328.30	1.00	2.39	1757
6,456,530	1.60	---	---	---	29/06/2001	02/08/2010	---	SPACE HELLAS SA (CR)	2.19	---	↘ 2.19	14/06/2013	---	---	---	---	---	---	3064@1.98	70.35	2012	---	---	---	14,139.80	1.25	2.20	9578
28,438,268	0.300	---	---	---	21/08/2006	24/11/1999	---	SPIROY AGRICULTURE SA (CR)	0.305	-0.33	€ 0.306	19/09/2013	0.290	0.290	0.305	0.305	0.292	970@0.290	460@0.299	---	2012	690	2	201.45	8,673.67	0.252	0.557	1357
33,125,000	5.00	---	---	---	03/07/2006	18/08/2010	---	TECHNICAL OLYMPIC SA (CR)	1.45	---	↘ 1.45	20/09/2013	1.48	1.35	1.48	1.45	1.43	250@1.37	100@1.45	-(6)-	2012	2,163	21	3,092.99	48,031.25	1.17	2.71	3728
109,319,070	0.300	(0.0399)	(0.0613)	---	28/05/2012	05/08/2013	---	TERNA ENERGY (CR)	3.06	-1.29	€ 3.10	20/09/2013	3.10	3.01	3.11	3.06	3.04	200@3.02	2166@3.07	67.21	2012	38,421	136	116,929.03	334,516.35	2.24	3.73	7537
36,300,000	1.12	0.114	0.188	0.162	16/08/2013	12/12/2007	---	THESSALONIKA WATER & SEWERAGE	5.82	1.39	# 5.74	20/09/2013	5.83	5.80	5.90	5.82	5.85	748@5.82	960@5.87	11.94	2012	9,179	80	53,663.72	211,266.00	4.73	6.82	7577
45,094,620	0.500	0.036	---	0.0467	10/06/2013	01/11/1999	---	THRACE PLASTICS SA (CR)	1.22	-0.81	€ 1.23	20/09/2013	1.22	1.21	1.22	1.22	1.22	1144@1.21	1000@1.23	7.02	2012	8,110	30	9,865.54	55,015.44	1.07	1.64	1357
77,063,568	4.00	0.0806	---	---	24/06/2011	25/06/2004	---	TITAN CEMENT (CR)	17.30	-1.43	€ 17.55	20/09/2013	17.55	16.90	17.55	17.30	17.21	50@17.20	209@17.34	---	2012	22,570	144	388,387.14	1,386,182.45	11.31	18.00	2353
7,568,960	4.00	0.1869	---	---	24/06/2011	25/06/2004	---	TITAN CEMENT CO. (PR)	7.00	-1.69	€ 7.12	20/09/2013	7.15	7.00	7.15	7.00	7.08	10@6.87	300@7.15	---	2012	360	3	2,550.00	1,386,182.45	5.75	7.27	2353
10,080,000	3.00	0.21	0.4	1.5	17/07/2013	27/08/2001	---	TPA SA (CR)	23.99	-0.04	€ 24.00	20/09/2013	24.24	23.90	24.40	24.00	24.19	580@23.90	14@24.00	13.11	2012	3,518	22	85,083.13	241,819.20	19.00	25.20	2777
54,888,240	1.13	0.1	0.1	0.1	25/04/2013	22/03/2006	---	TRASTOR REAL EST. INV. CO.(CR)	0.769	1.18	# 0.760	20/09/2013	0.750	0.750	0.770	0.769	0.756	2020@0.760	237@0.769	---	2012	5,001	4	3,780.95	42,209.06	0.624	0.829	8671
14,627,315	0.300	---	---	---	16/11/1992	03/12/2012	---	UNIBIOS (CR)	0.279	2.20	# 0.273	20/09/2013	0.255	0.255	0.279	0.279	0.275	338@0.273	1278@0.279	---	2012	64,234	55	17,670.88	4,081.02	0.151	0.414	235

Number of Outstanding Securities	Nominal Value	Dividends [1]			Date of Last Coupon Dividend [2]	Note	Shares	Closing price	% change	Previous closing price/date	Open price	Price min	Price max	Last price	Avg price	Last Bid [7]	Last Ask [7]	P/E after	Year	Volume	Trades	Transactions Value	Company Mkt Value (thou. €)	Year low	Year high	Sector[ 4]
5,848,618		---	---	---	24/01/2008	---	ALPHA ETF FTSE Athex Large Cap	3.36	0.60 #	3.34 20/09/2013	3.34	3.34	3.36	3.36	3.34	46@3.36	---	---	---	601	2	2,007.36	-	2.49	3.99	11000
294,878		---	---	---	29/06/2009	---	NBGAM ETF	11.00	0.27 #	10.97 20/09/2013	11.00	11.00	11.00	11.00	11.00	---	---	---	---	2	1	22.00	-	8.23	11.75	11000
388,550		---	---	---	03/11/2010	---	NBGAM ETF GREECE & TURKEY 30	8.11	-0.73 €	8.17 20/09/2013	8.11	8.11	8.11	8.11	8.11	---	---	---	---	2	1	16.22	-	6.88	10.11	11000

Exchange Traded Funds (ETFs)

14,000,000	3.80	---	---	---	23/04/2010	29/06/1999	4815	ALPHA REAL ESTATE SA(CR)	6.98	6.89 #	6.53 19/09/2013	6.98	6.98	6.98	6.98	6.98	200@6.54	187@6.76	14.45	2012	1	1	6.98	97,720.00	5.26	7.00	8637
63,900,000	3.00	---	---	---	23/06/2003	04/11/2008	4816	ASTIR PALACE SA (CR)	3.57	-0.83 €	3.60 20/09/2013	3.59	3.57	3.59	3.57	3.58	300@3.56	642@3.57	---	2012	900	15	3,217.14	228,123.00	3.37	4.95	5753
49,152,904	0.800	---	---	---	09/08/2004	08/03/2006	4814	ATHENA SA (CR)	0.175	---	0.175 20/09/2013	---	---	---	---	---	1500@0.153	1950@0.210	---	2012	---	---	---	8,601.76	0.094	0.340	2357
191,660,320	0.300	---	---	---	20/07/2009	29/12/2010	4817	ATTICA HOLDINGS (CR)	0.310	8.77 #	0.285 20/09/2013	0.310	0.310	0.310	0.310	0.310	330@0.281	870@0.310	---	2012	3,230	6	1,001.30	59,414.70	0.241	0.588	5759
15,300,000	0.300	---	---	---	30/07/2009	13/12/1999	4893	ATTICA PUBLICATIONS SA (CR)	0.600	---	0.600 20/09/2013	---	---	---	---	---	---	5@0.600	---	2012	---	---	---	9,180.00	0.520	1.45	5557
8,418,750	0.300	---	0.15	0.29	05/06/2013	27/06/2012	4828	GEKE SA (CB)	6.68	---	6.68 18/09/2013	6.68	6.68	6.68	6.68	6.68	30@6.68	---	20.98	2012	70	1	467.60	56,237.25	6.59	6.79	5753
68,322,221	1.00	---	---	---	08/03/2002	08/04/2013	4986	GENIKI BANK (CR)	2.16	---	2.16 19/09/2013	---	---	---	---	---	---	---	---	2012	---	---	---	147,576.00	1.51	8.85	8355
71,082,707	1.70	---	---	---	01/07/2010	21/11/2012	4820	HERACLES GEN.CEMENT CO. (CR)	1.38	---	1.38 20/09/2013	1.38	1.38	1.38	1.38	1.38	863@1.38	800@1.40	---	2012	137	2	189.06	98,094.14	1.20	1.80	2353
13,404,440	8.63	---	---	---	02/04/2001	06/03/1992	4822	IONIAN HOTELS SA (CR)	8.95	---	8.95 20/09/2013	---	---	---	---	---	78@8.95	96@10.74	---	2012	---	---	---	119,969.74	8.40	13.00	5753
2,760,000	7.70	6.3291	7.6	8.52	26/06/2013	16/07/1990	4823	KARELIA TOBACCO CO. SA (CB)	205.00	---	205.00 20/09/2013	---	---	---	---	---	10@200.00	9@204.00	12.45	2012	---	---	---	565,800.00	110.00	210.00	3785
17,000,000	0.600	---	---	---	12/06/2008	07/03/2000	4941	KATHIMERINI SA (CR)	0.667	-19.93 €	0.833 20/09/2013	0.667	0.667	0.667	0.667	0.668	565@0.667	10@0.819	---	2012	20	2	13.35	11,339.00	0.321	1.00	5557
21,364,000	1.12	---	---	---	05/07/2010	10/08/2005	4824	LAMPSPA HOTEL SA (CR)	19.50	0.52 #	19.40 19/09/2013	19.50	19.50	19.50	19.50	19.50	100@16.05	59@19.50	---	2012	500	10	9,750.00	416,598.00	15.00	19.50	5753
6,700,000	0.800	---	---	---	19/07/2010	29/08/2012	4894	MILLS KEPENOS (CR)	1.47	---	1.47 19/09/2013	---	---	---	---	---	40@1.18	9350@1.40	8.74	2012	---	---	---	9,849.00	0.777	1.69	3577
70,926,000	2.25	---	---	---	25/07/2008	21/06/2000	4825	MINOAN LINES SA (CR)	1.99	-0.50 €	2.00 20/09/2013	2.00	1.96	2.00	2.00	2.00	377@2.00	1333@2.10	---	2012	2,266	9	4,520.28	141,142.74	1.70	2.10	5759
17,240,776	0.370	---	---	---	14/07/2005	30/09/2003	4827	PERSEUS SA (CR)	0.223	---	0.223 30/08/2013	---	---	---	---	---	---	1050@0.267	13.00	2012	---	---	---	3,844.69	0.033	0.325	3577

Surveillance

33,301,715	0.320	---	---	---	27/06/2003	08/07/2009	4978	AEGEK (CR)	0.076	4.11 #	0.073 20/09/2013	0.086	0.074	0.086	0.074	0.076	1999@0.075	27@0.080	---	2012	599	4	45.53	2,530.93	0.066	0.184	2357
14,870,100	0.300	---	---	---	15/05/2008	26/09/2011	4844	ALPHA GRISSIN S.A. (CR)	0.225	---	0.225 09/08/2013	---	---	---	---	---	---	500@0.225	---	2012	---	---	---	3,345.77	0.080	0.328	9533
215,246,452	0.300	---	---	---	25/06/2001	24/09/2001	4446	ALTEC SA (CR)	0.037	-2.63 €	0.038 20/09/2013	0.038	0.036	0.045	0.036	0.037	10000@0.031	2114@0.036	---	2012	66,591	17	2,433.70	7,964.12	0.021	0.062	9533
2,969,713	0.300	---	---	---	02/07/2008	28/02/2011	4958	ANEK LINES SA (PR, issue '96)	0.310	---	0.310 20/09/2013	0.310	0.310	0.310	0.310	0.310	554@0.310	---	---	2012	446	2	138.26	16,196.85	0.300	0.770	5759
312,163	0.300	---	---	---	02/07/2008	28/02/2011	4959	ANEK LINES SA (PR, issue '90)	1.43	---	1.43 09/09/2013	---	---	---	---	---	---	1@1.43	---	2012	---	---	---	16,196.85	1.43	1.78	5759
185,373,016	0.300	---	---	---	02/07/2008	28/02/2011	4957	ANEK LINES SA (CR)	0.080	-5.88 €	0.085 20/09/2013	0.080	0.080	0.080	0.080	0.080	4469@0.081	2000@0.082	---	2012	24,999	14	1,999.92	16,196.85	0.071	0.270	5759
81,644,555	0.300	---	---	---	01/07/2008	02/09/2002	4630	ATTI - KAT SA (CR)	0.020	---	0.020 20/09/2013	0.020	0.018	0.020	0.020	0.020	29785@0.019	11840@0.020	---	2012	91,022	12	1,818.62	1,632.89	0.018	0.088	2357
20,255,805	0.300	---	---	---	22/08/2006	02/08/2010	4881	AXON HOLDING SA (CR)	0.081	---	0.081 20/09/2013	---	---	---	---	---	1000@0.071	900@0.097	---	2012	---	---	---	1,640.72	0.050	0.192	4533
17,579,754	4.16	---	---	---	18/08/2006	02/08/2010	4885	BIOTER SA (CR)	0.175	2.94 #	0.170 20/09/2013	0.150	0.150	0.175	0.175	0.175	600@0.142	18000@0.173	---	2012	60,101	7	10,515.16	3,076.46	0.059	0.194	2357
12,431,980	0.720	---	---	---	20/06/2003	10/07/2003	4559	COMPUCON SA (CR)	0.075	---	0.075 11/09/2013	---	---	---	---	---	---	4916@0.085	---	2012	---	---	---	932.40	0.031	0.100	9537
30,159,583	0.470	---	---	---	26/06/2008	29/12/2010	4962	DIAS A/C (CR)	0.839	---	0.839 04/09/2013	---	---	---	---	---	---	2025@0.672	---	2012	---	---	---	25,303.89	0.420	0.845	3573
15,878,748	0.480	---	---	---	10/07/2006	22/03/2004	4960	DOMIKI KRITIS SA (CR)	0.538	---	0.538 26/08/2013	---	---	---	---	---	---	130@0.487	---	2012	---	---	---	8,542.77	0.310	0.800	2357
3,961,300	1.28	---	---	---	29/06/2004	03/08/2000	4808	DUROS SA (CR)	0.420	-6.04 €	0.447 20/09/2013	0.420	0.420	0.420	0.420	0.420	77@0.358	2199@0.420	---	2012	20	2	8.40	1,663.75	0.120	0.970	3763
7,085,888	1.59	---	---	---	02/07/1996	06/09/2010	4690	ELVIEMEK (CR)	3.00	---	3.00 05/02/2013	---	---	---	---	---	---	100@3.60	-(6)-	2012	---	---	---	21,257.66	3.00	3.58	8633
6,000,000	0.600	---	---	---	13/06/2008	08/04/2004	4886	EUROBROKERS S.A. (CR)	0.052	---	0.052 16/09/2013	---	---	---	---	---	1500@0.043	---	---	2012	---	---	---	312.00	0.052	0.333	8534
7,347,600	0.600	---	---	---	02/06/2010	25/02/2010	4889	EUROCONSULTANTS S.A. (CR)	3.08	---	3.08 11/09/2013	---	---	---	---	---	---	290@2.99	---	2012	---	---	---	22,630.61	2.12	3.08	2791

Number of Outstanding Securities	Nominal Value	Dividends [1]			Date of Last Coupon		Note	Shares	Closing price	% change	Previous closing price/date	Open price	Price min	Price max	Last price	Avg price	Last Bid [7]	Last Ask [7]	P/E after	Year	Volume	Trades	Transactions Value	Company Mkt Value (thou. €)	Year low	Year high	Sector[ 4]	
		2010	2011	2012	Dividend [2]	Coupon Right																						
Surveillance																												
21,820,410	0.800	---	---	---	22/05/2008	02/08/2011	4882	EUROMEDICA SA (CR)	0.340	---	↘ 0.340	19/09/2013	0.340	0.340	0.340	0.340	90@0.340	15880@0.350	---	2012	10	1	3.40	7,418.94	0.270	0.613	4533	
12,952,610	0.300	---	---	---		04/10/2012	4846	Forthnet (CR)	1.10	2.80	# 1.07	20/09/2013	1.02	1.02	1.12	1.12	1.10	675@1.12	200@1.18	---	2011	1,506	5	1,662.78	14,247.87	0.350	1.43	9535
1,270,000	0.300	---	---	---	06/07/2007	06/02/2013	---	GIRAKIAN PROFIL SA (CB)	2.38	---	↘ 2.38	10/09/2013	---	---	---	---	---	300@2.37	---	2012	---	---	---	3,022.60	0.900	3.33	1757	
179,707,771	0.300	---	---	---	27/06/2002	01/11/2011	4847	HELLAS ONLINE SA (CR)	0.430	3.36	# 0.416	19/09/2013	0.430	0.430	0.430	0.430	1500@0.335	1850@0.430	---	2012	50	1	21.50	77,274.34	0.271	0.709	9537	
13,692,227	1.47	---	---	---	07/07/2006	08/10/1999	4845	HELLENIC FABRICS SA (CR)	0.298	---	↘ 0.298	04/09/2013	---	---	---	---	---	7000@0.294	---	2012	---	---	---	4,080.28	0.180	0.354	3763	
30,390,000	0.310	---	---	---	18/08/2008	29/12/2006	4447	HELLENIC FISHFARMING SA (CR)	0.095	18.75	# 0.080	20/09/2013	0.095	0.095	0.095	0.095	500@0.070	19998@0.095	22.27	2012	200	3	19.01	2,887.05	0.039	0.137	3573	
1,540,000	0.600	---	---	---	08/08/1994	19/09/2000	4855	J.BOUTARIS & SON HOLD. (PB)	0.026	---	↘ 0.026	18/09/2013	---	---	---	---	1000@0.021	---	---	2012	---	---	---	1,299.02	0.024	0.201	3535	
25,179,640	0.600	---	---	---	08/08/1994	19/09/2000	4854	J.BOUTARIS & SON HOLD. SA (CB)	0.050	-13.79	€ 0.058	18/09/2013	0.050	0.050	0.050	0.050	989@0.050	499@0.069	---	2012	1,000	2	50.00	1,299.02	0.037	0.132	3535	
7,125,216	0.650	---	---	---	01/07/2005	14/12/1999	4955	KRE.KA SA (CR)	0.250	---	↘ 0.250	20/09/2013	---	---	---	---	---	1889@0.241	---	2012	---	---	---	1,781.30	0.144	0.580	3573	
51,081,030	1.00	---	---	---	20/08/2007	03/09/2007	4912	LAVIPHARM SA (CR)	0.130	-6.48	€ 0.139	20/09/2013	0.130	0.130	0.132	0.132	1925@0.132	1600@0.135	---	2012	4,725	6	614.60	6,640.53	0.101	0.268	4577	
322,925,288	0.300	---	---	---	23/05/2007	10/04/2000	4554	M.J. MAILLIS SA (CR)	0.066	1.54	# 0.065	20/09/2013	0.065	0.065	0.067	0.067	1800@0.067	1800@0.070	---	2012	2,460	5	161.56	21,313.07	0.056	0.150	2723	
9,567,289	0.300	---	---	---	01/07/2004	19/11/2007	4944	MARAC ELECTRONICS (CR)	0.263	---	↘ 0.263	20/09/2013	---	---	---	---	---	2603@0.310	---	2012	---	---	---	2,516.20	0.068	0.409	9578	
4,178,856	1.58	0.22	---	---	21/07/2011	28/07/2004	4983	MEDICON S.A (CR)	0.841	---	↘ 0.841	19/09/2013	---	---	---	---	---	3000@0.673	---	2012	---	---	---	3,514.42	0.446	1.18	4535	
255,459,600	0.300	---	---	---	26/06/2000	03/12/2010	4833	NEL SA (CR)	0.028	-3.45	€ 0.029	20/09/2013	0.028	0.028	0.028	0.028	2058@0.028	3000@0.032	---	2012	3,852	3	107.86	7,152.87	0.012	0.158	5759	
20,231,328	0.600	---	---	---	15/07/2008	25/06/2004	4879	NIKAS SA (CR)	0.240	---	↘ 0.240	18/09/2013	---	---	---	---	3@0.240	2500@0.260	---	2012	---	---	---	4,855.52	0.230	0.530	3577	
20,210,127	1.53	---	---	---	27/06/1997	20/03/2000	5006	PARNASSOS ENTERP. (CR)	0.062	-8.82	€ 0.068	19/09/2013	0.062	0.062	0.062	0.062	1499@0.064	1000@0.067	---	2012	3,000	2	186.00	1,253.03	0.062	0.698	8775	
14,967,940	0.500	---	---	---	21/05/2008	04/01/2008	4956	PASAL DEVELOPMENT S.A. (CR)	0.145	-18.54	€ 0.178	19/09/2013	0.143	0.143	0.145	0.145	1501@0.145	2500@0.176	---	2012	1,191	4	172.43	2,170.35	0.120	0.414	8633	
40,946,303	0.360	---	---	---	18/07/2005	27/11/2007	4856	PC SYSTEMS SA (CR)	0.066	---	↘ 0.066	20/09/2013	---	---	---	---	2000@0.053	5000@0.066	---	2012	---	---	---	2,702.46	0.049	0.180	9533	
18,750,000	0.300	---	---	---	02/07/2001	31/12/2012	4985	PEGASUS PUBLISHING S.A. (CR)	0.064	10.35	# 0.058	20/09/2013	0.058	0.058	0.069	0.069	0.064	25@0.069	---	2012	45	3	2.88	1,200.00	0.044	0.610	5557	
28,056,518	0.530	---	---	---	04/07/2007	19/07/2006	4750	SATO SA (CR)	0.089	17.10	# 0.076	20/09/2013	0.089	0.089	0.089	0.089	318@0.062	31228@0.089	---	2012	250	3	22.25	2,497.03	0.025	0.123	3726	
36,235,184	1.00	---	---	---	01/07/2008	30/07/2012	4961	SELONDA AQUACULTURE SA (CR)	0.121	-9.70	€ 0.134	20/09/2013	0.122	0.121	0.123	0.121	16000@0.120	800@0.134	---	2012	16,800	17	2,034.74	4,384.46	0.119	0.600	3573	
7,914,480	2.50	---	---	---	23/06/2008	29/06/2011	4888	SFAKIANAKIS SA (CR)	0.528	20.00	# 0.440	20/09/2013	0.528	0.528	0.528	0.528	300@0.354	147@0.528	---	2012	150	2	79.20	4,178.85	0.364	0.763	5379	
60,221,300	0.400	---	---	---	01/07/2002	01/11/2010	4880	SHELMAN SA (CR)	0.089	---	↘ 0.089	20/09/2013	---	---	---	---	---	1000@0.106	---	2011	---	---	---	5,359.70	0.089	0.280	2353	
10,000,000	1.35	---	---	---	24/06/2008	10/05/2005	4887	SIDMA SA (CR)	0.329	-0.30	€ 0.330	20/09/2013	0.330	0.311	0.330	0.311	0.329	30@0.311	3000@0.330	---	2012	1,250	3	411.55	3,290.00	0.311	0.920	1757
29,060,950	0.340	---	---	---	20/08/2007	24/10/2001	4884	SPIDER METAL INDUSTRY SA (CR)	0.065	---	↘ 0.065	18/09/2013	---	---	---	---	---	6997@0.064	---	2012	---	---	---	1,888.96	0.022	0.097	2757	
100,793,000	0.300	---	---	---	16/07/2009	05/08/2013	---	TELETIPOS SA (CR)	0.177	-19.54	€ 0.220	19/09/2013	0.177	0.177	0.177	0.177	597@0.177	650@0.220	---	2012	108	2	19.12	17,840.36	0.118	0.600	5553	
3,229,566	0.320	---	---	---	22/06/2005	23/09/1999	4629	VARANGIS AVEPE S.A. (CR)	0.700	---	↘ 0.700	18/09/2013	---	---	---	---	---	50@0.735	---	2012	---	---	---	2,260.70	0.206	0.840	3726	
17,175,132	0.300	---	---	---	25/06/2002	21/06/2013	4997	VARVARESSOS SA (CB)	0.043	7.50	# 0.040	20/09/2013	0.043	0.043	0.043	0.043	2090@0.043	---	2012	10	1	0.43	738.53	0.027	0.181	3763		
13,191,620	0.620	---	---	---	04/08/2010	09/09/2002	4977	YALCO - CONSTANTINOU SA (CB)	0.138	15.00	# 0.120	19/09/2013	0.138	0.138	0.138	0.138	1500@0.098	1250@0.138	---	2012	50	1	6.90	1,820.44	0.104	0.210	3722	

Under Deletion																											
5,025,000	0.300	---	---	---	05/07/2005	14/03/2002	4963	ALSINCO S.A (CR)	0.022	---	↘ 0.022	20/09/2013	---	---	---	---	---	---	---	2012	---	---	---	110.55	0.006	0.185	3763
766,000	2.83	---	---	---	01/07/2004	11/12/2012	4937	TRIA ALFA SA (CR)	2.81	---	↘ 2.81	23/08/2013	---	---	---	---	---	1@3.35	---	2012	---	---	---	2,339.15	1.30	4.70	3763
245,000	2.83	---	---	---	19/07/2010	11/12/2012	4938	TRIA ALFA SA (PR)	0.762	---	↘ 0.762	11/09/2013	---	---	---	---	300@0.610	---	---	2012	---	---	---	2,339.15	0.501	1.93	3763

49,030,011	0.300	---	---	---	19/07/2010	12/05/2011	4875	ALAPIS (CR)	0.041	---	↘ 0.041	30/03/2012	---	---	---	---	---	---	---	---	---	---	---	2,010.23	0.041	0.041	4577
1,750,955,549	0.600	---	---	---	19/05/2008	08/12/2011	4911	ATE (CR)	0.155	---	↘ 0.155	30/07/2012	---	---	---	---	---	---	---	---	---	---	---	271,398.11	0.155	0.155	8355

Number of Outstanding Securities	Nominal Value	Dividends [1]			Date of Last Coupon		Note	Shares	Closing price	% change	Previous closing price/date	Open price	Price min	Price max	Last price	Avg price	Last Bid [7]	Last Ask [7]	P/E after	Year	Volume	Trades	Transactions Value	Company Mkt Value (thou. €)	Year low	Year high	Sector[ 4]
		2010	2011	2012	Dividend [2]	Right																					
Under Suspension																											
21,382,067	0.300	---	---	---	02/10/2006	15/02/2006	4628	ATERMON (CR)	0.120	---	↘ 0.120	31/03/2010	---	---	---	---	---	---	---	---	---	---	---	2,565.85	0.120	0.120	5555
105,423,498	0.510	---	---	---	01/07/2004	28/12/2005	4920	AVENIR S.A. (CR)	0.046	---	↘ 0.046	30/08/2012	---	---	---	---	---	---	---	---	---	---	---	4,849.48	0.046	0.046	5752
33,930,000	0.300	---	---	---	03/07/2006	30/05/2001	4865	BABIS VOVOS SA (CR)	0.304	---	↘ 0.304	30/03/2012	---	---	---	---	---	---	---	---	---	---	---	10,314.72	0.304	0.304	8633
20,121,710	1.21	---	---	---	27/07/1992	12/03/2003	5002	BALKAN R.E. (CR)	0.190	---	↘ 0.190	29/08/2013	---	---	---	---	---	---	---	---	---	---	---	3,823.12	0.162	0.438	8633
1,795,140,547	1.00	(0.0615)	---	---	31/05/2011	19/04/2012	4951	BANK OF CYPRUS (CR)	0.207	---	↘ 0.207	15/03/2013	---	---	---	---	5000@0.170	---	---	---	---	---	---	371,594.09	0.180	0.282	8355
21,920,570	0.300	---	---	---	03/07/2007	13/12/1999	4702	CARDASSILARIS SA (CR)	0.140	---	↘ 0.140	30/11/2010	---	---	---	---	---	---	---	---	---	---	---	3,068.88	0.140	0.140	3577
54,547,634	0.500	---	---	---	25/04/2005	21/01/2009	4860	CH.TEGOPOULOS PUBL. SA (CR)	0.038	---	↘ 0.038	23/03/2012	---	---	---	---	---	---	---	---	---	---	---	2,072.81	0.038	0.038	5557
33,718,750	0.300	---	---	---	28/05/2008	21/01/2013	4998	DOL SA (CR)	0.640	---	↘ 0.640	25/07/2013	---	---	---	---	---	3118@0.700	---	---	---	---	---	21,580.00	0.244	0.759	5557
7,847,611	1.20	---	---	---	01/08/2007	28/09/2011	4939	EDRASIS - C. PSALLIDAS SA (CR)	0.150	---	↘ 0.150	19/11/2012	---	---	---	---	---	---	---	---	---	---	---	1,177.14	0.150	0.150	2357
5,750,000	0.300	---	---	---	12/12/2008	12/12/2011	4929	ELECTRONIKI ATHINON SA (CR)	0.480	---	↘ 0.480	07/09/2012	---	---	---	---	---	---	---	---	---	---	---	2,760.00	0.480	0.480	5375
24,605,397	0.400	---	---	---	29/06/1995	27/05/2002	4651	EMPORIKOS DESMOS SA (CR)	0.080	---	↘ 0.080	28/05/2010	---	---	---	---	---	---	---	---	---	---	---	2,134.04	0.080	0.080	3722
1,182,903	0.400	---	---	---	01/07/1996	27/05/2002	4652	EMPORIKOS DESMOS SA (PR)	0.140	---	↘ 0.140	28/09/2009	---	---	---	---	---	---	---	---	---	---	---	2,134.04	0.140	0.140	3722
8,593,750	0.300	---	---	---	01/06/2009	20/06/2007	4876	FASHION BOX (CR)	1.30	---	↘ 1.30	23/02/2012	---	---	---	---	---	---	---	---	---	---	---	11,171.88	1.30	1.30	3763
7,326,648	1.00	---	---	---	26/07/2006	24/07/2001	4921	FINTEXPORT SA (CR)	0.328	---	↘ 0.328	29/06/2012	---	---	---	---	---	---	---	---	---	---	---	2,403.14	0.328	0.328	3763
20,860,000	0.300	---	---	---	03/07/2000	13/11/2007	4848	IKONA - IHOS SA (CR)	0.072	---	↘ 0.072	02/12/2011	---	---	---	---	---	---	---	---	---	---	---	1,501.92	0.072	0.072	5379
36,765,744	0.350	---	---	---	16/08/2006	06/06/2011	4869	IMPERIO SA (CR)	0.026	---	↘ 0.026	30/03/2012	---	---	---	---	---	---	---	---	---	---	---	955.91	0.026	0.026	2777
24,619,524	0.500	---	---	---	10/10/1986	30/12/2002	4914	KERAMIA-ALLATINI (CR)	0.088	---	↘ 0.088	27/08/2012	---	---	---	---	---	---	---	---	---	---	---	2,166.52	0.088	0.088	8633
7,840,373	1.20	---	---	---	18/07/2002	05/03/2003	4765	KLONATEX SA (PR)	0.080	---	↘ 0.080	09/05/2011	---	---	---	---	---	---	---	---	---	---	---	1,453.75	0.080	0.080	3763
20,663,047	1.20	---	---	---	21/08/2000	05/03/2003	4764	KLONATEX SA (CR)	0.040	---	↘ 0.040	09/05/2011	---	---	---	---	---	---	---	---	---	---	---	1,453.75	0.040	0.040	3763
17,544,600	0.600	---	---	---	03/07/2000	01/08/2000	4868	KOYMBAS SYNERGY GROUP (CR)	0.132	---	↘ 0.132	29/03/2012	---	---	---	---	---	---	---	---	---	---	---	2,315.89	0.132	0.132	8775
15,015,000	1.60	---	---	---	01/07/2002	02/02/2000	4603	MAXIM C.M. PERTSINIDIS SA (CB)	0.100	---	↘ 0.100	30/11/2009	---	---	---	---	---	---	---	---	---	---	---	1,501.50	0.100	0.100	3763
66,937,526	0.700	---	---	---	13/08/2010	21/05/2003	5003	MICHANIKI SA (CR)	0.100	---	↘ 0.100	29/08/2013	---	---	---	---	---	---	---	---	---	---	---	9,186.78	0.085	0.370	2357
25,968,987	0.700	---	---	---	13/08/2010	21/05/2003	5004	MICHANIKI SA (PR)	0.096	---	↘ 0.096	29/08/2013	---	---	---	---	---	---	---	---	---	---	---	9,186.78	0.065	0.268	2357
13,555,100	1.00	---	---	---		08/07/2005	4576	MICROLAND COMPUTERS SA (CR)	0.640	---	↘ 0.640	14/07/2009	---	---	---	---	---	---	---	---	---	---	---	8,675.26	0.640	0.640	5379
23,463,874	0.800	---	---	---	23/05/2003	21/12/1999	4918	NEORION SA (CR)	0.125	---	↘ 0.125	28/08/2012	---	---	---	---	---	---	---	---	---	---	---	2,932.98	0.125	0.125	2753
42,501,273	0.300	---	---	---	26/06/2007	10/08/2009	4993	NUTRIART (CR)	0.049	---	↘ 0.049	21/06/2013	---	---	---	---	---	---	---	---	---	---	---	2,082.56	0.038	0.114	3577
25,583,146	0.300	---	---	---	25/06/2001	03/12/2008	4723	PETZETAKIS SA (CR)	0.260	---	↘ 0.260	28/01/2011	---	---	---	---	---	---	---	---	---	---	---	6,651.62	0.260	0.260	1357
9,550,386	0.500	---	---	---	01/07/1997	12/06/2008	4626	PRAXITELIO SA (CR)	0.390	---	↘ 0.390	11/03/2010	---	---	---	---	---	---	---	---	---	---	---	4,430.09	0.390	0.390	4533
1,306,368	0.500	---	---	---	01/07/1997	12/06/2008	4627	PRAXITELIO SA (PR)	0.540	---	↘ 0.540	15/12/2009	---	---	---	---	---	---	---	---	---	---	---	4,430.09	0.540	0.540	4533
62,683,822	0.300	---	---	---	27/05/2008	09/01/2006	4830	PROTON BANK S.A. (CR)	0.180	---	↘ 0.180	07/10/2011	---	---	---	---	---	---	---	---	---	---	---	11,283.09	0.180	0.180	8355
23,059,688	0.660	---	---	---	03/07/2008	06/08/2004	4864	RIDENCO SA (CR)	0.032	---	↘ 0.032	30/03/2012	---	---	---	---	---	---	---	---	---	---	---	737.91	0.032	0.032	3765
51,083,993	1.00	---	---	---	15/07/2008	06/08/2003	4867	SANYO HELLAS HOLD. (CR)	0.020	---	↘ 0.020	30/03/2012	---	---	---	---	---	---	---	---	---	---	---	1,021.68	0.020	0.020	3722
51,334,286	0.320	---	---	---	03/07/2000	18/12/2007	4548	SAOS (CR)	0.780	---	↘ 0.780	27/03/2009	---	---	---	---	---	---	---	---	---	---	---	40,040.74	0.780	0.780	2773
26,408,040	0.300	---	---	---	01/07/1997	26/05/1999	4464	SHEET STEEL SA (CR)	0.120	---	↘ 0.120	28/11/2008	---	---	---	---	---	---	---	---	---	---	---	3,168.96	0.120	0.120	1757
26,262,660	0.900	---	---	---	01/07/2008	24/02/2011	4954	SPRIDER STORES (CR)	0.031	---	↘ 0.031	28/03/2013	---	---	---	---	---	---	---	---	---	---	---	814.14	0.025	0.055	5371
144,688,060	0.600	---	---	---	21/04/2008	10/03/2010	4982	T BANK (CR)	0.048	---	↘ 0.048	30/11/2011	---	---	---	---	---	---	---	---	---	---	---	6,945.03	0.048	0.048	8355
6,523,780	0.530	---	---	---	01/07/2002	06/03/2001	4971	TECHNICAL PUBLICATIONS SA (CR)	0.006	---	↘ 0.006	29/05/2013	---	---	---	---	---	---	---	---	---	---	---	39.14	0.006	0.347	5557
13,920,000	0.320	---	---	---	19/11/2001	01/08/2000	4726	TEXAPRET SA (CR)	0.080	---	↘ 0.080	23/02/2011	---	---	---	---	---	---	---	---	---	---	---	1,113.60	0.080	0.080	3763



Number of Outstanding Securities	Nominal Value	Dividends [1]			Date of Last Coupon		Note	Shares	Closing price	% change	Previous closing price/date	Open price	Price min	Price max	Last price	Avg price	Last Bid [7]	Last Ask [7]	P/E after	Year	Volume	Trades	Transactions Value	Company Mkt Value (thou. €)	Year low	Year high	Sector[ 4]
--	------------------	---------------	--	--	---------------------	--	------	--------	------------------	----------	--------------------------------	---------------	--------------	--------------	---------------	--------------	-----------------	--------------	--------------	------	--------	--------	-----------------------	--------------------------------	-------------	--------------	---------------

Under Suspension

284,465,964	3.70	---	---	---	20/06/2008	15/06/2009	4913	TT HELLENIC POSTBANK (CR)	0.168	---	↘ 0.168	30/08/2012	---	---	---	---	---	---	---	---	---	---	---	47,790.28	0.168	0.168	8355
89,616,200	0.300	---	---	---	21/08/2000	28/06/2007	4616	UNITED TEXTILES (CR)	0.050	---	↘ 0.050	25/02/2010	---	---	---	---	---	---	---	---	---	---	---	4,480.81	0.050	0.050	3763
71,683,906	0.400	---	---	---	15/06/2005	05/02/2008	4953	XATZIOANNOU (CR)	0.026	---	↘ 0.026	28/03/2013	---	---	---	---	---	---	---	---	---	---	---	1,863.78	0.020	0.085	3763

## Shares' Notes

Code	Note text
( )	- Adjusted dividends.
*	- Last adjusted closing price.
[1]	- Net dividends.
[2]	- The "Date of Last Coupon" for New listings refers to the date company's stocks started to trade in Athex
[3]	- The Company Market Value is referred to the number of outstanding shares
[4]	- Sectors codification can be found in Appendix A
[5]	- The Market Value refers to the total number of shares listed (including their several classes) in the exchange by the company.
[6]	- P/E greater than 100
[7]	- Last view of the Order Book before the end of the trading session
4446	- Transfer to the "Under Supervision" Category as of 20/10/2008.
4447	- Transfer to the "Under Supervision" Category as of 21/10/2008.
4464	- Suspension of trading as of 1/12/2008.
4548	- Suspension of trading as of 1/4/2009.
4554	- Transfer to the "Under Supervision" Category as of 6/4/2009.
4559	- Transfer to the "Under Supervision" Category as of 21/4/2009.
4576	- Suspension of trading as of 14/7/2009.
4603	- Suspension of trading as of 1/12/2009.
4616	- Suspension of trading as of 25/2/2010.
4626	- Suspension of trading as of 1/4/2010.
4627	- Suspension of trading as of 1/4/2010.
4628	- Suspension of trading as of 1/4/2010.
4629	- Transfer to the Under Supervision Category as of 12/4/2010.
4630	- Transfer to the Under Supervision Category as of 12/4/2010.
4651	- Suspension of trading as of 1/6/2010.
4652	- Suspension of trading as of 1/6/2010.
4690	- Transfer to Surveillance category as of 4/4/2006.
4702	- Suspension of trading as of 1/12/2010.
4723	- Suspension of trading as of 31/1/2011.
4726	- Suspension of trading as of 1/3/2011.
4750	- Transfer to the "Under Surveillance Category" from 8/4/2011.
4764	- Suspension of trading as of 20/5/2011.
4765	- Suspension of trading as of 20/5/2011.
4795	- The final gross (pre-tax) dividend is € 0.30 per share and subject to withholding tax on the full dividend amount, i.e. 0,45 per share, for those shareholders liable to withholding tax, in accordance with the applicable tax law provisions.
4808	- Suspension of trading as of 6/9/2011.
4814	- Transfer to the Low Dispersion Category as of 30/5/2011.
4815	- Transfer to the Low Dispersion Category as of 30/5/2011.
4816	- Transfer to the Low Dispersion Category as of 30/5/2011.
4817	- Transfer to the Low Dispersion Category as of 30/5/2011.
4820	- Transfer to the Low Dispersion category as of 18/4/2008.
4822	- Transfer to the Low Dispersion category as of 30/5/2011.
4823	- Transfer to the Low Dispersion category as of 4/4/2006.
4824	- Transfer to the Low Dispersion category as of 18/4/2008.
4825	- Transfer to the Low Dispersion category as of 8/4/2011.
4827	- Transfer to the Low Dispersion category as of 5/5/2010.
4828	- Transfer to the Low Dispersion category as of 4/4/2006.
4830	- Suspension of trading as of 10/10/2011.
4833	- Transfer to Surveillance category from 6/5/2010.
4844	- Transfer to the Surveillance category from 8/4/2011.
4845	- Transfer to the Surveillance Category as of 25/11/2011.
4846	- Transfer to the Surveillance Category as of 25/11/2011.
4847	- Transfer to the Surveillance Category as of 3/7/2009.

## Shares' Notes

Code	Note text
4848	- Suspension of trading as of 6/12/2011.
4854	- Transfer to the Surveillance Category as of 29/12/2011.
4855	- Transfer to the Surveillance Category as of 29/12/2011.
4856	- Transfer to the Surveillance Category as of 29/12/2011.
4860	- Suspension of trading as of 30/3/2012.
4864	- Suspension of trading as of 30/3/2012.
4865	- Suspension of trading as of 2/4/2012.
4867	- Suspension of trading as of 2/4/2012.
4868	- Suspension of trading as of 2/4/2012.
4869	- Suspension of trading as of 2/4/2012.
4875	- Suspension of trading as of 2/4/2012.
4876	- Suspension of trading as of 3/4/2012.
4879	- Transfer to the Surveillance Category as of 10/4/2012.
4880	- Transfer to the Surveillance Category as of 10/4/2012.
4881	- Transfer to the Surveillance Category as of 10/4/2012.
4882	- Transfer to the Surveillance Category as of 10/4/2012.
4884	- Transfer to the Surveillance Category as of 10/4/2012.
4885	- Transfer to the Surveillance Category as of 10/4/2012.
4886	- Transfer to the Surveillance Category as of 10/4/2012.
4887	- Transfer to the Surveillance Category as of 10/4/2012.
4888	- Transfer to the Surveillance Category as of 10/4/2012.
4889	- Transfer to the Surveillance Category as of 10/4/2012.
4893	- Transfer to the Low Dispersion category as of 28/5/2012.
4894	- Transfer to the Low Dispersion category as of 28/5/2012.
4911	- Lift of suspension from 30/7/2012.
4912	- Transfer to the Surveillance Category as of 31/7/2012.
4913	- Suspension of trading as of 30/8/2012.
4914	- Suspension of trading as of 31/8/2012.
4918	- Suspension of trading as of 31/8/2012.
4920	- Suspension of trading as of 31/8/2012.
4921	- Suspension of trading as of 31/8/2012.
4929	- Suspension of trading as of 1/10/2012.
4937	- Transfer to the UNDER DELETION category as of 30/11/2012.
4938	- Transfer to the UNDER DELETION category as of 30/11/2012.
4939	- Suspension of trading as of 30/11/2012.
4941	- Transfer to the Low Dispersion category as of 3/12/2012.
4944	- Transfer to the Surveillance Category as of 7/12/2012.
4951	- Suspension of trading as of 19/3/2013.
4953	- Suspension of trading as of 2/4/2013.
4954	- Suspension of trading as of 2/4/2013.
4955	- Transfer to the Surveillance Category as from 5/4/2013.
4956	- Transfer to the Surveillance Category as from 5/4/2013.
4957	- Transfer to the Surveillance Category as from 5/4/2013.
4958	- Transfer to the Surveillance Category as from 5/4/2013.
4959	- Transfer to the Surveillance Category as from 5/4/2013.
4960	- Transfer to the Surveillance Category as from 5/4/2013.
4961	- Transfer to the Surveillance Category as from 5/4/2013.
4962	- Transfer to the Surveillance Category as from 5/4/2013.
4963	- Transfer to the Under Deletion Category as from 5/4/2013.
4971	- Suspension of trading as of 3/6/2013.
4977	- Transfer to the "Under Surveillance Category" from 11/6/2013.
4978	- Transfer to the Under Supervision Category as of 11/6/2013.
4982	- Suspension of trading as of 1/12/2011.

## Shares' Notes

Code	Note text
4983	- Transfer to the Surveillance Category as of 5/4/2013.
4985	- Transfer to the "Under Surveillance Category" from 8/4/2011.
4986	- Transfer to the Low Dispersion category as of 30/5/2011.
4988	- As of June 7, 2013, the name of the company "DUTY FREE SHOPS A CORPORATION OPERATING DFS AND LARGE AND SMALL SCALE INDUSTRIAL OPERATIONS, TECHNIC" on ATHEX changes to "FOLLI FOLLIE S.A.".
4993	- Suspension of trading as of 21/6/2013 (15:18).
4997	- Transfer to the Under Supervision Category as of 21/12/2009. - The 6,870,053 new (CB) shares, resulting from the recent share capital increase through a rights issue, are not yet admitted to trading on the ATHEX.
4998	- Suspension of trading as of 26/7/2013.
5002	- Suspension of trading as of 30/08/2013.
5003	- Suspension of trading as of 30/08/2013.
5004	- Suspension of trading as of 30/08/2013.
5006	- Transfer to the Surveillance Category as of 3/9/2013.

## Securities Blocks Details

Securities	Block Volume	Price	Block Trade Value	Time of approval	Note
MLS MULTIMEDIA SA (CR)	86,000	2.93	251,980.00	12:30:50	20
OPAP (CR)	100,000	8.03	802,500.00	13:41:27	20
OPAP (CR)	250,000	8.04	2,008,750.00	14:02:31	20
PIRAEUS BANK (W)	500,000	0.735	367,500.00	14:29:08	20
PIRAEUS BANK (W)	1,244,334	0.735	914,585.49	14:53:00	20
PIRAEUS BANK (W)	1,000,000	0.731	731,000.00	15:33:52	20
OTE (CR)	200,000	7.47	1,494,000.00	16:23:41	20

## Blocks Notes

2 - SPOT 1 or SPOT 2 Packet	11 - Total Assets > 500 bil
3 - Block with Short Selling	12 - Sell Offer through Athex
4 - Buy to Close Block	13 - Forced Sale of NMOE
6 - Simultaneous Constitution	14 - Restoration Packet
7 - Repurchase Agreement	15 - Market Maker Packet
8 - Dispersion's Achievement (Not Listed)	16 - Short Selling
9 - Dispersion's Achievement (Listed)	18 - SPOT 1 Packet
10 - Share Capital Majority of Greek State (> 50 bil)	20 - Method 6-1 Packet

Shares Rights Details

Occured date	Exercise from	Exercise until	Trading until	Rights	Price min	Price max	Closing price	Last Bid	Last Ask	Volume	Trades	Transactions Value
-----------------	------------------	-------------------	------------------	--------	--------------	--------------	------------------	----------	----------	--------	--------	-----------------------

No Rights Transactions.

---

**Shares Short Selling**

---

Securities	Transactions Value	Transactions Volume	% of Total Volume	Short Covering Trans. Value	Short Covering Volume	% of Total Volume
ALPHA BANK (CR)	---	---	---	167.70	300	0.01

---

**Short Selling Notes**

---

[1] - The Hellenic Capital Markets Commission (HCMC) has decided to prohibit the short selling only in relation to shares of credit institutions admitted to trading on the Athens Exchange and comprising the FTSE/ATHEX - CSE Banking Index, for a period of three(3) months and more specifically from February1, 2013 until April 30, 2013.

## Stock Borrowing

Securities	Stock Borrowing through Helex (volume)	Stock Borrowing through OTC (volume) [1]	Totals [2]
ALAPIS (CR)	---	6,250	6,250
ALPHA BANK (CR)	684,500	4,361,835	5,046,335
ATE (CR)	---	69,000	69,000
BANK OF CYPRUS (CR)	---	102,899	102,899
CC HBC AG (CR)	23,800	75,941	99,741
EUROBANK ERGASIAS (CR)	22,920	68,406	91,326
EUROBANK PROPERTIES REIC (CR)	6,000	31,215	37,215
EYDAP S.A. (CR)	2,400	5,000	7,400
FOLLI FOLLIE (CR)	3,000	15,508	18,508
GEK TERNA (CR)	500	---	500
HELLENIC EXCHANGES (CR)	23,500	---	23,500
HELLENIC PETROLEUM (CR)	22,200	269	22,469
INTRALOT (CR)	24,000	---	24,000
JUMBO SA (CR)	9,900	3,525	13,425
LAMDA DEVELOPMENT SA (CR)	---	10,377	10,377
MARFIN INVESTMENT GROUP (CR)	---	733,474	733,474
METKA (CR)	7,400	---	7,400
MOTOR OIL (CR)	1,700	---	1,700
MYTILINEOS HOLDINGS (CR)	16,000	---	16,000
NATIONAL BANK (CR)	182,300	1,329,519	1,511,819
NBGAM ETF	10,000	---	10,000
NBGAM ETF GREECE & TURKEY 30	3,500	---	3,500
OPAP (CR)	93,200	2,067	95,267
OTE (CR)	102,300	109,116	211,416
P.P.A. S.A. (CR)	300	---	300
PIRAEUS BANK (CR)	20,200	266,976	287,176
PPC (CR)	58,200	---	58,200
TERNA ENERGY (CR)	5,400	---	5,400
TITAN CEMENT (CR)	7,200	55,390	62,590
VIOHALCO (CB)	5,200	---	5,200

## Stock Borrowing Notes

[1] - The information concerning OTC Stock Borrowing Transactions is based on the statements of the Dematerialised Securities System (DSS) operators involved and refers to volumes that have been cleared and registered up until the previous working day.



Shares Forced Sales

Securities	Transaction s Volume	Number of Trades	Transactions Value	Note
No Forced Transactions.				

Forced Sales Notes

- 1 - Normal Forced Sale.
- 2 - Forced Sales of Fixed Registered Shares.
- 3 - Forced Sales of Remaining Stock Fractions.

**Forced Sales Registered Shares**

Securities	Start Date	End Date	Initial Volume	Remaining Volume	Date	Avg price (day)	Avg price (period)	Number of Trades	Transactions Volume	Transactions Value
------------	------------	----------	-------------------	---------------------	------	--------------------	-----------------------	---------------------	------------------------	-----------------------

No Fixed Registered Shares Forced Sales.

**Forced Sales Notes**

According to Decision 1/380/04.05.2008 of the Hellenic Republic Capital Market Commission, the certificated registered shares that have not been deposited to the issuer for dematerialisation, will be auctioned in the Athens Exchange by the supervising issuer. Forced sales procedure is held according to Article 99A of the Athens Exchange Rulebook. The average price of the period is calculated by dividing the Total transactions value by the Total volume and includes all the transactions made until the current date.

## Exchange Traded Funds (ETFs) Characteristics

	Transactions Date (T)	Creation / Redemption	Units (T-1)	New Units (T-1)	Redemptio n Units (T-	Units (T) [1]	Fund Assets [2]	Net Unit Price	Dividen d per	Dividend Date
NBGAM ETF ΓΔ Χ.Α.	23/09/2013	25,000	294,878	---	---	294,878	3,220,999.00	10.9232	---	27/10/2011
ALPHA ETF FTSE Athex Large Cap	23/09/2013	50,000	5,848,618	---	---	5,848,618	19,522,600.00	3.3380	0.05	01/07/2013
NBGAM ETF GREECE & TURKEY 30	23/09/2013	25,000	388,550	---	---	388,550	3,162,500.00	8.1392	---	27/10/2011

## ETFs Notes

[1] - Units (T) = Units (T-1) + New Units (T-1) - Redemption Units (T-1)

[2] - The Creation / Redemption Units of T-1 are included.

Corporate Bonds

Num Listed Bonds	Nominal price	Issue price	Today's Rate	Exp. Date	Duration (years)	Note	Coupon attached		Trading	Corporate Bonds	Price min	Price max	Closing price	Previous closing price/date	Volume	Transactions Value	Last order		Date	ear min	Year max
							Common	Preferred									Price	Buy / Sell			
39,711,653	1.00	1.00	6.00	30/06/2016	5	4786	5	---	1	BANK OF CYPRUS PUBLIC CO. LTD (Convert. to CR sh.)	---	---	---	---	---	---	10.0000	B	13/03/2013	100.0000	100.0000
428,521,983	1.00	1.00	6.50	30/06/2016	5	4785	5	---	1	BANK OF CYPRUS PUBLIC CO. LTD (Convert. to CR sh.)	---	---	---	20.5000	14/03/2013	---	21.0000	B	15/03/2013	19.5000	30.0000
4,150,176	4.77	4.77	5.00	19/03/2015	5	---	15	---	1	MARFIN INVESTMENT GROUP S.A. (Conver to CR shar)	---	---	---	60.0000	20/09/2013	---	22.0000	B	23/09/2013	0.5000	70.0000
73,088,145	1.00	1.00	5.50	30/06/2014	5	4574	9	---	1	BANK OF CYPRUS PUBLIC CO. LTD (Convert. to CR sh.)	---	---	---	20.0000	08/03/2013	---	21.5000	B	15/03/2013	20.0000	26.0000
1,794,284	12.49	9.77	5.80	12/07/2015	8	---	13	---	1	NIREUS S.A. (Convertible to CR shares)	---	---	---	12.0000	26/07/2013	---	25.0001	B	23/09/2013	11.0000	15.0000
27,283,632	1.00	1.00	1.32	30/06/2018	10	---	11	---	1	BANK OF CYPRUS PUBLIC CO. LTD (Convert. to CR sh.)	---	---	---	33.0000	13/12/2012	---	35.0000	B	15/03/2013	33.0000	33.0000
212,849,265	1.00	1.00	6.30	29/07/2020	7	---	1	---	1	MARFIN INVESTMENT GROUP S.A. SERIES B (BOND)	---	---	---	0.8500	23/08/2013	---	0.9000	B	23/09/2013	0.8500	0.8500
2,156,827	1.00	1.00	7.00	29/07/2019	6	---	1	---	1	MARFIN INVESTMENT GROUP S.A. SERIES A (BOND)	---	---	---	1.0000	23/08/2013	---	0.9500	B	23/09/2013	1.0000	1.0000

4574 - The bonds are of indefinite duration.

4785 - The bonds are of indefinite duration.

4786 - The bonds are of indefinite duration. The Bond's par value, issue price and trading prices are expressed in USA Dollars, whereas its Transactions Value is expressed in Euros.

Corporate Bonds Notes

Transactions Volume = (Pieces) \* (Nominal Price). Transactions Value = (Pieces) \* (Nominal Price) \* (price %) + (Accrued interest).

The price of a Bond is stated as a percentage (%) of Bond's Nominal Price.

Nominal Price in Euros (€), except if it is noted differently.

Government Bonds

Number Listed Bonds	Nominal price	Today's Rate	Accrued Interest Calc	Exp. Date [1]	Duration (years)	Note	Coupons Date	Curr. coupon value	Trading Unit	Government Bonds	Price min	Price max	Closing price	Previous closing price/date	Volume	Transactions Value	Price	Last order Buy / Sell	Date
2,658,781,973	1.00	4.30	Actual/Actual	24/02/2023	11	---	24/02	4.30	1	GGB-FXD-240223-11Y-2.000-1.00	---	---	---	---	---	---	---	---	---
2,658,781,973	1.00	4.30	Actual/Actual	24/02/2024	12	---	24/02	4.30	1	GGB-FXD-240224-12Y-2.000-1.00	---	---	---	---	---	---	---	---	---
2,658,781,973	1.00	4.30	Actual/Actual	24/02/2025	13	---	24/02	4.30	1	GGB-FXD-240225-13Y-2.000-1.00	---	---	---	---	---	---	---	---	---
2,658,781,973	1.00	4.30	Actual/Actual	24/02/2026	14	---	24/02	4.30	1	GGB-FXD-240226-14Y-2.000-1.00	---	---	---	---	---	---	---	---	---
2,658,781,973	1.00	4.30	Actual/Actual	24/02/2027	15	---	24/02	4.30	1	GGB-FXD-240227-15Y-2.000-1.00	---	---	---	---	---	---	---	---	---
2,836,034,104	1.00	4.30	Actual/Actual	24/02/2028	16	---	24/02	4.30	1	GGB-FXD-240228-16Y-2.000-1.00	---	---	---	---	---	---	---	---	---
2,836,034,104	1.00	4.30	Actual/Actual	24/02/2029	17	---	24/02	4.30	1	GGB-FXD-240229-17Y-2.000-1.00	---	---	---	---	---	---	---	---	---
2,836,034,104	1.00	4.30	Actual/Actual	24/02/2030	18	---	24/02	4.30	1	GGB-FXD-240230-18Y-2.000-1.00	---	---	---	---	---	---	---	---	---
2,836,034,104	1.00	4.30	Actual/Actual	24/02/2031	19	---	24/02	4.30	1	GGB-FXD-240231-19Y-2.000-1.00	---	---	---	---	---	---	---	---	---
2,836,034,104	1.00	4.30	Actual/Actual	24/02/2032	20	---	24/02	4.30	1	GGB-FXD-240232-20Y-2.000-1.00	---	---	---	---	---	---	---	---	---
2,836,034,104	1.00	4.30	Actual/Actual	24/02/2033	21	---	24/02	4.30	1	GGB-FXD-240233-21Y-2.000-1.00	---	---	---	---	---	---	---	---	---
2,836,034,104	1.00	4.30	Actual/Actual	24/02/2034	22	---	24/02	4.30	1	GGB-FXD-240234-22Y-2.000-1.00	---	---	---	---	---	---	---	---	---
2,836,034,104	1.00	4.30	Actual/Actual	24/02/2035	23	---	24/02	4.30	1	GGB-FXD-240235-23Y-2.000-1.00	---	---	---	---	---	---	---	---	---
2,836,034,104	1.00	4.30	Actual/Actual	24/02/2036	24	---	24/02	4.30	1	GGB-FXD-240236-24Y-2.000-1.00	---	---	---	---	---	---	---	---	---
2,836,034,104	1.00	4.30	Actual/Actual	24/02/2037	25	---	24/02	4.30	1	GGB-FXD-240237-25Y-2.000-1.00	---	---	---	---	---	---	---	---	---
2,836,034,104	1.00	4.30	Actual/Actual	24/02/2038	26	---	24/02	4.30	1	GGB-FXD-240238-26Y-2.000-1.00	---	---	---	---	---	---	---	---	---
2,836,034,104	1.00	4.30	Actual/Actual	24/02/2039	27	---	24/02	4.30	1	GGB-FXD-240239-27Y-2.000-1.00	---	---	---	---	---	---	---	---	---
2,836,034,104	1.00	4.30	Actual/Actual	24/02/2040	28	---	24/02	4.30	1	GGB-FXD-240240-28Y-2.000-1.00	---	---	---	---	---	---	---	---	---
2,836,034,104	1.00	4.30	Actual/Actual	24/02/2041	29	---	24/02	4.30	1	GGB-FXD-240241-29Y-2.000-1.00	---	---	---	---	---	---	---	---	---
2,836,034,104	1.00	4.30	Actual/Actual	24/02/2042	30	---	24/02	4.30	1	GGB-FXD-240242-30Y-2.000-1.00	---	---	---	---	---	---	---	---	---
1,500,000	1,000.00	0.97	FLR Actual/360	10/08/2014	5	---	10/02 - 10/08	---	1	GGB-FRN-100814-05Y-1.762-1000.00	---	---	---	---	---	---	---	---	---
5,187,186	1,000.00	1.60	FLR Actual/360	21/05/2014	5	---	21/11 - 21/05	---	1	GGB-FRN-210514-05Y-2.734-1000.00	---	---	---	---	---	---	---	---	---
78,300	1,000.00	1.16	FLR Actual/360	23/07/2014	5	---	23/01 - 23/07	---	1	GGB-FRN-230714-05Y-2.018-1000.00	---	---	---	---	---	---	---	---	---

Government Bonds Notes

Transactions Volume = (Pieces) \* (Nominal Price). Transactions Value = (Pieces) \* (Nominal Price) \* (price %) + (Accrued interest).  
The Value of current coupon for the issues with NV 0.01 euro refers to NV 100 euros  
FLR: Floating Interest Rate.  
[1] - The Expiration Date of the interest bearing period and the Date for coupon payment.

Bonds in Circulation	Currency / Min nominal traded Value	Coupons Payment Date	Current Coupon Value	Note	Coupon Attached	Trading Unit	Issue Date	Duration (years)	Today's Interest	A.I.C in days	Bonds	Last price of previous days	Last Outcry in Cash (euro) Price	Buy / Sell	Trades in Pieces	Life min	Life Max
Bonds of International Organizations																	
1,000,000	EUR / 1000	21/07	---	---	8	1	21/07/2006	10	5.0 FLR	360	EUROPEAN INVESTMENT BANK BOND	97.50	16/04/2007	---	---	---	---
Corporate Bonds in Foreign Currency and Euro																	
103,746	GBP / 10	01/12	0.25	---	54	1	01/12/1930	98	2.5	360	National Mortgage Bank	2.27	05/02/1996	2.27	S	05/02/1996	2.27
0	GBP / 10	01/12	0.25	---	56	1	01/12/1928	100	2.5	360	National Mortgage Bank	---	---	---	---	---	---

Government Bonds Notes

A.I.C: Accrued Interest Calculation base.  
FLR: Floating Interest Rate.  
The minimum tradeable Nominal Value for all Demeterialised Government Titles is 100 Euros.

State Banks Bonds (one year maturity)

Number Listed Bonds	Nominal value	Initial Rate	Current Rate	Annual Interest	Issue Date	Note	State Banks Bonds	Trading Unit	Yearly Renewals	Last Outcry in Cash (euro) Price	Buy / Sell	Volume
342,560	130.41	2.35	3.92	0.00	31/01/2005	---	H.I.D.B.	1	9	100.00	B	---
16,015	1,211.71	3.65	2.47	0.00	30/11/2006	---	H.I.D.B.	1	7	---	---	---
2,446	1,154.00	4.90	2.47	28.96	31/05/2008	---	H.I.D.B.	1	6	---	---	---
171,117	1,163.28	5.50	2.47	29.19	31/05/2008	---	H.I.D.B.	1	6	---	---	---
63,787	1,129.20	5.45	2.47	30.88	31/08/2008	---	H.I.D.B.	1	6	---	---	---
5,358	1,108.96	5.45	2.47	27.83	31/10/2008	---	H.I.D.B.	1	5	---	---	---
1,045	1,129.74	5.50	2.47	28.35	31/10/2008	---	H.I.D.B.	1	5	---	---	---
76,077	1,132.45	5.75	2.47	28.42	31/10/2008	---	H.I.D.B.	1	5	---	---	---

Bonds Notes

The annual renewal of H.I.D.B. Bonds is free of taxes (net rate).  
For Bonds issue until 31/07/2013 the accrued interest is capitalized.

Athex & ATHEXClear Members List

Member Name			Stock Market			Derivatives Market			ATHEXClear Member		
Address	Phone	Fax	Market Member	Remote Member	Market Maker	Proprietary	Market Maker	Agent	General Clearing	Direct Clearing	Non Clearing
A. SARRIS SECURITIES S.A.			a								
6, DRAGATSANIOU STR. ATHINA	(210)-3367700	(210)-3312324									
AGRICULTURAL BANK OF GREECE S.A.							a			a	
, 23 PANEPISTIMIOU ATHINA	(210)-3298400	(210)-3298322									
ALPHA FINANCE INVESTMENT SERVICES S.A.			a		a		a			a	
5, MERLIN STR. ATHINA	(210)-3677400	(210)-3311193									
ALPHA BANK A.E.						a			a		
40, STADIOU STR ATHINA	(210)-3265546	(210)-3265811									
	(210)-3260000	(210)-3264116									
ARGUS STOCKBROKERS LTD			a	a							
12-14, KENNEDY AVE, S. 303 NICOSIA	(+35722)-22717000	(+35722)-22717070									
ATHENAIKI BROKERAGE FIRM S.A.			a								
33, STADIOU STR. ATHINA	(210)-3254764	(210)-3254767									
ATLANTIC SECURITIES LIMITED			a	a							
37, PRODROMOU STR. NICOSIA	(+35722)-445400	(+35722)-661914									
ATLAS SECURITIES S.A			a			a					a
14 - 16, VERVENON STR.& 125 MICHALAKOPOULOU STR. ATHINA	(210)-3363300	(210)-3238925									
ATTICA BANK S.A.									a		
54, AKADIMIAS STR. ATHINA	(210)-3390757	(210)-3646090									
23, OMIROU STR. ATHINA	(210)-3669000	(210)-3669410									
AXIA VENTURES GROUP LTD			a	a							
10, G. KRANIDIOTI NICOSIA	+357 22 742000	+357 22 742001									
AXON SECURITIES S.A.			a			a					a
48, STADIOU ATHINA	(210)-3363800	(210)-3243903									
BANK OF CYPRUS PUBLIC COMPANY LTD									a		
, 51,STASINOU (AG. PARASKEVI, STROVOLOS) NICOSIA	(0035722)-121883	(0035722)-336258									
170, ALEXANDRAS AVE ATHINA	(210)-6477708	(210)-6477709									
BETA SECURITIES S.A.			a		a	a	a			a	
, BRAILA & 29 ALEXANDRAS AVE ATHINA	(210)-6478900	(210)-6410139									
BNP PARIBAS SECURITIES SERVICES									a		
94, VAS. SOFIAS AVE ATHINA	(210)-7468500	(210)-7468579									
CAPITAL SECURITIES S.A.			a			a					a
58, MITROPOLEOS STR. ATHINA	(210)-3369700	(210)-3369820									
CFS SECURITIES & INVESTMENT SERVICES S.A.			a		a			a		a	
3, STADIOU STR. ATHINA	(210)-3360800	(210)-3311854									
CITIGROUP GLOBAL MARKET LTD			a	a							
, CITIGROUP CENTRE, CANADA SQUARE, CANARY WHART LONDON	002079864000	002079862266									
CO-OPERATIVE CENTRAL BANK LTD			a	a							
8, GRIGORI AFXENTIOU STR. NICOSIA	(+35722)-743300	(+35722)-672083									
CREDIT AGRICOLE CHEUVREUX S.A.			a	a							
, 9 QUAI PAUL DOUMER PARIS	33 (0) 1 41 89 70 00										
CREDIT SUISSE SECURITIES (EUROPE) LIMITED			a	a							
, ONE CABOT SQUARE LONDON	+44 20 7888 8888	+44 20 7888 1600									
CYCLOS SECURITIES S.A.			a		a	a				a	
39, PANEPISTIMIOU STR. ATHINA	(210)-3364300	(210)-3239122									
D.A. TSEKOURAS SEC. S.A.			a								
3, PESMAZOGLOU STR. ATHINA	(210)-3214406	(210)-3211997									
DEUTSCHE BANK S.A.			a	a							
70, THEODOR-HEUSS-ALLEE FRANKFURT	0049 69 910 00	0049 69 910 34 225									
DYNAMIC SECURITIES			a					a		a	
6 - 10, CHAR. TRIKOUPi STR. ATHINA	(210)-3677700	(210)-3677777									
EL. PETROPOULAKIS SECURITIES S.A.			a					a			a
9, ARISTIDOU STR. ATHINA	(210)-3213928	(210)-3216810									
EUROBANK EQUITIES S.A.			a		a		a			a	
10, FILELLINON STR. ATHINA	(210)-3720000	(210)-3720001									
EUROBANK ERGASIAS S.A.									a		
8, OTHONOS STR. ATHINA	(210)-3337000	(210)-3233866									
	(210)-3337969	(210)-3245916									
EUROCORP SECURITIES S.A.			a			a				a	
14, FILIKIS ETAIRIAS SQ. ATHINA	(210)-7263500	(210)-7263666									
EUOTRUST BROKERAGE S.A.			a								
13-15, SOPHOCLEOUS STR. ATHINA	(210)-3363100	(210)-3238334									



Athex & ATHEXClear Members List

Member Name			Stock Market			Derivatives Market			ATHEXClear Member		
Address	Phone	Fax	Market Member	Remote Member	Market Maker	Proprietary	Market Maker	Agent	General Clearing	Direct Clearing	Non Clearing
EUROXX SECURITIES S.A.			a			a				a	
7, PALAIOLOGOU STR. CHALANDRI	(210)-6879400	(210)-6879401									
G.A. PERVANAS SECURITIES & INVESTMENT SERVICES CO S.A.			a			a					a
7 - 9, SOPHOCLEOUS STR. ATHINA	(210)-3251875	(210)-3210291									
GENERAL BANK OF GREECE S.A.									a		
87-89, ERMOY ATHINA	(210)-6976072	(210)-6976079									
, 109-111, MESOGEION AVE. ATHINA	(210)-6975000	(210)-6975706									
GLOBAL CAPITAL SECURITIES AND FINANCIAL SERVICES LTD			a	a							
5, LEMESOU AVE. LEMESOS CYPRUS	(+35722)-710710	(+35722)-339332									
GUARDIAN TRUST SECURITIES S.A			a		a	a					a
15, FILELLINON STR. ATHINA	(210)-3220402	(210)-3220498									
HELLENIC AMERICAN SEC. S.A.			a			a					
6, EVRIPIDOU STR. ATHINA	(210)-3311100	(210)-3215968									
HELLENIC BANK (INVESTMENTS) LTD			a	a							
31, KYRIAKOY MATSI AVE. NICOSIA	(+35722)-500100	(+35722)-500110									
HSBC BANK PLC									a		
109-111, MESOGION AVE ATHINA	(210)-6961507	(210)-6929310									
INDEX SECURITIES S.A.			a								
6, DRAGATSANIOU STR. ATHINA	(210)-3213920	(210)-3213216									
INTERSEC S.A.						a				a	
80-88, SYGROU AVE ATHINA	(210)-9203000	(210)-9203052									
INVESTMENT BANK OF GREECE S.A.			a		a		a		a		
32, AIGEIALIAS MAROUSI	(210) 8173000	(210) 8173101									
24B, KIFISSIAS AVE MAROUSI	(210)-8171800	(210)-8171889									
J. CHR. MAVRIKIS SECURITIES S.A.			a								
5, SOPHOCLEOUS STR. ATHINA	(210)-3213949	(210)-3217767									
KAPPA SECURITIES S.A.			a			a					a
15, VALAORITOU STR. ATHINA	(210)-3610371	(210)-3641002									
KYPROU SECURITIES S.A.			a		a	a					a
26, HALKIDONOS & FIDIPPIDOY STR. ATHINA	(210)-8701000	(210)-8701049									
LAIKI FINANCIAL SERVICES LTD			a	a							
26, CLR HOUSE, VIRONOS AVE. NICOSIA	(+35722)-898600	(+35722)-680953									
LEON DEPOLAS SECURITIES S.A.			a					a			a
1, CHR. LADA STR. ATHINA	(210)-3213286	(210)-3211618									
MAGNA TRUST SECURITIES S.A			a					a			a
9, FIDIOU STR. ATHINA	(210)-3327503	(210)-3327599									
MEGA EQUITY SECURITIES & FINANCIAL SERVICES LTD			a	a							
42-44, GRIBA DIGENI AV. NICOSIA	(+35722)-711711	(+35722)-711811									
MERIT SECURITIES S.A			a		a	a				a	
38, VAS. KONSTANTINOY STR. ATHINA	(210)-3671800	(210)-3671830									
MERRILL LYNCH			a	a							
2, KING EDWARD STREET LONDON	(+4420)-79952000	(+4420)-79954525									
METOCHIKI SECURITIES S.A.			a								
3, G. GENNADIOY STR. ATHINA	(210)-3306700	(210)-3306709									
MIDAS BROKERAGE S.A.			a								
5, SOPHOCLEOUS STR. ATHINA	(210)-3253203	(210)-3253205									
N. CHRYSOCHOIDIS STOCK BROKERAGE I.S.S.A.			a					a		a	
7 - 9, SOPHOCLEOUS STR. ATHINA	(210)-3213913	(210)-3216115									
N. SARROS SECURITIES S.A.						a					
7-9, SOPHOCLEOUS STR. ATHINA	(210)-3705600	(210)-3219992									
NATIONAL BANK OF GREECE / FORMER PROBANK			a								
10, AMERIKIS STR. ATHINA	(210)-3392631	(210)-3392646									
NATIONAL BANK OF GREECE S.A.							a		a		
86, AILOU STR. ATHINA	(210)-3341000	(210)-3228187									
68, AKADIMIAS STR. ATHINA	(210)-3328817	(210)-3328678									
NBG SECURITIES S.A.			a		a		a				a
68, AKADIMIAS STR. ATHINA	(210)-3328500	(210)-3328565									
NEW PROTON BANK S.A.			a			a				a	
20, ESLIN & AMALIADOS ATHINA	210 6970000	210 6970111									
NUNTIOUS SECURITIES S.A			a					a			a
6, DRAGATSANIOU STR. ATHINA	(210)-3350599	(210)-3254846									
OLYMPIA SECURITIES S.A			a								
46B, A. METAXA STR. GLYFADA	(210)-3702500	(210)-3702520									

## Athex &amp; ATHEXClear Members List

Member Name			Stock Market			Derivatives Market			ATHEXClear Member		
Address	Phone	Fax	Market Member	Remote Member	Market Maker	Proprietary	Market Maker	Agent	General Clearing	Direct Clearing	Non Clearing
ORANGE PARTNERS SECURITIES S.A			a								
5, TZORTZ STR. ATHINA	(210)-3300009	(210)-3305240									
PANTELAKIS SEC. S.A.			a			a					a
109-111, MESOGION AVE. ATHINA	(210)-6965000	(210)-6929550									
PEGASUS BROKERAGE FIRM S.A			a			a					
17, VALAORITOU STR. ATHINA	(210)-3670700	(210)-3670760									
PIRAEUS BANK S.A.								a	a		
4, AMERIKIS STR. ATHINA	(210)-3335000	(210)-3335079									
4, AMERIKIS STR ATHINA	(210)-3335918	(210)-3254207									
PIRAEUS SECURITIES S.A.			a				a			a	
10, STADIOU STR. ATHINA	(210)-3354100	(210)-3233814									
PRELIUM SECURITIES & INVESTMENT SERVICES S.A.			a			a					a
, KIFISSIAS AVE & 1 DAVAKI STR ATHINA	(210)-3677000	(210)-6920403									
PROCHOICE SECURITIES LTD			a	a							
57, SPYROU KYPRIANOY NICOSIA	+357-24-661192	+357-24-662464									
SHARELINK SECURITIES & FINANCIAL SERVICES LTD			a	a							
6, ELLINAS HOUSE, THEOTOKI STR. NICOSIA	(+35722)-554200	(+35722)-750852									
SOCIETE GENERALE S.A.			a	a		a					
17, COURS VALMY PUTEAUX - LA DEFENSE PARIS	(+33) 142134754	(+33) 142135697									
240-242, KIFISIAS AVE ATHINA	(210)-6790161	(210)-6728828									
SOLIDUS SECURITIES S.A			a			a				a	
64, LOUIZIS RIANKOUR STR. ATHINA	(210)-6925500	(210)-6985421									
SOTIRIADIS SECURITIES S.A.			a								
7, VALAORITOU STR. ATHINA	(210)-3636943	(210)-3601943									
ST. EM. LAVRENTAKIS SECURITIES S.A.			a			a					a
7 - 9, SOPHOCLEOUS STR. ATHINA	(210)-3213336	(210)-3246572									
THE CYPRUS INVESTMENT AND SECURITIES CORPORATION LIMITED (CISCO)			a	a							
4, EVROU STR. (EUROLIFE HOUSE) NICOSIA	(+35722)-881800	(+35722)-881801									
UBS LIMITED			a	a							
1, FINSBURY AVENUE LONDON	(+4420)-79013333	(+4420)-79012345									
Z.G. PORTALAKIS INVESTMENT SERVICES S.A.			a								
8, PESMAZOGLOU STR. ATHINA	(210)-3214830	(210)-3212024									
KARAMANOF SECURITIES & INV. SERVICES S.A.			a					a		a	
2, SQ. ST THEODORON ATHINA	(210)-3212947	(210)-3217088									

## List of Stocks under Market Making operations

Securities Market Maker	Stock Category	
	Start Market Making	End Market Making
<b>BANK OF CYPRUS (CR)</b>	<b>Under Suspension</b>	
EUROBANK EQUITIES S.A.	23/10/2012	22/10/2013
INVESTMENT BANK OF GREECE S.A.	02/01/2013	01/01/2014
<b>COCA - COLA HBC (CR)</b>	<b>Under Suspension</b>	
EUROBANK EQUITIES S.A.	23/10/2012	22/10/2013
INVESTMENT BANK OF GREECE S.A.	08/01/2013	07/01/2014
<b>CYPRUS POPULAR BANK (CR)</b>	<b>Under Suspension</b>	
PIRAEUS SECURITIES S.A.	02/02/2013	01/02/2014
<b>ALPHA BANK (CR)</b>	<b>Main Market</b>	
EUROBANK EQUITIES S.A.	24/10/2012	23/10/2013
INVESTMENT BANK OF GREECE S.A.	08/01/2013	07/01/2014
MERIT SECURITIES S.A	03/09/2013	02/09/2014
NBG SECURITIES S.A.	15/01/2013	14/01/2014
PIRAEUS SECURITIES S.A.	28/05/2013	27/05/2014
<b>ALUMIL (CR)</b>	<b>Main Market</b>	
BETA SECURITIES S.A.	18/07/2013	17/07/2014
<b>CC HBC AG (CR)</b>	<b>Main Market</b>	
NBG SECURITIES S.A.	29/04/2013	28/04/2014
<b>ELLAKTOR (CR)</b>	<b>Main Market</b>	
EUROBANK EQUITIES S.A.	01/06/2013	31/05/2014
INVESTMENT BANK OF GREECE S.A.	02/01/2013	01/01/2014
NBG SECURITIES S.A.	25/06/2013	24/06/2014
<b>ELTON SA (CR)</b>	<b>Main Market</b>	
BETA SECURITIES S.A.	03/09/2013	02/09/2014
<b>EUROBANK ERGASIAS (CR)</b>	<b>Main Market</b>	
ALPHA FINANCE INVESTMENT SERVICES S.A.	08/01/2013	07/01/2014
EUROBANK EQUITIES S.A.	01/06/2013	31/05/2014
INVESTMENT BANK OF GREECE S.A.	08/01/2013	07/01/2014
<b>FRIGOGLASS SA (CR)</b>	<b>Main Market</b>	
EUROBANK EQUITIES S.A.	23/08/2013	22/08/2014
<b>GEK TERNA (CR)</b>	<b>Main Market</b>	
INVESTMENT BANK OF GREECE S.A.	02/01/2013	01/01/2014
<b>GR. SARANTIS SA (CR)</b>	<b>Main Market</b>	
BETA SECURITIES S.A.	14/05/2013	13/05/2014
<b>HELLENIC EXCHANGES (CR)</b>	<b>Main Market</b>	
EUROBANK EQUITIES S.A.	01/06/2013	31/05/2014
INVESTMENT BANK OF GREECE S.A.	02/01/2013	01/01/2014
NBG SECURITIES S.A.	25/06/2013	24/06/2014
<b>INTRACOM CONSTR. (CR)</b>	<b>Main Market</b>	
MERIT SECURITIES S.A	27/12/2012	26/12/2013
<b>INTRALOT (CR)</b>	<b>Main Market</b>	
EUROBANK EQUITIES S.A.	01/06/2013	31/05/2014
INVESTMENT BANK OF GREECE S.A.	02/01/2013	01/01/2014
<b>MARFIN INVESTMENT GROUP (CR)</b>	<b>Main Market</b>	
PIRAEUS SECURITIES S.A.	02/02/2013	01/02/2014
<b>MLS MULTIMEDIA SA (CR)</b>	<b>Main Market</b>	
BETA SECURITIES S.A.	18/07/2013	17/07/2014
<b>MOTOR OIL (CR)</b>	<b>Main Market</b>	
EUROBANK EQUITIES S.A.	23/10/2012	22/10/2013
<b>MYTILINEOS HOLDINGS (CR)</b>	<b>Main Market</b>	
INVESTMENT BANK OF GREECE S.A.	02/01/2013	01/01/2014
NBG SECURITIES S.A.	25/06/2013	24/06/2014
<b>NATIONAL BANK (CR)</b>	<b>Main Market</b>	
ALPHA FINANCE INVESTMENT SERVICES S.A.	08/01/2013	07/01/2014
EUROBANK EQUITIES S.A.	24/10/2012	23/10/2013
INVESTMENT BANK OF GREECE S.A.	08/01/2013	07/01/2014
MERIT SECURITIES S.A	03/09/2013	02/09/2014
NBG SECURITIES S.A.	28/02/2013	27/02/2014
PIRAEUS SECURITIES S.A.	08/09/2013	07/09/2014
<b>OPAP (CR)</b>	<b>Main Market</b>	
ALPHA FINANCE INVESTMENT SERVICES S.A.	08/01/2013	07/01/2014
EUROBANK EQUITIES S.A.	24/10/2012	23/10/2013
INVESTMENT BANK OF GREECE S.A.	08/01/2013	07/01/2014
NBG SECURITIES S.A.	15/01/2013	14/01/2014

## List of Stocks under Market Making operations

Securities	Stock Category	
	Start Market Making	End Market Making
Market Maker		
<b>OTE (CR)</b>	<b>Main Market</b>	
ALPHA FINANCE INVESTMENT SERVICES S.A.	08/01/2013	07/01/2014
EUROBANK EQUITIES S.A.	24/10/2012	23/10/2013
INVESTMENT BANK OF GREECE S.A.	08/01/2013	07/01/2014
NBG SECURITIES S.A.	01/12/2012	30/11/2013
PIRAEUS SECURITIES S.A.	08/09/2013	07/09/2014
<b>PETROPOULOS PETROS (CR)</b>	<b>Main Market</b>	
BETA SECURITIES S.A.	28/05/2013	27/05/2014
<b>PIRAEUS BANK (CR)</b>	<b>Main Market</b>	
EUROBANK EQUITIES S.A.	23/10/2012	22/10/2013
INVESTMENT BANK OF GREECE S.A.	08/01/2013	07/01/2014
MERIT SECURITIES S.A.	16/09/2013	15/09/2014
NBG SECURITIES S.A.	02/06/2013	01/06/2014
PIRAEUS SECURITIES S.A.	16/02/2013	15/02/2014
<b>PPC (CR)</b>	<b>Main Market</b>	
ALPHA FINANCE INVESTMENT SERVICES S.A.	08/01/2013	07/01/2014
EUROBANK EQUITIES S.A.	23/10/2012	22/10/2013
INVESTMENT BANK OF GREECE S.A.	08/01/2013	07/01/2014
NBG SECURITIES S.A.	26/03/2013	25/03/2014
<b>S.KANAKIS SA (CR)</b>	<b>Main Market</b>	
BETA SECURITIES S.A.	01/10/2012	30/09/2013
<b>TITAN CEMENT (CR)</b>	<b>Main Market</b>	
EUROBANK EQUITIES S.A.	23/10/2012	22/10/2013
<b>VIOHALCO (CB)</b>	<b>Main Market</b>	
ALPHA FINANCE INVESTMENT SERVICES S.A.	11/02/2013	10/03/2014
EUROBANK EQUITIES S.A.	20/01/2013	19/01/2014
MERIT SECURITIES S.A.	13/12/2012	12/12/2013

Underlying Asset				Derivatives Market																		
Price max	Price min	Closing price	change	Delivery Month	Open price	Price max	Price min	Last price	Closing price	Last Bid	Last Ask	Settlement price	change	Life high	Life low	Trades	Volume	change	Value	change	Open Interest	change
FTSE/Athex Large Cap				(Trade Unit: 1 Index Point x 5€, Cash Settlement)																		
338.19	332.84	336.61	0.59%	October 2013	336.25	339.50	333.50	338.00	338.25	25@338.25	6@338.75	338.25	0.45%	354.00	292.25	415	3,938	-56.71%	6,628,956.25	-57.61%	44,743	-0.52%
				November 2013	339.50	339.50	334.25	336.25	337.75	30@335.00	1@343.00	337.75	-0.22%	354.00	319.00	3	22	-33.33%	36,803.75	-35.62%	377	5.60%
				December 2013	338.25	341.00	336.00	339.75	341.00	5@339.75	---	341.00	-0.51%	356.75	276.75	35	289	-52.47%	487,616.25	-53.86%	3,790	-2.70%
				March 2014	---	---	---	---	---	---	---	---	---	---	---	---	---	---	---	---	---	---
				June 2014	---	---	---	---	---	---	---	---	---	---	---	---	---	---	---	---	---	---
				September 2014	---	---	---	---	---	---	---	---	---	---	---	---	---	---	---	---	---	---

Underlying Asset				Derivatives Market																		
Price max	Price min	Closing price	change	Delivery Month	Open price	Price max	Price min	Last price	Closing price	Last Bid	Last Ask	Settlement price	change	Life high	Life low	Trades	Volume	change	Value	change	Open Interest	change
ALPHA BANK (CR)				(Contract Size: 100 Securities, Physical Delivery)																		
0.572	0.552	0.561	1.81%	December 2013	0.566	0.570	0.554	0.560	0.570	80@0.560	5@0.565	0.570	0.71%	0.620	0.437	89	1,482	-74.69%	83,393.20	-75.65%	17,218	3.21%
				March 2014	---	---	---	---	0.567	---	---	0.567	0.71%	0.591	0.591	---	---	---	---	---	100	0.00%
				June 2014	0.561	0.561	0.561	0.561	0.564	---	---	0.564	0.89%	0.587	0.561	1	100	-75.00%	5,610.00	-75.98%	500	25.00%
				September 2014	---	---	---	---	---	---	---	---	---	---	---	---	---	---	---	---	---	---
CC HBC AG (CR)				(Contract Size: 100 Securities, Physical Delivery)																		
21.99	21.53	21.86	-0.18%	December 2013	21.77	21.90	21.55	21.88	21.96	1@21.80	10@21.90	21.96	-0.18%	23.80	17.90	34	168	-42.07%	365,376.00	-42.83%	337	22.10%
				March 2014	---	---	---	---	---	---	---	---	---	---	---	---	---	---	---	---	---	---
				June 2014	---	---	---	---	---	---	---	---	---	---	---	---	---	---	---	---	---	---
				September 2014	---	---	---	---	---	---	---	---	---	---	---	---	---	---	---	---	---	---
CORINTH PIPEWORKS SA (CR)				(Contract Size: 100 Securities, Physical Delivery)																		
2.03	1.98	2.00	0.50%	December 2013	---	---	---	---	2.02	1@1.93	12@2.08	2.02	0.50%	2.16	1.99	---	---	-100.00%	---	-100.00%	591	0.00%
				March 2014	---	---	---	---	---	---	---	---	---	---	---	---	---	---	---	---	---	---
				June 2014	---	---	---	---	---	---	---	---	---	---	---	---	---	---	---	---	---	---
				September 2014	---	---	---	---	---	---	---	---	---	---	---	---	---	---	---	---	---	---
ELLAKTOR (CR)				(Contract Size: 100 Securities, Physical Delivery)																		
2.35	2.22	2.27	-3.40%	December 2013	2.30	2.30	2.23	2.28	2.24	2@2.28	15@2.31	2.24	-3.45%	2.38	2.11	41	247	-83.28%	55,878.00	-83.90%	3,758	-0.87%
				March 2014	---	---	---	---	2.19	---	---	2.19	-3.52%	2.23	2.22	---	---	---	---	---	170	0.00%
				June 2014	---	---	---	---	---	---	---	---	---	---	---	---	---	---	---	---	---	---
				September 2014	---	---	---	---	---	---	---	---	---	---	---	---	---	---	---	---	---	---
EUROBANK ERGASIAS (CR)				(Contract Size: 100 Securities, Physical Delivery)																		
0.620	0.605	0.610	0.33%	December 2013	0.610	0.624	0.610	0.615	0.628	5@0.614	1@0.635	0.628	0.32%	0.700	0.600	3	7	-89.23%	430.90	-89.41%	751	0.81%
				March 2014	---	---	---	---	0.617	---	---	0.617	0.33%	0.673	0.619	---	---	---	---	---	---	---
				June 2014	---	---	---	---	---	---	---	---	---	---	---	---	---	---	---	---	---	---
				September 2014	---	---	---	---	---	---	---	---	---	---	---	---	---	---	---	---	---	---
EUROBANK PROPERTIES REIC (CR)				(Contract Size: 100 Securities, Physical Delivery)																		
7.34	7.13	7.15	-4.67%	December 2013	7.27	7.31	7.19	7.23	7.15	2@7.16	18@7.35	7.15	-4.67%	7.48	6.83	32	74	174.07%	53,638.00	170.01%	151	2.03%
				March 2014	---	---	---	---	---	---	---	---	---	---	---	---	---	---	---	---	---	---
				June 2014	---	---	---	---	---	---	---	---	---	---	---	---	---	---	---	---	---	---
				September 2014	---	---	---	---	---	---	---	---	---	---	---	---	---	---	---	---	---	---
EYDAP S.A. (CR)				(Contract Size: 100 Securities, Physical Delivery)																		
8.18	7.92	8.18	2.25%	December 2013	8.00	8.20	7.95	8.11	8.13	1@8.09	12@8.18	8.13	3.04%	8.20	6.31	62	170	-30.89%	136,839.00	-29.39%	886	6.75%
				March 2014	---	---	---	---	---	---	---	---	---	---	---	---	---	---	---	---	---	---
				June 2014	---	---	---	---	---	---	---	---	---	---	---	---	---	---	---	---	---	---
				September 2014	---	---	---	---	---	---	---	---	---	---	---	---	---	---	---	---	---	---
FOLLI FOLLIE (CR)				(Contract Size: 100 Securities, Physical Delivery)																		
19.16	18.20	19.00	0.53%	December 2013	18.91	19.01	16.00	16.00	18.68	5@17.12	1@18.95	18.68	0.54%	19.33	16.00	23	66	164.00%	122,392.00	160.28%	120	3.45%
				March 2014	---	---	---	---	---	---	---	---	---	---	---	---	---	---	---	---	---	---
				June 2014	---	---	---	---	---	---	---	---	---	---	---	---	---	---	---	---	---	---
				September 2014	---	---	---	---	---	---	---	---	---	---	---	---	---	---	---	---	---	---

Underlying Asset				Derivatives Market																		
Price max	Price min	Closing price	change	Delivery Month	Open price	Price max	Price min	Last price	Closing price	Last Bid	Last Ask	Settlement price	change	Life high	Life low	Trades	Volume	change	Value	change	Open Interest	change
FRIGOGLASS SA (CR)				(Contract Size: 100 Securities, Physical Delivery)																		
5.28	5.00	5.20	-0.76%	December 2013	5.18	5.21	5.05	5.21	5.21	1@5.08	1@5.28	5.21	-0.57%	5.45	5.03	11	50	-48.45%	25,801.00	-50.43%	307	0.66%
				March 2014	---	---	---	---	---	---	---	---	---	---	---	---	---	---	---	---	---	---
				June 2014	---	---	---	---	---	---	---	---	---	---	---	---	---	---	---	---	---	---
				September 2014	---	---	---	---	---	---	---	---	---	---	---	---	---	---	---	---	---	---
GEK TERNA (CR)				(Contract Size: 100 Securities, Physical Delivery)																		
2.28	2.20	2.24	-1.75%	December 2013	2.26	2.29	2.21	2.29	2.29	3@2.25	3@2.29	2.29	-0.87%	2.51	1.57	25	71	-95.87%	15,940.00	-96.03%	15,573	0.08%
				March 2014	---	---	---	---	2.29	---	---	2.29	-0.87%	2.50	2.26	---	---	---	---	---	15,895	0.00%
				June 2014	---	---	---	---	---	---	---	---	---	---	---	---	---	---	---	---	---	---
				September 2014	---	---	---	---	---	---	---	---	---	---	---	---	---	---	---	---	---	---
HELLENIC EXCHANGES (CR)				(Contract Size: 100 Securities, Physical Delivery)																		
6.23	6.10	6.18	-0.48%	December 2013	6.23	6.23	6.11	6.15	6.16	6@6.14	1@6.19	6.16	-0.48%	6.85	4.01	15	100	-82.96%	61,574.00	-83.38%	3,422	-1.58%
				March 2014	---	---	---	---	---	---	---	---	---	---	---	---	---	---	---	---	---	---
				June 2014	---	---	---	---	---	---	---	---	---	---	---	---	---	---	---	---	---	---
				September 2014	---	---	---	---	---	---	---	---	---	---	---	---	---	---	---	---	---	---
HELLENIC PETROLEUM (CR)				(Contract Size: 100 Securities, Physical Delivery)																		
7.69	7.50	7.68	1.59%	December 2013	7.60	7.66	7.56	7.65	7.64	5@7.65	1@7.77	7.64	1.60%	8.00	6.61	10	41	-88.32%	31,244.00	-88.63%	1,670	0.78%
				March 2014	---	---	---	---	---	---	---	---	---	---	---	---	---	---	---	---	---	---
				June 2014	---	---	---	---	---	---	---	---	---	---	---	---	---	---	---	---	---	---
				September 2014	---	---	---	---	---	---	---	---	---	---	---	---	---	---	---	---	---	---
INTRALOT (CR)				(Contract Size: 100 Securities, Physical Delivery)																		
1.71	1.65	1.66	-2.35%	December 2013	1.71	1.71	1.66	1.68	1.68	6@1.67	6@1.71	1.68	-1.18%	1.77	1.57	11	174	-64.05%	29,380.00	-64.94%	2,780	5.74%
				March 2014	---	---	---	---	---	---	---	---	---	---	---	---	---	---	---	---	---	---
				June 2014	---	---	---	---	---	---	---	---	---	---	---	---	---	---	---	---	---	---
				September 2014	---	---	---	---	---	---	---	---	---	---	---	---	---	---	---	---	---	---
JUMBO SA (CR)				(Contract Size: 100 Securities, Physical Delivery)																		
8.80	8.42	8.70	1.16%	December 2013	8.80	8.80	8.47	8.51	8.91	2@8.43	9@8.75	8.91	1.14%	9.14	8.06	29	102	-41.38%	88,050.00	-43.35%	155	-6.06%
				March 2014	---	---	---	---	---	---	---	---	---	---	---	---	---	---	---	---	---	---
				June 2014	---	---	---	---	---	---	---	---	---	---	---	---	---	---	---	---	---	---
				September 2014	---	---	---	---	---	---	---	---	---	---	---	---	---	---	---	---	---	---
MARFIN INVESTMENT GROUP (CR)				(Contract Size: 100 Securities, Physical Delivery)																		
0.357	0.348	0.356	1.71%	December 2013	0.348	0.355	0.345	0.355	0.357	10@0.350	2@0.360	0.357	1.71%	0.382	0.317	16	241	-91.52%	8,409.60	-91.93%	16,896	-0.55%
				March 2014	---	---	---	---	---	---	---	---	---	---	---	---	---	---	---	---	---	---
				June 2014	---	---	---	---	---	---	---	---	---	---	---	---	---	---	---	---	---	---
				September 2014	---	---	---	---	---	---	---	---	---	---	---	---	---	---	---	---	---	---
METKA (CR)				(Contract Size: 100 Securities, Physical Delivery)																		
11.96	11.48	11.74	-1.18%	December 2013	11.88	11.88	11.61	11.68	11.74	1@11.54	2@11.84	11.74	-1.18%	12.34	10.52	6	37	-55.95%	43,355.00	-57.06%	257	-2.28%
				March 2014	---	---	---	---	---	---	---	---	---	---	---	---	---	---	---	---	---	---
				June 2014	---	---	---	---	---	---	---	---	---	---	---	---	---	---	---	---	---	---
				September 2014	---	---	---	---	---	---	---	---	---	---	---	---	---	---	---	---	---	---

Underlying Asset				Derivatives Market																		
Price max	Price min	Closing price	change	Delivery Month	Open price	Price max	Price min	Last price	Closing price	Last Bid	Last Ask	Settlement price	change	Life high	Life low	Trades	Volume	change	Value	change	Open Interest	change
MOTOR OIL (CR)				(Contract Size: 100 Securities, Physical Delivery)																		
7.75	7.60	7.63	-1.42%	December 2013	7.69	7.69	7.64	7.67	7.65	2@7.65	1@7.84	7.65	-1.42%	8.00	7.40	9	26	-66.67%	19,933.00	-67.55%	373	2.19%
				March 2014	---	---	---	---	---	---	---	---	---	---	---	---	---	---	---	---	---	---
				June 2014	---	---	---	---	---	---	---	---	---	---	---	---	---	---	---	---	---	---
				September 2014	---	---	---	---	---	---	---	---	---	---	---	---	---	---	---	---	---	---
MYTILINEOS HOLDINGS (CR)				(Contract Size: 100 Securities, Physical Delivery)																		
4.92	4.76	4.82	-1.43%	December 2013	4.92	4.92	4.79	4.82	4.79	1@4.82	3@4.88	4.79	-1.44%	5.28	3.70	31	110	-93.76%	53,186.00	-93.90%	5,491	-0.69%
				March 2014	4.80	4.80	4.80	4.80	4.80	---	---	4.80	-1.44%	5.03	4.43	1	50	-50.00%	24,000.00	-51.07%	1,450	-3.33%
				June 2014	---	---	---	---	---	---	---	---	---	---	---	---	---	---	---	---	---	---
				September 2014	---	---	---	---	---	---	---	---	---	---	---	---	---	---	---	---	---	---
NATIONAL BANK (CR)				(Contract Size: 100 Securities, Physical Delivery)																		
3.07	2.96	2.99	0.00%	December 2013	3.03	3.06	2.96	2.99	3.01	13@3.00	5@3.01	3.01	0.00%	3.34	2.31	132	1,120	-59.17%	336,898.00	-60.53%	5,295	2.70%
				March 2014	---	---	---	---	---	---	---	---	---	---	---	---	---	---	---	---	---	---
				June 2014	---	---	---	---	---	---	---	---	---	---	---	---	---	---	---	---	---	---
				September 2014	---	---	---	---	---	---	---	---	---	---	---	---	---	---	---	---	---	---
OPAP (CR)				(Contract Size: 100 Securities, Physical Delivery)																		
8.17	8.00	8.17	1.87%	December 2013	8.11	8.15	8.02	8.15	8.13	60@8.13	1@8.16	8.13	0.87%	8.24	6.31	61	341	-58.67%	276,190.00	-58.71%	2,446	4.26%
				March 2014	---	---	---	---	---	---	---	---	---	---	---	---	---	---	---	---	---	---
				June 2014	---	---	---	---	---	---	---	---	---	---	---	---	---	---	---	---	---	---
				September 2014	---	---	---	---	---	---	---	---	---	---	---	---	---	---	---	---	---	---
OTE (CR)				(Contract Size: 100 Securities, Physical Delivery)																		
7.57	7.29	7.56	5.00%	December 2013	7.28	7.56	7.28	7.55	7.54	2@7.54	30@7.56	7.54	4.14%	7.84	4.40	210	1,622	-55.74%	1,206,143.00	-56.56%	7,081	2.31%
				March 2014	---	---	---	---	7.52	---	---	7.52	4.16%	7.78	6.40	---	---	---	---	---	---	---
				June 2014	---	---	---	---	---	---	---	---	---	---	---	---	---	---	---	---	---	---
				September 2014	---	---	---	---	---	---	---	---	---	---	---	---	---	---	---	---	---	---
P.P.A. S.A. (CR)				(Contract Size: 100 Securities, Physical Delivery)																		
17.14	16.86	17.01	0.06%	December 2013	---	---	---	---	17.14	5@15.34	1@17.36	17.14	0.06%	17.90	16.84	---	---	-100.00%	---	-100.00%	589	0.00%
				March 2014	---	---	---	---	---	---	---	---	---	---	---	---	---	---	---	---	---	---
				June 2014	---	---	---	---	---	---	---	---	---	---	---	---	---	---	---	---	---	---
				September 2014	---	---	---	---	---	---	---	---	---	---	---	---	---	---	---	---	---	---
PIRAEUS BANK (CR)				(Contract Size: 100 Securities, Physical Delivery)																		
1.29	1.23	1.24	0.00%	December 2013	1.26	1.29	1.24	1.24	1.26	16@1.24	15@1.25	1.26	0.00%	1.41	0.231	109	2,741	-48.61%	346,344.00	-50.22%	18,836	5.90%
				March 2014	---	---	---	---	1.26	---	---	1.26	0.00%	1.37	0.924	---	---	---	---	---	250	0.00%
				June 2014	---	---	---	---	---	---	---	---	---	---	---	---	---	---	---	---	---	---
				September 2014	---	---	---	---	---	---	---	---	---	---	---	---	---	---	---	---	---	---
PPC (CR)				(Contract Size: 100 Securities, Physical Delivery)																		
8.03	7.70	7.96	-0.50%	December 2013	7.95	8.00	7.75	7.91	7.93	27@7.91	3@7.93	7.93	-0.25%	8.56	5.08	135	709	-62.86%	558,572.00	-63.88%	3,634	3.00%
				March 2014	7.97	7.97	7.97	7.97	7.97	---	---	7.97	0.89%	8.15	6.30	1	20	0.00%	15,940.00	-0.13%	80	33.33%
				June 2014	---	---	---	---	---	---	---	---	---	---	---	---	---	---	---	---	---	---
				September 2014	---	---	---	---	---	---	---	---	---	---	---	---	---	---	---	---	---	---



Underlying Asset				Derivatives Market																		
Price max	Price min	Closing price	change	Delivery Month	Open price	Price max	Price min	Last price	Closing price	Last Bid	Last Ask	Settlement price	change	Life high	Life low	Trades	Volume	change	Value	change	Open Interest	change
SIDENOR (CR)				(Contract Size: 100 Securities, Physical Delivery)																		
1.54	1.51	1.51	-1.31%	December 2013	1.54	1.55	1.52	1.52	1.52	2@1.50	3@1.55	1.52	-1.30%	1.76	1.49	3	18	-95.88%	2,771.00	-96.05%	1,348	-0.66%
				March 2014	---	---	---	---	---	---	---	---	---	---	---	---	---	---	---	---	---	---
				June 2014	---	---	---	---	---	---	---	---	---	---	---	---	---	---	---	---	---	---
				September 2014	---	---	---	---	---	---	---	---	---	---	---	---	---	---	---	---	---	---
TERNA ENERGY (CR)				(Contract Size: 100 Securities, Physical Delivery)																		
3.11	3.01	3.06	-1.29%	December 2013	3.09	3.09	3.08	3.08	3.08	1@3.05	1@3.11	3.08	-2.84%	3.22	3.00	3	24	-81.10%	7,406.00	-81.56%	2,137	0.19%
				March 2014	---	---	---	---	---	---	---	---	---	---	---	---	---	---	---	---	---	---
				June 2014	---	---	---	---	---	---	---	---	---	---	---	---	---	---	---	---	---	---
				September 2014	---	---	---	---	---	---	---	---	---	---	---	---	---	---	---	---	---	---
TITAN CEMENT (CR)				(Contract Size: 100 Securities, Physical Delivery)																		
17.55	16.90	17.30	-1.43%	December 2013	17.40	17.40	16.85	17.20	17.48	21@17.15	1@17.30	17.48	-1.41%	17.99	15.02	19	47	-7.84%	80,764.00	-10.19%	130	-5.80%
				March 2014	---	---	---	---	---	---	---	---	---	---	---	---	---	---	---	---	---	---
				June 2014	---	---	---	---	---	---	---	---	---	---	---	---	---	---	---	---	---	---
				September 2014	---	---	---	---	---	---	---	---	---	---	---	---	---	---	---	---	---	---
VIOHALCO (CB)				(Contract Size: 100 Securities, Physical Delivery)																		
4.29	4.11	4.28	1.91%	December 2013	4.23	4.26	4.11	4.26	4.29	1@4.25	1@4.30	4.29	1.90%	4.53	3.89	10	25	-88.32%	10,444.00	-88.48%	522	1.56%
				March 2014	---	---	---	---	---	---	---	---	---	---	---	---	---	---	---	---	---	---
				June 2014	---	---	---	---	---	---	---	---	---	---	---	---	---	---	---	---	---	---
				September 2014	---	---	---	---	---	---	---	---	---	---	---	---	---	---	---	---	---	---

FTSE/Athex Large Cap

(Trade Unit: 1 Index Point x 5€ - Exercicio Style: European, Cash Settlement)

Call Options																	Put Options																	
October 2013								November 2013							Other Months		October 2013								November 2013							Other Months		
Exerise Price	Open price	Price max	Price min	Last price	Closing price	Volume	Open Interest	Open price	Price max	Price min	Last price	Closing price	Volume	Open Interest	Volume	Open Interest	Open price	Price max	Price min	Last price	Closing price	Volume	Open Interest	Open price	Price max	Price min	Last price	Closing price	Volume	Open Interest	Volume	Open Interest	Exerise Price	
215	-	-	-	-	-	-	-	121.00	121.00	121.00	121.00	122.00	35	65			-	-	-	-	-	-	-	-	-	-	-	-	-	-			215	
240	-	-	-	-	-	-	-	-	-	-	-	-	-	-			-	-	-	-	-	-	-	-	-	-	-	-	-	-			240	
255	-	-	-	-	-	-	-	-	-	-	-	-	-	-			-	-	-	-	-	-	-	-	-	-	-	-	-	-			255	
260	-	-	-	-	-	-	-	-	-	-	-	-	-	-			-	-	-	-	-	-	-	-	-	-	-	-	-	-			260	
265	-	-	-	-	-	-	-	-	-	-	-	-	-	-			-	-	-	-	-	-	-	-	-	-	-	-	-	-			265	
270	-	-	-	-	-	-	-	-	-	-	-	-	-	-			-	-	-	-	-	-	-	-	-	-	-	-	-	-			270	
275	-	-	-	-	-	-	-	-	-	-	-	-	-	-			-	-	-	-	-	-	-	-	-	-	-	-	-	-			275	
280	-	-	-	-	-	-	-	-	-	-	-	-	-	-			-	-	-	-	-	-	-	-	-	-	-	-	-	-			280	
285	-	-	-	-	-	-	-	-	-	-	-	-	-	-			-	-	-	-	0.87	-	1	-	-	-	-	-	-	-			285	
290	-	-	-	-	-	-	-	-	-	-	-	-	-	-			-	-	-	-	-	-	-	-	-	-	-	-	-	-			290	
295	-	-	-	-	-	-	-	-	-	-	-	-	-	-			-	-	-	-	1.80	-	6	-	-	-	-	-	-	-			295	
300	-	-	-	-	-	-	-	-	-	-	-	-	-	-			-	-	-	-	2.40	-	13	-	-	-	-	-	-	-			300	
305	-	-	-	-	36.50	-	15	-	-	-	-	-	-	-			-	-	-	-	3.30	-	8	-	-	-	-	-	-	-			305	
310	-	-	-	-	32.50	-	20	-	-	-	-	-	-	-			-	-	-	-	4.30	-	5	-	-	-	-	-	-	-			310	
315	28.00	28.00	28.00	28.00	28.75	38	435	-	-	-	-	-	-	-			-	-	-	-	5.60	-	57	-	-	-	-	-	-	-			315	
320	-	-	-	-	-	-	-	-	-	-	-	-	-	-			-	-	-	-	7.10	-	2	-	-	-	13.50	-	1			320		
325	-	-	-	-	-	-	-	-	-	-	-	-	-	-			9.00	9.00	9.00	9.00	8.90	32	54	-	-	-	-	-	-	-			325	
330	18.25	18.25	18.25	18.25	19.00	1	1	-	-	-	-	-	-	-			10.00	10.00	10.00	10.00	10.75	1	41	-	-	-	-	-	-	-			330	
335	16.00	16.00	16.00	16.00	16.50	1	63	-	-	-	-	-	-	-			15.00	16.00	12.50	13.50	13.25	185	809	-	-	-	-	-	-	-			335	
340	12.75	14.00	8.90	9.00	14.00	112	282	-	-	-	-	-	-	-			17.00	18.50	17.00	18.50	15.75	70	72	25.00	26.00	23.00	23.00	23.00	404	404			340	
345	-	-	-	-	11.75	-	191	-	-	-	-	-	-	-			20.00	21.75	20.00	21.75	18.50	52	362	-	-	-	-	-	-	-			345	
350	-	-	-	-	9.90	-	50	-	-	-	-	-	-	-			-	-	-	-	21.75	-	47	-	-	-	-	-	-	-			350	
355	-	-	-	-	8.30	-	20	-	-	-	-	-	-	-			-	-	-	-	-	-	-	-	-	-	-	-	-	-			355	
360	-	-	-	-	6.80	-	3	-	-	-	-	-	-	-			-	-	-	-	28.50	-	6	-	-	-	-	-	-	-			360	
365	-	-	-	-	5.60	-	1	-	-	-	-	-	-	-			-	-	-	-	32.25	-	10	-	-	-	-	-	-	-			365	
370	-	-	-	-	-	-	-	-	-	-	-	-	-	-			-	-	-	-	-	-	-	-	-	-	-	-	-	-			370	
375	-	-	-	-	-	-	-	-	-	-	-	-	-	-			-	-	-	-	-	-	-	-	-	-	-	-	-	-			375	
380	-	-	-	-	-	-	-	-	-	-	-	-	-	-			-	-	-	-	-	-	-	-	-	-	-	-	-	-			380	
385	-	-	-	-	-	-	-	-	-	-	-	-	-	-			-	-	-	-	-	-	-	-	-	-	-	-	-	-			385	
390	-	-	-	-	-	-	-	-	-	-	-	-	-	-			-	-	-	-	-	-	-	-	-	-	-	-	-	-			390	
395	-	-	-	-	-	-	-	-	-	-	-	-	-	-			-	-	-	-	-	-	-	-	-	-	-	-	-	-			395	
400	-	-	-	-	-	-	-	-	-	-	-	-	-	-			-	-	-	-	-	-	-	-	-	-	-	-	-	-			400	
405	-	-	-	-	-	-	-	-	-	-	-	-	-	-			-	-	-	-	-	-	-	-	-	-	-	-	-	-			405	
410	-	-	-	-	-	-	-	-	-	-	-	-	-	-			-	-	-	-	-	-	-	-	-	-	-	-	-	-			410	
415	-	-	-	-	-	-	-	-	-	-	-	-	-	-			-	-	-	-	-	-	-	-	-	-	-	-	-	-			415	
440	-	-	-	-	-	-	-	-	-	-	-	-	-	-			-	-	-	-	102.00	-	30	103.00	103.00	103.00	103.00	103.00	27	27			440	

FTSE/Athex Large Cap

(Trade Unit: 1 Index Point x 5€ - Exercise Style: European, Cash Settlement)

Call Options																	Put Options																		
Exercise Price	October 2013							November 2013							Other Months		October 2013							November 2013							Other Months		Exercise Price		
	Open price	Price max	Price min	Last price	Closing price	Volume	Open Interest	Open price	Price max	Price min	Last price	Closing price	Volume	Open Interest	Volume	Open Interest	Open price	Price max	Price min	Last price	Closing price	Volume	Open Interest	Open price	Price max	Price min	Last price	Closing price	Volume	Open Interest	Volume	Open Interest			
1,500	-	-	-	-	-	-	-	-	-	-	-	-	-	-	-	-	-	-	-	-	-	-	-	-	-	-	-	-	-	-	-	1,500			
Totals:						152	1,081							35	65	0	4							340	1,523							431	432	0	568
Nominal Transactions Value:						253,575.00								37,625.00		0.00								572,225.00								746,200.00		0.00	
Number of Trades:						14								1		0								31								26		0	

ALPHA BANK (CR)

(Contract Size: 100 Securities, Exercise Style: American, Physical Delivery)

Call Options																	Put Options																			
October 2013								November 2013								Other Months		October 2013								November 2013								Other Months		
Exercise Price	Open price	Price max	Price min	Last price	Closing price	Volume	Open Interest	Open price	Price max	Price min	Last price	Closing price	Volume	Open Interest	Volume	Open Interest	Open price	Price max	Price min	Last price	Closing price	Volume	Open Interest	Open price	Price max	Price min	Last price	Closing price	Volume	Open Interest	Volume	Open Interest	Exercise Price			
0.100						-	-							-	-							-	-						-	-			0.100			
0.200						-	-							-	-							-	-						-	-			0.200			
0.300						-	-							-	-							-	-						-	-			0.300			
0.350						-	-							-	-							-	-						-	-			0.350			
0.400						-	-							-	-							-	-						-	-			0.400			
0.450						-	-							-	-							-	-						-	-			0.450			
0.500						-	-							-	-							-	-						-	-			0.500			
0.550						-	-							-	-							-	-						-	-			0.550			
0.600						-	-							-	-							-	-						-	-			0.600			
0.650						-	-							-	-							-	-						-	-			0.650			
0.700						-	-							-	-							-	-						-	-			0.700			
0.800						-	-							-	-							-	-						-	-			0.800			
0.900						-	-							-	-							-	-						-	-			0.900			
1.00						-	-							-	-							-	-						-	-			1.00			
1.10						-	-							-	-							-	-						-	-			1.10			
1.20						-	-							-	-							-	-						-	-			1.20			
1.30						-	-							-	-							-	-						-	-			1.30			
1.40						-	-							-	-							-	-						-	-			1.40			
1.50						-	-							-	-							-	-						-	-			1.50			
1.60						-	-							-	-							-	-						-	-			1.60			
1.70						-	-							-	-							-	-						-	-			1.70			
1.80						-	-							-	-							-	-						-	-			1.80			
Totals:						0	0							0	0	0	0							0	0							0	0			
Nominal Transactions Value:						0.00								0.00		0.00	0.00							0.00								0.00				
Number of Trades:						0								0		0	0							0								0				

NATIONAL BANK (CR)

(Contract Size: 100 Securities, Exercise Style: American, Physical Delivery)

Call Options																	Put Options																			
October 2013								November 2013								Other Months		October 2013								November 2013								Other Months		
Exercise Price	Open price	Price max	Price min	Last price	Closing price	Volume	Open Interest	Open price	Price max	Price min	Last price	Closing price	Volume	Open Interest	Volume	Open Interest	Open price	Price max	Price min	Last price	Closing price	Volume	Open Interest	Open price	Price max	Price min	Last price	Closing price	Volume	Open Interest	Volume	Open Interest	Exercise Price			
0.300						-	-							-	-							-	-						-	-			0.300			
0.400						-	-							-	-							-	-						-	-			0.400			
0.500						-	-							-	-							-	-						-	-			0.500			
0.600						-	-							-	-							-	-						-	-			0.600			
0.700						-	-							-	-							-	-						-	-			0.700			
0.800						-	-							-	-							-	-						-	-			0.800			
0.900						-	-							-	-							-	-						-	-			0.900			
1.00						-	-							-	-							-	-						-	-			1.00			
1.10						-	-							-	-							-	-						-	-			1.10			
1.20						-	-							-	-							-	-						-	-			1.20			
1.30						-	-							-	-							-	-						-	-			1.30			
1.40						-	-							-	-							-	-						-	-			1.40			
1.50						-	-							-	-							-	-						-	-			1.50			
1.60						-	-							-	-							-	-						-	-			1.60			
1.70						-	-							-	-							-	-						-	-			1.70			
1.80						-	-							-	-							-	-						-	-			1.80			
1.90						-	-							-	-							-	-						-	-			1.90			
2.00						-	-							-	-							-	-						-	-			2.00			
2.20						-	-							-	-							-	-						-	-			2.20			
2.40						-	-							-	-							0.007	-	20					-	-			2.40			
2.60						-	-							-	-							0.028	-	20					-	-			2.60			
2.70						-	-							-	-							-	-						-	-			2.70			
2.80						-	-							-	-							0.076	-	20					-	-			2.80			
2.90						-	-							-	-							-	-						-	-			2.90			
3.00					0.158	-	120							-	-							-	-						-	-			3.00			
3.10	0.120	0.120	0.120	0.120	0.116	1	1							-	-							-	-						-	-			3.10			
3.20					0.083	-	20					0.152	-	20								-	-						-	-			3.20			
3.30						-	-							-	-							-	-						-	-			3.30			
3.40					0.040	-	1							-	-							-	-						-	-			3.40			
3.60					0.017	-	1							-	-							-	-						-	-			3.60			
3.80						-	-							-	-							-	-						-	-			3.80			
4.00						-	-							-	-							-	-						-	-			4.00			
4.40						-	-							-	-							-	-						-	-			4.40			
Totals:						1	143							0	20	0	0							0	60							0	0			
Nominal Transactions Value:						310.00						0.00						0.00						0.00						0.00						
Number of Trades:						1						0						0						0						0						

OPAP (CR)

(Contract Size: 100 Securities, Exercise Style: American, Physical Delivery)

Call Options																Put Options																				
October 2013								November 2013								Other Months		October 2013								November 2013								Other Months		
Exercise Price	Open price	Price max	Price min	Last price	Closing price	Volume	Open Interest	Open price	Price max	Price min	Last price	Closing price	Volume	Open Interest	Volume	Open Interest	Open price	Price max	Price min	Last price	Closing price	Volume	Open Interest	Open price	Price max	Price min	Last price	Closing price	Volume	Open Interest	Volume	Open Interest	Exercise Price			
1.00						-	-							-	-							-	-									1.00				
4.00						-	-							-	-							-	-									4.00				
4.40						-	-							-	-							-	-									4.40				
4.80						-	-							-	-							-	-									4.80				
5.20						-	-							-	-							-	-									5.20				
5.60						-	-							-	-							-	-									5.60				
6.00						-	-							-	-							-	-									6.00				
6.40					1.79	-	25							-	-							-	-										6.40			
6.60						-	-							-	-							-	-									6.60				
6.80					1.41	-	25							-	-							-	-										6.80			
7.00						-	-							-	-							-	-									7.00				
7.20					1.05	-	25							-	-							-	-										7.20			
7.40						-	-							-	-							-	-									7.40				
7.60					0.742	-	40							-	-							-	-										7.60			
7.80						-	-							-	-							-	-									7.80				
8.00						-	-							-	-							-	-									8.00				
8.20						-	-							-	-							-	-									8.20				
8.40						-	-							-	-							-	-									8.40				
8.80						-	-							-	-							-	-									8.80				
9.00						-	-							-	-							-	-									9.00				
9.20						-	-							-	-							-	-									9.20				
9.40						-	-							-	-							-	-									9.40				
9.60						-	-							-	-							-	-									9.60				
9.80						-	-							-	-							-	-									9.80				
10.00						-	-							-	-							-	-									10.00				
20.00						-	-							-	-							-	-									20.00				
Totals:						0	115							0	0	30	1,630							0	55							0	0	25	25	
Nominal Transactions Value:							0.00							0.00		24,600.00							0.00								0.00		19,000.00			
Number of Trades:							0							0		6							0.00								0		5			

OTE (CR)

(Contract Size: 100 Securities, Exercise Style: American, Physical Delivery)

Call Options																	Put Options																			
October 2013								November 2013								Other Months		October 2013								November 2013								Other Months		
Exercise Price	Open price	Price max	Price min	Last price	Closing price	Volume	Open Interest	Open price	Price max	Price min	Last price	Closing price	Volume	Open Interest	Volume	Open Interest	Open price	Price max	Price min	Last price	Closing price	Volume	Open Interest	Open price	Price max	Price min	Last price	Closing price	Volume	Open Interest	Volume	Open Interest	Exercise Price			
3.80						-	-							-	-							-	-						-	-			3.80			
4.00						-	-							-	-							-	-						-	-			4.00			
4.40						-	-							-	-							-	-						-	-			4.40			
4.80						-	-							-	-							-	-						-	-			4.80			
5.20						-	-							-	-							-	-						-	-			5.20			
5.60						-	-							-	-							-	-						-	-			5.60			
6.00						-	-							-	-							-	-						-	-			6.00			
6.40						-	-							-	-							-	-						-	-			6.40			
6.60						-	-							-	-							-	-						-	-			6.60			
6.80						-	-							-	-							-	-						-	-			6.80			
7.00						-	-							-	-							-	-						-	-			7.00			
7.20						-	-							-	-							-	-						-	-			7.20			
7.40						-	-							-	-						0.286	-	1						-	-			7.40			
7.60						-	-							-	-							-	-						-	-			7.60			
7.80						-	-							-	-							-	-						-	-			7.80			
8.00						-	-							-	-							-	-						-	-			8.00			
8.20						-	-							-	-							-	-						-	-			8.20			
8.40						-	-							-	-							-	-						-	-			8.40			
8.60						-	-							-	-							-	-						-	-			8.60			
8.80						-	-							-	-							-	-						-	-			8.80			
9.00						-	-							-	-							-	-						-	-			9.00			
9.20						-	-							-	-							-	-						-	-			9.20			
Totals:						0	0							0	0	0	1,600							0	1							0	35			
Nominal Transactions Value:						0.00								0.00		0.00								0.00								0.00				
Number of Trades:						0								0		0								0								0				

PIRAEUS BANK (CR)

(Contract Size: 100 Securities, Exercise Style: American, Physical Delivery)

Call Options																	Put Options																				
October 2013								November 2013								Other Months		October 2013								November 2013								Other Months			
Exercise Price	Open price	Price max	Price min	Last price	Closing price	Volume	Open Interest	Open price	Price max	Price min	Last price	Closing price	Volume	Open Interest	Volume	Open Interest	Open price	Price max	Price min	Last price	Closing price	Volume	Open Interest	Open price	Price max	Price min	Last price	Closing price	Volume	Open Interest	Volume	Open Interest	Exercise Price				
0.500							-	-							-	-									-	-									0.500		
0.600							-	-							-	-									-	-									0.600		
0.700							-	-							-	-									-	-									0.700		
0.800							-	-							-	-									-	-									0.800		
0.900							-	-							-	-									-	-									0.900		
1.00							-	-							-	-									-	-									1.00		
1.05							-	-							-	-									-	-									1.05		
1.10							-	-							-	-									-	-									1.10		
1.15							-	-							-	-									-	-									1.15		
1.20							-	-							-	-									-	-									1.20		
1.25							-	-							-	-									-	-									1.25		
1.30							-	-							-	-									-	-									1.30		
1.35							-	-							-	-									-	-									1.35		
1.40							-	-							-	-									-	-									1.40		
1.50							-	-							-	-									-	-									1.50		
1.60							-	-							-	-									-	-									1.60		
1.70							-	-							-	-									-	-									1.70		
1.80							-	-							-	-									-	-									1.80		
1.90							-	-							-	-									-	-									1.90		
Totals:						0	0							0	0	0	0							0	0							0	0	0	0		
Nominal Transactions Value:						0.00								0.00		0.00							0.00				0.00				0.00						
Number of Trades:						0								0		0							0.00				0				0						



PPC (CR)

(Contract Size: 100 Securities, Exercise Style: American, Physical Delivery)

Call Options																	Put Options																						
	October 2013							November 2013							Other Months			October 2013											November 2013							Other Months			
Exercise Price	Open price	Price max	Price min	Last price	Closing price	Volume	Open Interest	Open price	Price max	Price min	Last price	Closing price	Volume	Open Interest	Volume	Open Interest	Open price	Price max	Price min	Last price	Closing price	Volume	Open Interest	Open price	Price max	Price min	Last price	Closing price	Volume	Open Interest	Volume	Open Interest	Exercise Price						
4.00						-	-							-	-							-	-						-	-			4.00						
4.40						-	-							-	-							-	-						-	-			4.40						
4.80						-	-							-	-							-	-						-	-			4.80						
5.20						-	-							-	-							-	-						-	-			5.20						
5.60						-	-							-	-							-	-						-	-			5.60						
6.00						-	-							-	-							-	-						-	-			6.00						
6.40						-	-							-	-							-	-						-	-			6.40						
6.80						-	-							-	-							-	-						-	-			6.80						
7.00						-	-							-	-							-	-						-	-			7.00						
7.20						-	-							-	-							-	-						-	-			7.20						
7.40						-	-							-	-							-	-						-	-			7.40						
7.60						-	-							-	-							-	-						-	-			7.60						
7.80						-	-							-	-							-	-						-	-			7.80						
8.00						-	-							-	-							-	-						-	-			8.00						
8.20						-	-							-	-							-	-						-	-			8.20						
8.40						-	-							-	-							-	-						-	-			8.40						
8.60						-	-							-	-							-	-						-	-			8.60						
8.80						-	-							-	-							-	-						-	-			8.80						
9.00						-	-							-	-							-	-						-	-			9.00						
9.20						-	-							-	-							-	-						-	-			9.20						
9.60						-	-							-	-							-	-						-	-			9.60						
10.00						-	-							-	-							-	-						-	-			10.00						
Totals:						0	0							0	0	0	30							0	0							0	0	0	0				
Nominal Transactions Value:						0.00								0.00		0.00								0.00								0.00							
Number of Trades:						0								0		0								0								0							

Securities	Type[4]	Stock Repo [1]						Stock Reverse Repo [2]						Repurchase Agreements [3]									
		Trans. price	chg.	Trades	Volume	Transactions Value	Open Interest[5]	Price max	Price min	Last price	Last Ask	Trades	Volume	Transactions Value	Open Interest[5]	Price max	Price min	Last price	Last Ask	Trades	Volume	Transactions Value	Open Interest[5]
AEGEAN AIRLINES (CR)	SR RA	100.00	---	---	---	---	85	---	---	---	42@3%	---	---	---	---	---	---	---	---	---	---	---	---
ALPHA BANK (CR)	SR RA	100.00	---	---	---	---	54,615	3.30%	3.30%	3.30%	27699@3.3%	1	60	3,366.0	5,343	---	---	---	---	---	---	---	1,562
ALPHA ETF FTSE Athex Large Cap	SR RA	100.00	---	---	---	---	---	---	---	---	---	---	---	---	---	---	---	---	---	---	---	---	1,664
ALUMIL (CR)	RA	---	---	---	---	---	---	---	---	---	---	---	---	---	---	---	---	---	---	---	---	---	---
ATHENS MEDICAL CENTER SA (CR)	SR RA	100.00	---	---	---	---	434	---	---	---	217@3%	---	---	---	---	---	---	---	---	---	---	---	---
AUTOHELLAS SA (CR)	SR RA	100.02	---	---	---	---	54	---	---	---	27@3%	---	---	---	---	---	---	---	---	---	---	---	---
CC HBC AG (CR)	SR RA	100.22	0.05	1	13	28,418.0	1,264	---	---	---	505@3%	---	---	---	120	---	---	---	---	---	---	---	118
CENTRIC HOLDINGS (CR)	SR RA	100.00	---	---	---	---	200	---	---	---	157@9%	---	---	---	---	---	---	---	---	---	---	---	---
CORINTH PIPEWORKS SA (CR)	SR RA	100.00	---	---	---	---	160	---	---	---	80@3%	---	---	---	---	---	---	---	---	---	---	---	---
CRETE PLASTICS SA (CR)	SR RA	100.00	---	---	---	---	---	---	---	---	---	---	---	---	---	---	---	---	---	---	---	---	---
ELLAKTOR (CR)	SR RA	100.01	---	---	---	---	2,403	---	---	---	1201@3%	---	---	---	---	---	---	---	---	---	---	---	---
ELTON SA (CR)	SR RA	100.00	---	---	---	---	50	---	---	---	35@3%	---	---	---	---	---	---	---	---	---	---	---	---
ELVAL SA. (CB)	SR RA	100.01	---	---	---	---	621	---	---	---	310@3%	---	---	---	---	---	---	---	---	---	---	---	---
EUROBANK ERGASIAS (CR)	SR RA	100.14	0.01	---	---	---	2,494	---	---	---	444@3%	---	---	---	995	---	---	---	---	---	---	---	28
EUROBANK PROPERTIES REIC (CR)	SR RA	100.08	0.01	---	---	---	1,639	---	---	---	759@3%	---	---	---	60	---	---	---	---	---	---	---	---
EUROPEAN RELIANCE INSUR. (CR)	SR RA	100.00	---	---	---	---	---	---	---	---	---	---	---	---	---	---	---	---	---	---	---	---	---
EYDAP S.A. (CR)	SR RA	100.04	---	---	---	---	325	---	---	---	154@3%	---	---	---	8	---	---	---	---	---	---	---	16
FOLLI FOLLIE (CR)	SR RA	100.10	0.01	---	---	---	842	---	---	---	401@3%	---	---	---	20	---	---	---	---	---	---	---	10
FOURLIS (CR)	SR RA	100.00	---	---	---	---	195	---	---	---	97@3%	---	---	---	---	---	---	---	---	---	---	---	---
FRIGOGLASS SA (CR)	SR RA	100.03	---	---	---	---	229	---	---	---	114@3%	---	---	---	---	---	---	---	---	---	---	---	---
GEK TERNA (CR)	SR RA	100.00	---	---	---	---	582	---	---	---	286@3%	---	---	---	5	---	---	---	---	---	---	---	---
GR. SARANTIS SA (CR)	SR RA	100.00	---	---	---	---	62	---	---	---	31@3%	---	---	---	---	---	---	---	---	---	---	---	---
HALKOR SA (CB)	SR RA	100.00	---	---	---	---	415	---	---	---	207@3%	---	---	---	---	---	---	---	---	---	---	---	---
HELLENIC CABLES SA (CR)	SR RA	100.00	---	---	---	---	84	---	---	---	42@3%	---	---	---	---	---	---	---	---	---	---	---	---
HELLENIC EXCHANGES (CR)	SR RA	100.07	---	---	---	---	5,993	---	---	---	2761@3%	---	---	---	230	---	---	---	---	---	---	---	---
HELLENIC PETROLEUM (CR)	SR RA	100.25	0.02	---	---	---	2,224	---	---	---	936@3%	---	---	---	176	---	---	---	---	---	---	---	46
HYGEIA SA (CR)	SR RA	100.00	---	---	---	---	700	---	---	---	406@4.6%	---	---	---	---	---	---	---	---	---	---	---	---
IASO SA (CR)	SR RA	100.00	---	---	---	---	86	---	---	---	43@3%	---	---	---	---	---	---	---	---	---	---	---	---
IKTINOS HELLAS SA (CR)	SR RA	100.00	---	---	---	---	10	---	---	---	---	---	---	---	---	---	---	---	---	---	---	---	---
INFORM P. LYKOS SA (CR)	SR RA	100.00	---	---	---	---	203	---	---	---	101@3%	---	---	---	---	---	---	---	---	---	---	---	---
INTRACOM CONSTR. (CR)	SR RA	100.00	---	---	---	---	37	---	---	---	18@3%	---	---	---	---	---	---	---	---	---	---	---	---
INTRACOM HOLDINGS (CR)	SR RA	100.00	---	---	---	---	665	---	---	---	430@3.8%	---	---	---	---	---	---	---	---	---	---	---	---

Stock Lending Notes

- [1] - Stock Repo: A Contract for selling stocks to HELEX with a Repurchase Right (According to ATHEX BoD Resolution No 17)
- [2] - Stock Reverse Repo: A Contract for buying stocks from HELEX with a Resell Right. (According to ATHEX BoD Resolution No 18)
- [3] - Standardized Repurchase Agreements: A Contract that constitutes a standardized agreement for the purchase or sale of shares, with repurchase or resell pact (According to ATHEX BoD Resolution No 20)
- [4] - Type of products is divided into SR: Stock Repo or Stock Reverse Repo, and RA: Repurchase Agreements.
- [5] - Open Interest in all Series (both tradeable or non-tradeable).

Securities	Type[4]	Stock Repo [1]						Stock Reverse Repo [2]								Repurchase Agreements [3]							
		Trans. price	chg.	Trades	Volume	Transactions Value	Open Interest[5]	Price max	Price min	Last price	Last Ask	Trades	Volume	Transactions Value	Open Interest[5]	Price max	Price min	Last price	Last Ask	Trades	Volume	Transactions Value	Open Interest[5]
INTRALOT (CR)	SR RA	100.03	---	---	---	---	4,116	3.00%	3.00%	3.00%	1793@3%	1	25	4,150.0	265	3.00%	3.00%	3.00%	---	1	25	4,150.0	25
J & P - AVAX SA (CR)	SR RA	100.02	---	---	---	---	235	---	---	---	117@3%	---	---	---	---	---	---	---	---	---	---	---	---
JUMBO SA (CR)	SR RA	100.06	0.01	---	---	---	2,338	---	---	---	1090@3%	---	---	---	79	---	---	---	---	---	---	---	20
KLEEMAN HELLAS SA (CR)	SR RA	100.00	---	---	---	---	982	---	---	---	491@3%	---	---	---	---	---	---	---	---	---	---	---	---
KLOUKINAS - LAPPAS SA (CR)	SR RA	100.00	---	---	---	---	---	---	---	---	---	---	---	---	---	---	---	---	---	---	---	---	---
KORRES (CR)	SR RA	100.00	---	---	---	---	---	---	---	---	---	---	---	---	---	---	---	---	---	---	---	---	---
KRI-KRI S.A. (CR)	SR RA	100.00	---	---	---	---	549	---	---	---	274@3%	---	---	---	---	---	---	---	---	---	---	---	---
LAMDA DEVELOPMENT SA (CR)	SR RA	100.00	---	---	---	---	890	---	---	---	445@3%	---	---	---	---	---	---	---	---	---	---	---	---
LOULIS MILLS SA (CR)	SR RA	100.00	---	---	---	---	---	---	---	---	---	---	---	---	---	---	---	---	---	---	---	---	---
MARFIN INVESTMENT GROUP (CR)	SR RA	100.00	---	---	---	---	1,792	---	---	---	---	---	---	---	---	---	---	---	---	---	---	---	---
METKA (CR)	SR RA	100.20	0.03	---	---	---	591	---	---	---	230@3%	---	---	---	65	---	---	---	---	---	---	---	9
MLS MULTIMEDIA SA (CR)	SR RA	100.00	---	---	---	---	99	---	---	---	49@3%	---	---	---	---	---	---	---	---	---	---	---	---
MOTOR OIL (CR)	SR RA	100.07	---	---	---	---	2,057	---	---	---	1028@3%	---	---	---	---	---	---	---	---	---	---	---	17
MYTILINEOS HOLDINGS (CR)	SR RA	100.01	---	---	---	---	3,875	---	---	---	1777@3%	---	---	---	110	---	---	---	---	---	---	---	---
NATIONAL BANK (CR)	SR RA	100.10	0.01	1	13	3,887.0	9,078	---	---	---	3055@3%	---	---	---	1,477	---	---	---	---	---	---	---	346
NBGAM ETF	SR RA	100.00	---	---	---	---	---	---	---	---	---	---	---	---	---	---	---	---	---	---	---	---	100
NBGAM ETF GREECE & TURKEY 30	SR RA	100.00	---	---	---	---	---	---	---	---	---	---	---	---	---	---	---	---	---	---	---	---	35
NIREFS SA (CR)	SR RA	100.00	---	---	---	---	326	---	---	---	220@4.4%	---	---	---	---	---	---	---	---	---	---	---	---
OPAP (CR)	SR RA	100.11	0.02	---	---	---	4,838	---	---	---	1854@3%	---	---	---	565	---	---	---	---	---	---	---	367
OTE (CR)	SR RA	100.26	0.04	---	---	---	5,262	3.00%	3.00%	3.00%	1503@3%	2	207	156,492.0	1,127	---	---	---	---	---	---	---	102
P.P.A. S.A. (CR)	SR RA	100.11	0.08	---	---	---	15	---	---	---	4@3%	---	---	---	3	---	---	---	---	---	---	---	---
PETROPOULOS PETROS (CR)	RA	---	---	---	---	---	---	---	---	---	---	---	---	---	---	---	---	---	---	---	---	---	---
PIRAEUS BANK (CR)	SR RA	100.02	---	---	---	---	7,846	---	---	---	3721@3%	---	---	---	202	---	---	---	---	---	---	---	---
PPC (CR)	SR RA	100.33	0.06	---	---	---	1,932	3.00%	3.00%	3.00%	239@3%	1	180	143,280.0	727	---	---	---	---	---	---	---	35
QUEST HOLDINGS (CR)	SR RA	100.00	---	---	---	---	39	---	---	---	19@3%	---	---	---	---	---	---	---	---	---	---	---	---
REDS S.A. (CR)	SR RA	100.00	---	---	---	---	572	---	---	---	363@3.6%	---	---	---	---	---	---	---	---	---	---	---	---
SELECTED TEXT. IND. ASSOC (CR)	SR RA	100.00	---	1	10	242.0	110	---	---	---	74@7%	---	---	---	---	---	---	---	---	---	---	---	---
SIDENOR (CR)	SR RA	100.00	---	---	---	---	442	---	---	---	221@3%	---	---	---	---	---	---	---	---	---	---	---	---
TECHNICAL OLYMPIC SA (CR)	SR RA	100.00	---	---	---	---	57	---	---	---	28@3%	---	---	---	---	---	---	---	---	---	---	---	---
TERNA ENERGY (CR)	SR RA	100.13	0.02	---	---	---	293	---	---	---	97@3%	---	---	---	49	---	---	---	---	---	---	---	5
THESSALONIKA WATER & SEWERAGE	SR RA	100.00	---	---	---	---	1,270	---	---	---	635@3%	---	---	---	---	---	---	---	---	---	---	---	---
THRACE PLASTICS SA (CR)	SR RA	100.00	---	---	---	---	1,010	---	---	---	505@3%	---	---	---	---	---	---	---	---	---	---	---	---

Stock Lending Notes

- [1] - Stock Repo: A Contract for selling stocks to HELEX with a Repurchase Right (According to ATHEX BoD Resolution No 17)
- [2] - Stock Reverse Repo: A Contract for buying stocks from HELEX with a Resell Right. (According to ATHEX BoD Resolution No 18)
- [3] - Standardized Repurchase Agreements: A Contract that constitutes a standardized agreement for the purchase or sale of shares, with repurchase or resell pact (According to ATHEX BoD Resolution No 20)
- [4] - Type of products is divided into SR: Stock Repo or Stock Reverse Repo, and RA: Repurchase Agreements.
- [5] - Open Interest in all Series (both tradeable or non-tradeable).

Securities	Type[4]	Stock Repo [1]						Stock Reverse Repo [2]								Repurchase Agreements [3]							
		Trans. price	chg.	Trades	Volume	Transactions Value	Open Interest[5]	Price max	Price min	Last price	Last Ask	Trades	Volume	Transactions Value	Open Interest[5]	Price max	Price min	Last price	Last Ask	Trades	Volume	Transactions Value	Open Interest[5]
TITAN CEMENT (CR)	SR RA	100.03	---	---	---	---	9,035	3.00%	3.00%	3.00%	4450@3%	1	7	12,110.0	67	---	---	---	---	---	---	---	12
TPA SA (CR)	SR RA	100.00	---	---	---	---	6	---	---	---	---	---	---	---	---	---	---	---	---	---	---	---	---
TRASTOR REAL EST. INV. CO.(CR)	SR RA	100.00	---	---	---	---	284	---	---	---	142@3%	---	---	---	---	---	---	---	---	---	---	---	---
VIOHALCO (CB)	SR RA	100.01	---	---	---	---	3,990	3.00%	3.00%	3.00%	1911@3%	1	62	26,536.0	84	---	---	---	---	---	---	---	30

Stock Lending Notes

- [1] - Stock Repo: A Contract for selling stocks to HELEX with a Repurchase Right (According to ATHEX BoD Resolution No 17)
- [2] - Stock Reverse Repo: A Contract for buying stocks from HELEX with a Resell Right. (According to ATHEX BoD Resolution No 18)
- [3] - Standardized Repurchase Agreements: A Contract that constitutes a standardized agreement for the purchase or sale of shares, with repurchase or resell pact (According to ATHEX BoD Resolution No 20)
- [4] - Type of products is divided into SR: Stock Repo or Stock Reverse Repo, and RA: Repurchase Agreements.
- [5] - Open Interest in all Series (both tradeable or non-tradeable).

## Sectors codification for listed companies

533	-	Exploration & Production	537	-	Integrated Oil & Gas
1353	-	Commodity Chemicals	1357	-	Specialty Chemicals
1753	-	Aluminum	1755	-	Nonferrous Metals
1757	-	Steel	1775	-	General Mining
2353	-	Building Materials & Fixtures	2357	-	Heavy Construction
2723	-	Containers & Packaging	2727	-	Diversified Industrials
2733	-	Electrical Components & Equipment	2753	-	Commercial Vehicles & Trucks
2757	-	Industrial Machinery	2773	-	Marine Transportation
2777	-	Transportation Services	2791	-	Business Support Services
2797	-	Industrial Suppliers	3535	-	Distillers & Vintners
3537	-	Soft Drinks	3573	-	Farming & Fishing
3577	-	Food Products	3722	-	Durable Household Products
3726	-	Furnishings	3728	-	Home Construction
3747	-	Toys	3763	-	Clothing & Accessories
3765	-	Footwear	3767	-	Personal Products
3785	-	Tobacco	4533	-	Health Care Providers
4535	-	Medical Equipment	4577	-	Pharmaceuticals
5337	-	Food Retailers & Wholesalers	5371	-	Apparel Retailers
5373	-	Broadline Retailers	5375	-	Home Improvement Retailers
5379	-	Specialty Retailers	5553	-	Broadcasting & Entertainment
5555	-	Media Agencies	5557	-	Publishing
5751	-	Airlines	5752	-	Gambling
5753	-	Hotels	5755	-	Recreational Services
5757	-	Restaurants & Bars	5759	-	Travel & Tourism
6535	-	Fixed Line Telecommunications	6575	-	Mobile Telecommunications
7535	-	Conventional Electricity	7537	-	Alternative Electricity
7577	-	Water	8355	-	Banks
8534	-	Insurance Brokers	8536	-	Property & Casualty Insurance
8633	-	Real Estate Holding & Development	8637	-	Real Estate Services
8671	-	Industrial & Office REITs	8675	-	Specialty REITs
8775	-	Specialty Finance	8777	-	Investment Services
8985	-	Equity Investment Instruments	9533	-	Computer Services
9535	-	Internet	9537	-	Software
9572	-	Computer Hardware	9574	-	Electronic Office Equipment
9578	-	Telecommunications Equipment	11000	-	ETF

