



ATHEXGROUP
Athens Exchange Group

Hellenic Exchanges – Athens Stock Exchange S.A.

“

2016

δελτιο ημερησιων συναλλαγων

daily official list

Friday, 12 February, 2016
Year: 137 Trading Day No: 29

”

Disclaimer:

Hellenic Exchanges-Athens Stock Exchange S.A. endeavours to ensure that the data and other material ("Information") presented on the Daily Official List are accurate and complete, but it is not liable for any errors or omissions of data or /and for the accuracy, credibility, updating and completeness of the aforesaid information nor it has any liability arising directly or indirectly from the use of the above Information.

The Company is not liable for the accuracy of the data included in listed companies' announcements. Only the sender of such an announcement is fully and solely liable for any infringement of third party's rights from the content of such announcement. All contents of the Daily Official List are provided only for information purposes and do not constitute investment advice or solicitation to invest in securities or other products listed for trading on the Exchange.

You acknowledge and agree that the Company is the owner of any property rights related to any Information appearing on the Daily Official List including intellectual property rights copyright, trademarks, etc.

The above data are a property of the Hellenic Exchanges-Athens Exchange and are copyright protected. Users are forbidden to reproduce, modify, copy, sale, transmit or redistribute, by all reproduction means and methods, part or the whole of the above data, without reference to their source.

The commercial exploitation of these data is, also, forbidden by third parties. Hellenic Exchanges-Athens Exchange does not carry any responsibility, direct or indirect, derived from usage or accidental alteration of the above data when used by third parties.

Hellenic Exchanges – Athens Stock Exchange S.A.

110 Athinon Ave., 10442 Athens, Tel: (210) 33.66.800, Fax: (210) 32.13.938

www.helex.gr

Thessalonica Stock Exchange Center (T.S.E.C)

16-18 Katouni Str., Thessalonica 546 25 Tel: (2310) 567.667, Fax: (2310) 530.545

Athex Members Guarantee Fund

14-16 Fidiou Str., Athens 106 78, Tel: (210) 33.04.682, Fax: (210) 33.04.155

Hellenic Republic Capital Market Commission

1 Kolokotroni Str. & 1 Stadiou Str., Athens 10562 Tel: (210) 33.77.100 Fax: (210) 33.77.173

Table of Contents

Section 1: Statistical Figures of Securities, Derivatives and Lending

Summary of Markets

Athex Indices

Analytic Figures for Athex Market's Boards and Categories

Trading Details by Athex Sectors and Financial Instruments (ETFs)

Top 10 best & worst performing Shares

Derivatives Summary

Section 2: Analytic Figures of Shares Transactions

Analytic Figures of Shares Transactions

Shares' Notes

Section 3: Figures of Securities Transactions

Securities Blocks Details

Shares Rights Details

Stock Borrowing

Shares Forced Sales

Forced Sales Registered Shares

Exchange Traded Funds (ETFs) Characteristics

Section 5: Bonds traded in Fixed Income Assets Market

Corporate Bonds

Government Bonds

Treasury Bills & Zero Coupon Government Bonds

Government Bonds Traded with the Open Outcry Method

State Banks Bonds

Section 6: Additional Infos

Athex & ATHEXClear Members List

List of Stocks under Market Making operations

Equity Investment Instruments Acknowledgements

Section 7: Derivatives Market Analytic Figures

Index Futures

Stock Futures

Index Options

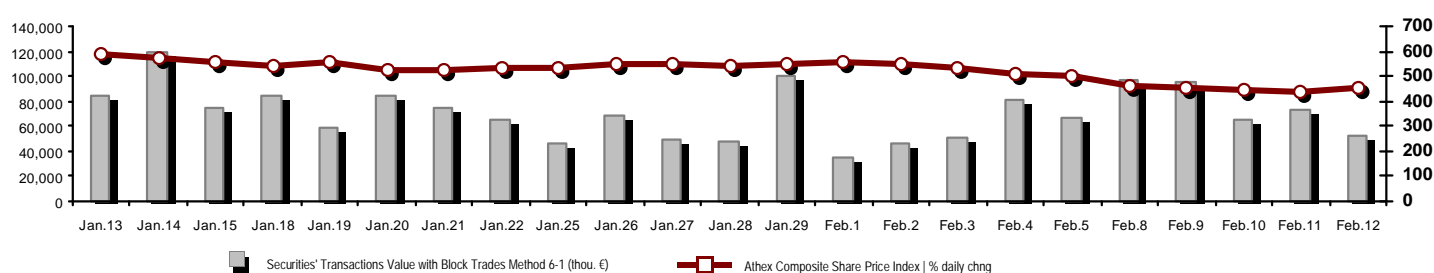
Stock Options

Stock Lending Analytic Figures

Appendix A: Sectors codification for listed companies

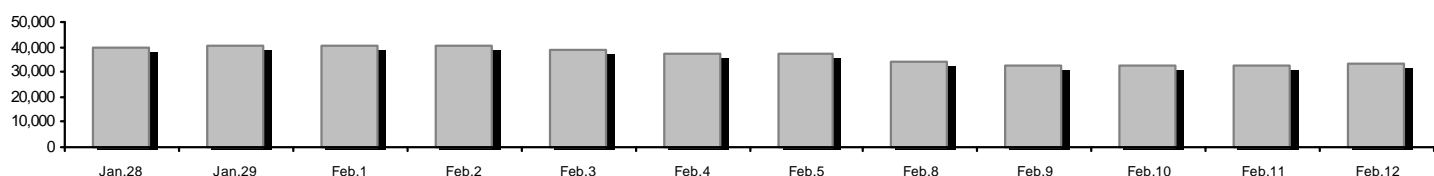
Summary of Markets

Athex Composite Share Price Index vs Shares and Derivatives Transactions Value

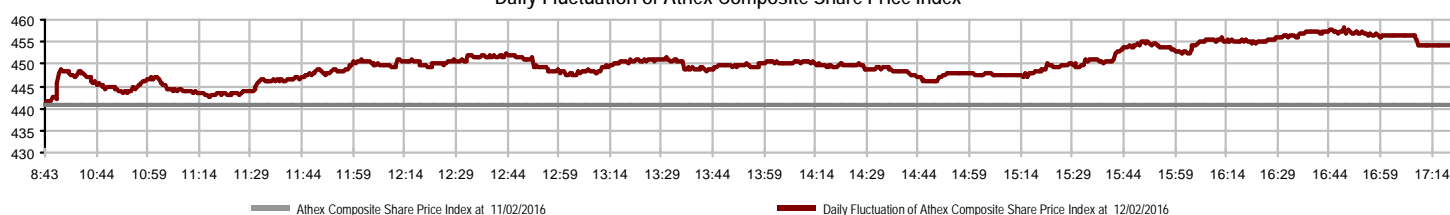


Athex Capitalisation (mill. €) **: 33,254.02		Derivatives Total Open Interest 228,289	
Daily change: mill. € %	1,027.31 3.19%	in Index Futures % daily chng	20,578 3.77%
Yearly Avg Capitalisation: mill. € % chng prev year Avg	39,640.32 -9.14%	in Stock Futures % daily chng	198,799 -4.33%
Athex Composite Share Price Index % daily chng	454.29 3.04%	in Index Options % daily chng	6,110 1.46%
Athex Composite Share Price Index Capitalisation (mill. €)	28,968.23	in Stock Options % daily chng	2,802 1.26%
Daily change (mill. €)	946.84		
Securities' Transactions Value with Block Trades Method 6-1 (52,353.48		Derivatives Contracts Volume: 80,845	
Daily change: thou. € %	-20,660.30 -28.30%	Daily change: pieces %	-28,791 -26.26%
YtD Avg Trans. Value: thou. € % chng prev year Avg	71,874.05 -16.04%	YtD Avg Derivatives Contracts % chng prev year Avg	55,503 -15.53%
Blocks Transactions Value of Method 6-1 (thou. €)	1,810.00	Derivatives Trades Number:	3,368
Blocks Transactions Value of Method 6-2 & 6-3 (thou. €)	0.00	Daily change: number %	-1,045 -23.68%
Bonds Transactions Value (thou. €)	0.00	YtD Avg Derivatives Trades number % chng prev year Avg	2,515 -23.04%
Securities' Transactions Volume with Block Trades Method 6-1 (th 150,632.33		Lending Total Open Interest 466,935	
Daily change: thou. pieces %	-122,597.58 -44.87%	Daily change: pieces %	10,021 2.19%
YtD Avg Volume: thou. pieces % chng prev year Avg	132,015.48 -31.61%	Lending Volume (Multilateral/Bilateral)	11,121
Blocks Transactions Volume of Method 6-1 (thou. Pieces)	6,000.00	Daily change: pieces %	-108,379 -90.69%
Blocks Transactions Volume of Method 6-2 & 6-3 (thou. Pieces)	0.00	Multilateral Lending	10,521
Bonds Transactions Volume (thou. pieces)	0.00	Bilateral Lending	600
Securities' Trades Number with Block Trades Method 6-1 27,809		Lending Trades Number: 11	
Daily change: number %	-11,815 -29.82%	Daily change: thou. € %	0 0.00%
YtD Avg Derivatives Trades number % chng prev year Avg	23,377 -13.43%	Multilateral Lending Trades Number	10
Number of Blocks Method 6-1	3	Bilateral Lending Trades Number	1
Number of Blocks Method 6-2 & 6-3	0		
Number of Bonds Transactions	0		

Athex Capitalisation (mill. €) **



Daily Fluctuation of Athex Composite Share Price Index



Athex Indices

Index name	12/02/2016	11/02/2016	pts.	%	Min	Max	Year min	Year max	Year change
Athex Composite Share Price Index	454.29 #	440.88	13.41	3.04%	440.88	458.01	420.82	631.35	-28.04% €
FTSE/Athex Large Cap	119.41 #	114.13	5.28	4.63%	114.13	120.55	107.52	183.34	-34.87% €
FTSE/ATHEX Custom Capped	390.34 €	398.38	-8.04	-2.02%			390.34	576.80	-33.60% €
FTSE/ATHEX Custom Capped - USD	317.45 €	319.73	-2.28	-0.71%			317.45	446.81	-30.67% €
FTSE/Athex Mid Cap Index	560.09 #	544.59	15.50	2.85%	542.71	562.82	515.21	820.16	-31.40% €
FTSE/ATHEX-CSE Banking Index	19.02 #	16.33	2.69	16.47%	16.17	19.31	13.57	44.84	-57.35% €
FTSE/ATHEX Global Traders Index Plus	1,067.90 #	1,061.36	6.54	0.62%	1,061.07	1,078.16	1,031.55	1,278.16	-16.22% €
FTSE/ATHEX Global Traders Index	1,180.46 #	1,161.87	18.59	1.60%	1,161.68	1,190.63	1,129.41	1,426.71	-17.26% €
FTSE/ATHEX Mid & Small Cap Factor-Weighted Ind	1,133.88 #	1,112.39	21.49	1.93%	1,112.39	1,133.88	1,066.64	1,261.08	-9.69% €
Greece & Turkey 30 Price Index	411.05 #	405.07	5.98	1.48%	405.07	413.98	396.10	455.35	-11.45% €
ATHEX Mid & SmallCap Price Index	1,879.02 €	1,881.30	-2.28	-0.12%	1,879.02	1,900.93	1,853.13	2,183.18	-13.49% €
FTSE/Athex Market Index	293.92 #	281.15	12.77	4.54%	281.15	296.65	265.17	449.96	-34.68% €
FTSE Med Index	4,396.47 €	4,624.92	-228.45	-4.94%			4,396.47	5,530.53	-20.50% €
Athex Composite Index Total Return Index	675.95 #	656.01	19.94	3.04%	656.01	681.50	626.16	939.41	-28.05% €
FTSE/Athex Large Cap Total Return	164.73 #	157.44	7.29	4.63%			157.44	246.77	-34.86% €
FTSE/ATHEX Large Cap Net Total Return	492.04 #	470.30	21.74	4.62%	470.30	496.76	443.06	755.50	-34.87% €
FTSE/ATHEX Custom Capped Total Return	418.87 €	427.50	-8.63	-2.02%			418.87	618.97	-33.60% €
FTSE/ATHEX Custom Capped - USD Total Return	340.66 €	343.11	-2.45	-0.71%			340.66	479.47	-30.67% €
FTSE/Athex Mid Cap Total Return	688.60 #	669.55	19.05	2.85%			669.55	1,008.35	-31.40% €
FTSE/ATHEX-CSE Banking Total Return Index	18.54 #	15.92	2.62	16.46%			15.92	42.34	-57.37% €
Greece & Turkey 30 Total Return Index	502.35 €	512.83	-10.48	-2.04%			502.35	562.63	-12.74% €
Hellenic Mid & Small Cap Index	587.20 #	580.32	6.88	1.19%	580.30	592.42	560.15	722.84	-17.94% €
FTSE/Athex Banks	25.13 #	21.57	3.56	16.50%	21.36	25.51	17.93	59.24	-57.35% €
FTSE/Athex Insurance	1,369.77 #	1,338.16	31.61	2.36%	1,296.01	1,369.77	1,274.94	1,517.28	-7.14% €
FTSE/Athex Financial Services	717.67 #	703.73	13.94	1.98%	700.74	736.26	634.69	996.19	-26.31% €
FTSE/Athex Industrial Goods & Services	1,465.78 €	1,472.16	-6.38	-0.43%	1,463.88	1,510.48	1,385.37	1,844.00	-19.67% €
FTSE/Athex Retail	1,987.04 #	1,918.70	68.34	3.56%	1,918.70	1,987.04	1,826.41	2,526.06	-21.34% €
FTSE/ATHEX Real Estate	2,229.93 #	2,196.80	33.13	1.51%	2,181.89	2,263.91	2,179.99	2,502.99	-7.86% €
FTSE/Athex Personal & Household Goods	4,588.94 #	4,498.32	90.62	2.01%	4,498.32	4,686.69	4,433.32	5,241.11	-9.37% €
FTSE/Athex Food & Beverage	6,098.27 #	6,094.50	3.77	0.06%	6,094.50	6,195.18	5,952.97	7,376.68	-17.33% €
FTSE/Athex Basic Resources	1,309.59 #	1,301.92	7.67	0.59%	1,293.66	1,331.64	1,200.24	1,648.25	-19.89% €
FTSE/Athex Construction & Materials	1,542.05 #	1,529.57	12.48	0.82%	1,508.67	1,561.70	1,500.04	1,915.96	-17.91% €
FTSE/Athex Oil & Gas	1,947.89 #	1,915.09	32.80	1.71%	1,915.09	2,007.90	1,860.37	2,447.68	-19.24% €
FTSE/Athex Chemicals	6,612.98 #	6,516.21	96.77	1.49%	6,516.21	6,661.36	6,190.46	6,911.91	-2.93% €
FTSE/Athex Travel & Leisure	1,016.51 #	1,011.44	5.07	0.50%	1,009.28	1,035.46	982.74	1,426.44	-28.66% €
FTSE/Athex Technology	520.14 #	519.87	0.27	0.05%	508.88	529.86	489.05	598.90	-9.07% €
FTSE/Athex Telecommunications	1,891.02 #	1,857.98	33.04	1.78%	1,830.46	1,918.54	1,802.93	2,543.37	-25.65% €
FTSE/Athex Utilities	1,272.44 #	1,249.07	23.37	1.87%	1,240.10	1,295.21	1,136.34	1,734.68	-24.06% €
FTSE/Athex Health Care	71.38 #	65.03	6.35	9.76%	65.03	71.38	61.86	94.38	-15.88% €
Athex All Share Index	117.12 #	113.39	3.74	3.30%	117.12	117.12	113.39	162.12	-28.77% €
Hellenic Corporate Bond Index	97.75 €	98.38	-0.62	-0.63%			97.75	100.40	-2.71% €
Hellenic Corporate Bond Price Index	91.49 €	92.10	-0.61	-0.66%			91.49	94.61	-3.44% €

Note 1: Greece & Turkey 30 Pr data is the indicative at 17:20, whereas FTSE/ATHEX Custom Capped, FTSE/ATHEX Custom Capped - USD, FTSE/ATHEX Custom Capped TR, FTSE/ATHEX Custom Capped - USD TR, FTSE/Med 100 & Greece & Turkey 30 Rt., Hellenic Corporate Bond Price Index, Hellenic Corporate Bond Index closing prices refer to the previous trading day of 10/02/2016.

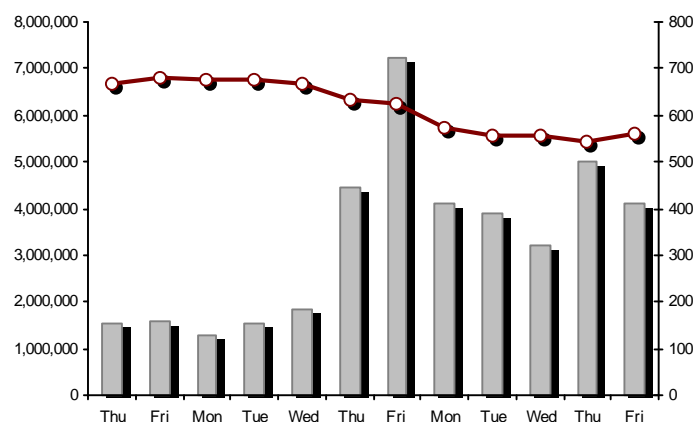
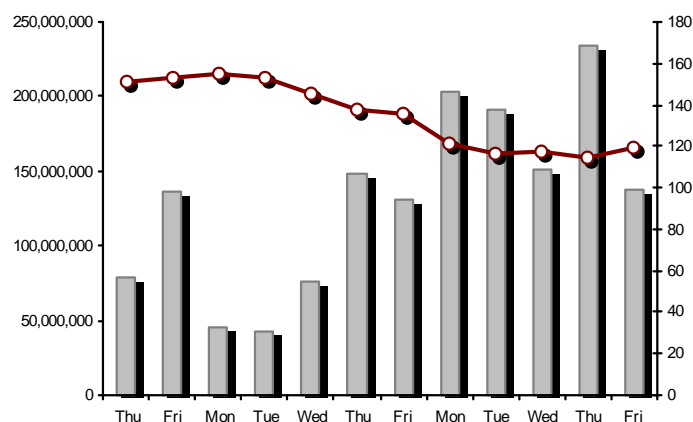
Note 2: The Hellenic Mid & Small Cap Index is a Customized index calculated by the Athens Exchange.

Athex Indices

FTSE/Large Cap

12/02/2016: 4.63% FTSE/Athex Mid Cap Index

12/02/2016: 2.85%

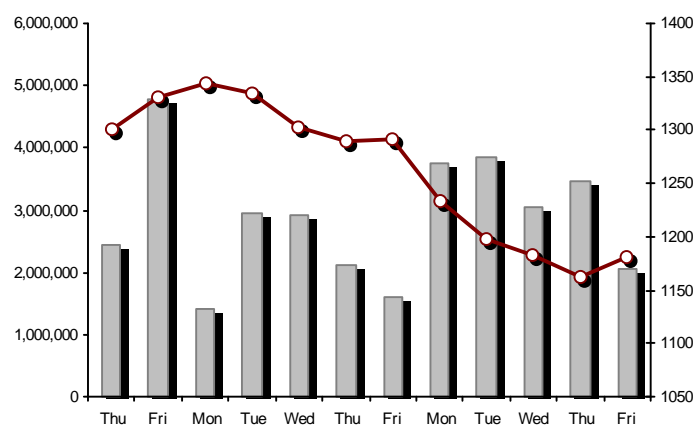
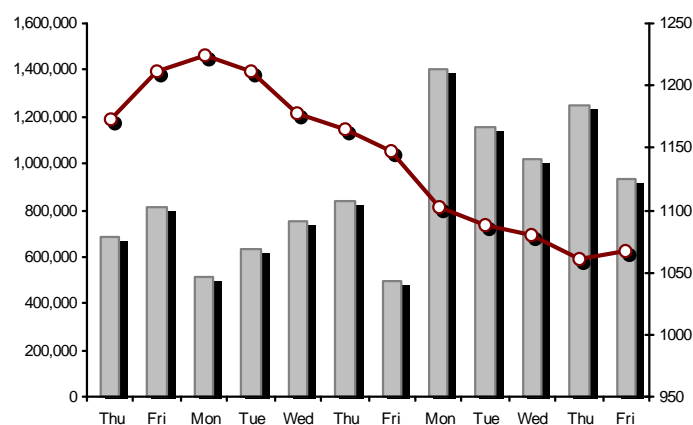


FTSE/ATHEX Global Traders Index Plus

12/02/2016: 0.62%

FTSE/ATHEX Global Traders Index

12/02/2016: 1.60%

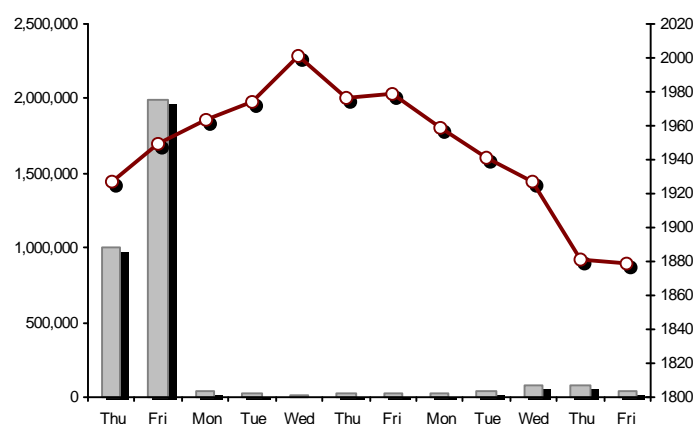
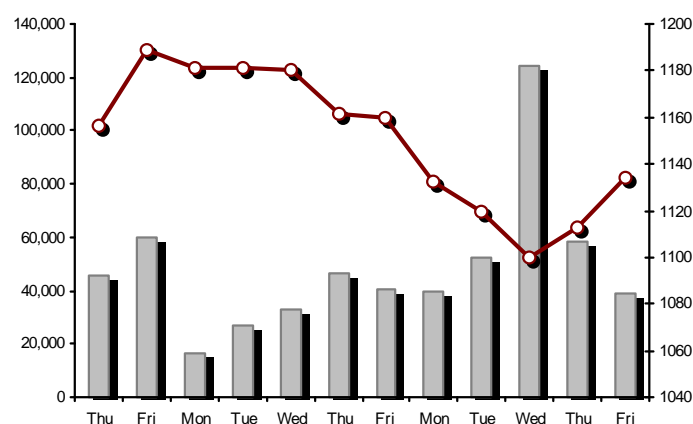


FTSE/ATHEX Mid & Small Cap Factor-Weighted Index

12/02/2016: 1.93%

ATHEX Mid & SmallCap Price Index

12/02/2016: -0.12%



Indices volume of transactions

Indices closing prices

Analytic Figures for Athex Market's Boards and Categories

	Total Traded Securities	Main Market	Low Dispersion	Other Categories (*)	Exchange Traded Funds (ETFs)	Warrants
Totals	132	106	8	12	3	3
Gain / Lose / Same:	72 / 39 / 21	62 / 31 / 13	3 / 3 / 2	4 / 5 / 3	3 / 0 / 0	0 / 0 / 3
Athex Capitalisation (mill. €) **	33,254.02	30,582.04	2,526.72	145.26		
Daily Average Trans/ons Value(thou.€)	71,874.05	71,870.84	66.98	6.41	18.66	4.53
Transactions Value	52,353.48	52,310.49	28.23	3.09	9.56	2.12
Main Board:	50,543.48	50,500.49	28.23	3.09	9.56	2.12
Blocks Board 6_2_3:	1,810.00	1,810.00	0.00	0.00	0.00	0.00
Forced Sales Board:	0.00	0.00	0.00	0.00	0.00	0.00
Special Terms Board:	0.00	0.00	0.00	0.00	0.00	0.00
Daily Average Transactions Volume	132,015,480	129,258,218	23,495	109,576	12,846	2,748,894
Transactions Volume	150,632,334	149,279,076	44,870	39,538	8,004	1,260,846
Main Board:	144,632,334	143,279,076	44,870	39,538	8,004	1,260,846
Blocks Board 6_2_3:	6,000,000	6,000,000	0	0	0	0
Forced Sales Board:	0	0	0	0	0	0
Special Terms Board:	0	0	0	0	0	0
Daily Average Number of Trades	23,377	23,226	42	59	5	46
Number of Trades	27,809	27,638	80	42	3	46
Main Board:	27,806	27,635	80	42	3	46
Blocks Board 6_2_3:	3	3	0	0	0	0
Forced Sales Board:	0	0	0	0	0	0
Special Terms Board:	0	0	0	0	0	0

(*) Summarised Transactions figures for Under Deletion and Under Supervision Categories.(**) The Market Capitalization of the Companies that belong in the Under Supervision Status is not included.

Trading Details by Athex Sectors and Financial Instruments (ETFs)

Code	Sectors	Gain / Lose / Same	Number of Trades	Transactions Volume	Transactions Value	% of Total Trans. Value
8300	- Banks	6 / 1 / 3	16,300	145,083,288	35,826,102.11	68.43%
1700	- Basic Resources	2 / 6 / 1	869	233,284	612,768.62	1.17%
1300	- Chemicals	3 / 0 / 0	21	2,506	3,367.85	0.01%
2300	- Construction & Materials	8 / 4 / 5	1,241	522,517	1,299,905.37	2.48%
12000	- Financial Instruments	3 / 0 / 0	3	8,004	9,556.66	0.02%
8700	- Financial Services	3 / 0 / 0	940	1,912,839	837,813.80	1.60%
3500	- Food & Beverage	6 / 4 / 1	295	238,220	889,329.47	1.70%
4500	- Health Care	2 / 1 / 1	18	16,433	2,600.09	0.00%
2700	- Industrial Goods & Services	8 / 4 / 3	840	189,763	534,975.84	1.02%
8500	- Insurance	1 / 0 / 0	3	1,030	1,275.00	0.00%
5500	- Media	1 / 0 / 1	3	249	12.01	0.00%
500	- Oil & Gas	1 / 1 / 0	1,084	232,622	963,248.48	1.84%
3700	- Personal & Household Goods	7 / 2 / 3	670	207,393	1,195,472.14	2.28%
8600	- Real Estate	3 / 5 / 0	448	113,966	468,941.39	0.90%
5300	- Retail	1 / 3 / 0	358	57,984	760,798.89	1.45%
9500	- Technology	6 / 4 / 1	265	87,652	99,991.50	0.19%
6500	- Telecommunications	1 / 0 / 0	1,191	489,188	3,350,659.85	6.40%
5700	- Travel & Leisure	6 / 3 / 2	1,894	831,827	4,401,186.47	8.41%
7500	- Utilities	4 / 1 / 0	1,366	403,569	1,095,476.07	2.09%

Top 10 best & worst performing Shares

Main Market					
With positive Price change	Closing price	change	With negative Price change	Closing price	change
NIREFS SA (CR)	0.097	29.33% #	PLAISIO COMPUTERS SA (CR)	4.25	-4.49% Ⓔ
NATIONAL BANK (CR)	0.150	25.00% #	GR. SARANTIS SA (CR)	6.85	-3.52% Ⓔ
PIRAEUS BANK (CR)	0.098	20.99% #	P.P.A. S.A. (CR)	10.50	-2.33% Ⓔ
ALPHA BANK (CR)	1.32	13.79% #	BANK OF CYPRUS (CR)	0.128	-2.29% Ⓔ
ATTICA BANK S.A. (CR)	0.092	12.20% #	GRIVALIA PROPERTIES (CR)	6.95	-2.11% Ⓔ
ELLAKTOR (CR)	1.06	11.46% #	VIOHALCO SA/NV (CB)	1.01	-1.94% Ⓔ
EUROBANK ERGASIAS (CR)	0.324	10.20% #	TITAN CEMENT (CR)	15.00	-0.99% Ⓔ
LAMDA DEVELOPMENT SA (CR)	3.56	9.54% #	CORINTH PIPEWORKS SA (CR)	0.712	-0.70% Ⓔ
HELLENIC PETROLEUM (CR)	3.09	6.55% #	MOTOR OIL (CR)	8.26	-0.48% Ⓔ
MARFIN INVESTMENT GROUP (CR)	0.058	5.45% #	EYDAP S.A. (CR)	3.93	-0.25% Ⓔ
With the highest Transactions Value	Value (thou. €)	change	With the highest Transactions Volume	Volume	change
ALPHA BANK (CR)	15,560.12	13.79% #	NATIONAL BANK (CR)	54,864,431	25.00% #
EUROBANK ERGASIAS (CR)	7,816.27	10.20% #	PIRAEUS BANK (CR)	42,222,612	20.99% #
NATIONAL BANK (CR)	7,434.39	25.00% #	EUROBANK ERGASIAS (CR)	24,600,007	10.20% #
PIRAEUS BANK (CR)	3,881.03	20.99% #	ALPHA BANK (CR)	12,587,213	13.79% #
OPAP (CR)	3,442.35	0.19% #	BANK OF CYPRUS (CR)	7,405,490	-2.29% Ⓔ
OTE (CR)	3,350.66	1.78% #	ATTICA BANK S.A. (CR)	2,141,586	12.20% #
BANK OF CYPRUS (CR)	944.48	-2.29% Ⓔ	MARFIN INVESTMENT GROUP (CR)	1,721,376	5.45% #
AEGEAN AIRLINES (CR)	921.68	1.62% #	OPAP (CR)	629,138	0.19% #
TITAN CEMENT (CR)	877.53	-0.99% Ⓔ	OTE (CR)	489,188	1.78% #
JUMBO SA (CR)	876.59	1.92% #	PPC (CR)	312,317	2.61% #

Note: Stocks that are not included in the "Low Dispersion" and "Under Supervision" categories, and the transactions value is more than 10,000 €.

Derivatives Summary

	Number of Trades	Volume	Open Interest
Index Futures	503	6,897	20,578
FTSE/Athex Large Cap	503	6,897	20,578
Stock Futures	2,850	73,735	198,799
ALPHA BANK (CR)	542	11,141	10,253
CC HBC AG (CR)	3	12	121
CORINTH PIPEWORKS SA (CR)	2	6	589
ELLAKTOR (CR)	38	329	1,605
EUROBANK ERGASIAS (CR)	449	11,847	20,824
EYDAP S.A. (CR)	11	31	254
FOLLI FOLLIE (CR)	12	54	202
FRIGOGLASS SA (CR)	3	21	786
GEK TERNA (CR)	11	49	7,589
GRIVALIA PROPERTIES (CR)	3	7	41
HELLENIC EXCHANGES-A.S.E. (CR)	31	98	655
HELLENIC PETROLEUM (CR)	94	255	5,234
INTRALOT (CR)	0	0	245
JUMBO SA (CR)	59	205	457
MARFIN INVESTMENT GROUP (CR)	55	525	34,272
METKA (CR)	33	96	349
MOTOR OIL (CR)	34	111	318
MYTILINEOS HOLDINGS (CR)	73	165	5,633
NATIONAL BANK (CR)	647	28,880	58,758
OPAP (CR)	91	613	2,494
OTE (CR)	137	805	4,321
P.P.A. S.A. (CR)	7	16	381
PIRAEUS BANK (CR)	326	17,791	35,466
PPC (CR)	150	599	5,352
TERNA ENERGY (CR)	17	37	1,152
TITAN CEMENT (CR)	15	26	444
VIOHALCO SA/NV (CB)	7	16	1,004
Index Options	12	178	6,110
FTSE/Athex Large Cap	12	178	6,110
Stock Options	3	35	2,802
ALPHA BANK (CR)	1	10	782
NATIONAL BANK (CR)	1	20	20
OPAP (CR)	1	5	655
OTE (CR)	0	0	1,170
PIRAEUS BANK (CR)	0	0	0
PPC (CR)	0	0	175
Total Derivatives Traded	3,368	80,845	228,289

Number of Outstanding Securities	Nominal Value	Dividends [1]			Date of Last Coupon		Note	Shares	Closing price	% change	Previous closing price/date	Open price	Price min	Price max	Last price	Avg price	Last Bid [7]	Last Ask [7]	P/E after	Year	Volume	Trades	Transactions Value[8]	Company Mkt Value (thou. €)	Year low	Year high	Sector[4]
		2013	2014	2015	Dividend [2]	Right																					

Warrants

1,141,734,167	---	---	---	11/06/2013	---	ALPHA BANK (W)	0.002	---	↘	0.002	11/02/2016	0.002	0.001	0.002	0.002	0.001	---	---	---	2014	1,046,653	16	1,059.06	2,028,683.18	0.001	0.002	8355
245,745,725	---	---	---	27/06/2013	---	NATIONAL BANK (W)	0.005	---	↘	0.005	11/02/2016	0.004	0.004	0.005	0.005	0.005	---	---	---	2014	213,693	29	1,056.78	1,372,072.73	0.002	0.007	8355
843,637,022	---	---	---	03/07/2013	---	PIRAEUS BANK (W)	0.001	---	↘	0.001	11/02/2016	0.001	0.001	0.001	0.001	0.001	---	---	---	2014	500	1	0.50	855,851.96	0.001	0.001	8355

Main Market

71,417,100	0.650	---	0.7	---	14/05/2015	27/06/2014	---	AEGEAN AIRLINES (CR)	6.26	1.62	#	6.16	11/02/2016	6.29	6.25	6.42	6.26	6.31	---	---	7.86	2014	146,177	586	921,679.68	447,071.05	6.13	7.44	5751
11,178,000	1.12	---	---	---	21/04/2010	15/12/2014	---	AEOLIAN INVESTMENT FUND (CR)	0.585	8.33	#	0.540	11/02/2016	0.594	0.585	0.594	0.585	0.591	---	---	---	2014	14	2	8.27	6,539.13	0.496	0.680	8985
1,536,881,200	0.300	---	---	---	07/04/2008	27/11/2015	---	ALPHA BANK (CR)	1.32	13.79	#	1.16	11/02/2016	1.19	1.12	1.35	1.32	1.24	---	---	---	2014	12,587,213	3,070	15,560,123.29	2,028,683.18	0.949	2.50	8355
22,016,250	0.370	---	---	---	15/07/2009	11/05/2000	---	ALUMIL (CR)	0.232	---	↘	0.232	11/02/2016	0.232	0.232	0.232	0.232	0.232	---	---	---	2014	20	1	4.64	5,107.77	0.228	0.259	1753
417,608	16.00	0.8	---	---	29/04/2014	05/03/2013	---	ANDROMEDA SA (CR)	12.00	---	↘	12.00	11/02/2016	---	---	---	---	---	---	---	---	2014	---	---	---	5,011.30	11.53	13.90	8985
26,252,040	0.340	---	---	---	08/07/2010	10/06/2015	---	AS COMPANY SA (CR)	0.372	-0.27	€	0.373	11/02/2016	0.340	0.340	0.372	0.372	0.351	---	---	5.23	2014	150	5	52.60	9,765.76	0.309	0.379	5379
86,735,980	0.310	---	---	---	06/07/2009	02/01/2002	---	ATHENS MEDICAL CENTER SA (CR)	0.690	---	↘	0.690	11/02/2016	0.686	0.686	0.700	0.690	0.698	---	---	---	2014	1,294	3	902.74	59,847.83	0.550	0.733	4533
2,339,353,394	0.300	---	---	---	04/06/2008	01/12/2015	5103	ATTICA BANK S.A. (CR)	0.092	12.20	#	0.082	11/02/2016	0.083	0.078	0.092	0.092	0.083	---	---	---	2014	2,141,586	589	177,573.61	215,220.51	0.066	0.279	8355
15,300,000	0.300	---	---	---	30/07/2009	13/12/1999	---	ATTICA PUBLICATIONS SA (CR)	0.786	---	↘	0.786	11/02/2016	---	---	---	---	---	---	---	28.35	2014	---	---	---	12,025.80	0.706	0.788	5557
46,821,187	0.700	---	---	---	01/07/2008	01/03/2010	---	AUDIO VISUAL ENTERPRISES (CR)	0.038	---	↘	0.038	11/02/2016	0.038	0.038	0.038	0.038	0.038	---	---	---	2014	205	2	7.79	1,779.21	0.028	0.060	5553
12,157,500	0.320	---	0.8	---	20/05/2015	22/11/2013	---	AUTOHELLAS SA (CR)	10.00	-0.30	€	10.03	11/02/2016	10.00	10.00	10.00	10.00	10.00	---	---	12.07	2014	300	1	3,000.00	121,575.00	9.72	11.24	5759
8,922,944,533	0.100	---	---	---	31/05/2011	02/02/2015	4857	BANK OF CYPRUS (CR)	0.128	-2.29	€	0.131	11/02/2016	0.130	0.127	0.131	0.128	0.128	---	---	---	2014	7,405,490	253	944,476.85	1,142,136.90	0.127	0.154	8355
19,864,886	5.60	0.672	0.672	---	05/03/2015	02/07/2008	---	BANK OF GREECE (CR)	9.27	3.92	#	8.92	11/02/2016	9.20	9.00	9.30	9.22	9.18	---	---	---	---	1,103	40	10,119.95	184,147.49	8.70	9.50	8355
23,986,500	1.05	---	---	---	26/06/2009	15/03/2000	---	BIOKARPET S.A.(CR)	0.216	-10.00	€	0.240	11/02/2016	0.216	0.216	0.216	0.216	0.220	---	---	---	2014	1	1	0.22	5,181.08	0.216	0.250	3726
15,842,391	1.51	---	---	---	15/07/2009	12/05/2000	---	BITROS HOLDING SA (CR)	0.227	---	↘	0.227	11/02/2016	---	---	---	---	---	---	---	---	2014	---	---	---	3,596.22	0.225	0.227	1757
15,816,009	0.300	---	---	---	01/07/2009	17/07/2000	---	BYTE COMPUTER SA (CR)	0.288	6.27	#	0.271	11/02/2016	0.269	0.269	0.290	0.290	0.273	---	---	4.33	2014	1,900	11	518.33	4,555.01	0.257	0.318	9533
368,141,297	6.70	0.354	0.36	---	02/07/2015	29/04/2013	---	CC HBC AG (CR)	16.36	0.06	#	16.35	11/02/2016	16.55	16.36	16.62	16.36	16.46	---	---	---	---	52,340	147	861,480.03	6,022,791.62	15.97	19.58	3537
101,123,806	0.360	---	---	---	22/07/2010	28/06/2011	---	CENTRIC HOLDINGS (CR)	0.089	5.95	#	0.084	11/02/2016	0.084	0.084	0.089	0.089	0.086	---	---	14.69	2014	31,027	31	2,682.17	9,000.02	0.067	0.100	5752
4,034,950	0.680	---	---	---	01/07/2005	30/12/2010	---	CHATZIKRANIOTIS & SONS SA (CR)	0.090	16.88	#	0.077	11/02/2016	0.090	0.090	0.090	0.090	0.090	---	---	---	2014	5,500	3	495.00	363.15	0.063	0.119	3577
124,170,201	0.780	---	---	---	28/06/2002	07/02/2005	---	CORINTH PIPEWORKS SA (CR)	0.712	-0.70	€	0.717	11/02/2016	0.730	0.700	0.739	0.712	0.721	---	---	---	2014	19,348	79	13,946.58	88,409.18	0.672	1.03	1757
9,907,500	0.300	---	---	---	06/10/2005	13/02/2002	---	CPI SA (CR)	0.125	9.65	#	0.114	11/02/2016	0.125	0.125	0.125	0.125	0.125	---	---	44.47	2015	47	1	5.88	1,238.44	0.114	0.150	9572
27,379,200	0.420	0.1	0.045	---	24/07/2015	14/10/2015	---	CRETE PLASTICS SA (CR)	5.57	0.54	#	5.54	11/02/2016	5.57	5.57	5.57	5.57	5.57	---	---	16.14	2014	10	1	55.70	152,502.14	5.06	6.04	1357
15,000,000	0.300	---	---	---	06/07/2007	18/07/2000	---	DAIOS PLASTICS SA (CR)	2.78	---	↘	2.78	11/02/2016	---	---	---	---	---	---	---	-(6)-	2014	---	---	---	41,700.00	2.70	2.82	1357
34,720,000	0.310	---	---	---	16/06/2010	01/08/2007	---	DROMEAS SA (CR)	0.079	9.72	#	0.072	11/02/2016	0.072	0.072	0.079	0.079	0.078	---	---	---	2014	27,400	16	2,137.10	2,742.88	0.066	0.128	3726
3,873,120	0.300	---	---	---	07/07/2008	04/10/2012	---	DRUCKFARBEN HELLAS (CR)	0.450	---	↘	0.450	11/02/2016	---	---	---	---	---	---	---	---	2014	---	---	---	1,742.90	0.450	0.550	1357
11,250,000	0.520	---	---	---	26/07/2010	09/11/2015	---	EKTER SA (CR)	0.389	2.37	#	0.380	11/02/2016	0.389	0.389	0.389	0.389	0.390	---	---	---	2014	1	1	0.39	4,376.25	0.320	0.499	2357
32,188,050	1.04	---	---	---	21/07/2008	20/01/2000	---	EL. D. MOUZAKIS SA (CB)	0.104	9.47	#	0.095	11/02/2016	0.104	0.104	0.104	0.104	0.104	---	---	---	2014	54	1	5.62	3,347.56	0.087	0.215	3763
18,435,000	1.00	---	---	---	07/07/2009	10/09/2010	---	ELASTRON (CR)	0.337	-6.39	€	0.360	11/02/2016	0.396	0.324	0.396	0.353	0.327	---	---	---	2014	2,310	15	756.46	6,212.60	0.324	0.405	1757
31,734,530	1.60	---	---	---	09/07/2007	19/07/2006	---	ELGEKA SA (CR)	0.195	---	↘	0.195	11/02/2016	---	---	---	---	---	---	---	---	2014	---	---	---	6,188.23	0.146	0.210	3577
23,828,130	0.500	---	---	---	07/07/2010	17/02/2009	---	ELINOIL S.A. (CR)	0.850	---	↘	0.850	11/02/2016	---	---	---	---	---	---	---	21.32	2014	---	---	---	20,253.91	0.780	0.850	537
177,001,313	1.03	---	---	---	05/07/2011	20/12/2007	---	ELLAKTOR (CR)	1.06	11.46	#	0.951	11/02/2016	0.978	0.956	1.08	1.06	1.02	---	---	---	2014	264,543	490	269,226.49	187,621.39	0.857	1.45	2357
82,667,000	0.300	---	---	---	22/07/2014	---	---	ELTECH ANEMOS S.A. (CR)	0.586	2.09	#	0.574	11/02/2016	0.580	0.560	0.586	0.586	0.574	---	---	9.94	2014	8,025	23	4,605.56	48,442.86	0.533	0.730	7537
26,730,187	0.600	0.05	---	---	23/06/2014	30/12/2010	---	ELTON SA (CR)	0.998	6.74	#	0.935	11/02/2016	0.998	0.998	0.998	0.998	0.998	---	---	10.90	2014	22	2	21.96	26,676.73	0.869	1.00	1353

Number of Outstanding Securities	Nominal Value	Dividends [1]			Date of Last Coupon Dividend [2]		Note	Shares	Closing price	% change	Previous closing price/date	Open price	Price min	Price max	Last price	Avg price	Last Bid [7]	Last Ask [7]	P/E after	Year	Volume	Trades	Transactions Value[8]	Company Mkt Value (thou. €)	Year low	Year high	Sector[4]
----------------------------------------	------------------	---------------	--	--	-------------------------------------	--	------	--------	------------------	----------	--------------------------------	---------------	--------------	--------------	---------------	--------------	-----------------	--------------	--------------	------	--------	--------	--------------------------	--------------------------------	-------------	--------------	---------------

Main Market

14,050,971	0.340	---	---	---	06/07/2011	17/10/2002	---	ELTRAK SA (CR)	1.19	---	↘	1.19	11/02/2016	1.19	1.19	1.19	1.19	1.19	---	---	---	2014	13	1	15.47	16,720.66	1.10	1.35	2753
125,562,262	0.320	---	---	---	30/05/2014	02/12/2014	---	ELVAL HOLDINGS (CB)	0.764	-0.52	€	0.768	11/02/2016	0.750	0.743	0.789	0.764	0.763	---	---	5.50	2014	11,090	62	8,467.05	95,929.57	0.670	1.23	1753
13,230,000	0.300	---	---	---	11/08/2010	24/09/2015	---	ELVE SA (CR)	0.385	---	↘	0.385	11/02/2016	---	---	---	---	---	---	---	0.91	2014	---	---	---	5,093.55	0.327	0.410	3763
2,185,998,765	0.300	---	---	---	02/05/2008	27/11/2015	---	EUROBANK ERGASIAS (CR)	0.324	10.20	#	0.294	11/02/2016	0.320	0.295	0.330	0.324	0.318	---	---	---	2014	24,600,007	4,906	7,816,265.99	708,263.60	0.241	1.03	8355
7,959,900	0.600	---	---	---	02/06/2010	10/12/2013	5031	EUROCONSULTANTS S.A. (CR)	1.25	4.17	#	1.20	11/02/2016	1.23	1.23	1.25	1.25	1.24	---	---	86.82	2014	50	2	61.90	9,949.88	1.12	1.74	2791
27,503,677	0.630	---	---	---	11/07/2013	18/10/1999	---	EUROPEAN RELIANCE INSUR. (CR)	1.30	2.36	#	1.27	11/02/2016	1.23	1.23	1.30	1.30	1.24	---	---	3.49	2014	1,030	3	1,275.00	35,754.78	1.21	1.44	8536
13,673,200	0.880	---	---	---	18/07/2008	26/07/2001	---	EVROFARMA SA (CR)	0.177	-9.69	€	0.196	11/02/2016	0.177	0.177	0.177	0.177	0.177	---	---	---	2014	1,010	3	178.77	2,420.16	0.177	0.270	3577
106,500,000	0.600	0.36	0.2	---	05/05/2015	28/01/2000	---	EYDAP S.A. (CR)	3.93	-0.25	€	3.94	11/02/2016	3.86	3.84	4.08	3.93	3.98	---	---	9.98	2014	27,613	216	109,757.11	418,545.00	3.60	5.20	7577
52,800,154	0.300	0.2	---	---	20/08/2014	21/06/2004	---	F.G. EUROPE S.A. (CR)	0.550	---	↘	0.550	11/02/2016	---	---	---	---	---	---	---	---	2014	---	---	---	29,040.08	0.441	0.649	3722
10,203,575	0.730	---	---	---	16/07/2007	18/10/1999	---	FIERATEX SA (CR)	0.081	---	↘	0.081	11/02/2016	---	---	---	---	---	---	---	---	2014	---	---	---	826.49	0.081	0.099	3763
11,720,024	0.540	0.0394	---	---	21/08/2014	04/11/2015	---	FLEXOPACK SA (CR)	2.44	---	↘	2.44	11/02/2016	---	---	---	---	---	---	---	7.48	2014	---	---	---	28,596.86	2.43	3.00	2723
4,181,450	0.500	---	---	---	21/08/2000	05/03/2002	---	FLOUR MILLS SARANTOPOULOS SA	0.900	---	↘	0.900	11/02/2016	---	---	---	---	---	---	---	---	2014	---	---	---	3,763.31	0.900	1.01	3577
66,948,210	0.300	---	0.1005	---	22/09/2015	22/09/2015	---	FOLLI FOLLIE (CR)	13.60	3.58	#	13.13	11/02/2016	13.13	13.13	13.60	13.60	13.36	---	---	---	2014	56,905	343	760,306.96	910,495.66	12.50	17.02	5379
50,992,322	1.07	---	---	---	21/06/2010	16/07/2002	---	FOURLIS (CR)	2.18	1.87	#	2.14	11/02/2016	2.27	2.15	2.27	2.18	2.18	---	---	---	2014	43,865	117	95,517.74	111,163.26	2.00	3.06	3722
50,593,832	0.300	---	---	---	07/07/2010	07/09/2011	---	FRIGOGLASS SA (CR)	1.16	0.87	#	1.15	11/02/2016	1.15	1.13	1.19	1.16	1.16	---	---	---	2014	65,521	140	75,871.99	58,688.85	1.00	1.87	2757
14,076,360	0.370	---	---	---	19/08/2008	22/07/2003	---	GALAXIDI S.A. (CR)	0.241	---	↘	0.241	11/02/2016	---	---	---	---	---	---	---	8.10	2014	---	---	---	3,392.40	0.234	0.570	3573
103,144,548	0.570	---	---	---	01/08/2011	07/08/2015	---	GEK TERNA (CR)	1.13	---	↘	1.13	11/02/2016	1.14	1.11	1.18	1.13	1.15	---	---	18.76	2014	120,195	229	137,678.70	116,553.34	1.05	1.55	2357
8,418,750	0.300	---	---	0.12	16/12/2015	27/06/2012	---	GEKE SA (CB)	4.29	---	↘	4.29	11/02/2016	---	---	---	---	---	---	---	---	2014	---	---	---	36,116.44	3.90	4.29	5753
24,060,000	0.300	0.017	0.02	---	03/08/2015	21/01/2000	---	GEN. COMMERCIAL & IND.SA (CR)	0.290	-2.36	€	0.297	11/02/2016	0.290	0.290	0.290	0.290	0.290	---	---	10.21	2014	3,000	1	870.00	6,977.40	0.257	0.333	2797
34,770,982	1.55	0.3	0.15	---	15/05/2015	27/07/2000	---	GR. SARANTIS SA (CR)	6.85	-3.52	€	7.10	11/02/2016	7.10	6.85	7.10	6.85	6.94	---	---	14.50	2014	31,212	18	216,528.08	238,181.23	6.80	8.00	3767
101,260,000	2.13	0.1821	0.3037	---	19/03/2015	08/01/2014	---	GRIVALIA PROPERTIES (CR)	6.95	-2.11	€	7.10	11/02/2016	7.05	6.95	7.19	6.95	7.07	---	---	13.06	2015	27,261	208	192,832.65	703,757.00	6.95	7.64	8675
8,340,750	1.18	---	---	---	25/06/2009	09/09/2015	---	HAIDEMENOS SA (CR)	1.04	---	↘	1.04	11/02/2016	---	---	---	---	---	---	---	---	2014	---	---	---	8,674.38	0.954	1.04	2791
101,279,627	0.380	---	---	---	26/06/2008	14/07/2006	---	HALKOR SA (CB)	0.218	6.86	#	0.204	11/02/2016	0.223	0.200	0.223	0.218	0.210	---	---	---	2014	1,932	8	404.97	22,078.96	0.195	0.305	1755
29,546,360	0.710	---	---	---	20/06/2008	23/08/2000	---	HELLENIC CABLES SA (CR)	0.649	3.02	#	0.630	11/02/2016	0.649	0.649	0.649	0.649	0.649	---	---	---	2014	1,500	2	973.50	19,175.59	0.567	0.749	2733
65,368,563	1.30	---	0.21	---	26/05/2015	07/08/2015	---	HELLENIC EXCHANGES-A.S.E. (CR)	3.86	1.58	#	3.80	11/02/2016	3.80	3.79	3.98	3.86	3.87	---	---	24.43	2014	191,449	627	741,532.80	252,322.65	3.40	5.33	8777
305,635,185	2.18	---	---	---	31/12/2014	01/10/2003	4795	HELLENIC PETROLEUM (CR)	3.09	6.55	#	2.90	11/02/2016	3.05	2.94	3.18	3.09	3.11	---	---	---	2014	186,671	776	579,545.68	944,412.72	2.74	4.15	537
305,732,436	0.410	---	---	---	08/07/2009	28/09/2011	---	HYGEIA SA (CR)	0.090	9.76	#	0.082	11/02/2016	0.087	0.085	0.090	0.090	0.089	---	---	---	2014	13,500	8	1,198.07	27,515.92	0.078	0.119	4533
65,441,118	0.440	---	---	---	24/11/2014	11/08/2015	---	IASO SA (CR)	0.424	8.44	#	0.391	11/02/2016	0.380	0.380	0.424	0.424	0.381	---	---	---	2014	1,139	6	434.28	27,747.03	0.360	0.563	4533
8,298,467	0.400	---	---	---	30/08/1993	08/05/2013	---	IDEAL GROUP SA (CR)	0.702	-10.00	€	0.780	11/02/2016	0.702	0.702	0.702	0.702	0.702	---	---	---	2014	164	2	115.13	5,825.52	0.568	0.822	9574
28,580,100	0.400	0.025	---	---	18/08/2014	10/10/2013	---	IKTINOS HELLAS SA (CR)	0.960	2.13	#	0.940	11/02/2016	0.950	0.930	0.960	0.960	0.939	---	---	9.17	2014	4,147	21	3,895.40	27,436.90	0.891	1.15	2353
9,090,000	0.900	---	---	---	15/05/2009	13/10/2014	---	ILYDA S.A. (CR)	0.555	---	↘	0.555	11/02/2016	---	---	---	---	---	---	---	---	2014	---	---	---	5,044.95	0.520	0.590	9537
20,578,374	0.620	---	0.4	---	04/06/2015	18/05/2015	---	INFORM P. LYKOS SA (CR)	0.519	---	↘	0.519	11/02/2016	---	---	---	---	---	---	---	0.42	2014	---	---	---	10,680.18	0.420	0.594	2791
11,233,200	0.730	---	---	---	12/07/2010	30/07/1999	---	INTERTECH SA (CR)	0.192	8.47	#	0.177	11/02/2016	0.192	0.192	0.192	0.192	0.192	---	---	---	2014	30	1	5.76	2,156.77	0.168	0.209	9572
34,986,430	0.440	---	---	---	25/07/2008	23/02/2010	---	INTERWOOD-XYLEMPORIA (CR)	0.063	---	↘	0.063	11/02/2016	---	---	---	---	---	---	---	---	2014	---	---	---	2,643.07	0.063	0.093	2353
2,566,836	0.440	---	---	---	13/08/2010	09/01/2007	---	INTERWOOD-XYLEMPORIA (PR)	0.171	---	↘	0.171	11/02/2016	---	---	---	---	---	---	---	---	2014	---	---	---	2,643.07	0.171	0.189	2353
23,154,250	1.36	---	---	---	12/08/2008	02/08/2010	---	INTRACOM CONSTR. (CR)	0.245	3.38	#	0.237	11/02/2016	0.250	0.245	0.250	0.245	0.245	---	---	1.98	2014	4,024	4	986.00	5,672.79	0.222	0.330	2357
133,025,996	1.41	---	---	---	03/07/2007	07/01/2002	---	INTRACOM HOLDINGS (CR)	0.270	2.66	#	0.263	11/02/2016	0.270	0.255	0.275	0.270	0.267	---	---	---	2014	37,416	91	10,004.85	35,917.02	0.245	0.345	9578
158,961,721	0.300	---	---	---	30/05/2013	14/11/2007	---	INTRALOT (CR)	1.08	1.89	#	1.06	11/02/2016	1.10	1.06	1.10	1.08	1.07	---	---	---	2014	7,333	27	7,840.50	171,678.66	1.01	1.21	5752

Number of Outstanding Securities	Nominal Value	Dividends [1]			Date of Last Coupon		Note	Shares	Closing price	% change	Previous closing price/date	Open price	Price min	Price max	Last price	Avg price	Last Bid [7]	Last Ask [7]	P/E after	Year	Volume	Trades	Transactions Value[8]	Company Mkt Value (thou. €)	Year low	Year high	Sector[4]
		2013	2014	2015	Dividend [2]	Right																					
Main Market																											
77,654,850	0.580	---	---	---	01/07/2011	21/02/2003	---	J & P - AVAX SA (CR)	0.240	0.42 #	0.239 11/02/2016	0.239	0.229	0.240	0.240	0.238	---	---	1.12	2014	4,649	35	1,104.17	18,637.16	0.226	0.358	2357
136,059,759	1.19	0.18	0.18	---	23/12/2014	05/03/2014	---	JUMBO SA (CR)	9.00	1.92 #	8.83 11/02/2016	9.10	8.96	9.20	9.00	9.09	---	---	16.40	2015	96,484	471	876,592.28	1,224,537.83	8.75	10.23	3747
9,742,920	0.400	0.01	0.01	---	10/08/2015	14/07/2000	---	KARAMOLEGOS SA (CR)	0.630	--- ↘	0.630 11/02/2016	0.630	0.630	0.630	0.630	0.630	---	---	6.05	2014	3	1	1.89	6,138.04	0.601	1.14	3577
14,679,792	1.68	---	---	---	24/06/2014	04/09/2000	---	KARATZIS SA (CR)	3.70	0.54 #	3.68 11/02/2016	3.68	3.60	3.70	3.70	3.68	---	---	8.95	2014	377	8	1,385.70	54,315.23	3.50	3.95	2723
13,202,756	0.350	---	---	---	01/07/2004	05/08/2014	---	KEKROPS SA (CR)	0.279	-3.13 ☒	0.288 11/02/2016	0.288	0.260	0.288	0.279	0.262	---	---	---	2014	1,117	5	292.80	3,683.57	0.257	0.330	8633
7,595,160	0.600	---	---	---	08/08/2008	18/08/2010	---	KIRIAKOULIS SHIPPING SA (CR)	0.290	-3.33 ☒	0.300 11/02/2016	0.300	0.250	0.300	0.290	0.253	---	---	---	2014	1,227	5	309.85	2,202.60	0.238	0.586	5759
23,648,700	0.350	---	---	---	13/07/2011	31/03/2015	---	KLEEMAN HELLAS SA (CR)	1.31	2.34 #	1.28 11/02/2016	1.40	1.28	1.40	1.31	1.29	---	---	5.27	2014	3,083	9	3,975.55	30,979.80	1.21	1.54	2757
40,219,218	0.300	---	---	---	25/05/2009	09/07/2013	---	KLOUKINAS - LAPPAS SA (CR)	0.257	--- ↘	0.257 11/02/2016	0.257	0.257	0.257	0.257	0.257	---	---	---	2014	10	1	2.57	10,336.34	0.245	0.299	2357
21,224,340	0.420	---	---	---	02/07/2008	25/04/2006	---	KORDELLOS BROS SA (CR)	0.265	--- ↘	0.265 11/02/2016	---	---	---	---	---	---	---	---	2014	---	---	---	5,624.45	0.265	0.265	1757
13,586,500	0.390	---	---	---	25/06/2010	28/05/2008	---	KORRES (CR)	3.46	2.67 #	3.37 11/02/2016	3.39	3.37	3.46	3.46	3.38	---	---	---	2014	39	4	131.96	47,009.29	2.92	3.89	3767
29,480,000	0.420	---	---	---	19/07/2010	01/08/2007	---	KRETA FARM SA (CR)	0.339	-5.83 ☒	0.360 11/02/2016	0.365	0.330	0.365	0.339	0.335	---	---	9.31	2014	10,949	23	3,669.36	9,993.72	0.330	0.416	3577
33,065,136	0.380	---	0.06	---	04/08/2015	16/09/2013	---	KRI-KRI S.A. (CR)	1.70	6.25 #	1.60 11/02/2016	1.70	1.70	1.70	1.70	1.70	---	---	15.74	2014	92	1	156.40	56,210.73	1.60	1.90	3577
15,804,800	0.330	---	---	---	15/06/2010	12/03/2004	---	KTIMA KOSTAS LAZARIDIS SA (CR)	0.229	--- ↘	0.229 11/02/2016	---	---	---	---	---	---	---	---	2014	---	---	---	3,619.30	0.212	0.310	3535
23,719,554	0.990	---	0.2406	---	14/08/2015	15/09/2014	---	KYRIAKIDIS MARBLES SA (CR)	2.34	-0.43 ☒	2.35 11/02/2016	2.35	2.34	2.35	2.34	2.34	---	---	8.89	2014	2,044	10	4,790.06	55,503.76	2.11	2.40	2353
79,721,775	0.300	---	---	---	30/05/2007	23/06/2014	---	LAMDA DEVELOPMENT SA (CR)	3.56	9.54 #	3.25 11/02/2016	3.28	3.20	3.57	3.56	3.33	---	---	---	2014	81,987	207	272,933.44	283,809.52	3.12	4.24	8633
21,364,000	1.12	---	---	---	05/07/2010	10/08/2005	---	LAMPSPA HOTEL SA (CR)	16.85	--- ↘	16.85 11/02/2016	16.85	16.85	16.85	16.85	16.85	---	---	-(6)-	2014	1	1	16.85	359,983.40	15.63	17.00	5753
5,939,268	0.620	---	---	---	10/07/2003	03/01/2002	---	LANAKAM SA (CR)	0.638	--- ↘	0.638 11/02/2016	---	---	---	---	---	---	---	---	2014	---	---	---	3,789.25	0.638	0.638	3763
7,734,375	1.00	---	---	---	09/07/2007	07/01/2011	---	LIVANIS SA (CR)	0.096	9.09 #	0.088 11/02/2016	0.096	0.096	0.096	0.096	0.096	---	---	---	2014	44	1	4.22	742.50	0.072	0.148	5557
4,740,000	0.860	---	---	---	14/03/2003	---	---	LOGISMOS S.A. (CR)	0.432	--- ↘	0.432 11/02/2016	---	---	---	---	---	---	---	---	2014	---	---	---	2,047.68	0.432	0.489	9533
17,125,062	0.940	---	---	---	01/06/2010	02/02/2015	---	LOULIS MILLS SA (CR)	1.50	-4.46 ☒	1.57 11/02/2016	1.50	1.50	1.50	1.50	1.50	---	---	7.33	2014	3,000	2	4,500.00	25,687.59	1.40	1.67	3577
939,385,586	0.300	---	---	---	26/04/2007	29/08/2014	---	MARFIN INVESTMENT GROUP (CR)	0.058	5.45 #	0.055 11/02/2016	0.056	0.054	0.058	0.058	0.056	---	---	---	2014	1,721,376	311	96,272.73	54,484.36	0.048	0.085	8775
9,819,370	0.690	---	---	---	14/08/2007	09/01/2004	---	MATHIOS REFRACTORY SA (CR)	0.324	--- ↘	0.324 11/02/2016	---	---	---	---	---	---	---	---	2014	---	---	---	3,181.48	0.324	0.324	2353
468,700	0.65	1	---	---	25/06/2015	21/05/2004	---	MERMEREN KOMB. A.D. PR. (GDR)	5.00	-0.79 ☒	5.04 11/02/2016	5.00	5.00	5.00	5.00	5.00	---	---	0.34	2014	100	4	500.00	2,343.50	4.90	8.49	1775
51,950,600	0.320	0.3	0.5	---	08/05/2015	21/10/2005	---	METKA (CR)	6.55	--- ↘	6.55 11/02/2016	6.55	6.55	6.85	6.55	6.65	---	---	4.60	2014	29,045	221	193,033.34	340,276.43	6.25	7.30	2757
10,500,000	0.950	---	---	---	24/06/2008	19/12/2013	---	MEVACO SA (CR)	0.932	--- ↘	0.932 11/02/2016	---	---	---	---	---	---	---	---	2014	---	---	---	9,786.00	0.705	1.02	2757
6,700,000	0.800	0.16	0.03	---	26/06/2015	29/05/2014	---	MILLS KEPENOS (CR)	1.76	--- ↘	1.76 11/02/2016	---	---	---	---	---	---	---	7.65	2014	---	---	---	11,792.00	1.54	1.89	3577
6,200,000	0.500	---	---	---	22/06/2010	01/11/1995	---	MINERVA KNITWEAR SA (CB)	0.075	--- ↘	0.075 11/02/2016	---	---	---	---	---	---	---	---	2014	---	---	---	465.00	0.064	0.092	3763
12,417,000	0.370	---	---	---	28/07/2008	06/09/2011	---	MLS MULTIMEDIA SA (CR)	3.11	0.32 #	3.10 11/02/2016	3.09	3.03	3.24	3.11	3.10	---	---	22.89	2014	15,579	66	48,234.18	38,616.87	2.75	3.77	9537
11,700,000	0.590	---	---	---	02/06/2009	24/07/2012	---	MOTODYNAMICS S.A. (CR)	0.515	--- ↘	0.515 11/02/2016	---	---	---	---	---	---	---	---	2014	---	---	---	6,025.50	0.457	0.549	5379
110,782,980	0.750	0.2	---	0.15	07/12/2015	04/11/2013	---	MOTOR OIL (CR)	8.26	-0.48 ☒	8.30 11/02/2016	8.69	8.22	8.69	8.26	8.35	---	---	---	2014	45,951	308	383,702.80	915,067.41	8.13	10.40	533
116,915,862	0.970	---	---	---	11/05/2009	19/10/2015	---	MYTILINEOS HOLDINGS (CR)	2.97	0.68 #	2.95 11/02/2016	2.93	2.93	3.02	2.97	2.98	---	---	---	2014	197,748	697	588,562.52	347,240.11	2.70	3.70	1755
8,321,682	0.670	---	---	---	17/08/2007	23/11/1999	---	N. LEVEDERIS SA (CB)	0.160	-9.09 ☒	0.176 11/02/2016	0.160	0.160	0.160	0.160	0.160	---	---	---	2014	728	1	116.48	4,010.52	0.159	0.195	1757
2,160,524	0.670	0.0436	0.0436	---	29/07/2015	23/11/1999	---	N. LEVEDERIS SA (PB)	1.24	-0.80 ☒	1.25 11/02/2016	1.24	1.24	1.24	1.24	1.24	---	---	---	2014	8	2	9.92	4,010.52	1.24	1.25	1757
11,510,102	0.890	---	---	---	24/06/2005	06/10/1999	---	NAFPAKTOS TEXTILE IND. SA (CB)	0.272	--- ↘	0.272 11/02/2016	0.272	0.272	0.272	0.272	0.272	---	---	---	2014	24	1	6.53	3,130.75	0.160	0.313	3763
6,340,000	0.600	---	---	---	30/11/2009	04/12/2015	---	NAKAS MUSIC	0.825	--- ↘	0.825 11/02/2016	---	---	---	---	---	---	---	8.59	2015	---	---	---	5,230.50	0.700	0.825	5379
9,147,151,527	0.300	---	---	---	16/05/2008	30/11/2015	---	NATIONAL BANK (CR)	0.150	25.00 #	0.120 11/02/2016	0.127	0.120	0.152	0.150	0.136	---	---	---	2014	54,864,431	4,703	7,434,391.94	1,372,072.73	0.099	0.340	8355
23,935,280	0.300	---	---	---	29/06/2009	13/06/2000	---	NAYTEMPORIKI PUBLISHING SA(CR)	0.071	--- ↘	0.071 11/02/2016	---	---	---	---	---	---	---	---	2014	---	---	---	1,699.40	0.065	0.084	5557
27,848,000	0.300	0.004	0.0032	---	18/08/2015	02/09/2003	---	NEWSPHONE HELLAS SA (CR)	0.216	--- ↘	0.216 11/02/2016	---	---	---	---	---	---	---	24.56	2014	---	---	---	6,015.17	0.135	0.250	2791

Number of Outstanding Securities	Nominal Value	Dividends [1]			Date of Last Coupon Dividend [2]		Date of Last Coupon Right	Note	Shares	Closing price	% change	Previous closing price/date	Open price	Price min	Price max	Last price	Avg price	Last Bid [7]	Last Ask [7]	P/E after	Year	Volume	Trades	Transactions Value[8]	Company Mkt Value (thou. €)	Year low	Year high	Sector[4]
----------------------------------------	------------------	---------------	--	--	-------------------------------------	--	------------------------------	------	--------	------------------	----------	--------------------------------	---------------	--------------	--------------	---------------	--------------	-----------------	--------------	--------------	------	--------	--------	--------------------------	--------------------------------	-------------	--------------	---------------

Main Market

22,996,875	1.25	---	---	---	24/06/2011	02/02/2016	5106	NEXANS HELLAS SA (CR)	0.998	---	↘	0.998	11/02/2016	---	---	---	---	---	---	---	2014	---	---	---	22,950.88	0.781	1.09	2733
259,030,486	0.300	---	---	---	08/07/2008	10/11/2008	---	NIREFS SA (CR)	0.097	29.33	#	0.075	11/02/2016	0.097	0.091	0.097	0.097	0.096	---	---	2014	155,695	71	15,013.53	25,125.96	0.072	0.109	3573
319,000,000	0.300	0.25	0.7017	0.17	11/09/2015	25/04/2001	---	OPAP (CR)	5.41	0.19	#	5.40	11/02/2016	5.49	5.36	5.60	5.41	5.47	---	8.93	2014	629,138	1,205	3,442,353.87	1,725,790.00	5.16	7.65	5752
490,150,389	2.83	---	0.08	---	25/06/2015	18/06/1998	---	OTE (CR)	6.87	1.78	#	6.75	11/02/2016	6.95	6.65	6.97	6.87	6.85	---	30.58	2014	489,188	1,191	3,350,659.85	3,367,333.17	6.55	9.19	6535
25,000,000	2.00	0.12	0.099	---	25/06/2015	08/08/2003	---	P.P.A. S.A. (CR)	10.50	-2.33	↕	10.75	11/02/2016	10.48	10.40	11.12	10.50	10.82	---	38.81	2014	17,128	220	185,235.44	262,500.00	9.80	14.78	2777
4,971,466	1.46	---	---	---	04/07/2007	08/10/2003	---	PAIRIS SA (CR)	0.179	---	↘	0.179	11/02/2016	---	---	---	---	---	---	---	2014	---	---	---	889.89	0.179	0.179	2723
3,953,090	0.900	---	0.067	---	27/05/2015	05/12/2012	---	PAPERPACK (CR)	0.800	---	↘	0.800	11/02/2016	---	---	---	---	---	---	2.46	2014	---	---	---	3,162.47	0.800	1.00	2723
50,797,369	0.310	---	---	---	17/08/2000	12/10/2010	---	PAPOUTSANIS (CR)	0.199	8.15	#	0.184	11/02/2016	0.184	0.184	0.199	0.199	0.197	---	---	2014	150	7	29.60	10,108.68	0.174	0.217	3767
7,070,400	0.930	---	---	---	18/05/2010	25/05/2015	---	PETROPOULOS PETROS (CR)	3.52	-1.40	↕	3.57	11/02/2016	3.52	3.52	3.56	3.52	3.52	---	21.68	2014	230	4	809.68	24,887.81	3.43	3.66	2753
8,733,183,280	0.300	---	---	---	16/05/2008	27/11/2015	---	PIRAEUS BANK (CR)	0.098	20.99	#	0.081	11/02/2016	0.088	0.082	0.100	0.098	0.092	---	---	2014	42,222,612	2,693	3,881,034.14	855,851.96	0.067	0.293	8355
22,080,000	0.330	0.2	---	---	21/05/2014	27/04/2015	---	PLAISIO COMPUTERS SA (CR)	4.25	-4.49	↕	4.45	11/02/2016	4.45	4.14	4.46	4.25	4.28	---	5.86	2014	7,720	74	33,019.77	93,840.00	4.00	4.56	9572
232,000,000	4.60	---	0.05	---	20/07/2015	12/12/2001	---	PPC (CR)	2.75	2.61	#	2.68	11/02/2016	2.79	2.68	2.84	2.75	2.77	---	18.64	2014	312,317	808	864,382.87	638,000.00	2.34	4.08	7535
11,812,193	0.470	---	0.02	---	26/03/2015	15/11/2006	---	PROFILE SA (CR)	0.449	6.90	#	0.420	11/02/2016	0.449	0.449	0.449	0.449	0.450	---	11.89	2014	2	1	0.90	5,303.67	0.399	0.546	9533
27,345,120	0.470	---	---	---	18/07/2005	26/02/2014	---	QUALITY & RELIABILITY SA (CR)	0.289	-0.34	↕	0.290	11/02/2016	0.290	0.289	0.300	0.290	0.289	---	10.85	2014	23,530	9	6,802.73	7,902.74	0.251	0.303	9533
11,962,443	0.300	---	---	---	05/09/2008	21/01/2016	---	QUEST HOLDINGS (CR)	3.50	---	↘	3.50	11/02/2016	3.50	3.50	3.50	3.50	3.50	---	18.47	2014	255	4	892.50	41,868.55	3.37	4.05	9533
57,434,884	1.31	---	---	---	05/06/2008	12/06/2009	---	REDS S.A. (CR)	0.328	9.33	#	0.300	11/02/2016	0.300	0.300	0.328	0.328	0.300	---	---	2014	708	2	212.68	18,838.64	0.300	0.340	8633
22,280,000	0.300	---	---	---	11/04/2011	23/02/2007	---	REVOIL (CR)	0.239	-1.65	↕	0.243	11/02/2016	0.243	0.239	0.243	0.239	0.239	---	---	2014	308	3	73.64	5,324.92	0.170	0.250	5379
7,500,000	0.800	0.0863	0.1	---	19/06/2015	10/02/2014	---	S.KANAKIS SA (CR)	1.86	-4.61	↕	1.95	11/02/2016	1.95	1.82	1.95	1.86	1.84	---	8.39	2014	1,730	38	3,183.70	13,950.00	1.75	2.00	3577
52,067,296	0.300	---	---	---	23/12/2003	24/01/2007	---	SELECTED TEXT. IND. ASSOC (CR)	0.170	---	↘	0.170	11/02/2016	0.170	0.170	0.170	0.170	0.170	---	---	2015	1,000	1	170.00	8,851.44	0.084	0.188	3763
204,235,184	0.300	---	---	---	01/07/2008	30/07/2012	---	SELONDA AQUACULTURE SA (CR)	0.093	9.41	#	0.085	11/02/2016	0.083	0.083	0.093	0.093	0.083	---	1.03	2014	6,901	4	572.79	18,993.87	0.074	0.108	3573
6,456,530	1.61	---	---	---	29/06/2001	02/08/2010	---	SPACE HELLAS SA (CR)	1.00	---	↘	1.00	11/02/2016	---	---	---	---	---	---	2.64	2014	---	---	---	6,456.53	0.891	1.28	9578
28,438,268	0.300	---	---	---	21/08/2006	24/11/1999	---	SPIROY AGRICULTURE SA (CR)	0.700	---	↘	0.700	11/02/2016	---	---	---	---	---	---	---	2014	---	---	---	19,906.79	0.700	0.700	1357
40,693,350	5.00	---	---	---	03/07/2006	26/05/2015	---	TECHNICAL OLYMPIC SA (CR)	0.680	9.85	#	0.619	11/02/2016	0.565	0.565	0.700	0.680	0.653	---	---	2014	6,664	31	4,348.51	27,671.48	0.565	0.831	3728
109,314,400	0.300	---	---	---	28/05/2012	05/08/2015	---	TERNA ENERGY (CR)	2.11	3.43	#	2.04	11/02/2016	2.04	2.01	2.14	2.11	2.07	---	---	2014	53,404	316	110,773.93	230,653.38	1.92	2.47	7537
36,300,000	1.12	0.285	0.24	---	03/08/2015	12/12/2007	---	THESSALONIKA WATER & SEWERAGE	2.70	1.89	#	2.65	11/02/2016	2.65	2.65	2.70	2.70	2.70	---	7.41	2014	2,210	3	5,956.60	98,010.00	2.65	3.05	7577
45,094,620	0.660	0.05	0.0225	---	20/04/2015	01/11/1999	---	THRACE PLASTICS SA (CR)	1.34	1.52	#	1.32	11/02/2016	1.34	1.32	1.35	1.32	1.33	---	---	2014	2,474	18	3,290.19	60,426.79	1.25	1.40	1357
77,063,568	4.00	---	0.1551	---	24/06/2015	25/06/2004	---	TITAN CEMENT (CR)	15.00	-0.99	↕	15.15	11/02/2016	15.15	14.86	15.15	15.00	15.09	---	13.84	2014	58,148	397	877,528.69	1,214,991.41	14.86	18.16	2353
7,568,960	4.00	---	0.1551	---	24/06/2015	25/06/2004	---	TITAN CEMENT CO. (PR)	7.80	---	↘	7.80	11/02/2016	---	---	---	---	---	---	7.20	2014	---	---	---	1,214,991.41	7.60	8.88	2353
10,080,000	3.00	0.6	1.95	---	04/05/2015	27/08/2001	---	TPA SA (CR)	20.91	---	↘	20.91	11/02/2016	20.91	20.91	20.91	20.91	20.91	---	9.90	2014	55	2	1,150.05	210,772.80	19.25	24.10	2777
15,627,315	0.300	---	---	---	16/11/1992	03/12/2012	---	UNIBIOS (CR)	0.069	2.99	#	0.067	11/02/2016	0.077	0.067	0.077	0.069	0.067	---	---	2014	3,411	10	229.05	1,078.28	0.054	0.091	2353
18,810,000	0.400	---	---	---	08/07/2010	14/11/2007	---	VARVERIS - MODA BAGNO SA (CR)	0.150	-6.25	↕	0.160	11/02/2016	0.160	0.150	0.160	0.150	0.155	---	---	2014	184	4	28.52	2,821.50	0.115	0.165	2353
233,164,646	---	---	---	---	---	23/07/2015	---	VIOHALCO SA/NV (CB)	1.01	-1.94	↕	1.03	11/02/2016	1.06	1.00	1.08	1.01	1.03	---	---	---	69,040	224	71,057.56	235,496.29	0.928	1.67	2727
4,968,600	2.88	---	---	---	01/07/1998	14/12/1998	---	VIS SA (CR)	0.849	7.74	#	0.788	11/02/2016	0.849	0.849	0.849	0.849	0.849	---	---	2014	600	3	509.40	4,218.34	0.611	0.860	2723
6,325,000	0.600	---	---	---	02/05/2014	17/02/2014	---	VOGIATZOGLOU SYSTEMS SA (CR)	1.06	8.38	#	0.978	11/02/2016	1.06	1.06	1.06	1.06	1.06	---	30.90	2014	21	1	22.26	6,704.50	0.978	1.06	2797

Exchange Traded Funds (ETFs)

6,030,903	---	---	---	---	24/01/2008	---	ALPHA ETF FTSE Athex Large Cap	1.19	1.88	#	1.17	11/02/2016	1.19	1.19	1.19	1.19	1.19	---	---	---	---	8,000	1	9,536.00	---	1.13	1.81	12003
294,878	---	---	---	---	29/06/2009	---	NBGAM ETF	5.38	7.17	#	5.02	11/02/2016	5.38	5.38	5.38	5.38	5.38	---	---	---	---	2	1	10.76	---	5.02	7.23	12003

Number of Outstanding Securities	Nominal Value	Dividends [1]			Date of Last Coupon Dividend [2]		Note	Shares	Closing price	% change	Previous closing price/date	Open price	Price min	Price max	Last price	Avg price	Last Bid [7]	Last Ask [7]	P/E after	Year	Volume	Trades	Transactions Value[8]	Company Mkt Value (thou. €)	Year low	Year high	Sector[4]
----------------------------------	---------------	---------------	--	--	----------------------------------	--	------	--------	---------------	----------	-----------------------------	------------	-----------	-----------	------------	-----------	--------------	--------------	-----------	------	--------	--------	-----------------------	-----------------------------	----------	-----------	------------

Exchange Traded Funds (ETFs)

388,550	---	---	---	---	03/11/2010	---	NBGAM ETF GREECE & TURKEY 30		4.95	0.61 #	4.92	11/02/2016	4.95	4.95	4.95	4.95	4.95	---	---	---	---	2	1	9.90	---	4.90	5.34	12003
---------	-----	-----	-----	-----	------------	-----	------------------------------	--	------	--------	------	------------	------	------	------	------	------	-----	-----	-----	-----	---	---	------	-----	------	------	-------

Low Dispersion

14,000,000	4.15	---	---	---	23/04/2010	29/06/1999	4815	ALPHA REAL ESTATE SA(CR)	4.34	-3.56 €	4.50	11/02/2016	4.28	4.28	5.29	5.29	4.34	---	---	23.36	2014	90	14	390.25	60,760.00	4.28	6.00	8637
63,900,000	3.00	---	---	---	23/06/2003	04/11/2008	4816	ASTIR PALACE SA (CR)	3.14	-1.88 €	3.20	11/02/2016	2.99	2.99	3.20	3.20	3.14	---	---	---	2014	5,808	23	18,231.02	200,646.00	2.90	3.51	5753
90,902,904	0.800	---	---	---	09/08/2004	08/03/2006	4814	ATHENA SA (CR)	0.041	13.89 #	0.036	11/02/2016	0.030	0.030	0.043	0.041	0.041	---	---	---	2014	30,700	20	1,264.10	3,727.02	0.018	0.043	2357
191,660,320	0.300	---	---	---	20/07/2009	29/12/2010	4817	ATTICA HOLDINGS (CR)	0.530	1.53 #	0.522	11/02/2016	0.522	0.522	0.540	0.535	0.530	---	---	---	2014	2,865	5	1,519.12	101,579.97	0.490	0.700	5759
71,082,707	1.70	---	---	---	01/07/2010	21/11/2012	4820	HERACLES GEN.CEMENT CO. (CR)	1.23	---	1.23	11/02/2016	1.23	1.23	1.23	1.23	1.23	---	---	---	2014	1,100	3	1,353.00	87,431.73	1.23	1.23	2353
13,404,440	8.63	---	---	---	02/04/2001	06/03/1992	4822	IONIAN HOTELS SA (CR)	8.13	---	8.13	11/02/2016	---	---	---	---	---	---	---	-(6)-	2014	---	---	---	108,978.10	5.64	8.13	5753
2,760,000	11.83	8.5	9.3	---	23/06/2015	16/07/1990	4823	KARELIA TOBACCO CO. SA (CB)	249.00	---	249.00	11/02/2016	---	---	---	---	---	---	---	11.10	2014	---	---	---	687,240.00	228.00	265.00	3785
106,980,050	2.25	---	---	---	25/07/2008	24/02/2014	5046	MINOAN LINES SA (CR)	2.00	---	2.00	11/02/2016	2.00	2.00	2.00	2.00	2.00	---	---	---	2014	1,602	4	3,204.00	213,960.10	2.00	2.01	5759
255,494,534	3.00	---	---	---	02/03/2012	23/12/2015	5104	NBG PANGAEA (CR)	3.95	6.76 #	3.70	11/02/2016	3.95	3.95	3.95	3.95	3.95	---	---	13.34	2014	5	1	19.75	1,009,203.41	3.45	6.03	8671
17,240,776	0.370	---	---	---	14/07/2005	30/09/2003	4827	PERSEUS SA (CR)	0.430	---	0.430	11/02/2016	---	---	---	---	---	---	---	2.07	2014	---	---	---	7,413.53	0.277	0.430	3577
54,888,240	1.13	0.09	---	---	25/04/2014	22/03/2006	5100	TRASTOR REAL EST. INV. CO.(CR)	0.834	-5.23 €	0.880	11/02/2016	0.800	0.800	0.870	0.870	0.834	---	---	---	2015	2,700	10	2,251.00	45,776.79	0.800	1.25	8671

Surveillance

33,301,715	0.320	---	---	---	27/06/2003	08/07/2009	4978	AEGEK (CR)	0.030	---	0.030	11/02/2016	0.030	0.030	0.030	0.030	0.030	---	---	---	2014	7,341	7	220.23	999.05	0.029	0.072	2357
13,000,000	1.00	---	---	---	01/08/2007	07/04/2000	5093	AKRITAS SA (CR)	0.143	19.17 #	0.120	11/02/2016	0.120	0.100	0.144	0.144	0.143	---	---	---	2014	1,530	4	219.20	1,859.00	0.100	0.530	2353
14,870,100	0.300	---	---	---	15/05/2008	26/09/2011	4844	ALPHA GRISSIN S.A. (CR)	0.023	---	0.023	11/02/2016	---	---	---	---	---	---	---	---	2014	---	---	---	342.01	0.023	0.023	9533
2,969,713	0.300	---	---	---	02/07/2008	28/02/2011	4958	ANEK LINES SA (PR, issue '96)	0.240	---	0.240	11/02/2016	---	---	---	---	---	---	---	---	2014	---	---	---	11,167.97	0.240	0.240	5759
312,163	0.300	---	---	---	02/07/2008	28/02/2011	4959	ANEK LINES SA (PR, issue '90)	0.832	---	0.832	11/02/2016	---	---	---	---	---	---	---	---	2014	---	---	---	11,167.97	0.832	1.04	5759
185,373,016	0.300	---	---	---	02/07/2008	28/02/2011	4957	ANEK LINES SA (CR)	0.055	7.84 #	0.051	11/02/2016	0.057	0.054	0.057	0.055	0.055	---	---	---	2014	6,349	6	349.41	11,167.97	0.050	0.079	5759
20,255,805	0.300	---	---	---	22/08/2006	02/08/2010	4881	AXON HOLDING SA (CR)	0.022	---	0.022	11/02/2016	---	---	---	---	---	---	---	---	2014	---	---	---	445.63	0.021	0.070	4533
17,579,754	4.16	---	---	---	18/08/2006	02/08/2010	5097	BIOTER SA (CR)	0.059	---	0.059	11/02/2016	0.059	0.059	0.059	0.059	0.059	---	---	---	2014	500	1	29.50	1,037.21	0.041	0.149	2357
14,173,104	0.300	---	---	---	11/08/2010	28/11/2013	5055	DIONIC (CR)	0.040	14.29 #	0.035	11/02/2016	0.040	0.040	0.040	0.040	0.040	---	---	---	2014	100	2	4.00	566.92	0.024	0.054	2797
15,878,748	0.480	---	---	---	10/07/2006	22/03/2004	5095	DOMIKI KRITIS SA (CR)	0.318	---	0.318	11/02/2016	---	---	---	---	---	---	---	---	2014	---	---	---	5,049.44	0.318	0.318	2357
3,961,300	1.28	---	---	---	29/06/2004	03/08/2000	5080	DUROS SA (CR)	0.300	---	0.300	11/02/2016	---	---	---	---	---	---	---	---	2014	---	---	---	1,188.39	0.300	0.300	3763
7,085,888	1.59	---	---	---	02/07/1996	06/09/2010	4690	ELVIEMEK (CR)	3.97	---	3.97	11/02/2016	---	---	---	---	---	---	---	---	2014	---	---	---	28,130.98	3.97	3.97	8633
6,000,000	0.600	---	---	---	13/06/2008	08/04/2004	4886	EUROBROKERS S.A. (CR)	0.009	---	0.009	11/02/2016	---	---	---	---	---	---	---	---	2014	---	---	---	54.00	0.009	0.009	8534
21,820,410	0.800	---	---	---	22/05/2008	02/08/2011	4882	EUROMEDICA SA (CR)	0.015	---	0.015	11/02/2016	---	---	---	---	---	---	---	---	2014	---	---	---	327.31	0.015	0.028	4533
110,097,185	0.300	---	---	---	04/12/2013		5033	Forthnet (CR)	0.388	-19.00 €	0.479	11/02/2016	0.386	0.386	0.388	0.388	0.388	---	---	---	---	1,009	5	391.47	42,717.71	0.354	0.750	9535
77,376,446	0.340	---	---	---	23/05/2005	18/08/2011	5094	G.E. DIMITRIOU (CR)	0.009	---	0.009	11/02/2016	0.009	0.009	0.009	0.009	0.009	---	---	---	2014	500	2	4.50	696.39	0.006	0.010	3722
1,270,000	0.300	---	---	---	06/07/2007	06/02/2013	5007	GIRAKIAN PROFIL SA (CB)	0.104	---	0.104	11/02/2016	---	---	---	---	---	---	---	---	2014	---	---	---	132.08	0.104	0.167	1757
36,748,909	0.730	---	---	---	15/12/2005	13/12/2006	5083	HEL. SUGAR INDUSTRY SA (CB)	0.078	20.00 #	0.065	11/02/2016	0.078	0.078	0.078	0.078	0.078	---	---	---	2015	1,000	2	78.00	2,866.41	0.064	0.150	3577
1,540,000	0.600	---	---	---	08/08/1994	19/09/2000	5058	J.BOUTARIS & SON HOLD. (PB)	0.022	---	0.022	11/02/2016	---	---	---	---	---	---	---	---	2014	---	---	---	1,796.45	0.006	0.022	3535
25,179,640	0.600	---	---	---	08/08/1994	19/09/2000	5057	J.BOUTARIS & SON HOLD. SA (CB)	0.070	---	0.070	11/02/2016	---	---	---	---	---	---	---	---	2014	---	---	---	1,796.45	0.025	0.070	3535
7,125,216	0.650	---	---	---	01/07/2005	14/12/1999	4955	KRE.KA SA (CR)	0.104	---	0.104	11/02/2016	---	---	---	---	---	---	---	---	2014	---	---	---	741.02	0.096	0.144	3573
51,081,030	1.00	---	---	---	20/08/2007	03/09/2007	4912	LAVIPHARM SA (CR)	0.130	-7.80 €	0.141	11/02/2016	0.130	0.130	0.130	0.130	0.130	---	---	---	2014	500	1	65.00	6,640.53	0.092	0.155	4577

Number of Outstanding Securities	Nominal Value	Dividends [1]			Date of Last Coupon Dividend [2]		Note	Shares	Closing price	% change	Previous closing price/date	Open price	Price min	Price max	Last price	Avg price	Last Bid [7]	Last Ask [7]	P/E after	Year	Volume	Trades	Transactions Value[8]	Company Mkt Value (thou. €)	Year low	Year high	Sector[4]
4,419,616	1.58	---	---	---	21/07/2011	04/03/2015	4983	MEDICON S.A (CR)	0.465	---	↘ 0.465	11/02/2016	---	---	---	---	---	---	2.66	2014	---	---	---	2,055.12	0.465	0.465	4535
20,231,328	0.600	---	---	---	15/07/2008	25/06/2004	4879	NIKAS SA (CR)	0.100	---	↘ 0.100	11/02/2016	---	---	---	---	---	---	---	2014	---	---	---	2,023.13	0.070	0.100	3577
14,967,940	0.500	---	---	---	21/05/2008	04/01/2008	4956	PASAL DEVELOPMENT S.A. (CR)	0.090	-4.26	↘ 0.094	11/02/2016	0.090	0.090	0.090	0.090	0.090	---	---	2014	98	1	8.82	1,347.11	0.058	0.094	8633
40,946,303	0.360	---	---	---	18/07/2005	27/11/2007	5089	PC SYSTEMS SA (CR)	0.011	---	↘ 0.011	11/02/2016	---	---	---	---	---	---	---	2014	---	---	---	450.41	0.007	0.014	9533
18,750,000	0.300	---	---	---	02/07/2001	31/12/2012	4985	PEGASUS PUBLISHING S.A. (CR)	0.116	---	↘ 0.116	11/02/2016	---	---	---	---	---	---	---	2014	---	---	---	2,175.00	0.052	0.120	5557
24,319,250	0.300	---	---	---	09/07/2002	04/07/2007	5054	PROODEFTIKH SA (CR)	0.068	-9.33	↘ 0.075	11/02/2016	0.065	0.065	0.070	0.070	0.067	---	2.38	2014	19,990	4	1,349.30	1,653.71	0.058	0.085	2357
65,326,268	0.530	---	---	---	04/07/2007	19/07/2006	4750	SATO SA (CR)	0.103	---	↘ 0.103	11/02/2016	---	---	---	---	---	---	---	2014	---	---	---	6,728.61	0.103	0.103	3726
7,914,480	0.300	---	---	---	23/06/2008	29/06/2011	4888	SFAKIANAKIS SA (CR)	0.589	-7.68	↘ 0.638	11/02/2016	0.520	0.520	0.590	0.590	0.589	---	---	2014	621	7	365.69	4,661.63	0.520	5.64	5379
10,186,667	1.35	---	---	---	24/06/2008	02/02/2016	4887	SIDMA SA (CR)	0.153	---	↘ 0.153	11/02/2016	---	---	---	---	---	---	---	2014	---	---	---	1,558.56	0.096	0.195	1757
151,189,500	0.300	---	---	---	16/07/2009	11/02/2016	5107	TELETIPOS SA (CR)	0.054	---	↘ 0.054	11/02/2016	---	---	---	---	---	---	---	2014	---	---	---	8,164.23	0.054	0.070	5553
16,383,428	0.300	---	---	---	25/06/2002	21/06/2013	4997	VARVARESSOS SA (CB)	0.006	---	↘ 0.006	11/02/2016	---	---	---	---	---	---	0.14	2014	---	---	---	98.30	0.006	0.007	3763
13,191,620	0.620	---	---	---	04/08/2010	09/09/2002	4977	YALCO - CONSTANTINOU SA (CB)	0.120	---	↘ 0.120	11/02/2016	---	---	---	---	---	---	---	2014	---	---	---	1,582.99	0.120	0.143	3722

1,130,180	0.440	---	---	---	20/06/2003	02/07/2014	5092	COMPUCON SA (CR)	0.019	---	↘ 0.019	11/02/2016	---	---	---	---	---	---	---	2014	---	---	---	21.47	0.018	0.019	9537
9,567,289	0.300	---	---	---	01/07/2004	19/11/2007	5062	MARAC ELECTRONICS (CR)	0.298	---	↘ 0.298	11/02/2016	---	---	---	---	---	---	---	2014	---	---	---	2,851.05	0.298	0.298	9578
766,000	1.00	---	---	---	01/07/2004	11/12/2012	4937	TRIA ALFA SA (CR)	1.80	---	↘ 1.80	11/02/2016	---	---	---	---	---	---	---	2014	---	---	---	1,712.00	1.80	1.80	3763
245,000	1.00	---	---	---	19/07/2010	11/12/2012	4938	TRIA ALFA SA (PR)	1.36	---	↘ 1.36	11/02/2016	---	---	---	---	---	---	---	2014	---	---	---	1,712.00	1.36	1.36	3763
4,737,503	0.320	---	---	---	22/06/2005	22/09/2015	5091	VARANGIS AVEPE S.A. (CR)	0.300	---	↘ 0.300	11/02/2016	---	---	---	---	---	---	---	2014	---	---	---	1,421.25	0.300	0.300	3726

5,000,000	0.400	---	---	---	03/06/2009	01/09/2014	5087	ALCO HELLAS SA (CR)	0.180	---	↘ 0.180	31/03/2015	---	---	---	---	---	---	---	---	---	---	---	900.00	0.180	0.180	1753
5,025,000	0.300	---	---	---	05/07/2005	14/03/2002	5023	ALSINCO S.A (CR)	0.043	---	↘ 0.043	29/11/2013	---	---	---	---	---	---	---	---	---	---	---	216.08	0.043	0.043	3763
215,246,452	0.300	---	---	---	25/06/2001	24/09/2001	4446	ALTEC SA (CR)	0.012	---	↘ 0.012	30/11/2015	---	---	---	---	---	---	---	---	---	---	---	2,582.96	0.012	0.012	9533
1,750,955,549	0.600	---	---	---	19/05/2008	08/12/2011	4911	ATE (CR)	0.155	---	↘ 0.155	27/07/2012	---	---	---	---	---	---	---	---	---	---	---	271,398.11	0.155	0.155	8355
21,382,067	0.300	---	---	---	02/10/2006	15/02/2006	4628	ATERMON (CR)	0.120	---	↘ 0.120	31/03/2010	---	---	---	---	---	---	---	---	---	---	---	2,565.85	0.120	0.120	5555
81,644,555	0.300	---	---	---	01/07/2008	02/09/2002	5098	ATTI - KAT SA (CR)	0.012	---	↘ 0.012	29/05/2015	---	---	---	---	---	---	---	---	---	---	---	979.73	0.012	0.012	2357
105,423,498	0.510	---	---	---	01/07/2004	28/12/2005	4920	AVENIR S.A. (CR)	0.046	---	↘ 0.046	30/08/2012	---	---	---	---	---	---	---	---	---	---	---	4,849.48	0.046	0.046	5752
33,930,000	0.300	---	---	---	03/07/2006	30/05/2001	4865	BABIS VOVOS SA (CR)	0.304	---	↘ 0.304	30/03/2012	---	---	---	---	---	---	---	---	---	---	---	10,314.72	0.304	0.304	8633
20,121,710	1.21	---	---	---	27/07/1992	12/03/2003	5002	BALKAN R.E. (CR)	0.190	---	↘ 0.190	29/08/2013	---	---	---	---	---	---	---	---	---	---	---	3,823.12	0.190	0.190	8633
21,920,570	0.300	---	---	---	03/07/2007	13/12/1999	4702	CARDASSILARIS SA (CR)	0.140	---	↘ 0.140	30/11/2010	---	---	---	---	---	---	---	---	---	---	---	3,068.88	0.140	0.140	3577
54,547,634	0.500	---	---	---	25/04/2005	21/01/2009	4860	CH.TEGOPOULOS PUBL. SA (CR)	0.038	---	↘ 0.038	29/03/2012	---	---	---	---	---	---	---	---	---	---	---	2,072.81	0.038	0.038	5557
30,159,583	0.470	---	---	---	26/06/2008	29/12/2010	5047	DIAS A/C (CR)	0.050	---	↘ 0.050	26/03/2014	---	---	---	---	---	---	---	---	---	---	---	1,507.98	0.050	0.050	3573
7,847,611	1.20	---	---	---	01/08/2007	28/09/2011	4939	EDRASIS - C. PSALLIDAS SA (CR)	0.150	---	↘ 0.150	29/11/2012	---	---	---	---	---	---	---	---	---	---	---	1,177.14	0.150	0.150	2357
5,750,000	0.300	---	---	---	12/12/2008	12/12/2011	4929	ELECTRONIKI ATHINON SA (CR)	0.480	---	↘ 0.480	28/09/2012	---	---	---	---	---	---	---	---	---	---	---	2,760.00	0.480	0.480	5375
24,605,397	0.400	---	---	---	29/06/1995	27/05/2002	4651	EMPORIKOS DESMOS SA (CR)	0.080	---	↘ 0.080	31/05/2010	---	---	---	---	---	---	---	---	---	---	---	2,134.04	0.080	0.080	3722
1,182,903	0.400	---	---	---	01/07/1996	27/05/2002	4652	EMPORIKOS DESMOS SA (PR)	0.140	---	↘ 0.140	31/05/2010	---	---	---	---	---	---	---	---	---	---	---	2,134.04	0.140	0.140	3722
7,326,648	1.00	---	---	---	26/07/2006	24/07/2001	4921	FINTEXPOR SA (CR)	0.328	---	↘ 0.328	30/08/2012	---	---	---	---	---	---	---	---	---	---	---	2,403.14	0.328	0.328	3763

Number of Outstanding Securities	Nominal Value	Dividends [1]			Date of Last Coupon Dividend [2]		Note	Shares	Closing price	% change	Previous closing price/date	Open price	Price min	Price max	Last price	Avg price	Last Bid [7]	Last Ask [7]	P/E after	Year	Volume	Trades	Transactions Value[8]	Company Mkt Value (thou. €)	Year low	Year high	Sector[4]
----------------------------------------	------------------	---------------	--	--	-------------------------------------	--	------	--------	------------------	----------	--------------------------------	---------------	--------------	--------------	---------------	--------------	-----------------	--------------	--------------	------	--------	--------	--------------------------	--------------------------------	-------------	--------------	---------------

Suspension Status

13,692,227	1.47	---	---	---	07/07/2006	08/10/1999	5049	HELLENIC FABRICS SA (CR)	0.117	---	↘ 0.117	31/03/2014	---	---	---	---	---	---	---	---	---	---	---	1,601.99	0.117	0.117	3763
30,390,000	0.310	---	---	---	18/08/2008	29/12/2006	5099	HELLENIC FISHFARMING SA (CR)	0.070	---	↘ 0.070	02/06/2015	---	---	---	---	---	---	---	---	---	---	---	2,127.30	0.070	0.070	3573
24,619,524	0.500	---	---	---	10/10/1986	30/12/2002	4914	KERAMIA-ALLATINI (CR)	0.088	---	↘ 0.088	30/08/2012	---	---	---	---	---	---	---	---	---	---	---	2,166.52	0.088	0.088	8633
7,840,373	1.20	---	---	---	18/07/2002	05/03/2003	4765	KLONATEX SA (PR)	0.080	---	↘ 0.080	16/05/2011	---	---	---	---	---	---	---	---	---	---	---	1,453.75	0.080	0.080	3763
20,663,047	1.20	---	---	---	21/08/2000	05/03/2003	4764	KLONATEX SA (CR)	0.040	---	↘ 0.040	16/05/2011	---	---	---	---	---	---	---	---	---	---	---	1,453.75	0.040	0.040	3763
17,544,600	0.600	---	---	---	03/07/2000	01/08/2000	4868	KOYMBAS SYNERGY GROUP (CR)	0.132	---	↘ 0.132	30/03/2012	---	---	---	---	---	---	---	---	---	---	---	2,315.89	0.132	0.132	8775
66,937,526	0.700	---	---	---	13/08/2010	21/05/2003	5003	MICHANIKI SA (CR)	0.100	---	↘ 0.100	29/08/2013	---	---	---	---	---	---	---	---	---	---	---	9,186.78	0.100	0.100	2357
25,968,987	0.700	---	---	---	13/08/2010	21/05/2003	5004	MICHANIKI SA (PR)	0.096	---	↘ 0.096	29/08/2013	---	---	---	---	---	---	---	---	---	---	---	9,186.78	0.096	0.096	2357
13,555,100	1.00	---	---	---		08/07/2005	4576	MICROLAND COMPUTERS SA (CR)	0.640	---	↘ 0.640	14/07/2009	---	---	---	---	---	---	---	---	---	---	---	8,675.26	0.640	0.640	5379
255,459,600	0.300	---	---	---	26/06/2000	03/12/2010	5101	NEL SA (CR)	0.070	---	↘ 0.070	31/08/2015	---	---	---	---	---	---	---	---	---	---	---	17,882.17	0.070	0.070	5759
23,463,874	0.800	---	---	---	23/05/2003	21/12/1999	4918	NEORION SA (CR)	0.125	---	↘ 0.125	30/08/2012	---	---	---	---	---	---	---	---	---	---	---	2,932.98	0.125	0.125	2753
42,501,273	0.300	---	---	---	26/06/2007	10/08/2009	4993	NUTRIART (CR)	0.049	---	↘ 0.047	# 20/06/2013	---	---	---	---	---	---	---	---	---	---	---	2,082.56	0.049	0.049	3577
20,210,127	1.53	---	---	---	27/06/1997	20/03/2000	5061	PARNASSOS ENTERP. (CR)	0.070	---	↘ 0.070	30/05/2014	---	---	---	---	---	---	---	---	---	---	---	1,414.71	0.070	0.070	8775
25,583,146	0.300	---	---	---	25/06/2001	03/12/2008	4723	PETZETAKIS SA (CR)	0.260	---	↘ 0.260	28/01/2011	---	---	---	---	---	---	---	---	---	---	---	6,651.62	0.260	0.260	1357
9,550,386	0.500	---	---	---	01/07/1997	12/06/2008	4626	PRAXITELIO SA (CR)	0.390	---	↘ 0.390	31/03/2010	---	---	---	---	---	---	---	---	---	---	---	4,430.09	0.390	0.390	4533
1,306,368	0.500	---	---	---	01/07/1997	12/06/2008	4627	PRAXITELIO SA (PR)	0.540	---	↘ 0.540	31/03/2010	---	---	---	---	---	---	---	---	---	---	---	4,430.09	0.540	0.540	4533
62,683,822	0.300	---	---	---	27/05/2008	09/01/2006	4830	PROTON BANK S.A. (CR)	0.180	---	↘ 0.180	07/10/2011	---	---	---	---	---	---	---	---	---	---	---	11,283.09	0.180	0.180	8355
25,667,143	0.320	---	---	---	03/07/2000	18/12/2007	4548	SAOS (CR)	1.56	---	↘ 0.780	# 31/03/2009	---	---	---	---	---	---	---	---	---	---	---	40,040.74	1.56	1.56	2773
26,408,040	0.300	---	---	---	01/07/1997	26/05/1999	4464	SHEET STEEL SA (CR)	0.120	---	↘ 0.120	28/11/2008	---	---	---	---	---	---	---	---	---	---	---	3,168.96	0.120	0.120	1757
60,221,300	0.400	---	---	---	01/07/2002	01/11/2010	5022	SHELMAN SA (CR)	0.080	---	↘ 0.080	29/11/2013	---	---	---	---	---	---	---	---	---	---	---	4,817.70	0.080	0.080	2353
29,060,950	0.340	---	---	---	20/08/2007	24/10/2001	5088	SPIDER METAL INDUSTRY SA (CR)	0.008	---	↘ 0.008	31/03/2015	---	---	---	---	---	---	---	---	---	---	---	232.49	0.008	0.008	2757
26,262,660	0.900	---	---	---	01/07/2008	24/02/2011	4954	SPRIDER STORES (CR)	0.031	---	↘ 0.031	28/03/2013	---	---	---	---	---	---	---	---	---	---	---	814.14	0.031	0.031	5371
144,688,060	0.600	---	---	---	21/04/2008	10/03/2010	4982	T BANK (CR)	0.048	---	↘ 0.052	# 29/11/2011	---	---	---	---	---	---	---	---	---	---	---	6,945.03	0.048	0.048	8355
6,523,780	0.530	---	---	---	01/07/2002	06/03/2001	4971	TECHNICAL PUBLICATIONS SA (CR)	0.006	---	↘ 0.006	31/05/2013	---	---	---	---	---	---	---	---	---	---	---	39.14	0.006	0.006	5557
13,920,000	0.320	---	---	---	19/11/2001	01/08/2000	4726	TEXAPRET SA (CR)	0.080	---	↘ 0.080	28/02/2011	---	---	---	---	---	---	---	---	---	---	---	1,113.60	0.080	0.080	3763
510,840	1.00	---	---	---	15/07/2008	21/11/2013	5036	TROPEA HOLDING (CR)	2.00	---	↘ 0.020	# 30/03/2012	---	---	---	---	---	---	---	---	---	---	---	1,021.68	2.00	2.00	3722
284,465,964	3.70	---	---	---	20/06/2008	15/06/2009	4913	TT HELLENIC POSTBANK (CR)	0.168	---	↘ 0.239	# 29/08/2012	---	---	---	---	---	---	---	---	---	---	---	47,790.28	0.168	0.168	8355
89,616,200	0.300	---	---	---	21/08/2000	28/06/2007	4616	UNITED TEXTILES (CR)	0.050	---	↘ 0.050	24/02/2010	---	---	---	---	---	---	---	---	---	---	---	4,480.81	0.050	0.050	3763
71,683,906	0.400	---	---	---	15/06/2005	05/02/2008	4953	XATZIOANNOU (CR)	0.026	---	↘ 0.026	28/03/2013	---	---	---	---	---	---	---	---	---	---	---	1,863.78	0.026	0.026	3763

Shares' Notes

Code	Note text
()	- Adjusted dividends.
*	- Last adjusted closing price.
[1]	- Net dividends.
[2]	- The "Date of Last Coupon" for New listings refers to the date company's stocks started to trade in Athex
[3]	- The Company Market Value is referred to the number of outstanding shares
[4]	- Sectors codification can be found in Appendix A
[5]	- The Market Value refers to the total number of shares listed (including their several classes) in the exchange by the company.
[6]	- P/E greater than 100
[7]	- Last view of the Order Book before the end of the trading session
[8]	- All Blocks Methods' Transactions Value are included.
4446	- Transfer to the "Under Supervision" Category as of 20/10/2008.
4464	- Suspension of trading as of 1/12/2008.
4548	- Suspension of trading as of 1/4/2009.
4576	- Suspension of trading as of 14/7/2009.
4616	- Suspension of trading as of 25/2/2010.
4626	- Suspension of trading as of 1/4/2010.
4627	- Suspension of trading as of 1/4/2010.
4628	- Suspension of trading as of 1/4/2010.
4651	- Suspension of trading as of 1/6/2010.
4652	- Suspension of trading as of 1/6/2010.
4690	- Transfer to Surveillance category as of 4/4/2006.
4702	- Suspension of trading as of 1/12/2010.
4723	- Suspension of trading as of 31/1/2011.
4726	- Suspension of trading as of 1/3/2011.
4750	- Transfer to the "Under Surveillance Category" from 8/4/2011.
4764	- Suspension of trading as of 20/5/2011.
4765	- Suspension of trading as of 20/5/2011.
4795	- The final gross (pre-tax) dividend is € 0.30 per share and subject to withholding tax on the full dividend amount, i.e. 0.45 per share, for those shareholders liable to withholding tax, in accordance with the applicable tax law provisions.
4814	- Transfer to the Low Dispersion Category as of 30/5/2011.
4815	- Transfer to the Low Dispersion Category as of 30/5/2011.
4816	- Transfer to the Low Dispersion Category as of 30/5/2011.
4817	- Transfer to the Low Dispersion Category as of 30/5/2011.
4820	- Transfer to the Low Dispersion category as of 18/4/2008.
4822	- Transfer to the Low Dispersion category as of 30/5/2011.
4823	- Transfer to the Low Dispersion category as of 4/4/2006.
4827	- Transfer to the Low Dispersion category as of 5/5/2010.
4830	- Suspension of trading as of 10/10/2011.
4844	- Transfer to the Surveillance category from 8/4/2011.
4857	- The 793,906,274 new (CR) shares, resulting from the recent share capital increase through a rights issue, are not yet admitted to trading on the ATHEX.
4860	- Suspension of trading as of 30/3/2012.
4865	- Suspension of trading as of 2/4/2012.
4868	- Suspension of trading as of 2/4/2012.
4879	- Transfer to the Surveillance Category as of 10/4/2012.
4881	- Transfer to the Surveillance Category as of 10/4/2012.
4882	- Transfer to the Surveillance Category as of 10/4/2012.
4886	- Transfer to the Surveillance Category as of 10/4/2012.
4887	- Transfer to the Surveillance Category as of 10/4/2012.
4888	- Transfer to the Surveillance Category as of 10/4/2012.
4911	- Lift of suspension from 30/7/2012.
4912	- Transfer to the Surveillance Category as of 31/7/2012.
4913	- Suspension of trading as of 30/8/2012.

Shares' Notes

Code	Note text
4914	- Suspension of trading as of 31/8/2012.
4918	- Suspension of trading as of 31/8/2012.
4920	- Suspension of trading as of 31/8/2012.
4921	- Suspension of trading as of 31/8/2012.
4929	- Suspension of trading as of 1/10/2012.
4937	- Transfer to the UNDER DELETION category as of 30/11/2012.
4938	- Transfer to the UNDER DELETION category as of 30/11/2012.
4939	- Suspension of trading as of 30/11/2012.
4953	- Suspension of trading as of 2/4/2013.
4954	- Suspension of trading as of 2/4/2013.
4955	- Transfer to the Surveillance Category as from 5/4/2013.
4956	- Transfer to the Surveillance Category as from 5/4/2013.
4957	- Transfer to the Surveillance Category as from 5/4/2013.
4958	- Transfer to the Surveillance Category as from 5/4/2013.
4959	- Transfer to the Surveillance Category as from 5/4/2013.
4971	- Suspension of trading as of 3/6/2013.
4977	- Transfer to the "Under Surveillance Category" from 11/6/2013.
4978	- Transfer to the Under Supervision Category as of 11/6/2013.
4982	- Suspension of trading as of 1/12/2011.
4983	- Transfer to the Surveillance Category as of 5/4/2013.
4985	- Transfer to the "Under Surveillance Category" from 8/4/2011.
4993	- Suspension of trading as of 21/6/2013 (15:18).
4997	- Transfer to the Under Supervision Category as of 21/12/2009. - The 6,870,053 new (CB) shares, resulting from the recent share capital increase through a rights issue, are not yet admitted to trading on the ATHEX.
5002	- Suspension of trading as of 30/08/2013.
5003	- Suspension of trading as of 30/08/2013.
5004	- Suspension of trading as of 30/08/2013.
5007	- Transfer to the Surveillance category, as of 11/10/2013.
5022	- Suspension of trading as of 2/12/2013.
5023	- Suspension of trading as of 2/12/2013.
5031	- The 612,300 new (CR) shares, resulting from the recent share capital increase through a rights issue, are not yet admitted to trading on the ATHEX.
5033	- Transfer to the Surveillance Category as of 25/11/2011. The 97,144,575new (CR) shares, resulting from the recent share capital increase through a rights issue, are not yet admitted to trading on the ATHEX.
5036	- The company's share is under suspension of trading as of 2/4/2012. During suspension, the company proceeded and concluded a share reverse split, according to which - after the conclusion of the corporate action - the total number of the company's shares, as well as, the last closing price of 30/03/2012 were adjusted.
5046	- Transfer to the Low Dispersion category as of 8/4/2011.
5047	- Suspension of trading as of 27/3/2014.
5049	- Under suspension of trading as of 1/4/2014.
5054	- Transfer to the Surveillance Category as of 10/4/2014.
5055	- Transfer to the Surveillance Category as of 10/4/2014.
5057	- Transfer to the Surveillance Category as of 29/12/2011.
5058	- Transfer to the Surveillance Category as of 29/12/2011.
5061	- Suspension of trading as of 2/6/2014.
5062	- Transfer to the UNDER DELETION category as of 4/6/2014.
5080	- Suspension of trading as of 6/9/2011.
5083	- Transfer to the Surveillance Category as of 06/03/2015.
5087	- Suspension of trading as of 1/4/2015.
5088	- Suspension of trading as of 1/4/2015.
5089	- Transfer to the Surveillance Category as of 8/4/2015.
5091	- Transfer to the UNDER DELETION category as of 8/4/2015.
5092	- Transfer to the UNDER DELETION category as of 8/4/2015.
5093	- Transfer to the Surveillance Category as of 8/4/2015.
5094	- Transfer to the Surveillance Category as of 8/4/2015.
5095	- Transfer to the Surveillance Category as from 9/4/2015.

Shares' Notes

Code	Note text
5097	- Transfer to the Surveillance Category as of 10/4/2012.
5098	- Suspension of trading as of 2/6/2015.
5099	- Suspension of trading as of 3/6/2015.
5100	- Transfer to the Low Dispersion Category as of 24/6/2015.
5101	- Suspension of trading as of 1/9/2015.
5103	- The 2,495,784,996 new (CR) shares, resulting from the recent share capital increase through a rights issue, are not yet admitted to trading on the ATHEX.
5104	- Transfer to the "Low Dispersion" Category as of 31/10/2014. Change of the company name from "MIG REAL ESTATE R.E.I.C." to " NBG PANGAEA R.E.I.C." as of 30/12/2015.
5106	- Share capital increase in progress through a rights issue. Rights' trading period on ATHEX: 05/02/2016 - 16/02/2016, pre-emption rights' subscription period: 05/02/2016 - 19/02/2016.
5107	- The 50,396,500 new (CR) shares, resulting from the recent share capital increase through a rights issue, are not yet admitted to trading on the ATHEX. Transfer to the Surveillance Category from 8/4/2011.

Securities Blocks Details

Securities	Block Volume	Price	Block Trade Value	Time of approval	Note
ALPHA BANK (CR)	500,000	1.16	577,500.00	11:34:03	20
ALPHA BANK (CR)	500,000	1.20	597,500.00	14:15:01	20
BANK OF CYPRUS (CR)	5,000,000	0.127	635,000.00	17:14:56	20

Blocks Notes

9 - Method 6-1 / Special Fees

10 - Method 6-1 / Special Fees, SDS

14 - Method 6-3 / Settlement, Incomplete Buy and Sell

18 - Method 6-2 / SPOT 1

19 - Method 6-2 / SPOT 2

20 - Method 6-1 and Method 6-1 Same Day Settlement

21 - Other Pre-agreed

Shares Rights Details

Occured date	Exercise from	Exercise until	Trading until	Rights	Price min	Price max	Closing price	Last Bid	Last Ask	Volume	Trades	Transactions Value
02/02/2016	05/02/2016	19/02/2016	16/02/2016	NEXANS HELLAS S.A. (CR)	---	---	---	---	---	---	---	---

Shares Forced Sales

Securities	Transaction s Volume	Number of Trades	Transactions Value	Note
No Forced Transactions.				

Forced Sales Notes

- 1 - Normal Forced Sale.
- 2 - Forced Sales of Fixed Registered Shares.
- 3 - Forced Sales of Remaining Stock Fractions.

Forced Sales Registered Shares

Securities	Start Date	End Date	Initial Volume	Remaining Volume	Date	Avg price (day)	Avg price (period)	Number of Trades	Transactions Volume	Transactions Value
No Fixed Registered Shares Forced Sales.										

Forced Sales Notes

According to Decision 1/380/04.05.2008 of the Hellenic Republic Capital Market Commission, the certificated registered shares that have not been deposited to the issuer for dematerialisation, will be auctioned in the Athens Exchange by the supervising issuer. Forced sales procedure is held according to Article 99A of the Athens Exchange Rulebook. The average price of the period is calculated by dividing the Total transactions value by the Total volume and includes all the transactions made until the current date.

Exchange Traded Funds (ETFs) Characteristics

	Transactions Date (T)	Creation / Redemption	Units (T-1)	New Units (T-1)	Redemptio n Units (T-	Units (T) [1]	Fund Assets [2]	Net Unit Price	Dividen d per	Dividend Date
NBGAM ETF ΓΔ Χ.Α.	12/02/2016	25,000	294,878	---	---	294,878	1,527,338.00	5.1796	---	27/10/2011
ALPHA ETF FTSE Athex Large Cap	12/02/2016	50,000	6,030,903	---	---	6,030,903	6,946,109.00	1.1518	0.06	03/08/2015
NBGAM ETF GREECE & TURKEY 30	12/02/2016	25,000	388,550	---	---	388,550	1,886,792.00	4.8560	---	27/10/2011

ETFs Notes

[1] - Units (T) = Units (T-1) + New Units (T-1) - Redemption Units (T-1)

[2] - The Creation / Redemption Units of T-1 are included.

Corporate Bonds

Num Listed Bonds	Nominal price	Issue price	Today's Rate	Exp. Date	Duration (years)	Note	Coupon attached		Trading	Corporate Bonds	Price min	Price max	Closing price	Previous closing price/date		Volume	Transactions Value	Last order		Date	ear min	Year max
							Common	Preferred										Price	Buy / Sell			
1,794,284	13.76	9.77	0.00	21/10/2025	18	---	---	---	1	NIREUS S.A. (Convertible to CR shares)	---	---	---	12.0000	29/01/2014	---	---	11.0000	B	17/11/2014	12.0000	12.0000
212,237,880	1.00	1.00	6.30	29/07/2020	7	---	11	---	1	MARFIN INVESTMENT GROUP S.A. SERIES B (BOND)	---	---	---	0.8500	23/08/2013	---	---	1.0000	B	28/11/2014	0.8500	0.8500
163,076,727	1.00	1.00	7.00	29/07/2019	6	---	11	---	1	MARFIN INVESTMENT GROUP S.A. SERIES A (BOND)	---	---	---	1.0000	23/08/2013	---	---	1.0000	B	28/11/2014	1.0000	1.0000

Corporate Bonds Notes

Transactions Volume = (Pieces) * (Nominal Price). Transactions Value = (Pieces) * (Nominal Price) * (price %) + (Accrued interest).
The price of a Bond is stated as a percentage (%) of Bond's Nominal Price.
Nominal Price in Euros (€), except if it is noted differently.

Government Bonds

Number Listed Bonds	Nominal price	Today's Rate	Accrued Interest Calc	Exp. Date [1]	Duration (years)	Note	Coupons Date	Curr. coupon value	Trading Unit	Government Bonds	Price min	Price max	Closing price	Previous closing price/date	Volume	Transactions Value	Price	Last order Buy / Sell	Date
1,792,455,803	1.00	4.30	Actual/Actual	24/02/2023	11	---	24/02	4.30	1	GGB-FXD-240223-11Y-2.000-1.00	---	---	---	10.0000 22/06/2015	---	---	---	---	---
1,771,485,249	1.00	4.30	Actual/Actual	24/02/2024	12	---	24/02	4.30	1	GGB-FXD-240224-12Y-2.000-1.00	---	---	---	10.0000 22/06/2015	---	---	---	---	---
1,744,316,583	1.00	4.30	Actual/Actual	24/02/2025	13	---	24/02	4.30	1	GGB-FXD-240225-13Y-2.000-1.00	---	---	---	10.0000 22/06/2015	---	---	---	---	---
1,498,761,836	1.00	4.30	Actual/Actual	24/02/2026	14	---	24/02	4.30	1	GGB-FXD-240226-14Y-2.000-1.00	---	---	---	10.0000 22/06/2015	---	---	---	---	---
1,469,952,920	1.00	4.30	Actual/Actual	24/02/2027	15	---	24/02	4.30	1	GGB-FXD-240227-15Y-2.000-1.00	---	---	---	10.0000 22/06/2015	---	---	---	---	---
1,525,434,082	1.00	4.30	Actual/Actual	24/02/2028	16	---	24/02	4.30	1	GGB-FXD-240228-16Y-2.000-1.00	---	---	---	10.0000 22/06/2015	---	---	---	---	---
1,503,860,546	1.00	4.30	Actual/Actual	24/02/2029	17	---	24/02	4.30	1	GGB-FXD-240229-17Y-2.000-1.00	---	---	---	10.0000 22/06/2015	---	---	---	---	---
1,435,418,132	1.00	4.30	Actual/Actual	24/02/2030	18	---	24/02	4.30	1	GGB-FXD-240230-18Y-2.000-1.00	---	---	---	10.0000 22/06/2015	---	---	---	---	---
1,368,045,727	1.00	4.30	Actual/Actual	24/02/2031	19	---	24/02	4.30	1	GGB-FXD-240231-19Y-2.000-1.00	---	---	---	10.0000 22/06/2015	---	---	---	---	---
1,373,758,194	1.00	4.30	Actual/Actual	24/02/2032	20	---	24/02	4.30	1	GGB-FXD-240232-20Y-2.000-1.00	---	---	---	10.0000 22/06/2015	---	---	---	---	---
1,452,639,893	1.00	4.30	Actual/Actual	24/02/2033	21	---	24/02	4.30	1	GGB-FXD-240233-21Y-2.000-1.00	---	---	---	10.0000 22/06/2015	---	---	---	---	---
1,410,344,954	1.00	4.30	Actual/Actual	24/02/2034	22	---	24/02	4.30	1	GGB-FXD-240234-22Y-2.000-1.00	---	---	---	10.0000 22/06/2015	---	---	---	---	---
1,444,202,190	1.00	4.30	Actual/Actual	24/02/2035	23	---	24/02	4.30	1	GGB-FXD-240235-23Y-2.000-1.00	---	---	---	10.0000 22/06/2015	---	---	---	---	---
1,505,138,031	1.00	4.30	Actual/Actual	24/02/2036	24	---	24/02	4.30	1	GGB-FXD-240236-24Y-2.000-1.00	---	---	---	10.0000 22/06/2015	---	---	---	---	---
1,396,254,095	1.00	4.30	Actual/Actual	24/02/2037	25	---	24/02	4.30	1	GGB-FXD-240237-25Y-2.000-1.00	---	---	---	10.0000 22/06/2015	---	---	---	---	---
1,382,167,704	1.00	4.30	Actual/Actual	24/02/2038	26	---	24/02	4.30	1	GGB-FXD-240238-26Y-2.000-1.00	---	---	---	10.0000 22/06/2015	---	---	---	---	---
1,337,331,257	1.00	4.30	Actual/Actual	24/02/2039	27	---	24/02	4.30	1	GGB-FXD-240239-27Y-2.000-1.00	---	---	---	10.0000 22/06/2015	---	---	---	---	---
1,371,908,706	1.00	4.30	Actual/Actual	24/02/2040	28	---	24/02	4.30	1	GGB-FXD-240240-28Y-2.000-1.00	---	---	---	10.0000 22/06/2015	---	---	---	---	---
1,360,659,778	1.00	4.30	Actual/Actual	24/02/2041	29	---	24/02	4.30	1	GGB-FXD-240241-29Y-2.000-1.00	---	---	---	10.0000 22/06/2015	---	---	---	---	---
1,432,747,403	1.00	4.30	Actual/Actual	24/02/2042	30	---	24/02	4.30	1	GGB-FXD-240242-30Y-2.000-1.00	---	---	---	10.0000 22/06/2015	---	---	---	---	---
742,153	1,000.00	0.93	FLR Actual/360	10/08/2019	5	---	10/02 - 10/08	---	1	GGB-FLT-100819-05Y-0.934-1,000	---	---	---	---	---	---	---	---	---
4,030,827	1,000.00	4.75	Actual/Actual	17/04/2019	5	---	17/04	4.75	1	GGB-FXD-170419-05Y-4.750-1,000	---	---	---	---	---	---	---	---	---
2,089,066	1,000.00	3.38	Actual/Actual	17/07/2017	3	---	17/07	3.38	1	GGB-FXD-170717-03Y-3.375-1,000	---	---	---	---	---	---	---	---	---

Government Bonds Notes

Transactions Volume = (Pieces) * (Nominal Price). Transactions Value = (Pieces) * (Nominal Price) * (price %) + (Accrued interest).
The Value of current coupon for the issues with NV 0.01 euro refers to NV 100 euros
FLR: Floating Interest Rate.
[1] - The Expiration Date of the interest bearing period and the Date for coupon payment.

Bonds in Circulation	Currency / Min nominal traded Value	Coupons Payment Date	Current Coupon Value	Note	Coupon Attached	Trading Unit	Issue Date	Duration (years)	Today's Interest	A.I.C in days	Bonds	Last price of previous days	Last Outcry in Cash (euro) Price	Buy / Sell	Trades in Pieces	Life min	Life Max
Bonds of International Organizations																	
1,000,000	EUR / 1000	21/07	---	---	10	1	21/07/2006	10	5.0 FLR	360	EUROPEAN INVESTMENT BANK BOND	97.50	16/04/2007	---	---	---	---
Corporate Bonds in Foreign Currency and Euro																	
103,746	GBP / 10	01/12	0.25	---	57	1	01/12/1930	98	2.5	360	National Mortgage Bank	2.27	05/02/1996	2.27	S	05/02/1996	2.27
0	GBP / 10	01/12	0.25	---	59	1	01/12/1928	100	2.5	360	National Mortgage Bank	---	---	---	---	---	---

Government Bonds Notes

A.I.C: Accrued Interest Calculation base.
FLR: Floating Interest Rate.
The minimum tradeable Nominal Value for all Demeterialised Government Titles is 100 Euros.

Athex & ATHEXClear Members List

Member Name			Stock Market			Derivatives Market		ATHEXClear Member	
Address	Phone	Fax	Market Member	Remote Member	Market Maker	Proprietary	Market Maker	General Clearing	Direct Clearing
A. SARRIS SECURITIES S.A.			a						
6, DRAGATSANIOU ATHINA	+30 2103367700	210-3312324							
ALPHA FINANCE INVESTMENT SERVICES S.A.			a		a	a	a		a
5, MERLIN STR. ATHINA	(210)-3677400	(210)-3311193							
ALPHA BANK A.E.								a	
40, STADIOU STR ATHINA	(210)-3265546 (210)-3260000	(210)-3265811 (210)-3264116							
ARGUS STOCKBROKERS LTD			a	a		a			
25 , AVENUE DEMOSTHENI SEVERI NICOSIA	+357 22717000	0035722717070							
ATLANTIC SECURITIES LIMITED			a	a					
37, PRODROMOU NICOSIA	+357 22445400	00357 22661914							
ATLAS SECURITIES S.A			a			a			
, MICHALAKOPOULOU 125 & VERVAINON 14-16 ATHINA	+30 2103363300	210-3238925							
ATTICA BANK S.A.								a	
54, AKADIMIAS STR. ATHINA	(210)-3390757	(210)-3646090							
23, OMIROU STR. ATHINA	(210)-3669000	(210)-3669410							
AXIA VENTURES GROUP LTD			a	a					
, KRANIDIOTI 10, OFFICE 102 NICOSIA	+357 22742000	357 22742001							
AXON SECURITIES S.A.			a			a			
48, STADIOU ATHINA	+30 2103363800	210-3243903							
BANK OF AMERICA MERRILL LYNCH			a	a					
2 , KING EDWARD STREET LONDON	+44 20276281000								
BETA SECURITIES S.A.			a		a	a	a		a
29 , ALEXANDRAS AVEN. & VRAILA ATHINA	+30 2106478900	210-6410139							
BNP PARIBAS SECURITIES SERVICES S.A.								a	
, VASILISSIS SOFIAS 94 & KERASOUNTOS 1 ATHINA	+30 2107468500	210-7468579-581							
CAPITAL SECURITIES S.A.			a			a			
58, MITROPOLEOS ATHINA	+30 2103369700	+30 210 3369820							
CFS SECURITIES-INVESTMENT SERVICES S.A.			a						
6, DRAGATSANIOU ATHINA	+30 2103360800	+30 210-3360980							
CITIGROUP GLOBAL MARKET LTD			a	a					
1, CITIGROUP CENTER , CANADA SQ., CANARY WHARF LONDON	+44 02079864000								
CREDIT SUISSE SECURITIES (EUROPE) LIMITED			a	a					
, ONE CABOT SQUARE LONDON	+44 2078888888								
CYCLOS SECURITIES S.A.			a			a			a
39, PANEPISTIMIOU ATHINA	+30 2103364300	+30 210-3239122							
D.A. TSEKOURAS SEC. S.A.			a						
33, STADIOU ATHINA	+30 2103245100	210-3211997							
DELTASTOCK AD									a
115, MEGAPARK OFFICE BUILDING, OFFICE AREA E, G TSARIGRADSKOJ 39 P28115051	+35928115049								
DEUTSCHE BANK S.A.			a	a		a			
1 , GREAT WINCHESTER STREET LONDON	+44 20 754 54209	00441133361437							
DYNAMIC SECURITIES S.A.			a			a			a
8, OMIROU ATHINA	+30 2103677700	210-3677777							
EL. PETROPOULAKIS SECURITIES S.A.			a			a			
9, ARISTEIDOU ATHINA	+30 2103213928	+30 210-3216810							
ESTINVEST S.A.									a
9, TH REPUBLICII STREET FOCSANI	+40 237238900	+40 237237471							
EUROBANK ERGASIAS S.A.								a	
8, OTHONOS STR. ATHINA	(210)-3337969 (210)-3337000	(210)-3245916 (210)-3233866							
EUROBANK SECURITIES INVESTMENT FIRM S.A			a		a	a	a		a
, FILELLINON 10 & XENOFONTOS 13 ATHINA	+30 2103720000	210-3720001							
EUROCORP SECURITIES S.A.			a			a			a
14, SQ.FILIKIS ETAIRIAS ATHINA	+30 2107263500	210-7263666							
EUOTRUST BROKERAGE S.A.			a						
113, SEVASTOUPOLEOS ATHINA	+30 2103363100	+30 210-3238334							
EUROXX SECURITIES S.A.			a		a	a	a		a
7, PALAIOLOGOU CHALANDRI	(210)-6879400	(210)-6879401							
G.A. PERVANAS SECURITIES-INVESTMENT SERVICES CO S.A.			a						
7-9, SOFOKLEOUS ATHINA	+30 2103727200	210-3210-291							
GLOBAL CAPITAL SECURITIES AND FINANCIAL SERVICES LTD			a	a					
, AVE. ARCHIEPISKOPOU MAKARIOU NICOSIA	+357 22710710	357 22339332							

Athex & ATHEXCclear Members List

Member Name			Stock Market			Derivatives Market		ATHEXCclear Member	
Address	Phone	Fax	Market Member	Remote Member	Market Maker	Proprietary	Market Maker	General Clearing	Direct Clearing
GUARDIAN TRUST SECURITIES S.A			a			a			
31, ERMOU ATHINA	+30 2103378700	210-3220498							
HELLENIC BANK (INVESTMENTS) LTD			a	a					
, AVE. KYRIAKOU MATSI 31 - PO BOX 24747 NICOSIA	+357 22500100	357 22500110							
HELLENICAMERICAN SEC. S.A.			a		a	a			a
27, ANDREA PAPANDREOU ATHINA	+30 2103311100	+30 210-3215968							
HSBC BANK PLC								a	
109-111, AVE. MESOGION ATHINA	+30 2106960000	210-6928000							
INDEX SECURITIES S.A.			a						
6, DRAGATSANIOU ATHINA	+30 2103213920	+30 210-3213216							
INTERFINBROK CORPORATION S.A.									a
1, STR.CALARASI NR. CONSTANTA	+40 241639071	0241-547829							
INVESTMENT BANK OF GREECE S.A.			a		a	a	a	a	
32 , EGIALIAS & PARADISOU MAROUSI	+30 2108173111	+30 210-6896325							
J. CHR. MAVRIKIS SECURITIES S.A.			a						
5, SOFOKLEOUS ATHINA	+30 2103216730	210-3217767							
KAPPA SECURITIES S.A.			a			a			
15, VALAORITOU ATHINA	+30 2103678600	+30 210-3641002							
KARAMANOF SECURITIES-INV. SERVICES S.A.			a			a			
2, SQ. AGION THEODORON ATHINA	+30 2103212947	+30 210-3217088							
LAIKI FINANCIAL SERVICES LTD				a					
26, AVE. VYRONOS NICOSIA	357 22367367	357 22718567							
LEON DEPOLAS SECURITIES S.A.			a		a	a			
1, CHRISTOU LADA ATHINA	+30 2103213276	+30 210-3211618							
MAGNA TRUST SECURITIES S.A			a						
5, GEORGE ATHINA	+30 2103800820	210-3220910							
MEGA EQUITY SECURITIES-FINANCIAL SERVICES LTD			a	a		a			
42-44, AVE. GRIVA DIGENI NICOSIA	+357 22711711	357 22711811							
MERIT SECURITIES S.A			a		a	a			a
3, GEORGIOU SOURI ATHINA	+30 2103671890	210-3671830							
MIDAS BROKERAGE S.A.			a		a				
5, SOFOKLEOUS ATHINA	+30 2141008800	+30 210-3253205							
N. CHRYSOCHOIDIS STOCK BROKERAGE I.S.S.A.			a			a			a
7-9, SOFOKLEOUS ATHINA	+30 2103213913	+30 210-3216115							
NATIONAL BANK OF GREECE S.A.			a			a		a	
68, AKADIMIAS STR. ATHINA	(210)-3328817	(210)-3328678							
86, AIOLOU STR. ATHINA	(210)-3341000	(210)-3228187							
NATIONAL SECURITIES S.A			a		a	a	a		
91, MICHALAKOPOULOU ATHINA	+30 2107720000	+30 210-7720002							
NUNTIUS SECURITIES S.A			a						
6, DRAGATSANIOU ATHINA	+30 2103350599	+30210-3254846							
ONE PLUS CAPITAL LIMITED			a	a		a			
, 75 PRODROMOU AVENUE, ONEWORLD PARKVIEW HOUSE, 3RD FLOOR, 22873760									
PANTELAKIS SECURITIES S.A.			a			a			
57, ETHNIKIS ANTISTASIS B CHALANDRI	+30 2106965000	210-6929550							
PEGASUS BROKERAGE FIRM S.A			a			a			
17 , VALAORITOU & AMERIKIS ATHINA	+30 2103670700	+30 210-3670760							
PIRAEUS BANK S.A.			a			a		a	
4, AMERIKIS STR. ATHINA	(210)-3335000	(210)-3335079							
4, AMERIKIS STR ATHINA	(210)-3335918	(210)-3254207							
PIRAEUS SECURITIES S.A.			a		a	a	a		a
5, KORAI ATHINA	+30 2103354100	210-3354170							
PRELIUM SECURITIES-INVESTMENT SERVICES S.A.			a			a			
1 , DAVAKI & KIFISIAS AVE. ATHINA	+30 2103677000	+30 210-6926403							
PROCHOICE SECURITIES LTD			a	a					
57, SPYROU KYPRIANOY NICOSIA	+357-24-661192	+357-24-662464							
SHARELINK SECURITIES-FINANCIAL SERVICES LTD			a	a		a			
6 , THEOTOKI MEGARO ELLINA NICOSIA	+357 22554200	+357 22750852							
SOCIETE GENERALE S.A.			a	a		a			
, 17 COURS VALMY 92987 PUTEAUX - LA DEFENSE PARIS	+33 157290504	+33142138697							
SOLIDUS SECURITIES S.A			a			a			a
64, LOUIZIS RIANCOUR ATHINA	+30 2106900600	210-6985421							

Athex & ATHEXClear Members List

Member Name			Stock Market			Derivatives Market		ATHEXClear Member	
Address	Phone	Fax	Market Member	Remote Member	Market Maker	Proprietary	Market Maker	General Clearing	Direct Clearing
SSIF BROKER SA									a
119 , CALEA MOTILOR NAPOCA	+40 364401709	0040364401710							
SSIF VIENNA INVESTMENT TRUST S.A.									a
, 4 SPLAIUL UNIRII, BUILDING B3 BUCHAREST	+40 212074880	004 021 207 48 98							
ST. EM. LAVRENTAKIS SECURITIES S.A.			a			a			
7-9, SOFOKLEOUS ATHINA	+30 2103213336	+30 210-3246572							
THE CYPRUS INVESTMENT & SECURITIES CORPORATION LTD			a	a					
154 , LIMASSOL AVENUE, STROVOLOS NICOSIA	+357 22121700	357 22338800							
UBS LIMITED			a	a					
1 , FINSBURY AVENUE LONDON	+44 2075687135								

List of Stocks under Market Making operations

Securities	Stock Category
Market Maker	Start Market Making
CYPRUS POPULAR BANK (CR)	Suspension Status
PIRAEUS SECURITIES S.A.	02/02/2013
VIOHALCO (CB)	Suspension Status
ALPHA FINANCE INVESTMENT SERVICES S.A.	11/02/2013
EUROBANK SECURITIES INVESTMENT FIRM S.A	20/01/2013
MERIT SECURITIES S.A	13/12/2012
ALPHA BANK (CR)	Main Market
EUROBANK SECURITIES INVESTMENT FIRM S.A	24/10/2012
HELLENICAMERICAN SEC. S.A.	25/07/2014
INVESTMENT BANK OF GREECE S.A.	08/01/2013
LEON DEPOLAS SECURITIES S.A.	04/01/2016
MERIT SECURITIES S.A	03/09/2013
MIDAS BROKERAGE S.A.	11/01/2006
NATIONAL SECURITIES S.A	15/01/2013
PIRAEUS SECURITIES S.A.	28/05/2013
ALUMIL (CR)	Main Market
BETA SECURITIES S.A.	18/07/2013
ATTICA BANK S.A. (CR)	Main Market
BETA SECURITIES S.A.	02/06/2014
EUROBANK SECURITIES INVESTMENT FIRM S.A	25/07/2014
BANK OF CYPRUS (CR)	Main Market
EUROBANK SECURITIES INVESTMENT FIRM S.A	23/03/2015
NATIONAL SECURITIES S.A	22/06/2015
BYTE COMPUTER SA (CR)	Main Market
MERIT SECURITIES S.A	04/08/2013
CC HBC AG (CR)	Main Market
EUROBANK SECURITIES INVESTMENT FIRM S.A	23/10/2013
NATIONAL SECURITIES S.A	29/04/2013
PIRAEUS SECURITIES S.A.	04/05/2015
ELLAKTOR (CR)	Main Market
EUROBANK SECURITIES INVESTMENT FIRM S.A	01/06/2013
INVESTMENT BANK OF GREECE S.A.	02/01/2013
NATIONAL SECURITIES S.A	25/06/2013
ELTON SA (CR)	Main Market
BETA SECURITIES S.A.	03/09/2013
EUROBANK ERGASIAS (CR)	Main Market
ALPHA FINANCE INVESTMENT SERVICES S.A.	08/01/2013
EUROBANK SECURITIES INVESTMENT FIRM S.A	01/06/2013
HELLENICAMERICAN SEC. S.A.	25/07/2014
INVESTMENT BANK OF GREECE S.A.	08/01/2013
MIDAS BROKERAGE S.A.	07/01/2016
PIRAEUS SECURITIES S.A.	28/09/2013
EUROCONSULTANTS S.A. (CR)	Main Market
EUROBANK SECURITIES INVESTMENT FIRM S.A	22/07/2014
FOLLI FOLLIE (CR)	Main Market
NATIONAL SECURITIES S.A	17/02/2014
PIRAEUS SECURITIES S.A.	04/05/2015
FOURLIS (CR)	Main Market
HELLENICAMERICAN SEC. S.A.	14/09/2005
FRIGOGLOSS SA (CR)	Main Market
EUROBANK SECURITIES INVESTMENT FIRM S.A	27/10/2014
GEK TERNA (CR)	Main Market
HELLENICAMERICAN SEC. S.A.	07/09/2015
INVESTMENT BANK OF GREECE S.A.	02/01/2013
GR. SARANTIS SA (CR)	Main Market
BETA SECURITIES S.A.	14/05/2013
HELLENIC EXCHANGES-A.S.E. (CR)	Main Market
EUROBANK SECURITIES INVESTMENT FIRM S.A	01/06/2013
HELLENICAMERICAN SEC. S.A.	01/09/2014
INVESTMENT BANK OF GREECE S.A.	02/01/2013
NATIONAL SECURITIES S.A	25/06/2013
PIRAEUS SECURITIES S.A.	04/05/2015
HELLENIC PETROLEUM (CR)	Main Market
HELLENICAMERICAN SEC. S.A.	14/09/2015
INTRACOM HOLDINGS (CR)	Main Market
HELLENICAMERICAN SEC. S.A.	07/09/2015

List of Stocks under Market Making operations

Securities	Stock Category
Market Maker	Start Market Making
INTRALOT (CR)	Main Market
EUROBANK SECURITIES INVESTMENT FIRM S.A	01/06/2013
INVESTMENT BANK OF GREECE S.A.	02/01/2013
PIRAEUS SECURITIES S.A.	28/09/2013
J & P - AVAX SA (CR)	Main Market
EUROBANK SECURITIES INVESTMENT FIRM S.A	14/12/2015
KLOUKINAS - LAPPAS SA (CR)	Main Market
BETA SECURITIES S.A.	22/09/2014
LAMDA DEVELOPMENT SA (CR)	Main Market
EUROBANK SECURITIES INVESTMENT FIRM S.A	08/12/2014
MARFIN INVESTMENT GROUP (CR)	Main Market
EUROBANK SECURITIES INVESTMENT FIRM S.A	23/03/2015
HELLENICAMERICAN SEC. S.A.	25/07/2014
PIRAEUS SECURITIES S.A.	02/02/2013
MLS MULTIMEDIA SA (CR)	Main Market
HELLENICAMERICAN SEC. S.A.	07/12/2015
MOTOR OIL (CR)	Main Market
EUROBANK SECURITIES INVESTMENT FIRM S.A	23/10/2012
HELLENICAMERICAN SEC. S.A.	01/09/2014
NATIONAL SECURITIES S.A	17/02/2014
PIRAEUS SECURITIES S.A.	04/05/2015
MYTILINEOS HOLDINGS (CR)	Main Market
HELLENICAMERICAN SEC. S.A.	25/07/2014
INVESTMENT BANK OF GREECE S.A.	02/01/2013
NATIONAL SECURITIES S.A	25/06/2013
PIRAEUS SECURITIES S.A.	04/05/2015
NATIONAL BANK (CR)	Main Market
ALPHA FINANCE INVESTMENT SERVICES S.A.	08/01/2013
EUROBANK SECURITIES INVESTMENT FIRM S.A	24/10/2012
HELLENICAMERICAN SEC. S.A.	25/07/2014
INVESTMENT BANK OF GREECE S.A.	08/01/2013
LEON DEPOLAS SECURITIES S.A.	20/04/2015
MERIT SECURITIES S.A	03/09/2013
MIDAS BROKERAGE S.A.	07/01/2016
NATIONAL SECURITIES S.A	28/02/2013
PIRAEUS SECURITIES S.A.	08/09/2013
OPAP (CR)	Main Market
ALPHA FINANCE INVESTMENT SERVICES S.A.	08/01/2013
EUROBANK SECURITIES INVESTMENT FIRM S.A	24/10/2012
HELLENICAMERICAN SEC. S.A.	25/07/2014
INVESTMENT BANK OF GREECE S.A.	08/01/2013
NATIONAL SECURITIES S.A	15/01/2013
PIRAEUS SECURITIES S.A.	04/05/2015
OTE (CR)	Main Market
ALPHA FINANCE INVESTMENT SERVICES S.A.	08/01/2013
EUROBANK SECURITIES INVESTMENT FIRM S.A	24/10/2012
HELLENICAMERICAN SEC. S.A.	25/07/2014
INVESTMENT BANK OF GREECE S.A.	08/01/2013
LEON DEPOLAS SECURITIES S.A.	20/04/2015
MIDAS BROKERAGE S.A.	01/10/2015
NATIONAL SECURITIES S.A	01/12/2012
PIRAEUS SECURITIES S.A.	08/09/2013
PAPOUTSANIS (CR)	Main Market
BETA SECURITIES S.A.	25/11/2013
PETROPOULOS PETROS (CR)	Main Market
BETA SECURITIES S.A.	28/05/2013
PIRAEUS BANK (CR)	Main Market
EUROBANK SECURITIES INVESTMENT FIRM S.A	23/10/2012
HELLENICAMERICAN SEC. S.A.	25/07/2014
INVESTMENT BANK OF GREECE S.A.	08/01/2013
MERIT SECURITIES S.A	16/09/2013
MIDAS BROKERAGE S.A.	11/01/2016
NATIONAL SECURITIES S.A	02/06/2013
PIRAEUS SECURITIES S.A.	16/02/2013
PLAISIO COMPUTERS SA (CR)	Main Market
BETA SECURITIES S.A.	05/05/2014
EUROBANK SECURITIES INVESTMENT FIRM S.A	02/03/2015

List of Stocks under Market Making operations

Securities		Stock Category
Market Maker	Start Market Making	
PPC (CR)		Main Market
ALPHA FINANCE INVESTMENT SERVICES S.A.	08/01/2013	
EUROBANK SECURITIES INVESTMENT FIRM S.A	23/10/2012	
HELLENICAMERICAN SEC. S.A.	01/09/2014	
INVESTMENT BANK OF GREECE S.A.	08/01/2013	
NATIONAL SECURITIES S.A	26/03/2013	
PIRAEUS SECURITIES S.A.	28/09/2013	
QUALITY & RELIABILITY SA (CR)		Main Market
BETA SECURITIES S.A.	20/08/2014	
S.KANAKIS SA (CR)		Main Market
BETA SECURITIES S.A.	01/10/2013	
TITAN CEMENT (CR)		Main Market
EUROBANK SECURITIES INVESTMENT FIRM S.A	23/10/2012	
NATIONAL SECURITIES S.A	17/02/2014	
PIRAEUS SECURITIES S.A.	04/05/2015	
VIOHALCO SA/NV (CB)		Main Market
ALPHA FINANCE INVESTMENT SERVICES S.A.	17/02/2014	
MERIT SECURITIES S.A	17/03/2014	

Equity Investment Instruments Acknowledgements

Portfolio Investments Company Name	NAV per Share	Share Price	Premium/ Discount
AEOLIAN INVESTMENT FUND S.A.	0.88	0.60	-31.82%
ALPHA TRUST ANDROMEDA SA	16.57	11.53	-30.42%

Acknowledgements Notes

According to the Decision of the Capital Market Commission 4/278/12.08.2003 Portfolio Investment Companies are required to notify the Athens Exchange on the 10th, 20th and last working day of each month the Net Asset Value (NAV) of their shares as well as Premium or Discount in relation to their market value.

Underlying Asset				Derivatives Market													
Price max	Price min	Closing price	change	Delivery Month	Open price	Price max	Price min	Last price	Closing price	Last Bid	Last Ask	Settlement price	Life high	Life low	Trades	Volume	Open Interest
FTSE/Athex Large Cap																	(Trade Unit: 1 Index Point x 5€, Cash Settlement)
120.55	114.13	119.41	4.63%	February 2016	115.75	120.50	115.00	118.75	118.75	---	---	120.25	185.00	---	366	5,113	12,688
				March 2016	118.00	120.50	114.50	119.00	119.00	---	---	120.25	170.50	---	137	1,784	7,890
				April 2016	---	---	---	---	114.50	---	---	---	---	---	---	---	---
				June 2016	---	---	---	---	115.00	---	---	---	---	---	---	---	---
				September 2016	---	---	---	---	115.50	---	---	---	---	---	---	---	---
				December 2016	---	---	---	---	116.00	---	---	---	---	---	---	---	---

Underlying Asset				Derivatives Market													
Price max	Price min	Closing price	change	Delivery Month	Open price	Price max	Price min	Last price	Closing price	Last Bid	Last Ask	Settlement price	Life high	Life low	Trades	Volume	Open Interest
ALPHA BANK (CR)				(Contract Size: 100 Securities, Physical Delivery)													
1.35	1.12	1.32	13.79%	March 2016	1.16	1.35	1.14	1.32	1.32	---	---	1.34	2.64	---	539	11,089	10,050
				June 2016	1.19	1.24	1.19	1.24	1.24	---	---	1.35	---	2.68	3	52	203
				September 2016	---	---	---	---	1.17	---	---	---	---	---	---	---	---
				December 2016	---	---	---	---	1.18	---	---	---	---	---	---	---	---
CC HBC AG (CR)				(Contract Size: 100 Securities, Physical Delivery)													
16.62	16.36	16.36	0.06%	March 2016	16.55	16.59	16.55	16.59	16.59	---	---	16.47	21.55	---	3	12	121
				June 2016	---	---	---	---	16.47	---	---	---	---	---	---	---	---
				September 2016	---	---	---	---	16.55	---	---	---	---	---	---	---	---
				December 2016	---	---	---	---	16.63	---	---	---	---	---	---	---	---
CORINTH PIPEWORKS SA (CR)				(Contract Size: 100 Securities, Physical Delivery)													
0.739	0.700	0.712	-0.70%	March 2016	0.740	0.740	0.701	0.701	0.701	---	---	0.719	1.08	---	2	6	589
				June 2016	---	---	---	---	0.722	---	---	---	---	---	---	---	---
				September 2016	---	---	---	---	0.726	---	---	---	---	---	---	---	---
				December 2016	---	---	---	---	0.729	---	---	---	---	---	---	---	---
ELLAKTOR (CR)				(Contract Size: 100 Securities, Physical Delivery)													
1.08	0.956	1.06	11.46%	March 2016	0.970	1.07	0.960	1.06	1.06	---	---	1.07	1.87	---	37	259	1,485
				June 2016	0.970	0.970	0.970	0.970	0.970	---	---	1.05	1.27	---	1	70	120
				September 2016	---	---	---	---	0.963	---	---	---	---	---	---	---	---
				December 2016	---	---	---	---	0.967	---	---	---	---	---	---	---	---
EUROBANK ERGASIAS (CR)				(Contract Size: 100 Securities, Physical Delivery)													
0.330	0.295	0.324	10.20%	March 2016	0.324	0.332	0.297	0.332	0.332	---	---	0.328	1.14	---	448	11,846	20,810
				June 2016	0.303	0.303	0.303	0.303	0.303	---	---	0.331	1.16	---	1	1	14
				September 2016	---	---	---	---	0.298	---	---	---	---	---	---	---	---
				December 2016	---	---	---	---	0.299	---	---	---	---	---	---	---	---
EYDAP S.A. (CR)				(Contract Size: 100 Securities, Physical Delivery)													
4.08	3.84	3.93	-0.25%	March 2016	3.85	4.04	3.85	4.04	4.04	---	---	3.82	5.18	---	11	31	254
				June 2016	---	---	---	---	3.97	---	---	---	---	---	---	---	---
				September 2016	---	---	---	---	3.99	---	---	---	---	---	---	---	---
				December 2016	---	---	---	---	4.01	---	---	---	---	---	---	---	---
FOLLI FOLLIE (CR)				(Contract Size: 100 Securities, Physical Delivery)													
13.60	13.13	13.60	3.58%	March 2016	13.25	13.49	13.19	13.49	13.49	---	---	13.49	18.54	---	12	54	202
				June 2016	---	---	---	---	13.22	---	---	14.16	15.38	---	---	---	---
				September 2016	---	---	---	---	13.29	---	---	---	---	---	---	---	---
				December 2016	---	---	---	---	13.36	---	---	---	---	---	---	---	---
FRIGOGLASS SA (CR)				(Contract Size: 100 Securities, Physical Delivery)													
1.19	1.13	1.16	0.87%	March 2016	1.18	1.18	1.13	1.16	1.16	---	---	1.20	1.98	---	3	21	786
				June 2016	---	---	---	---	1.16	---	---	---	---	---	---	---	---
				September 2016	---	---	---	---	1.16	---	---	---	---	---	---	---	---
				December 2016	---	---	---	---	1.17	---	---	---	---	---	---	---	---

Underlying Asset				Derivatives Market													
Price max	Price min	Closing price	change	Delivery Month	Open price	Price max	Price min	Last price	Closing price	Last Bid	Last Ask	Settlement price	Life high	Life low	Trades	Volume	Open Interest
GEK TERNA (CR)				(Contract Size: 100 Securities, Physical Delivery)													
1.18	1.11	1.13	0.00%	March 2016	1.14	1.18	1.13	1.18	1.18	---	---	1.14	1.63	---	11	49	7,563
				June 2016	---	---	---	---	1.14	---	---	1.12	---	1.35	---	---	26
				September 2016	---	---	---	---	1.14	---	---	---	---	---	---	---	---
				December 2016	---	---	---	---	1.15	---	---	---	---	---	---	---	---
GRIVALIA PROPERTIES (CR)				(Contract Size: 100 Securities, Physical Delivery)													
7.19	6.95	6.95	-2.11%	March 2016	7.11	7.13	7.11	7.11	7.11	---	---	6.96	8.14	---	3	7	41
				June 2016	---	---	---	---	7.15	---	---	---	---	---	---	---	---
				September 2016	---	---	---	---	7.19	---	---	---	---	---	---	---	---
				December 2016	---	---	---	---	7.22	---	---	---	---	---	---	---	---
HELLENIC EXCHANGES-A.S.E. (CR)				(Contract Size: 100 Securities, Physical Delivery)													
3.98	3.79	3.86	1.58%	March 2016	3.80	3.95	3.80	3.94	3.94	---	---	3.89	5.61	---	31	98	595
				June 2016	---	---	---	---	3.83	---	---	3.89	---	4.64	---	---	60
				September 2016	---	---	---	---	3.85	---	---	---	---	---	---	---	---
				December 2016	---	---	---	---	3.87	---	---	---	---	---	---	---	---
HELLENIC PETROLEUM (CR)				(Contract Size: 100 Securities, Physical Delivery)													
3.18	2.94	3.09	6.55%	March 2016	2.90	3.18	2.90	3.10	3.10	---	---	3.14	4.42	---	94	255	5,234
				June 2016	---	---	---	---	2.92	---	---	---	---	---	---	---	---
				September 2016	---	---	---	---	2.94	---	---	---	---	---	---	---	---
				December 2016	---	---	---	---	2.95	---	---	---	---	---	---	---	---
INTRALOT (CR)				(Contract Size: 100 Securities, Physical Delivery)													
1.10	1.06	1.08	1.89%	March 2016	---	---	---	---	1.06	---	---	1.04	1.23	---	---	---	245
				June 2016	---	---	---	---	1.07	---	---	---	---	---	---	---	---
				September 2016	---	---	---	---	1.07	---	---	---	---	---	---	---	---
				December 2016	---	---	---	---	1.08	---	---	---	---	---	---	---	---
JUMBO SA (CR)				(Contract Size: 100 Securities, Physical Delivery)													
9.20	8.96	9.00	1.92%	March 2016	9.10	9.21	8.97	9.02	9.02	---	---	9.14	10.13	---	59	205	457
				June 2016	---	---	---	---	8.89	---	---	---	---	---	---	---	---
				September 2016	---	---	---	---	8.94	---	---	---	---	---	---	---	---
				December 2016	---	---	---	---	8.98	---	---	---	---	---	---	---	---
MARFIN INVESTMENT GROUP (CR)				(Contract Size: 100 Securities, Physical Delivery)													
0.058	0.054	0.058	5.45%	March 2016	0.059	0.063	0.055	0.059	0.059	---	---	0.058	0.087	---	55	525	34,272
				June 2016	---	---	---	---	0.055	---	---	---	---	---	---	---	---
				September 2016	---	---	---	---	0.056	---	---	---	---	---	---	---	---
				December 2016	---	---	---	---	0.056	---	---	---	---	---	---	---	---
METKA (CR)				(Contract Size: 100 Securities, Physical Delivery)													
6.85	6.55	6.55	0.00%	March 2016	6.54	6.80	6.54	6.60	6.60	---	---	6.51	7.98	---	33	96	349
				June 2016	---	---	---	---	6.60	---	---	---	---	---	---	---	---
				September 2016	---	---	---	---	6.63	---	---	---	---	---	---	---	---
				December 2016	---	---	---	---	6.66	---	---	---	---	---	---	---	---

Underlying Asset				Derivatives Market													
Price max	Price min	Closing price	change	Delivery Month	Open price	Price max	Price min	Last price	Closing price	Last Bid	Last Ask	Settlement price	Life high	Life low	Trades	Volume	Open Interest
MOTOR OIL (CR)				(Contract Size: 100 Securities, Physical Delivery)													
8.69	8.22	8.26	-0.48%	March 2016	8.58	8.58	8.23	8.35	8.35	---	---	8.39	10.78	---	34	111	318
				June 2016	---	---	---	---	8.36	---	---	---	---	---	---	---	---
				September 2016	---	---	---	---	8.40	---	---	---	---	---	---	---	---
				December 2016	---	---	---	---	8.44	---	---	---	---	---	---	---	---
MYTILINEOS HOLDINGS (CR)				(Contract Size: 100 Securities, Physical Delivery)													
3.02	2.93	2.97	0.68%	March 2016	2.96	3.03	2.93	2.98	2.98	---	---	3.00	4.20	---	73	165	5,633
				June 2016	---	---	---	---	2.97	---	---	2.88	3.14	---	---	---	---
				September 2016	---	---	---	---	2.99	---	---	---	---	---	---	---	---
				December 2016	---	---	---	---	3.00	---	---	---	---	---	---	---	---
NATIONAL BANK (CR)				(Contract Size: 100 Securities, Physical Delivery)													
0.152	0.120	0.150	25.00%	March 2016	0.131	0.153	0.121	0.150	0.150	---	---	0.152	0.551	---	644	28,877	58,737
				June 2016	0.131	0.140	0.131	0.140	0.140	---	---	0.152	0.346	---	3	3	21
				September 2016	---	---	---	---	0.121	---	---	---	---	---	---	---	---
				December 2016	---	---	---	---	0.122	---	---	---	---	---	---	---	---
OPAP (CR)				(Contract Size: 100 Securities, Physical Delivery)													
5.60	5.36	5.41	0.19%	March 2016	5.49	5.55	5.38	5.43	5.43	---	---	5.45	8.72	---	87	589	2,482
				June 2016	5.48	5.66	5.48	5.60	5.60	---	---	5.55	7.25	---	4	24	12
				September 2016	---	---	---	---	5.47	---	---	---	---	---	---	---	---
				December 2016	---	---	---	---	5.49	---	---	---	---	---	---	---	---
OTE (CR)				(Contract Size: 100 Securities, Physical Delivery)													
6.97	6.65	6.87	1.78%	March 2016	6.97	6.97	6.67	6.87	6.87	---	---	6.89	9.34	---	137	805	4,255
				June 2016	---	---	---	---	6.80	---	---	6.80	7.96	---	---	---	66
				September 2016	---	---	---	---	6.83	---	---	---	---	---	---	---	---
				December 2016	---	---	---	---	6.87	---	---	---	---	---	---	---	---
P.P.A. S.A. (CR)				(Contract Size: 100 Securities, Physical Delivery)													
11.12	10.40	10.50	-2.33%	March 2016	10.99	11.00	10.37	10.37	10.37	---	---	10.33	15.50	---	7	16	352
				June 2016	---	---	---	---	10.83	---	---	10.28	14.75	---	---	---	29
				September 2016	---	---	---	---	10.88	---	---	---	---	---	---	---	---
				December 2016	---	---	---	---	10.93	---	---	---	---	---	---	---	---
PIRAEUS BANK (CR)				(Contract Size: 100 Securities, Physical Delivery)													
0.100	0.082	0.098	20.99%	March 2016	0.088	0.103	0.083	0.102	0.102	---	---	0.101	0.312	---	326	17,791	35,446
				June 2016	---	---	---	---	0.082	---	---	0.107	0.303	---	---	---	20
				September 2016	---	---	---	---	0.082	---	---	---	---	---	---	---	---
				December 2016	---	---	---	---	0.082	---	---	---	---	---	---	---	---
PPC (CR)				(Contract Size: 100 Securities, Physical Delivery)													
2.84	2.68	2.75	2.61%	March 2016	2.71	2.84	2.69	2.76	2.76	---	---	2.85	5.53	---	149	589	5,332
				June 2016	2.75	2.75	2.75	2.75	2.75	---	---	2.80	3.00	---	1	10	20
				September 2016	---	---	---	---	2.71	---	---	---	---	---	---	---	---
				December 2016	---	---	---	---	2.73	---	---	---	---	---	---	---	---

Underlying Asset				Derivatives Market													
Price max	Price min	Closing price	change	Delivery Month	Open price	Price max	Price min	Last price	Closing price	Last Bid	Last Ask	Settlement price	Life high	Life low	Trades	Volume	Open Interest
TERNA ENERGY (CR)				(Contract Size: 100 Securities, Physical Delivery)													
2.14	2.01	2.11	3.43%	March 2016	2.00	2.11	2.00	2.11	2.11	---	---	2.11	2.55	---	17	37	1,152
				June 2016	---	---	---	---	2.05	---	---	---	---	---	---	---	---
				September 2016	---	---	---	---	2.06	---	---	---	---	---	---	---	---
				December 2016	---	---	---	---	2.08	---	---	---	---	---	---	---	---
TITAN CEMENT (CR)				(Contract Size: 100 Securities, Physical Delivery)													
15.15	14.86	15.00	-0.99%	March 2016	15.10	15.26	14.90	14.90	14.90	---	---	14.76	21.29	---	15	26	444
				June 2016	---	---	---	---	15.26	---	---	14.76	17.87	---	---	---	---
				September 2016	---	---	---	---	15.33	---	---	---	---	---	---	---	---
				December 2016	---	---	---	---	15.41	---	---	---	---	---	---	---	---
VIOHALCO SA/NV (CB)				(Contract Size: 100 Securities, Physical Delivery)													
1.08	1.00	1.01	-1.94%	March 2016	1.06	1.08	1.05	1.05	1.05	---	---	1.06	1.95	---	7	16	1,004
				June 2016	---	---	---	---	1.04	---	---	---	---	---	---	---	---
				September 2016	---	---	---	---	1.04	---	---	---	---	---	---	---	---
				December 2016	---	---	---	---	1.05	---	---	---	---	---	---	---	---

FTSE/Athex Large Cap

(Trade Unit: 1 Index Point x 5€ - Excercise Style: European, Cash Settlement)

Call Options																	Put Options																
Exerise Price	February 2016							March 2016							Other Months		February 2016							March 2016							Other Months		Exerise Price
	Open price	Price max	Price min	Last price	Closing price	Volume	Open Interest	Open price	Price max	Price min	Last price	Closing price	Volume	Open Interest	Volume	Open Interest	Open price	Price max	Price min	Last price	Closing price	Volume	Open Interest	Open price	Price max	Price min	Last price	Closing price	Volume	Open Interest	Volume	Open Interest	
90	0.00	0.00	0.00	-	26.50	-	-	0.00	0.00	0.00	-	27.50	-	-			0.00	0.00	0.00	-	0.03	-	-	0.00	0.00	0.00	-	0.31	-	-			90
95	0.00	0.00	0.00	-	21.50	-	-	0.00	0.00	0.00	-	23.00	-	-			0.00	0.00	0.00	-	0.11	-	-	0.00	0.00	0.00	-	0.70	-	-			95
100	0.00	0.00	0.00	-	16.75	-	-	0.00	0.00	0.00	-	18.50	-	-			0.00	0.00	0.00	-	0.37	-	-	0.00	0.00	0.00	-	1.40	-	-			100
105	0.00	0.00	0.00	-	12.50	-	-	0.00	0.00	0.00	-	14.75	-	81			0.00	0.00	0.00	-	1.00	-	-	0.00	0.00	0.00	-	2.50	-	-			105
110	9.00	9.60	9.00	9.60	9.60	15	30	0.00	0.00	0.00	-	11.25	-	1			9.00	9.60	0.00	-	2.20	-	-	0.00	0.00	0.00	-	4.10	-	-			110
115	0.00	0.00	0.00	-	5.60	-	1	10.00	10.00	10.00	10.00	10.00	1	2			0.00	0.00	0.00	-	4.20	-	1	0.00	0.00	0.00	-	6.20	-	1			115
120	3.50	3.50	2.20	2.20	2.20	60	110	0.00	0.00	0.00	-	6.10	-	187			3.50	3.50	0.00	-	6.90	-	-	0.00	0.00	0.00	-	8.90	-	2			120
125	0.00	0.00	0.00	-	1.90	-	37	0.00	0.00	0.00	-	4.30	-	-			0.00	0.00	0.00	-	10.50	-	-	0.00	0.00	0.00	-	12.00	-	-			125
130	0.00	0.00	0.00	-	1.00	-	87	2.90	2.90	2.90	2.90	2.90	100	455			0.00	0.00	0.00	-	14.50	-	12	0.00	0.00	0.00	-	15.75	-	1			130
135	0.00	0.00	0.00	-	0.49	-	1	0.00	0.00	0.00	-	2.00	-	1			0.00	0.00	0.00	-	19.00	-	1	0.00	0.00	0.00	-	19.75	-	1			135
140	0.00	0.00	0.00	-	0.22	-	246	0.00	0.00	0.00	-	1.30	-	648			0.00	0.00	0.00	-	23.75	-	12	0.00	0.00	0.00	-	24.00	-	-			140
145	0.00	0.00	0.00	-	0.09	-	99	0.00	0.00	0.00	-	0.84	-	7			0.00	0.00	0.00	-	28.50	-	13	0.00	0.00	0.00	-	28.50	-	-			145
150	0.00	0.00	0.00	-	0.04	-	53	0.00	0.00	0.00	-	0.53	-	171			0.00	0.00	0.00	-	33.50	-	104	0.00	0.00	0.00	-	33.25	-	3			150
155	0.00	0.00	0.00	-	0.01	-	162	0.00	0.00	0.00	-	0.33	-	2			0.00	0.00	0.00	-	38.50	-	11	0.00	0.00	0.00	-	38.00	-	1			155
160	0.00	0.00	0.00	-	0.01	-	597	0.00	0.00	0.00	-	0.20	-	3			0.00	0.00	0.00	-	43.50	-	25	0.00	0.00	0.00	-	42.75	-	-			160
165	0.00	0.00	0.00	-	0.01	-	100	0.00	0.00	0.00	-	0.12	-	6			0.00	0.00	0.00	-	48.50	-	69	0.00	0.00	0.00	-	47.75	-	-			165
170	0.00	0.00	0.00	-	0.01	-	21	0.00	0.00	0.00	-	0.07	-	10			0.00	0.00	0.00	-	53.50	-	-	0.00	0.00	0.00	-	52.50	-	-			170
175	0.00	0.00	0.00	-	0.01	-	505	0.00	0.00	0.00	-	0.04	-	-			0.00	0.00	0.00	-	58.50	-	1	0.00	0.00	0.00	-	57.50	-	-			175
180	0.00	0.00	0.00	-	0.01	-	563	0.00	0.00	0.00	-	0.02	-	-			0.00	0.00	0.00	-	63.50	-	1	0.00	0.00	0.00	-	62.50	-	5			180
185	0.00	0.00	0.00	-	0.01	-	444	0.00	0.00	0.00	-	0.01	-	-			0.00	0.00	0.00	-	68.50	-	1	0.00	0.00	0.00	-	67.50	-	-			185
190	0.00	0.00	0.00	-	0.01	-	159	0.00	0.00	0.00	-	0.01	-	-			0.00	0.00	0.00	-	73.50	-	-	0.00	0.00	0.00	-	72.50	-	-			190
195	0.00	0.00	0.00	-	0.01	-	1	0.00	0.00	0.00	-	0.06	-	-			0.00	0.00	0.00	-	78.50	-	-	0.00	0.00	0.00	-	77.50	-	-			195
200	0.00	0.00	0.00	-	0.01	-	804	0.00	0.00	0.00	-	0.01	-	11			0.00	0.00	0.00	-	83.50	-	-	0.00	0.00	0.00	-	82.50	-	187			200
205	0.00	0.00	0.00	-	0.03	-	-	0.00	0.00	0.00	-	0.02	-	-			0.00	0.00	0.00	-	88.50	-	-	0.00	0.00	0.00	-	87.50	-	-			205
210	0.00	0.00	0.00	-	0.01	-	1	0.00	0.00	0.00	-	0.01	-	-			0.00	0.00	0.00	-	93.50	-	-	0.00	0.00	0.00	-	92.50	-	-			210
215	0.00	0.00	0.00	-	0.01	-	-	0.00	0.00	0.00	-	0.01	-	-			0.00	0.00	0.00	-	98.50	-	-	0.00	0.00	0.00	-	97.50	-	-			215
220	0.00	0.00	0.00	-	0.02	-	-	0.00	0.00	0.00	-	0.01	-	-			0.00	0.00	0.00	-	103.00	-	-	0.00	0.00	0.00	-	103.00	-	-			220
225	-	-	-	-	-	-	-	0.00	0.00	0.00	-	0.01	-	-			-	-	-	-	-	-	-	0.00	0.00	0.00	-	108.00	-	-			225
230	-	-	-	-	-	-	-	0.00	0.00	0.00	-	0.01	-	-			-	-	-	-	-	-	-	0.00	0.00	0.00	-	113.00	-	-			230
235	-	-	-	-	-	-	-	0.00	0.00	0.00	-	0.03	-	-			-	-	-	-	-	-	-	0.00	0.00	0.00	-	118.00	-	-			235
240	-	-	-	-	-	-	-	0.00	0.00	0.00	-	0.02	-	-			-	-	-	-	-	-	-	0.00	0.00	0.00	-	123.00	-	-			240
245	-	-	-	-	-	-	-	0.00	0.00	0.00	-	0.01	-	-			-	-	-	-	-	-	-	0.00	0.00	0.00	-	127.00	-	-			245
250	-	-	-	-	-	-	-	0.00	0.00	0.00	-	0.01	-	-			-	-	-	-	-	-	-	0.00	0.00	0.00	-	132.00	-	-			250
255	-	-	-	-	-	-	-	0.00	0.00	0.00	-	0.01	-	-			-	-	-	-	-	-	-	0.00	0.00	0.00	-	137.00	-	-			255
260	-	-	-	-	-	-	-	0.00	0.00	0.00	-	0.01	-	-			-	-	-	-	-	-	-	0.00	0.00	0.00	-	142.00	-	40			260
265	-	-	-	-	-	-	-	0.00	0.00	0.00	-	0.01	-	-			-	-	-	-	-	-	-	0.00	0.00	0.00	-	147.00	-	-			265

FTSE/Athex Large Cap

(Trade Unit: 1 Index Point x 5€ - Exercise Style: European, Cash Settlement)

Call Options																	Put Options																		
Exercise Price	February 2016							March 2016							Other Months			February 2016							March 2016							Other Months			Exercise Price
	Open price	Price max	Price min	Last price	Closing price	Volume	Open Interest	Open price	Price max	Price min	Last price	Closing price	Volume	Open Interest	Volume	Open Interest	Open price	Price max	Price min	Last price	Closing price	Volume	Open Interest	Open price	Price max	Price min	Last price	Closing price	Volume	Open Interest	Volume	Open Interest			
Totals:						75	4,021							101	1,585	2	12						0	251					0	241	0	0			
Number of Trades:							9							2		1							0						0		0				

ALPHA BANK (CR)

(Contract Size: 100 Securities, Exercise Style: American, Physical Delivery)

Call Options																	Put Options																		
February 2016																	March 2016													Other Months					
Exerise Price	Open price	Price max	Price min	Last price	Closing price	Volume	Open Interest	Open price	Price max	Price min	Last price	Closing price	Volume	Open Interest	Volume	Open Interest	Open price	Price max	Price min	Last price	Closing price	Volume	Open Interest	Open price	Price max	Price min	Last price	Closing price	Volume	Open Interest	Volume	Open Interest	Exerise Price		
0.100						-	-	0.000	0.000	0.000		1.06	-	-								-	-	0.000	0.000	0.000		0.001	-	-			0.001		
0.200						-	-	0.000	0.000	0.000		0.960	-	-								-	-	0.000	0.000	0.000		0.001	-	-			0.002		
0.300						-	-	0.000	0.000	0.000		0.861	-	-								-	-	0.000	0.000	0.000		0.001	-	-			0.003		
0.400						-	-	0.000	0.000	0.000		0.761	-	-								-	-	0.000	0.000	0.000		0.001	-	-			0.004		
0.500						-	-	0.000	0.000	0.000		0.661	-	-								-	-	0.000	0.000	0.000		0.001	-	-			0.005		
0.600						-	-	0.000	0.000	0.000		0.561	-	-								-	-	0.000	0.000	0.000		0.001	-	-			0.006		
0.700						-	-	0.000	0.000	0.000		0.462	-	-								-	-	0.000	0.000	0.000		0.001	-	-			0.007		
0.800	0.000	0.000	0.000		0.360	-	-	0.000	0.000	0.000		0.364	-	-			0.000	0.000	0.000		0.001	-	-	0.000	0.000	0.000		0.003	-	-			0.008		
0.850	0.000	0.000	0.000		0.310	-	-	0.000	0.000	0.000		0.317	-	-			0.000	0.000	0.000		0.001	-	-	0.000	0.000	0.000		0.006	-	-			0.009		
0.900	0.000	0.000	0.000		0.261	-	-	0.000	0.000	0.000		0.273	-	-			0.000	0.000	0.000		0.001	-	-	0.000	0.000	0.000		0.011	-	-			0.009		
0.950	0.000	0.000	0.000		0.211	-	-	0.000	0.000	0.000		0.231	-	-			0.000	0.000	0.000		0.001	-	-	0.000	0.000	0.000		0.019	-	-			0.010		
1.000	0.000	0.000	0.000		0.164	-	-	0.000	0.000	0.000		0.192	-	-			0.000	0.000	0.000		0.004	-	-	0.000	0.000	0.000		0.030	-	-			0.010		
1.100	0.000	0.000	0.000		0.083	-	-	0.000	0.000	0.000		0.127	-	-			0.000	0.000	0.000		0.022	-	-	0.000	0.000	0.000		0.065	-	-			0.011		
1.200	0.000	0.000	0.000		0.031	-	-	0.000	0.000	0.000		0.080	-	-			0.000	0.000	0.000		0.071	-	-	0.000	0.000	0.000		0.117	-	-			0.012		
1.300	0.000	0.000	0.000		0.009	-	-	0.077	0.077	0.077	0.077	0.077	10	10			0.000	0.000	0.000		0.148	-	-	0.000	0.000	0.000		0.184	-	-			0.013		
1.400	0.000	0.000	0.000		0.002	-	-	0.000	0.000	0.000		0.026	-	-			0.000	0.000	0.000		0.241	-	-	0.000	0.000	0.000		0.264	-	-			0.014		
1.500	0.000	0.000	0.000		0.001	-	-	0.000	0.000	0.000		0.014	-	-			0.000	0.000	0.000		0.340	-	-	0.000	0.000	0.000		0.352	-	-			0.015		
1.600	0.000	0.000	0.000		0.008	-	-	0.000	0.000	0.000		0.007	-	20			0.000	0.000	0.000		0.440	-	-	0.000	0.000	0.000		0.445	-	-			0.016		
1.700	0.000	0.000	0.000		0.002	-	-	0.000	0.000	0.000		0.004	-	-			0.000	0.000	0.000		0.540	-	-	0.000	0.000	0.000		0.542	-	-			0.017		
1.800	0.000	0.000	0.000		0.001	-	-	0.000	0.000	0.000		0.002	-	2			0.000	0.000	0.000		0.640	-	-	0.000	0.000	0.000		0.640	-	-			0.018		
1.900	0.000	0.000	0.000		0.003	-	-	0.000	0.000	0.000		0.001	-	-			0.000	0.000	0.000		0.740	-	-	0.000	0.000	0.000		0.740	-	-			0.019		
2.000	0.000	0.000	0.000		0.001	-	300	0.000	0.000	0.000		0.005	-	-			0.000	0.000	0.000		0.840	-	-	0.000	0.000	0.000		0.840	-	-			0.020		
2.200	0.000	0.000	0.000		0.002	-	-	0.000	0.000	0.000		0.001	-	50			0.000	0.000	0.000		1.04	-	-	0.000	0.000	0.000		1.04	-	-			0.022		
2.400	0.000	0.000	0.000		0.001	-	400	0.000	0.000	0.000		0.003	-	-			0.000	0.000	0.000		1.24	-	-	0.000	0.000	0.000		1.24	-	-			0.024		
2.600	0.000	0.000	0.000		0.001	-	-	0.000	0.000	0.000		0.001	-	-			0.000	0.000	0.000		1.44	-	-	0.000	0.000	0.000		1.44	-	-			0.026		
2.800	0.000	0.000	0.000		0.001	-	-	0.000	0.000	0.000		0.002	-	-			0.000	0.000	0.000		1.64	-	-	0.000	0.000	0.000		1.64	-	-			0.028		
3.000	0.000	0.000	0.000		0.002	-	-	0.000	0.000	0.000		0.001	-	-			0.000	0.000	0.000		1.84	-	-	0.000	0.000	0.000		1.84	-	-			0.030		
3.200	0.000	0.000	0.000		0.001	-	-	0.000	0.000	0.000		0.001	-	-			0.000	0.000	0.000		2.04	-	-	0.000	0.000	0.000		2.04	-	-			0.032		
3.400	0.000	0.000	0.000		0.001	-	-	0.000	0.000	0.000		0.001	-	-			0.000	0.000	0.000		2.24	-	-	0.000	0.000	0.000		2.24	-	-			0.034		
3.600	0.000	0.000	0.000		0.001	-	-	0.000	0.000	0.000		0.001	-	-			0.000	0.000	0.000		2.44	-	-	0.000	0.000	0.000		2.44	-	-			0.036		
Totals:						0	700							10	82	0	0							0	0	0	0	0	0	0	0	0	0	0	0
Number of Trades:						0								1		0								0.00		0		0		0		0		0	

NATIONAL BANK (CR)

(Contract Size: 100 Securities, Exercise Style: American, Physical Delivery)

Call Options																	Put Options																	
February 2016								March 2016							Other Months		February 2016								March 2016							Other Months		
Exercise Price	Open price	Price max	Price min	Last price	Closing price	Volume	Open Interest	Open price	Price max	Price min	Last price	Closing price	Volume	Open Interest	Volume	Open Interest	Open price	Price max	Price min	Last price	Closing price	Volume	Open Interest	Open price	Price max	Price min	Last price	Closing price	Volume	Open Interest	Volume	Open Interest	Exercise Price	
0.050	0.082	0.082	0.082	0.082	0.082	20	20	0.000	0.000	0.000		0.070	-	-			0.000	0.000	0.000		0.001	-	-		0.000	0.000	0.000		0.001	-	-			0.001
0.100	0.000	0.000	0.000		0.029	-	-	0.000	0.000	0.000		0.030	-	-			0.000	0.000	0.000		0.009	-	-		0.000	0.000	0.000		0.010	-	-			0.001
0.150	0.000	0.000	0.000		0.009	-	-	0.000	0.000	0.000		0.010	-	-			0.000	0.000	0.000		0.039	-	-		0.000	0.000	0.000		0.040	-	-			0.002
0.200	0.000	0.000	0.000		0.003	-	-	0.000	0.000	0.000		0.003	-	-			0.000	0.000	0.000		0.082	-	-		0.000	0.000	0.000		0.083	-	-			0.002
0.250	0.000	0.000	0.000		0.001	-	-	0.000	0.000	0.000		0.001	-	-			0.000	0.000	0.000		0.131	-	-		0.000	0.000	0.000		0.131	-	-			0.003
0.300	0.000	0.000	0.000		0.002	-	-	0.000	0.000	0.000		0.001	-	-			0.000	0.000	0.000		0.180	-	-		0.000	0.000	0.000		0.180	-	-			0.003
0.350	0.000	0.000	0.000		0.001	-	-	0.000	0.000	0.000		0.001	-	-			0.000	0.000	0.000		0.230	-	-		0.000	0.000	0.000		0.230	-	-			0.004
0.400	0.000	0.000	0.000		0.001	-	-	0.000	0.000	0.000		0.001	-	-			0.000	0.000	0.000		0.280	-	-		0.000	0.000	0.000		0.280	-	-			0.004
0.450	0.000	0.000	0.000		0.001	-	-	0.000	0.000	0.000		0.001	-	-			0.000	0.000	0.000		0.330	-	-		0.000	0.000	0.000		0.330	-	-			0.005
0.500	0.000	0.000	0.000		0.001	-	-	0.000	0.000	0.000		0.001	-	-			0.000	0.000	0.000		0.380	-	-		0.000	0.000	0.000		0.380	-	-			0.005
0.550	0.000	0.000	0.000		0.001	-	-	0.000	0.000	0.000		0.001	-	-			0.000	0.000	0.000		0.430	-	-		0.000	0.000	0.000		0.430	-	-			0.006
0.600	0.000	0.000	0.000		0.001	-	-	0.000	0.000	0.000		0.001	-	-			0.000	0.000	0.000		0.480	-	-		0.000	0.000	0.000		0.480	-	-			0.006
0.700						-	-	0.000	0.000	0.000		0.001	-	-								-	-		0.000	0.000	0.000		0.580	-	-			0.007
0.800						-	-	0.000	0.000	0.000		0.004	-	-								-	-		0.000	0.000	0.000		0.680	-	-			0.008
0.900						-	-	0.000	0.000	0.000		0.002	-	-								-	-		0.000	0.000	0.000		0.780	-	-			0.009
1.000						-	-	0.000	0.000	0.000		0.001	-	-								-	-		0.000	0.000	0.000		0.880	-	-			0.010
1.100						-	-	0.000	0.000	0.000		0.001	-	-								-	-		0.000	0.000	0.000		0.980	-	-			0.011
1.200						-	-	0.000	0.000	0.000		0.001	-	-								-	-		0.000	0.000	0.000		1.08	-	-			0.012
1.300						-	-	0.000	0.000	0.000		0.009	-	-								-	-		0.000	0.000	0.000		1.18	-	-			0.013
1.400						-	-	0.000	0.000	0.000		0.008	-	-								-	-		0.000	0.000	0.000		1.28	-	-			0.014
1.500						-	-	0.000	0.000	0.000		0.007	-	-								-	-		0.000	0.000	0.000		1.38	-	-			0.015
1.600						-	-	0.000	0.000	0.000		0.006	-	-								-	-		0.000	0.000	0.000		1.48	-	-			0.016
Totals:						20	20						0	0	0	0						20	0						0	0	0	0		
Number of Trades:						1							0		0							0.00						0		0				

OPAP (CR)

(Contract Size: 100 Securities, Exercise Style: American, Physical Delivery)

Call Options																	Put Options																			
February 2016								March 2016								Other Months		February 2016								March 2016								Other Months		
Exercise Price	Open price	Price max	Price min	Last price	Closing price	Volume	Open Interest	Open price	Price max	Price min	Last price	Closing price	Volume	Open Interest	Volume	Open Interest	Open price	Price max	Price min	Last price	Closing price	Volume	Open Interest	Open price	Price max	Price min	Last price	Closing price	Volume	Open Interest	Volume	Open Interest	Exercise Price			
3.600	0.000	0.000	0.000		1.80	-	-	0.000	0.000	0.000		1.81	-	-			0.000	0.000	0.000		0.001	-	-	0.000	0.000	0.000		0.001	-	-			0.036			
3.800	0.000	0.000	0.000		1.60	-	-	0.000	0.000	0.000		1.61	-	-			0.000	0.000	0.000		0.001	-	-	0.000	0.000	0.000		0.001	-	-			0.038			
4.000	0.000	0.000	0.000		1.40	-	-	0.000	0.000	0.000		1.41	-	-			0.000	0.000	0.000		0.001	-	-	0.000	0.000	0.000		0.003	-	-			0.040			
4.400	0.000	0.000	0.000		1.00	-	-	0.000	0.000	0.000		1.03	-	-			0.000	0.000	0.000		0.001	-	-	0.000	0.000	0.000		0.018	-	-			0.044			
4.800	0.000	0.000	0.000		0.611	-	-	0.000	0.000	0.000		0.680	-	-			0.000	0.000	0.000		0.009	-	-	0.000	0.000	0.000		0.071	-	-			0.048			
5.200	0.344	0.344	0.344	0.344	0.344	5	5	0.000	0.000	0.000		0.403	-	-			0.000	0.000	0.000		0.077	-	-	0.000	0.000	0.000		0.193	-	-			0.052			
5.600	0.000	0.000	0.000		0.084	-	-	0.000	0.000	0.000		0.212	-	-			0.000	0.000	0.000		0.282	-	-	0.000	0.000	0.000		0.401	-	-			0.056			
6.000	0.000	0.000	0.000		0.015	-	-	0.000	0.000	0.000		0.100	-	-			0.000	0.000	0.000		0.613	-	-	0.000	0.000	0.000		0.690	-	-			0.060			
6.400	0.000	0.000	0.000		0.002	-	-	0.000	0.000	0.000		0.042	-	-			0.000	0.000	0.000		1.00	-	150	0.000	0.000	0.000		1.03	-	-			0.064			
6.800	0.000	0.000	0.000		0.001	-	10	0.000	0.000	0.000		0.015	-	15			0.000	0.000	0.000		1.40	-	10	0.000	0.000	0.000		1.41	-	-			0.068			
7.200	0.000	0.000	0.000		0.001	-	25	0.000	0.000	0.000		0.005	-	-			0.000	0.000	0.000		1.80	-	5	0.000	0.000	0.000		1.80	-	-			0.072			
7.600	0.000	0.000	0.000		0.001	-	45	0.000	0.000	0.000		0.002	-	-			0.000	0.000	0.000		2.20	-	-	0.000	0.000	0.000		2.20	-	-			0.076			
8.000	0.000	0.000	0.000		0.001	-	90	0.000	0.000	0.000		0.001	-	-			0.000	0.000	0.000		2.60	-	-	0.000	0.000	0.000		2.60	-	-			0.080			
8.400	0.000	0.000	0.000		0.003	-	-	0.000	0.000	0.000		0.002	-	-			0.000	0.000	0.000		3.00	-	-	0.000	0.000	0.000		3.00	-	-			0.084			
8.800	0.000	0.000	0.000		0.001	-	-	0.000	0.000	0.000		0.001	-	-			0.000	0.000	0.000		3.40	-	-	0.000	0.000	0.000		3.40	-	-			0.088			
9.200	0.000	0.000	0.000		0.001	-	-	0.000	0.000	0.000		0.001	-	-			0.000	0.000	0.000		3.80	-	-	0.000	0.000	0.000		3.80	-	-			0.092			
9.600	0.000	0.000	0.000		0.001	-	-	0.000	0.000	0.000		0.001	-	-			0.000	0.000	0.000		4.20	-	-	0.000	0.000	0.000		4.20	-	-			0.096			
10.000	0.000	0.000	0.000		0.001	-	-	0.000	0.000	0.000		0.001	-	-			0.000	0.000	0.000		4.60	-	-	0.000	0.000	0.000		4.60	-	-			0.100			
Totals:						5	175							0	15	0	0							5	165							0	300	0	0	
Number of Trades:						1								0		0								0.00								0		0		

OTE (CR)

(Contract Size: 100 Securities, Exercise Style: American, Physical Delivery)

Call Options																	Put Options																			
February 2016								March 2016								Other Months		February 2016								March 2016								Other Months		
Exercise Price	Open price	Price max	Price min	Last price	Closing price	Volume	Open Interest	Open price	Price max	Price min	Last price	Closing price	Volume	Open Interest	Volume	Open Interest	Open price	Price max	Price min	Last price	Closing price	Volume	Open Interest	Open price	Price max	Price min	Last price	Closing price	Volume	Open Interest	Volume	Open Interest	Exercise Price			
4.800	0.000	0.000	0.000		1.95	-	-	0.000	0.000	0.000		1.96	-	-			0.000	0.000	0.000		0.001	-	-	0.000	0.000	0.000		0.002	-	-			0.048			
5.200	0.000	0.000	0.000		1.55	-	-	0.000	0.000	0.000		1.57	-	-			0.000	0.000	0.000		0.002	-	-	0.000	0.000	0.000		0.010	-	-			0.052			
5.600	0.000	0.000	0.000		1.15	-	-	0.000	0.000	0.000		1.20	-	-			0.000	0.000	0.000		0.001	-	-	0.000	0.000	0.000		0.037	-	-			0.056			
6.000	0.000	0.000	0.000		0.762	-	-	0.000	0.000	0.000		0.861	-	-			0.000	0.000	0.000		0.009	-	-	0.000	0.000	0.000		0.099	-	-			0.060			
6.400	0.000	0.000	0.000		0.414	-	-	0.000	0.000	0.000		0.582	-	-			0.000	0.000	0.000		0.061	-	-	0.000	0.000	0.000		0.219	-	-			0.064			
6.800	0.000	0.000	0.000		0.170	-	15	0.000	0.000	0.000		0.365	-	5			0.000	0.000	0.000		0.217	-	-	0.000	0.000	0.000		0.403	-	-			0.068			
7.200	0.000	0.000	0.000		0.050	-	25	0.000	0.000	0.000		0.215	-	-			0.000	0.000	0.000		0.497	-	20	0.000	0.000	0.000		0.653	-	-			0.072			
7.600	0.000	0.000	0.000		0.010	-	50	0.000	0.000	0.000		0.116	-	5			0.000	0.000	0.000		0.858	-	80	0.000	0.000	0.000		0.954	-	-			0.076			
8.000	0.000	0.000	0.000		0.001	-	105	0.000	0.000	0.000		0.060	-	5			0.000	0.000	0.000		1.25	-	120	0.000	0.000	0.000		1.30	-	-			0.080			
8.400	0.000	0.000	0.000		0.001	-	120	0.000	0.000	0.000		0.029	-	-			0.000	0.000	0.000		1.65	-	-	0.000	0.000	0.000		1.67	-	-			0.084			
8.800	0.000	0.000	0.000		0.001	-	110	0.000	0.000	0.000		0.013	-	-			0.000	0.000	0.000		2.05	-	-	0.000	0.000	0.000		2.06	-	-			0.088			
9.200	0.000	0.000	0.000		0.001	-	-	0.000	0.000	0.000		0.006	-	-			0.000	0.000	0.000		2.45	-	-	0.000	0.000	0.000		2.45	-	-			0.092			
9.600	0.000	0.000	0.000		0.001	-	80	0.000	0.000	0.000		0.002	-	-			0.000	0.000	0.000		2.85	-	-	0.000	0.000	0.000		2.85	-	-			0.096			
10.000	0.000	0.000	0.000		0.001	-	-	0.000	0.000	0.000		0.001	-	-			0.000	0.000	0.000		3.25	-	-	0.000	0.000	0.000		3.25	-	-			0.100			
11.000	0.000	0.000	0.000		0.001	-	-	0.000	0.000	0.000		0.002	-	-			0.000	0.000	0.000		4.25	-	-	0.000	0.000	0.000		4.25	-	-			0.110			
12.000	0.000	0.000	0.000		0.001	-	-	0.000	0.000	0.000		0.001	-	-			0.000	0.000	0.000		5.25	-	-	0.000	0.000	0.000		5.25	-	-			0.120			
13.000	0.000	0.000	0.000		0.001	-	-	0.000	0.000	0.000		0.001	-	-			0.000	0.000	0.000		6.25	-	-	0.000	0.000	0.000		6.25	-	-			0.130			
14.000	0.000	0.000	0.000		0.001	-	-	0.000	0.000	0.000		0.001	-	-			0.000	0.000	0.000		7.25	-	-	0.000	0.000	0.000		7.25	-	-			0.140			
Totals:						0	505							0	15	0	0							0	220							0	430	0	0	
Number of Trades:						0								0		0							0.00								0		0			

PIRAEUS BANK (CR)

(Contract Size: 100 Securities, Exercise Style: American, Physical Delivery)

Call Options																	Put Options																			
February 2016								March 2016								Other Months		February 2016								March 2016								Other Months		
Exercise Price	Open price	Price max	Price min	Last price	Closing price	Volume	Open Interest	Open price	Price max	Price min	Last price	Closing price	Volume	Open Interest	Volume	Open Interest	Open price	Price max	Price min	Last price	Closing price	Volume	Open Interest	Open price	Price max	Price min	Last price	Closing price	Volume	Open Interest	Volume	Open Interest	Exercise Price			
0.050	0.000	0.000	0.000		0.035	-	-	0.000	0.000	0.000		0.035	-	-			0.000	0.000	0.000		0.004	-	-	0.000	0.000	0.000		0.004	-	-			0.001			
0.100	0.000	0.000	0.000		0.012	-	-	0.000	0.000	0.000		0.013	-	-			0.000	0.000	0.000		0.031	-	-	0.000	0.000	0.000		0.032	-	-			0.001			
0.150	0.000	0.000	0.000		0.004	-	-	0.000	0.000	0.000		0.005	-	-			0.000	0.000	0.000		0.073	-	-	0.000	0.000	0.000		0.074	-	-			0.002			
0.200	0.000	0.000	0.000		0.002	-	-	0.000	0.000	0.000		0.002	-	-			0.000	0.000	0.000		0.121	-	-	0.000	0.000	0.000		0.121	-	-			0.002			
0.250	0.000	0.000	0.000		0.001	-	-	0.000	0.000	0.000		0.001	-	-			0.000	0.000	0.000		0.170	-	-	0.000	0.000	0.000		0.170	-	-			0.003			
0.300	0.000	0.000	0.000		0.003	-	-	0.000	0.000	0.000		0.001	-	-			0.000	0.000	0.000		0.219	-	-	0.000	0.000	0.000		0.219	-	-			0.003			
0.350	0.000	0.000	0.000		0.001	-	-	0.000	0.000	0.000		0.001	-	-			0.000	0.000	0.000		0.269	-	-	0.000	0.000	0.000		0.269	-	-			0.004			
0.400	0.000	0.000	0.000		0.001	-	-	0.000	0.000	0.000		0.001	-	-			0.000	0.000	0.000		0.319	-	-	0.000	0.000	0.000		0.319	-	-			0.004			
0.450	0.000	0.000	0.000		0.001	-	-	0.000	0.000	0.000		0.001	-	-			0.000	0.000	0.000		0.369	-	-	0.000	0.000	0.000		0.369	-	-			0.005			
0.500	0.000	0.000	0.000		0.001	-	-	0.000	0.000	0.000		0.001	-	-			0.000	0.000	0.000		0.419	-	-	0.000	0.000	0.000		0.419	-	-			0.005			
0.550	0.000	0.000	0.000		0.001	-	-	0.000	0.000	0.000		0.001	-	-			0.000	0.000	0.000		0.469	-	-	0.000	0.000	0.000		0.469	-	-			0.006			
0.600	0.000	0.000	0.000		0.001	-	-	0.000	0.000	0.000		0.001	-	-			0.000	0.000	0.000		0.519	-	-	0.000	0.000	0.000		0.519	-	-			0.006			
0.650	0.000	0.000	0.000		0.003	-	-	0.000	0.000	0.000		0.001	-	-			0.000	0.000	0.000		0.569	-	-	0.000	0.000	0.000		0.569	-	-			0.007			
0.700	0.000	0.000	0.000		0.002	-	-	0.000	0.000	0.000		0.001	-	-			0.000	0.000	0.000		0.619	-	-	0.000	0.000	0.000		0.619	-	-			0.007			
0.800						-	-	0.000	0.000	0.000		0.003	-	-								-	-	0.000	0.000	0.000		0.719	-	-			0.008			
Totals:						0	0							0	0	0	0							0	0							0	0	0	0	
Number of Trades:						0								0		0								0.00								0		0		

PPC (CR)

(Contract Size: 100 Securities, Exercise Style: American, Physical Delivery)

Call Options																	Put Options																						
Exerise Price	February 2016							March 2016							Other Months		February 2016							March 2016							Other Months		Exerise Price						
	Open price	Price max	Price min	Last price	Closing price	Volume	Open Interest	Open price	Price max	Price min	Last price	Closing price	Volume	Open Interest	Volume	Open Interest	Open price	Price max	Price min	Last price	Closing price	Volume	Open Interest	Open price	Price max	Price min	Last price	Closing price	Volume	Open Interest	Volume	Open Interest							
1.800	0.000	0.000	0.000		0.881	-	-	0.000	0.000	0.000		0.884	-	-			0.000	0.000	0.000		0.001	-	-	0.000	0.000	0.000		0.001	-	-				0.018					
1.900	0.000	0.000	0.000		0.781	-	-	0.000	0.000	0.000		0.784	-	-			0.000	0.000	0.000		0.001	-	-	0.000	0.000	0.000		0.001	-	-				0.019					
2.000	0.000	0.000	0.000		0.681	-	-	0.000	0.000	0.000		0.686	-	-			0.000	0.000	0.000		0.001	-	-	0.000	0.000	0.000		0.002	-	-				0.020					
2.200	0.000	0.000	0.000		0.481	-	-	0.000	0.000	0.000		0.495	-	-			0.000	0.000	0.000		0.001	-	-	0.000	0.000	0.000		0.010	-	-				0.022					
2.400	0.000	0.000	0.000		0.285	-	-	0.000	0.000	0.000		0.324	-	-			0.000	0.000	0.000		0.004	-	-	0.000	0.000	0.000		0.039	-	-				0.024					
2.600	0.000	0.000	0.000		0.121	-	-	0.000	0.000	0.000		0.190	-	-			0.000	0.000	0.000		0.040	-	-	0.000	0.000	0.000		0.105	-	-				0.026					
2.800	0.000	0.000	0.000		0.031	-	-	0.000	0.000	0.000		0.098	-	-			0.000	0.000	0.000		0.150	-	-	0.000	0.000	0.000		0.213	-	-				0.028					
3.000	0.000	0.000	0.000		0.004	-	-	0.000	0.000	0.000		0.045	-	-			0.000	0.000	0.000		0.323	-	-	0.000	0.000	0.000		0.360	-	-				0.030					
3.200	0.000	0.000	0.000		0.001	-	10	0.000	0.000	0.000		0.019	-	-			0.000	0.000	0.000		0.520	-	-	0.000	0.000	0.000		0.534	-	-				0.032					
3.400	0.000	0.000	0.000		0.001	-	15	0.000	0.000	0.000		0.007	-	20			0.000	0.000	0.000		0.720	-	-	0.000	0.000	0.000		0.723	-	-				0.034					
3.600	0.000	0.000	0.000		0.016	-	-	0.000	0.000	0.000		0.002	-	-			0.000	0.000	0.000		0.920	-	-	0.000	0.000	0.000		0.920	-	-				0.036					
3.800	0.000	0.000	0.000		0.001	-	30	0.000	0.000	0.000		0.001	-	40			0.000	0.000	0.000		1.12	-	-	0.000	0.000	0.000		1.12	-	-				0.038					
4.000	0.000	0.000	0.000		0.001	-	-	0.000	0.000	0.000		0.005	-	-			0.000	0.000	0.000		1.32	-	-	0.000	0.000	0.000		1.32	-	-				0.040					
4.400	0.000	0.000	0.000		0.001	-	-	0.000	0.000	0.000		0.001	-	-			0.000	0.000	0.000		1.72	-	-	0.000	0.000	0.000		1.72	-	-				0.044					
4.800	0.000	0.000	0.000		0.002	-	-	0.000	0.000	0.000		0.001	-	60			0.000	0.000	0.000		2.12	-	-	0.000	0.000	0.000		2.12	-	-				0.048					
5.200	0.000	0.000	0.000		0.001	-	-	0.000	0.000	0.000		0.001	-	-			0.000	0.000	0.000		2.52	-	-	0.000	0.000	0.000		2.52	-	-				0.052					
5.600	0.000	0.000	0.000		0.001	-	-	0.000	0.000	0.000		0.001	-	-			0.000	0.000	0.000		2.92	-	-	0.000	0.000	0.000		2.92	-	-				0.056					
6.000	0.000	0.000	0.000		0.002	-	-	0.000	0.000	0.000		0.001	-	-			0.000	0.000	0.000		3.32	-	-	0.000	0.000	0.000		3.32	-	-				0.060					
6.400	0.000	0.000	0.000		0.001	-	-	0.000	0.000	0.000		0.001	-	-			0.000	0.000	0.000		3.72	-	-	0.000	0.000	0.000		3.72	-	-				0.064					
6.800	0.000	0.000	0.000		0.001	-	-	0.000	0.000	0.000		0.001	-	-			0.000	0.000	0.000		4.12	-	-	0.000	0.000	0.000		4.12	-	-				0.068					
7.200	0.000	0.000	0.000		0.001	-	-	0.000	0.000	0.000		0.001	-	-			0.000	0.000	0.000		4.52	-	-	0.000	0.000	0.000		4.52	-	-				0.072					
Totals:							0	55								0	120	0	0								0	0								0	0	0	0
Number of Trades:							0									0		0									0.00									0		0	

Lending Products	Underlying Title	Multilateral Transactions[1]					Bilateral Transactions[2]		Stock Borrowing through OTC (volume)[3]
		Open Interest[5]	Volume(Offered)	Average Weighted	Transactions volume	Average Weighted	Transactions Volume	Average Weighte	Transactions Volume
AEGNBOR	AEGEAN AIRLINES (CR)	111	9,338	5.31%	---	---	---	---	11,701
ALPHABOR	ALPHA BANK (CR)	52,283	27,500	5.31%	---	---	---	---	5,411,784
AETFBOR	ALPHA ETF FTSE Athex Large Cap	---	---	---	---	---	---	---	---
ALMYBOR	ALUMIL (CR)	---	---	---	---	---	---	---	---
ASCOBOR	AS COMPANY SA (CR)	---	---	---	---	---	---	---	---
IATRBOR	ATHENS MEDICAL CENTER SA (CR)	---	39,104	5.31%	---	---	---	---	---
OTOELBOR	AUTOHELLAS SA (CR)	---	1,361	5.31%	---	---	---	---	---
EEEBOR	CC HBC AG (CR)	5,420	1,984	5.31%	---	---	---	---	70,546
CENTRBOR	CENTRIC HOLDINGS (CR)	---	16,000	5.31%	---	---	---	---	---
SOLKBOR	CORINTH PIPEWORKS SA (CR)	---	---	---	---	---	---	---	---
PLAKRBOR	CRETE PLASTICS SA (CR)	---	---	---	---	---	---	---	---
ELLAKTORBOR	ELLAKTOR (CR)	---	84,387	5.31%	---	---	---	---	---
ANEMOSBOR	ELTECH ANEMOS S.A. (CR)	---	---	---	---	---	---	---	---
ELTONBOR	ELTON SA (CR)	---	---	---	---	---	---	---	---
ELBABOR	ELVAL HOLDINGS (CB)	---	35,344	5.31%	---	---	---	---	---
EUROBBOR	EUROBANK ERGASIAS (CR)	---	208,593	5.31%	---	---	---	---	3,543,334
EUROCBOR	EUROCONSULTANTS S.A. (CR)	---	---	---	---	---	---	---	---
EUPICBOR	EUROPEAN RELIANCE INSUR. (CR)	---	---	---	---	---	---	---	---
EYDAPBOR	EYDAP S.A. (CR)	2,400	3,913	5.31%	1,300	4.21%	---	---	17,780
FFGRPBOR	FOLLI FOLLIE (CR)	9,100	69,861	5.31%	---	---	---	---	508,553
FOYRKBOR	FOURLIS (CR)	---	5,130	5.31%	---	---	---	---	3,850
FRIGOBOR	FRIGOGLASS SA (CR)	---	5,599	5.31%	---	---	---	---	---
GEKTERNABOR	GEK TERNA (CR)	682	57,456	5.31%	---	---	---	---	---
SARBOR	GR. SARANTIS SA (CR)	---	1,931	5.31%	---	---	---	---	---
EUPROBOR	GRIVALIA PROPERTIES (CR)	16,633	73,969	3.31%	---	---	---	---	42,742
XAKOBOR	HALKOR SA (CB)	---	50,550	5.31%	---	---	---	---	---
EXAEBOR	HELLENIC EXCHANGES-A.S.E. (CR)	9,491	498,159	5.31%	---	---	---	---	125,900
ELPEBOR	HELLENIC PETROLEUM (CR)	---	229,652	5.31%	---	---	---	---	44,796
HYGEIABOR	HYGEIA SA (CR)	---	48,700	5.31%	---	---	---	---	---
IASOBOR	IASO SA (CR)	---	---	---	---	---	---	---	---
IKTINBOR	IKTINOS HELLAS SA (CR)	---	---	---	---	---	---	---	---

Stock Lending Notes

- [1] - Multilateral contracts Lending or Borrowing as per Methods 8-1, 8-2 and 8-3-3 (According to ATHEX BoD Resolution No.17)
- [2] - Billateral Contracts Lending or Borrowing as per Methods 8-3-1 and 8-3-2 (According to ATHEX BoD Resolution No.20)
- [3] - The information concerning OTC Stock Borrowing Transactions is based on the statements of the Dematerialised Securities System (DSS) operators involved and refers to volumes that have been registered up until the previous working day.
- [4] - Average Price (Volume weighted)
- [5] - The Data concerning Open Interest before the start of trading session

Lending Products	Underlying Title	Multilateral Transactions[1]					Bilateral Transactions[2]		Stock Borrowing through OTC (volume)[3]
		Open Interest[5]	Volume(Offered)	Average Weighted	Transactions volume	Average Weighted	Transactions Volume	Average Weighte	Transactions Volume
LYKBOR	INFORM P. LYKOS SA (CR)	---	---	---	---	---	---	---	---
INTRKBOR	INTRACOM HOLDINGS (CR)	---	168,546	5.31%	---	---	---	---	---
INLOTBOR	INTRALOT (CR)	11,614	55,783	5.31%	---	---	---	---	803
AVAXBOR	J & P - AVAX SA (CR)	---	20,335	5.31%	---	---	---	---	---
BELABOR	JUMBO SA (CR)	80,189	60,231	3.31%	4,000	2.65%	---	---	112,565
KLEMBOR	KLEEMAN HELLAS SA (CR)	---	23,512	5.31%	---	---	---	---	---
KORRESBOR	KORRES (CR)	---	---	---	---	---	---	---	---
KRIBOR	KRI-KRI S.A. (CR)	---	47,768	5.31%	---	---	---	---	---
KYRMBOR	KYRIAKIDIS MARBLES SA (CR)	---	4,799	5.31%	---	---	---	---	---
LAMDABOR	LAMDA DEVELOPMENT SA (CR)	103	29	5.34%	---	---	---	---	10,377
MIGBOR	MARFIN INVESTMENT GROUP (CR)	3,000	70,383	5.31%	---	---	---	---	744,474
METKKBOR	METKA (CR)	5,570	11,775	5.31%	---	---	---	---	965
MLSBOR	MLS MULTIMEDIA SA (CR)	---	8,719	5.31%	---	---	---	---	---
MOHBOR	MOTOR OIL (CR)	42,856	37,989	3.31%	1,600	2.65%	---	---	35,900
MYTILBOR	MYTILINEOS HOLDINGS (CR)	5,230	168,671	5.31%	---	---	---	---	---
ETEBOR	NATIONAL BANK (CR)	94,331	483,299	5.31%	---	---	---	---	1,691,527
ETFASEBOR	NBGAM ETF	---	---	---	---	---	600	1.00%	---
ETFGT30PBOR	NBGAM ETF GREECE & TURKEY 30	---	---	---	---	---	---	---	---
OPAPBOR	OPAP (CR)	46,742	212,316	3.55%	621	2.65%	---	---	805,448
HTOBOR	OTE (CR)	14,039	66,155	3.86%	3,000	2.65%	---	---	179,846
PPABOR	P.P.A. S.A. (CR)	297	559	5.31%	---	---	---	---	151
PETROBOR	PETROPOULOS PETROS (CR)	---	---	---	---	---	---	---	---
TPEIRBOR	PIRAEUS BANK (CR)	---	10,395	5.31%	---	---	---	---	6,583,662
PLAISBOR	PLAISIO COMPUTERS SA (CR)	---	---	---	---	---	---	---	---
PPCBOR	PPC (CR)	33,508	90,206	3.55%	---	---	---	---	927,224
QUALBOR	QUALITY & RELIABILITY SA (CR)	---	---	---	---	---	---	---	---
KAMPBOR	REDS S.A. (CR)	---	---	---	---	---	---	---	---
OLYMPBOR	TECHNICAL OLYMPIC SA (CR)	---	9,039	5.31%	---	---	---	---	---
TENERGYBOR	TERNA ENERGY (CR)	---	25,691	5.31%	---	---	---	---	---
EYAPSBOR	THESSALONIKA WATER & SEWERAGE	---	798	5.31%	---	---	---	---	---
PLATBOR	THRACE PLASTICS SA (CR)	---	42,700	5.31%	---	---	---	---	---

Stock Lending Notes

- [1] - Multilateral contracts Lending or Borrowing as per Methods 8-1, 8-2 and 8-3-3 (According to ATHEX BoD Resolution No.17)
- [2] - Bilateral Contracts Lending or Borrowing as per Methods 8-3-1 and 8-3-2 (According to ATHEX BoD Resolution No.20)
- [3] - The information concerning OTC Stock Borrowing Transactions is based on the statements of the Dematerialised Securities System (DSS) operators involved and refers to volumes that have been registered up until the previous working day.
- [4] - Average Price (Volume weighted)
- [5] - The Data concerning Open Interest before the start of trading session

Lending Products	Underlying Title	Multilateral Transactions[1]					Bilateral Transactions[2]		Stock Borrowing through OTC (volume)[3]
		Open Interest[5]	Volume(Offered)	Average Weighted	Transactions volume	Average Weighted	Transactions Volume	Average Weighted	Transactions Volume
TITKBOR	TITAN CEMENT (CR)	5,400	253,510	5.31%	---	---	---	---	3,204
OLTHBOR	TPA SA (CR)	---	3,462	5.31%	---	---	---	---	---
VIOBOR	VIOHALCO SA/NV (CB)	27,936	4,581	3.31%	---	---	---	---	---

Stock Lending Notes

[1] - Multilateral contracts Lending or Borrowing as per Methods 8-1, 8-2 and 8-3-3 (According to ATHEX BoD Resolution No.17)

[2] - Bilateral Contracts Lending or Borrowing as per Methods 8-3-1 and 8-3-2 (According to ATHEX BoD Resolution No.20)

[3] - The information concerning OTC Stock Borrowing Transactions is based on the statements of the Dematerialised Securities System (DSS) operators involved and refers to volumes that have been registered up until the previous working day.

[4] - Average Price (Volume weighted)

[5] - The Data concerning Open Interest before the start of trading session

Sectors codification for listed companies

533	-	Exploration & Production	537	-	Integrated Oil & Gas
1353	-	Commodity Chemicals	1357	-	Specialty Chemicals
1753	-	Aluminum	1755	-	Nonferrous Metals
1757	-	Steel	1775	-	General Mining
2353	-	Building Materials & Fixtures	2357	-	Heavy Construction
2723	-	Containers & Packaging	2727	-	Diversified Industrials
2733	-	Electrical Components & Equipment	2753	-	Commercial Vehicles & Trucks
2757	-	Industrial Machinery	2773	-	Marine Transportation
2777	-	Transportation Services	2791	-	Business Support Services
2797	-	Industrial Suppliers	3535	-	Distillers & Vintners
3537	-	Soft Drinks	3573	-	Farming Fishing & Plantations
3577	-	Food Products	3722	-	Durable Household Products
3726	-	Furnishings	3728	-	Home Construction
3747	-	Toys	3763	-	Clothing & Accessories
3765	-	Footwear	3767	-	Personal Products
3785	-	Tobacco	4533	-	Health Care Providers
4535	-	Medical Equipment	4577	-	Pharmaceuticals
5337	-	Food Retailers & Wholesalers	5371	-	Apparel Retailers
5373	-	Broadline Retailers	5375	-	Home Improvement Retailers
5379	-	Specialty Retailers	5553	-	Broadcasting & Entertainment
5555	-	Media Agencies	5557	-	Publishing
5751	-	Airlines	5752	-	Gambling
5753	-	Hotels	5755	-	Recreational Services
5757	-	Restaurants & Bars	5759	-	Travel & Tourism
6535	-	Fixed Line Telecommunications	6575	-	Mobile Telecommunications
7535	-	Conventional Electricity	7537	-	Alternative Electricity
7577	-	Water	8355	-	Banks
8534	-	Insurance Brokers	8536	-	Property & Casualty Insurance
8633	-	Real Estate Holding & Development	8637	-	Real Estate Services
8671	-	Industrial & Office REITs	8675	-	Specialty REITs
8775	-	Specialty Finance	8777	-	Investment Services
8985	-	Equity Investment Instruments	9533	-	Computer Services
9535	-	Internet	9537	-	Software
9572	-	Computer Hardware	9574	-	Electronic Office Equipment
9578	-	Telecommunications Equipment	12003	-	ETF



ATHEXGROUP
Όμιλος Χρηματιστηρίου Αθηνών

Λεωφ. Αθηνών 110 104 42 Αθήνα
110, Athinon Ave. GR 104 42 Athens
tel. (+30)210-33.66.800, fax (+30)210-33.66.101
www.athegroup.gr