



**ATHEX**GROUP  
Athens Exchange Group

Hellenic Exchanges – Athens Stock Exchange S.A.

“

**2016**

δελτιο ημερησιων συναλλαγων

*daily official list*

Monday, 7 March, 2016

Year: 137 Trading Day No: 45

”

**Disclaimer:**

Hellenic Exchanges-Athens Stock Exchange S.A. endeavours to ensure that the data and other material ("Information") presented on the Daily Official List are accurate and complete, but it is not liable for any errors or omissions of data or /and for the accuracy, credibility, updating and completeness of the aforesaid information nor it has any liability arising directly or indirectly from the use of the above Information.

The Company is not liable for the accuracy of the data included in listed companies' announcements. Only the sender of such an announcement is fully and solely liable for any infringement of third party's rights from the content of such announcement. All contents of the Daily Official List are provided only for information purposes and do not constitute investment advice or solicitation to invest in securities or other products listed for trading on the Exchange.

You acknowledge and agree that the Company is the owner of any property rights related to any Information appearing on the Daily Official List including intellectual property rights copyright, trademarks, etc.

The above data are a property of the Hellenic Exchanges-Athens Exchange and are copyright protected. Users are forbidden to reproduce, modify, copy, sale, transmit or redistribute, by all reproduction means and methods, part or the whole of the above data, without reference to their source.

The commercial exploitation of these data is, also, forbidden by third parties. Hellenic Exchanges-Athens Exchange does not carry any responsibility, direct or indirect, derived from usage or accidental alteration of the above data when used by third parties.

---

**Hellenic Exchanges – Athens Stock Exchange S.A.**

110 Athinon Ave., 10442 Athens, Tel: (210) 33.66.800, Fax: (210) 32.13.938

[www.helex.gr](http://www.helex.gr)

---

**Thessalonica Stock Exchange Center (T.S.E.C)**

16-18 Katouni Str., Thessalonica 546 25 Tel: (2310) 567.667, Fax: (2310) 530.545

**Athex Members Guarantee Fund**

14-16 Fidiou Str., Athens 106 78, Tel: (210) 33.04.682, Fax: (210) 33.04.155

**Hellenic Republic Capital Market Commission**

1 Kolokotroni Str. & 1 Stadiou Str., Athens 10562 Tel: (210) 33.77.100 Fax: (210) 33.77.173

---

**Table of Contents**

---

**Section 1: Statistical Figures of Securities, Derivatives and Lending**

Summary of Markets

Athex Indices

Analytic Figures for Athex Market's Boards and Categories

Trading Details by Athex Sectors and Financial Instruments (ETFs)

Top 10 best &amp; worst performing Shares

Derivatives Summary

**Section 2: Analytic Figures of Shares Transactions**

Analytic Figures of Shares Transactions

Shares' Notes

**Section 3: Figures of Securities Transactions**

Securities Blocks Details

Shares Rights Details

Stock Borrowing

Shares Forced Sales

Forced Sales Registered Shares

Exchange Traded Funds (ETFs) Characteristics

**Section 5: Bonds traded in Fixed Income Assets Market**

Corporate Bonds

Government Bonds

Treasury Bills &amp; Zero Coupon Government Bonds

Government Bonds Traded with the Open Outcry Method

State Banks Bonds

**Section 6: Additional Infos**

Athex &amp; ATHEXClear Members List

List of Stocks under Market Making operations

**Section 7: Derivatives Market Analytic Figures**

Index Futures

Stock Futures

Index Options

Stock Options

Stock Lending Analytic Figures

**Appendix A: Sectors codification for listed companies**

---

Section codification follows the corresponding from the Greek version of Daily Official List for reference purposes.

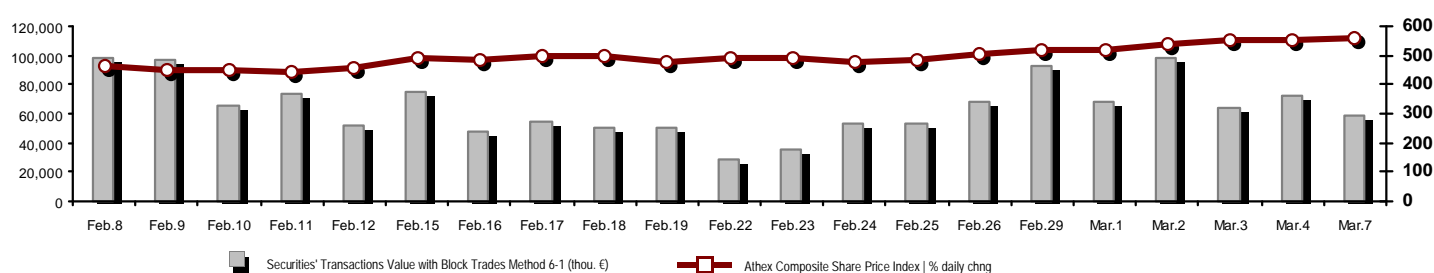
---

Hellenic Exchanges – Athens Stock Exchange S.A.Strategic Communication & Market Analysis Division - Market Analysis Department

---

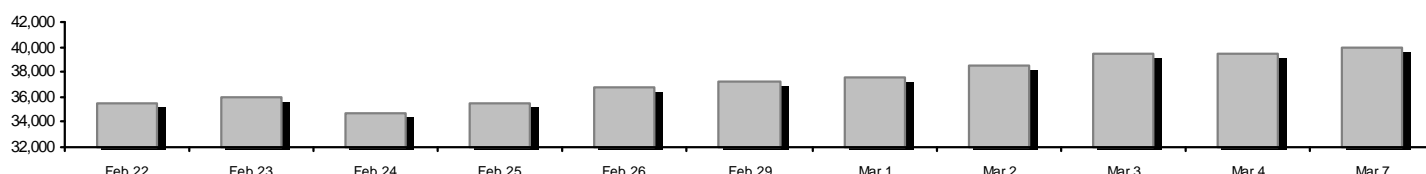
## Summary of Markets

Athex Composite Share Price Index vs Shares and Derivatives Transactions Value

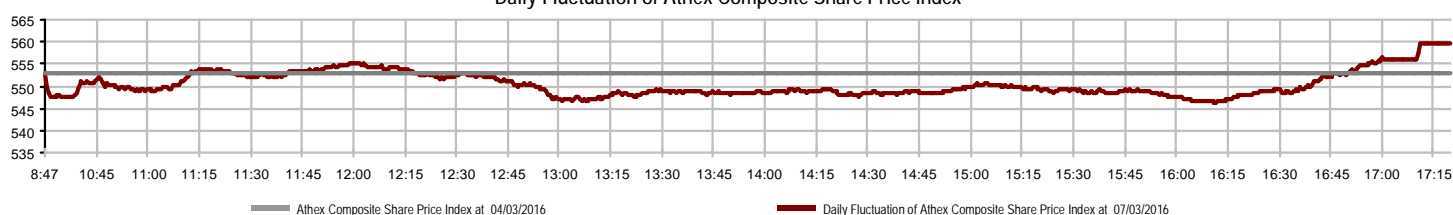


Athex Capitalisation (mill. €) **: 39,969.82		Derivatives Total Open Interest 225,399	
Daily change: mill. €   %	523.82 1.33%	in Index Futures   % daily chng	14,180 2.26%
Yearly Avg Capitalisation: mill. €   % chng prev year Avg	38,622.68 -11.47%	in Stock Futures   % daily chng	205,612 1.39%
Athex Composite Share Price Index   % daily chng	559.44 1.19%	in Index Options   % daily chng	4,515 -1.72%
Athex Composite Share Price Index Capitalisation (mill. €)	35,698.02	in Stock Options   % daily chng	1,092 0.00%
Daily change (mill. €)	528.30		
Securities' Transactions Value with Block Trades Method 6-1 ( 58,019.75		Derivatives Contracts Volume: 57,028	
Daily change: thou. €   %	-14,678.26 -20.19%	Daily change: pieces   %	-28,955 -33.68%
YtD Avg Trans. Value: thou. €   % chng prev year Avg	67,897.40 -20.69%	YtD Avg Derivatives Contracts   % chng prev year Avg	61,730 -6.06%
Blocks Transactions Value of Method 6-1 (thou. €)	2,619.00	Derivatives Trades Number: 2,977	
Blocks Transactions Value of Method 6-2 & 6-3 (thou. €)	2.42	Daily change: number   %	-1,588 -34.79%
Bonds Transactions Value (thou. €)	0.00	YtD Avg Derivatives Trades number   % chng prev year Avg	2,869 -12.21%
Securities' Transactions Volume with Block Trades Method 6-1 (th 100,342.15		Lending Total Open Interest 1,116,933	
Daily change: thou. pieces   %	-8,927.19 -8.17%	Daily change: pieces   %	35,595 3.29%
YtD Avg Volume: thou. pieces   % chng prev year Avg	124,504.32 -35.50%	Lending Volume (Multilateral/Bilateral)	169,822
Blocks Transactions Volume of Method 6-1 (thou. Pieces)	2,850.00	Daily change: pieces   %	-24,978 -12.82%
Blocks Transactions Volume of Method 6-2 & 6-3 (thou. Pieces)	0.31	Multilateral Lending	47,722
Bonds Transactions Volume (thou. pieces)	0.00	Bilateral Lending	122,100
Securities' Trades Number with Block Trades Method 6-1 23,108		Lending Trades Number: 71	
Daily change: number   %	-9,155 -28.38%	Daily change: thou. €   %	50 238.10%
YtD Avg Derivatives Trades number   % chng prev year Avg	23,748 -12.06%	Multilateral Lending Trades Number	63
Number of Blocks Method 6-1	3	Bilateral Lending Trades Number	8
Number of Blocks Method 6-2 & 6-3	1		
Number of Bonds Transactions	0		

Athex Capitalisation (mill. €) \*\*



Daily Fluctuation of Athex Composite Share Price Index



## Athex Indices

Index name	07/03/2016	04/03/2016	pts.	%	Min	Max	Year min	Year max	Year change
Athex Composite Share Price Index	559.44 #	552.84	6.60	1.19%	546.20	559.63	420.82	631.35	-11.39% €
FTSE/Athex Large Cap	152.66 #	149.93	2.73	1.82%	147.53	152.66	107.52	183.34	-16.73% €
FTSE/ATHEX Custom Capped	497.89 #	496.86	1.03	0.21%			390.34	576.80	-15.31% €
FTSE/ATHEX Custom Capped - USD	392.91 #	389.42	3.48	0.89%			317.45	446.81	-14.19% €
FTSE/Athex Mid Cap Index	597.86 €	605.66	-7.80	-1.29%	591.34	606.23	515.21	820.16	-26.77% €
FTSE/ATHEX-CSE Banking Index	29.29 #	28.62	0.67	2.34%	27.07	29.29	13.57	44.84	-34.33% €
FTSE/ATHEX Global Traders Index Plus	1,245.69 #	1,227.52	18.17	1.48%	1,218.55	1,252.27	1,031.55	1,278.16	-2.27% €
FTSE/ATHEX Global Traders Index	1,400.87 #	1,390.34	10.53	0.76%	1,379.63	1,403.06	1,129.41	1,426.71	-1.81% €
FTSE/ATHEX Mid & Small Cap Factor-Weighted Ind	1,114.82 €	1,156.09	-41.27	-3.57%	1,114.82	1,162.27	1,066.64	1,261.08	-11.21% €
Greece & Turkey 30 Price Index	474.21 #	472.23	1.98	0.42%	469.54	477.05	396.10	477.05	2.15% #
ATHEX Mid & SmallCap Price Index	1,915.79 €	1,929.38	-13.59	-0.70%	1,894.36	1,929.38	1,848.24	2,183.18	-11.79% €
FTSE/Athex Market Index	373.07 #	366.80	6.27	1.71%	360.88	373.13	265.17	449.96	-17.09% €
FTSE Med Index	4,856.31 €	4,907.93	-51.62	-1.05%			4,396.47	5,530.53	-12.19% €
Athex Composite Index Total Return Index	832.41 #	822.59	9.82	1.19%	812.71	832.70	626.16	939.41	-11.39% €
FTSE/Athex Large Cap Total Return	210.59 #	206.82	3.77	1.82%			157.44	246.77	-16.73% €
FTSE/ATHEX Large Cap Net Total Return	629.09 #	617.83	11.26	1.82%	607.94	629.09	443.06	755.50	-16.73% €
FTSE/ATHEX Custom Capped Total Return	534.29 #	533.18	1.10	0.21%			418.87	618.97	-15.31% €
FTSE/ATHEX Custom Capped - USD Total Return	421.63 #	417.89	3.74	0.89%			340.66	479.47	-14.19% €
FTSE/Athex Mid Cap Total Return	735.04 €	744.62	-9.58	-1.29%			669.55	1,008.35	-26.77% €
FTSE/ATHEX-CSE Banking Total Return Index	27.32 #	26.69	0.63	2.36%			15.92	42.34	-37.18% €
Greece & Turkey 30 Total Return Index	585.65 #	585.32	0.33	0.06%			502.35	585.65	1.73% #
Hellenic Mid & Small Cap Index	677.86 #	676.15	1.71	0.25%	670.80	681.64	560.15	722.84	-5.27% €
FTSE/Athex Banks	38.70 #	37.81	0.89	2.35%	35.77	38.70	17.93	59.24	-34.32% €
FTSE/Athex Insurance	1,369.77 €	1,475.13	-105.36	-7.14%	1,359.23	1,475.13	1,274.94	1,517.28	-7.14% €
FTSE/Athex Financial Services	963.36 #	948.08	15.28	1.61%	945.42	968.34	634.69	996.19	-1.08% €
FTSE/Athex Industrial Goods & Services	1,488.46 €	1,519.95	-31.49	-2.07%	1,477.19	1,526.16	1,369.56	1,844.00	-18.43% €
FTSE/Athex Retail	2,649.72 #	2,513.75	135.97	5.41%	2,503.55	2,691.96	1,826.41	2,691.96	4.90% #
FTSE/ATHEX Real Estate	2,457.95 #	2,440.90	17.05	0.70%	2,407.06	2,457.95	2,179.99	2,502.99	1.56% #
FTSE/Athex Personal & Household Goods	5,569.63 €	5,674.58	-104.95	-1.85%	5,503.81	5,689.10	4,433.32	5,913.40	10.00% #
FTSE/Athex Food & Beverage	6,795.37 #	6,612.73	182.64	2.76%	6,612.73	6,795.37	5,952.97	7,376.68	-7.88% €
FTSE/Athex Basic Resources	1,529.33 €	1,598.19	-68.86	-4.31%	1,519.19	1,598.19	1,200.24	1,648.25	-6.45% €
FTSE/Athex Construction & Materials	1,999.77 #	1,914.11	85.66	4.48%	1,904.53	2,007.15	1,500.04	2,007.15	6.46% #
FTSE/Athex Oil & Gas	2,314.54 €	2,318.35	-3.81	-0.16%	2,267.25	2,318.35	1,860.37	2,447.68	-4.04% €
FTSE/Athex Chemicals	6,709.74 #	6,661.36	48.38	0.73%	6,564.59	6,709.74	6,190.46	6,951.67	-1.51% €
FTSE/Athex Travel & Leisure	1,236.44 #	1,205.68	30.76	2.55%	1,194.04	1,236.44	982.74	1,426.44	-13.22% €
FTSE/Athex Technology	543.73 €	547.97	-4.24	-0.77%	535.73	550.55	489.05	598.90	-4.94% €
FTSE/Athex Telecommunications	2,240.59 #	2,229.58	11.01	0.49%	2,182.79	2,240.59	1,802.93	2,543.37	-11.90% €
FTSE/Athex Utilities	1,445.31 €	1,453.85	-8.54	-0.59%	1,415.28	1,453.85	1,136.34	1,734.68	-13.74% €
FTSE/Athex Health Care	88.82 €	93.58	-4.76	-5.09%	86.44	93.58	61.86	95.17	4.67% #
Athex All Share Index	140.88 #	139.03	1.85	1.33%	140.88	140.88	113.39	162.12	-14.32% €
Hellenic Corporate Bond Index	97.83 #	97.77	0.05	0.06%			96.90	100.40	-2.64% €
Hellenic Corporate Bond Price Index	91.23 #	91.19	0.04	0.04%			90.43	94.61	-3.72% €

Note 1: Greece & Turkey 30 Pr data is the indicative at 17:20, whereas FTSE/ATHEX Custom Capped, FTSE/ATHEX Custom Capped - USD, FTSE/ATHEX Custom Capped TR, FTSE/ATHEX Custom Capped - USD TR, FTSE/Med 100 & Greece & Turkey 30 Rt., Hellenic Corporate Bond Price Index, Hellenic Corporate Bond Index closing prices refer to the previous trading day of 03/03/2016.

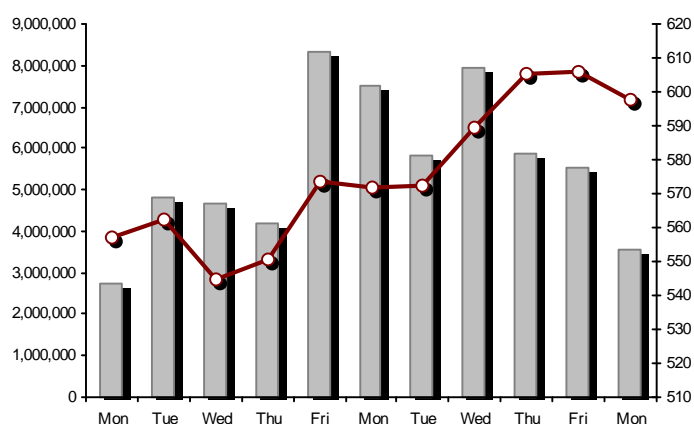
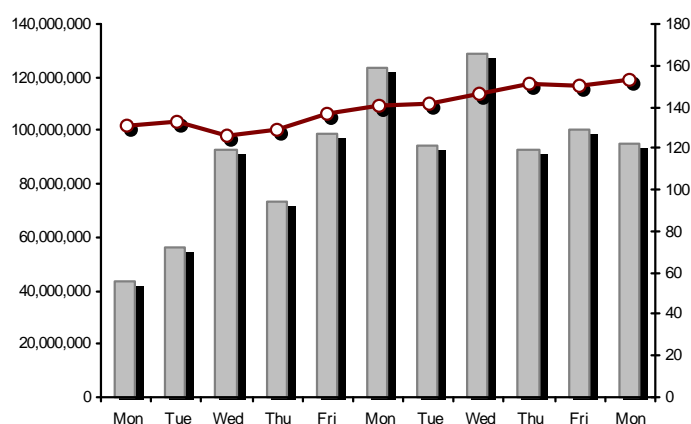
Note 2: The Hellenic Mid & Small Cap Index is a Customized index calculated by the Athens Exchange.

## Athex Indices

FTSE/Large Cap

07/03/2016: 1.82% FTSE/Athex Mid Cap Index

07/03/2016: -1.29%

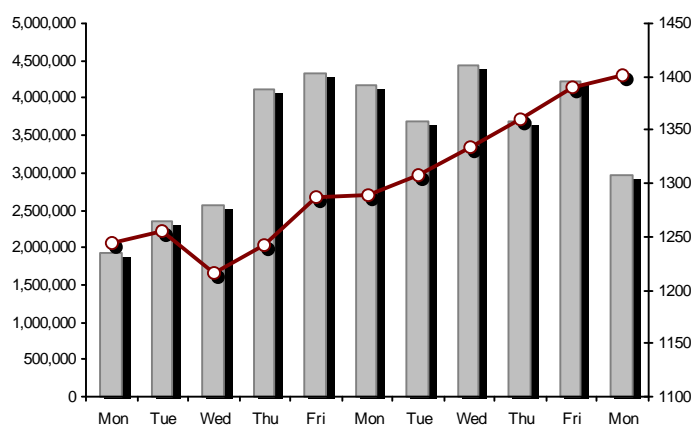
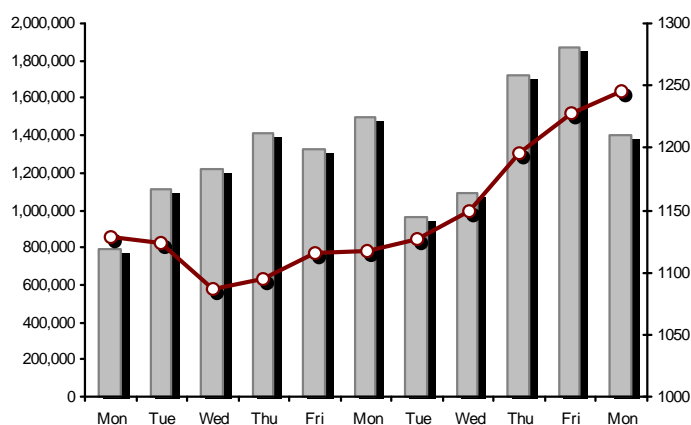


FTSE/ATHEX Global Traders Index Plus

07/03/2016: 1.48%

FTSE/ATHEX Global Traders Index

07/03/2016: 0.76%

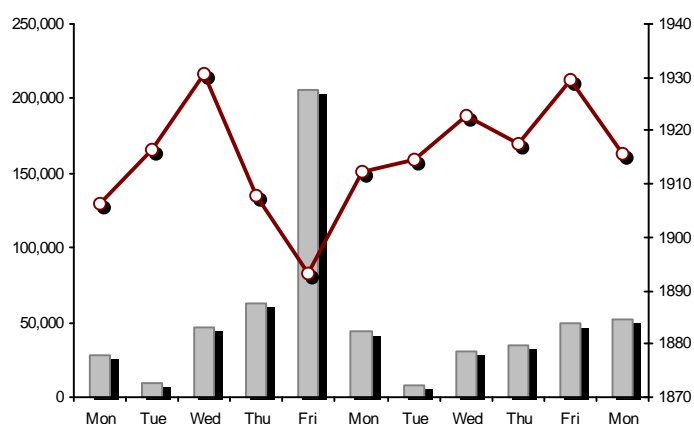
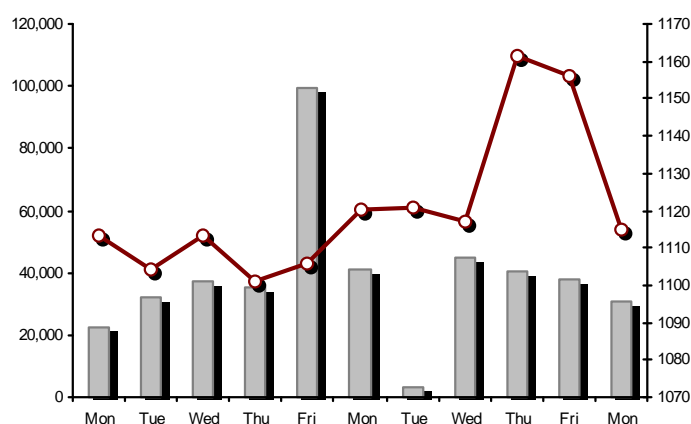


FTSE/ATHEX Mid &amp; Small Cap Factor-Weighted Index

07/03/2016: -3.57%

ATHEX Mid &amp; SmallCap Price Index

07/03/2016: -0.70%



Indices volume of transactions

Indices closing prices

## Analytic Figures for Athex Market's Boards and Categories

	Total Traded Securities	Main Market	Low Dispersion	Other Categories (*)	Exchange Traded Funds (ETFs)	Warrants
Totals	122	97	7	13	2	3
Gain / Lose / Same:	54 / 53 / 15	43 / 46 / 8	4 / 2 / 1	5 / 5 / 3	2 / 0 / 0	0 / 0 / 3
Athex Capitalisation (mill. €) **	39,969.82	37,248.33	2,576.68	144.81		
Daily Average Trans/ons Value(thou.€)	67,897.40	67,882.55	53.87	6.16	16.86	3.96
Transactions Value	58,022.17	57,979.48	40.88	0.69	0.02	1.10
Main Board:	55,400.75	55,358.06	40.88	0.69	0.02	1.10
Blocks Board 6_2_3:	2,621.42	2,621.42	0.00	0.00	0.00	0.00
Forced Sales Board:	0.00	0.00	0.00	0.00	0.00	0.00
Special Terms Board:	0.00	0.00	0.00	0.00	0.00	0.00
Daily Average Transactions Volume	124,504,319	122,155,773	22,130	102,889	11,810	2,305,406
Transactions Volume	100,342,456	99,479,434	22,935	15,196	4	824,887
Main Board:	97,492,146	96,629,124	22,935	15,196	4	824,887
Blocks Board 6_2_3:	2,850,310	2,850,310	0	0	0	0
Forced Sales Board:	0	0	0	0	0	0
Special Terms Board:	0	0	0	0	0	0
Daily Average Number of Trades	23,748	23,601	45	57	5	41
Number of Trades	23,109	22,987	57	44	2	19
Main Board:	23,105	22,983	57	44	2	19
Blocks Board 6_2_3:	4	4	0	0	0	0
Forced Sales Board:	0	0	0	0	0	0
Special Terms Board:	0	0	0	0	0	0

(\*) Summarised Transactions figures for Under Deletion and Under Supervision Categories.(\*\*) The Market Capitalization of the Companies that belong in the Under Supervision Status is not included.

## Trading Details by Athex Sectors and Financial Instruments (ETFs)

Code	Sectors	Gain / Lose / Same	Number of Trades	Transactions Volume	Transactions Value	% of Total Trans. Value
8300	- Banks	3 / 4 / 3	10,461	94,291,225	31,071,055.02	53.55%
1700	- Basic Resources	2 / 3 / 1	563	189,018	491,910.36	0.85%
1300	- Chemicals	1 / 3 / 0	40	7,100	9,960.79	0.02%
2300	- Construction & Materials	6 / 6 / 3	1,528	754,440	2,224,601.83	3.83%
12000	- Financial Instruments	2 / 0 / 0	2	4	24.18	0.00%
8700	- Financial Services	2 / 1 / 0	800	1,891,255	1,211,564.50	2.09%
3500	- Food & Beverage	5 / 5 / 0	170	53,946	348,237.95	0.60%
4500	- Health Care	1 / 2 / 2	26	9,533	2,019.99	0.00%
2700	- Industrial Goods & Services	7 / 6 / 1	910	320,021	450,005.01	0.78%
8500	- Insurance	0 / 1 / 0	7	1,145	1,487.90	0.00%
5500	- Media	1 / 0 / 1	10	899	47.87	0.00%
500	- Oil & Gas	1 / 1 / 0	1,494	473,347	4,043,200.93	6.97%
3700	- Personal & Household Goods	4 / 10 / 1	751	378,523	3,514,443.32	6.06%
8600	- Real Estate	1 / 3 / 0	206	59,945	397,099.29	0.68%
5300	- Retail	2 / 1 / 0	1,562	262,105	4,685,343.79	8.08%
9500	- Technology	4 / 3 / 3	275	98,922	98,004.86	0.17%
6500	- Telecommunications	1 / 0 / 0	1,135	473,456	3,795,066.80	6.54%
5700	- Travel & Leisure	8 / 2 / 0	2,036	695,630	4,528,933.70	7.81%
7500	- Utilities	3 / 2 / 0	1,133	381,942	1,149,163.28	1.98%

## Top 10 best &amp; worst performing Shares

Main Market					
With positive Price change	Closing price	change	With negative Price change	Closing price	change
NATIONAL BANK (CR)	0.235	5.86% #	FRIGOGLASS SA (CR)	0.691	-10.72% Ⓔ
TITAN CEMENT (CR)	19.50	5.40% #	ATTICA BANK S.A. (CR)	0.083	-5.68% Ⓔ
FOLLI FOLLIE (CR)	18.15	5.40% #	TPA SA (CR)	19.60	-4.76% Ⓔ
MARFIN INVESTMENT GROUP (CR)	0.093	4.49% #	MYTILINEOS HOLDINGS (CR)	3.45	-4.43% Ⓔ
ELLAKTOR (CR)	1.40	4.48% #	EYDAP S.A. (CR)	4.30	-3.59% Ⓔ
EUROBANK ERGASIAS (CR)	0.690	4.23% #	PLAISIO COMPUTERS SA (CR)	4.00	-3.15% Ⓔ
TERNA ENERGY (CR)	2.34	3.54% #	FOURLIS (CR)	2.72	-2.86% Ⓔ
CC HBC AG (CR)	18.23	2.76% #	CORINTH PIPEWORKS SA (CR)	0.896	-2.61% Ⓔ
OPAP (CR)	6.62	2.64% #	METKA (CR)	6.84	-2.15% Ⓔ
AEGEAN AIRLINES (CR)	8.05	2.29% #	GEK TERNA (CR)	1.43	-2.05% Ⓔ
With the highest Transactions Value	Value (thou. €)	change	With the highest Transactions Volume	Volume	change
ALPHA BANK (CR)	12,429.94	1.79% #	PIRAEUS BANK (CR)	47,799,450	-1.72% Ⓔ
PIRAEUS BANK (CR)	7,813.91	-1.72% Ⓔ	NATIONAL BANK (CR)	29,855,055	5.86% #
NATIONAL BANK (CR)	6,487.97	5.86% #	ALPHA BANK (CR)	7,481,674	1.79% #
FOLLI FOLLIE (CR)	4,684.95	5.40% #	EUROBANK ERGASIAS (CR)	6,412,148	4.23% #
EUROBANK ERGASIAS (CR)	4,142.69	4.23% #	MARFIN INVESTMENT GROUP (CR)	1,680,089	4.49% #
OTE (CR)	3,795.07	0.49% #	ATTICA BANK S.A. (CR)	1,587,854	-5.68% Ⓔ
MOTOR OIL (CR)	3,706.19	-0.51% Ⓔ	OPAP (CR)	489,715	2.64% #
JUMBO SA (CR)	3,461.99	-1.79% Ⓔ	OTE (CR)	473,456	0.49% #
OPAP (CR)	3,191.77	2.64% #	MOTOR OIL (CR)	383,596	-0.51% Ⓔ
TITAN CEMENT (CR)	1,399.16	5.40% #	ELLAKTOR (CR)	378,387	4.48% #

Note: Stocks that are not included in the "Low Dispersion" and "Under Supervision" categories, and the transactions value is more than 10,000 €.



## Derivatives Summary

	Number of Trades	Volume	Open Interest
Index Futures	313	3,431	14,180
FTSE/Athex Large Cap	313	3,431	14,180
Stock Futures	2,597	53,124	205,612
ALPHA BANK (CR)	418	10,775	14,533
CC HBC AG (CR)	3	9	154
CORINTH PIPEWORKS SA (CR)	2	4	618
ELLAKTOR (CR)	38	162	1,567
EUROBANK ERGASIAS (CR)	366	6,361	29,705
EYDAP S.A. (CR)	5	23	243
FOLLI FOLLIE (CR)	57	170	310
FRIGOGLASS SA (CR)	17	71	1,338
GEK TERNA (CR)	35	165	7,075
GRIVALIA PROPERTIES (CR)	3	15	159
HELLENIC EXCHANGES-A.S.E. (CR)	46	202	753
HELLENIC PETROLEUM (CR)	69	328	4,846
INTRALOT (CR)	3	8	356
JUMBO SA (CR)	36	97	802
MARFIN INVESTMENT GROUP (CR)	38	620	37,308
METKA (CR)	2	10	535
MOTOR OIL (CR)	40	144	516
MYTILINEOS HOLDINGS (CR)	89	210	4,586
NATIONAL BANK (CR)	482	18,733	54,287
OPAP (CR)	111	528	2,084
OTE (CR)	77	311	4,200
P.P.A. S.A. (CR)	7	11	449
PIRAEUS BANK (CR)	413	13,368	31,776
PPC (CR)	176	664	4,723
TERNA ENERGY (CR)	3	8	1,185
TITAN CEMENT (CR)	48	82	387
VIOHALCO SA/NV (CB)	13	45	1,117
Index Options	65	453	4,515
FTSE/Athex Large Cap	65	453	4,515
Stock Options	2	20	1,092
ALPHA BANK (CR)	0	0	182
NATIONAL BANK (CR)	0	0	0
OPAP (CR)	2	20	345
OTE (CR)	0	0	445
PIRAEUS BANK (CR)	0	0	0
PPC (CR)	0	0	120
Total Derivatives Traded	2,977	57,028	225,399

Number of Outstanding Securities	Nominal Value	Dividends [1]			Date of Last Coupon		Note	Shares	Closing price	% change	Previous closing price/date	Open price	Price min	Price max	Last price	Avg price	Last Bid [7]	Last Ask [7]	P/E after	Year	Volume	Trades	Transactions Value[8]	Company Mkt Value (thou. €)	Year low	Year high	Sector[ 4]
		2013	2014	2015	Dividend [2]	Right																					

Warrants

1,141,734,167	---	---	---	11/06/2013	---	ALPHA BANK (W)	0.001	---	0.001	04/03/2016	0.001	0.001	0.002	0.001	0.001	---	---	---	2015	523,565	11	633.57	2,628,066.85	0.001	0.002	8355
245,745,725	---	---	---	27/06/2013	---	NATIONAL BANK (W)	0.005	---	0.005	04/03/2016	0.004	0.004	0.005	0.005	0.005	---	---	---	2014	41,322	7	205.39	2,149,580.61	0.002	0.007	8355
843,637,022	---	---	---	03/07/2013	---	PIRAEUS BANK (W)	0.001	---	0.001	04/03/2016	0.001	0.001	0.001	0.001	0.001	---	---	---	2014	260,000	1	260.00	1,493,374.34	0.001	0.001	8355

Main Market

71,417,100	0.650	---	0.7	---	14/05/2015	27/06/2014	---	AEGEAN AIRLINES (CR)	8.05	2.29	#	7.87	04/03/2016	7.65	7.65	8.05	8.05	7.94	---	---	10.11	2014	164,513	528	1,306,718.87	574,907.66	6.13	8.05	5751
11,178,000	1.12	---	---	---	21/04/2010	15/12/2014	---	AEOLIAN INVESTMENT FUND (CR)	0.528	-0.38	€	0.530	04/03/2016	0.530	0.528	0.533	0.528	0.531	---	---	---	2014	1,389	4	736.97	5,901.98	0.400	0.680	8985
1,536,881,200	0.300	---	---	---	07/04/2008	27/11/2015	---	ALPHA BANK (CR)	1.71	1.79	#	1.68	04/03/2016	1.68	1.60	1.71	1.71	1.66	---	---	---	2015	7,481,674	2,189	12,429,937.13	2,628,066.85	0.949	2.50	8355
22,016,250	0.370	---	---	---	15/07/2009	11/05/2000	---	ALUMIL (CR)	0.270	---	↘	0.270	04/03/2016	0.270	0.270	0.270	0.270	0.270	---	---	---	2014	53	4	14.31	5,944.39	0.228	0.270	1753
417,608	16.00	0.8	---	---	29/04/2014	05/03/2013	---	ANDROMEDA SA (CR)	12.03	---	↘	12.03	04/03/2016	---	---	---	---	---	---	---	---	2015	---	---	---	5,023.82	11.53	13.90	8985
26,252,040	0.340	---	---	---	08/07/2010	10/06/2015	---	AS COMPANY SA (CR)	0.325	-0.92	€	0.328	04/03/2016	0.325	0.325	0.325	0.325	0.325	---	---	4.57	2014	931	1	302.58	8,531.91	0.298	0.379	5379
86,735,980	0.310	---	---	---	06/07/2009	02/01/2002	---	ATHENS MEDICAL CENTER SA (CR)	0.700	4.48	#	0.670	04/03/2016	0.670	0.670	0.700	0.700	0.689	---	---	---	2014	1,358	6	935.10	60,715.19	0.550	0.737	4533
2,339,353,394	0.300	---	---	---	04/06/2008	01/12/2015	5103	ATTICA BANK S.A. (CR)	0.083	-5.68	€	0.088	04/03/2016	0.088	0.078	0.088	0.083	0.082	---	---	---	2014	1,587,854	329	129,615.35	194,166.33	0.066	0.279	8355
15,300,000	0.300	---	---	---	30/07/2009	13/12/1999	---	ATTICA PUBLICATIONS SA (CR)	1.21	---	↘	1.21	04/03/2016	---	---	---	---	---	---	---	43.64	2014	---	---	---	18,513.00	0.706	1.21	5557
46,821,187	0.700	---	---	---	01/07/2008	01/03/2010	---	AUDIO VISUAL ENTERPRISES (CR)	0.047	4.44	#	0.045	04/03/2016	0.045	0.045	0.048	0.047	0.047	---	---	---	2014	610	4	28.54	2,200.60	0.028	0.060	5553
12,157,500	0.320	---	0.8	---	20/05/2015	22/11/2013	---	AUTOHELLAS SA (CR)	10.88	4.52	#	10.41	04/03/2016	10.88	10.88	10.88	10.88	10.88	---	---	13.13	2014	3	1	32.64	132,273.60	9.51	11.24	5759
8,922,944,533	0.100	---	---	---	31/05/2011	02/02/2015	4857	BANK OF CYPRUS (CR)	0.143	-1.38	€	0.145	04/03/2016	0.145	0.142	0.145	0.143	0.143	---	---	---	2014	328,083	38	46,885.05	1,275,981.07	0.121	0.154	8355
19,864,886	5.60	0.672	0.672	0.672	03/03/2016	02/07/2008	---	BANK OF GREECE (CR)	9.12	-0.87	€	9.20	04/03/2016	9.20	9.10	9.20	9.19	9.14	---	---	---	---	2,074	59	18,944.99	181,167.76	8.70	9.90	8355
23,986,500	1.05	---	---	---	26/06/2009	15/03/2000	---	BIOKARPET S.A.(CR)	0.158	-9.71	€	0.175	04/03/2016	0.158	0.158	0.158	0.158	0.158	---	---	---	2014	1,000	2	158.00	3,789.87	0.139	0.250	3726
15,842,391	1.51	---	---	---	15/07/2009	12/05/2000	---	BITROS HOLDING SA (CR)	0.200	---	↘	0.200	04/03/2016	---	---	---	---	---	---	---	---	2014	---	---	---	3,168.48	0.200	0.227	1757
15,816,009	0.300	---	---	---	01/07/2009	17/07/2000	---	BYTE COMPUTER SA (CR)	0.293	---	↘	0.293	04/03/2016	---	---	---	---	---	---	---	4.41	2014	---	---	---	4,634.09	0.257	0.318	9533
368,141,297	6.70	0.354	0.36	---	02/07/2015	29/04/2013	---	CC HBC AG (CR)	18.23	2.76	#	17.74	04/03/2016	17.78	17.75	18.23	18.23	18.07	---	---	---	---	18,960	93	342,530.96	6,711,215.84	15.97	19.58	3537
101,123,806	0.360	---	---	---	22/07/2010	28/06/2011	---	CENTRIC HOLDINGS (CR)	0.095	-2.06	€	0.097	04/03/2016	0.095	0.095	0.095	0.095	0.095	---	---	15.68	2014	15,105	8	1,434.98	9,606.76	0.067	0.105	5752
4,034,950	0.680	---	---	---	01/07/2005	30/12/2010	---	CHATZIKRANIOTIS & SONS SA (CR)	0.114	---	↘	0.114	04/03/2016	---	---	---	---	---	---	---	---	2014	---	---	---	459.98	0.063	0.119	3577
124,170,201	0.780	---	---	---	28/06/2002	07/02/2005	---	CORINTH PIPEWORKS SA (CR)	0.896	-2.61	€	0.920	04/03/2016	0.900	0.874	0.939	0.896	0.903	---	---	---	2014	29,772	75	26,883.48	111,256.50	0.672	1.03	1757
9,907,500	0.300	---	---	---	06/10/2005	13/02/2002	---	CPI SA (CR)	0.093	---	↘	0.093	04/03/2016	---	---	---	---	---	---	---	33.08	2015	---	---	---	921.40	0.092	0.150	9572
41,068,800	0.420	(0.0667)	(0.03)	---	24/07/2015	17/02/2016	---	CRETE PLASTICS SA (CR)	3.71	-3.13	€	3.83	04/03/2016	3.69	3.69	3.77	3.77	3.70	---	---	16.13	2014	353	7	1,307.28	152,365.25	3.37	4.12	1357
15,000,000	0.300	---	---	---	06/07/2007	18/07/2000	---	DAIOS PLASTICS SA (CR)	2.70	-3.57	€	2.80	04/03/2016	2.70	2.70	2.70	2.70	2.70	---	---	-(6)-	2014	50	2	135.00	40,500.00	2.70	2.82	1357
34,720,000	0.310	---	---	---	16/06/2010	01/08/2007	---	DROMEAS SA (CR)	0.116	11.54	#	0.104	04/03/2016	0.104	0.085	0.120	0.116	0.106	---	---	---	2014	22,450	44	2,370.54	4,027.52	0.066	0.148	3726
3,873,120	0.300	---	---	---	07/07/2008	04/10/2012	---	DRUCKFARBEN HELLAS (CR)	0.450	---	↘	0.450	04/03/2016	---	---	---	---	---	---	---	---	2014	---	---	---	1,742.90	0.450	0.550	1357
11,250,000	0.520	---	---	---	26/07/2010	09/11/2015	---	EKTER SA (CR)	0.400	-3.38	€	0.414	04/03/2016	0.404	0.400	0.404	0.400	0.401	---	---	---	2014	139	2	55.79	4,500.00	0.301	0.499	2357
32,188,050	1.04	---	---	---	21/07/2008	20/01/2000	---	EL. D. MOUZAKIS SA (CB)	0.120	---	↘	0.120	04/03/2016	---	---	---	---	---	---	---	---	2014	---	---	---	3,862.57	0.084	0.215	3763
18,435,000	1.00	---	---	---	07/07/2009	10/09/2010	---	ELASTRON (CR)	0.398	---	↘	0.398	04/03/2016	---	---	---	---	---	---	---	---	2014	---	---	---	7,337.13	0.320	0.405	1757
31,734,530	1.60	---	---	---	09/07/2007	19/07/2006	---	ELGEKA SA (CR)	0.169	---	↘	0.169	04/03/2016	---	---	---	---	---	---	---	---	2014	---	---	---	5,363.14	0.144	0.210	3577
23,828,130	0.500	---	---	---	07/07/2010	17/02/2009	---	ELINOIL S.A. (CR)	0.720	---	↘	0.720	04/03/2016	---	---	---	---	---	---	---	18.06	2014	---	---	---	17,156.25	0.690	0.850	537
177,001,313	1.03	---	---	---	05/07/2011	20/12/2007	---	ELLAKTOR (CR)	1.40	4.48	#	1.34	04/03/2016	1.34	1.31	1.40	1.40	1.36	---	---	---	2014	378,387	386	512,879.32	247,801.84	0.857	1.45	2357
82,667,000	0.300	---	---	---	22/07/2014	---	---	ELTECH ANEMOS S.A. (CR)	0.644	1.26	#	0.636	04/03/2016	0.636	0.623	0.645	0.644	0.644	---	---	10.93	2014	11,376	21	7,327.42	53,237.55	0.533	0.730	7537
26,730,187	0.600	0.05	---	---	23/06/2014	30/12/2010	---	ELTON SA (CR)	0.916	-3.48	€	0.949	04/03/2016	0.949	0.900	0.949	0.916	0.912	---	---	10.01	2014	1,162	7	1,060.25	24,484.85	0.869	1.00	1353

Number of Outstanding Securities	Nominal Value	Dividends [1]			Date of Last Coupon Dividend [2]		Note	Shares	Closing price	% change	Previous closing price/date	Open price	Price min	Price max	Last price	Avg price	Last Bid [7]	Last Ask [7]	P/E after	Year	Volume	Trades	Transactions Value[8]	Company Mkt Value (thou. €)	Year low	Year high	Sector[ 4]
----------------------------------	---------------	---------------	--	--	----------------------------------	--	------	--------	---------------	----------	-----------------------------	------------	-----------	-----------	------------	-----------	--------------	--------------	-----------	------	--------	--------	-----------------------	-----------------------------	----------	-----------	------------

Main Market

14,050,971	0.340	---	---	---	06/07/2011	17/10/2002	---	ELTRAK SA (CR)	1.13	---	↘	1.13	04/03/2016	---	---	---	---	---	---	2014	---	---	---	15,877.60	0.990	1.35	2753	
13,230,000	0.300	---	---	---	11/08/2010	24/09/2015	---	ELVE SA (CR)	0.360	-7.69	€	0.390	04/03/2016	0.352	0.352	0.398	0.360	0.360	---	0.85	2014	1,581	5	568.74	4,762.80	0.327	0.410	3763
2,185,998,765	0.300	---	---	---	02/05/2008	27/11/2015	---	EUROBANK ERGASIAS (CR)	0.690	4.23	#	0.662	04/03/2016	0.650	0.622	0.690	0.690	0.646	---	---	2014	6,412,148	2,399	4,142,694.09	1,508,339.15	0.241	1.03	8355
7,959,900	0.600	---	---	---	02/06/2010	10/12/2013	5031	EUROCONSULTANTS S.A. (CR)	1.55	3.33	#	1.50	04/03/2016	1.53	1.53	1.58	1.55	1.54	---	-(6)-	2014	61	4	93.98	12,337.85	1.12	1.74	2791
27,503,677	0.630	---	---	---	11/07/2013	18/10/1999	---	EUROPEAN RELIANCE INSUR. (CR)	1.30	-7.14	€	1.40	04/03/2016	1.29	1.29	1.31	1.30	1.30	---	3.49	2014	1,145	7	1,487.90	35,754.78	1.21	1.44	8536
13,673,200	0.880	---	---	---	18/07/2008	26/07/2001	---	EVROFARMA SA (CR)	0.143	-9.49	€	0.158	04/03/2016	0.152	0.143	0.152	0.143	0.145	---	---	2014	8,400	9	1,219.20	1,955.27	0.141	0.270	3577
106,500,000	0.600	0.36	0.2	---	05/05/2015	28/01/2000	---	EYDAP S.A. (CR)	4.30	-3.59	€	4.46	04/03/2016	4.30	4.29	4.46	4.30	4.37	---	10.91	2014	10,982	141	47,934.80	457,950.00	3.60	5.20	7577
52,800,154	0.300	0.2	---	---	20/08/2014	21/06/2004	---	F.G. EUROPE S.A. (CR)	0.539	---	↘	0.539	04/03/2016	---	---	---	---	---	---	---	2014	---	---	---	28,459.28	0.441	0.649	3722
10,203,575	0.730	---	---	---	16/07/2007	18/10/1999	---	FIERATEX SA (CR)	0.070	---	↘	0.070	04/03/2016	---	---	---	---	---	---	---	2014	---	---	---	714.25	0.039	0.099	3763
11,720,024	0.540	0.0394	---	---	21/08/2014	04/11/2015	---	FLEXOPACK SA (CR)	2.57	0.39	#	2.56	04/03/2016	2.57	2.57	2.57	2.57	2.57	---	7.87	2014	1,000	4	2,570.00	30,120.46	2.25	3.00	2723
4,181,450	0.500	---	---	---	21/08/2000	05/03/2002	---	FLOUR MILLS SARANTOPOULOS SA	0.899	---	↘	0.899	04/03/2016	---	---	---	---	---	---	---	2014	---	---	---	3,759.12	0.899	1.01	3577
66,948,210	0.300	---	0.1005	---	22/09/2015	22/09/2015	---	FOLLI FOLLIE (CR)	18.15	5.40	#	17.22	04/03/2016	17.22	17.11	18.45	18.15	17.97	---	---	2014	260,774	1,560	4,684,945.21	1,215,110.01	12.50	18.45	5379
50,992,322	1.07	---	---	---	21/06/2010	16/07/2002	---	FOURLIS (CR)	2.72	-2.86	€	2.80	04/03/2016	2.80	2.72	2.84	2.72	2.77	---	---	2014	11,531	74	31,956.99	138,699.12	2.00	3.06	3722
50,593,832	0.300	---	---	---	07/07/2010	07/09/2011	---	FRIGOGLASS SA (CR)	0.691	-10.72	€	0.774	04/03/2016	0.765	0.663	0.787	0.691	0.697	---	---	2014	109,926	273	76,583.05	34,960.34	0.599	1.87	2757
14,076,360	0.370	---	---	---	19/08/2008	22/07/2003	---	GALAXIDI S.A. (CR)	0.220	-4.35	€	0.230	04/03/2016	0.207	0.207	0.220	0.220	0.213	---	7.39	2014	6,496	14	1,381.40	3,096.80	0.196	0.570	3573
103,144,548	0.570	---	---	---	01/08/2011	07/08/2015	---	GEK TERNA (CR)	1.43	-2.05	€	1.46	04/03/2016	1.44	1.40	1.47	1.43	1.43	---	23.74	2014	174,811	335	249,173.15	147,496.70	1.05	1.55	2357
8,418,750	0.300	---	---	0.12	16/12/2015	27/06/2012	---	GEKE SA (CB)	4.71	---	↘	4.71	04/03/2016	---	---	---	---	---	---	---	2014	---	---	---	39,652.31	3.90	4.71	5753
24,060,000	0.300	0.017	0.02	---	03/08/2015	21/01/2000	---	GEN. COMMERCIAL & IND.SA (CR)	0.330	6.45	#	0.310	04/03/2016	0.279	0.279	0.330	0.330	0.281	---	11.62	2014	1,450	5	407.10	7,939.80	0.253	0.333	2797
34,770,982	1.55	0.3	0.15	---	15/05/2015	27/07/2000	---	GR. SARANTIS SA (CR)	7.32	---	↘	7.32	04/03/2016	7.32	7.32	7.32	7.32	7.32	---	15.50	2014	20	3	146.40	254,523.59	6.56	8.00	3767
101,260,000	2.13	0.1821	0.3037	---	19/03/2015	08/01/2014	---	GRIVALIA PROPERTIES (CR)	7.60	1.33	#	7.50	04/03/2016	7.48	7.41	7.60	7.60	7.48	---	14.28	2015	46,490	153	347,684.24	769,576.00	6.95	7.64	8675
8,340,750	1.18	---	---	---	25/06/2009	09/09/2015	---	HAIDEMENOS SA (CR)	1.04	---	↘	1.04	04/03/2016	---	---	---	---	---	---	---	2014	---	---	---	8,674.38	0.954	1.04	2791
101,279,627	0.380	---	---	---	26/06/2008	14/07/2006	---	HALKOR SA (CB)	0.258	5.74	#	0.244	04/03/2016	0.244	0.244	0.260	0.258	0.256	---	---	2014	27,660	39	7,073.48	26,130.14	0.193	0.305	1755
29,546,360	0.710	---	---	---	20/06/2008	23/08/2000	---	HELLENIC CABLES SA (CR)	0.626	0.97	#	0.620	04/03/2016	0.630	0.620	0.630	0.626	0.623	---	---	2014	2,200	7	1,369.80	18,496.02	0.567	0.749	2733
65,368,563	1.30	---	0.21	---	26/05/2015	07/08/2015	---	HELLENIC EXCHANGES-A.S.E. (CR)	5.06	1.20	#	5.00	04/03/2016	5.00	4.99	5.09	5.06	5.05	---	32.03	2014	209,777	548	1,059,354.18	330,764.93	3.40	5.33	8777
305,635,185	2.18	---	---	---	31/12/2014	01/10/2003	4795	HELLENIC PETROLEUM (CR)	3.76	0.54	#	3.74	04/03/2016	3.71	3.68	3.79	3.76	3.76	---	41.73	2015	89,751	493	337,013.63	1,149,188.30	2.74	4.15	537
305,732,436	0.410	---	---	---	08/07/2009	28/09/2011	---	HYGEIA SA (CR)	0.112	-5.09	€	0.118	04/03/2016	0.109	0.109	0.115	0.112	0.113	---	---	2014	6,000	12	678.69	34,242.03	0.078	0.120	4533
65,441,118	0.440	---	---	---	24/11/2014	11/08/2015	---	IASO SA (CR)	0.399	-10.94	€	0.448	04/03/2016	0.478	0.399	0.478	0.399	0.464	---	---	2014	550	4	255.00	26,111.01	0.360	0.563	4533
8,298,467	0.400	---	---	---	30/08/1993	08/05/2013	---	IDEAL GROUP SA (CR)	0.700	---	↘	0.700	04/03/2016	0.700	0.700	0.700	0.700	0.700	---	---	2014	397	6	277.90	5,808.93	0.568	0.822	9574
28,580,100	0.400	0.025	---	---	18/08/2014	10/10/2013	---	IKTINOS HELLAS SA (CR)	0.969	-3.10	€	1.00	04/03/2016	1.04	0.968	1.04	0.968	1.01	---	9.26	2014	2,218	13	2,242.98	27,694.12	0.891	1.15	2353
9,090,000	0.900	---	---	---	15/05/2009	13/10/2014	---	ILYDA S.A. (CR)	0.555	---	↘	0.555	04/03/2016	---	---	---	---	---	---	---	2014	---	---	---	5,044.95	0.520	0.590	9537
20,578,374	0.620	---	0.4	---	04/06/2015	18/05/2015	---	INFORM P. LYKOS SA (CR)	0.500	---	↘	0.500	04/03/2016	---	---	---	---	---	---	0.41	2014	---	---	---	10,289.19	0.420	0.594	2791
11,233,200	0.730	---	---	---	12/07/2010	30/07/1999	---	INTERTECH SA (CR)	0.185	9.47	#	0.169	04/03/2016	0.121	0.120	0.185	0.185	0.125	---	---	2014	4,254	13	530.75	2,078.14	0.120	0.229	9572
34,986,430	0.440	---	---	---	25/07/2008	23/02/2010	---	INTERWOOD-XYLEMPORIA (CR)	0.063	---	↘	0.063	04/03/2016	---	---	---	---	---	---	---	2014	---	---	---	2,643.07	0.063	0.093	2353
2,566,836	0.440	---	---	---	13/08/2010	09/01/2007	---	INTERWOOD-XYLEMPORIA (PR)	0.171	---	↘	0.171	04/03/2016	---	---	---	---	---	---	---	2014	---	---	---	2,643.07	0.171	0.189	2353
23,154,250	1.36	---	---	---	12/08/2008	02/08/2010	---	INTRACOM CONSTR. (CR)	0.280	-17.40	€	0.339	04/03/2016	0.280	0.280	0.280	0.280	0.280	---	2.26	2014	50	1	14.00	6,483.19	0.222	0.339	2357
133,025,996	1.41	---	---	---	03/07/2007	07/01/2002	---	INTRACOM HOLDINGS (CR)	0.312	0.97	#	0.309	04/03/2016	0.309	0.299	0.315	0.312	0.308	---	---	2014	71,404	75	22,000.02	41,504.11	0.245	0.345	9578
158,961,721	0.300	---	---	---	30/05/2013	14/11/2007	---	INTRALOT (CR)	1.17	1.74	#	1.15	04/03/2016	1.14	1.13	1.17	1.17	1.16	---	---	2014	18,820	37	21,821.61	185,985.21	1.01	1.21	5752
77,654,850	0.580	---	---	---	01/07/2011	21/02/2003	---	J & P - AVAX SA (CR)	0.280	-1.06	€	0.283	04/03/2016	0.283	0.275	0.309	0.280	0.285	---	1.30	2014	101,475	95	28,962.48	21,743.36	0.208	0.358	2357

Number of Outstanding Securities	Nominal Value	Dividends [1]			Date of Last Coupon		Note	Shares	Closing price	% change	Previous closing price/date	Open price	Price min	Price max	Last price	Avg price	Last Bid [7]	Last Ask [7]	P/E after	Year	Volume	Trades	Transactions Value[8]	Company Mkt Value (thou. €)	Year low	Year high	Sector[ 4]	
		2013	2014	2015	Dividend [2]	Right																						
Main Market																												
136,059,759	1.19	0.18	0.18	---	23/12/2014	05/03/2014	---	JUMBO SA (CR)	10.95	-1.79	11.15	04/03/2016	11.15	10.80	11.16	10.95	10.97	---	---	19.95	2015	315,466	568	3,461,994.52	1,489,854.36	8.75	11.78	3747
9,742,920	0.400	0.01	0.01	---	10/08/2015	14/07/2000	---	KARAMOLEGOS SA (CR)	0.849	---	0.849	04/03/2016	---	---	---	---	---	---	---	8.16	2014	---	---	---	8,271.74	0.601	1.14	3577
14,679,792	1.68	---	---	---	24/06/2014	04/09/2000	---	KARATZIS SA (CR)	3.64	-2.93	3.75	04/03/2016	3.67	3.64	3.67	3.64	3.66	---	---	8.81	2014	160	4	585.10	53,434.44	3.50	3.95	2723
13,202,756	0.350	---	---	---	01/07/2004	05/08/2014	---	KEKROPS SA (CR)	0.250	---	0.250	04/03/2016	---	---	---	---	---	---	---	---	2014	---	---	---	3,300.69	0.195	0.330	8633
7,595,160	0.600	---	---	---	08/08/2008	18/08/2010	---	KIRIAKOULIS SHIPPING SA (CR)	0.300	0.33	0.299	04/03/2016	0.299	0.299	0.300	0.300	0.300	---	---	---	2014	700	3	209.90	2,278.55	0.220	0.586	5759
23,648,700	0.350	---	---	---	13/07/2011	31/03/2015	---	KLEEMAN HELLAS SA (CR)	1.38	1.47	1.36	04/03/2016	1.28	1.28	1.38	1.38	1.31	---	---	5.55	2014	11,682	38	15,285.62	32,635.21	1.21	1.54	2757
40,219,218	0.300	---	---	---	25/05/2009	09/07/2013	---	KLOUKINAS - LAPPAS SA (CR)	0.252	---	0.252	04/03/2016	0.252	0.252	0.252	0.252	0.252	---	---	---	2014	25	1	6.30	10,135.24	0.227	0.299	2357
21,224,340	0.420	---	---	---	02/07/2008	25/04/2006	---	KORDELLOS BROS SA (CR)	0.239	-9.81	0.265	04/03/2016	0.239	0.239	0.239	0.239	0.239	---	---	---	2014	10	1	2.39	5,072.62	0.239	0.265	1757
13,586,500	0.390	---	---	---	25/06/2010	28/05/2008	---	KORRES (CR)	3.49	0.29	3.48	04/03/2016	3.33	3.33	3.49	3.49	3.39	---	---	---	2014	310	4	1,049.90	47,416.89	2.92	3.90	3767
29,480,000	0.420	---	---	---	19/07/2010	01/08/2007	---	KRETA FARM SA (CR)	0.338	6.29	0.318	04/03/2016	0.339	0.320	0.339	0.339	0.322	---	---	9.29	2014	680	7	218.83	9,964.24	0.300	0.416	3577
33,065,136	0.380	---	0.06	---	04/08/2015	16/09/2013	---	KRI-KRI S.A. (CR)	1.62	3.85	1.56	04/03/2016	1.60	1.60	1.62	1.62	1.60	---	---	15.00	2014	460	4	737.00	53,565.52	1.52	1.90	3577
15,804,800	0.360	---	---	---	15/06/2010	12/03/2004	---	KTIMA KOSTAS LAZARIDIS SA (CR)	0.254	---	0.254	04/03/2016	---	---	---	---	---	---	---	---	2014	---	---	---	4,014.42	0.203	0.310	3535
23,719,554	0.990	---	0.2406	---	14/08/2015	15/09/2014	---	KYRIAKIDIS MARBLES SA (CR)	2.39	---	2.39	04/03/2016	2.39	2.39	2.39	2.39	2.39	---	---	9.08	2014	910	4	2,174.90	56,689.73	2.11	2.44	2353
79,721,775	0.300	---	---	---	30/05/2007	23/06/2014	---	LAMDA DEVELOPMENT SA (CR)	3.99	-0.50	4.01	04/03/2016	4.04	3.92	4.04	3.99	3.94	---	---	---	2014	12,421	46	48,981.33	318,089.88	3.12	4.24	8633
21,364,000	1.12	---	---	---	05/07/2010	10/08/2005	---	LAMPSA HOTEL SA (CR)	16.50	---	16.50	04/03/2016	---	---	---	---	---	---	---	-(6)-	2014	---	---	---	352,506.00	15.51	17.00	5753
5,939,268	0.620	---	---	---	10/07/2003	03/01/2002	---	LANAKAM SA (CR)	0.600	-5.96	0.638	04/03/2016	0.600	0.600	0.600	0.600	0.600	---	---	---	2014	61	1	36.60	3,563.56	0.600	0.638	3763
7,734,375	1.00	---	---	---	09/07/2007	07/01/2011	---	LIVANIS SA (CR)	0.129	---	0.129	04/03/2016	---	---	---	---	---	---	---	---	2014	---	---	---	997.73	0.072	0.148	5557
4,740,000	0.860	---	---	---	14/03/2003	---	---	LOGISMOS S.A. (CR)	0.432	---	0.432	04/03/2016	---	---	---	---	---	---	---	---	2014	---	---	---	2,047.68	0.432	0.489	9533
17,125,062	0.940	---	---	---	01/06/2010	02/02/2015	---	LOULIS MILLS SA (CR)	1.56	---	1.56	04/03/2016	---	---	---	---	---	---	---	7.63	2014	---	---	---	26,715.10	1.35	1.67	3577
939,385,586	0.300	---	---	---	26/04/2007	29/08/2014	---	MARFIN INVESTMENT GROUP (CR)	0.093	4.49	0.089	04/03/2016	0.089	0.087	0.093	0.093	0.090	---	---	---	2014	1,680,089	248	151,473.35	87,362.86	0.048	0.096	8775
9,819,370	0.690	---	---	---	14/08/2007	09/01/2004	---	MATHIOS REFRACTORY SA (CR)	0.324	---	0.324	04/03/2016	---	---	---	---	---	---	---	---	2014	---	---	---	3,181.48	0.324	0.324	2353
468,700	0.65	1	---	---	25/06/2015	21/05/2004	---	MERMEREN KOMB. A.D. PR. (GDR)	5.25	1.55	5.17	04/03/2016	5.25	5.25	5.25	5.25	5.25	---	---	0.36	2014	1	1	5.25	2,460.68	4.87	8.49	1775
51,950,600	0.320	0.3	0.5	---	08/05/2015	21/10/2005	---	METKA (CR)	6.84	-2.15	6.99	04/03/2016	6.99	6.82	6.99	6.84	6.86	---	---	4.81	2014	16,246	118	111,378.53	355,342.10	6.24	7.30	2757
10,500,000	0.950	---	---	---	24/06/2008	19/12/2013	---	MEVACO SA (CR)	1.00	---	1.00	04/03/2016	---	---	---	---	---	---	---	---	2014	---	---	---	10,500.00	0.705	1.02	2757
6,700,000	0.800	0.16	0.03	---	26/06/2015	29/05/2014	---	MILLS KEPENOS (CR)	1.76	---	1.76	04/03/2016	---	---	---	---	---	---	---	7.65	2014	---	---	---	11,792.00	1.54	1.89	3577
6,200,000	0.500	---	---	---	22/06/2010	01/11/1995	---	MINERVA KNITWEAR SA (CB)	0.060	---	0.060	04/03/2016	---	---	---	---	---	---	---	---	2014	---	---	---	372.00	0.060	0.092	3763
12,417,000	0.480	---	---	---	28/07/2008	06/09/2011	---	MLS MULTIMEDIA SA (CR)	3.15	-1.56	3.20	04/03/2016	3.19	3.10	3.25	3.15	3.20	---	---	23.19	2014	10,574	78	33,792.92	39,113.55	2.75	3.77	9537
11,700,000	0.590	---	---	---	02/06/2009	24/07/2012	---	MOTODYNAMICS S.A. (CR)	0.515	---	0.515	04/03/2016	---	---	---	---	---	---	---	---	2014	---	---	---	6,025.50	0.457	0.549	5379
110,782,980	0.750	0.2	---	0.15	07/12/2015	04/11/2013	---	MOTOR OIL (CR)	9.70	-0.51	9.75	04/03/2016	9.48	9.48	9.73	9.70	9.66	---	---	---	2014	383,596	1,001	3,706,187.30	1,074,594.91	8.13	10.40	533
116,915,862	0.970	---	---	---	11/05/2009	19/10/2015	---	MYTILINEOS HOLDINGS (CR)	3.45	-4.43	3.61	04/03/2016	3.52	3.43	3.57	3.45	3.48	---	---	---	2014	131,522	443	457,931.45	403,359.72	2.70	3.70	1755
8,321,682	0.670	---	---	---	17/08/2007	23/11/1999	---	N. LEVEDERIS SA (CB)	0.153	---	0.153	04/03/2016	---	---	---	---	---	---	---	---	2014	---	---	---	3,952.27	0.144	0.195	1757
2,160,524	0.670	0.0436	0.0436	---	29/07/2015	23/11/1999	---	N. LEVEDERIS SA (PB)	1.24	---	1.24	04/03/2016	---	---	---	---	---	---	---	---	2014	---	---	---	3,952.27	1.24	1.25	1757
11,510,102	0.890	---	---	---	24/06/2005	06/10/1999	---	NAFPAKTOS TEXTILE IND. SA (CB)	0.240	---	0.240	04/03/2016	---	---	---	---	---	---	---	---	2014	---	---	---	2,762.42	0.135	0.313	3763
6,340,000	0.600	---	---	---	30/11/2009	04/12/2015	---	NAKAS MUSIC	0.700	---	0.700	04/03/2016	---	---	---	---	---	---	---	7.29	2015	---	---	---	4,438.00	0.600	0.825	5379
9,147,151,527	0.300	---	---	---	16/05/2008	30/11/2015	---	NATIONAL BANK (CR)	0.235	5.86	0.222	04/03/2016	0.219	0.210	0.235	0.235	0.217	---	---	---	2014	29,855,055	2,610	6,487,968.74	2,149,580.61	0.099	0.340	8355
23,935,280	0.300	---	---	---	29/06/2009	13/06/2000	---	NAYTEMPORIKI PUBLISHING SA(CR)	0.070	---	0.070	04/03/2016	0.052	0.052	0.070	0.070	0.067	---	---	---	2014	289	6	19.33	1,675.47	0.052	0.084	5557
27,848,000	0.300	0.004	0.0032	---	18/08/2015	02/09/2003	---	NEWSPHONE HELLAS SA (CR)	0.219	---	0.219	04/03/2016	---	---	---	---	---	---	---	24.91	2014	---	---	---	6,098.71	0.135	0.250	2791
22,996,875	1.25	---	---	---	24/06/2011	02/02/2016	---	NEXANS HELLAS SA (CR)	0.986	---	0.986	04/03/2016	---	---	---	---	---	---	---	---	2014	---	---	---	22,674.92	0.781	1.09	2733

Number of Outstanding Securities	Nominal Value	Dividends [1]			Date of Last Coupon Dividend [2]		Note	Shares	Closing price	% change	Previous closing price/date	Open price	Price min	Price max	Last price	Avg price	Last Bid [7]	Last Ask [7]	P/E after	Year	Volume	Trades	Transactions Value[8]	Company Mkt Value (thou. €)	Year low	Year high	Sector[ 4]
259,030,486	0.300	---	---	---	08/07/2008	10/11/2008	---	NIREFS SA (CR)	0.100	-4.76	€ 0.105 04/03/2016	0.110	0.096	0.114	0.100	0.103	---	---	---	2014	9,977	19	1,026.83	25,903.05	0.072	0.135	3573
319,000,000	0.300	0.25	0.7017	0.17	11/09/2015	25/04/2001	---	OPAP (CR)	6.62	2.64	# 6.45 04/03/2016	6.41	6.40	6.65	6.62	6.52	---	---	10.93	2014	489,715	1,437	3,191,773.22	2,111,780.00	5.16	7.65	5752
490,150,389	2.83	---	0.08	---	25/06/2015	18/06/1998	---	OTE (CR)	8.14	0.49	# 8.10 04/03/2016	7.98	7.93	8.14	8.14	8.02	---	---	43.09	2015	473,456	1,135	3,795,066.80	3,989,824.17	6.55	9.19	6535
25,000,000	2.00	0.12	0.099	---	25/06/2015	08/08/2003	---	P.P.A. S.A. (CR)	11.50	-0.43	€ 11.55 04/03/2016	11.75	11.23	11.75	11.50	11.44	---	---	42.51	2014	3,058	46	34,971.13	287,500.00	9.80	14.78	2777
4,971,466	1.46	---	---	---	04/07/2007	08/10/2003	---	PAIRIS SA (CR)	0.179	---	↘ 0.179 04/03/2016	---	---	---	---	---	---	---	---	2014	---	---	---	889.89	0.179	0.179	2723
3,953,090	0.900	---	0.067	---	27/05/2015	05/12/2012	---	PAPERPACK (CR)	1.03	---	↘ 1.03 04/03/2016	---	---	---	---	---	---	---	3.16	2014	---	---	---	4,071.68	0.651	1.03	2723
50,797,369	0.310	---	---	---	17/08/2000	12/10/2010	---	PAPOUTSANIS (CR)	0.196	-0.51	€ 0.197 04/03/2016	0.197	0.178	0.197	0.196	0.187	---	---	---	2014	2,039	12	381.67	9,956.28	0.174	0.217	3767
7,070,400	0.930	---	---	---	18/05/2010	25/05/2015	---	PETROPOULOS PETROS (CR)	3.65	0.27	# 3.64 04/03/2016	3.58	3.58	3.65	3.65	3.62	---	---	34.23	2015	297	11	1,074.19	25,806.96	3.43	3.66	2753
8,733,183,280	0.300	---	---	---	16/05/2008	27/11/2015	---	PIRAEUS BANK (CR)	0.171	-1.72	€ 0.174 04/03/2016	0.174	0.154	0.177	0.171	0.163	---	---	---	2014	47,799,450	2,818	7,813,910.71	1,493,374.34	0.067	0.293	8355
22,086,000	0.330	0.2	---	---	21/05/2014	27/04/2015	---	PLAISIO COMPUTERS SA (CR)	4.00	-3.15	€ 4.13 04/03/2016	4.13	3.98	4.20	4.00	4.05	---	---	5.51	2014	10,217	97	41,345.36	88,320.00	3.93	4.56	9572
232,000,000	4.60	---	0.05	---	20/07/2015	12/12/2001	---	PPC (CR)	3.22	-0.31	€ 3.23 04/03/2016	3.17	3.11	3.25	3.22	3.17	---	---	21.83	2014	304,714	741	966,218.16	747,040.00	2.34	4.08	7535
11,812,193	0.470	---	0.02	---	26/03/2015	15/11/2006	---	PROFILE SA (CR)	0.427	1.19	# 0.422 04/03/2016	0.427	0.427	0.427	0.427	0.427	---	---	11.31	2014	10	1	4.27	5,043.81	0.388	0.546	9533
27,345,120	0.470	---	---	---	18/07/2005	26/02/2014	---	QUALITY & RELIABILITY SA (CR)	0.300	---	↘ 0.300 04/03/2016	0.300	0.300	0.300	0.300	0.300	---	---	11.26	2014	20	1	6.00	8,203.54	0.251	0.303	9533
11,962,443	0.300	---	---	---	05/09/2008	21/01/2016	---	QUEST HOLDINGS (CR)	3.67	---	↘ 3.67 04/03/2016	---	---	---	---	---	---	---	19.37	2014	---	---	---	43,902.17	3.30	4.05	9533
57,434,884	1.31	---	---	---	05/06/2008	12/06/2009	---	REDS S.A. (CR)	0.302	-5.62	€ 0.320 04/03/2016	0.301	0.301	0.302	0.302	0.302	---	---	---	2014	1,004	4	302.92	17,345.33	0.300	0.340	8633
22,280,000	0.300	---	---	---	11/04/2011	23/02/2007	---	REVOIL (CR)	0.240	9.09	# 0.220 04/03/2016	0.240	0.240	0.240	0.240	0.240	---	---	---	2014	400	1	96.00	5,347.20	0.169	0.250	5379
7,500,000	0.800	0.0863	0.1	---	19/06/2015	10/02/2014	---	S.KANAKIS SA (CR)	2.00	-2.91	€ 2.06 04/03/2016	1.99	1.99	2.00	2.00	2.00	---	---	9.02	2014	112	6	223.97	15,000.00	1.75	2.25	3577
52,067,296	0.300	---	---	---	23/12/2003	24/01/2007	---	SELECTED TEXT. IND. ASSOC (CR)	0.114	-5.00	€ 0.120 04/03/2016	0.110	0.110	0.115	0.115	0.113	---	---	---	2015	22,587	7	2,545.05	5,935.67	0.084	0.188	3763
204,235,184	0.300	---	---	---	01/07/2008	30/07/2012	---	SELONDA AQUACULTURE SA (CR)	0.092	-2.13	€ 0.094 04/03/2016	0.085	0.085	0.103	0.092	0.103	---	---	1.02	2014	8,661	14	887.96	18,789.64	0.074	0.108	3573
6,456,530	1.61	---	---	---	29/06/2001	02/08/2010	---	SPACE HELLAS SA (CR)	0.940	3.30	# 0.910 04/03/2016	0.940	0.940	0.940	0.940	0.940	---	---	7.16	2015	1	1	0.94	6,069.14	0.840	1.28	9578
28,438,268	0.300	---	---	---	21/08/2006	24/11/1999	---	SPIROY AGRICULTURE SA (CR)	0.699	---	↘ 0.699 04/03/2016	---	---	---	---	---	---	---	---	2014	---	---	---	19,878.35	0.630	0.700	1357
40,693,350	5.00	---	---	---	03/07/2006	26/05/2015	---	TECHNICAL OLYMPIC SA (CR)	0.697	-0.57	€ 0.701 04/03/2016	0.605	0.605	0.737	0.697	0.666	---	---	---	2014	276	15	183.94	28,363.26	0.565	0.831	3728
109,314,400	0.300	---	---	---	28/05/2012	05/08/2015	---	TERNA ENERGY (CR)	2.34	3.54	# 2.26 04/03/2016	2.22	2.22	2.34	2.34	2.28	---	---	---	2014	51,261	222	116,893.69	255,795.70	1.92	2.47	7537
36,300,000	1.12	0.285	0.24	---	03/08/2015	12/12/2007	---	THESSALONIKA WATER & SEWERAGE	2.99	1.36	# 2.95 04/03/2016	3.00	2.98	3.00	2.99	2.99	---	---	8.20	2014	3,609	8	10,789.21	108,537.00	2.65	3.05	7577
45,094,620	0.660	0.05	0.0225	---	20/04/2015	01/11/1999	---	THRACE PLASTICS SA (CR)	1.36	0.74	# 1.35 04/03/2016	1.33	1.33	1.36	1.36	1.35	---	---	---	2014	5,535	24	7,458.26	61,328.68	1.25	1.41	1357
77,063,568	4.00	---	0.1551	---	24/06/2015	25/06/2004	---	TITAN CEMENT (CR)	19.50	5.40	# 18.50 04/03/2016	18.50	18.40	19.60	19.50	19.23	---	---	17.99	2014	72,775	626	1,399,160.72	1,570,254.70	14.86	19.60	2353
7,568,960	4.00	---	0.1551	---	24/06/2015	25/06/2004	---	TITAN CEMENT CO. (PR)	8.92	3.72	# 8.60 04/03/2016	8.60	8.60	8.92	8.92	8.72	---	---	8.23	2014	1,010	7	8,806.20	1,570,254.70	7.36	8.92	2353
10,080,000	3.00	0.6	1.95	---	04/05/2015	27/08/2001	---	TPA SA (CR)	19.60	-4.76	€ 20.58 04/03/2016	19.81	19.50	20.19	19.60	19.61	---	---	9.28	2014	539	17	10,570.12	197,568.00	18.10	24.10	2777
15,627,315	0.300	---	---	---	16/11/1992	03/12/2012	---	UNIBIOS (CR)	0.069	7.81	# 0.064 04/03/2016	0.070	0.064	0.070	0.070	0.068	---	---	---	2014	570	13	38.71	1,078.28	0.054	0.091	2353
18,810,000	0.400	---	---	---	08/07/2010	14/11/2007	---	VARVERIS - MODA BAGNO SA (CR)	0.150	---	↘ 0.150 04/03/2016	---	---	---	---	---	---	---	---	2014	---	---	---	2,821.50	0.115	0.165	2353
259,189,761	---	---	---	---	26/02/2016	---	---	VIOHALCO SA/NV (CB)	1.16	---	↘ 1.16 04/03/2016	1.16	1.13	1.18	1.16	1.15	---	---	---	---	168,747	376	194,563.29	300,660.12	0.928	1.67	2727
4,968,600	2.88	---	---	---	01/07/1998	14/12/1998	---	VIS SA (CR)	0.850	4.94	# 0.810 04/03/2016	0.891	0.850	0.891	0.850	0.854	---	---	---	2014	470	3	401.55	4,223.31	0.611	1.00	2723
6,325,000	0.600	---	---	---	02/05/2014	17/02/2014	---	VOGIATZOGLOU SYSTEMS SA (CR)	1.12	---	↘ 1.12 04/03/2016	---	---	---	---	---	---	---	32.65	2014	---	---	---	7,084.00	0.978	1.12	2797

Exchange Traded Funds (ETFs)																																																																																																																																																																																																																																																																																																																																																																																																																																																																																																																																																																																																																																																																																																																																																																																																																																																																																																																																																																																																																																																																																																																																																																											
6,030,903	---	---	---	24/01/2008	---	ALPHA ETF FTSE Athex Large Cap			1.51	---	↘	1.51	04/03/2016	---	---	---	---	---	---	---	---	---	---	---	---	---	---	---	---	---	---	---	---	---	---	---	---	---	---	---	---	---	---	---	---	---	---	---	---	---	---	---	---	---	---	---	---	---	---	---	---	---	---	---	---	---	---	---	---	---	---	---	---	---	---	---	---	---	---	---	---	---	---	---	---	---	---	---	---	---	---	---	---	---	---	---	---	---	---	---	---	---	---	---	---	---	---	---	---	---	---	---	---	---	---	---	---	---	---	---	---	---	---	---	---	---	---	---	---	---	---	---	---	---	---	---	---	---	---	---	---	---	---	---	---	---	---	---	---	---	---	---	---	---	---	---	---	---	---	---	---	---	---	---	---	---	---	---	---	---	---	---	---	---	---	---	---	---	---	---	---	---	---	---	---	---	---	---	---	---	---	---	---	---	---	---	---	---	---	---	---	---	---	---	---	---	---	---	---	---	---	---	---	---	---	---	---	---	---	---	---	---	---	---	---	---	---	---	---	---	---	---	---	---	---	---	---	---	---	---	---	---	---	---	---	---	---	---	---	---	---	---	---	---	---	---	---	---	---	---	---	---	---	---	---	---	---	---	---	---	---	---	---	---	---	---	---	---	---	---	---	---	---	---	---	---	---	---	---	---	---	---	---	---	---	---	---	---	---	---	---	---	---	---	---	---	---	---	---	---	---	---	---	---	---	---	---	---	---	---	---	---	---	---	---	---	---	---	---	---	---	---	---	---	---	---	---	---	---	---	---	---	---	---	---	---	---	---	---	---	---	---	---	---	---	---	---	---	---	---	---	---	---	---	---	---	---	---	---	---	---	---	---	---	---	---	---	---	---	---	---	---	---	---	---	---	---	---	---	---	---	---	---	---	---	---	---	---	---	---	---	---	---	---	---	---	---	---	---	---	---	---	---	---	---	---	---	---	---	---	---	---	---	---	---	---	---	---	---	---	---	---	---	---	---	---	---	---	---	---	---	---	---	---	---	---	---	---	---	---	---	---	---	---	---	---	---	---	---	---	---	---	---	---	---	---	---	---	---	---	---	---	---	---	---	---	---	---	---	---	---	---	---	---	---	---	---	---	---	---	---	---	---	---	---	---	---	---	---	---	---	---	---	---	---	---	---	---	---	---	---	---	---	---	---	---	---	---	---	---	---	---	---	---	---	---	---	---	---	---	---	---	---	---	---	---	---	---	---	---	---	---	---	---	---	---	---	---	---	---	---	---	---	---	---	---	---	---	---	---	---	---	---	---	---	---	---	---	---	---	---	---	---	---	---	---	---	---	---	---	---	---	---	---	---	---	---	---	---	---	---	---	---	---	---	---	---	---	---	---	---	---	---	---	---	---	---	---	---	---	---	---	---	---	---	---	---	---	---	---	---	---	---	---	---	---	---	---	---	---	---	---	---	---	---	---	---	---	---	---	---	---	---	---	---	---	---	---	---	---	---	---	---	---	---	---	---	---	---	---	---	---	---	---	---	---	---	---	---	---	---	---	---	---	---	---	---	---	---	---	---	---	---	---	---	---	---	---	---	---	---	---	---	---	---	---	---	---	---	---	---	---	---	---	---	---	---	---	---	---	---	---	---	---	---	---	---	---	---	---	---	---	---	---	---	---	---	---	---	---	---	---	---	---	---	---	---	---	---	---	---	---	---	---	---	---	---	---	---	---	---	---	---	---	---	---	---	---	---	---	---	---	---	---	---	---	---	---	---	---	---	---	---	---	---	---	---	---	---	---	---	---	---	---	---	---	---	---	---	---	---	---	---	---	---	---	---	---	---	---	---	---	---	---	---	---	---	---	---	---	---	---	---	---	---	---	---	---	---	---	---	---	---	---	---	---	---	---	---	---	---	---	---	---	---	---	---	---	---	---	---	---	---	---	---	---	---	---	---	---	---	---	---	---	---	---	---	---	---	---	---	---	---	---	---	---	---	---	---	---	---	---	---	---	---	---	---	---	---	---	---	---	---	---	---	---	---	---	---	---	---	---	---	---	---	---	---	---	---	---	---	---	---	---	---	---	---	---	---	---	---	---	---	---	---	---	---	---	---	---	---	---	---	---	---	---	---	---	---	---	---	---	---	---	---	---	---	---	---	---	---	---	---	---	---	---	---	---	---	---	---	---	---	---	---	---	---	---	---	---	---	---	---	---	---	---	---	---	---	---	---	---	---	---	---	---	---	---	---	---	---	---	---	---	---	---	---	---	---	---	---	---	---	---	---	---	---	---	---	---	---	---	---	---	---	---	---	---	---	---	---	---	---	---	---	---	---	---	---	---	---	---	---	---	---	---	---	---	---	---	---	---	---	---	---	---	---	---	---	---	---	---	---	---	---	---	---	---	---	---	---	---	---	---	---	---	---	---	---	---	---	---	---	---	---	---	---	---	---	---	---	---	---	---	---	---	---	---	---	---	---	---	---	---	---	---	---	---	---	---	---	---	---	---	---	---	---	---	---	---	---	---	---	---	---	---	---	---	---	---	---	---	---	---	---	---	---	---	---	---	---	---	---	---	---	---	---	---	---	---	---</

Number of Outstanding Securities	Nominal Value	Dividends [1]			Date of Last Coupon Dividend [2]		Note	Shares	Closing price	% change	Previous closing price/date	Open price	Price min	Price max	Last price	Avg price	Last Bid [7]	Last Ask [7]	P/E after	Year	Volume	Trades	Transactions Value[8]	Company Mkt Value (thou. €)	Year low	Year high	Sector[ 4]	
		2013	2014	2015																								
Low Dispersion																												
14,000,000	4.15	---	---	---	23/04/2010	29/06/1999	4815	ALPHA REAL ESTATE SA(CR)	4.36	-3.11 €	4.50	04/03/2016	4.36	4.36	4.36	4.36	4.36	---	---	22.03	2015	30	3	130.80	61,040.00	4.20	6.00	8637
63,900,000	3.00	---	---	---	23/06/2003	04/11/2008	4816	ASTIR PALACE SA (CR)	3.15	-3.37 €	3.26	04/03/2016	3.02	3.02	3.25	3.25	3.15	---	---	---	2015	400	4	1,258.60	201,285.00	2.90	3.51	5753
134,652,904	0.800	---	---	---	09/08/2004	08/03/2006	4814	ATHENA SA (CR)	0.082	18.84 #	0.069	04/03/2016	0.082	0.082	0.082	0.082	0.082	---	---	---	2014	199	3	16.32	11,041.54	0.018	0.082	2357
191,660,320	0.300	---	---	---	20/07/2009	29/12/2010	4817	ATTICA HOLDINGS (CR)	0.675	0.45 #	0.672	04/03/2016	0.611	0.611	0.689	0.689	0.674	---	---	95.55	2015	3,950	11	2,664.25	129,370.72	0.490	0.700	5759
71,082,707	1.70	---	---	---	01/07/2010	21/11/2012	4820	HERACLES GEN.CEMENT CO. (CR)	1.23	---	↘	1.23	04/03/2016	1.23	1.23	1.23	1.23	---	---	---	2014	16,964	27	20,865.72	87,431.73	1.23	1.23	2353
13,404,440	8.63	---	---	---	02/04/2001	06/03/1992	4822	IONIAN HOTELS SA (CR)	6.08	---	↘	6.08	04/03/2016	---	---	---	---	---	---	37.59	2015	---	---	---	81,499.00	5.64	8.13	5753
2,760,000	11.83	8.5	9.3	---	23/06/2015	16/07/1990	4823	KARELIA TOBACCO CO. SA (CB)	250.00	2.35 #	244.25	04/03/2016	250.00	250.00	250.00	250.00	250.00	---	---	11.14	2014	52	5	13,000.00	690,000.00	228.00	265.00	3785
106,980,050	2.25	---	---	---	25/07/2008	24/02/2014	5046	MINOAN LINES SA (CR)	2.20	2.33 #	2.15	04/03/2016	2.20	2.20	2.20	2.20	2.20	---	---	---	2014	1,340	4	2,948.00	235,356.11	2.00	2.20	5759
255,494,534	3.00	---	---	---	02/03/2012	23/12/2015	5104	NBG PANGAEA (CR)	4.00	---	↘	4.00	04/03/2016	---	---	---	---	---	---	13.51	2014	---	---	---	1,021,978.14	3.45	6.03	8671
17,240,776	0.370	---	---	---	14/07/2005	30/09/2003	4827	PERSEUS SA (CR)	0.515	---	↘	0.515	04/03/2016	---	---	---	---	---	---	2.48	2014	---	---	---	8,879.00	0.277	0.515	3577
54,888,240	1.13	0.09	---	---	25/04/2014	22/03/2006	5100	TRASTOR REAL EST. INV. CO.(CR)	0.889	---	↘	0.889	04/03/2016	---	---	---	---	---	---	---	2015	---	---	---	48,795.65	0.611	1.25	8671

Surveillance																												
33,301,715	0.320	---	---	---	27/06/2003	08/07/2009	4978	AEGEK (CR)	0.039	-13.33	€ 0.045	04/03/2016	0.036	0.036	0.043	0.043	0.039	---	---	---	2014	4,385	10	171.85	1,298.77	0.029	0.072	2357
13,000,000	1.00	---	---	---	01/08/2007	07/04/2000	5093	AKRITAS SA (CR)	0.100	---	↘ 0.100	04/03/2016	---	---	---	---	---	---	---	2014	---	---	---	1,300.00	0.061	0.530	2353	
14,870,100	0.300	---	---	---	15/05/2008	26/09/2011	4844	ALPHA GRISSIN S.A. (CR)	0.023	---	↘ 0.023	04/03/2016	0.019	0.019	0.023	0.023	0.023	---	---	---	2014	2,000	2	45.98	342.01	0.019	0.023	9533
2,969,713	0.300	---	---	---	02/07/2008	28/02/2011	4958	ANEK LINES SA (PR, issue '96)	0.192	---	↘ 0.192	04/03/2016	---	---	---	---	---	---	---	2014	---	---	---	13,064.52	0.192	0.240	5759	
312,163	0.300	---	---	---	02/07/2008	28/02/2011	4959	ANEK LINES SA (PR, issue '90)	0.832	---	↘ 0.832	04/03/2016	---	---	---	---	---	---	---	2014	---	---	---	13,064.52	0.832	1.04	5759	
185,373,016	0.300	---	---	---	02/07/2008	28/02/2011	4957	ANEK LINES SA (CR)	0.066	1.54	# 0.065	04/03/2016	0.067	0.066	0.067	0.066	0.066	---	---	---	2014	1,084	3	71.63	13,064.52	0.050	0.079	5759
20,255,805	0.300	---	---	---	22/08/2006	02/08/2010	4881	AXON HOLDING SA (CR)	0.013	---	↘ 0.013	04/03/2016	0.013	0.013	0.013	0.013	0.013	---	---	---	2014	550	2	7.15	263.33	0.013	0.070	4533
17,579,754	4.16	---	---	---	18/08/2006	02/08/2010	5097	BIOTER SA (CR)	0.071	---	↘ 0.071	04/03/2016	---	---	---	---	---	---	---	2014	---	---	---	1,248.16	0.038	0.149	2357	
14,173,104	0.300	---	---	---	11/08/2010	28/11/2013	5055	DIONIC (CR)	0.036	-2.70	€ 0.037	04/03/2016	0.037	0.034	0.037	0.034	0.036	---	---	---	2014	4,185	4	151.55	510.23	0.024	0.054	2797
15,878,748	0.480	---	---	---	10/07/2006	22/03/2004	5095	DOMIKI KRITIS SA (CR)	0.253	---	↘ 0.253	04/03/2016	---	---	---	---	---	---	---	2014	---	---	---	4,017.32	0.204	0.318	2357	
3,961,300	1.28	---	---	---	29/06/2004	03/08/2000	5080	DUROS SA (CR)	0.300	---	↘ 0.300	04/03/2016	---	---	---	---	---	---	---	2014	---	---	---	1,188.39	0.300	0.300	3763	
7,085,888	1.59	---	---	---	02/07/1996	06/09/2010	4690	ELVIEMEK (CR)	3.97	---	↘ 3.97	04/03/2016	---	---	---	---	---	---	---	2014	---	---	---	28,130.98	3.97	3.97	8633	
6,000,000	0.600	---	---	---	13/06/2008	08/04/2004	4886	EUROBROKERS S.A. (CR)	0.009	---	↘ 0.009	04/03/2016	---	---	---	---	---	---	---	2014	---	---	---	54.00	0.009	0.009	8534	
21,820,410	0.800	---	---	---	22/05/2008	02/08/2011	4882	EUROMEDICA SA (CR)	0.012	---	↘ 0.012	04/03/2016	---	---	---	---	---	---	---	2014	---	---	---	261.84	0.012	0.028	4533	
110,097,185	0.300	---	---	---	04/12/2013		5033	Forthnet (CR)	0.420	---	↘ 0.420	04/03/2016	---	---	---	---	---	---	---	---	---	---	---	46,240.82	0.334	0.750	9535	
77,376,446	0.340	---	---	---	23/05/2005	18/08/2011	5094	G.E. DIMITRIOU (CR)	0.007	-12.50	€ 0.008	04/03/2016	0.007	0.007	0.007	0.007	0.007	---	---	---	2014	530	6	3.71	541.64	0.006	0.010	3722
1,270,000	0.300	---	---	---	06/07/2007	06/02/2013	5007	GIRAKIAN PROFIL SA (CB)	0.084	---	↘ 0.084	04/03/2016	---	---	---	---	---	---	---	2014	---	---	---	106.68	0.084	0.167	1757	
1,540,000	0.600	---	---	---	08/08/1994	19/09/2000	5058	J.BOUTARIS & SON HOLD. (PB)	0.062	19.23	# 0.052	04/03/2016	0.062	0.062	0.062	0.062	0.062	---	---	---	2014	100	2	6.20	1,505.54	0.006	0.062	3535
25,179,640	0.600	---	---	---	08/08/1994	19/09/2000	5057	J.BOUTARIS & SON HOLD. SA (CB)	0.056	5.66	# 0.053	04/03/2016	0.056	0.056	0.056	0.056	0.056	---	---	---	2014	100	2	5.60	1,505.54	0.025	0.070	3535
7,125,216	0.650	---	---	---	01/07/2005	14/12/1999	4955	KRE.KA SA (CR)	0.122	---	↘ 0.122	04/03/2016	---	---	---	---	---	---	---	2014	---	---	---	869.28	0.090	0.144	3573	
51,081,030	1.00	---	---	---	20/08/2007	03/09/2007	4912	LAVIPHARM SA (CR)	0.134	---	↘ 0.134	04/03/2016	0.134	0.134	0.134	0.134	0.134	---	---	---	2014	1,075	2	144.05	6,844.86	0.092	0.155	4577
4,419,616	1.58	---	---	---	21/07/2011	04/03/2015	4983	MEDICON S.A (CR)	0.465	---	↘ 0.465	04/03/2016	---	---	---	---	---	---	2.66	2014	---	---	---	2,055.12	0.465	0.465	4535	
20,231,328	0.600	---	---	---	15/07/2008	25/06/2004	4879	NIKAS SA (CR)	0.100	---	↘ 0.100	04/03/2016	---	---	---	---	---	---	---	2014	---	---	---	2,023.13	0.070	0.100	3577	
14,967,940	0.500	---	---	---	21/05/2008	04/01/2008	4956	PASAL DEVELOPMENT S.A. (CR)	0.116	---	↘ 0.116	04/03/2016	---	---	---	---	---	---	---	2014	---	---	---	1,736.28	0.058	0.116	8633	
40,946,303	0.360	---	---	---	18/07/2005	27/11/2007	5089	PC SYSTEMS SA (CR)	0.009	---	↘ 0.009	04/03/2016	---	---	---	---	---	---	---	2014	---	---	---	368.52	0.007	0.014	9533	

Number of Outstanding Securities	Nominal Value	Dividends [1]			Date of Last Coupon		Note	Shares	Closing price	% change	Previous closing price/date	Open price	Price min	Price max	Last price	Avg price	Last Bid [7]	Last Ask [7]	P/E after	Year	Volume	Trades	Transactions Value[8]	Company Mkt Value (thou. €)	Year low	Year high	Sector[ 4]
		2013	2014	2015	Dividend [2]	Right																					
Surveillance																											
18,750,000	0.300	---	---	---	02/07/2001	31/12/2012	4985	PEGASUS PUBLISHING S.A. (CR)	0.050	---	↘ 0.050	04/03/2016	---	---	---	---	---	---	---	2014	---	---	---	937.50	0.048	0.120	5557
24,319,250	0.300	---	---	---	09/07/2002	04/07/2007	5054	PROODEFTIKH SA (CR)	0.064	12.28	# 0.057	04/03/2016	0.068	0.063	0.068	0.063	0.064	---	2.24	2014	522	5	33.39	1,556.43	0.050	0.092	2357
65,326,268	0.530	---	---	---	04/07/2007	19/07/2006	4750	SATO SA (CR)	0.076	13.43	# 0.067	04/03/2016	0.054	0.054	0.080	0.080	0.076	---	---	2014	583	4	44.48	4,964.80	0.054	0.103	3726
7,914,480	0.300	---	---	---	23/06/2008	29/06/2011	4888	SFAKIANAKIS SA (CR)	0.430	---	↘ 0.430	04/03/2016	---	---	---	---	---	---	---	2014	---	---	---	3,403.23	0.360	5.64	5379
10,186,667	1.35	---	---	---	24/06/2008	02/02/2016	4887	SIDMA SA (CR)	0.312	---	↘ 0.312	04/03/2016	---	---	---	---	---	---	---	2014	---	---	---	3,178.24	0.096	0.312	1757
151,189,500	0.300	---	---	---	16/07/2009	11/02/2016	---	TELETIPOS SA (CR)	0.060	---	↘ 0.060	04/03/2016	---	---	---	---	---	---	---	2014	---	---	---	9,071.37	0.054	0.070	5553
16,383,428	0.300	---	---	---	25/06/2002	21/06/2013	4997	VARVARESSOS SA (CB)	0.008	---	↘ 0.008	04/03/2016	---	---	---	---	---	---	0.19	2014	---	---	---	131.07	0.006	0.008	3763
13,191,620	0.620	---	---	---	04/08/2010	09/09/2002	4977	YALCO - CONSTANTINOU SA (CB)	0.075	-1.32	⬇ 0.076	04/03/2016	0.075	0.075	0.075	0.075	0.075	---	---	2014	37	1	2.78	989.37	0.072	0.143	3722

Under Deletion																											
1,130,180	0.440	---	---	---	20/06/2003	02/07/2014	5092	COMPUCON SA (CR)	0.016	-15.79	⬇ 0.019	04/03/2016	0.016	0.016	0.016	0.016	0.016	---	---	2014	45	1	0.72	18.08	0.016	0.019	9537
9,567,289	0.300	---	---	---	01/07/2004	19/11/2007	5062	MARAC ELECTRONICS (CR)	0.298	---	↘ 0.298	04/03/2016	---	---	---	---	---	---	---	2014	---	---	---	2,851.05	0.298	0.298	9578
766,000	1.00	---	---	---	01/07/2004	11/12/2012	4937	TRIA ALFA SA (CR)	2.59	---	↘ 2.59	04/03/2016	---	---	---	---	---	---	---	2014	---	---	---	2,317.14	1.80	2.59	3763
245,000	1.00	---	---	---	19/07/2010	11/12/2012	4938	TRIA ALFA SA (PR)	1.36	---	↘ 1.36	04/03/2016	---	---	---	---	---	---	---	2014	---	---	---	2,317.14	1.36	1.36	3763
4,737,503	0.320	---	---	---	22/06/2005	22/09/2015	5091	VARANGIS AVEPE S.A. (CR)	0.300	---	↘ 0.300	04/03/2016	---	---	---	---	---	---	---	2014	---	---	---	1,421.25	0.300	0.300	3726

Suspension Status																											
5,000,000	0.400	---	---	---	03/06/2009	01/09/2014	5087	ALCO HELLAS SA (CR)	0.180	---	↘ 0.180	31/03/2015	---	---	---	---	---	---	---	---	---	---	---	900.00	0.180	0.180	1753
5,025,000	0.300	---	---	---	05/07/2005	14/03/2002	5023	ALSINCO S.A (CR)	0.043	---	↘ 0.043	29/11/2013	---	---	---	---	---	---	---	---	---	---	---	216.08	0.043	0.043	3763
215,246,452	0.300	---	---	---	25/06/2001	24/09/2001	4446	ALTEC SA (CR)	0.012	---	↘ 0.012	30/11/2015	---	---	---	---	---	---	---	---	---	---	---	2,582.96	0.012	0.012	9533
21,382,067	0.300	---	---	---	02/10/2006	15/02/2006	4628	ATERMON (CR)	0.120	---	↘ 0.120	31/03/2010	---	---	---	---	---	---	---	---	---	---	---	2,565.85	0.120	0.120	5555
81,644,555	0.300	---	---	---	01/07/2008	02/09/2002	5098	ATTI - KAT SA (CR)	0.012	---	↘ 0.012	29/05/2015	---	---	---	---	---	---	---	---	---	---	---	979.73	0.012	0.012	2357
33,930,000	0.300	---	---	---	03/07/2006	30/05/2001	4865	BABIS VOVOS SA (CR)	0.304	---	↘ 0.304	30/03/2012	---	---	---	---	---	---	---	---	---	---	---	10,314.72	0.304	0.304	8633
20,121,710	1.21	---	---	---	27/07/1992	12/03/2003	5002	BALKAN R.E. (CR)	0.190	---	↘ 0.190	29/08/2013	---	---	---	---	---	---	---	---	---	---	---	3,823.12	0.190	0.190	8633
21,920,570	0.300	---	---	---	03/07/2007	13/12/1999	4702	CARDASSILARIS SA (CR)	0.140	---	↘ 0.140	30/11/2010	---	---	---	---	---	---	---	---	---	---	---	3,068.88	0.140	0.140	3577
30,159,583	0.470	---	---	---	26/06/2008	29/12/2010	5047	DIAS A/C (CR)	0.050	---	↘ 0.050	26/03/2014	---	---	---	---	---	---	---	---	---	---	---	1,507.98	0.050	0.050	3573
7,847,611	1.20	---	---	---	01/08/2007	28/09/2011	4939	EDRASIS - C. PSALLIDAS SA (CR)	0.150	---	↘ 0.150	29/11/2012	---	---	---	---	---	---	---	---	---	---	---	1,177.14	0.150	0.150	2357
5,750,000	0.300	---	---	---	12/12/2008	12/12/2011	4929	ELECTRONIKI ATHINON SA (CR)	0.480	---	↘ 0.480	28/09/2012	---	---	---	---	---	---	---	---	---	---	---	2,760.00	0.480	0.480	5375
24,605,397	0.400	---	---	---	29/06/1995	27/05/2002	4651	EMPORIKOS DESMOS SA (CR)	0.080	---	↘ 0.080	31/05/2010	---	---	---	---	---	---	---	---	---	---	---	2,134.04	0.080	0.080	3722
1,182,903	0.400	---	---	---	01/07/1996	27/05/2002	4652	EMPORIKOS DESMOS SA (PR)	0.140	---	↘ 0.140	31/05/2010	---	---	---	---	---	---	---	---	---	---	---	2,134.04	0.140	0.140	3722
36,748,909	0.730	---	---	---	15/12/2005	13/12/2006	5109	HEL. SUGAR INDUSTRY SA (CB)	0.075	---	↘ 0.075	29/02/2016	---	---	---	---	---	---	---	---	---	---	---	2,756.17	0.064	0.150	3577
13,692,227	1.47	---	---	---	07/07/2006	08/10/1999	5049	HELLENIC FABRICS SA (CR)	0.117	---	↘ 0.117	31/03/2014	---	---	---	---	---	---	---	---	---	---	---	1,601.99	0.117	0.117	3763
30,390,000	0.310	---	---	---	18/08/2008	29/12/2006	5099	HELLENIC FISHFARMING SA (CR)	0.070	---	↘ 0.070	02/06/2015	---	---	---	---	---	---	---	---	---	---	---	2,127.30	0.070	0.070	3573
24,619,524	0.500	---	---	---	10/10/1986	30/12/2002	4914	KERAMIA-ALLATINI (CR)	0.088	---	↘ 0.088	30/08/2012	---	---	---	---	---	---	---	---	---	---	---	2,166.52	0.088	0.088	8633
17,544,600	0.600	---	---	---	03/07/2000	01/08/2000	4868	KOYMBAS SYNERGY GROUP (CR)	0.132	---	↘ 0.132	30/03/2012	---	---	---	---	---	---	---	---	---	---	---	2,315.89	0.132	0.132	8775
66,937,526	0.700	---	---	---	13/08/2010	21/05/2003	5003	MICHANIKI SA (CR)	0.100	---	↘ 0.100	29/08/2013	---	---	---	---	---	---	---	---	---	---	---	9,186.78	0.100	0.100	2357
25,968,987	0.700	---	---	---	13/08/2010	21/05/2003	5004	MICHANIKI SA (PR)	0.096	---	↘ 0.096	29/08/2013	---	---	---	---	---	---	---	---	---	---	---	9,186.78	0.096	0.096	2357
13,555,100	1.00	---	---	---	08/07/2005	---	4576	MICROLAND COMPUTERS SA (CR)	0.640	---	↘ 0.640	14/07/2009	---	---	---	---	---	---	---	---	---	---	---	8,675.26	0.640	0.640	5379

Number of Outstanding Securities	Nominal Value	Dividends [1]			Date of Last Coupon Dividend [2]		Right	Note	Shares	Closing price	% change	Previous closing price/date	Open price	Price min	Price max	Last price	Avg price	Last Bid [7]	Last Ask [7]	P/E after	Year	Volume	Trades	Transactions Value[8]	Company Mkt Value (thou. €)	Year low	Year high	Sector[ 4]
255,459,600	0.300	---	---	---	26/06/2000	03/12/2010	5101	NEL SA (CR)		0.070	---	0.070	31/08/2015	---	---	---	---	---	---	---	---	---	---	---	17,882.17	0.070	0.070	5759
23,463,874	0.800	---	---	---	23/05/2003	21/12/1999	4918	NEORION SA (CR)		0.125	---	0.125	30/08/2012	---	---	---	---	---	---	---	---	---	---	---	2,932.98	0.125	0.125	2753
20,210,127	1.53	---	---	---	27/06/1997	20/03/2000	5061	PARNASSOS ENTERP. (CR)		0.070	---	0.070	30/05/2014	---	---	---	---	---	---	---	---	---	---	---	1,414.71	0.070	0.070	8775
25,583,146	0.300	---	---	---	25/06/2001	03/12/2008	4723	PETZETAKIS SA (CR)		0.260	---	0.260	28/01/2011	---	---	---	---	---	---	---	---	---	---	---	6,651.62	0.260	0.260	1357
9,550,386	0.500	---	---	---	01/07/1997	12/06/2008	4626	PRAXITELIO SA (CR)		0.390	---	0.390	31/03/2010	---	---	---	---	---	---	---	---	---	---	---	4,430.09	0.390	0.390	4533
1,306,368	0.500	---	---	---	01/07/1997	12/06/2008	4627	PRAXITELIO SA (PR)		0.540	---	0.540	31/03/2010	---	---	---	---	---	---	---	---	---	---	---	4,430.09	0.540	0.540	4533
25,667,143	0.320	---	---	---	03/07/2000	18/12/2007	4548	SAOS (CR)		1.56	---	0.780	# 31/03/2009	---	---	---	---	---	---	---	---	---	---	---	40,040.74	1.56	1.56	2773
26,408,040	0.300	---	---	---	01/07/1997	26/05/1999	4464	SHEET STEEL SA (CR)		0.120	---	0.120	28/11/2008	---	---	---	---	---	---	---	---	---	---	---	3,168.96	0.120	0.120	1757
60,221,300	0.400	---	---	---	01/07/2002	01/11/2010	5022	SHELMAN SA (CR)		0.080	---	0.080	29/11/2013	---	---	---	---	---	---	---	---	---	---	---	4,817.70	0.080	0.080	2353
29,060,950	0.340	---	---	---	20/08/2007	24/10/2001	5088	SPIDER METAL INDUSTRY SA (CR)		0.008	---	0.008	31/03/2015	---	---	---	---	---	---	---	---	---	---	---	232.49	0.008	0.008	2757
144,688,060	0.600	---	---	---	21/04/2008	10/03/2010	4982	T BANK (CR)		0.048	---	0.052	# 29/11/2011	---	---	---	---	---	---	---	---	---	---	---	6,945.03	0.048	0.048	8355
6,523,780	0.530	---	---	---	01/07/2002	06/03/2001	4971	TECHNICAL PUBLICATIONS SA (CR)		0.006	---	0.006	31/05/2013	---	---	---	---	---	---	---	---	---	---	---	39.14	0.006	0.006	5557
13,920,000	0.320	---	---	---	19/11/2001	01/08/2000	4726	TEXAPRET SA (CR)		0.080	---	0.080	28/02/2011	---	---	---	---	---	---	---	---	---	---	---	1,113.60	0.080	0.080	3763
510,840	1.00	---	---	---	15/07/2008	21/11/2013	5036	TROPEA HOLDING (CR)		2.00	---	0.020	# 30/03/2012	---	---	---	---	---	---	---	---	---	---	---	1,021.68	2.00	2.00	3722
284,465,964	3.70	---	---	---	20/06/2008	15/06/2009	4913	TT HELLENIC POSTBANK (CR)		0.168	---	0.239	# 29/08/2012	---	---	---	---	---	---	---	---	---	---	---	47,790.28	0.168	0.168	8355
89,616,200	0.300	---	---	---	21/08/2000	28/06/2007	4616	UNITED TEXTILES (CR)		0.050	---	0.050	24/02/2010	---	---	---	---	---	---	---	---	---	---	---	4,480.81	0.050	0.050	3763
71,683,906	0.400	---	---	---	15/06/2005	05/02/2008	4953	XATZIOANNOU (CR)		0.026	---	0.026	28/03/2013	---	---	---	---	---	---	---	---	---	---	---	1,863.78	0.026	0.026	3763



## Shares' Notes

Code	Note text
( )	- Adjusted dividends.
*	- Last adjusted closing price.
[1]	- Net dividends.
[2]	- The "Date of Last Coupon" for New listings refers to the date company's stocks started to trade in Athex
[3]	- The Company Market Value is referred to the number of outstanding shares
[4]	- Sectors codification can be found in Appendix A
[5]	- The Market Value refers to the total number of shares listed (including their several classes) in the exchange by the company.
[6]	- P/E greater than 100
[7]	- Last view of the Order Book before the end of the trading session
[8]	- All Blocks Methods' Transactions Value are included.
4446	- Transfer to the "Under Supervision" Category as of 20/10/2008.
4464	- Suspension of trading as of 1/12/2008.
4548	- Suspension of trading as of 1/4/2009.
4576	- Suspension of trading as of 14/7/2009.
4616	- Suspension of trading as of 25/2/2010.
4626	- Suspension of trading as of 1/4/2010.
4627	- Suspension of trading as of 1/4/2010.
4628	- Suspension of trading as of 1/4/2010.
4651	- Suspension of trading as of 1/6/2010.
4652	- Suspension of trading as of 1/6/2010.
4690	- Transfer to Surveillance category as of 4/4/2006.
4702	- Suspension of trading as of 1/12/2010.
4723	- Suspension of trading as of 31/1/2011.
4726	- Suspension of trading as of 1/3/2011.
4750	- Transfer to the "Under Surveillance Category" from 8/4/2011.
4795	- The final gross (pre-tax) dividend is € 0.30 per share and subject to withholding tax on the full dividend amount, i.e. 0.45 per share, for those shareholders liable to withholding tax, in accordance with the applicable tax law provisions.
4814	- Transfer to the Low Dispersion Category as of 30/5/2011.
4815	- Transfer to the Low Dispersion Category as of 30/5/2011.
4816	- Transfer to the Low Dispersion Category as of 30/5/2011.
4817	- Transfer to the Low Dispersion Category as of 30/5/2011.
4820	- Transfer to the Low Dispersion category as of 18/4/2008.
4822	- Transfer to the Low Dispersion category as of 30/5/2011.
4823	- Transfer to the Low Dispersion category as of 4/4/2006.
4827	- Transfer to the Low Dispersion category as of 5/5/2010.
4844	- Transfer to the Surveillance category from 8/4/2011.
4857	- The 793,906,274 new (CR) shares, resulting from the recent share capital increase through a rights issue, are not yet admitted to trading on the ATHEX.
4865	- Suspension of trading as of 2/4/2012.
4868	- Suspension of trading as of 2/4/2012.
4879	- Transfer to the Surveillance Category as of 10/4/2012.
4881	- Transfer to the Surveillance Category as of 10/4/2012.
4882	- Transfer to the Surveillance Category as of 10/4/2012.
4886	- Transfer to the Surveillance Category as of 10/4/2012.
4887	- Transfer to the Surveillance Category as of 10/4/2012.
4888	- Transfer to the Surveillance Category as of 10/4/2012.
4912	- Transfer to the Surveillance Category as of 31/7/2012.
4913	- Suspension of trading as of 30/8/2012.
4914	- Suspension of trading as of 31/8/2012.
4918	- Suspension of trading as of 31/8/2012.
4929	- Suspension of trading as of 1/10/2012.
4937	- Transfer to the UNDER DELETION category as of 30/11/2012.
4938	- Transfer to the UNDER DELETION category as of 30/11/2012.

## Shares' Notes

Code	Note text
4939	- Suspension of trading as of 30/11/2012.
4953	- Suspension of trading as of 2/4/2013.
4955	- Transfer to the Surveillance Category as from 5/4/2013.
4956	- Transfer to the Surveillance Category as from 5/4/2013.
4957	- Transfer to the Surveillance Category as from 5/4/2013.
4958	- Transfer to the Surveillance Category as from 5/4/2013.
4959	- Transfer to the Surveillance Category as from 5/4/2013.
4971	- Suspension of trading as of 3/6/2013.
4977	- Transfer to the "Under Surveillance Category" from 11/6/2013.
4978	- Transfer to the Under Supervision Category as of 11/6/2013.
4982	- Suspension of trading as of 1/12/2011.
4983	- Transfer to the Surveillance Category as of 5/4/2013.
4985	- Transfer to the "Under Surveillance Category" from 8/4/2011.
4997	- Transfer to the Under Supervision Category as of 21/12/2009. - The 6,870,053 new (CB) shares, resulting from the recent share capital increase through a rights issue, are not yet admitted to trading on the ATHEX.
5002	- Suspension of trading as of 30/08/2013.
5003	- Suspension of trading as of 30/08/2013.
5004	- Suspension of trading as of 30/08/2013.
5007	- Transfer to the Surveillance category, as of 11/10/2013.
5022	- Suspension of trading as of 2/12/2013.
5023	- Suspension of trading as of 2/12/2013.
5031	- The 612,300 new (CR) shares, resulting from the recent share capital increase through a rights issue, are not yet admitted to trading on the ATHEX.
5033	- Transfer to the Surveillance Category as of 25/11/2011. The 97,144,575 new (CR) shares, resulting from the recent share capital increase through a rights issue, are not yet admitted to trading on the ATHEX.
5036	- The company's share is under suspension of trading as of 2/4/2012. During suspension, the company proceeded and concluded a share reverse split, according to which - after the conclusion of the corporate action - the total number of the company's shares, as well as, the last closing price of 30/03/2012 were adjusted.
5046	- Transfer to the Low Dispersion category as of 8/4/2011.
5047	- Suspension of trading as of 27/3/2014.
5049	- Under suspension of trading as of 1/4/2014.
5054	- Transfer to the Surveillance Category as of 10/4/2014.
5055	- Transfer to the Surveillance Category as of 10/4/2014.
5057	- Transfer to the Surveillance Category as of 29/12/2011.
5058	- Transfer to the Surveillance Category as of 29/12/2011.
5061	- Suspension of trading as of 2/6/2014.
5062	- Transfer to the UNDER DELETION category as of 4/6/2014.
5080	- Suspension of trading as of 6/9/2011.
5087	- Suspension of trading as of 1/4/2015.
5088	- Suspension of trading as of 1/4/2015.
5089	- Transfer to the Surveillance Category as of 8/4/2015.
5091	- Transfer to the UNDER DELETION category as of 8/4/2015.
5092	- Transfer to the UNDER DELETION category as of 8/4/2015.
5093	- Transfer to the Surveillance Category as of 8/4/2015.
5094	- Transfer to the Surveillance Category as of 8/4/2015.
5095	- Transfer to the Surveillance Category as from 9/4/2015.
5097	- Transfer to the Surveillance Category as of 10/4/2012.
5098	- Suspension of trading as of 2/6/2015.
5099	- Suspension of trading as of 3/6/2015.
5100	- Transfer to the Low Dispersion Category as of 24/6/2015.
5101	- Suspension of trading as of 1/9/2015.
5103	- The 2,495,784,996 new (CR) shares, resulting from the recent share capital increase through a rights issue, are not yet admitted to trading on the ATHEX.
5104	- Transfer to the "Low Dispersion" Category as of 31/10/2014. Change of the company name from "MIG REAL ESTATE R.E.I.C." to "NBG PANGAEA R.E.I.C." as of 30/12/2015.
5109	- Suspension of trading as of 01/03/2016.

## Securities Blocks Details

Securities	Block Volume	Price	Block Trade Value	Time of approval	Note
OTE (CR)	310	7.80	2,418.00	11:21:10	18
JUMBO SA (CR)	100,000	11.00	1,100,000.00	13:50:20	20
PIRAEUS BANK (CR)	2,650,000	0.160	424,000.00	14:40:32	20
JUMBO SA (CR)	100,000	10.95	1,095,000.00	17:11:50	20

## Blocks Notes

9 - Method 6-1 / Special Fees

10 - Method 6-1 / Special Fees, SDS

14 - Method 6-3 / Settlement, Incomplete Buy and Sell

18 - Method 6-2 / SPOT 1

19 - Method 6-2 / SPOT 2

20 - Method 6-1 and Method 6-1 Same Day Settlement

21 - Other Pre-agreed

Shares Rights Details

Occured date	Exercise from	Exercise until	Trading until	Rights	Price min	Price max	Closing price	Last Bid	Last Ask	Volume	Trades	Transactions Value
-----------------	------------------	-------------------	------------------	--------	--------------	--------------	------------------	----------	----------	--------	--------	-----------------------

No Rights Transactions.

Shares Forced Sales

Securities	Transaction s Volume	Number of Trades	Transactions Value	Note
No Forced Transactions.				

Forced Sales Notes

- 1 - Normal Forced Sale.
- 2 - Forced Sales of Fixed Registered Shares.
- 3 - Forced Sales of Remaining Stock Fractions.

**Forced Sales Registered Shares**

Securities	Start Date	End Date	Initial Volume	Remaining Volume	Date	Avg price (day)	Avg price (period)	Number of Trades	Transactions Volume	Transactions Value
------------	------------	----------	----------------	------------------	------	-----------------	--------------------	------------------	---------------------	--------------------

No Fixed Registered Shares Forced Sales.

**Forced Sales Notes**

According to Decision 1/380/04.05.2008 of the Hellenic Republic Capital Market Commission, the certificated registered shares that have not been deposited to the issuer for dematerialisation, will be auctioned in the Athens Exchange by the supervising issuer. Forced sales procedure is held according to Article 99A of the Athens Exchange Rulebook. The average price of the period is calculated by dividing the Total transactions value by the Total volume and includes all the transactions made until the current date.

## Exchange Traded Funds (ETFs) Characteristics

	Transactions Date (T)	Creation / Redemption	Units (T-1)	New Units (T-1)	Redemptio n Units (T-	Units (T) [1]	Fund Assets [2]	Net Unit Price	Dividen d per	Dividend Date
NBGAM ETF ΓΔ Χ.Α.	07/03/2016	25,000	294,878	---	---	294,878	1,903,616.00	6.4556	---	27/10/2011
ALPHA ETF FTSE Athex Large Cap	07/03/2016	50,000	6,030,903	---	---	6,030,903	9,098,718.00	1.5087	0.06	03/08/2015
NBGAM ETF GREECE & TURKEY 30	07/03/2016	25,000	388,550	---	---	388,550	2,171,814.00	5.5895	---	27/10/2011

## ETFs Notes

[1] - Units (T) = Units (T-1) + New Units (T-1) - Redemption Units (T-1)

[2] - The Creation / Redemption Units of T-1 are included.

Corporate Bonds

Num Listed Bonds	Nominal price	Issue price	Today's Rate	Exp. Date	Duration (years)	Note	Coupon attached		Trading	Corporate Bonds	Price min	Price max	Closing price	Previous closing price/date		Volume	Transactions Value	Last order		Date	ear min	Year max
							Common	Preferred										Price	Buy / Sell			
1,794,284	13.76	9.77	0.00	21/10/2025	18	---	---	---	1	NIREUS S.A. (Convertible to CR shares)	---	---	---	12.0000	29/01/2014	---	---	11.0000	B	17/11/2014	12.0000	12.0000
212,237,880	1.00	1.00	6.30	29/07/2020	7	---	11	---	1	MARFIN INVESTMENT GROUP S.A. SERIES B (BOND)	---	---	---	0.8500	23/08/2013	---	---	1.0000	B	28/11/2014	0.8500	0.8500
163,076,727	1.00	1.00	7.00	29/07/2019	6	---	11	---	1	MARFIN INVESTMENT GROUP S.A. SERIES A (BOND)	---	---	---	1.0000	23/08/2013	---	---	1.0000	B	28/11/2014	1.0000	1.0000

Corporate Bonds Notes

Transactions Volume = (Pieces) \* (Nominal Price). Transactions Value = (Pieces) \* (Nominal Price) \* (price %) + (Accrued interest).  
The price of a Bond is stated as a percentage (%) of Bond's Nominal Price.  
Nominal Price in Euros (€), except if it is noted differently.



Government Bonds

Number Listed Bonds	Nominal price	Today's Rate	Accrued Interest Calc	Exp. Date [1]	Duration (years)	Note	Coupons Date	Curr. coupon value	Trading Unit	Government Bonds	Price min	Price max	Closing price	Previous closing price/date	Volume	Transactions Value	Price	Last order Buy / Sell	Date
1,792,455,803	1.00	4.30	Actual/Actual	24/02/2023	11	---	24/02	4.30	1	GGB-FXD-240223-11Y-2.000-1.00	---	---	---	10.0000 22/06/2015	---	---	---	---	---
1,771,485,249	1.00	4.30	Actual/Actual	24/02/2024	12	---	24/02	4.30	1	GGB-FXD-240224-12Y-2.000-1.00	---	---	---	10.0000 22/06/2015	---	---	---	---	---
1,744,316,583	1.00	4.30	Actual/Actual	24/02/2025	13	---	24/02	4.30	1	GGB-FXD-240225-13Y-2.000-1.00	---	---	---	10.0000 22/06/2015	---	---	---	---	---
1,498,761,836	1.00	4.30	Actual/Actual	24/02/2026	14	---	24/02	4.30	1	GGB-FXD-240226-14Y-2.000-1.00	---	---	---	10.0000 22/06/2015	---	---	---	---	---
1,469,952,920	1.00	4.30	Actual/Actual	24/02/2027	15	---	24/02	4.30	1	GGB-FXD-240227-15Y-2.000-1.00	---	---	---	10.0000 22/06/2015	---	---	---	---	---
1,525,434,082	1.00	4.30	Actual/Actual	24/02/2028	16	---	24/02	4.30	1	GGB-FXD-240228-16Y-2.000-1.00	---	---	---	10.0000 22/06/2015	---	---	---	---	---
1,503,860,546	1.00	4.30	Actual/Actual	24/02/2029	17	---	24/02	4.30	1	GGB-FXD-240229-17Y-2.000-1.00	---	---	---	10.0000 22/06/2015	---	---	---	---	---
1,435,418,132	1.00	4.30	Actual/Actual	24/02/2030	18	---	24/02	4.30	1	GGB-FXD-240230-18Y-2.000-1.00	---	---	---	10.0000 22/06/2015	---	---	---	---	---
1,368,045,727	1.00	4.30	Actual/Actual	24/02/2031	19	---	24/02	4.30	1	GGB-FXD-240231-19Y-2.000-1.00	---	---	---	10.0000 22/06/2015	---	---	---	---	---
1,373,758,194	1.00	4.30	Actual/Actual	24/02/2032	20	---	24/02	4.30	1	GGB-FXD-240232-20Y-2.000-1.00	---	---	---	10.0000 22/06/2015	---	---	---	---	---
1,452,639,893	1.00	4.30	Actual/Actual	24/02/2033	21	---	24/02	4.30	1	GGB-FXD-240233-21Y-2.000-1.00	---	---	---	10.0000 22/06/2015	---	---	---	---	---
1,410,344,954	1.00	4.30	Actual/Actual	24/02/2034	22	---	24/02	4.30	1	GGB-FXD-240234-22Y-2.000-1.00	---	---	---	10.0000 22/06/2015	---	---	---	---	---
1,444,202,190	1.00	4.30	Actual/Actual	24/02/2035	23	---	24/02	4.30	1	GGB-FXD-240235-23Y-2.000-1.00	---	---	---	10.0000 22/06/2015	---	---	---	---	---
1,505,138,031	1.00	4.30	Actual/Actual	24/02/2036	24	---	24/02	4.30	1	GGB-FXD-240236-24Y-2.000-1.00	---	---	---	10.0000 22/06/2015	---	---	---	---	---
1,396,254,095	1.00	4.30	Actual/Actual	24/02/2037	25	---	24/02	4.30	1	GGB-FXD-240237-25Y-2.000-1.00	---	---	---	10.0000 22/06/2015	---	---	---	---	---
1,382,167,704	1.00	4.30	Actual/Actual	24/02/2038	26	---	24/02	4.30	1	GGB-FXD-240238-26Y-2.000-1.00	---	---	---	10.0000 22/06/2015	---	---	---	---	---
1,337,331,257	1.00	4.30	Actual/Actual	24/02/2039	27	---	24/02	4.30	1	GGB-FXD-240239-27Y-2.000-1.00	---	---	---	10.0000 22/06/2015	---	---	---	---	---
1,371,908,706	1.00	4.30	Actual/Actual	24/02/2040	28	---	24/02	4.30	1	GGB-FXD-240240-28Y-2.000-1.00	---	---	---	10.0000 22/06/2015	---	---	---	---	---
1,360,659,778	1.00	4.30	Actual/Actual	24/02/2041	29	---	24/02	4.30	1	GGB-FXD-240241-29Y-2.000-1.00	---	---	---	10.0000 22/06/2015	---	---	---	---	---
1,432,747,403	1.00	4.30	Actual/Actual	24/02/2042	30	---	24/02	4.30	1	GGB-FXD-240242-30Y-2.000-1.00	---	---	---	10.0000 22/06/2015	---	---	---	---	---
742,153	1,000.00	0.93	FLR Actual/360	10/08/2019	5	---	10/02 - 10/08	---	1	GGB-FLT-100819-05Y-0.934-1,000	---	---	---	---	---	---	---	---	---
4,030,827	1,000.00	4.75	Actual/Actual	17/04/2019	5	---	17/04	4.75	1	GGB-FXD-170419-05Y-4.750-1,000	---	---	---	---	---	---	---	---	---
2,089,066	1,000.00	3.38	Actual/Actual	17/07/2017	3	---	17/07	3.38	1	GGB-FXD-170717-03Y-3.375-1,000	---	---	---	---	---	---	---	---	---

Government Bonds Notes

Transactions Volume = (Pieces) \* (Nominal Price). Transactions Value = (Pieces) \* (Nominal Price) \* (price %) + (Accrued interest).  
The Value of current coupon for the issues with NV 0.01 euro refers to NV 100 euros  
FLR: Floating Interest Rate.  
[1] - The Expiration Date of the interest bearing period and the Date for coupon payment.

Bonds in Circulation	Currency / Min nominal traded Value	Coupons Payment Date	Current Coupon Value	Note	Coupon Attached	Trading Unit	Issue Date	Duration (years)	Today's Interest	A.I.C in days	Bonds	Last price of previous days	Last Outcry in Cash (euro) Price	Buy / Sell	Trades in Pieces	Life min	Life Max
Bonds of International Organizations																	
1,000,000	EUR / 1000	21/07	---	---	10	1	21/07/2006	10	5.0 FLR	360	EUROPEAN INVESTMENT BANK BOND	97.50	16/04/2007	---	---	---	---
Corporate Bonds in Foreign Currency and Euro																	
103,746	GBP / 10	01/12	0.25	---	57	1	01/12/1930	98	2.5	360	National Mortgage Bank	2.27	05/02/1996	2.27	S	05/02/1996	2.27
0	GBP / 10	01/12	0.25	---	59	1	01/12/1928	100	2.5	360	National Mortgage Bank	---	---	---	---	---	---

Government Bonds Notes

A.I.C: Accrued Interest Calculation base.  
FLR: Floating Interest Rate.  
The minimum tradeable Nominal Value for all Demeterialised Government Titles is 100 Euros.

Athex & ATHEXClear Members List

Member Name			Stock Market			Derivatives Market		ATHEXClear Member	
Address	Phone	Fax	Market Member	Remote Member	Market Maker	Proprietary	Market Maker	General Clearing	Direct Clearing
A. SARRIS SECURITIES S.A.			a						
6, DRAGATSANIOU ATHINA	+30 2103367700	210-3312324							
ALPHA FINANCE INVESTMENT SERVICES S.A.			a		a	a	a		a
5, MERLIN ATHINA	+30 2103677400	210-33311193							
ALPHA BANK A.E.								a	
40, STADIOU STR ATHINA	(210)-3265546 (210)-3260000	(210)-3265811 (210)-3264116							
ARGUS STOCKBROKERS LTD			a	a		a			
25 , AVENUE DEMOSTHENI SEVERI NICOSIA	+357 22717000	0035722717070							
ATLANTIC SECURITIES LIMITED			a	a					
37, PRODROMOU NICOSIA	+357 22445400	00357 22661914							
ATLAS SECURITIES S.A			a			a			
, MICHALAKOPOULOU 125 & VERVAINON 14-16 ATHINA	+30 2103363300	210-3238925							
ATTICA BANK S.A.								a	
54, AKADIMIAS STR. ATHINA	(210)-3390757	(210)-3646090							
23, OMIROU STR. ATHINA	(210)-3669000	(210)-3669410							
AXIA VENTURES GROUP LTD			a	a					
, KRANIDIOTI 10, OFFICE 102 NICOSIA	+357 22742000	357 22742001							
AXON SECURITIES S.A.			a			a			
48, STADIOU ATHINA	+30 2103363800	210-3243903							
BANK OF AMERICA MERRILL LYNCH			a	a					
2 , KING EDWARD STREET LONDON	+44 20276281000								
BETA SECURITIES S.A.			a		a	a	a		a
29 , ALEXANDRAS AVEN. & VRAILA ATHINA	+30 2106478900	210-6410139							
BNP PARIBAS SECURITIES SERVICES S.A.								a	
, VASILISSIS SOFIAS 94 & KERASOUNTOS 1 ATHINA	+30 2107468500	210-7468579-581							
CAPITAL SECURITIES S.A.			a			a			
58, MITROPOLEOS ATHINA	+30 2103369700	+30 210 3369820							
CFS SECURITIES-INVESTMENT SERVICES S.A.			a						
6, DRAGATSANIOU ATHINA	+30 2103360800	+30 210-3360980							
CITIGROUP GLOBAL MARKET LTD			a	a					
1, CITIGROUP CENTER , CANADA SQ., CANARY WHARF LONDON	+44 02079864000								
CREDIT SUISSE SECURITIES (EUROPE) LIMITED			a	a					
, ONE CABOT SQUARE LONDON	+44 2078888888								
CYCLOS SECURITIES S.A.			a			a			a
39, PANEPISTIMIOU ATHINA	+30 2103364300	+30 210-3239122							
D.A. TSEKOURAS SEC. S.A.			a						
33, STADIOU ATHINA	+30 2103245100	210-3211997							
DELTASTOCK AD									a
115, MEGAPARK OFFICE BUILDING, OFFICE AREA E, G TSARIGRADSKOJ 39 P28115051	+35928115049								
DEUTSCHE BANK S.A.			a	a		a			
1 , GREAT WINCHESTER STREET LONDON	+44 20 754 54209	00441133361437							
DYNAMIC SECURITIES S.A.			a			a			a
8, OMIROU ATHINA	+30 2103677700	210-3677777							
EL. PETROPOULAKIS SECURITIES S.A.			a			a			
9, ARISTEIDOU ATHINA	+30 2103213928	+30 210-3216810							
ESTINVEST S.A.									a
9, TH REPUBLICII STREET FOCSANI	+40 237238900	+40 237237471							
EUROBANK ERGASIAS S.A.								a	
8, OTHONOS STR. ATHINA	(210)-3337969 (210)-3337000	(210)-3245916 (210)-3233866							
EUROBANK SECURITIES INVESTMENT FIRM S.A			a		a	a	a		a
, FILELLINON 10 & XENOFONTOS 13 ATHINA	+30 2103720000	210-3720001							
EUROCORP SECURITIES S.A.			a			a			a
14, SQ.FILIKIS ETAIRIAS ATHINA	+30 2107263500	210-7263666							
EUROTRUST BROKERAGE S.A.			a						
113, SEVASTOUPOLEOS ATHINA	+30 2103363100	+30 210-3238334							
EUROXX SECURITIES S.A.			a		a	a	a		a
7, PALAIOLOGOU CHALANDRI	(210)-6879400	(210)-6879401							
G.A. PERVANAS SECURITIES-INVESTMENT SERVICES CO S.A.			a						
7-9, SOFOKLEOUS ATHINA	+30 2103727200	210-3210-291							
GLOBAL CAPITAL SECURITIES AND FINANCIAL SERVICES LTD			a	a					
, AVE. ARCHIEPISKOPOU MAKARIOU NICOSIA	+357 22710710	357 22339332							

Athex & ATHEXCclear Members List

Member Name			Stock Market			Derivatives Market		ATHEXCclear Member	
Address	Phone	Fax	Market Member	Remote Member	Market Maker	Proprietary	Market Maker	General Clearing	Direct Clearing
GUARDIAN TRUST SECURITIES S.A			a			a			
31, ERMOU ATHINA	+30 2103378700	210-3220498							
HELLENIC BANK (INVESTMENTS) LTD			a	a					
, AVE. KYRIAKOU MATSI 31 - PO BOX 24747 NICOSIA	+357 22500100	357 22500110							
HELLENICAMERICAN SEC. S.A.			a		a	a			a
27, ANDREA PAPANDREOU ATHINA	+30 2103311100	+30 210-3215968							
HSBC BANK PLC								a	
109-111, AVE. MESOGION ATHINA	+30 2106960000	210-6928000							
INDEX SECURITIES S.A.			a						
6, DRAGATSANIOU ATHINA	+30 2103213920	+30 210-3213216							
INTERFINBROK CORPORATION S.A.									a
1, STR.CALARASI NR. CONSTANTA	+40 241639071	0241-547829							
INVESTMENT BANK OF GREECE S.A.			a		a	a	a	a	
32 , EGIALIAS & PARADISOU MAROUSI	+30 2108173111	+30 210-6896325							
J. CHR. MAVRIKIS SECURITIES S.A.			a						
5, SOFOKLEOUS ATHINA	+30 2103216730	210-3217767							
KAPPA SECURITIES S.A.			a			a			
15, VALAORITOU ATHINA	+30 2103678600	+30 210-3641002							
KARAMANOF SECURITIES-INV. SERVICES S.A.			a			a			
2, SQ. AGION THEODORON ATHINA	+30 2103212947	+30 210-3217088							
LAIKI FINANCIAL SERVICES LTD				a					
26, AVE. VYRONOS NICOSIA	357 22367367	357 22718567							
LEON DEPOLAS SECURITIES S.A.			a		a	a			
1, CHRISTOU LADA ATHINA	+30 2103213276	+30 210-3211618							
MAGNA TRUST SECURITIES S.A			a						
5, GEORGE ATHINA	+30 2103800820	210-3220910							
MEGA EQUITY SECURITIES-FINANCIAL SERVICES LTD			a	a		a			
42-44, AVE. GRIVA DIGENI NICOSIA	+357 22711711	357 22711811							
MERIT SECURITIES S.A			a		a	a			a
3, GEORGIOU SOURI ATHINA	+30 2103671890	210-3671830							
MIDAS BROKERAGE S.A.			a		a				
5, SOFOKLEOUS ATHINA	+30 2141008800	+30 210-3253205							
N. CHRYSOCHOIDIS STOCK BROKERAGE I.S.S.A.			a			a			a
7-9, SOFOKLEOUS ATHINA	+30 2103213913	+30 210-3216115							
NATIONAL BANK OF GREECE S.A.			a			a		a	
68, AKADIMIAS STR. ATHINA	(210)-3328817	(210)-3328678							
86, AIOLOU STR. ATHINA	(210)-3341000	(210)-3228187							
NATIONAL SECURITIES S.A			a		a	a	a		
91, MICHALAKOPOULOU ATHINA	+30 2107720000	+30 210-7720002							
NUNTIUS SECURITIES S.A			a						
6, DRAGATSANIOU ATHINA	+30 2103350599	+30210-3254846							
ONE PLUS CAPITAL LIMITED			a	a		a			
, 75 PRODROMOU AVENUE, ONEWORLD PARKVIEW HOUSE, 3RD FLOOR, 22873760									
PANTELAKIS SECURITIES S.A.			a			a			
57, ETHNIKIS ANTISTASIS B CHALANDRI	+30 2106965000	210-6929550							
PEGASUS BROKERAGE FIRM S.A			a			a			
17 , VALAORITOU & AMERIKIS ATHINA	+30 2103670700	+30 210-3670760							
PIRAEUS BANK S.A.			a			a		a	
4, AMERIKIS STR. ATHINA	(210)-3335000	(210)-3335079							
4, AMERIKIS STR ATHINA	(210)-3335918	(210)-3254207							
PIRAEUS SECURITIES S.A.			a		a	a	a		a
5, KORAI ATHINA	+30 2103354100	210-3354170							
PRELIUM SECURITIES-INVESTMENT SERVICES S.A.			a			a			
1 , DAVAKI & KIFISIAS AVE. ATHINA	+30 2103677000	+30 210-6926403							
PROCHOICE SECURITIES LTD			a	a					
57, SPYROU KYPRIANOY NICOSIA	+357-24-661192	+357-24-662464							
SHARELINK SECURITIES-FINANCIAL SERVICES LTD			a	a		a			
6 , THEOTOKI MEGARO ELLINA NICOSIA	+357 22554200	+357 22750852							
SOCIETE GENERALE S.A.			a	a		a			
, 17 COURS VALMY 92987 PUTEAUX - LA DEFENSE PARIS	+33 157290504	+33142138697							
SOLIDUS SECURITIES S.A			a			a			a
64, LOUIZIS RIANCOUR ATHINA	+30 2106900600	210-6985421							

Athex & ATHEXClear Members List

Member Name			Stock Market			Derivatives Market		ATHEXClear Member	
Address	Phone	Fax	Market Member	Remote Member	Market Maker	Proprietary	Market Maker	General Clearing	Direct Clearing
SSIF BROKER SA									a
119 , CALEA MOTILOR NAPOCA	+40 364401709	0040364401710							
SSIF VIENNA INVESTMENT TRUST S.A.									a
, 4 SPLAIUL UNIRII, BUILDING B3 BUCHAREST	+40 212074880	004 021 207 48 98							
ST. EM. LAVRENTAKIS SECURITIES S.A.			a			a			
7-9, SOFOKLEOUS ATHINA	+30 2103213336	+30 210-3246572							
THE CYPRUS INVESTMENT & SECURITIES CORPORATION LTD			a	a					
154 , LIMASSOL AVENUE, STROVOLOS NICOSIA	+357 22121700	357 22338800							
UBS LIMITED			a	a					
1 , FINSBURY AVENUE LONDON	+44 2075687135								

## List of Stocks under Market Making operations

Securities	Stock Category
Market Maker	Start Market Making
<b>CYPRUS POPULAR BANK (CR)</b>	<b>Suspension Status</b>
PIRAEUS SECURITIES S.A.	02/02/2013
<b>VIOHALCO (CB)</b>	<b>Suspension Status</b>
ALPHA FINANCE INVESTMENT SERVICES S.A.	11/02/2013
EUROBANK SECURITIES INVESTMENT FIRM S.A	20/01/2013
MERIT SECURITIES S.A	13/12/2012
<b>ALPHA BANK (CR)</b>	<b>Main Market</b>
ALPHA FINANCE INVESTMENT SERVICES S.A.	29/02/2016
EUROBANK SECURITIES INVESTMENT FIRM S.A	24/10/2012
HELLENICAMERICAN SEC. S.A.	25/07/2014
INVESTMENT BANK OF GREECE S.A.	08/01/2013
LEON DEPOLAS SECURITIES S.A.	04/01/2016
MERIT SECURITIES S.A	03/09/2013
MIDAS BROKERAGE S.A.	11/01/2006
NATIONAL SECURITIES S.A	15/01/2013
PIRAEUS SECURITIES S.A.	28/05/2013
<b>ALUMIL (CR)</b>	<b>Main Market</b>
BETA SECURITIES S.A.	18/07/2013
<b>ATTICA BANK S.A. (CR)</b>	<b>Main Market</b>
BETA SECURITIES S.A.	02/06/2014
EUROBANK SECURITIES INVESTMENT FIRM S.A	25/07/2014
<b>BANK OF CYPRUS (CR)</b>	<b>Main Market</b>
EUROBANK SECURITIES INVESTMENT FIRM S.A	23/03/2015
NATIONAL SECURITIES S.A	22/06/2015
<b>BYTE COMPUTER SA (CR)</b>	<b>Main Market</b>
MERIT SECURITIES S.A	04/08/2013
<b>CC HBC AG (CR)</b>	<b>Main Market</b>
EUROBANK SECURITIES INVESTMENT FIRM S.A	23/10/2013
NATIONAL SECURITIES S.A	29/04/2013
PIRAEUS SECURITIES S.A.	04/05/2015
<b>ELLAKTOR (CR)</b>	<b>Main Market</b>
EUROBANK SECURITIES INVESTMENT FIRM S.A	01/06/2013
INVESTMENT BANK OF GREECE S.A.	02/01/2013
NATIONAL SECURITIES S.A	25/06/2013
<b>ELTON SA (CR)</b>	<b>Main Market</b>
BETA SECURITIES S.A.	03/09/2013
<b>EUROBANK ERGASIAS (CR)</b>	<b>Main Market</b>
ALPHA FINANCE INVESTMENT SERVICES S.A.	08/01/2013
EUROBANK SECURITIES INVESTMENT FIRM S.A	01/06/2013
HELLENICAMERICAN SEC. S.A.	25/07/2014
INVESTMENT BANK OF GREECE S.A.	08/01/2013
MIDAS BROKERAGE S.A.	07/01/2016
PIRAEUS SECURITIES S.A.	28/09/2013
<b>EUROCONSULTANTS S.A. (CR)</b>	<b>Main Market</b>
EUROBANK SECURITIES INVESTMENT FIRM S.A	22/07/2014
<b>FOLLI FOLLIE (CR)</b>	<b>Main Market</b>
NATIONAL SECURITIES S.A	17/02/2014
PIRAEUS SECURITIES S.A.	04/05/2015
<b>FOURLIS (CR)</b>	<b>Main Market</b>
HELLENICAMERICAN SEC. S.A.	14/09/2005
<b>FRIGOGLASS SA (CR)</b>	<b>Main Market</b>
EUROBANK SECURITIES INVESTMENT FIRM S.A	27/10/2014
<b>GEK TERNA (CR)</b>	<b>Main Market</b>
HELLENICAMERICAN SEC. S.A.	07/09/2015
INVESTMENT BANK OF GREECE S.A.	02/01/2013
<b>GR. SARANTIS SA (CR)</b>	<b>Main Market</b>
BETA SECURITIES S.A.	14/05/2013
<b>HELLENIC EXCHANGES-A.S.E. (CR)</b>	<b>Main Market</b>
EUROBANK SECURITIES INVESTMENT FIRM S.A	01/06/2013
HELLENICAMERICAN SEC. S.A.	01/09/2014
INVESTMENT BANK OF GREECE S.A.	02/01/2013
NATIONAL SECURITIES S.A	25/06/2013
PIRAEUS SECURITIES S.A.	04/05/2015
<b>HELLENIC PETROLEUM (CR)</b>	<b>Main Market</b>
HELLENICAMERICAN SEC. S.A.	14/09/2015
<b>INTRACOM HOLDINGS (CR)</b>	<b>Main Market</b>
HELLENICAMERICAN SEC. S.A.	07/09/2015

## List of Stocks under Market Making operations

Securities	Stock Category
Market Maker	Start Market Making
<b>INTRALOT (CR)</b>	<b>Main Market</b>
EUROBANK SECURITIES INVESTMENT FIRM S.A	01/06/2013
INVESTMENT BANK OF GREECE S.A.	02/01/2013
PIRAEUS SECURITIES S.A.	28/09/2013
<b>J &amp; P - AVAX SA (CR)</b>	<b>Main Market</b>
EUROBANK SECURITIES INVESTMENT FIRM S.A	14/12/2015
<b>KLOUKINAS - LAPPAS SA (CR)</b>	<b>Main Market</b>
BETA SECURITIES S.A.	22/09/2014
<b>LAMDA DEVELOPMENT SA (CR)</b>	<b>Main Market</b>
EUROBANK SECURITIES INVESTMENT FIRM S.A	08/12/2014
<b>MARFIN INVESTMENT GROUP (CR)</b>	<b>Main Market</b>
EUROBANK SECURITIES INVESTMENT FIRM S.A	23/03/2015
HELLENICAMERICAN SEC. S.A.	25/07/2014
PIRAEUS SECURITIES S.A.	02/02/2013
<b>MLS MULTIMEDIA SA (CR)</b>	<b>Main Market</b>
HELLENICAMERICAN SEC. S.A.	07/12/2015
<b>MOTOR OIL (CR)</b>	<b>Main Market</b>
EUROBANK SECURITIES INVESTMENT FIRM S.A	23/10/2012
HELLENICAMERICAN SEC. S.A.	01/09/2014
NATIONAL SECURITIES S.A	17/02/2014
PIRAEUS SECURITIES S.A.	04/05/2015
<b>MYTILINEOS HOLDINGS (CR)</b>	<b>Main Market</b>
HELLENICAMERICAN SEC. S.A.	25/07/2014
INVESTMENT BANK OF GREECE S.A.	02/01/2013
NATIONAL SECURITIES S.A	25/06/2013
PIRAEUS SECURITIES S.A.	04/05/2015
<b>NATIONAL BANK (CR)</b>	<b>Main Market</b>
ALPHA FINANCE INVESTMENT SERVICES S.A.	08/01/2013
EUROBANK SECURITIES INVESTMENT FIRM S.A	24/10/2012
HELLENICAMERICAN SEC. S.A.	25/07/2014
INVESTMENT BANK OF GREECE S.A.	08/01/2013
LEON DEPOLAS SECURITIES S.A.	20/04/2015
MERIT SECURITIES S.A	03/09/2013
MIDAS BROKERAGE S.A.	07/01/2016
NATIONAL SECURITIES S.A	28/02/2013
PIRAEUS SECURITIES S.A.	08/09/2013
<b>OPAP (CR)</b>	<b>Main Market</b>
ALPHA FINANCE INVESTMENT SERVICES S.A.	08/01/2013
EUROBANK SECURITIES INVESTMENT FIRM S.A	24/10/2012
HELLENICAMERICAN SEC. S.A.	25/07/2014
INVESTMENT BANK OF GREECE S.A.	08/01/2013
NATIONAL SECURITIES S.A	15/01/2013
PIRAEUS SECURITIES S.A.	04/05/2015
<b>OTE (CR)</b>	<b>Main Market</b>
ALPHA FINANCE INVESTMENT SERVICES S.A.	08/01/2013
EUROBANK SECURITIES INVESTMENT FIRM S.A	24/10/2012
HELLENICAMERICAN SEC. S.A.	25/07/2014
INVESTMENT BANK OF GREECE S.A.	08/01/2013
LEON DEPOLAS SECURITIES S.A.	20/04/2015
MIDAS BROKERAGE S.A.	01/10/2015
NATIONAL SECURITIES S.A	01/12/2012
PIRAEUS SECURITIES S.A.	08/09/2013
<b>PAPOUTSANIS (CR)</b>	<b>Main Market</b>
BETA SECURITIES S.A.	25/11/2013
<b>PETROPOULOS PETROS (CR)</b>	<b>Main Market</b>
BETA SECURITIES S.A.	28/05/2013
<b>PIRAEUS BANK (CR)</b>	<b>Main Market</b>
EUROBANK SECURITIES INVESTMENT FIRM S.A	23/10/2012
HELLENICAMERICAN SEC. S.A.	25/07/2014
INVESTMENT BANK OF GREECE S.A.	08/01/2013
MERIT SECURITIES S.A	16/09/2013
MIDAS BROKERAGE S.A.	11/01/2016
NATIONAL SECURITIES S.A	02/06/2013
PIRAEUS SECURITIES S.A.	16/02/2013
<b>PLAISIO COMPUTERS SA (CR)</b>	<b>Main Market</b>
BETA SECURITIES S.A.	05/05/2014
EUROBANK SECURITIES INVESTMENT FIRM S.A	02/03/2015

## List of Stocks under Market Making operations

Securities		Stock Category
Market Maker	Start Market Making	
PPC (CR)		Main Market
ALPHA FINANCE INVESTMENT SERVICES S.A.	08/01/2013	
EUROBANK SECURITIES INVESTMENT FIRM S.A	23/10/2012	
HELLENICAMERICAN SEC. S.A.	01/09/2014	
INVESTMENT BANK OF GREECE S.A.	08/01/2013	
NATIONAL SECURITIES S.A	26/03/2013	
PIRAEUS SECURITIES S.A.	28/09/2013	
QUALITY & RELIABILITY SA (CR)		Main Market
BETA SECURITIES S.A.	20/08/2014	
S.KANAKIS SA (CR)		Main Market
BETA SECURITIES S.A.	01/10/2013	
TITAN CEMENT (CR)		Main Market
EUROBANK SECURITIES INVESTMENT FIRM S.A	23/10/2012	
NATIONAL SECURITIES S.A	17/02/2014	
PIRAEUS SECURITIES S.A.	04/05/2015	
VIOHALCO SA/NV (CB)		Main Market
ALPHA FINANCE INVESTMENT SERVICES S.A.	17/02/2014	
MERIT SECURITIES S.A	17/03/2014	



Underlying Asset				Derivatives Market													
Price max	Price min	Closing price	change	Delivery Month	Open price	Price max	Price min	Last price	Closing price	Last Bid	Last Ask	Settlement price	Life high	Life low	Trades	Volume	Open Interest
FTSE/Athex Large Cap																	(Trade Unit: 1 Index Point x 5€, Cash Settlement)
152.66	147.53	152.66	1.82%	March 2016	147.25	153.75	145.75	153.75	153.75	---	---	150.50	170.50	---	249	2,262	10,709
				April 2016	148.00	153.75	146.00	153.75	153.75	---	---	151.00	153.75	---	64	1,169	3,471
				May 2016	---	---	---	---	150.50	---	---	---	---	---	---	---	---
				June 2016	---	---	---	---	150.75	---	---	---	---	---	---	---	---
				September 2016	---	---	---	---	151.50	---	---	---	---	---	---	---	---
				December 2016	---	---	---	---	152.25	---	---	---	---	---	---	---	---

Underlying Asset				Derivatives Market													
Price max	Price min	Closing price	change	Delivery Month	Open price	Price max	Price min	Last price	Closing price	Last Bid	Last Ask	Settlement price	Life high	Life low	Trades	Volume	Open Interest
ALPHA BANK (CR)				(Contract Size: 100 Securities, Physical Delivery)													
1.71	1.60	1.71	1.79%	March 2016	1.65	1.72	1.59	1.72	1.72	---	---	1.69	2.64	---	408	10,735	14,288
				June 2016	1.69	1.69	1.62	1.68	1.68	---	---	1.69	---	2.68	10	40	245
				September 2016	---	---	---	---	1.70	---	---	---	---	---	---	---	---
				December 2016	---	---	---	---	1.71	---	---	---	---	---	---	---	---
CC HBC AG (CR)				(Contract Size: 100 Securities, Physical Delivery)													
18.23	17.75	18.23	2.76%	March 2016	18.05	18.05	17.89	17.92	17.92	---	---	18.24	21.55	---	3	9	154
				June 2016	---	---	---	---	17.84	---	---	---	---	---	---	---	---
				September 2016	---	---	---	---	17.93	---	---	---	---	---	---	---	---
				December 2016	---	---	---	---	18.02	---	---	---	---	---	---	---	---
CORINTH PIPEWORKS SA (CR)				(Contract Size: 100 Securities, Physical Delivery)													
0.939	0.874	0.896	-2.61%	March 2016	0.922	0.922	0.922	0.922	0.922	---	---	0.905	1.08	---	2	4	568
				June 2016	---	---	---	---	0.925	---	---	0.926	0.860	---	---	---	50
				September 2016	---	---	---	---	0.930	---	---	---	---	---	---	---	---
				December 2016	---	---	---	---	0.935	---	---	---	---	---	---	---	---
ELLAKTOR (CR)				(Contract Size: 100 Securities, Physical Delivery)													
1.40	1.31	1.40	4.48%	March 2016	1.34	1.38	1.31	1.38	1.38	---	---	1.35	1.87	---	37	161	1,516
				June 2016	1.33	1.33	1.33	1.33	1.33	---	---	1.35	1.33	---	1	1	51
				September 2016	---	---	---	---	1.35	---	---	---	---	---	---	---	---
				December 2016	---	---	---	---	1.36	---	---	---	---	---	---	---	---
EUROBANK ERGASIAS (CR)				(Contract Size: 100 Securities, Physical Delivery)													
0.690	0.622	0.690	4.23%	March 2016	0.648	0.689	0.621	0.689	0.689	---	---	0.658	1.14	---	358	6,324	29,430
				June 2016	0.610	0.637	0.610	0.637	0.637	---	---	0.651	1.16	---	8	37	275
				September 2016	---	---	---	---	0.669	---	---	---	---	---	---	---	---
				December 2016	---	---	---	---	0.673	---	---	---	---	---	---	---	---
EYDAP S.A. (CR)				(Contract Size: 100 Securities, Physical Delivery)													
4.46	4.29	4.30	-3.59%	March 2016	4.44	4.46	4.31	4.31	4.31	---	---	4.27	5.18	---	5	23	243
				June 2016	---	---	---	---	4.49	---	---	---	---	---	---	---	---
				September 2016	---	---	---	---	4.51	---	---	---	---	---	---	---	---
				December 2016	---	---	---	---	4.53	---	---	---	---	---	---	---	---
FOLLI FOLLIE (CR)				(Contract Size: 100 Securities, Physical Delivery)													
18.45	17.11	18.15	5.40%	March 2016	17.49	18.40	17.41	18.24	18.24	---	---	18.17	18.54	---	57	170	310
				June 2016	---	---	---	---	17.32	---	---	19.11	15.38	---	---	---	---
				September 2016	---	---	---	---	17.41	---	---	---	---	---	---	---	---
				December 2016	---	---	---	---	17.49	---	---	---	---	---	---	---	---
FRIGOGLASS SA (CR)				(Contract Size: 100 Securities, Physical Delivery)													
0.787	0.663	0.691	-10.72%	March 2016	0.752	0.752	0.675	0.680	0.680	---	---	0.693	1.98	---	17	71	1,338
				June 2016	---	---	---	---	0.779	---	---	---	---	---	---	---	---
				September 2016	---	---	---	---	0.782	---	---	---	---	---	---	---	---
				December 2016	---	---	---	---	0.786	---	---	---	---	---	---	---	---

Underlying Asset				Derivatives Market													
Price max	Price min	Closing price	change	Delivery Month	Open price	Price max	Price min	Last price	Closing price	Last Bid	Last Ask	Settlement price	Life high	Life low	Trades	Volume	Open Interest
GEK TERNA (CR)				(Contract Size: 100 Securities, Physical Delivery)													
1.47	1.40	1.43	-2.05%	March 2016	1.44	1.46	1.41	1.44	1.44	---	---	1.44	1.63	---	35	165	7,049
				June 2016	---	---	---	---	1.47	---	---	1.44	---	1.39	---	---	26
				September 2016	---	---	---	---	1.48	---	---	---	---	---	---	---	---
				December 2016	---	---	---	---	1.48	---	---	---	---	---	---	---	---
GRIVALIA PROPERTIES (CR)				(Contract Size: 100 Securities, Physical Delivery)													
7.60	7.41	7.60	1.33%	March 2016	7.26	7.26	7.20	7.22	7.22	---	---	7.22	8.14	---	3	15	159
				June 2016	---	---	---	---	7.54	---	---	---	---	---	---	---	---
				September 2016	---	---	---	---	7.58	---	---	---	---	---	---	---	---
				December 2016	---	---	---	---	7.62	---	---	---	---	---	---	---	---
HELLENIC EXCHANGES-A.S.E. (CR)				(Contract Size: 100 Securities, Physical Delivery)													
5.09	4.99	5.06	1.20%	March 2016	4.97	5.10	4.94	5.10	5.10	---	---	5.08	5.61	---	46	202	706
				June 2016	---	---	---	---	5.03	---	---	5.02	---	4.95	---	---	47
				September 2016	---	---	---	---	5.05	---	---	---	---	---	---	---	---
				December 2016	---	---	---	---	5.08	---	---	---	---	---	---	---	---
HELLENIC PETROLEUM (CR)				(Contract Size: 100 Securities, Physical Delivery)													
3.79	3.68	3.76	0.54%	March 2016	3.74	3.79	3.70	3.79	3.79	---	---	3.78	4.42	---	69	328	4,846
				June 2016	---	---	---	---	3.76	---	---	---	---	---	---	---	---
				September 2016	---	---	---	---	3.78	---	---	---	---	---	---	---	---
				December 2016	---	---	---	---	3.80	---	---	---	---	---	---	---	---
INTRALOT (CR)				(Contract Size: 100 Securities, Physical Delivery)													
1.17	1.13	1.17	1.74%	March 2016	1.12	1.15	1.12	1.15	1.15	---	---	1.18	1.23	---	3	8	356
				June 2016	---	---	---	---	1.16	---	---	---	---	---	---	---	---
				September 2016	---	---	---	---	1.16	---	---	---	---	---	---	---	---
				December 2016	---	---	---	---	1.17	---	---	---	---	---	---	---	---
JUMBO SA (CR)				(Contract Size: 100 Securities, Physical Delivery)													
11.16	10.80	10.95	-1.79%	March 2016	11.06	11.14	10.78	10.87	10.87	---	---	10.87	11.66	---	35	96	801
				June 2016	11.61	11.61	11.61	11.61	11.61	---	---	11.67	---	11.61	---	1	1
				September 2016	---	---	---	---	11.27	---	---	---	---	---	---	---	---
				December 2016	---	---	---	---	11.33	---	---	---	---	---	---	---	---
MARFIN INVESTMENT GROUP (CR)				(Contract Size: 100 Securities, Physical Delivery)													
0.093	0.087	0.093	4.49%	March 2016	0.085	0.094	0.085	0.094	0.094	---	---	0.093	0.097	---	38	620	36,808
				June 2016	---	---	---	---	0.090	---	---	0.092	---	0.096	---	---	500
				September 2016	---	---	---	---	0.090	---	---	---	---	---	---	---	---
				December 2016	---	---	---	---	0.090	---	---	---	---	---	---	---	---
METKA (CR)				(Contract Size: 100 Securities, Physical Delivery)													
6.99	6.82	6.84	-2.15%	March 2016	6.90	6.90	6.83	6.83	6.83	---	---	6.80	7.98	---	2	10	535
				June 2016	---	---	---	---	7.03	---	---	---	---	---	---	---	---
				September 2016	---	---	---	---	7.07	---	---	---	---	---	---	---	---
				December 2016	---	---	---	---	7.10	---	---	---	---	---	---	---	---

Underlying Asset				Derivatives Market													
Price max	Price min	Closing price	change	Delivery Month	Open price	Price max	Price min	Last price	Closing price	Last Bid	Last Ask	Settlement price	Life high	Life low	Trades	Volume	Open Interest
MOTOR OIL (CR)				(Contract Size: 100 Securities, Physical Delivery)													
9.73	9.48	9.70	-0.51%	March 2016	9.70	9.75	9.64	9.75	9.75	---	---	9.68	10.78	---	39	119	491
				June 2016	9.69	9.69	9.69	9.69	9.69	---	---	9.70	---	9.69	1	25	25
				September 2016	---	---	---	---	9.86	---	---	---	---	---	---	---	---
				December 2016	---	---	---	---	9.91	---	---	---	---	---	---	---	---
MYTILINEOS HOLDINGS (CR)				(Contract Size: 100 Securities, Physical Delivery)													
3.57	3.43	3.45	-4.43%	March 2016	3.52	3.59	3.41	3.47	3.47	---	---	3.47	4.20	---	87	202	4,577
				June 2016	3.53	3.53	3.50	3.50	3.50	---	---	3.50	---	3.53	2	8	9
				September 2016	---	---	---	---	3.65	---	---	---	---	---	---	---	---
				December 2016	---	---	---	---	3.67	---	---	---	---	---	---	---	---
NATIONAL BANK (CR)				(Contract Size: 100 Securities, Physical Delivery)													
0.235	0.210	0.235	5.86%	March 2016	0.216	0.236	0.210	0.232	0.232	---	---	0.225	0.551	---	434	17,622	52,827
				June 2016	0.222	0.229	0.210	0.220	0.220	---	---	0.228	---	0.346	48	1,111	1,460
				September 2016	---	---	---	---	0.224	---	---	---	---	---	---	---	---
				December 2016	---	---	---	---	0.226	---	---	---	---	---	---	---	---
OPAP (CR)				(Contract Size: 100 Securities, Physical Delivery)													
6.65	6.40	6.62	2.64%	March 2016	6.45	6.64	6.40	6.61	6.61	---	---	6.54	8.72	---	107	448	2,061
				June 2016	6.55	6.55	6.44	6.44	6.44	---	---	6.52	---	7.25	4	80	23
				September 2016	---	---	---	---	6.52	---	---	---	---	---	---	---	---
				December 2016	---	---	---	---	6.55	---	---	---	---	---	---	---	---
OTE (CR)				(Contract Size: 100 Securities, Physical Delivery)													
8.14	7.93	8.14	0.49%	March 2016	8.01	8.15	7.94	8.15	8.15	---	---	8.09	9.34	---	75	250	4,133
				June 2016	8.04	8.15	8.04	8.15	8.15	---	---	8.09	---	8.15	2	61	67
				September 2016	---	---	---	---	8.19	---	---	---	---	---	---	---	---
				December 2016	---	---	---	---	8.23	---	---	---	---	---	---	---	---
P.P.A. S.A. (CR)				(Contract Size: 100 Securities, Physical Delivery)													
11.75	11.23	11.50	-0.43%	March 2016	11.40	11.44	11.37	11.44	11.44	---	---	11.32	15.50	---	7	11	380
				June 2016	---	---	---	---	11.62	---	---	11.36	---	14.75	---	---	69
				September 2016	---	---	---	---	11.68	---	---	---	---	---	---	---	---
				December 2016	---	---	---	---	11.73	---	---	---	---	---	---	---	---
PIRAEUS BANK (CR)				(Contract Size: 100 Securities, Physical Delivery)													
0.177	0.154	0.171	-1.72%	March 2016	0.178	0.180	0.153	0.173	0.173	---	---	0.165	0.312	---	409	13,259	31,387
				June 2016	0.162	0.162	0.159	0.160	0.160	---	---	0.165	---	0.303	4	109	389
				September 2016	---	---	---	---	0.176	---	---	---	---	---	---	---	---
				December 2016	---	---	---	---	0.177	---	---	---	---	---	---	---	---
PPC (CR)				(Contract Size: 100 Securities, Physical Delivery)													
3.25	3.11	3.22	-0.31%	March 2016	3.13	3.25	3.10	3.24	3.24	---	---	3.19	5.53	---	176	664	4,711
				June 2016	---	---	---	---	3.25	---	---	3.19	---	3.10	---	---	12
				September 2016	---	---	---	---	3.27	---	---	---	---	---	---	---	---
				December 2016	---	---	---	---	3.28	---	---	---	---	---	---	---	---

Underlying Asset				Derivatives Market													
Price max	Price min	Closing price	change	Delivery Month	Open price	Price max	Price min	Last price	Closing price	Last Bid	Last Ask	Settlement price	Life high	Life low	Trades	Volume	Open Interest
TERNA ENERGY (CR)				(Contract Size: 100 Securities, Physical Delivery)													
2.34	2.22	2.34	3.54%	March 2016	2.26	2.30	2.25	2.30	2.30	---	---	2.39	2.55	---	3	8	1,185
				June 2016	---	---	---	---	2.27	---	---	---	---	---	---	---	---
				September 2016	---	---	---	---	2.28	---	---	---	---	---	---	---	---
				December 2016	---	---	---	---	2.30	---	---	---	---	---	---	---	---
TITAN CEMENT (CR)				(Contract Size: 100 Securities, Physical Delivery)													
19.60	18.40	19.50	5.40%	March 2016	18.36	19.51	18.36	19.50	19.50	---	---	19.25	21.29	---	48	82	387
				June 2016	---	---	---	---	18.61	---	---	19.14	17.87	---	---	---	---
				September 2016	---	---	---	---	18.70	---	---	---	---	---	---	---	---
				December 2016	---	---	---	---	18.79	---	---	---	---	---	---	---	---
VIOHALCO SA/NV (CB)				(Contract Size: 100 Securities, Physical Delivery)													
1.18	1.13	1.16	0.00%	March 2016	1.15	1.18	1.14	1.16	1.16	---	---	1.18	1.95	---	13	45	1,117
				June 2016	---	---	---	---	1.17	---	---	---	---	---	---	---	---
				September 2016	---	---	---	---	1.17	---	---	---	---	---	---	---	---
				December 2016	---	---	---	---	1.18	---	---	---	---	---	---	---	---

FTSE/Athex Large Cap

(Trade Unit: 1 Index Point x 5€ - Exercicio Style: European, Cash Settlement)

Call Options																	Put Options																
Exerise Price	March 2016							April 2016							Other Months		March 2016							April 2016							Other Months		Exerise Price
	Open price	Price max	Price min	Last price	Closing price	Volume	Open Interest	Open price	Price max	Price min	Last price	Closing price	Volume	Open Interest	Volume	Open Interest	Open price	Price max	Price min	Last price	Closing price	Volume	Open Interest	Open price	Price max	Price min	Last price	Closing price	Volume	Open Interest	Volume	Open Interest	
90	0.00	0.00	0.00	-	59.50	-	-	0.00	0.00	0.00	-	60.00	-	-			0.00	0.00	0.00	-	0.01	-	-	0.00	0.00	0.00	-	0.01	-	-			90
95	0.00	0.00	0.00	-	54.50	-	-	0.00	0.00	0.00	-	55.00	-	-			0.00	0.00	0.00	-	0.01	-	-	0.00	0.00	0.00	-	0.01	-	-			95
100	0.00	0.00	0.00	-	49.75	-	-	0.00	0.00	0.00	-	50.00	-	-			0.00	0.00	0.00	-	0.05	-	-	0.00	0.00	0.00	-	0.02	-	-			100
105	0.00	0.00	0.00	-	44.75	-	23	0.00	0.00	0.00	-	45.25	-	-			0.00	0.00	0.00	-	0.01	-	-	0.00	0.00	0.00	-	0.05	-	-			105
110	0.00	0.00	0.00	-	39.75	-	1	0.00	0.00	0.00	-	40.25	-	30			0.00	0.00	0.00	-	0.01	-	-	0.00	0.00	0.00	-	0.13	-	-			110
115	0.00	0.00	0.00	-	34.75	-	3	0.00	0.00	0.00	-	35.50	-	12			0.00	0.00	0.00	-	0.01	-	1	0.00	0.00	0.00	-	0.28	-	-			115
120	0.00	0.00	0.00	-	29.75	-	148	0.00	0.00	0.00	-	30.75	-	-			0.00	0.00	0.00	-	0.04	-	13	0.00	0.00	0.00	-	0.57	-	50			120
125	0.00	0.00	0.00	-	24.75	-	3	0.00	0.00	0.00	-	26.25	-	-			0.00	0.00	0.00	-	0.14	-	159	0.00	0.00	0.00	-	1.10	-	-			125
130	20.75	23.25	20.75	23.25	23.25	50	379	21.00	24.50	21.00	24.50	24.50	40	190			20.75	23.25	0.00	-	0.40	-	218	0.00	0.00	0.00	-	1.80	-	47			130
135	0.00	0.00	0.00	-	15.75	-	6	0.00	0.00	0.00	-	18.25	-	-			0.00	0.00	0.00	-	0.94	-	55	0.00	0.00	0.00	-	2.90	-	37			135
140	10.00	14.00	10.00	14.00	14.00	61	545	0.00	0.00	0.00	-	14.75	-	-			10.00	14.00	1.60	1.60	1.60	62	298	3.80	3.80	3.80	3.80	3.80	1	11			140
145	6.50	9.50	5.60	9.50	9.50	72	538	10.00	10.00	10.00	10.00	10.00	20	323			6.50	9.50	2.00	2.00	2.00	74	228	0.00	0.00	0.00	-	6.40	-	-			145
150	3.90	6.00	3.90	6.00	6.00	13	220	0.00	0.00	0.00	-	9.00	-	50			3.90	6.00	5.00	5.00	5.00	45	60	0.00	0.00	0.00	-	8.80	-	-			150
155	0.00	0.00	0.00	-	3.50	-	542	0.00	0.00	0.00	-	6.90	-	55			0.00	0.00	6.00	6.00	6.00	5	8	0.00	0.00	0.00	-	11.50	-	-			155
160	0.00	0.00	0.00	-	2.10	-	3	0.00	0.00	0.00	-	5.10	-	-			0.00	0.00	0.00	-	12.25	-	-	0.00	0.00	0.00	-	14.75	-	-			160
165	0.00	0.00	0.00	-	1.20	-	6	0.00	0.00	0.00	-	3.80	-	-			0.00	0.00	0.00	-	16.50	-	-	0.00	0.00	0.00	-	18.50	-	-			165
170	0.00	0.00	0.00	-	0.64	-	10	0.00	0.00	0.00	-	2.70	-	-			0.00	0.00	0.00	-	20.75	-	-	0.00	0.00	0.00	-	22.50	-	-			170
175	0.00	0.00	0.00	-	0.32	-	-	0.00	0.00	0.00	-	1.90	-	-			0.00	0.00	0.00	-	25.50	-	-	0.00	0.00	0.00	-	26.50	-	-			175
180	0.00	0.00	0.00	-	0.16	-	-	0.00	0.00	0.00	-	1.30	-	-			0.00	0.00	0.00	-	30.50	-	5	0.00	0.00	0.00	-	31.00	-	-			180
185	0.00	0.00	0.00	-	0.07	-	-	0.00	0.00	0.00	-	0.91	-	-			0.00	0.00	0.00	-	35.25	-	-	0.00	0.00	0.00	-	35.50	-	-			185
190	0.00	0.00	0.00	-	0.03	-	-	-	-	-	-	-	-	-			0.00	0.00	0.00	-	40.25	-	-	-	-	-	-	-	-	-	-	190	
195	0.00	0.00	0.00	-	0.01	-	-	-	-	-	-	-	-	-			0.00	0.00	0.00	-	45.25	-	-	-	-	-	-	-	-	-	-	195	
200	0.00	0.00	0.00	-	0.01	-	11	-	-	-	-	-	-	-			0.00	0.00	53.00	53.00	53.00	10	187	-	-	-	-	-	-	-	-	-	200
205	0.00	0.00	0.00	-	0.01	-	-	-	-	-	-	-	-	-			0.00	0.00	0.00	-	55.00	-	-	-	-	-	-	-	-	-	-	-	205
210	0.00	0.00	0.00	-	0.01	-	-	-	-	-	-	-	-	-			0.00	0.00	0.00	-	60.00	-	-	-	-	-	-	-	-	-	-	-	210
215	0.00	0.00	0.00	-	0.01	-	-	-	-	-	-	-	-	-			0.00	0.00	0.00	-	65.00	-	-	-	-	-	-	-	-	-	-	-	215
220	0.00	0.00	0.00	-	0.01	-	-	-	-	-	-	-	-	-			0.00	0.00	0.00	-	70.00	-	-	-	-	-	-	-	-	-	-	-	220
225	0.00	0.00	0.00	-	0.01	-	-	-	-	-	-	-	-	-			0.00	0.00	0.00	-	75.00	-	-	-	-	-	-	-	-	-	-	-	225
230	0.00	0.00	0.00	-	0.01	-	-	-	-	-	-	-	-	-			0.00	0.00	0.00	-	80.00	-	-	-	-	-	-	-	-	-	-	-	230
235	0.00	0.00	0.00	-	0.03	-	-	-	-	-	-	-	-	-			0.00	0.00	0.00	-	85.00	-	-	-	-	-	-	-	-	-	-	-	235
240	0.00	0.00	0.00	-	0.02	-	-	-	-	-	-	-	-	-			0.00	0.00	0.00	-	90.00	-	-	-	-	-	-	-	-	-	-	-	240
245	0.00	0.00	0.00	-	0.01	-	-	-	-	-	-	-	-	-			0.00	0.00	0.00	-	95.00	-	-	-	-	-	-	-	-	-	-	-	245
250	0.00	0.00	0.00	-	0.01	-	-	-	-	-	-	-	-	-			0.00	0.00	0.00	-	100.00	-	-	-	-	-	-	-	-	-	-	-	250
255	0.00	0.00	0.00	-	0.01	-	-	-	-	-	-	-	-	-			0.00	0.00	0.00	-	105.00	-	-	-	-	-	-	-	-	-	-	-	255
260	0.00	0.00	0.00	-	0.01	-	-	-	-	-	-	-	-	-			0.00	0.00	0.00	-	110.00	-	40	-	-	-	-	-	-	-	-	-	260
265	0.00	0.00	0.00	-	0.01	-	-	-	-	-	-	-	-	-			0.00	0.00	0.00	-	115.00	-	-	-	-	-	-	-	-	-	-	-	265

FTSE/Athex Large Cap

(Trade Unit: 1 Index Point x 5€ - Exercise Style: European, Cash Settlement)

Call Options																	Put Options																		
Exercise Price	March 2016							April 2016							Other Months			March 2016							April 2016							Other Months			Exercise Price
	Open price	Price max	Price min	Last price	Closing price	Volume	Open Interest	Open price	Price max	Price min	Last price	Closing price	Volume	Open Interest	Volume	Open Interest	Open price	Price max	Price min	Last price	Closing price	Volume	Open Interest	Open price	Price max	Price min	Last price	Closing price	Volume	Open Interest	Volume	Open Interest			
Totals:						196	2,438							60	660	0	0						196	1,272					1	145	0	0			
Number of Trades:						27								3		0							34					1		0					

ALPHA BANK (CR)

(Contract Size: 100 Securities, Exercise Style: American, Physical Delivery)

Call Options																	Put Options																			
March 2016								April 2016								Other Months		March 2016								April 2016								Other Months		
Exercise Price	Open price	Price max	Price min	Last price	Closing price	Volume	Open Interest	Open price	Price max	Price min	Last price	Closing price	Volume	Open Interest	Volume	Open Interest	Open price	Price max	Price min	Last price	Closing price	Volume	Open Interest	Open price	Price max	Price min	Last price	Closing price	Volume	Open Interest	Volume	Open Interest	Exercise Price			
0.100	0.000	0.000	0.000		1.58	-	-						-	-			0.000	0.000	0.000		0.001	-	-					-	-			0.001				
0.200	0.000	0.000	0.000		1.48	-	-						-	-			0.000	0.000	0.000		0.001	-	-					-	-			0.002				
0.300	0.000	0.000	0.000		1.38	-	-						-	-			0.000	0.000	0.000		0.001	-	-					-	-			0.003				
0.400	0.000	0.000	0.000		1.28	-	-						-	-			0.000	0.000	0.000		0.001	-	-					-	-			0.004				
0.500	0.000	0.000	0.000		1.18	-	-						-	-			0.000	0.000	0.000		0.001	-	-					-	-			0.005				
0.600	0.000	0.000	0.000		1.08	-	-						-	-			0.000	0.000	0.000		0.001	-	-					-	-			0.006				
0.700	0.000	0.000	0.000		0.981	-	-						-	-			0.000	0.000	0.000		0.001	-	-					-	-			0.007				
0.800	0.000	0.000	0.000		0.881	-	-	0.000	0.000	0.000		0.882	-	-			0.000	0.000	0.000		0.001	-	-	0.000	0.000	0.000		0.001	-	-			0.008			
0.850	0.000	0.000	0.000		0.831	-	-	0.000	0.000	0.000		0.833	-	-			0.000	0.000	0.000		0.001	-	-	0.000	0.000	0.000		0.001	-	-			0.009			
0.900	0.000	0.000	0.000		0.781	-	-	0.000	0.000	0.000		0.783	-	-			0.000	0.000	0.000		0.001	-	-	0.000	0.000	0.000		0.001	-	-			0.009			
0.950	0.000	0.000	0.000		0.731	-	-	0.000	0.000	0.000		0.734	-	-			0.000	0.000	0.000		0.001	-	-	0.000	0.000	0.000		0.002	-	-			0.010			
1.000	0.000	0.000	0.000		0.681	-	-	0.000	0.000	0.000		0.686	-	-			0.000	0.000	0.000		0.001	-	-	0.000	0.000	0.000		0.004	-	-			0.010			
1.100	0.000	0.000	0.000		0.582	-	-	0.000	0.000	0.000		0.592	-	-			0.000	0.000	0.000		0.001	-	-	0.000	0.000	0.000		0.010	-	-			0.011			
1.200	0.000	0.000	0.000		0.484	-	-	0.000	0.000	0.000		0.503	-	-			0.000	0.000	0.000		0.003	-	-	0.000	0.000	0.000		0.020	-	-			0.012			
1.300	0.000	0.000	0.000		0.390	-	10	0.000	0.000	0.000		0.421	-	-			0.000	0.000	0.000		0.009	-	-	0.000	0.000	0.000		0.038	-	-			0.013			
1.400	0.000	0.000	0.000		0.303	-	-	0.000	0.000	0.000		0.346	-	-			0.000	0.000	0.000		0.022	-	-	0.000	0.000	0.000		0.063	-	-			0.014			
1.500	0.000	0.000	0.000		0.226	-	-	0.000	0.000	0.000		0.281	-	-			0.000	0.000	0.000		0.045	-	-	0.000	0.000	0.000		0.098	-	-			0.015			
1.600	0.000	0.000	0.000		0.161	-	20	0.000	0.000	0.000		0.225	-	-			0.000	0.000	0.000		0.080	-	2	0.000	0.000	0.000		0.141	-	-			0.016			
1.700	0.000	0.000	0.000		0.111	-	-	0.000	0.000	0.000		0.177	-	-			0.000	0.000	0.000		0.130	-	-	0.000	0.000	0.000		0.193	-	-			0.017			
1.800	0.000	0.000	0.000		0.074	-	100	0.000	0.000	0.000		0.137	-	-			0.000	0.000	0.000		0.192	-	-	0.000	0.000	0.000		0.254	-	-			0.018			
1.900	0.000	0.000	0.000		0.047	-	-	0.000	0.000	0.000		0.107	-	-			0.000	0.000	0.000		0.266	-	-	0.000	0.000	0.000		0.323	-	-			0.019			
2.000	0.000	0.000	0.000		0.029	-	-	0.000	0.000	0.000		0.081	-	-			0.000	0.000	0.000		0.348	-	-	0.000	0.000	0.000		0.397	-	-			0.020			
2.200	0.000	0.000	0.000		0.010	-	50	0.000	0.000	0.000		0.047	-	-			0.000	0.000	0.000		0.529	-	-	0.000	0.000	0.000		0.563	-	-			0.022			
2.400	0.000	0.000	0.000		0.003	-	-	0.000	0.000	0.000		0.026	-	-			0.000	0.000	0.000		0.722	-	-	0.000	0.000	0.000		0.742	-	-			0.024			
2.600	0.000	0.000	0.000		0.001	-	-	0.000	0.000	0.000		0.014	-	-			0.000	0.000	0.000		0.920	-	-	0.000	0.000	0.000		0.930	-	-			0.026			
2.800	0.000	0.000	0.000		0.001	-	-	0.000	0.000	0.000		0.007	-	-			0.000	0.000	0.000		1.12	-	-	0.000	0.000	0.000		1.12	-	-			0.028			
3.000	0.000	0.000	0.000		0.001	-	-	0.000	0.000	0.000		0.004	-	-			0.000	0.000	0.000		1.32	-	-	0.000	0.000	0.000		1.32	-	-			0.030			
3.200	0.000	0.000	0.000		0.001	-	-						-	-			0.000	0.000	0.000		1.52	-	-					-	-			0.032				
3.400	0.000	0.000	0.000		0.001	-	-						-	-			0.000	0.000	0.000		1.72	-	-					-	-			0.034				
3.600	0.000	0.000	0.000		0.001	-	-						-	-			0.000	0.000	0.000		1.92	-	-					-	-			0.036				
Totals:						0	180						0	0	0	0						0	2						0	0	0	0				
Number of Trades:						0							0		0							0.00						0		0						



## NATIONAL BANK (CR)

(Contract Size: 100 Securities, Exercise Style: American, Physical Delivery)

Call Options																	Put Options																							
March 2016								April 2016								Other Months		March 2016								April 2016								Other Months						
Exercise Price	Open price	Price max	Price min	Last price	Closing price	Volume	Open Interest	Open price	Price max	Price min	Last price	Closing price	Volume	Open Interest	Volume	Open Interest	Open price	Price max	Price min	Last price	Closing price	Volume	Open Interest	Open price	Price max	Price min	Last price	Closing price	Volume	Open Interest	Volume	Open Interest	Exercise Price							
0.050	0.000	0.000	0.000		0.172	-	-	0.000	0.000	0.000		0.172	-	-			0.000	0.000	0.000		0.001	-	-	0.000	0.000	0.000		0.001	-	-			0.001							
0.100	0.000	0.000	0.000		0.122	-	-	0.000	0.000	0.000		0.122	-	-			0.000	0.000	0.000		0.001	-	-	0.000	0.000	0.000		0.001	-	-			0.001							
0.150	0.000	0.000	0.000		0.073	-	-	0.000	0.000	0.000		0.076	-	-			0.000	0.000	0.000		0.001	-	-	0.000	0.000	0.000		0.003	-	-			0.002							
0.200	0.000	0.000	0.000		0.034	-	-	0.000	0.000	0.000		0.040	-	-			0.000	0.000	0.000		0.012	-	-	0.000	0.000	0.000		0.018	-	-			0.002							
0.250	0.000	0.000	0.000		0.013	-	-	0.000	0.000	0.000		0.019	-	-			0.000	0.000	0.000		0.040	-	-	0.000	0.000	0.000		0.047	-	-			0.003							
0.300	0.000	0.000	0.000		0.004	-	-	0.000	0.000	0.000		0.008	-	-			0.000	0.000	0.000		0.082	-	-	0.000	0.000	0.000		0.086	-	-			0.003							
0.350	0.000	0.000	0.000		0.001	-	-	0.000	0.000	0.000		0.004	-	-			0.000	0.000	0.000		0.129	-	-	0.000	0.000	0.000		0.131	-	-			0.004							
0.400	0.000	0.000	0.000		0.001	-	-	0.000	0.000	0.000		0.001	-	-			0.000	0.000	0.000		0.178	-	-	0.000	0.000	0.000		0.179	-	-			0.004							
0.450	0.000	0.000	0.000		0.001	-	-	0.000	0.000	0.000		0.001	-	-			0.000	0.000	0.000		0.228	-	-	0.000	0.000	0.000		0.228	-	-			0.005							
0.500	0.000	0.000	0.000		0.001	-	-	0.000	0.000	0.000		0.001	-	-			0.000	0.000	0.000		0.278	-	-	0.000	0.000	0.000		0.278	-	-			0.005							
0.550	0.000	0.000	0.000		0.001	-	-						-	-			0.000	0.000	0.000		0.328	-	-				-	-				0.006								
0.600	0.000	0.000	0.000		0.001	-	-						-	-			0.000	0.000	0.000		0.378	-	-				-	-				0.006								
0.700	0.000	0.000	0.000		0.001	-	-						-	-			0.000	0.000	0.000		0.478	-	-				-	-				0.007								
0.800	0.000	0.000	0.000		0.004	-	-						-	-			0.000	0.000	0.000		0.578	-	-				-	-				0.008								
0.900	0.000	0.000	0.000		0.002	-	-						-	-			0.000	0.000	0.000		0.678	-	-				-	-				0.009								
1.000	0.000	0.000	0.000		0.001	-	-						-	-			0.000	0.000	0.000		0.778	-	-				-	-				0.010								
1.100	0.000	0.000	0.000		0.001	-	-						-	-			0.000	0.000	0.000		0.878	-	-				-	-				0.011								
1.200	0.000	0.000	0.000		0.001	-	-						-	-			0.000	0.000	0.000		0.978	-	-				-	-				0.012								
1.300	0.000	0.000	0.000		0.009	-	-						-	-			0.000	0.000	0.000		1.08	-	-				-	-				0.013								
1.400	0.000	0.000	0.000		0.008	-	-						-	-			0.000	0.000	0.000		1.18	-	-				-	-				0.014								
1.500	0.000	0.000	0.000		0.007	-	-						-	-			0.000	0.000	0.000		1.28	-	-				-	-				0.015								
1.600	0.000	0.000	0.000		0.006	-	-						-	-			0.000	0.000	0.000		1.38	-	-				-	-				0.016								
Totals:							0	0								0	0	0	0								0	0								0	0			
Number of Trades:							0								0	0								0.00								0								0

OPAP (CR)

(Contract Size: 100 Securities, Exercise Style: American, Physical Delivery)

Call Options																	Put Options																			
March 2016								April 2016								Other Months		March 2016								April 2016								Other Months		
Exercise Price	Open price	Price max	Price min	Last price	Closing price	Volume	Open Interest	Open price	Price max	Price min	Last price	Closing price	Volume	Open Interest	Volume	Open Interest	Open price	Price max	Price min	Last price	Closing price	Volume	Open Interest	Open price	Price max	Price min	Last price	Closing price	Volume	Open Interest	Volume	Open Interest	Exercise Price			
3.600	0.000	0.000	0.000		2.85	-	-	0.000	0.000	0.000		2.86	-	-			0.000	0.000	0.000		0.001	-	-	0.000	0.000	0.000		0.001	-	-			0.036			
3.800	0.000	0.000	0.000		2.65	-	-	0.000	0.000	0.000		2.66	-	-			0.000	0.000	0.000		0.001	-	-	0.000	0.000	0.000		0.001	-	-			0.038			
4.000	0.000	0.000	0.000		2.45	-	-	0.000	0.000	0.000		2.46	-	-			0.000	0.000	0.000		0.001	-	-	0.000	0.000	0.000		0.001	-	-			0.040			
4.400	0.000	0.000	0.000		2.05	-	-	0.000	0.000	0.000		2.06	-	-			0.000	0.000	0.000		0.001	-	-	0.000	0.000	0.000		0.002	-	-			0.044			
4.800	0.000	0.000	0.000		1.65	-	-	0.000	0.000	0.000		1.67	-	-			0.000	0.000	0.000		0.001	-	-	0.000	0.000	0.000		0.012	-	-			0.048			
5.200	0.000	0.000	0.000		1.26	-	-	0.000	0.000	0.000		1.30	-	-			0.000	0.000	0.000		0.003	-	-	0.000	0.000	0.000		0.039	-	-			0.052			
5.600	0.000	0.000	0.000		0.874	-	5	0.000	0.000	0.000		0.962	-	-			0.000	0.000	0.000		0.020	-	-	0.000	0.000	0.000		0.100	-	-			0.056			
6.000	0.000	0.000	0.000		0.538	-	-	0.000	0.000	0.000		0.677	-	-			0.000	0.000	0.000		0.084	-	100	0.000	0.000	0.000		0.214	-	-			0.060			
6.400	0.270	0.270	0.270	0.270	0.270	20	20	0.000	0.000	0.000		0.449	-	-			0.000	0.000	0.000		0.229	-	-	0.000	0.000	0.000		0.384	-	-			0.064			
6.800	0.000	0.000	0.000		0.125	-	15	0.000	0.000	0.000		0.281	-	5			0.000	0.000	0.000		0.470	-	200	0.000	0.000	0.000		0.617	-	-			0.068			
7.200	0.000	0.000	0.000		0.046	-	-	0.000	0.000	0.000		0.169	-	-			0.000	0.000	0.000		0.791	-	-	0.000	0.000	0.000		0.905	-	-			0.072			
7.600	0.000	0.000	0.000		0.014	-	-	0.000	0.000	0.000		0.096	-	-			0.000	0.000	0.000		1.16	-	-	0.000	0.000	0.000		1.23	-	-			0.076			
8.000	0.000	0.000	0.000		0.004	-	-	0.000	0.000	0.000		0.052	-	-			0.000	0.000	0.000		1.55	-	-	0.000	0.000	0.000		1.59	-	-			0.080			
8.400	0.000	0.000	0.000		0.001	-	-	0.000	0.000	0.000		0.027	-	-			0.000	0.000	0.000		1.95	-	-	0.000	0.000	0.000		1.97	-	-			0.084			
8.800	0.000	0.000	0.000		0.001	-	-	0.000	0.000	0.000		0.013	-	-			0.000	0.000	0.000		2.35	-	-	0.000	0.000	0.000		2.35	-	-			0.088			
9.200	0.000	0.000	0.000		0.001	-	-						-	-			0.000	0.000	0.000		2.75	-	-				-	-			0.092					
9.600	0.000	0.000	0.000		0.001	-	-						-	-			0.000	0.000	0.000		3.15	-	-				-	-			0.096					
10.000	0.000	0.000	0.000		0.001	-	-						-	-			0.000	0.000	0.000		3.55	-	-				-	-			0.100					
Totals:						20	40						0	5	0	0						20	300						0	0	0	0				
Number of Trades:						2							0		0						0.00						0		0							

OTE (CR)

(Contract Size: 100 Securities, Exercise Style: American, Physical Delivery)

Call Options																	Put Options																			
March 2016								April 2016								Other Months		March 2016								April 2016								Other Months		
Exercise Price	Open price	Price max	Price min	Last price	Closing price	Volume	Open Interest	Open price	Price max	Price min	Last price	Closing price	Volume	Open Interest	Volume	Open Interest	Open price	Price max	Price min	Last price	Closing price	Volume	Open Interest	Open price	Price max	Price min	Last price	Closing price	Volume	Open Interest	Volume	Open Interest	Exercise Price			
4.800	0.000	0.000	0.000		3.30	-	-	0.000	0.000	0.000		3.31	-	-			0.000	0.000	0.000		0.001	-	-	0.000	0.000	0.000		0.001	-	-			0.048			
5.200	0.000	0.000	0.000		2.90	-	-	0.000	0.000	0.000		2.91	-	-			0.000	0.000	0.000		0.001	-	-	0.000	0.000	0.000		0.001	-	-			0.052			
5.600	0.000	0.000	0.000		2.50	-	-	0.000	0.000	0.000		2.51	-	-			0.000	0.000	0.000		0.001	-	-	0.000	0.000	0.000		0.001	-	-			0.056			
6.000	0.000	0.000	0.000		2.10	-	-	0.000	0.000	0.000		2.12	-	-			0.000	0.000	0.000		0.001	-	-	0.000	0.000	0.000		0.007	-	-			0.060			
6.400	0.000	0.000	0.000		1.71	-	-	0.000	0.000	0.000		1.74	-	-			0.000	0.000	0.000		0.001	-	60	0.000	0.000	0.000		0.022	-	-			0.064			
6.800	0.000	0.000	0.000		1.31	-	5	0.000	0.000	0.000		1.37	-	-			0.000	0.000	0.000		0.005	-	210	0.000	0.000	0.000		0.058	-	-			0.068			
7.200	0.000	0.000	0.000		0.933	-	-	0.000	0.000	0.000		1.04	-	-			0.000	0.000	0.000		0.027	-	130	0.000	0.000	0.000		0.127	-	-			0.072			
7.600	0.000	0.000	0.000		0.599	-	5	0.000	0.000	0.000		0.761	-	-			0.000	0.000	0.000		0.093	-	30	0.000	0.000	0.000		0.244	-	-			0.076			
8.000	0.000	0.000	0.000		0.339	-	5	0.000	0.000	0.000		0.529	-	-			0.000	0.000	0.000		0.233	-	-	0.000	0.000	0.000		0.411	-	-			0.080			
8.400	0.000	0.000	0.000		0.166	-	-	0.000	0.000	0.000		0.349	-	-			0.000	0.000	0.000		0.460	-	-	0.000	0.000	0.000		0.632	-	-			0.084			
8.800	0.000	0.000	0.000		0.070	-	-	0.000	0.000	0.000		0.220	-	-			0.000	0.000	0.000		0.764	-	-	0.000	0.000	0.000		0.903	-	-			0.088			
9.200	0.000	0.000	0.000		0.025	-	-	0.000	0.000	0.000		0.134	-	-			0.000	0.000	0.000		1.12	-	-	0.000	0.000	0.000		1.22	-	-			0.092			
9.600	0.000	0.000	0.000		0.008	-	-	0.000	0.000	0.000		0.078	-	-			0.000	0.000	0.000		1.50	-	-	0.000	0.000	0.000		1.56	-	-			0.096			
10.000	0.000	0.000	0.000		0.002	-	-	0.000	0.000	0.000		0.043	-	-			0.000	0.000	0.000		1.90	-	-	0.000	0.000	0.000		1.93	-	-			0.100			
11.000	0.000	0.000	0.000		0.002	-	-						-	-			0.000	0.000	0.000		2.90	-	-				-	-			0.110					
12.000	0.000	0.000	0.000		0.001	-	-						-	-			0.000	0.000	0.000		3.90	-	-				-	-			0.120					
13.000	0.000	0.000	0.000		0.001	-	-						-	-			0.000	0.000	0.000		4.90	-	-				-	-			0.130					
14.000	0.000	0.000	0.000		0.001	-	-						-	-			0.000	0.000	0.000		5.90	-	-				-	-			0.140					
Totals:						0	15						0	0	0	0						0	430					0	0	0	0					
Number of Trades:							0						0		0							0.00						0		0						

PIRAEUS BANK (CR)

(Contract Size: 100 Securities, Exercise Style: American, Physical Delivery)

Call Options																	Put Options																			
March 2016								April 2016								Other Months		March 2016								April 2016								Other Months		
Exercise Price	Open price	Price max	Price min	Last price	Closing price	Volume	Open Interest	Open price	Price max	Price min	Last price	Closing price	Volume	Open Interest	Volume	Open Interest	Open price	Price max	Price min	Last price	Closing price	Volume	Open Interest	Open price	Price max	Price min	Last price	Closing price	Volume	Open Interest	Volume	Open Interest	Exercise Price			
0.050	0.000	0.000	0.000		0.124	-	-	0.000	0.000	0.000		0.124	-	-			0.000	0.000	0.000		0.001	-	-	0.000	0.000	0.000		0.002	-	-			0.001			
0.100	0.000	0.000	0.000		0.074	-	-	0.000	0.000	0.000		0.075	-	-			0.000	0.000	0.000		0.001	-	-	0.000	0.000	0.000		0.001	-	-			0.001			
0.150	0.000	0.000	0.000		0.029	-	-	0.000	0.000	0.000		0.036	-	-			0.000	0.000	0.000		0.005	-	-	0.000	0.000	0.000		0.011	-	-			0.002			
0.200	0.000	0.000	0.000		0.007	-	-	0.000	0.000	0.000		0.014	-	-			0.000	0.000	0.000		0.033	-	-	0.000	0.000	0.000		0.039	-	-			0.002			
0.250	0.000	0.000	0.000		0.001	-	-	0.000	0.000	0.000		0.005	-	-			0.000	0.000	0.000		0.077	-	-	0.000	0.000	0.000		0.080	-	-			0.003			
0.300	0.000	0.000	0.000		0.001	-	-	0.000	0.000	0.000		0.002	-	-			0.000	0.000	0.000		0.126	-	-	0.000	0.000	0.000		0.127	-	-			0.003			
0.350	0.000	0.000	0.000		0.001	-	-	0.000	0.000	0.000		0.001	-	-			0.000	0.000	0.000		0.176	-	-	0.000	0.000	0.000		0.176	-	-			0.004			
0.400	0.000	0.000	0.000		0.001	-	-	0.000	0.000	0.000		0.001	-	-			0.000	0.000	0.000		0.226	-	-	0.000	0.000	0.000		0.226	-	-			0.004			
0.450	0.000	0.000	0.000		0.001	-	-	0.000	0.000	0.000		0.001	-	-			0.000	0.000	0.000		0.276	-	-	0.000	0.000	0.000		0.276	-	-			0.005			
0.500	0.000	0.000	0.000		0.001	-	-						-	-			0.000	0.000	0.000		0.326	-	-				-	-			0.005					
0.550	0.000	0.000	0.000		0.001	-	-						-	-			0.000	0.000	0.000		0.376	-	-				-	-			0.006					
0.600	0.000	0.000	0.000		0.001	-	-						-	-			0.000	0.000	0.000		0.426	-	-				-	-			0.006					
0.650	0.000	0.000	0.000		0.001	-	-						-	-			0.000	0.000	0.000		0.476	-	-				-	-			0.007					
0.700	0.000	0.000	0.000		0.001	-	-						-	-			0.000	0.000	0.000		0.526	-	-				-	-			0.007					
0.800	0.000	0.000	0.000		0.003	-	-						-	-			0.000	0.000	0.000		0.626	-	-				-	-			0.008					
Totals:						0	0						0	0	0	0						0	0					0	0	0	0					
Number of Trades:						0							0		0							0.00						0		0						

PPC (CR)

(Contract Size: 100 Securities, Exercise Style: American, Physical Delivery)

Call Options																	Put Options																			
March 2016																	April 2016																	Other Months		
Exerise Price	Open price	Price max	Price min	Last price	Closing price	Volume	Open Interest	Open price	Price max	Price min	Last price	Closing price	Volume	Open Interest	Volume	Open Interest	Open price	Price max	Price min	Last price	Closing price	Volume	Open Interest	Open price	Price max	Price min	Last price	Closing price	Volume	Open Interest	Volume	Open Interest	Exerise Price			
1.800	0.000	0.000	0.000		1.43	-	-	0.000	0.000	0.000		1.43	-	-			0.000	0.000	0.000		0.001	-	-	0.000	0.000	0.000		0.001	-	-				0.018		
1.900	0.000	0.000	0.000		1.33	-	-	0.000	0.000	0.000		1.33	-	-			0.000	0.000	0.000		0.001	-	-	0.000	0.000	0.000		0.001	-	-				0.019		
2.000	0.000	0.000	0.000		1.23	-	-	0.000	0.000	0.000		1.23	-	-			0.000	0.000	0.000		0.001	-	-	0.000	0.000	0.000		0.001	-	-				0.020		
2.200	0.000	0.000	0.000		1.03	-	-	0.000	0.000	0.000		1.04	-	-			0.000	0.000	0.000		0.002	-	-	0.000	0.000	0.000		0.001	-	-				0.022		
2.400	0.000	0.000	0.000		0.832	-	-	0.000	0.000	0.000		0.842	-	-			0.000	0.000	0.000		0.001	-	-	0.000	0.000	0.000		0.007	-	-				0.024		
2.600	0.000	0.000	0.000		0.633	-	-	0.000	0.000	0.000		0.658	-	-			0.000	0.000	0.000		0.001	-	-	0.000	0.000	0.000		0.022	-	-				0.026		
2.800	0.000	0.000	0.000		0.440	-	-	0.000	0.000	0.000		0.489	-	-			0.000	0.000	0.000		0.008	-	-	0.000	0.000	0.000		0.053	-	-				0.028		
3.000	0.000	0.000	0.000		0.268	-	-	0.000	0.000	0.000		0.348	-	-			0.000	0.000	0.000		0.036	-	-	0.000	0.000	0.000		0.111	-	-				0.030		
3.200	0.000	0.000	0.000		0.138	-	-	0.000	0.000	0.000		0.234	-	-			0.000	0.000	0.000		0.105	-	-	0.000	0.000	0.000		0.197	-	-				0.032		
3.400	0.000	0.000	0.000		0.058	-	20	0.000	0.000	0.000		0.149	-	-			0.000	0.000	0.000		0.225	-	-	0.000	0.000	0.000		0.312	-	-				0.034		
3.600	0.000	0.000	0.000		0.020	-	-	0.000	0.000	0.000		0.091	-	-			0.000	0.000	0.000		0.388	-	-	0.000	0.000	0.000		0.454	-	-				0.036		
3.800	0.000	0.000	0.000		0.005	-	40	0.000	0.000	0.000		0.053	-	-			0.000	0.000	0.000		0.574	-	-	0.000	0.000	0.000		0.616	-	-				0.038		
4.000	0.000	0.000	0.000		0.001	-	-	0.000	0.000	0.000		0.030	-	-			0.000	0.000	0.000		0.770	-	-	0.000	0.000	0.000		0.793	-	-				0.040		
4.400	0.000	0.000	0.000		0.001	-	-	0.000	0.000	0.000		0.008	-	-			0.000	0.000	0.000		1.17	-	-	0.000	0.000	0.000		1.17	-	-				0.044		
4.800	0.000	0.000	0.000		0.001	-	60	0.000	0.000	0.000		0.002	-	-			0.000	0.000	0.000		1.57	-	-	0.000	0.000	0.000		1.57	-	-				0.048		
5.200	0.000	0.000	0.000		0.001	-	-	0.000	0.000	0.000		0.001	-	-			0.000	0.000	0.000		1.97	-	-	0.000	0.000	0.000		1.97	-	-				0.052		
5.600	0.000	0.000	0.000		0.001	-	-						-	-			0.000	0.000	0.000		2.37	-	-				-	-					0.056			
6.000	0.000	0.000	0.000		0.001	-	-						-	-			0.000	0.000	0.000		2.77	-	-				-	-					0.060			
6.400	0.000	0.000	0.000		0.001	-	-						-	-			0.000	0.000	0.000		3.17	-	-				-	-					0.064			
6.800	0.000	0.000	0.000		0.001	-	-						-	-			0.000	0.000	0.000		3.57	-	-				-	-					0.068			
7.200	0.000	0.000	0.000		0.001	-	-						-	-			0.000	0.000	0.000		3.97	-	-				-	-					0.072			
Totals:							0	120								0	0	0	0								0	0				0	0			
Number of Trades:							0								0	0								0.00								0	0			

Lending Products	Underlying Title	Multilateral Transactions[1]					Bilateral Transactions[2]		Stock Borrowing through OTC (volume)[3]
		Open Interest[5]	Volume(Offered)	Average Weighted	Transactions volume	Average Weighted	Transactions Volume	Average Weighte	Transactions Volume
AEGNBOR	AEGEAN AIRLINES (CR)	1,500	8,380	5.31%	---	---	---	---	11,701
ALPHABOR	ALPHA BANK (CR)	85,679	336	5.30%	336	5.30%	---	---	6,016,805
AETFBOR	ALPHA ETF FTSE Athex Large Cap	---	---	---	---	---	---	---	---
ALMYBOR	ALUMIL (CR)	---	---	---	---	---	---	---	---
ASCOBOR	AS COMPANY SA (CR)	---	---	---	---	---	---	---	---
IATRBOR	ATHENS MEDICAL CENTER SA (CR)	---	39,104	5.31%	---	---	---	---	---
OTOELBOR	AUTOHELLAS SA (CR)	---	1,361	5.31%	---	---	---	---	---
EEEBOR	CC HBC AG (CR)	7,893	26	5.36%	26	5.36%	---	---	70,546
CENTRBOR	CENTRIC HOLDINGS (CR)	---	16,000	5.31%	---	---	---	---	---
SOLKBOR	CORINTH PIPEWORKS SA (CR)	---	---	---	---	---	---	---	---
PLAKRBOR	CRETE PLASTICS SA (CR)	---	---	---	---	---	---	---	---
ELLAKTORBOR	ELLAKTOR (CR)	32,600	44,108	5.31%	---	---	---	---	23,700
ANEMOSBOR	ELTECH ANEMOS S.A. (CR)	---	---	---	---	---	---	---	---
ELTONBOR	ELTON SA (CR)	---	---	---	---	---	---	---	---
EUROBBOR	EUROBANK ERGASIAS (CR)	208,869	1,314	5.31%	1,314	5.31%	20,000	2.51%	3,146,981
EUROCBOR	EUROCONSULTANTS S.A. (CR)	---	---	---	---	---	---	---	---
EUPICBOR	EUROPEAN RELIANCE INSUR. (CR)	---	---	---	---	---	---	---	---
EYDAPBOR	EYDAP S.A. (CR)	5,714	63	5.31%	---	---	---	---	24,480
FFGRPBOR	FOLLI FOLLIE (CR)	8,700	71,693	3.31%	---	---	---	---	510,453
FOYRKBOR	FOURLIS (CR)	---	5,130	5.31%	---	---	---	---	3,850
FRIGOBOR	FRIGOGLASS SA (CR)	---	5,760	5.31%	---	---	---	---	---
GEKTERNABOR	GEK TERNA (CR)	500	57,638	5.31%	---	---	---	---	---
SARBOR	GR. SARANTIS SA (CR)	---	1,931	5.31%	---	---	---	---	---
EUPROBOR	GRIVALIA PROPERTIES (CR)	26,440	67,982	3.31%	---	---	---	---	37,742
XAKOBOR	HALKOR SA (CB)	---	50,550	5.31%	---	---	---	---	---
EXAEBOR	HELLENIC EXCHANGES-A.S.E. (CR)	60,619	407,711	3.31%	8,600	2.65%	---	---	98,443
ELPEBOR	HELLENIC PETROLEUM (CR)	3,712	109,938	5.31%	---	---	---	---	44,796
HYGEIABOR	HYGEIA SA (CR)	---	48,700	5.31%	---	---	---	---	---
IASOBOR	IASO SA (CR)	---	---	---	---	---	---	---	---
IKTINBOR	IKTINOS HELLAS SA (CR)	---	---	---	---	---	---	---	---
LYKBOR	INFORM P. LYKOS SA (CR)	---	---	---	---	---	---	---	---

Stock Lending Notes

- [1] - Multilateral contracts Lending or Borrowing as per Methods 8-1, 8-2 and 8-3-3 (According to ATHEX BoD Resolution No.17)
- [2] - Billateral Contracts Lending or Borrowing as per Methods 8-3-1 and 8-3-2 (According to ATHEX BoD Resolution No.20 )
- [3] - The information concerning OTC Stock Borrowing Transactions is based on the statements of the Dematerialised Securities System (DSS) operators involved and refers to volumes that have been registered up until the previous working day.
- [4] - Average Price (Volume weighted)
- [5] - The Data concerning Open Interest before the start of trading session

Lending Products	Underlying Title	Multilateral Transactions[1]					Bilateral Transactions[2]		Stock Borrowing through OTC (volume)[3]
		Open Interest[5]	Volume(Offered)	Average Weighted	Transactions volume	Average Weighted	Transactions Volume	Average Weighte	Transactions Volume
INTRKBOR	INTRACOM HOLDINGS (CR)	---	168,546	5.31%	---	---	---	---	---
INLOTBOR	INTRALOT (CR)	10,131	59,769	5.31%	---	---	---	---	803
AVAXBOR	J & P - AVAX SA (CR)	---	20,335	5.31%	---	---	---	---	---
BELABOR	JUMBO SA (CR)	102,401	33,671	5.31%	---	---	---	---	47,865
KLEMBOR	KLEEMAN HELLAS SA (CR)	---	23,512	5.31%	---	---	---	---	---
KORRESBOR	KORRES (CR)	---	---	---	---	---	---	---	---
KRIBOR	KRI-KRI S.A. (CR)	---	47,768	5.31%	---	---	---	---	---
KYRMBOR	KYRIAKIDIS MARBLES SA (CR)	---	5,737	5.31%	---	---	---	---	---
LAMDABOR	LAMDA DEVELOPMENT SA (CR)	111	23	5.41%	---	---	---	---	10,377
MIGBOR	MARFIN INVESTMENT GROUP (CR)	---	84,717	5.31%	---	---	---	---	744,474
METKKBOR	METKA (CR)	3,000	13,431	5.31%	---	---	---	---	5,165
MLSBOR	MLS MULTIMEDIA SA (CR)	---	9,118	5.31%	---	---	---	---	---
MOHBOR	MOTOR OIL (CR)	39,349	17,050	5.31%	---	---	---	---	120,254
MYTILBOR	MYTILINEOS HOLDINGS (CR)	7,732	169,020	3.31%	1,500	2.65%	---	---	8,300
ETEBOR	NATIONAL BANK (CR)	250,831	81,937	5.31%	28,000	4.22%	6,000	0.01%	1,220,526
ETFASEBOR	NBGAM ETF	---	---	---	---	---	---	---	---
ETFGT30PBOR	NBGAM ETF GREECE & TURKEY 30	---	---	---	---	---	---	---	---
OPAPBOR	OPAP (CR)	39,029	101,892	3.31%	---	---	3,000	0.01%	857,278
HTOBOR	OTE (CR)	70,050	10,309	4.68%	2,000	3.65%	10,000	0.01%	179,848
PPABOR	P.P.A. S.A. (CR)	97	880	5.31%	---	---	---	---	151
PETROBOR	PETROPOULOS PETROS (CR)	---	---	---	---	---	---	---	---
TPEIRBOR	PIRAEUS BANK (CR)	20,363	5,646	5.31%	5,646	5.31%	82,000	0.01%	2,183,662
PLAISBOR	PLAISIO COMPUTERS SA (CR)	---	---	---	---	---	---	---	---
PPCBOR	PPC (CR)	120,978	6,669	5.16%	---	---	1,100	0.01%	1,227,224
QUALBOR	QUALITY & RELIABILITY SA (CR)	---	---	---	---	---	---	---	---
QUESTBOR	QUEST HOLDINGS (CR)	---	---	---	---	---	---	---	---
KAMPBOR	REDS S.A. (CR)	---	---	---	---	---	---	---	---
OLYMPBOR	TECHNICAL OLYMPIC SA (CR)	---	9,039	5.31%	---	---	---	---	---
TENERGYBOR	TERNA ENERGY (CR)	---	25,691	5.31%	---	---	---	---	13,200
EYAPSBOR	THESSALONIKA WATER & SEWERAGE	---	798	5.31%	---	---	---	---	---
PLATBOR	THRACE PLASTICS SA (CR)	---	42,700	5.31%	---	---	---	---	---

Stock Lending Notes

- [1] - Multilateral contracts Lending or Borrowing as per Methods 8-1, 8-2 and 8-3-3 (According to ATHEX BoD Resolution No.17)
- [2] - Billateral Contracts Lending or Borrowing as per Methods 8-3-1 and 8-3-2 (According to ATHEX BoD Resolution No.20 )
- [3] - The information concerning OTC Stock Borrowing Transactions is based on the statements of the Dematerialised Securities System (DSS) operators involved and refers to volumes that have been registered up until the previous working day.
- [4] - Average Price (Volume weighted)
- [5] - The Data concerning Open Interest before the start of trading session

Lending Products	Underlying Title	Multilateral Transactions[1]					Bilateral Transactions[2]		Stock Borrowing through OTC (volume)[3]
		Open Interest[5]	Volume(Offered)	Average Weighted	Transactions volume	Average Weighted	Transactions Volume	Average Weighted	Transactions Volume
TITKBOR	TITAN CEMENT (CR)	5,600	253,607	3.31%	300	2.65%	---	---	3,204
OLTHBOR	TPA SA (CR)	---	263	5.31%	---	---	---	---	---
VIOBOR	VIOHALCO SA/NV (CB)	5,035	5,701	5.31%	---	---	---	---	---

Stock Lending Notes

[1] - Multilateral contracts Lending or Borrowing as per Methods 8-1, 8-2 and 8-3-3 (According to ATHEX BoD Resolution No.17)

[2] - Bilateral Contracts Lending or Borrowing as per Methods 8-3-1 and 8-3-2 (According to ATHEX BoD Resolution No.20 )

[3] - The information concerning OTC Stock Borrowing Transactions is based on the statements of the Dematerialised Securities System (DSS) operators involved and refers to volumes that have been registered up until the previous working day.

[4] - Average Price (Volume weighted)

[5] - The Data concerning Open Interest before the start of trading session



## Sectors codification for listed companies

533	-	Exploration & Production	537	-	Integrated Oil & Gas
1353	-	Commodity Chemicals	1357	-	Specialty Chemicals
1753	-	Aluminum	1755	-	Nonferrous Metals
1757	-	Steel	1775	-	General Mining
2353	-	Building Materials & Fixtures	2357	-	Heavy Construction
2723	-	Containers & Packaging	2727	-	Diversified Industrials
2733	-	Electrical Components & Equipment	2753	-	Commercial Vehicles & Trucks
2757	-	Industrial Machinery	2773	-	Marine Transportation
2777	-	Transportation Services	2791	-	Business Support Services
2797	-	Industrial Suppliers	3535	-	Distillers & Vintners
3537	-	Soft Drinks	3573	-	Farming Fishing & Plantations
3577	-	Food Products	3722	-	Durable Household Products
3726	-	Furnishings	3728	-	Home Construction
3747	-	Toys	3763	-	Clothing & Accessories
3765	-	Footwear	3767	-	Personal Products
3785	-	Tobacco	4533	-	Health Care Providers
4535	-	Medical Equipment	4577	-	Pharmaceuticals
5337	-	Food Retailers & Wholesalers	5371	-	Apparel Retailers
5373	-	Broadline Retailers	5375	-	Home Improvement Retailers
5379	-	Specialty Retailers	5553	-	Broadcasting & Entertainment
5555	-	Media Agencies	5557	-	Publishing
5751	-	Airlines	5752	-	Gambling
5753	-	Hotels	5755	-	Recreational Services
5757	-	Restaurants & Bars	5759	-	Travel & Tourism
6535	-	Fixed Line Telecommunications	6575	-	Mobile Telecommunications
7535	-	Conventional Electricity	7537	-	Alternative Electricity
7577	-	Water	8355	-	Banks
8534	-	Insurance Brokers	8536	-	Property & Casualty Insurance
8633	-	Real Estate Holding & Development	8637	-	Real Estate Services
8671	-	Industrial & Office REITs	8675	-	Specialty REITs
8775	-	Specialty Finance	8777	-	Investment Services
8985	-	Equity Investment Instruments	9533	-	Computer Services
9535	-	Internet	9537	-	Software
9572	-	Computer Hardware	9574	-	Electronic Office Equipment
9578	-	Telecommunications Equipment	12003	-	ETF



**ATHEXGROUP**  
Όμιλος Χρηματιστηρίου Αθηνών

Λεωφ. Αθηνών 110 104 42 Αθήνα  
110, Athinon Ave. GR 104 42 Athens  
tel. (+30)210-33.66.800, fax (+30)210-33.66.101  
[www.athegroup.gr](http://www.athegroup.gr)