



ATHEXGROUP
Athens Exchange Group

Hellenic Exchanges – Athens Stock Exchange S.A.

“

2016

δελτίο ημερησίων συναλλαγών

daily official list

Thursday, 14 April, 2016
Year: 137 Trading Day No: 70

”

Disclaimer:

Hellenic Exchanges-Athens Stock Exchange S.A. endeavours to ensure that the data and other material ("Information") presented on the Daily Official List are accurate and complete, but it is not liable for any errors or omissions of data or /and for the accuracy, credibility, updating and completeness of the aforesaid information nor it has any liability arising directly or indirectly from the use of the above Information.

The Company is not liable for the accuracy of the data included in listed companies' announcements. Only the sender of such an announcement is fully and solely liable for any infringement of third party's rights from the content of such announcement. All contents of the Daily Official List are provided only for information purposes and do not constitute investment advice or solicitation to invest in securities or other products listed for trading on the Exchange.

You acknowledge and agree that the Company is the owner of any property rights related to any Information appearing on the Daily Official List including intellectual property rights copyright, trademarks, etc.

The above data are a property of the Hellenic Exchanges-Athens Exchange and are copyright protected. Users are forbidden to reproduce, modify, copy, sale, transmit or redistribute, by all reproduction means and methods, part or the whole of the above data, without reference to their source.

The commercial exploitation of these data is, also, forbidden by third parties. Hellenic Exchanges-Athens Exchange does not carry any responsibility, direct or indirect, derived from usage or accidental alteration of the above data when used by third parties.

Hellenic Exchanges – Athens Stock Exchange S.A.

110 Athinon Ave., 10442 Athens, Tel: (210) 33.66.800, Fax: (210) 32.13.938

www.helix.gr

Thessalonica Stock Exchange Center (T.S.E.C)

16-18 Katouni Str., Thessalonica 546 25 Tel: (2310) 567.667, Fax: (2310) 530.545

Athex Members Guarantee Fund

14-16 Fidiou Str., Athens 106 78, Tel: (210) 33.04.682, Fax: (210) 33.04.155

Hellenic Republic Capital Market Commission

1 Kolokotroni Str. & 1 Stadiou Str., Athens 10562 Tel: (210) 33.77.100 Fax: (210) 33.77.173

Table of Contents

Section 1: Statistical Figures of Securities, Derivatives and Lending

Summary of Markets

Athex Indices

Analytic Figures for Athex Market's Boards and Categories

Trading Details by Athex Sectors and Financial Instruments (ETFs)

Top 10 best & worst performing Shares

Derivatives Summary

Section 2: Analytic Figures of Shares Transactions

Analytic Figures of Shares Transactions

Shares' Notes

Section 3: Figures of Securities Transactions

Securities Blocks Details

Shares Rights Details

Stock Borrowing

Shares Forced Sales

Forced Sales Registered Shares

Exchange Traded Funds (ETFs) Characteristics

Section 5: Bonds traded in Fixed Income Assets Market

Corporate Bonds

Government Bonds

Treasury Bills & Zero Coupon Government Bonds

Government Bonds Traded with the Open Outcry Method

State Banks Bonds

Section 6: Additional Infos

Athex & ATHEXClear Members List

List of Stocks under Market Making operations

Section 7: Derivatives Market Analytic Figures

Index Futures

Stock Futures

Index Options

Stock Options

Stock Lending Analytic Figures

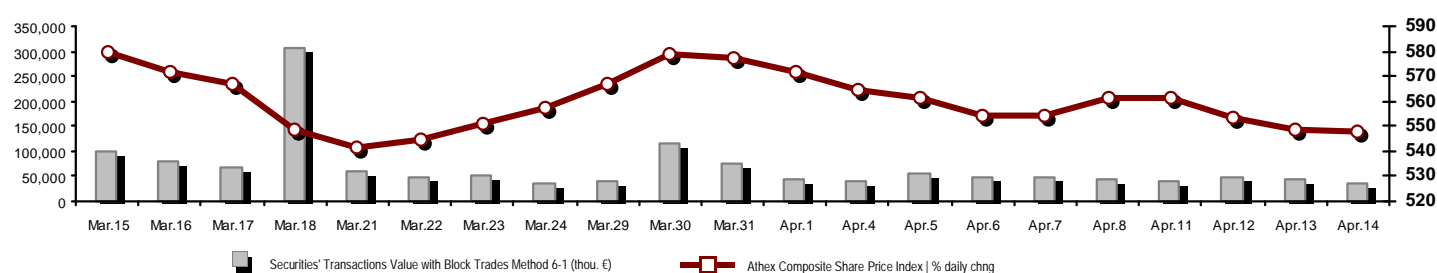
Appendix A: Sectors codification for listed companies

Section codification follows the corresponding from the Greek version of Daily Official List for reference purposes.

Hellenic Exchanges – Athens Stock Exchange S.A.Strategic Communication & Market Analysis Division - Market Analysis Department

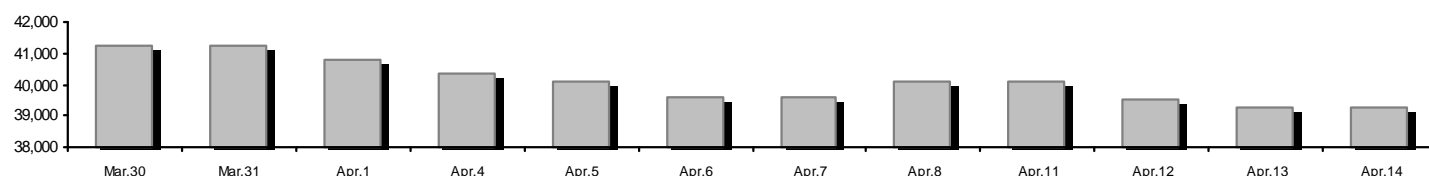
Summary of Markets

Athex Composite Share Price Index vs Shares and Derivatives Transactions Value

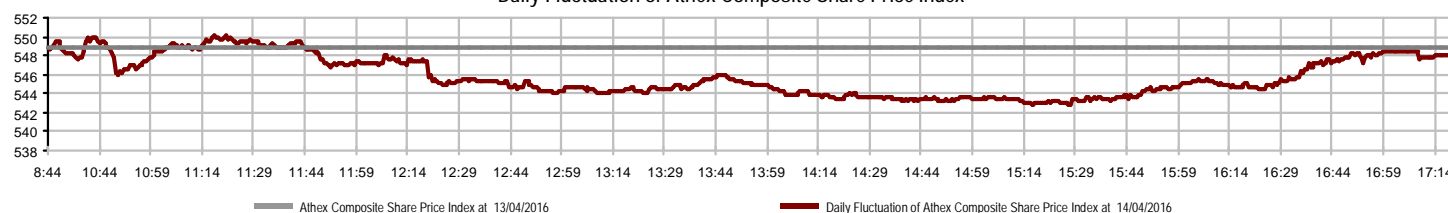


Athex Capitalisation (mill. €) **: 39,265.82		Derivatives Total Open Interest 202,885	
Daily change: mill. € %	11.84 0.03%	in Index Futures % daily chng	15,287 2.20%
Yearly Avg Capitalisation: mill. € % chng prev year Avg	39,097.45 -10.38%	in Stock Futures % daily chng	183,785 -0.54%
Athex Composite Share Price Index % daily chng	548.10 -0.13%	in Index Options % daily chng	3,733 1.63%
Athex Composite Share Price Index Capitalisation (mill. €)	34,913.18	in Stock Options % daily chng	80 0.00%
Daily change (mill. €)	11.98		
Securities' Transactions Value with Block Trades Method 6-1 (36,726.13		Derivatives Contracts Volume: 46,951	
Daily change: thou. € %	-7,383.14 -16.74%	Daily change: pieces %	-20,686 -30.58%
YtD Avg Trans. Value: thou. € % chng prev year Avg	67,779.10 -20.83%	YtD Avg Derivatives Contracts % chng prev year Avg	62,447 -4.96%
Blocks Transactions Value of Method 6-1 (thou. €)	2,904.43	Derivatives Trades Number: 2,005	
Blocks Transactions Value of Method 6-2 & 6-3 (thou. €)	0.00	Daily change: number %	-804 -28.62%
Bonds Transactions Value (thou. €)	0.00	YtD Avg Derivatives Trades number % chng prev year Avg	2,872 -12.12%
Securities' Transactions Volume with Block Trades Method 6-1 (th 51,594.13		Lending Total Open Interest 551,361	
Daily change: thou. pieces %	-34,495.28 -40.07%	Daily change: pieces %	41,000 8.03%
YtD Avg Volume: thou. pieces % chng prev year Avg	121,488.15 -37.07%	Lending Volume (Multilateral/Bilateral) 77,500	
Blocks Transactions Volume of Method 6-1 (thou. Pieces)	561.13	Daily change: pieces %	61,770 392.69%
Blocks Transactions Volume of Method 6-2 & 6-3 (thou. Pieces)	0.00	Multilateral Lending 72,500	
Bonds Transactions Volume (thou. pieces)	0.00	Bilateral Lending 5,000	
Securities' Trades Number with Block Trades Method 6-1 15,628		Lending Trades Number: 12	
Daily change: number %	-2,661 -14.55%	Daily change: thou. € %	-10 -45.45%
YtD Avg Derivatives Trades number % chng prev year Avg	22,950 -15.01%	Multilateral Lending Trades Number 11	
Number of Blocks Method 6-1	4	Bilateral Lending Trades Number 1	
Number of Blocks Method 6-2 & 6-3	0		
Number of Bonds Transactions	0		

Athex Capitalisation (mill. €) **



Daily Fluctuation of Athex Composite Share Price Index



Athex Indices

Index name	14/04/2016	13/04/2016	pts.	%	Min	Max	Year min	Year max	Year change
Athex Composite Share Price Index	548.10	548.83	-0.73	-0.13%	542.74	550.11	420.82	631.35	-13.19%
FTSE/Athex Large Cap	148.75	148.62	0.13	0.09%	147.16	149.24	107.52	183.34	-18.87%
FTSE/Athex Mid Cap Index	624.21	638.41	-14.20	-2.22%	615.52	638.41	515.21	820.16	-23.54%
FTSE/ATHEX-CSE Banking Index	28.92	28.83	0.09	0.31%	28.31	29.15	13.57	44.84	-35.16%
FTSE/ATHEX Global Traders Index Plus	1,186.87	1,199.59	-12.72	-1.06%	1,177.75	1,200.09	1,031.55	1,278.16	-6.88%
FTSE/ATHEX Global Traders Index	1,352.72	1,356.86	-4.14	-0.31%	1,335.97	1,356.89	1,129.41	1,426.71	-5.19%
FTSE/ATHEX Mid & Small Cap Factor-Weighted Ind	1,106.01	1,123.95	-17.94	-1.60%	1,101.41	1,125.08	1,066.64	1,261.08	-11.91%
Greece & Turkey 30 Price Index	506.80	506.17	0.63	0.12%	502.42	507.90	396.10	507.90	9.17%
ATHEX Mid & SmallCap Price Index	2,001.16	2,004.11	-2.95	-0.15%	1,985.66	2,005.59	1,848.24	2,183.18	-7.86%
FTSE/Athex Market Index	364.41	364.39	0.02	0.01%	360.58	365.84	265.17	449.96	-19.01%
FTSE Med Index	4,813.19	4,773.29	39.90	0.84%			4,396.47	5,530.53	-12.97%
Athex Composite Index Total Return Index	816.41	817.50	-1.09	-0.13%	808.42	819.40	626.16	939.41	-13.09%
FTSE/Athex Large Cap Total Return	205.33	205.15	0.18	0.09%			157.44	246.77	-18.81%
FTSE/ATHEX Large Cap Net Total Return	613.37	612.80	0.57	0.09%	606.80	615.38	443.06	755.50	-18.81%
FTSE/Athex Mid Cap Total Return	767.45	784.91	-17.46	-2.22%			669.55	1,008.35	-23.54%
FTSE/ATHEX-CSE Banking Total Return Index	27.64	26.90	0.74	2.75%			15.92	42.34	-36.45%
Greece & Turkey 30 Total Return Index	634.91	620.21	14.70	2.37%			502.35	634.91	10.28%
Hellenic Mid & Small Cap Index	667.35	673.40	-6.05	-0.90%	660.61	673.74	560.15	722.84	-6.74%
FTSE/Athex Banks	38.21	38.10	0.11	0.29%	37.40	38.52	17.93	59.24	-35.15%
FTSE/Athex Insurance	1,538.35	1,527.82	10.53	0.69%	1,527.82	1,538.35	1,274.94	1,612.11	4.29%
FTSE/Athex Financial Services	993.72	977.74	15.98	1.63%	969.10	1,005.35	634.69	1,034.56	2.03%
FTSE/Athex Industrial Goods & Services	1,413.87	1,429.64	-15.77	-1.10%	1,396.58	1,440.28	1,369.56	1,844.00	-22.52%
FTSE/Athex Retail	2,657.80	2,629.74	28.06	1.07%	2,613.98	2,658.87	1,826.41	2,691.96	5.22%
FTSE/ATHEX Real Estate	2,405.46	2,435.02	-29.56	-1.21%	2,384.48	2,439.23	2,154.15	2,502.99	-0.60%
FTSE/Athex Personal & Household Goods	5,783.36	5,759.83	23.53	0.41%	5,651.71	5,790.88	4,433.32	6,053.11	14.22%
FTSE/Athex Food & Beverage	6,787.85	6,821.40	-33.55	-0.49%	6,765.49	6,854.94	5,952.97	7,376.68	-7.98%
FTSE/Athex Basic Resources	1,423.02	1,442.47	-19.45	-1.35%	1,398.02	1,446.60	1,200.24	1,648.25	-12.95%
FTSE/Athex Construction & Materials	1,796.55	1,829.93	-33.38	-1.82%	1,778.06	1,829.93	1,500.04	2,059.39	-4.36%
FTSE/Athex Oil & Gas	2,186.85	2,211.75	-24.90	-1.13%	2,162.90	2,219.52	1,860.37	2,447.68	-9.33%
FTSE/Athex Chemicals	6,940.16	6,988.54	-48.38	-0.69%	6,940.16	7,085.31	6,190.46	7,133.70	1.88%
FTSE/Athex Travel & Leisure	1,191.77	1,189.18	2.59	0.22%	1,179.92	1,207.76	982.74	1,426.44	-16.36%
FTSE/Athex Technology	545.93	544.50	1.43	0.26%	543.27	557.45	489.05	598.90	-4.56%
FTSE/Athex Telecommunications	2,091.95	2,053.42	38.53	1.88%	2,020.39	2,100.21	1,802.93	2,543.37	-17.75%
FTSE/Athex Utilities	1,375.89	1,401.55	-25.66	-1.83%	1,361.30	1,401.55	1,136.34	1,734.68	-17.88%
FTSE/Athex Health Care	120.55	123.72	-3.17	-2.56%	112.62	126.89	61.86	133.24	42.06%
Athex All Share Index	138.80	138.76	0.04	0.03%	138.80	138.80	113.39	162.12	-15.58%
Hellenic Corporate Bond Index	99.96	99.83	0.14	0.14%			96.90	100.40	-0.52%
Hellenic Corporate Bond Price Index	92.67	92.55	0.11	0.12%			90.43	94.61	-2.20%

Note 1: Greece & Turkey 30 Pr data is the indicative at 17:20, whereas FTSE/ATHEX Custom Capped, FTSE/ATHEX Custom Capped - USD, FTSE/ATHEX Custom Capped TR, FTSE/ATHEX Custom Capped - USD TR, FTSE/Med 100 & Greece & Turkey 30 Rt., Hellenic Corporate Bond Price Index, Hellenic Corporate Bond Index closing prices refer to the previous trading day of 12/04/2016.

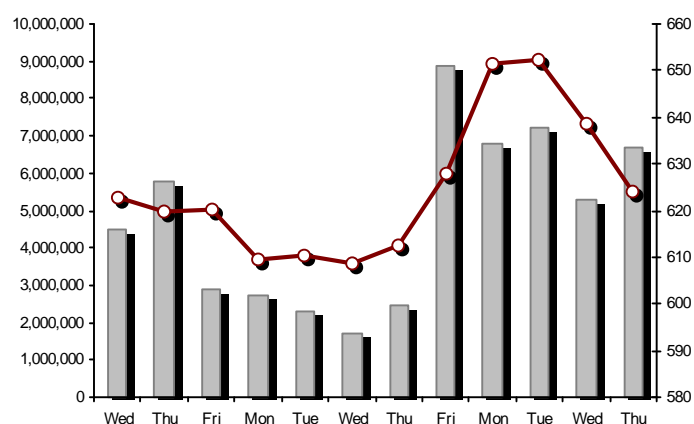
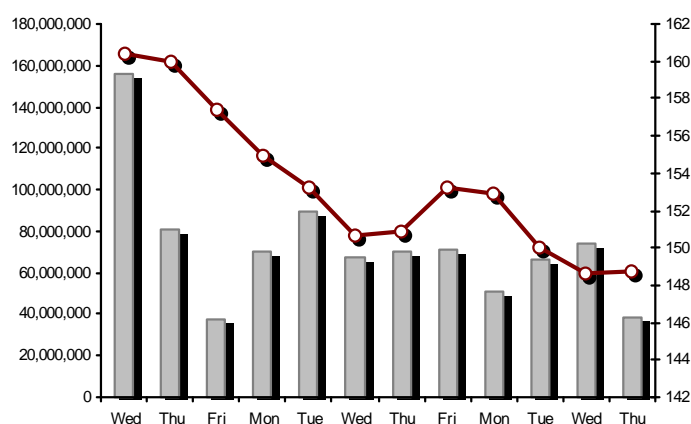
Note 2: The Hellenic Mid & Small Cap Index is a Customized index calculated by the Athens Exchange.

Athex Indices

FTSE/Large Cap

14/04/2016: 0.09% FTSE/Athex Mid Cap Index

14/04/2016: -2.22%

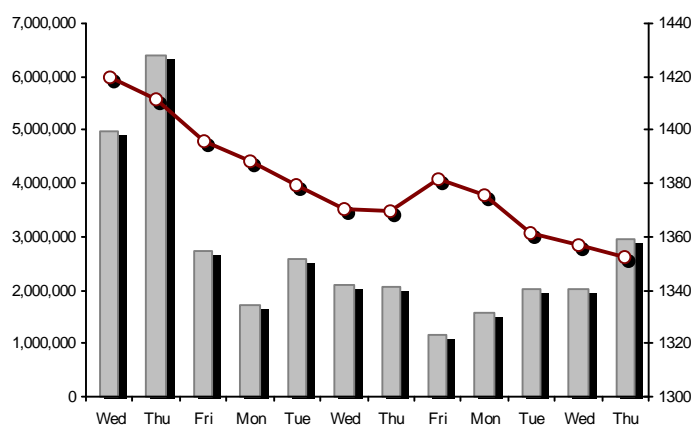
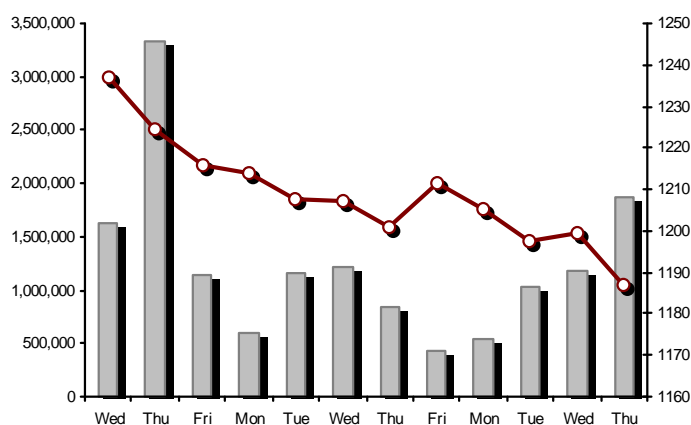


FTSE/ATHEX Global Traders Index Plus

14/04/2016: -1.06%

FTSE/ATHEX Global Traders Index

14/04/2016: -0.31%

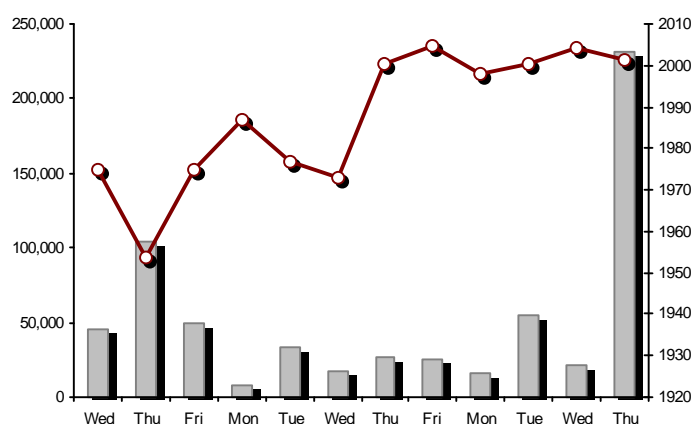
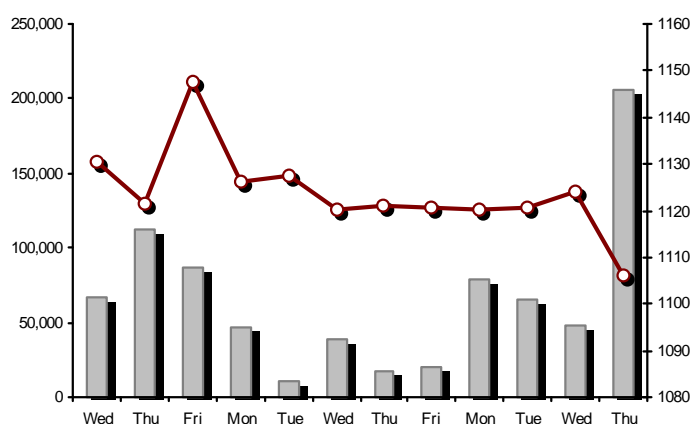


FTSE/ATHEX Mid & Small Cap Factor-Weighted Index

14/04/2016: -1.60%

ATHEX Mid & SmallCap Price Index

14/04/2016: -0.15%



Indices volume of transactions

Indices closing prices

Analytic Figures for Athex Market's Boards and Categories

	Total Traded Securities	Main Market	Low Dispersion	Other Categories (*)	Exchange Traded Funds (ETFs)	Warrants
Totals	122	99	5	13	2	3
Gain / Lose / Same:	46 / 56 / 20	40 / 46 / 13	2 / 2 / 1	3 / 7 / 3	1 / 0 / 1	0 / 1 / 2
Athex Capitalisation (mill. €) **	39,265.82	36,593.25	2,555.59	116.99		
Daily Average Trans/ons Value(thou.€)	67,779.10	67,747.68	42.56	5.22	16.97	14.24
Transactions Value	36,726.13	36,532.47	127.14	9.47	47.42	9.63
Main Board:	33,821.70	33,628.04	127.14	9.47	47.42	9.63
Blocks Board 6_2_3:	2,904.43	2,904.43	0.00	0.00	0.00	0.00
Forced Sales Board:	0.00	0.00	0.00	0.00	0.00	0.00
Special Terms Board:	0.00	0.00	0.00	0.00	0.00	0.00
Daily Average Transactions Volume	121,488,153	114,086,413	21,312	87,951	11,127	7,349,569
Transactions Volume	51,594,126	48,576,307	155,549	81,360	7,904	2,773,006
Main Board:	51,032,998	48,015,179	155,549	81,360	7,904	2,773,006
Blocks Board 6_2_3:	561,128	561,128	0	0	0	0
Forced Sales Board:	0	0	0	0	0	0
Special Terms Board:	0	0	0	0	0	0
Daily Average Number of Trades	22,950	22,782	40	51	5	74
Number of Trades	15,628	15,461	52	43	3	69
Main Board:	15,624	15,457	52	43	3	69
Blocks Board 6_2_3:	4	4	0	0	0	0
Forced Sales Board:	0	0	0	0	0	0
Special Terms Board:	0	0	0	0	0	0

(*) Summarised Transactions figures for Under Deletion and Under Supervision Categories. (**) The Market Capitalization of the Companies that belong in the Under Supervision Status is not included.

Trading Details by Athex Sectors and Financial Instruments (ETFs)

Code	Sectors	Gain / Lose / Same	Number of Trades	Transactions Volume	Transactions Value	% of Total Trans. Value
8300	- Banks	5 / 3 / 2	6,128	44,216,435	20,799,543.98	56.63%
1700	- Basic Resources	3 / 3 / 0	446	101,649	275,722.74	0.75%
1300	- Chemicals	1 / 2 / 0	11	1,176	1,752.13	0.00%
2300	- Construction & Materials	3 / 9 / 2	658	257,348	806,857.48	2.20%
12000	- Financial Instruments	1 / 0 / 1	3	7,904	47,424.84	0.13%
8700	- Financial Services	2 / 1 / 0	1,206	2,981,157	1,947,369.99	5.30%
3500	- Food & Beverage	6 / 4 / 2	194	69,668	413,811.39	1.13%
4500	- Health Care	2 / 2 / 1	166	439,521	113,450.16	0.31%
2700	- Industrial Goods & Services	5 / 6 / 3	1,635	893,167	855,817.35	2.33%
8500	- Insurance	1 / 0 / 0	3	980	1,430.80	0.00%
5500	- Media	0 / 0 / 2	2	72,450	78,918.25	0.21%
500	- Oil & Gas	1 / 2 / 0	895	240,704	1,352,241.20	3.68%
3700	- Personal & Household Goods	4 / 5 / 3	447	388,886	1,540,065.50	4.19%
8600	- Real Estate	1 / 4 / 1	298	97,561	337,455.72	0.92%
5300	- Retail	1 / 3 / 0	527	66,083	998,459.84	2.72%
9500	- Technology	4 / 4 / 2	93	21,611	27,397.68	0.07%
6500	- Telecommunications	1 / 0 / 0	761	527,643	3,978,240.29	10.83%
5700	- Travel & Leisure	4 / 4 / 1	1,285	975,815	2,460,770.04	6.70%
7500	- Utilities	1 / 4 / 0	870	234,368	689,395.71	1.88%

Top 10 best & worst performing Shares

Main Market					
With positive Price change	Closing price	change	With negative Price change	Closing price	change
MARFIN INVESTMENT GROUP (CR)	0.147	13.08% #	FRIGOGLASS SA (CR)	0.290	-19.22% €
NATIONAL BANK (CR)	0.223	2.77% #	IASO SA (CR)	0.492	-9.89% €
BANK OF CYPRUS (CR)	0.152	2.01% #	FOURLIS (CR)	2.70	-6.90% €
OTE (CR)	7.60	1.88% #	ATTICA BANK S.A. (CR)	0.112	-5.88% €
JUMBO SA (CR)	11.45	1.15% #	INTRALOT (CR)	1.00	-3.85% €
FOLLI FOLLIE (CR)	18.20	1.11% #	CORINTH PIPEWORKS SA (CR)	0.764	-3.17% €
OPAP (CR)	6.39	0.63% #	PPC (CR)	2.80	-3.11% €
GEK TERNA (CR)	1.61	0.63% #	ELLAKTOR (CR)	1.07	-2.73% €
ALPHA BANK (CR)	1.72	0.58% #	TPA SA (CR)	20.88	-2.66% €
PIRAEUS BANK (CR)	0.181	0.56% #	HELLENIC PETROLEUM (CR)	3.41	-2.57% €
With the highest Transactions Value	Value (thou. €)	change	With the highest Transactions Volume	Volume	change
ALPHA BANK (CR)	12,300.35	0.58% #	PIRAEUS BANK (CR)	13,030,192	0.56% #
OTE (CR)	3,978.24	1.88% #	NATIONAL BANK (CR)	10,731,076	2.77% #
EUROBANK ERGASIAS (CR)	3,034.06	-2.47% €	ALPHA BANK (CR)	7,188,922	0.58% #
NATIONAL BANK (CR)	2,355.60	2.77% #	EUROBANK ERGASIAS (CR)	4,759,953	-2.47% €
PIRAEUS BANK (CR)	2,323.49	0.56% #	BANK OF CYPRUS (CR)	3,194,448	2.01% #
OPAP (CR)	1,663.09	0.63% #	MARFIN INVESTMENT GROUP (CR)	2,652,888	13.08% #
HELLENIC EXCHANGES-A.S.E. (CR)	1,583.28	-0.82% €	ATTICA BANK S.A. (CR)	2,537,805	-5.88% €
JUMBO SA (CR)	1,299.51	1.15% #	FRIGOGLASS SA (CR)	657,086	-19.22% €
FOLLI FOLLIE (CR)	995.39	1.11% #	OTE (CR)	527,643	1.88% #
MOTOR OIL (CR)	837.10	-0.43% €	INTRALOT (CR)	451,991	-3.85% €

Note: Stocks that are not included in the "Low Dispersion" and "Under Supervision" categories, and the transactions value is more than 10,000 €.

Derivatives Summary

	Number of Trades	Volume	Open Interest
Index Futures	359	9,141	15,287
FTSE/Athex Large Cap	359	9,141	15,287
Stock Futures	1,640	37,740	183,785
ALPHA BANK (CR)	115	3,633	9,085
CC HBC AG (CR)	3	5	40
CORINTH PIPEWORKS SA (CR)	1	2	649
ELLAKTOR (CR)	27	168	1,333
EUROBANK ERGASIAS (CR)	285	4,387	18,457
EYDAP S.A. (CR)	2	2	153
FOLLI FOLLIE (CR)	6	7	155
FRIGOGLASS SA (CR)	85	373	1,901
GEK TERNA (CR)	31	152	6,834
GRIVALIA PROPERTIES (CR)	0	0	156
HELLENIC EXCHANGES-A.S.E. (CR)	3	7	459
HELLENIC PETROLEUM (CR)	55	117	4,326
INTRALOT (CR)	1	2	459
JUMBO SA (CR)	16	54	508
MARFIN INVESTMENT GROUP (CR)	253	6,722	33,810
METKA (CR)	8	14	588
MOTOR OIL (CR)	3	7	740
MYTILINEOS HOLDINGS (CR)	30	164	3,612
NATIONAL BANK (CR)	221	9,320	46,687
OPAP (CR)	31	138	2,643
OTE (CR)	115	547	2,823
P.P.A. S.A. (CR)	7	9	455
PIRAEUS BANK (CR)	229	11,409	39,968
PPC (CR)	76	396	4,922
TERNA ENERGY (CR)	1	2	1,216
TITAN CEMENT (CR)	17	36	134
VIOHALCO SA/NV (CB)	19	67	1,672
Index Options	6	70	3,733
FTSE/Athex Large Cap	6	70	3,733
Stock Options	0	0	80
ALPHA BANK (CR)	0	0	0
NATIONAL BANK (CR)	0	0	0
OPAP (CR)	0	0	45
OTE (CR)	0	0	20
PIRAEUS BANK (CR)	0	0	10
PPC (CR)	0	0	5
Total Derivatives Traded	2,005	46,951	202,885

Number of Outstanding Securities	Nominal Value	Dividends [1]			Date of Last Coupon		Note	Shares	Closing price	% change	Previous closing price/date	Open price	Price min	Price max	Last price	Avg price	Last Bid [7]	Last Ask [7]	P/E after	Year	Volume	Trades	Transactions Value[8]	Company Mkt Value (thou. €)	Year low	Year high	Sector[4]
		2013	2014	2015	Dividend [2]	Right																					
Warrants																											
1,141,734,167	---	---	---		11/06/2013	---	ALPHA BANK (W)	0.002	---	0.002	13/04/2016	0.003	0.002	0.003	0.002	0.0027135533@0.002	12461708@0.003	---	2015	1,113,167	33	2,239.93	2,643,435.66	0.001	0.004	8355	
245,745,725	---	---	---		27/06/2013	---	NATIONAL BANK (W)	0.010	-9.09	0.011	13/04/2016	0.011	0.010	0.012	0.010	0.011239242@0.010	276130@0.011	---	2015	599,838	30	6,326.38	2,039,814.79	0.002	0.025	8355	
843,637,022	---	---	---		03/07/2013	---	PIRAEUS BANK (W)	0.001	---	0.001	13/04/2016	0.001	0.001	0.001	0.001	---	51684970@0.001	---	2015	1,060,001	6	1,060.00	1,580,706.17	0.001	0.002	8355	

Warrants

71,417,100	0.650	---	0.7	---	14/05/2015	27/06/2014	---	AEGEAN AIRLINES (CR)	8.13	0.25	#	8.11	13/04/2016	8.11	8.01	8.17	8.13	8.07	368@8.03	30@8.14	10.70	2015	23,122	204	186,475.80	580,621.02	6.13	8.74	5751	
11,178,000	1.12	---	---	---	21/04/2010	15/12/2014	---	AEOLIAN INVESTMENT FUND (CR)	0.659	6.46	#	0.619	13/04/2016	0.571	0.570	0.659	0.659	0.610	100@0.571	212@0.659	---	2015	225	5	137.25	7,366.30	0.384	0.680	8985	
1,536,881,200	0.300	---	---	---	07/04/2008	27/11/2015	---	ALPHA BANK (CR)	1.72	0.58	#	1.71	13/04/2016	1.72	1.68	1.73	1.72	1.71	206009@1.71	79372@1.73	---	2015	7,188,922	928	12,300,354.35	2,643,435.66	0.949	2.50	8355	
22,016,250	0.370	---	---	---	15/07/2009	11/05/2000	---	ALUMIL (CR)	0.250	2.88	#	0.243	13/04/2016	0.243	0.243	0.260	0.250	0.244	---	199@0.250	---	2015	150	7	36.65	5,504.06	0.216	0.290	1753	
417,608	16.00	0.8	---	---	29/04/2014	05/03/2013	---	ANDROMEDA SA (CR)	11.63	---	11.63	13/04/2016	---	---	---	---	---	6@11.63	---	---	---	2015	---	---	---	4,856.78	11.53	13.90	8985	
26,252,040	0.340	---	---	---	08/07/2010	10/06/2015	---	AS COMPANY SA (CR)	0.329	---	0.329	13/04/2016	---	---	---	---	---	2000@0.312	2000@0.327	5.60	2015	---	---	---	8,636.92	0.290	0.379	5379		
86,735,980	0.310	---	---	---	06/07/2009	02/01/2002	---	ATHENS MEDICAL CENTER SA (CR)	0.759	10.00	#	0.690	13/04/2016	0.759	0.759	0.759	0.759	0.759	1000@0.690	6@0.759	---	2015	55	2	41.75	65,832.61	0.550	0.759	4533	
2,339,353,394	0.300	---	---	---	04/06/2008	01/12/2015	5103	ATTICA BANK S.A. (CR)	0.112	-5.88	0.119	13/04/2016	0.115	0.105	0.120	0.112	0.112	65000@0.111	85560@0.114	---	2015	2,537,805	628	284,408.97	262,007.58	0.066	0.279	8355		
15,300,000	0.300	---	---	---	30/07/2009	13/12/1999	---	ATTICA PUBLICATIONS SA (CR)	1.09	---	1.09	13/04/2016	1.09	1.09	1.09	1.09	1.09	---	1078@1.19	---	2015	72,400	1	78,916.00	16,677.00	0.706	1.21	5557		
46,821,187	0.700	---	---	---	01/07/2008	01/03/2010	---	AUDIO VISUAL ENTERPRISES (CR)	0.045	---	0.045	13/04/2016	0.045	0.045	0.045	0.045	0.045	---	10@0.041	---	2015	50	1	2.25	2,106.95	0.028	0.060	5553		
12,157,500	0.320	---	0.8	---	20/05/2015	22/11/2013	---	AUTOHELLAS SA (CR)	11.00	-2.22	11.25	13/04/2016	11.00	11.00	11.03	11.00	11.00	24@11.01	100@11.64	8.79	2015	1,321	12	14,531.27	133,732.50	9.51	12.00	5759		
8,922,944,533	0.100	---	---	---	31/05/2011	02/02/2015	4857	BANK OF CYPRUS (CR)	0.152	2.01	#	0.149	13/04/2016	0.149	0.149	0.153	0.152	0.151	291276@0.151	75694@0.152	---	2015	3,194,448	115	482,555.60	1,356,287.57	0.121	0.161	8355	
19,864,886	5.60	0.672	0.672	0.672	03/03/2016	02/07/2008	---	BANK OF GREECE (CR)	9.16	0.11	#	9.15	13/04/2016	9.12	9.10	9.24	9.16	9.14	58@9.15	47@9.16	---	---	1,033	35	9,442.60	181,962.36	8.70	9.90	8355	
23,986,500	1.05	---	---	---	26/06/2009	15/03/2000	---	BIOKARPET S.A.(CR)	0.449	-2.18	0.459	13/04/2016	0.370	0.370	0.450	0.450	0.438	1000@0.381	600@0.449	---	2015	2,020	7	884.40	10,769.94	0.139	0.459	3726		
15,842,391	1.51	---	---	---	15/07/2009	12/05/2000	---	BITROS HOLDING SA (CR)	0.199	---	0.199	13/04/2016	---	---	---	---	---	---	1205@0.180	---	2015	---	---	---	---	3,152.64	0.180	0.227	1757	
15,816,009	0.300	---	---	---	01/07/2009	17/07/2000	---	BYTE COMPUTER SA (CR)	0.281	2.18	#	0.275	13/04/2016	0.281	0.281	0.281	0.281	0.281	100@0.270	100@0.284	---	2015	100	1	28.10	4,444.30	0.257	0.322	9533	
368,141,297	6.70	0.354	0.36	---	02/07/2015	29/04/2013	---	CC HBC AG (CR)	18.21	-0.49	18.30	13/04/2016	18.30	18.15	18.39	18.21	18.27	328@18.15	1@18.23	---	---	---	21,376	81	390,424.20	6,703,853.02	15.97	19.58	3537	
101,123,806	0.360	---	---	---	22/07/2010	28/06/2011	---	CENTRIC HOLDINGS (CR)	0.096	5.49	#	0.091	13/04/2016	0.090	0.090	0.096	0.096	0.092	2850@0.091	490@0.096	---	2015	52,925	25	4,871.54	9,707.89	0.067	0.105	5752	
4,034,950	0.680	---	---	---	01/07/2005	30/12/2010	---	CHATZIKRANIOTIS & SONS SA (CR)	0.095	---	0.095	13/04/2016	---	---	---	---	---	---	30@0.095	---	2015	---	---	---	---	383.32	0.063	0.119	3577	
124,170,201	0.780	---	---	---	28/06/2002	07/02/2005	---	CORINTH PIPEWORKS SA (CR)	0.764	-3.17	0.789	13/04/2016	0.780	0.750	0.785	0.764	0.766	500@0.760	106@0.764	29.53	2015	13,726	73	10,511.31	94,866.03	0.672	1.03	1757		
9,907,500	0.300	---	---	---	06/10/2005	13/02/2002	---	CPI SA (CR)	0.110	---	0.110	13/04/2016	---	---	---	---	---	300@0.099	45@0.110	39.13	2015	---	---	---	---	1,089.83	0.092	0.150	9572	
41,068,800	0.420	(0.0667)	(0.03)	---	24/07/2015	17/02/2016	---	CRETE PLASTICS SA (CR)	3.31	-2.65	3.40	13/04/2016	3.31	3.31	3.31	3.31	3.31	16@3.31	29@3.40	11.11	2015	72	2	238.32	135,937.73	3.19	4.12	1357		
15,000,000	0.300	---	---	---	06/07/2007	18/07/2000	---	DAIOS PLASTICS SA (CR)	2.95	---	2.95	13/04/2016	---	---	---	---	---	---	---	---	---	2015	---	---	---	---	44,250.00	2.70	2.95	1357
34,720,000	0.310	---	---	---	16/06/2010	01/08/2007	---	DROMEAS SA (CR)	0.114	-0.87	0.115	13/04/2016	0.100	0.100	0.114	0.114	0.114	3000@0.103	485@0.114	---	2015	200,505	6	22,850.64	3,958.08	0.066	0.148	3726		
11,250,000	0.520	---	---	---	26/07/2010	09/11/2015	---	EKTER SA (CR)	0.438	---	0.438	13/04/2016	---	---	---	---	---	25@0.399	500@0.428	13.83	2015	---	---	---	---	4,927.50	0.301	0.499	2357	
32,188,050	1.04	---	---	---	21/07/2008	20/01/2000	---	EL. D. MOUZAKIS SA (CB)	0.145	---	0.145	13/04/2016	---	---	---	---	---	---	3711@0.131	---	2015	---	---	---	---	4,667.27	0.084	0.215	3763	
18,435,000	1.00	---	---	---	07/07/2009	10/09/2010	---	ELASTRON (CR)	0.404	1.76	#	0.397	13/04/2016	0.398	0.398	0.404	0.404	0.404	6318@0.404	1342@0.405	---	2015	3,682	8	1,487.16	7,447.74	0.310	0.405	1757	
31,734,530	1.60	---	---	---	09/07/2007	19/07/2006	---	ELGEKA SA (CR)	0.180	9.09	#	0.165	13/04/2016	0.149	0.149	0.180	0.180	0.155	120@0.149	680@0.180	---	2015	100	3	15.52	5,712.22	0.144	0.210	3577	
23,828,130	0.500	---	---	---	07/07/2010	17/02/2009	---	ELINOIL S.A. (CR)	0.850	8.97	#	0.780	13/04/2016	0.850	0.850	0.850	0.850	0.850	---	389@0.850	21.32	2014	97	1	82.45	20,253.91	0.690	0.850	537	
177,001,313	1.03	---	---	---	05/07/2011	20/12/2007	---	ELLAKTOR (CR)	1.07	-2.73	1.10	13/04/2016	1.09	1.06	1.10	1.07	1.07	13796@1.06	3000@1.08	---	2015	126,185	211	135,061.15	189,391.40	0.857	1.51	2357		
82,667,000	0.300	---	---	---	22/07/2014	---	---	ELTECH ANEMOS S.A. (CR)	0.660	-1.35	0.669	13/04/2016	0.664	0.654	0.664	0.660	0.659	100@0.655	1653@0.660	7.10	2015	1,696	12	1,117.99	54,560.22	0.533	0.730	7537		
26,730,187	0.600	0.05	---	---	23/06/2014	30/12/2010	---	ELTON SA (CR)	0.919	2.23	#	0.899	13/04/2016	0.919	0.919	0.919	0.919	0.919	---	1761@0.900	16.41	2015	102	2	93.74	24,565.04	0.857	1.00	1353	
14,050,971	0.340	---	---	---	06/07/2011	17/10/2002	---	ELTRAK SA (CR)	1.23	2.50	#	1.20	13/04/2016	1.20	1.20	1.23	1.23	1.23	---	90@1.22	24.45	2015	70	4	86.04	17,282.69	0.990	1.35	2753	

Number of Outstanding Securities	Nominal Value	Dividends [1]			Date of Last Coupon		Note	Shares	Closing price	% change	Previous closing price/date	Open price	Price min	Price max	Last price	Avg price	Last Bid [7]	Last Ask [7]	P/E after	Year	Volume	Trades	Transactions Value[8]	Company Mkt Value (thou. €)	Year low	Year high	Sector[4]
		2013	2014	2015	Dividend [2]	Right																					
Main Market																											
9,742,920	0.400	0.01	0.01	---	10/08/2015	14/07/2000	---	KARAMOLEGOS SA (CR)	0.940	2.17 #	0.920 13/04/2016	0.950	0.930	0.950	0.940	0.938	1500@0.930	400@0.949	-(6)-	2015	2,006	6	1,880.70	9,158.34	0.601	1.14	3577
14,679,792	1.68	---	---	---	24/06/2014	04/09/2000	---	KARATZIS SA (CR)	3.78	--- ↘	3.78 13/04/2016	3.50	3.50	3.80	3.78	3.65	259@3.73	120@3.83	10.85	2015	5,230	25	19,092.43	55,489.61	3.44	3.95	2723
13,202,756	0.350	---	---	---	01/07/2004	05/08/2014	---	KEKROPS SA (CR)	0.275	--- ↘	0.275 13/04/2016	0.275	0.275	0.275	0.275	0.276	100@0.193	2700@0.264	---	2015	5	1	1.38	3,630.76	0.175	0.330	8633
7,595,160	0.600	---	---	---	08/08/2008	18/08/2010	---	KIRIAKOULIS SHIPPING SA (CR)	0.538	--- ↘	0.538 13/04/2016	---	---	---	---	---	---	10130@0.485	66.99	2015	---	---	---	4,086.20	0.220	0.586	5759
23,648,700	0.350	---	---	---	13/07/2011	31/03/2015	---	KLEEMAN HELLAS SA (CR)	1.55	--- ↘	1.55 13/04/2016	---	---	---	---	---	70@1.56	9@1.58	18.70	2015	---	---	---	36,655.49	1.21	1.60	2757
40,219,218	0.300	---	---	---	25/05/2009	09/07/2013	---	KLOUKINAS - LAPPAS SA (CR)	0.302	--- ↘	0.302 13/04/2016	0.302	0.302	0.302	0.302	0.302	70@0.276	2500@0.289	---	2015	22	1	6.64	12,146.20	0.218	0.302	2357
21,224,340	0.420	---	---	---	02/07/2008	25/04/2006	---	KORDELLOS BROS SA (CR)	0.249	--- ↘	0.249 13/04/2016	---	---	---	---	---	---	36@0.225	---	2015	---	---	---	5,284.86	0.216	0.290	1757
13,586,500	0.390	---	---	---	25/06/2010	28/05/2008	---	KORRES (CR)	3.21	1.91 #	3.15 13/04/2016	3.15	3.04	3.21	3.21	3.12	5000@3.15	292@3.21	---	2015	1,420	26	4,428.91	43,612.67	2.92	3.90	3767
29,480,000	0.420	---	---	---	19/07/2010	01/08/2007	---	KRETA FARM SA (CR)	0.404	-3.35 ⚡	0.418 13/04/2016	0.400	0.400	0.404	0.404	0.402	200@0.380	488@0.403	---	2015	500	2	200.80	11,909.92	0.300	0.488	3577
33,065,136	0.380	---	0.06	---	04/08/2015	16/09/2013	---	KRI-KRI S.A. (CR)	1.59	--- ↘	1.59 13/04/2016	1.59	1.59	1.59	1.59	1.59	640@1.57	500@1.65	13.68	2015	4,000	1	6,360.00	52,573.57	1.52	1.90	3577
15,804,800	0.360	---	---	---	15/06/2010	12/03/2004	---	KTIMA KOSTAS LAZARIDIS SA (CR)	0.370	--- ↘	0.370 13/04/2016	---	---	---	---	---	---	20@0.371	---	2015	---	---	---	5,847.78	0.203	0.370	3535
23,719,554	0.990	---	0.2406	---	14/08/2015	15/09/2014	---	KYRIAKIDIS MARBLES SA (CR)	2.42	-2.02 ⚡	2.47 13/04/2016	2.45	2.42	2.45	2.42	2.45	65@2.41	466@2.42	9.26	2015	1,607	2	3,935.65	57,401.32	2.11	2.52	2353
79,721,775	0.300	---	---	---	30/05/2007	23/06/2014	---	LAMDA DEVELOPMENT SA (CR)	3.90	-2.01 ⚡	3.98 13/04/2016	3.98	3.78	4.00	3.90	3.89	45@3.81	550@3.94	---	2015	23,344	114	90,730.87	310,914.92	3.12	4.24	8633
21,364,000	1.12	---	---	---	05/07/2010	10/08/2005	---	LAMPSA HOTEL SA (CR)	16.50	--- ↘	16.50 13/04/2016	---	---	---	---	---	50@15.83	60@16.60	75.08	2015	---	---	---	352,506.00	15.32	17.00	5753
5,939,268	0.620	---	---	---	10/07/2003	03/01/2002	---	LANAKAM SA (CR)	0.580	--- ↘	0.580 13/04/2016	---	---	---	---	---	---	251@0.600	---	2015	---	---	---	3,444.78	0.580	0.638	3763
7,734,375	1.00	---	---	---	09/07/2007	07/01/2011	---	LIVANIS SA (CR)	0.117	--- ↘	0.117 13/04/2016	---	---	---	---	---	---	4830@0.117	---	2015	---	---	---	904.92	0.072	0.148	5557
4,740,000	0.860	---	---	---	---	14/03/2003	---	LOGISMOS S.A. (CR)	0.429	--- ↘	0.429 13/04/2016	---	---	---	---	---	---	1100@0.429	---	2015	---	---	---	2,033.46	0.429	0.489	9533
17,125,062	0.940	---	---	---	01/06/2010	02/02/2015	---	LOULIS MILLS SA (CR)	1.65	--- ↘	1.65 13/04/2016	---	---	---	---	---	---	200@1.79	48.22	2015	---	---	---	28,256.35	1.35	1.78	3577
939,385,586	0.300	---	---	---	26/04/2007	29/08/2014	---	MARFIN INVESTMENT GROUP (CR)	0.147	13.08 #	0.130 13/04/2016	0.130	0.126	0.152	0.147	0.137164450@0.169	150@0.148	---	2015	2,652,888	784	363,952.99	138,089.68	0.048	0.154	8775	
9,819,370	0.690	---	---	---	14/08/2007	09/01/2004	---	MATHIOS REFRACTORY SA (CR)	0.200	23.46 #	0.162 13/04/2016	0.200	0.200	0.200	0.200	0.200	600@0.200	---	---	2015	1,000	2	200.00	1,963.87	0.162	0.345	2353
468,700	0.65	1	---	---	25/06/2015	21/05/2004	---	MERMEREN KOMB. A.D. PR. (GDR)	6.15	11.41 #	5.52 13/04/2016	6.07	6.07	6.15	6.15	6.10	500@5.40	1192@6.00	0.59	2015	17	4	103.67	2,882.51	4.87	8.49	1775
51,950,600	0.320	0.3	0.5	---	08/05/2015	21/10/2005	---	METKA (CR)	6.51	0.31 #	6.49 13/04/2016	6.49	6.39	6.62	6.51	6.47	20@6.46	59@6.51	19.54	2015	54,053	166	349,947.83	338,198.41	6.24	7.30	2757
10,500,000	0.950	---	---	---	24/06/2008	19/12/2013	---	MEVACO SA (CR)	0.950	--- ↘	0.950 13/04/2016	---	---	---	---	---	200@0.855	200@1.04	---	2015	---	---	---	9,975.00	0.705	1.02	2757
6,700,000	0.800	0.16	0.03	---	26/06/2015	29/05/2014	---	MILLS KEPENOS (CR)	1.12	9.80 #	1.02 13/04/2016	1.11	1.11	1.12	1.12	1.12	400@1.06	94@1.12	10.80	2015	557	4	623.34	7,504.00	1.02	1.89	3577
6,200,000	0.500	---	---	---	22/06/2010	01/11/1995	---	MINERVA KNITWEAR SA (CB)	0.045	--- ↘	0.045 13/04/2016	---	---	---	---	---	3000@0.041	---	---	2015	---	---	---	279.00	0.045	0.092	3763
12,417,000	0.480	---	---	---	28/07/2008	06/09/2011	---	MLS MULTIMEDIA SA (CR)	3.14	0.32 #	3.13 13/04/2016	3.11	3.11	3.14	3.14	3.13	100@3.06	435@3.14	19.28	2015	2,850	14	8,913.95	38,989.38	2.75	3.77	9537
11,700,000	0.590	---	---	---	02/06/2009	24/07/2012	---	MOTODYNAMICS S.A. (CR)	0.329	-3.23 ⚡	0.340 13/04/2016	0.340	0.307	0.340	0.329	0.340	10@0.310	15@0.329	12.01	2015	2,031	4	689.74	3,849.30	0.306	0.549	5379
110,782,980	0.750	0.2	---	0.15	07/12/2015	04/11/2013	---	MOTOR OIL (CR)	9.35	-0.43 ⚡	9.39 13/04/2016	9.39	9.27	9.41	9.35	9.35	42@9.30	100@9.36	5.15	2015	89,563	434	837,104.39	1,035,820.86	8.13	10.40	533
116,915,862	0.970	---	---	---	11/05/2009	19/10/2015	---	MYTILINEOS HOLDINGS (CR)	3.23	-1.22 ⚡	3.27 13/04/2016	3.22	3.17	3.28	3.23	3.21	20@3.21	519@3.25	---	2015	81,924	352	263,087.95	377,638.23	2.70	3.70	1755
8,321,682	0.670	---	---	---	17/08/2007	23/11/1999	---	N. LEVEDERIS SA (CB)	0.290	--- ↘	0.290 13/04/2016	---	---	---	---	---	---	517@0.289	---	2015	---	---	---	5,092.34	0.138	0.290	1757
2,160,524	0.670	0.0436	0.0436	---	29/07/2015	23/11/1999	---	N. LEVEDERIS SA (PB)	1.24	--- ↘	1.24 13/04/2016	---	---	---	---	---	---	4000@1.15	---	2015	---	---	---	5,092.34	1.24	1.25	1757
11,510,102	0.890	---	---	---	24/06/2005	06/10/1999	---	NAFPAKTOS TEXTILE IND. SA (CB)	0.190	-9.95 ⚡	0.211 13/04/2016	0.190	0.190	0.190	0.190	0.190	100@0.211	500@0.232	---	2015	240	1	45.60	2,186.92	0.135	0.313	3763
6,340,000	0.600	---	---	---	30/11/2009	04/12/2015	---	NAKAS MUSIC	0.900	--- ↘	0.900 13/04/2016	---	---	---	---	---	---	10@0.810	9.37	2015	---	---	---	5,706.00	0.600	0.900	5379
9,147,151,527	0.300	---	---	---	16/05/2008	30/11/2015	---	NATIONAL BANK (CR)	0.223	2.77 #	0.217 13/04/2016	0.215	0.215	0.224	0.223	0.220	12000@0.222	35000@0.224	---	2015	10,731,076	1,137	2,355,604.73	2,039,814.79	0.099	0.340	8355
23,935,280	0.300	---	---	---	29/06/2009	13/06/2000	---	NAYTEMPORIKI PUBLISHING SA(CR)	0.092	--- ↘	0.092 13/04/2016	---	---	---	---	---	---	---	---	2015	---	---	---	2,202.05	0.049	0.093	5557
27,848,000	0.300	0.004	0.0032	---	18/08/2015	02/09/2003	---	NEWSPHONE HELLAS SA (CR)	0.187	--- ↘	0.187 13/04/2016	---	---	---	---	---	100@0.169	1000@0.198	7.85	2015	---	---	---	5,207.58	0.135	0.250	2791
22,996,875	1.25	---	---	---	24/06/2011	02/02/2016	---	NEXANS HELLAS SA (CR)	0.983	--- ↘	0.983 13/04/2016	0.983	0.983	0.983	0.983	0.983	100@0.886	158@0.983	---	2015	2,000	1	1,966.00	22,605.93	0.781	1.09	2733
290,612,964	0.300	---	---	---	08/07/2008	21/03/2016	---	NIREFS SA (CR)	0.150	4.17 #	0.144 13/04/2016	0.144	0.135	0.150	0.150	0.139	460@0.142	250@0.149	0.21	2015	20,526	56	2,863.15	43,591.94	0.067	0.172	3573

Number of Outstanding Securities	Nominal Value	Dividends [1]			Date of Last Coupon		Note	Shares	Closing price	% change	Previous closing price/date	Open price	Price min	Price max	Last price	Avg price	Last Bid [7]	Last Ask [7]	P/E after	Year	Volume	Trades	Transactions Value[8]	Company Mkt Value (thou. €)	Year low	Year high	Sector[4]
		2013	2014	2015	Dividend [2]	Right																					
Main Market																											
319,000,000	0.300	0.25	0.7017	0.17	11/09/2015	25/04/2001	---	OPAP (CR)	6.39	0.63 #	6.35 13/04/2016	6.39	6.32	6.48	6.39	6.39	2000@6.37	805@6.39	9.66	2015	260,362	796	1,663,089.84	2,038,410.00	5.16	7.65	5752
490,150,389	2.83	---	0.08	---	25/06/2015	18/06/1998	---	OTE (CR)	7.60	1.88 #	7.46 13/04/2016	7.46	7.31	7.63	7.60	7.54	3322@7.55	3066@7.61	40.23	2015	527,643	761	3,978,240.29	3,725,142.96	6.55	9.19	6535
25,000,000	2.00	0.12	0.099	---	25/06/2015	08/08/2003	---	P.P.A. S.A. (CR)	11.85	-0.50 €	11.91 13/04/2016	11.84	11.53	11.90	11.85	11.69	56@11.79	174@11.88	35.37	2015	8,563	162	100,112.22	296,250.00	9.80	14.78	2777
4,971,466	1.46	---	---	---	04/07/2007	08/10/2003	---	PAIRIS SA (CR)	0.179	--- ↘	0.179 13/04/2016	---	---	---	---	---	---	2500@0.170	---	2015	---	---	---	889.89	0.179	0.179	2723
3,953,090	0.900	---	0.067	---	27/05/2015	05/12/2012	---	PAPERPACK (CR)	1.08	3.85 #	1.04 13/04/2016	1.04	1.03	1.08	1.08	1.04	101@1.01	501@1.08	3.40	2015	1,436	14	1,490.08	4,269.34	0.651	1.08	2723
50,797,369	0.310	---	---	---	17/08/2000	12/10/2010	---	PAPOUTSANIS (CR)	0.189	--- ↘	0.189 13/04/2016	0.189	0.181	0.193	0.189	0.188	100@0.171	157@0.189	---	2015	877	8	165.06	9,600.70	0.167	0.217	3767
7,070,400	0.930	---	---	---	18/05/2010	25/05/2015	---	PETROPOULOS PETROS (CR)	3.72	--- ↘	3.72 13/04/2016	3.66	3.66	3.72	3.72	3.69	50@3.66	42@3.71	34.88	2015	205	8	756.60	26,301.89	3.43	4.04	2753
8,733,183,280	0.300	---	---	---	16/05/2008	27/11/2015	---	PIRAEUS BANK (CR)	0.181	0.56 #	0.180 13/04/2016	0.178	0.174	0.184	0.181	0.178628166@0.181	5000@0.183	---	2015	13,030,192	1,258	2,323,493.60	1,580,706.17	0.067	0.293	8355	
22,080,000	0.330	0.2	---	---	21/05/2014	27/04/2015	---	PLAISIO COMPUTERS SA (CR)	4.00	--- ↘	4.00 13/04/2016	4.00	3.94	4.08	4.00	3.99	60@3.96	4785@4.00	13.17	2015	2,328	36	9,286.22	88,320.00	3.87	4.56	9572
232,000,000	4.60	---	0.05	---	20/07/2015	12/12/2001	---	PPC (CR)	2.80	-3.11 €	2.89 13/04/2016	2.86	2.80	2.87	2.80	2.83	3656@2.80	850@2.82	---	2015	153,435	381	433,779.75	649,600.00	2.34	4.08	7535
11,812,193	0.470	---	0.02	---	26/03/2015	15/11/2006	---	PROFILE SA (CR)	0.410	-2.38 €	0.420 13/04/2016	0.416	0.402	0.416	0.410	0.410	750@0.400	1350@0.410	---	2015	13,965	16	5,729.35	4,843.00	0.388	0.546	9533
27,345,120	0.470	---	---	---	18/07/2005	26/02/2014	---	QUALITY & RELIABILITY SA (CR)	0.280	--- ↘	0.280 13/04/2016	0.280	0.280	0.280	0.280	0.280	---	1500@0.265	---	2015	10	1	2.80	7,656.63	0.251	0.320	9533
11,962,443	0.300	---	---	---	05/09/2008	21/01/2016	---	QUEST HOLDINGS (CR)	4.09	-3.31 €	4.23 13/04/2016	4.09	4.09	4.09	4.09	4.09	100@3.98	5@4.09	---	2015	680	3	2,781.20	48,926.39	3.30	4.23	9533
57,434,884	1.31	---	---	---	05/06/2008	12/06/2009	---	REDS S.A. (CR)	0.300	-9.09 €	0.330 13/04/2016	0.359	0.300	0.359	0.300	0.300	1@0.350	1320@0.354	---	2015	500	3	150.06	17,230.47	0.300	0.389	8633
22,280,000	0.300	---	---	---	11/04/2011	23/02/2007	---	REVOIL (CR)	0.270	-12.90 €	0.310 13/04/2016	0.265	0.265	0.278	0.270	0.266	100@0.265	200@0.280	8.68	2015	8,742	7	2,321.65	6,015.60	0.169	0.357	5379
7,500,000	0.800	0.0863	0.1	---	19/06/2015	10/02/2014	---	S.KANAKIS SA (CR)	1.80	-0.55 €	1.81 13/04/2016	1.80	1.80	1.81	1.80	1.80	2000@1.78	5827@1.80	7.69	2015	5,223	14	9,403.62	13,500.00	1.75	2.25	3577
52,067,296	0.300	---	---	---	23/12/2003	24/01/2007	---	SELECTED TEXT. IND. ASSOC (CR)	0.130	-5.11 €	0.137 13/04/2016	0.101	0.101	0.130	0.130	0.117	8@0.120	92@0.130	---	2015	1,142	8	133.87	6,768.75	0.084	0.188	3763
204,235,184	0.300	---	---	---	01/07/2008	30/07/2012	---	SELONDA AQUACULTURE SA (CR)	0.138	2.22 #	0.135 13/04/2016	0.130	0.129	0.138	0.138	0.136	540@0.127	2000@0.135	---	2015	13,270	17	1,809.15	28,184.46	0.074	0.153	3573
6,456,530	1.61	---	---	---	29/06/2001	02/08/2010	---	SPACE HELLAS SA (CR)	0.945	--- ↘	0.945 13/04/2016	---	---	---	---	---	---	6@0.945	7.20	2015	---	---	---	6,101.42	0.664	1.28	9578
28,438,268	0.300	---	---	---	21/08/2006	24/11/1999	---	SPIROY AGRICULTURE SA (CR)	0.699	--- ↘	0.699 13/04/2016	---	---	---	---	---	---	600@0.639	---	2015	---	---	---	19,878.35	0.630	0.700	1357
40,693,350	5.00	---	---	---	03/07/2006	26/05/2015	---	TECHNICAL OLYMPIC SA (CR)	0.671	0.15 #	0.670 13/04/2016	0.700	0.652	0.700	0.671	0.671	10@0.669	612@0.671	---	2015	717	13	480.95	27,305.24	0.565	0.831	3728
109,314,400	0.300	---	---	---	28/05/2012	05/08/2015	---	TERNA ENERGY (CR)	2.61	-1.88 €	2.66 13/04/2016	2.66	2.59	2.66	2.61	2.62	1645@2.62	500@2.64	-(6)-	2015	45,483	204	118,946.68	285,310.58	1.92	2.92	7537
36,300,000	1.12	0.285	0.24	---	03/08/2015	12/12/2007	---	THESSALONIKA WATER & SEWERAGE	3.09	-2.52 €	3.17 13/04/2016	3.05	3.00	3.15	3.09	3.10	70@3.02	450@3.09	8.28	2015	6,436	48	19,924.55	112,167.00	2.65	3.24	7577
45,094,620	0.660	0.05	0.0225	---	20/04/2015	01/11/1999	---	THRACE PLASTICS SA (CR)	1.41	-0.70 €	1.42 13/04/2016	1.44	1.41	1.44	1.41	1.42	200@1.41	2412@1.43	-(6)-	2015	1,002	7	1,420.07	63,583.41	1.25	1.45	1357
77,063,568	4.00	---	0.1551	---	24/06/2015	25/06/2004	---	TITAN CEMENT (CR)	17.48	-2.07 €	17.85 13/04/2016	17.57	17.32	17.67	17.48	17.41	32@17.35	4235@17.48	24.60	2015	30,242	262	526,539.61	1,424,274.56	14.86	20.00	2353
7,568,960	4.00	---	0.1551	---	24/06/2015	25/06/2004	---	TITAN CEMENT CO. (PR)	10.20	-2.86 €	10.50 13/04/2016	10.55	10.20	10.60	10.20	10.34	50@10.12	2740@10.20	14.35	2015	416	8	4,300.30	1,424,274.56	7.36	11.53	2353
10,080,000	3.00	0.6	1.95	---	04/05/2015	27/08/2001	---	TPA SA (CR)	20.88	-2.66 €	21.45 13/04/2016	20.90	20.88	20.90	20.88	20.89	5@20.01	94@20.85	11.75	2015	1,005	4	20,996.40	210,470.40	18.10	24.10	2777
15,627,315	0.300	---	---	---	16/11/1992	03/12/2012	---	UNIBIOS (CR)	0.074	-1.33 €	0.075 13/04/2016	0.070	0.058	0.075	0.074	0.073	350@0.068	4100@0.070	---	2015	1,450	8	105.93	1,156.42	0.053	0.091	2353
18,810,000	0.400	---	---	---	08/07/2010	14/11/2007	---	VARVERIS - MODA BAGNO SA (CR)	0.150	--- ↘	0.150 13/04/2016	---	---	---	---	---	---	2210@0.135	---	2015	---	---	---	2,821.50	0.115	0.165	2353
259,189,761	---	---	---	---	26/02/2016	---	---	VIOHALCO SA/NV (CB)	0.991	-1.88 €	1.01 13/04/2016	1.01	0.984	1.02	0.991	0.999	200@0.990	998@0.999	---	---	162,311	316	162,094.49	256,857.05	0.928	1.67	2727
4,968,600	2.88	---	---	---	01/07/1998	14/12/1998	---	VIS SA (CR)	0.869	--- ↘	0.869 13/04/2016	---	---	---	---	---	---	300@0.937	---	2015	---	---	---	4,317.71	0.611	1.00	2723
6,325,000	0.600	---	---	---	02/05/2014	17/02/2014	---	VOGIATZOGLOU SYSTEMS SA (CR)	1.01	--- ↘	1.01 13/04/2016	---	---	---	---	---	---	900@0.999	---	2015	---	---	---	6,388.25	0.978	1.12	2797

Exchange Traded Funds (ETFs)																											
6,030,903	---	---	---	24/01/2008	---	ALPHA ETF FTSE Athex Large Cap	1.51	---	↘	1.51	13/04/2016	---	---	---	---	500@1.48	66@1.50	---	---	---	---	---	---	1.13	1.81	12003	
294,878	---	---	---	29/06/2009	---	NBGAM ETF	6.41	---	↘	6.41	13/04/2016	6.41	6.41	6.41	6.41	12@4.50	---	---	---	2	1	12.82	---	4.50	7.23	12003	
388,550	---	---	---	03/11/2010	---	NBGAM ETF GREECE & TURKEY 30	6.01	0.17	#	6.00	13/04/2016	6.00	6.00	6.01	6.01	6.00	---	---	---	---	7,902	2	47,412.02	---	4.90	6.01	12003

Number of Outstanding Securities	Nominal Value	Dividends [1]			Date of Last Coupon Dividend [2]		Note	Shares	Closing price	% change	Previous closing price/date	Open price	Price min	Price max	Last price	Avg price	Last Bid [7]	Last Ask [7]	P/E after	Year	Volume	Trades	Transactions Value[8]	Company Mkt Value (thou. €)	Year low	Year high	Sector[4]
14,000,000	4.15	---	---	---	23/04/2010	29/06/1999	4815	ALPHA REAL ESTATE SA(CR)	4.46	-1.33 €	4.52 13/04/2016	4.46	4.46	4.46	4.46	4.46	10@4.46	100@4.99	22.53	2015	50	1	223.00	62,440.00	4.20	6.00	8637
63,900,000	3.00	---	---	---	23/06/2003	04/11/2008	4816	ASTIR PALACE SA (CR)	2.93	-1.35 €	2.97 13/04/2016	2.93	2.93	2.93	2.93	2.93	50@2.95	1351@3.00	---	2015	48	3	140.64	187,227.00	2.90	3.51	5753
134,652,904	0.800	---	---	---	09/08/2004	08/03/2006	4814	ATHENA SA (CR)	0.130	--- γ	0.130 13/04/2016	---	---	---	---	---	---	3150@0.129	---	2015	---	---	---	17,504.88	0.018	0.130	2357
191,660,320	0.300	---	---	---	20/07/2009	29/12/2010	4817	ATTICA HOLDINGS (CR)	0.800	6.10 #	0.754 13/04/2016	0.800	0.800	0.800	0.800	0.800	52270@0.800	780@0.830	-(6)-	2015	154,680	43	123,744.00	153,328.26	0.490	0.800	5759
13,404,440	8.63	---	---	---	02/04/2001	06/03/1992	4822	IONIAN HOTELS SA (CR)	10.00	--- γ	10.00 13/04/2016	---	---	---	---	---	---	799@10.00	61.83	2015	---	---	---	134,044.40	5.64	10.00	5753
2,760,000	11.83	8.5	9.3	---	23/06/2015	16/07/1990	4823	KARELIA TOBACCO CO. SA (CB)	253.95	1.40 #	250.45 13/04/2016	253.95	253.95	253.95	253.95	253.95	4@227.50	4@253.95	13.12	2015	5	2	1,269.75	700,902.00	228.00	265.00	3785
106,980,050	2.25	---	---	---	25/07/2008	24/02/2014	5046	MINOAN LINES SA (CR)	2.30	--- γ	2.30 13/04/2016	2.30	2.30	2.30	2.30	2.30	434@2.30	---	15.18	2015	766	3	1,761.80	246,054.12	2.00	2.30	5759
255,494,534	3.00	---	---	---	02/03/2012	23/12/2015	5104	NBG PANGAEA (CR)	3.91	--- γ	3.91 13/04/2016	---	---	---	---	---	400@4.11	100@4.69	20.09	2015	---	---	---	998,983.63	3.45	6.03	8671
17,240,776	0.370	---	---	---	14/07/2005	30/09/2003	4827	PERSEUS SA (CR)	0.490	--- γ	0.490 13/04/2016	---	---	---	---	---	---	94@0.498	3.59	2015	---	---	---	8,447.98	0.277	0.520	3577
54,888,240	1.13	0.09	---	---	25/04/2014	22/03/2006	5100	TRASTOR REAL EST. INV. CO.(CR)	0.850	--- γ	0.850 13/04/2016	---	---	---	---	---	800@0.741	3320@0.999	---	2015	---	---	---	46,655.00	0.611	1.25	8671

13,000,000	1.00	---	---	---	01/08/2007	07/04/2000	5093	AKRITAS SA (CR)	0.140	--- γ	0.140 13/04/2016	---	---	---	---	---	---	10@0.112	---	2015	---	---	---	1,820.00	0.061	0.530	2353
14,870,100	0.300	---	---	---	15/05/2008	26/09/2011	4844	ALPHA GRISSIN S.A. (CR)	0.032	--- γ	0.032 13/04/2016	---	---	---	---	---	5000@0.032	---	---	2015	---	---	---	475.84	0.019	0.032	9533
2,969,713	0.300	---	---	---	02/07/2008	28/02/2011	4958	ANEK LINES SA (PR, Issue '96)	0.127	--- γ	0.127 13/04/2016	---	---	---	---	---	640@0.130	---	53.12	2015	---	---	---	13,092.40	0.124	0.240	5759
312,163	0.300	---	---	---	02/07/2008	28/02/2011	4959	ANEK LINES SA (PR, Issue '90)	0.352	--- γ	0.352 13/04/2016	---	---	---	---	---	---	---	-(6)-	2015	---	---	---	13,092.40	0.352	1.04	5759
185,373,016	0.300	---	---	---	02/07/2008	28/02/2011	4957	ANEK LINES SA (CR)	0.068	-2.86 €	0.070 13/04/2016	0.068	0.064	0.068	0.064	0.068	5000@0.058	599@0.069	28.44	2015	30,600	3	2,078.40	13,092.40	0.050	0.079	5759
20,255,805	0.300	---	---	---	22/08/2006	02/08/2010	4881	AXON HOLDING SA (CR)	0.009	--- γ	0.009 13/04/2016	---	---	---	---	---	7342@0.008	---	---	2015	---	---	---	182.30	0.009	0.070	4533
17,579,754	4.16	---	---	---	18/08/2006	02/08/2010	5097	BIOTER SA (CR)	0.064	-7.25 €	0.069 13/04/2016	0.082	0.057	0.082	0.057	0.064	750@0.057	2998@0.082	---	2015	1,750	3	112.25	1,125.10	0.038	0.149	2357
14,173,104	0.300	---	---	---	11/08/2010	28/11/2013	5055	DIONIC (CR)	0.055	7.84 #	0.051 13/04/2016	0.055	0.055	0.055	0.055	0.055	---	3000@0.054	0.17	2015	113	2	6.22	779.52	0.024	0.055	2797
15,878,748	0.480	---	---	---	10/07/2006	22/03/2004	5095	DOMIKI KRITIS SA (CR)	0.207	-17.20 €	0.250 13/04/2016	0.250	0.200	0.250	0.200	0.207	---	1000@0.249	---	2015	115	2	23.75	3,286.90	0.200	0.318	2357
3,961,300	1.28	---	---	---	29/06/2004	03/08/2000	5080	DUROS SA (CR)	0.240	--- γ	0.240 13/04/2016	---	---	---	---	---	---	10@0.239	---	2015	---	---	---	950.71	0.240	0.300	3763
7,085,888	1.59	---	---	---	02/07/1996	06/09/2010	4690	ELVIEMEK (CR)	3.97	--- γ	3.97 13/04/2016	---	---	---	---	---	---	66@3.18	---	2015	---	---	---	28,130.98	3.97	3.97	8633
6,000,000	0.600	---	---	---	13/06/2008	08/04/2004	4886	EUROBROKERS S.A. (CR)	0.009	--- γ	0.009 13/04/2016	---	---	---	---	---	---	---	---	2015	---	---	---	54.00	0.009	0.009	8534
21,820,410	0.800	---	---	---	22/05/2008	02/08/2011	4882	EUROMEDICA SA (CR)	0.010	--- γ	0.010 13/04/2016	---	---	---	---	---	3000@0.008	---	---	2015	---	---	---	218.20	0.010	0.028	4533
110,097,185	0.300	---	---	---	04/12/2013		5033	Forthnet (CR)	0.301	--- γ	0.301 13/04/2016	---	---	---	---	---	468@0.302	32@0.361	---	2015	---	---	---	33,139.25	0.301	0.750	9535
77,376,446	0.340	---	---	---	23/05/2005	18/08/2011	5094	G.E. DIMITRIOU (CR)	0.012	--- γ	0.012 13/04/2016	---	---	---	---	---	---	700@0.010	---	2015	---	---	---	928.52	0.006	0.012	3722
1,270,000	0.300	---	---	---	06/07/2007	06/02/2013	5007	GIRAKIAN PROFIL SA (CB)	0.108	--- γ	0.108 13/04/2016	---	---	---	---	---	1200@0.110	---	---	2015	---	---	---	137.16	0.075	0.167	1757
1,540,000	0.600	---	---	---	08/08/1994	19/09/2000	5058	J.BOUTARIS & SON HOLD. (PB)	0.050	--- γ	0.050 13/04/2016	---	---	---	---	---	---	3000@0.060	---	2015	---	---	---	706.49	0.006	0.062	3535
25,179,640	0.600	---	---	---	08/08/1994	19/09/2000	5057	J.BOUTARIS & SON HOLD. SA (CB)	0.025	-16.67 €	0.030 13/04/2016	0.025	0.025	0.025	0.025	0.025	2999@0.025	---	---	2015	460	2	11.50	706.49	0.025	0.070	3535
7,125,216	0.650	---	---	---	01/07/2005	14/12/1999	4955	KRE.KA SA (CR)	0.122	--- γ	0.122 13/04/2016	0.122	0.122	0.122	0.122	0.122	2000@0.098	999@0.110	---	2015	1,000	3	122.00	869.28	0.090	0.146	3573
51,081,030	1.00	---	---	---	20/08/2007	03/09/2007	4912	LAVIPHARM SA (CR)	0.120	--- γ	0.120 13/04/2016	0.120	0.120	0.120	0.120	0.120	---	194@0.120	---	2015	500	2	60.00	6,129.72	0.088	0.155	4577
4,419,616	1.58	---	---	---	21/07/2011	04/03/2015	4983	MEDICON S.A (CR)	0.460	19.48 #	0.385 13/04/2016	0.460	0.460	0.460	0.460	0.460	700@0.308	145@0.460	1.26	2015	105	3	48.30	2,033.02	0.321	0.465	4535
20,231,328	0.600	---	---	---	15/07/2008	25/06/2004	4879	NIKAS SA (CR)	0.110	--- γ	0.110 13/04/2016	---	---	---	---	---	---	1000@0.132	---	2015	---	---	---	2,225.45	0.070	0.119	3577
14,967,940	0.500	---	---	---	21/05/2008	04/01/2008	4956	PASAL DEVELOPMENT S.A. (CR)	0.159	19.55 #	0.133 13/04/2016	0.159	0.159	0.159	0.159	0.159	3647@0.159	---	---	2015	41,653	10	6,622.83	2,379.90	0.058	0.159	8633
18,750,000	0.300	---	---	---	02/07/2001	31/12/2012	4985	PEGASUS PUBLISHING S.A. (CR)	0.058	--- γ	0.058 13/04/2016	---	---	---	---	---	---	6@0.047	---	2015	---	---	---	1,087.50	0.040	0.120	5557
24,319,250	0.300	---	---	---	09/07/2002	04/07/2007	5054	PROODEFTIKH SA (CR)	0.070	-4.11 €	0.073 13/04/2016	0.070	0.070	0.070	0.070	0.070	457@0.070	2500@0.072	---	2015	4,540	9	317.80	1,702.35	0.050	0.092	2357
65,326,268	0.530	---	---	---	04/07/2007	19/07/2006	4750	SATO SA (CR)	0.014	--- γ	0.014 13/04/2016	0.014	0.014	0.014	0.014	0.014	14999@0.015	---	---	2015	360	2	5.04	914.57	0.014	0.103	3726

Number of Outstanding Securities	Nominal Value	Dividends [1]			Date of Last Coupon Dividend [2]		Note	Shares	Closing price	% change	Previous closing price/date	Open price	Price min	Price max	Last price	Avg price	Last Bid [7]	Last Ask [7]	P/E after	Year	Volume	Trades	Transactions Value[8]	Company Mkt Value (thou. €)	Year low	Year high	Sector[4]
--	------------------	---------------	--	--	-------------------------------------	--	------	--------	------------------	----------	--------------------------------	---------------	--------------	--------------	---------------	--------------	-----------------	--------------	--------------	------	--------	--------	--------------------------	--------------------------------	-------------	--------------	---------------

Surveillance

7,914,480	0.300	---	---	---	23/06/2008	29/06/2011	4888	SFAKIANAKIS SA (CR)	0.366	-12.86	0.420	13/04/2016	0.366	0.366	0.366	0.366	37@0.366	150@0.420	---	2015	163	1	59.66	2,896.70	0.360	5.64	5379
10,186,667	1.35	---	---	---	24/06/2008	02/02/2016	4887	SIDMA SA (CR)	0.380	---	0.380	13/04/2016	---	---	---	---	---	1000@0.379	---	2015	---	---	---	3,870.93	0.096	0.380	1757
16,383,428	0.300	---	---	---	25/06/2002	21/06/2013	4997	VARVARESSOS SA (CB)	0.031	---	0.031	13/04/2016	---	---	---	---	---	---	---	2015	---	---	---	507.89	0.006	0.031	3763
13,191,620	0.620	---	---	---	04/08/2010	09/09/2002	4977	YALCO - CONSTANTINOU SA (CB)	0.056	---	0.056	13/04/2016	---	---	---	---	173@0.060	100@0.067	---	2015	---	---	---	738.73	0.055	0.143	3722

Under Deletion

1,130,180	0.440	---	---	---	20/06/2003	02/07/2014	5092	COMPUCON SA (CR)	0.011	-15.39	0.013	13/04/2016	0.011	0.011	0.011	0.011	0.010	2999@0.011	---	2015	1	1	0.01	12.43	0.011	0.019	9537
9,567,289	0.300	---	---	---	01/07/2004	19/11/2007	5062	MARAC ELECTRONICS (CR)	0.298	---	0.298	13/04/2016	---	---	---	---	---	14880@0.239	---	2015	---	---	---	2,851.05	0.298	0.298	9578
766,000	1.00	---	---	---	01/07/2004	11/12/2012	4937	TRIA ALFA SA (CR)	2.59	---	2.59	13/04/2016	---	---	---	---	---	14@2.08	---	2015	---	---	---	2,317.14	1.80	2.59	3763
245,000	1.00	---	---	---	19/07/2010	11/12/2012	4938	TRIA ALFA SA (PR)	1.36	---	1.36	13/04/2016	---	---	---	---	---	191@1.09	---	2015	---	---	---	2,317.14	1.36	1.36	3763
4,737,503	0.320	---	---	---	22/06/2005	22/09/2015	5091	VARANGIS AVEPE S.A. (CR)	0.300	---	0.300	13/04/2016	---	---	---	---	---	34@0.240	---	2015	---	---	---	1,421.25	0.300	0.300	3726

Suspension Status

33,301,715	0.320	---	---	---	27/06/2003	08/07/2009	4978	AEGEK (CR)	0.043	---	0.043	31/03/2016	---	---	---	---	---	3310@0.049	---	---	---	---	---	1,431.97	0.029	0.072	2357
5,000,000	0.400	---	---	---	03/06/2009	01/09/2014	5087	ALCO HELLAS SA (CR)	0.180	---	0.180	31/03/2015	---	---	---	---	---	---	---	---	---	---	---	900.00	0.180	0.180	1753
5,025,000	0.300	---	---	---	05/07/2005	14/03/2002	5023	AL SINCO S.A (CR)	0.043	---	0.043	29/11/2013	---	---	---	---	---	---	---	---	---	---	---	216.08	0.043	0.043	3763
215,246,452	0.300	---	---	---	25/06/2001	24/09/2001	4446	ALTEC SA (CR)	0.012	---	0.012	30/11/2015	---	---	---	---	---	---	---	---	---	---	---	2,582.96	0.012	0.012	9533
21,382,067	0.300	---	---	---	02/10/2006	15/02/2006	4628	ATERMON (CR)	0.120	---	0.120	31/03/2010	---	---	---	---	---	---	---	---	---	---	---	2,565.85	0.120	0.120	5555
81,644,555	0.300	---	---	---	01/07/2008	02/09/2002	5098	ATTI - KAT SA (CR)	0.012	---	0.012	29/05/2015	---	---	---	---	---	---	---	---	---	---	---	979.73	0.012	0.012	2357
33,930,000	0.300	---	---	---	03/07/2006	30/05/2001	4865	BABIS VOVOS SA (CR)	0.304	---	0.304	30/03/2012	---	---	---	---	---	---	---	---	---	---	---	10,314.72	0.304	0.304	8633
20,121,710	1.21	---	---	---	27/07/1992	12/03/2003	5002	BALKAN R.E. (CR)	0.190	---	0.190	29/08/2013	---	---	---	---	---	---	---	---	---	---	---	3,823.12	0.190	0.190	8633
21,920,570	0.300	---	---	---	03/07/2007	13/12/1999	4702	CARDASSILARIS SA (CR)	0.140	---	0.140	30/11/2010	---	---	---	---	---	---	---	---	---	---	---	3,068.88	0.140	0.140	3577
30,159,583	0.470	---	---	---	26/06/2008	29/12/2010	5047	DIAS A/C (CR)	0.050	---	0.050	26/03/2014	---	---	---	---	---	---	---	---	---	---	---	1,507.98	0.050	0.050	3573
3,873,120	0.300	---	---	---	07/07/2008	04/10/2012	---	DRUCKFARBEN HELLAS (CR)	0.410	---	0.410	24/03/2016	---	---	---	---	---	---	---	---	---	---	---	1,587.98	0.410	0.550	1357
7,847,611	1.20	---	---	---	01/08/2007	28/09/2011	4939	EDRASIS - C. PSALLIDAS SA (CR)	0.150	---	0.150	29/11/2012	---	---	---	---	---	---	---	---	---	---	---	1,177.14	0.150	0.150	2357
5,750,000	0.300	---	---	---	12/12/2008	12/12/2011	4929	ELECTRONIKI ATHINON SA (CR)	0.480	---	0.480	28/09/2012	---	---	---	---	---	---	---	---	---	---	---	2,760.00	0.480	0.480	5375
24,605,397	0.400	---	---	---	29/06/1995	27/05/2002	4651	EMPORIKOS DESMOS SA (CR)	0.080	---	0.080	31/05/2010	---	---	---	---	---	---	---	---	---	---	---	2,134.04	0.080	0.080	3722
1,182,903	0.400	---	---	---	01/07/1996	27/05/2002	4652	EMPORIKOS DESMOS SA (PR)	0.140	---	0.140	31/05/2010	---	---	---	---	---	---	---	---	---	---	---	2,134.04	0.140	0.140	3722
36,748,909	0.730	---	---	---	15/12/2005	13/12/2006	5109	HEL. SUGAR INDUSTRY SA (CB)	0.075	---	0.075	29/02/2016	---	---	---	---	---	---	---	---	---	---	---	2,756.17	0.064	0.150	3577
13,692,227	1.47	---	---	---	07/07/2006	08/10/1999	5049	HELLENIC FABRICS SA (CR)	0.117	---	0.117	31/03/2014	---	---	---	---	---	---	---	---	---	---	---	1,601.99	0.117	0.117	3763
30,390,000	0.310	---	---	---	18/08/2008	29/12/2006	5099	HELLENIC FISHFARMING SA (CR)	0.070	---	0.070	02/06/2015	---	---	---	---	---	---	---	---	---	---	---	2,127.30	0.070	0.070	3573
71,082,707	1.70	---	---	---	01/07/2010	21/11/2012	4820	HERACLES GEN.CEMENT CO. (CR)	1.23	---	1.23	09/03/2016	---	---	---	---	---	---	---	---	---	---	---	87,431.73	1.23	1.23	2353
24,619,524	0.500	---	---	---	10/10/1986	30/12/2002	4914	KERAMIA-ALLATINI (CR)	0.088	---	0.088	30/08/2012	---	---	---	---	---	---	---	---	---	---	---	2,166.52	0.088	0.088	8633
17,544,600	0.600	---	---	---	03/07/2000	01/08/2000	4868	KOYMBAS SYNERGY GROUP (CR)	0.132	---	0.132	30/03/2012	---	---	---	---	---	---	---	---	---	---	---	2,315.89	0.132	0.132	8775
66,937,526	0.700	---	---	---	13/08/2010	21/05/2003	5003	MICHANIKI SA (CR)	0.100	---	0.100	29/08/2013	---	---	---	---	---	---	---	---	---	---	---	9,186.78	0.100	0.100	2357
25,968,987	0.700	---	---	---	13/08/2010	21/05/2003	5004	MICHANIKI SA (PR)	0.096	---	0.096	29/08/2013	---	---	---	---	---	---	---	---	---	---	---	9,186.78	0.096	0.096	2357
13,555,100	1.00	---	---	---	08/07/2005	---	4576	MICROLAND COMPUTERS SA (CR)	0.640	---	0.640	14/07/2009	---	---	---	---	---	---	---	---	---	---	---	8,675.26	0.640	0.640	5379
255,459,600	0.300	---	---	---	26/06/2000	03/12/2010	5101	NEL SA (CR)	0.070	---	0.070	31/08/2015	---	---	---	---	---	---	---	---	---	---	---	17,882.17	0.070	0.070	5759

Number of Outstanding Securities	Nominal Value	Dividends [1]			Date of Last Coupon		Note	Shares	Closing price	% change	Previous closing price/date	Open price	Price min	Price max	Last price	Avg price	Last Bid [7]	Last Ask [7]	P/E after	Year	Volume	Trades	Transactions Value[8]	Company Mkt Value (thou. €)	Year low	Year high	Sector[4]
		2013	2014	2015	Dividend [2]	Right																					
Suspension Status																											
23,463,874	0.800	---	---	---	23/05/2003	21/12/1999	4918	NEORION SA (CR)	0.125	---	0.125	30/08/2012	---	---	---	---	---	---	---	---	---	---	---	2,932.98	0.125	0.125	2753
20,210,127	1.53	---	---	---	27/06/1997	20/03/2000	5061	PARNASSOS ENTERP. (CR)	0.070	---	0.070	30/05/2014	---	---	---	---	---	---	---	---	---	---	---	1,414.71	0.070	0.070	8775
40,946,303	0.360	---	---	---	18/07/2005	27/11/2007	5089	PC SYSTEMS SA (CR)	0.006	---	0.006	31/03/2016	---	---	---	---	---	---	---	---	---	---	---	245.68	0.006	0.014	9533
25,583,146	0.300	---	---	---	25/06/2001	03/12/2008	4723	PETZETAKIS SA (CR)	0.260	---	0.260	28/01/2011	---	---	---	---	---	---	---	---	---	---	---	6,651.62	0.260	0.260	1357
9,550,386	0.500	---	---	---	01/07/1997	12/06/2008	4626	PRAXITELIO SA (CR)	0.390	---	0.390	31/03/2010	---	---	---	---	---	---	---	---	---	---	---	4,430.09	0.390	0.390	4533
1,306,368	0.500	---	---	---	01/07/1997	12/06/2008	4627	PRAXITELIO SA (PR)	0.540	---	0.540	31/03/2010	---	---	---	---	---	---	---	---	---	---	---	4,430.09	0.540	0.540	4533
25,667,143	0.320	---	---	---	03/07/2000	18/12/2007	4548	SAOS (CR)	1.56	---	0.780	# 31/03/2009	---	---	---	---	---	---	---	---	---	---	---	40,040.74	1.56	1.56	2773
26,408,040	0.300	---	---	---	01/07/1997	26/05/1999	4464	SHEET STEEL SA (CR)	0.120	---	0.120	28/11/2008	---	---	---	---	---	---	---	---	---	---	---	3,168.96	0.120	0.120	1757
60,221,300	0.400	---	---	---	01/07/2002	01/11/2010	5022	SHELMAN SA (CR)	0.080	---	0.080	29/11/2013	---	---	---	---	---	---	---	---	---	---	---	4,817.70	0.080	0.080	2353
29,060,950	0.340	---	---	---	20/08/2007	24/10/2001	5088	SPIDER METAL INDUSTRY SA (CR)	0.008	---	0.008	31/03/2015	---	---	---	---	---	---	---	---	---	---	---	232.49	0.008	0.008	2757
144,688,060	0.600	---	---	---	21/04/2008	10/03/2010	4982	T BANK (CR)	0.048	---	0.052	# 29/11/2011	---	---	---	---	---	---	---	---	---	---	---	6,945.03	0.048	0.048	8355
6,523,780	0.530	---	---	---	01/07/2002	06/03/2001	4971	TECHNICAL PUBLICATIONS SA (CR)	0.006	---	0.006	31/05/2013	---	---	---	---	---	---	---	---	---	---	---	39.14	0.006	0.006	5557
151,189,500	0.300	---	---	---	16/07/2009	11/02/2016	5110	TELETIPOS SA (CR)	0.060	---	0.060	07/03/2016	---	---	---	---	---	5@0.048	---	---	---	---	---	9,071.37	0.054	0.070	5553
13,920,000	0.320	---	---	---	19/11/2001	01/08/2000	4726	TEXAPRET SA (CR)	0.080	---	0.080	28/02/2011	---	---	---	---	---	---	---	---	---	---	---	1,113.60	0.080	0.080	3763
510,840	1.00	---	---	---	15/07/2008	21/11/2013	5036	TROPEA HOLDING (CR)	2.00	---	0.020	# 30/03/2012	---	---	---	---	---	---	---	---	---	---	---	1,021.68	2.00	2.00	3722
284,465,964	3.70	---	---	---	20/06/2008	15/06/2009	4913	TT HELLENIC POSTBANK (CR)	0.168	---	0.239	# 29/08/2012	---	---	---	---	---	---	---	---	---	---	---	47,790.28	0.168	0.168	8355
89,616,200	0.300	---	---	---	21/08/2000	28/06/2007	4616	UNITED TEXTILES (CR)	0.050	---	0.050	24/02/2010	---	---	---	---	---	---	---	---	---	---	---	4,480.81	0.050	0.050	3763
71,683,906	0.400	---	---	---	15/06/2005	05/02/2008	4953	XATZIOANNOU (CR)	0.026	---	0.026	28/03/2013	---	---	---	---	---	---	---	---	---	---	---	1,863.78	0.026	0.026	3763

Shares' Notes

Code	Note text
()	- Adjusted dividends.
*	- Last adjusted closing price.
[1]	- Net dividends.
[2]	- The "Date of Last Coupon" for New listings refers to the date company's stocks started to trade in Athex
[3]	- The Company Market Value is referred to the number of outstanding shares
[4]	- Sectors codification can be found in Appendix A
[5]	- The Market Value refers to the total number of shares listed (including their several classes) in the exchange by the company.
[6]	- P/E greater than 100
[7]	- Last view of the Order Book before the end of the trading session
[8]	- All Blocks Methods' Transactions Value are included.
4446	- Transfer to the "Under Supervision" Category as of 20/10/2008.
4464	- Suspension of trading as of 1/12/2008.
4548	- Suspension of trading as of 1/4/2009.
4576	- Suspension of trading as of 14/7/2009.
4616	- Suspension of trading as of 25/2/2010.
4626	- Suspension of trading as of 1/4/2010.
4627	- Suspension of trading as of 1/4/2010.
4628	- Suspension of trading as of 1/4/2010.
4651	- Suspension of trading as of 1/6/2010.
4652	- Suspension of trading as of 1/6/2010.
4690	- Transfer to Surveillance category as of 4/4/2006.
4702	- Suspension of trading as of 1/12/2010.
4723	- Suspension of trading as of 31/1/2011.
4726	- Suspension of trading as of 1/3/2011.
4750	- Transfer to the "Under Surveillance Category" from 8/4/2011.
4795	- The final gross (pre-tax) dividend is € 0.30 per share and subject to withholding tax on the full dividend amount, i.e. 0.45 per share, for those shareholders liable to withholding tax, in accordance with the applicable tax law provisions.
4814	- Transfer to the Low Dispersion Category as of 30/5/2011.
4815	- Transfer to the Low Dispersion Category as of 30/5/2011.
4816	- Transfer to the Low Dispersion Category as of 30/5/2011.
4817	- Transfer to the Low Dispersion Category as of 30/5/2011.
4820	- Transfer to the Low Dispersion category as of 18/4/2008.
4822	- Transfer to the Low Dispersion category as of 30/5/2011.
4823	- Transfer to the Low Dispersion category as of 4/4/2006.
4827	- Transfer to the Low Dispersion category as of 5/5/2010.
4844	- Transfer to the Surveillance category from 8/4/2011.
4857	- The 793,906,274 new (CR) shares, resulting from the recent share capital increase through a rights issue, are not yet admitted to trading on the ATHEX.
4865	- Suspension of trading as of 2/4/2012.
4868	- Suspension of trading as of 2/4/2012.
4879	- Transfer to the Surveillance Category as of 10/4/2012.
4881	- Transfer to the Surveillance Category as of 10/4/2012.
4882	- Transfer to the Surveillance Category as of 10/4/2012.
4886	- Transfer to the Surveillance Category as of 10/4/2012.
4887	- Transfer to the Surveillance Category as of 10/4/2012.
4888	- Transfer to the Surveillance Category as of 10/4/2012.
4912	- Transfer to the Surveillance Category as of 31/7/2012.
4913	- Suspension of trading as of 30/8/2012.
4914	- Suspension of trading as of 31/8/2012.
4918	- Suspension of trading as of 31/8/2012.
4929	- Suspension of trading as of 1/10/2012.
4937	- Transfer to the UNDER DELETION category as of 30/11/2012.
4938	- Transfer to the UNDER DELETION category as of 30/11/2012.

Shares' Notes

Code	Note text
4939	- Suspension of trading as of 30/11/2012.
4953	- Suspension of trading as of 2/4/2013.
4955	- Transfer to the Surveillance Category as from 5/4/2013.
4956	- Transfer to the Surveillance Category as from 5/4/2013.
4957	- Transfer to the Surveillance Category as from 5/4/2013.
4958	- Transfer to the Surveillance Category as from 5/4/2013.
4959	- Transfer to the Surveillance Category as from 5/4/2013.
4971	- Suspension of trading as of 3/6/2013.
4977	- Transfer to the "Under Surveillance Category" from 11/6/2013.
4978	- Transfer to the Under Supervision Category as of 11/6/2013.
4982	- Suspension of trading as of 1/12/2011.
4983	- Transfer to the Surveillance Category as of 5/4/2013.
4985	- Transfer to the "Under Surveillance Category" from 8/4/2011.
4997	- Transfer to the Under Supervision Category as of 21/12/2009. - The 6,870,053 new (CB) shares, resulting from the recent share capital increase through a rights issue, are not yet admitted to trading on the ATHEX.
5002	- Suspension of trading as of 30/08/2013.
5003	- Suspension of trading as of 30/08/2013.
5004	- Suspension of trading as of 30/08/2013.
5007	- Transfer to the Surveillance category, as of 11/10/2013.
5022	- Suspension of trading as of 2/12/2013.
5023	- Suspension of trading as of 2/12/2013.
5031	- The 612,300 new (CR) shares, resulting from the recent share capital increase through a rights issue, are not yet admitted to trading on the ATHEX.
5033	- Transfer to the Surveillance Category as of 25/11/2011. The 97,144,575new (CR) shares, resulting from the recent share capital increase through a rights issue, are not yet admitted to trading on the ATHEX.
5036	- The company's share is under suspension of trading as of 2/4/2012. During suspension, the company proceeded and concluded a share reverse split, according to which - after the conclusion of the corporate action - the total number of the company's shares, as well as, the last closing price of 30/03/2012 were adjusted.
5046	- Transfer to the Low Dispersion category as of 8/4/2011.
5047	- Suspension of trading as of 27/3/2014.
5049	- Under suspension of trading as of 1/4/2014.
5054	- Transfer to the Surveillance Category as of 10/4/2014.
5055	- Transfer to the Surveillance Category as of 10/4/2014.
5057	- Transfer to the Surveillance Category as of 29/12/2011.
5058	- Transfer to the Surveillance Category as of 29/12/2011.
5061	- Suspension of trading as of 2/6/2014.
5062	- Transfer to the UNDER DELETION category as of 4/6/2014.
5080	- Suspension of trading as of 6/9/2011.
5087	- Suspension of trading as of 1/4/2015.
5088	- Suspension of trading as of 1/4/2015.
5089	- Transfer to the Surveillance Category as of 8/4/2015.
5091	- Transfer to the UNDER DELETION category as of 8/4/2015.
5092	- Transfer to the UNDER DELETION category as of 8/4/2015.
5093	- Transfer to the Surveillance Category as of 8/4/2015.
5094	- Transfer to the Surveillance Category as of 8/4/2015.
5095	- Transfer to the Surveillance Category as from 9/4/2015.
5097	- Transfer to the Surveillance Category as of 10/4/2012.
5098	- Suspension of trading as of 2/6/2015.
5099	- Suspension of trading as of 3/6/2015.
5100	- Transfer to the Low Dispersion Category as of 24/6/2015.
5101	- Suspension of trading as of 1/9/2015.
5103	- The 2,495,784,996 new (CR) shares, resulting from the recent share capital increase through a rights issue, are not yet admitted to trading on the ATHEX.
5104	- Transfer to the "Low Dispersion" Category as of 31/10/2014. Change of the company name from "MIG REAL ESTATE R.E.I.C." to " NBG PANGAEA R.E.I.C." as of 30/12/2015.
5109	- Suspension of trading as of 01/03/2016.
5110	- Suspension of trading as of 08/03/2016.

Securities Blocks Details

Securities	Block Volume	Price	Block Trade Value	Time of approval	Note
ALPHA BANK (CR)	237,357	1.72	408,254.04	10:30:06	20
JUMBO SA (CR)	46,502	11.45	532,447.90	17:00:48	20
HELLENIC EXCHANGES-A.S.E. (CR)	52,000	4.84	251,680.00	17:13:38	20
OTE (CR)	225,269	7.60	1,712,044.40	17:15:24	20

Blocks Notes

9 - Method 6-1 / Special Fees

10 - Method 6-1 / Special Fees, SDS

14 - Method 6-3 / Settlement, Incomplete Buy and Sell

18 - Method 6-2 / SPOT 1

19 - Method 6-2 / SPOT 2

20 - Method 6-1 and Method 6-1 Same Day Settlement

21 - Other Pre-agreed

Shares Rights Details

Occured date	Exercise from	Exercise until	Trading until	Rights	Price min	Price max	Closing price	Last Bid	Last Ask	Volume	Trades	Transactions Value
-----------------	------------------	-------------------	------------------	--------	--------------	--------------	------------------	----------	----------	--------	--------	-----------------------

No Rights Transactions.

Shares Forced Sales

Securities	Transaction s Volume	Number of Trades	Transactions Value	Note
No Forced Transactions.				

Forced Sales Notes

- 1 - Normal Forced Sale.
- 2 - Forced Sales of Fixed Registered Shares.
- 3 - Forced Sales of Remaining Stock Fractions.

Forced Sales Registered Shares

Securities	Start Date	End Date	Initial Volume	Remaining Volume	Date	Avg price (day)	Avg price (period)	Number of Trades	Transactions Volume	Transactions Value
No Fixed Registered Shares Forced Sales.										

Forced Sales Notes

According to Decision 1/380/04.05.2008 of the Hellenic Republic Capital Market Commission, the certificated registered shares that have not been deposited to the issuer for dematerialisation, will be auctioned in the Athens Exchange by the supervising issuer. Forced sales procedure is held according to Article 99A of the Athens Exchange Rulebook. The average price of the period is calculated by dividing the Total transactions value by the Total volume and includes all the transactions made until the current date.

Exchange Traded Funds (ETFs) Characteristics

	Transactions Date (T)	Creation / Redemption	Units (T-1)	New Units (T-1)	Redemptio n Units (T-	Units (T) [1]	Fund Assets [2]	Net Unit Price	Dividen d per	Dividend Date
NBGAM ETF ΓΔ Χ.Α.	14/04/2016	25,000	294,878	---	---	294,878	1,890,735.00	6.4119	---	27/10/2011
ALPHA ETF FTSE Athex Large Cap	14/04/2016	50,000	6,030,903	---	---	6,030,903	9,024,197.00	1.4963	0.06	03/08/2015
NBGAM ETF GREECE & TURKEY 30	14/04/2016	25,000	388,550	---	---	388,550	2,333,457.00	6.0056	---	27/10/2011

ETFs Notes

[1] - Units (T) = Units (T-1) + New Units (T-1) - Redemption Units (T-1)

[2] - The Creation / Redemption Units of T-1 are included.

Corporate Bonds

Num Listed Bonds	Nominal price	Issue price	Today's Rate	Exp. Date	Duration (years)	Note	Coupon attached		Trading	Corporate Bonds	Price min	Price max	Closing price	Previous closing price/date	Volume	Transactions Value	Last order		Date	ear min	Year max
							Common	Preferred									Price	Buy / Sell			
1,794,284	13.76	9.77	0.00	21/10/2025	18	---	---	---	1	NIREUS S.A. (Convertible to CR shares)	---	---	---	100.000011/04/2016	---	---	11.0000	B	17/11/2014	12.0000	150.0000
212,237,880	1.00	1.00	6.30	29/07/2020	7	---	11	---	1	MARFIN INVESTMENT GROUP S.A. SERIES B (BOND)	---	---	---	0.850023/08/2013	---	---	1.0000	B	28/11/2014	0.8500	0.8500
163,076,727	1.00	1.00	7.00	29/07/2019	6	---	11	---	1	MARFIN INVESTMENT GROUP S.A. SERIES A (BOND)	---	---	---	1.000023/08/2013	---	---	1.0000	B	28/11/2014	1.0000	1.0000

Corporate Bonds Notes

Transactions Volume = (Pieces) * (Nominal Price). Transactions Value = (Pieces) * (Nominal Price) * (price %) + (Accrued interest).
The price of a Bond is stated as a percentage (%) of Bond's Nominal Price.
Nominal Price in Euros (€), except if it is noted differently.

Government Bonds

Number Listed Bonds	Nominal price	Today's Rate	Accrued Interest Calc	Exp. Date [1]	Duration (years)	Note	Coupons Date	Curr. coupon value	Trading Unit	Government Bonds	Price min	Price max	Closing price	Previous closing price/date	Volume	Transactions Value	Price	Last order Buy / Sell	Date
1,792,455,803	1.00	4.30	Actual/Actual	24/02/2023	11	---	24/02	4.30	1	GGB-FXD-240223-11Y-2.000-1.00	---	---	---	10.0000 22/06/2015	---	---	---	---	---
1,771,485,249	1.00	4.30	Actual/Actual	24/02/2024	12	---	24/02	4.30	1	GGB-FXD-240224-12Y-2.000-1.00	---	---	---	10.0000 22/06/2015	---	---	---	---	---
1,744,316,583	1.00	4.30	Actual/Actual	24/02/2025	13	---	24/02	4.30	1	GGB-FXD-240225-13Y-2.000-1.00	---	---	---	10.0000 22/06/2015	---	---	---	---	---
1,498,761,836	1.00	4.30	Actual/Actual	24/02/2026	14	---	24/02	4.30	1	GGB-FXD-240226-14Y-2.000-1.00	---	---	---	10.0000 22/06/2015	---	---	---	---	---
1,469,952,920	1.00	4.30	Actual/Actual	24/02/2027	15	---	24/02	4.30	1	GGB-FXD-240227-15Y-2.000-1.00	---	---	---	10.0000 22/06/2015	---	---	---	---	---
1,525,434,082	1.00	4.30	Actual/Actual	24/02/2028	16	---	24/02	4.30	1	GGB-FXD-240228-16Y-2.000-1.00	---	---	---	10.0000 22/06/2015	---	---	---	---	---
1,503,860,546	1.00	4.30	Actual/Actual	24/02/2029	17	---	24/02	4.30	1	GGB-FXD-240229-17Y-2.000-1.00	---	---	---	10.0000 22/06/2015	---	---	---	---	---
1,435,418,132	1.00	4.30	Actual/Actual	24/02/2030	18	---	24/02	4.30	1	GGB-FXD-240230-18Y-2.000-1.00	---	---	---	10.0000 22/06/2015	---	---	---	---	---
1,368,045,727	1.00	4.30	Actual/Actual	24/02/2031	19	---	24/02	4.30	1	GGB-FXD-240231-19Y-2.000-1.00	---	---	---	10.0000 22/06/2015	---	---	---	---	---
1,373,758,194	1.00	4.30	Actual/Actual	24/02/2032	20	---	24/02	4.30	1	GGB-FXD-240232-20Y-2.000-1.00	---	---	---	10.0000 22/06/2015	---	---	---	---	---
1,452,639,893	1.00	4.30	Actual/Actual	24/02/2033	21	---	24/02	4.30	1	GGB-FXD-240233-21Y-2.000-1.00	---	---	---	10.0000 22/06/2015	---	---	---	---	---
1,410,344,954	1.00	4.30	Actual/Actual	24/02/2034	22	---	24/02	4.30	1	GGB-FXD-240234-22Y-2.000-1.00	---	---	---	10.0000 22/06/2015	---	---	---	---	---
1,444,202,190	1.00	4.30	Actual/Actual	24/02/2035	23	---	24/02	4.30	1	GGB-FXD-240235-23Y-2.000-1.00	---	---	---	10.0000 22/06/2015	---	---	---	---	---
1,505,138,031	1.00	4.30	Actual/Actual	24/02/2036	24	---	24/02	4.30	1	GGB-FXD-240236-24Y-2.000-1.00	---	---	---	10.0000 22/06/2015	---	---	---	---	---
1,396,254,095	1.00	4.30	Actual/Actual	24/02/2037	25	---	24/02	4.30	1	GGB-FXD-240237-25Y-2.000-1.00	---	---	---	10.0000 22/06/2015	---	---	---	---	---
1,382,167,704	1.00	4.30	Actual/Actual	24/02/2038	26	---	24/02	4.30	1	GGB-FXD-240238-26Y-2.000-1.00	---	---	---	10.0000 22/06/2015	---	---	---	---	---
1,337,331,257	1.00	4.30	Actual/Actual	24/02/2039	27	---	24/02	4.30	1	GGB-FXD-240239-27Y-2.000-1.00	---	---	---	10.0000 22/06/2015	---	---	---	---	---
1,371,908,706	1.00	4.30	Actual/Actual	24/02/2040	28	---	24/02	4.30	1	GGB-FXD-240240-28Y-2.000-1.00	---	---	---	10.0000 22/06/2015	---	---	---	---	---
1,360,659,778	1.00	4.30	Actual/Actual	24/02/2041	29	---	24/02	4.30	1	GGB-FXD-240241-29Y-2.000-1.00	---	---	---	10.0000 22/06/2015	---	---	---	---	---
1,432,747,403	1.00	4.30	Actual/Actual	24/02/2042	30	---	24/02	4.30	1	GGB-FXD-240242-30Y-2.000-1.00	---	---	---	10.0000 22/06/2015	---	---	---	---	---
742,153	1,000.00	0.93	FLR Actual/360	10/08/2019	5	---	10/02 - 10/08	---	1	GGB-FLT-100819-05Y-0.934-1,000	---	---	---	---	---	---	---	---	---
4,030,827	1,000.00	4.75	Actual/Actual	17/04/2019	5	---	17/04	4.75	1	GGB-FXD-170419-05Y-4.750-1,000	---	---	---	---	---	---	---	---	---
2,089,066	1,000.00	3.38	Actual/Actual	17/07/2017	3	---	17/07	3.38	1	GGB-FXD-170717-03Y-3.375-1,000	---	---	---	---	---	---	---	---	---

Government Bonds Notes

Transactions Volume = (Pieces) * (Nominal Price). Transactions Value = (Pieces) * (Nominal Price) * (price %) + (Accrued interest).
The Value of current coupon for the issues with NV 0.01 euro refers to NV 100 euros
FLR: Floating Interest Rate.
[1] - The Expiration Date of the interest bearing period and the Date for coupon payment.

Bonds in Circulation	Currency / Min nominal traded Value	Coupons Payment Date	Current Coupon Value	Note	Coupon Attached	Trading Unit	Issue Date	Duration (years)	Today's Interest	A.I.C in days	Bonds	Last price of previous days	Last Outcry in Cash (euro) Price	Buy / Sell	Trades in Pieces	Life min	Life Max
Bonds of International Organizations																	
1,000,000	EUR / 1000	21/07	---	---	10	1	21/07/2006	10	5.0 FLR	360	EUROPEAN INVESTMENT BANK BOND	97.50	16/04/2007	---	---	---	---
Corporate Bonds in Foreign Currency and Euro																	
103,746	GBP / 10	01/12	0.25	---	57	1	01/12/1930	98	2.5	360	National Mortgage Bank	2.27	05/02/1996	2.27	S	05/02/1996	2.27
0	GBP / 10	01/12	0.25	---	59	1	01/12/1928	100	2.5	360	National Mortgage Bank	---	---	---	---	---	---

Government Bonds Notes

A.I.C: Accrued Interest Calculation base.
FLR: Floating Interest Rate.
The minimum tradeable Nominal Value for all Demeterialised Government Titles is 100 Euros.

Athex & ATHEXClear Members List

Member Name			Stock Market			Derivatives Market		ATHEXCclear Member	
Address	Phone	Fax	Market Member	Remote Member	Market Maker	Proprietary	Market Maker	General Clearing	Direct Clearing
A. SARRIS SECURITIES S.A.			a						
6, DRAGATSANIOU ATHINA	+30 2103367700	210-3312324							
ALPHA FINANCE INVESTMENT SERVICES S.A.			a		a	a	a		a
5, MERLIN ATHINA	+30 2103677400	210-33311193							
ALPHA BANK A.E.								a	
103, AVE. ATHINON ATHINA	+30 2103436820	210-3436270							
40, STADIOU STR ATHINA	(210)-3260000 (210)-3265546	(210)-3264116 (210)-3265811							
ARGUS STOCKBROKERS LTD			a	a		a			
25 , AVENUE DEMOSTHENI SEVERI NICOSIA	+357 22717000	0035722717070							
ATLANTIC SECURITIES LIMITED			a	a					
37, PRODROMOU NICOSIA	+357 22445400	00357 22661914							
ATLAS SECURITIES S.A			a			a			
, 125 MICHALAKOPOULOU & 14-16 VERVENON ATHINA	+30 2103363300	210-3238925							
ATTICA BANK S.A.								a	
54, AKADIMIAS STR. ATHINA	(210)-3390757	(210)-3646090							
23, OMIROU ATHINA	+30 2103669261	210-3669265							
23, OMIROU STR. ATHINA	(210)-3669000	(210)-3669410							
AXIA VENTURES GROUP LTD			a	a					
, KRANIDIOTI 10, OFFICE 102 NICOSIA	+357 22742000	357 22742001							
AXON SECURITIES S.A.			a			a			
48, STADIOU ATHINA	+30 2103363800	210-3243903							
BANK OF AMERICA MERRILL LYNCH			a	a					
2 , KING EDWARD STREET LONDON	+44 20276281000								
BETA SECURITIES S.A.			a		a	a	a		a
29 , ALEXANDRAS AVEN. & VRAILA ATHINA	+30 2106478900	210-6410139							
BNP PARIBAS SECURITIES SERVICES S.A.								a	
, VASILISSIS SOFIAS 94 & KERASOUNTOS 1 ATHINA	+30 2107468500	210-7468579-581							
CAPITAL SECURITIES S.A.			a			a			
58, MITROPOLEOS ATHINA	+30 2103369700	+30 210 3369820							
CFS SECURITIES-INVESTMENT SERVICES S.A.			a						
6, DRAGATSANIOU ATHINA	+30 2103360800	+30 210-3360980							
CITIGROUP GLOBAL MARKET LTD			a	a					
1, CITIGROUP CENTER , CANADA SQ., CANARY WHARF LONDON	+44 02079864000								
CREDIT SUISSE SECURITIES (EUROPE) LIMITED			a	a					
, ONE CABOT SQUARE LONDON	+44 2078888888								
CYCLOS SECURITIES S.A.			a			a			a
39, PANEPISTIMIOU ATHINA	+30 2103364300	+30 210-3239122							
D.A. TSEKOURAS SEC. S.A.			a						
33, STADIOU ATHINA	+30 2103245100	210-3211997							
DELTASTOCK AD									a
115, MEGAPARK OFFICE BUILDING, OFFICE AREA E, G TSARIGRADSKOJ 39	+35928115051	+35928115049							
DEUTSCHE BANK S.A.			a	a		a			
1 , GREAT WINCHESTER STREET LONDON	+44 20 754 54209	00441133361437							
DYNAMIC SECURITIES S.A.			a			a			a
8, OMIROU ATHINA	+30 2103677700	210-3677777							
EL. PETROPOULAKIS SECURITIES S.A.			a			a			
9, ARISTEIDOU ATHINA	+30 2103213928	+30 210-3216810							
ESTINVEST S.A.									a
9, TH REPUBLICII STREET FOCSANI	+40 237238900	+40 237237471							
EUROBANK ERGASIAS S.A.								a	
8, OTHONOS STR. ATHINA	(210)-3337969 (210)-3337000	(210)-3245916 (210)-3233866							
EUROBANK SECURITIES INVESTMENT FIRM S.A			a		a	a	a		a
, FILELLINON 10 & XENOFONTOS 13 ATHINA	+30 2103720000	210-3720001							
EUROCORP SECURITIES S.A.			a			a			a
14, SQ.FILIKIS ETAIRIAS ATHINA	+30 2107263500	210-7263666							
EUOTRUST BROKERAGE S.A.			a						
113, SEVASTOUPOLEOS ATHINA	+30 2103363100	+30 210-3238334							
EUROXX SECURITIES S.A.			a		a	a	a		a
7, PALAIOLOGOU CHALANDRI	(210)-6879400	(210)-6879401							
G.A. PERVANAS SECURITIES-INVESTMENT SERVICES CO S.A.			a						
7-9, SOFOKLEOUS ATHINA	+30 2103727200	210-3210-291							

Athex & ATHEXClear Members List

Member Name			Stock Market			Derivatives Market		ATHEXClear Member	
Address	Phone	Fax	Market Member	Remote Member	Market Maker	Proprietary	Market Maker	General Clearing	Direct Clearing
GLOBAL CAPITAL SECURITIES AND FINANCIAL SERVICES LTD			a	a					
, AVE. ARCHIEPISKOPOU MAKARIOU NICOSIA	+357 22710710	357 22339332							
GUARDIAN TRUST SECURITIES S.A			a			a			
31, ERMOU ATHINA	+30 2103378700	210-3220498							
HELLENIC BANK (INVESTMENTS) LTD			a	a					
, AVE.KYRIAKOU MATSI 31 - PO BOX 24747 NICOSIA	+357 22500100	357 22500110							
HELLENICAMERICAN SEC. S.A.			a		a	a			a
27, ANDREA PAPANDREOU ATHINA	+30 2103311100	+30 210-3215968							
HSBC BANK PLC								a	
109-111, AVE. MESOGION ATHINA	+30 2106960000	210-6928000							
INDEX SECURITIES S.A.			a						
6, DRAGATSANIOU ATHINA	+30 2103213920	+30 210-3213216							
INTERFINBROK CORPORATION S.A.									a
1, STR.CALARASI NR. CONSTANTA	+40 241639071	0241-547829							
INVESTMENT BANK OF GREECE S.A.			a		a	a	a	a	
32 , EGIALIAS & PARADISOU MAROUSI	+30 2108173111	+30 210-6896325							
J. CHR. MAVRIKIS SECURITIES S.A.			a						
5, SOFOKLEOUS ATHINA	+30 2103216730	210-3217767							
KAPPA SECURITIES S.A.			a			a			
15, VALAORITOU ATHINA	+30 2103678600	+30 210-3641002							
KARAMANOF SECURITIES-INV. SERVICES S.A.			a			a			
2, SQ. AGION THEODORON ATHINA	+30 2103212947	+30 210-3217088							
LAIKI FINANCIAL SERVICES LTD				a					
26, AVE. VYRONOS NICOSIA	357 22367367	357 22718567							
LEON DEPOLAS SECURITIES S.A.			a		a	a			
1, CHRISTOU LADA ATHINA	+30 2103213276	+30 210-3211618							
MAGNA TRUST SECURITIES S.A			a						
5, GEORGE ATHINA	+30 2103800820	210-3220910							
MEGA EQUITY SECURITIES-FINANCIAL SERVICES LTD			a	a		a			
42-44, AVE. GRIVA DIGENI NICOSIA	+357 22711711	357 22711811							
MERIT SECURITIES S.A			a		a	a			a
3, GEORGIOU SOURI ATHINA	+30 2103671890	210-3671830							
MIDAS BROKERAGE S.A.			a		a				
5, SOFOKLEOUS ATHINA	+30 2141008800	+30 210-3253205							
N. CHRYSOCHOIDIS STOCK BROKERAGE I.S.S.A.			a			a			a
7-9, SOFOKLEOUS ATHINA	+30 2103213913	+30 210-3216115							
NATIONAL BANK OF GREECE S.A.			a			a		a	
68, AKADIMIAS STR. ATHINA	(210)-3328817	(210)-3328678							
86, AIOLOU STR. ATHINA	(210)-3341000	(210)-3228187							
NATIONAL SECURITIES S.A			a		a	a	a		
91, MICHALAKOPOULOU ATHINA	+30 2107720000	+30 210-7720002							
NUNTIUS SECURITIES S.A			a						
6, DRAGATSANIOU ATHINA	+30 2103350599	+30210-3254846							
ONE PLUS CAPITAL LIMITED			a	a		a			
, 75 PRODROMOU AVENUE, ONEWORLD PARKVIEW HOUSE, 3RD FLOOR, 22873760									
PANTELAKIS SECURITIES S.A.			a			a			
57, ETHNIKIS ANTISTASIS B CHALANDRI	+30 2106965000	210-6929550							
PEGASUS BROKERAGE FIRM S.A			a			a			
17 , VALAORITOU & AMERIKIS ATHINA	+30 2103670700	+30 210-3670760							
PIRAEUS BANK S.A.			a			a		a	
4, AMERIKIS STR. ATHINA	(210)-3335000	(210)-3335079							
4, AMERIKIS STR ATHINA	(210)-3335918	(210)-3254207							
4, AMERIKIS ATHINA	+30 2103335000	210-3335079							
PIRAEUS SECURITIES S.A.			a		a	a	a		a
5, KORAI ATHINA	+30 2103354100	210-3354170							
PRELIUM SECURITIES-INVESTMENT SERVICES S.A.			a			a			
1 , DAVAKI & KIFISIAS AVE. ATHINA	+30 2103677000	+30 210-6926403							
PROCHOICE SECURITIES LTD			a	a					
57, SPYROU KYPRIANOY NICOSIA	+357-24-661192	+357-24-662464							
SHARELINK SECURITIES-FINANCIAL SERVICES LTD			a	a		a			
6 , THEOTOKI MEGARO ELLINA NICOSIA	+357 22554200	+357 22750852							
SOCIETE GENERALE S.A.			a	a		a			
, 17 COURS VALMY 92987 PUTEAUX - LA DEFENSE PARIS	+33 157290504	+33142138697							

Athex & ATHEXClear Members List

Member Name			Stock Market			Derivatives Market		ATHEXClear Member	
Address	Phone	Fax	Market Member	Remote Member	Market Maker	Proprietary	Market Maker	General Clearing	Direct Clearing
SOLIDUS SECURITIES S.A			a			a			a
64, LOUIZIS RIANCOUR ATHINA	+30 2106900600	210-6985421							
SSIF BROKER SA									a
119 , CALEA MOTILOR NAPOCA	+40 364401709	0040364401710							
SSIF VIENNA INVESTMENT TRUST S.A.									a
, 4 SPLAIUL UNIRII, BUILDING B3 BUCHAREST	+40 212074880	004 021 207 48 98							
ST. EM. LAVRENTAKIS SECURITIES S.A.			a			a			
7-9, SOFOKLEOUS ATHINA	+30 2103213336	+30 210-3246572							
THE CYPRUS INVESTMENT & SECURITIES CORPORATION LTD			a	a					
154 , LIMASSOL AVENUE, STROVOLOS NICOSIA	+357 22121700	357 22338800							
UBS LIMITED			a	a					
1 , FINSBURY AVENUE LONDON	+44 2075687135								

List of Stocks under Market Making operations

Securities	Stock Category
Market Maker	Start Market Making
ALPHA BANK (CR)	Main Market
ALPHA FINANCE INVESTMENT SERVICES S.A.	29/02/2016
EUROBANK SECURITIES INVESTMENT FIRM S.A	24/10/2012
INVESTMENT BANK OF GREECE S.A.	08/01/2013
LEON DEPOLAS SECURITIES S.A.	04/01/2016
MERIT SECURITIES S.A	03/09/2013
MIDAS BROKERAGE S.A.	11/01/2006
NATIONAL SECURITIES S.A	15/01/2013
PIRAEUS SECURITIES S.A.	28/05/2013
ALUMIL (CR)	Main Market
BETA SECURITIES S.A.	18/07/2013
ATTICA BANK S.A. (CR)	Main Market
BETA SECURITIES S.A.	02/06/2014
EUROBANK SECURITIES INVESTMENT FIRM S.A	25/07/2014
BANK OF CYPRUS (CR)	Main Market
EUROBANK SECURITIES INVESTMENT FIRM S.A	23/03/2015
NATIONAL SECURITIES S.A	22/06/2015
BYTE COMPUTER SA (CR)	Main Market
MERIT SECURITIES S.A	04/08/2013
CC HBC AG (CR)	Main Market
EUROBANK SECURITIES INVESTMENT FIRM S.A	23/10/2013
NATIONAL SECURITIES S.A	29/04/2013
PIRAEUS SECURITIES S.A.	04/05/2015
ELLAKTOR (CR)	Main Market
EUROBANK SECURITIES INVESTMENT FIRM S.A	01/06/2013
INVESTMENT BANK OF GREECE S.A.	02/01/2013
NATIONAL SECURITIES S.A	25/06/2013
ELTON SA (CR)	Main Market
BETA SECURITIES S.A.	03/09/2013
EUROBANK ERGASIAS (CR)	Main Market
ALPHA FINANCE INVESTMENT SERVICES S.A.	08/01/2013
EUROBANK SECURITIES INVESTMENT FIRM S.A	01/06/2013
HELLENICAMERICAN SEC. S.A.	25/07/2014
INVESTMENT BANK OF GREECE S.A.	08/01/2013
MIDAS BROKERAGE S.A.	07/01/2016
PIRAEUS SECURITIES S.A.	28/09/2013
EUROCONSULTANTS S.A. (CR)	Main Market
EUROBANK SECURITIES INVESTMENT FIRM S.A	22/07/2014
FOLLI FOLLIE (CR)	Main Market
NATIONAL SECURITIES S.A	17/02/2014
PIRAEUS SECURITIES S.A.	04/05/2015
FOURLIS (CR)	Main Market
HELLENICAMERICAN SEC. S.A.	14/09/2005
FRIGOGLASS SA (CR)	Main Market
EUROBANK SECURITIES INVESTMENT FIRM S.A	27/10/2014
GEK TERNA (CR)	Main Market
HELLENICAMERICAN SEC. S.A.	07/09/2015
INVESTMENT BANK OF GREECE S.A.	02/01/2013
GR. SARANTIS SA (CR)	Main Market
BETA SECURITIES S.A.	14/05/2013
HELLENIC EXCHANGES-A.S.E. (CR)	Main Market
EUROBANK SECURITIES INVESTMENT FIRM S.A	01/06/2013
HELLENICAMERICAN SEC. S.A.	01/09/2014
INVESTMENT BANK OF GREECE S.A.	02/01/2013
NATIONAL SECURITIES S.A	25/06/2013
PIRAEUS SECURITIES S.A.	04/05/2015
HELLENIC PETROLEUM (CR)	Main Market
HELLENICAMERICAN SEC. S.A.	14/09/2015
INTRACOM HOLDINGS (CR)	Main Market
HELLENICAMERICAN SEC. S.A.	07/09/2015
INTRALOT (CR)	Main Market
EUROBANK SECURITIES INVESTMENT FIRM S.A	01/06/2013
INVESTMENT BANK OF GREECE S.A.	02/01/2013
PIRAEUS SECURITIES S.A.	28/09/2013
J & P - AVAX SA (CR)	Main Market
EUROBANK SECURITIES INVESTMENT FIRM S.A	14/12/2015
KLOUKINAS - LAPPAS SA (CR)	Main Market
BETA SECURITIES S.A.	22/09/2014

List of Stocks under Market Making operations

Securities	Stock Category
Market Maker	Start Market Making
LAMDA DEVELOPMENT SA (CR)	Main Market
EUROBANK SECURITIES INVESTMENT FIRM S.A	08/12/2014
MARFIN INVESTMENT GROUP (CR)	Main Market
EUROBANK SECURITIES INVESTMENT FIRM S.A	23/03/2015
HELLENICAMERICAN SEC. S.A.	25/07/2014
PIRAEUS SECURITIES S.A.	02/02/2013
MLS MULTIMEDIA SA (CR)	Main Market
HELLENICAMERICAN SEC. S.A.	07/12/2015
MOTOR OIL (CR)	Main Market
EUROBANK SECURITIES INVESTMENT FIRM S.A	23/10/2012
HELLENICAMERICAN SEC. S.A.	01/09/2014
NATIONAL SECURITIES S.A	17/02/2014
PIRAEUS SECURITIES S.A.	04/05/2015
MYTILINEOS HOLDINGS (CR)	Main Market
INVESTMENT BANK OF GREECE S.A.	02/01/2013
NATIONAL SECURITIES S.A	25/06/2013
PIRAEUS SECURITIES S.A.	04/05/2015
NATIONAL BANK (CR)	Main Market
ALPHA FINANCE INVESTMENT SERVICES S.A.	08/01/2013
EUROBANK SECURITIES INVESTMENT FIRM S.A	24/10/2012
HELLENICAMERICAN SEC. S.A.	25/07/2014
INVESTMENT BANK OF GREECE S.A.	08/01/2013
LEON DEPOLAS SECURITIES S.A.	20/04/2015
MERIT SECURITIES S.A	03/09/2013
MIDAS BROKERAGE S.A.	07/01/2016
NATIONAL SECURITIES S.A	28/02/2013
PIRAEUS SECURITIES S.A.	08/09/2013
OPAP (CR)	Main Market
ALPHA FINANCE INVESTMENT SERVICES S.A.	08/01/2013
EUROBANK SECURITIES INVESTMENT FIRM S.A	24/10/2012
HELLENICAMERICAN SEC. S.A.	25/07/2014
INVESTMENT BANK OF GREECE S.A.	08/01/2013
MIDAS BROKERAGE S.A.	04/04/2016
NATIONAL SECURITIES S.A	15/01/2013
PIRAEUS SECURITIES S.A.	04/05/2015
OTE (CR)	Main Market
ALPHA FINANCE INVESTMENT SERVICES S.A.	08/01/2013
EUROBANK SECURITIES INVESTMENT FIRM S.A	24/10/2012
HELLENICAMERICAN SEC. S.A.	25/07/2014
INVESTMENT BANK OF GREECE S.A.	08/01/2013
LEON DEPOLAS SECURITIES S.A.	20/04/2015
MIDAS BROKERAGE S.A.	01/10/2015
NATIONAL SECURITIES S.A	01/12/2012
PIRAEUS SECURITIES S.A.	08/09/2013
PAPOUTSANIS (CR)	Main Market
BETA SECURITIES S.A.	25/11/2013
PETROPOULOS PETROS (CR)	Main Market
BETA SECURITIES S.A.	28/05/2013
PIRAEUS BANK (CR)	Main Market
EUROBANK SECURITIES INVESTMENT FIRM S.A	23/10/2012
HELLENICAMERICAN SEC. S.A.	25/07/2014
INVESTMENT BANK OF GREECE S.A.	08/01/2013
MERIT SECURITIES S.A	16/09/2013
MIDAS BROKERAGE S.A.	11/01/2016
NATIONAL SECURITIES S.A	02/06/2013
PIRAEUS SECURITIES S.A.	16/02/2013
PLAISIO COMPUTERS SA (CR)	Main Market
BETA SECURITIES S.A.	05/05/2014
EUROBANK SECURITIES INVESTMENT FIRM S.A	02/03/2015
PPC (CR)	Main Market
ALPHA FINANCE INVESTMENT SERVICES S.A.	08/01/2013
EUROBANK SECURITIES INVESTMENT FIRM S.A	23/10/2012
INVESTMENT BANK OF GREECE S.A.	08/01/2013
MIDAS BROKERAGE S.A.	04/04/2016
NATIONAL SECURITIES S.A	26/03/2013
PIRAEUS SECURITIES S.A.	28/09/2013
QUALITY & RELIABILITY SA (CR)	Main Market
BETA SECURITIES S.A.	20/08/2014

List of Stocks under Market Making operations

Securities	Stock Category
Market Maker	Start Market Making
S.KANAKIS SA (CR)	Main Market
BETA SECURITIES S.A.	01/10/2013
TITAN CEMENT (CR)	Main Market
EUROBANK SECURITIES INVESTMENT FIRM S.A	23/10/2012
NATIONAL SECURITIES S.A	17/02/2014
PIRAEUS SECURITIES S.A.	04/05/2015
VIOHALCO SA/NV (CB)	Main Market
ALPHA FINANCE INVESTMENT SERVICES S.A.	17/02/2014
MERIT SECURITIES S.A	17/03/2014

Underlying Asset				Derivatives Market													
Price max	Price min	Closing price	change	Delivery Month	Open price	Price max	Price min	Last price	Closing price	Last Bid	Last Ask	Settlement price	Life high	Life low	Trades	Volume	Open Interest
FTSE/Athex Large Cap																	(Trade Unit: 1 Index Point x 5€, Cash Settlement)
149.24	147.16	148.75	0.09%	April 2016	149.25	149.25	146.25	149.25	149.25	---	---	148.50	163.75	---	189	4,669	3,674
				May 2016	149.00	149.50	146.00	149.50	149.50	---	---	148.50	172.00	---	170	4,472	11,604
				June 2016	---	---	---	---	149.25	---	---	158.00	158.00	---	---	---	9
				September 2016	---	---	---	---	150.00	---	---	---	---	---	---	---	---
				December 2016	---	---	---	---	150.75	---	---	---	---	---	---	---	---
				March 2017	---	---	---	---	151.50	---	---	---	---	---	---	---	---

Underlying Asset				Derivatives Market														
Price max	Price min	Closing price	change	Delivery Month	Open price	Price max	Price min	Last price	Closing price	Last Bid	Last Ask	Settlement price	Life high	Life low	Trades	Volume	Open Interest	
ALPHA BANK (CR)				(Contract Size: 100 Securities, Physical Delivery)														
1.73	1.68	1.72	0.58%	June 2016	1.72	1.73	1.67	1.73	1.73	---	---	1.71	2.68	---	114	3,583	9,084	
				September 2016	1.74	1.74	1.74	1.74	1.74	---	---	1.75	---	1.99	---	1	50	1
				December 2016	---	---	---	---	1.73	---	---	---	---	---	---	---	---	---
				March 2017	---	---	---	---	1.74	---	---	---	---	---	---	---	---	---
CC HBC AG (CR)				(Contract Size: 100 Securities, Physical Delivery)														
18.39	18.15	18.21	-0.49%	June 2016	18.30	18.32	18.25	18.32	18.32	---	---	18.20	18.99	---	3	5	40	
				September 2016	---	---	---	---	18.46	---	---	---	---	---	---	---	---	---
				December 2016	---	---	---	---	18.55	---	---	---	---	---	---	---	---	---
				March 2017	---	---	---	---	18.64	---	---	---	---	---	---	---	---	---
CORINTH PIPEWORKS SA (CR)				(Contract Size: 100 Securities, Physical Delivery)														
0.785	0.750	0.764	-3.17%	June 2016	0.752	0.752	0.752	0.752	0.752	---	---	0.779	0.965	---	1	2	649	
				September 2016	---	---	---	---	0.796	---	---	---	---	---	---	---	---	---
				December 2016	---	---	---	---	0.800	---	---	---	---	---	---	---	---	---
				March 2017	---	---	---	---	0.804	---	---	---	---	---	---	---	---	---
ELLAKTOR (CR)				(Contract Size: 100 Securities, Physical Delivery)														
1.10	1.06	1.07	-2.73%	June 2016	1.09	1.09	1.05	1.08	1.08	---	---	1.07	1.46	---	27	168	1,333	
				September 2016	---	---	---	---	1.11	---	---	---	---	---	---	---	---	---
				December 2016	---	---	---	---	1.12	---	---	---	---	---	---	---	---	---
				March 2017	---	---	---	---	1.12	---	---	---	---	---	---	---	---	---
EUROBANK ERGASIAS (CR)				(Contract Size: 100 Securities, Physical Delivery)														
0.659	0.619	0.632	-2.47%	June 2016	0.655	0.656	0.618	0.640	0.640	---	---	0.645	1.16	---	285	4,387	18,457	
				September 2016	---	---	---	---	0.654	---	---	0.658	0.801	---	---	---	---	---
				December 2016	---	---	---	---	0.657	---	---	---	---	---	---	---	---	---
				March 2017	---	---	---	---	0.660	---	---	---	---	---	---	---	---	---
EYDAP S.A. (CR)				(Contract Size: 100 Securities, Physical Delivery)														
4.37	4.15	4.32	0.47%	June 2016	4.22	4.22	4.21	4.21	4.21	---	---	4.32	4.49	---	2	2	153	
				September 2016	---	---	---	---	4.34	---	---	---	---	---	---	---	---	---
				December 2016	---	---	---	---	4.36	---	---	---	---	---	---	---	---	---
				March 2017	---	---	---	---	4.38	---	---	---	---	---	---	---	---	---
FOLLI FOLLIE (CR)				(Contract Size: 100 Securities, Physical Delivery)														
18.20	17.89	18.20	1.11%	June 2016	17.85	18.18	17.85	18.18	18.18	---	---	18.04	18.18	---	6	7	155	
				September 2016	---	---	---	---	18.16	---	---	---	---	---	---	---	---	---
				December 2016	---	---	---	---	18.25	---	---	---	---	---	---	---	---	---
				March 2017	---	---	---	---	18.34	---	---	---	---	---	---	---	---	---
FRIGOGLASS SA (CR)				(Contract Size: 100 Securities, Physical Delivery)														
0.350	0.282	0.290	-19.22%	June 2016	0.352	0.352	0.283	0.290	0.290	---	---	0.310	0.720	---	85	373	1,901	
				September 2016	---	---	---	---	0.362	---	---	---	---	---	---	---	---	---
				December 2016	---	---	---	---	0.364	---	---	---	---	---	---	---	---	---
				March 2017	---	---	---	---	0.366	---	---	---	---	---	---	---	---	---

Underlying Asset				Derivatives Market													
Price max	Price min	Closing price	change	Delivery Month	Open price	Price max	Price min	Last price	Closing price	Last Bid	Last Ask	Settlement price	Life high	Life low	Trades	Volume	Open Interest
GEK TERNA (CR)				(Contract Size: 100 Securities, Physical Delivery)													
1.61	1.56	1.61	0.63%	June 2016	1.63	1.63	1.56	1.60	1.60	---	---	1.64	1.68	---	31	152	6,834
				September 2016	---	---	---	---	1.61	---	---	---	---	---	---	---	---
				December 2016	---	---	---	---	1.62	---	---	---	---	---	---	---	---
				March 2017	---	---	---	---	1.63	---	---	---	---	---	---	---	---
GRIVALIA PROPERTIES (CR)				(Contract Size: 100 Securities, Physical Delivery)													
7.50	7.41	7.44	-0.80%	June 2016	---	---	---	---	7.53	---	---	7.45	7.54	---	---	---	156
				September 2016	---	---	---	---	7.57	---	---	---	---	---	---	---	---
				December 2016	---	---	---	---	7.60	---	---	---	---	---	---	---	---
				March 2017	---	---	---	---	7.64	---	---	---	---	---	---	---	---
HELLENIC EXCHANGES-A.S.E. (CR)				(Contract Size: 100 Securities, Physical Delivery)													
4.86	4.81	4.81	-0.82%	June 2016	4.73	4.76	4.70	4.76	4.76	---	---	4.74	5.35	---	3	7	459
				September 2016	---	---	---	---	4.89	---	---	---	---	---	---	---	---
				December 2016	---	---	---	---	4.92	---	---	---	---	---	---	---	---
				March 2017	---	---	---	---	4.94	---	---	---	---	---	---	---	---
HELLENIC PETROLEUM (CR)				(Contract Size: 100 Securities, Physical Delivery)													
3.54	3.34	3.41	-2.57%	June 2016	3.51	3.51	3.38	3.45	3.45	---	---	3.44	4.22	---	55	117	4,326
				September 2016	---	---	---	---	3.53	---	---	3.43	3.73	---	---	---	---
				December 2016	---	---	---	---	3.55	---	---	---	---	---	---	---	---
				March 2017	---	---	---	---	3.57	---	---	---	---	---	---	---	---
INTRALOT (CR)				(Contract Size: 100 Securities, Physical Delivery)													
1.07	1.00	1.00	-3.85%	June 2016	1.02	1.02	1.02	1.02	1.02	---	---	1.01	1.19	---	1	2	459
				September 2016	---	---	---	---	1.05	---	---	---	---	---	---	---	---
				December 2016	---	---	---	---	1.05	---	---	---	---	---	---	---	---
				March 2017	---	---	---	---	1.06	---	---	---	---	---	---	---	---
JUMBO SA (CR)				(Contract Size: 100 Securities, Physical Delivery)													
11.46	11.12	11.45	1.15%	June 2016	11.33	11.44	11.16	11.44	11.44	---	---	11.19	11.93	---	16	54	508
				September 2016	---	---	---	---	11.42	---	---	---	---	---	---	---	---
				December 2016	---	---	---	---	11.48	---	---	---	---	---	---	---	---
				March 2017	---	---	---	---	11.53	---	---	---	---	---	---	---	---
MARFIN INVESTMENT GROUP (CR)				(Contract Size: 100 Securities, Physical Delivery)													
0.152	0.126	0.147	13.08%	June 2016	0.128	0.160	0.127	0.152	0.152	---	---	0.150	0.160	---	253	6,722	33,810
				September 2016	---	---	---	---	0.131	---	---	---	---	---	---	---	---
				December 2016	---	---	---	---	0.132	---	---	---	---	---	---	---	---
				March 2017	---	---	---	---	0.132	---	---	---	---	---	---	---	---
METKA (CR)				(Contract Size: 100 Securities, Physical Delivery)													
6.62	6.39	6.51	0.31%	June 2016	6.44	6.44	6.33	6.33	6.33	---	---	6.50	6.82	---	8	14	588
				September 2016	---	---	---	---	6.55	---	---	---	---	---	---	---	---
				December 2016	---	---	---	---	6.58	---	---	---	---	---	---	---	---
				March 2017	---	---	---	---	6.61	---	---	---	---	---	---	---	---

Underlying Asset				Derivatives Market													
Price max	Price min	Closing price	change	Delivery Month	Open price	Price max	Price min	Last price	Closing price	Last Bid	Last Ask	Settlement price	Life high	Life low	Trades	Volume	Open Interest
MOTOR OIL (CR)				(Contract Size: 100 Securities, Physical Delivery)													
9.41	9.27	9.35	-0.43%	June 2016	9.31	9.35	9.31	9.31	9.31	---	---	9.32	9.98	---	3	7	740
				September 2016	---	---	---	---	9.47	---	---	9.47	---	9.86	---	---	---
				December 2016	---	---	---	---	9.52	---	---	---	---	---	---	---	---
				March 2017	---	---	---	---	9.57	---	---	---	---	---	---	---	---
MYTILINEOS HOLDINGS (CR)				(Contract Size: 100 Securities, Physical Delivery)													
3.28	3.17	3.23	-1.22%	June 2016	3.27	3.27	3.19	3.22	3.22	---	---	3.22	3.58	---	30	164	3,612
				September 2016	---	---	---	---	3.30	---	---	---	---	---	---	---	---
				December 2016	---	---	---	---	3.31	---	---	---	---	---	---	---	---
				March 2017	---	---	---	---	3.33	---	---	---	---	---	---	---	---
NATIONAL BANK (CR)				(Contract Size: 100 Securities, Physical Delivery)													
0.224	0.215	0.223	2.77%	June 2016	0.215	0.224	0.214	0.223	0.223	---	---	0.223	0.346	---	221	9,320	46,687
				September 2016	---	---	---	---	0.219	---	---	0.221	---	0.240	---	---	---
				December 2016	---	---	---	---	0.220	---	---	---	---	---	---	---	---
				March 2017	---	---	---	---	0.221	---	---	---	---	---	---	---	---
OPAP (CR)				(Contract Size: 100 Securities, Physical Delivery)													
6.48	6.32	6.39	0.63%	June 2016	6.19	6.23	6.08	6.17	6.17	---	---	6.17	7.25	---	31	138	2,643
				September 2016	---	---	---	---	6.41	---	---	6.14	---	6.34	---	---	---
				December 2016	---	---	---	---	6.44	---	---	---	---	---	---	---	---
				March 2017	---	---	---	---	6.47	---	---	---	---	---	---	---	---
OTE (CR)				(Contract Size: 100 Securities, Physical Delivery)													
7.63	7.31	7.60	1.88%	June 2016	7.46	7.68	7.35	7.57	7.57	---	---	7.56	8.20	---	115	547	2,823
				September 2016	---	---	---	---	7.52	---	---	7.60	---	7.79	---	---	---
				December 2016	---	---	---	---	7.56	---	---	---	---	---	---	---	---
				March 2017	---	---	---	---	7.60	---	---	---	---	---	---	---	---
P.P.A. S.A. (CR)				(Contract Size: 100 Securities, Physical Delivery)													
11.90	11.53	11.85	-0.50%	June 2016	11.96	11.96	11.58	11.58	11.58	---	---	11.69	14.75	---	7	9	455
				September 2016	---	---	---	---	12.01	---	---	---	---	---	---	---	---
				December 2016	---	---	---	---	12.07	---	---	---	---	---	---	---	---
				March 2017	---	---	---	---	12.13	---	---	---	---	---	---	---	---
PIRAEUS BANK (CR)				(Contract Size: 100 Securities, Physical Delivery)													
0.184	0.174	0.181	0.56%	June 2016	0.176	0.185	0.173	0.185	0.185	---	---	0.182	0.303	---	229	11,409	39,968
				September 2016	---	---	---	---	0.182	---	---	---	---	---	---	---	---
				December 2016	---	---	---	---	0.182	---	---	---	---	---	---	---	---
				March 2017	---	---	---	---	0.183	---	---	---	---	---	---	---	---
PPC (CR)				(Contract Size: 100 Securities, Physical Delivery)													
2.87	2.80	2.80	-3.11%	June 2016	2.86	2.87	2.79	2.82	2.82	---	---	2.83	3.53	---	76	396	4,922
				September 2016	---	---	---	---	2.92	---	---	---	---	---	---	---	---
				December 2016	---	---	---	---	2.93	---	---	---	---	---	---	---	---
				March 2017	---	---	---	---	2.94	---	---	---	---	---	---	---	---

Underlying Asset				Derivatives Market													
Price max	Price min	Closing price	change	Delivery Month	Open price	Price max	Price min	Last price	Closing price	Last Bid	Last Ask	Settlement price	Life high	Life low	Trades	Volume	Open Interest
TERNA ENERGY (CR)				(Contract Size: 100 Securities, Physical Delivery)													
2.66	2.59	2.61	-1.88%	June 2016	2.58	2.58	2.58	2.58	2.58	---	---	2.63	2.85	---	1	2	1,216
				September 2016	---	---	---	---	2.68	---	---	---	---	---	---	---	---
				December 2016	---	---	---	---	2.70	---	---	---	---	---	---	---	---
				March 2017	---	---	---	---	2.71	---	---	---	---	---	---	---	---
TITAN CEMENT (CR)				(Contract Size: 100 Securities, Physical Delivery)													
17.67	17.32	17.48	-2.07%	June 2016	17.61	17.61	17.36	17.43	17.43	---	---	17.41	19.82	---	17	36	134
				September 2016	---	---	---	---	18.00	---	---	17.41	18.78	---	---	---	---
				December 2016	---	---	---	---	18.09	---	---	---	---	---	---	---	---
				March 2017	---	---	---	---	18.19	---	---	---	---	---	---	---	---
VIOHALCO SA/NV (CB)				(Contract Size: 100 Securities, Physical Delivery)													
1.02	0.984	0.991	-1.88%	June 2016	1.01	1.01	0.990	1.00	1.00	---	---	1.00	1.30	---	19	67	1,672
				September 2016	---	---	---	---	1.02	---	---	---	---	---	---	---	---
				December 2016	---	---	---	---	1.02	---	---	---	---	---	---	---	---
				March 2017	---	---	---	---	1.03	---	---	---	---	---	---	---	---

Daily Official List																	Year: 137 Trading Day No: 70																															
Section 7: Index Options																	Thursday, 14 April, 2016																															
FTSE/Athex Large Cap																	(Trade Unit: 1 Index Point x 5€ - Excercise Style: European, Cash Settlement)																															
Call Options																	Put Options																															
Exerise Price	April 2016							May 2016							Other Months		April 2016							May 2016							Other Months		Exerise Price															
	Open price	Price max	Price min	Last price	Closing price	Volume	Open Interest	Open price	Price max	Price min	Last price	Closing price	Volume	Open Interest	Volume	Open Interest	Open price	Price max	Price min	Last price	Closing price	Volume	Open Interest	Open price	Price max	Price min	Last price	Closing price	Volume	Open Interest	Volume	Open Interest																
90	0.00	0.00	0.00	-	59.00	-	52	-	-	-	-	-	-	-	-	-	0.00	0.00	0.00	-	0.01	-	-	-	-	-	-	-	-	-	-	90																
95	0.00	0.00	0.00	-	54.00	-	-	-	-	-	-	-	-	-	-	-	0.00	0.00	0.00	-	0.01	-	-	-	-	-	-	-	-	-	-	95																
100	0.00	0.00	0.00	-	49.00	-	-	0.00	0.00	0.00	-	49.00	-	-	-	-	0.00	0.00	0.00	-	0.01	-	-	0.00	0.00	0.00	-	0.01	-	-	-	100																
105	0.00	0.00	0.00	-	44.00	-	-	0.00	0.00	0.00	-	44.00	-	-	-	-	0.00	0.00	0.00	-	0.04	-	-	0.00	0.00	0.00	-	0.02	-	-	-	105																
110	0.00	0.00	0.00	-	39.00	-	30	0.00	0.00	0.00	-	39.00	-	-	-	-	0.00	0.00	0.00	-	0.01	-	-	0.00	0.00	0.00	-	0.05	-	-	-	110																
115	0.00	0.00	0.00	-	34.00	-	12	0.00	0.00	0.00	-	34.00	-	-	-	-	0.00	0.00	0.00	-	0.02	-	-	0.00	0.00	0.00	-	0.14	-	-	-	115																
120	0.00	0.00	0.00	-	29.00	-	-	0.00	0.00	0.00	-	29.25	-	-	-	-	0.00	0.00	0.00	-	0.01	-	50	0.00	0.00	0.00	-	0.33	-	-	-	120																
125	0.00	0.00	0.00	-	24.00	-	-	0.00	0.00	0.00	-	24.75	-	-	-	-	0.00	0.00	0.00	-	0.01	-	-	0.00	0.00	0.00	-	0.70	-	-	-	125																
130	0.00	0.00	0.00	-	19.00	-	60	0.00	0.00	0.00	-	20.25	-	30	-	-	0.00	0.00	0.00	-	0.01	-	47	0.00	0.00	0.00	-	1.30	-	5	-	130																
135	0.00	0.00	0.00	-	14.00	-	-	0.00	0.00	0.00	-	16.25	-	-	-	-	0.00	0.00	0.00	-	0.01	-	37	0.00	0.00	0.00	-	2.30	-	-	-	135																
140	0.00	0.00	0.00	-	9.10	-	4	0.00	0.00	0.00	-	12.75	-	-	-	-	0.00	0.00	0.00	-	0.12	-	127	0.00	0.00	0.00	-	3.80	-	205	-	140																
145	0.00	0.00	0.00	-	4.80	-	164	0.00	0.00	0.00	-	9.70	-	-	-	-	0.00	0.00	0.00	-	0.79	-	9	0.00	0.00	0.00	-	5.70	-	1	-	145																
150	0.00	0.00	0.00	-	1.80	-	196	0.00	0.00	0.00	-	7.20	-	43	-	-	0.00	0.00	0.00	-	2.80	-	111	0.00	0.00	0.00	-	8.20	-	31	-	150																
155	0.00	0.00	0.00	-	0.46	-	745	4.00	4.00	4.00	4.00	4.00	25	1,048	-	-	0.00	0.00	0.00	-	6.50	-	52	0.00	0.00	0.00	-	11.25	-	3	-	155																
160	0.00	0.00	0.00	-	0.07	-	98	3.30	3.50	3.30	3.50	3.50	44	54	-	-	0.00	0.00	0.00	-	11.00	-	44	14.00	14.00	14.00	14.00	14.00	1	1	-	160																
165	0.00	0.00	0.00	-	0.01	-	109	0.00	0.00	0.00	-	2.50	-	247	-	-	0.00	0.00	0.00	-	16.00	-	24	0.00	0.00	0.00	-	18.50	-	-	-	165																
170	0.00	0.00	0.00	-	0.01	-	90	0.00	0.00	0.00	-	1.60	-	4	-	-	0.00	0.00	0.00	-	21.00	-	-	0.00	0.00	0.00	-	22.50	-	-	-	170																
175	0.00	0.00	0.00	-	0.02	-	-	0.00	0.00	0.00	-	1.10	-	-	-	-	0.00	0.00	0.00	-	26.00	-	-	0.00	0.00	0.00	-	27.00	-	-	-	175																
180	0.00	0.00	0.00	-	0.05	-	-	0.00	0.00	0.00	-	0.67	-	-	-	-	0.00	0.00	0.00	-	31.00	-	-	0.00	0.00	0.00	-	31.50	-	-	-	180																
185	0.00	0.00	0.00	-	0.02	-	-	0.00	0.00	0.00	-	0.42	-	-	-	-	0.00	0.00	0.00	-	36.00	-	-	0.00	0.00	0.00	-	36.25	-	-	-	185																
190	-	-	-	-	-	-	-	-	-	-	-	-	-	-	-	-	-	-	-	-	-	-	-	-	-	-	-	-	-	-	-	190																
195	-	-	-	-	-	-	-	-	-	-	-	-	-	-	-	-	-	-	-	-	-	-	-	-	-	-	-	-	-	-	-	195																
200	-	-	-	-	-	-	-	-	-	-	-	-	-	-	-	-	-	-	-	-	-	-	-	-	-	-	-	-	-	-	-	200																
205	-	-	-	-	-	-	-	-	-	-	-	-	-	-	-	-	-	-	-	-	-	-	-	-	-	-	-	-	-	-	-	205																
210	-	-	-	-	-	-	-	-	-	-	-	-	-	-	-	-	-	-	-	-	-	-	-	-	-	-	-	-	-	-	-	210																
215	-	-	-	-	-	-	-	-	-	-	-	-	-	-	-	-	-	-	-	-	-	-	-	-	-	-	-	-	-	-	-	215																
220	-	-	-	-	-	-	-	-	-	-	-	-	-	-	-	-	-	-	-	-	-	-	-	-	-	-	-	-	-	-	-	220																
225	-	-	-	-	-	-	-	-	-	-	-	-	-	-	-	-	-	-	-	-	-	-	-	-	-	-	-	-	-	-	-	225																
230	-	-	-	-	-	-	-	-	-	-	-	-	-	-	-	-	-	-	-	-	-	-	-	-	-	-	-	-	-	-	-	230																
235	-	-	-	-	-	-	-	-	-	-	-	-	-	-	-	-	-	-	-	-	-	-	-	-	-	-	-	-	-	-	-	235																
240	-	-	-	-	-	-	-	-	-	-	-	-	-	-	-	-	-	-	-	-	-	-	-	-	-	-	-	-	-	-	-	240																
245	-	-	-	-	-	-	-	-	-	-	-	-	-	-	-	-	-	-	-	-	-	-	-	-	-	-	-	-	-	-	-	245																
250	-	-	-	-	-	-	-	-	-	-	-	-	-	-	-	-	-	-	-	-	-	-	-	-	-	-	-	-	-	-	-	250																
260	-	-	-	-	-	-	-	0.00	0.00	0.00	-	0.01	-	-	-	-	-	-	-	-	-	-	-	0.00	0.00	0.00	-	111.00	-	-	-	260																
Totals:																	0						1,560	69						1,426	0	0	0						501	1						246	0	0
Number of Trades:																	0							5							0		0							1							0	

Hellenic Exchanges – Athens Stock Exchange S.A.

Strategic Communication & Market Analysis Division - Market Analysis Department

Section 7, 1/2

ALPHA BANK (CR)

(Contract Size: 100 Securities, Exercise Style: American, Physical Delivery)

Call Options																	Put Options																	
April 2016								May 2016							Other Months		April 2016								May 2016							Other Months		
Exercise Price	Open price	Price max	Price min	Last price	Closing price	Volume	Open Interest	Open price	Price max	Price min	Last price	Closing price	Volume	Open Interest	Volume	Open Interest	Open price	Price max	Price min	Last price	Closing price	Volume	Open Interest	Open price	Price max	Price min	Last price	Closing price	Volume	Open Interest	Volume	Open Interest	Exercise Price	
0.100						-	-							-	-								-	-					-	-			0.001	
0.200						-	-							-	-								-	-					-	-			0.002	
0.300						-	-							-	-								-	-					-	-			0.003	
0.400						-	-							-	-								-	-					-	-			0.004	
0.500						-	-							-	-								-	-					-	-			0.005	
0.600						-	-							-	-								-	-					-	-			0.006	
0.800	0.000	0.000	0.000		0.910	-	-							-	-		0.000	0.000	0.000		0.001	-	-					-	-				0.008	
0.850	0.000	0.000	0.000		0.860	-	-							-	-		0.000	0.000	0.000		0.001	-	-					-	-				0.009	
0.900	0.000	0.000	0.000		0.810	-	-	0.000	0.000	0.000		0.813	-	-		0.000	0.000	0.000		0.001	-	-	0.000	0.000	0.000		0.001	-	-				0.009	
0.950	0.000	0.000	0.000		0.760	-	-	0.000	0.000	0.000		0.764	-	-		0.000	0.000	0.000		0.001	-	-	0.000	0.000	0.000		0.002	-	-				0.010	
1.000	0.000	0.000	0.000		0.710	-	-	0.000	0.000	0.000		0.715	-	-		0.000	0.000	0.000		0.001	-	-	0.000	0.000	0.000		0.003	-	-				0.010	
1.100	0.000	0.000	0.000		0.610	-	-	0.000	0.000	0.000		0.620	-	-		0.000	0.000	0.000		0.001	-	-	0.000	0.000	0.000		0.007	-	-				0.011	
1.200	0.000	0.000	0.000		0.510	-	-	0.000	0.000	0.000		0.529	-	-		0.000	0.000	0.000		0.002	-	-	0.000	0.000	0.000		0.016	-	-				0.012	
1.300	0.000	0.000	0.000		0.410	-	-	0.000	0.000	0.000		0.444	-	-		0.000	0.000	0.000		0.001	-	-	0.000	0.000	0.000		0.031	-	-				0.013	
1.400	0.000	0.000	0.000		0.310	-	-	0.000	0.000	0.000		0.367	-	-		0.000	0.000	0.000		0.001	-	-	0.000	0.000	0.000		0.054	-	-				0.014	
1.500	0.000	0.000	0.000		0.211	-	-	0.000	0.000	0.000		0.298	-	-		0.000	0.000	0.000		0.001	-	-	0.000	0.000	0.000		0.085	-	-				0.015	
1.600	0.000	0.000	0.000		0.118	-	-	0.000	0.000	0.000		0.238	-	-		0.000	0.000	0.000		0.008	-	-	0.000	0.000	0.000		0.125	-	-				0.016	
1.700	0.000	0.000	0.000		0.049	-	-	0.000	0.000	0.000		0.188	-	-		0.000	0.000	0.000		0.039	-	-	0.000	0.000	0.000		0.174	-	-				0.017	
1.800	0.000	0.000	0.000		0.013	-	-	0.000	0.000	0.000		0.147	-	-		0.000	0.000	0.000		0.103	-	-	0.000	0.000	0.000		0.234	-	-				0.018	
1.900	0.000	0.000	0.000		0.002	-	-	0.000	0.000	0.000		0.114	-	-		0.000	0.000	0.000		0.192	-	-	0.000	0.000	0.000		0.300	-	-				0.019	
2.000	0.000	0.000	0.000		0.002	-	-	0.000	0.000	0.000		0.085	-	-		0.000	0.000	0.000		0.290	-	-	0.000	0.000	0.000		0.372	-	-				0.020	
2.200	0.000	0.000	0.000		0.001	-	-	0.000	0.000	0.000		0.049	-	-		0.000	0.000	0.000		0.490	-	-	0.000	0.000	0.000		0.535	-	-				0.022	
2.400	0.000	0.000	0.000		0.001	-	-	0.000	0.000	0.000		0.027	-	-		0.000	0.000	0.000		0.690	-	-	0.000	0.000	0.000		0.713	-	-				0.024	
2.600	0.000	0.000	0.000		0.001	-	-	0.000	0.000	0.000		0.014	-	-		0.000	0.000	0.000		0.890	-	-	0.000	0.000	0.000		0.901	-	-				0.026	
2.800	0.000	0.000	0.000		0.002	-	-	0.000	0.000	0.000		0.008	-	-		0.000	0.000	0.000		1.09	-	-	0.000	0.000	0.000		1.09	-	-				0.028	
3.000	0.000	0.000	0.000		0.001	-	-	0.000	0.000	0.000		0.004	-	-		0.000	0.000	0.000		1.29	-	-	0.000	0.000	0.000		1.29	-	-				0.030	
3.200						-	-							-	-								-	-					-	-			0.032	
3.400						-	-							-	-								-	-					-	-			0.034	
3.600						-	-							-	-								-	-					-	-			0.036	
Totals:						0	0						0	0	0	0						0	0					0	0	0	0			
Number of Trades:						0							0		0							0.00					0				0			

NATIONAL BANK (CR) (Contract Size: 100 Securities, Exercise Style: American, Physical Delivery)

Call Options																Put Options																	
Exercise Price	April 2016							May 2016							Other Months		April 2016							May 2016							Other Months		Exercise Price
	Open price	Price max	Price min	Last price	Closing price	Volume	Open Interest	Open price	Price max	Price min	Last price	Closing price	Volume	Open Interest	Volume	Open Interest	Open price	Price max	Price min	Last price	Closing price	Volume	Open Interest	Open price	Price max	Price min	Last price	Closing price	Volume	Open Interest	Volume	Open Interest	
0.050	0.000	0.000	0.000		0.167	-	-	0.000	0.000	0.000		0.167	-	-			0.000	0.000	0.000		0.001	-	-	0.000	0.000	0.000		0.001	-	-			0.001
0.100	0.000	0.000	0.000		0.117	-	-	0.000	0.000	0.000		0.117	-	-			0.000	0.000	0.000		0.001	-	-	0.000	0.000	0.000		0.001	-	-			0.001
0.150	0.000	0.000	0.000		0.067	-	-	0.000	0.000	0.000		0.071	-	-			0.000	0.000	0.000		0.001	-	-	0.000	0.000	0.000		0.003	-	-			0.002
0.200	0.000	0.000	0.000		0.020	-	-	0.000	0.000	0.000		0.036	-	-			0.000	0.000	0.000		0.003	-	-	0.000	0.000	0.000		0.018	-	-			0.002
0.250	0.000	0.000	0.000		0.001	-	-	0.000	0.000	0.000		0.016	-	-			0.000	0.000	0.000		0.034	-	-	0.000	0.000	0.000		0.049	-	-			0.003
0.300	0.000	0.000	0.000		0.001	-	-	0.000	0.000	0.000		0.007	-	-			0.000	0.000	0.000		0.083	-	-	0.000	0.000	0.000		0.089	-	-			0.003
0.350	0.000	0.000	0.000		0.001	-	-	0.000	0.000	0.000		0.003	-	-			0.000	0.000	0.000		0.133	-	-	0.000	0.000	0.000		0.135	-	-			0.004
0.400	0.000	0.000	0.000		0.003	-	-	0.000	0.000	0.000		0.001	-	-			0.000	0.000	0.000		0.183	-	-	0.000	0.000	0.000		0.184	-	-			0.004
0.450	0.000	0.000	0.000		0.001	-	-	0.000	0.000	0.000		0.003	-	-			0.000	0.000	0.000		0.233	-	-	0.000	0.000	0.000		0.233	-	-			0.005
0.500	0.000	0.000	0.000		0.001	-	-	0.000	0.000	0.000		0.001	-	-			0.000	0.000	0.000		0.283	-	-	0.000	0.000	0.000		0.283	-	-			0.005
0.550						-	-						-	-								-	-						-	-			0.006
0.600						-	-						-	-								-	-						-	-			0.006
0.700						-	-						-	-								-	-						-	-			0.007
0.800						-	-						-	-								-	-						-	-			0.008
0.900						-	-						-	-								-	-						-	-			0.009
1.000						-	-						-	-								-	-						-	-			0.010
1.100						-	-						-	-								-	-						-	-			0.011
1.200						-	-						-	-								-	-						-	-			0.012
1.300						-	-						-	-								-	-						-	-			0.013
1.400						-	-						-	-								-	-						-	-			0.014
Totals:							0	0								0	0	0	0								0	0			0	0	
Number of Trades:							0									0		0									0.00				0		

OPAP (CR)

(Contract Size: 100 Securities, Exercise Style: American, Physical Delivery)

Call Options																	Put Options																		
April 2016																	May 2016																	Other Months	
Other Months																	Other Months																	Other Months	
Exercise Price	Open price	Price max	Price min	Last price	Closing price	Volume	Open Interest	Open price	Price max	Price min	Last price	Closing price	Volume	Open Interest	Volume	Open Interest	Open price	Price max	Price min	Last price	Closing price	Volume	Open Interest	Open price	Price max	Price min	Last price	Closing price	Volume	Open Interest	Volume	Open Interest	Exercise Price		
3.600	0.000	0.000	0.000		2.75	-	-						-	-			0.000	0.000	0.000		0.001	-	-					-	-			0.036			
3.800	0.000	0.000	0.000		2.55	-	-						-	-			0.000	0.000	0.000		0.001	-	-					-	-			0.038			
4.000	0.000	0.000	0.000		2.35	-	-	0.000	0.000	0.000		2.36	-	-			0.000	0.000	0.000		0.001	-	-	0.000	0.000	0.000		0.001	-	-			0.040		
4.400	0.000	0.000	0.000		1.95	-	-	0.000	0.000	0.000		1.96	-	-			0.000	0.000	0.000		0.001	-	-	0.000	0.000	0.000		0.003	-	-			0.044		
4.800	0.000	0.000	0.000		1.55	-	-	0.000	0.000	0.000		1.57	-	-			0.000	0.000	0.000		0.001	-	-	0.000	0.000	0.000		0.013	-	-			0.048		
5.200	0.000	0.000	0.000		1.15	-	-	0.000	0.000	0.000		1.21	-	-			0.000	0.000	0.000		0.001	-	-	0.000	0.000	0.000		0.044	-	-			0.052		
5.600	0.000	0.000	0.000		0.751	-	-	0.000	0.000	0.000		0.874	-	-			0.000	0.000	0.000		0.001	-	-	0.000	0.000	0.000		0.113	-	-			0.056		
6.000	0.000	0.000	0.000		0.355	-	-	0.000	0.000	0.000		0.599	-	-			0.000	0.000	0.000		0.004	-	-	0.000	0.000	0.000		0.237	-	-			0.060		
6.400	0.000	0.000	0.000		0.065	-	-	0.000	0.000	0.000		0.385	-	-			0.000	0.000	0.000		0.115	-	-	0.000	0.000	0.000		0.423	-	-			0.064		
6.800	0.000	0.000	0.000		0.002	-	5	0.000	0.000	0.000		0.235	-	-			0.000	0.000	0.000		0.451	-	-	0.000	0.000	0.000		0.673	-	-			0.068		
7.200	0.000	0.000	0.000		0.004	-	-	0.000	0.000	0.000		0.134	-	-			0.000	0.000	0.000		0.850	-	-	0.000	0.000	0.000		0.972	-	-			0.072		
7.600	0.000	0.000	0.000		0.004	-	-	0.000	0.000	0.000		0.071	-	-			0.000	0.000	0.000		1.25	-	-	0.000	0.000	0.000		1.31	-	-			0.076		
8.000	0.000	0.000	0.000		0.001	-	-	0.000	0.000	0.000		0.037	-	-			0.000	0.000	0.000		1.65	-	-	0.000	0.000	0.000		1.68	-	-			0.080		
8.400	0.000	0.000	0.000		0.001	-	-	0.000	0.000	0.000		0.018	-	-			0.000	0.000	0.000		2.05	-	-	0.000	0.000	0.000		2.06	-	-			0.084		
8.800	0.000	0.000	0.000		0.001	-	-	0.000	0.000	0.000		0.009	-	-			0.000	0.000	0.000		2.45	-	-	0.000	0.000	0.000		2.45	-	-			0.088		
9.200						-	-						-	-								-	-					-	-			0.092			
9.600						-	-						-	-								-	-					-	-			0.096			
10.000						-	-						-	-								-	-					-	-			0.100			
Totals:						0	5							0	0	0	0							0	0							0	40	0	0
Number of Trades:						0								0			0							0.00							0			0	

OTE (CR)

(Contract Size: 100 Securities, Exercise Style: American, Physical Delivery)

Call Options																	Put Options																			
April 2016								May 2016								Other Months		April 2016								May 2016								Other Months		
Exercise Price	Open price	Price max	Price min	Last price	Closing price	Volume	Open Interest	Open price	Price max	Price min	Last price	Closing price	Volume	Open Interest	Volume	Open Interest	Open price	Price max	Price min	Last price	Closing price	Volume	Open Interest	Open price	Price max	Price min	Last price	Closing price	Volume	Open Interest	Volume	Open Interest	Exercise Price			
4.800	0.000	0.000	0.000		2.66	-	-	0.000	0.000	0.000		2.67	-	-			0.000	0.000	0.000		0.001	-	-	0.000	0.000	0.000		0.001	-	-					0.048	
5.200	0.000	0.000	0.000		2.26	-	-	0.000	0.000	0.000		2.27	-	-			0.000	0.000	0.000		0.001	-	-	0.000	0.000	0.000		0.001	-	-					0.052	
5.600	0.000	0.000	0.000		1.86	-	-	0.000	0.000	0.000		1.88	-	-			0.000	0.000	0.000		0.001	-	-	0.000	0.000	0.000		0.007	-	-					0.056	
6.000	0.000	0.000	0.000		1.46	-	-	0.000	0.000	0.000		1.50	-	-			0.000	0.000	0.000		0.001	-	-	0.000	0.000	0.000		0.025	-	-					0.060	
6.400	0.000	0.000	0.000		1.06	-	-	0.000	0.000	0.000		1.14	-	-			0.000	0.000	0.000		0.001	-	-	0.000	0.000	0.000		0.068	-	-					0.064	
6.800	0.000	0.000	0.000		0.661	-	-	0.000	0.000	0.000		0.827	-	-			0.000	0.000	0.000		0.003	-	-	0.000	0.000	0.000		0.154	-	-					0.068	
7.200	0.000	0.000	0.000		0.279	-	-	0.000	0.000	0.000		0.566	-	-			0.000	0.000	0.000		0.018	-	-	0.000	0.000	0.000		0.292	-	-					0.072	
7.600	0.000	0.000	0.000		0.046	-	-	0.000	0.000	0.000		0.369	-	-			0.000	0.000	0.000		0.185	-	-	0.000	0.000	0.000		0.494	-	-					0.076	
8.000	0.000	0.000	0.000		0.002	-	5	0.000	0.000	0.000		0.225	-	-			0.000	0.000	0.000		0.541	-	15	0.000	0.000	0.000		0.751	-	-					0.080	
8.400	0.000	0.000	0.000		0.001	-	-	0.000	0.000	0.000		0.128	-	-			0.000	0.000	0.000		0.940	-	-	0.000	0.000	0.000		1.05	-	-					0.084	
8.800	0.000	0.000	0.000		0.002	-	-	0.000	0.000	0.000		0.071	-	-			0.000	0.000	0.000		1.34	-	-	0.000	0.000	0.000		1.40	-	-					0.088	
9.200	0.000	0.000	0.000		0.001	-	-	0.000	0.000	0.000		0.037	-	-			0.000	0.000	0.000		1.74	-	-	0.000	0.000	0.000		1.77	-	-					0.092	
9.600	0.000	0.000	0.000		0.001	-	-	0.000	0.000	0.000		0.019	-	-			0.000	0.000	0.000		2.14	-	-	0.000	0.000	0.000		2.15	-	-					0.096	
10.000	0.000	0.000	0.000		0.001	-	-	0.000	0.000	0.000		0.009	-	-			0.000	0.000	0.000		2.54	-	-	0.000	0.000	0.000		2.54	-	-					0.100	
11.000																																				
12.000																																				
13.000																																				
14.000																																				
Totals:					0			5			0					0		0					15		0					0		0				
Number of Trades:					0			0					0		0.00					0					0											

PIRAEUS BANK (CR)

(Contract Size: 100 Securities, Exercise Style: American, Physical Delivery)

Call Options																	Put Options																			
April 2016								May 2016								Other Months		April 2016								May 2016								Other Months		
Exerise Price	Open price	Price max	Price min	Last price	Closing price	Volume	Open Interest	Open price	Price max	Price min	Last price	Closing price	Volume	Open Interest	Volume	Open Interest	Open price	Price max	Price min	Last price	Closing price	Volume	Open Interest	Open price	Price max	Price min	Last price	Closing price	Volume	Open Interest	Volume	Open Interest	Exerise Price			
0.050	0.000	0.000	0.000		0.130	-	-	0.000	0.000	0.000		0.130	-	-			0.000	0.000	0.000		0.002	-	-	0.000	0.000	0.000		0.001	-	-			0.001			
0.100	0.000	0.000	0.000		0.080	-	-	0.000	0.000	0.000		0.082	-	-			0.000	0.000	0.000		0.002	-	-	0.000	0.000	0.000		0.002	-	-			0.001			
0.150	0.000	0.000	0.000		0.031	-	-	0.000	0.000	0.000		0.045	-	-			0.000	0.000	0.000		0.001	-	-	0.000	0.000	0.000		0.014	-	-			0.002			
0.200	0.000	0.000	0.000		0.003	-	10	0.000	0.000	0.000		0.022	-	-			0.000	0.000	0.000		0.023	-	-	0.000	0.000	0.000		0.042	-	-			0.002			
0.250	0.000	0.000	0.000		0.001	-	-	0.000	0.000	0.000		0.010	-	-			0.000	0.000	0.000		0.070	-	-	0.000	0.000	0.000		0.080	-	-			0.003			
0.300	0.000	0.000	0.000		0.002	-	-	0.000	0.000	0.000		0.005	-	-			0.000	0.000	0.000		0.120	-	-	0.000	0.000	0.000		0.124	-	-			0.003			
0.350	0.000	0.000	0.000		0.001	-	-	0.000	0.000	0.000		0.002	-	-			0.000	0.000	0.000		0.170	-	-	0.000	0.000	0.000		0.172	-	-			0.004			
0.400	0.000	0.000	0.000		0.001	-	-	0.000	0.000	0.000		0.001	-	-			0.000	0.000	0.000		0.220	-	-	0.000	0.000	0.000		0.221	-	-			0.004			
0.450	0.000	0.000	0.000		0.001	-	-	0.000	0.000	0.000		0.001	-	-			0.000	0.000	0.000		0.270	-	-	0.000	0.000	0.000		0.270	-	-			0.005			
0.500	0.000	0.000	0.000		0.001	-	-	0.000	0.000	0.000		0.001	-	-			0.000	0.000	0.000		0.320	-	-	0.000	0.000	0.000		0.320	-	-			0.005			
0.550						-	-						-	-								-	-						-	-			0.006			
0.600						-	-						-	-								-	-						-	-			0.006			
0.650						-	-						-	-								-	-						-	-			0.007			
0.700						-	-						-	-								-	-						-	-			0.007			
Totals:																0		0		0		0		0		0		0		0		0		0		
Number of Trades:																0		0		0		0.00		0.00		0		0		0		0				

PPC (CR)

(Contract Size: 100 Securities, Exercise Style: American, Physical Delivery)

Call Options																	Put Options																				
Exerise Price	April 2016							May 2016							Other Months			April 2016							May 2016							Other Months			Exerise Price		
	Open price	Price max	Price min	Last price	Closing price	Volume	Open Interest	Open price	Price max	Price min	Last price	Closing price	Volume	Open Interest	Volume	Open Interest	Open price	Price max	Price min	Last price	Closing price	Volume	Open Interest	Open price	Price max	Price min	Last price	Closing price	Volume	Open Interest	Volume	Open Interest					
1.800	0.000	0.000	0.000		1.09	-	-	0.000	0.000	0.000		1.09	-	-			0.000	0.000	0.000		0.001	-	-	0.000	0.000	0.000		0.001	-	-					0.018		
1.900	0.000	0.000	0.000		0.990	-	-	0.000	0.000	0.000		0.994	-	-			0.000	0.000	0.000		0.001	-	-	0.000	0.000	0.000		0.001	-	-					0.019		
2.000	0.000	0.000	0.000		0.890	-	-	0.000	0.000	0.000		0.895	-	-			0.000	0.000	0.000		0.001	-	-	0.000	0.000	0.000		0.001	-	-					0.020		
2.200	0.000	0.000	0.000		0.690	-	-	0.000	0.000	0.000		0.700	-	-			0.000	0.000	0.000		0.001	-	-	0.000	0.000	0.000		0.006	-	-					0.022		
2.400	0.000	0.000	0.000		0.490	-	-	0.000	0.000	0.000		0.517	-	-			0.000	0.000	0.000		0.001	-	-	0.000	0.000	0.000		0.022	-	-					0.024		
2.600	0.000	0.000	0.000		0.290	-	-	0.000	0.000	0.000		0.356	-	-			0.000	0.000	0.000		0.001	-	-	0.000	0.000	0.000		0.061	-	-					0.026		
2.800	0.000	0.000	0.000		0.104	-	-	0.000	0.000	0.000		0.227	-	-			0.000	0.000	0.000		0.014	-	-	0.000	0.000	0.000		0.131	-	-					0.028		
3.000	0.000	0.000	0.000		0.011	-	-	0.000	0.000	0.000		0.133	-	5			0.000	0.000	0.000		0.121	-	-	0.000	0.000	0.000		0.237	-	-					0.030		
3.200	0.000	0.000	0.000		0.001	-	-	0.000	0.000	0.000		0.073	-	-			0.000	0.000	0.000		0.310	-	-	0.000	0.000	0.000		0.378	-	-					0.032		
3.400	0.000	0.000	0.000		0.002	-	-	0.000	0.000	0.000		0.037	-	-			0.000	0.000	0.000		0.510	-	-	0.000	0.000	0.000		0.542	-	-					0.034		
3.600	0.000	0.000	0.000		0.001	-	-	0.000	0.000	0.000		0.017	-	-			0.000	0.000	0.000		0.710	-	-	0.000	0.000	0.000		0.722	-	-					0.036		
3.800	0.000	0.000	0.000		0.001	-	-	0.000	0.000	0.000		0.008	-	-			0.000	0.000	0.000		0.910	-	-	0.000	0.000	0.000		0.914	-	-					0.038		
4.000	0.000	0.000	0.000		0.001	-	-	0.000	0.000	0.000		0.003	-	-			0.000	0.000	0.000		1.11	-	-	0.000	0.000	0.000		1.11	-	-					0.040		
4.400	0.000	0.000	0.000		0.001	-	-	0.000	0.000	0.000		0.001	-	-			0.000	0.000	0.000		1.51	-	-	0.000	0.000	0.000		1.51	-	-					0.044		
4.800	0.000	0.000	0.000		0.001	-	-						-	-			0.000	0.000	0.000		1.91	-	-				-	-					-	-			0.048
5.200	0.000	0.000	0.000		0.001	-	-						-	-			0.000	0.000	0.000		2.31	-	-				-	-					-	-			0.052
5.600						-	-						-	-							-	-					-	-					-	-			0.056
6.000						-	-						-	-							-	-					-	-					-	-			0.060
6.400						-	-						-	-							-	-					-	-					-	-			0.064
6.800						-	-						-	-							-	-					-	-					-	-			0.068
7.200						-	-						-	-							-	-					-	-					-	-			0.072
Totals:							0	0					0	5	0	0						0	0					0	0			0	0				
Number of Trades:							0						0		0						0.00						0					0					

Lending Products	Underlying Title	Multilateral Transactions[1]					Bilateral Transactions[2]		Stock Borrowing through OTC (volume)[3]
		Open Interest[5]	Volume(Offered)	Average Weighted	Transactions volume	Average Weighted	Transactions Volume	Average Weighte	Transactions Volume
AEGNBOR	AEGEAN AIRLINES (CR)	1,000	7,579	5.31%	---	---	---	---	19,256
ALPHABOR	ALPHA BANK (CR)	117,320	83	8.57%	---	---	---	---	2,447,600
AETFBOR	ALPHA ETF FTSE Athex Large Cap	---	---	---	---	---	---	---	---
ALMYBOR	ALUMIL (CR)	---	---	---	---	---	---	---	---
ASCOBOR	AS COMPANY SA (CR)	---	---	---	---	---	---	---	---
IATRBOR	ATHENS MEDICAL CENTER SA (CR)	---	39,104	5.31%	---	---	---	---	---
OTOELBOR	AUTOHELLAS SA (CR)	---	1,361	5.31%	---	---	---	---	---
EEEBOR	CC HBC AG (CR)	5,446	1	5.65%	---	---	5,000	3.00%	70,546
CENTRBOR	CENTRIC HOLDINGS (CR)	---	16,000	5.31%	---	---	---	---	---
SOLKBOR	CORINTH PIPEWORKS SA (CR)	---	---	---	---	---	---	---	---
PLAKRBOR	CRETE PLASTICS SA (CR)	---	---	---	---	---	---	---	---
ELLAKTORBOR	ELLAKTOR (CR)	300	48,666	5.31%	---	---	---	---	160
ANEMOSBOR	ELTECH ANEMOS S.A. (CR)	---	---	---	---	---	---	---	---
ELTONBOR	ELTON SA (CR)	---	---	---	---	---	---	---	---
EUROBBOR	EUROBANK ERGASIAS (CR)	5,000	1,455	5.31%	---	---	---	---	1,164,711
EUROCBOR	EUROCONSULTANTS S.A. (CR)	---	---	---	---	---	---	---	---
EUPICBOR	EUROPEAN RELIANCE INSUR. (CR)	---	---	---	---	---	---	---	---
EYDAPBOR	EYDAP S.A. (CR)	900	1,221	5.31%	---	---	---	---	17,780
FFGRPBOR	FOLLI FOLLIE (CR)	2,000	76,321	5.31%	---	---	---	---	918,921
FOYRKBOR	FOURLIS (CR)	---	5,130	5.31%	---	---	---	---	3,850
FRIGOBOR	FRIGOGLASS SA (CR)	---	2,480	5.31%	---	---	---	---	---
GEKTERNABOR	GEK TERNA (CR)	7,651	35,545	5.31%	---	---	---	---	---
SARBOR	GR. SARANTIS SA (CR)	200	1,769	5.31%	---	---	---	---	---
EUPROBOR	GRIVALIA PROPERTIES (CR)	400	67,582	5.31%	---	---	---	---	32,742
XAKOBOR	HALKOR SA (CB)	---	50,550	5.31%	---	---	---	---	---
EXAEBOR	HELLENIC EXCHANGES-A.S.E. (CR)	35,784	336,944	3.31%	---	---	---	---	111,443
ELPEBOR	HELLENIC PETROLEUM (CR)	---	157,750	5.31%	---	---	---	---	44,796
HYGEIABOR	HYGEIA SA (CR)	---	48,700	5.31%	---	---	---	---	---
IASOBOR	IASO SA (CR)	---	---	---	---	---	---	---	---
IKTINBOR	IKTINOS HELLAS SA (CR)	---	---	---	---	---	---	---	---
LYKBOR	INFORM P. LYKOS SA (CR)	---	---	---	---	---	---	---	---

Stock Lending Notes

- [1] - Multilateral contracts Lending or Borrowing as per Methods 8-1, 8-2 and 8-3-3 (According to ATHEX BoD Resolution No.17)
- [2] - Billateral Contracts Lending or Borrowing as per Methods 8-3-1 and 8-3-2 (According to ATHEX BoD Resolution No.20)
- [3] - The information concerning OTC Stock Borrowing Transactions is based on the statements of the Dematerialised Securities System (DSS) operators involved and refers to volumes that have been registered up until the previous working day.
- [4] - Average Price (Volume weighted)
- [5] - The Data concerning Open Interest before the start of trading session

Lending Products	Underlying Title	Multilateral Transactions[1]					Bilateral Transactions[2]		Stock Borrowing through OTC (volume)[3]
		Open Interest[5]	Volume(Offered)	Average Weighted	Transactions volume	Average Weighted	Transactions Volume	Average Weighte	Transactions Volume
INTRKBOR	INTRACOM HOLDINGS (CR)	---	168,546	5.31%	---	---	---	---	---
INLOTBOR	INTRALOT (CR)	6,000	56,089	4.24%	1,000	2.65%	---	---	803
AVAXBOR	J & P - AVAX SA (CR)	---	20,335	5.31%	---	---	---	---	---
BELABOR	JUMBO SA (CR)	47,001	58,694	3.31%	---	---	---	---	27,765
KLEMBOR	KLEEMAN HELLAS SA (CR)	---	23,512	5.31%	---	---	---	---	---
KORRESBOR	KORRES (CR)	---	---	---	---	---	---	---	---
KRIBOR	KRI-KRI S.A. (CR)	---	47,768	5.31%	---	---	---	---	---
KYRMBOR	KYRIAKIDIS MARBLES SA (CR)	---	5,737	5.31%	---	---	---	---	---
LAMDABOR	LAMDA DEVELOPMENT SA (CR)	---	111	5.31%	---	---	---	---	10,377
MIGBOR	MARFIN INVESTMENT GROUP (CR)	---	84,717	5.31%	---	---	---	---	744,474
METKKBOR	METKA (CR)	5,650	3,232	5.31%	---	---	---	---	965
MLSBOR	MLS MULTIMEDIA SA (CR)	---	9,118	5.31%	---	---	---	---	---
MOHBOR	MOTOR OIL (CR)	14,198	25,018	5.31%	---	---	---	---	52,454
MYTILBOR	MYTILINEOS HOLDINGS (CR)	8,170	146,857	5.31%	---	---	---	---	---
ETEBOR	NATIONAL BANK (CR)	192,259	75,313	5.31%	50,000	4.76%	---	---	1,220,527
ETFASEBOR	NBGAM ETF	---	---	---	---	---	---	---	---
ETFGT30PBOR	NBGAM ETF GREECE & TURKEY 30	---	---	---	---	---	---	---	---
OPAPBOR	OPAP (CR)	50,672	82,001	3.31%	21,500	2.65%	---	---	855,034
HTOBOR	OTE (CR)	9,927	41,244	5.31%	---	---	---	---	220,288
PPABOR	P.P.A. S.A. (CR)	---	958	5.31%	---	---	---	---	901
PETROBOR	PETROPOULOS PETROS (CR)	---	---	---	---	---	---	---	---
TPEIRBOR	PIRAEUS BANK (CR)	16,593	52	5.31%	---	---	---	---	2,210,343
PLAISBOR	PLAISIO COMPUTERS SA (CR)	---	---	---	---	---	---	---	---
PPCBOR	PPC (CR)	15,346	91,268	5.31%	---	---	---	---	1,177,224
QUALBOR	QUALITY & RELIABILITY SA (CR)	---	---	---	---	---	---	---	---
QUESTBOR	QUEST HOLDINGS (CR)	---	---	---	---	---	---	---	---
KAMPBOR	REDS S.A. (CR)	---	---	---	---	---	---	---	---
OLYMPBOR	TECHNICAL OLYMPIC SA (CR)	---	9,039	5.31%	---	---	---	---	---
TENERGYBOR	TERNA ENERGY (CR)	4,525	20,469	5.31%	---	---	---	---	22,000
EYAPSBOR	THESSALONIKA WATER & SEWERAGE	---	798	5.31%	---	---	---	---	---
PLATBOR	THRACE PLASTICS SA (CR)	---	42,700	5.31%	---	---	---	---	---

Stock Lending Notes

- [1] - Multilateral contracts Lending or Borrowing as per Methods 8-1, 8-2 and 8-3-3 (According to ATHEX BoD Resolution No.17)
- [2] - Billateral Contracts Lending or Borrowing as per Methods 8-3-1 and 8-3-2 (According to ATHEX BoD Resolution No.20)
- [3] - The information concerning OTC Stock Borrowing Transactions is based on the statements of the Dematerialised Securities System (DSS) operators involved and refers to volumes that have been registered up until the previous working day.
- [4] - Average Price (Volume weighted)
- [5] - The Data concerning Open Interest before the start of trading session

Lending Products	Underlying Title	Multilateral Transactions[1]					Bilateral Transactions[2]		Stock Borrowing through OTC (volume)[3]
		Open Interest[5]	Volume(Offered)	Average Weighted	Transactions volume	Average Weighted	Transactions Volume	Average Weighted	Transactions Volume
TITKBOR	TITAN CEMENT (CR)	1,500	242,794	5.31%	---	---	---	---	3,204
OLTHBOR	TPA SA (CR)	---	263	5.31%	---	---	---	---	---
VIOBOR	VIOHALCO SA/NV (CB)	3,519	53,444	5.31%	---	---	---	---	---

Stock Lending Notes

- [1] - Multilateral contracts Lending or Borrowing as per Methods 8-1, 8-2 and 8-3-3 (According to ATHEX BoD Resolution No.17)
- [2] - Bilateral Contracts Lending or Borrowing as per Methods 8-3-1 and 8-3-2 (According to ATHEX BoD Resolution No.20)
- [3] - The information concerning OTC Stock Borrowing Transactions is based on the statements of the Dematerialised Securities System (DSS) operators involved and refers to volumes that have been registered up until the previous working day.
- [4] - Average Price (Volume weighted)
- [5] - The Data concerning Open Interest before the start of trading session

Sectors codification for listed companies

533	-	Exploration & Production	537	-	Integrated Oil & Gas
1353	-	Commodity Chemicals	1357	-	Specialty Chemicals
1753	-	Aluminum	1755	-	Nonferrous Metals
1757	-	Steel	1775	-	General Mining
2353	-	Building Materials & Fixtures	2357	-	Heavy Construction
2723	-	Containers & Packaging	2727	-	Diversified Industrials
2733	-	Electrical Components & Equipment	2753	-	Commercial Vehicles & Trucks
2757	-	Industrial Machinery	2773	-	Marine Transportation
2777	-	Transportation Services	2791	-	Business Support Services
2797	-	Industrial Suppliers	3535	-	Distillers & Vintners
3537	-	Soft Drinks	3573	-	Farming Fishing & Plantations
3577	-	Food Products	3722	-	Durable Household Products
3726	-	Furnishings	3728	-	Home Construction
3747	-	Toys	3763	-	Clothing & Accessories
3765	-	Footwear	3767	-	Personal Products
3785	-	Tobacco	4533	-	Health Care Providers
4535	-	Medical Equipment	4577	-	Pharmaceuticals
5337	-	Food Retailers & Wholesalers	5371	-	Apparel Retailers
5373	-	Broadline Retailers	5375	-	Home Improvement Retailers
5379	-	Specialty Retailers	5553	-	Broadcasting & Entertainment
5555	-	Media Agencies	5557	-	Publishing
5751	-	Airlines	5752	-	Gambling
5753	-	Hotels	5755	-	Recreational Services
5757	-	Restaurants & Bars	5759	-	Travel & Tourism
6535	-	Fixed Line Telecommunications	6575	-	Mobile Telecommunications
7535	-	Conventional Electricity	7537	-	Alternative Electricity
7577	-	Water	8355	-	Banks
8534	-	Insurance Brokers	8536	-	Property & Casualty Insurance
8633	-	Real Estate Holding & Development	8637	-	Real Estate Services
8671	-	Industrial & Office REITs	8675	-	Specialty REITs
8775	-	Specialty Finance	8777	-	Investment Services
8985	-	Equity Investment Instruments	9533	-	Computer Services
9535	-	Internet	9537	-	Software
9572	-	Computer Hardware	9574	-	Electronic Office Equipment
9578	-	Telecommunications Equipment	12003	-	ETF



ATHEXGROUP
Όμιλος Χρηματιστηρίου Αθηνών

Λεωφ. Αθηνών 110 104 42 Αθήνα
110, Athinon Ave. GR 104 42 Athens
tel. (+30)210-33.66.800, fax (+30)210-33.66.101
www.athegroup.gr