



ATHEXGROUP
Athens Exchange Group

Hellenic Exchanges – Athens Stock Exchange S.A.

“

2016

δελτίο ημερησίων συναλλαγών

daily official list

Thursday, 28 April, 2016
Year: 137 Trading Day No: 80

”

Disclaimer:

Hellenic Exchanges-Athens Stock Exchange S.A. endeavours to ensure that the data and other material ("Information") presented on the Daily Official List are accurate and complete, but it is not liable for any errors or omissions of data or /and for the accuracy, credibility, updating and completeness of the aforesaid information nor it has any liability arising directly or indirectly from the use of the above Information.

The Company is not liable for the accuracy of the data included in listed companies' announcements. Only the sender of such an announcement is fully and solely liable for any infringement of third party's rights from the content of such announcement. All contents of the Daily Official List are provided only for information purposes and do not constitute investment advice or solicitation to invest in securities or other products listed for trading on the Exchange.

You acknowledge and agree that the Company is the owner of any property rights related to any Information appearing on the Daily Official List including intellectual property rights copyright, trademarks, etc.

The above data are a property of the Hellenic Exchanges-Athens Exchange and are copyright protected. Users are forbidden to reproduce, modify, copy, sale, transmit or redistribute, by all reproduction means and methods, part or the whole of the above data, without reference to their source.

The commercial exploitation of these data is, also, forbidden by third parties. Hellenic Exchanges-Athens Exchange does not carry any responsibility, direct or indirect, derived from usage or accidental alteration of the above data when used by third parties.

Hellenic Exchanges – Athens Stock Exchange S.A.

110 Athinon Ave., 10442 Athens, Tel: (210) 33.66.800, Fax: (210) 32.13.938

www.helix.gr

Thessalonica Stock Exchange Center (T.S.E.C)

16-18 Katouni Str., Thessalonica 546 25 Tel: (2310) 567.667, Fax: (2310) 530.545

Athex Members Guarantee Fund

14-16 Fidiou Str., Athens 106 78, Tel: (210) 33.04.682, Fax: (210) 33.04.155

Hellenic Republic Capital Market Commission

1 Kolokotroni Str. & 1 Stadiou Str., Athens 10562 Tel: (210) 33.77.100 Fax: (210) 33.77.173

Table of Contents

Section 1: Statistical Figures of Securities, Derivatives and Lending

Summary of Markets

Athex Indices

Analytic Figures for Athex Market's Boards and Categories

Trading Details by Athex Sectors and Financial Instruments (ETFs)

Top 10 best & worst performing Shares

Derivatives Summary

Section 2: Analytic Figures of Shares Transactions

Analytic Figures of Shares Transactions

Shares' Notes

Section 3: Figures of Securities Transactions

Securities Blocks Details

Shares Rights Details

Stock Borrowing

Shares Forced Sales

Forced Sales Registered Shares

Exchange Traded Funds (ETFs) Characteristics

Section 5: Bonds traded in Fixed Income Assets Market

Corporate Bonds

Government Bonds

Treasury Bills & Zero Coupon Government Bonds

Government Bonds Traded with the Open Outcry Method

State Banks Bonds

Section 6: Additional Infos

Athex & ATHEXClear Members List

List of Stocks under Market Making operations

Section 7: Derivatives Market Analytic Figures

Index Futures

Stock Futures

Index Options

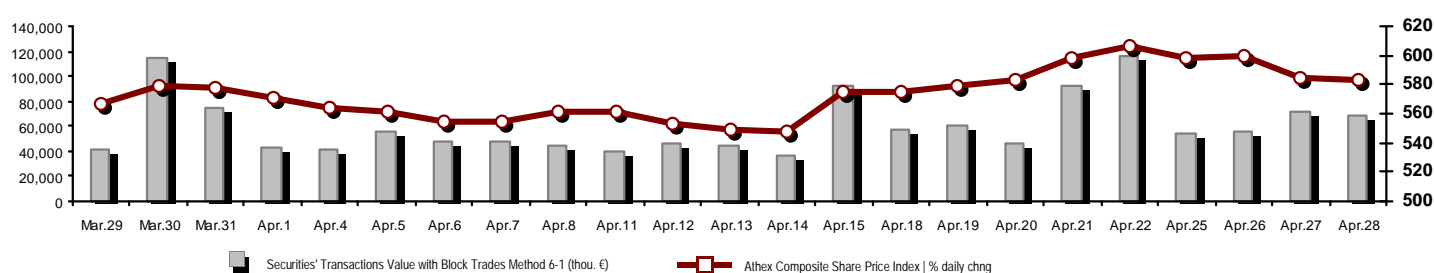
Stock Options

Stock Lending Analytic Figures

Appendix A: Sectors codification for listed companies

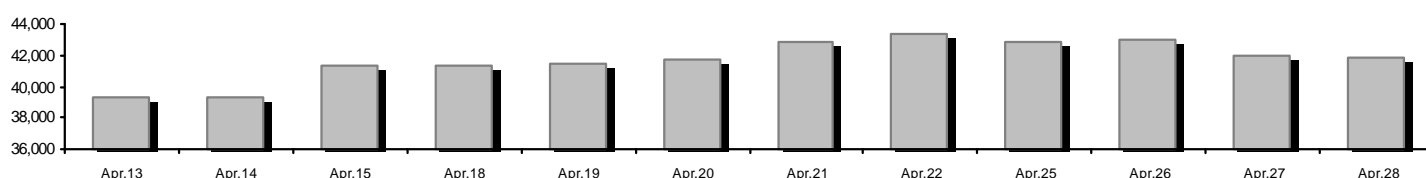
Summary of Markets

Athex Composite Share Price Index vs Shares and Derivatives Transactions Value

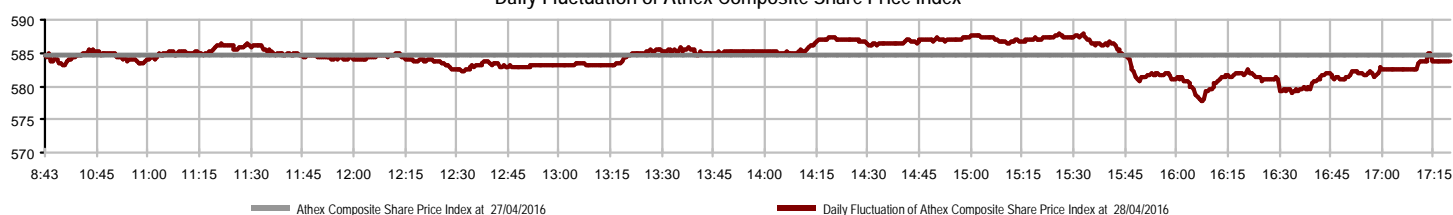


Athex Capitalisation (mill. €) **: 41,843.34			Derivatives Total Open Interest 202,570		
Daily change: mill. € % -76.08 -0.18%			in Index Futures % daily chng 17,391 1.76%		
Yearly Avg Capitalisation: mill. € % chng prev year Avg 39,482.11 -9.50%			in Stock Futures % daily chng 181,966 -0.58%		
Athex Composite Share Price Index % daily chng 583.65 -0.15%			in Index Options % daily chng 2,723 0.00%		
Athex Composite Share Price Index Capitalisation (mill. €) 37,469.85			in Stock Options % daily chng 490 0.00%		
Daily change (mill. €) -107.31					
Securities' Transactions Value with Block Trades Method 6-1 (68,120.71			Derivatives Contracts Volume: 36,610		
Daily change: thou. € % -3,316.85 -4.64%			Daily change: pieces % -27,337 -42.75%		
YtD Avg Trans. Value: thou. € % chng prev year Avg 68,255.06 -20.27%			YtD Avg Derivatives Contracts % chng prev year Avg 63,070 -4.02%		
Blocks Transactions Value of Method 6-1 (thou. €) 7,933.63			Derivatives Trades Number: 1,939		
Blocks Transactions Value of Method 6-2 & 6-3 (thou. €) 0.00			Daily change: number % -1,496 -43.55%		
Bonds Transactions Value (thou. €) 0.00			YtD Avg Derivatives Trades number % chng prev year Avg 2,886 -11.68%		
Securities' Transactions Volume with Block Trades Method 6-1 (th 115,803.48			Lending Total Open Interest 573,423		
Daily change: thou. pieces % -17,607.93 -13.20%			Daily change: pieces % -2,215 -0.38%		
YtD Avg Volume: thou. pieces % chng prev year Avg 120,503.43 -37.58%			Lending Volume (Multilateral/Bilateral) 31,181		
Blocks Transactions Volume of Method 6-1 (thou. Pieces) 20,228.58			Daily change: pieces % 12,681 68.55%		
Blocks Transactions Volume of Method 6-2 & 6-3 (thou. Pieces) 0.00			Multilateral Lending 15,181		
Bonds Transactions Volume (thou. pieces) 0.00			Bilateral Lending 16,000		
Securities' Trades Number with Block Trades Method 6-1 15,692			Lending Trades Number: 18		
Daily change: number % -11,553 -42.40%			Daily change: thou. € % 16 800.00%		
YtD Avg Derivatives Trades number % chng prev year Avg 22,817 -15.50%			Multilateral Lending Trades Number 16		
Number of Blocks Method 6-1 10			Bilateral Lending Trades Number 2		
Number of Blocks Method 6-2 & 6-3 0					
Number of Bonds Transactions 0					

Athex Capitalisation (mill. €) **



Daily Fluctuation of Athex Composite Share Price Index



Athex Indices

Index name	28/04/2016	27/04/2016	pts.	%	Min	Max	Year min	Year max	Year change
Athex Composite Share Price Index	583.65	584.55	-0.90	-0.15%	577.77	587.84	420.82	631.35	-7.56%
FTSE/Athex Large Cap	161.48	162.15	-0.67	-0.41%	159.09	162.92	107.52	183.34	-11.92%
FTSE/Athex Mid Cap Index	647.91	645.16	2.75	0.43%	642.03	652.75	515.21	820.16	-20.64%
FTSE/ATHEX-CSE Banking Index	34.43	35.03	-0.60	-1.71%	33.34	35.55	13.57	44.84	-22.80%
FTSE/ATHEX Global Traders Index Plus	1,252.30	1,251.17	1.13	0.09%	1,241.46	1,254.32	1,031.55	1,278.16	-1.75%
FTSE/ATHEX Global Traders Index	1,438.29	1,430.25	8.04	0.56%	1,421.92	1,439.40	1,129.41	1,451.74	0.81%
FTSE/ATHEX Mid & Small Cap Factor-Weighted Ind	1,137.98	1,131.16	6.82	0.60%	1,129.94	1,140.94	1,066.64	1,261.08	-9.37%
Greece & Turkey 30 Price Index	517.39	516.10	1.29	0.25%	512.25	517.44	396.10	527.12	11.45%
ATHEX Mid & SmallCap Price Index	2,033.56	2,032.16	1.40	0.07%	2,022.86	2,033.82	1,848.24	2,183.18	-6.37%
FTSE/Athex Market Index	394.91	396.44	-1.53	-0.39%	389.21	398.32	265.17	449.96	-12.23%
Athex Composite Index Total Return Index	869.57	870.92	-1.35	-0.16%	860.81	875.81	626.16	939.41	-7.43%
FTSE/Athex Large Cap Total Return	223.45	223.83	-0.38	-0.17%			157.44	246.77	-11.64%
FTSE/ATHEX Large Cap Net Total Return	665.84	668.62	-2.78	-0.42%	656.00	671.80	443.06	755.50	-11.87%
FTSE/Athex Mid Cap Total Return	796.58	793.20	3.38	0.43%			669.55	1,008.35	-20.64%
FTSE/ATHEX-CSE Banking Total Return Index	32.90	33.48	-0.57	-1.71%			15.92	42.34	-24.35%
Greece & Turkey 30 Total Return Index	648.60	657.35	-8.75	-1.33%			502.35	660.49	12.66%
Hellenic Mid & Small Cap Index	696.20	695.04	1.16	0.17%	691.47	700.11	560.15	722.84	-2.71%
FTSE/Athex Banks	45.49	46.29	-0.80	-1.73%	44.05	46.98	17.93	59.24	-22.79%
FTSE/Athex Insurance	1,633.18	1,633.18	0.00	0.00%	1,633.18	1,633.18	1,274.94	1,896.60	10.71%
FTSE/Athex Financial Services	1,013.94	964.82	49.12	5.09%	964.82	1,022.58	634.69	1,057.49	4.11%
FTSE/Athex Industrial Goods & Services	1,443.20	1,452.49	-9.29	-0.64%	1,439.69	1,474.53	1,369.56	1,844.00	-20.91%
FTSE/Athex Retail	2,631.18	2,658.85	-27.67	-1.04%	2,631.18	2,682.15	1,826.41	2,691.96	4.16%
FTSE/ATHEX Real Estate	2,390.44	2,381.81	8.63	0.36%	2,381.79	2,432.79	2,154.15	2,502.99	-1.23%
FTSE/Athex Personal & Household Goods	5,869.18	5,776.69	92.49	1.60%	5,776.69	5,895.48	4,433.32	6,053.11	15.92%
FTSE/Athex Food & Beverage	6,642.48	6,761.76	-119.28	-1.76%	6,605.20	6,769.21	5,952.97	7,376.68	-9.95%
FTSE/Athex Basic Resources	1,550.32	1,556.82	-6.50	-0.42%	1,532.05	1,601.76	1,200.24	1,673.11	-5.16%
FTSE/Athex Construction & Materials	2,039.55	2,013.55	26.00	1.29%	1,997.59	2,039.67	1,500.04	2,059.39	8.58%
FTSE/Athex Oil & Gas	2,378.47	2,372.46	6.01	0.25%	2,344.53	2,384.82	1,860.37	2,447.68	-1.39%
FTSE/Athex Chemicals	7,182.08	7,230.46	-48.38	-0.67%	7,182.08	7,230.46	6,190.46	7,327.23	5.43%
FTSE/Athex Travel & Leisure	1,221.51	1,209.04	12.47	1.03%	1,194.26	1,221.78	982.74	1,426.44	-14.27%
FTSE/Athex Technology	558.97	554.92	4.05	0.73%	551.91	564.30	489.05	598.90	-2.28%
FTSE/Athex Telecommunications	2,331.43	2,295.64	35.79	1.56%	2,243.34	2,331.43	1,802.93	2,543.37	-8.33%
FTSE/Athex Utilities	1,455.65	1,442.40	13.25	0.92%	1,434.21	1,461.32	1,136.34	1,734.68	-13.12%
FTSE/Athex Health Care	118.17	117.37	0.80	0.68%	115.79	118.96	61.86	133.24	39.25%
Athex All Share Index	147.85	148.12	-0.27	-0.18%	147.85	147.85	113.39	162.12	-10.08%
Hellenic Corporate Bond Index	100.56	100.52	0.05	0.04%			96.90	100.64	0.08%
Hellenic Corporate Bond Price Index	93.03	93.00	0.03	0.03%			90.43	94.61	-1.82%

Note 1: Greece & Turkey 30 Pr data is the indicative at 17:20, whereas FTSE/ATHEX Custom Capped, FTSE/ATHEX Custom Capped - USD, FTSE/ATHEX Custom Capped TR, FTSE/ATHEX Custom Capped - USD TR, FTSE/Med 100 & Greece & Turkey 30 Rt., Hellenic Corporate Bond Price Index, Hellenic Corporate Bond Index closing prices refer to the previous trading day of 26/04/2016.

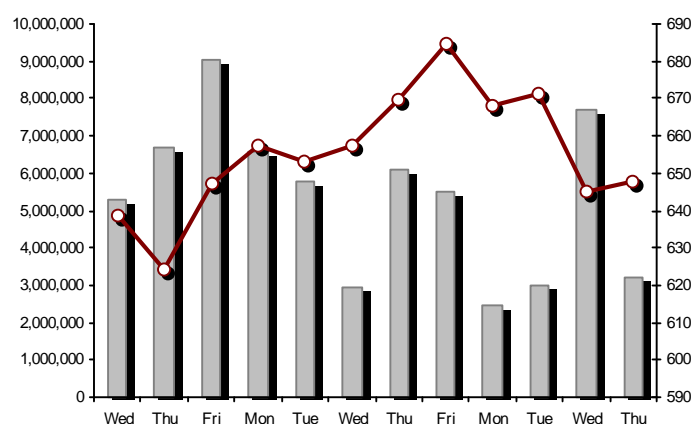
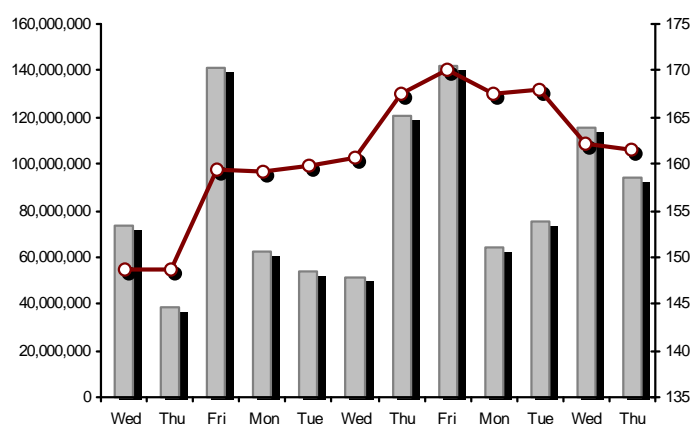
Note 2: The Hellenic Mid & Small Cap Index is a Customized index calculated by the Athens Exchange.

Athex Indices

FTSE/Large Cap

28/04/2016: -0.41% FTSE/Athex Mid Cap Index

28/04/2016: 0.43%

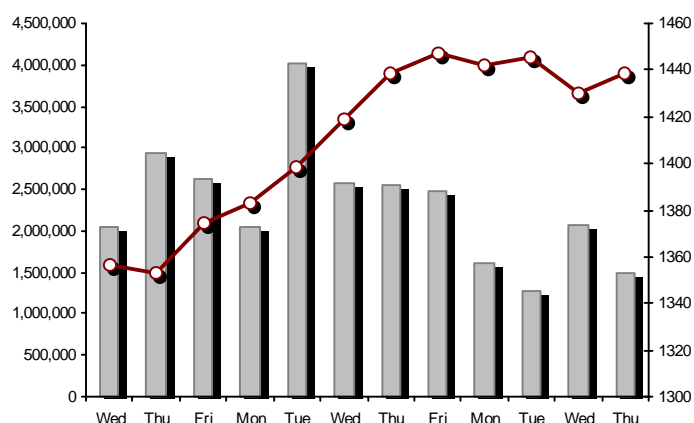
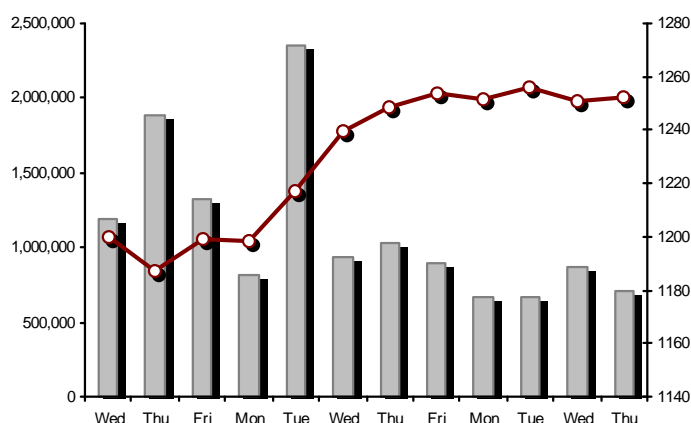


FTSE/ATHEX Global Traders Index Plus

28/04/2016: 0.09%

FTSE/ATHEX Global Traders Index

28/04/2016: 0.56%

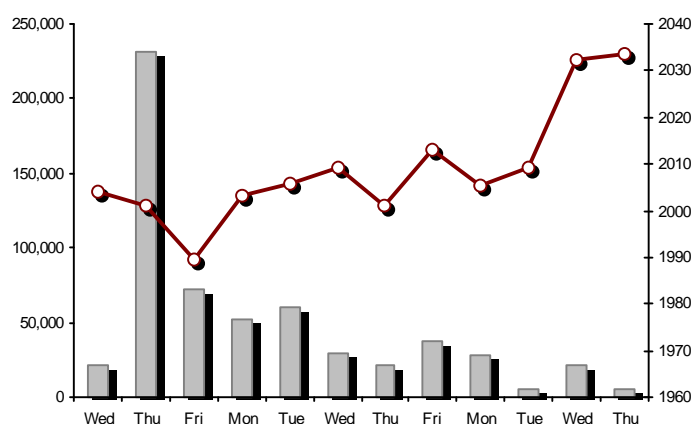
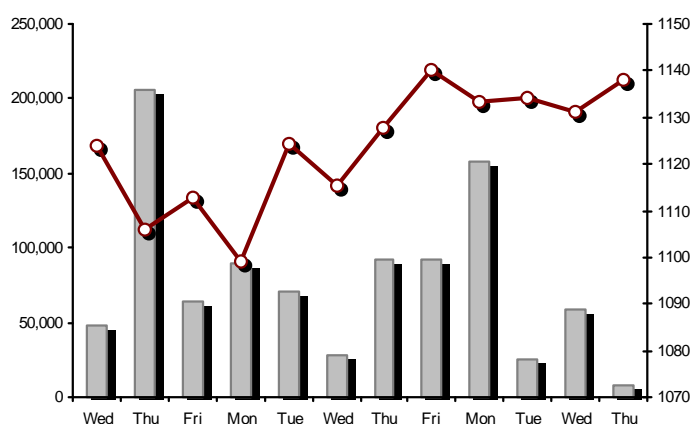


FTSE/ATHEX Mid & Small Cap Factor-Weighted Index

28/04/2016: 0.60%

ATHEX Mid & SmallCap Price Index

28/04/2016: 0.07%



Indices volume of transactions

Indices closing prices

Analytic Figures for Athex Market's Boards and Categories

	Total Traded Securities	Main Market	Low Dispersion	Other Categories (*)	Exchange Traded Funds (ETFs)	Warrants
Totals	101	84	5	7	2	3
Gain / Lose / Same:	52 / 38 / 11	42 / 35 / 7	3 / 1 / 1	6 / 1 / 0	0 / 1 / 1	1 / 0 / 2
Athex Capitalisation (mill. €) **	41,843.34	39,121.56	2,583.72	138.06		
Daily Average Trans/ons Value(thou.€)	68,255.06	68,221.44	41.61	11.13	15.38	16.65
Transactions Value	68,120.71	68,064.87	9.52	5.04	0.03	41.25
Main Board:	60,187.08	60,131.24	9.52	5.04	0.03	41.25
Blocks Board 6_2_3:	7,933.63	7,933.63	0.00	0.00	0.00	0.00
Forced Sales Board:	0.00	0.00	0.00	0.00	0.00	0.00
Special Terms Board:	0.00	0.00	0.00	0.00	0.00	0.00
Daily Average Transactions Volume	120,503,429	112,535,960	22,284	118,161	10,045	7,914,492
Transactions Volume	115,803,478	104,700,251	2,435	37,099	4	11,063,689
Main Board:	95,574,903	84,471,676	2,435	37,099	4	11,063,689
Blocks Board 6_2_3:	20,228,575	20,228,575	0	0	0	0
Forced Sales Board:	0	0	0	0	0	0
Special Terms Board:	0	0	0	0	0	0
Daily Average Number of Trades	22,817	22,631	38	60	4	84
Number of Trades	15,692	15,544	12	32	2	102
Main Board:	15,682	15,534	12	32	2	102
Blocks Board 6_2_3:	10	10	0	0	0	0
Forced Sales Board:	0	0	0	0	0	0
Special Terms Board:	0	0	0	0	0	0

(*) Summarised Transactions figures for Under Deletion and Under Supervision Categories. (**) The Market Capitalization of the Companies that belong in the Under Supervision Status is not included.

Trading Details by Athex Sectors and Financial Instruments (ETFs)

Code	Sectors	Gain / Lose / Same	Number of Trades	Transactions Volume	Transactions Value	% of Total Trans. Value
8300	- Banks	4 / 4 / 2	9,301	110,400,421	49,436,980.12	72.57%
1700	- Basic Resources	2 / 4 / 0	318	96,486	308,220.21	0.45%
1300	- Chemicals	1 / 1 / 1	8	1,031	3,419.68	0.01%
2300	- Construction & Materials	6 / 4 / 2	437	141,100	527,653.19	0.77%
12000	- Financial Instruments	0 / 1 / 1	2	4	25.94	0.00%
8700	- Financial Services	2 / 0 / 0	1,048	2,718,224	2,602,406.32	3.82%
3500	- Food & Beverage	8 / 1 / 0	202	78,135	1,087,153.29	1.60%
4500	- Health Care	2 / 0 / 0	35	60,774	9,148.43	0.01%
2700	- Industrial Goods & Services	6 / 6 / 1	419	153,427	264,037.98	0.39%
8500	- Insurance	0 / 0 / 0	---	---	---	---
5500	- Media	0 / 0 / 0	---	---	---	---
500	- Oil & Gas	1 / 1 / 0	581	423,916	2,191,985.07	3.22%
3700	- Personal & Household Goods	3 / 5 / 1	366	210,057	2,237,233.23	3.28%
8600	- Real Estate	1 / 5 / 0	201	55,449	325,854.98	0.48%
5300	- Retail	1 / 1 / 0	230	26,211	469,913.94	0.69%
9500	- Technology	5 / 2 / 1	86	14,771	20,673.30	0.03%
6500	- Telecommunications	1 / 0 / 0	623	472,855	3,972,779.46	5.83%
5700	- Travel & Leisure	7 / 2 / 0	1,248	633,222	3,727,578.23	5.47%
7500	- Utilities	2 / 1 / 2	587	317,395	935,645.51	1.37%

Top 10 best & worst performing Shares

Main Market					
With positive Price change	Closing price	change	With negative Price change	Closing price	change
HELLENIC EXCHANGES-A.S.E. (CR)	4.98	5.96% #	ALPHA BANK (CR)	1.91	-4.50% Ⓔ
PIRAEUS BANK (CR)	0.260	4.00% #	NATIONAL BANK (CR)	0.260	-3.35% Ⓔ
ATTICA BANK S.A. (CR)	0.118	3.51% #	LAMDA DEVELOPMENT SA (CR)	3.77	-3.33% Ⓔ
GRIVALIA PROPERTIES (CR)	7.50	2.32% #	CC HBC AG (CR)	17.82	-1.76% Ⓔ
BANK OF GREECE (CR)	9.83	1.87% #	BANK OF CYPRUS (CR)	0.150	-1.32% Ⓔ
JUMBO SA (CR)	11.47	1.87% #	AEGEAN AIRLINES (CR)	8.01	-1.23% Ⓔ
VIOHALCO SANV (CB)	1.14	1.79% #	FOLLI FOLLIE (CR)	18.00	-1.04% Ⓔ
HELLENIC PETROLEUM (CR)	3.87	1.58% #	METKA (CR)	6.68	-0.74% Ⓔ
OTE (CR)	8.47	1.56% #	EUROBANK ERGASIAS (CR)	0.740	-0.67% Ⓔ
OPAP (CR)	6.60	1.54% #	MYTILINEOS HOLDINGS (CR)	3.50	-0.57% Ⓔ
With the highest Transactions Value	Value (thou. €)	change	With the highest Transactions Volume	Volume	change
ALPHA BANK (CR)	23,438.37	-4.50% Ⓔ	NATIONAL BANK (CR)	53,682,322	-3.35% Ⓔ
NATIONAL BANK (CR)	14,250.82	-3.35% Ⓔ	PIRAEUS BANK (CR)	17,222,335	4.00% #
EUROBANK ERGASIAS (CR)	6,135.25	-0.67% Ⓔ	ALPHA BANK (CR)	12,017,975	-4.50% Ⓔ
PIRAEUS BANK (CR)	4,348.38	4.00% #	EUROBANK ERGASIAS (CR)	8,195,451	-0.67% Ⓔ
OTE (CR)	3,972.78	1.56% #	BANK OF CYPRUS (CR)	7,405,706	-1.32% Ⓔ
OPAP (CR)	3,196.71	1.54% #	MARFIN INVESTMENT GROUP (CR)	2,255,312	1.44% #
HELLENIC EXCHANGES-A.S.E. (CR)	2,280.96	5.96% #	ATTICA BANK S.A. (CR)	811,206	3.51% #
JUMBO SA (CR)	2,185.06	1.87% #	OPAP (CR)	489,201	1.54% #
HELLENIC PETROLEUM (CR)	1,270.95	1.58% #	OTE (CR)	472,855	1.56% #
BANK OF CYPRUS (CR)	1,112.35	-1.32% Ⓔ	HELLENIC EXCHANGES-A.S.E. (CR)	462,912	5.96% #

Note: Stocks that are not included in the "Low Dispersion" and "Under Supervision" categories, and the transactions value is more than 10,000 €.

Derivatives Summary

	Number of Trades	Volume	Open Interest
Index Futures	197	1,414	17,391
FTSE/Athex Large Cap	197	1,414	17,391
Stock Futures	1,741	35,195	181,966
ALPHA BANK (CR)	349	5,883	5,380
CC HBC AG (CR)	0	0	49
CORINTH PIPEWORKS SA (CR)	0	0	694
ELLAKTOR (CR)	10	56	1,400
EUROBANK ERGASIAS (CR)	320	5,154	24,459
EYDAP S.A. (CR)	4	42	232
FOLLI FOLLIE (CR)	10	13	148
GEK TERNA (CR)	13	90	6,984
GRIVALIA PROPERTIES (CR)	0	0	156
HELLENIC EXCHANGES-A.S.E. (CR)	54	203	944
HELLENIC PETROLEUM (CR)	29	97	4,311
INTRALOT (CR)	1	2	566
JUMBO SA (CR)	4	16	504
MARFIN INVESTMENT GROUP (CR)	53	1,713	33,043
METKA (CR)	16	53	603
MOTOR OIL (CR)	9	36	600
MYTILINEOS HOLDINGS (CR)	44	113	3,495
NATIONAL BANK (CR)	285	10,941	45,056
OPAP (CR)	69	228	2,959
OTE (CR)	70	394	2,380
P.P.A. S.A. (CR)	1	1	486
PIRAEUS BANK (CR)	306	9,891	37,207
PPC (CR)	63	199	6,261
TERNA ENERGY (CR)	0	0	1,220
TITAN CEMENT (CR)	18	26	179
VIOHALCO SA/NV (CB)	13	44	2,650
Index Options	1	1	2,723
FTSE/Athex Large Cap	1	1	2,723
Stock Options	0	0	490
ALPHA BANK (CR)	0	0	0
NATIONAL BANK (CR)	0	0	0
OPAP (CR)	0	0	275
OTE (CR)	0	0	10
PIRAEUS BANK (CR)	0	0	0
PPC (CR)	0	0	205
Total Derivatives Traded	1,939	36,610	202,570

Number of Outstanding Securities	Nominal Value	Dividends [1]			Date of Last Coupon		Note	Shares	Closing price	% change	Previous closing price/date	Open price	Price min	Price max	Last price	Avg price	Last Bid [7]	Last Ask [7]	P/E after	Year	Volume	Trades	Transactions Value[8]	Company Mkt Value (thou. €)	Year low	Year high	Sector[4]
		2013	2014	2015	Dividend [2]	Right																					
Warrants																											
1,141,734,167	---	---	---		11/06/2013	---	ALPHA BANK (W)	0.003	---	↘ 0.003	27/04/2016	0.002	0.002	0.003	0.003	0.0028675882@0.002	13055912@0.003	---	2015	2,360,656	14	5,881.97	2,935,443.09	0.001	0.004	8355	
245,745,725	---	---	---		27/06/2013	---	NATIONAL BANK (W)	0.009	12.50	# 0.008	27/04/2016	0.008	0.007	0.009	0.009	0.0084326@0.008	870813@0.009	---	2015	3,553,439	76	29,890.34	2,378,259.40	0.002	0.025	8355	
843,637,022	---	---	---		03/07/2013	---	PIRAEUS BANK (W)	0.002	---	↘ 0.002	27/04/2016	0.001	0.001	0.002	0.002	0.0025637953@0.001	47533043@0.002	---	2015	5,149,594	12	5,479.19	2,270,627.65	0.001	0.002	8355	

Warrants

71,417,100	0.650	---	0.7	---	14/05/2015	27/06/2014	---	AEGEAN AIRLINES (CR)	8.01	-1.23	€ 8.11	27/04/2016	8.06	8.01	8.28	8.01	8.073848@8.01	57@8.18	10.55	2015	57,017	413	460,264.92	572,050.97	6.13	8.74	5751
11,178,000	1.12	---	---	---	21/04/2010	15/12/2014	---	AEOLIAN INVESTMENT FUND (CR)	0.610	---	0.610	27/04/2016	---	---	---	---	300@0.621	700@0.671	---	2015	---	---	---	6,818.58	0.384	0.680	8985
1,536,881,200	0.300	---	---	---	07/04/2008	27/11/2015	---	ALPHA BANK (CR)	1.91	-4.50	€ 2.00	27/04/2016	2.00	1.87	2.03	1.91	1.9562000@2.60	88147@1.93	---	2015	12,017,975	1,805	23,438,367.93	2,935,443.09	0.949	2.50	8355
22,016,250	0.370	---	---	---	15/07/2009	11/05/2000	---	ALUMIL (CR)	0.246	-0.81	€ 0.248	27/04/2016	0.246	0.246	0.246	0.246	0.246---	1204@0.246	---	2015	100	2	24.60	5,416.00	0.205	0.290	1753
417,608	16.00	0.8	---	---	29/04/2014	05/03/2013	---	ANDROMEDA SA (CR)	11.57	---	0.1157	27/04/2016	---	---	---	---	4@11.57	---	---	2015	---	---	---	4,831.72	11.53	13.90	8985
26,252,040	0.340	---	---	---	08/07/2010	10/06/2015	---	AS COMPANY SA (CR)	0.321	---	0.321	27/04/2016	---	---	---	---	20@0.315	400@0.346	5.46	2015	---	---	---	8,426.90	0.290	0.379	5379
86,735,980	0.310	---	---	---	06/07/2009	02/01/2002	---	ATHENS MEDICAL CENTER SA (CR)	0.779	---	0.779	27/04/2016	---	---	---	---	100@0.702	15@0.775	---	2015	---	---	---	67,567.33	0.550	0.780	4533
2,339,353,394	0.300	---	---	---	04/06/2008	01/12/2015	5103	ATTICA BANK S.A. (CR)	0.118	3.51	# 0.114	27/04/2016	0.115	0.113	0.118	0.118	0.11525000@0.115	25000@0.119	---	2015	811,206	184	93,479.13	276,043.70	0.066	0.279	8355
15,300,000	0.300	---	---	---	30/07/2009	13/12/1999	---	ATTICA PUBLICATIONS SA (CR)	0.883	---	0.883	27/04/2016	---	---	---	---	---	220@0.971	---	2015	---	---	---	13,509.90	0.706	1.21	5557
46,821,187	0.700	---	---	---	01/07/2008	01/03/2010	---	AUDIO VISUAL ENTERPRISES (CR)	0.045	---	0.045	27/04/2016	---	---	---	---	---	25970@0.045	---	2015	---	---	---	2,106.95	0.028	0.060	5553
12,157,500	0.320	---	0.8	---	20/05/2015	22/11/2013	---	AUTOHELLAS SA (CR)	11.00	-3.34	€ 11.38	27/04/2016	11.00	11.00	11.00	11.00	30@11.02	6@11.28	8.79	2015	238	3	2,618.00	133,732.50	9.51	12.00	5759
8,922,944,533	0.100	---	---	---	31/05/2011	02/02/2015	4857	BANK OF CYPRUS (CR)	0.150	-1.32	€ 0.152	27/04/2016	0.151	0.148	0.152	0.150	0.150115350@0.148	58381@0.150	---	2015	7,405,706	242	1,112,348.83	1,338,441.68	0.121	0.161	8355
19,864,886	5.60	0.672	0.672	0.672	03/03/2016	02/07/2008	---	BANK OF GREECE (CR)	9.83	1.87	# 9.65	27/04/2016	9.78	9.52	9.99	9.98	9.8320@9.81	249@9.98	---	---	1,737	38	17,076.03	195,271.83	8.70	9.99	8355
23,986,500	1.05	---	---	---	26/06/2009	15/03/2000	---	BIOKARPET S.A.(CR)	0.271	---	0.271	27/04/2016	---	---	---	---	39@0.271	350@0.350	---	2015	---	---	---	6,500.34	0.139	0.459	3726
15,842,391	1.51	---	---	---	15/07/2009	12/05/2000	---	BITROS HOLDING SA (CR)	0.189	-5.03	€ 0.199	27/04/2016	0.180	0.180	0.189	0.189	0.181---	5@0.189	---	2015	1,350	3	244.31	2,994.21	0.180	0.227	1757
15,816,009	0.300	---	---	---	01/07/2009	17/07/2000	---	BYTE COMPUTER SA (CR)	0.265	---	0.265	27/04/2016	0.265	0.265	0.265	0.265	50@0.262	100@0.272	---	2015	100	1	26.50	4,191.24	0.257	0.322	9533
368,141,297	6.70	0.354	0.36	---	02/07/2015	29/04/2013	---	CC HBC AG (CR)	17.82	-1.76	€ 18.14	27/04/2016	18.14	17.72	18.16	17.82	17.91200@17.76	500@18.15	---	---	60,542	137	1,084,041.72	6,560,277.91	15.97	19.58	3537
101,123,806	0.360	---	---	---	22/07/2010	28/06/2011	---	CENTRIC HOLDINGS (CR)	0.108	4.85	# 0.103	27/04/2016	0.108	0.108	0.108	0.108	500@0.102	4527@0.108	---	2015	5,000	2	540.00	10,921.37	0.067	0.114	5752
124,170,201	0.780	---	---	---	28/06/2002	07/02/2005	---	CORINTH PIPEWORKS SA (CR)	0.899	1.70	# 0.884	27/04/2016	0.899	0.880	0.900	0.899	0.897100@0.880	3300@0.910	34.74	2015	3,065	15	2,747.86	111,629.01	0.672	1.03	1757
9,907,500	0.300	---	---	---	06/10/2005	13/02/2002	---	CPI SA (CR)	0.110	---	0.110	27/04/2016	---	---	---	---	300@0.099	45@0.110	39.13	2015	---	---	---	1,089.83	0.092	0.150	9572
41,068,800	0.420	(0.0667)	(0.03)	---	24/07/2015	17/02/2016	---	CRETE PLASTICS SA (CR)	3.40	0.30	# 3.39	27/04/2016	3.40	3.40	3.40	3.40	510@3.35	4@3.40	11.41	2015	996	5	3,386.40	139,633.92	3.19	4.12	1357
15,000,000	0.300	---	---	---	06/07/2007	18/07/2000	---	DAIOS PLASTICS SA (CR)	2.95	---	2.95	27/04/2016	---	---	---	---	8@2.95	---	---	2015	---	---	---	44,250.00	2.70	2.95	1357
34,720,000	0.310	---	---	---	16/06/2010	01/08/2007	---	DROMEAS SA (CR)	0.113	-1.74	€ 0.115	27/04/2016	0.113	0.113	0.113	0.113	500@0.110	1800@0.112	---	2015	3,250	1	367.25	3,923.36	0.066	0.148	3726
11,250,000	0.520	---	---	---	26/07/2010	09/11/2015	---	EKTER SA (CR)	0.430	-0.46	€ 0.432	27/04/2016	0.410	0.410	0.430	0.430	0.4141000@0.402	857@0.430	13.58	2015	200	3	82.86	4,837.50	0.301	0.499	2357
32,188,050	1.04	---	---	---	21/07/2008	20/01/2000	---	EL. D. MOUZAKIS SA (CB)	0.145	---	0.145	27/04/2016	---	---	---	---	---	100@0.145	---	2015	---	---	---	4,667.27	0.084	0.215	3763
18,435,000	1.00	---	---	---	07/07/2009	10/09/2010	---	ELASTRON (CR)	0.480	---	0.480	27/04/2016	---	---	---	---	---	201@0.470	---	2015	---	---	---	8,848.80	0.310	0.500	1757
31,734,530	1.60	---	---	---	09/07/2007	19/07/2006	---	ELGEKA SA (CR)	0.180	---	0.180	27/04/2016	---	---	---	---	---	3590@0.180	---	2015	---	---	---	5,712.22	0.144	0.210	3577
23,828,130	0.500	---	---	---	07/07/2010	17/02/2009	---	ELINOIL S.A. (CR)	0.790	---	0.790	27/04/2016	---	---	---	---	---	10@0.800	6.93	2015	---	---	---	18,824.22	0.690	0.850	537
177,001,313	1.03	---	---	---	05/07/2011	20/12/2007	---	ELLAKTOR (CR)	1.27	---	0.127	27/04/2016	1.25	1.23	1.29	1.27	1.27500@1.26	4176@1.27	---	2015	52,035	147	65,902.43	224,791.67	0.857	1.51	2357
82,667,000	0.300	---	---	---	22/07/2014	---	---	ELTECH ANEMOS S.A. (CR)	0.680	---	0.680	27/04/2016	0.680	0.679	0.680	0.680	0.68027680@0.680	430@0.690	7.31	2015	5,900	9	4,011.90	56,213.56	0.533	0.730	7537
26,730,187	0.600	0.05	---	---	23/06/2014	30/12/2010	---	ELTON SA (CR)	0.920	---	0.920	27/04/2016	0.920	0.920	0.920	0.920	0.920---	1000@0.890	16.42	2015	33	1	30.36	24,591.77	0.857	1.00	1353
14,050,971	0.340	---	---	---	06/07/2011	17/10/2002	---	ELTRAK SA (CR)	1.25	---	1.25	27/04/2016	---	---	---	---	---	230@1.24	24.84	2015	---	---	---	17,563.71	0.990	1.35	2753
13,230,000	0.300	---	---	---	11/08/2010	24/09/2015	---	ELVE SA (CR)	0.351	---	0.351	27/04/2016	---	---	---	---	1000@0.350	2401@0.386	11.19	2015	---	---	---	4,643.73	0.327	0.410	3763

Number of Outstanding Securities	Nominal Value	Dividends [1]			Date of Last Coupon Dividend [2]		Note	Shares	Closing price	% change	Previous closing price/date	Open price	Price min	Price max	Last price	Avg price	Last Bid [7]	Last Ask [7]	P/E after	Year	Volume	Trades	Transactions Value[8]	Company Mkt Value (thou. €)	Year low	Year high	Sector[4]
----------------------------------	---------------	---------------	--	--	----------------------------------	--	------	--------	---------------	----------	-----------------------------	------------	-----------	-----------	------------	-----------	--------------	--------------	-----------	------	--------	--------	-----------------------	-----------------------------	----------	-----------	------------

Main Market

2,185,998,765	0.300	---	---	---	02/05/2008	27/11/2015	---	EUROBANK ERGASIAS (CR)	0.740	-0.67	€ 0.745	27/04/2016	0.750	0.725	0.763	0.740	0.749	6723@0.739	40000@0.744	---	2015	8,195,451	2,405	6,135,253.23	1,617,639.09	0.241	1.03	8355
7,959,900	0.600	---	---	---	02/06/2010	10/12/2013	5031	EUROCONSULTANTS S.A. (CR)	1.46	-1.35	€ 1.48	27/04/2016	1.48	1.46	1.48	1.46	1.47	20@1.41	100@1.45	---	2015	70	2	102.60	11,621.45	1.12	1.76	2791
27,503,677	0.630	---	---	---	11/07/2013	18/10/1999	---	EUROPEAN RELIANCE INSUR. (CR)	1.55	---	↘ 1.55	27/04/2016	---	---	---	---	---	600@1.52	30@1.59	3.87	2015	---	---	---	42,630.70	1.21	1.80	8536
13,673,200	0.880	---	---	---	18/07/2008	26/07/2001	---	EVROFARMA SA (CR)	0.180	2.86	# 0.175	27/04/2016	0.180	0.180	0.180	0.180	0.180	1000@0.152	550@0.180	10.84	2015	1,050	2	189.00	2,461.18	0.120	0.270	3577
106,500,000	0.600	0.36	0.2	---	05/05/2015	28/01/2000	---	EYDAP S.A. (CR)	4.65	1.53	# 4.58	27/04/2016	4.59	4.54	4.68	4.65	4.64	8@4.54	200@4.66	11.34	2015	14,020	79	65,058.71	495,225.00	3.60	5.20	7577
52,800,154	0.300	0.2	---	---	20/08/2014	21/06/2004	---	F.G. EUROPE S.A. (CR)	0.677	---	↘ 0.677	27/04/2016	---	---	---	---	---	---	228@0.650	29.91	2015	---	---	---	35,745.70	0.441	0.677	3722
10,203,575	0.730	---	---	---	16/07/2007	18/10/1999	---	FIERATEX SA (CR)	0.185	---	↘ 0.185	27/04/2016	---	---	---	---	---	---	223@0.185	---	2015	---	---	---	1,887.66	0.039	0.205	3763
11,720,024	0.540	0.0394	---	---	21/08/2014	04/11/2015	---	FLEXOPACK SA (CR)	2.60	6.12	# 2.45	27/04/2016	2.60	2.60	2.60	2.60	2.60	---	2000@2.50	6.92	2015	1	1	2.60	30,472.06	2.25	3.00	2723
4,181,450	0.500	---	---	---	21/08/2000	05/03/2002	---	FLOUR MILLS SARANTOPOULOS SA	0.617	---	↘ 0.617	27/04/2016	---	---	---	---	---	100@0.556	41@0.678	---	2015	---	---	---	2,579.95	0.534	1.01	3577
66,948,210	0.300	---	0.1005	---	22/09/2015	22/09/2015	---	FOLLI FOLLIE (CR)	18.00	-1.04	€ 18.19	27/04/2016	18.27	18.00	18.35	18.00	18.13	150@17.70	4502@17.99	---	2015	25,911	227	469,800.87	1,205,067.78	12.50	18.45	5379
50,992,322	1.07	---	---	---	21/06/2010	16/07/2002	---	FOURLIS (CR)	3.12	-0.32	€ 3.13	27/04/2016	3.15	3.08	3.15	3.12	3.13	50@3.07	2@3.12	---	2015	14,814	37	46,332.84	159,096.04	2.00	3.28	3722
14,076,360	0.370	---	---	---	19/08/2008	22/07/2003	---	GALAXIDI S.A. (CR)	0.274	29.86	# 0.211	27/04/2016	0.274	0.274	0.274	0.274	0.274	700@0.183	3799@0.274	26.82	2015	100	2	27.40	3,856.92	0.163	0.570	3573
103,423,291	0.570	---	---	---	01/08/2011	19/04/2016	---	GEK TERNA (CR)	1.71	1.18	# 1.69	27/04/2016	1.69	1.68	1.71	1.71	1.70	6276@1.69	549@1.71	10.74	2015	21,527	68	36,587.35	176,853.83	1.05	1.77	2357
8,418,750	0.300	---	---	0.12	16/12/2015	27/06/2012	---	GEKE SA (CB)	4.60	---	↘ 4.60	27/04/2016	---	---	---	---	---	---	20@4.60	15.24	2015	---	---	---	38,726.25	3.90	4.85	5753
24,060,000	0.300	0.017	0.02	---	03/08/2015	21/01/2000	---	GEN. COMMERCIAL & IND.SA (CR)	0.348	---	↘ 0.348	27/04/2016	---	---	---	---	---	1000@0.314	500@0.340	14.64	2015	---	---	---	8,372.88	0.253	0.392	2797
34,770,982	1.55	0.3	0.15	0.16	20/04/2016	27/07/2000	---	GR. SARANTIS SA (CR)	8.74	-2.35	€ 8.95	27/04/2016	8.84	8.52	8.84	8.74	8.68	20@8.54	76@8.74	27.55	2015	425	14	3,688.63	303,898.38	6.56	9.20	3767
101,260,000	2.13	0.1821	0.3037	0.3134	18/03/2016	08/01/2014	---	GRIVALIA PROPERTIES (CR)	7.50	2.32	# 7.33	27/04/2016	7.40	7.40	7.57	7.50	7.50	301@7.41	450@7.53	14.09	2015	38,493	133	288,497.62	759,450.00	6.46	7.70	8675
8,340,750	1.18	---	---	---	25/06/2009	09/09/2015	---	HAIDEMENOS SA (CR)	0.382	-9.91	€ 0.424	27/04/2016	0.400	0.382	0.400	0.382	0.382	---	1447@0.382	---	2015	5,015	5	1,915.86	3,186.17	0.372	1.04	2791
101,279,627	0.380	---	---	---	26/06/2008	14/07/2006	---	HALKOR SA (CB)	0.262	1.95	# 0.257	27/04/2016	0.256	0.256	0.262	0.262	0.258	640@0.237	1640@0.260	---	2015	6,550	12	1,689.00	26,535.26	0.193	0.305	1755
29,546,360	0.710	---	---	---	20/06/2008	23/08/2000	---	HELLENIC CABLES SA (CR)	0.688	---	↘ 0.688	27/04/2016	---	---	---	---	---	200@0.651	478@0.685	---	2015	---	---	---	20,327.90	0.550	0.749	2733
65,368,563	1.30	---	0.21	---	26/05/2015	07/08/2015	---	HELLENIC EXCHANGES-A.S.E. (CR)	4.98	5.96	# 4.70	27/04/2016	4.75	4.75	5.01	4.98	4.93	1000@4.92	4091@4.95	25.28	2015	462,912	755	2,280,961.97	325,535.44	3.40	5.35	8777
305,635,185	2.18	---	---	---	31/12/2014	01/10/2003	4795	HELLENIC PETROLEUM (CR)	3.87	1.58	# 3.81	27/04/2016	3.79	3.76	3.87	3.87	3.84	20@3.83	8756@3.87	42.95	2015	331,353	368	1,270,952.50	1,182,808.17	2.74	4.21	537
305,732,436	0.410	---	---	---	08/07/2009	28/09/2011	---	HYGEIA SA (CR)	0.149	0.68	# 0.148	27/04/2016	0.146	0.146	0.150	0.149	0.148	8500@0.145	7500@0.151	---	2015	60,300	31	8,910.67	45,554.13	0.078	0.168	4533
65,441,118	0.440	---	---	---	24/11/2014	11/08/2015	---	IASO SA (CR)	0.511	0.20	# 0.510	27/04/2016	0.505	0.500	0.511	0.511	0.502	7@0.500	133@0.513	---	2015	474	4	237.76	33,440.41	0.360	0.579	4533
8,298,467	0.400	---	---	---	30/08/1993	08/05/2013	---	IDEAL GROUP SA (CR)	0.800	---	↘ 0.800	27/04/2016	---	---	---	---	---	101@0.800	609@0.870	-(6)-	2015	---	---	---	6,638.77	0.568	0.840	9574
28,580,100	0.400	0.025	---	---	18/08/2014	10/10/2013	---	IKTINOS HELLAS SA (CR)	1.09	3.81	# 1.05	27/04/2016	0.956	0.956	1.09	1.09	1.05	300@0.968	94@1.05	29.99	2015	2,055	17	2,166.03	31,152.31	0.891	1.15	2353
9,090,000	0.900	---	---	---	15/05/2009	13/10/2014	---	ILYDA S.A. (CR)	0.550	---	↘ 0.550	27/04/2016	---	---	---	---	---	---	491@0.496	---	2015	---	---	---	4,999.50	0.500	0.590	9537
20,578,374	0.620	---	0.4	---	04/06/2015	18/05/2015	---	INFORM P. LYKOS SA (CR)	0.446	-9.90	€ 0.495	27/04/2016	0.446	0.446	0.462	0.446	0.446	772@0.446	440@0.495	---	2015	2,548	11	1,136.90	9,177.95	0.410	0.594	2791
11,233,200	0.730	---	---	---	12/07/2010	30/07/1999	---	INTERTECH SA (CR)	0.198	10.00	# 0.180	27/04/2016	0.198	0.198	0.198	0.198	0.198	1000@0.158	60@0.198	---	2015	40	1	7.92	2,224.17	0.120	0.250	9572
34,986,430	0.440	---	---	---	25/07/2008	23/02/2010	---	INTERWOOD-XYLEMPORIA (CR)	0.063	---	↘ 0.063	27/04/2016	---	---	---	---	---	3565@0.063	---	---	2015	---	---	---	2,599.44	0.063	0.093	2353
2,566,836	0.440	---	---	---	13/08/2010	09/01/2007	---	INTERWOOD-XYLEMPORIA (PR)	0.154	---	↘ 0.154	27/04/2016	---	---	---	---	---	---	383@0.139	---	2015	---	---	---	2,599.44	0.154	0.189	2353
23,154,250	1.36	---	---	---	12/08/2008	02/08/2010	---	INTRACOM CONSTR. (CR)	0.450	4.90	# 0.429	27/04/2016	0.429	0.429	0.450	0.450	0.449	---	300@0.440	---	2015	210	4	94.33	10,419.41	0.222	0.450	2357
133,025,996	1.41	---	---	---	03/07/2007	07/01/2002	---	INTRACOM HOLDINGS (CR)	0.335	2.13	# 0.328	27/04/2016	0.333	0.322	0.338	0.335	0.332	3714@0.326	392@0.335	---	2015	9,893	21	3,285.36	44,563.71	0.245	0.372	9578
158,961,721	0.300	---	---	---	30/05/2013	14/11/2007	---	INTRALOT (CR)	1.02	0.99	# 1.01	27/04/2016	0.980	0.980	1.03	1.02	1.01	200@0.994	3595@1.02	---	2015	57,388	80	57,880.90	162,140.96	0.980	1.21	5752
77,654,850	0.580	---	---	---	01/07/2011	21/02/2003	---	J & P - AVAX SA (CR)	0.290	1.40	# 0.286	27/04/2016	0.285	0.285	0.290	0.290	0.288	2000@0.281	500@0.297	---	2015	13,881	16	4,001.49	22,519.91	0.208	0.358	2357
136,059,759	1.19	0.18	0.18	---	23/12/2014	05/03/2014	---	JUMBO SA (CR)	11.47	1.87	# 11.26	27/04/2016	11.34	11.30	11.51	11.47	11.42	100@11.32	9708@11.47	20.90	2015	191,289	303	2,185,055.69	1,560,605.44	8.75	11.98	3747
9,742,920	0.400	0.01	0.01	---	10/08/2015	14/07/2000	---	KARAMOLEGOS SA (CR)	0.999	---	↘ 0.999	27/04/2016	---	---	---	---	---	3000@0.900	505@0.999	-(6)-	2015	---	---	---	9,733.18	0.601	1.14	3577
14,679,792	1.68	---	---	---	24/06/2014	04/09/2000	---	KARATZIS SA (CR)	3.89	---	↘ 3.89	27/04/2016	---	---	---	---	---	300@3.64	100@3.89	11.17	2015	---	---	---	57,104.39	3.44	3.95	2723

Number of Outstanding Securities	Nominal Value	Dividends [1]			Date of Last Coupon Dividend [2]		Note	Shares	Closing price	% change	Previous closing price/date	Open price	Price min	Price max	Last price	Avg price	Last Bid [7]	Last Ask [7]	P/E after	Year	Volume	Trades	Transactions Value[8]	Company Mkt Value (thou. €)	Year low	Year high	Sector[4]
13,202,756	0.350	---	---	---	01/07/2004	05/08/2014	---	KEKROPS SA (CR)	0.249	-3.86	€ 0.259 27/04/2016	0.258	0.244	0.258	0.253	0.248	500@0.239	300@0.254	---	2015	2,265	11	562.82	3,287.49	0.175	0.330	8633
7,595,160	0.600	---	---	---	08/08/2008	18/08/2010	---	KIRIAKOULIS SHIPPING SA (CR)	0.538	---	↘ 0.538 27/04/2016	---	---	---	---	---	---	1396@0.485	66.99	2015	---	---	---	4,086.20	0.220	0.586	5759
23,648,700	0.350	---	---	---	13/07/2011	31/03/2015	---	KLEEMAN HELLAS SA (CR)	1.57	---	↘ 1.57 27/04/2016	1.57	1.57	1.57	1.57	1.57	1200@1.56	3000@1.64	18.94	2015	1,000	6	1,570.00	37,128.46	1.21	1.65	2757
40,219,218	0.300	---	---	---	25/05/2009	09/07/2013	---	KLOUKINAS - LAPPAS SA (CR)	0.287	-4.33	€ 0.300 27/04/2016	0.291	0.270	0.295	0.287	0.274	---	495@0.270	---	2015	1,000	15	274.15	11,542.92	0.218	0.302	2357
21,224,340	0.420	---	---	---	02/07/2008	25/04/2006	---	KORDELLOS BROS SA (CR)	0.249	---	↘ 0.249 27/04/2016	---	---	---	---	---	---	1000@0.240	---	2015	---	---	---	5,284.86	0.216	0.290	1757
13,586,500	0.390	---	---	---	25/06/2010	28/05/2008	---	KORRES (CR)	3.24	---	↘ 3.24 27/04/2016	---	---	---	---	---	210@3.15	100@3.28	---	2015	---	---	---	44,020.26	2.92	3.90	3767
29,480,000	0.420	---	---	---	19/07/2010	01/08/2007	---	KRETA FARM SA (CR)	0.470	2.40	# 0.459 27/04/2016	0.470	0.470	0.470	0.470	0.470	320@0.401	100@0.469	---	2015	5	1	2.35	13,855.60	0.300	0.488	3577
33,065,136	0.380	---	0.06	---	04/08/2015	16/09/2013	---	KRI-KRI S.A. (CR)	1.69	0.60	# 1.68 27/04/2016	1.68	1.68	1.70	1.69	1.70	500@1.59	100@1.63	14.54	2015	301	4	511.47	55,880.08	1.52	1.90	3577
15,804,800	0.360	---	---	---	15/06/2010	12/03/2004	---	KTIMA KOSTAS LAZARIDIS SA (CR)	0.399	---	↘ 0.399 27/04/2016	---	---	---	---	---	---	400@0.377	---	2015	---	---	---	6,306.12	0.203	0.407	3535
23,719,554	0.990	---	0.2406	---	14/08/2015	15/09/2014	---	KYRIAKIDIS MARBLES SA (CR)	2.30	---	↘ 2.30 27/04/2016	2.34	2.30	2.34	2.30	2.31	120@2.32	100@2.44	8.80	2015	500	4	1,155.30	54,554.97	2.11	2.52	2353
79,721,775	0.300	---	---	---	30/05/2007	23/06/2014	---	LAMDA DEVELOPMENT SA (CR)	3.77	-3.33	€ 3.90 27/04/2016	3.92	3.77	3.92	3.77	3.86	1398@3.77	300@3.90	---	2015	9,041	52	34,894.64	300,551.09	3.12	4.24	8633
21,364,000	1.12	---	---	---	05/07/2010	10/08/2005	---	LAMPSA HOTEL SA (CR)	16.28	---	↘ 16.28 27/04/2016	---	---	---	---	---	100@15.71	300@16.60	74.08	2015	---	---	---	347,805.92	15.32	17.00	5753
5,939,268	0.620	---	---	---	10/07/2003	03/01/2002	---	LANAKAM SA (CR)	0.580	---	↘ 0.580 27/04/2016	---	---	---	---	---	---	500@0.580	---	2015	---	---	---	3,444.78	0.580	0.638	3763
4,740,000	0.860	---	---	---	---	14/03/2003	---	LOGISMOS S.A. (CR)	0.429	---	↘ 0.429 27/04/2016	---	---	---	---	---	202@0.387	600@0.429	---	2015	---	---	---	2,033.46	0.429	0.489	9533
17,125,062	0.940	---	---	---	01/06/2010	02/02/2015	---	LOULIS MILLS SA (CR)	1.60	---	↘ 1.60 27/04/2016	---	---	---	---	---	450@1.45	937@1.66	46.76	2015	---	---	---	27,400.10	1.35	1.78	3577
939,385,586	0.300	---	---	---	26/04/2007	29/08/2014	---	MARFIN INVESTMENT GROUP (CR)	0.141	1.44	# 0.139 27/04/2016	0.141	0.140	0.148	0.141	0.143	17557@0.141	26657@0.142	---	2015	2,255,312	293	321,444.35	132,453.37	0.048	0.168	8775
9,819,370	0.690	---	---	---	14/08/2007	09/01/2004	---	MATHIOS REFRACTORY SA (CR)	0.201	---	↘ 0.201 27/04/2016	---	---	---	---	---	2000@0.151	---	---	2015	---	---	---	1,973.69	0.162	0.345	2353
468,700	0.65	1.48	---	---	26/04/2016	21/05/2004	---	MERMEREN KOMB. A.D. PR. (GDR)	5.42	-7.98	€ 5.89 27/04/2016	5.33	5.33	5.42	5.42	5.39	250@5.20	45@5.70	0.52	2015	44	2	237.31	2,540.35	4.87	8.49	1775
51,950,600	0.320	0.3	0.5	---	08/05/2015	21/10/2005	---	METKA (CR)	6.68	-0.74	€ 6.73 27/04/2016	6.78	6.61	6.84	6.68	6.71	849@6.68	4@6.83	20.05	2015	11,277	150	75,714.78	347,030.01	6.24	7.30	2757
10,500,000	0.950	---	---	---	24/06/2008	19/12/2013	---	MEVACO SA (CR)	0.950	---	↘ 0.950 27/04/2016	---	---	---	---	---	100@0.900	300@1.04	---	2015	---	---	---	9,975.00	0.705	1.02	2757
6,700,000	0.800	0.16	0.03	---	26/06/2015	29/05/2014	---	MILLS KEPENOS (CR)	1.29	---	↘ 1.29 27/04/2016	---	---	---	---	---	---	200@1.29	12.44	2015	---	---	---	8,643.00	1.02	1.89	3577
6,200,000	0.500	---	---	---	22/06/2010	01/11/1995	---	MINERVA KNITWEAR SA (CB)	0.050	---	↘ 0.050 27/04/2016	---	---	---	---	---	792@0.050	---	---	2015	---	---	---	310.00	0.045	0.092	3763
12,417,000	0.370	---	---	---	28/07/2008	06/09/2011	---	MLS MULTIMEDIA SA (CR)	3.10	-1.59	€ 3.15 27/04/2016	3.12	3.10	3.18	3.10	3.14	100@3.09	2440@3.18	19.04	2015	1,710	15	5,364.50	38,492.70	2.75	3.77	9537
11,700,000	0.590	---	---	---	02/06/2009	24/07/2012	---	MOTODYNAMICS S.A. (CR)	0.377	1.07	# 0.373 27/04/2016	0.373	0.373	0.377	0.377	0.377	---	10@0.404	13.76	2015	300	3	113.07	4,410.90	0.306	0.549	5379
110,782,980	0.750	0.2	---	0.15	07/12/2015	04/11/2013	---	MOTOR OIL (CR)	9.96	-0.40	€ 10.00 27/04/2016	9.85	9.84	10.02	9.96	9.95	900@9.89	500@9.98	5.49	2015	92,563	213	921,032.57	1,103,398.48	8.13	10.40	533
116,915,862	0.970	---	---	---	11/05/2009	19/10/2015	---	MYTILINEOS HOLDINGS (CR)	3.50	-0.57	€ 3.52 27/04/2016	3.46	3.46	3.63	3.50	3.55	663@3.50	400@3.54	---	2015	85,377	284	303,277.13	409,205.52	2.70	3.82	1755
8,321,682	0.670	---	---	---	17/08/2007	23/11/1999	---	N. LEVEDERIS SA (CB)	0.385	---	↘ 0.385 27/04/2016	---	---	---	---	---	---	300@0.347	---	2015	---	---	---	5,688.45	0.138	0.385	1757
2,160,524	0.670	0.0436	0.0436	---	29/07/2015	23/11/1999	---	N. LEVEDERIS SA (PB)	1.15	---	↘ 1.15 27/04/2016	---	---	---	---	---	---	560@1.24	---	2015	---	---	---	5,688.45	1.15	1.25	1757
11,510,102	0.890	---	---	---	24/06/2005	06/10/1999	---	NAFFAKTOS TEXTILE IND. SA (CB)	0.172	---	↘ 0.172 27/04/2016	---	---	---	---	---	700@0.155	---	---	2015	---	---	---	1,979.74	0.135	0.313	3763
6,340,000	0.600	---	---	---	30/11/2009	04/12/2015	---	NAKAS MUSIC	0.900	---	↘ 0.900 27/04/2016	---	---	---	---	---	---	500@0.890	9.37	2015	---	---	---	5,706.00	0.600	0.900	5379
9,147,151,527	0.300	---	---	---	16/05/2008	30/11/2015	---	NATIONAL BANK (CR)	0.260	-3.35	€ 0.269 27/04/2016	0.270	0.254	0.275	0.260	0.265	064406@0.349	15000@0.261	---	2015	53,682,322	2,623	14,250,824.93	2,378,259.40	0.099	0.340	8355
23,935,280	0.300	---	---	---	29/06/2009	13/06/2000	---	NAYTEMPORIKI PUBLISHING SA(CR)	0.097	---	↘ 0.097 27/04/2016	---	---	---	---	---	---	40@0.088	---	2015	---	---	---	2,321.72	0.049	0.097	5557
27,848,000	0.300	0.004	0.0032	---	18/08/2015	02/09/2003	---	NEWSPHONE HELLAS SA (CR)	0.219	4.29	# 0.210 27/04/2016	0.219	0.219	0.219	0.219	0.219	3000@0.189	731@0.219	9.20	2015	20	1	4.38	6,098.71	0.135	0.250	2791
290,612,964	0.300	---	---	---	08/07/2008	21/03/2016	---	NIREFS SA (CR)	0.143	2.88	# 0.139 27/04/2016	0.138	0.132	0.143	0.143	0.139	10@0.137	30@0.144	0.20	2015	13,320	45	1,849.27	41,557.65	0.067	0.172	3573
319,000,000	0.300	0.25	0.7017	0.17	11/09/2015	25/04/2001	---	OPAP (CR)	6.60	1.54	# 6.50 27/04/2016	6.50	6.42	6.60	6.60	6.54	18917@6.51	171514@6.60	9.97	2015	489,201	733	3,196,706.51	2,105,400.00	5.16	7.65	5752
490,150,389	2.83	---	0.08	---	25/06/2015	18/06/1998	---	OTE (CR)	8.47	1.56	# 8.34 27/04/2016	8.15	8.15	8.47	8.47	8.40	500@8.38	10551@8.47	44.83	2015	472,855	623	3,972,779.46	4,151,573.79	6.55	9.19	6535
25,000,000	2.00	0.12	0.099	---	25/06/2015	08/08/2003	---	P.P.A. S.A. (CR)	11.92	-0.42	€ 11.97 27/04/2016	12.00	11.85	12.19	11.92	12.07	50@11.87	50@12.00	35.58	2015	3,060	56	36,927.21	298,000.00	9.80	14.78	2777
4,971,466	1.46	---	---	---	04/07/2007	08/10/2003	---	PAIRIS SA (CR)	0.196	---	↘ 0.196 27/04/2016	---	---	---	---	---	---	193@0.196	---	2015	---	---	---	974.41	0.179	0.196	2723

Number of Outstanding Securities	Nominal Value	Dividends [1]			Date of Last Coupon Dividend [2]		Note	Shares	Closing price	% change	Previous closing price/date	Open price	Price min	Price max	Last price	Avg price	Last Bid [7]	Last Ask [7]	P/E after	Year	Volume	Trades	Transactions Value[8]	Company Mkt Value (thou. €)	Year low	Year high	Sector[4]
--	------------------	---------------	--	--	-------------------------------------	--	------	--------	------------------	----------	--------------------------------	---------------	--------------	--------------	---------------	--------------	-----------------	--------------	--------------	------	--------	--------	--------------------------	--------------------------------	-------------	--------------	---------------

Main Market

3,953,090	0.900	---	0.067	---	27/05/2015	05/12/2012	---	PAPERPACK (CR)	1.20	3.45	#	1.16	27/04/2016	1.20	1.20	1.20	1.20	5513@1.11	248@1.20	3.78	2015	2	2	2.40	4,743.71	0.651	1.25	2723
50,797,369	0.310	---	---	---	17/08/2000	12/10/2010	---	PAPOUTSANIS (CR)	0.181	-3.21	€	0.187	27/04/2016	0.181	0.181	0.181	0.181	---	400@0.178	---	2015	100	2	18.10	9,194.32	0.153	0.217	3767
7,070,400	0.930	---	---	---	18/05/2010	25/05/2015	---	PETROPOULOS PETROS (CR)	3.86	0.78	#	3.83	27/04/2016	3.78	3.75	3.86	3.86	55@3.80	73@3.86	36.20	2015	664	16	2,525.19	27,291.74	3.43	4.04	2753
8,733,183,280	0.300	---	---	---	16/05/2008	27/11/2015	---	PIRAEUS BANK (CR)	0.260	4.00	#	0.250	27/04/2016	0.256	0.236	0.260	0.260	0.252517670@0.250	146705@0.260	---	2015	17,222,335	1,902	4,348,378.54	2,270,627.65	0.067	0.293	8355
22,080,000	0.330	0.2	---	---	21/05/2014	27/04/2015	---	PLAISIO COMPUTERS SA (CR)	4.04	0.50	#	4.02	27/04/2016	4.00	3.98	4.04	4.04	135@3.99	67@4.04	13.30	2015	2,830	27	11,344.59	89,203.20	3.87	4.56	9572
232,000,000	4.60	---	0.05	---	20/07/2015	12/12/2001	---	PPC (CR)	2.93	1.03	#	2.90	27/04/2016	2.90	2.88	2.95	2.93	2000@2.90	40659@2.93	---	2015	288,514	453	841,424.54	679,760.00	2.34	4.08	7535
11,812,193	0.470	---	0.02	---	26/03/2015	15/11/2006	---	PROFILE SA (CR)	0.423	-0.47	€	0.425	27/04/2016	0.405	0.405	0.423	0.423	1700@0.409	12@0.409	---	2015	32	9	13.49	4,996.56	0.388	0.546	9533
27,345,120	0.470	---	---	---	18/07/2005	26/02/2014	---	QUALITY & RELIABILITY SA (CR)	0.290	5.45	#	0.275	27/04/2016	0.290	0.290	0.290	0.290	---	948@0.290	---	2015	12	2	3.48	7,930.08	0.251	0.320	9533
11,962,443	0.300	---	---	---	05/09/2008	21/01/2016	---	QUEST HOLDINGS (CR)	4.14	0.98	#	4.10	27/04/2016	4.00	4.00	4.50	4.14	135@4.14	25@4.24	---	2015	154	10	627.46	49,524.51	3.30	4.50	9533
57,434,884	1.31	---	---	---	05/06/2008	12/06/2009	---	REDS S.A. (CR)	0.300	-0.99	€	0.303	27/04/2016	0.303	0.300	0.303	0.300	500@0.303	8202@0.333	---	2015	5,500	2	1,651.50	17,230.47	0.300	0.389	8633
22,280,000	0.300	---	---	---	11/04/2011	23/02/2007	---	REVOIL (CR)	0.364	---	↘	0.364	27/04/2016	---	---	---	---	3650@0.255	1637@0.364	11.70	2015	---	---	---	8,109.92	0.169	0.378	5379
7,500,000	0.800	0.0863	0.1	---	19/06/2015	10/02/2014	---	S.KANAKIS SA (CR)	1.93	0.52	#	1.92	27/04/2016	1.93	1.88	1.93	1.93	250@1.87	242@1.93	8.25	2015	114	3	217.57	14,475.00	1.75	2.25	3577
52,067,296	0.300	---	---	---	23/12/2003	24/01/2007	---	SELECTED TEXT. IND. ASSOC (CR)	0.129	---	↘	0.129	27/04/2016	---	---	---	---	3000@0.093	200@0.127	---	2015	---	---	---	6,716.68	0.084	0.188	3763
204,235,184	0.300	---	---	---	01/07/2008	30/07/2012	---	SELONDA AQUACULTURE SA (CR)	0.133	8.13	#	0.123	27/04/2016	0.133	0.133	0.133	0.133	1510@0.126	2000@0.132	---	2015	2,000	2	266.00	27,163.28	0.074	0.153	3573
6,456,530	1.61	---	---	---	29/06/2001	02/08/2010	---	SPACE HELLAS SA (CR)	1.00	---	↘	1.00	27/04/2016	---	---	---	---	---	509@1.00	7.61	2015	---	---	---	6,456.53	0.664	1.28	9578
28,438,268	0.300	---	---	---	21/08/2006	24/11/1999	---	SPIROY AGRICULTURE SA (CR)	0.699	---	↘	0.699	27/04/2016	---	---	---	---	---	1740@0.630	---	2015	---	---	---	19,878.35	0.630	0.700	1357
40,693,350	5.00	---	---	---	03/07/2006	26/05/2015	---	TECHNICAL OLYMPIC SA (CR)	0.662	-0.90	€	0.668	27/04/2016	0.720	0.662	0.720	0.662	25@0.662	9@0.697	---	2015	76	6	50.57	26,939.00	0.565	0.831	3728
109,314,400	0.300	---	---	---	28/05/2012	05/08/2015	---	TERNA ENERGY (CR)	2.77	---	↘	2.77	27/04/2016	2.77	2.73	2.80	2.77	1500@2.76	3120@2.77	-(6)-	2015	8,231	38	22,760.50	302,800.89	1.92	2.92	7537
36,300,000	1.12	0.285	0.24	---	03/08/2015	12/12/2007	---	THESSALONIKA WATER & SEWERAGE	3.30	-0.30	€	3.31	27/04/2016	3.25	3.25	3.31	3.30	176@3.25	1244@3.31	8.84	2015	730	8	2,389.86	119,790.00	2.65	3.54	7577
45,094,620	0.660	0.05	0.0225	---	20/04/2015	01/11/1999	---	THRACE PLASTICS SA (CR)	1.46	-0.68	€	1.47	27/04/2016	1.46	1.46	1.46	1.46	1190@1.43	1048@1.46	-(6)-	2015	2	2	2.92	65,838.15	1.25	1.49	1357
77,063,568	4.00	---	0.1551	---	24/06/2015	25/06/2004	---	TITAN CEMENT (CR)	19.90	1.53	#	19.60	27/04/2016	19.50	19.43	19.90	19.90	250@19.52	100@19.95	28.00	2015	21,013	136	415,221.12	1,611,676.67	14.86	20.00	2353
7,568,960	4.00	---	0.1551	---	24/06/2015	25/06/2004	---	TITAN CEMENT CO. (PR)	10.32	-6.18	€	11.00	27/04/2016	10.32	10.32	10.32	10.32	75@10.32	50@10.99	14.52	2015	20	2	206.40	1,611,676.67	7.36	11.53	2353
10,080,000	3.00	0.6	1.95	---	04/05/2015	27/08/2001	---	TPA SA (CR)	19.38	-3.10	€	20.00	27/04/2016	20.00	19.30	20.00	20.00	45@19.40	20@20.00	10.90	2015	467	8	9,123.80	195,350.40	18.10	24.10	2777
15,627,315	0.300	---	---	---	16/11/1992	03/12/2012	---	UNIBIOS (CR)	0.068	-18.07	€	0.083	27/04/2016	0.070	0.067	0.076	0.068	3510@0.066	505@0.075	---	2015	28,159	23	1,921.73	1,062.66	0.053	0.091	2353
18,810,000	0.400	---	---	---	08/07/2010	14/11/2007	---	VARVERIS - MODA BAGNO SA (CR)	0.150	---	↘	0.150	27/04/2016	---	---	---	---	---	2180@0.135	---	2015	---	---	---	2,821.50	0.115	0.165	2353
259,189,761	---	---	---	---	---	26/02/2016	---	VIOHALCO SA/NV (CB)	1.14	1.79	#	1.12	27/04/2016	1.14	1.13	1.16	1.14	1351@1.14	50@1.15	---	---	115,603	148	132,071.76	295,476.33	0.928	1.67	2727
4,968,600	2.88	---	---	---	01/07/1998	14/12/1998	---	VIS SA (CR)	0.869	---	↘	0.869	27/04/2016	---	---	---	---	---	150@0.900	---	2015	---	---	---	4,317.71	0.611	1.00	2723
6,325,000	0.600	---	---	---	02/05/2014	17/02/2014	---	VOGIATZOGLOU SYSTEMS SA (CR)	1.01	---	↘	1.01	27/04/2016	---	---	---	---	---	50@1.07	---	2015	---	---	---	6,388.25	0.978	1.12	2797

Exchange Traded Funds (ETFs)

6,030,903	---	---	---	24/01/2008	---	ALPHA ETF FTSE Athex Large Cap	1.63	---	↘	1.63	27/04/2016	---	---	---	---	40@1.19	47@1.62	---	---	---	---	---	---	---	1.13	1.81	12003
294,878	---	---	---	29/06/2009	---	NBGAM ETF	6.80	---	↘	6.80	27/04/2016	6.80	6.80	6.80	6.80	223@6.60	---	---	---	---	2	1	13.60	---	4.50	7.23	12003
388,550	---	---	---	03/11/2010	---	NBGAM ETF GREECE & TURKEY 30	6.17	-0.48	€	6.20	27/04/2016	6.17	6.17	6.17	6.17	---	---	---	---	---	2	1	12.34	---	4.90	6.27	12003

Low Dispersion

14,000,000	4.15	---	---	---	23/04/2010	29/06/1999	4815	ALPHA REAL ESTATE SA(CR)	4.60	-8.55	€	5.03	27/04/2016	4.60	4.60	4.60	4.60	50@4.61	400@5.03	23.24	2015	50	2	230.00	64,400.00	4.20	6.28	8637	
63,900,000	3.00	---	---	---	23/06/2003	04/11/2008	4816	ASTIR PALACE SA (CR)	3.25	7.26	#	3.03	27/04/2016	3.30	3.20	3.30	3.20	3.26	550@3.05	581@3.20	---	2015	2,200	7	7,160.00	207,675.00	2.90	3.51	5753
134,652,904	0.800	---	---	---	09/08/2004	08/03/2006	4814	ATHENA SA (CR)	0.130	---	↘	0.130	27/04/2016	---	---	---	---	---	280@0.104	---	2015	---	---	---	17,504.88	0.018	0.130	2357	

Number of Outstanding Securities	Nominal Value	Dividends [1]			Date of Last Coupon Dividend [2]		Note	Shares	Closing price	% change	Previous closing price/date	Open price	Price min	Price max	Last price	Avg price	Last Bid [7]	Last Ask [7]	P/E after	Year	Volume	Trades	Transactions Value[8]	Company Mkt Value (thou. €)	Year low	Year high	Sector[4]
191,660,320	0.300	---	---	---	20/07/2009	29/12/2010	4817	ATTICA HOLDINGS (CR)	0.940	4.44 #	0.900 27/04/2016	0.940	0.940	0.940	0.940	0.940	1500@0.852	4995@0.940	-(6)-	2015	5	1	4.70	180,160.70	0.490	0.950	5759
13,404,440	8.63	---	---	---	02/04/2001	06/03/1992	4822	IONIAN HOTELS SA (CR)	10.00	--- ↘	10.00 27/04/2016	---	---	---	---	---	---	799@10.00	61.83	2015	---	---	---	134,044.40	5.64	10.00	5753
2,760,000	11.83	8.5	9.3	---	23/06/2015	16/07/1990	4823	KARELIA TOBACCO CO. SA (CB)	245.00	--- ↘	245.00 27/04/2016	245.00	245.00	245.00	245.00	245.00	5@230.00	10@253.00	12.66	2015	7	1	1,715.00	676,200.00	227.20	265.00	3785
106,980,050	2.25	---	---	---	25/07/2008	24/02/2014	5046	MINOAN LINES SA (CR)	2.40	0.84 #	2.38 27/04/2016	2.40	2.40	2.40	2.40	2.40	327@2.40	---	15.84	2015	173	1	415.20	256,752.12	2.00	2.45	5759
255,494,534	3.00	---	---	0.2035	15/04/2016	23/12/2015	5104	NBG PANGAEA (CR)	3.81	--- ↘	3.81 27/04/2016	---	---	---	---	---	373@3.72	---	19.58	2015	---	---	---	973,434.17	3.45	6.03	8671
22,996,875	1.25	---	---	---	24/06/2011	02/02/2016	5116	NEXANS HELLAS SA (CR)	0.850	--- ↘	0.850 27/04/2016	---	---	---	---	---	3008@0.850	---	---	2015	---	---	---	19,547.34	0.781	1.09	2733
17,240,776	0.370	---	---	---	14/07/2005	30/09/2003	4827	PERSEUS SA (CR)	0.490	--- ↘	0.490 27/04/2016	---	---	---	---	---	---	94@0.498	3.59	2015	---	---	---	8,447.98	0.277	0.520	3577
54,888,240	1.13	0.09	---	---	25/04/2014	22/03/2006	5100	TRASTOR REAL EST. INV. CO.(CR)	0.830	--- ↘	0.830 27/04/2016	---	---	---	---	---	800@0.740	424@0.990	---	2015	---	---	---	45,557.24	0.611	1.25	8671

Surveillance

13,000,000	1.00	---	---	---	01/08/2007	07/04/2000	5093	AKRITAS SA (CR)	0.168	--- ↘	0.168 27/04/2016	---	---	---	---	---	---	20@0.135	---	2015	---	---	---	2,184.00	0.061	0.530	2353
14,870,100	0.300	---	---	---	15/05/2008	26/09/2011	4844	ALPHA GRISSIN S.A. (CR)	0.038	--- ↘	0.038 27/04/2016	---	---	---	---	---	---	---	---	2015	---	---	---	565.06	0.019	0.038	9533
2,969,713	0.300	---	---	---	02/07/2008	28/02/2011	4958	ANEK LINES SA (PR, issue '96)	0.127	--- ↘	0.127 27/04/2016	---	---	---	---	---	---	---	53.12	2015	---	---	---	17,192.46	0.124	0.240	5759
312,163	0.300	---	---	---	02/07/2008	28/02/2011	4959	ANEK LINES SA (PR, issue '90)	0.422	--- ↘	0.422 27/04/2016	---	---	---	---	---	---	---	-(6)-	2015	---	---	---	17,192.46	0.352	1.04	5759
185,373,016	0.300	---	---	---	02/07/2008	28/02/2011	4957	ANEK LINES SA (CR)	0.090	5.88 #	0.085 27/04/2016	0.098	0.090	0.098	0.090	0.090	2000@0.081	10000@0.084	37.65	2015	22,000	8	1,988.00	17,192.46	0.050	0.098	5759
20,255,805	0.300	---	---	---	22/08/2006	02/08/2010	4881	AXON HOLDING SA (CR)	0.008	--- ↘	0.008 27/04/2016	---	---	---	---	---	6596@0.008	---	---	2015	---	---	---	162.05	0.008	0.070	4533
17,579,754	4.16	---	---	---	18/08/2006	02/08/2010	5097	BIOTER SA (CR)	0.080	19.40 #	0.067 27/04/2016	0.080	0.080	0.080	0.080	0.080	500@0.060	6999@0.080	---	2015	500	2	40.00	1,406.38	0.038	0.149	2357
4,034,950	0.680	---	---	---	01/07/2005	30/12/2010	5114	CHATZIKRANIOTIS & SONS SA (CR)	0.064	--- ↘	0.064 27/04/2016	---	---	---	---	---	800@0.058	---	---	2015	---	---	---	258.24	0.061	0.119	3577
14,173,104	0.300	---	---	---	11/08/2010	28/11/2013	5055	DIONIC (CR)	0.057	--- ↘	0.057 27/04/2016	---	---	---	---	---	---	3000@0.056	0.18	2015	---	---	---	807.87	0.024	0.058	2797
15,878,748	0.480	---	---	---	10/07/2006	22/03/2004	5095	DOMIKI KRITIS SA (CR)	0.207	--- ↘	0.207 27/04/2016	---	---	---	---	---	400@0.166	---	---	2015	---	---	---	3,286.90	0.200	0.318	2357
3,961,300	1.28	---	---	---	29/06/2004	03/08/2000	5080	DUROS SA (CR)	0.240	--- ↘	0.240 27/04/2016	---	---	---	---	---	---	10@0.239	---	2015	---	---	---	950.71	0.240	0.300	3763
7,085,888	1.59	---	---	---	02/07/1996	06/09/2010	4690	ELVIEK (CR)	3.97	--- ↘	3.97 27/04/2016	---	---	---	---	---	---	50@3.18	---	2015	---	---	---	28,130.98	3.97	3.97	8633
6,000,000	0.600	---	---	---	13/06/2008	08/04/2004	4886	EUROBROKERS S.A. (CR)	0.009	--- ↘	0.009 27/04/2016	---	---	---	---	---	---	---	---	2015	---	---	---	54.00	0.009	0.009	8534
21,820,410	0.800	---	---	---	22/05/2008	02/08/2011	4882	EUROMEDICA SA (CR)	0.006	---	0.006 27/04/2016	---	---	---	---	---	4000@0.006	---	---	2015	---	---	---	130.92	0.006	0.028	4533
110,097,185	0.300	---	---	---	04/12/2013	5033	Forthnet (CR)	0.330	--- ↘	0.330 27/04/2016	---	---	---	---	---	---	200@0.275	434@0.350	---	2015	---	---	---	36,332.07	0.289	0.750	9535
50,593,832	0.300	---	---	---	07/07/2010	07/09/2011	5113	FRIGOGLASS SA (CR)	0.215	2.38 #	0.210 27/04/2016	0.214	0.214	0.215	0.215	0.215	4000@0.212	3075@0.213	---	2015	13,700	13	2,940.50	10,877.67	0.191	1.87	2757
77,376,446	0.340	---	---	---	23/05/2005	18/08/2011	5094	G.E. DIMITRIOU (CR)	0.009	--- ↘	0.009 27/04/2016	---	---	---	---	---	---	2000@0.010	---	2015	---	---	---	696.39	0.006	0.012	3722
1,270,000	0.300	---	---	---	06/07/2007	06/02/2013	5007	GIRAKIAN PROFIL SA (CB)	0.129	--- ↘	0.129 27/04/2016	---	---	---	---	---	600@0.104	---	---	2015	---	---	---	163.83	0.075	0.167	1757
1,540,000	0.600	---	---	---	08/08/1994	19/09/2000	5058	J.BOUTARIS & SON HOLD. (PB)	0.050	--- ↘	0.050 27/04/2016	---	---	---	---	---	---	2000@0.060	---	2015	---	---	---	1,814.40	0.006	0.062	3535
25,179,640	0.600	---	---	---	08/08/1994	19/09/2000	5057	J.BOUTARIS & SON HOLD. SA (CB)	0.069	15.00 #	0.060 27/04/2016	0.069	0.069	0.069	0.069	0.069	---	2896@0.069	---	2015	703	6	48.51	1,814.40	0.025	0.070	3535
7,125,216	0.650	---	---	---	01/07/2005	14/12/1999	4955	KRE.KA SA (CR)	0.117	--- ↘	0.117 27/04/2016	---	---	---	---	---	2000@0.094	900@0.129	---	2015	---	---	---	833.65	0.090	0.146	3573
51,081,030	1.00	---	---	---	20/08/2007	03/09/2007	4912	LAVIPHARM SA (CR)	0.124	--- ↘	0.124 27/04/2016	---	---	---	---	---	300@0.100	5@0.122	---	2015	---	---	---	6,334.05	0.088	0.155	4577
7,734,375	1.00	---	---	---	09/07/2007	07/01/2011	5112	LIVANIS SA (CR)	0.048	--- ↘	0.048 27/04/2016	---	---	---	---	---	247@0.048	---	---	2015	---	---	---	371.25	0.048	0.148	5557
4,419,616	1.58	---	---	---	21/07/2011	04/03/2015	4983	MEDICON S.A (CR)	0.552	--- ↘	0.552 27/04/2016	---	---	---	---	---	---	550@0.550	1.51	2015	---	---	---	2,439.63	0.321	0.552	4535
20,231,328	0.600	---	---	---	15/07/2008	25/06/2004	4879	NIKAS SA (CR)	0.110	--- ↘	0.110 27/04/2016	---	---	---	---	---	---	252@0.122	---	2015	---	---	---	2,225.45	0.070	0.119	3577
14,967,940	0.500	---	---	---	21/05/2008	04/01/2008	4956	PASAL DEVELOPMENT S.A. (CR)	0.184	-19.65 €	0.229 27/04/2016	0.184	0.184	0.184	0.184	0.184	---	20000@0.220	---	2015	100	1	18.40	2,754.10	0.058	0.229	8633
18,750,000	0.300	---	---	---	02/07/2001	31/12/2012	4985	PEGASUS PUBLISHING S.A. (CR)	0.045	--- ↘	0.045 27/04/2016	---	---	---	---	---	---	4@0.036	---	2015	---	---	---	843.75	0.040	0.120	5557
65,326,268	0.530	---	---	---	04/07/2007	19/07/2006	4750	SATO SA (CR)	0.019	--- ↘	0.019 27/04/2016	---	---	---	---	---	10000@0.022	---	---	2015	---	---	---	1,241.20	0.014	0.103	3726

Number of Outstanding Securities	Nominal Value	Dividends [1]			Date of Last Coupon		Note	Shares	Closing price	% change	Previous closing price/date	Open price	Price min	Price max	Last price	Avg price	Last Bid [7]	Last Ask [7]	P/E after	Year	Volume	Trades	Transactions Value[8]	Company Mkt Value (thou. €)	Year low	Year high	Sector[4]	
		2013	2014	2015	Dividend [2]	Right																						
Surveillance																												
7,914,480	0.300	---	---	---	23/06/2008	29/06/2011	4888	SFAKIANAKIS SA (CR)	0.398	---	↘ 0.398	27/04/2016	---	---	---	---	199@0.367	400@0.477	---	2015	---	---	---	3,149.96	0.360	5.64	5379	
10,186,667	1.35	---	---	---	24/06/2008	02/02/2016	4887	SIDMA SA (CR)	0.380	---	↘ 0.380	27/04/2016	---	---	---	---	---	304@0.373	---	2015	---	---	---	3,870.93	0.096	0.380	1757	
4,737,503	0.320	---	---	---	22/06/2005	22/09/2015	5115	VARANGIS AVEPE S.A. (CR)	0.300	---	↘ 0.300	27/04/2016	---	---	---	---	---	1034@0.240	---	2015	---	---	---	1,421.25	0.300	0.300	3726	
16,383,428	0.300	---	---	---	25/06/2002	21/06/2013	4997	VARVARESSOS SA (CB)	0.037	19.36	# 0.031	27/04/2016	0.037	0.037	0.037	0.037	0.037	1005@0.037	---	2015	95	1	3.52	606.19	0.006	0.037	3763	
13,191,620	0.620	---	---	---	04/08/2010	09/09/2002	4977	YALCO - CONSTANTINOU SA (CB)	0.056	---	↘ 0.056	27/04/2016	---	---	---	---	---	3000@0.045	200@0.067	---	2015	---	---	---	738.73	0.055	0.143	3722

Under Deletion																												
1,130,180	0.440	---	---	---	20/06/2003	02/07/2014	5092	COMPUCON SA (CR)	0.007	---	↘ 0.007	27/04/2016	---	---	---	---	7000@0.006	---	---	2015	---	---	---	7.91	0.007	0.019	9537	
9,567,289	0.300	---	---	---	01/07/2004	19/11/2007	5062	MARAC ELECTRONICS (CR)	0.298	---	↘ 0.298	27/04/2016	---	---	---	---	---	14880@0.239	---	2015	---	---	---	2,851.05	0.298	0.298	9578	
24,319,250	0.300	---	---	---	09/07/2002	04/07/2007	5111	PROODEFTIKH SA (CR)	0.040	---	↘ 0.040	27/04/2016	---	---	---	---	585@0.045	11500@0.048	---	2015	---	---	---	972.77	0.036	0.092	2357	
766,000	1.00	---	---	---	01/07/2004	11/12/2012	4937	TRIA ALFA SA (CR)	2.59	---	↘ 2.59	27/04/2016	---	---	---	---	---	14@2.08	---	2015	---	---	---	2,383.29	1.80	2.59	3763	
245,000	1.00	---	---	---	19/07/2010	11/12/2012	4938	TRIA ALFA SA (PR)	1.63	19.85	# 1.36	27/04/2016	1.63	1.63	1.63	1.63	1.63	---	191@1.09	---	2015	1	1	1.63	2,383.29	1.36	1.63	3763

Suspension Status																												
33,301,715	0.320	---	---	---	27/06/2003	08/07/2009	4978	AEGEK (CR)	0.043	---	↘ 0.043	31/03/2016	---	---	---	---	---	---	---	---	---	---	---	---	1,431.97	0.029	0.072	2357
5,000,000	0.400	---	---	---	03/06/2009	01/09/2014	5087	ALCO HELLAS SA (CR)	0.180	---	↘ 0.180	31/03/2015	---	---	---	---	---	---	---	---	---	---	---	---	900.00	0.180	0.180	1753
5,025,000	0.300	---	---	---	05/07/2005	14/03/2002	5023	ALSINCO S.A (CR)	0.043	---	↘ 0.043	29/11/2013	---	---	---	---	---	---	---	---	---	---	---	---	216.08	0.043	0.043	3763
215,246,452	0.300	---	---	---	25/06/2001	24/09/2001	4446	ALTEC SA (CR)	0.012	---	↘ 0.012	30/11/2015	---	---	---	---	---	---	---	---	---	---	---	---	2,582.96	0.012	0.012	9533
21,382,067	0.300	---	---	---	02/10/2006	15/02/2006	4628	ATERMON (CR)	0.120	---	↘ 0.120	31/03/2010	---	---	---	---	---	---	---	---	---	---	---	---	2,565.85	0.120	0.120	5555
81,644,555	0.300	---	---	---	01/07/2008	02/09/2002	5098	ATTI - KAT SA (CR)	0.012	---	↘ 0.012	29/05/2015	---	---	---	---	---	---	---	---	---	---	---	---	979.73	0.012	0.012	2357
33,930,000	0.300	---	---	---	03/07/2006	30/05/2001	4865	BABIS VOVOS SA (CR)	0.304	---	↘ 0.304	30/03/2012	---	---	---	---	---	---	---	---	---	---	---	---	10,314.72	0.304	0.304	8633
20,121,710	1.21	---	---	---	27/07/1992	12/03/2003	5002	BALKAN R.E. (CR)	0.190	---	↘ 0.190	29/08/2013	---	---	---	---	---	---	---	---	---	---	---	---	3,823.12	0.190	0.190	8633
21,920,570	0.300	---	---	---	03/07/2007	13/12/1999	4702	CARDASSILARIS SA (CR)	0.140	---	↘ 0.140	30/11/2010	---	---	---	---	---	---	---	---	---	---	---	---	3,068.88	0.140	0.140	3577
30,159,583	0.470	---	---	---	26/06/2008	29/12/2010	5047	DIAS A/C (CR)	0.050	---	↘ 0.050	26/03/2014	---	---	---	---	---	---	---	---	---	---	---	---	1,507.98	0.050	0.050	3573
3,873,120	0.300	---	---	---	07/07/2008	04/10/2012	---	DRUCKFARBEN HELLAS (CR)	0.410	---	↘ 0.410	24/03/2016	---	---	---	---	---	---	---	---	---	---	---	---	1,587.98	0.410	0.550	1357
7,847,611	1.20	---	---	---	01/08/2007	28/09/2011	4939	EDRASIS - C. PSALLIDAS SA (CR)	0.150	---	↘ 0.150	29/11/2012	---	---	---	---	---	---	---	---	---	---	---	---	1,177.14	0.150	0.150	2357
5,750,000	0.300	---	---	---	12/12/2008	12/12/2011	4929	ELECTRONIKI ATHINON SA (CR)	0.480	---	↘ 0.480	28/09/2012	---	---	---	---	---	---	---	---	---	---	---	---	2,760.00	0.480	0.480	5375
24,605,397	0.400	---	---	---	29/06/1995	27/05/2002	4651	EMPORIKOS DESMOS SA (CR)	0.080	---	↘ 0.080	31/05/2010	---	---	---	---	---	---	---	---	---	---	---	---	2,134.04	0.080	0.080	3722
1,182,903	0.400	---	---	---	01/07/1996	27/05/2002	4652	EMPORIKOS DESMOS SA (PR)	0.140	---	↘ 0.140	31/05/2010	---	---	---	---	---	---	---	---	---	---	---	---	2,134.04	0.140	0.140	3722
36,748,909	0.730	---	---	---	15/12/2005	13/12/2006	5109	HEL. SUGAR INDUSTRY SA (CB)	0.075	---	↘ 0.075	29/02/2016	---	---	---	---	---	---	---	---	---	---	---	---	2,756.17	0.064	0.150	3577
13,692,227	1.47	---	---	---	07/07/2006	08/10/1999	5049	HELLENIC FABRICS SA (CR)	0.117	---	↘ 0.117	31/03/2014	---	---	---	---	---	---	---	---	---	---	---	---	1,601.99	0.117	0.117	3763
30,390,000	0.310	---	---	---	18/08/2008	29/12/2006	5099	HELLENIC FISHFARMING SA (CR)	0.070	---	↘ 0.070	02/06/2015	---	---	---	---	---	---	---	---	---	---	---	---	2,127.30	0.070	0.070	3573
71,082,707	1.70	---	---	---	01/07/2010	21/11/2012	4820	HERACLES GEN.CEMENT CO. (CR)	1.23	---	↘ 1.23	09/03/2016	---	---	---	---	---	---	---	---	---	---	---	---	87,431.73	1.23	1.23	2353
24,619,524	0.500	---	---	---	10/10/1986	30/12/2002	4914	KERAMIA-ALLATINI (CR)	0.088	---	↘ 0.088	30/08/2012	---	---	---	---	---	---	---	---	---	---	---	---	2,166.52	0.088	0.088	8633
17,544,600	0.600	---	---	---	03/07/2000	01/08/2000	4868	KOYMBAS SYNERGY GROUP (CR)	0.132	---	↘ 0.132	30/03/2012	---	---	---	---	---	---	---	---	---	---	---	---	2,315.89	0.132	0.132	8775
66,937,526	0.700	---	---	---	13/08/2010	21/05/2003	5003	MICHANIKI SA (CR)	0.100	---	↘ 0.100	29/08/2013	---	---	---	---	---	---	---	---	---	---	---	---	9,186.78	0.100	0.100	2357
25,968,987	0.700	---	---	---	13/08/2010	21/05/2003	5004	MICHANIKI SA (PR)	0.096	---	↘ 0.096	29/08/2013	---	---	---	---	---	---	---	---	---	---	---	---	9,186.78	0.096	0.096	2357
13,555,100	1.00	---	---	---	08/07/2005	4576	MICROLAND COMPUTERS SA (CR)	0.640	---	↘ 0.640	14/07/2009	---	---	---	---	---	---	---	---	---	---	---	---	---	8,675.26	0.640	0.640	5379

Number of Outstanding Securities	Nominal Value	Dividends [1]			Date of Last Coupon		Note	Shares	Closing price	% change	Previous closing price/date	Open price	Price min	Price max	Last price	Avg price	Last Bid [7]	Last Ask [7]	P/E after	Year	Volume	Trades	Transactions Value[8]	Company Mkt Value (thou. €)	Year low	Year high	Sector[4]	
		2013	2014	2015	Dividend [2]	Right																						
Suspension Status																												
255,459,600	0.300	---	---	---	26/06/2000	03/12/2010	5101	NEL SA (CR)	0.070	---	0.070	31/08/2015	---	---	---	---	---	---	---	---	---	---	---	---	17,882.17	0.070	0.070	5759
23,463,874	0.800	---	---	---	23/05/2003	21/12/1999	4918	NEORION SA (CR)	0.125	---	0.125	30/08/2012	---	---	---	---	---	---	---	---	---	---	---	---	2,932.98	0.125	0.125	2753
20,210,127	1.53	---	---	---	27/06/1997	20/03/2000	5061	PARNASSOS ENTERP. (CR)	0.070	---	0.070	30/05/2014	---	---	---	---	---	---	---	---	---	---	---	---	1,414.71	0.070	0.070	8775
40,946,303	0.360	---	---	---	18/07/2005	27/11/2007	5089	PC SYSTEMS SA (CR)	0.006	---	0.006	31/03/2016	---	---	---	---	---	---	---	---	---	---	---	---	245.68	0.006	0.014	9533
25,583,146	0.300	---	---	---	25/06/2001	03/12/2008	4723	PETZETAKIS SA (CR)	0.260	---	0.260	28/01/2011	---	---	---	---	---	---	---	---	---	---	---	---	6,651.62	0.260	0.260	1357
9,550,386	0.500	---	---	---	01/07/1997	12/06/2008	4626	PRAXITELIO SA (CR)	0.390	---	0.390	31/03/2010	---	---	---	---	---	---	---	---	---	---	---	---	4,430.09	0.390	0.390	4533
1,306,368	0.500	---	---	---	01/07/1997	12/06/2008	4627	PRAXITELIO SA (PR)	0.540	---	0.540	31/03/2010	---	---	---	---	---	---	---	---	---	---	---	---	4,430.09	0.540	0.540	4533
25,667,143	0.320	---	---	---	03/07/2000	18/12/2007	4548	SAOS (CR)	1.56	---	0.780	# 31/03/2009	---	---	---	---	---	---	---	---	---	---	---	---	40,040.74	1.56	1.56	2773
26,408,040	0.300	---	---	---	01/07/1997	26/05/1999	4464	SHEET STEEL SA (CR)	0.120	---	0.120	28/11/2008	---	---	---	---	---	---	---	---	---	---	---	---	3,168.96	0.120	0.120	1757
60,221,300	0.400	---	---	---	01/07/2002	01/11/2010	5022	SHELMAN SA (CR)	0.080	---	0.080	29/11/2013	---	---	---	---	---	---	---	---	---	---	---	---	4,817.70	0.080	0.080	2353
29,060,950	0.340	---	---	---	20/08/2007	24/10/2001	5088	SPIDER METAL INDUSTRY SA (CR)	0.008	---	0.008	31/03/2015	---	---	---	---	---	---	---	---	---	---	---	---	232.49	0.008	0.008	2757
144,688,060	0.600	---	---	---	21/04/2008	10/03/2010	4982	T BANK (CR)	0.048	---	0.052	# 29/11/2011	---	---	---	---	---	---	---	---	---	---	---	---	6,945.03	0.048	0.048	8355
6,523,780	0.530	---	---	---	01/07/2002	06/03/2001	4971	TECHNICAL PUBLICATIONS SA (CR)	0.006	---	0.006	31/05/2013	---	---	---	---	---	---	---	---	---	---	---	---	39.14	0.006	0.006	5557
151,189,500	0.300	---	---	---	16/07/2009	11/02/2016	5110	TELETIPOS SA (CR)	0.060	---	0.060	07/03/2016	---	---	---	---	---	5@0.048	---	---	---	---	---	---	9,071.37	0.054	0.070	5553
13,920,000	0.320	---	---	---	19/11/2001	01/08/2000	4726	TEXAPRET SA (CR)	0.080	---	0.080	28/02/2011	---	---	---	---	---	---	---	---	---	---	---	---	1,113.60	0.080	0.080	3763
510,840	1.00	---	---	---	15/07/2008	21/11/2013	5036	TROPEA HOLDING (CR)	2.00	---	0.020	# 30/03/2012	---	---	---	---	---	---	---	---	---	---	---	---	1,021.68	2.00	2.00	3722
284,465,964	3.70	---	---	---	20/06/2008	15/06/2009	4913	TT HELLENIC POSTBANK (CR)	0.168	---	0.239	# 29/08/2012	---	---	---	---	---	---	---	---	---	---	---	---	47,790.28	0.168	0.168	8355
89,616,200	0.300	---	---	---	21/08/2000	28/06/2007	4616	UNITED TEXTILES (CR)	0.050	---	0.050	24/02/2010	---	---	---	---	---	---	---	---	---	---	---	---	4,480.81	0.050	0.050	3763
71,683,906	0.400	---	---	---	15/06/2005	05/02/2008	4953	XATZIOANNOU (CR)	0.026	---	0.026	28/03/2013	---	---	---	---	---	---	---	---	---	---	---	---	1,863.78	0.026	0.026	3763

Shares' Notes

Code	Note text
()	- Adjusted dividends.
*	- Last adjusted closing price.
[1]	- Net dividends.
[2]	- The "Date of Last Coupon" for New listings refers to the date company's stocks started to trade in Athex
[3]	- The Company Market Value is referred to the number of outstanding shares
[4]	- Sectors codification can be found in Appendix A
[5]	- The Market Value refers to the total number of shares listed (including their several classes) in the exchange by the company.
[6]	- P/E greater than 100
[7]	- Last view of the Order Book before the end of the trading session
[8]	- All Blocks Methods' Transactions Value are included.
4446	- Transfer to the "Under Supervision" Category as of 20/10/2008.
4464	- Suspension of trading as of 1/12/2008.
4548	- Suspension of trading as of 1/4/2009.
4576	- Suspension of trading as of 14/7/2009.
4616	- Suspension of trading as of 25/2/2010.
4626	- Suspension of trading as of 1/4/2010.
4627	- Suspension of trading as of 1/4/2010.
4628	- Suspension of trading as of 1/4/2010.
4651	- Suspension of trading as of 1/6/2010.
4652	- Suspension of trading as of 1/6/2010.
4690	- Transfer to Surveillance category as of 4/4/2006.
4702	- Suspension of trading as of 1/12/2010.
4723	- Suspension of trading as of 31/1/2011.
4726	- Suspension of trading as of 1/3/2011.
4750	- Transfer to the "Under Surveillance Category" from 8/4/2011.
4795	- The final gross (pre-tax) dividend is € 0.30 per share and subject to withholding tax on the full dividend amount, i.e. 0.45 per share, for those shareholders liable to withholding tax, in accordance with the applicable tax law provisions.
4814	- Transfer to the Low Dispersion Category as of 30/5/2011.
4815	- Transfer to the Low Dispersion Category as of 30/5/2011.
4816	- Transfer to the Low Dispersion Category as of 30/5/2011.
4817	- Transfer to the Low Dispersion Category as of 30/5/2011.
4820	- Transfer to the Low Dispersion category as of 18/4/2008.
4822	- Transfer to the Low Dispersion category as of 30/5/2011.
4823	- Transfer to the Low Dispersion category as of 4/4/2006.
4827	- Transfer to the Low Dispersion category as of 5/5/2010.
4844	- Transfer to the Surveillance category from 8/4/2011.
4857	- The 793,906,274 new (CR) shares, resulting from the recent share capital increase through a rights issue, are not yet admitted to trading on the ATHEX.
4865	- Suspension of trading as of 2/4/2012.
4868	- Suspension of trading as of 2/4/2012.
4879	- Transfer to the Surveillance Category as of 10/4/2012.
4881	- Transfer to the Surveillance Category as of 10/4/2012.
4882	- Transfer to the Surveillance Category as of 10/4/2012.
4886	- Transfer to the Surveillance Category as of 10/4/2012.
4887	- Transfer to the Surveillance Category as of 10/4/2012.
4888	- Transfer to the Surveillance Category as of 10/4/2012.
4912	- Transfer to the Surveillance Category as of 31/7/2012.
4913	- Suspension of trading as of 30/8/2012.
4914	- Suspension of trading as of 31/8/2012.
4918	- Suspension of trading as of 31/8/2012.
4929	- Suspension of trading as of 1/10/2012.
4937	- Transfer to the UNDER DELETION category as of 30/11/2012.
4938	- Transfer to the UNDER DELETION category as of 30/11/2012.

Shares' Notes

Code	Note text
4939	- Suspension of trading as of 30/11/2012.
4953	- Suspension of trading as of 2/4/2013.
4955	- Transfer to the Surveillance Category as from 5/4/2013.
4956	- Transfer to the Surveillance Category as from 5/4/2013.
4957	- Transfer to the Surveillance Category as from 5/4/2013.
4958	- Transfer to the Surveillance Category as from 5/4/2013.
4959	- Transfer to the Surveillance Category as from 5/4/2013.
4971	- Suspension of trading as of 3/6/2013.
4977	- Transfer to the "Under Surveillance Category" from 11/6/2013.
4978	- Transfer to the Under Supervision Category as of 11/6/2013.
4982	- Suspension of trading as of 1/12/2011.
4983	- Transfer to the Surveillance Category as of 5/4/2013.
4985	- Transfer to the "Under Surveillance Category" from 8/4/2011.
4997	- Transfer to the Under Supervision Category as of 21/12/2009. - The 6,870,053 new (CB) shares, resulting from the recent share capital increase through a rights issue, are not yet admitted to trading on the ATHEX.
5002	- Suspension of trading as of 30/08/2013.
5003	- Suspension of trading as of 30/08/2013.
5004	- Suspension of trading as of 30/08/2013.
5007	- Transfer to the Surveillance category, as of 11/10/2013.
5022	- Suspension of trading as of 2/12/2013.
5023	- Suspension of trading as of 2/12/2013.
5031	- The 612,300 new (CR) shares, resulting from the recent share capital increase through a rights issue, are not yet admitted to trading on the ATHEX.
5033	- Transfer to the Surveillance Category as of 25/11/2011. The 97,144,575new (CR) shares, resulting from the recent share capital increase through a rights issue, are not yet admitted to trading on the ATHEX.
5036	- The company's share is under suspension of trading as of 2/4/2012. During suspension, the company proceeded and concluded a share reverse split, according to which - after the conclusion of the corporate action - the total number of the company's shares, as well as, the last closing price of 30/03/2012 were adjusted.
5046	- Transfer to the Low Dispersion category as of 8/4/2011.
5047	- Suspension of trading as of 27/3/2014.
5049	- Under suspension of trading as of 1/4/2014.
5055	- Transfer to the Surveillance Category as of 10/4/2014.
5057	- Transfer to the Surveillance Category as of 29/12/2011.
5058	- Transfer to the Surveillance Category as of 29/12/2011.
5061	- Suspension of trading as of 2/6/2014.
5062	- Transfer to the UNDER DELETION category as of 4/6/2014.
5080	- Suspension of trading as of 6/9/2011.
5087	- Suspension of trading as of 1/4/2015.
5088	- Suspension of trading as of 1/4/2015.
5089	- Transfer to the Surveillance Category as of 8/4/2015.
5092	- Transfer to the UNDER DELETION category as of 8/4/2015.
5093	- Transfer to the Surveillance Category as of 8/4/2015.
5094	- Transfer to the Surveillance Category as of 8/4/2015.
5095	- Transfer to the Surveillance Category as from 9/4/2015.
5097	- Transfer to the Surveillance Category as of 10/4/2012.
5098	- Suspension of trading as of 2/6/2015.
5099	- Suspension of trading as of 3/6/2015.
5100	- Transfer to the Low Dispersion Category as of 24/6/2015.
5101	- Suspension of trading as of 1/9/2015.
5103	- The 2,495,784,996 new (CR) shares, resulting from the recent share capital increase through a rights issue, are not yet admitted to trading on the ATHEX.
5104	- Transfer to the "Low Dispersion" Category as of 31/10/2014. Change of the company name from "MIG REAL ESTATE R.E.I.C." to "NBG PANGAEA R.E.I.C." as of 30/12/2015.
5109	- Suspension of trading as of 01/03/2016.
5110	- Suspension of trading as of 08/03/2016.
5111	- Transfer to the Under Deletion Category as of 15/04/2016.
5112	- Transfer to the Surveillance Category as of 15/04/2016.

Shares' Notes

Code	Note text
5113	- Transfer to the Surveillance Category as of 15/04/2016.
5114	- Transfer to the Surveillance Category as of 15/04/2016.
5115	- Transfer to the Surveillance Category as of 15/04/2016.
5116	- Transfer to the Low Dispersion Category as of 20/4/2016.

Securities Blocks Details

Securities	Block Volume	Price	Block Trade Value	Time of approval	Note
NATIONAL BANK (CR)	2,035,408	0.271	551,595.57	11:02:44	20
JUMBO SA (CR)	50,000	11.35	567,500.00	12:20:32	20
ALPHA BANK (CR)	150,000	1.98	297,000.00	14:40:34	20
ALPHA BANK (CR)	328,209	1.98	649,853.82	14:41:02	20
ALPHA BANK (CR)	280,000	1.98	554,400.00	15:31:25	20
ALPHA BANK (CR)	420,000	1.98	831,600.00	15:34:12	20
NATIONAL BANK (CR)	4,200,000	0.264	1,108,800.00	16:28:44	20
NATIONAL BANK (CR)	2,600,000	0.264	686,400.00	16:29:27	20
NATIONAL BANK (CR)	4,300,000	0.264	1,135,200.00	16:42:50	20
NATIONAL BANK (CR)	5,864,958	0.265	1,551,281.39	16:47:48	20

Blocks Notes

9 - Method 6-1 / Special Fees

10 - Method 6-1 / Special Fees, SDS

14 - Method 6-3 / Settlement, Incomplete Buy and Sell

18 - Method 6-2 / SPOT 1

19 - Method 6-2 / SPOT 2

20 - Method 6-1 and Method 6-1 Same Day Settlement

21 - Other Pre-agreed

Shares Rights Details

Occured date	Exercise from	Exercise until	Trading until	Rights	Price min	Price max	Closing price	Last Bid	Last Ask	Volume	Trades	Transactions Value
-----------------	------------------	-------------------	------------------	--------	--------------	--------------	------------------	----------	----------	--------	--------	-----------------------

No Rights Transactions.

Shares Forced Sales

Securities	Transaction s Volume	Number of Trades	Transactions Value	Note
No Forced Transactions.				

Forced Sales Notes

- 1 - Normal Forced Sale.
- 2 - Forced Sales of Fixed Registered Shares.
- 3 - Forced Sales of Remaining Stock Fractions.

Forced Sales Registered Shares

Securities	Start Date	End Date	Initial Volume	Remaining Volume	Date	Avg price (day)	Avg price (period)	Number of Trades	Transactions Volume	Transactions Value
No Fixed Registered Shares Forced Sales.										

Forced Sales Notes

According to Decision 1/380/04.05.2008 of the Hellenic Republic Capital Market Commission, the certificated registered shares that have not been deposited to the issuer for dematerialisation, will be auctioned in the Athens Exchange by the supervising issuer. Forced sales procedure is held according to Article 99A of the Athens Exchange Rulebook. The average price of the period is calculated by dividing the Total transactions value by the Total volume and includes all the transactions made until the current date.

Exchange Traded Funds (ETFs) Characteristics

	Transactions Date (T)	Creation / Redemption	Units (T-1)	New Units (T-1)	Redemptio n Units (T-	Units (T) [1]	Fund Assets [2]	Net Unit Price	Dividen d per	Dividend Date
NBGAM ETF ΓΔ Χ.Α.	28/04/2016	25,000	294,878	---	---	294,878	2,011,502.00	6.8215	---	27/10/2011
ALPHA ETF FTSE Athex Large Cap	28/04/2016	50,000	6,030,903	---	---	6,030,903	9,837,704.00	1.6312	0.06	03/08/2015
NBGAM ETF GREECE & TURKEY 30	28/04/2016	25,000	388,550	---	---	388,550	2,396,705.00	6.1683	---	27/10/2011

ETFs Notes

[1] - Units (T) = Units (T-1) + New Units (T-1) - Redemption Units (T-1)

[2] - The Creation / Redemption Units of T-1 are included.

Corporate Bonds

Num Listed Bonds	Nominal price	Issue price	Today's Rate	Exp. Date	Duration (years)	Note	Coupon attached		Trading	Corporate Bonds	Price min	Price max	Closing price	Previous closing price/date	Volume	Transactions Value	Last order		Date	ear min	Year max
							Common	Preferred									Price	Buy / Sell			
1,794,284	13.76	9.77	0.00	21/10/2025	18	---	---	---	1	NIREUS S.A. (Convertible to CR shares)	---	---	---	100.000011/04/2016	---	---	11.0000	B	17/11/2014	12.0000	150.0000
212,237,880	1.00	1.00	6.30	29/07/2020	7	---	11	---	1	MARFIN INVESTMENT GROUP S.A. SERIES B (BOND)	---	---	---	0.850023/08/2013	---	---	1.0000	B	28/11/2014	0.8500	0.8500
163,076,727	1.00	1.00	7.00	29/07/2019	6	---	11	---	1	MARFIN INVESTMENT GROUP S.A. SERIES A (BOND)	---	---	---	1.000023/08/2013	---	---	1.0000	B	28/11/2014	1.0000	1.0000

Corporate Bonds Notes

Transactions Volume = (Pieces) * (Nominal Price). Transactions Value = (Pieces) * (Nominal Price) * (price %) + (Accrued interest).
The price of a Bond is stated as a percentage (%) of Bond's Nominal Price.
Nominal Price in Euros (€), except if it is noted differently.

Government Bonds

Number Listed Bonds	Nominal price	Today's Rate	Accrued Interest Calc	Exp. Date [1]	Duration (years)	Note	Coupons Date	Curr. coupon value	Trading Unit	Government Bonds	Price min	Price max	Closing price	Previous closing price/date	Volume	Transactions Value	Price	Last order Buy / Sell	Date
1,792,455,803	1.00	4.30	Actual/Actual	24/02/2023	11	---	24/02	4.30	1	GGB-FXD-240223-11Y-2.000-1.00	---	---	---	10.0000 22/06/2015	---	---	---	---	---
1,771,485,249	1.00	4.30	Actual/Actual	24/02/2024	12	---	24/02	4.30	1	GGB-FXD-240224-12Y-2.000-1.00	---	---	---	10.0000 22/06/2015	---	---	---	---	---
1,744,316,583	1.00	4.30	Actual/Actual	24/02/2025	13	---	24/02	4.30	1	GGB-FXD-240225-13Y-2.000-1.00	---	---	---	10.0000 22/06/2015	---	---	---	---	---
1,498,761,836	1.00	4.30	Actual/Actual	24/02/2026	14	---	24/02	4.30	1	GGB-FXD-240226-14Y-2.000-1.00	---	---	---	10.0000 22/06/2015	---	---	---	---	---
1,469,952,920	1.00	4.30	Actual/Actual	24/02/2027	15	---	24/02	4.30	1	GGB-FXD-240227-15Y-2.000-1.00	---	---	---	10.0000 22/06/2015	---	---	---	---	---
1,525,434,082	1.00	4.30	Actual/Actual	24/02/2028	16	---	24/02	4.30	1	GGB-FXD-240228-16Y-2.000-1.00	---	---	---	10.0000 22/06/2015	---	---	---	---	---
1,503,860,546	1.00	4.30	Actual/Actual	24/02/2029	17	---	24/02	4.30	1	GGB-FXD-240229-17Y-2.000-1.00	---	---	---	10.0000 22/06/2015	---	---	---	---	---
1,435,418,132	1.00	4.30	Actual/Actual	24/02/2030	18	---	24/02	4.30	1	GGB-FXD-240230-18Y-2.000-1.00	---	---	---	10.0000 22/06/2015	---	---	---	---	---
1,368,045,727	1.00	4.30	Actual/Actual	24/02/2031	19	---	24/02	4.30	1	GGB-FXD-240231-19Y-2.000-1.00	---	---	---	10.0000 22/06/2015	---	---	---	---	---
1,373,758,194	1.00	4.30	Actual/Actual	24/02/2032	20	---	24/02	4.30	1	GGB-FXD-240232-20Y-2.000-1.00	---	---	---	10.0000 22/06/2015	---	---	---	---	---
1,452,639,893	1.00	4.30	Actual/Actual	24/02/2033	21	---	24/02	4.30	1	GGB-FXD-240233-21Y-2.000-1.00	---	---	---	10.0000 22/06/2015	---	---	---	---	---
1,410,344,954	1.00	4.30	Actual/Actual	24/02/2034	22	---	24/02	4.30	1	GGB-FXD-240234-22Y-2.000-1.00	---	---	---	10.0000 22/06/2015	---	---	---	---	---
1,444,202,190	1.00	4.30	Actual/Actual	24/02/2035	23	---	24/02	4.30	1	GGB-FXD-240235-23Y-2.000-1.00	---	---	---	10.0000 22/06/2015	---	---	---	---	---
1,505,138,031	1.00	4.30	Actual/Actual	24/02/2036	24	---	24/02	4.30	1	GGB-FXD-240236-24Y-2.000-1.00	---	---	---	10.0000 22/06/2015	---	---	---	---	---
1,396,254,095	1.00	4.30	Actual/Actual	24/02/2037	25	---	24/02	4.30	1	GGB-FXD-240237-25Y-2.000-1.00	---	---	---	10.0000 22/06/2015	---	---	---	---	---
1,382,167,704	1.00	4.30	Actual/Actual	24/02/2038	26	---	24/02	4.30	1	GGB-FXD-240238-26Y-2.000-1.00	---	---	---	10.0000 22/06/2015	---	---	---	---	---
1,337,331,257	1.00	4.30	Actual/Actual	24/02/2039	27	---	24/02	4.30	1	GGB-FXD-240239-27Y-2.000-1.00	---	---	---	10.0000 22/06/2015	---	---	---	---	---
1,371,908,706	1.00	4.30	Actual/Actual	24/02/2040	28	---	24/02	4.30	1	GGB-FXD-240240-28Y-2.000-1.00	---	---	---	10.0000 22/06/2015	---	---	---	---	---
1,360,659,778	1.00	4.30	Actual/Actual	24/02/2041	29	---	24/02	4.30	1	GGB-FXD-240241-29Y-2.000-1.00	---	---	---	10.0000 22/06/2015	---	---	---	---	---
1,432,747,403	1.00	4.30	Actual/Actual	24/02/2042	30	---	24/02	4.30	1	GGB-FXD-240242-30Y-2.000-1.00	---	---	---	10.0000 22/06/2015	---	---	---	---	---
742,153	1,000.00	0.93	FLR Actual/360	10/08/2019	5	---	10/02 - 10/08	---	1	GGB-FLT-100819-05Y-0.934-1,000	---	---	---	---	---	---	---	---	---
4,030,827	1,000.00	4.75	Actual/Actual	17/04/2019	5	---	17/04	4.75	1	GGB-FXD-170419-05Y-4.750-1,000	---	---	---	---	---	---	---	---	---
2,089,066	1,000.00	3.38	Actual/Actual	17/07/2017	3	---	17/07	3.38	1	GGB-FXD-170717-03Y-3.375-1,000	---	---	---	---	---	---	---	---	---

Government Bonds Notes

Transactions Volume = (Pieces) * (Nominal Price). Transactions Value = (Pieces) * (Nominal Price) * (price %) + (Accrued interest).
The Value of current coupon for the issues with NV 0.01 euro refers to NV 100 euros
FLR: Floating Interest Rate.
[1] - The Expiration Date of the interest bearing period and the Date for coupon payment.

Bonds in Circulation	Currency / Min nominal traded Value	Coupons Payment Date	Current Coupon Value	Note	Coupon Attached	Trading Unit	Issue Date	Duration (years)	Today's Interest	A.I.C in days	Bonds	Last price of previous days	Last Outcry in Cash (euro) Price	Buy / Sell	Trades in Pieces	Life min	Life Max
Bonds of International Organizations																	
1,000,000	EUR / 1000	21/07	---	---	10	1	21/07/2006	10	5.0 FLR	360	EUROPEAN INVESTMENT BANK BOND	97.50	16/04/2007	---	---	---	---
Corporate Bonds in Foreign Currency and Euro																	
103,746	GBP / 10	01/12	0.25	---	57	1	01/12/1930	98	2.5	360	National Mortgage Bank	2.27	05/02/1996	2.27	S	05/02/1996	2.27
0	GBP / 10	01/12	0.25	---	59	1	01/12/1928	100	2.5	360	National Mortgage Bank	---	---	---	---	---	---

Government Bonds Notes

A.I.C: Accrued Interest Calculation base.
FLR: Floating Interest Rate.
The minimum tradeable Nominal Value for all Demeterialised Government Titles is 100 Euros.

Athex & ATHEXClear Members List

Member Name			Stock Market			Derivatives Market		ATHEXClear Member	
Address	Phone	Fax	Market Member	Remote Member	Market Maker	Proprietary	Market Maker	General Clearing	Direct Clearing
A. SARRIS SECURITIES S.A.			a						
6, DRAGATSANIOU ATHINA	+30 2103367700	210-3312324							
ALPHA FINANCE INVESTMENT SERVICES S.A.			a		a	a	a		a
5, MERLIN ATHINA	+30 2103677400	210-33311193							
ALPHA BANK A.E.								a	
40, STADIOU STR ATHINA	(210)-3265546	(210)-3265811							
103, AVE. ATHINON ATHINA	+30 2103436820	210-3436270							
40, STADIOU STR ATHINA	(210)-3260000	(210)-3264116							
ARGUS STOCKBROKERS LTD			a	a		a			
25 , AVENUE DEMOSTHENI SEVERI NICOSIA	+357 22717000	0035722717070							
ATLANTIC SECURITIES LIMITED			a	a					
37, PRODROMOU NICOSIA	+357 22445400	00357 22661914							
ATLAS SECURITIES S.A			a			a			
, 125 MICHALAKOPOULOU & 14-16 VERVENON ATHINA	+30 2103363300	210-3238925							
ATTICA BANK S.A.								a	
54, AKADIMIAS STR. ATHINA	(210)-3390757	(210)-3646090							
23, OMIROU ATHINA	+30 2103669261	210-3669265							
23, OMIROU STR. ATHINA	(210)-3669000	(210)-3669410							
AXIA VENTURES GROUP LTD			a	a					
, KRANIDIOTI 10, OFFICE 102 NICOSIA	+357 22742000	357 22742001							
AXON SECURITIES S.A.			a			a			
48, STADIOU ATHINA	+30 2103363800	210-3243903							
BANK OF AMERICA MERRILL LYNCH			a	a					
2 , KING EDWARD STREET LONDON	+44 20276281000								
BETA SECURITIES S.A.			a		a	a	a		a
29 , ALEXANDRAS AVEN. & VRAILA ATHINA	+30 2106478900	210-6410139							
BNP PARIBAS SECURITIES SERVICES S.A.								a	
, VASILISSIS SOFIAS 94 & KERASOUNTOS 1 ATHINA	+30 2107468500	210-7468579-581							
CAPITAL SECURITIES S.A.			a			a			
58, MITROPOLEOS ATHINA	+30 2103369700	+30 210 3369820							
CFS SECURITIES-INVESTMENT SERVICES S.A.			a						
6, DRAGATSANIOU ATHINA	+30 2103360800	+30 210-3360980							
CITIGROUP GLOBAL MARKET LTD			a	a					
1, CITIGROUP CENTER , CANADA SQ., CANARY WHARF LONDON	+44 02079864000								
CREDIT SUISSE SECURITIES (EUROPE) LIMITED			a	a					
, ONE CABOT SQUARE LONDON	+44 2078888888								
CYCLOS SECURITIES S.A.			a			a			a
39, PANEPISTIMIOU ATHINA	+30 2103364300	+30 210-3239122							
D.A. TSEKOURAS SEC. S.A.			a						
33, STADIOU ATHINA	+30 2103245100	210-3211997							
DELTASTOCK AD									a
115, MEGAPARK OFFICE BUILDING, OFFICE AREA E, G TSARIGRADSKOJ 39	+35928115051	+35928115049							
DEUTSCHE BANK S.A.			a	a		a			
1 , GREAT WINCHESTER STREET LONDON	+44 20 754 54209	00441133361437							
DYNAMIC SECURITIES S.A.			a			a			a
8, OMIROU ATHINA	+30 2103677700	210-3677777							
EL. PETROPOULAKIS SECURITIES S.A.			a			a			
9, ARISTEIDOU ATHINA	+30 2103213928	+30 210-3216810							
ESTINVEST S.A.									a
9, TH REPUBLICII STREET FOCSANI	+40 237238900	+40 237237471							
EUROBANK ERGASIAS S.A.								a	
8, OTHONOS STR. ATHINA	(210)-3337969	(210)-3245916							
	(210)-3337000	(210)-3233866							
8, OTHONOS ATHINA	+30 2103337000	210-3245916							
EUROBANK SECURITIES INVESTMENT FIRM S.A			a		a	a	a		a
, FILELLINON 10 & XENOFONTOS 13 ATHINA	+30 2103720000	210-3720001							
EUROCORP SECURITIES S.A.			a			a			a
14, SQ.FILIKIS ETAIRIAS ATHINA	+30 2107263500	210-7263666							
EUOTRUST BROKERAGE S.A.			a						
113, SEVASTOUPOLEOS ATHINA	+30 2103363100	+30 210-3238334							
EUROXX SECURITIES S.A.			a		a	a	a		a
7, PALEOLOGOU CHALANDRI	+30 2106879400	210-6879401							
7, PALAIOLOGOU CHALANDRI	(210)-6879400	(210)-6879401							

Athex & ATHEXClear Members List

Member Name			Stock Market			Derivatives Market		ATHEXClear Member	
Address	Phone	Fax	Market Member	Remote Member	Market Maker	Proprietary	Market Maker	General Clearing	Direct Clearing
G. A. PERVAS SECURITIES-INVESTMENT SERVICES CO S.A.			a						
7-9, SOFOKLEOUS ATHINA	+30 2103727200	210-3210-291							
GLOBAL CAPITAL SECURITIES AND FINANCIAL SERVICES LTD			a	a					
, AVE. ARCHIEPIKOPOU MAKARIOU NICOSIA	+357 22710710	357 22339332							
GUARDIAN TRUST SECURITIES S.A			a			a			
31, ERMOU ATHINA	+30 2103378700	210-3220498							
HELLENIC BANK (INVESTMENTS) LTD			a	a					
, AVE.KYRIAKOU MATSI 31 - PO BOX 24747 NICOSIA	+357 22500100	357 22500110							
HELLENICAMERICAN SEC. S.A.			a		a	a			a
27, ANDREA PAPANDREOU ATHINA	+30 2103311100	+30 210-3215968							
HSBC BANK PLC								a	
109-111, AVE. MESOGION ATHINA	+30 2106960000	210-6928000							
INDEX SECURITIES S.A.			a						
6, DRAGATSANIOU ATHINA	+30 2103213920	+30 210-3213216							
INTERFINBROK CORPORATION S.A.									a
1, STR.CALARASI NR. CONSTANTA	+40 241639071	0241-547829							
INVESTMENT BANK OF GREECE S.A.			a		a	a		a	
32 , EGIALIAS & PARADISOU MAROUSI	+30 2108173111	+30 210-6896325							
J. CHR. MAVRIKIS SECURITIES S.A.			a						
5, SOFOKLEOUS ATHINA	+30 2103216730	210-3217767							
KAPPA SECURITIES S.A.			a			a			
15, VALAORITOU ATHINA	+30 2103678600	+30 210-3641002							
KARAMANOF SECURITIES-INV. SERVICES S.A.			a			a			
2, SQ. AGION THEODORON ATHINA	+30 2103212947	+30 210-3217088							
LAIKI FINANCIAL SERVICES LTD				a					
26, AVE. VYRONOS NICOSIA	357 22367367	357 22718567							
LEON DEPOLAS SECURITIES S.A.			a		a	a			
1, CHRISTOU LADA ATHINA	+30 2103213276	+30 210-3211618							
MAGNA TRUST SECURITIES S.A			a						
5, GEORGE ATHINA	+30 2103800820	210-3220910							
MEGA EQUITY SECURITIES-FINANCIAL SERVICES LTD			a	a		a			
42-44, AVE. GRIVA DIGENI NICOSIA	+357 22711711	357 22711811							
MERIT SECURITIES S.A			a		a	a			a
3, GEORGIOU SOURI ATHINA	+30 2103671890	210-3671830							
MIDAS BROKERAGE S.A.			a		a				
5, SOFOKLEOUS ATHINA	+30 2141008800	+30 210-3253205							
N. CHRYSISOCHOIDIS STOCK BROKERAGE I.S.S.A.			a			a			a
7-9, SOFOKLEOUS ATHINA	+30 2103213913	+30 210-3216115							
NATIONAL BANK OF GREECE S.A.			a			a		a	
68, AKADIMIAS STR. ATHINA	(210)-3328817	(210)-3328678							
86, AIOLOU STR. ATHINA	(210)-3341000	(210)-3228187							
NATIONAL SECURITIES S.A			a		a	a	a		
91, MICHALAKOPOULOU ATHINA	+30 2107720000	+30 210-7720002							
NUNTIUS SECURITIES S.A			a						
6, DRAGATSANIOU ATHINA	+30 2103350599	+30210-3254846							
ONE PLUS CAPITAL LIMITED			a	a		a			
, 75 PRODRAMOU AVENUE, ONEWORLD PARKVIEW HOUSE, 3RD FLOOR, 22873760	+30 2103350599								
PANTELAKIS SECURITIES S.A.			a			a			
57, ETHNIKIS ANTISTASIS B CHALANDRI	+30 2106965000	210-6929550							
PEGASUS BROKERAGE FIRM S.A			a			a			
17 , VALAORITOU & AMERIKIS ATHINA	+30 2103670700	+30 210-3670760							
PIRAEUS BANK S.A.			a			a		a	
4, AMERIKIS STR. ATHINA	(210)-3335000	(210)-3335079							
4, AMERIKIS STR ATHINA	(210)-3335918	(210)-3254207							
4, AMERIKIS ATHINA	+30 2103335000	210-3335079							
PIRAEUS SECURITIES S.A.			a		a	a	a		a
5, KORAI ATHINA	+30 2103354100	210-3354170							
PRELIUM SECURITIES-INVESTMENT SERVICES S.A.			a			a			
1 , DAVAKI & KIFISIAS AVE. ATHINA	+30 2103677000	+30 210-6926403							
PROCHOICE SECURITIES LTD			a	a					
57, SPYROY KYPRIANOY NICOSIA	+357-24-661192	+357-24-662464							
SHARELINK SECURITIES-FINANCIAL SERVICES LTD			a	a		a			
6 , THEOTOKI MEGARO ELLINA NICOSIA	+357 22554200	+357 22750852							

Athex & ATHEXClear Members List

Member Name			Stock Market			Derivatives Market		ATHEXClear Member	
Address	Phone	Fax	Market Member	Remote Member	Market Maker	Proprietary	Market Maker	General Clearing	Direct Clearing
SOCIETE GENERALE S.A.			a	a		a			
, 17 COURS VALMY 92987 PUTEAUX - LA DEFENSE PARIS	+33 157290504	+33142138697							
SOLIDUS SECURITIES S.A			a			a			a
64, LOUIZIS RIANCOUR ATHINA	+30 2106900600	210-6985421							
SSIF BRK FINANCIAL GROUP S.A.									a
119 , CALEA MOTILOR NAPOCA	+40 364401709	0040364401710							
SSIF VIENNA INVESTMENT TRUST S.A.									a
, 4 SPLAIUL UNIRII, BUILDING B3 BUCHAREST	+40 212074880	004 021 207 48 98							
ST. EM. LAVRENTAKIS SECURITIES S.A.			a			a			
7-9, SOFOKLEOUS ATHINA	+30 2103213336	+30 210-3246572							
THE CYPRUS INVESTMENT & SECURITIES CORPORATION LTD			a	a					
154 , LIMASSOL AVENUE, STROVOLOS NICOSIA	+357 22121700	357 22338800							
UBS LIMITED			a	a					
1 , FINSBURY AVENUE LONDON	+44 2075687135								

List of Stocks under Market Making operations

Securities	Stock Category
Market Maker	Start Market Making
FRIGOGLASS SA (CR)	Surveillance
EUROBANK SECURITIES INVESTMENT FIRM S.A	27/10/2014
ALPHA BANK (CR)	Main Market
ALPHA FINANCE INVESTMENT SERVICES S.A.	29/02/2016
EUROBANK SECURITIES INVESTMENT FIRM S.A	24/10/2012
INVESTMENT BANK OF GREECE S.A.	08/01/2013
LEON DEPOLAS SECURITIES S.A.	04/01/2016
MERIT SECURITIES S.A	03/09/2013
MIDAS BROKERAGE S.A.	11/01/2006
NATIONAL SECURITIES S.A	15/01/2013
PIRAEUS SECURITIES S.A.	28/05/2013
ALUMIL (CR)	Main Market
BETA SECURITIES S.A.	18/07/2013
ATTICA BANK S.A. (CR)	Main Market
BETA SECURITIES S.A.	02/06/2014
EUROBANK SECURITIES INVESTMENT FIRM S.A	25/07/2014
EUROXX SECURITIES S.A.	22/01/2016
BANK OF CYPRUS (CR)	Main Market
EUROBANK SECURITIES INVESTMENT FIRM S.A	23/03/2015
NATIONAL SECURITIES S.A	22/06/2015
BYTE COMPUTER SA (CR)	Main Market
MERIT SECURITIES S.A	04/08/2013
CC HBC AG (CR)	Main Market
EUROBANK SECURITIES INVESTMENT FIRM S.A	23/10/2013
NATIONAL SECURITIES S.A	29/04/2013
PIRAEUS SECURITIES S.A.	04/05/2015
ELLAKTOR (CR)	Main Market
EUROBANK SECURITIES INVESTMENT FIRM S.A	01/06/2013
INVESTMENT BANK OF GREECE S.A.	02/01/2013
NATIONAL SECURITIES S.A	25/06/2013
ELTON SA (CR)	Main Market
BETA SECURITIES S.A.	03/09/2013
EUROBANK ERGASIAS (CR)	Main Market
ALPHA FINANCE INVESTMENT SERVICES S.A.	08/01/2013
EUROBANK SECURITIES INVESTMENT FIRM S.A	01/06/2013
HELLENICAMERICAN SEC. S.A.	25/07/2014
INVESTMENT BANK OF GREECE S.A.	08/01/2013
MIDAS BROKERAGE S.A.	07/01/2016
PIRAEUS SECURITIES S.A.	28/09/2013
EUROCONSULTANTS S.A. (CR)	Main Market
EUROBANK SECURITIES INVESTMENT FIRM S.A	22/07/2014
FOLLI FOLLIE (CR)	Main Market
NATIONAL SECURITIES S.A	17/02/2014
PIRAEUS SECURITIES S.A.	04/05/2015
FOURLIS (CR)	Main Market
HELLENICAMERICAN SEC. S.A.	14/09/2005
GEK TERNA (CR)	Main Market
HELLENICAMERICAN SEC. S.A.	07/09/2015
INVESTMENT BANK OF GREECE S.A.	02/01/2013
GR. SARANTIS SA (CR)	Main Market
BETA SECURITIES S.A.	14/05/2013
HELLENIC EXCHANGES-A.S.E. (CR)	Main Market
EUROBANK SECURITIES INVESTMENT FIRM S.A	01/06/2013
HELLENICAMERICAN SEC. S.A.	01/09/2014
INVESTMENT BANK OF GREECE S.A.	02/01/2013
NATIONAL SECURITIES S.A	25/06/2013
PIRAEUS SECURITIES S.A.	04/05/2015
HELLENIC PETROLEUM (CR)	Main Market
HELLENICAMERICAN SEC. S.A.	14/09/2015
INTRACOM HOLDINGS (CR)	Main Market
HELLENICAMERICAN SEC. S.A.	07/09/2015
INTRALOT (CR)	Main Market
EUROBANK SECURITIES INVESTMENT FIRM S.A	01/06/2013
INVESTMENT BANK OF GREECE S.A.	02/01/2013
PIRAEUS SECURITIES S.A.	28/09/2013
J & P - AVAX SA (CR)	Main Market
EUROBANK SECURITIES INVESTMENT FIRM S.A	14/12/2015
KLOUKINAS - LAPPAS SA (CR)	Main Market
BETA SECURITIES S.A.	22/09/2014

List of Stocks under Market Making operations

Securities	Stock Category
Market Maker	Start Market Making
LAMDA DEVELOPMENT SA (CR)	Main Market
EUROBANK SECURITIES INVESTMENT FIRM S.A	08/12/2014
MARFIN INVESTMENT GROUP (CR)	Main Market
EUROBANK SECURITIES INVESTMENT FIRM S.A	23/03/2015
HELLENICAMERICAN SEC. S.A.	25/07/2014
PIRAEUS SECURITIES S.A.	02/02/2013
MLS MULTIMEDIA SA (CR)	Main Market
HELLENICAMERICAN SEC. S.A.	07/12/2015
MOTOR OIL (CR)	Main Market
EUROBANK SECURITIES INVESTMENT FIRM S.A	23/10/2012
HELLENICAMERICAN SEC. S.A.	01/09/2014
NATIONAL SECURITIES S.A	17/02/2014
PIRAEUS SECURITIES S.A.	04/05/2015
MYTILINEOS HOLDINGS (CR)	Main Market
INVESTMENT BANK OF GREECE S.A.	02/01/2013
NATIONAL SECURITIES S.A	25/06/2013
PIRAEUS SECURITIES S.A.	04/05/2015
NATIONAL BANK (CR)	Main Market
ALPHA FINANCE INVESTMENT SERVICES S.A.	08/01/2013
EUROBANK SECURITIES INVESTMENT FIRM S.A	24/10/2012
HELLENICAMERICAN SEC. S.A.	25/07/2014
INVESTMENT BANK OF GREECE S.A.	08/01/2013
LEON DEPOLAS SECURITIES S.A.	20/04/2015
MERIT SECURITIES S.A	03/09/2013
MIDAS BROKERAGE S.A.	07/01/2016
NATIONAL SECURITIES S.A	28/02/2013
PIRAEUS SECURITIES S.A.	08/09/2013
OPAP (CR)	Main Market
ALPHA FINANCE INVESTMENT SERVICES S.A.	08/01/2013
EUROBANK SECURITIES INVESTMENT FIRM S.A	24/10/2012
HELLENICAMERICAN SEC. S.A.	25/07/2014
INVESTMENT BANK OF GREECE S.A.	08/01/2013
MIDAS BROKERAGE S.A.	04/04/2016
NATIONAL SECURITIES S.A	15/01/2013
PIRAEUS SECURITIES S.A.	04/05/2015
OTE (CR)	Main Market
ALPHA FINANCE INVESTMENT SERVICES S.A.	08/01/2013
EUROBANK SECURITIES INVESTMENT FIRM S.A	24/10/2012
HELLENICAMERICAN SEC. S.A.	25/07/2014
INVESTMENT BANK OF GREECE S.A.	08/01/2013
LEON DEPOLAS SECURITIES S.A.	20/04/2015
MIDAS BROKERAGE S.A.	01/10/2015
NATIONAL SECURITIES S.A	01/12/2012
PIRAEUS SECURITIES S.A.	08/09/2013
PAPOUTSANIS (CR)	Main Market
BETA SECURITIES S.A.	25/11/2013
PETROPOULOS PETROS (CR)	Main Market
BETA SECURITIES S.A.	28/05/2013
PIRAEUS BANK (CR)	Main Market
EUROBANK SECURITIES INVESTMENT FIRM S.A	23/10/2012
EUROXX SECURITIES S.A.	15/02/2016
HELLENICAMERICAN SEC. S.A.	25/07/2014
INVESTMENT BANK OF GREECE S.A.	08/01/2013
MERIT SECURITIES S.A	16/09/2013
MIDAS BROKERAGE S.A.	11/01/2016
NATIONAL SECURITIES S.A	02/06/2013
PIRAEUS SECURITIES S.A.	16/02/2013
PLAISIO COMPUTERS SA (CR)	Main Market
BETA SECURITIES S.A.	05/05/2014
EUROBANK SECURITIES INVESTMENT FIRM S.A	02/03/2015
PPC (CR)	Main Market
ALPHA FINANCE INVESTMENT SERVICES S.A.	08/01/2013
EUROBANK SECURITIES INVESTMENT FIRM S.A	23/10/2012
INVESTMENT BANK OF GREECE S.A.	08/01/2013
MIDAS BROKERAGE S.A.	04/04/2016
NATIONAL SECURITIES S.A	26/03/2013
PIRAEUS SECURITIES S.A.	28/09/2013
QUALITY & RELIABILITY SA (CR)	Main Market
BETA SECURITIES S.A.	20/08/2014

List of Stocks under Market Making operations

Securities		Stock Category
Market Maker	Start Market Making	
S.KANAKIS SA (CR)		Main Market
BETA SECURITIES S.A.	01/10/2013	
TITAN CEMENT (CR)		Main Market
EUROBANK SECURITIES INVESTMENT FIRM S.A	23/10/2012	
NATIONAL SECURITIES S.A	17/02/2014	
PIRAEUS SECURITIES S.A.	04/05/2015	
VIOHALCO SA/NV (CB)		Main Market
ALPHA FINANCE INVESTMENT SERVICES S.A.	17/02/2014	
MERIT SECURITIES S.A	17/03/2014	

Underlying Asset				Derivatives Market													
Price max	Price min	Closing price	change	Delivery Month	Open price	Price max	Price min	Last price	Closing price	Last Bid	Last Ask	Settlement price	Life high	Life low	Trades	Volume	Open Interest
FTSE/Athex Large Cap																	(Trade Unit: 1 Index Point x 5€, Cash Settlement)
162.92	159.09	161.48	-0.41%	May 2016	160.50	163.00	158.50	162.75	162.75	---	---	160.75	172.00	---	192	1,395	16,650
				June 2016	162.25	162.25	158.00	158.00	158.00	---	---	160.75	175.00	---	5	19	741
				July 2016	---	---	---	---	162.75	---	---	---	---	---	---	---	---
				September 2016	---	---	---	---	163.50	---	---	---	---	---	---	---	---
				December 2016	---	---	---	---	164.25	---	---	---	---	---	---	---	---
				March 2017	---	---	---	---	165.00	---	---	---	---	---	---	---	---

Underlying Asset				Derivatives Market													
Price max	Price min	Closing price	change	Delivery Month	Open price	Price max	Price min	Last price	Closing price	Last Bid	Last Ask	Settlement price	Life high	Life low	Trades	Volume	Open Interest
ALPHA BANK (CR)				(Contract Size: 100 Securities, Physical Delivery)													
2.03	1.87	1.91	-4.50%	June 2016	1.98	2.02	1.88	1.92	1.92	---	---	1.91	2.68	---	346	5,876	5,369
				September 2016	1.98	1.98	1.98	1.98	1.98	---	---	1.91	---	2.26	3	7	11
				December 2016	---	---	---	---	2.03	---	---	---	---	---	---	---	---
				March 2017	---	---	---	---	2.04	---	---	---	---	---	---	---	---
CC HBC AG (CR)				(Contract Size: 100 Securities, Physical Delivery)													
18.16	17.72	17.82	-1.76%	June 2016	---	---	---	---	18.19	---	---	17.81	18.99	---	---	---	49
				September 2016	---	---	---	---	18.28	---	---	---	---	---	---	---	---
				December 2016	---	---	---	---	18.37	---	---	---	---	---	---	---	---
				March 2017	---	---	---	---	18.47	---	---	---	---	---	---	---	---
CORINTH PIPEWORKS SA (CR)				(Contract Size: 100 Securities, Physical Delivery)													
0.900	0.880	0.899	1.70%	June 2016	---	---	---	---	0.887	---	---	0.917	0.965	---	---	---	694
				September 2016	---	---	---	---	0.891	---	---	---	---	---	---	---	---
				December 2016	---	---	---	---	0.895	---	---	---	---	---	---	---	---
				March 2017	---	---	---	---	0.900	---	---	---	---	---	---	---	---
ELLAKTOR (CR)				(Contract Size: 100 Securities, Physical Delivery)													
1.29	1.23	1.27	0.00%	June 2016	1.26	1.28	1.26	1.26	1.26	---	---	1.26	1.46	---	10	56	1,400
				September 2016	---	---	---	---	1.28	---	---	---	---	---	---	---	---
				December 2016	---	---	---	---	1.29	---	---	---	---	---	---	---	---
				March 2017	---	---	---	---	1.29	---	---	---	---	---	---	---	---
EUROBANK ERGASIAS (CR)				(Contract Size: 100 Securities, Physical Delivery)													
0.763	0.725	0.740	-0.67%	June 2016	0.741	0.762	0.725	0.740	0.740	---	---	0.743	1.16	---	320	5,154	24,358
				September 2016	---	---	---	---	0.751	---	---	0.746	0.880	---	---	---	101
				December 2016	---	---	---	---	0.755	---	---	---	---	---	---	---	---
				March 2017	---	---	---	---	0.758	---	---	---	---	---	---	---	---
EYDAP S.A. (CR)				(Contract Size: 100 Securities, Physical Delivery)													
4.68	4.54	4.65	1.53%	June 2016	4.62	4.63	4.62	4.63	4.63	---	---	4.67	4.73	---	4	42	232
				September 2016	---	---	---	---	4.62	---	---	---	---	---	---	---	---
				December 2016	---	---	---	---	4.64	---	---	---	---	---	---	---	---
				March 2017	---	---	---	---	4.66	---	---	---	---	---	---	---	---
FOLLI FOLLIE (CR)				(Contract Size: 100 Securities, Physical Delivery)													
18.35	18.00	18.00	-1.04%	June 2016	18.12	18.29	18.04	18.04	18.04	---	---	17.84	18.34	---	10	13	148
				September 2016	---	---	---	---	18.33	---	---	---	---	---	---	---	---
				December 2016	---	---	---	---	18.43	---	---	---	---	---	---	---	---
				March 2017	---	---	---	---	18.52	---	---	---	---	---	---	---	---
GEK TERNA (CR)				(Contract Size: 100 Securities, Physical Delivery)													
1.71	1.68	1.71	1.18%	June 2016	1.72	1.72	1.69	1.69	1.69	---	---	1.72	1.79	---	13	90	6,984
				September 2016	---	---	---	---	1.70	---	---	---	---	---	---	---	---
				December 2016	---	---	---	---	1.71	---	---	---	---	---	---	---	---
				March 2017	---	---	---	---	1.72	---	---	---	---	---	---	---	---

Underlying Asset				Derivatives Market													
Price max	Price min	Closing price	change	Delivery Month	Open price	Price max	Price min	Last price	Closing price	Last Bid	Last Ask	Settlement price	Life high	Life low	Trades	Volume	Open Interest
GRIVALIA PROPERTIES (CR)				(Contract Size: 100 Securities, Physical Delivery)													
7.57	7.40	7.50	2.32%	June 2016	---	---	---	---	7.35	---	---	7.51	7.61	---	---	---	156
				September 2016	---	---	---	---	7.39	---	---	---	---	---	---	---	---
				December 2016	---	---	---	---	7.42	---	---	---	---	---	---	---	---
				March 2017	---	---	---	---	7.46	---	---	---	---	---	---	---	---
HELLENIC EXCHANGES-A.S.E. (CR)				(Contract Size: 100 Securities, Physical Delivery)													
5.01	4.75	4.98	5.96%	June 2016	4.70	4.93	4.70	4.86	4.86	---	---	4.86	5.35	---	54	203	944
				September 2016	---	---	---	---	4.74	---	---	---	---	---	---	---	---
				December 2016	---	---	---	---	4.76	---	---	---	---	---	---	---	---
				March 2017	---	---	---	---	4.78	---	---	---	---	---	---	---	---
HELLENIC PETROLEUM (CR)				(Contract Size: 100 Securities, Physical Delivery)													
3.87	3.76	3.87	1.58%	June 2016	3.76	3.87	3.76	3.84	3.84	---	---	3.82	4.22	---	29	97	4,311
				September 2016	---	---	---	---	3.84	---	---	3.81	3.76	---	---	---	---
				December 2016	---	---	---	---	3.86	---	---	---	---	---	---	---	---
				March 2017	---	---	---	---	3.88	---	---	---	---	---	---	---	---
INTRALOT (CR)				(Contract Size: 100 Securities, Physical Delivery)													
1.03	0.980	1.02	0.99%	June 2016	0.993	0.993	0.993	0.993	0.993	---	---	1.01	1.19	---	1	2	566
				September 2016	---	---	---	---	1.02	---	---	---	---	---	---	---	---
				December 2016	---	---	---	---	1.02	---	---	---	---	---	---	---	---
				March 2017	---	---	---	---	1.03	---	---	---	---	---	---	---	---
JUMBO SA (CR)				(Contract Size: 100 Securities, Physical Delivery)													
11.51	11.30	11.47	1.87%	June 2016	11.30	11.40	11.30	11.40	11.40	---	---	11.21	11.93	---	4	16	504
				September 2016	---	---	---	---	11.35	---	---	---	---	---	---	---	---
				December 2016	---	---	---	---	11.41	---	---	---	---	---	---	---	---
				March 2017	---	---	---	---	11.46	---	---	---	---	---	---	---	---
MARFIN INVESTMENT GROUP (CR)				(Contract Size: 100 Securities, Physical Delivery)													
0.148	0.140	0.141	1.44%	June 2016	0.139	0.147	0.137	0.142	0.142	---	---	0.142	0.167	---	53	1,713	32,943
				September 2016	---	---	---	---	0.140	---	---	0.129	0.145	---	---	---	100
				December 2016	---	---	---	---	0.141	---	---	---	---	---	---	---	---
				March 2017	---	---	---	---	0.142	---	---	---	---	---	---	---	---
METKA (CR)				(Contract Size: 100 Securities, Physical Delivery)													
6.84	6.61	6.68	-0.74%	June 2016	6.58	6.72	6.58	6.63	6.63	---	---	6.67	7.00	---	16	53	603
				September 2016	---	---	---	---	6.78	---	---	---	---	---	---	---	---
				December 2016	---	---	---	---	6.82	---	---	---	---	---	---	---	---
				March 2017	---	---	---	---	6.85	---	---	---	---	---	---	---	---
MOTOR OIL (CR)				(Contract Size: 100 Securities, Physical Delivery)													
10.02	9.84	9.96	-0.40%	June 2016	9.91	9.99	9.88	9.88	9.88	---	---	9.89	10.15	---	9	36	600
				September 2016	---	---	---	---	10.08	---	---	10.05	9.86	---	---	---	---
				December 2016	---	---	---	---	10.13	---	---	---	---	---	---	---	---
				March 2017	---	---	---	---	10.18	---	---	---	---	---	---	---	---

Underlying Asset				Derivatives Market													
Price max	Price min	Closing price	change	Delivery Month	Open price	Price max	Price min	Last price	Closing price	Last Bid	Last Ask	Settlement price	Life high	Life low	Trades	Volume	Open Interest
MYTILINEOS HOLDINGS (CR)				(Contract Size: 100 Securities, Physical Delivery)													
3.63	3.46	3.50	-0.57%	June 2016	3.52	3.62	3.48	3.57	3.57	---	---	3.50	3.80	---	44	113	3,495
				September 2016	---	---	---	---	3.55	---	---	---	---	---	---	---	---
				December 2016	---	---	---	---	3.57	---	---	---	---	---	---	---	---
				March 2017	---	---	---	---	3.58	---	---	---	---	---	---	---	---
NATIONAL BANK (CR)				(Contract Size: 100 Securities, Physical Delivery)													
0.275	0.254	0.260	-3.35%	June 2016	0.265	0.275	0.255	0.267	0.267	---	---	0.264	0.346	---	285	10,941	45,056
				September 2016	---	---	---	---	0.271	---	---	0.262	0.240	---	---	---	---
				December 2016	---	---	---	---	0.272	---	---	---	---	---	---	---	---
				March 2017	---	---	---	---	0.274	---	---	---	---	---	---	---	---
OPAP (CR)				(Contract Size: 100 Securities, Physical Delivery)													
6.60	6.42	6.60	1.54%	June 2016	6.31	6.40	6.25	6.38	6.38	---	---	6.27	7.25	---	69	228	2,959
				September 2016	---	---	---	---	6.55	---	---	6.30	6.66	---	---	---	---
				December 2016	---	---	---	---	6.58	---	---	---	---	---	---	---	---
				March 2017	---	---	---	---	6.62	---	---	---	---	---	---	---	---
OTE (CR)				(Contract Size: 100 Securities, Physical Delivery)													
8.47	8.15	8.47	1.56%	June 2016	8.26	8.44	8.25	8.43	8.43	---	---	8.28	8.51	---	70	394	2,380
				September 2016	---	---	---	---	8.41	---	---	8.32	7.79	---	---	---	---
				December 2016	---	---	---	---	8.45	---	---	---	---	---	---	---	---
				March 2017	---	---	---	---	8.49	---	---	---	---	---	---	---	---
P.P.A. S.A. (CR)				(Contract Size: 100 Securities, Physical Delivery)													
12.19	11.85	11.92	-0.42%	June 2016	12.20	12.20	12.20	12.20	12.20	---	---	11.93	14.75	---	1	1	486
				September 2016	---	---	---	---	12.06	---	---	---	---	---	---	---	---
				December 2016	---	---	---	---	12.12	---	---	---	---	---	---	---	---
				March 2017	---	---	---	---	12.19	---	---	---	---	---	---	---	---
PIRAEUS BANK (CR)				(Contract Size: 100 Securities, Physical Delivery)													
0.260	0.236	0.260	4.00%	June 2016	0.248	0.260	0.236	0.255	0.255	---	---	0.259	0.303	---	305	9,591	37,207
				September 2016	0.260	0.260	0.260	0.260	0.260	---	---	0.264	0.268	---	1	300	---
				December 2016	---	---	---	---	0.253	---	---	---	---	---	---	---	---
				March 2017	---	---	---	---	0.255	---	---	---	---	---	---	---	---
PPC (CR)				(Contract Size: 100 Securities, Physical Delivery)													
2.95	2.88	2.93	1.03%	June 2016	2.90	2.95	2.88	2.93	2.93	---	---	2.95	3.53	---	63	199	6,261
				September 2016	---	---	---	---	2.92	---	---	---	---	---	---	---	---
				December 2016	---	---	---	---	2.94	---	---	---	---	---	---	---	---
				March 2017	---	---	---	---	2.95	---	---	---	---	---	---	---	---
TERNA ENERGY (CR)				(Contract Size: 100 Securities, Physical Delivery)													
2.80	2.73	2.77	0.00%	June 2016	---	---	---	---	2.78	---	---	2.79	2.85	---	---	---	1,220
				September 2016	---	---	---	---	2.79	---	---	---	---	---	---	---	---
				December 2016	---	---	---	---	2.81	---	---	---	---	---	---	---	---
				March 2017	---	---	---	---	2.82	---	---	---	---	---	---	---	---

Underlying Asset				Derivatives Market													
Price max	Price min	Closing price	change	Delivery Month	Open price	Price max	Price min	Last price	Closing price	Last Bid	Last Ask	Settlement price	Life high	Life low	Trades	Volume	Open Interest
TITAN CEMENT (CR)				(Contract Size: 100 Securities, Physical Delivery)													
19.90	19.43	19.90	1.53%	June 2016	19.49	19.86	19.36	19.86	19.86	---	---	19.65	19.86	---	18	26	179
				September 2016	---	---	---	---	19.75	---	---	19.65	---	18.78	---	---	---
				December 2016	---	---	---	---	19.85	---	---	---	---	---	---	---	---
				March 2017	---	---	---	---	19.95	---	---	---	---	---	---	---	---
VIOHALCO SA/NV (CB)				(Contract Size: 100 Securities, Physical Delivery)													
1.16	1.13	1.14	1.79%	June 2016	1.15	1.17	1.13	1.16	1.16	---	---	1.17	1.30	---	13	44	2,650
				September 2016	---	---	---	---	1.13	---	---	---	---	---	---	---	---
				December 2016	---	---	---	---	1.13	---	---	---	---	---	---	---	---
				March 2017	---	---	---	---	1.14	---	---	---	---	---	---	---	---

Daily Official List

Section 7: Index Options

Year: 137 Trading Day No: 80

Thursday, 28 April, 2016

FTSE/Athex Large Cap

(Trade Unit: 1 Index Point x 5€ - Exercise Style: European, Cash Settlement)

Call Options																	Put Options																			
Exercise Price	May 2016							June 2016							Other Months		May 2016							June 2016							Other Months		Exercise Price			
	Open price	Price max	Price min	Last price	Closing price	Volume	Open Interest	Open price	Price max	Price min	Last price	Closing price	Volume	Open Interest	Volume	Open Interest	Open price	Price max	Price min	Last price	Closing price	Volume	Open Interest	Open price	Price max	Price min	Last price	Closing price	Volume	Open Interest	Volume	Open Interest				
90	-	-	-	-	-	-	-	0.00	0.00	0.00	-	71.50	-	-			-	-	-	-	-	-	-	0.00	0.00	0.00	-	0.01	-	-			90			
95	-	-	-	-	-	-	-	0.00	0.00	0.00	-	66.50	-	-			-	-	-	-	-	-	-	0.00	0.00	0.00	-	0.02	-	-			95			
100	0.00	0.00	0.00	-	61.00	-	-	0.00	0.00	0.00	-	61.50	-	-			0.00	0.00	0.00	-	0.01	-	-	0.00	0.00	0.00	-	0.01	-	-			100			
105	0.00	0.00	0.00	-	56.00	-	-	0.00	0.00	0.00	-	56.50	-	-			0.00	0.00	0.00	-	0.04	-	-	0.00	0.00	0.00	-	0.01	-	-			105			
110	0.00	0.00	0.00	-	51.00	-	-	0.00	0.00	0.00	-	51.50	-	-			0.00	0.00	0.00	-	0.01	-	-	0.00	0.00	0.00	-	0.03	-	-			110			
115	0.00	0.00	0.00	-	46.25	-	-	0.00	0.00	0.00	-	46.50	-	-			0.00	0.00	0.00	-	0.01	-	-	0.00	0.00	0.00	-	0.07	-	-			115			
120	0.00	0.00	0.00	-	41.25	-	-	0.00	0.00	0.00	-	41.50	-	-			0.00	0.00	0.00	-	0.01	-	-	0.00	0.00	0.00	-	0.17	-	-			120			
125	0.00	0.00	0.00	-	36.25	-	-	0.00	0.00	0.00	-	36.75	-	-			0.00	0.00	0.00	-	0.04	-	-	0.00	0.00	0.00	-	0.35	-	-			125			
130	0.00	0.00	0.00	-	31.25	-	30	0.00	0.00	0.00	-	32.00	-	-			0.00	0.00	0.00	-	0.11	-	5	0.00	0.00	0.00	-	0.67	-	-			130			
135	0.00	0.00	0.00	-	26.50	-	-	0.00	0.00	0.00	-	27.50	-	-			0.00	0.00	0.00	-	0.28	-	-	0.00	0.00	0.00	-	1.20	-	-			135			
140	0.00	0.00	0.00	-	21.75	-	-	0.00	0.00	0.00	-	23.50	-	-			0.00	0.00	0.00	-	0.63	-	205	0.00	0.00	0.00	-	2.00	-	40			140			
145	0.00	0.00	0.00	-	17.50	-	-	0.00	0.00	0.00	-	19.50	-	-			0.00	0.00	0.00	-	1.30	-	3	0.00	0.00	0.00	-	3.10	-	12			145			
150	0.00	0.00	0.00	-	13.50	-	43	0.00	0.00	0.00	-	16.00	-	10			0.00	0.00	0.00	-	2.30	-	39	0.00	0.00	0.00	-	4.50	-	-			150			
155	0.00	0.00	0.00	-	10.25	-	1,091	0.00	0.00	0.00	-	13.00	-	-			0.00	0.00	0.00	-	3.90	-	102	0.00	0.00	0.00	-	6.40	-	-			155			
160	0.00	0.00	0.00	-	7.30	-	97	0.00	0.00	0.00	-	10.25	-	210			0.00	0.00	0.00	-	6.10	-	248	0.00	0.00	0.00	-	8.70	-	1			160			
165	0.00	0.00	0.00	-	5.10	-	280	0.00	0.00	0.00	-	7.90	-	30			0.00	0.00	0.00	-	8.80	-	9	0.00	0.00	0.00	-	11.50	-	1			165			
170	3.00	3.00	3.00	3.00	3.00	1	70	0.00	0.00	0.00	-	6.10	-	-			3.00	3.00	0.00	-	12.00	-	-	0.00	0.00	0.00	-	14.50	-	-			170			
175	0.00	0.00	0.00	-	2.20	-	100	0.00	0.00	0.00	-	4.60	-	-			0.00	0.00	0.00	-	16.00	-	-	0.00	0.00	0.00	-	18.00	-	-			175			
180	0.00	0.00	0.00	-	1.30	-	50	0.00	0.00	0.00	-	3.40	-	-			0.00	0.00	0.00	-	20.00	-	-	0.00	0.00	0.00	-	21.75	-	-			180			
185	0.00	0.00	0.00	-	0.79	-	-	0.00	0.00	0.00	-	2.50	-	-			0.00	0.00	0.00	-	24.50	-	-	0.00	0.00	0.00	-	26.00	-	-			185			
190	0.00	0.00	0.00	-	0.45	-	-	0.00	0.00	0.00	-	1.80	-	-			0.00	0.00	0.00	-	29.25	-	-	0.00	0.00	0.00	-	30.25	-	-			190			
195	0.00	0.00	0.00	-	0.25	-	-	0.00	0.00	0.00	-	1.20	-	-			0.00	0.00	0.00	-	34.00	-	-	0.00	0.00	0.00	-	34.75	-	-			195			
200	-	-	-	-	-	-	-	0.00	0.00	0.00	-	0.87	-	-			-	-	-	-	-	-	-	0.00	0.00	0.00	-	39.25	-	-			200			
205	-	-	-	-	-	-	-	0.00	0.00	0.00	-	0.60	-	-			-	-	-	-	-	-	-	0.00	0.00	0.00	-	44.00	-	-			205			
210	-	-	-	-	-	-	-	0.00	0.00	0.00	-	0.41	-	-			-	-	-	-	-	-	-	0.00	0.00	0.00	-	48.75	-	-			210			
215	-	-	-	-	-	-	-	0.00	0.00	0.00	-	0.27	-	-			-	-	-	-	-	-	-	0.00	0.00	0.00	-	53.50	-	-			215			
220	-	-	-	-	-	-	-	0.00	0.00	0.00	-	0.18	-	-			-	-	-	-	-	-	-	0.00	0.00	0.00	-	58.50	-	-			220			
225	-	-	-	-	-	-	-	0.00	0.00	0.00	-	0.12	-	-			-	-	-	-	-	-	-	0.00	0.00	0.00	-	63.50	-	-			225			
230	-	-	-	-	-	-	-	0.00	0.00	0.00	-	0.08	-	-			-	-	-	-	-	-	-	0.00	0.00	0.00	-	68.50	-	-			230			
235	-	-	-	-	-	-	-	0.00	0.00	0.00	-	0.05	-	-			-	-	-	-	-	-	-	0.00	0.00	0.00	-	73.50	-	-			235			
240	-	-	-	-	-	-	-	0.00	0.00	0.00	-	0.03	-	-			-	-	-	-	-	-	-	0.00	0.00	0.00	-	78.50	-	-			240			
245	-	-	-	-	-	-	-	0.00	0.00	0.00	-	0.02	-	-			-	-	-	-	-	-	-	0.00	0.00	0.00	-	83.50	-	-			245			
250	-	-	-	-	-	-	-	0.00	0.00	0.00	-	0.01	-	-			-	-	-	-	-	-	-	0.00	0.00	0.00	-	88.50	-	-			250			
260	0.00	0.00	0.00	-	0.01	-	-	-	-	-	-	-	-	-			0.00	0.00	0.00	-	98.50	-	47	-	-	-	-	-	-	-	-	260				
Totals:							1	1,761	0							250	0	0	0							658	0							54	0	0
Number of Trades:							1		0								0		0								0							0	0	

Hellenic Exchanges – Athens Stock Exchange S.A.

Strategic Communication & Market Analysis Division - Market Analysis Department

Section 7, 1/1

ALPHA BANK (CR)

(Contract Size: 100 Securities, Exercise Style: American, Physical Delivery)

Call Options																	Put Options																			
May 2016								June 2016								Other Months		May 2016								June 2016								Other Months		
Exerise Price	Open price	Price max	Price min	Last price	Closing price	Volume	Open Interest	Open price	Price max	Price min	Last price	Closing price	Volume	Open Interest	Volume	Open Interest	Open price	Price max	Price min	Last price	Closing price	Volume	Open Interest	Open price	Price max	Price min	Last price	Closing price	Volume	Open Interest	Volume	Open Interest	Exerise Price			
0.100						-	-	0.000	0.000	0.000		1.90	-	-								-	-	0.000	0.000	0.000		0.001	-	-			0.001			
0.200						-	-	0.000	0.000	0.000		1.80	-	-								-	-	0.000	0.000	0.000		0.001	-	-			0.002			
0.300						-	-	0.000	0.000	0.000		1.70	-	-								-	-	0.000	0.000	0.000		0.001	-	-			0.003			
0.400						-	-	0.000	0.000	0.000		1.60	-	-								-	-	0.000	0.000	0.000		0.001	-	-			0.004			
0.500						-	-	0.000	0.000	0.000		1.50	-	-								-	-	0.000	0.000	0.000		0.001	-	-			0.005			
0.600						-	-	0.000	0.000	0.000		1.40	-	-								-	-	0.000	0.000	0.000		0.001	-	-			0.006			
0.800						-	-	0.000	0.000	0.000		1.20	-	-								-	-	0.000	0.000	0.000		0.001	-	-			0.008			
0.850						-	-	0.000	0.000	0.000		1.15	-	-								-	-	0.000	0.000	0.000		0.001	-	-			0.009			
0.900	0.000	0.000	0.000		1.10	-	-	0.000	0.000	0.000		1.10	-	-			0.000	0.000	0.000		0.001	-	-	0.000	0.000	0.000		0.002	-	-			0.009			
0.950	0.000	0.000	0.000		1.05	-	-	0.000	0.000	0.000		1.05	-	-			0.000	0.000	0.000		0.001	-	-	0.000	0.000	0.000		0.001	-	-			0.010			
1.000	0.000	0.000	0.000		1.00	-	-	0.000	0.000	0.000		1.00	-	-			0.000	0.000	0.000		0.002	-	-	0.000	0.000	0.000		0.001	-	-			0.010			
1.100	0.000	0.000	0.000		0.901	-	-	0.000	0.000	0.000		0.905	-	-			0.000	0.000	0.000		0.001	-	-	0.000	0.000	0.000		0.002	-	-			0.011			
1.200	0.000	0.000	0.000		0.802	-	-	0.000	0.000	0.000		0.808	-	-			0.000	0.000	0.000		0.001	-	-	0.000	0.000	0.000		0.005	-	-			0.012			
1.300	0.000	0.000	0.000		0.702	-	-	0.000	0.000	0.000		0.714	-	-			0.000	0.000	0.000		0.001	-	-	0.000	0.000	0.000		0.011	-	-			0.013			
1.400	0.000	0.000	0.000		0.605	-	-	0.000	0.000	0.000		0.624	-	-			0.000	0.000	0.000		0.003	-	-	0.000	0.000	0.000		0.021	-	-			0.014			
1.500	0.000	0.000	0.000		0.510	-	-	0.000	0.000	0.000		0.540	-	-			0.000	0.000	0.000		0.008	-	-	0.000	0.000	0.000		0.035	-	-			0.015			
1.600	0.000	0.000	0.000		0.419	-	-	0.000	0.000	0.000		0.461	-	-			0.000	0.000	0.000		0.017	-	-	0.000	0.000	0.000		0.056	-	-			0.016			
1.700	0.000	0.000	0.000		0.336	-	-	0.000	0.000	0.000		0.389	-	-			0.000	0.000	0.000		0.034	-	-	0.000	0.000	0.000		0.084	-	-			0.017			
1.800	0.000	0.000	0.000		0.262	-	-	0.000	0.000	0.000		0.326	-	-			0.000	0.000	0.000		0.059	-	-	0.000	0.000	0.000		0.121	-	-			0.018			
1.900	0.000	0.000	0.000		0.198	-	-	0.000	0.000	0.000		0.270	-	-			0.000	0.000	0.000		0.096	-	-	0.000	0.000	0.000		0.165	-	-			0.019			
2.000	0.000	0.000	0.000		0.146	-	-	0.000	0.000	0.000		0.220	-	-			0.000	0.000	0.000		0.144	-	-	0.000	0.000	0.000		0.215	-	-			0.020			
2.200	0.000	0.000	0.000		0.074	-	-	0.000	0.000	0.000		0.145	-	-			0.000	0.000	0.000		0.271	-	-	0.000	0.000	0.000		0.340	-	-			0.022			
2.400	0.000	0.000	0.000		0.034	-	-	0.000	0.000	0.000		0.093	-	-			0.000	0.000	0.000		0.432	-	-	0.000	0.000	0.000		0.487	-	-			0.024			
2.600	0.000	0.000	0.000		0.014	-	-	0.000	0.000	0.000		0.058	-	-			0.000	0.000	0.000		0.612	-	-	0.000	0.000	0.000		0.652	-	-			0.026			
2.800	0.000	0.000	0.000		0.006	-	-	0.000	0.000	0.000		0.035	-	-			0.000	0.000	0.000		0.804	-	-	0.000	0.000	0.000		0.830	-	-			0.028			
3.000	0.000	0.000	0.000		0.002	-	-	0.000	0.000	0.000		0.021	-	-			0.000	0.000	0.000		1.00	-	-	0.000	0.000	0.000		1.02	-	-			0.030			
3.200	0.000	0.000	0.000		0.001	-	-	0.000	0.000	0.000		0.012	-	-			0.000	0.000	0.000		1.20	-	-	0.000	0.000	0.000		1.21	-	-			0.032			
3.400						-	-	0.000	0.000	0.000		0.007	-	-								-	-	0.000	0.000	0.000		1.40	-	-			0.034			
3.600						-	-	0.000	0.000	0.000		0.004	-	-								-	-	0.000	0.000	0.000		1.60	-	-			0.036			
Totals:						0	0							0	0	0	0							0	0							0	0	0	0	
Number of Trades:						0								0		0								0.00								0		0		

NATIONAL BANK (CR)

(Contract Size: 100 Securities, Exercise Style: American, Physical Delivery)

Call Options																	Put Options																			
May 2016								June 2016								Other Months		May 2016								June 2016								Other Months		
Exercise Price	Open price	Price max	Price min	Last price	Closing price	Volume	Open Interest	Open price	Price max	Price min	Last price	Closing price	Volume	Open Interest	Volume	Open Interest	Open price	Price max	Price min	Last price	Closing price	Volume	Open Interest	Open price	Price max	Price min	Last price	Closing price	Volume	Open Interest	Volume	Open Interest	Exercise Price			
0.050	0.000	0.000	0.000		0.219	-	-	0.000	0.000	0.000		0.219	-	-			0.000	0.000	0.000		0.001	-	-	0.000	0.000	0.000		0.001	-	-			0.001			
0.100	0.000	0.000	0.000		0.169	-	-	0.000	0.000	0.000		0.169	-	-			0.000	0.000	0.000		0.001	-	-	0.000	0.000	0.000		0.001	-	-			0.001			
0.150	0.000	0.000	0.000		0.119	-	-	0.000	0.000	0.000		0.120	-	-			0.000	0.000	0.000		0.003	-	-	0.000	0.000	0.000		0.001	-	-			0.002			
0.200	0.000	0.000	0.000		0.072	-	-	0.000	0.000	0.000		0.075	-	-			0.000	0.000	0.000		0.003	-	-	0.000	0.000	0.000		0.005	-	-			0.002			
0.250	0.000	0.000	0.000		0.036	-	-	0.000	0.000	0.000		0.041	-	-			0.000	0.000	0.000		0.017	-	-	0.000	0.000	0.000		0.021	-	-			0.003			
0.300	0.000	0.000	0.000		0.016	-	-	0.000	0.000	0.000		0.020	-	-			0.000	0.000	0.000		0.046	-	-	0.000	0.000	0.000		0.050	-	-			0.003			
0.350	0.000	0.000	0.000		0.006	-	-	0.000	0.000	0.000		0.009	-	-			0.000	0.000	0.000		0.086	-	-	0.000	0.000	0.000		0.089	-	-			0.004			
0.400	0.000	0.000	0.000		0.002	-	-	0.000	0.000	0.000		0.004	-	-			0.000	0.000	0.000		0.133	-	-	0.000	0.000	0.000		0.134	-	-			0.004			
0.450	0.000	0.000	0.000		0.001	-	-	0.000	0.000	0.000		0.002	-	-			0.000	0.000	0.000		0.181	-	-	0.000	0.000	0.000		0.182	-	-			0.005			
0.500	0.000	0.000	0.000		0.001	-	-	0.000	0.000	0.000		0.001	-	-			0.000	0.000	0.000		0.231	-	-	0.000	0.000	0.000		0.231	-	-			0.005			
0.550	0.000	0.000	0.000		0.001	-	-	0.000	0.000	0.000		0.003	-	-			0.000	0.000	0.000		0.281	-	-	0.000	0.000	0.000		0.281	-	-			0.006			
0.600						-	-	0.000	0.000	0.000		0.001	-	-								-	-	0.000	0.000	0.000		0.331	-	-			0.006			
0.700						-	-	0.000	0.000	0.000		0.001	-	-								-	-	0.000	0.000	0.000		0.431	-	-			0.007			
0.800						-	-	0.000	0.000	0.000		0.001	-	-								-	-	0.000	0.000	0.000		0.531	-	-			0.008			
0.900						-	-	0.000	0.000	0.000		0.001	-	-								-	-	0.000	0.000	0.000		0.631	-	-			0.009			
1.000						-	-	0.000	0.000	0.000		0.001	-	-								-	-	0.000	0.000	0.000		0.731	-	-			0.010			
1.100						-	-	0.000	0.000	0.000		0.001	-	-								-	-	0.000	0.000	0.000		0.831	-	-			0.011			
1.200						-	-	0.000	0.000	0.000		0.001	-	-								-	-	0.000	0.000	0.000		0.931	-	-			0.012			
1.300						-	-	0.000	0.000	0.000		0.001	-	-								-	-	0.000	0.000	0.000		1.03	-	-			0.013			
1.400						-	-	0.000	0.000	0.000		0.001	-	-								-	-	0.000	0.000	0.000		1.13	-	-			0.014			
Totals:						0	0							0	0	0	0							0	0							0	0			
Number of Trades:						0								0		0								0.00								0		0		

OPAP (CR)

(Contract Size: 100 Securities, Exercise Style: American, Physical Delivery)

Call Options																	Put Options																			
May 2016								June 2016								Other Months		May 2016								June 2016								Other Months		
Exercise Price	Open price	Price max	Price min	Last price	Closing price	Volume	Open Interest	Open price	Price max	Price min	Last price	Closing price	Volume	Open Interest	Volume	Open Interest	Open price	Price max	Price min	Last price	Closing price	Volume	Open Interest	Open price	Price max	Price min	Last price	Closing price	Volume	Open Interest	Volume	Open Interest	Exercise Price			
3.600						-	-	0.000	0.000	0.000		2.91	-	-								-	-	0.000	0.000	0.000		0.001	-	-			0.036			
3.800						-	-	0.000	0.000	0.000		2.71	-	-								-	-	0.000	0.000	0.000		0.001	-	-			0.038			
4.000	0.000	0.000	0.000		2.51	-	-	0.000	0.000	0.000		2.51	-	-			0.000	0.000	0.000		0.001	-	-	0.000	0.000	0.000		0.003	-	-			0.040			
4.400	0.000	0.000	0.000		2.11	-	-	0.000	0.000	0.000		2.12	-	-			0.000	0.000	0.000		0.001	-	-	0.000	0.000	0.000		0.003	-	-			0.044			
4.800	0.000	0.000	0.000		1.71	-	-	0.000	0.000	0.000		1.73	-	-			0.000	0.000	0.000		0.001	-	-	0.000	0.000	0.000		0.012	-	-			0.048			
5.200	0.000	0.000	0.000		1.31	-	-	0.000	0.000	0.000		1.35	-	-			0.000	0.000	0.000		0.006	-	-	0.000	0.000	0.000		0.039	-	-			0.052			
5.600	0.000	0.000	0.000		0.939	-	-	0.000	0.000	0.000		1.01	-	-			0.000	0.000	0.000		0.032	-	30	0.000	0.000	0.000		0.098	-	-			0.056			
6.000	0.000	0.000	0.000		0.610	-	-	0.000	0.000	0.000		0.724	-	-			0.000	0.000	0.000		0.103	-	170	0.000	0.000	0.000		0.208	-	-			0.060			
6.400	0.000	0.000	0.000		0.355	-	-	0.000	0.000	0.000		0.491	-	-			0.000	0.000	0.000		0.247	-	5	0.000	0.000	0.000		0.374	-	-			0.064			
6.800	0.000	0.000	0.000		0.183	-	-	0.000	0.000	0.000		0.313	-	-			0.000	0.000	0.000		0.475	-	-	0.000	0.000	0.000		0.596	-	-			0.068			
7.200	0.000	0.000	0.000		0.082	-	-	0.000	0.000	0.000		0.192	-	60			0.000	0.000	0.000		0.775	-	-	0.000	0.000	0.000		0.875	-	-			0.072			
7.600	0.000	0.000	0.000		0.033	-	-	0.000	0.000	0.000		0.113	-	-			0.000	0.000	0.000		1.13	-	-	0.000	0.000	0.000		1.20	-	-			0.076			
8.000	0.000	0.000	0.000		0.012	-	-	0.000	0.000	0.000		0.064	-	-			0.000	0.000	0.000		1.51	-	-	0.000	0.000	0.000		1.55	-	-			0.080			
8.400	0.000	0.000	0.000		0.004	-	-	0.000	0.000	0.000		0.034	-	-			0.000	0.000	0.000		1.90	-	-	0.000	0.000	0.000		1.92	-	-			0.084			
8.800	0.000	0.000	0.000		0.001	-	-	0.000	0.000	0.000		0.018	-	-			0.000	0.000	0.000		2.30	-	-	0.000	0.000	0.000		2.31	-	-			0.088			
9.200						-	-	0.000	0.000	0.000		0.009	-	-								-	-	0.000	0.000	0.000		2.70	-	-			0.092			
9.600						-	-	0.000	0.000	0.000		0.004	-	-								-	-	0.000	0.000	0.000		3.10	-	-			0.096			
10.000						-	-	0.000	0.000	0.000		0.002	-	-								-	-	0.000	0.000	0.000		3.50	-	-			0.100			
Totals:						0	0						0	60	0	0						0	205					0	10	0	0					
Number of Trades:						0							0		0							0.00					0		0							

OTE (CR)

(Contract Size: 100 Securities, Exercise Style: American, Physical Delivery)

Call Options																	Put Options																			
May 2016								June 2016								Other Months		May 2016								June 2016								Other Months		
Exercise Price	Open price	Price max	Price min	Last price	Closing price	Volume	Open Interest	Open price	Price max	Price min	Last price	Closing price	Volume	Open Interest	Volume	Open Interest	Open price	Price max	Price min	Last price	Closing price	Volume	Open Interest	Open price	Price max	Price min	Last price	Closing price	Volume	Open Interest	Volume	Open Interest	Exercise Price			
4.800	0.000	0.000	0.000		3.55	-	-	0.000	0.000	0.000		3.55	-	-			0.000	0.000	0.000		0.001	-	-	0.000	0.000	0.000		0.001	-	-			0.048			
5.200	0.000	0.000	0.000		3.15	-	-	0.000	0.000	0.000		3.16	-	-			0.000	0.000	0.000		0.001	-	-	0.000	0.000	0.000		0.001	-	-			0.052			
5.600	0.000	0.000	0.000		2.75	-	-	0.000	0.000	0.000		2.76	-	-			0.000	0.000	0.000		0.001	-	-	0.000	0.000	0.000		0.002	-	-			0.056			
6.000	0.000	0.000	0.000		2.35	-	-	0.000	0.000	0.000		2.37	-	-			0.000	0.000	0.000		0.001	-	-	0.000	0.000	0.000		0.008	-	-			0.060			
6.400	0.000	0.000	0.000		1.95	-	-	0.000	0.000	0.000		1.98	-	-			0.000	0.000	0.000		0.002	-	-	0.000	0.000	0.000		0.025	-	-			0.064			
6.800	0.000	0.000	0.000		1.56	-	-	0.000	0.000	0.000		1.62	-	-			0.000	0.000	0.000		0.009	-	-	0.000	0.000	0.000		0.060	-	-			0.068			
7.200	0.000	0.000	0.000		1.18	-	-	0.000	0.000	0.000		1.28	-	-			0.000	0.000	0.000		0.033	-	-	0.000	0.000	0.000		0.123	-	-			0.072			
7.600	0.000	0.000	0.000		0.841	-	-	0.000	0.000	0.000		0.983	-	-			0.000	0.000	0.000		0.091	-	-	0.000	0.000	0.000		0.222	-	-			0.076			
8.000	0.000	0.000	0.000		0.558	-	-	0.000	0.000	0.000		0.731	-	-			0.000	0.000	0.000		0.208	-	-	0.000	0.000	0.000		0.369	-	-			0.080			
8.400	0.000	0.000	0.000		0.340	-	-	0.000	0.000	0.000		0.526	-	-			0.000	0.000	0.000		0.390	-	-	0.000	0.000	0.000		0.564	-	-			0.084			
8.800	0.000	0.000	0.000		0.190	-	-	0.000	0.000	0.000		0.366	-	-			0.000	0.000	0.000		0.640	-	-	0.000	0.000	0.000		0.804	-	-			0.088			
9.200	0.000	0.000	0.000		0.097	-	-	0.000	0.000	0.000		0.246	-	-			0.000	0.000	0.000		0.948	-	-	0.000	0.000	0.000		1.08	-	-			0.092			
9.600	0.000	0.000	0.000		0.046	-	-	0.000	0.000	0.000		0.160	-	-			0.000	0.000	0.000		1.30	-	-	0.000	0.000	0.000		1.40	-	-			0.096			
10.000	0.000	0.000	0.000		0.020	-	-	0.000	0.000	0.000		0.102	-	-			0.000	0.000	0.000		1.67	-	-	0.000	0.000	0.000		1.74	-	-			0.100			
11.000	0.000	0.000	0.000		0.002	-	-	0.000	0.000	0.000		0.029	-	-			0.000	0.000	0.000		2.66	-	-	0.000	0.000	0.000		2.67	-	-			0.110			
12.000						-	-	0.000	0.000	0.000		0.007	-	-								-	-	0.000	0.000	0.000		3.66	-	-			0.120			
13.000						-	-	0.000	0.000	0.000		0.002	-	-								-	-	0.000	0.000	0.000		4.66	-	-			0.130			
14.000						-	-	0.000	0.000	0.000		0.001	-	-								-	-	0.000	0.000	0.000		5.66	-	-			0.140			
Totals:						0	0						0	0	0	0						0	0									0	10	0	0	
Number of Trades:							0						0		0							0.00								0		0				

PIRAEUS BANK (CR)

(Contract Size: 100 Securities, Exercise Style: American, Physical Delivery)

[illegible]

PPC (CR)

(Contract Size: 100 Securities, Exercise Style: American, Physical Delivery)

Call Options																	Put Options																							
Exerise Price	May 2016							June 2016							Other Months			May 2016							June 2016							Other Months			Exerise Price					
	Open price	Price max	Price min	Last price	Closing price	Volume	Open Interest	Open price	Price max	Price min	Last price	Closing price	Volume	Open Interest	Volume	Open Interest	Open price	Price max	Price min	Last price	Closing price	Volume	Open Interest	Open price	Price max	Price min	Last price	Closing price	Volume	Open Interest	Volume	Open Interest								
1.800	0.000	0.000	0.000		1.10	-	-	0.000	0.000	0.000		1.11	-	-			0.000	0.000	0.000		0.001	-	-	0.000	0.000	0.000		0.001	-	-			0.018							
1.900	0.000	0.000	0.000		1.00	-	-	0.000	0.000	0.000		1.01	-	-			0.000	0.000	0.000		0.001	-	-	0.000	0.000	0.000		0.002	-	-			0.019							
2.000	0.000	0.000	0.000		0.903	-	-	0.000	0.000	0.000		0.909	-	-			0.000	0.000	0.000		0.002	-	-	0.000	0.000	0.000		0.004	-	-			0.020							
2.200	0.000	0.000	0.000		0.704	-	-	0.000	0.000	0.000		0.720	-	-			0.000	0.000	0.000		0.001	-	-	0.000	0.000	0.000		0.014	-	-			0.022							
2.400	0.000	0.000	0.000		0.511	-	-	0.000	0.000	0.000		0.547	-	-			0.000	0.000	0.000		0.008	-	-	0.000	0.000	0.000		0.040	-	-			0.024							
2.600	0.000	0.000	0.000		0.335	-	-	0.000	0.000	0.000		0.394	-	-			0.000	0.000	0.000		0.032	-	-	0.000	0.000	0.000		0.087	-	-			0.026							
2.800	0.000	0.000	0.000		0.194	-	-	0.000	0.000	0.000		0.272	-	-			0.000	0.000	0.000		0.090	-	-	0.000	0.000	0.000		0.165	-	-			0.028							
3.000	0.000	0.000	0.000		0.097	-	5	0.000	0.000	0.000		0.179	-	-			0.000	0.000	0.000		0.194	-	150	0.000	0.000	0.000		0.271	-	-			0.030							
3.200	0.000	0.000	0.000		0.043	-	-	0.000	0.000	0.000		0.111	-	-			0.000	0.000	0.000		0.339	-	-	0.000	0.000	0.000		0.404	-	-			0.032							
3.400	0.000	0.000	0.000		0.017	-	-	0.000	0.000	0.000		0.066	-	-			0.000	0.000	0.000		0.514	-	-	0.000	0.000	0.000		0.558	-	-			0.034							
3.600	0.000	0.000	0.000		0.006	-	-	0.000	0.000	0.000		0.038	-	-			0.000	0.000	0.000		0.703	-	-	0.000	0.000	0.000		0.731	-	-			0.036							
3.800	0.000	0.000	0.000		0.002	-	-	0.000	0.000	0.000		0.021	-	-			0.000	0.000	0.000		0.900	-	-	0.000	0.000	0.000		0.915	-	-			0.038							
4.000	0.000	0.000	0.000		0.002	-	-	0.000	0.000	0.000		0.011	-	-			0.000	0.000	0.000		1.10	-	-	0.000	0.000	0.000		1.11	-	-			0.040							
4.400	0.000	0.000	0.000		0.001	-	-	0.000	0.000	0.000		0.003	-	-			0.000	0.000	0.000		1.50	-	-	0.000	0.000	0.000		1.50	-	-			0.044							
4.800						-	-	0.000	0.000	0.000		0.001	-	-								-	-	0.000	0.000	0.000		1.90	-	-			0.048							
5.200						-	-	0.000	0.000	0.000		0.001	-	-								-	-	0.000	0.000	0.000		2.30	-	-			0.052							
5.600						-	-	0.000	0.000	0.000		0.001	-	-								-	-	0.000	0.000	0.000		2.70	-	-			0.056							
6.000						-	-	0.000	0.000	0.000		0.001	-	-								-	-	0.000	0.000	0.000		3.10	-	-			0.060							
6.400						-	-	0.000	0.000	0.000		0.001	-	-								-	-	0.000	0.000	0.000		3.50	-	-			0.064							
6.800						-	-	0.000	0.000	0.000		0.001	-	-								-	-	0.000	0.000	0.000		3.90	-	-			0.068							
7.200						-	-	0.000	0.000	0.000		0.002	-	-								-	-	0.000	0.000	0.000		4.30	-	-			0.072							
Totals:							0	5								0	0	0	0								0	150								0	50	0	0	
Number of Trades:							0								0	0								0.00								0								0

Lending Products	Underlying Title	Multilateral Transactions[1]					Bilateral Transactions[2]		Stock Borrowing through OTC (volume)[3]
		Open Interest[5]	Volume(Offered)	Average Weighted	Transactions volume	Average Weighted	Transactions Volume	Average Weighte	Transactions Volume
AEGNBOR	AEGEAN AIRLINES (CR)	500	7,178	5.31%	---	---	---	---	11,756
ALPHABOR	ALPHA BANK (CR)	93,220	87	5.35%	---	---	---	---	2,447,593
AETFBOR	ALPHA ETF FTSE Athex Large Cap	---	---	---	---	---	---	---	---
ALMYBOR	ALUMIL (CR)	---	---	---	---	---	---	---	---
ASCOBOR	AS COMPANY SA (CR)	---	---	---	---	---	---	---	---
IATRBOR	ATHENS MEDICAL CENTER SA (CR)	---	37,904	5.31%	---	---	---	---	---
OTOELBOR	AUTOHELLAS SA (CR)	---	1,361	5.31%	---	---	---	---	---
BOCBOR	BANK OF CYPRUS (CR)	---	17	5.33%	---	---	---	---	2,008
EEEBOR	CC HBC AG (CR)	5,446	1	5.65%	---	---	---	---	70,546
CENTRBOR	CENTRIC HOLDINGS (CR)	---	16,000	5.31%	---	---	---	---	---
SOLKBOR	CORINTH PIPEWORKS SA (CR)	---	---	---	---	---	---	---	---
PLAKRBOR	CRETE PLASTICS SA (CR)	---	---	---	---	---	---	---	---
ELLAKTORBOR	ELLAKTOR (CR)	300	55,824	5.31%	---	---	---	---	160
ANEMOSBOR	ELTECH ANEMOS S.A. (CR)	---	---	---	---	---	---	---	---
ELTONBOR	ELTON SA (CR)	---	---	---	---	---	---	---	---
EUROBBOR	EUROBANK ERGASIAS (CR)	5,000	3,306	5.31%	---	---	15,000	0.01%	1,789,495
EUROCBOR	EUROCONSULTANTS S.A. (CR)	---	---	---	---	---	---	---	---
EUPICBOR	EUROPEAN RELIANCE INSUR. (CR)	---	---	---	---	---	---	---	---
EYDAPBOR	EYDAP S.A. (CR)	2,000	343	5.65%	---	---	---	---	17,780
FLEXOBOR	FLEXOPACK SA (CR)	---	---	---	---	---	---	---	---
FFGRPBOR	FOLLI FOLLIE (CR)	---	78,320	5.31%	---	---	---	---	718,921
FOYRKBOR	FOURLIS (CR)	---	5,130	5.31%	---	---	---	---	3,850
GEKTERNABOR	GEK TERNA (CR)	500	33,413	5.31%	---	---	---	---	---
SARBOR	GR. SARANTIS SA (CR)	---	1,769	5.31%	---	---	---	---	---
EUPROBOR	GRIVALIA PROPERTIES (CR)	400	67,582	5.31%	---	---	---	---	32,742
XAKOBOR	HALKOR SA (CB)	---	50,550	5.31%	---	---	---	---	---
EXAEBOR	HELLENIC EXCHANGES-A.S.E. (CR)	22,584	367,546	5.31%	1,000	2.65%	---	---	110,443
ELPEBOR	HELLENIC PETROLEUM (CR)	---	157,750	5.31%	---	---	---	---	44,796
HYGEIABOR	HYGEIA SA (CR)	---	48,700	5.31%	---	---	---	---	---
IASOBOR	IASO SA (CR)	---	---	---	---	---	---	---	---
IKTINBOR	IKTINOS HELLAS SA (CR)	---	---	---	---	---	---	---	---

Stock Lending Notes

- [1] - Multilateral contracts Lending or Borrowing as per Methods 8-1, 8-2 and 8-3-3 (According to ATHEX BoD Resolution No.17)
- [2] - Billateral Contracts Lending or Borrowing as per Methods 8-3-1 and 8-3-2 (According to ATHEX BoD Resolution No.20)
- [3] - The information concerning OTC Stock Borrowing Transactions is based on the statements of the Dematerialised Securities System (DSS) operators involved and refers to volumes that have been registered up until the previous working day.
- [4] - Average Price (Volume weighted)
- [5] - The Data concerning Open Interest before the start of trading session

Lending Products	Underlying Title	Multilateral Transactions[1]					Bilateral Transactions[2]		Stock Borrowing through OTC (volume)[3]
		Open Interest[5]	Volume(Offered)	Average Weighted	Transactions volume	Average Weighted	Transactions Volume	Average Weighte	Transactions Volume
LYKBOR	INFORM P. LYKOS SA (CR)	---	---	---	---	---	---	---	---
INTRKBOR	INTRACOM HOLDINGS (CR)	---	168,546	5.31%	---	---	---	---	---
INLOTBOR	INTRALOT (CR)	5,000	63,099	5.31%	---	---	---	---	803
AVAXBOR	J & P - AVAX SA (CR)	281	20,335	5.31%	281	2.92%	---	---	---
BELABOR	JUMBO SA (CR)	46,801	43,691	5.31%	---	---	---	---	26,365
KLEMBOR	KLEEMAN HELLAS SA (CR)	---	23,512	5.31%	---	---	---	---	---
KORRESBOR	KORRES (CR)	---	---	---	---	---	---	---	---
KRIBOR	KRI-KRI S.A. (CR)	---	47,768	5.31%	---	---	---	---	---
KYRMBOR	KYRIAKIDIS MARBLES SA (CR)	---	5,737	5.31%	---	---	---	---	---
LAMDABOR	LAMDA DEVELOPMENT SA (CR)	---	111	5.31%	---	---	---	---	10,377
MIGBOR	MARFIN INVESTMENT GROUP (CR)	---	73,440	5.31%	---	---	---	---	744,474
METKKBOR	METKA (CR)	5,650	10,911	5.31%	---	---	---	---	965
MLSBOR	MLS MULTIMEDIA SA (CR)	---	9,118	5.31%	---	---	---	---	---
MOHBOR	MOTOR OIL (CR)	14,798	25,018	5.31%	600	3.15%	---	---	37,254
MYTILBOR	MYTILINEOS HOLDINGS (CR)	7,570	146,557	5.31%	---	---	---	---	---
ETEBOR	NATIONAL BANK (CR)	192,259	36,249	5.31%	---	---	---	---	1,231,568
ETFASEBOR	NBGAM ETF	---	---	---	---	---	---	---	---
ETFGT30PBOR	NBGAM ETF GREECE & TURKEY 30	---	---	---	---	---	---	---	---
OPAPBOR	OPAP (CR)	70,400	16,160	3.31%	---	---	---	---	919,034
HTOBOR	OTE (CR)	45,927	11,908	5.31%	---	---	1,000	0.01%	210,202
PPABOR	P.P.A. S.A. (CR)	---	958	5.31%	---	---	---	---	901
PETROBOR	PETROPOULOS PETROS (CR)	---	---	---	---	---	---	---	---
TPEIRBOR	PIRAEUS BANK (CR)	26,593	36,569	5.31%	10,000	4.11%	---	---	2,960,343
PLAISBOR	PLAISIO COMPUTERS SA (CR)	---	---	---	---	---	---	---	---
PPCBOR	PPC (CR)	12,350	90,569	3.31%	---	---	---	---	1,177,224
QUALBOR	QUALITY & RELIABILITY SA (CR)	---	---	---	---	---	---	---	---
QUESTBOR	QUEST HOLDINGS (CR)	---	---	---	---	---	---	---	---
KAMPBOR	REDS S.A. (CR)	---	---	---	---	---	---	---	---
OLYMPBOR	TECHNICAL OLYMPIC SA (CR)	---	9,039	5.31%	---	---	---	---	---
TENERGYBOR	TERNA ENERGY (CR)	4,525	20,469	5.31%	---	---	---	---	22,000
EYAPSBOR	THESSALONIKA WATER & SEWERAGE	---	798	5.31%	---	---	---	---	---

Stock Lending Notes

- [1] - Multilateral contracts Lending or Borrowing as per Methods 8-1, 8-2 and 8-3-3 (According to ATHEX BoD Resolution No.17)
- [2] - Billateral Contracts Lending or Borrowing as per Methods 8-3-1 and 8-3-2 (According to ATHEX BoD Resolution No.20)
- [3] - The information concerning OTC Stock Borrowing Transactions is based on the statements of the Dematerialised Securities System (DSS) operators involved and refers to volumes that have been registered up until the previous working day.
- [4] - Average Price (Volume weighted)
- [5] - The Data concerning Open Interest before the start of trading session

Lending Products	Underlying Title	Multilateral Transactions[1]					Bilateral Transactions[2]		Stock Borrowing through OTC (volume)[3]
		Open Interest[5]	Volume(Offered)	Average Weighted	Transactions volume	Average Weighted	Transactions Volume	Average Weighted	Transactions Volume
PLATBOR	THRACE PLASTICS SA (CR)	---	42,700	5.31%	---	---	---	---	---
TITKBOR	TITAN CEMENT (CR)	7,800	239,792	5.31%	3,300	2.92%	---	---	3,204
OLTHBOR	TPA SA (CR)	---	263	5.31%	---	---	---	---	---
VIOBOR	VIOHALCO SA/NV (CB)	3,519	54,959	5.31%	---	---	---	---	---

Stock Lending Notes

[1] - Multilateral contracts Lending or Borrowing as per Methods 8-1, 8-2 and 8-3-3 (According to ATHEX BoD Resolution No.17)

[2] - Bilateral Contracts Lending or Borrowing as per Methods 8-3-1 and 8-3-2 (According to ATHEX BoD Resolution No.20)

[3] - The information concerning OTC Stock Borrowing Transactions is based on the statements of the Dematerialised Securities System (DSS) operators involved and refers to volumes that have been registered up until the previous working day.

[4] - Average Price (Volume weighted)

[5] - The Data concerning Open Interest before the start of trading session

Sectors codification for listed companies

533	-	Exploration & Production	537	-	Integrated Oil & Gas
1353	-	Commodity Chemicals	1357	-	Specialty Chemicals
1753	-	Aluminum	1755	-	Nonferrous Metals
1757	-	Steel	1775	-	General Mining
2353	-	Building Materials & Fixtures	2357	-	Heavy Construction
2723	-	Containers & Packaging	2727	-	Diversified Industrials
2733	-	Electrical Components & Equipment	2753	-	Commercial Vehicles & Trucks
2757	-	Industrial Machinery	2773	-	Marine Transportation
2777	-	Transportation Services	2791	-	Business Support Services
2797	-	Industrial Suppliers	3535	-	Distillers & Vintners
3537	-	Soft Drinks	3573	-	Farming Fishing & Plantations
3577	-	Food Products	3722	-	Durable Household Products
3726	-	Furnishings	3728	-	Home Construction
3747	-	Toys	3763	-	Clothing & Accessories
3765	-	Footwear	3767	-	Personal Products
3785	-	Tobacco	4533	-	Health Care Providers
4535	-	Medical Equipment	4577	-	Pharmaceuticals
5337	-	Food Retailers & Wholesalers	5371	-	Apparel Retailers
5373	-	Broadline Retailers	5375	-	Home Improvement Retailers
5379	-	Specialty Retailers	5553	-	Broadcasting & Entertainment
5555	-	Media Agencies	5557	-	Publishing
5751	-	Airlines	5752	-	Gambling
5753	-	Hotels	5755	-	Recreational Services
5757	-	Restaurants & Bars	5759	-	Travel & Tourism
6535	-	Fixed Line Telecommunications	6575	-	Mobile Telecommunications
7535	-	Conventional Electricity	7537	-	Alternative Electricity
7577	-	Water	8355	-	Banks
8534	-	Insurance Brokers	8536	-	Property & Casualty Insurance
8633	-	Real Estate Holding & Development	8637	-	Real Estate Services
8671	-	Industrial & Office REITs	8675	-	Specialty REITs
8775	-	Specialty Finance	8777	-	Investment Services
8985	-	Equity Investment Instruments	9533	-	Computer Services
9535	-	Internet	9537	-	Software
9572	-	Computer Hardware	9574	-	Electronic Office Equipment
9578	-	Telecommunications Equipment	12003	-	ETF



ATHEXGROUP
Όμιλος Χρηματιστηρίου Αθηνών

Λεωφ. Αθηνών 110 104 42 Αθήνα
110, Athinon Ave. GR 104 42 Athens
tel. (+30)210-33.66.800, fax (+30)210-33.66.101
www.athegroup.gr