



**ATHEXGROUP**  
Athens Exchange Group

Hellenic Exchanges – Athens Stock Exchange S.A.

“

**2016**

δελτιο ημερησιων συναλλαγων

*daily official list*

Wednesday, 28 September, 2016

Year: 137 Trading Day No: 184

”

**Disclaimer:**

Hellenic Exchanges-Athens Stock Exchange S.A. endeavours to ensure that the data and other material ("Information") presented on the Daily Official List are accurate and complete, but it is not liable for any errors or omissions of data or /and for the accuracy, credibility, updating and completeness of the aforesaid information nor it has any liability arising directly or indirectly from the use of the above Information.

The Company is not liable for the accuracy of the data included in listed companies' announcements. Only the sender of such an announcement is fully and solely liable for any infringement of third party's rights from the content of such announcement. All contents of the Daily Official List are provided only for information purposes and do not constitute investment advice or solicitation to invest in securities or other products listed for trading on the Exchange.

You acknowledge and agree that the Company is the owner of any property rights related to any Information appearing on the Daily Official List including intellectual property rights copyright, trademarks, etc.

The above data are a property of the Hellenic Exchanges-Athens Exchange and are copyright protected. Users are forbidden to reproduce, modify, copy, sale, transmit or redistribute, by all reproduction means and methods, part or the whole of the above data, without reference to their source.

The commercial exploitation of these data is, also, forbidden by third parties. Hellenic Exchanges-Athens Exchange does not carry any responsibility, direct or indirect, derived from usage or accidental alteration of the above data when used by third parties.

---

**Hellenic Exchanges – Athens Stock Exchange S.A.**

110 Athinon Ave., 10442 Athens, Tel: (210) 33.66.800, Fax: (210) 32.13.938

[www.helix.gr](http://www.helix.gr)

---

**Thessalonica Stock Exchange Center (T.S.E.C)**

16-18 Katouni Str., Thessalonica 546 25 Tel: (2310) 567.667, Fax: (2310) 530.545

**Athex Members Guarantee Fund**

14-16 Fidiou Str., Athens 106 78, Tel: (210) 33.04.682, Fax: (210) 33.04.155

**Hellenic Republic Capital Market Commission**

1 Kolokotroni Str. & 1 Stadiou Str., Athens 10562 Tel: (210) 33.77.100 Fax: (210) 33.77.173

---

**Table of Contents**

---

**Section 1: Statistical Figures of Securities, Derivatives and Lending**

Summary of Markets

Athex Indices

Analytic Figures for Athex Market's Boards and Categories

Trading Details by Athex Sectors and Financial Instruments (ETFs)

Top 10 best &amp; worst performing Shares

Derivatives Summary

**Section 2: Analytic Figures of Shares Transactions**

Analytic Figures of Shares Transactions

Shares' Notes

**Section 3: Figures of Securities Transactions**

Securities Blocks Details

Shares Rights Details

Stock Borrowing

Shares Forced Sales

Forced Sales Registered Shares

Exchange Traded Funds (ETFs) Characteristics

**Section 5: Bonds traded in Fixed Income Assets Market**

Corporate Bonds

Government Bonds

Treasury Bills &amp; Zero Coupon Government Bonds

Government Bonds Traded with the Open Outcry Method

State Banks Bonds

**Section 6: Additional Infos**

Athex &amp; ATHEXClear Members List

List of Stocks under Market Making operations

**Section 7: Derivatives Market Analytic Figures**

Index Futures

Stock Futures

Index Options

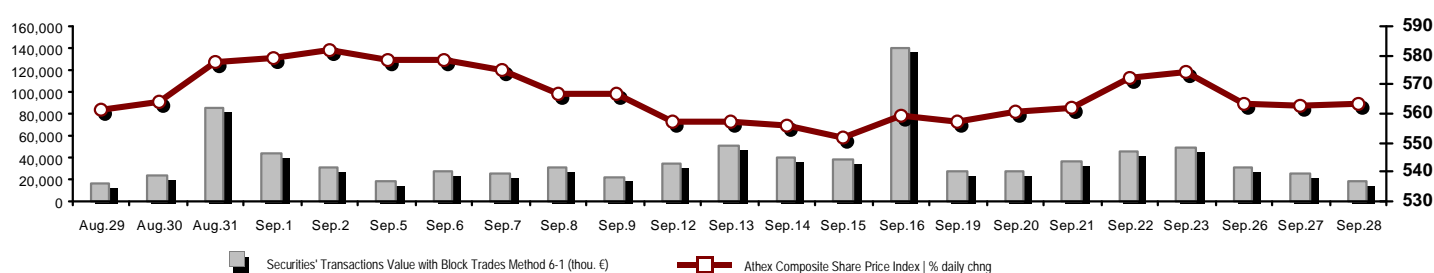
Stock Options

Stock Lending Analytic Figures

**Appendix A: Sectors codification for listed companies**

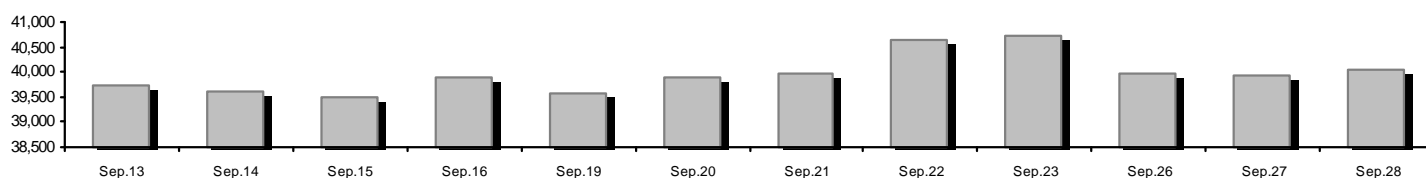
## Summary of Markets

Athex Composite Share Price Index vs Shares and Derivatives Transactions Value

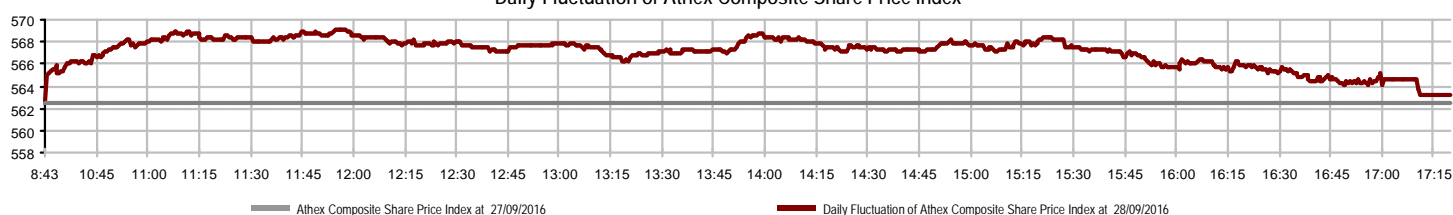


Athex Capitalisation (mill. €) **: 40,036.62		Derivatives Total Open Interest 263,759	
Daily change: mill. €   %	100.18 0.25%	in Index Futures   % daily chng	5,930 1.33%
Yearly Avg Capitalisation: mill. €   % chng prev year Avg	40,657.86 -6.87%	in Stock Futures   % daily chng	255,404 0.55%
Athex Composite Share Price Index   % daily chng	563.15 0.13%	in Index Options   % daily chng	1,776 18.40%
Athex Composite Share Price Index Capitalisation (mill. €)	35,578.69	in Stock Options   % daily chng	649 4.85%
Daily change (mill. €)	65.99		
Securities' Transactions Value with Block Trades Method 6-1 ( 18,830.50		Derivatives Contracts Volume: 18,179	
Daily change: %	-7,275.18 -27.87%	Daily change: pieces   %	-21,172 -53.80%
YtD Avg Trans. Value: thou. €   % chng prev year Avg	63,350.95 -25.97%	YtD Avg Derivatives Contracts % chng prev year Avg	61,685 -6.12%
Blocks Transactions Value of Method 6-1 (thou. €)	252.50	Derivatives Trades Number:	1,275
Blocks Transactions Value of Method 6-2 & 6-3 (thou. €)	0.00	Daily change: number   %	-420 -24.78%
Bonds Transactions Value (thou.€)	0.00	YtD Avg Derivatives Trades number % chng prev year Avg	2,621 -19.80%
Securities' Transactions Volume with Block Trades Method 6-1 (th 58,051.97		Lending Total Open Interest 1,263,056	
Daily change: thou. pieces   %	-219.73 -0.38%	Daily change: pieces   %	67,450 5.64%
YtD Avg Volume: % chng prev year Avg	103,828.25 -46.08%	Lending Volume (Multilateral/Bilateral)	70,800
Blocks Transactions Volume of Method 6-1 (thou. Pieces)	25.00	Daily change: pieces   %	69,800 6980.00%
Blocks Transactions Volume of Method 6-2 & 6-3 (thou. Pieces)	0.00	Multilateral Lending	70,800
Bonds Transactions Volume	0.00	Bilateral Lending	0
Securities' Trades Number with Block Trades Method 6-1 10,584		Lending Trades Number: 21	
Daily change: number   %	-2,372 -18.31%	Daily change: %	13 162.50%
YtD Avg Derivatives Trades number % chng prev year Avg	19,867 -26.39%	Multilateral Lending Trades Number	21
Number of Blocks Method 6-1	1	Bilateral Lending Trades Number	0
Number of Blocks Method 6-2 & 6-3	0		
Number of Bonds Transactions	0		

Athex Capitalisation (mill. €) \*\*



Daily Fluctuation of Athex Composite Share Price Index



## Athex Indices

Index name	28/09/2016	27/09/2016	pts.	%	Min	Max	Year min	Year max	Year change
Athex Composite Share Price Index	563.15 #	562.40	0.75	0.13%	562.40	569.15	420.82	658.99	-10.80% €
FTSE/Athex Large Cap	1,497.74 #	1,495.92	1.82	0.12%	1,495.92	1,519.07	1,075.20	1,868.90	-18.31% €
FTSE/Athex Mid Cap Index	732.00 #	731.03	0.97	0.13%	730.98	736.91	515.21	820.16	-10.34% €
FTSE/ATHEX-CSE Banking Index	475.68 €	482.64	-6.96	-1.44%	475.68	496.54	271.40	938.40	-46.67% €
FTSE/ATHEX Global Traders Index Plus	1,360.76 #	1,355.11	5.65	0.42%	1,353.98	1,366.28	1,031.55	1,388.54	6.76% #
FTSE/ATHEX Global Traders Index	1,453.52 #	1,447.13	6.39	0.44%	1,447.13	1,462.74	1,129.41	1,579.62	1.88% #
FTSE/ATHEX Mid & Small Cap Factor-Weighted Ind	1,192.66 €	1,195.06	-2.40	-0.20%	1,179.18	1,195.67	1,066.64	1,261.08	-5.01% €
Greece & Turkey 30 Price Index	452.00 #	450.09	1.91	0.42%	450.09	453.20	396.10	527.12	-2.63% €
ATHEX Mid & SmallCap Price Index	2,059.60 €	2,060.46	-0.86	-0.04%	2,052.09	2,077.90	1,848.24	2,213.61	-5.17% €
FTSE/Athex Market Index	368.60 #	368.15	0.45	0.12%	368.15	373.68	265.17	457.53	-18.08% €
FTSE Med Index	4,722.59 €	4,737.23	-14.64	-0.31%			4,396.47	5,530.53	-14.61% €
Athex Composite Index Total Return Index	855.17 #	854.03	1.14	0.13%	854.03	864.29	626.16	986.51	-8.97% €
FTSE/Athex Large Cap Total Return	2,109.23 #	2,106.66	2.57	0.12%			1,574.40	2,572.00	-16.59% €
FTSE/ATHEX Large Cap Net Total Return	629.17 #	628.40	0.77	0.12%	628.40	638.13	443.06	773.01	-16.72% €
FTSE/Athex Mid Cap Total Return	902.50 #	901.30	1.20	0.13%			669.55	1,008.35	-10.09% €
FTSE/ATHEX-CSE Banking Total Return Index	454.54 €	461.19	-6.65	-1.44%			318.40	895.04	-47.74% €
Greece & Turkey 30 Total Return Index	569.59 #	565.10	4.49	0.79%			0.00	660.49	-1.06% €
Hellenic Mid & Small Cap Index	708.47 #	705.10	3.37	0.48%	705.10	710.32	560.15	786.32	-0.99% €
FTSE/Athex Banks	628.49 €	637.69	-9.20	-1.44%	628.49	656.05	358.60	1,239.80	-46.67% €
FTSE/Athex Financial Services	887.66 €	894.60	-6.94	-0.78%	887.66	910.22	634.69	1,179.09	-8.86% €
FTSE/Athex Industrial Goods & Services	1,527.56 #	1,510.91	16.65	1.10%	1,509.68	1,539.47	1,369.56	1,844.00	-16.28% €
FTSE/Athex Retail	3,199.90 #	3,157.53	42.37	1.34%	3,118.08	3,214.51	1,826.41	3,252.50	26.68% #
FTSE/ATHEX Real Estate	2,403.83 #	2,395.26	8.57	0.36%	2,391.17	2,422.74	2,154.15	2,621.31	-0.67% €
FTSE/Athex Personal & Household Goods	5,784.75 #	5,777.22	7.53	0.13%	5,777.22	5,903.14	4,433.32	6,333.20	14.25% #
FTSE/Athex Food & Beverage	7,596.93 #	7,556.30	40.63	0.54%	7,556.30	7,638.14	5,952.97	7,638.14	2.99% #
FTSE/Athex Basic Resources	1,720.09 #	1,676.09	44.00	2.63%	1,667.30	1,724.49	1,200.24	1,997.24	5.22% #
FTSE/Athex Construction & Materials	2,166.38 #	2,155.53	10.85	0.50%	2,142.50	2,170.45	1,500.04	2,343.14	15.33% #
FTSE/Athex Oil & Gas	2,380.56 #	2,369.62	10.94	0.46%	2,355.97	2,384.68	1,860.37	2,657.42	-1.30% €
FTSE/Athex Chemicals	8,236.09 #	7,890.86	345.23	4.38%	7,890.86	8,285.40	6,190.46	8,285.40	20.90% #
FTSE/Athex Media	1,664.72 #	1,643.91	20.81	1.27%	1,643.91	1,664.72	1,290.16	2,247.37	12.68% #
FTSE/Athex Travel & Leisure	1,352.63 #	1,321.52	31.11	2.35%	1,321.52	1,360.48	982.74	1,426.44	-5.07% €
FTSE/Athex Technology	651.42 #	648.23	3.19	0.49%	638.25	655.45	489.05	658.99	13.88% #
FTSE/Athex Telecommunications	2,160.77 #	2,158.01	2.76	0.13%	2,152.51	2,188.29	1,802.93	2,669.99	-15.04% €
FTSE/Athex Utilities	1,424.81 €	1,444.52	-19.71	-1.36%	1,424.27	1,467.95	1,136.34	1,734.68	-14.96% €
Athex All Share Index	141.18 #	140.83	0.34	0.24%	141.18	141.18	113.39	165.22	-14.14% €
Hellenic Corporate Bond Index	107.15 #	107.11	0.04	0.04%			96.90	107.30	6.64% #
Hellenic Corporate Bond Price Index	97.01 #	96.99	0.02	0.02%			90.43	97.44	2.38% #

Note 1: FTSE/Med 100, Greece & Turkey 30 Rt., Hellenic Corporate Bond Price Index and Hellenic Corporate Bond Index closing prices refer to the previous trading day of 26/09/2016.

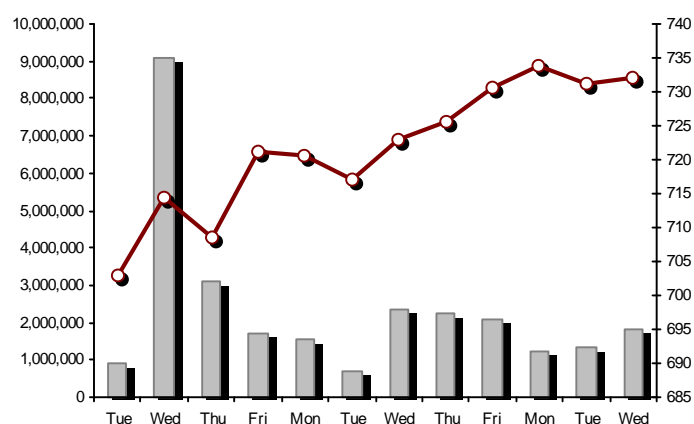
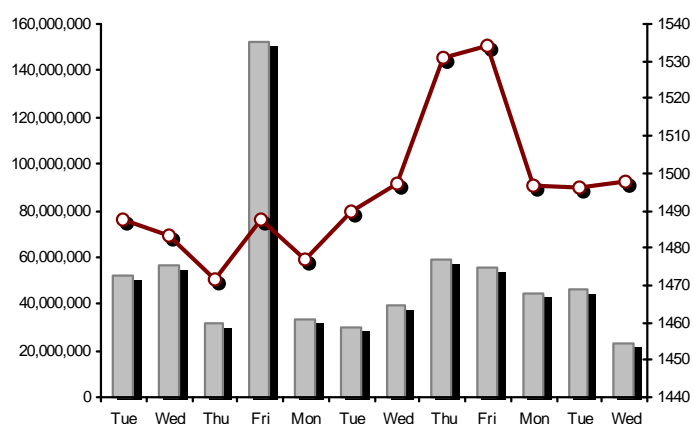
Note 2: The Hellenic Mid & Small Cap Index is a Customized index calculated by the Athens Exchange.

## Athex Indices

FTSE/Large Cap

28/09/2016: 0.12% FTSE/Athex Mid Cap Index

28/09/2016: 0.13%

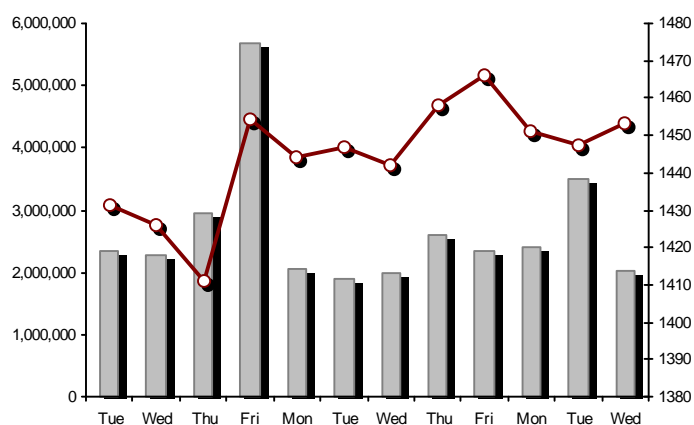
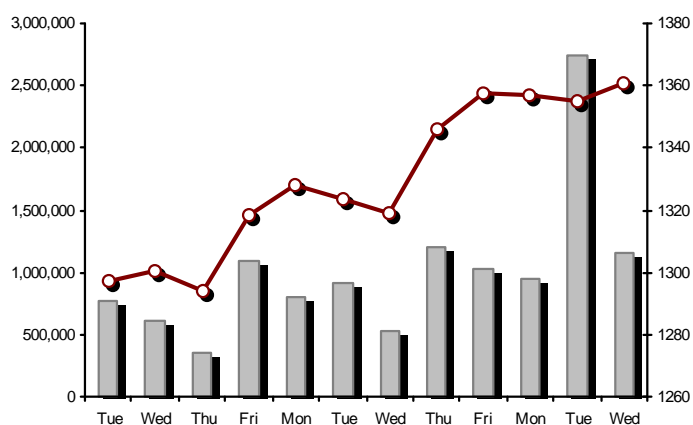


FTSE/ATHEX Global Traders Index Plus

28/09/2016: 0.42%

FTSE/ATHEX Global Traders Index

28/09/2016: 0.44%

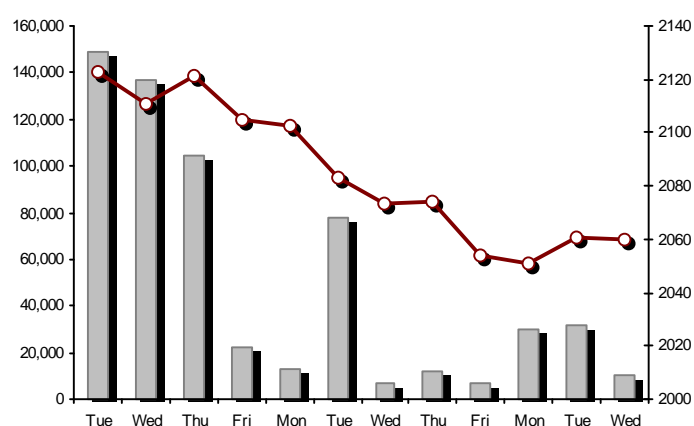
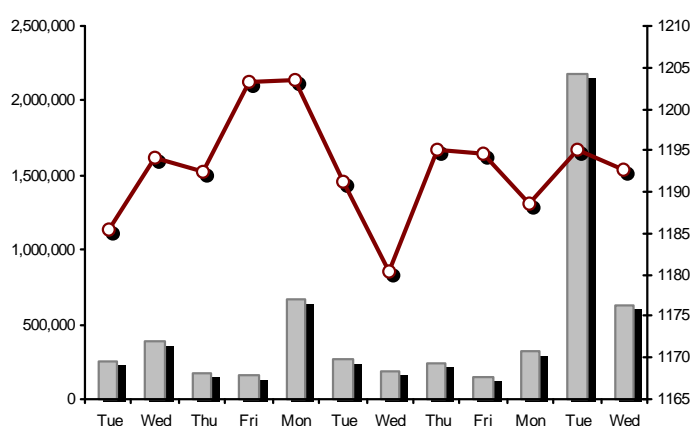


FTSE/ATHEX Mid &amp; Small Cap Factor-Weighted Index

28/09/2016: -0.20%

ATHEX Mid &amp; SmallCap Price Index

28/09/2016: -0.04%



Indices volume of transactions

Indices closing prices

## Analytic Figures for Athex Market's Boards and Categories

	Total Traded Securities	Main Market	Low Dispersion	Other Categories (*)	Exchange Traded Funds (ETFs)	Warrants
Totals	120	98	5	11	3	3
Gain / Lose / Same:	52 / 37 / 31	43 / 34 / 21	1 / 2 / 2	6 / 1 / 4	2 / 0 / 1	0 / 0 / 3
Athex Capitalisation (mill. €) **	40,036.62	37,220.44	2,687.90	128.27		
Daily Average Trans/ons Value(thou.€)	63,350.95	63,247.30	112.21	9.68	16.67	11.94
Transactions Value	18,830.50	18,707.84	60.60	6.20	0.46	55.41
Main Board:	18,578.00	18,455.34	60.60	6.20	0.46	55.41
Blocks Board 6_2_3:	252.50	252.50	0.00	0.00	0.00	0.00
Forced Sales Board:	0.00	0.00	0.00	0.00	0.00	0.00
Special Terms Board:	0.00	0.00	0.00	0.00	0.00	0.00
Daily Average Transactions Volume	103,828,251	98,393,067	115,774	91,897	7,525	5,308,134
Transactions Volume	58,051,973	29,697,930	5,078	118,380	33	28,230,552
Main Board:	58,026,973	29,672,930	5,078	118,380	33	28,230,552
Blocks Board 6_2_3:	25,000	25,000	0	0	0	0
Forced Sales Board:	0	0	0	0	0	0
Special Terms Board:	0	0	0	0	0	0
Daily Average Number of Trades	19,867	19,718	31	52	4	62
Number of Trades	10,584	10,439	23	66	6	50
Main Board:	10,583	10,438	23	66	6	50
Blocks Board 6_2_3:	1	1	0	0	0	0
Forced Sales Board:	0	0	0	0	0	0
Special Terms Board:	0	0	0	0	0	0

(\*) Summarised Transactions figures for Under Deletion and Under Supervision Categories.(\*\*) The Market Capitalization of the Companies that belong in the Under Supervision Status is not included.

## Trading Details by Athex Sectors and Financial Instruments (ETFs)

Code	Sectors	Gain / Lose / Same	Number of Trades	Transactions Volume	Transactions Value	% of Total Trans. Value
8300	- Banks	2 / 3 / 5	4,456	53,226,777	8,929,955.65	47.42%
1700	- Basic Resources	5 / 1 / 0	1,045	583,455	828,271.04	4.40%
1300	- Chemicals	1 / 0 / 1	19	3,521	5,662.18	0.03%
2300	- Construction & Materials	6 / 3 / 3	398	295,307	566,647.76	3.01%
12000	- Financial Instruments	2 / 0 / 1	6	33	460.26	0.00%
8700	- Financial Services	0 / 2 / 1	427	1,625,603	443,508.26	2.36%
3500	- Food & Beverage	6 / 4 / 2	106	49,898	196,230.97	1.04%
4500	- Health Care	2 / 1 / 1	37	58,606	9,690.79	0.05%
2700	- Industrial Goods & Services	6 / 5 / 3	723	424,649	742,838.58	3.94%
8500	- Insurance	0 / 0 / 1	4	4,302	7,783.68	0.04%
5500	- Media	1 / 1 / 1	5	1,269	33.79	0.00%
500	- Oil & Gas	2 / 0 / 1	244	166,609	610,705.57	3.24%
3700	- Personal & Household Goods	3 / 4 / 5	312	180,315	917,190.85	4.87%
8600	- Real Estate	2 / 2 / 1	118	35,401	177,805.24	0.94%
5300	- Retail	1 / 2 / 0	223	26,391	507,946.07	2.70%
9500	- Technology	5 / 3 / 3	159	58,621	59,449.49	0.32%
6500	- Telecommunications	1 / 0 / 0	643	225,567	1,780,091.23	9.45%
5700	- Travel & Leisure	5 / 4 / 1	864	770,193	2,232,271.15	11.85%
7500	- Utilities	2 / 2 / 1	783	283,664	813,730.14	4.32%

## Top 10 best &amp; worst performing Shares

Main Market					
With positive Price change	Closing price	change	With negative Price change	Closing price	change
HELLENIC CABLES SA (CR)	1.18	15.69% #	ALPHA BANK (CR)	1.49	-2.61% €
CORINTH PIPEWORKS (CR)	0.627	10.39% #	EUROBANK ERGASIAS (CR)	0.500	-2.15% €
PETROPOULOS PETROS (CR)	4.17	3.47% #	INTRALOT (CR)	0.970	-2.02% €
MYTILINEOS HOLDINGS (CR)	3.91	2.62% #	PPC (CR)	2.61	-1.88% €
OPAP (CR)	7.68	2.54% #	HALKOR SA (CB)	0.341	-1.73% €
VIOHALCO SA/NV (CB)	1.23	2.50% #	EYDAP S.A. (CR)	5.33	-1.66% €
QUEST HOLDINGS (CR)	5.15	1.98% #	KYRIAKIDIS MARBLES SA (CR)	3.00	-1.64% €
P.P.A. S.A. (CR)	12.40	1.89% #	BANK OF CYPRUS (CR)	0.140	-1.41% €
GRIVALIA PROPERTIES (CR)	6.83	1.49% #	LAMDA DEVELOPMENT SA (CR)	4.51	-1.31% €
FOLLI FOLLIE (CR)	21.90	1.34% #	HELLENIC EXCHANGES-A.S.E. (CR)	4.10	-0.97% €
With the highest Transactions Value	Value (thou. €)	change	With the highest Transactions Volume	Volume	change
EUROBANK ERGASIAS (CR)	3,302.57	-2.15% €	NATIONAL BANK (CR)	6,690,765	0.55% #
ALPHA BANK (CR)	3,164.59	-2.61% €	EUROBANK ERGASIAS (CR)	6,358,843	-2.15% €
OTE (CR)	1,780.09	0.13% #	PIRAEUS BANK (CR)	6,181,082	0.00% -
OPAP (CR)	1,505.96	2.54% #	ATTICA BANK S.A. (CR)	2,284,490	0.00% -
NATIONAL BANK (CR)	1,240.46	0.55% #	ALPHA BANK (CR)	2,070,032	-2.61% €
PIRAEUS BANK (CR)	847.46	0.00% -	MARFIN INVESTMENT GROUP (CR)	1,566,883	0.00% -
PPC (CR)	652.52	-1.88% €	BANK OF CYPRUS (CR)	1,410,396	-1.41% €
MYTILINEOS HOLDINGS (CR)	588.73	2.62% #	INTRALOT (CR)	501,944	-2.02% €
FOURLIS (CR)	541.13	0.00% -	CORINTH PIPEWORKS (CR)	390,687	10.39% #
FOLLI FOLLIE (CR)	506.50	1.34% #	PPC (CR)	242,660	-1.88% €

Note: Stocks that are not included in the "Low Dispersion" and "Under Supervision" categories, and the transactions value is more than 10,000 €.



## Derivatives Summary

	Number of Trades	Volume	Open Interest
Index Futures	196	771	5,930
FTSE/Athex Large Cap	196	771	5,930
Stock Futures	1,042	17,033	255,404
ALPHA BANK (CR)	154	1,961	14,788
CC HBC AG (CR)	2	10	87
CORINTH PIPEWORKS (CR)	101	1,007	720
ELLAKTOR (CR)	7	31	1,661
EUROBANK ERGASIAS (CR)	229	4,473	23,961
EYDAP S.A. (CR)	5	17	422
FOLLI FOLLIE (CR)	7	19	173
GEK TERNA (CR)	5	16	6,735
GRIVALIA PROPERTIES (CR)	2	2	54
HELLENIC EXCHANGES-A.S.E. (CR)	5	13	371
HELLENIC PETROLEUM (CR)	13	20	3,748
INTRALOT (CR)	1	2	629
JUMBO SA (CR)	5	27	107
MARFIN INVESTMENT GROUP (CR)	68	1,315	41,456
METKA (CR)	1	5	81
MOTOR OIL (CR)	2	3	347
MYTILINEOS HOLDINGS (CR)	45	148	2,532
NATIONAL BANK (CR)	71	2,493	67,343
OPAP (CR)	45	78	1,436
OTE (CR)	94	337	6,023
P.P.A. S.A. (CR)	4	4	649
PIRAEUS BANK (CR)	76	4,622	72,782
PPC (CR)	90	415	5,730
TERNA ENERGY (CR)	0	0	1,185
TITAN CEMENT (CR)	3	3	119
VIOHALCO SA/NV (CB)	7	12	2,265
Index Options	34	345	1,776
FTSE/Athex Large Cap	34	345	1,776
Stock Options	3	30	649
ALPHA BANK (CR)	0	0	130
NATIONAL BANK (CR)	0	0	0
OPAP (CR)	2	20	170
OTE (CR)	1	10	179
PIRAEUS BANK (CR)	0	0	0
PPC (CR)	0	0	170
Total Derivatives Traded	1,275	18,179	263,759

Number of Outstanding Securities	Nominal Value	Dividends [1]			Date of Last Coupon		Note	Shares	Closing price	% change	Previous closing price/date	Open price	Price min	Price max	Last price	Avg price	Last Bid [7]	Last Ask [7]	P/E after	Year	Volume	Trades	Transactions Value[8]	Company Mkt Value (thou. €)	Year low	Year high	Sector[ 4]
		2013	2014	2015	Dividend [2]	Right																					

Warrants

1,141,734,167	---	---	---	11/06/2013	---	ALPHA BANK (W)	0.001	---	0.001	27/09/2016	0.001	0.001	0.002	0.001	0.002	1640247@0.001	13515274@0.002	---	2015	28,005,265	34	54,402.37	2,289,952.99	0.001	0.004	8355
245,745,725	---	---	---	27/06/2013	---	NATIONAL BANK (W)	0.005	---	0.005	27/09/2016	0.004	0.004	0.006	0.005	0.005	104743@0.005	741887@0.006	---	2015	175,287	15	956.43	1,673,928.73	0.002	0.025	8355
843,637,022	---	---	---	03/07/2013	---	PIRAEUS BANK (W)	0.001	---	0.001	27/09/2016	0.001	0.001	0.001	0.001	0.001	---	15881394@0.001	---	2015	50,000	1	50.00	1,178,979.74	0.001	0.002	8355

Main Market

71,417,100	0.650	---	0.7	0.7	13/05/2016	27/06/2014	---	AEGEAN AIRLINES (CR)	6.22	0.97	#	6.16	27/09/2016	6.20	6.20	6.31	6.22	6.24	1627@6.20	236@6.23	8.19	2015	35,066	217	218,959.25	444,214.36	6.09	9.06	5751
11,178,000	1.12	---	---	---	21/04/2010	15/12/2014	---	AEOLIAN INVESTMENT FUND (CR)	0.504	-10.00	€	0.560	27/09/2016	0.528	0.504	0.528	0.504	0.509	250@0.520	100@0.565	---	2015	500	3	254.40	5,633.71	0.384	0.701	8985
1,536,881,200	0.300	---	---	---	07/04/2008	27/11/2015	---	ALPHA BANK (CR)	1.49	-2.61	€	1.53	27/09/2016	1.55	1.49	1.57	1.49	1.53	294120@1.48	43901@1.50	---	2015	2,070,032	733	3,164,587.73	2,289,952.99	0.949	2.75	8355
22,016,250	0.370	---	---	---	15/07/2009	11/05/2000	---	ALUMIL (CR)	0.219	0.46	#	0.218	27/09/2016	0.218	0.218	0.219	0.219	0.218	50@0.199	150@0.200	---	2015	105	3	22.94	4,821.56	0.101	0.290	1753
417,608	16.00	0.8	---	---	29/04/2014	05/03/2013	---	ANDROMEDA SA (CR)	12.68	---	0.12	12.68	27/09/2016	---	---	---	---	---	15@12.00	10@13.68	---	2015	---	---	---	5,295.27	11.53	13.90	8985
13,126,020	0.680	---	---	---	08/07/2010	19/07/2016	---	AS COMPANY SA (CR)	0.660	---	0.660	27/09/2016	---	---	---	---	---	---	450@0.662	2000@0.694	5.62	2015	---	---	---	8,663.17	0.580	0.796	5379
86,735,980	0.310	---	---	---	06/07/2009	02/01/2002	---	ATHENS MEDICAL CENTER SA (CR)	0.628	---	0.628	27/09/2016	---	---	---	---	---	---	---	248@0.627	---	2015	---	---	---	54,470.20	0.539	0.780	4533
2,339,353,394	0.300	---	---	---	04/06/2008	01/12/2015	---	ATTICA BANK S.A. (CR)	0.049	---	0.049	27/09/2016	0.050	0.047	0.054	0.049	0.050	50054@0.048	60384@0.050	---	2015	2,284,490	272	115,176.21	114,628.32	0.037	0.279	8355	
15,300,000	0.300	---	---	---	30/07/2009	13/12/1999	---	ATTICA PUBLICATIONS SA (CR)	0.740	---	0.740	27/09/2016	---	---	---	---	---	---	460@0.666	40@0.813	---	2015	---	---	---	11,322.00	0.706	1.21	5557
48,184,910	0.700	---	---	---	01/07/2008	01/03/2010	---	AUDIO VISUAL ENTERPRISES (CR)	0.080	1.27	#	0.079	27/09/2016	0.080	0.080	0.080	0.080	0.080	---	2000@0.079	---	2015	10	1	0.80	3,854.79	0.028	0.108	5553
12,213,750	0.320	---	0.8	0.85	07/06/2016	22/11/2013	---	AUTOHELLAS SA (CR)	11.70	0.86	#	11.60	27/09/2016	11.78	11.14	11.78	11.70	11.53	1@11.50	13@11.70	9.34	2015	141	5	1,625.58	142,900.88	9.51	12.00	5759
8,922,944,533	0.100	---	---	---	31/05/2011	02/02/2015	4857	BANK OF CYPRUS (CR)	0.140	-1.41	€	0.142	27/09/2016	0.142	0.140	0.143	0.140	0.141	110100@0.139	1365115@0.140	---	2015	1,410,396	59	198,216.96	1,249,212.23	0.121	0.174	8355
19,864,886	5.60	0.672	0.672	0.672	03/03/2016	02/07/2008	---	BANK OF GREECE (CR)	9.85	0.41	#	9.81	27/09/2016	9.85	9.82	9.89	9.85	9.84	150@9.80	100@9.90	---	---	617	15	6,073.15	195,669.13	8.70	11.11	8355
23,986,500	1.05	---	---	---	26/06/2009	15/03/2000	---	BIOKARPET S.A.(CR)	0.270	---	0.270	27/09/2016	0.270	0.270	0.270	0.270	0.270	---	699@0.270	---	2015	1	1	0.27	6,476.36	0.139	0.459	3726	
15,842,391	1.51	---	---	---	15/07/2009	12/05/2000	---	BITROS HOLDING SA (CR)	0.185	---	0.185	27/09/2016	---	---	---	---	---	---	---	169@0.173	---	2015	---	---	---	2,930.84	0.125	0.227	1757
15,816,009	0.300	---	---	---	01/07/2009	17/07/2000	---	BYTE COMPUTER SA (CR)	0.279	2.57	#	0.272	27/09/2016	0.279	0.279	0.279	0.279	0.279	100@0.269	100@0.282	---	2015	100	1	27.90	4,412.67	0.256	0.322	9533
365,203,298	6.70	0.354	0.36	0.4	30/06/2016	29/04/2013	---	CC HBC AG (CR)	20.39	0.54	#	20.28	27/09/2016	20.50	20.33	20.50	20.43	20.42	294@20.30	1622@20.43	---	---	9,291	55	189,689.84	7,446,495.25	15.97	20.50	3537
101,123,806	0.360	---	---	---	22/07/2010	28/06/2011	---	CENTRIC HOLDINGS (CR)	0.094	-7.84	€	0.102	27/09/2016	0.109	0.094	0.109	0.094	0.095	2000@0.092	499@0.104	---	2015	8,265	21	781.09	9,505.64	0.067	0.147	5752
124,170,201	0.780	---	---	---	28/06/2002	07/02/2005	---	CORINTH PIPEWORKS (CR)	0.627	10.39	#	0.568	27/09/2016	0.570	0.553	0.627	0.627	0.577	45@0.624	50@0.628	24.23	2015	390,687	529	225,488.12	77,854.72	0.522	1.03	1757
9,907,500	0.300	---	---	---	06/10/2005	13/02/2002	---	CPI SA (CR)	0.187	---	0.187	27/09/2016	---	---	---	---	---	---	---	1000@0.180	66.52	2015	---	---	---	1,852.70	0.092	0.187	9572
41,068,800	0.420	(0.0667)	(0.03)	0.1205	19/08/2016	17/02/2016	---	CRETE PLASTICS SA (CR)	4.30	---	0.430	27/09/2016	---	---	---	---	---	---	2500@4.35	400@4.73	14.43	2015	---	---	---	176,595.84	3.19	4.55	1357
15,000,000	0.300	---	---	---	06/07/2007	18/07/2000	---	DAIOS PLASTICS SA (CR)	2.90	---	0.290	27/09/2016	---	---	---	---	---	---	50@2.62	59@3.00	---	2015	---	---	---	43,500.00	2.45	2.95	1357
34,720,000	0.310	---	---	---	16/06/2010	01/08/2007	---	DROMEAS SA (CR)	0.097	-8.49	€	0.106	27/09/2016	0.096	0.096	0.097	0.097	0.096	586@0.097	2284@0.108	---	2015	1,714	4	164.66	3,367.84	0.066	0.152	3726
3,873,120	0.300	---	---	---	07/07/2008	04/10/2012	---	DRUCKFARBEN HELLAS (CR)	0.400	---	0.400	27/09/2016	---	---	---	---	---	---	---	---	0.64	2015	---	---	---	1,549.25	0.360	0.550	1357
11,250,000	0.520	---	---	0.04	25/07/2016	09/11/2015	---	EKTER SA (CR)	0.417	-0.95	€	0.421	27/09/2016	0.420	0.416	0.446	0.420	0.421	20@0.420	400@0.444	13.17	2015	4,200	5	1,769.80	4,691.25	0.301	0.499	2357
32,188,050	1.04	---	---	---	21/07/2008	20/01/2000	---	EL. D. MOUZAKIS SA (CB)	0.119	---	0.119	27/09/2016	---	---	---	---	---	---	---	240@0.129	---	2015	---	---	---	3,830.38	0.084	0.215	3763
18,421,516	1.00	---	---	---	07/07/2009	10/09/2010	---	ELASTRON (CR)	0.477	---	0.477	27/09/2016	---	---	---	---	---	---	---	426@0.460	---	2015	---	---	---	8,787.06	0.310	0.638	1757
31,734,530	1.60	---	---	---	09/07/2007	19/07/2006	---	ELGEKA SA (CR)	0.177	---	0.177	27/09/2016	---	---	---	---	---	---	---	210@0.174	---	2015	---	---	---	5,617.01	0.118	0.210	3577
23,828,130	0.500	---	---	0.16	08/06/2016	17/02/2009	---	ELINOIL S.A. (CR)	0.850	---	0.850	27/09/2016	0.850	0.850	0.850	0.850	0.850	1200@0.850	60@0.934	7.45	2015	100,000	4	85,000.00	20,253.91	0.634	1.08	537	
177,001,313	1.03	---	---	---	05/07/2011	20/12/2007	---	ELLAKTOR (CR)	1.31	0.77	#	1.30	27/09/2016	1.30	1.29	1.34	1.31	1.32	2526@1.29	3000@1.31	---	2015	199,671	161	262,583.71	231,871.72	0.857	1.59	2357
82,667,000	0.300	---	---	---	22/07/2014	---	---	ELTECH ANEMOS S.A. (CR)	0.745	0.13	#	0.744	27/09/2016	0.736	0.735	0.745	0.745	0.737	3002@0.736	530@0.745	8.01	2015	5,389	8	3,971.22	61,586.92	0.533	0.780	7537
26,730,187	0.600	0.05	---	---	23/06/2014	30/12/2010	---	ELTON SA (CR)	0.880	---	0.880	27/09/2016	0.890	0.880	0.890	0.880	0.887	50@0.853	800@0.879	15.71	2015	160	4	141.90	23,522.56	0.802	1.00	1353	
14,050,971	0.340	---	---	---	06/07/2011	17/10/2002	---	ELTRAK SA (CR)	1.30	---	0.130	27/09/2016	---	---	---	---	---	---	1600@1.25	150@1.39	25.84	2015	---	---	---	18,266.26	0.990	1.44	2753

Number of Outstanding Securities	Nominal Value	Dividends [1]			Date of Last Coupon Dividend [2]		Note	Shares	Closing price	% change	Previous closing price/date	Open price	Price min	Price max	Last price	Avg price	Last Bid [7]	Last Ask [7]	P/E after	Year	Volume	Trades	Transactions Value[8]	Company Mkt Value (thou. €)	Year low	Year high	Sector[ 4]
--	------------------	---------------	--	--	-------------------------------------	--	------	--------	------------------	----------	--------------------------------	---------------	--------------	--------------	---------------	--------------	-----------------	--------------	--------------	------	--------	--------	--------------------------	--------------------------------	-------------	--------------	---------------

Main Market

3,307,500	0.960	---	---	---	11/08/2010	23/09/2016	---	ELVE SA (CR)	1.47	-0.68	€ 1.48	27/09/2016	1.39	1.35	1.47	1.47	1.40	100@1.42	170@1.47	11.72	2015	729	11	1,021.14	4,862.03	1.31	2.10	3763
2,185,998,765	0.300	---	---	---	02/05/2008	27/11/2015	---	EUROBANK ERGASIAS (CR)	0.500	-2.15	€ 0.511	27/09/2016	0.520	0.500	0.529	0.500	0.519	19824@0.499	3000@0.508	---	2015	6,358,843	2,066	3,302,574.91	1,092,999.38	0.241	1.17	8355
8,623,225	0.600	---	---	---	02/06/2010	30/05/2016	5031	EUROCONSULTANTS S.A. (CR)	0.720	---	↘ 0.720	27/09/2016	0.720	0.720	0.720	0.720	0.720	300@0.652	255@0.710	---	2015	100	1	72.00	6,208.72	0.682	1.82	2791
27,503,677	0.630	---	---	0.06	22/06/2016	18/10/1999	---	EUROPEAN RELIANCE INSUR. (CR)	1.84	---	↘ 1.84	27/09/2016	1.80	1.80	1.84	1.84	1.81	2500@1.79	147@1.84	4.60	2015	4,302	4	7,783.68	50,606.77	1.21	2.10	8536
13,673,200	0.880	---	---	---	18/07/2008	26/07/2001	---	EVROFARMA SA (CR)	0.190	-1.04	€ 0.192	27/09/2016	0.190	0.190	0.190	0.190	0.190	10000@0.174	92@0.185	11.44	2015	1,000	1	190.00	2,597.91	0.120	0.307	3577
106,500,000	0.600	0.36	0.2	0.31	28/06/2016	28/01/2000	---	EYDAP S.A. (CR)	5.33	-1.66	€ 5.42	27/09/2016	5.26	5.26	5.40	5.33	5.32	250@5.27	1152@5.33	12.99	2015	22,806	168	121,253.50	567,645.00	3.60	6.10	7577
52,800,154	0.300	0.2	---	---	20/08/2014	21/06/2004	---	F.G. EUROPE S.A. (CR)	0.575	---	↘ 0.575	27/09/2016	---	---	---	---	---	---	2001@0.559	25.41	2015	---	---	---	30,360.09	0.441	0.700	3722
10,203,575	0.730	---	---	---	16/07/2007	18/10/1999	---	FIERATEX SA (CR)	0.160	---	↘ 0.160	27/09/2016	---	---	---	---	---	---	1033@0.144	---	2015	---	---	---	1,632.57	0.039	0.205	3763
11,720,024	0.540	0.0394	---	---	21/08/2014	04/11/2015	---	FLEXOPACK SA (CR)	2.51	-9.39	€ 2.77	27/09/2016	2.51	2.51	2.51	2.51	2.51	51@2.51	422@2.78	6.68	2015	1	1	2.51	29,417.26	2.10	3.00	2723
4,181,450	0.500	---	---	---	21/08/2000	05/03/2002	---	FLOUR MILLS SARANTOPOULOS SA	0.587	9.93	# 0.534	27/09/2016	0.534	0.534	0.587	0.587	0.552	---	---	---	2015	30	2	16.55	2,454.51	0.362	1.01	3577
66,948,210	0.300	---	0.1005	---	22/09/2015	22/09/2015	---	FOLLI FOLLIE (CR)	21.90	1.34	# 21.61	27/09/2016	21.61	21.34	22.00	21.90	21.78	223@21.49	64@21.90	---	2015	23,254	207	506,502.47	1,466,165.80	12.50	22.26	5379
50,992,322	1.07	---	---	---	21/06/2010	16/07/2002	---	FOURLIS (CR)	3.83	---	↘ 3.83	27/09/2016	3.83	3.83	3.87	3.83	3.83	2720@3.83	1365@3.85	---	2015	141,215	102	541,128.97	195,300.59	2.00	3.96	3722
14,076,360	0.370	---	---	---	19/08/2008	22/07/2003	---	GALAXIDI S.A. (CR)	0.317	9.69	# 0.289	27/09/2016	0.317	0.317	0.317	0.317	0.317	---	700@0.317	31.03	2015	300	1	95.10	4,462.21	0.163	0.570	3573
103,423,291	0.570	---	---	---	01/08/2011	19/04/2016	---	GEK TERNA (CR)	1.82	1.11	# 1.80	27/09/2016	1.83	1.77	1.84	1.82	1.81	2999@1.81	623@1.83	11.43	2015	48,190	106	87,102.08	188,230.39	1.05	2.10	2357
8,418,750	0.300	---	---	0.12	16/12/2015	27/06/2012	---	GEKE SA (CB)	4.90	---	↘ 4.90	27/09/2016	---	---	---	---	---	500@4.41	10@5.08	16.24	2015	---	---	---	41,251.88	3.90	5.60	5753
24,060,000	0.300	0.017	0.02	0.01	11/07/2016	11/07/2016	---	GEN. COMMERCIAL & IND.SA (CR)	0.313	-0.63	€ 0.315	27/09/2016	0.313	0.313	0.313	0.313	0.313	3000@0.320	42@0.330	13.17	2015	700	1	219.10	7,530.78	0.253	0.394	2797
34,770,982	1.55	0.3	0.15	0.16	20/04/2016	27/07/2000	---	GR. SARANTIS SA (CR)	9.85	---	↘ 9.85	27/09/2016	9.85	9.83	9.85	9.85	9.84	100@9.80	71@9.82	31.04	2015	356	8	3,502.62	342,494.17	6.56	10.00	3767
101,260,000	2.13	0.1821	0.3037	0.3134	18/03/2016	08/01/2014	---	GRIVALIA PROPERTIES (CR)	6.83	1.49	# 6.73	27/09/2016	6.73	6.73	6.84	6.83	6.81	13@6.83	318@6.84	12.84	2015	19,352	52	131,717.57	691,605.80	6.46	7.74	8675
8,340,750	1.18	---	---	---	25/06/2009	09/09/2015	---	HAIDEMENOS SA (CR)	0.299	---	↘ 0.299	27/09/2016	---	---	---	---	---	300@0.270	271@0.298	---	2015	---	---	---	2,493.88	0.240	1.04	2791
101,279,627	0.380	---	---	---	26/06/2008	14/07/2006	---	HALKOR SA (CB)	0.341	-1.73	€ 0.347	27/09/2016	0.355	0.336	0.376	0.341	0.351	2300@0.335	200@0.348	---	2015	39,922	86	13,992.85	34,536.35	0.193	0.425	1755
29,546,360	0.710	---	---	---	20/06/2008	23/08/2000	---	HELLENIC CABLES SA (CR)	1.18	15.69	# 1.02	27/09/2016	1.05	1.02	1.18	1.18	1.08	1872@1.18	2550@1.19	---	2015	239,336	319	259,012.68	34,864.70	0.530	1.18	2733
65,368,563	1.08	---	0.21	0.1026	31/05/2016	04/07/2016	---	HELLENIC EXCHANGES-A.S.E. (CR)	4.10	-0.97	€ 4.14	27/09/2016	4.14	4.10	4.19	4.10	4.14	390@4.08	693@4.12	20.81	2015	58,220	163	240,897.50	268,011.11	3.40	5.56	8777
305,635,185	2.18	---	---	---	31/12/2014	01/10/2003	4795	HELLENIC PETROLEUM (CR)	3.78	0.80	# 3.75	27/09/2016	3.75	3.73	3.81	3.78	3.78	544@3.75	421@3.79	41.95	2015	23,112	134	87,336.41	1,155,301.00	2.74	4.33	537
305,732,436	0.410	---	---	---	08/07/2009	28/09/2011	---	HYGEIA SA (CR)	0.140	1.45	# 0.138	27/09/2016	0.140	0.139	0.142	0.140	0.140	171381@0.140	12567@0.143	---	2015	52,349	29	7,354.36	42,802.54	0.078	0.197	4533
65,441,118	0.440	---	---	---	24/11/2014	11/08/2015	---	IASO SA (CR)	0.405	-0.25	€ 0.406	27/09/2016	0.395	0.395	0.415	0.400	0.405	54@0.400	1000@0.410	---	2015	5,697	5	2,307.57	26,503.65	0.360	0.669	4533
8,298,467	0.400	---	---	---	30/08/1993	08/05/2013	---	IDEAL GROUP SA (CR)	0.690	---	↘ 0.690	27/09/2016	0.690	0.690	0.690	0.690	0.690	1565@0.690	130@0.759	-(6)-	2015	35	2	24.15	5,725.94	0.568	0.959	9574
28,580,100	0.400	0.025	---	---	18/08/2014	04/07/2016	---	IKTINOS HELLAS SA (CR)	0.945	---	↘ 0.945	27/09/2016	0.900	0.900	0.945	0.945	0.900	1@0.891	2202@0.940	26.00	2015	393	4	353.84	27,008.19	0.860	1.15	2353
9,090,000	0.900	---	---	---	15/05/2009	13/10/2014	---	ILYDA S.A. (CR)	0.437	---	↘ 0.437	27/09/2016	---	---	---	---	---	---	172@0.394	---	2015	---	---	---	3,972.33	0.397	0.590	9537
20,578,374	0.620	---	0.4	0.07	05/07/2016	18/05/2015	---	INFORM P. LYKOS SA (CR)	0.434	-8.44	€ 0.474	27/09/2016	0.485	0.434	0.485	0.434	0.434	15@0.434	2191@0.475	---	2015	782	8	339.45	8,931.01	0.405	0.620	2791
10,500,000	4.00	---	---	---	---	02/08/2016	---	INTERCONTINENTAL (CR)	5.60	---	↘ 5.60	27/09/2016	---	---	---	---	---	50@3.92	950@5.60	---	---	---	---	---	58,800.00	5.15	5.80	8674
11,233,200	0.730	---	---	---	12/07/2010	30/07/1999	---	INTERTECH SA (CR)	0.172	-0.58	€ 0.173	27/09/2016	0.170	0.170	0.172	0.172	0.170	500@0.170	4494@0.172	---	2015	5,631	5	959.53	1,932.11	0.120	0.376	9572
34,986,430	0.440	---	---	---	25/07/2008	23/02/2010	---	INTERWOOD-XYLEMPORIA (CR)	0.067	---	↘ 0.067	27/09/2016	---	---	---	---	---	7150@0.061	---	---	2015	---	---	---	2,739.38	0.061	0.093	2353
2,566,836	0.440	---	---	---	13/08/2010	09/01/2007	---	INTERWOOD-XYLEMPORIA (PR)	0.154	---	↘ 0.154	27/09/2016	---	---	---	---	---	---	4039@0.139	---	2015	---	---	---	2,739.38	0.154	0.189	2353
23,154,250	1.36	---	---	---	12/08/2008	02/08/2010	---	INTRACOM CONSTR. (CR)	0.568	9.44	# 0.519	27/09/2016	0.568	0.568	0.568	0.568	0.570	---	227@0.468	---	2015	1	1	0.57	13,151.61	0.222	0.575	2357
133,025,996	1.41	---	---	---	03/07/2007	07/01/2002	---	INTRACOM HOLDINGS (CR)	0.271	-1.81	€ 0.276	27/09/2016	0.280	0.268	0.284	0.271	0.273	403@0.269	500@0.277	---	2015	35,213	61	9,612.23	36,050.04	0.245	0.394	9578
158,961,721	0.300	---	---	---	30/05/2013	14/11/2007	---	INTRALOT (CR)	0.970	-2.02	€ 0.990	27/09/2016	0.990	0.970	0.990	0.970	0.979	1383@0.967	251@0.977	---	2015	501,944	122	491,366.21	154,192.87	0.815	1.21	5752
77,654,850	0.580	---	---	---	01/07/2011	21/02/2003	---	J & P - AVAX SA (CR)	0.285	---	↘ 0.285	27/09/2016	0.293	0.284	0.293	0.285	0.285	3052@0.285	2000@0.288	---	2015	11,908	20	3,398.47	22,131.63	0.208	0.490	2357
136,059,759	0.880	0.18	0.18	---	29/07/2016	05/03/2014	---	JUMBO SA (CR)	10.89	0.18	# 10.87	27/09/2016	10.87	10.87	11.18	10.89	10.98	1060@10.88	50@11.10	19.84	2015	27,785	149	305,192.88	1,481,690.78	8.75	12.32	3747

Number of Outstanding Securities	Nominal Value	Dividends [1]			Date of Last Coupon		Note	Shares	Closing price	% change	Previous closing price/date	Open price	Price min	Price max	Last price	Avg price	Last Bid [7]	Last Ask [7]	P/E after	Year	Volume	Trades	Transactions Value[8]	Company Mkt Value (thou. €)	Year low	Year high	Sector[ 4]		
		2013	2014	2015	Dividend [2]	Right																							
Main Market																													
9,742,920	0.400	0.01	0.01	0.01	12/08/2016	14/07/2000	---	KARAMOLEGOS SA (CR)	1.46	---	1.46	27/09/2016	1.46	1.46	1.46	1.46	594@1.46	50@1.56	-(6)-	2015	15	1	21.90	14,224.66	0.601	1.65	3577		
14,679,792	1.68	---	---	---	24/06/2014	04/09/2000	---	KARATZIS SA (CR)	3.80	---	3.80	27/09/2016	3.65	3.65	3.80	3.80	3.69	300@3.55	200@3.80	10.91	2015	350	4	1,290.00	55,783.21	3.40	3.95	2723	
13,202,756	0.350	---	---	---	01/07/2004	05/08/2014	---	KEKROPS SA (CR)	0.262	-1.50	0.266	27/09/2016	0.260	0.260	0.262	0.262	0.261	1748@0.262	83@0.269	---	2015	900	3	234.60	3,459.12	0.175	0.330	8633	
7,595,160	0.600	---	---	---	08/08/2008	18/08/2010	---	KIRIAKOULIS SHIPPING SA (CR)	0.721	---	0.721	27/09/2016	---	---	---	---	---	2135@0.649	89.77	2015	---	---	---	5,476.11	0.220	0.721	5759		
23,648,700	0.350	---	---	---	13/07/2011	31/03/2015	---	KLEEMAN HELLAS SA (CR)	2.02	---	2.02	27/09/2016	2.02	2.02	2.02	2.02	2.026613720@2.02	450@2.03	24.37	2015	64,428	26	130,144.56	47,770.37	1.21	2.04	2757		
40,219,218	0.300	---	---	---	25/05/2009	09/07/2013	---	KLOUKINAS - LAPPAS SA (CR)	0.292	---	0.292	27/09/2016	0.292	0.292	0.292	0.292	50@0.278	3750@0.279	---	2015	55	1	16.06	11,744.01	0.218	0.353	2357		
21,224,340	0.420	---	---	---	02/07/2008	25/04/2006	---	KORDELLOS BROS SA (CR)	0.373	---	0.373	27/09/2016	---	---	---	---	---	7000@0.336	---	---	2015	---	---	---	7,916.68	0.167	0.373	1757	
13,586,500	0.390	---	---	---	25/06/2010	28/05/2008	---	KORRES (CR)	2.86	0.35	#	2.85	27/09/2016	2.90	2.82	2.90	2.86	2.84	4342@2.85	5067@2.86	---	2015	6,148	13	17,465.49	38,857.39	2.80	3.90	3767
29,480,000	0.420	---	---	---	19/07/2010	01/08/2007	---	KRETA FARM SA (CR)	0.442	-3.91	0.460	27/09/2016	0.423	0.423	0.449	0.447	0.430	106@0.430	250@0.448	---	2015	2,214	10	951.38	13,030.16	0.300	0.610	3577	
33,065,136	0.380	---	0.06	0.06	18/08/2016	16/09/2013	---	KRI-KRI S.A. (CR)	1.64	---	1.64	27/09/2016	---	---	---	---	---	200@1.58	488@1.69	14.11	2015	---	---	---	54,226.82	1.50	1.90	3577	
15,804,800	0.360	---	---	---	15/06/2010	12/03/2004	---	KTIMA KOSTAS LAZARIDIS SA (CR)	0.488	6.78	#	0.457	27/09/2016	0.488	0.488	0.488	0.488	---	830@0.430	---	2015	5	1	2.44	7,712.74	0.166	0.488	3535	
23,719,554	0.990	---	0.2406	---	14/08/2015	15/09/2014	---	KYRIAKIDIS MARBLES SA (CR)	3.00	-1.64	0.305	27/09/2016	3.00	3.00	3.00	3.00	3.00	6954@3.00	500@3.03	11.48	2015	10,415	7	31,245.00	71,158.66	2.11	3.05	2353	
79,721,775	0.300	---	---	---	30/05/2007	23/06/2014	---	LAMDA DEVELOPMENT SA (CR)	4.51	-1.31	0.457	27/09/2016	4.57	4.50	4.59	4.50	4.53	614@4.50	64@4.54	---	2015	9,637	53	43,655.70	359,545.21	3.12	5.08	8633	
21,364,000	1.12	---	---	---	05/07/2010	10/08/2005	---	LAMPSPA HOTEL SA (CR)	17.30	---	17.30	27/09/2016	17.30	17.30	17.30	17.30	17.30	---	60@17.10	78.72	2015	15	1	259.50	369,597.20	15.32	18.00	5753	
5,939,268	0.620	---	---	---	10/07/2003	03/01/2002	---	LANAKAM SA (CR)	0.570	---	0.570	27/09/2016	---	---	---	---	---	---	156@0.513	---	2015	---	---	---	3,385.38	0.570	0.638	3763	
4,740,000	0.860	---	---	---	14/03/2003	---	---	LOGISMOS S.A. (CR)	0.219	---	0.219	27/09/2016	---	---	---	---	---	7950@0.230	---	---	2015	---	---	---	1,038.06	0.219	0.489	9533	
17,125,062	0.940	---	---	---	01/06/2010	18/07/2016	---	LOULIS MILLS SA (CR)	1.54	1.99	#	1.51	27/09/2016	1.54	1.54	1.54	1.54	1.54	200@1.39	250@1.53	45.00	2015	1	1	1.54	26,372.60	1.30	1.83	3577
939,510,748	0.300	---	---	---	26/04/2007	29/08/2014	---	MARFIN INVESTMENT GROUP (CR)	0.127	---	0.127	27/09/2016	0.127	0.127	0.132	0.127	0.129	44550@0.126	10000@0.128	---	2015	1,566,883	261	202,356.36	119,317.87	0.048	0.222	8775	
9,819,370	0.690	---	---	---	14/08/2007	09/01/2004	---	MATHIOS REFRACTORY SA (CR)	0.295	-2.96	0.304	27/09/2016	0.295	0.295	0.295	0.295	0.295	---	500@0.300	---	2015	500	1	147.50	2,896.71	0.162	0.345	2353	
468,700	0.65	1.48	---	---	26/04/2016	21/05/2004	---	MERMEREN KOMB. A.D. PR. (GDR)	5.49	---	5.49	27/09/2016	---	---	---	---	---	20@4.75	90@5.42	0.53	2015	---	---	---	2,573.16	4.83	8.49	1775	
51,950,600	0.320	0.3	0.5	0.12	13/05/2016	21/10/2005	---	METKA (CR)	7.33	0.82	#	7.27	27/09/2016	7.27	7.26	7.49	7.33	7.34	770@7.40	555@7.45	22.00	2015	3,986	48	29,241.46	380,797.90	6.24	7.93	2757
10,500,000	0.950	---	---	---	24/06/2008	19/12/2013	---	MEVACO SA (CR)	0.989	---	0.989	27/09/2016	---	---	---	---	---	1000@0.900	210@0.989	---	2015	---	---	---	10,384.50	0.705	1.10	2757	
6,700,000	0.800	0.16	0.03	0.023	27/06/2016	29/05/2014	---	MILLS KEPENOS (CR)	1.58	8.22	#	1.46	27/09/2016	1.34	1.34	1.58	1.58	1.34	---	120@1.40	15.23	2015	926	2	1,241.08	10,586.00	0.880	2.21	3577
6,200,000	0.500	---	---	---	22/06/2010	01/11/1995	---	MINERVA KNITWEAR SA (CB)	0.050	---	0.050	27/09/2016	---	---	---	---	---	300@0.046	---	---	2015	---	---	---	310.00	0.045	0.092	3763	
12,417,000	0.370	---	---	---	28/07/2008	06/09/2011	---	MLS MULTIMEDIA SA (CR)	3.80	---	3.80	27/09/2016	3.74	3.72	3.83	3.80	3.75	940@3.73	1915@3.80	23.33	2015	8,555	36	32,105.90	47,184.60	2.75	3.85	9537	
11,700,000	0.590	---	---	---	02/06/2009	24/07/2012	---	MOTODYNAMICS S.A. (CR)	0.355	-3.79	0.369	27/09/2016	0.360	0.350	0.360	0.355	0.352	41@0.371	7000@0.372	12.96	2015	2,567	8	904.83	4,153.50	0.227	0.549	5379	
110,782,980	0.750	0.2	---	0.65	27/06/2016	04/11/2013	---	MOTOR OIL (CR)	10.09	0.30	#	10.06	27/09/2016	10.00	10.00	10.09	10.09	10.08	550@10.07	309@10.09	5.56	2015	43,497	106	438,369.16	1,117,800.27	8.13	11.26	533
116,915,862	0.970	---	---	---	11/05/2009	19/10/2015	---	MYTILINEOS HOLDINGS (CR)	3.91	2.62	#	3.81	27/09/2016	3.80	3.79	3.92	3.91	3.86	9000@3.90	1534@3.92	---	2015	152,593	422	588,727.54	457,141.02	2.70	4.54	1755
8,321,682	0.670	---	---	---	17/08/2007	23/11/1999	---	N. LEVEDERIS SA (CB)	0.254	---	0.254	27/09/2016	---	---	---	---	---	---	700@0.279	---	2015	---	---	---	2,686.25	0.138	0.385	1757	
2,160,524	0.670	0.0436	0.0436	0.0436	04/08/2016	23/11/1999	---	N. LEVEDERIS SA (PB)	0.265	5.58	#	0.251	27/09/2016	0.260	0.260	0.312	0.265	0.286	5000@0.200	1749@0.265	---	2015	101	4	28.87	2,686.25	0.202	1.25	1757
11,510,102	0.890	---	---	---	24/06/2005	06/10/1999	---	NAFPAKTOS TEXTILE IND. SA (CB)	0.111	---	0.111	27/09/2016	---	---	---	---	---	9000@0.108	---	---	2015	---	---	---	1,277.62	0.085	0.313	3763	
6,340,000	0.600	---	---	---	30/11/2009	04/12/2015	---	NAKAS MUSIC	0.980	-5.77	0.104	27/09/2016	0.936	0.936	0.980	0.980	0.945	180@0.936	10@0.980	6.17	2016	570	8	538.77	6,213.20	0.600	1.05	5379	
9,147,151,527	0.300	---	---	---	16/05/2008	30/11/2015	---	NATIONAL BANK (CR)	0.183	0.55	#	0.182	27/09/2016	0.186	0.183	0.188	0.183	0.185	184400@0.182	31500@0.184	---	2015	6,690,765	720	1,240,459.52	1,673,928.73	0.099	0.340	8355
23,935,280	0.300	---	---	---	29/06/2009	13/06/2000	---	NAYTEMPORIKI PUBLISHING SA(CR)	0.053	-7.02	0.057	27/09/2016	0.053	0.053	0.053	0.053	0.053	975@0.053	200@0.062	---	2015	25	1	1.33	1,268.57	0.049	0.097	5557	
27,848,000	0.300	0.004	0.0032	0.0084	16/08/2016	02/09/2003	---	NEWSPHONE HELLAS SA (CR)	0.210	---	0.210	27/09/2016	---	---	---	---	---	200@0.197	200@0.213	8.82	2015	---	---	---	5,848.08	0.135	0.291	2791	
291,282,095	0.300	---	---	---	08/07/2008	21/03/2016	---	NIREFS SA (CR)	0.138	-0.72	0.139	27/09/2016	0.143	0.138	0.144	0.138	0.141	2000@0.137	669@0.144	0.20	2015	23,601	26	3,322.04	40,196.93	0.067	0.297	3573	
319,000,000	0.300	0.25	0.57	0.4	23/06/2016	25/04/2001	---	OPAP (CR)	7.68	2.54	#	7.49	27/09/2016	7.49	7.49	7.72	7.68	7.68	971@7.63	3180@7.69	11.								

Number of Outstanding Securities	Nominal Value	Dividends [1]			Date of Last Coupon Dividend [2]		Date of Right	Note	Shares	Closing price	% change	Previous closing price/date	Open price	Price min	Price max	Last price	Avg price	Last Bid [7]	Last Ask [7]	P/E after	Year	Volume	Trades	Transactions Value[8]	Company Mkt Value (thou. €)	Year low	Year high	Sector[ 4]
----------------------------------	---------------	---------------	--	--	----------------------------------	--	---------------	------	--------	---------------	----------	-----------------------------	------------	-----------	-----------	------------	-----------	--------------	--------------	-----------	------	--------	--------	-----------------------	-----------------------------	----------	-----------	------------

Main Market

25,000,000	2.00	0.12	0.099	0.1114	18/07/2016	08/08/2003	---	P.P.A. S.A. (CR)		12.40	1.89 #	12.17 27/09/2016	12.17	12.05	12.43	12.40	12.19	250@12.35	50@12.42	37.01	2015	15,743	115	191,951.80	310,000.00	9.80	14.78	2777
4,971,466	1.46	---	---	---	04/07/2007	08/10/2003	---	PAIRIS SA (CR)		0.194	--- ↘	0.194 27/09/2016	---	---	---	---	---	---	---	---	2015	---	---	---	964.46	0.179	0.215	2723
3,953,090	0.900	---	0.067	0.11	26/05/2016	05/12/2012	---	PAPERPACK (CR)		1.13	--- ↘	1.13 27/09/2016	---	---	---	---	---	3101@1.07	365@1.16	3.56	2015	---	---	---	4,466.99	0.651	1.38	2723
50,797,369	0.310	---	---	---	17/08/2000	12/10/2010	---	PAPOUTSANIS (CR)		0.118	0.86 #	0.117 27/09/2016	0.121	0.112	0.121	0.118	0.115	50@0.114	885@0.118	---	2015	881	12	100.97	5,994.09	0.080	0.217	3767
7,070,400	0.930	---	---	---	18/05/2010	06/05/2016	---	PETROPOULOS PETROS (CR)		4.17	3.47 #	4.03 27/09/2016	3.95	3.88	4.17	4.17	4.00	50@4.09	174@4.18	39.10	2015	14,039	45	56,146.64	29,483.57	3.43	4.25	2753
8,733,183,280	0.300	---	---	---	16/05/2008	27/11/2015	---	PIRAEUS BANK (CR)		0.135	--- ↘	0.135 27/09/2016	0.137	0.135	0.140	0.135	0.137	63050@0.134	300@0.136	---	2015	6,181,082	541	847,458.37	1,178,979.74	0.067	0.308	8355
22,080,000	0.330	0.2	---	0.08	17/05/2016	27/04/2015	---	PLAISIO COMPUTERS SA (CR)		4.12	--- ↘	4.12 27/09/2016	4.12	4.00	4.14	4.12	4.02	5@4.06	196@4.12	13.56	2015	678	22	2,727.48	90,969.60	3.87	4.75	9572
232,000,000	4.60	---	0.05	---	20/07/2015	12/12/2001	---	PPC (CR)		2.61	-1.88 ⚡	2.66 27/09/2016	2.70	2.61	2.76	2.61	2.69	1560@2.60	3100@2.64	---	2015	242,660	549	652,515.26	605,520.00	2.29	4.08	7535
11,812,193	0.470	---	0.02	---	26/03/2015	15/11/2006	---	PROFILE SA (CR)		0.429	-2.28 ⚡	0.439 27/09/2016	0.438	0.429	0.440	0.429	0.436	1620@0.427	290@0.439	---	2015	5,490	14	2,395.59	5,067.43	0.388	0.546	9533
27,345,120	0.470	---	---	---	18/07/2005	26/02/2014	---	QUALITY & RELIABILITY SA (CR)		0.418	9.71 #	0.381 27/09/2016	0.418	0.418	0.418	0.418	0.418	50@0.393	13995@0.394	---	2015	55	1	22.99	11,430.26	0.207	0.465	9533
11,921,531	3.66	---	---	---	05/09/2008	21/01/2016	---	QUEST HOLDINGS (CR)		5.15	1.98 #	5.05 27/09/2016	5.13	5.13	5.20	5.15	5.14	6@5.13	235@5.20	---	2015	2,174	10	11,183.02	61,395.88	3.30	5.49	9533
57,434,884	1.31	---	---	---	05/06/2008	12/06/2009	---	REDS S.A. (CR)		0.320	0.31 #	0.319 27/09/2016	0.319	0.310	0.320	0.320	0.315	1975@0.320	800@0.340	---	2015	5,385	8	1,694.45	18,379.16	0.280	0.410	8633
22,280,000	0.300	---	---	---	11/04/2011	23/02/2007	---	REVOIL (CR)		0.353	--- ↘	0.353 27/09/2016	---	---	---	---	---	1000@0.250	1700@0.354	11.35	2015	---	---	---	7,864.84	0.169	0.557	5379
7,500,000	0.690	0.0863	0.1	---	19/06/2015	05/07/2016	---	S.KANAKIS SA (CR)		2.30	-1.29 ⚡	2.33 27/09/2016	2.37	2.29	2.37	2.30	2.34	790@2.30	50@2.34	9.83	2015	215	3	502.30	17,250.00	1.75	2.40	3577
52,067,296	0.300	---	---	---	23/12/2003	24/01/2007	---	SELECTED TEXT. IND. ASSOC (CR)		0.132	-9.59 ⚡	0.146 27/09/2016	0.132	0.132	0.132	0.132	0.132	100@0.133	1352@0.142	---	2015	131	1	17.29	6,872.88	0.084	0.205	3763
204,235,184	0.300	---	---	---	01/07/2008	30/07/2012	---	SELONDA AQUACULTURE SA (CR)		0.159	--- ↘	0.159 27/09/2016	---	---	---	---	---	---	410@0.149	---	2015	---	---	---	32,473.39	0.074	0.273	3573
6,456,530	1.61	---	---	---	29/06/2001	02/08/2010	---	SPACE HELLAS SA (CR)		0.720	4.35 #	0.690 27/09/2016	0.701	0.700	0.720	0.720	0.707	150@0.701	150@0.740	5.48	2015	450	4	318.13	4,648.70	0.592	1.28	9578
28,438,268	0.300	---	---	---	21/08/2006	24/11/1999	---	SPIROY AGRICULTURE SA (CR)		0.699	--- ↘	0.699 27/09/2016	---	---	---	---	---	---	2170@0.630	---	2015	---	---	---	19,878.35	0.630	0.700	1357
40,693,350	5.00	---	---	---	03/07/2006	26/05/2015	---	TECHNICAL OLYMPIC SA (CR)		0.722	-1.10 ⚡	0.730 27/09/2016	0.717	0.717	0.728	0.728	0.718	50@0.719	400@0.729	---	2015	97	5	69.66	29,380.60	0.530	0.850	3728
109,314,400	0.300	---	---	0.0935	30/05/2016	05/08/2015	---	TERNA ENERGY (CR)		2.55	--- ↘	2.55 27/09/2016	2.57	2.52	2.57	2.55	2.54	117@2.52	436@2.57	-(6)-	2015	7,709	53	19,577.16	278,751.72	1.92	3.05	7537
36,300,000	1.12	0.285	0.24	0.25	23/06/2016	12/12/2007	---	THESSALONIKA WATER & SEWERAGE		3.22	0.31 #	3.21 27/09/2016	3.22	3.21	3.22	3.22	3.22	3000@3.21	385@3.23	8.62	2015	5,100	5	16,413.00	116,886.00	2.65	3.86	7577
45,094,620	0.660	0.05	0.0225	---	20/04/2015	01/11/1999	---	THRACE PLASTICS SA (CR)		1.67	4.37 #	1.60 27/09/2016	1.63	1.63	1.68	1.67	1.64	1@1.63	125@1.67	-(6)-	2015	3,361	15	5,520.28	75,308.02	1.25	1.68	1357
77,063,568	4.00	---	0.1551	0.3099	27/06/2016	25/06/2004	---	TITAN CEMENT (CR)		21.28	0.38 #	21.20 27/09/2016	21.19	21.08	21.31	21.28	21.21	35@21.23	401@21.29	29.95	2015	6,772	73	143,658.11	1,725,441.98	14.86	22.40	2353
7,568,960	4.00	---	0.1551	0.3099	27/06/2016	25/06/2004	---	TITAN CEMENT CO. (PR)		11.30	0.09 #	11.29 27/09/2016	11.35	11.12	11.35	11.30	11.31	886@11.22	75@11.30	15.90	2015	3,175	15	35,916.65	1,725,441.98	7.36	13.30	2353
10,080,000	3.00	0.6	1.95	0.58	18/07/2016	27/08/2001	---	TPA SA (CR)		18.05	-0.82 ⚡	18.20 27/09/2016	18.20	18.05	18.20	18.05	18.15	20@18.03	451@18.20	10.16	2015	735	38	13,342.14	181,944.00	17.78	24.10	2777
15,627,315	0.300	---	---	---	16/11/1992	03/12/2012	---	UNIBIOS (CR)		0.071	--- ↘	0.071 27/09/2016	---	---	---	---	---	500@0.065	1000@0.071	---	2015	---	---	---	1,109.54	0.053	0.105	2353
18,810,000	0.400	---	---	---	08/07/2010	14/11/2007	---	VARVERIS - MODA BAGNO SA (CR)		0.117	--- ↘	0.117 27/09/2016	---	---	---	---	---	---	60@0.106	---	2015	---	---	---	2,200.77	0.081	0.165	2353
259,189,761		---	---	---		26/02/2016	---	VIOHALCO SA/INV (CB)		1.23	2.50 #	1.20 27/09/2016	1.20	1.20	1.23	1.23	1.22	150@1.22	2671@1.23	---	---	47,271	100	57,656.64	318,803.41	0.928	1.67	2727
4,968,600	2.88	---	---	---	01/07/1998	14/12/1998	---	VIS SA (CR)		0.840	--- ↘	0.840 27/09/2016	---	---	---	---	---	278@0.777	40@0.840	---	2015	---	---	---	4,173.62	0.611	1.00	2723
6,325,000	0.600	---	---	---	02/05/2014	17/02/2014	---	VOGIATZOGLOU SYSTEMS SA (CR)		1.75	--- ↘	1.75 27/09/2016	---	---	---	---	---	---	726@1.58	---	2015	---	---	---	11,068.75	0.700	1.75	2797

Exchange Traded Funds (ETFs)

619,082	---	---	---		15/06/2016	---	ALPHA ETF FTSE Athens Large Cap		15.06	1.61 #	14.82 27/09/2016	15.03	15.03	15.06	15.06	15.04	38@15.03	5@15.10	---	---	---	---	29	4	436.10	---	11.30	170.69	12003
294,878	---	---	---		29/06/2009	---	NBGAM ETF		6.67	--- ↘	6.67 27/09/2016	6.67	6.67	6.67	6.67	6.67	---	---	---	---	---	---	2	1	13.34	---	4.50	7.60	12003
388,550	---	---	---		03/11/2010	---	NBGAM ETF GREECE & TURKEY 30		5.41	0.56 #	5.38 27/09/2016	5.41	5.41	5.41	5.41	5.41	---	---	---	---	---	---	2	1	10.82	---	4.90	6.27	12003

Low Dispersion

14,000,000	4.15	---	---	---	23/04/2010	29/06/1999	4815	ALPHA REAL ESTATE SA(CR)		5.31	--- ↘	5.31 27/09/2016	---	---	---	---	---	50@4.54	355@4.97	26.83	2015	---	---	---	74,340.00	4.11	7.30	8637
------------	------	-----	-----	-----	------------	------------	------	--------------------------	--	------	-------	-----------------	-----	-----	-----	-----	-----	---------	----------	-------	------	-----	-----	-----	-----------	------	------	------

Number of Outstanding Securities	Nominal Value	Dividends [1]			Date of Last Coupon Dividend [2]		Note	Shares	Closing price	% change	Previous closing price/date	Open price	Price min	Price max	Last price	Avg price	Last Bid [7]	Last Ask [7]	P/E after	Year	Volume	Trades	Transactions Value[8]	Company Mkt Value (thou. €)	Year low	Year high	Sector[ 4]
63,900,000	3.00	---	---	---	23/06/2003	04/11/2008	4816	ASTIR PALACE SA (CR)	3.90	-0.51 <b>€</b>	3.92 27/09/2016	3.91	3.89	3.91	3.90	3.90	1000@3.83	699@3.90	---	2015	1,461	5	5,699.59	249,210.00	2.90	3.95	5753
134,652,904	0.800	---	---	---	09/08/2004	08/03/2006	4814	ATHENA SA (CR)	0.040	---	0.040 27/09/2016	---	---	---	---	---	---	---	---	2015	---	---	---	5,386.12	0.018	0.130	2357
191,660,320	0.300	---	---	---	20/07/2009	29/12/2010	4817	ATTICA HOLDINGS (CR)	0.920	-3.87 <b>€</b>	0.957 27/09/2016	0.920	0.920	0.920	0.920	0.920	1201@0.920	7000@0.955	-(6)-	2015	1,250	2	1,150.00	176,327.49	0.490	1.40	5759
13,404,440	8.63	---	---	---	02/04/2001	06/03/1992	4822	IONIAN HOTELS SA (CR)	10.00	---	10.00 27/09/2016	---	---	---	---	---	---	60@10.00	61.83	2015	---	---	---	134,044.40	5.64	10.00	5753
2,760,000	11.83	8.5	9.3	8.5	15/07/2016	16/07/1990	4823	KARELIA TOBACCO CO. SA (CB)	255.00	---	255.00 27/09/2016	255.00	255.00	255.00	255.00	255.00	16@255.00	20@266.00	13.18	2015	190	2	48,450.00	703,800.00	227.20	269.00	3785
106,980,050	2.25	---	---	---	25/07/2008	24/02/2014	5046	MINOAN LINES SA (CR)	2.34	11.43 <b>#</b>	2.10 27/09/2016	2.20	2.20	2.39	2.39	2.34	20@2.30	69@2.37	15.44	2015	2,050	12	4,795.00	250,333.32	2.00	2.45	5759
255,494,534	3.00	---	---	0.2035	15/04/2016	23/12/2015	5104	NBG PANGAEA (CR)	3.96	---	3.96 27/09/2016	3.96	3.96	3.96	3.96	3.96	726@3.96	---	20.35	2015	127	2	502.92	1,011,758.35	3.22	6.03	8671
22,996,875	1.25	---	---	---	24/06/2011	02/02/2016	5116	NEXANS HELLAS SA (CR)	0.861	---	0.861 27/09/2016	---	---	---	---	---	5000@0.858	7@1.00	---	2015	---	---	---	19,800.31	0.781	1.58	2733
17,240,776	0.370	---	---	---	14/07/2005	30/09/2003	4827	PERSEUS SA (CR)	0.468	---	0.468 27/09/2016	---	---	---	---	---	---	144@0.375	3.43	2015	---	---	---	8,068.68	0.277	0.520	3577
54,888,240	1.13	0.09	---	---	25/04/2014	22/03/2006	5100	TRASTOR REAL EST. INV. CO.(CR)	0.999	---	0.999 27/09/2016	---	---	---	---	---	---	10@0.999	---	2015	---	---	---	54,833.35	0.611	1.25	8671

Surveillance																													
33,301,715	0.320	---	---	---	27/06/2003	08/07/2009	5120	AEGEK (CR)	0.046	2.22	#	0.045	27/09/2016	0.036	0.036	0.046	0.045	0.045	7000@0.036	1000@0.045	---	2015	10,027	4	455.97	1,531.88	0.029	0.072	2357
13,000,000	1.00	---	---	---	01/08/2007	07/04/2000	5093	AKRITAS SA (CR)	0.177	---	γ	0.177	27/09/2016	---	---	---	---	---	---	---	---	2015	---	---	---	2,301.00	0.061	0.530	2353
14,870,100	0.300	---	---	---	15/05/2008	26/09/2011	4844	ALPHA GRISSIN S.A. (CR)	0.031	---	γ	0.031	27/09/2016	---	---	---	---	---	300@0.026	---	---	2015	---	---	---	460.97	0.019	0.038	9533
2,969,713	0.300	---	---	---	02/07/2008	28/02/2011	4958	ANEK LINES SA (PR, issue '96)	0.104	---	γ	0.104	27/09/2016	---	---	---	---	---	750@0.104	---	43.50	2015	---	---	---	13,416.69	0.104	0.240	5759
312,163	0.300	---	---	---	02/07/2008	28/02/2011	4959	ANEK LINES SA (PR, issue '90)	0.422	---	γ	0.422	27/09/2016	---	---	---	---	---	---	---	-(6)-	2015	---	---	---	13,416.69	0.352	1.04	5759
185,373,016	0.300	---	---	---	02/07/2008	28/02/2011	4957	ANEK LINES SA (CR)	0.070	16.67	#	0.060	27/09/2016	0.072	0.061	0.072	0.061	0.070	4500@0.060	2100@0.065	29.28	2015	23,934	16	1,677.97	13,416.69	0.050	0.103	5759
20,255,805	0.300	---	---	---	22/08/2006	02/08/2010	4881	AXON HOLDING SA (CR)	0.006	---	γ	0.006	27/09/2016	0.006	0.006	0.006	0.006	0.006	6000@0.006	---	---	2015	260	1	1.56	121.53	0.006	0.070	4533
17,579,754	4.16	---	---	---	18/08/2006	02/08/2010	5097	BIOTER SA (CR)	0.085	---	γ	0.085	27/09/2016	---	---	---	---	---	---	74@0.070	---	2015	---	---	---	1,494.28	0.038	0.149	2357
4,034,950	0.680	---	---	---	01/07/2005	30/12/2010	5114	CHATZIKRANIOTIS & SONS SA (CR)	0.046	---	γ	0.046	27/09/2016	---	---	---	---	---	5814@0.040	---	---	2015	---	---	---	185.61	0.046	0.119	3577
14,173,104	0.300	---	---	---	11/08/2010	28/11/2013	5055	DIONIC (CR)	0.032	-17.95	€	0.039	27/09/2016	0.032	0.032	0.032	0.032	0.032	100@0.033	4436@0.040	0.10	2015	13	1	0.42	453.54	0.024	0.060	2797
15,878,748	0.480	---	---	---	10/07/2006	22/03/2004	5095	DOMIKI KRITIS SA (CR)	0.290	---	γ	0.290	27/09/2016	---	---	---	---	---	---	104@0.290	---	2015	---	---	---	4,604.84	0.147	0.318	2357
3,961,300	1.28	---	---	---	29/06/2004	03/08/2000	5080	DUROS SA (CR)	0.491	---	γ	0.491	27/09/2016	---	---	---	---	---	---	200@0.490	---	2015	---	---	---	1,945.00	0.118	0.491	3763
7,085,888	1.59	---	---	---	02/07/1996	06/09/2010	4690	ELVIEMEK (CR)	3.18	---	γ	3.18	27/09/2016	---	---	---	---	---	---	68@3.00	---	2015	---	---	---	22,533.12	3.18	3.97	8633
6,000,000	0.600	---	---	---	13/06/2008	08/04/2004	4886	EUROBROKERS S.A. (CR)	0.009	---	γ	0.009	27/09/2016	---	---	---	---	---	---	---	---	2015	---	---	---	54.00	0.009	0.009	8534
21,820,410	0.800	---	---	---	22/05/2008	02/08/2011	4882	EUROMEDICA SA (CR)	0.007	---	γ	0.007	27/09/2016	---	---	---	---	---	---	---	---	2015	---	---	---	152.74	0.006	0.028	4533
110,097,185	0.300	---	---	---	19/09/2016		5118	Forthnet (CR)	0.302	0.67	#	0.300	27/09/2016	0.300	0.300	0.310	0.310	0.302	3850@0.300	943@0.310	---	2015	240	3	72.57	33,249.35	0.236	0.660	9535
50,593,832	0.300	---	---	---	07/07/2010	07/09/2011	5113	FRIGOGLASS SA (CR)	0.092	2.22	#	0.090	27/09/2016	0.092	0.092	0.092	0.092	0.092	9800@0.092	15000@0.094	---	2015	37,165	16	3,419.18	4,654.63	0.089	1.87	2757
77,376,446	0.340	---	---	---	23/05/2005	18/08/2011	5094	G.E. DIMITRIOU (CR)	0.023	---	γ	0.023	27/09/2016	---	---	---	---	---	---	9000@0.022	---	2015	---	---	---	1,779.66	0.006	0.037	3722
1,270,000	0.300	---	---	---	06/07/2007	06/02/2013	5007	GIRAKIAN PROFIL SA (CB)	0.071	---	γ	0.071	27/09/2016	---	---	---	---	---	500@0.061	---	---	2015	---	---	---	90.17	0.071	0.167	1757
1,540,000	0.600	---	---	---	08/08/1994	19/09/2000	5058	J.BOUTARIS & SON HOLD. (PB)	0.046	---	γ	0.046	27/09/2016	---	---	---	---	---	---	3000@0.055	---	2015	---	---	---	473.71	0.006	0.062	3535
25,179,640	0.600	---	---	---	08/08/1994	19/09/2000	5057	J.BOUTARIS & SON HOLD. SA (CB)	0.016	---	γ	0.016	27/09/2016	0.016	0.016	0.016	0.016	0.016	9999@0.017	---	---	2015	12,300	3	196.80	473.71	0.016	0.128	3535
7,125,216	0.650	---	---	---	01/07/2005	14/12/1999	4955	KRE.KA SA (CR)	0.072	---	γ	0.072	27/09/2016	---	---	---	---	---	4900@0.072	---	---	2015	---	---	---	513.02	0.060	0.180	3573
51,081,030	1.00	---	---	---	20/08/2007	03/09/2007	4912	LAVIPHARM SA (CR)	0.091	8.33	#	0.084	27/09/2016	0.091	0.091	0.091	0.091	0.091	---	2165@0.084	---	2015	300	2	27.30	4,648.37	0.054	0.155	4577
7,734,375	1.00	---	---	---	09/07/2007	07/01/2011	5112	LIVANIS SA (CR)	0.026	---	γ	0.026	27/09/2016	0.022	0.022	0.031	0.031	0.026	501@0.031	---	---	2015	1,234	3	31.66	201.09	0.022	0.148	5557
4,419,616	1.58	---	---	---	21/07/2011	04/03/2015	4983	MEDICON S.A (CR)	0.790	---	γ	0.790	27/09/2016	---	---	---	---	---	---	839@0.632	2.17	2015	---	---	---	3,491.50	0.321	0.790	4535
20,231,328	0.600	---	---	---	15/07/2008	25/06/2004	4879	NIKAS SA (CR)	0.110	---	γ	0.110	27/09/2016	---	---	---	---	---	---	499@0.110	---	2015	---	---	---	2,225.45	0.070	0.132	3577

Number of Outstanding Securities	Nominal Value	Dividends [1]			Date of Last Coupon		Note	Shares	Closing price	% change	Previous closing price/date	Open price	Price min	Price max	Last price	Avg price	Last Bid [7]	Last Ask [7]	P/E after	Year	Volume	Trades	Transactions Value[8]	Company Mkt Value (thou. €)	Year low	Year high	Sector[ 4]		
		2013	2014	2015	Dividend [2]	Right																							
Surveillance																													
14,967,940	0.500	---	---	---	21/05/2008	04/01/2008	4956	PASAL DEVELOPMENT S.A. (CR)	0.300	---	↘ 0.300	27/09/2016	---	---	---	---	---	---	380@0.240	---	2015	---	---	---	4,490.38	0.058	0.300	8633	
18,750,000	0.300	---	---	---	02/07/2001	31/12/2012	4985	PEGASUS PUBLISHING S.A. (CR)	0.088	---	↘ 0.088	27/09/2016	---	---	---	---	---	---	6@0.090	---	2015	---	---	---	1,650.00	0.040	0.136	5557	
65,326,268	0.530	---	---	---	04/07/2007	19/07/2006	4750	SATO SA (CR)	0.116	---	↘ 0.116	27/09/2016	---	---	---	---	---	---	14950@0.093	---	2015	---	---	---	7,577.85	0.008	0.116	3726	
7,914,480	0.300	---	---	---	23/06/2008	29/06/2011	4888	SFAKIANAKIS SA (CR)	0.242	---	↘ 0.242	27/09/2016	---	---	---	---	---	---	971@0.194	---	2015	---	---	---	1,915.30	0.242	5.64	5379	
10,186,667	1.35	---	---	---	24/06/2008	02/02/2016	4887	SIDMA SA (CR)	0.228	20.00	# 0.190	27/09/2016	0.228	0.228	0.228	0.228	0.228	1395@0.152	263@0.228	---	2015	47	1	10.72	2,322.56	0.096	0.380	1757	
4,737,503	0.320	---	---	---	22/06/2005	22/09/2015	5115	VARANGIS AVEPE S.A. (CR)	0.235	---	↘ 0.235	27/09/2016	---	---	---	---	---	---	945@0.230	---	2015	---	---	---	1,113.31	0.235	0.300	3726	
16,383,428	0.300	---	---	---	25/06/2002	21/06/2013	4997	VARVARESSOS SA (CB)	0.072	---	↘ 0.072	27/09/2016	0.072	0.072	0.072	0.072	0.072	4932@0.072	---	2015	1,068	4	76.90	1,179.61	0.006	0.172	3763		
13,191,620	0.620	---	---	---	04/08/2010	09/09/2002	4977	YALCO - CONSTANTINOU SA (CB)	0.058	---	↘ 0.058	27/09/2016	---	---	---	---	---	---	600@0.047	600@0.069	---	2015	---	---	---	765.11	0.034	0.143	3722

Under Deletion																											
1,130,180	0.440	---	---	---	20/06/2003	02/07/2014	5092	COMPUCON SA (CR)	0.006	---	↘ 0.006	27/09/2016	---	---	---	---	6000@0.006	---	---	2015	---	---	---	6.78	0.006	0.019	9537
9,567,289	0.300	---	---	---	01/07/2004	19/11/2007	5062	MARAC ELECTRONICS (CR)	0.298	---	↘ 0.298	27/09/2016	---	---	---	---	---	36280@0.239	---	2015	---	---	---	2,851.05	0.298	0.298	9578
24,319,250	0.300	---	---	---	09/07/2002	04/07/2007	5111	PROODEFTIKH SA (CR)	0.059	---	↘ 0.059	27/09/2016	---	---	---	---	---	10850@0.070	---	2015	---	---	---	1,434.84	0.036	0.092	2357
766,000	1.00	---	---	---	01/07/2004	11/12/2012	4937	TRIA ALFA SA (CR)	2.59	---	↘ 2.59	27/09/2016	---	---	---	---	---	50@2.49	---	2015	---	---	---	2,383.29	1.80	2.59	3763
245,000	1.00	---	---	---	19/07/2010	11/12/2012	4938	TRIA ALFA SA (PR)	1.63	---	↘ 1.63	27/09/2016	---	---	---	---	---	300@1.62	---	2015	---	---	---	2,383.29	1.36	1.63	3763

Suspension Status																												
5,000,000	0.400	---	---	---	03/06/2009	01/09/2014	5087	ALCO HELLAS SA (CR)	0.180	---	↘ 0.180	31/03/2015	---	---	---	---	---	---	---	---	---	---	---	---	900.00	0.180	0.180	1753
5,025,000	0.300	---	---	---	05/07/2005	14/03/2002	5023	ALSINCO S.A (CR)	0.043	---	↘ 0.043	29/11/2013	---	---	---	---	---	---	---	---	---	---	---	---	216.08	0.043	0.043	3763
215,246,452	0.300	---	---	---	25/06/2001	24/09/2001	4446	ALTEC SA (CR)	0.012	---	↘ 0.012	30/11/2015	---	---	---	---	---	---	---	---	---	---	---	---	2,582.96	0.012	0.012	9533
81,644,555	0.300	---	---	---	01/07/2008	02/09/2002	5098	ATTI - KAT SA (CR)	0.012	---	↘ 0.012	29/05/2015	---	---	---	---	---	---	---	---	---	---	---	---	979.73	0.012	0.012	2357
33,930,000	0.300	---	---	---	03/07/2006	30/05/2001	4865	BABIS VOVOS SA (CR)	0.304	---	↘ 0.304	30/03/2012	---	---	---	---	---	---	---	---	---	---	---	---	10,314.72	0.304	0.304	8633
20,121,710	1.21	---	---	---	27/07/1992	12/03/2003	5002	BALKAN R.E. (CR)	0.190	---	↘ 0.190	29/08/2013	---	---	---	---	---	---	---	---	---	---	---	---	3,823.12	0.190	0.190	8633
21,920,570	0.300	---	---	---	03/07/2007	13/12/1999	4702	CARDASSILARIS SA (CR)	0.140	---	↘ 0.140	30/11/2010	---	---	---	---	---	---	---	---	---	---	---	---	3,068.88	0.140	0.140	3577
30,159,583	0.470	---	---	---	26/06/2008	29/12/2010	5047	DIAS A/C (CR)	0.050	---	↘ 0.050	26/03/2014	---	---	---	---	---	---	---	---	---	---	---	---	1,507.98	0.050	0.050	3573
7,847,611	1.20	---	---	---	01/08/2007	28/09/2011	4939	EDRASIS - C. PSALLIDAS SA (CR)	0.150	---	↘ 0.150	29/11/2012	---	---	---	---	---	---	---	---	---	---	---	---	1,177.14	0.150	0.150	2357
5,750,000	0.300	---	---	---	12/12/2008	12/12/2011	4929	ELECTRONIKI ATHINON SA (CR)	0.480	---	↘ 0.480	28/09/2012	---	---	---	---	---	---	---	---	---	---	---	---	2,760.00	0.480	0.480	5375
36,748,909	0.730	---	---	---	15/12/2005	13/12/2006	5109	HEL. SUGAR INDUSTRY SA (CB)	0.075	---	↘ 0.075	29/02/2016	---	---	---	---	---	---	---	---	---	---	---	---	2,756.17	0.064	0.150	3577
13,692,227	1.47	---	---	---	07/07/2006	08/10/1999	5049	HELLENIC FABRICS SA (CR)	0.117	---	↘ 0.117	31/03/2014	---	---	---	---	---	---	---	---	---	---	---	---	1,601.99	0.117	0.117	3763
30,390,000	0.310	---	---	---	18/08/2008	29/12/2006	5099	HELLENIC FISHFARMING SA (CR)	0.070	---	↘ 0.070	02/06/2015	---	---	---	---	---	---	---	---	---	---	---	---	2,127.30	0.070	0.070	3573
24,619,524	0.500	---	---	---	10/10/1986	30/12/2002	4914	KERAMIA-ALLATINI (CR)	0.088	---	↘ 0.088	30/08/2012	---	---	---	---	---	---	---	---	---	---	---	---	2,166.52	0.088	0.088	8633
66,937,526	0.700	---	---	---	13/08/2010	21/05/2003	5003	MICHANIKI SA (CR)	0.100	---	↘ 0.100	29/08/2013	---	---	---	---	---	---	---	---	---	---	---	---	9,186.78	0.100	0.100	2357
25,968,987	0.700	---	---	---	13/08/2010	21/05/2003	5004	MICHANIKI SA (PR)	0.096	---	↘ 0.096	29/08/2013	---	---	---	---	---	---	---	---	---	---	---	---	9,186.78	0.096	0.096	2357
13,555,100	1.00	---	---	---	08/07/2005		4576	MICROLAND COMPUTERS SA (CR)	0.640	---	↘ 0.640	14/07/2009	---	---	---	---	---	---	---	---	---	---	---	---	8,675.26	0.640	0.640	5379
255,459,600	0.300	---	---	---	26/06/2000	03/12/2010	5101	NEL SA (CR)	0.070	---	↘ 0.070	31/08/2015	---	---	---	---	---	---	---	---	---	---	---	---	17,882.17	0.070	0.070	5759
23,463,874	0.800	---	---	---	23/05/2003	21/12/1999	4918	NEORION SA (CR)	0.125	---	↘ 0.125	30/08/2012	---	---	---	---	---	---	---	---	---	---	---	---	2,932.98	0.125	0.125	2753
20,210,127	1.53	---	---	---	27/06/1997	20/03/2000	5061	PARNASSOS ENTERP. (CR)	0.070	---	↘ 0.070	30/05/2014	---	---	---	---	---	---	---	---	---	---	---	---	1,414.71	0.070	0.070	8775
40,946,303	0.360	---	---	---	18/07/2005	27/11/2007	5089	PC SYSTEMS SA (CR)	0.006	---	↘ 0.006	31/03/2016	---	---	---	---	---	---	---	---	---	---	---	---	245.68	0.006	0.014	9533

Number of Outstanding Securities	Nominal Value	Dividends [1]			Date of Last Coupon Dividend [2]		Note	Shares	Closing price	% change	Previous closing price/date	Open price	Price min	Price max	Last price	Avg price	Last Bid [7]	Last Ask [7]	P/E after	Year	Volume	Trades	Transactions Value[8]	Company Mkt Value (thou. €)	Year low	Year high	Sector[ 4]
--	------------------	---------------	--	--	-------------------------------------	--	------	--------	------------------	----------	--------------------------------	---------------	--------------	--------------	---------------	--------------	-----------------	--------------	--------------	------	--------	--------	--------------------------	--------------------------------	-------------	--------------	---------------

Suspension Status

25,667,143	0.320	---	---	---	03/07/2000	18/12/2007	4548	SAOS (CR)	1.56	---	↘ 0.780 # 31/03/2009	---	---	---	---	---	---	---	---	---	---	---	---	40,040.74	1.56	1.56	2773
26,408,040	0.300	---	---	---	01/07/1997	26/05/1999	4464	SHEET STEEL SA (CR)	0.120	---	↘ 0.120 28/11/2008	---	---	---	---	---	---	---	---	---	---	---	---	3,168.96	0.120	0.120	1757
29,060,950	0.340	---	---	---	20/08/2007	24/10/2001	5088	SPIDER METAL INDUSTRY SA (CR)	0.008	---	↘ 0.008 31/03/2015	---	---	---	---	---	---	---	---	---	---	---	---	232.49	0.008	0.008	2757
144,688,060	0.600	---	---	---	21/04/2008	10/03/2010	4982	T BANK (CR)	0.048	---	↘ 0.052 # 29/11/2011	---	---	---	---	---	---	---	---	---	---	---	---	6,945.03	0.048	0.048	8355
6,523,780	0.530	---	---	---	01/07/2002	06/03/2001	4971	TECHNICAL PUBLICATIONS SA (CR)	0.006	---	↘ 0.006 31/05/2013	---	---	---	---	---	---	---	---	---	---	---	---	39.14	0.006	0.006	5557
100,793,572	0.300	---	---	---	16/07/2009	11/02/2016	5110	TELETIPOS SA (CR)	0.060	---	↘ 0.060 07/03/2016	---	---	---	---	---	---	5@0.048	---	---	---	---	---	6,047.61	0.054	0.070	5553
13,920,000	0.320	---	---	---	19/11/2001	01/08/2000	4726	TEXAPRET SA (CR)	0.080	---	↘ 0.080 28/02/2011	---	---	---	---	---	---	---	---	---	---	---	---	1,113.60	0.080	0.080	3763
510,840	1.00	---	---	---	15/07/2008	21/11/2013	5036	TROPEA HOLDING (CR)	2.00	---	↘ 0.020 # 30/03/2012	---	---	---	---	---	---	---	---	---	---	---	---	1,021.68	2.00	2.00	3722
284,465,964	3.70	---	---	---	20/06/2008	15/06/2009	4913	TT HELLENIC POSTBANK (CR)	0.168	---	↘ 0.239 # 29/08/2012	---	---	---	---	---	---	---	---	---	---	---	---	47,790.28	0.168	0.168	8355
89,616,200	0.300	---	---	---	21/08/2000	28/06/2007	4616	UNITED TEXTILES (CR)	0.050	---	↘ 0.050 24/02/2010	---	---	---	---	---	---	---	---	---	---	---	---	4,480.81	0.050	0.050	3763
71,683,906	0.400	---	---	---	15/06/2005	05/02/2008	4953	XATZIOANNOU (CR)	0.026	---	↘ 0.026 28/03/2013	---	---	---	---	---	---	---	---	---	---	---	---	1,863.78	0.026	0.026	3763



## Shares' Notes

Code	Note text
( )	- Adjusted dividends.
*	- Last adjusted closing price.
[1]	- Net dividends.
[2]	- The "Date of Last Coupon" for New listings refers to the date company's stocks started to trade in Athex
[3]	- The Company Market Value is referred to the number of outstanding shares
[4]	- Sectors codification can be found in Appendix A
[5]	- The Market Value refers to the total number of shares listed (including their several classes) in the exchange by the company.
[6]	- P/E greater than 100
[7]	- Last view of the Order Book before the end of the trading session
[8]	- All Blocks Methods' Transactions Value are included.
4446	- Transfer to the "Under Supervision" Category as of 20/10/2008.
4464	- Suspension of trading as of 1/12/2008.
4548	- Suspension of trading as of 1/4/2009.
4576	- Suspension of trading as of 14/7/2009.
4616	- Suspension of trading as of 25/2/2010.
4690	- Transfer to Surveillance category as of 4/4/2006.
4702	- Suspension of trading as of 1/12/2010.
4726	- Suspension of trading as of 1/3/2011.
4750	- Transfer to the "Under Surveillance Category" from 8/4/2011.
4795	- The final gross (pre-tax) dividend is € 0.30 per share and subject to withholding tax on the full dividend amount, i.e. 0,45 per share, for those shareholders liable to withholding tax, in accordance with the applicable tax law provisions.
4814	- Transfer to the Low Dispersion Category as of 30/5/2011.
4815	- Transfer to the Low Dispersion Category as of 30/5/2011.
4816	- Transfer to the Low Dispersion Category as of 30/5/2011.
4817	- Transfer to the Low Dispersion Category as of 30/5/2011.
4822	- Transfer to the Low Dispersion category as of 30/5/2011.
4823	- Transfer to the Low Dispersion category as of 4/4/2006.
4827	- Transfer to the Low Dispersion category as of 5/5/2010.
4844	- Transfer to the Surveillance category from 8/4/2011.
4857	- The 793,906,274 new (CR) shares, resulting from the recent share capital increase through a rights issue, are not yet admitted to trading on the ATHEX.
4865	- Suspension of trading as of 2/4/2012.
4879	- Transfer to the Surveillance Category as of 10/4/2012.
4881	- Transfer to the Surveillance Category as of 10/4/2012.
4882	- Transfer to the Surveillance Category as of 10/4/2012.
4886	- Transfer to the Surveillance Category as of 10/4/2012.
4887	- Transfer to the Surveillance Category as of 10/4/2012.
4888	- Transfer to the Surveillance Category as of 10/4/2012.
4912	- Transfer to the Surveillance Category as of 31/7/2012.
4913	- Suspension of trading as of 30/8/2012.
4914	- Suspension of trading as of 31/8/2012.
4918	- Suspension of trading as of 31/8/2012.
4929	- Suspension of trading as of 1/10/2012.
4937	- Transfer to the UNDER DELETION category as of 30/11/2012.
4938	- Transfer to the UNDER DELETION category as of 30/11/2012.
4939	- Suspension of trading as of 30/11/2012.
4953	- Suspension of trading as of 2/4/2013.
4955	- Transfer to the Surveillance Category as from 5/4/2013.
4956	- Transfer to the Surveillance Category as from 5/4/2013.
4957	- Transfer to the Surveillance Category as from 5/4/2013.
4958	- Transfer to the Surveillance Category as from 5/4/2013.
4959	- Transfer to the Surveillance Category as from 5/4/2013.
4971	- Suspension of trading as of 3/6/2013.

## Shares' Notes

Code	Note text
4977	- Transfer to the "Under Surveillance Category" from 11/6/2013.
4982	- Suspension of trading as of 1/12/2011.
4983	- Transfer to the Surveillance Category as of 5/4/2013.
4985	- Transfer to the "Under Surveillance Category" from 8/4/2011.
4997	- Transfer to the Under Supervision Category as of 21/12/2009. - The 6,870,053 new (CB) shares, resulting from the recent share capital increase through a rights issue, are not yet admitted to trading on the ATHEX.
5002	- Suspension of trading as of 30/08/2013.
5003	- Suspension of trading as of 30/08/2013.
5004	- Suspension of trading as of 30/08/2013.
5007	- Transfer to the Surveillance category, as of 11/10/2013.
5023	- Suspension of trading as of 2/12/2013.
5031	- The 612,300 new (CR) shares, resulting from the recent share capital increase through a rights issue, are not yet admitted to trading on the ATHEX.
5036	- The company's share is under suspension of trading as of 2/4/2012. During suspension, the company proceeded and concluded a share reverse split, according to which - after the conclusion of the corporate action - the total number of the company's shares, as well as, the last closing price of 30/03/2012 were adjusted.
5046	- Transfer to the Low Dispersion category as of 8/4/2011.
5047	- Suspension of trading as of 27/3/2014.
5049	- Under suspension of trading as of 1/4/2014.
5055	- Transfer to the Surveillance Category as of 10/4/2014.
5057	- Transfer to the Surveillance Category as of 29/12/2011.
5058	- Transfer to the Surveillance Category as of 29/12/2011.
5061	- Suspension of trading as of 2/6/2014.
5062	- Transfer to the UNDER DELETION category as of 4/6/2014.
5080	- Suspension of trading as of 6/9/2011.
5087	- Suspension of trading as of 1/4/2015.
5088	- Suspension of trading as of 1/4/2015.
5089	- Transfer to the Surveillance Category as of 8/4/2015.
5092	- Transfer to the UNDER DELETION category as of 8/4/2015.
5093	- Transfer to the Surveillance Category as of 8/4/2015.
5094	- Transfer to the Surveillance Category as of 8/4/2015.
5095	- Transfer to the Surveillance Category as from 9/4/2015.
5097	- Transfer to the Surveillance Category as of 10/4/2012.
5098	- Suspension of trading as of 2/6/2015.
5099	- Suspension of trading as of 3/6/2015.
5100	- Transfer to the Low Dispersion Category as of 24/6/2015.
5101	- Suspension of trading as of 1/9/2015.
5104	- Transfer to the "Low Dispersion" Category as of 31/10/2014. Change of the company name from "MIG REAL ESTATE R.E.I.C." to " NBG PANGAEA R.E.I.C." as of 30/12/2015.
5109	- Suspension of trading as of 01/03/2016.
5110	- Suspension of trading as of 08/03/2016.
5111	- Transfer to the Under Deletion Category as of 15/04/2016.
5112	- Transfer to the Surveillance Category as of 15/04/2016.
5113	- Transfer to the Surveillance Category as of 15/04/2016.
5114	- Transfer to the Surveillance Category as of 15/04/2016.
5115	- Transfer to the Surveillance Category as of 15/04/2016.
5116	- Transfer to the Low Dispersion Category as of 20/4/2016.
5118	- Transfer to the Surveillance Category as of 25/11/2011. Issue of a Convertible Bond Loan in progress through a rights issue. Rights' trading period on ATHEX: 22/09/2016 - 03/10/2016, pre-emption rights' subscription period: 22/09/2016 - 06/10/2016.
5120	- Transfer to the Surveillance Category as of 27/09/2016.

Securities Blocks Details

Securities	Block Volume	Price	Block Trade Value	Time of approval	Note
MOTOR OIL (CR)	25,000	10.10	252,500.00	14:58:50	20

Blocks Notes

- 9 - Method 6-1 / Special Fees
- 10 - Method 6-1 / Special Fees, SDS
- 14 - Method 6-3 / Settlement, Incomplete Buy and Sell
- 18 - Method 6-2 / SPOT 1
- 19 - Method 6-2 / SPOT 2
- 20 - Method 6-1 and Method 6-1 Same Day Settlement
- 21 - Other Pre-agreed

Shares Rights Details

Occured date	Exercise from	Exercise until	Trading until	Rights	Price min	Price max	Closing price	Last Bid	Last Ask	Volume	Trades	Transactions Value
19/09/2016	22/09/2016	06/10/2016	03/10/2016	Forthnet S.A. (CR)	0.002	0.009	0.007	---	---	31,792	12	226.93

Shares Forced Sales

Securities	Transaction s Volume	Number of Trades	Transactions Value	Note
No Forced Transactions.				

Forced Sales Notes

- 1 - Normal Forced Sale.
- 2 - Forced Sales of Fixed Registered Shares.
- 3 - Forced Sales of Remaining Stock Fractions.

**Forced Sales Registered Shares**

Securities	Start Date	End Date	Initial Volume	Remaining Volume	Date	Avg price (day)	Avg price (period)	Number of Trades	Transactions Volume	Transactions Value
------------	------------	----------	-------------------	---------------------	------	--------------------	-----------------------	---------------------	------------------------	-----------------------

No Fixed Registered Shares Forced Sales.

**Forced Sales Notes**

According to Decision 1/380/04.05.2008 of the Hellenic Republic Capital Market Commission, the certificated registered shares that have not been deposited to the issuer for dematerialisation, will be auctioned in the Athens Exchange by the supervising issuer. Forced sales procedure is held according to Article 99A of the Athens Exchange Rulebook. The average price of the period is calculated by dividing the Total transactions value by the Total volume and includes all the transactions made until the current date.

## Exchange Traded Funds (ETFs) Characteristics

	Transactions Date (T)	Creation / Redemption	Units (T-1)	New Units (T-1)	Redemptio n Units (T-	Units (T) [1]	Fund Assets [2]	Net Unit Price	Dividen d per	Dividend Date
NBGAM ETF GREECE & TURKEY 30	28/09/2016	25,000	388,550	---	---	388,550	2,089,720.00	5.3783	---	27/10/2011
ALPHA ETF FTSE Athex Large Cap	28/09/2016	5,000	619,082	---	---	619,082	9,249,540.00	14.9407	0.37	30/06/2016
NBGAM ETF ΓΔ Χ.Α.	28/09/2016	25,000	294,878	---	---	294,878	1,960,161.00	6.6474	---	27/10/2011

## ETFs Notes

[1] - Units (T) = Units (T-1) + New Units (T-1) - Redemption Units (T-1)

[2] - The Creation / Redemption Units of T-1 are included.

Corporate Bonds

Num Listed Bonds	Nominal price	Issue price	Today's Rate	Exp. Date	Duration (years)	Note	Coupon		Trading	Corporate Bonds	Price min	Price max	Closing price	Previous closing price/date	Volume	Transactions Value	Last order		ear min	Year max
							Common	Preferred									Price	Buy / Sell		
1,779,209	13.76	9.77	0.00	21/10/2025	18	---	---	---	1	NIREUS S.A. (Convertible to CR shares)	---	---	---	100.000012/07/2016	---	---	9.9900	B	28/09/2016	10.0000150.0000
212,237,880	1.00	1.00	6.30	29/07/2020	7	---	13	---	1	MARFIN INVESTMENT GROUP S.A. SERIES B (BOND)	---	---	---	0.850023/08/2013	---	---	6.0000	B	14/09/2016	0.85000.8500
163,009,139	1.00	1.00	7.00	29/07/2019	6	---	13	---	1	MARFIN INVESTMENT GROUP S.A. SERIES A (BOND)	---	---	---	1.000023/08/2013	---	---	6.0000	B	14/09/2016	1.00001.0000

Corporate Bonds Notes

Transactions Volume = (Pieces) \* (Nominal Price). Transactions Value = (Pieces) \* (Nominal Price) \* (price %) + (Accrued interest).  
The price of a Bond is stated as a percentage (%) of Bond's Nominal Price.  
Nominal Price in Euros (€), except if it is noted differently.



Government Bonds

Number Listed Bonds	Nominal price	Today's Rate	Accrued Interest Calc	Exp. Date [1]	Duration (years)	Note	Coupons Date	Curr. coupon value	Trading Unit	Government Bonds	Price min	Price max	Closing price	Previous closing price/date	Volume	Transactions Value	Price	Last order Buy / Sell	Date
1,792,455,803	1.00	4.30	Actual/Actual	24/02/2023	11	---	24/02	4.30	1	GGB-FXD-240223-11Y-2.000-1.00	---	---	---	10.0000 22/06/2015	---	---	---	---	---
1,771,485,249	1.00	4.30	Actual/Actual	24/02/2024	12	---	24/02	4.30	1	GGB-FXD-240224-12Y-2.000-1.00	---	---	---	10.0000 22/06/2015	---	---	---	---	---
1,744,316,583	1.00	4.30	Actual/Actual	24/02/2025	13	---	24/02	4.30	1	GGB-FXD-240225-13Y-2.000-1.00	---	---	---	10.0000 22/06/2015	---	---	---	---	---
1,498,761,836	1.00	4.30	Actual/Actual	24/02/2026	14	---	24/02	4.30	1	GGB-FXD-240226-14Y-2.000-1.00	---	---	---	10.0000 22/06/2015	---	---	---	---	---
1,469,952,920	1.00	4.30	Actual/Actual	24/02/2027	15	---	24/02	4.30	1	GGB-FXD-240227-15Y-2.000-1.00	---	---	---	10.0000 22/06/2015	---	---	---	---	---
1,525,434,082	1.00	4.30	Actual/Actual	24/02/2028	16	---	24/02	4.30	1	GGB-FXD-240228-16Y-2.000-1.00	---	---	---	10.0000 22/06/2015	---	---	---	---	---
1,503,860,546	1.00	4.30	Actual/Actual	24/02/2029	17	---	24/02	4.30	1	GGB-FXD-240229-17Y-2.000-1.00	---	---	---	10.0000 22/06/2015	---	---	---	---	---
1,435,418,132	1.00	4.30	Actual/Actual	24/02/2030	18	---	24/02	4.30	1	GGB-FXD-240230-18Y-2.000-1.00	---	---	---	10.0000 22/06/2015	---	---	---	---	---
1,368,045,727	1.00	4.30	Actual/Actual	24/02/2031	19	---	24/02	4.30	1	GGB-FXD-240231-19Y-2.000-1.00	---	---	---	10.0000 22/06/2015	---	---	---	---	---
1,373,758,194	1.00	4.30	Actual/Actual	24/02/2032	20	---	24/02	4.30	1	GGB-FXD-240232-20Y-2.000-1.00	---	---	---	10.0000 22/06/2015	---	---	---	---	---
1,452,639,893	1.00	4.30	Actual/Actual	24/02/2033	21	---	24/02	4.30	1	GGB-FXD-240233-21Y-2.000-1.00	---	---	---	10.0000 22/06/2015	---	---	---	---	---
1,410,344,954	1.00	4.30	Actual/Actual	24/02/2034	22	---	24/02	4.30	1	GGB-FXD-240234-22Y-2.000-1.00	---	---	---	10.0000 22/06/2015	---	---	---	---	---
1,444,202,190	1.00	4.30	Actual/Actual	24/02/2035	23	---	24/02	4.30	1	GGB-FXD-240235-23Y-2.000-1.00	---	---	---	10.0000 22/06/2015	---	---	---	---	---
1,505,138,031	1.00	4.30	Actual/Actual	24/02/2036	24	---	24/02	4.30	1	GGB-FXD-240236-24Y-2.000-1.00	---	---	---	10.0000 22/06/2015	---	---	---	---	---
1,396,254,095	1.00	4.30	Actual/Actual	24/02/2037	25	---	24/02	4.30	1	GGB-FXD-240237-25Y-2.000-1.00	---	---	---	10.0000 22/06/2015	---	---	---	---	---
1,382,167,704	1.00	4.30	Actual/Actual	24/02/2038	26	---	24/02	4.30	1	GGB-FXD-240238-26Y-2.000-1.00	---	---	---	10.0000 22/06/2015	---	---	---	---	---
1,337,331,257	1.00	4.30	Actual/Actual	24/02/2039	27	---	24/02	4.30	1	GGB-FXD-240239-27Y-2.000-1.00	---	---	---	10.0000 22/06/2015	---	---	---	---	---
1,371,908,706	1.00	4.30	Actual/Actual	24/02/2040	28	---	24/02	4.30	1	GGB-FXD-240240-28Y-2.000-1.00	---	---	---	10.0000 22/06/2015	---	---	---	---	---
1,360,659,778	1.00	4.30	Actual/Actual	24/02/2041	29	---	24/02	4.30	1	GGB-FXD-240241-29Y-2.000-1.00	---	---	---	10.0000 22/06/2015	---	---	---	---	---
1,432,747,403	1.00	4.30	Actual/Actual	24/02/2042	30	---	24/02	4.30	1	GGB-FXD-240242-30Y-2.000-1.00	---	---	---	10.0000 22/06/2015	---	---	---	---	---
742,153	1,000.00	0.93	FLR Actual/360	10/08/2019	5	---	10/02 - 10/08	---	1	GGB-FLT-100819-05Y-0.934-1,000	---	---	---	---	---	---	---	---	---
4,030,827	1,000.00	4.75	Actual/Actual	17/04/2019	5	---	17/04	4.75	1	GGB-FXD-170419-05Y-4.750-1,000	---	---	---	---	---	---	---	---	---
2,089,066	1,000.00	3.38	Actual/Actual	17/07/2017	3	---	17/07	3.38	1	GGB-FXD-170717-03Y-3.375-1,000	---	---	---	---	---	---	---	---	---

Government Bonds Notes

Transactions Volume = (Pieces) \* (Nominal Price). Transactions Value = (Pieces) \* (Nominal Price) \* (price %) + (Accrued interest).  
The Value of current coupon for the issues with NV 0.01 euro refers to NV 100 euros  
FLR: Floating Interest Rate.  
[1] - The Expiration Date of the interest bearing period and the Date for coupon payment.

Bonds in Circulation	Currency / Min nominal traded Value	Coupons Payment Date	Current Coupon Value	Note	Coupon	Trading Unit	Issue Date	Duration (years)	Today's Interest	A.I.C in days	Bonds	Last price of previous days		Last Outcry in Cash (euro) Price Buy / Sell		Trades in Pieces	Life min	Life Max	
Corporate Bonds in Foreign Currency and Euro																			
103,746	GBP / 10	01/12	0.25	---	57	1	01/12/1930	98	2.5	360	National Mortgage Bank	2.27	05/02/1996	2.27	S	05/02/1996	---	2.27	2.27
0	GBP / 10	01/12	0.25	---	59	1	01/12/1928	100	2.5	360	National Mortgage Bank	---	---	---	---	---	---	---	---

Government Bonds Notes

A.I.C: Accrued Interest Calculation base.  
FLR: Floating Interest Rate.  
The minimum tradeable Nominal Value for all Demeterialised Government Titles is 100 Euros.  
(μτφρ-0)

Athex & ATHEXClear Members List

Member Name			Stock Market			Derivatives Market		ATHEXClear Member	
Address	Phone	Fax	Market Member	Remote Member	Market Maker	Proprietary	Market Maker	General Clearing	Direct Clearing
A. SARRIS SECURITIES S.A.			a						
6, DRAGATSANIOU ATHINA	+30 2103367700	210-3312324							
ALPHA FINANCE INVESTMENT SERVICES S.A.			a		a	a	a		a
5, MERLIN ATHINA	+30 2103677400	210-33311193							
ALPHA BANK A.E.								a	
40, STADIOU STR ATHINA	(210)-3260000	(210)-3264116							
	(210)-3265546	(210)-3265811							
103, AVE. ATHINON ATHINA	+30 2103436820	210-3436270							
ARGUS STOCKBROKERS LTD			a	a		a			
25 , DIMOSTHENI SEVERI AVE NICOSIA	+357 22717000	0035722717070							
ATLANTIC SECURITIES LIMITED			a	a					
37, PRODROMOU NICOSIA	+357 22445400	00357 22661914							
ATLAS SECURITIES S.A			a			a			
, 125 MICHALAKOPOULOU & 14-16 VERVENON ATHINA	+30 2103363300	210-3238925							
ATTICA BANK S.A.								a	
54, AKADIMIAS STR. ATHINA	(210)-3390757	(210)-3646090							
23, OMIROU ATHINA	+30 2103669261	210-3669265							
23, OMIROU STR. ATHINA	(210)-3669000	(210)-3669410							
AXIA VENTURES GROUP LTD			a	a					
, KRANIDIOTI 10, OFFICE 102 NICOSIA	+357 22742000	357 22742001							
AXON SECURITIES S.A.			a			a			
48, STADIOU ATHINA	+30 2103363800	210-3243903							
BANK OF AMERICA MERRILL LYNCH			a	a					
2 , KING EDWARD STREET LONDON	+44 20276281000								
BETA SECURITIES S.A.			a		a	a	a		a
29 , ALEXANDRAS AVEN. & VRAILA ATHINA	+30 2106478900	210-6410139							
BNP PARIBAS SECURITIES SERVICES S.A.								a	
, VASILISSIS SOFIAS 94 & KERASOUNTOS 1 ATHINA	+30 2107468500	210-7468579-581							
CAPITAL SECURITIES S.A.			a			a			
58, MITROPOLEOS ATHINA	+30 2103369700	+30 210 3369820							
CFS SECURITIES-INVESTMENT SERVICES S.A.			a						
3, PAPARRIGOPOULOU ATHINA	+30 2103360800	+30 210-3360980							
CITIGROUP GLOBAL MARKET LTD			a	a					
1, CITIGROUP CENTER , CANADA SQ., CANARY WHARF LONDON	+44 02079864000								
CREDIT SUISSE SECURITIES (EUROPE) LIMITED			a	a					
, ONE CABOT SQUARE LONDON	+44 2078888888								
CYCLOS SECURITIES S.A.			a			a			a
39, PANEPISTIMIOU ATHINA	+30 2103364300	+30 210-3239122							
D.A. TSEKOURAS SEC. S.A.			a						
33, STADIOU ATHINA	+30 2103245100	210-3211997							
DELTASTOCK AD									a
115, MEGAPARK OFFICE BUILDING, OFFICE AREA E, G TSARIGRADSKOGA 39	+35728115051	+35928115049							
DEUTSCHE BANK S.A.			a	a		a			
1 , GREAT WINCHESTER STREET LONDON	+44 20 754 54209	00441133361437							
DYNAMIC SECURITIES S.A.			a			a			a
8, OMIROU ATHINA	+30 2103677700	210-3677777							
EL. PETROPOULAKIS SECURITIES S.A.			a			a			
9, ARISTEIDOU ATHINA	+30 2103213928	+30 210-3216810							
ESTINVEST S.A.									a
9, TH REPUBLICII STREET FOCSANI	+40 237238900	+40 237237471							
EUROBANK ERGASIAS S.A.								a	
8, OTHONOS ATHINA	+30 2103337000	210-3245916							
8, OTHONOS STR. ATHINA	(210)-3337969	(210)-3245916							
	(210)-3337000	(210)-3233866							
EUROBANK SECURITIES INVESTMENT FIRM S.A			a		a	a	a		a
, FILELLINON 10 & XENOFONTOS 13 ATHINA	+30 2103720000	210-3720001							
EUROCORP SECURITIES S.A.			a			a			a
14, SQ.FILIKIS ETAIRIAS ATHINA	+30 2107263500	210-7263666							
EUROTRUST BROKERAGE S.A.			a						
113, SEVASTOUPOLEOS ATHINA	+30 2103363100	+30 210-3238334							
EUROXX SECURITIES S.A.			a		a	a	a		a
7, PALAIOLOGOU CHALANDRI	(210)-6879400	(210)-6879401							
7, PALEOLOGOU CHALANDRI	+30 2106879400	210-6879401							

Athex & ATHEXClear Members List

Member Name			Stock Market			Derivatives Market		ATHEXClear Member	
Address	Phone	Fax	Market Member	Remote Member	Market Maker	Proprietary	Market Maker	General Clearing	Direct Clearing
G. A. PERVANAS SECURITIES-INVESTMENT SERVICES CO S.A.			a						
7-9, SOFOKLEOUS ATHINA	+30 2103727200	210-3210-291							
GLOBAL CAPITAL SECURITIES AND FINANCIAL SERVICES LTD			a	a					
, AVE. ARCHIEPISKOPOU MAKARIOU NICOSIA	+357 22710710	357 22339332							
GUARDIAN TRUST SECURITIES S.A			a			a			
31, ERMOU ATHINA	+30 2103378700	210-3220498							
HELLENIC BANK (INVESTMENTS) LTD			a	a					
, AVE.KYRIAKOU MATSI 31 - PO BOX 24747 NICOSIA	+357 22500100	357 22500110							
HELLENICAMERICAN SEC. S.A.			a		a	a			a
27, ANDREA PAPANDREOU ATHINA	+30 2103311100	+30 210-3215968							
HSBC BANK PLC								a	
109-111, AVE. MESOGION ATHINA	+30 2106960000	210-6928000							
INDEX SECURITIES S.A.			a						
6, DRAGATSANIOU ATHINA	+30 2103213920	+30 210-3213216							
INTERFINBROK CORPORATION S.A.									a
1, STR.CALARASI NR. CONSTANTA	+40 241639071	0241-547829							
INVESTMENT BANK OF GREECE S.A.			a		a	a		a	
32 , EGIALIAS & PARADISOU MAROUSI	+30 2108173111	+30 210-6896325							
J. CHR. MAVRIKIS SECURITIES S.A.			a						
5, SOFOKLEOUS ATHINA	+30 2103216730	210-3217767							
KAPPA SECURITIES S.A.			a			a			
15, VALAORITOU ATHINA	+30 2103678600	+30 210-3641002							
KARAMANOF SECURITIES-INV. SERVICES S.A.			a			a			
2, SQ. AGION THEODORON ATHINA	+30 2103212947	+30 210-3217088							
LAIKI FINANCIAL SERVICES LTD				a					
26, AVE. VYRONOS NICOSIA	357 22367367	357 22718567							
LEON DEPOLAS SECURITIES S.A.			a		a	a			
1, CHRISTOU LADA ATHINA	+30 2103213276	+30 210-3211618							
MAGNA TRUST SECURITIES S.A			a						
12-14, KARAGIORGI SERBIAS ATHINA	+30 2103800820	210-3220910							
MEGA EQUITY SECURITIES-FINANCIAL SERVICES LTD			a	a		a			
42-44, AVE. GRIVA DIGENI NICOSIA	+357 22711711	357 22711811							
MERIT SECURITIES S.A			a		a	a			a
3, GEORGIOU SOURI ATHINA	+30 2103671890	210-3671830							
MIDAS BROKERAGE S.A.			a		a				
5, SOFOKLEOUS ATHINA	+30 2141008800	+30 210-3253205							
N. CHRYSOCHOIDIS STOCK BROKERAGE I.S.S.A.			a			a			a
7-9, SOFOKLEOUS ATHINA	+30 2103213913	+30 210-3216115							
NATIONAL BANK OF GREECE S.A.			a			a		a	
86, AIOLOU STR. ATHINA	(210)-3341000	(210)-3228187							
68, AKADIMIAS STR. ATHINA	(210)-3328817	(210)-3328678							
NATIONAL SECURITIES S.A			a		a	a	a		
66, KIFISIAS AVE , BUILDING A ATHINA	+30 2107720000	+30 210-7720002							
NUNTIUS SECURITIES S.A			a						
6, DRAGATSANIOU ATHINA	+30 2103350599	+30210-3254846							
ONE PLUS CAPITAL LIMITED			a	a					
, 75 PRODRAMOU AVENUE, ONEWORLD PARKVIEW HOUSE, 3RD FLOOR, 22873760	+30 2103350599								
PANTELAKIS SECURITIES S.A.			a			a			
57, ETHNIKIS ANTISTASIS B CHALANDRI	+30 2106965000	210-6929550							
PEGASUS BROKERAGE FIRM S.A			a			a			
17 , VALAORITOU & AMERIKIS ATHINA	+30 2103670700	+30 210-3670760							
PIRAEUS BANK S.A.			a			a		a	
4, AMERIKIS STR. ATHINA	(210)-3335000	(210)-3335079							
4, AMERIKIS STR ATHINA	(210)-3335918	(210)-3254207							
4, AMERIKIS ATHINA	+30 2103335000	210-3335079							
PIRAEUS SECURITIES S.A.			a		a	a	a		a
5, KORAI ATHINA	+30 2103354100	210-3354170							
PRELIUM SECURITIES-INVESTMENT SERVICES S.A.			a			a			
1 , DAVAKI & KIFISIAS AVE. ATHINA	+30 2103677000	+30 210-6926403							
PROCHOICE SECURITIES LTD			a	a					
57, SPYROY KYPRIANOY NICOSIA	+357-24-661192	+357-24-662464							
SHARELINK SECURITIES-FINANCIAL SERVICES LTD			a	a		a			
6 , THEOTOKI MEGARO ELLINA NICOSIA	+357 22554200	+357 22750852							

Athex & ATHEXClear Members List

Member Name			Stock Market			Derivatives Market		ATHEXClear Member	
Address	Phone	Fax	Market Member	Remote Member	Market Maker	Proprietary	Market Maker	General Clearing	Direct Clearing
SOCIETE GENERALE S.A.			a	a		a			
, 17 COURS VALMY 92987 PUTEAUX - LA DEFENSE PARIS	+33 157290504	+33142138697							
SOLIDUS SECURITIES S.A			a			a			a
64, LOUIZIS RIANCOUR ATHINA	+30 2106900600	210-6985421							
SSIF VIENNA INVESTMENT TRUST S.A.									a
, 4 SPLAIUL UNIRII, BUILDING B3 BUCHAREST	+40 212074880	004 021 207 48 98							
ST. EM. LAVRENTAKIS SECURITIES S.A.			a			a			
7-9, SOFOKLEOUS ATHINA	+30 2103213336	+30 210-3246572							
THE CYPRUS INVESTMENT & SECURITIES CORPORATION LTD			a	a					
154, LIMASSOL AVENUE, STROVOLOS NICOSIA	+357 22121700	357 22338800							
UBS LIMITED			a	a					
1 , FINSBURY AVENUE LONDON	+44 2075687135								

## List of Stocks under Market Making operations

Securities	Stock Category
Market Maker	Start Market Making
<b>FRIGOGLASS SA (CR)</b>	Surveillance
EUROBANK SECURITIES INVESTMENT FIRM S.A	27/10/2014
<b>ALPHA BANK (CR)</b>	Main Market
ALPHA FINANCE INVESTMENT SERVICES S.A.	29/02/2016
EUROBANK SECURITIES INVESTMENT FIRM S.A	24/10/2012
LEON DEPOLAS SECURITIES S.A.	04/01/2016
MERIT SECURITIES S.A	03/09/2013
MIDAS BROKERAGE S.A.	11/01/2006
NATIONAL SECURITIES S.A	15/01/2013
PIRAEUS SECURITIES S.A.	28/05/2013
<b>ALUMIL (CR)</b>	Main Market
BETA SECURITIES S.A.	18/07/2013
<b>ATTICA BANK S.A. (CR)</b>	Main Market
BETA SECURITIES S.A.	02/06/2014
EUROBANK SECURITIES INVESTMENT FIRM S.A	25/07/2014
EUROXX SECURITIES S.A.	22/01/2016
<b>BANK OF CYPRUS (CR)</b>	Main Market
EUROBANK SECURITIES INVESTMENT FIRM S.A	23/03/2015
NATIONAL SECURITIES S.A	22/06/2015
<b>BYTE COMPUTER SA (CR)</b>	Main Market
MERIT SECURITIES S.A	04/08/2013
<b>CC HBC AG (CR)</b>	Main Market
EUROBANK SECURITIES INVESTMENT FIRM S.A	23/10/2013
NATIONAL SECURITIES S.A	29/04/2013
PIRAEUS SECURITIES S.A.	04/05/2015
<b>ELLAKTOR (CR)</b>	Main Market
EUROBANK SECURITIES INVESTMENT FIRM S.A	01/06/2013
NATIONAL SECURITIES S.A	25/06/2013
<b>ELTON SA (CR)</b>	Main Market
BETA SECURITIES S.A.	03/09/2013
<b>EUROBANK ERGASIAS (CR)</b>	Main Market
ALPHA FINANCE INVESTMENT SERVICES S.A.	08/01/2013
EUROBANK SECURITIES INVESTMENT FIRM S.A	01/06/2013
HELLENICAMERICAN SEC. S.A.	25/07/2014
MIDAS BROKERAGE S.A.	07/01/2016
PIRAEUS SECURITIES S.A.	28/09/2013
<b>EUROCONSULTANTS S.A. (CR)</b>	Main Market
EUROBANK SECURITIES INVESTMENT FIRM S.A	22/07/2014
<b>FOLLI FOLLIE (CR)</b>	Main Market
NATIONAL SECURITIES S.A	17/02/2014
PIRAEUS SECURITIES S.A.	04/05/2015
<b>FOURLIS (CR)</b>	Main Market
HELLENICAMERICAN SEC. S.A.	14/09/2005
<b>GEK TERNA (CR)</b>	Main Market
HELLENICAMERICAN SEC. S.A.	07/09/2015
<b>GR. SARANTIS SA (CR)</b>	Main Market
BETA SECURITIES S.A.	14/05/2013
<b>HELLENIC EXCHANGES-A.S.E. (CR)</b>	Main Market
EUROBANK SECURITIES INVESTMENT FIRM S.A	01/06/2013
HELLENICAMERICAN SEC. S.A.	01/09/2014
NATIONAL SECURITIES S.A	25/06/2013
PIRAEUS SECURITIES S.A.	04/05/2015
<b>HELLENIC PETROLEUM (CR)</b>	Main Market
HELLENICAMERICAN SEC. S.A.	14/09/2015
<b>HYGEIA SA (CR)</b>	Main Market
HELLENICAMERICAN SEC. S.A.	18/04/2016
<b>INTRACOM HOLDINGS (CR)</b>	Main Market
HELLENICAMERICAN SEC. S.A.	07/09/2015
<b>INTRALOT (CR)</b>	Main Market
EUROBANK SECURITIES INVESTMENT FIRM S.A	01/06/2013
PIRAEUS SECURITIES S.A.	28/09/2013
<b>J &amp; P - AVAX SA (CR)</b>	Main Market
EUROBANK SECURITIES INVESTMENT FIRM S.A	14/12/2015
<b>KLOUKINAS - LAPPAS SA (CR)</b>	Main Market
BETA SECURITIES S.A.	22/09/2014
<b>LAMDA DEVELOPMENT SA (CR)</b>	Main Market
EUROBANK SECURITIES INVESTMENT FIRM S.A	08/12/2014

## List of Stocks under Market Making operations

Securities	Stock Category
Market Maker	Start Market Making
<b>MARFIN INVESTMENT GROUP (CR)</b>	<b>Main Market</b>
EUROBANK SECURITIES INVESTMENT FIRM S.A	23/03/2015
HELLENICAMERICAN SEC. S.A.	25/07/2014
PIRAEUS SECURITIES S.A.	02/02/2013
<b>MLS MULTIMEDIA SA (CR)</b>	<b>Main Market</b>
HELLENICAMERICAN SEC. S.A.	07/12/2015
<b>MOTOR OIL (CR)</b>	<b>Main Market</b>
EUROBANK SECURITIES INVESTMENT FIRM S.A	23/10/2012
HELLENICAMERICAN SEC. S.A.	01/09/2014
NATIONAL SECURITIES S.A	17/02/2014
PIRAEUS SECURITIES S.A.	04/05/2015
<b>MYTILINEOS HOLDINGS (CR)</b>	<b>Main Market</b>
NATIONAL SECURITIES S.A	25/06/2013
PIRAEUS SECURITIES S.A.	04/05/2015
<b>NATIONAL BANK (CR)</b>	<b>Main Market</b>
ALPHA FINANCE INVESTMENT SERVICES S.A.	08/01/2013
EUROBANK SECURITIES INVESTMENT FIRM S.A	24/10/2012
HELLENICAMERICAN SEC. S.A.	25/07/2014
LEON DEPOLAS SECURITIES S.A.	20/04/2015
MERIT SECURITIES S.A	03/09/2013
MIDAS BROKERAGE S.A.	07/01/2016
NATIONAL SECURITIES S.A	28/02/2013
PIRAEUS SECURITIES S.A.	08/09/2013
<b>OPAP (CR)</b>	<b>Main Market</b>
ALPHA FINANCE INVESTMENT SERVICES S.A.	08/01/2013
EUROBANK SECURITIES INVESTMENT FIRM S.A	24/10/2012
HELLENICAMERICAN SEC. S.A.	25/07/2014
MIDAS BROKERAGE S.A.	04/04/2016
NATIONAL SECURITIES S.A	15/01/2013
PIRAEUS SECURITIES S.A.	04/05/2015
<b>OTE (CR)</b>	<b>Main Market</b>
ALPHA FINANCE INVESTMENT SERVICES S.A.	08/01/2013
EUROBANK SECURITIES INVESTMENT FIRM S.A	24/10/2012
HELLENICAMERICAN SEC. S.A.	25/07/2014
MIDAS BROKERAGE S.A.	01/10/2015
NATIONAL SECURITIES S.A	01/12/2012
PIRAEUS SECURITIES S.A.	08/09/2013
<b>PAPOUTSANIS (CR)</b>	<b>Main Market</b>
BETA SECURITIES S.A.	25/11/2013
<b>PETROPOULOS PETROS (CR)</b>	<b>Main Market</b>
BETA SECURITIES S.A.	28/05/2013
<b>PIRAEUS BANK (CR)</b>	<b>Main Market</b>
EUROBANK SECURITIES INVESTMENT FIRM S.A	23/10/2012
EUROXX SECURITIES S.A.	15/02/2016
HELLENICAMERICAN SEC. S.A.	25/07/2014
MERIT SECURITIES S.A	16/09/2013
MIDAS BROKERAGE S.A.	11/01/2016
NATIONAL SECURITIES S.A	02/06/2013
PIRAEUS SECURITIES S.A.	16/02/2013
<b>PLAISIO COMPUTERS SA (CR)</b>	<b>Main Market</b>
BETA SECURITIES S.A.	05/05/2014
EUROBANK SECURITIES INVESTMENT FIRM S.A	02/03/2015
<b>PPC (CR)</b>	<b>Main Market</b>
ALPHA FINANCE INVESTMENT SERVICES S.A.	08/01/2013
EUROBANK SECURITIES INVESTMENT FIRM S.A	23/10/2012
MIDAS BROKERAGE S.A.	04/04/2016
NATIONAL SECURITIES S.A	26/03/2013
PIRAEUS SECURITIES S.A.	28/09/2013
<b>QUALITY &amp; RELIABILITY SA (CR)</b>	<b>Main Market</b>
BETA SECURITIES S.A.	20/08/2014
<b>S.KANAKIS SA (CR)</b>	<b>Main Market</b>
BETA SECURITIES S.A.	01/10/2013
<b>TITAN CEMENT (CR)</b>	<b>Main Market</b>
EUROBANK SECURITIES INVESTMENT FIRM S.A	23/10/2012
NATIONAL SECURITIES S.A	17/02/2014
PIRAEUS SECURITIES S.A.	04/05/2015
<b>VIOHALCO SA/NV (CB)</b>	<b>Main Market</b>
ALPHA FINANCE INVESTMENT SERVICES S.A.	17/02/2014
MERIT SECURITIES S.A	17/03/2014

Underlying Asset				Derivatives Market													
Price max	Price min	Closing price	change	Delivery Month	Open price	Price max	Price min	Last price	Closing price	Last Bid	Last Ask	Settlement price	Life high	Life low	Trades	Volume	Open Interest
FTSE/Athex Large Cap																	(Trade Unit: 1 Index Point x 2€, Cash Settlement)
1,519.07	1,495.92	1,497.74	0.12%	October 2016	1,504.50	1,517.75	1,495.50	1,498.50	1,498.50	---	---	1,502.00	1,580.75	---	193	749	5,699
				November 2016	1,516.25	1,516.25	1,500.00	1,500.00	1,500.00	---	---	1,501.50	1,539.00	---	3	22	231
				December 2016	---	---	---	---	1,502.50	---	---	---	---	---	---	---	---
				March 2017	---	---	---	---	1,510.25	---	---	---	---	---	---	---	---
				June 2017	---	---	---	---	1,517.75	---	---	---	---	---	---	---	---
				September 2017	---	---	---	---	1,525.25	---	---	---	---	---	---	---	---



Underlying Asset				Derivatives Market													
Price max	Price min	Closing price	change	Delivery Month	Open price	Price max	Price min	Last price	Closing price	Last Bid	Last Ask	Settlement price	Life high	Life low	Trades	Volume	Open Interest
ALPHA BANK (CR)				(Contract Size: 100 Securities, Physical Delivery)													
1.57	1.49	1.49	-2.61%	December 2016	1.55	1.56	1.48	1.49	1.49	---	---	1.52	1.87	---	154	1,961	14,788
				March 2017	---	---	---	---	1.54	---	---	---	---	---	---	---	---
				June 2017	---	---	---	---	1.55	---	---	---	---	---	---	---	---
				September 2017	---	---	---	---	1.56	---	---	---	---	---	---	---	---
CC HBC AG (CR)				(Contract Size: 100 Securities, Physical Delivery)													
20.50	20.33	20.39	0.54%	December 2016	20.35	20.35	20.31	20.31	20.31	---	---	20.46	20.40	---	2	10	87
				March 2017	---	---	---	---	20.47	---	---	---	---	---	---	---	---
				June 2017	---	---	---	---	20.58	---	---	---	---	---	---	---	---
				September 2017	---	---	---	---	20.68	---	---	---	---	---	---	---	---
CORINTH PIPEWORKS (CR)				(Contract Size: 100 Securities, Physical Delivery)													
0.627	0.553	0.627	10.39%	December 2016	0.568	0.625	0.558	0.610	0.610	---	---	0.609	0.929	---	101	1,007	720
				March 2017	---	---	---	---	0.573	---	---	0.639	0.850	---	---	---	---
				June 2017	---	---	---	---	0.576	---	---	---	---	---	---	---	---
				September 2017	---	---	---	---	0.579	---	---	---	---	---	---	---	---
ELLAKTOR (CR)				(Contract Size: 100 Securities, Physical Delivery)													
1.34	1.29	1.31	0.77%	December 2016	1.32	1.33	1.29	1.30	1.30	---	---	1.30	1.33	---	7	31	1,661
				March 2017	---	---	---	---	1.31	---	---	---	---	---	---	---	---
				June 2017	---	---	---	---	1.32	---	---	---	---	---	---	---	---
				September 2017	---	---	---	---	1.33	---	---	---	---	---	---	---	---
EUROBANK ERGASIAS (CR)				(Contract Size: 100 Securities, Physical Delivery)													
0.529	0.500	0.500	-2.15%	December 2016	0.522	0.528	0.498	0.500	0.500	---	---	0.507	0.590	---	229	4,473	23,961
				March 2017	---	---	---	---	0.516	---	---	---	---	---	---	---	---
				June 2017	---	---	---	---	0.518	---	---	---	---	---	---	---	---
				September 2017	---	---	---	---	0.521	---	---	---	---	---	---	---	---
EYDAP S.A. (CR)				(Contract Size: 100 Securities, Physical Delivery)													
5.40	5.26	5.33	-1.66%	December 2016	5.28	5.28	5.25	5.25	5.25	---	---	5.32	5.61	---	5	17	422
				March 2017	---	---	---	---	5.47	---	---	---	---	---	---	---	---
				June 2017	---	---	---	---	5.50	---	---	---	---	---	---	---	---
				September 2017	---	---	---	---	5.53	---	---	---	---	---	---	---	---
FOLLI FOLLIE (CR)				(Contract Size: 100 Securities, Physical Delivery)													
22.00	21.34	21.90	1.34%	December 2016	21.95	21.95	21.60	21.60	21.60	---	---	21.75	22.09	---	6	14	168
				March 2017	21.86	21.86	21.86	21.86	21.86	---	---	21.86	21.86	---	1	5	5
				June 2017	---	---	---	---	21.92	---	---	---	---	---	---	---	---
				September 2017	---	---	---	---	22.03	---	---	---	---	---	---	---	---
GEK TERNA (CR)				(Contract Size: 100 Securities, Physical Delivery)													
1.84	1.77	1.82	1.11%	December 2016	1.82	1.84	1.78	1.78	1.78	---	---	1.84	1.90	---	5	16	6,735
				March 2017	---	---	---	---	1.82	---	---	---	---	---	---	---	---
				June 2017	---	---	---	---	1.83	---	---	---	---	---	---	---	---
				September 2017	---	---	---	---	1.84	---	---	---	---	---	---	---	---

Underlying Asset				Derivatives Market													
Price max	Price min	Closing price	change	Delivery Month	Open price	Price max	Price min	Last price	Closing price	Last Bid	Last Ask	Settlement price	Life high	Life low	Trades	Volume	Open Interest
GRIVALIA PROPERTIES (CR)				(Contract Size: 100 Securities, Physical Delivery)													
6.84	6.73	6.83	1.49%	December 2016	6.80	6.80	6.80	6.80	6.80	---	---	6.80	7.19	---	2	2	54
				March 2017	---	---	---	---	6.79	---	---	---	---	---	---	---	---
				June 2017	---	---	---	---	6.83	---	---	---	---	---	---	---	---
				September 2017	---	---	---	---	6.86	---	---	---	---	---	---	---	---
HELLENIC EXCHANGES-A.S.E. (CR)				(Contract Size: 100 Securities, Physical Delivery)													
4.19	4.10	4.10	-0.97%	December 2016	4.13	4.17	4.11	4.11	4.11	---	---	4.11	4.43	---	5	13	371
				March 2017	---	---	---	---	4.18	---	---	---	---	---	---	---	---
				June 2017	---	---	---	---	4.20	---	---	---	---	---	---	---	---
				September 2017	---	---	---	---	4.22	---	---	---	---	---	---	---	---
HELLENIC PETROLEUM (CR)				(Contract Size: 100 Securities, Physical Delivery)													
3.81	3.73	3.78	0.80%	December 2016	3.80	3.82	3.76	3.78	3.78	---	---	3.82	3.89	---	13	20	3,748
				March 2017	---	---	---	---	3.79	---	---	---	---	---	---	---	---
				June 2017	---	---	---	---	3.80	---	---	---	---	---	---	---	---
				September 2017	---	---	---	---	3.82	---	---	---	---	---	---	---	---
INTRALOT (CR)				(Contract Size: 100 Securities, Physical Delivery)													
0.990	0.970	0.970	-2.02%	December 2016	0.993	0.993	0.993	0.993	0.993	---	---	0.970	1.02	---	1	2	629
				March 2017	---	---	---	---	0.999	---	---	---	---	---	---	---	---
				June 2017	---	---	---	---	1.00	---	---	---	---	---	---	---	---
				September 2017	---	---	---	---	1.01	---	---	---	---	---	---	---	---
JUMBO SA (CR)				(Contract Size: 100 Securities, Physical Delivery)													
11.18	10.87	10.89	0.18%	December 2016	10.94	11.11	10.90	10.90	10.90	---	---	10.85	11.69	---	5	27	107
				March 2017	---	---	---	---	10.97	---	---	---	---	---	---	---	---
				June 2017	---	---	---	---	11.03	---	---	---	---	---	---	---	---
				September 2017	---	---	---	---	11.08	---	---	---	---	---	---	---	---
MARFIN INVESTMENT GROUP (CR)				(Contract Size: 100 Securities, Physical Delivery)													
0.132	0.127	0.127	0.00%	December 2016	0.124	0.133	0.112	0.125	0.125	---	---	0.125	0.137	---	68	1,315	41,456
				March 2017	---	---	---	---	0.128	---	---	---	---	---	---	---	---
				June 2017	---	---	---	---	0.129	---	---	---	---	---	---	---	---
				September 2017	---	---	---	---	0.129	---	---	---	---	---	---	---	---
METKA (CR)				(Contract Size: 100 Securities, Physical Delivery)													
7.49	7.26	7.33	0.82%	December 2016	7.36	7.36	7.36	7.36	7.36	---	---	7.34	7.53	---	1	5	81
				March 2017	---	---	---	---	7.34	---	---	---	---	---	---	---	---
				June 2017	---	---	---	---	7.38	---	---	---	---	---	---	---	---
				September 2017	---	---	---	---	7.41	---	---	---	---	---	---	---	---
MOTOR OIL (CR)				(Contract Size: 100 Securities, Physical Delivery)													
10.09	10.00	10.09	0.30%	December 2016	10.05	10.05	10.05	10.05	10.05	---	---	10.05	10.53	---	2	3	347
				March 2017	---	---	---	---	10.16	---	---	---	---	---	---	---	---
				June 2017	---	---	---	---	10.21	---	---	---	---	---	---	---	---
				September 2017	---	---	---	---	10.26	---	---	---	---	---	---	---	---

Underlying Asset				Derivatives Market													
Price max	Price min	Closing price	change	Delivery Month	Open price	Price max	Price min	Last price	Closing price	Last Bid	Last Ask	Settlement price	Life high	Life low	Trades	Volume	Open Interest
MYTILINEOS HOLDINGS (CR)				(Contract Size: 100 Securities, Physical Delivery)													
3.92	3.79	3.91	2.62%	December 2016	3.82	3.92	3.81	3.90	3.90	---	---	3.91	3.95	---	45	148	2,532
				March 2017	---	---	---	---	3.85	---	---	---	---	---	---	---	---
				June 2017	---	---	---	---	3.87	---	---	---	---	---	---	---	---
				September 2017	---	---	---	---	3.88	---	---	---	---	---	---	---	---
NATIONAL BANK (CR)				(Contract Size: 100 Securities, Physical Delivery)													
0.188	0.183	0.183	0.55%	December 2016	0.187	0.188	0.182	0.183	0.183	---	---	0.184	0.268	---	71	2,493	67,343
				March 2017	---	---	---	---	0.184	---	---	---	---	---	---	---	---
				June 2017	---	---	---	---	0.185	---	---	---	---	---	---	---	---
				September 2017	---	---	---	---	0.186	---	---	---	---	---	---	---	---
OPAP (CR)				(Contract Size: 100 Securities, Physical Delivery)													
7.72	7.49	7.68	2.54%	December 2016	7.54	7.63	7.53	7.60	7.60	---	---	7.56	7.75	---	45	78	1,436
				March 2017	---	---	---	---	7.56	---	---	---	---	---	---	---	---
				June 2017	---	---	---	---	7.60	---	---	---	---	---	---	---	---
				September 2017	---	---	---	---	7.64	---	---	---	---	---	---	---	---
OTE (CR)				(Contract Size: 100 Securities, Physical Delivery)													
7.95	7.82	7.85	0.13%	December 2016	7.91	7.97	7.83	7.86	7.86	---	---	7.87	8.85	---	94	337	6,023
				March 2017	---	---	---	---	7.91	---	---	---	---	---	---	---	---
				June 2017	---	---	---	---	7.95	---	---	---	---	---	---	---	---
				September 2017	---	---	---	---	7.99	---	---	---	---	---	---	---	---
P.P.A. S.A. (CR)				(Contract Size: 100 Securities, Physical Delivery)													
12.43	12.05	12.40	1.89%	December 2016	12.24	12.35	12.15	12.35	12.35	---	---	12.40	12.72	---	4	4	649
				March 2017	---	---	---	---	12.29	---	---	---	---	---	---	---	---
				June 2017	---	---	---	---	12.35	---	---	---	---	---	---	---	---
				September 2017	---	---	---	---	12.41	---	---	---	---	---	---	---	---
PIRAEUS BANK (CR)				(Contract Size: 100 Securities, Physical Delivery)													
0.140	0.135	0.135	0.00%	December 2016	0.138	0.141	0.133	0.133	0.133	---	---	0.136	0.250	---	76	4,622	72,782
				March 2017	---	---	---	---	0.136	---	---	---	---	---	---	---	---
				June 2017	---	---	---	---	0.137	---	---	---	---	---	---	---	---
				September 2017	---	---	---	---	0.138	---	---	---	---	---	---	---	---
PPC (CR)				(Contract Size: 100 Securities, Physical Delivery)													
2.76	2.61	2.61	-1.88%	December 2016	2.72	2.76	2.62	2.62	2.62	---	---	2.64	2.83	---	90	415	5,730
				March 2017	---	---	---	---	2.69	---	---	---	---	---	---	---	---
				June 2017	---	---	---	---	2.70	---	---	---	---	---	---	---	---
				September 2017	---	---	---	---	2.71	---	---	---	---	---	---	---	---
TERNA ENERGY (CR)				(Contract Size: 100 Securities, Physical Delivery)													
2.57	2.52	2.55	0.00%	December 2016	---	---	---	---	2.56	---	---	2.57	2.62	---	---	---	1,185
				March 2017	---	---	---	---	2.57	---	---	---	---	---	---	---	---
				June 2017	---	---	---	---	2.59	---	---	---	---	---	---	---	---
				September 2017	---	---	---	---	2.60	---	---	---	---	---	---	---	---

Underlying Asset				Derivatives Market													
Price max	Price min	Closing price	change	Delivery Month	Open price	Price max	Price min	Last price	Closing price	Last Bid	Last Ask	Settlement price	Life high	Life low	Trades	Volume	Open Interest
TITAN CEMENT (CR)				(Contract Size: 100 Securities, Physical Delivery)													
21.31	21.08	21.28	0.38%	December 2016	21.26	21.35	21.26	21.35	21.35	---	---	21.17	21.35	---	3	3	119
				March 2017	---	---	---	---	21.40	---	---	---	---	---	---	---	---
				June 2017	---	---	---	---	21.51	---	---	---	---	---	---	---	---
				September 2017	---	---	---	---	21.62	---	---	---	---	---	---	---	---
VIOHALCO SA/NV (CB)				(Contract Size: 100 Securities, Physical Delivery)													
1.23	1.20	1.23	2.50%	December 2016	1.23	1.23	1.23	1.23	1.23	---	---	1.24	1.31	---	7	12	2,265
				March 2017	---	---	---	---	1.21	---	---	---	---	---	---	---	---
				June 2017	---	---	---	---	1.22	---	---	---	---	---	---	---	---
				September 2017	---	---	---	---	1.22	---	---	---	---	---	---	---	---

FTSE/Athex Large Cap

(Trade Unit: 1 Index Point x 2€ - Exercise Style: European, Cash Settlement)

Call Options																	Put Options																	
Exerise Price	October 2016							November 2016							Other Months		October 2016								November 2016							Other Months		Exerise Price
	Open price	Price max	Price min	Last price	Closing price	Volume	Open Interest	Open price	Price max	Price min	Last price	Closing price	Volume	Open Interest	Volume	Open Interest	Open price	Price max	Price min	Last price	Closing price	Volume	Open Interest	Open price	Price max	Price min	Last price	Closing price	Volume	Open Interest	Volume	Open Interest		
900	-	-	-	-	-	-	-	-	-	-	-	-	-	-	-	-	-	-	-	-	-	-	-	-	-	-	-	-	-	-	-	-	900	
950	-	-	-	-	-	-	-	-	-	-	-	-	-	-	-	-	-	-	-	-	-	-	-	-	-	-	-	-	-	-	-	-	950	
1,000	-	-	-	-	-	-	-	-	-	-	-	-	-	-	-	-	-	-	-	-	-	-	-	-	-	-	-	-	-	-	-	-	1,000	
1,050	-	-	-	-	-	-	-	-	-	-	-	-	-	-	-	-	-	-	-	-	-	-	-	-	-	-	-	-	-	-	-	-	1,050	
1,100	-	-	-	-	-	-	-	-	-	-	-	-	-	-	-	-	-	-	-	-	-	-	-	-	-	-	-	-	-	-	-	-	1,100	
1,150	-	-	-	-	-	-	-	-	-	-	-	-	-	-	-	-	-	-	-	-	-	-	-	-	-	-	-	-	-	-	-	-	1,150	
1,200	-	-	-	-	-	-	-	-	-	-	-	-	-	-	-	-	-	-	-	-	-	-	-	-	-	-	-	-	-	-	-	-	1,200	
1,250	-	-	-	-	-	-	-	-	-	-	-	-	-	-	-	-	-	-	-	-	-	-	-	-	-	-	-	-	-	-	-	-	1,250	
1,275	-	-	-	-	-	-	-	-	-	-	-	-	-	-	-	-	-	-	-	-	-	-	-	-	-	-	-	-	-	-	-	-	1,275	
1,300	-	-	-	-	-	-	-	-	-	-	-	-	-	-	-	-	-	-	-	-	-	-	-	-	-	-	-	-	-	-	-	-	1,300	
1,325	-	-	-	-	-	-	-	-	-	-	-	-	-	-	-	-	-	-	-	-	-	-	-	-	-	-	-	-	-	-	-	-	1,325	
1,350	0.00	0.00	0.00	-	153.00	-	-	0.00	0.00	0.00	-	160.00	-	-	-	-	0.00	0.00	0.00	-	1.90	-	-	0.00	0.00	0.00	-	9.10	-	3	-	-	1,350	
1,375	0.00	0.00	0.00	-	130.00	-	-	0.00	0.00	0.00	-	139.00	-	-	-	-	0.00	0.00	0.00	-	3.70	-	-	0.00	0.00	0.00	-	13.25	-	-	-	-	1,375	
1,400	0.00	0.00	0.00	-	108.00	-	-	0.00	0.00	0.00	-	119.00	-	-	-	-	0.00	0.00	0.00	-	6.60	-	24	0.00	0.00	0.00	-	18.75	-	-	-	-	1,400	
1,425	0.00	0.00	0.00	-	87.50	-	1	0.00	0.00	0.00	-	101.00	-	-	-	-	0.00	0.00	0.00	-	11.00	-	18	0.00	0.00	0.00	-	25.75	-	29	-	-	1,425	
1,450	0.00	0.00	0.00	-	69.00	-	13	0.00	0.00	0.00	-	85.00	-	-	-	-	0.00	0.00	10.00	10.00	10.00	4	22	0.00	0.00	0.00	-	34.25	-	2	-	-	1,450	
1,475	0.00	0.00	0.00	-	53.00	-	8	0.00	0.00	0.00	-	70.50	-	-	-	-	0.00	0.00	18.00	18.00	18.00	9	40	0.00	0.00	0.00	-	44.50	-	3	-	-	1,475	
1,500	0.00	0.00	0.00	-	39.25	-	18	0.00	0.00	0.00	-	57.50	-	40	-	-	0.00	0.00	0.00	-	37.75	-	17	0.00	0.00	0.00	-	56.50	-	1	-	-	1,500	
1,525	23.50	23.50	23.50	23.50	23.50	40	342	41.25	41.25	41.25	41.25	41.25	20	81	-	-	23.50	23.50	0.00	-	51.50	-	3	0.00	0.00	0.00	-	70.00	-	-	-	-	1,525	
1,550	20.00	20.00	14.50	14.50	14.50	234	657	31.00	31.00	31.00	31.00	31.00	20	40	-	-	20.00	20.00	0.00	-	68.00	-	20	0.00	0.00	0.00	-	85.50	-	1	-	-	1,550	
1,575	14.00	14.00	8.20	8.20	8.20	3	9	0.00	0.00	0.00	-	28.75	-	-	-	-	14.00	14.00	0.00	-	86.50	-	10	0.00	0.00	0.00	-	103.00	-	-	-	-	1,575	
1,600	9.00	9.00	5.50	5.50	5.50	3	209	0.00	0.00	0.00	-	22.25	-	-	-	-	9.00	9.00	0.00	-	107.00	-	20	0.00	0.00	0.00	-	121.00	-	-	-	-	1,600	
1,625	0.00	0.00	0.00	-	5.40	-	35	0.00	0.00	0.00	-	17.00	-	-	-	-	0.00	0.00	0.00	-	129.00	-	-	0.00	0.00	0.00	-	141.00	-	-	-	-	1,625	
1,650	0.00	0.00	0.00	-	3.20	-	38	0.00	0.00	0.00	-	12.75	-	-	-	-	0.00	0.00	0.00	-	152.00	-	-	0.00	0.00	0.00	-	161.00	-	-	-	-	1,650	
1,675	0.00	0.00	0.00	-	1.90	-	-	0.00	0.00	0.00	-	9.40	-	-	-	-	0.00	0.00	0.00	-	175.00	-	-	0.00	0.00	0.00	-	183.00	-	-	-	-	1,675	
1,700	0.00	0.00	0.00	-	1.10	-	13	0.00	0.00	0.00	-	6.90	-	-	-	-	0.00	0.00	0.00	-	199.00	-	-	0.00	0.00	0.00	-	205.00	-	-	-	-	1,700	
1,725	-	-	-	-	-	-	-	-	-	-	-	-	-	-	-	-	-	-	-	-	-	-	-	-	-	-	-	-	-	-	-	-	1,725	
1,750	-	-	-	-	-	-	-	-	-	-	-	-	-	-	-	-	-	-	-	-	-	-	-	-	-	-	-	-	-	-	-	-	1,750	
1,775	-	-	-	-	-	-	-	-	-	-	-	-	-	-	-	-	-	-	-	-	-	-	-	-	-	-	-	-	-	-	-	-	1,775	
1,800	-	-	-	-	-	-	-	-	-	-	-	-	-	-	-	-	-	-	-	-	-	-	-	-	-	-	-	-	-	-	-	-	1,800	
1,825	-	-	-	-	-	-	-	-	-	-	-	-	-	-	-	-	-	-	-	-	-	-	-	-	-	-	-	-	-	-	-	-	1,825	
1,850	-	-	-	-	-	-	-	-	-	-	-	-	-	-	-	-	-	-	-	-	-	-	-	-	-	-	-	-	-	-	-	-	1,850	
1,900	-	-	-	-	-	-	-	-	-	-	-	-	-	-	-	-	-	-	-	-	-	-	-	-	-	-	-	-	-	-	-	-	1,900	
1,950	-	-	-	-	-	-	-	-	-	-	-	-	-	-	-	-	-	-	-	-	-	-	-	-	-	-	-	-	-	-	-	-	1,950	
2,000	-	-	-	-	-	-	-	-	-	-	-	-	-	-	-	-	-	-	-	-	-	-	-	-	-	-	-	-	-	-	-	-	2,000	
2,050	-	-	-	-	-	-	-	-	-	-	-	-	-	-	-	-	-	-	-	-	-	-	-	-	-	-	-	-	-	-	-	-	2,050	

FTSE/Athex Large Cap

(Trade Unit: 1 Index Point x 2€ - Exercise Style: European, Cash Settlement)

Call Options																Put Options																							
Exercise Price	October 2016							November 2016							Other Months		October 2016							November 2016							Other Months		Exercise Price						
	Open price	Price max	Price min	Last price	Closing price	Volume	Open Interest	Open price	Price max	Price min	Last price	Closing price	Volume	Open Interest	Volume	Open Interest	Open price	Price max	Price min	Last price	Closing price	Volume	Open Interest	Open price	Price max	Price min	Last price	Closing price	Volume	Open Interest	Volume	Open Interest							
2,100	-	-	-	-	-	-	-	-	-	-	-	-	-	-	-	-	-	-	-	-	-	-	-	-	-	-	-	-	-	-	-	2,100							
Totals:							280	1,343								40	161	12	47								13	174								0	39	0	12
Number of Trades:							24								2	1									7								0	0					

ALPHA BANK (CR)

(Contract Size: 100 Securities, Exercise Style: American, Physical Delivery)

Call Options																	Put Options																	
Exercise Price	October 2016							November 2016							Other Months		October 2016								November 2016							Other Months		Exercise Price
	Open price	Price max	Price min	Last price	Closing price	Volume	Open Interest	Open price	Price max	Price min	Last price	Closing price	Volume	Open Interest	Volume	Open Interest	Open price	Price max	Price min	Last price	Closing price	Volume	Open Interest	Open price	Price max	Price min	Last price	Closing price	Volume	Open Interest	Volume	Open Interest		
0.800						-	-							-	-							-	-					-	-			0.008		
0.850						-	-							-	-							-	-					-	-			0.009		
0.900						-	-							-	-							-	-					-	-			0.009		
0.950						-	-							-	-							-	-					-	-			0.010		
1.000	0.000	0.000	0.000		0.532	-	-	0.000	0.000	0.000		0.538	-	-			0.000	0.000	0.000		0.001	-	-	0.000	0.000	0.000		0.005	-	-			0.010	
1.100	0.000	0.000	0.000		0.433	-	-	0.000	0.000	0.000		0.446	-	-			0.000	0.000	0.000		0.002	-	-	0.000	0.000	0.000		0.012	-	-			0.011	
1.200	0.000	0.000	0.000		0.339	-	-	0.000	0.000	0.000		0.361	-	-			0.000	0.000	0.000		0.007	-	-	0.000	0.000	0.000		0.027	-	-			0.012	
1.300	0.000	0.000	0.000		0.252	-	-	0.000	0.000	0.000		0.285	-	-			0.000	0.000	0.000		0.020	-	-	0.000	0.000	0.000		0.051	-	-			0.013	
1.400	0.000	0.000	0.000		0.177	-	-	0.000	0.000	0.000		0.219	-	-			0.000	0.000	0.000		0.045	-	-	0.000	0.000	0.000		0.085	-	-			0.014	
1.500	0.000	0.000	0.000		0.117	-	-	0.000	0.000	0.000		0.165	-	-			0.000	0.000	0.000		0.086	-	-	0.000	0.000	0.000		0.131	-	-			0.015	
1.600	0.000	0.000	0.000		0.073	-	-	0.000	0.000	0.000		0.122	-	-			0.000	0.000	0.000		0.141	-	-	0.000	0.000	0.000		0.188	-	-			0.016	
1.700	0.000	0.000	0.000		0.043	-	50	0.000	0.000	0.000		0.088	-	-			0.000	0.000	0.000		0.211	-	-	0.000	0.000	0.000		0.254	-	-			0.017	
1.800	0.000	0.000	0.000		0.024	-	-	0.000	0.000	0.000		0.062	-	-			0.000	0.000	0.000		0.292	-	-	0.000	0.000	0.000		0.328	-	-			0.018	
1.900	0.000	0.000	0.000		0.013	-	-	0.000	0.000	0.000		0.043	-	-			0.000	0.000	0.000		0.381	-	-	0.000	0.000	0.000		0.409	-	-			0.019	
2.000	0.000	0.000	0.000		0.007	-	-	0.000	0.000	0.000		0.030	-	-			0.000	0.000	0.000		0.475	-	-	0.000	0.000	0.000		0.495	-	-			0.020	
2.200	0.000	0.000	0.000		0.002	-	-	0.000	0.000	0.000		0.014	-	-			0.000	0.000	0.000		0.670	-	-	0.000	0.000	0.000		0.680	-	-			0.022	
2.400	0.000	0.000	0.000		0.002	-	-	0.000	0.000	0.000		0.006	-	-			0.000	0.000	0.000		0.870	-	-	0.000	0.000	0.000		0.873	-	-			0.024	
2.600	0.000	0.000	0.000		0.001	-	-	0.000	0.000	0.000		0.003	-	-			0.000	0.000	0.000		1.07	-	-	0.000	0.000	0.000		1.07	-	-			0.026	
2.800						-	-							-	-							-	-					-	-			0.028		
3.000						-	-							-	-							-	-					-	-			0.030		
3.200						-	-							-	-							-	-					-	-			0.032		
3.400						-	-							-	-							-	-					-	-			0.034		
3.600						-	-							-	-							-	-					-	-			0.036		
Totals:						0	50						0	0	0	0						0	0					0	80	0	0			
Number of Trades:							0						0		0							0.00						0		0				

NATIONAL BANK (CR)

(Contract Size: 100 Securities, Exercise Style: American, Physical Delivery)

Call Options																	Put Options																			
October 2016								November 2016								Other Months		October 2016								November 2016								Other Months		
Exerise Price	Open price	Price max	Price min	Last price	Closing price	Volume	Open Interest	Open price	Price max	Price min	Last price	Closing price	Volume	Open Interest	Volume	Open Interest	Open price	Price max	Price min	Last price	Closing price	Volume	Open Interest	Open price	Price max	Price min	Last price	Closing price	Volume	Open Interest	Volume	Open Interest	Exerise Price			
0.050	0.000	0.000	0.000		0.132	-	-	0.000	0.000	0.000		0.132	-	-			0.000	0.000	0.000		0.001	-	-	0.000	0.000	0.000		0.001	-	-			0.001			
0.100	0.000	0.000	0.000		0.082	-	-	0.000	0.000	0.000		0.083	-	-			0.000	0.000	0.000		0.001	-	-	0.000	0.000	0.000		0.001	-	-			0.001			
0.150	0.000	0.000	0.000		0.039	-	-	0.000	0.000	0.000		0.042	-	-			0.000	0.000	0.000		0.007	-	-	0.000	0.000	0.000		0.009	-	-			0.002			
0.200	0.000	0.000	0.000		0.014	-	-	0.000	0.000	0.000		0.017	-	-			0.000	0.000	0.000		0.032	-	-	0.000	0.000	0.000		0.035	-	-			0.002			
0.250	0.000	0.000	0.000		0.004	-	-	0.000	0.000	0.000		0.007	-	-			0.000	0.000	0.000		0.072	-	-	0.000	0.000	0.000		0.074	-	-			0.003			
0.300	0.000	0.000	0.000		0.001	-	-	0.000	0.000	0.000		0.002	-	-			0.000	0.000	0.000		0.119	-	-	0.000	0.000	0.000		0.120	-	-			0.003			
0.350	0.000	0.000	0.000		0.001	-	-	0.000	0.000	0.000		0.001	-	-			0.000	0.000	0.000		0.168	-	-	0.000	0.000	0.000		0.168	-	-			0.004			
0.400	0.000	0.000	0.000		0.001	-	-	0.000	0.000	0.000		0.001	-	-			0.000	0.000	0.000		0.218	-	-	0.000	0.000	0.000		0.218	-	-			0.004			
0.450	0.000	0.000	0.000		0.001	-	-	0.000	0.000	0.000		0.001	-	-			0.000	0.000	0.000		0.268	-	-	0.000	0.000	0.000		0.268	-	-			0.005			
0.500	-							-							-							-							0.005							
0.550	-							-							-							-							0.006							
0.600	-							-							-							-							0.006							
Totals:							0	0								0	0	0	0								0	0	0	0						
Number of Trades:							0							0							0.00							0							0	



OPAP (CR)

(Contract Size: 100 Securities, Exercise Style: American, Physical Delivery)

Call Options																	Put Options																			
October 2016								November 2016								Other Months		October 2016								November 2016								Other Months		
Exercise Price	Open price	Price max	Price min	Last price	Closing price	Volume	Open Interest	Open price	Price max	Price min	Last price	Closing price	Volume	Open Interest	Volume	Open Interest	Open price	Price max	Price min	Last price	Closing price	Volume	Open Interest	Open price	Price max	Price min	Last price	Closing price	Volume	Open Interest	Volume	Open Interest	Exercise Price			
3.600						-	-							-	-							-	-						-	-			0.036			
3.800						-	-							-	-							-	-						-	-			0.038			
4.000						-	-							-	-							-	-						-	-			0.040			
4.400						-	-							-	-							-	-						-	-			0.044			
4.800	0.000	0.000	0.000		2.70	-	-							-	-		0.000	0.000	0.000		0.001	-	-			0.000	0.000	0.000		0.001	-	-		0.048		
5.200	0.000	0.000	0.000		2.30	-	-	0.000	0.000	0.000		2.31	-	-			0.000	0.000	0.000		0.001	-	-		0.000	0.000	0.000		0.001	-	-			0.052		
5.600	0.000	0.000	0.000		1.90	-	-	0.000	0.000	0.000		1.91	-	-			0.000	0.000	0.000		0.001	-	10		0.000	0.000	0.000		0.004	-	-			0.056		
6.000	0.000	0.000	0.000		1.50	-	-	0.000	0.000	0.000		1.52	-	-			0.000	0.000	0.000		0.003	-	10		0.000	0.000	0.000		0.017	-	-			0.060		
6.400	0.000	0.000	0.000		1.12	-	-	0.000	0.000	0.000		1.16	-	-			0.000	0.000	0.000		0.018	-	-		0.000	0.000	0.000		0.053	-	-			0.064		
6.800	0.000	0.000	0.000		0.763	-	-	0.000	0.000	0.000		0.838	-	-			0.000	0.000	0.000		0.064	-	-		0.000	0.000	0.000		0.129	-	-			0.068		
7.200	0.000	0.000	0.000		0.471	-	-	0.000	0.000	0.000		0.566	-	-			0.000	0.000	0.000		0.171	-	-		0.180	0.180	0.180	0.180	0.180	10	10			0.072		
7.600	0.000	0.000	0.000		0.258	-	65	0.000	0.000	0.000		0.363	-	-			0.000	0.000	0.000		0.359	-	5		0.000	0.000	0.000		0.453	-	-			0.076		
8.000	0.000	0.000	0.000		0.125	-	40	0.000	0.000	0.000		0.216	-	10			0.000	0.000	0.000		0.626	-	-		0.000	0.000	0.000		0.706	-	-			0.080		
8.400	0.000	0.000	0.000		0.052	-	-	0.000	0.000	0.000		0.119	-	10			0.000	0.000	0.000		0.953	-	-		0.000	0.000	0.000		1.01	-	-			0.084		
8.800	0.000	0.000	0.000		0.020	-	-	0.000	0.000	0.000		0.064	-	-			0.000	0.000	0.000		1.32	-	-		0.000	0.000	0.000		1.36	-	-			0.088		
9.200	0.000	0.000	0.000		0.006	-	-	0.000	0.000	0.000		0.032	-	-			0.000	0.000	0.000		1.71	-	-		0.000	0.000	0.000		1.73	-	-			0.092		
9.600	0.000	0.000	0.000		0.002	-	-	0.000	0.000	0.000		0.015	-	-			0.000	0.000	0.000		2.11	-	-		0.000	0.000	0.000		2.11	-	-			0.096		
10.000	0.000	0.000	0.000		0.001	-	-	0.000	0.000	0.000		0.007	-	-			0.000	0.000	0.000		2.51	-	-		0.000	0.000	0.000		2.51	-	-			0.100		
Totals:						0	105							0	20	0	0							0	25							10	10	10	10	
Number of Trades:						0							0			0							0.00							1			1			

OTE (CR)

(Contract Size: 100 Securities, Exercise Style: American, Physical Delivery)

Call Options																Put Options																				
October 2016								November 2016								Other Months		October 2016								November 2016								Other Months		
Exercise Price	Open price	Price max	Price min	Last price	Closing price	Volume	Open Interest	Open price	Price max	Price min	Last price	Closing price	Volume	Open Interest	Volume	Open Interest	Open price	Price max	Price min	Last price	Closing price	Volume	Open Interest	Open price	Price max	Price min	Last price	Closing price	Volume	Open Interest	Volume	Open Interest	Exercise Price			
4.800						-	-							-	-							-	-					-	-			0.048				
5.200						-	-							-	-							-	-					-	-			0.052				
5.600	0.000	0.000	0.000		2.25	-	-	0.000	0.000	0.000		2.26	-	-			0.000	0.000	0.000		0.001	-	-	0.000	0.000	0.000		0.001	-	-			0.056			
6.000	0.000	0.000	0.000		1.85	-	-	0.000	0.000	0.000		1.86	-	-			0.000	0.000	0.000		0.001	-	-	0.000	0.000	0.000		0.007	-	-			0.060			
6.400	0.000	0.000	0.000		1.45	-	-	0.000	0.000	0.000		1.48	-	-			0.000	0.000	0.000		0.003	-	-	0.000	0.000	0.000		0.025	-	-			0.064			
6.800	0.000	0.000	0.000		1.07	-	-	0.000	0.000	0.000		1.13	-	-			0.000	0.000	0.000		0.017	-	-	0.000	0.000	0.000		0.069	-	-			0.068			
7.200	0.000	0.000	0.000		0.713	-	-	0.000	0.000	0.000		0.814	-	-			0.000	0.000	0.000		0.063	-	-	0.000	0.000	0.000		0.154	-	-			0.072			
7.600	0.000	0.000	0.000		0.424	-	20	0.000	0.000	0.000		0.555	-	-			0.000	0.000	0.000		0.174	-	35	0.000	0.000	0.000		0.294	-	-			0.076			
8.000	0.000	0.000	0.000		0.220	-	2	0.000	0.000	0.000		0.358	-	-			0.000	0.000	0.000		0.370	-	37	0.000	0.000	0.000		0.497	-	-			0.080			
8.400	0.000	0.000	0.000		0.099	-	30	0.000	0.000	0.000		0.216	-	-			0.000	0.000	0.000		0.650	-	-	0.000	0.000	0.000		0.755	-	-			0.084			
8.800	0.000	0.000	0.000		0.039	-	20	0.000	0.000	0.000		0.122	-	-			0.000	0.000	0.000		0.990	-	5	0.000	0.000	0.000		1.06	-	-			0.088			
9.200	0.000	0.000	0.000		0.013	-	-	0.000	0.000	0.000		0.066	-	-			0.000	0.000	0.000		1.37	-	-	0.000	0.000	0.000		1.41	-	-			0.092			
9.600	0.000	0.000	0.000		0.004	-	-	0.000	0.000	0.000		0.034	-	-			0.000	0.000	0.000		1.76	-	-	0.000	0.000	0.000		1.78	-	-			0.096			
10.000	0.000	0.000	0.000		0.001	-	-	0.000	0.000	0.000		0.017	-	-			0.000	0.000	0.000		2.16	-	-	0.000	0.000	0.000		2.16	-	-			0.100			
11.000	0.000	0.000	0.000		0.004	-	-	0.000	0.000	0.000		0.002	-	-			0.000	0.000	0.000		3.16	-	-	0.000	0.000	0.000		3.16	-	-			0.110			
12.000	0.000	0.000	0.000		0.001	-	-	0.000	0.000	0.000		0.001	-	-			0.000	0.000	0.000		4.16	-	-	0.000	0.000	0.000		4.16	-	-			0.120			
13.000	0.000	0.000	0.000		0.001	-	-						-	-			0.000	0.000	0.000		5.16	-	-				-	-			0.130					
14.000						-	-						-	-								-	-				-	-				0.140				
Totals:						0	72						0	0	0	0						0	77					0	20	10	10					
Number of Trades:						0							0		0							0.00					0			1						

PIRAEUS BANK (CR)

(Contract Size: 100 Securities, Exercise Style: American, Physical Delivery)

Call Options																	Put Options																								
	October 2016							November 2016							Other Months			October 2016								November 2016								Other Months							
Exercise Price	Open price	Price max	Price min	Last price	Closing price	Volume	Open Interest	Open price	Price max	Price min	Last price	Closing price	Volume	Open Interest	Volume	Open Interest	Open price	Price max	Price min	Last price	Closing price	Volume	Open Interest	Open price	Price max	Price min	Last price	Closing price	Volume	Open Interest	Volume	Open Interest	Exercise Price								
0.050	0.000	0.000	0.000		0.085	-	-	0.000	0.000	0.000		0.086	-	-			0.000	0.000	0.000		0.003	-	-	0.000	0.000	0.000		0.001	-	-			0.001								
0.100	0.000	0.000	0.000		0.045	-	-	0.000	0.000	0.000		0.045	-	-			0.000	0.000	0.000		0.010	-	-	0.000	0.000	0.000		0.010	-	-			0.001								
0.150	0.000	0.000	0.000		0.022	-	-	0.000	0.000	0.000		0.022	-	-			0.000	0.000	0.000		0.037	-	-	0.000	0.000	0.000		0.037	-	-			0.002								
0.200	0.000	0.000	0.000		0.011	-	-	0.000	0.000	0.000		0.011	-	-			0.000	0.000	0.000		0.075	-	-	0.000	0.000	0.000		0.075	-	-			0.002								
0.250	0.000	0.000	0.000		0.005	-	-	0.000	0.000	0.000		0.005	-	-			0.000	0.000	0.000		0.120	-	-	0.000	0.000	0.000		0.120	-	-			0.003								
0.300	0.000	0.000	0.000		0.003	-	-	0.000	0.000	0.000		0.003	-	-			0.000	0.000	0.000		0.167	-	-	0.000	0.000	0.000		0.167	-	-			0.003								
0.350	0.000	0.000	0.000		0.001	-	-	0.000	0.000	0.000		0.001	-	-			0.000	0.000	0.000		0.216	-	-	0.000	0.000	0.000		0.216	-	-			0.004								
0.400	0.000	0.000	0.000		0.001	-	-	0.000	0.000	0.000		0.001	-	-			0.000	0.000	0.000		0.265	-	-	0.000	0.000	0.000		0.265	-	-			0.004								
0.450						-	-						-	-								-	-						-	-			0.005								
0.500						-	-						-	-								-	-						-	-			0.005								
0.550						-	-						-	-								-	-						-	-			0.006								
Totals:							0	0								0	0	0	0									0	0				0	0							
Number of Trades:							0									0		0										0.00										0		0	

PPC (CR)

(Contract Size: 100 Securities, Exercise Style: American, Physical Delivery)

Call Options																Put Options																								
Exercise Price	October 2016							November 2016							Other Months		October 2016										November 2016							Other Months		Exercise Price				
	Open price	Price max	Price min	Last price	Closing price	Volume	Open Interest	Open price	Price max	Price min	Last price	Closing price	Volume	Open Interest	Volume	Open Interest	Open price	Price max	Price min	Last price	Closing price	Volume	Open Interest	Open price	Price max	Price min	Last price	Closing price	Volume	Open Interest	Volume	Open Interest								
1.700	0.000	0.000	0.000		0.962	-	-	0.000	0.000	0.000		0.965	-	-			0.000	0.000	0.000		0.001	-	-	0.000	0.000	0.000		0.002	-	-			0.017							
1.800	0.000	0.000	0.000		0.862	-	-	0.000	0.000	0.000		0.866	-	-			0.000	0.000	0.000		0.001	-	-	0.000	0.000	0.000		0.001	-	-			0.018							
1.900	0.000	0.000	0.000		0.763	-	-	0.000	0.000	0.000		0.767	-	-			0.000	0.000	0.000		0.001	-	-	0.000	0.000	0.000		0.002	-	-			0.019							
2.000	0.000	0.000	0.000		0.663	-	-	0.000	0.000	0.000		0.671	-	-			0.000	0.000	0.000		0.001	-	-	0.000	0.000	0.000		0.005	-	-			0.020							
2.200	0.000	0.000	0.000		0.467	-	-	0.000	0.000	0.000		0.487	-	-			0.000	0.000	0.000		0.004	-	-	0.000	0.000	0.000		0.020	-	-			0.022							
2.400	0.000	0.000	0.000		0.287	-	-	0.000	0.000	0.000		0.327	-	-			0.000	0.000	0.000		0.024	-	-	0.000	0.000	0.000		0.060	-	-			0.024							
2.600	0.000	0.000	0.000		0.147	-	95	0.000	0.000	0.000		0.202	-	-			0.000	0.000	0.000		0.084	-	5	0.000	0.000	0.000		0.135	-	-			0.026							
2.800	0.000	0.000	0.000		0.061	-	20	0.000	0.000	0.000		0.113	-	-			0.000	0.000	0.000		0.198	-	30	0.000	0.000	0.000		0.246	-	-			0.028							
3.000	0.000	0.000	0.000		0.020	-	-	0.000	0.000	0.000		0.059	-	-			0.000	0.000	0.000		0.357	-	10	0.000	0.000	0.000		0.392	-	-			0.030							
3.200	0.000	0.000	0.000		0.005	-	-	0.000	0.000	0.000		0.028	-	-			0.000	0.000	0.000		0.543	-	-	0.000	0.000	0.000		0.562	-	-			0.032							
3.400	0.000	0.000	0.000		0.001	-	-	0.000	0.000	0.000		0.013	-	-			0.000	0.000	0.000		0.740	-	-	0.000	0.000	0.000		0.747	-	-			0.034							
3.600	0.000	0.000	0.000		0.001	-	-	0.000	0.000	0.000		0.005	-	-			0.000	0.000	0.000		0.940	-	-	0.000	0.000	0.000		0.941	-	-			0.036							
3.800	0.000	0.000	0.000		0.002	-	-	0.000	0.000	0.000		0.002	-	-			0.000	0.000	0.000		1.14	-	-	0.000	0.000	0.000		1.14	-	-			0.038							
4.000						-	-						-	-								-	-					-	-			0.040								
4.400						-	-						-	-								-	-					-	-			0.044								
4.800						-	-						-	-								-	-					-	-			0.048								
5.200						-	-						-	-								-	-					-	-			0.052								
5.600						-	-						-	-								-	-					-	-			0.056								
6.000						-	-						-	-								-	-					-	-			0.060								
Totals:							0	115								0	0	0	0								0	45								0	10	0	0	
Number of Trades:							0								0	0								0.00								0								0

Lending Products	Underlying Title	Multilateral Transactions[1]					Bilateral Transactions[2]		Stock Borrowing through OTC (volume)[3]
		Open Interest[5]	Volume(Offered)	Average Weighted	Transactions volume	Average Weighted	Transactions Volume	Average Weighte	Transactions Volume
AEGNBOR	AEGEAN AIRLINES (CR)	7,600	11,257	5.31%	---	---	---	---	11,701
ALPHABOR	ALPHA BANK (CR)	92,350	1,057	5.31%	---	---	---	---	11,801,029
ALMYBOR	ALUMIL (CR)	---	---	---	---	---	---	---	---
IATRBOR	ATHENS MEDICAL CENTER SA (CR)	---	36,400	5.31%	---	---	---	---	---
OTOELBOR	AUTOHELLAS SA (CR)	---	---	---	---	---	---	---	---
BOCBOR	BANK OF CYPRUS (CR)	---	270	5.31%	---	---	---	---	84,008
EEEBOR	CC HBC AG (CR)	4,228	261	5.32%	---	---	---	---	70,546
CENTRBOR	CENTRIC HOLDINGS (CR)	---	16,000	5.31%	---	---	---	---	---
SOLKBOR	CORINTH PIPEWORKS (CR)	5,800	800	6.65%	800	6.65%	---	---	---
PLAKRBOR	CRETE PLASTICS SA (CR)	---	---	---	---	---	---	---	---
ELINBOR	ELINOIL S.A. (CR)	---	---	---	---	---	---	---	---
ELLAKTORBOR	ELLAKTOR (CR)	10,000	77,427	5.31%	---	---	---	---	---
ANEMOSBOR	ELTECH ANEMOS S.A. (CR)	---	---	---	---	---	---	---	---
ELTONBOR	ELTON SA (CR)	---	---	---	---	---	---	---	---
EUROBBOR	EUROBANK ERGASIAS (CR)	69,312	212,320	5.31%	68,000	4.19%	---	---	4,145,742
EUPICBOR	EUROPEAN RELIANCE INSUR. (CR)	---	---	---	---	---	---	---	---
EYDAPBOR	EYDAP S.A. (CR)	572	5,790	5.31%	---	---	---	---	17,780
FLEXOBOR	FLEXOPACK SA (CR)	---	---	---	---	---	---	---	---
FFGRPBOR	FOLLI FOLLIE (CR)	22,372	56,207	5.31%	---	---	---	---	713,651
FOYRKBOR	FOURLIS (CR)	---	5,130	5.31%	---	---	---	---	3,850
GEKTERNABOR	GEK TERNA (CR)	12	30,350	5.31%	---	---	---	---	---
SARBOR	GR. SARANTIS SA (CR)	---	1,536	5.31%	---	---	---	---	---
EUPROBOR	GRIVALIA PROPERTIES (CR)	1,000	60,036	5.31%	---	---	---	---	31,492
XAKOBOR	HALKOR SA (CB)	---	56,552	5.31%	---	---	---	---	---
EXAEBOR	HELLENIC EXCHANGES-A.S.E. (CR)	7,100	447,128	5.31%	1,500	2.65%	---	---	98,443
ELPEBOR	HELLENIC PETROLEUM (CR)	1,075	146,176	5.31%	---	---	---	---	42,606
HYGEIABOR	HYGEIA SA (CR)	---	48,700	5.31%	---	---	---	---	---
IASOBOR	IASO SA (CR)	---	---	---	---	---	---	---	---
IKTINBOR	IKTINOS HELLAS SA (CR)	---	798	5.31%	---	---	---	---	---
INTRKBOR	INTRACOM HOLDINGS (CR)	---	168,546	5.31%	---	---	---	---	---
INLOTBOR	INTRALOT (CR)	20,000	43,699	5.31%	---	---	---	---	803

Stock Lending Notes

[1] - Multilateral contracts Lending or Borrowing as per Methods 8-1, 8-2 and 8-3-3 (According to ATHEX BoD Resolution No.17)

[2] - Billateral Contracts Lending or Borrowing as per Methods 8-3-1 and 8-3-2 (According to ATHEX BoD Resolution No.20 )

[3] - The information concerning OTC Stock Borrowing Transactions is based on the statements of the Dematerialised Securities System (DSS) operators involved and refers to volumes that have been registered up until the previous working day.

[4] - Average Price (Volume weighted)

[5] - The Data concerning Open Interest before the start of trading session

Lending Products	Underlying Title	Multilateral Transactions[1]					Bilateral Transactions[2]		Stock Borrowing through OTC (volume)[3]
		Open Interest[5]	Volume(Offered)	Average Weighted	Transactions volume	Average Weighted	Transactions Volume	Average Weighte	Transactions Volume
AVAXBOR	J & P - AVAX SA (CR)	---	20,335	5.31%	---	---	---	---	---
BELABOR	JUMBO SA (CR)	7,025	110,446	5.31%	---	---	---	---	6,365
KLEMBOR	KLEEMAN HELLAS SA (CR)	---	5,191	5.31%	---	---	---	---	---
KORRESBOR	KORRES (CR)	---	---	---	---	---	---	---	---
KRIBOR	KRI-KRI S.A. (CR)	---	47,768	5.31%	---	---	---	---	---
KYRMBOR	KYRIAKIDIS MARBLES SA (CR)	---	935	5.31%	---	---	---	---	---
LAMDABOR	LAMDA DEVELOPMENT SA (CR)	---	111	5.31%	---	---	---	---	10,377
MIGBOR	MARFIN INVESTMENT GROUP (CR)	---	272,904	5.31%	---	---	---	---	749,474
METKKBOR	METKA (CR)	1,124	16,812	5.31%	---	---	---	---	13,834
MLSBOR	MLS MULTIMEDIA SA (CR)	---	9,118	5.31%	---	---	---	---	---
MOHBOR	MOTOR OIL (CR)	4,795	26,308	5.31%	---	---	---	---	52,254
MYTILBOR	MYTILINEOS HOLDINGS (CR)	5,064	110,174	5.31%	---	---	---	---	---
ETEBOR	NATIONAL BANK (CR)	842,592	19,123	5.31%	---	---	---	---	787,741
ETFASEBOR	NBGAM ETF	---	---	---	---	---	---	---	---
ETFGT30PBOR	NBGAM ETF GREECE & TURKEY 30	---	---	---	---	---	---	---	---
OPAPBOR	OPAP (CR)	103,000	21,171	3.31%	---	---	---	---	819,549
HTOBOR	OTE (CR)	4,857	64,115	5.31%	500	2.74%	---	---	445,931
PPABOR	P.P.A. S.A. (CR)	368	1,215	5.31%	---	---	---	---	901
PAPBOR	PAPOUTSANIS (CR)	---	---	---	---	---	---	---	---
PETROBOR	PETROPOULOS PETROS (CR)	---	---	---	---	---	---	---	---
TPEIRBOR	PIRAEUS BANK (CR)	7,661	42,231	3.31%	---	---	---	---	7,175,542
PLAISBOR	PLAISIO COMPUTERS SA (CR)	---	---	---	---	---	---	---	---
PPCBOR	PPC (CR)	36,950	81,765	5.31%	---	---	---	---	512,774
QUALBOR	QUALITY & RELIABILITY SA (CR)	---	---	---	---	---	---	---	---
QUESTBOR	QUEST HOLDINGS (CR)	---	---	---	---	---	---	---	---
KAMPBOR	REDS S.A. (CR)	---	---	---	---	---	---	---	---
EPILBOR	SELECTED TEXT. IND. ASSOC (CR)	---	---	---	---	---	---	---	---
SELOBOR	SELONDA AQUACULTURE SA (CR)	---	---	---	---	---	---	---	---
OLYMPBOR	TECHNICAL OLYMPIC SA (CR)	---	9,039	5.31%	---	---	---	---	---
TENERGYBOR	TERNA ENERGY (CR)	1,000	30,448	5.31%	---	---	---	---	---
EYAPSBOR	THESSALONIKA WATER & SEWERAGE	---	2,799	5.31%	---	---	---	---	---

Stock Lending Notes

[1] - Multilateral contracts Lending or Borrowing as per Methods 8-1, 8-2 and 8-3-3 (According to ATHEX BoD Resolution No.17)

[2] - Billateral Contracts Lending or Borrowing as per Methods 8-3-1 and 8-3-2 (According to ATHEX BoD Resolution No.20 )

[3] - The information concerning OTC Stock Borrowing Transactions is based on the statements of the Dematerialised Securities System (DSS) operators involved and refers to volumes that have been registered up until the previous working day.

[4] - Average Price (Volume weighted)

[5] - The Data concerning Open Interest before the start of trading session

Lending Products	Underlying Title	Multilateral Transactions[1]					Bilateral Transactions[2]		Stock Borrowing through OTC (volume)[3]
		Open Interest[5]	Volume(Offered)	Average Weighted	Transactions volume	Average Weighted	Transactions Volume	Average Weighted	Transactions Volume
PLATBOR	THRACE PLASTICS SA (CR)	---	37,360	5.31%	---	---	---	---	---
TITKBOR	TITAN CEMENT (CR)	7,199	218,877	3.31%	---	---	---	---	8,204
OLTHBOR	TPA SA (CR)	---	23	5.32%	---	---	---	---	---
VIOBOR	VIOHALCO SA/NV (CB)	---	59,278	5.31%	---	---	---	---	---

Stock Lending Notes

[1] - Multilateral contracts Lending or Borrowing as per Methods 8-1, 8-2 and 8-3-3 (According to ATHEX BoD Resolution No.17)

[2] - Bilateral Contracts Lending or Borrowing as per Methods 8-3-1 and 8-3-2 (According to ATHEX BoD Resolution No.20 )

[3] - The information concerning OTC Stock Borrowing Transactions is based on the statements of the Dematerialised Securities System (DSS) operators involved and refers to volumes that have been registered up until the previous working day.

[4] - Average Price (Volume weighted)

[5] - The Data concerning Open Interest before the start of trading session

## Sectors codification for listed companies

533	-	Exploration & Production	537	-	Integrated Oil & Gas
1353	-	Commodity Chemicals	1357	-	Specialty Chemicals
1753	-	Aluminum	1755	-	Nonferrous Metals
1757	-	Steel	1775	-	General Mining
2353	-	Building Materials & Fixtures	2357	-	Heavy Construction
2723	-	Containers & Packaging	2727	-	Diversified Industrials
2733	-	Electrical Components & Equipment	2753	-	Commercial Vehicles & Trucks
2757	-	Industrial Machinery	2773	-	Marine Transportation
2777	-	Transportation Services	2791	-	Business Support Services
2797	-	Industrial Suppliers	3535	-	Distillers & Vintners
3537	-	Soft Drinks	3573	-	Farming Fishing & Plantations
3577	-	Food Products	3722	-	Durable Household Products
3726	-	Furnishings	3728	-	Home Construction
3747	-	Toys	3763	-	Clothing & Accessories
3765	-	Footwear	3767	-	Personal Products
3785	-	Tobacco	4533	-	Health Care Providers
4535	-	Medical Equipment	4577	-	Pharmaceuticals
5337	-	Food Retailers & Wholesalers	5371	-	Apparel Retailers
5373	-	Broadline Retailers	5375	-	Home Improvement Retailers
5379	-	Specialty Retailers	5553	-	Broadcasting & Entertainment
5555	-	Media Agencies	5557	-	Publishing
5751	-	Airlines	5752	-	Gambling
5753	-	Hotels	5755	-	Recreational Services
5757	-	Restaurants & Bars	5759	-	Travel & Tourism
6535	-	Fixed Line Telecommunications	6575	-	Mobile Telecommunications
7535	-	Conventional Electricity	7537	-	Alternative Electricity
7577	-	Water	8355	-	Banks
8534	-	Insurance Brokers	8536	-	Property & Casualty Insurance
8633	-	Real Estate Holding & Development	8637	-	Real Estate Services
8671	-	Industrial & Office REITs	8674	-	Diversified REITs
8675	-	Specialty REITs	8775	-	Specialty Finance
8777	-	Investment Services	8985	-	Equity Investment Instruments
9533	-	Computer Services	9535	-	Internet
9537	-	Software	9572	-	Computer Hardware
9574	-	Electronic Office Equipment	9578	-	Telecommunications Equipment
12003	-	ETF			





**ATHEXGROUP**  
Όμιλος Χρηματιστηρίου Αθηνών

Λεωφ. Αθηνών 110 104 42 Αθήνα  
110, Athinon Ave. GR 104 42 Athens  
tel. (+30)210-33.66.800, fax (+30)210-33.66.101  
[www.athegroup.gr](http://www.athegroup.gr)