



ATHEXGROUP
Athens Exchange Group

Hellenic Exchanges – Athens Stock Exchange S.A.

“

2016

δελτιο ημερησιων συναλλαγων

daily official list

Thursday, 6 October, 2016
Year: 137 Trading Day No: 190

”

Disclaimer:

Hellenic Exchanges-Athens Stock Exchange S.A. endeavours to ensure that the data and other material ("Information") presented on the Daily Official List are accurate and complete, but it is not liable for any errors or omissions of data or /and for the accuracy, credibility, updating and completeness of the aforesaid information nor it has any liability arising directly or indirectly from the use of the above Information.

The Company is not liable for the accuracy of the data included in listed companies' announcements. Only the sender of such an announcement is fully and solely liable for any infringement of third party's rights from the content of such announcement. All contents of the Daily Official List are provided only for information purposes and do not constitute investment advice or solicitation to invest in securities or other products listed for trading on the Exchange.

You acknowledge and agree that the Company is the owner of any property rights related to any Information appearing on the Daily Official List including intellectual property rights copyright, trademarks, etc.

The above data are a property of the Hellenic Exchanges-Athens Exchange and are copyright protected. Users are forbidden to reproduce, modify, copy, sale, transmit or redistribute, by all reproduction means and methods, part or the whole of the above data, without reference to their source.

The commercial exploitation of these data is, also, forbidden by third parties. Hellenic Exchanges-Athens Exchange does not carry any responsibility, direct or indirect, derived from usage or accidental alteration of the above data when used by third parties.

Hellenic Exchanges – Athens Stock Exchange S.A.

110 Athinon Ave., 10442 Athens, Tel: (210) 33.66.800, Fax: (210) 32.13.938

www.helix.gr

Thessalonica Stock Exchange Center (T.S.E.C)

16-18 Katouni Str., Thessalonica 546 25 Tel: (2310) 567.667, Fax: (2310) 530.545

Athex Members Guarantee Fund

14-16 Fidiou Str., Athens 106 78, Tel: (210) 33.04.682, Fax: (210) 33.04.155

Hellenic Republic Capital Market Commission

1 Kolokotroni Str. & 1 Stadiou Str., Athens 10562 Tel: (210) 33.77.100 Fax: (210) 33.77.173

Table of Contents

Section 1: Statistical Figures of Securities, Derivatives and Lending

Summary of Markets

Athex Indices

Analytic Figures for Athex Market's Boards and Categories

Trading Details by Athex Sectors and Financial Instruments (ETFs)

Top 10 best & worst performing Shares

Derivatives Summary

Section 2: Analytic Figures of Shares Transactions

Analytic Figures of Shares Transactions

Shares' Notes

Section 3: Figures of Securities Transactions

Securities Blocks Details

Shares Rights Details

Stock Borrowing

Shares Forced Sales

Forced Sales Registered Shares

Exchange Traded Funds (ETFs) Characteristics

Section 5: Bonds traded in Fixed Income Assets Market

Corporate Bonds

Government Bonds

Treasury Bills & Zero Coupon Government Bonds

Government Bonds Traded with the Open Outcry Method

State Banks Bonds

Section 6: Additional Infos

Athex & ATHEXClear Members List

List of Stocks under Market Making operations

Section 7: Derivatives Market Analytic Figures

Index Futures

Stock Futures

Index Options

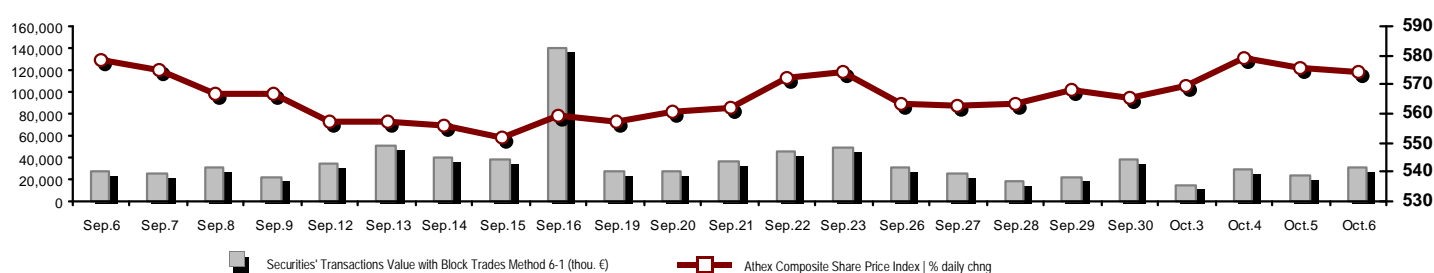
Stock Options

Stock Lending Analytic Figures

Appendix A: Sectors codification for listed companies

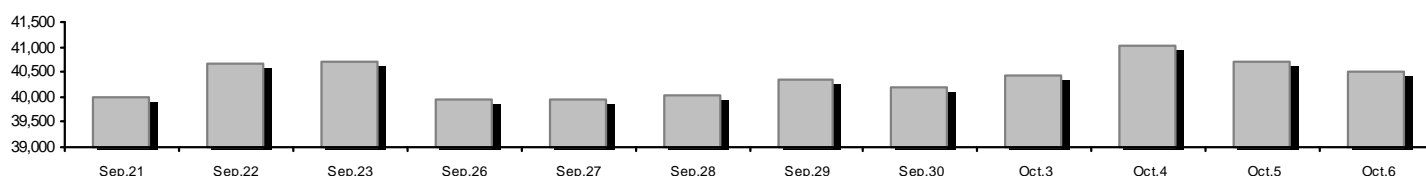
Summary of Markets

Athex Composite Share Price Index vs Shares and Derivatives Transactions Value

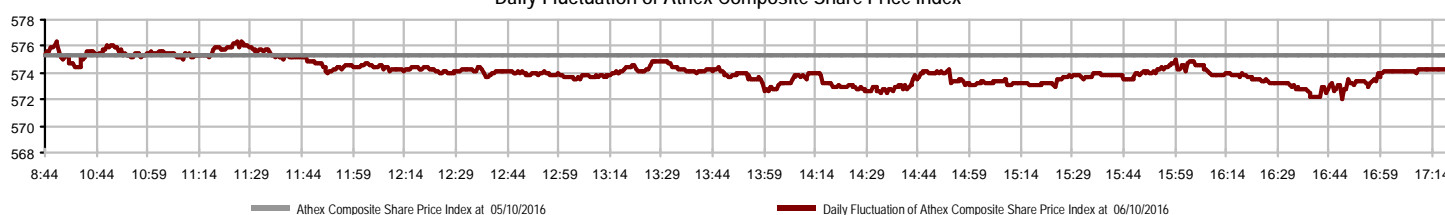


Athex Capitalisation (mill. €) **: 40,525.04		Derivatives Total Open Interest 271,999	
Daily change: mill. € % -199.74 -0.49%		in Index Futures % daily chng 6,264 3.42%	
Yearly Avg Capitalisation: mill. € % chng prev year Avg 40,654.10 -6.87%		in Stock Futures % daily chng 262,795 -0.79%	
Athex Composite Share Price Index % daily chng 574.22 -0.20%		in Index Options % daily chng 2,234 4.78%	
Athex Composite Share Price Index Capitalisation (mill. €) 36,019.02		in Stock Options % daily chng 706 0.00%	
Daily change (mill. €) -200.26			
Securities' Transactions Value with Block Trades Method 6-1 (31,404.86		Derivatives Contracts Volume: 30,588	
Daily change: % 7,613.42 32.00%		Daily change: pieces % 9,648 46.07%	
YtD Avg Trans. Value: thou. € % chng prev year Avg 62,192.06 -27.33%		YtD Avg Derivatives Contracts % chng prev year Avg 60,515 -7.91%	
Blocks Transactions Value of Method 6-1 (thou. €) 3,395.31		Derivatives Trades Number: 1,424	
Blocks Transactions Value of Method 6-2 & 6-3 (thou. €) 0.00		Daily change: number % 107 8.12%	
Bonds Transactions Value (thou.€) 1,632.58		YtD Avg Derivatives Trades number % chng prev year Avg 2,582 -20.99%	
Securities' Transactions Volume with Block Trades Method 6-1 (th 36,028.72		Lending Total Open Interest 1,338,306	
Daily change: thou. pieces % -4,079.49 -10.17%		Daily change: pieces % 7,490 0.56%	
YtD Avg Volume: % chng prev year Avg 101,771.27 -47.15%		Lending Volume (Multilateral/Bilateral) 7,490	
Blocks Transactions Volume of Method 6-1 (thou. Pieces) 3,198.06		Daily change: pieces % -17,810 -70.40%	
Blocks Transactions Volume of Method 6-2 & 6-3 (thou. Pieces) 0.00		Multilateral Lending 7,490	
Bonds Transactions Volume 1,631,223.00		Bilateral Lending 0	
Securities' Trades Number with Block Trades Method 6-1 12,983		Lending Trades Number: 7	
Daily change: number % 1,362 11.72%		Daily change: % -4 -36.36%	
YtD Avg Derivatives Trades number % chng prev year Avg 19,620 -27.31%		Multilateral Lending Trades Number 7	
Number of Blocks Method 6-1 5		Bilateral Lending Trades Number 0	
Number of Blocks Method 6-2 & 6-3 0			
Number of Bonds Transactions 30			

Athex Capitalisation (mill. €) **



Daily Fluctuation of Athex Composite Share Price Index



Athex Indices

Index name	06/10/2016	05/10/2016	pts.	%	Min	Max	Year min	Year max	Year change
Athex Composite Share Price Index	574.22	575.37	-1.15	-0.20%	572.03	576.42	420.82	658.99	-9.05%
FTSE/Athex Large Cap	1,519.12	1,527.64	-8.52	-0.56%	1,515.01	1,531.34	1,075.20	1,868.90	-17.14%
FTSE/Athex Mid Cap Index	725.15	724.67	0.48	0.07%	719.46	728.27	515.21	820.16	-11.18%
FTSE/ATHEX-CSE Banking Index	492.46	493.71	-1.25	-0.25%	486.58	498.32	271.40	938.40	-44.79%
FTSE/ATHEX Global Traders Index Plus	1,404.90	1,394.04	10.86	0.78%	1,392.02	1,405.00	1,031.55	1,405.00	10.22%
FTSE/ATHEX Global Traders Index	1,490.27	1,489.83	0.44	0.03%	1,479.48	1,493.29	1,129.41	1,579.62	4.46%
FTSE/ATHEX Mid & Small Cap Factor-Weighted Ind	1,316.83	1,276.69	40.14	3.14%	1,276.69	1,317.06	1,066.64	1,317.06	4.88%
Greece & Turkey 30 Price Index	447.18	444.89	2.29	0.51%	445.84	450.07	396.10	527.12	-3.67%
ATHEX Mid & SmallCap Price Index	2,097.12	2,081.51	15.61	0.75%	2,065.62	2,104.72	1,848.24	2,213.61	-3.45%
FTSE/Athex Market Index	373.60	375.62	-2.02	-0.54%	372.55	376.52	265.17	457.53	-16.97%
FTSE Med Index	4,545.92	4,651.12	-105.20	-2.26%			4,396.47	5,530.53	-17.80%
Athex Composite Index Total Return Index	871.98	873.73	-1.75	-0.20%	868.66	875.33	626.16	986.51	-7.18%
FTSE/Athex Large Cap Total Return	2,139.37	2,151.35	-11.98	-0.56%			1,574.40	2,572.00	-15.40%
FTSE/ATHEX Large Cap Net Total Return	638.15	641.73	-3.58	-0.56%	636.42	643.28	443.06	773.01	-15.53%
FTSE/Athex Mid Cap Total Return	894.05	893.46	0.59	0.07%			669.55	1,008.35	-10.93%
FTSE/ATHEX-CSE Banking Total Return Index	470.57	471.77	-1.20	-0.25%			318.40	895.04	-45.90%
Greece & Turkey 30 Total Return Index	563.20	562.60	0.60	0.11%			0.00	660.49	-2.17%
Hellenic Mid & Small Cap Index	727.03	724.69	2.34	0.32%	721.31	727.03	560.15	786.32	1.60%
FTSE/Athex Banks	650.66	652.32	-1.66	-0.25%	642.89	658.40	358.60	1,239.80	-44.78%
FTSE/Athex Financial Services	915.39	909.16	6.23	0.69%	897.00	918.17	634.69	1,179.09	-6.01%
FTSE/Athex Industrial Goods & Services	1,531.73	1,529.95	1.78	0.12%	1,519.32	1,537.90	1,369.56	1,844.00	-16.06%
FTSE/Athex Retail	3,188.21	3,183.83	4.38	0.14%	3,154.61	3,199.90	1,826.41	3,272.96	26.21%
FTSE/ATHEX Real Estate	2,446.90	2,440.01	6.89	0.28%	2,421.66	2,458.95	2,154.15	2,621.31	1.11%
FTSE/Athex Personal & Household Goods	6,010.17	6,036.39	-26.22	-0.43%	5,918.08	6,051.17	4,433.32	6,333.20	18.70%
FTSE/Athex Food & Beverage	7,605.22	7,675.08	-69.86	-0.91%	7,574.57	7,675.08	5,952.97	7,850.45	3.10%
FTSE/Athex Basic Resources	1,988.44	1,922.45	65.99	3.43%	1,922.45	1,988.44	1,200.24	1,997.24	21.64%
FTSE/Athex Construction & Materials	2,172.06	2,169.68	2.38	0.11%	2,148.78	2,175.53	1,500.04	2,343.14	15.63%
FTSE/Athex Oil & Gas	2,500.50	2,475.11	25.39	1.03%	2,475.11	2,502.56	1,860.37	2,657.42	3.67%
FTSE/Athex Chemicals	8,384.04	8,236.09	147.95	1.80%	8,186.77	8,433.36	6,190.46	8,531.99	23.07%
FTSE/Athex Media	1,768.77	1,768.77	0.00	0.00%	1,768.77	1,768.77	1,290.16	2,247.37	19.72%
FTSE/Athex Travel & Leisure	1,325.36	1,346.01	-20.65	-1.53%	1,325.36	1,355.49	982.74	1,426.44	-6.98%
FTSE/Athex Technology	642.97	642.06	0.91	0.14%	638.77	656.79	489.05	658.99	12.41%
FTSE/Athex Telecommunications	2,094.71	2,144.25	-49.54	-2.31%	2,086.45	2,158.01	1,802.93	2,669.99	-17.64%
FTSE/Athex Utilities	1,456.05	1,467.55	-11.50	-0.78%	1,438.66	1,467.55	1,136.34	1,734.68	-13.10%
Athex All Share Index	142.92	143.64	-0.71	-0.50%	142.92	142.92	113.39	165.22	-13.08%
Hellenic Corporate Bond Index	107.31	107.33	-0.02	-0.02%			96.90	107.33	6.80%
Hellenic Corporate Bond Price Index	97.05	97.08	-0.03	-0.03%			90.43	97.44	2.42%

Note 1: FTSE/Med 100, Greece & Turkey 30 Rt., Hellenic Corporate Bond Price Index and Hellenic Corporate Bond Index closing prices refer to the previous trading day of 04/10/2016.

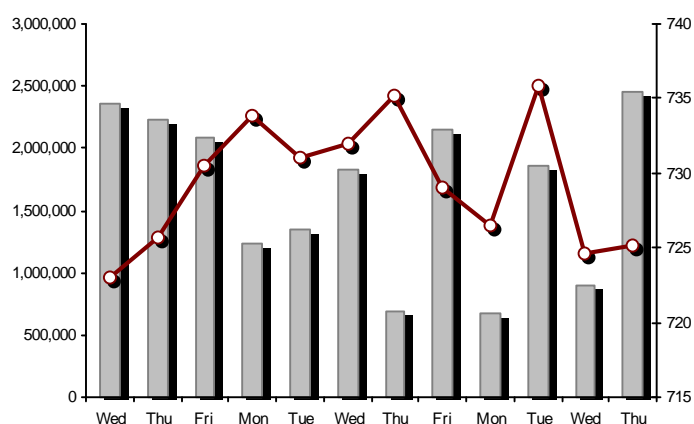
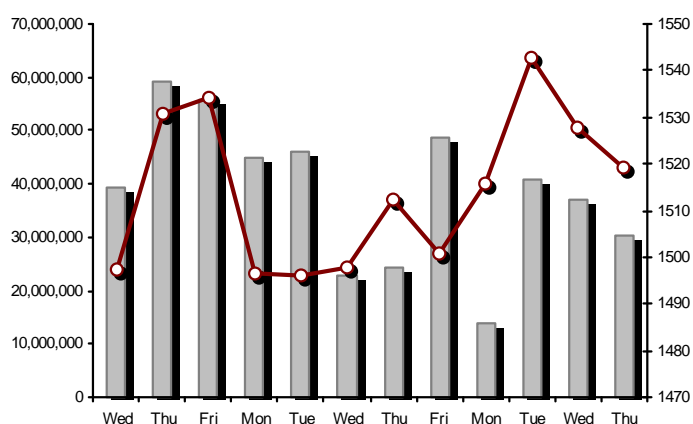
Note 2: The Hellenic Mid & Small Cap Index is a Customized index calculated by the Athens Exchange.

Athex Indices

FTSE/Large Cap

06/10/2016: -0.56% FTSE/Athex Mid Cap Index

06/10/2016: 0.07%

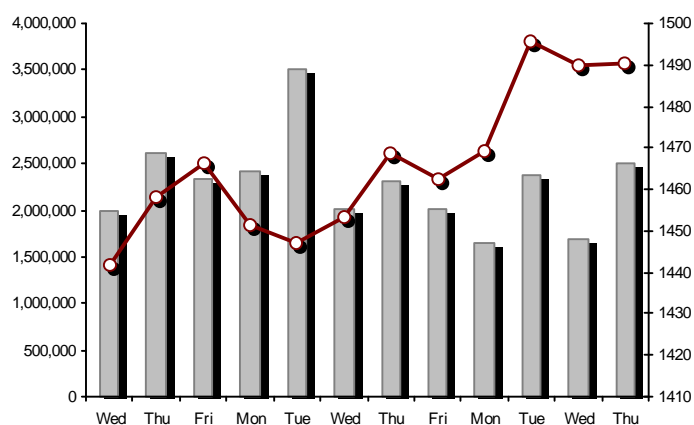
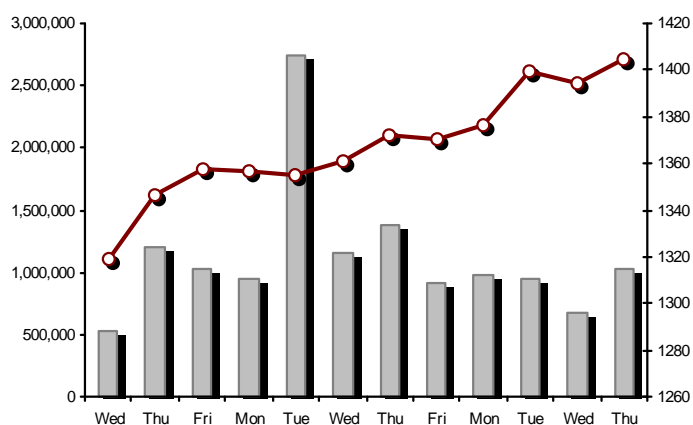


FTSE/ATHEX Global Traders Index Plus

06/10/2016: 0.78%

FTSE/ATHEX Global Traders Index

06/10/2016: 0.03%

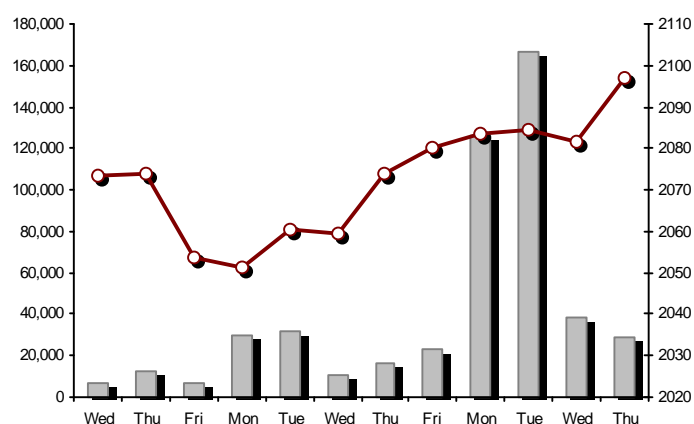
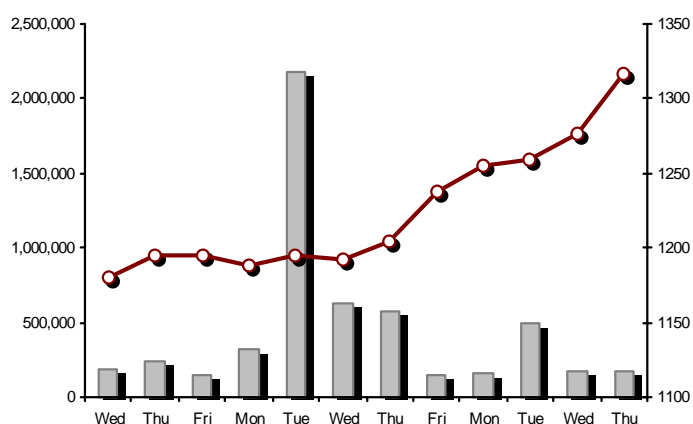


FTSE/ATHEX Mid & Small Cap Factor-Weighted Index

06/10/2016: 3.14%

ATHEX Mid & SmallCap Price Index

06/10/2016: 0.75%



Indices volume of transactions

Indices closing prices

Analytic Figures for Athex Market's Boards and Categories

	Total Traded Securities	Main Market	Low Dispersion	Other Categories (*)	Exchange Traded Funds (ETFs)	Warrants
Totals	117	97	5	10	3	2
Gain / Lose / Same:	53 / 41 / 23	45 / 35 / 17	1 / 2 / 2	5 / 3 / 2	2 / 0 / 1	0 / 1 / 1
Athex Capitalisation (mill. €) **	40,525.04	37,660.75	2,740.87	123.43		
Daily Average Trans/ons Value(thou.€)	62,192.06	62,086.68	113.30	9.66	16.17	11.62
Transactions Value	31,404.86	31,056.29	340.62	4.84	3.08	0.03
Main Board:	28,005.23	27,660.98	336.30	4.84	3.08	0.03
Blocks Board 6_2_3:	3,395.31	3,395.31	0.00	0.00	0.00	0.00
Forced Sales Board:	4.32	0.00	4.32	0.00	0.00	0.00
Special Terms Board:	0.00	0.00	0.00	0.00	0.00	0.00
Daily Average Transactions Volume	101,771,267	96,469,239	113,114	93,474	7,289	5,173,514
Transactions Volume	36,028,718	35,824,052	72,123	125,073	204	7,266
Main Board:	32,829,551	32,625,996	71,012	125,073	204	7,266
Blocks Board 6_2_3:	3,198,056	3,198,056	0	0	0	0
Forced Sales Board:	1,111	0	1,111	0	0	0
Special Terms Board:	0	0	0	0	0	0
Daily Average Number of Trades	19,620	19,472	32	52	4	61
Number of Trades	12,983	12,817	124	37	3	2
Main Board:	12,976	12,812	122	37	3	2
Blocks Board 6_2_3:	5	5	0	0	0	0
Forced Sales Board:	2	0	2	0	0	0
Special Terms Board:	0	0	0	0	0	0

(*) Summarised Transactions figures for Under Deletion and Under Supervision Categories. (**) The Market Capitalization of the Companies that belong in the Under Supervision Status is not included.

Trading Details by Athex Sectors and Financial Instruments (ETFs)

Code	Sectors	Gain / Lose / Same	Number of Trades	Transactions Volume	Transactions Value	% of Total Trans. Value
8300	- Banks	1 / 4 / 4	4,121	30,310,759	13,418,024.69	42.73%
1700	- Basic Resources	7 / 1 / 0	899	439,747	1,751,481.58	5.58%
1300	- Chemicals	3 / 0 / 0	33	7,469	16,716.93	0.05%
2300	- Construction & Materials	2 / 5 / 3	677	250,439	496,681.33	1.58%
12000	- Financial Instruments	2 / 0 / 1	3	204	3,082.84	0.01%
8700	- Financial Services	2 / 1 / 0	668	2,441,796	701,153.52	2.23%
3500	- Food & Beverage	5 / 1 / 2	167	69,265	433,119.54	1.38%
4500	- Health Care	1 / 2 / 2	23	106,625	2,842.57	0.01%
2700	- Industrial Goods & Services	9 / 6 / 4	519	177,899	504,910.55	1.61%
8500	- Insurance	0 / 1 / 0	3	91	162.07	0.00%
5500	- Media	0 / 1 / 0	2	15,290	11,466.82	0.04%
500	- Oil & Gas	1 / 0 / 1	520	132,424	979,966.49	3.12%
3700	- Personal & Household Goods	5 / 4 / 3	444	65,922	473,268.54	1.51%
8600	- Real Estate	2 / 1 / 1	186	44,822	247,459.06	0.79%
5300	- Retail	1 / 3 / 0	404	74,039	1,525,369.44	4.86%
9500	- Technology	6 / 1 / 2	293	136,525	89,999.98	0.29%
6500	- Telecommunications	0 / 1 / 0	1,780	982,881	7,556,798.05	24.06%
5700	- Travel & Leisure	4 / 6 / 0	1,546	594,769	2,666,905.61	8.49%
7500	- Utilities	2 / 3 / 0	695	177,752	525,455.01	1.67%

Top 10 best & worst performing Shares

Main Market					
With positive Price change	Closing price	change	With negative Price change	Closing price	change
J & P - AVAX SA (CR)	0.456	10.95% #	ATTICA PUBLICATIONS SA (CR)	0.750	-7.86% Ⓔ
INTRALOT (CR)	1.29	7.50% #	AEGEAN AIRLINES (CR)	5.91	-4.68% Ⓔ
MYTILINEOS HOLDINGS (CR)	4.52	3.43% #	HELLENIC CABLES SA (CR)	1.15	-3.36% Ⓔ
AUTOHELLAS SA (CR)	11.70	2.81% #	MARFIN INVESTMENT GROUP (CR)	0.122	-2.40% Ⓔ
GEK TERNA (CR)	1.94	2.65% #	OTE (CR)	7.61	-2.31% Ⓔ
INTRACOM HOLDINGS (CR)	0.299	2.05% #	BANK OF CYPRUS (CR)	0.137	-2.14% Ⓔ
THRACE PLASTICS SA (CR)	1.70	1.80% #	ATTICA BANK S.A. (CR)	0.048	-2.04% Ⓔ
LAMDA DEVELOPMENT SA (CR)	4.70	1.73% #	EYDAP S.A. (CR)	5.30	-1.85% Ⓔ
ELTECH ANEMOS S.A. (CR)	0.766	1.73% #	EUROBANK ERGASIAS (CR)	0.508	-1.36% Ⓔ
MOTOR OIL (CR)	10.56	1.54% #	OPAP (CR)	7.55	-1.18% Ⓔ
With the highest Transactions Value	Value (thou. €)	change	With the highest Transactions Volume	Volume	change
OTE (CR)	7,556.80	-2.31% Ⓔ	NATIONAL BANK (CR)	10,363,153	0.00% -
ALPHA BANK (CR)	6,006.66	0.00% -	EUROBANK ERGASIAS (CR)	8,651,310	-1.36% Ⓔ
EUROBANK ERGASIAS (CR)	4,466.69	-1.36% Ⓔ	PIRAEUS BANK (CR)	4,869,468	0.00% -
NATIONAL BANK (CR)	1,944.76	0.00% -	ALPHA BANK (CR)	3,861,616	0.00% -
MYTILINEOS HOLDINGS (CR)	1,721.99	3.43% #	MARFIN INVESTMENT GROUP (CR)	2,344,743	-2.40% Ⓔ
FOLLI FOLLIE (CR)	1,521.49	0.14% #	BANK OF CYPRUS (CR)	1,985,610	-2.14% Ⓔ
OPAP (CR)	1,262.63	-1.18% Ⓔ	OTE (CR)	982,881	-2.31% Ⓔ
AEGEAN AIRLINES (CR)	856.62	-4.68% Ⓔ	ATTICA BANK S.A. (CR)	570,462	-2.04% Ⓔ
MOTOR OIL (CR)	729.12	1.54% #	MYTILINEOS HOLDINGS (CR)	388,877	3.43% #
PIRAEUS BANK (CR)	680.03	0.00% -	INTRALOT (CR)	168,570	7.50% #

Note: Stocks that are not included in the "Low Dispersion" and "Under Supervision" categories, and the transactions value is more than 10,000 €.

Derivatives Summary

	Number of Trades	Volume	Open Interest
Index Futures	221	2,430	6,264
FTSE/Athex Large Cap	221	2,430	6,264
Stock Futures	1,191	28,046	262,795
ALPHA BANK (CR)	123	2,588	13,460
CC HBC AG (CR)	3	5	141
CORINTH PIPEWORKS (CR)	0	0	835
ELLAKTOR (CR)	7	21	1,702
EUROBANK ERGASIAS (CR)	87	3,221	24,122
EYDAP S.A. (CR)	1	1	435
FOLLI FOLLIE (CR)	3	9	172
GEK TERNA (CR)	8	131	6,632
GRIVALIA PROPERTIES (CR)	0	0	56
HELLENIC EXCHANGES-A.S.E. (CR)	21	38	370
HELLENIC PETROLEUM (CR)	22	116	3,553
INTRALOT (CR)	42	177	690
JUMBO SA (CR)	8	12	155
MARFIN INVESTMENT GROUP (CR)	99	3,176	43,865
METKA (CR)	24	67	562
MOTOR OIL (CR)	9	20	288
MYTILINEOS HOLDINGS (CR)	164	958	4,155
NATIONAL BANK (CR)	48	4,271	67,121
OPAP (CR)	51	124	1,414
OTE (CR)	308	1,084	6,758
P.P.A. S.A. (CR)	1	1	659
PIRAEUS BANK (CR)	103	11,725	76,198
PPC (CR)	47	236	5,804
TERNA ENERGY (CR)	2	14	1,193
TITAN CEMENT (CR)	1	1	115
VIOHALCO SA/NV (CB)	9	50	2,340
Index Options	12	112	2,234
FTSE/Athex Large Cap	12	112	2,234
Stock Options	0	0	706
ALPHA BANK (CR)	0	0	130
NATIONAL BANK (CR)	0	0	0
OPAP (CR)	0	0	187
OTE (CR)	0	0	199
PIRAEUS BANK (CR)	0	0	0
PPC (CR)	0	0	190
Total Derivatives Traded	1,424	30,588	271,999

Number of Outstanding Securities	Nominal Value	Dividends [1]			Date of Last Coupon		Note	Shares	Closing price	% change	Previous closing price/date	Open price	Price min	Price max	Last price	Avg price	Last Bid [7]	Last Ask [7]	P/E after	Year	Volume	Trades	Transactions Value[8]	Company Mkt Value (thou. €)	Year low	Year high	Sector[4]
		2013	2014	2015	Dividend [2]	Right																					

Warrants

1,141,734,167	---	---	---	11/06/2013	---	ALPHA BANK (W)	0.001	-50.00	€	0.002	05/10/2016	0.001	0.001	0.001	0.001	0.00404871107@0.001	14514605@0.002	---	2015	2,266	1	2.27	2,397,534.67	0.001	0.004	8355
245,745,725	---	---	---	27/06/2013	---	NATIONAL BANK (W)	0.005	---	↘	0.005	05/10/2016	0.005	0.005	0.005	0.005	0.005596046@0.005	427199@0.006	---	2015	5,000	1	25.00	1,728,811.64	0.002	0.025	8355
843,637,022	---	---	---	03/07/2013	---	PIRAEUS BANK (W)	0.001	---	↘	0.001	05/10/2016	---	---	---	---	---	15198213@0.001	---	2015	---	---	---	1,213,912.48	0.001	0.002	8355

Main Market

71,417,100	0.650	---	0.7	0.7	13/05/2016	27/06/2014	---	AEGEAN AIRLINES (CR)	5.91	-4.68	€	6.20	05/10/2016	6.26	5.91	6.26	5.91	6.02	2340@5.90	250@5.93	7.78	2015	142,424	702	856,619.52	422,075.06	5.91	9.06	5751
11,178,000	1.12	---	---	---	21/04/2010	15/12/2014	---	AEOLIAN INVESTMENT FUND (CR)	0.553	9.72	#	0.504	05/10/2016	0.520	0.520	0.553	0.553	0.531	300@0.522	150@0.553	---	2015	150	2	79.65	6,181.43	0.384	0.701	8985
1,536,881,200	0.300	---	---	---	07/04/2008	27/11/2015	---	ALPHA BANK (CR)	1.56	---	↘	1.56	05/10/2016	1.57	1.53	1.58	1.56	1.56	252567@1.56	6500@1.57	---	2015	3,861,616	827	6,006,663.55	2,397,534.67	0.949	2.75	8355
22,016,250	0.370	---	---	---	15/07/2009	11/05/2000	---	ALUMIL (CR)	0.211	-6.64	€	0.226	05/10/2016	0.226	0.211	0.226	0.212	0.214	50@0.210	4454@0.212	---	2015	1,715	7	366.52	4,645.43	0.101	0.290	1753
417,608	16.00	0.8	---	---	29/04/2014	05/03/2013	---	ANDROMEDA SA (CR)	12.13	---	↘	12.13	05/10/2016	---	---	---	---	---	15@12.30	10@13.23	---	2015	---	---	---	5,065.59	11.53	13.90	8985
13,126,020	0.680	---	---	---	08/07/2010	19/07/2016	---	AS COMPANY SA (CR)	0.778	---	↘	0.778	05/10/2016	---	---	---	---	---	200@0.714	1500@0.777	6.62	2015	---	---	---	10,212.04	0.580	0.796	5379
86,735,980	0.310	---	---	---	06/07/2009	02/01/2002	---	ATHENS MEDICAL CENTER SA (CR)	0.650	---	↘	0.650	05/10/2016	---	---	---	---	---	---	800@0.649	---	2015	---	---	---	56,378.39	0.539	0.780	4533
2,339,353,394	0.300	---	---	---	04/06/2008	01/12/2015	---	ATTICA BANK S.A. (CR)	0.048	-2.04	€	0.049	05/10/2016	0.049	0.046	0.049	0.048	0.047241138@0.046	132696@0.048	---	2015	570,462	118	27,026.69	112,288.96	0.037	0.279	8355	
15,300,000	0.300	---	---	---	30/07/2009	13/12/1999	---	ATTICA PUBLICATIONS SA (CR)	0.750	-7.86	€	0.814	05/10/2016	0.733	0.733	0.750	0.750	0.750	120@0.733	3399@0.750	---	2015	15,290	2	11,466.82	11,475.00	0.706	1.21	5557
48,184,910	0.700	---	---	---	01/07/2008	01/03/2010	---	AUDIO VISUAL ENTERPRISES (CR)	0.085	---	↘	0.085	05/10/2016	---	---	---	---	---	---	1800@0.077	---	2015	---	---	---	4,095.72	0.028	0.108	5553
12,213,750	0.320	---	0.8	0.85	07/06/2016	22/11/2013	---	AUTOHELLAS SA (CR)	11.70	2.81	#	11.38	05/10/2016	11.38	11.38	11.70	11.70	11.69	1000@11.70	372@11.80	9.34	2015	1,050	5	12,277.96	142,900.88	9.51	12.00	5759
8,922,944,533	0.100	---	---	---	31/05/2011	02/02/2015	4857	BANK OF CYPRUS (CR)	0.137	-2.14	€	0.140	05/10/2016	0.141	0.136	0.141	0.137	0.138	464472@0.136	33201@0.137	---	2015	1,985,610	87	274,398.67	1,222,443.40	0.121	0.174	8355
19,864,886	5.60	0.672	0.672	0.672	03/03/2016	02/07/2008	---	BANK OF GREECE (CR)	9.94	0.71	#	9.87	05/10/2016	9.76	9.72	9.98	9.94	9.83	40@9.78	1000@9.95	---	---	1,874	42	18,426.78	197,456.97	8.70	11.11	8355
23,986,500	1.05	---	---	---	26/06/2009	15/03/2000	---	BIOKARPET S.A.(CR)	0.275	2.23	#	0.269	05/10/2016	0.270	0.270	0.275	0.275	0.271	1@0.275	500@0.295	---	2015	799	2	216.23	6,596.29	0.139	0.459	3726
15,842,391	1.51	---	---	---	15/07/2009	12/05/2000	---	BITROS HOLDING SA (CR)	0.200	---	↘	0.200	05/10/2016	---	---	---	---	---	---	500@0.199	---	2015	---	---	---	3,168.48	0.125	0.227	1757
15,816,009	0.300	---	---	---	01/07/2009	17/07/2000	---	BYTE COMPUTER SA (CR)	0.296	---	↘	0.296	05/10/2016	---	---	---	---	---	100@0.290	100@0.303	---	2015	---	---	---	4,681.54	0.256	0.322	9533
365,203,298	6.70	0.354	0.36	0.4	30/06/2016	29/04/2013	---	CC HBC AG (CR)	20.41	-0.92	€	20.60	05/10/2016	20.43	20.33	20.56	20.41	20.47	331@20.41	161@20.53	---	---	20,605	80	421,694.78	7,453,799.31	15.97	21.07	3537
101,123,806	0.360	---	---	---	22/07/2010	28/06/2011	---	CENTRIC HOLDINGS (CR)	0.097	-2.02	€	0.099	05/10/2016	0.095	0.090	0.097	0.097	0.093	10@0.096	9910@0.097	---	2015	32,089	30	2,983.97	9,809.01	0.067	0.147	5752
124,170,201	0.780	---	---	---	28/06/2002	07/02/2005	---	CORINTH PIPEWORKS (CR)	0.625	0.81	#	0.620	05/10/2016	0.620	0.616	0.625	0.625	0.621	5000@0.620	3000@0.628	24.15	2015	39,831	57	24,725.11	77,606.38	0.522	1.03	1757
9,907,500	0.300	---	---	---	06/10/2005	13/02/2002	---	CPI SA (CR)	0.177	-1.67	€	0.180	05/10/2016	0.174	0.174	0.177	0.177	0.174	200@0.165	20@0.178	62.97	2015	540	3	94.06	1,753.63	0.092	0.190	9572
41,068,800	0.420	(0.0667)	(0.03)	0.1205	19/08/2016	17/02/2016	---	CRETE PLASTICS SA (CR)	4.73	3.05	#	4.59	05/10/2016	4.73	4.73	4.73	4.73	4.73	500@4.65	100@4.94	15.87	2015	1,383	3	6,541.59	194,255.42	3.19	4.73	1357
15,000,000	0.300	---	---	---	06/07/2007	18/07/2000	---	DAIOS PLASTICS SA (CR)	2.90	---	↘	2.90	05/10/2016	---	---	---	---	---	---	20@3.18	---	2015	---	---	---	43,500.00	2.45	2.95	1357
34,720,000	0.310	---	---	---	16/06/2010	01/08/2007	---	DROMEAS SA (CR)	0.108	-9.24	€	0.119	05/10/2016	0.109	0.108	0.109	0.108	0.109	---	2000@0.109	---	2015	6,000	3	652.50	3,749.76	0.066	0.152	3726
3,873,120	0.300	---	---	---	07/07/2008	04/10/2012	---	DRUCKFARBEN HELLAS (CR)	0.400	---	↘	0.400	05/10/2016	---	---	---	---	---	118@0.440	---	0.64	2015	---	---	---	1,549.25	0.360	0.550	1357
11,250,000	0.520	---	---	0.04	25/07/2016	09/11/2015	---	EKTER SA (CR)	0.410	---	↘	0.410	05/10/2016	---	---	---	---	---	1600@0.419	375@0.447	12.95	2015	---	---	---	4,612.50	0.301	0.499	2357
32,188,050	1.04	---	---	---	21/07/2008	20/01/2000	---	EL. D. MOUZAKIS SA (CB)	0.129	8.40	#	0.119	05/10/2016	0.108	0.108	0.129	0.129	0.109	---	200@0.129	---	2015	740	4	80.76	4,152.26	0.084	0.215	3763
18,421,516	1.00	---	---	---	07/07/2009	10/09/2010	---	ELASTRON (CR)	0.566	8.22	#	0.523	05/10/2016	0.523	0.491	0.575	0.566	0.515	100@0.520	98@0.566	---	2015	6,791	16	3,499.11	10,426.58	0.310	0.638	1757
31,734,530	1.60	---	---	---	09/07/2007	19/07/2006	---	ELGEKA SA (CR)	0.179	---	↘	0.179	05/10/2016	---	---	---	---	---	---	700@0.178	---	2015	---	---	---	5,680.48	0.118	0.210	3577
23,828,130	0.500	---	---	0.16	08/06/2016	17/02/2009	---	ELINOIL S.A. (CR)	0.850	---	↘	0.850	05/10/2016	---	---	---	---	---	370@0.850	1500@0.940	7.45	2015	---	---	---	20,253.91	0.634	1.08	537
177,001,313	1.03	---	---	---	05/07/2011	20/12/2007	---	ELLAKTOR (CR)	1.28	---	↘	1.28	05/10/2016	1.27	1.26	1.28	1.28	1.27	8879@1.26	5665@1.29	---	2015	29,829	93	37,917.19	226,561.68	0.857	1.59	2357
82,667,000	0.300	---	---	---	22/07/2014	---	---	ELTECH ANEMOS S.A. (CR)	0.766	1.73	#	0.753	05/10/2016	0.750	0.750	0.766	0.766	0.760	320@0.757	491@0.766	8.24	2015	14,189	17	10,777.45	63,322.92	0.533	0.780	7537
26,730,187	0.600	0.05	---	---	23/06/2014	30/12/2010	---	ELTON SA (CR)	0.925	4.64	#	0.884	05/10/2016	0.906	0.906	0.925	0.925	0.918	50@0.883	186@0.925	16.51	2015	170	9	155.99	24,725.42	0.802	1.00	1353
14,050,971	0.340	---	---	---	06/07/2011	17/10/2002	---	ELTRAK SA (CR)	1.36	---	↘	1.36	05/10/2016	1.36	1.36	1.36	1.36	1.36	1000@1.27	180@1.35	27.03	2015	469	2	637.84	19,109.32	0.990	1.44	2753

Number of Outstanding Securities	Nominal Value	Dividends [1]			Date of Last Coupon		Note	Shares	Closing price	% change	Previous closing price/date	Open price	Price min	Price max	Last price	Avg price	Last Bid [7]	Last Ask [7]	P/E after	Year	Volume	Trades	Transactions Value[8]	Company Mkt Value (thou. €)	Year low	Year high	Sector[4]	
		2013	2014	2015	Dividend [2]	Right																						
Main Market																												
3,307,500	0.960	---	---	---	11/08/2010	23/09/2016	---	ELVE SA (CR)	1.58	8.97 #	1.45 05/10/2016	1.45	1.45	1.58	1.58	1.54	1300@1.44	79@1.58	12.59	2015	6,320	16	9,736.39	5,225.85	1.31	2.10	3763	
2,185,998,765	0.300	---	---	---	02/05/2008	27/11/2015	---	EUROBANK ERGASIAS (CR)	0.508	-1.36 €	0.515 05/10/2016	0.521	0.508	0.525	0.508	0.516	2219@0.508	6300@0.510	---	2015	8,651,310	1,640	4,466,687.67	1,110,487.37	0.241	1.17	8355	
8,623,225	0.600	---	---	---	02/06/2010	30/05/2016	5031	EUROCONSULTANTS S.A. (CR)	0.715	5.15 #	0.680 05/10/2016	0.720	0.715	0.720	0.715	0.715	300@0.637	100@0.716	---	2015	740	2	529.15	6,165.61	0.633	1.82	2791	
27,503,677	0.630	---	---	0.06	22/06/2016	18/10/1999	---	EUROPEAN RELIANCE INSUR. (CR)	1.79	-2.72 €	1.84 05/10/2016	1.77	1.77	1.79	1.79	1.78	200@1.76	540@1.86	4.47	2015	91	3	162.07	49,231.58	1.21	2.10	8536	
13,673,200	0.880	---	---	---	18/07/2008	26/07/2001	---	EVROFARMA SA (CR)	0.210	---	0.210 05/10/2016	---	---	---	---	---	400@0.172	984@0.210	12.65	2015	---	---	---	2,871.37	0.120	0.307	3577	
106,500,000	0.600	0.36	0.2	0.31	28/06/2016	28/01/2000	---	EYDAP S.A. (CR)	5.30	-1.85 €	5.40 05/10/2016	5.30	5.24	5.32	5.30	5.27	670@5.28	5691@5.30	12.92	2015	28,769	155	151,666.56	564,450.00	3.60	6.10	7577	
52,800,154	0.300	0.2	---	---	20/08/2014	21/06/2004	---	F.G. EUROPE S.A. (CR)	0.550	-1.79 €	0.560 05/10/2016	0.550	0.550	0.550	0.550	0.550	1000@0.530	671@0.550	24.30	2015	2,000	3	1,100.00	29,040.08	0.441	0.700	3722	
10,203,575	0.730	---	---	---	16/07/2007	18/10/1999	---	FIERATEX SA (CR)	0.160	---	0.160 05/10/2016	---	---	---	---	---	---	833@0.144	---	---	2015	---	---	---	1,632.57	0.039	0.205	3763
11,720,024	0.540	0.0394	---	---	21/08/2014	04/11/2015	---	FLEXOPACK SA (CR)	2.70	-5.59 €	2.86 05/10/2016	2.76	2.70	2.76	2.70	2.71	500@2.70	500@2.80	7.18	2015	1,200	2	3,252.00	31,644.06	2.10	3.03	2723	
4,181,450	0.500	---	---	---	21/08/2000	05/03/2002	---	FLOUR MILLS SARANTOPOULOS SA	0.700	---	0.700 05/10/2016	---	---	---	---	---	---	---	---	---	2015	---	---	---	2,927.02	0.362	1.01	3577
66,948,210	0.300	---	0.1005	---	22/09/2015	22/09/2015	---	FOLLI FOLLIE (CR)	21.82	0.14 #	21.79 05/10/2016	21.80	21.59	22.00	21.82	21.80	300@21.47	4555@21.82	---	2015	69,809	389	1,521,491.58	1,460,809.94	12.50	22.40	5379	
50,992,322	1.07	---	---	---	21/06/2010	16/07/2002	---	FOURLIS (CR)	3.70	0.54 #	3.68 05/10/2016	3.72	3.58	3.72	3.70	3.64	1228@3.60	1252@3.70	---	2015	11,798	61	42,924.30	188,671.59	2.00	3.96	3722	
14,076,360	0.370	---	---	---	19/08/2008	22/07/2003	---	GALAXIDI S.A. (CR)	0.320	0.95 #	0.317 05/10/2016	0.320	0.320	0.320	0.320	0.320	1000@0.287	1910@0.300	31.32	2015	500	1	160.00	4,504.44	0.163	0.570	3573	
103,423,291	0.570	---	---	---	01/08/2011	19/04/2016	---	GEK TERNA (CR)	1.94	2.65 #	1.89 05/10/2016	1.92	1.90	1.94	1.94	1.92	725@1.92	6388@1.94	12.18	2015	47,784	91	91,762.89	200,641.18	1.05	2.10	2357	
8,418,750	0.300	---	---	0.12	16/12/2015	27/06/2012	---	GEKE SA (CB)	4.85	---	4.85 05/10/2016	---	---	---	---	---	15@4.50	10@5.07	16.07	2015	---	---	---	40,830.94	3.90	5.60	5753	
24,060,000	0.300	0.017	0.02	0.01	11/07/2016	11/07/2016	---	GEN. COMMERCIAL & IND.SA (CR)	0.326	-2.69 €	0.335 05/10/2016	0.320	0.320	0.326	0.326	0.325	1201@0.326	200@0.336	13.71	2015	1,200	4	390.00	7,843.56	0.253	0.394	2797	
34,770,982	1.55	0.3	0.15	0.16	20/04/2016	27/07/2000	---	GR. SARANTIS SA (CR)	9.70	---	9.70 05/10/2016	9.80	9.65	9.80	9.70	9.72	30@9.51	19@9.69	30.57	2015	360	7	3,498.29	337,278.53	6.56	10.00	3767	
101,260,000	2.13	0.1821	0.3037	0.3134	18/03/2016	08/01/2014	---	GRIVALIA PROPERTIES (CR)	6.84	-0.73 €	6.89 05/10/2016	6.89	6.82	6.90	6.84	6.89	160@6.84	2411@6.89	12.85	2015	29,846	94	205,501.74	692,618.40	6.46	7.74	8675	
8,340,750	1.18	---	---	---	25/06/2009	09/09/2015	---	HAIDEMENOS SA (CR)	0.324	---	0.324 05/10/2016	---	---	---	---	---	100@0.298	400@0.338	---	2015	---	---	---	2,702.40	0.240	1.04	2791	
101,279,627	0.380	---	---	---	26/06/2008	14/07/2006	---	HALKOR SA (CB)	0.372	2.76 #	0.362 05/10/2016	0.378	0.349	0.378	0.370	0.354	200@0.352	578@0.362	---	2015	2,325	20	822.85	37,676.02	0.193	0.425	1755	
29,546,360	0.710	---	---	---	20/06/2008	23/08/2000	---	HELLENIC CABLES SA (CR)	1.15	-3.36 €	1.19 05/10/2016	1.19	1.15	1.20	1.15	1.16	2561@1.15	5526@1.17	---	2015	33,777	65	39,186.47	33,978.31	0.530	1.31	2733	
65,368,563	1.08	---	0.21	0.1026	31/05/2016	04/07/2016	---	HELLENIC EXCHANGES-A.S.E. (CR)	4.30	1.42 #	4.24 05/10/2016	4.20	4.20	4.30	4.30	4.28	3203@4.27	4601@4.30	21.83	2015	96,903	274	414,833.50	281,084.82	3.40	5.56	8777	
305,635,185	2.18	---	---	---	31/12/2014	01/10/2003	4795	HELLENIC PETROLEUM (CR)	4.00	---	4.00 05/10/2016	4.00	3.96	4.01	4.00	3.98	1000@3.97	4932@4.00	44.39	2015	63,002	219	250,843.71	1,222,540.74	2.74	4.33	537	
305,732,436	0.410	---	---	---	08/07/2009	28/09/2011	---	HYGEIA SA (CR)	0.144	---	0.144 05/10/2016	0.148	0.142	0.148	0.144	0.144	105@0.142	7000@0.144	---	2015	3,345	3	481.89	44,025.47	0.078	0.197	4533	
65,441,118	0.440	---	---	---	24/11/2014	11/08/2015	---	IASO SA (CR)	0.420	---	0.420 05/10/2016	0.420	0.420	0.420	0.420	0.420	3000@0.408	149@0.427	---	2015	100	2	42.00	27,485.27	0.360	0.669	4533	
8,298,467	0.400	---	---	---	30/08/1993	08/05/2013	---	IDEAL GROUP SA (CR)	0.720	0.42 #	0.717 05/10/2016	0.720	0.720	0.720	0.720	0.720	696@0.720	---	-(6)-	2015	4	1	2.88	5,974.90	0.568	0.959	9574	
28,580,100	0.400	0.025	---	---	18/08/2014	04/07/2016	---	IKTINOS HELLAS SA (CR)	0.888	-0.22 €	0.890 05/10/2016	0.888	0.888	0.888	0.888	0.888	150@0.870	2101@0.888	24.43	2015	4,600	2	4,084.80	25,379.13	0.850	1.15	2353	
9,090,000	0.900	---	---	---	15/05/2009	13/10/2014	---	ILYDA S.A. (CR)	0.437	---	0.437 05/10/2016	---	---	---	---	---	---	122@0.394	---	---	2015	---	---	---	3,972.33	0.397	0.590	9537
20,578,374	0.620	---	0.4	0.07	05/07/2016	18/05/2015	---	INFORM P. LYKOS SA (CR)	0.487	---	0.487 05/10/2016	---	---	---	---	---	101@0.444	293@0.479	---	2015	---	---	---	10,021.67	0.405	0.620	2791	
10,500,000	4.00	---	---	---		02/08/2016	---	INTERCONTINENTAL (CR)	5.60	---	5.60 05/10/2016	---	---	---	---	---	---	1010@5.60	---	---	---	---	---	58,800.00	5.15	5.80	8674	
11,233,200	0.730	---	---	---	12/07/2010	30/07/1999	---	INTERTECH SA (CR)	0.203	---	0.203 05/10/2016	---	---	---	---	---	900@0.150	972@0.202	---	2015	---	---	---	2,280.34	0.120	0.376	9572	
34,986,430	0.440	---	---	---	25/07/2008	23/02/2010	---	INTERWOOD-XYLEMPORIA (CR)	0.067	---	0.067 05/10/2016	---	---	---	---	---	9150@0.061	---	---	2015	---	---	---	2,739.38	0.061	0.093	2353	
2,566,836	0.440	---	---	---	13/08/2010	09/01/2007	---	INTERWOOD-XYLEMPORIA (PR)	0.154	---	0.154 05/10/2016	---	---	---	---	---	---	315@0.139	---	---	2015	---	---	---	2,739.38	0.154	0.189	2353
23,154,250	1.36	---	---	---	12/08/2008	02/08/2010	---	INTRACOM CONSTR. (CR)	0.450	-3.64 €	0.467 05/10/2016	0.479	0.450	0.479	0.450	0.456	101@0.440	732@0.450	---	2015	402	6	183.49	10,419.41	0.222	0.599	2357	
133,025,996	1.41	---	---	---	03/07/2007	07/01/2002	---	INTRACOM HOLDINGS (CR)	0.299	2.05 #	0.293 05/10/2016	0.295	0.292	0.301	0.299	0.298	353@0.298	6048@0.300	---	2015	115,454	131	34,388.37	39,774.77	0.245	0.394	9578	
158,961,721	0.300	---	---	---	30/05/2013	14/11/2007	---	INTRALOT (CR)	1.29	7.50 #	1.20 05/10/2016	1.21	1.20	1.29	1.29	1.24	13500@1.27	5000@1.29	---	2015	168,570	202	209,186.93	205,060.62	0.815	1.29	5752	
77,654,850	0.580	---	---	---	01/07/2011	21/02/2003	---	J & P - AVAX SA (CR)																				

Number of Outstanding Securities	Nominal Value	Dividends [1]			Date of Last Coupon		Note	Shares	Closing price	% change	Previous closing price/date	Open price	Price min	Price max	Last price	Avg price	Last Bid [7]	Last Ask [7]	P/E after	Year	Volume	Trades	Transactions Value[8]	Company Mkt Value (thou. €)	Year low	Year high	Sector[4]
		2013	2014	2015	Dividend [2]	Right																					
Main Market																											
9,742,920	0.400	0.01	0.01	0.01	12/08/2016	14/07/2000	---	KARAMOLEGOS SA (CR)	1.49	--- ↘	1.49 05/10/2016	1.49	1.49	1.49	1.49	1.49	559@1.49	20@1.59	-(6)-	2015	50	1	74.50	14,516.95	0.601	1.65	3577
14,679,792	1.68	---	---	---	24/06/2014	04/09/2000	---	KARATZIS SA (CR)	4.12	3.78 #	3.97 05/10/2016	4.12	4.12	4.12	4.12	4.12	20@4.00	60@4.10	11.83	2015	50	1	206.00	60,480.74	3.40	4.12	2723
13,202,756	0.350	---	---	---	01/07/2004	05/08/2014	---	KEKROPS SA (CR)	0.321	14.64 #	0.280 05/10/2016	0.290	0.290	0.325	0.321	0.304	100@0.310	73@0.324	---	2015	6,180	16	1,878.88	4,238.08	0.175	0.330	8633
7,595,160	0.600	---	---	---	08/08/2008	18/08/2010	---	KIRIAKOULIS SHIPPING SA (CR)	0.721	--- ↘	0.721 05/10/2016	---	---	---	---	---	---	2035@0.649	89.77	2015	---	---	---	5,476.11	0.220	0.721	5759
23,648,700	0.350	---	---	---	13/07/2011	31/03/2015	---	KLEEMAN HELLAS SA (CR)	2.02	--- ↘	2.02 05/10/2016	2.02	2.02	2.03	2.02	2.026398437@2.02	1000@2.09	24.37	2015	2,970	7	5,999.50	47,770.37	1.21	2.04	2757	
40,219,218	0.300	---	---	---	25/05/2009	09/07/2013	---	KLOUKINAS - LAPPAS SA (CR)	0.262	--- ↘	0.262 05/10/2016	0.270	0.250	0.270	0.262	0.257 5000@0.255	4917@0.262	---	2015	3,060	17	786.48	10,537.44	0.218	0.353	2357	
21,224,340	0.420	---	---	---	02/07/2008	25/04/2006	---	KORDELLOS BROS SA (CR)	0.363	--- ↘	0.363 05/10/2016	---	---	---	---	---	---	400@0.358	---	2015	---	---	---	7,704.44	0.167	0.373	1757
13,586,500	0.390	---	---	---	25/06/2010	28/05/2008	---	KORRES (CR)	2.92	--- ↘	2.92 05/10/2016	---	---	---	---	---	100@2.88	380@2.98	---	2015	---	---	---	39,672.58	2.79	3.90	3767
29,480,000	0.420	---	---	---	19/07/2010	01/08/2007	---	KRETA FARM SA (CR)	0.442	5.49 #	0.419 05/10/2016	0.413	0.406	0.455	0.442	0.422 191@0.425	200@0.452	---	2015	12,451	40	5,256.49	13,030.16	0.300	0.610	3577	
33,065,136	0.380	---	0.06	0.06	18/08/2016	16/09/2013	---	KRI-KRI S.A. (CR)	1.68	--- ↘	1.68 05/10/2016	---	---	---	---	---	1000@1.60	805@1.68	14.45	2015	---	---	---	55,549.43	1.50	1.90	3577
15,804,800	0.360	---	---	---	15/06/2010	12/03/2004	---	KTIMA KOSTAS LAZARIDIS SA (CR)	0.390	--- ↘	0.390 05/10/2016	---	---	---	---	---	1200@0.273	1000@0.390	---	2015	---	---	---	6,163.87	0.166	0.534	3535
23,719,554	0.990	---	0.2406	---	14/08/2015	15/09/2014	---	KYRIAKIDIS MARBLES SA (CR)	3.00	--- ↘	3.00 05/10/2016	3.25	3.00	3.25	3.00	3.01 5001@2.10	2500@3.10	11.48	2015	310	3	932.50	71,158.66	2.11	3.25	2353	
79,721,775	0.300	---	---	---	30/05/2007	23/06/2014	---	LAMDA DEVELOPMENT SA (CR)	4.70	1.73 #	4.62 05/10/2016	4.70	4.58	4.70	4.70	4.65 46@4.58	4329@4.70	---	2015	7,685	74	35,756.65	374,692.34	3.12	5.08	8633	
21,364,000	1.12	---	---	---	05/07/2010	10/08/2005	---	LAMPSA HOTEL SA (CR)	17.20	-0.52 €	17.29 05/10/2016	17.00	17.00	17.20	17.20	17.03 70@16.52	48@17.05	78.27	2015	20	2	340.60	367,460.80	15.32	18.00	5753	
5,939,268	0.620	---	---	---	10/07/2003	03/01/2002	---	LANAKAM SA (CR)	0.590	--- ↘	0.590 05/10/2016	---	---	---	---	---	---	356@0.531	---	2015	---	---	---	3,504.17	0.570	0.638	3763
4,740,000	0.860	---	---	---	14/03/2003	---	---	LOGISMOS S.A. (CR)	0.241	--- ↘	0.241 05/10/2016	---	---	---	---	---	5000@0.247	---	---	2015	---	---	---	1,142.34	0.219	0.489	9533
17,125,062	0.940	---	---	---	01/06/2010	18/07/2016	---	LOULIS MILLS SA (CR)	1.60	--- ↘	1.60 05/10/2016	---	---	---	---	---	200@1.48	298@1.62	46.76	2015	---	---	---	27,400.10	1.30	1.83	3577
939,510,748	0.300	---	---	---	26/04/2007	29/08/2014	---	MARFIN INVESTMENT GROUP (CR)	0.122	-2.40 €	0.125 05/10/2016	0.124	0.120	0.124	0.122	0.122200810@0.121	3000@0.123	---	2015	2,344,743	392	286,240.37	114,620.31	0.048	0.222	8775	
9,819,370	0.690	---	---	---	14/08/2007	09/01/2004	---	MATHIOS REFRACTORY SA (CR)	0.329	--- ↘	0.329 05/10/2016	---	---	---	---	---	---	2948@0.315	---	2015	---	---	---	3,230.57	0.162	0.356	2353
468,700	0.65	1.48	---	---	26/04/2016	21/05/2004	---	MERMEREN KOMB. A.D. PR. (GDR)	5.50	3.38 #	5.32 05/10/2016	5.50	5.50	5.50	5.50	5.50 200@4.68	50@5.20	0.53	2015	3	1	16.50	2,577.85	4.83	8.49	1775	
51,950,600	0.320	0.3	0.5	0.12	13/05/2016	21/10/2005	---	METKA (CR)	7.29	0.41 #	7.26 05/10/2016	7.30	7.20	7.30	7.29	7.26 500@7.26	56@7.28	21.88	2015	44,823	216	325,505.08	378,719.87	6.24	7.93	2757	
10,500,000	0.950	---	---	---	24/06/2008	19/12/2013	---	MEVACO SA (CR)	0.960	5.49 #	0.910 05/10/2016	0.960	0.960	0.960	0.960	0.960 50@0.900	30@0.969	---	2015	900	3	864.00	10,080.00	0.705	1.10	2757	
6,700,000	0.800	0.16	0.03	0.023	27/06/2016	29/05/2014	---	MILLS KEPENOS (CR)	1.70	--- ↘	1.70 05/10/2016	---	---	---	---	---	---	200@1.53	16.39	2015	---	---	---	11,390.00	0.880	2.21	3577
6,200,000	0.500	---	---	---	22/06/2010	01/11/1995	---	MINERVA KNITWEAR SA (CB)	0.050	--- ↘	0.050 05/10/2016	---	---	---	---	---	3000@0.045	---	---	2015	---	---	---	310.00	0.045	0.092	3763
12,417,000	0.370	---	---	---	28/07/2008	06/09/2011	---	MLS MULTIMEDIA SA (CR)	3.87	0.26 #	3.86 05/10/2016	3.82	3.82	3.91	3.87	3.85 50@3.80	5@3.87	23.76	2015	8,824	50	33,982.82	48,053.79	2.75	3.91	9537	
11,700,000	0.590	---	---	---	02/06/2009	24/07/2012	---	MOTODYNAMICS S.A. (CR)	0.356	-4.04 €	0.371 05/10/2016	0.361	0.356	0.361	0.356	0.360 7@0.356	4580@0.370	13.00	2015	693	3	249.21	4,165.20	0.227	0.549	5379	
110,782,980	0.750	0.2	---	0.65	27/06/2016	04/11/2013	---	MOTOR OIL (CR)	10.56	1.54 #	10.40 05/10/2016	10.45	10.45	10.57	10.56	10.50 1000@10.53	3495@10.56	5.82	2015	69,422	301	729,122.78	1,169,868.27	8.13	11.26	533	
116,915,862	0.970	---	---	---	11/05/2009	19/10/2015	---	MYTILINEOS HOLDINGS (CR)	4.52	3.43 #	4.37 05/10/2016	4.37	4.36	4.52	4.52	4.43 2200@4.51	1550@4.53	---	2015	388,877	795	1,721,992.07	528,459.70	2.70	4.54	1755	
8,321,682	0.670	---	---	---	17/08/2007	23/11/1999	---	N. LEVEDERIS SA (CB)	0.254	--- ↘	0.254 05/10/2016	---	---	---	---	---	---	150@0.239	---	2015	---	---	---	2,740.26	0.138	0.385	1757
2,160,524	0.670	0.0436	0.0436	0.0436	04/08/2016	23/11/1999	---	N. LEVEDERIS SA (PB)	0.290	7.41 #	0.270 05/10/2016	0.290	0.290	0.290	0.290	0.290 60@0.260	564@0.282	---	2015	200	2	58.00	2,740.26	0.202	1.25	1757	
11,510,102	0.890	---	---	---	24/06/2005	06/10/1999	---	NAFPAKTOS TEXTILE IND. SA (CB)	0.110	--- ↘	0.110 05/10/2016	---	---	---	---	---	500@0.106	---	---	2015	---	---	---	1,266.11	0.085	0.313	3763
6,340,000	0.600	---	---	---	30/11/2009	04/12/2015	---	NAKAS MUSIC	1.00	-9.91 €	1.11 05/10/2016	1.10	0.999	1.11	1.00	1.04	---	10@1.00	6.29	2016	3,450	8	3,599.90	6,340.00	0.600	1.11	5379
9,147,151,527	0.300	---	---	---	16/05/2008	30/11/2015	---	NATIONAL BANK (CR)	0.189	--- ↘	0.189 05/10/2016	0.189	0.185	0.190	0.189	0.188183400@0.187	681911@0.190	---	2015	10,363,153	844	1,944,763.45	1,728,811.64	0.099	0.340	8355	
23,935,280	0.300	---	---	---	29/06/2009	13/06/2000	---	NAYTEMPORIKI PUBLISHING SA(CR)	0.062	--- ↘	0.062 05/10/2016	---	---	---	---	---	443@0.059	---	---	2015	---	---	---	1,483.99	0.049	0.097	5557
27,848,000	0.300	0.004	0.0032	0.0084	16/08/2016	02/09/2003	---	NEWSPHONE HELLAS SA (CR)	0.219	2.82 #	0.213 05/10/2016	0.219	0.219	0.219	0.219	0.219 500@0.199	2096@0.219	9.20	2015	10	1	2.19	6,098.71	0.135	0.291	2791	
291,282,095	0.300	---	---	---	08/07/2008	21/03/2016	---	NIREFS SA (CR)	0.145	2.11 #	0.142 05/10/2016	0.144	0.140	0.149	0.145	0.146 163@0.144	450@0.146	0.21	2015	32,450	35	4,737.05	42,235.90	0.067	0.297	3573	
319,000,000	0.300	0.25	0.57	0.4	23/06/2016	25/04/2001	---	OPAP (CR)	7.55	-1.18 €	7.64 05/10/2016	7.68	7.55	7.72	7.55	7.60 50@7.54	10@7.60	11.41	2015	166,069	482	1,262,633.35	2,408,450.00	5.16	7.84	5752	
490,150,389	2.83	---	0.08	0.1	29/06/2016	18/06/1998	---	OTE (CR)	7.61	-2.31 €	7.79 05/10/2016	7.84	7.58	7.84	7.61	7.69 21045@7.61	350@7.63	40.28	2015	982,881	1,780	7,556,798.05	3,730,044.46	6.55	9.71	6535	

Number of Outstanding Securities	Nominal Value	Dividends [1]			Date of Last Coupon Dividend [2]		Date of Last Coupon Right	Note	Shares	Closing price	% change	Previous closing price/date	Open price	Price min	Price max	Last price	Avg price	Last Bid [7]	Last Ask [7]	P/E after	Year	Volume	Trades	Transactions Value[8]	Company Mkt Value (thou. €)	Year low	Year high	Sector[4]
--	------------------	---------------	--	--	-------------------------------------	--	------------------------------	------	--------	------------------	----------	--------------------------------	---------------	--------------	--------------	---------------	--------------	-----------------	--------------	--------------	------	--------	--------	--------------------------	--------------------------------	-------------	--------------	---------------

Main Market

25,000,000	2.00	0.12	0.099	0.1114	18/07/2016	08/08/2003	---	P.P.A. S.A. (CR)		12.59	0.32 #	12.55	05/10/2016	12.57	12.43	12.64	12.59	12.52	7@12.46	35@12.59	37.58	2015	1,677	37	20,998.48	314,750.00	9.80	14.78	2777
4,971,466	1.46	---	---	---	04/07/2007	08/10/2003	---	PAIRIS SA (CR)		0.205	9.63 #	0.187	05/10/2016	0.170	0.169	0.205	0.205	0.170	850@0.171	595@0.205	---	2015	1,155	3	196.38	1,019.15	0.158	0.215	2723
3,953,090	0.900	---	0.067	0.11	26/05/2016	05/12/2012	---	PAPERPACK (CR)		1.24	-5.34 €	1.31	05/10/2016	1.28	1.24	1.28	1.24	1.27	100@1.23	450@1.27	3.91	2015	372	4	472.39	4,901.83	0.651	1.38	2723
50,797,369	0.310	---	---	---	17/08/2000	12/10/2010	---	PAPOUTSANIS (CR)		0.121	3.42 #	0.117	05/10/2016	0.121	0.121	0.122	0.122	0.121	50@0.118	899@0.121	---	2015	260	7	31.48	6,146.48	0.080	0.217	3767
7,070,400	0.930	---	---	---	18/05/2010	06/05/2016	---	PETROPOULOS PETROS (CR)		4.17	0.24 #	4.16	05/10/2016	4.10	4.10	4.17	4.17	4.16	50@4.12	2000@4.16	39.10	2015	304	6	1,264.04	29,483.57	3.43	4.25	2753
8,733,183,280	0.300	---	---	---	16/05/2008	27/11/2015	---	PIRAEUS BANK (CR)		0.139	---	0.139	05/10/2016	0.139	0.138	0.141	0.139	0.140195550@0.138	155013@0.140	---	2015	4,869,468	561	680,030.61	1,213,912.48	0.067	0.308	8355	
22,080,000	0.330	0.2	---	0.08	17/05/2016	27/04/2015	---	PLAISIO COMPUTERS SA (CR)		4.00	---	0.00	05/10/2016	4.10	3.94	4.10	4.00	3.98	39@3.94	218@4.11	13.17	2015	2,863	54	11,403.00	88,320.00	3.87	4.75	9572
232,000,000	4.60	---	0.05	---	20/07/2015	12/12/2001	---	PPC (CR)		2.71	-0.37 €	2.72	05/10/2016	2.72	2.67	2.75	2.71	2.70	210@2.69	13126@2.71	---	2015	99,499	342	268,969.25	628,720.00	2.29	4.08	7535
11,812,193	0.470	---	0.02	---	26/03/2015	15/11/2006	---	PROFILE SA (CR)		0.448	1.59 #	0.441	05/10/2016	0.445	0.445	0.448	0.448	0.447	250@0.440	840@0.448	---	2015	1,820	10	813.36	5,291.86	0.388	0.546	9533
27,345,120	0.470	---	---	---	18/07/2005	26/02/2014	---	QUALITY & RELIABILITY SA (CR)		0.338	---	0.338	05/10/2016	0.380	0.310	0.380	0.338	0.323	220@0.300	495@0.320	---	2015	1,113	18	359.46	9,242.65	0.207	0.465	9533
11,921,531	3.66	---	---	---	05/09/2008	21/01/2016	---	QUEST HOLDINGS (CR)		5.20	0.97 #	5.15	05/10/2016	5.00	5.00	5.29	5.20	5.19	165@5.20	220@5.29	---	2015	1,465	19	7,598.66	61,991.96	3.30	5.49	9533
57,434,884	1.31	---	---	---	05/06/2008	12/06/2009	---	REDS S.A. (CR)		0.301	---	0.301	05/10/2016	---	---	---	---	---	500@0.307	---	---	2015	---	---	---	17,287.90	0.280	0.410	8633
22,280,000	0.300	---	---	---	11/04/2011	23/02/2007	---	REVOIL (CR)		0.333	-3.48 €	0.345	05/10/2016	0.302	0.302	0.333	0.333	0.330	750@0.276	4199@0.333	10.70	2015	87	4	28.75	7,419.24	0.169	0.557	5379
7,500,000	0.690	0.0863	0.1	---	19/06/2015	05/07/2016	---	S.KANAKIS SA (CR)		2.60	8.33 #	2.40	05/10/2016	2.35	2.35	2.64	2.50	2.54	50@2.40	55@2.45	11.11	2015	355	5	901.20	19,500.00	1.75	2.64	3577
52,067,296	0.300	---	---	---	23/12/2003	24/01/2007	---	SELECTED TEXT. IND. ASSOC (CR)		0.148	---	0.148	05/10/2016	---	---	---	---	---	---	284@0.145	---	2015	---	---	---	7,705.96	0.084	0.205	3763
204,235,184	0.300	---	---	---	01/07/2008	30/07/2012	---	SELONDA AQUACULTURE SA (CR)		0.158	---	0.158	05/10/2016	0.145	0.145	0.158	0.158	0.146	20@0.143	1568@0.158	---	2015	1,189	3	173.97	32,269.16	0.074	0.273	3573
6,456,530	1.61	---	---	---	29/06/2001	02/08/2010	---	SPACE HELLAS SA (CR)		0.680	---	0.680	05/10/2016	---	---	---	---	---	400@0.681	---	5.18	2015	---	---	---	4,390.44	0.592	1.28	9578
28,438,268	0.300	---	---	---	21/08/2006	24/11/1999	---	SPIROY AGRICULTURE SA (CR)		0.699	---	0.699	05/10/2016	---	---	---	---	---	---	1670@0.630	---	2015	---	---	---	19,878.35	0.630	0.700	1357
40,693,350	5.00	---	---	---	03/07/2006	26/05/2015	---	TECHNICAL OLYMPIC SA (CR)		0.769	-0.65 €	0.774	05/10/2016	0.787	0.734	0.787	0.769	0.754	99@0.734	498@0.769	---	2015	2,803	17	2,114.29	31,293.19	0.530	0.850	3728
109,314,400	0.300	---	---	0.0935	30/05/2016	05/08/2015	---	TERNA ENERGY (CR)		2.62	-0.38 €	2.63	05/10/2016	2.60	2.57	2.65	2.62	2.60	350@2.58	300@2.63	-(6)-	2015	32,333	161	83,934.82	286,403.73	1.92	3.05	7537
36,300,000	1.12	0.285	0.24	0.25	23/06/2016	12/12/2007	---	THESSALONIKA WATER & SEWERAGE		3.40	0.30 #	3.39	05/10/2016	3.37	3.37	3.44	3.40	3.41	100@3.35	493@3.40	9.11	2015	2,962	20	10,106.93	123,420.00	2.65	3.86	7577
45,094,620	0.660	0.05	0.0225	---	20/04/2015	01/11/1999	---	THRACE PLASTICS SA (CR)		1.70	1.80 #	1.67	05/10/2016	1.68	1.66	1.71	1.70	1.69	900@1.64	578@1.70	-(6)-	2015	5,916	21	10,019.35	76,660.85	1.25	1.73	1357
77,063,568	4.00	---	0.1551	0.3099	27/06/2016	25/06/2004	---	TITAN CEMENT (CR)		21.25	-0.23 €	21.30	05/10/2016	21.24	21.01	21.31	21.25	21.20	25@21.10	1969@21.25	29.90	2015	12,424	201	263,335.44	1,719,042.83	14.86	22.40	2353
7,568,960	4.00	---	0.1551	0.3099	27/06/2016	25/06/2004	---	TITAN CEMENT CO. (PR)		10.76	-0.19 €	10.78	05/10/2016	10.72	10.69	10.79	10.76	10.74	70@10.62	443@10.76	15.14	2015	2,913	20	31,272.76	1,719,042.83	7.36	13.30	2353
10,080,000	3.00	0.6	1.95	0.58	18/07/2016	27/08/2001	---	TPA SA (CR)		18.48	---	18.48	05/10/2016	18.48	18.48	18.48	18.48	18.48	50@18.20	30@18.49	10.40	2015	4	1	73.92	186,278.40	17.78	24.10	2777
15,627,315	0.300	---	---	---	16/11/1992	03/12/2012	---	UNIBIOS (CR)		0.084	-6.67 €	0.090	05/10/2016	0.079	0.079	0.094	0.084	0.094	998@0.084	2000@0.095	---	2015	427	5	39.96	1,312.69	0.053	0.105	2353
18,810,000	0.400	---	---	---	08/07/2010	14/11/2007	---	VARVERIS - MODA BAGNO SA (CR)		0.117	---	0.117	05/10/2016	---	---	---	---	---	---	308@0.117	---	2015	---	---	---	2,200.77	0.081	0.165	2353
259,189,761		---	---	---		26/02/2016	---	VIOHALCO SA/NV (CB)		1.22	-0.81 €	1.23	05/10/2016	1.23	1.20	1.24	1.22	1.22	1641@1.21	7076@1.23	---	---	85,928	160	104,948.31	316,211.51	0.928	1.67	2727
4,968,600	2.88	---	---	---	01/07/1998	14/12/1998	---	VIS SA (CR)		0.855	6.88 #	0.800	05/10/2016	0.850	0.840	0.855	0.855	0.846	818@0.779	30@0.855	---	2015	220	3	186.10	4,248.15	0.611	1.00	2723
6,325,000	0.600	---	---	---	02/05/2014	17/02/2014	---	VOGIATZOGLOU SYSTEMS SA (CR)		1.43	---	1.43	05/10/2016	---	---	---	---	---	---	359@1.29	---	2015	---	---	---	9,044.75	0.700	1.75	2797

Exchange Traded Funds (ETFs)

619,082	---	---	---		15/06/2016	---	ALPHA ETF FTSE Athens Large Cap		15.29	0.72 #	15.18 05/10/2016	15.29	15.29	15.29	15.29	15.29	---	---	---	---	---	200	1	3,058.60	---	11.30	170.69	12003
294,878	---	---	---		29/06/2009	---	NBGAM ETF		6.78	---	6.78 05/10/2016	6.78	6.78	6.78	6.78	6.78	---	---	---	---	---	2	1	13.56	---	4.50	7.60	12003
388,550	---	---	---		03/11/2010	---	NBGAM ETF GREECE & TURKEY 30		5.34	0.19 #	5.33 05/10/2016	5.34	5.34	5.34	5.34	5.34	---	---	---	---	---	2	1	10.68	---	4.90	6.27	12003

Low Dispersion

14,000,000	4.15	---	---	---	23/04/2010	29/06/1999	4815	ALPHA REAL ESTATE SA(CR)		5.31	---	5.31 05/10/2016	---	---	---	---	---	60@4.55	750@4.84	26.83	2015	---	---	---	74,340.00	4.11	7.30	8637
------------	------	-----	-----	-----	------------	------------	------	--------------------------	--	------	-----	-----------------	-----	-----	-----	-----	-----	---------	----------	-------	------	-----	-----	-----	-----------	------	------	------

Number of Outstanding Securities	Nominal Value	Dividends [1]			Date of Last Coupon		Note	Shares	Closing price	% change	Previous closing price/date	Open price	Price min	Price max	Last price	Avg price	Last Bid [7]	Last Ask [7]	P/E after	Year	Volume	Trades	Transactions Value[8]	Company Mkt Value (thou. €)	Year low	Year high	Sector[4]
		2013	2014	2015	Dividend [2]	Coupon Right																					
Low Dispersion																											
63,900,000	3.00	---	---	---	23/06/2003	04/11/2008	4816	ASTIR PALACE SA (CR)	4.56	6.54 #	4.28 05/10/2016	4.50	4.50	4.63	4.56	4.56	61446@4.61	5300@4.66	---	2015	70,424	113	320,813.72	291,384.00	2.90	4.63	5753
134,652,904	0.800	---	---	---	09/08/2004	08/03/2006	4814	ATHENA SA (CR)	0.040	---	0.040 05/10/2016	---	---	---	---	---	44@0.048	---	---	2015	---	---	---	5,386.12	0.018	0.130	2357
191,660,320	0.300	---	---	---	20/07/2009	29/12/2010	4817	ATTICA HOLDINGS (CR)	0.966	-5.29 €	1.02 05/10/2016	0.920	0.920	0.970	0.970	0.965	1299@0.920	95@0.960	-(6)-	2015	11	2	10.62	185,143.87	0.490	1.40	5759
13,404,440	8.63	---	---	---	02/04/2001	06/03/1992	4822	IONIAN HOTELS SA (CR)	10.00	---	10.00 05/10/2016	---	---	---	---	---	---	60@10.00	61.83	2015	---	---	---	134,044.40	5.64	10.00	5753
2,760,000	11.83	8.5	9.3	8.5	15/07/2016	16/07/1990	4823	KARELIA TOBACCO CO. SA (CB)	255.00	---	255.00 05/10/2016	255.00	255.00	255.00	255.00	255.00	1@233.00	20@268.00	13.18	2015	56	4	14,280.00	703,800.00	227.20	269.00	3785
106,980,050	2.25	---	---	---	25/07/2008	24/02/2014	5046	MINOAN LINES SA (CR)	2.30	-4.17 €	2.40 05/10/2016	2.30	2.30	2.30	2.30	2.30	1000@2.41	---	15.18	2015	521	3	1,198.30	246,054.12	2.00	2.45	5759
255,494,534	3.00	---	---	0.2035	15/04/2016	23/12/2015	5104	NBG PANGAEA (CR)	3.97	---	3.97 05/10/2016	---	---	---	---	---	619@3.97	---	20.40	2015	1,111	2	4,321.79	1,014,313.30	3.22	6.03	8671
22,996,875	1.25	---	---	---	24/06/2011	02/02/2016	5116	NEXANS HELLAS SA (CR)	1.19	---	1.19 05/10/2016	---	---	---	---	---	51@1.00	497@1.20	---	2015	---	---	---	27,366.28	0.781	1.58	2733
17,240,776	0.370	---	---	---	14/07/2005	30/09/2003	4827	PERSEUS SA (CR)	0.419	---	0.419 05/10/2016	---	---	---	---	---	---	5500@0.414	3.07	2015	---	---	---	7,223.89	0.277	0.520	3577
54,888,240	1.13	0.09	---	---	25/04/2014	22/03/2006	5100	TRASTOR REAL EST. INV. CO.(CR)	0.944	---	0.944 05/10/2016	---	---	---	---	---	150@0.810	301@0.944	---	2015	---	---	---	51,814.50	0.611	1.25	8671

Surveillance																											
13,000,000	1.00	---	---	---	01/08/2007	07/04/2000	5093	AKRITAS SA (CR)	0.175	---	0.175 05/10/2016	---	---	---	---	---	---	10@0.175	---	2015	---	---	---	2,275.00	0.061	0.530	2353
14,870,100	0.300	---	---	---	15/05/2008	26/09/2011	4844	ALPHA GRISSIN S.A. (CR)	0.031	---	0.031 05/10/2016	---	---	---	---	---	100@0.030	---	---	2015	---	---	---	460.97	0.019	0.038	9533
2,969,713	0.300	---	---	---	02/07/2008	28/02/2011	4958	ANEK LINES SA (PR, Issue '96)	0.104	---	0.104 05/10/2016	---	---	---	---	---	---	---	43.50	2015	---	---	---	11,933.71	0.104	0.240	5759
312,163	0.300	---	---	---	02/07/2008	28/02/2011	4959	ANEK LINES SA (PR, Issue '90)	0.422	---	0.422 05/10/2016	---	---	---	---	---	---	---	-(6)-	2015	---	---	---	11,933.71	0.352	1.04	5759
185,373,016	0.300	---	---	---	02/07/2008	28/02/2011	4957	ANEK LINES SA (CR)	0.062	5.09 #	0.059 05/10/2016	0.059	0.059	0.062	0.062	0.062	10000@0.061	23000@0.068	25.93	2015	13,591	5	840.64	11,933.71	0.050	0.103	5759
20,255,805	0.300	---	---	---	22/08/2006	02/08/2010	4881	AXON HOLDING SA (CR)	0.006	---	0.006 05/10/2016	---	---	---	---	---	5800@0.006	---	---	2015	---	---	---	121.53	0.006	0.070	4533
17,579,754	4.16	---	---	---	18/08/2006	02/08/2010	5097	BIOTER SA (CR)	0.085	---	0.085 05/10/2016	---	---	---	---	---	---	74@0.068	---	2015	---	---	---	1,494.28	0.038	0.149	2357
4,034,950	0.680	---	---	---	01/07/2005	30/12/2010	5114	CHATZIKRANIOTIS & SONS SA (CR)	0.037	---	0.037 05/10/2016	---	---	---	---	---	10000@0.033	---	---	2015	---	---	---	149.29	0.037	0.119	3577
14,173,104	0.300	---	---	---	11/08/2010	28/11/2013	5055	DIONIC (CR)	0.047	---	0.047 05/10/2016	0.047	0.047	0.047	0.047	0.047	---	201@0.047	0.14	2015	100	1	4.70	666.14	0.024	0.060	2797
15,878,748	0.480	---	---	---	10/07/2006	22/03/2004	5095	DOMIKI KRITIS SA (CR)	0.290	---	0.290 05/10/2016	---	---	---	---	---	---	300@0.279	---	2015	---	---	---	4,604.84	0.147	0.318	2357
3,961,300	1.28	---	---	---	29/06/2004	03/08/2000	5080	DUROS SA (CR)	0.491	---	0.491 05/10/2016	---	---	---	---	---	---	5650@0.489	---	2015	---	---	---	1,945.00	0.118	0.491	3763
7,085,888	1.59	---	---	---	02/07/1996	06/09/2010	4690	ELVIEMEK (CR)	3.18	---	3.18 05/10/2016	---	---	---	---	---	---	49@2.90	---	2015	---	---	---	22,533.12	3.18	3.97	8633
6,000,000	0.600	---	---	---	13/06/2008	08/04/2004	4886	EUROBROKERS S.A. (CR)	0.009	---	0.009 05/10/2016	---	---	---	---	---	---	---	---	2015	---	---	---	54.00	0.009	0.009	8534
21,820,410	0.800	---	---	---	22/05/2008	02/08/2011	4882	EUROMEDICA SA (CR)	0.008	14.29 #	0.007 05/10/2016	0.007	0.007	0.008	0.008	0.008	91078@0.008	---	---	2015	98,630	12	785.43	174.56	0.006	0.028	4533
110,097,185	0.300	---	---	---	19/09/2016		5118	Forthnet (CR)	0.306	5.52 #	0.290 05/10/2016	0.316	0.300	0.316	0.306	0.306	1850@0.295	700@0.300	---	2015	4,442	7	1,357.37	33,689.74	0.236	0.660	9535
50,593,832	0.300	---	---	---	07/07/2010	07/09/2011	5113	FRIGOGLASS SA (CR)	0.097	-1.02 €	0.098 05/10/2016	0.097	0.097	0.097	0.097	0.097	1000@0.093	1500@0.096	---	2015	2,000	1	194.00	4,907.60	0.086	1.87	2757
77,376,446	0.340	---	---	---	23/05/2005	18/08/2011	5094	G.E. DIMITRIOU (CR)	0.021	---	0.021 05/10/2016	---	---	---	---	---	---	9000@0.022	---	2015	---	---	---	1,624.91	0.006	0.037	3722
1,270,000	0.300	---	---	---	06/07/2007	06/02/2013	5007	GIRAKIAN PROFIL SA (CB)	0.071	---	0.071 05/10/2016	---	---	---	---	---	3000@0.057	---	---	2015	---	---	---	90.17	0.071	0.167	1757
1,540,000	0.600	---	---	---	08/08/1994	19/09/2000	5058	J.BOUTARIS & SON HOLD. (PB)	0.046	---	0.046 05/10/2016	---	---	---	---	---	---	3000@0.055	---	2015	---	---	---	473.71	0.006	0.062	3535
25,179,640	0.600	---	---	---	08/08/1994	19/09/2000	5057	J.BOUTARIS & SON HOLD. SA (CB)	0.016	---	0.016 05/10/2016	---	---	---	---	---	2818@0.019	---	---	2015	---	---	---	473.71	0.016	0.128	3535
7,125,216	0.650	---	---	---	01/07/2005	14/12/1999	4955	KRE.KA SA (CR)	0.073	1.39 #	0.072 05/10/2016	0.073	0.073	0.073	0.073	0.073	4999@0.073	---	---	2015	1,665	2	121.55	520.14	0.060	0.180	3573
51,081,030	1.00	---	---	---	20/08/2007	03/09/2007	4912	LAVIPHARM SA (CR)	0.077	-6.10 €	0.082 05/10/2016	0.077	0.077	0.077	0.077	0.077	100@0.072	200@0.077	---	2015	1,800	2	138.60	3,933.24	0.054	0.155	4577
7,734,375	1.00	---	---	---	09/07/2007	07/01/2011	5112	LIVANIS SA (CR)	0.026	---	0.026 05/10/2016	---	---	---	---	---	1299@0.022	---	---	2015	---	---	---	201.09	0.022	0.148	5557
4,419,616	1.58	---	---	---	21/07/2011	04/03/2015	4983	MEDICON S.A (CR)	0.507	-19.78 €	0.632 05/10/2016	0.569	0.506	0.569	0.506	0.507	---	7084@0.506	1.39	2015	2,750	4	1,394.65	2,240.75	0.321	0.790	4535
20,231,328	0.600	---	---	---	15/07/2008	25/06/2004	4879	NIKAS SA (CR)	0.110	---	0.110 05/10/2016	---	---	---	---	---	---	499@0.110	---	2015	---	---	---	2,225.45	0.070	0.132	3577
14,967,940	0.500	---	---	---	21/05/2008	04/01/2008	4956	PASAL DEVELOPMENT S.A. (CR)	0.300	---	0.300 05/10/2016	---	---	---	---	---	---	181@0.240	---	2015	---	---	---	4,490.38	0.058	0.300	8633

Number of Outstanding Securities	Nominal Value	Dividends [1]			Date of Last Coupon		Note	Shares	Closing price	% change	Previous closing price/date	Open price	Price min	Price max	Last price	Avg price	Last Bid [7]	Last Ask [7]	P/E after	Year	Volume	Trades	Transactions Value[8]	Company Mkt Value (thou. €)	Year low	Year high	Sector[4]	
		2013	2014	2015	Dividend [2]	Right																						
Surveillance																												
18,750,000	0.300	---	---	---	02/07/2001	31/12/2012	4985	PEGASUS PUBLISHING S.A. (CR)	0.088	---	↘	0.088	05/10/2016	---	---	---	---	---	12@0.071	---	2015	---	---	---	1,650.00	0.040	0.136	5557
65,326,268	0.530	---	---	---	04/07/2007	19/07/2006	4750	SATO SA (CR)	0.116	---	↘	0.116	05/10/2016	---	---	---	---	---	14950@0.093	---	2015	---	---	---	7,577.85	0.008	0.116	3726
7,914,480	0.300	---	---	---	23/06/2008	29/06/2011	4888	SFAKIANAKIS SA (CR)	0.157	---	↘	0.157	05/10/2016	---	---	---	---	230@0.188	---	---	2015	---	---	---	1,242.57	0.157	5.64	5379
10,186,667	1.35	---	---	---	24/06/2008	02/02/2016	4887	SIDMA SA (CR)	0.284	19.83	#	0.237	05/10/2016	0.284	0.284	0.284	0.284	1@0.270	505@0.284	---	2015	5	1	1.42	2,893.01	0.096	0.380	1757
4,737,503	0.320	---	---	---	22/06/2005	22/09/2015	5115	VARANGIS AVEPE S.A. (CR)	0.235	---	↘	0.235	05/10/2016	---	---	---	---	---	945@0.230	---	2015	---	---	---	1,113.31	0.235	0.300	3726
16,383,428	0.300	---	---	---	25/06/2002	21/06/2013	4997	VARVARESSOS SA (CB)	0.056	---	↘	0.056	05/10/2016	0.056	0.056	0.056	0.056	1000@0.060	---	---	2015	90	2	5.04	917.47	0.006	0.172	3763
13,191,620	0.620	---	---	---	04/08/2010	09/09/2002	4977	YALCO - CONSTANTINOU SA (CB)	0.058	---	↘	0.058	05/10/2016	---	---	---	---	100@0.057	1000@0.069	---	2015	---	---	---	765.11	0.034	0.143	3722

Under Deletion																												
1,130,180	0.440	---	---	---	20/06/2003	02/07/2014	5092	COMPUCON SA (CR)	0.006	---	↘	0.006	05/10/2016	---	---	---	---	6000@0.006	---	---	2015	---	---	---	6.78	0.006	0.019	9537
9,567,289	0.300	---	---	---	01/07/2004	19/11/2007	5062	MARAC ELECTRONICS (CR)	0.298	---	↘	0.298	05/10/2016	---	---	---	---	14880@0.239	---	2015	---	---	---	2,851.05	0.298	0.298	9578	
24,319,250	0.300	---	---	---	09/07/2002	04/07/2007	5111	PROODEFTIKH SA (CR)	0.050	---	↘	0.050	05/10/2016	---	---	---	---	3800@0.050	---	2015	---	---	---	1,215.96	0.036	0.092	2357	
766,000	1.00	---	---	---	01/07/2004	11/12/2012	4937	TRIA ALFA SA (CR)	2.59	---	↘	2.59	05/10/2016	---	---	---	---	50@2.39	---	2015	---	---	---	2,383.29	1.80	2.59	3763	
245,000	1.00	---	---	---	19/07/2010	11/12/2012	4938	TRIA ALFA SA (PR)	1.63	---	↘	1.63	05/10/2016	---	---	---	---	300@1.61	---	2015	---	---	---	2,383.29	1.36	1.63	3763	

Suspension Status																											
33,301,715	0.320	---	---	---	27/06/2003	08/07/2009	5121	AEGEK (CR)	0.038	---	↘	0.038	30/09/2016	---	---	---	---	4000@0.031	---	---	---	---	---	1,265.47	0.029	0.072	2357
5,000,000	0.400	---	---	---	03/06/2009	01/09/2014	5087	ALCO HELLAS SA (CR)	0.180	---	↘	0.180	31/03/2015	---	---	---	---	---	---	---	---	---	---	900.00	0.180	0.180	1753
5,025,000	0.300	---	---	---	05/07/2005	14/03/2002	5023	ALSINCO S.A (CR)	0.043	---	↘	0.043	29/11/2013	---	---	---	---	---	---	---	---	---	---	216.08	0.043	0.043	3763
215,246,452	0.300	---	---	---	25/06/2001	24/09/2001	4446	ALTEC SA (CR)	0.012	---	↘	0.012	30/11/2015	---	---	---	---	---	---	---	---	---	---	2,582.96	0.012	0.012	9533
81,644,555	0.300	---	---	---	01/07/2008	02/09/2002	5098	ATTI - KAT SA (CR)	0.012	---	↘	0.012	29/05/2015	---	---	---	---	---	---	---	---	---	---	979.73	0.012	0.012	2357
33,930,000	0.300	---	---	---	03/07/2006	30/05/2001	4865	BABIS VOVOS SA (CR)	0.304	---	↘	0.304	30/03/2012	---	---	---	---	---	---	---	---	---	---	10,314.72	0.304	0.304	8633
20,121,710	1.21	---	---	---	27/07/1992	12/03/2003	5002	BALKAN R.E. (CR)	0.190	---	↘	0.190	29/08/2013	---	---	---	---	---	---	---	---	---	---	3,823.12	0.190	0.190	8633
21,920,570	0.300	---	---	---	03/07/2007	13/12/1999	4702	CARDASSILARIS SA (CR)	0.140	---	↘	0.140	30/11/2010	---	---	---	---	---	---	---	---	---	---	3,068.88	0.140	0.140	3577
30,159,583	0.470	---	---	---	26/06/2008	29/12/2010	5047	DIAS A/C (CR)	0.050	---	↘	0.050	26/03/2014	---	---	---	---	---	---	---	---	---	---	1,507.98	0.050	0.050	3573
7,847,611	1.20	---	---	---	01/08/2007	28/09/2011	4939	EDRASIS - C. PSALLIDAS SA (CR)	0.150	---	↘	0.150	29/11/2012	---	---	---	---	---	---	---	---	---	---	1,177.14	0.150	0.150	2357
5,750,000	0.300	---	---	---	12/12/2008	12/12/2011	4929	ELECTRONIKI ATHINON SA (CR)	0.480	---	↘	0.480	28/09/2012	---	---	---	---	---	---	---	---	---	---	2,760.00	0.480	0.480	5375
36,748,909	0.730	---	---	---	15/12/2005	13/12/2006	5109	HEL. SUGAR INDUSTRY SA (CB)	0.075	---	↘	0.075	29/02/2016	---	---	---	---	---	---	---	---	---	---	2,756.17	0.064	0.150	3577
13,692,227	1.47	---	---	---	07/07/2006	08/10/1999	5049	HELLENIC FABRICS SA (CR)	0.117	---	↘	0.117	31/03/2014	---	---	---	---	---	---	---	---	---	---	1,601.99	0.117	0.117	3763
30,390,000	0.310	---	---	---	18/08/2008	29/12/2006	5099	HELLENIC FISHFARMING SA (CR)	0.070	---	↘	0.070	02/06/2015	---	---	---	---	---	---	---	---	---	---	2,127.30	0.070	0.070	3573
24,619,524	0.500	---	---	---	10/10/1986	30/12/2002	4914	KERAMIA-ALLATINI (CR)	0.088	---	↘	0.088	30/08/2012	---	---	---	---	---	---	---	---	---	---	2,166.52	0.088	0.088	8633
66,937,526	0.700	---	---	---	13/08/2010	21/05/2003	5003	MICHANIKI SA (CR)	0.100	---	↘	0.100	29/08/2013	---	---	---	---	---	---	---	---	---	---	9,186.78	0.100	0.100	2357
25,968,987	0.700	---	---	---	13/08/2010	21/05/2003	5004	MICHANIKI SA (PR)	0.096	---	↘	0.096	29/08/2013	---	---	---	---	---	---	---	---	---	---	9,186.78	0.096	0.096	2357
13,555,100	1.00	---	---	---	08/07/2005		4576	MICROLAND COMPUTERS SA (CR)	0.640	---	↘	0.640	14/07/2009	---	---	---	---	---	---	---	---	---	---	8,675.26	0.640	0.640	5379
255,459,600	0.300	---	---	---	26/06/2000	03/12/2010	5101	NEL SA (CR)	0.070	---	↘	0.070	31/08/2015	---	---	---	---	---	---	---	---	---	---	17,882.17	0.070	0.070	5759
23,463,874	0.800	---	---	---	23/05/2003	21/12/1999	4918	NEORION SA (CR)	0.125	---	↘	0.125	30/08/2012	---	---	---	---	---	---	---	---	---	---	2,932.98	0.125	0.125	2753
20,210,127	1.53	---	---	---	27/06/1997	20/03/2000	5061	PARNASSOS ENTERP. (CR)	0.070	---	↘	0.070	30/05/2014	---	---	---	---	---	---	---	---	---	---	1,414.71	0.070	0.070	8775
40,946,303	0.360	---	---	---	18/07/2005	27/11/2007	5089	PC SYSTEMS SA (CR)	0.006	---	↘	0.006	31/03/2016	---	---	---	---	---	---	---	---	---	---	245.68	0.006	0.014	9533

Number of Outstanding Securities	Nominal Value	Dividends [1]			Date of Last Coupon Dividend [2]		Note	Shares	Closing price	% change	Previous closing price/date	Open price	Price min	Price max	Last price	Avg price	Last Bid [7]	Last Ask [7]	P/E after	Year	Volume	Trades	Transactions Value[8]	Company Mkt Value (thou. €)	Year low	Year high	Sector[4]
--	------------------	---------------	--	--	-------------------------------------	--	------	--------	------------------	----------	--------------------------------	---------------	--------------	--------------	---------------	--------------	-----------------	--------------	--------------	------	--------	--------	--------------------------	--------------------------------	-------------	--------------	---------------

Suspension Status

25,667,143	0.320	---	---	---	03/07/2000	18/12/2007	4548	SAOS (CR)	1.56	---	↘	0.780	# 31/03/2009	---	---	---	---	---	---	---	---	---	---	40,040.74	1.56	1.56	2773	
26,408,040	0.300	---	---	---	01/07/1997	26/05/1999	4464	SHEET STEEL SA (CR)	0.120	---	↘	0.120	28/11/2008	---	---	---	---	---	---	---	---	---	---	3,168.96	0.120	0.120	1757	
29,060,950	0.340	---	---	---	20/08/2007	24/10/2001	5088	SPIDER METAL INDUSTRY SA (CR)	0.008	---	↘	0.008	31/03/2015	---	---	---	---	---	---	---	---	---	---	232.49	0.008	0.008	2757	
144,688,060	0.600	---	---	---	21/04/2008	10/03/2010	4982	T BANK (CR)	0.048	---	↘	0.052	# 29/11/2011	---	---	---	---	---	---	---	---	---	---	6,945.03	0.048	0.048	8355	
6,523,780	0.530	---	---	---	01/07/2002	06/03/2001	4971	TECHNICAL PUBLICATIONS SA (CR)	0.006	---	↘	0.006	31/05/2013	---	---	---	---	---	---	---	---	---	---	39.14	0.006	0.006	5557	
100,793,572	0.300	---	---	---	16/07/2009	11/02/2016	5110	TELETIPOS SA (CR)	0.060	---	↘	0.060	07/03/2016	---	---	---	---	---	5@0.048	---	---	---	---	---	6,047.61	0.054	0.070	5553
13,920,000	0.320	---	---	---	19/11/2001	01/08/2000	4726	TEXAPRET SA (CR)	0.080	---	↘	0.080	28/02/2011	---	---	---	---	---	---	---	---	---	---	1,113.60	0.080	0.080	3763	
510,840	1.00	---	---	---	15/07/2008	21/11/2013	5036	TROPEA HOLDING (CR)	2.00	---	↘	0.020	# 30/03/2012	---	---	---	---	---	---	---	---	---	---	1,021.68	2.00	2.00	3722	
284,465,964	3.70	---	---	---	20/06/2008	15/06/2009	4913	TT HELLENIC POSTBANK (CR)	0.168	---	↘	0.239	# 29/08/2012	---	---	---	---	---	---	---	---	---	---	47,790.28	0.168	0.168	8355	
89,616,200	0.300	---	---	---	21/08/2000	28/06/2007	4616	UNITED TEXTILES (CR)	0.050	---	↘	0.050	24/02/2010	---	---	---	---	---	---	---	---	---	---	4,480.81	0.050	0.050	3763	
71,683,906	0.400	---	---	---	15/06/2005	05/02/2008	4953	XATZIOANNOU (CR)	0.026	---	↘	0.026	28/03/2013	---	---	---	---	---	---	---	---	---	---	1,863.78	0.026	0.026	3763	

Shares' Notes

Code	Note text
()	- Adjusted dividends.
*	- Last adjusted closing price.
[1]	- Net dividends.
[2]	- The "Date of Last Coupon" for New listings refers to the date company's stocks started to trade in Athex
[3]	- The Company Market Value is referred to the number of outstanding shares
[4]	- Sectors codification can be found in Appendix A
[5]	- The Market Value refers to the total number of shares listed (including their several classes) in the exchange by the company.
[6]	- P/E greater than 100
[7]	- Last view of the Order Book before the end of the trading session
[8]	- All Blocks Methods' Transactions Value are included.
4446	- Transfer to the "Under Supervision" Category as of 20/10/2008.
4464	- Suspension of trading as of 1/12/2008.
4548	- Suspension of trading as of 1/4/2009.
4576	- Suspension of trading as of 14/7/2009.
4616	- Suspension of trading as of 25/2/2010.
4690	- Transfer to Surveillance category as of 4/4/2006.
4702	- Suspension of trading as of 1/12/2010.
4726	- Suspension of trading as of 1/3/2011.
4750	- Transfer to the "Under Surveillance Category" from 8/4/2011.
4795	- The final gross (pre-tax) dividend is € 0.30 per share and subject to withholding tax on the full dividend amount, i.e. 0,45 per share, for those shareholders liable to withholding tax, in accordance with the applicable tax law provisions.
4814	- Transfer to the Low Dispersion Category as of 30/5/2011.
4815	- Transfer to the Low Dispersion Category as of 30/5/2011.
4816	- Transfer to the Low Dispersion Category as of 30/5/2011.
4817	- Transfer to the Low Dispersion Category as of 30/5/2011.
4822	- Transfer to the Low Dispersion category as of 30/5/2011.
4823	- Transfer to the Low Dispersion category as of 4/4/2006.
4827	- Transfer to the Low Dispersion category as of 5/5/2010.
4844	- Transfer to the Surveillance category from 8/4/2011.
4857	- The 793,906,274 new (CR) shares, resulting from the recent share capital increase through a rights issue, are not yet admitted to trading on the ATHEX.
4865	- Suspension of trading as of 2/4/2012.
4879	- Transfer to the Surveillance Category as of 10/4/2012.
4881	- Transfer to the Surveillance Category as of 10/4/2012.
4882	- Transfer to the Surveillance Category as of 10/4/2012.
4886	- Transfer to the Surveillance Category as of 10/4/2012.
4887	- Transfer to the Surveillance Category as of 10/4/2012.
4888	- Transfer to the Surveillance Category as of 10/4/2012.
4912	- Transfer to the Surveillance Category as of 31/7/2012.
4913	- Suspension of trading as of 30/8/2012.
4914	- Suspension of trading as of 31/8/2012.
4918	- Suspension of trading as of 31/8/2012.
4929	- Suspension of trading as of 1/10/2012.
4937	- Transfer to the UNDER DELETION category as of 30/11/2012.
4938	- Transfer to the UNDER DELETION category as of 30/11/2012.
4939	- Suspension of trading as of 30/11/2012.
4953	- Suspension of trading as of 2/4/2013.
4955	- Transfer to the Surveillance Category as from 5/4/2013.
4956	- Transfer to the Surveillance Category as from 5/4/2013.
4957	- Transfer to the Surveillance Category as from 5/4/2013.
4958	- Transfer to the Surveillance Category as from 5/4/2013.
4959	- Transfer to the Surveillance Category as from 5/4/2013.
4971	- Suspension of trading as of 3/6/2013.

Shares' Notes

Code	Note text
4977	- Transfer to the "Under Surveillance Category" from 11/6/2013.
4982	- Suspension of trading as of 1/12/2011.
4983	- Transfer to the Surveillance Category as of 5/4/2013.
4985	- Transfer to the "Under Surveillance Category" from 8/4/2011.
4997	- Transfer to the Under Supervision Category as of 21/12/2009. - The 6,870,053 new (CB) shares, resulting from the recent share capital increase through a rights issue, are not yet admitted to trading on the ATHEX.
5002	- Suspension of trading as of 30/08/2013.
5003	- Suspension of trading as of 30/08/2013.
5004	- Suspension of trading as of 30/08/2013.
5007	- Transfer to the Surveillance category, as of 11/10/2013.
5023	- Suspension of trading as of 2/12/2013.
5031	- The 612,300 new (CR) shares, resulting from the recent share capital increase through a rights issue, are not yet admitted to trading on the ATHEX.
5036	- The company's share is under suspension of trading as of 2/4/2012. During suspension, the company proceeded and concluded a share reverse split, according to which - after the conclusion of the corporate action - the total number of the company's shares, as well as, the last closing price of 30/03/2012 were adjusted.
5046	- Transfer to the Low Dispersion category as of 8/4/2011.
5047	- Suspension of trading as of 27/3/2014.
5049	- Under suspension of trading as of 1/4/2014.
5055	- Transfer to the Surveillance Category as of 10/4/2014.
5057	- Transfer to the Surveillance Category as of 29/12/2011.
5058	- Transfer to the Surveillance Category as of 29/12/2011.
5061	- Suspension of trading as of 2/6/2014.
5062	- Transfer to the UNDER DELETION category as of 4/6/2014.
5080	- Suspension of trading as of 6/9/2011.
5087	- Suspension of trading as of 1/4/2015.
5088	- Suspension of trading as of 1/4/2015.
5089	- Transfer to the Surveillance Category as of 8/4/2015.
5092	- Transfer to the UNDER DELETION category as of 8/4/2015.
5093	- Transfer to the Surveillance Category as of 8/4/2015.
5094	- Transfer to the Surveillance Category as of 8/4/2015.
5095	- Transfer to the Surveillance Category as from 9/4/2015.
5097	- Transfer to the Surveillance Category as of 10/4/2012.
5098	- Suspension of trading as of 2/6/2015.
5099	- Suspension of trading as of 3/6/2015.
5100	- Transfer to the Low Dispersion Category as of 24/6/2015.
5101	- Suspension of trading as of 1/9/2015.
5104	- Transfer to the "Low Dispersion" Category as of 31/10/2014. Change of the company name from "MIG REAL ESTATE R.E.I.C." to " NBG PANGAEA R.E.I.C." as of 30/12/2015.
5109	- Suspension of trading as of 01/03/2016.
5110	- Suspension of trading as of 08/03/2016.
5111	- Transfer to the Under Deletion Category as of 15/04/2016.
5112	- Transfer to the Surveillance Category as of 15/04/2016.
5113	- Transfer to the Surveillance Category as of 15/04/2016.
5114	- Transfer to the Surveillance Category as of 15/04/2016.
5115	- Transfer to the Surveillance Category as of 15/04/2016.
5116	- Transfer to the Low Dispersion Category as of 20/4/2016.
5118	- Transfer to the Surveillance Category as of 25/11/2011. Issue of a Convertible Bond Loan in progress through a rights issue. Rights' trading period on ATHEX: 22/09/2016 - 03/10/2016, pre-emption rights' subscription period: 22/09/2016 - 06/10/2016.
5121	- Suspension of trading as of 3/10/2016.

Securities Blocks Details

Securities	Block Volume	Price	Block Trade Value	Time of approval	Note
OTE (CR)	90,000	7.80	701,550.00	11:10:26	20
FOLLI FOLLIE (CR)	22,056	21.77	480,048.84	11:58:39	20
EUROBANK ERGASIAS (CR)	500,000	0.515	257,500.00	14:05:16	20
OTE (CR)	86,000	7.74	665,210.00	14:45:57	20
EUROBANK ERGASIAS (CR)	2,500,000	0.516	1,291,000.00	17:12:17	20

Blocks Notes

9 - Method 6-1 / Special Fees

10 - Method 6-1 / Special Fees, SDS

14 - Method 6-3 / Settlement, Incomplete Buy and Sell

18 - Method 6-2 / SPOT 1

19 - Method 6-2 / SPOT 2

20 - Method 6-1 and Method 6-1 Same Day Settlement

21 - Other Pre-agreed

Shares Rights Details

Occured date	Exercise from	Exercise until	Trading until	Rights	Price min	Price max	Closing price	Last Bid	Last Ask	Volume	Trades	Transactions Value
19/09/2016	22/09/2016	06/10/2016	03/10/2016	Forthnet S.A. (CR)	---	---	---	---	---	---	---	---

Shares Forced Sales

Securities	Transaction s Volume	Number of Trades	Transactions Value	Note
NBG PANGAEA (CR)	1,111	2	4,321.79	3

Forced Sales Notes

- 1 - Normal Forced Sale.
- 2 - Forced Sales of Fixed Registered Shares.
- 3 - Forced Sales of Remaining Stock Fractions.

Forced Sales Registered Shares

Securities	Start Date	End Date	Initial Volume	Remaining Volume	Date	Avg price (day)	Avg price (period)	Number of Trades	Transactions Volume	Transactions Value
No Fixed Registered Shares Forced Sales.										

Forced Sales Notes

According to Decision 1/380/04.05.2008 of the Hellenic Republic Capital Market Commission, the certificated registered shares that have not been deposited to the issuer for dematerialisation, will be auctioned in the Athens Exchange by the supervising issuer. Forced sales procedure is held according to Article 99A of the Athens Exchange Rulebook. The average price of the period is calculated by dividing the Total transactions value by the Total volume and includes all the transactions made until the current date.

Exchange Traded Funds (ETFs) Characteristics

	Transactions Date (T)	Creation / Redemption	Units (T-1)	New Units (T-1)	Redemptio n Units (T-	Units (T) [1]	Fund Assets [2]	Net Unit Price	Dividen d per	Dividend Date
NBGAM ETF GREECE & TURKEY 30	06/10/2016	25,000	388,550	---	---	388,550	2,066,381.00	5.3182	---	27/10/2011
NBGAM ETF ΓΔ Χ.Α.	06/10/2016	25,000	294,878	---	---	294,878	2,003,098.00	6.7930	---	27/10/2011

ETFs Notes

[1] - Units (T) = Units (T-1) + New Units (T-1) - Redemption Units (T-1)

[2] - The Creation / Redemption Units of T-1 are included.

Corporate Bonds

Num Listed Bonds	Nominal price	Issue price	Today's Rate	Exp. Date	Duration (years)	Note	Coupon		Trading	Corporate Bonds	Price min	Price max	Closing price	Previous closing price/date		Volume	Transactions Value	Last order		Date	ear min	Year max
							Common	Preferred										Price	Buy / Sell			
40,000,000	1.00	1.00	5.00	04/10/2021	5	---	1	---	1	HOUSEMARKET S.A. (Non convertible)	100.0000	100.1000	100.0017	---	---	1,631,223	1,632,582.49	100.1000	B	06/10/2016	100.0000	100.1000
1,779,209	13.76	9.77	0.00	21/10/2025	18	---	---	---	1	NIREUS S.A. (Convertible to CR shares)	---	---	---	100.0000	12/07/2016	---	---	6.0110	B	06/10/2016	10.0000	150.0000
212,237,880	1.00	1.00	6.30	29/07/2020	7	---	13	---	1	MARFIN INVESTMENT GROUP S.A. SERIES B (BOND)	---	---	---	0.8500	23/08/2013	---	---	5.0000	B	04/10/2016	0.8500	0.8500
163,009,139	1.00	1.00	7.00	29/07/2019	6	---	13	---	1	MARFIN INVESTMENT GROUP S.A. SERIES A (BOND)	---	---	---	1.0000	23/08/2013	---	---	5.0000	B	04/10/2016	1.0000	1.0000

Corporate Bonds Notes

Transactions Volume = (Pieces) * (Nominal Price). Transactions Value = (Pieces) * (Nominal Price) * (price %) + (Accrued interest).
The price of a Bond is stated as a percentage (%) of Bond's Nominal Price.
Nominal Price in Euros (€), except if it is noted differently.

Government Bonds

Number Listed Bonds	Nominal price	Today's Rate	Accrued Interest Calc	Exp. Date [1]	Duration (years)	Note	Coupons Date	Curr. coupon value	Trading Unit	Government Bonds	Price min	Price max	Closing price	Previous closing price/date	Volume	Transactions Value	Price	Last order Buy / Sell	Date
1,792,455,803	1.00	4.30	Actual/Actual	24/02/2023	11	---	24/02	4.30	1	GGB-FXD-240223-11Y-2.000-1.00	---	---	---	10.0000 22/06/2015	---	---	---	---	---
1,771,485,249	1.00	4.30	Actual/Actual	24/02/2024	12	---	24/02	4.30	1	GGB-FXD-240224-12Y-2.000-1.00	---	---	---	10.0000 22/06/2015	---	---	---	---	---
1,744,316,583	1.00	4.30	Actual/Actual	24/02/2025	13	---	24/02	4.30	1	GGB-FXD-240225-13Y-2.000-1.00	---	---	---	10.0000 22/06/2015	---	---	---	---	---
1,498,761,836	1.00	4.30	Actual/Actual	24/02/2026	14	---	24/02	4.30	1	GGB-FXD-240226-14Y-2.000-1.00	---	---	---	10.0000 22/06/2015	---	---	---	---	---
1,469,952,920	1.00	4.30	Actual/Actual	24/02/2027	15	---	24/02	4.30	1	GGB-FXD-240227-15Y-2.000-1.00	---	---	---	10.0000 22/06/2015	---	---	---	---	---
1,525,434,082	1.00	4.30	Actual/Actual	24/02/2028	16	---	24/02	4.30	1	GGB-FXD-240228-16Y-2.000-1.00	---	---	---	10.0000 22/06/2015	---	---	---	---	---
1,503,860,546	1.00	4.30	Actual/Actual	24/02/2029	17	---	24/02	4.30	1	GGB-FXD-240229-17Y-2.000-1.00	---	---	---	10.0000 22/06/2015	---	---	---	---	---
1,435,418,132	1.00	4.30	Actual/Actual	24/02/2030	18	---	24/02	4.30	1	GGB-FXD-240230-18Y-2.000-1.00	---	---	---	10.0000 22/06/2015	---	---	---	---	---
1,368,045,727	1.00	4.30	Actual/Actual	24/02/2031	19	---	24/02	4.30	1	GGB-FXD-240231-19Y-2.000-1.00	---	---	---	10.0000 22/06/2015	---	---	---	---	---
1,373,758,194	1.00	4.30	Actual/Actual	24/02/2032	20	---	24/02	4.30	1	GGB-FXD-240232-20Y-2.000-1.00	---	---	---	10.0000 22/06/2015	---	---	---	---	---
1,452,639,893	1.00	4.30	Actual/Actual	24/02/2033	21	---	24/02	4.30	1	GGB-FXD-240233-21Y-2.000-1.00	---	---	---	10.0000 22/06/2015	---	---	---	---	---
1,410,344,954	1.00	4.30	Actual/Actual	24/02/2034	22	---	24/02	4.30	1	GGB-FXD-240234-22Y-2.000-1.00	---	---	---	10.0000 22/06/2015	---	---	---	---	---
1,444,202,190	1.00	4.30	Actual/Actual	24/02/2035	23	---	24/02	4.30	1	GGB-FXD-240235-23Y-2.000-1.00	---	---	---	10.0000 22/06/2015	---	---	---	---	---
1,505,138,031	1.00	4.30	Actual/Actual	24/02/2036	24	---	24/02	4.30	1	GGB-FXD-240236-24Y-2.000-1.00	---	---	---	10.0000 22/06/2015	---	---	---	---	---
1,396,254,095	1.00	4.30	Actual/Actual	24/02/2037	25	---	24/02	4.30	1	GGB-FXD-240237-25Y-2.000-1.00	---	---	---	10.0000 22/06/2015	---	---	---	---	---
1,382,167,704	1.00	4.30	Actual/Actual	24/02/2038	26	---	24/02	4.30	1	GGB-FXD-240238-26Y-2.000-1.00	---	---	---	10.0000 22/06/2015	---	---	---	---	---
1,337,331,257	1.00	4.30	Actual/Actual	24/02/2039	27	---	24/02	4.30	1	GGB-FXD-240239-27Y-2.000-1.00	---	---	---	10.0000 22/06/2015	---	---	---	---	---
1,371,908,706	1.00	4.30	Actual/Actual	24/02/2040	28	---	24/02	4.30	1	GGB-FXD-240240-28Y-2.000-1.00	---	---	---	10.0000 22/06/2015	---	---	---	---	---
1,360,659,778	1.00	4.30	Actual/Actual	24/02/2041	29	---	24/02	4.30	1	GGB-FXD-240241-29Y-2.000-1.00	---	---	---	10.0000 22/06/2015	---	---	---	---	---
1,432,747,403	1.00	4.30	Actual/Actual	24/02/2042	30	---	24/02	4.30	1	GGB-FXD-240242-30Y-2.000-1.00	---	---	---	10.0000 22/06/2015	---	---	---	---	---
742,153	1,000.00	0.93	FLR Actual/360	10/08/2019	5	---	10/02 - 10/08	---	1	GGB-FLT-100819-05Y-0.934-1,000	---	---	---	---	---	---	---	---	---
4,030,827	1,000.00	4.75	Actual/Actual	17/04/2019	5	---	17/04	4.75	1	GGB-FXD-170419-05Y-4.750-1,000	---	---	---	---	---	---	---	---	---
2,089,066	1,000.00	3.38	Actual/Actual	17/07/2017	3	---	17/07	3.38	1	GGB-FXD-170717-03Y-3.375-1,000	---	---	---	---	---	---	---	---	---

Government Bonds Notes

Transactions Volume = (Pieces) * (Nominal Price). Transactions Value = (Pieces) * (Nominal Price) * (price %) + (Accrued interest).
The Value of current coupon for the issues with NV 0.01 euro refers to NV 100 euros
FLR: Floating Interest Rate.
[1] - The Expiration Date of the interest bearing period and the Date for coupon payment.

Bonds in Circulation	Currency / Min nominal traded Value	Coupons Payment Date	Current Coupon Value	Note	Coupon	Trading Unit	Issue Date	Duration (years)	Today's Interest	A.I.C in days	Bonds	Last price of previous days		Last Outcry in Cash (euro) Price Buy / Sell		Trades in Pieces	Life min	Life Max	
Corporate Bonds in Foreign Currency and Euro																			
103,746	GBP / 10	01/12	0.25	---	57	1	01/12/1930	98	2.5	360	National Mortgage Bank	2.27	05/02/1996	2.27	S	05/02/1996	---	2.27	2.27
0	GBP / 10	01/12	0.25	---	59	1	01/12/1928	100	2.5	360	National Mortgage Bank	---	---	---	---	---	---	---	---

Government Bonds Notes

A.I.C: Accrued Interest Calculation base.
FLR: Floating Interest Rate.
The minimum tradeable Nominal Value for all Demeterialised Government Titles is 100 Euros.
(μτφρ-0)

Athex & ATHEXClear Members List

Member Name			Stock Market			Derivatives Market		ATHEXClear Member	
Address	Phone	Fax	Market Member	Remote Member	Market Maker	Proprietary	Market Maker	General Clearing	Direct Clearing
A. SARRIS SECURITIES S.A.			a						
6, DRAGATSANIOU ATHINA	+30 2103367700	210-3312324							
ALPHA FINANCE INVESTMENT SERVICES S.A.			a		a	a	a		a
5, MERLIN ATHINA	+30 2103677400	210-33311193							
ALPHA BANK A.E.								a	
40, STADIOU STR ATHINA	(210)-3260000	(210)-3264116							
	(210)-3265546	(210)-3265811							
103, AVE. ATHINON ATHINA	+30 2103436820	210-3436270							
ARGUS STOCKBROKERS LTD			a	a		a			
25 , DIMOSTHENI SEVERI AVE NICOSIA	+357 22717000	0035722717070							
ATLANTIC SECURITIES LIMITED			a	a					
37, PRODROMOU NICOSIA	+357 22445400	00357 22661914							
ATLAS SECURITIES S.A			a			a			
, 125 MICHALAKOPOULOU & 14-16 VERVENON ATHINA	+30 2103363300	210-3238925							
ATTICA BANK S.A.								a	
54, AKADIMIAS STR. ATHINA	(210)-3390757	(210)-3646090							
23, OMIROU ATHINA	+30 2103669261	210-3669265							
23, OMIROU STR. ATHINA	(210)-3669000	(210)-3669410							
AXIA VENTURES GROUP LTD			a	a					
, KRANIDIOTI 10, OFFICE 102 NICOSIA	+357 22742000	357 22742001							
AXON SECURITIES S.A.			a			a			
48, STADIOU ATHINA	+30 2103363800	210-3243903							
BANK OF AMERICA MERRILL LYNCH			a	a					
2 , KING EDWARD STREET LONDON	+44 20276281000								
BETA SECURITIES S.A.			a		a	a	a		a
29 , ALEXANDRAS AVEN. & VRAILA ATHINA	+30 2106478900	210-6410139							
BNP PARIBAS SECURITIES SERVICES S.A.								a	
, VASILISSIS SOFIAS 94 & KERASOUNTOS 1 ATHINA	+30 2107468500	210-7468579-581							
CAPITAL SECURITIES S.A.			a			a			
58, MITROPOLEOS ATHINA	+30 2103369700	+30 210 3369820							
CFS SECURITIES-INVESTMENT SERVICES S.A.			a						
3, PAPARRIGOPOULOU ATHINA	+30 2103360800	+30 210-3360980							
CITIGROUP GLOBAL MARKET LTD			a	a					
1, CITIGROUP CENTER , CANADA SQ., CANARY WHARF LONDON	+44 02079864000								
CREDIT SUISSE SECURITIES (EUROPE) LIMITED			a	a					
, ONE CABOT SQUARE LONDON	+44 2078888888								
CYCLOS SECURITIES S.A.			a			a			a
39, PANEPISTIMIOU ATHINA	+30 2103364300	+30 210-3239122							
D.A. TSEKOURAS SEC. S.A.			a						
33, STADIOU ATHINA	+30 2103245100	210-3211997							
DELTASTOCK AD									a
115, MEGAPARK OFFICE BUILDING, OFFICE AREA E, G TSARIGRADSKOJ 39	+35728115051	+35928115049							
DEUTSCHE BANK S.A.			a	a		a			
1 , GREAT WINCHESTER STREET LONDON	+44 20 754 54209	00441133361437							
DYNAMIC SECURITIES S.A.			a			a			a
8, OMIROU ATHINA	+30 2103677700	210-3677777							
EL. PETROPOULAKIS SECURITIES S.A.			a			a			
9, ARISTEIDOU ATHINA	+30 2103213928	+30 210-3216810							
ESTINVEST S.A.									a
9, TH REPUBLICII STREET FOCSANI	+40 237238900	+40 237237471							
EUROBANK ERGASIAS S.A.								a	
8, OTHONOS ATHINA	+30 2103337000	210-3245916							
8, OTHONOS STR. ATHINA	(210)-3337969	(210)-3245916							
	(210)-3337000	(210)-3233866							
EUROBANK SECURITIES INVESTMENT FIRM S.A			a		a	a	a		a
, FILELLINON 10 & XENOFONTOS 13 ATHINA	+30 2103720000	210-3720001							
EUROCORP SECURITIES S.A.			a			a			a
14, SQ.FILIKIS ETAIRIAS ATHINA	+30 2107263500	210-7263666							
EUOTRUST BROKERAGE S.A.			a						
113, SEVASTOUPOLEOS ATHINA	+30 2103363100	+30 210-3238334							
EUROXX SECURITIES S.A.			a		a	a	a		a
7, PALAIOLOGOU CHALANDRI	(210)-6879400	(210)-6879401							
7, PALEOLOGOU CHALANDRI	+30 2106879400	210-6879401							

Athex & ATHEXClear Members List

Member Name			Stock Market			Derivatives Market		ATHEXClear Member	
Address	Phone	Fax	Market Member	Remote Member	Market Maker	Proprietary	Market Maker	General Clearing	Direct Clearing
G. A. PERVAS SECURITIES-INVESTMENT SERVICES CO S.A.			a						
7-9, SOFOKLEOUS ATHINA	+30 2103727200	210-3210-291							
GLOBAL CAPITAL SECURITIES AND FINANCIAL SERVICES LTD			a	a					
, AVE. ARCHIEPIKOPOU MAKARIOU NICOSIA	+357 22710710	357 22339332							
GUARDIAN TRUST SECURITIES S.A			a			a			
31, ERMOU ATHINA	+30 2103378700	210-3220498							
HELLENIC BANK (INVESTMENTS) LTD			a	a					
, AVE.KYRIAKOU MATSI 31 - PO BOX 24747 NICOSIA	+357 22500100	357 22500110							
HELLENICAMERICAN SEC. S.A.			a		a	a			a
27, ANDREA PAPANDREOU ATHINA	+30 2103311100	+30 210-3215968							
HSBC BANK PLC								a	
109-111, AVE. MESOGION ATHINA	+30 2106960000	210-6928000							
INDEX SECURITIES S.A.			a						
6, DRAGATSANIOU ATHINA	+30 2103213920	+30 210-3213216							
INTERFINBROK CORPORATION S.A.									a
1, STR.CALARASI NR. CONSTANTA	+40 241639071	0241-547829							
INVESTMENT BANK OF GREECE S.A.			a		a	a		a	
32 , EGIALIAS & PARADISOU MAROUSI	+30 2108173111	+30 210-6896325							
J. CHR. MAVRIKIS SECURITIES S.A.			a						
5, SOFOKLEOUS ATHINA	+30 2103216730	210-3217767							
KAPPA SECURITIES S.A.			a			a			
15, VALAORITOU ATHINA	+30 2103678600	+30 210-3641002							
KARAMANOF SECURITIES-INV. SERVICES S.A.			a			a			
2, SQ. AGION THEODORON ATHINA	+30 2103212947	+30 210-3217088							
LAIKI FINANCIAL SERVICES LTD				a					
26, AVE. VYRONOS NICOSIA	357 22367367	357 22718567							
LEON DEPOLAS SECURITIES S.A.			a		a	a			
1, CHRISTOU LADA ATHINA	+30 2103213276	+30 210-3211618							
MAGNA TRUST SECURITIES S.A			a						
12-14, KARAGIORGI SERBIAS ATHINA	+30 2103800820	210-3220910							
MEGA EQUITY SECURITIES-FINANCIAL SERVICES LTD			a	a		a			
42-44, AVE. GRIVA DIGENI NICOSIA	+357 22711711	357 22711811							
MERIT SECURITIES S.A			a		a	a			a
3, GEORGIOU SOURI ATHINA	+30 2103671890	210-3671830							
MIDAS BROKERAGE S.A.			a		a				
5, SOFOKLEOUS ATHINA	+30 2141008800	+30 210-3253205							
N. CHRYSISOCHOIDIS STOCK BROKERAGE I.S.S.A.			a			a			a
7-9, SOFOKLEOUS ATHINA	+30 2103213913	+30 210-3216115							
NATIONAL BANK OF GREECE S.A.			a			a		a	
86, AIOLOU STR. ATHINA	(210)-3341000	(210)-3228187							
68, AKADIMIAS STR. ATHINA	(210)-3328817	(210)-3328678							
NATIONAL SECURITIES S.A			a		a	a	a		
66, KIFISIAS AVE , BUILDING A ATHINA	+30 2107720000	+30 210-7720002							
NUNTIUS SECURITIES S.A			a						
6, DRAGATSANIOU ATHINA	+30 2103350599	+30210-3254846							
ONE PLUS CAPITAL LIMITED			a	a					
, 75 PRODRAMOU AVENUE, ONEWORLD PARKVIEW HOUSE, 3RD FLOOR, 22873760	+30 2103350599								
PANTELAKIS SECURITIES S.A.			a			a			
57, ETHNIKIS ANTISTASIS B CHALANDRI	+30 2106965000	210-6929550							
PEGASUS BROKERAGE FIRM S.A			a			a			
17 , VALAORITOU & AMERIKIS ATHINA	+30 2103670700	+30 210-3670760							
PIRAEUS BANK S.A.			a			a		a	
4, AMERIKIS STR. ATHINA	(210)-3335000	(210)-3335079							
4, AMERIKIS STR ATHINA	(210)-3335918	(210)-3254207							
4, AMERIKIS ATHINA	+30 2103335000	210-3335079							
PIRAEUS SECURITIES S.A.			a		a	a	a		a
5, KORAI ATHINA	+30 2103354100	210-3354170							
PRELIUM SECURITIES-INVESTMENT SERVICES S.A.			a			a			
1 , DAVAKI & KIFISIAS AVE. ATHINA	+30 2103677000	+30 210-6926403							
PROCHOICE SECURITIES LTD			a	a					
57, SPYROY KYPRIANOY NICOSIA	+357-24-661192	+357-24-662464							
SHARELINK SECURITIES-FINANCIAL SERVICES LTD			a	a		a			
6 , THEOTOKI MEGARO ELLINA NICOSIA	+357 22554200	+357 22750852							

Athex & ATHEXClear Members List

Member Name			Stock Market			Derivatives Market		ATHEXClear Member	
Address	Phone	Fax	Market Member	Remote Member	Market Maker	Proprietary	Market Maker	General Clearing	Direct Clearing
SOCIETE GENERALE S.A.			a	a		a			
, 17 COURS VALMY 92987 PUTEAUX - LA DEFENSE PARIS	+33 157290504	+33142138697							
SOLIDUS SECURITIES S.A			a			a			a
64, LOUIZIS RIANCOUR ATHINA	+30 2106900600	210-6985421							
SSIF VIENNA INVESTMENT TRUST S.A.									a
, 4 SPLAIUL UNIRII, BUILDING B3 BUCHAREST	+40 212074880	004 021 207 48 98							
ST. EM. LAVRENTAKIS SECURITIES S.A.			a			a			
7-9, SOFOKLEOUS ATHINA	+30 2103213336	+30 210-3246572							
THE CYPRUS INVESTMENT & SECURITIES CORPORATION LTD			a	a					
154, LIMASSOL AVENUE, STROVOLOS NICOSIA	+357 22121700	357 22338800							
UBS LIMITED			a	a					
1 , FINSBURY AVENUE LONDON	+44 2075687135								

List of Stocks under Market Making operations

Securities	Stock Category
Market Maker	Start Market Making
FRIGOGLASS SA (CR)	Surveillance
EUROBANK SECURITIES INVESTMENT FIRM S.A	27/10/2014
ALPHA BANK (CR)	Main Market
ALPHA FINANCE INVESTMENT SERVICES S.A.	29/02/2016
EUROBANK SECURITIES INVESTMENT FIRM S.A	24/10/2012
LEON DEPOLAS SECURITIES S.A.	04/01/2016
MERIT SECURITIES S.A	03/09/2013
MIDAS BROKERAGE S.A.	11/01/2006
NATIONAL SECURITIES S.A	15/01/2013
PIRAEUS SECURITIES S.A.	28/05/2013
ALUMIL (CR)	Main Market
BETA SECURITIES S.A.	18/07/2013
ATTICA BANK S.A. (CR)	Main Market
BETA SECURITIES S.A.	02/06/2014
EUROBANK SECURITIES INVESTMENT FIRM S.A	25/07/2014
EUROXX SECURITIES S.A.	22/01/2016
BANK OF CYPRUS (CR)	Main Market
EUROBANK SECURITIES INVESTMENT FIRM S.A	23/03/2015
NATIONAL SECURITIES S.A	22/06/2015
BYTE COMPUTER SA (CR)	Main Market
MERIT SECURITIES S.A	04/08/2013
CC HBC AG (CR)	Main Market
EUROBANK SECURITIES INVESTMENT FIRM S.A	23/10/2013
NATIONAL SECURITIES S.A	29/04/2013
PIRAEUS SECURITIES S.A.	04/05/2015
ELLAKTOR (CR)	Main Market
EUROBANK SECURITIES INVESTMENT FIRM S.A	01/06/2013
NATIONAL SECURITIES S.A	25/06/2013
ELTON SA (CR)	Main Market
BETA SECURITIES S.A.	03/09/2013
EUROBANK ERGASIAS (CR)	Main Market
ALPHA FINANCE INVESTMENT SERVICES S.A.	08/01/2013
EUROBANK SECURITIES INVESTMENT FIRM S.A	01/06/2013
HELLENICAMERICAN SEC. S.A.	25/07/2014
MIDAS BROKERAGE S.A.	07/01/2016
PIRAEUS SECURITIES S.A.	28/09/2013
EUROCONSULTANTS S.A. (CR)	Main Market
EUROBANK SECURITIES INVESTMENT FIRM S.A	22/07/2014
FOLLI FOLLIE (CR)	Main Market
NATIONAL SECURITIES S.A	17/02/2014
PIRAEUS SECURITIES S.A.	04/05/2015
FOURLIS (CR)	Main Market
HELLENICAMERICAN SEC. S.A.	14/09/2005
GEK TERNA (CR)	Main Market
HELLENICAMERICAN SEC. S.A.	07/09/2015
GR. SARANTIS SA (CR)	Main Market
BETA SECURITIES S.A.	14/05/2013
HELLENIC EXCHANGES-A.S.E. (CR)	Main Market
EUROBANK SECURITIES INVESTMENT FIRM S.A	01/06/2013
HELLENICAMERICAN SEC. S.A.	01/09/2014
NATIONAL SECURITIES S.A	25/06/2013
PIRAEUS SECURITIES S.A.	04/05/2015
HELLENIC PETROLEUM (CR)	Main Market
HELLENICAMERICAN SEC. S.A.	14/09/2015
HYGEIA SA (CR)	Main Market
HELLENICAMERICAN SEC. S.A.	18/04/2016
INTRACOM HOLDINGS (CR)	Main Market
HELLENICAMERICAN SEC. S.A.	07/09/2015
INTRALOT (CR)	Main Market
EUROBANK SECURITIES INVESTMENT FIRM S.A	01/06/2013
PIRAEUS SECURITIES S.A.	28/09/2013
J & P - AVAX SA (CR)	Main Market
EUROBANK SECURITIES INVESTMENT FIRM S.A	14/12/2015
JUMBO SA (CR)	Main Market
MIDAS BROKERAGE S.A.	27/07/2016
KLOUKINAS - LAPPAS SA (CR)	Main Market
BETA SECURITIES S.A.	22/09/2014
LAMDA DEVELOPMENT SA (CR)	Main Market
EUROBANK SECURITIES INVESTMENT FIRM S.A	08/12/2014

List of Stocks under Market Making operations

Securities	Stock Category
Market Maker	Start Market Making
MARFIN INVESTMENT GROUP (CR)	Main Market
EUROBANK SECURITIES INVESTMENT FIRM S.A	23/03/2015
HELLENICAMERICAN SEC. S.A.	25/07/2014
PIRAEUS SECURITIES S.A.	02/02/2013
MLS MULTIMEDIA SA (CR)	Main Market
HELLENICAMERICAN SEC. S.A.	07/12/2015
MOTOR OIL (CR)	Main Market
EUROBANK SECURITIES INVESTMENT FIRM S.A	23/10/2012
HELLENICAMERICAN SEC. S.A.	01/09/2014
NATIONAL SECURITIES S.A	17/02/2014
PIRAEUS SECURITIES S.A.	04/05/2015
MYTILINEOS HOLDINGS (CR)	Main Market
NATIONAL SECURITIES S.A	25/06/2013
PIRAEUS SECURITIES S.A.	04/05/2015
NATIONAL BANK (CR)	Main Market
ALPHA FINANCE INVESTMENT SERVICES S.A.	08/01/2013
EUROBANK SECURITIES INVESTMENT FIRM S.A	24/10/2012
HELLENICAMERICAN SEC. S.A.	25/07/2014
LEON DEPOLAS SECURITIES S.A.	20/04/2015
MERIT SECURITIES S.A	03/09/2013
MIDAS BROKERAGE S.A.	07/01/2016
NATIONAL SECURITIES S.A	28/02/2013
PIRAEUS SECURITIES S.A.	08/09/2013
OPAP (CR)	Main Market
ALPHA FINANCE INVESTMENT SERVICES S.A.	08/01/2013
EUROBANK SECURITIES INVESTMENT FIRM S.A	24/10/2012
HELLENICAMERICAN SEC. S.A.	25/07/2014
MIDAS BROKERAGE S.A.	04/04/2016
NATIONAL SECURITIES S.A	15/01/2013
PIRAEUS SECURITIES S.A.	04/05/2015
OTE (CR)	Main Market
ALPHA FINANCE INVESTMENT SERVICES S.A.	08/01/2013
EUROBANK SECURITIES INVESTMENT FIRM S.A	24/10/2012
HELLENICAMERICAN SEC. S.A.	25/07/2014
MIDAS BROKERAGE S.A.	01/10/2015
NATIONAL SECURITIES S.A	01/12/2012
PIRAEUS SECURITIES S.A.	08/09/2013
PAPOUTSANIS (CR)	Main Market
BETA SECURITIES S.A.	25/11/2013
PETROPOULOS PETROS (CR)	Main Market
BETA SECURITIES S.A.	28/05/2013
PIRAEUS BANK (CR)	Main Market
EUROBANK SECURITIES INVESTMENT FIRM S.A	23/10/2012
EUROXX SECURITIES S.A.	15/02/2016
HELLENICAMERICAN SEC. S.A.	25/07/2014
MERIT SECURITIES S.A	16/09/2013
MIDAS BROKERAGE S.A.	11/01/2016
NATIONAL SECURITIES S.A	02/06/2013
PIRAEUS SECURITIES S.A.	16/02/2013
PLAISIO COMPUTERS SA (CR)	Main Market
BETA SECURITIES S.A.	05/05/2014
EUROBANK SECURITIES INVESTMENT FIRM S.A	02/03/2015
PPC (CR)	Main Market
ALPHA FINANCE INVESTMENT SERVICES S.A.	08/01/2013
EUROBANK SECURITIES INVESTMENT FIRM S.A	23/10/2012
MIDAS BROKERAGE S.A.	04/04/2016
NATIONAL SECURITIES S.A	26/03/2013
PIRAEUS SECURITIES S.A.	28/09/2013
QUALITY & RELIABILITY SA (CR)	Main Market
BETA SECURITIES S.A.	20/08/2014
S.KANAKIS SA (CR)	Main Market
BETA SECURITIES S.A.	01/10/2013
TITAN CEMENT (CR)	Main Market
EUROBANK SECURITIES INVESTMENT FIRM S.A	23/10/2012
NATIONAL SECURITIES S.A	17/02/2014
PIRAEUS SECURITIES S.A.	04/05/2015
VIOHALCO SA/NV (CB)	Main Market
ALPHA FINANCE INVESTMENT SERVICES S.A.	17/02/2014
MERIT SECURITIES S.A	17/03/2014

Underlying Asset				Derivatives Market													
Price max	Price min	Closing price	change	Delivery Month	Open price	Price max	Price min	Last price	Closing price	Last Bid	Last Ask	Settlement price	Life high	Life low	Trades	Volume	Open Interest
FTSE/Athex Large Cap				(Trade Unit: 1 Index Point x 2€, Cash Settlement)													
1,531.34	1,515.01	1,519.12	-0.56%	October 2016	1,526.00	1,530.00	1,513.00	1,520.00	1,520.00	---	---	1,518.75	1,580.75	---	172	1,548	5,030
				November 2016	1,525.50	1,525.50	1,513.00	1,519.00	1,519.00	---	---	1,518.50	---	1,543.00	49	882	1,231
				December 2016	---	---	---	---	1,533.75	---	---	1,521.50	---	1,529.00	---	---	3
				March 2017	---	---	---	---	1,541.50	---	---	---	---	---	---	---	---
				June 2017	---	---	---	---	1,549.25	---	---	---	---	---	---	---	---
				September 2017	---	---	---	---	1,557.00	---	---	---	---	---	---	---	---

Underlying Asset				Derivatives Market													
Price max	Price min	Closing price	change	Delivery Month	Open price	Price max	Price min	Last price	Closing price	Last Bid	Last Ask	Settlement price	Life high	Life low	Trades	Volume	Open Interest
ALPHA BANK (CR)				(Contract Size: 100 Securities, Physical Delivery)													
1.58	1.53	1.56	0.00%	December 2016	1.56	1.57	1.53	1.57	1.57	---	---	1.56	1.87	---	123	2,588	13,460
				March 2017	---	---	---	---	1.57	---	---	---	---	---	---	---	---
				June 2017	---	---	---	---	1.58	---	---	---	---	---	---	---	---
				September 2017	---	---	---	---	1.59	---	---	---	---	---	---	---	---
CC HBC AG (CR)				(Contract Size: 100 Securities, Physical Delivery)													
20.56	20.33	20.41	-0.92%	December 2016	20.18	20.40	20.18	20.40	20.40	---	---	20.28	21.05	---	3	5	141
				March 2017	---	---	---	---	20.79	---	---	---	---	---	---	---	---
				June 2017	---	---	---	---	20.89	---	---	---	---	---	---	---	---
				September 2017	---	---	---	---	20.99	---	---	---	---	---	---	---	---
CORINTH PIPEWORKS (CR)				(Contract Size: 100 Securities, Physical Delivery)													
0.625	0.616	0.625	0.81%	December 2016	---	---	---	---	0.622	---	---	0.617	0.929	---	---	---	835
				March 2017	---	---	---	---	0.626	---	---	0.648	0.850	---	---	---	---
				June 2017	---	---	---	---	0.629	---	---	---	---	---	---	---	---
				September 2017	---	---	---	---	0.632	---	---	---	---	---	---	---	---
ELLAKTOR (CR)				(Contract Size: 100 Securities, Physical Delivery)													
1.28	1.26	1.28	0.00%	December 2016	1.29	1.29	1.27	1.27	1.27	---	---	1.27	1.33	---	7	21	1,702
				March 2017	---	---	---	---	1.29	---	---	---	---	---	---	---	---
				June 2017	---	---	---	---	1.30	---	---	---	---	---	---	---	---
				September 2017	---	---	---	---	1.30	---	---	---	---	---	---	---	---
EUROBANK ERGASIAS (CR)				(Contract Size: 100 Securities, Physical Delivery)													
0.525	0.508	0.508	-1.36%	December 2016	0.521	0.524	0.510	0.515	0.515	---	---	0.520	0.590	---	87	3,221	24,122
				March 2017	---	---	---	---	0.520	---	---	---	---	---	---	---	---
				June 2017	---	---	---	---	0.522	---	---	---	---	---	---	---	---
				September 2017	---	---	---	---	0.525	---	---	---	---	---	---	---	---
EYDAP S.A. (CR)				(Contract Size: 100 Securities, Physical Delivery)													
5.32	5.24	5.30	-1.85%	December 2016	5.28	5.28	5.28	5.28	5.28	---	---	5.29	5.61	---	1	1	435
				March 2017	---	---	---	---	5.45	---	---	---	---	---	---	---	---
				June 2017	---	---	---	---	5.48	---	---	---	---	---	---	---	---
				September 2017	---	---	---	---	5.50	---	---	---	---	---	---	---	---
FOLLI FOLLIE (CR)				(Contract Size: 100 Securities, Physical Delivery)													
22.00	21.59	21.82	0.14%	December 2016	21.86	21.86	21.75	21.75	21.75	---	---	21.67	22.31	---	3	9	171
				March 2017	---	---	---	---	21.99	---	---	21.61	21.97	---	---	---	1
				June 2017	---	---	---	---	22.10	---	---	---	---	---	---	---	---
				September 2017	---	---	---	---	22.21	---	---	---	---	---	---	---	---
GEK TERNA (CR)				(Contract Size: 100 Securities, Physical Delivery)													
1.94	1.90	1.94	2.65%	December 2016	1.91	1.94	1.91	1.94	1.94	---	---	1.98	1.94	---	8	131	6,632
				March 2017	---	---	---	---	1.91	---	---	---	---	---	---	---	---
				June 2017	---	---	---	---	1.92	---	---	---	---	---	---	---	---
				September 2017	---	---	---	---	1.93	---	---	---	---	---	---	---	---

Underlying Asset				Derivatives Market													
Price max	Price min	Closing price	change	Delivery Month	Open price	Price max	Price min	Last price	Closing price	Last Bid	Last Ask	Settlement price	Life high	Life low	Trades	Volume	Open Interest
GRIVALIA PROPERTIES (CR)				(Contract Size: 100 Securities, Physical Delivery)													
6.90	6.82	6.84	-0.73%	December 2016	---	---	---	---	6.92	---	---	6.81	7.19	---	---	---	56
				March 2017	---	---	---	---	6.95	---	---	---	---	---	---	---	---
				June 2017	---	---	---	---	6.99	---	---	---	---	---	---	---	---
				September 2017	---	---	---	---	7.02	---	---	---	---	---	---	---	---
HELLENIC EXCHANGES-A.S.E. (CR)				(Contract Size: 100 Securities, Physical Delivery)													
4.30	4.20	4.30	1.42%	December 2016	4.23	4.30	4.23	4.28	4.28	---	---	4.30	4.43	---	21	38	370
				March 2017	---	---	---	---	4.28	---	---	---	---	---	---	---	---
				June 2017	---	---	---	---	4.30	---	---	---	---	---	---	---	---
				September 2017	---	---	---	---	4.32	---	---	---	---	---	---	---	---
HELLENIC PETROLEUM (CR)				(Contract Size: 100 Securities, Physical Delivery)													
4.01	3.96	4.00	0.00%	December 2016	4.01	4.02	3.95	4.00	4.00	---	---	4.02	4.04	---	22	116	3,553
				March 2017	---	---	---	---	4.04	---	---	---	---	---	---	---	---
				June 2017	---	---	---	---	4.06	---	---	---	---	---	---	---	---
				September 2017	---	---	---	---	4.08	---	---	---	---	---	---	---	---
INTRALOT (CR)				(Contract Size: 100 Securities, Physical Delivery)													
1.29	1.20	1.29	7.50%	December 2016	1.18	1.28	1.18	1.26	1.26	---	---	1.26	1.28	---	42	177	690
				March 2017	---	---	---	---	1.21	---	---	---	---	---	---	---	---
				June 2017	---	---	---	---	1.22	---	---	---	---	---	---	---	---
				September 2017	---	---	---	---	1.22	---	---	---	---	---	---	---	---
JUMBO SA (CR)				(Contract Size: 100 Securities, Physical Delivery)													
11.60	11.28	11.50	-0.60%	December 2016	11.40	11.50	11.24	11.30	11.30	---	---	11.28	11.69	---	8	12	155
				March 2017	---	---	---	---	11.67	---	---	---	---	---	---	---	---
				June 2017	---	---	---	---	11.73	---	---	---	---	---	---	---	---
				September 2017	---	---	---	---	11.79	---	---	---	---	---	---	---	---
MARFIN INVESTMENT GROUP (CR)				(Contract Size: 100 Securities, Physical Delivery)													
0.124	0.120	0.122	-2.40%	December 2016	0.122	0.123	0.119	0.122	0.122	---	---	0.124	0.137	---	99	3,176	43,865
				March 2017	---	---	---	---	0.126	---	---	---	---	---	---	---	---
				June 2017	---	---	---	---	0.127	---	---	---	---	---	---	---	---
				September 2017	---	---	---	---	0.127	---	---	---	---	---	---	---	---
METKA (CR)				(Contract Size: 100 Securities, Physical Delivery)													
7.30	7.20	7.29	0.41%	December 2016	7.27	7.27	7.19	7.26	7.26	---	---	7.28	7.53	---	24	67	562
				March 2017	---	---	---	---	7.33	---	---	---	---	---	---	---	---
				June 2017	---	---	---	---	7.36	---	---	---	---	---	---	---	---
				September 2017	---	---	---	---	7.40	---	---	---	---	---	---	---	---
MOTOR OIL (CR)				(Contract Size: 100 Securities, Physical Delivery)													
10.57	10.45	10.56	1.54%	December 2016	10.50	10.50	10.46	10.46	10.46	---	---	10.61	10.53	---	9	20	288
				March 2017	---	---	---	---	10.49	---	---	---	---	---	---	---	---
				June 2017	---	---	---	---	10.55	---	---	---	---	---	---	---	---
				September 2017	---	---	---	---	10.60	---	---	---	---	---	---	---	---

Underlying Asset				Derivatives Market													
Price max	Price min	Closing price	change	Delivery Month	Open price	Price max	Price min	Last price	Closing price	Last Bid	Last Ask	Settlement price	Life high	Life low	Trades	Volume	Open Interest
MYTILINEOS HOLDINGS (CR)				(Contract Size: 100 Securities, Physical Delivery)													
4.52	4.36	4.52	3.43%	December 2016	4.39	4.55	4.38	4.54	4.54	---	---	4.52	4.55	---	164	958	4,154
				March 2017	---	---	---	---	4.41	---	---	4.51	---	4.28	---	---	1
				June 2017	---	---	---	---	4.43	---	---	---	---	---	---	---	---
				September 2017	---	---	---	---	4.45	---	---	---	---	---	---	---	---
NATIONAL BANK (CR)				(Contract Size: 100 Securities, Physical Delivery)													
0.190	0.185	0.189	0.00%	December 2016	0.189	0.190	0.186	0.190	0.190	---	---	0.189	0.268	---	48	4,271	67,121
				March 2017	---	---	---	---	0.191	---	---	---	---	---	---	---	---
				June 2017	---	---	---	---	0.192	---	---	---	---	---	---	---	---
				September 2017	---	---	---	---	0.193	---	---	---	---	---	---	---	---
OPAP (CR)				(Contract Size: 100 Securities, Physical Delivery)													
7.72	7.55	7.55	-1.18%	December 2016	7.55	7.58	7.48	7.51	7.51	---	---	7.49	7.75	---	51	124	1,414
				March 2017	---	---	---	---	7.71	---	---	---	---	---	---	---	---
				June 2017	---	---	---	---	7.75	---	---	---	---	---	---	---	---
				September 2017	---	---	---	---	7.79	---	---	---	---	---	---	---	---
OTE (CR)				(Contract Size: 100 Securities, Physical Delivery)													
7.84	7.58	7.61	-2.31%	December 2016	7.81	7.83	7.59	7.63	7.63	---	---	7.62	8.85	---	308	1,084	6,758
				March 2017	---	---	---	---	7.86	---	---	---	---	---	---	---	---
				June 2017	---	---	---	---	7.90	---	---	---	---	---	---	---	---
				September 2017	---	---	---	---	7.94	---	---	---	---	---	---	---	---
P.P.A. S.A. (CR)				(Contract Size: 100 Securities, Physical Delivery)													
12.64	12.43	12.59	0.32%	December 2016	12.45	12.45	12.45	12.45	12.45	---	---	12.59	12.72	---	1	1	659
				March 2017	---	---	---	---	12.66	---	---	---	---	---	---	---	---
				June 2017	---	---	---	---	12.73	---	---	---	---	---	---	---	---
				September 2017	---	---	---	---	12.79	---	---	---	---	---	---	---	---
PIRAEUS BANK (CR)				(Contract Size: 100 Securities, Physical Delivery)													
0.141	0.138	0.139	0.00%	December 2016	0.140	0.140	0.138	0.140	0.140	---	---	0.140	0.250	---	103	11,725	76,198
				March 2017	---	---	---	---	0.140	---	---	---	---	---	---	---	---
				June 2017	---	---	---	---	0.141	---	---	---	---	---	---	---	---
				September 2017	---	---	---	---	0.142	---	---	---	---	---	---	---	---
PPC (CR)				(Contract Size: 100 Securities, Physical Delivery)													
2.75	2.67	2.71	-0.37%	December 2016	2.73	2.74	2.68	2.70	2.70	---	---	2.72	2.83	---	47	236	5,804
				March 2017	---	---	---	---	2.74	---	---	---	---	---	---	---	---
				June 2017	---	---	---	---	2.76	---	---	---	---	---	---	---	---
				September 2017	---	---	---	---	2.77	---	---	---	---	---	---	---	---
TERNA ENERGY (CR)				(Contract Size: 100 Securities, Physical Delivery)													
2.65	2.57	2.62	-0.38%	December 2016	2.60	2.60	2.59	2.59	2.59	---	---	2.64	2.67	---	2	14	1,193
				March 2017	---	---	---	---	2.65	---	---	---	---	---	---	---	---
				June 2017	---	---	---	---	2.67	---	---	---	---	---	---	---	---
				September 2017	---	---	---	---	2.68	---	---	---	---	---	---	---	---

Underlying Asset				Derivatives Market													
Price max	Price min	Closing price	change	Delivery Month	Open price	Price max	Price min	Last price	Closing price	Last Bid	Last Ask	Settlement price	Life high	Life low	Trades	Volume	Open Interest
TITAN CEMENT (CR)				(Contract Size: 100 Securities, Physical Delivery)													
21.31	21.01	21.25	-0.23%	December 2016	21.13	21.13	21.13	21.13	21.13	---	---	21.14	21.37	---	1	1	115
				March 2017	---	---	---	---	21.49	---	---	20.85	---	20.85	---	---	---
				June 2017	---	---	---	---	21.60	---	---	---	---	---	---	---	---
				September 2017	---	---	---	---	21.71	---	---	---	---	---	---	---	---
VIOHALCO SA/NV (CB)				(Contract Size: 100 Securities, Physical Delivery)													
1.24	1.20	1.22	-0.81%	December 2016	1.24	1.24	1.21	1.22	1.22	---	---	1.21	1.31	---	9	50	2,340
				March 2017	---	---	---	---	1.24	---	---	---	---	---	---	---	---
				June 2017	---	---	---	---	1.25	---	---	---	---	---	---	---	---
				September 2017	---	---	---	---	1.25	---	---	---	---	---	---	---	---

FTSE/Athex Large Cap

(Trade Unit: 1 Index Point x 2€ - Exercise Style: European, Cash Settlement)

Call Options																	Put Options																
Exerise Price	October 2016							November 2016							Other Months		October 2016							November 2016							Other Months		Exerise Price
	Open price	Price max	Price min	Last price	Closing price	Volume	Open Interest	Open price	Price max	Price min	Last price	Closing price	Volume	Open Interest	Volume	Open Interest	Open price	Price max	Price min	Last price	Closing price	Volume	Open Interest	Open price	Price max	Price min	Last price	Closing price	Volume	Open Interest	Volume	Open Interest	
900	-	-	-	-	-	-	-	-	-	-	-	-	-	-	-	-	-	-	-	-	-	-	-	-	-	-	-	-	-	-	-	-	900
950	-	-	-	-	-	-	-	-	-	-	-	-	-	-	-	-	-	-	-	-	-	-	-	-	-	-	-	-	-	-	-	-	950
1,000	-	-	-	-	-	-	-	-	-	-	-	-	-	-	-	-	-	-	-	-	-	-	-	-	-	-	-	-	-	-	-	-	1,000
1,050	-	-	-	-	-	-	-	-	-	-	-	-	-	-	-	-	-	-	-	-	-	-	-	-	-	-	-	-	-	-	-	-	1,050
1,100	-	-	-	-	-	-	-	-	-	-	-	-	-	-	-	-	-	-	-	-	-	-	-	-	-	-	-	-	-	-	-	-	1,100
1,150	-	-	-	-	-	-	-	-	-	-	-	-	-	-	-	-	-	-	-	-	-	-	-	-	-	-	-	-	-	-	-	-	1,150
1,200	-	-	-	-	-	-	-	-	-	-	-	-	-	-	-	-	-	-	-	-	-	-	-	-	-	-	-	-	-	-	-	-	1,200
1,250	-	-	-	-	-	-	-	-	-	-	-	-	-	-	-	-	-	-	-	-	-	-	-	-	-	-	-	-	-	-	-	-	1,250
1,275	-	-	-	-	-	-	-	-	-	-	-	-	-	-	-	-	-	-	-	-	-	-	-	-	-	-	-	-	-	-	-	-	1,275
1,300	-	-	-	-	-	-	-	-	-	-	-	-	-	-	-	-	-	-	-	-	-	-	-	-	-	-	-	-	-	-	-	-	1,300
1,325	-	-	-	-	-	-	-	-	-	-	-	-	-	-	-	-	-	-	-	-	-	-	-	-	-	-	-	-	-	-	-	-	1,325
1,350	0.00	0.00	0.00	-	173.00	-	-	0.00	0.00	0.00	-	175.00	-	-	-	-	0.00	0.00	0.00	-	0.04	-	-	0.00	0.00	0.00	-	2.20	-	3	-	-	1,350
1,375	0.00	0.00	0.00	-	149.00	-	-	0.00	0.00	0.00	-	152.00	-	-	-	-	0.00	0.00	0.00	-	0.17	-	-	0.00	0.00	0.00	-	3.90	-	-	-	-	1,375
1,400	0.00	0.00	0.00	-	124.00	-	-	0.00	0.00	0.00	-	130.00	-	10	-	-	0.00	0.00	0.00	-	0.57	-	24	0.00	0.00	0.00	-	6.60	-	1	-	-	1,400
1,425	0.00	0.00	0.00	-	100.00	-	1	0.00	0.00	0.00	-	109.00	-	-	-	-	0.00	0.00	0.00	-	1.60	-	18	0.00	0.00	0.00	-	10.75	-	26	-	-	1,425
1,450	81.00	81.00	81.00	81.00	81.00	26	39	0.00	0.00	0.00	-	89.50	-	-	-	-	81.00	81.00	0.00	-	3.90	-	23	0.00	0.00	0.00	-	16.25	-	4	-	-	1,450
1,475	0.00	0.00	0.00	-	57.00	-	9	0.00	0.00	0.00	-	72.00	-	2	-	-	0.00	0.00	0.00	-	8.30	-	42	28.75	28.75	28.75	28.75	28.75	40	40	-	-	1,475
1,500	0.00	0.00	0.00	-	39.25	-	14	0.00	0.00	0.00	-	57.00	-	40	-	-	0.00	0.00	19.00	19.00	19.00	1	19	0.00	0.00	0.00	-	33.50	-	1	-	-	1,500
1,525	21.00	21.00	21.00	21.00	21.00	1	348	0.00	0.00	0.00	-	43.75	-	81	-	-	21.00	21.00	0.00	-	26.75	-	4	0.00	0.00	0.00	-	45.25	-	-	-	-	1,525
1,550	12.00	12.00	12.00	12.00	12.00	1	652	0.00	0.00	0.00	-	33.00	-	40	-	-	12.00	12.00	0.00	-	41.50	-	20	0.00	0.00	0.00	-	59.50	-	1	-	-	1,550
1,575	0.00	0.00	0.00	-	8.30	-	9	19.50	20.00	19.50	20.00	20.00	21	21	-	-	0.00	0.00	0.00	-	59.50	-	10	0.00	0.00	0.00	-	75.50	-	1	-	-	1,575
1,600	0.00	0.00	0.00	-	4.20	-	321	15.00	15.00	15.00	15.00	15.00	22	22	-	-	0.00	0.00	0.00	-	80.50	-	20	0.00	0.00	0.00	-	93.50	-	-	-	-	1,600
1,625	0.00	0.00	0.00	-	1.90	-	35	0.00	0.00	0.00	-	12.00	-	-	-	-	0.00	0.00	0.00	-	103.00	-	-	0.00	0.00	0.00	-	113.00	-	-	-	-	1,625
1,650	0.00	0.00	0.00	-	0.82	-	38	0.00	0.00	0.00	-	8.20	-	20	-	-	0.00	0.00	0.00	-	127.00	-	-	0.00	0.00	0.00	-	134.00	-	-	-	-	1,650
1,675	0.00	0.00	0.00	-	0.32	-	-	0.00	0.00	0.00	-	5.40	-	-	-	-	0.00	0.00	0.00	-	152.00	-	-	0.00	0.00	0.00	-	157.00	-	-	-	-	1,675
1,700	0.00	0.00	0.00	-	0.11	-	13	0.00	0.00	0.00	-	3.50	-	-	-	-	0.00	0.00	0.00	-	176.00	-	-	0.00	0.00	0.00	-	180.00	-	-	-	-	1,700
1,725	-	-	-	-	-	-	-	-	-	-	-	-	-	-	-	-	-	-	-	-	-	-	-	-	-	-	-	-	-	-	-	-	1,725
1,750	-	-	-	-	-	-	-	-	-	-	-	-	-	-	-	-	-	-	-	-	-	-	-	-	-	-	-	-	-	-	-	-	1,750
1,775	-	-	-	-	-	-	-	-	-	-	-	-	-	-	-	-	-	-	-	-	-	-	-	-	-	-	-	-	-	-	-	-	1,775
1,800	-	-	-	-	-	-	-	-	-	-	-	-	-	-	-	-	-	-	-	-	-	-	-	-	-	-	-	-	-	-	-	-	1,800
1,825	-	-	-	-	-	-	-	-	-	-	-	-	-	-	-	-	-	-	-	-	-	-	-	-	-	-	-	-	-	-	-	-	1,825
1,850	-	-	-	-	-	-	-	-	-	-	-	-	-	-	-	-	-	-	-	-	-	-	-	-	-	-	-	-	-	-	-	-	1,850
1,900	-	-	-	-	-	-	-	-	-	-	-	-	-	-	-	-	-	-	-	-	-	-	-	-	-	-	-	-	-	-	-	-	1,900
1,950	-	-	-	-	-	-	-	-	-	-	-	-	-	-	-	-	-	-	-	-	-	-	-	-	-	-	-	-	-	-	-	-	1,950
2,000	-	-	-	-	-	-	-	-	-	-	-	-	-	-	-	-	-	-	-	-	-	-	-	-	-	-	-	-	-	-	-	-	2,000
2,050	-	-	-	-	-	-	-	-	-	-	-	-	-	-	-	-	-	-	-	-	-	-	-	-	-	-	-	-	-	-	-	-	2,050

FTSE/Athex Large Cap

(Trade Unit: 1 Index Point x 2€ - Exercise Style: European, Cash Settlement)

Call Options																Put Options																							
Exercise Price	October 2016							November 2016							Other Months		October 2016							November 2016							Other Months		Exercise Price						
	Open price	Price max	Price min	Last price	Closing price	Volume	Open Interest	Open price	Price max	Price min	Last price	Closing price	Volume	Open Interest	Volume	Open Interest	Open price	Price max	Price min	Last price	Closing price	Volume	Open Interest	Open price	Price max	Price min	Last price	Closing price	Volume	Open Interest	Volume	Open Interest							
2,100	-	-	-	-	-	-	-	-	-	-	-	-	-	-	-	-	-	-	-	-	-	-	-	-	-	-	-	-	-	-	-	2,100							
Totals:							28	1,479								43	236	0	250								1	180								40	77	0	12
Number of Trades:							5								4	0	0								1								2	0					

ALPHA BANK (CR)

(Contract Size: 100 Securities, Exercise Style: American, Physical Delivery)

Call Options																	Put Options																	
Exercise Price	October 2016							November 2016							Other Months		October 2016								November 2016							Other Months		Exercise Price
	Open price	Price max	Price min	Last price	Closing price	Volume	Open Interest	Open price	Price max	Price min	Last price	Closing price	Volume	Open Interest	Volume	Open Interest	Open price	Price max	Price min	Last price	Closing price	Volume	Open Interest	Open price	Price max	Price min	Last price	Closing price	Volume	Open Interest	Volume	Open Interest		
0.800						-	-							-	-							-	-					-	-			0.008		
0.850						-	-							-	-							-	-					-	-			0.009		
0.900						-	-							-	-							-	-					-	-			0.009		
0.950						-	-							-	-							-	-					-	-			0.010		
1.000	0.000	0.000	0.000		0.561	-	-	0.000	0.000	0.000		0.563	-	-			0.000	0.000	0.000		0.001	-	-	0.000	0.000	0.000		0.001	-	-			0.010	
1.100	0.000	0.000	0.000		0.461	-	-	0.000	0.000	0.000		0.466	-	-			0.000	0.000	0.000		0.002	-	-	0.000	0.000	0.000		0.004	-	-			0.011	
1.200	0.000	0.000	0.000		0.362	-	-	0.000	0.000	0.000		0.374	-	-			0.000	0.000	0.000		0.001	-	-	0.000	0.000	0.000		0.011	-	-			0.012	
1.300	0.000	0.000	0.000		0.266	-	-	0.000	0.000	0.000		0.290	-	-			0.000	0.000	0.000		0.005	-	-	0.000	0.000	0.000		0.026	-	-			0.013	
1.400	0.000	0.000	0.000		0.179	-	-	0.000	0.000	0.000		0.215	-	-			0.000	0.000	0.000		0.018	-	-	0.000	0.000	0.000		0.052	-	-			0.014	
1.500	0.000	0.000	0.000		0.108	-	-	0.000	0.000	0.000		0.155	-	-			0.000	0.000	0.000		0.047	-	-	0.000	0.000	0.000		0.092	-	-			0.015	
1.600	0.000	0.000	0.000		0.059	-	-	0.000	0.000	0.000		0.108	-	-			0.000	0.000	0.000		0.097	-	-	0.000	0.000	0.000		0.144	-	-			0.016	
1.700	0.000	0.000	0.000		0.028	-	50	0.000	0.000	0.000		0.072	-	-			0.000	0.000	0.000		0.167	-	-	0.000	0.000	0.000		0.208	-	-			0.017	
1.800	0.000	0.000	0.000		0.012	-	-	0.000	0.000	0.000		0.047	-	-			0.000	0.000	0.000		0.251	-	-	0.000	0.000	0.000		0.283	-	-			0.018	
1.900	0.000	0.000	0.000		0.005	-	-	0.000	0.000	0.000		0.029	-	-			0.000	0.000	0.000		0.343	-	-	0.000	0.000	0.000		0.366	-	-			0.019	
2.000	0.000	0.000	0.000		0.002	-	-	0.000	0.000	0.000		0.018	-	-			0.000	0.000	0.000		0.441	-	-	0.000	0.000	0.000		0.454	-	-			0.020	
2.200	0.000	0.000	0.000		0.001	-	-	0.000	0.000	0.000		0.006	-	-			0.000	0.000	0.000		0.640	-	-	0.000	0.000	0.000		0.643	-	-			0.022	
2.400	0.000	0.000	0.000		0.002	-	-	0.000	0.000	0.000		0.002	-	-			0.000	0.000	0.000		0.840	-	-	0.000	0.000	0.000		0.840	-	-			0.024	
2.600	0.000	0.000	0.000		0.001	-	-	0.000	0.000	0.000		0.001	-	-			0.000	0.000	0.000		1.04	-	-	0.000	0.000	0.000		1.04	-	-			0.026	
2.800						-	-							-	-							-	-					-	-			0.028		
3.000						-	-							-	-							-	-					-	-			0.030		
3.200						-	-							-	-							-	-					-	-			0.032		
3.400						-	-							-	-							-	-					-	-			0.034		
3.600						-	-							-	-							-	-					-	-			0.036		
Totals:						0	50						0	0	0	0						0	0					0	80	0	0			
Number of Trades:							0						0		0							0.00						0		0				

NATIONAL BANK (CR)

(Contract Size: 100 Securities, Exercise Style: American, Physical Delivery)

Call Options																	Put Options																						
October 2016								November 2016								Other Months		October 2016								November 2016								Other Months					
Exercise Price	Open price	Price max	Price min	Last price	Closing price	Volume	Open Interest	Open price	Price max	Price min	Last price	Closing price	Volume	Open Interest	Volume	Open Interest	Open price	Price max	Price min	Last price	Closing price	Volume	Open Interest	Open price	Price max	Price min	Last price	Closing price	Volume	Open Interest	Volume	Open Interest	Exercise Price						
0.050	0.000	0.000	0.000		0.139	-	-	0.000	0.000	0.000		0.139	-	-			0.000	0.000	0.000		0.001	-	-	0.000	0.000	0.000		0.001	-	-			0.001						
0.100	0.000	0.000	0.000		0.090	-	-	0.000	0.000	0.000		0.090	-	-			0.000	0.000	0.000		0.001	-	-	0.000	0.000	0.000		0.001	-	-			0.001						
0.150	0.000	0.000	0.000		0.050	-	-	0.000	0.000	0.000		0.050	-	-			0.000	0.000	0.000		0.011	-	-	0.000	0.000	0.000		0.011	-	-			0.002						
0.200	0.000	0.000	0.000		0.025	-	-	0.000	0.000	0.000		0.025	-	-			0.000	0.000	0.000		0.036	-	-	0.000	0.000	0.000		0.035	-	-			0.002						
0.250	0.000	0.000	0.000		0.011	-	-	0.000	0.000	0.000		0.012	-	-			0.000	0.000	0.000		0.072	-	-	0.000	0.000	0.000		0.072	-	-			0.003						
0.300	0.000	0.000	0.000		0.005	-	-	0.000	0.000	0.000		0.005	-	-			0.000	0.000	0.000		0.116	-	-	0.000	0.000	0.000		0.116	-	-			0.003						
0.350	0.000	0.000	0.000		0.002	-	-	0.000	0.000	0.000		0.002	-	-			0.000	0.000	0.000		0.163	-	-	0.000	0.000	0.000		0.163	-	-			0.004						
0.400	0.000	0.000	0.000		0.001	-	-	0.000	0.000	0.000		0.001	-	-			0.000	0.000	0.000		0.212	-	-	0.000	0.000	0.000		0.212	-	-			0.004						
0.450	0.000	0.000	0.000		0.001	-	-	0.000	0.000	0.000		0.001	-	-			0.000	0.000	0.000		0.261	-	-	0.000	0.000	0.000		0.261	-	-			0.005						
0.500																																				0.005			
0.550																																				0.006			
0.600																																				0.006			
Totals:							0	0								0	0	0	0								0	0								0	0		
Number of Trades:							0								0								0								0								0

OPAP (CR)

(Contract Size: 100 Securities, Exercise Style: American, Physical Delivery)

Call Options																	Put Options																			
October 2016								November 2016								Other Months		October 2016								November 2016								Other Months		
Exerise Price	Open price	Price max	Price min	Last price	Closing price	Volume	Open Interest	Open price	Price max	Price min	Last price	Closing price	Volume	Open Interest	Volume	Open Interest	Open price	Price max	Price min	Last price	Closing price	Volume	Open Interest	Open price	Price max	Price min	Last price	Closing price	Volume	Open Interest	Volume	Open Interest	Exerise Price			
3.600						-	-							-	-							-	-					-	-			0.036				
3.800						-	-							-	-							-	-					-	-			0.038				
4.000						-	-							-	-							-	-					-	-			0.040				
4.400						-	-							-	-							-	-					-	-			0.044				
4.800	0.000	0.000	0.000		2.84	-	-							-	-		0.000	0.000	0.000		0.001	-	-					-	-			0.048				
5.200	0.000	0.000	0.000		2.44	-	-	0.000	0.000	0.000		2.45	-	-			0.000	0.000	0.000		0.001	-	-	0.000	0.000	0.000		0.001	-	-			0.052			
5.600	0.000	0.000	0.000		2.04	-	-	0.000	0.000	0.000		2.05	-	-			0.000	0.000	0.000		0.001	-	10	0.000	0.000	0.000		0.001	-	-			0.056			
6.000	0.000	0.000	0.000		1.65	-	-	0.000	0.000	0.000		1.66	-	-			0.000	0.000	0.000		0.001	-	10	0.000	0.000	0.000		0.006	-	-			0.060			
6.400	0.000	0.000	0.000		1.25	-	-	0.000	0.000	0.000		1.28	-	-			0.000	0.000	0.000		0.003	-	-	0.000	0.000	0.000		0.023	-	-			0.064			
6.800	0.000	0.000	0.000		0.866	-	-	0.000	0.000	0.000		0.928	-	-			0.000	0.000	0.000		0.020	-	-	0.000	0.000	0.000		0.072	-	-			0.068			
7.200	0.000	0.000	0.000		0.530	-	-	0.000	0.000	0.000		0.626	-	-			0.000	0.000	0.000		0.083	-	-	0.000	0.000	0.000		0.169	-	-			0.072			
7.600	0.000	0.000	0.000		0.274	-	65	0.000	0.000	0.000		0.390	-	-			0.000	0.000	0.000		0.228	-	10	0.000	0.000	0.000		0.333	-	-			0.076			
8.000	0.000	0.000	0.000		0.117	-	40	0.000	0.000	0.000		0.225	-	10			0.000	0.000	0.000		0.470	-	-	0.000	0.000	0.000		0.568	-	-			0.080			
8.400	0.000	0.000	0.000		0.041	-	-	0.000	0.000	0.000		0.118	-	10			0.000	0.000	0.000		0.795	-	-	0.000	0.000	0.000		0.862	-	-			0.084			
8.800	0.000	0.000	0.000		0.012	-	-	0.000	0.000	0.000		0.058	-	-			0.000	0.000	0.000		1.17	-	-	0.000	0.000	0.000		1.20	-	-			0.088			
9.200	0.000	0.000	0.000		0.003	-	-	0.000	0.000	0.000		0.026	-	-			0.000	0.000	0.000		1.56	-	-	0.000	0.000	0.000		1.57	-	-			0.092			
9.600	0.000	0.000	0.000		0.001	-	-	0.000	0.000	0.000		0.011	-	-			0.000	0.000	0.000		1.96	-	-	0.000	0.000	0.000		1.96	-	-			0.096			
10.000	0.000	0.000	0.000		0.001	-	-	0.000	0.000	0.000		0.004	-	-			0.000	0.000	0.000		2.36	-	-	0.000	0.000	0.000		2.36	-	-			0.100			
Totals:						0	105						0	20	0	0						0	30					0	22	0	10					
Number of Trades:						0							0		0							0.00					0		0							

OTE (CR)

(Contract Size: 100 Securities, Exercise Style: American, Physical Delivery)

Call Options																	Put Options																			
October 2016								November 2016								Other Months		October 2016								November 2016								Other Months		
Exercise Price	Open price	Price max	Price min	Last price	Closing price	Volume	Open Interest	Open price	Price max	Price min	Last price	Closing price	Volume	Open Interest	Volume	Open Interest	Open price	Price max	Price min	Last price	Closing price	Volume	Open Interest	Open price	Price max	Price min	Last price	Closing price	Volume	Open Interest	Volume	Open Interest	Exercise Price			
4.800						-	-						-	-								-	-					-	-			0.048				
5.200						-	-						-	-								-	-					-	-			0.052				
5.600	0.000	0.000	0.000		2.19	-	-	0.000	0.000	0.000		2.20	-	-			0.000	0.000	0.000		0.001	-	-	0.000	0.000	0.000		0.001	-	-			0.056			
6.000	0.000	0.000	0.000		1.80	-	-	0.000	0.000	0.000		1.81	-	-			0.000	0.000	0.000		0.001	-	-	0.000	0.000	0.000		0.003	-	-			0.060			
6.400	0.000	0.000	0.000		1.40	-	-	0.000	0.000	0.000		1.42	-	-			0.000	0.000	0.000		0.002	-	-	0.000	0.000	0.000		0.013	-	-			0.064			
6.800	0.000	0.000	0.000		1.00	-	-	0.000	0.000	0.000		1.05	-	-			0.000	0.000	0.000		0.004	-	-	0.000	0.000	0.000		0.046	-	-			0.068			
7.200	0.000	0.000	0.000		0.628	-	-	0.000	0.000	0.000		0.730	-	-			0.000	0.000	0.000		0.031	-	-	0.000	0.000	0.000		0.123	-	-			0.072			
7.600	0.000	0.000	0.000		0.325	-	20	0.000	0.000	0.000		0.467	-	-			0.000	0.000	0.000		0.129	-	35	0.000	0.000	0.000		0.259	-	-			0.076			
8.000	0.000	0.000	0.000		0.132	-	2	0.000	0.000	0.000		0.274	-	-			0.000	0.000	0.000		0.336	-	37	0.000	0.000	0.000		0.466	-	-			0.080			
8.400	0.000	0.000	0.000		0.040	-	30	0.000	0.000	0.000		0.148	-	-			0.000	0.000	0.000		0.644	-	-	0.000	0.000	0.000		0.741	-	-			0.084			
8.800	0.000	0.000	0.000		0.009	-	20	0.000	0.000	0.000		0.073	-	-			0.000	0.000	0.000		1.01	-	5	0.000	0.000	0.000		1.07	-	-			0.088			
9.200	0.000	0.000	0.000		0.002	-	-	0.000	0.000	0.000		0.033	-	-			0.000	0.000	0.000		1.41	-	-	0.000	0.000	0.000		1.43	-	-			0.092			
9.600	0.000	0.000	0.000		0.001	-	-	0.000	0.000	0.000		0.014	-	-			0.000	0.000	0.000		1.81	-	-	0.000	0.000	0.000		1.81	-	-			0.096			
10.000	0.000	0.000	0.000		0.001	-	-	0.000	0.000	0.000		0.005	-	-			0.000	0.000	0.000		2.21	-	-	0.000	0.000	0.000		2.21	-	-			0.100			
11.000	0.000	0.000	0.000		0.004	-	-	0.000	0.000	0.000		0.001	-	-			0.000	0.000	0.000		3.21	-	-	0.000	0.000	0.000		3.21	-	-			0.110			
12.000	0.000	0.000	0.000		0.001	-	-	0.000	0.000	0.000		0.001	-	-			0.000	0.000	0.000		4.21	-	-	0.000	0.000	0.000		4.21	-	-			0.120			
13.000	0.000	0.000	0.000		0.001	-	-						-	-			0.000	0.000	0.000		5.21	-	-				-	-			0.130					
14.000						-	-						-	-								-	-				-	-				0.140				
Totals:						0	72						0	0	0	0						0	77					0	40	0	10					
Number of Trades:						0							0		0							0.00					0		0							

PIRAEUS BANK (CR)

(Contract Size: 100 Securities, Exercise Style: American, Physical Delivery)

Call Options																	Put Options																		
October 2016								November 2016							Other Months		October 2016								November 2016							Other Months			
Exercise Price	Open price	Price max	Price min	Last price	Closing price	Volume	Open Interest	Open price	Price max	Price min	Last price	Closing price	Volume	Open Interest	Volume	Open Interest	Open price	Price max	Price min	Last price	Closing price	Volume	Open Interest	Open price	Price max	Price min	Last price	Closing price	Volume	Open Interest	Volume	Open Interest	Exercise Price		
0.050	0.000	0.000	0.000		0.089	-	-	0.000	0.000	0.000		0.089	-	-			0.000	0.000	0.000		0.003	-	-	0.000	0.000	0.000		0.001	-	-			0.001		
0.100	0.000	0.000	0.000		0.048	-	-	0.000	0.000	0.000		0.048	-	-			0.000	0.000	0.000		0.009	-	-	0.000	0.000	0.000		0.009	-	-			0.001		
0.150	0.000	0.000	0.000		0.023	-	-	0.000	0.000	0.000		0.024	-	-			0.000	0.000	0.000		0.034	-	-	0.000	0.000	0.000		0.035	-	-			0.002		
0.200	0.000	0.000	0.000		0.011	-	-	0.000	0.000	0.000		0.012	-	-			0.000	0.000	0.000		0.072	-	-	0.000	0.000	0.000		0.072	-	-			0.002		
0.250	0.000	0.000	0.000		0.005	-	-	0.000	0.000	0.000		0.006	-	-			0.000	0.000	0.000		0.116	-	-	0.000	0.000	0.000		0.116	-	-			0.003		
0.300	0.000	0.000	0.000		0.003	-	-	0.000	0.000	0.000		0.003	-	-			0.000	0.000	0.000		0.163	-	-	0.000	0.000	0.000		0.163	-	-			0.003		
0.350	0.000	0.000	0.000		0.001	-	-	0.000	0.000	0.000		0.002	-	-			0.000	0.000	0.000		0.212	-	-	0.000	0.000	0.000		0.212	-	-			0.004		
0.400	0.000	0.000	0.000		0.001	-	-	0.000	0.000	0.000		0.001	-	-			0.000	0.000	0.000		0.262	-	-	0.000	0.000	0.000		0.261	-	-			0.004		
0.450						-	-						-	-								-	-						-	-			0.005		
0.500						-	-						-	-								-	-						-	-			0.005		
0.550						-	-						-	-								-	-						-	-			0.006		
Totals:						0	0							0	0	0	0							0	0							0	0	0	0
Number of Trades:						0								0		0							0.00								0		0		

PPC (CR)

(Contract Size: 100 Securities, Exercise Style: American, Physical Delivery)

Call Options																	Put Options																			
October 2016								November 2016								Other Months		October 2016								November 2016								Other Months		
Exercise Price	Open price	Price max	Price min	Last price	Closing price	Volume	Open Interest	Open price	Price max	Price min	Last price	Closing price	Volume	Open Interest	Volume	Open Interest	Open price	Price max	Price min	Last price	Closing price	Volume	Open Interest	Open price	Price max	Price min	Last price	Closing price	Volume	Open Interest	Volume	Open Interest	Exercise Price			
1.700	0.000	0.000	0.000		1.02	-	-	0.000	0.000	0.000		1.02	-	-			0.000	0.000	0.000		0.001	-	-	0.000	0.000	0.000		0.002	-	-			0.017			
1.800	0.000	0.000	0.000		0.922	-	-	0.000	0.000	0.000		0.924	-	-			0.000	0.000	0.000		0.001	-	-	0.000	0.000	0.000		0.001	-	-			0.018			
1.900	0.000	0.000	0.000		0.822	-	-	0.000	0.000	0.000		0.825	-	-			0.000	0.000	0.000		0.001	-	-	0.000	0.000	0.000		0.001	-	-			0.019			
2.000	0.000	0.000	0.000		0.722	-	-	0.000	0.000	0.000		0.726	-	-			0.000	0.000	0.000		0.001	-	-	0.000	0.000	0.000		0.001	-	-			0.020			
2.200	0.000	0.000	0.000		0.522	-	-	0.000	0.000	0.000		0.534	-	-			0.000	0.000	0.000		0.001	-	-	0.000	0.000	0.000		0.009	-	-			0.022			
2.400	0.000	0.000	0.000		0.328	-	-	0.000	0.000	0.000		0.359	-	-			0.000	0.000	0.000		0.006	-	-	0.000	0.000	0.000		0.033	-	-			0.024			
2.600	0.000	0.000	0.000		0.161	-	95	0.000	0.000	0.000		0.217	-	-			0.000	0.000	0.000		0.039	-	5	0.000	0.000	0.000		0.091	-	-			0.026			
2.800	0.000	0.000	0.000		0.057	-	20	0.000	0.000	0.000		0.118	-	10			0.000	0.000	0.000		0.135	-	30	0.000	0.000	0.000		0.191	-	-			0.028			
3.000	0.000	0.000	0.000		0.013	-	-	0.000	0.000	0.000		0.057	-	-			0.000	0.000	0.000		0.292	-	10	0.000	0.000	0.000		0.331	-	-			0.030			
3.200	0.000	0.000	0.000		0.002	-	-	0.000	0.000	0.000		0.024	-	-			0.000	0.000	0.000		0.481	-	-	0.000	0.000	0.000		0.499	-	-			0.032			
3.400	0.000	0.000	0.000		0.001	-	-	0.000	0.000	0.000		0.009	-	-			0.000	0.000	0.000		0.680	-	-	0.000	0.000	0.000		0.685	-	-			0.034			
3.600	0.000	0.000	0.000		0.001	-	-	0.000	0.000	0.000		0.003	-	-			0.000	0.000	0.000		0.880	-	-	0.000	0.000	0.000		0.880	-	-			0.036			
3.800	0.000	0.000	0.000		0.002	-	-	0.000	0.000	0.000		0.001	-	-			0.000	0.000	0.000		1.08	-	-	0.000	0.000	0.000		1.08	-	-			0.038			
4.000						-	-						-	-								-	-					-	-			0.040				
4.400						-	-						-	-								-	-					-	-			0.044				
4.800						-	-						-	-								-	-					-	-			0.048				
5.200						-	-						-	-								-	-					-	-			0.052				
5.600						-	-						-	-								-	-					-	-			0.056				
6.000						-	-						-	-								-	-					-	-			0.060				
Totals:						0	115						0	10	0	0						0	45					0	20	0	0					
Number of Trades:						0							0		0							0.00					0		0							

Lending Products	Underlying Title	Multilateral Transactions[1]					Bilateral Transactions[2]		Stock Borrowing through OTC (volume)[3]
		Open Interest[5]	Volume(Offered)	Average Weighted	Transactions volume	Average Weighted	Transactions Volume	Average Weighte	Transactions Volume
AEGNBOR	AEGEAN AIRLINES (CR)	7,600	11,478	5.31%	---	---	---	---	11,701
ALPHABOR	ALPHA BANK (CR)	92,350	2,258	5.31%	---	---	---	---	7,000,948
ALMYBOR	ALUMIL (CR)	---	---	---	---	---	---	---	---
IATRBOR	ATHENS MEDICAL CENTER SA (CR)	---	36,400	5.31%	---	---	---	---	---
OTOELBOR	AUTOHELLAS SA (CR)	---	---	---	---	---	---	---	---
BOCBOR	BANK OF CYPRUS (CR)	---	270	5.31%	---	---	---	---	84,008
EEEBOR	CC HBC AG (CR)	4,228	261	5.32%	---	---	---	---	70,546
CENTRBOR	CENTRIC HOLDINGS (CR)	---	16,000	5.31%	---	---	---	---	---
SOLKBOR	CORINTH PIPEWORKS (CR)	5,800	160	5.31%	---	---	---	---	---
PLAKRBOR	CRETE PLASTICS SA (CR)	---	---	---	---	---	---	---	---
ELINBOR	ELINOIL S.A. (CR)	---	---	---	---	---	---	---	---
ELLAKTORBOR	ELLAKTOR (CR)	10,000	77,427	5.31%	---	---	---	---	---
ANEMOSBOR	ELTECH ANEMOS S.A. (CR)	---	1,678	5.31%	---	---	---	---	---
ELTONBOR	ELTON SA (CR)	---	---	---	---	---	---	---	---
EUROBBOR	EUROBANK ERGASIAS (CR)	69,312	144,321	5.31%	---	---	---	---	2,213,051
EUPICBOR	EUROPEAN RELIANCE INSUR. (CR)	---	---	---	---	---	---	---	---
EYDAPBOR	EYDAP S.A. (CR)	572	5,790	5.31%	---	---	---	---	17,780
FLEXOBOR	FLEXOPACK SA (CR)	---	---	---	---	---	---	---	---
FFGRPBOR	FOLLI FOLLIE (CR)	22,632	56,207	5.31%	260	2.65%	---	---	713,242
FOYRKBOR	FOURLIS (CR)	---	5,130	5.31%	---	---	---	---	3,850
GEKTERNABOR	GEK TERNA (CR)	12	30,350	5.31%	---	---	---	---	---
SARBOR	GR. SARANTIS SA (CR)	---	1,536	5.31%	---	---	---	---	---
EUPROBOR	GRIVALIA PROPERTIES (CR)	1,000	59,535	5.31%	---	---	---	---	97,022
XAKOBOR	HALKOR SA (CB)	---	56,552	5.31%	---	---	---	---	---
EXAEBOR	HELLENIC EXCHANGES-A.S.E. (CR)	9,600	446,129	5.31%	3,000	2.68%	---	---	98,443
ELPEBOR	HELLENIC PETROLEUM (CR)	2,075	145,627	5.31%	---	---	---	---	42,606
HYGEIABOR	HYGEIA SA (CR)	---	48,700	5.31%	---	---	---	---	---
IASOBOR	IASO SA (CR)	---	---	---	---	---	---	---	---
IKTINBOR	IKTINOS HELLAS SA (CR)	---	798	5.31%	---	---	---	---	---
INTRKBOR	INTRACOM HOLDINGS (CR)	---	168,546	5.31%	---	---	---	---	---
INLOTBOR	INTRALOT (CR)	23,500	41,199	3.31%	1,000	2.65%	---	---	803

Stock Lending Notes

- [1] - Multilateral contracts Lending or Borrowing as per Methods 8-1, 8-2 and 8-3-3 (According to ATHEX BoD Resolution No.17)
- [2] - Bilateral Contracts Lending or Borrowing as per Methods 8-3-1 and 8-3-2 (According to ATHEX BoD Resolution No.20)
- [3] - The information concerning OTC Stock Borrowing Transactions is based on the statements of the Dematerialised Securities System (DSS) operators involved and refers to volumes that have been registered up until the previous working day.
- [4] - Average Price (Volume weighted)
- [5] - The Data concerning Open Interest before the start of trading session

Lending Products	Underlying Title	Multilateral Transactions[1]					Bilateral Transactions[2]		Stock Borrowing through OTC (volume)[3]
		Open Interest[5]	Volume(Offered)	Average Weighted	Transactions volume	Average Weighted	Transactions Volume	Average Weighte	Transactions Volume
AVAXBOR	J & P - AVAX SA (CR)	---	20,335	5.31%	---	---	---	---	---
BELABOR	JUMBO SA (CR)	9,025	122,795	5.31%	1,000	2.76%	---	---	6,365
KLEMBOR	KLEEMAN HELLAS SA (CR)	---	5,191	5.31%	---	---	---	---	---
KORRESBOR	KORRES (CR)	---	---	---	---	---	---	---	---
KRIBOR	KRI-KRI S.A. (CR)	---	47,768	5.31%	---	---	---	---	---
KYRMBOR	KYRIAKIDIS MARBLES SA (CR)	---	4,936	5.31%	---	---	---	---	---
LAMDABOR	LAMDA DEVELOPMENT SA (CR)	---	111	5.31%	---	---	---	---	10,377
MIGBOR	MARFIN INVESTMENT GROUP (CR)	---	272,904	5.31%	---	---	---	---	749,474
METKKBOR	METKA (CR)	19,524	2,092	4.24%	---	---	---	---	13,834
MLSBOR	MLS MULTIMEDIA SA (CR)	---	9,118	5.31%	---	---	---	---	---
MOHBOR	MOTOR OIL (CR)	4,795	26,308	5.31%	---	---	---	---	52,254
MYTILBOR	MYTILINEOS HOLDINGS (CR)	14,294	109,510	3.86%	2,230	2.65%	---	---	---
ETEBOR	NATIONAL BANK (CR)	842,592	173,753	5.31%	---	---	---	---	787,741
ETFASEBOR	NBGAM ETF	---	---	---	---	---	---	---	---
ETFGT30PBOR	NBGAM ETF GREECE & TURKEY 30	---	---	---	---	---	---	---	---
OPAPBOR	OPAP (CR)	106,000	19,810	4.24%	---	---	---	---	819,549
HTOBOR	OTE (CR)	4,357	64,370	5.31%	---	---	---	---	271,932
PPABOR	P.P.A. S.A. (CR)	368	1,215	5.31%	---	---	---	---	901
PAPBOR	PAPOUTSANIS (CR)	---	---	---	---	---	---	---	---
PETROBOR	PETROPOULOS PETROS (CR)	---	---	---	---	---	---	---	---
TPEIRBOR	PIRAEUS BANK (CR)	43,061	15,374	5.31%	---	---	---	---	7,175,542
PLAISBOR	PLAISIO COMPUTERS SA (CR)	---	---	---	---	---	---	---	---
PPCBOR	PPC (CR)	36,950	84,763	5.31%	---	---	---	---	512,774
QUALBOR	QUALITY & RELIABILITY SA (CR)	---	---	---	---	---	---	---	---
QUESTBOR	QUEST HOLDINGS (CR)	---	---	---	---	---	---	---	---
KAMPBOR	REDS S.A. (CR)	---	---	---	---	---	---	---	---
EPILBOR	SELECTED TEXT. IND. ASSOC (CR)	---	---	---	---	---	---	---	---
SELOBOR	SELONDA AQUACULTURE SA (CR)	---	---	---	---	---	---	---	---
OLYMPBOR	TECHNICAL OLYMPIC SA (CR)	---	9,039	5.31%	---	---	---	---	---
TENERGYBOR	TERNA ENERGY (CR)	1,000	30,986	5.31%	---	---	---	---	---
EYAPSBOR	THESSALONIKA WATER & SEWERAGE	---	4,438	5.31%	---	---	---	---	---

Stock Lending Notes

- [1] - Multilateral contracts Lending or Borrowing as per Methods 8-1, 8-2 and 8-3-3 (According to ATHEX BoD Resolution No.17)
- [2] - Billateral Contracts Lending or Borrowing as per Methods 8-3-1 and 8-3-2 (According to ATHEX BoD Resolution No.20)
- [3] - The information concerning OTC Stock Borrowing Transactions is based on the statements of the Dematerialised Securities System (DSS) operators involved and refers to volumes that have been registered up until the previous working day.
- [4] - Average Price (Volume weighted)
- [5] - The Data concerning Open Interest before the start of trading session

Lending Products	Underlying Title	Multilateral Transactions[1]					Bilateral Transactions[2]		Stock Borrowing through OTC (volume)[3]
		Open Interest[5]	Volume(Offered)	Average Weighted	Transactions volume	Average Weighted	Transactions Volume	Average Weighted	Transactions Volume
PLATBOR	THRACE PLASTICS SA (CR)	---	37,360	5.31%	---	---	---	---	---
TITKBOR	TITAN CEMENT (CR)	7,659	218,417	3.31%	---	---	---	---	3,204
OLTHBOR	TPA SA (CR)	---	23	5.32%	---	---	---	---	---
VIOBOR	VIOHALCO SA/NV (CB)	---	59,278	5.31%	---	---	---	---	---

Stock Lending Notes

- [1] - Multilateral contracts Lending or Borrowing as per Methods 8-1, 8-2 and 8-3-3 (According to ATHEX BoD Resolution No.17)
- [2] - Bilateral Contracts Lending or Borrowing as per Methods 8-3-1 and 8-3-2 (According to ATHEX BoD Resolution No.20)
- [3] - The information concerning OTC Stock Borrowing Transactions is based on the statements of the Dematerialised Securities System (DSS) operators involved and refers to volumes that have been registered up until the previous working day.
- [4] - Average Price (Volume weighted)
- [5] - The Data concerning Open Interest before the start of trading session

Sectors codification for listed companies

533	-	Exploration & Production	537	-	Integrated Oil & Gas
1353	-	Commodity Chemicals	1357	-	Specialty Chemicals
1753	-	Aluminum	1755	-	Nonferrous Metals
1757	-	Steel	1775	-	General Mining
2353	-	Building Materials & Fixtures	2357	-	Heavy Construction
2723	-	Containers & Packaging	2727	-	Diversified Industrials
2733	-	Electrical Components & Equipment	2753	-	Commercial Vehicles & Trucks
2757	-	Industrial Machinery	2773	-	Marine Transportation
2777	-	Transportation Services	2791	-	Business Support Services
2797	-	Industrial Suppliers	3535	-	Distillers & Vintners
3537	-	Soft Drinks	3573	-	Farming Fishing & Plantations
3577	-	Food Products	3722	-	Durable Household Products
3726	-	Furnishings	3728	-	Home Construction
3747	-	Toys	3763	-	Clothing & Accessories
3765	-	Footwear	3767	-	Personal Products
3785	-	Tobacco	4533	-	Health Care Providers
4535	-	Medical Equipment	4577	-	Pharmaceuticals
5337	-	Food Retailers & Wholesalers	5371	-	Apparel Retailers
5373	-	Broadline Retailers	5375	-	Home Improvement Retailers
5379	-	Specialty Retailers	5553	-	Broadcasting & Entertainment
5555	-	Media Agencies	5557	-	Publishing
5751	-	Airlines	5752	-	Gambling
5753	-	Hotels	5755	-	Recreational Services
5757	-	Restaurants & Bars	5759	-	Travel & Tourism
6535	-	Fixed Line Telecommunications	6575	-	Mobile Telecommunications
7535	-	Conventional Electricity	7537	-	Alternative Electricity
7577	-	Water	8355	-	Banks
8534	-	Insurance Brokers	8536	-	Property & Casualty Insurance
8633	-	Real Estate Holding & Development	8637	-	Real Estate Services
8671	-	Industrial & Office REITs	8674	-	Diversified REITs
8675	-	Specialty REITs	8775	-	Specialty Finance
8777	-	Investment Services	8985	-	Equity Investment Instruments
9533	-	Computer Services	9535	-	Internet
9537	-	Software	9572	-	Computer Hardware
9574	-	Electronic Office Equipment	9578	-	Telecommunications Equipment
12003	-	ETF			



ATHEXGROUP
Όμιλος Χρηματιστηρίου Αθηνών

Λεωφ. Αθηνών 110 104 42 Αθήνα
110, Athinon Ave. GR 104 42 Athens
tel. (+30)210-33.66.800, fax (+30)210-33.66.101
www.athegroup.gr