



ATHEXGROUP
Athens Exchange Group

Hellenic Exchanges – Athens Stock Exchange S.A.

“

2016

δελτιο ημερησιων συναλλαγων

daily official list

Friday, 7 October, 2016
Year: 137 Trading Day No: 191

”

Disclaimer:

Hellenic Exchanges-Athens Stock Exchange S.A. endeavours to ensure that the data and other material ("Information") presented on the Daily Official List are accurate and complete, but it is not liable for any errors or omissions of data or /and for the accuracy, credibility, updating and completeness of the aforesaid information nor it has any liability arising directly or indirectly from the use of the above Information.

The Company is not liable for the accuracy of the data included in listed companies' announcements. Only the sender of such an announcement is fully and solely liable for any infringement of third party's rights from the content of such announcement. All contents of the Daily Official List are provided only for information purposes and do not constitute investment advice or solicitation to invest in securities or other products listed for trading on the Exchange.

You acknowledge and agree that the Company is the owner of any property rights related to any Information appearing on the Daily Official List including intellectual property rights copyright, trademarks, etc.

The above data are a property of the Hellenic Exchanges-Athens Exchange and are copyright protected. Users are forbidden to reproduce, modify, copy, sale, transmit or redistribute, by all reproduction means and methods, part or the whole of the above data, without reference to their source.

The commercial exploitation of these data is, also, forbidden by third parties. Hellenic Exchanges-Athens Exchange does not carry any responsibility, direct or indirect, derived from usage or accidental alteration of the above data when used by third parties.

Hellenic Exchanges – Athens Stock Exchange S.A.

110 Athinon Ave., 10442 Athens, Tel: (210) 33.66.800, Fax: (210) 32.13.938

www.helix.gr

Thessalonica Stock Exchange Center (T.S.E.C)

16-18 Katouni Str., Thessalonica 546 25 Tel: (2310) 567.667, Fax: (2310) 530.545

Athex Members Guarantee Fund

14-16 Fidiou Str., Athens 106 78, Tel: (210) 33.04.682, Fax: (210) 33.04.155

Hellenic Republic Capital Market Commission

1 Kolokotroni Str. & 1 Stadiou Str., Athens 10562 Tel: (210) 33.77.100 Fax: (210) 33.77.173

Table of Contents

Section 1: Statistical Figures of Securities, Derivatives and Lending

Summary of Markets

Athex Indices

Analytic Figures for Athex Market's Boards and Categories

Trading Details by Athex Sectors and Financial Instruments (ETFs)

Top 10 best & worst performing Shares

Derivatives Summary

Section 2: Analytic Figures of Shares Transactions

Analytic Figures of Shares Transactions

Shares' Notes

Section 3: Figures of Securities Transactions

Securities Blocks Details

Shares Rights Details

Stock Borrowing

Shares Forced Sales

Forced Sales Registered Shares

Exchange Traded Funds (ETFs) Characteristics

Section 5: Bonds traded in Fixed Income Assets Market

Corporate Bonds

Government Bonds

Treasury Bills & Zero Coupon Government Bonds

Government Bonds Traded with the Open Outcry Method

State Banks Bonds

Section 6: Additional Infos

Athex & ATHEXClear Members List

List of Stocks under Market Making operations

Section 7: Derivatives Market Analytic Figures

Index Futures

Stock Futures

Index Options

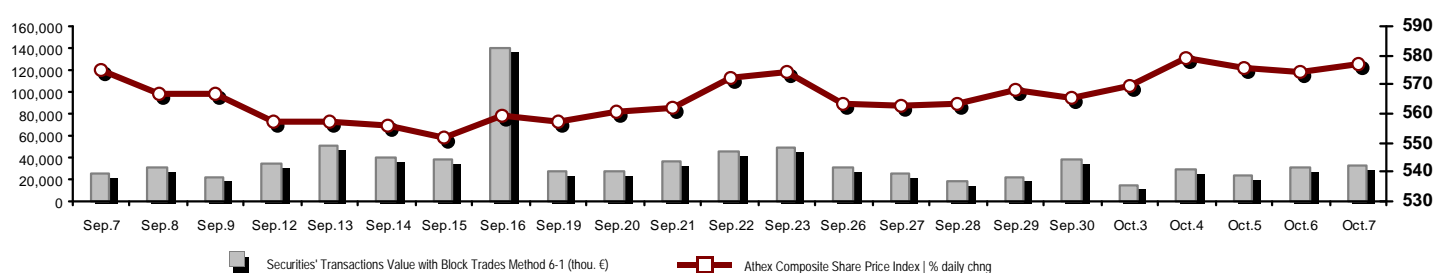
Stock Options

Stock Lending Analytic Figures

Appendix A: Sectors codification for listed companies

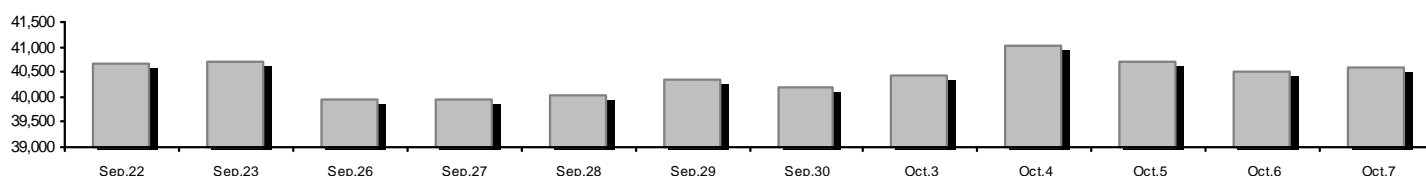
Summary of Markets

Athex Composite Share Price Index vs Shares and Derivatives Transactions Value

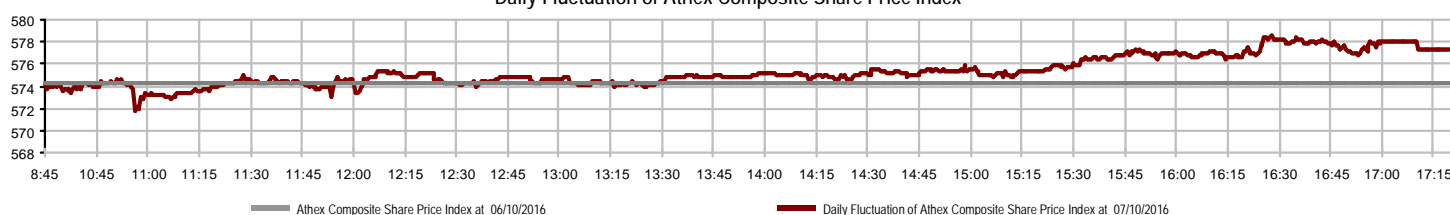


Athex Capitalisation (mill. €) **: 40,591.72		Derivatives Total Open Interest 276,759	
Daily change: mill. € %	66.67 0.16%	in Index Futures % daily chng	6,440 2.81%
Yearly Avg Capitalisation: mill. € % chng prev year Avg	40,653.77 -6.87%	in Stock Futures % daily chng	267,144 1.65%
Athex Composite Share Price Index % daily chng	577.30 0.54%	in Index Options % daily chng	2,319 3.80%
Athex Composite Share Price Index Capitalisation (mill. €)	36,073.88	in Stock Options % daily chng	856 21.25%
Daily change (mill. €)	54.85		
Securities' Transactions Value with Block Trades Method 6-1 (32,933.15		Derivatives Contracts Volume: 20,402	
Daily change: %	1,528.28 4.87%	Daily change: pieces %	-10,186 -33.30%
YtD Avg Trans. Value: thou. € % chng prev year Avg	62,038.87 -27.51%	YtD Avg Derivatives Contracts % chng prev year Avg	60,305 -8.22%
Blocks Transactions Value of Method 6-1 (thou. €)	2,249.84	Derivatives Trades Number:	1,465
Blocks Transactions Value of Method 6-2 & 6-3 (thou. €)	18.35	Daily change: number %	41 2.88%
Bonds Transactions Value (thou.€)	251.23	YtD Avg Derivatives Trades number % chng prev year Avg	2,576 -21.17%
Securities' Transactions Volume with Block Trades Method 6-1 (th 57,038.42		Lending Total Open Interest 1,442,106	
Daily change: thou. pieces %	21,009.70 58.31%	Daily change: pieces %	103,800 7.76%
YtD Avg Volume: % chng prev year Avg	101,537.06 -47.27%	Lending Volume (Multilateral/Bilateral)	110,800
Blocks Transactions Volume of Method 6-1 (thou. Pieces)	5,176.85	Daily change: pieces %	103,310 1379.31%
Blocks Transactions Volume of Method 6-2 & 6-3 (thou. Pieces)	5.00	Multilateral Lending	110,800
Bonds Transactions Volume	250,000.00	Bilateral Lending	0
Securities' Trades Number with Block Trades Method 6-1 13,570		Lending Trades Number: 21	
Daily change: number %	587 4.52%	Daily change: %	14 200.00%
YtD Avg Derivatives Trades number % chng prev year Avg	19,588 -27.43%	Multilateral Lending Trades Number	21
Number of Blocks Method 6-1	4	Bilateral Lending Trades Number	0
Number of Blocks Method 6-2 & 6-3	1		
Number of Bonds Transactions	7		

Athex Capitalisation (mill. €) **



Daily Fluctuation of Athex Composite Share Price Index



Athex Indices

Index name	07/10/2016	06/10/2016	pts.	%	Min	Max	Year min	Year max	Year change
Athex Composite Share Price Index	577.30 #	574.22	3.08	0.54%	571.82	578.55	420.82	658.99	-8.56% €
FTSE/Athex Large Cap	1,523.55 #	1,519.12	4.43	0.29%	1,512.17	1,529.67	1,075.20	1,868.90	-16.90% €
FTSE/Athex Mid Cap Index	721.48 €	725.15	-3.67	-0.51%	715.97	731.89	515.21	820.16	-11.63% €
FTSE/ATHEX-CSE Banking Index	502.67 #	492.46	10.21	2.07%	488.54	503.51	271.40	938.40	-43.65% €
FTSE/ATHEX Global Traders Index Plus	1,417.88 #	1,404.90	12.98	0.92%	1,402.51	1,418.12	1,031.55	1,418.12	11.24% #
FTSE/ATHEX Global Traders Index	1,507.06 #	1,490.27	16.79	1.13%	1,485.82	1,507.36	1,129.41	1,579.62	5.63% #
FTSE/ATHEX Mid & Small Cap Factor-Weighted Ind	1,334.57 #	1,316.83	17.74	1.35%	1,312.19	1,335.20	1,066.64	1,335.20	6.29% #
Greece & Turkey 30 Price Index	448.54 #	446.97	1.57	0.35%	446.47	452.66	396.10	527.12	-3.38% €
ATHEX Mid & SmallCap Price Index	2,115.06 #	2,097.12	17.94	0.86%	2,094.11	2,116.37	1,848.24	2,213.61	-2.62% €
FTSE/Athex Market Index	374.61 #	373.60	1.01	0.27%	372.00	376.10	265.17	457.53	-16.75% €
FTSE Med Index	4,558.68 #	4,545.92	12.76	0.28%			4,396.47	5,530.53	-17.57% €
Athex Composite Index Total Return Index	876.67 #	871.98	4.69	0.54%	868.35	878.56	626.16	986.51	-6.68% €
FTSE/Athex Large Cap Total Return	2,145.60 #	2,139.37	6.23	0.29%			1,574.40	2,572.00	-15.16% €
FTSE/ATHEX Large Cap Net Total Return	640.01 #	638.15	1.86	0.29%	635.23	642.58	443.06	773.01	-15.29% €
FTSE/Athex Mid Cap Total Return	889.54 €	894.05	-4.51	-0.50%			669.55	1,008.35	-11.38% €
FTSE/ATHEX-CSE Banking Total Return Index	480.33 #	470.57	9.76	2.07%			318.40	895.04	-44.78% €
Greece & Turkey 30 Total Return Index	565.84 #	563.20	2.64	0.47%			0.00	660.49	-1.71% €
Hellenic Mid & Small Cap Index	734.87 #	727.03	7.84	1.08%	722.88	735.03	560.15	786.32	2.70% #
FTSE/Athex Banks	664.14 #	650.66	13.48	2.07%	645.48	665.26	358.60	1,239.80	-43.64% €
FTSE/Athex Financial Services	926.50 #	915.39	11.11	1.21%	908.46	935.52	634.69	1,179.09	-4.87% €
FTSE/Athex Industrial Goods & Services	1,547.89 #	1,531.73	16.16	1.06%	1,522.76	1,549.72	1,369.56	1,844.00	-15.17% €
FTSE/Athex Retail	3,182.37 €	3,188.21	-5.84	-0.18%	3,163.37	3,207.21	1,826.41	3,272.96	25.98% #
FTSE/ATHEX Real Estate	2,457.82 #	2,446.90	10.92	0.45%	2,430.11	2,462.25	2,154.15	2,621.31	1.56% #
FTSE/Athex Personal & Household Goods	5,942.70 €	6,010.17	-67.47	-1.12%	5,895.30	6,020.71	4,433.32	6,333.20	17.37% #
FTSE/Athex Food & Beverage	7,340.79 €	7,605.22	-264.43	-3.48%	7,340.79	7,605.22	5,952.97	7,850.45	-0.49% €
FTSE/Athex Basic Resources	2,111.61 #	1,988.44	123.17	6.19%	1,970.84	2,129.21	1,200.24	2,129.21	29.17% #
FTSE/Athex Construction & Materials	2,212.36 #	2,172.06	40.30	1.86%	2,149.71	2,215.29	1,500.04	2,343.14	17.78% #
FTSE/Athex Oil & Gas	2,520.02 #	2,500.50	19.52	0.78%	2,476.39	2,520.02	1,860.37	2,657.42	4.48% #
FTSE/Athex Chemicals	8,334.72 €	8,384.04	-49.32	-0.59%	8,137.45	8,384.04	6,190.46	8,531.99	22.35% #
FTSE/Athex Media	1,768.77 ~	1,768.77	0.00	0.00%	1,768.77	1,768.77	1,290.16	2,247.37	19.72% #
FTSE/Athex Travel & Leisure	1,333.44 #	1,325.36	8.08	0.61%	1,325.36	1,341.34	982.74	1,426.44	-6.42% €
FTSE/Athex Technology	641.07 €	642.97	-1.90	-0.30%	634.27	653.42	489.05	658.99	12.07% #
FTSE/Athex Telecommunications	2,127.74 #	2,094.71	33.03	1.58%	2,094.71	2,127.74	1,802.93	2,669.99	-16.34% €
FTSE/Athex Utilities	1,465.55 #	1,456.05	9.50	0.65%	1,441.33	1,471.82	1,136.34	1,734.68	-12.53% €
Athex All Share Index	143.16 #	142.92	0.24	0.17%	143.16	143.16	113.39	165.22	-12.93% €
Hellenic Corporate Bond Index	107.33 #	107.31	0.02	0.02%			96.90	107.33	6.82% #
Hellenic Corporate Bond Price Index	97.05 #	97.05	0.00	0.00%			90.43	97.44	2.42% #

Note 1: FTSE/Med 100, Greece & Turkey 30 Rt., Hellenic Corporate Bond Price Index and Hellenic Corporate Bond Index closing prices refer to the previous trading day of 05/10/2016.

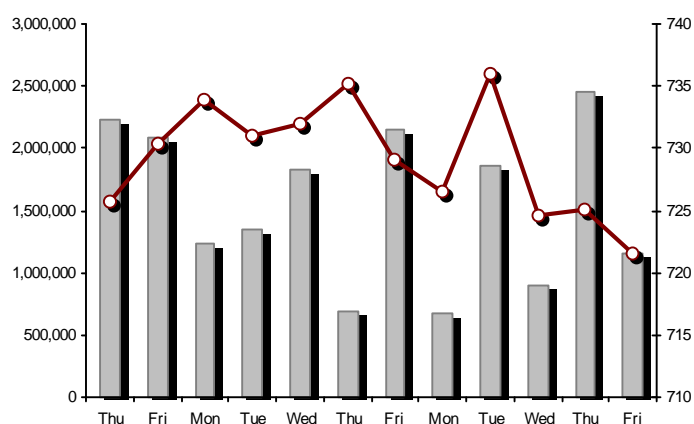
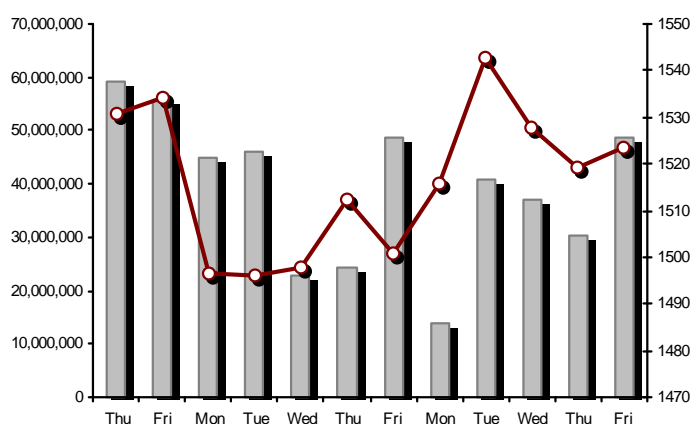
Note 2: The Hellenic Mid & Small Cap Index is a Customized index calculated by the Athens Exchange.

Athex Indices

FTSE/Large Cap

07/10/2016: 0.29% FTSE/Athex Mid Cap Index

07/10/2016: -0.51%

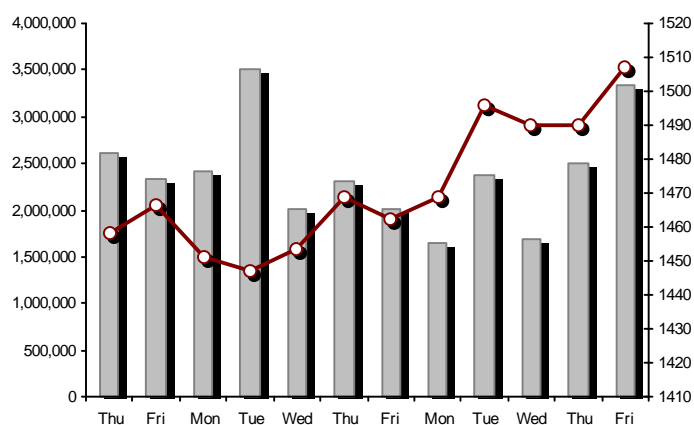
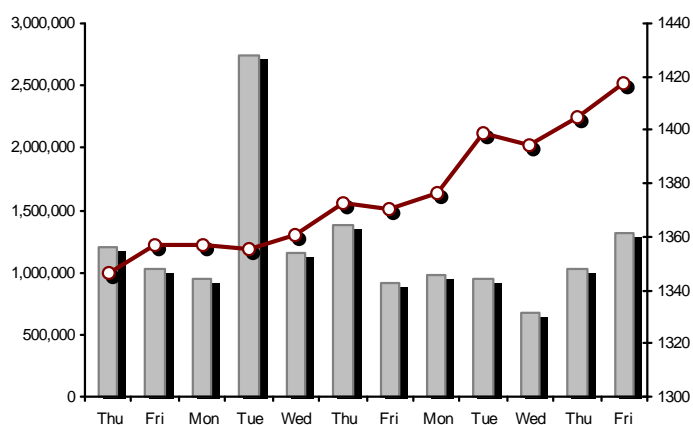


FTSE/ATHEX Global Traders Index Plus

07/10/2016: 0.92%

FTSE/ATHEX Global Traders Index

07/10/2016: 1.13%

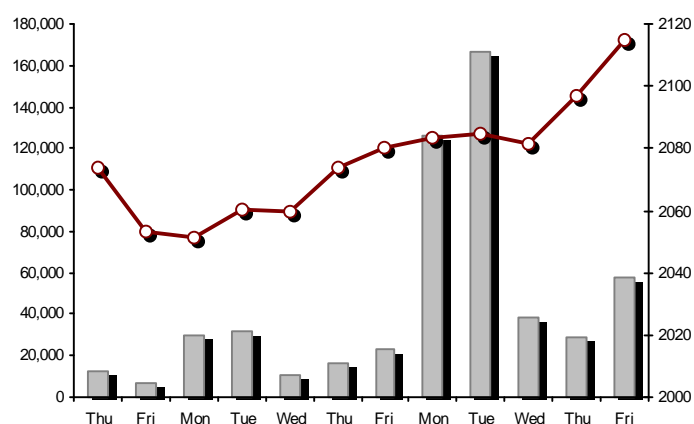
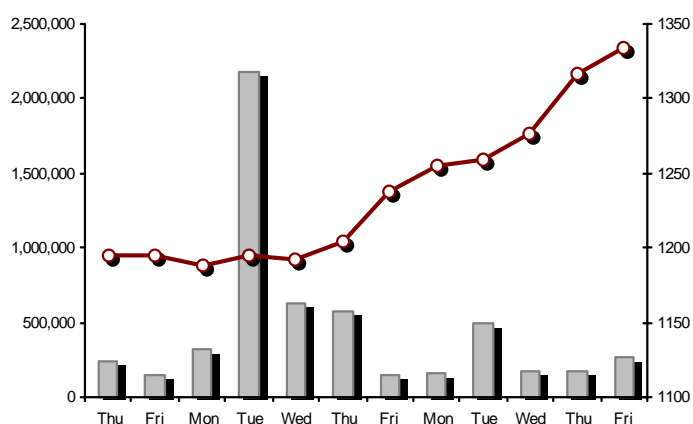


FTSE/ATHEX Mid & Small Cap Factor-Weighted Index

07/10/2016: 1.35%

ATHEX Mid & SmallCap Price Index

07/10/2016: 0.86%



Indices volume of transactions

Indices closing prices

Analytic Figures for Athex Market's Boards and Categories

	Total Traded Securities	Main Market	Low Dispersion	Other Categories (*)	Exchange Traded Funds (ETFs)	Warrants
Totals	122	102	4	12	2	2
Gain / Lose / Same:	63 / 40 / 19	53 / 35 / 14	2 / 0 / 2	5 / 5 / 2	2 / 0 / 0	1 / 0 / 1
Athex Capitalisation (mill. €) **	40,591.72	37,715.13	2,755.17	121.43		
Daily Average Trans/ons Value(thou.€)	62,038.87	61,930.36	116.41	9.67	16.09	11.56
Transactions Value	32,951.50	32,229.47	708.26	12.64	0.02	1.10
Main Board:	30,683.31	30,221.98	447.56	12.64	0.02	1.10
Blocks Board 6_2_3:	2,268.19	2,007.49	260.70	0.00	0.00	0.00
Forced Sales Board:	0.00	0.00	0.00	0.00	0.00	0.00
Special Terms Board:	0.00	0.00	0.00	0.00	0.00	0.00
Daily Average Transactions Volume	101,537,063	96,259,613	113,220	93,638	7,251	5,148,284
Transactions Volume	57,043,417	56,430,619	133,347	124,706	4	354,741
Main Board:	51,861,570	51,303,772	78,347	124,706	4	354,741
Blocks Board 6_2_3:	5,181,847	5,126,847	55,000	0	0	0
Forced Sales Board:	0	0	0	0	0	0
Special Terms Board:	0	0	0	0	0	0
Daily Average Number of Trades	19,588	19,440	33	52	4	61
Number of Trades	13,571	13,355	118	83	2	13
Main Board:	13,566	13,351	117	83	2	13
Blocks Board 6_2_3:	5	4	1	0	0	0
Forced Sales Board:	0	0	0	0	0	0
Special Terms Board:	0	0	0	0	0	0

(*) Summarised Transactions figures for Under Deletion and Under Supervision Categories.(**) The Market Capitalization of the Companies that belong in the Under Supervision Status is not included.

Trading Details by Athex Sectors and Financial Instruments (ETFs)

Code	Sectors	Gain / Lose / Same	Number of Trades	Transactions Volume	Transactions Value	% of Total Trans. Value
8300	- Banks	5 / 1 / 3	4,546	51,556,796	16,325,999.27	49.55%
1700	- Basic Resources	5 / 3 / 0	1,460	703,407	2,765,595.06	8.39%
1300	- Chemicals	1 / 2 / 0	67	19,304	21,960.78	0.07%
2300	- Construction & Materials	7 / 3 / 3	1,158	729,858	1,320,217.66	4.01%
12000	- Financial Instruments	2 / 0 / 0	2	4	24.40	0.00%
8700	- Financial Services	4 / 0 / 0	524	1,002,077	517,297.68	1.57%
3500	- Food & Beverage	2 / 7 / 0	305	150,630	949,305.23	2.88%
4500	- Health Care	1 / 4 / 1	58	21,707	4,418.49	0.01%
2700	- Industrial Goods & Services	7 / 5 / 2	804	426,147	880,953.91	2.67%
8500	- Insurance	1 / 0 / 0	13	1,168	2,068.13	0.01%
5500	- Media	0 / 1 / 0	1	40	28.00	0.00%
500	- Oil & Gas	3 / 0 / 0	459	116,075	862,544.24	2.62%
3700	- Personal & Household Goods	7 / 4 / 1	402	211,922	1,825,576.12	5.54%
8600	- Real Estate	2 / 0 / 2	189	60,464	357,931.20	1.09%
5300	- Retail	2 / 3 / 0	169	44,157	521,470.23	1.58%
9500	- Technology	4 / 5 / 4	804	753,237	286,829.29	0.87%
6500	- Telecommunications	1 / 0 / 0	971	380,695	2,933,510.30	8.90%
5700	- Travel & Leisure	6 / 1 / 2	1,052	653,959	2,804,441.87	8.51%
7500	- Utilities	3 / 1 / 1	587	211,770	571,325.65	1.73%

Top 10 best & worst performing Shares

Main Market					
With positive Price change	Closing price	change	With negative Price change	Closing price	change
INTRACOM HOLDINGS (CR)	0.326	9.03% #	QUEST HOLDINGS (CR)	5.00	-3.85% ₤
MYTILINEOS HOLDINGS (CR)	4.80	6.19% #	CC HBC AG (CR)	19.70	-3.48% ₤
GEK TERNA (CR)	2.05	5.67% #	PETROPOULOS PETROS (CR)	4.05	-2.88% ₤
INTRALOT (CR)	1.36	5.43% #	FOURLIS (CR)	3.60	-2.70% ₤
J & P - AVAX SA (CR)	0.479	5.04% #	JUMBO SA (CR)	11.38	-1.04% ₤
EUROBANK ERGASIAS (CR)	0.529	4.13% #	P.P.A. S.A. (CR)	12.50	-0.71% ₤
VIOHALCO SA/NV (CB)	1.27	4.10% #	TITAN CEMENT CO. (PR)	10.72	-0.37% ₤
HELLENIC CABLES SA (CR)	1.19	3.48% #	FOLLI FOLLIE (CR)	21.78	-0.18% ₤
NIREFS SA (CR)	0.150	3.45% #	TPA SA (CR)	18.45	-0.16% ₤
KORRES (CR)	3.02	3.42% #	ELTECH ANEMOS S.A. (CR)	0.765	-0.13% ₤
With the highest Transactions Value	Value (thou. €)	change	With the highest Transactions Volume	Volume	change
ALPHA BANK (CR)	5,322.40	1.92% #	NATIONAL BANK (CR)	26,920,489	0.53% #
NATIONAL BANK (CR)	5,095.57	0.53% #	EUROBANK ERGASIAS (CR)	8,168,217	4.13% #
EUROBANK ERGASIAS (CR)	4,232.16	4.13% #	PIRAEUS BANK (CR)	7,376,721	2.16% #
OTE (CR)	2,933.51	1.58% #	BANK OF CYPRUS (CR)	4,182,039	0.00% ↘
MYTILINEOS HOLDINGS (CR)	2,700.27	6.19% #	ALPHA BANK (CR)	3,388,995	1.92% #
OPAP (CR)	1,582.39	0.53% #	ATTICA BANK S.A. (CR)	1,164,614	0.00% ↘
JUMBO SA (CR)	1,522.13	-1.04% ₤	MARFIN INVESTMENT GROUP (CR)	908,907	2.46% #
PIRAEUS BANK (CR)	1,040.57	2.16% #	INTRACOM HOLDINGS (CR)	677,640	9.03% #
CC HBC AG (CR)	926.16	-3.48% ₤	MYTILINEOS HOLDINGS (CR)	577,520	6.19% #
MOTOR OIL (CR)	646.96	1.04% #	OTE (CR)	380,695	1.58% #

Note: Stocks that are not included in the "Low Dispersion" and "Under Supervision" categories, and the transactions value is more than 10,000 €.

Derivatives Summary

	Number of Trades	Volume	Open Interest
Index Futures	221	3,111	6,440
FTSE/Athex Large Cap	221	3,111	6,440
Stock Futures	1,209	16,915	267,144
ALPHA BANK (CR)	114	2,114	13,243
CC HBC AG (CR)	40	102	88
CORINTH PIPEWORKS (CR)	3	5	835
ELLAKTOR (CR)	29	183	1,838
EUROBANK ERGASIAS (CR)	120	3,960	24,857
EYDAP S.A. (CR)	5	10	430
FOLLI FOLLIE (CR)	1	1	172
GEK TERNA (CR)	54	502	6,770
GRIVALIA PROPERTIES (CR)	1	1	56
HELLENIC EXCHANGES-A.S.E. (CR)	35	63	390
HELLENIC PETROLEUM (CR)	22	100	3,549
INTRALOT (CR)	51	274	760
JUMBO SA (CR)	5	10	163
MARFIN INVESTMENT GROUP (CR)	15	332	44,137
METKA (CR)	46	163	577
MOTOR OIL (CR)	4	14	279
MYTILINEOS HOLDINGS (CR)	323	1,260	4,480
NATIONAL BANK (CR)	73	4,925	69,507
OPAP (CR)	20	69	1,381
OTE (CR)	151	439	6,834
P.P.A. S.A. (CR)	4	5	657
PIRAEUS BANK (CR)	33	2,139	76,495
PPC (CR)	25	103	5,863
TERNA ENERGY (CR)	1	4	1,197
TITAN CEMENT (CR)	3	3	117
VIOHALCO SA/NV (CB)	31	134	2,469
Index Options	22	226	2,319
FTSE/Athex Large Cap	22	226	2,319
Stock Options	13	150	856
ALPHA BANK (CR)	1	50	180
NATIONAL BANK (CR)	0	0	0
OPAP (CR)	8	40	227
OTE (CR)	3	50	249
PIRAEUS BANK (CR)	0	0	0
PPC (CR)	1	10	200
Total Derivatives Traded	1,465	20,402	276,759

Number of Outstanding Securities	Nominal Value	Dividends [1]			Date of Last Coupon		Note	Shares	Closing price	% change	Previous closing price/date	Open price	Price min	Price max	Last price	Avg price	Last Bid [7]	Last Ask [7]	P/E after	Year	Volume	Trades	Transactions Value[8]	Company Mkt Value (thou. €)	Year low	Year high	Sector[4]
		2013	2014	2015	Dividend [2]	Right																					

Warrants

1,141,734,167	---	---	---	11/06/2013	---	ALPHA BANK (W)			0.002	100.00	#	0.001	06/10/2016	0.002	0.001	0.002	0.002	0.0039245135@0.001	10023127@0.002	---	2015	251,072	5	501.17	2,443,641.11	0.001	0.004	8355
245,745,725	---	---	---	27/06/2013	---	NATIONAL BANK (W)			0.005	---	↘	0.005	06/10/2016	0.005	0.005	0.006	0.005	0.006573377@0.005	382230@0.006	---	2015	103,669	8	598.35	1,737,958.79	0.002	0.025	8355
843,637,022	---	---	---	03/07/2013	---	PIRAEUS BANK (W)			0.001	---	↘	0.001	06/10/2016	---	---	---	---	---	16515713@0.001	---	2015	---	---	---	1,240,112.03	0.001	0.002	8355

Main Market

71,417,100	0.650	---	0.7	0.7	13/05/2016	27/06/2014	---	AEGEAN AIRLINES (CR)	5.99	1.35 #	5.91	06/10/2016	5.94	5.88	6.06	5.99	5.97	2143@5.99	100@6.05	7.89	2015	45,729	261	272,818.64	427,788.43	5.88	9.06	5751	
11,178,000	1.12	---	---	---	21/04/2010	15/12/2014	---	AEOLIAN INVESTMENT FUND (CR)	0.580	4.88 #	0.553	06/10/2016	0.580	0.580	0.580	0.580	0.580	100@0.510	150@0.580	---	2015	50	1	29.00	6,483.24	0.384	0.701	8985	
1,536,881,200	0.300	---	---	---	07/04/2008	27/11/2015	---	ALPHA BANK (CR)	1.59	1.92 #	1.56	06/10/2016	1.56	1.54	1.60	1.59	1.57	138099@1.59	178140@1.60	---	2015	3,388,995	743	5,322,400.73	2,443,641.11	0.949	2.75	8355	
22,016,250	0.370	---	---	---	15/07/2009	11/05/2000	---	ALUMIL (CR)	0.212	0.47 #	0.211	06/10/2016	0.225	0.190	0.225	0.212	0.191	---	118@0.206	---	2015	19,498	55	3,728.99	4,667.45	0.101	0.290	1753	
417,608	16.00	0.8	---	---	29/04/2014	05/03/2013	---	ANDROMEDA SA (CR)	12.40	2.23 #	12.13	06/10/2016	12.40	12.40	12.40	12.40	12.40	40@12.40	10@13.33	---	2015	10	1	124.00	5,178.34	11.53	13.90	8985	
13,126,020	0.680	---	---	---	08/07/2010	19/07/2016	---	AS COMPANY SA (CR)	0.778	---	↘	0.778	06/10/2016	---	---	---	---	401@0.717	500@0.770	6.62	2015	---	---	---	10,212.04	0.580	0.796	5379	
86,735,980	0.310	---	---	---	06/07/2009	02/01/2002	---	ATHENS MEDICAL CENTER SA (CR)	0.650	---	↘	0.650	06/10/2016	0.649	0.649	0.650	0.650	0.650	100@0.663	---	2015	1,975	5	1,283.25	56,378.39	0.539	0.780	4533	
2,339,353,394	0.300	---	---	---	04/06/2008	01/12/2015	---	ATTICA BANK S.A. (CR)	0.048	---	↘	0.048	06/10/2016	0.047	0.046	0.048	0.048	0.046111548@0.046	267296@0.048	---	2015	1,164,614	130	54,059.90	112,288.96	0.037	0.279	8355	
15,300,000	0.300	---	---	---	30/07/2009	13/12/1999	---	ATTICA PUBLICATIONS SA (CR)	0.700	-6.67	€	0.750	06/10/2016	0.700	0.700	0.700	0.700	80@0.700	3399@0.750	---	2015	40	1	28.00	10,710.00	0.700	1.21	5557	
48,184,910	0.700	---	---	---	01/07/2008	01/03/2010	---	AUDIO VISUAL ENTERPRISES (CR)	0.085	---	↘	0.085	06/10/2016	---	---	---	---	---	1800@0.077	---	2015	---	---	---	4,095.72	0.028	0.108	5553	
12,213,750	0.320	---	0.8	0.85	07/06/2016	22/11/2013	---	AUTOHELLAS SA (CR)	11.70	---	↘	11.70	06/10/2016	11.70	11.70	11.70	11.70	298@11.70	417@11.80	9.34	2015	702	3	8,213.40	142,900.88	9.51	12.00	5759	
8,922,944,533	0.100	---	---	---	31/05/2011	02/02/2015	4857	BANK OF CYPRUS (CR)	0.137	---	↘	0.137	06/10/2016	0.138	0.136	0.139	0.137	0.136171385@0.136	24100@0.137	---	2015	4,182,039	149	570,530.88	1,222,443.40	0.121	0.174	8355	
19,864,886	5.60	0.672	0.672	0.672	03/03/2016	02/07/2008	---	BANK OF GREECE (CR)	9.84	-1.01	€	9.94	06/10/2016	9.80	9.72	9.86	9.84	9.80	8@9.81	55@9.92	---	---	980	33	9,605.13	195,470.48	8.70	11.11	8355
23,986,500	1.05	---	---	---	26/06/2009	15/03/2000	---	BIOKARPET S.A.(CR)	0.275	---	↘	0.275	06/10/2016	---	---	---	---	---	20@0.275	---	2015	---	---	---	6,596.29	0.139	0.459	3726	
15,842,391	1.51	---	---	---	15/07/2009	12/05/2000	---	BITROS HOLDING SA (CR)	0.200	---	↘	0.200	06/10/2016	---	---	---	---	---	267@0.190	---	2015	---	---	---	3,168.48	0.125	0.227	1757	
15,816,009	0.300	---	---	---	01/07/2009	17/07/2000	---	BYTE COMPUTER SA (CR)	0.296	---	↘	0.296	06/10/2016	0.296	0.296	0.296	0.296	0.296	10@0.292	---	2015	50	1	14.80	4,681.54	0.256	0.322	9533	
365,203,298	6.70	0.354	0.36	0.4	30/06/2016	29/04/2013	---	CC HBC AG (CR)	19.70	-3.48	€	20.41	06/10/2016	20.30	19.70	20.35	19.70	19.96	5832@19.70	600@20.09	---	---	46,399	159	926,161.22	7,194,504.97	15.97	21.07	3537
101,123,806	0.360	---	---	---	22/07/2010	28/06/2011	---	CENTRIC HOLDINGS (CR)	0.097	---	↘	0.097	06/10/2016	0.092	0.092	0.101	0.097	0.093	801@0.092	935@0.097	---	2015	23,680	19	2,205.28	9,809.01	0.067	0.147	5752
124,170,201	0.780	---	---	---	28/06/2002	07/02/2005	---	CORINTH PIPEWORKS (CR)	0.632	1.12 #	0.625	06/10/2016	0.623	0.611	0.632	0.632	0.619	400@0.625	500@0.633	24.42	2015	87,898	90	54,448.85	78,475.57	0.522	1.03	1757	
9,907,500	0.300	---	---	---	06/10/2005	13/02/2002	---	CPI SA (CR)	0.177	---	↘	0.177	06/10/2016	---	---	---	---	---	40@0.169	62.97	2015	---	---	---	---	1,753.63	0.092	0.190	9572
41,068,800	0.420	(0.0667)	(0.03)	0.1205	19/08/2016	17/02/2016	---	CRETE PLASTICS SA (CR)	4.72	-0.21	€	4.73	06/10/2016	4.72	4.72	4.72	4.72	4.72	216@4.72	300@4.73	15.84	2015	34	2	160.48	193,844.74	3.19	4.73	1357
15,000,000	0.300	---	---	---	06/07/2007	18/07/2000	---	DAIOS PLASTICS SA (CR)	2.90	---	↘	2.90	06/10/2016	---	---	---	---	---	50@2.63	---	2015	---	---	---	43,500.00	2.45	2.95	1357	
34,720,000	0.310	---	---	---	16/06/2010	01/08/2007	---	DROMEAS SA (CR)	0.116	7.41 #	0.108	06/10/2016	0.108	0.108	0.116	0.116	0.108	1000@0.107	439@0.116	---	2015	13,060	10	1,410.96	4,027.52	0.066	0.152	3726	
3,873,120	0.300	---	---	---	07/07/2008	04/10/2012	---	DRUCKFARBEN HELLAS (CR)	0.400	---	↘	0.400	06/10/2016	---	---	---	---	---	2000@0.420	---	0.64	2015	---	---	---	1,549.25	0.360	0.550	1357
11,250,000	0.520	---	---	0.04	25/07/2016	09/11/2015	---	EKTER SA (CR)	0.410	---	↘	0.410	06/10/2016	0.410	0.410	0.410	0.410	0.410	1600@0.419	25@0.439	12.95	2015	50	1	20.50	4,612.50	0.301	0.499	2357
32,188,050	1.04	---	---	---	21/07/2008	20/01/2000	---	EL. D. MOUZAKIS SA (CB)	0.129	---	↘	0.129	06/10/2016	---	---	---	---	---	2902@0.139	---	2015	---	---	---	4,152.26	0.084	0.215	3763	
18,421,516	1.00	---	---	---	07/07/2009	10/09/2010	---	ELASTRON (CR)	0.586	3.53 #	0.566	06/10/2016	0.579	0.579	0.586	0.586	0.581	200@0.529	377@0.586	---	2015	1,629	8	946.44	10,795.01	0.310	0.638	1757	
31,734,530	1.60	---	---	---	09/07/2007	19/07/2006	---	ELGEKA SA (CR)	0.179	---	↘	0.179	06/10/2016	---	---	---	---	---	197@0.176	---	2015	---	---	---	5,680.48	0.118	0.210	3577	
23,828,130	0.500	---	---	0.16	08/06/2016	17/02/2009	---	ELINOIL S.A. (CR)	0.860	1.18 #	0.850	06/10/2016	0.860	0.860	0.860	0.860	0.860	940@0.860	1850@0.934	7.54	2015	560	1	481.60	20,492.19	0.634	1.08	537	
177,001,313	1.03	---	---	---	05/07/2011	20/12/2007	---	ELLAKTOR (CR)	1.31	2.34 #	1.28	06/10/2016	1.28	1.26	1.34	1.31	1.31	13000@1.30	1000@1.32	---	2015	276,627	350	363,307.55	231,871.72	0.857	1.59	2357	
82,667,000	0.300	---	---	---	22/07/2014	---	---	ELTECH ANEMOS S.A. (CR)	0.765	-0.13	€	0.766	06/10/2016	0.752	0.750	0.770	0.765	0.751	666@0.761	469@0.765	8.23	2015	26,711	17	20,062.54	63,240.26	0.533	0.780	7537
26,730,187	0.600	0.05	---	---	23/06/2014	30/12/2010	---	ELTON SA (CR)	0.930	0.54 #	0.925	06/10/2016	0.880	0.880	0.930	0.930	0.899	200@0.912	200@0.940	16.60	2015	13,441	43	12,079.04	24,859.07	0.802	1.00	1353	
14,050,971	0.340	---	---	---	06/07/2011	17/10/2002	---	ELTRAK SA (CR)	1.26	-7.35	€	1.36	06/10/2016	1.29	1.26	1.29	1.26	1.27	621@1.26	10@1.35	25.04	2015	600	6	760.21	17,704.22	0.990	1.44	2753

Number of Outstanding Securities	Nominal Value	Dividends [1]			Date of Last Coupon		Note	Shares	Closing price	% change	Previous closing price/date	Open price	Price min	Price max	Last price	Avg price	Last Bid [7]	Last Ask [7]	P/E after	Year	Volume	Trades	Transactions Value[8]	Company Mkt Value (thou. €)	Year low	Year high	Sector[4]
		2013	2014	2015	Dividend [2]	Right																					
Main Market																											
3,307,500	0.960	---	---	---	11/08/2010	23/09/2016	---	ELVE SA (CR)	1.68	6.33 #	1.58 06/10/2016	1.64	1.62	1.69	1.69	1.66	100@1.46	100@1.70	13.39	2015	1,355	15	2,247.37	5,556.60	1.31	2.10	3763
2,185,998,765	0.300	---	---	---	02/05/2008	27/11/2015	---	EUROBANK ERGASIAS (CR)	0.529	4.13 #	0.508 06/10/2016	0.504	0.504	0.530	0.529	0.518	3000@0.525	12170@0.530	---	2015	8,168,217	1,563	4,232,156.29	1,156,393.35	0.241	1.17	8355
8,623,225	0.600	---	---	---	02/06/2010	30/05/2016	5031	EUROCONSULTANTS S.A. (CR)	0.720	0.70 #	0.715 06/10/2016	0.720	0.720	0.720	0.720	0.720	250@0.677	70@0.720	---	2015	10	1	7.20	6,208.72	0.633	1.82	2791
27,503,677	0.630	---	---	0.06	22/06/2016	18/10/1999	---	EUROPEAN RELIANCE INSUR. (CR)	1.86	3.91 #	1.79 06/10/2016	1.77	1.76	1.87	1.86	1.77	90@1.78	188@1.86	4.65	2015	1,168	13	2,068.13	51,156.84	1.21	2.10	8536
13,673,200	0.880	---	---	---	18/07/2008	26/07/2001	---	EVROFARMA SA (CR)	0.229	9.05 #	0.210 06/10/2016	0.210	0.210	0.229	0.229	0.225	5000@0.150	1000@0.220	13.79	2015	2,075	5	466.84	3,131.16	0.120	0.307	3577
106,500,000	0.600	0.36	0.2	0.31	28/06/2016	28/01/2000	---	EYDAP S.A. (CR)	5.37	1.32 #	5.30 06/10/2016	5.30	5.22	5.37	5.37	5.33	100@5.35	500@5.38	13.09	2015	14,771	72	78,659.76	571,905.00	3.60	6.10	7577
52,800,154	0.300	0.2	---	---	20/08/2014	21/06/2004	---	F.G. EUROPE S.A. (CR)	0.530	-3.64 €	0.550 06/10/2016	0.530	0.530	0.530	0.530	0.530	2329@0.530	700@0.590	23.42	2015	671	1	355.63	27,984.08	0.441	0.700	3722
10,203,575	0.730	---	---	---	16/07/2007	18/10/1999	---	FIERATEX SA (CR)	0.160	---	0.160 06/10/2016	---	---	---	---	---	---	973@0.144	---	2015	---	---	---	1,632.57	0.039	0.205	3763
11,720,024	0.540	0.0394	---	---	21/08/2014	04/11/2015	---	FLEXOPACK SA (CR)	2.70	---	2.70 06/10/2016	---	---	---	---	---	70@2.48	1@2.89	7.18	2015	---	---	---	31,644.06	2.10	3.03	2723
4,181,450	0.500	---	---	---	21/08/2000	05/03/2002	---	FLOUR MILLS SARANTOPOULOS SA	0.700	---	0.700 06/10/2016	---	---	---	---	---	---	23@0.700	---	2015	---	---	---	2,927.02	0.362	1.01	3577
66,948,210	0.300	---	0.1005	---	22/09/2015	22/09/2015	---	FOLLI FOLLIE (CR)	21.78	-0.18 €	21.82 06/10/2016	21.95	21.65	21.95	21.78	21.79	30@21.72	1930@21.78	---	2015	23,436	127	510,691.09	1,458,132.01	12.50	22.40	5379
50,992,322	1.07	---	---	---	21/06/2010	16/07/2002	---	FOURLIS (CR)	3.60	-2.70 €	3.70 06/10/2016	3.62	3.60	3.68	3.60	3.62	1000@3.58	1300@3.63	---	2015	46,106	51	167,032.30	183,572.36	2.00	3.96	3722
14,076,360	0.370	---	---	---	19/08/2008	22/07/2003	---	GALAXIDI S.A. (CR)	0.309	-3.44 €	0.320 06/10/2016	0.300	0.300	0.310	0.310	0.307	500@0.290	1000@0.314	30.25	2015	14,911	16	4,573.81	4,349.60	0.163	0.570	3573
103,423,291	0.570	---	---	---	01/08/2011	19/04/2016	---	GEK TERNA (CR)	2.05	5.67 #	1.94 06/10/2016	1.96	1.94	2.05	2.05	2.00	400@2.03	5206@2.05	12.88	2015	270,904	357	540,689.19	212,017.75	1.05	2.10	2357
8,418,750	0.300	---	---	0.12	16/12/2015	27/06/2012	---	GEKE SA (CB)	4.85	---	4.85 06/10/2016	---	---	---	---	---	---	30@5.33	16.07	2015	---	---	---	40,830.94	3.90	5.60	5753
24,060,000	0.300	0.017	0.02	0.01	11/07/2016	11/07/2016	---	GEN. COMMERCIAL & IND.SA (CR)	0.326	---	0.326 06/10/2016	---	---	---	---	---	400@0.320	30@0.340	13.71	2015	---	---	---	7,843.56	0.253	0.394	2797
34,770,982	1.55	0.3	0.15	0.16	20/04/2016	27/07/2000	---	GR. SARANTIS SA (CR)	9.62	-0.82 €	9.70 06/10/2016	9.80	9.41	9.99	9.62	9.61	100@9.46	198@9.75	30.32	2015	937	17	9,004.13	334,496.85	6.56	10.00	3767
101,260,000	2.13	0.1821	0.3037	0.3134	18/03/2016	08/01/2014	---	GRIVALIA PROPERTIES (CR)	6.84	---	6.84 06/10/2016	6.84	6.83	6.90	6.84	6.88	570@6.83	12092@6.90	12.85	2015	44,499	107	306,259.01	692,618.40	6.46	7.74	8675
8,340,750	1.18	---	---	---	25/06/2009	09/09/2015	---	HAIDEMENOS SA (CR)	0.324	---	0.324 06/10/2016	---	---	---	---	---	---	25@0.299	---	2015	---	---	---	2,702.40	0.240	1.04	2791
101,279,627	0.380	---	---	---	26/06/2008	14/07/2006	---	HALKOR SA (CB)	0.360	-3.23 €	0.372 06/10/2016	0.370	0.360	0.376	0.360	0.364	200@0.356	1817@0.359	---	2015	15,124	44	5,507.80	36,460.67	0.193	0.425	1755
29,546,360	0.710	---	---	---	20/06/2008	23/08/2000	---	HELLENIC CABLES SA (CR)	1.19	3.48 #	1.15 06/10/2016	1.16	1.15	1.20	1.19	1.17	1000@1.18	1719@1.19	---	2015	77,222	117	90,657.25	35,160.17	0.530	1.31	2733
65,368,563	1.08	---	0.21	0.1026	31/05/2016	04/07/2016	---	HELLENIC EXCHANGES-A.S.E. (CR)	4.34	0.93 #	4.30 06/10/2016	4.30	4.26	4.40	4.34	4.35	590@4.34	150@4.38	22.03	2015	93,110	314	405,278.22	283,699.56	3.40	5.56	8777
305,635,185	2.18	---	---	---	31/12/2014	01/10/2003	4795	HELLENIC PETROLEUM (CR)	4.01	0.25 #	4.00 06/10/2016	4.00	3.95	4.05	4.01	3.98	2@4.01	4940@4.02	44.50	2015	53,997	202	215,102.64	1,225,597.09	2.74	4.33	537
305,732,436	0.410	---	---	---	08/07/2009	28/09/2011	---	HYGEIA SA (CR)	0.143	-0.69 €	0.144 06/10/2016	0.146	0.142	0.146	0.143	0.144	2411@0.142	2450@0.145	---	2015	16,185	25	2,327.72	43,719.74	0.078	0.197	4533
65,441,118	0.440	---	---	---	24/11/2014	11/08/2015	---	IASO SA (CR)	0.418	-0.48 €	0.420 06/10/2016	0.407	0.407	0.426	0.418	0.417	481@0.418	147@0.426	---	2015	1,333	16	555.42	27,354.39	0.360	0.669	4533
8,298,467	0.400	---	---	---	30/08/1993	08/05/2013	---	IDEAL GROUP SA (CR)	0.720	---	0.720 06/10/2016	0.720	0.720	0.720	0.720	0.720	784@0.720	---	-(6)-	2015	16	1	11.52	5,974.90	0.568	0.959	9574
28,580,100	0.400	0.025	---	---	18/08/2014	04/07/2016	---	IKTINOS HELLAS SA (CR)	0.907	2.14 #	0.888 06/10/2016	0.915	0.880	0.915	0.907	0.905	140@0.860	300@0.910	24.95	2015	38,322	16	34,680.43	25,922.15	0.850	1.15	2353
9,090,000	0.900	---	---	---	15/05/2009	13/10/2014	---	ILYDA S.A. (CR)	0.437	---	0.437 06/10/2016	---	---	---	---	---	---	72@0.394	---	2015	---	---	---	3,972.33	0.397	0.590	9537
20,578,374	0.620	---	0.4	0.07	05/07/2016	18/05/2015	---	INFORM P. LYKOS SA (CR)	0.487	---	0.487 06/10/2016	---	---	---	---	---	101@0.427	500@0.457	---	2015	---	---	---	10,021.67	0.405	0.620	2791
10,500,000	4.00	---	---	---	---	02/08/2016	---	INTERCONTINENTAL (CR)	5.60	---	5.60 06/10/2016	---	---	---	---	---	---	1010@5.60	---	---	---	---	---	58,800.00	5.15	5.80	8674
11,233,200	0.730	---	---	---	12/07/2010	30/07/1999	---	INTERTECH SA (CR)	0.198	-2.46 €	0.203 06/10/2016	0.147	0.147	0.198	0.198	0.157	556@0.163	47@0.197	---	2015	250	4	39.30	2,224.17	0.120	0.376	9572
34,986,430	0.440	---	---	---	25/07/2008	23/02/2010	---	INTERWOOD-XYLEMPORIA (CR)	0.067	---	0.067 06/10/2016	---	---	---	---	---	9150@0.061	4760@0.073	---	2015	---	---	---	2,739.38	0.061	0.093	2353
2,566,836	0.440	---	---	---	13/08/2010	09/01/2007	---	INTERWOOD-XYLEMPORIA (PR)	0.154	---	0.154 06/10/2016	---	---	---	---	---	---	315@0.139	---	2015	---	---	---	2,739.38	0.154	0.189	2353
23,154,250	1.36	---	---	---	12/08/2008	02/08/2010	---	INTRACOM CONSTR. (CR)	0.467	3.78 #	0.450 06/10/2016	0.493	0.446	0.493	0.467	0.458	1000@0.453	852@0.465	---	2015	6,617	30	3,030.68	10,813.03	0.222	0.599	2357
133,025,996	1.41	---	---	---	03/07/2007	07/01/2002	---	INTRACOM HOLDINGS (CR)	0.326	9.03 #	0.299 06/10/2016	0.300	0.300	0.335	0.326	0.322	657@0.325	500@0.330	---	2015	677,640	559	218,469.95	43,366.47	0.245	0.394	9578
158,961,721	0.300	---	---	---	30/05/2013	14/11/2007	---	INTRALOT (CR)	1.36	5.43 #	1.29 06/10/2016	1.29	1.28	1.37	1.36	1.33	2500@1.31	4631@1.36	---	2015	238,200	233	316,892.08	216,187.94	0.815	1.37	5752
77,654,850	0.580	---	---	---	01/07/2011	21/02/2003	---	J & P - AVAX SA (CR)	0.479	5.04 #	0.456 06/10/2016	0.457	0.440	0.488	0.479	0.466	102@0.470	3150@0.481	---	2015	91,536	191	42,				

Number of Outstanding Securities	Nominal Value	Dividends [1]			Date of Last Coupon		Note	Shares	Closing price	% change	Previous closing price/date	Open price	Price min	Price max	Last price	Avg price	Last Bid [7]	Last Ask [7]	P/E after	Year	Volume	Trades	Transactions Value[8]	Company Mkt Value (thou. €)	Year low	Year high	Sector[4]		
		2013	2014	2015	Dividend [2]	Right																							
Main Market																													
9,742,920	0.400	0.01	0.01	0.01	12/08/2016	14/07/2000	---	KARAMOLEGOS SA (CR)	1.49	---	↘	1.49	06/10/2016	---	---	---	---	609@1.49	---	-(6)-	2015	---	---	---	14,516.95	0.601	1.65	3577	
14,679,792	1.68	---	---	---	24/06/2014	04/09/2000	---	KARATZIS SA (CR)	4.12	---	↘	4.12	06/10/2016	4.10	4.10	4.12	4.12	4.11	220@4.00	50@4.10	11.83	2015	200	4	821.80	60,480.74	3.40	4.12	2723
13,202,756	0.350	---	---	---	01/07/2004	05/08/2014	---	KEKROPS SA (CR)	0.345	7.48	#	0.321	06/10/2016	0.321	0.321	0.350	0.345	0.337	300@0.322	3@0.345	---	2015	5,320	15	1,792.87	4,554.95	0.175	0.350	8633
7,595,160	0.600	---	---	---	08/08/2008	18/08/2010	---	KIRIAKOULIS SHIPPING SA (CR)	0.721	---	↘	0.721	06/10/2016	---	---	---	---	---	2135@0.649	89.77	2015	---	---	---	5,476.11	0.220	0.721	5759	
23,648,700	0.350	---	---	---	13/07/2011	31/03/2015	---	KLEEMAN HELLAS SA (CR)	2.02	---	↘	2.02	06/10/2016	2.02	2.02	2.03	2.02	2.026389673@2.02	3000@2.39	24.37	2015	8,789	8	17,753.83	47,770.37	1.21	2.04	2757	
40,219,218	0.300	---	---	---	25/05/2009	09/07/2013	---	KLOUKINAS - LAPPAS SA (CR)	0.260	-0.76	€	0.262	06/10/2016	0.263	0.250	0.263	0.262	0.260	115@0.255	3842@0.262	---	2015	4,130	16	1,071.82	10,457.00	0.218	0.353	2357
21,224,340	0.420	---	---	---	02/07/2008	25/04/2006	---	KORDELLOS BROS SA (CR)	0.363	---	↘	0.363	06/10/2016	---	---	---	---	---	816@0.327	---	2015	---	---	---	7,704.44	0.167	0.373	1757	
13,586,500	0.390	---	---	---	25/06/2010	28/05/2008	---	KORRES (CR)	3.02	3.42	#	2.92	06/10/2016	2.98	2.98	3.14	3.02	3.07	100@3.01	7794@3.02	---	2015	12,005	36	36,835.70	41,031.23	2.79	3.90	3767
29,480,000	0.420	---	---	---	19/07/2010	01/08/2007	---	KRETA FARM SA (CR)	0.441	-0.23	€	0.442	06/10/2016	0.440	0.421	0.447	0.441	0.429	200@0.423	2111@0.440	---	2015	16,460	35	7,067.64	13,000.68	0.300	0.610	3577
33,065,136	0.380	---	0.06	0.06	18/08/2016	16/09/2013	---	KRI-KRI S.A. (CR)	1.68	---	↘	1.68	06/10/2016	---	---	---	---	---	300@1.59	200@1.70	14.45	2015	---	---	---	55,549.43	1.50	1.90	3577
15,804,800	0.360	---	---	---	15/06/2010	12/03/2004	---	KTIMA KOSTAS LAZARIDIS SA (CR)	0.389	-0.26	€	0.390	06/10/2016	0.320	0.320	0.389	0.389	0.338	299@0.320	9@0.389	---	2015	20	3	6.75	6,148.07	0.166	0.534	3535
23,719,554	0.990	---	0.2406	---	14/08/2015	15/09/2014	---	KYRIAKIDIS MARBLES SA (CR)	3.00	---	↘	3.00	06/10/2016	3.03	3.00	3.03	3.00	3.01	80@3.00	200@3.03	11.48	2015	820	4	2,467.00	71,158.66	2.11	3.25	2353
79,721,775	0.300	---	---	---	30/05/2007	23/06/2014	---	LAMDA DEVELOPMENT SA (CR)	4.75	1.06	#	4.70	06/10/2016	4.61	4.61	4.75	4.75	4.70	645@4.65	1864@4.75	---	2015	10,391	66	48,870.94	378,678.43	3.12	5.08	8633
21,364,000	1.12	---	---	---	05/07/2010	10/08/2005	---	LAMPSA HOTEL SA (CR)	17.30	0.58	#	17.20	06/10/2016	17.00	17.00	17.30	17.30	17.05	50@16.50	17@17.00	78.72	2015	20	2	340.90	369,597.20	15.32	18.00	5753
5,939,268	0.620	---	---	---	10/07/2003	03/01/2002	---	LANAKAM SA (CR)	0.590	---	↘	0.590	06/10/2016	---	---	---	---	---	---	672@0.531	---	2015	---	---	---	3,504.17	0.570	0.638	3763
4,740,000	0.860	---	---	---	14/03/2003	---	---	LOGISMOS S.A. (CR)	0.265	9.96	#	0.241	06/10/2016	0.265	0.253	0.265	0.265	0.260	119@0.265	---	---	2015	10,180	11	2,645.84	1,256.10	0.219	0.489	9533
17,125,062	0.940	---	---	---	01/06/2010	18/07/2016	---	LOULIS MILLS SA (CR)	1.60	---	↘	1.60	06/10/2016	---	---	---	---	---	101@1.46	298@1.62	46.76	2015	---	---	---	27,400.10	1.30	1.83	3577
939,510,748	0.300	---	---	---	26/04/2007	29/08/2014	---	MARFIN INVESTMENT GROUP (CR)	0.125	2.46	#	0.122	06/10/2016	0.122	0.122	0.125	0.125	0.123	18972@0.124	72000@0.126	---	2015	908,907	208	111,866.46	117,438.84	0.048	0.222	8775
9,819,370	0.690	---	---	---	14/08/2007	09/01/2004	---	MATHIOS REFRACTORY SA (CR)	0.329	---	↘	0.329	06/10/2016	---	---	---	---	---	---	2448@0.326	---	2015	---	---	---	3,230.57	0.162	0.356	2353
468,700	0.65	1.48	---	---	26/04/2016	21/05/2004	---	MERMEREN KOMB. A.D. PR. (GDR)	5.20	-5.45	€	5.50	06/10/2016	5.20	5.20	5.20	5.20	5.20	100@4.90	50@5.30	0.50	2015	50	1	260.00	2,437.24	4.83	8.49	1775
51,950,600	0.320	0.3	0.5	0.12	13/05/2016	21/10/2005	---	METKA (CR)	7.40	1.51	#	7.29	06/10/2016	7.30	7.29	7.43	7.40	7.37	30@7.37	5370@7.40	22.21	2015	61,924	239	456,592.36	384,434.44	6.24	7.93	2757
10,500,000	0.950	---	---	---	24/06/2008	19/12/2013	---	MEVACO SA (CR)	0.960	---	↘	0.960	06/10/2016	---	---	---	---	---	250@0.910	200@0.979	---	2015	---	---	---	10,080.00	0.705	1.10	2757
6,700,000	0.800	0.16	0.03	0.023	27/06/2016	29/05/2014	---	MILLS KEPENOS (CR)	1.53	-10.00	€	1.70	06/10/2016	1.53	1.53	1.53	1.53	1.53	---	300@1.53	14.75	2015	10	1	15.30	10,251.00	0.880	2.21	3577
6,200,000	0.500	---	---	---	22/06/2010	01/11/1995	---	MINERVA KNITWEAR SA (CB)	0.050	---	↘	0.050	06/10/2016	---	---	---	---	---	4000@0.045	---	---	2015	---	---	---	310.00	0.045	0.092	3763
12,417,000	0.370	---	---	---	28/07/2008	06/09/2011	---	MLS MULTIMEDIA SA (CR)	3.89	0.52	#	3.87	06/10/2016	3.82	3.81	3.89	3.89	3.85	900@3.75	188@3.89	23.89	2015	4,107	39	15,807.73	48,302.13	2.75	3.91	9537
11,700,000	0.590	---	---	---	02/06/2009	24/07/2012	---	MOTODYNAMICS S.A. (CR)	0.372	4.49	#	0.356	06/10/2016	0.356	0.354	0.395	0.395	0.370	100@0.395	875@0.462	13.58	2015	14,937	19	5,521.41	4,352.40	0.227	0.549	5379
110,782,980	0.750	0.2	---	0.65	27/06/2016	04/11/2013	---	MOTOR OIL (CR)	10.67	1.04	#	10.56	06/10/2016	10.56	10.46	10.67	10.67	10.52	10000@10.50	452@10.67	5.88	2015	61,518	256	646,960.00	1,182,054.40	8.13	11.26	533
116,915,862	0.970	---	---	---	11/05/2009	19/10/2015	---	MYTILINEOS HOLDINGS (CR)	4.80	6.19	#	4.52	06/10/2016	4.52	4.48	4.84	4.80	4.68	10@4.79	14840@4.80	---	2015	577,520	1,256	2,700,269.95	561,196.14	2.70	4.84	1755
8,321,682	0.670	---	---	---	17/08/2007	23/11/1999	---	N. LEVEDERIS SA (CB)	0.277	9.05	#	0.254	06/10/2016	0.277	0.277	0.277	0.277	0.277	---	30@0.249	---	2015	38	1	10.53	2,845.24	0.138	0.385	1757
2,160,524	0.670	0.0436	0.0436	0.0436	04/08/2016	23/11/1999	---	N. LEVEDERIS SA (PB)	0.250	-13.79	€	0.290	06/10/2016	0.300	0.250	0.300	0.250	0.256	100@0.203	385@0.298	---	2015	1,650	5	422.50	2,845.24	0.202	1.25	1757
11,510,102	0.890	---	---	---	24/06/2005	06/10/1999	---	NAFPAKTOS TEXTILE IND. SA (CB)	0.110	---	↘	0.110	06/10/2016	---	---	---	---	---	500@0.103	---	---	2015	---	---	---	1,266.11	0.085	0.313	3763
6,340,000	0.600	---	---	---	30/11/2009	04/12/2015	---	NAKAS MUSIC	0.923	-7.70	€	1.00	06/10/2016	0.900	0.900	0.950	0.923	0.916	---	30@0.923	5.81	2016	5,723	20	5,244.70	5,851.82	0.600	1.11	5379
9,147,151,527	0.300	---	---	---	16/05/2008	30/11/2015	---	NATIONAL BANK (CR)	0.190	0.53	#	0.189	06/10/2016	0.189	0.186	0.192	0.190	0.189361380@0.189	135800@0.191	---	2015	26,920,489	1,415	5,095,572.71	1,737,958.79	0.099	0.340	8355	
23,935,280	0.300	---	---	---	29/06/2009	13/06/2000	---	NAYTEMPORIKI PUBLISHING SA(CR)	0.062	---	↘	0.062	06/10/2016	---	---	---	---	---	443@0.058	---	---	2015	---	---	---	1,483.99	0.049	0.097	5557
27,848,000	0.300	0.004	0.0032	0.0084	16/08/2016	02/09/2003	---	NEWSPHONE HELLAS SA (CR)	0.219	---	↘	0.219	06/10/2016	---	---	---	---	---	400@0.197	2000@0.216	9.20	2015	---	---	---	6,098.71	0.135	0.291	2791
291,282,095	0.300	---	---	---	08/07/2008	21/03/2016	---	NIREFS SA (CR)	0.150	3.45	#	0.145	06/10/2016	0.144	0.144	0.153	0.150	0.149											

Number of Outstanding Securities	Nominal Value	Dividends [1]			Date of Last Coupon Dividend [2]		Date of Right	Note	Shares	Closing price	% change	Previous closing price/date	Open price	Price min	Price max	Last price	Avg price	Last Bid [7]	Last Ask [7]	P/E after	Year	Volume	Trades	Transactions Value[8]	Company Mkt Value (thou. €)	Year low	Year high	Sector[4]
----------------------------------	---------------	---------------	--	--	----------------------------------	--	---------------	------	--------	---------------	----------	-----------------------------	------------	-----------	-----------	------------	-----------	--------------	--------------	-----------	------	--------	--------	-----------------------	-----------------------------	----------	-----------	------------

Main Market

25,000,000	2.00	0.12	0.099	0.1114	18/07/2016	08/08/2003	---	P.P.A. S.A. (CR)		12.50	-0.71 €	12.59 06/10/2016	12.59	12.40	12.62	12.50	12.49	97@12.45	512@12.50	37.31	2015	973	47	12,154.85	312,500.00	9.80	14.78	2777
4,971,466	1.46	---	---	---	04/07/2007	08/10/2003	---	PAIRIS SA (CR)		0.195	-4.88 €	0.205 06/10/2016	0.195	0.195	0.195	0.195	0.195	---	1150@0.220	---	2015	850	1	165.75	969.44	0.158	0.215	2723
3,953,090	0.900	---	0.067	0.11	26/05/2016	05/12/2012	---	PAPERPACK (CR)		1.24	--- ₹	1.24 06/10/2016	---	---	---	---	---	200@1.21	100@1.32	3.91	2015	---	---	---	4,901.83	0.651	1.38	2723
50,797,369	0.310	---	---	---	17/08/2000	12/10/2010	---	PAPOUTSANIS (CR)		0.122	0.83 #	0.121 06/10/2016	0.122	0.122	0.122	0.122	0.122	50@0.118	4792@0.122	---	2015	121	3	14.76	6,197.28	0.080	0.217	3767
7,070,400	0.930	---	---	---	18/05/2010	06/05/2016	---	PETROPOULOS PETROS (CR)		4.05	-2.88 €	4.17 06/10/2016	4.13	4.02	4.16	4.05	4.05	50@4.03	149@4.10	37.98	2015	4,790	27	19,419.01	28,635.12	3.43	4.25	2753
8,733,183,280	0.300	---	---	---	16/05/2008	27/11/2015	---	PIRAEUS BANK (CR)		0.142	2.16 #	0.139 06/10/2016	0.139	0.138	0.144	0.142	0.141	77300@0.141	574150@0.143	---	2015	7,376,721	500	1,040,574.11	1,240,112.03	0.067	0.308	8355
22,080,000	0.330	0.2	---	0.08	17/05/2016	27/04/2015	---	PLAISIO COMPUTERS SA (CR)		4.00	--- ₹	4.00 06/10/2016	4.09	3.92	4.09	4.00	3.96	60@3.93	539@4.00	13.17	2015	5,516	69	21,836.66	88,320.00	3.87	4.75	9572
232,000,000	4.60	---	0.05	---	20/07/2015	12/12/2001	---	PPC (CR)		2.71	--- ₹	2.71 06/10/2016	2.70	2.68	2.73	2.71	2.71	14022@2.70	5371@2.73	---	2015	124,151	332	336,382.29	628,720.00	2.29	4.08	7535
11,812,193	0.470	---	0.02	---	26/03/2015	15/11/2006	---	PROFILE SA (CR)		0.447	-0.22 €	0.448 06/10/2016	0.445	0.444	0.448	0.448	0.444	100@0.441	480@0.448	---	2015	15,570	14	6,914.61	5,280.05	0.388	0.546	9533
27,345,120	0.470	---	---	---	18/07/2005	26/02/2014	---	QUALITY & RELIABILITY SA (CR)		0.295	-12.72 €	0.338 06/10/2016	0.380	0.237	0.380	0.295	0.260	800@0.237	1051@0.285	---	2015	27,835	79	7,231.57	8,066.81	0.207	0.465	9533
11,921,531	3.66	---	---	---	05/09/2008	21/01/2016	---	QUEST HOLDINGS (CR)		5.00	-3.85 €	5.20 06/10/2016	5.25	5.00	5.25	5.00	5.01	1152@5.00	250@5.20	---	2015	2,174	11	10,881.75	59,607.66	3.30	5.49	9533
57,434,884	1.31	---	---	---	05/06/2008	12/06/2009	---	REDS S.A. (CR)		0.301	--- ₹	0.301 06/10/2016	---	---	---	---	---	500@0.307	---	---	2015	---	---	---	17,287.90	0.280	0.410	8633
22,280,000	0.300	---	---	---	11/04/2011	23/02/2007	---	REVOIL (CR)		0.330	-0.90 €	0.333 06/10/2016	0.331	0.330	0.331	0.330	0.330	500@0.277	100@0.330	10.61	2015	11	2	3.63	7,352.40	0.169	0.557	5379
7,500,000	0.690	0.0863	0.1	---	19/06/2015	05/07/2016	---	S.KANAKIS SA (CR)		2.50	-3.85 €	2.60 06/10/2016	2.55	2.50	2.55	2.50	2.53	50@2.46	205@2.50	10.68	2015	200	3	505.00	18,750.00	1.75	2.64	3577
52,067,296	0.300	---	---	---	23/12/2003	24/01/2007	---	SELECTED TEXT. IND. ASSOC (CR)		0.156	5.40 #	0.148 06/10/2016	0.134	0.134	0.156	0.156	0.135	100@0.136	96@0.154	---	2015	850	7	114.34	8,122.50	0.084	0.205	3763
204,235,184	0.300	---	---	---	01/07/2008	30/07/2012	---	SELONDA AQUACULTURE SA (CR)		0.150	-5.06 €	0.158 06/10/2016	0.150	0.150	0.150	0.150	0.150	67@0.150	1000@0.157	---	2015	3,136	1	470.40	30,635.28	0.074	0.273	3573
6,456,530	1.61	---	---	---	29/06/2001	02/08/2010	---	SPACE HELLAS SA (CR)		0.721	6.03 #	0.680 06/10/2016	0.701	0.701	0.721	0.721	0.710	400@0.701	330@0.742	5.49	2015	370	2	262.77	4,655.16	0.592	1.28	9578
28,438,268	0.300	---	---	---	21/08/2006	24/11/1999	---	SPIROY AGRICULTURE SA (CR)		0.699	--- ₹	0.699 06/10/2016	---	---	---	---	---	---	2910@0.630	---	2015	---	---	---	19,878.35	0.630	0.700	1357
40,693,350	5.00	---	---	---	03/07/2006	26/05/2015	---	TECHNICAL OLYMPIC SA (CR)		0.779	1.30 #	0.769 06/10/2016	0.782	0.779	0.782	0.779	0.780	100@0.720	857@0.779	---	2015	435	8	339.30	31,700.12	0.530	0.850	3728
109,314,400	0.300	---	---	0.0935	30/05/2016	05/08/2015	---	TERNA ENERGY (CR)		2.64	0.76 #	2.62 06/10/2016	2.56	2.56	2.67	2.64	2.65	1787@2.64	650@2.66	-(6)-	2015	30,334	120	80,364.87	288,590.02	1.92	3.05	7537
36,300,000	1.12	0.285	0.24	0.25	23/06/2016	12/12/2007	---	THESSALONIKA WATER & SEWERAGE		3.48	2.35 #	3.40 06/10/2016	3.42	3.40	3.54	3.48	3.54	200@3.42	224@3.48	9.32	2015	15,803	46	55,856.19	126,324.00	2.65	3.86	7577
45,094,620	0.660	0.05	0.0225	---	20/04/2015	01/11/1999	---	THRACE PLASTICS SA (CR)		1.69	-0.59 €	1.70 06/10/2016	1.68	1.65	1.69	1.69	1.67	2255@1.68	946@1.69	-(6)-	2015	5,829	22	9,721.26	76,209.91	1.25	1.73	1357
77,063,568	4.00	---	0.1551	0.3099	27/06/2016	25/06/2004	---	TITAN CEMENT (CR)		21.50	1.18 #	21.25 06/10/2016	21.03	21.01	21.50	21.50	21.38	318@21.42	1864@21.50	30.26	2015	14,238	156	304,462.95	1,738,005.96	14.86	22.40	2353
7,568,960	4.00	---	0.1551	0.3099	27/06/2016	25/06/2004	---	TITAN CEMENT CO. (PR)		10.72	-0.37 €	10.76 06/10/2016	10.72	10.69	10.82	10.72	10.71	20@10.69	145@10.72	15.09	2015	2,485	24	26,614.15	1,738,005.96	7.36	13.30	2353
10,080,000	3.00	0.6	1.95	0.58	18/07/2016	27/08/2001	---	TPA SA (CR)		18.45	-0.16 €	18.48 06/10/2016	18.49	18.45	18.50	18.45	18.50	5@18.12	174@18.45	10.38	2015	2,424	10	44,832.50	185,976.00	17.78	24.10	2777
15,627,315	0.300	---	---	---	16/11/1992	03/12/2012	---	UNIBIOS (CR)		0.106	26.19 #	0.084 06/10/2016	0.084	0.084	0.106	0.106	0.086	5@0.100	2297@0.103	---	2015	127	3	10.95	1,656.50	0.053	0.106	2353
18,810,000	0.400	---	---	---	08/07/2010	14/11/2007	---	VARVERIS - MODA BAGNO SA (CR)		0.117	--- ₹	0.117 06/10/2016	---	---	---	---	---	---	100@0.106	---	2015	---	---	---	2,200.77	0.081	0.165	2353
259,189,761		---	---	---		26/02/2016	---	VIOHALCO SA/NV (CB)		1.27	4.10 #	1.22 06/10/2016	1.22	1.20	1.28	1.27	1.23	6000@1.26	5524@1.28	---	---	186,089	313	229,668.65	329,171.00	0.928	1.67	2727
4,968,600	2.88	---	---	---	01/07/1998	14/12/1998	---	VIS SA (CR)		0.878	2.69 #	0.855 06/10/2016	0.878	0.878	0.878	0.878	0.878	1000@0.780	280@0.878	---	2015	90	1	79.02	4,362.43	0.611	1.00	2723
6,325,000	0.600	---	---	---	02/05/2014	17/02/2014	---	VOGIATZOGLOU SYSTEMS SA (CR)		1.43	--- ₹	1.43 06/10/2016	---	---	---	---	---	---	109@1.29	---	2015	---	---	---	9,044.75	0.700	1.75	2797

Exchange Traded Funds (ETFs)

619,082	---	---	---	15/06/2016	---	ALPHA ETF FTSE Athens Large Cap	15.29	---	₹	15.29	06/10/2016	---	---	---	---	---	---	---	---	---	---	---	---	---	---	---	---	---	---	---	---	---	---	---	---	---	---	---	---	---	---	---	---	---	---	---	---	---	---	---	---	---	---	---	---	---	---	---	---	---	---	---	---	---	---	---	---	---	---	---	---	---	---	---	---	---	---	---	---	---	---	---	---	---	---	---	---	---	---	---	---	---	---	---	---	---	---	---	---	---	---	---	---	---	---	---	---	---	---	---	---	---	---	---	---	---	---	---	---	---	---	---	---	---	---	---	---	---	---	---	---	---	---	---	---	---	---	---	---	---	---	---	---	---	---	---	---	---	---	---	---	---	---	---	---	---	---	---	---	---	---	---	---	---	---	---	---	---	---	---	---	---	---	---	---	---	---	---	---	---	---	---	---	---	---	---	---	---	---	---	---	---	---	---	---	---	---	---	---	---	---	---	---	---	---	---	---	---	---	---	---	---	---	---	---	---	---	---	---	---	---	---	---	---	---	---	---	---	---	---	---	---	---	---	---	---	---	---	---	---	---	---	---	---	---	---	---	---	---	---	---	---	---	---	---	---	---	---	---	---	---	---	---	---	---	---	---	---	---	---	---	---	---	---	---	---	---	---	---	---	---	---	---	---	---	---	---	---	---	---	---	---	---	---	---	---	---	---	---	---	---	---	---	---	---	---	---	---	---	---	---	---	---	---	---	---	---	---	---	---	---	---	---	---	---	---	---	---	---	---	---	---	---	---	---	---	---	---	---	---	---	---	---	---	---	---	---	---	---	---	---	---	---	---	---	---	---	---	---	---	---	---	---	---	---	---	---	---	---	---	---	---	---	---	---	---	---	---	---	---	---	---	---	---	---	---	---	---	---	---	---	---	---	---	---	---	---	---	---	---	---	---	---	---	---	---	---	---	---	---	---	---	---	---	---	---	---	---	---	---	---	---	---	---	---	---	---	---	---	---	---	---	---	---	---	---	---	---	---	---	---	---	---	---	---	---	---	---	---	---	---	---	---	---	---	---	---	---	---	---	---	---	---	---	---	---	---	---	---	---	---	---	---	---	---	---	---	---	---	---	---	---	---	---	---	---	---	---	---	---	---	---	---	---	---	---	---	---	---	---	---	---	---	---	---	---	---	---	---	---	---	---	---	---	---	---	---	---	---	---	---	---	---	---	---	---	---	---	---	---	---	---	---	---	---	---	---	---	---	---	---	---	---	---	---	---	---	---	---	---	---	---	---	---	---	---	---	---	---	---	---	---	---	---	---	---	---	---	---	---	---	---	---	---	---	---	---	---	---	---	---	---	---	---	---	---	---	---	---	---	---	---	---	---	---	---	---	---	---	---	---	---	---	---	---	---	---	---	---	---	---	---	---	---	---	---	---	---	---	---	---	---	---	---	---	---	---	---	---	---	---	---	---	---	---	---	---	---	---	---	---	---	---	---	---	---	---	---	---	---	---	---	---	---	---	---	---	---	---	---	---	---	---	---	---	---	---	---	---	---	---	---	---	---	---	---	---	---	---	---	---	---	---	---	---	---	---	---	---	---	---	---	---	---	---	---	---	---	---	---	---	---	---	---	---	---	---	---	---	---	---	---	---	---	---	---	---	---	---	---	---	---	---	---	---	---	---	---	---	---	---	---	---	---	---	---	---	---	---	---	---	---	---	---	---	---	---	---	---	---	---	---	---	---	---	---	---	---	---	---	---	---	---	---	---	---	---	---	---	---	---	---	---	---	---	---	---	---	---	---	---	---	---	---	---	---	---	---	---	---	---	---	---	---	---	---	---	---	---	---	---	---	---	---	---	---	---	---	---	---	---	---	---	---	---	---	---	---	---	---	---	---	---	---	---	---	---	---	---	---	---	---	---	---	---	---	---	---	---	---	---	---	---	---	---	---	---	---	---	---	---	---	---	---	---	---	---	---	---	---	---	---	---	---	---	---	---	---	---	---	---	---	---	---	---	---	---	---	---	---	---	---	---	---	---	---	---	---	---	---	---	---	---	---	---	---	---	---	---	---	---	---	---	---	---	---	---	---	---	---	---	---	---	---	---	---	---	---	---	---	---	---	---	---	---	---	---	---	---	---	---	---	---	---	---	---	---	---	---	---	---	---	---	---	---	---	---	---	---	---	---	---	---	---	---	---	---	---	---	---	---	---	---	---	---	---	---	---	---	---	---	---	---	---	---	---	---	---	---	---	---	---	---	---	---	---	---	---	---	---	---	---	---	---	---	---	---	---	---	---	---	---	---	---	---	---	---	---	---	---	---	---	---	---	---	---	---	---	---	---	---	---	---	---	---	---	---	---	---	---	---	---	---	---	---	---	---	---	---	---	---	---	---	---	---	---	---	---	---	---	---	---	---	---	---	---	---	---	---	---	---	---	---	---	---	---	---	---	---	---	---	---	---	---	---	---	---	---	---	---	---	---	---	---	---	---	---	---	---	---	---	---	---	---	---	---	---	---	---	---	---	---	---	---	---	---	---	---	---	---	---	---	---	---	---	---	---	---	---	---	---	---	---	---	---	---	---	---	---	---	---	---	---	---	---	---	---	---	---	---	---	---</
---------	-----	-----	-----	------------	-----	---------------------------------	-------	-----	---	-------	------------	-----	-----	-----	-----	-----	-----	-----	-----	-----	-----	-----	-----	-----	-----	-----	-----	-----	-----	-----	-----	-----	-----	-----	-----	-----	-----	-----	-----	-----	-----	-----	-----	-----	-----	-----	-----	-----	-----	-----	-----	-----	-----	-----	-----	-----	-----	-----	-----	-----	-----	-----	-----	-----	-----	-----	-----	-----	-----	-----	-----	-----	-----	-----	-----	-----	-----	-----	-----	-----	-----	-----	-----	-----	-----	-----	-----	-----	-----	-----	-----	-----	-----	-----	-----	-----	-----	-----	-----	-----	-----	-----	-----	-----	-----	-----	-----	-----	-----	-----	-----	-----	-----	-----	-----	-----	-----	-----	-----	-----	-----	-----	-----	-----	-----	-----	-----	-----	-----	-----	-----	-----	-----	-----	-----	-----	-----	-----	-----	-----	-----	-----	-----	-----	-----	-----	-----	-----	-----	-----	-----	-----	-----	-----	-----	-----	-----	-----	-----	-----	-----	-----	-----	-----	-----	-----	-----	-----	-----	-----	-----	-----	-----	-----	-----	-----	-----	-----	-----	-----	-----	-----	-----	-----	-----	-----	-----	-----	-----	-----	-----	-----	-----	-----	-----	-----	-----	-----	-----	-----	-----	-----	-----	-----	-----	-----	-----	-----	-----	-----	-----	-----	-----	-----	-----	-----	-----	-----	-----	-----	-----	-----	-----	-----	-----	-----	-----	-----	-----	-----	-----	-----	-----	-----	-----	-----	-----	-----	-----	-----	-----	-----	-----	-----	-----	-----	-----	-----	-----	-----	-----	-----	-----	-----	-----	-----	-----	-----	-----	-----	-----	-----	-----	-----	-----	-----	-----	-----	-----	-----	-----	-----	-----	-----	-----	-----	-----	-----	-----	-----	-----	-----	-----	-----	-----	-----	-----	-----	-----	-----	-----	-----	-----	-----	-----	-----	-----	-----	-----	-----	-----	-----	-----	-----	-----	-----	-----	-----	-----	-----	-----	-----	-----	-----	-----	-----	-----	-----	-----	-----	-----	-----	-----	-----	-----	-----	-----	-----	-----	-----	-----	-----	-----	-----	-----	-----	-----	-----	-----	-----	-----	-----	-----	-----	-----	-----	-----	-----	-----	-----	-----	-----	-----	-----	-----	-----	-----	-----	-----	-----	-----	-----	-----	-----	-----	-----	-----	-----	-----	-----	-----	-----	-----	-----	-----	-----	-----	-----	-----	-----	-----	-----	-----	-----	-----	-----	-----	-----	-----	-----	-----	-----	-----	-----	-----	-----	-----	-----	-----	-----	-----	-----	-----	-----	-----	-----	-----	-----	-----	-----	-----	-----	-----	-----	-----	-----	-----	-----	-----	-----	-----	-----	-----	-----	-----	-----	-----	-----	-----	-----	-----	-----	-----	-----	-----	-----	-----	-----	-----	-----	-----	-----	-----	-----	-----	-----	-----	-----	-----	-----	-----	-----	-----	-----	-----	-----	-----	-----	-----	-----	-----	-----	-----	-----	-----	-----	-----	-----	-----	-----	-----	-----	-----	-----	-----	-----	-----	-----	-----	-----	-----	-----	-----	-----	-----	-----	-----	-----	-----	-----	-----	-----	-----	-----	-----	-----	-----	-----	-----	-----	-----	-----	-----	-----	-----	-----	-----	-----	-----	-----	-----	-----	-----	-----	-----	-----	-----	-----	-----	-----	-----	-----	-----	-----	-----	-----	-----	-----	-----	-----	-----	-----	-----	-----	-----	-----	-----	-----	-----	-----	-----	-----	-----	-----	-----	-----	-----	-----	-----	-----	-----	-----	-----	-----	-----	-----	-----	-----	-----	-----	-----	-----	-----	-----	-----	-----	-----	-----	-----	-----	-----	-----	-----	-----	-----	-----	-----	-----	-----	-----	-----	-----	-----	-----	-----	-----	-----	-----	-----	-----	-----	-----	-----	-----	-----	-----	-----	-----	-----	-----	-----	-----	-----	-----	-----	-----	-----	-----	-----	-----	-----	-----	-----	-----	-----	-----	-----	-----	-----	-----	-----	-----	-----	-----	-----	-----	-----	-----	-----	-----	-----	-----	-----	-----	-----	-----	-----	-----	-----	-----	-----	-----	-----	-----	-----	-----	-----	-----	-----	-----	-----	-----	-----	-----	-----	-----	-----	-----	-----	-----	-----	-----	-----	-----	-----	-----	-----	-----	-----	-----	-----	-----	-----	-----	-----	-----	-----	-----	-----	-----	-----	-----	-----	-----	-----	-----	-----	-----	-----	-----	-----	-----	-----	-----	-----	-----	-----	-----	-----	-----	-----	-----	-----	-----	-----	-----	-----	-----	-----	-----	-----	-----	-----	-----	-----	-----	-----	-----	-----	-----	-----	-----	-----	-----	-----	-----	-----	-----	-----	-----	-----	-----	-----	-----	-----	-----	-----	-----	-----	-----	-----	-----	-----	-----	-----	-----	-----	-----	-----	-----	-----	-----	-----	-----	-----	-----	-----	-----	-----	-----	-----	-----	-----	-----	-----	-----	-----	-----	-----	-----	-----	-----	-----	-----	-----	-----	-----	-----	-----	-----	-----	-----	-----	-----	-----	-----	-----	-----	-----	-----	-----	-----	-----	-----	-----	-----	-----	-----	-----	-----	-----	-----	-----	-----	-----	-----	-----	-----	-----	-----	-----	-----	-----	-----	-----	-----	-----	-----	-----	-----	-----	-----	-----	-----	-----	-----	-----	-----	-----	-----	-----	-----	-----	-----	-----	-----	-----	-----	-----	-----	-----	-----	-----	-----	-----	-----	-----	-----	-----	-----	-----	-----	-----	-----	-----	-----	-----	-----	-----	-----	-----	-----	-----	-----	-----	-----	-----	-----	-----	-----	-----	-----	-----	-----	-----	-----	-----	-----	-----	-----	-----	-----	-----	-----	-----	-----	-----	-----	-----	-----	-----	-----	-----	-----	-----	-----	-----	-----	-----	-----	-----	-----	-----	-----	-----	-----	-----	-----	-----	-----	-----	-----	-----	-----	-----	-----	-----	-----	-----	-----	-----	-----	-----	-----	-----	-----	-----	-----	-----	-----	-----	-----	-----	-----	-----	-----	-----	-----	-----	-----	-----	-----	-----	-----	-----	-----	-----	-----	-----	-----	-----	-----	-----	-----	-----	-----	-----	-----	-----	-----	-----	-----	-----	-----	-----	-----	-----	-----	-----	-----	-----	-----	-----	-----	-----	-----	-----	-----	-----	-----	-----	-----	-----	-----	-----	-----	-----	-----	-----	-----	-----	-----	-----	-----	-----	-----	-----	-----	-----	-----	-----	-----	-----	-----	-----	-----	-----	-----	-----	-----	-----	-----	-----	-----	-----	-----	-----	-----	-----	-----	-----	-----	-----	-----	-----	-----	-----	-----	-----	-----	-----	-----	-----	-----	-----	-----	-----	-----	-----	-----	-----	-----	-----	-----	-----	-----	-----	-----	-----	-----	-----	-----	-----	-----	-----	-----	-----	-----	-----	-----	-----	-----	-----	-----	-----	-----	-----	-----	-----	-----	-----	-----	-----	-----	-----	-----	-----	-----	-----	-----	-----	-----	-----	-----	-----	-----	-----	-----	-----	-----	-----	-----	-----	-----	-----	-----	-----	-----	-----	-----	-----	-----	-----	-----	-----	-----	-----	-----	-----	-----	-----	-----	-----	-----	-----	-----	-----	-----	-----	-----	-----	-----	-----	-----	-----	-----	-----	-----	-----	-----	-----	-----	-----	-----	-----	-----	-----	-----	-----	-----	-----	-------

Low Dispersion

14,000,000	4.15	---	---	---	23/04/2010	29/06/1999	4815	ALPHA REAL ESTATE SA(CR)		5.31	--- ₹	5.31 06/10/2016	---	---	---	---	---	60@4.58	40@4.81	26.83	2015	---	---	---	74,340.00	4.11	7.30	8637
------------	------	-----	-----	-----	------------	------------	------	--------------------------	--	------	--------------	-----------------	-----	-----	-----	-----	-----	---------	---------	-------	------	-----	-----	-----	-----------	------	------	------

Number of Outstanding Securities	Nominal Value	Dividends [1]			Date of Last Coupon		Note	Shares	Closing price	% change	Previous closing price/date	Open price	Price min	Price max	Last price	Avg price	Last Bid [7]	Last Ask [7]	P/E after	Year	Volume	Trades	Transactions Value[8]	Company Mkt Value (thou. €)	Year low	Year high	Sector[4]
		2013	2014	2015	Dividend [2]	Coupon Right																					
Low Dispersion																											
63,900,000	3.00	---	---	---	23/06/2003	04/11/2008	4816	ASTIR PALACE SA (CR)	4.70	3.07 #	4.56 06/10/2016	4.64	4.64	4.71	4.70	4.72	10000@4.61	400@4.74	---	2015	130,756	105	616,611.25	300,330.00	2.90	4.71	5753
134,652,904	0.800	---	---	---	09/08/2004	08/03/2006	4814	ATHENA SA (CR)	0.040	---	0.040 06/10/2016	---	---	---	---	---	---	---	---	2015	---	---	---	5,386.12	0.018	0.130	2357
191,660,320	0.300	---	---	---	20/07/2009	29/12/2010	4817	ATTICA HOLDINGS (CR)	0.966	---	0.966 06/10/2016	---	---	---	---	---	910@0.822	1701@1.01	-(6)-	2015	---	---	---	185,143.87	0.490	1.40	5759
13,404,440	8.63	---	---	---	02/04/2001	06/03/1992	4822	IONIAN HOTELS SA (CR)	10.00	---	10.00 06/10/2016	---	---	---	---	---	50@8.00	60@10.00	61.83	2015	---	---	---	134,044.40	5.64	10.00	5753
2,760,000	11.83	8.5	9.3	8.5	15/07/2016	16/07/1990	4823	KARELIA TOBACCO CO. SA (CB)	255.00	---	255.00 06/10/2016	255.00	255.00	255.10	255.00	255.01	36@255.00	70@268.00	13.18	2015	337	7	85,939.20	703,800.00	227.20	269.00	3785
106,980,050	2.25	---	---	---	25/07/2008	24/02/2014	5046	MINOAN LINES SA (CR)	2.35	2.17 #	2.30 06/10/2016	2.30	2.30	2.40	2.40	2.35	490@2.39	20@2.40	15.51	2015	2,000	5	4,699.90	251,403.12	2.00	2.45	5759
255,494,534	3.00	---	---	0.2035	15/04/2016	23/12/2015	5104	NBG PANGAEA (CR)	3.97	---	3.97 06/10/2016	3.97	3.97	3.97	3.97	3.97	365@3.97	---	20.40	2015	254	1	1,008.38	1,014,313.30	3.22	6.03	8671
22,996,875	1.25	---	---	---	24/06/2011	02/02/2016	5116	NEXANS HELLAS SA (CR)	1.19	---	1.19 06/10/2016	---	---	---	---	---	---	750@1.19	---	2015	---	---	---	27,366.28	0.781	1.58	2733
17,240,776	0.370	---	---	---	14/07/2005	30/09/2003	4827	PERSEUS SA (CR)	0.419	---	0.419 06/10/2016	---	---	---	---	---	---	5500@0.414	3.07	2015	---	---	---	7,223.89	0.277	0.520	3577
54,888,240	1.13	0.09	---	---	25/04/2014	22/03/2006	5100	TRASTOR REAL EST. INV. CO.(CR)	0.944	---	0.944 06/10/2016	---	---	---	---	---	100@0.756	50@0.990	---	2015	---	---	---	51,814.50	0.611	1.25	8671

Surveillance																											
13,000,000	1.00	---	---	---	01/08/2007	07/04/2000	5093	AKRITAS SA (CR)	0.175	---	0.175 06/10/2016	---	---	---	---	---	---	20@0.174	---	2015	---	---	---	2,275.00	0.061	0.530	2353
14,870,100	0.300	---	---	---	15/05/2008	26/09/2011	4844	ALPHA GRISSIN S.A. (CR)	0.031	---	0.031 06/10/2016	---	---	---	---	---	2000@0.025	---	---	2015	---	---	---	460.97	0.019	0.038	9533
2,969,713	0.300	---	---	---	02/07/2008	28/02/2011	4958	ANEK LINES SA (PR, Issue '96)	0.104	---	0.104 06/10/2016	---	---	---	---	---	---	---	43.50	2015	---	---	---	11,562.96	0.104	0.240	5759
312,163	0.300	---	---	---	02/07/2008	28/02/2011	4959	ANEK LINES SA (PR, Issue '90)	0.422	---	0.422 06/10/2016	---	---	---	---	---	---	---	-(6)-	2015	---	---	---	11,562.96	0.352	1.04	5759
185,373,016	0.300	---	---	---	02/07/2008	28/02/2011	4957	ANEK LINES SA (CR)	0.060	-3.23	0.062 06/10/2016	0.060	0.060	0.060	0.060	0.060	723@0.060	5000@0.064	25.10	2015	4,455	11	267.30	11,562.96	0.050	0.103	5759
20,255,805	0.300	---	---	---	22/08/2006	02/08/2010	4881	AXON HOLDING SA (CR)	0.006	---	0.006 06/10/2016	---	---	---	---	---	14000@0.006	---	---	2015	---	---	---	121.53	0.006	0.070	4533
17,579,754	4.16	---	---	---	18/08/2006	02/08/2010	5097	BIOTER SA (CR)	0.078	-8.24	0.085 06/10/2016	0.078	0.078	0.078	0.078	0.078	---	419@0.078	---	2015	202	3	15.76	1,371.22	0.038	0.149	2357
4,034,950	0.680	---	---	---	01/07/2005	30/12/2010	5114	CHATZIKRANIOTIS & SONS SA (CR)	0.037	---	0.037 06/10/2016	---	---	---	---	---	11014@0.040	---	---	2015	---	---	---	149.29	0.037	0.119	3577
14,173,104	0.300	---	---	---	11/08/2010	28/11/2013	5055	DIONIC (CR)	0.048	2.13 #	0.047 06/10/2016	0.047	0.047	0.048	0.048	0.048	---	1000@0.047	0.15	2015	1,100	4	52.70	680.31	0.024	0.060	2797
15,878,748	0.480	---	---	---	10/07/2006	22/03/2004	5095	DOMIKI KRITIS SA (CR)	0.290	---	0.290 06/10/2016	---	---	---	---	---	---	30@0.275	---	2015	---	---	---	4,604.84	0.147	0.318	2357
3,961,300	1.28	---	---	---	29/06/2004	03/08/2000	5080	DUROS SA (CR)	0.491	---	0.491 06/10/2016	---	---	---	---	---	---	200@0.490	---	2015	---	---	---	1,945.00	0.118	0.491	3763
7,085,888	1.59	---	---	---	02/07/1996	06/09/2010	4690	ELVIEMEK (CR)	3.18	---	3.18 06/10/2016	---	---	---	---	---	---	49@2.90	---	2015	---	---	---	22,533.12	3.18	3.97	8633
6,000,000	0.600	---	---	---	13/06/2008	08/04/2004	4886	EUROBROKERS S.A. (CR)	0.009	---	0.009 06/10/2016	---	---	---	---	---	---	---	---	2015	---	---	---	54.00	0.009	0.009	8534
21,820,410	0.800	---	---	---	22/05/2008	02/08/2011	4882	EUROMEDICA SA (CR)	0.007	-12.50	0.008 06/10/2016	0.007	0.007	0.007	0.007	0.007	37980@0.007	---	---	2015	20	1	0.14	152.74	0.006	0.028	4533
110,097,185	0.300	---	---	---	19/09/2016		5118	Forthnet (CR)	0.287	-6.21	0.306 06/10/2016	0.300	0.272	0.300	0.287	0.287	1273@0.272	1000@0.300	---	2015	9,439	13	2,712.25	31,597.89	0.236	0.660	9535
50,593,832	0.300	---	---	---	07/07/2010	07/09/2011	5113	FRIGOGLASS SA (CR)	0.099	2.06 #	0.097 06/10/2016	0.097	0.097	0.101	0.099	0.099	11566@0.099	3200@0.101	---	2015	81,086	26	7,988.78	5,008.79	0.086	1.87	2757
77,376,446	0.340	---	---	---	23/05/2005	18/08/2011	5094	G.E. DIMITRIOU (CR)	0.021	---	0.021 06/10/2016	---	---	---	---	---	---	2000@0.020	---	2015	---	---	---	1,624.91	0.006	0.037	3722
1,270,000	0.300	---	---	---	06/07/2007	06/02/2013	5007	GIRAKIAN PROFIL SA (CB)	0.071	---	0.071 06/10/2016	---	---	---	---	---	3000@0.057	---	---	2015	---	---	---	90.17	0.071	0.167	1757
1,540,000	0.600	---	---	---	08/08/1994	19/09/2000	5058	J.BOUTARIS & SON HOLD. (PB)	0.046	---	0.046 06/10/2016	---	---	---	---	---	---	3000@0.055	---	2015	---	---	---	473.71	0.006	0.062	3535
25,179,640	0.600	---	---	---	08/08/1994	19/09/2000	5057	J.BOUTARIS & SON HOLD. SA (CB)	0.016	---	0.016 06/10/2016	---	---	---	---	---	2818@0.019	---	---	2015	---	---	---	473.71	0.016	0.128	3535
7,125,216	0.650	---	---	---	01/07/2005	14/12/1999	4955	KRE.KA SA (CR)	0.073	---	0.073 06/10/2016	---	---	---	---	---	4900@0.072	---	---	2015	---	---	---	520.14	0.060	0.180	3573
51,081,030	1.00	---	---	---	20/08/2007	03/09/2007	4912	LAVIPHARM SA (CR)	0.087	12.99 #	0.077 06/10/2016	0.091	0.082	0.091	0.082	0.087	3000@0.065	31998@0.082	---	2015	2,000	5	173.00	4,444.05	0.054	0.155	4577
7,734,375	1.00	---	---	---	09/07/2007	07/01/2011	5112	LIVANIS SA (CR)	0.026	---	0.026 06/10/2016	---	---	---	---	---	1299@0.022	---	---	2015	---	---	---	201.09	0.022	0.148	5557
4,419,616	1.58	---	---	---	21/07/2011	04/03/2015	4983	MEDICON S.A (CR)	0.407	-19.72	0.507 06/10/2016	0.407	0.407	0.407	0.407	0.407	400@0.407	2803@0.501	1.12	2015	194	6	78.96	1,798.78	0.321	0.790	4535
20,231,328	0.600	---	---	---	15/07/2008	25/06/2004	4879	NIKAS SA (CR)	0.110	---	0.110 06/10/2016	---	---	---	---	---	---	50@0.109	---	2015	---	---	---	2,225.45	0.070	0.132	3577
14,967,940	0.500	---	---	---	21/05/2008	04/01/2008	4956	PASAL DEVELOPMENT S.A. (CR)	0.300	---	0.300 06/10/2016	---	---	---	---	---	---	8181@0.240	---	2015	---	---	---	4,490.38	0.058	0.300	8633

Number of Outstanding Securities	Nominal Value	Dividends [1]			Date of Last Coupon		Note	Shares	Closing price	% change	Previous closing price/date	Open price	Price min	Price max	Last price	Avg price	Last Bid [7]	Last Ask [7]	P/E after	Year	Volume	Trades	Transactions Value[8]	Company Mkt Value (thou. €)	Year low	Year high	Sector[4]	
		2013	2014	2015	Dividend [2]	Right																						
Surveillance																												
18,750,000	0.300	---	---	---	02/07/2001	31/12/2012	4985	PEGASUS PUBLISHING S.A. (CR)	0.088	---	↘	0.088	06/10/2016	---	---	---	---	---	20@0.071	---	2015	---	---	---	1,650.00	0.040	0.136	5557
65,326,268	0.530	---	---	---	04/07/2007	19/07/2006	4750	SATO SA (CR)	0.116	---	↘	0.116	06/10/2016	---	---	---	---	---	14950@0.093	---	2015	---	---	---	7,577.85	0.008	0.116	3726
7,914,480	0.300	---	---	---	23/06/2008	29/06/2011	4888	SFAKIANAKIS SA (CR)	0.188	19.74	#	0.157	06/10/2016	0.188	0.188	0.188	0.188	500@0.188	---	2015	50	1	9.40	1,487.92	0.157	5.64	5379	
10,186,667	1.35	---	---	---	24/06/2008	02/02/2016	4887	SIDMA SA (CR)	0.284	---	↘	0.284	06/10/2016	---	---	---	---	---	50@0.249	---	2015	---	---	---	2,893.01	0.096	0.380	1757
4,737,503	0.320	---	---	---	22/06/2005	22/09/2015	5115	VARANGIS AVEPE S.A. (CR)	0.235	---	↘	0.235	06/10/2016	---	---	---	---	---	945@0.230	---	2015	---	---	---	1,113.31	0.235	0.300	3726
16,383,428	0.300	---	---	---	25/06/2002	21/06/2013	4997	VARVARESSOS SA (CB)	0.067	19.64	#	0.056	06/10/2016	0.067	0.067	0.067	0.067	3930@0.067	---	2015	2,270	5	152.09	1,097.69	0.006	0.172	3763	
13,191,620	0.620	---	---	---	04/08/2010	09/09/2002	4977	YALCO - CONSTANTINOU SA (CB)	0.058	---	↘	0.058	06/10/2016	---	---	---	---	---	900@0.069	---	2015	---	---	---	765.11	0.034	0.143	3722

Under Deletion																													
1,130,180	0.440	---	---	---	20/06/2003	02/07/2014	5092	COMPUCON SA (CR)	0.006	---	↘	0.006	06/10/2016	0.006	0.006	0.006	0.006	0.006	5910@0.006	---	---	2015	90	1	0.54	6.78	0.006	0.019	9537
9,567,289	0.300	---	---	---	01/07/2004	19/11/2007	5062	MARAC ELECTRONICS (CR)	0.298	---	↘	0.298	06/10/2016	---	---	---	---	---	---	36330@0.239	---	2015	---	---	---	2,851.05	0.298	0.298	9578
24,319,250	0.300	---	---	---	09/07/2002	04/07/2007	5111	PROODEFTIKH SA (CR)	0.050	---	↘	0.050	06/10/2016	0.050	0.050	0.050	0.050	0.050	6000@0.040	10000@0.049	---	2015	23,800	7	1,190.00	1,215.96	0.036	0.092	2357
766,000	1.00	---	---	---	01/07/2004	11/12/2012	4937	TRIA ALFA SA (CR)	2.59	---	↘	2.59	06/10/2016	---	---	---	---	---	---	14@2.08	---	2015	---	---	---	2,383.29	1.80	2.59	3763
245,000	1.00	---	---	---	19/07/2010	11/12/2012	4938	TRIA ALFA SA (PR)	1.63	---	↘	1.63	06/10/2016	---	---	---	---	---	---	191@1.31	---	2015	---	---	---	2,383.29	1.36	1.63	3763

Suspension Status																													
33,301,715	0.320	---	---	---	27/06/2003	08/07/2009	5121	AEGEK (CR)	0.038	---	↘	0.038	30/09/2016	---	---	---	---	---	4000@0.031	---	---	---	---	---	---	1,265.47	0.029	0.072	2357
5,000,000	0.400	---	---	---	03/06/2009	01/09/2014	5087	ALCO HELLAS SA (CR)	0.180	---	↘	0.180	31/03/2015	---	---	---	---	---	---	---	---	---	---	---	---	900.00	0.180	0.180	1753
5,025,000	0.300	---	---	---	05/07/2005	14/03/2002	5023	ALSINCO S.A (CR)	0.043	---	↘	0.043	29/11/2013	---	---	---	---	---	---	---	---	---	---	---	---	216.08	0.043	0.043	3763
215,246,452	0.300	---	---	---	25/06/2001	24/09/2001	4446	ALTEC SA (CR)	0.012	---	↘	0.012	30/11/2015	---	---	---	---	---	---	---	---	---	---	---	---	2,582.96	0.012	0.012	9533
81,644,555	0.300	---	---	---	01/07/2008	02/09/2002	5098	ATTI - KAT SA (CR)	0.012	---	↘	0.012	29/05/2015	---	---	---	---	---	---	---	---	---	---	---	---	979.73	0.012	0.012	2357
33,930,000	0.300	---	---	---	03/07/2006	30/05/2001	4865	BABIS VOVOS SA (CR)	0.304	---	↘	0.304	30/03/2012	---	---	---	---	---	---	---	---	---	---	---	---	10,314.72	0.304	0.304	8633
20,121,710	1.21	---	---	---	27/07/1992	12/03/2003	5002	BALKAN R.E. (CR)	0.190	---	↘	0.190	29/08/2013	---	---	---	---	---	---	---	---	---	---	---	---	3,823.12	0.190	0.190	8633
21,920,570	0.300	---	---	---	03/07/2007	13/12/1999	4702	CARDASSILARIS SA (CR)	0.140	---	↘	0.140	30/11/2010	---	---	---	---	---	---	---	---	---	---	---	---	3,068.88	0.140	0.140	3577
30,159,583	0.470	---	---	---	26/06/2008	29/12/2010	5047	DIAS A/C (CR)	0.050	---	↘	0.050	26/03/2014	---	---	---	---	---	---	---	---	---	---	---	---	1,507.98	0.050	0.050	3573
7,847,611	1.20	---	---	---	01/08/2007	28/09/2011	4939	EDRASIS - C. PSALLIDAS SA (CR)	0.150	---	↘	0.150	29/11/2012	---	---	---	---	---	---	---	---	---	---	---	---	1,177.14	0.150	0.150	2357
5,750,000	0.300	---	---	---	12/12/2008	12/12/2011	4929	ELECTRONIKI ATHINON SA (CR)	0.480	---	↘	0.480	28/09/2012	---	---	---	---	---	---	---	---	---	---	---	---	2,760.00	0.480	0.480	5375
36,748,909	0.730	---	---	---	15/12/2005	13/12/2006	5109	HEL. SUGAR INDUSTRY SA (CB)	0.075	---	↘	0.075	29/02/2016	---	---	---	---	---	---	---	---	---	---	---	---	2,756.17	0.064	0.150	3577
13,692,227	1.47	---	---	---	07/07/2006	08/10/1999	5049	HELLENIC FABRICS SA (CR)	0.117	---	↘	0.117	31/03/2014	---	---	---	---	---	---	---	---	---	---	---	---	1,601.99	0.117	0.117	3763
30,390,000	0.310	---	---	---	18/08/2008	29/12/2006	5099	HELLENIC FISHFARMING SA (CR)	0.070	---	↘	0.070	02/06/2015	---	---	---	---	---	---	---	---	---	---	---	---	2,127.30	0.070	0.070	3573
24,619,524	0.500	---	---	---	10/10/1986	30/12/2002	4914	KERAMIA-ALLATINI (CR)	0.088	---	↘	0.088	30/08/2012	---	---	---	---	---	---	---	---	---	---	---	---	2,166.52	0.088	0.088	8633
66,937,526	0.700	---	---	---	13/08/2010	21/05/2003	5003	MICHANIKI SA (CR)	0.100	---	↘	0.100	29/08/2013	---	---	---	---	---	---	---	---	---	---	---	---	9,186.78	0.100	0.100	2357
25,968,987	0.700	---	---	---	13/08/2010	21/05/2003	5004	MICHANIKI SA (PR)	0.096	---	↘	0.096	29/08/2013	---	---	---	---	---	---	---	---	---	---	---	---	9,186.78	0.096	0.096	2357
13,555,100	1.00	---	---	---	08/07/2005		4576	MICROLAND COMPUTERS SA (CR)	0.640	---	↘	0.640	14/07/2009	---	---	---	---	---	---	---	---	---	---	---	---	8,675.26	0.640	0.640	5379
255,459,600	0.300	---	---	---	26/06/2000	03/12/2010	5101	NEL SA (CR)	0.070	---	↘	0.070	31/08/2015	---	---	---	---	---	---	---	---	---	---	---	---	17,882.17	0.070	0.070	5759
23,463,874	0.800	---	---	---	23/05/2003	21/12/1999	4918	NEORION SA (CR)	0.125	---	↘	0.125	30/08/2012	---	---	---	---	---	---	---	---	---	---	---	---	2,932.98	0.125	0.125	2753
20,210,127	1.53	---	---	---	27/06/1997	20/03/2000	5061	PARNASSOS ENTERP. (CR)	0.070	---	↘	0.070	30/05/2014	---	---	---	---	---	---	---	---	---	---	---	---	1,414.71	0.070	0.070	8775
40,946,303	0.360	---	---	---	18/07/2005	27/11/2007	5089	PC SYSTEMS SA (CR)	0.006	---	↘	0.006	31/03/2016	---	---	---	---	---	---	---	---	---	---	---	---	245.68	0.006	0.014	9533

Number of Outstanding Securities	Nominal Value	Dividends [1]			Date of Last Coupon Dividend [2]		Note	Shares	Closing price	% change	Previous closing price/date	Open price	Price min	Price max	Last price	Avg price	Last Bid [7]	Last Ask [7]	P/E after	Year	Volume	Trades	Transactions Value[8]	Company Mkt Value (thou. €)	Year low	Year high	Sector[4]
--	------------------	---------------	--	--	-------------------------------------	--	------	--------	------------------	----------	--------------------------------	---------------	--------------	--------------	---------------	--------------	-----------------	--------------	--------------	------	--------	--------	--------------------------	--------------------------------	-------------	--------------	---------------

Suspension Status

25,667,143	0.320	---	---	---	03/07/2000	18/12/2007	4548	SAOS (CR)	1.56	---	↘ 0.780 # 31/03/2009	---	---	---	---	---	---	---	---	---	---	---	---	40,040.74	1.56	1.56	2773
26,408,040	0.300	---	---	---	01/07/1997	26/05/1999	4464	SHEET STEEL SA (CR)	0.120	---	↘ 0.120 28/11/2008	---	---	---	---	---	---	---	---	---	---	---	---	3,168.96	0.120	0.120	1757
29,060,950	0.340	---	---	---	20/08/2007	24/10/2001	5088	SPIDER METAL INDUSTRY SA (CR)	0.008	---	↘ 0.008 31/03/2015	---	---	---	---	---	---	---	---	---	---	---	---	232.49	0.008	0.008	2757
144,688,060	0.600	---	---	---	21/04/2008	10/03/2010	4982	T BANK (CR)	0.048	---	↘ 0.052 # 29/11/2011	---	---	---	---	---	---	---	---	---	---	---	---	6,945.03	0.048	0.048	8355
6,523,780	0.530	---	---	---	01/07/2002	06/03/2001	4971	TECHNICAL PUBLICATIONS SA (CR)	0.006	---	↘ 0.006 31/05/2013	---	---	---	---	---	---	---	---	---	---	---	---	39.14	0.006	0.006	5557
100,793,572	0.300	---	---	---	16/07/2009	11/02/2016	5110	TELETIPOS SA (CR)	0.060	---	↘ 0.060 07/03/2016	---	---	---	---	---	---	5@0.048	---	---	---	---	---	6,047.61	0.054	0.070	5553
13,920,000	0.320	---	---	---	19/11/2001	01/08/2000	4726	TEXAPRET SA (CR)	0.080	---	↘ 0.080 28/02/2011	---	---	---	---	---	---	---	---	---	---	---	---	1,113.60	0.080	0.080	3763
510,840	1.00	---	---	---	15/07/2008	21/11/2013	5036	TROPEA HOLDING (CR)	2.00	---	↘ 0.020 # 30/03/2012	---	---	---	---	---	---	---	---	---	---	---	---	1,021.68	2.00	2.00	3722
284,465,964	3.70	---	---	---	20/06/2008	15/06/2009	4913	TT HELLENIC POSTBANK (CR)	0.168	---	↘ 0.239 # 29/08/2012	---	---	---	---	---	---	---	---	---	---	---	---	47,790.28	0.168	0.168	8355
89,616,200	0.300	---	---	---	21/08/2000	28/06/2007	4616	UNITED TEXTILES (CR)	0.050	---	↘ 0.050 24/02/2010	---	---	---	---	---	---	---	---	---	---	---	---	4,480.81	0.050	0.050	3763
71,683,906	0.400	---	---	---	15/06/2005	05/02/2008	4953	XATZIOANNOU (CR)	0.026	---	↘ 0.026 28/03/2013	---	---	---	---	---	---	---	---	---	---	---	---	1,863.78	0.026	0.026	3763

Shares' Notes

Code	Note text
()	- Adjusted dividends.
*	- Last adjusted closing price.
[1]	- Net dividends.
[2]	- The "Date of Last Coupon" for New listings refers to the date company's stocks started to trade in Athex
[3]	- The Company Market Value is referred to the number of outstanding shares
[4]	- Sectors codification can be found in Appendix A
[5]	- The Market Value refers to the total number of shares listed (including their several classes) in the exchange by the company.
[6]	- P/E greater than 100
[7]	- Last view of the Order Book before the end of the trading session
[8]	- All Blocks Methods' Transactions Value are included.
4446	- Transfer to the "Under Supervision" Category as of 20/10/2008.
4464	- Suspension of trading as of 1/12/2008.
4548	- Suspension of trading as of 1/4/2009.
4576	- Suspension of trading as of 14/7/2009.
4616	- Suspension of trading as of 25/2/2010.
4690	- Transfer to Surveillance category as of 4/4/2006.
4702	- Suspension of trading as of 1/12/2010.
4726	- Suspension of trading as of 1/3/2011.
4750	- Transfer to the "Under Surveillance Category" from 8/4/2011.
4795	- The final gross (pre-tax) dividend is € 0.30 per share and subject to withholding tax on the full dividend amount, i.e. 0,45 per share, for those shareholders liable to withholding tax, in accordance with the applicable tax law provisions.
4814	- Transfer to the Low Dispersion Category as of 30/5/2011.
4815	- Transfer to the Low Dispersion Category as of 30/5/2011.
4816	- Transfer to the Low Dispersion Category as of 30/5/2011.
4817	- Transfer to the Low Dispersion Category as of 30/5/2011.
4822	- Transfer to the Low Dispersion category as of 30/5/2011.
4823	- Transfer to the Low Dispersion category as of 4/4/2006.
4827	- Transfer to the Low Dispersion category as of 5/5/2010.
4844	- Transfer to the Surveillance category from 8/4/2011.
4857	- The 793,906,274 new (CR) shares, resulting from the recent share capital increase through a rights issue, are not yet admitted to trading on the ATHEX.
4865	- Suspension of trading as of 2/4/2012.
4879	- Transfer to the Surveillance Category as of 10/4/2012.
4881	- Transfer to the Surveillance Category as of 10/4/2012.
4882	- Transfer to the Surveillance Category as of 10/4/2012.
4886	- Transfer to the Surveillance Category as of 10/4/2012.
4887	- Transfer to the Surveillance Category as of 10/4/2012.
4888	- Transfer to the Surveillance Category as of 10/4/2012.
4912	- Transfer to the Surveillance Category as of 31/7/2012.
4913	- Suspension of trading as of 30/8/2012.
4914	- Suspension of trading as of 31/8/2012.
4918	- Suspension of trading as of 31/8/2012.
4929	- Suspension of trading as of 1/10/2012.
4937	- Transfer to the UNDER DELETION category as of 30/11/2012.
4938	- Transfer to the UNDER DELETION category as of 30/11/2012.
4939	- Suspension of trading as of 30/11/2012.
4953	- Suspension of trading as of 2/4/2013.
4955	- Transfer to the Surveillance Category as from 5/4/2013.
4956	- Transfer to the Surveillance Category as from 5/4/2013.
4957	- Transfer to the Surveillance Category as from 5/4/2013.
4958	- Transfer to the Surveillance Category as from 5/4/2013.
4959	- Transfer to the Surveillance Category as from 5/4/2013.
4971	- Suspension of trading as of 3/6/2013.

Shares' Notes

Code	Note text
4977	- Transfer to the "Under Surveillance Category" from 11/6/2013.
4982	- Suspension of trading as of 1/12/2011.
4983	- Transfer to the Surveillance Category as of 5/4/2013.
4985	- Transfer to the "Under Surveillance Category" from 8/4/2011.
4997	- Transfer to the Under Supervision Category as of 21/12/2009. - The 6,870,053 new (CB) shares, resulting from the recent share capital increase through a rights issue, are not yet admitted to trading on the ATHEX.
5002	- Suspension of trading as of 30/08/2013.
5003	- Suspension of trading as of 30/08/2013.
5004	- Suspension of trading as of 30/08/2013.
5007	- Transfer to the Surveillance category, as of 11/10/2013.
5023	- Suspension of trading as of 2/12/2013.
5031	- The 612,300 new (CR) shares, resulting from the recent share capital increase through a rights issue, are not yet admitted to trading on the ATHEX.
5036	- The company's share is under suspension of trading as of 2/4/2012. During suspension, the company proceeded and concluded a share reverse split, according to which - after the conclusion of the corporate action - the total number of the company's shares, as well as, the last closing price of 30/03/2012 were adjusted.
5046	- Transfer to the Low Dispersion category as of 8/4/2011.
5047	- Suspension of trading as of 27/3/2014.
5049	- Under suspension of trading as of 1/4/2014.
5055	- Transfer to the Surveillance Category as of 10/4/2014.
5057	- Transfer to the Surveillance Category as of 29/12/2011.
5058	- Transfer to the Surveillance Category as of 29/12/2011.
5061	- Suspension of trading as of 2/6/2014.
5062	- Transfer to the UNDER DELETION category as of 4/6/2014.
5080	- Suspension of trading as of 6/9/2011.
5087	- Suspension of trading as of 1/4/2015.
5088	- Suspension of trading as of 1/4/2015.
5089	- Transfer to the Surveillance Category as of 8/4/2015.
5092	- Transfer to the UNDER DELETION category as of 8/4/2015.
5093	- Transfer to the Surveillance Category as of 8/4/2015.
5094	- Transfer to the Surveillance Category as of 8/4/2015.
5095	- Transfer to the Surveillance Category as from 9/4/2015.
5097	- Transfer to the Surveillance Category as of 10/4/2012.
5098	- Suspension of trading as of 2/6/2015.
5099	- Suspension of trading as of 3/6/2015.
5100	- Transfer to the Low Dispersion Category as of 24/6/2015.
5101	- Suspension of trading as of 1/9/2015.
5104	- Transfer to the "Low Dispersion" Category as of 31/10/2014. Change of the company name from "MIG REAL ESTATE R.E.I.C." to " NBG PANGAEA R.E.I.C." as of 30/12/2015.
5109	- Suspension of trading as of 01/03/2016.
5110	- Suspension of trading as of 08/03/2016.
5111	- Transfer to the Under Deletion Category as of 15/04/2016.
5112	- Transfer to the Surveillance Category as of 15/04/2016.
5113	- Transfer to the Surveillance Category as of 15/04/2016.
5114	- Transfer to the Surveillance Category as of 15/04/2016.
5115	- Transfer to the Surveillance Category as of 15/04/2016.
5116	- Transfer to the Low Dispersion Category as of 20/4/2016.
5118	- Transfer to the Surveillance Category as of 25/11/2011. Issue of a Convertible Bond Loan in progress through a rights issue. Rights' trading period on ATHEX: 22/09/2016 - 03/10/2016, pre-emption rights' subscription period: 22/09/2016 - 06/10/2016.
5121	- Suspension of trading as of 3/10/2016.

Securities Blocks Details

Securities	Block Volume	Price	Block Trade Value	Time of approval	Note
BANK OF CYPRUS (CR)	2,591,847	0.136	352,491.19	12:21:19	20
ASTIR PALACE SA (CR)	55,000	4.74	260,700.00	12:47:20	20
JUMBO SA (CR)	30,000	11.38	341,400.00	15:12:14	20
THESSALONIKA WATER & SEWERAGE	5,000	3.67	18,350.00	16:12:57	18
EUROBANK ERGASIAS (CR)	2,500,000	0.518	1,295,250.00	17:13:27	20

Blocks Notes

9 - Method 6-1 / Special Fees

10 - Method 6-1 / Special Fees, SDS

14 - Method 6-3 / Settlement, Incomplete Buy and Sell

18 - Method 6-2 / SPOT 1

19 - Method 6-2 / SPOT 2

20 - Method 6-1 and Method 6-1 Same Day Settlement

21 - Other Pre-agreed

Shares Rights Details

Occured date	Exercise from	Exercise until	Trading until	Rights	Price min	Price max	Closing price	Last Bid	Last Ask	Volume	Trades	Transactions Value
-----------------	------------------	-------------------	------------------	--------	--------------	--------------	------------------	----------	----------	--------	--------	-----------------------

No Rights Transactions.

Shares Forced Sales

Securities	Transaction s Volume	Number of Trades	Transactions Value	Note
No Forced Transactions.				

Forced Sales Notes

- 1 - Normal Forced Sale.
- 2 - Forced Sales of Fixed Registered Shares.
- 3 - Forced Sales of Remaining Stock Fractions.

Forced Sales Registered Shares

Securities	Start Date	End Date	Initial Volume	Remaining Volume	Date	Avg price (day)	Avg price (period)	Number of Trades	Transactions Volume	Transactions Value
No Fixed Registered Shares Forced Sales.										

Forced Sales Notes

According to Decision 1/380/04.05.2008 of the Hellenic Republic Capital Market Commission, the certificated registered shares that have not been deposited to the issuer for dematerialisation, will be auctioned in the Athens Exchange by the supervising issuer. Forced sales procedure is held according to Article 99A of the Athens Exchange Rulebook. The average price of the period is calculated by dividing the Total transactions value by the Total volume and includes all the transactions made until the current date.

Exchange Traded Funds (ETFs) Characteristics

	Transactions Date (T)	Creation / Redemption	Units (T-1)	New Units (T-1)	Redemptio n Units (T-	Units (T) [1]	Fund Assets [2]	Net Unit Price	Dividen d per	Dividend Date
NBGAM ETF ΓΔ Χ.Α.	07/10/2016	25,000	294,878	---	---	294,878	1,998,977.00	6.7790	---	27/10/2011
NBGAM ETF GREECE & TURKEY 30	07/10/2016	25,000	388,550	---	---	388,550	2,077,331.00	5.3464	---	27/10/2011

ETFs Notes

[1] - Units (T) = Units (T-1) + New Units (T-1) - Redemption Units (T-1)

[2] - The Creation / Redemption Units of T-1 are included.

Corporate Bonds

Num Listed Bonds	Nominal price	Issue price	Today's Rate	Exp. Date	Duration (years)	Note	Coupon		Trading	Corporate Bonds	Price min	Price max	Closing price	Previous closing price/date	Volume	Transactions Value	Last order		Date	ear min	Year max
							Common	Preferred									Price	Buy / Sell			
40,000,000	1.00	1.00	5.00	04/10/2021	5	---	1	---	1	HOUSEMARKET S.A. (Non convertible)	100.0000	100.5000	100.3956	100.0020 06/10/2016	250,000	251,232.03	100.1500	B	07/10/2016	100.0000	100.5000
1,779,209	13.76	9.77	0.00	21/10/2025	18	---	---	---	1	NIREUS S.A. (Convertible to CR shares)	---	---	---	100.0000 12/07/2016	---	---	3.0000	B	07/10/2016	10.0000	150.0000
212,237,880	1.00	1.00	6.30	29/07/2020	7	---	13	---	1	MARFIN INVESTMENT GROUP S.A. SERIES B (BOND)	---	---	---	0.8500 23/08/2013	---	---	5.0000	B	04/10/2016	0.8500	0.8500
163,009,139	1.00	1.00	7.00	29/07/2019	6	---	13	---	1	MARFIN INVESTMENT GROUP S.A. SERIES A (BOND)	---	---	---	1.0000 23/08/2013	---	---	5.0000	B	04/10/2016	1.0000	1.0000

Corporate Bonds Notes

Transactions Volume = (Pieces) * (Nominal Price). Transactions Value = (Pieces) * (Nominal Price) * (price %) + (Accrued interest).
The price of a Bond is stated as a percentage (%) of Bond's Nominal Price.
Nominal Price in Euros (€), except if it is noted differently.

Government Bonds

Number Listed Bonds	Nominal price	Today's Rate	Accrued Interest Calc	Exp. Date [1]	Duration (years)	Note	Coupons Date	Curr. coupon value	Trading Unit	Government Bonds	Price min	Price max	Closing price	Previous closing price/date	Volume	Transactions Value	Price	Last order Buy / Sell	Date
1,792,455,803	1.00	4.30	Actual/Actual	24/02/2023	11	---	24/02	4.30	1	GGB-FXD-240223-11Y-2.000-1.00	---	---	---	10.0000 22/06/2015	---	---	---	---	---
1,771,485,249	1.00	4.30	Actual/Actual	24/02/2024	12	---	24/02	4.30	1	GGB-FXD-240224-12Y-2.000-1.00	---	---	---	10.0000 22/06/2015	---	---	---	---	---
1,744,316,583	1.00	4.30	Actual/Actual	24/02/2025	13	---	24/02	4.30	1	GGB-FXD-240225-13Y-2.000-1.00	---	---	---	10.0000 22/06/2015	---	---	---	---	---
1,498,761,836	1.00	4.30	Actual/Actual	24/02/2026	14	---	24/02	4.30	1	GGB-FXD-240226-14Y-2.000-1.00	---	---	---	10.0000 22/06/2015	---	---	---	---	---
1,469,952,920	1.00	4.30	Actual/Actual	24/02/2027	15	---	24/02	4.30	1	GGB-FXD-240227-15Y-2.000-1.00	---	---	---	10.0000 22/06/2015	---	---	---	---	---
1,525,434,082	1.00	4.30	Actual/Actual	24/02/2028	16	---	24/02	4.30	1	GGB-FXD-240228-16Y-2.000-1.00	---	---	---	10.0000 22/06/2015	---	---	---	---	---
1,503,860,546	1.00	4.30	Actual/Actual	24/02/2029	17	---	24/02	4.30	1	GGB-FXD-240229-17Y-2.000-1.00	---	---	---	10.0000 22/06/2015	---	---	---	---	---
1,435,418,132	1.00	4.30	Actual/Actual	24/02/2030	18	---	24/02	4.30	1	GGB-FXD-240230-18Y-2.000-1.00	---	---	---	10.0000 22/06/2015	---	---	---	---	---
1,368,045,727	1.00	4.30	Actual/Actual	24/02/2031	19	---	24/02	4.30	1	GGB-FXD-240231-19Y-2.000-1.00	---	---	---	10.0000 22/06/2015	---	---	---	---	---
1,373,758,194	1.00	4.30	Actual/Actual	24/02/2032	20	---	24/02	4.30	1	GGB-FXD-240232-20Y-2.000-1.00	---	---	---	10.0000 22/06/2015	---	---	---	---	---
1,452,639,893	1.00	4.30	Actual/Actual	24/02/2033	21	---	24/02	4.30	1	GGB-FXD-240233-21Y-2.000-1.00	---	---	---	10.0000 22/06/2015	---	---	---	---	---
1,410,344,954	1.00	4.30	Actual/Actual	24/02/2034	22	---	24/02	4.30	1	GGB-FXD-240234-22Y-2.000-1.00	---	---	---	10.0000 22/06/2015	---	---	---	---	---
1,444,202,190	1.00	4.30	Actual/Actual	24/02/2035	23	---	24/02	4.30	1	GGB-FXD-240235-23Y-2.000-1.00	---	---	---	10.0000 22/06/2015	---	---	---	---	---
1,505,138,031	1.00	4.30	Actual/Actual	24/02/2036	24	---	24/02	4.30	1	GGB-FXD-240236-24Y-2.000-1.00	---	---	---	10.0000 22/06/2015	---	---	---	---	---
1,396,254,095	1.00	4.30	Actual/Actual	24/02/2037	25	---	24/02	4.30	1	GGB-FXD-240237-25Y-2.000-1.00	---	---	---	10.0000 22/06/2015	---	---	---	---	---
1,382,167,704	1.00	4.30	Actual/Actual	24/02/2038	26	---	24/02	4.30	1	GGB-FXD-240238-26Y-2.000-1.00	---	---	---	10.0000 22/06/2015	---	---	---	---	---
1,337,331,257	1.00	4.30	Actual/Actual	24/02/2039	27	---	24/02	4.30	1	GGB-FXD-240239-27Y-2.000-1.00	---	---	---	10.0000 22/06/2015	---	---	---	---	---
1,371,908,706	1.00	4.30	Actual/Actual	24/02/2040	28	---	24/02	4.30	1	GGB-FXD-240240-28Y-2.000-1.00	---	---	---	10.0000 22/06/2015	---	---	---	---	---
1,360,659,778	1.00	4.30	Actual/Actual	24/02/2041	29	---	24/02	4.30	1	GGB-FXD-240241-29Y-2.000-1.00	---	---	---	10.0000 22/06/2015	---	---	---	---	---
1,432,747,403	1.00	4.30	Actual/Actual	24/02/2042	30	---	24/02	4.30	1	GGB-FXD-240242-30Y-2.000-1.00	---	---	---	10.0000 22/06/2015	---	---	---	---	---
742,153	1,000.00	0.93	FLR Actual/360	10/08/2019	5	---	10/02 - 10/08	---	1	GGB-FLT-100819-05Y-0.934-1,000	---	---	---	---	---	---	---	---	---
4,030,827	1,000.00	4.75	Actual/Actual	17/04/2019	5	---	17/04	4.75	1	GGB-FXD-170419-05Y-4.750-1,000	---	---	---	---	---	---	---	---	---
2,089,066	1,000.00	3.38	Actual/Actual	17/07/2017	3	---	17/07	3.38	1	GGB-FXD-170717-03Y-3.375-1,000	---	---	---	---	---	---	---	---	---

Government Bonds Notes

Transactions Volume = (Pieces) * (Nominal Price). Transactions Value = (Pieces) * (Nominal Price) * (price %) + (Accrued interest).
The Value of current coupon for the issues with NV 0.01 euro refers to NV 100 euros
FLR: Floating Interest Rate.
[1] - The Expiration Date of the interest bearing period and the Date for coupon payment.

Bonds in Circulation	Currency / Min nominal traded Value	Coupons Payment Date	Current Coupon Value	Note	Coupon	Trading Unit	Issue Date	Duration (years)	Today's Interest	A.I.C in days	Bonds	Last price of previous days		Last Outcry in Cash (euro) Price Buy / Sell		Date	Trades in Pieces	Life min	Life Max
Corporate Bonds in Foreign Currency and Euro																			
103,746	GBP / 10	01/12	0.25	---	57	1	01/12/1930	98	2.5	360	National Mortgage Bank	2.27	05/02/1996	2.27	S	05/02/1996	---	2.27	2.27
0	GBP / 10	01/12	0.25	---	59	1	01/12/1928	100	2.5	360	National Mortgage Bank	---	---	---	---	---	---	---	---

Government Bonds Notes

A.I.C: Accrued Interest Calculation base.
FLR: Floating Interest Rate.
The minimum tradeable Nominal Value for all Demeterialised Government Titles is 100 Euros.
(μτφρ-0)

Athex & ATHEXClear Members List

Member Name			Stock Market			Derivatives Market		ATHEXCclear Member	
Address	Phone	Fax	Market Member	Remote Member	Market Maker	Proprietary	Market Maker	General Clearing	Direct Clearing
A. SARRIS SECURITIES S.A.			a						
6, DRAGATSANIOU ATHINA	+30 2103367700	210-3312324							
ALPHA FINANCE INVESTMENT SERVICES S.A.			a		a	a	a		a
5, MERLIN ATHINA	+30 2103677400	210-33311193							
ALPHA BANK A.E.								a	
40, STADIOU STR ATHINA	(210)-3260000	(210)-3264116							
	(210)-3265546	(210)-3265811							
103, AVE. ATHINON ATHINA	+30 2103436820	210-3436270							
ARGUS STOCKBROKERS LTD			a	a		a			
25 , DIMOSTHENI SEVERI AVE NICOSIA	+357 22717000	0035722717070							
ATLANTIC SECURITIES LIMITED			a	a					
37, PRODROMOU NICOSIA	+357 22445400	00357 22661914							
ATLAS SECURITIES S.A			a			a			
, 125 MICHALAKOPOULOU & 14-16 VERVENON ATHINA	+30 2103363300	210-3238925							
ATTICA BANK S.A.								a	
54, AKADIMIAS STR. ATHINA	(210)-3390757	(210)-3646090							
23, OMIROU ATHINA	+30 2103669261	210-3669265							
23, OMIROU STR. ATHINA	(210)-3669000	(210)-3669410							
AXIA VENTURES GROUP LTD			a	a					
, KRANIDIOTI 10, OFFICE 102 NICOSIA	+357 22742000	357 22742001							
AXON SECURITIES S.A.			a			a			
48, STADIOU ATHINA	+30 2103363800	210-3243903							
BANK OF AMERICA MERRILL LYNCH			a	a					
2 , KING EDWARD STREET LONDON	+44 20276281000								
BETA SECURITIES S.A.			a		a	a	a		a
29 , ALEXANDRAS AVEN. & VRAILA ATHINA	+30 2106478900	210-6410139							
BNP PARIBAS SECURITIES SERVICES S.A.								a	
, VASILISSIS SOFIAS 94 & KERASOUNTOS 1 ATHINA	+30 2107468500	210-7468579-581							
CAPITAL SECURITIES S.A.			a			a			
58, MITROPOLEOS ATHINA	+30 2103369700	+30 210 3369820							
CFS SECURITIES-INVESTMENT SERVICES S.A.			a						
3, PAPARRIGOPOULOU ATHINA	+30 2103360800	+30 210-3360980							
CITIGROUP GLOBAL MARKET LTD			a	a					
1, CITIGROUP CENTER , CANADA SQ., CANARY WHARF LONDON	+44 02079864000								
CREDIT SUISSE SECURITIES (EUROPE) LIMITED			a	a					
, ONE CABOT SQUARE LONDON	+44 2078888888								
CYCLOS SECURITIES S.A.			a			a			a
39, PANEPISTIMIOU ATHINA	+30 2103364300	+30 210-3239122							
D.A. TSEKOURAS SEC. S.A.			a						
33, STADIOU ATHINA	+30 2103245100	210-3211997							
DELTASTOCK AD									a
115, MEGAPARK OFFICE BUILDING, OFFICE AREA E, G TSARIGRADSKOGA 39	+35928115051	+35928115049							
DEUTSCHE BANK S.A.			a	a		a			
1 , GREAT WINCHESTER STREET LONDON	+44 20 754 54209	00441133361437							
DYNAMIC SECURITIES S.A.			a			a			a
8, OMIROU ATHINA	+30 2103677700	210-3677777							
EL. PETROPOULAKIS SECURITIES S.A.			a			a			
9, ARISTEIDOU ATHINA	+30 2103213928	+30 210-3216810							
ESTINVEST S.A.									a
9, TH REPUBLICII STREET FOCSANI	+40 237238900	+40 237237471							
EUROBANK ERGASIAS S.A.								a	
8, OTHONOS ATHINA	+30 2103337000	210-3245916							
8, OTHONOS STR. ATHINA	(210)-3337969	(210)-3245916							
	(210)-3337000	(210)-3233866							
EUROBANK SECURITIES INVESTMENT FIRM S.A			a		a	a	a		a
, FILELLINON 10 & XENOFONTOS 13 ATHINA	+30 2103720000	210-3720001							
EUROCORP SECURITIES S.A.			a			a			a
14, SQ.FILIKIS ETAIRIAS ATHINA	+30 2107263500	210-7263666							
EUOTRUST BROKERAGE S.A.			a						
113, SEVASTOUPOLEOS ATHINA	+30 2103363100	+30 210-3238334							
EUROXX SECURITIES S.A.			a		a	a	a		a
7, PALAIOLOGOU CHALANDRI	(210)-6879400	(210)-6879401							
7, PALEOLOGOU CHALANDRI	+30 2106879400	210-6879401							

Athex & ATHEXClear Members List

Member Name			Stock Market			Derivatives Market		ATHEXClear Member	
Address	Phone	Fax	Market Member	Remote Member	Market Maker	Proprietary	Market Maker	General Clearing	Direct Clearing
G. A. PERVANAS SECURITIES-INVESTMENT SERVICES CO S.A.			a						
7-9, SOFOKLEOUS ATHINA	+30 2103727200	210-3210-291							
GLOBAL CAPITAL SECURITIES AND FINANCIAL SERVICES LTD			a	a					
, AVE. ARCHIEPISKOPOU MAKARIOU NICOSIA	+357 22710710	357 22339332							
GUARDIAN TRUST SECURITIES S.A			a			a			
31, ERMOU ATHINA	+30 2103378700	210-3220498							
HELLENIC BANK (INVESTMENTS) LTD			a	a					
, AVE.KYRIAKOU MATSI 31 - PO BOX 24747 NICOSIA	+357 22500100	357 22500110							
HELLENICAMERICAN SEC. S.A.			a		a	a			a
27, ANDREA PAPANDREOU ATHINA	+30 2103311100	+30 210-3215968							
HSBC BANK PLC								a	
109-111, AVE. MESOGION ATHINA	+30 2106960000	210-6928000							
INDEX SECURITIES S.A.			a						
6, DRAGATSANIOU ATHINA	+30 2103213920	+30 210-3213216							
INTERFINBROK CORPORATION S.A.									a
1, STR.CALARASI NR. CONSTANTA	+40 241639071	0241-547829							
INVESTMENT BANK OF GREECE S.A.			a		a	a		a	
32 , EGIALIAS & PARADISOU MAROUSI	+30 2108173111	+30 210-6896325							
J. CHR. MAVRIKIS SECURITIES S.A.			a						
5, SOFOKLEOUS ATHINA	+30 2103216730	210-3217767							
KAPPA SECURITIES S.A.			a			a			
15, VALAORITOU ATHINA	+30 2103678600	+30 210-3641002							
KARAMANOF SECURITIES-INV. SERVICES S.A.			a			a			
2, SQ. AGION THEODORON ATHINA	+30 2103212947	+30 210-3217088							
LAIKI FINANCIAL SERVICES LTD				a					
26, AVE. VYRONOS NICOSIA	357 22367367	357 22718567							
LEON DEPOLAS SECURITIES S.A.			a		a	a			
1, CHRISTOU LADA ATHINA	+30 2103213276	+30 210-3211618							
MAGNA TRUST SECURITIES S.A			a						
12-14, KARAGIORGI SERBIAS ATHINA	+30 2103800820	210-3220910							
MEGA EQUITY SECURITIES-FINANCIAL SERVICES LTD			a	a		a			
42-44, AVE. GRIVA DIGENI NICOSIA	+357 22711711	357 22711811							
MERIT SECURITIES S.A			a		a	a			a
3, GEORGIOU SOURI ATHINA	+30 2103671890	210-3671830							
MIDAS BROKERAGE S.A.			a		a				
5, SOFOKLEOUS ATHINA	+30 2141008800	+30 210-3253205							
N. CHRYSISOCHOIDIS STOCK BROKERAGE I.S.S.A.			a			a			a
7-9, SOFOKLEOUS ATHINA	+30 2103213913	+30 210-3216115							
NATIONAL BANK OF GREECE S.A.			a			a		a	
86, AIOLOU STR. ATHINA	(210)-3341000	(210)-3228187							
68, AKADIMIAS STR. ATHINA	(210)-3328817	(210)-3328678							
NATIONAL SECURITIES S.A			a		a	a	a		
66, KIFISIAS AVE , BUILDING A ATHINA	+30 2107720000	+30 210-7720002							
NUNTIUS SECURITIES S.A			a						
6, DRAGATSANIOU ATHINA	+30 2103350599	+30210-3254846							
ONE PLUS CAPITAL LIMITED			a	a					
, 75 PRODRAMOU AVENUE, ONEWORLD PARKVIEW HOUSE, 3RD FLOOR, 22873760	+30 2103350599								
PANTELAKIS SECURITIES S.A.			a			a			
57, ETHNIKIS ANTISTASIS B CHALANDRI	+30 2106965000	210-6929550							
PEGASUS BROKERAGE FIRM S.A			a			a			
17 , VALAORITOU & AMERIKIS ATHINA	+30 2103670700	+30 210-3670760							
PIRAEUS BANK S.A.			a			a		a	
4, AMERIKIS STR. ATHINA	(210)-3335000	(210)-3335079							
4, AMERIKIS STR ATHINA	(210)-3335918	(210)-3254207							
4, AMERIKIS ATHINA	+30 2103335000	210-3335079							
PIRAEUS SECURITIES S.A.			a		a	a	a		a
5, KORAI ATHINA	+30 2103354100	210-3354170							
PRELIUM SECURITIES-INVESTMENT SERVICES S.A.			a			a			
1 , DAVAKI & KIFISIAS AVE. ATHINA	+30 2103677000	+30 210-6926403							
PROCHOICE SECURITIES LTD			a	a					
57, SPYROY KYPRIANOY NICOSIA	+357-24-661192	+357-24-662464							
SHARELINK SECURITIES-FINANCIAL SERVICES LTD			a	a		a			
6 , THEOTOKI MEGARO ELLINA NICOSIA	+357 22554200	+357 22750852							

Athex & ATHEXClear Members List

Member Name			Stock Market			Derivatives Market		ATHEXClear Member	
Address	Phone	Fax	Market Member	Remote Member	Market Maker	Proprietary	Market Maker	General Clearing	Direct Clearing
SOCIETE GENERALE S.A.			a	a		a			
, 17 COURS VALMY 92987 PUTEAUX - LA DEFENSE PARIS	+33 157290504	+33142138697							
SOLIDUS SECURITIES S.A			a			a			a
64, LOUIZIS RIANCOUR ATHINA	+30 2106900600	210-6985421							
SSIF VIENNA INVESTMENT TRUST S.A.									a
, 4 SPLAIUL UNIRII, BUILDING B3 BUCHAREST	+40 212074880	004 021 207 48 98							
ST. EM. LAVRENTAKIS SECURITIES S.A.			a			a			
7-9, SOFOKLEOUS ATHINA	+30 2103213336	+30 210-3246572							
THE CYPRUS INVESTMENT & SECURITIES CORPORATION LTD			a	a					
154, LIMASSOL AVENUE, STROVOLOS NICOSIA	+357 22121700	357 22338800							
UBS LIMITED			a	a					
1 , FINSBURY AVENUE LONDON	+44 2075687135								

List of Stocks under Market Making operations

Securities	Stock Category
Market Maker	Start Market Making
FRIGOGLASS SA (CR)	Surveillance
EUROBANK SECURITIES INVESTMENT FIRM S.A	27/10/2014
ALPHA BANK (CR)	Main Market
ALPHA FINANCE INVESTMENT SERVICES S.A.	29/02/2016
EUROBANK SECURITIES INVESTMENT FIRM S.A	24/10/2012
LEON DEPOLAS SECURITIES S.A.	04/01/2016
MERIT SECURITIES S.A	03/09/2013
MIDAS BROKERAGE S.A.	11/01/2006
NATIONAL SECURITIES S.A	15/01/2013
PIRAEUS SECURITIES S.A.	28/05/2013
ALUMIL (CR)	Main Market
BETA SECURITIES S.A.	18/07/2013
ATTICA BANK S.A. (CR)	Main Market
BETA SECURITIES S.A.	02/06/2014
EUROBANK SECURITIES INVESTMENT FIRM S.A	25/07/2014
EUROXX SECURITIES S.A.	22/01/2016
BANK OF CYPRUS (CR)	Main Market
EUROBANK SECURITIES INVESTMENT FIRM S.A	23/03/2015
NATIONAL SECURITIES S.A	22/06/2015
BYTE COMPUTER SA (CR)	Main Market
MERIT SECURITIES S.A	04/08/2013
CC HBC AG (CR)	Main Market
EUROBANK SECURITIES INVESTMENT FIRM S.A	23/10/2013
NATIONAL SECURITIES S.A	29/04/2013
PIRAEUS SECURITIES S.A.	04/05/2015
ELLAKTOR (CR)	Main Market
EUROBANK SECURITIES INVESTMENT FIRM S.A	01/06/2013
NATIONAL SECURITIES S.A	25/06/2013
ELTON SA (CR)	Main Market
BETA SECURITIES S.A.	03/09/2013
EUROBANK ERGASIAS (CR)	Main Market
ALPHA FINANCE INVESTMENT SERVICES S.A.	08/01/2013
EUROBANK SECURITIES INVESTMENT FIRM S.A	01/06/2013
HELLENICAMERICAN SEC. S.A.	25/07/2014
MIDAS BROKERAGE S.A.	07/01/2016
PIRAEUS SECURITIES S.A.	28/09/2013
EUROCONSULTANTS S.A. (CR)	Main Market
EUROBANK SECURITIES INVESTMENT FIRM S.A	22/07/2014
FOLLI FOLLIE (CR)	Main Market
NATIONAL SECURITIES S.A	17/02/2014
PIRAEUS SECURITIES S.A.	04/05/2015
FOURLIS (CR)	Main Market
HELLENICAMERICAN SEC. S.A.	14/09/2005
GEK TERNA (CR)	Main Market
HELLENICAMERICAN SEC. S.A.	07/09/2015
GR. SARANTIS SA (CR)	Main Market
BETA SECURITIES S.A.	14/05/2013
HELLENIC EXCHANGES-A.S.E. (CR)	Main Market
EUROBANK SECURITIES INVESTMENT FIRM S.A	01/06/2013
HELLENICAMERICAN SEC. S.A.	01/09/2014
NATIONAL SECURITIES S.A	25/06/2013
PIRAEUS SECURITIES S.A.	04/05/2015
HELLENIC PETROLEUM (CR)	Main Market
HELLENICAMERICAN SEC. S.A.	14/09/2015
HYGEIA SA (CR)	Main Market
HELLENICAMERICAN SEC. S.A.	18/04/2016
INTRACOM HOLDINGS (CR)	Main Market
HELLENICAMERICAN SEC. S.A.	07/09/2015
INTRALOT (CR)	Main Market
EUROBANK SECURITIES INVESTMENT FIRM S.A	01/06/2013
PIRAEUS SECURITIES S.A.	28/09/2013
J & P - AVAX SA (CR)	Main Market
EUROBANK SECURITIES INVESTMENT FIRM S.A	14/12/2015
JUMBO SA (CR)	Main Market
MIDAS BROKERAGE S.A.	27/07/2016
KLOUKINAS - LAPPAS SA (CR)	Main Market
BETA SECURITIES S.A.	22/09/2014
LAMDA DEVELOPMENT SA (CR)	Main Market
EUROBANK SECURITIES INVESTMENT FIRM S.A	08/12/2014

List of Stocks under Market Making operations

Securities	Stock Category
Market Maker	Start Market Making
MARFIN INVESTMENT GROUP (CR)	Main Market
EUROBANK SECURITIES INVESTMENT FIRM S.A	23/03/2015
HELLENICAMERICAN SEC. S.A.	25/07/2014
PIRAEUS SECURITIES S.A.	02/02/2013
MLS MULTIMEDIA SA (CR)	Main Market
HELLENICAMERICAN SEC. S.A.	07/12/2015
MOTOR OIL (CR)	Main Market
EUROBANK SECURITIES INVESTMENT FIRM S.A	23/10/2012
HELLENICAMERICAN SEC. S.A.	01/09/2014
NATIONAL SECURITIES S.A	17/02/2014
PIRAEUS SECURITIES S.A.	04/05/2015
MYTILINEOS HOLDINGS (CR)	Main Market
NATIONAL SECURITIES S.A	25/06/2013
PIRAEUS SECURITIES S.A.	04/05/2015
NATIONAL BANK (CR)	Main Market
ALPHA FINANCE INVESTMENT SERVICES S.A.	08/01/2013
EUROBANK SECURITIES INVESTMENT FIRM S.A	24/10/2012
HELLENICAMERICAN SEC. S.A.	25/07/2014
LEON DEPOLAS SECURITIES S.A.	20/04/2015
MERIT SECURITIES S.A	03/09/2013
MIDAS BROKERAGE S.A.	07/01/2016
NATIONAL SECURITIES S.A	28/02/2013
PIRAEUS SECURITIES S.A.	08/09/2013
OPAP (CR)	Main Market
ALPHA FINANCE INVESTMENT SERVICES S.A.	08/01/2013
EUROBANK SECURITIES INVESTMENT FIRM S.A	24/10/2012
HELLENICAMERICAN SEC. S.A.	25/07/2014
MIDAS BROKERAGE S.A.	04/04/2016
NATIONAL SECURITIES S.A	15/01/2013
PIRAEUS SECURITIES S.A.	04/05/2015
OTE (CR)	Main Market
ALPHA FINANCE INVESTMENT SERVICES S.A.	08/01/2013
EUROBANK SECURITIES INVESTMENT FIRM S.A	24/10/2012
HELLENICAMERICAN SEC. S.A.	25/07/2014
MIDAS BROKERAGE S.A.	01/10/2015
NATIONAL SECURITIES S.A	01/12/2012
PIRAEUS SECURITIES S.A.	08/09/2013
PAPOUTSANIS (CR)	Main Market
BETA SECURITIES S.A.	25/11/2013
PETROPOULOS PETROS (CR)	Main Market
BETA SECURITIES S.A.	28/05/2013
PIRAEUS BANK (CR)	Main Market
EUROBANK SECURITIES INVESTMENT FIRM S.A	23/10/2012
EUROXX SECURITIES S.A.	15/02/2016
HELLENICAMERICAN SEC. S.A.	25/07/2014
MERIT SECURITIES S.A	16/09/2013
MIDAS BROKERAGE S.A.	11/01/2016
NATIONAL SECURITIES S.A	02/06/2013
PIRAEUS SECURITIES S.A.	16/02/2013
PLAISIO COMPUTERS SA (CR)	Main Market
BETA SECURITIES S.A.	05/05/2014
EUROBANK SECURITIES INVESTMENT FIRM S.A	02/03/2015
PPC (CR)	Main Market
ALPHA FINANCE INVESTMENT SERVICES S.A.	08/01/2013
EUROBANK SECURITIES INVESTMENT FIRM S.A	23/10/2012
MIDAS BROKERAGE S.A.	04/04/2016
NATIONAL SECURITIES S.A	26/03/2013
PIRAEUS SECURITIES S.A.	28/09/2013
QUALITY & RELIABILITY SA (CR)	Main Market
BETA SECURITIES S.A.	20/08/2014
S.KANAKIS SA (CR)	Main Market
BETA SECURITIES S.A.	01/10/2013
TITAN CEMENT (CR)	Main Market
EUROBANK SECURITIES INVESTMENT FIRM S.A	23/10/2012
NATIONAL SECURITIES S.A	17/02/2014
PIRAEUS SECURITIES S.A.	04/05/2015
VIOHALCO SA/NV (CB)	Main Market
ALPHA FINANCE INVESTMENT SERVICES S.A.	17/02/2014
MERIT SECURITIES S.A	17/03/2014

Underlying Asset				Derivatives Market													
Price max	Price min	Closing price	change	Delivery Month	Open price	Price max	Price min	Last price	Closing price	Last Bid	Last Ask	Settlement price	Life high	Life low	Trades	Volume	Open Interest
FTSE/Athex Large Cap																	(Trade Unit: 1 Index Point x 2€, Cash Settlement)
1,529.67	1,512.17	1,523.55	0.29%	October 2016	1,514.50	1,528.00	1,511.75	1,523.25	1,523.25	---	---	1,522.50	1,580.75	---	194	2,335	5,035
				November 2016	1,517.75	1,527.25	1,508.50	1,521.25	1,521.25	---	---	1,522.00	1,543.00	---	27	776	1,402
				December 2016	---	---	---	---	1,525.00	---	---	1,525.25	1,529.00	---	---	---	3
				March 2017	---	---	---	---	1,532.75	---	---	---	---	---	---	---	---
				June 2017	---	---	---	---	1,540.50	---	---	---	---	---	---	---	---
				September 2017	---	---	---	---	1,548.25	---	---	---	---	---	---	---	---

Underlying Asset				Derivatives Market													
Price max	Price min	Closing price	change	Delivery Month	Open price	Price max	Price min	Last price	Closing price	Last Bid	Last Ask	Settlement price	Life high	Life low	Trades	Volume	Open Interest
ALPHA BANK (CR)				(Contract Size: 100 Securities, Physical Delivery)													
1.60	1.54	1.59	1.92%	December 2016	1.56	1.61	1.55	1.59	1.59	---	---	1.58	1.87	---	114	2,114	13,243
				March 2017	---	---	---	---	1.57	---	---	---	---	---	---	---	---
				June 2017	---	---	---	---	1.58	---	---	---	---	---	---	---	---
				September 2017	---	---	---	---	1.59	---	---	---	---	---	---	---	---
CC HBC AG (CR)				(Contract Size: 100 Securities, Physical Delivery)													
20.35	19.70	19.70	-3.48%	December 2016	20.30	20.30	19.74	19.74	19.74	---	---	19.57	21.05	---	40	102	88
				March 2017	---	---	---	---	20.59	---	---	---	---	---	---	---	---
				June 2017	---	---	---	---	20.70	---	---	---	---	---	---	---	---
				September 2017	---	---	---	---	20.80	---	---	---	---	---	---	---	---
CORINTH PIPEWORKS (CR)				(Contract Size: 100 Securities, Physical Delivery)													
0.632	0.611	0.632	1.12%	December 2016	0.600	0.619	0.600	0.619	0.619	---	---	0.624	0.929	---	3	5	835
				March 2017	---	---	---	---	0.631	---	---	0.655	0.850	---	---	---	---
				June 2017	---	---	---	---	0.634	---	---	---	---	---	---	---	---
				September 2017	---	---	---	---	0.637	---	---	---	---	---	---	---	---
ELLAKTOR (CR)				(Contract Size: 100 Securities, Physical Delivery)													
1.34	1.26	1.31	2.34%	December 2016	1.27	1.34	1.27	1.32	1.32	---	---	1.30	1.34	---	29	183	1,838
				March 2017	---	---	---	---	1.29	---	---	---	---	---	---	---	---
				June 2017	---	---	---	---	1.30	---	---	---	---	---	---	---	---
				September 2017	---	---	---	---	1.30	---	---	---	---	---	---	---	---
EUROBANK ERGASIAS (CR)				(Contract Size: 100 Securities, Physical Delivery)													
0.530	0.504	0.529	4.13%	December 2016	0.509	0.530	0.508	0.530	0.530	---	---	0.528	0.590	---	120	3,960	24,857
				March 2017	---	---	---	---	0.513	---	---	---	---	---	---	---	---
				June 2017	---	---	---	---	0.515	---	---	---	---	---	---	---	---
				September 2017	---	---	---	---	0.518	---	---	---	---	---	---	---	---
EYDAP S.A. (CR)				(Contract Size: 100 Securities, Physical Delivery)													
5.37	5.22	5.37	1.32%	December 2016	5.33	5.35	5.33	5.35	5.35	---	---	5.36	5.61	---	5	10	430
				March 2017	---	---	---	---	5.35	---	---	---	---	---	---	---	---
				June 2017	---	---	---	---	5.37	---	---	---	---	---	---	---	---
				September 2017	---	---	---	---	5.40	---	---	---	---	---	---	---	---
FOLLI FOLLIE (CR)				(Contract Size: 100 Securities, Physical Delivery)													
21.95	21.65	21.78	-0.18%	December 2016	21.85	21.85	21.85	21.85	21.85	---	---	21.63	22.31	---	1	1	171
				March 2017	---	---	---	---	22.02	---	---	21.57	21.97	---	---	---	1
				June 2017	---	---	---	---	22.13	---	---	---	---	---	---	---	---
				September 2017	---	---	---	---	22.24	---	---	---	---	---	---	---	---
GEK TERNA (CR)				(Contract Size: 100 Securities, Physical Delivery)													
2.05	1.94	2.05	5.67%	December 2016	1.95	2.04	1.95	2.02	2.02	---	---	2.09	2.04	---	54	502	6,770
				March 2017	---	---	---	---	1.96	---	---	---	---	---	---	---	---
				June 2017	---	---	---	---	1.97	---	---	---	---	---	---	---	---
				September 2017	---	---	---	---	1.98	---	---	---	---	---	---	---	---

Underlying Asset				Derivatives Market													
Price max	Price min	Closing price	change	Delivery Month	Open price	Price max	Price min	Last price	Closing price	Last Bid	Last Ask	Settlement price	Life high	Life low	Trades	Volume	Open Interest
GRIVALIA PROPERTIES (CR)				(Contract Size: 100 Securities, Physical Delivery)													
6.90	6.83	6.84	0.00%	December 2016	6.90	6.90	6.90	6.90	6.90	---	---	6.81	7.19	---	1	1	56
				March 2017	---	---	---	---	6.90	---	---	---	---	---	---	---	---
				June 2017	---	---	---	---	6.94	---	---	---	---	---	---	---	---
				September 2017	---	---	---	---	6.97	---	---	---	---	---	---	---	---
HELLENIC EXCHANGES-A.S.E. (CR)				(Contract Size: 100 Securities, Physical Delivery)													
4.40	4.26	4.34	0.93%	December 2016	4.29	4.40	4.29	4.40	4.40	---	---	4.34	4.43	---	35	63	390
				March 2017	---	---	---	---	4.34	---	---	---	---	---	---	---	---
				June 2017	---	---	---	---	4.36	---	---	---	---	---	---	---	---
				September 2017	---	---	---	---	4.38	---	---	---	---	---	---	---	---
HELLENIC PETROLEUM (CR)				(Contract Size: 100 Securities, Physical Delivery)													
4.05	3.95	4.01	0.25%	December 2016	3.98	4.01	3.95	4.01	4.01	---	---	4.03	4.04	---	22	100	3,549
				March 2017	---	---	---	---	4.04	---	---	---	---	---	---	---	---
				June 2017	---	---	---	---	4.06	---	---	---	---	---	---	---	---
				September 2017	---	---	---	---	4.08	---	---	---	---	---	---	---	---
INTRALOT (CR)				(Contract Size: 100 Securities, Physical Delivery)													
1.37	1.28	1.36	5.43%	December 2016	1.29	1.35	1.28	1.33	1.33	---	---	1.33	1.35	---	51	274	760
				March 2017	---	---	---	---	1.30	---	---	---	---	---	---	---	---
				June 2017	---	---	---	---	1.31	---	---	---	---	---	---	---	---
				September 2017	---	---	---	---	1.31	---	---	---	---	---	---	---	---
JUMBO SA (CR)				(Contract Size: 100 Securities, Physical Delivery)													
11.50	11.24	11.38	-1.04%	December 2016	11.16	11.19	11.04	11.04	11.04	---	---	11.16	11.69	---	5	10	163
				March 2017	---	---	---	---	11.60	---	---	---	---	---	---	---	---
				June 2017	---	---	---	---	11.66	---	---	---	---	---	---	---	---
				September 2017	---	---	---	---	11.72	---	---	---	---	---	---	---	---
MARFIN INVESTMENT GROUP (CR)				(Contract Size: 100 Securities, Physical Delivery)													
0.125	0.122	0.125	2.46%	December 2016	0.122	0.126	0.122	0.126	0.126	---	---	0.127	0.137	---	15	332	44,137
				March 2017	---	---	---	---	0.123	---	---	---	---	---	---	---	---
				June 2017	---	---	---	---	0.124	---	---	---	---	---	---	---	---
				September 2017	---	---	---	---	0.124	---	---	---	---	---	---	---	---
METKA (CR)				(Contract Size: 100 Securities, Physical Delivery)													
7.43	7.29	7.40	1.51%	December 2016	7.30	7.40	7.28	7.39	7.39	---	---	7.39	7.53	---	46	163	577
				March 2017	---	---	---	---	7.36	---	---	---	---	---	---	---	---
				June 2017	---	---	---	---	7.39	---	---	---	---	---	---	---	---
				September 2017	---	---	---	---	7.43	---	---	---	---	---	---	---	---
MOTOR OIL (CR)				(Contract Size: 100 Securities, Physical Delivery)													
10.67	10.46	10.67	1.04%	December 2016	10.47	10.50	10.47	10.50	10.50	---	---	10.50	10.53	---	4	14	279
				March 2017	---	---	---	---	10.66	---	---	---	---	---	---	---	---
				June 2017	---	---	---	---	10.71	---	---	---	---	---	---	---	---
				September 2017	---	---	---	---	10.76	---	---	---	---	---	---	---	---

Underlying Asset				Derivatives Market													
Price max	Price min	Closing price	change	Delivery Month	Open price	Price max	Price min	Last price	Closing price	Last Bid	Last Ask	Settlement price	Life high	Life low	Trades	Volume	Open Interest
MYTILNEOS HOLDINGS (CR)				(Contract Size: 100 Securities, Physical Delivery)													
4.84	4.48	4.80	6.19%	December 2016	4.51	4.83	4.50	4.80	4.80	---	---	4.80	4.83	---	323	1,260	4,479
				March 2017	---	---	---	---	4.56	---	---	4.79	---	4.28	---	---	1
				June 2017	---	---	---	---	4.58	---	---	---	---	---	---	---	---
				September 2017	---	---	---	---	4.61	---	---	---	---	---	---	---	---
NATIONAL BANK (CR)				(Contract Size: 100 Securities, Physical Delivery)													
0.192	0.186	0.190	0.53%	December 2016	0.188	0.192	0.188	0.191	0.191	---	---	0.190	0.268	---	73	4,925	69,507
				March 2017	---	---	---	---	0.191	---	---	---	---	---	---	---	---
				June 2017	---	---	---	---	0.192	---	---	---	---	---	---	---	---
				September 2017	---	---	---	---	0.193	---	---	---	---	---	---	---	---
OPAP (CR)				(Contract Size: 100 Securities, Physical Delivery)													
7.64	7.56	7.59	0.53%	December 2016	7.49	7.53	7.48	7.51	7.51	---	---	7.52	7.75	---	20	69	1,381
				March 2017	---	---	---	---	7.62	---	---	---	---	---	---	---	---
				June 2017	---	---	---	---	7.66	---	---	---	---	---	---	---	---
				September 2017	---	---	---	---	7.69	---	---	---	---	---	---	---	---
OTE (CR)				(Contract Size: 100 Securities, Physical Delivery)													
7.73	7.64	7.73	1.58%	December 2016	7.67	7.75	7.65	7.72	7.72	---	---	7.72	8.85	---	151	439	6,834
				March 2017	---	---	---	---	7.68	---	---	---	---	---	---	---	---
				June 2017	---	---	---	---	7.72	---	---	---	---	---	---	---	---
				September 2017	---	---	---	---	7.76	---	---	---	---	---	---	---	---
P.P.A. S.A. (CR)				(Contract Size: 100 Securities, Physical Delivery)													
12.62	12.40	12.50	-0.71%	December 2016	12.60	12.60	12.50	12.50	12.50	---	---	12.50	12.72	---	4	5	657
				March 2017	---	---	---	---	12.70	---	---	---	---	---	---	---	---
				June 2017	---	---	---	---	12.77	---	---	---	---	---	---	---	---
				September 2017	---	---	---	---	12.83	---	---	---	---	---	---	---	---
PIRAEUS BANK (CR)				(Contract Size: 100 Securities, Physical Delivery)													
0.144	0.138	0.142	2.16%	December 2016	0.139	0.144	0.139	0.141	0.141	---	---	0.141	0.250	---	33	2,139	76,495
				March 2017	---	---	---	---	0.140	---	---	---	---	---	---	---	---
				June 2017	---	---	---	---	0.141	---	---	---	---	---	---	---	---
				September 2017	---	---	---	---	0.142	---	---	---	---	---	---	---	---
PPC (CR)				(Contract Size: 100 Securities, Physical Delivery)													
2.73	2.68	2.71	0.00%	December 2016	2.72	2.74	2.70	2.72	2.72	---	---	2.73	2.83	---	25	103	5,863
				March 2017	---	---	---	---	2.73	---	---	---	---	---	---	---	---
				June 2017	---	---	---	---	2.75	---	---	---	---	---	---	---	---
				September 2017	---	---	---	---	2.76	---	---	---	---	---	---	---	---
TERNA ENERGY (CR)				(Contract Size: 100 Securities, Physical Delivery)													
2.67	2.56	2.64	0.76%	December 2016	2.65	2.65	2.65	2.65	2.65	---	---	2.66	2.67	---	1	4	1,197
				March 2017	---	---	---	---	2.64	---	---	---	---	---	---	---	---
				June 2017	---	---	---	---	2.66	---	---	---	---	---	---	---	---
				September 2017	---	---	---	---	2.67	---	---	---	---	---	---	---	---

Underlying Asset				Derivatives Market													
Price max	Price min	Closing price	change	Delivery Month	Open price	Price max	Price min	Last price	Closing price	Last Bid	Last Ask	Settlement price	Life high	Life low	Trades	Volume	Open Interest
TITAN CEMENT (CR)				(Contract Size: 100 Securities, Physical Delivery)													
21.50	21.01	21.50	1.18%	December 2016	21.30	21.45	21.30	21.45	21.45	---	---	21.39	21.45	---	3	3	117
				March 2017	---	---	---	---	21.44	---	---	21.10	---	20.85	---	---	---
				June 2017	---	---	---	---	21.55	---	---	---	---	---	---	---	---
				September 2017	---	---	---	---	21.66	---	---	---	---	---	---	---	---
VIOHALCO SA/NV (CB)				(Contract Size: 100 Securities, Physical Delivery)													
1.28	1.20	1.27	4.10%	December 2016	1.22	1.28	1.22	1.28	1.28	---	---	1.28	1.31	---	31	134	2,469
				March 2017	---	---	---	---	1.23	---	---	---	---	---	---	---	---
				June 2017	---	---	---	---	1.24	---	---	---	---	---	---	---	---
				September 2017	---	---	---	---	1.24	---	---	---	---	---	---	---	---

FTSE/Athex Large Cap

(Trade Unit: 1 Index Point x 2€ - Exercise Style: European, Cash Settlement)

Call Options																	Put Options																			
October 2016								November 2016								Other Months		October 2016								November 2016								Other Months		
Exerise Price	Open price	Price max	Price min	Last price	Closing price	Volume	Open Interest	Open price	Price max	Price min	Last price	Closing price	Volume	Open Interest	Volume	Open Interest	Open price	Price max	Price min	Last price	Closing price	Volume	Open Interest	Open price	Price max	Price min	Last price	Closing price	Volume	Open Interest	Volume	Open Interest	Exerise Price			
900	-	-	-	-	-	-	-	-	-	-	-	-	-	-	-	-	-	-	-	-	-	-	-	-	-	-	-	-	-	-	-	900				
950	-	-	-	-	-	-	-	-	-	-	-	-	-	-	-	-	-	-	-	-	-	-	-	-	-	-	-	-	-	-	-	950				
1,000	-	-	-	-	-	-	-	-	-	-	-	-	-	-	-	-	-	-	-	-	-	-	-	-	-	-	-	-	-	-	-	1,000				
1,050	-	-	-	-	-	-	-	-	-	-	-	-	-	-	-	-	-	-	-	-	-	-	-	-	-	-	-	-	-	-	-	1,050				
1,100	-	-	-	-	-	-	-	-	-	-	-	-	-	-	-	-	-	-	-	-	-	-	-	-	-	-	-	-	-	-	-	1,100				
1,150	-	-	-	-	-	-	-	-	-	-	-	-	-	-	-	-	-	-	-	-	-	-	-	-	-	-	-	-	-	-	-	1,150				
1,200	-	-	-	-	-	-	-	-	-	-	-	-	-	-	-	-	-	-	-	-	-	-	-	-	-	-	-	-	-	-	-	1,200				
1,250	-	-	-	-	-	-	-	-	-	-	-	-	-	-	-	-	-	-	-	-	-	-	-	-	-	-	-	-	-	-	-	1,250				
1,275	-	-	-	-	-	-	-	-	-	-	-	-	-	-	-	-	-	-	-	-	-	-	-	-	-	-	-	-	-	-	-	1,275				
1,300	-	-	-	-	-	-	-	-	-	-	-	-	-	-	-	-	-	-	-	-	-	-	-	-	-	-	-	-	-	-	-	1,300				
1,325	-	-	-	-	-	-	-	-	-	-	-	-	-	-	-	-	-	-	-	-	-	-	-	-	-	-	-	-	-	-	-	1,325				
1,350	0.00	0.00	0.00	-	169.00	-	-	0.00	0.00	0.00	-	170.00	-	-	-	-	0.00	0.00	0.00	-	0.07	-	-	0.00	0.00	0.00	-	2.40	-	3	-	-	1,350			
1,375	0.00	0.00	0.00	-	144.00	-	-	0.00	0.00	0.00	-	147.00	-	-	-	-	0.00	0.00	0.00	-	0.27	-	-	0.00	0.00	0.00	-	4.20	-	-	-	-	1,375			
1,400	0.00	0.00	0.00	-	119.00	-	-	0.00	0.00	0.00	-	125.00	-	10	-	-	0.00	0.00	0.00	-	0.82	-	24	0.00	0.00	0.00	-	7.10	-	1	-	-	1,400			
1,425	0.00	0.00	0.00	-	96.00	-	1	0.00	0.00	0.00	-	105.00	-	-	-	-	0.00	0.00	0.00	-	2.20	-	18	9.90	9.90	9.90	9.90	9.90	1	26	-	-	1,425			
1,450	0.00	0.00	0.00	-	73.50	-	39	0.00	0.00	0.00	-	85.50	-	-	-	-	0.00	0.00	0.00	-	4.90	-	23	16.50	16.50	16.50	16.50	16.50	2	4	-	-	1,450			
1,475	0.00	0.00	0.00	-	53.50	-	9	0.00	0.00	0.00	-	68.50	-	2	-	-	0.00	0.00	0.00	-	10.00	-	42	21.75	21.75	20.50	21.50	21.50	120	83	-	-	1,475			
1,500	0.00	0.00	0.00	-	37.00	-	14	0.00	0.00	0.00	-	53.50	-	40	-	-	0.00	0.00	0.00	-	18.25	-	19	0.00	0.00	0.00	-	35.25	-	1	-	-	1,500			
1,525	20.00	24.25	20.00	24.25	24.25	20	358	37.00	42.25	36.00	42.25	42.25	70	111	-	-	20.00	24.25	0.00	-	30.00	-	4	0.00	0.00	0.00	-	47.50	-	-	-	-	1,525			
1,550	0.00	0.00	0.00	-	14.25	-	652	0.00	0.00	0.00	-	30.75	-	40	-	-	0.00	0.00	0.00	-	45.50	-	20	0.00	0.00	0.00	-	62.00	-	1	-	-	1,550			
1,575	0.00	0.00	0.00	-	7.80	-	9	0.00	0.00	0.00	-	22.25	-	21	-	-	0.00	0.00	0.00	-	64.00	-	10	0.00	0.00	0.00	-	78.50	-	1	-	-	1,575			
1,600	3.00	3.50	3.00	3.50	3.50	11	321	13.50	16.00	13.50	16.00	16.00	2	24	-	-	3.00	3.50	0.00	-	85.00	-	20	0.00	0.00	0.00	-	97.00	-	-	-	-	1,600			
1,625	0.00	0.00	0.00	-	1.90	-	35	0.00	0.00	0.00	-	11.00	-	-	-	-	0.00	0.00	0.00	-	108.00	-	-	0.00	0.00	0.00	-	117.00	-	-	-	-	1,625			
1,650	0.00	0.00	0.00	-	0.81	-	38	0.00	0.00	0.00	-	7.40	-	20	-	-	0.00	0.00	0.00	-	132.00	-	-	0.00	0.00	0.00	-	139.00	-	-	-	-	1,650			
1,675	0.00	0.00	0.00	-	0.32	-	-	0.00	0.00	0.00	-	4.80	-	-	-	-	0.00	0.00	0.00	-	156.00	-	-	0.00	0.00	0.00	-	161.00	-	-	-	-	1,675			
1,700	0.00	0.00	0.00	-	0.12	-	13	0.00	0.00	0.00	-	3.10	-	-	-	-	0.00	0.00	0.00	-	181.00	-	-	0.00	0.00	0.00	-	184.00	-	-	-	-	1,700			
1,725	-	-	-	-	-	-	-	-	-	-	-	-	-	-	-	-	-	-	-	-	-	-	-	-	-	-	-	-	-	-	-	1,725				
1,750	-	-	-	-	-	-	-	-	-	-	-	-	-	-	-	-	-	-	-	-	-	-	-	-	-	-	-	-	-	-	-	1,750				
1,775	-	-	-	-	-	-	-	-	-	-	-	-	-	-	-	-	-	-	-	-	-	-	-	-	-	-	-	-	-	-	-	1,775				
1,800	-	-	-	-	-	-	-	-	-	-	-	-	-	-	-	-	-	-	-	-	-	-	-	-	-	-	-	-	-	-	-	1,800				
1,825	-	-	-	-	-	-	-	-	-	-	-	-	-	-	-	-	-	-	-	-	-	-	-	-	-	-	-	-	-	-	-	1,825				
1,850	-	-	-	-	-	-	-	-	-	-	-	-	-	-	-	-	-	-	-	-	-	-	-	-	-	-	-	-	-	-	-	1,850				
1,900	-	-	-	-	-	-	-	-	-	-	-	-	-	-	-	-	-	-	-	-	-	-	-	-	-	-	-	-	-	-	-	1,900				
1,950	-	-	-	-	-	-	-	-	-	-	-	-	-	-	-	-	-	-	-	-	-	-	-	-	-	-	-	-	-	-	-	1,950				
2,000	-	-	-	-	-	-	-	-	-	-	-	-	-	-	-	-	-	-	-	-	-	-	-	-	-	-	-	-	-	-	-	2,000				
2,050	-	-	-	-	-	-	-	-	-	-	-	-	-	-	-	-	-	-	-	-	-	-	-	-	-	-	-	-	-	-	-	2,050				

FTSE/Athex Large Cap (Trade Unit: 1 Index Point x 2€ - Exercise Style: European, Cash Settlement)

Call Options																	Put Options																		
Exercise Price	October 2016							November 2016							Other Months		October 2016							November 2016							Other Months		Exercise Price		
	Open price	Price max	Price min	Last price	Closing price	Volume	Open Interest	Open price	Price max	Price min	Last price	Closing price	Volume	Open Interest	Volume	Open Interest	Open price	Price max	Price min	Last price	Closing price	Volume	Open Interest	Open price	Price max	Price min	Last price	Closing price	Volume	Open Interest	Volume	Open Interest			
2,100	-	-	-	-	-	-	-	-	-	-	-	-	-	-	-	-	-	-	-	-	-	-	-	-	-	-	-	-	-	-	-	2,100			
Totals:						31	1,489							72	268	0	250							0	180							123	120	0	12
Number of Trades:						4							9	0								0							9	0					

ALPHA BANK (CR)

(Contract Size: 100 Securities, Exercise Style: American, Physical Delivery)

Call Options																	Put Options																								
Exercise Price	October 2016							November 2016							Other Months		October 2016								November 2016							Other Months		Exercise Price							
	Open price	Price max	Price min	Last price	Closing price	Volume	Open Interest	Open price	Price max	Price min	Last price	Closing price	Volume	Open Interest	Volume	Open Interest	Open price	Price max	Price min	Last price	Closing price	Volume	Open Interest	Open price	Price max	Price min	Last price	Closing price	Volume	Open Interest	Volume	Open Interest									
0.800																																		0.008							
0.850																																		0.009							
0.900																																		0.009							
0.950																																		0.010							
1.000	0.000	0.000	0.000		0.561	-	-	0.000	0.000	0.000		0.563	-	-			0.000	0.000	0.000		0.001	-	-	0.000	0.000	0.000		0.001	-	-			0.010								
1.100	0.000	0.000	0.000		0.461	-	-	0.000	0.000	0.000		0.466	-	-			0.000	0.000	0.000		0.002	-	-	0.000	0.000	0.000		0.003	-	-			0.011								
1.200	0.000	0.000	0.000		0.362	-	-	0.000	0.000	0.000		0.373	-	-			0.000	0.000	0.000		0.001	-	-	0.000	0.000	0.000		0.011	-	-			0.012								
1.300	0.000	0.000	0.000		0.265	-	-	0.000	0.000	0.000		0.288	-	-			0.000	0.000	0.000		0.004	-	-	0.000	0.000	0.000		0.025	-	-			0.013								
1.400	0.000	0.000	0.000		0.177	-	-	0.000	0.000	0.000		0.214	-	-			0.000	0.000	0.000		0.016	-	-	0.000	0.000	0.000		0.050	-	-			0.014								
1.500	0.000	0.000	0.000		0.106	-	-	0.166	0.166	0.166	0.166	0.166	50	50			0.000	0.000	0.000		0.045	-	-	0.000	0.000	0.000		0.090	-	-			0.015								
1.600	0.000	0.000	0.000		0.056	-	-	0.000	0.000	0.000		0.105	-	-			0.000	0.000	0.000		0.094	-	-	0.000	0.000	0.000		0.142	-	-			0.016								
1.700	0.000	0.000	0.000		0.026	-	50	0.000	0.000	0.000		0.070	-	-			0.000	0.000	0.000		0.165	-	-	0.000	0.000	0.000		0.206	-	-			0.017								
1.800	0.000	0.000	0.000		0.010	-	-	0.000	0.000	0.000		0.045	-	-			0.000	0.000	0.000		0.249	-	-	0.000	0.000	0.000		0.281	-	-			0.018								
1.900	0.000	0.000	0.000		0.004	-	-	0.000	0.000	0.000		0.028	-	-			0.000	0.000	0.000		0.343	-	-	0.000	0.000	0.000		0.364	-	-			0.019								
2.000	0.000	0.000	0.000		0.001	-	-	0.000	0.000	0.000		0.017	-	-			0.000	0.000	0.000		0.441	-	-	0.000	0.000	0.000		0.454	-	-			0.020								
2.200	0.000	0.000	0.000		0.001	-	-	0.000	0.000	0.000		0.006	-	-			0.000	0.000	0.000		0.640	-	-	0.000	0.000	0.000		0.643	-	-			0.022								
2.400	0.000	0.000	0.000		0.002	-	-	0.000	0.000	0.000		0.002	-	-			0.000	0.000	0.000		0.840	-	-	0.000	0.000	0.000		0.840	-	-			0.024								
2.600	0.000	0.000	0.000		0.001	-	-	0.000	0.000	0.000		0.001	-	-			0.000	0.000	0.000		1.04	-	-	0.000	0.000	0.000		1.04	-	-			0.026								
2.800																																		0.028							
3.000																																		0.030							
3.200																																		0.032							
3.400																																		0.034							
3.600																																		0.036							
Totals:						0	50							50	50	0	0							0	0							0	80	0	0						
Number of Trades:						0							1							0							0.00							0							0

NATIONAL BANK (CR)

(Contract Size: 100 Securities, Exercise Style: American, Physical Delivery)

Call Options																	Put Options																			
October 2016								November 2016								Other Months		October 2016								November 2016								Other Months		
Exerise Price	Open price	Price max	Price min	Last price	Closing price	Volume	Open Interest	Open price	Price max	Price min	Last price	Closing price	Volume	Open Interest	Volume	Open Interest	Open price	Price max	Price min	Last price	Closing price	Volume	Open Interest	Open price	Price max	Price min	Last price	Closing price	Volume	Open Interest	Volume	Open Interest	Exerise Price			
0.050	0.000	0.000	0.000		0.139	-	-	0.000	0.000	0.000		0.139	-	-			0.000	0.000	0.000		0.001	-	-	0.000	0.000	0.000		0.001	-	-			0.001			
0.100	0.000	0.000	0.000		0.090	-	-	0.000	0.000	0.000		0.090	-	-			0.000	0.000	0.000		0.001	-	-	0.000	0.000	0.000		0.001	-	-			0.001			
0.150	0.000	0.000	0.000		0.050	-	-	0.000	0.000	0.000		0.050	-	-			0.000	0.000	0.000		0.011	-	-	0.000	0.000	0.000		0.011	-	-			0.002			
0.200	0.000	0.000	0.000		0.025	-	-	0.000	0.000	0.000		0.025	-	-			0.000	0.000	0.000		0.035	-	-	0.000	0.000	0.000		0.035	-	-			0.002			
0.250	0.000	0.000	0.000		0.011	-	-	0.000	0.000	0.000		0.011	-	-			0.000	0.000	0.000		0.072	-	-	0.000	0.000	0.000		0.072	-	-			0.003			
0.300	0.000	0.000	0.000		0.005	-	-	0.000	0.000	0.000		0.005	-	-			0.000	0.000	0.000		0.116	-	-	0.000	0.000	0.000		0.116	-	-			0.003			
0.350	0.000	0.000	0.000		0.002	-	-	0.000	0.000	0.000		0.002	-	-			0.000	0.000	0.000		0.163	-	-	0.000	0.000	0.000		0.163	-	-			0.004			
0.400	0.000	0.000	0.000		0.001	-	-	0.000	0.000	0.000		0.001	-	-			0.000	0.000	0.000		0.212	-	-	0.000	0.000	0.000		0.212	-	-			0.004			
0.450	0.000	0.000	0.000		0.001	-	-	0.000	0.000	0.000		0.001	-	-			0.000	0.000	0.000		0.261	-	-	0.000	0.000	0.000		0.261	-	-			0.005			
0.500	-							-							-							-							0.005							
0.550	-							-							-							-							0.006							
0.600	-							-							-							-							0.006							
Totals:							0	0	0							0	0							0	0	0							0	0		
Number of Trades:							0	0							0	0.00							0	0							0					

OPAP (CR)

(Contract Size: 100 Securities, Exercise Style: American, Physical Delivery)

Call Options																	Put Options																			
October 2016								November 2016								Other Months		October 2016								November 2016								Other Months		
Exercise Price	Open price	Price max	Price min	Last price	Closing price	Volume	Open Interest	Open price	Price max	Price min	Last price	Closing price	Volume	Open Interest	Volume	Open Interest	Open price	Price max	Price min	Last price	Closing price	Volume	Open Interest	Open price	Price max	Price min	Last price	Closing price	Volume	Open Interest	Volume	Open Interest	Exercise Price			
3.600						-	-							-	-							-	-					-	-			0.036				
3.800						-	-							-	-							-	-					-	-			0.038				
4.000						-	-							-	-							-	-					-	-			0.040				
4.400						-	-							-	-							-	-					-	-			0.044				
4.800	0.000	0.000	0.000		2.75	-	-							-	-		0.000	0.000	0.000		0.001	-	-					-	-			0.048				
5.200	0.000	0.000	0.000		2.35	-	-	0.000	0.000	0.000		2.36	-	-		0.000	0.000	0.000		0.001	-	-	0.000	0.000	0.000		0.001	-	-			0.052				
5.600	0.000	0.000	0.000		1.95	-	-	0.000	0.000	0.000		1.96	-	-		0.000	0.000	0.000		0.001	-	10	0.000	0.000	0.000		0.001	-	-			0.056				
6.000	0.000	0.000	0.000		1.56	-	-	0.000	0.000	0.000		1.57	-	-		0.000	0.000	0.000		0.001	-	10	0.000	0.000	0.000		0.007	-	-			0.060				
6.400	0.000	0.000	0.000		1.16	-	-	0.000	0.000	0.000		1.19	-	-		0.000	0.000	0.000		0.005	-	-	0.000	0.000	0.000		0.027	-	-			0.064				
6.800	0.000	0.000	0.000		0.786	-	-	0.000	0.000	0.000		0.848	-	-		0.000	0.000	0.000		0.030	-	-	0.000	0.000	0.000		0.082	-	-			0.068				
7.200	0.000	0.000	0.000		0.463	-	-	0.000	0.000	0.000		0.560	-	-		0.000	0.000	0.000		0.107	-	-	0.176	0.179	0.169	0.169	0.169	25	35			0.072				
7.600	0.000	0.000	0.000		0.233	-	65	0.000	0.000	0.000		0.338	-	-		0.000	0.000	0.000		0.277	-	10	0.377	0.377	0.360	0.360	0.360	15	15			0.076				
8.000	0.000	0.000	0.000		0.097	-	40	0.000	0.000	0.000		0.188	-	10		0.000	0.000	0.000		0.541	-	-	0.000	0.000	0.000		0.621	-	-			0.080				
8.400	0.000	0.000	0.000		0.033	-	-	0.000	0.000	0.000		0.095	-	10		0.000	0.000	0.000		0.878	-	-	0.000	0.000	0.000		0.930	-	-			0.084				
8.800	0.000	0.000	0.000		0.009	-	-	0.000	0.000	0.000		0.045	-	-		0.000	0.000	0.000		1.26	-	-	0.000	0.000	0.000		1.28	-	-			0.088				
9.200	0.000	0.000	0.000		0.002	-	-	0.000	0.000	0.000		0.018	-	-		0.000	0.000	0.000		1.65	-	-	0.000	0.000	0.000		1.66	-	-			0.092				
9.600	0.000	0.000	0.000		0.001	-	-	0.000	0.000	0.000		0.007	-	-		0.000	0.000	0.000		2.05	-	-	0.000	0.000	0.000		2.05	-	-			0.096				
10.000	0.000	0.000	0.000		0.001	-	-	0.000	0.000	0.000		0.003	-	-		0.000	0.000	0.000		2.45	-	-	0.000	0.000	0.000		2.45	-	-			0.100				
Totals:						0	105							0	20	0	0							0	30							40	62	0	10	
Number of Trades:						0							0			0							0.00							8			0			

OTE (CR)

(Contract Size: 100 Securities, Exercise Style: American, Physical Delivery)

Call Options																	Put Options																	
October 2016								November 2016							Other Months		October 2016								November 2016							Other Months		
Exercise Price	Open price	Price max	Price min	Last price	Closing price	Volume	Open Interest	Open price	Price max	Price min	Last price	Closing price	Volume	Open Interest	Volume	Open Interest	Open price	Price max	Price min	Last price	Closing price	Volume	Open Interest	Open price	Price max	Price min	Last price	Closing price	Volume	Open Interest	Volume	Open Interest	Exercise Price	
4.800						-	-						-	-								-	-					-	-			0.048		
5.200						-	-						-	-								-	-					-	-			0.052		
5.600	0.000	0.000	0.000		2.01	-	-	0.000	0.000	0.000		2.02	-	-			0.000	0.000	0.000		0.001	-	-	0.000	0.000	0.000		0.001	-	-			0.056	
6.000	0.000	0.000	0.000		1.62	-	-	0.000	0.000	0.000		1.63	-	-			0.000	0.000	0.000		0.001	-	-	0.000	0.000	0.000		0.003	-	-			0.060	
6.400	0.000	0.000	0.000		1.22	-	-	0.000	0.000	0.000		1.24	-	-			0.000	0.000	0.000		0.002	-	-	0.000	0.000	0.000		0.017	-	-			0.064	
6.800	0.000	0.000	0.000		0.823	-	-	0.000	0.000	0.000		0.884	-	-			0.000	0.000	0.000		0.007	-	-	0.000	0.000	0.000		0.058	-	-			0.068	
7.200	0.000	0.000	0.000		0.466	-	-	0.000	0.000	0.000		0.578	-	-			0.000	0.000	0.000		0.051	-	-	0.000	0.000	0.000		0.151	-	-			0.072	
7.600	0.000	0.000	0.000		0.205	-	20	0.000	0.000	0.000		0.341	-	-			0.000	0.000	0.000		0.189	-	35	0.000	0.000	0.000		0.314	-	-			0.076	
8.000	0.000	0.000	0.000		0.066	-	2	0.200	0.200	0.200	0.200	0.200	40	40			0.000	0.000	0.000		0.450	-	37	0.473	0.491	0.473	0.491	0.491	10	15			0.080	
8.400	0.000	0.000	0.000		0.015	-	30	0.000	0.000	0.000		0.089	-	-			0.000	0.000	0.000		0.801	-	-	0.000	0.000	0.000		0.863	-	-			0.084	
8.800	0.000	0.000	0.000		0.002	-	20	0.000	0.000	0.000		0.039	-	-			0.000	0.000	0.000		1.19	-	5	0.000	0.000	0.000		1.22	-	-			0.088	
9.200	0.000	0.000	0.000		0.002	-	-	0.000	0.000	0.000		0.015	-	-			0.000	0.000	0.000		1.59	-	-	0.000	0.000	0.000		1.60	-	-			0.092	
9.600	0.000	0.000	0.000		0.001	-	-	0.000	0.000	0.000		0.006	-	-			0.000	0.000	0.000		1.99	-	-	0.000	0.000	0.000		1.99	-	-			0.096	
10.000	0.000	0.000	0.000		0.001	-	-	0.000	0.000	0.000		0.002	-	-			0.000	0.000	0.000		2.39	-	-	0.000	0.000	0.000		2.39	-	-			0.100	
11.000	0.000	0.000	0.000		0.004	-	-	0.000	0.000	0.000		0.001	-	-			0.000	0.000	0.000		3.39	-	-	0.000	0.000	0.000		3.39	-	-			0.110	
12.000	0.000	0.000	0.000		0.001	-	-	0.000	0.000	0.000		0.001	-	-			0.000	0.000	0.000		4.39	-	-	0.000	0.000	0.000		4.39	-	-			0.120	
13.000	0.000	0.000	0.000		0.001	-	-						-	-			0.000	0.000	0.000		5.39	-	-				-	-				0.130		
14.000						-	-						-	-								-	-				-	-					0.140	
Totals:						0	72						40	40	0	0						0	77					10	50	0	10			
Number of Trades:						0							1		0							0.00					2		0					

PIRAEUS BANK (CR)

(Contract Size: 100 Securities, Exercise Style: American, Physical Delivery)

Call Options																	Put Options																			
October 2016								November 2016								Other Months		October 2016								November 2016								Other Months		
Exercise Price	Open price	Price max	Price min	Last price	Closing price	Volume	Open Interest	Open price	Price max	Price min	Last price	Closing price	Volume	Open Interest	Volume	Open Interest	Open price	Price max	Price min	Last price	Closing price	Volume	Open Interest	Open price	Price max	Price min	Last price	Closing price	Volume	Open Interest	Volume	Open Interest	Exercise Price			
0.050	0.000	0.000	0.000		0.089	-	-	0.000	0.000	0.000		0.089	-	-			0.000	0.000	0.000		0.003	-	-	0.000	0.000	0.000		0.001	-	-			0.001			
0.100	0.000	0.000	0.000		0.048	-	-	0.000	0.000	0.000		0.048	-	-			0.000	0.000	0.000		0.009	-	-	0.000	0.000	0.000		0.009	-	-			0.001			
0.150	0.000	0.000	0.000		0.023	-	-	0.000	0.000	0.000		0.024	-	-			0.000	0.000	0.000		0.034	-	-	0.000	0.000	0.000		0.035	-	-			0.002			
0.200	0.000	0.000	0.000		0.011	-	-	0.000	0.000	0.000		0.012	-	-			0.000	0.000	0.000		0.072	-	-	0.000	0.000	0.000		0.072	-	-			0.002			
0.250	0.000	0.000	0.000		0.005	-	-	0.000	0.000	0.000		0.006	-	-			0.000	0.000	0.000		0.116	-	-	0.000	0.000	0.000		0.116	-	-			0.003			
0.300	0.000	0.000	0.000		0.003	-	-	0.000	0.000	0.000		0.003	-	-			0.000	0.000	0.000		0.163	-	-	0.000	0.000	0.000		0.163	-	-			0.003			
0.350	0.000	0.000	0.000		0.001	-	-	0.000	0.000	0.000		0.001	-	-			0.000	0.000	0.000		0.212	-	-	0.000	0.000	0.000		0.212	-	-			0.004			
0.400	0.000	0.000	0.000		0.001	-	-	0.000	0.000	0.000		0.001	-	-			0.000	0.000	0.000		0.262	-	-	0.000	0.000	0.000		0.261	-	-			0.004			
0.450						-	-						-	-								-	-					-	-			0.005				
0.500						-	-						-	-								-	-					-	-			0.005				
0.550						-	-						-	-								-	-					-	-			0.006				
Totals:						0	0							0	0	0	0							0	0							0	0	0	0	
Number of Trades:						0								0		0								0.00								0		0		

PPC (CR)

(Contract Size: 100 Securities, Exercise Style: American, Physical Delivery)

Call Options																Put Options																							
Exercise Price	October 2016							November 2016							Other Months		October 2016							November 2016							Other Months		Exercise Price						
	Open price	Price max	Price min	Last price	Closing price	Volume	Open Interest	Open price	Price max	Price min	Last price	Closing price	Volume	Open Interest	Volume	Open Interest	Open price	Price max	Price min	Last price	Closing price	Volume	Open Interest	Open price	Price max	Price min	Last price	Closing price	Volume	Open Interest	Volume	Open Interest							
1.700	0.000	0.000	0.000		1.01	-	-	0.000	0.000	0.000		1.01	-	-			0.000	0.000	0.000		0.001	-	-	0.000	0.000	0.000		0.002	-	-			0.017						
1.800	0.000	0.000	0.000		0.911	-	-	0.000	0.000	0.000		0.914	-	-			0.000	0.000	0.000		0.001	-	-	0.000	0.000	0.000		0.001	-	-			0.018						
1.900	0.000	0.000	0.000		0.812	-	-	0.000	0.000	0.000		0.815	-	-			0.000	0.000	0.000		0.001	-	-	0.000	0.000	0.000		0.001	-	-			0.019						
2.000	0.000	0.000	0.000		0.712	-	-	0.000	0.000	0.000		0.716	-	-			0.000	0.000	0.000		0.001	-	-	0.000	0.000	0.000		0.001	-	-			0.020						
2.200	0.000	0.000	0.000		0.512	-	-	0.000	0.000	0.000		0.524	-	-			0.000	0.000	0.000		0.001	-	-	0.000	0.000	0.000		0.008	-	-			0.022						
2.400	0.000	0.000	0.000		0.319	-	-	0.000	0.000	0.000		0.349	-	-			0.000	0.000	0.000		0.007	-	-	0.000	0.000	0.000		0.033	-	-			0.024						
2.600	0.000	0.000	0.000		0.156	-	95	0.000	0.000	0.000		0.208	-	-			0.000	0.000	0.000		0.043	-	5	0.000	0.000	0.000		0.092	-	-			0.026						
2.800	0.000	0.000	0.000		0.055	-	20	0.110	0.110	0.110	0.110	0.110	10	20			0.000	0.000	0.000		0.143	-	30	0.000	0.000	0.000		0.194	-	-			0.028						
3.000	0.000	0.000	0.000		0.013	-	-	0.000	0.000	0.000		0.052	-	-			0.000	0.000	0.000		0.301	-	10	0.000	0.000	0.000		0.336	-	-			0.030						
3.200	0.000	0.000	0.000		0.002	-	-	0.000	0.000	0.000		0.022	-	-			0.000	0.000	0.000		0.491	-	-	0.000	0.000	0.000		0.506	-	-			0.032						
3.400	0.000	0.000	0.000		0.001	-	-	0.000	0.000	0.000		0.008	-	-			0.000	0.000	0.000		0.690	-	-	0.000	0.000	0.000		0.694	-	-			0.034						
3.600	0.000	0.000	0.000		0.001	-	-	0.000	0.000	0.000		0.003	-	-			0.000	0.000	0.000		0.890	-	-	0.000	0.000	0.000		0.890	-	-			0.036						
3.800	0.000	0.000	0.000		0.002	-	-	0.000	0.000	0.000		0.001	-	-			0.000	0.000	0.000		1.09	-	-	0.000	0.000	0.000		1.09	-	-			0.038						
4.000						-	-						-	-								-	-					-	-			0.040							
4.400						-	-						-	-								-	-					-	-			0.044							
4.800						-	-						-	-								-	-					-	-			0.048							
5.200						-	-						-	-								-	-					-	-			0.052							
5.600						-	-						-	-								-	-					-	-			0.056							
6.000						-	-						-	-								-	-					-	-			0.060							
Totals:							0	115								10	20	0	0								0	45								0	20	0	0
Number of Trades:							0								1			0								0.00								0			0		

Lending Products	Underlying Title	Multilateral Transactions[1]					Bilateral Transactions[2]		Stock Borrowing through OTC (volume)[3]
		Open Interest[5]	Volume(Offered)	Average Weighted	Transactions volume	Average Weighted	Transactions Volume	Average Weighte	Transactions Volume
AEGNBOR	AEGEAN AIRLINES (CR)	7,600	11,478	5.31%	---	---	---	---	11,701
ALPHABOR	ALPHA BANK (CR)	92,350	2,258	5.31%	---	---	---	---	7,000,948
ALMYBOR	ALUMIL (CR)	---	---	---	---	---	---	---	---
IATRBOR	ATHENS MEDICAL CENTER SA (CR)	---	36,400	5.31%	---	---	---	---	---
OTOELBOR	AUTOHELLAS SA (CR)	---	---	---	---	---	---	---	---
BOCBOR	BANK OF CYPRUS (CR)	---	270	5.31%	---	---	---	---	84,008
EEEBOR	CC HBC AG (CR)	4,228	261	5.32%	---	---	---	---	70,546
CENTRBOR	CENTRIC HOLDINGS (CR)	---	16,000	5.31%	---	---	---	---	---
SOLKBOR	CORINTH PIPEWORKS (CR)	5,800	160	5.31%	---	---	---	---	---
PLAKRBOR	CRETE PLASTICS SA (CR)	---	---	---	---	---	---	---	---
ELINBOR	ELINOIL S.A. (CR)	---	---	---	---	---	---	---	---
ELLAKTORBOR	ELLAKTOR (CR)	10,000	77,427	5.31%	---	---	---	---	---
ANEMOSBOR	ELTECH ANEMOS S.A. (CR)	---	1,678	5.31%	---	---	---	---	---
ELTONBOR	ELTON SA (CR)	---	---	---	---	---	---	---	---
EUROBBOR	EUROBANK ERGASIAS (CR)	149,312	144,321	5.31%	80,000	4.59%	---	---	2,213,051
EUPICBOR	EUROPEAN RELIANCE INSUR. (CR)	---	---	---	---	---	---	---	---
EYDAPBOR	EYDAP S.A. (CR)	572	5,790	5.31%	---	---	---	---	17,780
FLEXOBOR	FLEXOPACK SA (CR)	---	---	---	---	---	---	---	---
FFGRPBOR	FOLLI FOLLIE (CR)	15,632	55,948	3.31%	---	---	---	---	716,795
FOYRKBOR	FOURLIS (CR)	---	5,130	5.31%	---	---	---	---	3,850
GEKTERNABOR	GEK TERNA (CR)	12	30,350	5.31%	---	---	---	---	---
SARBOR	GR. SARANTIS SA (CR)	---	1,536	5.31%	---	---	---	---	---
EUPROBOR	GRIVALIA PROPERTIES (CR)	1,000	59,735	5.31%	---	---	---	---	97,022
XAKOBOR	HALKOR SA (CB)	---	56,552	5.31%	---	---	---	---	---
EXAEBOR	HELLENIC EXCHANGES-A.S.E. (CR)	31,100	443,129	3.55%	21,500	2.65%	---	---	98,443
ELPEBOR	HELLENIC PETROLEUM (CR)	2,075	145,627	5.31%	---	---	---	---	42,606
HYGEIABOR	HYGEIA SA (CR)	---	48,700	5.31%	---	---	---	---	---
IASOBOR	IASO SA (CR)	---	---	---	---	---	---	---	---
IKTINBOR	IKTINOS HELLAS SA (CR)	---	798	5.31%	---	---	---	---	---
INTRKBOR	INTRACOM HOLDINGS (CR)	---	168,546	5.31%	---	---	---	---	---
INLOTBOR	INTRALOT (CR)	25,500	40,199	3.31%	2,000	2.65%	---	---	803

Stock Lending Notes

- [1] - Multilateral contracts Lending or Borrowing as per Methods 8-1, 8-2 and 8-3-3 (According to ATHEX BoD Resolution No.17)
- [2] - Billateral Contracts Lending or Borrowing as per Methods 8-3-1 and 8-3-2 (According to ATHEX BoD Resolution No.20)
- [3] - The information concerning OTC Stock Borrowing Transactions is based on the statements of the Dematerialised Securities System (DSS) operators involved and refers to volumes that have been registered up until the previous working day.
- [4] - Average Price (Volume weighted)
- [5] - The Data concerning Open Interest before the start of trading session

Lending Products	Underlying Title	Multilateral Transactions[1]					Bilateral Transactions[2]		Stock Borrowing through OTC (volume)[3]
		Open Interest[5]	Volume(Offered)	Average Weighted	Transactions volume	Average Weighted	Transactions Volume	Average Weighte	Transactions Volume
AVAXBOR	J & P - AVAX SA (CR)	---	20,335	5.31%	---	---	---	---	---
BELABOR	JUMBO SA (CR)	10,525	121,796	3.55%	1,500	2.65%	---	---	8,011
KLEMBOR	KLEEMAN HELLAS SA (CR)	---	5,191	5.31%	---	---	---	---	---
KORRESBOR	KORRES (CR)	---	---	---	---	---	---	---	---
KRIBOR	KRI-KRI S.A. (CR)	---	47,768	5.31%	---	---	---	---	---
KYRMBOR	KYRIAKIDIS MARBLES SA (CR)	---	4,936	5.31%	---	---	---	---	---
LAMDABOR	LAMDA DEVELOPMENT SA (CR)	---	111	5.31%	---	---	---	---	10,377
MIGBOR	MARFIN INVESTMENT GROUP (CR)	---	272,904	5.31%	---	---	---	---	749,474
METKKBOR	METKA (CR)	21,324	2,093	3.31%	1,800	3.12%	---	---	13,834
MLSBOR	MLS MULTIMEDIA SA (CR)	---	9,118	5.31%	---	---	---	---	---
MOHBOR	MOTOR OIL (CR)	4,795	26,308	5.31%	---	---	---	---	52,254
MYTILBOR	MYTILINEOS HOLDINGS (CR)	14,294	107,278	3.31%	---	---	---	---	---
ETEBOR	NATIONAL BANK (CR)	842,592	173,753	5.31%	---	---	---	---	787,741
ETFASEBOR	NBGAM ETF	---	---	---	---	---	---	---	---
ETFGT30PBOR	NBGAM ETF GREECE & TURKEY 30	---	---	---	---	---	---	---	---
OPAPBOR	OPAP (CR)	106,000	19,811	5.31%	---	---	---	---	819,549
HTOBOR	OTE (CR)	4,357	64,370	5.31%	---	---	---	---	271,932
PPABOR	P.P.A. S.A. (CR)	368	1,215	5.31%	---	---	---	---	901
PAPBOR	PAPOUTSANIS (CR)	---	---	---	---	---	---	---	---
PETROBOR	PETROPOULOS PETROS (CR)	---	---	---	---	---	---	---	---
TPEIRBOR	PIRAEUS BANK (CR)	47,061	15,773	5.31%	4,000	4.07%	---	---	7,175,542
PLAISBOR	PLAISIO COMPUTERS SA (CR)	---	---	---	---	---	---	---	---
PPCBOR	PPC (CR)	36,950	85,764	5.31%	---	---	---	---	512,774
QUALBOR	QUALITY & RELIABILITY SA (CR)	---	---	---	---	---	---	---	---
QUESTBOR	QUEST HOLDINGS (CR)	---	---	---	---	---	---	---	---
KAMPBOR	REDS S.A. (CR)	---	---	---	---	---	---	---	---
EPILBOR	SELECTED TEXT. IND. ASSOC (CR)	---	---	---	---	---	---	---	---
SELOBOR	SELONDA AQUACULTURE SA (CR)	---	---	---	---	---	---	---	---
OLYMPBOR	TECHNICAL OLYMPIC SA (CR)	---	9,039	5.31%	---	---	---	---	---
TENERGYBOR	TERNA ENERGY (CR)	1,000	30,986	5.31%	---	---	---	---	---
EYAPSBOR	THESSALONIKA WATER & SEWERAGE	---	4,438	5.31%	---	---	---	---	---

Stock Lending Notes

- [1] - Multilateral contracts Lending or Borrowing as per Methods 8-1, 8-2 and 8-3-3 (According to ATHEX BoD Resolution No.17)
- [2] - Billateral Contracts Lending or Borrowing as per Methods 8-3-1 and 8-3-2 (According to ATHEX BoD Resolution No.20)
- [3] - The information concerning OTC Stock Borrowing Transactions is based on the statements of the Dematerialised Securities System (DSS) operators involved and refers to volumes that have been registered up until the previous working day.
- [4] - Average Price (Volume weighted)
- [5] - The Data concerning Open Interest before the start of trading session

Lending Products	Underlying Title	Multilateral Transactions[1]					Bilateral Transactions[2]		Stock Borrowing through OTC (volume)[3]
		Open Interest[5]	Volume(Offered)	Average Weighted	Transactions volume	Average Weighted	Transactions Volume	Average Weighted	Transactions Volume
PLATBOR	THRACE PLASTICS SA (CR)	---	37,360	5.31%	---	---	---	---	---
TITKBOR	TITAN CEMENT (CR)	7,659	218,417	5.31%	---	---	---	---	4,511
OLTHBOR	TPA SA (CR)	---	23	5.32%	---	---	---	---	---
VIOBOR	VIOHALCO SA/NV (CB)	---	59,278	5.31%	---	---	---	---	---

Stock Lending Notes

- [1] - Multilateral contracts Lending or Borrowing as per Methods 8-1, 8-2 and 8-3-3 (According to ATHEX BoD Resolution No.17)
- [2] - Bilateral Contracts Lending or Borrowing as per Methods 8-3-1 and 8-3-2 (According to ATHEX BoD Resolution No.20)
- [3] - The information concerning OTC Stock Borrowing Transactions is based on the statements of the Dematerialised Securities System (DSS) operators involved and refers to volumes that have been registered up until the previous working day.
- [4] - Average Price (Volume weighted)
- [5] - The Data concerning Open Interest before the start of trading session

Sectors codification for listed companies

533	-	Exploration & Production	537	-	Integrated Oil & Gas
1353	-	Commodity Chemicals	1357	-	Specialty Chemicals
1753	-	Aluminum	1755	-	Nonferrous Metals
1757	-	Steel	1775	-	General Mining
2353	-	Building Materials & Fixtures	2357	-	Heavy Construction
2723	-	Containers & Packaging	2727	-	Diversified Industrials
2733	-	Electrical Components & Equipment	2753	-	Commercial Vehicles & Trucks
2757	-	Industrial Machinery	2773	-	Marine Transportation
2777	-	Transportation Services	2791	-	Business Support Services
2797	-	Industrial Suppliers	3535	-	Distillers & Vintners
3537	-	Soft Drinks	3573	-	Farming Fishing & Plantations
3577	-	Food Products	3722	-	Durable Household Products
3726	-	Furnishings	3728	-	Home Construction
3747	-	Toys	3763	-	Clothing & Accessories
3765	-	Footwear	3767	-	Personal Products
3785	-	Tobacco	4533	-	Health Care Providers
4535	-	Medical Equipment	4577	-	Pharmaceuticals
5337	-	Food Retailers & Wholesalers	5371	-	Apparel Retailers
5373	-	Broadline Retailers	5375	-	Home Improvement Retailers
5379	-	Specialty Retailers	5553	-	Broadcasting & Entertainment
5555	-	Media Agencies	5557	-	Publishing
5751	-	Airlines	5752	-	Gambling
5753	-	Hotels	5755	-	Recreational Services
5757	-	Restaurants & Bars	5759	-	Travel & Tourism
6535	-	Fixed Line Telecommunications	6575	-	Mobile Telecommunications
7535	-	Conventional Electricity	7537	-	Alternative Electricity
7577	-	Water	8355	-	Banks
8534	-	Insurance Brokers	8536	-	Property & Casualty Insurance
8633	-	Real Estate Holding & Development	8637	-	Real Estate Services
8671	-	Industrial & Office REITs	8674	-	Diversified REITs
8675	-	Specialty REITs	8775	-	Specialty Finance
8777	-	Investment Services	8985	-	Equity Investment Instruments
9533	-	Computer Services	9535	-	Internet
9537	-	Software	9572	-	Computer Hardware
9574	-	Electronic Office Equipment	9578	-	Telecommunications Equipment
12003	-	ETF			



ATHEXGROUP
Όμιλος Χρηματιστηρίου Αθηνών

Λεωφ. Αθηνών 110 104 42 Αθήνα
110, Athinon Ave. GR 104 42 Athens
tel. (+30)210-33.66.800, fax (+30)210-33.66.101
www.athegroup.gr