



**ATHEXGROUP**  
Athens Exchange Group

Hellenic Exchanges – Athens Stock Exchange S.A.

“

**2016**

δελτιο ημερησιων συναλλαγων

*daily official list*

Thursday, 13 October, 2016  
Year: 137 Trading Day No: 195

”

**Disclaimer:**

Hellenic Exchanges-Athens Stock Exchange S.A. endeavours to ensure that the data and other material ("Information") presented on the Daily Official List are accurate and complete, but it is not liable for any errors or omissions of data or /and for the accuracy, credibility, updating and completeness of the aforesaid information nor it has any liability arising directly or indirectly from the use of the above Information.

The Company is not liable for the accuracy of the data included in listed companies' announcements. Only the sender of such an announcement is fully and solely liable for any infringement of third party's rights from the content of such announcement. All contents of the Daily Official List are provided only for information purposes and do not constitute investment advice or solicitation to invest in securities or other products listed for trading on the Exchange.

You acknowledge and agree that the Company is the owner of any property rights related to any Information appearing on the Daily Official List including intellectual property rights copyright, trademarks, etc.

The above data are a property of the Hellenic Exchanges-Athens Exchange and are copyright protected. Users are forbidden to reproduce, modify, copy, sale, transmit or redistribute, by all reproduction means and methods, part or the whole of the above data, without reference to their source.

The commercial exploitation of these data is, also, forbidden by third parties. Hellenic Exchanges-Athens Exchange does not carry any responsibility, direct or indirect, derived from usage or accidental alteration of the above data when used by third parties.

---

**Hellenic Exchanges – Athens Stock Exchange S.A.**

110 Athinon Ave., 10442 Athens, Tel: (210) 33.66.800, Fax: (210) 32.13.938

[www.helix.gr](http://www.helix.gr)

---

**Thessalonica Stock Exchange Center (T.S.E.C)**

16-18 Katouni Str., Thessalonica 546 25 Tel: (2310) 567.667, Fax: (2310) 530.545

---

**Athex Members Guarantee Fund**

14-16 Fidiou Str., Athens 106 78, Tel: (210) 33.04.682, Fax: (210) 33.04.155

---

**Hellenic Republic Capital Market Commission**

1 Kolokotroni Str. & 1 Stadiou Str., Athens 10562 Tel: (210) 33.77.100 Fax: (210) 33.77.173

---

**Table of Contents**

---

**Section 1: Statistical Figures of Securities, Derivatives and Lending**

Summary of Markets

Athex Indices

Analytic Figures for Athex Market's Boards and Categories

Trading Details by Athex Sectors and Financial Instruments (ETFs)

Top 10 best &amp; worst performing Shares

Derivatives Summary

**Section 2: Analytic Figures of Shares Transactions**

Analytic Figures of Shares Transactions

Shares' Notes

**Section 3: Figures of Securities Transactions**

Securities Blocks Details

Shares Rights Details

Stock Borrowing

Shares Forced Sales

Forced Sales Registered Shares

Exchange Traded Funds (ETFs) Characteristics

**Section 5: Bonds traded in Fixed Income Assets Market**

Corporate Bonds

Government Bonds

Treasury Bills &amp; Zero Coupon Government Bonds

Government Bonds Traded with the Open Outcry Method

State Banks Bonds

**Section 6: Additional Infos**

Athex &amp; ATHEXClear Members List

List of Stocks under Market Making operations

**Section 7: Derivatives Market Analytic Figures**

Index Futures

Stock Futures

Index Options

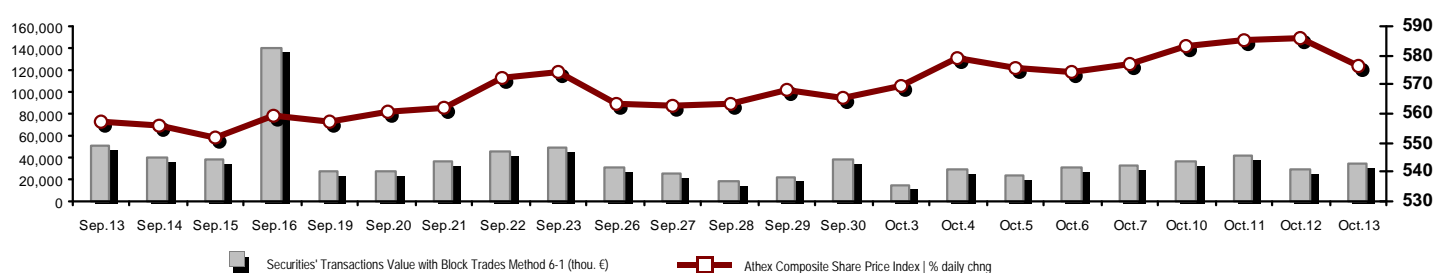
Stock Options

Stock Lending Analytic Figures

**Appendix A: Sectors codification for listed companies**

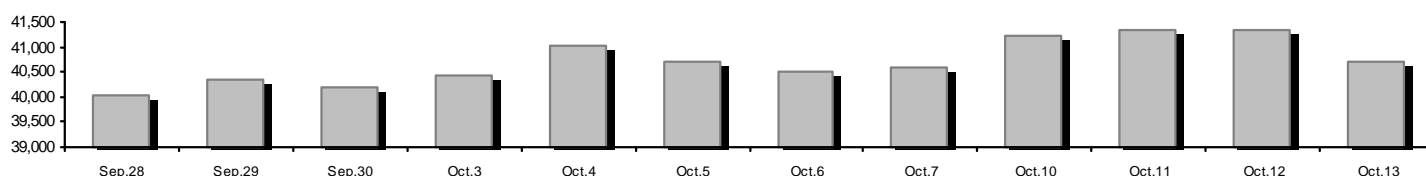
## Summary of Markets

Athex Composite Share Price Index vs Shares and Derivatives Transactions Value

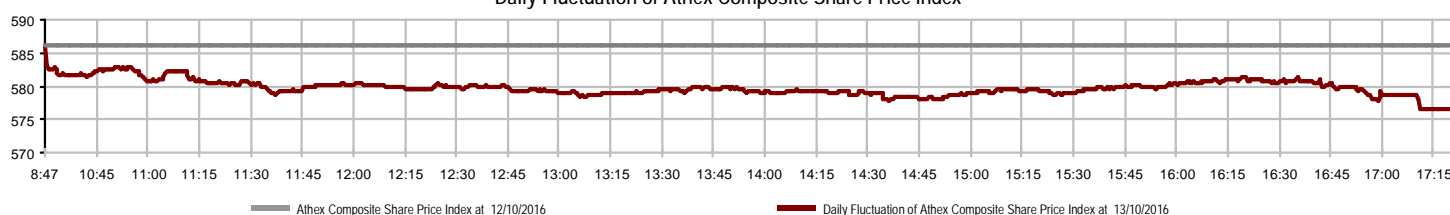


Athex Capitalisation (mill. €) **: 40,711.05		Derivatives Total Open Interest 280,609	
Daily change: mill. €   % -647.92 -1.57%		in Index Futures   % daily chng 7,298 -3.13%	
Yearly Avg Capitalisation: mill. €   % chng prev year Avg 40,664.20 -6.85%		in Stock Futures   % daily chng 269,303 1.34%	
Athex Composite Share Price Index   % daily chng 576.58 -1.65%		in Index Options   % daily chng 3,007 11.95%	
Athex Composite Share Price Index Capitalisation (mill. €) 36,083.93		in Stock Options   % daily chng 1,001 2.56%	
Daily change (mill. €) -740.76			
Securities' Transactions Value with Block Trades Method 6-1 ( 35,125.61		Derivatives Contracts Volume: 25,971	
Daily change: % 5,868.40 20.06%		Daily change: pieces   % 8,220 46.31%	
YtD Avg Trans. Value: thou. €   % chng prev year Avg 61,497.04 -28.14%		YtD Avg Derivatives Contracts % chng prev year Avg 59,632 -9.25%	
Blocks Transactions Value of Method 6-1 (thou. €) 3,874.27		Derivatives Trades Number: 1,872	
Blocks Transactions Value of Method 6-2 & 6-3 (thou. €) 0.00		Daily change: number   % 626 50.24%	
Bonds Transactions Value (thou.€) 23.62		YtD Avg Derivatives Trades number % chng prev year Avg 2,561 -21.63%	
Securities' Transactions Volume with Block Trades Method 6-1 (th 46,479.89		Lending Total Open Interest 1,412,846	
Daily change: thou. pieces   % 9,352.50 25.19%		Daily change: pieces   % 24,940 1.80%	
YtD Avg Volume: % chng prev year Avg 100,484.54 -47.82%		Lending Volume (Multilateral/Bilateral) 107,400	
Blocks Transactions Volume of Method 6-1 (thou. Pieces) 5,379.95		Daily change: pieces   % 99,800 1313.16%	
Blocks Transactions Volume of Method 6-2 & 6-3 (thou. Pieces) 0.00		Multilateral Lending 47,400	
Bonds Transactions Volume 23,506.00		Bilateral Lending 60,000	
Securities' Trades Number with Block Trades Method 6-1 14,810		Lending Trades Number: 10	
Daily change: number   % 3,350 29.23%		Daily change: % -5 -33.33%	
YtD Avg Derivatives Trades number % chng prev year Avg 19,498 -27.76%		Multilateral Lending Trades Number 9	
Number of Blocks Method 6-1 7		Bilateral Lending Trades Number 1	
Number of Blocks Method 6-2 & 6-3 0			
Number of Bonds Transactions 4			

Athex Capitalisation (mill. €) \*\*



Daily Fluctuation of Athex Composite Share Price Index



## Athex Indices

Index name	13/10/2016	12/10/2016	pts.	%	Min	Max	Year min	Year max	Year change
Athex Composite Share Price Index	576.58 €	586.24	-9.66	-1.65%	576.58	586.24	420.82	658.99	-8.68% €
FTSE/Athex Large Cap	1,524.14 €	1,560.15	-36.01	-2.31%	1,524.14	1,560.15	1,075.20	1,868.90	-16.87% €
FTSE/Athex Mid Cap Index	724.20 €	731.11	-6.91	-0.95%	722.11	731.11	515.21	820.16	-11.30% €
FTSE/ATHEX-CSE Banking Index	501.01 €	521.03	-20.02	-3.84%	501.01	521.03	271.40	938.40	-43.83% €
FTSE/ATHEX Global Traders Index Plus	1,403.82 €	1,410.35	-6.53	-0.46%	1,403.55	1,414.01	1,031.55	1,425.25	10.14% #
FTSE/ATHEX Global Traders Index	1,511.62 €	1,527.12	-15.50	-1.01%	1,510.52	1,527.12	1,129.41	1,579.62	5.95% #
FTSE/ATHEX Mid & Small Cap Factor-Weighted Ind	1,314.49 €	1,317.94	-3.45	-0.26%	1,311.79	1,330.63	1,066.64	1,344.86	4.69% #
Greece & Turkey 30 Price Index	443.01 €	448.20	-5.19	-1.16%	441.73	448.20	396.10	527.12	-4.57% €
ATHEX Mid & SmallCap Price Index	2,114.32 #	2,085.18	29.14	1.40%	2,082.97	2,118.52	1,848.24	2,213.61	-2.65% €
FTSE/Athex Market Index	374.78 €	383.48	-8.70	-2.27%	374.78	383.48	265.17	457.53	-16.71% €
FTSE Med Index	4,644.25 #	4,635.29	8.96	0.19%			4,396.47	5,530.53	-16.02% €
Athex Composite Index Total Return Index	876.39 €	890.23	-13.84	-1.55%	876.39	890.23	626.16	986.51	-6.71% €
FTSE/Athex Large Cap Total Return	2,149.26 €	2,202.94	-53.68	-2.44%			1,574.40	2,572.00	-15.01% €
FTSE/ATHEX Large Cap Net Total Return	640.97 €	655.39	-14.42	-2.20%	640.97	655.39	443.06	773.01	-15.16% €
FTSE/Athex Mid Cap Total Return	892.90 €	901.42	-8.52	-0.95%			669.55	1,008.35	-11.05% €
FTSE/ATHEX-CSE Banking Total Return Index	478.75 €	497.88	-19.13	-3.84%			318.40	895.04	-44.96% €
Greece & Turkey 30 Total Return Index	567.39 €	567.63	-0.24	-0.04%			0.00	660.49	-1.45% €
Hellenic Mid & Small Cap Index	734.56 €	739.01	-4.45	-0.60%	730.70	739.01	560.15	786.32	2.65% #
FTSE/Athex Banks	661.95 €	688.40	-26.45	-3.84%	661.95	688.40	358.60	1,239.80	-43.83% €
FTSE/Athex Financial Services	927.53 €	930.31	-2.78	-0.30%	915.74	931.00	634.69	1,179.09	-4.76% €
FTSE/Athex Industrial Goods & Services	1,572.34 €	1,573.74	-1.40	-0.09%	1,555.69	1,573.74	1,369.56	1,844.00	-13.83% €
FTSE/Athex Retail	3,097.62 €	3,163.37	-65.75	-2.08%	3,097.62	3,163.37	1,826.41	3,272.96	22.63% #
FTSE/ATHEX Real Estate	2,459.49 €	2,465.92	-6.43	-0.26%	2,423.69	2,465.92	2,154.15	2,621.31	1.63% #
FTSE/Athex Personal & Household Goods	6,174.84 €	6,174.93	-0.09	0.00%	6,116.40	6,208.64	4,433.32	6,333.20	21.95% #
FTSE/Athex Food & Beverage	7,381.54 €	7,564.01	-182.47	-2.41%	7,381.54	7,564.01	5,952.97	7,850.45	0.07% #
FTSE/Athex Basic Resources	2,067.62 €	2,098.42	-30.80	-1.47%	2,067.62	2,116.01	1,200.24	2,173.20	26.48% #
FTSE/Athex Construction & Materials	2,172.65 €	2,181.53	-8.88	-0.41%	2,150.81	2,181.53	1,500.04	2,343.14	15.67% #
FTSE/Athex Oil & Gas	2,552.41 €	2,562.55	-10.14	-0.40%	2,532.58	2,562.55	1,860.37	2,657.42	5.82% #
FTSE/Athex Chemicals	8,384.04 #	8,236.09	147.95	1.80%	8,137.45	8,384.04	6,190.46	8,581.31	23.07% #
FTSE/Athex Media	1,768.77 ~	1,768.77	0.00	0.00%	1,768.77	1,768.77	1,290.16	2,247.37	19.72% #
FTSE/Athex Travel & Leisure	1,288.56 €	1,335.03	-46.47	-3.48%	1,288.56	1,335.03	982.74	1,426.44	-9.57% €
FTSE/Athex Technology	636.91 #	636.67	0.24	0.04%	631.56	640.78	489.05	658.99	11.35% #
FTSE/Athex Telecommunications	2,158.01 €	2,226.83	-68.82	-3.09%	2,158.01	2,226.83	1,802.93	2,669.99	-15.15% €
FTSE/Athex Utilities	1,496.31 #	1,492.42	3.89	0.26%	1,481.74	1,505.18	1,136.34	1,734.68	-10.69% €
Athex All Share Index	143.54 €	145.86	-2.31	-1.58%	143.54	143.54	113.39	165.22	-12.70% €
Hellenic Corporate Bond Index	107.58 €	107.61	-0.03	-0.03%			96.90	107.61	7.07% #
Hellenic Corporate Bond Price Index	97.19 €	97.23	-0.04	-0.04%			90.43	97.44	2.57% #

Note 1: FTSE/Med 100, Greece & Turkey 30 Rt., Hellenic Corporate Bond Price Index and Hellenic Corporate Bond Index closing prices refer to the previous trading day of 11/10/2016.

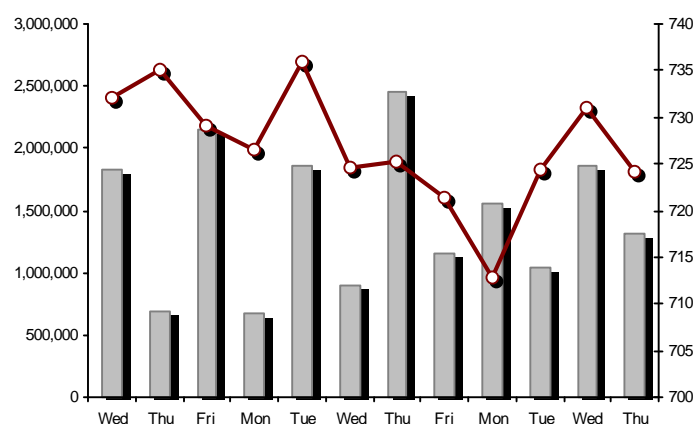
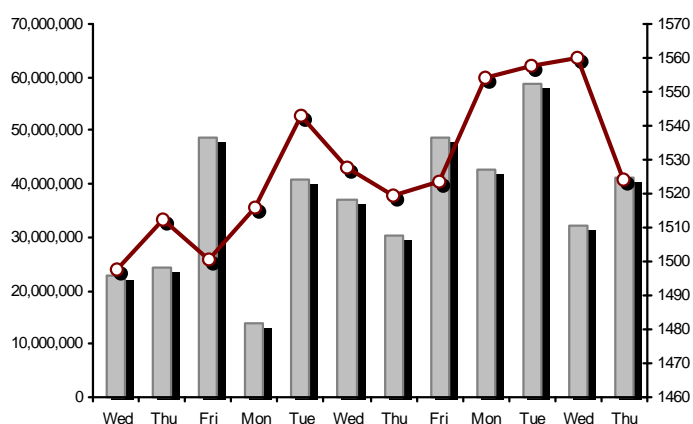
Note 2: The Hellenic Mid & Small Cap Index is a Customized index calculated by the Athens Exchange.

## Athex Indices

FTSE/Large Cap

13/10/2016: -2.31% FTSE/Athex Mid Cap Index

13/10/2016: -0.95%

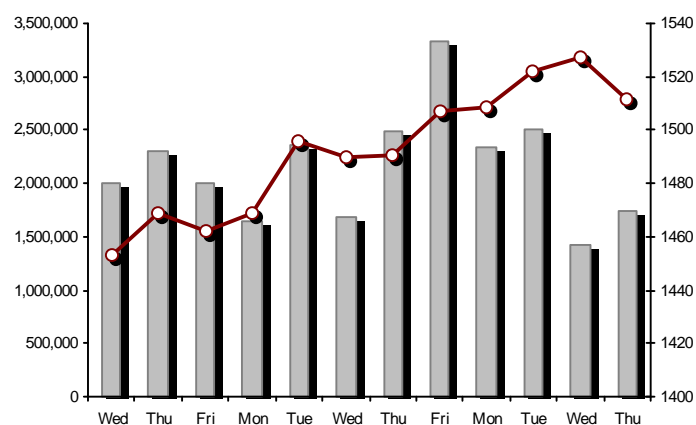
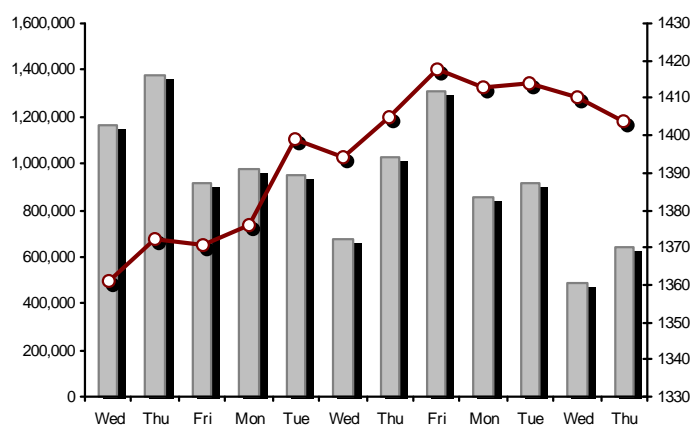


FTSE/ATHEX Global Traders Index Plus

13/10/2016: -0.46%

FTSE/ATHEX Global Traders Index

13/10/2016: -1.01%

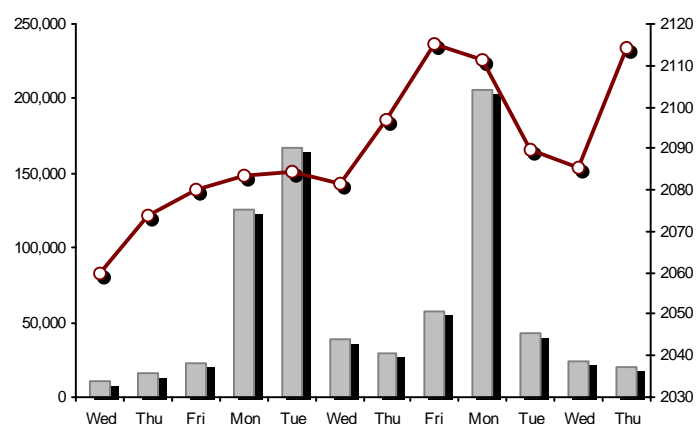
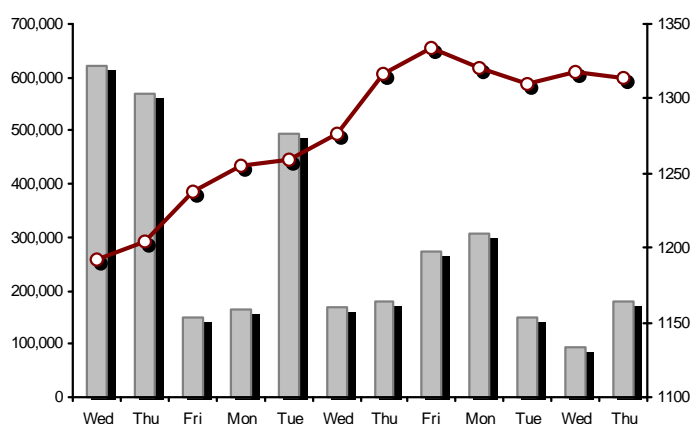


FTSE/ATHEX Mid &amp; Small Cap Factor-Weighted Index

13/10/2016: -0.26%

ATHEX Mid &amp; SmallCap Price Index

13/10/2016: 1.40%



Indices volume of transactions

Indices closing prices

## Analytic Figures for Athex Market's Boards and Categories

	Total Traded Securities	Main Market	Low Dispersion	Other Categories (*)	Exchange Traded Funds (ETFs)	Warrants
Totals	110	92	5	8	3	2
Gain / Lose / Same:	38 / 54 / 18	33 / 45 / 14	3 / 1 / 1	2 / 5 / 1	0 / 3 / 0	0 / 0 / 2
Athex Capitalisation (mill. €) **	40,711.05	37,731.26	2,846.37	133.42		
Daily Average Trans/ons Value(thou.€)	61,497.04	61,380.80	123.96	9.69	15.76	11.35
Transactions Value	35,125.61	34,804.65	300.26	20.22	0.04	0.44
Main Board:	31,251.34	30,930.39	300.26	20.22	0.04	0.44
Blocks Board 6_2_3:	3,874.27	3,874.27	0.00	0.00	0.00	0.00
Forced Sales Board:	0.00	0.00	0.00	0.00	0.00	0.00
Special Terms Board:	0.00	0.00	0.00	0.00	0.00	0.00
Daily Average Transactions Volume	100,484,544	95,308,903	112,180	93,009	7,102	5,046,960
Transactions Volume	46,479,888	46,210,817	64,205	110,559	5	94,302
Main Board:	41,099,938	40,830,867	64,205	110,559	5	94,302
Blocks Board 6_2_3:	5,379,950	5,379,950	0	0	0	0
Forced Sales Board:	0	0	0	0	0	0
Special Terms Board:	0	0	0	0	0	0
Daily Average Number of Trades	19,498	19,349	34	52	4	60
Number of Trades	14,810	14,608	113	73	3	13
Main Board:	14,803	14,601	113	73	3	13
Blocks Board 6_2_3:	7	7	0	0	0	0
Forced Sales Board:	0	0	0	0	0	0
Special Terms Board:	0	0	0	0	0	0

(\*) Summarised Transactions figures for Under Deletion and Under Supervision Categories.(\*\*) The Market Capitalization of the Companies that belong in the Under Supervision Status is not included.

## Trading Details by Athex Sectors and Financial Instruments (ETFs)

Code	Sectors	Gain / Lose / Same	Number of Trades	Transactions Volume	Transactions Value	% of Total Trans. Value
8300	- Banks	1 / 6 / 2	5,322	41,760,067	16,118,110.58	45.89%
1700	- Basic Resources	2 / 4 / 1	640	238,510	730,390.38	2.08%
1300	- Chemicals	3 / 0 / 0	112	51,426	52,264.56	0.15%
2300	- Construction & Materials	3 / 7 / 0	993	257,260	955,556.77	2.72%
12000	- Financial Instruments	0 / 3 / 0	3	5	39.49	0.00%
8700	- Financial Services	1 / 1 / 1	478	1,313,884	448,358.66	1.28%
3500	- Food & Beverage	5 / 3 / 0	176	59,288	431,347.90	1.23%
4500	- Health Care	0 / 4 / 1	47	99,130	14,831.32	0.04%
2700	- Industrial Goods & Services	6 / 5 / 4	667	350,081	474,322.56	1.35%
8500	- Insurance	1 / 0 / 0	10	2,183	4,027.80	0.01%
5500	- Media	0 / 0 / 1	1	5	0.43	0.00%
500	- Oil & Gas	1 / 1 / 0	831	186,205	1,349,338.92	3.84%
3700	- Personal & Household Goods	3 / 4 / 4	691	285,628	3,116,133.46	8.87%
8600	- Real Estate	2 / 2 / 1	262	64,953	367,489.44	1.05%
5300	- Retail	2 / 2 / 0	422	58,877	1,097,173.42	3.12%
9500	- Technology	3 / 4 / 1	191	64,620	51,158.03	0.15%
6500	- Telecommunications	0 / 1 / 0	1,167	417,085	3,309,927.66	9.42%
5700	- Travel & Leisure	3 / 5 / 1	1,510	833,059	5,326,334.28	15.16%
7500	- Utilities	2 / 2 / 1	1,287	437,622	1,278,805.41	3.64%

## Top 10 best &amp; worst performing Shares

Main Market					
With positive Price change	Closing price	change	With negative Price change	Closing price	change
ELTON SA (CR)	0.917	1.89% #	ALPHA BANK (CR)	1.58	-5.39% ⚡
THRACE PLASTICS SA (CR)	1.70	1.80% #	INTRALOT (CR)	1.22	-4.69% ⚡
J & P - AVAX SA (CR)	0.468	1.08% #	PIRAEUS BANK (CR)	0.140	-4.11% ⚡
PPC (CR)	2.85	0.71% #	NATIONAL BANK (CR)	0.189	-4.06% ⚡
P.P.A. S.A. (CR)	12.55	0.56% #	OPAP (CR)	7.31	-3.82% ⚡
PLAISIO COMPUTERS SA (CR)	3.83	0.52% #	OTE (CR)	7.84	-3.09% ⚡
JUMBO SA (CR)	11.90	0.42% #	VIOHALCO SA/NV (CB)	1.26	-3.08% ⚡
EUROBANK ERGASIAS (CR)	0.537	0.37% #	KYRIAKIDIS MARBLES SA (CR)	3.00	-2.91% ⚡
MOTOR OIL (CR)	10.90	0.37% #	INTRACOM HOLDINGS (CR)	0.312	-2.80% ⚡
EYDAP S.A. (CR)	5.36	0.19% #	CC HBC AG (CR)	19.81	-2.41% ⚡
With the highest Transactions Value	Value (thou. €)	change	With the highest Transactions Volume	Volume	change
ALPHA BANK (CR)	6,175.64	-5.39% ⚡	NATIONAL BANK (CR)	13,062,185	-4.06% ⚡
EUROBANK ERGASIAS (CR)	5,514.67	0.37% #	PIRAEUS BANK (CR)	11,181,061	-4.11% ⚡
OPAP (CR)	4,606.77	-3.82% ⚡	EUROBANK ERGASIAS (CR)	10,416,194	0.37% #
OTE (CR)	3,309.93	-3.09% ⚡	ALPHA BANK (CR)	3,848,082	-5.39% ⚡
JUMBO SA (CR)	3,054.70	0.42% #	BANK OF CYPRUS (CR)	1,673,511	-0.73% ⚡
NATIONAL BANK (CR)	2,513.48	-4.06% ⚡	ATTICA BANK S.A. (CR)	1,483,250	-1.79% ⚡
PIRAEUS BANK (CR)	1,587.98	-4.11% ⚡	MARFIN INVESTMENT GROUP (CR)	1,245,784	-1.61% ⚡
PPC (CR)	1,127.49	0.71% #	OPAP (CR)	620,164	-3.82% ⚡
FOLLI FOLLIE (CR)	1,092.72	-2.08% ⚡	OTE (CR)	417,085	-3.09% ⚡
MOTOR OIL (CR)	958.48	0.37% #	PPC (CR)	396,034	0.71% #

Note: Stocks that are not included in the "Low Dispersion" and "Under Supervision" categories, and the transactions value is more than 10,000 €.



## Derivatives Summary

	Number of Trades	Volume	Open Interest
Index Futures	383	2,264	7,298
FTSE/Athex Large Cap	383	2,264	7,298
Stock Futures	1,440	23,283	269,303
ALPHA BANK (CR)	231	4,860	12,576
CC HBC AG (CR)	5	9	101
CORINTH PIPEWORKS (CR)	0	0	820
ELLAKTOR (CR)	16	86	2,036
EUROBANK ERGASIAS (CR)	293	8,211	24,626
EYDAP S.A. (CR)	0	0	428
FOLLI FOLLIE (CR)	6	22	153
GEK TERNA (CR)	15	69	6,767
GRIVALIA PROPERTIES (CR)	2	6	56
HELLENIC EXCHANGES-A.S.E. (CR)	27	69	340
HELLENIC PETROLEUM (CR)	34	81	3,585
INTRALOT (CR)	20	196	627
JUMBO SA (CR)	21	70	142
MARFIN INVESTMENT GROUP (CR)	26	488	45,756
METKA (CR)	7	15	540
MOTOR OIL (CR)	6	14	287
MYTILINEOS HOLDINGS (CR)	116	451	4,743
NATIONAL BANK (CR)	95	2,641	65,854
OPAP (CR)	86	270	1,570
OTE (CR)	133	584	6,552
P.P.A. S.A. (CR)	3	11	645
PIRAEUS BANK (CR)	117	4,208	80,786
PPC (CR)	155	869	6,491
TERNA ENERGY (CR)	3	8	1,202
TITAN CEMENT (CR)	11	15	125
VIOHALCO SA/NV (CB)	12	30	2,495
Index Options	42	389	3,007
FTSE/Athex Large Cap	42	389	3,007
Stock Options	7	35	1,001
ALPHA BANK (CR)	0	0	180
NATIONAL BANK (CR)	0	0	0
OPAP (CR)	6	30	267
OTE (CR)	0	0	249
PIRAEUS BANK (CR)	0	0	0
PPC (CR)	1	5	305
Total Derivatives Traded	1,872	25,971	280,609

Number of Outstanding Securities	Nominal Value	Dividends [1]			Date of Last Coupon		Note	Shares	Closing price	% change	Previous closing price/date	Open price	Price min	Price max	Last price	Avg price	Last Bid [7]	Last Ask [7]	P/E after	Year	Volume	Trades	Transactions Value[8]	Company Mkt Value (thou. €)	Year low	Year high	Sector[ 4]
		2013	2014	2015	Dividend [2]	Right																					
Warrants																											
1,141,734,167		---	---	---	11/06/2013	---	ALPHA BANK (W)		0.001	---	↘ 0.001	12/10/2016	0.001	0.001	0.001	0.001	0.0038540261@0.001	13663369@0.002	---	2015	6,796	4	6.80	2,428,272.30	0.001	0.004	8355
245,745,725		---	---	---	27/06/2013	---	NATIONAL BANK (W)		0.005	---	↘ 0.005	12/10/2016	0.005	0.005	0.005	0.005	0.005820098@0.005	668191@0.006	---	2015	87,506	9	437.53	1,728,811.64	0.002	0.025	8355
843,637,022		---	---	---	03/07/2013	---	PIRAEUS BANK (W)		0.001	---	↘ 0.001	12/10/2016	---	---	---	---	---	15889531@0.001	---	2015	---	---	---	1,222,645.66	0.001	0.002	8355

Warrants

71,417,100	0.650	---	0.7	0.7	13/05/2016	27/06/2014	---	AEGEAN AIRLINES (CR)	5.95	-0.50	↘ 5.98	12/10/2016	5.95	5.91	6.02	5.95	5.94	400@5.93	24@5.99	7.83	2015	49,520	335	294,288.96	424,931.75	5.88	9.06	5751
11,178,000	1.12	---	---	---	21/04/2010	15/12/2014	---	AEOLIAN INVESTMENT FUND (CR)	0.555	---	↘ 0.555	12/10/2016	---	---	---	---	100@0.522	250@0.599	---	2015	---	---	---	6,203.79	0.384	0.701	8985	
1,536,881,200	0.300	---	---	---	07/04/2008	27/11/2015	---	ALPHA BANK (CR)	1.58	-5.39	↘ 1.67	12/10/2016	1.65	1.58	1.65	1.58	1.61	28920@1.57	70250@1.59	---	2015	3,848,082	1,153	6,175,639.11	2,428,272.30	0.949	2.75	8355
22,016,250	0.370	---	---	---	15/07/2009	11/05/2000	---	ALUMIL (CR)	0.226	7.11	# 0.211	12/10/2016	0.226	0.226	0.226	0.226	0.226	201@0.190	50@0.214	---	2015	110	2	24.86	4,975.67	0.101	0.290	1753
417,608	16.00	0.8	---	---	29/04/2014	05/03/2013	---	ANDROMEDA SA (CR)	13.00	4.84	# 12.40	12/10/2016	13.00	13.00	13.00	13.00	13.00	99@13.00	---	---	2015	1	1	13.00	5,428.90	11.53	13.90	8985
13,126,020	0.650	---	---	---	08/07/2010	12/10/2016	---	AS COMPANY SA (CR)	0.720	---	↘ 0.720	12/10/2016	---	---	---	---	400@0.680	222@0.751	6.13	2015	---	---	---	9,450.73	0.580	0.796	5379	
86,735,980	0.310	---	---	---	06/07/2009	02/01/2002	---	ATHENS MEDICAL CENTER SA (CR)	0.760	---	↘ 0.760	12/10/2016	---	---	---	---	---	11@0.760	---	---	2015	---	---	---	65,919.34	0.539	0.780	4533
2,339,353,394	0.300	---	---	---	04/06/2008	01/12/2015	---	ATTICA BANK S.A. (CR)	0.055	-1.79	↘ 0.056	12/10/2016	0.056	0.054	0.057	0.055	0.055	83200@0.054	32800@0.057	---	2015	1,483,250	183	82,112.92	128,664.44	0.037	0.279	8355
15,300,000	0.300	---	---	---	30/07/2009	13/12/1999	---	ATTICA PUBLICATIONS SA (CR)	0.700	---	↘ 0.700	12/10/2016	---	---	---	---	380@0.632	54@0.700	---	2015	---	---	---	10,710.00	0.700	1.21	5557	
48,184,910	0.700	---	---	---	01/07/2008	01/03/2010	---	AUDIO VISUAL ENTERPRISES (CR)	0.085	---	↘ 0.085	12/10/2016	0.085	0.085	0.085	0.085	0.086	---	1830@0.077	---	2015	5	1	0.43	4,095.72	0.028	0.108	5553
12,213,750	0.320	---	0.8	0.85	07/06/2016	22/11/2013	---	AUTOHELLAS SA (CR)	11.70	---	↘ 11.70	12/10/2016	11.70	11.70	11.70	11.70	11.70	876@11.70	1724@12.00	9.34	2015	524	4	6,130.80	142,900.88	9.51	12.00	5759
8,922,944,533	0.100	---	---	---	31/05/2011	02/02/2015	4857	BANK OF CYPRUS (CR)	0.136	-0.73	↘ 0.137	12/10/2016	0.137	0.136	0.138	0.136	0.137307950@0.135	76000@0.137	---	2015	1,673,511	77	229,164.65	1,213,520.46	0.121	0.174	8355	
19,864,886	5.60	0.672	0.672	0.672	03/03/2016	02/07/2008	---	BANK OF GREECE (CR)	9.91	-1.20	↘ 10.03	12/10/2016	9.90	9.82	9.98	9.91	9.86	76@9.91	12@9.98	---	---	1,482	29	14,608.76	196,861.02	8.70	11.11	8355
23,986,500	1.05	---	---	---	26/06/2009	15/03/2000	---	BIOKARPET S.A.(CR)	0.270	---	↘ 0.270	12/10/2016	---	---	---	---	---	1700@0.297	---	---	2015	---	---	---	6,476.36	0.139	0.459	3726
15,842,391	1.51	---	---	---	15/07/2009	12/05/2000	---	BITROS HOLDING SA (CR)	0.220	---	↘ 0.220	12/10/2016	---	---	---	---	---	1863@0.213	---	---	2015	---	---	---	3,485.33	0.125	0.227	1757
15,816,009	0.300	---	---	---	01/07/2009	17/07/2000	---	BYTE COMPUTER SA (CR)	0.306	---	↘ 0.306	12/10/2016	---	---	---	---	100@0.301	100@0.315	---	2015	---	---	---	4,839.70	0.256	0.322	9533	
365,203,298	6.70	0.354	0.36	0.4	30/06/2016	29/04/2013	---	CC HBC AG (CR)	19.81	-2.41	↘ 20.30	12/10/2016	19.99	19.81	20.15	19.81	19.95	2595@19.81	433@19.88	---	---	21,011	107	419,062.65	7,234,677.33	15.97	21.07	3537
101,123,806	0.360	---	---	---	22/07/2010	28/06/2011	---	CENTRIC HOLDINGS (CR)	0.105	---	↘ 0.105	12/10/2016	---	---	---	---	500@0.096	500@0.103	---	2015	---	---	---	10,618.00	0.067	0.147	5752	
124,170,201	0.780	---	---	---	28/06/2002	07/02/2005	---	CORINTH PIPEWORKS (CR)	0.618	-0.96	↘ 0.624	12/10/2016	0.617	0.604	0.620	0.618	0.612	15@0.610	500@0.619	23.88	2015	68,414	80	41,840.60	76,737.18	0.522	1.03	1757
9,907,500	0.300	---	---	---	06/10/2005	13/02/2002	---	CPI SA (CR)	0.171	---	↘ 0.171	12/10/2016	---	---	---	---	---	2300@0.185	60.83	2015	---	---	---	1,694.18	0.092	0.190	9572	
41,068,800	0.420	(0.0667)	(0.03)	0.1205	19/08/2016	17/02/2016	---	CRETE PLASTICS SA (CR)	4.90	4.48	# 4.69	12/10/2016	4.90	4.90	4.90	4.90	4.90	500@4.70	150@4.82	16.44	2015	5	1	24.50	201,237.12	3.19	4.95	1357
15,000,000	0.300	---	---	---	06/07/2007	18/07/2000	---	DAIOS PLASTICS SA (CR)	2.90	---	↘ 2.90	12/10/2016	---	---	---	---	50@2.66	20@3.19	---	2015	---	---	---	43,500.00	2.45	2.95	1357	
34,720,000	0.310	---	---	---	16/06/2010	01/08/2007	---	DROMEAS SA (CR)	0.114	7.55	# 0.106	12/10/2016	0.114	0.114	0.114	0.114	0.114	10001@0.096	7469@0.105	---	2015	5	1	0.57	3,958.08	0.066	0.152	3726
3,873,120	0.300	---	---	---	07/07/2008	04/10/2012	---	DRUCKFARBEN HELLAS (CR)	0.400	---	↘ 0.400	12/10/2016	---	---	---	---	---	---	0.64	2015	---	---	---	1,549.25	0.360	0.550	1357	
11,250,000	0.520	---	---	0.04	25/07/2016	09/11/2015	---	EKTER SA (CR)	0.410	---	↘ 0.410	12/10/2016	---	---	---	---	1000@0.412	2000@0.480	12.95	2015	---	---	---	4,612.50	0.301	0.499	2357	
32,188,050	1.04	---	---	---	21/07/2008	20/01/2000	---	EL. D. MOUZAKIS SA (CB)	0.129	---	↘ 0.129	12/10/2016	---	---	---	---	---	460@0.139	---	---	2015	---	---	---	4,152.26	0.084	0.215	3763
18,421,516	1.00	---	---	---	07/07/2009	10/09/2010	---	ELASTRON (CR)	0.604	2.37	# 0.590	12/10/2016	0.604	0.604	0.604	0.604	0.604	100@0.533	500@0.595	---	2015	5	1	3.02	11,126.60	0.310	0.639	1757
31,734,530	1.60	---	---	---	09/07/2007	19/07/2006	---	ELGEKA SA (CR)	0.179	---	↘ 0.179	12/10/2016	---	---	---	---	---	2379@0.178	---	---	2015	---	---	---	5,680.48	0.118	0.210	3577
23,828,130	0.500	---	---	0.16	08/06/2016	17/02/2009	---	ELINOIL S.A. (CR)	0.990	---	↘ 0.990	12/10/2016	---	---	---	---	---	1000@0.928	8.68	2015	---	---	---	23,589.85	0.634	1.08	537	
177,001,313	1.03	---	---	---	05/07/2011	20/12/2007	---	ELLAKTOR (CR)	1.28	-0.77	↘ 1.29	12/10/2016	1.28	1.25	1.28	1.28	1.27	8310@1.26	1515@1.28	---	2015	118,404	237	150,081.99	226,561.68	0.857	1.59	2357
82,667,000	0.300	---	---	---	22/07/2014	---	---	ELTECH ANEMOS S.A. (CR)	0.752	-1.70	↘ 0.765	12/10/2016	0.760	0.752	0.766	0.760	0.755	1700@0.745	500@0.761	8.09	2015	7,511	25	5,672.64	62,165.58	0.533	0.780	7537
26,730,187	0.600	0.05	---	---	23/06/2014	30/12/2010	---	ELTON SA (CR)	0.917	1.89	# 0.900	12/10/2016	0.900	0.900	0.930	0.920	0.923	500@0.903	335@0.915	16.37	2015	45,157	85	41,688.88	24,511.58	0.802	1.00	1353
14,050,971	0.340	---	---	---	06/07/2011	17/10/2002	---	ELTRAK SA (CR)	1.22	-3.18	↘ 1.26	12/10/2016	1.22	1.22	1.22	1.22	1.22	300@1.24	90@1.35	24.25	2015	3,280	4	4,001.60	17,142.18	0.990	1.44	2753

Number of Outstanding Securities	Nominal Value	Dividends [1]			Date of Last Coupon		Note	Shares	Closing price	% change	Previous closing price/date	Open price	Price min	Price max	Last price	Avg price	Last Bid [7]	Last Ask [7]	P/E after	Year	Volume	Trades	Transactions Value[8]	Company Mkt Value (thou. €)	Year low	Year high	Sector[ 4]		
		2013	2014	2015	Dividend [2]	Right																							
Main Market																													
3,307,500	0.960	---	---	---	11/08/2010	23/09/2016	---	ELVE SA (CR)	1.69	---	↘	1.69	12/10/2016	1.56	1.54	1.69	1.68	1.64	101@1.54	87@1.68	13.47	2015	1,299	12	2,123.46	5,589.68	1.31	2.10	3763
2,185,998,765	0.300	---	---	---	02/05/2008	27/11/2015	---	EUROBANK ERGASIAS (CR)	0.537	0.37	#	0.535	12/10/2016	0.530	0.518	0.543	0.537	0.529	11465@0.532	59400@0.375	---	2015	10,416,194	2,067	5,514,674.89	1,173,881.34	0.241	1.17	8355
8,623,225	0.600	---	---	---	02/06/2010	30/05/2016	5031	EUROCONSULTANTS S.A. (CR)	0.734	---	↘	0.734	12/10/2016	---	---	---	---	300@0.630	250@0.720	---	2015	---	---	---	6,329.45	0.633	1.82	2791	
27,503,677	0.630	---	---	0.06	22/06/2016	18/10/1999	---	EUROPEAN RELIANCE INSUR. (CR)	1.85	2.78	#	1.80	12/10/2016	1.80	1.80	1.85	1.85	1.85	912@1.85	112@1.86	4.62	2015	2,183	10	4,027.80	50,881.80	1.21	2.10	8536
13,673,200	0.880	---	---	---	18/07/2008	26/07/2001	---	EVROFARMA SA (CR)	0.228	8.57	#	0.210	12/10/2016	0.200	0.200	0.228	0.228	0.217	2000@0.210	2744@0.228	13.73	2015	10,750	19	2,335.51	3,117.49	0.120	0.307	3577
106,500,000	0.600	0.36	0.2	0.31	28/06/2016	28/01/2000	---	EYDAP S.A. (CR)	5.36	0.19	#	5.35	12/10/2016	5.34	5.30	5.42	5.36	5.36	30@5.36	350@5.40	13.07	2015	20,146	181	107,896.22	570,840.00	3.60	6.10	7577
52,800,154	0.300	0.2	---	---	20/08/2014	21/06/2004	---	F.G. EUROPE S.A. (CR)	0.530	---	↘	0.530	12/10/2016	---	---	---	---	---	12@0.529	23.42	2015	---	---	---	27,984.08	0.441	0.700	3722	
10,203,575	0.730	---	---	---	16/07/2007	18/10/1999	---	FIERATEX SA (CR)	0.160	---	↘	0.160	12/10/2016	---	---	---	---	---	2883@0.144	---	2015	---	---	---	1,632.57	0.039	0.205	3763	
11,720,024	0.540	0.0394	---	---	21/08/2014	04/11/2015	---	FLEXOPACK SA (CR)	2.55	---	↘	2.55	12/10/2016	---	---	---	---	---	350@2.47	50@2.75	6.78	2015	---	---	---	29,886.06	2.10	3.03	2723
4,181,450	0.500	---	---	---	21/08/2000	05/03/2002	---	FLOUR MILLS SARANTOPOULOS SA	0.770	---	↘	0.770	12/10/2016	---	---	---	---	---	29@0.770	---	2015	---	---	---	3,219.72	0.362	1.01	3577	
66,948,210	0.300	---	0.1005	---	22/09/2015	22/09/2015	---	FOLLI FOLLIE (CR)	21.20	-2.08	€	21.65	12/10/2016	21.65	21.20	21.65	21.20	21.47	95@21.19	6988@21.45	---	2015	50,906	401	1,092,721.88	1,419,302.05	12.50	22.40	5379
50,992,322	1.07	---	---	---	21/06/2010	16/07/2002	---	FOURLIS (CR)	3.70	-2.12	€	3.78	12/10/2016	3.70	3.68	3.77	3.70	3.70	270@3.70	273@3.77	---	2015	14,024	54	51,915.61	188,671.59	2.00	3.96	3722
14,076,360	0.370	---	---	---	19/08/2008	22/07/2003	---	GALAXIDI S.A. (CR)	0.339	---	↘	0.339	12/10/2016	---	---	---	---	---	11000@0.310	33.18	2015	---	---	---	4,771.89	0.163	0.570	3573	
103,423,291	0.570	---	---	---	01/08/2011	19/04/2016	---	GEK TERNA (CR)	2.05	-0.49	€	2.06	12/10/2016	2.03	2.00	2.05	2.05	2.03	923@2.03	246@2.05	12.88	2015	51,587	158	104,635.50	212,017.75	1.05	2.11	2357
8,418,750	0.300	---	---	0.12	16/12/2015	27/06/2012	---	GEKE SA (CB)	5.33	9.90	#	4.85	12/10/2016	5.33	5.33	5.33	5.33	5.33	430@4.37	20@5.33	17.66	2015	10	1	53.30	44,871.94	3.90	5.60	5753
24,060,000	0.300	0.017	0.02	0.01	11/07/2016	11/07/2016	---	GEN. COMMERCIAL & IND.SA (CR)	0.330	---	↘	0.330	12/10/2016	---	---	---	---	---	1000@0.318	2000@0.350	13.88	2015	---	---	---	7,939.80	0.253	0.394	2797
34,770,982	1.55	0.3	0.15	0.16	20/04/2016	27/07/2000	---	GR. SARANTIS SA (CR)	9.68	-1.22	€	9.80	12/10/2016	9.73	9.60	9.73	9.68	9.63	2000@9.60	340@9.67	30.51	2015	107	3	1,030.61	336,583.11	6.56	10.00	3767
101,260,000	2.13	0.1821	0.3037	0.3134	18/03/2016	08/01/2014	---	GRIVALIA PROPERTIES (CR)	6.80	-0.44	€	6.83	12/10/2016	6.76	6.76	6.87	6.80	6.81	274@6.77	1786@6.88	12.78	2015	42,629	146	290,132.35	688,568.00	6.46	7.74	8675
8,340,750	1.18	---	---	---	25/06/2009	09/09/2015	---	HAIDEMENOS SA (CR)	0.324	---	↘	0.324	12/10/2016	---	---	---	---	---	2000@0.356	---	2015	---	---	---	2,702.40	0.240	1.04	2791	
101,279,627	0.380	---	---	---	26/06/2008	14/07/2006	---	HALKOR SA (CB)	0.332	-1.48	€	0.337	12/10/2016	0.330	0.325	0.346	0.332	0.331	125@0.327	550@0.344	---	2015	26,854	43	8,875.82	33,624.84	0.193	0.425	1755
29,546,360	0.710	---	---	---	20/06/2008	23/08/2000	---	HELLENIC CABLES SA (CR)	1.14	-0.87	€	1.15	12/10/2016	1.15	1.10	1.15	1.14	1.13	4000@1.13	3300@1.15	---	2015	81,932	118	92,623.55	33,682.85	0.530	1.31	2733
65,368,563	1.08	---	0.21	0.1026	31/05/2016	04/07/2016	---	HELLENIC EXCHANGES-A.S.E. (CR)	4.37	---	↘	4.37	12/10/2016	4.37	4.31	4.39	4.37	4.35	7978@4.35	1820@4.39	22.18	2015	68,099	242	296,194.31	285,660.62	3.40	5.56	8777
305,635,185	2.18	---	---	---	31/12/2014	01/10/2003	4795	HELLENIC PETROLEUM (CR)	3.99	-1.97	€	4.07	12/10/2016	4.06	3.94	4.06	3.99	3.99	90@3.99	1000@4.02	44.28	2015	97,927	444	390,862.92	1,219,484.39	2.74	4.33	537
305,732,436	0.410	---	---	---	08/07/2009	28/09/2011	---	HYGEIA SA (CR)	0.144	-0.69	€	0.145	12/10/2016	0.141	0.140	0.144	0.144	0.140	7485@0.141	1950@0.144	---	2015	83,050	28	11,648.40	44,025.47	0.078	0.197	4533
65,441,118	0.440	---	---	---	24/11/2014	11/08/2015	---	IASO SA (CR)	0.421	-3.22	€	0.435	12/10/2016	0.433	0.415	0.433	0.420	0.427	497@0.415	1650@0.420	---	2015	5,628	10	2,402.86	27,550.71	0.360	0.669	4533
8,298,467	0.400	---	---	---	30/08/1993	08/05/2013	---	IDEAL GROUP SA (CR)	0.728	---	↘	0.728	12/10/2016	---	---	---	---	---	500@0.728	116@0.800	-(6)-	2015	---	---	---	6,041.28	0.568	0.959	9574
28,580,100	0.400	0.025	---	---	18/08/2014	04/07/2016	---	IKTINOS HELLAS SA (CR)	0.900	0.33	#	0.897	12/10/2016	0.897	0.897	0.900	0.900	0.897	700@0.837	1000@0.900	24.76	2015	235	4	210.90	25,722.09	0.837	1.15	2353
9,090,000	0.900	---	---	---	15/05/2009	13/10/2014	---	ILYDA S.A. (CR)	0.437	---	↘	0.437	12/10/2016	---	---	---	---	---	3042@0.437	---	2015	---	---	---	3,972.33	0.397	0.590	9537	
20,578,374	0.620	---	0.4	0.07	05/07/2016	18/05/2015	---	INFORM P. LYKOS SA (CR)	0.466	-0.43	€	0.468	12/10/2016	0.454	0.443	0.467	0.466	0.450	1@0.443	495@0.466	---	2015	2,101	9	945.97	9,589.52	0.405	0.620	2791
10,500,000	4.00	---	---	---	02/08/2016	---	---	INTERCONTINENTAL (CR)	5.60	---	↘	5.60	12/10/2016	---	---	---	---	---	2920@5.60	---	---	---	---	---	---	58,800.00	5.15	5.80	8674
11,233,200	0.730	---	---	---	12/07/2010	30/07/1999	---	INTERTECH SA (CR)	0.198	---	↘	0.198	12/10/2016	---	---	---	---	---	155@0.146	947@0.200	---	2015	---	---	---	2,224.17	0.120	0.376	9572
34,986,430	0.440	---	---	---	25/07/2008	23/02/2010	---	INTERWOOD-XYLEMPORIA (CR)	0.067	---	↘	0.067	12/10/2016	---	---	---	---	---	7150@0.061	---	---	2015	---	---	---	2,739.38	0.061	0.093	2353
2,566,836	0.440	---	---	---	13/08/2010	09/01/2007	---	INTERWOOD-XYLEMPORIA (PR)	0.154	---	↘	0.154	12/10/2016	---	---	---	---	---	315@0.139	---	2015	---	---	---	2,739.38	0.154	0.189	2353	
23,154,250	1.36	---	---	---	12/08/2008	02/08/2010	---	INTRACOM CONSTR. (CR)	0.425	-3.85	€	0.442	12/10/2016	0.442	0.422	0.469	0.425	0.424	252@0.425	10@0.446	---	2015	8,123	25	3,446.94	9,840.56	0.222	0.599	2357
133,025,996	1.41	---	---	---	03/07/2007	07/01/2002	---	INTRACOM HOLDINGS (CR)	0.312	-2.80	€	0.321	12/10/2016	0.315	0.309	0.320	0.312	0.312	2000@0.309	3791@0.310	---	2015	40,880	76	12,766.82	41,504.11	0.245	0.394	9578
158,961,721	0.300	---	---	---	30/05/2013	14/11/2007	---	INTRALOT (CR)	1.22	-4.69	€	1.28	12/10/																

Number of Outstanding Securities	Nominal Value	Dividends [1]			Date of Last Coupon Dividend [2]		Date of Last Coupon Right	Note	Shares	Closing price	% change	Previous closing price/date	Open price	Price min	Price max	Last price	Avg price	Last Bid [7]	Last Ask [7]	P/E after	Year	Volume	Trades	Transactions Value[8]	Company Mkt Value (thou. €)	Year low	Year high	Sector[ 4]
--	------------------	---------------	--	--	-------------------------------------	--	------------------------------	------	--------	------------------	----------	--------------------------------	---------------	--------------	--------------	---------------	--------------	-----------------	--------------	--------------	------	--------	--------	--------------------------	--------------------------------	-------------	--------------	---------------

Main Market

9,742,920	0.400	0.01	0.01	0.01	12/08/2016	14/07/2000	---	KARAMOLEGOS SA (CR)	1.49	---	1.49	12/10/2016	---	---	---	---	609@1.49	---	-(6)-	2015	---	---	---	14,516.95	0.601	1.65	3577	
14,679,792	1.68	---	---	---	24/06/2014	04/09/2000	---	KARATZIS SA (CR)	4.12	---	4.12	12/10/2016	3.94	3.94	4.12	4.12	4.07	50@4.00	347@4.12	11.83	2015	559	15	2,273.29	60,480.74	3.40	4.12	2723
13,202,756	0.350	---	---	---	01/07/2004	05/08/2014	---	KEKROPS SA (CR)	0.325	-0.92	€ 0.328	12/10/2016	0.264	0.264	0.325	0.325	0.272	700@0.273	1000@0.319	---	2015	405	6	110.01	4,290.90	0.175	0.355	8633
7,595,160	0.600	---	---	---	08/08/2008	18/08/2010	---	KIRIAKOULIS SHIPPING SA (CR)	0.721	---	0.721	12/10/2016	---	---	---	---	---	1975@0.649	89.77	2015	---	---	---	5,476.11	0.220	0.721	5759	
23,648,700	0.350	---	---	---	13/07/2011	31/03/2015	---	KLEEMAN HELLAS SA (CR)	2.02	---	2.02	12/10/2016	2.02	2.02	2.02	2.02	2.026296251@2.02	200@2.03	24.37	2015	25,307	15	51,120.14	47,770.37	1.21	2.04	2757	
40,219,218	0.300	---	---	---	25/05/2009	09/07/2013	---	KLOUKINAS - LAPPAS SA (CR)	0.285	4.78	# 0.272	12/10/2016	0.299	0.285	0.299	0.285	0.289	80@0.250	713@0.280	---	2015	312	4	90.25	11,462.48	0.218	0.353	2357
21,224,340	0.420	---	---	---	02/07/2008	25/04/2006	---	KORDELLOS BROS SA (CR)	0.363	---	0.363	12/10/2016	0.363	0.363	0.363	0.363	0.360	---	979@0.362	---	2015	1	1	0.36	7,704.44	0.167	0.373	1757
13,586,500	0.390	---	---	---	25/06/2010	28/05/2008	---	KORRES (CR)	3.01	-1.31	€ 3.05	12/10/2016	3.00	3.00	3.07	3.06	3.04	25@3.00	8@3.07	---	2015	745	6	2,261.37	40,895.37	2.79	3.90	3767
29,480,000	0.420	---	---	---	19/07/2010	01/08/2007	---	KRETA FARM SA (CR)	0.438	-4.57	€ 0.459	12/10/2016	0.419	0.416	0.446	0.438	0.421	100@0.425	390@0.438	---	2015	8,480	14	3,572.95	12,912.24	0.300	0.610	3577
33,065,136	0.380	---	0.06	0.06	18/08/2016	16/09/2013	---	KRI-KRI S.A. (CR)	1.62	0.62	# 1.61	12/10/2016	1.58	1.58	1.62	1.62	1.60	650@1.57	1155@1.62	13.94	2015	1,800	4	2,877.80	53,565.52	1.50	1.90	3577
15,804,800	0.360	---	---	---	15/06/2010	12/03/2004	---	KTIMA KOSTAS LAZARIDIS SA (CR)	0.374	---	0.374	12/10/2016	---	---	---	---	---	900@0.360	---	2015	---	---	---	5,911.00	0.166	0.534	3535	
23,719,554	0.990	---	0.2406	---	14/08/2015	15/09/2014	---	KYRIAKIDIS MARBLES SA (CR)	3.00	-2.91	€ 3.09	12/10/2016	3.00	3.00	3.03	3.00	3.00	5997@3.00	1@3.02	11.48	2015	6,086	6	18,273.00	71,158.66	2.11	3.25	2353
79,721,775	0.300	---	---	---	30/05/2007	23/06/2014	---	LAMDA DEVELOPMENT SA (CR)	4.80	---	4.80	12/10/2016	4.70	4.64	4.80	4.80	4.72	1500@4.72	2966@4.83	---	2015	15,752	97	74,381.23	382,664.52	3.12	5.08	8633
21,364,000	1.12	---	---	---	05/07/2010	10/08/2005	---	LAMPSPA HOTEL SA (CR)	17.00	0.59	# 16.90	12/10/2016	17.20	17.00	17.20	17.00	17.02	10@15.99	92@17.00	77.36	2015	60	4	1,021.00	363,188.00	15.32	18.00	5753
5,939,268	0.620	---	---	---	10/07/2003	03/01/2002	---	LANAKAM SA (CR)	0.589	---	0.589	12/10/2016	---	---	---	---	---	4000@0.560	---	2015	---	---	---	3,498.23	0.539	0.638	3763	
4,740,000	0.860	---	---	---	---	14/03/2003	---	LOGISMOS S.A. (CR)	0.265	---	0.265	12/10/2016	---	---	---	---	---	400@0.266	---	---	2015	---	---	---	1,256.10	0.219	0.489	9533
17,125,062	0.940	---	---	---	01/06/2010	18/07/2016	---	LOULIS MILLS SA (CR)	1.52	0.66	# 1.51	12/10/2016	1.52	1.52	1.52	1.52	1.52	300@1.44	198@1.52	44.42	2015	200	2	304.00	26,030.09	1.30	1.83	3577
939,510,748	0.300	---	---	---	26/04/2007	29/08/2014	---	MARFIN INVESTMENT GROUP (CR)	0.122	-1.61	€ 0.124	12/10/2016	0.122	0.121	0.124	0.122	0.122	80921@0.121	5083@0.123	---	2015	1,245,784	235	152,151.35	114,620.31	0.048	0.222	8775
9,819,370	0.690	---	---	---	14/08/2007	09/01/2004	---	MATHIOS REFRACTORY SA (CR)	0.329	---	0.329	12/10/2016	---	---	---	---	---	990@0.327	---	2015	---	---	---	3,230.57	0.162	0.356	2353	
468,700	0.65	1.48	---	---	26/04/2016	21/05/2004	---	MERMEREN KOMB. A.D. PR. (GDR)	5.20	-5.45	€ 5.50	12/10/2016	5.02	5.00	5.20	5.20	5.15	200@5.07	500@5.20	0.50	2015	967	12	4,984.06	2,437.24	4.83	8.49	1775
51,950,600	0.320	0.3	0.5	0.12	13/05/2016	21/10/2005	---	METKA (CR)	7.66	0.13	# 7.65	12/10/2016	7.59	7.56	7.70	7.66	7.62	197@7.61	70@7.66	22.99	2015	11,925	139	90,852.61	397,941.60	6.24	7.93	2757
10,500,000	0.950	---	---	---	24/06/2008	19/12/2013	---	MEVACO SA (CR)	0.980	---	0.980	12/10/2016	---	---	---	---	---	300@0.930	240@0.999	---	2015	---	---	---	10,290.00	0.705	1.10	2757
6,700,000	0.800	0.16	0.03	0.023	27/06/2016	29/05/2014	---	MILLS KEPENOS (CR)	1.53	---	1.53	12/10/2016	---	---	---	---	---	---	7@1.53	14.75	2015	---	---	---	10,251.00	0.880	2.21	3577
6,200,000	0.500	---	---	---	22/06/2010	01/11/1995	---	MINERVA KNITWEAR SA (CB)	0.050	---	0.050	12/10/2016	---	---	---	---	---	4000@0.045	---	---	2015	---	---	---	310.00	0.045	0.092	3763
12,417,000	0.370	---	---	---	28/07/2008	06/09/2011	---	MLS MULTIMEDIA SA (CR)	3.98	-0.25	€ 3.99	12/10/2016	3.89	3.89	3.98	3.98	3.98	50@3.96	3250@4.00	24.44	2015	1,422	20	5,654.03	49,419.66	2.75	3.99	9537
11,700,000	0.590	---	---	---	02/06/2009	24/07/2012	---	MOTODYNAMICS S.A. (CR)	0.372	-12.47	€ 0.425	12/10/2016	0.373	0.372	0.373	0.372	0.372	509@0.372	100@0.391	13.58	2015	555	7	206.52	4,352.40	0.227	0.569	5379
110,782,980	0.750	0.2	---	0.65	27/06/2016	04/11/2013	---	MOTOR OIL (CR)	10.90	0.37	# 10.86	12/10/2016	10.84	10.82	10.90	10.90	10.86	1551@10.87	300@10.93	6.00	2015	88,278	387	958,476.00	1,207,534.48	8.13	11.26	533
116,915,862	0.970	---	---	---	11/05/2009	19/10/2015	---	MYTILINEOS HOLDINGS (CR)	4.70	-1.47	€ 4.77	12/10/2016	4.75	4.70	4.81	4.70	4.75	734@4.69	200@4.74	---	2015	142,159	501	674,661.66	549,504.55	2.70	4.94	1755
8,321,682	0.670	---	---	---	17/08/2007	23/11/1999	---	N. LEVEDERIS SA (CB)	0.277	---	0.277	12/10/2016	---	---	---	---	---	850@0.276	---	2015	---	---	---	2,942.46	0.138	0.385	1757	
2,160,524	0.670	0.0436	0.0436	0.0436	04/08/2016	23/11/1999	---	N. LEVEDERIS SA (PB)	0.295	---	0.295	12/10/2016	---	---	---	---	---	1000@0.211	150@0.280	---	2015	---	---	---	2,942.46	0.202	1.25	1757
11,510,102	0.890	---	---	---	24/06/2005	06/10/1999	---	NAFPAKTOS TEXTILE IND. SA (CB)	0.110	---	0.110	12/10/2016	---	---	---	---	---	1000@0.101	---	---	2015	---	---	---	1,266.11	0.085	0.313	3763
6,340,000	0.600	---	---	---	30/11/2009	04/12/2015	---	NAKAS MUSIC	0.880	10.00	# 0.800	12/10/2016	0.880	0.860	0.880	0.880	0.869	3@0.880	---	5.54	2016	3,552	7	3,085.76	5,579.20	0.600	1.11	5379
9,147,151,527	0.300	---	---	---	16/05/2008	30/11/2015	---	NATIONAL BANK (CR)	0.189	-4.06	€ 0.197	12/10/2016	0.194	0.189	0.195	0.189	0.192283319@0.189	500000@0.190	---	2015	13,062,185	923	2,513,484.15	1,728,811.64	0.099	0.340	8355	
23,935,280	0.300	---	---	---	29/06/2009	13/06/2000	---	NAYTEMPORIKI PUBLISHING SA(CR)	0.062	---	0.062	12/10/2016	---	---	---	---	---	2000@0.056	---	---	2015	---	---	---	1,483.99	0.049	0.097	5557
27,848,000	0.300	0.004	0.0032	0.0084	16/08/2016	02/09/2003	---	NEWSPHONE HELLAS SA (CR)	0.196	-1.51	€ 0.199	12/10/2016	0.197	0.196	0.197	0.196	0.197	600@0.197	3005@0.231	8.23	2015	1,000	2	196.70	5,458.21	0.135	0.291	2791
291,282,095	0.300	---	---	---	08/07/2008	21/03/2016	---	NIREFS SA (CR)	0.158	1.93	# 0.155	12/10/2016	0.150	0.150	0.158	0.158	0.154	500@0.150	5408@0.158	0.22	2015	16,772	24	2,586.18	46,022.57	0.067	0.297	3573
319,000,000	0.300	0.25	0.57	0.4	13/10/2016	25/04/2001	---	OPAP (CR)	7.31	-3.82	€ 7.60	12/10/2016	7.48	7.31	7.55	7.31	7.43	6970@7.30	1000@7.45	11.05	2015	620,164	939	4,606,774.58	2,331,890.00	5.16	7.84	5752
490,150,389	2.83	---	0.08	0.1	29/06/2016	18/06/1998	---	OTE (CR)	7.84	-3.09	€ 8.09	12/10/2016	8.01	7.84	8.06	7.84	7.94	5515@7.83	50@7.87	41.50	2015	417,085	1,167	3,309,927.66	3,842,779.05	6.55	9.71	6535

Number of Outstanding Securities	Nominal Value	Dividends [1]			Date of Last Coupon		Note	Shares	Closing price	% change	Previous closing price/date	Open price	Price min	Price max	Last price	Avg price	Last Bid [7]	Last Ask [7]	P/E after	Year	Volume	Trades	Transactions Value[8]	Company Mkt Value (thou. €)	Year low	Year high	Sector[ 4]	
		2013	2014	2015	Dividend [2]	Right																						
Main Market																												
25,000,000	2.00	0.12	0.099	0.1114	18/07/2016	08/08/2003	---	P.P.A. S.A. (CR)	12.55	0.56 #	12.48 12/10/2016	12.48	12.28	12.55	12.55	12.44	45@12.46	568@12.55	37.46	2015	3,433	81	42,700.67	313,750.00	9.80	14.78	2777	
4,971,466	1.46	---	---	---	04/07/2007	08/10/2003	---	PAIRIS SA (CR)	0.194	--- ↘	0.194 12/10/2016	0.190	0.190	0.194	0.194	0.190	---	41@0.194	---	2015	1,000	3	190.04	964.46	0.158	0.215	2723	
3,953,090	0.900	---	0.067	0.11	26/05/2016	05/12/2012	---	PAPERPACK (CR)	1.36	9.68 #	1.24 12/10/2016	1.36	1.36	1.36	1.36	1.36	40@1.21	1350@1.36	4.28	2015	50	1	68.00	5,376.20	0.651	1.38	2723	
50,797,369	0.310	---	---	---	17/08/2000	12/10/2010	---	PAPOUTSANIS (CR)	0.122	--- ↘	0.122 12/10/2016	0.122	0.121	0.122	0.122	0.122	65@0.120	3545@0.121	---	2015	10,511	4	1,281.84	6,197.28	0.080	0.217	3767	
7,070,400	0.930	---	---	---	18/05/2010	06/05/2016	---	PETROPOULOS PETROS (CR)	4.05	--- ↘	4.05 12/10/2016	3.94	3.94	4.05	4.05	4.02	80@3.99	100@4.04	37.98	2015	432	4	1,736.35	28,635.12	3.43	4.25	2753	
8,733,183,280	0.300	---	---	---	16/05/2008	27/11/2015	---	PIRAEUS BANK (CR)	0.140	-4.11 €	0.146 12/10/2016	0.144	0.140	0.145	0.140	0.142242926@0.140	10400@0.142	---	2015	11,181,061	877	1,587,981.77	1,222,645.66	0.067	0.308	8355		
22,080,000	0.330	0.2	---	0.08	17/05/2016	27/04/2015	---	PLAISIO COMPUTERS SA (CR)	3.83	0.52 #	3.81 12/10/2016	3.76	3.76	3.90	3.83	3.81	13@3.80	100@3.93	12.61	2015	5,773	66	21,970.71	84,566.40	3.76	4.75	9572	
232,000,000	4.60	---	0.05	---	20/07/2015	12/12/2001	---	PPC (CR)	2.85	0.71 #	2.83 12/10/2016	2.80	2.80	2.89	2.85	2.85	1550@2.84	10980@2.87	---	2015	396,034	968	1,127,487.60	661,200.00	2.29	4.08	7535	
11,812,193	0.470	---	0.02	---	26/03/2015	15/11/2006	---	PROFILE SA (CR)	0.450	--- ↘	0.450 12/10/2016	0.440	0.440	0.451	0.450	0.446	1000@0.440	384@0.449	---	2015	2,300	4	1,026.10	5,315.49	0.388	0.546	9533	
27,345,120	0.470	---	---	---	18/07/2005	26/02/2014	---	QUALITY & RELIABILITY SA (CR)	0.282	-0.70 €	0.284 12/10/2016	0.290	0.282	0.290	0.282	0.285	50@0.268	385@0.280	---	2015	130	3	37.10	7,711.32	0.207	0.465	9533	
11,921,531	3.66	---	---	---	05/09/2008	21/01/2016	---	QUEST HOLDINGS (CR)	5.40	2.08 #	5.29 12/10/2016	4.86	4.86	5.40	5.40	5.39	100@4.96	21@5.40	---	2015	830	8	4,471.08	64,376.27	3.30	5.49	9533	
57,434,884	1.31	---	---	---	05/06/2008	12/06/2009	---	REDS S.A. (CR)	0.320	2.89 #	0.311 12/10/2016	0.306	0.306	0.320	0.320	0.318	500@0.307	21@0.320	---	2015	4,350	5	1,381.50	18,379.16	0.280	0.410	8633	
22,280,000	0.300	---	---	---	11/04/2011	23/02/2007	---	REVOIL (CR)	0.320	1.27 #	0.316 12/10/2016	0.300	0.300	0.320	0.320	0.300	2000@0.280	497@0.320	10.28	2015	3,864	7	1,159.26	7,129.60	0.169	0.557	5379	
7,500,000	0.690	0.0863	0.1	---	19/06/2015	05/07/2016	---	S.KANAKIS SA (CR)	2.45	0.82 #	2.43 12/10/2016	2.31	2.31	2.45	2.45	2.31	60@2.39	50@2.44	10.47	2015	263	5	608.45	18,375.00	1.75	2.64	3577	
52,067,296	0.300	---	---	---	23/12/2003	24/01/2007	---	SELECTED TEXT. IND. ASSOC (CR)	0.143	10.00 #	0.130 12/10/2016	0.124	0.124	0.143	0.143	0.124	686@0.124	6673@0.143	---	2015	801	7	99.51	7,445.62	0.084	0.205	3763	
204,235,184	0.300	---	---	---	01/07/2008	30/07/2012	---	SELONDA AQUACULTURE SA (CR)	0.146	--- ↘	0.146 12/10/2016	---	---	---	---	---	1110@0.132	199@0.145	---	2015	---	---	---	29,818.34	0.074	0.273	3573	
6,456,530	1.61	---	---	---	29/06/2001	02/08/2010	---	SPACE HELLAS SA (CR)	0.650	-9.85 €	0.721 12/10/2016	0.650	0.650	0.650	0.650	0.650	195@0.651	170@0.770	4.95	2015	150	1	97.50	4,196.74	0.592	1.28	9578	
28,438,268	0.300	---	---	---	21/08/2006	24/11/1999	---	SPIROY AGRICULTURE SA (CR)	0.699	--- ↘	0.699 12/10/2016	---	---	---	---	---	---	1670@0.630	---	2015	---	---	---	19,878.35	0.630	0.700	1357	
40,693,350	5.00	---	---	---	03/07/2006	26/05/2015	---	TECHNICAL OLYMPIC SA (CR)	0.759	--- ↘	0.759 12/10/2016	0.740	0.740	0.759	0.759	0.748	100@0.724	1035@0.759	---	2015	101	5	75.52	30,886.25	0.530	0.850	3728	
109,314,400	0.300	---	---	0.0935	30/05/2016	05/08/2015	---	TERNA ENERGY (CR)	2.65	--- ↘	2.65 12/10/2016	2.62	2.60	2.65	2.65	2.64	335@2.63	246@2.67	-(6)-	2015	12,603	93	33,235.73	289,683.16	1.92	3.05	7537	
36,300,000	1.12	0.285	0.24	0.25	23/06/2016	12/12/2007	---	THESSALONIKA WATER & SEWERAGE	3.40	-1.73 €	3.46 12/10/2016	3.46	3.37	3.46	3.40	3.40	14@3.36	24@3.40	9.11	2015	1,328	20	4,513.22	123,420.00	2.65	3.86	7577	
45,094,620	0.660	0.05	0.0225	---	20/04/2015	01/11/1999	---	THRACE PLASTICS SA (CR)	1.70	1.80 #	1.67 12/10/2016	1.67	1.65	1.70	1.70	1.68	199@1.67	1997@1.70	-(6)-	2015	6,264	26	10,551.18	76,660.85	1.25	1.74	1357	
77,063,568	4.00	---	0.1551	0.3099	27/06/2016	25/06/2004	---	TITAN CEMENT (CR)	21.07	-0.33 €	21.14 12/10/2016	21.11	20.92	21.19	21.07	21.04	379@20.92	100@21.20	29.65	2015	29,735	420	625,614.44	1,703,581.91	14.86	22.40	2353	
7,568,960	4.00	---	0.1551	0.3099	27/06/2016	25/06/2004	---	TITAN CEMENT CO. (PR)	10.55	-0.85 €	10.64 12/10/2016	10.60	10.50	10.65	10.54	10.56	50@10.51	195@10.65	14.85	2015	3,305	35	34,884.85	1,703,581.91	7.36	13.30	2353	
10,080,000	3.00	0.6	1.95	0.58	18/07/2016	27/08/2001	---	TPA SA (CR)	18.40	1.38 #	18.15 12/10/2016	18.20	18.20	18.40	18.40	18.22	12@18.40	10@18.49	10.35	2015	55	5	1,001.95	185,472.00	17.78	24.10	2777	
15,627,315	0.300	---	---	---	16/11/1992	03/12/2012	---	UNIBIOS (CR)	0.103	-7.21 €	0.111 12/10/2016	0.100	0.100	0.103	0.103	0.103	1@0.111	3000@0.104	---	2015	594	7	60.96	1,609.61	0.053	0.124	2353	
18,810,000	0.400	---	---	---	08/07/2010	14/11/2007	---	VARVERIS - MODA BAGNO SA (CR)	0.117	--- ↘	0.117 12/10/2016	---	---	---	---	---	---	308@0.117	---	2015	---	---	---	2,200.77	0.081	0.165	2353	
259,189,761	---	---	---	---	---	26/02/2016	---	VIOHALCO SA/INV (CB)	1.26	-3.08 €	1.30 12/10/2016	1.29	1.25	1.29	1.26	1.28	619@1.26	2536@1.27	---	---	135,155	225	172,502.11	326,579.10	0.928	1.67	2727	
4,968,600	2.88	---	---	---	01/07/1998	14/12/1998	---	VIS SA (CR)	0.878	--- ↘	0.878 12/10/2016	---	---	---	---	---	500@0.821	70@0.878	---	2015	---	---	---	4,362.43	0.611	1.00	2723	
6,325,000	0.600	---	---	---	02/05/2014	17/02/2014	---	VOGIATZOGLOU SYSTEMS SA (CR)	1.43	--- ↘	1.43 12/10/2016	---	---	---	---	---	---	289@1.49	---	2015	---	---	---	9,044.75	0.700	1.75	2797	

Exchange Traded Funds (ETFs)

619,082	---	---	---	---	15/06/2016	---	---	---	ALPHA ETF FTSE Athens Large Cap	15.27	-1.86 €	15.56 12/10/2016	15.27	15.27	15.27	15.27	15.27	---	64@15.27	---	---	---	1	1	15.27	---	11.30	170.69	12003
294,878	---	---	---	---	29/06/2009	---	---	---	NBGAM ETF	6.82	-1.30 €	6.91 12/10/2016	6.82	6.82	6.82	6.82	6.82	---	---	---	---	---	2	1	13.64	---	4.50	7.60	12003
388,550	---	---	---	---	03/11/2010	---	---	---	NBGAM ETF GREECE & TURKEY 30	5.29	-0.94 €	5.34 12/10/2016	5.29	5.29	5.29	5.29	5.29	---	---	---	---	---	2	1	10.58	---	4.90	6.27	12003

Low Dispersion

14,000,000	4.15	---	---	---	23/04/2010	29/06/1999	4815	---	ALPHA REAL ESTATE SA(CR)	5.31	--- ↘	5.31 12/10/2016	---	---	---	---	---	60@4.52	1@5.60	26.83	2015	---	---	---	74,340.00	4.11	7.30	8637
------------	------	-----	-----	-----	------------	------------	------	-----	--------------------------	------	-------	-----------------	-----	-----	-----	-----	-----	---------	--------	-------	------	-----	-----	-----	-----------	------	------	------

Number of Outstanding Securities	Nominal Value	Dividends [1]			Date of Last Coupon		Note	Shares	Closing price	% change	Previous closing price/date	Open price	Price min	Price max	Last price	Avg price	Last Bid [7]	Last Ask [7]	P/E after	Year	Volume	Trades	Transactions Value[8]	Company Mkt Value (thou. €)	Year low	Year high	Sector[ 4]
		2013	2014	2015	Dividend [2]	Coupon Right																					
Low Dispersion																											
81,122,516	3.00	---	---	---	23/06/2003	04/11/2008	4816	ASTIR PALACE SA (CR)	5.04	2.02 #	4.94 12/10/2016	4.95	4.95	5.08	5.04	5.04	4300@5.05	855@5.08	---	2015	57,965	95	292,241.62	408,857.48	2.90	5.08	5753
134,652,904	0.800	---	---	---	09/08/2004	08/03/2006	4814	ATHENA SA (CR)	0.040	---	0.040 12/10/2016	---	---	---	---	---	---	26@0.048	---	2015	---	---	---	5,386.12	0.018	0.130	2357
191,660,320	0.300	---	---	---	20/07/2009	29/12/2010	4817	ATTICA HOLDINGS (CR)	0.900	-6.83 €	0.966 12/10/2016	0.900	0.900	0.900	0.900	0.900	250@0.862	57@0.897	-(6)-	2015	4,393	6	3,953.70	172,494.29	0.490	1.40	5759
13,404,440	8.63	---	---	---	02/04/2001	06/03/1992	4822	IONIAN HOTELS SA (CR)	10.00	---	10.00 12/10/2016	---	---	---	---	---	---	350@12.00	61.83	2015	---	---	---	134,044.40	5.64	10.00	5753
2,760,000	11.83	8.5	9.3	8.5	15/07/2016	16/07/1990	4823	KARELIA TOBACCO CO. SA (CB)	255.00	---	255.00 12/10/2016	255.00	255.00	255.00	255.00	255.00	85@254.00	85@255.00	13.18	2015	10	1	2,550.00	703,800.00	227.20	269.00	3785
106,980,050	2.25	---	---	---	25/07/2008	24/02/2014	5046	MINOAN LINES SA (CR)	2.35	---	2.35 12/10/2016	---	---	---	---	---	500@2.40	---	15.51	2015	---	---	---	251,403.12	2.00	2.45	5759
255,494,534	3.00	---	---	0.2035	15/04/2016	23/12/2015	5104	NBG PANGAEA (CR)	3.97	---	3.97 12/10/2016	---	---	---	---	---	365@3.97	---	20.40	2015	---	---	---	1,014,313.30	3.22	6.03	8671
22,996,875	1.25	---	---	---	24/06/2011	02/02/2016	5116	NEXANS HELLAS SA (CR)	1.29	8.40 #	1.19 12/10/2016	1.19	1.19	1.39	1.39	1.29	---	487@1.30	---	2015	20	3	25.80	29,665.97	0.781	1.58	2733
17,240,776	0.370	---	---	---	14/07/2005	30/09/2003	4827	PERSEUS SA (CR)	0.419	---	0.419 12/10/2016	---	---	---	---	---	500@0.360	2774@0.415	3.07	2015	---	---	---	7,223.89	0.277	0.520	3577
54,888,240	1.13	0.09	---	---	25/04/2014	22/03/2006	5100	TRASTOR REAL EST. INV. CO.(CR)	0.817	8.07 #	0.756 12/10/2016	0.856	0.785	0.856	0.785	0.817	500@0.780	1483@0.856	---	2015	1,817	8	1,484.35	44,843.69	0.611	1.25	8671

Surveillance																											
13,000,000	1.00	---	---	---	01/08/2007	07/04/2000	5093	AKRITAS SA (CR)	0.175	---	0.175 12/10/2016	---	---	---	---	---	---	10@0.140	---	2015	---	---	---	2,275.00	0.061	0.530	2353
14,870,100	0.300	---	---	---	15/05/2008	26/09/2011	4844	ALPHA GRISSIN S.A. (CR)	0.031	---	0.031 12/10/2016	---	---	---	---	---	1000@0.031	---	---	2015	---	---	---	460.97	0.019	0.038	9533
2,969,713	0.300	---	---	---	02/07/2008	28/02/2011	4958	ANEK LINES SA (PR, Issue '96)	0.104	---	0.104 12/10/2016	---	---	---	---	---	---	---	43.50	2015	---	---	---	11,377.59	0.104	0.240	5759
312,163	0.300	---	---	---	02/07/2008	28/02/2011	4959	ANEK LINES SA (PR, Issue '90)	0.422	---	0.422 12/10/2016	---	---	---	---	---	---	---	-(6)-	2015	---	---	---	11,377.59	0.352	1.04	5759
185,373,016	0.300	---	---	---	02/07/2008	28/02/2011	4957	ANEK LINES SA (CR)	0.059	-1.67 €	0.060 12/10/2016	0.059	0.059	0.059	0.059	0.059	1021@0.060	3000@0.071	24.68	2015	2,128	5	125.55	11,377.59	0.050	0.103	5759
20,255,805	0.300	---	---	---	22/08/2006	02/08/2010	4881	AXON HOLDING SA (CR)	0.006	---	0.006 12/10/2016	---	---	---	---	---	14000@0.006	---	---	2015	---	---	---	121.53	0.006	0.070	4533
17,579,754	4.16	---	---	---	18/08/2006	02/08/2010	5097	BIOTER SA (CR)	0.078	---	0.078 12/10/2016	---	---	---	---	---	---	2049@0.063	---	2015	---	---	---	1,371.22	0.038	0.149	2357
4,034,950	0.680	---	---	---	01/07/2005	30/12/2010	5114	CHATZIKRANIOTIS & SONS SA (CR)	0.030	-18.92 €	0.037 12/10/2016	0.030	0.030	0.030	0.030	0.030	3000@0.037	---	---	2015	12	1	0.36	121.05	0.030	0.119	3577
1,417,311	3.00	---	---	---	11/08/2010	12/10/2016	5122	DIONIC (CR)	0.370	---	0.370 12/10/2016	---	---	---	---	---	---	---	0.11	2015	---	---	---	524.41	0.024	0.060	2797
15,878,748	0.480	---	---	---	10/07/2006	22/03/2004	5095	DOMIKI KRITIS SA (CR)	0.290	---	0.290 12/10/2016	---	---	---	---	---	---	15@0.260	---	2015	---	---	---	4,604.84	0.147	0.318	2357
3,961,300	1.28	---	---	---	29/06/2004	03/08/2000	5080	DUROS SA (CR)	0.491	---	0.491 12/10/2016	---	---	---	---	---	---	200@0.485	---	2015	---	---	---	1,945.00	0.118	0.491	3763
7,085,888	1.59	---	---	---	02/07/1996	06/09/2010	4690	ELVIEMEK (CR)	3.18	---	3.18 12/10/2016	---	---	---	---	---	---	49@2.90	---	2015	---	---	---	22,533.12	3.18	3.97	8633
6,000,000	0.600	---	---	---	13/06/2008	08/04/2004	4886	EUROBROKERS S.A. (CR)	0.009	---	0.009 12/10/2016	---	---	---	---	---	---	---	---	2015	---	---	---	54.00	0.009	0.009	8534
21,820,410	0.800	---	---	---	22/05/2008	02/08/2011	4882	EUROMEDICA SA (CR)	0.006	---	0.006 12/10/2016	0.006	0.006	0.006	0.006	0.006	6000@0.006	---	---	2015	1,350	1	8.10	130.92	0.006	0.028	4533
110,097,185	0.300	---	---	---	19/09/2016		5118	Forthnet (CR)	0.391	18.49 #	0.330 12/10/2016	0.390	0.390	0.396	0.396	0.391	2000@0.396	---	---	2015	13,135	13	5,134.69	43,048.00	0.236	0.660	9535
50,593,832	0.300	---	---	---	07/07/2010	07/09/2011	5113	FRIGOGLASS SA (CR)	0.168	20.00 #	0.140 12/10/2016	0.168	0.168	0.168	0.168	0.168	100200@0.168	---	---	2015	83,832	43	14,083.78	8,499.76	0.086	1.87	2757
77,376,446	0.340	---	---	---	23/05/2005	18/08/2011	5094	G.E. DIMITRIOU (CR)	0.022	---	0.022 12/10/2016	---	---	---	---	---	---	11799@0.022	---	2015	---	---	---	1,702.28	0.006	0.037	3722
1,270,000	0.300	---	---	---	06/07/2007	06/02/2013	5007	GIRAKIAN PROFIL SA (CB)	0.071	---	0.071 12/10/2016	---	---	---	---	---	3000@0.057	---	---	2015	---	---	---	90.17	0.071	0.167	1757
1,540,000	0.600	---	---	---	08/08/1994	19/09/2000	5058	J.BOUTARIS & SON HOLD. (PB)	0.046	---	0.046 12/10/2016	---	---	---	---	---	---	3000@0.055	---	2015	---	---	---	473.71	0.006	0.062	3535
25,179,640	0.600	---	---	---	08/08/1994	19/09/2000	5057	J.BOUTARIS & SON HOLD. SA (CB)	0.016	---	0.016 12/10/2016	---	---	---	---	---	13998@0.016	---	---	2015	---	---	---	473.71	0.016	0.128	3535
7,125,216	0.650	---	---	---	01/07/2005	14/12/1999	4955	KRE.KA SA (CR)	0.073	---	0.073 12/10/2016	---	---	---	---	---	3000@0.080	---	---	2015	---	---	---	520.14	0.060	0.180	3573
51,081,030	1.00	---	---	---	20/08/2007	03/09/2007	4912	LAVIPHARM SA (CR)	0.085	-15.84 €	0.101 12/10/2016	0.081	0.081	0.093	0.084	0.085	3000@0.082	2000@0.090	---	2015	9,100	7	771.30	4,341.89	0.054	0.155	4577
7,734,375	1.00	---	---	---	09/07/2007	07/01/2011	5112	LIVANIS SA (CR)	0.022	---	0.022 12/10/2016	---	---	---	---	---	1778@0.018	---	---	2015	---	---	---	170.16	0.022	0.148	5557
4,419,616	1.58	---	---	---	21/07/2011	04/03/2015	4983	MEDICON S.A (CR)	0.330	-8.84 €	0.362 12/10/2016	0.330	0.330	0.330	0.330	0.330	810@0.350	---	0.90	2015	2	1	0.66	1,458.47	0.321	0.790	4535
20,231,328	0.600	---	---	---	15/07/2008	25/06/2004	4879	NIKAS SA (CR)	0.110	---	0.110 12/10/2016	---	---	---	---	---	---	499@0.110	---	2015	---	---	---	2,225.45	0.070	0.132	3577
14,967,940	0.500	---	---	---	21/05/2008	04/01/2008	4956	PASAL DEVELOPMENT S.A. (CR)	0.300	---	0.300 12/10/2016	---	---	---	---	---	---	8000@0.270	---	2015	---	---	---	4,490.38	0.058	0.300	8633

Number of Outstanding Securities	Nominal Value	Dividends [1]			Date of Last Coupon		Note	Shares	Closing price	% change	Previous closing price/date	Open price	Price min	Price max	Last price	Avg price	Last Bid [7]	Last Ask [7]	P/E after	Year	Volume	Trades	Transactions Value[8]	Company Mkt Value (thou. €)	Year low	Year high	Sector[ 4]	
		2013	2014	2015	Dividend [2]	Right																						
Surveillance																												
18,750,000	0.300	---	---	---	02/07/2001	31/12/2012	4985	PEGASUS PUBLISHING S.A. (CR)	0.071	---	0.071	12/10/2016	---	---	---	---	---	34@0.057	---	2015	---	---	---	1,331.25	0.040	0.136	5557	
65,326,268	0.530	---	---	---	04/07/2007	19/07/2006	4750	SATO SA (CR)	0.093	-19.83	0.116	12/10/2016	0.093	0.093	0.093	0.093	0.093	34829@0.093	---	2015	1,000	2	93.00	6,075.34	0.008	0.116	3726	
7,914,480	0.300	---	---	---	23/06/2008	29/06/2011	4888	SFAKIANAKIS SA (CR)	0.188	---	0.188	12/10/2016	---	---	---	---	171@0.152	---	2015	---	---	---	---	1,487.92	0.157	5.64	5379	
10,186,667	1.35	---	---	---	24/06/2008	02/02/2016	4887	SIDMA SA (CR)	0.253	---	0.253	12/10/2016	---	---	---	---	310@0.206	310@0.303	2015	---	---	---	---	2,577.23	0.096	0.380	1757	
4,737,503	0.320	---	---	---	22/06/2005	22/09/2015	5115	VARANGIS AVEPE S.A. (CR)	0.235	---	0.235	12/10/2016	---	---	---	---	---	945@0.230	---	2015	---	---	---	---	1,113.31	0.235	0.300	3726
16,383,428	0.300	---	---	---	25/06/2002	21/06/2013	4997	VARVARESSOS SA (CB)	0.067	---	0.067	12/10/2016	---	---	---	---	3000@0.054	---	2015	---	---	---	---	1,097.69	0.006	0.172	3763	
13,191,620	0.620	---	---	---	04/08/2010	09/09/2002	4977	YALCO - CONSTANTINOU SA (CB)	0.058	---	0.058	12/10/2016	---	---	---	---	2000@0.048	1897@0.069	2015	---	---	---	---	765.11	0.034	0.143	3722	

Under Deletion																											
1,130,180	0.440	---	---	---	20/06/2003	02/07/2014	5092	COMPUCON SA (CR)	0.006	---	0.006	12/10/2016	---	---	---	---	6000@0.006	---	---	2015	---	---	---	6.78	0.006	0.019	9537
9,567,289	0.300	---	---	---	01/07/2004	19/11/2007	5062	MARAC ELECTRONICS (CR)	0.298	---	0.298	12/10/2016	---	---	---	---	---	14930@0.239	---	2015	---	---	---	2,851.05	0.298	0.298	9578
24,319,250	0.300	---	---	---	09/07/2002	04/07/2007	5111	PROODEFTIKH SA (CR)	0.049	---	0.049	12/10/2016	---	---	---	---	---	1199@0.050	---	2015	---	---	---	1,191.64	0.036	0.092	2357
766,000	1.00	---	---	---	01/07/2004	11/12/2012	4937	TRIA ALFA SA (CR)	2.59	---	2.59	12/10/2016	---	---	---	---	---	14@2.08	---	2015	---	---	---	2,383.29	1.80	2.59	3763
245,000	1.00	---	---	---	19/07/2010	11/12/2012	4938	TRIA ALFA SA (PR)	1.63	---	1.63	12/10/2016	---	---	---	---	---	191@1.31	---	2015	---	---	---	2,383.29	1.36	1.63	3763

Suspension Status																											
33,301,715	0.320	---	---	---	27/06/2003	08/07/2009	5121	AEGEK (CR)	0.038	---	0.038	30/09/2016	---	---	---	---	---	---	---	---	---	---	1,265.47	0.029	0.072	2357	
5,000,000	0.400	---	---	---	03/06/2009	01/09/2014	5087	ALCO HELLAS SA (CR)	0.180	---	0.180	31/03/2015	---	---	---	---	---	---	---	---	---	---	900.00	0.180	0.180	1753	
5,025,000	0.300	---	---	---	05/07/2005	14/03/2002	5023	ALSINCO S.A (CR)	0.043	---	0.043	29/11/2013	---	---	---	---	---	---	---	---	---	---	216.08	0.043	0.043	3763	
215,246,452	0.300	---	---	---	25/06/2001	24/09/2001	4446	ALTEC SA (CR)	0.012	---	0.012	30/11/2015	---	---	---	---	---	---	---	---	---	---	2,582.96	0.012	0.012	9533	
81,644,555	0.300	---	---	---	01/07/2008	02/09/2002	5098	ATTI - KAT SA (CR)	0.012	---	0.012	29/05/2015	---	---	---	---	---	---	---	---	---	---	979.73	0.012	0.012	2357	
33,930,000	0.300	---	---	---	03/07/2006	30/05/2001	4865	BABIS VOVOs SA (CR)	0.304	---	0.304	30/03/2012	---	---	---	---	---	---	---	---	---	---	10,314.72	0.304	0.304	8633	
20,121,710	1.21	---	---	---	27/07/1992	12/03/2003	5002	BALKAN R.E. (CR)	0.190	---	0.190	29/08/2013	---	---	---	---	---	---	---	---	---	---	3,823.12	0.190	0.190	8633	
21,920,570	0.300	---	---	---	03/07/2007	13/12/1999	4702	CARDASSILARIS SA (CR)	0.140	---	0.140	30/11/2010	---	---	---	---	---	---	---	---	---	---	3,068.88	0.140	0.140	3577	
30,159,583	0.470	---	---	---	26/06/2008	29/12/2010	5047	DIAS A/C (CR)	0.050	---	0.050	26/03/2014	---	---	---	---	---	---	---	---	---	---	1,507.98	0.050	0.050	3573	
7,847,611	1.20	---	---	---	01/08/2007	28/09/2011	4939	EDRASIS - C. PSALLIDAS SA (CR)	0.150	---	0.150	29/11/2012	---	---	---	---	---	---	---	---	---	---	1,177.14	0.150	0.150	2357	
5,750,000	0.300	---	---	---	12/12/2008	12/12/2011	4929	ELECTRONIKI ATHINON SA (CR)	0.480	---	0.480	28/09/2012	---	---	---	---	---	---	---	---	---	---	2,760.00	0.480	0.480	5375	
36,748,909	0.730	---	---	---	15/12/2005	13/12/2006	5109	HEL. SUGAR INDUSTRY SA (CB)	0.075	---	0.075	29/02/2016	---	---	---	---	---	---	---	---	---	---	2,756.17	0.064	0.150	3577	
13,692,227	1.47	---	---	---	07/07/2006	08/10/1999	5049	HELLENIC FABRICS SA (CR)	0.117	---	0.117	31/03/2014	---	---	---	---	---	---	---	---	---	---	1,601.99	0.117	0.117	3763	
30,390,000	0.310	---	---	---	18/08/2008	29/12/2006	5099	HELLENIC FISHFARMING SA (CR)	0.070	---	0.070	02/06/2015	---	---	---	---	---	---	---	---	---	---	2,127.30	0.070	0.070	3573	
24,619,524	0.500	---	---	---	10/10/1986	30/12/2002	4914	KERAMIA-ALLATINI (CR)	0.088	---	0.088	30/08/2012	---	---	---	---	---	---	---	---	---	---	2,166.52	0.088	0.088	8633	
66,937,526	0.700	---	---	---	13/08/2010	21/05/2003	5003	MICHANIKI SA (CR)	0.100	---	0.100	29/08/2013	---	---	---	---	---	---	---	---	---	---	9,186.78	0.100	0.100	2357	
25,968,987	0.700	---	---	---	13/08/2010	21/05/2003	5004	MICHANIKI SA (PR)	0.096	---	0.096	29/08/2013	---	---	---	---	---	---	---	---	---	---	9,186.78	0.096	0.096	2357	
13,555,100	1.00	---	---	---	08/07/2005		4576	MICROLAND COMPUTERS SA (CR)	0.640	---	0.640	14/07/2009	---	---	---	---	---	---	---	---	---	---	8,675.26	0.640	0.640	5379	
255,459,600	0.300	---	---	---	26/06/2000	03/12/2010	5101	NEL SA (CR)	0.070	---	0.070	31/08/2015	---	---	---	---	---	---	---	---	---	---	17,882.17	0.070	0.070	5759	
23,463,874	0.800	---	---	---	23/05/2003	21/12/1999	4918	NEORION SA (CR)	0.125	---	0.125	30/08/2012	---	---	---	---	---	---	---	---	---	---	2,932.98	0.125	0.125	2753	
20,210,127	1.53	---	---	---	27/06/1997	20/03/2000	5061	PARNASSOS ENTERP. (CR)	0.070	---	0.070	30/05/2014	---	---	---	---	---	---	---	---	---	---	1,414.71	0.070	0.070	8775	
40,946,303	0.360	---	---	---	18/07/2005	27/11/2007	5089	PC SYSTEMS SA (CR)	0.006	---	0.006	31/03/2016	---	---	---	---	---	---	---	---	---	---	245.68	0.006	0.014	9533	

Number of Outstanding Securities	Nominal Value	Dividends [1]			Date of Last Coupon		Note	Shares	Closing price	% change	Previous closing price/date	Open price	Price min	Price max	Last price	Avg price	Last Bid [7]	Last Ask [7]	P/E after	Year	Volume	Trades	Transactions Value[8]	Company Mkt Value (thou. €)	Year low	Year high	Sector[ 4]	
		2013	2014	2015	Dividend [2]	Right																						
Suspension Status																												
26,408,040	0.300	---	---	---	01/07/1997	26/05/1999	4464	SHEET STEEL SA (CR)	0.120	---	0.120	28/11/2008	---	---	---	---	---	---	---	---	---	---	---	---	3,168.96	0.120	0.120	1757
29,060,950	0.340	---	---	---	20/08/2007	24/10/2001	5088	SPIDER METAL INDUSTRY SA (CR)	0.008	---	0.008	31/03/2015	---	---	---	---	---	---	---	---	---	---	---	---	232.49	0.008	0.008	2757
144,688,060	0.600	---	---	---	21/04/2008	10/03/2010	4982	T BANK (CR)	0.048	---	0.052	# 29/11/2011	---	---	---	---	---	---	---	---	---	---	---	---	6,945.03	0.048	0.048	8355
6,523,780	0.530	---	---	---	01/07/2002	06/03/2001	4971	TECHNICAL PUBLICATIONS SA (CR)	0.006	---	0.006	31/05/2013	---	---	---	---	---	---	---	---	---	---	---	---	39.14	0.006	0.006	5557
100,793,572	0.300	---	---	---	16/07/2009	11/02/2016	5110	TELETIPOS SA (CR)	0.060	---	0.060	07/03/2016	---	---	---	---	---	5@0.048	---	---	---	---	---	---	6,047.61	0.054	0.070	5553
13,920,000	0.320	---	---	---	19/11/2001	01/08/2000	4726	TEXAPRET SA (CR)	0.080	---	0.080	28/02/2011	---	---	---	---	---	---	---	---	---	---	---	---	1,113.60	0.080	0.080	3763
510,840	1.00	---	---	---	15/07/2008	21/11/2013	5036	TROPEA HOLDING (CR)	2.00	---	0.020	# 30/03/2012	---	---	---	---	---	---	---	---	---	---	---	---	1,021.68	2.00	2.00	3722
284,465,964	3.70	---	---	---	20/06/2008	15/06/2009	4913	TT HELLENIC POSTBANK (CR)	0.168	---	0.239	# 29/08/2012	---	---	---	---	---	---	---	---	---	---	---	---	47,790.28	0.168	0.168	8355
89,616,200	0.300	---	---	---	21/08/2000	28/06/2007	4616	UNITED TEXTILES (CR)	0.050	---	0.050	24/02/2010	---	---	---	---	---	---	---	---	---	---	---	---	4,480.81	0.050	0.050	3763
71,683,906	0.400	---	---	---	15/06/2005	05/02/2008	4953	XATZIOANNOU (CR)	0.026	---	0.026	28/03/2013	---	---	---	---	---	---	---	---	---	---	---	---	1,863.78	0.026	0.026	3763



## Shares' Notes

Code	Note text
( )	- Adjusted dividends.
*	- Last adjusted closing price.
[1]	- Net dividends.
[2]	- The "Date of Last Coupon" for New listings refers to the date company's stocks started to trade in Athex
[3]	- The Company Market Value is referred to the number of outstanding shares
[4]	- Sectors codification can be found in Appendix A
[5]	- The Market Value refers to the total number of shares listed (including their several classes) in the exchange by the company.
[6]	- P/E greater than 100
[7]	- Last view of the Order Book before the end of the trading session
[8]	- All Blocks Methods' Transactions Value are included.
4446	- Transfer to the "Under Supervision" Category as of 20/10/2008.
4464	- Suspension of trading as of 1/12/2008.
4576	- Suspension of trading as of 14/7/2009.
4616	- Suspension of trading as of 25/2/2010.
4690	- Transfer to Surveillance category as of 4/4/2006.
4702	- Suspension of trading as of 1/12/2010.
4726	- Suspension of trading as of 1/3/2011.
4750	- Transfer to the "Under Surveillance Category" from 8/4/2011.
4795	- The final gross (pre-tax) dividend is € 0.30 per share and subject to withholding tax on the full dividend amount, i.e. 0,45 per share, for those shareholders liable to withholding tax, in accordance with the applicable tax law provisions.
4814	- Transfer to the Low Dispersion Category as of 30/5/2011.
4815	- Transfer to the Low Dispersion Category as of 30/5/2011.
4816	- Transfer to the Low Dispersion Category as of 30/5/2011.
4817	- Transfer to the Low Dispersion Category as of 30/5/2011.
4822	- Transfer to the Low Dispersion category as of 30/5/2011.
4823	- Transfer to the Low Dispersion category as of 4/4/2006.
4827	- Transfer to the Low Dispersion category as of 5/5/2010.
4844	- Transfer to the Surveillance category from 8/4/2011.
4857	- The 793,906,274 new (CR) shares, resulting from the recent share capital increase through a rights issue, are not yet admitted to trading on the ATHEX.
4865	- Suspension of trading as of 2/4/2012.
4879	- Transfer to the Surveillance Category as of 10/4/2012.
4881	- Transfer to the Surveillance Category as of 10/4/2012.
4882	- Transfer to the Surveillance Category as of 10/4/2012.
4886	- Transfer to the Surveillance Category as of 10/4/2012.
4887	- Transfer to the Surveillance Category as of 10/4/2012.
4888	- Transfer to the Surveillance Category as of 10/4/2012.
4912	- Transfer to the Surveillance Category as of 31/7/2012.
4913	- Suspension of trading as of 30/8/2012.
4914	- Suspension of trading as of 31/8/2012.
4918	- Suspension of trading as of 31/8/2012.
4929	- Suspension of trading as of 1/10/2012.
4937	- Transfer to the UNDER DELETION category as of 30/11/2012.
4938	- Transfer to the UNDER DELETION category as of 30/11/2012.
4939	- Suspension of trading as of 30/11/2012.
4953	- Suspension of trading as of 2/4/2013.
4955	- Transfer to the Surveillance Category as from 5/4/2013.
4956	- Transfer to the Surveillance Category as from 5/4/2013.
4957	- Transfer to the Surveillance Category as from 5/4/2013.
4958	- Transfer to the Surveillance Category as from 5/4/2013.
4959	- Transfer to the Surveillance Category as from 5/4/2013.
4971	- Suspension of trading as of 3/6/2013.
4977	- Transfer to the "Under Surveillance Category" from 11/6/2013.

## Shares' Notes

Code	Note text
4982	- Suspension of trading as of 1/12/2011.
4983	- Transfer to the Surveillance Category as of 5/4/2013.
4985	- Transfer to the "Under Surveillance Category" from 8/4/2011.
4997	- Transfer to the Under Supervision Category as of 21/12/2009. - The 6,870,053 new (CB) shares, resulting from the recent share capital increase through a rights issue, are not yet admitted to trading on the ATHEX.
5002	- Suspension of trading as of 30/08/2013.
5003	- Suspension of trading as of 30/08/2013.
5004	- Suspension of trading as of 30/08/2013.
5007	- Transfer to the Surveillance category, as of 11/10/2013.
5023	- Suspension of trading as of 2/12/2013.
5031	- The 612,300 new (CR) shares, resulting from the recent share capital increase through a rights issue, are not yet admitted to trading on the ATHEX.
5036	- The company's share is under suspension of trading as of 2/4/2012. During suspension, the company proceeded and concluded a share reverse split, according to which - after the conclusion of the corporate action - the total number of the company's shares, as well as, the last closing price of 30/03/2012 were adjusted.
5046	- Transfer to the Low Dispersion category as of 8/4/2011.
5047	- Suspension of trading as of 27/3/2014.
5049	- Under suspension of trading as of 1/4/2014.
5057	- Transfer to the Surveillance Category as of 29/12/2011.
5058	- Transfer to the Surveillance Category as of 29/12/2011.
5061	- Suspension of trading as of 2/6/2014.
5062	- Transfer to the UNDER DELETION category as of 4/6/2014.
5080	- Suspension of trading as of 6/9/2011.
5087	- Suspension of trading as of 1/4/2015.
5088	- Suspension of trading as of 1/4/2015.
5089	- Transfer to the Surveillance Category as of 8/4/2015.
5092	- Transfer to the UNDER DELETION category as of 8/4/2015.
5093	- Transfer to the Surveillance Category as of 8/4/2015.
5094	- Transfer to the Surveillance Category as of 8/4/2015.
5095	- Transfer to the Surveillance Category as from 9/4/2015.
5097	- Transfer to the Surveillance Category as of 10/4/2012.
5098	- Suspension of trading as of 2/6/2015.
5099	- Suspension of trading as of 3/6/2015.
5100	- Transfer to the Low Dispersion Category as of 24/6/2015.
5101	- Suspension of trading as of 1/9/2015.
5104	- Transfer to the "Low Dispersion" Category as of 31/10/2014. Change of the company name from "MIG REAL ESTATE R.E.I.C." to "NBG PANGAEA R.E.I.C." as of 30/12/2015.
5109	- Suspension of trading as of 01/03/2016.
5110	- Suspension of trading as of 08/03/2016.
5111	- Transfer to the Under Deletion Category as of 15/04/2016.
5112	- Transfer to the Surveillance Category as of 15/04/2016.
5113	- Transfer to the Surveillance Category as of 15/04/2016.
5114	- Transfer to the Surveillance Category as of 15/04/2016.
5115	- Transfer to the Surveillance Category as of 15/04/2016.
5116	- Transfer to the Low Dispersion Category as of 20/4/2016.
5118	- Transfer to the Surveillance Category as of 25/11/2011. Issue of a Convertible Bond Loan in progress through a rights issue. Rights' trading period on ATHEX: 22/09/2016 - 03/10/2016, pre-emption rights' subscription period: 22/09/2016 - 06/10/2016.
5121	- Suspension of trading as of 3/10/2016.
5122	- Transfer to the Surveillance Category as of 10/4/2014. Shares' reverse split in progress. Temporary suspension of trading: 12/10/2016. Start date of trading of the 1,417,311 (CR) shares, with adjusted opening share price of € 0.370 is set at 17/10/2016.

## Securities Blocks Details

Securities	Block Volume	Price	Block Trade Value	Time of approval	Note
OPAP (CR)	38,000	7.45	283,100.00	12:04:55	20
EUROBANK ERGASIAS (CR)	700,000	0.529	370,300.00	12:13:41	20
NATIONAL BANK (CR)	2,000,000	0.193	386,000.00	12:14:17	20
JUMBO SA (CR)	31,433	11.85	372,481.05	14:33:27	20
JUMBO SA (CR)	71,567	11.85	848,068.95	14:34:13	20
OPAP (CR)	38,950	7.46	290,567.00	16:58:34	20
EUROBANK ERGASIAS (CR)	2,500,000	0.530	1,323,750.00	17:15:05	20

## Blocks Notes

9 - Method 6-1 / Special Fees

10 - Method 6-1 / Special Fees, SDS

14 - Method 6-3 / Settlement, Incomplete Buy and Sell

18 - Method 6-2 / SPOT 1

19 - Method 6-2 / SPOT 2

20 - Method 6-1 and Method 6-1 Same Day Settlement

21 - Other Pre-agreed

Shares Rights Details

Occured date	Exercise from	Exercise until	Trading until	Rights	Price min	Price max	Closing price	Last Bid	Last Ask	Volume	Trades	Transactions Value
-----------------	------------------	-------------------	------------------	--------	--------------	--------------	------------------	----------	----------	--------	--------	-----------------------

No Rights Transactions.

Shares Forced Sales

Securities	Transaction s Volume	Number of Trades	Transactions Value	Note
No Forced Transactions.				

Forced Sales Notes

- 1 - Normal Forced Sale.
- 2 - Forced Sales of Fixed Registered Shares.
- 3 - Forced Sales of Remaining Stock Fractions.

Forced Sales Registered Shares

Securities	Start Date	End Date	Initial Volume	Remaining Volume	Date	Avg price (day)	Avg price (period)	Number of Trades	Transactions Volume	Transactions Value
No Fixed Registered Shares Forced Sales.										

Forced Sales Notes

According to Decision 1/380/04.05.2008 of the Hellenic Republic Capital Market Commission, the certificated registered shares that have not been deposited to the issuer for dematerialisation, will be auctioned in the Athens Exchange by the supervising issuer. Forced sales procedure is held according to Article 99A of the Athens Exchange Rulebook. The average price of the period is calculated by dividing the Total transactions value by the Total volume and includes all the transactions made until the current date.

## Exchange Traded Funds (ETFs) Characteristics

	Transactions Date (T)	Creation / Redemption	Units (T-1)	New Units (T-1)	Redemptio n Units (T-	Units (T) [1]	Fund Assets [2]	Net Unit Price	Dividen d per	Dividend Date
NBGAM ETF ΓΔ Χ.Α.	13/10/2016	25,000	294,878	---	---	294,878	2,038,651.00	6.9135	---	27/10/2011
NBGAM ETF GREECE & TURKEY 30	13/10/2016	25,000	388,550	---	---	388,550	2,080,955.00	5.3557	---	27/10/2011

## ETFs Notes

[1] - Units (T) = Units (T-1) + New Units (T-1) - Redemption Units (T-1)

[2] - The Creation / Redemption Units of T-1 are included.

Corporate Bonds

Num Listed Bonds	Nominal price	Issue price	Today's Rate	Exp. Date	Duration (years)	Note	Coupon		Trading	Corporate Bonds	Price min	Price max	Closing price	Previous closing price/date	Volume	Transactions Value	Last order		Date	ear min	Year max
							Common	Preferred									Price	Buy / Sell			
40,000,000	1.00	1.00	5.00	04/10/2021	5	---	1	---	1	HOUSEMARKET S.A. (Non convertible)	100.3000	100.3000	100.3000	100.4000 12/10/2016	23,506	23,618.97	100.0000	B	13/10/2016	99.9000	100.5000
1,779,209	13.76	9.77	0.00	21/10/2025	18	---	---	---	1	NIREUS S.A. (Convertible to CR shares)	---	---	---	100.0000 12/07/2016	---	---	3.1000	S	13/10/2016	10.0000	150.0000
212,237,880	1.00	1.00	6.30	29/07/2020	7	---	13	---	1	MARFIN INVESTMENT GROUP S.A. SERIES B (BOND)	---	---	---	0.8500 23/08/2013	---	---	5.0000	B	04/10/2016	0.8500	0.8500
163,009,139	1.00	1.00	7.00	29/07/2019	6	---	13	---	1	MARFIN INVESTMENT GROUP S.A. SERIES A (BOND)	---	---	---	1.0000 23/08/2013	---	---	5.0000	B	04/10/2016	1.0000	1.0000

Corporate Bonds Notes

Transactions Volume = (Pieces) \* (Nominal Price). Transactions Value = (Pieces) \* (Nominal Price) \* (price %) + (Accrued interest).  
The price of a Bond is stated as a percentage (%) of Bond's Nominal Price.  
Nominal Price in Euros (€), except if it is noted differently.



Government Bonds

Number Listed Bonds	Nominal price	Today's Rate	Accrued Interest Calc	Exp. Date [1]	Duration (years)	Note	Coupons Date	Curr. coupon value	Trading Unit	Government Bonds	Price min	Price max	Closing price	Previous closing price/date	Volume	Transactions Value	Price	Last order Buy / Sell	Date
1,792,455,803	1.00	4.30	Actual/Actual	24/02/2023	11	---	24/02	4.30	1	GGB-FXD-240223-11Y-2.000-1.00	---	---	---	10.0000 22/06/2015	---	---	---	---	---
1,771,485,249	1.00	4.30	Actual/Actual	24/02/2024	12	---	24/02	4.30	1	GGB-FXD-240224-12Y-2.000-1.00	---	---	---	10.0000 22/06/2015	---	---	---	---	---
1,744,316,583	1.00	4.30	Actual/Actual	24/02/2025	13	---	24/02	4.30	1	GGB-FXD-240225-13Y-2.000-1.00	---	---	---	10.0000 22/06/2015	---	---	---	---	---
1,498,761,836	1.00	4.30	Actual/Actual	24/02/2026	14	---	24/02	4.30	1	GGB-FXD-240226-14Y-2.000-1.00	---	---	---	10.0000 22/06/2015	---	---	---	---	---
1,469,952,920	1.00	4.30	Actual/Actual	24/02/2027	15	---	24/02	4.30	1	GGB-FXD-240227-15Y-2.000-1.00	---	---	---	10.0000 22/06/2015	---	---	---	---	---
1,525,434,082	1.00	4.30	Actual/Actual	24/02/2028	16	---	24/02	4.30	1	GGB-FXD-240228-16Y-2.000-1.00	---	---	---	10.0000 22/06/2015	---	---	---	---	---
1,503,860,546	1.00	4.30	Actual/Actual	24/02/2029	17	---	24/02	4.30	1	GGB-FXD-240229-17Y-2.000-1.00	---	---	---	10.0000 22/06/2015	---	---	---	---	---
1,435,418,132	1.00	4.30	Actual/Actual	24/02/2030	18	---	24/02	4.30	1	GGB-FXD-240230-18Y-2.000-1.00	---	---	---	10.0000 22/06/2015	---	---	---	---	---
1,368,045,727	1.00	4.30	Actual/Actual	24/02/2031	19	---	24/02	4.30	1	GGB-FXD-240231-19Y-2.000-1.00	---	---	---	10.0000 22/06/2015	---	---	---	---	---
1,373,758,194	1.00	4.30	Actual/Actual	24/02/2032	20	---	24/02	4.30	1	GGB-FXD-240232-20Y-2.000-1.00	---	---	---	10.0000 22/06/2015	---	---	---	---	---
1,452,639,893	1.00	4.30	Actual/Actual	24/02/2033	21	---	24/02	4.30	1	GGB-FXD-240233-21Y-2.000-1.00	---	---	---	10.0000 22/06/2015	---	---	---	---	---
1,410,344,954	1.00	4.30	Actual/Actual	24/02/2034	22	---	24/02	4.30	1	GGB-FXD-240234-22Y-2.000-1.00	---	---	---	10.0000 22/06/2015	---	---	---	---	---
1,444,202,190	1.00	4.30	Actual/Actual	24/02/2035	23	---	24/02	4.30	1	GGB-FXD-240235-23Y-2.000-1.00	---	---	---	10.0000 22/06/2015	---	---	---	---	---
1,505,138,031	1.00	4.30	Actual/Actual	24/02/2036	24	---	24/02	4.30	1	GGB-FXD-240236-24Y-2.000-1.00	---	---	---	10.0000 22/06/2015	---	---	---	---	---
1,396,254,095	1.00	4.30	Actual/Actual	24/02/2037	25	---	24/02	4.30	1	GGB-FXD-240237-25Y-2.000-1.00	---	---	---	10.0000 22/06/2015	---	---	---	---	---
1,382,167,704	1.00	4.30	Actual/Actual	24/02/2038	26	---	24/02	4.30	1	GGB-FXD-240238-26Y-2.000-1.00	---	---	---	10.0000 22/06/2015	---	---	---	---	---
1,337,331,257	1.00	4.30	Actual/Actual	24/02/2039	27	---	24/02	4.30	1	GGB-FXD-240239-27Y-2.000-1.00	---	---	---	10.0000 22/06/2015	---	---	---	---	---
1,371,908,706	1.00	4.30	Actual/Actual	24/02/2040	28	---	24/02	4.30	1	GGB-FXD-240240-28Y-2.000-1.00	---	---	---	10.0000 22/06/2015	---	---	---	---	---
1,360,659,778	1.00	4.30	Actual/Actual	24/02/2041	29	---	24/02	4.30	1	GGB-FXD-240241-29Y-2.000-1.00	---	---	---	10.0000 22/06/2015	---	---	---	---	---
1,432,747,403	1.00	4.30	Actual/Actual	24/02/2042	30	---	24/02	4.30	1	GGB-FXD-240242-30Y-2.000-1.00	---	---	---	10.0000 22/06/2015	---	---	---	---	---
742,153	1,000.00	0.93	FLR Actual/360	10/08/2019	5	---	10/02 - 10/08	---	1	GGB-FLT-100819-05Y-0.934-1,000	---	---	---	---	---	---	---	---	---
4,030,827	1,000.00	4.75	Actual/Actual	17/04/2019	5	---	17/04	4.75	1	GGB-FXD-170419-05Y-4.750-1,000	---	---	---	---	---	---	---	---	---
2,089,066	1,000.00	3.38	Actual/Actual	17/07/2017	3	---	17/07	3.38	1	GGB-FXD-170717-03Y-3.375-1,000	---	---	---	---	---	---	---	---	---

Government Bonds Notes

Transactions Volume = (Pieces) \* (Nominal Price). Transactions Value = (Pieces) \* (Nominal Price) \* (price %) + (Accrued interest).  
The Value of current coupon for the issues with NV 0.01 euro refers to NV 100 euros  
FLR: Floating Interest Rate.  
[1] - The Expiration Date of the interest bearing period and the Date for coupon payment.

Bonds in Circulation	Currency / Min nominal traded Value	Coupons Payment Date	Current Coupon Value	Note	Coupon	Trading Unit	Issue Date	Duration (years)	Today's Interest	A.I.C in days	Bonds	Last price of previous days		Last Outcry in Cash (euro) Price Buy / Sell		Trades in Pieces	Life min	Life Max	
Corporate Bonds in Foreign Currency and Euro																			
103,746	GBP / 10	01/12	0.25	---	57	1	01/12/1930	98	2.5	360	National Mortgage Bank	2.27	05/02/1996	2.27	S	05/02/1996	---	2.27	2.27
0	GBP / 10	01/12	0.25	---	59	1	01/12/1928	100	2.5	360	National Mortgage Bank	---	---	---	---	---	---	---	---

Government Bonds Notes

A.I.C: Accrued Interest Calculation base.  
FLR: Floating Interest Rate.  
The minimum tradeable Nominal Value for all Demeterialised Government Titles is 100 Euros.  
(μτφρ-0)

Athex & ATHEXClear Members List

Member Name			Stock Market			Derivatives Market		ATHEXCclear Member	
Address	Phone	Fax	Market Member	Remote Member	Market Maker	Proprietary	Market Maker	General Clearing	Direct Clearing
A. SARRIS SECURITIES S.A.			a						
6, DRAGATSANIOU ATHINA	+30 2103367700	210-3312324							
ALPHA FINANCE INVESTMENT SERVICES S.A.			a		a	a	a		a
5, MERLIN ATHINA	+30 2103677400	210-33311193							
ALPHA BANK A.E.								a	
40, STADIOU STR ATHINA	(210)-3260000	(210)-3264116							
	(210)-3265546	(210)-3265811							
103, AVE. ATHINON ATHINA	+30 2103436820	210-3436270							
ARGUS STOCKBROKERS LTD			a	a		a			
25 , DIMOSTHENI SEVERI AVE NICOSIA	+357 22717000	0035722717070							
ATLANTIC SECURITIES LIMITED			a	a					
37, PRODROMOU NICOSIA	+357 22445400	00357 22661914							
ATLAS SECURITIES S.A			a			a			
, 125 MICHALAKOPOULOU & 14-16 VERVENON ATHINA	+30 2103363300	210-3238925							
ATTICA BANK S.A.								a	
54, AKADIMIAS STR. ATHINA	(210)-3390757	(210)-3646090							
23, OMIROU ATHINA	+30 2103669261	210-3669265							
23, OMIROU STR. ATHINA	(210)-3669000	(210)-3669410							
AXIA VENTURES GROUP LTD			a	a					
, KRANIDIOTI 10, OFFICE 102 NICOSIA	+357 22742000	357 22742001							
AXON SECURITIES S.A.			a			a			
48, STADIOU ATHINA	+30 2103363800	210-3243903							
BANK OF AMERICA MERRILL LYNCH			a	a					
2 , KING EDWARD STREET LONDON	+44 20276281000								
BETA SECURITIES S.A.			a		a	a	a		a
29 , ALEXANDRAS AVEN. & VRAILA ATHINA	+30 2106478900	210-6410139							
BNP PARIBAS SECURITIES SERVICES S.A.								a	
, VASILISSIS SOFIAS 94 & KERASOUNTOS 1 ATHINA	+30 2107468500	210-7468579-581							
CAPITAL SECURITIES S.A.			a			a			
58, MITROPOLEOS ATHINA	+30 2103369700	+30 210 3369820							
CFS SECURITIES-INVESTMENT SERVICES S.A.			a						
3, PAPARRIGOPOULOU ATHINA	+30 2103360800	+30 210-3360980							
CITIGROUP GLOBAL MARKET LTD			a	a					
1, CITIGROUP CENTER , CANADA SQ., CANARY WHARF LONDON	+44 02079864000								
CREDIT SUISSE SECURITIES (EUROPE) LIMITED			a	a					
, ONE CABOT SQUARE LONDON	+44 2078888888								
CYCLOS SECURITIES S.A.			a			a			a
39, PANEPISTIMIOU ATHINA	+30 2103364300	+30 210-3239122							
D.A. TSEKOURAS SEC. S.A.			a						
33, STADIOU ATHINA	+30 2103245100	210-3211997							
DELTASTOCK AD									a
115, MEGAPARK OFFICE BUILDING, OFFICE AREA E, G TSARIGRADSKOGA 39	+35928115051	+35928115049							
DEUTSCHE BANK S.A.			a	a		a			
1 , GREAT WINCHESTER STREET LONDON	+44 20 754 54209	00441133361437							
DYNAMIC SECURITIES S.A.			a			a			a
8, OMIROU ATHINA	+30 2103677700	210-3677777							
EL. PETROPOULAKIS SECURITIES S.A.			a			a			
9, ARISTEIDOU ATHINA	+30 2103213928	+30 210-3216810							
ESTINVEST S.A.									a
9, TH REPUBLICII STREET FOCSANI	+40 237238900	+40 237237471							
EUROBANK ERGASIAS S.A.								a	
8, OTHONOS ATHINA	+30 2103337000	210-3245916							
8, OTHONOS STR. ATHINA	(210)-3337969	(210)-3245916							
	(210)-3337000	(210)-3233866							
EUROBANK SECURITIES INVESTMENT FIRM S.A			a		a	a	a		a
, FILELLINON 10 & XENOFONTOS 13 ATHINA	+30 2103720000	210-3720001							
EUROCORP SECURITIES S.A.			a			a			a
14, SQ.FILIKIS ETAIRIAS ATHINA	+30 2107263500	210-7263666							
EUOTRUST BROKERAGE S.A.			a						
113, SEVASTOUPOLEOS ATHINA	+30 2103363100	+30 210-3238334							
EUROXX SECURITIES S.A.			a		a	a	a		a
7, PALAIOLOGOU CHALANDRI	(210)-6879400	(210)-6879401							
7, PALEOLOGOU CHALANDRI	+30 2106879400	210-6879401							

Athex & ATHEXClear Members List

Member Name			Stock Market			Derivatives Market		ATHEXClear Member	
Address	Phone	Fax	Market Member	Remote Member	Market Maker	Proprietary	Market Maker	General Clearing	Direct Clearing
G. A. PERVAS SECURITIES-INVESTMENT SERVICES CO S.A.			a						
7-9, SOFOKLEOUS ATHINA	+30 2103727200	210-3210-291							
GLOBAL CAPITAL SECURITIES AND FINANCIAL SERVICES LTD			a	a					
, AVE. ARCHIEPISKOPOU MAKARIOU NICOSIA	+357 22710710	357 22339332							
GUARDIAN TRUST SECURITIES S.A			a			a			
31, ERMOU ATHINA	+30 2103378700	210-3220498							
HELLENIC BANK (INVESTMENTS) LTD			a	a					
, AVE.KYRIAKOU MATSI 31 - PO BOX 24747 NICOSIA	+357 22500100	357 22500110							
HELLENICAMERICAN SEC. S.A.			a		a	a			a
27, ANDREA PAPANDREOU ATHINA	+30 2103311100	+30 210-3215968							
HSBC BANK PLC								a	
109-111, AVE. MESOGION ATHINA	+30 2106960000	210-6928000							
INDEX SECURITIES S.A.			a						
6, DRAGATSANIOU ATHINA	+30 2103213920	+30 210-3213216							
INTERFINBROK CORPORATION S.A.									a
1, STR.CALARASI NR. CONSTANTA	+40 241639071	0241-547829							
INVESTMENT BANK OF GREECE S.A.			a		a	a		a	
32 , EGIALIAS & PARADISOU MAROUSI	+30 2108173111	+30 210-6896325							
J. CHR. MAVRIKIS SECURITIES S.A.			a						
5, SOFOKLEOUS ATHINA	+30 2103216730	210-3217767							
KAPPA SECURITIES S.A.			a			a			
15, VALAORITOU ATHINA	+30 2103678600	+30 210-3641002							
KARAMANOF SECURITIES-INV. SERVICES S.A.			a			a			
2, SQ. AGION THEODORON ATHINA	+30 2103212947	+30 210-3217088							
LAIKI FINANCIAL SERVICES LTD				a					
26, AVE. VYRONOS NICOSIA	357 22367367	357 22718567							
LEON DEPOLAS SECURITIES S.A.			a		a	a			
1, CHRISTOU LADA ATHINA	+30 2103213276	+30 210-3211618							
MAGNA TRUST SECURITIES S.A			a						
12-14, KARAGIORGI SERBIAS ATHINA	+30 2103800820	210-3220910							
MEGA EQUITY SECURITIES-FINANCIAL SERVICES LTD			a	a		a			
42-44, AVE. GRIVA DIGENI NICOSIA	+357 22711711	357 22711811							
MERIT SECURITIES S.A			a		a	a			a
3, GEORGIOU SOURI ATHINA	+30 2103671890	210-3671830							
MIDAS BROKERAGE S.A.			a		a				
5, SOFOKLEOUS ATHINA	+30 2141008800	+30 210-3253205							
N. CHRYSOCHOIDIS STOCK BROKERAGE I.S.S.A.			a			a			a
7-9, SOFOKLEOUS ATHINA	+30 2103213913	+30 210-3216115							
NATIONAL BANK OF GREECE S.A.			a			a		a	
86, AIOLOU STR. ATHINA	(210)-3341000	(210)-3228187							
68, AKADIMIAS STR. ATHINA	(210)-3328817	(210)-3328678							
NATIONAL SECURITIES S.A			a		a	a	a		
66, KIFISIAS AVE , BUILDING A ATHINA	+30 2107720000	+30 210-7720002							
NUNTIUS SECURITIES S.A			a						
6, DRAGATSANIOU ATHINA	+30 2103350599	+30210-3254846							
ONE PLUS CAPITAL LIMITED			a	a					
, 75 PRODRAMOU AVENUE, ONEWORLD PARKVIEW HOUSE, 3RD FLOOR, 22873760	+30 2103350599								
PANTELAKIS SECURITIES S.A.			a			a			
57, ETHNIKIS ANTISTASIS B CHALANDRI	+30 2106965000	210-6929550							
PEGASUS BROKERAGE FIRM S.A			a			a			
17 , VALAORITOU & AMERIKIS ATHINA	+30 2103670700	+30 210-3670760							
PIRAEUS BANK S.A.			a			a		a	
4, AMERIKIS STR. ATHINA	(210)-3335000	(210)-3335079							
4, AMERIKIS STR ATHINA	(210)-3335918	(210)-3254207							
4, AMERIKIS ATHINA	+30 2103335000	210-3335079							
PIRAEUS SECURITIES S.A.			a		a	a	a		a
5, KORAI ATHINA	+30 2103354100	210-3354170							
PRELIUM SECURITIES-INVESTMENT SERVICES S.A.			a			a			
1 , DAVAKI & KIFISIAS AVE. ATHINA	+30 2103677000	+30 210-6926403							
PROCHOICE SECURITIES LTD			a	a					
57, SPYROY KYPRIANOY NICOSIA	+357-24-661192	+357-24-662464							
SHARELINK SECURITIES-FINANCIAL SERVICES LTD			a	a		a			
6 , THEOTOKI MEGARO ELLINA NICOSIA	+357 22554200	+357 22750852							

Athex & ATHEXClear Members List

Member Name			Stock Market			Derivatives Market		ATHEXClear Member	
Address	Phone	Fax	Market Member	Remote Member	Market Maker	Proprietary	Market Maker	General Clearing	Direct Clearing
SOCIETE GENERALE S.A.			a	a		a			
, 17 COURS VALMY 92987 PUTEAUX - LA DEFENSE PARIS	+33 157290504	+33142138697							
SOLIDUS SECURITIES S.A			a			a			a
64, LOUIZIS RIANCOUR ATHINA	+30 2106900600	210-6985421							
SSIF VIENNA INVESTMENT TRUST S.A.									a
, 4 SPLAIUL UNIRII, BUILDING B3 BUCHAREST	+40 212074880	004 021 207 48 98							
ST. EM. LAVRENTAKIS SECURITIES S.A.			a			a			
7-9, SOFOKLEOUS ATHINA	+30 2103213336	+30 210-3246572							
THE CYPRUS INVESTMENT & SECURITIES CORPORATION LTD			a	a					
154, LIMASSOL AVENUE, STROVOLOS NICOSIA	+357 22121700	357 22338800							
UBS LIMITED			a	a					
1 , FINSBURY AVENUE LONDON	+44 2075687135								

## List of Stocks under Market Making operations

Securities	Stock Category
Market Maker	Start Market Making
<b>FRIGOGLASS SA (CR)</b>	Surveillance
EUROBANK SECURITIES INVESTMENT FIRM S.A	27/10/2014
<b>ALPHA BANK (CR)</b>	Main Market
ALPHA FINANCE INVESTMENT SERVICES S.A.	29/02/2016
EUROBANK SECURITIES INVESTMENT FIRM S.A	24/10/2012
LEON DEPOLAS SECURITIES S.A.	04/01/2016
MERIT SECURITIES S.A	03/09/2013
MIDAS BROKERAGE S.A.	11/01/2006
NATIONAL SECURITIES S.A	15/01/2013
PIRAEUS SECURITIES S.A.	28/05/2013
<b>ALUMIL (CR)</b>	Main Market
BETA SECURITIES S.A.	18/07/2013
<b>ATTICA BANK S.A. (CR)</b>	Main Market
BETA SECURITIES S.A.	02/06/2014
EUROBANK SECURITIES INVESTMENT FIRM S.A	25/07/2014
EUROXX SECURITIES S.A.	22/01/2016
<b>BANK OF CYPRUS (CR)</b>	Main Market
EUROBANK SECURITIES INVESTMENT FIRM S.A	23/03/2015
NATIONAL SECURITIES S.A	22/06/2015
<b>BYTE COMPUTER SA (CR)</b>	Main Market
MERIT SECURITIES S.A	04/08/2013
<b>CC HBC AG (CR)</b>	Main Market
EUROBANK SECURITIES INVESTMENT FIRM S.A	23/10/2013
NATIONAL SECURITIES S.A	29/04/2013
PIRAEUS SECURITIES S.A.	04/05/2015
<b>ELLAKTOR (CR)</b>	Main Market
EUROBANK SECURITIES INVESTMENT FIRM S.A	01/06/2013
NATIONAL SECURITIES S.A	25/06/2013
<b>ELTON SA (CR)</b>	Main Market
BETA SECURITIES S.A.	03/09/2013
<b>EUROBANK ERGASIAS (CR)</b>	Main Market
ALPHA FINANCE INVESTMENT SERVICES S.A.	08/01/2013
EUROBANK SECURITIES INVESTMENT FIRM S.A	01/06/2013
HELLENICAMERICAN SEC. S.A.	25/07/2014
MIDAS BROKERAGE S.A.	07/01/2016
PIRAEUS SECURITIES S.A.	28/09/2013
<b>EUROCONSULTANTS S.A. (CR)</b>	Main Market
EUROBANK SECURITIES INVESTMENT FIRM S.A	22/07/2014
<b>FOLLI FOLLIE (CR)</b>	Main Market
NATIONAL SECURITIES S.A	17/02/2014
PIRAEUS SECURITIES S.A.	04/05/2015
<b>FOURLIS (CR)</b>	Main Market
HELLENICAMERICAN SEC. S.A.	14/09/2005
<b>GEK TERNA (CR)</b>	Main Market
HELLENICAMERICAN SEC. S.A.	07/09/2015
<b>GR. SARANTIS SA (CR)</b>	Main Market
BETA SECURITIES S.A.	14/05/2013
<b>HELLENIC EXCHANGES-A.S.E. (CR)</b>	Main Market
EUROBANK SECURITIES INVESTMENT FIRM S.A	01/06/2013
HELLENICAMERICAN SEC. S.A.	01/09/2014
NATIONAL SECURITIES S.A	25/06/2013
PIRAEUS SECURITIES S.A.	04/05/2015
<b>HELLENIC PETROLEUM (CR)</b>	Main Market
HELLENICAMERICAN SEC. S.A.	14/09/2015
<b>HYGEIA SA (CR)</b>	Main Market
HELLENICAMERICAN SEC. S.A.	18/04/2016
<b>INTRACOM HOLDINGS (CR)</b>	Main Market
HELLENICAMERICAN SEC. S.A.	07/09/2015
<b>INTRALOT (CR)</b>	Main Market
EUROBANK SECURITIES INVESTMENT FIRM S.A	01/06/2013
PIRAEUS SECURITIES S.A.	28/09/2013
<b>J &amp; P - AVAX SA (CR)</b>	Main Market
EUROBANK SECURITIES INVESTMENT FIRM S.A	14/12/2015
<b>JUMBO SA (CR)</b>	Main Market
MIDAS BROKERAGE S.A.	27/07/2016
<b>KLOUKINAS - LAPPAS SA (CR)</b>	Main Market
BETA SECURITIES S.A.	22/09/2014
<b>LAMDA DEVELOPMENT SA (CR)</b>	Main Market
EUROBANK SECURITIES INVESTMENT FIRM S.A	08/12/2014

## List of Stocks under Market Making operations

Securities	Stock Category
Market Maker	Start Market Making
<b>MARFIN INVESTMENT GROUP (CR)</b>	<b>Main Market</b>
EUROBANK SECURITIES INVESTMENT FIRM S.A	23/03/2015
HELLENICAMERICAN SEC. S.A.	25/07/2014
PIRAEUS SECURITIES S.A.	02/02/2013
<b>MLS MULTIMEDIA SA (CR)</b>	<b>Main Market</b>
HELLENICAMERICAN SEC. S.A.	07/12/2015
<b>MOTOR OIL (CR)</b>	<b>Main Market</b>
EUROBANK SECURITIES INVESTMENT FIRM S.A	23/10/2012
HELLENICAMERICAN SEC. S.A.	01/09/2014
NATIONAL SECURITIES S.A	17/02/2014
PIRAEUS SECURITIES S.A.	04/05/2015
<b>MYTILINEOS HOLDINGS (CR)</b>	<b>Main Market</b>
NATIONAL SECURITIES S.A	25/06/2013
PIRAEUS SECURITIES S.A.	04/05/2015
<b>NATIONAL BANK (CR)</b>	<b>Main Market</b>
ALPHA FINANCE INVESTMENT SERVICES S.A.	08/01/2013
EUROBANK SECURITIES INVESTMENT FIRM S.A	24/10/2012
HELLENICAMERICAN SEC. S.A.	25/07/2014
LEON DEPOLAS SECURITIES S.A.	20/04/2015
MERIT SECURITIES S.A	03/09/2013
MIDAS BROKERAGE S.A.	07/01/2016
NATIONAL SECURITIES S.A	28/02/2013
PIRAEUS SECURITIES S.A.	08/09/2013
<b>OPAP (CR)</b>	<b>Main Market</b>
ALPHA FINANCE INVESTMENT SERVICES S.A.	08/01/2013
EUROBANK SECURITIES INVESTMENT FIRM S.A	24/10/2012
HELLENICAMERICAN SEC. S.A.	25/07/2014
MIDAS BROKERAGE S.A.	04/04/2016
NATIONAL SECURITIES S.A	15/01/2013
PIRAEUS SECURITIES S.A.	04/05/2015
<b>OTE (CR)</b>	<b>Main Market</b>
ALPHA FINANCE INVESTMENT SERVICES S.A.	08/01/2013
EUROBANK SECURITIES INVESTMENT FIRM S.A	24/10/2012
HELLENICAMERICAN SEC. S.A.	25/07/2014
MIDAS BROKERAGE S.A.	01/10/2015
NATIONAL SECURITIES S.A	01/12/2012
PIRAEUS SECURITIES S.A.	08/09/2013
<b>PAPOUTSANIS (CR)</b>	<b>Main Market</b>
BETA SECURITIES S.A.	25/11/2013
<b>PETROPOULOS PETROS (CR)</b>	<b>Main Market</b>
BETA SECURITIES S.A.	28/05/2013
<b>PIRAEUS BANK (CR)</b>	<b>Main Market</b>
EUROBANK SECURITIES INVESTMENT FIRM S.A	23/10/2012
EUROXX SECURITIES S.A.	15/02/2016
HELLENICAMERICAN SEC. S.A.	25/07/2014
MERIT SECURITIES S.A	16/09/2013
MIDAS BROKERAGE S.A.	11/01/2016
NATIONAL SECURITIES S.A	02/06/2013
PIRAEUS SECURITIES S.A.	16/02/2013
<b>PLAISIO COMPUTERS SA (CR)</b>	<b>Main Market</b>
BETA SECURITIES S.A.	05/05/2014
EUROBANK SECURITIES INVESTMENT FIRM S.A	02/03/2015
<b>PPC (CR)</b>	<b>Main Market</b>
ALPHA FINANCE INVESTMENT SERVICES S.A.	08/01/2013
EUROBANK SECURITIES INVESTMENT FIRM S.A	23/10/2012
MIDAS BROKERAGE S.A.	04/04/2016
NATIONAL SECURITIES S.A	26/03/2013
PIRAEUS SECURITIES S.A.	28/09/2013
<b>QUALITY &amp; RELIABILITY SA (CR)</b>	<b>Main Market</b>
BETA SECURITIES S.A.	20/08/2014
<b>S.KANAKIS SA (CR)</b>	<b>Main Market</b>
BETA SECURITIES S.A.	01/10/2013
<b>TITAN CEMENT (CR)</b>	<b>Main Market</b>
EUROBANK SECURITIES INVESTMENT FIRM S.A	23/10/2012
NATIONAL SECURITIES S.A	17/02/2014
PIRAEUS SECURITIES S.A.	04/05/2015
<b>VIOHALCO SA/NV (CB)</b>	<b>Main Market</b>
ALPHA FINANCE INVESTMENT SERVICES S.A.	17/02/2014
MERIT SECURITIES S.A	17/03/2014

Underlying Asset				Derivatives Market													
Price max	Price min	Closing price	change	Delivery Month	Open price	Price max	Price min	Last price	Closing price	Last Bid	Last Ask	Settlement price	Life high	Life low	Trades	Volume	Open Interest
FTSE/Athex Large Cap				(Trade Unit: 1 Index Point x 2€, Cash Settlement)													
1,560.15	1,524.14	1,524.14	-2.31%	October 2016	1,542.50	1,546.00	1,524.00	1,524.00	1,524.00	---	---	1,534.50	1,580.75	---	313	1,739	3,948
				November 2016	1,543.50	1,544.00	1,524.00	1,524.00	1,524.00	---	---	1,534.00	1,576.50	---	70	525	3,347
				December 2016	---	---	---	---	1,565.75	---	---	1,537.25	1,529.00	---	---	---	3
				March 2017	---	---	---	---	1,573.75	---	---	---	---	---	---	---	---
				June 2017	---	---	---	---	1,581.50	---	---	---	---	---	---	---	---
				September 2017	---	---	---	---	1,589.50	---	---	---	---	---	---	---	---



Underlying Asset				Derivatives Market													
Price max	Price min	Closing price	change	Delivery Month	Open price	Price max	Price min	Last price	Closing price	Last Bid	Last Ask	Settlement price	Life high	Life low	Trades	Volume	Open Interest
ALPHA BANK (CR)				(Contract Size: 100 Securities, Physical Delivery)													
1.65	1.58	1.58	-5.39%	December 2016	1.62	1.65	1.58	1.58	1.58	---	---	1.59	1.87	---	231	4,860	12,576
				March 2017	---	---	---	---	1.68	---	---	---	---	---	---	---	---
				June 2017	---	---	---	---	1.69	---	---	---	---	---	---	---	---
				September 2017	---	---	---	---	1.70	---	---	---	---	---	---	---	---
CC HBC AG (CR)				(Contract Size: 100 Securities, Physical Delivery)													
20.15	19.81	19.81	-2.41%	December 2016	20.02	20.15	19.92	19.92	19.92	---	---	19.68	21.05	---	5	9	101
				March 2017	---	---	---	---	20.48	---	---	---	---	---	---	---	---
				June 2017	---	---	---	---	20.58	---	---	---	---	---	---	---	---
				September 2017	---	---	---	---	20.68	---	---	---	---	---	---	---	---
CORINTH PIPEWORKS (CR)				(Contract Size: 100 Securities, Physical Delivery)													
0.620	0.604	0.618	-0.96%	December 2016	---	---	---	---	0.626	---	---	0.603	0.929	---	---	---	820
				March 2017	---	---	---	---	0.629	---	---	0.634	0.850	---	---	---	---
				June 2017	---	---	---	---	0.633	---	---	---	---	---	---	---	---
				September 2017	---	---	---	---	0.636	---	---	---	---	---	---	---	---
ELLAKTOR (CR)				(Contract Size: 100 Securities, Physical Delivery)													
1.28	1.25	1.28	-0.77%	December 2016	1.27	1.28	1.26	1.28	1.28	---	---	1.27	1.36	---	16	86	2,036
				March 2017	---	---	---	---	1.30	---	---	---	---	---	---	---	---
				June 2017	---	---	---	---	1.31	---	---	---	---	---	---	---	---
				September 2017	---	---	---	---	1.31	---	---	---	---	---	---	---	---
EUROBANK ERGASIAS (CR)				(Contract Size: 100 Securities, Physical Delivery)													
0.543	0.518	0.537	0.37%	December 2016	0.526	0.543	0.518	0.530	0.530	---	---	0.532	0.590	---	293	8,211	24,626
				March 2017	---	---	---	---	0.540	---	---	---	---	---	---	---	---
				June 2017	---	---	---	---	0.542	---	---	---	---	---	---	---	---
				September 2017	---	---	---	---	0.545	---	---	---	---	---	---	---	---
EYDAP S.A. (CR)				(Contract Size: 100 Securities, Physical Delivery)													
5.42	5.30	5.36	0.19%	December 2016	---	---	---	---	5.37	---	---	5.35	5.61	---	---	---	428
				March 2017	---	---	---	---	5.40	---	---	---	---	---	---	---	---
				June 2017	---	---	---	---	5.42	---	---	---	---	---	---	---	---
				September 2017	---	---	---	---	5.45	---	---	---	---	---	---	---	---
FOLLI FOLLIE (CR)				(Contract Size: 100 Securities, Physical Delivery)													
21.65	21.20	21.20	-2.08%	December 2016	21.60	21.60	21.20	21.20	21.20	---	---	21.05	22.31	---	6	22	152
				March 2017	---	---	---	---	21.84	---	---	20.99	21.97	---	---	---	1
				June 2017	---	---	---	---	21.95	---	---	---	---	---	---	---	---
				September 2017	---	---	---	---	22.06	---	---	---	---	---	---	---	---
GEK TERNA (CR)				(Contract Size: 100 Securities, Physical Delivery)													
2.05	2.00	2.05	-0.49%	December 2016	2.01	2.04	2.00	2.04	2.04	---	---	2.09	2.09	---	15	69	6,767
				March 2017	---	---	---	---	2.08	---	---	---	---	---	---	---	---
				June 2017	---	---	---	---	2.09	---	---	---	---	---	---	---	---
				September 2017	---	---	---	---	2.10	---	---	---	---	---	---	---	---

Underlying Asset				Derivatives Market													
Price max	Price min	Closing price	change	Delivery Month	Open price	Price max	Price min	Last price	Closing price	Last Bid	Last Ask	Settlement price	Life high	Life low	Trades	Volume	Open Interest
GRIVALIA PROPERTIES (CR)				(Contract Size: 100 Securities, Physical Delivery)													
6.87	6.76	6.80	-0.44%	December 2016	6.80	6.82	6.80	6.82	6.82	---	---	6.82	7.19	---	2	6	56
				March 2017	---	---	---	---	6.89	---	---	---	---	---	---	---	---
				June 2017	---	---	---	---	6.92	---	---	---	---	---	---	---	---
				September 2017	---	---	---	---	6.96	---	---	---	---	---	---	---	---
HELLENIC EXCHANGES-A.S.E. (CR)				(Contract Size: 100 Securities, Physical Delivery)													
4.39	4.31	4.37	0.00%	December 2016	4.33	4.39	4.30	4.33	4.33	---	---	4.36	4.43	---	27	69	340
				March 2017	---	---	---	---	4.41	---	---	---	---	---	---	---	---
				June 2017	---	---	---	---	4.43	---	---	---	---	---	---	---	---
				September 2017	---	---	---	---	4.45	---	---	---	---	---	---	---	---
HELLENIC PETROLEUM (CR)				(Contract Size: 100 Securities, Physical Delivery)													
4.06	3.94	3.99	-1.97%	December 2016	4.04	4.04	3.95	4.04	4.04	---	---	4.00	4.18	---	34	81	3,585
				March 2017	---	---	---	---	4.11	---	---	---	---	---	---	---	---
				June 2017	---	---	---	---	4.13	---	---	---	---	---	---	---	---
				September 2017	---	---	---	---	4.15	---	---	---	---	---	---	---	---
INTRALOT (CR)				(Contract Size: 100 Securities, Physical Delivery)													
1.29	1.21	1.22	-4.69%	December 2016	1.25	1.25	1.21	1.21	1.21	---	---	1.19	1.39	---	20	196	627
				March 2017	---	---	---	---	1.29	---	---	---	---	---	---	---	---
				June 2017	---	---	---	---	1.30	---	---	---	---	---	---	---	---
				September 2017	---	---	---	---	1.30	---	---	---	---	---	---	---	---
JUMBO SA (CR)				(Contract Size: 100 Securities, Physical Delivery)													
11.98	11.73	11.90	0.42%	December 2016	11.59	11.71	11.58	11.58	11.58	---	---	11.67	11.71	---	21	70	142
				March 2017	---	---	---	---	11.95	---	---	---	---	---	---	---	---
				June 2017	---	---	---	---	12.01	---	---	---	---	---	---	---	---
				September 2017	---	---	---	---	12.07	---	---	---	---	---	---	---	---
MARFIN INVESTMENT GROUP (CR)				(Contract Size: 100 Securities, Physical Delivery)													
0.124	0.121	0.122	-1.61%	December 2016	0.123	0.125	0.121	0.122	0.122	---	---	0.123	0.137	---	26	488	45,756
				March 2017	---	---	---	---	0.125	---	---	---	---	---	---	---	---
				June 2017	---	---	---	---	0.126	---	---	---	---	---	---	---	---
				September 2017	---	---	---	---	0.126	---	---	---	---	---	---	---	---
METKA (CR)				(Contract Size: 100 Securities, Physical Delivery)													
7.70	7.56	7.66	0.13%	December 2016	7.64	7.64	7.57	7.57	7.57	---	---	7.65	7.71	---	7	15	540
				March 2017	---	---	---	---	7.72	---	---	7.60	7.65	---	---	---	---
				June 2017	---	---	---	---	7.75	---	---	---	---	---	---	---	---
				September 2017	---	---	---	---	7.79	---	---	---	---	---	---	---	---
MOTOR OIL (CR)				(Contract Size: 100 Securities, Physical Delivery)													
10.90	10.82	10.90	0.37%	December 2016	10.86	10.87	10.80	10.80	10.80	---	---	10.97	10.87	---	6	14	287
				March 2017	---	---	---	---	10.95	---	---	---	---	---	---	---	---
				June 2017	---	---	---	---	11.01	---	---	---	---	---	---	---	---
				September 2017	---	---	---	---	11.06	---	---	---	---	---	---	---	---

Underlying Asset				Derivatives Market													
Price max	Price min	Closing price	change	Delivery Month	Open price	Price max	Price min	Last price	Closing price	Last Bid	Last Ask	Settlement price	Life high	Life low	Trades	Volume	Open Interest
MYTILINEOS HOLDINGS (CR)																	
(Contract Size: 100 Securities, Physical Delivery)																	
4.81	4.70	4.70	-1.47%	December 2016	4.74	4.83	4.71	4.72	4.72	---	---	4.75	4.95	---	116	451	4,712
				March 2017	---	---	---	---	4.81	---	---	4.78	---	4.94	---	---	31
				June 2017	---	---	---	---	4.84	---	---	---	---	---	---	---	---
				September 2017	---	---	---	---	4.86	---	---	---	---	---	---	---	---
NATIONAL BANK (CR)																	
(Contract Size: 100 Securities, Physical Delivery)																	
0.195	0.189	0.189	-4.06%	December 2016	0.195	0.195	0.190	0.190	0.190	---	---	0.192	0.268	---	95	2,641	65,854
				March 2017	---	---	---	---	0.199	---	---	---	---	---	---	---	---
				June 2017	---	---	---	---	0.200	---	---	---	---	---	---	---	---
				September 2017	---	---	---	---	0.201	---	---	---	---	---	---	---	---
OPAP (CR)																	
(Contract Size: 100 Securities, Physical Delivery)																	
7.55	7.31	7.31	-3.82%	December 2016	7.46	7.55	7.32	7.32	7.32	---	---	7.41	7.75	---	86	270	1,570
				March 2017	---	---	---	---	7.67	---	---	---	---	---	---	---	---
				June 2017	---	---	---	---	7.70	---	---	---	---	---	---	---	---
				September 2017	---	---	---	---	7.74	---	---	---	---	---	---	---	---
OTE (CR)																	
(Contract Size: 100 Securities, Physical Delivery)																	
8.06	7.84	7.84	-3.09%	December 2016	8.01	8.07	7.84	7.84	7.84	---	---	7.91	8.85	---	133	584	6,552
				March 2017	---	---	---	---	8.16	---	---	---	---	---	---	---	---
				June 2017	---	---	---	---	8.20	---	---	---	---	---	---	---	---
				September 2017	---	---	---	---	8.24	---	---	---	---	---	---	---	---
P.P.A. S.A. (CR)																	
(Contract Size: 100 Securities, Physical Delivery)																	
12.55	12.28	12.55	0.56%	December 2016	12.46	12.46	12.36	12.36	12.36	---	---	12.55	12.72	---	3	11	645
				March 2017	---	---	---	---	12.59	---	---	---	---	---	---	---	---
				June 2017	---	---	---	---	12.65	---	---	---	---	---	---	---	---
				September 2017	---	---	---	---	12.71	---	---	---	---	---	---	---	---
PIRAEUS BANK (CR)																	
(Contract Size: 100 Securities, Physical Delivery)																	
0.145	0.140	0.140	-4.11%	December 2016	0.144	0.144	0.140	0.141	0.141	---	---	0.141	0.250	---	117	4,208	80,786
				March 2017	---	---	---	---	0.147	---	---	---	---	---	---	---	---
				June 2017	---	---	---	---	0.148	---	---	---	---	---	---	---	---
				September 2017	---	---	---	---	0.149	---	---	---	---	---	---	---	---
PPC (CR)																	
(Contract Size: 100 Securities, Physical Delivery)																	
2.89	2.80	2.85	0.71%	December 2016	2.82	2.90	2.78	2.84	2.84	---	---	2.87	2.90	---	152	809	6,461
				March 2017	2.84	2.89	2.84	2.89	2.89	---	---	2.87	2.89	---	3	60	30
				June 2017	---	---	---	---	2.87	---	---	---	---	---	---	---	---
				September 2017	---	---	---	---	2.88	---	---	---	---	---	---	---	---
TERNA ENERGY (CR)																	
(Contract Size: 100 Securities, Physical Delivery)																	
2.65	2.60	2.65	0.00%	December 2016	2.63	2.63	2.63	2.63	2.63	---	---	2.67	2.67	---	3	8	1,202
				March 2017	---	---	---	---	2.67	---	---	---	---	---	---	---	---
				June 2017	---	---	---	---	2.69	---	---	---	---	---	---	---	---
				September 2017	---	---	---	---	2.70	---	---	---	---	---	---	---	---

Underlying Asset				Derivatives Market													
Price max	Price min	Closing price	change	Delivery Month	Open price	Price max	Price min	Last price	Closing price	Last Bid	Last Ask	Settlement price	Life high	Life low	Trades	Volume	Open Interest
TITAN CEMENT (CR)				(Contract Size: 100 Securities, Physical Delivery)													
21.19	20.92	21.07	-0.33%	December 2016	21.02	21.02	20.99	20.99	20.99	---	---	20.96	21.46	---	11	15	125
				March 2017	---	---	---	---	21.32	---	---	20.67	---	20.85	---	---	---
				June 2017	---	---	---	---	21.43	---	---	---	---	---	---	---	---
				September 2017	---	---	---	---	21.54	---	---	---	---	---	---	---	---
VIOHALCO SA/NV (CB)				(Contract Size: 100 Securities, Physical Delivery)													
1.29	1.25	1.26	-3.08%	December 2016	1.28	1.28	1.25	1.28	1.28	---	---	1.27	1.35	---	12	30	2,495
				March 2017	---	---	---	---	1.31	---	---	---	---	---	---	---	---
				June 2017	---	---	---	---	1.32	---	---	---	---	---	---	---	---
				September 2017	---	---	---	---	1.32	---	---	---	---	---	---	---	---

FTSE/Athex Large Cap

(Trade Unit: 1 Index Point x 2€ - Exercise Style: European, Cash Settlement)

Call Options																	Put Options																			
October 2016								November 2016								Other Months		October 2016								November 2016								Other Months		
Exerise Price	Open price	Price max	Price min	Last price	Closing price	Volume	Open Interest	Open price	Price max	Price min	Last price	Closing price	Volume	Open Interest	Volume	Open Interest	Open price	Price max	Price min	Last price	Closing price	Volume	Open Interest	Open price	Price max	Price min	Last price	Closing price	Volume	Open Interest	Volume	Open Interest	Exerise Price			
900	-	-	-	-	-	-	-	-	-	-	-	-	-	-	-	-	-	-	-	-	-	-	-	-	-	-	-	-	-	-	-	900				
950	-	-	-	-	-	-	-	-	-	-	-	-	-	-	-	-	-	-	-	-	-	-	-	-	-	-	-	-	-	-	-	950				
1,000	-	-	-	-	-	-	-	-	-	-	-	-	-	-	-	-	-	-	-	-	-	-	-	-	-	-	-	-	-	-	-	1,000				
1,050	-	-	-	-	-	-	-	-	-	-	-	-	-	-	-	-	-	-	-	-	-	-	-	-	-	-	-	-	-	-	-	1,050				
1,100	-	-	-	-	-	-	-	-	-	-	-	-	-	-	-	-	-	-	-	-	-	-	-	-	-	-	-	-	-	-	-	1,100				
1,150	-	-	-	-	-	-	-	-	-	-	-	-	-	-	-	-	-	-	-	-	-	-	-	-	-	-	-	-	-	-	-	1,150				
1,200	-	-	-	-	-	-	-	-	-	-	-	-	-	-	-	-	-	-	-	-	-	-	-	-	-	-	-	-	-	-	-	1,200				
1,250	-	-	-	-	-	-	-	-	-	-	-	-	-	-	-	-	-	-	-	-	-	-	-	-	-	-	-	-	-	-	-	1,250				
1,275	-	-	-	-	-	-	-	-	-	-	-	-	-	-	-	-	-	-	-	-	-	-	-	-	-	-	-	-	-	-	-	1,275				
1,300	-	-	-	-	-	-	-	-	-	-	-	-	-	-	-	-	-	-	-	-	-	-	-	-	-	-	-	-	-	-	-	1,300				
1,325	-	-	-	-	-	-	-	-	-	-	-	-	-	-	-	-	-	-	-	-	-	-	-	-	-	-	-	-	-	-	-	1,325				
1,350	0.00	0.00	0.00	-	209.00	-	-	0.00	0.00	0.00	-	208.00	-	-	-	-	0.00	0.00	0.00	-	0.01	-	-	0.00	0.00	0.00	-	0.35	-	3	-	-	1,350			
1,375	0.00	0.00	0.00	-	184.00	-	-	0.00	0.00	0.00	-	183.00	-	-	-	-	0.00	0.00	0.00	-	0.06	-	-	0.00	0.00	0.00	-	0.80	-	-	-	-	1,375			
1,400	0.00	0.00	0.00	-	159.00	-	-	0.00	0.00	0.00	-	159.00	-	10	-	-	0.00	0.00	0.00	-	0.01	-	24	0.00	0.00	0.00	-	1.70	-	2	-	-	1,400			
1,425	0.00	0.00	0.00	-	134.00	-	1	0.00	0.00	0.00	-	136.00	-	-	-	-	0.00	0.00	0.00	-	0.01	-	18	8.50	8.50	8.50	8.50	8.50	2	25	-	-	1,425			
1,450	0.00	0.00	0.00	-	109.00	-	13	0.00	0.00	0.00	-	114.00	-	-	-	-	0.00	0.00	0.00	-	0.09	-	23	0.00	0.00	0.00	-	5.90	-	4	-	-	1,450			
1,475	0.00	0.00	0.00	-	84.00	-	9	0.00	0.00	0.00	-	93.00	-	2	-	-	0.00	0.00	0.00	-	0.48	-	38	0.00	0.00	0.00	-	10.00	-	83	-	-	1,475			
1,500	0.00	0.00	0.00	-	60.50	-	15	0.00	0.00	0.00	-	74.00	-	40	-	-	0.00	0.00	0.00	-	1.90	-	21	27.25	28.75	23.00	23.00	23.00	120	141	-	-	1,500			
1,525	24.00	24.00	18.25	18.25	18.25	72	387	50.00	50.00	44.25	44.25	44.25	48	159	-	-	24.00	24.00	14.00	17.00	17.00	4	20	38.75	38.75	38.75	38.75	38.75	20	20	-	-	1,525			
1,550	10.00	10.00	7.10	8.00	8.00	41	758	35.00	35.00	30.00	30.00	30.00	31	130	-	-	10.00	10.00	23.00	27.00	27.00	2	45	46.00	46.00	46.00	46.00	46.00	10	81	-	-	1,550			
1,575	5.50	5.50	4.00	4.00	4.00	6	64	25.50	25.50	25.50	25.50	25.50	3	39	-	-	5.50	5.50	0.00	-	27.25	-	12	0.00	0.00	0.00	-	48.25	-	4	-	-	1,575			
1,600	0.00	0.00	0.00	-	4.60	-	326	16.00	16.00	16.00	16.00	16.00	20	59	-	-	0.00	0.00	0.00	-	45.75	-	20	0.00	0.00	0.00	-	64.00	-	1	-	-	1,600			
1,625	0.00	0.00	0.00	-	1.60	-	35	0.00	0.00	0.00	-	15.00	-	-	-	-	0.00	0.00	0.00	-	68.00	-	-	0.00	0.00	0.00	-	82.00	-	-	-	-	1,625			
1,650	0.00	0.00	0.00	-	0.44	-	38	0.00	0.00	0.00	-	9.80	-	20	-	-	0.00	0.00	0.00	-	91.50	-	-	0.00	0.00	0.00	-	102.00	-	-	-	-	1,650			
1,675	0.00	0.00	0.00	-	0.10	-	-	0.00	0.00	0.00	-	6.20	-	20	-	-	0.00	0.00	0.00	-	116.00	-	-	0.00	0.00	0.00	-	123.00	-	-	-	-	1,675			
1,700	0.00	0.00	0.00	-	0.02	-	13	0.00	0.00	0.00	-	3.80	-	-	-	-	0.00	0.00	0.00	-	141.00	-	-	0.00	0.00	0.00	-	146.00	-	-	-	-	1,700			
1,725	-	-	-	-	-	-	-	-	-	-	-	-	-	-	-	-	-	-	-	-	-	-	-	-	-	-	-	-	-	-	-	1,725				
1,750	-	-	-	-	-	-	-	-	-	-	-	-	-	-	-	-	-	-	-	-	-	-	-	-	-	-	-	-	-	-	-	1,750				
1,775	-	-	-	-	-	-	-	-	-	-	-	-	-	-	-	-	-	-	-	-	-	-	-	-	-	-	-	-	-	-	-	1,775				
1,800	-	-	-	-	-	-	-	-	-	-	-	-	-	-	-	-	-	-	-	-	-	-	-	-	-	-	-	-	-	-	-	1,800				
1,825	-	-	-	-	-	-	-	-	-	-	-	-	-	-	-	-	-	-	-	-	-	-	-	-	-	-	-	-	-	-	-	1,825				
1,850	-	-	-	-	-	-	-	-	-	-	-	-	-	-	-	-	-	-	-	-	-	-	-	-	-	-	-	-	-	-	-	1,850				
1,900	-	-	-	-	-	-	-	-	-	-	-	-	-	-	-	-	-	-	-	-	-	-	-	-	-	-	-	-	-	-	-	1,900				
1,950	-	-	-	-	-	-	-	-	-	-	-	-	-	-	-	-	-	-	-	-	-	-	-	-	-	-	-	-	-	-	-	1,950				
2,000	-	-	-	-	-	-	-	-	-	-	-	-	-	-	-	-	-	-	-	-	-	-	-	-	-	-	-	-	-	-	-	2,000				
2,050	-	-	-	-	-	-	-	-	-	-	-	-	-	-	-	-	-	-	-	-	-	-	-	-	-	-	-	-	-	-	-	2,050				

FTSE/Athex Large Cap

(Trade Unit: 1 Index Point x 2€ - Exercise Style: European, Cash Settlement)

Call Options																Put Options																							
Exercise Price	October 2016							November 2016							Other Months		October 2016								November 2016							Other Months		Exercise Price					
	Open price	Price max	Price min	Last price	Closing price	Volume	Open Interest	Open price	Price max	Price min	Last price	Closing price	Volume	Open Interest	Volume	Open Interest	Open price	Price max	Price min	Last price	Closing price	Volume	Open Interest	Open price	Price max	Price min	Last price	Closing price	Volume	Open Interest	Volume	Open Interest							
2,100	-	-	-	-	-	-	-	-	-	-	-	-	-	-	-	-	-	-	-	-	-	-	-	-	-	-	-	-	-	-	-	-	2,100						
Totals:							119	1,659								102	479	10	272								6	221								152	364	0	12
Number of Trades:							16								12		1								4								9			0			

ALPHA BANK (CR)

(Contract Size: 100 Securities, Exercise Style: American, Physical Delivery)

Call Options																	Put Options																		
Exercise Price	October 2016							November 2016							Other Months		October 2016							November 2016							Other Months		Exercise Price		
	Open price	Price max	Price min	Last price	Closing price	Volume	Open Interest	Open price	Price max	Price min	Last price	Closing price	Volume	Open Interest	Volume	Open Interest	Open price	Price max	Price min	Last price	Closing price	Volume	Open Interest	Open price	Price max	Price min	Last price	Closing price	Volume	Open Interest	Volume	Open Interest			
0.800																																	0.008		
0.850																																	0.009		
0.900																																	0.009		
0.950																																	0.010		
1.000	0.000	0.000	0.000		0.670	-	-	0.000	0.000	0.000		0.672	-	-			0.000	0.000	0.000		0.001	-	-	0.000	0.000	0.000		0.001	-	-		0.010			
1.100	0.000	0.000	0.000		0.571	-	-	0.000	0.000	0.000		0.573	-	-			0.000	0.000	0.000		0.002	-	-	0.000	0.000	0.000		0.001	-	-		0.011			
1.200	0.000	0.000	0.000		0.471	-	-	0.000	0.000	0.000		0.476	-	-			0.000	0.000	0.000		0.001	-	-	0.000	0.000	0.000		0.003	-	-		0.012			
1.300	0.000	0.000	0.000		0.371	-	-	0.000	0.000	0.000		0.382	-	-			0.000	0.000	0.000		0.001	-	-	0.000	0.000	0.000		0.009	-	-		0.013			
1.400	0.000	0.000	0.000		0.273	-	-	0.000	0.000	0.000		0.296	-	-			0.000	0.000	0.000		0.003	-	-	0.000	0.000	0.000		0.023	-	-		0.014			
1.500	0.000	0.000	0.000		0.183	-	-	0.000	0.000	0.000		0.220	-	50			0.000	0.000	0.000		0.012	-	-	0.000	0.000	0.000		0.047	-	-		0.015			
1.600	0.000	0.000	0.000		0.108	-	-	0.000	0.000	0.000		0.157	-	-			0.000	0.000	0.000		0.038	-	-	0.000	0.000	0.000		0.084	-	-		0.016			
1.700	0.000	0.000	0.000		0.056	-	50	0.000	0.000	0.000		0.108	-	-			0.000	0.000	0.000		0.085	-	-	0.000	0.000	0.000		0.135	-	-		0.017			
1.800	0.000	0.000	0.000		0.024	-	-	0.000	0.000	0.000		0.071	-	-			0.000	0.000	0.000		0.154	-	-	0.000	0.000	0.000		0.198	-	-		0.018			
1.900	0.000	0.000	0.000		0.009	-	-	0.000	0.000	0.000		0.045	-	-			0.000	0.000	0.000		0.238	-	-	0.000	0.000	0.000		0.272	-	-		0.019			
2.000	0.000	0.000	0.000		0.003	-	-	0.000	0.000	0.000		0.028	-	-			0.000	0.000	0.000		0.332	-	-	0.000	0.000	0.000		0.355	-	-		0.020			
2.200	0.000	0.000	0.000		0.001	-	-	0.000	0.000	0.000		0.010	-	-			0.000	0.000	0.000		0.530	-	-	0.000	0.000	0.000		0.537	-	-		0.022			
2.400	0.000	0.000	0.000		0.002	-	-	0.000	0.000	0.000		0.003	-	-			0.000	0.000	0.000		0.730	-	-	0.000	0.000	0.000		0.731	-	-		0.024			
2.600	0.000	0.000	0.000		0.001	-	-	0.000	0.000	0.000		0.001	-	-			0.000	0.000	0.000		0.930	-	-	0.000	0.000	0.000		0.930	-	-		0.026			
2.800																																	0.028		
3.000																																	0.030		
3.200																																	0.032		
3.400																																	0.034		
3.600																																	0.036		
Totals:						0	50							0	50	0	0							0	0							0	80	0	0
Number of Trades:						0								0		0							0.00								0		0		

NATIONAL BANK (CR)

(Contract Size: 100 Securities, Exercise Style: American, Physical Delivery)

Call Options																	Put Options																						
October 2016								November 2016								Other Months		October 2016								November 2016								Other Months					
Exerise Price	Open price	Price max	Price min	Last price	Closing price	Volume	Open Interest	Open price	Price max	Price min	Last price	Closing price	Volume	Open Interest	Volume	Open Interest	Open price	Price max	Price min	Last price	Closing price	Volume	Open Interest	Open price	Price max	Price min	Last price	Closing price	Volume	Open Interest	Volume	Open Interest	Exerise Price						
0.050	0.000	0.000	0.000		0.147	-	-	0.000	0.000	0.000		0.147	-	-			0.000	0.000	0.000		0.001	-	-	0.000	0.000	0.000		0.001	-	-			0.001						
0.100	0.000	0.000	0.000		0.098	-	-	0.000	0.000	0.000		0.098	-	-			0.000	0.000	0.000		0.001	-	-	0.000	0.000	0.000		0.001	-	-			0.001						
0.150	0.000	0.000	0.000		0.055	-	-	0.000	0.000	0.000		0.056	-	-			0.000	0.000	0.000		0.008	-	-	0.000	0.000	0.000		0.008	-	-			0.002						
0.200	0.000	0.000	0.000		0.027	-	-	0.000	0.000	0.000		0.028	-	-			0.000	0.000	0.000		0.030	-	-	0.000	0.000	0.000		0.030	-	-			0.002						
0.250	0.000	0.000	0.000		0.012	-	-	0.000	0.000	0.000		0.013	-	-			0.000	0.000	0.000		0.065	-	-	0.000	0.000	0.000		0.065	-	-			0.003						
0.300	0.000	0.000	0.000		0.005	-	-	0.000	0.000	0.000		0.006	-	-			0.000	0.000	0.000		0.108	-	-	0.000	0.000	0.000		0.108	-	-			0.003						
0.350	0.000	0.000	0.000		0.002	-	-	0.000	0.000	0.000		0.003	-	-			0.000	0.000	0.000		0.155	-	-	0.000	0.000	0.000		0.155	-	-			0.004						
0.400	0.000	0.000	0.000		0.001	-	-	0.000	0.000	0.000		0.001	-	-			0.000	0.000	0.000		0.204	-	-	0.000	0.000	0.000		0.204	-	-			0.004						
0.450	0.000	0.000	0.000		0.001	-	-	0.000	0.000	0.000		0.001	-	-			0.000	0.000	0.000		0.253	-	-	0.000	0.000	0.000		0.253	-	-			0.005						
0.500	-							-							-							-							-							0.005			
0.550	-							-							-							-							-							0.006			
0.600	-							-							-							-							-							0.006			
Totals:							0	0								0	0	0	0								0	0								0	0		
Number of Trades:							0								0								0								0								0



OPAP (CR)

(Contract Size: 100 Securities, Exercise Style: American, Physical Delivery)

Call Options																	Put Options																			
October 2016								November 2016								Other Months		October 2016								November 2016								Other Months		
Exerise Price	Open price	Price max	Price min	Last price	Closing price	Volume	Open Interest	Open price	Price max	Price min	Last price	Closing price	Volume	Open Interest	Volume	Open Interest	Open price	Price max	Price min	Last price	Closing price	Volume	Open Interest	Open price	Price max	Price min	Last price	Closing price	Volume	Open Interest	Volume	Open Interest	Exerise Price			
3.600						-	-							-	-							-	-					-	-			0.036				
3.800						-	-							-	-							-	-					-	-			0.038				
4.000						-	-							-	-							-	-					-	-			0.040				
4.400						-	-							-	-							-	-					-	-			0.044				
4.800	0.000	0.000	0.000		2.80	-	-							-	-		0.000	0.000	0.000		0.001	-	-					-	-			0.048				
5.200	0.000	0.000	0.000		2.40	-	-	0.000	0.000	0.000		2.41	-	-		0.000	0.000	0.000		0.001	-	-		0.000	0.000	0.000		0.001	-	-			0.052			
5.600	0.000	0.000	0.000		2.00	-	-	0.000	0.000	0.000		2.01	-	-		0.000	0.000	0.000		0.001	-	10		0.000	0.000	0.000		0.001	-	-			0.056			
6.000	0.000	0.000	0.000		1.60	-	-	0.000	0.000	0.000		1.62	-	-		0.000	0.000	0.000		0.001	-	10		0.000	0.000	0.000		0.004	-	-			0.060			
6.400	0.000	0.000	0.000		1.20	-	-	0.000	0.000	0.000		1.23	-	-		0.000	0.000	0.000		0.001	-	-		0.000	0.000	0.000		0.019	-	-			0.064			
6.800	0.000	0.000	0.000		0.818	-	-	0.000	0.000	0.000		0.877	-	-		0.000	0.000	0.000		0.014	-	-		0.000	0.000	0.000		0.063	-	-			0.068			
7.200	0.000	0.000	0.000		0.475	-	-	0.000	0.000	0.000		0.574	-	-		0.000	0.000	0.000		0.071	-	-		0.178	0.178	0.174	0.174	0.174	10	45			0.072			
7.600	0.000	0.000	0.000		0.222	-	65	0.000	0.000	0.000		0.339	-	-		0.221	0.221	0.214	0.214	0.214	15	20		0.384	0.384	0.384	0.384	0.384	5	20			0.076			
8.000	0.000	0.000	0.000		0.082	-	40	0.000	0.000	0.000		0.185	-	25		0.000	0.000	0.000		0.479	-	-		0.000	0.000	0.000		0.570	-	-			0.080			
8.400	0.000	0.000	0.000		0.023	-	-	0.000	0.000	0.000		0.089	-	10		0.000	0.000	0.000		0.820	-	-		0.000	0.000	0.000		0.876	-	-			0.084			
8.800	0.000	0.000	0.000		0.005	-	-	0.000	0.000	0.000		0.040	-	-		0.000	0.000	0.000		1.20	-	-		0.000	0.000	0.000		1.23	-	-			0.088			
9.200	0.000	0.000	0.000		0.001	-	-	0.000	0.000	0.000		0.016	-	-		0.000	0.000	0.000		1.60	-	-		0.000	0.000	0.000		1.61	-	-			0.092			
9.600	0.000	0.000	0.000		0.001	-	-	0.000	0.000	0.000		0.006	-	-		0.000	0.000	0.000		2.00	-	-		0.000	0.000	0.000		2.00	-	-			0.096			
10.000	0.000	0.000	0.000		0.001	-	-	0.000	0.000	0.000		0.002	-	-		0.000	0.000	0.000		2.40	-	-		0.000	0.000	0.000		2.40	-	-			0.100			
Totals:						0	105							0	35	0	0							0	40							15	77	0	10	
Number of Trades:						0								0		0								3.00								3		0		

OTE (CR)

(Contract Size: 100 Securities, Exercise Style: American, Physical Delivery)

Call Options																Put Options																				
October 2016								November 2016								Other Months		October 2016								November 2016								Other Months		
Exercise Price	Open price	Price max	Price min	Last price	Closing price	Volume	Open Interest	Open price	Price max	Price min	Last price	Closing price	Volume	Open Interest	Volume	Open Interest	Open price	Price max	Price min	Last price	Closing price	Volume	Open Interest	Open price	Price max	Price min	Last price	Closing price	Volume	Open Interest	Volume	Open Interest	Exercise Price			
4.800						-	-							-	-							-	-					-	-			0.048				
5.200						-	-							-	-							-	-					-	-			0.052				
5.600	0.000	0.000	0.000		2.49	-	-	0.000	0.000	0.000		2.50	-	-			0.000	0.000	0.000		0.001	-	-	0.000	0.000	0.000		0.001	-	-			0.056			
6.000	0.000	0.000	0.000		2.09	-	-	0.000	0.000	0.000		2.10	-	-			0.000	0.000	0.000		0.001	-	-	0.000	0.000	0.000		0.003	-	-			0.060			
6.400	0.000	0.000	0.000		1.69	-	-	0.000	0.000	0.000		1.71	-	-			0.000	0.000	0.000		0.002	-	-	0.000	0.000	0.000		0.002	-	-			0.064			
6.800	0.000	0.000	0.000		1.29	-	-	0.000	0.000	0.000		1.32	-	-			0.000	0.000	0.000		0.004	-	-	0.000	0.000	0.000		0.012	-	-			0.068			
7.200	0.000	0.000	0.000		0.895	-	-	0.000	0.000	0.000		0.951	-	-			0.000	0.000	0.000		0.001	-	-	0.000	0.000	0.000		0.046	-	-			0.072			
7.600	0.000	0.000	0.000		0.515	-	20	0.000	0.000	0.000		0.633	-	-			0.000	0.000	0.000		0.021	-	35	0.000	0.000	0.000		0.128	-	-			0.076			
8.000	0.000	0.000	0.000		0.215	-	2	0.000	0.000	0.000		0.384	-	40			0.000	0.000	0.000		0.122	-	37	0.000	0.000	0.000		0.279	-	-			0.080			
8.400	0.000	0.000	0.000		0.058	-	30	0.000	0.000	0.000		0.210	-	5			0.000	0.000	0.000		0.364	-	-	0.000	0.000	0.000		0.504	-	-			0.084			
8.800	0.000	0.000	0.000		0.009	-	20	0.000	0.000	0.000		0.102	-	-			0.000	0.000	0.000		0.716	-	5	0.000	0.000	0.000		0.797	-	-			0.088			
9.200	0.000	0.000	0.000		0.001	-	-	0.000	0.000	0.000		0.046	-	-			0.000	0.000	0.000		1.11	-	-	0.000	0.000	0.000		1.14	-	-			0.092			
9.600	0.000	0.000	0.000		0.001	-	-	0.000	0.000	0.000		0.018	-	-			0.000	0.000	0.000		1.51	-	-	0.000	0.000	0.000		1.52	-	-			0.096			
10.000	0.000	0.000	0.000		0.001	-	-	0.000	0.000	0.000		0.006	-	-			0.000	0.000	0.000		1.91	-	-	0.000	0.000	0.000		1.91	-	-			0.100			
11.000	0.000	0.000	0.000		0.004	-	-	0.000	0.000	0.000		0.001	-	-			0.000	0.000	0.000		2.91	-	-	0.000	0.000	0.000		2.91	-	-			0.110			
12.000	0.000	0.000	0.000		0.001	-	-	0.000	0.000	0.000		0.001	-	-			0.000	0.000	0.000		3.91	-	-	0.000	0.000	0.000		3.91	-	-			0.120			
13.000	0.000	0.000	0.000		0.001	-	-						-	-			0.000	0.000	0.000		4.91	-	-				-	-			0.130					
14.000						-	-						-	-								-	-				-	-				0.140				
Totals:						0	72						0	45	0	0						0	77					0	55	0	0					
Number of Trades:						0							0		0							0.00					0			0						

PIRAEUS BANK (CR)

(Contract Size: 100 Securities, Exercise Style: American, Physical Delivery)

Call Options																	Put Options																			
October 2016								November 2016								Other Months		October 2016								November 2016								Other Months		
Exercise Price	Open price	Price max	Price min	Last price	Closing price	Volume	Open Interest	Open price	Price max	Price min	Last price	Closing price	Volume	Open Interest	Volume	Open Interest	Open price	Price max	Price min	Last price	Closing price	Volume	Open Interest	Open price	Price max	Price min	Last price	Closing price	Volume	Open Interest	Volume	Open Interest	Exercise Price			
0.050	0.000	0.000	0.000		0.096	-	-	0.000	0.000	0.000		0.096	-	-			0.000	0.000	0.000		0.003	-	-	0.000	0.000	0.000		0.001	-	-			0.001			
0.100	0.000	0.000	0.000		0.053	-	-	0.000	0.000	0.000		0.054	-	-			0.000	0.000	0.000		0.007	-	-	0.000	0.000	0.000		0.008	-	-			0.001			
0.150	0.000	0.000	0.000		0.027	-	-	0.000	0.000	0.000		0.027	-	-			0.000	0.000	0.000		0.031	-	-	0.000	0.000	0.000		0.031	-	-			0.002			
0.200	0.000	0.000	0.000		0.013	-	-	0.000	0.000	0.000		0.014	-	-			0.000	0.000	0.000		0.067	-	-	0.000	0.000	0.000		0.067	-	-			0.002			
0.250	0.000	0.000	0.000		0.006	-	-	0.000	0.000	0.000		0.007	-	-			0.000	0.000	0.000		0.110	-	-	0.000	0.000	0.000		0.110	-	-			0.003			
0.300	0.000	0.000	0.000		0.003	-	-	0.000	0.000	0.000		0.003	-	-			0.000	0.000	0.000		0.157	-	-	0.000	0.000	0.000		0.157	-	-			0.003			
0.350	0.000	0.000	0.000		0.002	-	-	0.000	0.000	0.000		0.002	-	-			0.000	0.000	0.000		0.205	-	-	0.000	0.000	0.000		0.205	-	-			0.004			
0.400	0.000	0.000	0.000		0.001	-	-	0.000	0.000	0.000		0.001	-	-			0.000	0.000	0.000		0.255	-	-	0.000	0.000	0.000		0.255	-	-			0.004			
0.450						-	-						-	-								-	-						-	-			0.005			
0.500						-	-						-	-								-	-						-	-			0.005			
0.550						-	-						-	-								-	-						-	-			0.006			
Totals:						0	0							0	0	0	0							0	0							0	0	0	0	
Number of Trades:						0								0		0								0.00								0		0		

PPC (CR)

(Contract Size: 100 Securities, Exercise Style: American, Physical Delivery)

Call Options																	Put Options																						
Exercise Price	October 2016							November 2016							Other Months		October 2016							November 2016							Other Months		Exercise Price						
	Open price	Price max	Price min	Last price	Closing price	Volume	Open Interest	Open price	Price max	Price min	Last price	Closing price	Volume	Open Interest	Volume	Open Interest	Open price	Price max	Price min	Last price	Closing price	Volume	Open Interest	Open price	Price max	Price min	Last price	Closing price	Volume	Open Interest	Volume	Open Interest							
1.700	0.000	0.000	0.000		1.13	-	-	0.000	0.000	0.000		1.13	-	-			0.000	0.000	0.000		0.001	-	-	0.000	0.000	0.000		0.002	-	-			0.017						
1.800	0.000	0.000	0.000		1.03	-	-	0.000	0.000	0.000		1.03	-	-			0.000	0.000	0.000		0.001	-	-	0.000	0.000	0.000		0.001	-	-			0.018						
1.900	0.000	0.000	0.000		0.931	-	-	0.000	0.000	0.000		0.934	-	-			0.000	0.000	0.000		0.001	-	-	0.000	0.000	0.000		0.001	-	-			0.019						
2.000	0.000	0.000	0.000		0.831	-	-	0.000	0.000	0.000		0.834	-	-			0.000	0.000	0.000		0.001	-	-	0.000	0.000	0.000		0.001	-	-			0.020						
2.200	0.000	0.000	0.000		0.631	-	-	0.000	0.000	0.000		0.635	-	-			0.000	0.000	0.000		0.001	-	-	0.000	0.000	0.000		0.001	-	-			0.022						
2.400	0.000	0.000	0.000		0.432	-	-	0.000	0.000	0.000		0.443	-	-			0.000	0.000	0.000		0.001	-	-	0.000	0.000	0.000		0.008	-	-			0.024						
2.600	0.000	0.000	0.000		0.246	-	95	0.000	0.000	0.000		0.272	-	-			0.000	0.000	0.000		0.015	-	5	0.000	0.000	0.000		0.037	-	-			0.026						
2.800	0.000	0.000	0.000		0.105	-	20	0.000	0.000	0.000		0.143	-	20			0.000	0.000	0.000		0.074	-	30	0.000	0.000	0.000		0.108	-	-			0.028						
3.000	0.000	0.000	0.000		0.031	-	-	0.100	0.100	0.100	0.100	0.100	5	105			0.000	0.000	0.000		0.199	-	10	0.000	0.000	0.000		0.227	-	-			0.030						
3.200	0.000	0.000	0.000		0.006	-	-	0.000	0.000	0.000		0.023	-	-			0.000	0.000	0.000		0.375	-	-	0.000	0.000	0.000		0.388	-	-			0.032						
3.400	0.000	0.000	0.000		0.001	-	-	0.000	0.000	0.000		0.007	-	-			0.000	0.000	0.000		0.570	-	-	0.000	0.000	0.000		0.573	-	-			0.034						
3.600	0.000	0.000	0.000		0.001	-	-	0.000	0.000	0.000		0.002	-	-			0.000	0.000	0.000		0.770	-	-	0.000	0.000	0.000		0.770	-	-			0.036						
3.800	0.000	0.000	0.000		0.002	-	-	0.000	0.000	0.000		0.001	-	-			0.000	0.000	0.000		0.970	-	-	0.000	0.000	0.000		0.970	-	-			0.038						
4.000						-	-						-	-								-	-					-	-			0.040							
4.400						-	-						-	-								-	-					-	-			0.044							
4.800						-	-						-	-								-	-					-	-			0.048							
5.200						-	-						-	-								-	-					-	-			0.052							
5.600						-	-						-	-								-	-					-	-			0.056							
6.000						-	-						-	-								-	-					-	-			0.060							
Totals:							0	115								5	125	0	0								0	45								0	20	0	0
Number of Trades:							0								1		0								0.00								0			0			

Lending Products	Underlying Title	Multilateral Transactions[1]					Bilateral Transactions[2]		Stock Borrowing through OTC (volume)[3]
		Open Interest[5]	Volume(Offered)	Average Weighted	Transactions volume	Average Weighted	Transactions Volume	Average Weighte	Transactions Volume
AEGNBOR	AEGEAN AIRLINES (CR)	7,600	12,119	5.31%	---	---	---	---	11,701
ALPHABOR	ALPHA BANK (CR)	92,350	96,188	3.31%	---	---	---	---	7,000,948
ALMYBOR	ALUMIL (CR)	---	---	---	---	---	---	---	---
IATRBOR	ATHENS MEDICAL CENTER SA (CR)	---	36,400	5.31%	---	---	---	---	---
OTOELBOR	AUTOHELLAS SA (CR)	---	---	---	---	---	---	---	---
BOCBOR	BANK OF CYPRUS (CR)	---	270	5.31%	---	---	---	---	84,008
EEEBOR	CC HBC AG (CR)	4,228	261	5.32%	---	---	---	---	70,546
CENTRBOR	CENTRIC HOLDINGS (CR)	---	16,000	5.31%	---	---	---	---	---
SOLKBOR	CORINTH PIPEWORKS (CR)	5,800	3,358	5.31%	---	---	---	---	---
PLAKRBOR	CRETE PLASTICS SA (CR)	---	---	---	---	---	---	---	---
ELINBOR	ELINOIL S.A. (CR)	---	---	---	---	---	---	---	---
ELLAKTORBOR	ELLAKTOR (CR)	10,000	77,427	5.31%	---	---	---	---	---
ANEMOSBOR	ELTECH ANEMOS S.A. (CR)	---	1,678	5.31%	---	---	---	---	---
ELTONBOR	ELTON SA (CR)	---	---	---	---	---	---	---	---
EUROBBOR	EUROBANK ERGASIAS (CR)	79,312	72,916	5.31%	---	---	---	---	1,915,051
EUPICBOR	EUROPEAN RELIANCE INSUR. (CR)	---	---	---	---	---	---	---	---
EYDAPBOR	EYDAP S.A. (CR)	572	5,790	5.31%	---	---	---	---	17,780
FLEXOBOR	FLEXOPACK SA (CR)	---	---	---	---	---	---	---	---
FFGRPBOR	FOLLI FOLLIE (CR)	15,232	63,192	3.86%	---	---	---	---	713,242
FOYRKBOR	FOURLIS (CR)	---	5,130	5.31%	---	---	---	---	3,850
GEKTERNABOR	GEK TERNA (CR)	12	30,350	5.31%	---	---	---	---	---
SARBOR	GR. SARANTIS SA (CR)	---	1,536	5.31%	---	---	---	---	---
EUPROBOR	GRIVALIA PROPERTIES (CR)	1,000	95,479	5.31%	---	---	---	---	97,022
XAKOBOR	HALKOR SA (CB)	---	56,552	5.31%	---	---	---	---	---
EXAEBOR	HELLENIC EXCHANGES-A.S.E. (CR)	28,100	426,520	5.31%	---	---	---	---	98,443
ELPEBOR	HELLENIC PETROLEUM (CR)	2,075	147,870	5.31%	1,000	2.68%	---	---	42,606
HYGEIABOR	HYGEIA SA (CR)	---	48,700	5.31%	---	---	---	---	---
IASOBOR	IASO SA (CR)	---	---	---	---	---	---	---	---
IKTINBOR	IKTINOS HELLAS SA (CR)	---	798	5.31%	---	---	---	---	---
INTRKBOR	INTRACOM HOLDINGS (CR)	---	168,546	5.31%	---	---	---	---	---
INLOTBOR	INTRALOT (CR)	29,000	36,076	5.31%	---	---	---	---	803

Stock Lending Notes

- [1] - Multilateral contracts Lending or Borrowing as per Methods 8-1, 8-2 and 8-3-3 (According to ATHEX BoD Resolution No.17)
- [2] - Billateral Contracts Lending or Borrowing as per Methods 8-3-1 and 8-3-2 (According to ATHEX BoD Resolution No.20 )
- [3] - The information concerning OTC Stock Borrowing Transactions is based on the statements of the Dematerialised Securities System (DSS) operators involved and refers to volumes that have been registered up until the previous working day.
- [4] - Average Price (Volume weighted)
- [5] - The Data concerning Open Interest before the start of trading session

Lending Products	Underlying Title	Multilateral Transactions[1]					Bilateral Transactions[2]		Stock Borrowing through OTC (volume)[3]
		Open Interest[5]	Volume(Offered)	Average Weighted	Transactions volume	Average Weighted	Transactions Volume	Average Weighte	Transactions Volume
AVAXBOR	J & P - AVAX SA (CR)	---	20,335	5.31%	---	---	---	---	---
BELABOR	JUMBO SA (CR)	9,825	120,294	5.31%	---	---	---	---	6,365
KLEMBOR	KLEEMAN HELLAS SA (CR)	---	5,191	5.31%	---	---	---	---	---
KORRESBOR	KORRES (CR)	---	---	---	---	---	---	---	---
KRIBOR	KRI-KRI S.A. (CR)	---	47,768	5.31%	---	---	---	---	---
KYRMBOR	KYRIAKIDIS MARBLES SA (CR)	---	4,936	5.31%	---	---	---	---	---
LAMDABOR	LAMDA DEVELOPMENT SA (CR)	---	111	5.31%	---	---	---	---	10,377
MIGBOR	MARFIN INVESTMENT GROUP (CR)	---	281,902	5.31%	---	---	---	---	749,474
METKKBOR	METKA (CR)	18,824	252	6.15%	---	---	---	---	13,834
MLSBOR	MLS MULTIMEDIA SA (CR)	---	9,118	5.31%	---	---	---	---	---
MOHBOR	MOTOR OIL (CR)	4,795	33,322	5.31%	---	---	---	---	52,254
MYTILBOR	MYTILINEOS HOLDINGS (CR)	24,794	122,288	3.31%	---	---	---	---	---
ETEBOR	NATIONAL BANK (CR)	879,592	170,354	3.86%	32,000	2.79%	---	---	787,741
ETFASEBOR	NBGAM ETF	---	---	---	---	---	---	---	---
ETFGT30PBOR	NBGAM ETF GREECE & TURKEY 30	---	---	---	---	---	---	---	---
OPAPBOR	OPAP (CR)	77,000	38,965	5.31%	---	---	---	---	819,549
HTOBOR	OTE (CR)	4,357	66,233	5.31%	---	---	---	---	292,099
PPABOR	P.P.A. S.A. (CR)	368	1,468	5.31%	---	---	---	---	901
PAPBOR	PAPOUTSANIS (CR)	---	---	---	---	---	---	---	---
PETROBOR	PETROPOULOS PETROS (CR)	---	---	---	---	---	---	---	---
TPEIRBOR	PIRAEUS BANK (CR)	71,761	15,658	3.31%	14,400	3.19%	60,000	5.00%	7,175,542
PLAISBOR	PLAISIO COMPUTERS SA (CR)	---	---	---	---	---	---	---	---
PPCBOR	PPC (CR)	36,950	86,264	5.31%	---	---	---	---	512,774
QUALBOR	QUALITY & RELIABILITY SA (CR)	---	---	---	---	---	---	---	---
QUESTBOR	QUEST HOLDINGS (CR)	---	---	---	---	---	---	---	---
KAMPBOR	REDS S.A. (CR)	---	---	---	---	---	---	---	---
EPILBOR	SELECTED TEXT. IND. ASSOC (CR)	---	---	---	---	---	---	---	---
SELOBOR	SELONDA AQUACULTURE SA (CR)	---	---	---	---	---	---	---	---
OLYMPBOR	TECHNICAL OLYMPIC SA (CR)	---	23,046	5.31%	---	---	---	---	---
TENERGYBOR	TERNA ENERGY (CR)	1,000	30,986	5.31%	---	---	---	---	---
EYAPSBOR	THESSALONIKA WATER & SEWERAGE	---	4,438	5.31%	---	---	---	---	---

Stock Lending Notes

- [1] - Multilateral contracts Lending or Borrowing as per Methods 8-1, 8-2 and 8-3-3 (According to ATHEX BoD Resolution No.17)
- [2] - Billateral Contracts Lending or Borrowing as per Methods 8-3-1 and 8-3-2 (According to ATHEX BoD Resolution No.20 )
- [3] - The information concerning OTC Stock Borrowing Transactions is based on the statements of the Dematerialised Securities System (DSS) operators involved and refers to volumes that have been registered up until the previous working day.
- [4] - Average Price (Volume weighted)
- [5] - The Data concerning Open Interest before the start of trading session

Lending Products	Underlying Title	Multilateral Transactions[1]					Bilateral Transactions[2]		Stock Borrowing through OTC (volume)[3]
		Open Interest[5]	Volume(Offered)	Average Weighted	Transactions volume	Average Weighted	Transactions Volume	Average Weighted	Transactions Volume
PLATBOR	THRACE PLASTICS SA (CR)	---	37,360	5.31%	---	---	---	---	---
TITKBOR	TITAN CEMENT (CR)	8,299	216,417	3.31%	---	---	---	---	3,204
OLTHBOR	TPA SA (CR)	---	183	5.31%	---	---	---	---	---
VIOBOR	VIOHALCO SA/NV (CB)	---	67,888	5.31%	---	---	---	---	---

Stock Lending Notes

[1] - Multilateral contracts Lending or Borrowing as per Methods 8-1, 8-2 and 8-3-3 (According to ATHEX BoD Resolution No.17)

[2] - Bilateral Contracts Lending or Borrowing as per Methods 8-3-1 and 8-3-2 (According to ATHEX BoD Resolution No.20 )

[3] - The information concerning OTC Stock Borrowing Transactions is based on the statements of the Dematerialised Securities System (DSS) operators involved and refers to volumes that have been registered up until the previous working day.

[4] - Average Price (Volume weighted)

[5] - The Data concerning Open Interest before the start of trading session

## Sectors codification for listed companies

533	-	Exploration & Production	537	-	Integrated Oil & Gas
1353	-	Commodity Chemicals	1357	-	Specialty Chemicals
1753	-	Aluminum	1755	-	Nonferrous Metals
1757	-	Steel	1775	-	General Mining
2353	-	Building Materials & Fixtures	2357	-	Heavy Construction
2723	-	Containers & Packaging	2727	-	Diversified Industrials
2733	-	Electrical Components & Equipment	2753	-	Commercial Vehicles & Trucks
2757	-	Industrial Machinery	2773	-	Marine Transportation
2777	-	Transportation Services	2791	-	Business Support Services
2797	-	Industrial Suppliers	3535	-	Distillers & Vintners
3537	-	Soft Drinks	3573	-	Farming Fishing & Plantations
3577	-	Food Products	3722	-	Durable Household Products
3726	-	Furnishings	3728	-	Home Construction
3747	-	Toys	3763	-	Clothing & Accessories
3765	-	Footwear	3767	-	Personal Products
3785	-	Tobacco	4533	-	Health Care Providers
4535	-	Medical Equipment	4577	-	Pharmaceuticals
5337	-	Food Retailers & Wholesalers	5371	-	Apparel Retailers
5373	-	Broadline Retailers	5375	-	Home Improvement Retailers
5379	-	Specialty Retailers	5553	-	Broadcasting & Entertainment
5555	-	Media Agencies	5557	-	Publishing
5751	-	Airlines	5752	-	Gambling
5753	-	Hotels	5755	-	Recreational Services
5757	-	Restaurants & Bars	5759	-	Travel & Tourism
6535	-	Fixed Line Telecommunications	6575	-	Mobile Telecommunications
7535	-	Conventional Electricity	7537	-	Alternative Electricity
7577	-	Water	8355	-	Banks
8534	-	Insurance Brokers	8536	-	Property & Casualty Insurance
8633	-	Real Estate Holding & Development	8637	-	Real Estate Services
8671	-	Industrial & Office REITs	8674	-	Diversified REITs
8675	-	Specialty REITs	8775	-	Specialty Finance
8777	-	Investment Services	8985	-	Equity Investment Instruments
9533	-	Computer Services	9535	-	Internet
9537	-	Software	9572	-	Computer Hardware
9574	-	Electronic Office Equipment	9578	-	Telecommunications Equipment
12003	-	ETF			





**ATHEXGROUP**  
Όμιλος Χρηματιστηρίου Αθηνών

Λεωφ. Αθηνών 110 104 42 Αθήνα  
110, Athinon Ave. GR 104 42 Athens  
tel. (+30)210-33.66.800, fax (+30)210-33.66.101  
[www.athegroup.gr](http://www.athegroup.gr)