



**ATHEX**GROUP  
Athens Exchange Group

Hellenic Exchanges – Athens Stock Exchange S.A.

“

**2016**

δελτίο ημερησίων συναλλαγών

*daily official list*

Tuesday, 15 November, 2016

Year: 137 Trading Day No: 217

”

**Disclaimer:**

Hellenic Exchanges-Athens Stock Exchange S.A. endeavours to ensure that the data and other material ("Information") presented on the Daily Official List are accurate and complete, but it is not liable for any errors or omissions of data or /and for the accuracy, credibility, updating and completeness of the aforesaid information nor it has any liability arising directly or indirectly from the use of the above Information.

The Company is not liable for the accuracy of the data included in listed companies' announcements. Only the sender of such an announcement is fully and solely liable for any infringement of third party's rights from the content of such announcement. All contents of the Daily Official List are provided only for information purposes and do not constitute investment advice or solicitation to invest in securities or other products listed for trading on the Exchange.

You acknowledge and agree that the Company is the owner of any property rights related to any Information appearing on the Daily Official List including intellectual property rights copyright, trademarks, etc.

The above data are a property of the Hellenic Exchanges-Athens Exchange and are copyright protected. Users are forbidden to reproduce, modify, copy, sale, transmit or redistribute, by all reproduction means and methods, part or the whole of the above data, without reference to their source.

The commercial exploitation of these data is, also, forbidden by third parties. Hellenic Exchanges-Athens Exchange does not carry any responsibility, direct or indirect, derived from usage or accidental alteration of the above data when used by third parties.

---

**Hellenic Exchanges – Athens Stock Exchange S.A.**

110 Athinon Ave., 10442 Athens, Tel: (210) 33.66.800, Fax: (210) 32.13.938

[www.helex.gr](http://www.helex.gr)

---

**Thessalonica Stock Exchange Center (T.S.E.C)**

16-18 Katouni Str., Thessalonica 546 25 Tel: (2310) 567.667, Fax: (2310) 530.545

---

**Athex Members Guarantee Fund**

14-16 Fidiou Str., Athens 106 78, Tel: (210) 33.04.682, Fax: (210) 33.04.155

---

**Hellenic Republic Capital Market Commission**

1 Kolokotroni Str. & 1 Stadiou Str., Athens 10562 Tel: (210) 33.77.100 Fax: (210) 33.77.173

---

**Table of Contents**

---

**Section 1: Statistical Figures of Securities, Derivatives and Lending**

Summary of Markets

Athex Indices

Analytic Figures for Athex Market's Boards and Categories

Trading Details by Athex Sectors and Financial Instruments (ETFs)

Top 10 best &amp; worst performing Shares

Derivatives Summary

**Section 2: Analytic Figures of Shares Transactions**

Analytic Figures of Shares Transactions

Shares' Notes

**Section 3: Figures of Securities Transactions**

Securities Blocks Details

Shares Rights Details

Stock Borrowing

Shares Forced Sales

Forced Sales Registered Shares

Exchange Traded Funds (ETFs) Characteristics

**Section 5: Bonds traded in Fixed Income Assets Market**

Corporate Bonds

Government Bonds

Treasury Bills &amp; Zero Coupon Government Bonds

Government Bonds Traded with the Open Outcry Method

State Banks Bonds

**Section 6: Additional Infos**

Athex &amp; ATHEXClear Members List

List of Stocks under Market Making operations

**Section 7: Derivatives Market Analytic Figures**

Index Futures

Stock Futures

Index Options

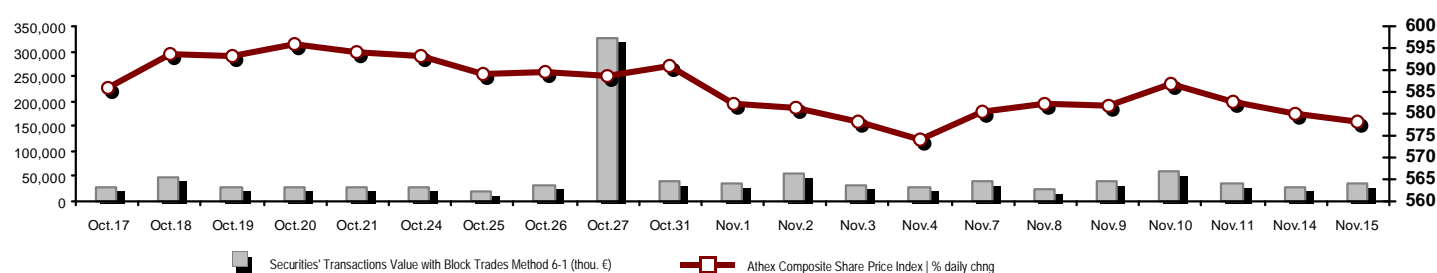
Stock Options

Stock Lending Analytic Figures

**Appendix A: Sectors codification for listed companies**

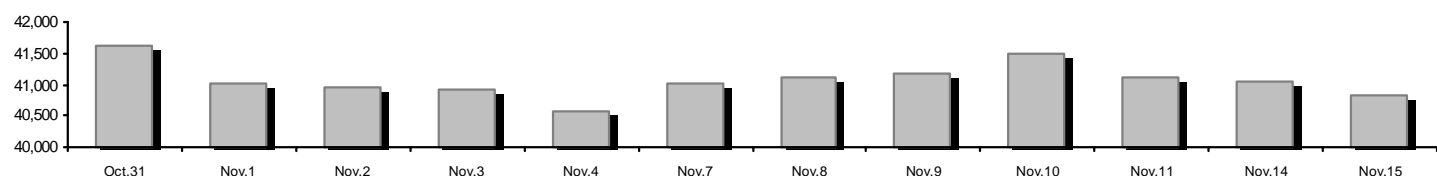
## Summary of Markets

Athex Composite Share Price Index vs Shares and Derivatives Transactions Value

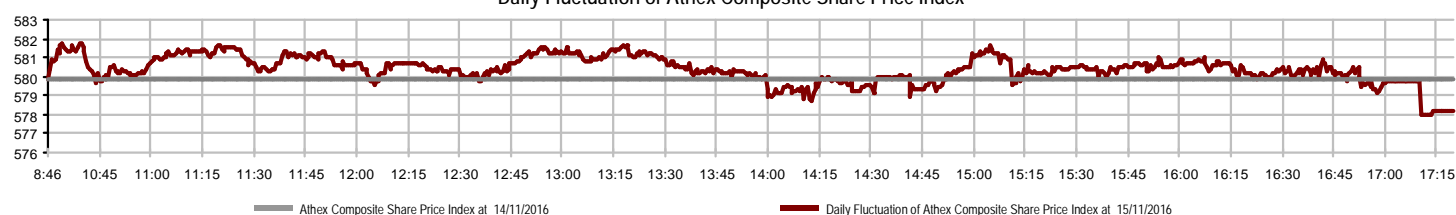


Athex Capitalisation (mill. €) **: 40,827.74	Derivatives Total Open Interest: 326,241
Daily change: mill. €   %: -210.14 -0.51%	in Index Futures   % daily chng: 8,888 0.50%
Yearly Avg Capitalisation: mill. €   % chng prev year Avg: 40,735.93 -6.69%	in Stock Futures   % daily chng: 313,173 -2.50%
Athex Composite Share Price Index   % daily chng: 578.17 -0.29%	in Index Options   % daily chng: 3,120 1.79%
Athex Composite Share Price Index Capitalisation (mill. €): 36,180.47	in Stock Options   % daily chng: 1,060 0.00%
Daily change (mill. €): -174.68	
Securities' Transactions Value with Block Trades Method 6-1 (thou. €): 36,385.41	Derivatives Contracts Volume: 48,425
Daily change: %: 8,110.87 28.69%	Daily change: pieces   %: 17,211 55.14%
YtD Avg Trans. Value: thou. €   % chng prev year Avg: 60,088.60 -29.79%	YtD Avg Derivatives Contracts % chng prev year Avg: 57,193 -12.96%
Blocks Transactions Value of Method 6-1 (thou. €): 2,265.89	Derivatives Trades Number: 1,718
Blocks Transactions Value of Method 6-2 & 6-3 (thou. €): 0.00	Daily change: number   %: 283 19.72%
Bonds Transactions Value (thou.€): 0.00	YtD Avg Derivatives Trades number % chng prev year Avg: 2,473 -24.32%
Securities' Transactions Volume with Block Trades Method 6-1 (thou. pieces): 42,073.05	Lending Total Open Interest: 1,072,475
Daily change: thou. pieces   %: -5,808.37 -12.13%	Daily change: pieces   %: 372,300 53.17%
YtD Avg Volume: % chng prev year Avg: 95,193.63 -50.57%	Lending Volume (Multilateral/Bilateral): 386,800
Blocks Transactions Volume of Method 6-1 (thou. Pieces): 223.54	Daily change: pieces   %: 379,894 5500.93%
Blocks Transactions Volume of Method 6-2 & 6-3 (thou. Pieces): 0.00	Multilateral Lending: 386,800
Bonds Transactions Volume: 0.00	Bilateral Lending: 0
Securities' Trades Number with Block Trades Method 6-1: 14,425	Lending Trades Number: 3
Daily change: number   %: 3,262 29.22%	Daily change: %: -3 -50.00%
YtD Avg Derivatives Trades number % chng prev year Avg: 18,821 -30.27%	Multilateral Lending Trades Number: 3
Number of Blocks Method 6-1: 3	Bilateral Lending Trades Number: 0
Number of Blocks Method 6-2 & 6-3: 0	
Number of Bonds Transactions: 0	

Athex Capitalisation (mill. €) \*\*



Daily Fluctuation of Athex Composite Share Price Index



## Athex Indices

Index name	15/11/2016	14/11/2016	pts.	%	Min	Max	Year min	Year max	Year change
Athex Composite Share Price Index	578.17	579.88	-1.71	-0.29%	578.00	581.76	420.82	658.99	-8.42%
FTSE/Athex Large Cap	1,526.58	1,534.19	-7.61	-0.50%	1,525.63	1,541.65	1,075.20	1,868.90	-16.74%
FTSE/Athex Mid Cap Index	745.60	742.05	3.55	0.48%	738.80	750.41	515.21	820.16	-8.68%
FTSE/ATHEX-CSE Banking Index	486.51	490.82	-4.31	-0.88%	483.41	497.11	271.40	938.40	-45.46%
FTSE/ATHEX Global Traders Index Plus	1,411.38	1,412.43	-1.05	-0.07%	1,407.36	1,422.06	1,031.55	1,444.79	10.73%
FTSE/ATHEX Global Traders Index	1,518.49	1,514.25	4.24	0.28%	1,512.08	1,530.54	1,129.41	1,579.62	6.43%
FTSE/ATHEX Mid & Small Cap Factor-Weighted Ind	1,328.55	1,330.99	-2.44	-0.18%	1,309.80	1,340.36	1,066.64	1,383.28	5.81%
Greece & Turkey 30 Price Index	426.66	423.87	2.79	0.66%	423.88	428.03	396.10	527.12	-8.09%
ATHEX Mid & SmallCap Price Index	2,199.80	2,187.49	12.31	0.56%	2,174.84	2,199.80	1,848.24	2,222.75	1.28%
FTSE/Athex Market Index	375.71	377.47	-1.76	-0.47%	375.54	379.21	265.17	457.53	-16.50%
FTSE Med Index	4,524.13	4,513.89	10.24	0.23%			4,380.06	5,530.53	-18.19%
Athex Composite Index Total Return Index	880.27	882.88	-2.61	-0.30%	880.01	885.74	626.16	986.51	-6.30%
FTSE/Athex Large Cap Total Return	2,161.80	2,172.57	-10.77	-0.50%			1,574.40	2,572.00	-14.52%
FTSE/ATHEX Large Cap Net Total Return	643.12	646.32	-3.20	-0.50%	642.72	649.47	443.06	773.01	-14.87%
FTSE/Athex Mid Cap Total Return	923.41	919.02	4.39	0.48%			669.55	1,008.35	-8.01%
FTSE/ATHEX-CSE Banking Total Return Index	470.32	474.49	-4.17	-0.88%			318.40	895.04	-45.93%
Greece & Turkey 30 Total Return Index	537.20	540.18	-2.98	-0.55%			0.00	660.49	-6.69%
Hellenic Mid & Small Cap Index	737.19	739.25	-2.06	-0.28%	736.80	743.10	560.15	786.32	3.02%
FTSE/Athex Banks	642.80	648.50	-5.70	-0.88%	638.70	656.81	358.60	1,239.80	-45.45%
FTSE/Athex Financial Services	940.34	947.28	-6.94	-0.73%	940.34	949.01	634.69	1,179.09	-3.45%
FTSE/Athex Industrial Goods & Services	1,504.35	1,545.16	-40.81	-2.64%	1,500.24	1,545.16	1,369.56	1,844.00	-17.56%
FTSE/Athex Retail	2,936.90	2,923.75	13.15	0.45%	2,922.28	2,971.96	1,826.41	3,272.96	16.26%
FTSE/ATHEX Real Estate	2,493.63	2,502.04	-8.41	-0.34%	2,483.01	2,514.84	2,154.15	2,621.31	3.04%
FTSE/Athex Personal & Household Goods	6,111.38	6,005.89	105.49	1.76%	5,975.68	6,217.76	4,433.32	6,666.58	20.70%
FTSE/Athex Food & Beverage	7,187.92	7,232.67	-44.75	-0.62%	7,139.53	7,277.37	5,952.97	7,850.45	-2.56%
FTSE/Athex Basic Resources	2,362.37	2,278.78	83.59	3.67%	2,278.78	2,362.37	1,200.24	2,362.37	44.51%
FTSE/Athex Construction & Materials	2,147.43	2,162.18	-14.75	-0.68%	2,143.01	2,172.69	1,500.04	2,343.14	14.32%
FTSE/Athex Oil & Gas	2,613.01	2,589.67	23.34	0.90%	2,569.04	2,614.59	1,860.37	2,657.42	8.34%
FTSE/Athex Chemicals	9,616.99	9,222.44	394.55	4.28%	9,222.44	9,616.99	6,190.46	9,666.30	41.17%
FTSE/Athex Media	1,685.53	1,768.77	-83.24	-4.71%	1,664.72	1,768.77	1,290.16	2,247.37	14.08%
FTSE/Athex Travel & Leisure	1,449.34	1,479.27	-29.93	-2.02%	1,449.34	1,480.41	982.74	1,528.09	1.72%
FTSE/Athex Technology	649.39	648.39	1.00	0.15%	639.60	652.52	489.05	659.86	13.53%
FTSE/Athex Telecommunications	2,226.83	2,229.58	-2.75	-0.12%	2,218.57	2,243.34	1,802.93	2,669.99	-12.45%
FTSE/Athex Utilities	1,519.05	1,547.50	-28.45	-1.84%	1,519.05	1,550.24	1,136.34	1,734.68	-9.34%
Athex All Share Index	144.00	144.74	-0.74	-0.51%	144.00	144.00	113.39	165.22	-12.42%
Hellenic Corporate Bond Index	108.35	108.39	-0.05	-0.04%			96.90	108.61	7.83%
Hellenic Corporate Bond Price Index	97.43	97.51	-0.08	-0.09%			90.43	97.75	2.82%

Note 1: FTSE/Med 100, Greece & Turkey 30 Rt., Hellenic Corporate Bond Price Index and Hellenic Corporate Bond Index closing prices refer to the previous trading day of 11/11/2016.

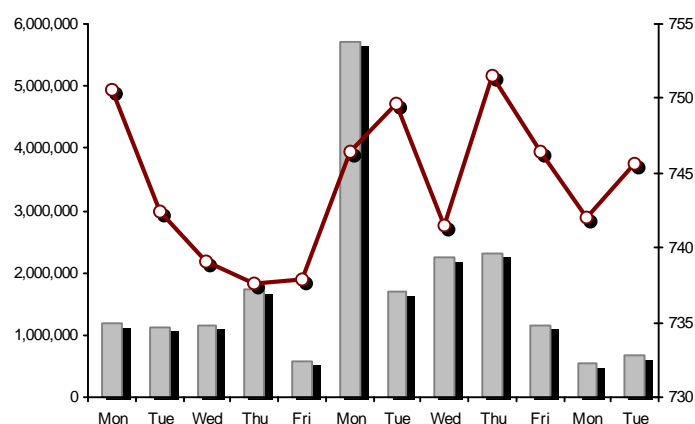
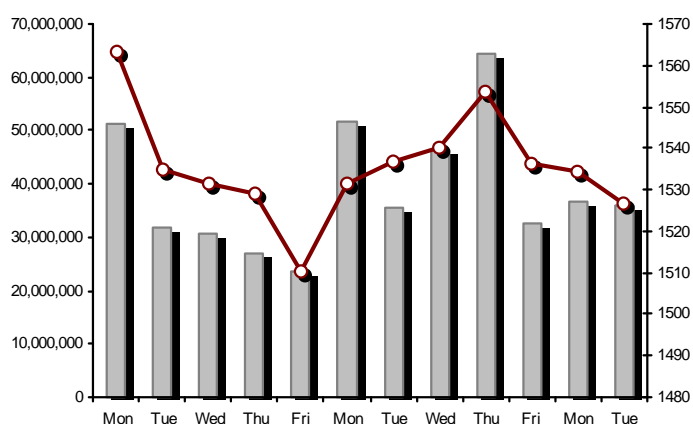
Note 2: The Hellenic Mid & Small Cap Index is a Customized index calculated by the Athens Exchange.

## Athex Indices

FTSE/Large Cap

15/11/2016: -0.50% FTSE/Athex Mid Cap Index

15/11/2016: 0.48%

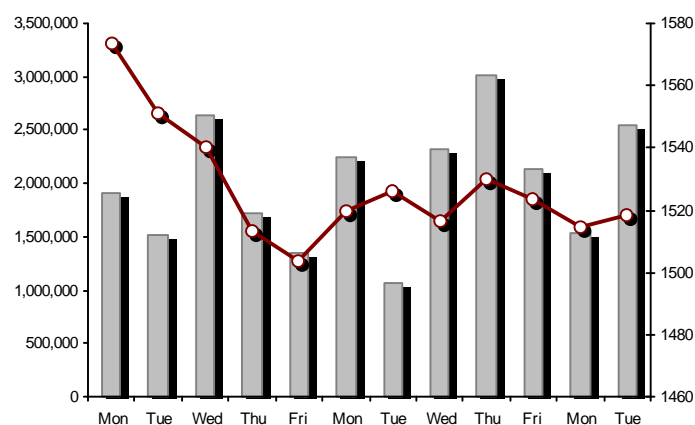
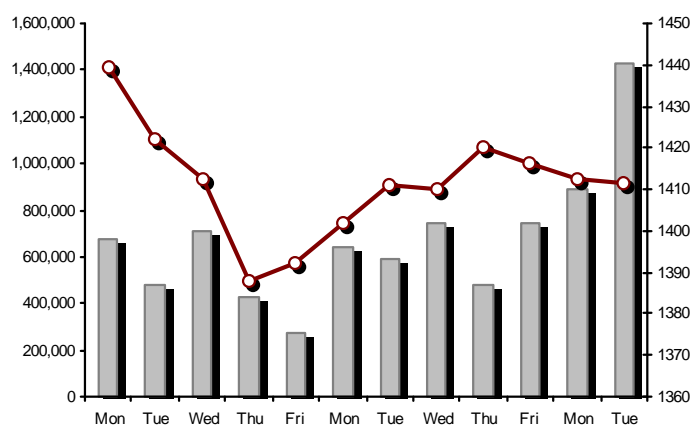


FTSE/ATHEX Global Traders Index Plus

15/11/2016: -0.07%

FTSE/ATHEX Global Traders Index

15/11/2016: 0.28%

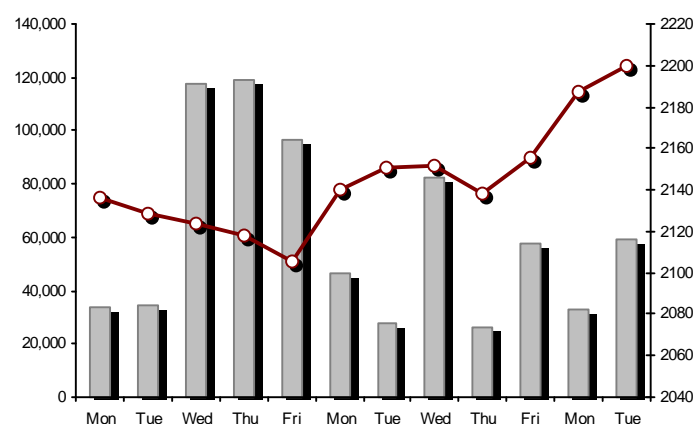
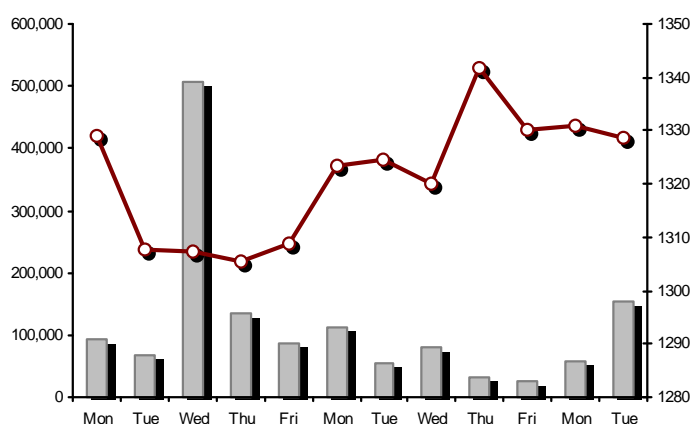


FTSE/ATHEX Mid &amp; Small Cap Factor-Weighted Index

15/11/2016: -0.18%

ATHEX Mid &amp; SmallCap Price Index

15/11/2016: 0.56%



Indices volume of transactions

Indices closing prices

## Analytic Figures for Athex Market's Boards and Categories

	Total Traded Securities	Main Market	Low Dispersion	Other Categories (*)	Exchange Traded Funds (ETFs)	Warrants
Totals	108	87	8	8	2	3
Gain / Lose / Same:	38 / 51 / 19	32 / 42 / 13	1 / 6 / 1	3 / 2 / 3	0 / 1 / 1	2 / 0 / 1
Athex Capitalisation (mill. €) **	40,827.74	37,858.33	2,847.44	121.97		
Daily Average Trans/ons Value(thou.€)	60,088.60	58,587.72	1,509.22	9.65	14.60	10.40
Transactions Value	36,385.41	36,227.74	127.07	9.20	19.69	1.71
Main Board:	34,119.52	33,961.85	127.07	9.20	19.69	1.71
Blocks Board 6_2_3:	2,265.89	2,265.89	0.00	0.00	0.00	0.00
Forced Sales Board:	0.00	0.00	0.00	0.00	0.00	0.00
Special Terms Board:	0.00	0.00	0.00	0.00	0.00	0.00
Daily Average Transactions Volume	95,193,628	90,200,958	355,419	90,017	6,412	4,621,342
Transactions Volume	42,073,052	41,567,777	22,905	92,924	1,294	388,152
Main Board:	41,849,510	41,344,235	22,905	92,924	1,294	388,152
Blocks Board 6_2_3:	223,542	223,542	0	0	0	0
Forced Sales Board:	0	0	0	0	0	0
Special Terms Board:	0	0	0	0	0	0
Daily Average Number of Trades	18,821	18,673	37	52	4	55
Number of Trades	14,425	14,288	60	37	3	37
Main Board:	14,422	14,285	60	37	3	37
Blocks Board 6_2_3:	3	3	0	0	0	0
Forced Sales Board:	0	0	0	0	0	0
Special Terms Board:	0	0	0	0	0	0

(\*) Summarised Transactions figures for Under Deletion and Under Supervision Categories.(\*\*) The Market Capitalization of the Companies that belong in the Under Supervision Status is not included.

## Trading Details by Athex Sectors and Financial Instruments (ETFs)

Code	Sectors	Gain / Lose / Same	Number of Trades	Transactions Volume	Transactions Value	% of Total Trans. Value
8300	- Banks	3 / 5 / 2	4,728	37,899,967	13,538,840.06	37.21%
1700	- Basic Resources	4 / 1 / 2	1,462	723,729	3,674,357.39	10.10%
1300	- Chemicals	2 / 1 / 0	59	55,463	114,206.23	0.31%
2300	- Construction & Materials	5 / 5 / 2	773	256,742	1,778,577.31	4.89%
12000	- Financial Instruments	0 / 1 / 1	3	1,294	19,688.84	0.05%
8700	- Financial Services	0 / 2 / 1	278	500,383	333,731.47	0.92%
3500	- Food & Beverage	4 / 5 / 2	178	68,229	478,449.70	1.31%
4500	- Health Care	2 / 2 / 0	61	88,498	14,780.56	0.04%
2700	- Industrial Goods & Services	4 / 6 / 2	1,074	333,130	1,198,619.96	3.29%
8500	- Insurance	0 / 1 / 0	10	7,037	13,283.49	0.04%
5500	- Media	0 / 1 / 1	11	15,393	1,242.36	0.00%
500	- Oil & Gas	1 / 1 / 0	731	197,246	1,803,958.78	4.96%
3700	- Personal & Household Goods	5 / 2 / 1	1,096	215,816	1,951,073.84	5.36%
8600	- Real Estate	0 / 2 / 1	173	32,436	189,824.09	0.52%
5300	- Retail	2 / 2 / 1	568	57,091	745,565.77	2.05%
9500	- Technology	3 / 3 / 1	128	23,406	38,723.54	0.11%
6500	- Telecommunications	0 / 1 / 0	824	631,341	5,118,588.55	14.07%
5700	- Travel & Leisure	2 / 7 / 1	1,441	706,972	4,678,681.79	12.86%
7500	- Utilities	1 / 3 / 1	827	258,879	693,215.21	1.91%

## Top 10 best &amp; worst performing Shares

Main Market					
With positive Price change	Closing price	change	With negative Price change	Closing price	change
THRACE PLASTICS SA (CR)	1.95	4.28% #	METKA (CR)	6.93	-4.81% ⚡
MYTILINEOS HOLDINGS (CR)	5.37	3.67% #	EYDAP S.A. (CR)	5.21	-4.40% ⚡
CRETE PLASTICS SA (CR)	5.18	3.60% #	VIOHALCO SA/NV (CB)	1.27	-3.79% ⚡
FOURLIS (CR)	3.84	2.67% #	ATTICA BANK S.A. (CR)	0.057	-3.39% ⚡
KORRES (CR)	3.40	2.10% #	ELTECH ANEMOS S.A. (CR)	0.795	-3.05% ⚡
JUMBO SA (CR)	11.60	2.02% #	PIRAEUS BANK (CR)	0.140	-2.78% ⚡
MOTOR OIL (CR)	11.10	1.46% #	INTRALOT (CR)	1.07	-2.73% ⚡
HYGEIA SA (CR)	0.143	1.42% #	AEGEAN AIRLINES (CR)	5.93	-2.31% ⚡
TECHNICAL OLYMPIC SA (CR)	0.867	1.40% #	OPAP (CR)	8.33	-2.00% ⚡
AUTOHELLAS SA (CR)	12.45	1.22% #	GR. SARANTIS SA (CR)	10.05	-1.37% ⚡
With the highest Transactions Value	Value (thou. €)	change	With the highest Transactions Volume	Volume	change
ALPHA BANK (CR)	7,503.65	0.00% -	NATIONAL BANK (CR)	16,113,013	-1.10% ⚡
OTE (CR)	5,118.59	-0.12% ⚡	PIRAEUS BANK (CR)	9,770,454	-2.78% ⚡
OPAP (CR)	3,927.39	-2.00% ⚡	ALPHA BANK (CR)	4,885,899	0.00% -
MYTILINEOS HOLDINGS (CR)	3,653.81	3.67% #	BANK OF CYPRUS (CR)	3,788,922	0.75% #
NATIONAL BANK (CR)	2,921.11	-1.10% ⚡	EUROBANK ERGASIAS (CR)	2,161,358	-0.96% ⚡
JUMBO SA (CR)	1,593.11	2.02% #	ATTICA BANK S.A. (CR)	788,925	-3.39% ⚡
TITAN CEMENT (CR)	1,583.54	-0.94% ⚡	MYTILINEOS HOLDINGS (CR)	687,348	3.67% #
MOTOR OIL (CR)	1,581.94	1.46% #	OTE (CR)	631,341	-0.12% ⚡
PIRAEUS BANK (CR)	1,400.64	-2.78% ⚡	OPAP (CR)	466,472	-2.00% ⚡
EUROBANK ERGASIAS (CR)	1,127.74	-0.96% ⚡	MARFIN INVESTMENT GROUP (CR)	434,021	0.00% -

Note: Stocks that are not included in the "Low Dispersion" and "Under Supervision" categories, and the transactions value is more than 10,000 €.



## Derivatives Summary

	Number of Trades	Volume	Open Interest
Index Futures	296	5,167	8,888
FTSE/Athex Large Cap	296	5,167	8,888
Stock Futures	1,416	43,176	313,173
ALPHA BANK (CR)	219	7,799	15,586
CC HBC AG (CR)	0	0	136
CORINTH PIPEWORKS (CR)	14	97	1,027
ELLAKTOR (CR)	12	43	2,930
EUROBANK ERGASIAS (CR)	70	3,403	33,423
EYDAP S.A. (CR)	11	78	317
FOLLI FOLLIE (CR)	13	26	176
GEK TERNA (CR)	13	95	7,318
GRIVALIA PROPERTIES (CR)	0	0	58
HELLENIC EXCHANGES-A.S.E. (CR)	3	7	364
HELLENIC PETROLEUM (CR)	8	188	3,929
INTRALOT (CR)	5	27	812
JUMBO SA (CR)	13	29	281
MARFIN INVESTMENT GROUP (CR)	9	174	45,912
METKA (CR)	107	336	714
MOTOR OIL (CR)	14	39	291
MYTILINEOS HOLDINGS (CR)	368	2,245	8,098
NATIONAL BANK (CR)	164	21,009	79,962
OPAP (CR)	117	491	2,171
OTE (CR)	83	391	7,321
P.P.A. S.A. (CR)	1	1	660
PIRAEUS BANK (CR)	106	6,389	91,061
PPC (CR)	50	255	6,746
TERNA ENERGY (CR)	0	0	1,232
TITAN CEMENT (CR)	7	24	108
VIOHALCO SA/NV (CB)	9	30	2,540
Index Options	6	82	3,120
FTSE/Athex Large Cap	6	82	3,120
Stock Options	0	0	1,060
ALPHA BANK (CR)	0	0	130
NATIONAL BANK (CR)	0	0	0
OPAP (CR)	0	0	410
OTE (CR)	0	0	310
PIRAEUS BANK (CR)	0	0	0
PPC (CR)	0	0	210
Total Derivatives Traded	1,718	48,425	326,241

Number of Outstanding Securities	Nominal Value	Dividends [1]			Date of Last Coupon Dividend [2]		Note	Shares	Closing price	% change	Previous closing price/date	Open price	Price min	Price max	Last price	Avg price	Last Bid [7]	Last Ask [7]	P/E after	Year	Volume	Trades	Transactions Value[8]	Company Mkt Value (thou. €)	Year low	Year high	Sector[ 4]
--	------------------	---------------	--	--	-------------------------------------	--	------	--------	------------------	----------	--------------------------------	---------------	--------------	--------------	---------------	--------------	-----------------	--------------	--------------	------	--------	--------	--------------------------	--------------------------------	-------------	--------------	---------------

Warrants

1,141,734,167	---	---	---	11/06/2013	---	ALPHA BANK (W)	0.002	100.00	#	0.001	14/11/2016	0.001	0.001	0.002	0.002	0.0081741611@0.001	14789254@0.002	---	2015	114,499	12	114.80	2,366,797.05	0.001	0.004	8355	
245,745,725	---	---	---	27/06/2013	---	NATIONAL BANK (W)	0.007	16.67	#	0.006	14/11/2016	0.006	0.005	0.007	0.007	0.00610139@0.006	897175@0.007	---	2015	263,653	22	1,583.17	1,646,487.27	0.002	0.025	8355	
843,637,022	---	---	---	03/07/2013	---	PIRAEUS BANK (W)	0.001	---	~	0.001	14/11/2016	0.001	0.001	0.001	0.001	0.001	---	12810011@0.001	---	2015	10,000	3	10.00	1,222,645.66	0.001	0.002	8355

Main Market

71,417,100	0.650	---	0.7	0.7	13/05/2016	27/06/2014	---	AEGEAN AIRLINES (CR)		5.93	-2.31	6.07	14/11/2016	6.05	5.93	6.06	5.93	6.01	429@5.92	1000@5.97	7.81	2015	77,430	430	465,484.20	423,503.40	5.84	9.06	5751
11,178,000	1.12	---	---	---	21/04/2010	15/12/2014	---	AEOLIAN INVESTMENT FUND (CR)		0.485	-3.58	0.503	14/11/2016	0.508	0.485	0.508	0.485	0.498	150@0.505	150@0.500	---	2015	4,000	7	1,993.48	5,421.33	0.384	0.701	8985
1,536,881,200	0.300	---	---	---	07/04/2008	27/11/2015	---	ALPHA BANK (CR)		1.54	---	1.54	14/11/2016	1.56	1.50	1.57	1.54	1.54	95123@1.54	3000@1.55	---	2015	4,885,899	1,433	7,503,654.61	2,366,797.05	0.949	2.75	8355
22,016,250	0.370	---	---	---	15/07/2009	11/05/2000	---	ALUMIL (CR)		0.230	3.60	0.222	14/11/2016	0.222	0.221	0.230	0.230	0.222	55@0.219	7510@0.230	---	2015	710	8	157.62	5,063.74	0.101	0.290	1753
417,608	16.00	0.8	---	---	29/04/2014	05/03/2013	---	ANDROMEDA SA (CR)		13.40	---	13.40	14/11/2016	---	---	---	---	---	20@13.52	---	---	2015	---	---	---	5,595.95	11.53	13.90	8985
13,126,020	0.650	---	---	---	08/07/2010	12/10/2016	---	AS COMPANY SA (CR)		0.687	-1.86	0.700	14/11/2016	0.650	0.635	0.687	0.687	0.668	327@0.674	400@0.687	5.85	2015	14,005	14	9,349.50	9,017.58	0.580	0.796	5379
86,735,980	0.310	---	---	---	06/07/2009	02/01/2002	---	ATHENS MEDICAL CENTER SA (CR)		0.626	-0.48	0.629	14/11/2016	0.568	0.567	0.626	0.626	0.569	100@0.569	70@0.626	---	2015	830	4	472.48	54,296.72	0.539	0.780	4533
2,339,353,394	0.300	---	---	---	04/06/2008	01/12/2015	---	ATTICA BANK S.A. (CR)		0.057	-3.39	0.059	14/11/2016	0.059	0.057	0.059	0.057	0.058162144@0.057	50000@0.058	---	2015	788,925	104	45,936.97	133,343.14	0.037	0.279	8355	
15,300,000	0.300	---	---	---	30/07/2009	13/12/1999	---	ATTICA PUBLICATIONS SA (CR)		0.619	---	0.619	14/11/2016	---	---	---	---	---	507@0.558	443@0.619	---	2015	---	---	---	9,470.70	0.564	1.21	5557
48,184,910	0.700	---	---	---	01/07/2008	01/03/2010	---	AUDIO VISUAL ENTERPRISES (CR)		0.081	-4.71	0.085	14/11/2016	0.083	0.080	0.083	0.082	0.081	---	1617@0.082	---	2015	15,383	9	1,241.91	3,902.98	0.028	0.108	5553
12,213,750	0.320	---	0.8	0.85	07/06/2016	22/11/2013	---	AUTOHELLAS SA (CR)		12.45	1.22	12.30	14/11/2016	12.60	12.45	12.60	12.45	12.59	494@12.45	42@12.60	9.94	2015	5,206	5	65,524.70	152,061.19	9.51	12.75	5759
8,922,944,533	0.100	---	---	---	31/05/2011	02/02/2015	4857	BANK OF CYPRUS (CR)		0.134	0.75	0.133	14/11/2016	0.133	0.132	0.135	0.134	0.134	20000@0.133	342586@0.135	---	2015	3,788,922	208	505,870.52	1,195,674.57	0.121	0.174	8355
19,864,886	5.60	0.672	0.672	0.672	03/03/2016	02/07/2008	---	BANK OF GREECE (CR)		9.91	-0.40	9.95	14/11/2016	9.90	9.90	9.99	9.93	9.92	210@9.91	181@9.95	---	---	3,244	35	32,182.88	196,861.02	8.70	11.11	8355
23,986,500	1.05	---	---	---	26/06/2009	15/03/2000	---	BIOKARPET S.A.(CR)		0.307	---	0.307	14/11/2016	---	---	---	---	---	---	100@0.277	---	2015	---	---	---	7,363.86	0.139	0.459	3726
15,842,391	1.51	---	---	---	15/07/2009	12/05/2000	---	BITROS HOLDING SA (CR)		0.209	---	0.209	14/11/2016	---	---	---	---	---	---	3895@0.215	---	2015	---	---	---	3,311.06	0.125	0.227	1757
15,816,009	0.300	---	---	---	01/07/2009	17/07/2000	---	BYTE COMPUTER SA (CR)		0.310	---	0.310	14/11/2016	---	---	---	---	---	100@0.303	100@0.321	---	2015	---	---	---	4,902.96	0.256	0.322	9533
365,203,298	6.70	0.354	0.36	0.4	30/06/2016	29/04/2013	---	CC HBC AG (CR)		19.29	-0.62	19.41	14/11/2016	19.41	19.16	19.53	19.29	19.35	2429@19.30	270@19.32	---	---	24,120	101	466,684.61	7,044,771.62	15.97	21.07	3537
101,123,806	0.360	---	---	---	22/07/2010	28/06/2011	---	CENTRIC HOLDINGS (CR)		0.108	---	0.108	14/11/2016	---	---	---	---	---	500@0.099	983@0.106	---	2015	---	---	---	10,921.37	0.067	0.147	5752
124,170,201	0.780	---	---	---	28/06/2002	07/02/2005	---	CORINTH PIPEWORKS (CR)		0.620	---	0.620	14/11/2016	0.620	0.611	0.625	0.620	0.621	2020@0.610	2950@0.618	23.96	2015	26,260	44	16,304.47	76,985.52	0.522	1.03	1757
9,907,500	0.300	---	---	---	06/10/2005	13/02/2002	---	CPI SA (CR)		0.186	---	0.186	14/11/2016	---	---	---	---	---	200@0.170	---	22.26	2016	---	---	---	1,842.80	0.092	0.192	9572
41,068,800	0.420	(0.0667)	(0.03)	0.1205	19/08/2016	17/02/2016	---	CRETE PLASTICS SA (CR)		5.18	3.60	5.00	14/11/2016	4.71	4.71	5.18	5.18	4.96	100@4.83	71@5.48	17.38	2015	3,550	5	17,623.50	212,736.38	3.19	5.30	1357
15,000,000	0.300	---	---	---	06/07/2007	18/07/2000	---	DAIOS PLASTICS SA (CR)		2.90	---	2.90	14/11/2016	---	---	---	---	---	50@2.63	---	---	2015	---	---	---	43,500.00	2.45	2.95	1357
34,720,000	0.310	---	---	---	16/06/2010	01/08/2007	---	DROMEAS SA (CR)		0.118	---	0.118	14/11/2016	---	---	---	---	---	2000@0.099	3444@0.115	---	2015	---	---	---	4,096.96	0.066	0.152	3726
3,873,120	0.300	---	---	---	07/07/2008	04/10/2012	---	DRUCKFARBEN HELLAS (CR)		0.420	---	0.420	14/11/2016	---	---	---	---	---	1500@0.422	---	0.67	2015	---	---	---	1,626.71	0.360	0.550	1357
11,250,000	0.520	---	---	0.04	25/07/2016	09/11/2015	---	EKTER SA (CR)		0.499	---	0.499	14/11/2016	---	---	---	---	---	2500@0.440	694@0.489	15.76	2015	---	---	---	5,613.75	0.301	0.509	2357
32,188,050	1.04	---	---	---	21/07/2008	20/01/2000	---	EL. D. MOUZAKIS SA (CB)		0.139	---	0.139	14/11/2016	---	---	---	---	---	---	110@0.126	---	2015	---	---	---	4,474.14	0.084	0.215	3763
18,421,516	1.00	---	---	---	07/07/2009	10/09/2010	---	ELASTRON (CR)		0.709	8.08	0.656	14/11/2016	0.650	0.650	0.709	0.709	0.655	5@0.640	1899@0.709	---	2015	2,774	10	1,815.82	13,060.85	0.310	0.709	1757
31,734,530	1.60	---	---	---	09/07/2007	19/07/2006	---	ELGEKA SA (CR)		0.126	-10.00	0.140	14/11/2016	0.129	0.126	0.129	0.126	0.127	1647@0.126	200@0.154	---	2015	943	3	120.04	3,998.55	0.118	0.210	3577
23,828,130	0.500	---	---	0.16	08/06/2016	17/02/2009	---	ELINOIL S.A. (CR)		0.900	---	0.900	14/11/2016	---	---	---	---	---	700@0.680	65@0.920	7.89	2015	---	---	---	21,445.32	0.634	1.25	537
177,001,313	1.03	---	---	---	05/07/2011	20/12/2007	---	ELLAKTOR (CR)		1.15	---	1.15	14/11/2016	1.16	1.12	1.16	1.15	1.13	5500@1.12	2594@1.15	---	2015	131,582	208	149,173.20	203,551.51	0.857	1.59	2357
82,667,000	0.300	---	---	---		22/07/2014	---	ELTECH ANEMOS S.A. (CR)		0.795	-3.05	0.820	14/11/2016	0.820	0.792	0.821	0.795	0.808	2617@0.794	1000@0.809	8.55	2015	73,566	133	59,465.79	65,720.27	0.533	0.831	7537
26,730,187	0.600	0.05	---	---	23/06/2014	30/12/2010	---	ELTON SA (CR)		0.880	-2.22	0.900	14/11/2016	0.920	0.870	0.920	0.880	0.876	50@0.865	4838@0.880	15.71	2015	2,710	10	2,374.47	23,522.56	0.802	1.00	1353
14,050,971	0.340	---	---	---	06/07/2011	17/10/2002	---	ELTRAK SA (CR)		1.34	---	1.34	14/11/2016	---	---	---	---	---	10@1.32	380@1.44	26.63	2015	---	---	---	18,828.30	0.990	1.45	2753

Number of Outstanding Securities	Nominal Value	Dividends [1]			Date of Last Coupon Dividend [2]		Note	Shares	Closing price	% change	Previous closing price/date	Open price	Price min	Price max	Last price	Avg price	Last Bid [7]	Last Ask [7]	P/E after	Year	Volume	Trades	Transactions Value[8]	Company Mkt Value (thou. €)	Year low	Year high	Sector[ 4]
----------------------------------	---------------	---------------	--	--	----------------------------------	--	------	--------	---------------	----------	-----------------------------	------------	-----------	-----------	------------	-----------	--------------	--------------	-----------	------	--------	--------	-----------------------	-----------------------------	----------	-----------	------------

Main Market

3,307,500	0.960	---	---	---	11/08/2010	23/09/2016	---	ELVE SA (CR)	2.00	---	↘	2.00	14/11/2016	---	---	---	---	100@1.88	567@2.00	15.94	2015	---	---	---	6,615.00	1.31	2.10	3763
2,185,998,765	0.300	---	---	---	02/05/2008	27/11/2015	---	EUROBANK ERGASIAS (CR)	0.515	-0.96	€	0.520	14/11/2016	0.527	0.515	0.529	0.515	0.522 21970@0.514	200@0.519	---	2015	2,161,358	837	1,127,736.76	1,125,789.36	0.241	1.17	8355
8,623,225	0.600	---	---	---	02/06/2010	30/05/2016	5031	EUROCONSULTANTS S.A. (CR)	0.656	-3.25	€	0.678	14/11/2016	0.652	0.652	0.656	0.656	0.655 600@0.611	65@0.656	---	2015	151	7	98.86	5,656.84	0.504	1.82	2791
27,503,677	0.630	---	---	0.06	22/06/2016	18/10/1999	---	EUROPEAN RELIANCE INSUR. (CR)	1.92	-1.03	€	1.94	14/11/2016	1.85	1.85	1.92	1.92	1.89 2300@1.88	998@1.92	4.80	2015	7,037	10	13,283.49	52,807.06	1.21	2.10	8536
13,673,200	0.880	---	---	---	18/07/2008	26/07/2001	---	EVROFARMA SA (CR)	0.180	-25.00	€	0.240	14/11/2016	0.180	0.180	0.180	0.180	0.180 80@0.180	110@0.255	10.84	2015	20	1	3.60	2,461.18	0.120	0.320	3577
106,500,000	0.600	0.36	0.2	0.31	28/06/2016	28/01/2000	---	EYDAP S.A. (CR)	5.21	-4.40	€	5.45	14/11/2016	5.40	5.21	5.48	5.21	5.32 1205@5.21	2500@5.30	12.70	2015	40,075	281	213,277.00	554,865.00	3.60	6.10	7577
52,800,154	0.300	0.2	---	---	20/08/2014	21/06/2004	---	F.G. EUROPE S.A. (CR)	0.590	---	↘	0.590	14/11/2016	---	---	---	---	---	180@0.590	26.07	2015	---	---	---	31,152.09	0.441	0.700	3722
10,203,575	0.730	---	---	---	16/07/2007	18/10/1999	---	FIERATEX SA (CR)	0.160	---	↘	0.160	14/11/2016	---	---	---	---	---	833@0.144	---	2015	---	---	---	1,632.57	0.039	0.205	3763
11,720,024	0.540	0.0394	---	---	21/08/2014	04/11/2015	---	FLEXOPACK SA (CR)	2.61	---	↘	2.61	14/11/2016	---	---	---	---	200@2.58	3@2.62	6.94	2015	---	---	---	30,589.26	2.10	3.08	2723
4,181,450	0.500	---	---	---	21/08/2000	05/03/2002	---	FLOUR MILLS SARANTOPOULOS SA	0.700	---	↘	0.700	14/11/2016	---	---	---	---	---	---	---	2015	---	---	---	2,927.02	0.362	1.01	3577
66,948,210	0.300	---	0.1005	---	22/09/2015	22/09/2015	---	FOLLI FOLLIE (CR)	20.10	0.45	#	20.01	14/11/2016	20.00	20.00	20.34	20.10	20.18 191@20.09	10@20.15	---	2015	36,385	536	734,234.93	1,345,659.02	12.50	22.40	5379
50,992,322	1.07	---	---	---	21/06/2010	16/07/2002	---	FOURLIS (CR)	3.84	2.67	#	3.74	14/11/2016	3.78	3.74	3.84	3.84	3.83 99@3.74	6975@3.84	---	2015	32,501	11	124,330.02	195,810.52	2.00	3.96	3722
14,076,360	0.370	---	---	---	19/08/2008	22/07/2003	---	GALAXIDI S.A. (CR)	0.397	---	↘	0.397	14/11/2016	---	---	---	---	---	2000@0.358	38.86	2015	---	---	---	5,588.31	0.163	0.570	3573
103,423,291	0.570	---	---	---	01/08/2011	19/04/2016	---	GEK TERNA (CR)	2.10	0.48	#	2.09	14/11/2016	2.13	2.09	2.13	2.10	2.10 2672@2.09	106@2.10	13.19	2015	9,911	44	20,848.29	217,188.91	1.05	2.20	2357
8,418,750	0.300	---	---	0.12	16/12/2015	27/06/2012	---	GEKE SA (CB)	5.01	---	↘	5.01	14/11/2016	---	---	---	---	---	---	16.60	2015	---	---	---	42,177.94	3.90	5.60	5753
24,060,000	0.300	0.017	0.02	0.01	11/07/2016	11/07/2016	---	GEN. COMMERCIAL & IND.SA (CR)	0.360	---	↘	0.360	14/11/2016	---	---	---	---	2600@0.324	7000@0.360	15.14	2015	---	---	---	8,661.60	0.253	0.394	2797
34,770,982	1.55	0.3	0.15	0.16	20/04/2016	27/07/2000	---	GR. SARANTIS SA (CR)	10.05	-1.37	€	10.19	14/11/2016	10.02	9.95	10.25	10.05	10.03 100@9.96	40@10.20	31.67	2015	17,007	193	170,516.88	349,448.37	6.56	10.50	3767
101,260,000	2.13	0.1821	0.3037	0.3134	18/03/2016	08/01/2014	---	GRIVALIA PROPERTIES (CR)	7.06	---	↘	7.06	14/11/2016	7.03	7.01	7.14	7.06	7.07 14242@7.10	122@7.13	13.27	2015	15,695	98	110,958.87	714,895.60	6.46	7.74	8675
8,340,750	1.18	---	---	---	25/06/2009	09/09/2015	---	HAIDEMENOS SA (CR)	0.294	---	↘	0.294	14/11/2016	---	---	---	---	---	1000@0.299	---	2015	---	---	---	2,452.18	0.240	1.04	2791
101,279,627	0.380	---	---	---	26/06/2008	14/07/2006	---	HALKOR SA (CB)	0.335	-5.63	€	0.355	14/11/2016	0.340	0.335	0.348	0.335	0.337 50@0.335	1000@0.344	---	2015	6,630	25	2,235.33	33,928.68	0.193	0.425	1755
29,546,360	0.710	---	---	---	20/06/2008	23/08/2000	---	HELLENIC CABLES SA (CR)	1.17	0.86	#	1.16	14/11/2016	1.17	1.15	1.17	1.17	1.16 5986@1.15	1370@1.17	---	2015	27,030	25	31,425.10	34,569.24	0.530	1.31	2733
65,368,563	1.08	---	0.21	0.1026	31/05/2016	04/07/2016	---	HELLENIC EXCHANGES-A.S.E. (CR)	4.50	-0.88	€	4.54	14/11/2016	4.54	4.50	4.55	4.50	4.51 100@4.48	1268@4.50	22.84	2015	62,362	165	281,245.57	294,158.53	3.40	5.56	8777
305,635,185	2.18	---	---	---	31/12/2014	01/10/2003	4795	HELLENIC PETROLEUM (CR)	4.13	-0.24	€	4.14	14/11/2016	4.14	4.10	4.17	4.13	4.13 1000@4.11	538@4.13	45.83	2015	53,812	247	222,021.20	1,262,273.31	2.74	4.33	537
305,732,436	0.410	---	---	---	08/07/2009	28/09/2011	---	HYGEIA SA (CR)	0.143	1.42	#	0.141	14/11/2016	0.147	0.139	0.147	0.143	0.140 3000@0.140	1230@0.143	---	2015	80,800	44	11,348.76	43,719.74	0.078	0.197	4533
65,441,118	0.440	---	---	---	24/11/2014	11/08/2015	---	IASO SA (CR)	0.435	-5.43	€	0.460	14/11/2016	0.425	0.425	0.447	0.435	0.440 200@0.434	350@0.447	---	2015	6,668	12	2,936.12	28,466.89	0.360	0.669	4533
8,298,467	0.400	---	---	---	30/08/1993	08/05/2013	---	IDEAL GROUP SA (CR)	0.800	2.17	#	0.783	14/11/2016	0.710	0.710	0.800	0.800	0.799 100@0.810	1000@0.861	-(6)-	2015	2,020	2	1,614.20	6,638.77	0.568	0.959	9574
28,580,100	0.400	0.025	---	---	18/08/2014	04/07/2016	---	IKTINOS HELLAS SA (CR)	0.836	-4.68	€	0.877	14/11/2016	0.812	0.811	0.836	0.836	0.816 20@0.810	66@0.836	23.00	2015	1,985	22	1,619.37	23,892.96	0.811	1.15	2353
9,090,000	0.900	---	---	---	15/05/2009	13/10/2014	---	ILYDA S.A. (CR)	0.437	---	↘	0.437	14/11/2016	---	---	---	---	---	222@0.394	---	2015	---	---	---	3,972.33	0.397	0.590	9537
20,578,374	0.620	---	0.4	0.07	05/07/2016	18/05/2015	---	INFORM P. LYKOS SA (CR)	0.490	---	↘	0.490	14/11/2016	---	---	---	---	226@0.441	3678@0.469	---	2015	---	---	---	10,083.40	0.364	0.620	2791
10,500,000	4.00	---	---	---	---	02/08/2016	---	INTERCONTINENTAL (CR)	5.60	---	↘	5.60	14/11/2016	---	---	---	---	---	950@5.59	---	---	---	---	---	58,800.00	5.15	5.80	8674
11,233,200	0.730	---	---	---	12/07/2010	30/07/1999	---	INTERTECH SA (CR)	0.200	---	↘	0.200	14/11/2016	---	---	---	---	200@0.180	1000@0.203	---	2015	---	---	---	2,246.64	0.120	0.376	9572
34,986,430	0.440	---	---	---	25/07/2008	23/02/2010	---	INTERWOOD-XYLEMPORIA (CR)	0.061	-8.96	€	0.067	14/11/2016	0.061	0.061	0.061	0.061	0.061 2000@0.062	---	---	2015	247	2	15.07	2,490.96	0.061	0.093	2353
2,566,836	0.440	---	---	---	13/08/2010	09/01/2007	---	INTERWOOD-XYLEMPORIA (PR)	0.139	---	↘	0.139	14/11/2016	---	---	---	---	---	261@0.139	---	2015	---	---	---	2,490.96	0.139	0.189	2353
23,154,250	1.36	---	---	---	12/08/2008	02/08/2010	---	INTRACOM CONSTR. (CR)	0.430	---	↘	0.430	14/11/2016	---	---	---	---	2000@0.380	3000@0.430	---	2015	---	---	---	9,956.33	0.222	0.599	2357
133,025,996	1.41	---	---	---	03/07/2007	07/01/2002	---	INTRACOM HOLDINGS (CR)	0.307	-0.97	€	0.310	14/11/2016	0.310	0.304	0.310	0.307	0.308 1000@0.305	1762@0.307	---	2015	10,750	28	3,307.71	40,838.98	0.245	0.394	9578
158,961,721	0.300	---	---	---	30/05/2013	14/11/2007	---	INTRALOT (CR)	1.07	-2.73	€	1.10	14/11/2016	1.10	1.06	1.10	1.07	1.07 1000@1.06	190@1.07	---	2015	105,248	80	113,003.42	170,089.04	0.815	1.39	5752
77,654,850	0.580	---	---	---	01/07/2011	21/02/2003	---	J & P - AVAX SA (CR)	0.424	0.47	#	0.422	14/11/2016	0.449	0.412	0.449	0.424	0.420 500@0.414	749@0.426	---	2015	10,725	53	4,508.62	32,925.66	0.208	0.534	2357
136,059,759	0.880	0.18	0.18	---	04/11/2016	05/03/2014	---	JUMBO SA (CR)	11.60	2.02	#	11.37	14/11/2016	11.37	11.32	11.89	11.60	11.64 4382@11.66	50@11.79	19.14	2016	136,842	848	1,593,106.87	1,578,293.20	8.75	12.99	3747

Number of Outstanding Securities	Nominal Value	Dividends [1]			Date of Last Coupon		Note	Shares	Closing price	% change	Previous closing price/date	Open price	Price min	Price max	Last price	Avg price	Last Bid [7]	Last Ask [7]	P/E after	Year	Volume	Trades	Transactions Value[8]	Company Mkt Value (thou. €)	Year low	Year high	Sector[ 4]	
		2013	2014	2015	Dividend [2]	Right																						
Main Market																												
9,742,920	0.400	0.01	0.01	0.01	12/08/2016	14/07/2000	---	KARAMOLEGOS SA (CR)	1.70	---	1.70	14/11/2016	---	---	---	---	100@1.73	---	-(6)-	2015	---	---	---	16,562.96	0.601	1.75	3577	
14,679,792	1.68	---	---	---	24/06/2014	04/09/2000	---	KARATZIS SA (CR)	3.85	---	3.85	14/11/2016	---	---	---	---	150@3.74	---	11.05	2015	---	---	---	56,517.20	3.40	4.22	2723	
13,202,756	0.350	---	---	---	01/07/2004	05/08/2014	---	KEKROPS SA (CR)	0.320	---	0.320	14/11/2016	---	---	---	---	---	350@0.329	---	2015	---	---	---	4,224.88	0.175	0.355	8633	
7,595,160	0.600	---	---	---	08/08/2008	18/08/2010	---	KIRIAKOULIS SHIPPING SA (CR)	0.721	---	0.721	14/11/2016	---	---	---	---	---	1265@0.649	89.77	2015	---	---	---	5,476.11	0.220	0.721	5759	
23,648,700	0.350	---	---	---	13/07/2011	31/03/2015	---	KLEEMAN HELLAS SA (CR)	2.02	---	2.02	14/11/2016	2.02	2.02	2.02	2.02	2.025844298@2.02	1000@2.03	24.37	2015	28,716	9	58,006.32	47,770.37	1.21	2.05	2757	
40,219,218	0.300	---	---	---	25/05/2009	09/07/2013	---	KLOUKINAS - LAPPAS SA (CR)	0.280	8.53	# 0.258	14/11/2016	0.280	0.280	0.280	0.280	50@0.273	700@0.279	---	2015	100	1	28.00	11,261.38	0.218	0.353	2357	
21,224,340	0.420	---	---	---	02/07/2008	25/04/2006	---	KORDELLOS BROS SA (CR)	0.363	---	0.363	14/11/2016	0.363	0.363	0.363	0.363	0.360	---	62187@0.327	---	2015	1	1	0.36	7,704.44	0.167	0.373	1757
13,586,500	0.390	---	---	---	25/06/2010	28/05/2008	---	KORRES (CR)	3.40	2.10	# 3.33	14/11/2016	3.40	3.37	3.45	3.40	3.40	200@3.40	80@3.45	---	2015	8,924	6	30,341.70	46,194.10	2.79	3.90	3767
29,480,000	0.420	---	---	---	19/07/2010	01/08/2007	---	KRETA FARM SA (CR)	0.410	-2.38	€ 0.420	14/11/2016	0.410	0.410	0.410	0.410	0.410	2650@0.410	350@0.418	---	2015	7,900	5	3,239.00	12,086.80	0.300	0.610	3577
33,065,136	0.380	---	0.06	0.06	18/08/2016	16/09/2013	---	KRI-KRI S.A. (CR)	1.62	---	1.62	14/11/2016	---	---	---	---	---	401@1.63	2144@1.68	13.94	2015	---	---	---	53,565.52	1.50	1.90	3577
15,804,800	0.360	---	---	---	15/06/2010	12/03/2004	---	KTIMA KOSTAS LAZARIDIS SA (CR)	0.410	2.76	# 0.399	14/11/2016	0.410	0.410	0.410	0.410	0.410	2500@0.305	30000@0.400	---	2015	1	1	0.41	6,479.97	0.166	0.534	3535
23,719,554	0.990	---	0.2406	---	14/08/2015	15/09/2014	---	KYRIAKIDIS MARBLES SA (CR)	2.90	-3.97	€ 3.02	14/11/2016	2.90	2.90	2.90	2.90	2.90	750@2.86	50@2.90	11.09	2015	100	1	290.00	68,786.71	2.11	3.25	2353
79,721,775	0.300	---	---	---	30/05/2007	23/06/2014	---	LAMDA DEVELOPMENT SA (CR)	4.70	-0.84	€ 4.74	14/11/2016	4.70	4.68	4.78	4.70	4.71	387@4.70	250@4.74	---	2015	16,691	71	78,649.22	374,692.34	3.12	5.12	8633
21,364,000	1.12	---	---	---	05/07/2010	10/08/2005	---	LAMPESA HOTEL SA (CR)	16.95	-0.23	€ 16.99	14/11/2016	17.10	16.95	17.10	16.95	17.08	70@16.61	73@16.95	77.13	2015	12	2	204.90	362,119.80	15.32	18.00	5753
5,939,268	0.620	---	---	---	10/07/2003	03/01/2002	---	LANAKAM SA (CR)	0.589	---	0.589	14/11/2016	---	---	---	---	---	---	1000@0.589	---	2015	---	---	---	3,498.23	0.539	0.638	3763
4,740,000	0.860	---	---	---	---	14/03/2003	---	LOGISMOS S.A. (CR)	0.330	---	0.330	14/11/2016	---	---	---	---	---	700@0.251	490@0.429	---	2015	---	---	---	1,564.20	0.219	0.489	9533
17,125,062	0.940	---	---	---	01/06/2010	18/07/2016	---	LOULIS MILLS SA (CR)	1.66	1.22	# 1.64	14/11/2016	1.66	1.66	1.66	1.66	1.66	---	1000@1.60	48.51	2015	1	1	1.66	28,427.60	1.30	1.83	3577
939,510,748	0.300	---	---	---	26/04/2007	29/08/2014	---	MARFIN INVESTMENT GROUP (CR)	0.115	---	0.115	14/11/2016	0.115	0.115	0.117	0.115	0.116	75844@0.115	500@0.116	---	2015	434,021	106	50,492.42	108,043.74	0.048	0.222	8775
9,819,370	0.690	---	---	---	14/08/2007	09/01/2004	---	MATHIOS REFRACTORY SA (CR)	0.345	---	0.345	14/11/2016	---	---	---	---	---	---	500@0.338	---	2015	---	---	---	3,387.68	0.162	0.359	2353
468,700	0.65	1.48	---	---	26/04/2016	21/05/2004	---	MERMEREN KOMB. A.D. PR. (GDR)	5.99	14.75	# 5.22	14/11/2016	5.99	5.99	5.99	5.99	5.99	125@5.26	64@5.90	0.58	2015	6	1	35.94	2,807.51	4.83	8.49	1775
51,950,600	0.320	0.3	0.5	0.12	13/05/2016	21/10/2005	---	METKA (CR)	6.93	-4.81	€ 7.28	14/11/2016	7.30	6.87	7.30	6.93	7.00	100@6.92	88@6.96	20.80	2015	136,435	798	955,479.68	360,017.66	6.24	7.93	2757
10,500,000	0.950	---	---	---	24/06/2008	19/12/2013	---	MEVACO SA (CR)	0.920	---	0.920	14/11/2016	---	---	---	---	---	300@0.921	150@0.989	---	2015	---	---	---	9,660.00	0.705	1.10	2757
6,700,000	0.800	0.16	0.03	0.023	27/06/2016	29/05/2014	---	MILLS KEPENOS (CR)	1.29	---	1.29	14/11/2016	---	---	---	---	---	---	77@1.31	12.44	2015	---	---	---	8,643.00	0.880	2.21	3577
6,200,000	0.500	---	---	---	22/06/2010	01/11/1995	---	MINERVA KNITWEAR SA (CB)	0.044	---	0.044	14/11/2016	---	---	---	---	---	339@0.044	---	---	2015	---	---	---	272.80	0.044	0.092	3763
12,417,000	0.370	---	---	---	28/07/2008	06/09/2011	---	MLS MULTIMEDIA SA (CR)	3.99	-0.50	€ 4.01	14/11/2016	3.94	3.94	4.01	3.99	3.96	320@3.94	842@3.99	24.50	2015	5,742	45	22,759.55	49,543.83	2.75	4.04	9537
11,700,000	0.590	---	---	---	02/06/2009	24/07/2012	---	MOTODYNAMICS S.A. (CR)	0.380	---	0.380	14/11/2016	---	---	---	---	---	1024@0.380	40@0.410	13.87	2015	---	---	---	4,446.00	0.227	0.569	5379
110,782,980	0.750	0.2	---	0.65	27/06/2016	04/11/2013	---	MOTOR OIL (CR)	11.10	1.46	# 10.94	14/11/2016	10.81	10.81	11.11	11.10	11.03	280@11.01	14869@11.10	6.11	2015	143,434	484	1,581,937.58	1,229,691.08	8.13	11.26	533
116,915,862	0.970	---	---	---	11/05/2009	19/10/2015	---	MYTILINEOS HOLDINGS (CR)	5.37	3.67	# 5.18	14/11/2016	5.20	5.20	5.37	5.37	5.32	30@5.36	168@5.37	---	2015	687,348	1,373	3,653,807.85	627,838.18	2.70	5.37	1755
8,321,682	0.670	---	---	---	17/08/2007	23/11/1999	---	N. LEVEDERIS SA (CB)	0.229	---	0.229	14/11/2016	---	---	---	---	---	---	145@0.219	---	2015	---	---	---	2,510.61	0.138	0.385	1757
2,160,524	0.670	0.0436	0.0436	0.0436	04/08/2016	23/11/1999	---	N. LEVEDERIS SA (PB)	0.280	---	0.280	14/11/2016	---	---	---	---	---	400@0.200	300@0.300	---	2015	---	---	---	2,510.61	0.202	1.25	1757
11,510,102	0.890	---	---	---	24/06/2005	06/10/1999	---	NAFPAKTOS TEXTILE IND. SA (CB)	0.120	---	0.120	14/11/2016	---	---	---	---	---	100@0.120	---	---	2015	---	---	---	1,381.21	0.085	0.313	3763
6,340,000	0.600	---	---	---	30/11/2009	09/11/2016	---	NAKAS MUSIC	0.820	3.80	# 0.790	14/11/2016	0.820	0.820	0.820	0.820	0.820	500@0.711	350@0.980	5.16	2016	120	4	98.40	5,198.80	0.600	1.11	5379
9,147,151,527	0.300	---	---	---	16/05/2008	30/11/2015	---	NATIONAL BANK (CR)	0.180	-1.10	€ 0.182	14/11/2016	0.184	0.180	0.184	0.180	0.181948881@0.179	105000@0.181	---	2015	16,113,013	1,329	2,921,110.07	1,646,487.27	0.099	0.340	8355	
23,935,280	0.300	---	---	---	29/06/2009	13/06/2000	---	NAYTEMPORIKI PUBLISHING SA(CR)	0.060	---	0.060	14/11/2016	---	---	---	---	---	463@0.056	---	---	2015	---	---	---	1,436.12	0.049	0.097	5557
27,848,000	0.300	0.004	0.0032	0.0084	16/08/2016	02/09/2003	---	NEWSPHONE HELLAS SA (CR)	0.220	-4.35	€ 0.230	14/11/2016	0.210	0.208	0.220	0.220	0.212	2000@0.209	2500@0.235	9.24	2015	8,600	4	1,826.60	6,126.56	0.135	0.291	2791
291,282,095	0.300	---	---	---	08/07/2008	21/03/2016	---	NIREFS SA (CR)	0.159	---	0.159	14/11/2016	0.156	0.156	0.164	0.159	0.160	1600@0.158	400@0.162	0.23	2015	33,167	36	5,320.96	46,313.85	0.067	0.297	3573
319,000,000	0.300	0.25	0.57	0.4	13/10/2016	25/04/2001	---	OPAP (CR)	8.33	-2.00	€ 8.50	14/11/2016	8.50	8.33	8.51	8.33	8.42	3346@8.33	843@8.40	12.59	2015	466,472	872	3,927,385.07	2,657,270.00	5.16	8.80	5752
490,150,389	2.83	---	0.08	0.1	29/06/2016	18/06/1998	---	OTE (CR)	8.09	-0.12	€ 8.10	14/11/2016	8.06	8.06	8.15	8.09	8.11	5541@8.08	1000@8.13	42.82	2015	631,341	824	5,118,588.55	3,965,316.65	6.55	9.71	

Number of Outstanding Securities	Nominal Value	Dividends [1]			Date of Last Coupon Dividend [2]		Date of Right	Note	Shares	Closing price	% change	Previous closing price/date	Open price	Price min	Price max	Last price	Avg price	Last Bid [7]	Last Ask [7]	P/E after	Year	Volume	Trades	Transactions Value[8]	Company Mkt Value (thou. €)	Year low	Year high	Sector[ 4]
----------------------------------	---------------	---------------	--	--	----------------------------------	--	---------------	------	--------	---------------	----------	-----------------------------	------------	-----------	-----------	------------	-----------	--------------	--------------	-----------	------	--------	--------	-----------------------	-----------------------------	----------	-----------	------------

Main Market

25,000,000	2.00	0.12	0.099	0.1114	18/07/2016	08/08/2003	---	P.P.A. S.A. (CR)	12.57	0.88	#	12.46	14/11/2016	12.55	12.43	12.60	12.57	12.54	99@12.48	45@12.52	37.52	2015	2,424	45	30,398.70	314,250.00	9.80	14.78	2777
4,971,466	1.46	---	---	---	04/07/2007	08/10/2003	---	PAIRIS SA (CR)	0.171	1.79	#	0.168	14/11/2016	0.171	0.171	0.171	0.171	0.171	1875@0.175	---	---	2015	125	1	21.38	850.12	0.158	0.215	2723
3,953,090	0.900	---	0.067	0.11	26/05/2016	05/12/2012	---	PAPERPACK (CR)	1.50	---	~	1.50	14/11/2016	---	---	---	---	---	1530@1.36	15000@1.55	4.72	2015	---	---	---	5,929.64	0.651	1.50	2723
50,797,369	0.310	---	---	---	17/08/2000	12/10/2010	---	PAPOUTSANIS (CR)	0.178	1.71	#	0.175	14/11/2016	0.178	0.177	0.179	0.177	0.178	50@0.173	1900@0.174	---	2015	6,779	10	1,206.15	9,041.93	0.080	0.217	3767
7,070,400	0.930	---	---	---	18/05/2010	06/05/2016	---	PETROPOULOS PETROS (CR)	4.08	---	~	4.08	14/11/2016	4.04	4.04	4.10	4.08	4.09	---	95@4.14	38.26	2015	177	8	723.88	28,847.23	3.43	4.25	2753
8,733,183,280	0.300	---	---	---	16/05/2008	27/11/2015	---	PIRAEUS BANK (CR)	0.140	-2.78	€	0.144	14/11/2016	0.146	0.140	0.148	0.140	0.143274786@0.140	20000@0.142	---	2015	9,770,454	745	1,400,640.28	1,222,645.66	0.067	0.308	8355	
22,080,000	0.330	0.2	---	0.08	17/05/2016	27/04/2015	---	PLAISIO COMPUTERS SA (CR)	3.93	0.26	#	3.92	14/11/2016	3.95	3.81	3.95	3.93	3.88	75@3.86	91@3.93	12.94	2015	2,618	44	10,154.03	86,774.40	3.73	4.75	9572
232,000,000	4.60	---	0.05	---	20/07/2015	12/12/2001	---	PPC (CR)	2.96	-1.00	€	2.99	14/11/2016	2.99	2.94	3.00	2.96	2.97	1055@2.94	697@2.96	---	2015	104,036	273	308,558.98	686,720.00	2.29	4.08	7535
11,812,193	0.470	---	0.02	---	26/03/2015	15/11/2006	---	PROFILE SA (CR)	0.430	-2.27	€	0.440	14/11/2016	0.439	0.430	0.439	0.430	0.431	555@0.430	1300@0.440	---	2015	1,555	6	669.55	5,079.24	0.388	0.546	9533
27,345,120	0.470	---	---	---	18/07/2005	26/02/2014	---	QUALITY & RELIABILITY SA (CR)	0.340	7.94	#	0.315	14/11/2016	0.340	0.340	0.340	0.340	0.340	55@0.309	1000@0.310	---	2015	55	1	18.70	9,297.34	0.207	0.465	9533
11,921,531	3.66	---	---	---	05/09/2008	21/01/2016	---	QUEST HOLDINGS (CR)	5.60	---	~	5.60	14/11/2016	---	---	---	---	---	100@5.48	50@5.89	---	2015	---	---	---	66,760.57	3.30	5.69	9533
57,434,884	1.31	---	---	---	05/06/2008	12/06/2009	---	REDS S.A. (CR)	0.310	---	~	0.310	14/11/2016	---	---	---	---	---	4812@0.310	---	---	2015	---	---	---	17,804.81	0.280	0.410	8633
22,280,000	0.300	---	---	---	11/04/2011	23/02/2007	---	REVOIL (CR)	0.300	-3.23	€	0.310	14/11/2016	0.290	0.290	0.302	0.301	0.290	681@0.290	619@0.290	9.64	2015	6,281	12	1,824.14	6,684.00	0.169	0.557	5379
7,500,000	0.690	0.0863	0.1	---	19/06/2015	05/07/2016	---	S.KANAKIS SA (CR)	2.50	---	~	2.50	14/11/2016	2.52	2.33	2.52	2.50	2.38	50@2.32	249@2.49	10.68	2015	1,267	26	3,012.86	18,750.00	1.75	2.64	3577
52,067,296	0.300	---	---	---	23/12/2003	24/01/2007	---	SELECTED TEXT. IND. ASSOC (CR)	0.140	---	~	0.140	14/11/2016	0.132	0.132	0.140	0.140	0.132	1200@0.130	960@0.140	---	2016	2,010	2	265.40	7,289.42	0.084	0.205	3763
204,235,184	0.300	---	---	---	01/07/2008	30/07/2012	---	SELONDA AQUACULTURE SA (CR)	0.196	0.51	#	0.195	14/11/2016	0.196	0.196	0.196	0.196	0.196	62@0.176	500@0.186	---	2015	10	1	1.96	40,030.10	0.074	0.273	3573
6,456,530	1.61	---	---	---	29/06/2001	02/08/2010	---	SPACE HELLAS SA (CR)	0.755	---	~	0.755	14/11/2016	---	---	---	---	---	30@0.700	250@0.830	5.75	2015	---	---	---	4,874.68	0.592	1.28	9578
28,438,268	0.300	---	---	---	21/08/2006	24/11/1999	---	SPIROY AGRICULTURE SA (CR)	0.699	---	~	0.699	14/11/2016	---	---	---	---	---	---	29481@0.630	---	2015	---	---	---	19,878.35	0.630	0.700	1357
40,693,350	5.00	---	---	---	03/07/2006	26/05/2015	---	TECHNICAL OLYMPIC SA (CR)	0.867	1.40	#	0.855	14/11/2016	0.860	0.850	0.890	0.867	0.870	1200@0.854	350@0.897	---	2015	11,667	17	10,146.82	35,281.13	0.530	0.890	3728
109,314,400	0.300	---	---	0.0935	30/05/2016	05/08/2015	---	TERNA ENERGY (CR)	2.73	0.74	#	2.71	14/11/2016	2.68	2.67	2.78	2.73	2.71	800@2.70	992@2.72	-(6)-	2015	40,973	137	111,125.10	298,428.31	1.92	3.05	7537
36,300,000	1.12	0.285	0.24	0.25	23/06/2016	12/12/2007	---	THESSALONIKA WATER & SEWERAGE	3.46	---	~	3.46	14/11/2016	3.42	3.42	3.46	3.46	3.44	300@3.42	440@3.48	9.27	2015	229	3	788.34	125,598.00	2.65	3.86	7577
45,094,620	0.660	0.05	0.0225	---	20/04/2015	01/11/1999	---	THRACE PLASTICS SA (CR)	1.95	4.28	#	1.87	14/11/2016	1.93	1.87	1.96	1.95	1.92	5@1.92	1275@1.95	-(6)-	2015	49,203	44	94,208.26	87,934.51	1.25	1.96	1357
77,063,568	4.00	---	0.1551	0.3099	27/06/2016	25/06/2004	---	TITAN CEMENT (CR)	21.03	-0.94	€	21.23	14/11/2016	21.25	21.03	21.34	21.03	21.25	18@21.03	550@21.19	29.59	2015	74,507	412	1,583,544.77	1,718,816.25	14.86	22.40	2353
7,568,960	4.00	---	0.1551	0.3099	27/06/2016	25/06/2004	---	TITAN CEMENT CO. (PR)	12.97	0.54	#	12.90	14/11/2016	12.90	12.90	12.97	12.96	12.94	82@12.96	250@12.98	18.25	2015	1,250	16	16,174.66	1,718,816.25	7.36	13.30	2353
10,080,000	3.00	0.6	1.95	0.58	18/07/2016	27/08/2001	---	TPA SA (CR)	18.27	-0.49	€	18.36	14/11/2016	18.27	18.27	18.27	18.27	18.27	157@18.27	370@18.50	10.28	2015	29	2	529.83	184,161.60	17.78	24.10	2777
15,627,315	0.300	---	---	---	16/11/1992	03/12/2012	---	UNIBIOS (CR)	0.154	---	~	0.154	14/11/2016	0.149	0.145	0.154	0.154	0.154	310@0.146	600@0.154	---	2015	6,413	6	985.05	2,406.61	0.053	0.157	2353
18,810,000	0.400	---	---	---	08/07/2010	14/11/2007	---	VARVERIS - MODA BAGNO SA (CR)	0.146	26.96	#	0.115	14/11/2016	0.140	0.140	0.146	0.146	0.141	100@0.082	5725@0.146	---	2015	310	3	43.85	2,746.26	0.072	0.165	2353
259,189,761		---	---	---		26/02/2016	---	VIOHALCO SA/INV (CB)	1.27	-3.79	€	1.32	14/11/2016	1.29	1.26	1.32	1.27	1.30	4700@1.26	3100@1.29	---	---	87,942	158	113,989.47	329,171.00	0.928	1.67	2727
4,968,600	2.88	---	---	---	01/07/1998	14/12/1998	---	VIS SA (CR)	0.890	---	~	0.890	14/11/2016	---	---	---	---	---	30@0.820	500@0.909	---	2015	---	---	---	4,422.05	0.611	1.00	2723
6,325,000	0.600	---	---	---	02/05/2014	17/02/2014	---	VOGIATZOGLOU SYSTEMS SA (CR)	1.19	---	~	1.19	14/11/2016	---	---	---	---	---	---	157@1.08	---	2015	---	---	---	7,526.75	0.700	1.75	2797

Exchange Traded Funds (ETFs)

619,082	---	---	---		15/06/2016	---	ALPHA ETF FTSE Athens Large Cap		15.23	-1.98 €	15.53	14/11/2016	15.37	15.23	15.37	15.23	15.23	---	---	---	---	---	1,292	2	19,675.14	---	11.30	170.69	12003
294,878	---	---	---		29/06/2009	---	NBGAM ETF		6.85	---	6.85	14/11/2016	6.85	6.85	6.85	6.85	6.85	---	8@6.85	---	---	---	2	1	13.70	---	4.50	7.60	12003
388,550	---	---	---		03/11/2010	---	NBGAM ETF GREECE & TURKEY 30		5.08	---	5.08	14/11/2016	---	---	---	---	---	---	2@5.12	---	---	---	---	---	---	---	4.90	6.27	12003

Low Dispersion

14,000,000	4.15	---	---	---	23/04/2010	29/06/1999	4815	ALPHA REAL ESTATE SA(CR)		4.32	-8.28 €	4.71	14/11/2016	4.32	4.32	4.32	4.32	4.32	129@4.50	39@4.69	21.83	2015	50	4	216.00	60,480.00	4.11	7.30	8637
------------	------	-----	-----	-----	------------	------------	------	--------------------------	--	------	---------	------	------------	------	------	------	------	------	----------	---------	-------	------	----	---	--------	-----------	------	------	------

Number of Outstanding Securities	Nominal Value	Dividends [1]			Date of Last Coupon Dividend [2]		Note	Shares	Closing price	% change	Previous closing price/date	Open price	Price min	Price max	Last price	Avg price	Last Bid [7]	Last Ask [7]	P/E after	Year	Volume	Trades	Transactions Value[8]	Company Mkt Value (thou. €)	Year low	Year high	Sector[ 4]
81,122,516	3.00	---	---	---	23/06/2003	04/11/2008	4816	ASTIR PALACE SA (CR)	5.23	-0.38	€ 5.25 14/11/2016	5.22	5.22	5.25	5.24	5.23	120@5.23	30@5.24	---	2015	19,250	29	100,619.00	424,270.76	2.90	5.30	5753
13,465,290	0.300	---	---	---	09/08/2004	09/11/2016	4814	ATHENA SA (CR)	0.900	---	↘ 0.090 # 08/11/2016	---	---	---	---	---	---	340@0.999	---	2015	---	---	---	12,118.76	0.180	1.30	2357
191,660,320	0.300	---	---	---	20/07/2009	29/12/2010	4817	ATTICA HOLDINGS (CR)	0.920	4.54	# 0.880 14/11/2016	0.920	0.920	0.920	0.920	0.920	30@0.880	1372@0.919	-(6)-	2015	2,486	8	2,287.12	176,327.49	0.490	1.40	5759
13,404,440	8.63	---	---	---	02/04/2001	06/03/1992	4822	IONIAN HOTELS SA (CR)	9.90	-1.00	€ 10.00 14/11/2016	9.90	9.90	9.90	9.90	9.90	80@9.91	100@10.15	61.21	2015	182	3	1,801.80	132,703.96	5.64	12.00	5753
2,760,000	11.83	8.5	9.3	8.5	15/07/2016	16/07/1990	4823	KARELIA TOBACCO CO. SA (CB)	246.05	-4.00	€ 256.30 14/11/2016	250.00	243.20	250.00	243.20	246.05	31@244.00	64@250.00	12.72	2015	86	9	21,160.00	679,098.00	227.20	2079.00	3785
106,980,050	2.25	---	---	---	25/07/2008	24/02/2014	5046	MINOAN LINES SA (CR)	2.40	---	↘ 2.40 14/11/2016	2.40	2.40	2.40	2.40	2.40	300@2.40	---	15.84	2015	200	2	480.00	256,752.12	2.00	2.45	5759
255,494,534	3.00	---	---	0.2035	15/04/2016	23/12/2015	5104	NBG PANGAEA (CR)	4.00	---	↘ 4.00 14/11/2016	---	---	---	---	---	200@3.95	---	20.56	2015	---	---	---	1,021,978.14	3.22	6.03	8671
22,996,875	1.25	---	---	---	24/06/2011	02/02/2016	5116	NEXANS HELLAS SA (CR)	0.930	-5.10	€ 0.980 14/11/2016	0.930	0.930	1.14	1.14	0.930	489@0.930	99@1.14	---	2015	501	4	466.14	21,387.09	0.781	1.58	2733
17,240,776	0.370	---	---	---	14/07/2005	30/09/2003	4827	PERSEUS SA (CR)	0.240	-10.78	€ 0.269 14/11/2016	0.240	0.240	0.240	0.240	0.240	850@0.240	---	1.76	2015	150	1	36.00	4,137.79	0.240	0.520	3577
54,888,240	1.13	0.09	---	---	25/04/2014	22/03/2006	5100	TRASTOR REAL EST. INV. CO.(CR)	1.06	---	↘ 1.06 14/11/2016	---	---	---	---	---	500@0.851	583@1.05	---	2015	---	---	---	58,181.53	0.611	1.25	8671

Surveillance

13,000,000	1.00	---	---	---	01/08/2007	07/04/2000	5093	AKRITAS SA (CR)	0.144	---	↘ 0.144 14/11/2016	---	---	---	---	---	252@0.150	---	---	2015	---	---	---	1,872.00	0.061	0.530	2353
14,870,100	0.300	---	---	---	15/05/2008	26/09/2011	4844	ALPHA GRISSIN S.A. (CR)	0.031	---	↘ 0.031 14/11/2016	---	---	---	---	---	100@0.031	---	---	2015	---	---	---	460.97	0.019	0.038	9533
2,969,713	0.300	---	---	---	02/07/2008	28/02/2011	4958	ANEK LINES SA (PR, Issue '96)	0.104	---	↘ 0.104 14/11/2016	---	---	---	---	---	---	---	43.50	2015	---	---	---	11,933.71	0.104	0.240	5759
312,163	0.300	---	---	---	02/07/2008	28/02/2011	4959	ANEK LINES SA (PR, Issue '90)	0.422	---	↘ 0.422 14/11/2016	---	---	---	---	---	---	12@0.422	-(6)-	2015	---	---	---	11,933.71	0.352	1.04	5759
185,373,016	0.300	---	---	---	02/07/2008	28/02/2011	4957	ANEK LINES SA (CR)	0.062	-11.43	€ 0.070 14/11/2016	0.062	0.062	0.065	0.065	0.062	20000@0.063	2227@0.065	25.93	2015	30,486	10	1,891.58	11,933.71	0.050	0.103	5759
20,255,805	0.300	---	---	---	22/08/2006	02/08/2010	4881	AXON HOLDING SA (CR)	0.006	---	↘ 0.006 14/11/2016	---	---	---	---	---	6500@0.006	---	---	2015	---	---	---	121.53	0.006	0.070	4533
17,579,754	4.16	---	---	---	18/08/2006	02/08/2010	5097	BIOTER SA (CR)	0.069	-1.43	€ 0.070 14/11/2016	0.070	0.068	0.070	0.068	0.069	---	13294@0.068	---	2015	19,612	5	1,346.43	1,213.00	0.038	0.149	2357
4,034,950	0.680	---	---	---	01/07/2005	30/12/2010	5114	CHATZIKRANIOTIS & SONS SA (CR)	0.051	---	↘ 0.051 14/11/2016	---	---	---	---	---	5881@0.061	---	---	2015	---	---	---	205.78	0.030	0.119	3577
1,417,311	0.300	---	---	---	11/08/2010	12/10/2016	5123	DIONIC (CR)	0.430	---	↘ 0.430 14/11/2016	---	---	---	---	---	---	260@0.430	0.13	2015	---	---	---	609.44	0.240	0.600	2797
15,878,748	0.480	---	---	---	10/07/2006	22/03/2004	5095	DOMIKI KRITIS SA (CR)	0.290	---	↘ 0.290 14/11/2016	---	---	---	---	---	---	1000@0.275	---	2015	---	---	---	4,604.84	0.147	0.318	2357
3,961,300	1.28	---	---	---	29/06/2004	03/08/2000	5080	DUROS SA (CR)	0.491	---	↘ 0.491 14/11/2016	---	---	---	---	---	---	10@0.393	---	2015	---	---	---	1,945.00	0.118	0.491	3763
7,085,888	1.59	---	---	---	02/07/1996	06/09/2010	4690	ELVIEMEK (CR)	3.18	---	↘ 3.18 14/11/2016	---	---	---	---	---	---	49@2.90	---	2015	---	---	---	22,533.12	3.18	3.97	8633
6,000,000	0.600	---	---	---	13/06/2008	08/04/2004	4886	EUROBROKERS S.A. (CR)	0.010	---	↘ 0.010 14/11/2016	---	---	---	---	---	---	---	---	2015	---	---	---	60.00	0.009	0.010	8534
21,820,410	0.800	---	---	---	22/05/2008	02/08/2011	4882	EUROMEDICA SA (CR)	0.006	---	↘ 0.006 14/11/2016	---	---	---	---	---	6500@0.006	---	---	2015	---	---	---	130.92	0.006	0.028	4533
110,097,185	0.300	---	---	---	19/09/2016		5118	Forthnet (CR)	0.300	---	↘ 0.300 14/11/2016	0.300	0.300	0.300	0.300	0.300	4962@0.300	500@0.347	---	2015	666	2	199.80	33,029.16	0.236	0.660	9535
50,593,832	0.300	---	---	---	07/07/2010	07/09/2011	5113	FRIGOGLASS SA (CR)	0.138	2.22	# 0.135 14/11/2016	0.136	0.136	0.138	0.138	0.138	6500@0.135	1000@0.139	---	2015	41,000	13	5,654.00	6,981.95	0.086	1.87	2757
77,376,446	0.340	---	---	---	23/05/2005	18/08/2011	5094	G.E. DIMITRIOU (CR)	0.031	---	↘ 0.031 14/11/2016	---	---	---	---	---	---	14729@0.025	---	2015	---	---	---	2,398.67	0.006	0.037	3722
1,270,000	0.300	---	---	---	06/07/2007	06/02/2013	5007	GIRAKIAN PROFIL SA (CB)	0.060	---	↘ 0.060 14/11/2016	---	---	---	---	---	2000@0.048	---	---	2015	---	---	---	76.20	0.060	0.167	1757
1,540,000	0.600	---	---	---	08/08/1994	19/09/2000	5058	J.BOUTARIS & SON HOLD. (PB)	0.046	---	↘ 0.046 14/11/2016	---	---	---	---	---	3000@0.037	3000@0.055	---	2015	---	---	---	1,178.74	0.006	0.062	3535
25,179,640	0.600	---	---	---	08/08/1994	19/09/2000	5057	J.BOUTARIS & SON HOLD. SA (CB)	0.044	18.92	# 0.037 14/11/2016	0.044	0.044	0.044	0.044	0.044	450@0.044	---	---	2015	650	2	28.60	1,178.74	0.016	0.128	3535
7,125,216	0.650	---	---	---	01/07/2005	14/12/1999	4955	KRE.KA SA (CR)	0.072	---	↘ 0.072 14/11/2016	---	---	---	---	---	4995@0.085	---	---	2015	---	---	---	513.02	0.060	0.180	3573
51,081,030	1.00	---	---	---	20/08/2007	03/09/2007	4912	LAVIPHARM SA (CR)	0.116	5.45	# 0.110 14/11/2016	0.116	0.116	0.116	0.116	0.116	2000@0.088	3450@0.113	---	2015	200	1	23.20	5,925.40	0.054	0.155	4577
7,734,375	1.00	---	---	---	09/07/2007	07/01/2011	5112	LIVANIS SA (CR)	0.012	---	↘ 0.012 14/11/2016	---	---	---	---	---	1000@0.012	---	---	2015	---	---	---	92.81	0.012	0.148	5557
4,419,616	1.58	---	---	---	21/07/2011	04/03/2015	4983	MEDICON S.A (CR)	0.365	---	↘ 0.365 14/11/2016	---	---	---	---	---	5000@0.350	2000@0.400	1.00	2015	---	---	---	1,613.16	0.321	0.790	4535
20,231,328	0.600	---	---	---	15/07/2008	25/06/2004	4879	NIKAS SA (CR)	0.110	---	↘ 0.110 14/11/2016	---	---	---	---	---	---	1000@0.132	---	2015	---	---	---	2,225.45	0.070	0.132	3577
14,967,940	0.500	---	---	---	21/05/2008	04/01/2008	4956	PASAL DEVELOPMENT S.A. (CR)	0.150	---	↘ 0.150 14/11/2016	---	---	---	---	---	100@0.145	30@0.180	---	2015	---	---	---	2,245.19	0.058	0.300	8633

Number of Outstanding Securities	Nominal Value	Dividends [1]			Date of Last Coupon		Note	Shares	Closing price	% change	Previous closing price/date	Open price	Price min	Price max	Last price	Avg price	Last Bid [7]	Last Ask [7]	P/E after	Year	Volume	Trades	Transactions Value[8]	Company Mkt Value (thou. €)	Year low	Year high	Sector[ 4]
		2013	2014	2015	Dividend [2]	Right																					
Surveillance																											
18,750,000	0.300	---	---	---	02/07/2001	31/12/2012	4985	PEGASUS PUBLISHING S.A. (CR)	0.045	---	↘ 0.045	14/11/2016	0.045	0.045	0.045	0.045	0.045 29990@0.045	---	---	2015	10	2	0.45	843.75	0.040	0.136	5557
65,326,268	0.530	---	---	---	04/07/2007	19/07/2006	4750	SATO SA (CR)	0.093	---	↘ 0.093	14/11/2016	---	---	---	---	---	26@0.075	---	2015	---	---	---	6,075.34	0.008	0.116	3726
7,914,480	0.300	---	---	---	23/06/2008	29/06/2011	4888	SFAKIANAKIS SA (CR)	0.196	---	↘ 0.196	14/11/2016	0.196	0.196	0.196	0.196	198@0.200	---	---	2015	300	2	58.80	1,551.24	0.157	5.64	5379
10,186,667	1.35	---	---	---	24/06/2008	02/02/2016	4887	SIDMA SA (CR)	0.235	---	↘ 0.235	14/11/2016	---	---	---	---	400@0.220	260@0.232	---	2015	---	---	---	2,393.87	0.096	0.380	1757
4,737,503	0.320	---	---	---	22/06/2005	22/09/2015	5115	VARANGIS AVEPE S.A. (CR)	0.235	---	↘ 0.235	14/11/2016	---	---	---	---	---	945@0.230	---	2015	---	---	---	1,113.31	0.235	0.300	3726
16,383,428	0.300	---	---	---	25/06/2002	21/06/2013	4997	VARVARESSOS SA (CB)	0.055	---	↘ 0.055	14/11/2016	---	---	---	---	10000@0.050	---	---	2015	---	---	---	901.09	0.006	0.172	3763
13,191,620	0.620	---	---	---	04/08/2010	09/09/2002	4977	YALCO - CONSTANTINOU SA (CB)	0.069	---	↘ 0.069	14/11/2016	---	---	---	---	---	350@0.060	---	2015	---	---	---	910.22	0.034	0.143	3722

Under Deletion																											
1,130,180	0.440	---	---	---	20/06/2003	02/07/2014	5092	COMPUCON SA (CR)	0.006	---	0.006	14/11/2016	---	---	---	---	6000@0.006	---	---	2015	---	---	---	6.78	0.006	0.019	9537
9,567,289	0.300	---	---	---	01/07/2004	19/11/2007	5062	MARAC ELECTRONICS (CR)	0.298	---	0.298	14/11/2016	---	---	---	---	---	14880@0.239	---	2015	---	---	---	2,851.05	0.298	0.298	9578
24,319,250	0.300	---	---	---	09/07/2002	04/07/2007	5111	PROODEFTIKH SA (CR)	0.040	---	0.040	14/11/2016	---	---	---	---	8000@0.036	7230@0.048	---	2015	---	---	---	972.77	0.036	0.092	2357
766,000	1.00	---	---	---	01/07/2004	11/12/2012	4937	TRIA ALFA SA (CR)	2.59	---	2.59	14/11/2016	---	---	---	---	---	14@2.08	---	2015	---	---	---	2,383.29	1.80	2.59	3763
245,000	1.00	---	---	---	19/07/2010	11/12/2012	4938	TRIA ALFA SA (PR)	1.63	---	1.63	14/11/2016	---	---	---	---	---	191@1.31	---	2015	---	---	---	2,383.29	1.36	1.63	3763

Suspension Status																											
33,301,715	0.320	---	---	---	27/06/2003	08/07/2009	5121	AEGEK (CR)	0.038	---	0.038	30/09/2016	---	---	---	---	---	---	---	---	---	---	---	1,265.47	0.029	0.072	2357
5,000,000	0.400	---	---	---	03/06/2009	01/09/2014	5087	ALCO HELLAS SA (CR)	0.180	---	0.180	31/03/2015	---	---	---	---	---	---	---	---	---	---	---	900.00	0.180	0.180	1753
5,025,000	0.300	---	---	---	05/07/2005	14/03/2002	5023	ALSINCO S.A (CR)	0.043	---	0.043	29/11/2013	---	---	---	---	---	---	---	---	---	---	---	216.08	0.043	0.043	3763
215,246,452	0.300	---	---	---	25/06/2001	24/09/2001	4446	ALTEC SA (CR)	0.012	---	0.012	30/11/2015	---	---	---	---	---	---	---	---	---	---	---	2,582.96	0.012	0.012	9533
81,644,555	0.300	---	---	---	01/07/2008	02/09/2002	5098	ATTI - KAT SA (CR)	0.012	---	0.012	29/05/2015	---	---	---	---	---	---	---	---	---	---	---	979.73	0.012	0.012	2357
33,930,000	0.300	---	---	---	03/07/2006	30/05/2001	4865	BABIS VOVOs SA (CR)	0.304	---	0.304	30/03/2012	---	---	---	---	---	---	---	---	---	---	---	10,314.72	0.304	0.304	8633
20,121,710	1.21	---	---	---	27/07/1992	12/03/2003	5002	BALKAN R.E. (CR)	0.190	---	0.190	29/08/2013	---	---	---	---	---	---	---	---	---	---	---	3,823.12	0.190	0.190	8633
21,920,570	0.300	---	---	---	03/07/2007	13/12/1999	4702	CARDASSILARIS SA (CR)	0.140	---	0.140	30/11/2010	---	---	---	---	---	---	---	---	---	---	---	3,068.88	0.140	0.140	3577
30,159,583	0.470	---	---	---	26/06/2008	29/12/2010	5047	DIAS A/C (CR)	0.050	---	0.050	26/03/2014	---	---	---	---	---	---	---	---	---	---	---	1,507.98	0.050	0.050	3573
7,847,611	1.20	---	---	---	01/08/2007	28/09/2011	4939	EDRASIS - C. PSALLIDAS SA (CR)	0.150	---	0.150	29/11/2012	---	---	---	---	---	---	---	---	---	---	---	1,177.14	0.150	0.150	2357
5,750,000	0.300	---	---	---	12/12/2008	12/12/2011	4929	ELECTRONIKI ATHINON SA (CR)	0.480	---	0.480	28/09/2012	---	---	---	---	---	---	---	---	---	---	---	2,760.00	0.480	0.480	5375
36,748,909	0.730	---	---	---	15/12/2005	13/12/2006	5109	HEL. SUGAR INDUSTRY SA (CB)	0.075	---	0.075	29/02/2016	---	---	---	---	---	---	---	---	---	---	---	2,756.17	0.064	0.150	3577
13,692,227	1.47	---	---	---	07/07/2006	08/10/1999	5049	HELLENIC FABRICS SA (CR)	0.117	---	0.117	31/03/2014	---	---	---	---	---	---	---	---	---	---	---	1,601.99	0.117	0.117	3763
30,390,000	0.310	---	---	---	18/08/2008	29/12/2006	5099	HELLENIC FISHFARMING SA (CR)	0.070	---	0.070	02/06/2015	---	---	---	---	---	---	---	---	---	---	---	2,127.30	0.070	0.070	3573
24,619,524	0.500	---	---	---	10/10/1986	30/12/2002	4914	KERAMIA-ALLATINI (CR)	0.088	---	0.088	30/08/2012	---	---	---	---	---	---	---	---	---	---	---	2,166.52	0.088	0.088	8633
66,937,526	0.700	---	---	---	13/08/2010	21/05/2003	5003	MICHANIKI SA (CR)	0.100	---	0.100	29/08/2013	---	---	---	---	---	---	---	---	---	---	---	9,186.78	0.100	0.100	2357
25,968,987	0.700	---	---	---	13/08/2010	21/05/2003	5004	MICHANIKI SA (PR)	0.096	---	0.096	29/08/2013	---	---	---	---	---	---	---	---	---	---	---	9,186.78	0.096	0.096	2357
13,555,100	1.00	---	---	---	08/07/2005		4576	MICROLAND COMPUTERS SA (CR)	0.640	---	0.640	14/07/2009	---	---	---	---	---	---	---	---	---	---	---	8,675.26	0.640	0.640	5379
255,459,600	0.300	---	---	---	26/06/2000	03/12/2010	5101	NEL SA (CR)	0.070	---	0.070	31/08/2015	---	---	---	---	---	---	---	---	---	---	---	17,882.17	0.070	0.070	5759
23,463,874	0.800	---	---	---	23/05/2003	21/12/1999	4918	NEORION SA (CR)	0.125	---	0.125	30/08/2012	---	---	---	---	---	---	---	---	---	---	---	2,932.98	0.125	0.125	2753
20,210,127	1.53	---	---	---	27/06/1997	20/03/2000	5061	PARNASSOS ENTERP. (CR)	0.070	---	0.070	30/05/2014	---	---	---	---	---	---	---	---	---	---	---	1,414.71	0.070	0.070	8775
40,946,303	0.360	---	---	---	18/07/2005	27/11/2007	5089	PC SYSTEMS SA (CR)	0.006	---	0.006	31/03/2016	---	---	---	---	---	---	---	---	---	---	---	245.68	0.006	0.014	9533

Number of Outstanding Securities	Nominal Value	Dividends [1]			Date of Last Coupon Dividend [2]		Note	Shares	Closing price	% change	Previous closing price/date	Open price	Price min	Price max	Last price	Avg price	Last Bid [7]	Last Ask [7]	P/E after	Year	Volume	Trades	Transactions Value[8]	Company Mkt Value (thou. €)	Year low	Year high	Sector[ 4]
--	------------------	---------------	--	--	-------------------------------------	--	------	--------	------------------	----------	--------------------------------	---------------	--------------	--------------	---------------	--------------	-----------------	--------------	--------------	------	--------	--------	--------------------------	--------------------------------	-------------	--------------	---------------

Suspension Status

26,408,040	0.300	---	---	---	01/07/1997	26/05/1999	4464	SHEET STEEL SA (CR)	0.120	---	0.120	28/11/2008	---	---	---	---	---	---	---	---	---	---	---	3,168.96	0.120	0.120	1757
29,060,950	0.340	---	---	---	20/08/2007	24/10/2001	5088	SPIDER METAL INDUSTRY SA (CR)	0.008	---	0.008	31/03/2015	---	---	---	---	---	---	---	---	---	---	---	232.49	0.008	0.008	2757
144,688,060	0.600	---	---	---	21/04/2008	10/03/2010	4982	T BANK (CR)	0.048	---	0.052	# 29/11/2011	---	---	---	---	---	---	---	---	---	---	---	6,945.03	0.048	0.048	8355
6,523,780	0.530	---	---	---	01/07/2002	06/03/2001	4971	TECHNICAL PUBLICATIONS SA (CR)	0.006	---	0.006	31/05/2013	---	---	---	---	---	---	---	---	---	---	---	39.14	0.006	0.006	5557
100,793,572	0.300	---	---	---	16/07/2009	11/02/2016	5110	TELETIPOS SA (CR)	0.060	---	0.060	07/03/2016	---	---	---	---	---	5@0.048	---	---	---	---	---	6,047.61	0.054	0.070	5553
13,920,000	0.320	---	---	---	19/11/2001	01/08/2000	4726	TEXAPRET SA (CR)	0.080	---	0.080	28/02/2011	---	---	---	---	---	---	---	---	---	---	---	1,113.60	0.080	0.080	3763
510,840	1.00	---	---	---	15/07/2008	21/11/2013	5036	TROPEA HOLDING (CR)	2.00	---	0.020	# 30/03/2012	---	---	---	---	---	---	---	---	---	---	---	1,021.68	2.00	2.00	3722
284,465,964	3.70	---	---	---	20/06/2008	15/06/2009	4913	TT HELLENIC POSTBANK (CR)	0.168	---	0.239	# 29/08/2012	---	---	---	---	---	---	---	---	---	---	---	47,790.28	0.168	0.168	8355
71,683,906	0.400	---	---	---	15/06/2005	05/02/2008	4953	XATZIOANNOU (CR)	0.026	---	0.026	28/03/2013	---	---	---	---	---	---	---	---	---	---	---	1,863.78	0.026	0.026	3763



## Shares' Notes

Code	Note text
( )	- Adjusted dividends.
*	- Last adjusted closing price.
[1]	- Net dividends.
[2]	- The "Date of Last Coupon" for New listings refers to the date company's stocks started to trade in Athex
[3]	- The Company Market Value is referred to the number of outstanding shares
[4]	- Sectors codification can be found in Appendix A
[5]	- The Market Value refers to the total number of shares listed (including their several classes) in the exchange by the company.
[6]	- P/E greater than 100
[7]	- Last view of the Order Book before the end of the trading session
[8]	- All Blocks Methods' Transactions Value are included.
4446	- Transfer to the "Under Supervision" Category as of 20/10/2008.
4464	- Suspension of trading as of 1/12/2008.
4576	- Suspension of trading as of 14/7/2009.
4690	- Transfer to Surveillance category as of 4/4/2006.
4702	- Suspension of trading as of 1/12/2010.
4726	- Suspension of trading as of 1/3/2011.
4750	- Transfer to the "Under Surveillance Category" from 8/4/2011.
4795	- The final gross (pre-tax) dividend is € 0.30 per share and subject to withholding tax on the full dividend amount, i.e. 0.45 per share, for those shareholders liable to withholding tax, in accordance with the applicable tax law provisions.
4814	- Transfer to the Low Dispersion Category as of 30/5/2011.
4815	- Transfer to the Low Dispersion Category as of 30/5/2011.
4816	- Transfer to the Low Dispersion Category as of 30/5/2011.
4817	- Transfer to the Low Dispersion Category as of 30/5/2011.
4822	- Transfer to the Low Dispersion category as of 30/5/2011.
4823	- Transfer to the Low Dispersion category as of 4/4/2006.
4827	- Transfer to the Low Dispersion category as of 5/5/2010.
4844	- Transfer to the Surveillance category from 8/4/2011.
4857	- The 793,906,274 new (CR) shares, resulting from the recent share capital increase through a rights issue, are not yet admitted to trading on the ATHEX.
4865	- Suspension of trading as of 2/4/2012.
4879	- Transfer to the Surveillance Category as of 10/4/2012.
4881	- Transfer to the Surveillance Category as of 10/4/2012.
4882	- Transfer to the Surveillance Category as of 10/4/2012.
4886	- Transfer to the Surveillance Category as of 10/4/2012.
4887	- Transfer to the Surveillance Category as of 10/4/2012.
4888	- Transfer to the Surveillance Category as of 10/4/2012.
4912	- Transfer to the Surveillance Category as of 31/7/2012.
4913	- Suspension of trading as of 30/8/2012.
4914	- Suspension of trading as of 31/8/2012.
4918	- Suspension of trading as of 31/8/2012.
4929	- Suspension of trading as of 1/10/2012.
4937	- Transfer to the UNDER DELETION category as of 30/11/2012.
4938	- Transfer to the UNDER DELETION category as of 30/11/2012.
4939	- Suspension of trading as of 30/11/2012.
4953	- Suspension of trading as of 2/4/2013.
4955	- Transfer to the Surveillance Category as from 5/4/2013.
4956	- Transfer to the Surveillance Category as from 5/4/2013.
4957	- Transfer to the Surveillance Category as from 5/4/2013.
4958	- Transfer to the Surveillance Category as from 5/4/2013.
4959	- Transfer to the Surveillance Category as from 5/4/2013.
4971	- Suspension of trading as of 3/6/2013.
4977	- Transfer to the "Under Surveillance Category" from 11/6/2013.
4982	- Suspension of trading as of 1/12/2011.

## Shares' Notes

Code	Note text
4983	- Transfer to the Surveillance Category as of 5/4/2013.
4985	- Transfer to the "Under Surveillance Category" from 8/4/2011.
4997	- Transfer to the Under Supervision Category as of 21/12/2009. - The 6,870,053 new (CB) shares, resulting from the recent share capital increase through a rights issue, are not yet admitted to trading on the ATHEX.
5002	- Suspension of trading as of 30/08/2013.
5003	- Suspension of trading as of 30/08/2013.
5004	- Suspension of trading as of 30/08/2013.
5007	- Transfer to the Surveillance category, as of 11/10/2013.
5023	- Suspension of trading as of 2/12/2013.
5031	- The 612,300 new (CR) shares, resulting from the recent share capital increase through a rights issue, are not yet admitted to trading on the ATHEX.
5036	- The company's share is under suspension of trading as of 2/4/2012. During suspension, the company proceeded and concluded a share reverse split, according to which - after the conclusion of the corporate action - the total number of the company's shares, as well as, the last closing price of 30/03/2012 were adjusted.
5046	- Transfer to the Low Dispersion category as of 8/4/2011.
5047	- Suspension of trading as of 27/3/2014.
5049	- Under suspension of trading as of 1/4/2014.
5057	- Transfer to the Surveillance Category as of 29/12/2011.
5058	- Transfer to the Surveillance Category as of 29/12/2011.
5061	- Suspension of trading as of 2/6/2014.
5062	- Transfer to the UNDER DELETION category as of 4/6/2014.
5080	- Suspension of trading as of 6/9/2011.
5087	- Suspension of trading as of 1/4/2015.
5088	- Suspension of trading as of 1/4/2015.
5089	- Transfer to the Surveillance Category as of 8/4/2015.
5092	- Transfer to the UNDER DELETION category as of 8/4/2015.
5093	- Transfer to the Surveillance Category as of 8/4/2015.
5094	- Transfer to the Surveillance Category as of 8/4/2015.
5095	- Transfer to the Surveillance Category as from 9/4/2015.
5097	- Transfer to the Surveillance Category as of 10/4/2012.
5098	- Suspension of trading as of 2/6/2015.
5099	- Suspension of trading as of 3/6/2015.
5100	- Transfer to the Low Dispersion Category as of 24/6/2015.
5101	- Suspension of trading as of 1/9/2015.
5104	- Transfer to the "Low Dispersion" Category as of 31/10/2014. Change of the company name from "MIG REAL ESTATE R.E.I.C." to "NBG PANGAEA R.E.I.C." as of 30/12/2015.
5109	- Suspension of trading as of 01/03/2016.
5110	- Suspension of trading as of 08/03/2016.
5111	- Transfer to the Under Deletion Category as of 15/04/2016.
5112	- Transfer to the Surveillance Category as of 15/04/2016.
5113	- Transfer to the Surveillance Category as of 15/04/2016.
5114	- Transfer to the Surveillance Category as of 15/04/2016.
5115	- Transfer to the Surveillance Category as of 15/04/2016.
5116	- Transfer to the Low Dispersion Category as of 20/4/2016.
5118	- Transfer to the Surveillance Category as of 25/11/2011. Issue of a Convertible Bond Loan in progress through a rights issue. Rights' trading period on ATHEX: 22/09/2016 - 03/10/2016, pre-emption rights' subscription period: 22/09/2016 - 06/10/2016.
5121	- Suspension of trading as of 3/10/2016.
5123	- Transfer to the Surveillance Category as of 10/4/2014.

## Securities Blocks Details

Securities	Block Volume	Price	Block Trade Value	Time of approval	Note
OTE (CR)	83,190	8.10	673,839.00	13:04:42	20
TITAN CEMENT (CR)	34,445	21.30	733,678.50	13:10:17	20
OTE (CR)	105,907	8.11	858,376.24	13:43:53	20

## Blocks Notes

9 - Method 6-1 / Special Fees

10 - Method 6-1 / Special Fees, SDS

14 - Method 6-3 / Settlement, Incomplete Buy and Sell

18 - Method 6-2 / SPOT 1

19 - Method 6-2 / SPOT 2

20 - Method 6-1 and Method 6-1 Same Day Settlement

21 - Other Pre-agreed

Shares Rights Details

Occured date	Exercise from	Exercise until	Trading until	Rights	Price min	Price max	Closing price	Last Bid	Last Ask	Volume	Trades	Transactions Value
-----------------	------------------	-------------------	------------------	--------	--------------	--------------	------------------	----------	----------	--------	--------	-----------------------

No Rights Transactions.

Shares Forced Sales

Securities	Transaction s Volume	Number of Trades	Transactions Value	Note
No Forced Transactions.				

Forced Sales Notes

- 1 - Normal Forced Sale.
- 2 - Forced Sales of Fixed Registered Shares.
- 3 - Forced Sales of Remaining Stock Fractions.

Securities	Start Date	End Date	Initial Volume	Remaining Volume	Date	Avg price (day)	Avg price (period)	Number of Trades	Transactions Volume	Transactions Value
------------	------------	----------	----------------	------------------	------	-----------------	--------------------	------------------	---------------------	--------------------

**No Fixed Registered Shares Forced Sales.**

According to Decision 1/380/04.05.2008 of the Hellenic Republic Capital Market Commission, the certificated registered shares that have not been deposited to the issuer for dematerialisation, will be auctioned in the Athens Exchange by the supervising issuer. Forced sales procedure is held according to Article 99A of the Athens Exchange Rulebook. The average price of the period is calculated by dividing the Total transactions value by the Total volume and includes all the transactions made until the current date.

## Exchange Traded Funds (ETFs) Characteristics

	Transactions Date (T)	Creation / Redemption	Units (T-1)	New Units (T-1)	Redemptio n Units (T-	Units (T) [1]	Fund Assets [2]	Net Unit Price	Dividen d per	Dividend Date
NBGAM ETF GREECE & TURKEY 30	15/11/2016	25,000	388,550	---	---	388,550	1,972,534.00	5.0767	4.92	27/10/2011
NBGAM ETF ΓΔΧ.Α.	15/11/2016	25,000	294,878	---	---	294,878	2,019,136.00	6.8474	---	27/10/2011
ALPHA ETF FTSE Athex Large Cap	15/11/2016	5,000	619,082	---	---	619,082	9,500,642.00	15.3463	0.37	30/06/2016

## ETFs Notes

[1] - Units (T) = Units (T-1) + New Units (T-1) - Redemption Units (T-1)

[2] - The Creation / Redemption Units of T-1 are included.

Corporate Bonds

Num Listed Bonds	Nominal price	Issue price	Today's Rate	Exp. Date	Duration (years)	Note	Coupon		Trading	Corporate Bonds	Price min	Price max	Closing price	Previous closing price/date	Volume	Transactions Value	Last order		Date	ear min	Year max
							Common	Preferred									Price	Buy / Sell			
233,748,933	0.30	0.30	1.00	11/10/2025	9	---	1	---	1	FORTHNET S.A. (Convertible)	---	---	---	---	---	---	95.0000	S	09/11/2016	100.0000	100.0000
40,000,000	1.00	1.00	5.00	04/10/2021	5	---	1	---	1	HOUSEMARKET S.A. (Non Convertible)	---	---	---	100.7000	10/11/2016	---	100.5000	B	15/11/2016	99.9000	100.9000
1,779,209	13.76	9.77	0.00	21/10/2025	18	---	---	---	1	NIREUS S.A. (Convertible)	---	---	---	100.0000	12/07/2016	---	3.0000	S	15/11/2016	10.0000	150.0000
212,237,880	1.00	1.00	6.30	29/07/2020	7	---	14	---	1	MARFIN INVESTMENT GROUP S.A. SERIES B (Convert.)	---	---	---	0.8500	23/08/2013	---	5.0000	B	04/10/2016	0.8500	0.8500
163,009,139	1.00	1.00	7.00	29/07/2019	6	---	14	---	1	MARFIN INVESTMENT GROUP S.A. SERIES A (Convert.)	---	---	---	1.0000	23/08/2013	---	5.0000	B	04/10/2016	1.0000	1.0000

Corporate Bonds Notes

Transactions Volume = (Pieces) \* (Nominal Price). Transactions Value = (Pieces) \* (Nominal Price) \* (price %) + (Accrued interest).  
The price of a Bond is stated as a percentage (%) of Bond's Nominal Price.  
Nominal Price in Euros (€), except if it is noted differently.



Government Bonds

Number Listed Bonds	Nominal price	Today's Rate	Accrued Interest Calc	Exp. Date [1]	Duration (years)	Note	Coupons Date	Curr. coupon value	Trading Unit	Government Bonds	Price min	Price max	Closing price	Previous closing price/date	Volume	Transactions Value	Price	Last order Buy / Sell	Date
1,792,455,803	1.00	3.00	Actual/Actual	24/02/2023	11	---	24/02	3.00	1	GGB-FXD-240223-11Y-2.000-1.00	---	---	---	10.0000 22/06/2015	---	---	---	---	---
1,771,485,249	1.00	3.00	Actual/Actual	24/02/2024	12	---	24/02	3.00	1	GGB-FXD-240224-12Y-2.000-1.00	---	---	---	10.0000 22/06/2015	---	---	---	---	---
1,744,316,583	1.00	3.00	Actual/Actual	24/02/2025	13	---	24/02	3.00	1	GGB-FXD-240225-13Y-2.000-1.00	---	---	---	10.0000 22/06/2015	---	---	---	---	---
1,498,761,836	1.00	3.00	Actual/Actual	24/02/2026	14	---	24/02	3.00	1	GGB-FXD-240226-14Y-2.000-1.00	---	---	---	10.0000 22/06/2015	---	---	---	---	---
1,469,952,920	1.00	3.00	Actual/Actual	24/02/2027	15	---	24/02	3.00	1	GGB-FXD-240227-15Y-2.000-1.00	---	---	---	10.0000 22/06/2015	---	---	---	---	---
1,525,434,082	1.00	3.00	Actual/Actual	24/02/2028	16	---	24/02	3.00	1	GGB-FXD-240228-16Y-2.000-1.00	---	---	---	10.0000 22/06/2015	---	---	---	---	---
1,503,860,546	1.00	3.00	Actual/Actual	24/02/2029	17	---	24/02	3.00	1	GGB-FXD-240229-17Y-2.000-1.00	---	---	---	10.0000 22/06/2015	---	---	---	---	---
1,435,418,132	1.00	3.00	Actual/Actual	24/02/2030	18	---	24/02	3.00	1	GGB-FXD-240230-18Y-2.000-1.00	---	---	---	10.0000 22/06/2015	---	---	---	---	---
1,368,045,727	1.00	3.00	Actual/Actual	24/02/2031	19	---	24/02	3.00	1	GGB-FXD-240231-19Y-2.000-1.00	---	---	---	10.0000 22/06/2015	---	---	---	---	---
1,373,758,194	1.00	3.00	Actual/Actual	24/02/2032	20	---	24/02	3.00	1	GGB-FXD-240232-20Y-2.000-1.00	---	---	---	10.0000 22/06/2015	---	---	---	---	---
1,452,639,893	1.00	3.00	Actual/Actual	24/02/2033	21	---	24/02	3.00	1	GGB-FXD-240233-21Y-2.000-1.00	---	---	---	10.0000 22/06/2015	---	---	---	---	---
1,410,344,954	1.00	3.00	Actual/Actual	24/02/2034	22	---	24/02	3.00	1	GGB-FXD-240234-22Y-2.000-1.00	---	---	---	10.0000 22/06/2015	---	---	---	---	---
1,444,202,190	1.00	3.00	Actual/Actual	24/02/2035	23	---	24/02	3.00	1	GGB-FXD-240235-23Y-2.000-1.00	---	---	---	10.0000 22/06/2015	---	---	---	---	---
1,505,138,031	1.00	3.00	Actual/Actual	24/02/2036	24	---	24/02	3.00	1	GGB-FXD-240236-24Y-2.000-1.00	---	---	---	10.0000 22/06/2015	---	---	---	---	---
1,396,254,095	1.00	3.00	Actual/Actual	24/02/2037	25	---	24/02	3.00	1	GGB-FXD-240237-25Y-2.000-1.00	---	---	---	10.0000 22/06/2015	---	---	---	---	---
1,382,167,704	1.00	3.00	Actual/Actual	24/02/2038	26	---	24/02	3.00	1	GGB-FXD-240238-26Y-2.000-1.00	---	---	---	10.0000 22/06/2015	---	---	---	---	---
1,337,331,257	1.00	3.00	Actual/Actual	24/02/2039	27	---	24/02	3.00	1	GGB-FXD-240239-27Y-2.000-1.00	---	---	---	10.0000 22/06/2015	---	---	---	---	---
1,371,908,706	1.00	3.00	Actual/Actual	24/02/2040	28	---	24/02	3.00	1	GGB-FXD-240240-28Y-2.000-1.00	---	---	---	10.0000 22/06/2015	---	---	---	---	---
1,360,659,778	1.00	3.00	Actual/Actual	24/02/2041	29	---	24/02	3.00	1	GGB-FXD-240241-29Y-2.000-1.00	---	---	---	10.0000 22/06/2015	---	---	---	---	---
1,432,747,403	1.00	3.00	Actual/Actual	24/02/2042	30	---	24/02	3.00	1	GGB-FXD-240242-30Y-2.000-1.00	---	---	---	10.0000 22/06/2015	---	---	---	---	---
742,153	1,000.00	0.44	FLR Actual/360	10/08/2019	5	---	10/02 - 10/08	---	1	GGB-FLT-100819-05Y-0.934-1,000	---	---	---	---	---	---	---	---	---
4,030,827	1,000.00	4.75	Actual/Actual	17/04/2019	5	---	17/04	4.75	1	GGB-FXD-170419-05Y-4.750-1,000	---	---	---	---	---	---	---	---	---
2,089,066	1,000.00	3.38	Actual/Actual	17/07/2017	3	---	17/07	3.38	1	GGB-FXD-170717-03Y-3.375-1,000	---	---	---	---	---	---	---	---	---

Government Bonds Notes

Transactions Volume = (Pieces) \* (Nominal Price). Transactions Value = (Pieces) \* (Nominal Price) \* (price %) + (Accrued interest).  
The Value of current coupon for the issues with NV 0.01 euro refers to NV 100 euros  
FLR: Floating Interest Rate.  
[1] - The Expiration Date of the interest bearing period and the Date for coupon payment.

Bonds in Circulation	Currency / Min nominal traded Value	Coupons Payment Date	Current Coupon Value	Note	Coupon	Trading Unit	Issue Date	Duration (years)	Today's Interest	A.I.C in days	Bonds	Last price of previous days		Last Outcry in Cash (euro)			Trades in Pieces	Life min	Life Max
														Price	Buy / Sell	Date			
Corporate Bonds in Foreign Currency and Euro																			
103,746	GBP / 10	01/12	0.25	---	57	1	01/12/1930	98	2.5	360	National Mortgage Bank	2.27	05/02/1996	2.27	S	05/02/1996	---	2.27	2.27
0	GBP / 10	01/12	0.25	---	59	1	01/12/1928	100	2.5	360	National Mortgage Bank	---	---	---	---	---	---	---	---

Government Bonds Notes

A.I.C: Accrued Interest Calculation base.  
FLR: Floating Interest Rate.  
The minimum tradeable Nominal Value for all Demeterialised Government Titles is 100 Euros.  
(μτφρ-0)

Athex & ATHEXClear Members List

Member Name			Stock Market			Derivatives Market		ATHEXClear Member	
Address	Phone	Fax	Market Member	Remote Member	Market Maker	Proprietary	Market Maker	General Clearing	Direct Clearing
A. SARRIS SECURITIES S.A.			a						
6, DRAGATSANIOU ATHINA	+30 2103367700	210-3312324							
ALPHA FINANCE INVESTMENT SERVICES S.A.			a		a	a	a		a
5, MERLIN ATHINA	+30 2103677400	210-33311193							
ALPHA BANK A.E.								a	
40, STADIOU STR ATHINA	(210)-3260000	(210)-3264116							
	(210)-3265546	(210)-3265811							
103, AVE. ATHINON ATHINA	+30 2103436820	210-3436270							
ARGUS STOCKBROKERS LTD			a	a		a			
25 , DIMOSTHENI SEVERI AVE NICOSIA	+357 22717000	0035722717070							
ATLANTIC SECURITIES LIMITED			a	a					
37, PRODROMOU NICOSIA	+357 22445400	00357 22661914							
ATLAS SECURITIES S.A			a			a			
, 125 MICHALAKOPOULOU & 14-16 VERVENON ATHINA	+30 2103363300	210-3238925							
ATTICA BANK S.A.								a	
54, AKADIMIAS STR. ATHINA	(210)-3390757	(210)-3646090							
23, OMIROU ATHINA	+30 2103669261	210-3669265							
23, OMIROU STR. ATHINA	(210)-3669000	(210)-3669410							
AXIA VENTURES GROUP LTD			a	a					
, KRANIDIOTI 10, OFFICE 102 NICOSIA	+357 22742000	357 22742001							
AXON SECURITIES S.A.			a			a			
48, STADIOU ATHINA	+30 2103363800	210-3243903							
BANK OF AMERICA MERRILL LYNCH			a	a					
2 , KING EDWARD STREET LONDON	+44 20276281000								
BETA SECURITIES S.A.			a		a	a			a
29 , ALEXANDRAS AVEN. & VRAILA ATHINA	+30 2106478900	210-6410139							
BNP PARIBAS SECURITIES SERVICES S.A.								a	
, VASILISSIS SOFIAS 94 & KERASOUNTOS 1 ATHINA	+30 2107468500	210-7468579-581							
CAPITAL SECURITIES S.A.			a			a			
58, MITROPOLEOS ATHINA	+30 2103369700	+30 210 3369820							
CFS SECURITIES-INVESTMENT SERVICES S.A.			a						
3, PAPARRIGOPOULOU ATHINA	+30 2103360800	+30 210-3360980							
CITIGROUP GLOBAL MARKET LTD			a	a					
1, CITIGROUP CENTER , CANADA SQ., CANARY WHARF LONDON	+44 02079864000								
CREDIT SUISSE SECURITIES (EUROPE) LIMITED			a	a					
, ONE CABOT SQUARE LONDON	+44 2078888888								
CYCLOS SECURITIES S.A.			a			a			a
39, PANEPISTIMIOU ATHINA	+30 2103364300	+30 210-3239122							
D.A. TSEKOURAS SEC. S.A.			a						
33, STADIOU ATHINA	+30 2103245100	210-3211997							
DELTASTOCK AD									a
115, MEGAPARK OFFICE BUILDING, OFFICE AREA E, G TSARIGRADSKOGA 39	+38628115051	+35928115049							
DEUTSCHE BANK S.A.			a	a		a			
1 , GREAT WINCHESTER STREET LONDON	+44 20 754 54209	00441133361437							
DYNAMIC SECURITIES S.A.			a			a			a
8, OMIROU ATHINA	+30 2103677700	210-3677777							
EL. PETROPOULAKIS SECURITIES S.A.			a			a			
9, ARISTEIDOU ATHINA	+30 2103213928	+30 210-3216810							
ESTINVEST S.A.									a
9, TH REPUBLICII STREET FOCSANI	+40 237238900	+40 237237471							
EUROBANK ERGASIAS S.A.								a	
8, OTHONOS ATHINA	+30 2103337000	210-3245916							
8, OTHONOS STR. ATHINA	(210)-3337969	(210)-3245916							
	(210)-3337000	(210)-3233866							
EUROBANK SECURITIES INVESTMENT FIRM S.A			a		a	a	a		a
, FILELLINON 10 & XENOFONTOS 13 ATHINA	+30 2103720000	210-3720001							
EUROCORP SECURITIES S.A.			a			a			a
14, SQ.FILIKIS ETAIRIAS ATHINA	+30 2107263500	210-7263666							
EUROTRUST BROKERAGE S.A.			a						
113, SEVASTOUPOLEOS ATHINA	+30 2103363100	+30 210-3238334							
EUROXX SECURITIES S.A.			a		a	a	a		a
7, PALAIOLOGOU CHALANDRI	(210)-6879400	(210)-6879401							
7, PALEOLOGOU CHALANDRI	+30 2106879400	210-6879401							

Athex & ATHEXClear Members List

Member Name			Stock Market			Derivatives Market		ATHEXClear Member	
Address	Phone	Fax	Market Member	Remote Member	Market Maker	Proprietary	Market Maker	General Clearing	Direct Clearing
G. A. PERVAS SECURITIES-INVESTMENT SERVICES CO S.A.			a						
7-9, SOFOKLEOUS ATHINA	+30 2103727200	210-3210-291							
GLOBAL CAPITAL SECURITIES AND FINANCIAL SERVICES LTD			a	a					
, AVE. ARCHIEPISKOPOU MAKARIOU NICOSIA	+357 22710710	357 22339332							
GUARDIAN TRUST SECURITIES S.A			a			a			
31, ERMOU ATHINA	+30 2103378700	210-3220498							
HELLENIC BANK (INVESTMENTS) LTD			a	a					
, AVE.KYRIAKOU MATSI 31 - PO BOX 24747 NICOSIA	+357 22500100	357 22500110							
HELLENICAMERICAN SEC. S.A.			a		a	a			a
27, ANDREA PAPANDREOU ATHINA	+30 2103311100	+30 210-3215968							
HSBC BANK PLC								a	
109-111, AVE. MESOGION ATHINA	+30 2106960000	210-6928000							
INDEX SECURITIES S.A.			a						
6, DRAGATSANIOU ATHINA	+30 2103213920	+30 210-3213216							
INTERFINBROK CORPORATION S.A.									a
1, STR.CALARASI NR. CONSTANTA	+40 241639071	0241-547829							
INVESTMENT BANK OF GREECE S.A.			a		a	a		a	
32 , EGIALIAS & PARADISOU MAROUSI	+30 2108173111	+30 210-6896325							
J. CHR. MAVRIKIS SECURITIES S.A.			a						
5, SOFOKLEOUS ATHINA	+30 2103216730	210-3217767							
KAPPA SECURITIES S.A.			a			a			
15, VALAORITOU ATHINA	+30 2103678600	+30 210-3641002							
KARAMANOF SECURITIES-INV. SERVICES S.A.			a			a			
2, SQ. AGION THEODORON ATHINA	+30 2103212947	+30 210-3217088							
LAIKI FINANCIAL SERVICES LTD				a					
26, AVE. VYRONOS NICOSIA	357 22367367	357 22718567							
LEON DEPOLAS SECURITIES S.A.			a		a	a			
1, CHRISTOU LADA ATHINA	+30 2103213276	+30 210-3211618							
MAGNA TRUST SECURITIES S.A			a						
12-14, KARAGIORGI SERBIAS ATHINA	+30 2103800820	210-3220910							
MEGA EQUITY SECURITIES-FINANCIAL SERVICES LTD			a	a		a			
42-44, AVE. GRIVA DIGENI NICOSIA	+357 22711711	357 22711811							
MERIT SECURITIES S.A			a		a	a			a
3, GEORGIOU SOURI ATHINA	+30 2103671890	210-3671830							
MIDAS BROKERAGE S.A.			a		a				
5, SOFOKLEOUS ATHINA	+30 2141008800	+30 210-3253205							
N. CHRYSISOCHOIDIS STOCK BROKERAGE I.S.S.A.			a			a			a
7-9, SOFOKLEOUS ATHINA	+30 2103213913	+30 210-3216115							
NATIONAL BANK OF GREECE S.A.			a			a		a	
86, AIOLOU STR. ATHINA	(210)-3341000	(210)-3228187							
68, AKADIMIAS STR. ATHINA	(210)-3328817	(210)-3328678							
NATIONAL SECURITIES S.A			a		a	a	a		
66, KIFISIAS AVE , BUILDING A ATHINA	+30 2107720000	+30 210-7720002							
NUNTIUS SECURITIES S.A			a						
6, DRAGATSANIOU ATHINA	+30 2103350599	+30210-3254846							
ONE PLUS CAPITAL LIMITED			a	a					
, 75 PRODRAMOU AVENUE, ONEWORLD PARKVIEW HOUSE, 3RD FLOOR, 22873760	+30 2103350599								
PANTELAKIS SECURITIES S.A.			a			a			
57, ETHNIKIS ANTISTASIS B CHALANDRI	+30 2106965000	210-6929550							
PEGASUS BROKERAGE FIRM S.A			a			a			
17 , VALAORITOU & AMERIKIS ATHINA	+30 2103670700	+30 210-3670760							
PIRAEUS BANK S.A.			a			a		a	
4, AMERIKIS STR. ATHINA	(210)-3335000	(210)-3335079							
4, AMERIKIS STR ATHINA	(210)-3335918	(210)-3254207							
4, AMERIKIS ATHINA	+30 2103335000	210-3335079							
PIRAEUS SECURITIES S.A.			a		a	a	a		a
5, KORAI ATHINA	+30 2103354100	210-3354170							
PRELIUM SECURITIES-INVESTMENT SERVICES S.A.			a			a			
1 , DAVAKI & KIFISIAS AVE. ATHINA	+30 2103677000	+30 210-6926403							
PROCHOICE SECURITIES LTD			a	a					
57, SPYROY KYPRIANOY NICOSIA	+357-24-661192	+357-24-662464							
SHARELINK SECURITIES-FINANCIAL SERVICES LTD			a	a		a			
6 , THEOTOKI MEGARO ELLINA NICOSIA	+357 22554200	+357 22750852							

Athex & ATHEXClear Members List

Member Name			Stock Market			Derivatives Market		ATHEXClear Member	
Address	Phone	Fax	Market Member	Remote Member	Market Maker	Proprietary	Market Maker	General Clearing	Direct Clearing
SOCIETE GENERALE S.A.			a	a		a			
, 17 COURS VALMY 92987 PUTEAUX - LA DEFENSE PARIS	+33 157290504	+33142138697							
SOLIDUS SECURITIES S.A			a			a			a
64, LOUIZIS RIANCOUR ATHINA	+30 2106900600	210-6985421							
SSIF VIENNA INVESTMENT TRUST S.A.									a
, 4 SPLAIUL UNIRII, BUILDING B3 BUCHAREST	+40 212074880	004 021 207 48 98							
ST. EM. LAVRENTAKIS SECURITIES S.A.			a			a			
7-9, SOFOKLEOUS ATHINA	+30 2103213336	+30 210-3246572							
THE CYPRUS INVESTMENT & SECURITIES CORPORATION LTD			a	a					
154, LIMASSOL AVENUE, STROVOLOS NICOSIA	+357 22121700	357 22338800							
UBS LIMITED			a	a					
1 , FINSBURY AVENUE LONDON	+44 2075687135								

## List of Stocks under Market Making operations

Securities	Stock Category
Market Maker	Start Market Making
<b>FRIGOGLASS SA (CR)</b>	Surveillance
EUROBANK SECURITIES INVESTMENT FIRM S.A	27/10/2014
<b>ALPHA BANK (CR)</b>	Main Market
ALPHA FINANCE INVESTMENT SERVICES S.A.	29/02/2016
EUROBANK SECURITIES INVESTMENT FIRM S.A	24/10/2012
LEON DEPOLAS SECURITIES S.A.	04/01/2016
MERIT SECURITIES S.A	03/09/2013
MIDAS BROKERAGE S.A.	11/01/2006
NATIONAL SECURITIES S.A	15/01/2013
PIRAEUS SECURITIES S.A.	28/05/2013
<b>ALUMIL (CR)</b>	Main Market
BETA SECURITIES S.A.	18/07/2013
<b>ATTICA BANK S.A. (CR)</b>	Main Market
BETA SECURITIES S.A.	02/06/2014
EUROBANK SECURITIES INVESTMENT FIRM S.A	25/07/2014
EUROXX SECURITIES S.A.	22/01/2016
<b>BANK OF CYPRUS (CR)</b>	Main Market
EUROBANK SECURITIES INVESTMENT FIRM S.A	23/03/2015
NATIONAL SECURITIES S.A	22/06/2015
<b>BYTE COMPUTER SA (CR)</b>	Main Market
MERIT SECURITIES S.A	04/08/2013
<b>CC HBC AG (CR)</b>	Main Market
EUROBANK SECURITIES INVESTMENT FIRM S.A	23/10/2013
NATIONAL SECURITIES S.A	29/04/2013
PIRAEUS SECURITIES S.A.	04/05/2015
<b>ELLAKTOR (CR)</b>	Main Market
EUROBANK SECURITIES INVESTMENT FIRM S.A	01/06/2013
NATIONAL SECURITIES S.A	25/06/2013
<b>ELTON SA (CR)</b>	Main Market
BETA SECURITIES S.A.	03/09/2013
<b>EUROBANK ERGASIAS (CR)</b>	Main Market
ALPHA FINANCE INVESTMENT SERVICES S.A.	08/01/2013
EUROBANK SECURITIES INVESTMENT FIRM S.A	01/06/2013
HELLENICAMERICAN SEC. S.A.	25/07/2014
MIDAS BROKERAGE S.A.	07/01/2016
PIRAEUS SECURITIES S.A.	28/09/2013
<b>EUROCONSULTANTS S.A. (CR)</b>	Main Market
EUROBANK SECURITIES INVESTMENT FIRM S.A	22/07/2014
<b>FOLLI FOLLIE (CR)</b>	Main Market
NATIONAL SECURITIES S.A	17/02/2014
PIRAEUS SECURITIES S.A.	04/05/2015
<b>FOURLIS (CR)</b>	Main Market
HELLENICAMERICAN SEC. S.A.	14/09/2005
<b>GEK TERNA (CR)</b>	Main Market
HELLENICAMERICAN SEC. S.A.	07/09/2015
<b>GR. SARANTIS SA (CR)</b>	Main Market
BETA SECURITIES S.A.	14/05/2013
<b>HELLENIC EXCHANGES-A.S.E. (CR)</b>	Main Market
EUROBANK SECURITIES INVESTMENT FIRM S.A	01/06/2013
HELLENICAMERICAN SEC. S.A.	01/09/2014
NATIONAL SECURITIES S.A	25/06/2013
PIRAEUS SECURITIES S.A.	04/05/2015
<b>HELLENIC PETROLEUM (CR)</b>	Main Market
HELLENICAMERICAN SEC. S.A.	14/09/2015
<b>HYGEIA SA (CR)</b>	Main Market
HELLENICAMERICAN SEC. S.A.	18/04/2016
<b>INTRACOM HOLDINGS (CR)</b>	Main Market
HELLENICAMERICAN SEC. S.A.	07/09/2015
<b>INTRALOT (CR)</b>	Main Market
EUROBANK SECURITIES INVESTMENT FIRM S.A	01/06/2013
PIRAEUS SECURITIES S.A.	28/09/2013
<b>J &amp; P - AVAX SA (CR)</b>	Main Market
EUROBANK SECURITIES INVESTMENT FIRM S.A	14/12/2015
<b>JUMBO SA (CR)</b>	Main Market
MIDAS BROKERAGE S.A.	27/07/2016
<b>KLOUKINAS - LAPPAS SA (CR)</b>	Main Market
BETA SECURITIES S.A.	22/09/2014
<b>LAMDA DEVELOPMENT SA (CR)</b>	Main Market
EUROBANK SECURITIES INVESTMENT FIRM S.A	08/12/2014

## List of Stocks under Market Making operations

Securities	Stock Category
Market Maker	Start Market Making
<b>MARFIN INVESTMENT GROUP (CR)</b>	<b>Main Market</b>
EUROBANK SECURITIES INVESTMENT FIRM S.A	23/03/2015
HELLENICAMERICAN SEC. S.A.	25/07/2014
PIRAEUS SECURITIES S.A.	02/02/2013
<b>MLS MULTIMEDIA SA (CR)</b>	<b>Main Market</b>
HELLENICAMERICAN SEC. S.A.	07/12/2015
<b>MOTOR OIL (CR)</b>	<b>Main Market</b>
EUROBANK SECURITIES INVESTMENT FIRM S.A	23/10/2012
HELLENICAMERICAN SEC. S.A.	01/09/2014
NATIONAL SECURITIES S.A	17/02/2014
PIRAEUS SECURITIES S.A.	04/05/2015
<b>MYTILINEOS HOLDINGS (CR)</b>	<b>Main Market</b>
NATIONAL SECURITIES S.A	25/06/2013
PIRAEUS SECURITIES S.A.	04/05/2015
<b>NATIONAL BANK (CR)</b>	<b>Main Market</b>
ALPHA FINANCE INVESTMENT SERVICES S.A.	08/01/2013
EUROBANK SECURITIES INVESTMENT FIRM S.A	24/10/2012
HELLENICAMERICAN SEC. S.A.	25/07/2014
LEON DEPOLAS SECURITIES S.A.	20/04/2015
MERIT SECURITIES S.A	03/09/2013
MIDAS BROKERAGE S.A.	07/01/2016
NATIONAL SECURITIES S.A	28/02/2013
PIRAEUS SECURITIES S.A.	08/09/2013
<b>OPAP (CR)</b>	<b>Main Market</b>
ALPHA FINANCE INVESTMENT SERVICES S.A.	08/01/2013
EUROBANK SECURITIES INVESTMENT FIRM S.A	24/10/2012
HELLENICAMERICAN SEC. S.A.	25/07/2014
MIDAS BROKERAGE S.A.	04/04/2016
NATIONAL SECURITIES S.A	15/01/2013
PIRAEUS SECURITIES S.A.	04/05/2015
<b>OTE (CR)</b>	<b>Main Market</b>
ALPHA FINANCE INVESTMENT SERVICES S.A.	08/01/2013
EUROBANK SECURITIES INVESTMENT FIRM S.A	24/10/2012
HELLENICAMERICAN SEC. S.A.	25/07/2014
MIDAS BROKERAGE S.A.	01/10/2015
NATIONAL SECURITIES S.A	01/12/2012
PIRAEUS SECURITIES S.A.	08/09/2013
<b>PAPOUTSANIS (CR)</b>	<b>Main Market</b>
BETA SECURITIES S.A.	25/11/2013
<b>PETROPOULOS PETROS (CR)</b>	<b>Main Market</b>
BETA SECURITIES S.A.	28/05/2013
<b>PIRAEUS BANK (CR)</b>	<b>Main Market</b>
EUROBANK SECURITIES INVESTMENT FIRM S.A	23/10/2012
EUROXX SECURITIES S.A.	15/02/2016
HELLENICAMERICAN SEC. S.A.	25/07/2014
MERIT SECURITIES S.A	16/09/2013
MIDAS BROKERAGE S.A.	11/01/2016
NATIONAL SECURITIES S.A	02/06/2013
PIRAEUS SECURITIES S.A.	16/02/2013
<b>PLAISIO COMPUTERS SA (CR)</b>	<b>Main Market</b>
BETA SECURITIES S.A.	05/05/2014
EUROBANK SECURITIES INVESTMENT FIRM S.A	02/03/2015
<b>PPC (CR)</b>	<b>Main Market</b>
ALPHA FINANCE INVESTMENT SERVICES S.A.	08/01/2013
EUROBANK SECURITIES INVESTMENT FIRM S.A	23/10/2012
MIDAS BROKERAGE S.A.	04/04/2016
NATIONAL SECURITIES S.A	26/03/2013
PIRAEUS SECURITIES S.A.	28/09/2013
<b>QUALITY &amp; RELIABILITY SA (CR)</b>	<b>Main Market</b>
BETA SECURITIES S.A.	20/08/2014
<b>S.KANAKIS SA (CR)</b>	<b>Main Market</b>
BETA SECURITIES S.A.	01/10/2013
<b>TITAN CEMENT (CR)</b>	<b>Main Market</b>
EUROBANK SECURITIES INVESTMENT FIRM S.A	23/10/2012
NATIONAL SECURITIES S.A	17/02/2014
PIRAEUS SECURITIES S.A.	04/05/2015
<b>VIOHALCO SA/NV (CB)</b>	<b>Main Market</b>
ALPHA FINANCE INVESTMENT SERVICES S.A.	17/02/2014
MERIT SECURITIES S.A	17/03/2014

Underlying Asset				Derivatives Market													
Price max	Price min	Closing price	change	Delivery Month	Open price	Price max	Price min	Last price	Closing price	Last Bid	Last Ask	Settlement price	Life high	Life low	Trades	Volume	Open Interest
FTSE/Athex Large Cap																	(Trade Unit: 1 Index Point x 2€, Cash Settlement)
1,541.65	1,525.63	1,526.58	-0.50%	November 2016	1,537.25	1,541.75	1,526.25	1,531.75	1,531.75	---	---	1,532.50	1,591.00	---	161	2,911	3,613
				December 2016	1,547.00	1,547.00	1,526.50	1,534.00	1,534.00	---	---	1,532.50	1,582.75	---	133	2,249	5,248
				January 2017	1,524.75	1,524.75	1,524.50	1,524.50	1,524.50	---	---	1,529.25	1,544.00	---	2	7	27
				March 2017	---	---	---	---	1,544.75	---	---	---	---	---	---	---	---
				June 2017	---	---	---	---	1,552.50	---	---	---	---	---	---	---	---
				September 2017	---	---	---	---	1,560.25	---	---	---	---	---	---	---	---



Underlying Asset				Derivatives Market													
Price max	Price min	Closing price	change	Delivery Month	Open price	Price max	Price min	Last price	Closing price	Last Bid	Last Ask	Settlement price	Life high	Life low	Trades	Volume	Open Interest
ALPHA BANK (CR)				(Contract Size: 100 Securities, Physical Delivery)													
1.57	1.50	1.54	0.00%	December 2016	1.56	1.56	1.50	1.55	1.55	---	---	1.55	1.87	---	219	7,799	15,586
				March 2017	---	---	---	---	1.55	---	---	---	---	---	---	---	---
				June 2017	---	---	---	---	1.56	---	---	---	---	---	---	---	---
				September 2017	---	---	---	---	1.57	---	---	---	---	---	---	---	---
CC HBC AG (CR)				(Contract Size: 100 Securities, Physical Delivery)													
19.53	19.16	19.29	-0.62%	December 2016	---	---	---	---	19.44	---	---	19.32	21.05	---	---	---	136
				March 2017	---	---	---	---	19.54	---	---	---	---	---	---	---	---
				June 2017	---	---	---	---	19.64	---	---	---	---	---	---	---	---
				September 2017	---	---	---	---	19.74	---	---	---	---	---	---	---	---
CORINTH PIPEWORKS (CR)				(Contract Size: 100 Securities, Physical Delivery)													
0.625	0.611	0.620	0.00%	December 2016	0.624	0.625	0.618	0.618	0.618	---	---	0.605	0.929	---	14	97	1,027
				March 2017	---	---	---	---	0.624	---	---	0.638	0.850	---	---	---	---
				June 2017	---	---	---	---	0.627	---	---	---	---	---	---	---	---
				September 2017	---	---	---	---	0.631	---	---	---	---	---	---	---	---
ELLAKTOR (CR)				(Contract Size: 100 Securities, Physical Delivery)													
1.16	1.12	1.15	0.00%	December 2016	1.14	1.15	1.12	1.15	1.15	---	---	1.15	1.36	---	12	43	2,930
				March 2017	---	---	---	---	1.16	---	---	---	---	---	---	---	---
				June 2017	---	---	---	---	1.16	---	---	---	---	---	---	---	---
				September 2017	---	---	---	---	1.17	---	---	---	---	---	---	---	---
EUROBANK ERGASIAS (CR)				(Contract Size: 100 Securities, Physical Delivery)													
0.529	0.515	0.515	-0.96%	December 2016	0.525	0.528	0.515	0.517	0.517	---	---	0.521	0.590	---	70	3,403	33,423
				March 2017	---	---	---	---	0.524	---	---	---	---	---	---	---	---
				June 2017	---	---	---	---	0.526	---	---	---	---	---	---	---	---
				September 2017	---	---	---	---	0.529	---	---	---	---	---	---	---	---
EYDAP S.A. (CR)				(Contract Size: 100 Securities, Physical Delivery)													
5.48	5.21	5.21	-4.40%	December 2016	5.01	5.04	4.95	4.95	4.95	---	---	4.96	5.61	---	11	78	317
				March 2017	---	---	---	---	5.49	---	---	---	---	---	---	---	---
				June 2017	---	---	---	---	5.51	---	---	---	---	---	---	---	---
				September 2017	---	---	---	---	5.54	---	---	---	---	---	---	---	---
FOLLI FOLLIE (CR)				(Contract Size: 100 Securities, Physical Delivery)													
20.34	20.00	20.10	0.45%	December 2016	20.10	20.31	20.06	20.20	20.20	---	---	20.11	22.31	---	13	26	176
				March 2017	---	---	---	---	20.15	---	---	20.12	22.10	---	---	---	---
				June 2017	---	---	---	---	20.25	---	---	---	---	---	---	---	---
				September 2017	---	---	---	---	20.35	---	---	---	---	---	---	---	---
GEK TERNA (CR)				(Contract Size: 100 Securities, Physical Delivery)													
2.13	2.09	2.10	0.48%	December 2016	2.13	2.13	2.10	2.11	2.11	---	---	2.10	2.20	---	13	95	7,318
				March 2017	---	---	---	---	2.10	---	---	---	---	---	---	---	---
				June 2017	---	---	---	---	2.11	---	---	---	---	---	---	---	---
				September 2017	---	---	---	---	2.13	---	---	---	---	---	---	---	---

Underlying Asset				Derivatives Market													
Price max	Price min	Closing price	change	Delivery Month	Open price	Price max	Price min	Last price	Closing price	Last Bid	Last Ask	Settlement price	Life high	Life low	Trades	Volume	Open Interest
GRIVALIA PROPERTIES (CR)				(Contract Size: 100 Securities, Physical Delivery)													
7.14	7.01	7.06	0.00%	December 2016	---	---	---	---	7.07	---	---	7.08	7.21	---	---	---	58
				March 2017	---	---	---	---	7.11	---	---	---	---	---	---	---	---
				June 2017	---	---	---	---	7.14	---	---	---	---	---	---	---	---
				September 2017	---	---	---	---	7.18	---	---	---	---	---	---	---	---
HELLENIC EXCHANGES-A.S.E. (CR)				(Contract Size: 100 Securities, Physical Delivery)													
4.55	4.50	4.50	-0.88%	December 2016	4.52	4.52	4.51	4.51	4.51	---	---	4.50	4.58	---	3	7	364
				March 2017	---	---	---	---	4.57	---	---	---	---	---	---	---	---
				June 2017	---	---	---	---	4.59	---	---	---	---	---	---	---	---
				September 2017	---	---	---	---	4.62	---	---	---	---	---	---	---	---
HELLENIC PETROLEUM (CR)				(Contract Size: 100 Securities, Physical Delivery)													
4.17	4.10	4.13	-0.24%	December 2016	4.14	4.15	4.12	4.12	4.12	---	---	4.17	4.24	---	7	18	3,799
				March 2017	4.13	4.13	4.13	4.13	4.13	---	---	4.15	4.20	---	1	170	130
				June 2017	---	---	---	---	4.19	---	---	---	---	---	---	---	---
				September 2017	---	---	---	---	4.21	---	---	---	---	---	---	---	---
INTRALOT (CR)				(Contract Size: 100 Securities, Physical Delivery)													
1.10	1.06	1.07	-2.73%	December 2016	1.07	1.08	1.07	1.07	1.07	---	---	1.07	1.39	---	5	27	812
				March 2017	---	---	---	---	1.11	---	---	---	---	---	---	---	---
				June 2017	---	---	---	---	1.11	---	---	---	---	---	---	---	---
				September 2017	---	---	---	---	1.12	---	---	---	---	---	---	---	---
JUMBO SA (CR)				(Contract Size: 100 Securities, Physical Delivery)													
11.89	11.32	11.60	2.02%	December 2016	11.42	11.81	11.42	11.55	11.55	---	---	11.73	12.73	---	13	29	281
				March 2017	---	---	---	---	11.45	---	---	---	---	---	---	---	---
				June 2017	---	---	---	---	11.51	---	---	---	---	---	---	---	---
				September 2017	---	---	---	---	11.56	---	---	---	---	---	---	---	---
MARFIN INVESTMENT GROUP (CR)				(Contract Size: 100 Securities, Physical Delivery)													
0.117	0.115	0.115	0.00%	December 2016	0.116	0.117	0.115	0.117	0.117	---	---	0.117	0.137	---	9	174	45,912
				March 2017	---	---	---	---	0.116	---	---	---	---	---	---	---	---
				June 2017	---	---	---	---	0.116	---	---	---	---	---	---	---	---
				September 2017	---	---	---	---	0.117	---	---	---	---	---	---	---	---
METKA (CR)				(Contract Size: 100 Securities, Physical Delivery)													
7.30	6.87	6.93	-4.81%	December 2016	7.23	7.23	6.86	6.91	6.91	---	---	6.88	7.80	---	104	306	684
				March 2017	7.11	7.11	7.08	7.08	7.08	---	---	6.90	7.65	---	3	30	30
				June 2017	---	---	---	---	7.37	---	---	---	---	---	---	---	---
				September 2017	---	---	---	---	7.40	---	---	---	---	---	---	---	---
MOTOR OIL (CR)				(Contract Size: 100 Securities, Physical Delivery)													
11.11	10.81	11.10	1.46%	December 2016	10.83	11.10	10.83	11.09	11.09	---	---	11.14	11.20	---	14	39	291
				March 2017	---	---	---	---	11.01	---	---	---	---	---	---	---	---
				June 2017	---	---	---	---	11.07	---	---	---	---	---	---	---	---
				September 2017	---	---	---	---	11.13	---	---	---	---	---	---	---	---

Underlying Asset				Derivatives Market													
Price max	Price min	Closing price	change	Delivery Month	Open price	Price max	Price min	Last price	Closing price	Last Bid	Last Ask	Settlement price	Life high	Life low	Trades	Volume	Open Interest
MYTILINEOS HOLDINGS (CR)				(Contract Size: 100 Securities, Physical Delivery)													
5.37	5.20	5.37	3.67%	December 2016	5.18	5.38	5.18	5.36	5.36	---	---	5.35	5.38	---	368	2,245	8,050
				March 2017	---	---	---	---	5.22	---	---	5.33	---	5.29	---	---	48
				June 2017	---	---	---	---	5.24	---	---	---	---	---	---	---	---
				September 2017	---	---	---	---	5.27	---	---	---	---	---	---	---	---
NATIONAL BANK (CR)				(Contract Size: 100 Securities, Physical Delivery)													
0.184	0.180	0.180	-1.10%	December 2016	0.183	0.184	0.179	0.180	0.180	---	---	0.181	0.268	---	164	21,009	79,962
				March 2017	---	---	---	---	0.183	---	---	---	---	---	---	---	---
				June 2017	---	---	---	---	0.184	---	---	---	---	---	---	---	---
				September 2017	---	---	---	---	0.185	---	---	---	---	---	---	---	---
OPAP (CR)				(Contract Size: 100 Securities, Physical Delivery)													
8.51	8.33	8.33	-2.00%	December 2016	8.50	8.50	8.33	8.33	8.33	---	---	8.38	8.77	---	117	491	2,171
				March 2017	---	---	---	---	8.56	---	---	8.39	---	8.37	---	---	---
				June 2017	---	---	---	---	8.60	---	---	---	---	---	---	---	---
				September 2017	---	---	---	---	8.64	---	---	---	---	---	---	---	---
OTE (CR)				(Contract Size: 100 Securities, Physical Delivery)													
8.15	8.06	8.09	-0.12%	December 2016	8.10	8.15	8.08	8.10	8.10	---	---	8.10	8.85	---	83	391	7,321
				March 2017	---	---	---	---	8.16	---	---	---	---	---	---	---	---
				June 2017	---	---	---	---	8.20	---	---	---	---	---	---	---	---
				September 2017	---	---	---	---	8.24	---	---	---	---	---	---	---	---
P.P.A. S.A. (CR)				(Contract Size: 100 Securities, Physical Delivery)													
12.60	12.43	12.57	0.88%	December 2016	12.56	12.56	12.56	12.56	12.56	---	---	12.57	12.85	---	1	1	660
				March 2017	---	---	---	---	12.55	---	---	---	---	---	---	---	---
				June 2017	---	---	---	---	12.61	---	---	---	---	---	---	---	---
				September 2017	---	---	---	---	12.67	---	---	---	---	---	---	---	---
PIRAEUS BANK (CR)				(Contract Size: 100 Securities, Physical Delivery)													
0.148	0.140	0.140	-2.78%	December 2016	0.145	0.148	0.140	0.141	0.141	---	---	0.142	0.250	---	106	6,389	91,061
				March 2017	---	---	---	---	0.145	---	---	---	---	---	---	---	---
				June 2017	---	---	---	---	0.146	---	---	---	---	---	---	---	---
				September 2017	---	---	---	---	0.146	---	---	---	---	---	---	---	---
PPC (CR)				(Contract Size: 100 Securities, Physical Delivery)													
3.00	2.94	2.96	-1.00%	December 2016	2.97	2.99	2.95	2.95	2.95	---	---	2.93	3.10	---	50	255	6,624
				March 2017	---	---	---	---	3.01	---	---	2.92	---	3.09	---	---	122
				June 2017	---	---	---	---	3.03	---	---	---	---	---	---	---	---
				September 2017	---	---	---	---	3.04	---	---	---	---	---	---	---	---
TERNA ENERGY (CR)				(Contract Size: 100 Securities, Physical Delivery)													
2.78	2.67	2.73	0.74%	December 2016	---	---	---	---	2.71	---	---	2.75	2.78	---	---	---	1,232
				March 2017	---	---	---	---	2.73	---	---	---	---	---	---	---	---
				June 2017	---	---	---	---	2.74	---	---	---	---	---	---	---	---
				September 2017	---	---	---	---	2.76	---	---	---	---	---	---	---	---

Underlying Asset				Derivatives Market													
Price max	Price min	Closing price	change	Delivery Month	Open price	Price max	Price min	Last price	Closing price	Last Bid	Last Ask	Settlement price	Life high	Life low	Trades	Volume	Open Interest
TITAN CEMENT (CR)				(Contract Size: 100 Securities, Physical Delivery)													
21.34	21.03	21.03	-0.94%	December 2016	21.12	21.25	20.81	20.81	20.81	---	---	21.12	21.78	---	7	24	108
				March 2017	---	---	---	---	21.38	---	---	20.82	---	20.85	---	---	---
				June 2017	---	---	---	---	21.48	---	---	---	---	---	---	---	---
				September 2017	---	---	---	---	21.59	---	---	---	---	---	---	---	---
VIOHALCO SA/NV (CB)				(Contract Size: 100 Securities, Physical Delivery)													
1.32	1.26	1.27	-3.79%	December 2016	1.30	1.31	1.27	1.27	1.27	---	---	1.26	1.47	---	9	30	2,540
				March 2017	---	---	---	---	1.33	---	---	---	---	---	---	---	---
				June 2017	---	---	---	---	1.34	---	---	---	---	---	---	---	---
				September 2017	---	---	---	---	1.34	---	---	---	---	---	---	---	---

FTSE/Athex Large Cap

(Trade Unit: 1 Index Point x 2€ - Exercise Style: European, Cash Settlement)

Call Options																	Put Options																			
November 2016								December 2016								Other Months		November 2016								December 2016								Other Months		
Exercise Price	Open price	Price max	Price min	Last price	Closing price	Volume	Open Interest	Open price	Price max	Price min	Last price	Closing price	Volume	Open Interest	Volume	Open Interest	Open price	Price max	Price min	Last price	Closing price	Volume	Open Interest	Open price	Price max	Price min	Last price	Closing price	Volume	Open Interest	Volume	Open Interest	Exercise Price			
900	-	-	-	-	-	-	-	0.00	0.00	0.00	-	645.00	-	-			-	-	-	-	-	-	-	0.00	0.00	0.00	-	0.03	-	-			900			
950	-	-	-	-	-	-	-	0.00	0.00	0.00	-	595.00	-	-			-	-	-	-	-	-	-	0.00	0.00	0.00	-	0.01	-	-			950			
1,000	-	-	-	-	-	-	-	0.00	0.00	0.00	-	546.00	-	-			-	-	-	-	-	-	-	0.00	0.00	0.00	-	0.01	-	-			1,000			
1,050	-	-	-	-	-	-	-	0.00	0.00	0.00	-	496.00	-	-			-	-	-	-	-	-	-	0.00	0.00	0.00	-	0.05	-	-			1,050			
1,100	-	-	-	-	-	-	-	0.00	0.00	0.00	-	446.00	-	-			-	-	-	-	-	-	-	0.00	0.00	0.00	-	0.01	-	-			1,100			
1,150	-	-	-	-	-	-	-	0.00	0.00	0.00	-	396.00	-	-			-	-	-	-	-	-	-	0.00	0.00	0.00	-	0.01	-	-			1,150			
1,200	-	-	-	-	-	-	-	0.00	0.00	0.00	-	346.00	-	-			-	-	-	-	-	-	-	0.00	0.00	0.00	-	0.01	-	-			1,200			
1,250	-	-	-	-	-	-	-	0.00	0.00	0.00	-	296.00	-	-			-	-	-	-	-	-	-	0.00	0.00	0.00	-	0.01	-	-			1,250			
1,275	-	-	-	-	-	-	-	0.00	0.00	0.00	-	271.00	-	-			-	-	-	-	-	-	-	0.00	0.00	0.00	-	0.01	-	-			1,275			
1,300	-	-	-	-	-	-	-	0.00	0.00	0.00	-	246.00	-	-			-	-	-	-	-	-	-	0.00	0.00	0.00	-	0.01	-	-			1,300			
1,325	-	-	-	-	-	-	-	0.00	0.00	0.00	-	221.00	-	-			-	-	-	-	-	-	-	0.00	0.00	0.00	-	0.04	-	-			1,325			
1,350	0.00	0.00	0.00	-	187.00	-	-	0.00	0.00	0.00	-	196.00	-	-			0.00	0.00	0.00	-	0.01	-	3	0.00	0.00	0.00	-	0.14	-	-			1,350			
1,375	0.00	0.00	0.00	-	162.00	-	-	0.00	0.00	0.00	-	172.00	-	-			0.00	0.00	0.00	-	0.08	-	-	0.00	0.00	0.00	-	0.38	-	-			1,375			
1,400	0.00	0.00	0.00	-	137.00	-	10	0.00	0.00	0.00	-	147.00	-	12			0.00	0.00	0.00	-	0.01	-	3	0.00	0.00	0.00	-	0.96	-	-			1,400			
1,425	0.00	0.00	0.00	-	112.00	-	-	0.00	0.00	0.00	-	123.00	-	6			0.00	0.00	0.00	-	0.01	-	25	0.00	0.00	0.00	-	2.20	-	-			1,425			
1,450	0.00	0.00	0.00	-	87.00	-	-	0.00	0.00	0.00	-	101.00	-	-			0.00	0.00	0.00	-	0.01	-	4	0.00	0.00	0.00	-	4.50	-	4			1,450			
1,475	0.00	0.00	0.00	-	62.00	-	41	0.00	0.00	0.00	-	79.50	-	7			0.00	0.00	0.00	-	0.13	-	84	0.00	0.00	0.00	-	8.30	-	-			1,475			
1,500	30.00	30.00	30.00	30.00	30.00	20	157	0.00	0.00	0.00	-	61.00	-	30			30.00	30.00	0.00	-	1.20	-	122	16.25	16.25	16.25	16.25	16.25	20	180			1,500			
1,525	0.00	0.00	0.00	-	18.25	-	105	0.00	0.00	0.00	-	44.50	-	20			0.00	0.00	0.00	-	6.30	-	58	26.50	26.50	26.50	26.50	26.50	20	98			1,525			
1,550	3.00	3.00	3.00	3.00	3.00	1	123	22.25	22.25	22.25	22.25	22.25	20	52			3.00	3.00	0.00	-	19.00	-	143	0.00	0.00	0.00	-	34.75	-	41			1,550			
1,575	0.00	0.00	0.00	-	1.30	-	306	16.00	16.00	16.00	16.00	16.00	1	171			0.00	0.00	0.00	-	39.25	-	33	0.00	0.00	0.00	-	49.50	-	100			1,575			
1,600	0.00	0.00	0.00	-	0.16	-	315	0.00	0.00	0.00	-	13.25	-	429			0.00	0.00	0.00	-	63.00	-	8	0.00	0.00	0.00	-	67.00	-	20			1,600			
1,625	0.00	0.00	0.00	-	0.01	-	95	0.00	0.00	0.00	-	8.10	-	157			0.00	0.00	0.00	-	88.00	-	-	0.00	0.00	0.00	-	86.50	-	-			1,625			
1,650	0.00	0.00	0.00	-	0.01	-	48	0.00	0.00	0.00	-	4.70	-	20			0.00	0.00	0.00	-	113.00	-	-	0.00	0.00	0.00	-	108.00	-	-			1,650			
1,675	0.00	0.00	0.00	-	0.01	-	20	0.00	0.00	0.00	-	2.60	-	-			0.00	0.00	0.00	-	138.00	-	-	0.00	0.00	0.00	-	131.00	-	-			1,675			
1,700	0.00	0.00	0.00	-	0.01	-	3	0.00	0.00	0.00	-	1.30	-	-			0.00	0.00	0.00	-	163.00	-	-	0.00	0.00	0.00	-	155.00	-	-			1,700			
1,725	-	-	-	-	-	-	-	0.00	0.00	0.00	-	0.66	-	-			-	-	-	-	-	-	-	0.00	0.00	0.00	-	179.00	-	-			1,725			
1,750	-	-	-	-	-	-	-	0.00	0.00	0.00	-	0.31	-	-			-	-	-	-	-	-	-	0.00	0.00	0.00	-	203.00	-	-			1,750			
1,775	-	-	-	-	-	-	-	0.00	0.00	0.00	-	0.14	-	-			-	-	-	-	-	-	-	0.00	0.00	0.00	-	228.00	-	-			1,775			
1,800	-	-	-	-	-	-	-	0.00	0.00	0.00	-	0.06	-	-			-	-	-	-	-	-	-	0.00	0.00	0.00	-	253.00	-	-			1,800			
1,825	-	-	-	-	-	-	-	0.00	0.00	0.00	-	0.02	-	-			-	-	-	-	-	-	-	0.00	0.00	0.00	-	278.00	-	-			1,825			
1,850	-	-	-	-	-	-	-	0.00	0.00	0.00	-	0.01	-	-			-	-	-	-	-	-	-	0.00	0.00	0.00	-	303.00	-	-			1,850			
1,900	-	-	-	-	-	-	-	0.00	0.00	0.00	-	0.01	-	-			-	-	-	-	-	-	-	0.00	0.00	0.00	-	353.00	-	-			1,900			
1,950	-	-	-	-	-	-	-	0.00	0.00	0.00	-	0.02	-	-			-	-	-	-	-	-	-	0.00	0.00	0.00	-	403.00	-	-			1,950			
2,000	-	-	-	-	-	-	-	0.00	0.00	0.00	-	0.01	-	-			-	-	-	-	-	-	-	0.00	0.00	0.00	-	453.00	-	-			2,000			
2,050	-	-	-	-	-	-	-	0.00	0.00	0.00	-	0.01	-	-			-	-	-	-	-	-	-	0.00	0.00	0.00	-	503.00	-	-			2,050			

FTSE/Athex Large Cap (Trade Unit: 1 Index Point x 2€ - Exercise Style: European, Cash Settlement)

Call Options																	Put Options																						
Exercise Price	November 2016							December 2016							Other Months		November 2016							December 2016							Other Months		Exercise Price						
	Open price	Price max	Price min	Last price	Closing price	Volume	Open Interest	Open price	Price max	Price min	Last price	Closing price	Volume	Open Interest	Volume	Open Interest	Open price	Price max	Price min	Last price	Closing price	Volume	Open Interest	Open price	Price max	Price min	Last price	Closing price	Volume	Open Interest	Volume	Open Interest							
2,100	-	-	-	-	-	-	-	0.00	0.00	0.00	-	0.01	-	-			-	-	-	-	-	-	-	0.00	0.00	0.00	-	553.00	-	-			2,100						
Totals:							21	1,223								21	904	0	67								0	483								40	443	0	0
Number of Trades:							2								2	0									0								2	0					

ALPHA BANK (CR)

(Contract Size: 100 Securities, Exercise Style: American, Physical Delivery)

Call Options																	Put Options																	
Exercise Price	November 2016							December 2016							Other Months		November 2016								December 2016							Other Months		Exercise Price
	Open price	Price max	Price min	Last price	Closing price	Volume	Open Interest	Open price	Price max	Price min	Last price	Closing price	Volume	Open Interest	Volume	Open Interest	Open price	Price max	Price min	Last price	Closing price	Volume	Open Interest	Open price	Price max	Price min	Last price	Closing price	Volume	Open Interest	Volume	Open Interest		
0.800						-	-	0.000	0.000	0.000		0.741	-	-								-	-	0.000	0.000	0.000		0.002	-	-			0.008	
0.850						-	-	0.000	0.000	0.000		0.692	-	-								-	-	0.000	0.000	0.000		0.001	-	-			0.009	
0.900						-	-	0.000	0.000	0.000		0.642	-	-								-	-	0.000	0.000	0.000		0.001	-	-			0.009	
0.950						-	-	0.000	0.000	0.000		0.592	-	-								-	-	0.000	0.000	0.000		0.001	-	-			0.010	
1.000	0.000	0.000	0.000		0.540	-	-	0.000	0.000	0.000		0.542	-	-			0.000	0.000	0.000		0.001	-	-	0.000	0.000	0.000		0.001	-	-			0.010	
1.100	0.000	0.000	0.000		0.440	-	-	0.000	0.000	0.000		0.442	-	-			0.000	0.000	0.000		0.001	-	-	0.000	0.000	0.000		0.001	-	-			0.011	
1.200	0.000	0.000	0.000		0.340	-	-	0.000	0.000	0.000		0.344	-	-			0.000	0.000	0.000		0.002	-	-	0.000	0.000	0.000		0.002	-	-			0.012	
1.300	0.000	0.000	0.000		0.241	-	-	0.000	0.000	0.000		0.250	-	-			0.000	0.000	0.000		0.001	-	-	0.000	0.000	0.000		0.008	-	-			0.013	
1.400	0.000	0.000	0.000		0.144	-	-	0.000	0.000	0.000		0.167	-	-			0.000	0.000	0.000		0.004	-	-	0.000	0.000	0.000		0.024	-	-			0.014	
1.500	0.000	0.000	0.000		0.065	-	50	0.000	0.000	0.000		0.101	-	-			0.000	0.000	0.000		0.025	-	-	0.000	0.000	0.000		0.058	-	-			0.015	
1.600	0.000	0.000	0.000		0.020	-	-	0.000	0.000	0.000		0.054	-	-			0.000	0.000	0.000		0.080	-	-	0.000	0.000	0.000		0.112	-	-			0.016	
1.700	0.000	0.000	0.000		0.004	-	-	0.000	0.000	0.000		0.027	-	-			0.000	0.000	0.000		0.164	-	-	0.000	0.000	0.000		0.184	-	-			0.017	
1.800	0.000	0.000	0.000		0.004	-	-	0.000	0.000	0.000		0.012	-	-			0.000	0.000	0.000		0.260	-	-	0.000	0.000	0.000		0.270	-	-			0.018	
1.900	0.000	0.000	0.000		0.001	-	-	0.000	0.000	0.000		0.005	-	-			0.000	0.000	0.000		0.360	-	-	0.000	0.000	0.000		0.363	-	-			0.019	
2.000	0.000	0.000	0.000		0.001	-	-	0.000	0.000	0.000		0.002	-	-			0.000	0.000	0.000		0.460	-	-	0.000	0.000	0.000		0.460	-	-			0.020	
2.200	0.000	0.000	0.000		0.002	-	-	0.000	0.000	0.000		0.001	-	-			0.000	0.000	0.000		0.660	-	80	0.000	0.000	0.000		0.660	-	-			0.022	
2.400	0.000	0.000	0.000		0.001	-	-	0.000	0.000	0.000		0.002	-	-			0.000	0.000	0.000		0.860	-	-	0.000	0.000	0.000		0.860	-	-			0.024	
2.600	0.000	0.000	0.000		0.001	-	-	0.000	0.000	0.000		0.001	-	-			0.000	0.000	0.000		1.06	-	-	0.000	0.000	0.000		1.06	-	-			0.026	
2.800						-	-	0.000	0.000	0.000		0.001	-	-								-	-	0.000	0.000	0.000		1.26	-	-			0.028	
3.000						-	-	0.000	0.000	0.000		0.001	-	-								-	-	0.000	0.000	0.000		1.46	-	-			0.030	
3.200						-	-	0.000	0.000	0.000		0.001	-	-								-	-	0.000	0.000	0.000		1.66	-	-			0.032	
3.400						-	-	0.000	0.000	0.000		0.001	-	-								-	-	0.000	0.000	0.000		1.86	-	-			0.034	
3.600						-	-	0.000	0.000	0.000		0.001	-	-								-	-	0.000	0.000	0.000		2.06	-	-			0.036	
Totals:						0	50						0	0	0	0						0	80					0	0	0	0	0		
Number of Trades:						0							0		0							0.00					0		0					

NATIONAL BANK (CR)

(Contract Size: 100 Securities, Exercise Style: American, Physical Delivery)

Call Options																	Put Options																							
November 2016								December 2016								Other Months		November 2016								December 2016								Other Months						
Exerise Price	Open price	Price max	Price min	Last price	Closing price	Volume	Open Interest	Open price	Price max	Price min	Last price	Closing price	Volume	Open Interest	Volume	Open Interest	Open price	Price max	Price min	Last price	Closing price	Volume	Open Interest	Open price	Price max	Price min	Last price	Closing price	Volume	Open Interest	Volume	Open Interest	Exerise Price							
0.050	0.000	0.000	0.000		0.132	-	-	0.000	0.000	0.000		0.132	-	-			0.000	0.000	0.000		0.001	-	-	0.000	0.000	0.000		0.001	-	-			0.001							
0.100	0.000	0.000	0.000		0.082	-	-	0.000	0.000	0.000		0.083	-	-			0.000	0.000	0.000		0.001	-	-	0.000	0.000	0.000		0.001	-	-			0.001							
0.150	0.000	0.000	0.000		0.039	-	-	0.000	0.000	0.000		0.044	-	-			0.000	0.000	0.000		0.007	-	-	0.000	0.000	0.000		0.012	-	-			0.002							
0.200	0.000	0.000	0.000		0.014	-	-	0.000	0.000	0.000		0.021	-	-			0.000	0.000	0.000		0.032	-	-	0.000	0.000	0.000		0.038	-	-			0.002							
0.250	0.000	0.000	0.000		0.004	-	-	0.000	0.000	0.000		0.009	-	-			0.000	0.000	0.000		0.072	-	-	0.000	0.000	0.000		0.077	-	-			0.003							
0.300	0.000	0.000	0.000		0.001	-	-	0.000	0.000	0.000		0.004	-	-			0.000	0.000	0.000		0.119	-	-	0.000	0.000	0.000		0.121	-	-			0.003							
0.350	0.000	0.000	0.000		0.002	-	-	0.000	0.000	0.000		0.002	-	-			0.000	0.000	0.000		0.168	-	-	0.000	0.000	0.000		0.169	-	-			0.004							
0.400	0.000	0.000	0.000		0.001	-	-	0.000	0.000	0.000		0.001	-	-			0.000	0.000	0.000		0.218	-	-	0.000	0.000	0.000		0.218	-	-			0.004							
0.450	0.000	0.000	0.000		0.001	-	-	0.000	0.000	0.000		0.004	-	-			0.000	0.000	0.000		0.268	-	-	0.000	0.000	0.000		0.268	-	-			0.005							
0.500								0.000	0.000	0.000		0.002	-	-									-	-	0.000	0.000	0.000		0.318	-	-			0.005						
0.550								0.000	0.000	0.000		0.001	-	-										-	-	0.000	0.000	0.000		0.368	-	-			0.006					
0.600								0.000	0.000	0.000		0.001	-	-										-	-	0.000	0.000	0.000		0.418	-	-			0.006					
Totals:							0	0								0	0	0	0								0	0								0	0	0	0	
Number of Trades:							0								0			0.00								0			0											



OPAP (CR)

(Contract Size: 100 Securities, Exercise Style: American, Physical Delivery)

Call Options																	Put Options																					
Exercise Price	November 2016							December 2016							Other Months			November 2016										December 2016							Other Months			Exercise Price
	Open price	Price max	Price min	Last price	Closing price	Volume	Open Interest	Open price	Price max	Price min	Last price	Closing price	Volume	Open Interest	Volume	Open Interest	Open price	Price max	Price min	Last price	Closing price	Volume	Open Interest	Open price	Price max	Price min	Last price	Closing price	Volume	Open Interest	Volume	Open Interest						
3.600						-	-	0.000	0.000	0.000		4.91	-	-								-	-	0.000	0.000	0.000		0.001	-	-			0.036					
3.800						-	-	0.000	0.000	0.000		4.71	-	-								-	-	0.000	0.000	0.000		0.001	-	-			0.038					
4.000						-	-	0.000	0.000	0.000		4.51	-	-								-	-	0.000	0.000	0.000		0.001	-	-			0.040					
4.400						-	-	0.000	0.000	0.000		4.11	-	-								-	-	0.000	0.000	0.000		0.001	-	-			0.044					
4.800						-	-	0.000	0.000	0.000		3.71	-	-								-	-	0.000	0.000	0.000		0.001	-	-			0.048					
5.200	0.000	0.000	0.000		3.30	-	-	0.000	0.000	0.000		3.31	-	-			0.000	0.000	0.000		0.001	-	-	0.000	0.000	0.000		0.001	-	-			0.052					
5.600	0.000	0.000	0.000		2.90	-	-	0.000	0.000	0.000		2.91	-	-			0.000	0.000	0.000		0.001	-	-	0.000	0.000	0.000		0.001	-	-			0.056					
6.000	0.000	0.000	0.000		2.50	-	-	0.000	0.000	0.000		2.51	-	-			0.000	0.000	0.000		0.001	-	-	0.000	0.000	0.000		0.002	-	-			0.060					
6.400	0.000	0.000	0.000		2.10	-	-	0.000	0.000	0.000		2.11	-	-			0.000	0.000	0.000		0.001	-	-	0.000	0.000	0.000		0.001	-	-			0.064					
6.800	0.000	0.000	0.000		1.70	-	-	0.000	0.000	0.000		1.71	-	-			0.000	0.000	0.000		0.001	-	12	0.000	0.000	0.000		0.001	-	-			0.068					
7.200	0.000	0.000	0.000		1.30	-	-	0.000	0.000	0.000		1.32	-	-			0.000	0.000	0.000		0.001	-	55	0.000	0.000	0.000		0.009	-	-			0.072					
7.600	0.000	0.000	0.000		0.902	-	-	0.000	0.000	0.000		0.950	-	-			0.000	0.000	0.000		0.001	-	39	0.000	0.000	0.000		0.037	-	-			0.076					
8.000	0.000	0.000	0.000		0.506	-	25	0.000	0.000	0.000		0.624	-	-			0.000	0.000	0.000		0.004	-	5	0.000	0.000	0.000		0.110	-	-			0.080					
8.400	0.000	0.000	0.000		0.174	-	10	0.000	0.000	0.000		0.367	-	100			0.000	0.000	0.000		0.072	-	-	0.000	0.000	0.000		0.253	-	-			0.084					
8.800	0.000	0.000	0.000		0.025	-	-	0.000	0.000	0.000		0.191	-	99			0.000	0.000	0.000		0.323	-	-	0.000	0.000	0.000		0.477	-	-			0.088					
9.200	0.000	0.000	0.000		0.001	-	-	0.000	0.000	0.000		0.087	-	-			0.000	0.000	0.000		0.700	-	-	0.000	0.000	0.000		0.774	-	-			0.092					
9.600	0.000	0.000	0.000		0.005	-	-	0.000	0.000	0.000		0.035	-	-			0.000	0.000	0.000		1.10	-	-	0.000	0.000	0.000		1.12	-	-			0.096					
10.000	0.000	0.000	0.000		0.001	-	-	0.000	0.000	0.000		0.013	-	-			0.000	0.000	0.000		1.50	-	-	0.000	0.000	0.000		1.50	-	-			0.100					
11.000	0.000	0.000	0.000		0.001	-	-	0.000	0.000	0.000		0.001	-	-			0.000	0.000	0.000		2.50	-	-	0.000	0.000	0.000		2.50	-	-			0.110					
12.000	0.000	0.000	0.000		0.001	-	-	0.000	0.000	0.000		0.001	-	-			0.000	0.000	0.000		3.50	-	-	0.000	0.000	0.000		3.50	-	-			0.120					
Totals:							0	35								0	199	0	0							0	111								0	65	0	0
Number of Trades:							0									0		0								0.00									0		0	

OTE (CR)

(Contract Size: 100 Securities, Exercise Style: American, Physical Delivery)

Call Options																	Put Options																			
November 2016								December 2016								Other Months		November 2016								December 2016								Other Months		
Exerise Price	Open price	Price max	Price min	Last price	Closing price	Volume	Open Interest	Open price	Price max	Price min	Last price	Closing price	Volume	Open Interest	Volume	Open Interest	Open price	Price max	Price min	Last price	Closing price	Volume	Open Interest	Open price	Price max	Price min	Last price	Closing price	Volume	Open Interest	Volume	Open Interest	Exerise Price			
4.800						-	-	0.000	0.000	0.000		3.31	-	-								-	-	0.000	0.000	0.000		0.002	-	-			0.048			
5.200						-	-	0.000	0.000	0.000		2.91	-	-								-	-	0.000	0.000	0.000		0.001	-	-			0.052			
5.600	0.000	0.000	0.000		2.50	-	-	0.000	0.000	0.000		2.51	-	-			0.000	0.000	0.000		0.001	-	-	0.000	0.000	0.000		0.001	-	-			0.056			
6.000	0.000	0.000	0.000		2.10	-	-	0.000	0.000	0.000		2.11	-	-			0.000	0.000	0.000		0.001	-	-	0.000	0.000	0.000		0.001	-	-			0.060			
6.400	0.000	0.000	0.000		1.70	-	-	0.000	0.000	0.000		1.71	-	-			0.000	0.000	0.000		0.001	-	-	0.000	0.000	0.000		0.001	-	-			0.064			
6.800	0.000	0.000	0.000		1.30	-	-	0.000	0.000	0.000		1.32	-	-			0.000	0.000	0.000		0.001	-	-	0.000	0.000	0.000		0.008	-	-			0.068			
7.200	0.000	0.000	0.000		0.902	-	-	0.000	0.000	0.000		0.946	-	-			0.000	0.000	0.000		0.001	-	-	0.000	0.000	0.000		0.034	-	-			0.072			
7.600	0.000	0.000	0.000		0.504	-	-	0.000	0.000	0.000		0.618	-	-			0.000	0.000	0.000		0.003	-	40	0.000	0.000	0.000		0.104	-	-			0.076			
8.000	0.000	0.000	0.000		0.165	-	-	0.000	0.000	0.000		0.360	-	210			0.000	0.000	0.000		0.064	-	15	0.000	0.000	0.000		0.247	-	-			0.080			
8.400	0.000	0.000	0.000		0.019	-	5	0.000	0.000	0.000		0.185	-	-			0.000	0.000	0.000		0.318	-	-	0.000	0.000	0.000		0.472	-	-			0.084			
8.800	0.000	0.000	0.000		0.001	-	-	0.000	0.000	0.000		0.082	-	-			0.000	0.000	0.000		0.700	-	-	0.000	0.000	0.000		0.770	-	-			0.088			
9.200	0.000	0.000	0.000		0.001	-	-	0.000	0.000	0.000		0.032	-	-			0.000	0.000	0.000		1.10	-	-	0.000	0.000	0.000		1.12	-	-			0.092			
9.600	0.000	0.000	0.000		0.001	-	-	0.000	0.000	0.000		0.011	-	-			0.000	0.000	0.000		1.50	-	-	0.000	0.000	0.000		1.50	-	-			0.096			
10.000	0.000	0.000	0.000		0.001	-	-	0.000	0.000	0.000		0.003	-	-			0.000	0.000	0.000		1.90	-	-	0.000	0.000	0.000		1.90	-	-			0.100			
11.000	0.000	0.000	0.000		0.001	-	-	0.000	0.000	0.000		0.001	-	-			0.000	0.000	0.000		2.90	-	-	0.000	0.000	0.000		2.90	-	-			0.110			
12.000	0.000	0.000	0.000		0.001	-	-	0.000	0.000	0.000		0.001	-	-			0.000	0.000	0.000		3.90	-	-	0.000	0.000	0.000		3.90	-	-			0.120			
13.000						-	-	0.000	0.000	0.000		0.001	-	-								-	-	0.000	0.000	0.000		4.90	-	-			0.130			
14.000						-	-	0.000	0.000	0.000		0.003	-	-								-	-	0.000	0.000	0.000		5.90	-	-			0.140			
Totals:						0	5							0	210	0	30							0	55							0	10	0	0	
Number of Trades:						0								0		0							0.00								0		0			

PIRAEUS BANK (CR)

(Contract Size: 100 Securities, Exercise Style: American, Physical Delivery)

Call Options																	Put Options																		
November 2016								December 2016								Other Months		November 2016								December 2016								Other Months	
Exercise Price	Open price	Price max	Price min	Last price	Closing price	Volume	Open Interest	Open price	Price max	Price min	Last price	Closing price	Volume	Open Interest	Volume	Open Interest	Open price	Price max	Price min	Last price	Closing price	Volume	Open Interest	Open price	Price max	Price min	Last price	Closing price	Volume	Open Interest	Volume	Open Interest	Exercise Price		
0.050	0.000	0.000	0.000		0.094	-	-	0.000	0.000	0.000		0.094	-	-			0.000	0.000	0.000		0.001	-	-	0.000	0.000	0.000		0.001	-	-			0.001		
0.100	0.000	0.000	0.000		0.047	-	-	0.000	0.000	0.000		0.050	-	-			0.000	0.000	0.000		0.003	-	-	0.000	0.000	0.000		0.006	-	-			0.001		
0.150	0.000	0.000	0.000		0.017	-	-	0.000	0.000	0.000		0.023	-	-			0.000	0.000	0.000		0.023	-	-	0.000	0.000	0.000		0.029	-	-			0.002		
0.200	0.000	0.000	0.000		0.005	-	-	0.000	0.000	0.000		0.010	-	-			0.000	0.000	0.000		0.061	-	-	0.000	0.000	0.000		0.066	-	-			0.002		
0.250	0.000	0.000	0.000		0.001	-	-	0.000	0.000	0.000		0.004	-	-			0.000	0.000	0.000		0.107	-	-	0.000	0.000	0.000		0.110	-	-			0.003		
0.300	0.000	0.000	0.000		0.002	-	-	0.000	0.000	0.000		0.002	-	-			0.000	0.000	0.000		0.156	-	-	0.000	0.000	0.000		0.157	-	-			0.003		
0.350	0.000	0.000	0.000		0.001	-	-	0.000	0.000	0.000		0.001	-	-			0.000	0.000	0.000		0.206	-	-	0.000	0.000	0.000		0.206	-	-			0.004		
0.400	0.000	0.000	0.000		0.001	-	-	0.000	0.000	0.000		0.005	-	-			0.000	0.000	0.000		0.256	-	-	0.000	0.000	0.000		0.256	-	-			0.004		
0.450						-	-	0.000	0.000	0.000		0.004	-	-								-	-	0.000	0.000	0.000		0.306	-	-			0.005		
0.500						-	-	0.000	0.000	0.000		0.003	-	-								-	-	0.000	0.000	0.000		0.356	-	-			0.005		
0.550						-	-	0.000	0.000	0.000		0.002	-	-								-	-	0.000	0.000	0.000		0.406	-	-			0.006		
Totals:						0	0							0	0	0	0							0	0							0	0		
Number of Trades:						0								0		0	0.00							0								0			

PPC (CR)

(Contract Size: 100 Securities, Exercise Style: American, Physical Delivery)

Call Options																	Put Options																			
November 2016								December 2016								Other Months		November 2016								December 2016								Other Months		
Exercise Price	Open price	Price max	Price min	Last price	Closing price	Volume	Open Interest	Open price	Price max	Price min	Last price	Closing price	Volume	Open Interest	Volume	Open Interest	Open price	Price max	Price min	Last price	Closing price	Volume	Open Interest	Open price	Price max	Price min	Last price	Closing price	Volume	Open Interest	Volume	Open Interest	Exercise Price			
1.700	0.000	0.000	0.000		1.29	-	-	0.000	0.000	0.000		1.29	-	-			0.000	0.000	0.000		0.002	-	-	0.000	0.000	0.000		0.001	-	-			0.017			
1.800	0.000	0.000	0.000		1.19	-	-	0.000	0.000	0.000		1.19	-	-			0.000	0.000	0.000		0.001	-	-	0.000	0.000	0.000		0.001	-	-			0.018			
1.900	0.000	0.000	0.000		1.09	-	-	0.000	0.000	0.000		1.09	-	-			0.000	0.000	0.000		0.001	-	-	0.000	0.000	0.000		0.001	-	-			0.019			
2.000	0.000	0.000	0.000		0.990	-	-	0.000	0.000	0.000		0.994	-	-			0.000	0.000	0.000		0.001	-	-	0.000	0.000	0.000		0.001	-	-			0.020			
2.200	0.000	0.000	0.000		0.790	-	-	0.000	0.000	0.000		0.794	-	-			0.000	0.000	0.000		0.001	-	-	0.000	0.000	0.000		0.002	-	-			0.022			
2.400	0.000	0.000	0.000		0.591	-	-	0.000	0.000	0.000		0.596	-	40			0.000	0.000	0.000		0.001	-	-	0.000	0.000	0.000		0.002	-	-			0.024			
2.600	0.000	0.000	0.000		0.391	-	-	0.000	0.000	0.000		0.406	-	-			0.000	0.000	0.000		0.001	-	5	0.000	0.000	0.000		0.011	-	-			0.026			
2.800	0.000	0.000	0.000		0.195	-	20	0.000	0.000	0.000		0.242	-	-			0.000	0.000	0.000		0.005	-	15	0.000	0.000	0.000		0.047	-	-			0.028			
3.000	0.000	0.000	0.000		0.051	-	110	0.000	0.000	0.000		0.121	-	-			0.000	0.000	0.000		0.060	-	20	0.000	0.000	0.000		0.126	-	-			0.030			
3.200	0.000	0.000	0.000		0.005	-	-	0.000	0.000	0.000		0.051	-	-			0.000	0.000	0.000		0.214	-	-	0.000	0.000	0.000		0.256	-	-			0.032			
3.400	0.000	0.000	0.000		0.001	-	-	0.000	0.000	0.000		0.018	-	-			0.000	0.000	0.000		0.410	-	-	0.000	0.000	0.000		0.424	-	-			0.034			
3.600	0.000	0.000	0.000		0.001	-	-	0.000	0.000	0.000		0.005	-	-			0.000	0.000	0.000		0.610	-	-	0.000	0.000	0.000		0.612	-	-			0.036			
3.800	0.000	0.000	0.000		0.001	-	-	0.000	0.000	0.000		0.001	-	-			0.000	0.000	0.000		0.810	-	-	0.000	0.000	0.000		0.810	-	-			0.038			
4.000	0.000	0.000	0.000		0.001	-	-	0.000	0.000	0.000		0.001	-	-			0.000	0.000	0.000		1.01	-	-	0.000	0.000	0.000		1.01	-	-			0.040			
4.400						-	-	0.000	0.000	0.000		0.001	-	-								-	-	0.000	0.000	0.000		1.41	-	-			0.044			
4.800						-	-	0.000	0.000	0.000		0.001	-	-								-	-	0.000	0.000	0.000		1.81	-	-			0.048			
5.200						-	-	0.000	0.000	0.000		0.001	-	-								-	-	0.000	0.000	0.000		2.21	-	-			0.052			
5.600						-	-	0.000	0.000	0.000		0.001	-	-								-	-	0.000	0.000	0.000		2.61	-	-			0.056			
6.000						-	-	0.000	0.000	0.000		0.001	-	-								-	-	0.000	0.000	0.000		3.01	-	-			0.060			
Totals:						0	130						0	40	0	0						0	40					0	0	0	0					
Number of Trades:						0							0		0							0.00					0		0							

Lending Products	Underlying Title	Multilateral Transactions[1]					Bilateral Transactions[2]		Stock Borrowing through OTC (volume)[3]
		Open Interest[5]	Volume(Offered)	Average Weighted	Transactions volume	Average Weighted	Transactions Volume	Average Weighte	Transactions Volume
AEGNBOR	AEGEAN AIRLINES (CR)	100	12,838	5.31%	---	---	---	---	11,701
ALPHABOR	ALPHA BANK (CR)	74,350	228,164	5.31%	---	---	---	---	1,858,064
ALMYBOR	ALUMIL (CR)	---	---	---	---	---	---	---	---
IATRBOR	ATHENS MEDICAL CENTER SA (CR)	---	36,398	5.31%	---	---	---	---	---
OTOELBOR	AUTOHELLAS SA (CR)	---	1,840	5.31%	---	---	---	---	---
BOCBOR	BANK OF CYPRUS (CR)	---	270	5.31%	---	---	---	---	84,008
EEEBOR	CC HBC AG (CR)	2,428	4,271	5.31%	---	---	---	---	70,546
CENTRBOR	CENTRIC HOLDINGS (CR)	---	16,000	5.31%	---	---	---	---	---
SOLKBOR	CORINTH PIPEWORKS (CR)	7,800	1,758	5.31%	---	---	---	---	---
PLAKRBOR	CRETE PLASTICS SA (CR)	---	---	---	---	---	---	---	---
ELINBOR	ELINOIL S.A. (CR)	---	---	---	---	---	---	---	---
ELLAKTORBOR	ELLAKTOR (CR)	10,000	77,427	5.31%	---	---	---	---	---
ANEMOSBOR	ELTECH ANEMOS S.A. (CR)	---	4,998	5.31%	---	---	---	---	---
ELTONBOR	ELTON SA (CR)	---	---	---	---	---	---	---	---
EUROBBOR	EUROBANK ERGASIAS (CR)	3,312	306,225	5.31%	---	---	---	---	2,110,051
EUPICBOR	EUROPEAN RELIANCE INSUR. (CR)	---	---	---	---	---	---	---	---
EYDAPBOR	EYDAP S.A. (CR)	1,572	4,989	5.31%	---	---	---	---	17,780
FLEXOBOR	FLEXOPACK SA (CR)	---	---	---	---	---	---	---	---
FFGRPBOR	FOLLI FOLLIE (CR)	8,690	69,732	5.31%	---	---	---	---	712,242
FOYRKBOR	FOURLIS (CR)	---	5,130	5.31%	---	---	---	---	3,850
GEKTERNABOR	GEK TERNA (CR)	112	30,269	5.31%	---	---	---	---	---
SARBOR	GR. SARANTIS SA (CR)	---	1,536	5.31%	---	---	---	---	---
EUPROBOR	GRIVALIA PROPERTIES (CR)	1,000	96,628	5.31%	---	---	---	---	47,676
XAKOBOR	HALKOR SA (CB)	---	56,552	5.31%	---	---	---	---	---
EXAEBOR	HELLENIC EXCHANGES-A.S.E. (CR)	29,600	428,671	3.31%	---	---	---	---	98,443
ELPEBOR	HELLENIC PETROLEUM (CR)	175	142,159	3.31%	---	---	---	---	42,606
HYGEIABOR	HYGEIA SA (CR)	---	48,700	5.31%	---	---	---	---	---
IASOBOR	IASO SA (CR)	---	---	---	---	---	---	---	---
IKTINBOR	IKTINOS HELLAS SA (CR)	---	798	5.31%	---	---	---	---	---
INTRKBOR	INTRACOM HOLDINGS (CR)	---	168,546	5.31%	---	---	---	---	---
INLOTBOR	INTRALOT (CR)	27,000	37,679	5.31%	---	---	---	---	803

Stock Lending Notes

- [1] - Multilateral contracts Lending or Borrowing as per Methods 8-1, 8-2 and 8-3-3 (According to ATHEX BoD Resolution No.17)
- [2] - Billateral Contracts Lending or Borrowing as per Methods 8-3-1 and 8-3-2 (According to ATHEX BoD Resolution No.20 )
- [3] - The information concerning OTC Stock Borrowing Transactions is based on the statements of the Dematerialised Securities System (DSS) operators involved and refers to volumes that have been registered up until the previous working day.
- [4] - Average Price (Volume weighted)
- [5] - The Data concerning Open Interest before the start of trading session

Lending Products	Underlying Title	Multilateral Transactions[1]					Bilateral Transactions[2]		Stock Borrowing through OTC (volume)[3]
		Open Interest[5]	Volume(Offered)	Average Weighted	Transactions volume	Average Weighted	Transactions Volume	Average Weighte	Transactions Volume
AVAXBOR	J & P - AVAX SA (CR)	---	20,335	5.31%	---	---	---	---	---
BELABOR	JUMBO SA (CR)	9,325	103,403	5.31%	---	---	---	---	6,365
KLEMBOR	KLEEMAN HELLAS SA (CR)	---	1,188	5.31%	---	---	---	---	---
KORRESBOR	KORRES (CR)	---	---	---	---	---	---	---	---
KRIBOR	KRI-KRI S.A. (CR)	---	47,768	5.31%	---	---	---	---	---
KYRMBOR	KYRIAKIDIS MARBLES SA (CR)	---	4,936	5.31%	---	---	---	---	---
LAMDABOR	LAMDA DEVELOPMENT SA (CR)	14	100	5.32%	---	---	---	---	10,377
MIGBOR	MARFIN INVESTMENT GROUP (CR)	3,000	278,903	5.31%	---	---	---	---	749,474
METKKBOR	METKA (CR)	24,765	5	5.35%	---	---	---	---	13,671
MLSBOR	MLS MULTIMEDIA SA (CR)	---	9,118	5.31%	---	---	---	---	---
MOHBOR	MOTOR OIL (CR)	9,795	28,758	3.31%	300	2.65%	---	---	52,254
MYTILBOR	MYTILINEOS HOLDINGS (CR)	22,394	127,319	5.31%	---	---	---	---	---
ETEBOR	NATIONAL BANK (CR)	718,265	1,339,301	3.31%	384,000	2.65%	---	---	1,687,741
ETFASEBOR	NBGAM ETF	---	---	---	---	---	---	---	---
ETFGT30PBOR	NBGAM ETF GREECE & TURKEY 30	---	---	---	---	---	---	---	---
OPAPBOR	OPAP (CR)	59,937	6,731	3.31%	---	---	---	---	863,649
HTOBOR	OTE (CR)	6,863	68,628	3.31%	2,500	2.65%	---	---	271,932
PPABOR	P.P.A. S.A. (CR)	368	1,468	5.31%	---	---	---	---	901
PAPBOR	PAPOUTSANIS (CR)	---	---	---	---	---	---	---	---
PETROBOR	PETROPOULOS PETROS (CR)	---	---	---	---	---	---	---	---
TPEIRBOR	PIRAEUS BANK (CR)	6,061	626,090	5.31%	---	---	---	---	7,175,542
PLAISBOR	PLAISIO COMPUTERS SA (CR)	---	---	---	---	---	---	---	---
PPCBOR	PPC (CR)	36,950	86,383	5.31%	---	---	---	---	512,774
QUALBOR	QUALITY & RELIABILITY SA (CR)	---	---	---	---	---	---	---	---
QUESTBOR	QUEST HOLDINGS (CR)	---	798	5.31%	---	---	---	---	---
KAMPBOR	REDS S.A. (CR)	---	---	---	---	---	---	---	---
EPILBOR	SELECTED TEXT. IND. ASSOC (CR)	---	---	---	---	---	---	---	---
SELOBOR	SELONDA AQUACULTURE SA (CR)	---	---	---	---	---	---	---	---
OLYMPBOR	TECHNICAL OLYMPIC SA (CR)	---	23,237	5.31%	---	---	---	---	---
TENERGYBOR	TERNA ENERGY (CR)	1,000	32,305	5.31%	---	---	---	---	---
EYAPSBOR	THESSALONIKA WATER & SEWERAGE	---	6,149	5.31%	---	---	---	---	---

Stock Lending Notes

- [1] - Multilateral contracts Lending or Borrowing as per Methods 8-1, 8-2 and 8-3-3 (According to ATHEX BoD Resolution No.17)
- [2] - Billateral Contracts Lending or Borrowing as per Methods 8-3-1 and 8-3-2 (According to ATHEX BoD Resolution No.20 )
- [3] - The information concerning OTC Stock Borrowing Transactions is based on the statements of the Dematerialised Securities System (DSS) operators involved and refers to volumes that have been registered up until the previous working day.
- [4] - Average Price (Volume weighted)
- [5] - The Data concerning Open Interest before the start of trading session

Lending Products	Underlying Title	Multilateral Transactions[1]					Bilateral Transactions[2]		Stock Borrowing through OTC (volume)[3]
		Open Interest[5]	Volume(Offered)	Average Weighted	Transactions volume	Average Weighted	Transactions Volume	Average Weighted	Transactions Volume
PLATBOR	THRACE PLASTICS SA (CR)	---	43,699	5.31%	---	---	---	---	---
TITKBOR	TITAN CEMENT (CR)	7,599	212,447	3.31%	---	---	---	---	3,204
OLTHBOR	TPA SA (CR)	---	183	5.31%	---	---	---	---	---
VIOBOR	VIOHALCO SA/NV (CB)	---	67,888	5.31%	---	---	---	---	---

Stock Lending Notes

[1] - Multilateral contracts Lending or Borrowing as per Methods 8-1, 8-2 and 8-3-3 (According to ATHEX BoD Resolution No.17)

[2] - Bilateral Contracts Lending or Borrowing as per Methods 8-3-1 and 8-3-2 (According to ATHEX BoD Resolution No.20 )

[3] - The information concerning OTC Stock Borrowing Transactions is based on the statements of the Dematerialised Securities System (DSS) operators involved and refers to volumes that have been registered up until the previous working day.

[4] - Average Price (Volume weighted)

[5] - The Data concerning Open Interest before the start of trading session

## Sectors codification for listed companies

533	-	Exploration & Production	537	-	Integrated Oil & Gas
1353	-	Commodity Chemicals	1357	-	Specialty Chemicals
1753	-	Aluminum	1755	-	Nonferrous Metals
1757	-	Steel	1775	-	General Mining
2353	-	Building Materials & Fixtures	2357	-	Heavy Construction
2723	-	Containers & Packaging	2727	-	Diversified Industrials
2733	-	Electrical Components & Equipment	2753	-	Commercial Vehicles & Trucks
2757	-	Industrial Machinery	2773	-	Marine Transportation
2777	-	Transportation Services	2791	-	Business Support Services
2797	-	Industrial Suppliers	3535	-	Distillers & Vintners
3537	-	Soft Drinks	3573	-	Farming Fishing & Plantations
3577	-	Food Products	3722	-	Durable Household Products
3726	-	Furnishings	3728	-	Home Construction
3747	-	Toys	3763	-	Clothing & Accessories
3765	-	Footwear	3767	-	Personal Products
3785	-	Tobacco	4533	-	Health Care Providers
4535	-	Medical Equipment	4577	-	Pharmaceuticals
5337	-	Food Retailers & Wholesalers	5371	-	Apparel Retailers
5373	-	Broadline Retailers	5375	-	Home Improvement Retailers
5379	-	Specialty Retailers	5553	-	Broadcasting & Entertainment
5555	-	Media Agencies	5557	-	Publishing
5751	-	Airlines	5752	-	Gambling
5753	-	Hotels	5755	-	Recreational Services
5757	-	Restaurants & Bars	5759	-	Travel & Tourism
6535	-	Fixed Line Telecommunications	6575	-	Mobile Telecommunications
7535	-	Conventional Electricity	7537	-	Alternative Electricity
7577	-	Water	8355	-	Banks
8534	-	Insurance Brokers	8536	-	Property & Casualty Insurance
8633	-	Real Estate Holding & Development	8637	-	Real Estate Services
8671	-	Industrial & Office REITs	8674	-	Diversified REITs
8675	-	Specialty REITs	8775	-	Specialty Finance
8777	-	Investment Services	8985	-	Equity Investment Instruments
9533	-	Computer Services	9535	-	Internet
9537	-	Software	9572	-	Computer Hardware
9574	-	Electronic Office Equipment	9578	-	Telecommunications Equipment
12003	-	ETF			





**ATHEXGROUP**  
Όμιλος Χρηματιστηρίου Αθηνών

Λεωφ. Αθηνών 110 104 42 Αθήνα  
110, Athinon Ave. GR 104 42 Athens  
tel. (+30)210-33.66.800, fax (+30)210-33.66.101  
[www.athexgroup.gr](http://www.athexgroup.gr)