



ATHEXGROUP
Athens Exchange Group

Hellenic Exchanges – Athens Stock Exchange S.A.

“

2016

δελτίο ημερησίων συναλλαγών

daily official list

Thursday, 24 November, 2016

Year: 137 Trading Day No: 224

”

Disclaimer:

Hellenic Exchanges-Athens Stock Exchange S.A. endeavours to ensure that the data and other material ("Information") presented on the Daily Official List are accurate and complete, but it is not liable for any errors or omissions of data or /and for the accuracy, credibility, updating and completeness of the aforesaid information nor it has any liability arising directly or indirectly from the use of the above Information.

The Company is not liable for the accuracy of the data included in listed companies' announcements. Only the sender of such an announcement is fully and solely liable for any infringement of third party's rights from the content of such announcement. All contents of the Daily Official List are provided only for information purposes and do not constitute investment advice or solicitation to invest in securities or other products listed for trading on the Exchange.

You acknowledge and agree that the Company is the owner of any property rights related to any Information appearing on the Daily Official List including intellectual property rights copyright, trademarks, etc.

The above data are a property of the Hellenic Exchanges-Athens Exchange and are copyright protected. Users are forbidden to reproduce, modify, copy, sale, transmit or redistribute, by all reproduction means and methods, part or the whole of the above data, without reference to their source.

The commercial exploitation of these data is, also, forbidden by third parties. Hellenic Exchanges-Athens Exchange does not carry any responsibility, direct or indirect, derived from usage or accidental alteration of the above data when used by third parties.

Hellenic Exchanges – Athens Stock Exchange S.A.

110 Athinon Ave., 10442 Athens, Tel: (210) 33.66.800, Fax: (210) 32.13.938

www.helix.gr

Thessalonica Stock Exchange Center (T.S.E.C)

16-18 Katouni Str., Thessalonica 546 25 Tel: (2310) 567.667, Fax: (2310) 530.545

Athex Members Guarantee Fund

14-16 Fidiou Str., Athens 106 78, Tel: (210) 33.04.682, Fax: (210) 33.04.155

Hellenic Republic Capital Market Commission

1 Kolokotroni Str. & 1 Stadiou Str., Athens 10562 Tel: (210) 33.77.100 Fax: (210) 33.77.173

Table of Contents

Section 1: Statistical Figures of Securities, Derivatives and Lending

Summary of Markets

Athex Indices

Analytic Figures for Athex Market's Boards and Categories

Trading Details by Athex Sectors and Financial Instruments (ETFs)

Top 10 best & worst performing Shares

Derivatives Summary

Section 2: Analytic Figures of Shares Transactions

Analytic Figures of Shares Transactions

Shares' Notes

Section 3: Figures of Securities Transactions

Securities Blocks Details

Shares Rights Details

Stock Borrowing

Shares Forced Sales

Forced Sales Registered Shares

Exchange Traded Funds (ETFs) Characteristics

Section 5: Bonds traded in Fixed Income Assets Market

Corporate Bonds

Government Bonds

Treasury Bills & Zero Coupon Government Bonds

Government Bonds Traded with the Open Outcry Method

State Banks Bonds

Section 6: Additional Infos

Athex & ATHEXClear Members List

List of Stocks under Market Making operations

Section 7: Derivatives Market Analytic Figures

Index Futures

Stock Futures

Index Options

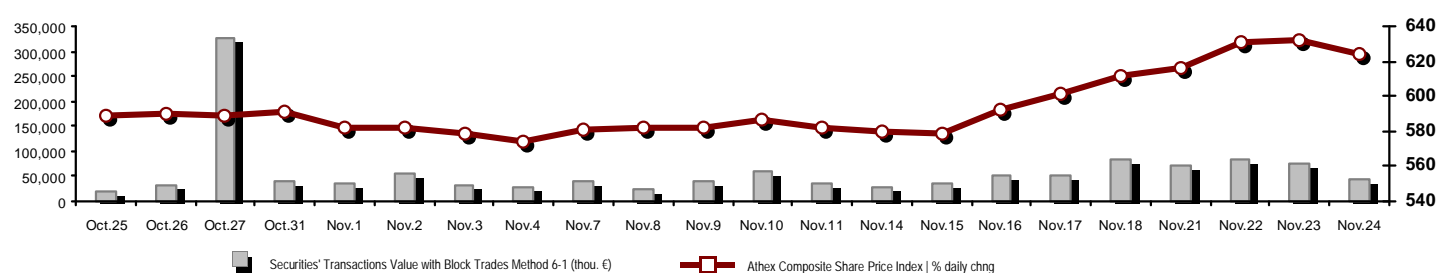
Stock Options

Stock Lending Analytic Figures

Appendix A: Sectors codification for listed companies

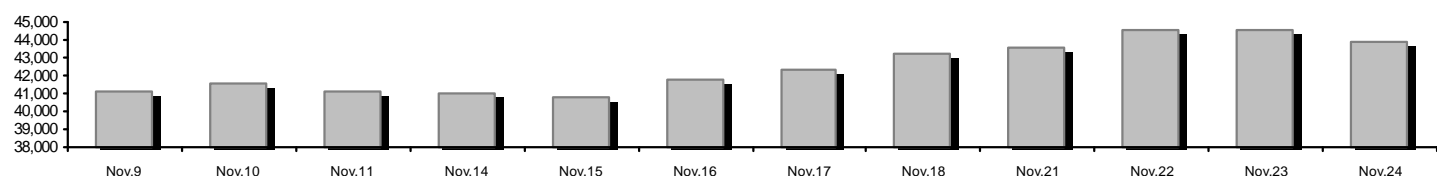
Summary of Markets

Athex Composite Share Price Index vs Shares and Derivatives Transactions Value

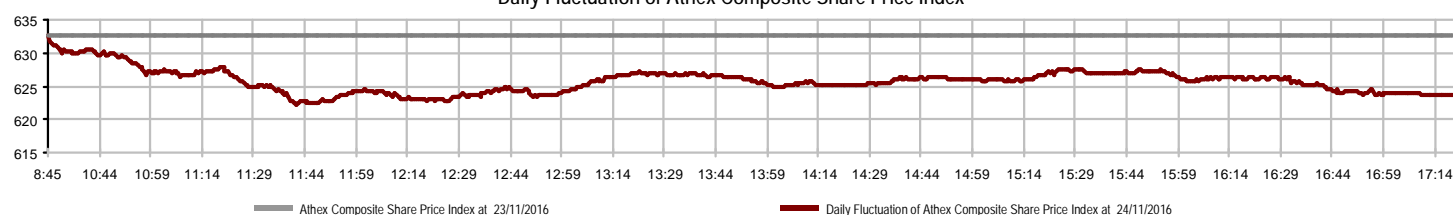


Athex Capitalisation (mill. €) **: 43,940.18	Derivatives Total Open Interest 386,885
Daily change: mill. € % -614.28 -1.38%	in Index Futures % daily chng 9,384 0.32%
Yearly Avg Capitalisation: mill. € % chng prev year Avg 40,819.95 -6.49%	in Stock Futures % daily chng 374,721 3.48%
Athex Composite Share Price Index % daily chng 623.63 -1.41%	in Index Options % daily chng 2,114 3.98%
Athex Composite Share Price Index Capitalisation (mill. €) 39,182.21	in Stock Options % daily chng 666 9.36%
Daily change (mill. €) -591.66	
Securities' Transactions Value with Block Trades Method 6-1 (42,262.60	Derivatives Contracts Volume: 97,747
Daily change: % -34,248.20 -44.76%	Daily change: pieces % 1,152 1.19%
YtD Avg Trans. Value: thou. € % chng prev year Avg 60,268.27 -29.58%	YtD Avg Derivatives Contracts % chng prev year Avg 58,657 -10.73%
Blocks Transactions Value of Method 6-1 (thou. €) 2,450.06	Derivatives Trades Number: 3,014
Blocks Transactions Value of Method 6-2 & 6-3 (thou. €) 985.65	Daily change: number % -191 -5.96%
Bonds Transactions Value (thou.€) 71.04	YtD Avg Derivatives Trades number % chng prev year Avg 2,510 -23.19%
Securities' Transactions Volume with Block Trades Method 6-1 (th 86,856.14	Lending Total Open Interest 901,358
Daily change: thou. pieces % -72,981.83 -45.66%	Daily change: pieces % -72,774 -7.47%
YtD Avg Volume: % chng prev year Avg 96,217.52 -50.04%	Lending Volume (Multilateral/Bilateral) 2,102
Blocks Transactions Volume of Method 6-1 (thou. Pieces) 2,201.61	Daily change: pieces % -173,298 -98.80%
Blocks Transactions Volume of Method 6-2 & 6-3 (thou. Pieces) 2,200.00	Multilateral Lending 102
Bonds Transactions Volume 70,000.00	Bilateral Lending 2,000
Securities' Trades Number with Block Trades Method 6-1 16,563	Lending Trades Number: 3
Daily change: number % -6,681 -28.74%	Daily change: % -11 -78.57%
YtD Avg Derivatives Trades number % chng prev year Avg 18,915 -29.92%	Multilateral Lending Trades Number 2
Number of Blocks Method 6-1 4	Bilateral Lending Trades Number 1
Number of Blocks Method 6-2 & 6-3 4	
Number of Bonds Transactions 6	

Athex Capitalisation (mill. €) **



Daily Fluctuation of Athex Composite Share Price Index



Athex Indices

Index name	24/11/2016	23/11/2016	pts.	%	Min	Max	Year min	Year max	Year change
Athex Composite Share Price Index	623.63	632.52	-8.89	-1.41%	622.20	632.52	420.82	658.99	-1.22%
FTSE/Athex Large Cap	1,682.02	1,715.33	-33.31	-1.94%	1,678.38	1,715.33	1,075.20	1,868.90	-8.26%
FTSE/Athex Mid Cap Index	789.65	786.99	2.66	0.34%	785.12	794.32	515.21	820.16	-3.28%
FTSE/ATHEX-CSE Banking Index	601.75	634.98	-33.23	-5.23%	601.75	634.98	271.40	938.40	-32.54%
FTSE/ATHEX Global Traders Index Plus	1,466.74	1,469.66	-2.92	-0.20%	1,459.48	1,472.32	1,031.55	1,472.80	15.07%
FTSE/ATHEX Global Traders Index	1,610.38	1,618.84	-8.46	-0.52%	1,601.01	1,618.84	1,129.41	1,618.89	12.87%
FTSE/ATHEX Mid & Small Cap Factor-Weighted Ind	1,343.02	1,334.61	8.41	0.63%	1,328.97	1,343.02	1,066.64	1,383.28	6.96%
Greece & Turkey 30 Price Index	421.91	431.35	-9.44	-2.19%	421.83	437.42	396.10	527.12	-9.11%
ATHEX Mid & SmallCap Price Index	2,191.15	2,189.69	1.46	0.07%	2,167.79	2,214.88	1,848.24	2,242.26	0.88%
FTSE/Athex Market Index	413.46	421.37	-7.91	-1.88%	412.52	421.37	265.17	457.53	-8.11%
FTSE Med Index	4,614.23	4,620.16	-5.93	-0.13%			4,380.06	5,530.53	-16.56%
Athex Composite Index Total Return Index	949.49	963.02	-13.53	-1.40%	947.31	963.02	626.16	986.51	1.07%
FTSE/Athex Large Cap Total Return	2,381.94	2,429.11	-47.17	-1.94%			1,574.40	2,572.00	-5.81%
FTSE/ATHEX Large Cap Net Total Return	708.60	722.64	-14.04	-1.94%	707.07	722.64	443.06	773.01	-6.21%
FTSE/Athex Mid Cap Total Return	977.99	974.69	3.30	0.34%			669.55	1,008.35	-2.57%
FTSE/ATHEX-CSE Banking Total Return Index	581.72	613.84	-32.12	-5.23%			318.40	895.04	-33.12%
Greece & Turkey 30 Total Return Index	547.07	551.18	-4.11	-0.75%			0.00	660.49	-4.98%
Hellenic Mid & Small Cap Index	779.14	784.10	-4.96	-0.63%	774.89	784.10	560.15	786.32	8.88%
FTSE/Athex Banks	795.06	838.96	-43.90	-5.23%	795.06	838.96	358.60	1,239.80	-32.53%
FTSE/Athex Financial Services	1,037.18	1,058.70	-21.52	-2.03%	1,030.25	1,058.70	634.69	1,179.09	6.50%
FTSE/Athex Industrial Goods & Services	1,560.33	1,565.31	-4.98	-0.32%	1,543.74	1,573.06	1,369.56	1,844.00	-14.49%
FTSE/Athex Retail	3,018.72	3,039.18	-20.46	-0.67%	2,999.72	3,052.33	1,826.41	3,272.96	19.50%
FTSE/ATHEX Real Estate	2,619.75	2,630.30	-10.55	-0.40%	2,593.78	2,638.71	2,154.15	2,644.45	8.25%
FTSE/Athex Personal & Household Goods	6,862.65	6,803.27	59.38	0.87%	6,721.07	6,879.73	4,433.32	6,879.73	35.54%
FTSE/Athex Food & Beverage	7,437.34	7,445.30	-7.96	-0.11%	7,366.86	7,449.02	5,952.97	7,850.45	0.82%
FTSE/Athex Basic Resources	2,577.93	2,604.32	-26.39	-1.01%	2,555.93	2,626.32	1,200.24	2,648.32	57.70%
FTSE/Athex Construction & Materials	2,213.79	2,238.62	-24.83	-1.11%	2,205.33	2,238.62	1,500.04	2,343.14	17.86%
FTSE/Athex Oil & Gas	2,830.05	2,846.23	-16.18	-0.57%	2,795.61	2,846.23	1,860.37	2,896.19	17.34%
FTSE/Athex Chemicals	9,863.58	9,814.26	49.32	0.50%	9,764.94	10,011.53	6,190.46	10,603.34	44.79%
FTSE/Athex Media	1,789.58	1,643.91	145.67	8.86%	1,643.91	1,789.58	1,290.16	2,247.37	21.13%
FTSE/Athex Travel & Leisure	1,533.91	1,547.07	-13.16	-0.85%	1,525.09	1,547.07	982.74	1,556.21	7.65%
FTSE/Athex Technology	651.09	650.72	0.37	0.06%	635.38	655.79	489.05	659.86	13.82%
FTSE/Athex Telecommunications	2,334.18	2,356.20	-22.02	-0.93%	2,317.66	2,364.46	1,802.93	2,669.99	-8.22%
FTSE/Athex Utilities	1,588.26	1,612.05	-23.79	-1.48%	1,578.10	1,613.36	1,136.34	1,734.68	-5.21%
Athex All Share Index	155.03	157.20	-2.17	-1.38%	155.03	155.03	113.39	165.22	-5.71%
Hellenic Corporate Bond Index	108.45	108.46	-0.01	-0.01%			96.90	108.61	7.93%
Hellenic Corporate Bond Price Index	97.38	97.40	-0.02	-0.02%			90.43	97.75	2.77%

Note 1: FTSE/Med 100, Greece & Turkey 30 Rt., Hellenic Corporate Bond Price Index and Hellenic Corporate Bond Index closing prices refer to the previous trading day of 22/11/2016.

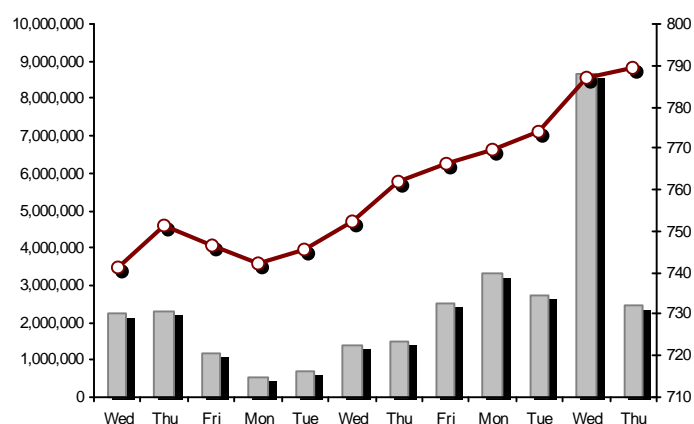
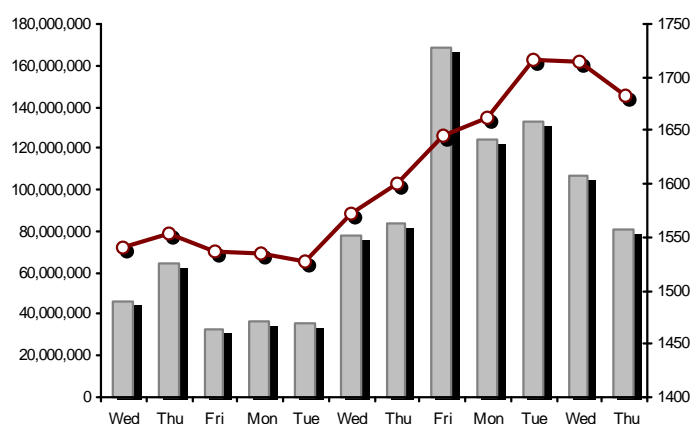
Note 2: The Hellenic Mid & Small Cap Index is a Customized index calculated by the Athens Exchange.

Athex Indices

FTSE/Large Cap

24/11/2016: -1.94% FTSE/Athex Mid Cap Index

24/11/2016: 0.34%

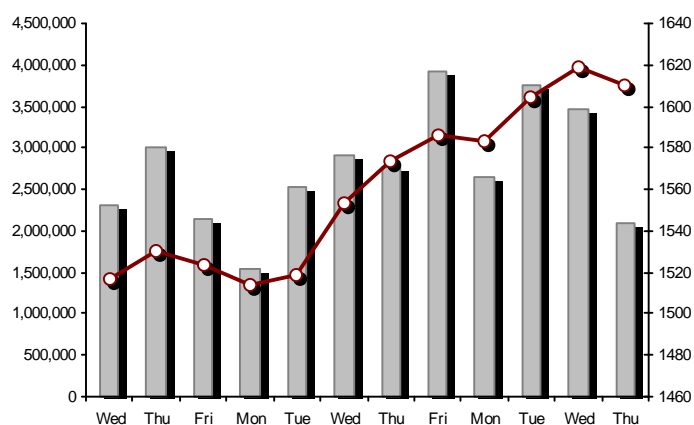
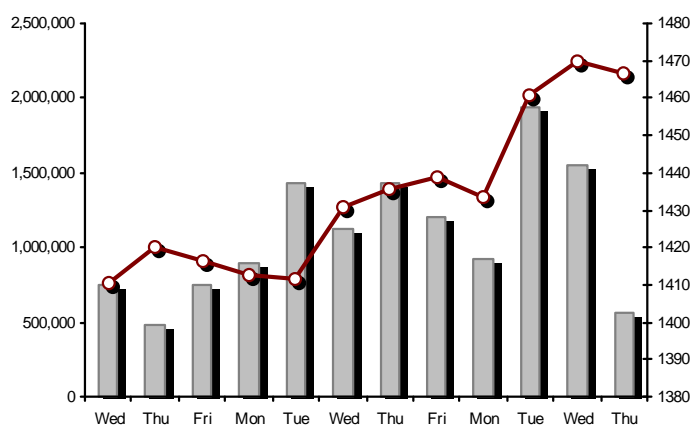


FTSE/ATHEX Global Traders Index Plus

24/11/2016: -0.20%

FTSE/ATHEX Global Traders Index

24/11/2016: -0.52%

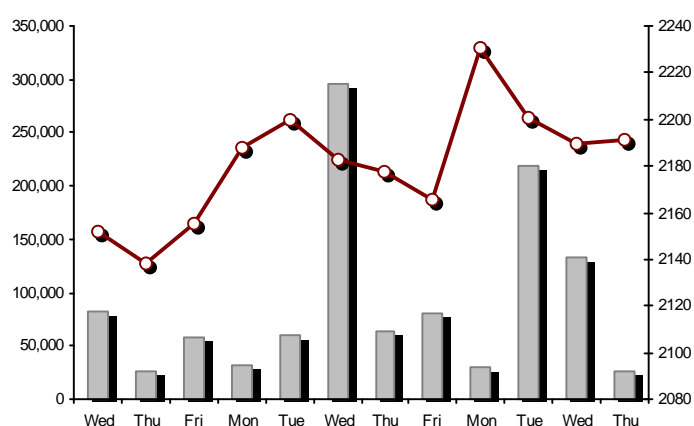
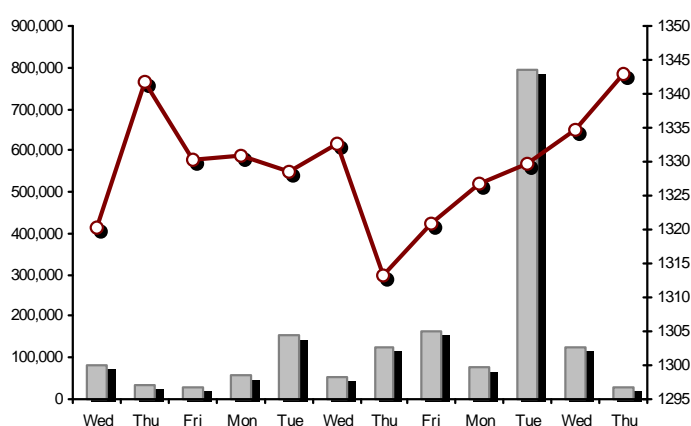


FTSE/ATHEX Mid & Small Cap Factor-Weighted Index

24/11/2016: 0.63%

ATHEX Mid & SmallCap Price Index

24/11/2016: 0.07%



Indices volume of transactions

Indices closing prices

Analytic Figures for Athex Market's Boards and Categories

	Total Traded Securities	Main Market	Low Dispersion	Other Categories (*)	Exchange Traded Funds (ETFs)	Warrants
Totals	118	92	5	15	3	3
Gain / Lose / Same:	31 / 65 / 22	27 / 51 / 14	0 / 3 / 2	4 / 7 / 4	0 / 3 / 0	0 / 1 / 2
Athex Capitalisation (mill. €) **	43,940.18	40,893.37	2,931.26	115.56		
Daily Average Trans/ons Value(thou.€)	60,268.27	58,813.23	1,466.18	9.71	15.14	10.39
Transactions Value	43,248.25	43,015.97	39.41	16.01	168.32	8.53
Main Board:	39,812.54	39,580.27	39.41	16.01	168.32	8.53
Blocks Board 6_2_3:	3,435.71	3,435.71	0.00	0.00	0.00	0.00
Forced Sales Board:	0.00	0.00	0.00	0.00	0.00	0.00
Special Terms Board:	0.00	0.00	0.00	0.00	0.00	0.00
Daily Average Transactions Volume	96,217,520	91,278,747	345,135	90,056	6,280	4,585,193
Transactions Volume	89,056,135	87,556,788	8,998	73,434	11,999	1,404,916
Main Board:	84,654,526	83,155,179	8,998	73,434	11,999	1,404,916
Blocks Board 6_2_3:	4,401,609	4,401,609	0	0	0	0
Forced Sales Board:	0	0	0	0	0	0
Special Terms Board:	0	0	0	0	0	0
Daily Average Number of Trades	18,915	18,767	37	52	4	55
Number of Trades	16,567	16,385	41	72	8	61
Main Board:	16,559	16,377	41	72	8	61
Blocks Board 6_2_3:	8	8	0	0	0	0
Forced Sales Board:	0	0	0	0	0	0
Special Terms Board:	0	0	0	0	0	0

(*) Summarised Transactions figures for Under Deletion and Under Supervision Categories.(**) The Market Capitalization of the Companies that belong in the Under Supervision Status is not included.

Trading Details by Athex Sectors and Financial Instruments (ETFs)

Code	Sectors	Gain / Lose / Same	Number of Trades	Transactions Volume	Transactions Value	% of Total Trans. Value
8300	- Banks	0 / 7 / 3	9,212	83,661,290	26,640,347.95	61.60%
1700	- Basic Resources	3 / 4 / 1	391	139,916	598,639.22	1.38%
1300	- Chemicals	2 / 1 / 0	65	17,905	38,284.05	0.09%
2300	- Construction & Materials	4 / 7 / 3	1,458	920,913	2,673,924.62	6.18%
12000	- Financial Instruments	0 / 3 / 0	8	11,999	168,320.73	0.39%
8700	- Financial Services	0 / 2 / 0	789	2,313,201	813,760.43	1.88%
3500	- Food & Beverage	5 / 5 / 0	164	101,927	105,054.80	0.24%
4500	- Health Care	2 / 1 / 2	33	59,100	13,786.27	0.03%
2700	- Industrial Goods & Services	4 / 7 / 4	393	193,171	421,059.97	0.97%
8500	- Insurance	0 / 0 / 1	9	593	1,146.21	0.00%
5500	- Media	1 / 1 / 0	11	236	18.90	0.00%
500	- Oil & Gas	0 / 2 / 0	405	205,577	1,751,353.51	4.05%
3700	- Personal & Household Goods	4 / 5 / 1	741	215,281	1,852,553.64	4.28%
8600	- Real Estate	1 / 5 / 1	116	20,808	92,511.94	0.21%
5300	- Retail	0 / 3 / 0	200	28,736	475,063.20	1.10%
9500	- Technology	2 / 5 / 1	251	86,967	164,265.82	0.38%
6500	- Telecommunications	0 / 1 / 0	756	372,701	3,171,107.30	7.33%
5700	- Travel & Leisure	1 / 3 / 5	706	400,224	3,287,622.52	7.60%
7500	- Utilities	2 / 3 / 0	859	305,590	979,427.37	2.26%

Top 10 best & worst performing Shares

Main Market					
With positive Price change	Closing price	change	With negative Price change	Closing price	change
NIREFS SA (CR)	0.179	4.07% #	ELLAKTOR (CR)	1.11	-7.50% €
FOURLIS (CR)	4.17	2.46% #	PIRAEUS BANK (CR)	0.196	-5.77% €
PLAISIO COMPUTERS SA (CR)	4.01	2.30% #	EUROBANK ERGASIAS (CR)	0.673	-5.61% €
CRETE PLASTICS SA (CR)	5.12	1.39% #	NATIONAL BANK (CR)	0.216	-5.26% €
JUMBO SA (CR)	13.21	0.84% #	ALPHA BANK (CR)	1.79	-4.79% €
THRACE PLASTICS SA (CR)	2.00	0.50% #	ATTICA BANK S.A. (CR)	0.064	-4.48% €
GR. SARANTIS SA (CR)	10.64	0.38% #	HELLENIC CABLES SA (CR)	1.19	-3.25% €
EYDAP S.A. (CR)	5.40	0.37% #	PPC (CR)	3.13	-2.80% €
GRIVALIA PROPERTIES (CR)	7.60	0.13% #	AEGEAN AIRLINES (CR)	6.12	-2.70% €
			MARFIN INVESTMENT GROUP (CR)	0.136	-2.16% €
With the highest Transactions Value	Value (thou. €)	change	With the highest Transactions Volume	Volume	change
NATIONAL BANK (CR)	10,512.03	-5.26% €	NATIONAL BANK (CR)	47,523,943	-5.26% €
ALPHA BANK (CR)	7,450.10	-4.79% €	PIRAEUS BANK (CR)	20,887,058	-5.77% €
PIRAEUS BANK (CR)	4,185.77	-5.77% €	EUROBANK ERGASIAS (CR)	5,832,689	-5.61% €
EUROBANK ERGASIAS (CR)	4,029.92	-5.61% €	ALPHA BANK (CR)	4,106,119	-4.79% €
OTE (CR)	3,171.11	-0.93% €	MARFIN INVESTMENT GROUP (CR)	2,208,684	-2.16% €
OPAP (CR)	3,003.48	-0.67% €	BANK OF CYPRUS (CR)	2,197,885	0.00% -
TITAN CEMENT (CR)	1,675.44	-0.09% €	ATTICA BANK S.A. (CR)	1,703,036	-4.48% €
JUMBO SA (CR)	1,353.82	0.84% #	ELLAKTOR (CR)	757,380	-7.50% €
MOTOR OIL (CR)	1,323.80	-0.41% €	OTE (CR)	372,701	-0.93% €
ELLAKTOR (CR)	852.60	-7.50% €	OPAP (CR)	339,822	-0.67% €

Note: Stocks that are not included in the "Low Dispersion" and "Under Supervision" categories, and the transactions value is more than 10,000 €.

Derivatives Summary

	Number of Trades	Volume	Open Interest
Index Futures	277	1,074	9,384
FTSE/Athex Large Cap	277	1,074	9,384
Stock Futures	2,700	96,476	374,721
ALPHA BANK (CR)	328	4,821	18,099
CC HBC AG (CR)	0	0	154
CORINTH PIPEWORKS (CR)	2	8	811
ELLAKTOR (CR)	76	416	3,802
EUROBANK ERGASIAS (CR)	520	10,376	30,553
EYDAP S.A. (CR)	7	13	303
FOLLI FOLLIE (CR)	7	19	495
GEK TERNA (CR)	6	16	8,196
GRIVALIA PROPERTIES (CR)	0	0	49
HELLENIC EXCHANGES-A.S.E. (CR)	21	65	370
HELLENIC PETROLEUM (CR)	25	108	3,834
INTRALOT (CR)	2	2	1,133
JUMBO SA (CR)	28	67	294
MARFIN INVESTMENT GROUP (CR)	139	3,490	51,112
METKA (CR)	7	18	620
MOTOR OIL (CR)	8	24	351
MYTILINEOS HOLDINGS (CR)	119	411	8,397
NATIONAL BANK (CR)	552	33,531	118,614
OPAP (CR)	27	102	1,996
OTE (CR)	123	543	8,244
P.P.A. S.A. (CR)	1	4	662
PIRAEUS BANK (CR)	549	41,700	104,717
PPC (CR)	142	720	7,813
TERNA ENERGY (CR)	0	0	1,241
TITAN CEMENT (CR)	5	6	130
VIOHALCO SA/NV (CB)	6	16	2,731
Index Options	32	140	2,114
FTSE/Athex Large Cap	32	140	2,114
Stock Options	5	57	666
ALPHA BANK (CR)	0	0	50
NATIONAL BANK (CR)	2	10	10
OPAP (CR)	0	0	274
OTE (CR)	3	47	297
PIRAEUS BANK (CR)	0	0	0
PPC (CR)	0	0	35
Total Derivatives Traded	3,014	97,747	386,885

Number of Outstanding Securities	Nominal Value	Dividends [1]			Date of Last Coupon		Note	Shares	Closing price	% change	Previous closing price/date	Open price	Price min	Price max	Last price	Avg price	Last Bid [7]	Last Ask [7]	P/E after	Year	Volume	Trades	Transactions Value[8]	Company Mkt Value (thou. €)	Year low	Year high	Sector[4]
		2013	2014	2015	Dividend [2]	Right																					

Warrants

1,141,734,167	---	---	---	11/06/2013	---	ALPHA BANK (W)	0.002	---	0.002	23/11/2016	0.002	0.001	0.002	0.002	0.002	1038917@0.001	27920886@0.002	---	2015	514,676	16	1,006.76	2,751,017.35	0.001	0.004	8355
245,745,725	---	---	---	27/06/2013	---	NATIONAL BANK (W)	0.008	-20.00	0.010	23/11/2016	0.010	0.007	0.010	0.008	0.008	16292@0.007	10462@0.008	---	2015	889,888	42	7,527.29	1,975,784.73	0.002	0.025	8355
843,637,022	---	---	---	03/07/2013	---	PIRAEUS BANK (W)	0.001	---	0.001	23/11/2016	0.001	0.001	0.001	0.001	0.001	---	17705299@0.001	---	2015	352	3	0.35	1,711,703.92	0.001	0.002	8355

Main Market

71,417,100	0.650	---	0.7	0.7	13/05/2016	27/06/2014	---	AEGEAN AIRLINES (CR)	6.12	-2.70	6.29	23/11/2016	6.24	6.12	6.25	6.12	6.19	869@6.11	500@6.15	8.06	2015	37,105	174	229,648.86	437,072.65	5.84	9.06	5751
11,178,000	1.12	---	---	---	21/04/2010	15/12/2014	---	AEOLIAN INVESTMENT FUND (CR)	0.510	---	0.510	23/11/2016	---	---	---	---	1000@0.498	475@0.547	---	2015	---	---	---	5,700.78	0.384	0.701	8985	
1,536,881,200	0.300	---	---	---	07/04/2008	27/11/2015	---	ALPHA BANK (CR)	1.79	-4.79	1.88	23/11/2016	1.87	1.79	1.87	1.79	1.81	56685@1.78	32306@1.79	---	2015	4,106,119	1,378	7,450,097.72	2,751,017.35	0.949	2.75	8355
22,016,250	0.370	---	---	---	15/07/2009	11/05/2000	---	ALUMIL (CR)	0.218	---	0.218	23/11/2016	0.218	0.218	0.218	0.218	60@0.210	42341@0.218	---	2015	110	1	23.98	4,799.54	0.101	0.290	1753	
417,608	16.00	0.8	---	---	29/04/2014	05/03/2013	---	ANDROMEDA SA (CR)	14.00	---	14.00	23/11/2016	---	---	---	---	403@13.40	---	---	2015	---	---	---	5,846.51	11.53	14.00	8985	
13,126,020	0.650	---	---	---	08/07/2010	12/10/2016	---	AS COMPANY SA (CR)	0.680	-0.58	0.684	23/11/2016	0.679	0.679	0.680	0.680	100@0.661	500@0.688	5.79	2015	2,000	2	1,359.00	8,925.69	0.580	0.796	5379	
86,735,980	0.310	---	---	---	06/07/2009	02/01/2002	---	ATHENS MEDICAL CENTER SA (CR)	0.659	9.83	0.600	23/11/2016	0.659	0.659	0.659	0.659	300@0.540	664@0.659	---	2015	35	2	23.07	57,159.01	0.539	0.780	4533	
2,339,353,394	0.300	---	---	---	04/06/2008	01/12/2015	---	ATTICA BANK S.A. (CR)	0.064	-4.48	0.067	23/11/2016	0.067	0.064	0.067	0.064	0.065108067@0.063	147506@0.065	---	2015	1,703,036	207	110,842.78	149,718.62	0.037	0.279	8355	
15,300,000	0.300	---	---	---	30/07/2009	13/12/1999	---	ATTICA PUBLICATIONS SA (CR)	0.748	---	0.748	23/11/2016	---	---	---	---	---	945@0.747	---	2015	---	---	---	11,444.40	0.564	1.21	5557	
48,184,910	0.700	---	---	---	01/07/2008	01/03/2010	---	AUDIO VISUAL ENTERPRISES (CR)	0.086	8.86	0.079	23/11/2016	0.086	0.086	0.086	0.086	325@0.072	3645@0.086	---	2015	10	1	0.86	4,143.90	0.028	0.108	5553	
12,213,750	0.320	---	0.8	0.85	07/06/2016	22/11/2013	---	AUTOHELLAS SA (CR)	12.88	---	12.88	23/11/2016	12.60	12.60	12.88	12.88	12.80	425@12.50	86@12.88	10.29	2015	90	2	1,151.92	157,313.10	9.51	13.00	5759
8,922,944,533	0.100	---	---	---	31/05/2011	02/02/2015	4857	BANK OF CYPRUS (CR)	0.129	---	0.129	23/11/2016	0.131	0.128	0.131	0.129	0.12982696@0.128	5869@0.129	---	2015	2,197,885	97	284,578.72	1,151,059.84	0.121	0.174	8355	
19,864,886	5.60	0.672	0.672	0.672	03/03/2016	02/07/2008	---	BANK OF GREECE (CR)	10.30	-2.09	10.52	23/11/2016	10.49	10.15	10.70	10.30	10.38	99@10.23	20@10.39	---	---	5,644	97	58,583.30	204,608.33	8.70	11.11	8355
23,986,500	1.05	---	---	---	26/06/2009	15/03/2000	---	BIOKARPET S.A.(CR)	0.290	---	0.290	23/11/2016	---	---	---	---	---	400@0.295	---	2015	---	---	---	6,956.09	0.139	0.459	3726	
15,842,391	1.51	---	---	---	15/07/2009	12/05/2000	---	BITROS HOLDING SA (CR)	0.194	---	0.194	23/11/2016	---	---	---	---	414@0.176	312@0.194	---	2015	---	---	---	3,073.42	0.125	0.227	1757	
15,816,009	0.300	---	---	---	01/07/2009	17/07/2000	---	BYTE COMPUTER SA (CR)	0.310	---	0.310	23/11/2016	---	---	---	---	100@0.300	100@0.315	---	2015	---	---	---	4,902.96	0.256	0.322	9533	
365,203,298	6.70	0.354	0.36	0.4	30/06/2016	29/04/2013	---	CC HBC AG (CR)	19.96	-0.10	19.98	23/11/2016	19.77	19.77	19.99	19.96	19.86	3000@19.92	481@19.99	---	---	3,972	35	78,865.89	7,289,457.83	15.97	21.07	3537
101,123,806	0.360	---	---	---	22/07/2010	28/06/2011	---	CENTRIC HOLDINGS (CR)	0.102	2.00	0.100	23/11/2016	0.102	0.102	0.102	0.102	0.10010000@0.095	10000@0.100	---	2015	1	1	0.10	10,314.63	0.067	0.147	5752	
124,170,201	0.780	---	---	---	28/06/2002	07/02/2005	---	CORINTH PIPEWORKS (CR)	0.623	0.16	0.622	23/11/2016	0.620	0.615	0.623	0.623	0.620	5565@0.615	4165@0.623	24.08	2015	12,498	26	7,751.07	77,358.04	0.522	1.03	1757
9,907,500	0.300	---	---	---	06/10/2005	13/02/2002	---	CPI SA (CR)	0.188	---	0.188	23/11/2016	---	---	---	---	200@0.170	---	22.50	2016	---	---	---	1,862.61	0.092	0.196	9572	
41,068,800	0.420	(0.0667)	(0.03)	0.1205	19/08/2016	17/02/2016	---	CRETE PLASTICS SA (CR)	5.12	1.39	5.05	23/11/2016	5.05	5.00	5.12	5.12	5.07	70@5.00	350@5.10	17.18	2015	2,441	8	12,382.10	210,272.26	3.19	5.30	1357
15,000,000	0.300	---	---	---	06/07/2007	18/07/2000	---	DAIOS PLASTICS SA (CR)	2.90	---	2.90	23/11/2016	---	---	---	---	---	200@2.90	---	2015	---	---	---	43,500.00	2.45	2.95	1357	
34,720,000	0.310	---	---	---	16/06/2010	01/08/2007	---	DROMEAS SA (CR)	0.097	-9.35	0.107	23/11/2016	0.098	0.097	0.098	0.097	0.098	5@0.110	2160@0.108	---	2015	2,000	2	195.25	3,367.84	0.066	0.152	3726
3,873,120	0.300	---	---	---	07/07/2008	04/10/2012	---	DRUCKFARBEN HELLAS (CR)	0.420	---	0.420	23/11/2016	---	---	---	---	1500@0.420	---	0.67	2015	---	---	---	1,626.71	0.360	0.550	1357	
11,250,000	0.520	---	---	0.04	25/07/2016	09/11/2015	---	EKTER SA (CR)	0.490	2.08	0.480	23/11/2016	0.450	0.450	0.490	0.490	0.453	850@0.448	305@0.490	15.47	2015	1,075	3	486.75	5,512.50	0.301	0.509	2357
32,188,050	1.04	---	---	---	21/07/2008	20/01/2000	---	EL. D. MOUZAKIS SA (CB)	0.126	-5.97	0.134	23/11/2016	0.121	0.121	0.146	0.126	0.127	2494@0.123	460@0.147	---	2015	3,663	27	466.72	4,055.69	0.084	0.215	3763
18,421,516	1.00	---	---	---	07/07/2009	10/09/2010	---	ELASTRON (CR)	0.700	-2.78	0.720	23/11/2016	0.670	0.650	0.715	0.700	0.656	50@0.670	1440@0.700	---	2015	7,654	12	5,020.25	12,895.06	0.310	0.850	1757
31,734,530	1.60	---	---	---	09/07/2007	19/07/2006	---	ELGEKA SA (CR)	0.150	---	0.150	23/11/2016	---	---	---	---	250@0.137	600@0.155	---	2015	---	---	---	4,760.18	0.118	0.210	3577	
23,828,130	0.500	---	---	0.16	08/06/2016	17/02/2009	---	ELINOIL S.A. (CR)	0.923	---	0.923	23/11/2016	---	---	---	---	190@0.750	190@0.920	8.09	2015	---	---	---	21,993.36	0.634	1.25	537	
177,001,313	1.03	---	---	---	05/07/2011	20/12/2007	---	ELLAKTOR (CR)	1.11	-7.50	1.20	23/11/2016	1.17	1.11	1.17	1.11	1.13	54260@1.10	13012@1.13	---	2015	757,380	735	852,596.99	196,471.46	0.857	1.59	2357
82,667,000	0.300	---	---	---	22/07/2014	---	---	ELTECH ANEMOS S.A. (CR)	0.844	-0.12	0.845	23/11/2016	0.832	0.827	0.845	0.844	0.832	2000@0.831	497@0.843	9.08	2015	30,195	32	25,114.95	69,770.95	0.533	0.846	7537
26,730,187	0.600	0.05	---	---	23/06/2014	30/12/2010	---	ELTON SA (CR)	0.892	-0.67	0.898	23/11/2016	0.860	0.860	0.900	0.892	0.863	1000@0.851	897@0.890	15.92	2015	4,418	14	3,811.34	23,843.33	0.802	1.00	1353
14,050,971	0.340	---	---	---	06/07/2011	17/10/2002	---	ELTRAK SA (CR)	1.27	---	1.27	23/11/2016	---	---	---	---	---	150@1.35	25.24	2015	---	---	---	17,844.73	0.990	1.45	2753	

Number of Outstanding Securities	Nominal Value	Dividends [1]			Date of Last Coupon Dividend [2]		Note	Shares	Closing price	% change	Previous closing price/date	Open price	Price min	Price max	Last price	Avg price	Last Bid [7]	Last Ask [7]	P/E after	Year	Volume	Trades	Transactions Value[8]	Company Mkt Value (thou. €)	Year low	Year high	Sector[4]
----------------------------------	---------------	---------------	--	--	----------------------------------	--	------	--------	---------------	----------	-----------------------------	------------	-----------	-----------	------------	-----------	--------------	--------------	-----------	------	--------	--------	-----------------------	-----------------------------	----------	-----------	------------

Main Market

3,307,500	0.960	---	---	---	11/08/2010	23/09/2016	---	ELVE SA (CR)	2.05	---	↘	2.05	23/11/2016	---	---	---	---	300@1.92	147@2.03	16.34	2015	---	---	---	6,780.38	1.31	2.10	3763	
2,185,998,765	0.300	---	---	---	02/05/2008	27/11/2015	---	EUROBANK ERGASIAS (CR)	0.673	-5.61	€	0.713	23/11/2016	0.706	0.673	0.712	0.673	0.691 21950@0.672	111840@0.679	---	2015	5,832,689	2,466	4,029,915.02	1,471,177.17	0.241	1.17	8355	
8,623,225	0.600	---	---	---	02/06/2010	30/05/2016	5031	EUROCONSULTANTS S.A. (CR)	0.610	2.52	#	0.595	23/11/2016	0.579	0.579	0.610	0.610	0.580 114@0.544	370@0.630	---	2015	201	4	116.66	5,260.17	0.504	1.82	2791	
27,503,677	0.630	---	---	0.06	22/06/2016	18/10/1999	---	EUROPEAN RELIANCE INSUR. (CR)	1.96	---	↘	1.96	23/11/2016	1.97	1.91	1.97	1.96	1.93 7@1.91	19@1.96	4.89	2015	593	9	1,146.21	53,907.21	1.21	2.10	8536	
13,673,200	0.880	---	---	---	18/07/2008	26/07/2001	---	EVROFARMA SA (CR)	0.180	---	↘	0.180	23/11/2016	---	---	---	---	500@0.172	1000@0.234	10.84	2015	---	---	---	2,461.18	0.120	0.320	3577	
106,500,000	0.600	0.36	0.2	0.31	28/06/2016	28/01/2000	---	EYDAP S.A. (CR)	5.40	0.37	#	5.38	23/11/2016	5.35	5.31	5.42	5.40	5.36 1932@5.36	399@5.40	13.16	2015	38,914	241	208,637.97	575,100.00	3.60	6.10	7577	
52,800,154	0.300	0.2	---	---	20/08/2014	21/06/2004	---	F.G. EUROPE S.A. (CR)	0.594	---	↘	0.594	23/11/2016	---	---	---	---	200@0.535	1000@0.575	26.25	2015	---	---	---	31,363.29	0.441	0.700	3722	
10,203,575	0.730	---	---	---	16/07/2007	18/10/1999	---	FIERATEX SA (CR)	0.144	-10.00	€	0.160	23/11/2016	0.144	0.144	0.144	0.144	0.143	---	830@0.144	---	2015	3	1	0.43	1,469.31	0.039	0.205	3763
11,720,024	0.540	0.0394	---	---	21/08/2014	04/11/2015	---	FLEXOPACK SA (CR)	2.74	---	↘	2.74	23/11/2016	---	---	---	---	284@2.76	590@2.95	7.29	2015	---	---	---	32,112.87	2.10	3.08	2723	
4,181,450	0.500	---	---	---	21/08/2000	05/03/2002	---	FLOUR MILLS SARANTOPOULOS SA	0.630	---	↘	0.630	23/11/2016	---	---	---	---	---	---	---	2015	---	---	---	2,634.31	0.362	1.01	3577	
66,948,210	0.300	---	0.1005	---	22/09/2015	22/09/2015	---	FOLLI FOLLIE (CR)	20.66	-0.67	€	20.80	23/11/2016	20.89	20.53	20.89	20.66	20.69 2@20.64	1500@20.77	---	2015	22,836	190	472,366.70	1,383,150.02	12.50	22.40	5379	
50,992,322	1.07	---	---	---	21/06/2010	16/07/2002	---	FOURLIS (CR)	4.17	2.46	#	4.07	23/11/2016	4.07	4.05	4.19	4.17	4.12 4255@4.10	577@4.17	---	2015	93,096	149	383,123.37	212,637.98	2.00	4.19	3722	
14,076,360	0.370	---	---	---	19/08/2008	22/07/2003	---	GALAXIDI S.A. (CR)	0.398	---	↘	0.398	23/11/2016	---	---	---	---	---	3000@0.359	38.96	2015	---	---	---	5,602.39	0.163	0.570	3573	
103,423,291	0.570	---	---	---	01/08/2011	19/04/2016	---	GEK TERNA (CR)	2.26	-1.31	€	2.29	23/11/2016	2.27	2.22	2.29	2.26	2.25 2000@2.25	5486@2.26	14.19	2015	45,822	99	103,146.44	233,736.64	1.05	2.32	2357	
8,418,750	0.300	---	---	0.12	16/12/2015	27/06/2012	---	GEKE SA (CB)	5.01	---	↘	5.01	23/11/2016	---	---	---	---	70@4.51	120@5.50	16.60	2015	---	---	---	42,177.94	3.90	5.60	5753	
24,060,000	0.300	0.017	0.02	0.01	11/07/2016	11/07/2016	---	GEN. COMMERCIAL & IND.SA (CR)	0.358	2.58	#	0.349	23/11/2016	0.358	0.358	0.358	0.358	0.358 554@0.331	2000@0.355	15.06	2015	90	2	32.22	8,613.48	0.253	0.394	2797	
34,770,982	1.55	0.3	0.15	0.16	20/04/2016	27/07/2000	---	GR. SARANTIS SA (CR)	10.64	0.38	#	10.60	23/11/2016	10.83	10.60	10.83	10.64	10.71 50@10.51	4999@10.60	33.53	2015	10,332	162	110,626.88	369,963.25	6.56	10.89	3767	
101,260,000	2.13	0.1821	0.3037	0.3134	18/03/2016	08/01/2014	---	GRIVALIA PROPERTIES (CR)	7.60	0.13	#	7.59	23/11/2016	7.59	7.50	7.60	7.60	7.58 1371@7.59	974@7.60	14.28	2015	4,001	27	30,309.41	769,576.00	6.46	7.74	8675	
8,340,750	1.18	---	---	---	25/06/2009	09/09/2015	---	HAIDEMENOS SA (CR)	0.267	---	↘	0.267	23/11/2016	---	---	---	---	600@0.187	1000@0.340	---	2015	---	---	---	2,226.98	0.240	1.04	2791	
101,279,627	0.380	---	---	---	26/06/2008	14/07/2006	---	HALKOR SA (CB)	0.364	-1.62	€	0.370	23/11/2016	0.353	0.353	0.375	0.364	0.358 90@0.359	1720@0.367	---	2015	10,880	21	3,900.22	36,865.78	0.193	0.425	1755	
29,546,360	0.710	---	---	---	20/06/2008	23/08/2000	---	HELLENIC CABLES SA (CR)	1.19	-3.25	€	1.23	23/11/2016	1.21	1.19	1.21	1.19	1.20 6500@1.18	2200@1.21	---	2015	18,880	27	22,634.70	35,160.17	0.530	1.31	2733	
65,368,563	1.08	---	0.21	0.1026	31/05/2016	04/07/2016	---	HELLENIC EXCHANGES-A.S.E. (CR)	4.89	-2.00	€	4.99	23/11/2016	4.98	4.84	4.98	4.89	4.87 2040@4.85	284@4.89	24.82	2015	104,517	241	508,999.29	319,652.27	3.40	5.56	8777	
305,635,185	2.18	---	---	---	31/12/2014	01/10/2003	4795	HELLENIC PETROLEUM (CR)	4.49	-0.88	€	4.53	23/11/2016	4.53	4.48	4.57	4.49	4.51 14555@4.49	270@4.53	49.83	2015	94,793	241	427,556.87	1,372,301.98	2.74	4.68	537	
305,732,436	0.410	---	---	---	08/07/2009	28/09/2011	---	HYGEIA SA (CR)	0.150	-3.23	€	0.155	23/11/2016	0.151	0.148	0.154	0.150	0.150 3236@0.150	5500@0.154	---	2015	25,014	18	3,758.95	45,859.87	0.078	0.197	4533	
65,441,118	0.440	---	---	---	24/11/2014	11/08/2015	---	IASO SA (CR)	0.470	2.17	#	0.460	23/11/2016	0.497	0.469	0.497	0.469	0.471 1239@0.441	201@0.469	---	2015	2,001	5	943.30	30,757.33	0.360	0.669	4533	
8,298,467	0.400	---	---	---	30/08/1993	08/05/2013	---	IDEAL GROUP SA (CR)	0.800	---	↘	0.800	23/11/2016	0.800	0.800	0.800	0.800	0.800 1100@0.800	112@0.880	-(6)-	2015	100	1	80.00	6,638.77	0.568	0.959	9574	
28,580,100	0.400	0.025	---	---	18/08/2014	04/07/2016	---	IKTINOS HELLAS SA (CR)	0.854	0.47	#	0.850	23/11/2016	0.812	0.812	0.860	0.854	0.830 500@0.813	500@0.813	23.50	2015	1,391	18	1,155.08	24,407.41	0.811	1.15	2353	
9,090,000	0.900	---	---	---	15/05/2009	13/10/2014	---	ILYDA S.A. (CR)	0.437	---	↘	0.437	23/11/2016	---	---	---	---	---	3042@0.437	---	2015	---	---	---	3,972.33	0.397	0.590	9537	
20,578,374	0.620	---	0.4	0.07	05/07/2016	18/05/2015	---	INFORM P. LYKOS SA (CR)	0.490	8.65	#	0.451	23/11/2016	0.484	0.484	0.490	0.490	0.488 100@0.452	5000@0.480	---	2015	1,310	3	638.84	10,083.40	0.364	0.620	2791	
10,500,000	4.00	---	---	---	---	02/08/2016	---	INTERCONTINENTAL (CR)	5.59	---	↘	5.59	23/11/2016	---	---	---	---	---	810@5.59	---	---	---	---	---	58,695.00	5.15	5.80	8674	
11,233,200	0.730	---	---	---	12/07/2010	30/07/1999	---	INTERTECH SA (CR)	0.189	---	↘	0.189	23/11/2016	---	---	---	---	---	640@0.171	200@0.190	---	2015	---	---	---	2,123.07	0.120	0.376	9572
34,986,430	0.440	---	---	---	25/07/2008	23/02/2010	---	INTERWOOD-XYLEMPORIA (CR)	0.065	---	↘	0.065	23/11/2016	---	---	---	---	---	5000@0.061	---	---	2015	---	---	---	2,630.91	0.061	0.093	2353
2,566,836	0.440	---	---	---	13/08/2010	09/01/2007	---	INTERWOOD-XYLEMPORIA (PR)	0.139	---	↘	0.139	23/11/2016	---	---	---	---	---	68@0.129	---	2015	---	---	---	2,630.91	0.139	0.189	2353	
23,154,250	1.36	---	---	---	12/08/2008	02/08/2010	---	INTRACOM CONSTR. (CR)	0.448	2.05	#	0.439	23/11/2016	0.469	0.410	0.469	0.448	0.439 100@0.403	54@0.448	---	2015	476	11	209.02	10,373.10	0.222	0.599	2357	
133,025,996	1.41	---	---	---	03/07/2007	07/01/2002	---	INTRACOM HOLDINGS (CR)	0.324	-1.82	€	0.330	23/11/2016	0.323	0.316	0.327	0.324	0.322 200@0.323	322@0.324	---	2015	27,682	51	8,909.11	43,100.42	0.245	0.394	9578	
158,961,721	0.300	---	---	---	30/05/2013	14/11/2007	---	INTRALOT (CR)	1.08	---	↘	1.08	23/11/2016	1.06	1.05	1.08	1.07	1.07 1421@1.07	1950@1.08	---	2015	13,202	42	14,081.41	171,678.66	0.815	1.39	5752	
77,654,850	0.580	---	---	---	01/07/2011	21/02/2003	---	J & P - AVAX SA (CR)	0.425	-1.16	€	0.430	23/11/2016	0.438	0.416	0.438	0.425	0.423 301@0.417	499@0.425	---	2015	21,250	46	8,993.35	33,003.31	0.208	0.534	2357	
136,059,759	0.880	0.18	0.18	---	04/11/2016	05/03/2014	---	JUMBO SA (CR)	13.21	0.84	#	13.10	23/11/2016	12.87	12.87	13.25	13.21	13.13 1053@13.09	1030@13.25	21.80	2016	103,106	381	1,353,816.68	1,797,349.42	8.75	13.25	3747	

Number of Outstanding Securities	Nominal Value	Dividends [1]			Date of Last Coupon		Note	Shares	Closing price	% change	Previous closing price/date	Open price	Price min	Price max	Last price	Avg price	Last Bid [7]	Last Ask [7]	P/E after	Year	Volume	Trades	Transactions Value[8]	Company Mkt Value (thou. €)	Year low	Year high	Sector[4]	
		2013	2014	2015	Dividend [2]	Right																						
Main Market																												
9,742,920	0.400	0.01	0.01	0.01	12/08/2016	14/07/2000	---	KARAMOLEGOS SA (CR)	1.80	---	1.80	23/11/2016	---	---	---	---	609@1.80	---	-(6)-	2015	---	---	---	17,537.26	0.601	1.80	3577	
14,679,792	1.68	---	---	---	24/06/2014	04/09/2000	---	KARATZIS SA (CR)	3.90	---	3.90	23/11/2016	---	---	---	---	100@3.77	60@3.88	11.19	2015	---	---	---	57,251.19	3.40	4.22	2723	
13,202,756	0.350	---	---	---	01/07/2004	05/08/2014	---	KEKROPS SA (CR)	0.370	-1.07	0.374	23/11/2016	0.360	0.340	0.380	0.380	0.351	---	127@0.353	---	2015	689	12	242.18	4,885.02	0.175	0.398	8633
7,595,160	0.600	---	---	---	08/08/2008	18/08/2010	---	KIRIAKOULIS SHIPPING SA (CR)	0.721	---	0.721	23/11/2016	---	---	---	---	---	---	1975@0.649	89.77	2015	---	---	---	5,476.11	0.220	0.721	5759
23,648,700	0.350	---	---	---	13/07/2011	31/03/2015	---	KLEEMAN HELLAS SA (CR)	2.02	---	2.02	23/11/2016	2.02	2.02	2.02	2.02	2.025687293@2.02	1000@2.09	24.37	2015	33,326	12	67,318.52	47,770.37	1.21	2.05	2757	
40,219,218	0.300	---	---	---	25/05/2009	09/07/2013	---	KLOUKINAS - LAPPAS SA (CR)	0.277	-3.82	0.288	23/11/2016	0.304	0.276	0.304	0.277	0.294	50@0.267	43@0.268	---	2015	158	4	46.42	11,140.72	0.218	0.353	2357
21,224,340	0.420	---	---	---	02/07/2008	25/04/2006	---	KORDELLOS BROS SA (CR)	0.295	-9.79	0.327	23/11/2016	0.295	0.295	0.295	0.295	0.295	---	2150@0.295	---	2015	10,466	4	3,087.47	6,261.18	0.167	0.373	1757
13,586,500	0.390	---	---	---	25/06/2010	28/05/2008	---	KORRES (CR)	3.47	-0.86	3.50	23/11/2016	3.50	3.42	3.50	3.42	3.49	45@3.45	50@3.50	---	2015	635	6	2,214.10	47,145.16	2.79	3.90	3767
29,480,000	0.420	---	---	---	19/07/2010	01/08/2007	---	KRETA FARM SA (CR)	0.425	0.47	# 0.423	23/11/2016	0.420	0.420	0.425	0.425	0.423	26@0.425	1920@0.428	---	2015	2,529	6	1,069.44	12,529.00	0.300	0.610	3577
33,065,136	0.380	---	0.06	0.06	18/08/2016	16/09/2013	---	KRI-KRI S.A. (CR)	1.70	-0.58	1.71	23/11/2016	1.74	1.65	1.74	1.70	1.68	178@1.65	424@1.70	14.63	2015	880	8	1,479.54	56,210.73	1.50	1.90	3577
15,804,800	0.360	---	---	---	15/06/2010	12/03/2004	---	KTIMA KOSTAS LAZARIDIS SA (CR)	0.305	-17.57	0.370	23/11/2016	0.360	0.305	0.360	0.305	0.305	898@0.305	999@0.359	---	2015	1,001	5	305.58	4,820.46	0.166	0.534	3535
23,286,253	0.990	---	0.2406	---	14/08/2015	15/09/2014	---	KYRIAKIDIS MARBLES SA (CR)	3.10	---	3.10	23/11/2016	3.10	3.00	3.10	3.10	3.06	544@3.10	100@3.15	11.86	2015	3,599	7	11,021.30	72,187.38	2.11	3.25	2353
79,721,775	0.300	---	---	---	30/05/2007	23/06/2014	---	LAMDA DEVELOPMENT SA (CR)	4.75	-1.25	4.81	23/11/2016	4.85	4.70	4.85	4.75	4.74	365@4.70	293@4.76	---	2015	12,541	62	59,439.72	378,678.43	3.12	5.12	8633
21,364,000	1.12	---	---	---	05/07/2010	10/08/2005	---	LAMPSA HOTEL SA (CR)	17.00	---	17.00	23/11/2016	16.50	16.50	17.00	17.00	16.75	1@17.00	57@17.50	77.36	2015	100	4	1,675.00	363,188.00	15.32	18.00	5753
5,939,268	0.620	---	---	---	10/07/2003	03/01/2002	---	LANAKAM SA (CR)	0.589	---	0.589	23/11/2016	---	---	---	---	---	---	2300@0.530	---	2015	---	---	---	3,498.23	0.539	0.638	3763
4,740,000	0.860	---	---	---	---	14/03/2003	---	LOGISMOS S.A. (CR)	0.330	---	0.330	23/11/2016	---	---	---	---	---	800@0.251	490@0.428	---	2015	---	---	---	1,564.20	0.219	0.489	9533
17,125,062	0.940	---	---	---	01/06/2010	18/07/2016	---	LOULIS MILLS SA (CR)	1.53	4.08	# 1.47	23/11/2016	1.51	1.45	1.53	1.53	1.47	1000@1.48	808@1.53	44.71	2015	3,451	20	5,082.06	26,201.34	1.30	1.83	3577
939,510,748	0.300	---	---	---	26/04/2007	29/08/2014	---	MARFIN INVESTMENT GROUP (CR)	0.136	-2.16	0.139	23/11/2016	0.139	0.133	0.141	0.136	0.138	232@0.136	3090@0.137	---	2015	2,208,684	548	304,761.14	127,773.46	0.048	0.222	8775
9,819,370	0.690	---	---	---	14/08/2007	09/01/2004	---	MATHIOS REFRACTORY SA (CR)	0.345	---	0.345	23/11/2016	---	---	---	---	---	---	500@0.353	---	2015	---	---	---	3,387.68	0.162	0.359	2353
468,700	0.65	1.48	---	---	26/04/2016	21/05/2004	---	MERMEREN KOMB. A.D. PR. (GDR)	6.19	---	6.19	23/11/2016	---	---	---	---	---	1@5.19	50@5.98	0.60	2015	---	---	---	2,901.25	4.83	8.49	1775
51,950,600	0.320	0.3	0.5	0.12	13/05/2016	21/10/2005	---	METKA (CR)	7.20	-0.28	7.22	23/11/2016	7.26	7.08	7.26	7.20	7.15	4981@7.16	155@7.21	21.61	2015	16,853	118	120,492.95	374,044.32	6.24	7.93	2757
10,500,000	0.950	---	---	---	24/06/2008	19/12/2013	---	MEVACO SA (CR)	0.908	---	0.908	23/11/2016	0.908	0.908	0.908	0.908	0.908	20@0.915	200@0.996	---	2015	180	1	163.44	9,534.00	0.705	1.10	2757
6,700,000	0.800	0.16	0.03	0.023	27/06/2016	29/05/2014	---	MILLS KEPENOS (CR)	1.29	---	1.29	23/11/2016	---	---	---	---	---	---	649@1.36	12.44	2015	---	---	---	8,643.00	0.880	2.21	3577
6,200,000	0.500	---	---	---	22/06/2010	01/11/1995	---	MINERVA KNITWEAR SA (CB)	0.048	---	0.048	23/11/2016	---	---	---	---	---	9000@0.052	---	---	2015	---	---	---	297.60	0.044	0.092	3763
12,417,000	0.370	---	---	---	28/07/2008	06/09/2011	---	MLS MULTIMEDIA SA (CR)	4.00	-1.24	4.05	23/11/2016	3.98	3.93	4.05	4.00	3.97	100@3.93	135@4.00	24.56	2015	8,579	63	34,036.77	49,668.00	2.75	4.07	9537
11,700,000	0.590	---	---	---	02/06/2009	24/07/2012	---	MOTODYNAMICS S.A. (CR)	0.428	---	0.428	23/11/2016	---	---	---	---	---	190@0.365	400@0.407	15.62	2015	---	---	---	5,007.60	0.227	0.569	5379
110,782,980	0.750	0.2	---	0.65	27/06/2016	04/11/2013	---	MOTOR OIL (CR)	12.00	-0.41	12.05	23/11/2016	12.00	11.77	12.00	12.00	11.95	300@11.85	13345@12.00	6.61	2015	110,784	164	1,323,796.64	1,329,395.76	8.13	12.17	533
116,915,862	0.970	---	---	---	11/05/2009	19/10/2015	---	MYTILINEOS HOLDINGS (CR)	5.86	-1.01	5.92	23/11/2016	5.91	5.81	5.97	5.86	5.90	17369@5.86	10@5.87	---	2015	98,107	325	578,806.58	685,126.95	2.70	6.02	1755
8,321,682	0.670	---	---	---	17/08/2007	23/11/1999	---	N. LEVEDERIS SA (CB)	0.247	9.78	# 0.225	23/11/2016	0.247	0.247	0.247	0.247	0.247	---	198@0.247	---	2015	200	1	49.40	2,660.40	0.138	0.385	1757
2,160,524	0.670	0.0436	0.0436	0.0436	04/08/2016	23/11/1999	---	N. LEVEDERIS SA (PB)	0.280	---	0.280	23/11/2016	---	---	---	---	---	400@0.196	300@0.279	---	2015	---	---	---	2,660.40	0.202	1.25	1757
11,510,102	0.890	---	---	---	24/06/2005	06/10/1999	---	NAFPAKTOS TEXTILE IND. SA (CB)	0.120	---	0.120	23/11/2016	---	---	---	---	---	1000@0.112	---	---	2015	---	---	---	1,381.21	0.085	0.313	3763
6,340,000	0.600	---	---	---	30/11/2009	09/11/2016	---	NAKAS MUSIC	0.820	---	0.820	23/11/2016	---	---	---	---	---	260@0.770	670@0.844	5.16	2016	---	---	---	5,198.80	0.600	1.11	5379
9,147,151,527	0.300	---	---	---	16/05/2008	30/11/2015	---	NATIONAL BANK (CR)	0.216	-5.26	0.228	23/11/2016	0.228	0.216	0.228	0.216	0.221047684@0.215	110000@0.218	---	2015	47,523,943	3,175	10,512,027.91	1,975,784.73	0.099	0.340	8355	
23,935,280	0.300	---	---	---	29/06/2009	13/06/2000	---	NAYTEMPORIKI PUBLISHING SA(CR)	0.060	---	0.060	23/11/2016	---	---	---	---	---	363@0.056	---	---	2015	---	---	---	1,436.12	0.049	0.097	5557
27,848,000	0.300	0.004	0.0032	0.0084	16/08/2016	02/09/2003	---	NEWSPHONE HELLAS SA (CR)	0.210	0.48	# 0.209	23/11/2016	0.210	0.210	0.210	0.210	0.210	328@0.212	2500@0.228	8.82	2015	640	1	134.40	5,848.08	0.135	0.291	2791
291,497,368	0.300	---	---	---	08/07/2008	21/03/2016	---	NIREFS SA (CR)	0.179	4.07	# 0.172	23/11/2016	0.169	0.169	0.179	0.179	0.174	1000@0.178	3871@0.179	0.25	2015	84,371	54	14,713.45	52,178.03	0.067	0.297	3573
319,000,000	0.300	0.25	0.57	0.4	13/10/2016	25/04/2001	---	OPAP (CR)	8.84	-0.67	8.90	23/11/2016	8.90	8.78	8.90	8.84	8.84	5237@8.82	250@8.87	13.36	2015	339,822	452	3,003,482.56	2,819,960.00	5.16	8.97	5752
490,150,389	2.83	---	0.08	0.1	29/06/2016</																							

Number of Outstanding Securities	Nominal Value	Dividends [1]			Date of Last Coupon Dividend [2]		Date of Right	Note	Shares	Closing price	% change	Previous closing price/date	Open price	Price min	Price max	Last price	Avg price	Last Bid [7]	Last Ask [7]	P/E after	Year	Volume	Trades	Transactions Value[8]	Company Mkt Value (thou. €)	Year low	Year high	Sector[4]
----------------------------------	---------------	---------------	--	--	----------------------------------	--	---------------	------	--------	---------------	----------	-----------------------------	------------	-----------	-----------	------------	-----------	--------------	--------------	-----------	------	--------	--------	-----------------------	-----------------------------	----------	-----------	------------

Main Market

25,000,000	2.00	0.12	0.099	0.1114	18/07/2016	08/08/2003	---	P.P.A. S.A. (CR)		13.08	---	↘ 13.08	23/11/2016	13.07	12.94	13.09	13.08	13.04	97@12.96	405@13.07	39.04	2015	3,140	46	40,936.87	327,000.00	9.80	14.78	2777
4,971,466	1.46	---	---	---	04/07/2007	08/10/2003	---	PAIRIS SA (CR)		0.160	---	↘ 0.160	23/11/2016	---	---	---	---	---	---	2000@0.208	---	2015	---	---	---	795.43	0.158	0.215	2723
3,953,090	0.900	---	0.067	0.11	26/05/2016	05/12/2012	---	PAPERPACK (CR)		1.40	-6.67	€ 1.50	23/11/2016	1.40	1.40	1.40	1.40	1.40	20@1.41	152@1.50	4.41	2015	2	1	2.80	5,534.33	0.651	1.52	2723
50,797,369	0.310	---	---	---	17/08/2000	12/10/2010	---	PAPOUTSANIS (CR)		0.194	4.87	# 0.185	23/11/2016	0.194	0.194	0.194	0.194	0.194	50@0.176	150@0.179	---	2015	51	3	9.89	9,854.69	0.080	0.217	3767
7,070,400	0.930	---	---	---	18/05/2010	06/05/2016	---	PETROPOULOS PETROS (CR)		4.16	---	↘ 4.16	23/11/2016	4.08	4.08	4.16	4.16	4.14	100@4.02	---	39.01	2015	186	7	769.12	29,412.86	3.43	4.25	2753
8,733,183,280	0.300	---	---	---	16/05/2008	27/11/2015	---	PIRAEUS BANK (CR)		0.196	-5.77	€ 0.208	23/11/2016	0.206	0.196	0.208	0.196	0.200	234401@0.195	64500@0.198	---	2015	20,887,058	1,731	4,185,768.10	1,711,703.92	0.067	0.308	8355
22,080,000	0.330	0.2	---	0.08	17/05/2016	27/04/2015	---	PLAISIO COMPUTERS SA (CR)		4.01	2.30	# 3.92	23/11/2016	3.94	3.82	4.03	4.01	3.96	25@3.93	248@4.00	13.20	2015	27,391	97	108,452.54	88,540.80	3.73	4.75	9572
232,000,000	4.60	---	0.05	---	20/07/2015	12/12/2001	---	PPC (CR)		3.13	-2.80	€ 3.22	23/11/2016	3.21	3.11	3.23	3.13	3.18	550@3.12	3000@3.14	---	2015	220,508	511	700,270.83	726,160.00	2.29	4.08	7535
11,812,193	0.470	---	0.02	---	26/03/2015	15/11/2006	---	PROFILE SA (CR)		0.447	1.13	# 0.442	23/11/2016	0.433	0.433	0.450	0.447	0.444	49@0.440	399@0.447	---	2015	4,299	15	1,909.46	5,280.05	0.388	0.546	9533
27,345,120	0.470	---	---	---	18/07/2005	26/02/2014	---	QUALITY & RELIABILITY SA (CR)		0.288	-4.00	€ 0.300	23/11/2016	0.290	0.288	0.293	0.288	0.290	50@0.282	10950@0.288	---	2015	222	5	64.35	7,875.39	0.207	0.465	9533
11,921,531	3.66	---	---	---	05/09/2008	21/01/2016	---	QUEST HOLDINGS (CR)		5.52	-3.50	€ 5.72	23/11/2016	5.72	5.51	5.72	5.53	5.63	103@5.51	10@5.61	---	2015	1,092	7	6,152.26	65,806.85	3.30	6.00	9533
57,434,884	1.31	---	---	---	05/06/2008	12/06/2009	---	REDS S.A. (CR)		0.310	---	↘ 0.310	23/11/2016	0.310	0.310	0.310	0.310	0.310	538@0.311	1000@0.335	---	2015	1,700	2	527.00	17,804.81	0.280	0.410	8633
22,280,000	0.300	---	---	---	11/04/2011	23/02/2007	---	REVOIL (CR)		0.340	-9.09	€ 0.374	23/11/2016	0.340	0.340	0.360	0.340	0.343	1@0.350	199@0.360	10.93	2015	3,900	8	1,337.50	7,575.20	0.169	0.557	5379
7,500,000	0.690	0.0863	0.1	---	19/06/2015	05/07/2016	---	S.KANAKIS SA (CR)		2.50	-7.06	€ 2.69	23/11/2016	2.68	2.50	2.69	2.50	2.56	50@2.47	232@2.49	10.68	2015	1,165	19	2,977.03	18,750.00	1.75	2.77	3577
52,067,296	0.300	---	---	---	23/12/2003	24/01/2007	---	SELECTED TEXT. IND. ASSOC (CR)		0.143	---	↘ 0.143	23/11/2016	---	---	---	---	---	600@0.137	844@0.147	---	2016	---	---	---	7,445.62	0.084	0.205	3763
204,235,184	0.300	---	---	---	01/07/2008	30/07/2012	---	SELONDA AQUACULTURE SA (CR)		0.196	---	↘ 0.196	23/11/2016	---	---	---	---	---	---	334@0.185	---	2015	---	---	---	40,030.10	0.074	0.273	3573
6,456,530	1.61	---	---	---	29/06/2001	02/08/2010	---	SPACE HELLAS SA (CR)		0.755	---	↘ 0.755	23/11/2016	---	---	---	---	---	300@0.682	---	5.75	2015	---	---	---	4,874.68	0.592	1.28	9578
28,438,268	0.300	---	---	---	21/08/2006	24/11/1999	---	SPIROY AGRICULTURE SA (CR)		0.699	---	↘ 0.699	23/11/2016	---	---	---	---	---	---	2573@0.630	---	2015	---	---	---	19,878.35	0.630	0.700	1357
40,693,350	5.00	---	---	---	03/07/2006	26/05/2015	---	TECHNICAL OLYMPIC SA (CR)		0.874	-5.92	€ 0.929	23/11/2016	0.940	0.874	0.940	0.874	0.884	84@0.874	500@0.909	---	2015	2,375	9	2,099.22	35,565.99	0.530	0.940	3728
109,314,400	0.300	---	---	0.0935	30/05/2016	05/08/2015	---	TERNA ENERGY (CR)		2.82	-2.08	€ 2.88	23/11/2016	2.84	2.79	2.86	2.82	2.81	335@2.81	783@2.83	-(6)-	2015	15,323	67	43,118.23	308,266.61	1.92	3.05	7537
36,300,000	1.12	0.285	0.24	0.25	23/06/2016	12/12/2007	---	THESSALONIKA WATER & SEWERAGE		3.53	1.73	# 3.47	23/11/2016	3.50	3.47	3.53	3.53	3.52	200@3.46	6730@3.52	9.45	2015	650	8	2,285.39	128,139.00	2.65	3.86	7577
45,094,620	0.660	0.05	0.0225	---	20/04/2015	01/11/1999	---	THRACE PLASTICS SA (CR)		2.00	0.50	# 1.99	23/11/2016	1.99	1.98	2.04	2.00	2.00	355@1.99	599@2.00	-(6)-	2015	11,046	43	22,090.61	90,189.24	1.25	2.15	1357
77,063,568	4.00	---	0.1551	0.3099	27/06/2016	25/06/2004	---	TITAN CEMENT (CR)		21.74	-0.09	€ 21.76	23/11/2016	21.86	21.64	21.86	21.78	21.74	263@21.78	2254@21.85	30.59	2015	77,082	498	1,675,441.98	1,775,650.69	14.86	22.40	2353
7,568,960	4.00	---	0.1551	0.3099	27/06/2016	25/06/2004	---	TITAN CEMENT CO. (PR)		13.25	---	↘ 13.25	23/11/2016	13.05	13.00	13.25	13.25	13.02	590@13.00	210@13.35	18.65	2015	1,540	21	20,045.50	1,775,650.69	7.36	13.38	2353
10,080,000	3.00	0.6	1.95	0.58	18/07/2016	27/08/2001	---	TPA SA (CR)		18.32	-0.38	€ 18.39	23/11/2016	18.30	18.30	18.40	18.31	18.33	30@18.32	30@18.55	10.31	2015	850	11	15,583.70	184,665.60	17.78	24.10	2777
15,627,315	0.300	---	---	---	16/11/1992	03/12/2012	---	UNIBIOS (CR)		0.148	-0.67	€ 0.149	23/11/2016	0.140	0.140	0.148	0.148	0.148	910@0.130	500@0.148	---	2015	1,010	4	149.40	2,312.84	0.053	0.158	2353
18,810,000	0.400	---	---	---	08/07/2010	14/11/2007	---	VARVERIS - MODA BAGNO SA (CR)		0.188	---	↘ 0.188	23/11/2016	---	---	---	---	---	---	64@0.177	---	2015	---	---	---	3,536.28	0.072	0.188	2353
259,189,761		---	---	---		26/02/2016	---	VIOHALCO SA/INV (CB)		1.36	-0.73	€ 1.37	23/11/2016	1.39	1.34	1.39	1.36	1.36	838@1.35	2088@1.36	---	---	111,449	152	151,327.50	352,498.07	0.928	1.67	2727
4,968,600	2.88	---	---	---	01/07/1998	14/12/1998	---	VIS SA (CR)		0.884	---	↘ 0.884	23/11/2016	---	---	---	---	---	---	100@0.880	---	2015	---	---	---	4,392.24	0.611	1.00	2723
6,325,000	0.600	---	---	---	02/05/2014	17/02/2014	---	VOGIATZOGLOU SYSTEMS SA (CR)		1.19	---	↘ 1.19	23/11/2016	---	---	---	---	---	---	1000@1.08	---	2015	---	---	---	7,526.75	0.700	1.75	2797

Exchange Traded Funds (ETFs)

619,082	---	---	---		15/06/2016	---	ALPHA ETF FTSE Athens Large Cap		16.80	-0.94	€ 16.96	23/11/2016	16.81	16.75	16.81	16.80	16.80	---	25@16.83	---	---	---	8,629	4	144,932.59	---	11.30	170.69	12003
294,878	---	---	---		29/06/2009	---	NBGAM ETF		7.35	-1.21	€ 7.44	23/11/2016	7.43	7.35	7.43	7.35	7.43	---	---	---	---	---	2,652	2	19,704.20	---	4.50	7.60	12003
388,550	---	---	---		03/11/2010	---	NBGAM ETF GREECE & TURKEY 30		5.07	-1.74	€ 5.16	23/11/2016	5.13	5.07	5.13	5.07	5.13	---	---	---	---	---	718	2	3,683.94	---	4.90	6.27	12003

Low Dispersion

14,000,000	4.15	---	---	---	23/04/2010	29/06/1999	4815	ALPHA REAL ESTATE SA(CR)		4.57	-2.77	€ 4.70	23/11/2016	4.55	4.55	4.98	4.98	4.57	100@4.62	100@4.97	23.09	2015	104	5	474.92	63,980.00	4.11	7.30	8637
------------	------	-----	-----	-----	------------	------------	------	--------------------------	--	------	-------	--------	------------	------	------	------	------	------	----------	----------	-------	------	-----	---	--------	-----------	------	------	------

Number of Outstanding Securities	Nominal Value	Dividends [1]			Date of Last Coupon		Note	Shares	Closing price	% change	Previous closing price/date	Open price	Price min	Price max	Last price	Avg price	Last Bid [7]	Last Ask [7]	P/E after	Year	Volume	Trades	Transactions Value[8]	Company Mkt Value (thou. €)	Year low	Year high	Sector[4]	
		2013	2014	2015	Dividend [2]	Coupon Right																						
Low Dispersion																												
81,122,516	3.00	---	---	---	23/06/2003	04/11/2008	4816	ASTIR PALACE SA (CR)	5.34	---	↘	5.34	23/11/2016	5.34	5.33	5.34	5.34	187@5.34	1500@5.35	---	2015	6,941	26	37,033.22	433,194.24	2.90	5.40	5753
13,465,290	0.300	---	---	---	09/08/2004	09/11/2016	4814	ATHENA SA (CR)	0.720	-20.00	€	0.900	23/11/2016	0.720	0.720	0.720	0.720	---	9@0.720	---	2015	40	3	28.80	9,695.01	0.180	1.30	2357
191,660,320	0.300	---	---	---	20/07/2009	29/12/2010	4817	ATTICA HOLDINGS (CR)	0.900	---	↘	0.900	23/11/2016	---	---	---	---	998@0.852	1791@0.920	-(6)-	2015	---	---	---	172,494.29	0.490	1.40	5759
13,404,440	8.63	---	---	---	02/04/2001	06/03/1992	4822	IONIAN HOTELS SA (CR)	9.90	---	↘	9.90	23/11/2016	---	---	---	---	48@9.91	152@10.82	61.21	2015	---	---	---	132,703.96	5.64	12.00	5753
2,760,000	11.83	8.5	9.3	8.5	15/07/2016	16/07/1990	4823	KARELIA TOBACCO CO. SA (CB)	255.00	---	↘	255.00	23/11/2016	---	---	---	---	18@244.00	19@254.95	13.18	2015	---	---	---	703,800.00	227.20	279.00	3785
106,980,050	2.25	---	---	---	25/07/2008	24/02/2014	5046	MINOAN LINES SA (CR)	2.40	---	↘	2.40	23/11/2016	2.40	2.40	2.40	2.40	850@2.40	---	15.84	2015	150	1	360.00	256,752.12	2.00	2.45	5759
255,494,534	3.00	---	---	0.2035	15/04/2016	23/12/2015	5104	NBG PANGAEA (CR)	4.25	---	↘	4.25	23/11/2016	---	---	---	---	50@4.21	---	21.84	2015	---	---	---	1,085,851.77	3.22	6.03	8671
22,996,875	1.25	---	---	---	24/06/2011	02/02/2016	5116	NEXANS HELLAS SA (CR)	0.930	---	↘	0.930	23/11/2016	---	---	---	---	100@0.823	100@1.04	---	2015	---	---	---	21,387.09	0.781	1.58	2733
17,240,776	0.370	---	---	---	14/07/2005	30/09/2003	4827	PERSEUS SA (CR)	0.240	---	↘	0.240	23/11/2016	---	---	---	---	1500@0.200	---	1.76	2015	---	---	---	4,137.79	0.240	0.520	3577
54,888,240	1.13	0.09	---	---	25/04/2014	22/03/2006	5100	TRASTOR REAL EST. INV. CO.(CR)	0.861	-11.51	€	0.973	23/11/2016	0.861	0.861	0.861	0.861	487@0.865	500@0.939	---	2015	1,763	6	1,517.94	47,258.77	0.611	1.25	8671

Surveillance																													
13,000,000	1.00	---	---	---	01/08/2007	07/04/2000	5093	AKRITAS SA (CR)	0.151	---	↘	0.151	23/11/2016	0.151	0.151	0.151	0.151	92@0.151	---	---	2015	90	7	13.59	1,963.00	0.061	0.530	2353	
14,870,100	0.300	---	---	---	15/05/2008	26/09/2011	4844	ALPHA GRISSIN S.A. (CR)	0.031	---	↘	0.031	23/11/2016	---	---	---	---	2000@0.025	---	---	2015	---	---	---	460.97	0.019	0.038	9533	
2,969,713	0.300	---	---	---	02/07/2008	28/02/2011	4958	ANEK LINES SA (PR, issue '96)	0.086	---	↘	0.086	23/11/2016	---	---	---	---	---	---	35.97	2015	---	---	---	12,807.12	0.086	0.240	5759	
312,163	0.300	---	---	---	02/07/2008	28/02/2011	4959	ANEK LINES SA (PR, issue '90)	0.422	---	↘	0.422	23/11/2016	---	---	---	---	---	---	-(6)-	2015	---	---	---	12,807.12	0.352	1.04	5759	
185,373,016	0.300	---	---	---	02/07/2008	28/02/2011	4957	ANEK LINES SA (CR)	0.067	-5.63	€	0.071	23/11/2016	0.068	0.065	0.068	0.065	0.067	3289@0.065	6022@0.068	28.03	2015	2,813	4	189.45	12,807.12	0.050	0.103	5759
20,255,805	0.300	---	---	---	22/08/2006	02/08/2010	4881	AXON HOLDING SA (CR)	0.006	---	↘	0.006	23/11/2016	---	---	---	---	---	14000@0.006	---	---	2015	---	---	---	121.53	0.006	0.070	4533
17,579,754	4.16	---	---	---	18/08/2006	02/08/2010	5097	BIOTER SA (CR)	0.059	15.69	#	0.051	23/11/2016	0.059	0.059	0.059	0.059	0.059	2900@0.051	4500@0.061	---	2015	10,000	2	590.00	1,037.21	0.038	0.149	2357
4,034,950	0.680	---	---	---	01/07/2005	30/12/2010	5114	CHATZIKRANIOTIS & SONS SA (CR)	0.164	19.71	#	0.137	23/11/2016	0.164	0.164	0.164	0.164	0.164	---	148@0.140	---	2015	2,458	9	403.11	661.73	0.030	0.164	3577
1,417,311	0.300	---	---	---	11/08/2010	12/10/2016	5123	DIONIC (CR)	0.440	-20.00	€	0.550	23/11/2016	0.440	0.440	0.440	0.440	0.440	---	7445@0.440	0.14	2015	350	2	154.00	623.62	0.240	0.600	2797
15,878,748	0.480	---	---	---	10/07/2006	22/03/2004	5095	DOMIKI KRITIS SA (CR)	0.290	---	↘	0.290	23/11/2016	---	---	---	---	---	---	650@0.232	---	2015	---	---	---	4,604.84	0.147	0.318	2357
3,961,300	1.28	---	---	---	29/06/2004	03/08/2000	5080	DUROS SA (CR)	0.491	---	↘	0.491	23/11/2016	---	---	---	---	---	---	200@0.485	---	2015	---	---	---	1,945.00	0.118	0.491	3763
7,085,888	1.59	---	---	---	02/07/1996	06/09/2010	4690	ELVIEMEK (CR)	3.00	---	↘	3.00	23/11/2016	---	---	---	---	---	---	10@3.00	---	2015	---	---	---	21,257.66	2.90	3.97	8633
6,000,000	0.600	---	---	---	13/06/2008	08/04/2004	4886	EUROBROKERS S.A. (CR)	0.010	---	↘	0.010	23/11/2016	---	---	---	---	---	3000@0.008	---	---	2015	---	---	---	60.00	0.009	0.010	8534
21,820,410	0.800	---	---	---	22/05/2008	02/08/2011	4882	EUROMEDICA SA (CR)	0.006	---	↘	0.006	23/11/2016	---	---	---	---	---	50000@0.007	---	---	2015	---	---	---	130.92	0.006	0.028	4533
110,097,185	0.300	---	---	---	19/09/2016		5118	Forthnet (CR)	0.265	-0.38	€	0.266	23/11/2016	0.263	0.263	0.300	0.290	0.265	150@0.280	2275@0.300	---	2015	17,602	12	4,661.33	29,175.75	0.236	0.660	9535
50,593,832	0.300	---	---	---	07/07/2010	07/09/2011	5113	FRIGOGLASS SA (CR)	0.132	-2.22	€	0.135	23/11/2016	0.132	0.132	0.132	0.132	0.132	2460@0.119	2781@0.131	---	2015	5,714	6	754.25	6,678.39	0.086	1.87	2757
77,376,446	0.340	---	---	---	23/05/2005	18/08/2011	5094	G.E. DIMITRIOU (CR)	0.031	---	↘	0.031	23/11/2016	---	---	---	---	---	---	37988@0.025	---	2015	---	---	---	2,398.67	0.006	0.037	3722
1,270,000	0.300	---	---	---	06/07/2007	06/02/2013	5007	GIRAKIAN PROFIL SA (CB)	0.060	---	↘	0.060	23/11/2016	---	---	---	---	---	2000@0.048	---	---	2015	---	---	---	76.20	0.060	0.167	1757
1,540,000	0.600	---	---	---	08/08/1994	19/09/2000	5058	J.BOUTARIS & SON HOLD. (PB)	0.066	---	↘	0.066	23/11/2016	---	---	---	---	---	2000@0.053	6000@0.079	---	2015	---	---	---	1,436.16	0.006	0.066	3535
25,179,640	0.600	---	---	---	08/08/1994	19/09/2000	5057	J.BOUTARIS & SON HOLD. SA (CB)	0.053	-8.62	€	0.058	23/11/2016	0.053	0.053	0.053	0.053	0.053	---	3900@0.050	---	2015	1,500	6	79.50	1,436.16	0.016	0.128	3535
7,125,216	0.650	---	---	---	01/07/2005	14/12/1999	4955	KRE.KA SA (CR)	0.072	---	↘	0.072	23/11/2016	---	---	---	---	---	4995@0.085	---	---	2015	---	---	---	513.02	0.060	0.180	3573
51,081,030	1.00	---	---	---	20/08/2007	03/09/2007	4912	LAVIPHARM SA (CR)	0.104	---	↘	0.104	23/11/2016	0.104	0.104	0.105	0.104	0.104	1900@0.085	3640@0.104	---	2015	10,600	7	1,103.00	5,312.43	0.054	0.155	4577
7,734,375	1.00	---	---	---	09/07/2007	07/01/2011	5112	LIVANIS SA (CR)	0.012	---	↘	0.012	23/11/2016	---	---	---	---	---	3000@0.010	---	---	2015	---	---	---	92.81	0.012	0.148	5557
4,419,616	1.58	---	---	---	21/07/2011	04/03/2015	4983	MEDICON S.A (CR)	0.371	---	↘	0.371	23/11/2016	0.371	0.371	0.371	0.371	0.371	1000@0.298	2000@0.420	1.02	2015	21,450	1	7,957.95	1,639.68	0.321	0.790	4535
20,231,328	0.600	---	---	---	15/07/2008	25/06/2004	4879	NIKAS SA (CR)	0.132	20.00	#	0.110	23/11/2016	0.132	0.132	0.132	0.132	0.132	---	999@0.132	---	2015	600	2	79.20	2,670.54	0.070	0.132	3577
14,967,940	0.500	---	---	---	21/05/2008	04/01/2008	4956	PASAL DEVELOPMENT S.A. (CR)	0.077	-19.79	€	0.096	23/11/2016	0.077	0.077	0.077	0.077	0.077	1991@0.077	---	---	2015	10	2	0.77	1,152.53	0.058	0.300	8633

Number of Outstanding Securities	Nominal Value	Dividends [1]			Date of Last Coupon		Note	Shares	Closing price	% change	Previous closing price/date	Open price	Price min	Price max	Last price	Avg price	Last Bid [7]	Last Ask [7]	P/E after	Year	Volume	Trades	Transactions Value[8]	Company Mkt Value (thou. €)	Year low	Year high	Sector[4]	
		2013	2014	2015	Dividend [2]	Right																						
Surveillance																												
18,750,000	0.300	---	---	---	02/07/2001	31/12/2012	4985	PEGASUS PUBLISHING S.A. (CR)	0.080	-12.09	0.091	23/11/2016	0.073	0.073	0.080	0.080	0.080	---	214@0.108	---	2015	226	10	18.04	1,500.00	0.040	0.136	5557
65,326,268	0.530	---	---	---	04/07/2007	19/07/2006	4750	SATO SA (CR)	0.060	---	0.060	23/11/2016	---	---	---	---	100@0.049	8000@0.060	---	2015	---	---	---	3,919.58	0.008	0.116	3726	
7,914,480	0.300	---	---	---	23/06/2008	29/06/2011	4888	SFAKIANAKIS SA (CR)	0.205	---	0.205	23/11/2016	---	---	---	---	198@0.200	---	---	2015	---	---	---	1,622.47	0.157	5.64	5379	
10,186,667	1.35	---	---	---	24/06/2008	02/02/2016	4887	SIDMA SA (CR)	0.251	19.52	0.210	23/11/2016	0.251	0.251	0.251	0.250	96@0.173	609@0.249	---	2015	1	1	0.25	2,556.85	0.096	0.380	1757	
4,737,503	0.320	---	---	---	22/06/2005	22/09/2015	5115	VARANGIS AVEPE S.A. (CR)	0.235	---	0.235	23/11/2016	---	---	---	---	---	945@0.230	---	2015	---	---	---	1,113.31	0.235	0.300	3726	
16,383,428	0.300	---	---	---	25/06/2002	21/06/2013	4997	VARVARESSOS SA (CB)	0.055	---	0.055	23/11/2016	0.055	0.055	0.055	0.055	500@0.060	---	---	2015	20	1	1.10	901.09	0.006	0.172	3763	
13,191,620	0.620	---	---	---	04/08/2010	09/09/2002	4977	YALCO - CONSTANTINOU SA (CB)	0.060	---	0.060	23/11/2016	---	---	---	---	---	1000@0.060	---	2015	---	---	---	791.50	0.034	0.143	3722	

1,130,180	0.440	---	---	---	20/06/2003	02/07/2014	5092	COMPUCON SA (CR)	0.006	---	0.006	23/11/2016	---	---	---	---	4000@0.006	---	---	2015	---	---	---	6.78	0.006	0.019	9537
9,567,289	0.300	---	---	---	01/07/2004	19/11/2007	5062	MARAC ELECTRONICS (CR)	0.298	---	0.298	23/11/2016	---	---	---	---	---	14880@0.239	---	2015	---	---	---	2,851.05	0.298	0.298	9578
24,319,250	0.300	---	---	---	09/07/2002	04/07/2007	5111	PROODEFTIKH SA (CR)	0.045	---	0.045	23/11/2016	---	---	---	---	5600@0.039	1199@0.050	---	2015	---	---	---	1,094.37	0.032	0.092	2357
766,000	1.00	---	---	---	01/07/2004	11/12/2012	4937	TRIA ALFA SA (CR)	2.59	---	2.59	23/11/2016	---	---	---	---	---	14@2.08	---	2015	---	---	---	2,383.29	1.80	2.59	3763
245,000	1.00	---	---	---	19/07/2010	11/12/2012	4938	TRIA ALFA SA (PR)	1.63	---	1.63	23/11/2016	---	---	---	---	---	191@1.31	---	2015	---	---	---	2,383.29	1.36	1.63	3763

33,301,715	0.320	---	---	---	27/06/2003	08/07/2009	5121	AEGEK (CR)	0.038	---	0.038	30/09/2016	---	---	---	---	---	---	---	---	---	---	---	1,265.47	0.029	0.072	2357
5,000,000	0.400	---	---	---	03/06/2009	01/09/2014	5087	ALCO HELLAS SA (CR)	0.180	---	0.180	31/03/2015	---	---	---	---	---	---	---	---	---	---	---	900.00	0.180	0.180	1753
5,025,000	0.300	---	---	---	05/07/2005	14/03/2002	5023	ALSINCO S.A (CR)	0.043	---	0.043	29/11/2013	---	---	---	---	---	---	---	---	---	---	---	216.08	0.043	0.043	3763
215,246,452	0.300	---	---	---	25/06/2001	24/09/2001	4446	ALTEC SA (CR)	0.012	---	0.012	30/11/2015	---	---	---	---	---	---	---	---	---	---	---	2,582.96	0.012	0.012	9533
81,644,555	0.300	---	---	---	01/07/2008	02/09/2002	5098	ATTI - KAT SA (CR)	0.012	---	0.012	29/05/2015	---	---	---	---	---	---	---	---	---	---	---	979.73	0.012	0.012	2357
33,930,000	0.300	---	---	---	03/07/2006	30/05/2001	4865	BABIS VOVOS SA (CR)	0.304	---	0.304	30/03/2012	---	---	---	---	---	---	---	---	---	---	---	10,314.72	0.304	0.304	8633
20,121,710	1.21	---	---	---	27/07/1992	12/03/2003	5002	BALKAN R.E. (CR)	0.190	---	0.190	29/08/2013	---	---	---	---	---	---	---	---	---	---	---	3,823.12	0.190	0.190	8633
21,920,570	0.300	---	---	---	03/07/2007	13/12/1999	4702	CARDASSILARIS SA (CR)	0.140	---	0.140	30/11/2010	---	---	---	---	---	---	---	---	---	---	---	3,068.88	0.140	0.140	3577
30,159,583	0.470	---	---	---	26/06/2008	29/12/2010	5047	DIAS A/C (CR)	0.050	---	0.050	26/03/2014	---	---	---	---	---	---	---	---	---	---	---	1,507.98	0.050	0.050	3573
7,847,611	1.20	---	---	---	01/08/2007	28/09/2011	4939	EDRASIS - C. PSALLIDAS SA (CR)	0.150	---	0.150	29/11/2012	---	---	---	---	---	---	---	---	---	---	---	1,177.14	0.150	0.150	2357
5,750,000	0.300	---	---	---	12/12/2008	12/12/2011	4929	ELECTRONIKI ATHINON SA (CR)	0.480	---	0.480	28/09/2012	---	---	---	---	---	---	---	---	---	---	---	2,760.00	0.480	0.480	5375
36,748,909	0.730	---	---	---	15/12/2005	13/12/2006	5109	HEL. SUGAR INDUSTRY SA (CB)	0.075	---	0.075	29/02/2016	---	---	---	---	---	---	---	---	---	---	---	2,756.17	0.064	0.150	3577
13,692,227	1.47	---	---	---	07/07/2006	08/10/1999	5049	HELLENIC FABRICS SA (CR)	0.117	---	0.117	31/03/2014	---	---	---	---	---	---	---	---	---	---	---	1,601.99	0.117	0.117	3763
30,390,000	0.310	---	---	---	18/08/2008	29/12/2006	5099	HELLENIC FISHFARMING SA (CR)	0.070	---	0.070	02/06/2015	---	---	---	---	---	---	---	---	---	---	---	2,127.30	0.070	0.070	3573
24,619,524	0.500	---	---	---	10/10/1986	30/12/2002	4914	KERAMIA-ALLATINI (CR)	0.088	---	0.088	30/08/2012	---	---	---	---	---	---	---	---	---	---	---	2,166.52	0.088	0.088	8633
66,937,526	0.700	---	---	---	13/08/2010	21/05/2003	5003	MICHANIKI SA (CR)	0.100	---	0.100	29/08/2013	---	---	---	---	---	---	---	---	---	---	---	9,186.78	0.100	0.100	2357
25,968,987	0.700	---	---	---	13/08/2010	21/05/2003	5004	MICHANIKI SA (PR)	0.096	---	0.096	29/08/2013	---	---	---	---	---	---	---	---	---	---	---	9,186.78	0.096	0.096	2357
13,555,100	1.00	---	---	---	08/07/2005		4576	MICROLAND COMPUTERS SA (CR)	0.640	---	0.640	14/07/2009	---	---	---	---	---	---	---	---	---	---	---	8,675.26	0.640	0.640	5379
255,459,600	0.300	---	---	---	26/06/2000	03/12/2010	5101	NEL SA (CR)	0.070	---	0.070	31/08/2015	---	---	---	---	---	---	---	---	---	---	---	17,882.17	0.070	0.070	5759
23,463,874	0.800	---	---	---	23/05/2003	21/12/1999	4918	NEORION SA (CR)	0.125	---	0.125	30/08/2012	---	---	---	---	---	---	---	---	---	---	---	2,932.98	0.125	0.125	2753
20,210,127	1.53	---	---	---	27/06/1997	20/03/2000	5061	PARNASSOS ENTERP. (CR)	0.070	---	0.070	30/05/2014	---	---	---	---	---	---	---	---	---	---	---	1,414.71	0.070	0.070	8775
40,946,303	0.360	---	---	---	18/07/2005	27/11/2007	5089	PC SYSTEMS SA (CR)	0.006	---	0.006	31/03/2016	---	---	---	---	---	---	---	---	---	---	---	245.68	0.006	0.014	9533

Number of Outstanding Securities	Nominal Value	Dividends [1]			Date of Last Coupon Dividend [2]		Note	Shares	Closing price	% change	Previous closing price/date	Open price	Price min	Price max	Last price	Avg price	Last Bid [7]	Last Ask [7]	P/E after	Year	Volume	Trades	Transactions Value[8]	Company Mkt Value (thou. €)	Year low	Year high	Sector[4]
--	------------------	---------------	--	--	-------------------------------------	--	------	--------	------------------	----------	--------------------------------	---------------	--------------	--------------	---------------	--------------	-----------------	--------------	--------------	------	--------	--------	--------------------------	--------------------------------	-------------	--------------	---------------

Suspension Status

26,408,040	0.300	---	---	---	01/07/1997	26/05/1999	4464	SHEET STEEL SA (CR)	0.120	---	↘ 0.120	28/11/2008	---	---	---	---	---	---	---	---	---	---	---	3,168.96	0.120	0.120	1757
29,060,950	0.340	---	---	---	20/08/2007	24/10/2001	5088	SPIDER METAL INDUSTRY SA (CR)	0.008	---	↘ 0.008	31/03/2015	---	---	---	---	---	---	---	---	---	---	---	232.49	0.008	0.008	2757
144,688,060	0.600	---	---	---	21/04/2008	10/03/2010	4982	T BANK (CR)	0.048	---	↘ 0.052	# 29/11/2011	---	---	---	---	---	---	---	---	---	---	---	6,945.03	0.048	0.048	8355
6,523,780	0.530	---	---	---	01/07/2002	06/03/2001	4971	TECHNICAL PUBLICATIONS SA (CR)	0.006	---	↘ 0.006	31/05/2013	---	---	---	---	---	---	---	---	---	---	---	39.14	0.006	0.006	5557
100,793,572	0.300	---	---	---	16/07/2009	11/02/2016	5110	TELETIPOS SA (CR)	0.060	---	↘ 0.060	07/03/2016	---	---	---	---	---	5@0.048	---	---	---	---	---	6,047.61	0.054	0.070	5553
13,920,000	0.320	---	---	---	19/11/2001	01/08/2000	4726	TEXAPRET SA (CR)	0.080	---	↘ 0.080	28/02/2011	---	---	---	---	---	---	---	---	---	---	---	1,113.60	0.080	0.080	3763
510,840	1.00	---	---	---	15/07/2008	21/11/2013	5036	TROPEA HOLDING (CR)	2.00	---	↘ 0.020	# 30/03/2012	---	---	---	---	---	---	---	---	---	---	---	1,021.68	2.00	2.00	3722
284,465,964	3.70	---	---	---	20/06/2008	15/06/2009	4913	TT HELLENIC POSTBANK (CR)	0.168	---	↘ 0.239	# 29/08/2012	---	---	---	---	---	---	---	---	---	---	---	47,790.28	0.168	0.168	8355
71,683,906	0.400	---	---	---	15/06/2005	05/02/2008	4953	XATZIOANNOU (CR)	0.026	---	↘ 0.026	28/03/2013	---	---	---	---	---	---	---	---	---	---	---	1,863.78	0.026	0.026	3763

Shares' Notes

Code	Note text
()	- Adjusted dividends.
*	- Last adjusted closing price.
[1]	- Net dividends.
[2]	- The "Date of Last Coupon" for New listings refers to the date company's stocks started to trade in Athex
[3]	- The Company Market Value is referred to the number of outstanding shares
[4]	- Sectors codification can be found in Appendix A
[5]	- The Market Value refers to the total number of shares listed (including their several classes) in the exchange by the company.
[6]	- P/E greater than 100
[7]	- Last view of the Order Book before the end of the trading session
[8]	- All Blocks Methods' Transactions Value are included.
4446	- Transfer to the "Under Supervision" Category as of 20/10/2008.
4464	- Suspension of trading as of 1/12/2008.
4576	- Suspension of trading as of 14/7/2009.
4690	- Transfer to Surveillance category as of 4/4/2006.
4702	- Suspension of trading as of 1/12/2010.
4726	- Suspension of trading as of 1/3/2011.
4750	- Transfer to the "Under Surveillance Category" from 8/4/2011.
4795	- The final gross (pre-tax) dividend is € 0.30 per share and subject to withholding tax on the full dividend amount, i.e. 0.45 per share, for those shareholders liable to withholding tax, in accordance with the applicable tax law provisions.
4814	- Transfer to the Low Dispersion Category as of 30/5/2011.
4815	- Transfer to the Low Dispersion Category as of 30/5/2011.
4816	- Transfer to the Low Dispersion Category as of 30/5/2011.
4817	- Transfer to the Low Dispersion Category as of 30/5/2011.
4822	- Transfer to the Low Dispersion category as of 30/5/2011.
4823	- Transfer to the Low Dispersion category as of 4/4/2006.
4827	- Transfer to the Low Dispersion category as of 5/5/2010.
4844	- Transfer to the Surveillance category from 8/4/2011.
4857	- The 793,906,274 new (CR) shares, resulting from the recent share capital increase through a rights issue, are not yet admitted to trading on the ATHEX.
4865	- Suspension of trading as of 2/4/2012.
4879	- Transfer to the Surveillance Category as of 10/4/2012.
4881	- Transfer to the Surveillance Category as of 10/4/2012.
4882	- Transfer to the Surveillance Category as of 10/4/2012.
4886	- Transfer to the Surveillance Category as of 10/4/2012.
4887	- Transfer to the Surveillance Category as of 10/4/2012.
4888	- Transfer to the Surveillance Category as of 10/4/2012.
4912	- Transfer to the Surveillance Category as of 31/7/2012.
4913	- Suspension of trading as of 30/8/2012.
4914	- Suspension of trading as of 31/8/2012.
4918	- Suspension of trading as of 31/8/2012.
4929	- Suspension of trading as of 1/10/2012.
4937	- Transfer to the UNDER DELETION category as of 30/11/2012.
4938	- Transfer to the UNDER DELETION category as of 30/11/2012.
4939	- Suspension of trading as of 30/11/2012.
4953	- Suspension of trading as of 2/4/2013.
4955	- Transfer to the Surveillance Category as from 5/4/2013.
4956	- Transfer to the Surveillance Category as from 5/4/2013.
4957	- Transfer to the Surveillance Category as from 5/4/2013.
4958	- Transfer to the Surveillance Category as from 5/4/2013.
4959	- Transfer to the Surveillance Category as from 5/4/2013.
4971	- Suspension of trading as of 3/6/2013.
4977	- Transfer to the "Under Surveillance Category" from 11/6/2013.
4982	- Suspension of trading as of 1/12/2011.

Shares' Notes

Code	Note text
4983	- Transfer to the Surveillance Category as of 5/4/2013.
4985	- Transfer to the "Under Surveillance Category" from 8/4/2011.
4997	- Transfer to the Under Supervision Category as of 21/12/2009. - The 6,870,053 new (CB) shares, resulting from the recent share capital increase through a rights issue, are not yet admitted to trading on the ATHEX.
5002	- Suspension of trading as of 30/08/2013.
5003	- Suspension of trading as of 30/08/2013.
5004	- Suspension of trading as of 30/08/2013.
5007	- Transfer to the Surveillance category, as of 11/10/2013.
5023	- Suspension of trading as of 2/12/2013.
5031	- The 612,300 new (CR) shares, resulting from the recent share capital increase through a rights issue, are not yet admitted to trading on the ATHEX.
5036	- The company's share is under suspension of trading as of 2/4/2012. During suspension, the company proceeded and concluded a share reverse split, according to which - after the conclusion of the corporate action - the total number of the company's shares, as well as, the last closing price of 30/03/2012 were adjusted.
5046	- Transfer to the Low Dispersion category as of 8/4/2011.
5047	- Suspension of trading as of 27/3/2014.
5049	- Under suspension of trading as of 1/4/2014.
5057	- Transfer to the Surveillance Category as of 29/12/2011.
5058	- Transfer to the Surveillance Category as of 29/12/2011.
5061	- Suspension of trading as of 2/6/2014.
5062	- Transfer to the UNDER DELETION category as of 4/6/2014.
5080	- Suspension of trading as of 6/9/2011.
5087	- Suspension of trading as of 1/4/2015.
5088	- Suspension of trading as of 1/4/2015.
5089	- Transfer to the Surveillance Category as of 8/4/2015.
5092	- Transfer to the UNDER DELETION category as of 8/4/2015.
5093	- Transfer to the Surveillance Category as of 8/4/2015.
5094	- Transfer to the Surveillance Category as of 8/4/2015.
5095	- Transfer to the Surveillance Category as from 9/4/2015.
5097	- Transfer to the Surveillance Category as of 10/4/2012.
5098	- Suspension of trading as of 2/6/2015.
5099	- Suspension of trading as of 3/6/2015.
5100	- Transfer to the Low Dispersion Category as of 24/6/2015.
5101	- Suspension of trading as of 1/9/2015.
5104	- Transfer to the "Low Dispersion" Category as of 31/10/2014. Change of the company name from "MIG REAL ESTATE R.E.I.C." to "NBG PANGAEA R.E.I.C." as of 30/12/2015.
5109	- Suspension of trading as of 01/03/2016.
5110	- Suspension of trading as of 08/03/2016.
5111	- Transfer to the Under Deletion Category as of 15/04/2016.
5112	- Transfer to the Surveillance Category as of 15/04/2016.
5113	- Transfer to the Surveillance Category as of 15/04/2016.
5114	- Transfer to the Surveillance Category as of 15/04/2016.
5115	- Transfer to the Surveillance Category as of 15/04/2016.
5116	- Transfer to the Low Dispersion Category as of 20/4/2016.
5118	- Transfer to the Surveillance Category as of 25/11/2011. Issue of a Convertible Bond Loan in progress through a rights issue. Rights' trading period on ATHEX: 22/09/2016 - 03/10/2016, pre-emption rights' subscription period: 22/09/2016 - 06/10/2016.
5121	- Suspension of trading as of 3/10/2016.
5123	- Transfer to the Surveillance Category as of 10/4/2014.

Securities Blocks Details

Securities	Block Volume	Price	Block Trade Value	Time of approval	Note
MOTOR OIL (CR)	40,000	12.00	480,000.00	11:27:42	20
EUROBANK ERGASIAS (CR)	440,000	0.675	297,000.00	16:04:34	14
ALPHA BANK (CR)	165,000	1.79	295,416.00	16:05:16	14
PIRAEUS BANK (CR)	1,575,000	0.189	297,990.00	16:06:13	14
HELLENIC EXCHANGES-A.S.E. (CR)	20,000	4.76	95,246.00	16:06:55	14
OPAP (CR)	131,609	8.86	1,166,055.74	16:09:40	20
NATIONAL BANK (CR)	2,000,000	0.222	444,000.00	16:11:16	20
MOTOR OIL (CR)	30,000	12.00	360,000.00	17:15:17	20

Blocks Notes

- 9 - Method 6-1 / Special Fees
- 10 - Method 6-1 / Special Fees, SDS
- 14 - Method 6-3 / Settlement, Incomplete Buy and Sell
- 18 - Method 6-2 / SPOT 1
- 19 - Method 6-2 / SPOT 2
- 20 - Method 6-1 and Method 6-1 Same Day Settlement
- 21 - Other Pre-agreed

Shares Rights Details

Occured date	Exercise from	Exercise until	Trading until	Rights	Price min	Price max	Closing price	Last Bid	Last Ask	Volume	Trades	Transactions Value
-----------------	------------------	-------------------	------------------	--------	--------------	--------------	------------------	----------	----------	--------	--------	-----------------------

No Rights Transactions.

Shares Forced Sales

Securities	Transaction s Volume	Number of Trades	Transactions Value	Note
No Forced Transactions.				

Forced Sales Notes

- 1 - Normal Forced Sale.
- 2 - Forced Sales of Fixed Registered Shares.
- 3 - Forced Sales of Remaining Stock Fractions.

Forced Sales Registered Shares

Securities	Start Date	End Date	Initial Volume	Remaining Volume	Date	Avg price (day)	Avg price (period)	Number of Trades	Transactions Volume	Transactions Value
No Fixed Registered Shares Forced Sales.										

Forced Sales Notes

According to Decision 1/380/04.05.2008 of the Hellenic Republic Capital Market Commission, the certificated registered shares that have not been deposited to the issuer for dematerialisation, will be auctioned in the Athens Exchange by the supervising issuer. Forced sales procedure is held according to Article 99A of the Athens Exchange Rulebook. The average price of the period is calculated by dividing the Total transactions value by the Total volume and includes all the transactions made until the current date.

Exchange Traded Funds (ETFs) Characteristics

	Transactions Date (T)	Creation / Redemption	Units (T-1)	New Units (T-1)	Redemptio n Units (T-	Units (T) [1]	Fund Assets [2]	Net Unit Price	Dividen d per	Dividend Date
NBGAM ETF GREECE & TURKEY 30	24/11/2016	25,000	388,550	---	---	388,550	2,004,885.00	5.1599	---	27/10/2011
NBGAM ETF ΓΔ Χ.Α.	24/11/2016	25,000	294,878	---	---	294,878	2,195,684.00	7.4461	---	27/10/2011
ALPHA ETF FTSE Athex Large Cap	24/11/2016	5,000	619,082	---	---	619,082	10,607,790.00	17.1347	0.37	30/06/2016

ETFs Notes

[1] - Units (T) = Units (T-1) + New Units (T-1) - Redemption Units (T-1)

[2] - The Creation / Redemption Units of T-1 are included.

Corporate Bonds

Num Listed Bonds	Nominal price	Issue price	Today's Rate	Exp. Date	Duration (years)	Note	Coupon		Trading	Corporate Bonds	Price min	Price max	Closing price	Previous closing price/date	Volume	Transactions Value	Last order		Date	ear min	Year max	
							Common	Preferred									Price	Buy / Sell				
233,748,933	0.30	0.30	1.00	11/10/2025	9	---	1	---	1	FORTHNET S.A. (Convertible)	---	---	---	---	---	---	95.0000	S	09/11/2016	100.0000	100.0000	
40,000,000	1.00	1.00	5.00	04/10/2021	5	---	1	---	1	HOUSEMARKET S.A. (Non Convertible)	100.6500	100.8000	100.7179	100.5000	23/11/2016	70,000	71,037.23	100.5000	B	24/11/2016	99.9000	101.3000
1,774,359	13.76	9.77	0.00	21/10/2025	18	---	26	---	1	NIREUS S.A. (Convertible)	---	---	---	100.0000	12/07/2016	---	---	4.5000	B	24/11/2016	10.0000	150.0000
212,237,880	1.00	1.00	6.30	29/07/2020	7	---	14	---	1	MARFIN INVESTMENT GROUP S.A. SERIES B (Convert.)	---	---	---	0.8500	23/08/2013	---	---	5.0000	B	04/10/2016	0.8500	0.8500
163,009,139	1.00	1.00	7.00	29/07/2019	6	---	14	---	1	MARFIN INVESTMENT GROUP S.A. SERIES A (Convert.)	---	---	---	1.0000	23/08/2013	---	---	5.0000	B	04/10/2016	1.0000	1.0000

Corporate Bonds Notes

Transactions Volume = (Pieces) * (Nominal Price). Transactions Value = (Pieces) * (Nominal Price) * (price %) + (Accrued interest).
The price of a Bond is stated as a percentage (%) of Bond's Nominal Price.
Nominal Price in Euros (€), except if it is noted differently.

Government Bonds

Number Listed Bonds	Nominal price	Today's Rate	Accrued Interest Calc	Exp. Date [1]	Duration (years)	Note	Coupons Date	Curr. coupon value	Trading Unit	Government Bonds	Price min	Price max	Closing price	Previous closing price/date	Volume	Transactions Value	Price	Last order Buy / Sell	Date
1,792,455,803	1.00	3.00	Actual/Actual	24/02/2023	11	---	24/02	3.00	1	GGB-FXD-240223-11Y-2.000-1.00	---	---	---	10.0000 22/06/2015	---	---	---	---	---
1,771,485,249	1.00	3.00	Actual/Actual	24/02/2024	12	---	24/02	3.00	1	GGB-FXD-240224-12Y-2.000-1.00	---	---	---	10.0000 22/06/2015	---	---	---	---	---
1,744,316,583	1.00	3.00	Actual/Actual	24/02/2025	13	---	24/02	3.00	1	GGB-FXD-240225-13Y-2.000-1.00	---	---	---	10.0000 22/06/2015	---	---	---	---	---
1,498,761,836	1.00	3.00	Actual/Actual	24/02/2026	14	---	24/02	3.00	1	GGB-FXD-240226-14Y-2.000-1.00	---	---	---	10.0000 22/06/2015	---	---	---	---	---
1,469,952,920	1.00	3.00	Actual/Actual	24/02/2027	15	---	24/02	3.00	1	GGB-FXD-240227-15Y-2.000-1.00	---	---	---	10.0000 22/06/2015	---	---	---	---	---
1,525,434,082	1.00	3.00	Actual/Actual	24/02/2028	16	---	24/02	3.00	1	GGB-FXD-240228-16Y-2.000-1.00	---	---	---	10.0000 22/06/2015	---	---	---	---	---
1,503,860,546	1.00	3.00	Actual/Actual	24/02/2029	17	---	24/02	3.00	1	GGB-FXD-240229-17Y-2.000-1.00	---	---	---	10.0000 22/06/2015	---	---	---	---	---
1,435,418,132	1.00	3.00	Actual/Actual	24/02/2030	18	---	24/02	3.00	1	GGB-FXD-240230-18Y-2.000-1.00	---	---	---	10.0000 22/06/2015	---	---	---	---	---
1,368,045,727	1.00	3.00	Actual/Actual	24/02/2031	19	---	24/02	3.00	1	GGB-FXD-240231-19Y-2.000-1.00	---	---	---	10.0000 22/06/2015	---	---	---	---	---
1,373,758,194	1.00	3.00	Actual/Actual	24/02/2032	20	---	24/02	3.00	1	GGB-FXD-240232-20Y-2.000-1.00	---	---	---	10.0000 22/06/2015	---	---	---	---	---
1,452,639,893	1.00	3.00	Actual/Actual	24/02/2033	21	---	24/02	3.00	1	GGB-FXD-240233-21Y-2.000-1.00	---	---	---	10.0000 22/06/2015	---	---	---	---	---
1,410,344,954	1.00	3.00	Actual/Actual	24/02/2034	22	---	24/02	3.00	1	GGB-FXD-240234-22Y-2.000-1.00	---	---	---	10.0000 22/06/2015	---	---	---	---	---
1,444,202,190	1.00	3.00	Actual/Actual	24/02/2035	23	---	24/02	3.00	1	GGB-FXD-240235-23Y-2.000-1.00	---	---	---	10.0000 22/06/2015	---	---	---	---	---
1,505,138,031	1.00	3.00	Actual/Actual	24/02/2036	24	---	24/02	3.00	1	GGB-FXD-240236-24Y-2.000-1.00	---	---	---	10.0000 22/06/2015	---	---	---	---	---
1,396,254,095	1.00	3.00	Actual/Actual	24/02/2037	25	---	24/02	3.00	1	GGB-FXD-240237-25Y-2.000-1.00	---	---	---	10.0000 22/06/2015	---	---	---	---	---
1,382,167,704	1.00	3.00	Actual/Actual	24/02/2038	26	---	24/02	3.00	1	GGB-FXD-240238-26Y-2.000-1.00	---	---	---	10.0000 22/06/2015	---	---	---	---	---
1,337,331,257	1.00	3.00	Actual/Actual	24/02/2039	27	---	24/02	3.00	1	GGB-FXD-240239-27Y-2.000-1.00	---	---	---	10.0000 22/06/2015	---	---	---	---	---
1,371,908,706	1.00	3.00	Actual/Actual	24/02/2040	28	---	24/02	3.00	1	GGB-FXD-240240-28Y-2.000-1.00	---	---	---	10.0000 22/06/2015	---	---	---	---	---
1,360,659,778	1.00	3.00	Actual/Actual	24/02/2041	29	---	24/02	3.00	1	GGB-FXD-240241-29Y-2.000-1.00	---	---	---	10.0000 22/06/2015	---	---	---	---	---
1,432,747,403	1.00	3.00	Actual/Actual	24/02/2042	30	---	24/02	3.00	1	GGB-FXD-240242-30Y-2.000-1.00	---	---	---	10.0000 22/06/2015	---	---	---	---	---
742,153	1,000.00	0.44	FLR Actual/360	10/08/2019	5	---	10/02 - 10/08	---	1	GGB-FLT-100819-05Y-0.934-1,000	---	---	---	---	---	---	---	---	---
4,030,827	1,000.00	4.75	Actual/Actual	17/04/2019	5	---	17/04	4.75	1	GGB-FXD-170419-05Y-4.750-1,000	---	---	---	---	---	---	---	---	---
2,089,066	1,000.00	3.38	Actual/Actual	17/07/2017	3	---	17/07	3.38	1	GGB-FXD-170717-03Y-3.375-1,000	---	---	---	---	---	---	---	---	---

Government Bonds Notes

Transactions Volume = (Pieces) * (Nominal Price). Transactions Value = (Pieces) * (Nominal Price) * (price %) + (Accrued interest).
The Value of current coupon for the issues with NV 0.01 euro refers to NV 100 euros
FLR: Floating Interest Rate.
[1] - The Expiration Date of the interest bearing period and the Date for coupon payment.

Bonds in Circulation	Currency / Min nominal traded Value	Coupons Payment Date	Current Coupon Value	Note	Coupon	Trading Unit	Issue Date	Duration (years)	Today's Interest	A.I.C in days	Bonds	Last price of previous days		Last Outcry in Cash (euro) Price		Buy / Sell	Date	Trades in Pieces	Life min	Life Max
Corporate Bonds in Foreign Currency and Euro																				
103,746	GBP / 10	01/12	0.25	---	57	1	01/12/1930	98	2.5	360	National Mortgage Bank	2.27	05/02/1996	2.27	S	05/02/1996	---	2.27	2.27	
0	GBP / 10	01/12	0.25	---	59	1	01/12/1928	100	2.5	360	National Mortgage Bank	---	---	---	---	---	---	---	---	

Government Bonds Notes

A.I.C: Accrued Interest Calculation base.
FLR: Floating Interest Rate.
The minimum tradeable Nominal Value for all Demeterialised Government Titles is 100 Euros.
(μτφρ-0)

Athex & ATHEXClear Members List

Member Name			Stock Market			Derivatives Market		ATHEXClear Member	
Address	Phone	Fax	Market Member	Remote Member	Market Maker	Proprietary	Market Maker	General Clearing	Direct Clearing
A. SARRIS SECURITIES S.A.			a						
6, DRAGATSANIOU ATHINA	+30 2103367700	210-3312324							
ALPHA FINANCE INVESTMENT SERVICES S.A.			a		a	a	a		a
5, MERLIN ATHINA	+30 2103677400	210-33311193							
ALPHA BANK A.E.								a	
40, STADIOU STR ATHINA	(210)-3260000	(210)-3264116							
	(210)-3265546	(210)-3265811							
103, AVE. ATHINON ATHINA	+30 2103436820	210-3436270							
ARGUS STOCKBROKERS LTD			a	a		a			
25 , DIMOSTHENI SEVERI AVE NICOSIA	+357 22717000	0035722717070							
ATLANTIC SECURITIES LIMITED			a	a					
37, PRODROMOU NICOSIA	+357 22445400	00357 22661914							
ATLAS SECURITIES S.A			a			a			
, 125 MICHALAKOPOULOU & 14-16 VERVENON ATHINA	+30 2103363300	210-3238925							
ATTICA BANK S.A.								a	
54, AKADIMIAS STR. ATHINA	(210)-3390757	(210)-3646090							
23, OMIROU ATHINA	+30 2103669261	210-3669265							
23, OMIROU STR. ATHINA	(210)-3669000	(210)-3669410							
AXIA VENTURES GROUP LTD			a	a					
, KRANIDIOTI 10, OFFICE 102 NICOSIA	+357 22742000	357 22742001							
AXON SECURITIES S.A.			a			a			
48, STADIOU ATHINA	+30 2103363800	210-3243903							
BANK OF AMERICA MERRILL LYNCH			a	a					
2 , KING EDWARD STREET LONDON	+44 20276281000								
BETA SECURITIES S.A.			a		a	a			a
29 , ALEXANDRAS AVEN. & VRAILA ATHINA	+30 2106478900	210-6410139							
BNP PARIBAS SECURITIES SERVICES S.A.								a	
2, LAMPSAKOU STREET ATHINA	+30 2107468500	210-7468579-581							
CAPITAL SECURITIES S.A.			a			a			
58, MITROPOLEOS ATHINA	+30 2103369700	+30 210 3369820							
CFS SECURITIES-INVESTMENT SERVICES S.A.			a						
3, PAPARRIGOPOULOU ATHINA	+30 2103360800	+30 210-3360980							
CITIGROUP GLOBAL MARKET LTD			a	a					
1, CITIGROUP CENTER , CANADA SQ., CANARY WHARF LONDON	+44 02079864000								
CREDIT SUISSE SECURITIES (EUROPE) LIMITED			a	a					
, ONE CABOT SQUARE LONDON	+44 2078888888								
CYCLOS SECURITIES S.A.			a			a			a
39, PANEPISTIMIOU ATHINA	+30 2103364300	+30 210-3239122							
D.A. TSEKOURAS SEC. S.A.			a						
33, STADIOU ATHINA	+30 2103245100	210-3211997							
DELTASTOCK AD									a
115, MEGAPARK OFFICE BUILDING, OFFICE AREA E, G TSARIGRADSKOGA 39	+38628115051	+35928115049							
DEUTSCHE BANK S.A.			a	a		a			
1 , GREAT WINCHESTER STREET LONDON	+44 20 754 54209	00441133361437							
DYNAMIC SECURITIES S.A.			a			a			a
8, OMIROU ATHINA	+30 2103677700	210-3677777							
EL. PETROPOULAKIS SECURITIES S.A.			a			a			
9, ARISTEIDOU ATHINA	+30 2103213928	+30 210-3216810							
ESTINVEST S.A.									a
9, TH REPUBLICII STREET FOCSANI	+40 237238900	+40 237237471							
EUROBANK ERGASIAS S.A.								a	
8, OTHONOS ATHINA	+30 2103337000	210-3245916							
8, OTHONOS STR. ATHINA	(210)-3337969	(210)-3245916							
	(210)-3337000	(210)-3233866							
EUROBANK SECURITIES INVESTMENT FIRM S.A			a		a	a	a		a
, FILELLINON 10 & XENOFONTOS 13 ATHINA	+30 2103720000	210-3720001							
EUROCORP SECURITIES S.A.			a			a			a
14, SQ.FILIKIS ETAIRIAS ATHINA	+30 2107263500	210-7263666							
EUROTRUST BROKERAGE S.A.			a						
113, SEVASTOUPOLEOS ATHINA	+30 2103363100	+30 210-3238334							
EUROXX SECURITIES S.A.			a		a	a	a		a
7, PALAIOLOGOU CHALANDRI	(210)-6879400	(210)-6879401							
7, PALEOLOGOU CHALANDRI	+30 2106879400	210-6879401							

Athex & ATHEXClear Members List

Member Name			Stock Market			Derivatives Market		ATHEXClear Member	
Address	Phone	Fax	Market Member	Remote Member	Market Maker	Proprietary	Market Maker	General Clearing	Direct Clearing
G. A. PERVAS SECURITIES-INVESTMENT SERVICES CO S.A.			a						
7-9, SOFOKLEOUS ATHINA	+30 2103727200	210-3210-291							
GLOBAL CAPITAL SECURITIES AND FINANCIAL SERVICES LTD			a	a					
, AVE. ARCHIEPISKOPOU MAKARIOU NICOSIA	+357 22710710	357 22339332							
GUARDIAN TRUST SECURITIES S.A			a			a			
31, ERMOU ATHINA	+30 2103378700	210-3220498							
HELLENIC BANK (INVESTMENTS) LTD			a	a					
, AVE.KYRIAKOU MATSI 31 - PO BOX 24747 NICOSIA	+357 22500100	357 22500110							
HELLENICAMERICAN SEC. S.A.			a		a	a			a
27, ANDREA PAPANDREOU ATHINA	+30 2103311100	+30 210-3215968							
HSBC BANK PLC								a	
109-111, AVE. MESOGION ATHINA	+30 2106960000	210-6928000							
INDEX SECURITIES S.A.			a						
6, DRAGATSANIOU ATHINA	+30 2103213920	+30 210-3213216							
INTERFINBROK CORPORATION S.A.									a
1, STR.CALARASI NR. CONSTANTA	+40 241639071	0241-547829							
INVESTMENT BANK OF GREECE S.A.			a		a	a		a	
32 , EGIALIAS & PARADISOU MAROUSI	+30 2108173111	+30 210-6896325							
J. CHR. MAVRIKIS SECURITIES S.A.			a						
5, SOFOKLEOUS ATHINA	+30 2103216730	210-3217767							
KAPPA SECURITIES S.A.			a			a			
15, VALAORITOU ATHINA	+30 2103678600	+30 210-3641002							
KARAMANOF SECURITIES-INV. SERVICES S.A.			a			a			
2, SQ. AGION THEODORON ATHINA	+30 2103212947	+30 210-3217088							
LAIKI FINANCIAL SERVICES LTD				a					
26, AVE. VYRONOS NICOSIA	357 22367367	357 22718567							
LEON DEPOLAS SECURITIES S.A.			a		a	a			
1, CHRISTOU LADA ATHINA	+30 2103213276	+30 210-3211618							
MAGNA TRUST SECURITIES S.A			a						
12-14, KARAGIORGI SERBIAS ATHINA	+30 2103800820	210-3220910							
MEGA EQUITY SECURITIES-FINANCIAL SERVICES LTD			a	a		a			
42-44, AVE. GRIVA DIGENI NICOSIA	+357 22711711	357 22711811							
MERIT SECURITIES S.A			a		a	a			a
3, GEORGIOU SOURI ATHINA	+30 2103671890	210-3671830							
MIDAS BROKERAGE S.A.			a		a				
5, SOFOKLEOUS ATHINA	+30 2141008800	+30 210-3253205							
N. CHRYSISOCHOIDIS STOCK BROKERAGE I.S.S.A.			a			a			a
7-9, SOFOKLEOUS ATHINA	+30 2103213913	+30 210-3216115							
NATIONAL BANK OF GREECE S.A.			a			a		a	
86, AIOLOU STR. ATHINA	(210)-3341000	(210)-3228187							
68, AKADIMIAS STR. ATHINA	(210)-3328817	(210)-3328678							
NATIONAL SECURITIES S.A			a		a	a	a		
66, KIFISIAS AVE , BUILDING A ATHINA	+30 2107720000	+30 210-7720002							
NUNTIUS SECURITIES S.A			a						
6, DRAGATSANIOU ATHINA	+30 2103350599	+30210-3254846							
ONE PLUS CAPITAL LIMITED			a	a					
, 75 PRODRAMOU AVENUE, ONEWORLD PARKVIEW HOUSE, 3RD FLOOR, 22873760	+30 2103350599								
PANTELAKIS SECURITIES S.A.			a			a			
57, ETHNIKIS ANTISTASIS B CHALANDRI	+30 2106965000	210-6929550							
PEGASUS BROKERAGE FIRM S.A			a			a			
17 , VALAORITOU & AMERIKIS ATHINA	+30 2103670700	+30 210-3670760							
PIRAEUS BANK S.A.			a			a		a	
4, AMERIKIS STR. ATHINA	(210)-3335000	(210)-3335079							
4, AMERIKIS STR ATHINA	(210)-3335918	(210)-3254207							
4, AMERIKIS ATHINA	+30 2103335000	210-3335079							
PIRAEUS SECURITIES S.A.			a		a	a	a		a
5, KORAI ATHINA	+30 2103354100	210-3354170							
PRELIUM SECURITIES-INVESTMENT SERVICES S.A.			a			a			
1 , DAVAKI & KIFISIAS AVE. ATHINA	+30 2103677000	+30 210-6926403							
PROCHOICE SECURITIES LTD			a	a					
57, SPYROY KYPRIANOY NICOSIA	+357-24-661192	+357-24-662464							
SHARELINK SECURITIES-FINANCIAL SERVICES LTD			a	a		a			
6 , THEOTOKI MEGARO ELLINA NICOSIA	+357 22554200	+357 22750852							

Athex & ATHEXClear Members List

Member Name			Stock Market			Derivatives Market		ATHEXClear Member	
Address	Phone	Fax	Market Member	Remote Member	Market Maker	Proprietary	Market Maker	General Clearing	Direct Clearing
SOCIETE GENERALE S.A.			a	a		a			
, 17 COURS VALMY 92987 PUTEAUX - LA DEFENSE PARIS	+33 157290504	+33142138697							
SOLIDUS SECURITIES S.A			a			a			a
64, LOUIZIS RIANCOUR ATHINA	+30 2106900600	210-6985421							
SSIF VIENNA INVESTMENT TRUST S.A.									a
, 4 SPLAIUL UNIRII, BUILDING B3 BUCHAREST	+40 212074880	004 021 207 48 98							
ST. EM. LAVRENTAKIS SECURITIES S.A.			a			a			
7-9, SOFOKLEOUS ATHINA	+30 2103213336	+30 210-3246572							
THE CYPRUS INVESTMENT & SECURITIES CORPORATION LTD			a	a					
154, LIMASSOL AVENUE, STROVOLOS NICOSIA	+357 22121700	357 22338800							
UBS LIMITED			a	a					
1 , FINSBURY AVENUE LONDON	+44 2075687135								

List of Stocks under Market Making operations

Securities	Stock Category
Market Maker	Start Market Making
FRIGOGLASS SA (CR)	Surveillance
EUROBANK SECURITIES INVESTMENT FIRM S.A	27/10/2014
ALPHA BANK (CR)	Main Market
ALPHA FINANCE INVESTMENT SERVICES S.A.	29/02/2016
EUROBANK SECURITIES INVESTMENT FIRM S.A	24/10/2012
LEON DEPOLAS SECURITIES S.A.	04/01/2016
MERIT SECURITIES S.A	03/09/2013
MIDAS BROKERAGE S.A.	11/01/2006
NATIONAL SECURITIES S.A	15/01/2013
PIRAEUS SECURITIES S.A.	28/05/2013
ALUMIL (CR)	Main Market
BETA SECURITIES S.A.	18/07/2013
ATTICA BANK S.A. (CR)	Main Market
BETA SECURITIES S.A.	02/06/2014
EUROBANK SECURITIES INVESTMENT FIRM S.A	25/07/2014
EUROXX SECURITIES S.A.	22/01/2016
BANK OF CYPRUS (CR)	Main Market
EUROBANK SECURITIES INVESTMENT FIRM S.A	23/03/2015
NATIONAL SECURITIES S.A	22/06/2015
BYTE COMPUTER SA (CR)	Main Market
MERIT SECURITIES S.A	04/08/2013
CC HBC AG (CR)	Main Market
EUROBANK SECURITIES INVESTMENT FIRM S.A	23/10/2013
NATIONAL SECURITIES S.A	29/04/2013
PIRAEUS SECURITIES S.A.	04/05/2015
ELLAKTOR (CR)	Main Market
EUROBANK SECURITIES INVESTMENT FIRM S.A	01/06/2013
NATIONAL SECURITIES S.A	25/06/2013
ELTON SA (CR)	Main Market
BETA SECURITIES S.A.	03/09/2013
EUROBANK ERGASIAS (CR)	Main Market
ALPHA FINANCE INVESTMENT SERVICES S.A.	08/01/2013
EUROBANK SECURITIES INVESTMENT FIRM S.A	01/06/2013
HELLENICAMERICAN SEC. S.A.	25/07/2014
MIDAS BROKERAGE S.A.	07/01/2016
PIRAEUS SECURITIES S.A.	28/09/2013
EUROCONSULTANTS S.A. (CR)	Main Market
EUROBANK SECURITIES INVESTMENT FIRM S.A	22/07/2014
FOLLI FOLLIE (CR)	Main Market
NATIONAL SECURITIES S.A	17/02/2014
PIRAEUS SECURITIES S.A.	04/05/2015
FOURLIS (CR)	Main Market
HELLENICAMERICAN SEC. S.A.	14/09/2005
GEK TERNA (CR)	Main Market
HELLENICAMERICAN SEC. S.A.	07/09/2015
GR. SARANTIS SA (CR)	Main Market
BETA SECURITIES S.A.	14/05/2013
HELLENIC EXCHANGES-A.S.E. (CR)	Main Market
EUROBANK SECURITIES INVESTMENT FIRM S.A	01/06/2013
HELLENICAMERICAN SEC. S.A.	01/09/2014
NATIONAL SECURITIES S.A	25/06/2013
PIRAEUS SECURITIES S.A.	04/05/2015
HELLENIC PETROLEUM (CR)	Main Market
HELLENICAMERICAN SEC. S.A.	14/09/2015
HYGEIA SA (CR)	Main Market
HELLENICAMERICAN SEC. S.A.	18/04/2016
INTRACOM HOLDINGS (CR)	Main Market
HELLENICAMERICAN SEC. S.A.	07/09/2015
INTRALOT (CR)	Main Market
EUROBANK SECURITIES INVESTMENT FIRM S.A	01/06/2013
PIRAEUS SECURITIES S.A.	28/09/2013
J & P - AVAX SA (CR)	Main Market
EUROBANK SECURITIES INVESTMENT FIRM S.A	14/12/2015
JUMBO SA (CR)	Main Market
MIDAS BROKERAGE S.A.	27/07/2016
KLOUKINAS - LAPPAS SA (CR)	Main Market
BETA SECURITIES S.A.	22/09/2014
LAMDA DEVELOPMENT SA (CR)	Main Market
EUROBANK SECURITIES INVESTMENT FIRM S.A	08/12/2014

List of Stocks under Market Making operations

Securities	Stock Category
Market Maker	Start Market Making
MARFIN INVESTMENT GROUP (CR)	Main Market
EUROBANK SECURITIES INVESTMENT FIRM S.A	23/03/2015
HELLENICAMERICAN SEC. S.A.	25/07/2014
PIRAEUS SECURITIES S.A.	02/02/2013
MLS MULTIMEDIA SA (CR)	Main Market
HELLENICAMERICAN SEC. S.A.	07/12/2015
MOTOR OIL (CR)	Main Market
EUROBANK SECURITIES INVESTMENT FIRM S.A	23/10/2012
HELLENICAMERICAN SEC. S.A.	01/09/2014
NATIONAL SECURITIES S.A	17/02/2014
PIRAEUS SECURITIES S.A.	04/05/2015
MYTILINEOS HOLDINGS (CR)	Main Market
NATIONAL SECURITIES S.A	25/06/2013
PIRAEUS SECURITIES S.A.	04/05/2015
NATIONAL BANK (CR)	Main Market
ALPHA FINANCE INVESTMENT SERVICES S.A.	08/01/2013
EUROBANK SECURITIES INVESTMENT FIRM S.A	24/10/2012
HELLENICAMERICAN SEC. S.A.	25/07/2014
LEON DEPOLAS SECURITIES S.A.	20/04/2015
MERIT SECURITIES S.A	03/09/2013
MIDAS BROKERAGE S.A.	07/01/2016
NATIONAL SECURITIES S.A	28/02/2013
PIRAEUS SECURITIES S.A.	08/09/2013
OPAP (CR)	Main Market
ALPHA FINANCE INVESTMENT SERVICES S.A.	08/01/2013
EUROBANK SECURITIES INVESTMENT FIRM S.A	24/10/2012
HELLENICAMERICAN SEC. S.A.	25/07/2014
MIDAS BROKERAGE S.A.	04/04/2016
NATIONAL SECURITIES S.A	15/01/2013
PIRAEUS SECURITIES S.A.	04/05/2015
OTE (CR)	Main Market
ALPHA FINANCE INVESTMENT SERVICES S.A.	08/01/2013
EUROBANK SECURITIES INVESTMENT FIRM S.A	24/10/2012
HELLENICAMERICAN SEC. S.A.	25/07/2014
MIDAS BROKERAGE S.A.	01/10/2015
NATIONAL SECURITIES S.A	01/12/2012
PIRAEUS SECURITIES S.A.	08/09/2013
PAPOUTSANIS (CR)	Main Market
BETA SECURITIES S.A.	25/11/2013
PETROPOULOS PETROS (CR)	Main Market
BETA SECURITIES S.A.	28/05/2013
PIRAEUS BANK (CR)	Main Market
EUROBANK SECURITIES INVESTMENT FIRM S.A	23/10/2012
EUROXX SECURITIES S.A.	15/02/2016
HELLENICAMERICAN SEC. S.A.	25/07/2014
MERIT SECURITIES S.A	16/09/2013
MIDAS BROKERAGE S.A.	11/01/2016
NATIONAL SECURITIES S.A	02/06/2013
PIRAEUS SECURITIES S.A.	16/02/2013
PLAISIO COMPUTERS SA (CR)	Main Market
BETA SECURITIES S.A.	05/05/2014
EUROBANK SECURITIES INVESTMENT FIRM S.A	02/03/2015
PPC (CR)	Main Market
ALPHA FINANCE INVESTMENT SERVICES S.A.	08/01/2013
EUROBANK SECURITIES INVESTMENT FIRM S.A	23/10/2012
MIDAS BROKERAGE S.A.	04/04/2016
NATIONAL SECURITIES S.A	26/03/2013
PIRAEUS SECURITIES S.A.	28/09/2013
QUALITY & RELIABILITY SA (CR)	Main Market
BETA SECURITIES S.A.	20/08/2014
S.KANAKIS SA (CR)	Main Market
BETA SECURITIES S.A.	01/10/2013
TITAN CEMENT (CR)	Main Market
EUROBANK SECURITIES INVESTMENT FIRM S.A	23/10/2012
NATIONAL SECURITIES S.A	17/02/2014
PIRAEUS SECURITIES S.A.	04/05/2015
VIOHALCO SA/NV (CB)	Main Market
ALPHA FINANCE INVESTMENT SERVICES S.A.	17/02/2014
MERIT SECURITIES S.A	17/03/2014

Underlying Asset				Derivatives Market													
Price max	Price min	Closing price	change	Delivery Month	Open price	Price max	Price min	Last price	Closing price	Last Bid	Last Ask	Settlement price	Life high	Life low	Trades	Volume	Open Interest
FTSE/Athex Large Cap																	(Trade Unit: 1 Index Point x 2€, Cash Settlement)
1,715.33	1,678.38	1,682.02	-1.94%	December 2016	1,708.25	1,708.25	1,681.50	1,684.00	1,684.00	---	---	1,687.50	1,719.50	---	269	1,066	9,076
				January 2017	1,698.25	1,698.75	1,683.50	1,690.25	1,690.25	---	---	1,688.25	1,719.50	---	8	8	308
				February 2017	---	---	---	---	1,723.50	---	---	---	---	---	---	---	---
				March 2017	---	---	---	---	1,726.25	---	---	---	---	---	---	---	---
				June 2017	---	---	---	---	1,734.75	---	---	---	---	---	---	---	---
				September 2017	---	---	---	---	1,743.50	---	---	---	---	---	---	---	---

Underlying Asset				Derivatives Market													
Price max	Price min	Closing price	change	Delivery Month	Open price	Price max	Price min	Last price	Closing price	Last Bid	Last Ask	Settlement price	Life high	Life low	Trades	Volume	Open Interest
ALPHA BANK (CR)				(Contract Size: 100 Securities, Physical Delivery)													
1.87	1.79	1.79	-4.79%	December 2016	1.87	1.87	1.79	1.79	1.79	---	---	1.80	1.91	---	328	4,821	18,099
				March 2017	---	---	---	---	1.89	---	---	---	---	---	---	---	---
				June 2017	---	---	---	---	1.90	---	---	---	---	---	---	---	---
				September 2017	---	---	---	---	1.91	---	---	---	---	---	---	---	---
CC HBC AG (CR)				(Contract Size: 100 Securities, Physical Delivery)													
19.99	19.77	19.96	-0.10%	December 2016	---	---	---	---	20.01	---	---	19.99	21.05	---	---	---	144
				March 2017	---	---	---	---	20.11	---	---	19.59	19.85	---	---	---	10
				June 2017	---	---	---	---	20.21	---	---	---	---	---	---	---	---
				September 2017	---	---	---	---	20.31	---	---	---	---	---	---	---	---
CORINTH PIPEWORKS (CR)				(Contract Size: 100 Securities, Physical Delivery)													
0.623	0.615	0.623	0.16%	December 2016	0.600	0.600	0.600	0.600	0.600	---	---	0.608	0.929	---	2	8	811
				March 2017	---	---	---	---	0.626	---	---	0.641	0.850	---	---	---	---
				June 2017	---	---	---	---	0.629	---	---	---	---	---	---	---	---
				September 2017	---	---	---	---	0.632	---	---	---	---	---	---	---	---
ELLAKTOR (CR)				(Contract Size: 100 Securities, Physical Delivery)													
1.17	1.11	1.11	-7.50%	December 2016	1.17	1.17	1.11	1.12	1.12	---	---	1.12	1.36	---	73	366	3,801
				March 2017	1.16	1.16	1.13	1.13	1.13	---	---	1.13	1.16	---	3	50	1
				June 2017	---	---	---	---	1.21	---	---	---	---	---	---	---	---
				September 2017	---	---	---	---	1.22	---	---	---	---	---	---	---	---
EUROBANK ERGASIAS (CR)				(Contract Size: 100 Securities, Physical Delivery)													
0.712	0.673	0.673	-5.61%	December 2016	0.714	0.716	0.672	0.673	0.673	---	---	0.684	0.737	---	520	10,376	30,553
				March 2017	---	---	---	---	0.718	---	---	---	---	---	---	---	---
				June 2017	---	---	---	---	0.721	---	---	---	---	---	---	---	---
				September 2017	---	---	---	---	0.725	---	---	---	---	---	---	---	---
EYDAP S.A. (CR)				(Contract Size: 100 Securities, Physical Delivery)													
5.42	5.31	5.40	0.37%	December 2016	5.00	5.04	5.00	5.03	5.03	---	---	5.06	5.61	---	7	13	303
				March 2017	---	---	---	---	5.41	---	---	---	---	---	---	---	---
				June 2017	---	---	---	---	5.44	---	---	---	---	---	---	---	---
				September 2017	---	---	---	---	5.47	---	---	---	---	---	---	---	---
FOLLI FOLLIE (CR)				(Contract Size: 100 Securities, Physical Delivery)													
20.89	20.53	20.66	-0.67%	December 2016	20.74	20.88	20.66	20.80	20.80	---	---	20.86	22.31	---	7	19	495
				March 2017	---	---	---	---	20.93	---	---	20.87	22.10	---	---	---	---
				June 2017	---	---	---	---	21.04	---	---	---	---	---	---	---	---
				September 2017	---	---	---	---	21.14	---	---	---	---	---	---	---	---
GEK TERNA (CR)				(Contract Size: 100 Securities, Physical Delivery)													
2.29	2.22	2.26	-1.31%	December 2016	2.29	2.29	2.23	2.23	2.23	---	---	2.28	2.32	---	6	16	8,196
				March 2017	---	---	---	---	2.30	---	---	---	---	---	---	---	---
				June 2017	---	---	---	---	2.32	---	---	---	---	---	---	---	---
				September 2017	---	---	---	---	2.33	---	---	---	---	---	---	---	---

Underlying Asset				Derivatives Market													
Price max	Price min	Closing price	change	Delivery Month	Open price	Price max	Price min	Last price	Closing price	Last Bid	Last Ask	Settlement price	Life high	Life low	Trades	Volume	Open Interest
GRIVALIA PROPERTIES (CR)				(Contract Size: 100 Securities, Physical Delivery)													
7.60	7.50	7.60	0.13%	December 2016	---	---	---	---	7.60	---	---	7.62	7.59	---	---	---	49
				March 2017	---	---	---	---	7.64	---	---	---	---	---	---	---	---
				June 2017	---	---	---	---	7.68	---	---	---	---	---	---	---	---
				September 2017	---	---	---	---	7.71	---	---	---	---	---	---	---	---
HELLENIC EXCHANGES-A.S.E. (CR)				(Contract Size: 100 Securities, Physical Delivery)													
4.98	4.84	4.89	-2.00%	December 2016	4.96	4.97	4.85	4.85	4.85	---	---	4.86	5.03	---	21	65	370
				March 2017	---	---	---	---	5.02	---	---	---	---	---	---	---	---
				June 2017	---	---	---	---	5.05	---	---	---	---	---	---	---	---
				September 2017	---	---	---	---	5.07	---	---	---	---	---	---	---	---
HELLENIC PETROLEUM (CR)				(Contract Size: 100 Securities, Physical Delivery)													
4.57	4.48	4.49	-0.88%	December 2016	4.51	4.56	4.47	4.50	4.50	---	---	4.49	4.68	---	25	108	3,834
				March 2017	---	---	---	---	4.56	---	---	4.49	4.30	---	---	---	---
				June 2017	---	---	---	---	4.58	---	---	---	---	---	---	---	---
				September 2017	---	---	---	---	4.60	---	---	---	---	---	---	---	---
INTRALOT (CR)				(Contract Size: 100 Securities, Physical Delivery)													
1.08	1.05	1.08	0.00%	December 2016	1.08	1.09	1.08	1.09	1.09	---	---	1.11	1.39	---	2	2	1,133
				March 2017	---	---	---	---	1.09	---	---	---	---	---	---	---	---
				June 2017	---	---	---	---	1.09	---	---	---	---	---	---	---	---
				September 2017	---	---	---	---	1.10	---	---	---	---	---	---	---	---
JUMBO SA (CR)				(Contract Size: 100 Securities, Physical Delivery)													
13.25	12.87	13.21	0.84%	December 2016	12.95	13.25	12.95	13.18	13.18	---	---	13.02	13.25	---	28	67	294
				March 2017	---	---	---	---	13.18	---	---	---	---	---	---	---	---
				June 2017	---	---	---	---	13.25	---	---	---	---	---	---	---	---
				September 2017	---	---	---	---	13.32	---	---	---	---	---	---	---	---
MARFIN INVESTMENT GROUP (CR)				(Contract Size: 100 Securities, Physical Delivery)													
0.141	0.133	0.136	-2.16%	December 2016	0.137	0.142	0.134	0.136	0.136	---	---	0.136	0.145	---	139	3,490	51,112
				March 2017	---	---	---	---	0.140	---	---	---	---	---	---	---	---
				June 2017	---	---	---	---	0.141	---	---	---	---	---	---	---	---
				September 2017	---	---	---	---	0.141	---	---	---	---	---	---	---	---
METKA (CR)				(Contract Size: 100 Securities, Physical Delivery)													
7.26	7.08	7.20	-0.28%	December 2016	7.15	7.15	7.10	7.13	7.13	---	---	7.15	7.80	---	7	18	450
				March 2017	---	---	---	---	7.27	---	---	7.16	7.65	---	---	---	170
				June 2017	---	---	---	---	7.30	---	---	---	---	---	---	---	---
				September 2017	---	---	---	---	7.34	---	---	---	---	---	---	---	---
MOTOR OIL (CR)				(Contract Size: 100 Securities, Physical Delivery)													
12.00	11.77	12.00	-0.41%	December 2016	11.69	11.79	11.69	11.71	11.71	---	---	12.04	11.90	---	8	24	351
				March 2017	---	---	---	---	12.13	---	---	---	---	---	---	---	---
				June 2017	---	---	---	---	12.19	---	---	---	---	---	---	---	---
				September 2017	---	---	---	---	12.25	---	---	---	---	---	---	---	---

Underlying Asset				Derivatives Market													
Price max	Price min	Closing price	change	Delivery Month	Open price	Price max	Price min	Last price	Closing price	Last Bid	Last Ask	Settlement price	Life high	Life low	Trades	Volume	Open Interest
MYTILNEOS HOLDINGS (CR)				(Contract Size: 100 Securities, Physical Delivery)													
5.97	5.81	5.86	-1.01%	December 2016	5.93	5.99	5.82	5.87	5.87	---	---	5.88	6.05	---	119	411	8,290
				March 2017	---	---	---	---	5.96	---	---	5.88	---	5.97	---	---	107
				June 2017	---	---	---	---	5.99	---	---	---	---	---	---	---	---
				September 2017	---	---	---	---	6.02	---	---	---	---	---	---	---	---
NATIONAL BANK (CR)				(Contract Size: 100 Securities, Physical Delivery)													
0.228	0.216	0.216	-5.26%	December 2016	0.228	0.231	0.215	0.216	0.216	---	---	0.217	0.268	---	546	33,518	118,493
				March 2017	0.220	0.223	0.215	0.215	0.215	---	---	0.216	0.230	---	6	13	121
				June 2017	---	---	---	---	0.231	---	---	---	---	---	---	---	---
				September 2017	---	---	---	---	0.232	---	---	---	---	---	---	---	---
OPAP (CR)				(Contract Size: 100 Securities, Physical Delivery)													
8.90	8.78	8.84	-0.67%	December 2016	8.80	8.88	8.78	8.84	8.84	---	---	8.85	8.96	---	27	102	1,996
				March 2017	---	---	---	---	8.96	---	---	8.86	---	8.37	---	---	---
				June 2017	---	---	---	---	9.00	---	---	---	---	---	---	---	---
				September 2017	---	---	---	---	9.05	---	---	---	---	---	---	---	---
OTE (CR)				(Contract Size: 100 Securities, Physical Delivery)													
8.59	8.42	8.48	-0.93%	December 2016	8.55	8.58	8.43	8.47	8.47	---	---	8.50	8.85	---	123	543	8,244
				March 2017	---	---	---	---	8.61	---	---	---	---	---	---	---	---
				June 2017	---	---	---	---	8.66	---	---	---	---	---	---	---	---
				September 2017	---	---	---	---	8.70	---	---	---	---	---	---	---	---
P.P.A. S.A. (CR)				(Contract Size: 100 Securities, Physical Delivery)													
13.09	12.94	13.08	0.00%	December 2016	12.95	12.95	12.95	12.95	12.95	---	---	13.08	13.14	---	1	4	662
				March 2017	---	---	---	---	13.16	---	---	---	---	---	---	---	---
				June 2017	---	---	---	---	13.23	---	---	---	---	---	---	---	---
				September 2017	---	---	---	---	13.30	---	---	---	---	---	---	---	---
PIRAEUS BANK (CR)				(Contract Size: 100 Securities, Physical Delivery)													
0.208	0.196	0.196	-5.77%	December 2016	0.206	0.207	0.196	0.196	0.196	---	---	0.198	0.250	---	545	41,687	104,699
				March 2017	0.205	0.205	0.197	0.197	0.197	---	---	0.199	0.212	---	4	13	18
				June 2017	---	---	---	---	0.210	---	---	---	---	---	---	---	---
				September 2017	---	---	---	---	0.211	---	---	---	---	---	---	---	---
PPC (CR)				(Contract Size: 100 Securities, Physical Delivery)													
3.23	3.11	3.13	-2.80%	December 2016	3.21	3.24	3.12	3.12	3.12	---	---	3.13	3.30	---	141	719	7,800
				March 2017	3.23	3.23	3.23	3.23	3.23	---	---	3.16	3.26	---	1	1	13
				June 2017	---	---	---	---	3.26	---	---	---	---	---	---	---	---
				September 2017	---	---	---	---	3.27	---	---	---	---	---	---	---	---
TERNA ENERGY (CR)				(Contract Size: 100 Securities, Physical Delivery)													
2.86	2.79	2.82	-2.08%	December 2016	---	---	---	---	2.88	---	---	2.84	2.89	---	---	---	1,241
				March 2017	---	---	---	---	2.90	---	---	---	---	---	---	---	---
				June 2017	---	---	---	---	2.91	---	---	---	---	---	---	---	---
				September 2017	---	---	---	---	2.93	---	---	---	---	---	---	---	---

Underlying Asset				Derivatives Market													
Price max	Price min	Closing price	change	Delivery Month	Open price	Price max	Price min	Last price	Closing price	Last Bid	Last Ask	Settlement price	Life high	Life low	Trades	Volume	Open Interest
TITAN CEMENT (CR)				(Contract Size: 100 Securities, Physical Delivery)													
21.86	21.64	21.74	-0.09%	December 2016	21.70	21.80	21.70	21.80	21.80	---	---	21.76	21.80	---	5	6	130
				March 2017	---	---	---	---	21.90	---	---	21.45	---	20.85	---	---	---
				June 2017	---	---	---	---	22.01	---	---	---	---	---	---	---	---
				September 2017	---	---	---	---	22.12	---	---	---	---	---	---	---	---
VIOHALCO SA/NV (CB)				(Contract Size: 100 Securities, Physical Delivery)													
1.39	1.34	1.36	-0.73%	December 2016	1.34	1.37	1.34	1.37	1.37	---	---	1.35	1.47	---	6	16	2,731
				March 2017	---	---	---	---	1.38	---	---	---	---	---	---	---	---
				June 2017	---	---	---	---	1.39	---	---	---	---	---	---	---	---
				September 2017	---	---	---	---	1.39	---	---	---	---	---	---	---	---

FTSE/Athex Large Cap

(Trade Unit: 1 Index Point x 2€ - Excercise Style: European, Cash Settlement)

Call Options																	Put Options																			
December 2016								January 2017								Other Months		December 2016								January 2017								Other Months		
Exerise Price	Open price	Price max	Price min	Last price	Closing price	Volume	Open Interest	Open price	Price max	Price min	Last price	Closing price	Volume	Open Interest	Volume	Open Interest	Open price	Price max	Price min	Last price	Closing price	Volume	Open Interest	Open price	Price max	Price min	Last price	Closing price	Volume	Open Interest	Volume	Open Interest	Exerise Price			
900	0.00	0.00	0.00	-	807.00	-	-	-	-	-	-	-	-	-	-	-	0.00	0.00	0.00	-	0.03	-	-	-	-	-	-	-	-	-	-	-	900			
950	0.00	0.00	0.00	-	757.00	-	-	-	-	-	-	-	-	-	-	-	0.00	0.00	0.00	-	0.01	-	-	-	-	-	-	-	-	-	-	-	950			
1,000	0.00	0.00	0.00	-	707.00	-	-	-	-	-	-	-	-	-	-	-	0.00	0.00	0.00	-	0.01	-	-	-	-	-	-	-	-	-	-	-	1,000			
1,050	0.00	0.00	0.00	-	657.00	-	-	-	-	-	-	-	-	-	-	-	0.00	0.00	0.00	-	0.05	-	-	-	-	-	-	-	-	-	-	-	1,050			
1,100	0.00	0.00	0.00	-	607.00	-	-	-	-	-	-	-	-	-	-	-	0.00	0.00	0.00	-	0.01	-	-	-	-	-	-	-	-	-	-	-	1,100			
1,150	0.00	0.00	0.00	-	557.00	-	-	-	-	-	-	-	-	-	-	-	0.00	0.00	0.00	-	0.01	-	-	-	-	-	-	-	-	-	-	-	1,150			
1,200	0.00	0.00	0.00	-	507.00	-	-	-	-	-	-	-	-	-	-	-	0.00	0.00	0.00	-	0.01	-	-	-	-	-	-	-	-	-	-	-	1,200			
1,250	0.00	0.00	0.00	-	457.00	-	-	-	-	-	-	-	-	-	-	-	0.00	0.00	0.00	-	0.01	-	-	-	-	-	-	-	-	-	-	-	1,250			
1,275	0.00	0.00	0.00	-	432.00	-	-	-	-	-	-	-	-	-	-	-	0.00	0.00	0.00	-	0.01	-	-	-	-	-	-	-	-	-	-	-	1,275			
1,300	0.00	0.00	0.00	-	407.00	-	-	-	-	-	-	-	-	-	-	-	0.00	0.00	0.00	-	0.03	-	-	-	-	-	-	-	-	-	-	-	1,300			
1,325	0.00	0.00	0.00	-	383.00	-	-	-	-	-	-	-	-	-	-	-	0.00	0.00	0.00	-	0.09	-	-	-	-	-	-	-	-	-	-	-	1,325			
1,350	0.00	0.00	0.00	-	358.00	-	-	-	-	-	-	-	-	-	-	-	0.00	0.00	0.00	-	0.01	-	-	-	-	-	-	-	-	-	-	-	1,350			
1,375	0.00	0.00	0.00	-	333.00	-	-	0.00	0.00	0.00	-	332.00	-	-	-	-	0.00	0.00	0.00	-	0.03	-	-	0.00	0.00	0.00	-	0.04	-	-	-	-	1,375			
1,400	286.00	286.00	286.00	286.00	286.00	1	11	0.00	0.00	0.00	-	308.00	-	-	-	-	286.00	286.00	0.00	-	0.01	-	-	0.00	0.00	0.00	-	0.09	-	-	-	-	1,400			
1,425	0.00	0.00	0.00	-	283.00	-	6	0.00	0.00	0.00	-	283.00	-	-	-	-	0.00	0.00	0.00	-	0.01	-	-	0.00	0.00	0.00	-	0.21	-	-	-	-	1,425			
1,450	0.00	0.00	0.00	-	258.00	-	-	0.00	0.00	0.00	-	258.00	-	7	-	-	0.00	0.00	0.00	-	0.01	-	4	0.00	0.00	0.00	-	0.43	-	-	-	-	1,450			
1,475	0.00	0.00	0.00	-	233.00	-	4	0.00	0.00	0.00	-	234.00	-	4	-	-	0.00	0.00	0.00	-	0.02	-	-	0.00	0.00	0.00	-	0.86	-	-	-	-	1,475			
1,500	0.00	0.00	0.00	-	208.00	-	24	0.00	0.00	0.00	-	209.00	-	-	-	-	0.00	0.00	0.00	-	0.08	-	212	0.00	0.00	0.00	-	1.60	-	-	-	-	1,500			
1,525	0.00	0.00	0.00	-	183.00	-	20	0.00	0.00	0.00	-	186.00	-	-	-	-	0.00	0.00	0.00	-	0.23	-	152	0.00	0.00	0.00	-	2.80	-	-	-	-	1,525			
1,550	140.00	140.00	140.00	140.00	140.00	1	30	0.00	0.00	0.00	-	163.00	-	14	-	-	140.00	140.00	0.00	-	0.61	-	67	0.00	0.00	0.00	-	4.70	-	-	-	-	1,550			
1,575	125.00	125.00	125.00	125.00	125.00	1	34	0.00	0.00	0.00	-	141.00	-	-	-	-	125.00	125.00	0.00	-	1.40	-	102	0.00	0.00	0.00	-	7.60	-	-	-	-	1,575			
1,600	98.00	98.00	98.00	98.00	98.00	1	306	0.00	0.00	0.00	-	120.00	-	40	-	-	98.00	98.00	4.00	4.00	4.00	1	94	0.00	0.00	0.00	-	11.50	-	-	-	-	1,600			
1,625	71.00	75.00	71.00	75.00	75.00	2	171	0.00	0.00	0.00	-	100.00	-	-	-	-	71.00	75.00	0.00	-	6.10	-	2	0.00	0.00	0.00	-	17.25	-	-	-	-	1,625			
1,650	58.00	58.00	53.00	55.00	55.00	8	56	0.00	0.00	0.00	-	82.50	-	7	-	-	58.00	58.00	14.00	14.00	14.00	14	72	0.00	0.00	0.00	-	24.25	-	40	-	-	1,650			
1,675	0.00	0.00	0.00	-	51.50	-	171	0.00	0.00	0.00	-	67.00	-	2	-	-	0.00	0.00	0.00	-	18.50	-	13	0.00	0.00	0.00	-	33.50	-	-	-	-	1,675			
1,700	29.00	29.00	24.00	26.00	26.00	43	121	0.00	0.00	0.00	-	53.00	-	50	-	-	29.00	29.00	30.75	30.75	30.75	4	31	0.00	0.00	0.00	-	44.50	-	-	-	-	1,700			
1,725	0.00	0.00	0.00	-	25.00	-	177	0.00	0.00	0.00	-	41.25	-	-	-	-	0.00	0.00	0.00	-	42.00	-	-	0.00	0.00	0.00	-	57.50	-	-	-	-	1,725			
1,750	0.00	0.00	0.00	-	16.25	-	5	25.00	25.00	23.00	23.00	23.00	64	64	-	-	0.00	0.00	0.00	-	58.00	-	-	0.00	0.00	0.00	-	73.00	-	-	-	-	1,750			
1,775	0.00	0.00	0.00	-	9.90	-	-	0.00	0.00	0.00	-	23.50	-	-	-	-	0.00	0.00	0.00	-	77.00	-	-	0.00	0.00	0.00	-	90.00	-	-	-	-	1,775			
1,800	0.00	0.00	0.00	-	5.80	-	1	0.00	0.00	0.00	-	17.25	-	-	-	-	0.00	0.00	0.00	-	97.50	-	-	0.00	0.00	0.00	-	108.00	-	-	-	-	1,800			
1,825	0.00	0.00	0.00	-	3.20	-	-	0.00	0.00	0.00	-	12.25	-	-	-	-	0.00	0.00	0.00	-	120.00	-	-	0.00	0.00	0.00	-	128.00	-	-	-	-	1,825			
1,850	0.00	0.00	0.00	-	1.70	-	-	0.00	0.00	0.00	-	8.60	-	-	-	-	0.00	0.00	0.00	-	143.00	-	-	0.00	0.00	0.00	-	150.00	-	-	-	-	1,850			
1,900	0.00	0.00	0.00	-	0.39	-	-	-	-	-	-	-	-	-	-	-	0.00	0.00	0.00	-	192.00	-	-	-	-	-	-	-	-	-	-	-	1,900			
1,950	0.00	0.00	0.00	-	0.07	-	-	-	-	-	-	-	-	-	-	-	0.00	0.00	0.00	-	242.00	-	-	-	-	-	-	-	-	-	-	-	1,950			
2,000	0.00	0.00	0.00	-	0.01	-	-	-	-	-	-	-	-	-	-	-	0.00	0.00	0.00	-	292.00	-	-	-	-	-	-	-	-	-	-	-	2,000			
2,050	0.00	0.00	0.00	-	0.01	-	-	-	-	-	-	-	-	-	-	-	0.00	0.00	0.00	-	342.00	-	-	-	-	-	-	-	-	-	-	-	2,050			

FTSE/Athex Large Cap

(Trade Unit: 1 Index Point x 2€ - Exercise Style: European, Cash Settlement)

Call Options																	Put Options																		
Exercise Price	December 2016							January 2017							Other Months		December 2016								January 2017							Other Months		Exercise Price	
	Open price	Price max	Price min	Last price	Closing price	Volume	Open Interest	Open price	Price max	Price min	Last price	Closing price	Volume	Open Interest	Volume	Open Interest	Open price	Price max	Price min	Last price	Closing price	Volume	Open Interest	Open price	Price max	Price min	Last price	Closing price	Volume	Open Interest	Volume	Open Interest			
2,100	0.00	0.00	0.00	-	0.01	-	-	-	-	-	-	-	-	-	-	-	0.00	0.00	0.00	-	391.00	-	-	-	-	-	-	-	-	-	-	-	2,100		
Totals:						57	1,137							64	188	0	0							19	749							0	40	0	0
Number of Trades:						21								7		0							4							0		0			

ALPHA BANK (CR)

(Contract Size: 100 Securities, Exercise Style: American, Physical Delivery)

Call Options																	Put Options																	
Exercise Price	December 2016							January 2017							Other Months		December 2016							January 2017							Other Months		Exercise Price	
	Open price	Price max	Price min	Last price	Closing price	Volume	Open Interest	Open price	Price max	Price min	Last price	Closing price	Volume	Open Interest	Volume	Open Interest	Open price	Price max	Price min	Last price	Closing price	Volume	Open Interest	Open price	Price max	Price min	Last price	Closing price	Volume	Open Interest	Volume	Open Interest		
0.800	0.000	0.000	0.000		1.08	-	-						-	-			0.000	0.000	0.000		0.002	-	-					-	-				0.008	
0.850	0.000	0.000	0.000		1.03	-	-						-	-			0.000	0.000	0.000		0.001	-	-					-	-				0.009	
0.900	0.000	0.000	0.000		0.981	-	-						-	-			0.000	0.000	0.000		0.001	-	-					-	-				0.009	
0.950	0.000	0.000	0.000		0.931	-	-						-	-			0.000	0.000	0.000		0.001	-	-					-	-				0.010	
1.000	0.000	0.000	0.000		0.881	-	-	0.000	0.000	0.000		0.883	-	-			0.000	0.000	0.000		0.001	-	-	0.000	0.000	0.000		0.001	-	-				0.010
1.100	0.000	0.000	0.000		0.781	-	-	0.000	0.000	0.000		0.784	-	-			0.000	0.000	0.000		0.001	-	-	0.000	0.000	0.000		0.001	-	-				0.011
1.200	0.000	0.000	0.000		0.682	-	-	0.000	0.000	0.000		0.684	-	-			0.000	0.000	0.000		0.001	-	-	0.000	0.000	0.000		0.001	-	-				0.012
1.300	0.000	0.000	0.000		0.582	-	-	0.000	0.000	0.000		0.585	-	-			0.000	0.000	0.000		0.001	-	-	0.000	0.000	0.000		0.001	-	-				0.013
1.400	0.000	0.000	0.000		0.482	-	-	0.000	0.000	0.000		0.488	-	-			0.000	0.000	0.000		0.001	-	-	0.000	0.000	0.000		0.004	-	-				0.014
1.500	0.000	0.000	0.000		0.383	-	-	0.000	0.000	0.000		0.396	-	-			0.000	0.000	0.000		0.001	-	-	0.000	0.000	0.000		0.011	-	-				0.015
1.600	0.000	0.000	0.000		0.287	-	-	0.000	0.000	0.000		0.310	-	-			0.000	0.000	0.000		0.005	-	-	0.000	0.000	0.000		0.025	-	-				0.016
1.700	0.000	0.000	0.000		0.199	-	-	0.000	0.000	0.000		0.234	-	-			0.000	0.000	0.000		0.017	-	-	0.000	0.000	0.000		0.048	-	-				0.017
1.800	0.000	0.000	0.000		0.125	-	-	0.000	0.000	0.000		0.169	-	-			0.000	0.000	0.000		0.043	-	-	0.000	0.000	0.000		0.084	-	-				0.018
1.900	0.000	0.000	0.000		0.071	-	-	0.000	0.000	0.000		0.119	-	-			0.000	0.000	0.000		0.089	-	-	0.000	0.000	0.000		0.133	-	-				0.019
2.000	0.000	0.000	0.000		0.035	-	-	0.000	0.000	0.000		0.080	-	-			0.000	0.000	0.000		0.153	-	-	0.000	0.000	0.000		0.194	-	-				0.020
2.200	0.000	0.000	0.000		0.006	-	-	0.000	0.000	0.000		0.033	-	-			0.000	0.000	0.000		0.325	-	-	0.000	0.000	0.000		0.347	-	-				0.022
2.400	0.000	0.000	0.000		0.001	-	-	0.000	0.000	0.000		0.012	-	-			0.000	0.000	0.000		0.520	-	-	0.000	0.000	0.000		0.527	-	-				0.024
2.600	0.000	0.000	0.000		0.001	-	-	0.000	0.000	0.000		0.004	-	-			0.000	0.000	0.000		0.720	-	-	0.000	0.000	0.000		0.721	-	-				0.026
2.800	0.000	0.000	0.000		0.001	-	-	0.000	0.000	0.000		0.001	-	-			0.000	0.000	0.000		0.920	-	-	0.000	0.000	0.000		0.920	-	-				0.028
3.000	0.000	0.000	0.000		0.001	-	-						-	-			0.000	0.000	0.000		1.12	-	-					-	-				0.030	
3.200	0.000	0.000	0.000		0.001	-	-						-	-			0.000	0.000	0.000		1.32	-	-					-	-				0.032	
3.400	0.000	0.000	0.000		0.001	-	-						-	-			0.000	0.000	0.000		1.52	-	-					-	-				0.034	
3.600	0.000	0.000	0.000		0.001	-	-						-	-			0.000	0.000	0.000		1.72	-	-					-	-				0.036	
Totals:							0	0					0	0	0	0						0	0					0	50	0	0			
Number of Trades:							0						0		0							0.00						0		0				

NATIONAL BANK (CR)

(Contract Size: 100 Securities, Exercise Style: American, Physical Delivery)

Call Options																	Put Options																			
December 2016								January 2017								Other Months		December 2016								January 2017								Other Months		
Exerise Price	Open price	Price max	Price min	Last price	Closing price	Volume	Open Interest	Open price	Price max	Price min	Last price	Closing price	Volume	Open Interest	Volume	Open Interest	Open price	Price max	Price min	Last price	Closing price	Volume	Open Interest	Open price	Price max	Price min	Last price	Closing price	Volume	Open Interest	Volume	Open Interest	Exerise Price			
0.050	0.000	0.000	0.000		0.178	-	-	0.000	0.000	0.000		0.178	-	-			0.000	0.000	0.000		0.001	-	-	0.000	0.000	0.000		0.001	-	-			0.001			
0.100	0.000	0.000	0.000		0.128	-	-	0.000	0.000	0.000		0.128	-	-			0.000	0.000	0.000		0.001	-	-	0.000	0.000	0.000		0.002	-	-			0.001			
0.150	0.000	0.000	0.000		0.080	-	-	0.000	0.000	0.000		0.081	-	-			0.000	0.000	0.000		0.002	-	-	0.000	0.000	0.000		0.002	-	-			0.002			
0.200	0.051	0.051	0.051	0.051	0.051	5	5	0.036	0.036	0.036	0.036	0.036	5	5			0.000	0.000	0.000		0.013	-	-	0.000	0.000	0.000		0.015	-	-			0.002			
0.250	0.000	0.000	0.000		0.018	-	-	0.000	0.000	0.000		0.020	-	-			0.000	0.000	0.000		0.040	-	-	0.000	0.000	0.000		0.042	-	-			0.003			
0.300	0.000	0.000	0.000		0.007	-	-	0.000	0.000	0.000		0.009	-	-			0.000	0.000	0.000		0.079	-	-	0.000	0.000	0.000		0.080	-	-			0.003			
0.350	0.000	0.000	0.000		0.003	-	-	0.000	0.000	0.000		0.004	-	-			0.000	0.000	0.000		0.124	-	-	0.000	0.000	0.000		0.125	-	-			0.004			
0.400	0.000	0.000	0.000		0.001	-	-	0.000	0.000	0.000		0.001	-	-			0.000	0.000	0.000		0.173	-	-	0.000	0.000	0.000		0.173	-	-			0.004			
0.450	0.000	0.000	0.000		0.001	-	-	0.000	0.000	0.000		0.001	-	-			0.000	0.000	0.000		0.222	-	-	0.000	0.000	0.000		0.222	-	-			0.005			
0.500	0.000	0.000	0.000		0.002	-	-	0.000	0.000	0.000		0.001	-	-			0.000	0.000	0.000		0.272	-	-	0.000	0.000	0.000		0.272	-	-			0.005			
0.550	0.000	0.000	0.000		0.001	-	-						-	-			0.000	0.000	0.000		0.322	-	-				-	-			0.006					
0.600	0.000	0.000	0.000		0.001	-	-						-	-			0.000	0.000	0.000		0.372	-	-				-	-			0.006					
Totals:						5	5						5	5	0	0						5	0					0	0	0	0					
Number of Trades:							1						1		0							0.00						0		0						

OPAP (CR)

(Contract Size: 100 Securities, Exercise Style: American, Physical Delivery)

Call Options																	Put Options																			
December 2016								January 2017								Other Months		December 2016								January 2017								Other Months		
Exercise Price	Open price	Price max	Price min	Last price	Closing price	Volume	Open Interest	Open price	Price max	Price min	Last price	Closing price	Volume	Open Interest	Volume	Open Interest	Open price	Price max	Price min	Last price	Closing price	Volume	Open Interest	Open price	Price max	Price min	Last price	Closing price	Volume	Open Interest	Volume	Open Interest	Exercise Price			
3.600	0.000	0.000	0.000		5.30	-	-						-	-			0.000	0.000	0.000		0.001	-	-					-	-			0.036				
3.800	0.000	0.000	0.000		5.10	-	-						-	-			0.000	0.000	0.000		0.001	-	-					-	-			0.038				
4.000	0.000	0.000	0.000		4.91	-	-						-	-			0.000	0.000	0.000		0.001	-	-					-	-			0.040				
4.400	0.000	0.000	0.000		4.51	-	-						-	-			0.000	0.000	0.000		0.001	-	-					-	-			0.044				
4.800	0.000	0.000	0.000		4.11	-	-						-	-			0.000	0.000	0.000		0.001	-	-					-	-			0.048				
5.200	0.000	0.000	0.000		3.71	-	-						-	-			0.000	0.000	0.000		0.001	-	-					-	-			0.052				
5.600	0.000	0.000	0.000		3.31	-	-	0.000	0.000	0.000		3.32	-	-			0.000	0.000	0.000		0.001	-	-	0.000	0.000	0.000		0.001	-	-			0.056			
6.000	0.000	0.000	0.000		2.91	-	-	0.000	0.000	0.000		2.92	-	-			0.000	0.000	0.000		0.002	-	-	0.000	0.000	0.000		0.001	-	-			0.060			
6.400	0.000	0.000	0.000		2.51	-	-	0.000	0.000	0.000		2.52	-	-			0.000	0.000	0.000		0.001	-	-	0.000	0.000	0.000		0.001	-	-			0.064			
6.800	0.000	0.000	0.000		2.11	-	-	0.000	0.000	0.000		2.13	-	-			0.000	0.000	0.000		0.001	-	-	0.000	0.000	0.000		0.004	-	-			0.068			
7.200	0.000	0.000	0.000		1.71	-	-	0.000	0.000	0.000		1.74	-	-			0.000	0.000	0.000		0.001	-	25	0.000	0.000	0.000		0.014	-	-			0.072			
7.600	0.000	0.000	0.000		1.32	-	-	0.000	0.000	0.000		1.37	-	-			0.000	0.000	0.000		0.005	-	40	0.000	0.000	0.000		0.042	-	-			0.076			
8.000	0.000	0.000	0.000		0.938	-	-	0.000	0.000	0.000		1.02	-	-			0.000	0.000	0.000		0.028	-	-	0.000	0.000	0.000		0.099	-	-			0.080			
8.400	0.000	0.000	0.000		0.604	-	100	0.000	0.000	0.000		0.732	-	-			0.000	0.000	0.000		0.094	-	-	0.000	0.000	0.000		0.205	-	-			0.084			
8.800	0.000	0.000	0.000		0.343	-	99	0.000	0.000	0.000		0.493	-	-			0.000	0.000	0.000		0.232	-	-	0.000	0.000	0.000		0.367	-	-			0.088			
9.200	0.000	0.000	0.000		0.169	-	-	0.000	0.000	0.000		0.310	-	10			0.000	0.000	0.000		0.458	-	-	0.000	0.000	0.000		0.584	-	-			0.092			
9.600	0.000	0.000	0.000		0.071	-	-	0.000	0.000	0.000		0.187	-	-			0.000	0.000	0.000		0.761	-	-	0.000	0.000	0.000		0.862	-	-			0.096			
10.000	0.000	0.000	0.000		0.025	-	-	0.000	0.000	0.000		0.107	-	-			0.000	0.000	0.000		1.12	-	-	0.000	0.000	0.000		1.18	-	-			0.100			
11.000	0.000	0.000	0.000		0.001	-	-	0.000	0.000	0.000		0.020	-	-			0.000	0.000	0.000		2.10	-	-	0.000	0.000	0.000		2.10	-	-			0.110			
12.000	0.000	0.000	0.000		0.001	-	-	0.000	0.000	0.000		0.003	-	-			0.000	0.000	0.000		3.10	-	-	0.000	0.000	0.000		3.10	-	-			0.120			
Totals:						0	199							0	10	0	0							0	65							0	0	0	0	
Number of Trades:						0								0		0							0.00								0		0			

OTE (CR)

(Contract Size: 100 Securities, Exercise Style: American, Physical Delivery)

Call Options																Put Options																				
December 2016								January 2017								Other Months		December 2016								January 2017								Other Months		
Exerise Price	Open price	Price max	Price min	Last price	Closing price	Volume	Open Interest	Open price	Price max	Price min	Last price	Closing price	Volume	Open Interest	Volume	Open Interest	Open price	Price max	Price min	Last price	Closing price	Volume	Open Interest	Open price	Price max	Price min	Last price	Closing price	Volume	Open Interest	Volume	Open Interest	Exerise Price			
4.800	0.000	0.000	0.000		3.77	-	-						-	-			0.000	0.000	0.000		0.002	-	-					-	-			0.048				
5.200	0.000	0.000	0.000		3.37	-	-						-	-			0.000	0.000	0.000		0.001	-	-					-	-			0.052				
5.600	0.000	0.000	0.000		2.97	-	-						-	-			0.000	0.000	0.000		0.001	-	-					-	-			0.056				
6.000	0.000	0.000	0.000		2.57	-	-	0.000	0.000	0.000		2.58	-	-			0.000	0.000	0.000		0.001	-	-	0.000	0.000	0.000		0.001	-	-			0.060			
6.400	0.000	0.000	0.000		2.17	-	-	0.000	0.000	0.000		2.18	-	-			0.000	0.000	0.000		0.001	-	-	0.000	0.000	0.000		0.002	-	-			0.064			
6.800	0.000	0.000	0.000		1.77	-	-	0.000	0.000	0.000		1.79	-	-			0.000	0.000	0.000		0.001	-	-	0.000	0.000	0.000		0.010	-	-			0.068			
7.200	0.000	0.000	0.000		1.37	-	-	0.000	0.000	0.000		1.41	-	30			0.000	0.000	0.000		0.003	-	-	0.000	0.000	0.000		0.031	-	-			0.072			
7.600	0.000	0.000	0.000		0.986	-	-	0.000	0.000	0.000		1.07	-	-			0.000	0.000	0.000		0.017	-	5	0.000	0.000	0.000		0.083	-	-			0.076			
8.000	0.000	0.000	0.000		0.636	-	210	0.000	0.000	0.000		0.760	-	-			0.000	0.000	0.000		0.066	-	5	0.000	0.000	0.000		0.175	-	-			0.080			
8.400	0.000	0.000	0.000		0.357	-	-	0.000	0.000	0.000		0.515	-	-			0.000	0.000	0.000		0.187	-	-	0.000	0.000	0.000		0.329	-	-			0.084			
8.800	0.140	0.140	0.140	0.140	0.140	22	22	0.000	0.000	0.000		0.325	-	-			0.000	0.000	0.000		0.401	-	-	0.000	0.000	0.000		0.539	-	-			0.088			
9.200	0.000	0.000	0.000		0.068	-	-	0.000	0.000	0.000		0.192	-	-			0.000	0.000	0.000		0.699	-	-	0.000	0.000	0.000		0.808	-	-			0.092			
9.600	0.000	0.000	0.000		0.023	-	-	0.000	0.000	0.000		0.109	-	-			0.000	0.000	0.000		1.06	-	-	0.000	0.000	0.000		1.13	-	-			0.096			
10.000	0.000	0.000	0.000		0.006	-	-	0.000	0.000	0.000		0.058	-	-			0.000	0.000	0.000		1.44	-	-	0.000	0.000	0.000		1.48	-	-			0.100			
11.000	0.000	0.000	0.000		0.001	-	-	0.000	0.000	0.000		0.009	-	-			0.000	0.000	0.000		2.44	-	-	0.000	0.000	0.000		2.44	-	-			0.110			
12.000	0.000	0.000	0.000		0.001	-	-						-	-			0.000	0.000	0.000		3.44	-	-					-	-			0.120				
13.000	0.000	0.000	0.000		0.001	-	-						-	-			0.000	0.000	0.000		4.44	-	-					-	-			0.130				
14.000	0.000	0.000	0.000		0.003	-	-						-	-			0.000	0.000	0.000		5.44	-	-					-	-			0.140				
Totals:						22	232						0	30	25	25						22	10					0	0	0	0					
Number of Trades:							2						0		1							0.00						0		0						

PIRAEUS BANK (CR)

(Contract Size: 100 Securities, Exercise Style: American, Physical Delivery)

Call Options																	Put Options																			
December 2016								January 2017								Other Months		December 2016								January 2017								Other Months		
Exerise Price	Open price	Price max	Price min	Last price	Closing price	Volume	Open Interest	Open price	Price max	Price min	Last price	Closing price	Volume	Open Interest	Volume	Open Interest	Open price	Price max	Price min	Last price	Closing price	Volume	Open Interest	Open price	Price max	Price min	Last price	Closing price	Volume	Open Interest	Volume	Open Interest	Exerise Price			
0.050	0.000	0.000	0.000		0.158	-	-	0.000	0.000	0.000		0.158	-	-			0.000	0.000	0.000		0.001	-	-	0.000	0.000	0.000		0.001	-	-			0.001			
0.100	0.000	0.000	0.000		0.108	-	-	0.000	0.000	0.000		0.109	-	-			0.000	0.000	0.000		0.001	-	-	0.000	0.000	0.000		0.001	-	-			0.001			
0.150	0.000	0.000	0.000		0.064	-	-	0.000	0.000	0.000		0.065	-	-			0.000	0.000	0.000		0.005	-	-	0.000	0.000	0.000		0.006	-	-			0.002			
0.200	0.000	0.000	0.000		0.032	-	-	0.000	0.000	0.000		0.034	-	-			0.000	0.000	0.000		0.024	-	-	0.000	0.000	0.000		0.025	-	-			0.002			
0.250	0.000	0.000	0.000		0.014	-	-	0.000	0.000	0.000		0.016	-	-			0.000	0.000	0.000		0.056	-	-	0.000	0.000	0.000		0.058	-	-			0.003			
0.300	0.000	0.000	0.000		0.006	-	-	0.000	0.000	0.000		0.008	-	-			0.000	0.000	0.000		0.098	-	-	0.000	0.000	0.000		0.099	-	-			0.003			
0.350	0.000	0.000	0.000		0.003	-	-	0.000	0.000	0.000		0.003	-	-			0.000	0.000	0.000		0.144	-	-	0.000	0.000	0.000		0.145	-	-			0.004			
0.400	0.000	0.000	0.000		0.001	-	-	0.000	0.000	0.000		0.001	-	-			0.000	0.000	0.000		0.193	-	-	0.000	0.000	0.000		0.193	-	-			0.004			
0.450	0.000	0.000	0.000		0.001	-	-	0.000	0.000	0.000		0.001	-	-			0.000	0.000	0.000		0.242	-	-	0.000	0.000	0.000		0.242	-	-			0.005			
0.500	0.000	0.000	0.000		0.003	-	-						-	-			0.000	0.000	0.000		0.292	-	-				-	-				0.005				
0.550	0.000	0.000	0.000		0.002	-	-						-	-			0.000	0.000	0.000		0.342	-	-				-	-				0.006				
Totals:						0	0						0	0	0	0						0	0					0	0	0	0					
Number of Trades:						0							0		0							0.00						0		0						

PPC (CR)

(Contract Size: 100 Securities, Exercise Style: American, Physical Delivery)

Call Options																	Put Options																			
December 2016								January 2017								Other Months		December 2016								January 2017								Other Months		
Exercise Price	Open price	Price max	Price min	Last price	Closing price	Volume	Open Interest	Open price	Price max	Price min	Last price	Closing price	Volume	Open Interest	Volume	Open Interest	Open price	Price max	Price min	Last price	Closing price	Volume	Open Interest	Open price	Price max	Price min	Last price	Closing price	Volume	Open Interest	Volume	Open Interest	Exercise Price			
1.700	0.000	0.000	0.000		1.52	-	-						-	-			0.000	0.000	0.000		0.001	-	-					-	-				0.017			
1.800	0.000	0.000	0.000		1.42	-	-						-	-			0.000	0.000	0.000		0.001	-	-					-	-				0.018			
1.900	0.000	0.000	0.000		1.32	-	-	0.000	0.000	0.000		1.33	-	-			0.000	0.000	0.000		0.001	-	-	0.000	0.000	0.000		0.001	-	-				0.019		
2.000	0.000	0.000	0.000		1.22	-	-	0.000	0.000	0.000		1.23	-	-			0.000	0.000	0.000		0.001	-	-	0.000	0.000	0.000		0.001	-	-				0.020		
2.200	0.000	0.000	0.000		1.02	-	-	0.000	0.000	0.000		1.03	-	-			0.000	0.000	0.000		0.002	-	-	0.000	0.000	0.000		0.001	-	-				0.022		
2.400	0.000	0.000	0.000		0.823	-	35	0.000	0.000	0.000		0.830	-	-			0.000	0.000	0.000		0.001	-	-	0.000	0.000	0.000		0.003	-	-				0.024		
2.600	0.000	0.000	0.000		0.624	-	-	0.000	0.000	0.000		0.640	-	-			0.000	0.000	0.000		0.001	-	-	0.000	0.000	0.000		0.011	-	-				0.026		
2.800	0.000	0.000	0.000		0.430	-	-	0.000	0.000	0.000		0.465	-	-			0.000	0.000	0.000		0.007	-	-	0.000	0.000	0.000		0.036	-	-				0.028		
3.000	0.000	0.000	0.000		0.257	-	-	0.000	0.000	0.000		0.315	-	-			0.000	0.000	0.000		0.033	-	-	0.000	0.000	0.000		0.085	-	-				0.030		
3.200	0.000	0.000	0.000		0.127	-	-	0.000	0.000	0.000		0.198	-	-			0.000	0.000	0.000		0.103	-	-	0.000	0.000	0.000		0.168	-	-				0.032		
3.400	0.000	0.000	0.000		0.050	-	-	0.000	0.000	0.000		0.116	-	-			0.000	0.000	0.000		0.226	-	-	0.000	0.000	0.000		0.286	-	-				0.034		
3.600	0.000	0.000	0.000		0.016	-	-	0.000	0.000	0.000		0.063	-	-			0.000	0.000	0.000		0.393	-	-	0.000	0.000	0.000		0.433	-	-				0.036		
3.800	0.000	0.000	0.000		0.004	-	-	0.000	0.000	0.000		0.031	-	-			0.000	0.000	0.000		0.582	-	-	0.000	0.000	0.000		0.603	-	-				0.038		
4.000	0.000	0.000	0.000		0.001	-	-	0.000	0.000	0.000		0.015	-	-			0.000	0.000	0.000		0.780	-	-	0.000	0.000	0.000		0.788	-	-				0.040		
4.400	0.000	0.000	0.000		0.001	-	-	0.000	0.000	0.000		0.003	-	-			0.000	0.000	0.000		1.18	-	-	0.000	0.000	0.000		1.18	-	-				0.044		
4.800	0.000	0.000	0.000		0.001	-	-						-	-			0.000	0.000	0.000		1.58	-	-					-	-				0.048			
5.200	0.000	0.000	0.000		0.001	-	-						-	-			0.000	0.000	0.000		1.98	-	-					-	-				0.052			
5.600	0.000	0.000	0.000		0.001	-	-						-	-			0.000	0.000	0.000		2.38	-	-					-	-				0.056			
6.000	0.000	0.000	0.000		0.001	-	-						-	-			0.000	0.000	0.000		2.78	-	-					-	-				0.060			
Totals:						0	35						0	0	0	0						0	0					0	0	0	0					
Number of Trades:						0							0		0							0.00						0		0						

Lending Products	Underlying Title	Multilateral Transactions[1]					Bilateral Transactions[2]		Stock Borrowing through OTC (volume)[3]
		Open Interest[5]	Volume(Offered)	Average Weighted	Transactions volume	Average Weighted	Transactions Volume	Average Weighte	Transactions Volume
AEGNBOR	AEGEAN AIRLINES (CR)	100	13,599	5.31%	---	---	---	---	11,701
ALPHABOR	ALPHA BANK (CR)	124,350	164,415	5.31%	---	---	---	---	1,856,064
ALMYBOR	ALUMIL (CR)	---	---	---	---	---	---	---	---
IATRBOR	ATHENS MEDICAL CENTER SA (CR)	---	36,398	5.31%	---	---	---	---	---
OTOELBOR	AUTOHELLAS SA (CR)	---	1,840	5.31%	---	---	---	---	---
BOCBOR	BANK OF CYPRUS (CR)	---	270	5.31%	---	---	---	---	84,008
EEEBOR	CC HBC AG (CR)	2,428	4,271	5.31%	---	---	---	---	70,546
CENTRBOR	CENTRIC HOLDINGS (CR)	---	16,000	5.31%	---	---	---	---	---
SOLKBOR	CORINTH PIPEWORKS (CR)	---	---	---	---	---	---	---	---
PLAKRBOR	CRETE PLASTICS SA (CR)	---	---	---	---	---	---	---	---
ELINBOR	ELINOIL S.A. (CR)	---	---	---	---	---	---	---	---
ELLAKTORBOR	ELLAKTOR (CR)	10,000	77,427	5.31%	---	---	---	---	---
ANEMOSBOR	ELTECH ANEMOS S.A. (CR)	---	6,079	5.31%	---	---	---	---	---
ELTONBOR	ELTON SA (CR)	---	---	---	---	---	---	---	---
EUROBBOR	EUROBANK ERGASIAS (CR)	73,312	249,406	5.31%	---	---	---	---	2,585,051
EUPICBOR	EUROPEAN RELIANCE INSUR. (CR)	---	---	---	---	---	---	---	---
EYDAPBOR	EYDAP S.A. (CR)	1,972	4,670	4.24%	---	---	---	---	17,780
FLEXOBOR	FLEXOPACK SA (CR)	---	---	---	---	---	---	---	---
FFGRPBOR	FOLLI FOLLIE (CR)	8,192	70,233	5.31%	2	2.65%	---	---	712,242
FOYRKBOR	FOURLIS (CR)	---	5,130	5.31%	---	---	---	---	3,850
GEKTERNABOR	GEK TERNA (CR)	112	30,269	5.31%	---	---	---	---	---
SARBOR	GR. SARANTIS SA (CR)	---	1,536	5.31%	---	---	---	---	---
EUPROBOR	GRIVALIA PROPERTIES (CR)	1,000	96,628	5.31%	---	---	---	---	44,856
XAKOBOR	HALKOR SA (CB)	---	56,552	5.31%	---	---	---	---	---
EXAEBOR	HELLENIC EXCHANGES-A.S.E. (CR)	33,700	423,470	3.86%	---	---	---	---	98,443
ELPEBOR	HELLENIC PETROLEUM (CR)	175	142,160	5.31%	---	---	---	---	42,606
HYGEIABOR	HYGEIA SA (CR)	---	48,700	5.31%	---	---	---	---	---
IASOBOR	IASO SA (CR)	---	---	---	---	---	---	---	---
IKTINBOR	IKTINOS HELLAS SA (CR)	---	798	5.31%	---	---	---	---	---
INTRKBOR	INTRACOM HOLDINGS (CR)	---	171,048	5.31%	---	---	---	---	---
INLOTBOR	INTRALOT (CR)	6,000	37,679	5.31%	---	---	---	---	803

Stock Lending Notes

- [1] - Multilateral contracts Lending or Borrowing as per Methods 8-1, 8-2 and 8-3-3 (According to ATHEX BoD Resolution No.17)
- [2] - Billateral Contracts Lending or Borrowing as per Methods 8-3-1 and 8-3-2 (According to ATHEX BoD Resolution No.20)
- [3] - The information concerning OTC Stock Borrowing Transactions is based on the statements of the Dematerialised Securities System (DSS) operators involved and refers to volumes that have been registered up until the previous working day.
- [4] - Average Price (Volume weighted)
- [5] - The Data concerning Open Interest before the start of trading session

Lending Products	Underlying Title	Multilateral Transactions[1]					Bilateral Transactions[2]		Stock Borrowing through OTC (volume)[3]
		Open Interest[5]	Volume(Offered)	Average Weighted	Transactions volume	Average Weighted	Transactions Volume	Average Weighte	Transactions Volume
AVAXBOR	J & P - AVAX SA (CR)	---	20,335	5.31%	---	---	---	---	---
BELABOR	JUMBO SA (CR)	9,525	103,203	5.31%	---	---	---	---	6,365
KLEMBOR	KLEEMAN HELLAS SA (CR)	---	1,188	5.31%	---	---	---	---	---
KORRESBOR	KORRES (CR)	---	319	5.31%	---	---	---	---	---
KRIBOR	KRI-KRI S.A. (CR)	---	47,768	5.31%	---	---	---	---	---
KYRMBOR	KYRIAKIDIS MARBLES SA (CR)	---	5,737	5.31%	---	---	---	---	---
LAMDABOR	LAMDA DEVELOPMENT SA (CR)	14	100	5.32%	---	---	---	---	10,377
MIGBOR	MARFIN INVESTMENT GROUP (CR)	50,000	231,904	4.24%	---	---	---	---	749,474
METKKBOR	METKA (CR)	20,765	5	5.35%	---	---	---	---	13,671
MLSBOR	MLS MULTIMEDIA SA (CR)	---	9,118	5.31%	---	---	---	---	---
MOHBOR	MOTOR OIL (CR)	3,119	31,980	5.31%	---	---	---	---	52,254
MYTILBOR	MYTILINEOS HOLDINGS (CR)	22,394	127,319	5.31%	---	---	---	---	---
ETEBOR	NATIONAL BANK (CR)	328,265	965,316	5.31%	---	---	---	---	7,054,547
ETFASEBOR	NBGAM ETF	---	---	---	---	---	---	---	---
ETFGT30PBOR	NBGAM ETF GREECE & TURKEY 30	---	---	---	---	---	---	---	---
OPAPBOR	OPAP (CR)	49,000	7,370	3.31%	---	---	2,000	0.01%	877,223
HTOBOR	OTE (CR)	4,357	68,633	5.31%	---	---	---	---	348,504
PPABOR	P.P.A. S.A. (CR)	368	1,468	5.31%	---	---	---	---	901
PAPBOR	PAPOUTSANIS (CR)	---	---	---	---	---	---	---	---
PETROBOR	PETROPOULOS PETROS (CR)	---	---	---	---	---	---	---	---
TPEIRBOR	PIRAEUS BANK (CR)	106,061	541,598	5.31%	---	---	---	---	7,175,542
PLAISBOR	PLAISIO COMPUTERS SA (CR)	---	---	---	---	---	---	---	---
PPCBOR	PPC (CR)	36,950	86,383	5.31%	---	---	---	---	512,774
QUALBOR	QUALITY & RELIABILITY SA (CR)	---	---	---	---	---	---	---	---
QUESTBOR	QUEST HOLDINGS (CR)	---	958	5.31%	---	---	---	---	---
KAMPBOR	REDS S.A. (CR)	---	---	---	---	---	---	---	---
EPILBOR	SELECTED TEXT. IND. ASSOC (CR)	---	---	---	---	---	---	---	---
SELOBOR	SELONDA AQUACULTURE SA (CR)	---	---	---	---	---	---	---	---
OLYMPBOR	TECHNICAL OLYMPIC SA (CR)	---	23,237	5.31%	---	---	---	---	---
TENERGYBOR	TERNA ENERGY (CR)	1,000	32,305	5.31%	---	---	---	---	---
EYAPSBOR	THESSALONIKA WATER & SEWERAGE	---	6,149	5.31%	---	---	---	---	---

Stock Lending Notes

- [1] - Multilateral contracts Lending or Borrowing as per Methods 8-1, 8-2 and 8-3-3 (According to ATHEX BoD Resolution No.17)
- [2] - Billateral Contracts Lending or Borrowing as per Methods 8-3-1 and 8-3-2 (According to ATHEX BoD Resolution No.20)
- [3] - The information concerning OTC Stock Borrowing Transactions is based on the statements of the Dematerialised Securities System (DSS) operators involved and refers to volumes that have been registered up until the previous working day.
- [4] - Average Price (Volume weighted)
- [5] - The Data concerning Open Interest before the start of trading session

Lending Products	Underlying Title	Multilateral Transactions[1]					Bilateral Transactions[2]		Stock Borrowing through OTC (volume)[3]
		Open Interest[5]	Volume(Offered)	Average Weighted	Transactions volume	Average Weighted	Transactions Volume	Average Weighted	Transactions Volume
PLATBOR	THRACE PLASTICS SA (CR)	---	43,699	5.31%	---	---	---	---	---
TITKBOR	TITAN CEMENT (CR)	8,199	211,947	5.31%	100	2.65%	---	---	3,204
OLTHBOR	TPA SA (CR)	---	183	5.31%	---	---	---	---	---
VIOBOR	VIOHALCO SA/NV (CB)	---	67,888	5.31%	---	---	---	---	---

Stock Lending Notes

- [1] - Multilateral contracts Lending or Borrowing as per Methods 8-1, 8-2 and 8-3-3 (According to ATHEX BoD Resolution No.17)
- [2] - Bilateral Contracts Lending or Borrowing as per Methods 8-3-1 and 8-3-2 (According to ATHEX BoD Resolution No.20)
- [3] - The information concerning OTC Stock Borrowing Transactions is based on the statements of the Dematerialised Securities System (DSS) operators involved and refers to volumes that have been registered up until the previous working day.
- [4] - Average Price (Volume weighted)
- [5] - The Data concerning Open Interest before the start of trading session

Sectors codification for listed companies

533	-	Exploration & Production	537	-	Integrated Oil & Gas
1353	-	Commodity Chemicals	1357	-	Specialty Chemicals
1753	-	Aluminum	1755	-	Nonferrous Metals
1757	-	Steel	1775	-	General Mining
2353	-	Building Materials & Fixtures	2357	-	Heavy Construction
2723	-	Containers & Packaging	2727	-	Diversified Industrials
2733	-	Electrical Components & Equipment	2753	-	Commercial Vehicles & Trucks
2757	-	Industrial Machinery	2773	-	Marine Transportation
2777	-	Transportation Services	2791	-	Business Support Services
2797	-	Industrial Suppliers	3535	-	Distillers & Vintners
3537	-	Soft Drinks	3573	-	Farming Fishing & Plantations
3577	-	Food Products	3722	-	Durable Household Products
3726	-	Furnishings	3728	-	Home Construction
3747	-	Toys	3763	-	Clothing & Accessories
3765	-	Footwear	3767	-	Personal Products
3785	-	Tobacco	4533	-	Health Care Providers
4535	-	Medical Equipment	4577	-	Pharmaceuticals
5337	-	Food Retailers & Wholesalers	5371	-	Apparel Retailers
5373	-	Broadline Retailers	5375	-	Home Improvement Retailers
5379	-	Specialty Retailers	5553	-	Broadcasting & Entertainment
5555	-	Media Agencies	5557	-	Publishing
5751	-	Airlines	5752	-	Gambling
5753	-	Hotels	5755	-	Recreational Services
5757	-	Restaurants & Bars	5759	-	Travel & Tourism
6535	-	Fixed Line Telecommunications	6575	-	Mobile Telecommunications
7535	-	Conventional Electricity	7537	-	Alternative Electricity
7577	-	Water	8355	-	Banks
8534	-	Insurance Brokers	8536	-	Property & Casualty Insurance
8633	-	Real Estate Holding & Development	8637	-	Real Estate Services
8671	-	Industrial & Office REITs	8674	-	Diversified REITs
8675	-	Specialty REITs	8775	-	Specialty Finance
8777	-	Investment Services	8985	-	Equity Investment Instruments
9533	-	Computer Services	9535	-	Internet
9537	-	Software	9572	-	Computer Hardware
9574	-	Electronic Office Equipment	9578	-	Telecommunications Equipment
12003	-	ETF			



ATHEXGROUP
Όμιλος Χρηματιστηρίου Αθηνών

Λεωφ. Αθηνών 110 104 42 Αθήνα
110, Athinon Ave. GR 104 42 Athens
tel. (+30)210-33.66.800, fax (+30)210-33.66.101
www.athegroup.gr