



ATHEXGROUP
Athens Exchange Group

Hellenic Exchanges – Athens Stock Exchange S.A.

“

2016

δελτιο ημερησιων συναλλαγων

daily official list

Wednesday, 30 November, 2016

Year: 137 Trading Day No: 228

”

Disclaimer:

Hellenic Exchanges-Athens Stock Exchange S.A. endeavours to ensure that the data and other material ("Information") presented on the Daily Official List are accurate and complete, but it is not liable for any errors or omissions of data or /and for the accuracy, credibility, updating and completeness of the aforesaid information nor it has any liability arising directly or indirectly from the use of the above Information.

The Company is not liable for the accuracy of the data included in listed companies' announcements. Only the sender of such an announcement is fully and solely liable for any infringement of third party's rights from the content of such announcement. All contents of the Daily Official List are provided only for information purposes and do not constitute investment advice or solicitation to invest in securities or other products listed for trading on the Exchange.

You acknowledge and agree that the Company is the owner of any property rights related to any Information appearing on the Daily Official List including intellectual property rights copyright, trademarks, etc.

The above data are a property of the Hellenic Exchanges-Athens Exchange and are copyright protected. Users are forbidden to reproduce, modify, copy, sale, transmit or redistribute, by all reproduction means and methods, part or the whole of the above data, without reference to their source.

The commercial exploitation of these data is, also, forbidden by third parties. Hellenic Exchanges-Athens Exchange does not carry any responsibility, direct or indirect, derived from usage or accidental alteration of the above data when used by third parties.

Hellenic Exchanges – Athens Stock Exchange S.A.

110 Athinon Ave., 10442 Athens, Tel: (210) 33.66.800, Fax: (210) 32.13.938

www.helex.gr

Thessalonica Stock Exchange Center (T.S.E.C)

16-18 Katouni Str., Thessalonica 546 25 Tel: (2310) 567.667, Fax: (2310) 530.545

Athex Members Guarantee Fund

14-16 Fidiou Str., Athens 106 78, Tel: (210) 33.04.682, Fax: (210) 33.04.155

Hellenic Republic Capital Market Commission

1 Kolokotroni Str. & 1 Stadiou Str., Athens 10562 Tel: (210) 33.77.100 Fax: (210) 33.77.173

Table of Contents

Section 1: Statistical Figures of Securities, Derivatives and Lending

Summary of Markets

Athex Indices

Analytic Figures for Athex Market's Boards and Categories

Trading Details by Athex Sectors and Financial Instruments (ETFs)

Top 10 best & worst performing Shares

Derivatives Summary

Section 2: Analytic Figures of Shares Transactions

Analytic Figures of Shares Transactions

Shares' Notes

Section 3: Figures of Securities Transactions

Securities Blocks Details

Shares Rights Details

Stock Borrowing

Shares Forced Sales

Forced Sales Registered Shares

Exchange Traded Funds (ETFs) Characteristics

Section 5: Bonds traded in Fixed Income Assets Market

Corporate Bonds

Government Bonds

Treasury Bills & Zero Coupon Government Bonds

Government Bonds Traded with the Open Outcry Method

State Banks Bonds

Section 6: Additional Infos

Athex & ATHEXClear Members List

List of Stocks under Market Making operations

Section 7: Derivatives Market Analytic Figures

Index Futures

Stock Futures

Index Options

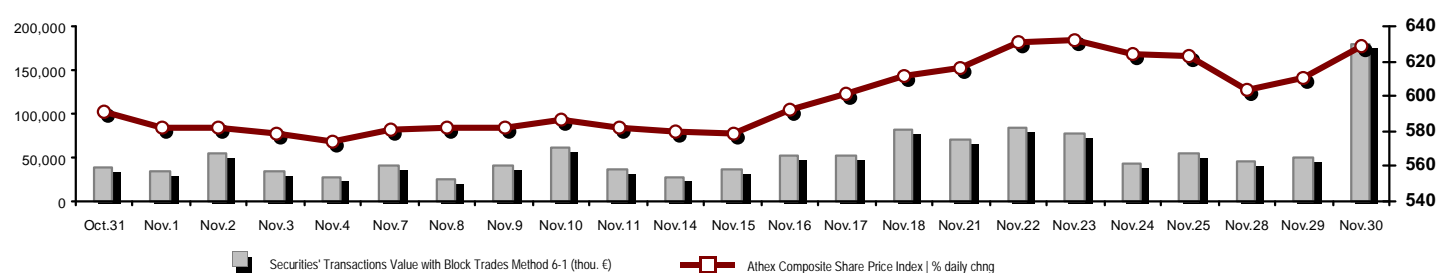
Stock Options

Stock Lending Analytic Figures

Appendix A: Sectors codification for listed companies

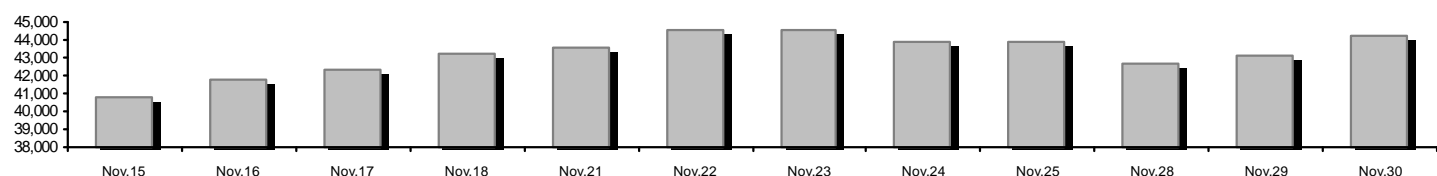
Summary of Markets

Athex Composite Share Price Index vs Shares and Derivatives Transactions Value

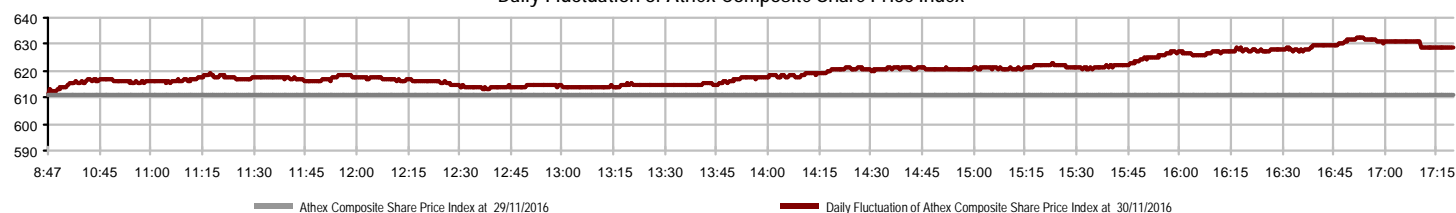


Athex Capitalisation (mill. €) **: 44,204.38	Derivatives Total Open Interest: 401,264
Daily change: mill. € %: 1,068.64 2.48%	in Index Futures % daily chng: 9,409 -1.39%
Yearly Avg Capitalisation: mill. € % chng prev year Avg: 40,866.92 -6.39%	in Stock Futures % daily chng: 388,595 -1.70%
Athex Composite Share Price Index % daily chng: 628.75 2.97%	in Index Options % daily chng: 2,544 -3.01%
Athex Composite Share Price Index Capitalisation (mill. €): 39,405.29	in Stock Options % daily chng: 716 0.00%
Daily change (mill. €): 1,060.42	
Securities' Transactions Value with Block Trades Method 6-1 (180,305.33	Derivatives Contracts Volume: 97,999
Daily change: %: 129,407.67 254.25%	Daily change: pieces %: 23,525 31.59%
YtD Avg Trans. Value: thou. € % chng prev year Avg: 60,660.43 -29.12%	YtD Avg Derivatives Contracts % chng prev year Avg: 59,007 -10.20%
Blocks Transactions Value of Method 6-1 (thou. €): 73,136.05	Derivatives Trades Number: 4,019
Blocks Transactions Value of Method 6-2 & 6-3 (thou. €): 614.63	Daily change: number %: 822 25.71%
Bonds Transactions Value (thou.€): 16.98	YtD Avg Derivatives Trades number % chng prev year Avg: 2,523 -22.79%
Securities' Transactions Volume with Block Trades Method 6-1 (th 179,805.33	Lending Total Open Interest: 821,974
Daily change: thou. pieces %: 91,991.28 104.76%	Daily change: pieces %: -84,600 -9.33%
YtD Avg Volume: % chng prev year Avg: 96,481.45 -49.90%	Lending Volume (Multilateral/Bilateral): 35,500
Blocks Transactions Volume of Method 6-1 (thou. Pieces): 5,082.62	Daily change: pieces %: 28,500 407.14%
Blocks Transactions Volume of Method 6-2 & 6-3 (thou. Pieces): 228.33	Multilateral Lending: 15,500
Bonds Transactions Volume: 16,728.00	Bilateral Lending: 20,000
Securities' Trades Number with Block Trades Method 6-1: 26,718	Lending Trades Number: 11
Daily change: number %: 8,684 48.15%	Daily change: %: 6 120.00%
YtD Avg Derivatives Trades number % chng prev year Avg: 18,944 -29.81%	Multilateral Lending Trades Number: 10
Number of Blocks Method 6-1: 35	Bilateral Lending Trades Number: 1
Number of Blocks Method 6-2 & 6-3: 2	
Number of Bonds Transactions: 2	

Athex Capitalisation (mill. €) **



Daily Fluctuation of Athex Composite Share Price Index



Athex Indices

Index name	30/11/2016	29/11/2016	pts.	%	Min	Max	Year min	Year max	Year change
Athex Composite Share Price Index	628.75 #	610.60	18.15	2.97%	610.60	632.62	420.82	658.99	-0.41% €
FTSE/Athex Large Cap	1,705.13 #	1,648.78	56.35	3.42%	1,648.78	1,715.24	1,075.20	1,868.90	-7.00% €
FTSE/Athex Mid Cap Index	779.50 €	783.22	-3.72	-0.47%	776.12	792.89	515.21	820.16	-4.52% €
FTSE/ATHEX-CSE Banking Index	626.46 #	580.96	45.50	7.83%	580.96	639.41	271.40	938.40	-29.77% €
FTSE/ATHEX Global Traders Index Plus	1,468.22 #	1,448.76	19.46	1.34%	1,443.95	1,469.15	1,031.55	1,474.64	15.19% #
FTSE/ATHEX Global Traders Index	1,613.65 #	1,589.37	24.28	1.53%	1,583.01	1,614.34	1,129.41	1,618.89	13.10% #
FTSE/ATHEX Mid & Small Cap Factor-Weighted Ind	1,350.40 €	1,351.63	-1.23	-0.09%	1,341.84	1,354.20	1,066.64	1,383.28	7.55% #
Greece & Turkey 30 Price Index	423.15 #	422.49	0.66	0.16%	420.36	424.57	396.10	527.12	-8.85% €
ATHEX Mid & SmallCap Price Index	2,122.20 €	2,136.85	-14.65	-0.69%	2,096.22	2,186.35	1,848.24	2,259.28	-2.29% €
FTSE/Athex Market Index	418.88 #	405.44	13.44	3.31%	405.44	421.41	265.17	457.53	-6.91% €
FTSE Med Index	4,578.37 #	4,572.09	6.28	0.14%			4,380.06	5,530.53	-17.21% €
Athex Composite Index Total Return Index	957.30 #	929.64	27.66	2.98%	929.64	963.19	626.16	986.51	1.90% #
FTSE/Athex Large Cap Total Return	2,461.01 #	2,379.69	81.32	3.42%			1,574.40	2,572.00	-2.68% €
FTSE/ATHEX Large Cap Net Total Return	718.34 #	694.60	23.74	3.42%	694.60	722.60	443.06	773.01	-4.92% €
FTSE/Athex Mid Cap Total Return	951.36 €	955.90	-4.54	-0.47%			669.55	1,008.35	-5.22% €
FTSE/ATHEX-CSE Banking Total Return Index	643.09 #	596.38	46.71	7.83%			318.40	895.04	-26.06% €
Greece & Turkey 30 Total Return Index	535.84 €	538.31	-2.47	-0.46%			0.00	660.49	-6.93% €
Hellenic Mid & Small Cap Index	777.11 #	766.11	11.00	1.44%	764.49	777.43	560.15	786.32	8.60% #
FTSE/Athex Banks	827.70 #	767.58	60.12	7.83%	767.58	844.81	358.60	1,239.80	-29.76% €
FTSE/Athex Financial Services	996.23 #	992.75	3.48	0.35%	991.01	1,013.57	634.69	1,179.09	2.29% #
FTSE/Athex Industrial Goods & Services	1,556.08 #	1,541.30	14.78	0.96%	1,527.96	1,556.08	1,369.56	1,844.00	-14.72% €
FTSE/Athex Retail	2,960.27 €	2,983.65	-23.38	-0.78%	2,955.89	2,995.34	1,826.41	3,272.96	17.19% #
FTSE/ATHEX Real Estate	2,677.26 #	2,617.52	59.74	2.28%	2,598.58	2,677.26	2,154.15	2,677.26	10.63% #
FTSE/Athex Personal & Household Goods	6,941.80 #	6,810.81	130.99	1.92%	6,725.31	7,045.73	4,433.32	7,045.73	37.10% #
FTSE/Athex Food & Beverage	7,471.07 #	7,384.95	86.12	1.17%	7,384.95	7,489.87	5,952.97	7,850.45	1.28% #
FTSE/Athex Basic Resources	2,608.72 #	2,586.73	21.99	0.85%	2,573.53	2,613.12	1,200.24	2,648.32	59.58% #
FTSE/Athex Construction & Materials	2,189.70 #	2,125.72	63.98	3.01%	2,092.25	2,189.70	1,500.04	2,343.14	16.57% #
FTSE/Athex Oil & Gas	2,834.58 #	2,780.23	54.35	1.95%	2,766.82	2,865.45	1,860.37	2,896.19	17.52% #
FTSE/Athex Media	1,997.67 ~	1,997.67	0.00	0.00%	1,997.67	1,997.67	1,290.16	2,247.37	35.21% #
FTSE/Athex Travel & Leisure	1,530.20 #	1,515.04	15.16	1.00%	1,509.07	1,550.31	982.74	1,556.21	7.39% #
FTSE/Athex Technology	645.76 €	647.80	-2.04	-0.31%	641.41	651.89	489.05	659.86	12.89% #
FTSE/Athex Telecommunications	2,367.21 #	2,312.16	55.05	2.38%	2,301.15	2,367.21	1,802.93	2,669.99	-6.93% €
FTSE/Athex Utilities	1,573.40 #	1,531.84	41.56	2.71%	1,531.84	1,586.95	1,136.34	1,734.68	-6.09% €
Athex All Share Index	155.96 #	152.17	3.78	2.49%	155.96	155.96	113.39	165.22	-5.15% €
Hellenic Corporate Bond Index	108.64 #	108.64	0.00	0.00%			96.90	108.64	8.13% #
Hellenic Corporate Bond Price Index	97.47 €	97.48	-0.01	-0.01%			90.43	97.75	2.87% #

Note 1: FTSE/Med 100, Greece & Turkey 30 Rt., Hellenic Corporate Bond Price Index and Hellenic Corporate Bond Index closing prices refer to the previous trading day of 28/11/2016.

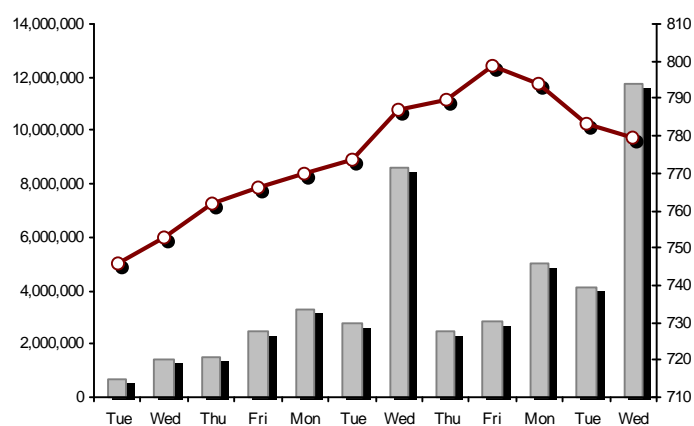
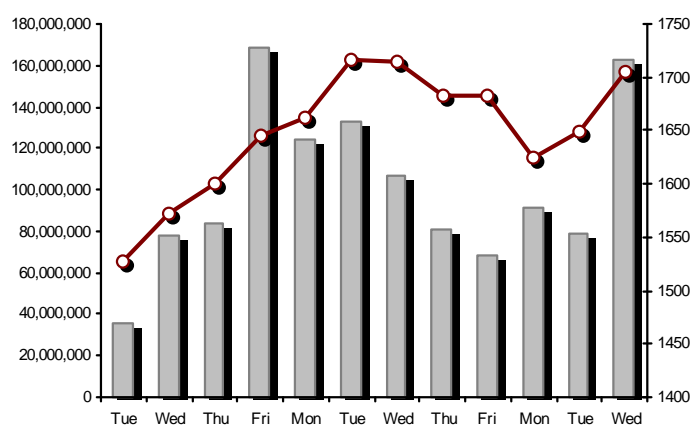
Note 2: The Hellenic Mid & Small Cap Index is a Customized index calculated by the Athens Exchange.

Athex Indices

FTSE/Large Cap

30/11/2016: 3.42% FTSE/Athex Mid Cap Index

30/11/2016: -0.47%

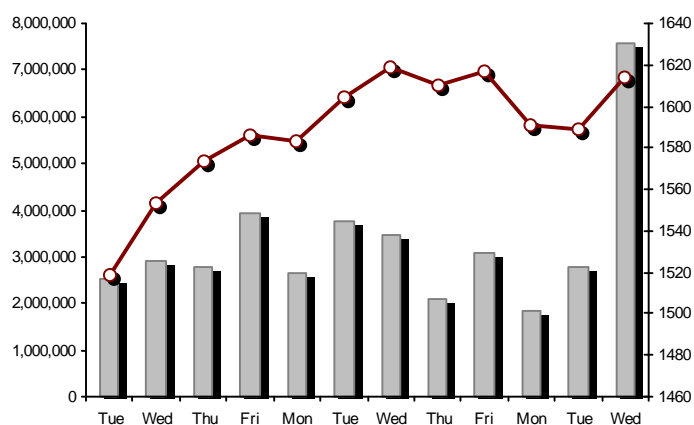
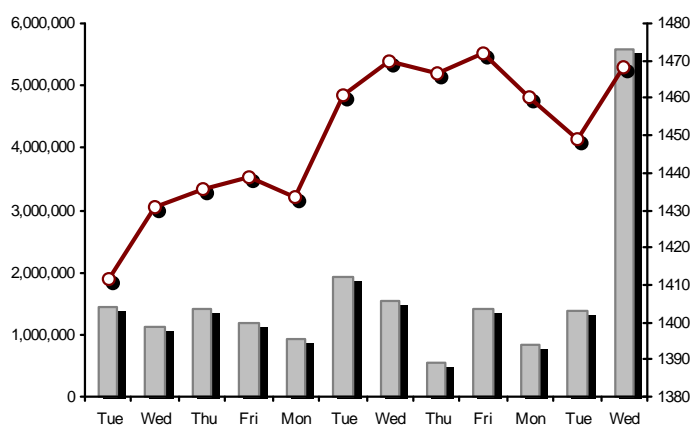


FTSE/ATHEX Global Traders Index Plus

30/11/2016: 1.34%

FTSE/ATHEX Global Traders Index

30/11/2016: 1.53%

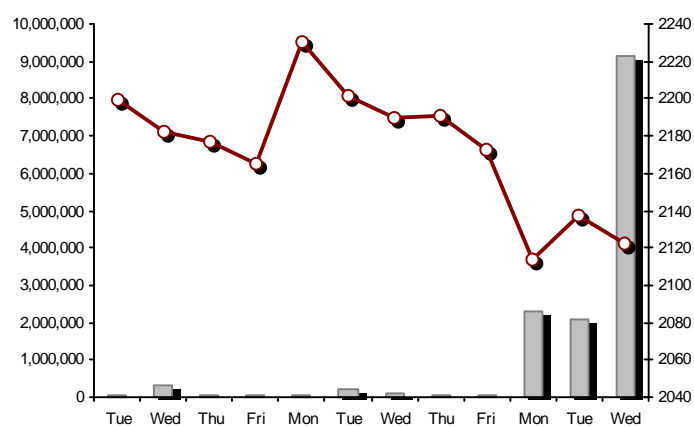
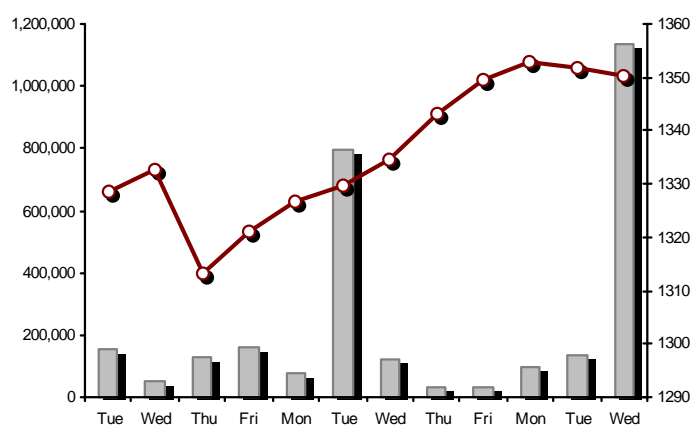


FTSE/ATHEX Mid & Small Cap Factor-Weighted Index

30/11/2016: -0.09%

ATHEX Mid & SmallCap Price Index

30/11/2016: -0.69%



Indices volume of transactions

Indices closing prices

Analytic Figures for Athex Market's Boards and Categories

	Total Traded Securities	Main Market	Low Dispersion	Other Categories (*)	Exchange Traded Funds (ETFs)	Warrants
Totals	116	95	5	11	3	2
Gain / Lose / Same:	69 / 32 / 15	62 / 24 / 9	2 / 2 / 1	3 / 6 / 2	2 / 0 / 1	0 / 0 / 2
Athex Capitalisation (mill. €) **	44,204.38	41,155.28	2,931.91	117.18		
Daily Average Trans/ons Value(thou.€)	60,660.43	59,236.50	1,441.67	9.69	14.94	10.28
Transactions Value	180,919.96	180,873.20	21.38	15.71	3.69	5.98
Main Board:	107,169.28	107,122.52	21.38	15.71	3.69	5.98
Blocks Board 6_2_3:	73,750.68	73,750.68	0.00	0.00	0.00	0.00
Forced Sales Board:	0.00	0.00	0.00	0.00	0.00	0.00
Special Terms Board:	0.00	0.00	0.00	0.00	0.00	0.00
Daily Average Transactions Volume	96,481,453	91,613,162	339,300	89,962	6,175	4,529,217
Transactions Volume	180,033,656	179,053,128	4,797	158,079	573	817,079
Main Board:	174,722,706	173,742,178	4,797	158,079	573	817,079
Blocks Board 6_2_3:	5,310,950	5,310,950	0	0	0	0
Forced Sales Board:	0	0	0	0	0	0
Special Terms Board:	0	0	0	0	0	0
Daily Average Number of Trades	18,944	18,796	37	52	4	55
Number of Trades	26,720	26,535	29	95	8	53
Main Board:	26,683	26,498	29	95	8	53
Blocks Board 6_2_3:	37	37	0	0	0	0
Forced Sales Board:	0	0	0	0	0	0
Special Terms Board:	0	0	0	0	0	0

(*) Summarised Transactions figures for Under Deletion and Under Supervision Categories.(**) The Market Capitalization of the Companies that belong in the Under Supervision Status is not included.

Trading Details by Athex Sectors and Financial Instruments (ETFs)

Code	Sectors	Gain / Lose / Same	Number of Trades	Transactions Volume	Transactions Value	% of Total Trans. Value
8300	- Banks	5 / 2 / 2	13,392	168,204,826	67,100,298.43	37.09%
1700	- Basic Resources	4 / 3 / 1	635	233,699	879,514.45	0.49%
1300	- Chemicals	1 / 0 / 2	69	15,732	35,768.03	0.02%
2300	- Construction & Materials	9 / 5 / 1	2,276	4,083,415	74,244,426.38	41.04%
12000	- Financial Instruments	2 / 0 / 1	8	573	3,690.90	0.00%
8700	- Financial Services	2 / 1 / 0	940	1,648,182	1,284,680.11	0.71%
3500	- Food & Beverage	5 / 3 / 0	216	153,385	1,657,310.47	0.92%
4500	- Health Care	2 / 1 / 2	37	33,328	6,382.08	0.00%
2700	- Industrial Goods & Services	11 / 3 / 0	765	375,663	765,042.19	0.42%
8500	- Insurance	1 / 0 / 0	3	17	33.17	0.00%
5500	- Media	1 / 0 / 0	2	600	55.20	0.00%
500	- Oil & Gas	2 / 1 / 0	1,054	356,115	3,075,162.09	1.70%
3700	- Personal & Household Goods	9 / 3 / 0	1,263	339,275	3,901,709.99	2.16%
8600	- Real Estate	1 / 3 / 0	454	330,446	2,357,876.51	1.30%
5300	- Retail	2 / 2 / 1	1,197	139,084	2,766,755.97	1.53%
9500	- Technology	4 / 1 / 2	222	108,891	78,036.14	0.04%
6500	- Telecommunications	1 / 0 / 0	1,474	1,053,757	8,987,081.14	4.97%
5700	- Travel & Leisure	3 / 3 / 3	1,731	2,382,938	11,943,265.53	6.60%
7500	- Utilities	4 / 1 / 0	982	573,730	1,832,867.63	1.01%

Top 10 best & worst performing Shares

Main Market					
With positive Price change	Closing price	change	With negative Price change	Closing price	change
PIRAEUS BANK (CR)	0.199	10.56% #	INTRALOT (CR)	1.08	-1.82% ⚡
EUROBANK ERGASIAS (CR)	0.707	10.47% #	ATTICA BANK S.A. (CR)	0.057	-1.72% ⚡
NATIONAL BANK (CR)	0.220	6.80% #	BANK OF CYPRUS (CR)	0.121	-1.63% ⚡
ALPHA BANK (CR)	1.90	6.15% #	FOURLIS (CR)	4.01	-1.23% ⚡
HELLENIC CABLES SA (CR)	1.22	5.17% #	LAMDA DEVELOPMENT SA (CR)	4.72	-0.84% ⚡
GRIVALIA PROPERTIES (CR)	7.90	4.22% #	FOLLI FOLLIE (CR)	20.26	-0.78% ⚡
HALKOR SA (CB)	0.374	4.18% #	HELLENIC EXCHANGES-A.S.E. (CR)	4.71	-0.42% ⚡
MARFIN INVESTMENT GROUP (CR)	0.129	4.03% #			
PPC (CR)	3.07	3.72% #			
ELLAKTOR (CR)	1.15	3.60% #			
With the highest Transactions Value	Value (thou. €)	change	With the highest Transactions Volume	Volume	change
TITAN CEMENT (CR)	73,724.51	3.15% #	PIRAEUS BANK (CR)	68,458,532	10.56% #
ALPHA BANK (CR)	30,952.81	6.15% #	NATIONAL BANK (CR)	55,609,786	6.80% #
PIRAEUS BANK (CR)	13,248.04	10.56% #	ALPHA BANK (CR)	16,287,358	6.15% #
NATIONAL BANK (CR)	12,151.37	6.80% #	EUROBANK ERGASIAS (CR)	14,252,852	10.47% #
OPAP (CR)	10,422.60	1.15% #	ATTICA BANK S.A. (CR)	9,091,532	-1.72% ⚡
EUROBANK ERGASIAS (CR)	9,728.26	10.47% #	BANK OF CYPRUS (CR)	3,683,831	-1.63% ⚡
OTE (CR)	8,987.08	2.38% #	TITAN CEMENT (CR)	3,674,421	3.15% #
JUMBO SA (CR)	3,343.90	2.21% #	MARFIN INVESTMENT GROUP (CR)	1,386,570	4.03% #
FOLLI FOLLIE (CR)	2,764.89	-0.78% ⚡	OPAP (CR)	1,184,678	1.15% #
MOTOR OIL (CR)	2,383.30	2.26% #	INTRALOT (CR)	1,104,104	-1.82% ⚡

Note: Stocks that are not included in the "Low Dispersion" and "Under Supervision" categories, and the transactions value is more than 10,000 €.

Derivatives Summary

	Number of Trades	Volume	Open Interest
Index Futures	594	2,252	9,409
FTSE/Athex Large Cap	594	2,252	9,409
Stock Futures	3,301	95,048	388,595
ALPHA BANK (CR)	565	9,747	17,714
CC HBC AG (CR)	4	11	156
CORINTH PIPEWORKS (CR)	5	37	641
ELLAKTOR (CR)	27	146	3,871
EUROBANK ERGASIAS (CR)	721	19,215	33,366
EYDAP S.A. (CR)	6	11	284
FOLLI FOLLIE (CR)	24	63	571
GEK TERNA (CR)	20	95	8,049
GRIVALIA PROPERTIES (CR)	5	16	49
HELLENIC EXCHANGES-A.S.E. (CR)	41	105	427
HELLENIC PETROLEUM (CR)	40	114	3,971
INTRALOT (CR)	23	173	1,132
JUMBO SA (CR)	50	97	340
MARFIN INVESTMENT GROUP (CR)	69	2,252	48,136
METKA (CR)	10	27	502
MOTOR OIL (CR)	15	40	391
MYTILINEOS HOLDINGS (CR)	64	307	7,016
NATIONAL BANK (CR)	547	31,286	121,528
OPAP (CR)	35	96	1,955
OTE (CR)	216	1,161	6,783
P.P.A. S.A. (CR)	7	12	647
PIRAEUS BANK (CR)	553	28,811	118,882
PPC (CR)	156	858	7,785
TERNA ENERGY (CR)	1	2	1,239
TITAN CEMENT (CR)	41	105	110
VIOHALCO SA/NV (CB)	56	261	3,050
Index Options	124	699	2,544
FTSE/Athex Large Cap	124	699	2,544
Stock Options	0	0	716
ALPHA BANK (CR)	0	0	100
NATIONAL BANK (CR)	0	0	10
OPAP (CR)	0	0	274
OTE (CR)	0	0	297
PIRAEUS BANK (CR)	0	0	0
PPC (CR)	0	0	35
Total Derivatives Traded	4,019	97,999	401,264

Number of Outstanding Securities	Nominal Value	Dividends [1]			Date of Last Coupon Dividend [2]		Note	Shares	Closing price	% change	Previous closing price/date	Open price	Price min	Price max	Last price	Avg price	Last Bid [7]	Last Ask [7]	P/E after	Year	Volume	Trades	Transactions Value[8]	Company Mkt Value (thou. €)	Year low	Year high	Sector[4]
1,141,734,167	---	---	---	---	11/06/2013	---	---	ALPHA BANK (W)	0.002	---	0.002	29/11/2016	0.001	0.001	0.002	0.002	0.0036563626@0.001	26524900@0.002	---	2015	156,067	14	176.09	2,920,074.28	0.001	0.004	8355
245,745,725	---	---	---	---	27/06/2013	---	---	NATIONAL BANK (W)	0.009	---	0.009	29/11/2016	0.009	0.008	0.009	0.009	0.009303690@0.008	260189@0.009	---	2015	661,012	39	5,801.28	2,012,373.34	0.002	0.025	8355
843,637,022	---	---	---	---	03/07/2013	---	---	PIRAEUS BANK (W)	0.001	---	0.001	29/11/2016	---	---	---	---	---	23868455@0.001	---	2015	---	---	---	1,737,903.47	0.001	0.002	8355

Warrants

71,417,100	0.650	---	0.7	0.7	13/05/2016	27/06/2014	---	AEGEAN AIRLINES (CR)	6.25	1.46	#	6.16	29/11/2016	6.08	6.06	6.26	6.25	6.19	3190@6.20	4959@6.25	8.23	2015	48,502	246	300,213.01	446,356.88	5.84	9.06	5751
11,178,000	1.12	---	---	---	21/04/2010	15/12/2014	---	AEOLIAN INVESTMENT FUND (CR)	0.497	1.43	#	0.490	29/11/2016	0.485	0.480	0.499	0.497	0.481	3086@0.489	575@0.532	---	2015	31,575	10	15,183.71	5,555.47	0.384	0.701	8985
1,536,881,200	0.300	---	---	---	07/04/2008	27/11/2015	---	ALPHA BANK (CR)	1.90	6.15	#	1.79	29/11/2016	1.83	1.81	1.95	1.90	1.90	11061@1.89	2121369@1.90	---	2015	16,287,358	2,849	30,952,810.87	2,920,074.28	0.949	2.75	8355
22,016,250	0.370	---	---	---	15/07/2009	11/05/2000	---	ALUMIL (CR)	0.218	0.46	#	0.217	29/11/2016	0.218	0.214	0.218	0.218	0.215	50@0.210	3459@0.217	---	2015	2,600	4	558.50	4,799.54	0.101	0.290	1753
417,608	16.00	0.8	---	---	29/04/2014	05/03/2013	---	ANDROMEDA SA (CR)	13.40	---	↘	13.40	29/11/2016	---	---	---	---	---	10@13.02	4@17.42	---	2015	---	---	---	5,595.95	11.53	14.00	8985
13,126,020	0.650	---	---	---	08/07/2010	12/10/2016	---	AS COMPANY SA (CR)	0.687	1.03	#	0.680	29/11/2016	0.647	0.646	0.687	0.687	0.649	190@0.657	198@0.686	5.85	2015	2,380	10	1,544.11	9,017.58	0.580	0.796	5379
86,735,980	0.310	---	---	---	06/07/2009	02/01/2002	---	ATHENS MEDICAL CENTER SA (CR)	0.642	-0.77	€	0.647	29/11/2016	0.586	0.586	0.642	0.642	0.634	194@0.586	1990@0.642	---	2015	48	4	30.42	55,684.50	0.539	0.780	4533
2,339,353,394	0.300	---	---	---	04/06/2008	01/12/2015	---	ATTICA BANK S.A. (CR)	0.057	-1.72	€	0.058	29/11/2016	0.059	0.056	0.060	0.057	0.057240755@0.056	71904@0.058	---	2015	9,091,532	397	522,542.48	133,343.14	0.037	0.279	8355	
15,300,000	0.300	---	---	---	30/07/2009	13/12/1999	---	ATTICA PUBLICATIONS SA (CR)	0.748	---	↘	0.748	29/11/2016	---	---	---	---	---	---	945@0.748	---	2015	---	---	---	11,444.40	0.564	1.21	5557
48,184,910	0.700	---	---	---	01/07/2008	01/03/2010	---	AUDIO VISUAL ENTERPRISES (CR)	0.096	---	↘	0.096	29/11/2016	---	---	---	---	---	---	5000@0.087	---	2015	---	---	---	4,625.75	0.028	0.108	5553
12,213,750	0.320	---	0.8	0.85	07/06/2016	22/11/2013	---	AUTOHELLAS SA (CR)	12.50	---	↘	12.50	29/11/2016	---	---	---	---	---	11@12.41	100@12.70	9.98	2015	---	---	---	152,671.88	9.51	13.00	5759
8,922,944,533	0.100	---	---	---	31/05/2011	02/02/2015	4857	BANK OF CYPRUS (CR)	0.121	-1.63	€	0.123	29/11/2016	0.123	0.121	0.124	0.121	0.123206096@0.121	132190@0.122	---	2015	3,683,831	170	452,045.41	1,079,676.29	0.121	0.174	8355	
19,864,886	5.60	0.672	0.672	0.672	03/03/2016	02/07/2008	---	BANK OF GREECE (CR)	10.25	0.69	#	10.18	29/11/2016	10.39	10.01	10.39	10.25	10.18	82@10.19	3083@10.25	---	---	3,856	64	39,249.17	203,615.08	8.70	11.11	8355
23,986,500	1.05	---	---	---	26/06/2009	15/03/2000	---	BIOKARPET S.A.(CR)	0.298	---	↘	0.298	29/11/2016	---	---	---	---	---	---	260@0.296	---	2015	---	---	---	7,147.98	0.139	0.459	3726
15,842,391	1.51	---	---	---	15/07/2009	12/05/2000	---	BITROS HOLDING SA (CR)	0.194	---	↘	0.194	29/11/2016	---	---	---	---	---	---	---	---	2015	---	---	---	3,073.42	0.125	0.227	1757
15,816,009	0.300	---	---	---	01/07/2009	17/07/2000	---	BYTE COMPUTER SA (CR)	0.300	---	↘	0.300	29/11/2016	---	---	---	---	---	100@0.299	100@0.308	---	2015	---	---	---	4,744.80	0.256	0.322	9533
365,203,298	6.70	0.354	0.36	0.4	30/06/2016	29/04/2013	---	CC HBC AG (CR)	20.05	1.16	#	19.82	29/11/2016	19.98	19.81	20.10	20.05	20.08	8085@19.97	2689@20.03	---	---	81,580	118	1,638,218.96	7,322,326.12	15.97	21.07	3537
101,123,806	0.360	---	---	---	22/07/2010	28/06/2011	---	CENTRIC HOLDINGS (CR)	0.099	---	↘	0.099	29/11/2016	0.095	0.095	0.102	0.102	0.098	2000@0.097	1796@0.102	---	2015	26,542	14	2,600.12	10,011.26	0.067	0.147	5752
124,170,201	0.780	---	---	---	28/06/2002	07/02/2005	---	CORINTH PIPEWORKS (CR)	0.616	---	↘	0.616	29/11/2016	0.628	0.608	0.630	0.616	0.614	205@0.615	547@0.616	23.81	2015	57,152	130	35,118.95	76,488.84	0.522	1.03	1757
9,907,500	0.300	---	---	---	06/10/2005	13/02/2002	---	CPI SA (CR)	0.188	---	↘	0.188	29/11/2016	---	---	---	---	---	---	---	22.50	2016	---	---	---	1,862.61	0.092	0.196	9572
41,068,800	0.420	(0.0667)	(0.03)	0.1205	19/08/2016	17/02/2016	---	CRETE PLASTICS SA (CR)	5.12	---	↘	5.12	29/11/2016	5.10	5.10	5.12	5.12	5.11	500@5.03	709@5.12	17.18	2015	2,500	5	12,770.00	210,272.26	3.19	5.30	1357
15,000,000	0.300	---	---	---	06/07/2007	18/07/2000	---	DAIOS PLASTICS SA (CR)	2.90	---	↘	2.90	29/11/2016	---	---	---	---	---	50@2.63	---	---	2015	---	---	---	43,500.00	2.45	2.95	1357
34,720,000	0.310	---	---	---	16/06/2010	01/08/2007	---	DROMEAS SA (CR)	0.114	12.87	#	0.101	29/11/2016	0.100	0.100	0.114	0.114	0.100	9@0.100	2976@0.114	---	2015	1,024	10	102.74	3,958.08	0.066	0.152	3726
3,873,120	0.300	---	---	---	07/07/2008	04/10/2012	---	DRUCKFARBEN HELLAS (CR)	0.420	---	↘	0.420	29/11/2016	---	---	---	---	---	1500@0.420	---	0.67	2015	---	---	---	1,626.71	0.360	0.550	1357
11,250,000	0.520	---	---	0.04	25/07/2016	09/11/2015	---	EKTER SA (CR)	0.465	-1.69	€	0.473	29/11/2016	0.473	0.465	0.473	0.465	0.467	300@0.456	100@0.478	14.68	2015	1,700	2	793.70	5,231.25	0.301	0.509	2357
32,188,050	1.04	---	---	---	21/07/2008	20/01/2000	---	EL. D. MOUZAKIS SA (CB)	0.153	9.29	#	0.140	29/11/2016	0.153	0.153	0.153	0.153	0.153	940@0.126	420@0.153	---	2015	40	1	6.12	4,924.77	0.084	0.215	3763
18,421,516	1.00	---	---	---	07/07/2009	10/09/2010	---	ELASTRON (CR)	0.685	-7.43	€	0.740	29/11/2016	0.650	0.650	0.699	0.685	0.676	100@0.710	150@0.695	---	2015	3,047	19	2,061.11	12,618.74	0.310	0.850	1757
31,734,530	1.60	---	---	---	09/07/2007	19/07/2006	---	ELGEKA SA (CR)	0.140	---	↘	0.140	29/11/2016	---	---	---	---	---	1000@0.126	400@0.139	---	2015	---	---	---	4,442.83	0.118	0.210	3577
23,828,130	0.500	---	---	0.16	08/06/2016	17/02/2009	---	ELINOIL S.A. (CR)	0.920	-0.33	€	0.923	29/11/2016	0.920	0.920	0.920	0.920	0.920	200@0.780	180@0.920	8.07	2015	10	1	9.20	21,921.88	0.634	1.25	537
177,001,313	1.03	---	---	---	05/07/2011	20/12/2007	---	ELLAKTOR (CR)	1.15	3.60	#	1.11	29/11/2016	1.12	1.10	1.15	1.15	1.13	1444@1.14	8120@1.15	---	2015	230,885	261	261,063.66	203,551.51	0.857	1.59	2357
82,667,000	0.300	---	---	---	22/07/2014	---	---	ELTECH ANEMOS S.A. (CR)	0.846	1.68	#	0.832	29/11/2016	0.846	0.830	0.846	0.846	0.835	3265@0.840	1495@0.846	9.10	2015	29,318	26	24,489.01	69,936.28	0.533	0.860	7537
26,730,187	0.600	0.05	---	---	23/06/2014	30/12/2010	---	ELTON SA (CR)	0.900	---	↘	0.900	29/11/2016	0.895	0.873	0.900	0.900	0.882	500@0.840	271@0.870	16.07	2015	3,146	25	2,774.77	24,057.17	0.802	1.00	1353
14,050,971	0.340	---	---	---	06/07/2011	17/10/2002	---	ELTRAK SA (CR)	1.34	4.69	#	1.28	29/11/2016	1.32	1.32	1.34	1.34	1.33	---	280@1.37	26.63	2015	390	4	517.10	18,828.30	0.990	1.45	2753

Number of Outstanding Securities	Nominal Value	Dividends [1]			Date of Last Coupon		Note	Shares	Closing price	% change	Previous closing price/date	Open price	Price min	Price max	Last price	Avg price	Last Bid [7]	Last Ask [7]	P/E after	Year	Volume	Trades	Transactions Value[8]	Company Mkt Value (thou. €)	Year low	Year high	Sector[4]	
		2013	2014	2015	Dividend [2]	Right																						
Main Market																												
3,307,500	0.960	---	---	---	11/08/2010	23/09/2016	---	ELVE SA (CR)	2.00	-2.44	€ 2.05	29/11/2016	1.91	1.91	2.00	2.00	1.95	30@1.91	950@2.00	15.94	2015	120	2	233.70	6,615.00	1.31	2.10	3763
2,185,998,765	0.300	---	---	---	02/05/2008	27/11/2015	---	EUROBANK ERGASIAS (CR)	0.707	10.47	# 0.640	29/11/2016	0.650	0.637	0.715	0.707	0.683	5500@0.706	11301@0.708	---	2015	14,252,852	3,280	9,728,261.74	1,545,501.13	0.241	1.17	8355
8,623,225	0.600	---	---	---	02/06/2010	30/05/2016	5031	EUROCONSULTANTS S.A. (CR)	0.629	---	↘ 0.629	29/11/2016	---	---	---	---	---	200@0.567	125@0.640	---	2015	---	---	---	5,424.01	0.504	1.82	2791
27,503,677	0.630	---	---	0.06	22/06/2016	18/10/1999	---	EUROPEAN RELIANCE INSUR. (CR)	1.96	1.03	# 1.94	29/11/2016	1.95	1.95	1.96	1.96	1.95	600@1.85	136@1.96	4.89	2015	17	3	33.17	53,907.21	1.21	2.10	8536
13,673,200	0.880	---	---	---	18/07/2008	26/07/2001	---	EVROFARMA SA (CR)	0.180	---	↘ 0.180	29/11/2016	---	---	---	---	---	1000@0.128	---	10.84	2015	---	---	---	2,461.18	0.120	0.320	3577
106,500,000	0.600	0.36	0.2	0.31	28/06/2016	28/01/2000	---	EYDAP S.A. (CR)	5.48	1.48	# 5.40	29/11/2016	5.47	5.45	5.50	5.48	5.48	275@5.46	4347@5.48	13.36	2015	62,498	139	342,393.99	583,620.00	3.60	6.10	7577
52,800,154	0.300	0.2	---	---	20/08/2014	21/06/2004	---	F.G. EUROPE S.A. (CR)	0.594	---	↘ 0.594	29/11/2016	---	---	---	---	---	760@0.590	26.25	2015	---	---	---	31,363.29	0.441	0.700	3722	
10,203,575	0.730	---	---	---	16/07/2007	18/10/1999	---	FIERATEX SA (CR)	0.130	---	↘ 0.130	29/11/2016	---	---	---	---	---	331@0.129	---	2015	---	---	---	1,326.46	0.039	0.205	3763	
11,720,024	0.540	0.0394	---	---	21/08/2014	04/11/2015	---	FLEXOPACK SA (CR)	2.95	---	↘ 2.95	29/11/2016	---	---	---	---	---	100@2.76	100@2.95	7.85	2015	---	---	---	34,574.07	2.10	3.08	2723
4,181,450	0.500	---	---	---	21/08/2000	05/03/2002	---	FLOUR MILLS SARANTOPOULOS SA	0.630	---	↘ 0.630	29/11/2016	---	---	---	---	---	300@0.570	1120@0.630	---	2015	---	---	---	2,634.31	0.362	1.01	3577
66,948,210	0.300	---	0.1005	---	22/09/2015	22/09/2015	---	FOLLI FOLLIE (CR)	20.26	-0.78	€ 20.42	29/11/2016	20.42	20.23	20.54	20.26	20.35	150@20.26	60@20.39	---	2015	135,871	1,179	2,764,894.37	1,356,370.73	12.50	22.40	5379
50,992,322	1.07	---	---	---	21/06/2010	16/07/2002	---	FOURLIS (CR)	4.01	-1.23	€ 4.06	29/11/2016	4.11	3.90	4.11	4.01	3.98	100@3.97	144@4.01	---	2015	44,367	180	176,779.01	204,479.21	2.00	4.28	3722
14,076,360	0.370	---	---	---	19/08/2008	22/07/2003	---	GALAXIDI S.A. (CR)	0.398	---	↘ 0.398	29/11/2016	---	---	---	---	---	2500@0.359	38.96	2015	---	---	---	5,602.39	0.163	0.570	3573	
103,423,291	0.570	---	---	---	01/08/2011	19/04/2016	---	GEK TERNA (CR)	2.27	1.79	# 2.23	29/11/2016	2.21	2.20	2.28	2.27	2.24	42@2.26	1635@2.28	14.26	2015	102,689	245	229,983.69	234,770.87	1.05	2.32	2357
8,418,750	0.300	---	---	0.12	16/12/2015	27/06/2012	---	GEKE SA (CB)	5.01	---	↘ 5.01	29/11/2016	---	---	---	---	---	120@5.50	16.60	2015	---	---	---	42,177.94	3.90	5.60	5753	
24,060,000	0.300	0.017	0.02	0.01	11/07/2016	11/07/2016	---	GEN. COMMERCIAL & IND.SA (CR)	0.340	---	↘ 0.340	29/11/2016	---	---	---	---	---	35@0.323	2845@0.340	14.30	2015	---	---	---	8,180.40	0.253	0.394	2797
34,770,982	1.55	0.3	0.15	0.16	20/04/2016	27/07/2000	---	GR. SARANTIS SA (CR)	10.80	2.95	# 10.49	29/11/2016	10.58	10.42	11.00	10.80	10.62	1475@10.80	15@11.00	34.04	2015	35,402	175	376,020.41	375,526.61	6.56	11.54	3767
101,260,000	2.13	0.1821	0.3037	0.3134	18/03/2016	08/01/2014	---	GRIVALIA PROPERTIES (CR)	7.90	4.22	# 7.58	29/11/2016	7.65	7.58	7.90	7.90	7.65	46@7.85	50853@7.90	14.85	2015	273,353	258	2,090,519.91	799,954.00	6.46	7.90	8675
8,340,750	1.18	---	---	---	25/06/2009	09/09/2015	---	HAIDEMENOS SA (CR)	0.285	6.74	# 0.267	29/11/2016	0.285	0.285	0.285	0.285	0.285	940@0.285	---	---	2015	4,060	4	1,157.10	2,377.11	0.240	1.04	2791
101,279,627	0.380	---	---	---	26/06/2008	14/07/2006	---	HALKOR SA (CB)	0.374	4.18	# 0.359	29/11/2016	0.368	0.347	0.376	0.374	0.367	2500@0.354	710@0.377	---	2015	29,778	44	10,921.55	37,878.58	0.193	0.425	1755
29,546,360	0.710	---	---	---	20/06/2008	23/08/2000	---	HELLENIC CABLES SA (CR)	1.22	5.17	# 1.16	29/11/2016	1.18	1.18	1.22	1.22	1.20	2991@1.19	3403@1.23	---	2015	47,480	79	57,083.41	36,046.56	0.530	1.31	2733
65,368,563	1.08	---	0.21	0.1026	31/05/2016	04/07/2016	---	HELLENIC EXCHANGES-A.S.E. (CR)	4.71	-0.42	€ 4.73	29/11/2016	4.71	4.70	4.81	4.71	4.75	1050@4.67	500@4.79	23.91	2015	230,037	566	1,092,516.30	307,885.93	3.40	5.56	8777
305,635,185	2.18	---	---	---	31/12/2014	01/10/2003	4795	HELLENIC PETROLEUM (CR)	4.33	1.17	# 4.28	29/11/2016	4.26	4.24	4.40	4.33	4.31	705@4.32	775@4.35	48.05	2015	160,398	605	691,852.18	1,323,400.35	2.74	4.68	537
305,732,436	0.410	---	---	---	08/07/2009	28/09/2011	---	HYGEIA SA (CR)	0.146	---	↘ 0.146	29/11/2016	0.149	0.146	0.150	0.146	0.147	6348@0.146	855@0.150	---	2015	25,069	16	3,691.05	44,636.94	0.078	0.197	4533
65,441,118	0.440	---	---	---	24/11/2014	11/08/2015	---	IASO SA (CR)	0.435	1.16	# 0.430	29/11/2016	0.448	0.417	0.448	0.435	0.433	336@0.435	1500@0.444	---	2015	5,601	15	2,424.84	28,466.89	0.360	0.669	4533
8,298,467	0.400	---	---	---	30/08/1993	08/05/2013	---	IDEAL GROUP SA (CR)	0.880	---	↘ 0.880	29/11/2016	0.880	0.880	0.880	0.880	0.880	29@0.880	100@0.910	-(6)-	2015	38	2	33.44	7,302.65	0.568	0.959	9574
28,580,100	0.400	0.025	---	---	18/08/2014	04/07/2016	---	IKTINOS HELLAS SA (CR)	0.846	0.83	# 0.839	29/11/2016	0.850	0.820	0.850	0.847	0.830	125@0.820	250@0.845	23.28	2015	4,135	21	3,431.74	24,178.76	0.811	1.15	2353
9,090,000	0.900	---	---	---	15/05/2009	13/10/2014	---	ILYDA S.A. (CR)	0.437	---	↘ 0.437	29/11/2016	---	---	---	---	---	222@0.394	---	---	2015	---	---	---	3,972.33	0.397	0.590	9537
20,578,374	0.620	---	0.4	0.07	05/07/2016	18/05/2015	---	INFORM P. LYKOS SA (CR)	0.509	---	↘ 0.509	29/11/2016	---	---	---	---	---	520@0.494	---	---	2015	---	---	---	10,474.39	0.364	0.620	2791
10,500,000	4.00	---	---	---	02/08/2016	---	---	INTERCONTINENTAL (CR)	5.59	---	↘ 5.59	29/11/2016	---	---	---	---	---	1148@5.59	---	---	---	---	---	---	58,695.00	5.15	5.80	8674
11,233,200	0.730	---	---	---	12/07/2010	30/07/1999	---	INTERTECH SA (CR)	0.185	---	↘ 0.185	29/11/2016	---	---	---	---	---	690@0.167	470@0.199	---	2015	---	---	---	2,078.14	0.120	0.376	9572
34,986,430	0.440	---	---	---	25/07/2008	23/02/2010	---	INTERWOOD-XYLEMPORIA (CR)	0.061	---	↘ 0.061	29/11/2016	---	---	---	---	---	3755@0.061	---	---	2015	---	---	---	2,465.29	0.061	0.093	2353
2,566,836	0.440	---	---	---	13/08/2010	09/01/2007	---	INTERWOOD-XYLEMPORIA (PR)	0.129	-7.19	€ 0.139	29/11/2016	0.129	0.129	0.129	0.129	0.129	---	25@0.129	---	2015	43	1	5.55	2,465.29	0.129	0.189	2353
23,154,250	1.36	---	---	---	12/08/2008	02/08/2010	---	INTRACOM CONSTR. (CR)	0.416	3.48	# 0.402	29/11/2016	0.513	0.401	0.513	0.421	0.415	1000@0.380	1000@0.420	---	2015	2,660	6	1,102.63	9,632.17	0.222	0.599	2357
133,025,996	1.41	---	---	---	03/07/2007	07/01/2002	---	INTRACOM HOLDINGS (CR)	0.304	2.36	# 0.297	29/11/2016	0.298	0.292	0.305	0.304	0.300	31@0.303	2376@0.305	---	2015	94,058	123	28,216.03	40,439.90	0.245	0.394	9578
158,961,721	0.300	---	---	---	30/05/2013	14/11/2007	---	INTRALOT (CR)	1.08	-1.82	€ 1.10	29/11/2016	1.10	1.08	1.12	1.08	1.08	954465@1.08	13582@1.09	---	2015	1,104,104	176	1,193,756.61	171,678.66	0.815	1.39	5752
77,654,850	0.580	---	---	---	01/07/2011	21/02/2003	---	J & P - AVAX SA (CR)	0.404	3.59	# 0.390	29/1																

Number of Outstanding Securities	Nominal Value	Dividends [1]			Date of Last Coupon Dividend [2]		Date of Last Coupon Right	Note	Shares	Closing price	% change	Previous closing price/date	Open price	Price min	Price max	Last price	Avg price	Last Bid [7]	Last Ask [7]	P/E after	Year	Volume	Trades	Transactions Value[8]	Company Mkt Value (thou. €)	Year low	Year high	Sector[4]
--	------------------	---------------	--	--	-------------------------------------	--	------------------------------	------	--------	------------------	----------	--------------------------------	---------------	--------------	--------------	---------------	--------------	-----------------	--------------	--------------	------	--------	--------	--------------------------	--------------------------------	-------------	--------------	---------------

Main Market

9,742,920	0.400	0.01	0.01	0.01	12/08/2016	14/07/2000	---	KARAMOLEGOS SA (CR)	1.83	-1.08	€ 1.85	29/11/2016	1.85	1.83	1.85	1.83	1.84	234@1.88	---	-(6)-	2015	375	2	688.43	17,829.54	0.601	1.85	3577
14,679,792	1.68	---	---	---	24/06/2014	04/09/2000	---	KARATZIS SA (CR)	3.88	---	↘ 3.88	29/11/2016	---	---	---	---	---	850@3.77	1980@4.22	11.14	2015	---	---	---	56,957.59	3.40	4.22	2723
13,202,756	0.350	---	---	---	01/07/2004	05/08/2014	---	KEKROPS SA (CR)	0.295	-8.67	€ 0.323	29/11/2016	0.294	0.294	0.346	0.295	0.301	150@0.295	1080@0.346	---	2015	450	4	135.25	3,894.81	0.175	0.398	8633
7,595,160	0.600	---	---	---	08/08/2008	18/08/2010	---	KIRIAKOULIS SHIPPING SA (CR)	0.721	---	↘ 0.721	29/11/2016	---	---	---	---	---	---	2177@0.649	89.77	2015	---	---	---	5,476.11	0.220	0.721	5759
23,648,700	0.350	---	---	---	13/07/2011	31/03/2015	---	KLEEMAN HELLAS SA (CR)	2.03	0.49	# 2.02	29/11/2016	2.02	2.02	2.03	2.03	2.025394700@2.02	988@2.03	24.49	2015	8,347	13	16,861.06	48,006.86	1.21	2.05	2757	
40,219,218	0.300	---	---	---	25/05/2009	09/07/2013	---	KLOUKINAS - LAPPAS SA (CR)	0.284	-5.02	€ 0.299	29/11/2016	0.298	0.284	0.298	0.284	0.292	1000@0.217	200@0.291	---	2015	170	3	49.68	11,422.26	0.218	0.353	2357
21,224,340	0.420	---	---	---	02/07/2008	25/04/2006	---	KORDELLOS BROS SA (CR)	0.266	-9.83	€ 0.295	29/11/2016	0.266	0.266	0.266	0.266	0.266	---	578@0.266	---	2015	421	5	111.99	5,645.67	0.167	0.373	1757
13,586,500	0.390	---	---	---	25/06/2010	28/05/2008	---	KORRES (CR)	3.74	1.63	# 3.68	29/11/2016	3.70	3.70	3.78	3.74	3.71	50@3.60	474@3.78	---	2015	910	11	3,371.98	50,813.51	2.79	3.90	3767
29,480,000	0.420	---	---	---	19/07/2010	01/08/2007	---	KRETA FARM SA (CR)	0.428	---	↘ 0.428	29/11/2016	---	---	---	---	---	300@0.401	1003@0.427	---	2015	---	---	---	12,617.44	0.300	0.610	3577
33,065,136	0.380	---	0.06	0.06	18/08/2016	16/09/2013	---	KRI-KRI S.A. (CR)	1.79	5.29	# 1.70	29/11/2016	1.73	1.65	1.79	1.79	1.75	46@1.65	188@1.79	15.40	2015	3,804	17	6,653.67	59,186.59	1.50	1.90	3577
15,804,800	0.360	---	---	---	15/06/2010	12/03/2004	---	KTIMA KOSTAS LAZARIDIS SA (CR)	0.282	---	↘ 0.282	29/11/2016	---	---	---	---	---	500@0.285	1000@0.350	---	2015	---	---	---	4,456.95	0.166	0.534	3535
23,286,253	0.990	---	0.2406	---	14/08/2015	15/09/2014	---	KYRIAKIDIS MARBLES SA (CR)	3.11	0.32	# 3.10	29/11/2016	3.11	3.11	3.11	3.11	3.11	710@3.11	200@3.13	11.90	2015	290	4	901.90	72,420.25	2.11	3.25	2353
79,721,775	0.300	---	---	---	30/05/2007	23/06/2014	---	LAMDA DEVELOPMENT SA (CR)	4.72	-0.84	€ 4.76	29/11/2016	4.76	4.66	4.80	4.72	4.72	303@4.70	144@4.72	---	2015	56,636	190	267,187.68	376,286.78	3.12	5.12	8633
21,364,000	1.12	---	---	---	05/07/2010	10/08/2005	---	LAMPESA HOTEL SA (CR)	16.89	---	↘ 16.89	29/11/2016	16.89	16.89	16.89	16.89	16.89	100@16.35	595@17.00	76.86	2015	120	2	2,026.80	360,837.96	15.32	18.00	5753
5,939,268	0.620	---	---	---	10/07/2003	03/01/2002	---	LANAKAM SA (CR)	0.589	---	↘ 0.589	29/11/2016	---	---	---	---	---	---	2300@0.500	---	2015	---	---	---	3,498.23	0.539	0.638	3763
4,740,000	0.860	---	---	---	---	14/03/2003	---	LOGISMOS S.A. (CR)	0.270	---	↘ 0.270	29/11/2016	---	---	---	---	---	900@0.189	100@0.349	---	2015	---	---	---	1,279.80	0.219	0.489	9533
17,125,062	0.940	---	---	---	01/06/2010	18/07/2016	---	LOULIS MILLS SA (CR)	1.78	6.59	# 1.67	29/11/2016	1.78	1.78	1.78	1.78	1.78	100@1.51	2386@1.65	52.02	2015	1	1	1.78	30,482.61	1.30	1.83	3577
939,510,748	0.300	---	---	---	26/04/2007	29/08/2014	---	MARFIN INVESTMENT GROUP (CR)	0.129	4.03	# 0.124	29/11/2016	0.126	0.124	0.130	0.129	0.128	2650@0.129	161779@0.130	---	2015	1,386,570	364	176,980.10	121,196.89	0.048	0.222	8775
9,819,370	0.690	---	---	---	14/08/2007	09/01/2004	---	MATHIOS REFRACTORY SA (CR)	0.345	---	↘ 0.345	29/11/2016	---	---	---	---	---	---	1900@0.311	---	2015	---	---	---	3,387.68	0.162	0.359	2353
468,700	0.65	1.48	---	---	26/04/2016	21/05/2004	---	MERMEREN KOMB. A.D. PR. (GDR)	6.20	1.47	# 6.11	29/11/2016	6.20	6.20	6.20	6.20	6.20	1@5.10	50@6.11	0.60	2015	5	1	31.00	2,905.94	4.83	8.49	1775
51,950,600	0.320	0.3	0.5	0.12	13/05/2016	21/10/2005	---	METKA (CR)	7.20	0.28	# 7.18	29/11/2016	7.24	7.10	7.24	7.20	7.17	50@7.13	100@7.22	21.61	2015	53,934	223	386,563.55	374,044.32	6.24	7.93	2757
10,500,000	0.950	---	---	---	24/06/2008	19/12/2013	---	MEVACO SA (CR)	0.969	---	↘ 0.969	29/11/2016	---	---	---	---	---	200@0.892	300@0.969	---	2015	---	---	---	10,174.50	0.705	1.10	2757
6,700,000	0.800	0.16	0.03	0.023	27/06/2016	29/05/2014	---	MILLS KEPENOS (CR)	1.29	---	↘ 1.29	29/11/2016	---	---	---	---	---	---	77@1.35	12.44	2015	---	---	---	8,643.00	0.880	2.21	3577
6,200,000	0.500	---	---	---	22/06/2010	01/11/1995	---	MINERVA KNITWEAR SA (CB)	0.048	---	↘ 0.048	29/11/2016	---	---	---	---	---	4000@0.044	---	---	2015	---	---	---	297.60	0.044	0.092	3763
12,417,000	0.370	---	---	---	28/07/2008	06/09/2011	---	MLS MULTIMEDIA SA (CR)	4.00	---	↘ 4.00	29/11/2016	3.94	3.94	4.00	4.00	3.97	500@3.94	2553@4.00	24.56	2015	8,756	51	34,786.31	49,668.00	2.75	4.07	9537
11,700,000	0.590	---	---	---	02/06/2009	24/07/2012	---	MOTODYNAMICS S.A. (CR)	0.410	7.90	# 0.380	29/11/2016	0.380	0.380	0.410	0.410	0.391	1133@0.380	49@0.410	14.97	2015	470	5	183.70	4,797.00	0.227	0.569	5379
110,782,980	0.750	0.2	---	0.65	27/06/2016	04/11/2013	---	MOTOR OIL (CR)	12.22	2.26	# 11.95	29/11/2016	11.95	11.86	12.39	12.22	12.18	154@12.19	150@12.30	6.73	2015	195,707	448	2,383,300.71	1,353,768.02	8.13	12.39	533
116,915,862	0.970	---	---	---	11/05/2009	19/10/2015	---	MYTILINEOS HOLDINGS (CR)	5.93	0.85	# 5.88	29/11/2016	5.88	5.85	5.94	5.93	5.91	200@5.89	2926@5.93	---	2015	140,586	430	830,688.36	693,311.06	2.70	6.02	1755
8,321,682	0.670	---	---	---	17/08/2007	23/11/1999	---	N. LEVEDERIS SA (CB)	0.209	-6.28	€ 0.223	29/11/2016	0.209	0.209	0.209	0.209	0.209	---	32@0.209	---	2015	110	2	22.99	2,322.57	0.138	0.385	1757
2,160,524	0.670	0.0436	0.0436	0.0436	04/08/2016	23/11/1999	---	N. LEVEDERIS SA (PB)	0.270	---	↘ 0.270	29/11/2016	---	---	---	---	---	2000@0.240	300@0.279	---	2015	---	---	---	2,322.57	0.202	1.25	1757
11,510,102	0.890	---	---	---	24/06/2005	06/10/1999	---	NAFPAKTOS TEXTILE IND. SA (CB)	0.115	9.52	# 0.105	29/11/2016	0.101	0.101	0.115	0.115	0.115	200@0.114	4@0.115	---	2015	2,038	3	234.26	1,323.66	0.085	0.313	3763
6,340,000	0.600	---	---	---	30/11/2009	09/11/2016	---	NAKAS MUSIC	0.830	---	↘ 0.830	29/11/2016	0.830	0.830	0.830	0.830	0.830	2@0.830	1500@0.848	5.22	2016	13	1	10.79	5,262.20	0.600	1.11	5379
9,147,151,527	0.300	---	---	---	16/05/2008	30/11/2015	---	NATIONAL BANK (CR)	0.220	6.80	# 0.206	29/11/2016	0.209	0.208	0.225	0.220	0.219156000@0.219	15000@0.222	---	2015	55,609,786	3,019	12,151,374.36	2,012,373.34	0.099	0.340	8355	
23,935,280	0.300	---	---	---	29/06/2009	13/06/2000	---	NAYTEMPORIKI PUBLISHING SA(CR)	0.065	---	↘ 0.065	29/11/2016	---	---	---	---	---	323@0.061	---	---	2015	---	---	---	1,555.79	0.049	0.097	5557
27,848,000	0.300	0.004	0.0032	0.0084	16/08/2016	02/09/2003	---	NEWSPHONE HELLAS SA (CR)	0.251	3.72	# 0.242	29/11/2016	0.251	0.251	0.251	0.251	0.251	2300@0.218	170@0.250	10.54	2015	20	1	5.02	6,989.85	0.135	0.291	2791
291,497,368	0.300	---	---	---	08/07/2008	21/03/2016	---	NIREFS SA (CR)	0.173	3.59	# 0.167	29/11/2016	0.169	0.169	0.175	0.173	0.173	200@0.172	10000@0.175	0.25	2015	49,950	57	8,630.31	50,429.04	0.067	0.297	3573
319,000,000	0.300	0.25	0.57	0.4	13/10/2016	25/04/2001	---	OPAP (CR)	8.80	1.15	# 8.70	29/11/2016	8.66	8.66	8.92	8.80	8.80	45971@8.80	10355@8.82	13.30	2015	1,184,678	1,256	10,422,599.00	2,807,200.00	5.16	8.97	5752
490,150,389	2.83	---	0.08	0.1	29/06/2016	18/06/1998	---	OTE (CR)	8.60	2.38	# 8.40	29/11/2016	8.42	8.36	8.60	8.60	8.53	292408@8.60	1902@8.62	45.52	2015	1,053,757	1,474	8,987,081.14	4,215,293.35	6.55	9.71	6535

Number of Outstanding Securities	Nominal Value	Dividends [1]			Date of Last Coupon Dividend [2]		Note	Shares	Closing price	% change	Previous closing price/date	Open price	Price min	Price max	Last price	Avg price	Last Bid [7]	Last Ask [7]	P/E after	Year	Volume	Trades	Transactions Value[8]	Company Mkt Value (thou. €)	Year low	Year high	Sector[4]
Main Market																											
25,000,000	2.00	0.12	0.099	0.1114	18/07/2016	08/08/2003	---	P.P.A. S.A. (CR)	13.10	1.00 #	12.97 29/11/2016	12.97	12.68	13.10	13.10	13.01	20@12.81	725@13.10	39.10	2015	5,507	93	71,636.00	327,500.00	9.80	14.78	2777
4,971,466	1.46	---	---	---	04/07/2007	08/10/2003	---	PAIRIS SA (CR)	0.144	--- ↘	0.144 29/11/2016	---	---	---	---	---	1000@0.151	---	---	2015	---	---	---	715.89	0.144	0.215	2723
3,953,090	0.900	---	0.067	0.11	26/05/2016	05/12/2012	---	PAPERPACK (CR)	1.54	-0.65 €	1.55 29/11/2016	1.44	1.42	1.54	1.54	1.49	2095@1.42	3415@1.54	4.85	2015	966	15	1,439.34	6,087.76	0.651	1.55	2723
50,797,369	0.310	---	---	---	17/08/2000	12/10/2010	---	PAPOUTSANIS (CR)	0.188	5.03 #	0.179 29/11/2016	0.174	0.174	0.188	0.188	0.183	300@0.140	2435@0.188	---	2015	233	10	42.68	9,549.91	0.080	0.217	3767
7,070,400	0.930	---	0.101	---	30/11/2016	06/05/2016	---	PETROPOULOS PETROS (CR)	4.19	0.48 #	4.17 29/11/2016	4.09	4.09	4.19	4.19	4.14	100@4.09	---	39.29	2015	200	13	828.00	29,624.98	3.43	4.25	2753
8,733,183,280	0.300	---	---	---	16/05/2008	27/11/2015	---	PIRAEUS BANK (CR)	0.199	10.56 #	0.180 29/11/2016	0.183	0.180	0.206	0.199	0.194025970@0.199	112041@0.200	---	2015	68,458,532	3,560	13,248,037.03	1,737,903.47	0.067	0.308	8355	
22,080,000	0.330	0.2	---	0.08	17/05/2016	27/04/2015	---	PLAISIO COMPUTERS SA (CR)	3.97	-0.75 €	4.00 29/11/2016	4.06	3.91	4.06	3.97	3.98	155@3.90	50@3.98	13.07	2015	2,007	31	7,989.10	87,657.60	3.73	4.75	9572
232,000,000	4.60	---	0.05	---	20/07/2015	12/12/2001	---	PPC (CR)	3.07	3.72 #	2.96 29/11/2016	2.97	2.97	3.12	3.07	3.05	1500@3.06	20960@3.08	---	2015	463,662	710	1,413,306.96	712,240.00	2.29	4.08	7535
11,812,193	0.470	---	0.02	---	26/03/2015	15/11/2006	---	PROFILE SA (CR)	0.432	0.47 #	0.430 29/11/2016	0.420	0.420	0.432	0.432	0.424	1500@0.423	1503@0.436	---	2015	3,000	7	1,272.00	5,102.87	0.388	0.546	9533
27,345,120	0.470	---	---	---	18/07/2005	26/02/2014	---	QUALITY & RELIABILITY SA (CR)	0.331	7.12 #	0.309 29/11/2016	0.331	0.331	0.331	0.331	0.331	50@0.315	500@0.329	---	2015	60	1	19.86	9,051.23	0.207	0.465	9533
11,921,531	3.66	---	---	---	05/09/2008	21/01/2016	---	QUEST HOLDINGS (CR)	6.00	11.11 #	5.40 29/11/2016	5.16	5.16	6.00	6.00	5.88	500@5.83	50@6.30	---	2015	972	7	5,719.40	71,529.19	3.30	6.00	9533
57,434,884	1.31	---	---	---	05/06/2008	12/06/2009	---	REDS S.A. (CR)	0.341	--- ↘	0.341 29/11/2016	---	---	---	---	---	2600@0.309	1457@0.371	---	2015	---	---	---	19,585.30	0.280	0.410	8633
22,280,000	0.300	---	---	---	11/04/2011	23/02/2007	---	REVOIL (CR)	0.350	-2.78 €	0.360 29/11/2016	0.360	0.350	0.360	0.350	0.351	550@0.285	484@0.348	11.25	2015	350	2	123.00	7,798.00	0.169	0.557	5379
7,500,000	0.690	0.0863	0.1	---	19/06/2015	05/07/2016	---	S.KANAKIS SA (CR)	2.76	1.47 #	2.72 29/11/2016	2.82	2.75	2.82	2.76	2.77	50@2.72	39@2.76	11.79	2015	155	4	429.80	20,700.00	1.75	2.82	3577
52,067,296	0.300	---	---	---	23/12/2003	24/01/2007	---	SELECTED TEXT. IND. ASSOC (CR)	0.140	3.70 #	0.135 29/11/2016	0.147	0.122	0.147	0.140	0.128	10@0.130	390@0.139	---	2016	4,070	8	522.24	7,289.42	0.084	0.205	3763
204,235,184	0.300	---	---	---	01/07/2008	30/07/2012	---	SELONDA AQUACULTURE SA (CR)	0.191	-0.52 €	0.192 29/11/2016	0.186	0.186	0.191	0.191	0.189	---	1@0.173	---	2015	4,752	8	896.22	39,008.92	0.074	0.273	3573
6,456,530	1.61	---	---	---	29/06/2001	02/08/2010	---	SPACE HELLAS SA (CR)	0.755	--- ↘	0.755 29/11/2016	---	---	---	---	---	300@0.681	---	5.75	2015	---	---	---	4,874.68	0.592	1.28	9578
28,438,268	0.300	---	---	---	21/08/2006	24/11/1999	---	SPIROY AGRICULTURE SA (CR)	0.699	--- ↘	0.699 29/11/2016	---	---	---	---	---	---	2573@0.630	---	2015	---	---	---	19,878.35	0.630	0.700	1357
40,693,350	5.00	---	---	---	03/07/2006	26/05/2015	---	TECHNICAL OLYMPIC SA (CR)	0.915	1.67 #	0.900 29/11/2016	0.900	0.900	0.918	0.912	0.903	1006@0.900	286@0.912	---	2015	519	9	468.63	37,234.42	0.530	0.940	3728
109,314,400	0.300	---	---	0.0935	30/05/2016	05/08/2015	---	TERNA ENERGY (CR)	2.82	1.44 #	2.78 29/11/2016	2.76	2.75	2.83	2.82	2.80	1401@2.77	140@2.82	-(6)-	2015	15,679	88	43,871.47	308,266.61	1.92	3.05	7537
36,300,000	1.12	0.285	0.24	0.25	23/06/2016	12/12/2007	---	THESSALONIKA WATER & SEWERAGE	3.40	-2.86 €	3.50 29/11/2016	3.44	3.40	3.45	3.40	3.42	160@3.38	27990@3.45	9.11	2015	2,573	19	8,806.20	123,420.00	2.65	3.86	7577
45,094,620	0.660	0.05	0.0225	---	20/04/2015	01/11/1999	---	THRACE PLASTICS SA (CR)	2.04	2.00 #	2.00 29/11/2016	2.00	1.98	2.04	2.04	2.01	1000@1.99	1089@2.04	-(6)-	2015	10,086	39	20,223.26	91,993.02	1.25	2.15	1357
77,063,568	4.00	---	0.1551	0.3099	27/06/2016	25/06/2004	---	TITAN CEMENT (CR)	21.30	3.15 #	20.65 29/11/2016	20.25	20.25	21.30	21.30	20.06	100@20.90	100@21.40	29.97	2015	3,674,421	1,586	73,724,507.27	1,739,472.03	14.86	22.40	2353
7,568,960	4.00	---	0.1551	0.3099	27/06/2016	25/06/2004	---	TITAN CEMENT CO. (PR)	12.95	0.86 #	12.84 29/11/2016	12.90	12.90	12.99	12.91	12.92	335@12.92	50@13.07	18.22	2015	430	6	5,556.50	1,739,472.03	7.36	13.38	2353
10,080,000	3.00	0.6	1.95	0.58	18/07/2016	27/08/2001	---	TPA SA (CR)	18.20	0.27 #	18.15 29/11/2016	18.40	18.20	18.40	18.20	18.20	18@18.18	3320@18.20	10.24	2015	1,685	23	30,669.19	183,456.00	17.78	24.10	2777
15,627,315	0.300	---	---	---	16/11/1992	03/12/2012	---	UNIBIOS (CR)	0.145	-5.23 €	0.153 29/11/2016	0.143	0.141	0.149	0.145	0.143	8872@0.145	3233@0.149	---	2015	14,410	11	2,067.41	2,265.96	0.053	0.165	2353
18,810,000	0.400	---	---	---	08/07/2010	14/11/2007	---	VARVERIS - MODA BAGNO SA (CR)	0.188	--- ↘	0.188 29/11/2016	---	---	---	---	---	---	4000@0.188	---	2015	---	---	---	3,536.28	0.072	0.188	2353
259,189,761	---	---	---	---	---	26/02/2016	---	VIOHALCO SA/NV (CB)	1.33	3.10 #	1.29 29/11/2016	1.30	1.29	1.34	1.33	1.31	3470@1.32	1974@1.33	---	---	142,012	239	186,191.44	344,722.38	0.928	1.67	2727
4,968,600	2.88	---	---	---	01/07/1998	14/12/1998	---	VIS SA (CR)	0.850	--- ↘	0.850 29/11/2016	---	---	---	---	---	469@0.777	300@0.910	---	2015	---	---	---	4,223.31	0.611	1.00	2723
6,325,000	0.600	---	---	---	02/05/2014	17/02/2014	---	VOGIATZOGLOU SYSTEMS SA (CR)	1.29	--- ↘	1.29 29/11/2016	---	---	---	---	---	---	157@1.17	---	2015	---	---	---	8,159.25	0.700	1.75	2797

Exchange Traded Funds (ETFs)

619,082	---	---	---	---	15/06/2016	---	ALPHA ETF FTSE Athens Large Cap	17.10	3.45 #	16.53 29/11/2016	16.70	16.70	17.22	17.10	17.07	---	---	17@17.10	---	---	---	68	4	1,160.90	---	11.30	170.69	12003
294,878	---	---	---	---	29/06/2009	---	NBGAM ETF	7.44	3.19 #	7.21 29/11/2016	7.44	7.44	7.44	7.44	7.44	---	---	---	---	---	---	2	1	14.88	---	4.50	7.60	12003
388,550	---	---	---	---	03/11/2010	---	NBGAM ETF GREECE & TURKEY 30	5.06	--- ↘	5.06 29/11/2016	5.00	5.00	5.06	5.06	5.00	---	---	---	---	---	---	503	3	2,515.12	---	4.90	6.27	12003

Low Dispersion

14,000,000	4.15	---	---	---	23/04/2010	29/06/1999	4815	ALPHA REAL ESTATE SA(CR)	4.81	-3.80 €	5.00 29/11/2016	4.81	4.81	4.81	4.81	4.81	100@4.61	5@4.81	24.30	2015	7	2	33.67	67,340.00	4.11	7.30	8637
------------	------	-----	-----	-----	------------	------------	------	--------------------------	------	---------	-----------------	------	------	------	------	------	----------	--------	-------	------	---	---	-------	-----------	------	------	------

Number of Outstanding Securities	Nominal Value	Dividends [1]			Date of Last Coupon		Note	Shares	Closing price	% change	Previous closing price/date	Open price	Price min	Price max	Last price	Avg price	Last Bid [7]	Last Ask [7]	P/E after	Year	Volume	Trades	Transactions Value[8]	Company Mkt Value (thou. €)	Year low	Year high	Sector[4]		
		2013	2014	2015	Dividend [2]	Coupon Right																							
Low Dispersion																													
81,122,516	3.00	---	---	---	23/06/2003	04/11/2008	4816	ASTIR PALACE SA (CR)	5.35	---	↘	5.35	29/11/2016	5.34	5.34	5.35	5.35	5.35	2496@5.34	9000@5.36	---	2015	3,716	19	19,879.46	434,005.46	2.90	5.40	5753
13,465,290	0.300	---	---	---	09/08/2004	09/11/2016	4814	ATHENA SA (CR)	0.408	---	↘	0.408	29/11/2016	---	---	---	---	---	---	---	---	2015	---	---	---	5,493.84	0.180	1.30	2357
191,660,320	0.300	---	---	---	20/07/2009	29/12/2010	4817	ATTICA HOLDINGS (CR)	0.900	5.88	#	0.850	29/11/2016	0.850	0.850	0.900	0.900	0.899	711@0.850	4228@0.900	-(6)-	2015	549	4	493.80	172,494.29	0.490	1.40	5759
13,404,440	8.63	---	---	---	02/04/2001	06/03/1992	4822	IONIAN HOTELS SA (CR)	9.90	---	↘	9.90	29/11/2016	---	---	---	---	---	150@10.00	150@10.48	61.21	2015	---	---	---	132,703.96	5.64	12.00	5753
2,760,000	11.83	8.5	9.3	8.5	15/07/2016	16/07/1990	4823	KARELIA TOBACCO CO. SA (CB)	255.00	---	↘	255.00	29/11/2016	---	---	---	---	---	36@248.00	5@260.00	13.18	2015	---	---	---	703,800.00	227.20	2079.00	3785
106,980,050	2.25	---	---	---	25/07/2008	24/02/2014	5046	MINOAN LINES SA (CR)	2.40	-1.24	€	2.43	29/11/2016	2.40	2.40	2.40	2.40	2.40	675@2.40	---	15.84	2015	325	3	780.00	256,752.12	2.00	2.45	5759
255,494,534	3.00	---	---	0.2035	15/04/2016	23/12/2015	5104	NBG PANGAEA (CR)	4.25	---	↘	4.25	29/11/2016	---	---	---	---	---	400@4.22	---	21.84	2015	---	---	---	1,085,851.77	3.22	6.03	8671
22,996,875	1.25	---	---	---	24/06/2011	02/02/2016	5116	NEXANS HELLAS SA (CR)	0.960	3.23	#	0.930	29/11/2016	0.960	0.960	0.960	0.960	0.960	100@0.823	200@0.960	---	2015	200	1	192.00	22,077.00	0.781	1.58	2733
17,240,776	0.370	---	---	---	14/07/2005	30/09/2003	4827	PERSEUS SA (CR)	0.240	---	↘	0.240	29/11/2016	---	---	---	---	---	1000@0.220	3127@0.285	1.76	2015	---	---	---	4,137.79	0.240	0.520	3577
54,888,240	1.13	0.09	---	---	25/04/2014	22/03/2006	5100	TRASTOR REAL EST. INV. CO.(CR)	0.861	---	↘	0.861	29/11/2016	---	---	---	---	---	2000@0.700	600@0.930	---	2015	---	---	---	47,258.77	0.611	1.25	8671

Surveillance																													
13,000,000	1.00	---	---	---	01/08/2007	07/04/2000	5093	AKRITAS SA (CR)	0.141	1.44	#	0.139	29/11/2016	0.128	0.128	0.151	0.151	0.141	113@0.128	325@0.151	---	2015	60	2	8.44	1,833.00	0.061	0.530	2353
14,870,100	0.300	---	---	---	15/05/2008	26/09/2011	4844	ALPHA GRISSIN S.A. (CR)	0.031	---	↘	0.031	29/11/2016	---	---	---	---	---	2000@0.025	---	---	2015	---	---	---	460.97	0.019	0.038	9533
2,969,713	0.300	---	---	---	02/07/2008	28/02/2011	4958	ANEK LINES SA (PR, Issue '96)	0.086	---	↘	0.086	29/11/2016	---	---	---	---	---	---	---	35.97	2015	---	---	---	12,251.00	0.086	0.240	5759
312,163	0.300	---	---	---	02/07/2008	28/02/2011	4959	ANEK LINES SA (PR, Issue '90)	0.422	---	↘	0.422	29/11/2016	---	---	---	---	---	---	---	-(6)-	2015	---	---	---	12,251.00	0.352	1.04	5759
185,373,016	0.300	---	---	---	02/07/2008	28/02/2011	4957	ANEK LINES SA (CR)	0.064	-1.54	€	0.065	29/11/2016	0.064	0.063	0.064	0.064	0.064	8500@0.063	3338@0.064	26.77	2015	14,402	11	916.73	12,251.00	0.050	0.103	5759
20,255,805	0.300	---	---	---	22/08/2006	02/08/2010	4881	AXON HOLDING SA (CR)	0.007	16.67	#	0.006	29/11/2016	0.007	0.007	0.007	0.007	0.007	7890@0.007	---	---	2015	110	1	0.77	141.79	0.006	0.070	4533
17,579,754	4.16	---	---	---	18/08/2006	02/08/2010	5097	BIOTER SA (CR)	0.060	---	↘	0.060	29/11/2016	0.060	0.060	0.060	0.060	0.060	8000@0.048	3000@0.072	---	2015	747	1	44.82	1,054.79	0.038	0.149	2357
4,034,950	0.680	---	---	---	01/07/2005	30/12/2010	5114	CHATZIKRANIOTIS & SONS SA (CR)	0.140	-7.28	€	0.151	29/11/2016	0.151	0.128	0.151	0.140	0.140	---	4468@0.140	---	2015	12,768	9	1,791.30	564.89	0.030	0.164	3577
1,417,311	0.300	---	---	---	11/08/2010	12/10/2016	5123	DIONIC (CR)	0.298	-15.82	€	0.354	29/11/2016	0.419	0.290	0.419	0.298	0.298	525@0.290	225@0.354	0.09	2015	2,643	7	787.78	422.36	0.240	0.600	2797
15,878,748	0.480	---	---	---	10/07/2006	22/03/2004	5095	DOMIKI KRITIS SA (CR)	0.290	---	↘	0.290	29/11/2016	---	---	---	---	---	---	1000@0.275	---	2015	---	---	---	4,604.84	0.147	0.318	2357
3,961,300	1.28	---	---	---	29/06/2004	03/08/2000	5080	DUROS SA (CR)	0.491	---	↘	0.491	29/11/2016	---	---	---	---	---	---	200@0.485	---	2015	---	---	---	1,945.00	0.118	0.491	3763
7,085,888	1.59	---	---	---	02/07/1996	06/09/2010	4690	ELVIEMEK (CR)	3.00	---	↘	3.00	29/11/2016	---	---	---	---	---	---	10@3.00	---	2015	---	---	---	21,257.66	2.90	3.97	8633
6,000,000	0.600	---	---	---	13/06/2008	08/04/2004	4886	EUROBROKERS S.A. (CR)	0.010	---	↘	0.010	29/11/2016	---	---	---	---	---	3000@0.008	---	---	2015	---	---	---	60.00	0.009	0.010	8534
21,820,410	0.800	---	---	---	22/05/2008	02/08/2011	4882	EUROMEDICA SA (CR)	0.007	---	↘	0.007	29/11/2016	---	---	---	---	---	50000@0.007	---	---	2015	---	---	---	152.74	0.006	0.028	4533
110,097,185	0.300	---	---	---	19/09/2016		5118	Forthnet (CR)	0.313	---	↘	0.313	29/11/2016	---	---	---	---	---	1173@0.260	425@0.297	---	2015	---	---	---	34,460.42	0.236	0.660	9535
50,593,832	0.300	---	---	---	07/07/2010	07/09/2011	5113	FRIGOGLASS SA (CR)	0.103	-14.17	€	0.120	29/11/2016	0.116	0.101	0.116	0.105	0.103	43@0.105	1481@0.114	---	2015	108,219	50	11,111.20	5,211.16	0.086	1.87	2757
77,376,446	0.340	---	---	---	23/05/2005	18/08/2011	5094	G.E. DIMITRIOU (CR)	0.025	-19.36	€	0.031	29/11/2016	0.025	0.025	0.025	0.025	0.025	---	15988@0.025	---	2015	1,030	2	25.75	1,934.41	0.006	0.037	3722
1,270,000	0.300	---	---	---	06/07/2007	06/02/2013	5007	GIRAKIAN PROFIL SA (CB)	0.060	---	↘	0.060	29/11/2016	---	---	---	---	---	2222@0.072	---	---	2015	---	---	---	76.20	0.060	0.167	1757
1,540,000	0.600	---	---	---	08/08/1994	19/09/2000	5058	J.BOUTARIS & SON HOLD. (PB)	0.066	---	↘	0.066	29/11/2016	---	---	---	---	---	---	4000@0.079	---	2015	---	---	---	1,234.72	0.006	0.066	3535
25,179,640	0.600	---	---	---	08/08/1994	19/09/2000	5057	J.BOUTARIS & SON HOLD. SA (CB)	0.045	---	↘	0.045	29/11/2016	---	---	---	---	---	1000@0.040	1648@0.053	---	2015	---	---	---	1,234.72	0.016	0.128	3535
7,125,216	0.650	---	---	---	01/07/2005	14/12/1999	4955	KRE.KA SA (CR)	0.072	---	↘	0.072	29/11/2016	---	---	---	---	---	4995@0.085	---	---	2015	---	---	---	513.02	0.060	0.180	3573
51,081,030	1.00	---	---	---	20/08/2007	03/09/2007	4912	LAVIPHARM SA (CR)	0.094	---	↘	0.094	29/11/2016	0.094	0.094	0.094	0.094	0.094	1000@0.090	5@0.093	---	2015	2,500	1	235.00	4,801.62	0.054	0.155	4577
7,734,375	1.00	---	---	---	09/07/2007	07/01/2011	5112	LIVANIS SA (CR)	0.011	---	↘	0.011	29/11/2016	---	---	---	---	---	1295@0.010	---	---	2015	---	---	---	85.08	0.011	0.148	5557
4,419,616	1.58	---	---	---	21/07/2011	04/03/2015	4983	MEDICON S.A (CR)	0.298	---	↘	0.298	29/11/2016	---	---	---	---	---	250@0.300	---	0.82	2015	---	---	---	1,317.05	0.298	0.790	4535
20,231,328	0.600	---	---	---	15/07/2008	25/06/2004	4879	NIKAS SA (CR)	0.132	---	↘	0.132	29/11/2016	---	---	---	---	---	---	1000@0.158	---	2015	---	---	---	2,670.54	0.070	0.132	3577
14,967,940	0.500	---	---	---	21/05/2008	04/01/2008	4956	PASAL DEVELOPMENT S.A. (CR)	0.074	---	↘	0.074	29/11/2016	---	---	---	---	---	9903@0.075	---	---	2015	---	---	---	1,107.63	0.058	0.300	8633

Number of Outstanding Securities	Nominal Value	Dividends [1]			Date of Last Coupon		Note	Shares	Closing price	% change	Previous closing price/date	Open price	Price min	Price max	Last price	Avg price	Last Bid [7]	Last Ask [7]	P/E after	Year	Volume	Trades	Transactions Value[8]	Company Mkt Value (thou. €)	Year low	Year high	Sector[4]	
		2013	2014	2015	Dividend [2]	Right																						
Surveillance																												
18,750,000	0.300	---	---	---	02/07/2001	31/12/2012	4985	PEGASUS PUBLISHING S.A. (CR)	0.092	19.48 #	0.077	29/11/2016	0.092	0.092	0.092	0.092	0.092	---	4@0.062	---	2015	600	2	55.20	1,725.00	0.040	0.136	5557
65,326,268	0.530	---	---	---	04/07/2007	19/07/2006	4750	SATO SA (CR)	0.060	---	↘ 0.060	29/11/2016	---	---	---	---	295@0.048	1000@0.060	---	2015	---	---	---	---	3,919.58	0.008	0.116	3726
7,914,480	0.300	---	---	---	23/06/2008	29/06/2011	4888	SFAKIANAKIS SA (CR)	0.200	---	↘ 0.200	29/11/2016	---	---	---	---	266@0.240	---	---	2015	---	---	---	---	1,582.90	0.157	5.64	5379
10,186,667	1.35	---	---	---	24/06/2008	02/02/2016	4887	SIDMA SA (CR)	0.251	---	↘ 0.251	29/11/2016	---	---	---	---	---	1007@0.240	---	2015	---	---	---	---	2,556.85	0.096	0.380	1757
4,737,503	0.320	---	---	---	22/06/2005	22/09/2015	5115	VARANGIS AVEPE S.A. (CR)	0.235	---	↘ 0.235	29/11/2016	---	---	---	---	---	1435@0.230	---	2015	---	---	---	---	1,113.31	0.235	0.300	3726
16,383,428	0.300	---	---	---	25/06/2002	21/06/2013	4997	VARVARESSOS SA (CB)	0.055	---	↘ 0.055	29/11/2016	---	---	---	---	---	---	---	2015	---	---	---	---	901.09	0.006	0.172	3763
13,191,620	0.620	---	---	---	04/08/2010	09/09/2002	4977	YALCO - CONSTANTINOU SA (CB)	0.060	---	↘ 0.060	29/11/2016	---	---	---	---	---	1000@0.060	---	2015	---	---	---	---	791.50	0.034	0.143	3722

Under Deletion																											
1,130,180	0.440	---	---	---	20/06/2003	02/07/2014	5092	COMPUCON SA (CR)	0.006	---	↘ 0.006	29/11/2016	---	---	---	---	---	---	---	2015	---	---	---	6.78	0.006	0.019	9537
9,567,289	0.300	---	---	---	01/07/2004	19/11/2007	5062	MARAC ELECTRONICS (CR)	0.298	---	↘ 0.298	29/11/2016	---	---	---	---	---	14880@0.239	---	2015	---	---	---	2,851.05	0.298	0.298	9578
24,319,250	0.300	---	---	---	09/07/2002	04/07/2007	5111	PROODEFTIKH SA (CR)	0.049	-2.00	↗ 0.050	29/11/2016	0.046	0.045	0.060	0.045	0.049 23000@0.040	21004@0.045	---	2015	15,000	9	730.92	1,191.64	0.032	0.092	2357
766,000	1.00	---	---	---	01/07/2004	11/12/2012	4937	TRIA ALFA SA (CR)	2.59	---	↘ 2.59	29/11/2016	---	---	---	---	---	14@2.08	---	2015	---	---	---	2,383.29	1.80	2.59	3763
245,000	1.00	---	---	---	19/07/2010	11/12/2012	4938	TRIA ALFA SA (PR)	1.63	---	↘ 1.63	29/11/2016	---	---	---	---	---	191@1.31	---	2015	---	---	---	2,383.29	1.36	1.63	3763

33,301,715	0.320	---	---	---	27/06/2003	08/07/2009	5121	AEGEK (CR)	0.038	---	↘ 0.038	30/09/2016	---	---	---	---	---	---	---	---	---	---	---	1,265.47	0.029	0.072	2357
5,000,000	0.400	---	---	---	03/06/2009	01/09/2014	5087	ALCO HELLAS SA (CR)	0.180	---	↘ 0.180	31/03/2015	---	---	---	---	---	---	---	---	---	---	---	900.00	0.180	0.180	1753
5,025,000	0.300	---	---	---	05/07/2005	14/03/2002	5023	ALSINCO S.A (CR)	0.043	---	↘ 0.043	29/11/2013	---	---	---	---	---	---	---	---	---	---	---	216.08	0.043	0.043	3763
215,246,452	0.300	---	---	---	25/06/2001	24/09/2001	4446	ALTEC SA (CR)	0.012	---	↘ 0.012	30/11/2015	---	---	---	---	---	---	---	---	---	---	---	2,582.96	0.012	0.012	9533
81,644,555	0.300	---	---	---	01/07/2008	02/09/2002	5098	ATTI - KAT SA (CR)	0.012	---	↘ 0.012	29/05/2015	---	---	---	---	---	---	---	---	---	---	---	979.73	0.012	0.012	2357
33,930,000	0.300	---	---	---	03/07/2006	30/05/2001	4865	BABIS VOVOs SA (CR)	0.304	---	↘ 0.304	30/03/2012	---	---	---	---	---	---	---	---	---	---	---	10,314.72	0.304	0.304	8633
20,121,710	1.21	---	---	---	27/07/1992	12/03/2003	5002	BALKAN R.E. (CR)	0.190	---	↘ 0.190	29/08/2013	---	---	---	---	---	---	---	---	---	---	---	3,823.12	0.190	0.190	8633
30,159,583	0.470	---	---	---	26/06/2008	29/12/2010	5047	DIAS A/C (CR)	0.050	---	↘ 0.050	26/03/2014	---	---	---	---	---	---	---	---	---	---	---	1,507.98	0.050	0.050	3573
7,847,611	1.20	---	---	---	01/08/2007	28/09/2011	4939	EDRASIS - C. PSALLIDAS SA (CR)	0.150	---	↘ 0.150	29/11/2012	---	---	---	---	---	---	---	---	---	---	---	1,177.14	0.150	0.150	2357
36,748,909	0.730	---	---	---	15/12/2005	13/12/2006	5109	HEL. SUGAR INDUSTRY SA (CB)	0.075	---	↘ 0.075	29/02/2016	---	---	---	---	---	---	---	---	---	---	---	2,756.17	0.064	0.150	3577
13,692,227	1.47	---	---	---	07/07/2006	08/10/1999	5049	HELLENIC FABRICS SA (CR)	0.117	---	↘ 0.117	31/03/2014	---	---	---	---	---	---	---	---	---	---	---	1,601.99	0.117	0.117	3763
30,390,000	0.310	---	---	---	18/08/2008	29/12/2006	5099	HELLENIC FISHFARMING SA (CR)	0.070	---	↘ 0.070	02/06/2015	---	---	---	---	---	---	---	---	---	---	---	2,127.30	0.070	0.070	3573
24,619,524	0.500	---	---	---	10/10/1986	30/12/2002	4914	KERAMIA-ALLATINI (CR)	0.088	---	↘ 0.088	30/08/2012	---	---	---	---	---	---	---	---	---	---	---	2,166.52	0.088	0.088	8633
66,937,526	0.700	---	---	---	13/08/2010	21/05/2003	5003	MICHANIKI SA (CR)	0.100	---	↘ 0.100	29/08/2013	---	---	---	---	---	---	---	---	---	---	---	9,186.78	0.100	0.100	2357
25,968,987	0.700	---	---	---	13/08/2010	21/05/2003	5004	MICHANIKI SA (PR)	0.096	---	↘ 0.096	29/08/2013	---	---	---	---	---	---	---	---	---	---	---	9,186.78	0.096	0.096	2357
13,555,100	1.00	---	---	---	08/07/2005		4576	MICROLAND COMPUTERS SA (CR)	0.640	---	↘ 0.640	14/07/2009	---	---	---	---	---	---	---	---	---	---	---	8,675.26	0.640	0.640	5379
255,459,600	0.300	---	---	---	26/06/2000	03/12/2010	5101	NEL SA (CR)	0.070	---	↘ 0.070	31/08/2015	---	---	---	---	---	---	---	---	---	---	---	17,882.17	0.070	0.070	5759
23,463,874	0.800	---	---	---	23/05/2003	21/12/1999	4918	NEORION SA (CR)	0.125	---	↘ 0.125	30/08/2012	---	---	---	---	---	---	---	---	---	---	---	2,932.98	0.125	0.125	2753
20,210,127	1.53	---	---	---	27/06/1997	20/03/2000	5061	PARNASSOS ENTERP. (CR)	0.070	---	↘ 0.070	30/05/2014	---	---	---	---	---	---	---	---	---	---	---	1,414.71	0.070	0.070	8775
40,946,303	0.360	---	---	---	18/07/2005	27/11/2007	5089	PC SYSTEMS SA (CR)	0.006	---	↘ 0.006	31/03/2016	---	---	---	---	---	---	---	---	---	---	---	245.68	0.006	0.014	9533
29,060,950	0.340	---	---	---	20/08/2007	24/10/2001	5088	SPIDER METAL INDUSTRY SA (CR)	0.008	---	↘ 0.008	31/03/2015	---	---	---	---	---	---	---	---	---	---	---	232.49	0.008	0.008	2757
144,688,060	0.600	---	---	---	21/04/2008	10/03/2010	4982	T BANK (CR)	0.048	---	↘ 0.052 #	29/11/2011	---	---	---	---	---	---	---	---	---	---	---	6,945.03	0.048	0.048	8355

Number of Outstanding Securities	Nominal Value	Dividends [1]			Date of Last Coupon		Note	Shares	Closing price	% change	Previous closing		Open price	Price min	Price max	Last price	Avg price	Last Bid [7]	Last Ask [7]	P/E after	Year	Volume	Trades	Transactions Value[8]	Company Mkt Value (thou. €)	Year low	Year high	Sector[4]
		2013	2014	2015	Dividend [2]	Right					price/date																	
Suspension Status																												
6,523,780	0.530	---	---	---	01/07/2002	06/03/2001	4971	TECHNICAL PUBLICATIONS SA (CR)	0.006	---	↘ 0.006	31/05/2013	---	---	---	---	---	---	---	---	---	---	---	---	39.14	0.006	0.006	5557
100,793,572	0.300	---	---	---	16/07/2009	11/02/2016	5110	TELETIPPOS SA (CR)	0.060	---	↘ 0.060	07/03/2016	---	---	---	---	---	---	5@0.048	---	---	---	---	---	6,047.61	0.054	0.070	5553
13,920,000	0.320	---	---	---	19/11/2001	01/08/2000	4726	TEXAPRET SA (CR)	0.080	---	↘ 0.080	28/02/2011	---	---	---	---	---	---	---	---	---	---	---	---	1,113.60	0.080	0.080	3763
510,840	1.00	---	---	---	15/07/2008	21/11/2013	5036	TROPEA HOLDING (CR)	2.00	---	↘ 0.020	# 30/03/2012	---	---	---	---	---	---	---	---	---	---	---	---	1,021.68	2.00	2.00	3722
284,465,964	3.70	---	---	---	20/06/2008	15/06/2009	4913	TT HELLENIC POSTBANK (CR)	0.168	---	↘ 0.239	# 29/08/2012	---	---	---	---	---	---	---	---	---	---	---	---	47,790.28	0.168	0.168	8355
71,683,906	0.400	---	---	---	15/06/2005	05/02/2008	4953	XATZIOANNOU (CR)	0.026	---	↘ 0.026	28/03/2013	---	---	---	---	---	---	---	---	---	---	---	---	1,863.78	0.026	0.026	3763

Shares' Notes

Code	Note text
()	- Adjusted dividends.
*	- Last adjusted closing price.
[1]	- Net dividends.
[2]	- The "Date of Last Coupon" for New listings refers to the date company's stocks started to trade in Athex
[3]	- The Company Market Value is referred to the number of outstanding shares
[4]	- Sectors codification can be found in Appendix A
[5]	- The Market Value refers to the total number of shares listed (including their several classes) in the exchange by the company.
[6]	- P/E greater than 100
[7]	- Last view of the Order Book before the end of the trading session
[8]	- All Blocks Methods' Transactions Value are included.
4446	- Transfer to the "Under Supervision" Category as of 20/10/2008.
4576	- Suspension of trading as of 14/7/2009.
4690	- Transfer to Surveillance category as of 4/4/2006.
4726	- Suspension of trading as of 1/3/2011.
4750	- Transfer to the "Under Surveillance Category" from 8/4/2011.
4795	- The final gross (pre-tax) dividend is € 0.30 per share and subject to withholding tax on the full dividend amount, i.e. 0,45 per share, for those shareholders liable to withholding tax, in accordance with the applicable tax law provisions.
4814	- Transfer to the Low Dispersion Category as of 30/5/2011.
4815	- Transfer to the Low Dispersion Category as of 30/5/2011.
4816	- Transfer to the Low Dispersion Category as of 30/5/2011.
4817	- Transfer to the Low Dispersion Category as of 30/5/2011.
4822	- Transfer to the Low Dispersion category as of 30/5/2011.
4823	- Transfer to the Low Dispersion category as of 4/4/2006.
4827	- Transfer to the Low Dispersion category as of 5/5/2010.
4844	- Transfer to the Surveillance category from 8/4/2011.
4857	- The 793,906,274 new (CR) shares, resulting from the recent share capital increase through a rights issue, are not yet admitted to trading on the ATHEX.
4865	- Suspension of trading as of 2/4/2012.
4879	- Transfer to the Surveillance Category as of 10/4/2012.
4881	- Transfer to the Surveillance Category as of 10/4/2012.
4882	- Transfer to the Surveillance Category as of 10/4/2012.
4886	- Transfer to the Surveillance Category as of 10/4/2012.
4887	- Transfer to the Surveillance Category as of 10/4/2012.
4888	- Transfer to the Surveillance Category as of 10/4/2012.
4912	- Transfer to the Surveillance Category as of 31/7/2012.
4913	- Suspension of trading as of 30/8/2012.
4914	- Suspension of trading as of 31/8/2012.
4918	- Suspension of trading as of 31/8/2012.
4937	- Transfer to the UNDER DELETION category as of 30/11/2012.
4938	- Transfer to the UNDER DELETION category as of 30/11/2012.
4939	- Suspension of trading as of 30/11/2012.
4953	- Suspension of trading as of 2/4/2013.
4955	- Transfer to the Surveillance Category as from 5/4/2013.
4956	- Transfer to the Surveillance Category as from 5/4/2013.
4957	- Transfer to the Surveillance Category as from 5/4/2013.
4958	- Transfer to the Surveillance Category as from 5/4/2013.
4959	- Transfer to the Surveillance Category as from 5/4/2013.
4971	- Suspension of trading as of 3/6/2013.
4977	- Transfer to the "Under Surveillance Category" from 11/6/2013.
4982	- Suspension of trading as of 1/12/2011.
4983	- Transfer to the Surveillance Category as of 5/4/2013.
4985	- Transfer to the "Under Surveillance Category" from 8/4/2011.
4997	- Transfer to the Under Supervision Category as of 21/12/2009. - The 6,870,053 new (CB) shares, resulting from the recent share capital increase through a rights issue, are

Shares' Notes

Code	Note text
	not yet admitted to trading on the ATHEX.
5002	- Suspension of trading as of 30/08/2013.
5003	- Suspension of trading as of 30/08/2013.
5004	- Suspension of trading as of 30/08/2013.
5007	- Transfer to the Surveillance category, as of 11/10/2013.
5023	- Suspension of trading as of 2/12/2013.
5031	- The 612,300 new (CR) shares, resulting from the recent share capital increase through a rights issue, are not yet admitted to trading on the ATHEX.
5036	- The company's share is under suspension of trading as of 2/4/2012. During suspension, the company proceeded and concluded a share reverse split, according to which - after the conclusion of the corporate action - the total number of the company's shares, as well as, the last closing price of 30/03/2012 were adjusted.
5046	- Transfer to the Low Dispersion category as of 8/4/2011.
5047	- Suspension of trading as of 27/3/2014.
5049	- Under suspension of trading as of 1/4/2014.
5057	- Transfer to the Surveillance Category as of 29/12/2011.
5058	- Transfer to the Surveillance Category as of 29/12/2011.
5061	- Suspension of trading as of 2/6/2014.
5062	- Transfer to the UNDER DELETION category as of 4/6/2014.
5080	- Suspension of trading as of 6/9/2011.
5087	- Suspension of trading as of 1/4/2015.
5088	- Suspension of trading as of 1/4/2015.
5089	- Transfer to the Surveillance Category as of 8/4/2015.
5092	- Transfer to the UNDER DELETION category as of 8/4/2015.
5093	- Transfer to the Surveillance Category as of 8/4/2015.
5094	- Transfer to the Surveillance Category as of 8/4/2015.
5095	- Transfer to the Surveillance Category as from 9/4/2015.
5097	- Transfer to the Surveillance Category as of 10/4/2012.
5098	- Suspension of trading as of 2/6/2015.
5099	- Suspension of trading as of 3/6/2015.
5100	- Transfer to the Low Dispersion Category as of 24/6/2015.
5101	- Suspension of trading as of 1/9/2015.
5104	- Transfer to the "Low Dispersion" Category as of 31/10/2014. Change of the company name from "MIG REAL ESTATE R.E.I.C." to " NBG PANGAEA R.E.I.C." as of 30/12/2015.
5109	- Suspension of trading as of 01/03/2016.
5110	- Suspension of trading as of 08/03/2016.
5111	- Transfer to the Under Deletion Category as of 15/04/2016.
5112	- Transfer to the Surveillance Category as of 15/04/2016.
5113	- Transfer to the Surveillance Category as of 15/04/2016.
5114	- Transfer to the Surveillance Category as of 15/04/2016.
5115	- Transfer to the Surveillance Category as of 15/04/2016.
5116	- Transfer to the Low Dispersion Category as of 20/4/2016.
5118	- Transfer to the Surveillance Category as of 25/11/2011. Issue of a Convertible Bond Loan in progress through a rights issue. Rights' trading period on ATHEX: 22/09/2016 - 03/10/2016, pre-emption rights' subscription period: 22/09/2016 - 06/10/2016.
5121	- Suspension of trading as of 3/10/2016.
5123	- Transfer to the Surveillance Category as of 10/4/2014.

Securities Blocks Details

Securities	Block Volume	Price	Block Trade Value	Time of approval	Note
GRIVALIA PROPERTIES (CR)	91,530	7.60	695,628.00	10:43:18	20
GRIVALIA PROPERTIES (CR)	102,225	7.60	776,910.00	11:04:25	20
TITAN CEMENT (CR)	1,000,000	20.00	20,000,000.00	11:28:12	20
TITAN CEMENT (CR)	700,000	20.00	14,000,000.00	11:28:39	20
TITAN CEMENT (CR)	327,434	20.00	6,548,680.00	11:29:26	20
TITAN CEMENT (CR)	266,704	20.00	5,334,080.00	11:29:58	20
TITAN CEMENT (CR)	200,000	20.00	4,000,000.00	11:30:43	20
TITAN CEMENT (CR)	150,000	20.00	3,000,000.00	11:31:09	20
TITAN CEMENT (CR)	75,000	20.00	1,500,000.00	11:31:47	20
TITAN CEMENT (CR)	75,000	20.00	1,500,000.00	11:32:13	20
TITAN CEMENT (CR)	60,000	20.00	1,200,000.00	11:32:41	20
TITAN CEMENT (CR)	50,000	20.00	1,000,000.00	11:33:50	20
TITAN CEMENT (CR)	50,000	20.00	1,000,000.00	11:34:09	20
TITAN CEMENT (CR)	50,000	20.00	1,000,000.00	11:34:29	20
TITAN CEMENT (CR)	25,000	20.00	500,000.00	11:35:04	20
TITAN CEMENT (CR)	25,000	20.00	500,000.00	11:35:23	20
TITAN CEMENT (CR)	20,000	20.00	400,000.00	11:35:48	20
TITAN CEMENT (CR)	15,000	20.00	300,000.00	11:36:11	20
TITAN CEMENT (CR)	16,362	20.00	327,240.00	11:36:37	20
TITAN CEMENT (CR)	13,000	20.00	260,000.00	11:43:05	20
TITAN CEMENT (CR)	50,000	20.00	1,000,000.00	11:43:40	20
TITAN CEMENT (CR)	50,000	20.00	1,000,000.00	11:44:01	20
TITAN CEMENT (CR)	40,000	20.00	800,000.00	11:44:54	20
TITAN CEMENT (CR)	20,000	20.00	400,000.00	11:45:23	20
TITAN CEMENT (CR)	15,000	20.00	300,000.00	11:45:50	20
TITAN CEMENT (CR)	15,000	20.00	300,000.00	11:46:19	20
TITAN CEMENT (CR)	13,500	20.00	270,000.00	11:46:40	20
TITAN CEMENT (CR)	13,500	20.00	270,000.00	11:47:04	20
TITAN CEMENT (CR)	13,500	20.00	270,000.00	11:47:31	20
TITAN CEMENT (CR)	13,000	20.00	260,000.00	11:47:57	20
TITAN CEMENT (CR)	25,000	20.00	500,000.00	11:48:21	20
TITAN CEMENT (CR)	13,000	20.00	260,000.00	11:48:59	20
NATIONAL BANK (CR)	200,000	0.212	42,400.00	13:47:22	18
CC HBC AG (CR)	28,328	20.20	572,225.60	15:58:17	18
ALPHA BANK (CR)	1,401,550	1.92	2,683,968.25	16:34:51	20
OTE (CR)	67,317	8.50	571,857.92	16:44:48	20
FOLLI FOLLIE (CR)	20,000	20.38	407,688.00	17:02:43	20

Blocks Notes

- 9 - Method 6-1 / Special Fees
- 10 - Method 6-1 / Special Fees, SDS
- 14 - Method 6-3 / Settlement, Incomplete Buy and Sell
- 18 - Method 6-2 / SPOT 1
- 19 - Method 6-2 / SPOT 2
- 20 - Method 6-1 and Method 6-1 Same Day Settlement
- 21 - Other Pre-agreed

Shares Rights Details

Occured date	Exercise from	Exercise until	Trading until	Rights	Price min	Price max	Closing price	Last Bid	Last Ask	Volume	Trades	Transactions Value
-----------------	------------------	-------------------	------------------	--------	--------------	--------------	------------------	----------	----------	--------	--------	-----------------------

No Rights Transactions.

Shares Forced Sales

Securities	Transaction s Volume	Number of Trades	Transactions Value	Note
No Forced Transactions.				

Forced Sales Notes

- 1 - Normal Forced Sale.
- 2 - Forced Sales of Fixed Registered Shares.
- 3 - Forced Sales of Remaining Stock Fractions.

Forced Sales Registered Shares

Securities	Start Date	End Date	Initial Volume	Remaining Volume	Date	Avg price (day)	Avg price (period)	Number of Trades	Transactions Volume	Transactions Value
No Fixed Registered Shares Forced Sales.										

Forced Sales Notes

According to Decision 1/380/04.05.2008 of the Hellenic Republic Capital Market Commission, the certificated registered shares that have not been deposited to the issuer for dematerialisation, will be auctioned in the Athens Exchange by the supervising issuer. Forced sales procedure is held according to Article 99A of the Athens Exchange Rulebook. The average price of the period is calculated by dividing the Total transactions value by the Total volume and includes all the transactions made until the current date.

Exchange Traded Funds (ETFs) Characteristics

	Transactions Date (T)	Creation / Redemption	Units (T-1)	New Units (T-1)	Redemptio n Units (T-	Units (T) [1]	Fund Assets [2]	Net Unit Price	Dividen d per	Dividend Date
ALPHA ETF FTSE Athex Large Cap	30/11/2016	5,000	619,082	---	---	619,082	10,197,350.00	16.4717	0.37	30/06/2016
NBGAM ETF GREECE & TURKEY 30	30/11/2016	25,000	388,550	---	---	388,550	1,959,679.00	5.0436	---	27/10/2011
NBGAM ETF ΓΔ Χ.Α.	30/11/2016	25,000	294,878	---	---	294,878	2,119,157.00	7.1866	---	27/10/2011

ETFs Notes

[1] - Units (T) = Units (T-1) + New Units (T-1) - Redemption Units (T-1)

[2] - The Creation / Redemption Units of T-1 are included.

Corporate Bonds

Num Listed Bonds	Nominal price	Issue price	Today's Rate	Exp. Date	Duration (years)	Note	Coupon		Trading	Corporate Bonds	Price min	Price max	Closing price	Previous closing price/date	Volume	Transactions Value	Last order		Date	ear min	Year max	
							Common	Preferred									Price	Buy / Sell				
233,748,933	0.30	0.30	1.00	11/10/2025	9	---	1	---	1	FORTHNET S.A. (Convertible)	---	---	---	---	---	---	95.0000	S	09/11/2016	100.0000	100.0000	
40,000,000	1.00	1.00	5.00	04/10/2021	5	---	1	---	1	HOUSEMARKET S.A. (Non Convertible)	100.5010	100.9000	100.6680	100.5000	28/11/2016	16,728	16,976.81	100.5010	B	30/11/2016	99.9000	101.3000
1,774,359	13.76	9.77	0.00	21/10/2025	18	---	26	---	1	NIREUS S.A. (Convertible)	---	---	---	100.0000	12/07/2016	---	---	4.5000	S	30/11/2016	10.0000	150.0000
212,237,880	1.00	1.00	6.30	29/07/2020	7	---	14	---	1	MARFIN INVESTMENT GROUP S.A. SERIES B (Convert.)	---	---	---	0.8500	23/08/2013	---	---	5.0000	B	04/10/2016	0.8500	0.8500
163,009,139	1.00	1.00	7.00	29/07/2019	6	---	14	---	1	MARFIN INVESTMENT GROUP S.A. SERIES A (Convert.)	---	---	---	1.0000	23/08/2013	---	---	5.0000	B	04/10/2016	1.0000	1.0000

Corporate Bonds Notes

Transactions Volume = (Pieces) * (Nominal Price). Transactions Value = (Pieces) * (Nominal Price) * (price %) + (Accrued interest).
The price of a Bond is stated as a percentage (%) of Bond's Nominal Price.
Nominal Price in Euros (€), except if it is noted differently.

Government Bonds

Number Listed Bonds	Nominal price	Today's Rate	Accrued Interest Calc	Exp. Date [1]	Duration (years)	Note	Coupons Date	Curr. coupon value	Trading Unit	Government Bonds	Price min	Price max	Closing price	Previous closing price/date	Volume	Transactions Value	Price	Last order Buy / Sell	Date
1,792,455,803	1.00	3.00	Actual/Actual	24/02/2023	11	---	24/02	3.00	1	GGB-FXD-240223-11Y-2.000-1.00	---	---	---	10.0000 22/06/2015	---	---	---	---	---
1,771,485,249	1.00	3.00	Actual/Actual	24/02/2024	12	---	24/02	3.00	1	GGB-FXD-240224-12Y-2.000-1.00	---	---	---	10.0000 22/06/2015	---	---	---	---	---
1,744,316,583	1.00	3.00	Actual/Actual	24/02/2025	13	---	24/02	3.00	1	GGB-FXD-240225-13Y-2.000-1.00	---	---	---	10.0000 22/06/2015	---	---	---	---	---
1,498,761,836	1.00	3.00	Actual/Actual	24/02/2026	14	---	24/02	3.00	1	GGB-FXD-240226-14Y-2.000-1.00	---	---	---	10.0000 22/06/2015	---	---	---	---	---
1,469,952,920	1.00	3.00	Actual/Actual	24/02/2027	15	---	24/02	3.00	1	GGB-FXD-240227-15Y-2.000-1.00	---	---	---	10.0000 22/06/2015	---	---	---	---	---
1,525,434,082	1.00	3.00	Actual/Actual	24/02/2028	16	---	24/02	3.00	1	GGB-FXD-240228-16Y-2.000-1.00	---	---	---	10.0000 22/06/2015	---	---	---	---	---
1,503,860,546	1.00	3.00	Actual/Actual	24/02/2029	17	---	24/02	3.00	1	GGB-FXD-240229-17Y-2.000-1.00	---	---	---	10.0000 22/06/2015	---	---	---	---	---
1,435,418,132	1.00	3.00	Actual/Actual	24/02/2030	18	---	24/02	3.00	1	GGB-FXD-240230-18Y-2.000-1.00	---	---	---	10.0000 22/06/2015	---	---	---	---	---
1,368,045,727	1.00	3.00	Actual/Actual	24/02/2031	19	---	24/02	3.00	1	GGB-FXD-240231-19Y-2.000-1.00	---	---	---	10.0000 22/06/2015	---	---	---	---	---
1,373,758,194	1.00	3.00	Actual/Actual	24/02/2032	20	---	24/02	3.00	1	GGB-FXD-240232-20Y-2.000-1.00	---	---	---	10.0000 22/06/2015	---	---	---	---	---
1,452,639,893	1.00	3.00	Actual/Actual	24/02/2033	21	---	24/02	3.00	1	GGB-FXD-240233-21Y-2.000-1.00	---	---	---	10.0000 22/06/2015	---	---	---	---	---
1,410,344,954	1.00	3.00	Actual/Actual	24/02/2034	22	---	24/02	3.00	1	GGB-FXD-240234-22Y-2.000-1.00	---	---	---	10.0000 22/06/2015	---	---	---	---	---
1,444,202,190	1.00	3.00	Actual/Actual	24/02/2035	23	---	24/02	3.00	1	GGB-FXD-240235-23Y-2.000-1.00	---	---	---	10.0000 22/06/2015	---	---	---	---	---
1,505,138,031	1.00	3.00	Actual/Actual	24/02/2036	24	---	24/02	3.00	1	GGB-FXD-240236-24Y-2.000-1.00	---	---	---	10.0000 22/06/2015	---	---	---	---	---
1,396,254,095	1.00	3.00	Actual/Actual	24/02/2037	25	---	24/02	3.00	1	GGB-FXD-240237-25Y-2.000-1.00	---	---	---	10.0000 22/06/2015	---	---	---	---	---
1,382,167,704	1.00	3.00	Actual/Actual	24/02/2038	26	---	24/02	3.00	1	GGB-FXD-240238-26Y-2.000-1.00	---	---	---	10.0000 22/06/2015	---	---	---	---	---
1,337,331,257	1.00	3.00	Actual/Actual	24/02/2039	27	---	24/02	3.00	1	GGB-FXD-240239-27Y-2.000-1.00	---	---	---	10.0000 22/06/2015	---	---	---	---	---
1,371,908,706	1.00	3.00	Actual/Actual	24/02/2040	28	---	24/02	3.00	1	GGB-FXD-240240-28Y-2.000-1.00	---	---	---	10.0000 22/06/2015	---	---	---	---	---
1,360,659,778	1.00	3.00	Actual/Actual	24/02/2041	29	---	24/02	3.00	1	GGB-FXD-240241-29Y-2.000-1.00	---	---	---	10.0000 22/06/2015	---	---	---	---	---
1,432,747,403	1.00	3.00	Actual/Actual	24/02/2042	30	---	24/02	3.00	1	GGB-FXD-240242-30Y-2.000-1.00	---	---	---	10.0000 22/06/2015	---	---	---	---	---
742,153	1,000.00	0.44	FLR Actual/360	10/08/2019	5	---	10/02 - 10/08	---	1	GGB-FLT-100819-05Y-0.934-1,000	---	---	---	---	---	---	---	---	---
4,030,827	1,000.00	4.75	Actual/Actual	17/04/2019	5	---	17/04	4.75	1	GGB-FXD-170419-05Y-4.750-1,000	---	---	---	---	---	---	---	---	---
2,089,066	1,000.00	3.38	Actual/Actual	17/07/2017	3	---	17/07	3.38	1	GGB-FXD-170717-03Y-3.375-1,000	---	---	---	---	---	---	---	---	---

Government Bonds Notes

Transactions Volume = (Pieces) * (Nominal Price). Transactions Value = (Pieces) * (Nominal Price) * (price %) + (Accrued interest).
The Value of current coupon for the issues with NV 0.01 euro refers to NV 100 euros
FLR: Floating Interest Rate.
[1] - The Expiration Date of the interest bearing period and the Date for coupon payment.

Bonds in Circulation	Currency / Min nominal traded Value	Coupons Payment Date	Current Coupon Value	Note	Coupon	Trading Unit	Issue Date	Duration (years)	Today's Interest	A.I.C in days	Bonds	Last price of previous days		Last Outcry in Cash (euro) Price Buy / Sell		Trades in Pieces	Life min	Life Max	
Corporate Bonds in Foreign Currency and Euro																			
103,746	GBP / 10	01/12	0.25	---	57	1	01/12/1930	98	2.5	360	National Mortgage Bank	2.27	05/02/1996	2.27	S	05/02/1996	---	2.27	2.27
0	GBP / 10	01/12	0.25	---	59	1	01/12/1928	100	2.5	360	National Mortgage Bank	---	---	---	---	---	---	---	---

Government Bonds Notes

A.I.C: Accrued Interest Calculation base.
FLR: Floating Interest Rate.
The minimum tradeable Nominal Value for all Demeterialised Government Titles is 100 Euros.
(μτφρ-0)

Athex & ATHEXClear Members List

Member Name			Stock Market			Derivatives Market		ATHEXClear Member	
Address	Phone	Fax	Market Member	Remote Member	Market Maker	Proprietary	Market Maker	General Clearing	Direct Clearing
A. SARRIS SECURITIES S.A.			a						
6, DRAGATSANIOU ATHINA	+30 2103367700	210-3312324							
ALPHA FINANCE INVESTMENT SERVICES S.A.			a		a	a	a		a
5, MERLIN ATHINA	+30 2103677400	210-33311193							
ALPHA BANK A.E.								a	
40, STADIOU STR ATHINA	(210)-3260000	(210)-3264116							
	(210)-3265546	(210)-3265811							
103, AVE. ATHINON ATHINA	+30 2103436820	210-3436270							
ARGUS STOCKBROKERS LTD			a	a		a			
25 , DIMOSTHENI SEVERI AVE NICOSIA	+357 22717000	0035722717070							
ATLANTIC SECURITIES LIMITED			a	a					
37, PRODROMOU NICOSIA	+357 22445400	00357 22661914							
ATLAS SECURITIES S.A			a			a			
, 125 MICHALAKOPOULOU & 14-16 VERVENON ATHINA	+30 2103363300	210-3238925							
ATTICA BANK S.A.								a	
54, AKADIMIAS STR. ATHINA	(210)-3390757	(210)-3646090							
23, OMIROU ATHINA	+30 2103669261	210-3669265							
23, OMIROU STR. ATHINA	(210)-3669000	(210)-3669410							
AXIA VENTURES GROUP LTD			a	a					
, KRANIDIOTI 10, OFFICE 102 NICOSIA	+357 22742000	357 22742001							
AXON SECURITIES S.A.			a			a			
48, STADIOU ATHINA	+30 2103363800	210-3243903							
BANK OF AMERICA MERRILL LYNCH			a	a					
2 , KING EDWARD STREET LONDON	+44 20276281000								
BETA SECURITIES S.A.			a		a	a			a
29 , ALEXANDRAS AVEN. & VRAILA ATHINA	+30 2106478900	210-6410139							
BNP PARIBAS SECURITIES SERVICES S.A.								a	
2, LAMPSAKOU ATHINA	+30 2107468500	210-7468579-581							
CAPITAL SECURITIES S.A.			a			a			
58, MITROPOLEOS ATHINA	+30 2103369700	+30 210 3369820							
CFS SECURITIES-INVESTMENT SERVICES S.A.			a						
3, PAPARRIGOPOULOU ATHINA	+30 2103360800	+30 210-3360980							
CITIGROUP GLOBAL MARKET LTD			a	a					
1, CITIGROUP CENTER , CANADA SQ., CANARY WHARF LONDON	+44 02079864000								
CREDIT SUISSE SECURITIES (EUROPE) LIMITED			a	a					
, ONE CABOT SQUARE LONDON	+44 2078888888								
CYCLOS SECURITIES S.A.			a			a			a
39, PANEPISTIMIOU ATHINA	+30 2103364300	+30 210-3239122							
D.A. TSEKOURAS SEC. S.A.			a						
33, STADIOU ATHINA	+30 2103245100	210-3211997							
DELTASTOCK AD									a
115, MEGAPARK OFFICE BUILDING, OFFICE AREA E, G TSARIGRADSKOJ 39	+35928115051	+35928115049							
DEUTSCHE BANK S.A.			a	a		a			
1 , GREAT WINCHESTER STREET LONDON	+44 20 754 54209	00441133361437							
DYNAMIC SECURITIES S.A.			a			a			a
8, OMIROU ATHINA	+30 2103677700	210-3677777							
EL. PETROPOULAKIS SECURITIES S.A.			a			a			
9, ARISTEIDOU ATHINA	+30 2103213928	+30 210-3216810							
ESTINVEST S.A.									a
9, TH REPUBLICII STREET FOCSANI	+40 237238900	+40 237237471							
EUROBANK ERGASIAS S.A.								a	
8, OTHONOS ATHINA	+30 2103337000	210-3245916							
8, OTHONOS STR. ATHINA	(210)-3337969	(210)-3245916							
	(210)-3337000	(210)-3233866							
EUROBANK SECURITIES INVESTMENT FIRM S.A			a		a	a	a		a
, FILELLINON 10 & XENOFONTOS 13 ATHINA	+30 2103720000	210-3720001							
EUROCORP SECURITIES S.A.			a			a			a
14, SQ.FILIKIS ETAIRIAS ATHINA	+30 2107263500	210-7263666							
EUROTRUST BROKERAGE S.A.			a						
113, SEVASTOUPOLEOS ATHINA	+30 2103363100	+30 210-3238334							
EUROXX SECURITIES S.A.			a		a	a	a		a
7, PALAIOLOGOU CHALANDRI	(210)-6879400	(210)-6879401							
7, PALEOLOGOU CHALANDRI	+30 2106879400	210-6879401							

Athex & ATHEXClear Members List

Member Name			Stock Market			Derivatives Market		ATHEXClear Member	
Address	Phone	Fax	Market Member	Remote Member	Market Maker	Proprietary	Market Maker	General Clearing	Direct Clearing
G. A. PERVANAS SECURITIES-INVESTMENT SERVICES CO S.A.			a						
7-9, SOFOKLEOUS ATHINA	+30 2103727200	210-3210-291							
GLOBAL CAPITAL SECURITIES AND FINANCIAL SERVICES LTD			a	a					
, AVE. ARCHIEPISKOPOU MAKARIOU NICOSIA	+357 22710710	357 22339332							
GUARDIAN TRUST SECURITIES S.A			a			a			
31, ERMOU ATHINA	+30 2103378700	210-3220498							
HELLENIC BANK (INVESTMENTS) LTD			a	a					
, AVE.KYRIAKOU MATSI 31 - PO BOX 24747 NICOSIA	+357 22500100	357 22500110							
HELLENICAMERICAN SEC. S.A.			a		a	a			a
27, ANDREA PAPANDREOU ATHINA	+30 2103311100	+30 210-3215968							
HSBC BANK PLC								a	
109-111, AVE. MESOGION ATHINA	+30 2106960000	210-6928000							
INDEX SECURITIES S.A.			a						
6, DRAGATSANIOU ATHINA	+30 2103213920	+30 210-3213216							
INTERFINBROK CORPORATION S.A.									a
1, STR.CALARASI NR. CONSTANTA	+40 241639071	0241-547829							
INVESTMENT BANK OF GREECE S.A.			a		a	a		a	
32 , EGIALIAS & PARADISOU MAROUSI	+30 2108173111	+30 210-6896325							
J. CHR. MAVRIKIS SECURITIES S.A.			a						
5, SOFOKLEOUS ATHINA	+30 2103216730	210-3217767							
KAPPA SECURITIES S.A.			a			a			
15, VALAORITOU ATHINA	+30 2103678600	+30 210-3641002							
KARAMANOF SECURITIES-INV. SERVICES S.A.			a			a			
2, SQ. AGION THEODORON ATHINA	+30 2103212947	+30 210-3217088							
LAIKI FINANCIAL SERVICES LTD				a					
26, AVE. VYRONOS NICOSIA	357 22367367	357 22718567							
LEON DEPOLAS SECURITIES S.A.			a		a	a			
1, CHRISTOU LADA ATHINA	+30 2103213276	+30 210-3211618							
MAGNA TRUST SECURITIES S.A			a						
12-14, KARAGIORGI SERBIAS ATHINA	+30 2103800820	210-3220910							
MEGA EQUITY SECURITIES-FINANCIAL SERVICES LTD			a	a		a			
42-44, AVE. GRIVA DIGENI NICOSIA	+357 22711711	357 22711811							
MERIT SECURITIES S.A			a		a	a			a
3, GEORGIOU SOURI ATHINA	+30 2103671890	210-3671830							
MIDAS BROKERAGE S.A.			a		a				
5, SOFOKLEOUS ATHINA	+30 2141008800	+30 210-3253205							
N. CHRYSOCHOIDIS STOCK BROKERAGE I.S.S.A.			a			a			a
7-9, SOFOKLEOUS ATHINA	+30 2103213913	+30 210-3216115							
NATIONAL BANK OF GREECE S.A.			a			a		a	
86, AIOLOU STR. ATHINA	(210)-3341000	(210)-3228187							
68, AKADIMIAS STR. ATHINA	(210)-3328817	(210)-3328678							
NATIONAL SECURITIES S.A			a		a	a	a		
66, KIFISIAS AVE , BUILDING A ATHINA	+30 2107720000	+30 210-7720002							
NUNTIUS SECURITIES S.A			a						
6, DRAGATSANIOU ATHINA	+30 2103350599	+30210-3254846							
ONE PLUS CAPITAL LIMITED			a	a					
, 75 PRODRAMOU AVENUE, ONEWORLD PARKVIEW HOUSE, 3RD FLOOR, 22873760	+30 2103350599								
PANTELAKIS SECURITIES S.A.			a			a			
57, ETHNIKIS ANTISTASIS B CHALANDRI	+30 2106965000	210-6929550							
PEGASUS BROKERAGE FIRM S.A			a			a			
17 , VALAORITOU & AMERIKIS ATHINA	+30 2103670700	+30 210-3670760							
PIRAEUS BANK S.A.			a			a		a	
4, AMERIKIS STR. ATHINA	(210)-3335000	(210)-3335079							
4, AMERIKIS STR ATHINA	(210)-3335918	(210)-3254207							
4, AMERIKIS ATHINA	+30 2103335000	210-3335079							
PIRAEUS SECURITIES S.A.			a		a	a	a		a
5, KORAI ATHINA	+30 2103354100	210-3354170							
PRELIUM SECURITIES-INVESTMENT SERVICES S.A.			a			a			
1 , DAVAKI & KIFISIAS AVE. ATHINA	+30 2103677000	+30 210-6926403							
PROCHOICE SECURITIES LTD			a	a					
57, SPYROY KYPRIANOY NICOSIA	+357-24-661192	+357-24-662464							
SHARELINK SECURITIES-FINANCIAL SERVICES LTD			a	a		a			
6 , THEOTOKI MEGARO ELLINA NICOSIA	+357 22554200	+357 22750852							

Athex & ATHEXClear Members List

Member Name			Stock Market			Derivatives Market		ATHEXClear Member	
Address	Phone	Fax	Market Member	Remote Member	Market Maker	Proprietary	Market Maker	General Clearing	Direct Clearing
SOCIETE GENERALE S.A.			a	a		a			
, 17 COURS VALMY 92987 PUTEAUX - LA DEFENSE PARIS	+33 157290504	+33142138697							
SOLIDUS SECURITIES S.A			a			a			a
64, LOUIZIS RIANCOUR ATHINA	+30 2106900600	210-6985421							
SSIF VIENNA INVESTMENT TRUST S.A.									a
, 4 SPLAIUL UNIRII, BUILDING B3 BUCHAREST	+40 212074880	004 021 207 48 98							
ST. EM. LAVRENTAKIS SECURITIES S.A.			a			a			
7-9, SOFOKLEOUS ATHINA	+30 2103213336	+30 210-3246572							
THE CYPRUS INVESTMENT & SECURITIES CORPORATION LTD			a	a					
154, LIMASSOL AVENUE, STROVOLOS NICOSIA	+357 22121700	357 22338800							
UBS LIMITED			a	a					
1 , FINSBURY AVENUE LONDON	+44 2075687135								

List of Stocks under Market Making operations

Securities	Stock Category
Market Maker	Start Market Making
FRIGOGLASS SA (CR)	Surveillance
EUROBANK SECURITIES INVESTMENT FIRM S.A	27/10/2014
ALPHA BANK (CR)	Main Market
ALPHA FINANCE INVESTMENT SERVICES S.A.	29/02/2016
EUROBANK SECURITIES INVESTMENT FIRM S.A	24/10/2012
LEON DEPOLAS SECURITIES S.A.	04/01/2016
MERIT SECURITIES S.A	03/09/2013
MIDAS BROKERAGE S.A.	11/01/2006
NATIONAL SECURITIES S.A	15/01/2013
PIRAEUS SECURITIES S.A.	28/05/2013
ALUMIL (CR)	Main Market
BETA SECURITIES S.A.	18/07/2013
ATTICA BANK S.A. (CR)	Main Market
BETA SECURITIES S.A.	02/06/2014
EUROBANK SECURITIES INVESTMENT FIRM S.A	25/07/2014
EUROXX SECURITIES S.A.	22/01/2016
BANK OF CYPRUS (CR)	Main Market
EUROBANK SECURITIES INVESTMENT FIRM S.A	23/03/2015
NATIONAL SECURITIES S.A	22/06/2015
BYTE COMPUTER SA (CR)	Main Market
MERIT SECURITIES S.A	04/08/2013
CC HBC AG (CR)	Main Market
EUROBANK SECURITIES INVESTMENT FIRM S.A	23/10/2013
NATIONAL SECURITIES S.A	29/04/2013
PIRAEUS SECURITIES S.A.	04/05/2015
ELLAKTOR (CR)	Main Market
EUROBANK SECURITIES INVESTMENT FIRM S.A	01/06/2013
NATIONAL SECURITIES S.A	25/06/2013
ELTON SA (CR)	Main Market
BETA SECURITIES S.A.	03/09/2013
EUROBANK ERGASIAS (CR)	Main Market
ALPHA FINANCE INVESTMENT SERVICES S.A.	08/01/2013
EUROBANK SECURITIES INVESTMENT FIRM S.A	01/06/2013
HELLENICAMERICAN SEC. S.A.	25/07/2014
MIDAS BROKERAGE S.A.	07/01/2016
PIRAEUS SECURITIES S.A.	28/09/2013
EUROCONSULTANTS S.A. (CR)	Main Market
EUROBANK SECURITIES INVESTMENT FIRM S.A	22/07/2014
FOLLI FOLLIE (CR)	Main Market
NATIONAL SECURITIES S.A	17/02/2014
PIRAEUS SECURITIES S.A.	04/05/2015
FOURLIS (CR)	Main Market
HELLENICAMERICAN SEC. S.A.	14/09/2005
GEK TERNA (CR)	Main Market
HELLENICAMERICAN SEC. S.A.	07/09/2015
GR. SARANTIS SA (CR)	Main Market
BETA SECURITIES S.A.	14/05/2013
HELLENIC EXCHANGES-A.S.E. (CR)	Main Market
EUROBANK SECURITIES INVESTMENT FIRM S.A	01/06/2013
HELLENICAMERICAN SEC. S.A.	01/09/2014
NATIONAL SECURITIES S.A	25/06/2013
PIRAEUS SECURITIES S.A.	04/05/2015
HELLENIC PETROLEUM (CR)	Main Market
HELLENICAMERICAN SEC. S.A.	14/09/2015
HYGEIA SA (CR)	Main Market
HELLENICAMERICAN SEC. S.A.	18/04/2016
INTRACOM HOLDINGS (CR)	Main Market
HELLENICAMERICAN SEC. S.A.	07/09/2015
INTRALOT (CR)	Main Market
EUROBANK SECURITIES INVESTMENT FIRM S.A	01/06/2013
PIRAEUS SECURITIES S.A.	28/09/2013
J & P - AVAX SA (CR)	Main Market
EUROBANK SECURITIES INVESTMENT FIRM S.A	14/12/2015
JUMBO SA (CR)	Main Market
MIDAS BROKERAGE S.A.	27/07/2016
KLOUKINAS - LAPPAS SA (CR)	Main Market
BETA SECURITIES S.A.	22/09/2014
LAMDA DEVELOPMENT SA (CR)	Main Market
EUROBANK SECURITIES INVESTMENT FIRM S.A	08/12/2014

List of Stocks under Market Making operations

Securities	Stock Category
Market Maker	Start Market Making
MARFIN INVESTMENT GROUP (CR)	Main Market
EUROBANK SECURITIES INVESTMENT FIRM S.A	23/03/2015
HELLENICAMERICAN SEC. S.A.	25/07/2014
PIRAEUS SECURITIES S.A.	02/02/2013
MLS MULTIMEDIA SA (CR)	Main Market
HELLENICAMERICAN SEC. S.A.	07/12/2015
MOTOR OIL (CR)	Main Market
EUROBANK SECURITIES INVESTMENT FIRM S.A	23/10/2012
HELLENICAMERICAN SEC. S.A.	01/09/2014
NATIONAL SECURITIES S.A	17/02/2014
PIRAEUS SECURITIES S.A.	04/05/2015
MYTILINEOS HOLDINGS (CR)	Main Market
NATIONAL SECURITIES S.A	25/06/2013
PIRAEUS SECURITIES S.A.	04/05/2015
NATIONAL BANK (CR)	Main Market
ALPHA FINANCE INVESTMENT SERVICES S.A.	08/01/2013
EUROBANK SECURITIES INVESTMENT FIRM S.A	24/10/2012
HELLENICAMERICAN SEC. S.A.	25/07/2014
LEON DEPOLAS SECURITIES S.A.	20/04/2015
MERIT SECURITIES S.A	03/09/2013
MIDAS BROKERAGE S.A.	07/01/2016
NATIONAL SECURITIES S.A	28/02/2013
PIRAEUS SECURITIES S.A.	08/09/2013
OPAP (CR)	Main Market
ALPHA FINANCE INVESTMENT SERVICES S.A.	08/01/2013
EUROBANK SECURITIES INVESTMENT FIRM S.A	24/10/2012
HELLENICAMERICAN SEC. S.A.	25/07/2014
MIDAS BROKERAGE S.A.	04/04/2016
NATIONAL SECURITIES S.A	15/01/2013
PIRAEUS SECURITIES S.A.	04/05/2015
OTE (CR)	Main Market
ALPHA FINANCE INVESTMENT SERVICES S.A.	08/01/2013
EUROBANK SECURITIES INVESTMENT FIRM S.A	24/10/2012
HELLENICAMERICAN SEC. S.A.	25/07/2014
MIDAS BROKERAGE S.A.	01/10/2015
NATIONAL SECURITIES S.A	01/12/2012
PIRAEUS SECURITIES S.A.	08/09/2013
PAPOUTSANIS (CR)	Main Market
BETA SECURITIES S.A.	25/11/2013
PETROPOULOS PETROS (CR)	Main Market
BETA SECURITIES S.A.	28/05/2013
PIRAEUS BANK (CR)	Main Market
EUROBANK SECURITIES INVESTMENT FIRM S.A	23/10/2012
EUROXX SECURITIES S.A.	15/02/2016
HELLENICAMERICAN SEC. S.A.	25/07/2014
MERIT SECURITIES S.A	16/09/2013
MIDAS BROKERAGE S.A.	11/01/2016
NATIONAL SECURITIES S.A	02/06/2013
PIRAEUS SECURITIES S.A.	16/02/2013
PLAISIO COMPUTERS SA (CR)	Main Market
BETA SECURITIES S.A.	05/05/2014
EUROBANK SECURITIES INVESTMENT FIRM S.A	02/03/2015
PPC (CR)	Main Market
ALPHA FINANCE INVESTMENT SERVICES S.A.	08/01/2013
EUROBANK SECURITIES INVESTMENT FIRM S.A	23/10/2012
MIDAS BROKERAGE S.A.	04/04/2016
NATIONAL SECURITIES S.A	26/03/2013
PIRAEUS SECURITIES S.A.	28/09/2013
QUALITY & RELIABILITY SA (CR)	Main Market
BETA SECURITIES S.A.	20/08/2014
S.KANAKIS SA (CR)	Main Market
BETA SECURITIES S.A.	01/10/2013
TITAN CEMENT (CR)	Main Market
EUROBANK SECURITIES INVESTMENT FIRM S.A	23/10/2012
NATIONAL SECURITIES S.A	17/02/2014
PIRAEUS SECURITIES S.A.	04/05/2015
VIOHALCO SA/NV (CB)	Main Market
ALPHA FINANCE INVESTMENT SERVICES S.A.	17/02/2014
MERIT SECURITIES S.A	17/03/2014

Underlying Asset				Derivatives Market													
Price max	Price min	Closing price	change	Delivery Month	Open price	Price max	Price min	Last price	Closing price	Last Bid	Last Ask	Settlement price	Life high	Life low	Trades	Volume	Open Interest
FTSE/Athex Large Cap																	(Trade Unit: 1 Index Point x 2€, Cash Settlement)
1,715.24	1,648.78	1,705.13	3.42%	December 2016	1,664.25	1,712.00	1,656.00	1,703.50	1,703.50	---	---	1,710.75	1,719.50	---	516	1,934	8,787
				January 2017	1,667.00	1,715.75	1,657.25	1,704.00	1,704.00	---	---	1,710.75	1,748.00	---	78	318	622
				February 2017	---	---	---	---	1,656.00	---	---	---	---	---	---	---	---
				March 2017	---	---	---	---	1,658.75	---	---	---	---	---	---	---	---
				June 2017	---	---	---	---	1,667.00	---	---	---	---	---	---	---	---
				September 2017	---	---	---	---	1,675.25	---	---	---	---	---	---	---	---

Underlying Asset				Derivatives Market													
Price max	Price min	Closing price	change	Delivery Month	Open price	Price max	Price min	Last price	Closing price	Last Bid	Last Ask	Settlement price	Life high	Life low	Trades	Volume	Open Interest
ALPHA BANK (CR)				(Contract Size: 100 Securities, Physical Delivery)													
1.95	1.81	1.90	6.15%	December 2016	1.85	1.94	1.82	1.90	1.90	---	---	1.93	1.94	---	564	9,745	17,692
				March 2017	1.90	1.90	1.90	1.90	1.90	---	---	1.92	---	1.90	1	2	22
				June 2017	---	---	---	---	1.81	---	---	---	---	---	---	---	---
				September 2017	---	---	---	---	1.82	---	---	---	---	---	---	---	---
CC HBC AG (CR)				(Contract Size: 100 Securities, Physical Delivery)													
20.10	19.81	20.05	1.16%	December 2016	20.00	20.00	20.00	20.00	20.00	---	---	20.08	21.05	---	3	8	151
				March 2017	19.81	19.81	19.81	19.81	19.81	---	---	19.69	---	19.85	1	3	5
				June 2017	---	---	---	---	20.04	---	---	---	---	---	---	---	---
				September 2017	---	---	---	---	20.14	---	---	---	---	---	---	---	---
CORINTH PIPEWORKS (CR)				(Contract Size: 100 Securities, Physical Delivery)													
0.630	0.608	0.616	0.00%	December 2016	0.628	0.628	0.610	0.610	0.610	---	---	0.601	0.929	---	5	37	641
				March 2017	---	---	---	---	0.620	---	---	0.633	---	0.850	---	---	---
				June 2017	---	---	---	---	0.623	---	---	---	---	---	---	---	---
				September 2017	---	---	---	---	0.626	---	---	---	---	---	---	---	---
ELLAKTOR (CR)				(Contract Size: 100 Securities, Physical Delivery)													
1.15	1.10	1.15	3.60%	December 2016	1.13	1.15	1.11	1.14	1.14	---	---	1.16	1.36	---	23	75	3,797
				March 2017	1.10	1.15	1.10	1.15	1.15	---	---	1.17	---	1.16	4	71	74
				June 2017	---	---	---	---	1.12	---	---	---	---	---	---	---	---
				September 2017	---	---	---	---	1.13	---	---	---	---	---	---	---	---
EUROBANK ERGASIAS (CR)				(Contract Size: 100 Securities, Physical Delivery)													
0.715	0.637	0.707	10.47%	December 2016	0.653	0.716	0.640	0.706	0.706	---	---	0.713	0.737	---	720	19,195	33,286
				March 2017	0.710	0.710	0.710	0.710	0.710	---	---	0.712	---	0.710	1	20	80
				June 2017	---	---	---	---	0.647	---	---	---	---	---	---	---	---
				September 2017	---	---	---	---	0.650	---	---	---	---	---	---	---	---
EYDAP S.A. (CR)				(Contract Size: 100 Securities, Physical Delivery)													
5.50	5.45	5.48	1.48%	December 2016	5.12	5.24	5.12	5.24	5.24	---	---	5.13	5.61	---	6	11	269
				March 2017	---	---	---	---	5.43	---	---	5.25	---	5.20	---	---	15
				June 2017	---	---	---	---	5.46	---	---	---	---	---	---	---	---
				September 2017	---	---	---	---	5.49	---	---	---	---	---	---	---	---
FOLLI FOLLIE (CR)				(Contract Size: 100 Securities, Physical Delivery)													
20.54	20.23	20.26	-0.78%	December 2016	20.50	20.53	20.27	20.35	20.35	---	---	20.46	22.31	---	24	63	571
				March 2017	---	---	---	---	20.54	---	---	20.47	---	22.10	---	---	---
				June 2017	---	---	---	---	20.65	---	---	---	---	---	---	---	---
				September 2017	---	---	---	---	20.75	---	---	---	---	---	---	---	---
GEK TERNA (CR)				(Contract Size: 100 Securities, Physical Delivery)													
2.28	2.20	2.27	1.79%	December 2016	2.22	2.27	2.20	2.25	2.25	---	---	2.25	2.32	---	20	95	8,049
				March 2017	---	---	---	---	2.24	---	---	---	---	---	---	---	---
				June 2017	---	---	---	---	2.25	---	---	---	---	---	---	---	---
				September 2017	---	---	---	---	2.27	---	---	---	---	---	---	---	---

Underlying Asset				Derivatives Market													
Price max	Price min	Closing price	change	Delivery Month	Open price	Price max	Price min	Last price	Closing price	Last Bid	Last Ask	Settlement price	Life high	Life low	Trades	Volume	Open Interest
GRIVALIA PROPERTIES (CR)				(Contract Size: 100 Securities, Physical Delivery)													
7.90	7.58	7.90	4.22%	December 2016	7.65	7.70	7.63	7.70	7.70	---	---	7.70	7.70	---	5	16	49
				March 2017	---	---	---	---	7.63	---	---	---	---	---	---	---	---
				June 2017	---	---	---	---	7.66	---	---	---	---	---	---	---	---
				September 2017	---	---	---	---	7.70	---	---	---	---	---	---	---	---
HELLENIC EXCHANGES-A.S.E. (CR)				(Contract Size: 100 Securities, Physical Delivery)													
4.81	4.70	4.71	-0.42%	December 2016	4.78	4.82	4.73	4.76	4.76	---	---	4.68	5.03	---	41	105	427
				March 2017	---	---	---	---	4.76	---	---	---	---	---	---	---	---
				June 2017	---	---	---	---	4.78	---	---	---	---	---	---	---	---
				September 2017	---	---	---	---	4.81	---	---	---	---	---	---	---	---
HELLENIC PETROLEUM (CR)				(Contract Size: 100 Securities, Physical Delivery)													
4.40	4.24	4.33	1.17%	December 2016	4.27	4.39	4.27	4.33	4.33	---	---	4.39	4.68	---	39	110	3,971
				March 2017	4.29	4.29	4.29	4.29	4.29	---	---	4.40	4.30	---	1	4	---
				June 2017	---	---	---	---	4.33	---	---	---	---	---	---	---	---
				September 2017	---	---	---	---	4.35	---	---	---	---	---	---	---	---
INTRALOT (CR)				(Contract Size: 100 Securities, Physical Delivery)													
1.12	1.08	1.08	-1.82%	December 2016	1.09	1.12	1.08	1.09	1.09	---	---	1.11	1.39	---	23	173	1,132
				March 2017	---	---	---	---	1.11	---	---	---	---	---	---	---	---
				June 2017	---	---	---	---	1.11	---	---	---	---	---	---	---	---
				September 2017	---	---	---	---	1.12	---	---	---	---	---	---	---	---
JUMBO SA (CR)				(Contract Size: 100 Securities, Physical Delivery)													
13.70	12.95	13.42	2.21%	December 2016	13.44	13.57	12.97	13.40	13.40	---	---	13.23	13.57	---	50	97	340
				March 2017	---	---	---	---	13.21	---	---	---	---	---	---	---	---
				June 2017	---	---	---	---	13.28	---	---	---	---	---	---	---	---
				September 2017	---	---	---	---	13.34	---	---	---	---	---	---	---	---
MARFIN INVESTMENT GROUP (CR)				(Contract Size: 100 Securities, Physical Delivery)													
0.130	0.124	0.129	4.03%	December 2016	0.129	0.130	0.125	0.129	0.129	---	---	0.129	0.145	---	66	2,131	48,015
				March 2017	0.131	0.131	0.124	0.130	0.130	---	---	0.130	0.131	---	3	121	121
				June 2017	---	---	---	---	0.125	---	---	---	---	---	---	---	---
				September 2017	---	---	---	---	0.126	---	---	---	---	---	---	---	---
METKA (CR)				(Contract Size: 100 Securities, Physical Delivery)													
7.24	7.10	7.20	0.28%	December 2016	7.10	7.30	7.10	7.19	7.19	---	---	7.15	7.80	---	10	27	332
				March 2017	---	---	---	---	7.22	---	---	7.16	7.65	---	---	---	170
				June 2017	---	---	---	---	7.26	---	---	---	---	---	---	---	---
				September 2017	---	---	---	---	7.30	---	---	---	---	---	---	---	---
MOTOR OIL (CR)				(Contract Size: 100 Securities, Physical Delivery)													
12.39	11.86	12.22	2.26%	December 2016	11.77	12.18	11.77	12.13	12.13	---	---	12.26	12.18	---	13	30	391
				March 2017	11.85	12.06	11.85	12.06	12.06	---	---	12.19	12.06	---	2	10	---
				June 2017	---	---	---	---	12.08	---	---	---	---	---	---	---	---
				September 2017	---	---	---	---	12.14	---	---	---	---	---	---	---	---

Underlying Asset				Derivatives Market													
Price max	Price min	Closing price	change	Delivery Month	Open price	Price max	Price min	Last price	Closing price	Last Bid	Last Ask	Settlement price	Life high	Life low	Trades	Volume	Open Interest
MYTILNEOS HOLDINGS (CR)				(Contract Size: 100 Securities, Physical Delivery)													
5.94	5.85	5.93	0.85%	December 2016	5.90	5.96	5.87	5.93	5.93	---	---	5.92	6.05	---	63	267	6,875
				March 2017	5.91	5.91	5.91	5.91	5.91	---	---	5.94	---	5.97	1	40	141
				June 2017	---	---	---	---	5.95	---	---	---	---	---	---	---	---
				September 2017	---	---	---	---	5.97	---	---	---	---	---	---	---	---
NATIONAL BANK (CR)				(Contract Size: 100 Securities, Physical Delivery)													
0.225	0.208	0.220	6.80%	December 2016	0.209	0.225	0.209	0.220	0.220	---	---	0.224	0.268	---	537	31,075	121,105
				March 2017	0.214	0.222	0.214	0.222	0.222	---	---	0.221	0.230	---	10	211	423
				June 2017	---	---	---	---	0.208	---	---	---	---	---	---	---	---
				September 2017	---	---	---	---	0.209	---	---	---	---	---	---	---	---
OPAP (CR)				(Contract Size: 100 Securities, Physical Delivery)													
8.92	8.66	8.80	1.15%	December 2016	8.70	8.91	8.68	8.84	8.84	---	---	8.84	8.96	---	35	96	1,955
				March 2017	---	---	---	---	8.75	---	---	8.85	---	8.37	---	---	---
				June 2017	---	---	---	---	8.80	---	---	---	---	---	---	---	---
				September 2017	---	---	---	---	8.84	---	---	---	---	---	---	---	---
OTE (CR)				(Contract Size: 100 Securities, Physical Delivery)													
8.60	8.36	8.60	2.38%	December 2016	8.45	8.60	8.35	8.60	8.60	---	---	8.59	8.85	---	216	1,161	6,783
				March 2017	---	---	---	---	8.45	---	---	---	---	---	---	---	---
				June 2017	---	---	---	---	8.49	---	---	---	---	---	---	---	---
				September 2017	---	---	---	---	8.54	---	---	---	---	---	---	---	---
P.P.A. S.A. (CR)				(Contract Size: 100 Securities, Physical Delivery)													
13.10	12.68	13.10	1.00%	December 2016	12.81	13.04	12.81	13.04	13.04	---	---	13.10	13.14	---	7	12	647
				March 2017	---	---	---	---	13.05	---	---	---	---	---	---	---	---
				June 2017	---	---	---	---	13.11	---	---	---	---	---	---	---	---
				September 2017	---	---	---	---	13.18	---	---	---	---	---	---	---	---
PIRAEUS BANK (CR)				(Contract Size: 100 Securities, Physical Delivery)													
0.206	0.180	0.199	10.56%	December 2016	0.184	0.205	0.181	0.200	0.200	---	---	0.204	0.250	---	543	28,330	118,450
				March 2017	0.190	0.205	0.190	0.199	0.199	---	---	0.205	0.212	---	10	481	432
				June 2017	---	---	---	---	0.182	---	---	---	---	---	---	---	---
				September 2017	---	---	---	---	0.183	---	---	---	---	---	---	---	---
PPC (CR)				(Contract Size: 100 Securities, Physical Delivery)													
3.12	2.97	3.07	3.72%	December 2016	3.00	3.12	3.00	3.07	3.07	---	---	3.09	3.30	---	146	754	7,765
				March 2017	3.05	3.10	3.00	3.10	3.10	---	---	3.08	3.26	---	10	104	20
				June 2017	---	---	---	---	2.99	---	---	---	---	---	---	---	---
				September 2017	---	---	---	---	3.01	---	---	---	---	---	---	---	---
TERNA ENERGY (CR)				(Contract Size: 100 Securities, Physical Delivery)													
2.83	2.75	2.82	1.44%	December 2016	2.81	2.81	2.81	2.81	2.81	---	---	2.84	2.89	---	1	2	1,239
				March 2017	---	---	---	---	2.80	---	---	---	---	---	---	---	---
				June 2017	---	---	---	---	2.81	---	---	---	---	---	---	---	---
				September 2017	---	---	---	---	2.82	---	---	---	---	---	---	---	---

Underlying Asset				Derivatives Market													
Price max	Price min	Closing price	change	Delivery Month	Open price	Price max	Price min	Last price	Closing price	Last Bid	Last Ask	Settlement price	Life high	Life low	Trades	Volume	Open Interest
TITAN CEMENT (CR)				(Contract Size: 100 Securities, Physical Delivery)													
21.30	20.25	21.30	3.15%	December 2016	20.71	21.26	20.35	21.20	21.20	---	---	20.98	21.80	---	39	95	110
				March 2017	20.25	20.86	20.25	20.86	20.86	---	---	20.35	20.86	---	2	10	---
				June 2017	---	---	---	---	20.88	---	---	---	---	---	---	---	---
				September 2017	---	---	---	---	20.98	---	---	---	---	---	---	---	---
VIOHALCO SA/NV (CB)				(Contract Size: 100 Securities, Physical Delivery)													
1.34	1.29	1.33	3.10%	December 2016	1.29	1.34	1.28	1.34	1.34	---	---	1.34	1.47	---	56	261	2,850
				March 2017	---	---	---	---	1.30	---	---	1.35	1.36	---	---	---	200
				June 2017	---	---	---	---	1.30	---	---	---	---	---	---	---	---
				September 2017	---	---	---	---	1.31	---	---	---	---	---	---	---	---

FTSE/Athex Large Cap

(Trade Unit: 1 Index Point x 2€ - Excercise Style: European, Cash Settlement)

Call Options																	Put Options																			
December 2016								January 2017								Other Months		December 2016								January 2017								Other Months		
Exerise Price	Open price	Price max	Price min	Last price	Closing price	Volume	Open Interest	Open price	Price max	Price min	Last price	Closing price	Volume	Open Interest	Volume	Open Interest	Open price	Price max	Price min	Last price	Closing price	Volume	Open Interest	Open price	Price max	Price min	Last price	Closing price	Volume	Open Interest	Volume	Open Interest	Exerise Price			
900	0.00	0.00	0.00	-	754.00	-	-	-	-	-	-	-	-	-	-	-	0.00	0.00	0.00	-	0.03	-	-	-	-	-	-	-	-	-	-	-	900			
950	0.00	0.00	0.00	-	704.00	-	-	-	-	-	-	-	-	-	-	-	0.00	0.00	0.00	-	0.01	-	-	-	-	-	-	-	-	-	-	-	950			
1,000	0.00	0.00	0.00	-	654.00	-	-	-	-	-	-	-	-	-	-	-	0.00	0.00	0.00	-	0.01	-	-	-	-	-	-	-	-	-	-	-	1,000			
1,050	0.00	0.00	0.00	-	604.00	-	-	-	-	-	-	-	-	-	-	-	0.00	0.00	0.00	-	0.05	-	-	-	-	-	-	-	-	-	-	-	1,050			
1,100	0.00	0.00	0.00	-	554.00	-	-	-	-	-	-	-	-	-	-	-	0.00	0.00	0.00	-	0.01	-	-	-	-	-	-	-	-	-	-	-	1,100			
1,150	0.00	0.00	0.00	-	505.00	-	-	-	-	-	-	-	-	-	-	-	0.00	0.00	0.00	-	0.01	-	-	-	-	-	-	-	-	-	-	-	1,150			
1,200	0.00	0.00	0.00	-	455.00	-	-	-	-	-	-	-	-	-	-	-	0.00	0.00	0.00	-	0.01	-	-	-	-	-	-	-	-	-	-	-	1,200			
1,250	0.00	0.00	0.00	-	405.00	-	-	-	-	-	-	-	-	-	-	-	0.00	0.00	0.00	-	0.01	-	-	-	-	-	-	-	-	-	-	-	1,250			
1,275	0.00	0.00	0.00	-	380.00	-	-	-	-	-	-	-	-	-	-	-	0.00	0.00	0.00	-	0.01	-	-	-	-	-	-	-	-	-	-	-	1,275			
1,300	0.00	0.00	0.00	-	355.00	-	-	-	-	-	-	-	-	-	-	-	0.00	0.00	0.00	-	0.03	-	-	-	-	-	-	-	-	-	-	-	1,300			
1,325	0.00	0.00	0.00	-	330.00	-	-	-	-	-	-	-	-	-	-	-	0.00	0.00	0.00	-	0.09	-	-	-	-	-	-	-	-	-	-	-	1,325			
1,350	0.00	0.00	0.00	-	305.00	-	-	-	-	-	-	-	-	-	-	-	0.00	0.00	0.00	-	0.01	-	-	-	-	-	-	-	-	-	-	-	1,350			
1,375	0.00	0.00	0.00	-	280.00	-	-	0.00	0.00	0.00	-	279.00	-	-	-	-	0.00	0.00	0.00	-	0.03	-	-	0.00	0.00	0.00	-	0.12	-	-	-	-	1,375			
1,400	270.00	270.00	270.00	270.00	270.00	1	8	0.00	0.00	0.00	-	254.00	-	-	-	-	270.00	270.00	0.00	-	0.01	-	-	0.00	0.00	0.00	-	0.26	-	-	-	-	1,400			
1,425	0.00	0.00	0.00	-	230.00	-	6	0.00	0.00	0.00	-	229.00	-	-	-	-	0.00	0.00	0.00	-	0.02	-	-	0.00	0.00	0.00	-	0.57	-	-	-	-	1,425			
1,450	0.00	0.00	0.00	-	205.00	-	-	0.00	0.00	0.00	-	205.00	-	7	-	-	0.00	0.00	0.00	-	0.02	-	4	0.00	0.00	0.00	-	1.10	-	-	-	-	1,450			
1,475	185.00	187.00	185.00	187.00	187.00	2	3	0.00	0.00	0.00	-	181.00	-	4	-	-	185.00	187.00	0.00	-	0.07	-	-	0.00	0.00	0.00	-	2.10	-	-	-	-	1,475			
1,500	0.00	0.00	0.00	-	155.00	-	24	0.00	0.00	0.00	-	158.00	-	-	-	-	0.00	0.00	0.00	-	0.25	-	212	0.00	0.00	0.00	-	3.80	-	-	-	-	1,500			
1,525	0.00	0.00	0.00	-	131.00	-	20	0.00	0.00	0.00	-	135.00	-	-	-	-	0.00	0.00	0.00	-	0.74	-	152	0.00	0.00	0.00	-	6.30	-	-	-	-	1,525			
1,550	0.00	0.00	0.00	-	107.00	-	30	0.00	0.00	0.00	-	114.00	-	14	-	-	0.00	0.00	0.00	-	1.90	-	67	0.00	0.00	0.00	-	10.25	-	-	-	-	1,550			
1,575	88.00	88.00	88.00	88.00	88.00	10	24	0.00	0.00	0.00	-	94.50	-	-	-	-	88.00	88.00	2.50	2.50	2.50	2	102	0.00	0.00	0.00	-	15.50	-	-	-	-	1,575			
1,600	0.00	0.00	0.00	-	63.50	-	305	0.00	0.00	0.00	-	77.00	-	40	-	-	0.00	0.00	3.00	3.00	3.00	25	97	0.00	0.00	0.00	-	22.50	-	-	-	-	1,600			
1,625	52.00	120.00	50.00	120.00	120.00	18	154	0.00	0.00	0.00	-	61.00	-	-	-	-	52.00	120.00	4.50	4.50	4.50	3	83	0.00	0.00	0.00	-	31.75	-	90	-	-	1,625			
1,650	39.00	76.00	35.00	76.00	76.00	49	203	0.00	0.00	0.00	-	47.50	-	7	-	-	39.00	76.00	12.00	12.00	12.00	35	104	0.00	0.00	0.00	-	43.00	-	40	-	-	1,650			
1,675	27.75	50.50	20.50	50.00	50.00	245	84	0.00	0.00	0.00	-	36.25	-	2	-	-	27.75	50.50	16.00	16.00	16.00	25	27	0.00	0.00	0.00	-	56.50	-	40	-	-	1,675			
1,700	18.75	32.50	18.75	20.50	20.50	125	154	52.00	52.00	52.00	52.00	52.00	20	100	-	-	18.75	32.50	24.00	26.00	26.00	13	33	0.00	0.00	0.00	-	72.00	-	-	-	-	1,700			
1,725	10.00	21.00	9.00	21.00	21.00	84	215	22.00	31.25	22.00	31.25	31.25	42	-	-	-	10.00	21.00	0.00	-	76.50	-	1	0.00	0.00	0.00	-	89.50	-	-	-	-	1,725			
1,750	0.00	0.00	0.00	-	3.30	-	6	0.00	0.00	0.00	-	13.75	-	81	-	-	0.00	0.00	0.00	-	98.00	-	-	0.00	0.00	0.00	-	109.00	-	-	-	-	1,750			
1,775	0.00	0.00	0.00	-	1.60	-	-	0.00	0.00	0.00	-	9.40	-	-	-	-	0.00	0.00	0.00	-	121.00	-	-	0.00	0.00	0.00	-	130.00	-	-	-	-	1,775			
1,800	0.00	0.00	0.00	-	0.70	-	1	0.00	0.00	0.00	-	6.30	-	-	-	-	0.00	0.00	0.00	-	146.00	-	-	0.00	0.00	0.00	-	151.00	-	-	-	-	1,800			
1,825	0.00	0.00	0.00	-	0.29	-	-	0.00	0.00	0.00	-	4.20	-	-	-	-	0.00	0.00	0.00	-	170.00	-	-	0.00	0.00	0.00	-	174.00	-	-	-	-	1,825			
1,850	0.00	0.00	0.00	-	0.11	-	-	0.00	0.00	0.00	-	2.70	-	-	-	-	0.00	0.00	0.00	-	195.00	-	-	0.00	0.00	0.00	-	198.00	-	-	-	-	1,850			
1,900	0.00	0.00	0.00	-	0.01	-	-	-	-	-	-	-	-	-	-	-	0.00	0.00	0.00	-	245.00	-	-	-	-	-	-	-	-	-	-	1,900				
1,950	0.00	0.00	0.00	-	0.02	-	-	-	-	-	-	-	-	-	-	-	0.00	0.00	0.00	-	295.00	-	-	-	-	-	-	-	-	-	-	1,950				
2,000	0.00	0.00	0.00	-	0.01	-	-	-	-	-	-	-	-	-	-	-	0.00	0.00	0.00	-	345.00	-	-	-	-	-	-	-	-	-	-	2,000				
2,050	0.00	0.00	0.00	-	0.01	-	-	-	-	-	-	-	-	-	-	-	0.00	0.00	0.00	-	395.00	-	-	-	-	-	-	-	-	-	-	2,050				

FTSE/Athex Large Cap

(Trade Unit: 1 Index Point x 2€ - Exercise Style: European, Cash Settlement)

Call Options																	Put Options																		
Exercise Price	December 2016							January 2017							Other Months		December 2016							January 2017							Other Months		Exercise Price		
	Open price	Price max	Price min	Last price	Closing price	Volume	Open Interest	Open price	Price max	Price min	Last price	Closing price	Volume	Open Interest	Volume	Open Interest	Open price	Price max	Price min	Last price	Closing price	Volume	Open Interest	Open price	Price max	Price min	Last price	Closing price	Volume	Open Interest	Volume	Open Interest			
2,100	0.00	0.00	0.00	-	0.01	-	-	-	-	-	-	-	-	-	-	-	0.00	0.00	0.00	-	445.00	-	-	-	-	-	-	-	-	-	-	-	2,100		
Totals:						534	1,237							62	255	0	0							103	882							0	170	0	0
Number of Trades:						96								3	0								25							0	0				

ALPHA BANK (CR)

(Contract Size: 100 Securities, Exercise Style: American, Physical Delivery)

Call Options																	Put Options																			
December 2016								January 2017								Other Months		December 2016								January 2017								Other Months		
Exercise Price	Open price	Price max	Price min	Last price	Closing price	Volume	Open Interest	Open price	Price max	Price min	Last price	Closing price	Volume	Open Interest	Volume	Open Interest	Open price	Price max	Price min	Last price	Closing price	Volume	Open Interest	Open price	Price max	Price min	Last price	Closing price	Volume	Open Interest	Volume	Open Interest	Exercise Price			
0.800	0.000	0.000	0.000		0.991	-	-						-	-			0.000	0.000	0.000		0.002	-	-					-	-				0.008			
0.850	0.000	0.000	0.000		0.941	-	-						-	-			0.000	0.000	0.000		0.001	-	-					-	-				0.009			
0.900	0.000	0.000	0.000		0.891	-	-						-	-			0.000	0.000	0.000		0.001	-	-					-	-				0.009			
0.950	0.000	0.000	0.000		0.841	-	-						-	-			0.000	0.000	0.000		0.001	-	-					-	-				0.010			
1.000	0.000	0.000	0.000		0.791	-	-	0.000	0.000	0.000		0.793	-	-			0.000	0.000	0.000		0.001	-	-	0.000	0.000	0.000		0.001	-	-				0.010		
1.100	0.000	0.000	0.000		0.691	-	-	0.000	0.000	0.000		0.693	-	-			0.000	0.000	0.000		0.001	-	-	0.000	0.000	0.000		0.001	-	-				0.011		
1.200	0.000	0.000	0.000		0.591	-	-	0.000	0.000	0.000		0.594	-	-			0.000	0.000	0.000		0.001	-	-	0.000	0.000	0.000		0.001	-	-				0.012		
1.300	0.000	0.000	0.000		0.491	-	-	0.000	0.000	0.000		0.496	-	-			0.000	0.000	0.000		0.001	-	-	0.000	0.000	0.000		0.002	-	-				0.013		
1.400	0.000	0.000	0.000		0.391	-	-	0.000	0.000	0.000		0.400	-	-			0.000	0.000	0.000		0.002	-	-	0.000	0.000	0.000		0.006	-	-				0.014		
1.500	0.000	0.000	0.000		0.293	-	-	0.000	0.000	0.000		0.311	-	-			0.000	0.000	0.000		0.002	-	-	0.000	0.000	0.000		0.017	-	-				0.015		
1.600	0.000	0.000	0.000		0.200	-	-	0.000	0.000	0.000		0.232	-	-			0.000	0.000	0.000		0.009	-	-	0.000	0.000	0.000		0.037	-	-				0.016		
1.700	0.000	0.000	0.000		0.121	-	-	0.000	0.000	0.000		0.164	-	-			0.000	0.000	0.000		0.029	-	-	0.000	0.000	0.000		0.070	-	-				0.017		
1.800	0.000	0.000	0.000		0.063	-	50	0.000	0.000	0.000		0.111	-	-			0.000	0.000	0.000		0.071	-	-	0.000	0.000	0.000		0.116	-	-				0.018		
1.900	0.000	0.000	0.000		0.028	-	-	0.000	0.000	0.000		0.072	-	-			0.000	0.000	0.000		0.136	-	-	0.000	0.000	0.000		0.177	-	-				0.019		
2.000	0.000	0.000	0.000		0.010	-	-	0.000	0.000	0.000		0.045	-	-			0.000	0.000	0.000		0.219	-	-	0.000	0.000	0.000		0.250	-	-				0.020		
2.200	0.000	0.000	0.000		0.001	-	-	0.000	0.000	0.000		0.015	-	-			0.000	0.000	0.000		0.410	-	-	0.000	0.000	0.000		0.421	-	-				0.022		
2.400	0.000	0.000	0.000		0.001	-	-	0.000	0.000	0.000		0.004	-	-			0.000	0.000	0.000		0.610	-	-	0.000	0.000	0.000		0.611	-	-				0.024		
2.600	0.000	0.000	0.000		0.001	-	-	0.000	0.000	0.000		0.001	-	-			0.000	0.000	0.000		0.810	-	-	0.000	0.000	0.000		0.810	-	-				0.026		
2.800	0.000	0.000	0.000		0.001	-	-	0.000	0.000	0.000		0.001	-	-			0.000	0.000	0.000		1.01	-	-	0.000	0.000	0.000		1.01	-	-				0.028		
3.000	0.000	0.000	0.000		0.001	-	-						-	-			0.000	0.000	0.000		1.21	-	-					-	-				0.030			
3.200	0.000	0.000	0.000		0.001	-	-						-	-			0.000	0.000	0.000		1.41	-	-					-	-				0.032			
3.400	0.000	0.000	0.000		0.001	-	-						-	-			0.000	0.000	0.000		1.61	-	-					-	-				0.034			
3.600	0.000	0.000	0.000		0.001	-	-						-	-			0.000	0.000	0.000		1.81	-	-					-	-				0.036			
Totals:						0	50						0	0	0	0						0	0						0	50	0	0				
Number of Trades:							0						0		0							0.00							0		0					

NATIONAL BANK (CR)

(Contract Size: 100 Securities, Exercise Style: American, Physical Delivery)

Call Options																	Put Options																	
December 2016							January 2017							Other Months			December 2016							January 2017							Other Months			
Exerise Price	Open price	Price max	Price min	Last price	Closing price	Volume	Open Interest	Open price	Price max	Price min	Last price	Closing price	Volume	Open Interest	Volume	Open Interest	Open price	Price max	Price min	Last price	Closing price	Volume	Open Interest	Open price	Price max	Price min	Last price	Closing price	Volume	Open Interest	Volume	Open Interest	Exerise Price	
0.050	0.000	0.000	0.000		0.156	-	-	0.000	0.000	0.000		0.156	-	-			0.000	0.000	0.000		0.001	-	-	0.000	0.000	0.000		0.001	-	-			0.001	
0.100	0.000	0.000	0.000		0.106	-	-	0.000	0.000	0.000		0.106	-	-			0.000	0.000	0.000		0.001	-	-	0.000	0.000	0.000		0.002	-	-			0.001	
0.150	0.000	0.000	0.000		0.062	-	-	0.000	0.000	0.000		0.059	-	-			0.000	0.000	0.000		0.006	-	-	0.000	0.000	0.000		0.002	-	-			0.002	
0.200	0.000	0.000	0.000		0.031	-	5	0.000	0.000	0.000		0.024	-	5			0.000	0.000	0.000		0.025	-	-	0.000	0.000	0.000		0.017	-	-			0.002	
0.250	0.000	0.000	0.000		0.014	-	-	0.000	0.000	0.000		0.007	-	-			0.000	0.000	0.000		0.058	-	-	0.000	0.000	0.000		0.051	-	-			0.003	
0.300	0.000	0.000	0.000		0.006	-	-	0.000	0.000	0.000		0.002	-	-			0.000	0.000	0.000		0.100	-	-	0.000	0.000	0.000		0.095	-	-			0.003	
0.350	0.000	0.000	0.000		0.003	-	-	0.000	0.000	0.000		0.001	-	-			0.000	0.000	0.000		0.146	-	-	0.000	0.000	0.000		0.144	-	-			0.004	
0.400	0.000	0.000	0.000		0.001	-	-	0.000	0.000	0.000		0.002	-	-			0.000	0.000	0.000		0.195	-	-	0.000	0.000	0.000		0.194	-	-			0.004	
0.450	0.000	0.000	0.000		0.001	-	-	0.000	0.000	0.000		0.001	-	-			0.000	0.000	0.000		0.244	-	-	0.000	0.000	0.000		0.244	-	-			0.005	
0.500	0.000	0.000	0.000		0.002	-	-	0.000	0.000	0.000		0.001	-	-			0.000	0.000	0.000		0.294	-	-	0.000	0.000	0.000		0.294	-	-			0.005	
0.550	0.000	0.000	0.000		0.001	-	-						-	-			0.000	0.000	0.000		0.344	-	-				-	-			0.006			
0.600	0.000	0.000	0.000		0.001	-	-						-	-			0.000	0.000	0.000		0.394	-	-				-	-			0.006			
Totals:							0	5					0	5	0	0						0	0					0	0	0	0			
Number of Trades:							0						0		0							0.00						0		0				

OPAP (CR)

(Contract Size: 100 Securities, Exercise Style: American, Physical Delivery)

Call Options																Put Options																				
December 2016								January 2017								Other Months		December 2016								January 2017								Other Months		
Exercise Price	Open price	Price max	Price min	Last price	Closing price	Volume	Open Interest	Open price	Price max	Price min	Last price	Closing price	Volume	Open Interest	Volume	Open Interest	Open price	Price max	Price min	Last price	Closing price	Volume	Open Interest	Open price	Price max	Price min	Last price	Closing price	Volume	Open Interest	Volume	Open Interest	Exercise Price			
3.600	0.000	0.000	0.000		5.10	-	-						-	-			0.000	0.000	0.000		0.001	-	-					-	-			0.036				
3.800	0.000	0.000	0.000		4.90	-	-						-	-			0.000	0.000	0.000		0.001	-	-					-	-			0.038				
4.000	0.000	0.000	0.000		4.70	-	-						-	-			0.000	0.000	0.000		0.001	-	-					-	-			0.040				
4.400	0.000	0.000	0.000		4.30	-	-						-	-			0.000	0.000	0.000		0.001	-	-					-	-			0.044				
4.800	0.000	0.000	0.000		3.90	-	-						-	-			0.000	0.000	0.000		0.001	-	-					-	-			0.048				
5.200	0.000	0.000	0.000		3.50	-	-						-	-			0.000	0.000	0.000		0.001	-	-					-	-			0.052				
5.600	0.000	0.000	0.000		3.11	-	-	0.000	0.000	0.000		3.12	-	-			0.000	0.000	0.000		0.001	-	-	0.000	0.000	0.000		0.001	-	-			0.056			
6.000	0.000	0.000	0.000		2.71	-	-	0.000	0.000	0.000		2.72	-	-			0.000	0.000	0.000		0.002	-	-	0.000	0.000	0.000		0.001	-	-			0.060			
6.400	0.000	0.000	0.000		2.31	-	-	0.000	0.000	0.000		2.32	-	-			0.000	0.000	0.000		0.001	-	-	0.000	0.000	0.000		0.001	-	-			0.064			
6.800	0.000	0.000	0.000		1.91	-	-	0.000	0.000	0.000		1.92	-	-			0.000	0.000	0.000		0.001	-	-	0.000	0.000	0.000		0.004	-	-			0.068			
7.200	0.000	0.000	0.000		1.51	-	-	0.000	0.000	0.000		1.54	-	-			0.000	0.000	0.000		0.001	-	25	0.000	0.000	0.000		0.016	-	-			0.072			
7.600	0.000	0.000	0.000		1.11	-	-	0.000	0.000	0.000		1.17	-	-			0.000	0.000	0.000		0.005	-	40	0.000	0.000	0.000		0.049	-	-			0.076			
8.000	0.000	0.000	0.000		0.739	-	-	0.000	0.000	0.000		0.843	-	-			0.000	0.000	0.000		0.032	-	-	0.000	0.000	0.000		0.121	-	-			0.080			
8.400	0.000	0.000	0.000		0.424	-	100	0.000	0.000	0.000		0.567	-	-			0.000	0.000	0.000		0.116	-	-	0.000	0.000	0.000		0.244	-	-			0.084			
8.800	0.000	0.000	0.000		0.202	-	99	0.000	0.000	0.000		0.359	-	-			0.000	0.000	0.000		0.294	-	-	0.000	0.000	0.000		0.435	-	-			0.088			
9.200	0.000	0.000	0.000		0.077	-	-	0.000	0.000	0.000		0.210	-	10			0.000	0.000	0.000		0.570	-	-	0.000	0.000	0.000		0.687	-	-			0.092			
9.600	0.000	0.000	0.000		0.023	-	-	0.000	0.000	0.000		0.113	-	-			0.000	0.000	0.000		0.917	-	-	0.000	0.000	0.000		0.992	-	-			0.096			
10.000	0.000	0.000	0.000		0.005	-	-	0.000	0.000	0.000		0.058	-	-			0.000	0.000	0.000		1.30	-	-	0.000	0.000	0.000		1.34	-	-			0.100			
11.000	0.000	0.000	0.000		0.001	-	-	0.000	0.000	0.000		0.008	-	-			0.000	0.000	0.000		2.30	-	-	0.000	0.000	0.000		2.30	-	-			0.110			
12.000	0.000	0.000	0.000		0.001	-	-	0.000	0.000	0.000		0.001	-	-			0.000	0.000	0.000		3.30	-	-	0.000	0.000	0.000		3.30	-	-			0.120			
Totals:						0	199							0	10	0	0							0	65							0	0	0	0	
Number of Trades:						0							0			0							0.00							0			0			

OTE (CR)

(Contract Size: 100 Securities, Exercise Style: American, Physical Delivery)

Call Options																Put Options																				
December 2016								January 2017								Other Months		December 2016								January 2017								Other Months		
Exerise Price	Open price	Price max	Price min	Last price	Closing price	Volume	Open Interest	Open price	Price max	Price min	Last price	Closing price	Volume	Open Interest	Volume	Open Interest	Open price	Price max	Price min	Last price	Closing price	Volume	Open Interest	Open price	Price max	Price min	Last price	Closing price	Volume	Open Interest	Volume	Open Interest	Exerise Price			
4.800	0.000	0.000	0.000		3.60	-	-						-	-			0.000	0.000	0.000		0.002	-	-					-	-			0.048				
5.200	0.000	0.000	0.000		3.20	-	-						-	-			0.000	0.000	0.000		0.001	-	-					-	-			0.052				
5.600	0.000	0.000	0.000		2.81	-	-						-	-			0.000	0.000	0.000		0.001	-	-					-	-			0.056				
6.000	0.000	0.000	0.000		2.41	-	-	0.000	0.000	0.000		2.42	-	-			0.000	0.000	0.000		0.001	-	-	0.000	0.000	0.000		0.001	-	-			0.060			
6.400	0.000	0.000	0.000		2.01	-	-	0.000	0.000	0.000		2.02	-	-			0.000	0.000	0.000		0.001	-	-	0.000	0.000	0.000		0.002	-	-			0.064			
6.800	0.000	0.000	0.000		1.61	-	-	0.000	0.000	0.000		1.63	-	-			0.000	0.000	0.000		0.001	-	-	0.000	0.000	0.000		0.011	-	-			0.068			
7.200	0.000	0.000	0.000		1.21	-	-	0.000	0.000	0.000		1.26	-	30			0.000	0.000	0.000		0.002	-	-	0.000	0.000	0.000		0.037	-	-			0.072			
7.600	0.000	0.000	0.000		0.824	-	-	0.000	0.000	0.000		0.917	-	-			0.000	0.000	0.000		0.017	-	5	0.000	0.000	0.000		0.095	-	-			0.076			
8.000	0.000	0.000	0.000		0.485	-	210	0.000	0.000	0.000		0.630	-	-			0.000	0.000	0.000		0.077	-	5	0.000	0.000	0.000		0.208	-	-			0.080			
8.400	0.000	0.000	0.000		0.232	-	-	0.000	0.000	0.000		0.400	-	-			0.000	0.000	0.000		0.224	-	-	0.000	0.000	0.000		0.377	-	-			0.084			
8.800	0.000	0.000	0.000		0.090	-	22	0.000	0.000	0.000		0.241	-	-			0.000	0.000	0.000		0.482	-	-	0.000	0.000	0.000		0.618	-	-			0.088			
9.200	0.000	0.000	0.000		0.026	-	-	0.000	0.000	0.000		0.133	-	-			0.000	0.000	0.000		0.821	-	-	0.000	0.000	0.000		0.912	-	-			0.092			
9.600	0.000	0.000	0.000		0.006	-	-	0.000	0.000	0.000		0.067	-	-			0.000	0.000	0.000		1.20	-	-	0.000	0.000	0.000		1.25	-	-			0.096			
10.000	0.000	0.000	0.000		0.001	-	-	0.000	0.000	0.000		0.033	-	-			0.000	0.000	0.000		1.60	-	-	0.000	0.000	0.000		1.62	-	-			0.100			
11.000	0.000	0.000	0.000		0.001	-	-	0.000	0.000	0.000		0.004	-	-			0.000	0.000	0.000		2.60	-	-	0.000	0.000	0.000		2.60	-	-			0.110			
12.000	0.000	0.000	0.000		0.001	-	-						-	-			0.000	0.000	0.000		3.60	-	-					-	-			0.120				
13.000	0.000	0.000	0.000		0.001	-	-						-	-			0.000	0.000	0.000		4.60	-	-					-	-			0.130				
14.000	0.000	0.000	0.000		0.003	-	-						-	-			0.000	0.000	0.000		5.60	-	-					-	-			0.140				
Totals:						0	232							0	30	0	25							0	10							0	0	0	0	
Number of Trades:						0								0		0							0.00								0		0			

PIRAEUS BANK (CR)

(Contract Size: 100 Securities, Exercise Style: American, Physical Delivery)

Call Options																Put Options																				
December 2016								January 2017								Other Months		December 2016								January 2017								Other Months		
Exerise Price	Open price	Price max	Price min	Last price	Closing price	Volume	Open Interest	Open price	Price max	Price min	Last price	Closing price	Volume	Open Interest	Volume	Open Interest	Open price	Price max	Price min	Last price	Closing price	Volume	Open Interest	Open price	Price max	Price min	Last price	Closing price	Volume	Open Interest	Volume	Open Interest	Exerise Price			
0.050	0.000	0.000	0.000		0.130	-	-	0.000	0.000	0.000		0.130	-	-			0.000	0.000	0.000		0.001	-	-	0.000	0.000	0.000		0.001	-	-			0.001			
0.100	0.000	0.000	0.000		0.081	-	-	0.000	0.000	0.000		0.082	-	-			0.000	0.000	0.000		0.001	-	-	0.000	0.000	0.000		0.001	-	-			0.001			
0.150	0.000	0.000	0.000		0.043	-	-	0.000	0.000	0.000		0.043	-	-			0.000	0.000	0.000		0.012	-	-	0.000	0.000	0.000		0.012	-	-			0.002			
0.200	0.000	0.000	0.000		0.019	-	-	0.000	0.000	0.000		0.020	-	-			0.000	0.000	0.000		0.039	-	-	0.000	0.000	0.000		0.039	-	-			0.002			
0.250	0.000	0.000	0.000		0.008	-	-	0.000	0.000	0.000		0.008	-	-			0.000	0.000	0.000		0.078	-	-	0.000	0.000	0.000		0.078	-	-			0.003			
0.300	0.000	0.000	0.000		0.003	-	-	0.000	0.000	0.000		0.004	-	-			0.000	0.000	0.000		0.123	-	-	0.000	0.000	0.000		0.123	-	-			0.003			
0.350	0.000	0.000	0.000		0.001	-	-	0.000	0.000	0.000		0.001	-	-			0.000	0.000	0.000		0.171	-	-	0.000	0.000	0.000		0.171	-	-			0.004			
0.400	0.000	0.000	0.000		0.001	-	-	0.000	0.000	0.000		0.001	-	-			0.000	0.000	0.000		0.220	-	-	0.000	0.000	0.000		0.220	-	-			0.004			
0.450	0.000	0.000	0.000		0.002	-	-	0.000	0.000	0.000		0.001	-	-			0.000	0.000	0.000		0.270	-	-	0.000	0.000	0.000		0.270	-	-			0.005			
0.500	0.000	0.000	0.000		0.001	-	-						-	-			0.000	0.000	0.000		0.320	-	-				-	-			0.005					
0.550	0.000	0.000	0.000		0.001	-	-						-	-			0.000	0.000	0.000		0.370	-	-				-	-			0.006					
Totals:						0	0						0	0	0	0						0	0					0	0	0	0					
Number of Trades:						0							0		0							0.00						0		0						

PPC (CR)

(Contract Size: 100 Securities, Exercise Style: American, Physical Delivery)

Call Options																	Put Options																		
Exercise Price	December 2016							January 2017							Other Months		December 2016								January 2017								Other Months		Exercise Price
	Open price	Price max	Price min	Last price	Closing price	Volume	Open Interest	Open price	Price max	Price min	Last price	Closing price	Volume	Open Interest	Volume	Open Interest	Open price	Price max	Price min	Last price	Closing price	Volume	Open Interest	Open price	Price max	Price min	Last price	Closing price	Volume	Open Interest	Volume	Open Interest			
1.700	0.000	0.000	0.000		1.26	-	-						-	-			0.000	0.000	0.000		0.001	-	-					-	-				0.017		
1.800	0.000	0.000	0.000		1.16	-	-						-	-			0.000	0.000	0.000		0.001	-	-					-	-				0.018		
1.900	0.000	0.000	0.000		1.06	-	-	0.000	0.000	0.000		1.07	-	-			0.000	0.000	0.000		0.001	-	-	0.000	0.000	0.000		0.001	-	-				0.019	
2.000	0.000	0.000	0.000		0.962	-	-	0.000	0.000	0.000		0.966	-	-			0.000	0.000	0.000		0.001	-	-	0.000	0.000	0.000		0.001	-	-				0.020	
2.200	0.000	0.000	0.000		0.762	-	-	0.000	0.000	0.000		0.768	-	-			0.000	0.000	0.000		0.002	-	-	0.000	0.000	0.000		0.001	-	-				0.022	
2.400	0.000	0.000	0.000		0.562	-	35	0.000	0.000	0.000		0.576	-	-			0.000	0.000	0.000		0.001	-	-	0.000	0.000	0.000		0.009	-	-				0.024	
2.600	0.000	0.000	0.000		0.366	-	-	0.000	0.000	0.000		0.399	-	-			0.000	0.000	0.000		0.003	-	-	0.000	0.000	0.000		0.032	-	-				0.026	
2.800	0.000	0.000	0.000		0.191	-	-	0.000	0.000	0.000		0.253	-	-			0.000	0.000	0.000		0.029	-	-	0.000	0.000	0.000		0.085	-	-				0.028	
3.000	0.000	0.000	0.000		0.072	-	-	0.000	0.000	0.000		0.145	-	-			0.000	0.000	0.000		0.110	-	-	0.000	0.000	0.000		0.177	-	-				0.030	
3.200	0.000	0.000	0.000		0.018	-	-	0.000	0.000	0.000		0.074	-	-			0.000	0.000	0.000		0.256	-	-	0.000	0.000	0.000		0.306	-	-				0.032	
3.400	0.000	0.000	0.000		0.003	-	-	0.000	0.000	0.000		0.035	-	-			0.000	0.000	0.000		0.442	-	-	0.000	0.000	0.000		0.468	-	-				0.034	
3.600	0.000	0.000	0.000		0.001	-	-	0.000	0.000	0.000		0.014	-	-			0.000	0.000	0.000		0.640	-	-	0.000	0.000	0.000		0.648	-	-				0.036	
3.800	0.000	0.000	0.000		0.001	-	-	0.000	0.000	0.000		0.006	-	-			0.000	0.000	0.000		0.840	-	-	0.000	0.000	0.000		0.841	-	-				0.038	
4.000	0.000	0.000	0.000		0.001	-	-	0.000	0.000	0.000		0.002	-	-			0.000	0.000	0.000		1.04	-	-	0.000	0.000	0.000		1.04	-	-				0.040	
4.400	0.000	0.000	0.000		0.001	-	-	0.000	0.000	0.000		0.001	-	-			0.000	0.000	0.000		1.44	-	-	0.000	0.000	0.000		1.44	-	-				0.044	
4.800	0.000	0.000	0.000		0.001	-	-						-	-			0.000	0.000	0.000		1.84	-	-					-	-				0.048		
5.200	0.000	0.000	0.000		0.001	-	-						-	-			0.000	0.000	0.000		2.24	-	-					-	-				0.052		
5.600	0.000	0.000	0.000		0.001	-	-						-	-			0.000	0.000	0.000		2.64	-	-					-	-				0.056		
6.000	0.000	0.000	0.000		0.001	-	-						-	-			0.000	0.000	0.000		3.04	-	-					-	-				0.060		
Totals:							0	35					0	0	0	0						0	0					0	0	0	0				
Number of Trades:							0						0		0							0.00						0		0					

Lending Products	Underlying Title	Multilateral Transactions[1]					Bilateral Transactions[2]		Stock Borrowing through OTC (volume)[3]
		Open Interest[5]	Volume(Offered)	Average Weighted	Transactions volume	Average Weighted	Transactions Volume	Average Weighte	Transactions Volume
AEGNBOR	AEGEAN AIRLINES (CR)	100	13,920	5.31%	---	---	---	---	11,701
ALPHABOR	ALPHA BANK (CR)	126,350	160,474	3.31%	1,500	2.65%	---	---	1,843,748
ALMYBOR	ALUMIL (CR)	---	---	---	---	---	---	---	---
IATRBOR	ATHENS MEDICAL CENTER SA (CR)	---	36,398	5.31%	---	---	---	---	---
OTOELBOR	AUTOHELLAS SA (CR)	---	1,840	5.31%	---	---	---	---	---
BOCBOR	BANK OF CYPRUS (CR)	---	270	5.31%	---	---	---	---	84,008
EEEBOR	CC HBC AG (CR)	2,428	4,271	5.31%	---	---	---	---	70,546
CENTRBOR	CENTRIC HOLDINGS (CR)	---	16,000	5.31%	---	---	---	---	---
SOLKBOR	CORINTH PIPEWORKS (CR)	---	---	---	---	---	---	---	---
PLAKRBOR	CRETE PLASTICS SA (CR)	---	---	---	---	---	---	---	---
ELLAKTORBOR	ELLAKTOR (CR)	10,000	78,127	5.31%	---	---	---	---	---
ANEMOSBOR	ELTECH ANEMOS S.A. (CR)	---	6,239	5.31%	---	---	---	---	---
ELTONBOR	ELTON SA (CR)	---	---	---	---	---	---	---	---
EUROBBOR	EUROBANK ERGASIAS (CR)	73,312	285,236	5.31%	---	---	---	---	2,901,908
EUPICBOR	EUROPEAN RELIANCE INSUR. (CR)	---	---	---	---	---	---	---	---
EYDAPBOR	EYDAP S.A. (CR)	1,972	4,669	5.31%	---	---	---	---	17,780
FFGRPBOR	FOLLI FOLLIE (CR)	8,092	70,231	5.31%	---	---	---	---	712,242
FOYRKBOR	FOURLIS (CR)	---	5,130	5.31%	---	---	---	---	3,850
GEKTERNABOR	GEK TERNA (CR)	112	30,350	5.31%	---	---	---	---	---
SARBOR	GR. SARANTIS SA (CR)	705	973	3.86%	---	---	---	---	---
EUPROBOR	GRIVALIA PROPERTIES (CR)	2,000	96,628	5.31%	1,000	2.84%	---	---	45,656
XAKOBOR	HALKOR SA (CB)	---	56,552	5.31%	---	---	---	---	---
EXAEBOR	HELLENIC EXCHANGES-A.S.E. (CR)	35,100	422,070	3.31%	---	---	---	---	98,443
ELPEBOR	HELLENIC PETROLEUM (CR)	175	142,160	5.31%	---	---	---	---	42,606
HYGEIABOR	HYGEIA SA (CR)	---	51,699	5.31%	---	---	---	---	---
IASOBOR	IASO SA (CR)	---	---	---	---	---	---	---	---
IKTINBOR	IKTINOS HELLAS SA (CR)	---	798	5.31%	---	---	---	---	---
INTRKBOR	INTRACOM HOLDINGS (CR)	---	171,048	5.31%	---	---	---	---	---
INLOTBOR	INTRALOT (CR)	6,000	58,098	5.31%	---	---	---	---	803
AVAXBOR	J & P - AVAX SA (CR)	---	20,335	5.31%	---	---	---	---	---
BELABOR	JUMBO SA (CR)	10,025	102,704	5.31%	---	---	---	---	6,365

Stock Lending Notes

[1] - Multilateral contracts Lending or Borrowing as per Methods 8-1, 8-2 and 8-3-3 (According to ATHEX BoD Resolution No.17)

[2] - Billateral Contracts Lending or Borrowing as per Methods 8-3-1 and 8-3-2 (According to ATHEX BoD Resolution No.20)

[3] - The information concerning OTC Stock Borrowing Transactions is based on the statements of the Dematerialised Securities System (DSS) operators involved and refers to volumes that have been registered up until the previous working day.

[4] - Average Price (Volume weighted)

[5] - The Data concerning Open Interest before the start of trading session

Lending Products	Underlying Title	Multilateral Transactions[1]					Bilateral Transactions[2]		Stock Borrowing through OTC (volume)[3]
		Open Interest[5]	Volume(Offered)	Average Weighted	Transactions volume	Average Weighted	Transactions Volume	Average Weighte	Transactions Volume
KLEMBOR	KLEEMAN HELLAS SA (CR)	---	1,188	5.31%	---	---	---	---	---
KORRESBOR	KORRES (CR)	---	319	5.31%	---	---	---	---	---
KRIBOR	KRI-KRI S.A. (CR)	---	47,768	5.31%	---	---	---	---	---
KYRMBOR	KYRIAKIDIS MARBLES SA (CR)	---	5,737	5.31%	---	---	---	---	---
LAMDABOR	LAMDA DEVELOPMENT SA (CR)	14	100	5.32%	---	---	---	---	10,377
MIGBOR	MARFIN INVESTMENT GROUP (CR)	50,000	233,104	5.31%	---	---	---	---	744,474
METKKBOR	METKA (CR)	20,765	620	5.31%	---	---	---	---	965
MLSBOR	MLS MULTIMEDIA SA (CR)	---	9,118	5.31%	---	---	---	---	---
MOHBOR	MOTOR OIL (CR)	4,619	32,361	3.86%	---	---	---	---	37,254
MYTILBOR	MYTILINEOS HOLDINGS (CR)	22,394	127,618	5.31%	---	---	---	---	---
ETEBOR	NATIONAL BANK (CR)	328,265	819,576	5.31%	---	---	20,000	0.01%	4,764,280
ETFASEBOR	NBGAM ETF	---	---	---	---	---	---	---	---
ETFGT30PBOR	NBGAM ETF GREECE & TURKEY 30	---	---	---	---	---	---	---	---
OPAPBOR	OPAP (CR)	49,000	26,993	5.31%	---	---	---	---	833,108
HTOBOR	OTE (CR)	4,968	68,022	3.55%	---	---	---	---	348,804
PPABOR	P.P.A. S.A. (CR)	368	1,468	5.31%	---	---	---	---	901
PAPBOR	PAPOUTSANIS (CR)	---	---	---	---	---	---	---	---
PETROBOR	PETROPOULOS PETROS (CR)	---	---	---	---	---	---	---	---
TPEIRBOR	PIRAEUS BANK (CR)	6,061	542,212	5.31%	---	---	---	---	8,175,542
PLAISBOR	PLAISIO COMPUTERS SA (CR)	---	---	---	---	---	---	---	---
PPCBOR	PPC (CR)	36,950	86,383	5.31%	---	---	---	---	521,774
QUALBOR	QUALITY & RELIABILITY SA (CR)	---	---	---	---	---	---	---	---
QUESTBOR	QUEST HOLDINGS (CR)	---	958	5.31%	---	---	---	---	---
EPILBOR	SELECTED TEXT. IND. ASSOC (CR)	---	---	---	---	---	---	---	---
SELOBOR	SELONDA AQUACULTURE SA (CR)	---	---	---	---	---	---	---	---
OLYMPBOR	TECHNICAL OLYMPIC SA (CR)	---	23,237	5.31%	---	---	---	---	---
TENERGYBOR	TERNA ENERGY (CR)	1,000	32,305	5.31%	---	---	---	---	---
EYAPSBOR	THESSALONIKA WATER & SEWERAGE	---	6,484	5.31%	---	---	---	---	---
PLATBOR	THRACE PLASTICS SA (CR)	---	43,699	5.31%	---	---	---	---	---
TITKBOR	TITAN CEMENT (CR)	8,199	212,047	5.31%	---	---	---	---	611,404
OLTHBOR	TPA SA (CR)	---	183	5.31%	---	---	---	---	---

Stock Lending Notes

- [1] - Multilateral contracts Lending or Borrowing as per Methods 8-1, 8-2 and 8-3-3 (According to ATHEX BoD Resolution No.17)
- [2] - Billateral Contracts Lending or Borrowing as per Methods 8-3-1 and 8-3-2 (According to ATHEX BoD Resolution No.20)
- [3] - The information concerning OTC Stock Borrowing Transactions is based on the statements of the Dematerialised Securities System (DSS) operators involved and refers to volumes that have been registered up until the previous working day.
- [4] - Average Price (Volume weighted)
- [5] - The Data concerning Open Interest before the start of trading session

Lending Products	Underlying Title	Multilateral Transactions[1]					Bilateral Transactions[2]		Stock Borrowing through OTC (volume)[3]
		Open Interest[5]	Volume(Offered)	Average Weighted	Transactions volume	Average Weighted	Transactions Volume	Average Weighte	Transactions Volume
VIOBOR	VIOHALCO SA/NV (CB)	13,000	67,984	5.31%	13,000	3.88%	---	---	---

Stock Lending Notes

[1] - Multilateral contracts Lending or Borrowing as per Methods 8-1, 8-2 and 8-3-3 (According to ATHEX BoD Resolution No.17)

[2] - Billateral Contracts Lending or Borrowing as per Methods 8-3-1 and 8-3-2 (According to ATHEX BoD Resolution No.20)

[3] - The information concerning OTC Stock Borrowing Transactions is based on the statements of the Dematerialised Securities System (DSS) operators involved and refers to volumes that have been registered up until the previous working day.

[4] - Average Price (Volume weighted)

[5] - The Data concerning Open Interest before the start of trading session

Sectors codification for listed companies

533	-	Exploration & Production	537	-	Integrated Oil & Gas
1353	-	Commodity Chemicals	1357	-	Specialty Chemicals
1753	-	Aluminum	1755	-	Nonferrous Metals
1757	-	Steel	1775	-	General Mining
2353	-	Building Materials & Fixtures	2357	-	Heavy Construction
2723	-	Containers & Packaging	2727	-	Diversified Industrials
2733	-	Electrical Components & Equipment	2753	-	Commercial Vehicles & Trucks
2757	-	Industrial Machinery	2773	-	Marine Transportation
2777	-	Transportation Services	2791	-	Business Support Services
2797	-	Industrial Suppliers	3535	-	Distillers & Vintners
3537	-	Soft Drinks	3573	-	Farming Fishing & Plantations
3577	-	Food Products	3722	-	Durable Household Products
3726	-	Furnishings	3728	-	Home Construction
3747	-	Toys	3763	-	Clothing & Accessories
3765	-	Footwear	3767	-	Personal Products
3785	-	Tobacco	4533	-	Health Care Providers
4535	-	Medical Equipment	4577	-	Pharmaceuticals
5337	-	Food Retailers & Wholesalers	5371	-	Apparel Retailers
5373	-	Broadline Retailers	5375	-	Home Improvement Retailers
5379	-	Specialty Retailers	5553	-	Broadcasting & Entertainment
5555	-	Media Agencies	5557	-	Publishing
5751	-	Airlines	5752	-	Gambling
5753	-	Hotels	5755	-	Recreational Services
5757	-	Restaurants & Bars	5759	-	Travel & Tourism
6535	-	Fixed Line Telecommunications	6575	-	Mobile Telecommunications
7535	-	Conventional Electricity	7537	-	Alternative Electricity
7577	-	Water	8355	-	Banks
8534	-	Insurance Brokers	8536	-	Property & Casualty Insurance
8633	-	Real Estate Holding & Development	8637	-	Real Estate Services
8671	-	Industrial & Office REITs	8674	-	Diversified REITs
8675	-	Specialty REITs	8775	-	Specialty Finance
8777	-	Investment Services	8985	-	Equity Investment Instruments
9533	-	Computer Services	9535	-	Internet
9537	-	Software	9572	-	Computer Hardware
9574	-	Electronic Office Equipment	9578	-	Telecommunications Equipment
12003	-	ETF			



ATHEXGROUP
Όμιλος Χρηματιστηρίου Αθηνών

Λεωφ. Αθηνών 110 104 42 Αθήνα
110, Athinon Ave. GR 104 42 Athens
tel. (+30)210-33.66.800, fax (+30)210-33.66.101
www.athegroup.gr