



ATHEXGROUP
Athens Exchange Group

Hellenic Exchanges – Athens Stock Exchange S.A.

“

2016

δελτιο ημερησιων συναλλαγων

daily official list

Wednesday, 14 December, 2016

Year: 137 Trading Day No: 238

”

Disclaimer:

Hellenic Exchanges-Athens Stock Exchange S.A. endeavours to ensure that the data and other material ("Information") presented on the Daily Official List are accurate and complete, but it is not liable for any errors or omissions of data or /and for the accuracy, credibility, updating and completeness of the aforesaid information nor it has any liability arising directly or indirectly from the use of the above Information.

The Company is not liable for the accuracy of the data included in listed companies' announcements. Only the sender of such an announcement is fully and solely liable for any infringement of third party's rights from the content of such announcement. All contents of the Daily Official List are provided only for information purposes and do not constitute investment advice or solicitation to invest in securities or other products listed for trading on the Exchange.

You acknowledge and agree that the Company is the owner of any property rights related to any Information appearing on the Daily Official List including intellectual property rights copyright, trademarks, etc.

The above data are a property of the Hellenic Exchanges-Athens Exchange and are copyright protected. Users are forbidden to reproduce, modify, copy, sale, transmit or redistribute, by all reproduction means and methods, part or the whole of the above data, without reference to their source.

The commercial exploitation of these data is, also, forbidden by third parties. Hellenic Exchanges-Athens Exchange does not carry any responsibility, direct or indirect, derived from usage or accidental alteration of the above data when used by third parties.

Hellenic Exchanges – Athens Stock Exchange S.A.

110 Athinon Ave., 10442 Athens, Tel: (210) 33.66.800, Fax: (210) 32.13.938

www.helix.gr

Thessalonica Stock Exchange Center (T.S.E.C)

16-18 Katouni Str., Thessalonica 546 25 Tel: (2310) 567.667, Fax: (2310) 530.545

Athex Members Guarantee Fund

14-16 Fidiou Str., Athens 106 78, Tel: (210) 33.04.682, Fax: (210) 33.04.155

Hellenic Republic Capital Market Commission

1 Kolokotroni Str. & 1 Stadiou Str., Athens 10562 Tel: (210) 33.77.100 Fax: (210) 33.77.173

Table of Contents

Section 1: Statistical Figures of Securities, Derivatives and Lending

Summary of Markets

Athex Indices

Analytic Figures for Athex Market's Boards and Categories

Trading Details by Athex Sectors and Financial Instruments (ETFs)

Top 10 best & worst performing Shares

Derivatives Summary

Section 2: Analytic Figures of Shares Transactions

Analytic Figures of Shares Transactions

Shares' Notes

Section 3: Figures of Securities Transactions

Securities Blocks Details

Shares Rights Details

Stock Borrowing

Shares Forced Sales

Forced Sales Registered Shares

Exchange Traded Funds (ETFs) Characteristics

Section 5: Bonds traded in Fixed Income Assets Market

Corporate Bonds

Government Bonds

Treasury Bills & Zero Coupon Government Bonds

Government Bonds Traded with the Open Outcry Method

State Banks Bonds

Section 6: Additional Infos

Athex & ATHEXClear Members List

List of Stocks under Market Making operations

Section 7: Derivatives Market Analytic Figures

Index Futures

Stock Futures

Index Options

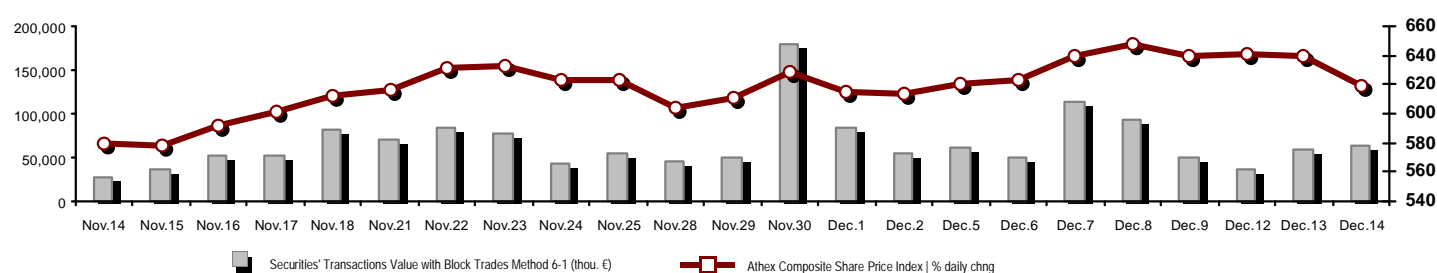
Stock Options

Stock Lending Analytic Figures

Appendix A: Sectors codification for listed companies

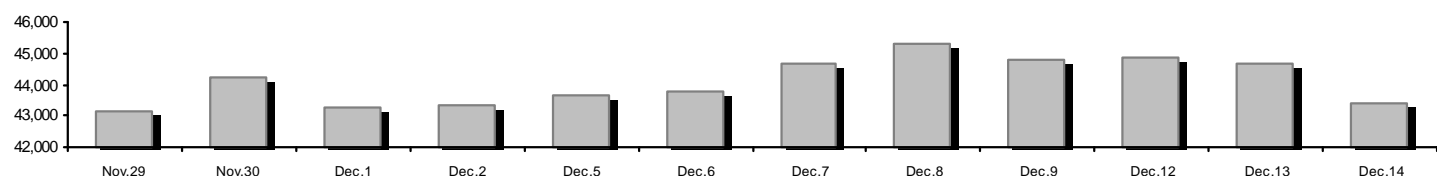
Summary of Markets

Athex Composite Share Price Index vs Shares and Derivatives Transactions Value

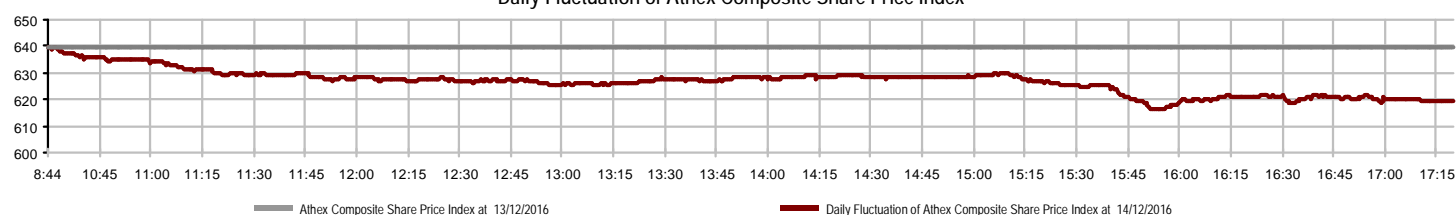


Athex Capitalisation (mill. €) **: 43,402.34	Derivatives Total Open Interest 411,231
Daily change: mill. € % -1,275.17 -2.85%	in Index Futures % daily chng 8,129 -13.17%
Yearly Avg Capitalisation: mill. € % chng prev year Avg 41,005.91 -6.07%	in Stock Futures % daily chng 399,587 -4.26%
Athex Composite Share Price Index % daily chng 619.19 -3.21%	in Index Options % daily chng 2,963 -3.36%
Athex Composite Share Price Index Capitalisation (mill. €) 38,708.37	in Stock Options % daily chng 552 0.18%
Daily change (mill. €) -1,249.56	
Securities' Transactions Value with Block Trades Method 6-1 (63,410.70	Derivatives Contracts Volume: 219,967
Daily change: % 5,415.06 9.34%	Daily change: pieces % 92,537 72.62%
YtD Avg Trans. Value: thou. € % chng prev year Avg 60,914.84 -28.82%	YtD Avg Derivatives Contracts % chng prev year Avg 62,190 -5.36%
Blocks Transactions Value of Method 6-1 (thou. €) 6,156.05	Derivatives Trades Number: 6,417
Blocks Transactions Value of Method 6-2 & 6-3 (thou. €) 0.05	Daily change: number % 2,744 74.71%
Bonds Transactions Value (thou.€) 0.00	YtD Avg Derivatives Trades number % chng prev year Avg 2,593 -20.65%
Securities' Transactions Volume with Block Trades Method 6-1 (th 100,595.34	Lending Total Open Interest 2,213,532
Daily change: thou. pieces % 30,119.85 42.74%	Daily change: pieces % -3,190 -0.14%
YtD Avg Volume: % chng prev year Avg 97,163.31 -49.54%	Lending Volume (Multilateral/Bilateral) 419,472
Blocks Transactions Volume of Method 6-1 (thou. Pieces) 6,359.34	Daily change: pieces % 403,472 2521.70%
Blocks Transactions Volume of Method 6-2 & 6-3 (thou. Pieces) 0.01	Multilateral Lending 19,417
Bonds Transactions Volume 0.00	Bilateral Lending 400,055
Securities' Trades Number with Block Trades Method 6-1 22,753	Lending Trades Number: 29
Daily change: number % 7,264 46.90%	Daily change: % 22 314.29%
YtD Avg Derivatives Trades number % chng prev year Avg 19,016 -29.55%	Multilateral Lending Trades Number 27
Number of Blocks Method 6-1 11	Bilateral Lending Trades Number 2
Number of Blocks Method 6-2 & 6-3 2	
Number of Bonds Transactions 0	

Athex Capitalisation (mill. €) **



Daily Fluctuation of Athex Composite Share Price Index



Athex Indices

Index name	14/12/2016	13/12/2016	pts.	%	Min	Max	Year min	Year max	Year change
Athex Composite Share Price Index	619.19 €	639.71	-20.52	-3.21%	616.16	639.71	420.82	658.99	-1.93% €
FTSE/Athex Large Cap	1,673.38 €	1,736.04	-62.66	-3.61%	1,666.56	1,736.04	1,075.20	1,868.90	-8.73% €
FTSE/Athex Mid Cap Index	748.25 €	768.13	-19.88	-2.59%	747.55	773.35	515.21	820.16	-8.35% €
FTSE/ATHEX-CSE Banking Index	612.64 €	662.85	-50.21	-7.57%	605.90	662.85	271.40	938.40	-31.32% €
FTSE/ATHEX Global Traders Index Plus	1,455.30 €	1,462.98	-7.68	-0.52%	1,448.41	1,464.86	1,031.55	1,485.28	14.18% #
FTSE/ATHEX Global Traders Index	1,605.65 €	1,637.01	-31.36	-1.92%	1,600.68	1,639.35	1,129.41	1,644.99	12.54% #
FTSE/ATHEX Mid & Small Cap Factor-Weighted Ind	1,328.20 #	1,327.78	0.42	0.03%	1,315.12	1,331.52	1,066.64	1,383.28	5.78% #
Greece & Turkey 30 Price Index	434.72 €	434.84	-0.12	-0.03%	429.84	435.95	396.10	527.12	-6.35% €
ATHEX Mid & SmallCap Price Index	1,924.06 €	1,959.96	-35.90	-1.83%	1,877.72	1,966.62	1,848.24	2,259.28	-11.41% €
FTSE/Athex Market Index	410.85 €	426.13	-15.28	-3.59%	409.23	426.13	265.17	457.53	-8.69% €
FTSE Med Index	4,639.10 #	4,601.93	37.17	0.81%			4,380.06	5,530.53	-16.11% €
Athex Composite Index Total Return Index	943.49 €	974.77	-31.28	-3.21%	938.87	974.77	626.16	989.83	0.43% #
FTSE/Athex Large Cap Total Return	2,416.46 €	2,506.95	-90.49	-3.61%			1,574.40	2,572.00	-4.45% €
FTSE/ATHEX Large Cap Net Total Return	705.28 €	731.69	-26.41	-3.61%	702.41	731.69	443.06	773.01	-6.65% €
FTSE/Athex Mid Cap Total Return	913.34 €	937.60	-24.26	-2.59%			669.55	1,008.35	-9.01% €
FTSE/ATHEX-CSE Banking Total Return Index	628.90 €	680.44	-51.54	-7.57%			318.40	895.04	-27.70% €
Greece & Turkey 30 Total Return Index	551.60 #	550.25	1.35	0.25%			0.00	660.49	-4.19% €
Hellenic Mid & Small Cap Index	766.98 €	781.22	-14.24	-1.82%	765.74	782.08	560.15	789.76	7.18% #
FTSE/Athex Banks	809.45 €	875.78	-66.33	-7.57%	800.54	875.78	358.60	1,239.80	-31.31% €
FTSE/Athex Financial Services	988.62 €	1,033.39	-44.77	-4.33%	988.62	1,034.78	634.69	1,179.09	1.51% #
FTSE/Athex Industrial Goods & Services	1,515.63 €	1,564.43	-48.80	-3.12%	1,505.20	1,572.77	1,369.56	1,844.00	-16.94% €
FTSE/Athex Retail	2,710.42 €	2,732.34	-21.92	-0.80%	2,688.50	2,745.49	1,826.41	3,272.96	7.30% #
FTSE/ATHEX Real Estate	2,585.92 €	2,634.75	-48.83	-1.85%	2,553.99	2,636.86	2,154.15	2,677.26	6.85% #
FTSE/Athex Personal & Household Goods	7,492.45 #	7,466.17	26.28	0.35%	7,369.75	7,505.24	4,433.32	7,505.24	47.97% #
FTSE/Athex Food & Beverage	7,155.32 €	7,255.68	-100.36	-1.38%	7,155.32	7,255.79	5,952.97	7,850.45	-3.00% €
FTSE/Athex Basic Resources	2,701.11 €	2,718.70	-17.59	-0.65%	2,683.51	2,762.70	1,200.24	2,762.70	65.24% #
FTSE/Athex Construction & Materials	2,166.45 €	2,182.91	-16.46	-0.75%	2,145.94	2,193.73	1,500.04	2,343.14	15.34% #
FTSE/Athex Oil & Gas	2,863.83 #	2,859.04	4.79	0.17%	2,818.96	2,875.40	1,860.37	2,896.19	18.74% #
FTSE/Athex Media	1,935.24 #	1,664.72	270.52	16.25%	1,664.72	1,935.24	1,290.16	2,705.17	30.99% #
FTSE/Athex Travel & Leisure	1,424.53 €	1,472.18	-47.65	-3.24%	1,423.00	1,472.39	982.74	1,556.21	-0.02% €
FTSE/Athex Technology	633.22 €	648.91	-15.69	-2.42%	633.22	648.91	489.05	659.86	10.70% #
FTSE/Athex Telecommunications	2,389.23 €	2,491.08	-101.85	-4.09%	2,375.47	2,491.08	1,802.93	2,669.99	-6.06% €
FTSE/Athex Utilities	1,466.16 €	1,531.60	-65.44	-4.27%	1,464.86	1,535.01	1,136.34	1,734.68	-12.49% €
Athex All Share Index	152.88 €	157.67	-4.79	-3.04%	152.88	152.88	113.39	165.22	-7.02% €
Hellenic Corporate Bond Index	108.96 €	108.96	0.00	0.00%			96.90	108.96	8.44% #
Hellenic Corporate Bond Price Index	97.56 €	97.58	-0.02	-0.02%			90.43	97.75	2.96% #

Note 1: FTSE/Med 100, Greece & Turkey 30 Rt., Hellenic Corporate Bond Price Index and Hellenic Corporate Bond Index closing prices refer to the previous trading day of 12/12/2016.

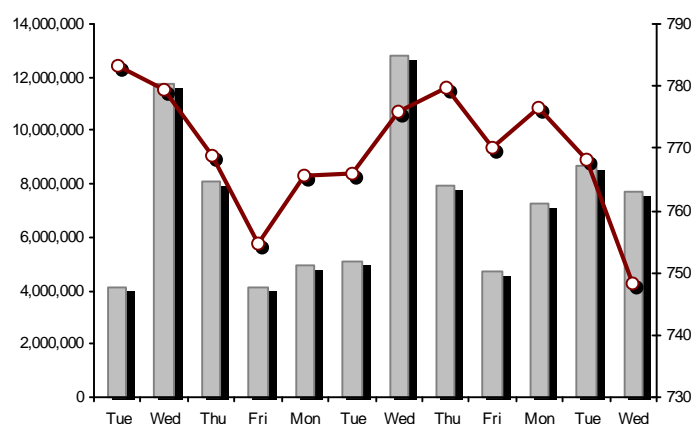
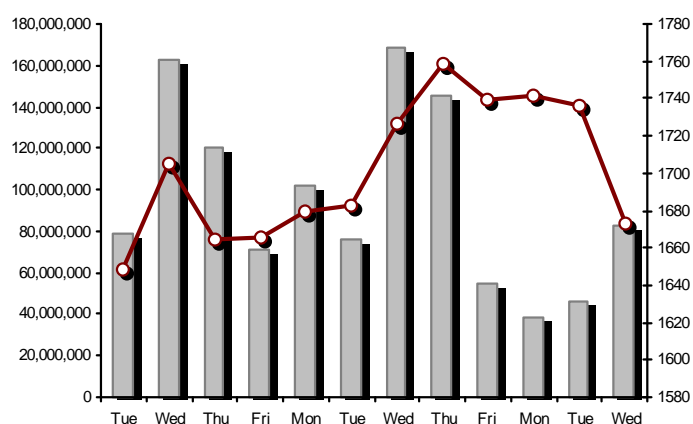
Note 2: The Hellenic Mid & Small Cap Index is a Customized index calculated by the Athens Exchange.

Athex Indices

FTSE/Large Cap

14/12/2016: -3.61% FTSE/Athex Mid Cap Index

14/12/2016: -2.59%

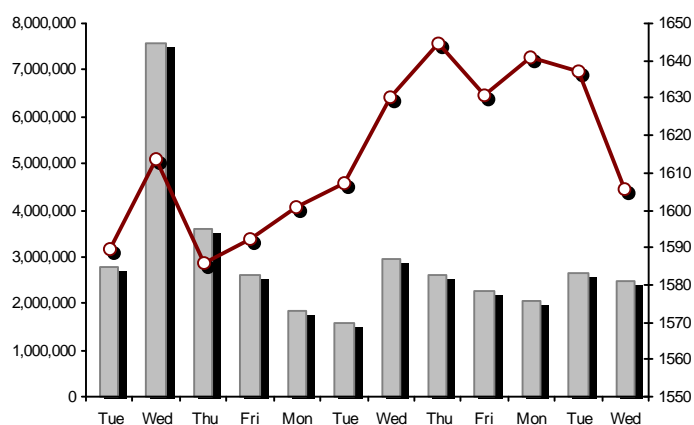
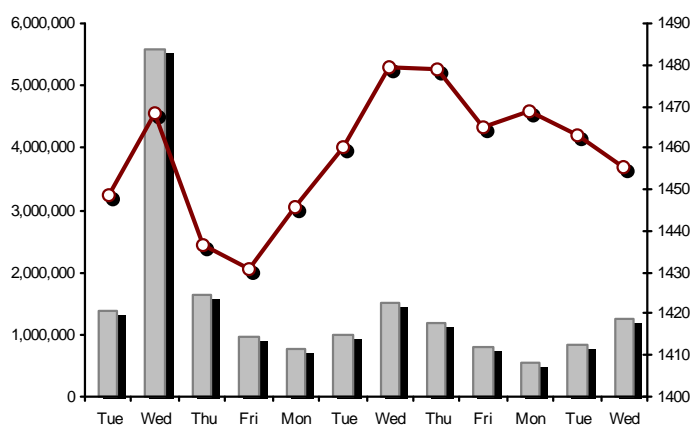


FTSE/ATHEX Global Traders Index Plus

14/12/2016: -0.52%

FTSE/ATHEX Global Traders Index

14/12/2016: -1.92%

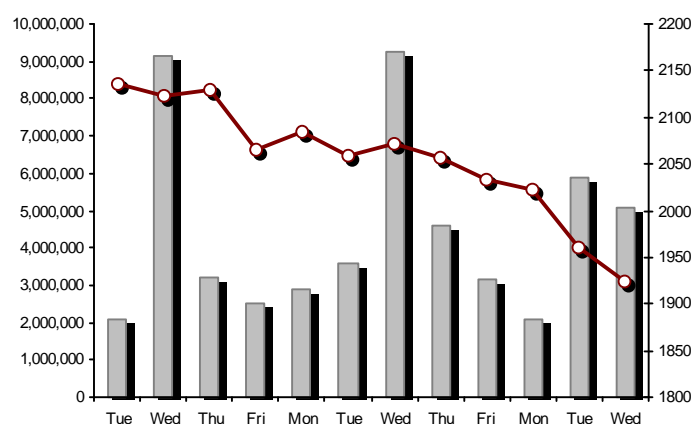
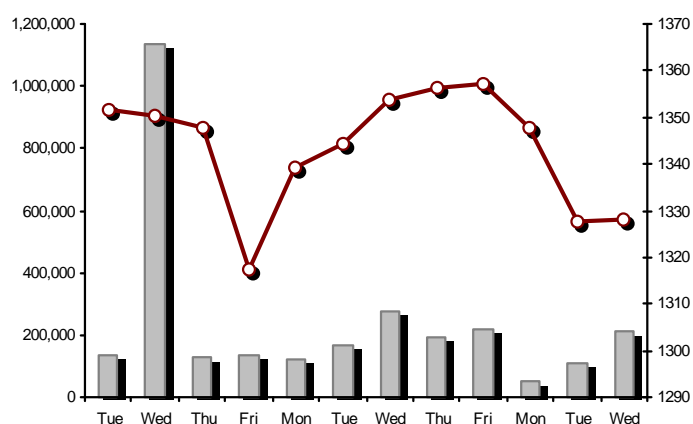


FTSE/ATHEX Mid & Small Cap Factor-Weighted Index

14/12/2016: 0.03%

ATHEX Mid & SmallCap Price Index

14/12/2016: -1.83%



Indices volume of transactions

Indices closing prices

Analytic Figures for Athex Market's Boards and Categories

	Total Traded Securities	Main Market	Low Dispersion	Other Categories (*)	Exchange Traded Funds (ETFs)	Warrants
Totals	127	99	7	16	3	2
Gain / Lose / Same:	32 / 76 / 19	24 / 63 / 12	3 / 4 / 0	5 / 6 / 5	0 / 3 / 0	0 / 0 / 2
Athex Capitalisation (mill. €) **	43,402.34	40,423.68	2,869.49	109.17		
Daily Average Trans/ons Value(thou.€)	60,914.84	59,546.50	1,384.78	9.72	14.41	10.46
Transactions Value	63,410.75	63,343.40	50.18	15.35	0.04	1.76
Main Board:	57,254.65	57,187.31	50.18	15.35	0.04	1.76
Blocks Board 6_2_3:	6,156.10	6,156.10	0.00	0.00	0.00	0.00
Forced Sales Board:	0.00	0.00	0.00	0.00	0.00	0.00
Special Terms Board:	0.00	0.00	0.00	0.00	0.00	0.00
Daily Average Transactions Volume	97,163,310	92,178,016	325,788	91,449	5,928	4,656,849
Transactions Volume	100,595,352	99,956,148	11,171	137,814	5	490,214
Main Board:	94,236,001	93,596,797	11,171	137,814	5	490,214
Blocks Board 6_2_3:	6,359,351	6,359,351	0	0	0	0
Forced Sales Board:	0	0	0	0	0	0
Special Terms Board:	0	0	0	0	0	0
Daily Average Number of Trades	19,016	18,868	37	53	4	55
Number of Trades	22,755	22,613	32	87	3	20
Main Board:	22,742	22,600	32	87	3	20
Blocks Board 6_2_3:	13	13	0	0	0	0
Forced Sales Board:	0	0	0	0	0	0
Special Terms Board:	0	0	0	0	0	0

(*) Summarised Transactions figures for Under Deletion and Under Supervision Categories.(**) The Market Capitalization of the Companies that belong in the Under Supervision Status is not included.

Trading Details by Athex Sectors and Financial Instruments (ETFs)

Code	Sectors	Gain / Lose / Same	Number of Trades	Transactions Volume	Transactions Value	% of Total Trans. Value
8300	- Banks	0 / 6 / 3	11,416	93,633,299	30,513,487.13	48.12%
1700	- Basic Resources	3 / 4 / 1	805	263,235	1,377,325.05	2.17%
1300	- Chemicals	3 / 1 / 0	50	92,829	427,551.37	0.67%
2300	- Construction & Materials	2 / 9 / 3	1,215	406,133	2,877,041.35	4.54%
12000	- Financial Instruments	0 / 3 / 0	3	5	41.67	0.00%
8700	- Financial Services	0 / 2 / 0	965	2,380,390	690,258.48	1.09%
3500	- Food & Beverage	3 / 4 / 5	277	184,253	1,229,658.55	1.94%
4500	- Health Care	1 / 4 / 1	69	122,263	15,317.30	0.02%
2700	- Industrial Goods & Services	5 / 11 / 1	763	239,470	541,681.40	0.85%
8500	- Insurance	0 / 0 / 1	8	7,919	15,282.73	0.02%
5500	- Media	1 / 1 / 1	10	10,114	807.82	0.00%
500	- Oil & Gas	1 / 1 / 0	1,112	281,796	2,807,770.28	4.43%
3700	- Personal & Household Goods	6 / 5 / 0	1,034	375,461	4,029,637.33	6.35%
8600	- Real Estate	3 / 4 / 0	365	85,358	362,226.57	0.57%
5300	- Retail	1 / 1 / 0	319	191,423	3,534,217.24	5.57%
9500	- Technology	1 / 6 / 3	177	103,417	81,201.18	0.13%
6500	- Telecommunications	0 / 1 / 0	836	438,562	3,834,869.57	6.05%
5700	- Travel & Leisure	2 / 8 / 0	2,223	1,348,940	9,770,695.39	15.41%
7500	- Utilities	0 / 5 / 0	1,108	430,485	1,301,676.73	2.05%

Top 10 best & worst performing Shares

Main Market					
With positive Price change	Closing price	change	With negative Price change	Closing price	change
FLEXOPACK SA (CR)	2.99	7.17% #	PIRAEUS BANK (CR)	0.210	-9.87% ⚡
MOTOR OIL (CR)	12.60	1.45% #	ATTICA BANK S.A. (CR)	0.044	-8.33% ⚡
CRETE PLASTICS SA (CR)	5.10	0.79% #	NATIONAL BANK (CR)	0.225	-7.79% ⚡
JUMBO SA (CR)	14.89	0.61% #	EUROBANK ERGASIAS (CR)	0.662	-7.67% ⚡
			ALPHA BANK (CR)	1.80	-6.25% ⚡
			PLAISIO COMPUTERS SA (CR)	3.80	-5.71% ⚡
			ELLAKTOR (CR)	1.10	-5.17% ⚡
			AEGEAN AIRLINES (CR)	6.17	-4.78% ⚡
			PPC (CR)	2.82	-4.73% ⚡
			HELLENIC EXCHANGES-A.S.E. (CR)	4.61	-4.36% ⚡
With the highest Transactions Value	Value (thou. €)	change	With the highest Transactions Volume	Volume	change
ALPHA BANK (CR)	9,482.43	-6.25% ⚡	NATIONAL BANK (CR)	40,187,209	-7.79% ⚡
OPAP (CR)	9,394.62	-3.10% ⚡	PIRAEUS BANK (CR)	26,874,299	-9.87% ⚡
NATIONAL BANK (CR)	9,230.18	-7.79% ⚡	BANK OF CYPRUS (CR)	9,057,080	0.00% -
PIRAEUS BANK (CR)	5,835.40	-9.87% ⚡	EUROBANK ERGASIAS (CR)	6,873,475	-7.67% ⚡
EUROBANK ERGASIAS (CR)	4,614.40	-7.67% ⚡	ALPHA BANK (CR)	5,157,246	-6.25% ⚡
OTE (CR)	3,834.87	-4.09% ⚡	ATTICA BANK S.A. (CR)	4,991,733	-8.33% ⚡
FOLLI FOLLIE (CR)	3,533.56	-0.80% ⚡	MARFIN INVESTMENT GROUP (CR)	2,301,285	-4.22% ⚡
JUMBO SA (CR)	3,348.59	0.61% #	OPAP (CR)	1,142,582	-3.10% ⚡
TITAN CEMENT (CR)	2,521.52	-0.05% ⚡	OTE (CR)	438,562	-4.09% ⚡
MOTOR OIL (CR)	2,454.14	1.45% #	PPC (CR)	337,590	-4.73% ⚡

Note: Stocks that are not included in the "Low Dispersion" and "Under Supervision" categories, and the transactions value is more than 10,000 €.

Derivatives Summary

	Number of Trades	Volume	Open Interest
Index Futures	828	8,450	8,129
FTSE/Athex Large Cap	828	8,450	8,129
Stock Futures	5,537	211,240	399,587
ALPHA BANK (CR)	645	10,267	21,689
CC HBC AG (CR)	3	3	154
ELLAKTOR (CR)	49	1,212	4,088
EUROBANK ERGASIAS (CR)	1,089	27,909	56,111
EYDAP S.A. (CR)	7	34	184
FOLLI FOLLIE (CR)	64	270	537
GEK TERNA (CR)	30	650	10,658
GRIVALIA PROPERTIES (CR)	7	33	68
HELLENIC EXCHANGES-A.S.E. (CR)	28	84	439
HELLENIC PETROLEUM (CR)	133	1,424	4,860
INTRALOT (CR)	33	384	1,121
JUMBO SA (CR)	70	277	638
MARFIN INVESTMENT GROUP (CR)	393	17,117	71,549
METKA (CR)	43	182	418
MOTOR OIL (CR)	16	43	362
MYTILINEOS HOLDINGS (CR)	332	2,516	5,987
NATIONAL BANK (CR)	915	82,148	111,728
OPAP (CR)	222	1,063	2,658
OTE (CR)	282	3,589	6,188
P.P.A. S.A. (CR)	14	28	711
PIRAEUS BANK (CR)	813	58,374	84,673
PPC (CR)	269	2,667	10,177
TERNA ENERGY (CR)	2	2	1,258
TITAN CEMENT (CR)	36	82	133
VIOHALCO SA/NV (CB)	42	882	3,198
Index Options	50	256	2,963
FTSE/Athex Large Cap	50	256	2,963
Stock Options	2	21	552
ALPHA BANK (CR)	0	0	100
NATIONAL BANK (CR)	0	0	10
OPAP (CR)	0	0	278
OTE (CR)	1	11	139
PIRAEUS BANK (CR)	0	0	0
PPC (CR)	1	10	25
Total Derivatives Traded	6,417	219,967	411,231

Number of Outstanding Securities	Nominal Value	Dividends [1]			Date of Last Coupon		Note	Shares	Closing price	% change	Previous closing price/date	Open price	Price min	Price max	Last price	Avg price	Last Bid [7]	Last Ask [7]	P/E after	Year	Volume	Trades	Transactions Value[8]	Company Mkt Value (thou. €)	Year low	Year high	Sector[4]
		2013	2014	2015	Dividend [2]	Right																					
Warrants																											
1,141,734,167		---	---	---	11/06/2013	---	ALPHA BANK (W)	0.002	---	↘ 0.002	13/12/2016	0.001	0.001	0.002	0.002	0.0029937931@0.001	64937654@0.002	---	2015	311,648	8	611.70	2,766,386.16	0.001	0.004	8355	
245,745,725		---	---	---	27/06/2013	---	NATIONAL BANK (W)	0.007	---	↘ 0.007	13/12/2016	0.006	0.006	0.007	0.007	0.006025640@0.006	302852@0.007	---	2015	178,566	12	1,151.41	2,058,109.09	0.002	0.025	8355	
843,637,022		---	---	---	03/07/2013	---	PIRAEUS BANK (W)	0.001	---	↘ 0.001	13/12/2016	---	---	---	---	---	7329600@0.001	---	2015	---	---	---	1,833,968.49	0.001	0.002	8355	

Warrants

71,417,100	0.650	---	0.7	0.7	13/05/2016	27/06/2014	---	AEGEAN AIRLINES (CR)	6.17	-4.78	⬇ 6.48	13/12/2016	6.42	6.16	6.49	6.17	6.30	806@6.17	200@6.24	8.12	2015	32,729	234	206,016.50	440,643.51	5.84	9.06	5751
11,178,000	1.12	---	---	---	21/04/2010	15/12/2014	---	AEOLIAN INVESTMENT FUND (CR)	0.517	---	↘ 0.517	13/12/2016	---	---	---	---	200@0.470	725@0.537	---	2015	---	---	---	5,779.03	0.384	0.701	8985	
1,536,881,200	0.300	---	---	---	07/04/2008	27/11/2015	---	ALPHA BANK (CR)	1.80	-6.25	⬇ 1.92	13/12/2016	1.92	1.78	1.92	1.80	1.84	1250@1.79	29999@1.82	---	2015	5,157,246	1,950	9,482,429.27	2,766,386.16	0.949	2.75	8355
22,016,250	0.370	---	---	---	15/07/2009	11/05/2000	---	ALUMIL (CR)	0.217	3.83	# 0.209	13/12/2016	0.217	0.217	0.217	0.217	0.217	100@0.198	100@0.209	---	2015	50	1	10.85	4,777.53	0.101	0.290	1753
417,608	16.00	0.8	---	---	29/04/2014	05/03/2013	---	ANDROMEDA SA (CR)	15.75	---	↘ 15.75	13/12/2016	---	---	---	---	10@13.30	20@15.74	---	2015	---	---	---	6,577.33	11.53	15.75	8985	
13,126,020	0.650	---	---	---	08/07/2010	12/10/2016	---	AS COMPANY SA (CR)	0.705	---	↘ 0.705	13/12/2016	---	---	---	---	3000@0.672	1734@0.699	6.00	2015	---	---	---	9,253.84	0.580	0.796	5379	
86,735,980	0.310	---	---	---	06/07/2009	02/01/2002	---	ATHENS MEDICAL CENTER SA (CR)	0.656	-0.61	⬇ 0.660	13/12/2016	0.660	0.600	0.660	0.656	0.608	---	241@0.654	---	2015	642	7	390.14	56,898.80	0.539	0.780	4533
2,339,353,394	0.300	---	---	---	04/06/2008	01/12/2015	---	ATTICA BANK S.A. (CR)	0.044	-8.33	⬇ 0.048	13/12/2016	0.048	0.043	0.048	0.044	0.045507000@0.043	156479@0.044	---	2015	4,991,733	379	224,829.71	102,931.55	0.037	0.279	8355	
15,300,000	0.300	---	---	---	30/07/2009	13/12/1999	---	ATTICA PUBLICATIONS SA (CR)	0.819	---	↘ 0.819	13/12/2016	---	---	---	---	---	935@0.738	---	2015	---	---	---	12,530.70	0.564	1.21	5557	
48,184,910	0.700	---	---	---	01/07/2008	01/03/2010	---	AUDIO VISUAL ENTERPRISES (CR)	0.093	16.25	# 0.080	13/12/2016	0.080	0.080	0.093	0.093	0.080	800@0.072	3500@0.087	---	2015	10,050	2	804.65	4,481.20	0.028	0.130	5553
12,213,750	0.320	---	0.8	0.85	07/06/2016	22/11/2013	---	AUTOHELLAS SA (CR)	12.25	-0.41	⬇ 12.30	13/12/2016	12.30	12.25	12.30	12.25	12.27	7@12.25	290@13.00	9.78	2015	13	2	159.50	149,618.44	9.51	13.00	5759
8,922,944,533	0.100	---	---	---	31/05/2011	02/02/2015	4857	BANK OF CYPRUS (CR)	0.123	---	↘ 0.123	13/12/2016	0.125	0.120	0.125	0.123	0.122185074@0.122	100000@0.124	---	2015	9,057,080	303	1,103,226.39	1,097,522.18	0.118	0.174	8355	
19,864,886	5.60	0.672	0.672	0.672	03/03/2016	02/07/2008	---	BANK OF GREECE (CR)	10.40	-1.14	⬇ 10.52	13/12/2016	10.49	10.38	10.49	10.40	10.41	64@10.42	50@10.45	---	---	2,043	36	21,262.65	206,594.81	8.70	11.11	8355
23,986,500	1.05	---	---	---	26/06/2009	15/03/2000	---	BIOKARPET S.A.(CR)	0.298	---	↘ 0.298	13/12/2016	---	---	---	---	---	500@0.303	---	2015	---	---	---	7,147.98	0.139	0.459	3726	
15,842,391	1.51	---	---	---	15/07/2009	12/05/2000	---	BITROS HOLDING SA (CR)	0.190	---	↘ 0.190	13/12/2016	---	---	---	---	---	4500@0.190	---	2015	---	---	---	3,010.05	0.125	0.227	1757	
15,816,009	0.300	---	---	---	01/07/2009	17/07/2000	---	BYTE COMPUTER SA (CR)	0.301	---	↘ 0.301	13/12/2016	---	---	---	---	100@0.293	100@0.309	---	2015	---	---	---	4,760.62	0.256	0.322	9533	
365,203,298	6.70	0.354	0.36	0.4	30/06/2016	29/04/2013	---	CC HBC AG (CR)	19.20	-1.39	⬇ 19.47	13/12/2016	19.43	19.20	19.43	19.20	19.27	360@19.19	36@19.34	---	---	62,376	164	1,201,835.89	7,011,903.32	15.97	21.07	3537
27,060	---	---	---	---	07/12/2016	---	---	CENERGY HOLDINGS (CB)	0.010	---	---	---	---	---	---	---	---	---	---	---	---	---	---	---	0.27	0.010	0.010	2727
101,123,806	0.360	---	---	---	22/07/2010	28/06/2011	---	CENTRIC HOLDINGS (CR)	0.094	-3.09	⬇ 0.097	13/12/2016	0.096	0.094	0.098	0.094	0.095	1@0.094	4501@0.099	---	2015	41,801	36	3,984.60	9,505.64	0.067	0.147	5752
124,170,201	0.780	---	---	---	28/06/2002	07/02/2005	---	CORINTH PIPEWORKS (CR)	0.619	-0.48	⬇ 0.622	13/12/2016	0.617	0.612	0.619	0.619	0.616	250@0.612	1017@0.619	23.92	2015	28,095	65	17,307.20	76,861.35	0.522	1.03	1757
9,907,500	0.300	---	---	---	06/10/2005	13/02/2002	---	CPI SA (CR)	0.188	---	↘ 0.188	13/12/2016	---	---	---	---	---	---	---	22.50	2016	---	---	---	1,862.61	0.092	0.196	9572
41,068,800	0.420	(0.0667)	(0.03)	0.1205	19/08/2016	17/02/2016	---	CRETE PLASTICS SA (CR)	5.10	0.79	# 5.06	13/12/2016	5.02	5.02	5.14	5.14	5.08	325@5.02	450@5.10	17.11	2015	78,601	8	399,256.88	209,450.88	3.19	5.30	1357
15,000,000	0.300	---	---	---	06/07/2007	18/07/2000	---	DAIOS PLASTICS SA (CR)	2.90	---	↘ 2.90	13/12/2016	---	---	---	---	100@2.65	---	---	2015	---	---	---	43,500.00	2.45	2.95	1357	
34,720,000	0.310	---	---	---	16/06/2010	01/08/2007	---	DROMEAS SA (CR)	0.113	---	↘ 0.113	13/12/2016	---	---	---	---	---	5000@0.102	---	2015	---	---	---	3,923.36	0.066	0.152	3726	
3,873,120	0.300	---	---	---	07/07/2008	04/10/2012	---	DRUCKFARBEN HELLAS (CR)	0.660	10.00	# 0.600	13/12/2016	0.660	0.660	0.660	0.660	0.660	3000@0.610	---	1.05	2015	500	1	330.00	2,556.26	0.360	0.660	1357
11,250,000	0.520	---	---	0.04	25/07/2016	09/11/2015	---	EKTER SA (CR)	0.487	4.28	# 0.467	13/12/2016	0.441	0.441	0.487	0.487	0.486	1500@0.443	160@0.487	15.38	2015	41	2	19.92	5,478.75	0.301	0.510	2357
32,188,050	1.04	---	---	---	21/07/2008	20/01/2000	---	EL. D. MOUZAKIS SA (CB)	0.153	---	↘ 0.153	13/12/2016	---	---	---	---	---	420@0.165	---	2015	---	---	---	4,924.77	0.084	0.215	3763	
18,421,516	1.00	---	---	---	07/07/2009	10/09/2010	---	ELASTRON (CR)	0.710	2.45	# 0.693	13/12/2016	0.710	0.710	0.710	0.710	0.710	100@0.682	490@0.710	---	2015	10	1	7.10	13,079.28	0.310	0.900	1757
31,734,530	1.60	---	---	---	09/07/2007	19/07/2006	---	ELGEKA SA (CR)	0.130	---	↘ 0.130	13/12/2016	---	---	---	---	247@0.119	1000@0.130	---	2015	---	---	---	4,125.49	0.107	0.210	3577	
23,828,130	0.500	---	---	0.16	08/06/2016	17/02/2009	---	ELINOIL S.A. (CR)	0.970	---	↘ 0.970	13/12/2016	---	---	---	---	---	1000@1.00	8.51	2015	---	---	---	23,113.29	0.634	1.25	537	
177,001,313	1.03	---	---	---	05/07/2011	20/12/2007	---	ELLAKTOR (CR)	1.10	-5.17	⬇ 1.16	13/12/2016	1.16	1.10	1.16	1.10	1.13	68246@1.10	1000@1.11	---	2015	175,474	287	197,681.05	194,701.44	0.857	1.59	2357
82,667,000	0.300	---	---	---	22/07/2014	---	---	ELTECH ANEMOS S.A. (CR)	0.854	-2.06	⬇ 0.872	13/12/2016	0.863	0.853	0.872	0.854	0.857	11400@0.853	250@0.859	9.19	2015	20,341	47	17,426.23	70,597.62	0.533	0.917	7537
26,730,187	0.600	0.05	---	---	23/06/2014	30/12/2010	---	ELTON SA (CR)	0.900	1.81	# 0.884	13/12/2016	0.900	0.884	0.900	0.900	0.892	50@0.878	1000@0.880	16.07	2015	210	3	187.40	24,057.17	0.802	1.00	1353

Number of Outstanding Securities	Nominal Value	Dividends [1]			Date of Last Coupon Dividend [2]		Note	Shares	Closing price	% change	Previous closing price/date	Open price	Price min	Price max	Last price	Avg price	Last Bid [7]	Last Ask [7]	P/E after	Year	Volume	Trades	Transactions Value[8]	Company Mkt Value (thou. €)	Year low	Year high	Sector[4]
14,050,971	0.340	---	---	---	06/07/2011	17/10/2002	---	ELTRAK SA (CR)	1.39	---	↘ 1.39	13/12/2016	1.38	1.26	1.39	1.39	1.27 572@1.26	60@1.39	27.63	2015	1,364	8	1,728.46	19,530.85	0.990	1.45	2753
3,307,500	0.960	---	---	---	11/08/2010	23/09/2016	---	ELVE SA (CR)	1.88	9.94	# 1.71	13/12/2016	1.88	1.88	1.88	1.88	200@1.72	201@1.76	14.99	2015	87	2	163.56	6,218.10	1.31	2.10	3763
2,185,998,765	0.300	---	---	---	02/05/2008	27/11/2015	---	EUROBANK ERGASIAS (CR)	0.662	-7.67	€ 0.717	13/12/2016	0.708	0.638	0.709	0.662	0.671 3500@0.660	49000@0.663	---	2015	6,873,475	2,860	4,614,397.69	1,447,131.18	0.241	1.17	8355
8,623,225	0.600	---	---	---	02/06/2010	30/05/2016	5031	EUROCONSULTANTS S.A. (CR)	0.530	-8.62	€ 0.580	13/12/2016	0.550	0.522	0.550	0.530	0.527 ---	150@0.530	---	2015	4,850	23	2,554.40	4,570.31	0.504	1.82	2791
27,503,677	0.630	---	---	0.06	22/06/2016	18/10/1999	---	EUROPEAN RELIANCE INSUR. (CR)	1.95	---	↘ 1.95	13/12/2016	1.93	1.91	1.95	1.95	1.93 2250@1.91	997@1.95	4.87	2015	7,919	8	15,282.73	53,632.17	1.21	2.10	8536
13,673,200	0.880	---	---	---	18/07/2008	26/07/2001	---	EVROFARMA SA (CR)	0.255	2.00	# 0.250	13/12/2016	0.225	0.225	0.255	0.255	0.235 ---	8349@0.255	15.36	2015	30	5	7.05	3,486.67	0.120	0.320	3577
106,500,000	0.600	0.36	0.2	0.31	28/06/2016	28/01/2000	---	EYDAP S.A. (CR)	5.56	-0.71	€ 5.60	13/12/2016	5.60	5.45	5.63	5.56	5.55 600@5.46	1113@5.56	13.55	2015	40,360	167	223,995.22	592,140.00	3.60	6.10	7577
52,800,154	0.300	0.2	---	---	20/08/2014	21/06/2004	---	F.G. EUROPE S.A. (CR)	0.570	9.19	# 0.522	13/12/2016	0.570	0.570	0.570	0.570	0.570 600@0.470	400@0.565	25.18	2015	1,485	2	846.45	30,096.09	0.441	0.700	3722
10,203,575	0.730	---	---	---	16/07/2007	18/10/1999	---	FIERATEX SA (CR)	0.083	---	↘ 0.083	13/12/2016	---	---	---	---	--- 3000@0.075	---	---	2015	---	---	---	846.90	0.039	0.205	3763
11,720,024	0.540	0.0394	---	---	21/08/2014	04/11/2015	---	FLEXOPACK SA (CR)	2.99	7.17	# 2.79	13/12/2016	2.80	2.80	2.99	2.99	2.97 200@2.99	500@3.00	7.95	2015	8,600	31	25,503.00	35,042.87	2.10	3.08	2723
4,181,450	0.500	---	---	---	21/08/2000	05/03/2002	---	FLOUR MILLS SARANTOPOULOS SA	0.630	---	↘ 0.630	13/12/2016	---	---	---	---	---	---	---	2015	---	---	---	2,634.31	0.362	1.01	3577
66,948,210	0.300	---	0.1005	---	22/09/2015	22/09/2015	---	FOLLI FOLLIE (CR)	18.55	-0.80	€ 18.70	13/12/2016	18.79	18.40	18.79	18.55	18.54 338@18.40	4896@18.55	---	2015	190,563	312	3,533,564.44	1,241,889.30	12.50	22.40	5379
50,992,322	1.07	---	---	---	21/06/2010	16/07/2002	---	FOURLIS (CR)	3.84	-1.54	€ 3.90	13/12/2016	3.93	3.78	3.98	3.84	3.89 69@3.78	2929@3.84	---	2015	119,561	123	464,869.27	195,810.52	2.00	4.28	3722
14,076,360	0.370	---	---	---	19/08/2008	22/07/2003	---	GALAXIDI S.A. (CR)	0.324	-9.75	€ 0.359	13/12/2016	0.350	0.324	0.350	0.324	0.325 ---	4729@0.324	31.71	2015	1,790	8	582.56	4,560.74	0.163	0.570	3573
103,423,291	0.570	---	---	---	01/08/2011	19/04/2016	---	GEK TERNA (CR)	2.18	-0.91	€ 2.20	13/12/2016	2.17	2.12	2.19	2.18	2.16 2850@2.11	1500@2.19	13.69	2015	54,900	167	118,531.03	225,462.77	1.05	2.32	2357
8,418,750	0.300	---	---	0.12	16/12/2015	27/06/2012	---	GEKE SA (CB)	4.60	---	↘ 4.60	13/12/2016	---	---	---	---	--- 50@4.20	126@4.95	15.24	2015	---	---	---	38,726.25	3.90	5.60	5753
24,060,000	0.300	0.017	0.02	0.01	11/07/2016	11/07/2016	---	GEN. COMMERCIAL & IND.SA (CR)	0.350	9.38	# 0.320	13/12/2016	0.321	0.320	0.350	0.350	0.320 500@0.311	1000@0.347	14.72	2015	3,299	4	1,056.83	8,421.00	0.253	0.394	2797
34,770,982	1.55	0.3	0.15	0.16	20/04/2016	27/07/2000	---	GR. SARANTIS SA (CR)	10.30	-0.10	€ 10.31	13/12/2016	10.25	10.19	10.35	10.30	10.29 350@10.22	1683@10.30	32.46	2015	18,781	116	193,163.89	358,141.11	6.56	11.54	3767
101,260,000	2.13	0.1821	0.3037	0.3134	18/03/2016	08/01/2014	---	GRIVALIA PROPERTIES (CR)	7.58	-2.07	€ 7.74	13/12/2016	7.73	7.43	7.73	7.58	7.58 28@7.56	720@7.61	14.24	2015	24,685	131	187,050.94	767,550.80	6.46	7.90	8675
8,340,750	1.18	---	---	---	25/06/2009	09/09/2015	---	HAIDEMENOS SA (CR)	0.280	---	↘ 0.280	13/12/2016	---	---	---	---	--- 2000@0.256	300@0.282	---	2015	---	---	---	2,335.41	0.240	1.04	2791
101,279,627	0.380	---	---	---	26/06/2008	14/07/2006	---	HALKOR SA (CB)	0.391	-6.68	€ 0.419	13/12/2016	0.415	0.391	0.415	0.391	0.400 100@0.382	19970@0.400	---	2015	16,847	34	6,744.89	39,600.33	0.193	0.448	1755
29,546,360	0.710	---	---	---	20/06/2008	23/08/2000	---	HELLENIC CABLES SA (CR)	1.31	-2.24	€ 1.34	13/12/2016	1.32	1.30	1.33	1.31	1.31 3800@1.29	500@1.32	---	2015	49,042	82	64,160.96	38,705.73	0.530	1.36	2733
65,368,563	1.08	---	0.21	0.1026	31/05/2016	04/07/2016	---	HELLENIC EXCHANGES-A.S.E. (CR)	4.61	-4.36	€ 4.82	13/12/2016	4.82	4.61	4.82	4.61	4.70 2127@4.61	300@4.66	23.40	2015	79,105	309	371,613.60	301,349.08	3.40	5.56	8777
305,635,185	2.18	---	---	---	31/12/2014	01/10/2003	4795	HELLENIC PETROLEUM (CR)	4.14	-3.27	€ 4.28	13/12/2016	4.27	4.14	4.28	4.14	4.19 1992@4.13	1634@4.15	45.94	2015	84,401	481	353,631.41	1,265,329.67	2.74	4.68	537
305,732,436	0.410	---	---	---	08/07/2009	28/09/2011	---	HYGEIA SA (CR)	0.144	-2.70	€ 0.148	13/12/2016	0.144	0.143	0.146	0.144	0.145 2000@0.143	4000@0.147	---	2015	40,559	28	5,879.31	44,025.47	0.078	0.197	4533
65,441,118	0.440	---	---	---	24/11/2014	11/08/2015	---	IASO SA (CR)	0.392	-6.00	€ 0.417	13/12/2016	0.410	0.390	0.411	0.400	0.400 2050@0.391	500@0.405	---	2015	8,586	17	3,433.89	25,652.92	0.360	0.669	4533
8,298,467	0.400	---	---	---	30/08/1993	08/05/2013	---	IDEAL GROUP SA (CR)	0.792	-10.00	€ 0.880	13/12/2016	0.792	0.792	0.792	0.792	0.792 ---	1863@0.792	-(6)-	2015	350	4	277.20	6,572.39	0.568	0.959	9574
28,580,100	0.400	0.025	---	---	18/08/2014	04/07/2016	---	IKTINOS HELLAS SA (CR)	0.792	-3.77	€ 0.823	13/12/2016	0.795	0.792	0.820	0.792	0.801 828@0.792	740@0.809	21.79	2015	10,355	36	8,296.73	22,635.44	0.792	1.15	2353
9,090,000	0.900	---	---	---	15/05/2009	13/10/2014	---	ILYDA S.A. (CR)	0.437	---	↘ 0.437	13/12/2016	---	---	---	---	--- 122@0.394	---	---	2015	---	---	---	3,972.33	0.397	0.590	9537
20,578,374	0.620	---	0.4	0.07	05/07/2016	18/05/2015	---	INFORM P. LYKOS SA (CR)	0.490	1.45	# 0.483	13/12/2016	0.480	0.480	0.490	0.490	0.482 4220@0.470	310@0.490	---	2015	2,500	4	1,204.00	10,083.40	0.364	0.620	2791
10,500,000	4.00	---	---	---	02/08/2016	---	---	INTERCONTINENTAL (CR)	5.57	---	↘ 5.57	13/12/2016	---	---	---	---	---	3880@5.57	---	---	---	---	---	58,485.00	5.15	5.80	8674
11,233,200	0.730	---	---	---	12/07/2010	30/07/1999	---	INTERTECH SA (CR)	0.185	-1.07	€ 0.187	13/12/2016	0.186	0.185	0.186	0.185	0.185 31136@0.185	---	---	2015	26,864	11	4,977.84	2,078.14	0.120	0.376	9572
34,986,430	0.440	---	---	---	25/07/2008	23/02/2010	---	INTERWOOD-XYLEMPORIA (CR)	0.061	---	↘ 0.061	13/12/2016	---	---	---	---	--- 3755@0.061	---	---	2015	---	---	---	2,442.19	0.061	0.093	2353
2,566,836	0.440	---	---	---	13/08/2010	09/01/2007	---	INTERWOOD-XYLEMPORIA (PR)	0.120	---	↘ 0.120	13/12/2016	---	---	---	---	---	914@0.117	---	2015	---	---	---	2,442.19	0.117	0.189	2353
23,154,250	1.36	---	---	---	12/08/2008	02/08/2010	---	INTRACOM CONSTR. (CR)	0.450	---	↘ 0.450	13/12/2016	---	---	---	---	--- 1000@0.381	500@0.429	---	2015	---	---	---	10,419.41	0.222	0.599	2357
133,025,996	1.41	---	---	---	03/07/2007	07/01/2002	---	INTRACOM HOLDINGS (CR)	0.303	-2.26	€ 0.310	13/12/2016	0.305	0.296	0.307	0.303	0.302 157@0.297	1353@0.302	---	2015	41,103	69	12,400.60	40,306.88	0.245	0.394	9578
158,961,721	0.300	---	---	---	30/05/2013	14/11/2007	---	INTRALOT (CR)	1.03	-2.83	€ 1.06	13/12/2016	1.06	1.02	1.06	1.03	1.04 570@1.02	3300@1.04	---	2015	120,347	65	125,085.47	163,730.57	0.815	1.39	5752
77,654,850	0.580	---	---	---	01/07/2011	21/02/2003	---	J & P - AVAX SA (CR)	0.371	-3.13	€ 0.383	13/12/2016	0.386	0.370	0.386	0.370	0.374 466@0.370	3270@0.376	---	2015	18,813	47	7,032.30	28,809.95	0.208	0.534	2357

Number of Outstanding Securities	Nominal Value	Dividends [1]			Date of Last Coupon Dividend [2]		Note	Shares	Closing price	% change	Previous closing price/date	Open price	Price min	Price max	Last price	Avg price	Last Bid [7]	Last Ask [7]	P/E after	Year	Volume	Trades	Transactions Value[8]	Company Mkt Value (thou. €)	Year low	Year high	Sector[4]
----------------------------------	---------------	---------------	--	--	----------------------------------	--	------	--------	---------------	----------	-----------------------------	------------	-----------	-----------	------------	-----------	--------------	--------------	-----------	------	--------	--------	-----------------------	-----------------------------	----------	-----------	------------

Main Market

136,059,759	0.880	0.18	0.18	---	04/11/2016	05/03/2014	---	JUMBO SA (CR)	14.89	0.61 #	14.80 13/12/2016	14.87	14.59	14.93	14.89	14.75	10@14.72	6500@14.90	24.57	2016	227,078	746	3,348,586.77	2,025,929.81	8.75	14.93	3747
9,742,920	0.400	0.01	0.01	0.01	12/08/2016	14/07/2000	---	KARAMOLEGOS SA (CR)	2.00	--- ↘	2.00 13/12/2016	---	---	---	---	---	109@1.97	1500@2.04	-(6)-	2015	---	---	---	19,485.84	0.601	2.00	3577
14,679,792	1.68	---	---	---	24/06/2014	04/09/2000	---	KARATZIS SA (CR)	4.00	2.30 #	3.91 13/12/2016	4.00	4.00	4.00	4.00	4.00	100@3.83	200@4.00	11.48	2015	30	1	120.00	58,719.17	3.40	4.22	2723
13,202,756	0.350	---	---	---	01/07/2004	05/08/2014	---	KEKROPS SA (CR)	0.370	-1.60 €	0.376 13/12/2016	0.297	0.297	0.370	0.370	0.316	1800@0.292	499@0.370	---	2015	4,050	9	1,279.50	4,885.02	0.175	0.398	8633
7,595,160	0.600	---	---	---	08/08/2008	18/08/2010	---	KIRIAKOULIS SHIPPING SA (CR)	0.639	9.23 #	0.585 13/12/2016	0.527	0.527	0.639	0.639	0.533	---	4924@0.639	79.56	2015	1,053	2	560.87	4,853.31	0.220	0.721	5759
23,648,700	0.350	---	---	---	13/07/2011	31/03/2015	---	KLEEMAN HELLAS SA (CR)	2.02	-0.49 €	2.03 13/12/2016	2.02	2.02	2.03	2.02	2.025	180592@2.02	2500@2.03	24.37	2015	12,865	10	25,987.31	47,770.37	1.21	2.05	2757
40,219,218	0.300	---	---	---	25/05/2009	09/07/2013	---	KLOUKINAS - LAPPAS SA (CR)	0.285	--- ↘	0.285 13/12/2016	0.285	0.285	0.285	0.285	0.285	50@0.271	300@0.279	---	2015	150	2	42.75	11,462.48	0.218	0.353	2357
21,224,340	0.420	---	---	---	02/07/2008	25/04/2006	---	KORDELLOS BROS SA (CR)	0.299	--- ↘	0.299 13/12/2016	---	---	---	---	---	---	1199@0.283	---	2015	---	---	---	6,346.08	0.167	0.373	1757
13,586,500	0.390	---	---	---	25/06/2010	28/05/2008	---	KORRES (CR)	3.63	-0.55 €	3.65 13/12/2016	3.53	3.53	3.64	3.63	3.56	250@3.54	930@3.63	---	2015	4,109	17	14,615.46	49,319.00	2.79	3.90	3767
29,480,000	0.420	---	---	---	19/07/2010	01/08/2007	---	KRETA FARM SA (CR)	0.432	--- ↘	0.432 13/12/2016	0.432	0.432	0.432	0.432	0.432	200@0.416	500@0.470	---	2015	2,527	7	1,091.66	12,735.36	0.300	0.610	3577
33,065,136	0.380	---	0.06	0.06	18/08/2016	16/09/2013	---	KRI-KRI S.A. (CR)	1.75	-4.89 €	1.84 13/12/2016	1.78	1.75	1.80	1.75	1.77	500@1.73	100@1.78	15.06	2015	2,444	13	4,325.18	57,863.99	1.50	1.90	3577
15,804,800	0.360	---	---	---	15/06/2010	12/03/2004	---	KTIMA KOSTAS LAZARIDIS SA (CR)	0.277	2.59 #	0.270 13/12/2016	0.240	0.240	0.279	0.278	0.250	1081@0.245	499@0.279	---	2015	12,641	12	3,158.58	4,377.93	0.166	0.534	3535
23,286,253	0.990	---	0.2406	---	14/08/2015	15/09/2014	---	KYRIAKIDIS MARBLES SA (CR)	3.25	--- ↘	3.25 13/12/2016	3.25	3.25	3.25	3.25	3.25	3693@3.25	500@3.30	12.43	2015	4,904	11	15,938.00	75,680.32	2.11	3.52	2353
79,721,775	0.300	---	---	---	30/05/2007	23/06/2014	---	LAMDA DEVELOPMENT SA (CR)	4.61	-1.50 €	4.68 13/12/2016	4.69	4.60	4.76	4.61	4.66	190@4.59	583@4.61	---	2015	35,935	208	167,445.91	367,517.38	3.12	5.12	8633
21,364,000	1.12	---	---	---	05/07/2010	10/08/2005	---	LAMPSA HOTEL SA (CR)	16.80	--- ↘	16.80 13/12/2016	---	---	---	---	---	10@17.00	57@17.50	76.45	2015	---	---	---	358,915.20	15.32	18.00	5753
5,939,268	0.620	---	---	---	10/07/2003	03/01/2002	---	LANAKAM SA (CR)	0.589	--- ↘	0.589 13/12/2016	---	---	---	---	---	---	253@0.549	---	2015	---	---	---	3,498.23	0.539	0.638	3763
4,740,000	0.860	---	---	---	14/03/2003	---	---	LOGISMOS S.A. (CR)	0.258	--- ↘	0.258 13/12/2016	---	---	---	---	---	1110@0.260	1@0.283	---	2015	---	---	---	1,222.92	0.219	0.489	9533
17,125,062	0.940	---	---	---	01/06/2010	18/07/2016	---	LOULIS MILLS SA (CR)	1.50	-3.85 €	1.56 13/12/2016	1.67	1.45	1.67	1.54	1.47	20@1.46	700@1.52	43.84	2015	303	6	444.70	25,687.59	1.30	1.83	3577
939,510,748	0.300	---	---	---	26/04/2007	29/08/2014	---	MARFIN INVESTMENT GROUP (CR)	0.136	-4.22 €	0.142 13/12/2016	0.142	0.136	0.143	0.136	0.138	88075@0.135	15000@0.137	---	2015	2,301,285	656	318,644.88	127,773.46	0.048	0.222	8775
9,819,370	0.690	---	---	---	14/08/2007	09/01/2004	---	MATHIOS REFRACTORY SA (CR)	0.243	-10.00 €	0.270 13/12/2016	0.243	0.243	0.243	0.243	0.243	---	500@0.296	---	2015	1,490	3	362.07	2,386.11	0.162	0.359	2353
468,700	0.65	1.48	---	---	26/04/2016	21/05/2004	---	MERMEREN KOMB. A.D. PR. (GDR)	6.21	-11.16 €	6.99 13/12/2016	7.00	6.21	8.90	6.21	6.48	9@5.27	50@6.40	0.60	2015	108	7	699.80	2,910.63	4.83	8.90	1775
51,950,600	0.320	0.3	0.5	0.12	13/05/2016	21/10/2005	---	METKA (CR)	7.05	-3.42 €	7.30 13/12/2016	7.20	6.98	7.38	7.05	7.14	170@7.00	590@7.17	21.16	2015	25,281	180	180,614.14	366,251.73	6.24	7.93	2757
10,500,000	0.950	---	---	---	24/06/2008	19/12/2013	---	MEVACO SA (CR)	0.950	--- ↘	0.950 13/12/2016	---	---	---	---	---	1000@0.930	250@0.999	---	2015	---	---	---	9,975.00	0.705	1.10	2757
6,700,000	0.800	0.16	0.03	0.023	27/06/2016	29/05/2014	---	MILLS KEPENOS (CR)	1.35	5.47 #	1.28 13/12/2016	1.23	1.23	1.35	1.35	1.28	272@1.23	78@1.37	13.01	2015	134	2	171.54	9,045.00	0.880	2.21	3577
6,200,000	0.500	---	---	---	22/06/2010	01/11/1995	---	MINERVA KNITWEAR SA (CB)	0.048	--- ↘	0.048 13/12/2016	---	---	---	---	---	4000@0.044	---	---	2015	---	---	---	297.60	0.044	0.092	3763
12,417,000	0.370	---	---	---	28/07/2008	06/09/2011	---	MLS MULTIMEDIA SA (CR)	3.99	--- ↘	3.99 13/12/2016	3.95	3.94	3.99	3.99	3.98	150@3.94	1345@4.00	24.50	2015	3,085	32	12,281.09	49,543.83	2.75	4.07	9537
11,700,000	0.590	---	---	---	02/06/2009	24/07/2012	---	MOTODYNAMICS S.A. (CR)	0.402	--- ↘	0.402 13/12/2016	---	---	---	---	---	1300@0.393	487@0.441	14.68	2015	---	---	---	4,703.40	0.227	0.569	5379
110,782,980	0.750	0.2	---	0.65	12/12/2016	04/11/2013	---	MOTOR OIL (CR)	12.60	1.45 #	12.42 13/12/2016	12.40	12.29	12.60	12.60	12.43	10000@12.46	173@12.61	6.94	2015	197,395	631	2,454,138.87	1,395,865.55	8.13	12.60	533
116,915,862	0.970	---	---	---	11/05/2009	19/10/2015	---	MYTILINEOS HOLDINGS (CR)	6.14	-0.65 €	6.18 13/12/2016	6.24	6.10	6.28	6.14	6.20	382@6.13	177@6.18	---	2015	218,009	693	1,352,528.38	717,863.39	2.70	6.28	1755
8,321,682	0.670	---	---	---	17/08/2007	23/11/1999	---	N. LEVEDERIS SA (CB)	0.139	--- ↘	0.139 13/12/2016	---	---	---	---	---	1270@0.128	---	---	2015	---	---	---	1,711.97	0.116	0.385	1757
2,160,524	0.670	0.0436	0.0436	0.0436	04/08/2016	23/11/1999	---	N. LEVEDERIS SA (PB)	0.257	1.18 #	0.254 13/12/2016	0.229	0.229	0.257	0.257	0.257	189@0.229	500@0.255	---	2015	101	3	25.93	1,711.97	0.202	1.25	1757
11,510,102	0.890	---	---	---	24/06/2005	06/10/1999	---	NAFPAKTOS TEXTILE IND. SA (CB)	0.138	--- ↘	0.138 13/12/2016	---	---	---	---	---	2000@0.130	100@0.140	---	2015	---	---	---	1,588.39	0.085	0.313	3763
6,340,000	0.600	---	---	---	30/11/2009	09/11/2016	---	NAKAS MUSIC	0.780	30.00 #	0.600 13/12/2016	0.600	0.600	0.780	0.780	0.759	440@0.780	---	4.91	2016	860	7	652.80	4,945.20	0.600	1.11	5379
9,147,151,527	0.300	---	---	---	16/05/2008	30/11/2015	---	NATIONAL BANK (CR)	0.225	-7.79 €	0.244 13/12/2016	0.241	0.222	0.243	0.225	0.230	813775@0.224	122420@0.227	---	2015	40,187,209	3,469	9,230,183.15	2,058,109.09	0.099	0.340	8355
23,935,280	0.300	---	---	---	29/06/2009	13/06/2000	---	NAYTEMPORIKI PUBLISHING SA(CR)	0.054	-8.47 €	0.059 13/12/2016	0.054	0.054	0.054	0.054	0.054	1960@0.054	---	---	2015	40	1	2.16	1,292.51	0.049	0.097	5557
27,848,000	0.300	0.004	0.0032	0.0084	16/08/2016	02/09/2003	---	NEWSPHONE HELLAS SA (CR)	0.239	6.22 #	0.225 13/12/2016	0.239	0.239	0.239	0.239	0.239	900@0.209	1785@0.239	10.04	2015	65	1	15.54	6,655.67	0.135	0.291	2791
291,497,368	0.300	---	---	---	08/07/2008	21/03/2016	---	NIREFS SA (CR)	0.175	--- ↘	0.175 13/12/2016	0.176	0.169	0.179	0.175	0.175	350@0.170	600@0.155	0.25	2015	100,008	56	17,516.69	51,012.04	0.067	0.297	3573
319,000,000	0.300	0.25	0.57	0.4	13/10/2016	25/04/2001	---	OPAP (CR)	8.13	-3.10 €	8.39 13/12/2016	8.35	8.11	8.39	8.13	8.22	32255@8.15	1139@8.16	12.29	2015	1,142,582	1,862	9,394,617.90	2,593,470.00	5.16	8.97	5752

Number of Outstanding Securities	Nominal Value	Dividends [1]			Date of Last Coupon		Note	Shares	Closing price	% change	Previous closing		Open price	Price min	Price max	Last price	Avg price	Last Bid [7]	Last Ask [7]	P/E after	Year	Volume	Trades	Transactions Value[8]	Company Mkt Value (thou. €)	Year low	Year high	Sector[4]
		2013	2014	2015	Dividend [2]	Right					price/date	price/date																
Main Market																												
490,150,389	2.83	---	0.08	0.1	29/06/2016	18/06/1998	---	OTE (CR)	8.68	-4.09 €	9.05	13/12/2016	9.05	8.62	9.05	8.68	8.74	2000@8.67	600@8.69	45.94	2015	438,562	836	3,834,869.57	4,254,505.38	6.55	9.71	6535
25,000,000	2.00	0.12	0.099	0.1114	18/07/2016	08/08/2003	---	P.P.A. S.A. (CR)	12.64	-2.77 €	13.00	13/12/2016	12.74	12.61	13.06	12.64	12.76	332@12.61	210@12.66	37.73	2015	3,998	92	50,995.49	316,000.00	9.80	14.78	2777
4,971,466	1.46	---	---	---	04/07/2007	08/10/2003	---	PAIRIS SA (CR)	0.167	---	0.167	13/12/2016	---	---	---	---	---	2000@0.151	---	---	2015	---	---	---	830.23	0.144	0.215	2723
3,953,090	0.900	---	0.118	0.11	08/12/2016	05/12/2012	---	PAPERPACK (CR)	1.50	---	1.50	13/12/2016	---	---	---	---	---	50@1.24	2690@1.64	4.72	2015	---	---	---	5,929.64	0.651	1.56	2723
50,797,369	0.310	---	---	---	17/08/2000	12/10/2010	---	PAPOUTSANIS (CR)	0.180	2.27 #	0.176	13/12/2016	0.181	0.176	0.184	0.180	0.180	50@0.171	1999@0.180	---	2015	4	4	0.72	9,143.53	0.080	0.217	3767
7,070,400	0.930	---	0.101	---	30/11/2016	06/05/2016	---	PETROPOULOS PETROS (CR)	4.24	-0.23 €	4.25	13/12/2016	4.20	4.20	4.25	4.24	4.23	100@4.16	45@4.24	39.76	2015	516	12	2,183.89	29,978.50	3.43	4.27	2753
8,733,183,280	0.300	---	---	---	16/05/2008	27/11/2015	---	PIRAEUS BANK (CR)	0.210	-9.87 €	0.233	13/12/2016	0.230	0.210	0.231	0.210	0.21709500@0.209	1210@0.212	---	2015	26,874,299	2,399	5,835,395.16	1,833,968.49	0.067	0.308	8355	
22,080,000	0.330	0.2	---	0.08	17/05/2016	27/04/2015	---	PLAISIO COMPUTERS SA (CR)	3.80	-5.71 €	4.03	13/12/2016	4.03	3.80	4.03	3.80	3.90	270@3.71	147@3.95	12.51	2015	8,801	39	34,292.52	83,904.00	3.73	4.75	9572
232,000,000	4.60	---	0.05	---	20/07/2015	12/12/2001	---	PPC (CR)	2.82	-4.73 €	2.96	13/12/2016	2.97	2.81	2.97	2.82	2.88	6020@2.81	30500@2.85	---	2015	337,590	740	973,548.70	654,240.00	2.29	4.08	7535
11,812,193	0.470	---	0.02	---	26/03/2015	15/11/2006	---	PROFILE SA (CR)	0.440	---	0.440	13/12/2016	0.440	0.440	0.440	0.440	0.440	100@0.428	6575@0.440	---	2015	50	1	22.00	5,197.36	0.388	0.546	9533
27,345,120	0.470	---	---	---	18/07/2005	26/02/2014	---	QUALITY & RELIABILITY SA (CR)	0.324	---	0.324	13/12/2016	0.324	0.324	0.324	0.324	0.324	---	79@0.292	---	2015	130	3	42.12	8,859.82	0.207	0.465	9533
11,921,531	3.32	---	---	---	05/09/2008	05/12/2016	---	QUEST HOLDINGS (CR)	6.31	-1.71 €	6.42	13/12/2016	6.58	6.30	6.58	6.48	6.35	290@6.30	140@6.45	---	2015	1,623	14	10,310.93	75,224.86	3.30	6.58	9533
57,434,884	1.31	---	---	---	05/06/2008	12/06/2009	---	REDS S.A. (CR)	0.301	-1.63 €	0.306	13/12/2016	0.301	0.301	0.302	0.301	0.301	689@0.308	500@0.336	---	2015	8,116	3	2,444.42	17,287.90	0.280	0.410	8633
22,280,000	0.300	---	---	---	11/04/2011	23/02/2007	---	REVOIL (CR)	0.354	---	0.354	13/12/2016	---	---	---	---	---	996@0.267	320@0.330	11.38	2015	---	---	---	7,887.12	0.169	0.557	5379
7,500,000	0.690	0.0863	0.1	---	19/06/2015	05/07/2016	---	S.KANAKIS SA (CR)	2.60	---	2.60	13/12/2016	2.67	2.60	2.67	2.60	2.64	50@2.55	50@2.60	11.11	2015	100	2	263.50	19,500.00	1.75	2.84	3577
52,067,296	0.300	---	---	---	23/12/2003	24/01/2007	---	SELECTED TEXT. IND. ASSOC (CR)	0.152	---	0.152	13/12/2016	---	---	---	---	---	---	200@0.166	---	2016	---	---	---	7,914.23	0.084	0.205	3763
204,235,184	0.300	---	---	---	01/07/2008	30/07/2012	---	SELONDA AQUACULTURE SA (CR)	0.160	---	0.160	13/12/2016	0.160	0.160	0.160	0.160	0.160	100@0.147	4600@0.160	---	2015	1,500	1	240.00	32,677.63	0.074	0.273	3573
6,456,530	1.61	---	---	---	29/06/2001	02/08/2010	---	SPACE HELLAS SA (CR)	0.700	-5.28 €	0.739	13/12/2016	0.700	0.700	0.700	0.700	0.700	---	300@0.720	5.33	2015	2,000	1	1,400.00	4,519.57	0.592	1.28	9578
28,438,268	0.300	---	---	---	21/08/2006	24/11/1999	---	SPIROY AGRICULTURE SA (CR)	0.699	---	0.699	13/12/2016	---	---	---	---	---	---	30133@0.630	---	2015	---	---	---	19,878.35	0.630	0.700	1357
40,693,350	5.00	---	---	---	03/07/2006	26/05/2015	---	TECHNICAL OLYMPIC SA (CR)	0.919	8.12 #	0.850	13/12/2016	0.830	0.830	0.919	0.919	0.878	107@0.872	1000@0.920	---	2015	1,000	18	877.84	37,397.19	0.530	0.940	3728
109,314,400	0.300	---	---	0.0935	30/05/2016	05/08/2015	---	TERNA ENERGY (CR)	2.66	-4.32 €	2.78	13/12/2016	2.78	2.64	2.78	2.66	2.68	2700@2.65	2000@2.67	-(6)-	2015	31,675	146	84,950.96	290,776.30	1.92	3.05	7537
36,300,000	1.12	0.285	0.24	0.25	23/06/2016	12/12/2007	---	THESSALONIKA WATER & SEWERAGE	3.35	-0.30 €	3.36	13/12/2016	3.35	3.35	3.44	3.35	3.38	4@3.35	120@3.42	8.97	2015	519	8	1,755.62	121,605.00	2.65	3.86	7577
45,094,620	0.660	0.05	0.0225	---	20/04/2015	01/11/1999	---	THRACE PLASTICS SA (CR)	2.08	-0.48 €	2.09	13/12/2016	2.08	2.05	2.08	2.08	2.06	5457@2.05	514@2.08	-(6)-	2015	13,518	38	27,777.09	93,796.81	1.25	2.15	1357
77,063,568	4.00	---	0.1551	0.3099	27/06/2016	25/06/2004	---	TITAN CEMENT (CR)	21.29	-0.05 €	21.30	13/12/2016	21.44	21.02	21.44	21.29	21.22	1500@21.03	600@21.30	29.96	2015	118,810	622	2,521,524.48	1,740,972.08	14.86	22.40	2353
7,568,960	4.00	---	0.1551	0.3099	27/06/2016	25/06/2004	---	TITAN CEMENT CO. (PR)	13.25	-2.57 €	13.60	13/12/2016	13.21	13.21	13.25	13.25	13.23	200@13.20	55@13.50	18.65	2015	500	8	6,617.00	1,740,972.08	7.36	13.81	2353
10,080,000	3.00	0.6	1.95	0.58	18/07/2016	27/08/2001	---	TPA SA (CR)	17.75	-0.28 €	17.80	13/12/2016	17.80	17.64	18.00	17.64	17.86	20@17.64	70@17.78	9.99	2015	1,874	15	33,464.06	178,920.00	17.56	24.10	2777
15,627,315	0.300	---	---	---	16/11/1992	03/12/2012	---	UNIBIOS (CR)	0.140	-1.41 €	0.142	13/12/2016	0.105	0.105	0.141	0.140	0.131	10@0.130	589@0.140	---	2015	35	5	4.60	2,187.82	0.053	0.165	2353
18,810,000	0.400	---	---	---	08/07/2010	14/11/2007	---	VARVERIS - MODA BAGNO SA (CR)	0.188	---	0.188	13/12/2016	---	---	---	---	---	---	4740@0.170	---	2015	---	---	---	3,536.28	0.072	0.188	2353
259,189,761	---	---	---	---	26/02/2016	---	---	VIOHALCO SA/INV (CB)	1.28	-3.76 €	1.33	13/12/2016	1.32	1.26	1.32	1.28	1.29	6873@1.26	1466@1.28	---	---	115,531	277	149,170.82	331,762.89	0.928	1.67	2727
4,968,600	2.88	---	---	---	01/07/1998	14/12/1998	---	VIS SA (CR)	0.900	---	0.900	13/12/2016	---	---	---	---	---	---	300@0.919	---	2015	---	---	---	4,471.74	0.611	1.00	2723
6,325,000	0.600	---	---	---	02/05/2014	17/02/2014	---	VOGIATZOGLOU SYSTEMS SA (CR)	1.29	---	1.29	13/12/2016	---	---	---	---	---	---	2157@1.17	---	2015	---	---	---	8,159.25	0.700	1.75	2797

Exchange Traded Funds (ETFs)

619,082	---	---	---	---	15/06/2016	---	---	ALPHA ETF FTSE Athex Large Cap	16.71	-3.24 €	17.27 13/12/2016	16.71	16.71	16.71	16.71	16.71	---	29@16.71	---	---	---	1	1	16.71	---	11.30	170.69	12003
294,878	---	---	---	---	29/06/2009	---	---	NBGAM ETF	7.30	-2.54 €	7.49 13/12/2016	7.30	7.30	7.30	7.30	7.30	---	---	---	---	---	2	1	14.60	---	4.50	7.60	12003
388,550	---	---	---	---	03/11/2010	---	---	NBGAM ETF GREECE & TURKEY 30	5.18	-0.58 €	5.21 13/12/2016	5.18	5.18	5.18	5.18	5.18	---	---	---	---	---	2	1	10.36	---	4.89	6.27	12003

Number of Outstanding Securities	Nominal Value	Dividends [1]			Date of Last Coupon Dividend [2]		Note	Shares	Closing price	% change	Previous closing price/date	Open price	Price min	Price max	Last price	Avg price	Last Bid [7]	Last Ask [7]	P/E after	Year	Volume	Trades	Transactions Value[8]	Company Mkt Value (thou. €)	Year low	Year high	Sector[4]
14,000,000	4.15	---	---	---	23/04/2010	29/06/1999	4815	ALPHA REAL ESTATE SA(CR)	4.62	0.44 #	4.60 13/12/2016	4.62	4.62	4.62	4.62	4.62	288@4.63	151@5.45	23.34	2015	150	2	693.00	64,680.00	4.11	7.30	8637
81,122,516	3.00	---	---	---	23/06/2003	04/11/2008	4816	ASTIR PALACE SA (CR)	5.35	0.19 #	5.34 13/12/2016	5.31	5.31	5.35	5.35	5.35	1000@5.34	14526@5.35	---	2015	7,030	13	37,607.58	434,005.46	2.90	5.40	5753
13,465,290	0.300	---	---	---	09/08/2004	09/11/2016	4814	ATHENA SA (CR)	0.408	---	0.408 13/12/2016	---	---	---	---	---	---	9@0.489	---	2015	---	---	---	5,493.84	0.180	1.30	2357
191,660,320	0.300	---	---	---	20/07/2009	29/12/2010	4817	ATTICA HOLDINGS (CR)	0.801	-5.09 €	0.844 13/12/2016	0.801	0.800	0.801	0.800	0.801	1000@0.750	1072@0.800	-(6)-	2015	694	4	555.87	153,519.92	0.490	1.40	5759
13,404,440	8.63	---	---	---	02/04/2001	06/03/1992	4822	IONIAN HOTELS SA (CR)	9.82	-1.80 €	10.00 13/12/2016	9.82	9.82	9.82	9.82	9.82	100@9.40	200@12.00	60.72	2015	200	1	1,964.00	131,631.60	5.64	12.00	5753
2,760,000	11.83	8.5	9.3	8.5	15/07/2016	16/07/1990	4823	KARELIA TOBACCO CO. SA (CB)	258.50	-0.79 €	260.55 13/12/2016	258.50	258.50	258.50	258.50	258.50	10@237.55	4@278.00	13.36	2015	25	1	6,462.50	713,460.00	227.20	279.00	3785
106,980,050	2.25	---	---	---	25/07/2008	24/02/2014	5046	MINOAN LINES SA (CR)	2.40	---	2.40 13/12/2016	---	---	---	---	---	500@2.40	---	15.84	2015	---	---	---	256,752.12	2.00	2.45	5759
255,494,534	3.00	---	---	0.2035	05/12/2016	23/12/2015	5104	NBG PANGAEA (CR)	4.04	---	4.04 13/12/2016	---	---	---	---	---	200@4.11	100@4.39	20.76	2015	---	---	---	1,032,197.92	3.22	6.03	8671
22,996,875	1.25	---	---	---	24/06/2011	02/02/2016	5116	NEXANS HELLAS SA (CR)	0.900	-3.23 €	0.930 13/12/2016	0.900	0.900	0.900	0.900	0.900	449@0.900	200@1.09	---	2015	950	3	855.00	20,697.19	0.781	1.58	2733
17,240,776	0.370	---	---	---	14/07/2005	30/09/2003	4827	PERSEUS SA (CR)	0.240	---	0.240 13/12/2016	---	---	---	---	---	---	---	1.76	2015	---	---	---	4,137.79	0.240	0.520	3577
54,888,240	1.13	0.09	---	---	25/04/2014	22/03/2006	5100	TRASTOR REAL EST. INV. CO.(CR)	0.964	0.31 #	0.961 13/12/2016	0.980	0.950	0.980	0.950	0.964	4988@0.950	33@0.970	---	2015	2,122	8	2,045.90	52,912.26	0.611	1.25	8671

13,000,000	1.00	---	---	---	01/08/2007	07/04/2000	5093	AKRITAS SA (CR)	0.140	---	0.140 13/12/2016	0.140	0.140	0.140	0.140	0.140	57@0.143	---	---	2015	70	6	9.80	1,820.00	0.061	0.530	2353
14,870,100	0.300	---	---	---	15/05/2008	26/09/2011	4844	ALPHA GRISSIN S.A. (CR)	0.031	---	0.031 13/12/2016	---	---	---	---	---	500@0.032	---	---	2015	---	---	---	460.97	0.019	0.038	9533
2,969,713	0.300	---	---	---	02/07/2008	28/02/2011	4958	ANEK LINES SA (PR, Issue '96)	0.086	---	0.086 13/12/2016	---	---	---	---	---	---	---	35.97	2015	---	---	---	10,953.39	0.086	0.240	5759
312,163	0.300	---	---	---	02/07/2008	28/02/2011	4959	ANEK LINES SA (PR, Issue '90)	0.422	---	0.422 13/12/2016	---	---	---	---	---	---	---	-(6)-	2015	---	---	---	10,953.39	0.352	1.04	5759
185,373,016	0.300	---	---	---	02/07/2008	28/02/2011	4957	ANEK LINES SA (CR)	0.057	-3.39 €	0.059 13/12/2016	0.059	0.057	0.059	0.057	0.057	10000@0.058	10000@0.061	23.84	2015	2,491	4	143.10	10,953.39	0.050	0.103	5759
20,255,805	0.300	---	---	---	22/08/2006	02/08/2010	4881	AXON HOLDING SA (CR)	0.006	---	0.006 13/12/2016	0.006	0.006	0.006	0.006	0.006	1989@0.007	---	---	2015	500	1	3.00	121.53	0.006	0.070	4533
17,579,754	4.16	---	---	---	18/08/2006	02/08/2010	5097	BIOTER SA (CR)	0.048	-9.43 €	0.053 13/12/2016	0.053	0.044	0.053	0.044	0.048	1895@0.044	3003@0.063	---	2015	20,229	16	967.14	843.83	0.038	0.149	2357
4,034,950	0.680	---	---	---	01/07/2005	30/12/2010	5114	CHATZIKRANIOTIS & SONS SA (CR)	0.150	---	0.150 13/12/2016	---	---	---	---	---	---	2950@0.160	---	2015	---	---	---	605.24	0.030	0.164	3577
1,417,311	0.300	---	---	---	11/08/2010	12/10/2016	5123	DIONIC (CR)	0.500	-1.96 €	0.510 13/12/2016	0.500	0.500	0.500	0.500	0.500	400@0.408	594@0.500	0.15	2015	2,905	10	1,452.50	708.66	0.240	0.600	2797
15,878,748	0.480	---	---	---	10/07/2006	22/03/2004	5095	DOMIKI KRITIS SA (CR)	0.290	---	0.290 13/12/2016	---	---	---	---	---	---	30@0.232	---	2015	---	---	---	4,604.84	0.147	0.318	2357
3,961,300	1.28	---	---	---	29/06/2004	03/08/2000	5080	DUROS SA (CR)	0.400	---	0.400 13/12/2016	---	---	---	---	---	---	5650@0.389	---	2015	---	---	---	1,584.52	0.118	0.491	3763
7,085,888	1.59	---	---	---	02/07/1996	06/09/2010	4690	ELVIEMEK (CR)	3.00	---	3.00 13/12/2016	---	---	---	---	---	---	10@3.00	---	2015	---	---	---	21,257.66	2.90	3.97	8633
6,000,000	0.600	---	---	---	13/06/2008	08/04/2004	4886	EUROBROKERS S.A. (CR)	0.010	---	0.010 13/12/2016	---	---	---	---	---	8000@0.010	---	---	2015	---	---	---	60.00	0.009	0.010	8534
21,820,410	0.800	---	---	---	22/05/2008	02/08/2011	4882	EUROMEDICA SA (CR)	0.007	---	0.007 13/12/2016	---	---	---	---	---	25000@0.007	---	---	2015	---	---	---	152.74	0.006	0.028	4533
110,097,185	0.300	---	---	---	19/09/2016		5118	Forthnet (CR)	0.268	13.56 #	0.236 13/12/2016	0.255	0.255	0.268	0.268	0.268	2750@0.248	10412@0.268	---	2015	19,411	3	5,196.88	29,506.05	0.236	0.660	9535
50,593,832	0.300	---	---	---	07/07/2010	07/09/2011	5113	FRIGOGLASS SA (CR)	0.106	-3.64 €	0.110 13/12/2016	0.106	0.106	0.108	0.106	0.106	1091@0.107	300@0.110	---	2015	5,800	10	615.00	5,362.95	0.086	1.87	2757
77,376,446	0.340	---	---	---	23/05/2005	18/08/2011	5094	G.E. DIMITRIOU (CR)	0.014	16.67 #	0.012 13/12/2016	0.010	0.010	0.014	0.014	0.014	9300@0.010	---	---	2015	3,180	4	43.32	1,083.27	0.006	0.037	3722
1,270,000	0.300	---	---	---	06/07/2007	06/02/2013	5007	GIRAKIAN PROFIL SA (CB)	0.060	---	0.060 13/12/2016	0.060	0.060	0.060	0.060	0.060	1500@0.050	---	---	2015	15	1	0.90	76.20	0.060	0.167	1757
1,540,000	0.600	---	---	---	08/08/1994	19/09/2000	5058	J.BOUTARIS & SON HOLD. (PB)	0.066	---	0.066 13/12/2016	---	---	---	---	---	---	2000@0.066	---	2015	---	---	---	1,436.16	0.006	0.066	3535
25,179,640	0.600	---	---	---	08/08/1994	19/09/2000	5057	J.BOUTARIS & SON HOLD. SA (CB)	0.053	---	0.053 13/12/2016	0.053	0.053	0.053	0.053	0.053	1000@0.050	2000@0.053	---	2015	400	1	21.20	1,436.16	0.016	0.128	3535
7,125,216	0.650	---	---	---	01/07/2005	14/12/1999	4955	KRE.KA SA (CR)	0.072	---	0.072 13/12/2016	---	---	---	---	---	4995@0.085	---	---	2015	---	---	---	513.02	0.060	0.180	3573
51,081,030	1.00	---	---	---	20/08/2007	03/09/2007	4912	LAVIPHARM SA (CR)	0.073	-9.88 €	0.081 13/12/2016	0.073	0.073	0.079	0.075	0.073	800@0.075	3000@0.083	---	2015	70,823	13	5,193.57	3,728.92	0.054	0.155	4577
7,734,375	1.00	---	---	---	09/07/2007	07/01/2011	5112	LIVANIS SA (CR)	0.011	---	0.011 13/12/2016	---	---	---	---	---	1295@0.010	---	---	2015	---	---	---	85.08	0.011	0.148	5557
4,419,616	1.58	---	---	---	21/07/2011	04/03/2015	4983	MEDICON S.A (CR)	0.362	19.87 #	0.302 13/12/2016	0.362	0.362	0.362	0.362	0.362	1847@0.362	---	0.99	2015	1,153	3	417.39	1,599.90	0.298	0.790	4535
20,231,328	0.600	---	---	---	15/07/2008	25/06/2004	4879	NIKAS SA (CR)	0.132	---	0.132 13/12/2016	---	---	---	---	---	---	2600@0.132	---	2015	---	---	---	2,670.54	0.070	0.132	3577

Number of Outstanding Securities	Nominal Value	Dividends [1]			Date of Last Coupon		Note	Shares	Closing price	% change	Previous closing price/date	Open price	Price min	Price max	Last price	Avg price	Last Bid [7]	Last Ask [7]	P/E after	Year	Volume	Trades	Transactions Value[8]	Company Mkt Value (thou. €)	Year low	Year high	Sector[4]	
		2013	2014	2015	Dividend [2]	Right																						
Surveillance																												
14,967,940	0.500	---	---	---	21/05/2008	04/01/2008	4956	PASAL DEVELOPMENT S.A. (CR)	0.123	19.42	#	0.103	13/12/2016	0.123	0.123	0.123	0.123	19100@0.123	---	---	2015	10,300	4	1,266.90	1,841.06	0.058	0.300	8633
18,750,000	0.300	---	---	---	02/07/2001	31/12/2012	4985	PEGASUS PUBLISHING S.A. (CR)	0.042	---	↘	0.042	13/12/2016	0.042	0.042	0.042	0.042	982@0.042	2@0.050	---	2015	24	7	1.01	787.50	0.040	0.136	5557
65,326,268	0.530	---	---	---	04/07/2007	19/07/2006	4750	SATO SA (CR)	0.068	---	↘	0.068	13/12/2016	---	---	---	---	700@0.055	13990@0.075	---	2015	---	---	---	4,442.19	0.008	0.116	3726
7,914,480	0.300	---	---	---	23/06/2008	29/06/2011	4888	SFAKIANAKIS SA (CR)	0.210	---	↘	0.210	13/12/2016	---	---	---	---	400@0.230	---	---	2015	---	---	---	1,662.04	0.157	5.64	5379
10,186,667	1.35	---	---	---	24/06/2008	02/02/2016	4887	SIDMA SA (CR)	0.251	---	↘	0.251	13/12/2016	---	---	---	---	---	260@0.229	---	2015	---	---	---	2,556.85	0.096	0.380	1757
4,737,503	0.320	---	---	---	22/06/2005	22/09/2015	5115	VARANGIS AVEPE S.A. (CR)	0.235	---	↘	0.235	13/12/2016	---	---	---	---	---	945@0.230	---	2015	---	---	---	1,113.31	0.235	0.300	3726
16,383,428	0.300	---	---	---	25/06/2002	21/06/2013	4997	VARVARESSOS SA (CB)	0.040	---	↘	0.040	13/12/2016	---	---	---	---	10000@0.048	---	---	2015	---	---	---	655.34	0.006	0.172	3763
13,191,620	0.620	---	---	---	04/08/2010	09/09/2002	4977	YALCO - CONSTANTINOOU SA (CB)	0.050	-16.67	↗	0.060	13/12/2016	0.050	0.050	0.050	0.050	1349@0.050	400@0.072	---	2015	151	1	7.55	659.58	0.034	0.143	3722

Under Deletion

1,130,180	0.440	---	---	---	20/06/2003	02/07/2014	5092	COMPUCON SA (CR)	0.006	---	↘	0.006	13/12/2016	---	---	---	---	---	6000@0.006	---	---	2015	---	---	---	6.78	0.006	0.019	9537
9,567,289	0.300	---	---	---	01/07/2004	19/11/2007	5062	MARAC ELECTRONICS (CR)	0.298	---	↘	0.298	13/12/2016	---	---	---	---	---	14880@0.239	---	---	2015	---	---	---	2,851.05	0.298	0.298	9578
24,319,250	0.300	---	---	---	09/07/2002	04/07/2007	5111	PROODEFTIKH SA (CR)	0.040	17.65	#	0.034	13/12/2016	0.040	0.040	0.040	0.040	0.040	4638@0.040	---	---	2015	362	3	14.48	972.77	0.032	0.092	2357
766,000	1.00	---	---	---	01/07/2004	11/12/2012	4937	TRIA ALFA SA (CR)	2.59	---	↘	2.59	13/12/2016	---	---	---	---	---	14@2.08	---	---	2015	---	---	---	2,383.29	1.80	2.59	3763
245,000	1.00	---	---	---	19/07/2010	11/12/2012	4938	TRIA ALFA SA (PR)	1.63	---	↘	1.63	13/12/2016	---	---	---	---	---	191@1.31	---	---	2015	---	---	---	2,383.29	1.36	1.63	3763

Suspension Status

[illegible]

Number of Outstanding Securities	Nominal Value	Dividends [1]			Date of Last Coupon Dividend [2]		Note	Shares	Closing price	% change	Previous closing price/date	Open price	Price min	Price max	Last price	Avg price	Last Bid [7]	Last Ask [7]	P/E after	Year	Volume	Trades	Transactions Value[8]	Company Mkt Value (thou. €)	Year low	Year high	Sector[4]
--	------------------	---------------	--	--	-------------------------------------	--	------	--------	------------------	----------	--------------------------------	---------------	--------------	--------------	---------------	--------------	-----------------	--------------	--------------	------	--------	--------	--------------------------	--------------------------------	-------------	--------------	---------------

Suspension Status

144,688,060	0.600	---	---	---	21/04/2008	10/03/2010	4982	T BANK (CR)	0.048	---	↘	0.052	# 29/11/2011	---	---	---	---	---	---	---	---	---	---	6,945.03	0.048	0.048	8355
6,523,780	0.530	---	---	---	01/07/2002	06/03/2001	4971	TECHNICAL PUBLICATIONS SA (CR)	0.006	---	↘	0.006	31/05/2013	---	---	---	---	---	---	---	---	---	---	39.14	0.006	0.006	5557
100,793,572	0.300	---	---	---	16/07/2009	11/02/2016	5110	TELETIPPOS SA (CR)	0.060	---	↘	0.060	07/03/2016	---	---	---	---	5@0.048	---	---	---	---	---	6,047.61	0.054	0.070	5553
13,920,000	0.320	---	---	---	19/11/2001	01/08/2000	4726	TEXAPRET SA (CR)	0.080	---	↘	0.080	28/02/2011	---	---	---	---	---	---	---	---	---	---	1,113.60	0.080	0.080	3763
510,840	1.00	---	---	---	15/07/2008	21/11/2013	5036	TROPEA HOLDING (CR)	2.00	---	↘	0.020	# 30/03/2012	---	---	---	---	---	---	---	---	---	---	1,021.68	2.00	2.00	3722
284,465,964	3.70	---	---	---	20/06/2008	15/06/2009	4913	TT HELLENIC POSTBANK (CR)	0.168	---	↘	0.239	# 29/08/2012	---	---	---	---	---	---	---	---	---	---	47,790.28	0.168	0.168	8355
71,683,906	0.400	---	---	---	15/06/2005	05/02/2008	4953	XATZIOANNOU (CR)	0.026	---	↘	0.026	28/03/2013	---	---	---	---	---	---	---	---	---	---	1,863.78	0.026	0.026	3763

Shares' Notes

Code	Note text
()	- Adjusted dividends.
*	- Last adjusted closing price.
[1]	- Net dividends.
[2]	- The "Date of Last Coupon" for New listings refers to the date company's stocks started to trade in Athex
[3]	- The Company Market Value is referred to the number of outstanding shares
[4]	- Sectors codification can be found in Appendix A
[5]	- The Market Value refers to the total number of shares listed (including their several classes) in the exchange by the company.
[6]	- P/E greater than 100
[7]	- Last view of the Order Book before the end of the trading session
[8]	- All Blocks Methods' Transactions Value are included.
4446	- Transfer to the "Under Supervision" Category as of 20/10/2008.
4576	- Suspension of trading as of 14/7/2009.
4690	- Transfer to Surveillance category as of 4/4/2006.
4726	- Suspension of trading as of 1/3/2011.
4750	- Transfer to the "Under Surveillance Category" from 8/4/2011.
4795	- The final gross (pre-tax) dividend is € 0.30 per share and subject to withholding tax on the full dividend amount, i.e. 0,45 per share, for those shareholders liable to withholding tax, in accordance with the applicable tax law provisions.
4814	- Transfer to the Low Dispersion Category as of 30/5/2011.
4815	- Transfer to the Low Dispersion Category as of 30/5/2011.
4816	- Transfer to the Low Dispersion Category as of 30/5/2011.
4817	- Transfer to the Low Dispersion Category as of 30/5/2011.
4822	- Transfer to the Low Dispersion category as of 30/5/2011.
4823	- Transfer to the Low Dispersion category as of 4/4/2006.
4827	- Transfer to the Low Dispersion category as of 5/5/2010.
4844	- Transfer to the Surveillance category from 8/4/2011.
4857	- The 793,906,274 new (CR) shares, resulting from the recent share capital increase through a rights issue, are not yet admitted to trading on the ATHEX.
4865	- Suspension of trading as of 2/4/2012.
4879	- Transfer to the Surveillance Category as of 10/4/2012.
4881	- Transfer to the Surveillance Category as of 10/4/2012.
4882	- Transfer to the Surveillance Category as of 10/4/2012.
4886	- Transfer to the Surveillance Category as of 10/4/2012.
4887	- Transfer to the Surveillance Category as of 10/4/2012.
4888	- Transfer to the Surveillance Category as of 10/4/2012.
4912	- Transfer to the Surveillance Category as of 31/7/2012.
4913	- Suspension of trading as of 30/8/2012.
4914	- Suspension of trading as of 31/8/2012.
4918	- Suspension of trading as of 31/8/2012.
4937	- Transfer to the UNDER DELETION category as of 30/11/2012.
4938	- Transfer to the UNDER DELETION category as of 30/11/2012.
4939	- Suspension of trading as of 30/11/2012.
4953	- Suspension of trading as of 2/4/2013.
4955	- Transfer to the Surveillance Category as from 5/4/2013.
4956	- Transfer to the Surveillance Category as from 5/4/2013.
4957	- Transfer to the Surveillance Category as from 5/4/2013.
4958	- Transfer to the Surveillance Category as from 5/4/2013.
4959	- Transfer to the Surveillance Category as from 5/4/2013.
4971	- Suspension of trading as of 3/6/2013.
4977	- Transfer to the "Under Surveillance Category" from 11/6/2013.
4982	- Suspension of trading as of 1/12/2011.
4983	- Transfer to the Surveillance Category as of 5/4/2013.
4985	- Transfer to the "Under Surveillance Category" from 8/4/2011.
4997	- Transfer to the Under Supervision Category as of 21/12/2009. - The 6,870,053 new (CB) shares, resulting from the recent share capital increase through a rights issue, are

Shares' Notes

Code	Note text
	not yet admitted to trading on the ATHEX.
5002	- Suspension of trading as of 30/08/2013.
5003	- Suspension of trading as of 30/08/2013.
5004	- Suspension of trading as of 30/08/2013.
5007	- Transfer to the Surveillance category, as of 11/10/2013.
5023	- Suspension of trading as of 2/12/2013.
5031	- The 612,300 new (CR) shares, resulting from the recent share capital increase through a rights issue, are not yet admitted to trading on the ATHEX.
5036	- The company's share is under suspension of trading as of 2/4/2012. During suspension, the company proceeded and concluded a share reverse split, according to which - after the conclusion of the corporate action - the total number of the company's shares, as well as, the last closing price of 30/03/2012 were adjusted.
5046	- Transfer to the Low Dispersion category as of 8/4/2011.
5047	- Suspension of trading as of 27/3/2014.
5049	- Under suspension of trading as of 1/4/2014.
5057	- Transfer to the Surveillance Category as of 29/12/2011.
5058	- Transfer to the Surveillance Category as of 29/12/2011.
5061	- Suspension of trading as of 2/6/2014.
5062	- Transfer to the UNDER DELETION category as of 4/6/2014.
5080	- Suspension of trading as of 6/9/2011.
5087	- Suspension of trading as of 1/4/2015.
5088	- Suspension of trading as of 1/4/2015.
5089	- Transfer to the Surveillance Category as of 8/4/2015.
5092	- Transfer to the UNDER DELETION category as of 8/4/2015.
5093	- Transfer to the Surveillance Category as of 8/4/2015.
5094	- Transfer to the Surveillance Category as of 8/4/2015.
5095	- Transfer to the Surveillance Category as from 9/4/2015.
5097	- Transfer to the Surveillance Category as of 10/4/2012.
5098	- Suspension of trading as of 2/6/2015.
5099	- Suspension of trading as of 3/6/2015.
5100	- Transfer to the Low Dispersion Category as of 24/6/2015.
5101	- Suspension of trading as of 1/9/2015.
5104	- Transfer to the "Low Dispersion" Category as of 31/10/2014. Change of the company name from "MIG REAL ESTATE R.E.I.C." to " NBG PANGAEA R.E.I.C." as of 30/12/2015.
5109	- Suspension of trading as of 01/03/2016.
5110	- Suspension of trading as of 08/03/2016.
5111	- Transfer to the Under Deletion Category as of 15/04/2016.
5112	- Transfer to the Surveillance Category as of 15/04/2016.
5113	- Transfer to the Surveillance Category as of 15/04/2016.
5114	- Transfer to the Surveillance Category as of 15/04/2016.
5115	- Transfer to the Surveillance Category as of 15/04/2016.
5116	- Transfer to the Low Dispersion Category as of 20/4/2016.
5118	- Transfer to the Surveillance Category as of 25/11/2011. Issue of a Convertible Bond Loan in progress through a rights issue. Rights' trading period on ATHEX: 22/09/2016 - 03/10/2016, pre-emption rights' subscription period: 22/09/2016 - 06/10/2016.
5121	- Suspension of trading as of 3/10/2016.
5123	- Transfer to the Surveillance Category as of 10/4/2014.

Securities Blocks Details

Securities	Block Volume	Price	Block Trade Value	Time of approval	Note
TITAN CEMENT (CR)	21,621	21.30	460,527.30	11:34:39	20
TITAN CEMENT (CR)	18,020	21.30	383,826.00	11:39:13	20
CRETE PLASTICS SA (CR)	76,696	5.08	389,615.68	11:48:27	20
NATIONAL BANK (CR)	1,149,633	0.230	264,415.59	13:36:06	20
FOLLI FOLLIE (CR)	40,000	18.50	740,000.00	13:47:14	20
BANK OF CYPRUS (CR)	4,747,000	0.121	574,387.00	14:28:47	20
OPAP (CR)	146,260	8.22	1,202,257.20	14:40:53	20
THESSALONIKA WATER & SEWERAGE	8	5.14	41.12	16:00:47	18
THESSALONIKA WATER & SEWERAGE	1	5.14	5.14	16:09:21	18
OTE (CR)	53,502	8.79	470,015.07	16:32:27	20
FOLLI FOLLIE (CR)	25,977	18.52	481,117.42	17:12:19	20
JUMBO SA (CR)	27,000	14.74	398,031.30	17:13:06	20
JUMBO SA (CR)	53,633	14.76	791,859.07	17:13:15	20

Blocks Notes

- 9 - Method 6-1 / Special Fees
- 10 - Method 6-1 / Special Fees, SDS
- 14 - Method 6-3 / Settlement, Incomplete Buy and Sell
- 18 - Method 6-2 / SPOT 1
- 19 - Method 6-2 / SPOT 2
- 20 - Method 6-1 and Method 6-1 Same Day Settlement
- 21 - Other Pre-agreed

Shares Rights Details

Occured date	Exercise from	Exercise until	Trading until	Rights	Price min	Price max	Closing price	Last Bid	Last Ask	Volume	Trades	Transactions Value
-----------------	------------------	-------------------	------------------	--------	--------------	--------------	------------------	----------	----------	--------	--------	-----------------------

No Rights Transactions.

Shares Forced Sales

Securities	Transaction s Volume	Number of Trades	Transactions Value	Note
No Forced Transactions.				

Forced Sales Notes

- 1 - Normal Forced Sale.
- 2 - Forced Sales of Fixed Registered Shares.
- 3 - Forced Sales of Remaining Stock Fractions.

Securities	Start Date	End Date	Initial Volume	Remaining Volume	Date	Avg price (day)	Avg price (period)	Number of Trades	Transactions Volume	Transactions Value
------------	------------	----------	----------------	------------------	------	-----------------	--------------------	------------------	---------------------	--------------------

No Fixed Registered Shares Forced Sales.

According to Decision 1/380/04.05.2008 of the Hellenic Republic Capital Market Commission, the certificated registered shares that have not been deposited to the issuer for dematerialisation, will be auctioned in the Athens Exchange by the supervising issuer. Forced sales procedure is held according to Article 99A of the Athens Exchange Rulebook. The average price of the period is calculated by dividing the Total transactions value by the Total volume and includes all the transactions made until the current date.

Exchange Traded Funds (ETFs) Characteristics

	Transactions Date (T)	Creation / Redemption	Units (T-1)	New Units (T-1)	Redemptio n Units (T-	Units (T) [1]	Fund Assets [2]	Net Unit Price	Dividen d per	Dividend Date
NBGAM ETF ΓΔ Χ.Α.	14/12/2016	25,000	294,878	---	---	294,878	2,216,500.00	7.5167	---	27/10/2011
ALPHA ETF FTSE Athex Large Cap	14/12/2016	5,000	619,082	---	---	619,082	10,733,780.00	17.3382	0.37	30/06/2016
NBGAM ETF GREECE & TURKEY 30	14/12/2016	25,000	388,550	---	---	388,550	2,019,183.00	5.1967	---	27/10/2011

ETFs Notes

[1] - Units (T) = Units (T-1) + New Units (T-1) - Redemption Units (T-1)

[2] - The Creation / Redemption Units of T-1 are included.

Corporate Bonds

Num Listed Bonds	Nominal price	Issue price	Today's Rate	Exp. Date	Duration (years)	Note	Coupon		Trading	Corporate Bonds	Price min	Price max	Closing price	Previous closing price/date	Volume	Transactions Value	Last order		Date	ear min	Year max
							Common	Preferred									Price	Buy / Sell			
233,748,933	0.30	0.30	1.00	11/10/2025	9	---	1	---	1	FORTHNET S.A. (Convertible)	---	---	---	---	---	---	95.0000	S	09/11/2016	100.0000	100.0000
40,000,000	1.00	1.00	5.00	04/10/2021	5	---	1	---	1	HOUSEMARKET S.A. (Non Convertible)	---	---	---	100.5800	13/12/2016	---	100.5000	S	14/12/2016	99.9000	101.3000
1,774,359	13.76	9.77	0.00	21/10/2025	18	---	26	---	1	NIREUS S.A. (Convertible)	---	---	---	100.0000	12/07/2016	---	5.0000	S	14/12/2016	10.0000	150.0000
212,237,880	1.00	1.00	6.30	29/07/2020	7	---	14	---	1	MARFIN INVESTMENT GROUP S.A. SERIES B (Convert.)	---	---	---	0.8500	23/08/2013	---	5.0000	B	04/10/2016	0.8500	0.8500
163,009,139	1.00	1.00	7.00	29/07/2019	6	---	14	---	1	MARFIN INVESTMENT GROUP S.A. SERIES A (Convert.)	---	---	---	1.0000	23/08/2013	---	5.0000	B	04/10/2016	1.0000	1.0000

Corporate Bonds Notes

Transactions Volume = (Pieces) * (Nominal Price). Transactions Value = (Pieces) * (Nominal Price) * (price %) + (Accrued interest).
The price of a Bond is stated as a percentage (%) of Bond's Nominal Price.
Nominal Price in Euros (€), except if it is noted differently.

Government Bonds

Number Listed Bonds	Nominal price	Today's Rate	Accrued Interest Calc	Exp. Date [1]	Duration (years)	Note	Coupons Date	Curr. coupon value	Trading Unit	Government Bonds	Price min	Price max	Closing price	Previous closing price/date	Volume	Transactions Value	Price	Last order Buy / Sell	Date
1,792,455,803	1.00	3.00	Actual/Actual	24/02/2023	11	---	24/02	3.00	1	GGB-FXD-240223-11Y-2.000-1.00	---	---	---	10.0000 22/06/2015	---	---	---	---	---
1,771,485,249	1.00	3.00	Actual/Actual	24/02/2024	12	---	24/02	3.00	1	GGB-FXD-240224-12Y-2.000-1.00	---	---	---	10.0000 22/06/2015	---	---	---	---	---
1,744,316,583	1.00	3.00	Actual/Actual	24/02/2025	13	---	24/02	3.00	1	GGB-FXD-240225-13Y-2.000-1.00	---	---	---	10.0000 22/06/2015	---	---	---	---	---
1,498,761,836	1.00	3.00	Actual/Actual	24/02/2026	14	---	24/02	3.00	1	GGB-FXD-240226-14Y-2.000-1.00	---	---	---	10.0000 22/06/2015	---	---	---	---	---
1,469,952,920	1.00	3.00	Actual/Actual	24/02/2027	15	---	24/02	3.00	1	GGB-FXD-240227-15Y-2.000-1.00	---	---	---	10.0000 22/06/2015	---	---	---	---	---
1,525,434,082	1.00	3.00	Actual/Actual	24/02/2028	16	---	24/02	3.00	1	GGB-FXD-240228-16Y-2.000-1.00	---	---	---	10.0000 22/06/2015	---	---	---	---	---
1,503,860,546	1.00	3.00	Actual/Actual	24/02/2029	17	---	24/02	3.00	1	GGB-FXD-240229-17Y-2.000-1.00	---	---	---	10.0000 22/06/2015	---	---	---	---	---
1,435,418,132	1.00	3.00	Actual/Actual	24/02/2030	18	---	24/02	3.00	1	GGB-FXD-240230-18Y-2.000-1.00	---	---	---	10.0000 22/06/2015	---	---	---	---	---
1,368,045,727	1.00	3.00	Actual/Actual	24/02/2031	19	---	24/02	3.00	1	GGB-FXD-240231-19Y-2.000-1.00	---	---	---	10.0000 22/06/2015	---	---	---	---	---
1,373,758,194	1.00	3.00	Actual/Actual	24/02/2032	20	---	24/02	3.00	1	GGB-FXD-240232-20Y-2.000-1.00	---	---	---	10.0000 22/06/2015	---	---	---	---	---
1,452,639,893	1.00	3.00	Actual/Actual	24/02/2033	21	---	24/02	3.00	1	GGB-FXD-240233-21Y-2.000-1.00	---	---	---	10.0000 22/06/2015	---	---	---	---	---
1,410,344,954	1.00	3.00	Actual/Actual	24/02/2034	22	---	24/02	3.00	1	GGB-FXD-240234-22Y-2.000-1.00	---	---	---	10.0000 22/06/2015	---	---	---	---	---
1,444,202,190	1.00	3.00	Actual/Actual	24/02/2035	23	---	24/02	3.00	1	GGB-FXD-240235-23Y-2.000-1.00	---	---	---	10.0000 22/06/2015	---	---	---	---	---
1,505,138,031	1.00	3.00	Actual/Actual	24/02/2036	24	---	24/02	3.00	1	GGB-FXD-240236-24Y-2.000-1.00	---	---	---	10.0000 22/06/2015	---	---	---	---	---
1,396,254,095	1.00	3.00	Actual/Actual	24/02/2037	25	---	24/02	3.00	1	GGB-FXD-240237-25Y-2.000-1.00	---	---	---	10.0000 22/06/2015	---	---	---	---	---
1,382,167,704	1.00	3.00	Actual/Actual	24/02/2038	26	---	24/02	3.00	1	GGB-FXD-240238-26Y-2.000-1.00	---	---	---	10.0000 22/06/2015	---	---	---	---	---
1,337,331,257	1.00	3.00	Actual/Actual	24/02/2039	27	---	24/02	3.00	1	GGB-FXD-240239-27Y-2.000-1.00	---	---	---	10.0000 22/06/2015	---	---	---	---	---
1,371,908,706	1.00	3.00	Actual/Actual	24/02/2040	28	---	24/02	3.00	1	GGB-FXD-240240-28Y-2.000-1.00	---	---	---	10.0000 22/06/2015	---	---	---	---	---
1,360,659,778	1.00	3.00	Actual/Actual	24/02/2041	29	---	24/02	3.00	1	GGB-FXD-240241-29Y-2.000-1.00	---	---	---	10.0000 22/06/2015	---	---	---	---	---
1,432,747,403	1.00	3.00	Actual/Actual	24/02/2042	30	---	24/02	3.00	1	GGB-FXD-240242-30Y-2.000-1.00	---	---	---	10.0000 22/06/2015	---	---	---	---	---
742,153	1,000.00	0.44	FLR Actual/360	10/08/2019	5	---	10/02 - 10/08	---	1	GGB-FLT-100819-05Y-0.934-1,000	---	---	---	---	---	---	---	---	---
4,030,827	1,000.00	4.75	Actual/Actual	17/04/2019	5	---	17/04	4.75	1	GGB-FXD-170419-05Y-4.750-1,000	---	---	---	---	---	---	---	---	---
2,089,066	1,000.00	3.38	Actual/Actual	17/07/2017	3	---	17/07	3.38	1	GGB-FXD-170717-03Y-3.375-1,000	---	---	---	---	---	---	---	---	---

Government Bonds Notes

Transactions Volume = (Pieces) * (Nominal Price). Transactions Value = (Pieces) * (Nominal Price) * (price %) + (Accrued interest).
The Value of current coupon for the issues with NV 0.01 euro refers to NV 100 euros
FLR: Floating Interest Rate.
[1] - The Expiration Date of the interest bearing period and the Date for coupon payment.

Bonds in Circulation	Currency / Min nominal traded Value	Coupons Payment Date	Current Coupon Value	Note	Coupon	Trading Unit	Issue Date	Duration (years)	Today's Interest	A.I.C in days	Bonds	Last price of previous days		Last Outcry in Cash (euro) Price Buy / Sell		Trades in Pieces	Life min	Life Max	
Corporate Bonds in Foreign Currency and Euro																			
103,746	GBP / 10	01/12	0.25	---	58	1	01/12/1930	98	2.5	360	National Mortgage Bank	2.27	05/02/1996	2.27	S	05/02/1996	---	2.27	2.27
0	GBP / 10	01/12	0.25	---	60	1	01/12/1928	100	2.5	360	National Mortgage Bank	---	---	---	---	---	---	---	---

Government Bonds Notes

A.I.C: Accrued Interest Calculation base.
FLR: Floating Interest Rate.
The minimum tradeable Nominal Value for all Demeterialised Government Titles is 100 Euros.
(μτφρ-0)

Athex & ATHEXClear Members List

Member Name			Stock Market			Derivatives Market		ATHEXClear Member	
Address	Phone	Fax	Market Member	Remote Member	Market Maker	Proprietary	Market Maker	General Clearing	Direct Clearing
A. SARRIS SECURITIES S.A.			a						
6, DRAGATSANIOU ATHINA	+30 2103367700	210-3312324							
ALPHA FINANCE INVESTMENT SERVICES S.A.			a		a	a	a		a
5, MERLIN ATHINA	+30 2103677400	210-33311193							
ALPHA BANK A.E.								a	
40, STADIOU STR ATHINA	(210)-3260000	(210)-3264116							
	(210)-3265546	(210)-3265811							
103, AVE. ATHINON ATHINA	+30 2103436820	210-3436270							
ARGUS STOCKBROKERS LTD			a	a		a			
25 , DIMOSTHENI SEVERI AVE NICOSIA	+357 22717000	0035722717070							
ATLANTIC SECURITIES LIMITED			a	a					
37, PRODROMOU NICOSIA	+357 22445400	00357 22661914							
ATLAS SECURITIES S.A			a			a			
, 125 MICHALAKOPOULOU & 14-16 VERVENON ATHINA	+30 2103363300	210-3238925							
ATTICA BANK S.A.								a	
54, AKADIMIAS STR. ATHINA	(210)-3390757	(210)-3646090							
23, OMIROU ATHINA	+30 2103669261	210-3669265							
23, OMIROU STR. ATHINA	(210)-3669000	(210)-3669410							
AXIA VENTURES GROUP LTD			a	a					
, KRANIDIOTI 10, OFFICE 102 NICOSIA	+357 22742000	357 22742001							
AXON SECURITIES S.A.			a			a			
48, STADIOU ATHINA	+30 2103363800	210-3243903							
BANK OF AMERICA MERRILL LYNCH			a	a					
2 , KING EDWARD STREET LONDON	+44 20276281000								
BETA SECURITIES S.A.			a		a	a			a
29 , ALEXANDRAS AVEN. & VRAILA ATHINA	+30 2106478900	210-6410139							
BNP PARIBAS SECURITIES SERVICES S.A.								a	
2, LAMPSAKOU ATHINA	+30 2107468500	210-7468579-581							
CAPITAL SECURITIES S.A.			a			a			
58, MITROPOLEOS ATHINA	+30 2103369700	+30 210 3369820							
CFS SECURITIES-INVESTMENT SERVICES S.A.			a						
3, PAPARRIGOPOULOU ATHINA	+30 2103360800	+30 210-3360980							
CITIGROUP GLOBAL MARKET LTD			a	a					
1, CITIGROUP CENTER , CANADA SQ., CANARY WHARF LONDON	+44 02079864000								
CREDIT SUISSE SECURITIES (EUROPE) LIMITED			a	a					
, ONE CABOT SQUARE LONDON	+44 2078888888								
CYCLOS SECURITIES S.A.			a			a			a
39, PANEPISTIMIOU ATHINA	+30 2103364300	+30 210-3239122							
D.A. TSEKOURAS SEC. S.A.			a						
33, STADIOU ATHINA	+30 2103245100	210-3211997							
DELTASTOCK AD									a
115, MEGAPARK OFFICE BUILDING, OFFICE AREA E, G TSARIGRADSKOJ 39	+35928115051	+35928115049							
DEUTSCHE BANK S.A.			a	a		a			
1 , GREAT WINCHESTER STREET LONDON	+44 20 754 54209	00441133361437							
DYNAMIC SECURITIES S.A.			a			a			a
8, OMIROU ATHINA	+30 2103677700	210-3677777							
EL. PETROPOULAKIS SECURITIES S.A.			a			a			
9, ARISTEIDOU ATHINA	+30 2103213928	+30 210-3216810							
ESTINVEST S.A.									a
9, TH REPUBLICII STREET FOCSANI	+40 237238900	+40 237237471							
EUROBANK ERGASIAS S.A.								a	
8, OTHONOS ATHINA	+30 2103337000	210-3245916							
8, OTHONOS STR. ATHINA	(210)-3337969	(210)-3245916							
	(210)-3337000	(210)-3233866							
EUROBANK SECURITIES INVESTMENT FIRM S.A			a		a	a	a		a
, FILELLINON 10 & XENOFONTOS 13 ATHINA	+30 2103720000	210-3720001							
EUROCORP SECURITIES S.A.			a			a			a
14, SQ.FILIKIS ETAIRIAS ATHINA	+30 2107263500	210-7263666							
EUOTRUST BROKERAGE S.A.			a						
113, SEVASTOUPOLEOS ATHINA	+30 2103363100	+30 210-3238334							
EUROXX SECURITIES S.A.			a		a	a	a		a
7, PALAIOLOGOU CHALANDRI	(210)-6879400	(210)-6879401							
7, PALEOLOGOU CHALANDRI	+30 2106879400	210-6879401							

Athex & ATHEXClear Members List

Member Name			Stock Market			Derivatives Market		ATHEXClear Member	
Address	Phone	Fax	Market Member	Remote Member	Market Maker	Proprietary	Market Maker	General Clearing	Direct Clearing
G. A. PERVANAS SECURITIES-INVESTMENT SERVICES CO S.A.			a						
7-9, SOFOKLEOUS ATHINA	+30 2103727200	210-3210-291							
GLOBAL CAPITAL SECURITIES AND FINANCIAL SERVICES LTD			a	a					
, AVE. ARCHIEPISKOPOU MAKARIOU NICOSIA	+357 22710710	357 22339332							
GUARDIAN TRUST SECURITIES S.A			a			a			
31, ERMOU ATHINA	+30 2103378700	210-3220498							
HELLENIC BANK (INVESTMENTS) LTD			a	a					
, AVE.KYRIAKOU MATSI 31 - PO BOX 24747 NICOSIA	+357 22500100	357 22500110							
HELLENICAMERICAN SEC. S.A.			a		a	a			a
27, ANDREA PAPANDREOU ATHINA	+30 2103311100	+30 210-3215968							
HSBC BANK PLC								a	
109-111, AVE. MESOGION ATHINA	+30 2106960000	210-6928000							
INDEX SECURITIES S.A.			a						
6, DRAGATSANIOU ATHINA	+30 2103213920	+30 210-3213216							
INTERFINBROK CORPORATION S.A.									a
1, STR.CALARASI NR. CONSTANTA	+40 241639071	0241-547829							
INVESTMENT BANK OF GREECE S.A.			a		a	a		a	
32 , EGIALIAS & PARADISOU MAROUSI	+30 2108173111	+30 210-6896325							
J. CHR. MAVRIKIS SECURITIES S.A.			a						
5, SOFOKLEOUS ATHINA	+30 2103216730	210-3217767							
KAPPA SECURITIES S.A.			a			a			
15, VALAORITOU ATHINA	+30 2103678600	+30 210-3641002							
KARAMANOF SECURITIES-INV. SERVICES S.A.			a			a			
2, SQ. AGION THEODORON ATHINA	+30 2103212947	+30 210-3217088							
LAIKI FINANCIAL SERVICES LTD				a					
26, AVE. VYRONOS NICOSIA	357 22367367	357 22718567							
LEON DEPOLAS SECURITIES S.A.			a		a	a			
1, CHRISTOU LADA ATHINA	+30 2103213276	+30 210-3211618							
MAGNA TRUST SECURITIES S.A			a						
12-14, KARAGIORGI SERBIAS ATHINA	+30 2103800820	210-3220910							
MEGA EQUITY SECURITIES-FINANCIAL SERVICES LTD			a	a		a			
42-44, AVE. GRIVA DIGENI NICOSIA	+357 22711711	357 22711811							
MERIT SECURITIES S.A			a		a	a			a
3, GEORGIOU SOURI ATHINA	+30 2103671890	210-3671830							
MIDAS BROKERAGE S.A.			a		a				
5, SOFOKLEOUS ATHINA	+30 2141008800	+30 210-3253205							
N. CHRYSISOCHOIDIS STOCK BROKERAGE I.S.S.A.			a			a			a
7-9, SOFOKLEOUS ATHINA	+30 2103213913	+30 210-3216115							
NATIONAL BANK OF GREECE S.A.			a			a		a	
86, AIOLOU STR. ATHINA	(210)-3341000	(210)-3228187							
68, AKADIMIAS STR. ATHINA	(210)-3328817	(210)-3328678							
NATIONAL SECURITIES S.A			a		a	a	a		
66, KIFISIAS AVE , BUILDING A ATHINA	+30 2107720000	+30 210-7720002							
NUNTIUS SECURITIES S.A			a						
6, DRAGATSANIOU ATHINA	+30 2103350599	+30210-3254846							
ONE PLUS CAPITAL LIMITED			a	a					
, 75 PRODRAMOU AVENUE, ONEWORLD PARKVIEW HOUSE, 3RD FLOOR, 22873760	+30 2103350599								
PANTELAKIS SECURITIES S.A.			a			a			
57, ETHNIKIS ANTISTASIS B CHALANDRI	+30 2106965000	210-6929550							
PEGASUS BROKERAGE FIRM S.A			a			a			
17 , VALAORITOU & AMERIKIS ATHINA	+30 2103670700	+30 210-3670760							
PIRAEUS BANK S.A.			a			a		a	
4, AMERIKIS STR. ATHINA	(210)-3335000	(210)-3335079							
4, AMERIKIS STR ATHINA	(210)-3335918	(210)-3254207							
4, AMERIKIS ATHINA	+30 2103335000	210-3335079							
PIRAEUS SECURITIES S.A.			a		a	a	a		a
5, KORAI ATHINA	+30 2103354100	210-3354170							
PRELIUM SECURITIES-INVESTMENT SERVICES S.A.			a			a			
1 , DAVAKI & KIFISIAS AVE. ATHINA	+30 2103677000	+30 210-6926403							
PROCHOICE SECURITIES LTD			a	a					
57, SPYROY KYPRIANOY NICOSIA	+357-24-661192	+357-24-662464							
SHARELINK SECURITIES-FINANCIAL SERVICES LTD			a	a		a			
6 , THEOTOKI MEGARO ELLINA NICOSIA	+357 22554200	+357 22750852							

Athex & ATHEXClear Members List

Member Name			Stock Market			Derivatives Market		ATHEXClear Member	
Address	Phone	Fax	Market Member	Remote Member	Market Maker	Proprietary	Market Maker	General Clearing	Direct Clearing
SOCIETE GENERALE S.A.			a	a		a			
, 17 COURS VALMY 92987 PUTEAUX - LA DEFENSE PARIS	+33 157290504	+33142138697							
SOLIDUS SECURITIES S.A			a			a			a
64, LOUIZIS RIANCOUR ATHINA	+30 2106900600	210-6985421							
SSIF VIENNA INVESTMENT TRUST S.A.									a
, 4 SPLAIUL UNIRII, BUILDING B3 BUCHAREST	+40 212074880	004 021 207 48 98							
ST. EM. LAVRENTAKIS SECURITIES S.A.			a			a			
7-9, SOFOKLEOUS ATHINA	+30 2103213336	+30 210-3246572							
THE CYPRUS INVESTMENT & SECURITIES CORPORATION LTD			a	a					
154, LIMASSOL AVENUE, STROVOLOS NICOSIA	+357 22121700	357 22338800							
UBS LIMITED			a	a					
1 , FINSBURY AVENUE LONDON	+44 2075687135								

List of Stocks under Market Making operations

Securities	Stock Category
Market Maker	Start Market Making
FRIGOGLASS SA (CR)	Surveillance
EUROBANK SECURITIES INVESTMENT FIRM S.A	27/10/2014
ALPHA BANK (CR)	Main Market
ALPHA FINANCE INVESTMENT SERVICES S.A.	29/02/2016
EUROBANK SECURITIES INVESTMENT FIRM S.A	24/10/2012
LEON DEPOLAS SECURITIES S.A.	04/01/2016
MERIT SECURITIES S.A	03/09/2013
MIDAS BROKERAGE S.A.	11/01/2006
NATIONAL SECURITIES S.A	15/01/2013
PIRAEUS SECURITIES S.A.	28/05/2013
ALUMIL (CR)	Main Market
BETA SECURITIES S.A.	18/07/2013
ATTICA BANK S.A. (CR)	Main Market
BETA SECURITIES S.A.	02/06/2014
EUROBANK SECURITIES INVESTMENT FIRM S.A	25/07/2014
EUROXX SECURITIES S.A.	22/01/2016
BANK OF CYPRUS (CR)	Main Market
EUROBANK SECURITIES INVESTMENT FIRM S.A	23/03/2015
NATIONAL SECURITIES S.A	22/06/2015
BYTE COMPUTER SA (CR)	Main Market
MERIT SECURITIES S.A	04/08/2013
CC HBC AG (CR)	Main Market
EUROBANK SECURITIES INVESTMENT FIRM S.A	23/10/2013
NATIONAL SECURITIES S.A	29/04/2013
PIRAEUS SECURITIES S.A.	04/05/2015
ELLAKTOR (CR)	Main Market
EUROBANK SECURITIES INVESTMENT FIRM S.A	01/06/2013
NATIONAL SECURITIES S.A	25/06/2013
ELTON SA (CR)	Main Market
BETA SECURITIES S.A.	03/09/2013
EUROBANK ERGASIAS (CR)	Main Market
ALPHA FINANCE INVESTMENT SERVICES S.A.	08/01/2013
EUROBANK SECURITIES INVESTMENT FIRM S.A	01/06/2013
HELLENICAMERICAN SEC. S.A.	25/07/2014
MIDAS BROKERAGE S.A.	07/01/2016
PIRAEUS SECURITIES S.A.	28/09/2013
EUROCONSULTANTS S.A. (CR)	Main Market
EUROBANK SECURITIES INVESTMENT FIRM S.A	22/07/2014
FOLLI FOLLIE (CR)	Main Market
NATIONAL SECURITIES S.A	17/02/2014
PIRAEUS SECURITIES S.A.	04/05/2015
FOURLIS (CR)	Main Market
HELLENICAMERICAN SEC. S.A.	14/09/2005
GEK TERNA (CR)	Main Market
HELLENICAMERICAN SEC. S.A.	07/09/2015
GR. SARANTIS SA (CR)	Main Market
BETA SECURITIES S.A.	14/05/2013
HELLENIC EXCHANGES-A.S.E. (CR)	Main Market
EUROBANK SECURITIES INVESTMENT FIRM S.A	01/06/2013
HELLENICAMERICAN SEC. S.A.	01/09/2014
NATIONAL SECURITIES S.A	25/06/2013
PIRAEUS SECURITIES S.A.	04/05/2015
HELLENIC PETROLEUM (CR)	Main Market
HELLENICAMERICAN SEC. S.A.	14/09/2015
HYGEIA SA (CR)	Main Market
HELLENICAMERICAN SEC. S.A.	18/04/2016
INTRACOM HOLDINGS (CR)	Main Market
HELLENICAMERICAN SEC. S.A.	07/09/2015
INTRALOT (CR)	Main Market
EUROBANK SECURITIES INVESTMENT FIRM S.A	01/06/2013
PIRAEUS SECURITIES S.A.	28/09/2013
J & P - AVAX SA (CR)	Main Market
EUROBANK SECURITIES INVESTMENT FIRM S.A	14/12/2015
JUMBO SA (CR)	Main Market
MIDAS BROKERAGE S.A.	27/07/2016
KLOUKINAS - LAPPAS SA (CR)	Main Market
BETA SECURITIES S.A.	22/09/2014
LAMDA DEVELOPMENT SA (CR)	Main Market
EUROBANK SECURITIES INVESTMENT FIRM S.A	08/12/2014

List of Stocks under Market Making operations

Securities	Stock Category
Market Maker	Start Market Making
MARFIN INVESTMENT GROUP (CR)	Main Market
EUROBANK SECURITIES INVESTMENT FIRM S.A	23/03/2015
HELLENICAMERICAN SEC. S.A.	25/07/2014
PIRAEUS SECURITIES S.A.	02/02/2013
MLS MULTIMEDIA SA (CR)	Main Market
HELLENICAMERICAN SEC. S.A.	07/12/2015
MOTOR OIL (CR)	Main Market
EUROBANK SECURITIES INVESTMENT FIRM S.A	23/10/2012
HELLENICAMERICAN SEC. S.A.	01/09/2014
NATIONAL SECURITIES S.A	17/02/2014
PIRAEUS SECURITIES S.A.	04/05/2015
MYTILINEOS HOLDINGS (CR)	Main Market
NATIONAL SECURITIES S.A	25/06/2013
PIRAEUS SECURITIES S.A.	04/05/2015
NATIONAL BANK (CR)	Main Market
ALPHA FINANCE INVESTMENT SERVICES S.A.	08/01/2013
EUROBANK SECURITIES INVESTMENT FIRM S.A	24/10/2012
HELLENICAMERICAN SEC. S.A.	25/07/2014
LEON DEPOLAS SECURITIES S.A.	20/04/2015
MERIT SECURITIES S.A	03/09/2013
MIDAS BROKERAGE S.A.	07/01/2016
NATIONAL SECURITIES S.A	28/02/2013
PIRAEUS SECURITIES S.A.	08/09/2013
OPAP (CR)	Main Market
ALPHA FINANCE INVESTMENT SERVICES S.A.	08/01/2013
EUROBANK SECURITIES INVESTMENT FIRM S.A	24/10/2012
HELLENICAMERICAN SEC. S.A.	25/07/2014
MIDAS BROKERAGE S.A.	04/04/2016
NATIONAL SECURITIES S.A	15/01/2013
PIRAEUS SECURITIES S.A.	04/05/2015
OTE (CR)	Main Market
ALPHA FINANCE INVESTMENT SERVICES S.A.	08/01/2013
EUROBANK SECURITIES INVESTMENT FIRM S.A	24/10/2012
HELLENICAMERICAN SEC. S.A.	25/07/2014
MIDAS BROKERAGE S.A.	01/10/2015
NATIONAL SECURITIES S.A	01/12/2012
PIRAEUS SECURITIES S.A.	08/09/2013
PAPOUTSANIS (CR)	Main Market
BETA SECURITIES S.A.	25/11/2013
PETROPOULOS PETROS (CR)	Main Market
BETA SECURITIES S.A.	28/05/2013
PIRAEUS BANK (CR)	Main Market
EUROBANK SECURITIES INVESTMENT FIRM S.A	23/10/2012
EUROXX SECURITIES S.A.	15/02/2016
HELLENICAMERICAN SEC. S.A.	25/07/2014
MERIT SECURITIES S.A	16/09/2013
MIDAS BROKERAGE S.A.	11/01/2016
NATIONAL SECURITIES S.A	02/06/2013
PIRAEUS SECURITIES S.A.	16/02/2013
PLAISIO COMPUTERS SA (CR)	Main Market
BETA SECURITIES S.A.	05/05/2014
EUROBANK SECURITIES INVESTMENT FIRM S.A	02/03/2015
PPC (CR)	Main Market
ALPHA FINANCE INVESTMENT SERVICES S.A.	08/01/2013
EUROBANK SECURITIES INVESTMENT FIRM S.A	23/10/2012
MIDAS BROKERAGE S.A.	04/04/2016
NATIONAL SECURITIES S.A	26/03/2013
PIRAEUS SECURITIES S.A.	28/09/2013
QUALITY & RELIABILITY SA (CR)	Main Market
BETA SECURITIES S.A.	20/08/2014
S.KANAKIS SA (CR)	Main Market
BETA SECURITIES S.A.	01/10/2013
TITAN CEMENT (CR)	Main Market
EUROBANK SECURITIES INVESTMENT FIRM S.A	23/10/2012
NATIONAL SECURITIES S.A	17/02/2014
PIRAEUS SECURITIES S.A.	04/05/2015
VIOHALCO SA/NV (CB)	Main Market
ALPHA FINANCE INVESTMENT SERVICES S.A.	17/02/2014
MERIT SECURITIES S.A	17/03/2014

Underlying Asset				Derivatives Market													
Price max	Price min	Closing price	change	Delivery Month	Open price	Price max	Price min	Last price	Closing price	Last Bid	Last Ask	Settlement price	Life high	Life low	Trades	Volume	Open Interest
FTSE/Athex Large Cap																	(Trade Unit: 1 Index Point x 2€, Cash Settlement)
1,736.04	1,666.56	1,673.38	-3.61%	December 2016	1,727.00	1,727.00	1,663.00	1,672.50	1,672.50	---	---	1,672.00	1,760.00	---	333	4,161	2,034
				January 2017	1,729.00	1,729.00	1,663.25	1,670.25	1,670.25	---	---	1,674.00	1,761.00	---	495	4,289	6,095
				February 2017	1,742.75	---	---	---	1,742.50	---	---	---	---	---	---	---	---
				March 2017	---	---	---	---	1,745.00	---	---	---	---	---	---	---	---
				June 2017	---	---	---	---	1,754.00	---	---	---	---	---	---	---	---
				September 2017	---	---	---	---	1,762.75	---	---	---	---	---	---	---	---

Underlying Asset				Derivatives Market													
Price max	Price min	Closing price	change	Delivery Month	Open price	Price max	Price min	Last price	Closing price	Last Bid	Last Ask	Settlement price	Life high	Life low	Trades	Volume	Open Interest
ALPHA BANK (CR)				(Contract Size: 100 Securities, Physical Delivery)													
1.92	1.78	1.80	-6.25%	December 2016	1.91	1.91	1.78	1.80	1.80	---	---	1.80	2.00	---	352	6,322	6,434
				March 2017	1.92	1.92	1.79	1.81	1.81	---	---	1.82	---	2.01	293	3,945	15,255
				June 2017	---	---	---	---	1.94	---	---	---	---	---	---	---	---
				September 2017	---	---	---	---	1.95	---	---	---	---	---	---	---	---
CC HBC AG (CR)				(Contract Size: 100 Securities, Physical Delivery)													
19.43	19.20	19.20	-1.39%	December 2016	19.47	19.47	19.47	19.47	19.47	---	---	19.16	21.05	---	1	1	140
				March 2017	19.52	19.52	19.20	19.20	19.20	---	---	19.21	---	19.97	2	2	14
				June 2017	---	---	---	---	19.67	---	---	---	---	---	---	---	---
				September 2017	---	---	---	---	19.77	---	---	---	---	---	---	---	---
ELLAKTOR (CR)				(Contract Size: 100 Securities, Physical Delivery)													
1.16	1.10	1.10	-5.17%	December 2016	1.15	1.15	1.10	1.11	1.11	---	---	1.11	1.36	---	24	595	2,727
				March 2017	1.16	1.16	1.12	1.12	1.12	---	---	1.12	---	1.18	25	617	1,361
				June 2017	---	---	---	---	1.17	---	---	---	---	---	---	---	---
				September 2017	---	---	---	---	1.18	---	---	---	---	---	---	---	---
EUROBANK ERGASIAS (CR)				(Contract Size: 100 Securities, Physical Delivery)													
0.709	0.638	0.662	-7.67%	December 2016	0.709	0.709	0.631	0.651	0.651	---	---	0.659	0.765	---	679	17,301	26,042
				March 2017	0.711	0.711	0.634	0.660	0.660	---	---	0.660	---	0.764	410	10,608	30,069
				June 2017	---	---	---	---	0.724	---	---	---	---	---	---	---	---
				September 2017	---	---	---	---	0.728	---	---	---	---	---	---	---	---
EYDAP S.A. (CR)				(Contract Size: 100 Securities, Physical Delivery)													
5.63	5.45	5.56	-0.71%	December 2016	5.58	5.58	5.58	5.58	5.58	---	---	5.32	5.68	---	5	20	114
				March 2017	5.33	5.33	5.26	5.26	5.26	---	---	5.05	---	5.57	2	14	70
				June 2017	---	---	---	---	5.66	---	---	---	---	---	---	---	---
				September 2017	---	---	---	---	5.69	---	---	---	---	---	---	---	---
FOLLI FOLLIE (CR)				(Contract Size: 100 Securities, Physical Delivery)													
18.79	18.40	18.55	-0.80%	December 2016	18.70	18.71	18.36	18.52	18.52	---	---	18.38	22.31	---	38	146	252
				March 2017	19.05	19.05	18.45	18.45	18.45	---	---	18.48	---	22.10	26	124	285
				June 2017	---	---	---	---	18.89	---	---	---	---	---	---	---	---
				September 2017	---	---	---	---	18.99	---	---	---	---	---	---	---	---
GEK TERNA (CR)				(Contract Size: 100 Securities, Physical Delivery)													
2.19	2.12	2.18	-0.91%	December 2016	2.20	2.20	2.13	2.14	2.14	---	---	2.14	2.32	---	13	316	3,536
				March 2017	2.21	2.22	2.13	2.16	2.16	---	---	2.19	---	2.26	17	334	7,122
				June 2017	---	---	---	---	2.22	---	---	---	---	---	---	---	---
				September 2017	---	---	---	---	2.23	---	---	---	---	---	---	---	---
GRIVALIA PROPERTIES (CR)				(Contract Size: 100 Securities, Physical Delivery)													
7.73	7.43	7.58	-2.07%	December 2016	7.65	7.65	7.51	7.51	7.51	---	---	7.53	7.74	---	3	14	45
				March 2017	7.66	7.66	7.52	7.52	7.52	---	---	7.54	---	7.75	4	19	23
				June 2017	---	---	---	---	7.82	---	---	---	---	---	---	---	---
				September 2017	---	---	---	---	7.86	---	---	---	---	---	---	---	---

Underlying Asset				Derivatives Market														
Price max	Price min	Closing price	change	Delivery Month	Open price	Price max	Price min	Last price	Closing price	Last Bid	Last Ask	Settlement price	Life high	Life low	Trades	Volume	Open Interest	
HELLENIC EXCHANGES-A.S.E. (CR)																		(Contract Size: 100 Securities, Physical Delivery)
4.82	4.61	4.61	-4.36%	December 2016	4.82	4.82	4.60	4.60	4.60	---	---	4.65	5.03	---	17	51	351	
				March 2017	4.83	4.83	4.69	4.69	4.69	---	---	4.67	---	4.94	---	11	33	88
				June 2017	---	---	---	---	4.87	---	---	---	---	---	---	---	---	
				September 2017	---	---	---	---	4.89	---	---	---	---	---	---	---	---	
HELLENIC PETROLEUM (CR)																		(Contract Size: 100 Securities, Physical Delivery)
4.28	4.14	4.14	-3.27%	December 2016	4.21	4.25	4.10	4.13	4.13	---	---	4.12	4.68	---	61	718	1,909	
				March 2017	4.24	4.28	4.14	4.14	4.14	---	---	4.15	---	4.40	---	72	706	2,951
				June 2017	---	---	---	---	4.32	---	---	---	---	---	---	---	---	
				September 2017	---	---	---	---	4.35	---	---	---	---	---	---	---	---	
INTRALOT (CR)																		(Contract Size: 100 Securities, Physical Delivery)
1.06	1.02	1.03	-2.83%	December 2016	1.06	1.06	1.00	1.00	1.00	---	---	1.06	1.39	---	16	200	336	
				March 2017	1.07	1.08	1.03	1.03	1.03	---	---	1.07	---	1.11	---	17	184	785
				June 2017	---	---	---	---	1.07	---	---	---	---	---	---	---	---	
				September 2017	---	---	---	---	1.08	---	---	---	---	---	---	---	---	
JUMBO SA (CR)																		(Contract Size: 100 Securities, Physical Delivery)
14.93	14.59	14.89	0.61%	December 2016	14.80	14.84	14.66	14.66	14.66	---	---	14.74	14.84	---	25	117	314	
				March 2017	14.57	14.80	14.50	14.69	14.69	---	---	14.59	---	14.80	---	45	160	324
				June 2017	---	---	---	---	14.95	---	---	---	---	---	---	---	---	
				September 2017	---	---	---	---	15.03	---	---	---	---	---	---	---	---	
MARFIN INVESTMENT GROUP (CR)																		(Contract Size: 100 Securities, Physical Delivery)
0.143	0.136	0.136	-4.22%	December 2016	0.142	0.142	0.136	0.137	0.137	---	---	0.137	0.148	---	190	9,041	30,635	
				March 2017	0.143	0.143	0.137	0.137	0.137	---	---	0.137	---	0.149	---	203	8,076	40,914
				June 2017	---	---	---	---	0.143	---	---	---	---	---	---	---	---	
				September 2017	---	---	---	---	0.144	---	---	---	---	---	---	---	---	
METKA (CR)																		(Contract Size: 100 Securities, Physical Delivery)
7.38	6.98	7.05	-3.42%	December 2016	7.24	7.27	7.05	7.05	7.05	---	---	7.03	7.80	---	25	97	188	
				March 2017	7.30	7.30	7.12	7.12	7.12	---	---	7.01	---	7.65	---	18	85	230
				June 2017	---	---	---	---	7.38	---	---	---	---	---	---	---	---	
				September 2017	---	---	---	---	7.41	---	---	---	---	---	---	---	---	
MOTOR OIL (CR)																		(Contract Size: 100 Securities, Physical Delivery)
12.60	12.29	12.60	1.45%	December 2016	12.40	12.50	12.33	12.38	12.38	---	---	12.32	12.50	---	10	33	340	
				March 2017	12.47	12.50	10.58	10.58	10.58	---	---	12.31	---	12.50	---	6	10	22
				June 2017	---	---	---	---	12.55	---	---	---	---	---	---	---	---	
				September 2017	---	---	---	---	12.61	---	---	---	---	---	---	---	---	
MYTILINEOS HOLDINGS (CR)																		(Contract Size: 100 Securities, Physical Delivery)
6.28	6.10	6.14	-0.65%	December 2016	6.15	6.26	6.10	6.13	6.13	---	---	6.18	6.32	---	125	1,191	3,595	
				March 2017	6.21	6.30	6.13	6.20	6.20	---	---	6.20	---	6.30	---	207	1,325	2,392
				June 2017	---	---	---	---	6.24	---	---	---	---	---	---	---	---	
				September 2017	---	---	---	---	6.27	---	---	---	---	---	---	---	---	

Underlying Asset				Derivatives Market														
Price max	Price min	Closing price	change	Delivery Month	Open price	Price max	Price min	Last price	Closing price	Last Bid	Last Ask	Settlement price	Life high	Life low	Trades	Volume	Open Interest	
NATIONAL BANK (CR)				(Contract Size: 100 Securities, Physical Delivery)														
0.243	0.222	0.225	-7.79%	December 2016	0.242	0.243	0.221	0.224	0.224	---	---	0.225	0.268	---	458	50,072	48,032	
				March 2017	0.243	0.243	0.222	0.225	0.225	---	---	0.226	---	0.258	---	457	32,076	63,696
				June 2017	---	---	---	---	0.247	---	---	---	---	---	---	---	---	
				September 2017	---	---	---	---	0.248	---	---	---	---	---	---	---	---	
OPAP (CR)				(Contract Size: 100 Securities, Physical Delivery)														
8.39	8.11	8.13	-3.10%	December 2016	8.29	8.29	8.09	8.13	8.13	---	---	8.10	8.96	---	61	285	1,222	
				March 2017	8.39	8.39	8.12	8.14	8.14	---	---	8.14	---	8.81	---	161	778	1,436
				June 2017	---	---	---	---	8.48	---	---	---	---	---	---	---	---	
				September 2017	---	---	---	---	8.52	---	---	---	---	---	---	---	---	
OTE (CR)				(Contract Size: 100 Securities, Physical Delivery)														
9.05	8.62	8.68	-4.09%	December 2016	9.00	9.00	8.67	8.68	8.68	---	---	8.71	9.19	---	143	1,901	3,437	
				March 2017	9.06	9.06	8.66	8.68	8.68	---	---	8.70	---	9.69	---	139	1,688	2,751
				June 2017	---	---	---	---	9.14	---	---	---	---	---	---	---	---	
				September 2017	---	---	---	---	9.19	---	---	---	---	---	---	---	---	
P.P.A. S.A. (CR)				(Contract Size: 100 Securities, Physical Delivery)														
13.06	12.61	12.64	-2.77%	December 2016	12.89	12.89	12.63	12.63	12.63	---	---	12.65	13.60	---	7	18	192	
				March 2017	12.94	12.95	12.69	12.69	12.69	---	---	12.77	---	13.65	---	7	10	519
				June 2017	---	---	---	---	13.13	---	---	---	---	---	---	---	---	
				September 2017	---	---	---	---	13.20	---	---	---	---	---	---	---	---	
PIRAEUS BANK (CR)				(Contract Size: 100 Securities, Physical Delivery)														
0.231	0.210	0.210	-9.87%	December 2016	0.230	0.231	0.208	0.209	0.209	---	---	0.211	0.250	---	396	32,056	42,676	
				March 2017	0.233	0.233	0.209	0.209	0.209	---	---	0.211	---	0.242	---	417	26,318	41,997
				June 2017	---	---	---	---	0.235	---	---	---	---	---	---	---	---	
				September 2017	---	---	---	---	0.237	---	---	---	---	---	---	---	---	
PPC (CR)				(Contract Size: 100 Securities, Physical Delivery)														
2.97	2.81	2.82	-4.73%	December 2016	2.95	2.96	2.80	2.81	2.81	---	---	2.83	3.30	---	107	1,250	5,722	
				March 2017	2.96	2.98	2.82	2.84	2.84	---	---	2.83	---	3.26	---	162	1,417	4,455
				June 2017	---	---	---	---	2.99	---	---	---	---	---	---	---	---	
				September 2017	---	---	---	---	3.01	---	---	---	---	---	---	---	---	
TERNA ENERGY (CR)				(Contract Size: 100 Securities, Physical Delivery)														
2.78	2.64	2.66	-4.32%	December 2016	2.73	2.73	2.73	2.73	2.73	---	---	2.63	2.89	---	1	1	317	
				March 2017	2.68	2.68	2.68	2.68	2.68	---	---	2.66	---	2.85	---	1	1	941
				June 2017	---	---	---	---	2.81	---	---	---	---	---	---	---	---	
				September 2017	---	---	---	---	2.82	---	---	---	---	---	---	---	---	
TITAN CEMENT (CR)				(Contract Size: 100 Securities, Physical Delivery)														
21.44	21.02	21.29	-0.05%	December 2016	21.19	21.33	21.05	21.20	21.20	---	---	20.79	21.80	---	21	44	75	
				March 2017	21.29	21.30	21.00	21.00	21.00	---	---	20.77	---	21.49	---	15	38	58
				June 2017	---	---	---	---	21.52	---	---	---	---	---	---	---	---	
				September 2017	---	---	---	---	21.63	---	---	---	---	---	---	---	---	

Underlying Asset				Derivatives Market														
Price max	Price min	Closing price	change	Delivery Month	Open price	Price max	Price min	Last price	Closing price	Last Bid	Last Ask	Settlement price	Life high	Life low	Trades	Volume	Open Interest	
VIOHALCO SA/NV (CB)				(Contract Size: 100 Securities, Physical Delivery)														
1.32	1.26	1.28	-3.76%	December 2016	1.33	1.33	1.27	1.27	1.27	---	---	1.26	1.47	---	23	466	1,302	
				March 2017	1.34	1.34	1.26	1.26	1.26	---	---	1.27	---	1.38	---	19	416	1,896
				June 2017	---	---	---	---	1.34	---	---	---	---	---	---	---	---	
				September 2017	---	---	---	---	1.35	---	---	---	---	---	---	---	---	

FTSE/Athex Large Cap

(Trade Unit: 1 Index Point x 2€ - Excercise Style: European, Cash Settlement)

Call Options																	Put Options																	
Exerise Price	December 2016							January 2017							Other Months		December 2016								January 2017							Other Months		Exerise Price
	Open price	Price max	Price min	Last price	Closing price	Volume	Open Interest	Open price	Price max	Price min	Last price	Closing price	Volume	Open Interest	Volume	Open Interest	Open price	Price max	Price min	Last price	Closing price	Volume	Open Interest	Open price	Price max	Price min	Last price	Closing price	Volume	Open Interest	Volume	Open Interest		
900	0.00	0.00	0.00	-	826.00	-	-	-	-	-	-	-	-	-	-	-	0.00	0.00	0.00	-	0.03	-	-	-	-	-	-	-	-	-	-	-	900	
950	0.00	0.00	0.00	-	776.00	-	-	-	-	-	-	-	-	-	-	-	0.00	0.00	0.00	-	0.01	-	-	-	-	-	-	-	-	-	-	-	950	
1,000	0.00	0.00	0.00	-	726.00	-	-	-	-	-	-	-	-	-	-	-	0.00	0.00	0.00	-	0.01	-	-	-	-	-	-	-	-	-	-	-	1,000	
1,050	0.00	0.00	0.00	-	676.00	-	-	-	-	-	-	-	-	-	-	-	0.00	0.00	0.00	-	0.05	-	-	-	-	-	-	-	-	-	-	-	1,050	
1,100	0.00	0.00	0.00	-	626.00	-	-	-	-	-	-	-	-	-	-	-	0.00	0.00	0.00	-	0.01	-	-	-	-	-	-	-	-	-	-	-	1,100	
1,150	0.00	0.00	0.00	-	576.00	-	-	-	-	-	-	-	-	-	-	-	0.00	0.00	0.00	-	0.01	-	-	-	-	-	-	-	-	-	-	-	1,150	
1,200	0.00	0.00	0.00	-	526.00	-	-	-	-	-	-	-	-	-	-	-	0.00	0.00	0.00	-	0.01	-	-	-	-	-	-	-	-	-	-	-	1,200	
1,250	0.00	0.00	0.00	-	476.00	-	-	-	-	-	-	-	-	-	-	-	0.00	0.00	0.00	-	0.01	-	-	-	-	-	-	-	-	-	-	-	1,250	
1,275	0.00	0.00	0.00	-	451.00	-	-	-	-	-	-	-	-	-	-	-	0.00	0.00	0.00	-	0.01	-	-	-	-	-	-	-	-	-	-	-	1,275	
1,300	0.00	0.00	0.00	-	426.00	-	-	-	-	-	-	-	-	-	-	-	0.00	0.00	0.00	-	0.03	-	-	-	-	-	-	-	-	-	-	-	1,300	
1,325	0.00	0.00	0.00	-	401.00	-	-	-	-	-	-	-	-	-	-	-	0.00	0.00	0.00	-	0.09	-	-	-	-	-	-	-	-	-	-	-	1,325	
1,350	0.00	0.00	0.00	-	376.00	-	-	-	-	-	-	-	-	-	-	-	0.00	0.00	0.00	-	0.01	-	-	-	-	-	-	-	-	-	-	-	1,350	
1,375	0.00	0.00	0.00	-	351.00	-	-	0.00	0.00	0.00	-	352.00	-	-	-	-	0.00	0.00	0.00	-	0.03	-	-	0.00	0.00	0.00	-	0.01	-	-	-	-	1,375	
1,400	0.00	0.00	0.00	-	326.00	-	9	0.00	0.00	0.00	-	327.00	-	-	-	-	0.00	0.00	0.00	-	0.01	-	-	0.00	0.00	0.00	-	0.01	-	-	-	-	1,400	
1,425	0.00	0.00	0.00	-	301.00	-	6	0.00	0.00	0.00	-	302.00	-	-	-	-	0.00	0.00	0.00	-	0.02	-	-	0.00	0.00	0.00	-	0.03	-	-	-	-	1,425	
1,450	0.00	0.00	0.00	-	276.00	-	-	0.00	0.00	0.00	-	277.00	-	7	-	-	0.00	0.00	0.00	-	0.01	-	4	0.00	0.00	0.00	-	0.09	-	-	-	-	1,450	
1,475	0.00	0.00	0.00	-	251.00	-	3	0.00	0.00	0.00	-	252.00	-	4	-	-	0.00	0.00	0.00	-	0.07	-	-	0.00	0.00	0.00	-	0.21	-	-	-	-	1,475	
1,500	0.00	0.00	0.00	-	226.00	-	24	0.00	0.00	0.00	-	228.00	-	-	-	-	0.00	0.00	0.00	-	0.01	-	202	0.00	0.00	0.00	-	0.47	-	-	-	-	1,500	
1,525	0.00	0.00	0.00	-	201.00	-	20	0.00	0.00	0.00	-	203.00	-	-	-	-	0.00	0.00	0.00	-	0.01	-	142	0.00	0.00	0.00	-	0.97	-	-	-	-	1,525	
1,550	126.00	126.00	126.00	126.00	126.00	5	30	0.00	0.00	0.00	-	179.00	-	14	-	-	126.00	126.00	0.00	-	0.01	-	67	0.00	0.00	0.00	-	1.90	-	-	-	-	1,550	
1,575	0.00	0.00	0.00	-	151.00	-	24	0.00	0.00	0.00	-	156.00	-	-	-	-	0.00	0.00	0.00	-	0.01	-	102	0.00	0.00	0.00	-	3.40	-	-	-	-	1,575	
1,600	78.00	78.00	78.00	78.00	78.00	8	279	0.00	0.00	0.00	-	133.00	-	40	-	-	78.00	78.00	0.00	-	0.01	-	165	0.00	0.00	0.00	-	5.80	-	-	-	-	1,600	
1,625	0.00	0.00	0.00	-	101.00	-	126	0.00	0.00	0.00	-	112.00	-	2	-	-	0.00	0.00	0.00	-	0.01	-	124	0.00	0.00	0.00	-	9.50	-	90	-	-	1,625	
1,650	69.00	69.00	40.00	40.00	40.00	11	182	0.00	0.00	0.00	-	92.50	-	7	-	-	69.00	69.00	3.50	3.50	3.50	10	114	28.00	30.00	28.00	30.00	30.00	3	41	-	-	1,650	
1,675	0.00	0.00	0.00	-	52.00	-	56	51.50	51.50	40.00	40.00	40.00	3	2	-	-	0.00	0.00	5.00	12.00	12.00	2	8	27.00	30.00	27.00	30.00	30.00	16	32	-	-	1,675	
1,700	14.00	14.00	6.00	6.00	6.00	8	153	34.00	34.00	34.00	34.00	34.00	1	77	-	-	14.00	14.00	8.00	30.00	30.00	31	47	40.00	40.00	40.00	40.00	40.00	13	22	-	-	1,700	
1,725	3.00	3.00	3.00	3.00	3.00	2	197	23.00	23.00	23.00	23.00	23.00	2	12	-	-	3.00	3.00	20.00	20.00	20.00	10	7	55.00	55.00	55.00	55.00	55.00	2	24	-	-	1,725	
1,750	0.00	0.00	0.00	-	3.10	-	156	18.00	18.00	16.00	16.00	16.00	14	175	-	-	0.00	0.00	0.00	-	26.50	-	10	65.00	65.00	65.00	65.00	65.00	1	2	-	-	1,750	
1,775	0.00	0.00	0.00	-	0.49	-	30	0.00	0.00	0.00	-	24.75	-	7	-	-	0.00	0.00	65.00	70.00	70.00	100	9	0.00	0.00	0.00	-	72.00	-	1	-	-	1,775	
1,800	0.00	0.00	0.00	-	0.04	-	3	11.00	11.00	8.50	8.50	8.50	14	50	-	-	0.00	0.00	0.00	-	73.50	-	-	0.00	0.00	0.00	-	89.50	-	-	-	-	1,800	
1,825	0.00	0.00	0.00	-	0.03	-	-	0.00	0.00	0.00	-	12.25	-	-	-	-	0.00	0.00	0.00	-	98.50	-	-	0.00	0.00	0.00	-	109.00	-	-	-	-	1,825	
1,850	0.00	0.00	0.00	-	0.04	-	-	0.00	0.00	0.00	-	8.20	-	40	-	-	0.00	0.00	0.00	-	123.00	-	-	0.00	0.00	0.00	-	130.00	-	-	-	-	1,850	
1,875	0.00	0.00	0.00	-	0.01	-	-	0.00	0.00	0.00	-	5.40	-	-	-	-	0.00	0.00	0.00	-	148.00	-	-	0.00	0.00	0.00	-	152.00	-	-	-	-	1,875	
1,900	0.00	0.00	0.00	-	0.05	-	-	-	-	-	-	-	-	-	-	-	0.00	0.00	0.00	-	173.00	-	-	-	-	-	-	-	-	-	-	1,900		
1,950	0.00	0.00	0.00	-	0.01	-	-	-	-	-	-	-	-	-	-	-	0.00	0.00	0.00	-	223.00	-	-	-	-	-	-	-	-	-	-	1,950		
2,000	0.00	0.00	0.00	-	0.01	-	-	-	-	-	-	-	-	-	-	-	0.00	0.00	0.00	-	273.00	-	-	-	-	-	-	-	-	-	-	2,000		

FTSE/Athex Large Cap

(Trade Unit: 1 Index Point x 2€ - Exercise Style: European, Cash Settlement)

Call Options																	Put Options																		
Exercise Price	December 2016							January 2017							Other Months		December 2016							January 2017							Other Months		Exercise Price		
	Open price	Price max	Price min	Last price	Closing price	Volume	Open Interest	Open price	Price max	Price min	Last price	Closing price	Volume	Open Interest	Volume	Open Interest	Open price	Price max	Price min	Last price	Closing price	Volume	Open Interest	Open price	Price max	Price min	Last price	Closing price	Volume	Open Interest	Volume	Open Interest			
2,050	0.00	0.00	0.00	-	0.01	-	-	-	-	-	-	-	-	-	-	-	0.00	0.00	0.00	-	323.00	-	-	-	-	-	-	-	-	-	-	-	2,050		
2,100	0.00	0.00	0.00	-	0.01	-	-	-	-	-	-	-	-	-	-	-	0.00	0.00	0.00	-	373.00	-	-	-	-	-	-	-	-	-	-	-	2,100		
Totals:						34	1,298							34	437	0	7							153	1,001							35	212	0	8
Number of Trades:						9								11		0							15								15		0		

ALPHA BANK (CR)

(Contract Size: 100 Securities, Exercise Style: American, Physical Delivery)

Call Options																	Put Options																			
December 2016								January 2017								Other Months		December 2016								January 2017								Other Months		
Exercise Price	Open price	Price max	Price min	Last price	Closing price	Volume	Open Interest	Open price	Price max	Price min	Last price	Closing price	Volume	Open Interest	Volume	Open Interest	Open price	Price max	Price min	Last price	Closing price	Volume	Open Interest	Open price	Price max	Price min	Last price	Closing price	Volume	Open Interest	Volume	Open Interest	Exercise Price			
0.800	0.000	0.000	0.000		1.12	-	-						-	-			0.000	0.000	0.000		0.002	-	-					-	-				0.008			
0.850	0.000	0.000	0.000		1.07	-	-						-	-			0.000	0.000	0.000		0.001	-	-					-	-				0.009			
0.900	0.000	0.000	0.000		1.02	-	-						-	-			0.000	0.000	0.000		0.001	-	-					-	-				0.009			
0.950	0.000	0.000	0.000		0.970	-	-						-	-			0.000	0.000	0.000		0.001	-	-					-	-				0.010			
1.000	0.000	0.000	0.000		0.920	-	-	0.000	0.000	0.000		0.922	-	-			0.000	0.000	0.000		0.001	-	-	0.000	0.000	0.000		0.001	-	-				0.010		
1.100	0.000	0.000	0.000		0.820	-	-	0.000	0.000	0.000		0.822	-	-			0.000	0.000	0.000		0.001	-	-	0.000	0.000	0.000		0.001	-	-				0.011		
1.200	0.000	0.000	0.000		0.720	-	-	0.000	0.000	0.000		0.723	-	-			0.000	0.000	0.000		0.001	-	-	0.000	0.000	0.000		0.001	-	-				0.012		
1.300	0.000	0.000	0.000		0.620	-	-	0.000	0.000	0.000		0.623	-	-			0.000	0.000	0.000		0.001	-	-	0.000	0.000	0.000		0.001	-	-				0.013		
1.400	0.000	0.000	0.000		0.520	-	-	0.000	0.000	0.000		0.524	-	-			0.000	0.000	0.000		0.001	-	-	0.000	0.000	0.000		0.001	-	-				0.014		
1.500	0.000	0.000	0.000		0.420	-	-	0.000	0.000	0.000		0.426	-	-			0.000	0.000	0.000		0.002	-	-	0.000	0.000	0.000		0.003	-	-				0.015		
1.600	0.000	0.000	0.000		0.320	-	-	0.000	0.000	0.000		0.332	-	-			0.000	0.000	0.000		0.001	-	-	0.000	0.000	0.000		0.009	-	-				0.016		
1.700	0.000	0.000	0.000		0.221	-	-	0.000	0.000	0.000		0.246	-	-			0.000	0.000	0.000		0.001	-	-	0.000	0.000	0.000		0.023	-	-				0.017		
1.800	0.000	0.000	0.000		0.125	-	50	0.000	0.000	0.000		0.173	-	-			0.000	0.000	0.000		0.005	-	-	0.000	0.000	0.000		0.049	-	-				0.018		
1.900	0.000	0.000	0.000		0.050	-	-	0.000	0.000	0.000		0.114	-	-			0.000	0.000	0.000		0.030	-	-	0.000	0.000	0.000		0.090	-	-				0.019		
2.000	0.000	0.000	0.000		0.012	-	-	0.000	0.000	0.000		0.070	-	-			0.000	0.000	0.000		0.092	-	-	0.000	0.000	0.000		0.146	-	-				0.020		
2.200	0.000	0.000	0.000		0.005	-	-	0.000	0.000	0.000		0.023	-	-			0.000	0.000	0.000		0.280	-	-	0.000	0.000	0.000		0.299	-	-				0.022		
2.400	0.000	0.000	0.000		0.004	-	-	0.000	0.000	0.000		0.005	-	-			0.000	0.000	0.000		0.480	-	-	0.000	0.000	0.000		0.483	-	-				0.024		
2.600	0.000	0.000	0.000		0.001	-	-	0.000	0.000	0.000		0.001	-	-			0.000	0.000	0.000		0.680	-	-	0.000	0.000	0.000		0.680	-	-				0.026		
2.800	0.000	0.000	0.000		0.001	-	-	0.000	0.000	0.000		0.001	-	-			0.000	0.000	0.000		0.880	-	-	0.000	0.000	0.000		0.880	-	-				0.028		
3.000	0.000	0.000	0.000		0.001	-	-	0.000	0.000	0.000		0.001	-	-			0.000	0.000	0.000		1.08	-	-	0.000	0.000	0.000		1.08	-	-				0.030		
3.200	0.000	0.000	0.000		0.001	-	-						-	-			0.000	0.000	0.000		1.28	-	-					-	-				0.032			
3.400	0.000	0.000	0.000		0.001	-	-						-	-			0.000	0.000	0.000		1.48	-	-					-	-				0.034			
3.600	0.000	0.000	0.000		0.001	-	-						-	-			0.000	0.000	0.000		1.68	-	-					-	-				0.036			
Totals:						0	50						0	0	0	0						0	0					0	50	0	0					
Number of Trades:							0						0		0							0.00						0		0						

NATIONAL BANK (CR)

(Contract Size: 100 Securities, Exercise Style: American, Physical Delivery)

Call Options																	Put Options																			
December 2016								January 2017								Other Months		December 2016								January 2017								Other Months		
Exercise Price	Open price	Price max	Price min	Last price	Closing price	Volume	Open Interest	Open price	Price max	Price min	Last price	Closing price	Volume	Open Interest	Volume	Open Interest	Open price	Price max	Price min	Last price	Closing price	Volume	Open Interest	Open price	Price max	Price min	Last price	Closing price	Volume	Open Interest	Volume	Open Interest	Exercise Price			
0.050	0.000	0.000	0.000		0.194	-	-	0.000	0.000	0.000		0.194	-	-			0.000	0.000	0.000		0.001	-	-	0.000	0.000	0.000		0.001	-	-			0.001			
0.100	0.000	0.000	0.000		0.144	-	-	0.000	0.000	0.000		0.144	-	-			0.000	0.000	0.000		0.001	-	-	0.000	0.000	0.000		0.001	-	-			0.001			
0.150	0.000	0.000	0.000		0.094	-	-	0.000	0.000	0.000		0.096	-	-			0.000	0.000	0.000		0.001	-	-	0.000	0.000	0.000		0.001	-	-			0.002			
0.200	0.000	0.000	0.000		0.046	-	5	0.000	0.000	0.000		0.055	-	5			0.000	0.000	0.000		0.002	-	-	0.000	0.000	0.000		0.011	-	-			0.002			
0.250	0.000	0.000	0.000		0.014	-	-	0.000	0.000	0.000		0.028	-	-			0.000	0.000	0.000		0.020	-	-	0.000	0.000	0.000		0.034	-	-			0.003			
0.300	0.000	0.000	0.000		0.003	-	-	0.000	0.000	0.000		0.013	-	-			0.000	0.000	0.000		0.059	-	-	0.000	0.000	0.000		0.068	-	-			0.003			
0.350	0.000	0.000	0.000		0.001	-	-	0.000	0.000	0.000		0.006	-	-			0.000	0.000	0.000		0.106	-	-	0.000	0.000	0.000		0.111	-	-			0.004			
0.400	0.000	0.000	0.000		0.001	-	-	0.000	0.000	0.000		0.002	-	-			0.000	0.000	0.000		0.156	-	-	0.000	0.000	0.000		0.158	-	-			0.004			
0.450	0.000	0.000	0.000		0.001	-	-	0.000	0.000	0.000		0.001	-	-			0.000	0.000	0.000		0.206	-	-	0.000	0.000	0.000		0.206	-	-			0.005			
0.500	0.000	0.000	0.000		0.001	-	-	0.000	0.000	0.000		0.001	-	-			0.000	0.000	0.000		0.256	-	-	0.000	0.000	0.000		0.256	-	-			0.005			
0.550	0.000	0.000	0.000		0.001	-	-						-	-			0.000	0.000	0.000		0.306	-	-					-	-			0.006				
0.600	0.000	0.000	0.000		0.001	-	-						-	-			0.000	0.000	0.000		0.356	-	-					-	-			0.006				
Totals:						0	5						0	5	0	0						0	0						0	0	0	0				
Number of Trades:							0						0		0							0.00						0		0						

OPAP (CR)

(Contract Size: 100 Securities, Exercise Style: American, Physical Delivery)

Call Options																	Put Options																							
December 2016								January 2017								Other Months		December 2016								January 2017								Other Months						
Exercise Price	Open price	Price max	Price min	Last price	Closing price	Volume	Open Interest	Open price	Price max	Price min	Last price	Closing price	Volume	Open Interest	Volume	Open Interest	Open price	Price max	Price min	Last price	Closing price	Volume	Open Interest	Open price	Price max	Price min	Last price	Closing price	Volume	Open Interest	Volume	Open Interest	Exercise Price							
3.600	0.000	0.000	0.000		4.79	-	-						-	-			0.000	0.000	0.000		0.001	-	-					-	-			0.036								
3.800	0.000	0.000	0.000		4.59	-	-						-	-			0.000	0.000	0.000		0.001	-	-					-	-			0.038								
4.000	0.000	0.000	0.000		4.39	-	-						-	-			0.000	0.000	0.000		0.001	-	-					-	-			0.040								
4.400	0.000	0.000	0.000		3.99	-	-						-	-			0.000	0.000	0.000		0.001	-	-					-	-			0.044								
4.800	0.000	0.000	0.000		3.59	-	-						-	-			0.000	0.000	0.000		0.001	-	-					-	-			0.048								
5.200	0.000	0.000	0.000		3.19	-	-						-	-			0.000	0.000	0.000		0.001	-	-					-	-			0.052								
5.600	0.000	0.000	0.000		2.79	-	-	0.000	0.000	0.000		2.80	-	-			0.000	0.000	0.000		0.001	-	-	0.000	0.000	0.000		0.001	-	-			0.056							
6.000	0.000	0.000	0.000		2.39	-	-	0.000	0.000	0.000		2.40	-	-			0.000	0.000	0.000		0.002	-	-	0.000	0.000	0.000		0.001	-	-			0.060							
6.400	0.000	0.000	0.000		1.99	-	-	0.000	0.000	0.000		2.00	-	-			0.000	0.000	0.000		0.001	-	-	0.000	0.000	0.000		0.001	-	-			0.064							
6.800	0.000	0.000	0.000		1.59	-	-	0.000	0.000	0.000		1.61	-	-			0.000	0.000	0.000		0.001	-	-	0.000	0.000	0.000		0.004	-	-			0.068							
7.200	0.000	0.000	0.000		1.19	-	-	0.000	0.000	0.000		1.22	-	-			0.000	0.000	0.000		0.001	-	25	0.000	0.000	0.000		0.018	-	-			0.072							
7.600	0.000	0.000	0.000		0.791	-	-	0.000	0.000	0.000		0.867	-	-			0.000	0.000	0.000		0.001	-	40	0.000	0.000	0.000		0.061	-	-			0.076							
8.000	0.000	0.000	0.000		0.395	-	-	0.000	0.000	0.000		0.563	-	-			0.000	0.000	0.000		0.004	-	-	0.000	0.000	0.000		0.157	-	-			0.080							
8.400	0.000	0.000	0.000		0.090	-	100	0.000	0.000	0.000		0.329	-	-			0.000	0.000	0.000		0.098	-	-	0.000	0.000	0.000		0.323	-	-			0.084							
8.800	0.000	0.000	0.000		0.004	-	99	0.000	0.000	0.000		0.175	-	4			0.000	0.000	0.000		0.413	-	-	0.000	0.000	0.000		0.569	-	-			0.088							
9.200	0.000	0.000	0.000		0.001	-	-	0.000	0.000	0.000		0.083	-	10			0.000	0.000	0.000		0.810	-	-	0.000	0.000	0.000		0.878	-	-			0.092							
9.600	0.000	0.000	0.000		0.001	-	-	0.000	0.000	0.000		0.034	-	-			0.000	0.000	0.000		1.21	-	-	0.000	0.000	0.000		1.23	-	-			0.096							
10.000	0.000	0.000	0.000		0.002	-	-	0.000	0.000	0.000		0.013	-	-			0.000	0.000	0.000		1.61	-	-	0.000	0.000	0.000		1.61	-	-			0.100							
11.000	0.000	0.000	0.000		0.001	-	-	0.000	0.000	0.000		0.001	-	-			0.000	0.000	0.000		2.61	-	-	0.000	0.000	0.000		2.61	-	-			0.110							
12.000	0.000	0.000	0.000		0.001	-	-	0.000	0.000	0.000		0.001	-	-			0.000	0.000	0.000		3.61	-	-	0.000	0.000	0.000		3.61	-	-			0.120							
Totals:						0	199							0	14	0	0							0	65							0	0	0	0					
Number of Trades:						0							0							0							0							0						

OTE (CR)

(Contract Size: 100 Securities, Exercise Style: American, Physical Delivery)

Call Options																	Put Options																			
December 2016								January 2017								Other Months		December 2016								January 2017								Other Months		
Exercise Price	Open price	Price max	Price min	Last price	Closing price	Volume	Open Interest	Open price	Price max	Price min	Last price	Closing price	Volume	Open Interest	Volume	Open Interest	Open price	Price max	Price min	Last price	Closing price	Volume	Open Interest	Open price	Price max	Price min	Last price	Closing price	Volume	Open Interest	Volume	Open Interest	Exercise Price			
4.800	0.000	0.000	0.000		4.25	-	-						-	-			0.000	0.000	0.000		0.002	-	-					-	-				0.048			
5.200	0.000	0.000	0.000		3.85	-	-						-	-			0.000	0.000	0.000		0.001	-	-					-	-				0.052			
5.600	0.000	0.000	0.000		3.45	-	-						-	-			0.000	0.000	0.000		0.001	-	-					-	-				0.056			
6.000	0.000	0.000	0.000		3.05	-	-	0.000	0.000	0.000		3.06	-	-			0.000	0.000	0.000		0.001	-	-	0.000	0.000	0.000		0.001	-	-				0.060		
6.400	0.000	0.000	0.000		2.65	-	-	0.000	0.000	0.000		2.66	-	-			0.000	0.000	0.000		0.001	-	-	0.000	0.000	0.000		0.001	-	-				0.064		
6.800	0.000	0.000	0.000		2.25	-	-	0.000	0.000	0.000		2.26	-	-			0.000	0.000	0.000		0.001	-	-	0.000	0.000	0.000		0.001	-	-				0.068		
7.200	0.000	0.000	0.000		1.85	-	-	0.000	0.000	0.000		1.87	-	30			0.000	0.000	0.000		0.001	-	-	0.000	0.000	0.000		0.002	-	-				0.072		
7.600	0.000	0.000	0.000		1.45	-	-	0.000	0.000	0.000		1.48	-	-			0.000	0.000	0.000		0.001	-	5	0.000	0.000	0.000		0.011	-	-				0.076		
8.000	0.000	0.000	0.000		1.05	-	-	0.000	0.000	0.000		1.11	-	-			0.000	0.000	0.000		0.001	-	5	0.000	0.000	0.000		0.040	-	-				0.080		
8.400	0.000	0.000	0.000		0.652	-	-	0.000	0.000	0.000		0.774	-	5			0.000	0.000	0.000		0.009	-	-	0.000	0.000	0.000		0.107	-	-				0.084		
8.800	0.000	0.000	0.000		0.271	-	22	0.000	0.000	0.000		0.497	-	12			0.000	0.000	0.000		0.020	-	-	0.000	0.000	0.000		0.229	-	-				0.088		
9.200	0.000	0.000	0.000		0.043	-	-	0.184	0.184	0.184	0.184	0.184	11	12			0.000	0.000	0.000		0.192	-	-	0.000	0.000	0.000		0.428	-	-				0.092		
9.600	0.000	0.000	0.000		0.002	-	-	0.000	0.000	0.000		0.158	-	-			0.000	0.000	0.000		0.551	-	-	0.000	0.000	0.000		0.691	-	-				0.096		
10.000	0.000	0.000	0.000		0.001	-	-	0.000	0.000	0.000		0.078	-	-			0.000	0.000	0.000		0.950	-	-	0.000	0.000	0.000		1.01	-	-				0.100		
11.000	0.000	0.000	0.000		0.001	-	-	0.000	0.000	0.000		0.008	-	-			0.000	0.000	0.000		1.95	-	-	0.000	0.000	0.000		1.95	-	-				0.110		
12.000	0.000	0.000	0.000		0.001	-	-	0.000	0.000	0.000		0.001	-	-			0.000	0.000	0.000		2.95	-	-	0.000	0.000	0.000		2.95	-	-				0.120		
13.000	0.000	0.000	0.000		0.001	-	-	0.000	0.000	0.000		0.001	-	-			0.000	0.000	0.000		3.95	-	-	0.000	0.000	0.000		3.95	-	-				0.130		
14.000	0.000	0.000	0.000		0.003	-	-						-	-			0.000	0.000	0.000		4.95	-	-					-	-				0.140			
Totals:						0	22						11	59	0	18						0	10						0	30	0	0				
Number of Trades:							0						1		0							0.00							0		0					

PIRAEUS BANK (CR)

(Contract Size: 100 Securities, Exercise Style: American, Physical Delivery)

Call Options																	Put Options																			
December 2016								January 2017								Other Months		December 2016								January 2017								Other Months		
Exercise Price	Open price	Price max	Price min	Last price	Closing price	Volume	Open Interest	Open price	Price max	Price min	Last price	Closing price	Volume	Open Interest	Volume	Open Interest	Open price	Price max	Price min	Last price	Closing price	Volume	Open Interest	Open price	Price max	Price min	Last price	Closing price	Volume	Open Interest	Volume	Open Interest	Exercise Price			
0.050	0.000	0.000	0.000		0.183	-	-	0.000	0.000	0.000		0.183	-	-			0.000	0.000	0.000		0.001	-	-	0.000	0.000	0.000		0.001	-	-			0.001			
0.100	0.000	0.000	0.000		0.133	-	-	0.000	0.000	0.000		0.133	-	-			0.000	0.000	0.000		0.001	-	-	0.000	0.000	0.000		0.001	-	-			0.001			
0.150	0.000	0.000	0.000		0.085	-	-	0.000	0.000	0.000		0.086	-	-			0.000	0.000	0.000		0.002	-	-	0.000	0.000	0.000		0.003	-	-			0.002			
0.200	0.000	0.000	0.000		0.047	-	-	0.000	0.000	0.000		0.049	-	-			0.000	0.000	0.000		0.014	-	-	0.000	0.000	0.000		0.016	-	-			0.002			
0.250	0.000	0.000	0.000		0.022	-	-	0.000	0.000	0.000		0.025	-	-			0.000	0.000	0.000		0.039	-	-	0.000	0.000	0.000		0.042	-	-			0.003			
0.300	0.000	0.000	0.000		0.010	-	-	0.000	0.000	0.000		0.012	-	-			0.000	0.000	0.000		0.077	-	-	0.000	0.000	0.000		0.079	-	-			0.003			
0.350	0.000	0.000	0.000		0.004	-	-	0.000	0.000	0.000		0.006	-	-			0.000	0.000	0.000		0.121	-	-	0.000	0.000	0.000		0.122	-	-			0.004			
0.400	0.000	0.000	0.000		0.002	-	-	0.000	0.000	0.000		0.003	-	-			0.000	0.000	0.000		0.168	-	-	0.000	0.000	0.000		0.169	-	-			0.004			
0.450	0.000	0.000	0.000		0.001	-	-	0.000	0.000	0.000		0.001	-	-			0.000	0.000	0.000		0.218	-	-	0.000	0.000	0.000		0.218	-	-			0.005			
0.500	0.000	0.000	0.000		0.001	-	-	0.000	0.000	0.000		0.001	-	-			0.000	0.000	0.000		0.267	-	-	0.000	0.000	0.000		0.267	-	-			0.005			
0.550	0.000	0.000	0.000		0.002	-	-						-	-			0.000	0.000	0.000		0.317	-	-				-	-			0.006					
Totals:						0	0						0	0	0	0						0	0					0	0	0	0					
Number of Trades:						0							0		0							0.00						0		0						

PPC (CR)

(Contract Size: 100 Securities, Exercise Style: American, Physical Delivery)

Call Options																	Put Options																		
Exercise Price	December 2016							January 2017							Other Months		December 2016								January 2017								Other Months		Exercise Price
	Open price	Price max	Price min	Last price	Closing price	Volume	Open Interest	Open price	Price max	Price min	Last price	Closing price	Volume	Open Interest	Volume	Open Interest	Open price	Price max	Price min	Last price	Closing price	Volume	Open Interest	Open price	Price max	Price min	Last price	Closing price	Volume	Open Interest	Volume	Open Interest			
1.700	0.000	0.000	0.000		1.26	-	-						-	-			0.000	0.000	0.000		0.001	-	-					-	-			0.017			
1.800	0.000	0.000	0.000		1.16	-	-						-	-			0.000	0.000	0.000		0.001	-	-					-	-			0.018			
1.900	0.000	0.000	0.000		1.06	-	-	0.000	0.000	0.000		1.06	-	-			0.000	0.000	0.000		0.001	-	-	0.000	0.000	0.000		0.001	-	-			0.019		
2.000	0.000	0.000	0.000		0.960	-	-	0.000	0.000	0.000		0.964	-	-			0.000	0.000	0.000		0.001	-	-	0.000	0.000	0.000		0.001	-	-			0.020		
2.200	0.000	0.000	0.000		0.760	-	-	0.000	0.000	0.000		0.765	-	-			0.000	0.000	0.000		0.002	-	-	0.000	0.000	0.000		0.001	-	-			0.022		
2.400	0.505	0.505	0.505	0.505	0.505	10	25	0.000	0.000	0.000		0.569	-	-			0.000	0.000	0.000		0.001	-	-	0.000	0.000	0.000		0.004	-	-			0.024		
2.600	0.000	0.000	0.000		0.361	-	-	0.000	0.000	0.000		0.386	-	-			0.000	0.000	0.000		0.001	-	-	0.000	0.000	0.000		0.021	-	-			0.026		
2.800	0.000	0.000	0.000		0.168	-	-	0.000	0.000	0.000		0.234	-	-			0.000	0.000	0.000		0.008	-	-	0.000	0.000	0.000		0.068	-	-			0.028		
3.000	0.000	0.000	0.000		0.038	-	-	0.000	0.000	0.000		0.123	-	-			0.000	0.000	0.000		0.077	-	-	0.000	0.000	0.000		0.158	-	-			0.030		
3.200	0.000	0.000	0.000		0.003	-	-	0.000	0.000	0.000		0.056	-	-			0.000	0.000	0.000		0.242	-	-	0.000	0.000	0.000		0.291	-	-			0.032		
3.400	0.000	0.000	0.000		0.006	-	-	0.000	0.000	0.000		0.022	-	-			0.000	0.000	0.000		0.440	-	-	0.000	0.000	0.000		0.457	-	-			0.034		
3.600	0.000	0.000	0.000		0.001	-	-	0.000	0.000	0.000		0.008	-	-			0.000	0.000	0.000		0.640	-	-	0.000	0.000	0.000		0.644	-	-			0.036		
3.800	0.000	0.000	0.000		0.001	-	-	0.000	0.000	0.000		0.002	-	-			0.000	0.000	0.000		0.840	-	-	0.000	0.000	0.000		0.840	-	-			0.038		
4.000	0.000	0.000	0.000		0.001	-	-	0.000	0.000	0.000		0.001	-	-			0.000	0.000	0.000		1.04	-	-	0.000	0.000	0.000		1.04	-	-			0.040		
4.400	0.000	0.000	0.000		0.001	-	-	0.000	0.000	0.000		0.001	-	-			0.000	0.000	0.000		1.44	-	-	0.000	0.000	0.000		1.44	-	-			0.044		
4.800	0.000	0.000	0.000		0.001	-	-						-	-			0.000	0.000	0.000		1.84	-	-					-	-			0.048			
5.200	0.000	0.000	0.000		0.001	-	-						-	-			0.000	0.000	0.000		2.24	-	-					-	-			0.052			
5.600	0.000	0.000	0.000		0.001	-	-						-	-			0.000	0.000	0.000		2.64	-	-					-	-			0.056			
6.000	0.000	0.000	0.000		0.001	-	-						-	-			0.000	0.000	0.000		3.04	-	-					-	-			0.060			
Totals:						10	25						0	0	0	0						10	0					0	0	0	0				
Number of Trades:							1						0		0							0.00						0		0					

Lending Products	Underlying Title	Multilateral Transactions[1]					Bilateral Transactions[2]		Stock Borrowing through OTC (volume)[3]
		Open Interest[5]	Volume(Offered)	Average Weighted	Transactions volume	Average Weighted	Transactions Volume	Average Weighte	Transactions Volume
AEGNBOR	AEGEAN AIRLINES (CR)	100	14,557	5.31%	---	---	---	---	24,929
ALPHABOR	ALPHA BANK (CR)	186,350	79,506	5.31%	---	---	---	---	2,143,747
ALMYBOR	ALUMIL (CR)	---	---	---	---	---	---	---	---
IATRBOR	ATHENS MEDICAL CENTER SA (CR)	---	36,398	5.31%	---	---	---	---	---
OTOELBOR	AUTOHELLAS SA (CR)	---	1,914	5.31%	---	---	---	---	---
BOCBOR	BANK OF CYPRUS (CR)	---	51	5.34%	---	---	---	---	2,008
EEEBOR	CC HBC AG (CR)	2,428	4,271	5.31%	---	---	---	---	70,546
CENTRBOR	CENTRIC HOLDINGS (CR)	---	16,000	5.31%	---	---	---	---	---
PLAKRBOR	CRETE PLASTICS SA (CR)	---	---	---	---	---	---	---	---
ELLAKTORBOR	ELLAKTOR (CR)	29,136	61,192	3.31%	2,200	2.65%	---	---	---
ANEMOSBOR	ELTECH ANEMOS S.A. (CR)	---	6,239	5.31%	---	---	---	---	---
ELTONBOR	ELTON SA (CR)	---	---	---	---	---	---	---	---
EUROBBOR	EUROBANK ERGASIAS (CR)	73,612	210,476	3.31%	---	---	---	---	5,557,423
EUPICBOR	EUROPEAN RELIANCE INSUR. (CR)	---	---	---	---	---	---	---	---
EYDAPBOR	EYDAP S.A. (CR)	3,451	1,910	5.31%	---	---	---	---	17,780
FFGRPBOR	FOLLI FOLLIE (CR)	8,090	70,333	5.31%	---	---	---	---	682,242
FOYRKBOR	FOURLIS (CR)	---	5,130	5.31%	---	---	---	---	3,850
GEKTERNABOR	GEK TERNA (CR)	112	30,350	5.31%	---	---	---	---	---
SARBOR	GR. SARANTIS SA (CR)	705	971	5.31%	---	---	---	---	---
EUPROBOR	GRIVALIA PROPERTIES (CR)	1,000	95,627	5.31%	---	---	---	---	42,976
XAKOBOR	HALKOR SA (CB)	---	56,552	5.31%	---	---	---	---	---
EXAEBOR	HELLENIC EXCHANGES-A.S.E. (CR)	25,700	431,469	5.31%	---	---	---	---	98,443
ELPEBOR	HELLENIC PETROLEUM (CR)	7,100	130,262	3.31%	---	---	---	---	42,606
HYGEIABOR	HYGEIA SA (CR)	---	51,699	5.31%	---	---	---	---	---
IASOBOR	IASO SA (CR)	---	---	---	---	---	---	---	---
IKTINBOR	IKTINOS HELLAS SA (CR)	---	798	5.31%	---	---	---	---	---
INTRKBOR	INTRACOM HOLDINGS (CR)	---	171,048	5.31%	---	---	---	---	---
INLOTBOR	INTRALOT (CR)	6,000	54,099	5.31%	---	---	---	---	803
AVAXBOR	J & P - AVAX SA (CR)	---	20,335	5.31%	---	---	---	---	---
BELABOR	JUMBO SA (CR)	30,325	85,995	3.31%	15,200	2.65%	---	---	6,365
KLEMBOR	KLEEMAN HELLAS SA (CR)	---	1,188	5.31%	---	---	---	---	---

Stock Lending Notes

- [1] - Multilateral contracts Lending or Borrowing as per Methods 8-1, 8-2 and 8-3-3 (According to ATHEX BoD Resolution No.17)
- [2] - Billateral Contracts Lending or Borrowing as per Methods 8-3-1 and 8-3-2 (According to ATHEX BoD Resolution No.20)
- [3] - The information concerning OTC Stock Borrowing Transactions is based on the statements of the Dematerialised Securities System (DSS) operators involved and refers to volumes that have been registered up until the previous working day.
- [4] - Average Price (Volume weighted)
- [5] - The Data concerning Open Interest before the start of trading session

Lending Products	Underlying Title	Multilateral Transactions[1]					Bilateral Transactions[2]		Stock Borrowing through OTC (volume)[3]
		Open Interest[5]	Volume(Offered)	Average Weighted	Transactions volume	Average Weighted	Transactions Volume	Average Weighte	Transactions Volume
KORRESBOR	KORRES (CR)	---	319	5.31%	---	---	---	---	---
KRIBOR	KRI-KRI S.A. (CR)	---	47,768	5.31%	---	---	---	---	---
KYRMBOR	KYRIAKIDIS MARBLES SA (CR)	---	5,737	5.31%	---	---	---	---	---
LAMDABOR	LAMDA DEVELOPMENT SA (CR)	14	100	5.32%	---	---	---	---	10,377
MIGBOR	MARFIN INVESTMENT GROUP (CR)	---	268,700	5.31%	---	---	---	---	744,474
METKKBOR	METKA (CR)	22,185	1,420	5.30%	1,420	5.30%	---	---	965
MLSBOR	MLS MULTIMEDIA SA (CR)	---	9,118	5.31%	---	---	---	---	---
MOHBOR	MOTOR OIL (CR)	13,119	26,505	3.31%	500	2.65%	---	---	37,254
MYTILBOR	MYTILINEOS HOLDINGS (CR)	27,394	122,620	5.31%	---	---	---	---	---
ETEBOR	NATIONAL BANK (CR)	1,123,265	27,079	3.55%	---	---	---	---	6,325,968
ETFASEBOR	NBGAM ETF	---	---	---	---	---	---	---	---
ETFGT30PBOR	NBGAM ETF GREECE & TURKEY 30	---	---	---	---	---	---	---	---
OPAPBOR	OPAP (CR)	49,000	39,597	5.31%	---	---	---	---	830,108
HTOBOR	OTE (CR)	33,968	42,121	3.31%	---	---	---	---	340,666
PPABOR	P.P.A. S.A. (CR)	368	1,468	5.31%	---	---	---	---	2,901
PAPBOR	PAPOUTSANIS (CR)	---	---	---	---	---	---	---	---
PETROBOR	PETROPOULOS PETROS (CR)	---	---	---	---	---	---	---	---
TPEIRBOR	PIRAEUS BANK (CR)	498,861	97	3.31%	97	3.31%	400,055	7.00%	11,459,481
PLAISBOR	PLAISIO COMPUTERS SA (CR)	---	---	---	---	---	---	---	---
PPCBOR	PPC (CR)	63,150	60,185	3.31%	---	---	---	---	709,803
QUALBOR	QUALITY & RELIABILITY SA (CR)	---	---	---	---	---	---	---	---
QUESTBOR	QUEST HOLDINGS (CR)	---	---	---	---	---	---	---	---
EPILBOR	SELECTED TEXT. IND. ASSOC (CR)	---	---	---	---	---	---	---	---
SELOBOR	SELONDA AQUACULTURE SA (CR)	---	---	---	---	---	---	---	---
OLYMPBOR	TECHNICAL OLYMPIC SA (CR)	---	23,237	5.31%	---	---	---	---	---
TENERGYBOR	TERNA ENERGY (CR)	1,000	32,305	5.31%	---	---	---	---	---
EYAPSBOR	THESSALONIKA WATER & SEWERAGE	---	6,484	5.31%	---	---	---	---	---
PLATBOR	THRACE PLASTICS SA (CR)	---	43,699	5.31%	---	---	---	---	---
TITKBOR	TITAN CEMENT (CR)	7,099	213,058	5.31%	---	---	---	---	9,704
OLTHBOR	TPA SA (CR)	---	183	5.31%	---	---	---	---	---
VIOBOR	VIOHALCO SA/NV (CB)	---	57,981	5.31%	---	---	---	---	---

Stock Lending Notes

- [1] - Multilateral contracts Lending or Borrowing as per Methods 8-1, 8-2 and 8-3-3 (According to ATHEX BoD Resolution No.17)
- [2] - Billateral Contracts Lending or Borrowing as per Methods 8-3-1 and 8-3-2 (According to ATHEX BoD Resolution No.20)
- [3] - The information concerning OTC Stock Borrowing Transactions is based on the statements of the Dematerialised Securities System (DSS) operators involved and refers to volumes that have been registered up until the previous working day.
- [4] - Average Price (Volume weighted)
- [5] - The Data concerning Open Interest before the start of trading session

Sectors codification for listed companies

533	-	Exploration & Production	537	-	Integrated Oil & Gas
1353	-	Commodity Chemicals	1357	-	Specialty Chemicals
1753	-	Aluminum	1755	-	Nonferrous Metals
1757	-	Steel	1775	-	General Mining
2353	-	Building Materials & Fixtures	2357	-	Heavy Construction
2723	-	Containers & Packaging	2727	-	Diversified Industrials
2733	-	Electrical Components & Equipment	2753	-	Commercial Vehicles & Trucks
2757	-	Industrial Machinery	2773	-	Marine Transportation
2777	-	Transportation Services	2791	-	Business Support Services
2797	-	Industrial Suppliers	3535	-	Distillers & Vintners
3537	-	Soft Drinks	3573	-	Farming Fishing & Plantations
3577	-	Food Products	3722	-	Durable Household Products
3726	-	Furnishings	3728	-	Home Construction
3747	-	Toys	3763	-	Clothing & Accessories
3765	-	Footwear	3767	-	Personal Products
3785	-	Tobacco	4533	-	Health Care Providers
4535	-	Medical Equipment	4577	-	Pharmaceuticals
5337	-	Food Retailers & Wholesalers	5371	-	Apparel Retailers
5373	-	Broadline Retailers	5375	-	Home Improvement Retailers
5379	-	Specialty Retailers	5553	-	Broadcasting & Entertainment
5555	-	Media Agencies	5557	-	Publishing
5751	-	Airlines	5752	-	Gambling
5753	-	Hotels	5755	-	Recreational Services
5757	-	Restaurants & Bars	5759	-	Travel & Tourism
6535	-	Fixed Line Telecommunications	6575	-	Mobile Telecommunications
7535	-	Conventional Electricity	7537	-	Alternative Electricity
7577	-	Water	8355	-	Banks
8534	-	Insurance Brokers	8536	-	Property & Casualty Insurance
8633	-	Real Estate Holding & Development	8637	-	Real Estate Services
8671	-	Industrial & Office REITs	8674	-	Diversified REITs
8675	-	Specialty REITs	8775	-	Specialty Finance
8777	-	Investment Services	8985	-	Equity Investment Instruments
9533	-	Computer Services	9535	-	Internet
9537	-	Software	9572	-	Computer Hardware
9574	-	Electronic Office Equipment	9578	-	Telecommunications Equipment
12003	-	ETF			



ATHEXGROUP
Όμιλος Χρηματιστηρίου Αθηνών

Λεωφ. Αθηνών 110 104 42 Αθήνα
110, Athinon Ave. GR 104 42 Athens
tel. (+30)210-33.66.800, fax (+30)210-33.66.101
www.athegroup.gr