



ATHEXGROUP
Athens Exchange Group

Hellenic Exchanges – Athens Stock Exchange S.A.

“

2016

δελτίο ημερησίων συναλλαγών

daily official list

Tuesday, 20 December, 2016
Year: 137 Trading Day No: 242

”

Disclaimer:

Hellenic Exchanges-Athens Stock Exchange S.A. endeavours to ensure that the data and other material ("Information") presented on the Daily Official List are accurate and complete, but it is not liable for any errors or omissions of data or /and for the accuracy, credibility, updating and completeness of the aforesaid information nor it has any liability arising directly or indirectly from the use of the above Information.

The Company is not liable for the accuracy of the data included in listed companies' announcements. Only the sender of such an announcement is fully and solely liable for any infringement of third party's rights from the content of such announcement. All contents of the Daily Official List are provided only for information purposes and do not constitute investment advice or solicitation to invest in securities or other products listed for trading on the Exchange.

You acknowledge and agree that the Company is the owner of any property rights related to any Information appearing on the Daily Official List including intellectual property rights copyright, trademarks, etc.

The above data are a property of the Hellenic Exchanges-Athens Exchange and are copyright protected. Users are forbidden to reproduce, modify, copy, sale, transmit or redistribute, by all reproduction means and methods, part or the whole of the above data, without reference to their source.

The commercial exploitation of these data is, also, forbidden by third parties. Hellenic Exchanges-Athens Exchange does not carry any responsibility, direct or indirect, derived from usage or accidental alteration of the above data when used by third parties.

Hellenic Exchanges – Athens Stock Exchange S.A.

110 Athinon Ave., 10442 Athens, Tel: (210) 33.66.800, Fax: (210) 32.13.938

www.helex.gr

Thessalonica Stock Exchange Center (T.S.E.C)

16-18 Katouni Str., Thessalonica 546 25 Tel: (2310) 567.667, Fax: (2310) 530.545

Athex Members Guarantee Fund

14-16 Fidiou Str., Athens 106 78, Tel: (210) 33.04.682, Fax: (210) 33.04.155

Hellenic Republic Capital Market Commission

1 Kolokotroni Str. & 1 Stadiou Str., Athens 10562 Tel: (210) 33.77.100 Fax: (210) 33.77.173

Table of Contents

Section 1: Statistical Figures of Securities, Derivatives and Lending

Summary of Markets

Athex Indices

Analytic Figures for Athex Market's Boards and Categories

Trading Details by Athex Sectors and Financial Instruments (ETFs)

Top 10 best & worst performing Shares

Derivatives Summary

Section 2: Analytic Figures of Shares Transactions

Analytic Figures of Shares Transactions

Shares' Notes

Section 3: Figures of Securities Transactions

Securities Blocks Details

Shares Rights Details

Stock Borrowing

Shares Forced Sales

Forced Sales Registered Shares

Exchange Traded Funds (ETFs) Characteristics

Section 5: Bonds traded in Fixed Income Assets Market

Corporate Bonds

Government Bonds

Treasury Bills & Zero Coupon Government Bonds

Government Bonds Traded with the Open Outcry Method

State Banks Bonds

Section 6: Additional Infos

Athex & ATHEXClear Members List

List of Stocks under Market Making operations

Section 7: Derivatives Market Analytic Figures

Index Futures

Stock Futures

Index Options

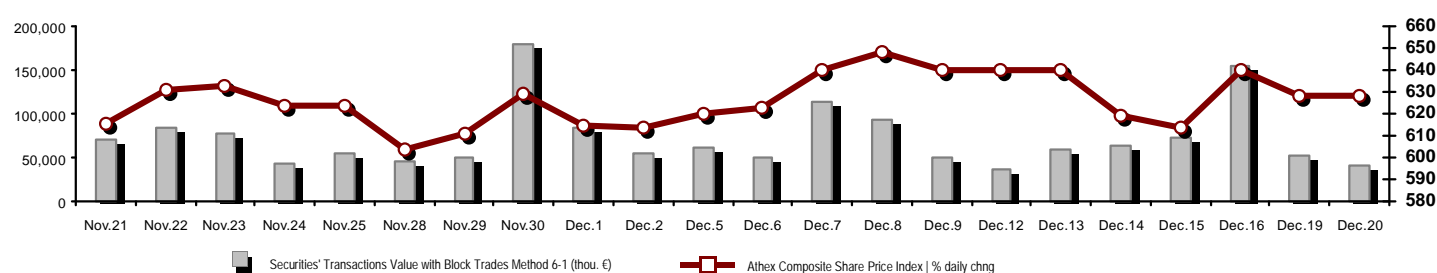
Stock Options

Stock Lending Analytic Figures

Appendix A: Sectors codification for listed companies

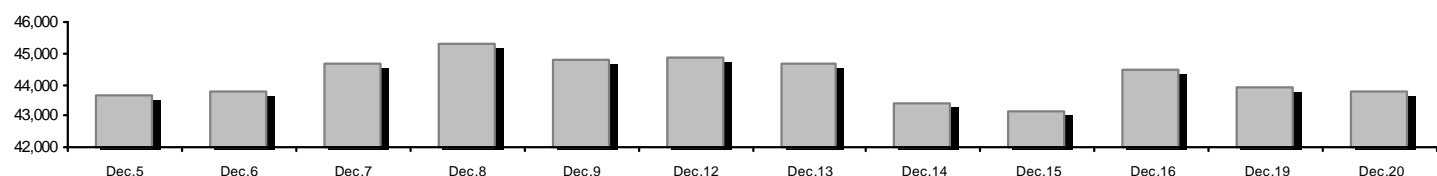
Summary of Markets

Athex Composite Share Price Index vs Shares and Derivatives Transactions Value

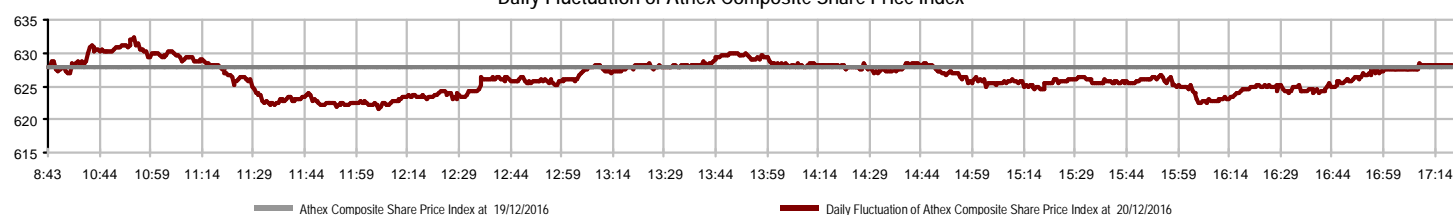


Athex Capitalisation (mill. €) **: 43,785.44		Derivatives Total Open Interest 316,776	
Daily change: mill. € % -109.06 -0.25%		in Index Futures % daily chng 7,888 5.58%	
Yearly Avg Capitalisation: mill. € % chng prev year Avg 41,052.46 -5.96%		in Stock Futures % daily chng 307,053 2.37%	
Athex Composite Share Price Index % daily chng 628.26 0.06%		in Index Options % daily chng 1,559 13.55%	
Athex Composite Share Price Index Capitalisation (mill. €) 39,210.21		in Stock Options % daily chng 276 0.00%	
Daily change (mill. €) -119.80			
Securities' Transactions Value with Block Trades Method 6-1 (39,917.16		Derivatives Contracts Volume: 50,183	
Daily change: % -11,550.83 -22.44%		Daily change: pieces % -7,597 -13.15%	
YtD Avg Trans. Value: thou. € % chng prev year Avg 61,218.17 -28.47%		YtD Avg Derivatives Contracts % chng prev year Avg 63,156 -3.89%	
Blocks Transactions Value of Method 6-1 (thou. €) 6,045.56		Derivatives Trades Number: 2,348	
Blocks Transactions Value of Method 6-2 & 6-3 (thou. €) 0.00		Daily change: number % -215 -8.39%	
Bonds Transactions Value (thou.€) 4.06		YtD Avg Derivatives Trades number % chng prev year Avg 2,627 -19.62%	
Securities' Transactions Volume with Block Trades Method 6-1 (th 90,378.21		Lending Total Open Interest 1,035,994	
Daily change: thou. pieces % 12,315.65 15.78%		Daily change: pieces % -1,517,119 -59.42%	
YtD Avg Volume: % chng prev year Avg 97,346.48 -49.45%		Lending Volume (Multilateral/Bilateral) 206,992	
Blocks Transactions Volume of Method 6-1 (thou. Pieces) 3,482.66		Daily change: pieces % -32,808 -13.68%	
Blocks Transactions Volume of Method 6-2 & 6-3 (thou. Pieces) 0.00		Multilateral Lending 6,992	
Bonds Transactions Volume 4,000.00		Bilateral Lending 200,000	
Securities' Trades Number with Block Trades Method 6-1 15,828		Lending Trades Number: 30	
Daily change: number % 36 0.23%		Daily change: % -27 -47.37%	
YtD Avg Derivatives Trades number % chng prev year Avg 19,041 -29.45%		Multilateral Lending Trades Number 29	
Number of Blocks Method 6-1 3		Bilateral Lending Trades Number 1	
Number of Blocks Method 6-2 & 6-3 0			
Number of Bonds Transactions 2			

Athex Capitalisation (mill. €) **



Daily Fluctuation of Athex Composite Share Price Index



Athex Indices

Index name	20/12/2016	19/12/2016	pts.	%	Min	Max	Year min	Year max	Year change
Athex Composite Share Price Index	628.26 #	627.91	0.35	0.06%	621.65	632.27	420.82	658.99	-0.49% €
FTSE/Athex Large Cap	1,683.97 €	1,688.44	-4.47	-0.26%	1,666.84	1,700.12	1,075.20	1,868.90	-8.15% €
FTSE/Athex Mid Cap Index	751.37 €	755.18	-3.81	-0.50%	747.89	764.91	515.21	820.16	-7.97% €
FTSE/ATHEX-CSE Banking Index	608.31 €	609.09	-0.78	-0.13%	594.83	618.97	271.40	938.40	-31.80% €
FTSE/ATHEX Global Traders Index Plus	1,479.02 #	1,478.81	0.21	0.01%	1,465.95	1,482.45	1,031.55	1,485.28	16.04% #
FTSE/ATHEX Global Traders Index	1,603.54 €	1,606.12	-2.58	-0.16%	1,592.83	1,611.35	1,129.41	1,644.99	12.39% #
FTSE/ATHEX Mid & Small Cap Factor-Weighted Ind	1,308.37 €	1,317.25	-8.88	-0.67%	1,301.40	1,321.74	1,066.64	1,383.28	4.21% #
Greece & Turkey 30 Price Index	443.23 #	438.81	4.42	1.01%	436.10	444.07	396.10	527.12	-4.52% €
ATHEX Mid & SmallCap Price Index	1,930.58 #	1,896.66	33.92	1.79%	1,883.38	1,993.25	1,831.98	2,259.28	-11.11% €
FTSE/Athex Market Index	413.43 €	414.56	-1.13	-0.27%	409.44	417.46	265.17	457.53	-8.12% €
FTSE Med Index	4,591.57 €	4,614.16	-22.59	-0.49%			4,380.06	5,530.53	-16.97% €
Athex Composite Index Total Return Index	957.31 #	956.78	0.53	0.06%	947.25	963.43	626.16	989.83	1.91% #
FTSE/Athex Large Cap Total Return	2,431.75 €	2,438.20	-6.45	-0.26%			1,574.40	2,572.00	-3.84% €
FTSE/ATHEX Large Cap Net Total Return	709.75 €	711.63	-1.88	-0.26%	702.53	716.55	443.06	773.01	-6.06% €
FTSE/Athex Mid Cap Total Return	917.14 €	921.80	-4.66	-0.51%			669.55	1,008.35	-8.63% €
FTSE/ATHEX-CSE Banking Total Return Index	624.45 €	625.25	-0.80	-0.13%			318.40	895.04	-28.21% €
Greece & Turkey 30 Total Return Index	556.81 €	563.27	-6.46	-1.15%			0.00	660.49	-3.28% €
Hellenic Mid & Small Cap Index	770.86 #	770.48	0.38	0.05%	762.79	772.88	560.15	789.76	7.73% #
FTSE/Athex Banks	803.72 €	804.75	-1.03	-0.13%	785.91	817.81	358.60	1,239.80	-31.80% €
FTSE/Athex Financial Services	986.89 €	1,004.59	-17.70	-1.76%	986.89	1,017.43	634.69	1,179.09	1.33% #
FTSE/Athex Industrial Goods & Services	1,445.76 €	1,451.70	-5.94	-0.41%	1,426.40	1,455.99	1,363.18	1,844.00	-20.77% €
FTSE/Athex Retail	2,695.81 €	2,697.27	-1.46	-0.05%	2,659.28	2,711.88	1,826.41	3,272.96	6.72% #
FTSE/ATHEX Real Estate	2,598.68 €	2,647.71	-49.03	-1.85%	2,581.91	2,666.88	2,154.15	2,677.26	7.38% #
FTSE/Athex Personal & Household Goods	7,623.40 #	7,270.65	352.75	4.85%	7,254.04	7,686.40	4,433.32	7,686.40	50.56% #
FTSE/Athex Food & Beverage	7,325.06 €	7,504.22	-179.16	-2.39%	7,314.33	7,504.22	5,952.97	7,850.45	-0.70% €
FTSE/Athex Basic Resources	2,714.30 €	2,745.10	-30.80	-1.12%	2,687.91	2,749.50	1,200.24	2,815.49	66.04% #
FTSE/Athex Construction & Materials	2,196.20 €	2,210.49	-14.29	-0.65%	2,152.64	2,214.40	1,500.04	2,343.14	16.92% #
FTSE/Athex Oil & Gas	3,001.30 #	2,982.58	18.72	0.63%	2,945.00	3,012.62	1,860.37	3,028.54	24.44% #
FTSE/Athex Media	1,706.34 €	1,747.96	-41.62	-2.38%	1,706.34	1,747.96	1,290.16	2,705.17	15.49% #
FTSE/Athex Travel & Leisure	1,443.05 #	1,429.79	13.26	0.93%	1,429.79	1,445.94	982.74	1,556.21	1.28% #
FTSE/Athex Technology	636.97 #	631.52	5.45	0.86%	626.06	636.97	489.05	659.86	11.36% #
FTSE/Athex Telecommunications	2,356.20 €	2,394.74	-38.54	-1.61%	2,353.45	2,422.26	1,802.93	2,669.99	-7.36% €
FTSE/Athex Utilities	1,486.45 #	1,484.33	2.12	0.14%	1,465.45	1,499.42	1,136.34	1,734.68	-11.28% €
Athex All Share Index	154.50 €	154.88	-0.38	-0.25%	154.50	154.50	113.39	165.22	-6.04% €
Hellenic Corporate Bond Index	109.11 #	108.99	0.12	0.11%			96.90	109.11	8.59% #
Hellenic Corporate Bond Price Index	97.61 #	97.55	0.07	0.07%			90.43	97.75	3.02% #

Note 1: FTSE/Med 100, Greece & Turkey 30 Rt., Hellenic Corporate Bond Price Index and Hellenic Corporate Bond Index closing prices refer to the previous trading day of 16/12/2016.

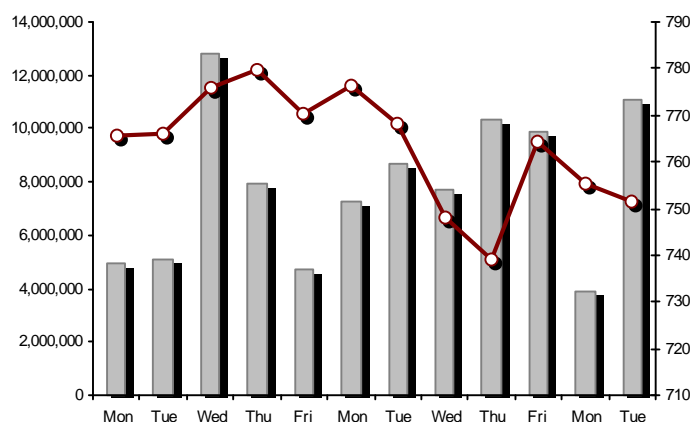
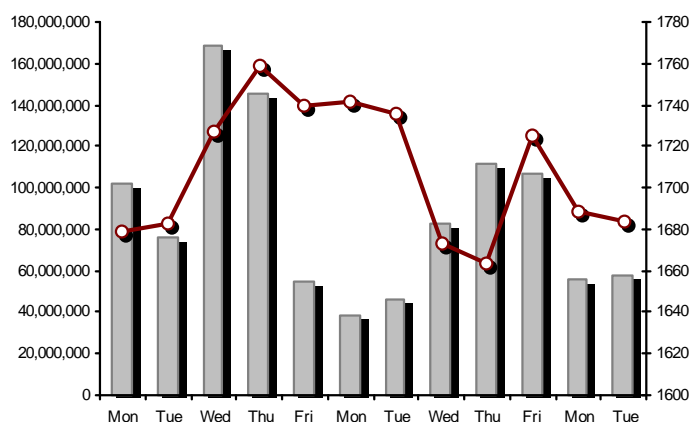
Note 2: The Hellenic Mid & Small Cap Index is a Customized index calculated by the Athens Exchange.

Athex Indices

FTSE/Large Cap

20/12/2016: -0.26% FTSE/Athex Mid Cap Index

20/12/2016: -0.50%

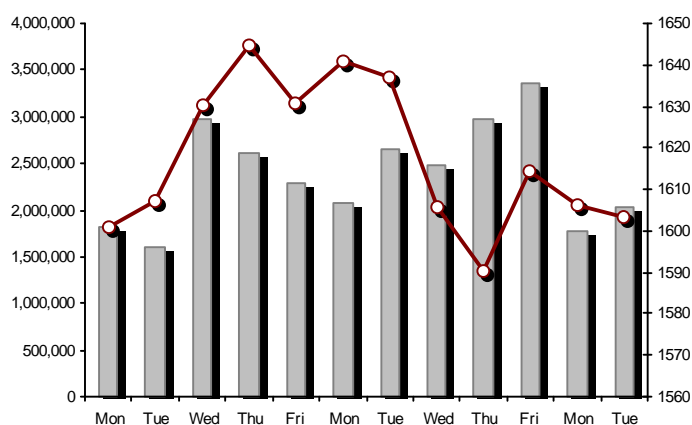
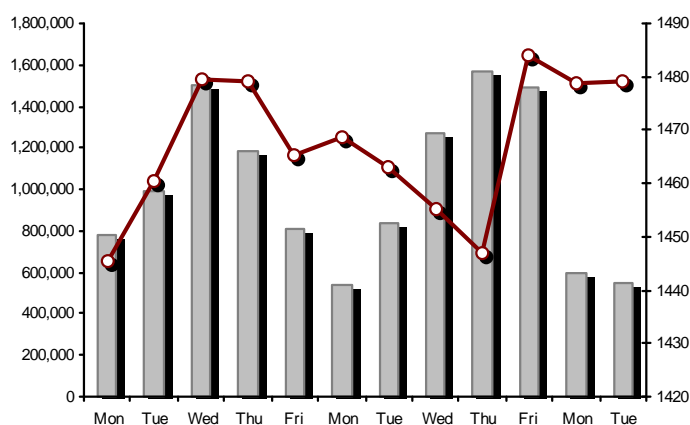


FTSE/ATHEX Global Traders Index Plus

20/12/2016: 0.01%

FTSE/ATHEX Global Traders Index

20/12/2016: -0.16%

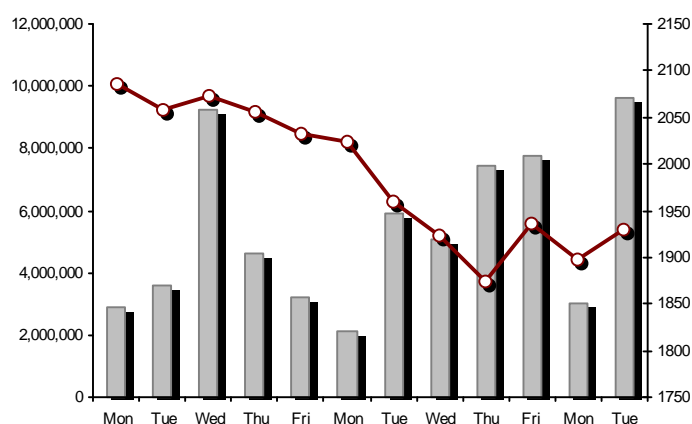
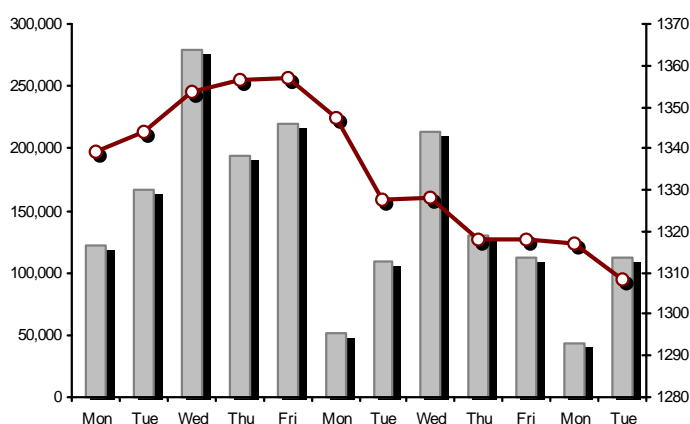


FTSE/ATHEX Mid & Small Cap Factor-Weighted Index

20/12/2016: -0.67%

ATHEX Mid & SmallCap Price Index

20/12/2016: 1.79%



Indices volume of transactions

Indices closing prices

Analytic Figures for Athex Market's Boards and Categories

	Total Traded Securities	Main Market	Low Dispersion	Other Categories (*)	Exchange Traded Funds (ETFs)	Warrants
Totals	115	94	6	10	3	2
Gain / Lose / Same:	44 / 55 / 16	35 / 48 / 11	3 / 1 / 2	3 / 5 / 2	3 / 0 / 0	0 / 1 / 1
Athex Capitalisation (mill. €) **	43,785.44	40,809.55	2,865.09	110.80		
Daily Average Trans/ons Value(thou.€)	61,218.17	59,528.37	1,705.89	9.81	14.17	10.33
Transactions Value	39,917.16	39,845.45	56.68	8.11	0.41	6.51
Main Board:	33,871.61	33,799.89	56.68	8.11	0.41	6.51
Blocks Board 6_2_3:	6,045.56	6,045.56	0.00	0.00	0.00	0.00
Forced Sales Board:	0.00	0.00	0.00	0.00	0.00	0.00
Special Terms Board:	0.00	0.00	0.00	0.00	0.00	0.00
Daily Average Transactions Volume	97,346,477	92,350,087	379,773	92,632	5,830	4,611,380
Transactions Volume	90,378,214	84,185,406	10,474	76,648	27	6,105,659
Main Board:	86,895,550	80,702,742	10,474	76,648	27	6,105,659
Blocks Board 6_2_3:	3,482,664	3,482,664	0	0	0	0
Forced Sales Board:	0	0	0	0	0	0
Special Terms Board:	0	0	0	0	0	0
Daily Average Number of Trades	19,041	18,892	38	53	4	54
Number of Trades	15,828	15,697	21	60	4	46
Main Board:	15,825	15,694	21	60	4	46
Blocks Board 6_2_3:	3	3	0	0	0	0
Forced Sales Board:	0	0	0	0	0	0
Special Terms Board:	0	0	0	0	0	0

(*) Summarised Transactions figures for Under Deletion and Under Supervision Categories.(**) The Market Capitalization of the Companies that belong in the Under Supervision Status is not included.

Trading Details by Athex Sectors and Financial Instruments (ETFs)

Code	Sectors	Gain / Lose / Same	Number of Trades	Transactions Volume	Transactions Value	% of Total Trans. Value
8300	- Banks	3 / 4 / 2	8,547	86,185,864	21,992,893.52	55.10%
1700	- Basic Resources	4 / 2 / 1	459	123,881	736,615.29	1.85%
1300	- Chemicals	1 / 2 / 1	36	14,524	29,513.57	0.07%
2300	- Construction & Materials	4 / 7 / 1	666	377,275	760,246.15	1.90%
12000	- Financial Instruments	3 / 0 / 0	4	27	412.25	0.00%
8700	- Financial Services	0 / 4 / 0	451	1,112,546	436,873.03	1.09%
3500	- Food & Beverage	2 / 5 / 2	180	118,085	348,525.86	0.87%
4500	- Health Care	2 / 2 / 1	62	104,837	13,317.32	0.03%
2700	- Industrial Goods & Services	3 / 6 / 3	604	159,501	466,584.74	1.17%
8500	- Insurance	1 / 0 / 0	4	2,002	3,884.79	0.01%
5500	- Media	0 / 1 / 0	2	1,000	82.00	0.00%
500	- Oil & Gas	2 / 0 / 0	567	91,586	900,113.88	2.25%
3700	- Personal & Household Goods	5 / 7 / 0	932	361,113	2,705,736.43	6.78%
8600	- Real Estate	3 / 1 / 2	292	30,418	132,880.95	0.33%
5300	- Retail	0 / 3 / 0	294	35,874	544,440.28	1.36%
9500	- Technology	4 / 2 / 1	109	16,183	22,866.83	0.06%
6500	- Telecommunications	0 / 1 / 0	537	770,925	6,652,497.13	16.67%
5700	- Travel & Leisure	4 / 6 / 2	1,186	444,144	2,920,141.00	7.32%
7500	- Utilities	3 / 2 / 0	896	428,429	1,249,539.69	3.13%

Top 10 best & worst performing Shares

Main Market					
With positive Price change	Closing price	change	With negative Price change	Closing price	change
JUMBO SA (CR)	15.20	6.15% #	NIREFS SA (CR)	0.163	-4.12% €
BANK OF CYPRUS (CR)	0.148	4.96% #	EUROBANK ERGASIAS (CR)	0.610	-4.09% €
KYRIAKIDIS MARBLES SA (CR)	3.38	4.00% #	KORRES (CR)	3.45	-3.90% €
ALPHA BANK (CR)	1.85	3.35% #	GRIVALIA PROPERTIES (CR)	7.63	-3.17% €
ATTICA BANK S.A. (CR)	0.044	2.33% #	MARFIN INVESTMENT GROUP (CR)	0.136	-2.86% €
PLAISIO COMPUTERS SA (CR)	3.80	2.15% #	ELLAKTOR (CR)	1.08	-2.70% €
OPAP (CR)	8.25	1.23% #	CC HBC AG (CR)	19.66	-2.38% €
PPC (CR)	2.89	0.70% #	PIRAEUS BANK (CR)	0.194	-2.02% €
MOTOR OIL (CR)	13.29	0.68% #	TERNA ENERGY (CR)	2.62	-1.87% €
HELLENIC PETROLEUM (CR)	4.26	0.47% #	NATIONAL BANK (CR)	0.238	-1.65% €
With the highest Transactions Value	Value (thou. €)	change	With the highest Transactions Volume	Volume	change
OTE (CR)	6,652.50	-1.61% €	PIRAEUS BANK (CR)	23,861,026	-2.02% €
ALPHA BANK (CR)	5,648.12	3.35% #	NATIONAL BANK (CR)	21,766,739	-1.65% €
NATIONAL BANK (CR)	5,189.73	-1.65% €	BANK OF CYPRUS (CR)	15,620,305	4.96% #
PIRAEUS BANK (CR)	4,620.50	-2.02% €	ATTICA BANK S.A. (CR)	9,590,798	2.33% #
EUROBANK ERGASIAS (CR)	3,794.00	-4.09% €	EUROBANK ERGASIAS (CR)	6,140,688	-4.09% €
OPAP (CR)	2,680.73	1.23% #	ALPHA BANK (CR)	3,097,962	3.35% #
BANK OF CYPRUS (CR)	2,274.31	4.96% #	MARFIN INVESTMENT GROUP (CR)	1,050,166	-2.86% €
JUMBO SA (CR)	1,570.21	6.15% #	OTE (CR)	770,925	-1.61% €
PPC (CR)	1,120.93	0.70% #	PPC (CR)	389,523	0.70% #
MOTOR OIL (CR)	753.64	0.68% #	OPAP (CR)	325,709	1.23% #

Note: Stocks that are not included in the "Low Dispersion" and "Under Supervision" categories, and the transactions value is more than 10,000 €.

Derivatives Summary

	Number of Trades	Volume	Open Interest
Index Futures	438	1,582	7,888
FTSE/Athex Large Cap	438	1,582	7,888
Stock Futures	1,880	48,371	307,053
ALPHA BANK (CR)	271	3,297	18,521
CC HBC AG (CR)	39	59	83
ELLAKTOR (CR)	13	84	3,013
EUROBANK ERGASIAS (CR)	421	9,395	44,665
EYDAP S.A. (CR)	3	4	92
FOLLI FOLLIE (CR)	8	16	481
GEK TERNA (CR)	3	25	7,686
GRIVALIA PROPERTIES (CR)	1	5	62
HELLENIC EXCHANGES-A.S.E. (CR)	1	2	236
HELLENIC PETROLEUM (CR)	14	70	4,071
INTRALOT (CR)	10	43	1,037
JUMBO SA (CR)	61	104	694
MARFIN INVESTMENT GROUP (CR)	45	721	49,262
METKA (CR)	20	59	329
MOTOR OIL (CR)	16	17	86
MYTILINEOS HOLDINGS (CR)	84	203	5,281
NATIONAL BANK (CR)	349	17,317	76,301
OPAP (CR)	37	78	2,642
OTE (CR)	38	85	4,179
P.P.A. S.A. (CR)	2	2	644
PIRAEUS BANK (CR)	385	16,599	76,226
PPC (CR)	47	148	7,457
TERNA ENERGY (CR)	1	2	1,251
TITAN CEMENT (CR)	6	8	101
VIOHALCO SA/NV (CB)	5	28	2,653
Index Options	30	230	1,559
FTSE/Athex Large Cap	30	230	1,559
Stock Options	0	0	276
ALPHA BANK (CR)	0	0	50
NATIONAL BANK (CR)	0	0	5
OPAP (CR)	0	0	14
OTE (CR)	0	0	172
PIRAEUS BANK (CR)	0	0	0
PPC (CR)	0	0	35
Total Derivatives Traded	2,348	50,183	316,776

Number of Outstanding Securities	Nominal Value	Dividends [1]			Date of Last Coupon		Note	Shares	Closing price	% change	Previous closing price/date	Open price	Price min	Price max	Last price	Avg price	Last Bid [7]	Last Ask [7]	P/E after	Year	Volume	Trades	Transactions Value[8]	Company Mkt Value (thou. €)	Year low	Year high	Sector[4]
		2013	2014	2015	Dividend [2]	Right																					
Warrants																											
1,141,734,167	---	---	---		11/06/2013	---	ALPHA BANK (W)	0.001	-50.00 %	0.002	19/12/2016	0.001	0.001	0.002	0.001	0.0078544133@0.001	47495487@0.002	---	2015	6,050,845	28	6,183.85	2,843,230.22	0.001	0.004	8355	
245,745,725	---	---	---		27/06/2013	---	NATIONAL BANK (W)	0.006	---	0.006	19/12/2016	0.006	0.006	0.007	0.006	0.006473246@0.006	148701@0.007	---	2015	54,814	18	329.55	2,177,022.06	0.002	0.025	8355	
843,637,022	---	---	---		03/07/2013	---	PIRAEUS BANK (W)	0.001	---	0.001	19/12/2016	---	---	---	---	---	28833024@0.001	---	2015	---	---	---	1,694,237.56	0.001	0.002	8355	

Warrants

71,417,100	0.650	---	0.7	0.7	13/05/2016	27/06/2014	---	AEGEAN AIRLINES (CR)	6.20	-1.27	€	6.28	19/12/2016	6.28	6.16	6.33	6.20	6.23	241@6.18	500@6.25	8.16	2015	14,328	143	89,198.69	442,786.02	5.84	9.06	5751	
11,178,000	1.12	---	---	---	21/04/2010	15/12/2014	---	AEOLIAN INVESTMENT FUND (CR)	0.530	-1.67	€	0.539	19/12/2016	0.535	0.530	0.598	0.530	0.550	500@0.493	500@0.595	---	2015	621	6	341.79	5,924.34	0.384	0.701	8985	
1,536,881,200	0.300	---	---	---	07/04/2008	27/11/2015	---	ALPHA BANK (CR)	1.85	3.35	#	1.79	19/12/2016	1.78	1.78	1.86	1.85	1.82	5000@1.84	13310@1.86	---	2015	3,097,962	1,108	5,648,120.24	2,843,230.22	0.949	2.75	8355	
22,016,250	0.370	---	---	---	15/07/2009	11/05/2000	---	ALUMIL (CR)	0.217	---	↘	0.217	19/12/2016	0.217	0.217	0.217	0.217	0.217	1150@0.196	100@0.199	---	2015	206	3	44.70	4,777.53	0.101	0.290	1753	
417,608	16.00	0.8	---	---	29/04/2014	05/03/2013	---	ANDROMEDA SA (CR)	13.18	-0.45	€	13.24	19/12/2016	13.24	13.00	13.24	13.00	13.22	5@13.00	85@13.12	---	2015	484	16	6,398.01	5,504.07	11.53	15.75	8985	
13,126,020	0.650	---	---	---	08/07/2010	12/10/2016	---	AS COMPANY SA (CR)	0.675	---	↘	0.675	19/12/2016	---	---	---	---	---	450@0.645	1088@0.720	5.75	2015	---	---	---	8,860.06	0.580	0.796	5379	
86,735,980	0.310	---	---	---	06/07/2009	02/01/2002	---	ATHENS MEDICAL CENTER SA (CR)	0.679	3.51	#	0.656	19/12/2016	0.679	0.679	0.679	0.679	0.680	500@0.600	1399@0.679	---	2015	1	1	0.68	58,893.73	0.539	0.780	4533	
2,339,353,394	0.300	---	---	---	04/06/2008	01/12/2015	---	ATTICA BANK S.A. (CR)	0.044	2.33	#	0.043	19/12/2016	0.045	0.043	0.047	0.044	0.045812826@0.043	785856@0.045	---	2015	9,590,798	438	431,258.49	102,931.55	0.037	0.279	8355		
15,300,000	0.300	---	---	---	30/07/2009	13/12/1999	---	ATTICA PUBLICATIONS SA (CR)	0.819	---	↘	0.819	19/12/2016	---	---	---	---	---	---	935@0.809	---	2015	---	---	---	12,530.70	0.564	1.21	5557	
48,184,910	0.700	---	---	---	01/07/2008	01/03/2010	---	AUDIO VISUAL ENTERPRISES (CR)	0.082	-2.38	€	0.084	19/12/2016	0.082	0.082	0.082	0.082	0.082	500@0.060	500@0.081	---	2015	1,000	2	82.00	3,951.16	0.028	0.130	5553	
12,213,750	0.320	---	0.8	0.85	07/06/2016	22/11/2013	---	AUTOHELLAS SA (CR)	12.00	0.17	#	11.98	19/12/2016	11.98	11.98	12.80	12.00	12.18	145@11.98	800@12.75	9.58	2015	90	5	1,095.88	146,565.00	9.51	13.00	5759	
8,922,944,533	0.100	---	---	---	31/05/2011	02/02/2015	4857	BANK OF CYPRUS (CR)	0.148	4.96	#	0.141	19/12/2016	0.142	0.142	0.148	0.148	0.146506457@0.148	566100@0.149	---	2015	15,620,305	683	2,274,305.93	1,320,595.79	0.118	0.174	8355		
19,864,886	5.60	0.672	0.672	0.672	03/03/2016	02/07/2008	---	BANK OF GREECE (CR)	10.58	---	↘	10.58	19/12/2016	10.56	10.56	10.65	10.58	10.60	90@10.58	1@10.62	---	---	2,687	32	28,469.49	210,170.49	8.70	11.11	8355	
23,986,500	1.05	---	---	---	26/06/2009	15/03/2000	---	BIOKARPET S.A.(CR)	0.298	---	↘	0.298	19/12/2016	---	---	---	---	---	---	500@0.303	---	2015	---	---	---	7,147.98	0.139	0.459	3726	
15,842,391	1.51	---	---	---	15/07/2009	12/05/2000	---	BITROS HOLDING SA (CR)	0.190	---	↘	0.190	19/12/2016	---	---	---	---	---	---	951@0.190	---	2015	---	---	---	3,010.05	0.125	0.227	1757	
15,816,009	0.300	---	---	---	01/07/2009	17/07/2000	---	BYTE COMPUTER SA (CR)	0.301	---	↘	0.301	19/12/2016	---	---	---	---	---	100@0.293	100@0.309	---	2015	---	---	---	4,760.62	0.256	0.322	9533	
365,203,298	6.70	0.354	0.36	0.4	30/06/2016	29/04/2013	---	CC HBC AG (CR)	19.66	-2.38	€	20.14	19/12/2016	19.82	19.63	19.83	19.66	19.72	250@19.64	10@19.76	---	---	16,817	100	331,550.88	7,179,896.84	15.97	21.07	3537	
27,060	---	---	---	---		07/12/2016	---	CENERGY HOLDINGS (CB)	0.010	---	---	---	---	---	---	---	---	---	---	---	---	---	---	---	---	---	0.27	0.010	0.010	2727
101,123,806	0.360	---	---	---	22/07/2010	28/06/2011	---	CENTRIC HOLDINGS (CR)	0.096	-7.69	€	0.104	19/12/2016	0.089	0.089	0.096	0.096	0.090	500@0.094	398@0.096	---	2015	2,702	14	243.69	9,707.89	0.067	0.147	5752	
9,907,500	0.300	---	---	---	06/10/2005	13/02/2002	---	CPI SA (CR)	0.188	---	↘	0.188	19/12/2016	---	---	---	---	---	350@0.172	380@0.187	22.50	2016	---	---	---	1,862.61	0.092	0.196	9572	
41,068,800	0.420	(0.0667)	(0.03)	0.1205	19/08/2016	17/02/2016	---	CRETE PLASTICS SA (CR)	4.96	-2.75	€	5.10	19/12/2016	5.02	4.96	5.02	4.96	4.98	300@4.92	500@5.05	16.64	2015	1,600	4	7,960.00	203,701.25	3.19	5.30	1357	
15,000,000	0.300	---	---	---	06/07/2007	18/07/2000	---	DAIOS PLASTICS SA (CR)	2.92	---	↘	2.92	19/12/2016	---	---	---	---	---	150@2.70	---	---	2015	---	---	---	43,800.00	2.45	2.95	1357	
34,720,000	0.310	---	---	---	16/06/2010	01/08/2007	---	DROMEAS SA (CR)	0.117	8.33	#	0.108	19/12/2016	0.117	0.117	0.117	0.117	0.117	2500@0.098	3990@0.116	---	2015	10	1	1.17	4,062.24	0.066	0.152	3726	
3,873,120	0.300	---	---	---	07/07/2008	04/10/2012	---	DRUCKFARBEN HELLAS (CR)	0.654	-9.92	€	0.726	19/12/2016	0.654	0.654	0.654	0.654	0.654	---	---	1.04	2015	47	1	30.74	2,533.02	0.360	0.726	1357	
11,250,000	0.520	---	---	0.04	25/07/2016	09/11/2015	---	EKTER SA (CR)	0.452	---	↘	0.452	19/12/2016	---	---	---	---	---	100@0.440	760@0.480	14.27	2015	---	---	---	5,085.00	0.301	0.510	2357	
32,188,050	1.04	---	---	---	21/07/2008	20/01/2000	---	EL. D. MOUZAKIS SA (CB)	0.153	---	↘	0.153	19/12/2016	---	---	---	---	---	---	120@0.138	---	2015	---	---	---	4,924.77	0.084	0.215	3763	
18,421,516	1.00	---	---	---	07/07/2009	10/09/2010	---	ELASTRON (CR)	0.820	13.42	#	0.723	19/12/2016	0.900	0.688	0.900	0.820	0.793	300@0.690	78@0.820	---	2015	363	10	287.72	15,105.64	0.310	0.900	1757	
31,734,530	1.60	---	---	---	09/07/2007	19/07/2006	---	ELGEKA SA (CR)	0.130	1.56	#	0.128	19/12/2016	0.123	0.120	0.130	0.130	0.122	347@0.118	1985@0.130	---	2015	1,655	6	202.55	4,125.49	0.107	0.210	3577	
23,828,130	0.500	---	---	0.16	08/06/2016	17/02/2009	---	ELINOIL S.A. (CR)	0.970	---	↘	0.970	19/12/2016	---	---	---	---	---	---	1000@1.00	8.51	2015	---	---	---	23,113.29	0.634	1.25	537	
177,001,313	1.03	---	---	---	05/07/2011	20/12/2007	---	ELLAKTOR (CR)	1.08	-2.70	€	1.11	19/12/2016	1.10	1.07	1.11	1.08	1.10	42073@1.08	6161@1.09	---	2015	290,111	226	317,813.93	191,161.42	0.857	1.59	2357	
82,667,000	0.300	---	---	---		22/07/2014	---	ELTECH ANEMOS S.A. (CR)	0.860	1.06	#	0.851	19/12/2016	0.852	0.845	0.869	0.860	0.853	3@0.859	435@0.860	9.25	2015	9,199	31	7,847.75	71,093.62	0.533	0.917	7537	
26,730,187	0.600	0.05	---	---	23/06/2014	30/12/2010	---	ELTON SA (CR)	0.900	---	↘	0.900	19/12/2016	0.851	0.850	0.900	0.900	0.850	50@0.863	2000@0.890	16.07	2015	5,521	5	4,694.00	24,057.17	0.802	1.00	1353	
14,050,971	0.340	---	---	---	06/07/2011	17/10/2002	---	ELTRAK SA (CR)	1.39	---	↘	1.39	19/12/2016	---	---	---	---	---	1000@1.27	401@1.40	27.63	2015	---	---	---	19,530.85	0.990	1.45	2753	

Daily Official List																									Year: 137 Trading Day No: 242			
Section 2: Analytic Figures of Shares Transactions																									Tuesday, 20 December, 2016			
Number of Outstanding Securities	Nominal Value	Dividends [1]			Date of Last Coupon Dividend [2]		Note	Shares	Closing price	% change	Previous closing price/date	Open price	Price min	Price max	Last price	Avg price	Last Bid [7]	Last Ask [7]	P/E after	Year	Volume	Trades	Transactions Value[8]	Company Mkt Value (thou. €)	Year low	Year high	Sector[4]	
Main Market																												
3,307,500	0.960	---	---	---	11/08/2010	23/09/2016	---	ELVE SA (CR)	1.70	-4.49 €	1.78 19/12/2016	1.68	1.68	1.70	1.70	1.70	10@1.86	19@1.82	13.55	2015	125	2	212.00	5,622.75	1.31	2.10	3763	
2,185,998,765	0.300	---	---	---	02/05/2008	27/11/2015	---	EUROBANK ERGASIAS (CR)	0.610	-4.09 €	0.636 19/12/2016	0.636	0.602	0.647	0.610	0.618	5500@0.609	7189@0.611	---	2015	6,140,688	2,179	3,793,998.68	1,333,459.25	0.241	1.17	8355	
8,623,225	0.600	---	---	---	02/06/2010	30/05/2016	5031	EUROCONSULTANTS S.A. (CR)	0.508	---	0.508 19/12/2016	---	---	---	---	---	50@0.475	2150@0.497	---	2015	---	---	---	4,380.60	0.485	1.82	2791	
27,503,677	0.630	---	---	0.06	22/06/2016	18/10/1999	---	EUROPEAN RELIANCE INSUR. (CR)	1.97	0.51 #	1.96 19/12/2016	1.95	1.94	1.97	1.97	1.94	985@1.94	4998@1.97	4.92	2015	2,002	4	3,884.79	54,182.24	1.21	2.10	8536	
13,673,200	0.880	---	---	---	18/07/2008	26/07/2001	---	EVROFARMA SA (CR)	0.279	---	0.279 19/12/2016	---	---	---	---	---	---	320@0.270	16.81	2015	---	---	---	3,814.82	0.120	0.320	3577	
106,500,000	0.600	0.36	0.2	0.31	28/06/2016	28/01/2000	---	EYDAP S.A. (CR)	5.67	-0.53 €	5.70 19/12/2016	5.60	5.60	5.70	5.67	5.65	10@5.65	479@5.69	13.82	2015	14,063	78	79,462.69	603,855.00	3.60	6.10	7577	
52,800,154	0.300	0.2	---	---	20/08/2014	21/06/2004	---	F.G. EUROPE S.A. (CR)	0.612	---	0.612 19/12/2016	---	---	---	---	---	---	200@0.570	27.04	2015	---	---	---	32,313.69	0.441	0.700	3722	
10,203,575	0.730	---	---	---	16/07/2007	18/10/1999	---	FIERATEX SA (CR)	0.074	-9.76 €	0.082 19/12/2016	0.074	0.074	0.074	0.074	0.074	1940@0.074	---	---	2015	60	1	4.44	755.06	0.039	0.205	3763	
11,720,024	0.540	0.0394	---	---	21/08/2014	04/11/2015	---	FLEXOPACK SA (CR)	2.99	---	2.99 19/12/2016	---	---	---	---	---	500@2.84	50@2.97	7.95	2015	---	---	---	35,042.87	2.10	3.08	2723	
4,181,450	0.500	---	---	---	21/08/2000	05/03/2002	---	FLOUR MILLS SARANTOPOULOS SA	0.630	---	0.630 19/12/2016	0.630	0.630	0.630	0.630	0.630	500@0.567	---	---	2015	614	1	386.82	2,634.31	0.362	1.01	3577	
66,948,210	0.300	---	0.1005	---	22/09/2015	22/09/2015	---	FOLLI FOLLIE (CR)	18.45	-0.05 €	18.46 19/12/2016	18.56	18.20	18.56	18.45	18.41	353@18.34	10@18.49	---	2015	29,434	288	541,854.11	1,235,194.47	12.50	22.40	5379	
50,992,322	1.07	---	---	---	21/06/2010	16/07/2002	---	FOURLIS (CR)	3.92	-0.76 €	3.95 19/12/2016	3.95	3.88	3.96	3.92	3.92	1000@3.86	4355@3.92	---	2015	174,880	125	685,583.40	199,889.90	2.00	4.28	3722	
14,076,360	0.370	---	---	---	19/08/2008	22/07/2003	---	GALAXIDI S.A. (CR)	0.321	---	0.321 19/12/2016	---	---	---	---	---	400@0.327	200@0.353	31.42	2015	---	---	---	4,518.51	0.163	0.570	3573	
103,423,291	0.570	---	---	---	01/08/2011	19/04/2016	---	GEK TERNA (CR)	2.14	---	2.14 19/12/2016	2.13	2.09	2.14	2.14	2.13	634@2.12	1000@2.16	13.44	2015	35,797	126	76,069.93	221,325.84	1.05	2.32	2357	
8,418,750	0.300	---	---	0.12	16/12/2015	27/06/2012	---	GEKE SA (CB)	4.30	-6.52 €	4.60 19/12/2016	4.58	4.30	4.58	4.30	4.43	5@4.16	20@4.58	14.25	2015	60	3	265.95	36,200.63	3.90	5.60	5753	
24,060,000	0.300	0.017	0.02	0.01	11/07/2016	11/07/2016	---	GEN. COMMERCIAL & IND.SA (CR)	0.324	---	0.324 19/12/2016	---	---	---	---	---	3000@0.320	1615@0.338	13.63	2015	---	---	---	7,795.44	0.253	0.394	2797	
34,770,982	1.55	0.3	0.15	0.16	20/04/2016	27/07/2000	---	GR. SARANTIS SA (CR)	10.17	-0.78 €	10.25 19/12/2016	10.40	9.93	10.40	10.17	10.04	2@10.14	244@10.15	32.05	2015	26,409	259	265,021.55	353,620.89	6.56	11.54	3767	
101,260,000	2.13	0.1821	0.3037	0.3134	18/03/2016	08/01/2014	---	GRIVALIA PROPERTIES (CR)	7.63	-3.17 €	7.88 19/12/2016	7.97	7.63	7.97	7.63	7.73	700@7.63	191@7.69	14.34	2015	9,063	151	70,082.04	772,613.80	6.46	8.00	8675	
8,340,750	1.18	---	---	---	25/06/2009	09/09/2015	---	HAIDEMENOS SA (CR)	0.284	-5.02 €	0.299 19/12/2016	0.281	0.281	0.293	0.284	0.286	100@0.270	164@0.290	---	2015	952	8	272.14	2,368.77	0.240	1.04	2791	
101,279,627	0.380	---	---	---	26/06/2008	14/07/2006	---	HALKOR SA (CB)	0.395	-1.25 €	0.400 19/12/2016	0.382	0.382	0.395	0.395	0.395	80@0.386	2650@0.395	---	2015	2,850	7	1,124.41	40,005.45	0.193	0.448	1755	
65,368,563	1.08	---	0.21	0.1026	31/05/2016	04/07/2016	---	HELLENIC EXCHANGES-A.S.E. (CR)	4.60	-1.50 €	4.67 19/12/2016	4.60	4.60	4.72	4.60	4.64	2350@4.59	215@4.63	23.35	2015	61,275	205	284,256.60	300,695.39	3.40	5.56	8777	
305,635,185	2.18	---	---	---	31/12/2014	01/10/2003	4795	HELLENIC PETROLEUM (CR)	4.26	0.47 #	4.24 19/12/2016	4.24	4.19	4.26	4.26	4.22	702@4.23	520@4.27	47.28	2015	34,689	225	146,471.26	1,302,005.89	2.74	4.68	537	
305,732,436	0.410	---	---	---	08/07/2009	28/09/2011	---	HYGEIA SA (CR)	0.144	1.41 #	0.142 19/12/2016	0.145	0.142	0.146	0.144	0.144	40@0.143	7510@0.144	---	2015	57,690	28	8,301.81	44,025.47	0.078	0.197	4533	
65,441,118	0.440	---	---	---	24/11/2014	11/08/2015	---	IASO SA (CR)	0.396	-3.42 €	0.410 19/12/2016	0.400	0.390	0.405	0.396	0.394	50@0.391	4200@0.420	---	2015	4,700	21	1,852.75	25,914.68	0.360	0.669	4533	
8,298,467	0.400	---	---	---	30/08/1993	08/05/2013	---	IDEAL GROUP SA (CR)	0.800	2.56 #	0.780 19/12/2016	0.726	0.726	0.800	0.800	0.793	900@0.727	100@0.820	-(6)-	2015	110	3	87.26	6,638.77	0.568	0.959	9574	
28,580,100	0.400	0.025	---	---	18/08/2014	04/07/2016	---	IKTINOS HELLAS SA (CR)	0.784	4.53 #	0.750 19/12/2016	0.790	0.731	0.790	0.784	0.773	1000@0.751	229@0.769	21.57	2015	4,570	23	3,534.10	22,406.80	0.731	1.15	2353	
9,090,000	0.900	---	---	---	15/05/2009	13/10/2014	---	ILYDA S.A. (CR)	0.437	---	0.437 19/12/2016	---	---	---	---	---	---	1922@0.394	---	2015	---	---	---	3,972.33	0.397	0.590	9537	
20,578,374	0.620	---	0.4	0.07	05/07/2016	18/05/2015	---	INFORM P. LYKOS SA (CR)	0.509	4.95 #	0.485 19/12/2016	0.509	0.509	0.509	0.509	0.510	300@0.455	12@0.509	---	2015	1	1	0.51	10,474.39	0.364	0.620	2791	
10,500,000	4.00	---	---	---	02/08/2016	---	---	INTERCONTINENTAL (CR)	5.57	---	5.57 19/12/2016	5.57	5.57	5.57	5.57	5.57	10@5.25	3740@5.57	---	---	140	2	779.80	58,485.00	5.15	5.80	8674	
11,233,200	0.730	---	---	---	12/07/2010	30/07/1999	---	INTERTECH SA (CR)	0.185	---	0.185 19/12/2016	---	---	---	---	---	499@0.171	2403@0.185	---	2015	---	---	---	2,078.14	0.120	0.376	9572	
34,986,430	0.440	---	---	---	25/07/2008	23/02/2010	---	INTERWOOD-XYLEMPORIA (CR)	0.061	---	0.061 19/12/2016	---	---	---	---	---	3755@0.061	---	---	2015	---	---	---	2,442.19	0.061	0.093	2353	
2,566,836	0.440	---	---	---	13/08/2010	09/01/2007	---	INTERWOOD-XYLEMPORIA (PR)	0.120	---	0.120 19/12/2016	---	---	---	---	---	---	200@0.117	---	2015	---	---	---	2,442.19	0.117	0.189	2353	
23,154,250	1.36	---	---	---	12/08/2008	02/08/2010	---	INTRACOM CONSTR. (CR)	0.410	-1.91 €	0.418 19/12/2016	0.410	0.410	0.410	0.410	0.410	1999@0.377	111@0.400	---	2015	30	1	12.30	9,493.24	0.222	0.599	2357	
133,025,996	1.41	---	---	---	03/07/2007	07/01/2002	---	INTRACOM HOLDINGS (CR)	0.297	-0.34 €	0.298 19/12/2016	0.298	0.293	0.300	0.297	0.295	1500@0.293	1577@0.297	---	2015	10,718	34	3,165.03	39,508.72	0.245	0.394	9578	
158,961,721	0.300	---	---	---	30/05/2013	14/11/2007	---	INTRALOT (CR)	1.03	---	1.03 19/12/2016	1.05	1.01	1.05	1.03	1.02	1164@1.02	3299@1.04	---	2015	90,110	76	91,761.12	163				

Number of Outstanding Securities	Nominal Value	Dividends [1]			Date of Last Coupon		Note	Shares	Closing price	% change	Previous closing price/date	Open price	Price min	Price max	Last price	Avg price	Last Bid [7]	Last Ask [7]	P/E after	Year	Volume	Trades	Transactions Value[8]	Company Mkt Value (thou. €)	Year low	Year high	Sector[4]		
		2013	2014	2015	Dividend [2]	Right																							
Main Market																													
14,679,792	1.68	---	---	---	24/06/2014	04/09/2000	---	KARATZIS SA (CR)	3.97	---	↘	3.97	19/12/2016	---	---	---	---	550@3.84	200@4.20	11.40	2015	---	---	---	58,278.77	3.40	4.22	2723	
13,202,756	0.350	---	---	---	01/07/2004	05/08/2014	---	KEKROPS SA (CR)	0.382	3.24	#	0.370	19/12/2016	0.382	0.382	0.382	0.382	500@0.307	500@0.350	---	2015	500	1	191.00	5,043.45	0.175	0.398	8633	
7,595,160	0.600	---	---	---	08/08/2008	18/08/2010	---	KIRIAKOULIS SHIPPING SA (CR)	0.630	-9.61	€	0.697	19/12/2016	0.628	0.628	0.690	0.629	0.636	---	400@0.629	78.44	2015	257	5	163.36	4,784.95	0.220	0.721	5759
23,648,700	0.350	---	---	---	13/07/2011	31/03/2015	---	KLEEMAN HELLAS SA (CR)	2.02	---	↘	2.02	19/12/2016	2.02	2.02	2.02	2.02	2.025087067@2.02	2500@2.03	24.37	2015	11,446	13	23,120.92	47,770.37	1.21	2.05	2757	
40,219,218	0.300	---	---	---	25/05/2009	09/07/2013	---	KLOUKINAS - LAPPAS SA (CR)	0.293	-0.34	€	0.294	19/12/2016	0.293	0.293	0.293	0.293	50@0.276	389@0.293	---	2015	181	3	53.03	11,784.23	0.218	0.353	2357	
21,224,340	0.420	---	---	---	02/07/2008	25/04/2006	---	KORDELLOS BROS SA (CR)	0.359	9.45	#	0.328	19/12/2016	0.359	0.359	0.359	0.359	0.360	---	1199@0.296	---	2015	5	1	1.80	7,619.54	0.167	0.373	1757
13,586,500	0.390	---	---	---	25/06/2010	28/05/2008	---	KORRES (CR)	3.45	-3.90	€	3.59	19/12/2016	3.58	3.45	3.60	3.45	3.58	29@3.45	4@3.55	---	2015	51,046	21	182,713.42	46,873.43	2.79	3.90	3767
29,480,000	0.420	---	---	---	19/07/2010	01/08/2007	---	KRETA FARM SA (CR)	0.419	-1.41	€	0.425	19/12/2016	0.419	0.419	0.419	0.419	0.419	590@0.420	500@0.430	---	2015	100	1	41.90	12,352.12	0.300	0.610	3577
33,065,136	0.380	---	0.06	0.06	18/08/2016	16/09/2013	---	KRI-KRI S.A. (CR)	1.84	---	↘	1.84	19/12/2016	---	---	---	---	250@1.76	350@1.84	15.83	2015	---	---	---	60,839.85	1.50	1.90	3577	
15,804,800	0.360	---	---	---	15/06/2010	12/03/2004	---	KTIMA KOSTAS LAZARIDIS SA (CR)	0.270	---	↘	0.270	19/12/2016	---	---	---	---	500@0.260	242@0.318	---	2015	---	---	---	4,267.30	0.166	0.534	3535	
23,286,253	0.990	---	0.2406	---	14/08/2015	15/09/2014	---	KYRIAKIDIS MARBLES SA (CR)	3.38	4.00	#	3.25	19/12/2016	3.25	3.25	3.39	3.38	3.38	50@3.34	9279@3.38	12.93	2015	11,082	5	37,427.16	78,707.54	2.11	3.52	2353
79,721,775	0.300	---	---	---	30/05/2007	23/06/2014	---	LAMDA DEVELOPMENT SA (CR)	4.62	0.44	#	4.60	19/12/2016	4.60	4.50	4.62	4.62	4.56	100@4.54	250@4.61	---	2015	13,314	135	60,683.08	368,314.60	3.12	5.12	8633
21,364,000	1.12	---	---	---	05/07/2010	10/08/2005	---	LAMPSPA HOTEL SA (CR)	16.70	---	↘	16.70	19/12/2016	---	---	---	---	30@17.00	200@17.40	75.99	2015	---	---	---	356,778.80	15.32	18.00	5753	
5,939,268	0.620	---	---	---	10/07/2003	03/01/2002	---	LANAKAM SA (CR)	0.589	---	↘	0.589	19/12/2016	---	---	---	---	---	253@0.549	---	2015	---	---	---	3,498.23	0.539	0.638	3763	
4,740,000	0.860	---	---	---	14/03/2003	---	---	LOGISMOS S.A. (CR)	0.258	---	↘	0.258	19/12/2016	---	---	---	---	1610@0.260	1@0.283	---	2015	---	---	---	1,222.92	0.219	0.489	9533	
17,125,062	0.940	---	---	---	01/06/2010	18/07/2016	---	LOULIS MILLS SA (CR)	1.59	---	↘	1.59	19/12/2016	---	---	---	---	100@1.45	310@1.50	46.47	2015	---	---	---	27,228.85	1.30	1.83	3577	
939,510,748	0.300	---	---	---	26/04/2007	29/08/2014	---	MARFIN INVESTMENT GROUP (CR)	0.136	-2.86	€	0.140	19/12/2016	0.142	0.136	0.143	0.136	0.13994440@0.136	14800@0.137	---	2015	1,050,166	224	145,876.63	127,773.46	0.048	0.222	8775	
9,819,370	0.690	---	---	---	14/08/2007	09/01/2004	---	MATHIOS REFRACTORY SA (CR)	0.220	---	↘	0.220	19/12/2016	---	---	---	---	500@0.202	1@0.242	---	2015	---	---	---	2,160.26	0.162	0.359	2353	
468,700	0.65	1.48	---	---	26/04/2016	21/05/2004	---	MERMEREN KOMB. A.D. PR. (GDR)	6.30	2.27	#	6.16	19/12/2016	6.30	5.94	6.30	6.30	6.20	40@5.92	25@6.45	0.61	2015	584	17	3,622.01	2,952.81	4.83	8.90	1775
51,950,600	0.320	0.3	0.5	0.12	13/05/2016	21/10/2005	---	METKA (CR)	6.40	-0.93	€	6.46	19/12/2016	6.36	6.28	6.48	6.40	6.38	723@6.40	128@6.42	19.21	2015	25,548	186	162,922.52	332,483.84	5.85	7.93	2757
10,500,000	0.950	---	---	---	24/06/2008	19/12/2013	---	MEVACO SA (CR)	0.891	---	↘	0.891	19/12/2016	---	---	---	---	70@0.900	200@0.980	---	2015	---	---	---	9,355.50	0.705	1.10	2757	
6,700,000	0.800	0.16	0.03	0.023	27/06/2016	29/05/2014	---	MILLS KEPENOS (CR)	1.30	---	↘	1.30	19/12/2016	---	---	---	---	20@1.27	100@1.37	12.53	2015	---	---	---	8,710.00	0.880	2.21	3577	
6,200,000	0.500	---	---	---	22/06/2010	01/11/1995	---	MINERVA KNITWEAR SA (CB)	0.048	---	↘	0.048	19/12/2016	---	---	---	---	4000@0.044	---	---	2015	---	---	---	297.60	0.044	0.092	3763	
12,417,000	0.370	---	---	---	28/07/2008	06/09/2011	---	MLS MULTIMEDIA SA (CR)	4.03	---	↘	4.03	19/12/2016	4.00	4.00	4.03	4.03	4.01	330@3.96	390@4.03	24.75	2015	1,970	15	7,907.80	50,040.51	2.75	4.07	9537
11,700,000	0.590	---	---	---	02/06/2009	24/07/2012	---	MOTODYNAMICS S.A. (CR)	0.400	-8.47	€	0.437	19/12/2016	0.400	0.400	0.400	0.400	0.400	500@0.405	101@0.480	14.60	2015	6,000	2	2,400.00	4,680.00	0.227	0.569	5379
110,782,980	0.750	0.2	---	0.65	12/12/2016	04/11/2013	---	MOTOR OIL (CR)	13.29	0.68	#	13.20	19/12/2016	13.20	13.03	13.39	13.29	13.25	462@13.27	260@13.30	7.32	2015	56,897	342	753,642.62	1,472,305.80	8.13	13.42	533
116,915,862	0.970	---	---	---	11/05/2009	19/10/2015	---	MYTILINEOS HOLDINGS (CR)	6.17	-1.12	€	6.24	19/12/2016	6.24	6.11	6.25	6.17	6.15	396@6.15	6581@6.17	---	2015	118,898	419	731,373.02	721,370.87	2.70	6.40	1755
8,321,682	0.670	---	---	---	17/08/2007	23/11/1999	---	N. LEVEDERIS SA (CB)	0.155	0.65	#	0.154	19/12/2016	0.169	0.155	0.169	0.155	0.166	239@0.155	---	2015	975	2	161.63	1,845.12	0.116	0.385	1757	
2,160,524	0.670	0.0436	0.0436	0.0436	04/08/2016	23/11/1999	---	N. LEVEDERIS SA (PB)	0.257	---	↘	0.257	19/12/2016	---	---	---	---	189@0.232	500@0.255	---	2015	---	---	---	1,845.12	0.202	1.25	1757	
11,510,102	0.890	---	---	---	24/06/2005	06/10/1999	---	NAFPAKTOS TEXTILE IND. SA (CB)	0.150	9.49	#	0.137	19/12/2016	0.150	0.150	0.150	0.150	0.150	1900@0.138	---	2015	400	1	60.00	1,726.52	0.085	0.313	3763	
6,340,000	0.600	---	---	---	30/11/2009	09/11/2016	---	NAKAS MUSIC	0.835	---	↘	0.835	19/12/2016	---	---	---	---	100@0.806	5000@0.915	5.25	2016	---	---	---	5,293.90	0.600	1.11	5379	
9,147,151,527	0.300	---	---	---	16/05/2008	30/11/2015	---	NATIONAL BANK (CR)	0.238	-1.65	€	0.242	19/12/2016	0.240	0.231	0.244	0.238	0.238176000@0.237	22881@0.238	---	2015	21,766,739	2,104	5,189,729.02	2,177,022.06	0.099	0.340	8355	
23,935,280	0.300	---	---	---	29/06/2009	13/06/2000	---	NAYTEMPORIKI PUBLISHING SA(CR)	0.045	---	↘	0.045	19/12/2016	---	---	---	---	323@0.042	---	---	2015	---	---	---	1,077.09	0.045	0.097	5557	
27,848,000	0.300	0.004	0.0032	0.0084	16/08/2016	02/09/2003	---	NEWSPHONE HELLAS SA (CR)	0.239	---	↘	0.239	19/12/2016	---	---	---	---	200@0.216	35@0.222	10.04	2015	---	---	---	6,655.67	0.135	0.291	2791	
291,497,368	0.300	---	---	---	08/07/2008	21/03/2016	---	NIREFS SA (CR)	0.163	-4.12	€	0.170	19/12/2016	0.167	0.162	0.170	0.165	0.165	400@0.164	22@0.165	0.23	2015	69,803	54	11,539.65	47,514.07	0.067	0.297	3573
319,000,000	0.300	0.25	0.57	0.4	13/10/2016	25/04/2001	---	OPAP (CR)	8.25	1.23	#	8.15	19/12/2016	8.15	8.15	8.27	8.25	8.23	260@8.22	10@8.26	12.47	2015	325,709	917	2,680,731.11	2,631,750.00	5.16	8.97	5752
490,150,389	2.83	---	0.08	0.1	29/06/2016	18/06/																							

Number of Outstanding Securities	Nominal Value	Dividends [1]			Date of Last Coupon		Note	Shares	Closing price	% change	Previous closing price/date	Open price	Price min	Price max	Last price	Avg price	Last Bid [7]	Last Ask [7]	P/E after	Year	Volume	Trades	Transactions Value[8]	Company Mkt Value (thou. €)	Year low	Year high	Sector[4]	
		2013	2014	2015	Dividend [2]	Right																						
Main Market																												
4,971,466	1.46	---	---	---	04/07/2007	08/10/2003	---	PAIRIS SA (CR)	0.155	-7.19	€ 0.167	19/12/2016	0.155	0.155	0.155	0.155	150@0.151	300@0.166	---	2015	300	1	46.50	770.58	0.144	0.215	2723	
3,953,090	0.900	---	0.118	0.11	08/12/2016	05/12/2012	---	PAPERPACK (CR)	1.50	-2.60	€ 1.54	19/12/2016	1.41	1.41	1.50	1.50	1.47	90@1.41	10@1.51	4.72	2015	30	2	44.10	5,929.64	0.651	1.56	2723
50,797,369	0.310	---	---	---	17/08/2000	12/10/2010	---	PAPOUTSANIS (CR)	0.178	-4.30	€ 0.186	19/12/2016	0.182	0.168	0.183	0.178	0.169	---	150@0.175	---	2015	1,599	11	270.73	9,041.93	0.080	0.217	3767
7,070,400	0.930	---	0.101	---	30/11/2016	06/05/2016	---	PETROPOULOS PETROS (CR)	4.23	---	↘ 4.23	19/12/2016	4.18	4.18	4.23	4.23	4.22	50@4.18	490@4.23	39.67	2015	191	8	806.20	29,907.79	3.43	4.27	2753
8,733,183,280	0.300	---	---	---	16/05/2008	27/11/2015	---	PIRAEUS BANK (CR)	0.194	-2.02	€ 0.198	19/12/2016	0.198	0.188	0.201	0.194	0.194160000@0.193	204734@0.195	---	2015	23,861,026	1,957	4,620,498.27	1,694,237.56	0.067	0.308	8355	
22,080,000	0.330	0.2	---	0.08	17/05/2016	27/04/2015	---	PLAISIO COMPUTERS SA (CR)	3.80	2.15	# 3.72	19/12/2016	3.70	3.64	3.80	3.80	3.71	50@3.75	751@3.80	12.51	2015	2,726	49	10,107.31	83,904.00	3.64	4.75	9572
232,000,000	4.60	---	0.05	---	20/07/2015	12/12/2001	---	PPC (CR)	2.89	0.70	# 2.87	19/12/2016	2.90	2.82	2.91	2.89	2.88	812@2.88	13127@2.89	---	2015	389,523	649	1,120,932.53	670,480.00	2.29	4.08	7535
11,812,193	0.470	---	0.02	---	26/03/2015	15/11/2006	---	PROFILE SA (CR)	0.440	---	↘ 0.440	19/12/2016	---	---	---	---	---	450@0.435	4358@0.439	---	2015	---	---	---	5,197.36	0.388	0.546	9533
27,345,120	0.470	---	---	---	18/07/2005	26/02/2014	---	QUALITY & RELIABILITY SA (CR)	0.334	3.09	# 0.324	19/12/2016	0.334	0.334	0.334	0.334	0.334	---	79@0.292	---	2015	160	3	53.44	9,133.27	0.207	0.465	9533
11,921,531	3.32	---	---	---	05/09/2008	05/12/2016	---	QUEST HOLDINGS (CR)	6.62	0.76	# 6.57	19/12/2016	6.51	6.50	6.62	6.62	6.51	100@6.51	6@6.62	---	2015	209	4	1,360.10	78,920.54	3.30	7.00	9533
57,434,884	1.31	---	---	---	05/06/2008	12/06/2009	---	REDS S.A. (CR)	0.303	---	↘ 0.303	19/12/2016	---	---	---	---	---	500@0.310	---	---	2015	---	---	---	17,402.77	0.280	0.410	8633
22,280,000	0.300	---	---	---	11/04/2011	23/02/2007	---	REVOIL (CR)	0.416	-0.72	€ 0.419	19/12/2016	0.429	0.416	0.429	0.416	0.423	996@0.325	1179@0.416	13.37	2015	440	4	186.17	9,268.48	0.169	0.557	5379
7,500,000	0.690	0.0863	0.1	---	19/06/2015	05/07/2016	---	S.KANAKIS SA (CR)	2.55	-1.16	€ 2.58	19/12/2016	2.60	2.50	2.60	2.55	2.55	50@2.49	790@2.54	10.90	2015	329	7	839.35	19,125.00	1.75	2.84	3577
52,067,296	0.300	---	---	---	23/12/2003	24/01/2007	---	SELECTED TEXT. IND. ASSOC (CR)	0.168	7.01	# 0.157	19/12/2016	0.168	0.168	0.168	0.168	0.168	---	481@0.159	---	2016	244	1	40.99	8,747.31	0.084	0.205	3763
204,235,184	0.300	---	---	---	01/07/2008	30/07/2012	---	SELONDA AQUACULTURE SA (CR)	0.138	1.47	# 0.136	19/12/2016	0.137	0.137	0.142	0.138	0.137	1@0.148	310@0.149	---	2015	28,655	9	3,939.25	28,184.46	0.074	0.273	3573
6,456,530	1.61	---	---	---	29/06/2001	02/08/2010	---	SPACE HELLAS SA (CR)	0.641	-8.43	€ 0.700	19/12/2016	0.641	0.641	0.641	0.641	0.641	10@0.641	700@0.770	4.88	2015	290	1	185.89	4,138.64	0.592	1.28	9578
28,438,268	0.300	---	---	---	21/08/2006	24/11/1999	---	SPIROY AGRICULTURE SA (CR)	0.699	---	↘ 0.699	19/12/2016	---	---	---	---	---	---	29913@0.630	---	2015	---	---	---	19,878.35	0.630	0.700	1357
40,693,350	5.00	---	---	---	03/07/2006	26/05/2015	---	TECHNICAL OLYMPIC SA (CR)	0.926	0.11	# 0.925	19/12/2016	0.953	0.926	0.953	0.926	0.929	163@0.926	874@0.945	---	2015	1,738	7	1,614.67	37,682.04	0.530	0.953	3728
109,314,400	0.300	---	---	0.0935	30/05/2016	05/08/2015	---	TERNA ENERGY (CR)	2.62	-1.87	€ 2.67	19/12/2016	2.64	2.61	2.67	2.62	2.63	50@2.61	110@2.64	-(6)-	2015	15,395	129	40,454.12	286,403.73	1.92	3.05	7537
36,300,000	1.12	0.285	0.24	0.25	23/06/2016	12/12/2007	---	THESSALONIKA WATER & SEWERAGE	3.40	1.49	# 3.35	19/12/2016	3.36	3.36	3.40	3.40	3.38	1@3.40	222@3.46	9.11	2015	249	9	842.60	123,420.00	2.65	3.86	7577
45,094,620	0.660	0.05	0.0225	---	20/04/2015	01/11/1999	---	THRACE PLASTICS SA (CR)	2.30	0.44	# 2.29	19/12/2016	2.33	2.25	2.33	2.30	2.29	500@2.25	10679@2.30	-(6)-	2015	7,356	26	16,828.83	103,717.63	1.25	2.33	1357
77,063,568	4.00	---	0.1551	0.3099	27/06/2016	25/06/2004	---	TITAN CEMENT (CR)	21.80	-0.46	€ 21.90	19/12/2016	21.18	21.18	21.95	21.80	21.80	585@21.74	785@21.80	30.68	2015	14,514	227	316,464.44	1,782,091.05	14.86	22.40	2353
7,568,960	4.00	---	0.1551	0.3099	27/06/2016	25/06/2004	---	TITAN CEMENT CO. (PR)	13.49	-0.07	€ 13.50	19/12/2016	13.11	13.11	13.49	13.49	13.46	70@13.11	90@13.49	18.98	2015	170	8	2,288.40	1,782,091.05	7.36	13.81	2353
10,080,000	3.00	0.6	1.95	0.58	18/07/2016	27/08/2001	---	TPA SA (CR)	17.74	-0.34	€ 17.80	19/12/2016	17.70	17.10	17.75	17.74	17.66	50@17.60	44@17.74	9.98	2015	7,284	47	128,600.89	178,819.20	17.10	24.10	2777
15,627,315	0.300	---	---	---	16/11/1992	03/12/2012	---	UNIBIOS (CR)	0.125	-0.79	€ 0.126	19/12/2016	0.129	0.121	0.129	0.125	0.124	679@0.118	150@0.125	---	2015	1,350	7	166.75	1,953.41	0.053	0.165	2353
18,810,000	0.400	---	---	---	08/07/2010	14/11/2007	---	VARVERIS - MODA BAGNO SA (CR)	0.188	---	↘ 0.188	19/12/2016	---	---	---	---	---	---	6219@0.170	---	2015	---	---	---	3,536.28	0.072	0.188	2353
259,189,761	---	---	---	---	26/02/2016	---	---	VIOHALCO SA/NV (CB)	1.24	---	↘ 1.24	19/12/2016	1.23	1.22	1.25	1.24	1.24	5181@1.23	331@1.24	---	---	86,910	196	107,970.33	321,395.30	0.928	1.67	2727
4,968,600	2.88	---	---	---	01/07/1998	14/12/1998	---	VIS SA (CR)	0.900	---	↘ 0.900	19/12/2016	---	---	---	---	---	500@0.821	200@0.899	---	2015	---	---	---	4,471.74	0.611	1.00	2723
6,325,000	0.600	---	---	---	02/05/2014	17/02/2014	---	VOGIATZOGLOU SYSTEMS SA (CR)	1.39	---	↘ 1.39	19/12/2016	---	---	---	---	---	---	757@1.26	---	2015	---	---	---	8,791.75	0.700	1.75	2797

Exchange Traded Funds (ETFs)

619,082	---	---	---	---	15/06/2016	---	---	ALPHA ETF FTSE Athex Large Cap	16.94	1.16	# 16.74	19/12/2016	16.77	16.77	16.94	16.94	16.83	---	9@16.82	---	---	---	23	2	386.97	---	11.30	170.69	12003
294,878	---	---	---	---	29/06/2009	---	---	NBGAM ETF	7.37	0.55	# 7.33	19/12/2016	7.37	7.37	7.37	7.37	7.37	---	---	---	---	---	2	1	14.74	---	4.50	7.60	12003
388,550	---	---	---	---	03/11/2010	---	---	NBGAM ETF GREECE & TURKEY 30	5.27	0.57	# 5.24	19/12/2016	5.27	5.27	5.27	5.27	5.27	---	---	---	---	---	2	1	10.54	---	4.89	6.27	12003

Low Dispersion

14,000,000	4.15	---	---	---	23/04/2010	29/06/1999	4815	ALPHA REAL ESTATE SA(CR)	5.43	19.60	#	4.54	19/12/2016	5.43	5.43	5.43	5.43	5.43	60@4.55	275@5.43	27.43	2015	1	1	5.43	76,020.00	4.11	7.30	8637
81,122,516	3.00	---	---	---	23/06/2003	04/11/2008	4816	ASTIR PALACE SA (CR)	5.37	-2.01	€	5.48	19/12/2016	5.37	5.37	5.37	5.37	5.37	7540@5.35	300@5.38	---	2015	9,986	15	53,624.82	435,627.91	2.90	5.48	5753

Number of Outstanding Securities	Nominal Value	Dividends [1]			Date of Last Coupon		Note	Shares	Closing price	% change	Previous closing price/date	Open price	Price min	Price max	Last price	Avg price	Last Bid [7]	Last Ask [7]	P/E after	Year	Volume	Trades	Transactions Value[8]	Company Mkt Value (thou. €)	Year low	Year high	Sector[4]	
		2013	2014	2015	Dividend [2]	Coupon Right																						
Low Dispersion																												
13,465,290	0.300	---	---	---	09/08/2004	09/11/2016	4814	ATHENA SA (CR)	0.408	---	↘ 0.408	19/12/2016	---	---	---	---	---	---	---	2015	---	---	---	5,493.84	0.180	1.30	2357	
191,660,320	0.300	---	---	---	20/07/2009	29/12/2010	4817	ATTICA HOLDINGS (CR)	0.760	---	↘ 0.760	19/12/2016	0.760	0.760	0.760	0.760	80@0.760	20@0.820	-(6)-	2015	20	1	15.20	145,661.84	0.490	1.40	5759	
13,404,440	8.63	---	---	---	02/04/2001	06/03/1992	4822	IONIAN HOTELS SA (CR)	9.50	5.56	# 9.00	19/12/2016	9.50	9.50	9.50	9.50	100@8.10	360@10.00	58.74	2015	300	1	2,850.00	127,342.18	5.64	12.00	5753	
2,760,000	11.83	8.5	9.3	8.5	15/07/2016	16/07/1990	4823	KARELIA TOBACCO CO. SA (CB)	258.50	---	↘ 258.50	19/12/2016	---	---	---	---	8@248.00	42@278.80	13.36	2015	---	---	---	713,460.00	227.20	2079.00	3785	
106,980,050	2.25	---	---	---	25/07/2008	24/02/2014	5046	MINOAN LINES SA (CR)	2.40	0.42	# 2.39	19/12/2016	2.39	2.39	2.40	2.40	2.40	433@2.40	---	15.84	2015	67	2	160.79	256,752.12	2.00	2.45	5759
255,494,534	3.00	---	---	0.2035	05/12/2016	23/12/2015	5104	NBG PANGAEA (CR)	4.04	---	↘ 4.04	19/12/2016	---	---	---	---	323@4.04	100@4.39	20.76	2015	---	---	---	1,032,197.92	3.22	6.03	8671	
22,996,875	1.25	---	---	---	24/06/2011	02/02/2016	5116	NEXANS HELLAS SA (CR)	0.900	---	↘ 0.900	19/12/2016	---	---	---	---	169@0.900	66@1.05	---	2015	---	---	---	20,697.19	0.781	1.58	2733	
17,240,776	0.370	---	---	---	14/07/2005	30/09/2003	4827	PERSEUS SA (CR)	0.240	---	↘ 0.240	19/12/2016	0.240	0.240	0.240	0.240	0.240	---	1.76	2015	100	1	24.00	4,137.79	0.240	0.520	3577	
54,888,240	1.13	0.09	---	---	25/04/2014	22/03/2006	5100	TRASTOR REAL EST. INV. CO.(CR)	0.869	---	↘ 0.869	19/12/2016	---	---	---	---	300@0.831	201@0.900	---	2015	---	---	---	47,697.88	0.611	1.25	8671	

Surveillance

13,000,000	1.00	---	---	---	01/08/2007	07/04/2000	5093	AKRITAS SA (CR)	0.140	---	↘ 0.140	19/12/2016	---	---	---	---	500@0.155	---	---	2015	---	---	---	1,820.00	0.061	0.530	2353	
14,870,100	0.300	---	---	---	15/05/2008	26/09/2011	4844	ALPHA GRISSIN S.A. (CR)	0.031	---	↘ 0.031	19/12/2016	---	---	---	---	100@0.031	---	---	2015	---	---	---	460.97	0.019	0.038	9533	
2,969,713	0.300	---	---	---	02/07/2008	28/02/2011	4958	ANEK LINES SA (PR, issue '96)	0.086	---	↘ 0.086	19/12/2016	---	---	---	---	---	83@0.069	35.97	2015	---	---	---	11,324.14	0.086	0.240	5759	
312,163	0.300	---	---	---	02/07/2008	28/02/2011	4959	ANEK LINES SA (PR, issue '90)	0.422	---	↘ 0.422	19/12/2016	---	---	---	---	---	---	-(6)-	2015	---	---	---	11,324.14	0.352	1.04	5759	
185,373,016	0.300	---	---	---	02/07/2008	28/02/2011	4957	ANEK LINES SA (CR)	0.059	-4.84	€ 0.062	19/12/2016	0.059	0.059	0.059	0.059	0.059	4959@0.059	45@0.062	24.68	2015	515	4	30.39	11,324.14	0.050	0.103	5759
20,255,805	0.300	---	---	---	22/08/2006	02/08/2010	4881	AXON HOLDING SA (CR)	0.006	---	↘ 0.006	19/12/2016	---	---	---	---	2889@0.007	---	---	2015	---	---	---	121.53	0.006	0.070	4533	
17,579,754	4.16	---	---	---	18/08/2006	02/08/2010	5097	BIOTER SA (CR)	0.059	13.46	# 0.052	19/12/2016	0.050	0.050	0.062	0.062	0.059	9998@0.050	500@0.060	---	2015	1,281	5	76.05	1,037.21	0.038	0.149	2357
4,034,950	0.680	---	---	---	01/07/2005	30/12/2010	5114	CHATZIKRANIOTIS & SONS SA (CR)	0.122	-18.67	€ 0.150	19/12/2016	0.122	0.122	0.122	0.122	0.122	3031@0.122	2000@0.140	---	2015	12	1	1.46	492.26	0.030	0.164	3577
1,417,311	0.300	---	---	---	11/08/2010	12/10/2016	5123	DIONIC (CR)	0.499	9.19	# 0.457	19/12/2016	0.480	0.470	0.500	0.500	0.499	320@0.480	1256@0.500	0.15	2015	3,170	8	1,580.60	707.24	0.240	0.600	2797
15,878,748	0.480	---	---	---	10/07/2006	22/03/2004	5095	DOMIKI KRITIS SA (CR)	0.290	---	↘ 0.290	19/12/2016	---	---	---	---	---	30@0.232	---	2015	---	---	---	4,604.84	0.147	0.318	2357	
3,961,300	1.28	---	---	---	29/06/2004	03/08/2000	5080	DUROS SA (CR)	0.400	---	↘ 0.400	19/12/2016	---	---	---	---	---	125@0.400	---	2015	---	---	---	1,584.52	0.118	0.491	3763	
7,085,888	1.59	---	---	---	02/07/1996	06/09/2010	4690	ELVIEMEK (CR)	3.30	---	↘ 3.30	19/12/2016	---	---	---	---	100@3.70	---	---	2015	---	---	---	23,383.43	2.90	3.97	8633	
6,000,000	0.600	---	---	---	13/06/2008	08/04/2004	4886	EUROBROKERS S.A. (CR)	0.010	---	↘ 0.010	19/12/2016	---	---	---	---	8000@0.010	---	---	2015	---	---	---	60.00	0.009	0.010	8534	
21,820,410	0.800	---	---	---	22/05/2008	02/08/2011	4882	EUROMEDICA SA (CR)	0.007	---	↘ 0.007	19/12/2016	0.007	0.007	0.007	0.007	0.007	20480@0.007	---	2015	15	1	0.11	152.74	0.006	0.028	4533	
110,097,185	0.300	---	---	---	19/09/2016		5118	Forthnet (CR)	0.255	---	↘ 0.255	19/12/2016	---	---	---	---	598@0.241	100@0.298	---	2015	---	---	---	28,074.78	0.236	0.660	9535	
50,593,832	0.300	---	---	---	07/07/2010	07/09/2011	5113	FRIGOGLASS SA (CR)	0.100	-1.96	€ 0.102	19/12/2016	0.101	0.099	0.101	0.100	0.100	1000@0.099	10000@0.102	---	2015	20,637	26	2,058.96	5,059.38	0.086	1.87	2757
77,376,446	0.340	---	---	---	23/05/2005	18/08/2011	5094	G.E. DIMITRIOU (CR)	0.022	---	↘ 0.022	19/12/2016	---	---	---	---	---	10626@0.022	---	2015	---	---	---	1,702.28	0.006	0.037	3722	
1,270,000	0.300	---	---	---	06/07/2007	06/02/2013	5007	GIRAKIAN PROFIL SA (CB)	0.060	---	↘ 0.060	19/12/2016	---	---	---	---	500@0.072	---	---	2015	---	---	---	76.20	0.060	0.167	1757	
1,540,000	0.600	---	---	---	08/08/1994	19/09/2000	5058	J.BOUTARIS & SON HOLD. (PB)	0.066	---	↘ 0.066	19/12/2016	---	---	---	---	---	4000@0.079	---	2015	---	---	---	1,184.36	0.006	0.066	3535	
25,179,640	0.600	---	---	---	08/08/1994	19/09/2000	5057	J.BOUTARIS & SON HOLD. SA (CB)	0.043	---	↘ 0.043	19/12/2016	---	---	---	---	21100@0.036	400@0.051	---	2015	---	---	---	1,184.36	0.016	0.128	3535	
7,125,216	0.650	---	---	---	01/07/2005	14/12/1999	4955	KRE.KA SA (CR)	0.072	---	↘ 0.072	19/12/2016	---	---	---	---	4995@0.085	---	---	2015	---	---	---	513.02	0.060	0.180	3573	
51,081,030	1.00	---	---	---	20/08/2007	03/09/2007	4912	LAVIPHARM SA (CR)	0.075	-11.77	€ 0.085	19/12/2016	0.073	0.073	0.075	0.075	0.075	23171@0.076	300@0.078	---	2015	42,431	11	3,161.97	3,831.08	0.054	0.155	4577
7,734,375	1.00	---	---	---	09/07/2007	07/01/2011	5112	LIVANIS SA (CR)	0.011	---	↘ 0.011	19/12/2016	---	---	---	---	1000@0.011	---	---	2015	---	---	---	85.08	0.011	0.148	5557	
4,419,616	1.58	---	---	---	21/07/2011	04/03/2015	4983	MEDICON S.A (CR)	0.362	---	↘ 0.362	19/12/2016	---	---	---	---	50@0.345	1@0.360	0.99	2015	---	---	---	1,599.90	0.298	0.790	4535	
20,231,328	0.600	---	---	---	15/07/2008	25/06/2004	4879	NIKAS SA (CR)	0.132	---	↘ 0.132	19/12/2016	---	---	---	---	---	3000@0.130	---	2015	---	---	---	2,670.54	0.070	0.132	3577	
14,967,940	0.500	---	---	---	21/05/2008	04/01/2008	4956	PASAL DEVELOPMENT S.A. (CR)	0.154	---	↘ 0.154	19/12/2016	0.154	0.154	0.154	0.154	0.154	5000@0.130	2600@0.153	---	2015	7,400	2	1,139.60	2,305.06	0.058	0.300	8633
18,750,000	0.300	---	---	---	02/07/2001	31/12/2012	4985	PEGASUS PUBLISHING S.A. (CR)	0.034	---	↘ 0.034	19/12/2016	---	---	---	---	---	6@0.033	---	2015	---	---	---	637.50	0.034	0.136	5557	

Number of Outstanding Securities	Nominal Value	Dividends [1]			Date of Last Coupon		Note	Shares	Closing price	% change	Previous closing price/date	Open price	Price min	Price max	Last price	Avg price	Last Bid [7]	Last Ask [7]	P/E after	Year	Volume	Trades	Transactions Value[8]	Company Mkt Value (thou. €)	Year low	Year high	Sector[4]		
		2013	2014	2015	Dividend [2]	Right																							
Surveillance																													
65,326,268	0.530	---	---	---	04/07/2007	19/07/2006	4750	SATO SA (CR)	0.065	---	↘	0.065	19/12/2016	---	---	---	---	360@0.052	1190@0.078	---	2015	---	---	---	4,246.21	0.008	0.116	3726	
7,914,480	0.300	---	---	---	23/06/2008	29/06/2011	4888	SFAKIANAKIS SA (CR)	0.210	---	↘	0.210	19/12/2016	---	---	---	---	500@0.252	---	---	2015	---	---	---	1,662.04	0.157	5.64	5379	
10,186,667	1.35	---	---	---	24/06/2008	02/02/2016	4887	SIDMA SA (CR)	0.251	---	↘	0.251	19/12/2016	---	---	---	---	6@0.201	260@0.229	---	2015	---	---	---	2,556.85	0.096	0.380	1757	
4,737,503	0.320	---	---	---	22/06/2005	22/09/2015	5115	VARANGIS AVEPE S.A. (CR)	0.235	---	↘	0.235	19/12/2016	---	---	---	---	1@0.220	---	---	2015	---	---	---	1,113.31	0.235	0.300	3726	
16,383,428	0.300	---	---	---	25/06/2002	21/06/2013	4997	VARVARESSOS SA (CB)	0.040	---	↘	0.040	19/12/2016	---	---	---	---	3000@0.033	10@0.040	---	2015	---	---	---	655.34	0.006	0.172	3763	
13,191,620	0.620	---	---	---	04/08/2010	09/09/2002	4977	YALCO - CONSTANTINOU SA (CB)	0.040	-20.00	↘	0.050	19/12/2016	0.040	0.040	0.040	0.040	0.040	2813@0.040	---	---	2015	187	1	7.48	527.66	0.034	0.143	3722

Under Deletion																													
1,130,180	0.440	---	---	---	20/06/2003	02/07/2014	5092	COMPUCON SA (CR)	0.006	---	↘	0.006	19/12/2016	---	---	---	---	6000@0.006	---	---	2015	---	---	---	6.78	0.006	0.019	9537	
9,567,289	0.300	---	---	---	01/07/2004	19/11/2007	5062	MARAC ELECTRONICS (CR)	0.298	---	↘	0.298	19/12/2016	---	---	---	---	---	14880@0.239	---	2015	---	---	---	2,851.05	0.298	0.298	9578	
24,319,250	0.300	---	---	---	09/07/2002	04/07/2007	5111	PROODEFTIKH SA (CR)	0.054	20.00	#	0.045	19/12/2016	0.054	0.054	0.054	0.054	0.054	2000@0.038	2000@0.054	---	2015	1,000	1	54.00	1,313.24	0.032	0.092	2357
766,000	1.00	---	---	---	01/07/2004	11/12/2012	4937	TRIA ALFA SA (CR)	2.59	---	↘	2.59	19/12/2016	---	---	---	---	---	14@2.08	---	2015	---	---	---	2,383.29	1.80	2.59	3763	
245,000	1.00	---	---	---	19/07/2010	11/12/2012	4938	TRIA ALFA SA (PR)	1.63	---	↘	1.63	19/12/2016	---	---	---	---	---	191@1.31	---	2015	---	---	---	2,383.29	1.36	1.63	3763	

Suspension Status																												
33,301,715	0.320	---	---	---	27/06/2003	08/07/2009	5121	AEGEK (CR)	0.038	---	↘	0.038	30/09/2016	---	---	---	---	---	---	---	---	---	---	---	1,265.47	0.029	0.072	2357
5,000,000	0.400	---	---	---	03/06/2009	01/09/2014	5087	ALCO HELLAS SA (CR)	0.180	---	↘	0.180	31/03/2015	---	---	---	---	---	---	---	---	---	---	---	900.00	0.180	0.180	1753
5,025,000	0.300	---	---	---	05/07/2005	14/03/2002	5023	ALSINCO S.A (CR)	0.043	---	↘	0.043	29/11/2013	---	---	---	---	---	---	---	---	---	---	---	216.08	0.043	0.043	3763
215,246,452	0.300	---	---	---	25/06/2001	24/09/2001	4446	ALTEC SA (CR)	0.012	---	↘	0.012	30/11/2015	---	---	---	---	---	---	---	---	---	---	---	2,582.96	0.012	0.012	9533
81,644,555	0.300	---	---	---	01/07/2008	02/09/2002	5098	ATTI - KAT SA (CR)	0.012	---	↘	0.012	29/05/2015	---	---	---	---	---	---	---	---	---	---	---	979.73	0.012	0.012	2357
33,930,000	0.300	---	---	---	03/07/2006	30/05/2001	4865	BABIS VOVOS SA (CR)	0.304	---	↘	0.304	30/03/2012	---	---	---	---	---	---	---	---	---	---	---	10,314.72	0.304	0.304	8633
20,121,710	1.21	---	---	---	27/07/1992	12/03/2003	5002	BALKAN R.E. (CR)	0.190	---	↘	0.190	29/08/2013	---	---	---	---	---	---	---	---	---	---	---	3,823.12	0.190	0.190	8633
30,159,583	0.470	---	---	---	26/06/2008	29/12/2010	5047	DIAS A/C (CR)	0.050	---	↘	0.050	26/03/2014	---	---	---	---	---	---	---	---	---	---	---	1,507.98	0.050	0.050	3573
7,847,611	1.20	---	---	---	01/08/2007	28/09/2011	4939	EDRASIS - C. PSALLIDAS SA (CR)	0.150	---	↘	0.150	29/11/2012	---	---	---	---	---	---	---	---	---	---	---	1,177.14	0.150	0.150	2357
36,748,909	0.730	---	---	---	15/12/2005	13/12/2006	5109	HEL. SUGAR INDUSTRY SA (CB)	0.075	---	↘	0.075	29/02/2016	---	---	---	---	---	---	---	---	---	---	---	2,756.17	0.064	0.150	3577
13,692,227	1.47	---	---	---	07/07/2006	08/10/1999	5049	HELLENIC FABRICS SA (CR)	0.117	---	↘	0.117	31/03/2014	---	---	---	---	---	---	---	---	---	---	---	1,601.99	0.117	0.117	3763
30,390,000	0.310	---	---	---	18/08/2008	29/12/2006	5099	HELLENIC FISHFARMING SA (CR)	0.070	---	↘	0.070	02/06/2015	---	---	---	---	---	---	---	---	---	---	---	2,127.30	0.070	0.070	3573
24,619,524	0.500	---	---	---	10/10/1986	30/12/2002	4914	KERAMIA-ALLATINI (CR)	0.088	---	↘	0.088	30/08/2012	---	---	---	---	---	---	---	---	---	---	---	2,166.52	0.088	0.088	8633
66,937,526	0.700	---	---	---	13/08/2010	21/05/2003	5003	MICHANIKI SA (CR)	0.100	---	↘	0.100	29/08/2013	---	---	---	---	---	---	---	---	---	---	---	9,186.78	0.100	0.100	2357
25,968,987	0.700	---	---	---	13/08/2010	21/05/2003	5004	MICHANIKI SA (PR)	0.096	---	↘	0.096	29/08/2013	---	---	---	---	---	---	---	---	---	---	---	9,186.78	0.096	0.096	2357
13,555,100	1.00	---	---	---	08/07/2005		4576	MICROLAND COMPUTERS SA (CR)	0.640	---	↘	0.640	14/07/2009	---	---	---	---	---	---	---	---	---	---	---	8,675.26	0.640	0.640	5379
255,459,600	0.300	---	---	---	26/06/2000	03/12/2010	5101	NEL SA (CR)	0.070	---	↘	0.070	31/08/2015	---	---	---	---	---	---	---	---	---	---	---	17,882.17	0.070	0.070	5759
23,463,874	0.800	---	---	---	23/05/2003	21/12/1999	4918	NEORION SA (CR)	0.125	---	↘	0.125	30/08/2012	---	---	---	---	---	---	---	---	---	---	---	2,932.98	0.125	0.125	2753
20,210,127	1.53	---	---	---	27/06/1997	20/03/2000	5061	PARNASSOS ENTERP. (CR)	0.070	---	↘	0.070	30/05/2014	---	---	---	---	---	---	---	---	---	---	---	1,414.71	0.070	0.070	8775
40,946,303	0.360	---	---	---	18/07/2005	27/11/2007	5089	PC SYSTEMS SA (CR)	0.006	---	↘	0.006	31/03/2016	---	---	---	---	---	---	---	---	---	---	---	245.68	0.006	0.014	9533
29,060,950	0.340	---	---	---	20/08/2007	24/10/2001	5088	SPIDER METAL INDUSTRY SA (CR)	0.008	---	↘	0.008	31/03/2015	---	---	---	---	---	---	---	---	---	---	---	232.49	0.008	0.008	2757
144,688,060	0.600	---	---	---	21/04/2008	10/03/2010	4982	T BANK (CR)	0.048	---	↘	0.052	# 29/11/2011	---	---	---	---	---	---	---	---	---	---	---	6,945.03	0.048	0.048	8355
6,523,780	0.530	---	---	---	01/07/2002	06/03/2001	4971	TECHNICAL PUBLICATIONS SA (CR)	0.006	---	↘	0.006	31/05/2013	---	---	---	---	---	---	---	---	---	---	---	39.14	0.006	0.006	5557

Number of Outstanding Securities	Nominal Value	Dividends [1]			Date of Last Coupon Dividend [2]		Date of Right	Note	Shares	Closing price	% change	Previous closing price/date		Open price	Price min	Price max	Last price	Avg price	Last Bid [7]	Last Ask [7]	P/E after	Year	Volume	Trades	Transactions Value[8]	Company Mkt Value (thou. €)	Year low	Year high	Sector[4]
--	------------------	---------------	--	--	-------------------------------------	--	---------------	------	--------	------------------	----------	--------------------------------	--	---------------	--------------	--------------	---------------	--------------	-----------------	--------------	--------------	------	--------	--------	--------------------------	--------------------------------	-------------	--------------	---------------

Suspension Status

100,793,572	0.300	---	---	---	16/07/2009	11/02/2016	5110	TELETIPPOS SA (CR)		0.060	---	↘	0.060	07/03/2016	---	---	---	---	---	---	5@0.048	---	---	---	---	---	6,047.61	0.054	0.070	5553
13,920,000	0.320	---	---	---	19/11/2001	01/08/2000	4726	TEXAPRET SA (CR)		0.080	---	↘	0.080	28/02/2011	---	---	---	---	---	---	---	---	---	---	---	---	1,113.60	0.080	0.080	3763
510,840	1.00	---	---	---	15/07/2008	21/11/2013	5036	TROPEA HOLDING (CR)		2.00	---	↘	0.020	# 30/03/2012	---	---	---	---	---	---	---	---	---	---	---	---	1,021.68	2.00	2.00	3722
284,465,964	3.70	---	---	---	20/06/2008	15/06/2009	4913	TT HELLENIC POSTBANK (CR)		0.168	---	↘	0.239	# 29/08/2012	---	---	---	---	---	---	---	---	---	---	---	---	47,790.28	0.168	0.168	8355
71,683,906	0.400	---	---	---	15/06/2005	05/02/2008	4953	XATZIOANNOU (CR)		0.026	---	↘	0.026	28/03/2013	---	---	---	---	---	---	---	---	---	---	---	---	1,863.78	0.026	0.026	3763

Shares' Notes

Code	Note text
()	- Adjusted dividends.
*	- Last adjusted closing price.
[1]	- Net dividends.
[2]	- The "Date of Last Coupon" for New listings refers to the date company's stocks started to trade in Athex
[3]	- The Company Market Value is referred to the number of outstanding shares
[4]	- Sectors codification can be found in Appendix A
[5]	- The Market Value refers to the total number of shares listed (including their several classes) in the exchange by the company.
[6]	- P/E greater than 100
[7]	- Last view of the Order Book before the end of the trading session
[8]	- All Blocks Methods' Transactions Value are included.
4446	- Transfer to the "Under Supervision" Category as of 20/10/2008.
4576	- Suspension of trading as of 14/7/2009.
4690	- Transfer to Surveillance category as of 4/4/2006.
4726	- Suspension of trading as of 1/3/2011.
4750	- Transfer to the "Under Surveillance Category" from 8/4/2011.
4795	- The final gross (pre-tax) dividend is € 0.30 per share and subject to withholding tax on the full dividend amount, i.e. 0,45 per share, for those shareholders liable to withholding tax, in accordance with the applicable tax law provisions.
4814	- Transfer to the Low Dispersion Category as of 30/5/2011.
4815	- Transfer to the Low Dispersion Category as of 30/5/2011.
4816	- Transfer to the Low Dispersion Category as of 30/5/2011.
4817	- Transfer to the Low Dispersion Category as of 30/5/2011.
4822	- Transfer to the Low Dispersion category as of 30/5/2011.
4823	- Transfer to the Low Dispersion category as of 4/4/2006.
4827	- Transfer to the Low Dispersion category as of 5/5/2010.
4844	- Transfer to the Surveillance category from 8/4/2011.
4857	- The 793,906,274 new (CR) shares, resulting from the recent share capital increase through a rights issue, are not yet admitted to trading on the ATHEX.
4865	- Suspension of trading as of 2/4/2012.
4879	- Transfer to the Surveillance Category as of 10/4/2012.
4881	- Transfer to the Surveillance Category as of 10/4/2012.
4882	- Transfer to the Surveillance Category as of 10/4/2012.
4886	- Transfer to the Surveillance Category as of 10/4/2012.
4887	- Transfer to the Surveillance Category as of 10/4/2012.
4888	- Transfer to the Surveillance Category as of 10/4/2012.
4912	- Transfer to the Surveillance Category as of 31/7/2012.
4913	- Suspension of trading as of 30/8/2012.
4914	- Suspension of trading as of 31/8/2012.
4918	- Suspension of trading as of 31/8/2012.
4937	- Transfer to the UNDER DELETION category as of 30/11/2012.
4938	- Transfer to the UNDER DELETION category as of 30/11/2012.
4939	- Suspension of trading as of 30/11/2012.
4953	- Suspension of trading as of 2/4/2013.
4955	- Transfer to the Surveillance Category as from 5/4/2013.
4956	- Transfer to the Surveillance Category as from 5/4/2013.
4957	- Transfer to the Surveillance Category as from 5/4/2013.
4958	- Transfer to the Surveillance Category as from 5/4/2013.
4959	- Transfer to the Surveillance Category as from 5/4/2013.
4971	- Suspension of trading as of 3/6/2013.
4977	- Transfer to the "Under Surveillance Category" from 11/6/2013.
4982	- Suspension of trading as of 1/12/2011.
4983	- Transfer to the Surveillance Category as of 5/4/2013.
4985	- Transfer to the "Under Surveillance Category" from 8/4/2011.
4997	- Transfer to the Under Supervision Category as of 21/12/2009. - The 6,870,053 new (CB) shares, resulting from the recent share capital increase through a rights issue, are

Shares' Notes

Code	Note text
	not yet admitted to trading on the ATHEX.
5002	- Suspension of trading as of 30/08/2013.
5003	- Suspension of trading as of 30/08/2013.
5004	- Suspension of trading as of 30/08/2013.
5007	- Transfer to the Surveillance category, as of 11/10/2013.
5023	- Suspension of trading as of 2/12/2013.
5031	- The 612,300 new (CR) shares, resulting from the recent share capital increase through a rights issue, are not yet admitted to trading on the ATHEX.
5036	- The company's share is under suspension of trading as of 2/4/2012. During suspension, the company proceeded and concluded a share reverse split, according to which - after the conclusion of the corporate action - the total number of the company's shares, as well as, the last closing price of 30/03/2012 were adjusted.
5046	- Transfer to the Low Dispersion category as of 8/4/2011.
5047	- Suspension of trading as of 27/3/2014.
5049	- Under suspension of trading as of 1/4/2014.
5057	- Transfer to the Surveillance Category as of 29/12/2011.
5058	- Transfer to the Surveillance Category as of 29/12/2011.
5061	- Suspension of trading as of 2/6/2014.
5062	- Transfer to the UNDER DELETION category as of 4/6/2014.
5080	- Suspension of trading as of 6/9/2011.
5087	- Suspension of trading as of 1/4/2015.
5088	- Suspension of trading as of 1/4/2015.
5089	- Transfer to the Surveillance Category as of 8/4/2015.
5092	- Transfer to the UNDER DELETION category as of 8/4/2015.
5093	- Transfer to the Surveillance Category as of 8/4/2015.
5094	- Transfer to the Surveillance Category as of 8/4/2015.
5095	- Transfer to the Surveillance Category as from 9/4/2015.
5097	- Transfer to the Surveillance Category as of 10/4/2012.
5098	- Suspension of trading as of 2/6/2015.
5099	- Suspension of trading as of 3/6/2015.
5100	- Transfer to the Low Dispersion Category as of 24/6/2015.
5101	- Suspension of trading as of 1/9/2015.
5104	- Transfer to the "Low Dispersion" Category as of 31/10/2014. Change of the company name from "MIG REAL ESTATE R.E.I.C." to " NBG PANGAEA R.E.I.C." as of 30/12/2015.
5109	- Suspension of trading as of 01/03/2016.
5110	- Suspension of trading as of 08/03/2016.
5111	- Transfer to the Under Deletion Category as of 15/04/2016.
5112	- Transfer to the Surveillance Category as of 15/04/2016.
5113	- Transfer to the Surveillance Category as of 15/04/2016.
5114	- Transfer to the Surveillance Category as of 15/04/2016.
5115	- Transfer to the Surveillance Category as of 15/04/2016.
5116	- Transfer to the Low Dispersion Category as of 20/4/2016.
5118	- Transfer to the Surveillance Category as of 25/11/2011. Issue of a Convertible Bond Loan in progress through a rights issue. Rights' trading period on ATHEX: 22/09/2016 - 03/10/2016, pre-emption rights' subscription period: 22/09/2016 - 06/10/2016.
5121	- Suspension of trading as of 3/10/2016.
5123	- Transfer to the Surveillance Category as of 10/4/2014.

Securities Blocks Details

Securities	Block Volume	Price	Block Trade Value	Time of approval	Note
BANK OF CYPRUS (CR)	2,774,817	0.147	407,898.10	14:47:54	20
OTE (CR)	607,847	8.63	5,245,658.83	16:33:15	20
FOURLIS (CR)	100,000	3.92	392,000.00	16:44:42	20

Blocks Notes

9 - Method 6-1 / Special Fees

10 - Method 6-1 / Special Fees, SDS

14 - Method 6-3 / Settlement, Incomplete Buy and Sell

18 - Method 6-2 / SPOT 1

19 - Method 6-2 / SPOT 2

20 - Method 6-1 and Method 6-1 Same Day Settlement

21 - Other Pre-agreed

Shares Rights Details

Occured date	Exercise from	Exercise until	Trading until	Rights	Price min	Price max	Closing price	Last Bid	Last Ask	Volume	Trades	Transactions Value
-----------------	------------------	-------------------	------------------	--------	--------------	--------------	------------------	----------	----------	--------	--------	-----------------------

No Rights Transactions.

Shares Forced Sales

Securities	Transaction s Volume	Number of Trades	Transactions Value	Note
No Forced Transactions.				

Forced Sales Notes

- 1 - Normal Forced Sale.
- 2 - Forced Sales of Fixed Registered Shares.
- 3 - Forced Sales of Remaining Stock Fractions.

Forced Sales Registered Shares

Securities	Start Date	End Date	Initial Volume	Remaining Volume	Date	Avg price (day)	Avg price (period)	Number of Trades	Transactions Volume	Transactions Value
No Fixed Registered Shares Forced Sales.										

Forced Sales Notes

According to Decision 1/380/04.05.2008 of the Hellenic Republic Capital Market Commission, the certificated registered shares that have not been deposited to the issuer for dematerialisation, will be auctioned in the Athens Exchange by the supervising issuer. Forced sales procedure is held according to Article 99A of the Athens Exchange Rulebook. The average price of the period is calculated by dividing the Total transactions value by the Total volume and includes all the transactions made until the current date.

Exchange Traded Funds (ETFs) Characteristics

	Transactions Date (T)	Creation / Redemption	Units (T-1)	New Units (T-1)	Redemptio n Units (T-	Units (T) [1]	Fund Assets [2]	Net Unit Price	Dividen d per	Dividend Date
NBGAM ETF ΓΔ Χ.Α.	20/12/2016	25,000	294,878	---	---	294,878	2,176,379.00	7.3806	---	27/10/2011
ALPHA ETF FTSE Athex Large Cap	20/12/2016	5,000	619,082	---	---	619,082	10,440,020.00	16.8637	0.37	30/06/2016
NBGAM ETF GREECE & TURKEY 30	20/12/2016	25,000	388,550	---	---	388,550	2,031,177.00	5.2276	---	27/10/2011

ETFs Notes

[1] - Units (T) = Units (T-1) + New Units (T-1) - Redemption Units (T-1)

[2] - The Creation / Redemption Units of T-1 are included.

Corporate Bonds

Num Listed Bonds	Nominal price	Issue price	Today's Rate	Exp. Date	Duration (years)	Note	Coupon		Trading	Corporate Bonds	Price min	Price max	Closing price	Previous closing price/date	Volume	Transactions Value	Last order		Date	ear min	Year max	
							Common	Preferred									Price	Buy / Sell				
233,748,933	0.30	0.30	1.00	11/10/2025	9	---	1	---	1	FORTHNET S.A. (Convertible)	---	---	---	---	---	---	95.0000	S	09/11/2016	100.0000	100.0000	
40,000,000	1.00	1.00	5.00	04/10/2021	5	---	1	---	1	HOUSEMARKET S.A. (Non Convertible)	100.3000	100.3000	100.3000	100.4230	19/12/2016	4,000	4,055.89	100.2000	B	20/12/2016	99.9000	101.3000
1,774,359	13.76	9.77	0.00	21/10/2025	18	---	26	---	1	NIREUS S.A. (Convertible)	---	---	---	100.0000	12/07/2016	---	---	5.0000	S	20/12/2016	10.0000	150.0000
212,237,880	1.00	1.00	6.30	29/07/2020	7	---	14	---	1	MARFIN INVESTMENT GROUP S.A. SERIES B (Convert.)	---	---	---	0.8500	23/08/2013	---	---	5.0000	B	04/10/2016	0.8500	0.8500
163,009,139	1.00	1.00	7.00	29/07/2019	6	---	14	---	1	MARFIN INVESTMENT GROUP S.A. SERIES A (Convert.)	---	---	---	1.0000	23/08/2013	---	---	5.0000	B	04/10/2016	1.0000	1.0000

Corporate Bonds Notes

Transactions Volume = (Pieces) * (Nominal Price). Transactions Value = (Pieces) * (Nominal Price) * (price %) + (Accrued interest).
The price of a Bond is stated as a percentage (%) of Bond's Nominal Price.
Nominal Price in Euros (€), except if it is noted differently.

Government Bonds

Number Listed Bonds	Nominal price	Today's Rate	Accrued Interest Calc	Exp. Date [1]	Duration (years)	Note	Coupons Date	Curr. coupon value	Trading Unit	Government Bonds	Price min	Price max	Closing price	Previous closing price/date	Volume	Transactions Value	Price	Last order Buy / Sell	Date
1,792,455,803	1.00	3.00	Actual/Actual	24/02/2023	11	---	24/02	3.00	1	GGB-FXD-240223-11Y-2.000-1.00	---	---	---	10.0000 22/06/2015	---	---	---	---	---
1,771,485,249	1.00	3.00	Actual/Actual	24/02/2024	12	---	24/02	3.00	1	GGB-FXD-240224-12Y-2.000-1.00	---	---	---	10.0000 22/06/2015	---	---	---	---	---
1,744,316,583	1.00	3.00	Actual/Actual	24/02/2025	13	---	24/02	3.00	1	GGB-FXD-240225-13Y-2.000-1.00	---	---	---	10.0000 22/06/2015	---	---	---	---	---
1,498,761,836	1.00	3.00	Actual/Actual	24/02/2026	14	---	24/02	3.00	1	GGB-FXD-240226-14Y-2.000-1.00	---	---	---	10.0000 22/06/2015	---	---	---	---	---
1,469,952,920	1.00	3.00	Actual/Actual	24/02/2027	15	---	24/02	3.00	1	GGB-FXD-240227-15Y-2.000-1.00	---	---	---	10.0000 22/06/2015	---	---	---	---	---
1,525,434,082	1.00	3.00	Actual/Actual	24/02/2028	16	---	24/02	3.00	1	GGB-FXD-240228-16Y-2.000-1.00	---	---	---	10.0000 22/06/2015	---	---	---	---	---
1,503,860,546	1.00	3.00	Actual/Actual	24/02/2029	17	---	24/02	3.00	1	GGB-FXD-240229-17Y-2.000-1.00	---	---	---	10.0000 22/06/2015	---	---	---	---	---
1,435,418,132	1.00	3.00	Actual/Actual	24/02/2030	18	---	24/02	3.00	1	GGB-FXD-240230-18Y-2.000-1.00	---	---	---	10.0000 22/06/2015	---	---	---	---	---
1,368,045,727	1.00	3.00	Actual/Actual	24/02/2031	19	---	24/02	3.00	1	GGB-FXD-240231-19Y-2.000-1.00	---	---	---	10.0000 22/06/2015	---	---	---	---	---
1,373,758,194	1.00	3.00	Actual/Actual	24/02/2032	20	---	24/02	3.00	1	GGB-FXD-240232-20Y-2.000-1.00	---	---	---	10.0000 22/06/2015	---	---	---	---	---
1,452,639,893	1.00	3.00	Actual/Actual	24/02/2033	21	---	24/02	3.00	1	GGB-FXD-240233-21Y-2.000-1.00	---	---	---	10.0000 22/06/2015	---	---	---	---	---
1,410,344,954	1.00	3.00	Actual/Actual	24/02/2034	22	---	24/02	3.00	1	GGB-FXD-240234-22Y-2.000-1.00	---	---	---	10.0000 22/06/2015	---	---	---	---	---
1,444,202,190	1.00	3.00	Actual/Actual	24/02/2035	23	---	24/02	3.00	1	GGB-FXD-240235-23Y-2.000-1.00	---	---	---	10.0000 22/06/2015	---	---	---	---	---
1,505,138,031	1.00	3.00	Actual/Actual	24/02/2036	24	---	24/02	3.00	1	GGB-FXD-240236-24Y-2.000-1.00	---	---	---	10.0000 22/06/2015	---	---	---	---	---
1,396,254,095	1.00	3.00	Actual/Actual	24/02/2037	25	---	24/02	3.00	1	GGB-FXD-240237-25Y-2.000-1.00	---	---	---	10.0000 22/06/2015	---	---	---	---	---
1,382,167,704	1.00	3.00	Actual/Actual	24/02/2038	26	---	24/02	3.00	1	GGB-FXD-240238-26Y-2.000-1.00	---	---	---	10.0000 22/06/2015	---	---	---	---	---
1,337,331,257	1.00	3.00	Actual/Actual	24/02/2039	27	---	24/02	3.00	1	GGB-FXD-240239-27Y-2.000-1.00	---	---	---	10.0000 22/06/2015	---	---	---	---	---
1,371,908,706	1.00	3.00	Actual/Actual	24/02/2040	28	---	24/02	3.00	1	GGB-FXD-240240-28Y-2.000-1.00	---	---	---	10.0000 22/06/2015	---	---	---	---	---
1,360,659,778	1.00	3.00	Actual/Actual	24/02/2041	29	---	24/02	3.00	1	GGB-FXD-240241-29Y-2.000-1.00	---	---	---	10.0000 22/06/2015	---	---	---	---	---
1,432,747,403	1.00	3.00	Actual/Actual	24/02/2042	30	---	24/02	3.00	1	GGB-FXD-240242-30Y-2.000-1.00	---	---	---	10.0000 22/06/2015	---	---	---	---	---
742,153	1,000.00	0.44	FLR Actual/360	10/08/2019	5	---	10/02 - 10/08	---	1	GGB-FLT-100819-05Y-0.934-1,000	---	---	---	---	---	---	---	---	---
4,030,827	1,000.00	4.75	Actual/Actual	17/04/2019	5	---	17/04	4.75	1	GGB-FXD-170419-05Y-4.750-1,000	---	---	---	---	---	---	---	---	---
2,089,066	1,000.00	3.38	Actual/Actual	17/07/2017	3	---	17/07	3.38	1	GGB-FXD-170717-03Y-3.375-1,000	---	---	---	---	---	---	---	---	---

Government Bonds Notes

Transactions Volume = (Pieces) * (Nominal Price). Transactions Value = (Pieces) * (Nominal Price) * (price %) + (Accrued interest).
The Value of current coupon for the issues with NV 0.01 euro refers to NV 100 euros
FLR: Floating Interest Rate.
[1] - The Expiration Date of the interest bearing period and the Date for coupon payment.

Bonds in Circulation	Currency / Min nominal traded Value	Coupons Payment Date	Current Coupon Value	Note	Coupon	Trading Unit	Issue Date	Duration (years)	Today's Interest	A.I.C in days	Bonds	Last price of previous days		Last Outcry in Cash (euro) Price Buy / Sell		Trades in Pieces Date	Life min	Life Max	
Corporate Bonds in Foreign Currency and Euro																			
103,746	GBP / 10	01/12	0.25	---	58	1	01/12/1930	98	2.5	360	National Mortgage Bank	2.27	05/02/1996	2.27	S	05/02/1996	---	2.27	2.27
0	GBP / 10	01/12	0.25	---	60	1	01/12/1928	100	2.5	360	National Mortgage Bank	---	---	---	---	---	---	---	---

Government Bonds Notes

A.I.C: Accrued Interest Calculation base.
FLR: Floating Interest Rate.
The minimum tradeable Nominal Value for all Demeterialised Government Titles is 100 Euros.
(μτφρ-0)

Athex & ATHEXClear Members List

Member Name			Stock Market			Derivatives Market		ATHEXClear Member	
Address	Phone	Fax	Market Member	Remote Member	Market Maker	Proprietary	Market Maker	General Clearing	Direct Clearing
A. SARRIS SECURITIES S.A.			a						
6, DRAGATSANIOU ATHINA	+30 2103367700	210-3312324							
ALPHA FINANCE INVESTMENT SERVICES S.A.			a		a	a	a		a
5, MERLIN ATHINA	+30 2103677400	210-33311193							
ALPHA BANK A.E.								a	
40, STADIOU STR ATHINA	(210)-3260000	(210)-3264116							
	(210)-3265546	(210)-3265811							
103, AVE. ATHINON ATHINA	+30 2103436820	210-3436270							
ARGUS STOCKBROKERS LTD			a	a		a			
25 , DIMOSTHENI SEVERI AVE NICOSIA	+357 22717000	0035722717070							
ATLANTIC SECURITIES LIMITED			a	a					
37, PRODROMOU NICOSIA	+357 22445400	00357 22661914							
ATLAS SECURITIES S.A			a			a			
, 125 MICHALAKOPOULOU & 14-16 VERVENON ATHINA	+30 2103363300	210-3238925							
ATTICA BANK S.A.								a	
54, AKADIMIAS STR. ATHINA	(210)-3390757	(210)-3646090							
23, OMIROU ATHINA	+30 2103669261	210-3669265							
23, OMIROU STR. ATHINA	(210)-3669000	(210)-3669410							
AXIA VENTURES GROUP LTD			a	a					
, KRANIDIOTI 10, OFFICE 102 NICOSIA	+357 22742000	357 22742001							
AXON SECURITIES S.A.			a			a			
48, STADIOU ATHINA	+30 2103363800	210-3243903							
BANK OF AMERICA MERRILL LYNCH			a	a					
2 , KING EDWARD STREET LONDON	+44 20276281000								
BETA SECURITIES S.A.			a		a	a			a
29 , ALEXANDRAS AVEN. & VRAILA ATHINA	+30 2106478900	210-6410139							
BNP PARIBAS SECURITIES SERVICES S.A.								a	
2, LAMPSAKOU ATHINA	+30 2107468500	210-7468579-581							
CAPITAL SECURITIES S.A.			a			a			
58, MITROPOLEOS ATHINA	+30 2103369700	+30 210 3369820							
CFS SECURITIES-INVESTMENT SERVICES S.A.			a						
3, PAPARRIGOPOULOU ATHINA	+30 2103360800	+30 210-3360980							
CITIGROUP GLOBAL MARKET LTD			a	a					
1, CITIGROUP CENTER , CANADA SQ., CANARY WHARF LONDON	+44 02079864000								
CREDIT SUISSE SECURITIES (EUROPE) LIMITED			a	a					
, ONE CABOT SQUARE LONDON	+44 2078888888								
CYCLOS SECURITIES S.A.			a			a			a
39, PANEPISTIMIOU ATHINA	+30 2103364300	+30 210-3239122							
D.A. TSEKOURAS SEC. S.A.			a						
33, STADIOU ATHINA	+30 2103245100	210-3211997							
DELTASTOCK AD									a
115, MEGAPARK OFFICE BUILDING, OFFICE AREA E, G TSARIGRADSKOJ 39	+35928115051	+35928115049							
DEUTSCHE BANK S.A.			a	a		a			
1 , GREAT WINCHESTER STREET LONDON	+44 20 754 54209	00441133361437							
DYNAMIC SECURITIES S.A.			a			a			a
8, OMIROU ATHINA	+30 2103677700	210-3677777							
EL. PETROPOULAKIS SECURITIES S.A.			a			a			
9, ARISTEIDOU ATHINA	+30 2103213928	+30 210-3216810							
ESTINVEST S.A.									a
9, TH REPUBLICII STREET FOCSANI	+40 237238900	+40 237237471							
EUROBANK ERGASIAS S.A.								a	
8, OTHONOS ATHINA	+30 2103337000	210-3245916							
8, OTHONOS STR. ATHINA	(210)-3337969	(210)-3245916							
	(210)-3337000	(210)-3233866							
EUROBANK SECURITIES INVESTMENT FIRM S.A			a		a	a	a		a
, FILELLINON 10 & XENOFONTOS 13 ATHINA	+30 2103720000	210-3720001							
EUROCORP SECURITIES S.A.			a			a			a
14, SQ.FILIKIS ETAIRIAS ATHINA	+30 2107263500	210-7263666							
EUROTRUST BROKERAGE S.A.			a						
113, SEVASTOUPOLEOS ATHINA	+30 2103363100	+30 210-3238334							
EUROXX SECURITIES S.A.			a		a	a	a		a
7, PALAIOLOGOU CHALANDRI	(210)-6879400	(210)-6879401							
7, PALEOLOGOU CHALANDRI	+30 2106879400	210-6879401							

Athex & ATHEXClear Members List

Member Name			Stock Market			Derivatives Market		ATHEXClear Member	
Address	Phone	Fax	Market Member	Remote Member	Market Maker	Proprietary	Market Maker	General Clearing	Direct Clearing
G. A. PERVAS SECURITIES-INVESTMENT SERVICES CO S.A.			a						
7-9, SOFOKLEOUS ATHINA	+30 2103727200	210-3210-291							
GLOBAL CAPITAL SECURITIES AND FINANCIAL SERVICES LTD			a	a					
, AVE. ARCHIEPISKOPOU MAKARIOU NICOSIA	+357 22710710	357 22339332							
GUARDIAN TRUST SECURITIES S.A			a			a			
31, ERMOU ATHINA	+30 2103378700	210-3220498							
HELLENIC BANK (INVESTMENTS) LTD			a	a					
, AVE.KYRIAKOU MATSI 31 - PO BOX 24747 NICOSIA	+357 22500100	357 22500110							
HELLENICAMERICAN SEC. S.A.			a		a	a			a
27, ANDREA PAPANDREOU ATHINA	+30 2103311100	+30 210-3215968							
HSBC BANK PLC								a	
109-111, AVE. MESOGION ATHINA	+30 2106960000	210-6928000							
INDEX SECURITIES S.A.			a						
6, DRAGATSANIOU ATHINA	+30 2103213920	+30 210-3213216							
INTERFINBROK CORPORATION S.A.									a
1, STR.CALARASI NR. CONSTANTA	+40 241639071	0241-547829							
INVESTMENT BANK OF GREECE S.A.			a		a	a		a	
32 , EGIALIAS & PARADISOU MAROUSI	+30 2108173111	+30 210-6896325							
J. CHR. MAVRIKIS SECURITIES S.A.			a						
5, SOFOKLEOUS ATHINA	+30 2103216730	210-3217767							
KAPPA SECURITIES S.A.			a			a			
15, VALAORITOU ATHINA	+30 2103678600	+30 210-3641002							
KARAMANOF SECURITIES-INV. SERVICES S.A.			a			a			
2, SQ. AGION THEODORON ATHINA	+30 2103212947	+30 210-3217088							
LAIKI FINANCIAL SERVICES LTD				a					
26, AVE. VYRONOS NICOSIA	357 22367367	357 22718567							
LEON DEPOLAS SECURITIES S.A.			a		a	a			
1, CHRISTOU LADA ATHINA	+30 2103213276	+30 210-3211618							
MAGNA TRUST SECURITIES S.A			a						
12-14, KARAGIORGI SERBIAS ATHINA	+30 2103800820	210-3220910							
MEGA EQUITY SECURITIES-FINANCIAL SERVICES LTD			a	a		a			
42-44, AVE. GRIVA DIGENI NICOSIA	+357 22711711	357 22711811							
MERIT SECURITIES S.A			a		a	a			a
3, GEORGIOU SOURI ATHINA	+30 2103671890	210-3671830							
MIDAS BROKERAGE S.A.			a		a				
5, SOFOKLEOUS ATHINA	+30 2141008800	+30 210-3253205							
N. CHRYSISOCHOIDIS STOCK BROKERAGE I.S.S.A.			a			a			a
7-9, SOFOKLEOUS ATHINA	+30 2103213913	+30 210-3216115							
NATIONAL BANK OF GREECE S.A.			a			a		a	
86, AIOLOU STR. ATHINA	(210)-3341000	(210)-3228187							
68, AKADIMIAS STR. ATHINA	(210)-3328817	(210)-3328678							
NATIONAL SECURITIES S.A			a		a	a	a		
66, KIFISIAS AVE , BUILDING A ATHINA	+30 2107720000	+30 210-7720002							
NUNTIUS SECURITIES S.A			a						
6, DRAGATSANIOU ATHINA	+30 2103350599	+30210-3254846							
ONE PLUS CAPITAL LIMITED			a	a					
, 75 PRODRAMOU AVENUE, ONEWORLD PARKVIEW HOUSE, 3RD FLOOR, 22873760	+30 2103350599								
PANTELAKIS SECURITIES S.A.			a			a			
57, ETHNIKIS ANTISTASIS B CHALANDRI	+30 2106965000	210-6929550							
PEGASUS BROKERAGE FIRM S.A			a			a			
17 , VALAORITOU & AMERIKIS ATHINA	+30 2103670700	+30 210-3670760							
PIRAEUS BANK S.A.			a			a		a	
4, AMERIKIS STR. ATHINA	(210)-3335000	(210)-3335079							
4, AMERIKIS STR ATHINA	(210)-3335918	(210)-3254207							
4, AMERIKIS ATHINA	+30 2103335000	210-3335079							
PIRAEUS SECURITIES S.A.			a		a	a	a		a
5, KORAI ATHINA	+30 2103354100	210-3354170							
PRELIUM SECURITIES-INVESTMENT SERVICES S.A.			a			a			
1 , DAVAKI & KIFISIAS AVE. ATHINA	+30 2103677000	+30 210-6926403							
PROCHOICE SECURITIES LTD			a	a					
57, SPYROY KYPRIANOY NICOSIA	+357-24-661192	+357-24-662464							
SHARELINK SECURITIES-FINANCIAL SERVICES LTD			a	a		a			
6 , THEOTOKI MEGARO ELLINA NICOSIA	+357 22554200	+357 22750852							

Athex & ATHEXClear Members List

Member Name			Stock Market			Derivatives Market		ATHEXClear Member	
Address	Phone	Fax	Market Member	Remote Member	Market Maker	Proprietary	Market Maker	General Clearing	Direct Clearing
SOCIETE GENERALE S.A.			a	a		a			
, 17 COURS VALMY 92987 PUTEAUX - LA DEFENSE PARIS	+33 157290504	+33142138697							
SOLIDUS SECURITIES S.A			a			a			a
64, LOUIZIS RIANCOUR ATHINA	+30 2106900600	210-6985421							
SSIF VIENNA INVESTMENT TRUST S.A.									a
, 4 SPLAIUL UNIRII, BUILDING B3 BUCHAREST	+40 212074880	004 021 207 48 98							
ST. EM. LAVRENTAKIS SECURITIES S.A.			a			a			
7-9, SOFOKLEOUS ATHINA	+30 2103213336	+30 210-3246572							
THE CYPRUS INVESTMENT & SECURITIES CORPORATION LTD			a	a					
154, LIMASSOL AVENUE, STROVOLOS NICOSIA	+357 22121700	357 22338800							
UBS LIMITED			a	a					
1 , FINSBURY AVENUE LONDON	+44 2075687135								

List of Stocks under Market Making operations

Securities	Stock Category
Market Maker	Start Market Making
FRIGOGLASS SA (CR)	Surveillance
EUROBANK SECURITIES INVESTMENT FIRM S.A	27/10/2014
ALPHA BANK (CR)	Main Market
ALPHA FINANCE INVESTMENT SERVICES S.A.	29/02/2016
EUROBANK SECURITIES INVESTMENT FIRM S.A	24/10/2012
LEON DEPOLAS SECURITIES S.A.	04/01/2016
MERIT SECURITIES S.A	03/09/2013
MIDAS BROKERAGE S.A.	11/01/2006
NATIONAL SECURITIES S.A	15/01/2013
PIRAEUS SECURITIES S.A.	28/05/2013
ALUMIL (CR)	Main Market
BETA SECURITIES S.A.	18/07/2013
ATTICA BANK S.A. (CR)	Main Market
BETA SECURITIES S.A.	02/06/2014
EUROBANK SECURITIES INVESTMENT FIRM S.A	25/07/2014
EUROXX SECURITIES S.A.	22/01/2016
BANK OF CYPRUS (CR)	Main Market
EUROBANK SECURITIES INVESTMENT FIRM S.A	23/03/2015
NATIONAL SECURITIES S.A	22/06/2015
BYTE COMPUTER SA (CR)	Main Market
MERIT SECURITIES S.A	04/08/2013
CC HBC AG (CR)	Main Market
EUROBANK SECURITIES INVESTMENT FIRM S.A	23/10/2013
NATIONAL SECURITIES S.A	29/04/2013
PIRAEUS SECURITIES S.A.	04/05/2015
ELLAKTOR (CR)	Main Market
EUROBANK SECURITIES INVESTMENT FIRM S.A	01/06/2013
NATIONAL SECURITIES S.A	25/06/2013
ELTON SA (CR)	Main Market
BETA SECURITIES S.A.	03/09/2013
EUROBANK ERGASIAS (CR)	Main Market
ALPHA FINANCE INVESTMENT SERVICES S.A.	08/01/2013
EUROBANK SECURITIES INVESTMENT FIRM S.A	01/06/2013
HELLENICAMERICAN SEC. S.A.	25/07/2014
MIDAS BROKERAGE S.A.	07/01/2016
PIRAEUS SECURITIES S.A.	28/09/2013
EUROCONSULTANTS S.A. (CR)	Main Market
EUROBANK SECURITIES INVESTMENT FIRM S.A	22/07/2014
FOLLI FOLLIE (CR)	Main Market
NATIONAL SECURITIES S.A	17/02/2014
PIRAEUS SECURITIES S.A.	04/05/2015
FOURLIS (CR)	Main Market
HELLENICAMERICAN SEC. S.A.	14/09/2005
GEK TERNA (CR)	Main Market
HELLENICAMERICAN SEC. S.A.	07/09/2015
GR. SARANTIS SA (CR)	Main Market
BETA SECURITIES S.A.	14/05/2013
HELLENIC EXCHANGES-A.S.E. (CR)	Main Market
EUROBANK SECURITIES INVESTMENT FIRM S.A	01/06/2013
HELLENICAMERICAN SEC. S.A.	01/09/2014
NATIONAL SECURITIES S.A	25/06/2013
PIRAEUS SECURITIES S.A.	04/05/2015
HELLENIC PETROLEUM (CR)	Main Market
HELLENICAMERICAN SEC. S.A.	14/09/2015
HYGEIA SA (CR)	Main Market
HELLENICAMERICAN SEC. S.A.	18/04/2016
INTRACOM HOLDINGS (CR)	Main Market
HELLENICAMERICAN SEC. S.A.	07/09/2015
INTRALOT (CR)	Main Market
EUROBANK SECURITIES INVESTMENT FIRM S.A	01/06/2013
PIRAEUS SECURITIES S.A.	28/09/2013
J & P - AVAX SA (CR)	Main Market
EUROBANK SECURITIES INVESTMENT FIRM S.A	14/12/2015
JUMBO SA (CR)	Main Market
MIDAS BROKERAGE S.A.	27/07/2016
KLOUKINAS - LAPPAS SA (CR)	Main Market
BETA SECURITIES S.A.	22/09/2014
LAMDA DEVELOPMENT SA (CR)	Main Market
EUROBANK SECURITIES INVESTMENT FIRM S.A	08/12/2014

List of Stocks under Market Making operations

Securities	Stock Category
Market Maker	Start Market Making
MARFIN INVESTMENT GROUP (CR)	Main Market
EUROBANK SECURITIES INVESTMENT FIRM S.A	23/03/2015
HELLENICAMERICAN SEC. S.A.	25/07/2014
PIRAEUS SECURITIES S.A.	02/02/2013
MLS MULTIMEDIA SA (CR)	Main Market
HELLENICAMERICAN SEC. S.A.	07/12/2015
MOTOR OIL (CR)	Main Market
EUROBANK SECURITIES INVESTMENT FIRM S.A	23/10/2012
HELLENICAMERICAN SEC. S.A.	01/09/2014
NATIONAL SECURITIES S.A	17/02/2014
PIRAEUS SECURITIES S.A.	04/05/2015
MYTILINEOS HOLDINGS (CR)	Main Market
NATIONAL SECURITIES S.A	25/06/2013
PIRAEUS SECURITIES S.A.	04/05/2015
NATIONAL BANK (CR)	Main Market
ALPHA FINANCE INVESTMENT SERVICES S.A.	08/01/2013
EUROBANK SECURITIES INVESTMENT FIRM S.A	24/10/2012
HELLENICAMERICAN SEC. S.A.	25/07/2014
LEON DEPOLAS SECURITIES S.A.	20/04/2015
MERIT SECURITIES S.A	03/09/2013
MIDAS BROKERAGE S.A.	07/01/2016
NATIONAL SECURITIES S.A	28/02/2013
PIRAEUS SECURITIES S.A.	08/09/2013
OPAP (CR)	Main Market
ALPHA FINANCE INVESTMENT SERVICES S.A.	08/01/2013
EUROBANK SECURITIES INVESTMENT FIRM S.A	24/10/2012
HELLENICAMERICAN SEC. S.A.	25/07/2014
MIDAS BROKERAGE S.A.	04/04/2016
NATIONAL SECURITIES S.A	15/01/2013
PIRAEUS SECURITIES S.A.	04/05/2015
OTE (CR)	Main Market
ALPHA FINANCE INVESTMENT SERVICES S.A.	08/01/2013
EUROBANK SECURITIES INVESTMENT FIRM S.A	24/10/2012
HELLENICAMERICAN SEC. S.A.	25/07/2014
MIDAS BROKERAGE S.A.	01/10/2015
NATIONAL SECURITIES S.A	01/12/2012
PIRAEUS SECURITIES S.A.	08/09/2013
PAPOUTSANIS (CR)	Main Market
BETA SECURITIES S.A.	25/11/2013
PETROPOULOS PETROS (CR)	Main Market
BETA SECURITIES S.A.	28/05/2013
PIRAEUS BANK (CR)	Main Market
EUROBANK SECURITIES INVESTMENT FIRM S.A	23/10/2012
EUROXX SECURITIES S.A.	15/02/2016
HELLENICAMERICAN SEC. S.A.	25/07/2014
MERIT SECURITIES S.A	16/09/2013
MIDAS BROKERAGE S.A.	11/01/2016
NATIONAL SECURITIES S.A	02/06/2013
PIRAEUS SECURITIES S.A.	16/02/2013
PLAISIO COMPUTERS SA (CR)	Main Market
BETA SECURITIES S.A.	05/05/2014
EUROBANK SECURITIES INVESTMENT FIRM S.A	02/03/2015
PPC (CR)	Main Market
ALPHA FINANCE INVESTMENT SERVICES S.A.	08/01/2013
EUROBANK SECURITIES INVESTMENT FIRM S.A	23/10/2012
MIDAS BROKERAGE S.A.	04/04/2016
NATIONAL SECURITIES S.A	26/03/2013
PIRAEUS SECURITIES S.A.	28/09/2013
QUALITY & RELIABILITY SA (CR)	Main Market
BETA SECURITIES S.A.	20/08/2014
S.KANAKIS SA (CR)	Main Market
BETA SECURITIES S.A.	01/10/2013
TITAN CEMENT (CR)	Main Market
EUROBANK SECURITIES INVESTMENT FIRM S.A	23/10/2012
NATIONAL SECURITIES S.A	17/02/2014
PIRAEUS SECURITIES S.A.	04/05/2015
VIOHALCO SA/NV (CB)	Main Market
ALPHA FINANCE INVESTMENT SERVICES S.A.	17/02/2014
MERIT SECURITIES S.A	17/03/2014

Underlying Asset				Derivatives Market													
Price max	Price min	Closing price	change	Delivery Month	Open price	Price max	Price min	Last price	Closing price	Last Bid	Last Ask	Settlement price	Life high	Life low	Trades	Volume	Open Interest
FTSE/Athex Large Cap																	(Trade Unit: 1 Index Point x 2€, Cash Settlement)
1,700.12	1,666.84	1,683.97	-0.26%	January 2017	1,678.00	1,689.00	1,665.00	1,684.00	1,684.00	---	---	1,680.25	1,761.00	---	425	1,521	7,738
				February 2017	1,679.75	1,686.50	1,667.00	1,668.50	1,668.50	---	---	1,680.25	1,707.50	---	13	61	150
				March 2017	---	---	---	---	1,696.75	---	---	---	---	---	---	---	---
				June 2017	---	---	---	---	1,705.25	---	---	---	---	---	---	---	---
				September 2017	---	---	---	---	1,713.75	---	---	---	---	---	---	---	---
				December 2017	---	---	---	---	1,722.25	---	---	---	---	---	---	---	---

Underlying Asset				Derivatives Market													
Price max	Price min	Closing price	change	Delivery Month	Open price	Price max	Price min	Last price	Closing price	Last Bid	Last Ask	Settlement price	Life high	Life low	Trades	Volume	Open Interest
ALPHA BANK (CR)				(Contract Size: 100 Securities, Physical Delivery)													
1.86	1.78	1.85	3.35%	March 2017	1.80	1.85	1.78	1.85	1.85	---	---	1.84	2.01	---	271	3,297	18,521
				June 2017	---	---	---	---	1.81	---	---	---	---	---	---	---	---
				September 2017	---	---	---	---	1.82	---	---	---	---	---	---	---	---
				December 2017	---	---	---	---	1.83	---	---	---	---	---	---	---	---
CC HBC AG (CR)				(Contract Size: 100 Securities, Physical Delivery)													
19.83	19.63	19.66	-2.38%	March 2017	19.76	19.84	19.56	19.58	19.58	---	---	19.67	19.97	---	39	59	83
				June 2017	---	---	---	---	20.34	---	---	---	---	---	---	---	---
				September 2017	---	---	---	---	20.44	---	---	---	---	---	---	---	---
				December 2017	---	---	---	---	20.54	---	---	---	---	---	---	---	---
ELLAKTOR (CR)				(Contract Size: 100 Securities, Physical Delivery)													
1.11	1.07	1.08	-2.70%	March 2017	1.12	1.12	1.08	1.09	1.09	---	---	1.10	1.18	---	13	84	3,013
				June 2017	---	---	---	---	1.12	---	---	---	---	---	---	---	---
				September 2017	---	---	---	---	1.13	---	---	---	---	---	---	---	---
				December 2017	---	---	---	---	1.13	---	---	---	---	---	---	---	---
EUROBANK ERGASIAS (CR)				(Contract Size: 100 Securities, Physical Delivery)													
0.647	0.602	0.610	-4.09%	March 2017	0.640	0.648	0.602	0.610	0.610	---	---	0.610	0.764	---	421	9,395	44,665
				June 2017	---	---	---	---	0.642	---	---	---	---	---	---	---	---
				September 2017	---	---	---	---	0.646	---	---	---	---	---	---	---	---
				December 2017	---	---	---	---	0.649	---	---	---	---	---	---	---	---
EYDAP S.A. (CR)				(Contract Size: 100 Securities, Physical Delivery)													
5.70	5.60	5.67	-0.53%	March 2017	5.39	5.39	5.36	5.36	5.36	---	---	5.15	5.57	---	3	4	92
				June 2017	---	---	---	---	5.76	---	---	---	---	---	---	---	---
				September 2017	---	---	---	---	5.79	---	---	---	---	---	---	---	---
				December 2017	---	---	---	---	5.81	---	---	---	---	---	---	---	---
FOLLI FOLLIE (CR)				(Contract Size: 100 Securities, Physical Delivery)													
18.56	18.20	18.45	-0.05%	March 2017	18.39	18.39	18.26	18.38	18.38	---	---	18.38	22.10	---	8	16	481
				June 2017	---	---	---	---	18.64	---	---	---	---	---	---	---	---
				September 2017	---	---	---	---	18.74	---	---	---	---	---	---	---	---
				December 2017	---	---	---	---	18.83	---	---	---	---	---	---	---	---
GEK TERNA (CR)				(Contract Size: 100 Securities, Physical Delivery)													
2.14	2.09	2.14	0.00%	March 2017	2.12	2.14	2.12	2.14	2.14	---	---	2.14	2.26	---	3	25	7,686
				June 2017	---	---	---	---	2.16	---	---	---	---	---	---	---	---
				September 2017	---	---	---	---	2.17	---	---	---	---	---	---	---	---
				December 2017	---	---	---	---	2.18	---	---	---	---	---	---	---	---
GRIVALIA PROPERTIES (CR)				(Contract Size: 100 Securities, Physical Delivery)													
7.97	7.63	7.63	-3.17%	March 2017	7.83	7.83	7.83	7.83	7.83	---	---	7.59	7.91	---	1	5	62
				June 2017	---	---	---	---	7.96	---	---	---	---	---	---	---	---
				September 2017	---	---	---	---	8.00	---	---	---	---	---	---	---	---
				December 2017	---	---	---	---	8.04	---	---	---	---	---	---	---	---

Underlying Asset				Derivatives Market													
Price max	Price min	Closing price	change	Delivery Month	Open price	Price max	Price min	Last price	Closing price	Last Bid	Last Ask	Settlement price	Life high	Life low	Trades	Volume	Open Interest
HELLENIC EXCHANGES-A.S.E. (CR)				(Contract Size: 100 Securities, Physical Delivery)													
4.72	4.60	4.60	-1.50%	March 2017	4.62	4.62	4.62	4.62	4.62	---	---	4.60	4.94	---	1	2	236
				June 2017	---	---	---	---	4.72	---	---	---	---	---	---	---	---
				September 2017	---	---	---	---	4.74	---	---	---	---	---	---	---	---
				December 2017	---	---	---	---	4.76	---	---	---	---	---	---	---	---
HELLENIC PETROLEUM (CR)				(Contract Size: 100 Securities, Physical Delivery)													
4.26	4.19	4.26	0.47%	March 2017	4.20	4.27	4.19	4.27	4.27	---	---	4.25	4.40	---	14	70	4,071
				June 2017	---	---	---	---	4.28	---	---	---	---	---	---	---	---
				September 2017	---	---	---	---	4.30	---	---	---	---	---	---	---	---
				December 2017	---	---	---	---	4.33	---	---	---	---	---	---	---	---
INTRALOT (CR)				(Contract Size: 100 Securities, Physical Delivery)													
1.05	1.01	1.03	0.00%	March 2017	1.05	1.05	1.02	1.02	1.02	---	---	1.04	1.11	---	10	43	1,037
				June 2017	---	---	---	---	1.04	---	---	---	---	---	---	---	---
				September 2017	---	---	---	---	1.05	---	---	---	---	---	---	---	---
				December 2017	---	---	---	---	1.05	---	---	---	---	---	---	---	---
JUMBO SA (CR)				(Contract Size: 100 Securities, Physical Delivery)													
15.36	14.28	15.20	6.15%	March 2017	14.35	15.10	14.35	15.09	15.09	---	---	14.89	15.10	---	61	104	694
				June 2017	---	---	---	---	14.46	---	---	---	---	---	---	---	---
				September 2017	---	---	---	---	14.53	---	---	---	---	---	---	---	---
				December 2017	---	---	---	---	14.61	---	---	---	---	---	---	---	---
MARFIN INVESTMENT GROUP (CR)				(Contract Size: 100 Securities, Physical Delivery)													
0.143	0.136	0.136	-2.86%	March 2017	0.143	0.143	0.137	0.137	0.137	---	---	0.138	0.149	---	45	721	49,262
				June 2017	---	---	---	---	0.141	---	---	---	---	---	---	---	---
				September 2017	---	---	---	---	0.142	---	---	---	---	---	---	---	---
				December 2017	---	---	---	---	0.143	---	---	---	---	---	---	---	---
METKA (CR)				(Contract Size: 100 Securities, Physical Delivery)													
6.48	6.28	6.40	-0.93%	March 2017	6.35	6.40	6.32	6.39	6.39	---	---	6.37	7.65	---	20	59	329
				June 2017	---	---	---	---	6.52	---	---	---	---	---	---	---	---
				September 2017	---	---	---	---	6.56	---	---	---	---	---	---	---	---
				December 2017	---	---	---	---	6.59	---	---	---	---	---	---	---	---
MOTOR OIL (CR)				(Contract Size: 100 Securities, Physical Delivery)													
13.39	13.03	13.29	0.68%	March 2017	13.10	13.33	13.10	13.30	13.30	---	---	12.99	13.33	---	16	17	86
				June 2017	---	---	---	---	13.33	---	---	---	---	---	---	---	---
				September 2017	---	---	---	---	13.40	---	---	---	---	---	---	---	---
				December 2017	---	---	---	---	13.46	---	---	---	---	---	---	---	---
MYTILINEOS HOLDINGS (CR)				(Contract Size: 100 Securities, Physical Delivery)													
6.25	6.11	6.17	-1.12%	March 2017	6.24	6.27	6.12	6.15	6.15	---	---	6.18	6.56	---	84	203	5,281
				June 2017	---	---	---	---	6.30	---	---	---	---	---	---	---	---
				September 2017	---	---	---	---	6.33	---	---	---	---	---	---	---	---
				December 2017	---	---	---	---	6.37	---	---	---	---	---	---	---	---

Underlying Asset				Derivatives Market													
Price max	Price min	Closing price	change	Delivery Month	Open price	Price max	Price min	Last price	Closing price	Last Bid	Last Ask	Settlement price	Life high	Life low	Trades	Volume	Open Interest
NATIONAL BANK (CR)				(Contract Size: 100 Securities, Physical Delivery)													
0.244	0.231	0.238	-1.65%	March 2017	0.240	0.243	0.232	0.238	0.238	---	---	0.240	0.258	---	349	17,317	76,301
				June 2017	---	---	---	---	0.244	---	---	---	---	---	---	---	---
				September 2017	---	---	---	---	0.246	---	---	---	---	---	---	---	---
				December 2017	---	---	---	---	0.247	---	---	---	---	---	---	---	---
OPAP (CR)				(Contract Size: 100 Securities, Physical Delivery)													
8.27	8.15	8.25	1.23%	March 2017	8.19	8.27	8.19	8.27	8.27	---	---	8.26	8.81	---	37	78	2,642
				June 2017	---	---	---	---	8.23	---	---	---	---	---	---	---	---
				September 2017	---	---	---	---	8.27	---	---	---	---	---	---	---	---
				December 2017	---	---	---	---	8.31	---	---	---	---	---	---	---	---
OTE (CR)				(Contract Size: 100 Securities, Physical Delivery)													
8.80	8.55	8.56	-1.61%	March 2017	8.72	8.76	8.57	8.69	8.69	---	---	8.60	9.69	---	38	85	4,179
				June 2017	---	---	---	---	8.79	---	---	---	---	---	---	---	---
				September 2017	---	---	---	---	8.83	---	---	---	---	---	---	---	---
				December 2017	---	---	---	---	8.87	---	---	---	---	---	---	---	---
P.P.A. S.A. (CR)				(Contract Size: 100 Securities, Physical Delivery)													
12.98	12.74	12.98	0.23%	March 2017	12.69	12.96	12.69	12.96	12.96	---	---	13.12	13.65	---	2	2	644
				June 2017	---	---	---	---	13.08	---	---	---	---	---	---	---	---
				September 2017	---	---	---	---	13.14	---	---	---	---	---	---	---	---
				December 2017	---	---	---	---	13.21	---	---	---	---	---	---	---	---
PIRAEUS BANK (CR)				(Contract Size: 100 Securities, Physical Delivery)													
0.201	0.188	0.194	-2.02%	March 2017	0.198	0.202	0.188	0.195	0.195	---	---	0.191	0.242	---	385	16,599	76,226
				June 2017	---	---	---	---	0.200	---	---	---	---	---	---	---	---
				September 2017	---	---	---	---	0.201	---	---	---	---	---	---	---	---
				December 2017	---	---	---	---	0.202	---	---	---	---	---	---	---	---
PPC (CR)				(Contract Size: 100 Securities, Physical Delivery)													
2.91	2.82	2.89	0.70%	March 2017	2.90	2.92	2.83	2.90	2.90	---	---	2.93	3.26	---	47	148	7,457
				June 2017	---	---	---	---	2.90	---	---	---	---	---	---	---	---
				September 2017	---	---	---	---	2.91	---	---	---	---	---	---	---	---
				December 2017	---	---	---	---	2.93	---	---	---	---	---	---	---	---
TERNA ENERGY (CR)				(Contract Size: 100 Securities, Physical Delivery)													
2.67	2.61	2.62	-1.87%	March 2017	2.67	2.67	2.67	2.67	2.67	---	---	2.62	2.85	---	1	2	1,251
				June 2017	---	---	---	---	2.70	---	---	---	---	---	---	---	---
				September 2017	---	---	---	---	2.71	---	---	---	---	---	---	---	---
				December 2017	---	---	---	---	2.72	---	---	---	---	---	---	---	---
TITAN CEMENT (CR)				(Contract Size: 100 Securities, Physical Delivery)													
21.95	21.18	21.80	-0.46%	March 2017	21.90	21.90	21.29	21.78	21.78	---	---	21.47	21.90	---	6	8	101
				June 2017	---	---	---	---	22.12	---	---	---	---	---	---	---	---
				September 2017	---	---	---	---	22.23	---	---	---	---	---	---	---	---
				December 2017	---	---	---	---	22.34	---	---	---	---	---	---	---	---

Underlying Asset				Derivatives Market													
Price max	Price min	Closing price	change	Delivery Month	Open price	Price max	Price min	Last price	Closing price	Last Bid	Last Ask	Settlement price	Life high	Life low	Trades	Volume	Open Interest
VIOHALCO SA/NV (CB)				(Contract Size: 100 Securities, Physical Delivery)													
1.25	1.22	1.24	0.00%	March 2017	1.23	1.26	1.23	1.24	1.24	---	---	1.24	1.38	---	5	28	2,653
				June 2017	---	---	---	---	1.25	---	---	---	---	---	---	---	---
				September 2017	---	---	---	---	1.26	---	---	---	---	---	---	---	---
				December 2017	---	---	---	---	1.26	---	---	---	---	---	---	---	---

FTSE/Athex Large Cap

(Trade Unit: 1 Index Point x 2€ - Exercise Style: European, Cash Settlement)

Call Options																	Put Options																			
January 2017								February 2017								Other Months		January 2017								February 2017								Other Months		
Exerise Price	Open price	Price max	Price min	Last price	Closing price	Volume	Open Interest	Open price	Price max	Price min	Last price	Closing price	Volume	Open Interest	Volume	Open Interest	Open price	Price max	Price min	Last price	Closing price	Volume	Open Interest	Open price	Price max	Price min	Last price	Closing price	Volume	Open Interest	Volume	Open Interest	Exerise Price			
1,200	-	-	-	-	-	-	-	-	-	-	-	-	-	-	-	-	-	-	-	-	-	-	-	-	-	-	-	-	-	-	-	-	1,200			
1,250	-	-	-	-	-	-	-	-	-	-	-	-	-	-	-	-	-	-	-	-	-	-	-	-	-	-	-	-	-	-	-	-	1,250			
1,275	-	-	-	-	-	-	-	-	-	-	-	-	-	-	-	-	-	-	-	-	-	-	-	-	-	-	-	-	-	-	-	-	1,275			
1,300	-	-	-	-	-	-	-	-	-	-	-	-	-	-	-	-	-	-	-	-	-	-	-	-	-	-	-	-	-	-	-	-	1,300			
1,325	-	-	-	-	-	-	-	-	-	-	-	-	-	-	-	-	-	-	-	-	-	-	-	-	-	-	-	-	-	-	-	-	1,325			
1,350	-	-	-	-	-	-	-	-	-	-	-	-	-	-	-	-	-	-	-	-	-	-	-	-	-	-	-	-	-	-	-	-	1,350			
1,375	0.00	0.00	0.00	-	295.00	-	-	-	-	-	-	-	-	-	-	-	0.00	0.00	0.00	-	0.01	-	-	-	-	-	-	-	-	-	-	-	1,375			
1,400	0.00	0.00	0.00	-	270.00	-	-	-	-	-	-	-	-	-	-	-	0.00	0.00	0.00	-	0.02	-	-	-	-	-	-	-	-	-	-	-	1,400			
1,425	0.00	0.00	0.00	-	245.00	-	-	-	-	-	-	-	-	-	-	-	0.00	0.00	0.00	-	0.06	-	-	-	-	-	-	-	-	-	-	-	1,425			
1,450	0.00	0.00	0.00	-	221.00	-	2	-	-	-	-	-	-	-	-	-	0.00	0.00	0.00	-	0.17	-	-	-	-	-	-	-	-	-	-	-	1,450			
1,475	0.00	0.00	0.00	-	196.00	-	4	-	-	-	-	-	-	-	-	-	0.00	0.00	0.00	-	0.41	-	-	-	-	-	-	-	-	-	-	-	1,475			
1,500	0.00	0.00	0.00	-	171.00	-	-	0.00	0.00	0.00	-	176.00	-	-	-	-	0.00	0.00	0.00	-	0.94	-	-	0.00	0.00	0.00	-	5.00	-	-	-	-	1,500			
1,525	0.00	0.00	0.00	-	147.00	-	-	0.00	0.00	0.00	-	154.00	-	-	-	-	0.00	0.00	0.00	-	2.00	-	-	0.00	0.00	0.00	-	7.70	-	-	-	-	1,525			
1,550	0.00	0.00	0.00	-	124.00	-	9	0.00	0.00	0.00	-	133.00	-	-	-	-	0.00	0.00	0.00	-	3.80	-	10	0.00	0.00	0.00	-	11.50	-	-	-	-	1,550			
1,575	0.00	0.00	0.00	-	102.00	-	-	0.00	0.00	0.00	-	113.00	-	-	-	-	0.00	0.00	0.00	-	6.90	-	10	0.00	0.00	0.00	-	16.75	-	-	-	-	1,575			
1,600	0.00	0.00	0.00	-	82.50	-	40	0.00	0.00	0.00	-	95.50	-	-	-	-	0.00	0.00	12.00	13.00	13.00	7	509	0.00	0.00	0.00	-	23.50	-	17	-	-	1,600			
1,625	0.00	0.00	0.00	-	64.00	-	3	0.00	0.00	0.00	-	79.00	-	-	-	-	0.00	0.00	18.00	18.00	18.00	9	145	0.00	0.00	0.00	-	32.00	-	-	-	-	1,625			
1,650	0.00	0.00	0.00	-	48.50	-	7	0.00	0.00	0.00	-	64.00	-	-	-	-	0.00	0.00	0.00	-	27.75	-	39	0.00	0.00	0.00	-	42.25	-	-	-	-	1,650			
1,675	0.00	0.00	0.00	-	35.50	-	3	0.00	0.00	0.00	-	51.50	-	-	-	-	0.00	0.00	40.50	40.50	40.50	1	60	0.00	0.00	0.00	-	54.50	-	1	-	-	1,675			
1,700	0.00	0.00	0.00	-	25.00	-	100	0.00	0.00	0.00	-	40.50	-	-	-	-	0.00	0.00	0.00	-	54.00	-	42	0.00	0.00	0.00	-	68.50	-	-	-	-	1,700			
1,725	15.00	17.25	15.00	17.25	17.25	5	18	0.00	0.00	0.00	-	31.25	-	-	-	-	15.00	17.25	0.00	-	71.00	-	27	0.00	0.00	0.00	-	84.00	-	-	-	-	1,725			
1,750	10.00	10.50	10.00	10.00	10.00	14	222	18.50	23.25	18.50	20.00	20.00	140	140	-	-	10.00	10.50	0.00	-	90.00	-	2	0.00	0.00	0.00	-	102.00	-	-	-	-	1,750			
1,775	7.00	7.00	6.40	6.40	6.40	13	40	0.00	0.00	0.00	-	17.75	-	-	-	-	7.00	7.00	0.00	-	111.00	-	1	0.00	0.00	0.00	-	121.00	-	-	-	-	1,775			
1,800	10.00	10.00	4.00	4.00	4.00	41	61	0.00	0.00	0.00	-	13.00	-	-	-	-	10.00	10.00	0.00	-	133.00	-	-	0.00	0.00	0.00	-	141.00	-	-	-	-	1,800			
1,825	0.00	0.00	0.00	-	2.40	-	-	0.00	0.00	0.00	-	9.50	-	-	-	-	0.00	0.00	0.00	-	156.00	-	-	0.00	0.00	0.00	-	162.00	-	-	-	-	1,825			
1,850	0.00	0.00	0.00	-	1.40	-	40	0.00	0.00	0.00	-	6.70	-	-	-	-	0.00	0.00	0.00	-	180.00	-	-	0.00	0.00	0.00	-	184.00	-	-	-	-	1,850			
1,875	0.00	0.00	0.00	-	0.74	-	-	0.00	0.00	0.00	-	4.70	-	-	-	-	0.00	0.00	0.00	-	205.00	-	-	0.00	0.00	0.00	-	207.00	-	-	-	-	1,875			
1,900	-	-	-	-	-	-	-	-	-	-	-	-	-	-	-	-	-	-	-	-	-	-	-	-	-	-	-	-	-	-	-	-	1,900			
1,950	-	-	-	-	-	-	-	-	-	-	-	-	-	-	-	-	-	-	-	-	-	-	-	-	-	-	-	-	-	-	-	-	1,950			
2,000	-	-	-	-	-	-	-	-	-	-	-	-	-	-	-	-	-	-	-	-	-	-	-	-	-	-	-	-	-	-	-	-	2,000			
2,050	-	-	-	-	-	-	-	-	-	-	-	-	-	-	-	-	-	-	-	-	-	-	-	-	-	-	-	-	-	-	-	-	2,050			
2,100	-	-	-	-	-	-	-	-	-	-	-	-	-	-	-	-	-	-	-	-	-	-	-	-	-	-	-	-	-	-	-	-	2,100			
Totals:						73	549							140	140	0	7							17	845							0	18	0	0	
Number of Trades:						15								7		0								8								0		0		

ALPHA BANK (CR)

(Contract Size: 100 Securities, Exercise Style: American, Physical Delivery)

Call Options																	Put Options																			
Exercise Price	January 2017							February 2017							Other Months		January 2017										February 2017							Other Months		Exercise Price
	Open price	Price max	Price min	Last price	Closing price	Volume	Open Interest	Open price	Price max	Price min	Last price	Closing price	Volume	Open Interest	Volume	Open Interest	Open price	Price max	Price min	Last price	Closing price	Volume	Open Interest	Open price	Price max	Price min	Last price	Closing price	Volume	Open Interest	Volume	Open Interest				
0.950						-	-							-	-							-	-						-	-			0.010			
1.000	0.000	0.000	0.000		0.792	-	-							-	-		0.000	0.000	0.000		0.001	-	-						-	-			0.010			
1.100	0.000	0.000	0.000		0.692	-	-							-	-		0.000	0.000	0.000		0.001	-	-						-	-			0.011			
1.200	0.000	0.000	0.000		0.592	-	-	0.000	0.000	0.000		0.594	-	-			0.000	0.000	0.000		0.001	-	-	0.000	0.000	0.000		0.001	-	-			0.012			
1.300	0.000	0.000	0.000		0.492	-	-	0.000	0.000	0.000		0.496	-	-			0.000	0.000	0.000		0.001	-	-	0.000	0.000	0.000		0.002	-	-			0.013			
1.400	0.000	0.000	0.000		0.394	-	-	0.000	0.000	0.000		0.401	-	-			0.000	0.000	0.000		0.001	-	-	0.000	0.000	0.000		0.006	-	-			0.014			
1.500	0.000	0.000	0.000		0.298	-	-	0.000	0.000	0.000		0.312	-	-			0.000	0.000	0.000		0.006	-	-	0.000	0.000	0.000		0.017	-	-			0.015			
1.600	0.000	0.000	0.000		0.211	-	-	0.000	0.000	0.000		0.232	-	-			0.000	0.000	0.000		0.018	-	-	0.000	0.000	0.000		0.037	-	-			0.016			
1.700	0.000	0.000	0.000		0.137	-	-	0.000	0.000	0.000		0.165	-	-			0.000	0.000	0.000		0.044	-	-	0.000	0.000	0.000		0.069	-	-			0.017			
1.800	0.000	0.000	0.000		0.081	-	-	0.000	0.000	0.000		0.112	-	-			0.000	0.000	0.000		0.088	-	-	0.000	0.000	0.000		0.116	-	-			0.018			
1.900	0.000	0.000	0.000		0.044	-	-	0.000	0.000	0.000		0.073	-	-			0.000	0.000	0.000		0.151	-	-	0.000	0.000	0.000		0.177	-	-			0.019			
2.000	0.000	0.000	0.000		0.022	-	-	0.000	0.000	0.000		0.045	-	-			0.000	0.000	0.000		0.229	-	-	0.000	0.000	0.000		0.250	-	-			0.020			
2.200	0.000	0.000	0.000		0.004	-	-	0.000	0.000	0.000		0.015	-	-			0.000	0.000	0.000		0.412	-	50	0.000	0.000	0.000		0.420	-	-			0.022			
2.400	0.000	0.000	0.000		0.001	-	-	0.000	0.000	0.000		0.004	-	-			0.000	0.000	0.000		0.610	-	-	0.000	0.000	0.000		0.611	-	-			0.024			
2.600	0.000	0.000	0.000		0.001	-	-	0.000	0.000	0.000		0.001	-	-			0.000	0.000	0.000		0.810	-	-	0.000	0.000	0.000		0.810	-	-			0.026			
2.800	0.000	0.000	0.000		0.001	-	-	0.000	0.000	0.000		0.002	-	-			0.000	0.000	0.000		1.01	-	-	0.000	0.000	0.000		1.01	-	-			0.028			
3.000	0.000	0.000	0.000		0.001	-	-	0.000	0.000	0.000		0.001	-	-			0.000	0.000	0.000		1.21	-	-	0.000	0.000	0.000		1.21	-	-			0.030			
3.200						-	-							-	-							-	-						-	-			0.032			
3.400						-	-							-	-							-	-						-	-			0.034			
3.600						-	-							-	-							-	-						-	-			0.036			
Totals:						0	0							0	0	0	0							0	50							0	0	0	0	
Number of Trades:						0								0		0							0.00								0		0			

NATIONAL BANK (CR)

(Contract Size: 100 Securities, Exercise Style: American, Physical Delivery)

Call Options																	Put Options																			
January 2017								February 2017								Other Months		January 2017								February 2017								Other Months		Exercise Price
Exercise Price	Open price	Price max	Price min	Last price	Closing price	Volume	Open Interest	Open price	Price max	Price min	Last price	Closing price	Volume	Open Interest	Volume	Open Interest	Open price	Price max	Price min	Last price	Closing price	Volume	Open Interest	Open price	Price max	Price min	Last price	Closing price	Volume	Open Interest	Volume	Open Interest				
0.050	0.000	0.000	0.000		0.192	-	-	0.000	0.000	0.000		0.192	-	-			0.000	0.000	0.000		0.001	-	-	0.000	0.000	0.000		0.001	-	-			0.001			
0.100	0.000	0.000	0.000		0.142	-	-	0.000	0.000	0.000		0.143	-	-			0.000	0.000	0.000		0.001	-	-	0.000	0.000	0.000		0.001	-	-			0.001			
0.150	0.000	0.000	0.000		0.094	-	-	0.000	0.000	0.000		0.098	-	-			0.000	0.000	0.000		0.002	-	-	0.000	0.000	0.000		0.006	-	-			0.002			
0.200	0.000	0.000	0.000		0.054	-	5	0.000	0.000	0.000		0.064	-	-			0.000	0.000	0.000		0.012	-	-	0.000	0.000	0.000		0.021	-	-			0.002			
0.250	0.000	0.000	0.000		0.028	-	-	0.000	0.000	0.000		0.040	-	-			0.000	0.000	0.000		0.036	-	-	0.000	0.000	0.000		0.047	-	-			0.003			
0.300	0.000	0.000	0.000		0.013	-	-	0.000	0.000	0.000		0.024	-	-			0.000	0.000	0.000		0.071	-	-	0.000	0.000	0.000		0.081	-	-			0.003			
0.350	0.000	0.000	0.000		0.006	-	-	0.000	0.000	0.000		0.014	-	-			0.000	0.000	0.000		0.113	-	-	0.000	0.000	0.000		0.121	-	-			0.004			
0.400	0.000	0.000	0.000		0.003	-	-	0.000	0.000	0.000		0.009	-	-			0.000	0.000	0.000		0.160	-	-	0.000	0.000	0.000		0.166	-	-			0.004			
0.450	0.000	0.000	0.000		0.001	-	-	0.000	0.000	0.000		0.005	-	-			0.000	0.000	0.000		0.209	-	-	0.000	0.000	0.000		0.212	-	-			0.005			
0.500	0.000	0.000	0.000		0.001	-	-	0.000	0.000	0.000		0.003	-	-			0.000	0.000	0.000		0.258	-	-	0.000	0.000	0.000		0.260	-	-			0.005			
0.550						-	-						-	-								-	-						-	-			0.006			
0.600						-	-						-	-								-	-						-	-			0.006			
Totals:																0		0									0		0	0		0				
Number of Trades:																0		0									0.00			0		0				

OPAP (CR)

(Contract Size: 100 Securities, Exercise Style: American, Physical Delivery)

Call Options																	Put Options																			
January 2017								February 2017								Other Months		January 2017								February 2017								Other Months		
Exerise Price	Open price	Price max	Price min	Last price	Closing price	Volume	Open Interest	Open price	Price max	Price min	Last price	Closing price	Volume	Open Interest	Volume	Open Interest	Open price	Price max	Price min	Last price	Closing price	Volume	Open Interest	Open price	Price max	Price min	Last price	Closing price	Volume	Open Interest	Volume	Open Interest	Exerise Price			
4.000						-	-							-	-							-	-						-	-			0.040			
4.400						-	-							-	-							-	-						-	-			0.044			
4.800						-	-							-	-							-	-						-	-			0.048			
5.200						-	-							-	-							-	-						-	-			0.052			
5.600	0.000	0.000	0.000		2.56	-	-							-	-		0.000	0.000	0.000			-	-		0.000	0.000	0.000		0.001	-	-		0.000	0.000	0.056	
6.000	0.000	0.000	0.000		2.16	-	-	0.000	0.000	0.000		2.17	-	-			0.000	0.000	0.000			-	-	0.000	0.000	0.000		0.001	-	-		0.000	0.000	0.060		
6.400	0.000	0.000	0.000		1.76	-	-	0.000	0.000	0.000		1.78	-	-			0.000	0.000	0.000			-	-	0.000	0.000	0.000		0.001	-	-		0.000	0.000	0.064		
6.800	0.000	0.000	0.000		1.37	-	-	0.000	0.000	0.000		1.40	-	-			0.000	0.000	0.000			-	-	0.000	0.000	0.000		0.004	-	-		0.000	0.000	0.068		
7.200	0.000	0.000	0.000		0.984	-	-	0.000	0.000	0.000		1.04	-	-			0.000	0.000	0.000			-	-	0.000	0.000	0.000		0.022	-	-		0.000	0.000	0.072		
7.600	0.000	0.000	0.000		0.643	-	-	0.000	0.000	0.000		0.731	-	-			0.000	0.000	0.000			-	-	0.000	0.000	0.000		0.080	-	-		0.000	0.000	0.076		
8.000	0.000	0.000	0.000		0.371	-	-	0.000	0.000	0.000		0.483	-	-			0.000	0.000	0.000			-	-	0.000	0.000	0.000		0.207	-	-		0.000	0.000	0.080		
8.400	0.000	0.000	0.000		0.186	-	-	0.000	0.000	0.000		0.294	-	-			0.000	0.000	0.000			-	-	0.000	0.000	0.000		0.422	-	-		0.000	0.000	0.084		
8.800	0.000	0.000	0.000		0.079	-	4	0.000	0.000	0.000		0.169	-	-			0.000	0.000	0.000			-	-	0.000	0.000	0.000		0.717	-	-		0.000	0.000	0.088		
9.200	0.000	0.000	0.000		0.029	-	10	0.000	0.000	0.000		0.090	-	-			0.000	0.000	0.000			-	-	0.000	0.000	0.000		1.07	-	-		0.000	0.000	0.092		
9.600	0.000	0.000	0.000		0.009	-	-	0.000	0.000	0.000		0.044	-	-			0.000	0.000	0.000			-	-	0.000	0.000	0.000		1.45	-	-		0.000	0.000	0.096		
10.000	0.000	0.000	0.000		0.003	-	-	0.000	0.000	0.000		0.020	-	-			0.000	0.000	0.000			-	-	0.000	0.000	0.000		1.85	-	-		0.000	0.000	0.100		
11.000	0.000	0.000	0.000		0.001	-	-	0.000	0.000	0.000		0.002	-	-			0.000	0.000	0.000			-	-	0.000	0.000	0.000		2.85	-	-		0.000	0.000	0.110		
12.000	0.000	0.000	0.000		0.001	-	-	0.000	0.000	0.000		0.001	-	-			0.000	0.000	0.000			-	-	0.000	0.000	0.000		3.85	-	-		0.000	0.000	0.120		
Totals:						0	14						0	0	0	0						0	0					0	0			0	0			
Number of Trades:						0						0		0								0.00					0		0		0					

OTE (CR)

(Contract Size: 100 Securities, Exercise Style: American, Physical Delivery)

Call Options																	Put Options																						
Exercise Price	January 2017							February 2017							Other Months		January 2017							February 2017							Other Months		Exercise Price						
	Open price	Price max	Price min	Last price	Closing price	Volume	Open Interest	Open price	Price max	Price min	Last price	Closing price	Volume	Open Interest	Volume	Open Interest	Open price	Price max	Price min	Last price	Closing price	Volume	Open Interest	Open price	Price max	Price min	Last price	Closing price	Volume	Open Interest	Volume	Open Interest							
5.200						-	-							-	-							-	-					-	-					0.052					
5.600						-	-							-	-							-	-					-	-					0.056					
6.000	0.000	0.000	0.000		2.71	-	-							-	-		0.000	0.000	0.000			-	-	0.000	0.000	0.000		0.001	-	-		0.000	0.000	0.000		0.060			
6.400	0.000	0.000	0.000		2.31	-	-	0.000	0.000	0.000		2.32	-	-		0.000	0.000	0.000			-	-	0.000	0.000	0.000		0.001	-	-		0.000	0.000	0.000		0.064				
6.800	0.000	0.000	0.000		1.91	-	-	0.000	0.000	0.000		1.93	-	-		0.000	0.000	0.000			-	-	0.000	0.000	0.000		0.001	-	-		0.000	0.000	0.000		0.068				
7.200	0.000	0.000	0.000		1.51	-	30	0.000	0.000	0.000		1.54	-	-		0.000	0.000	0.000			-	-	0.000	0.000	0.000		0.002	-	-		0.000	0.000	0.000		0.072				
7.600	0.000	0.000	0.000		1.13	-	-	0.000	0.000	0.000		1.18	-	-		0.000	0.000	0.000			-	-	0.000	0.000	0.000		0.013	-	-		0.000	0.000	0.000		0.076				
8.000	0.000	0.000	0.000		0.767	-	-	0.000	0.000	0.000		0.849	-	-		0.000	0.000	0.000			-	-	0.000	0.000	0.000		0.052	-	-		0.000	0.000	0.000		0.080				
8.400	0.000	0.000	0.000		0.465	-	5	0.000	0.000	0.000		0.573	-	-		0.000	0.000	0.000			-	-	0.000	0.000	0.000		0.151	-	10		0.000	0.000	0.000		0.084				
8.800	0.000	0.000	0.000		0.246	-	12	0.000	0.000	0.000		0.364	-	-		0.000	0.000	0.000			-	-	0.000	0.000	0.000		0.332	-	25		0.000	0.000	0.000		0.088				
9.200	0.000	0.000	0.000		0.112	-	12	0.000	0.000	0.000		0.214	-	-		0.000	0.000	0.000			-	-	0.000	0.000	0.000		0.599	-	-		0.000	0.000	0.000		0.092				
9.600	0.000	0.000	0.000		0.043	-	-	0.000	0.000	0.000		0.116	-	-		0.000	0.000	0.000			-	-	0.000	0.000	0.000		0.932	-	-		0.000	0.000	0.000		0.096				
10.000	0.000	0.000	0.000		0.014	-	-	0.000	0.000	0.000		0.060	-	-		0.000	0.000	0.000			-	-	0.000	0.000	0.000		1.31	-	-		0.000	0.000	0.000		0.100				
11.000	0.000	0.000	0.000		0.001	-	-	0.000	0.000	0.000		0.008	-	-		0.000	0.000	0.000			-	-	0.000	0.000	0.000		2.30	-	-		0.000	0.000	0.000		0.110				
12.000	0.000	0.000	0.000		0.001	-	-	0.000	0.000	0.000		0.001	-	-		0.000	0.000	0.000			-	-	0.000	0.000	0.000		3.30	-	-		0.000	0.000	0.000		0.120				
13.000	0.000	0.000	0.000		0.001	-	-	0.000	0.000	0.000		0.001	-	-		0.000	0.000	0.000			-	-	0.000	0.000	0.000		4.30	-	-		0.000	0.000	0.000		0.130				
14.000						-	-							-	-							-	-					-	-							0.140			
Totals:						0	59							0	0	0	78							0	35							0	0	0	0	0	0		
Number of Trades:						0								0		0								0.00								0		0					

PIRAEUS BANK (CR)

(Contract Size: 100 Securities, Exercise Style: American, Physical Delivery)

Call Options																	Put Options																				
January 2017								February 2017								Other Months		January 2017								February 2017								Other Months			
Exerise Price	Open price	Price max	Price min	Last price	Closing price	Volume	Open Interest	Open price	Price max	Price min	Last price	Closing price	Volume	Open Interest	Volume	Open Interest	Open price	Price max	Price min	Last price	Closing price	Volume	Open Interest	Open price	Price max	Price min	Last price	Closing price	Volume	Open Interest	Volume	Open Interest	Exerise Price				
0.050	0.000	0.000	0.000		0.148	-	-	0.000	0.000	0.000		0.148	-	-			0.000	0.000	0.000		0.001	-	-		0.000	0.000	0.000		0.001	-	-			0.001			
0.100	0.000	0.000	0.000		0.099	-	-	0.000	0.000	0.000		0.101	-	-			0.000	0.000	0.000		0.001	-	-		0.000	0.000	0.000		0.003	-	-			0.001			
0.150	0.000	0.000	0.000		0.057	-	-	0.000	0.000	0.000		0.065	-	-			0.000	0.000	0.000		0.008	-	-		0.000	0.000	0.000		0.016	-	-			0.002			
0.200	0.000	0.000	0.000		0.028	-	-	0.000	0.000	0.000		0.040	-	-			0.000	0.000	0.000		0.030	-	-		0.000	0.000	0.000		0.041	-	-			0.002			
0.250	0.000	0.000	0.000		0.013	-	-	0.000	0.000	0.000		0.025	-	-			0.000	0.000	0.000		0.065	-	-		0.000	0.000	0.000		0.076	-	-			0.003			
0.300	0.000	0.000	0.000		0.006	-	-	0.000	0.000	0.000		0.015	-	-			0.000	0.000	0.000		0.108	-	-		0.000	0.000	0.000		0.116	-	-			0.003			
0.350	0.000	0.000	0.000		0.003	-	-	0.000	0.000	0.000		0.009	-	-			0.000	0.000	0.000		0.154	-	-		0.000	0.000	0.000		0.160	-	-			0.004			
0.400	0.000	0.000	0.000		0.001	-	-	0.000	0.000	0.000		0.006	-	-			0.000	0.000	0.000		0.203	-	-		0.000	0.000	0.000		0.207	-	-			0.004			
0.450	0.000	0.000	0.000		0.001	-	-	0.000	0.000	0.000		0.004	-	-			0.000	0.000	0.000		0.252	-	-		0.000	0.000	0.000		0.255	-	-			0.005			
0.500	0.000	0.000	0.000		0.001	-	-	0.000	0.000	0.000		0.002	-	-			0.000	0.000	0.000		0.302	-	-		0.000	0.000	0.000		0.303	-	-			0.005			
0.550	-							-										-							-										0.006		
Totals:					0			0			0			0			0			0			0			0			0			0					
Number of Trades:					0			0			0			0.00			0			0			0			0			0								

PPC (CR)

(Contract Size: 100 Securities, Exercise Style: American, Physical Delivery)

Call Options																	Put Options																			
January 2017								February 2017								Other Months		January 2017								February 2017								Other Months		
Exerise Price	Open price	Price max	Price min	Last price	Closing price	Volume	Open Interest	Open price	Price max	Price min	Last price	Closing price	Volume	Open Interest	Volume	Open Interest	Open price	Price max	Price min	Last price	Closing price	Volume	Open Interest	Open price	Price max	Price min	Last price	Closing price	Volume	Open Interest	Volume	Open Interest	Exerise Price			
1.700						-	-							-	-							-	-					-	-			0.017				
1.800						-	-							-	-							-	-					-	-			0.018				
1.900	0.000	0.000	0.000		0.973	-	-	0.000	0.000	0.000		0.976	-	-			0.000	0.000	0.000		0.001	-	-	0.000	0.000	0.000		0.001	-	-			0.019			
2.000	0.000	0.000	0.000		0.874	-	-	0.000	0.000	0.000		0.877	-	-			0.000	0.000	0.000		0.001	-	-	0.000	0.000	0.000		0.001	-	-			0.020			
2.200	0.000	0.000	0.000		0.674	-	-	0.000	0.000	0.000		0.681	-	-			0.000	0.000	0.000		0.001	-	-	0.000	0.000	0.000		0.004	-	-			0.022			
2.400	0.000	0.000	0.000		0.478	-	30	0.000	0.000	0.000		0.496	-	-			0.000	0.000	0.000		0.003	-	-	0.000	0.000	0.000		0.018	-	-			0.024			
2.600	0.000	0.000	0.000		0.296	-	-	0.000	0.000	0.000		0.332	-	-			0.000	0.000	0.000		0.022	-	-	0.000	0.000	0.000		0.054	-	-			0.026			
2.800	0.000	0.000	0.000		0.153	-	-	0.000	0.000	0.000		0.203	-	-			0.000	0.000	0.000		0.078	-	5	0.000	0.000	0.000		0.125	-	-			0.028			
3.000	0.000	0.000	0.000		0.064	-	-	0.000	0.000	0.000		0.112	-	-			0.000	0.000	0.000		0.189	-	-	0.000	0.000	0.000		0.233	-	-			0.030			
3.200	0.000	0.000	0.000		0.021	-	-	0.000	0.000	0.000		0.057	-	-			0.000	0.000	0.000		0.347	-	-	0.000	0.000	0.000		0.378	-	-			0.032			
3.400	0.000	0.000	0.000		0.005	-	-	0.000	0.000	0.000		0.026	-	-			0.000	0.000	0.000		0.532	-	-	0.000	0.000	0.000		0.548	-	-			0.034			
3.600	0.000	0.000	0.000		0.001	-	-	0.000	0.000	0.000		0.011	-	-			0.000	0.000	0.000		0.730	-	-	0.000	0.000	0.000		0.735	-	-			0.036			
3.800	0.000	0.000	0.000		0.003	-	-	0.000	0.000	0.000		0.004	-	-			0.000	0.000	0.000		0.930	-	-	0.000	0.000	0.000		0.930	-	-			0.038			
4.000	0.000	0.000	0.000		0.001	-	-	0.000	0.000	0.000		0.002	-	-			0.000	0.000	0.000		1.13	-	-	0.000	0.000	0.000		1.13	-	-			0.040			
4.400	0.000	0.000	0.000		0.001	-	-	0.000	0.000	0.000		0.001	-	-			0.000	0.000	0.000		1.53	-	-	0.000	0.000	0.000		1.53	-	-			0.044			
4.800						-	-							-	-							-	-					-	-			0.048				
Totals:						0	30							0	0	0	0							0	5							0	0	0	0	
Number of Trades:						0								0		0							0.00								0		0			

Lending Products	Underlying Title	Multilateral Transactions[1]					Bilateral Transactions[2]		Stock Borrowing through OTC (volume)[3]
		Open Interest[5]	Volume(Offered)	Average Weighted	Transactions volume	Average Weighted	Transactions Volume	Average Weighte	Transactions Volume
AEGNBOR	AEGEAN AIRLINES (CR)	2,600	13,356	4.24%	1,000	2.69%	---	---	24,198
ALPHABOR	ALPHA BANK (CR)	162,350	59,504	4.68%	---	---	---	---	2,693,747
ALMYBOR	ALUMIL (CR)	---	---	---	---	---	---	---	---
IATRBOR	ATHENS MEDICAL CENTER SA (CR)	---	36,398	5.31%	---	---	---	---	---
OTOELBOR	AUTOHELLAS SA (CR)	---	1,914	5.31%	---	---	---	---	---
BOCBOR	BANK OF CYPRUS (CR)	---	51	5.34%	---	---	200,000	3.00%	2,008
EEEBOR	CC HBC AG (CR)	7,500	1,072	6.65%	1,072	6.65%	---	---	70,546
CENTRBOR	CENTRIC HOLDINGS (CR)	---	16,000	5.31%	---	---	---	---	---
PLAKRBOR	CRETE PLASTICS SA (CR)	---	---	---	---	---	---	---	---
ELLAKTORBOR	ELLAKTOR (CR)	10,000	30,712	5.31%	---	---	---	---	---
ANEMOSBOR	ELTECH ANEMOS S.A. (CR)	---	7,240	5.31%	---	---	---	---	---
ELTONBOR	ELTON SA (CR)	---	---	---	---	---	---	---	---
EUROBBOR	EUROBANK ERGASIAS (CR)	73,312	106,478	5.31%	---	---	---	---	6,493,162
EUPICBOR	EUROPEAN RELIANCE INSUR. (CR)	---	---	---	---	---	---	---	---
EYDAPBOR	EYDAP S.A. (CR)	4,051	1,427	4.68%	---	---	---	---	17,780
FFGRPBOR	FOLLI FOLLIE (CR)	8,090	70,333	5.31%	---	---	---	---	682,242
FOYRKBOR	FOURLIS (CR)	681	4,583	3.31%	---	---	---	---	3,850
GEKTERNABOR	GEK TERNA (CR)	112	30,350	5.31%	---	---	---	---	---
SARBOR	GR. SARANTIS SA (CR)	805	493	5.66%	---	---	---	---	---
EUPROBOR	GRIVALIA PROPERTIES (CR)	2,500	94,127	3.55%	---	---	---	---	39,950
XAKOBOR	HALKOR SA (CB)	---	56,552	5.31%	---	---	---	---	---
EXAEBOR	HELLENIC EXCHANGES-A.S.E. (CR)	22,700	426,619	5.31%	---	---	---	---	99,404
ELPEBOR	HELLENIC PETROLEUM (CR)	300	121,059	5.31%	---	---	---	---	42,606
HYGEIABOR	HYGEIA SA (CR)	---	51,699	5.31%	---	---	---	---	---
IASOBOR	IASO SA (CR)	---	---	---	---	---	---	---	---
IKTINBOR	IKTINOS HELLAS SA (CR)	---	798	5.31%	---	---	---	---	---
INTRKBOR	INTRACOM HOLDINGS (CR)	---	171,048	5.31%	---	---	---	---	---
INLOTBOR	INTRALOT (CR)	6,000	54,099	5.31%	---	---	---	---	803
AVAXBOR	J & P - AVAX SA (CR)	---	20,335	5.31%	---	---	---	---	---
BELABOR	JUMBO SA (CR)	56,725	125,323	3.31%	900	2.65%	---	---	6,365
KLEMBOR	KLEEMAN HELLAS SA (CR)	---	1,188	5.31%	---	---	---	---	---

Stock Lending Notes

[1] - Multilateral contracts Lending or Borrowing as per Methods 8-1, 8-2 and 8-3-3 (According to ATHEX BoD Resolution No.17)

[2] - Billateral Contracts Lending or Borrowing as per Methods 8-3-1 and 8-3-2 (According to ATHEX BoD Resolution No.20)

[3] - The information concerning OTC Stock Borrowing Transactions is based on the statements of the Dematerialised Securities System (DSS) operators involved and refers to volumes that have been registered up until the previous working day.

[4] - Average Price (Volume weighted)

[5] - The Data concerning Open Interest before the start of trading session

Lending Products	Underlying Title	Multilateral Transactions[1]					Bilateral Transactions[2]		Stock Borrowing through OTC (volume)[3]
		Open Interest[5]	Volume(Offered)	Average Weighted	Transactions volume	Average Weighted	Transactions Volume	Average Weighte	Transactions Volume
KORRESBOR	KORRES (CR)	---	319	5.31%	---	---	---	---	---
KRIBOR	KRI-KRI S.A. (CR)	---	47,768	5.31%	---	---	---	---	---
KYRMBOR	KYRIAKIDIS MARBLES SA (CR)	---	5,737	5.31%	---	---	---	---	---
LAMDABOR	LAMDA DEVELOPMENT SA (CR)	134	20	7.68%	20	9.65%	---	---	10,377
MIGBOR	MARFIN INVESTMENT GROUP (CR)	---	268,700	5.31%	---	---	---	---	744,474
METKKBOR	METKA (CR)	21,433	4,894	5.31%	---	---	---	---	965
MLSBOR	MLS MULTIMEDIA SA (CR)	---	9,118	5.31%	---	---	---	---	---
MOHBOR	MOTOR OIL (CR)	24,396	5,922	3.55%	---	---	---	---	37,254
MYTILBOR	MYTILINEOS HOLDINGS (CR)	72,394	26,376	5.65%	---	---	---	---	---
ETEBOR	NATIONAL BANK (CR)	308,265	411,460	5.31%	---	---	---	---	7,675,968
ETFASEBOR	NBGAM ETF	---	---	---	---	---	---	---	---
ETFGT30PBOR	NBGAM ETF GREECE & TURKEY 30	---	---	---	---	---	---	---	---
OPAPBOR	OPAP (CR)	43,000	39,597	5.31%	---	---	---	---	826,508
HTOBOR	OTE (CR)	6,168	18,778	5.31%	---	---	---	---	336,094
PPABOR	P.P.A. S.A. (CR)	368	1,468	5.31%	---	---	---	---	2,901
PAPBOR	PAPOUTSANIS (CR)	---	---	---	---	---	---	---	---
PETROBOR	PETROPOULOS PETROS (CR)	---	---	---	---	---	---	---	---
TPEIRBOR	PIRAEUS BANK (CR)	134,861	859	5.31%	---	---	---	---	18,066,332
PLAISBOR	PLAISIO COMPUTERS SA (CR)	---	---	---	---	---	---	---	---
PPCBOR	PPC (CR)	46,050	39,188	5.31%	2,500	3.39%	---	---	983,303
QUALBOR	QUALITY & RELIABILITY SA (CR)	---	---	---	---	---	---	---	---
QUESTBOR	QUEST HOLDINGS (CR)	---	---	---	---	---	---	---	---
EPILBOR	SELECTED TEXT. IND. ASSOC (CR)	---	---	---	---	---	---	---	---
SELOBOR	SELONDA AQUACULTURE SA (CR)	---	---	---	---	---	---	---	---
OLYMPBOR	TECHNICAL OLYMPIC SA (CR)	---	23,237	5.31%	---	---	---	---	---
TENERGYBOR	TERNA ENERGY (CR)	4,000	30,828	4.24%	---	---	---	---	---
EYAPSBOR	THESSALONIKA WATER & SEWERAGE	---	8,175	5.31%	---	---	---	---	---
PLATBOR	THRACE PLASTICS SA (CR)	---	43,699	5.31%	---	---	---	---	---
TITKBOR	TITAN CEMENT (CR)	16,699	203,958	3.31%	1,500	2.65%	---	---	9,704
OLTHBOR	TPA SA (CR)	---	183	5.31%	---	---	---	---	---
VIOBOR	VIOHALCO SA/NV (CB)	500	67,481	3.55%	---	---	---	---	---

Stock Lending Notes

- [1] - Multilateral contracts Lending or Borrowing as per Methods 8-1, 8-2 and 8-3-3 (According to ATHEX BoD Resolution No.17)
- [2] - Billateral Contracts Lending or Borrowing as per Methods 8-3-1 and 8-3-2 (According to ATHEX BoD Resolution No.20)
- [3] - The information concerning OTC Stock Borrowing Transactions is based on the statements of the Dematerialised Securities System (DSS) operators involved and refers to volumes that have been registered up until the previous working day.
- [4] - Average Price (Volume weighted)
- [5] - The Data concerning Open Interest before the start of trading session

Sectors codification for listed companies

533	-	Exploration & Production	537	-	Integrated Oil & Gas
1353	-	Commodity Chemicals	1357	-	Specialty Chemicals
1753	-	Aluminum	1755	-	Nonferrous Metals
1757	-	Steel	1775	-	General Mining
2353	-	Building Materials & Fixtures	2357	-	Heavy Construction
2723	-	Containers & Packaging	2727	-	Diversified Industrials
2733	-	Electrical Components & Equipment	2753	-	Commercial Vehicles & Trucks
2757	-	Industrial Machinery	2773	-	Marine Transportation
2777	-	Transportation Services	2791	-	Business Support Services
2797	-	Industrial Suppliers	3535	-	Distillers & Vintners
3537	-	Soft Drinks	3573	-	Farming Fishing & Plantations
3577	-	Food Products	3722	-	Durable Household Products
3726	-	Furnishings	3728	-	Home Construction
3747	-	Toys	3763	-	Clothing & Accessories
3765	-	Footwear	3767	-	Personal Products
3785	-	Tobacco	4533	-	Health Care Providers
4535	-	Medical Equipment	4577	-	Pharmaceuticals
5337	-	Food Retailers & Wholesalers	5371	-	Apparel Retailers
5373	-	Broadline Retailers	5375	-	Home Improvement Retailers
5379	-	Specialty Retailers	5553	-	Broadcasting & Entertainment
5555	-	Media Agencies	5557	-	Publishing
5751	-	Airlines	5752	-	Gambling
5753	-	Hotels	5755	-	Recreational Services
5757	-	Restaurants & Bars	5759	-	Travel & Tourism
6535	-	Fixed Line Telecommunications	6575	-	Mobile Telecommunications
7535	-	Conventional Electricity	7537	-	Alternative Electricity
7577	-	Water	8355	-	Banks
8534	-	Insurance Brokers	8536	-	Property & Casualty Insurance
8633	-	Real Estate Holding & Development	8637	-	Real Estate Services
8671	-	Industrial & Office REITs	8674	-	Diversified REITs
8675	-	Specialty REITs	8775	-	Specialty Finance
8777	-	Investment Services	8985	-	Equity Investment Instruments
9533	-	Computer Services	9535	-	Internet
9537	-	Software	9572	-	Computer Hardware
9574	-	Electronic Office Equipment	9578	-	Telecommunications Equipment
12003	-	ETF			



ATHEXGROUP
Όμιλος Χρηματιστηρίου Αθηνών

Λεωφ. Αθηνών 110 104 42 Αθήνα
110, Athinon Ave. GR 104 42 Athens
tel. (+30)210-33.66.800, fax (+30)210-33.66.101
www.athegroup.gr