



Hellenic Exchanges – Athens Stock Exchange S.A.

2017

δελτίο ημερησίων συναλλαγών
daily official list

Thursday, 19 January, 2017
Year: 138 Trading Day No: 13

Disclaimer:

Hellenic Exchanges-Athens Stock Exchange S.A. endeavours to ensure that the data and other material ("Information") presented on the Daily Official List are accurate and complete, but it is not liable for any errors or omissions of data or /and for the accuracy, credibility, updating and completeness of the aforesaid information nor it has any liability arising directly or indirectly from the use of the above Information.

The Company is not liable for the accuracy of the data included in listed companies' announcements. Only the sender of such an announcement is fully and solely liable for any infringement of third party's rights from the content of such announcement. All contents of the Daily Official List are provided only for information purposes and do not constitute investment advice or solicitation to invest in securities or other products listed for trading on the Exchange.

You acknowledge and agree that the Company is the owner of any property rights related to any Information appearing on the Daily Official List including intellectual property rights copyright, trademarks, etc.

The above data are a property of the Hellenic Exchanges-Athens Exchange and are copyright protected. Users are forbidden to reproduce, modify, copy, sale, transmit or redistribute, by all reproduction means and methods, part or the whole of the above data, without reference to their source.

The commercial exploitation of these data is, also, forbidden by third parties. Hellenic Exchanges-Athens Exchange does not carry any responsibility, direct or indirect, derived from usage or accidental alteration of the above data when used by third parties.

Hellenic Exchanges – Athens Stock Exchange S.A.

110 Athinon Ave., 10442 Athens, Tel: (210) 33.66.800, Fax: (210) 32.13.938

www.helix.gr

Thessalonica Stock Exchange Center (T.S.E.C)

16-18 Katouni Str., Thessalonica 546 25 Tel: (2310) 567.667, Fax: (2310) 530.545

Athex Members Guarantee Fund

14-16 Fidiou Str., Athens 106 78, Tel: (210) 33.04.682, Fax: (210) 33.04.155

Hellenic Republic Capital Market Commission

1 Kolokotroni Str. & 1 Stadiou Str., Athens 10562 Tel: (210) 33.77.100 Fax: (210) 33.77.173

Table of Contents

Section 1: Statistical Figures of Securities, Derivatives and Lending

Summary of Markets

Athex Indices

Analytic Figures for Athex Market's Boards and Categories

Trading Details by Athex Sectors and Financial Instruments (ETFs)

Top 10 best & worst performing Shares

Derivatives Summary

Section 2: Analytic Figures of Shares Transactions

Analytic Figures of Shares Transactions

Shares' Notes

Section 3: Figures of Securities Transactions

Securities Blocks Details

Shares Rights Details

Stock Borrowing

Shares Forced Sales

Forced Sales Registered Shares

Exchange Traded Funds (ETFs) Characteristics

Section 5: Bonds traded in Fixed Income Assets Market

Corporate Bonds

Government Bonds

Treasury Bills & Zero Coupon Government Bonds

Government Bonds Traded with the Open Outcry Method

State Banks Bonds

Section 6: Additional Infos

Athex & ATHEXClear Members List

List of Stocks under Market Making operations

Section 7: Derivatives Market Analytic Figures

Index Futures

Stock Futures

Index Options

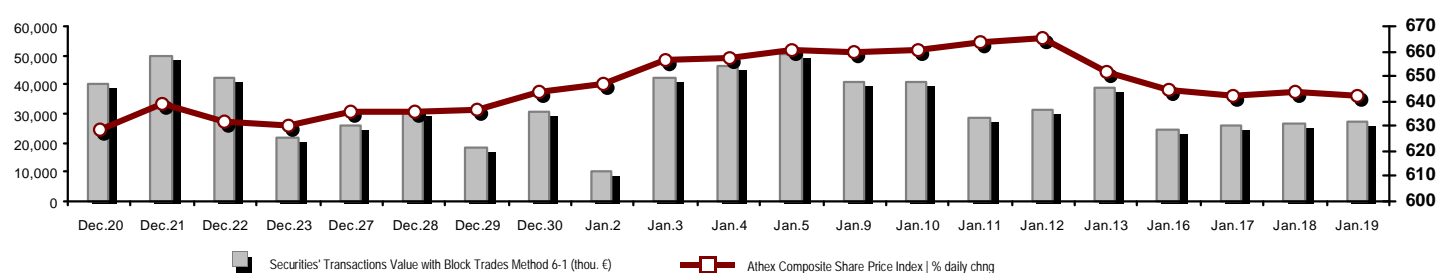
Stock Options

Stock Lending Analytic Figures

Appendix A: Sectors codification for listed companies

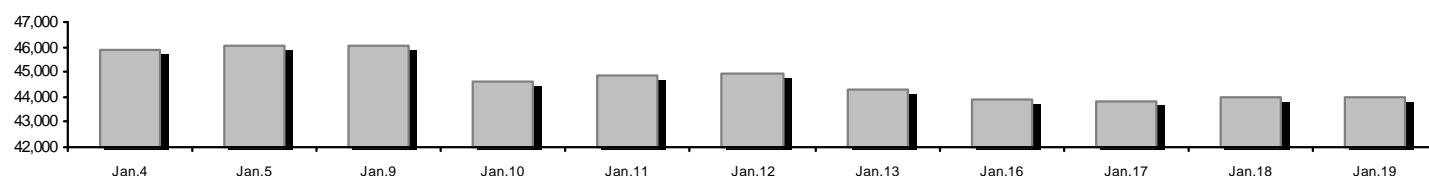
Summary of Markets

Athex Composite Share Price Index vs Shares and Derivatives Transactions Value

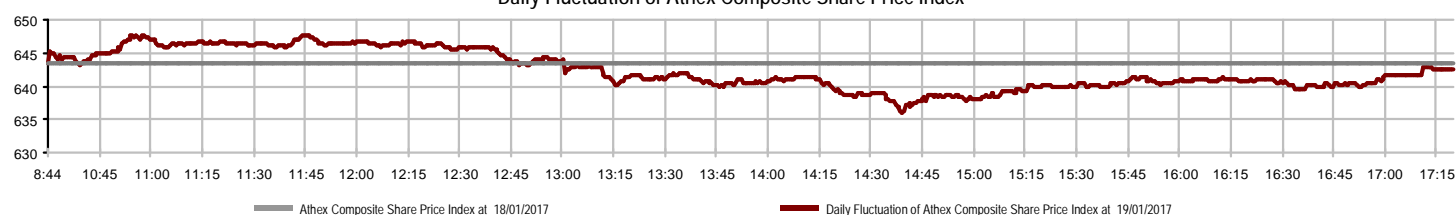


Athex Capitalisation (mill. €) **: 43,947.84			Derivatives Total Open Interest 359,575		
Daily change: mill. € % -39.87 -0.09%			in Index Futures % daily chng 8,064 -2.18%		
Yearly Avg Capitalisation: mill. € % chng prev year Avg 44,881.04 9.06%			in Stock Futures % daily chng 347,480 0.48%		
Athex Composite Share Price Index % daily chng 642.51 -0.15%			in Index Options % daily chng 3,482 1.10%		
Athex Composite Share Price Index Capitalisation (mill. €) 39,060.48			in Stock Options % daily chng 549 0.92%		
Daily change (mill. €) -16.57					
Securities' Transactions Value with Block Trades Method 6-1 (27,152.50			Derivatives Contracts Volume: 49,416		
Daily change: % 271.04 1.01%			Daily change: pieces % 16,380 49.58%		
YtD Avg Trans. Value: thou. € % chng prev year Avg 33,404.70 -44.67%			YtD Avg Derivatives Contracts % chng prev year Avg 37,457 -39.71%		
Blocks Transactions Value of Method 6-1 (thou. €) 1,026.63			Derivatives Trades Number: 1,687		
Blocks Transactions Value of Method 6-2 & 6-3 (thou. €) 0.00			Daily change: number % 379 28.98%		
Bonds Transactions Value (thou.€) 59.09			YtD Avg Derivatives Trades number % chng prev year Avg 1,626 -37.35%		
Securities' Transactions Volume with Block Trades Method 6-1 (th 41,872.51			Lending Total Open Interest 1,047,567		
Daily change: thou. pieces % 5,380.88 14.75%			Daily change: pieces % 205,100 24.35%		
YtD Avg Volume: % chng prev year Avg 58,760.11 -38.94%			Lending Volume (Multilateral/Bilateral) 210,100		
Blocks Transactions Volume of Method 6-1 (thou. Pieces) 474.42			Daily change: pieces % -31,440 -13.02%		
Blocks Transactions Volume of Method 6-2 & 6-3 (thou. Pieces) 0.00			Multilateral Lending 210,100		
Bonds Transactions Volume 58,680.00			Bilateral Lending 0		
Securities' Trades Number with Block Trades Method 6-1 12,110			Lending Trades Number: 9		
Daily change: number % 575 4.98%			Daily change: % -9 -50.00%		
YtD Avg Derivatives Trades number % chng prev year Avg 13,194 -30.06%			Multilateral Lending Trades Number 9		
Number of Blocks Method 6-1 3			Bilateral Lending Trades Number 0		
Number of Blocks Method 6-2 & 6-3 0					
Number of Bonds Transactions 7					

Athex Capitalisation (mill. €) **



Daily Fluctuation of Athex Composite Share Price Index



Athex Indices

Index name	19/01/2017	18/01/2017	pts.	%	Min	Max	Year min	Year max	Year change
Athex Composite Share Price Index	642.51	643.47	-0.96	-0.15%	636.07	647.74	636.07	670.21	-0.18%
FTSE/Athex Large Cap	1,724.25	1,723.70	0.55	0.03%	1,704.15	1,736.82	1,704.15	1,797.30	-0.95%
FTSE/Athex Mid Cap Index	809.12	813.46	-4.34	-0.53%	807.98	823.09	753.69	824.70	7.35%
FTSE/ATHEX-CSE Banking Index	613.10	616.88	-3.78	-0.61%	605.64	626.14	605.64	688.56	-3.33%
FTSE/ATHEX Global Traders Index Plus	1,525.29	1,528.39	-3.10	-0.20%	1,514.71	1,535.94	1,502.75	1,548.93	0.78%
FTSE/ATHEX Global Traders Index	1,655.16	1,657.75	-2.59	-0.16%	1,640.16	1,663.34	1,626.47	1,679.78	0.70%
FTSE/ATHEX Mid & Small Cap Factor-Weighted Ind	1,356.24	1,363.98	-7.74	-0.57%	1,350.31	1,381.05	1,315.47	1,381.05	1.16%
Greece & Turkey 30 Price Index	427.45	430.83	-3.38	-0.78%	424.84	432.90	407.85	439.98	-3.45%
ATHEX Mid & SmallCap Price Index	1,984.04	1,963.06	20.98	1.07%	1,935.32	1,984.04	1,675.92	1,993.16	18.39%
FTSE/Athex Market Index	423.86	423.79	0.07	0.02%	419.03	426.92	419.03	441.41	-0.76%
FTSE Med Index	4,520.81	4,527.62	-6.81	-0.15%			4,520.81	4,736.54	-1.64%
Athex Composite Index Total Return Index	980.13	981.60	-1.47	-0.15%	970.30	988.11	970.30	1,022.38	-0.18%
FTSE/Athex Large Cap Total Return	2,495.85	2,495.04	0.81	0.03%			2,487.40	2,580.69	-0.72%
FTSE/ATHEX Large Cap Net Total Return	726.72	726.49	0.23	0.03%	718.25	732.02	718.25	757.51	-0.95%
FTSE/Athex Mid Cap Total Return	968.36	973.55	-5.19	-0.53%			949.72	976.60	5.26%
FTSE/ATHEX-CSE Banking Total Return Index	636.69	640.61	-3.92	-0.61%			636.69	700.89	-2.20%
Greece & Turkey 30 Total Return Index	546.69	544.24	2.45	0.45%			521.62	558.29	-2.68%
Hellenic Mid & Small Cap Index	797.31	799.75	-2.44	-0.31%	792.12	802.71	785.14	812.70	1.34%
FTSE/Athex Banks	810.05	815.05	-5.00	-0.61%	800.19	827.29	800.19	909.75	-3.33%
FTSE/Athex Financial Services	1,047.29	1,055.28	-7.99	-0.76%	1,038.96	1,058.40	1,031.67	1,082.73	-0.89%
FTSE/Athex Industrial Goods & Services	1,471.88	1,481.00	-9.12	-0.62%	1,463.71	1,486.17	1,438.11	1,523.49	1.16%
FTSE/Athex Retail	2,637.36	2,685.58	-48.22	-1.80%	2,635.90	2,697.27	2,635.90	2,887.22	-6.14%
FTSE/ATHEX Real Estate	2,677.49	2,660.54	16.95	0.64%	2,643.50	2,711.48	2,609.12	2,787.51	1.31%
FTSE/Athex Personal & Household Goods	7,505.00	7,507.84	-2.84	-0.04%	7,301.46	7,508.44	7,154.50	7,668.69	-1.90%
FTSE/Athex Food & Beverage	7,852.00	7,759.80	92.20	1.19%	7,759.80	7,860.89	7,597.15	7,860.89	1.86%
FTSE/Athex Basic Resources	2,736.30	2,736.30	0.00	0.00%	2,701.11	2,753.90	2,674.71	2,815.49	1.14%
FTSE/Athex Construction & Materials	2,272.56	2,234.07	38.49	1.72%	2,225.47	2,274.84	2,199.12	2,297.92	0.78%
FTSE/Athex Oil & Gas	3,052.39	3,082.44	-30.05	-0.97%	3,021.66	3,102.70	2,980.73	3,152.56	1.80%
FTSE/Athex Media	1,872.81	1,872.81	0.00	0.00%	1,872.81	1,872.81	1,456.63	1,872.81	5.88%
FTSE/Athex Travel & Leisure	1,488.74	1,476.09	12.65	0.86%	1,459.07	1,488.74	1,459.07	1,535.73	1.52%
FTSE/Athex Technology	627.51	639.36	-11.85	-1.85%	626.83	649.59	626.83	652.06	-1.78%
FTSE/Athex Telecommunications	2,422.26	2,444.28	-22.02	-0.90%	2,405.75	2,444.28	2,391.98	2,515.85	-1.46%
FTSE/Athex Utilities	1,527.95	1,543.75	-15.80	-1.02%	1,527.80	1,560.86	1,514.50	1,600.06	0.74%
Athex All Share Index	155.02	155.16	-0.14	-0.09%	155.02	155.02	154.70	162.45	-2.57%
Hellenic Corporate Bond Index	109.76	109.74	0.01	0.01%			109.39	109.76	0.32%
Hellenic Corporate Bond Price Index	97.79	97.79	0.00	0.00%			97.66	97.80	0.06%

Note 1: FTSE/Med 100, Greece & Turkey 30 Rt., Hellenic Corporate Bond Price Index and Hellenic Corporate Bond Index closing prices refer to the previous trading day of 17/01/2017.

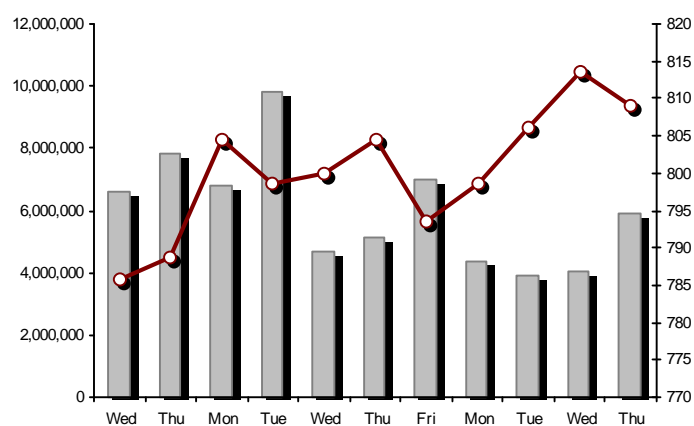
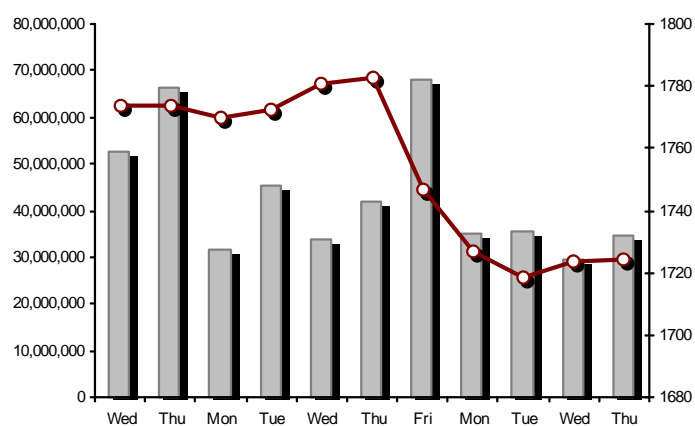
Note 2: The Hellenic Mid & Small Cap Index is a Customized index calculated by the Athens Exchange.

Athex Indices

FTSE/Large Cap

19/01/2017: 0.03% FTSE/Athex Mid Cap Index

19/01/2017: -0.53%

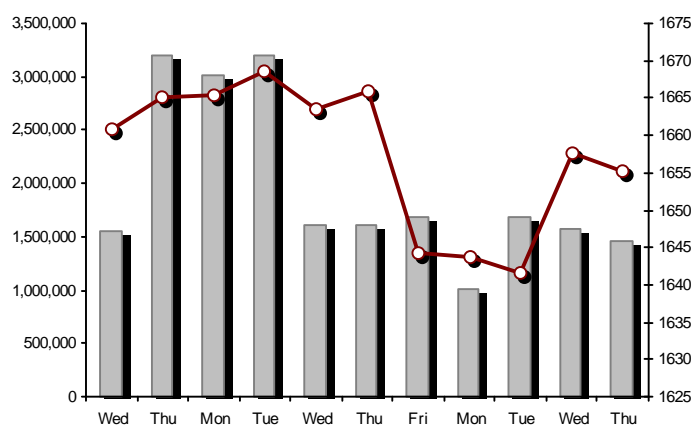
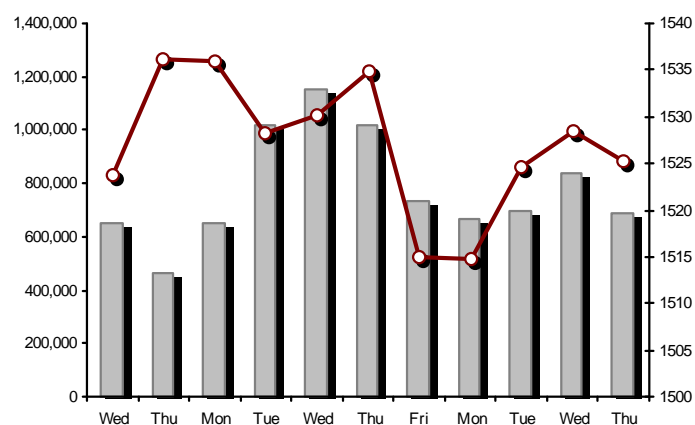


FTSE/ATHEX Global Traders Index Plus

19/01/2017: -0.20%

FTSE/ATHEX Global Traders Index

19/01/2017: -0.16%

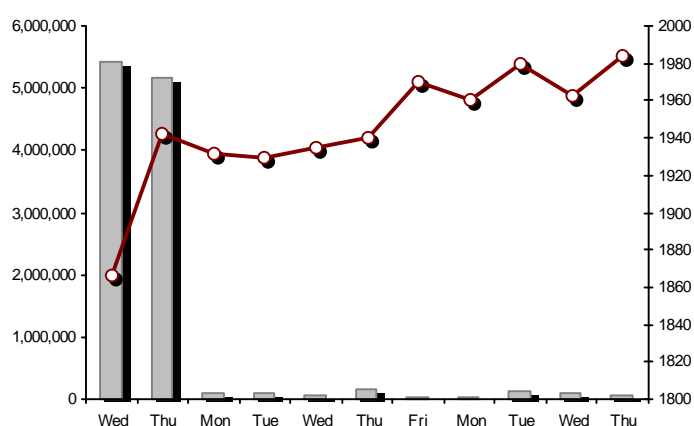
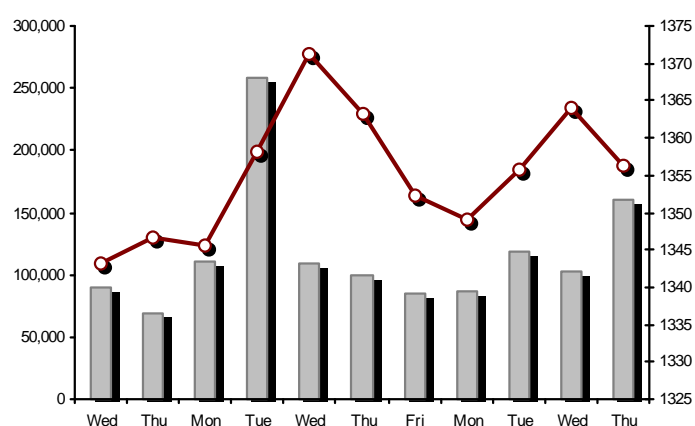


FTSE/ATHEX Mid & Small Cap Factor-Weighted Index

19/01/2017: -0.57%

ATHEX Mid & SmallCap Price Index

19/01/2017: 1.07%



Indices volume of transactions

Indices closing prices

Analytic Figures for Athex Market's Boards and Categories

	Total Traded Securities	Main Market	Low Dispersion	Other Categories (*)	Exchange Traded Funds (ETFs)	Warrants
Totals	133	102	7	19	3	2
Gain / Lose / Same:	42 / 65 / 26	32 / 54 / 16	3 / 1 / 3	6 / 8 / 5	1 / 2 / 0	0 / 0 / 2
Athex Capitalisation (mill. €) **	43,947.84	40,717.31	3,105.09	125.44		
Daily Average Trans/ons Value(thou.€)	33,404.70	33,274.33	104.81	25.72	2.38	3.15
Transactions Value	27,152.50	26,654.61	485.57	11.41	0.54	0.36
Main Board:	26,125.87	25,627.99	485.57	11.41	0.54	0.36
Blocks Board 6_2_3:	1,026.63	1,026.63	0.00	0.00	0.00	0.00
Forced Sales Board:	0.00	0.00	0.00	0.00	0.00	0.00
Special Terms Board:	0.00	0.00	0.00	0.00	0.00	0.00
Daily Average Transactions Volume	58,760,110	56,366,735	33,687	230,938	140	2,134,663
Transactions Volume	41,872,508	41,412,786	113,414	139,627	34	206,647
Main Board:	41,398,084	40,938,362	113,414	139,627	34	206,647
Blocks Board 6_2_3:	474,424	474,424	0	0	0	0
Forced Sales Board:	0	0	0	0	0	0
Special Terms Board:	0	0	0	0	0	0
Daily Average Number of Trades	13,194	13,023	39	94	3	36
Number of Trades	12,110	11,904	90	83	3	30
Main Board:	12,107	11,901	90	83	3	30
Blocks Board 6_2_3:	3	3	0	0	0	0
Forced Sales Board:	0	0	0	0	0	0
Special Terms Board:	0	0	0	0	0	0

(*) Summarised Transactions figures for Under Deletion and Under Supervision Categories.(**) The Market Capitalization of the Companies that belong in the Under Supervision Status is not included.

Trading Details by Athex Sectors and Financial Instruments (ETFs)

Code	Sectors	Gain / Lose / Same	Number of Trades	Transactions Volume	Transactions Value	% of Total Trans. Value
8300	- Banks	2 / 4 / 2	4,562	37,953,825	12,185,508.61	44.88%
1700	- Basic Resources	1 / 4 / 2	360	133,980	438,828.68	1.62%
1300	- Chemicals	1 / 2 / 1	57	28,047	107,251.27	0.39%
2300	- Construction & Materials	7 / 7 / 3	560	196,199	848,483.57	3.12%
12000	- Financial Instruments	1 / 2 / 0	3	34	541.91	0.00%
8700	- Financial Services	1 / 2 / 1	368	1,022,205	361,315.05	1.33%
3500	- Food & Beverage	3 / 7 / 1	165	118,856	377,099.97	1.39%
4500	- Health Care	3 / 2 / 1	120	95,960	35,114.63	0.13%
2700	- Industrial Goods & Services	7 / 8 / 2	1,038	559,605	698,186.71	2.57%
8500	- Insurance	1 / 0 / 0	20	8,084	17,133.00	0.06%
5500	- Media	0 / 0 / 1	5	22	0.82	0.00%
500	- Oil & Gas	1 / 1 / 0	566	131,417	1,098,825.04	4.05%
3700	- Personal & Household Goods	2 / 8 / 4	511	176,636	1,350,694.15	4.97%
8600	- Real Estate	5 / 2 / 0	152	31,521	120,443.64	0.44%
5300	- Retail	1 / 3 / 0	851	86,083	1,437,662.89	5.29%
9500	- Technology	2 / 5 / 4	343	93,132	114,864.58	0.42%
6500	- Telecommunications	0 / 1 / 0	753	490,774	4,315,232.50	15.89%
5700	- Travel & Leisure	4 / 3 / 3	1,151	518,906	3,089,458.49	11.38%
7500	- Utilities	0 / 4 / 1	525	227,222	555,850.75	2.05%

Top 10 best & worst performing Shares

Main Market					
With positive Price change	Closing price	change	With negative Price change	Closing price	change
EUROPEAN RELIANCE INSUR. (CR)	2.13	2.90% #	CENERGY HOLDINGS (CB)	0.820	-5.09% Ⓔ
TITAN CEMENT (CR)	22.20	2.07% #	PLAISIO COMPUTERS SA (CR)	3.51	-4.36% Ⓔ
INTRALOT (CR)	1.12	1.82% #	J & P - AVAX SA (CR)	0.423	-4.08% Ⓔ
AEGEAN AIRLINES (CR)	6.54	1.55% #	THESSALONIKA WATER & SEWERAGE	3.55	-3.53% Ⓔ
GEK TERNA (CR)	2.36	1.29% #	EUROBANK ERGASIAS (CR)	0.628	-2.94% Ⓔ
CC HBC AG (CR)	21.07	1.20% #	ELTECH ANEMOS S.A. (CR)	1.04	-2.80% Ⓔ
LAMDA DEVELOPMENT SA (CR)	4.62	0.87% #	ATTICA BANK S.A. (CR)	0.039	-2.50% Ⓔ
OPAP (CR)	8.46	0.71% #	VIOHALCO SA/NV (CB)	1.37	-2.14% Ⓔ
ALPHA BANK (CR)	1.84	0.55% #	TECHNICAL OLYMPIC SA (CR)	1.07	-1.83% Ⓔ
GRIVALIA PROPERTIES (CR)	8.00	0.50% #	FOLLI FOLLIE (CR)	18.05	-1.80% Ⓔ
With the highest Transactions Value	Value (thou. €)	change	With the highest Transactions Volume	Volume	change
OTE (CR)	4,315.23	-0.90% Ⓔ	NATIONAL BANK (CR)	15,837,078	-0.41% Ⓔ
NATIONAL BANK (CR)	3,797.98	-0.41% Ⓔ	PIRAEUS BANK (CR)	11,146,891	-1.00% Ⓔ
ALPHA BANK (CR)	3,127.57	0.55% #	ATTICA BANK S.A. (CR)	4,602,714	-2.50% Ⓔ
EUROBANK ERGASIAS (CR)	2,834.67	-2.94% Ⓔ	EUROBANK ERGASIAS (CR)	4,448,724	-2.94% Ⓔ
PIRAEUS BANK (CR)	2,217.55	-1.00% Ⓔ	ALPHA BANK (CR)	1,709,439	0.55% #
OPAP (CR)	2,088.83	0.71% #	MARFIN INVESTMENT GROUP (CR)	978,199	-1.30% Ⓔ
FOLLI FOLLIE (CR)	1,435.09	-1.80% Ⓔ	OTE (CR)	490,774	-0.90% Ⓔ
JUMBO SA (CR)	838.83	0.00% -	CENERGY HOLDINGS (CB)	314,442	-5.09% Ⓔ
MOTOR OIL (CR)	768.68	-1.40% Ⓔ	OPAP (CR)	248,984	0.71% #
TITAN CEMENT (CR)	565.47	2.07% #	VIOHALCO SA/NV (CB)	130,419	-2.14% Ⓔ

Note: Stocks that are not included in the "Low Dispersion" and "Under Supervision" categories, and the transactions value is more than 10,000 €.

Derivatives Summary

	Number of Trades	Volume	Open Interest
Index Futures	493	5,154	8,064
FTSE/Athex Large Cap	493	5,154	8,064
Stock Futures	1,168	44,139	347,480
ALPHA BANK (CR)	194	4,522	21,953
CC HBC AG (CR)	7	13	105
ELLAKTOR (CR)	0	0	3,670
EUROBANK ERGASIAS (CR)	217	6,606	47,255
EYDAP S.A. (CR)	0	0	72
FOLLI FOLLIE (CR)	15	24	432
GEK TERNA (CR)	3	6	7,784
GRIVALIA PROPERTIES (CR)	0	0	64
HELLENIC EXCHANGES-A.S.E. (CR)	8	21	311
HELLENIC PETROLEUM (CR)	28	87	3,942
INTRALOT (CR)	23	116	1,377
JUMBO SA (CR)	14	21	540
MARFIN INVESTMENT GROUP (CR)	33	651	52,215
METKA (CR)	3	12	365
MOTOR OIL (CR)	7	13	107
MYTILINEOS HOLDINGS (CR)	20	69	4,878
NATIONAL BANK (CR)	201	16,348	91,844
OPAP (CR)	58	168	2,255
OTE (CR)	34	240	4,385
P.P.A. S.A. (CR)	1	1	626
PIRAEUS BANK (CR)	219	14,863	91,392
PPC (CR)	65	317	7,682
TERNA ENERGY (CR)	1	5	1,332
TITAN CEMENT (CR)	7	11	101
VIOHALCO SA/NV (CB)	10	25	2,793
Index Options	24	114	3,482
FTSE/Athex Large Cap	24	114	3,482
Stock Options	2	9	549
ALPHA BANK (CR)	0	0	30
NATIONAL BANK (CR)	0	0	5
OPAP (CR)	0	0	150
OTE (CR)	1	4	189
PIRAEUS BANK (CR)	0	0	0
PPC (CR)	1	5	175
Total Derivatives Traded	1,687	49,416	359,575

Number of Outstanding Securities	Nominal Value	Dividends [1]			Date of Last Coupon Dividend [2]		Note	Shares	Closing price	% change	Previous closing price/date	Open price	Price min	Price max	Last price	Avg price	Last Bid [7]	Last Ask [7]	P/E after	Year	Volume	Trades	Transactions Value[8]	Company Mkt Value (thou. €)	Year low	Year high	Sector[4]
1,141,734,167	---	---	---	---	11/06/2013	---	---	ALPHA BANK (W)	0.002	---	0.002	18/01/2017	0.001	0.001	0.002	0.002	0.005034737@0.001	89710394@0.002	---	2015	174,827	14	175.84	2,827,861.41	0.001	0.002	8355
245,745,661	---	---	---	---	27/06/2013	---	---	NATIONAL BANK (W)	0.007	---	0.007	18/01/2017	0.006	0.005	0.007	0.007	0.0063658@0.006	996745@0.007	---	2015	31,820	16	186.62	2,195,316.37	0.005	0.008	8355
843,637,022	---	---	---	---	03/07/2013	---	---	PIRAEUS BANK (W)	0.001	---	0.001	18/01/2017	---	---	---	---	---	32992966@0.001	---	2015	---	---	---	1,729,170.29	0.001	0.001	8355

Warrants

71,417,100	0.650	0.7	0.7	---	13/05/2016	27/06/2014	---	AEGEAN AIRLINES (CR)	6.54	1.55	#	6.44	18/01/2017	6.41	6.41	6.54	6.54	6.50	4480@6.52	1700@6.55	8.61	2015	73,808	257	479,885.39	467,067.83	6.30	6.54	5751
11,178,000	1.12	---	---	---	21/04/2010	15/12/2014	---	AEOLIAN INVESTMENT FUND (CR)	0.584	---	↘	0.584	18/01/2017	0.584	0.584	0.584	0.584	0.584	350@0.576	680@0.584	---	2015	320	1	186.88	6,527.95	0.530	0.670	8985
1,536,881,200	0.300	---	---	---	07/04/2008	27/11/2015	---	ALPHA BANK (CR)	1.84	0.55	#	1.83	18/01/2017	1.84	1.81	1.86	1.84	1.83	10000@1.83	46700@1.85	---	2015	1,709,439	871	3,127,567.14	2,827,861.41	1.81	2.04	8355
22,016,250	0.370	---	---	---	15/07/2009	11/05/2000	---	ALUMIL (CR)	0.217	-0.46	€	0.218	18/01/2017	0.218	0.217	0.218	0.217	0.217	500@0.212	3629@0.217	---	2015	2,112	5	458.42	4,777.53	0.196	0.218	1753
417,608	16.00	---	---	---	29/04/2014	05/03/2013	---	ANDROMEDA SA (CR)	14.15	0.21	#	14.12	18/01/2017	14.12	14.12	14.20	14.12	14.15	419@14.12	50@14.80	---	2015	174	6	2,462.60	5,909.15	12.83	14.42	8985
13,126,020	0.650	---	---	---	08/07/2010	12/10/2016	---	AS COMPANY SA (CR)	0.680	---	↘	0.680	18/01/2017	---	---	---	---	---	278@0.663	1500@0.688	5.79	2015	---	---	---	8,925.69	0.650	0.697	5379
86,735,980	0.310	---	---	---	06/07/2009	02/01/2002	---	ATHENS MEDICAL CENTER SA (CR)	0.603	1.00	#	0.597	18/01/2017	0.597	0.573	0.603	0.603	0.577	1000@0.569	590@0.598	---	2015	1,170	8	675.21	52,301.80	0.551	0.648	4533
2,339,353,394	0.300	---	---	---	04/06/2008	01/12/2015	---	ATTICA BANK S.A. (CR)	0.039	-2.50	€	0.040	18/01/2017	0.040	0.037	0.041	0.039	0.039	62000@0.038	280000@0.039	---	2015	4,602,714	216	179,479.13	91,234.78	0.030	0.046	8355
15,300,000	0.300	---	---	---	30/07/2009	13/12/1999	---	ATTICA PUBLICATIONS SA (CR)	0.713	---	↘	0.713	18/01/2017	---	---	---	---	---	---	1235@0.642	---	2015	---	---	---	10,908.90	0.585	0.713	5557
48,184,910	0.700	---	---	---	01/07/2008	01/03/2010	---	AUDIO VISUAL ENTERPRISES (CR)	0.090	---	↘	0.090	18/01/2017	---	---	---	---	---	1170@0.068	7000@0.086	---	2015	---	---	---	4,336.64	0.070	0.090	5553
12,213,750	0.320	0.8	0.85	---	07/06/2016	22/11/2013	---	AUTOHELLAS SA (CR)	11.88	-3.42	€	12.30	18/01/2017	11.89	11.73	11.91	11.85	11.85	13@11.87	238@12.35	9.49	2015	78	7	924.47	145,099.35	11.73	12.35	5759
19,864,886	5.60	0.672	0.672	---	03/03/2016	02/07/2008	---	BANK OF GREECE (CR)	12.04	0.33	#	12.00	18/01/2017	12.00	11.91	12.15	12.11	11.97	10@11.94	500@12.12	---	---	2,332	49	27,905.90	239,173.23	10.60	13.00	8355
23,986,500	1.05	---	---	---	26/06/2009	15/03/2000	---	BIOKARPET S.A.(CR)	0.319	---	↘	0.319	18/01/2017	---	---	---	---	---	---	1000@0.299	---	2015	---	---	---	7,651.69	0.298	0.319	3726
15,842,391	1.51	---	---	---	15/07/2009	12/05/2000	---	BITROS HOLDING SA (CR)	0.195	---	↘	0.195	18/01/2017	---	---	---	---	---	---	1500@0.190	---	2015	---	---	---	3,089.27	0.179	0.209	1757
15,816,009	0.300	---	---	---	01/07/2009	17/07/2000	---	BYTE COMPUTER SA (CR)	0.283	---	↘	0.283	18/01/2017	---	---	---	---	---	100@0.280	100@0.295	---	2015	---	---	---	4,475.93	0.283	0.309	9533
366,640,638	6.70	0.36	0.4	---	30/06/2016	29/04/2013	---	CC HBC AG (CR)	21.07	1.20	#	20.82	18/01/2017	20.96	20.89	21.09	21.07	20.98	1500@21.01	456@21.07	---	---	17,068	65	358,091.18	7,725,118.24	20.37	21.09	3537
190,162,681	---	---	---	---	07/12/2016	---	---	CENERGY HOLDINGS (CB)	0.820	-5.09	€	0.864	18/01/2017	0.875	0.802	0.875	0.820	0.842	200@0.818	1000@0.824	---	---	314,442	614	264,778.85	155,933.40	0.620	0.898	2727
101,123,806	0.360	---	---	---	22/07/2010	28/06/2011	---	CENTRIC HOLDINGS (CR)	0.097	-6.73	€	0.104	18/01/2017	0.110	0.097	0.110	0.097	0.097	466@0.097	730@0.100	---	2015	993	11	96.74	9,809.01	0.093	0.115	5752
9,907,500	0.300	---	---	---	06/10/2005	13/02/2002	---	CPI SA (CR)	0.187	---	↘	0.187	18/01/2017	---	---	---	---	---	---	1060@0.200	22.38	2016	---	---	---	1,852.70	0.158	0.189	9572
41,068,800	0.420	(0.03)	0.1205	---	19/08/2016	17/02/2016	---	CRETE PLASTICS SA (CR)	5.05	---	↘	5.05	18/01/2017	4.85	4.85	5.05	5.05	5.05	1000@4.90	100@5.04	16.95	2015	18,072	4	91,253.60	207,397.44	4.79	5.10	1357
15,000,000	0.300	---	---	---	06/07/2007	18/07/2000	---	DAIOS PLASTICS SA (CR)	2.99	2.40	#	2.92	18/01/2017	2.71	2.71	2.99	2.99	2.85	250@2.74	500@2.90	---	2015	200	2	570.00	44,850.00	2.71	2.99	1357
34,720,000	0.310	---	---	---	16/06/2010	01/08/2007	---	DROMEAS SA (CR)	0.113	---	↘	0.113	18/01/2017	---	---	---	---	---	1000@0.103	400@0.113	---	2015	---	---	---	3,923.36	0.102	0.117	3726
3,873,120	0.300	---	---	---	07/07/2008	04/10/2012	---	DRUCKFARBEN HELLAS (CR)	0.570	---	↘	0.570	18/01/2017	---	---	---	---	---	2000@0.513	---	0.91	2015	---	---	---	2,207.68	0.522	0.700	1357
11,250,000	0.520	---	0.04	---	25/07/2016	09/11/2015	---	EKTER SA (CR)	0.452	0.44	#	0.450	18/01/2017	0.470	0.450	0.470	0.452	0.458	5940@0.452	750@0.470	14.27	2015	9,230	10	4,229.02	5,085.00	0.401	0.470	2357
32,188,050	1.04	---	---	---	21/07/2008	20/01/2000	---	EL. D. MOUZAKIS SA (CB)	0.170	-4.49	€	0.178	18/01/2017	0.170	0.170	0.170	0.170	0.170	---	120@0.170	---	2015	30	1	5.10	5,471.97	0.146	0.178	3763
18,421,516	1.00	---	---	---	07/07/2009	10/09/2010	---	ELASTRON (CR)	0.731	2.81	#	0.711	18/01/2017	0.711	0.711	0.732	0.731	0.718	100@0.720	1500@0.730	---	2015	2,310	6	1,657.62	13,466.13	0.700	0.847	1757
31,734,530	1.60	---	---	---	09/07/2007	19/07/2006	---	ELGEKA SA (CR)	0.156	-0.64	€	0.157	18/01/2017	0.156	0.156	0.156	0.156	0.156	400@0.142	1970@0.157	---	2015	4,290	1	669.24	4,950.59	0.100	0.157	3577
23,828,130	0.500	---	0.16	---	08/06/2016	17/02/2009	---	ELINOIL S.A. (CR)	0.950	---	↘	0.950	18/01/2017	---	---	---	---	---	---	2839@1.10	8.33	2015	---	---	---	22,636.72	0.950	1.00	537
177,001,313	1.03	---	---	---	05/07/2011	20/12/2007	---	ELLAKTOR (CR)	1.16	---	↘	1.16	18/01/2017	1.16	1.15	1.18	1.16	1.16	4554@1.16	8968@1.17	---	2015	36,079	79	41,903.00	205,321.52	1.10	1.24	2357
82,667,000	0.300	---	---	---	22/07/2014	---	---	ELTECH ANEMOS S.A. (CR)	1.04	-2.80	€	1.07	18/01/2017	1.07	1.03	1.08	1.04	1.05	7064@1.03	4000@1.05	11.19	2015	81,628	156	85,670.65	85,973.68	0.875	1.15	7537
26,730,187	0.600	---	---	---	23/06/2014	30/12/2010	---	ELTON SA (CR)	0.942	-1.36	€	0.955	18/01/2017	0.958	0.925	0.958	0.942	0.944	50@0.914	482@0.942	16.82	2015	5,773	29	5,449.98	25,179.84	0.837	0.959	1353
14,050,971	0.340	---	---	---	06/07/2011	17/10/2002	---	ELTRAK SA (CR)	1.35	---	↘	1.35	18/01/2017	---	---	---	---	---	110@1.25	49@1.35	26.83	2015	---	---	---	18,968.81	1.22	1.35	2753
3,307,500	0.960	---	---	---	11/08/2010	23/09/2016	---	ELVE SA (CR)	1.90	-3.55	€	1.97	18/01/2017	1.85	1.85	1.90	1.90	1.88	50@1.85	750@1.90	15.14	2015	450	2	845.00	6,284.25	1.63	1.97	3763

Number of Outstanding Securities	Nominal Value	Dividends [1]			Date of Last Coupon Dividend [2]		Note	Shares	Closing price	% change	Previous closing price/date	Open price	Price min	Price max	Last price	Avg price	Last Bid [7]	Last Ask [7]	P/E after	Year	Volume	Trades	Transactions Value[8]	Company Mkt Value (thou. €)	Year low	Year high	Sector[4]
2,185,998,765	0.300	---	---	---	02/05/2008	27/11/2015	---	EUROBANK ERGASIAS (CR)	0.628	-2.94	€ 0.647	18/01/2017	0.647	0.627	0.656	0.628	0.637 68365@0.628	28652@0.633	---	2015	4,448,724	988	2,834,665.71	1,372,807.22	0.627	0.716	8355
8,623,225	0.600	---	---	---	02/06/2010	30/05/2016	5031	EUROCONSULTANTS S.A. (CR)	0.513	3.43	# 0.496	18/01/2017	0.513	0.513	0.513	0.513	0.513 300@0.480	194@0.500	---	2015	20	1	10.26	4,423.71	0.450	0.655	2791
27,503,677	0.630	---	0.06	---	22/06/2016	18/10/1999	---	EUROPEAN RELIANCE INSUR. (CR)	2.13	2.90	# 2.07	18/01/2017	2.10	2.10	2.15	2.13	2.12 1900@2.12	21@2.13	5.32	2015	8,084	20	17,133.00	58,582.83	1.95	2.15	8536
13,673,200	0.880	---	---	---	18/07/2008	26/07/2001	---	EVROFARMA SA (CR)	0.337	-0.30	€ 0.338	18/01/2017	0.337	0.337	0.337	0.337	0.337 ---	4480@0.337	20.30	2015	5,420	1	1,826.54	4,607.87	0.272	0.339	3577
106,500,000	0.600	0.2	0.31	---	28/12/2016	28/01/2000	---	EYDAP S.A. (CR)	5.32	-0.75	€ 5.36	18/01/2017	5.34	5.30	5.34	5.32	5.32 1370@5.30	6475@5.32	12.97	2015	19,928	62	106,021.10	566,580.00	5.30	5.65	7577
52,800,154	0.300	---	---	---	20/08/2014	21/06/2004	---	F.G. EUROPE S.A. (CR)	0.561	---	↘ 0.561	18/01/2017	0.561	0.561	0.561	0.561	0.561 2692@0.561	400@0.579	24.79	2015	2,308	4	1,294.79	29,620.89	0.455	0.568	3722
10,203,575	0.730	---	---	---	16/07/2007	18/10/1999	---	FIERATEX SA (CR)	0.067	4.69	# 0.064	18/01/2017	0.067	0.067	0.067	0.067	0.067 298@0.070	---	---	2015	60	1	4.02	683.64	0.054	0.067	3763
11,720,024	0.540	---	---	---	21/08/2014	04/11/2015	---	FLEXOPACK SA (CR)	3.25	---	↘ 3.25	18/01/2017	3.25	3.25	3.25	3.25	3.25 885@3.25	700@3.29	8.65	2015	365	2	1,186.25	38,090.08	2.90	3.29	2723
4,181,450	0.500	---	---	---	21/08/2000	05/03/2002	---	FLOUR MILLS SARANTOPOULOS SA	0.630	---	↘ 0.630	18/01/2017	---	---	---	---	---	72@0.630	---	2015	---	---	---	2,634.31	0.630	0.630	3577
66,948,210	0.300	0.1005	---	---	22/09/2015	22/09/2015	---	FOLLI FOLLIE (CR)	18.05	-1.80	€ 18.38	18/01/2017	18.46	18.04	18.46	18.05	18.15 20@18.04	1357@18.09	---	2015	79,074	834	1,435,094.08	1,208,415.19	18.04	19.76	5379
51,330,410	1.07	---	---	---	21/06/2010	16/07/2002	---	FOURLIS (CR)	4.38	-0.23	€ 4.39	18/01/2017	4.39	4.35	4.41	4.38	4.38 400@4.35	1000@4.40	---	2015	85,357	129	374,059.16	224,827.20	3.95	4.42	3722
14,076,360	0.370	---	---	---	19/08/2008	22/07/2003	---	GALAXIDI S.A. (CR)	0.305	-8.68	€ 0.334	18/01/2017	0.337	0.305	0.337	0.305	0.318 56@0.305	100@0.314	29.85	2015	4,800	16	1,526.39	4,293.29	0.305	0.399	3573
103,423,291	0.570	---	---	---	01/08/2011	19/04/2016	---	GEK TERNA (CR)	2.36	1.29	# 2.33	18/01/2017	2.33	2.33	2.38	2.36	2.35 1635@2.35	1390@2.37	14.82	2015	17,506	66	41,188.74	244,078.97	2.25	2.42	2357
8,418,750	0.300	---	0.12	---	16/12/2015	27/06/2012	---	GEKE SA (CB)	3.57	---	↘ 3.57	18/01/2017	3.56	3.56	3.57	3.57	3.57 168@3.25	4@3.56	11.83	2015	100	3	356.79	30,054.94	3.25	4.30	5753
24,060,000	0.300	0.02	0.01	---	11/07/2016	11/07/2016	---	GEN. COMMERCIAL & IND.SA (CR)	0.338	---	↘ 0.338	18/01/2017	---	---	---	---	140@0.321	560@0.367	14.22	2015	---	---	---	8,132.28	0.319	0.355	2797
34,780,982	1.55	0.15	0.16	---	20/04/2016	27/07/2000	---	GR. SARANTIS SA (CR)	10.49	-0.19	€ 10.51	18/01/2017	10.51	10.34	10.67	10.49	10.55 196@10.38	614@10.49	33.06	2015	11,725	101	123,636.30	364,852.50	10.23	11.14	3767
101,260,000	2.13	0.3037	0.3134	---	18/03/2016	08/01/2014	---	GRIVALIA PROPERTIES (CR)	8.00	0.50	# 7.96	18/01/2017	7.96	7.88	8.12	8.00	8.00 4529@8.00	1@8.01	15.03	2015	11,691	79	93,497.92	810,080.00	7.54	8.24	8675
8,340,750	1.18	---	---	---	25/06/2009	09/09/2015	---	HAIDEMENOS SA (CR)	0.300	0.67	# 0.298	18/01/2017	0.269	0.269	0.300	0.300	0.270 1854@0.269	1395@0.300	---	2015	149	6	40.17	2,502.23	0.211	0.300	2791
101,279,627	0.380	---	---	---	26/06/2008	14/07/2006	---	HALKOR SA (CB)	0.510	-2.11	€ 0.521	18/01/2017	0.528	0.500	0.528	0.510	0.507 250@0.497	1000@0.515	---	2015	13,964	34	7,077.55	51,652.61	0.429	0.541	1755
65,368,563	1.08	0.21	0.1026	---	31/05/2016	04/07/2016	---	HELLENIC EXCHANGES-A.S.E. (CR)	4.82	-0.62	€ 4.85	18/01/2017	4.85	4.78	4.86	4.82	4.82 10@4.81	1107@4.84	24.47	2015	43,512	171	209,783.78	315,076.47	4.76	4.90	8777
305,635,185	2.18	---	---	---	31/12/2014	01/10/2003	4795	HELLENIC PETROLEUM (CR)	4.44	0.23	# 4.43	18/01/2017	4.43	4.38	4.46	4.44	4.43 50@4.41	266@4.45	49.27	2015	74,609	288	330,148.05	1,357,020.22	4.35	4.58	537
305,732,436	0.410	---	---	---	08/07/2009	28/09/2011	---	HYGEIA SA (CR)	0.150	---	↘ 0.150	18/01/2017	0.150	0.150	0.150	0.150	0.150 4000@0.149	2050@0.152	---	2015	5,000	1	750.00	45,859.87	0.147	0.158	4533
65,441,118	0.440	---	---	---	24/11/2014	11/08/2015	---	IASO SA (CR)	0.412	-0.48	€ 0.414	18/01/2017	0.414	0.412	0.429	0.412	0.418 1728@0.412	200@0.419	---	2015	78,360	92	32,749.61	26,961.74	0.385	0.440	4533
8,298,467	0.400	---	---	---	30/08/1993	08/05/2013	---	IDEAL GROUP SA (CR)	0.760	1.06	# 0.752	18/01/2017	0.760	0.760	0.760	0.760	0.760 1140@0.760	1215@0.827	-(6)-	2015	60	1	45.60	6,306.83	0.720	0.814	9574
28,580,100	0.400	---	---	---	18/08/2014	04/07/2016	---	IKTINOS HELLAS SA (CR)	0.791	-1.13	€ 0.800	18/01/2017	0.800	0.791	0.800	0.791	0.797 100@0.790	220@0.793	21.76	2015	23,862	56	19,013.35	22,606.86	0.773	0.847	2353
9,090,000	0.900	---	---	---	15/05/2009	13/10/2014	---	ILYDA S.A. (CR)	0.351	-10.00	€ 0.390	18/01/2017	0.351	0.351	0.351	0.351	0.351 4@0.351	1000@0.380	---	2015	1,621	7	568.97	3,190.59	0.351	0.476	9537
20,578,374	0.620	0.4	0.07	---	05/07/2016	18/05/2015	---	INFORM P. LYKOS SA (CR)	0.510	-7.27	€ 0.550	18/01/2017	0.588	0.503	0.588	0.510	0.508 50@0.510	200@0.580	---	2015	2,815	9	1,430.97	10,494.97	0.470	0.598	2791
10,500,000	4.00	---	---	---	02/08/2016	---	---	INTERCONTINENTAL (CR)	5.58	---	↘ 5.58	18/01/2017	---	---	---	---	100@5.03	2565@5.58	---	---	---	---	---	58,590.00	5.53	5.58	8674
11,233,200	0.730	---	---	---	12/07/2010	30/07/1999	---	INTERTECH SA (CR)	0.220	26.44	# 0.174	18/01/2017	0.220	0.220	0.220	0.220	0.220 100@0.180	71@0.220	---	2015	30	2	6.60	2,471.30	0.129	0.220	9572
34,986,430	0.440	---	---	---	25/07/2008	23/02/2010	---	INTERWOOD-XYLEMPORIA (CR)	0.061	---	↘ 0.061	18/01/2017	---	---	---	---	7566@0.061	---	---	2015	---	---	---	2,334.39	0.061	0.061	2353
2,566,836	0.440	---	---	---	13/08/2010	09/01/2007	---	INTERWOOD-XYLEMPORIA (PR)	0.078	2.63	# 0.076	18/01/2017	0.076	0.076	0.078	0.076	0.076 1950@0.061	413@0.076	---	2015	2,500	5	191.00	2,334.39	0.076	0.109	2353
23,154,250	1.36	---	---	---	12/08/2008	02/08/2010	---	INTRACOM CONSTR. (CR)	0.408	3.55	# 0.394	18/01/2017	0.381	0.381	0.410	0.408	0.408 2000@0.384	2843@0.407	---	2015	8,360	5	3,410.76	9,446.93	0.360	0.569	2357
133,025,996	1.41	---	---	---	03/07/2007	07/01/2002	---	INTRACOM HOLDINGS (CR)	0.305	---	↘ 0.305	18/01/2017	0.309	0.302	0.311	0.305	0.307 580@0.305	3991@0.309	---	2015	54,676	67	16,768.25	40,572.93	0.296	0.333	9578
158,961,721	0.300	---	---	---	30/05/2013	14/11/2007	---	INTRALOT (CR)	1.12	1.82	# 1.10	18/01/2017	1.09	1.09	1.16	1.12	1.14 7290@1.12	10000@1.13	---	2015	93,310	174	106,091.64	178,037.13	1.02	1.18	5752
77,654,850	0.580	---	---	---	01/07/2011	21/02/2003	---	J & P - AVAX SA (CR)	0.423	-4.08	€ 0.441	18/01/2017	0.439	0.417	0.440	0.418	0.430 1121@0.418	434@0.430	---	2015	23,646	49	10,171.24	32,848.00	0.380	0.458	2357
136,059,759	0.880	0.18	---	0.36	04/11/2016	05/03/2014	---	JUMBO SA (CR)	14.68	---	↘ 14.68	18/01/2017	14.68	14.21	14.68	14.68	14.64 100@14.55	200@14.69	24.22	2016	57,317	237	838,830.77	1,997,357.26	13.98	15.09	3747
9,742,920	0.400	0.01	0.01	---	12/08/2016	14/07/2000	---	KARAMOLEGOS SA (CR)	1.98	---	↘ 1.98	18/01/2017	---	---	---	---	109@1.98	1110@2.17	-(6)-	2015	---	---	---	19,290.98	1.96	2.00	3577
14,679,792	1.68	---	---	---	24/06/2014	04/09/2000	---	KARATZIS SA (CR)	4.21	-0.71	€ 4.24	18/01/2017	4.21	4.21	4.21	4.21	4.21 200@4.07	125@4.22	12.08	2015	2,162	1	9,102.02	61,801.92	3.90	4.24	2723

Number of Outstanding Securities	Nominal Value	Dividends [1]			Date of Last Coupon		Note	Shares	Closing price	% change	Previous closing price/date	Open price	Price min	Price max	Last price	Avg price	Last Bid [7]	Last Ask [7]	P/E after	Year	Volume	Trades	Transactions Value[8]	Company Mkt Value (thou. €)	Year low	Year high	Sector[4]	
		2014	2015	2016	Dividend [2]	Right																						
Main Market																												
13,202,756	0.350	---	---	---	01/07/2004	05/08/2014	---	KEKROPS SA (CR)	0.315	-9.74	€ 0.349	18/01/2017	0.315	0.315	0.320	0.315	0.315	---	5000@0.315	---	2015	10,701	9	3,370.82	4,158.87	0.294	0.368	8633
7,595,160	0.600	---	---	---	08/08/2008	18/08/2010	---	KIRIAKOULIS SHIPPING SA (CR)	0.594	---	↘ 0.594	18/01/2017	---	---	---	---	---	4005@0.570	73.96	2015	---	---	---	4,511.53	0.594	0.594	5759	
40,219,218	0.300	---	---	---	25/05/2009	09/07/2013	---	KLOUKINAS - LAPPAS SA (CR)	0.274	0.37	# 0.273	18/01/2017	0.288	0.270	0.288	0.274	0.272	105@0.265	2489@0.270	---	2015	3,839	17	1,043.89	11,020.07	0.251	0.297	2357
21,224,340	0.420	---	---	---	02/07/2008	25/04/2006	---	KORDELLOS BROS SA (CR)	0.205	-9.69	€ 0.227	18/01/2017	0.205	0.205	0.215	0.205	0.205	---	6990@0.205	---	2015	45,753	34	9,402.00	4,350.99	0.205	0.345	1757
13,586,500	0.390	---	---	---	25/06/2010	28/05/2008	---	KORRES (CR)	3.53	---	↘ 3.53	18/01/2017	3.53	3.53	3.53	3.53	3.53	15@3.46	204@3.58	---	2015	40	1	141.20	47,960.35	3.46	3.67	3767
29,480,000	0.420	---	---	---	19/07/2010	01/08/2007	---	KRETA FARM SA (CR)	0.437	---	↘ 0.437	18/01/2017	---	---	---	---	---	1000@0.420	450@0.440	---	2015	---	---	---	12,882.76	0.416	0.490	3577
33,065,136	0.380	0.06	0.06	---	18/08/2016	16/09/2013	---	KRI-KRI S.A. (CR)	1.86	-1.06	€ 1.88	18/01/2017	1.88	1.84	1.89	1.88	1.87	200@1.88	1900@1.90	16.00	2015	2,020	14	3,782.80	61,501.15	1.75	1.90	3577
15,804,800	0.360	---	---	---	15/06/2010	12/03/2004	---	KTIMA KOSTAS LAZARIDIS SA (CR)	0.225	2.27	# 0.220	18/01/2017	0.237	0.223	0.237	0.225	0.225	200@0.225	2000@0.286	---	2015	340	7	76.45	3,556.08	0.195	0.309	3535
23,286,253	0.990	0.2406	---	---	14/08/2015	15/09/2014	---	KYRIAKIDIS MARBLES SA (CR)	3.13	-4.57	€ 3.28	18/01/2017	3.28	3.13	3.28	3.13	3.15	380@3.12	700@3.16	11.97	2015	2,118	16	6,666.07	72,885.97	3.06	3.39	2353
79,721,775	0.300	---	---	---	30/05/2007	23/06/2014	---	LAMDA DEVELOPMENT SA (CR)	4.62	0.87	# 4.58	18/01/2017	4.58	4.58	4.67	4.62	4.62	693@4.60	500@4.66	---	2015	4,804	47	22,195.94	368,314.60	4.56	4.94	8633
21,364,000	1.12	---	---	---	05/07/2010	10/08/2005	---	LAMPSPA HOTEL SA (CR)	17.00	---	↘ 17.00	18/01/2017	---	---	---	---	---	50@16.20	1000@17.30	77.36	2015	---	---	---	363,188.00	17.00	17.00	5753
5,939,268	0.620	---	---	---	10/07/2003	03/01/2002	---	LANAKAM SA (CR)	0.589	---	↘ 0.589	18/01/2017	---	---	---	---	---	---	1030@0.550	---	2015	---	---	---	3,498.23	0.589	0.589	3763
4,740,000	0.860	---	---	---	---	14/03/2003	---	LOGISMOS S.A. (CR)	0.260	---	↘ 0.260	18/01/2017	---	---	---	---	---	800@0.234	490@0.286	---	2015	---	---	---	1,232.40	0.257	0.260	9533
17,125,062	0.940	---	---	---	01/06/2010	18/07/2016	---	LOULIS MILLS SA (CR)	1.55	---	↘ 1.55	18/01/2017	---	---	---	---	---	300@1.43	427@1.55	45.30	2015	---	---	---	26,543.85	1.46	1.66	3577
939,510,748	0.300	---	---	---	26/04/2007	29/08/2014	---	MARFIN INVESTMENT GROUP (CR)	0.152	-1.30	€ 0.154	18/01/2017	0.153	0.151	0.155	0.152	0.152	36482@0.152	15000@0.154	---	2015	978,199	190	148,881.79	142,805.63	0.147	0.170	8775
9,819,370	0.690	---	---	---	14/08/2007	09/01/2004	---	MATHIOS REFRACTORY SA (CR)	0.193	-8.09	€ 0.210	18/01/2017	0.231	0.192	0.231	0.193	0.193	952@0.193	999@0.231	---	2015	942	4	181.82	1,895.14	0.190	0.251	2353
468,700	1.48	---	---	---	26/04/2016	21/05/2004	---	MERMEREN KOMB. A.D. PR. (GDR)	8.25	---	↘ 8.25	18/01/2017	---	---	---	---	---	5@5.79	180@6.90	0.80	2015	---	---	---	3,866.78	5.90	8.25	1775
51,950,600	0.320	0.5	0.12	---	13/05/2016	21/10/2005	---	METKA (CR)	6.39	0.16	# 6.38	18/01/2017	6.40	6.32	6.43	6.39	6.38	2682@6.39	50@6.42	19.18	2015	19,896	82	126,905.63	331,964.33	6.24	6.65	2757
10,500,000	0.950	---	---	---	24/06/2008	19/12/2013	---	MEVACO SA (CR)	0.980	---	↘ 0.980	18/01/2017	---	---	---	---	---	---	200@1.01	---	2015	---	---	---	10,290.00	0.900	0.980	2757
6,700,000	0.800	0.03	0.023	---	27/06/2016	29/05/2014	---	MILLS KEPENOS (CR)	1.37	---	↘ 1.37	18/01/2017	---	---	---	---	---	1500@1.25	---	13.21	2015	---	---	---	9,179.00	1.37	1.66	3577
6,200,000	0.500	---	---	---	22/06/2010	01/11/1995	---	MINERVA KNITWEAR SA (CB)	0.036	---	↘ 0.036	18/01/2017	0.036	0.036	0.036	0.036	0.036	1940@0.035	---	---	2015	1,820	1	65.52	223.20	0.036	0.048	3763
12,417,000	0.370	---	---	---	28/07/2008	06/09/2011	---	MLS MULTIMEDIA SA (CR)	4.14	-0.24	€ 4.15	18/01/2017	4.09	4.09	4.15	4.14	4.12	555@4.09	145@4.14	25.42	2015	3,020	52	12,436.75	51,406.38	3.98	4.15	9537
11,700,000	0.590	---	---	---	02/06/2009	24/07/2012	---	MOTODYNAMICS S.A. (CR)	0.548	---	↘ 0.548	18/01/2017	---	---	---	---	---	5000@0.385	587@0.549	20.01	2015	---	---	---	6,411.60	0.370	0.550	5379
110,782,980	0.750	---	0.65	0.2	12/12/2016	04/11/2013	---	MOTOR OIL (CR)	13.40	-1.40	€ 13.59	18/01/2017	13.65	13.26	13.70	13.40	13.53	10@13.36	192@13.40	7.38	2015	56,808	278	768,676.99	1,484,491.93	13.07	13.92	533
116,915,862	0.970	---	---	---	11/05/2009	19/10/2015	---	MYTILINEOS HOLDINGS (CR)	6.22	---	↘ 6.22	18/01/2017	6.25	6.14	6.26	6.22	6.22	2344@6.22	300@6.23	---	2015	67,512	274	419,860.07	727,216.66	6.08	6.40	1755
8,321,682	0.670	---	---	---	17/08/2007	23/11/1999	---	N. LEVEDERIS SA (CB)	0.198	---	↘ 0.198	18/01/2017	---	---	---	---	---	---	---	---	2015	---	---	---	2,295.85	0.198	0.242	1757
2,160,524	0.670	0.0436	0.0436	---	04/08/2016	23/11/1999	---	N. LEVEDERIS SA (PB)	0.300	---	↘ 0.300	18/01/2017	---	---	---	---	---	200@0.210	780@0.290	---	2015	---	---	---	2,295.85	0.300	0.300	1757
11,510,102	0.890	---	---	---	24/06/2005	06/10/1999	---	NAFPAKTOS TEXTILE IND. SA (CB)	0.233	---	↘ 0.233	18/01/2017	---	---	---	---	---	---	600@0.256	---	2015	---	---	---	2,681.85	0.178	0.233	3763
6,340,000	0.600	---	---	---	30/11/2009	09/11/2016	---	NAKAS MUSIC	0.778	-1.64	€ 0.791	18/01/2017	0.770	0.770	0.780	0.780	0.775	4950@0.780	250@0.803	4.90	2016	100	6	77.50	4,932.52	0.744	0.826	5379
9,147,151,527	0.300	---	---	---	16/05/2008	30/11/2015	---	NATIONAL BANK (CR)	0.240	-0.41	€ 0.241	18/01/2017	0.244	0.236	0.246	0.240	0.240	177931@0.239	34000@0.241	---	2015	15,837,078	1,221	3,797,975.26	2,195,316.37	0.236	0.273	8355
23,935,280	0.300	---	---	---	29/06/2009	13/06/2000	---	NAYTEMPORIKI PUBLISHING SA(CR)	0.037	---	↘ 0.037	18/01/2017	---	---	---	---	---	323@0.037	---	---	2015	---	---	---	885.61	0.037	0.037	5557
27,848,000	0.300	0.0032	0.0084	---	16/08/2016	02/09/2003	---	NEWSPHONE HELLAS SA (CR)	0.259	1.97	# 0.254	18/01/2017	0.231	0.231	0.259	0.259	0.237	1316@0.232	410@0.259	10.88	2015	90	2	21.35	7,212.63	0.231	0.272	2791
291,497,368	0.300	---	---	---	08/07/2008	21/03/2016	---	NIREFS SA (CR)	0.190	-3.55	€ 0.197	18/01/2017	0.200	0.188	0.204	0.189	0.191	100@0.187	1174@0.189	0.27	2015	40,851	44	7,799.06	55,384.50	0.162	0.204	3573
319,000,000	0.300	0.57	0.4	0.12	13/10/2016	25/04/2001	---	OPAP (CR)	8.46	0.71	# 8.40	18/01/2017	8.40	8.26	8.48	8.46	8.39	44774@8.40	2100@8.48	12.78	2015	248,984	619	2,088,825.39	2,698,740.00	8.26	8.80	5752
490,150,389	2.83	0.08	0.1	---	29/06/2016	18/06/1998	---	OTE (CR)	8.80	-0.90	€ 8.88	18/01/2017	8.83	8.74	8.88	8.80	8.79	100@8.77	1000@8.82	46.58	2015	490,774	753	4,315,232.50	4,313,323.42	8.68	9.14	6535
25,000,000	2.00	0.099	0.1114	---	18/07/2016	08/08/2003	---	P.P.A. S.A. (CR)	12.99	-0.84	€ 13.10	18/01/2017	13.10	12.96	13.27	12.99	13.00	5@12.95	22@13.03	38.77	2015	2,344	64	30,472.81	324,750.00	12.96	13.42	

Number of Outstanding Securities	Nominal Value	Dividends [1]			Date of Last Coupon		Note	Shares	Closing price	% change	Previous closing price/date	Open price	Price min	Price max	Last price	Avg price	Last Bid [7]	Last Ask [7]	P/E after	Year	Volume	Trades	Transactions Value[8]	Company Mkt Value (thou. €)	Year low	Year high	Sector[4]
		2014	2015	2016	Dividend [2]	Right																					
Main Market																											
50,797,369	0.310	---	---	---	17/08/2000	12/10/2010	---	PAPOUTSANIS (CR)	0.194	0.52 #	0.193 18/01/2017	0.194	0.194	0.194	0.194	0.194	---	654@0.189	---	2015	405	3	78.57	9,854.69	0.165	0.199	3767
7,070,400	0.930	0.101	---	---	30/11/2016	06/05/2016	---	PETROPOULOS PETROS (CR)	4.30	-0.46 €	4.32 18/01/2017	4.23	4.23	4.32	4.30	4.27	80@4.23	46@4.30	40.32	2015	496	11	2,119.12	30,402.72	4.07	4.32	2753
8,733,183,280	0.300	---	---	---	16/05/2008	27/11/2015	---	PIRAEUS BANK (CR)	0.198	-1.00 €	0.200 18/01/2017	0.201	0.195	0.203	0.198	0.199145000@0.197	112050@0.199	---	2015	11,146,891	1,187	2,217,553.01	1,729,170.29	0.195	0.231	8355	
22,080,000	0.330	---	0.08	---	17/05/2016	27/04/2015	---	PLAISIO COMPUTERS SA (CR)	3.51	-4.36 €	3.67 18/01/2017	3.82	3.50	3.82	3.51	3.57	30@3.48	100@3.55	11.55	2015	21,910	187	78,218.45	77,500.80	3.50	3.87	9572
232,000,000	4.60	0.05	---	---	20/07/2015	12/12/2001	---	PPC (CR)	2.85	-1.04 €	2.88 18/01/2017	2.88	2.85	2.92	2.85	2.88	201@2.85	500@2.87	---	2015	110,180	237	317,041.18	661,200.00	2.84	3.06	7535
11,812,193	0.470	0.02	---	---	26/03/2015	15/11/2006	---	PROFILE SA (CR)	0.483	-0.21 €	0.484 18/01/2017	0.470	0.470	0.499	0.483	0.483	10@0.484	250@0.492	---	2015	6,657	19	3,215.29	5,705.29	0.466	0.522	9533
27,345,120	0.470	---	---	---	18/07/2005	26/02/2014	---	QUALITY & RELIABILITY SA (CR)	0.328	---	0.328 18/01/2017	0.328	0.328	0.328	0.328	0.328	---	80@0.296	---	2015	75	1	24.60	8,969.20	0.288	0.331	9533
11,921,531	3.32	---	---	---	05/09/2008	05/12/2016	---	QUEST HOLDINGS (CR)	6.52	---	6.52 18/01/2017	6.52	6.52	6.52	6.52	6.52	100@6.53	170@6.72	---	2015	200	1	1,304.00	77,728.38	6.30	6.78	9533
57,434,884	1.31	---	---	---	05/06/2008	12/06/2009	---	REDS S.A. (CR)	0.432	4.10 #	0.415 18/01/2017	0.382	0.382	0.435	0.435	0.406	2500@0.400	500@0.441	---	2015	2,841	10	1,153.24	24,811.87	0.300	0.435	8633
22,280,000	0.300	---	---	---	11/04/2011	23/02/2007	---	REVOIL (CR)	0.340	-2.86 €	0.350 18/01/2017	0.350	0.340	0.350	0.340	0.349	100@0.330	4246@0.340	10.93	2015	6,759	8	2,358.11	7,575.20	0.308	0.431	5379
7,500,000	0.690	0.1	---	---	19/06/2015	05/07/2016	---	S.KANAKIS SA (CR)	2.46	2.07 #	2.41 18/01/2017	2.46	2.46	2.46	2.46	2.46	50@2.39	1209@2.40	10.51	2015	50	1	123.00	18,450.00	2.35	2.59	3577
52,067,296	0.300	---	---	---	23/12/2003	24/01/2007	---	SELECTED TEXT. IND. ASSOC (CR)	0.147	-9.82 €	0.163 18/01/2017	0.147	0.147	0.149	0.147	0.148	---	318@0.147	---	2016	4,700	8	696.46	7,653.89	0.124	0.163	3763
245,497,164	0.300	---	---	---	01/07/2008	30/07/2012	---	SELONDA AQUACULTURE SA (CR)	0.164	-5.20 €	0.173 18/01/2017	0.157	0.156	0.164	0.164	0.159	310@0.158	260@0.162	---	2015	10,370	11	1,647.19	40,261.53	0.144	0.179	3573
6,456,530	1.61	---	---	---	29/06/2001	02/08/2010	---	SPACE HELLAS SA (CR)	0.721	-3.22 €	0.745 18/01/2017	0.740	0.720	0.740	0.721	0.740	200@0.681	100@0.819	5.49	2015	3,062	4	2,265.14	4,655.16	0.601	0.745	9578
28,438,268	0.300	---	---	---	21/08/2006	24/11/1999	---	SPIROY AGRICULTURE SA (CR)	0.630	---	0.630 18/01/2017	---	---	---	---	---	---	750@0.567	---	2015	---	---	---	17,916.11	0.630	0.699	1357
40,693,350	5.00	---	---	---	03/07/2006	26/05/2015	---	TECHNICAL OLYMPIC SA (CR)	1.07	-1.83 €	1.09 18/01/2017	1.06	1.04	1.07	1.07	1.05	942@1.05	288@1.07	---	2015	10,393	21	10,894.73	43,541.88	0.897	1.10	3728
109,314,400	0.300	---	0.0935	---	30/05/2016	05/08/2015	---	TERNA ENERGY (CR)	2.90	---	2.90 18/01/2017	2.90	2.88	2.92	2.90	2.90	1114@2.88	2180@2.90	-(6)-	2015	12,210	49	35,349.32	317,011.76	2.78	2.96	7537
36,300,000	1.12	0.24	0.25	---	23/06/2016	12/12/2007	---	THESSALONIKA WATER & SEWERAGE	3.55	-3.53 €	3.68 18/01/2017	3.67	3.55	3.67	3.55	3.59	1160@3.53	725@3.68	9.51	2015	3,276	21	11,768.50	128,865.00	3.43	3.74	7577
45,094,620	0.660	0.0225	---	---	20/04/2015	01/11/1999	---	THRACE PLASTICS SA (CR)	2.49	-0.40 €	2.50 18/01/2017	2.55	2.45	2.55	2.49	2.49	500@2.46	99@2.48	-(6)-	2015	4,002	22	9,977.69	112,285.60	2.18	2.69	1357
77,063,568	4.00	0.1551	0.3099	---	27/06/2016	25/06/2004	---	TITAN CEMENT (CR)	22.20	2.07 #	21.75 18/01/2017	21.74	21.59	22.20	22.20	21.91	1750@21.92	328@22.20	31.24	2015	25,806	191	565,470.48	1,819,047.34	21.30	22.45	2353
7,568,960	4.00	0.1551	0.3099	---	27/06/2016	25/06/2004	---	TITAN CEMENT CO. (PR)	14.30	---	14.30 18/01/2017	14.10	14.10	14.30	14.30	14.30	80@14.10	145@14.39	20.12	2015	10,650	12	152,257.90	1,819,047.34	13.52	14.30	2353
10,080,000	3.00	1.95	0.58	---	18/07/2016	27/08/2001	---	TPA SA (CR)	19.35	0.52 #	19.25 18/01/2017	19.00	19.00	19.40	19.35	19.02	4@19.29	1@19.28	10.89	2015	42	3	798.75	195,048.00	17.55	19.57	2777
15,627,315	0.300	---	---	---	16/11/1992	03/12/2012	---	UNIBIOS (CR)	0.118	-7.09 €	0.127 18/01/2017	0.130	0.118	0.134	0.118	0.121	1510@0.117	307@0.125	---	2015	11,037	34	1,333.05	1,844.02	0.118	0.150	2353
18,810,000	0.400	---	---	---	08/07/2010	14/11/2007	---	VARVERIS - MODA BAGNO SA (CR)	0.102	-9.74 €	0.113 18/01/2017	0.102	0.102	0.102	0.102	0.102	---	30@0.113	---	2015	8,330	5	849.66	1,918.62	0.102	0.170	2353
259,189,761	---	---	---	---	26/02/2016	---	---	VIOHALCO SA/NV (CB)	1.37	-2.14 €	1.40 18/01/2017	1.39	1.37	1.40	1.37	1.39	7025@1.36	4500@1.39	---	---	130,419	201	181,366.59	355,089.97	1.24	1.49	2727
4,968,600	2.88	---	---	---	01/07/1998	14/12/1998	---	VIS SA (CR)	0.850	---	0.850 18/01/2017	---	---	---	---	---	200@0.830	770@0.935	---	2015	---	---	---	4,223.31	0.810	0.900	2723
6,325,000	0.600	---	---	---	02/05/2014	17/02/2014	---	VOGIATZOGLOU SYSTEMS SA (CR)	1.34	---	1.34 18/01/2017	---	---	---	---	---	---	3942@1.21	---	2015	---	---	---	8,475.50	1.34	1.48	2797

Exchange Traded Funds (ETFs)

619,082	---	---	---	15/06/2016	---	ALPHA ETF FTSE Athex Large Cap	17.23	0.59 #	17.12 18/01/2017	17.23	17.23	17.23	17.23	17.23	15@14.60	167@18.00	---	---	---	---	30	1	516.75	---	17.12	17.83	12003
294,878	---	---	---	29/06/2009	---	NBGAM ETF	7.50	-0.40 €	7.53 18/01/2017	7.50	7.50	7.50	7.50	7.50	---	---	---	---	---	---	2	1	15.00	---	7.50	7.83	12003
388,550	---	---	---	03/11/2010	---	NBGAM ETF GREECE & TURKEY 30	5.08	-0.78 €	5.12 18/01/2017	5.08	5.08	5.08	5.08	5.08	---	---	---	---	---	---	2	1	10.16	---	4.89	5.26	12003

Low Dispersion

14,000,000	4.15	---	---	23/04/2010	29/06/1999	4815	ALPHA REAL ESTATE SA(CR)	4.98	3.97 #	4.79 18/01/2017	4.98	4.98	4.98	4.98	4.98	5@4.72	138@4.98	25.16	2015	2	1	9.96	69,720.00	4.70	5.38	8637
81,122,516	3.00	---	---	23/06/2003	04/11/2008	4816	ASTIR PALACE SA (CR)	5.40	---	5.40 18/01/2017	5.40	5.40	5.40	5.40	5.40	10552@5.40	1837@5.41	---	2015	76,048	68	410,659.20	438,061.59	5.34	5.41	5753
13,465,290	0.300	---	---	09/08/2004	09/11/2016	4814	ATHENA SA (CR)	0.482	---	0.482 18/01/2017	---	---	---	---	---	---	20@0.578	---	2015	---	---	---	6,490.27	0.408	0.493	2357
191,660,320	0.300	---	---	20/07/2009	29/12/2010	4817	ATTICA HOLDINGS (CR)	0.878	---	0.878 18/01/2017	---	---	---	---	---	1000@0.710	374@0.878	-(6)-	2015	---	---	---	168,277.76	0.850	0.900	5759

Number of Outstanding Securities	Nominal Value	Dividends [1]			Date of Last Coupon Dividend [2]		Note	Shares	Closing price	% change	Previous closing price/date	Open price	Price min	Price max	Last price	Avg price	Last Bid [7]	Last Ask [7]	P/E after	Year	Volume	Trades	Transactions Value[8]	Company Mkt Value (thou. €)	Year low	Year high	Sector[4]
13,404,440	8.63	---	---	---	02/04/2001	06/03/1992	4822	IONIAN HOTELS SA (CR)	9.51	0.10 #	9.50 18/01/2017	9.51	9.51	9.51	9.51	9.51	88@9.70	80@9.78	58.80	2015	100	3	951.00	127,476.22	9.50	9.51	5753
2,760,000	11.83	9.3	8.5	---	15/07/2016	16/07/1990	4823	KARELIA TOBACCO CO. SA (CB)	276.45	---	↗ 276.45 18/01/2017	---	---	---	---	---	8@258.20	1@276.00	14.29	2015	---	---	---	763,002.00	255.00	279.00	3785
23,648,700	0.350	---	---	---	13/07/2011	31/03/2015	5125	KLEEMAN HELLAS SA (CR)	2.02	---	↘ 2.02 18/01/2017	2.02	2.02	2.02	2.02	2.02	1418085@2.02	70950@2.03	24.37	2015	35,873	10	72,463.46	47,770.37	1.95	2.04	2757
106,980,050	2.25	---	---	---	25/07/2008	24/02/2014	5046	MINOAN LINES SA (CR)	2.39	---	↘ 2.39 18/01/2017	2.39	2.39	2.39	2.39	2.39	386@2.40	---	15.77	2015	114	3	272.46	255,682.32	2.39	2.55	5759
255,494,534	3.00	---	0.2035	0.067	05/12/2016	23/12/2015	5104	NBG PANGAEA (CR)	4.45	---	↘ 4.45 18/01/2017	---	---	---	---	---	90@4.10	54@4.49	22.87	2015	---	---	---	1,136,950.68	4.05	4.45	8671
22,996,875	1.25	---	---	---	24/06/2011	02/02/2016	5116	NEXANS HELLAS SA (CR)	0.964	0.10 #	0.963 18/01/2017	0.964	0.964	0.964	0.964	0.964	20@0.970	100@1.04	---	2015	1,177	3	1,134.63	22,168.99	0.963	1.04	2733
17,240,776	0.370	---	---	---	14/07/2005	30/09/2003	4827	PERSEUS SA (CR)	0.250	---	↘ 0.250 18/01/2017	---	---	---	---	---	---	---	1.83	2015	---	---	---	4,310.19	0.240	0.250	3577
85,762,875	0.500	---	---	---	25/04/2014	22/12/2016	5124	TRASTOR REAL EST. INV. CO.(CR)	0.760	-15.46	€ 0.899 18/01/2017	0.760	0.760	0.760	0.760	0.760	999@0.760	800@0.845	---	2015	100	2	76.00	65,179.79	0.742	0.899	8671

Surveillance

13,000,000	1.00	---	---	---	01/08/2007	07/04/2000	5093	AKRITAS SA (CR)	0.161	---	↘ 0.161 18/01/2017	0.161	0.161	0.161	0.161	0.161	8@0.161	---	---	2015	50	5	8.05	2,093.00	0.161	0.175	2353
14,870,100	0.300	---	---	---	15/05/2008	26/09/2011	4844	ALPHA GRISSIN S.A. (CR)	0.031	---	↘ 0.031 18/01/2017	---	---	---	---	---	2000@0.025	---	---	2015	---	---	---	460.97	0.031	0.031	9533
2,969,713	0.300	---	---	---	02/07/2008	28/02/2011	4958	ANEK LINES SA (PR, issue '96)	0.056	---	↘ 0.056 18/01/2017	---	---	---	---	---	500@0.057	---	23.42	2015	---	---	---	10,493.55	0.056	0.056	5759
312,163	0.300	---	---	---	02/07/2008	28/02/2011	4959	ANEK LINES SA (PR, issue '90)	0.422	---	↘ 0.422 18/01/2017	---	---	---	---	---	---	---	-(6)-	2015	---	---	---	10,493.55	0.422	0.422	5759
185,373,016	0.300	---	---	---	02/07/2008	28/02/2011	4957	ANEK LINES SA (CR)	0.055	-1.79	€ 0.056 18/01/2017	0.055	0.055	0.055	0.055	0.055	2000@0.056	20000@0.060	23.01	2015	25,371	6	1,395.41	10,493.55	0.055	0.064	5759
20,255,805	0.300	---	---	---	22/08/2006	02/08/2010	4881	AXON HOLDING SA (CR)	0.009	12.50 #	0.008 18/01/2017	0.009	0.009	0.009	0.009	0.010	1496@0.009	---	---	2015	5	2	0.05	182.30	0.007	0.009	4533
17,579,754	4.16	---	---	---	18/08/2006	02/08/2010	5097	BIOTER SA (CR)	0.088	17.33 #	0.075 18/01/2017	0.075	0.075	0.089	0.089	0.088	9776@0.075	1949@0.088	---	2015	2,224	3	194.80	1,547.02	0.075	0.110	2357
4,034,950	0.680	---	---	---	01/07/2005	30/12/2010	5114	CHATZIKRANIOTIS & SONS SA (CR)	0.050	---	↘ 0.050 18/01/2017	---	---	---	---	---	15000@0.043	---	---	2015	---	---	---	201.75	0.049	0.064	3577
1,417,311	0.300	---	---	---	11/08/2010	12/10/2016	5123	DIONIC (CR)	0.500	4.17 #	0.480 18/01/2017	0.500	0.500	0.500	0.500	0.500	---	499@0.500	0.15	2015	100	2	50.00	708.66	0.480	0.550	2797
15,878,748	0.480	---	---	---	10/07/2006	22/03/2004	5095	DOMIKI KRITIS SA (CR)	0.290	---	↘ 0.290 18/01/2017	---	---	---	---	---	---	30@0.232	---	2015	---	---	---	4,604.84	0.290	0.290	2357
3,961,300	1.28	---	---	---	29/06/2004	03/08/2000	5080	DUROS SA (CR)	0.400	---	↘ 0.400 18/01/2017	---	---	---	---	---	---	5890@0.320	---	2015	---	---	---	1,584.52	0.400	0.400	3763
7,085,888	1.59	---	---	---	02/07/1996	06/09/2010	4690	ELVIEK (CR)	4.70	---	↘ 4.70 18/01/2017	---	---	---	---	---	---	---	---	2015	---	---	---	33,303.67	4.70	4.70	8633
6,000,000	0.600	---	---	---	13/06/2008	08/04/2004	4886	EUROBROKERS S.A. (CR)	0.010	---	↘ 0.010 18/01/2017	---	---	---	---	---	4000@0.008	---	---	2015	---	---	---	60.00	0.010	0.010	8534
21,820,410	0.800	---	---	---	22/05/2008	02/08/2011	4882	EUROMEDICA SA (CR)	0.009	12.50 #	0.008 18/01/2017	0.009	0.009	0.009	0.009	0.009	2444@0.009	---	---	2015	56	3	0.50	196.38	0.007	0.009	4533
110,097,185	0.300	---	---	---	19/09/2016	5118	Forthnet (CR)	0.252	---	↘ 0.252 18/01/2017	---	---	---	---	---	---	15@0.252	485@0.292	---	2015	---	---	---	27,744.49	0.250	0.296	9535
50,593,832	0.300	---	---	---	07/07/2010	07/09/2011	5113	FRIGOGLASS SA (CR)	0.124	-0.80	€ 0.125 18/01/2017	0.130	0.120	0.130	0.124	0.124	1000@0.121	20000@0.126	---	2015	49,050	17	6,093.10	6,273.64	0.094	0.153	2757
77,376,446	0.340	---	---	---	23/05/2005	18/08/2011	5094	G.E. DIMITRIOU (CR)	0.017	-19.05	€ 0.021 18/01/2017	0.017	0.017	0.017	0.017	0.017	---	30069@0.017	---	2015	31	1	0.53	1,315.40	0.017	0.032	3722
1,270,000	0.300	---	---	---	06/07/2007	06/02/2013	5007	GIRAKIAN PROFIL SA (CB)	0.055	-14.06	€ 0.064 18/01/2017	0.052	0.052	0.055	0.055	0.055	4000@0.076	---	---	2015	300	2	16.47	69.85	0.052	0.100	1757
1,540,000	0.600	---	---	---	08/08/1994	19/09/2000	5058	J.BOUTARIS & SON HOLD. (PB)	0.066	---	↘ 0.066 18/01/2017	---	---	---	---	---	---	7000@0.079	---	2015	---	---	---	1,234.72	0.066	0.066	3535
25,179,640	0.600	---	---	---	08/08/1994	19/09/2000	5057	J.BOUTARIS & SON HOLD. SA (CB)	0.045	-4.26	€ 0.047 18/01/2017	0.045	0.045	0.045	0.045	0.045	31853@0.045	50@0.054	---	2015	32,547	4	1,464.62	1,234.72	0.042	0.069	3535
7,125,216	0.650	---	---	---	01/07/2005	14/12/1999	4955	KRE.KA SA (CR)	0.085	---	↘ 0.085 18/01/2017	0.085	0.085	0.085	0.085	0.085	1100@0.085	---	---	2015	1,100	1	93.50	605.64	0.085	0.102	3573
51,081,030	1.00	---	---	---	20/08/2007	03/09/2007	4912	LAVIPHARM SA (CR)	0.083	-8.79	€ 0.091 18/01/2017	0.082	0.082	0.096	0.096	0.083	2000@0.083	3199@0.096	---	2015	11,369	14	939.26	4,239.73	0.081	0.100	4577
7,734,375	1.00	---	---	---	09/07/2007	07/01/2011	5112	LIVANIS SA (CR)	0.008	---	↘ 0.008 18/01/2017	---	---	---	---	---	7000@0.007	---	---	2015	---	---	---	61.88	0.008	0.009	5557
4,419,616	1.58	---	---	---	21/07/2011	04/03/2015	4983	MEDICON S.A (CR)	0.320	---	↘ 0.320 18/01/2017	---	---	---	---	---	5980@0.261	---	0.88	2015	---	---	---	1,414.28	0.310	0.320	4535
20,231,328	0.600	---	---	---	15/07/2008	25/06/2004	4879	NIKAS SA (CR)	0.110	---	↘ 0.110 18/01/2017	---	---	---	---	---	---	3671@0.131	---	2015	---	---	---	2,225.45	0.106	0.132	3577
14,967,940	0.500	---	---	---	21/05/2008	04/01/2008	4956	PASAL DEVELOPMENT S.A. (CR)	0.101	1.00 #	0.100 18/01/2017	0.119	0.091	0.119	0.091	0.101	848@0.091	1500@0.100	---	2015	1,382	4	139.76	1,511.76	0.091	0.188	8633
18,750,000	0.300	---	---	---	02/07/2001	31/12/2012	4985	PEGASUS PUBLISHING S.A. (CR)	0.037	---	↘ 0.037 18/01/2017	0.037	0.037	0.040	0.040	0.037	18@0.040	---	---	2015	22	5	0.82	693.75	0.026	0.040	5557
65,326,268	0.530	---	---	---	04/07/2007	19/07/2006	4750	SATO SA (CR)	0.071	-19.32	€ 0.088 18/01/2017	0.071	0.071	0.071	0.071	0.071	---	3461@0.071	---	2015	2,000	1	142.00	4,638.17	0.071	0.109	3726

Number of Outstanding Securities	Nominal Value	Dividends [1]			Date of Last Coupon Dividend [2]	Coupon Right	Note	Shares	Closing price	% change	Previous closing price/date	Open price	Price min	Price max	Last price	Avg price	Last Bid [7]	Last Ask [7]	P/E after	Year	Volume	Trades	Transactions Value[8]	Company Mkt Value (thou. €)	Year low	Year high	Sector[4]
--	------------------	---------------	--	--	-------------------------------------	-----------------	------	--------	------------------	----------	--------------------------------	---------------	--------------	--------------	---------------	--------------	-----------------	--------------	--------------	------	--------	--------	--------------------------	--------------------------------	-------------	--------------	---------------

Surveillance

7,914,480	0.300	---	---	---	23/06/2008	29/06/2011	4888	SFAKIANAKIS SA (CR)	0.888	20.00 #	0.740	18/01/2017	0.888	0.888	0.888	0.888	0.888	1749@0.592	1749@0.888	---	2015	150	3	133.20	7,028.06	0.210	0.888	5379
10,186,667	1.35	---	---	---	24/06/2008	02/02/2016	4887	SIDMA SA (CR)	0.176	---	0.176	18/01/2017	0.176	0.157	0.176	0.157	0.176	95@0.157	622@0.210	---	2015	2,029	5	356.55	1,792.85	0.157	0.251	1757
4,737,503	0.320	---	---	---	22/06/2005	22/09/2015	5115	VARANGIS AVEPE S.A. (CR)	0.220	---	0.220	18/01/2017	---	---	---	---	---	1157@0.176	---	---	2015	---	---	---	1,042.25	0.220	0.220	3726
16,383,428	0.300	---	---	---	25/06/2002	21/06/2013	4997	VARVARESSOS SA (CB)	0.088	---	0.088	18/01/2017	---	---	---	---	---	16@0.087	---	---	2015	---	---	---	1,441.74	0.031	0.088	3763
13,191,620	0.620	---	---	---	04/08/2010	09/09/2002	4977	YALCO - CONSTANTINOU SA (CB)	0.040	---	0.040	18/01/2017	---	---	---	---	---	3900@0.048	---	---	2015	---	---	---	527.66	0.040	0.040	3722

Under Deletion

1,130,180	0.440	---	---	---	20/06/2003	02/07/2014	5092	COMPUCON SA (CR)	0.006	---	0.006	18/01/2017	0.006	0.006	0.006	0.006	0.006	5997@0.006	---	---	2015	1,821	2	10.93	6.78	0.006	0.006	9537
9,567,289	0.300	---	---	---	01/07/2004	19/11/2007	5062	MARAC ELECTRONICS (CR)	0.298	---	0.298	18/01/2017	---	---	---	---	---	16380@0.239	---	---	2015	---	---	---	2,851.05	0.298	0.298	9578
24,319,250	0.300	---	---	---	09/07/2002	04/07/2007	5111	PROODEFTIKH SA (CR)	0.037	-19.56	0.046	18/01/2017	0.037	0.037	0.037	0.037	0.037	7420@0.037	500@0.046	---	2015	10,020	3	370.74	899.81	0.037	0.049	2357
766,000	1.00	---	---	---	01/07/2004	11/12/2012	4937	TRIA ALFA SA (CR)	2.59	---	2.59	18/01/2017	---	---	---	---	---	50@2.30	---	---	2015	---	---	---	2,383.29	2.59	2.59	3763
245,000	1.00	---	---	---	19/07/2010	11/12/2012	4938	TRIA ALFA SA (PR)	1.63	---	1.63	18/01/2017	---	---	---	---	---	300@1.95	---	---	2015	---	---	---	2,383.29	1.63	1.63	3763

Suspension Status

33,301,715	0.320	---	---	---	27/06/2003	08/07/2009	5121	AEGEK (CR)	0.038	---	0.038	30/09/2016	---	---	---	---	---	---	---	---	---	---	---	---	1,265.47	0.038	0.038	2357
5,000,000	0.400	---	---	---	03/06/2009	01/09/2014	5087	ALCO HELLAS SA (CR)	0.180	---	0.180	31/03/2015	---	---	---	---	---	---	---	---	---	---	---	---	900.00	0.180	0.180	1753
215,246,452	0.300	---	---	---	25/06/2001	24/09/2001	4446	ALTEC SA (CR)	0.012	---	0.012	30/11/2015	---	---	---	---	---	---	---	---	---	---	---	---	2,582.96	0.012	0.012	9533
81,644,555	0.300	---	---	---	01/07/2008	02/09/2002	5098	ATTI - KAT SA (CR)	0.012	---	0.012	29/05/2015	---	---	---	---	---	---	---	---	---	---	---	---	979.73	0.012	0.012	2357
33,930,000	0.300	---	---	---	03/07/2006	30/05/2001	4865	BABIS VOVOS SA (CR)	0.304	---	0.304	30/03/2012	---	---	---	---	---	---	---	---	---	---	---	---	10,314.72	0.304	0.304	8633
20,121,710	1.21	---	---	---	27/07/1992	12/03/2003	5002	BALKAN R.E. (CR)	0.190	---	0.190	29/08/2013	---	---	---	---	---	---	---	---	---	---	---	---	3,823.12	0.190	0.190	8633
8,922,944,533	0.100	---	---	---	31/05/2011	02/02/2015	4857	BANK OF CYPRUS (CR)	0.162	---	0.162	09/01/2017	---	---	---	---	---	80000@0.141	50000@0.171	---	---	---	---	---	1,445,517.01	0.139	0.162	8355
7,847,611	1.20	---	---	---	01/08/2007	28/09/2011	4939	EDRASIS - C. PSALLIDAS SA (CR)	0.150	---	0.150	29/11/2012	---	---	---	---	---	---	---	---	---	---	---	---	1,177.14	0.150	0.150	2357
36,748,909	0.730	---	---	---	15/12/2005	13/12/2006	5109	HEL. SUGAR INDUSTRY SA (CB)	0.075	---	0.075	29/02/2016	---	---	---	---	---	---	---	---	---	---	---	---	2,756.17	0.075	0.075	3577
13,692,227	1.47	---	---	---	07/07/2006	08/10/1999	5049	HELLENIC FABRICS SA (CR)	0.117	---	0.117	31/03/2014	---	---	---	---	---	---	---	---	---	---	---	---	1,601.99	0.117	0.117	3763
30,390,000	0.310	---	---	---	18/08/2008	29/12/2006	5099	HELLENIC FISHFARMING SA (CR)	0.070	---	0.070	02/06/2015	---	---	---	---	---	---	---	---	---	---	---	---	2,127.30	0.070	0.070	3573
24,619,524	0.500	---	---	---	10/10/1986	30/12/2002	4914	KERAMIA-ALLATINI (CR)	0.088	---	0.088	30/08/2012	---	---	---	---	---	---	---	---	---	---	---	---	2,166.52	0.088	0.088	8633
66,937,526	0.700	---	---	---	13/08/2010	21/05/2003	5003	MICHANIKI SA (CR)	0.100	---	0.100	29/08/2013	---	---	---	---	---	---	---	---	---	---	---	---	9,186.78	0.100	0.100	2357
25,968,987	0.700	---	---	---	13/08/2010	21/05/2003	5004	MICHANIKI SA (PR)	0.096	---	0.096	29/08/2013	---	---	---	---	---	---	---	---	---	---	---	---	9,186.78	0.096	0.096	2357
13,555,100	1.00	---	---	---	08/07/2005		4576	MICROLAND COMPUTERS SA (CR)	0.640	---	0.640	14/07/2009	---	---	---	---	---	---	---	---	---	---	---	---	8,675.26	0.640	0.640	5379
255,459,600	0.300	---	---	---	26/06/2000	03/12/2010	5101	NEL SA (CR)	0.070	---	0.070	31/08/2015	---	---	---	---	---	---	---	---	---	---	---	---	17,882.17	0.070	0.070	5759
23,463,874	0.800	---	---	---	23/05/2003	21/12/1999	4918	NEORION SA (CR)	0.125	---	0.125	30/08/2012	---	---	---	---	---	---	---	---	---	---	---	---	2,932.98	0.125	0.125	2753
40,946,303	0.360	---	---	---	18/07/2005	27/11/2007	5089	PC SYSTEMS SA (CR)	0.006	---	0.006	31/03/2016	---	---	---	---	---	---	---	---	---	---	---	---	245.68	0.006	0.006	9533
144,688,060	0.600	---	---	---	21/04/2008	10/03/2010	4982	T BANK (CR)	0.048	---	0.052 #	29/11/2011	---	---	---	---	---	---	---	---	---	---	---	---	6,945.03	0.048	0.048	8355
100,793,572	0.300	---	---	---	16/07/2009	11/02/2016	5110	TELETIPOS SA (CR)	0.060	---	0.060	07/03/2016	---	---	---	---	---	5@0.048	---	---	---	---	---	---	6,047.61	0.060	0.060	5553
13,920,000	0.320	---	---	---	19/11/2001	01/08/2000	4726	TEXAPRET SA (CR)	0.080	---	0.080	28/02/2011	---	---	---	---	---	---	---	---	---	---	---	---	1,113.60	0.080	0.080	3763
510,840	1.00	---	---	---	15/07/2008	21/11/2013	5036	TROPEA HOLDING (CR)	2.00	---	0.020 #	30/03/2012	---	---	---	---	---	---	---	---	---	---	---	---	1,021.68	2.00	2.00	3722
284,465,964	3.70	---	---	---	20/06/2008	15/06/2009	4913	TT HELLENIC POSTBANK (CR)	0.168	---	0.239 #	29/08/2012	---	---	---	---	---	---	---	---	---	---	---	---	47,790.28	0.168	0.168	8355

Shares' Notes

Code	Note text
()	- Adjusted dividends.
*	- Last adjusted closing price.
[1]	- Net dividends.
[2]	- The "Date of Last Coupon" for New listings refers to the date company's stocks started to trade in Athex
[3]	- The Company Market Value is referred to the number of outstanding shares
[4]	- Sectors codification can be found in Appendix A
[5]	- The Market Value refers to the total number of shares listed (including their several classes) in the exchange by the company.
[6]	- P/E greater than 100
[7]	- Last view of the Order Book before the end of the trading session
[8]	- All Blocks Methods' Transactions Value are included.
4446	- Transfer to the "Under Supervision" Category as of 20/10/2008.
4576	- Suspension of trading as of 14/7/2009.
4690	- Transfer to Surveillance category as of 4/4/2006.
4726	- Suspension of trading as of 1/3/2011.
4750	- Transfer to the "Under Surveillance Category" from 8/4/2011.
4795	- The final gross (pre-tax) dividend is € 0.30 per share and subject to withholding tax on the full dividend amount, i.e. 0,45 per share, for those shareholders liable to withholding tax, in accordance with the applicable tax law provisions.
4814	- Transfer to the Low Dispersion Category as of 30/5/2011.
4815	- Transfer to the Low Dispersion Category as of 30/5/2011.
4816	- Transfer to the Low Dispersion Category as of 30/5/2011.
4817	- Transfer to the Low Dispersion Category as of 30/5/2011.
4822	- Transfer to the Low Dispersion category as of 30/5/2011.
4823	- Transfer to the Low Dispersion category as of 4/4/2006.
4827	- Transfer to the Low Dispersion category as of 5/5/2010.
4844	- Transfer to the Surveillance category from 8/4/2011.
4857	- The 793,906,274 new (CR) shares, resulting from the recent share capital increase through a rights issue, are not yet admitted to trading on the ATHEX.
4865	- Suspension of trading as of 2/4/2012.
4879	- Transfer to the Surveillance Category as of 10/4/2012.
4881	- Transfer to the Surveillance Category as of 10/4/2012.
4882	- Transfer to the Surveillance Category as of 10/4/2012.
4886	- Transfer to the Surveillance Category as of 10/4/2012.
4887	- Transfer to the Surveillance Category as of 10/4/2012.
4888	- Transfer to the Surveillance Category as of 10/4/2012.
4912	- Transfer to the Surveillance Category as of 31/7/2012.
4913	- Suspension of trading as of 30/8/2012.
4914	- Suspension of trading as of 31/8/2012.
4918	- Suspension of trading as of 31/8/2012.
4937	- Transfer to the UNDER DELETION category as of 30/11/2012.
4938	- Transfer to the UNDER DELETION category as of 30/11/2012.
4939	- Suspension of trading as of 30/11/2012.
4955	- Transfer to the Surveillance Category as from 5/4/2013.
4956	- Transfer to the Surveillance Category as from 5/4/2013.
4957	- Transfer to the Surveillance Category as from 5/4/2013.
4958	- Transfer to the Surveillance Category as from 5/4/2013.
4959	- Transfer to the Surveillance Category as from 5/4/2013.
4977	- Transfer to the "Under Surveillance Category" from 11/6/2013.
4982	- Suspension of trading as of 1/12/2011.
4983	- Transfer to the Surveillance Category as of 5/4/2013.
4985	- Transfer to the "Under Surveillance Category" from 8/4/2011.
4997	- Transfer to the Under Supervision Category as of 21/12/2009. - The 6,870,053 new (CB) shares, resulting from the recent share capital increase through a rights issue, are not yet admitted to trading on the ATHEX.
5002	- Suspension of trading as of 30/08/2013.

Shares' Notes

Code	Note text
5003	- Suspension of trading as of 30/08/2013.
5004	- Suspension of trading as of 30/08/2013.
5007	- Transfer to the Surveillance category, as of 11/10/2013.
5031	- The 612,300 new (CR) shares, resulting from the recent share capital increase through a rights issue, are not yet admitted to trading on the ATHEX.
5036	- The company's share is under suspension of trading as of 2/4/2012. During suspension, the company proceeded and concluded a share reverse split, according to which - after the conclusion of the corporate action - the total number of the company's shares, as well as, the last closing price of 30/03/2012 were adjusted.
5046	- Transfer to the Low Dispersion category as of 8/4/2011.
5049	- Under suspension of trading as of 1/4/2014.
5057	- Transfer to the Surveillance Category as of 29/12/2011.
5058	- Transfer to the Surveillance Category as of 29/12/2011.
5062	- Transfer to the UNDER DELETION category as of 4/6/2014.
5080	- Suspension of trading as of 6/9/2011.
5087	- Suspension of trading as of 1/4/2015.
5089	- Transfer to the Surveillance Category as of 8/4/2015.
5092	- Transfer to the UNDER DELETION category as of 8/4/2015.
5093	- Transfer to the Surveillance Category as of 8/4/2015.
5094	- Transfer to the Surveillance Category as of 8/4/2015.
5095	- Transfer to the Surveillance Category as from 9/4/2015.
5097	- Transfer to the Surveillance Category as of 10/4/2012.
5098	- Suspension of trading as of 2/6/2015.
5099	- Suspension of trading as of 3/6/2015.
5101	- Suspension of trading as of 1/9/2015.
5104	- Transfer to the "Low Dispersion" Category as of 31/10/2014. Change of the company name from "MIG REAL ESTATE R.E.I.C." to "NBG PANGAEA R.E.I.C." as of 30/12/2015.
5109	- Suspension of trading as of 01/03/2016.
5110	- Suspension of trading as of 08/03/2016.
5111	- Transfer to the Under Deletion Category as of 15/04/2016.
5112	- Transfer to the Surveillance Category as of 15/04/2016.
5113	- Transfer to the Surveillance Category as of 15/04/2016.
5114	- Transfer to the Surveillance Category as of 15/04/2016.
5115	- Transfer to the Surveillance Category as of 15/04/2016.
5116	- Transfer to the Low Dispersion Category as of 20/4/2016.
5118	- Transfer to the Surveillance Category as of 25/11/2011. Issue of a Convertible Bond Loan in progress through a rights issue. Rights' trading period on ATHEX: 22/09/2016 - 03/10/2016, pre-emption rights' subscription period: 22/09/2016 - 06/10/2016.
5121	- Suspension of trading as of 3/10/2016.
5123	- Transfer to the Surveillance Category as of 10/4/2014.
5124	- The 30,874,635 new (CR) shares, resulting from the recent share capital increase through a rights issue, are not yet admitted to trading on the ATHEX.
5125	- Transfer to the Low Dispersion Category as of 18/01/2017.

Securities Blocks Details

Securities	Block Volume	Price	Block Trade Value	Time of approval	Note
MOTOR OIL (CR)	24,424	13.63	332,777.00	12:16:06	20
OTE (CR)	50,000	8.81	440,250.00	12:17:22	20
EUROBANK ERGASIAS (CR)	400,000	0.634	253,600.00	14:31:39	20

Blocks Notes

9 - Method 6-1 / Special Fees

10 - Method 6-1 / Special Fees, SDS

14 - Method 6-3 / Settlement, Incomplete Buy and Sell

18 - Method 6-2 / SPOT 1

19 - Method 6-2 / SPOT 2

20 - Method 6-1 and Method 6-1 Same Day Settlement

21 - Other Pre-agreed

Shares Rights Details

Occured date	Exercise from	Exercise until	Trading until	Rights	Price min	Price max	Closing price	Last Bid	Last Ask	Volume	Trades	Transactions Value
-----------------	------------------	-------------------	------------------	--------	--------------	--------------	------------------	----------	----------	--------	--------	-----------------------

No Rights Transactions.

Shares Forced Sales

Securities	Transaction s Volume	Number of Trades	Transactions Value	Note
No Forced Transactions.				

Forced Sales Notes

- 1 - Normal Forced Sale.
- 2 - Forced Sales of Fixed Registered Shares.
- 3 - Forced Sales of Remaining Stock Fractions.

Forced Sales Registered Shares

Securities	Start Date	End Date	Initial Volume	Remaining Volume	Date	Avg price (day)	Avg price (period)	Number of Trades	Transactions Volume	Transactions Value
------------	------------	----------	----------------	------------------	------	-----------------	--------------------	------------------	---------------------	--------------------

No Fixed Registered Shares Forced Sales.

Forced Sales Notes

According to Decision 1/380/04.05.2008 of the Hellenic Republic Capital Market Commission, the certificated registered shares that have not been deposited to the issuer for dematerialisation, will be auctioned in the Athens Exchange by the supervising issuer. Forced sales procedure is held according to Article 99A of the Athens Exchange Rulebook. The average price of the period is calculated by dividing the Total transactions value by the Total volume and includes all the transactions made until the current date.

Exchange Traded Funds (ETFs) Characteristics

	Transactions Date (T)	Creation / Redemption	Units (T-1)	New Units (T-1)	Redemptio n Units (T-	Units (T) [1]	Fund Assets [2]	Net Unit Price	Dividen d per	Dividend Date
NBGAM ETF GREECE & TURKEY 30	19/01/2017	25,000	388,550	---	---	388,550	1,984,870.00	5.1084	---	27/10/2011
NBGAM ETF ΓΔΧΑ.	19/01/2017	25,000	294,878	---	---	294,878	2,220,394.00	7.5299	---	27/10/2011
ALPHA ETF FTSE Athex Large Cap	19/01/2017	5,000	619,082	---	---	619,082	10,646,280.00	17.1969	0.37	30/06/2016

ETFs Notes

[1] - Units (T) = Units (T-1) + New Units (T-1) - Redemption Units (T-1)

[2] - The Creation / Redemption Units of T-1 are included.

Corporate Bonds

Num Listed Bonds	Nominal price	Issue price	Today's Rate	Exp. Date	Duration (years)	Note	Coupon		Trading	Corporate Bonds	Price min	Price max	Closing price	Previous closing price/date	Volume	Transactions Value	Last order		Date	ear min	Year max	
							Common	Preferred									Price	Buy / Sell				
233,748,933	0.30	0.30	1.00	11/10/2025	9	---	2	---	1	FORTHNET S.A. (Convertible)	---	---	---	---	---	---	95.0000	S	09/11/2016	100.0000	100.0000	
40,000,000	1.00	1.00	5.00	04/10/2021	5	---	2	---	1	HOUSEMARKET S.A. (Non Convertible)	100.4000	100.6000	100.4426	100.5000	18/01/2017	58,680	59,094.58	99.6260	B	19/01/2017	100.3333	100.6000
1,774,359	13.76	9.77	0.00	21/10/2025	18	---	26	---	1	NIREUS S.A. (Convertible)	---	---	---	100.0000	12/07/2016	---	---	4.0000	B	19/01/2017	100.0000	100.0000
212,237,880	1.00	1.00	6.30	29/07/2020	7	---	14	---	1	MARFIN INVESTMENT GROUP S.A. SERIES B (Convert.)	---	---	---	0.8500	23/08/2013	---	---	5.0000	B	04/10/2016	0.8500	0.8500
163,009,139	1.00	1.00	7.00	29/07/2019	6	---	14	---	1	MARFIN INVESTMENT GROUP S.A. SERIES A (Convert.)	---	---	---	1.0000	23/08/2013	---	---	5.0000	B	04/10/2016	1.0000	1.0000

Corporate Bonds Notes

Transactions Volume = (Pieces) * (Nominal Price). Transactions Value = (Pieces) * (Nominal Price) * (price %) + (Accrued interest).
The price of a Bond is stated as a percentage (%) of Bond's Nominal Price.
Nominal Price in Euros (€), except if it is noted differently.

Government Bonds

Number Listed Bonds	Nominal price	Today's Rate	Accrued Interest Calc	Exp. Date [1]	Duration (years)	Note	Coupons Date	Curr. coupon value	Trading Unit	Government Bonds	Price min	Price max	Closing price	Previous closing price/date	Volume	Transactions Value	Price	Last order Buy / Sell	Date
1,792,455,803	1.00	3.00	Actual/Actual	24/02/2023	11	---	24/02	3.00	1	GGB-FXD-240223-11Y-2.000-1.00	---	---	---	10.0000 22/06/2015	---	---	---	---	---
1,771,485,249	1.00	3.00	Actual/Actual	24/02/2024	12	---	24/02	3.00	1	GGB-FXD-240224-12Y-2.000-1.00	---	---	---	10.0000 22/06/2015	---	---	---	---	---
1,744,316,583	1.00	3.00	Actual/Actual	24/02/2025	13	---	24/02	3.00	1	GGB-FXD-240225-13Y-2.000-1.00	---	---	---	10.0000 22/06/2015	---	---	---	---	---
1,498,761,836	1.00	3.00	Actual/Actual	24/02/2026	14	---	24/02	3.00	1	GGB-FXD-240226-14Y-2.000-1.00	---	---	---	10.0000 22/06/2015	---	---	---	---	---
1,469,952,920	1.00	3.00	Actual/Actual	24/02/2027	15	---	24/02	3.00	1	GGB-FXD-240227-15Y-2.000-1.00	---	---	---	10.0000 22/06/2015	---	---	---	---	---
1,525,434,082	1.00	3.00	Actual/Actual	24/02/2028	16	---	24/02	3.00	1	GGB-FXD-240228-16Y-2.000-1.00	---	---	---	10.0000 22/06/2015	---	---	---	---	---
1,503,860,546	1.00	3.00	Actual/Actual	24/02/2029	17	---	24/02	3.00	1	GGB-FXD-240229-17Y-2.000-1.00	---	---	---	10.0000 22/06/2015	---	---	---	---	---
1,435,418,132	1.00	3.00	Actual/Actual	24/02/2030	18	---	24/02	3.00	1	GGB-FXD-240230-18Y-2.000-1.00	---	---	---	10.0000 22/06/2015	---	---	---	---	---
1,368,045,727	1.00	3.00	Actual/Actual	24/02/2031	19	---	24/02	3.00	1	GGB-FXD-240231-19Y-2.000-1.00	---	---	---	10.0000 22/06/2015	---	---	---	---	---
1,373,758,194	1.00	3.00	Actual/Actual	24/02/2032	20	---	24/02	3.00	1	GGB-FXD-240232-20Y-2.000-1.00	---	---	---	10.0000 22/06/2015	---	---	---	---	---
1,452,639,893	1.00	3.00	Actual/Actual	24/02/2033	21	---	24/02	3.00	1	GGB-FXD-240233-21Y-2.000-1.00	---	---	---	10.0000 22/06/2015	---	---	---	---	---
1,410,344,954	1.00	3.00	Actual/Actual	24/02/2034	22	---	24/02	3.00	1	GGB-FXD-240234-22Y-2.000-1.00	---	---	---	10.0000 22/06/2015	---	---	---	---	---
1,444,202,190	1.00	3.00	Actual/Actual	24/02/2035	23	---	24/02	3.00	1	GGB-FXD-240235-23Y-2.000-1.00	---	---	---	10.0000 22/06/2015	---	---	---	---	---
1,505,138,031	1.00	3.00	Actual/Actual	24/02/2036	24	---	24/02	3.00	1	GGB-FXD-240236-24Y-2.000-1.00	---	---	---	10.0000 22/06/2015	---	---	---	---	---
1,396,254,095	1.00	3.00	Actual/Actual	24/02/2037	25	---	24/02	3.00	1	GGB-FXD-240237-25Y-2.000-1.00	---	---	---	10.0000 22/06/2015	---	---	---	---	---
1,382,167,704	1.00	3.00	Actual/Actual	24/02/2038	26	---	24/02	3.00	1	GGB-FXD-240238-26Y-2.000-1.00	---	---	---	10.0000 22/06/2015	---	---	---	---	---
1,337,331,257	1.00	3.00	Actual/Actual	24/02/2039	27	---	24/02	3.00	1	GGB-FXD-240239-27Y-2.000-1.00	---	---	---	10.0000 22/06/2015	---	---	---	---	---
1,371,908,706	1.00	3.00	Actual/Actual	24/02/2040	28	---	24/02	3.00	1	GGB-FXD-240240-28Y-2.000-1.00	---	---	---	10.0000 22/06/2015	---	---	---	---	---
1,360,659,778	1.00	3.00	Actual/Actual	24/02/2041	29	---	24/02	3.00	1	GGB-FXD-240241-29Y-2.000-1.00	---	---	---	10.0000 22/06/2015	---	---	---	---	---
1,432,747,403	1.00	3.00	Actual/Actual	24/02/2042	30	---	24/02	3.00	1	GGB-FXD-240242-30Y-2.000-1.00	---	---	---	10.0000 22/06/2015	---	---	---	---	---
742,153	1,000.00	0.44	FLR Actual/360	10/08/2019	5	---	10/02 - 10/08	---	1	GGB-FLT-100819-05Y-0.934-1,000	---	---	---	---	---	---	---	---	---
4,030,827	1,000.00	4.75	Actual/Actual	17/04/2019	5	---	17/04	4.75	1	GGB-FXD-170419-05Y-4.750-1,000	---	---	---	---	---	---	---	---	---
2,089,066	1,000.00	3.38	Actual/Actual	17/07/2017	3	---	17/07	3.38	1	GGB-FXD-170717-03Y-3.375-1,000	---	---	---	---	---	---	---	---	---

Government Bonds Notes

Transactions Volume = (Pieces) * (Nominal Price). Transactions Value = (Pieces) * (Nominal Price) * (price %) + (Accrued interest).
The Value of current coupon for the issues with NV 0.01 euro refers to NV 100 euros
FLR: Floating Interest Rate.
[1] - The Expiration Date of the interest bearing period and the Date for coupon payment.

Bonds in Circulation	Currency / Min nominal traded Value	Coupons Payment Date	Current Coupon Value	Note	Coupon	Trading Unit	Issue Date	Duration (years)	Today's Interest	A.I.C in days	Bonds	Last price of previous days		Last Outcry in Cash (euro) Price Buy / Sell		Trades in Pieces	Life min	Life Max	
Corporate Bonds in Foreign Currency and Euro																			
103,746	GBP / 10	01/12	0.25	---	58	1	01/12/1930	98	2.5	360	National Mortgage Bank	2.27	05/02/1996	2.27	S	05/02/1996	---	2.27	2.27
0	GBP / 10	01/12	0.25	---	60	1	01/12/1928	100	2.5	360	National Mortgage Bank	---	---	---	---	---	---	---	---

Government Bonds Notes

A.I.C: Accrued Interest Calculation base.
FLR: Floating Interest Rate.
The minimum tradeable Nominal Value for all Demeterialised Government Titles is 100 Euros.
(μτφρ-0)

Athex & ATHEXClear Members List

Member Name			Stock Market			Derivatives Market		ATHEXClear Member	
Address	Phone	Fax	Market Member	Remote Member	Market Maker	Proprietary	Market Maker	General Clearing	Direct Clearing
A. SARRIS SECURITIES S.A.			a						
6, DRAGATSANIOU ATHINA	+30 2103367700	210-3312324							
ALPHA FINANCE INVESTMENT SERVICES S.A.			a		a	a	a		a
5, MERLIN ATHINA	+30 2103677400	210-33311193							
ALPHA BANK A.E.								a	
40, STADIOU STR ATHINA	(210)-3260000	(210)-3264116							
	(210)-3265546	(210)-3265811							
103, AVE. ATHINON ATHINA	+30 2103436820	210-3436270							
ARGUS STOCKBROKERS LTD			a	a		a			
25 , DIMOSTHENI SEVERI AVE NICOSIA	+357 22717000	0035722717070							
ATLANTIC SECURITIES LIMITED			a	a					
37, PRODROMOU NICOSIA	+357 22445400	00357 22661914							
ATLAS SECURITIES S.A			a			a			
, 125 MICHALAKOPOULOU & 14-16 VERVENON ATHINA	+30 2103363300	210-3238925							
ATTICA BANK S.A.								a	
54, AKADIMIAS STR. ATHINA	(210)-3390757	(210)-3646090							
23, OMIROU ATHINA	+30 2103669261	210-3669265							
23, OMIROU STR. ATHINA	(210)-3669000	(210)-3669410							
AXIA VENTURES GROUP LTD			a	a					
, KRANIDIOTI 10, OFFICE 102 NICOSIA	+357 22742000	357 22742001							
AXON SECURITIES S.A.			a			a			
48, STADIOU ATHINA	+30 2103363800	210-3243903							
BANK OF AMERICA MERRILL LYNCH			a	a					
2 , KING EDWARD STREET LONDON	+44 20276281000								
BETA SECURITIES S.A.			a		a	a			a
29 , ALEXANDRAS AVEN. & VRAILA ATHINA	+30 2106478900	210-6410139							
BNP PARIBAS SECURITIES SERVICES S.A.								a	
2, LAMPSAKOU ATHINA	+30 2107468500	210-7468579-581							
CAPITAL SECURITIES S.A.			a			a			
58, MITROPOLEOS ATHINA	+30 2103369700	+30 210 3369820							
CFS SECURITIES-INVESTMENT SERVICES S.A.			a						
3, PAPARRIGOPOULOU ATHINA	+30 2103360800	+30 210-3360980							
CITIGROUP GLOBAL MARKET LTD			a	a					
1, CITIGROUP CENTER , CANADA SQ., CANARY WHARF LONDON	+44 02079864000								
CREDIT SUISSE SECURITIES (EUROPE) LIMITED			a	a					
, ONE CABOT SQUARE LONDON	+44 2078888888								
CYCLOS SECURITIES S.A.			a			a			a
39, PANEPISTIMIOU ATHINA	+30 2103364300	+30 210-3239122							
D.A. TSEKOURAS SEC. S.A.			a						
33, STADIOU ATHINA	+30 2103245100	210-3211997							
DELTASTOCK AD									a
115, MEGAPARK OFFICE BUILDING, OFFICE AREA E, G TSARIGRADSKOJ 39	+35928115051	+35928115049							
DEUTSCHE BANK S.A.			a	a		a			
1 , GREAT WINCHESTER STREET LONDON	+44 20 754 54209	00441133361437							
DYNAMIC SECURITIES S.A.			a			a			a
8, OMIROU ATHINA	+30 2103677700	210-3677777							
EL. PETROPOULAKIS SECURITIES S.A.			a			a			
9, ARISTEIDOU ATHINA	+30 2103213928	+30 210-3216810							
ESTINVEST S.A.									a
9, TH REPUBLICII STREET FOCSANI	+40 237238900	+40 237237471							
EUROBANK ERGASIAS S.A.								a	
8, OTHONOS ATHINA	+30 2103337000	210-3245916							
8, OTHONOS STR. ATHINA	(210)-3337969	(210)-3245916							
	(210)-3337000	(210)-3233866							
EUROBANK SECURITIES INVESTMENT FIRM S.A			a		a	a	a		a
, FILELLINON 10 & XENOFONTOS 13 ATHINA	+30 2103720000	210-3720001							
EUROCORP SECURITIES S.A.			a			a			a
14, SQ.FILIKIS ETAIRIAS ATHINA	+30 2107263500	210-7263666							
EUOTRUST BROKERAGE S.A.			a						
113, SEVASTOUPOLEOS ATHINA	+30 2103363100	+30 210-3238334							
EUROXX SECURITIES S.A.			a		a	a	a		a
7, PALAIOLOGOU CHALANDRI	(210)-6879400	(210)-6879401							
7, PALEOLOGOU CHALANDRI	+30 2106879400	210-6879401							

Athex & ATHEXClear Members List

Member Name			Stock Market			Derivatives Market		ATHEXClear Member	
Address	Phone	Fax	Market Member	Remote Member	Market Maker	Proprietary	Market Maker	General Clearing	Direct Clearing
G. A. PERVAS SECURITIES-INVESTMENT SERVICES CO S.A.			a						
7-9, SOFOKLEOUS ATHINA	+30 2103727200	210-3210-291							
GLOBAL CAPITAL SECURITIES AND FINANCIAL SERVICES LTD			a	a					
, AVE. ARCHIEPISKOPOU MAKARIOU NICOSIA	+357 22710710	357 22339332							
GUARDIAN TRUST SECURITIES S.A			a			a			
31, ERMOU ATHINA	+30 2103378700	210-3220498							
HELLENIC BANK (INVESTMENTS) LTD			a	a					
, AVE.KYRIAKOU MATSI 31 - PO BOX 24747 NICOSIA	+357 22500100	357 22500110							
HELLENICAMERICAN SEC. S.A.			a		a	a			a
27, ANDREA PAPANDREOU ATHINA	+30 2103311100	+30 210-3215968							
HSBC BANK PLC								a	
109-111, AVE. MESOGION ATHINA	+30 2106960000	210-6928000							
INDEX SECURITIES S.A.			a						
6, DRAGATSANIOU ATHINA	+30 2103213920	+30 210-3213216							
INTERFINBROK CORPORATION S.A.									a
1, STR.CALARASI NR. CONSTANTA	+40 241639071	0241-547829							
INVESTMENT BANK OF GREECE S.A.			a		a	a		a	
32 , EGIALIAS & PARADISOU MAROUSI	+30 2108173111	+30 210-6896325							
J. CHR. MAVRIKIS SECURITIES S.A.			a						
5, SOFOKLEOUS ATHINA	+30 2103216730	210-3217767							
KAPPA SECURITIES S.A.			a			a			
15, VALAORITOU ATHINA	+30 2103678600	+30 210-3641002							
KARAMANOF SECURITIES-INV. SERVICES S.A.			a			a			
2, SQ. AGION THEODORON ATHINA	+30 2103212947	+30 210-3217088							
LAIKI FINANCIAL SERVICES LTD				a					
26, AVE. VYRONOS NICOSIA	357 22367367	357 22718567							
LEON DEPOLAS SECURITIES S.A.			a		a	a			
1, CHRISTOU LADA ATHINA	+30 2103213276	+30 210-3211618							
MAGNA TRUST SECURITIES S.A			a						
12-14, KARAGIORGI SERBIAS ATHINA	+30 2103800820	210-3220910							
MEGA EQUITY SECURITIES-FINANCIAL SERVICES LTD			a	a		a			
42-44, AVE. GRIVA DIGENI NICOSIA	+357 22711711	357 22711811							
MERIT SECURITIES S.A			a		a	a			a
3, GEORGIOU SOURI ATHINA	+30 2103671890	210-3671830							
MIDAS BROKERAGE S.A.			a		a				
5, SOFOKLEOUS ATHINA	+30 2141008800	+30 210-3253205							
N. CHRYSISOCHOIDIS STOCK BROKERAGE I.S.S.A.			a			a			a
7-9, SOFOKLEOUS ATHINA	+30 2103213913	+30 210-3216115							
NATIONAL BANK OF GREECE S.A.			a			a		a	
86, AIOLOU STR. ATHINA	(210)-3341000	(210)-3228187							
68, AKADIMIAS STR. ATHINA	(210)-3328817	(210)-3328678							
NATIONAL SECURITIES S.A			a		a	a	a		
66, KIFISIAS AVE , BUILDING A ATHINA	+30 2107720000	+30 210-7720002							
NUNTIUS SECURITIES S.A			a						
6, DRAGATSANIOU ATHINA	+30 2103350599	+30210-3254846							
ONE PLUS CAPITAL LIMITED			a	a					
, 75 PRODRAMOU AVENUE, ONEWORLD PARKVIEW HOUSE, 3RD FLOOR, 22873760	+30 2103350599								
PANTELAKIS SECURITIES S.A.			a			a	a		
57, ETHNIKIS ANTISTASIS B CHALANDRI	+30 2106965000	210-6929550							
PEGASUS BROKERAGE FIRM S.A			a			a			
17 , VALAORITOU & AMERIKIS ATHINA	+30 2103670700	+30 210-3670760							
PIRAEUS BANK S.A.			a			a		a	
4, AMERIKIS STR. ATHINA	(210)-3335000	(210)-3335079							
4, AMERIKIS STR ATHINA	(210)-3335918	(210)-3254207							
4, AMERIKIS ATHINA	+30 2103335000	210-3335079							
PIRAEUS SECURITIES S.A.			a		a	a	a		a
5, KORAI ATHINA	+30 2103354100	210-3354170							
PRELIUM SECURITIES-INVESTMENT SERVICES S.A.			a			a			
1 , DAVAKI & KIFISIAS AVE. ATHINA	+30 2103677000	+30 210-6926403							
PROCHOICE SECURITIES LTD			a	a					
57, SPYROY KYPRIANOY NICOSIA	+357-24-661192	+357-24-662464							
SHARELINK SECURITIES-FINANCIAL SERVICES LTD			a	a		a			
6 , THEOTOKI MEGARO ELLINA NICOSIA	+357 22554200	+357 22750852							

Athex & ATHEXClear Members List

Member Name			Stock Market			Derivatives Market		ATHEXClear Member	
Address	Phone	Fax	Market Member	Remote Member	Market Maker	Proprietary	Market Maker	General Clearing	Direct Clearing
SOCIETE GENERALE S.A.			a	a		a			
, 17 COURS VALMY 92987 PUTEAUX - LA DEFENSE PARIS	+33 157290504	+33142138697							
SOLIDUS SECURITIES S.A			a			a			a
64, LOUIZIS RIANCOUR ATHINA	+30 2106900600	210-6985421							
SSIF VIENNA INVESTMENT TRUST S.A.									a
, 4 SPLAIUL UNIRII, BUILDING B3 BUCHAREST	+40 212074880	004 021 207 48 98							
ST. EM. LAVRENTAKIS SECURITIES S.A.			a			a			
7-9, SOFOKLEOUS ATHINA	+30 2103213336	+30 210-3246572							
THE CYPRUS INVESTMENT & SECURITIES CORPORATION LTD			a	a					
154, LIMASSOL AVENUE, STROVOLOS NICOSIA	+357 22121700	357 22338800							
UBS LIMITED			a	a					
1 , FINSBURY AVENUE LONDON	+44 2075687135								

List of Stocks under Market Making operations

Securities	Stock Category
Market Maker	Start Market Making
FRIGOGLASS SA (CR)	Surveillance
EUROBANK SECURITIES INVESTMENT FIRM S.A	27/10/2014
ALPHA BANK (CR)	Main Market
ALPHA FINANCE INVESTMENT SERVICES S.A.	29/02/2016
EUROBANK SECURITIES INVESTMENT FIRM S.A	24/10/2012
LEON DEPOLAS SECURITIES S.A.	04/01/2016
MERIT SECURITIES S.A	03/09/2013
MIDAS BROKERAGE S.A.	11/01/2006
NATIONAL SECURITIES S.A	15/01/2013
PIRAEUS SECURITIES S.A.	28/05/2013
ALUMIL (CR)	Main Market
BETA SECURITIES S.A.	18/07/2013
ATTICA BANK S.A. (CR)	Main Market
BETA SECURITIES S.A.	02/06/2014
EUROBANK SECURITIES INVESTMENT FIRM S.A	25/07/2014
EUROXX SECURITIES S.A.	22/01/2016
BYTE COMPUTER SA (CR)	Main Market
MERIT SECURITIES S.A	04/08/2013
CC HBC AG (CR)	Main Market
EUROBANK SECURITIES INVESTMENT FIRM S.A	23/10/2013
NATIONAL SECURITIES S.A	29/04/2013
PIRAEUS SECURITIES S.A.	04/05/2015
CENERGY HOLDINGS (CB)	Main Market
ALPHA FINANCE INVESTMENT SERVICES S.A.	02/01/2017
EUROBANK SECURITIES INVESTMENT FIRM S.A	02/01/2017
ELLAKTOR (CR)	Main Market
EUROBANK SECURITIES INVESTMENT FIRM S.A	01/06/2013
NATIONAL SECURITIES S.A	25/06/2013
ELTON SA (CR)	Main Market
BETA SECURITIES S.A.	03/09/2013
EUROBANK ERGASIAS (CR)	Main Market
ALPHA FINANCE INVESTMENT SERVICES S.A.	08/01/2013
EUROBANK SECURITIES INVESTMENT FIRM S.A	01/06/2013
HELLENICAMERICAN SEC. S.A.	25/07/2014
MIDAS BROKERAGE S.A.	07/01/2016
PIRAEUS SECURITIES S.A.	28/09/2013
EUROCONSULTANTS S.A. (CR)	Main Market
EUROBANK SECURITIES INVESTMENT FIRM S.A	22/07/2014
FOLLI FOLLIE (CR)	Main Market
NATIONAL SECURITIES S.A	17/02/2014
PIRAEUS SECURITIES S.A.	04/05/2015
FOURLIS (CR)	Main Market
EUROBANK SECURITIES INVESTMENT FIRM S.A	01/12/2016
EUROXX SECURITIES S.A.	01/12/2016
GEK TERNA (CR)	Main Market
HELLENICAMERICAN SEC. S.A.	07/09/2015
GR. SARANTIS SA (CR)	Main Market
BETA SECURITIES S.A.	14/05/2013
EUROBANK SECURITIES INVESTMENT FIRM S.A	24/10/2016
HELLENIC EXCHANGES-A.S.E. (CR)	Main Market
EUROBANK SECURITIES INVESTMENT FIRM S.A	01/06/2013
HELLENICAMERICAN SEC. S.A.	01/09/2014
NATIONAL SECURITIES S.A	25/06/2013
PIRAEUS SECURITIES S.A.	04/05/2015
HELLENIC PETROLEUM (CR)	Main Market
HELLENICAMERICAN SEC. S.A.	14/09/2015
HYGEIA SA (CR)	Main Market
HELLENICAMERICAN SEC. S.A.	18/04/2016
INTRACOM HOLDINGS (CR)	Main Market
HELLENICAMERICAN SEC. S.A.	07/09/2015
INTRALOT (CR)	Main Market
PIRAEUS SECURITIES S.A.	28/09/2013
J & P - AVAX SA (CR)	Main Market
EUROBANK SECURITIES INVESTMENT FIRM S.A	14/12/2015
JUMBO SA (CR)	Main Market
MIDAS BROKERAGE S.A.	27/07/2016
KLOUKINAS - LAPPAS SA (CR)	Main Market
BETA SECURITIES S.A.	22/09/2014

List of Stocks under Market Making operations

Securities	Stock Category
Market Maker	Start Market Making
LAMDA DEVELOPMENT SA (CR)	Main Market
EUROBANK SECURITIES INVESTMENT FIRM S.A	08/12/2014
MARFIN INVESTMENT GROUP (CR)	Main Market
HELLENICAMERICAN SEC. S.A.	25/07/2014
PIRAEUS SECURITIES S.A.	02/02/2013
MLS MULTIMEDIA SA (CR)	Main Market
HELLENICAMERICAN SEC. S.A.	07/12/2015
MOTOR OIL (CR)	Main Market
EUROBANK SECURITIES INVESTMENT FIRM S.A	23/10/2012
HELLENICAMERICAN SEC. S.A.	01/09/2014
NATIONAL SECURITIES S.A	17/02/2014
PIRAEUS SECURITIES S.A.	04/05/2015
MYTILINEOS HOLDINGS (CR)	Main Market
NATIONAL SECURITIES S.A	25/06/2013
PIRAEUS SECURITIES S.A.	04/05/2015
NATIONAL BANK (CR)	Main Market
ALPHA FINANCE INVESTMENT SERVICES S.A.	08/01/2013
EUROBANK SECURITIES INVESTMENT FIRM S.A	24/10/2012
HELLENICAMERICAN SEC. S.A.	25/07/2014
LEON DEPOLAS SECURITIES S.A.	20/04/2015
MERIT SECURITIES S.A	03/09/2013
MIDAS BROKERAGE S.A.	07/01/2016
NATIONAL SECURITIES S.A	28/02/2013
PIRAEUS SECURITIES S.A.	08/09/2013
OPAP (CR)	Main Market
ALPHA FINANCE INVESTMENT SERVICES S.A.	08/01/2013
EUROBANK SECURITIES INVESTMENT FIRM S.A	24/10/2012
HELLENICAMERICAN SEC. S.A.	25/07/2014
MIDAS BROKERAGE S.A.	04/04/2016
NATIONAL SECURITIES S.A	15/01/2013
PIRAEUS SECURITIES S.A.	04/05/2015
OTE (CR)	Main Market
ALPHA FINANCE INVESTMENT SERVICES S.A.	08/01/2013
EUROBANK SECURITIES INVESTMENT FIRM S.A	24/10/2012
HELLENICAMERICAN SEC. S.A.	25/07/2014
MIDAS BROKERAGE S.A.	01/10/2015
NATIONAL SECURITIES S.A	01/12/2012
PIRAEUS SECURITIES S.A.	08/09/2013
PAPOUTSANIS (CR)	Main Market
BETA SECURITIES S.A.	25/11/2013
PETROPOULOS PETROS (CR)	Main Market
BETA SECURITIES S.A.	28/05/2013
PIRAEUS BANK (CR)	Main Market
EUROBANK SECURITIES INVESTMENT FIRM S.A	23/10/2012
EUROXX SECURITIES S.A.	15/02/2016
HELLENICAMERICAN SEC. S.A.	25/07/2014
MERIT SECURITIES S.A	16/09/2013
MIDAS BROKERAGE S.A.	11/01/2016
NATIONAL SECURITIES S.A	02/06/2013
PIRAEUS SECURITIES S.A.	16/02/2013
PLAISIO COMPUTERS SA (CR)	Main Market
BETA SECURITIES S.A.	05/05/2014
EUROBANK SECURITIES INVESTMENT FIRM S.A	02/03/2015
PPC (CR)	Main Market
ALPHA FINANCE INVESTMENT SERVICES S.A.	08/01/2013
EUROBANK SECURITIES INVESTMENT FIRM S.A	23/10/2012
MIDAS BROKERAGE S.A.	04/04/2016
NATIONAL SECURITIES S.A	26/03/2013
PIRAEUS SECURITIES S.A.	28/09/2013
QUALITY & RELIABILITY SA (CR)	Main Market
BETA SECURITIES S.A.	20/08/2014
S.KANAKIS SA (CR)	Main Market
BETA SECURITIES S.A.	01/10/2013
TITAN CEMENT (CR)	Main Market
EUROBANK SECURITIES INVESTMENT FIRM S.A	23/10/2012
NATIONAL SECURITIES S.A	17/02/2014
PIRAEUS SECURITIES S.A.	04/05/2015

List of Stocks under Market Making operations

Securities	Stock Category
Market Maker	Start Market Making
VIOHALCO SA/NV (CB)	Main Market
ALPHA FINANCE INVESTMENT SERVICES S.A.	17/02/2014
MERIT SECURITIES S.A	17/03/2014

Underlying Asset				Derivatives Market													
Price max	Price min	Closing price	change	Delivery Month	Open price	Price max	Price min	Last price	Closing price	Last Bid	Last Ask	Settlement price	Life high	Life low	Trades	Volume	Open Interest
FTSE/Athex Large Cap																	(Trade Unit: 1 Index Point x 2€, Cash Settlement)
1,736.82	1,704.15	1,724.25	0.03%	January 2017	1,722.50	1,738.00	1,705.00	1,725.00	1,725.00	---	---	1,714.00	1,800.00	---	232	2,650	1,734
				February 2017	1,731.00	1,738.50	1,705.00	1,726.75	1,726.75	---	---	1,715.75	1,801.00	---	260	2,498	6,281
				March 2017	1,732.00	1,732.00	1,732.00	1,732.00	1,732.00	---	---	1,711.00	1,732.00	---	1	6	49
				June 2017	---	---	---	---	1,738.00	---	---	---	---	---	---	---	---
				September 2017	---	---	---	---	1,746.75	---	---	---	---	---	---	---	---
				December 2017	---	---	---	---	1,755.50	---	---	---	---	---	---	---	---

Underlying Asset				Derivatives Market													
Price max	Price min	Closing price	change	Delivery Month	Open price	Price max	Price min	Last price	Closing price	Last Bid	Last Ask	Settlement price	Life high	Life low	Trades	Volume	Open Interest
ALPHA BANK (CR)				(Contract Size: 100 Securities, Physical Delivery)													
1.86	1.81	1.84	0.55%	March 2017	1.84	1.86	1.81	1.85	1.85	---	---	1.82	2.04	---	194	4,522	21,953
				June 2017	---	---	---	---	1.85	---	---	---	---	---	---	---	---
				September 2017	---	---	---	---	1.85	---	---	---	---	---	---	---	---
				December 2017	---	---	---	---	1.86	---	---	---	---	---	---	---	---
CC HBC AG (CR)				(Contract Size: 100 Securities, Physical Delivery)													
21.09	20.89	21.07	1.20%	March 2017	20.99	21.09	20.99	21.09	21.09	---	---	21.08	21.09	---	7	13	105
				June 2017	---	---	---	---	20.99	---	---	---	---	---	---	---	---
				September 2017	---	---	---	---	21.10	---	---	---	---	---	---	---	---
				December 2017	---	---	---	---	21.20	---	---	---	---	---	---	---	---
ELLAKTOR (CR)				(Contract Size: 100 Securities, Physical Delivery)													
1.18	1.15	1.16	0.00%	March 2017	---	---	---	---	1.16	---	---	1.17	1.25	---	---	---	3,670
				June 2017	---	---	---	---	1.17	---	---	---	---	---	---	---	---
				September 2017	---	---	---	---	1.18	---	---	---	---	---	---	---	---
				December 2017	---	---	---	---	1.18	---	---	---	---	---	---	---	---
EUROBANK ERGASIAS (CR)				(Contract Size: 100 Securities, Physical Delivery)													
0.656	0.627	0.628	-2.94%	March 2017	0.648	0.656	0.628	0.631	0.631	---	---	0.632	0.764	---	217	6,606	47,255
				June 2017	---	---	---	---	0.652	---	---	---	---	---	---	---	---
				September 2017	---	---	---	---	0.656	---	---	---	---	---	---	---	---
				December 2017	---	---	---	---	0.659	---	---	---	---	---	---	---	---
EYDAP S.A. (CR)				(Contract Size: 100 Securities, Physical Delivery)													
5.34	5.30	5.32	-0.75%	March 2017	---	---	---	---	5.38	---	---	4.85	5.57	---	---	---	72
				June 2017	---	---	---	---	5.40	---	---	---	---	---	---	---	---
				September 2017	---	---	---	---	5.43	---	---	---	---	---	---	---	---
				December 2017	---	---	---	---	5.46	---	---	---	---	---	---	---	---
FOLLI FOLLIE (CR)				(Contract Size: 100 Securities, Physical Delivery)													
18.46	18.04	18.05	-1.80%	March 2017	18.40	18.40	18.07	18.07	18.07	---	---	17.84	22.10	---	15	24	432
				June 2017	---	---	---	---	18.53	---	---	---	---	---	---	---	---
				September 2017	---	---	---	---	18.63	---	---	---	---	---	---	---	---
				December 2017	---	---	---	---	18.72	---	---	---	---	---	---	---	---
GEK TERNA (CR)				(Contract Size: 100 Securities, Physical Delivery)													
2.38	2.33	2.36	1.29%	March 2017	2.34	2.38	2.34	2.38	2.38	---	---	2.38	2.42	---	3	6	7,784
				June 2017	---	---	---	---	2.35	---	---	---	---	---	---	---	---
				September 2017	---	---	---	---	2.36	---	---	---	---	---	---	---	---
				December 2017	---	---	---	---	2.37	---	---	---	---	---	---	---	---
GRIVALIA PROPERTIES (CR)				(Contract Size: 100 Securities, Physical Delivery)													
8.12	7.88	8.00	0.50%	March 2017	---	---	---	---	7.99	---	---	7.96	8.21	---	---	---	64
				June 2017	---	---	---	---	8.03	---	---	---	---	---	---	---	---
				September 2017	---	---	---	---	8.07	---	---	---	---	---	---	---	---
				December 2017	---	---	---	---	8.11	---	---	---	---	---	---	---	---

Underlying Asset				Derivatives Market													
Price max	Price min	Closing price	change	Delivery Month	Open price	Price max	Price min	Last price	Closing price	Last Bid	Last Ask	Settlement price	Life high	Life low	Trades	Volume	Open Interest
HELLENIC EXCHANGES-A.S.E. (CR)				(Contract Size: 100 Securities, Physical Delivery)													
4.86	4.78	4.82	-0.62%	March 2017	4.84	4.84	4.82	4.84	4.84	---	---	4.84	4.94	---	8	21	311
				June 2017	---	---	---	---	4.89	---	---	---	---	---	---	---	---
				September 2017	---	---	---	---	4.91	---	---	---	---	---	---	---	---
				December 2017	---	---	---	---	4.94	---	---	---	---	---	---	---	---
HELLENIC PETROLEUM (CR)				(Contract Size: 100 Securities, Physical Delivery)													
4.46	4.38	4.44	0.23%	March 2017	4.44	4.48	4.39	4.48	4.48	---	---	4.44	4.57	---	28	87	3,942
				June 2017	---	---	---	---	4.47	---	---	4.42	4.43	---	---	---	---
				September 2017	---	---	---	---	4.49	---	---	---	---	---	---	---	---
				December 2017	---	---	---	---	4.51	---	---	---	---	---	---	---	---
INTRALOT (CR)				(Contract Size: 100 Securities, Physical Delivery)													
1.16	1.09	1.12	1.82%	March 2017	1.13	1.16	1.13	1.15	1.15	---	---	1.14	1.16	---	23	116	1,377
				June 2017	---	---	---	---	1.11	---	---	---	---	---	---	---	---
				September 2017	---	---	---	---	1.11	---	---	---	---	---	---	---	---
				December 2017	---	---	---	---	1.12	---	---	---	---	---	---	---	---
JUMBO SA (CR)				(Contract Size: 100 Securities, Physical Delivery)													
14.68	14.21	14.68	0.00%	March 2017	14.50	14.65	14.29	14.65	14.65	---	---	14.43	15.11	---	14	21	540
				June 2017	---	---	---	---	14.80	---	---	---	---	---	---	---	---
				September 2017	---	---	---	---	14.88	---	---	---	---	---	---	---	---
				December 2017	---	---	---	---	14.95	---	---	---	---	---	---	---	---
MARFIN INVESTMENT GROUP (CR)				(Contract Size: 100 Securities, Physical Delivery)													
0.155	0.151	0.152	-1.30%	March 2017	0.155	0.155	0.151	0.155	0.155	---	---	0.152	0.171	---	33	651	52,215
				June 2017	---	---	---	---	0.155	---	---	---	---	---	---	---	---
				September 2017	---	---	---	---	0.156	---	---	---	---	---	---	---	---
				December 2017	---	---	---	---	0.157	---	---	---	---	---	---	---	---
METKA (CR)				(Contract Size: 100 Securities, Physical Delivery)													
6.43	6.32	6.39	0.16%	March 2017	6.38	6.39	6.38	6.39	6.39	---	---	6.45	7.65	---	3	12	365
				June 2017	---	---	---	---	6.43	---	---	---	---	---	---	---	---
				September 2017	---	---	---	---	6.47	---	---	---	---	---	---	---	---
				December 2017	---	---	---	---	6.50	---	---	---	---	---	---	---	---
MOTOR OIL (CR)				(Contract Size: 100 Securities, Physical Delivery)													
13.70	13.26	13.40	-1.40%	March 2017	13.65	13.65	13.42	13.42	13.42	---	---	13.09	13.90	---	7	13	107
				June 2017	---	---	---	---	13.70	---	---	---	---	---	---	---	---
				September 2017	---	---	---	---	13.77	---	---	---	---	---	---	---	---
				December 2017	---	---	---	---	13.84	---	---	---	---	---	---	---	---
MYTILINEOS HOLDINGS (CR)				(Contract Size: 100 Securities, Physical Delivery)													
6.26	6.14	6.22	0.00%	March 2017	6.23	6.24	6.16	6.23	6.23	---	---	6.24	6.56	---	20	69	4,878
				June 2017	---	---	---	---	6.27	---	---	---	---	---	---	---	---
				September 2017	---	---	---	---	6.30	---	---	---	---	---	---	---	---
				December 2017	---	---	---	---	6.33	---	---	---	---	---	---	---	---

Underlying Asset				Derivatives Market													
Price max	Price min	Closing price	change	Delivery Month	Open price	Price max	Price min	Last price	Closing price	Last Bid	Last Ask	Settlement price	Life high	Life low	Trades	Volume	Open Interest
NATIONAL BANK (CR)				(Contract Size: 100 Securities, Physical Delivery)													
0.246	0.236	0.240	-0.41%	March 2017	0.243	0.246	0.237	0.241	0.241	---	---	0.241	0.273	---	201	16,348	91,844
				June 2017	---	---	---	---	0.243	---	---	---	---	---	---	---	---
				September 2017	---	---	---	---	0.244	---	---	---	---	---	---	---	---
				December 2017	---	---	---	---	0.245	---	---	---	---	---	---	---	---
OPAP (CR)				(Contract Size: 100 Securities, Physical Delivery)													
8.48	8.26	8.46	0.71%	March 2017	8.43	8.49	8.27	8.46	8.46	---	---	8.44	8.81	---	58	168	2,255
				June 2017	---	---	---	---	8.47	---	---	8.37	8.43	---	---	---	---
				September 2017	---	---	---	---	8.51	---	---	---	---	---	---	---	---
				December 2017	---	---	---	---	8.55	---	---	---	---	---	---	---	---
OTE (CR)				(Contract Size: 100 Securities, Physical Delivery)													
8.88	8.74	8.80	-0.90%	March 2017	8.87	8.88	8.75	8.83	8.83	---	---	8.83	9.69	---	34	240	4,385
				June 2017	---	---	---	---	8.95	---	---	---	---	---	---	---	---
				September 2017	---	---	---	---	9.00	---	---	---	---	---	---	---	---
				December 2017	---	---	---	---	9.04	---	---	---	---	---	---	---	---
P.P.A. S.A. (CR)				(Contract Size: 100 Securities, Physical Delivery)													
13.27	12.96	12.99	-0.84%	March 2017	13.00	13.00	13.00	13.00	13.00	---	---	13.13	13.65	---	1	1	626
				June 2017	---	---	---	---	13.21	---	---	---	---	---	---	---	---
				September 2017	---	---	---	---	13.27	---	---	---	---	---	---	---	---
				December 2017	---	---	---	---	13.34	---	---	---	---	---	---	---	---
PIRAEUS BANK (CR)				(Contract Size: 100 Securities, Physical Delivery)													
0.203	0.195	0.198	-1.00%	March 2017	0.198	0.203	0.196	0.198	0.198	---	---	0.197	0.242	---	219	14,863	91,392
				June 2017	---	---	---	---	0.202	---	---	---	---	---	---	---	---
				September 2017	---	---	---	---	0.203	---	---	---	---	---	---	---	---
				December 2017	---	---	---	---	0.204	---	---	---	---	---	---	---	---
PPC (CR)				(Contract Size: 100 Securities, Physical Delivery)													
2.92	2.85	2.85	-1.04%	March 2017	2.90	2.93	2.86	2.87	2.87	---	---	2.86	3.26	---	65	317	7,682
				June 2017	---	---	---	---	2.90	---	---	---	---	---	---	---	---
				September 2017	---	---	---	---	2.92	---	---	---	---	---	---	---	---
				December 2017	---	---	---	---	2.93	---	---	---	---	---	---	---	---
TERNA ENERGY (CR)				(Contract Size: 100 Securities, Physical Delivery)													
2.92	2.88	2.90	0.00%	March 2017	2.90	2.90	2.90	2.90	2.90	---	---	2.93	2.95	---	1	5	1,332
				June 2017	---	---	---	---	2.92	---	---	---	---	---	---	---	---
				September 2017	---	---	---	---	2.94	---	---	---	---	---	---	---	---
				December 2017	---	---	---	---	2.95	---	---	---	---	---	---	---	---
TITAN CEMENT (CR)				(Contract Size: 100 Securities, Physical Delivery)													
22.20	21.59	22.20	2.07%	March 2017	21.74	22.08	21.70	22.08	22.08	---	---	21.88	22.40	---	7	11	101
				June 2017	---	---	---	---	21.93	---	---	---	---	---	---	---	---
				September 2017	---	---	---	---	22.04	---	---	---	---	---	---	---	---
				December 2017	---	---	---	---	22.15	---	---	---	---	---	---	---	---

Underlying Asset				Derivatives Market													
Price max	Price min	Closing price	change	Delivery Month	Open price	Price max	Price min	Last price	Closing price	Last Bid	Last Ask	Settlement price	Life high	Life low	Trades	Volume	Open Interest
VIOHALCO SA/NV (CB)				(Contract Size: 100 Securities, Physical Delivery)													
1.40	1.37	1.37	-2.14%	March 2017	1.38	1.38	1.37	1.38	1.38	---	---	1.38	1.49	---	10	25	2,793
				June 2017	---	---	---	---	1.41	---	---	---	---	---	---	---	---
				September 2017	---	---	---	---	1.42	---	---	---	---	---	---	---	---
				December 2017	---	---	---	---	1.43	---	---	---	---	---	---	---	---

FTSE/Athex Large Cap

(Trade Unit: 1 Index Point x 2€ - Exercise Style: European, Cash Settlement)

Call Options																	Put Options																			
January 2017								February 2017								Other Months		January 2017								February 2017								Other Months		
Exerise Price	Open price	Price max	Price min	Last price	Closing price	Volume	Open Interest	Open price	Price max	Price min	Last price	Closing price	Volume	Open Interest	Volume	Open Interest	Open price	Price max	Price min	Last price	Closing price	Volume	Open Interest	Open price	Price max	Price min	Last price	Closing price	Volume	Open Interest	Volume	Open Interest	Exerise Price			
1,200	-	-	-	-	-	-	-	-	-	-	-	-	-	-	-	-	-	-	-	-	-	-	-	-	-	-	-	-	-	-	-	1,200				
1,250	-	-	-	-	-	-	-	-	-	-	-	-	-	-	-	-	-	-	-	-	-	-	-	-	-	-	-	-	-	-	-	1,250				
1,275	-	-	-	-	-	-	-	-	-	-	-	-	-	-	-	-	-	-	-	-	-	-	-	-	-	-	-	-	-	-	-	1,275				
1,300	-	-	-	-	-	-	-	-	-	-	-	-	-	-	-	-	-	-	-	-	-	-	-	-	-	-	-	-	-	-	-	1,300				
1,325	-	-	-	-	-	-	-	-	-	-	-	-	-	-	-	-	-	-	-	-	-	-	-	-	-	-	-	-	-	-	-	1,325				
1,350	-	-	-	-	-	-	-	-	-	-	-	-	-	-	-	-	-	-	-	-	-	-	-	-	-	-	-	-	-	-	-	1,350				
1,375	0.00	0.00	0.00	-	350.00	-	-	-	-	-	-	-	-	-	-	-	0.00	0.00	0.00	-	0.01	-	-	-	-	-	-	-	-	-	-	-	1,375			
1,400	0.00	0.00	0.00	-	325.00	-	-	-	-	-	-	-	-	-	-	-	0.00	0.00	0.00	-	0.02	-	-	-	-	-	-	-	-	-	-	-	1,400			
1,425	0.00	0.00	0.00	-	300.00	-	-	-	-	-	-	-	-	-	-	-	0.00	0.00	0.00	-	0.01	-	-	-	-	-	-	-	-	-	-	-	1,425			
1,450	0.00	0.00	0.00	-	275.00	-	2	-	-	-	-	-	-	-	-	-	0.00	0.00	0.00	-	0.02	-	-	-	-	-	-	-	-	-	-	-	1,450			
1,475	0.00	0.00	0.00	-	250.00	-	4	-	-	-	-	-	-	-	-	-	0.00	0.00	0.00	-	0.01	-	-	-	-	-	-	-	-	-	-	-	1,475			
1,500	0.00	0.00	0.00	-	225.00	-	-	0.00	0.00	0.00	-	226.00	-	-	-	-	0.00	0.00	0.00	-	0.01	-	-	0.00	0.00	0.00	-	0.12	-	-	-	-	1,500			
1,525	0.00	0.00	0.00	-	200.00	-	-	0.00	0.00	0.00	-	201.00	-	-	-	-	0.00	0.00	0.00	-	0.05	-	-	0.00	0.00	0.00	-	0.30	-	-	-	-	1,525			
1,550	0.00	0.00	0.00	-	175.00	-	9	0.00	0.00	0.00	-	177.00	-	-	-	-	0.00	0.00	0.00	-	0.01	-	10	0.00	0.00	0.00	-	0.72	-	-	-	-	1,550			
1,575	0.00	0.00	0.00	-	150.00	-	-	0.00	0.00	0.00	-	153.00	-	-	-	-	0.00	0.00	0.00	-	0.01	-	10	0.00	0.00	0.00	-	1.60	-	-	-	-	1,575			
1,600	0.00	0.00	0.00	-	125.00	-	20	0.00	0.00	0.00	-	129.00	-	-	-	-	0.00	0.00	0.00	-	0.01	-	510	0.00	0.00	0.00	-	3.10	-	17	-	-	1,600			
1,625	0.00	0.00	0.00	-	100.00	-	2	0.00	0.00	0.00	-	107.00	-	-	-	-	0.00	0.00	0.00	-	0.01	-	143	0.00	0.00	0.00	-	5.80	-	-	-	-	1,625			
1,650	0.00	0.00	0.00	-	75.00	-	7	0.00	0.00	0.00	-	86.00	-	-	-	-	0.00	0.00	0.00	-	0.01	-	183	14.50	14.50	14.50	14.50	14.50	3	103	-	-	1,650			
1,675	0.00	0.00	0.00	-	50.50	-	3	0.00	0.00	0.00	-	67.50	-	-	-	-	0.00	0.00	0.00	-	0.18	-	94	0.00	0.00	0.00	-	16.25	-	43	-	-	1,675			
1,700	0.00	0.00	0.00	-	27.25	-	73	45.00	45.00	40.00	40.00	40.00	2	31	-	-	0.00	0.00	0.00	-	2.00	-	148	0.00	0.00	0.00	-	25.00	-	21	-	-	1,700			
1,725	4.00	4.00	2.50	2.50	2.50	3	19	28.00	28.00	28.00	28.00	28.00	11	60	-	-	4.00	4.00	2.00	5.00	5.00	3	71	37.75	37.75	37.75	37.75	37.75	1	60	-	-	1,725			
1,750	1.50	1.50	1.50	1.50	1.50	1	265	23.00	23.00	20.00	20.00	20.00	20	244	-	-	1.50	1.50	0.00	-	27.00	-	108	0.00	0.00	0.00	-	50.00	-	121	-	-	1,750			
1,775	0.00	0.00	0.00	-	0.23	-	115	0.00	0.00	0.00	-	18.00	-	96	-	-	0.00	0.00	53.00	53.00	53.00	15	8	0.00	0.00	0.00	-	66.50	-	40	-	-	1,775			
1,800	0.00	0.00	0.00	-	0.01	-	116	0.00	0.00	0.00	-	11.75	-	270	-	-	0.00	0.00	0.00	-	75.00	-	10	0.00	0.00	0.00	-	85.50	-	2	-	-	1,800			
1,825	0.00	0.00	0.00	-	0.01	-	230	0.00	0.00	0.00	-	7.30	-	26	-	-	0.00	0.00	0.00	-	99.50	-	1	0.00	0.00	0.00	-	106.00	-	-	-	-	1,825			
1,850	0.00	0.00	0.00	-	0.01	-	40	0.00	0.00	0.00	-	4.40	-	25	-	-	0.00	0.00	0.00	-	125.00	-	-	0.00	0.00	0.00	-	128.00	-	-	-	-	1,850			
1,875	0.00	0.00	0.00	-	0.05	-	-	0.00	0.00	0.00	-	2.50	-	-	-	-	0.00	0.00	0.00	-	150.00	-	-	0.00	0.00	0.00	-	151.00	-	-	-	-	1,875			
1,900	0.00	0.00	0.00	-	0.01	-	-	0.00	0.00	0.00	-	1.40	-	-	-	-	0.00	0.00	0.00	-	175.00	-	-	0.00	0.00	0.00	-	175.00	-	-	-	-	1,900			
1,950	-	-	-	-	-	-	-	-	-	-	-	-	-	-	-	-	-	-	-	-	-	-	-	-	-	-	-	-	-	-	-	1,950				
2,000	-	-	-	-	-	-	-	-	-	-	-	-	-	-	-	-	-	-	-	-	-	-	-	-	-	-	-	-	-	-	-	2,000				
2,050	-	-	-	-	-	-	-	-	-	-	-	-	-	-	-	-	-	-	-	-	-	-	-	-	-	-	-	-	-	-	-	2,050				
2,100	-	-	-	-	-	-	-	-	-	-	-	-	-	-	-	-	-	-	-	-	-	-	-	-	-	-	-	-	-	-	-	2,100				
Totals:						4	905							33	752	20	87							18	1,296							4	407	35	35	
Number of Trades:						3								6		4								4								2		5		

ALPHA BANK (CR)

(Contract Size: 100 Securities, Exercise Style: American, Physical Delivery)

Call Options																	Put Options																		
Exercise Price	January 2017							February 2017							Other Months		January 2017							February 2017							Other Months		Exercise Price		
	Open price	Price max	Price min	Last price	Closing price	Volume	Open Interest	Open price	Price max	Price min	Last price	Closing price	Volume	Open Interest	Volume	Open Interest	Open price	Price max	Price min	Last price	Closing price	Volume	Open Interest	Open price	Price max	Price min	Last price	Closing price	Volume	Open Interest	Volume	Open Interest			
0.950						-	-							-	-							-	-							-	-			0.010	
1.000	0.000	0.000	0.000		0.830	-	-							-	-			0.000	0.000	0.000		0.001	-	-					-	-			0.010		
1.100	0.000	0.000	0.000		0.730	-	-							-	-			0.000	0.000	0.000		0.001	-	-					-	-			0.011		
1.200	0.000	0.000	0.000		0.630	-	-	0.000	0.000	0.000		0.632	-	-			0.000	0.000	0.000		0.001	-	-	0.000	0.000	0.000		0.001	-	-			0.012		
1.300	0.000	0.000	0.000		0.530	-	-	0.000	0.000	0.000		0.532	-	-			0.000	0.000	0.000		0.001	-	-	0.000	0.000	0.000		0.001	-	-			0.013		
1.400	0.000	0.000	0.000		0.430	-	-	0.000	0.000	0.000		0.433	-	-			0.000	0.000	0.000		0.001	-	-	0.000	0.000	0.000		0.001	-	-			0.014		
1.500	0.000	0.000	0.000		0.330	-	-	0.000	0.000	0.000		0.335	-	-			0.000	0.000	0.000		0.001	-	-	0.000	0.000	0.000		0.003	-	-			0.015		
1.600	0.000	0.000	0.000		0.230	-	-	0.000	0.000	0.000		0.243	-	-			0.000	0.000	0.000		0.001	-	-	0.000	0.000	0.000		0.011	-	-			0.016		
1.700	0.000	0.000	0.000		0.131	-	-	0.000	0.000	0.000		0.163	-	-			0.000	0.000	0.000		0.001	-	-	0.000	0.000	0.000		0.030	-	-			0.017		
1.800	0.000	0.000	0.000		0.049	-	-	0.000	0.000	0.000		0.100	-	-			0.000	0.000	0.000		0.018	-	-	0.000	0.000	0.000		0.067	-	-			0.018		
1.900	0.000	0.000	0.000		0.008	-	-	0.000	0.000	0.000		0.055	-	-			0.000	0.000	0.000		0.078	-	-	0.000	0.000	0.000		0.122	-	-			0.019		
2.000	0.000	0.000	0.000		0.001	-	-	0.000	0.000	0.000		0.027	-	-			0.000	0.000	0.000		0.170	-	-	0.000	0.000	0.000		0.195	-	-			0.020		
2.200	0.000	0.000	0.000		0.004	-	-	0.000	0.000	0.000		0.005	-	-			0.000	0.000	0.000		0.370	-	30	0.000	0.000	0.000		0.373	-	-			0.022		
2.400	0.000	0.000	0.000		0.001	-	-	0.000	0.000	0.000		0.001	-	-			0.000	0.000	0.000		0.570	-	-	0.000	0.000	0.000		0.570	-	-			0.024		
2.600	0.000	0.000	0.000		0.001	-	-	0.000	0.000	0.000		0.001	-	-			0.000	0.000	0.000		0.770	-	-	0.000	0.000	0.000		0.770	-	-			0.026		
2.800	0.000	0.000	0.000		0.001	-	-	0.000	0.000	0.000		0.001	-	-			0.000	0.000	0.000		0.970	-	-	0.000	0.000	0.000		0.970	-	-			0.028		
3.000	0.000	0.000	0.000		0.001	-	-	0.000	0.000	0.000		0.001	-	-			0.000	0.000	0.000		1.17	-	-	0.000	0.000	0.000		1.17	-	-			0.030		
3.200						-	-							-	-							-	-							-	-			0.032	
3.400						-	-							-	-							-	-							-	-			0.034	
3.600						-	-							-	-							-	-							-	-			0.036	
Totals:						0	0							0	0	0	0							0	30							0	0	0	0
Number of Trades:						0								0		0							0.00								0		0		

NATIONAL BANK (CR)

(Contract Size: 100 Securities, Exercise Style: American, Physical Delivery)

Call Options																	Put Options																			
January 2017								February 2017								Other Months		January 2017								February 2017								Other Months		
Exercise Price	Open price	Price max	Price min	Last price	Closing price	Volume	Open Interest	Open price	Price max	Price min	Last price	Closing price	Volume	Open Interest	Volume	Open Interest	Open price	Price max	Price min	Last price	Closing price	Volume	Open Interest	Open price	Price max	Price min	Last price	Closing price	Volume	Open Interest	Volume	Open Interest	Exercise Price			
0.050	0.000	0.000	0.000		0.191	-	-	0.000	0.000	0.000		0.191	-	-			0.000	0.000	0.000		0.001	-	-	0.000	0.000	0.000		0.001	-	-			0.001			
0.100	0.000	0.000	0.000		0.141	-	-	0.000	0.000	0.000		0.141	-	-			0.000	0.000	0.000		0.001	-	-	0.000	0.000	0.000		0.001	-	-			0.001			
0.150	0.000	0.000	0.000		0.091	-	-	0.000	0.000	0.000		0.093	-	-			0.000	0.000	0.000		0.001	-	-	0.000	0.000	0.000		0.002	-	-			0.002			
0.200	0.000	0.000	0.000		0.043	-	5	0.000	0.000	0.000		0.054	-	-			0.000	0.000	0.000		0.002	-	-	0.000	0.000	0.000		0.012	-	-			0.002			
0.250	0.000	0.000	0.000		0.012	-	-	0.000	0.000	0.000		0.028	-	-			0.000	0.000	0.000		0.021	-	-	0.000	0.000	0.000		0.036	-	-			0.003			
0.300	0.000	0.000	0.000		0.002	-	-	0.000	0.000	0.000		0.013	-	-			0.000	0.000	0.000		0.061	-	-	0.000	0.000	0.000		0.072	-	-			0.003			
0.350	0.000	0.000	0.000		0.001	-	-	0.000	0.000	0.000		0.006	-	-			0.000	0.000	0.000		0.109	-	-	0.000	0.000	0.000		0.114	-	-			0.004			
0.400	0.000	0.000	0.000		0.003	-	-	0.000	0.000	0.000		0.003	-	-			0.000	0.000	0.000		0.159	-	-	0.000	0.000	0.000		0.161	-	-			0.004			
0.450	0.000	0.000	0.000		0.001	-	-	0.000	0.000	0.000		0.001	-	-			0.000	0.000	0.000		0.209	-	-	0.000	0.000	0.000		0.210	-	-			0.005			
0.500	0.000	0.000	0.000		0.001	-	-	0.000	0.000	0.000		0.001	-	-			0.000	0.000	0.000		0.259	-	-	0.000	0.000	0.000		0.259	-	-			0.005			
0.550						-	-						-	-								-	-					-	-			0.006				
0.600						-	-						-	-								-	-					-	-			0.006				
Totals:						0	5						0	0	0	0						0	0					0	0	0	0					
Number of Trades:							0						0		0							0.00						0		0						

OPAP (CR)

(Contract Size: 100 Securities, Exercise Style: American, Physical Delivery)

Call Options																	Put Options																			
January 2017								February 2017								Other Months		January 2017								February 2017								Other Months		
Exerise Price	Open price	Price max	Price min	Last price	Closing price	Volume	Open Interest	Open price	Price max	Price min	Last price	Closing price	Volume	Open Interest	Volume	Open Interest	Open price	Price max	Price min	Last price	Closing price	Volume	Open Interest	Open price	Price max	Price min	Last price	Closing price	Volume	Open Interest	Volume	Open Interest	Exerise Price			
4.000						-	-							-	-							-	-					-	-			0.040				
4.400						-	-							-	-							-	-					-	-			0.044				
4.800						-	-							-	-							-	-					-	-			0.048				
5.200						-	-							-	-							-	-					-	-			0.052				
5.600	0.000	0.000	0.000		2.80	-	-							-	-		0.000	0.000	0.000		0.001	-	-					-	-			0.056				
6.000	0.000	0.000	0.000		2.40	-	-	0.000	0.000	0.000		2.41	-	-			0.000	0.000	0.000		0.001	-	-	0.000	0.000	0.000		0.001	-	-			0.060			
6.400	0.000	0.000	0.000		2.00	-	-	0.000	0.000	0.000		2.01	-	-			0.000	0.000	0.000		0.001	-	-	0.000	0.000	0.000		0.001	-	-			0.064			
6.800	0.000	0.000	0.000		1.60	-	-	0.000	0.000	0.000		1.61	-	-			0.000	0.000	0.000		0.001	-	-	0.000	0.000	0.000		0.001	-	-			0.068			
7.200	0.000	0.000	0.000		1.20	-	-	0.000	0.000	0.000		1.22	-	-			0.000	0.000	0.000		0.001	-	-	0.000	0.000	0.000		0.004	-	-			0.072			
7.600	0.000	0.000	0.000		0.801	-	-	0.000	0.000	0.000		0.838	-	-			0.000	0.000	0.000		0.001	-	-	0.000	0.000	0.000		0.025	-	-			0.076			
8.000	0.000	0.000	0.000		0.402	-	-	0.000	0.000	0.000		0.508	-	-			0.000	0.000	0.000		0.001	-	-	0.000	0.000	0.000		0.095	-	-			0.080			
8.400	0.000	0.000	0.000		0.076	-	31	0.000	0.000	0.000		0.260	-	-			0.000	0.000	0.000		0.075	-	-	0.000	0.000	0.000		0.247	-	-			0.084			
8.800	0.000	0.000	0.000		0.001	-	4	0.000	0.000	0.000		0.111	-	50			0.000	0.000	0.000		0.401	-	-	0.000	0.000	0.000		0.499	-	-			0.088			
9.200	0.000	0.000	0.000		0.001	-	10	0.000	0.000	0.000		0.039	-	-			0.000	0.000	0.000		0.800	-	-	0.000	0.000	0.000		0.829	-	-			0.092			
9.600	0.000	0.000	0.000		0.001	-	-	0.000	0.000	0.000		0.011	-	-			0.000	0.000	0.000		1.20	-	-	0.000	0.000	0.000		1.20	-	-			0.096			
10.000	0.000	0.000	0.000		0.002	-	-	0.000	0.000	0.000		0.003	-	-			0.000	0.000	0.000		1.60	-	-	0.000	0.000	0.000		1.60	-	-			0.100			
11.000	0.000	0.000	0.000		0.001	-	-	0.000	0.000	0.000		0.001	-	-			0.000	0.000	0.000		2.60	-	-	0.000	0.000	0.000		2.60	-	-			0.110			
12.000	0.000	0.000	0.000		0.001	-	-	0.000	0.000	0.000		0.001	-	-			0.000	0.000	0.000		3.60	-	-	0.000	0.000	0.000		3.60	-	-			0.120			
Totals:						0	45							0	50	0	0							0	0							0	55	0	0	
Number of Trades:						0								0		0							0.00								0		0			

OTE (CR)

(Contract Size: 100 Securities, Exercise Style: American, Physical Delivery)

Call Options																	Put Options																			
January 2017								February 2017								Other Months		January 2017								February 2017								Other Months		
Exercise Price	Open price	Price max	Price min	Last price	Closing price	Volume	Open Interest	Open price	Price max	Price min	Last price	Closing price	Volume	Open Interest	Volume	Open Interest	Open price	Price max	Price min	Last price	Closing price	Volume	Open Interest	Open price	Price max	Price min	Last price	Closing price	Volume	Open Interest	Volume	Open Interest	Exercise Price			
5.200						-	-							-	-							-	-					-	-			0.052				
5.600						-	-							-	-							-	-					-	-			0.056				
6.000	0.000	0.000	0.000		2.88	-	-							-	-		0.000	0.000	0.000		0.001	-	-		0.000	0.000	0.000		0.002	-	-		0.060			
6.400	0.000	0.000	0.000		2.48	-	-	0.000	0.000	0.000		2.49	-	-			0.000	0.000	0.000		0.001	-	-	0.000	0.000	0.000		0.002	-	-		0.064				
6.800	0.000	0.000	0.000		2.08	-	-	0.000	0.000	0.000		2.09	-	-			0.000	0.000	0.000		0.001	-	-	0.000	0.000	0.000		0.001	-	-		0.068				
7.200	0.000	0.000	0.000		1.68	-	-	0.000	0.000	0.000		1.69	-	-			0.000	0.000	0.000		0.001	-	-	0.000	0.000	0.000		0.001	-	-		0.072				
7.600	0.000	0.000	0.000		1.28	-	-	0.000	0.000	0.000		1.30	-	-			0.000	0.000	0.000		0.001	-	-	0.000	0.000	0.000		0.003	-	-		0.076				
8.000	0.000	0.000	0.000		0.881	-	-	0.000	0.000	0.000		0.912	-	-			0.000	0.000	0.000		0.001	-	-	0.000	0.000	0.000		0.019	-	-		0.080				
8.400	0.000	0.000	0.000		0.481	-	5	0.000	0.000	0.000		0.571	-	-			0.000	0.000	0.000		0.001	-	10	0.000	0.000	0.000		0.078	-	-		0.084				
8.800	0.000	0.000	0.000		0.120	-	12	0.000	0.000	0.000		0.307	-	11			0.050	0.050	0.050	0.050	0.050	4	29	0.000	0.000	0.000		0.213	-	-		0.088				
9.200	0.000	0.000	0.000		0.003	-	12	0.000	0.000	0.000		0.138	-	32			0.000	0.000	0.000		0.323	-	-	0.000	0.000	0.000		0.444	-	-		0.092				
9.600	0.000	0.000	0.000		0.003	-	-	0.000	0.000	0.000		0.051	-	5			0.000	0.000	0.000		0.720	-	-	0.000	0.000	0.000		0.759	-	-		0.096				
10.000	0.000	0.000	0.000		0.001	-	-	0.000	0.000	0.000		0.015	-	-			0.000	0.000	0.000		1.12	-	-	0.000	0.000	0.000		1.13	-	-		0.100				
11.000	0.000	0.000	0.000		0.001	-	-	0.000	0.000	0.000		0.001	-	-			0.000	0.000	0.000		2.12	-	-	0.000	0.000	0.000		2.12	-	-		0.110				
12.000	0.000	0.000	0.000		0.001	-	-	0.000	0.000	0.000		0.001	-	-			0.000	0.000	0.000		3.12	-	-	0.000	0.000	0.000		3.12	-	-		0.120				
13.000	0.000	0.000	0.000		0.001	-	-	0.000	0.000	0.000		0.002	-	-			0.000	0.000	0.000		4.12	-	-	0.000	0.000	0.000		4.12	-	-		0.130				
14.000						-	-							-	-							-	-					-	-			0.140				
Totals:						0	29							0	48	0	68							0	39							0	5	0	0	
Number of Trades:						0								0		0							1.00								0		0			

PIRAEUS BANK (CR)

(Contract Size: 100 Securities, Exercise Style: American, Physical Delivery)

Call Options																	Put Options																							
January 2017								February 2017								Other Months		January 2017								February 2017								Other Months						
Exerise Price	Open price	Price max	Price min	Last price	Closing price	Volume	Open Interest	Open price	Price max	Price min	Last price	Closing price	Volume	Open Interest	Volume	Open Interest	Open price	Price max	Price min	Last price	Closing price	Volume	Open Interest	Open price	Price max	Price min	Last price	Closing price	Volume	Open Interest	Volume	Open Interest	Exerise Price							
0.050	0.000	0.000	0.000		0.150	-	-	0.000	0.000	0.000		0.150	-	-			0.000	0.000	0.000		0.001	-	-		0.000	0.000	0.000		0.001	-	-			0.001						
0.100	0.000	0.000	0.000		0.100	-	-	0.000	0.000	0.000		0.101	-	-			0.000	0.000	0.000		0.001	-	-		0.000	0.000	0.000		0.001	-	-			0.001						
0.150	0.000	0.000	0.000		0.051	-	-	0.000	0.000	0.000		0.060	-	-			0.000	0.000	0.000		0.001	-	-		0.000	0.000	0.000		0.010	-	-			0.002						
0.200	0.000	0.000	0.000		0.015	-	-	0.000	0.000	0.000		0.032	-	-			0.000	0.000	0.000		0.015	-	-		0.000	0.000	0.000		0.032	-	-			0.002						
0.250	0.000	0.000	0.000		0.002	-	-	0.000	0.000	0.000		0.016	-	-			0.000	0.000	0.000		0.052	-	-		0.000	0.000	0.000		0.066	-	-			0.003						
0.300	0.000	0.000	0.000		0.001	-	-	0.000	0.000	0.000		0.008	-	-			0.000	0.000	0.000		0.100	-	-		0.000	0.000	0.000		0.108	-	-			0.003						
0.350	0.000	0.000	0.000		0.001	-	-	0.000	0.000	0.000		0.004	-	-			0.000	0.000	0.000		0.150	-	-		0.000	0.000	0.000		0.154	-	-			0.004						
0.400	0.000	0.000	0.000		0.001	-	-	0.000	0.000	0.000		0.002	-	-			0.000	0.000	0.000		0.200	-	-		0.000	0.000	0.000		0.202	-	-			0.004						
0.450	0.000	0.000	0.000		0.001	-	-	0.000	0.000	0.000		0.001	-	-			0.000	0.000	0.000		0.250	-	-		0.000	0.000	0.000		0.251	-	-			0.005						
0.500	0.000	0.000	0.000		0.001	-	-	0.000	0.000	0.000		0.001	-	-			0.000	0.000	0.000		0.300	-	-		0.000	0.000	0.000		0.300	-	-			0.005						
0.550	-							-							-		-		-							-							-							
Totals:																0		0																		0		0		
Number of Trades:																0		0																		0		0		

PPC (CR)

(Contract Size: 100 Securities, Exercise Style: American, Physical Delivery)

Call Options																	Put Options																			
January 2017								February 2017								Other Months		January 2017								February 2017								Other Months		
Exerise Price	Open price	Price max	Price min	Last price	Closing price	Volume	Open Interest	Open price	Price max	Price min	Last price	Closing price	Volume	Open Interest	Volume	Open Interest	Open price	Price max	Price min	Last price	Closing price	Volume	Open Interest	Open price	Price max	Price min	Last price	Closing price	Volume	Open Interest	Volume	Open Interest	Exerise Price			
1.700						-	-						-	-								-	-					-	-				0.017			
1.800						-	-						-	-								-	-					-	-				0.018			
1.900	0.000	0.000	0.000		0.980	-	-	0.000	0.000	0.000		0.983	-	-			0.000	0.000	0.000		0.001	-	-	0.000	0.000	0.000		0.001	-	-			0.019			
2.000	0.000	0.000	0.000		0.880	-	-	0.000	0.000	0.000		0.883	-	-			0.000	0.000	0.000		0.001	-	-	0.000	0.000	0.000		0.001	-	-			0.020			
2.200	0.000	0.000	0.000		0.680	-	-	0.000	0.000	0.000		0.684	-	-			0.000	0.000	0.000		0.001	-	-	0.000	0.000	0.000		0.001	-	-			0.022			
2.400	0.000	0.000	0.000		0.480	-	20	0.000	0.000	0.000		0.488	-	-			0.000	0.000	0.000		0.001	-	-	0.000	0.000	0.000		0.004	-	-			0.024			
2.600	0.000	0.000	0.000		0.280	-	-	0.000	0.000	0.000		0.308	-	10			0.000	0.000	0.000		0.001	-	-	0.000	0.000	0.000		0.024	-	-			0.026			
2.800	0.000	0.000	0.000		0.094	-	-	0.140	0.140	0.140	0.140	0.140	5	25			0.000	0.000	0.000		0.013	-	15	0.000	0.000	0.000		0.079	-	-			0.028			
3.000	0.000	0.000	0.000		0.007	-	-	0.000	0.000	0.000		0.073	-	50			0.000	0.000	0.000		0.127	-	50	0.000	0.000	0.000		0.188	-	-			0.030			
3.200	0.000	0.000	0.000		0.001	-	-	0.000	0.000	0.000		0.026	-	-			0.000	0.000	0.000		0.320	-	-	0.000	0.000	0.000		0.342	-	-			0.032			
3.400	0.000	0.000	0.000		0.001	-	-	0.000	0.000	0.000		0.008	-	-			0.000	0.000	0.000		0.520	-	-	0.000	0.000	0.000		0.524	-	-			0.034			
3.600	0.000	0.000	0.000		0.001	-	-	0.000	0.000	0.000		0.002	-	-			0.000	0.000	0.000		0.720	-	-	0.000	0.000	0.000		0.720	-	-			0.036			
3.800	0.000	0.000	0.000		0.002	-	-	0.000	0.000	0.000		0.004	-	-			0.000	0.000	0.000		0.920	-	-	0.000	0.000	0.000		0.920	-	-			0.038			
4.000	0.000	0.000	0.000		0.001	-	-	0.000	0.000	0.000		0.001	-	-			0.000	0.000	0.000		1.12	-	-	0.000	0.000	0.000		1.12	-	-			0.040			
4.400	0.000	0.000	0.000		0.001	-	-	0.000	0.000	0.000		0.001	-	-			0.000	0.000	0.000		1.52	-	-	0.000	0.000	0.000		1.52	-	-			0.044			
4.800						-	-						-	-								-	-					-	-				0.048			
Totals:						0	20						5	85	0	0						0	65					0	5	0	0					
Number of Trades:						0							1		0							0.00						0		0						

Lending Products	Underlying Title	Multilateral Transactions[1]					Bilateral Transactions[2]		Stock Borrowing through OTC (volume)[3]
		Open Interest[5]	Volume(Offered)	Average Weighted	Transactions volume	Average Weighted	Transactions Volume	Average Weighte	Transactions Volume
AEGNBOR	AEGEAN AIRLINES (CR)	100	13,315	5.31%	---	---	---	---	11,701
ALPHABOR	ALPHA BANK (CR)	167,550	15,998	6.15%	---	---	---	---	4,327,747
ALMYBOR	ALUMIL (CR)	---	---	---	---	---	---	---	---
IATRBOR	ATHENS MEDICAL CENTER SA (CR)	---	36,398	5.31%	---	---	---	---	---
OTOELBOR	AUTOHELLAS SA (CR)	---	1,511	5.31%	---	---	---	---	---
EEEBOR	CC HBC AG (CR)	1,928	5,178	4.68%	---	---	---	---	70,546
CENTRBOR	CENTRIC HOLDINGS (CR)	---	16,000	5.31%	---	---	---	---	---
PLAKRBOR	CRETE PLASTICS SA (CR)	---	---	---	---	---	---	---	---
ELLAKTORBOR	ELLAKTOR (CR)	---	87,498	5.31%	---	---	---	---	---
ANEMOSBOR	ELTECH ANEMOS S.A. (CR)	---	7,440	5.31%	---	---	---	---	---
ELTONBOR	ELTON SA (CR)	---	---	---	---	---	---	---	---
EUROBBOR	EUROBANK ERGASIAS (CR)	73,312	246,466	5.31%	---	---	---	---	8,087,709
EUPICBOR	EUROPEAN RELIANCE INSUR. (CR)	---	---	---	---	---	---	---	---
EYDAPBOR	EYDAP S.A. (CR)	1,600	3,300	5.31%	---	---	---	---	18,780
FFGRPBOR	FOLLI FOLLIE (CR)	4,655	73,769	3.31%	---	---	---	---	624,200
FOYRKBOR	FOURLIS (CR)	2,000	3,528	3.31%	---	---	---	---	4,650
GEKTERNABOR	GEK TERNA (CR)	112	30,350	5.31%	---	---	---	---	---
SARBOR	GR. SARANTIS SA (CR)	205	492	5.31%	---	---	---	---	---
EUPROBOR	GRIVALIA PROPERTIES (CR)	1,000	94,127	5.31%	---	---	---	---	44,950
XAKOBOR	HALKOR SA (CB)	---	56,552	5.31%	---	---	---	---	---
EXAEBOR	HELLENIC EXCHANGES-A.S.E. (CR)	5,600	450,620	5.31%	---	---	---	---	100,365
ELPEBOR	HELLENIC PETROLEUM (CR)	300	125,024	5.31%	---	---	---	---	42,606
HYGEIABOR	HYGEIA SA (CR)	---	37,360	5.31%	---	---	---	---	---
IASOBOR	IASO SA (CR)	---	---	---	---	---	---	---	---
IKTINBOR	IKTINOS HELLAS SA (CR)	---	798	5.31%	---	---	---	---	---
INTRKBOR	INTRACOM HOLDINGS (CR)	---	171,048	5.31%	---	---	---	---	---
INLOTBOR	INTRALOT (CR)	6,000	54,099	5.31%	---	---	---	---	803
AVAXBOR	J & P - AVAX SA (CR)	---	20,335	5.31%	---	---	---	---	---
BELABOR	JUMBO SA (CR)	42,025	123,922	5.31%	100	2.65%	---	---	6,365
KLEMBOR	KLEEMAN HELLAS SA (CR)	---	---	---	---	---	---	---	---
KORRESBOR	KORRES (CR)	---	319	5.31%	---	---	---	---	---

Stock Lending Notes

- [1] - Multilateral contracts Lending or Borrowing as per Methods 8-1, 8-2 and 8-3-3 (According to ATHEX BoD Resolution No.17)
- [2] - Billateral Contracts Lending or Borrowing as per Methods 8-3-1 and 8-3-2 (According to ATHEX BoD Resolution No.20)
- [3] - The information concerning OTC Stock Borrowing Transactions is based on the statements of the Dematerialised Securities System (DSS) operators involved and refers to volumes that have been registered up until the previous working day.
- [4] - Average Price (Volume weighted)
- [5] - The Data concerning Open Interest before the start of trading session

Lending Products	Underlying Title	Multilateral Transactions[1]					Bilateral Transactions[2]		Stock Borrowing through OTC (volume)[3]
		Open Interest[5]	Volume(Offered)	Average Weighted	Transactions volume	Average Weighted	Transactions Volume	Average Weighte	Transactions Volume
KRIBOR	KRI-KRI S.A. (CR)	---	47,768	5.31%	---	---	---	---	---
KYRMBOR	KYRIAKIDIS MARBLES SA (CR)	---	5,737	5.31%	---	---	---	---	---
LAMDABOR	LAMDA DEVELOPMENT SA (CR)	14	100	5.32%	---	---	---	---	10,377
MIGBOR	MARFIN INVESTMENT GROUP (CR)	---	269,236	5.31%	---	---	---	---	744,474
METKKBOR	METKA (CR)	21,433	7,503	5.31%	---	---	---	---	965
MLSBOR	MLS MULTIMEDIA SA (CR)	---	9,118	5.31%	---	---	---	---	---
MOHBOR	MOTOR OIL (CR)	15,719	19,368	5.31%	---	---	---	---	37,254
MYTILBOR	MYTILINEOS HOLDINGS (CR)	5,164	74,187	5.31%	---	---	---	---	---
ETEBOR	NATIONAL BANK (CR)	508,265	1,274,944	5.31%	200,000	3.79%	---	---	8,439,014
ETFASEBOR	NBGAM ETF	---	---	---	---	---	---	---	---
ETFGT30PBOR	NBGAM ETF GREECE & TURKEY 30	---	---	---	---	---	---	---	---
OPAPBOR	OPAP (CR)	23,000	116,133	5.31%	---	---	---	---	818,058
HTOBOR	OTE (CR)	13,657	59,565	5.31%	10,000	3.82%	---	---	336,094
PPABOR	P.P.A. S.A. (CR)	368	1,468	5.31%	---	---	---	---	2,901
PAPBOR	PAPOUTSANIS (CR)	---	---	---	---	---	---	---	---
PETROBOR	PETROPOULOS PETROS (CR)	---	---	---	---	---	---	---	---
TPEIRBOR	PIRAEUS BANK (CR)	134,861	418,957	5.31%	---	---	---	---	19,779,857
PLAISBOR	PLAISIO COMPUTERS SA (CR)	---	---	---	---	---	---	---	---
PPCBOR	PPC (CR)	12,600	110,235	5.31%	---	---	---	---	1,342,915
PROFBOR	PROFILE SA (CR)	---	---	---	---	---	---	---	---
QUALBOR	QUALITY & RELIABILITY SA (CR)	---	---	---	---	---	---	---	---
QUESTBOR	QUEST HOLDINGS (CR)	---	1,038	5.31%	---	---	---	---	---
REVOILBOR	REVOIL (CR)	---	---	---	---	---	---	---	---
EPILBOR	SELECTED TEXT. IND. ASSOC (CR)	---	---	---	---	---	---	---	---
SELOBOR	SELONDA AQUACULTURE SA (CR)	---	---	---	---	---	---	---	---
OLYMPBOR	TECHNICAL OLYMPIC SA (CR)	---	23,237	5.31%	---	---	---	---	---
TENERGYBOR	TERNA ENERGY (CR)	1,000	31,218	5.31%	---	---	---	---	---
EYAPSBOR	THESSALONIKA WATER & SEWERAGE	---	7,535	5.31%	---	---	---	---	---
PLATBOR	THRACE PLASTICS SA (CR)	---	43,699	5.31%	---	---	---	---	---
TITKBOR	TITAN CEMENT (CR)	4,599	215,647	5.31%	---	---	---	---	16,704
OLTHBOR	TPA SA (CR)	---	183	5.31%	---	---	---	---	---

Stock Lending Notes

- [1] - Multilateral contracts Lending or Borrowing as per Methods 8-1, 8-2 and 8-3-3 (According to ATHEX BoD Resolution No.17)
- [2] - Billateral Contracts Lending or Borrowing as per Methods 8-3-1 and 8-3-2 (According to ATHEX BoD Resolution No.20)
- [3] - The information concerning OTC Stock Borrowing Transactions is based on the statements of the Dematerialised Securities System (DSS) operators involved and refers to volumes that have been registered up until the previous working day.
- [4] - Average Price (Volume weighted)
- [5] - The Data concerning Open Interest before the start of trading session

Lending Products	Underlying Title	Multilateral Transactions[1]					Bilateral Transactions[2]		Stock Borrowing through OTC (volume)[3]
		Open Interest[5]	Volume(Offered)	Average Weighted	Transactions volume	Average Weighted	Transactions Volume	Average Weighted	Transactions Volume
VIOBOR	VIOHALCO SA/NV (CB)	500	61,962	5.31%	---	---	---	---	---

Stock Lending Notes

[1] - Multilateral contracts Lending or Borrowing as per Methods 8-1, 8-2 and 8-3-3 (According to ATHEX BoD Resolution No.17)

[2] - Billateral Contracts Lending or Borrowing as per Methods 8-3-1 and 8-3-2 (According to ATHEX BoD Resolution No.20)

[3] - The information concerning OTC Stock Borrowing Transactions is based on the statements of the Dematerialised Securities System (DSS) operators involved and refers to volumes that have been registered up until the previous working day.

[4] - Average Price (Volume weighted)

[5] - The Data concerning Open Interest before the start of trading session

Sectors codification for listed companies

533	-	Exploration & Production	537	-	Integrated Oil & Gas
1353	-	Commodity Chemicals	1357	-	Specialty Chemicals
1753	-	Aluminum	1755	-	Nonferrous Metals
1757	-	Steel	1775	-	General Mining
2353	-	Building Materials & Fixtures	2357	-	Heavy Construction
2723	-	Containers & Packaging	2727	-	Diversified Industrials
2733	-	Electrical Components & Equipment	2753	-	Commercial Vehicles & Trucks
2757	-	Industrial Machinery	2773	-	Marine Transportation
2777	-	Transportation Services	2791	-	Business Support Services
2797	-	Industrial Suppliers	3535	-	Distillers & Vintners
3537	-	Soft Drinks	3573	-	Farming Fishing & Plantations
3577	-	Food Products	3722	-	Durable Household Products
3726	-	Furnishings	3728	-	Home Construction
3747	-	Toys	3763	-	Clothing & Accessories
3765	-	Footwear	3767	-	Personal Products
3785	-	Tobacco	4533	-	Health Care Providers
4535	-	Medical Equipment	4577	-	Pharmaceuticals
5337	-	Food Retailers & Wholesalers	5371	-	Apparel Retailers
5373	-	Broadline Retailers	5375	-	Home Improvement Retailers
5379	-	Specialty Retailers	5553	-	Broadcasting & Entertainment
5555	-	Media Agencies	5557	-	Publishing
5751	-	Airlines	5752	-	Gambling
5753	-	Hotels	5755	-	Recreational Services
5757	-	Restaurants & Bars	5759	-	Travel & Tourism
6535	-	Fixed Line Telecommunications	6575	-	Mobile Telecommunications
7535	-	Conventional Electricity	7537	-	Alternative Electricity
7577	-	Water	8355	-	Banks
8534	-	Insurance Brokers	8536	-	Property & Casualty Insurance
8633	-	Real Estate Holding & Development	8637	-	Real Estate Services
8671	-	Industrial & Office REITs	8674	-	Diversified REITs
8675	-	Specialty REITs	8775	-	Specialty Finance
8777	-	Investment Services	8985	-	Equity Investment Instruments
9533	-	Computer Services	9535	-	Internet
9537	-	Software	9572	-	Computer Hardware
9574	-	Electronic Office Equipment	9578	-	Telecommunications Equipment
12003	-	ETF			



ATHEXGROUP
Athens Exchange Group

Λεωφ. Αθηνών 110 104 42 Αθήνα
110, Athinon Ave. GR 104 42 Athens
tel. (+30)210-33.66.800, fax (+30)210-33.66.101
www.athexgroup.gr