



Hellenic Exchanges – Athens Stock Exchange S.A.

2017

δελτίο ημερησίων συναλλαγών
daily official list

Monday, 23 January, 2017
Year: 138 Trading Day No: 15

Disclaimer:

Hellenic Exchanges-Athens Stock Exchange S.A. endeavours to ensure that the data and other material ("Information") presented on the Daily Official List are accurate and complete, but it is not liable for any errors or omissions of data or /and for the accuracy, credibility, updating and completeness of the aforesaid information nor it has any liability arising directly or indirectly from the use of the above Information.

The Company is not liable for the accuracy of the data included in listed companies' announcements. Only the sender of such an announcement is fully and solely liable for any infringement of third party's rights from the content of such announcement. All contents of the Daily Official List are provided only for information purposes and do not constitute investment advice or solicitation to invest in securities or other products listed for trading on the Exchange.

You acknowledge and agree that the Company is the owner of any property rights related to any Information appearing on the Daily Official List including intellectual property rights copyright, trademarks, etc.

The above data are a property of the Hellenic Exchanges-Athens Exchange and are copyright protected. Users are forbidden to reproduce, modify, copy, sale, transmit or redistribute, by all reproduction means and methods, part or the whole of the above data, without reference to their source.

The commercial exploitation of these data is, also, forbidden by third parties. Hellenic Exchanges-Athens Exchange does not carry any responsibility, direct or indirect, derived from usage or accidental alteration of the above data when used by third parties.

Hellenic Exchanges – Athens Stock Exchange S.A.

110 Athinon Ave., 10442 Athens, Tel: (210) 33.66.800, Fax: (210) 32.13.938

www.helex.gr

Thessalonica Stock Exchange Center (T.S.E.C)

16-18 Katouni Str., Thessalonica 546 25 Tel: (2310) 567.667, Fax: (2310) 530.545

Athex Members Guarantee Fund

14-16 Fidiou Str., Athens 106 78, Tel: (210) 33.04.682, Fax: (210) 33.04.155

Hellenic Republic Capital Market Commission

1 Kolokotroni Str. & 1 Stadiou Str., Athens 10562 Tel: (210) 33.77.100 Fax: (210) 33.77.173

Table of Contents

Section 1: Statistical Figures of Securities, Derivatives and Lending

Summary of Markets

Athex Indices

Analytic Figures for Athex Market's Boards and Categories

Trading Details by Athex Sectors and Financial Instruments (ETFs)

Top 10 best & worst performing Shares

Derivatives Summary

Section 2: Analytic Figures of Shares Transactions

Analytic Figures of Shares Transactions

Shares' Notes

Section 3: Figures of Securities Transactions

Securities Blocks Details

Shares Rights Details

Stock Borrowing

Shares Forced Sales

Forced Sales Registered Shares

Exchange Traded Funds (ETFs) Characteristics

Section 5: Bonds traded in Fixed Income Assets Market

Corporate Bonds

Government Bonds

Treasury Bills & Zero Coupon Government Bonds

Government Bonds Traded with the Open Outcry Method

State Banks Bonds

Section 6: Additional Infos

Athex & ATHEXClear Members List

List of Stocks under Market Making operations

Section 7: Derivatives Market Analytic Figures

Index Futures

Stock Futures

Index Options

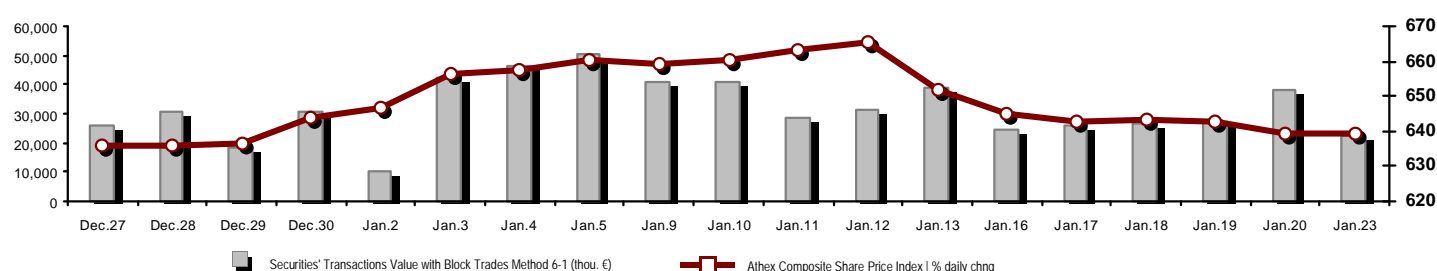
Stock Options

Stock Lending Analytic Figures

Appendix A: Sectors codification for listed companies

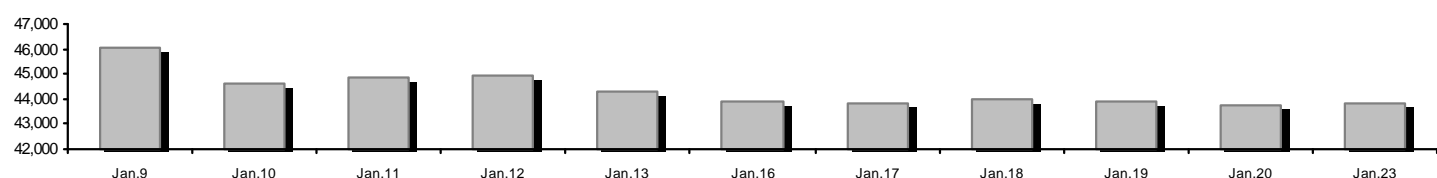
Summary of Markets

Athex Composite Share Price Index vs Shares and Derivatives Transactions Value

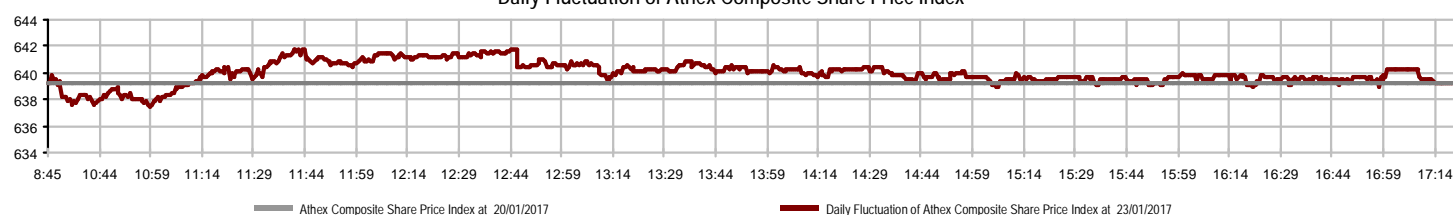


Athex Capitalisation (mill. €) **: 43,798.55	Derivatives Total Open Interest: 370,357
Daily change: mill. € %: 24.01 0.05%	in Index Futures % daily chng: 7,649 -10.55%
Yearly Avg Capitalisation: mill. € % chng prev year Avg: 44,734.85 8.71%	in Stock Futures % daily chng: 360,804 1.86%
Athex Composite Share Price Index % daily chng: 639.27 0.02%	in Index Options % daily chng: 1,488 -59.18%
Athex Composite Share Price Index Capitalisation (mill. €): 38,923.98	in Stock Options % daily chng: 416 -25.85%
Daily change (mill. €): 59.78	
Securities' Transactions Value with Block Trades Method 6-1 (thou. €): 22,338.67	Derivatives Contracts Volume: 25,429
Daily change: %: -15,791.87 -41.42%	Daily change: pieces %: -12,345 -32.68%
YtD Avg Trans. Value: thou. € % chng prev year Avg: 32,982.02 -45.37%	YtD Avg Derivatives Contracts % chng prev year Avg: 36,676 -40.97%
Blocks Transactions Value of Method 6-1 (thou. €): 1,292.95	Derivatives Trades Number: 912
Blocks Transactions Value of Method 6-2 & 6-3 (thou. €): 9.50	Daily change: number %: -552 -37.70%
Bonds Transactions Value (thou.€): 22.45	YtD Avg Derivatives Trades number % chng prev year Avg: 1,567 -39.60%
Securities' Transactions Volume with Block Trades Method 6-1 (thou. Pieces): 32,146.02	Lending Total Open Interest: 752,401
Daily change: thou. pieces %: -9,804.15 -23.37%	Daily change: pieces %: -6,000 -0.79%
YtD Avg Volume: % chng prev year Avg: 55,865.17 -41.95%	Lending Volume (Multilateral/Bilateral): 0
Blocks Transactions Volume of Method 6-1 (thou. Pieces): 123.80	Daily change: pieces %: -450 -100.00%
Blocks Transactions Volume of Method 6-2 & 6-3 (thou. Pieces): 5.00	Multilateral Lending: 0
Bonds Transactions Volume: 22,266.00	Bilateral Lending: 0
Securities' Trades Number with Block Trades Method 6-1: 9,419	Lending Trades Number: 0
Daily change: number %: -3,925 -29.41%	Daily change: %: -3 -100.00%
YtD Avg Derivatives Trades number % chng prev year Avg: 12,953 -31.35%	Multilateral Lending Trades Number: 0
Number of Blocks Method 6-1: 2	Bilateral Lending Trades Number: 0
Number of Blocks Method 6-2 & 6-3: 1	
Number of Bonds Transactions: 2	

Athex Capitalisation (mill. €) **



Daily Fluctuation of Athex Composite Share Price Index



Athex Indices

Index name	23/01/2017	20/01/2017	pts.	%	Min	Max	Year min	Year max	Year change
Athex Composite Share Price Index	639.27 #	639.16	0.11	0.02%	637.44	641.82	636.07	670.21	-0.68% €
FTSE/Athex Large Cap	1,713.05 #	1,712.90	0.15	0.01%	1,708.58	1,719.92	1,704.15	1,797.30	-1.60% €
FTSE/Athex Mid Cap Index	812.46 #	807.16	5.30	0.66%	806.01	819.83	753.69	824.70	7.80% #
FTSE/ATHEX-CSE Banking Index	603.25 €	607.61	-4.36	-0.72%	600.34	609.07	600.34	688.56	-4.88% €
FTSE/ATHEX Global Traders Index Plus	1,536.26 #	1,530.03	6.23	0.41%	1,530.03	1,549.34	1,502.75	1,549.34	1.50% #
FTSE/ATHEX Global Traders Index	1,651.22 #	1,650.30	0.92	0.06%	1,649.35	1,658.45	1,626.47	1,679.78	0.46% #
FTSE/ATHEX Mid & Small Cap Factor-Weighted Ind	1,366.30 #	1,361.01	5.29	0.39%	1,360.16	1,372.69	1,315.47	1,381.05	1.91% #
Greece & Turkey 30 Price Index	433.34 #	431.10	2.24	0.52%	430.31	433.60	407.85	439.98	-2.12% €
ATHEX Mid & SmallCap Price Index	2,043.92 #	1,999.08	44.84	2.24%	1,980.85	2,044.97	1,675.92	2,044.97	21.96% #
FTSE/Athex Market Index	421.22 #	421.12	0.10	0.02%	420.10	422.89	419.03	441.41	-1.37% €
FTSE Med Index	4,501.16 €	4,508.19	-7.03	-0.16%			4,501.16	4,736.54	-2.07% €
Athex Composite Index Total Return Index	975.19 #	975.01	0.18	0.02%	972.39	979.07	970.30	1,022.38	-0.68% €
FTSE/Athex Large Cap Total Return	2,479.64 #	2,479.42	0.22	0.01%			2,479.42	2,580.69	-1.36% €
FTSE/ATHEX Large Cap Net Total Return	722.00 #	721.94	0.06	0.01%	720.12	724.90	718.25	757.51	-1.60% €
FTSE/Athex Mid Cap Total Return	972.37 #	966.03	6.34	0.66%			949.72	976.60	5.69% #
FTSE/ATHEX-CSE Banking Total Return Index	626.46 €	630.99	-4.53	-0.72%			626.46	700.89	-3.77% €
Greece & Turkey 30 Total Return Index	547.03 #	542.70	4.33	0.80%			521.62	558.29	-2.62% €
Hellenic Mid & Small Cap Index	795.09 #	792.97	2.12	0.27%	792.97	797.95	785.14	812.70	1.06% #
FTSE/Athex Banks	797.05 €	802.80	-5.75	-0.72%	793.19	804.73	793.19	909.75	-4.88% €
FTSE/Athex Financial Services	1,043.48 #	1,042.43	1.05	0.10%	1,033.76	1,046.95	1,031.67	1,082.73	-1.25% €
FTSE/Athex Industrial Goods & Services	1,481.56 #	1,470.46	11.10	0.75%	1,470.46	1,490.67	1,438.11	1,523.49	1.83% #
FTSE/Athex Retail	2,646.13 #	2,630.06	16.07	0.61%	2,630.06	2,695.81	2,606.68	2,887.22	-5.82% €
FTSE/ATHEX Real Estate	2,683.83 #	2,675.38	8.45	0.32%	2,654.10	2,698.72	2,609.12	2,787.51	1.55% #
FTSE/Athex Personal & Household Goods	7,214.59 #	7,113.42	101.17	1.42%	7,113.42	7,233.17	7,113.42	7,668.69	-5.69% €
FTSE/Athex Food & Beverage	7,850.86 #	7,787.87	62.99	0.81%	7,787.87	7,866.04	7,597.15	7,866.04	1.85% #
FTSE/Athex Basic Resources	2,789.09 #	2,758.30	30.79	1.12%	2,758.30	2,815.49	2,674.71	2,815.49	3.09% #
FTSE/Athex Construction & Materials	2,249.98 €	2,292.40	-42.42	-1.85%	2,244.31	2,292.40	2,199.12	2,297.92	-0.22% €
FTSE/Athex Oil & Gas	3,078.37 €	3,090.69	-12.32	-0.40%	3,059.10	3,109.24	2,980.73	3,152.56	2.67% #
FTSE/Athex Media	1,768.77 ~	1,768.77	0.00	0.00%	1,768.77	1,768.77	1,310.97	1,872.81	0.00% ~
FTSE/Athex Travel & Leisure	1,509.09 #	1,496.35	12.74	0.85%	1,495.52	1,509.09	1,459.07	1,535.73	2.90% #
FTSE/Athex Technology	620.94 #	615.92	5.02	0.82%	615.92	627.08	615.23	652.06	-2.80% €
FTSE/Athex Telecommunications	2,422.26 €	2,436.02	-13.76	-0.56%	2,416.76	2,441.53	2,391.98	2,515.85	-1.46% €
FTSE/Athex Utilities	1,519.54 #	1,517.28	2.26	0.15%	1,509.62	1,531.25	1,509.62	1,600.06	0.18% #
Athex All Share Index	154.49 #	154.41	0.08	0.05%	154.49	154.49	154.41	162.45	-2.90% €
Hellenic Corporate Bond Index	109.75 #	109.74	0.00	0.00%			109.39	109.76	0.31% #
Hellenic Corporate Bond Price Index	97.75 €	97.76	-0.01	-0.01%			97.66	97.80	0.02% #

Note 1: FTSE/Med 100, Greece & Turkey 30 Rt., Hellenic Corporate Bond Price Index and Hellenic Corporate Bond Index closing prices refer to the previous trading day of 19/01/2017.

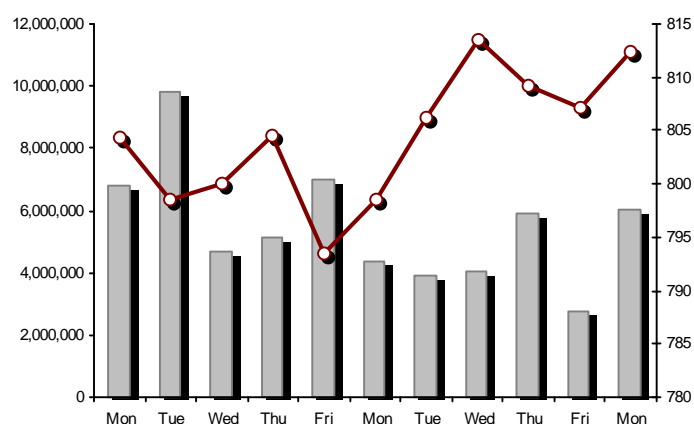
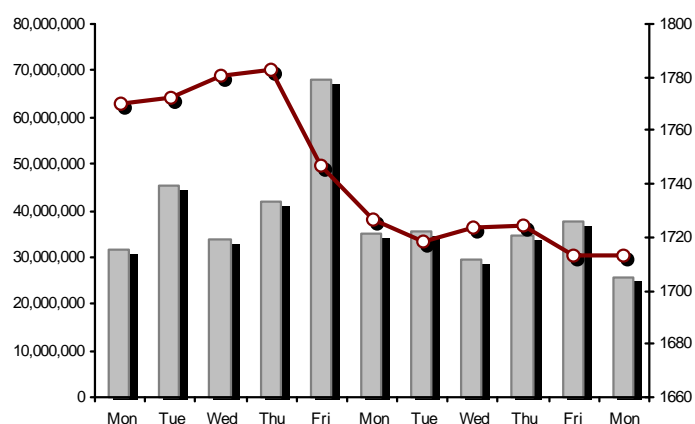
Note 2: The Hellenic Mid & Small Cap Index is a Customized index calculated by the Athens Exchange.

Athex Indices

FTSE/Large Cap

23/01/2017: 0.01% FTSE/Athex Mid Cap Index

23/01/2017: 0.66%

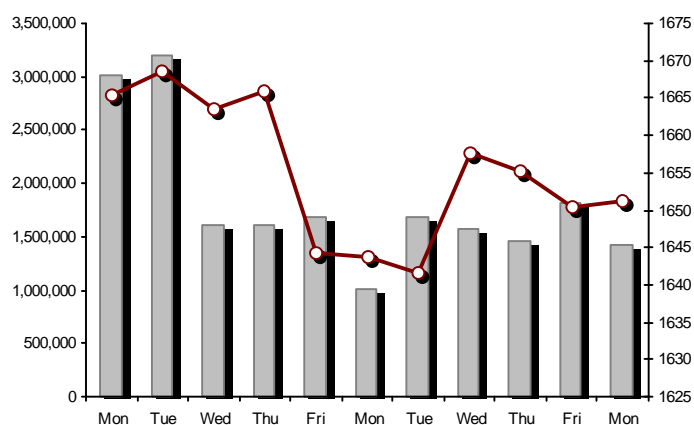
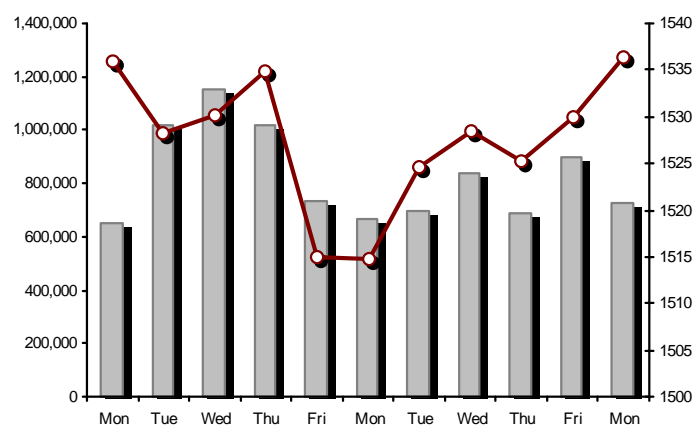


FTSE/ATHEX Global Traders Index Plus

23/01/2017: 0.41%

FTSE/ATHEX Global Traders Index

23/01/2017: 0.06%

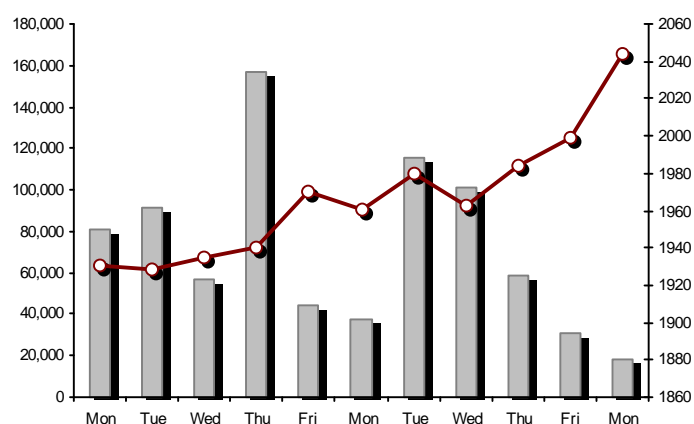
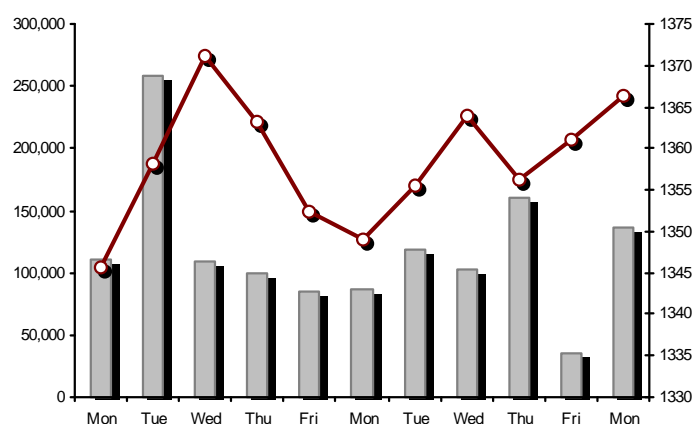


FTSE/ATHEX Mid & Small Cap Factor-Weighted Index

23/01/2017: 0.39%

ATHEX Mid & SmallCap Price Index

23/01/2017: 2.24%



Indices volume of transactions

Indices closing prices

Analytic Figures for Athex Market's Boards and Categories

	Total Traded Securities	Main Market	Low Dispersion	Other Categories (*)	Exchange Traded Funds (ETFs)	Warrants
Totals	126	102	8	11	3	2
Gain / Lose / Same:	55 / 51 / 20	48 / 44 / 10	0 / 4 / 4	6 / 2 / 3	1 / 1 / 1	0 / 0 / 2
Athex Capitalisation (mill. €) **	43,798.55	40,572.63	3,099.93	125.99		
Daily Average Trans/ons Value(thou.€)	32,982.02	32,464.16	495.34	23.23	2.06	2.77
Transactions Value	22,348.17	22,055.84	284.14	7.91	0.04	0.24
Main Board:	21,045.72	20,753.39	284.14	7.91	0.04	0.24
Blocks Board 6_2_3:	1,302.45	1,302.45	0.00	0.00	0.00	0.00
Forced Sales Board:	0.00	0.00	0.00	0.00	0.00	0.00
Special Terms Board:	0.00	0.00	0.00	0.00	0.00	0.00
Daily Average Transactions Volume	55,865,174	53,697,090	101,623	212,964	122	1,858,954
Transactions Volume	32,151,019	31,969,339	52,018	82,620	5	47,037
Main Board:	32,022,223	31,840,543	52,018	82,620	5	47,037
Blocks Board 6_2_3:	128,796	128,796	0	0	0	0
Forced Sales Board:	0	0	0	0	0	0
Special Terms Board:	0	0	0	0	0	0
Daily Average Number of Trades	12,953	12,775	51	89	3	35
Number of Trades	9,420	9,269	61	64	3	23
Main Board:	9,417	9,266	61	64	3	23
Blocks Board 6_2_3:	3	3	0	0	0	0
Forced Sales Board:	0	0	0	0	0	0
Special Terms Board:	0	0	0	0	0	0

(*) Summarised Transactions figures for Under Deletion and Under Supervision Categories.(**) The Market Capitalization of the Companies that belong in the Under Supervision Status is not included.

Trading Details by Athex Sectors and Financial Instruments (ETFs)

Code	Sectors	Gain / Lose / Same	Number of Trades	Transactions Volume	Transactions Value	% of Total Trans. Value
8300	- Banks	1 / 5 / 2	4,116	29,314,728	10,133,665.30	45.34%
1700	- Basic Resources	4 / 3 / 0	464	180,013	1,077,941.59	4.82%
1300	- Chemicals	3 / 1 / 0	28	2,455	9,379.75	0.04%
2300	- Construction & Materials	4 / 8 / 4	381	203,466	400,866.86	1.79%
12000	- Financial Instruments	1 / 1 / 1	3	5	42.32	0.00%
8700	- Financial Services	3 / 1 / 0	231	513,006	140,329.08	0.63%
3500	- Food & Beverage	5 / 5 / 1	156	76,519	446,373.05	2.00%
4500	- Health Care	4 / 1 / 0	78	184,821	29,188.71	0.13%
2700	- Industrial Goods & Services	7 / 4 / 3	556	309,662	586,015.24	2.62%
8500	- Insurance	1 / 0 / 0	20	7,077	15,123.60	0.07%
5500	- Media	0 / 0 / 0	---	---	---	---
500	- Oil & Gas	1 / 1 / 0	705	224,513	2,318,585.75	10.37%
3700	- Personal & Household Goods	7 / 4 / 3	436	116,047	1,056,123.83	4.73%
8600	- Real Estate	2 / 5 / 0	97	32,500	65,310.77	0.29%
5300	- Retail	2 / 0 / 1	288	26,168	473,440.54	2.12%
9500	- Technology	5 / 3 / 1	183	29,291	66,157.97	0.30%
6500	- Telecommunications	0 / 1 / 0	515	343,343	3,032,173.48	13.57%
5700	- Travel & Leisure	3 / 8 / 1	769	332,627	1,758,786.35	7.87%
7500	- Utilities	2 / 0 / 3	394	254,778	738,667.57	3.31%

Top 10 best & worst performing Shares

Main Market					
With positive Price change	Closing price	change	With negative Price change	Closing price	change
ATTICA BANK S.A. (CR)	0.044	15.79% #	GEKE SA (CB)	3.22	-9.80% €
HYGEIA SA (CR)	0.157	5.37% #	BANK OF GREECE (CR)	12.36	-4.04% €
EUROPEAN RELIANCE INSUR. (CR)	2.20	3.29% #	TITAN CEMENT (CR)	21.98	-2.31% €
AEGEAN AIRLINES (CR)	6.73	2.28% #	FOURLIS (CR)	4.32	-1.37% €
JUMBO SA (CR)	14.00	1.97% #	TITAN CEMENT CO. (PR)	14.30	-1.31% €
HELLENIC PETROLEUM (CR)	4.50	1.81% #	MOTOR OIL (CR)	13.49	-1.17% €
PLASIO COMPUTERS SA (CR)	3.40	1.80% #	EUROBANK ERGASIAS (CR)	0.625	-1.11% €
THESSALONIKA WATER & SEWERAGE	3.56	1.71% #	PIRAEUS BANK (CR)	0.193	-1.03% €
MARFIN INVESTMENT GROUP (CR)	0.153	1.32% #	INTRALOT (CR)	1.12	-0.88% €
MYTILINEOS HOLDINGS (CR)	6.34	1.12% #	ELLAKTOR (CR)	1.14	-0.87% €
With the highest Transactions Value	Value (thou. €)	change	With the highest Transactions Volume	Volume	change
ALPHA BANK (CR)	4,374.04	-0.55% €	NATIONAL BANK (CR)	13,194,572	-0.84% €
NATIONAL BANK (CR)	3,089.88	-0.84% €	PIRAEUS BANK (CR)	6,795,310	-1.03% €
OTE (CR)	3,032.17	-0.57% €	ATTICA BANK S.A. (CR)	5,291,609	15.79% #
MOTOR OIL (CR)	1,962.67	-1.17% €	ALPHA BANK (CR)	2,408,066	-0.55% €
PIRAEUS BANK (CR)	1,318.76	-1.03% €	EUROBANK ERGASIAS (CR)	1,566,659	-1.11% €
OPAP (CR)	1,191.40	0.82% #	MARFIN INVESTMENT GROUP (CR)	499,229	1.32% #
MYTILINEOS HOLDINGS (CR)	1,074.71	1.12% #	OTE (CR)	343,343	-0.57% €
EUROBANK ERGASIAS (CR)	986.64	-1.11% €	HYGEIA SA (CR)	180,000	5.37% #
JUMBO SA (CR)	587.82	1.97% #	MYTILINEOS HOLDINGS (CR)	168,815	1.12% #
FOLLI FOLLIE (CR)	473.36	0.61% #	MOTOR OIL (CR)	145,733	-1.17% €

Note: Stocks that are not included in the "Low Dispersion" and "Under Supervision" categories, and the transactions value is more than 10,000 €.

Derivatives Summary

	Number of Trades	Volume	Open Interest
Index Futures	152	777	7,649
FTSE/Athex Large Cap	152	777	7,649
Stock Futures	736	24,483	360,804
ALPHA BANK (CR)	101	1,889	22,478
CC HBC AG (CR)	5	9	106
ELLAKTOR (CR)	9	36	3,719
EUROBANK ERGASIAS (CR)	78	1,472	48,882
EYDAP S.A. (CR)	0	0	72
FOLLI FOLLIE (CR)	12	19	496
GEK TERNA (CR)	1	2	7,785
GRIVALIA PROPERTIES (CR)	4	16	65
HELLENIC EXCHANGES-A.S.E. (CR)	0	0	309
HELLENIC PETROLEUM (CR)	43	69	3,900
INTRALOT (CR)	10	41	1,463
JUMBO SA (CR)	20	36	397
MARFIN INVESTMENT GROUP (CR)	16	242	52,518
METKA (CR)	5	32	357
MOTOR OIL (CR)	2	11	121
MYTILINEOS HOLDINGS (CR)	70	292	5,033
NATIONAL BANK (CR)	141	9,917	95,922
OPAP (CR)	19	60	2,280
OTE (CR)	27	91	4,359
P.P.A. S.A. (CR)	0	0	626
PIRAEUS BANK (CR)	130	10,070	97,833
PPC (CR)	33	158	7,833
TERNA ENERGY (CR)	2	2	1,335
TITAN CEMENT (CR)	4	12	117
VIOHALCO SA/NV (CB)	4	7	2,798
Index Options	23	144	1,488
FTSE/Athex Large Cap	23	144	1,488
Stock Options	1	25	416
ALPHA BANK (CR)	0	0	0
NATIONAL BANK (CR)	0	0	0
OPAP (CR)	0	0	105
OTE (CR)	1	25	221
PIRAEUS BANK (CR)	0	0	0
PPC (CR)	0	0	90
Total Derivatives Traded	912	25,429	370,357

Number of Outstanding Securities	Nominal Value	Dividends [1]			Date of Last Coupon		Note	Shares	Closing price	% change	Previous closing price/date	Open price	Price min	Price max	Last price	Avg price	Last Bid [7]	Last Ask [7]	P/E after	Year	Volume	Trades	Transactions Value[8]	Company Mkt Value (thou. €)	Year low	Year high	Sector[4]
		2014	2015	2016	Dividend [2]	Right																					
Warrants																											
1,141,734,167	---	---	---		11/06/2013	---	ALPHA BANK (W)	0.002	---	↘ 0.002	20/01/2017	0.001	0.001	0.002	0.002	0.0015379467@0.001	92469506@0.002	---	2015	8,996	12	9.01	2,781,754.97	0.001	0.002	8355	
245,745,661	---	---	---		27/06/2013	---	NATIONAL BANK (W)	0.006	---	↘ 0.006	20/01/2017	0.005	0.005	0.007	0.006	0.00610000@0.006	918721@0.007	---	2015	38,041	11	230.21	2,149,580.61	0.005	0.008	8355	
843,637,022	---	---	---		03/07/2013	---	PIRAEUS BANK (W)	0.001	---	↘ 0.001	20/01/2017	---	---	---	---	---	---	30349939@0.001	---	2015	---	---	---	1,685,504.37	0.001	0.001	8355

Warrants

71,417,100	0.650	0.7	0.7	---	13/05/2016	27/06/2014	---	AEGEAN AIRLINES (CR)	6.73	2.28	# 6.58	20/01/2017	6.55	6.54	6.73	6.73	6.63	950@6.72	1000@6.76	8.86	2015	64,243	366	425,742.82	480,637.08	6.30	6.73	5751
11,178,000	1.12	---	---	---	21/04/2010	15/12/2014	---	AEOLIAN INVESTMENT FUND (CR)	0.578	1.05	# 0.572	20/01/2017	0.552	0.552	0.578	0.578	0.565	53@0.578	200@0.580	---	2015	497	3	280.77	6,460.88	0.530	0.670	8985
1,536,881,200	0.300	---	---	---	07/04/2008	27/11/2015	---	ALPHA BANK (CR)	1.81	-0.55	€ 1.82	20/01/2017	1.80	1.80	1.83	1.81	1.82	140880@1.80	22000@1.82	---	2015	2,408,066	1,025	4,374,041.78	2,781,754.97	1.80	2.04	8355
22,016,250	0.370	---	---	---	15/07/2009	11/05/2000	---	ALUMIL (CR)	0.218	6.34	# 0.205	20/01/2017	0.218	0.217	0.218	0.218	0.217	60@0.209	60@0.210	---	2015	174	4	37.83	4,799.54	0.196	0.218	1753
417,608	16.00	---	---	---	29/04/2014	05/03/2013	---	ANDROMEDA SA (CR)	14.93	5.51	# 14.15	20/01/2017	14.93	14.93	14.93	14.93	14.93	7@14.26	50@15.00	---	2015	20	1	298.60	6,234.89	12.83	14.93	8985
13,126,020	0.650	---	---	---	08/07/2010	12/10/2016	---	AS COMPANY SA (CR)	0.670	---	↘ 0.670	20/01/2017	---	---	---	---	---	1000@0.659	1550@0.696	5.70	2015	---	---	---	8,794.43	0.650	0.697	5379
86,735,980	0.310	---	---	---	06/07/2009	02/01/2002	---	ATHENS MEDICAL CENTER SA (CR)	0.609	1.67	# 0.599	20/01/2017	0.609	0.609	0.609	0.609	0.609	250@0.571	5660@0.608	---	2015	100	1	60.90	52,822.21	0.551	0.648	4533
2,339,353,394	0.300	---	---	---	04/06/2008	01/12/2015	---	ATTICA BANK S.A. (CR)	0.044	15.79	# 0.038	20/01/2017	0.039	0.038	0.045	0.044	0.042	199000@0.042	446337@0.044	---	2015	5,291,609	329	223,577.73	102,931.55	0.030	0.046	8355
15,300,000	0.300	---	---	---	30/07/2009	13/12/1999	---	ATTICA PUBLICATIONS SA (CR)	0.713	---	↘ 0.713	20/01/2017	---	---	---	---	---	---	1235@0.642	---	2015	---	---	---	10,908.90	0.585	0.713	5557
48,184,910	0.700	---	---	---	01/07/2008	01/03/2010	---	AUDIO VISUAL ENTERPRISES (CR)	0.085	---	↘ 0.085	20/01/2017	---	---	---	---	---	3000@0.066	890@0.083	---	2015	---	---	---	4,095.72	0.063	0.090	5553
12,213,750	0.320	0.8	0.85	---	07/06/2016	22/11/2013	---	AUTOHELLAS SA (CR)	11.89	-0.75	€ 11.98	20/01/2017	11.97	11.89	11.97	11.89	11.93	150@11.92	238@12.35	9.50	2015	45	4	537.01	145,221.49	11.73	12.35	5759
19,864,886	5.60	0.672	0.672	---	03/03/2016	02/07/2008	---	BANK OF GREECE (CR)	12.36	-4.04	€ 12.88	20/01/2017	12.25	12.01	12.45	12.36	12.25	2@12.32	122@12.36	---	---	11,475	210	140,523.71	245,529.99	10.60	13.00	8355
23,986,500	1.05	---	---	---	26/06/2009	15/03/2000	---	BIOKARPET S.A.(CR)	0.319	---	↘ 0.319	20/01/2017	---	---	---	---	---	---	1000@0.299	---	2015	---	---	---	7,651.69	0.298	0.319	3726
15,842,391	1.51	---	---	---	15/07/2009	12/05/2000	---	BITROS HOLDING SA (CR)	0.195	---	↘ 0.195	20/01/2017	---	---	---	---	---	---	102@0.194	---	2015	---	---	---	3,089.27	0.179	0.209	1757
15,816,009	0.300	---	---	---	01/07/2009	17/07/2000	---	BYTE COMPUTER SA (CR)	0.283	---	↘ 0.283	20/01/2017	0.278	0.267	0.283	0.283	0.277	100@0.278	100@0.286	---	2015	2,960	15	819.20	4,475.93	0.267	0.309	9533
366,640,638	6.70	0.36	0.4	---	30/06/2016	29/04/2013	---	CC HBC AG (CR)	21.07	0.81	# 20.90	20/01/2017	20.98	20.98	21.11	21.07	21.06	2251@21.08	1@21.11	---	---	20,044	63	422,181.78	7,725,118.24	20.37	21.11	3537
190,162,681	---	---	---	---	07/12/2016		---	CENERGY HOLDINGS (CB)	0.822	-0.12	€ 0.823	20/01/2017	0.824	0.820	0.832	0.822	0.827	551@0.822	922@0.826	---	---	87,355	131	72,280.46	156,313.72	0.620	0.898	2727
101,123,806	0.360	---	---	---	22/07/2010	28/06/2011	---	CENTRIC HOLDINGS (CR)	0.096	-6.80	€ 0.103	20/01/2017	0.124	0.095	0.124	0.096	0.096	1600@0.095	599@0.095	---	2015	5,407	22	521.22	9,707.89	0.093	0.124	5752
9,907,500	0.300	---	---	---	06/10/2005	13/02/2002	---	CPI SA (CR)	0.187	---	↘ 0.187	20/01/2017	---	---	---	---	---	---	---	22.38	2016	---	---	---	1,852.70	0.158	0.189	9572
41,068,800	0.420	(0.03)	0.1205	---	19/08/2016	17/02/2016	---	CRETE PLASTICS SA (CR)	5.18	2.57	# 5.05	20/01/2017	5.05	5.05	5.18	5.18	5.07	1@5.12	215@5.18	17.38	2015	1,294	4	6,556.75	212,736.38	4.79	5.18	1357
15,000,000	0.300	---	---	---	06/07/2007	18/07/2000	---	DAIOS PLASTICS SA (CR)	2.90	-3.01	€ 2.99	20/01/2017	2.71	2.71	2.90	2.90	2.81	500@2.73	317@2.90	---	2015	400	4	1,122.00	43,500.00	2.71	2.99	1357
34,720,000	0.310	---	---	---	16/06/2010	01/08/2007	---	DROMEAS SA (CR)	0.108	---	↘ 0.108	20/01/2017	---	---	---	---	---	525@0.101	1485@0.109	---	2015	---	---	---	3,749.76	0.102	0.117	3726
3,873,120	0.300	---	---	---	07/07/2008	04/10/2012	---	DRUCKFARBEN HELLAS (CR)	0.570	---	↘ 0.570	20/01/2017	---	---	---	---	---	100@0.550	---	0.91	2015	---	---	---	2,207.68	0.522	0.700	1357
11,250,000	0.520	---	0.04	---	25/07/2016	09/11/2015	---	EKTER SA (CR)	0.470	3.98	# 0.452	20/01/2017	0.470	0.470	0.470	0.470	0.470	1200@0.443	2496@0.470	14.84	2015	4	1	1.88	5,287.50	0.401	0.470	2357
32,188,050	1.04	---	---	---	21/07/2008	20/01/2000	---	EL. D. MOUZAKIS SA (CB)	0.165	-2.94	€ 0.170	20/01/2017	0.164	0.164	0.165	0.165	0.164	---	110@0.165	---	2015	935	2	153.35	5,311.03	0.146	0.178	3763
18,421,516	1.00	---	---	---	07/07/2009	10/09/2010	---	ELASTRON (CR)	0.770	5.34	# 0.731	20/01/2017	0.770	0.770	0.770	0.770	0.770	500@0.704	731@0.758	---	2015	1	1	0.77	14,184.57	0.700	0.847	1757
31,734,530	1.60	---	---	---	09/07/2007	19/07/2006	---	ELGEKA SA (CR)	0.170	---	↘ 0.170	20/01/2017	---	---	---	---	---	---	792@0.170	---	2015	---	---	---	5,394.87	0.100	0.170	3577
23,828,130	0.500	---	0.16	---	08/06/2016	17/02/2009	---	ELINOIL S.A. (CR)	0.950	---	↘ 0.950	20/01/2017	---	---	---	---	---	1000@0.910	2000@1.19	8.33	2015	---	---	---	22,636.72	0.950	1.00	537
177,001,313	1.03	---	---	---	05/07/2011	20/12/2007	---	ELLAKTOR (CR)	1.14	-0.87	€ 1.15	20/01/2017	1.15	1.13	1.15	1.14	1.14	3@1.14	1802@1.15	---	2015	97,878	131	111,239.79	201,781.50	1.10	1.24	2357
82,667,000	0.300	---	---	---	22/07/2014		---	ELTECH ANEMOS S.A. (CR)	1.06	0.95	# 1.05	20/01/2017	1.03	1.03	1.08	1.06	1.05	1000@1.04	2387@1.06	11.40	2015	15,566	37	16,401.16	87,627.02	0.875	1.15	7537
26,730,187	0.600	---	---	---	23/06/2014	30/12/2010	---	ELTON SA (CR)	0.958	0.10	# 0.957	20/01/2017	0.957	0.957	0.958	0.958	0.957	75@0.941	318@0.958	17.10	2015	125	4	119.65	25,607.52	0.837	0.959	1353
14,050,971	0.340	---	---	---	06/07/2011	17/10/2002	---	ELTRAK SA (CR)	1.40	3.70	# 1.35	20/01/2017	1.22	1.22	1.44	1.40	1.24	2000@1.24	28@1.39	27.82	2015	33	4	40.84	19,671.36	1.22	1.44	2753
3,307,500	0.960	---	---	---	11/08/2010	23/09/2016	---	ELVE SA (CR)	1.81	---	↘ 1.81	20/01/2017	---	---	---	---	---	100@1.82	135@1.97	14.43	2015	---	---	---	5,986.58	1.63	1.97	3763

Number of Outstanding Securities	Nominal Value	Dividends [1]			Date of Last Coupon Dividend [2]		Note	Shares	Closing price	% change	Previous closing price/date	Open price	Price min	Price max	Last price	Avg price	Last Bid [7]	Last Ask [7]	P/E after	Year	Volume	Trades	Transactions Value[8]	Company Mkt Value (thou. €)	Year low	Year high	Sector[4]
----------------------------------	---------------	---------------	--	--	----------------------------------	--	------	--------	---------------	----------	-----------------------------	------------	-----------	-----------	------------	-----------	--------------	--------------	-----------	------	--------	--------	-----------------------	-----------------------------	----------	-----------	------------

Main Market

2,185,998,765	0.300	---	---	---	02/05/2008	27/11/2015	---	EUROBANK ERGASIAS (CR)	0.625	-1.11	€ 0.632	20/01/2017	0.632	0.625	0.636	0.625	0.630321973@0.625	4500@0.627	---	2015	1,566,659	606	986,636.04	1,366,249.23	0.625	0.716	8355
8,623,225	0.600	---	---	---	02/06/2010	30/05/2016	5031	EUROCONSULTANTS S.A. (CR)	0.511	6.02	# 0.482	20/01/2017	0.511	0.511	0.511	0.511	100@0.453	500@0.500	---	2015	50	1	25.55	4,406.47	0.450	0.655	2791
27,503,677	0.630	---	0.06	---	22/06/2016	18/10/1999	---	EUROPEAN RELIANCE INSUR. (CR)	2.20	3.29	# 2.13	20/01/2017	2.15	2.12	2.20	2.20	2.14 30340@2.15	523@2.20	5.49	2015	7,077	20	15,123.60	60,508.09	1.95	2.20	8536
13,673,200	0.880	---	---	---	18/07/2008	26/07/2001	---	EVROFARMA SA (CR)	0.337	---	↘ 0.337	20/01/2017	0.320	0.320	0.337	0.337	0.321 ---	10@0.326	20.30	2015	230	5	73.77	4,607.87	0.272	0.339	3577
106,500,000	0.600	0.2	0.31	---	28/12/2016	28/01/2000	---	EYDAP S.A. (CR)	5.25	---	↘ 5.25	20/01/2017	5.18	5.18	5.30	5.25	5.21 465@5.20	500@5.26	12.80	2015	14,354	78	74,843.83	559,125.00	5.18	5.65	7577
52,800,154	0.300	---	---	---	20/08/2014	21/06/2004	---	F.G. EUROPE S.A. (CR)	0.561	---	↘ 0.561	20/01/2017	0.561	0.561	0.561	0.561	500@0.562	---	24.79	2015	3,044	3	1,707.68	29,620.89	0.455	0.568	3722
10,203,575	0.730	---	---	---	16/07/2007	18/10/1999	---	FIERATEX SA (CR)	0.080	9.59	# 0.073	20/01/2017	0.080	0.080	0.080	0.080	0.080 178@0.075	---	---	2015	100	1	8.00	816.29	0.054	0.080	3763
11,720,024	0.540	---	---	---	21/08/2014	04/11/2015	---	FLEXOPACK SA (CR)	3.38	---	↘ 3.38	20/01/2017	---	---	---	---	30@3.24	550@3.37	8.99	2015	---	---	---	39,613.68	2.90	3.38	2723
4,181,450	0.500	---	---	---	21/08/2000	05/03/2002	---	FLOUR MILLS SARANTOPOULOS SA	0.630	---	↘ 0.630	20/01/2017	---	---	---	---	---	72@0.630	---	2015	---	---	---	2,634.31	0.630	0.630	3577
66,948,210	0.300	0.1005	---	---	22/09/2015	22/09/2015	---	FOLLI FOLLIE (CR)	18.11	0.61	# 18.00	20/01/2017	18.29	18.00	18.45	18.11	18.21 386@18.11	260@18.19	---	2015	25,998	285	473,362.39	1,212,432.08	17.84	19.76	5379
51,330,410	1.07	---	---	---	21/06/2010	16/07/2002	---	FOURLIS (CR)	4.32	-1.37	€ 4.38	20/01/2017	4.35	4.30	4.40	4.32	4.34 1994@4.35	750@4.36	---	2015	47,745	137	207,282.21	221,747.37	3.95	4.54	3722
14,076,360	0.370	---	---	---	19/08/2008	22/07/2003	---	GALAXIDI S.A. (CR)	0.313	8.68	# 0.288	20/01/2017	0.315	0.313	0.315	0.313	0.314 1000@0.262	3905@0.313	30.64	2015	7,600	8	2,388.29	4,405.90	0.283	0.399	3573
103,423,291	0.570	---	---	---	01/08/2011	19/04/2016	---	GEK TERNA (CR)	2.35	---	↘ 2.35	20/01/2017	2.33	2.32	2.35	2.35	2.34 1483@2.33	500@2.36	14.76	2015	47,654	73	111,707.77	243,044.73	2.25	2.42	2357
8,418,750	0.300	---	0.12	---	16/12/2015	27/06/2012	---	GEKE SA (CB)	3.22	-9.80	€ 3.57	20/01/2017	3.25	3.22	3.35	3.22	3.24 ---	40@3.36	10.67	2015	3,141	40	10,178.42	27,108.38	3.22	4.30	5753
24,060,000	0.300	0.02	0.01	---	11/07/2016	11/07/2016	---	GEN. COMMERCIAL & IND.SA (CR)	0.338	---	↘ 0.338	20/01/2017	---	---	---	---	140@0.326	1770@0.360	14.22	2015	---	---	---	8,132.28	0.319	0.355	2797
34,780,982	1.55	0.15	0.16	---	20/04/2016	27/07/2000	---	GR. SARANTIS SA (CR)	10.50	-0.29	€ 10.53	20/01/2017	10.60	10.40	10.60	10.50	10.53 262@10.36	1061@10.47	33.09	2015	7,396	39	77,879.51	365,200.31	10.23	11.14	3767
101,260,000	2.13	0.3037	0.3134	---	18/03/2016	08/01/2014	---	GRIVALIA PROPERTIES (CR)	8.01	0.12	# 8.00	20/01/2017	7.95	7.91	8.07	8.01	8.02 1311@8.00	341@8.07	15.05	2015	2,000	22	16,043.38	811,092.60	7.54	8.24	8675
8,340,750	1.18	---	---	---	25/06/2009	09/09/2015	---	HAIDEMENOS SA (CR)	0.316	---	↘ 0.316	20/01/2017	---	---	---	---	1000@0.236	1888@0.313	---	2015	---	---	---	2,635.68	0.211	0.316	2791
101,279,627	0.380	---	---	---	26/06/2008	14/07/2006	---	HALKOR SA (CB)	0.502	-3.28	€ 0.519	20/01/2017	0.501	0.501	0.527	0.502	0.503 200@0.501	426@0.519	---	2015	670	9	337.22	50,842.37	0.429	0.541	1755
65,368,563	1.08	0.21	0.1026	---	31/05/2016	04/07/2016	---	HELLENIC EXCHANGES-A.S.E. (CR)	4.79	-0.21	€ 4.80	20/01/2017	4.80	4.75	4.81	4.79	4.79 21181@4.79	8035@4.80	24.32	2015	13,260	95	63,560.55	313,115.42	4.74	4.90	8777
305,635,185	2.18	---	---	---	31/12/2014	01/10/2003	4795	HELLENIC PETROLEUM (CR)	4.50	1.81	# 4.42	20/01/2017	4.44	4.44	4.56	4.50	4.52 1833@4.50	709@4.52	49.94	2015	78,780	350	355,920.73	1,375,358.33	4.35	4.58	537
305,732,436	0.410	---	---	---	08/07/2009	28/09/2011	---	HYGEIA SA (CR)	0.157	5.37	# 0.149	20/01/2017	0.148	0.148	0.157	0.157	0.153 3100@0.155	8800@0.158	---	2015	180,000	55	27,460.74	47,999.99	0.147	0.158	4533
65,441,118	0.440	---	---	---	24/11/2014	11/08/2015	---	IASO SA (CR)	0.406	-0.98	€ 0.410	20/01/2017	0.402	0.402	0.410	0.406	0.404 3000@0.404	1761@0.414	---	2015	3,971	11	1,603.66	26,569.09	0.385	0.440	4533
8,298,467	0.400	---	---	---	30/08/1993	08/05/2013	---	IDEAL GROUP SA (CR)	0.780	---	↘ 0.780	20/01/2017	---	---	---	---	1000@0.741	215@0.815	-(6)-	2015	---	---	---	6,472.80	0.720	0.814	9574
28,580,100	0.400	---	---	---	18/08/2014	04/07/2016	---	IKTINOS HELLAS SA (CR)	0.796	-0.37	€ 0.799	20/01/2017	0.802	0.780	0.810	0.796	0.792 600@0.776	341@0.795	21.90	2015	12,676	39	10,035.28	22,749.76	0.773	0.847	2353
9,090,000	0.900	---	---	---	15/05/2009	13/10/2014	---	ILYDA S.A. (CR)	0.351	---	↘ 0.351	20/01/2017	---	---	---	---	500@0.316	---	---	2015	---	---	---	3,190.59	0.351	0.476	9537
20,578,374	0.620	0.4	0.07	---	05/07/2016	18/05/2015	---	INFORM P. LYKOS SA (CR)	0.497	-9.47	€ 0.549	20/01/2017	0.498	0.497	0.498	0.497	0.497 1250@0.502	100@0.549	---	2015	800	2	397.65	10,227.45	0.470	0.598	2791
10,500,000	4.00	---	---	---	02/08/2016	---	---	INTERCONTINENTAL (CR)	5.58	---	↘ 5.58	20/01/2017	---	---	---	---	---	2565@5.58	---	---	---	---	---	58,590.00	5.53	5.58	8674
11,233,200	0.730	---	---	---	12/07/2010	30/07/1999	---	INTERTECH SA (CR)	0.275	25.00	# 0.220	20/01/2017	0.220	0.220	0.275	0.275	0.226 50000@0.179	226@0.275	---	2015	1,200	4	271.10	3,089.13	0.129	0.275	9572
34,986,430	0.440	---	---	---	25/07/2008	23/02/2010	---	INTERWOOD-XYLEMPORIA (CR)	0.061	---	↘ 0.061	20/01/2017	---	---	---	---	7566@0.061	---	---	2015	---	---	---	2,329.25	0.061	0.061	2353
2,566,836	0.440	---	---	---	13/08/2010	09/01/2007	---	INTERWOOD-XYLEMPORIA (PR)	0.076	-2.56	€ 0.078	20/01/2017	0.076	0.076	0.076	0.076	0.076 2000@0.060	---	---	2015	2,000	2	152.00	2,329.25	0.076	0.109	2353
23,154,250	1.36	---	---	---	12/08/2008	02/08/2010	---	INTRACOM CONSTR. (CR)	0.409	0.25	# 0.408	20/01/2017	0.385	0.385	0.409	0.409	0.385 2000@0.386	1999@0.409	---	2015	1,001	2	385.41	9,470.09	0.360	0.569	2357
133,025,996	1.41	---	---	---	03/07/2007	07/01/2002	---	INTRACOM HOLDINGS (CR)	0.304	-0.65	€ 0.306	20/01/2017	0.312	0.304	0.312	0.304	0.306 1392@0.304	500@0.308	---	2015	4,943	15	1,514.89	40,439.90	0.296	0.333	9578
158,961,721	0.300	---	---	---	30/05/2013	14/11/2007	---	INTRALOT (CR)	1.12	-0.88	€ 1.13	20/01/2017	1.12	1.12	1.16	1.12	1.13 2000@1.11	570@1.13	---	2015	102,795	84	116,512.90	178,037.13	1.02	1.18	5752
77,654,850	0.580	---	---	---	01/07/2011	21/02/2003	---	J & P - AVAX SA (CR)	0.420	---	↘ 0.420	20/01/2017	0.420	0.416	0.422	0.420	0.418 1000@0.420	200@0.424	---	2015	8,159	18	3,413.64	32,615.04	0.380	0.458	2357
136,059,759	0.880	0.18	---	0.36	04/11/2016	05/03/2014	---	JUMBO SA (CR)	14.00	1.97	# 13.73	20/01/2017	13.90	13.85	14.03	14.00	13.97 685@14.02	250@14.05	23.10	2016	42,066	205	587,818.66	1,904,836.63	13.73	15.09	3747
9,742,920	0.400	0.01	0.01	---	12/08/2016	14/07/2000	---	KARAMOLEGOS SA (CR)	1.96	---	↘ 1.96	20/01/2017	---	---	---	---	109@1.96	1500@2.05	-(6)-	2015	---	---	---	19,096.12	1.96	2.00	3577
14,679,792	1.68	---	---	---	24/06/2014	04/09/2000	---	KARATZIS SA (CR)	4.21	---	↘ 4.21	20/01/2017	---	---	---	---	35@4.08	60@4.13	12.08	2015	---	---	---	61,801.92	3.90	4.24	2723

Number of Outstanding Securities	Nominal Value	Dividends [1]			Date of Last Coupon		Note	Shares	Closing price	% change	Previous closing price/date	Open price	Price min	Price max	Last price	Avg price	Last Bid [7]	Last Ask [7]	P/E after	Year	Volume	Trades	Transactions Value[8]	Company Mkt Value (thou. €)	Year low	Year high	Sector[4]		
		2014	2015	2016	Dividend [2]	Right																							
Main Market																													
13,202,756	0.350	---	---	---	01/07/2004	05/08/2014	---	KEKROPS SA (CR)	0.336	-0.30	€ 0.337	20/01/2017	0.336	0.336	0.336	0.336	500@0.304	4995@0.329	---	2015	5	1	1.68	4,436.13	0.286	0.368	8633		
7,595,160	0.600	---	---	---	08/08/2008	18/08/2010	---	KIRIAKOULIS SHIPPING SA (CR)	0.591	-0.34	€ 0.593	20/01/2017	0.590	0.590	0.591	0.591	0.590	500@0.535	1403@0.585	73.59	2015	5,000	5	2,951.50	4,488.74	0.590	0.594	5759	
40,219,218	0.300	---	---	---	25/05/2009	09/07/2013	---	KLOUKINAS - LAPPAS SA (CR)	0.292	6.18	# 0.275	20/01/2017	0.288	0.288	0.292	0.292	0.291	1660@0.262	27988@0.285	---	2015	350	3	101.80	11,744.01	0.251	0.297	2357	
21,224,340	0.420	---	---	---	02/07/2008	25/04/2006	---	KORDELLOS BROS SA (CR)	0.215	0.94	# 0.213	20/01/2017	0.200	0.200	0.218	0.215	0.201	300@0.210	105@0.214	---	2015	10,072	13	2,027.20	4,563.23	0.187	0.345	1757	
13,586,500	0.390	---	---	---	25/06/2010	28/05/2008	---	KORRES (CR)	3.59	1.41	# 3.54	20/01/2017	3.59	3.59	3.59	3.59	3.59	60@3.47	450@3.59	---	2015	50	1	179.50	48,775.54	3.46	3.67	3767	
29,480,000	0.420	---	---	---	19/07/2010	01/08/2007	---	KRETA FARM SA (CR)	0.420	0.48	# 0.418	20/01/2017	0.420	0.420	0.420	0.420	0.420	2100@0.420	500@0.430	---	2015	500	1	210.00	12,381.60	0.416	0.490	3577	
33,065,136	0.380	0.06	0.06	---	18/08/2016	16/09/2013	---	KRI-KRI S.A. (CR)	1.87	-0.53	€ 1.88	20/01/2017	1.83	1.83	1.92	1.87	1.87	400@1.87	400@1.88	16.09	2015	6,826	23	12,780.96	61,831.80	1.75	1.92	3577	
15,804,800	0.360	---	---	---	15/06/2010	12/03/2004	---	KTIMA KOSTAS LAZARIDIS SA (CR)	0.225	---	~ 0.225	20/01/2017	---	---	---	---	---	450@0.225	---	---	2015	---	---	---	3,556.08	0.195	0.309	3535	
23,286,253	0.990	0.2406	---	---	14/08/2015	15/09/2014	---	KYRIAKIDIS MARBLES SA (CR)	3.26	4.15	# 3.13	20/01/2017	3.10	3.10	3.26	3.26	3.15	320@3.11	866@3.25	12.47	2015	1,150	8	3,621.00	75,913.18	3.06	3.39	2353	
79,721,775	0.300	---	---	---	30/05/2007	23/06/2014	---	LAMDA DEVELOPMENT SA (CR)	4.64	0.65	# 4.61	20/01/2017	4.55	4.55	4.65	4.64	4.62	5@4.56	496@4.66	---	2015	9,497	50	43,881.00	369,909.04	4.55	4.94	8633	
21,364,000	1.12	---	---	---	05/07/2010	10/08/2005	---	LAMPASA HOTEL SA (CR)	16.67	-1.83	€ 16.98	20/01/2017	16.67	16.67	16.67	16.67	16.67	75@16.66	1000@17.30	75.85	2015	25	1	416.75	356,137.88	16.64	17.00	5753	
5,939,268	0.620	---	---	---	10/07/2003	03/01/2002	---	LANAKAM SA (CR)	0.589	---	~ 0.589	20/01/2017	---	---	---	---	---	---	2150@0.590	---	---	2015	---	---	---	3,498.23	0.589	0.589	3763
4,740,000	0.860	---	---	---	---	14/03/2003	---	LOGISMOS S.A. (CR)	0.260	---	~ 0.260	20/01/2017	---	---	---	---	---	800@0.234	---	---	2015	---	---	---	1,232.40	0.257	0.260	9533	
17,125,062	0.940	---	---	---	01/06/2010	18/07/2016	---	LOULIS MILLS SA (CR)	1.56	6.12	# 1.47	20/01/2017	1.33	1.33	1.57	1.56	1.49	411@1.41	240@1.55	45.59	2015	3	3	4.46	26,715.10	1.33	1.66	3577	
939,510,748	0.300	---	---	---	26/04/2007	29/08/2014	---	MARFIN INVESTMENT GROUP (CR)	0.153	1.32	# 0.151	20/01/2017	0.151	0.151	0.155	0.153	0.153	2378@0.153	26484@0.154	---	2015	499,229	132	76,189.16	143,745.14	0.147	0.170	8775	
9,819,370	0.690	---	---	---	14/08/2007	09/01/2004	---	MATHIOS REFRACTORY SA (CR)	0.178	-7.77	€ 0.193	20/01/2017	0.178	0.178	0.178	0.178	0.178	800@0.178	1@0.212	---	2015	100	1	17.80	1,747.85	0.178	0.251	2353	
468,700	1.48	---	---	---	26/04/2016	21/05/2004	---	MERMEREN KOMB. A.D. PR. (GDR)	7.90	-4.24	€ 8.25	20/01/2017	5.82	5.82	7.90	7.90	6.31	500@5.88	39@7.90	0.76	2015	131	6	826.90	3,702.73	5.82	8.25	1775	
51,950,600	0.320	0.5	0.12	---	13/05/2016	21/10/2005	---	METKA (CR)	6.42	0.63	# 6.38	20/01/2017	6.47	6.37	6.47	6.42	6.43	15@6.36	266@6.42	19.27	2015	40,651	136	261,383.88	333,522.85	6.24	6.65	2757	
10,500,000	0.950	---	---	---	24/06/2008	19/12/2013	---	MEVACO SA (CR)	0.980	---	~ 0.980	20/01/2017	---	---	---	---	---	1000@0.882	200@1.01	---	2015	---	---	---	10,290.00	0.900	0.980	2757	
6,700,000	0.800	0.03	0.023	---	27/06/2016	29/05/2014	---	MILLS KEPENOS (CR)	1.25	-3.10	€ 1.29	20/01/2017	1.25	1.25	1.25	1.25	1.25	269@1.30	---	12.05	2015	20	1	25.00	8,375.00	1.25	1.66	3577	
6,200,000	0.500	---	---	---	22/06/2010	01/11/1995	---	MINERVA KNITWEAR SA (CB)	0.036	---	~ 0.036	20/01/2017	---	---	---	---	---	4000@0.034	---	---	2015	---	---	---	223.20	0.036	0.048	3763	
12,417,000	0.370	---	---	---	28/07/2008	06/09/2011	---	MLS MULTIMEDIA SA (CR)	4.15	0.24	# 4.14	20/01/2017	4.09	4.09	4.15	4.15	4.12	270@4.08	130@4.15	25.48	2015	4,118	50	16,956.50	51,530.55	3.98	4.15	9537	
11,700,000	0.590	---	---	---	02/06/2009	24/07/2012	---	MOTODYNAMICS S.A. (CR)	0.547	---	~ 0.547	20/01/2017	---	---	---	---	---	5000@0.385	30@0.493	19.97	2015	---	---	---	6,399.90	0.370	0.550	5379	
110,782,980	0.750	---	0.65	0.2	12/12/2016	04/11/2013	---	MOTOR OIL (CR)	13.49	-1.17	€ 13.65	20/01/2017	13.65	13.40	13.65	13.49	13.47	10@13.42	5284@13.45	7.43	2015	145,733	355	1,962,665.02	1,494,462.40	13.07	13.92	533	
116,915,862	0.970	---	---	---	11/05/2009	19/10/2015	---	MYTILINEOS HOLDINGS (CR)	6.34	1.12	# 6.27	20/01/2017	6.27	6.27	6.40	6.34	6.37	955@6.33	287@6.34	---	2015	168,815	430	1,074,705.07	741,246.57	6.08	6.40	1755	
8,321,682	0.670	---	---	---	17/08/2007	23/11/1999	---	N. LEVEDERIS SA (CB)	0.198	---	~ 0.198	20/01/2017	---	---	---	---	---	---	---	---	2015	---	---	---	2,295.85	0.198	0.242	1757	
2,160,524	0.670	0.0436	0.0436	---	04/08/2016	23/11/1999	---	N. LEVEDERIS SA (PB)	0.300	---	~ 0.300	20/01/2017	---	---	---	---	---	1200@0.211	400@0.299	---	2015	---	---	---	2,295.85	0.300	0.300	1757	
11,510,102	0.890	---	---	---	24/06/2005	06/10/1999	---	NAFPAKTOS TEXTILE IND. SA (CB)	0.233	---	~ 0.233	20/01/2017	0.210	0.210	0.256	0.233	0.230	4@0.233	200@0.255	---	2015	1,596	8	367.29	2,681.85	0.178	0.256	3763	
6,340,000	0.600	---	---	---	30/11/2009	09/11/2016	---	NAKAS MUSIC	0.780	---	~ 0.780	20/01/2017	0.780	0.780	0.780	0.780	0.780	990@0.780	2445@0.850	4.91	2016	20	2	15.60	4,945.20	0.744	0.826	5379	
9,147,151,527	0.300	---	---	---	16/05/2008	30/11/2015	---	NATIONAL BANK (CR)	0.235	-0.84	€ 0.237	20/01/2017	0.234	0.231	0.236	0.235	0.234	57916@0.234	229697@0.236	---	2015	13,194,572	1,145	3,089,883.78	2,149,580.61	0.231	0.273	8355	
23,935,280	0.300	---	---	---	29/06/2009	13/06/2000	---	NAYTEMPORIKI PUBLISHING SA(CR)	0.037	---	~ 0.037	20/01/2017	---	---	---	---	---	323@0.035	---	---	2015	---	---	---	885.61	0.037	0.037	5557	
27,848,000	0.300	0.0032	0.0084	---	16/08/2016	02/09/2003	---	NEWSPHONE HELLAS SA (CR)	0.259	---	~ 0.259	20/01/2017	---	---	---	---	---	1375@0.234	351@0.259	10.88	2015	---	---	---	7,212.63	0.231	0.272	2791	
291,497,368	0.300	---	---	---	08/07/2008	21/03/2016	---	NIREFS SA (CR)	0.179	-1.10	€ 0.181	20/01/2017	0.180	0.179	0.185	0.179	0.181	900@0.176	4232@0.179	0.25	2015	34,045	27	6,171.30	52,178.03	0.162	0.204	3573	
319,000,000	0.300	0.57	0.4	0.12	13/10/2016	25/04/2001	---	OPAP (CR)	8.57	0.82	# 8.50	20/01/2017	8.50	8.50	8.57	8.57	8.52	3992@8.55	1825@8.58	12.95	2015	139,900	207	1,191,396.24	2,733,830.00	8.26	8.80	5752	
490,150,389	2.83	0.08	0.1	---	29/06/2016	18/06/1998	---	OTE (CR)	8.80	-0.57	€ 8.85	20/01/2017	8.86	8.78	8.87	8.80	8.83	507@8.80	1811@8.87	46.58	2015	343,343	515	3,032,173.48	4,313,323.42	8.68	9.14	6535	
25,000,000	2.00	0.099	0.1114	---	18/07/2016	08/08/2003	---	P.P.A. S.A. (

Number of Outstanding Securities	Nominal Value	Dividends [1]			Date of Last Coupon Dividend [2]		Date of Right	Note	Shares	Closing price	% change	Previous closing price/date	Open price	Price min	Price max	Last price	Avg price	Last Bid [7]	Last Ask [7]	P/E after	Year	Volume	Trades	Transactions Value[8]	Company Mkt Value (thou. €)	Year low	Year high	Sector[4]
--	------------------	---------------	--	--	-------------------------------------	--	---------------	------	--------	------------------	----------	--------------------------------	---------------	--------------	--------------	---------------	--------------	-----------------	--------------	--------------	------	--------	--------	--------------------------	--------------------------------	-------------	--------------	---------------

Main Market

50,797,369	0.310	---	---	---	17/08/2000	12/10/2010	---	PAPOUTSANIS (CR)	0.205	2.50	#	0.200	20/01/2017	0.205	0.205	0.205	0.205	0.205	50@0.195	775@0.200	---	2015	114	2	23.37	10,413.46	0.165	0.205	3767
7,070,400	0.930	0.101	---	---	30/11/2016	06/05/2016	---	PETROPOULOS PETROS (CR)	4.32	0.23	#	4.31	20/01/2017	4.23	4.20	4.32	4.32	4.26	170@4.22	143@4.32	40.51	2015	1,463	32	6,237.68	30,544.13	4.07	4.32	2753
8,733,183,280	0.300	---	---	---	16/05/2008	27/11/2015	---	PIRAEUS BANK (CR)	0.193	-1.03	€	0.195	20/01/2017	0.196	0.192	0.196	0.193	0.194	74161@0.193	190000@0.194	---	2015	6,795,310	778	1,318,763.04	1,685,504.37	0.192	0.231	8355
22,080,000	0.330	---	0.08	---	17/05/2016	27/04/2015	---	PLAISIO COMPUTERS SA (CR)	3.40	1.80	#	3.34	20/01/2017	3.35	3.35	3.49	3.40	3.41	322@3.39	70@3.43	11.19	2015	11,379	79	38,837.74	75,072.00	3.33	3.87	9572
232,000,000	4.60	0.05	---	---	20/07/2015	12/12/2001	---	PPC (CR)	2.82	---	↘	2.82	20/01/2017	2.84	2.81	2.85	2.82	2.83	3609@2.81	5698@2.84	---	2015	137,466	210	388,898.52	654,240.00	2.81	3.06	7535
11,812,193	0.470	0.02	---	---	26/03/2015	15/11/2006	---	PROFILE SA (CR)	0.506	3.90	#	0.487	20/01/2017	0.490	0.482	0.506	0.506	0.491	30@0.492	690@0.506	---	2015	410	5	201.28	5,976.97	0.466	0.522	9533
27,345,120	0.470	---	---	---	18/07/2005	26/02/2014	---	QUALITY & RELIABILITY SA (CR)	0.318	-9.92	€	0.353	20/01/2017	0.323	0.318	0.327	0.318	0.321	---	11824@0.318	---	2015	161	3	51.61	8,695.75	0.288	0.353	9533
11,921,531	3.32	---	---	---	05/09/2008	05/12/2016	---	QUEST HOLDINGS (CR)	6.67	1.68	#	6.56	20/01/2017	6.51	6.51	6.67	6.67	6.63	55@6.68	25@6.95	---	2015	780	8	5,167.65	79,516.61	6.30	6.78	9533
57,434,884	1.31	---	---	---	05/06/2008	12/06/2009	---	REDS S.A. (CR)	0.448	-1.10	€	0.453	20/01/2017	0.450	0.420	0.450	0.448	0.446	1000@0.424	500@0.470	---	2015	3,024	7	1,349.75	25,730.83	0.300	0.454	8633
22,280,000	0.300	---	---	---	11/04/2011	23/02/2007	---	REVOIL (CR)	0.417	9.74	#	0.380	20/01/2017	0.417	0.417	0.417	0.417	0.417	800@0.311	1000@0.380	13.40	2015	150	1	62.55	9,290.76	0.308	0.431	5379
7,500,000	0.690	0.1	---	---	19/06/2015	05/07/2016	---	S.KANAKIS SA (CR)	2.39	-0.83	€	2.41	20/01/2017	2.39	2.34	2.39	2.39	2.36	50@2.35	100@2.40	10.21	2015	805	10	1,897.31	17,925.00	2.34	2.59	3577
52,067,296	0.300	---	---	---	23/12/2003	24/01/2007	---	SELECTED TEXT. IND. ASSOC (CR)	0.134	-7.59	€	0.145	20/01/2017	0.135	0.134	0.135	0.134	0.134	749@0.134	2500@0.159	---	2016	2,251	6	302.63	6,977.02	0.124	0.163	3763
245,497,164	0.300	---	---	---	01/07/2008	30/07/2012	---	SELONDA AQUACULTURE SA (CR)	0.169	-1.17	€	0.171	20/01/2017	0.154	0.154	0.169	0.169	0.156	120@0.157	807@0.169	---	2015	2,946	11	458.88	41,489.02	0.144	0.179	3573
6,456,530	1.61	---	---	---	29/06/2001	02/08/2010	---	SPACE HELLAS SA (CR)	0.700	-2.91	€	0.721	20/01/2017	0.700	0.700	0.700	0.700	0.700	400@0.650	100@0.793	5.33	2015	3,340	4	2,338.00	4,519.57	0.601	0.745	9578
28,438,268	0.300	---	---	---	21/08/2006	24/11/1999	---	SPIROY AGRICULTURE SA (CR)	0.630	---	↘	0.630	20/01/2017	---	---	---	---	---	---	7850@0.567	---	2015	---	---	---	17,916.11	0.630	0.699	1357
40,693,350	5.00	---	---	---	03/07/2006	26/05/2015	---	TECHNICAL OLYMPIC SA (CR)	1.06	1.92	#	1.04	20/01/2017	1.04	1.04	1.06	1.06	1.05	564@1.04	490@1.06	---	2015	900	13	943.31	43,134.95	0.897	1.10	3728
109,314,400	0.300	---	0.0935	---	30/05/2016	05/08/2015	---	TERNA ENERGY (CR)	2.90	---	↘	2.90	20/01/2017	2.88	2.86	2.94	2.90	2.90	300@2.88	800@2.91	-(6)-	2015	80,992	54	234,797.06	317,011.76	2.78	2.96	7537
36,300,000	1.12	0.24	0.25	---	23/06/2016	12/12/2007	---	THESSALONIKA WATER & SEWERAGE	3.56	1.71	#	3.50	20/01/2017	3.66	3.56	3.75	3.56	3.71	70@3.53	550@3.67	9.53	2015	6,400	15	23,727.00	129,228.00	3.43	3.75	7577
45,094,620	0.660	0.0225	---	---	20/04/2015	01/11/1999	---	THRACE PLASTICS SA (CR)	2.48	1.22	#	2.45	20/01/2017	2.49	2.48	2.49	2.48	2.49	200@2.45	1296@2.48	-(6)-	2015	636	16	1,581.35	111,834.66	2.18	2.69	1357
77,063,568	4.00	0.1551	0.3099	---	27/06/2016	25/06/2004	---	TITAN CEMENT (CR)	21.98	-2.31	€	22.50	20/01/2017	22.50	21.88	22.50	21.98	22.02	138@21.97	50@22.00	30.93	2015	6,477	55	142,589.48	1,802,093.35	21.30	22.50	2353
7,568,960	4.00	0.1551	0.3099	---	27/06/2016	25/06/2004	---	TITAN CEMENT CO. (PR)	14.30	-1.31	€	14.49	20/01/2017	14.12	14.12	14.48	14.30	14.41	40@14.16	12@14.30	20.12	2015	1,041	12	15,000.53	1,802,093.35	13.52	14.49	2353
10,080,000	3.00	1.95	0.58	---	18/07/2016	27/08/2001	---	TPA SA (CR)	19.34	0.16	#	19.31	20/01/2017	19.31	18.61	19.55	19.34	18.92	2@18.82	89@19.33	10.88	2015	225	18	4,256.35	194,947.20	17.55	19.57	2777
15,627,315	0.300	---	---	---	16/11/1992	03/12/2012	---	UNIBIOS (CR)	0.123	-1.60	€	0.125	20/01/2017	0.112	0.110	0.123	0.123	0.114	910@0.104	895@0.123	---	2015	11,858	27	1,350.71	1,922.16	0.110	0.150	2353
18,810,000	0.400	---	---	---	08/07/2010	14/11/2007	---	VARVERIS - MODA BAGNO SA (CR)	0.100	-1.96	€	0.102	20/01/2017	0.092	0.092	0.100	0.100	0.100	315@0.093	1000@0.112	---	2015	10,440	3	1,043.76	1,881.00	0.092	0.170	2353
259,189,761	---	---	---	---	26/02/2016		---	VIOHALCO SA/NV (CB)	1.39	0.72	#	1.38	20/01/2017	1.40	1.38	1.40	1.39	1.39	223@1.39	3649@1.40	---	---	89,704	161	124,424.10	360,273.77	1.24	1.49	2727
4,968,600	2.88	---	---	---	01/07/1998	14/12/1998	---	VIS SA (CR)	0.830	-2.35	€	0.850	20/01/2017	0.830	0.830	0.830	0.830	0.830	150@0.830	770@0.935	---	2015	100	1	83.00	4,123.94	0.810	0.900	2723
6,325,000	0.600	---	---	---	02/05/2014	17/02/2014	---	VOGIATZOGLOU SYSTEMS SA (CR)	1.34	---	↘	1.34	20/01/2017	---	---	---	---	---	---	289@1.21	---	2015	---	---	---	8,475.50	1.34	1.48	2797

Exchange Traded Funds (ETFs)

619,082	---	---	---	15/06/2016	---	ALPHA ETF FTSE Athex Large Cap	17.08	-0.84 €	17.23	20/01/2017	17.08	17.08	17.08	17.08	17@17.08	167@18.00	---	---	1	1	17.08	---	17.08	17.83	12003	
294,878	---	---	---	29/06/2009	---	NBGAM ETF	7.48	---	↘	7.48	20/01/2017	7.48	7.48	7.48	7.48	---	---	---	---	2	1	14.96	---	7.48	7.83	12003
388,550	---	---	---	03/11/2010	---	NBGAM ETF GREECE & TURKEY 30	5.14	0.59 #	5.11	20/01/2017	5.14	5.14	5.14	5.14	---	---	---	---	2	1	10.28	---	4.89	5.26	12003	

Low Dispersion

14,000,000	4.15	---	---	---	23/04/2010	29/06/1999	4815	ALPHA REAL ESTATE SA(CR)	4.61	-2.54	€	4.73	20/01/2017	4.61	4.61	4.61	4.61	4.61	44@4.61	60@4.70	23.29	2015	50	2	230.50	64,540.00	4.61	5.38	8637
81,122,516	3.00	---	---	---	23/06/2003	04/11/2008	4816	ASTIR PALACE SA (CR)	5.40	-1.46	€	5.48	20/01/2017	5.40	5.40	5.41	5.41	5.40	74@5.41	1000@5.44	---	2015	1,762	28	9,518.04	438,061.59	5.34	5.48	5753
13,465,290	0.300	---	---	---	09/08/2004	09/11/2016	4814	ATHENA SA (CR)	0.482	---	↘	0.482	20/01/2017	---	---	---	---	---	---	50@0.578	---	2015	---	---	---	6,490.27	0.408	0.493	2357
191,660,320	0.300	---	---	---	20/07/2009	29/12/2010	4817	ATTICA HOLDINGS (CR)	0.850	-4.39	€	0.889	20/01/2017	0.850	0.850	0.850	0.850	0.850	424@0.850	1422@0.889	-(6)-	2015	213	5	181.05	162,911.27	0.850	0.900	5759

Number of Outstanding Securities	Nominal Value	Dividends [1]			Date of Last Coupon Dividend [2]		Note	Shares	Closing price	% change	Previous closing price/date	Open price	Price min	Price max	Last price	Avg price	Last Bid [7]	Last Ask [7]	P/E after	Year	Volume	Trades	Transactions Value[8]	Company Mkt Value (thou. €)	Year low	Year high	Sector[4]
13,404,440	8.63	---	---	---	02/04/2001	06/03/1992	4822	IONIAN HOTELS SA (CR)	9.51	---	↘ 9.51	20/01/2017	---	---	---	---	389@9.56	130@10.01	58.80	2015	---	---	---	127,476.22	9.50	9.51	5753
2,760,000	11.83	9.3	8.5	---	15/07/2016	16/07/1990	4823	KARELIA TOBACCO CO. SA (CB)	279.00	---	↘ 279.00	20/01/2017	279.00	279.00	279.00	279.00	279.00 15@252.00	50@279.00	14.42	2015	641	10	178,839.00	770,040.00	255.00	279.00	3785
23,648,700	0.350	---	---	---	13/07/2011	31/03/2015	5125	KLEEMAN HELLAS SA (CR)	2.02	---	↘ 2.02	20/01/2017	2.02	2.02	2.02	2.02	2.021364212@2.02	70950@2.03	24.37	2015	45,732	5	92,378.64	47,770.37	1.95	2.04	2757
106,980,050	2.25	---	---	---	25/07/2008	24/02/2014	5046	MINOAN LINES SA (CR)	2.40	---	↘ 2.40	20/01/2017	2.40	2.40	2.40	2.40	2.40 904@2.40	---	15.84	2015	96	3	230.40	256,752.12	2.39	2.55	5759
255,494,534	3.00	---	0.2035	0.067	05/12/2016	23/12/2015	5104	NBG PANGAEA (CR)	4.45	---	↘ 4.45	20/01/2017	---	---	---	---	700@4.12	127@4.45	22.87	2015	---	---	---	1,136,950.68	4.05	4.45	8671
22,996,875	1.25	---	---	---	24/06/2011	02/02/2016	5116	NEXANS HELLAS SA (CR)	0.964	---	↘ 0.964	20/01/2017	0.964	0.964	0.964	0.964	0.964 1000@0.965	1503@1.00	---	2015	200	1	192.80	22,168.99	0.963	1.04	2733
17,240,776	0.370	---	---	---	14/07/2005	30/09/2003	4827	PERSEUS SA (CR)	0.250	---	↘ 0.250	20/01/2017	---	---	---	---	2000@0.200	5500@0.300	1.83	2015	---	---	---	4,310.19	0.240	0.250	3577
80,690,653	0.500	---	---	---	25/04/2014	22/12/2016	5124	TRASTOR REAL EST. INV. CO.(CR)	0.774	-3.25	↘ 0.800	20/01/2017	0.780	0.760	0.780	0.760	0.774 1000@0.761	1400@0.830	---	2015	3,324	7	2,572.26	62,454.57	0.742	0.899	8671

Surveillance

13,000,000	1.00	---	---	---	01/08/2007	07/04/2000	5093	AKRITAS SA (CR)	0.161	---	↘ 0.161	20/01/2017	0.161	0.161	0.161	0.161	0.161 18@0.161	---	---	2015	60	4	9.66	2,093.00	0.161	0.175	2353
14,870,100	0.300	---	---	---	15/05/2008	26/09/2011	4844	ALPHA GRISSIN S.A. (CR)	0.031	---	↘ 0.031	20/01/2017	---	---	---	---	6000@0.025	---	---	2015	---	---	---	460.97	0.031	0.031	9533
2,969,713	0.300	---	---	---	02/07/2008	28/02/2011	4958	ANEK LINES SA (PR, issue '96)	0.056	---	↘ 0.056	20/01/2017	---	---	---	---	500@0.057	---	23.42	2015	---	---	---	11,420.42	0.056	0.056	5759
312,163	0.300	---	---	---	02/07/2008	28/02/2011	4959	ANEK LINES SA (PR, issue '90)	0.422	---	↘ 0.422	20/01/2017	---	---	---	---	---	---	-(6)-	2015	---	---	---	11,420.42	0.422	0.422	5759
185,373,016	0.300	---	---	---	02/07/2008	28/02/2011	4957	ANEK LINES SA (CR)	0.060	9.09	# 0.055	20/01/2017	0.060	0.060	0.060	0.060	0.060 20000@0.056	8467@0.060	25.10	2015	10,000	4	600.00	11,420.42	0.055	0.064	5759
20,255,805	0.300	---	---	---	22/08/2006	02/08/2010	4881	AXON HOLDING SA (CR)	0.012	20.00	# 0.010	20/01/2017	0.012	0.012	0.012	0.012	0.012 6000@0.008	---	---	2015	5	1	0.06	243.07	0.007	0.012	4533
17,579,754	4.16	---	---	---	18/08/2006	02/08/2010	5097	BIOTER SA (CR)	0.075	---	↘ 0.075	20/01/2017	0.075	0.075	0.075	0.075	0.075 7875@0.075	7240@0.090	---	2015	2,618	2	196.35	1,318.48	0.075	0.110	2357
4,034,950	0.680	---	---	---	01/07/2005	30/12/2010	5114	CHATZIKRANIOTIS & SONS SA (CR)	0.050	---	↘ 0.050	20/01/2017	---	---	---	---	4000@0.040	---	---	2015	---	---	---	201.75	0.049	0.064	3577
1,417,311	0.300	---	---	---	11/08/2010	12/10/2016	5123	DIONIC (CR)	0.500	---	↘ 0.500	20/01/2017	---	---	---	---	50@0.512	590@0.557	0.15	2015	---	---	---	708.66	0.480	0.550	2797
15,878,748	0.480	---	---	---	10/07/2006	22/03/2004	5095	DOMIKI KRITIS SA (CR)	0.290	---	↘ 0.290	20/01/2017	---	---	---	---	---	15@0.232	---	2015	---	---	---	4,604.84	0.290	0.290	2357
3,961,300	1.28	---	---	---	29/06/2004	03/08/2000	5080	DUROS SA (CR)	0.400	---	↘ 0.400	20/01/2017	---	---	---	---	---	5860@0.320	---	2015	---	---	---	1,584.52	0.400	0.400	3763
7,085,888	1.59	---	---	---	02/07/1996	06/09/2010	4690	ELVIEK (CR)	4.70	---	↘ 4.70	20/01/2017	---	---	---	---	---	---	---	2015	---	---	---	33,303.67	4.70	4.70	8633
6,000,000	0.600	---	---	---	13/06/2008	08/04/2004	4886	EUROBROKERS S.A. (CR)	0.008	---	↘ 0.008	20/01/2017	---	---	---	---	6000@0.007	---	---	2015	---	---	---	48.00	0.008	0.010	8534
21,820,410	0.800	---	---	---	22/05/2008	02/08/2011	4882	EUROMEDICA SA (CR)	0.009	---	↘ 0.009	20/01/2017	---	---	---	---	3000@0.009	---	---	2015	---	---	---	196.38	0.007	0.009	4533
110,097,185	0.300	---	---	---	19/09/2016		5118	Forthnet (CR)	0.252	---	↘ 0.252	20/01/2017	---	---	---	---	1000@0.225	2300@0.295	---	2015	---	---	---	27,744.49	0.250	0.296	9535
50,593,832	0.300	---	---	---	07/07/2010	07/09/2011	5113	FRIGOGLASS SA (CR)	0.120	---	↘ 0.120	20/01/2017	0.118	0.118	0.122	0.120	0.120 4633@0.118	1400@0.137	---	2015	41,733	21	4,997.75	6,071.26	0.094	0.153	2757
77,376,446	0.340	---	---	---	23/05/2005	18/08/2011	5094	G.E. DIMITRIOU (CR)	0.015	7.14	# 0.014	20/01/2017	0.012	0.012	0.016	0.016	0.015 8900@0.012	800@0.016	---	2015	300	2	4.40	1,160.65	0.012	0.032	3722
1,270,000	0.300	---	---	---	06/07/2007	06/02/2013	5007	GIRAKIAN PROFIL SA (CB)	0.044	-20.00	↘ 0.055	20/01/2017	0.044	0.044	0.044	0.044	0.044 2850@0.044	---	---	2015	150	1	6.60	55.88	0.044	0.100	1757
1,540,000	0.600	---	---	---	08/08/1994	19/09/2000	5058	J.BOUTARIS & SON HOLD. (PB)	0.066	---	↘ 0.066	20/01/2017	---	---	---	---	---	267@0.066	---	2015	---	---	---	1,410.98	0.066	0.066	3535
25,179,640	0.600	---	---	---	08/08/1994	19/09/2000	5057	J.BOUTARIS & SON HOLD. SA (CB)	0.052	15.56	# 0.045	20/01/2017	0.045	0.045	0.052	0.052	0.052 7000@0.047	430@0.052	---	2015	3,500	4	181.30	1,410.98	0.042	0.069	3535
7,125,216	0.650	---	---	---	01/07/2005	14/12/1999	4955	KRE.KA SA (CR)	0.085	---	↘ 0.085	20/01/2017	---	---	---	---	4000@0.068	300@0.102	---	2015	---	---	---	605.64	0.085	0.102	3573
51,081,030	1.00	---	---	---	20/08/2007	03/09/2007	4912	LAVIPHARM SA (CR)	0.085	3.66	# 0.082	20/01/2017	0.077	0.077	0.094	0.080	0.085 4998@0.080	1990@0.093	---	2015	745	10	63.35	4,341.89	0.077	0.100	4577
7,734,375	1.00	---	---	---	09/07/2007	07/01/2011	5112	LIVANIS SA (CR)	0.008	---	↘ 0.008	20/01/2017	---	---	---	---	7000@0.007	---	---	2015	---	---	---	61.88	0.008	0.009	5557
4,419,616	1.58	---	---	---	21/07/2011	04/03/2015	4983	MEDICON S.A (CR)	0.320	---	↘ 0.320	20/01/2017	---	---	---	---	400@0.261	---	0.88	2015	---	---	---	1,414.28	0.310	0.320	4535
20,231,328	0.600	---	---	---	15/07/2008	25/06/2004	4879	NIKAS SA (CR)	0.110	---	↘ 0.110	20/01/2017	---	---	---	---	---	671@0.130	---	2015	---	---	---	2,225.45	0.106	0.132	3577
14,967,940	0.500	---	---	---	21/05/2008	04/01/2008	4956	PASAL DEVELOPMENT S.A. (CR)	0.084	-16.83	↘ 0.101	20/01/2017	0.117	0.082	0.117	0.082	0.084 899@0.082	3500@0.100	---	2015	14,600	8	1,232.20	1,257.31	0.082	0.188	8633
18,750,000	0.300	---	---	---	02/07/2001	31/12/2012	4985	PEGASUS PUBLISHING S.A. (CR)	0.037	---	↘ 0.037	20/01/2017	---	---	---	---	---	12@0.030	---	2015	---	---	---	693.75	0.026	0.040	5557
65,326,268	0.530	---	---	---	04/07/2007	19/07/2006	4750	SATO SA (CR)	0.069	16.95	# 0.059	20/01/2017	0.070	0.069	0.070	0.069	0.069 1391@0.069	9900@0.070	---	2015	8,909	7	614.92	4,507.51	0.057	0.109	3726

Number of Outstanding Securities	Nominal Value	Dividends [1]			Date of Last Coupon		Note	Shares	Closing price	% change	Previous closing price/date	Open price	Price min	Price max	Last price	Avg price	Last Bid [7]	Last Ask [7]	P/E after	Year	Volume	Trades	Transactions Value[8]	Company Mkt Value (thou. €)	Year low	Year high	Sector[4]	
		2014	2015	2016	Dividend [2]	Right																						
Surveillance																												
7,914,480	0.300	---	---	---	23/06/2008	29/06/2011	4888	SFAKIANAKIS SA (CR)	0.888	---	↴	0.888	20/01/2017	---	---	---	---	---	150@1.00	---	2015	---	---	---	7,028.06	0.210	0.888	5379
10,186,667	1.35	---	---	---	24/06/2008	02/02/2016	4887	SIDMA SA (CR)	0.176	---	↴	0.176	20/01/2017	---	---	---	---	200@0.158	622@0.210	---	2015	---	---	---	1,792.85	0.157	0.251	1757
4,737,503	0.320	---	---	---	22/06/2005	22/09/2015	5115	VARANGIS AVEPE S.A. (CR)	0.220	---	↴	0.220	20/01/2017	---	---	---	---	---	1157@0.176	---	2015	---	---	---	1,042.25	0.220	0.220	3726
16,383,428	0.300	---	---	---	25/06/2002	21/06/2013	4997	VARVARESSOS SA (CB)	0.105	---	↴	0.105	20/01/2017	---	---	---	---	---	2000@0.126	---	2015	---	---	---	1,720.26	0.031	0.105	3763
13,191,620	0.620	---	---	---	04/08/2010	09/09/2002	4977	YALCO - CONSTANTINOU SA (CB)	0.040	---	↴	0.040	20/01/2017	---	---	---	---	4000@0.032	---	---	2015	---	---	---	527.66	0.040	0.040	3722
Under Deletion																												
1,130,180	0.440	---	---	---	20/06/2003	02/07/2014	5092	COMPUCON SA (CR)	0.006	---	↴	0.006	20/01/2017	---	---	---	---	6000@0.006	---	---	2015	---	---	---	6.78	0.006	0.006	9537
9,567,289	0.300	---	---	---	01/07/2004	19/11/2007	5062	MARAC ELECTRONICS (CR)	0.298	---	↴	0.298	20/01/2017	---	---	---	---	---	16380@0.239	---	2015	---	---	---	2,851.05	0.298	0.298	9578
24,319,250	0.300	---	---	---	09/07/2002	04/07/2007	5111	PROODEFTIKH SA (CR)	0.037	---	↴	0.037	20/01/2017	---	---	---	---	10500@0.030	100@0.044	---	2015	---	---	---	899.81	0.037	0.049	2357
766,000	1.00	---	---	---	01/07/2004	11/12/2012	4937	TRIA ALFA SA (CR)	2.59	---	↴	2.59	20/01/2017	---	---	---	---	---	65@2.30	---	2015	---	---	---	2,383.29	2.59	2.59	3763
245,000	1.00	---	---	---	19/07/2010	11/12/2012	4938	TRIA ALFA SA (PR)	1.63	---	↴	1.63	20/01/2017	---	---	---	---	---	300@1.95	---	2015	---	---	---	2,383.29	1.63	1.63	3763
Suspension Status																												
33,301,715	0.320	---	---	---	27/06/2003	08/07/2009	5121	AEGEK (CR)	0.038	---	↴	0.038	30/09/2016	---	---	---	---	---	---	---	---	---	---	1,265.47	0.038	0.038	2357	
5,000,000	0.400	---	---	---	03/06/2009	01/09/2014	5087	ALCO HELLAS SA (CR)	0.180	---	↴	0.180	31/03/2015	---	---	---	---	---	---	---	---	---	---	900.00	0.180	0.180	1753	
215,246,452	0.300	---	---	---	25/06/2001	24/09/2001	4446	ALTEC SA (CR)	0.012	---	↴	0.012	30/11/2015	---	---	---	---	---	---	---	---	---	---	2,582.96	0.012	0.012	9533	
81,644,555	0.300	---	---	---	01/07/2008	02/09/2002	5098	ATTI - KAT SA (CR)	0.012	---	↴	0.012	29/05/2015	---	---	---	---	---	---	---	---	---	---	979.73	0.012	0.012	2357	
33,930,000	0.300	---	---	---	03/07/2006	30/05/2001	4865	BABIS VOVOS SA (CR)	0.304	---	↴	0.304	30/03/2012	---	---	---	---	---	---	---	---	---	---	10,314.72	0.304	0.304	8633	
20,121,710	1.21	---	---	---	27/07/1992	12/03/2003	5002	BALKAN R.E. (CR)	0.190	---	↴	0.190	29/08/2013	---	---	---	---	---	---	---	---	---	---	3,823.12	0.190	0.190	8633	
7,847,611	1.20	---	---	---	01/08/2007	28/09/2011	4939	EDRASIS - C. PSALLIDAS SA (CR)	0.150	---	↴	0.150	29/11/2012	---	---	---	---	---	---	---	---	---	---	1,177.14	0.150	0.150	2357	
36,748,909	0.730	---	---	---	15/12/2005	13/12/2006	5109	HEL. SUGAR INDUSTRY SA (CB)	0.075	---	↴	0.075	29/02/2016	---	---	---	---	---	---	---	---	---	---	2,756.17	0.075	0.075	3577	
13,692,227	1.47	---	---	---	07/07/2006	08/10/1999	5049	HELLENIC FABRICS SA (CR)	0.117	---	↴	0.117	31/03/2014	---	---	---	---	---	---	---	---	---	---	1,601.99	0.117	0.117	3763	
30,390,000	0.310	---	---	---	18/08/2008	29/12/2006	5099	HELLENIC FISHFARMING SA (CR)	0.070	---	↴	0.070	02/06/2015	---	---	---	---	---	---	---	---	---	---	2,127.30	0.070	0.070	3573	
24,619,524	0.500	---	---	---	10/10/1986	30/12/2002	4914	KERAMIA-ALLATINI (CR)	0.088	---	↴	0.088	30/08/2012	---	---	---	---	---	---	---	---	---	---	2,166.52	0.088	0.088	8633	
66,937,526	0.700	---	---	---	13/08/2010	21/05/2003	5003	MICHANIKI SA (CR)	0.100	---	↴	0.100	29/08/2013	---	---	---	---	---	---	---	---	---	---	9,186.78	0.100	0.100	2357	
25,968,987	0.700	---	---	---	13/08/2010	21/05/2003	5004	MICHANIKI SA (PR)	0.096	---	↴	0.096	29/08/2013	---	---	---	---	---	---	---	---	---	---	9,186.78	0.096	0.096	2357	
13,555,100	1.00	---	---	---		08/07/2005	4576	MICROLAND COMPUTERS SA (CR)	0.640	---	↴	0.640	14/07/2009	---	---	---	---	---	---	---	---	---	---	8,675.26	0.640	0.640	5379	
255,459,600	0.300	---	---	---	26/06/2000	03/12/2010	5101	NEL SA (CR)	0.070	---	↴	0.070	31/08/2015	---	---	---	---	---	---	---	---	---	---	17,882.17	0.070	0.070	5759	
23,463,874	0.800	---	---	---	23/05/2003	21/12/1999	4918	NEORION SA (CR)	0.125	---	↴	0.125	30/08/2012	---	---	---	---	---	---	---	---	---	---	2,932.98	0.125	0.125	2753	
40,946,303	0.360	---	---	---	18/07/2005	27/11/2007	5089	PC SYSTEMS SA (CR)	0.006	---	↴	0.006	31/03/2016	---	---	---	---	---	---	---	---	---	---	245.68	0.006	0.006	9533	
144,688,060	0.600	---	---	---	21/04/2008	10/03/2010	4982	T BANK (CR)	0.048	---	↴	0.052	# 29/11/2011	---	---	---	---	---	---	---	---	---	---	6,945.03	0.048	0.048	8355	
100,793,572	0.300	---	---	---	16/07/2009	11/02/2016	5110	TELETIPOS SA (CR)	0.060	---	↴	0.060	07/03/2016	---	---	---	---	---	5@0.048	---	---	---	---	---	6,047.61	0.060	0.060	5553
13,920,000	0.320	---	---	---	19/11/2001	01/08/2000	4726	TEXAPRET SA (CR)	0.080	---	↴	0.080	28/02/2011	---	---	---	---	---	---	---	---	---	---	1,113.60	0.080	0.080	3763	
510,840	1.00	---	---	---	15/07/2008	21/11/2013	5036	TROPEA HOLDING (CR)	2.00	---	↴	0.020	# 30/03/2012	---	---	---	---	---	---	---	---	---	---	1,021.68	2.00	2.00	3722	
284,465,964	3.70	---	---	---	20/06/2008	15/06/2009	4913	TT HELLENIC POSTBANK (CR)	0.168	---	↴	0.239	# 29/08/2012	---	---	---	---	---	---	---	---	---	---	47,790.28	0.168	0.168	8355	

Shares' Notes

Code	Note text
()	- Adjusted dividends.
*	- Last adjusted closing price.
[1]	- Net dividends.
[2]	- The "Date of Last Coupon" for New listings refers to the date company's stocks started to trade in Athex
[3]	- The Company Market Value is referred to the number of outstanding shares
[4]	- Sectors codification can be found in Appendix A
[5]	- The Market Value refers to the total number of shares listed (including their several classes) in the exchange by the company.
[6]	- P/E greater than 100
[7]	- Last view of the Order Book before the end of the trading session
[8]	- All Blocks Methods' Transactions Value are included.
4446	- Transfer to the "Under Supervision" Category as of 20/10/2008.
4576	- Suspension of trading as of 14/7/2009.
4690	- Transfer to Surveillance category as of 4/4/2006.
4726	- Suspension of trading as of 1/3/2011.
4750	- Transfer to the "Under Surveillance Category" from 8/4/2011.
4795	- The final gross (pre-tax) dividend is € 0.30 per share and subject to withholding tax on the full dividend amount, i.e. 0,45 per share, for those shareholders liable to withholding tax, in accordance with the applicable tax law provisions.
4814	- Transfer to the Low Dispersion Category as of 30/5/2011.
4815	- Transfer to the Low Dispersion Category as of 30/5/2011.
4816	- Transfer to the Low Dispersion Category as of 30/5/2011.
4817	- Transfer to the Low Dispersion Category as of 30/5/2011.
4822	- Transfer to the Low Dispersion category as of 30/5/2011.
4823	- Transfer to the Low Dispersion category as of 4/4/2006.
4827	- Transfer to the Low Dispersion category as of 5/5/2010.
4844	- Transfer to the Surveillance category from 8/4/2011.
4865	- Suspension of trading as of 2/4/2012.
4879	- Transfer to the Surveillance Category as of 10/4/2012.
4881	- Transfer to the Surveillance Category as of 10/4/2012.
4882	- Transfer to the Surveillance Category as of 10/4/2012.
4886	- Transfer to the Surveillance Category as of 10/4/2012.
4887	- Transfer to the Surveillance Category as of 10/4/2012.
4888	- Transfer to the Surveillance Category as of 10/4/2012.
4912	- Transfer to the Surveillance Category as of 31/7/2012.
4913	- Suspension of trading as of 30/8/2012.
4914	- Suspension of trading as of 31/8/2012.
4918	- Suspension of trading as of 31/8/2012.
4937	- Transfer to the UNDER DELETION category as of 30/11/2012.
4938	- Transfer to the UNDER DELETION category as of 30/11/2012.
4939	- Suspension of trading as of 30/11/2012.
4955	- Transfer to the Surveillance Category as from 5/4/2013.
4956	- Transfer to the Surveillance Category as from 5/4/2013.
4957	- Transfer to the Surveillance Category as from 5/4/2013.
4958	- Transfer to the Surveillance Category as from 5/4/2013.
4959	- Transfer to the Surveillance Category as from 5/4/2013.
4977	- Transfer to the "Under Surveillance Category" from 11/6/2013.
4982	- Suspension of trading as of 1/12/2011.
4983	- Transfer to the Surveillance Category as of 5/4/2013.
4985	- Transfer to the "Under Surveillance Category" from 8/4/2011.
4997	- Transfer to the Under Supervision Category as of 21/12/2009. - The 6,870,053 new (CB) shares, resulting from the recent share capital increase through a rights issue, are not yet admitted to trading on the ATHEX.
5002	- Suspension of trading as of 30/08/2013.
5003	- Suspension of trading as of 30/08/2013.

Shares' Notes

Code	Note text
5004	- Suspension of trading as of 30/08/2013.
5007	- Transfer to the Surveillance category, as of 11/10/2013.
5031	- The 612,300 new (CR) shares, resulting from the recent share capital increase through a rights issue, are not yet admitted to trading on the ATHEX.
5036	- The company's share is under suspension of trading as of 2/4/2012. During suspension, the company proceeded and concluded a share reverse split, according to which - after the conclusion of the corporate action - the total number of the company's shares, as well as, the last closing price of 30/03/2012 were adjusted.
5046	- Transfer to the Low Dispersion category as of 8/4/2011.
5049	- Under suspension of trading as of 1/4/2014.
5057	- Transfer to the Surveillance Category as of 29/12/2011.
5058	- Transfer to the Surveillance Category as of 29/12/2011.
5062	- Transfer to the UNDER DELETION category as of 4/6/2014.
5080	- Suspension of trading as of 6/9/2011.
5087	- Suspension of trading as of 1/4/2015.
5089	- Transfer to the Surveillance Category as of 8/4/2015.
5092	- Transfer to the UNDER DELETION category as of 8/4/2015.
5093	- Transfer to the Surveillance Category as of 8/4/2015.
5094	- Transfer to the Surveillance Category as of 8/4/2015.
5095	- Transfer to the Surveillance Category as from 9/4/2015.
5097	- Transfer to the Surveillance Category as of 10/4/2012.
5098	- Suspension of trading as of 2/6/2015.
5099	- Suspension of trading as of 3/6/2015.
5101	- Suspension of trading as of 1/9/2015.
5104	- Transfer to the "Low Dispersion" Category as of 31/10/2014. Change of the company name from "MIG REAL ESTATE R.E.I.C." to "NBG PANGAEA R.E.I.C." as of 30/12/2015.
5109	- Suspension of trading as of 01/03/2016.
5110	- Suspension of trading as of 08/03/2016.
5111	- Transfer to the Under Deletion Category as of 15/04/2016.
5112	- Transfer to the Surveillance Category as of 15/04/2016.
5113	- Transfer to the Surveillance Category as of 15/04/2016.
5114	- Transfer to the Surveillance Category as of 15/04/2016.
5115	- Transfer to the Surveillance Category as of 15/04/2016.
5116	- Transfer to the Low Dispersion Category as of 20/4/2016.
5118	- Transfer to the Surveillance Category as of 25/11/2011. Issue of a Convertible Bond Loan in progress through a rights issue. Rights' trading period on ATHEX: 22/09/2016 - 03/10/2016, pre-emption rights' subscription period: 22/09/2016 - 06/10/2016.
5121	- Suspension of trading as of 3/10/2016.
5123	- Transfer to the Surveillance Category as of 10/4/2014.
5124	- The 30,874,635 new (CR) shares, resulting from the recent share capital increase through a rights issue, are not yet admitted to trading on the ATHEX.
5125	- Transfer to the Low Dispersion Category as of 18/01/2017.

Securities Blocks Details

Securities	Block Volume	Price	Block Trade Value	Time of approval	Note
OPAP (CR)	75,000	8.51	637,875.00	12:58:28	20
ALPHA BANK (CR)	5,000	1.90	9,500.00	16:31:37	18
MOTOR OIL (CR)	48,796	13.42	655,076.54	16:32:14	20

Blocks Notes

9 - Method 6-1 / Special Fees

10 - Method 6-1 / Special Fees, SDS

14 - Method 6-3 / Settlement, Incomplete Buy and Sell

18 - Method 6-2 / SPOT 1

19 - Method 6-2 / SPOT 2

20 - Method 6-1 and Method 6-1 Same Day Settlement

21 - Other Pre-agreed

Shares Rights Details

Occured date	Exercise from	Exercise until	Trading until	Rights	Price min	Price max	Closing price	Last Bid	Last Ask	Volume	Trades	Transactions Value
-----------------	------------------	-------------------	------------------	--------	--------------	--------------	------------------	----------	----------	--------	--------	-----------------------

No Rights Transactions.

Shares Forced Sales

Securities	Transaction s Volume	Number of Trades	Transactions Value	Note
No Forced Transactions.				

Forced Sales Notes

- 1 - Normal Forced Sale.
- 2 - Forced Sales of Fixed Registered Shares.
- 3 - Forced Sales of Remaining Stock Fractions.

Forced Sales Registered Shares

Securities	Start Date	End Date	Initial Volume	Remaining Volume	Date	Avg price (day)	Avg price (period)	Number of Trades	Transactions Volume	Transactions Value
------------	------------	----------	----------------	------------------	------	-----------------	--------------------	------------------	---------------------	--------------------

No Fixed Registered Shares Forced Sales.

Forced Sales Notes

According to Decision 1/380/04.05.2008 of the Hellenic Republic Capital Market Commission, the certificated registered shares that have not been deposited to the issuer for dematerialisation, will be auctioned in the Athens Exchange by the supervising issuer. Forced sales procedure is held according to Article 99A of the Athens Exchange Rulebook. The average price of the period is calculated by dividing the Total transactions value by the Total volume and includes all the transactions made until the current date.

Exchange Traded Funds (ETFs) Characteristics

	Transactions Date (T)	Creation / Redemption	Units (T-1)	New Units (T-1)	Redemptio n Units (T-	Units (T) [1]	Fund Assets [2]	Net Unit Price	Dividen d per	Dividend Date
NBGAM ETF GREECE & TURKEY 30	23/01/2017	25,000	388,550	---	---	388,550	1,991,573.00	5.1257	---	27/10/2011
NBGAM ETF ΓΔΧ.Α.	23/01/2017	25,000	294,878	---	---	294,878	2,204,608.00	7.4763	---	27/10/2011
ALPHA ETF FTSE Athex Large Cap	23/01/2017	5,000	619,082	---	---	619,082	10,579,300.00	17.0887	0.37	30/06/2016

ETFs Notes

[1] - Units (T) = Units (T-1) + New Units (T-1) - Redemption Units (T-1)

[2] - The Creation / Redemption Units of T-1 are included.

Corporate Bonds

Num Listed Bonds	Nominal price	Issue price	Today's Rate	Exp. Date	Duration (years)	Note	Coupon		Trading	Corporate Bonds	Price min	Price max	Closing price	Previous closing price/date	Volume	Transactions Value	Last order		Date	ear min	Year max	
							Common	Preferred									Price	Buy / Sell				
233,748,933	0.30	0.30	1.00	11/10/2025	9	---	2	---	1	FORTHNET S.A. (Convertible)	---	---	---	---	---	---	95.0000	S	09/11/2016	100.0000	100.0000	
40,000,000	1.00	1.00	5.00	04/10/2021	5	---	2	---	1	HOUSEMARKET S.A. (Non Convertible)	100.5000	100.7000	100.5252	100.6000	20/01/2017	22,266	22,447.90	100.4500	B	23/01/2017	100.3333	100.8000
1,774,359	13.76	9.77	0.00	21/10/2025	18	---	26	---	1	NIREUS S.A. (Convertible)	---	---	---	100.0000	12/07/2016	---	---	11.0000	B	23/01/2017	100.0000	100.0000
212,237,880	1.00	1.00	6.30	29/07/2020	7	---	14	---	1	MARFIN INVESTMENT GROUP S.A. SERIES B (Convert.)	---	---	---	0.8500	23/08/2013	---	---	0.9100	B	20/01/2017	0.8500	0.8500
163,009,139	1.00	1.00	7.00	29/07/2019	6	---	14	---	1	MARFIN INVESTMENT GROUP S.A. SERIES A (Convert.)	---	---	---	1.0000	23/08/2013	---	---	0.1500	B	23/01/2017	1.0000	1.0000

Corporate Bonds Notes

Transactions Volume = (Pieces) * (Nominal Price). Transactions Value = (Pieces) * (Nominal Price) * (price %) + (Accrued interest).
The price of a Bond is stated as a percentage (%) of Bond's Nominal Price.
Nominal Price in Euros (€), except if it is noted differently.

Government Bonds

Number Listed Bonds	Nominal price	Today's Rate	Accrued Interest Calc	Exp. Date [1]	Duration (years)	Note	Coupons Date	Curr. coupon value	Trading Unit	Government Bonds	Price min	Price max	Closing price	Previous closing price/date	Volume	Transactions Value	Price	Last order Buy / Sell	Date
1,792,455,803	1.00	3.00	Actual/Actual	24/02/2023	11	---	24/02	3.00	1	GGB-FXD-240223-11Y-2.000-1.00	---	---	---	10.0000 22/06/2015	---	---	---	---	---
1,771,485,249	1.00	3.00	Actual/Actual	24/02/2024	12	---	24/02	3.00	1	GGB-FXD-240224-12Y-2.000-1.00	---	---	---	10.0000 22/06/2015	---	---	---	---	---
1,744,316,583	1.00	3.00	Actual/Actual	24/02/2025	13	---	24/02	3.00	1	GGB-FXD-240225-13Y-2.000-1.00	---	---	---	10.0000 22/06/2015	---	---	---	---	---
1,498,761,836	1.00	3.00	Actual/Actual	24/02/2026	14	---	24/02	3.00	1	GGB-FXD-240226-14Y-2.000-1.00	---	---	---	10.0000 22/06/2015	---	---	---	---	---
1,469,952,920	1.00	3.00	Actual/Actual	24/02/2027	15	---	24/02	3.00	1	GGB-FXD-240227-15Y-2.000-1.00	---	---	---	10.0000 22/06/2015	---	---	---	---	---
1,525,434,082	1.00	3.00	Actual/Actual	24/02/2028	16	---	24/02	3.00	1	GGB-FXD-240228-16Y-2.000-1.00	---	---	---	10.0000 22/06/2015	---	---	---	---	---
1,503,860,546	1.00	3.00	Actual/Actual	24/02/2029	17	---	24/02	3.00	1	GGB-FXD-240229-17Y-2.000-1.00	---	---	---	10.0000 22/06/2015	---	---	---	---	---
1,435,418,132	1.00	3.00	Actual/Actual	24/02/2030	18	---	24/02	3.00	1	GGB-FXD-240230-18Y-2.000-1.00	---	---	---	10.0000 22/06/2015	---	---	---	---	---
1,368,045,727	1.00	3.00	Actual/Actual	24/02/2031	19	---	24/02	3.00	1	GGB-FXD-240231-19Y-2.000-1.00	---	---	---	10.0000 22/06/2015	---	---	---	---	---
1,373,758,194	1.00	3.00	Actual/Actual	24/02/2032	20	---	24/02	3.00	1	GGB-FXD-240232-20Y-2.000-1.00	---	---	---	10.0000 22/06/2015	---	---	---	---	---
1,452,639,893	1.00	3.00	Actual/Actual	24/02/2033	21	---	24/02	3.00	1	GGB-FXD-240233-21Y-2.000-1.00	---	---	---	10.0000 22/06/2015	---	---	---	---	---
1,410,344,954	1.00	3.00	Actual/Actual	24/02/2034	22	---	24/02	3.00	1	GGB-FXD-240234-22Y-2.000-1.00	---	---	---	10.0000 22/06/2015	---	---	---	---	---
1,444,202,190	1.00	3.00	Actual/Actual	24/02/2035	23	---	24/02	3.00	1	GGB-FXD-240235-23Y-2.000-1.00	---	---	---	10.0000 22/06/2015	---	---	---	---	---
1,505,138,031	1.00	3.00	Actual/Actual	24/02/2036	24	---	24/02	3.00	1	GGB-FXD-240236-24Y-2.000-1.00	---	---	---	10.0000 22/06/2015	---	---	---	---	---
1,396,254,095	1.00	3.00	Actual/Actual	24/02/2037	25	---	24/02	3.00	1	GGB-FXD-240237-25Y-2.000-1.00	---	---	---	10.0000 22/06/2015	---	---	---	---	---
1,382,167,704	1.00	3.00	Actual/Actual	24/02/2038	26	---	24/02	3.00	1	GGB-FXD-240238-26Y-2.000-1.00	---	---	---	10.0000 22/06/2015	---	---	---	---	---
1,337,331,257	1.00	3.00	Actual/Actual	24/02/2039	27	---	24/02	3.00	1	GGB-FXD-240239-27Y-2.000-1.00	---	---	---	10.0000 22/06/2015	---	---	---	---	---
1,371,908,706	1.00	3.00	Actual/Actual	24/02/2040	28	---	24/02	3.00	1	GGB-FXD-240240-28Y-2.000-1.00	---	---	---	10.0000 22/06/2015	---	---	---	---	---
1,360,659,778	1.00	3.00	Actual/Actual	24/02/2041	29	---	24/02	3.00	1	GGB-FXD-240241-29Y-2.000-1.00	---	---	---	10.0000 22/06/2015	---	---	---	---	---
1,432,747,403	1.00	3.00	Actual/Actual	24/02/2042	30	---	24/02	3.00	1	GGB-FXD-240242-30Y-2.000-1.00	---	---	---	10.0000 22/06/2015	---	---	---	---	---
742,153	1,000.00	0.44	FLR Actual/360	10/08/2019	5	---	10/02 - 10/08	---	1	GGB-FLT-100819-05Y-0.934-1,000	---	---	---	---	---	---	---	---	---
4,030,827	1,000.00	4.75	Actual/Actual	17/04/2019	5	---	17/04	4.75	1	GGB-FXD-170419-05Y-4.750-1,000	---	---	---	---	---	---	---	---	---
2,089,066	1,000.00	3.38	Actual/Actual	17/07/2017	3	---	17/07	3.38	1	GGB-FXD-170717-03Y-3.375-1,000	---	---	---	---	---	---	---	---	---

Government Bonds Notes

Transactions Volume = (Pieces) * (Nominal Price). Transactions Value = (Pieces) * (Nominal Price) * (price %) + (Accrued interest).
The Value of current coupon for the issues with NV 0.01 euro refers to NV 100 euros
FLR: Floating Interest Rate.
[1] - The Expiration Date of the interest bearing period and the Date for coupon payment.

Bonds in Circulation	Currency / Min nominal traded Value	Coupons Payment Date	Current Coupon Value	Note	Coupon	Trading Unit	Issue Date	Duration (years)	Today's Interest	A.I.C in days	Bonds	Last price of previous days		Last Outcry in Cash (euro) Price Buy / Sell		Trades in Pieces	Life min	Life Max	
Corporate Bonds in Foreign Currency and Euro																			
103,746	GBP / 10	01/12	0.25	---	58	1	01/12/1930	98	2.5	360	National Mortgage Bank	2.27	05/02/1996	2.27	S	05/02/1996	---	2.27	2.27
0	GBP / 10	01/12	0.25	---	60	1	01/12/1928	100	2.5	360	National Mortgage Bank	---	---	---	---	---	---	---	---

Government Bonds Notes

A.I.C: Accrued Interest Calculation base.
FLR: Floating Interest Rate.
The minimum tradeable Nominal Value for all Demeterialised Government Titles is 100 Euros.
(μτφρ-0)

Athex & ATHEXClear Members List

Member Name			Stock Market			Derivatives Market		ATHEXCclear Member	
Address	Phone	Fax	Market Member	Remote Member	Market Maker	Proprietary	Market Maker	General Clearing	Direct Clearing
A. SARRIS SECURITIES S.A.			a						
6, DRAGATSANIOU ATHINA	+30 2103367700	210-3312324							
ALPHA FINANCE INVESTMENT SERVICES S.A.			a		a	a	a		a
5, MERLIN ATHINA	+30 2103677400	210-33311193							
ALPHA BANK A.E.								a	
40, STADIOU STR ATHINA	(210)-3260000	(210)-3264116							
	(210)-3265546	(210)-3265811							
103, AVE. ATHINON ATHINA	+30 2103436820	210-3436270							
ARGUS STOCKBROKERS LTD			a	a		a			
25 , DIMOSTHENI SEVERI AVE NICOSIA	+357 22717000	0035722717070							
ATLANTIC SECURITIES LIMITED			a	a					
37, PRODROMOU NICOSIA	+357 22445400	00357 22661914							
ATLAS SECURITIES S.A			a			a			
, 125 MICHALAKOPOULOU & 14-16 VERVENON ATHINA	+30 2103363300	210-3238925							
ATTICA BANK S.A.								a	
54, AKADIMIAS STR. ATHINA	(210)-3390757	(210)-3646090							
23, OMIROU ATHINA	+30 2103669261	210-3669265							
23, OMIROU STR. ATHINA	(210)-3669000	(210)-3669410							
AXIA VENTURES GROUP LTD			a	a					
, KRANIDIOTI 10, OFFICE 102 NICOSIA	+357 22742000	357 22742001							
AXON SECURITIES S.A.			a			a			
48, STADIOU ATHINA	+30 2103363800	210-3243903							
BANK OF AMERICA MERRILL LYNCH			a	a					
2 , KING EDWARD STREET LONDON	+44 20276281000								
BETA SECURITIES S.A.			a		a	a			a
29 , ALEXANDRAS AVEN. & VRAILA ATHINA	+30 2106478900	210-6410139							
BNP PARIBAS SECURITIES SERVICES S.A.								a	
2, LAMPSAKOU ATHINA	+30 2107468500	210-7468579-581							
CAPITAL SECURITIES S.A.			a			a			
58, MITROPOLEOS ATHINA	+30 2103369700	+30 210 3369820							
CFS SECURITIES-INVESTMENT SERVICES S.A.			a						
3, PAPARRIGOPOULOU ATHINA	+30 2103360800	+30 210-3360980							
CITIGROUP GLOBAL MARKET LTD			a	a					
1, CITIGROUP CENTER , CANADA SQ., CANARY WHARF LONDON	+44 02079864000								
CREDIT SUISSE SECURITIES (EUROPE) LIMITED			a	a					
, ONE CABOT SQUARE LONDON	+44 2078888888								
CYCLOS SECURITIES S.A.			a			a			a
39, PANEPISTIMIOU ATHINA	+30 2103364300	+30 210-3239122							
D.A. TSEKOURAS SEC. S.A.			a						
33, STADIOU ATHINA	+30 2103245100	210-3211997							
DELTASTOCK AD									a
115, MEGAPARK OFFICE BUILDING, OFFICE AREA E, G TSARIGRADSKOGA 39	+35928115051	+35928115049							
DEUTSCHE BANK S.A.			a	a		a			
1 , GREAT WINCHESTER STREET LONDON	+44 20 754 54209	00441133361437							
DYNAMIC SECURITIES S.A.			a			a			a
8, OMIROU ATHINA	+30 2103677700	210-3677777							
EL. PETROPOULAKIS SECURITIES S.A.			a			a			
9, ARISTEIDOU ATHINA	+30 2103213928	+30 210-3216810							
ESTINVEST S.A.									a
9, TH REPUBLICII STREET FOCSANI	+40 237238900	+40 237237471							
EUROBANK ERGASIAS S.A.								a	
8, OTHONOS ATHINA	+30 2103337000	210-3245916							
8, OTHONOS STR. ATHINA	(210)-3337969	(210)-3245916							
	(210)-3337000	(210)-3233866							
EUROBANK SECURITIES INVESTMENT FIRM S.A			a		a	a	a		a
, FILELLINON 10 & XENOFONTOS 13 ATHINA	+30 2103720000	210-3720001							
EUROCORP SECURITIES S.A.			a			a			a
14, SQ.FILIKIS ETAIRIAS ATHINA	+30 2107263500	210-7263666							
EUOTRUST BROKERAGE S.A.			a						
113, SEVASTOUPOLEOS ATHINA	+30 2103363100	+30 210-3238334							
EUROXX SECURITIES S.A.			a		a	a	a		a
7, PALAIOLOGOU CHALANDRI	(210)-6879400	(210)-6879401							
7, PALEOLOGOU CHALANDRI	+30 2106879400	210-6879401							

Athex & ATHEXClear Members List

Member Name			Stock Market			Derivatives Market		ATHEXClear Member	
Address	Phone	Fax	Market Member	Remote Member	Market Maker	Proprietary	Market Maker	General Clearing	Direct Clearing
G. A. PERVANAS SECURITIES-INVESTMENT SERVICES CO S.A.			a						
7-9, SOFOKLEOUS ATHINA	+30 2103727200	210-3210-291							
GLOBAL CAPITAL SECURITIES AND FINANCIAL SERVICES LTD			a	a					
, AVE. ARCHIEPISKOPOU MAKARIOU NICOSIA	+357 22710710	357 22339332							
GUARDIAN TRUST SECURITIES S.A			a			a			
31, ERMOU ATHINA	+30 2103378700	210-3220498							
HELLENIC BANK (INVESTMENTS) LTD			a	a					
, AVE.KYRIAKOU MATSI 31 - PO BOX 24747 NICOSIA	+357 22500100	357 22500110							
HELLENICAMERICAN SEC. S.A.			a		a	a			a
27, ANDREA PAPANDREOU ATHINA	+30 2103311100	+30 210-3215968							
HSBC BANK PLC								a	
109-111, AVE. MESOGION ATHINA	+30 2106960000	210-6928000							
INDEX SECURITIES S.A.			a						
6, DRAGATSANIOU ATHINA	+30 2103213920	+30 210-3213216							
INTERFINBROK CORPORATION S.A.									a
1, STR.CALARASI NR. CONSTANTA	+40 241639071	0241-547829							
INVESTMENT BANK OF GREECE S.A.			a		a	a		a	
32 , EGIALIAS & PARADISOU MAROUSI	+30 2108173111	+30 210-6896325							
J. CHR. MAVRIKIS SECURITIES S.A.			a						
5, SOFOKLEOUS ATHINA	+30 2103216730	210-3217767							
KAPPA SECURITIES S.A.			a			a			
15, VALAORITOU ATHINA	+30 2103678600	+30 210-3641002							
KARAMANOF SECURITIES-INV. SERVICES S.A.			a			a			
2, SQ. AGION THEODORON ATHINA	+30 2103212947	+30 210-3217088							
LAIKI FINANCIAL SERVICES LTD				a					
26, AVE. VYRONOS NICOSIA	357 22367367	357 22718567							
LEON DEPOLAS SECURITIES S.A.			a		a	a			
1, CHRISTOU LADA ATHINA	+30 2103213276	+30 210-3211618							
MAGNA TRUST SECURITIES S.A			a						
12-14, KARAGIORGI SERBIAS ATHINA	+30 2103800820	210-3220910							
MEGA EQUITY SECURITIES-FINANCIAL SERVICES LTD			a	a		a			
42-44, AVE. GRIVA DIGENI NICOSIA	+357 22711711	357 22711811							
MERIT SECURITIES S.A			a		a	a			a
3, GEORGIOU SOURI ATHINA	+30 2103671890	210-3671830							
MIDAS BROKERAGE S.A.			a		a				
5, SOFOKLEOUS ATHINA	+30 2141008800	+30 210-3253205							
N. CHRYSISOCHOIDIS STOCK BROKERAGE I.S.S.A.			a			a			a
7-9, SOFOKLEOUS ATHINA	+30 2103213913	+30 210-3216115							
NATIONAL BANK OF GREECE S.A.			a			a		a	
86, AIOLOU STR. ATHINA	(210)-3341000	(210)-3228187							
68, AKADIMIAS STR. ATHINA	(210)-3328817	(210)-3328678							
NATIONAL SECURITIES S.A			a		a	a	a		
66, KIFISIAS AVE , BUILDING A ATHINA	+30 2107720000	+30 210-7720002							
NUNTIUS SECURITIES S.A			a						
6, DRAGATSANIOU ATHINA	+30 2103350599	+30210-3254846							
ONE PLUS CAPITAL LIMITED			a	a					
, 75 PRODRAMOU AVENUE, ONEWORLD PARKVIEW HOUSE, 3RD FLOOR, 22873760	+30 2103350599								
PANTELAKIS SECURITIES S.A.			a			a	a		
57, ETHNIKIS ANTISTASIS B CHALANDRI	+30 2106965000	210-6929550							
PEGASUS BROKERAGE FIRM S.A			a			a			
17 , VALAORITOU & AMERIKIS ATHINA	+30 2103670700	+30 210-3670760							
PIRAEUS BANK S.A.			a			a		a	
4, AMERIKIS STR. ATHINA	(210)-3335000	(210)-3335079							
4, AMERIKIS STR ATHINA	(210)-3335918	(210)-3254207							
4, AMERIKIS ATHINA	+30 2103335000	210-3335079							
PIRAEUS SECURITIES S.A.			a		a	a	a		a
5, KORAI ATHINA	+30 2103354100	210-3354170							
PRELIUM SECURITIES-INVESTMENT SERVICES S.A.			a			a			
1 , DAVAKI & KIFISIAS AVE. ATHINA	+30 2103677000	+30 210-6926403							
PROCHOICE SECURITIES LTD			a	a					
57, SPYROY KYPRIANOY NICOSIA	+357-24-661192	+357-24-662464							
SHARELINK SECURITIES-FINANCIAL SERVICES LTD			a	a		a			
6 , THEOTOKI MEGARO ELLINA NICOSIA	+357 22554200	+357 22750852							

Athex & ATHEXClear Members List

Member Name			Stock Market			Derivatives Market		ATHEXClear Member	
Address	Phone	Fax	Market Member	Remote Member	Market Maker	Proprietary	Market Maker	General Clearing	Direct Clearing
SOCIETE GENERALE S.A.			a	a		a			
, 17 COURS VALMY 92987 PUTEAUX - LA DEFENSE PARIS	+33 157290504	+33142138697							
SOLIDUS SECURITIES S.A			a			a			a
64, LOUIZIS RIANCOUR ATHINA	+30 2106900600	210-6985421							
SSIF VIENNA INVESTMENT TRUST S.A.									a
, 4 SPLAIUL UNIRII, BUILDING B3 BUCHAREST	+40 212074880	004 021 207 48 98							
ST. EM. LAVRENTAKIS SECURITIES S.A.			a			a			
7-9, SOFOKLEOUS ATHINA	+30 2103213336	+30 210-3246572							
THE CYPRUS INVESTMENT & SECURITIES CORPORATION LTD			a	a					
154, LIMASSOL AVENUE, STROVOLOS NICOSIA	+357 22121700	357 22338800							
UBS LIMITED			a	a					
1 , FINSBURY AVENUE LONDON	+44 2075687135								

List of Stocks under Market Making operations

Securities	Stock Category
Market Maker	Start Market Making
FRIGOGLASS SA (CR)	Surveillance
EUROBANK SECURITIES INVESTMENT FIRM S.A	27/10/2014
ALPHA BANK (CR)	Main Market
ALPHA FINANCE INVESTMENT SERVICES S.A.	29/02/2016
EUROBANK SECURITIES INVESTMENT FIRM S.A	24/10/2012
LEON DEPOLAS SECURITIES S.A.	04/01/2016
MERIT SECURITIES S.A	03/09/2013
MIDAS BROKERAGE S.A.	11/01/2006
NATIONAL SECURITIES S.A	15/01/2013
PIRAEUS SECURITIES S.A.	28/05/2013
ALUMIL (CR)	Main Market
BETA SECURITIES S.A.	18/07/2013
ATTICA BANK S.A. (CR)	Main Market
BETA SECURITIES S.A.	02/06/2014
EUROBANK SECURITIES INVESTMENT FIRM S.A	25/07/2014
EUROXX SECURITIES S.A.	22/01/2016
BYTE COMPUTER SA (CR)	Main Market
MERIT SECURITIES S.A	04/08/2013
CC HBC AG (CR)	Main Market
EUROBANK SECURITIES INVESTMENT FIRM S.A	23/10/2013
NATIONAL SECURITIES S.A	29/04/2013
PIRAEUS SECURITIES S.A.	04/05/2015
CENERGY HOLDINGS (CB)	Main Market
ALPHA FINANCE INVESTMENT SERVICES S.A.	02/01/2017
EUROBANK SECURITIES INVESTMENT FIRM S.A	02/01/2017
ELLAKTOR (CR)	Main Market
EUROBANK SECURITIES INVESTMENT FIRM S.A	01/06/2013
NATIONAL SECURITIES S.A	25/06/2013
ELTON SA (CR)	Main Market
BETA SECURITIES S.A.	03/09/2013
EUROBANK ERGASIAS (CR)	Main Market
ALPHA FINANCE INVESTMENT SERVICES S.A.	08/01/2013
EUROBANK SECURITIES INVESTMENT FIRM S.A	01/06/2013
HELLENICAMERICAN SEC. S.A.	25/07/2014
MIDAS BROKERAGE S.A.	07/01/2016
PIRAEUS SECURITIES S.A.	28/09/2013
EUROCONSULTANTS S.A. (CR)	Main Market
EUROBANK SECURITIES INVESTMENT FIRM S.A	22/07/2014
FOLLI FOLLIE (CR)	Main Market
NATIONAL SECURITIES S.A	17/02/2014
PIRAEUS SECURITIES S.A.	04/05/2015
FOURLIS (CR)	Main Market
EUROBANK SECURITIES INVESTMENT FIRM S.A	01/12/2016
EUROXX SECURITIES S.A.	01/12/2016
GEK TERNA (CR)	Main Market
HELLENICAMERICAN SEC. S.A.	07/09/2015
GR. SARANTIS SA (CR)	Main Market
BETA SECURITIES S.A.	14/05/2013
EUROBANK SECURITIES INVESTMENT FIRM S.A	24/10/2016
HELLENIC EXCHANGES-A.S.E. (CR)	Main Market
EUROBANK SECURITIES INVESTMENT FIRM S.A	01/06/2013
HELLENICAMERICAN SEC. S.A.	01/09/2014
NATIONAL SECURITIES S.A	25/06/2013
PIRAEUS SECURITIES S.A.	04/05/2015
HELLENIC PETROLEUM (CR)	Main Market
HELLENICAMERICAN SEC. S.A.	14/09/2015
HYGEIA SA (CR)	Main Market
HELLENICAMERICAN SEC. S.A.	18/04/2016
INTRACOM HOLDINGS (CR)	Main Market
HELLENICAMERICAN SEC. S.A.	07/09/2015
INTRALOT (CR)	Main Market
PIRAEUS SECURITIES S.A.	28/09/2013
J & P - AVAX SA (CR)	Main Market
EUROBANK SECURITIES INVESTMENT FIRM S.A	14/12/2015
JUMBO SA (CR)	Main Market
MIDAS BROKERAGE S.A.	27/07/2016
KLOUKINAS - LAPPAS SA (CR)	Main Market
BETA SECURITIES S.A.	22/09/2014

List of Stocks under Market Making operations

Securities	Stock Category
Market Maker	Start Market Making
LAMDA DEVELOPMENT SA (CR)	Main Market
EUROBANK SECURITIES INVESTMENT FIRM S.A	08/12/2014
MARFIN INVESTMENT GROUP (CR)	Main Market
HELLENICAMERICAN SEC. S.A.	25/07/2014
PIRAEUS SECURITIES S.A.	02/02/2013
MLS MULTIMEDIA SA (CR)	Main Market
HELLENICAMERICAN SEC. S.A.	07/12/2015
MOTOR OIL (CR)	Main Market
EUROBANK SECURITIES INVESTMENT FIRM S.A	23/10/2012
HELLENICAMERICAN SEC. S.A.	01/09/2014
NATIONAL SECURITIES S.A	17/02/2014
PIRAEUS SECURITIES S.A.	04/05/2015
MYTILINEOS HOLDINGS (CR)	Main Market
NATIONAL SECURITIES S.A	25/06/2013
PIRAEUS SECURITIES S.A.	04/05/2015
NATIONAL BANK (CR)	Main Market
ALPHA FINANCE INVESTMENT SERVICES S.A.	08/01/2013
EUROBANK SECURITIES INVESTMENT FIRM S.A	24/10/2012
HELLENICAMERICAN SEC. S.A.	25/07/2014
LEON DEPOLAS SECURITIES S.A.	20/04/2015
MERIT SECURITIES S.A	03/09/2013
MIDAS BROKERAGE S.A.	07/01/2016
NATIONAL SECURITIES S.A	28/02/2013
PIRAEUS SECURITIES S.A.	08/09/2013
OPAP (CR)	Main Market
ALPHA FINANCE INVESTMENT SERVICES S.A.	08/01/2013
EUROBANK SECURITIES INVESTMENT FIRM S.A	24/10/2012
HELLENICAMERICAN SEC. S.A.	25/07/2014
MIDAS BROKERAGE S.A.	04/04/2016
NATIONAL SECURITIES S.A	15/01/2013
PIRAEUS SECURITIES S.A.	04/05/2015
OTE (CR)	Main Market
ALPHA FINANCE INVESTMENT SERVICES S.A.	08/01/2013
EUROBANK SECURITIES INVESTMENT FIRM S.A	24/10/2012
HELLENICAMERICAN SEC. S.A.	25/07/2014
MIDAS BROKERAGE S.A.	01/10/2015
NATIONAL SECURITIES S.A	01/12/2012
PIRAEUS SECURITIES S.A.	08/09/2013
PAPOUTSANIS (CR)	Main Market
BETA SECURITIES S.A.	25/11/2013
PETROPOULOS PETROS (CR)	Main Market
BETA SECURITIES S.A.	28/05/2013
PIRAEUS BANK (CR)	Main Market
EUROBANK SECURITIES INVESTMENT FIRM S.A	23/10/2012
EUROXX SECURITIES S.A.	15/02/2016
HELLENICAMERICAN SEC. S.A.	25/07/2014
MERIT SECURITIES S.A	16/09/2013
MIDAS BROKERAGE S.A.	11/01/2016
NATIONAL SECURITIES S.A	02/06/2013
PIRAEUS SECURITIES S.A.	16/02/2013
PLAISIO COMPUTERS SA (CR)	Main Market
BETA SECURITIES S.A.	05/05/2014
EUROBANK SECURITIES INVESTMENT FIRM S.A	02/03/2015
PPC (CR)	Main Market
ALPHA FINANCE INVESTMENT SERVICES S.A.	08/01/2013
EUROBANK SECURITIES INVESTMENT FIRM S.A	23/10/2012
MIDAS BROKERAGE S.A.	04/04/2016
NATIONAL SECURITIES S.A	26/03/2013
PIRAEUS SECURITIES S.A.	28/09/2013
QUALITY & RELIABILITY SA (CR)	Main Market
BETA SECURITIES S.A.	20/08/2014
S.KANAKIS SA (CR)	Main Market
BETA SECURITIES S.A.	01/10/2013
TITAN CEMENT (CR)	Main Market
EUROBANK SECURITIES INVESTMENT FIRM S.A	23/10/2012
NATIONAL SECURITIES S.A	17/02/2014
PIRAEUS SECURITIES S.A.	04/05/2015

List of Stocks under Market Making operations

Securities	Stock Category
Market Maker	Start Market Making
VIOHALCO SA/NV (CB)	Main Market
ALPHA FINANCE INVESTMENT SERVICES S.A.	17/02/2014
MERIT SECURITIES S.A	17/03/2014

Underlying Asset				Derivatives Market														
Price max	Price min	Closing price	change	Delivery Month	Open price	Price max	Price min	Last price	Closing price	Last Bid	Last Ask	Settlement price	Life high	Life low	Trades	Volume	Open Interest	
FTSE/Athex Large Cap																	(Trade Unit: 1 Index Point x 2€, Cash Settlement)	
1,719.92	1,708.58	1,713.05	0.01%	February 2017	1,701.00	1,722.00	1,701.00	1,717.00	1,717.00	---	---	1,704.75	1,801.00	---	148	716	7,481	
				March 2017	1,716.00	1,716.75	1,713.50	1,713.50	1,713.50	---	---	1,704.75	---	1,732.00	---	4	61	168
				April 2017	---	---	---	---	1,721.50	---	---	---	---	---	---	---	---	---
				June 2017	---	---	---	---	1,727.00	---	---	---	---	---	---	---	---	---
				September 2017	---	---	---	---	1,735.50	---	---	---	---	---	---	---	---	---
				December 2017	---	---	---	---	1,744.25	---	---	---	---	---	---	---	---	---

Underlying Asset				Derivatives Market													
Price max	Price min	Closing price	change	Delivery Month	Open price	Price max	Price min	Last price	Closing price	Last Bid	Last Ask	Settlement price	Life high	Life low	Trades	Volume	Open Interest
ALPHA BANK (CR)				(Contract Size: 100 Securities, Physical Delivery)													
1.83	1.80	1.81	-0.55%	March 2017	1.81	1.83	1.80	1.81	1.81	---	---	1.82	2.04	---	101	1,889	22,478
				June 2017	---	---	---	---	1.83	---	---	---	---	---	---	---	---
				September 2017	---	---	---	---	1.84	---	---	---	---	---	---	---	---
				December 2017	---	---	---	---	1.85	---	---	---	---	---	---	---	---
CC HBC AG (CR)				(Contract Size: 100 Securities, Physical Delivery)													
21.11	20.98	21.07	0.81%	March 2017	20.90	21.10	20.90	21.08	21.08	---	---	21.08	21.10	---	5	9	106
				June 2017	---	---	---	---	21.07	---	---	---	---	---	---	---	---
				September 2017	---	---	---	---	21.18	---	---	---	---	---	---	---	---
				December 2017	---	---	---	---	21.28	---	---	---	---	---	---	---	---
ELLAKTOR (CR)				(Contract Size: 100 Securities, Physical Delivery)													
1.15	1.13	1.14	-0.87%	March 2017	1.15	1.15	1.14	1.15	1.15	---	---	1.15	1.25	---	9	36	3,719
				June 2017	---	---	---	---	1.16	---	---	---	---	---	---	---	---
				September 2017	---	---	---	---	1.17	---	---	---	---	---	---	---	---
				December 2017	---	---	---	---	1.17	---	---	---	---	---	---	---	---
EUROBANK ERGASIAS (CR)				(Contract Size: 100 Securities, Physical Delivery)													
0.636	0.625	0.625	-1.11%	March 2017	0.630	0.636	0.626	0.631	0.631	---	---	0.628	0.764	---	78	1,472	48,882
				June 2017	---	---	---	---	0.637	---	---	---	---	---	---	---	---
				September 2017	---	---	---	---	0.640	---	---	---	---	---	---	---	---
				December 2017	---	---	---	---	0.644	---	---	---	---	---	---	---	---
EYDAP S.A. (CR)				(Contract Size: 100 Securities, Physical Delivery)													
5.30	5.18	5.25	0.00%	March 2017	---	---	---	---	5.27	---	---	4.79	5.57	---	---	---	72
				June 2017	---	---	---	---	5.29	---	---	---	---	---	---	---	---
				September 2017	---	---	---	---	5.32	---	---	---	---	---	---	---	---
				December 2017	---	---	---	---	5.35	---	---	---	---	---	---	---	---
FOLLI FOLLIE (CR)				(Contract Size: 100 Securities, Physical Delivery)													
18.45	18.00	18.11	0.61%	March 2017	18.00	18.40	18.00	18.22	18.22	---	---	18.00	22.10	---	12	19	496
				June 2017	---	---	---	---	18.15	---	---	---	---	---	---	---	---
				September 2017	---	---	---	---	18.24	---	---	---	---	---	---	---	---
				December 2017	---	---	---	---	18.33	---	---	---	---	---	---	---	---
GEK TERNA (CR)				(Contract Size: 100 Securities, Physical Delivery)													
2.35	2.32	2.35	0.00%	March 2017	2.35	2.35	2.35	2.35	2.35	---	---	2.37	2.42	---	1	2	7,785
				June 2017	---	---	---	---	2.37	---	---	---	---	---	---	---	---
				September 2017	---	---	---	---	2.38	---	---	---	---	---	---	---	---
				December 2017	---	---	---	---	2.39	---	---	---	---	---	---	---	---
GRIVALIA PROPERTIES (CR)				(Contract Size: 100 Securities, Physical Delivery)													
8.07	7.91	8.01	0.12%	March 2017	8.15	8.15	7.95	8.06	8.06	---	---	7.97	8.21	---	4	16	65
				June 2017	---	---	---	---	8.07	---	---	---	---	---	---	---	---
				September 2017	---	---	---	---	8.11	---	---	---	---	---	---	---	---
				December 2017	---	---	---	---	8.15	---	---	---	---	---	---	---	---

Underlying Asset				Derivatives Market													
Price max	Price min	Closing price	change	Delivery Month	Open price	Price max	Price min	Last price	Closing price	Last Bid	Last Ask	Settlement price	Life high	Life low	Trades	Volume	Open Interest
HELLENIC EXCHANGES-A.S.E. (CR)				(Contract Size: 100 Securities, Physical Delivery)													
4.81	4.75	4.79	-0.21%	March 2017	---	---	---	---	4.81	---	---	4.81	4.94	---	---	---	309
				June 2017	---	---	---	---	4.84	---	---	---	---	---	---	---	---
				September 2017	---	---	---	---	4.86	---	---	---	---	---	---	---	---
				December 2017	---	---	---	---	4.89	---	---	---	---	---	---	---	---
HELLENIC PETROLEUM (CR)				(Contract Size: 100 Securities, Physical Delivery)													
4.56	4.44	4.50	1.81%	March 2017	4.48	4.55	4.48	4.50	4.50	---	---	4.50	4.57	---	43	69	3,900
				June 2017	---	---	---	---	4.46	---	---	4.48	4.43	---	---	---	---
				September 2017	---	---	---	---	4.48	---	---	---	---	---	---	---	---
				December 2017	---	---	---	---	4.50	---	---	---	---	---	---	---	---
INTRALOT (CR)				(Contract Size: 100 Securities, Physical Delivery)													
1.16	1.12	1.12	-0.88%	March 2017	1.15	1.16	1.13	1.13	1.13	---	---	1.12	1.16	---	10	41	1,463
				June 2017	---	---	---	---	1.14	---	---	---	---	---	---	---	---
				September 2017	---	---	---	---	1.14	---	---	---	---	---	---	---	---
				December 2017	---	---	---	---	1.15	---	---	---	---	---	---	---	---
JUMBO SA (CR)				(Contract Size: 100 Securities, Physical Delivery)													
14.03	13.85	14.00	1.97%	March 2017	13.92	14.05	13.84	13.99	13.99	---	---	14.10	15.11	---	20	36	397
				June 2017	---	---	---	---	13.84	---	---	---	---	---	---	---	---
				September 2017	---	---	---	---	13.91	---	---	---	---	---	---	---	---
				December 2017	---	---	---	---	13.98	---	---	---	---	---	---	---	---
MARFIN INVESTMENT GROUP (CR)				(Contract Size: 100 Securities, Physical Delivery)													
0.155	0.151	0.153	1.32%	March 2017	0.152	0.154	0.152	0.154	0.154	---	---	0.154	0.171	---	16	242	52,518
				June 2017	---	---	---	---	0.152	---	---	---	---	---	---	---	---
				September 2017	---	---	---	---	0.153	---	---	---	---	---	---	---	---
				December 2017	---	---	---	---	0.154	---	---	---	---	---	---	---	---
METKA (CR)				(Contract Size: 100 Securities, Physical Delivery)													
6.47	6.37	6.42	0.63%	March 2017	6.47	6.47	6.42	6.42	6.42	---	---	6.43	7.65	---	5	32	357
				June 2017	---	---	---	---	6.43	---	---	---	---	---	---	---	---
				September 2017	---	---	---	---	6.46	---	---	---	---	---	---	---	---
				December 2017	---	---	---	---	6.50	---	---	---	---	---	---	---	---
MOTOR OIL (CR)				(Contract Size: 100 Securities, Physical Delivery)													
13.65	13.40	13.49	-1.17%	March 2017	13.60	13.60	13.60	13.60	13.60	---	---	13.17	13.90	---	2	11	121
				June 2017	---	---	---	---	13.76	---	---	12.95	13.65	---	---	---	---
				September 2017	---	---	---	---	13.83	---	---	---	---	---	---	---	---
				December 2017	---	---	---	---	13.90	---	---	---	---	---	---	---	---
MYTILINEOS HOLDINGS (CR)				(Contract Size: 100 Securities, Physical Delivery)													
6.40	6.27	6.34	1.12%	March 2017	6.27	6.41	6.27	6.37	6.37	---	---	6.37	6.56	---	70	292	5,033
				June 2017	---	---	---	---	6.32	---	---	---	---	---	---	---	---
				September 2017	---	---	---	---	6.35	---	---	---	---	---	---	---	---
				December 2017	---	---	---	---	6.38	---	---	---	---	---	---	---	---

Underlying Asset				Derivatives Market													
Price max	Price min	Closing price	change	Delivery Month	Open price	Price max	Price min	Last price	Closing price	Last Bid	Last Ask	Settlement price	Life high	Life low	Trades	Volume	Open Interest
NATIONAL BANK (CR)				(Contract Size: 100 Securities, Physical Delivery)													
0.236	0.231	0.235	-0.84%	March 2017	0.237	0.237	0.232	0.233	0.233	---	---	0.235	0.273	---	141	9,917	95,922
				June 2017	---	---	---	---	0.239	---	---	---	---	---	---	---	---
				September 2017	---	---	---	---	0.240	---	---	---	---	---	---	---	---
				December 2017	---	---	---	---	0.241	---	---	---	---	---	---	---	---
OPAP (CR)				(Contract Size: 100 Securities, Physical Delivery)													
8.57	8.50	8.57	0.82%	March 2017	8.52	8.57	8.49	8.57	8.57	---	---	8.55	8.81	---	19	60	2,280
				June 2017	---	---	---	---	8.57	---	---	8.48	8.43	---	---	---	---
				September 2017	---	---	---	---	8.61	---	---	---	---	---	---	---	---
				December 2017	---	---	---	---	8.66	---	---	---	---	---	---	---	---
OTE (CR)				(Contract Size: 100 Securities, Physical Delivery)													
8.87	8.78	8.80	-0.57%	March 2017	8.82	8.89	8.82	8.83	8.83	---	---	8.89	9.69	---	27	91	4,359
				June 2017	---	---	---	---	8.92	---	---	---	---	---	---	---	---
				September 2017	---	---	---	---	8.97	---	---	---	---	---	---	---	---
				December 2017	---	---	---	---	9.01	---	---	---	---	---	---	---	---
P.P.A. S.A. (CR)				(Contract Size: 100 Securities, Physical Delivery)													
13.08	12.86	13.03	1.09%	March 2017	---	---	---	---	12.93	---	---	13.17	13.65	---	---	---	626
				June 2017	---	---	---	---	13.00	---	---	---	---	---	---	---	---
				September 2017	---	---	---	---	13.06	---	---	---	---	---	---	---	---
				December 2017	---	---	---	---	13.13	---	---	---	---	---	---	---	---
PIRAEUS BANK (CR)				(Contract Size: 100 Securities, Physical Delivery)													
0.196	0.192	0.193	-1.03%	March 2017	0.195	0.197	0.193	0.194	0.194	---	---	0.194	0.242	---	130	10,070	97,833
				June 2017	---	---	---	---	0.197	---	---	---	---	---	---	---	---
				September 2017	---	---	---	---	0.198	---	---	---	---	---	---	---	---
				December 2017	---	---	---	---	0.199	---	---	---	---	---	---	---	---
PPC (CR)				(Contract Size: 100 Securities, Physical Delivery)													
2.85	2.81	2.82	0.00%	March 2017	2.82	2.86	2.82	2.82	2.82	---	---	2.83	3.26	---	33	158	7,833
				June 2017	---	---	---	---	2.84	---	---	---	---	---	---	---	---
				September 2017	---	---	---	---	2.86	---	---	---	---	---	---	---	---
				December 2017	---	---	---	---	2.87	---	---	---	---	---	---	---	---
TERNA ENERGY (CR)				(Contract Size: 100 Securities, Physical Delivery)													
2.94	2.86	2.90	0.00%	March 2017	2.90	2.90	2.90	2.90	2.90	---	---	2.93	2.95	---	2	2	1,335
				June 2017	---	---	---	---	2.92	---	---	---	---	---	---	---	---
				September 2017	---	---	---	---	2.94	---	---	---	---	---	---	---	---
				December 2017	---	---	---	---	2.95	---	---	---	---	---	---	---	---
TITAN CEMENT (CR)				(Contract Size: 100 Securities, Physical Delivery)													
22.50	21.88	21.98	-2.31%	March 2017	22.16	22.23	22.16	22.23	22.23	---	---	21.67	22.40	---	4	12	117
				June 2017	---	---	---	---	22.68	---	---	---	---	---	---	---	---
				September 2017	---	---	---	---	22.80	---	---	---	---	---	---	---	---
				December 2017	---	---	---	---	22.91	---	---	---	---	---	---	---	---

Underlying Asset				Derivatives Market													
Price max	Price min	Closing price	change	Delivery Month	Open price	Price max	Price min	Last price	Closing price	Last Bid	Last Ask	Settlement price	Life high	Life low	Trades	Volume	Open Interest
VIOHALCO SA/NV (CB)				(Contract Size: 100 Securities, Physical Delivery)													
1.40	1.38	1.39	0.72%	March 2017	1.40	1.40	1.39	1.39	1.39	---	---	1.40	1.49	---	4	7	2,798
				June 2017	---	---	---	---	1.39	---	---	---	---	---	---	---	---
				September 2017	---	---	---	---	1.40	---	---	---	---	---	---	---	---
				December 2017	---	---	---	---	1.41	---	---	---	---	---	---	---	---

FTSE/Athex Large Cap

(Trade Unit: 1 Index Point x 2€ - Exercise Style: European, Cash Settlement)

Call Options																	Put Options																								
February 2017								March 2017								Other Months		February 2017								March 2017								Other Months							
Exerise Price	Open price	Price max	Price min	Last price	Closing price	Volume	Open Interest	Open price	Price max	Price min	Last price	Closing price	Volume	Open Interest	Volume	Open Interest	Open price	Price max	Price min	Last price	Closing price	Volume	Open Interest	Open price	Price max	Price min	Last price	Closing price	Volume	Open Interest	Volume	Open Interest	Exerise Price								
1,200	-	-	-	-	-	-	-	0.00	0.00	0.00	-	502.00	-	-			-	-	-	-	-	-	-	0.00	0.00	0.00	-	0.01	-	-			1,200								
1,250	-	-	-	-	-	-	-	0.00	0.00	0.00	-	453.00	-	-			-	-	-	-	-	-	-	0.00	0.00	0.00	-	0.01	-	-			1,250								
1,275	-	-	-	-	-	-	-	0.00	0.00	0.00	-	428.00	-	-			-	-	-	-	-	-	-	0.00	0.00	0.00	-	0.01	-	-			1,275								
1,300	-	-	-	-	-	-	-	0.00	0.00	0.00	-	403.00	-	-			-	-	-	-	-	-	-	0.00	0.00	0.00	-	0.01	-	-			1,300								
1,325	-	-	-	-	-	-	-	0.00	0.00	0.00	-	378.00	-	-			-	-	-	-	-	-	-	0.00	0.00	0.00	-	0.01	-	-			1,325								
1,350	-	-	-	-	-	-	-	0.00	0.00	0.00	-	353.00	-	-			-	-	-	-	-	-	-	0.00	0.00	0.00	-	0.03	-	-			1,350								
1,375	-	-	-	-	-	-	-	0.00	0.00	0.00	-	328.00	-	-			-	-	-	-	-	-	-	0.00	0.00	0.00	-	0.07	-	-			1,375								
1,400	-	-	-	-	-	-	-	0.00	0.00	0.00	-	303.00	-	-			-	-	-	-	-	-	-	0.00	0.00	0.00	-	0.15	-	-			1,400								
1,425	-	-	-	-	-	-	-	0.00	0.00	0.00	-	278.00	-	-			-	-	-	-	-	-	-	0.00	0.00	0.00	-	0.32	-	-			1,425								
1,450	-	-	-	-	-	-	-	0.00	0.00	0.00	-	254.00	-	-			-	-	-	-	-	-	-	0.00	0.00	0.00	-	0.63	-	-			1,450								
1,475	-	-	-	-	-	-	-	0.00	0.00	0.00	-	229.00	-	-			-	-	-	-	-	-	-	0.00	0.00	0.00	-	1.20	-	-			1,475								
1,500	0.00	0.00	0.00	-	204.00	-	-	0.00	0.00	0.00	-	205.00	-	7			0.00	0.00	0.00	-	0.17	-	-	0.00	0.00	0.00	-	2.10	-	-			1,500								
1,525	0.00	0.00	0.00	-	180.00	-	-	0.00	0.00	0.00	-	182.00	-	-			0.00	0.00	0.00	-	0.45	-	-	0.00	0.00	0.00	-	3.60	-	-			1,525								
1,550	0.00	0.00	0.00	-	155.00	-	-	0.00	0.00	0.00	-	159.00	-	-			0.00	0.00	0.00	-	1.10	-	-	0.00	0.00	0.00	-	5.90	-	-			1,550								
1,575	0.00	0.00	0.00	-	132.00	-	-	0.00	0.00	0.00	-	138.00	-	-			0.00	0.00	0.00	-	2.30	-	-	0.00	0.00	0.00	-	9.10	-	-			1,575								
1,600	0.00	0.00	0.00	-	109.00	-	-	0.00	0.00	0.00	-	117.00	-	-			0.00	0.00	0.00	-	4.50	-	17	0.00	0.00	0.00	-	13.75	-	-			1,600								
1,625	0.00	0.00	0.00	-	87.50	-	-	0.00	0.00	0.00	-	98.50	-	-			0.00	0.00	0.00	-	8.20	-	-	0.00	0.00	0.00	-	19.75	-	-			1,625								
1,650	0.00	0.00	0.00	-	68.00	-	-	0.00	0.00	0.00	-	81.00	-	-			0.00	0.00	9.00	10.00	10.00	25	123	0.00	0.00	0.00	-	27.50	-	-			1,650								
1,675	0.00	0.00	0.00	-	51.50	-	-	0.00	0.00	0.00	-	66.00	-	-			0.00	0.00	0.00	-	22.00	-	45	0.00	0.00	0.00	-	37.00	-	-			1,675								
1,700	44.00	44.00	44.00	44.00	44.00	3	37	0.00	0.00	0.00	-	52.50	-	90			44.00	44.00	22.25	22.25	22.25	15	36	0.00	0.00	0.00	-	48.50	-	35			1,700								
1,725	0.00	0.00	0.00	-	26.00	-	70	0.00	0.00	0.00	-	41.00	-	-			0.00	0.00	0.00	-	46.25	-	75	0.00	0.00	0.00	-	62.00	-	-			1,725								
1,750	15.00	20.00	15.00	18.00	18.00	15	257	0.00	0.00	0.00	-	31.50	-	-			15.00	20.00	50.00	50.00	50.00	70	100	0.00	0.00	0.00	-	77.50	-	-			1,750								
1,775	13.50	13.50	13.50	13.50	13.50	3	99	0.00	0.00	0.00	-	23.75	-	-			13.50	13.50	0.00	-	81.50	-	40	0.00	0.00	0.00	-	94.50	-	-			1,775								
1,800	10.00	10.00	10.00	10.00	10.00	3	273	18.00	18.00	18.00	18.00	18.00	10	130			10.00	10.00	0.00	-	102.00	-	3	0.00	0.00	0.00	-	113.00	-	-			1,800								
1,825	0.00	0.00	0.00	-	3.90	-	26	0.00	0.00	0.00	-	12.75	-	-			0.00	0.00	0.00	-	124.00	-	-	0.00	0.00	0.00	-	133.00	-	-			1,825								
1,850	0.00	0.00	0.00	-	2.20	-	25	0.00	0.00	0.00	-	9.00	-	-			0.00	0.00	0.00	-	147.00	-	-	0.00	0.00	0.00	-	155.00	-	-			1,850								
1,875	0.00	0.00	0.00	-	1.20	-	-	0.00	0.00	0.00	-	6.30	-	-			0.00	0.00	0.00	-	171.00	-	-	0.00	0.00	0.00	-	177.00	-	-			1,875								
1,900	0.00	0.00	0.00	-	0.59	-	-	0.00	0.00	0.00	-	4.30	-	-			0.00	0.00	0.00	-	196.00	-	-	0.00	0.00	0.00	-	200.00	-	-			1,900								
1,950	-	-	-	-	-	-	-	0.00	0.00	0.00	-	1.90	-	-			-	-	-	-	-	-	-	0.00	0.00	0.00	-	247.00	-	-			1,950								
2,000	-	-	-	-	-	-	-	0.00	0.00	0.00	-	0.78	-	-			-	-	-	-	-	-	-	0.00	0.00	0.00	-	296.00	-	-			2,000								
2,050	-	-	-	-	-	-	-	0.00	0.00	0.00	-	0.30	-	-			-	-	-	-	-	-	-	0.00	0.00	0.00	-	345.00	-	-			2,050								
2,100	-	-	-	-	-	-	-	0.00	0.00	0.00	-	0.11	-	-			-	-	-	-	-	-	-	0.00	0.00	0.00	-	395.00	-	-			2,100								
Totals:						24	787							10	227	0	0							110	439							0	35	0	0						
Number of Trades:						10						1						0						12						0						0					

ALPHA BANK (CR)

(Contract Size: 100 Securities, Exercise Style: American, Physical Delivery)

Call Options																	Put Options																			
Exercise Price	February 2017							March 2017							Other Months		February 2017										March 2017							Other Months		Exercise Price
	Open price	Price max	Price min	Last price	Closing price	Volume	Open Interest	Open price	Price max	Price min	Last price	Closing price	Volume	Open Interest	Volume	Open Interest	Open price	Price max	Price min	Last price	Closing price	Volume	Open Interest	Open price	Price max	Price min	Last price	Closing price	Volume	Open Interest	Volume	Open Interest				
0.950						-	-	0.000	0.000	0.000		0.873	-	-								-	-	0.000	0.000	0.000		0.001	-	-			0.010			
1.000						-	-	0.000	0.000	0.000		0.823	-	-								-	-	0.000	0.000	0.000		0.001	-	-			0.010			
1.100						-	-	0.000	0.000	0.000		0.723	-	-								-	-	0.000	0.000	0.000		0.001	-	-			0.011			
1.200	0.000	0.000	0.000		0.622	-	-	0.000	0.000	0.000		0.624	-	-			0.000	0.000	0.000		0.001	-	-	0.000	0.000	0.000		0.001	-	-			0.012			
1.300	0.000	0.000	0.000		0.522	-	-	0.000	0.000	0.000		0.525	-	-			0.000	0.000	0.000		0.001	-	-	0.000	0.000	0.000		0.001	-	-			0.013			
1.400	0.000	0.000	0.000		0.423	-	-	0.000	0.000	0.000		0.428	-	-			0.000	0.000	0.000		0.001	-	-	0.000	0.000	0.000		0.004	-	-			0.014			
1.500	0.000	0.000	0.000		0.325	-	-	0.000	0.000	0.000		0.336	-	-			0.000	0.000	0.000		0.002	-	-	0.000	0.000	0.000		0.012	-	-			0.015			
1.600	0.000	0.000	0.000		0.232	-	-	0.000	0.000	0.000		0.252	-	-			0.000	0.000	0.000		0.010	-	-	0.000	0.000	0.000		0.027	-	-			0.016			
1.700	0.000	0.000	0.000		0.152	-	-	0.000	0.000	0.000		0.181	-	-			0.000	0.000	0.000		0.029	-	-	0.000	0.000	0.000		0.056	-	-			0.017			
1.800	0.000	0.000	0.000		0.090	-	-	0.000	0.000	0.000		0.123	-	-			0.000	0.000	0.000		0.067	-	-	0.000	0.000	0.000		0.098	-	-			0.018			
1.900	0.000	0.000	0.000		0.047	-	-	0.000	0.000	0.000		0.079	-	-			0.000	0.000	0.000		0.125	-	-	0.000	0.000	0.000		0.153	-	-			0.019			
2.000	0.000	0.000	0.000		0.022	-	-	0.000	0.000	0.000		0.049	-	-			0.000	0.000	0.000		0.199	-	-	0.000	0.000	0.000		0.224	-	-			0.020			
2.200	0.000	0.000	0.000		0.003	-	-	0.000	0.000	0.000		0.016	-	-			0.000	0.000	0.000		0.382	-	-	0.000	0.000	0.000		0.392	-	-			0.022			
2.400	0.000	0.000	0.000		0.001	-	-	0.000	0.000	0.000		0.004	-	-			0.000	0.000	0.000		0.580	-	-	0.000	0.000	0.000		0.581	-	-			0.024			
2.600	0.000	0.000	0.000		0.001	-	-	0.000	0.000	0.000		0.001	-	-			0.000	0.000	0.000		0.780	-	-	0.000	0.000	0.000		0.780	-	-			0.026			
2.800	0.000	0.000	0.000		0.001	-	-	0.000	0.000	0.000		0.001	-	-			0.000	0.000	0.000		0.980	-	-	0.000	0.000	0.000		0.980	-	-			0.028			
3.000	0.000	0.000	0.000		0.001	-	-	0.000	0.000	0.000		0.001	-	-			0.000	0.000	0.000		1.18	-	-	0.000	0.000	0.000		1.18	-	-			0.030			
3.200						-	-	0.000	0.000	0.000		0.001	-	-								-	-	0.000	0.000	0.000		1.38	-	-			0.032			
3.400						-	-	0.000	0.000	0.000		0.001	-	-								-	-	0.000	0.000	0.000		1.58	-	-			0.034			
3.600						-	-	0.000	0.000	0.000		0.001	-	-								-	-	0.000	0.000	0.000		1.78	-	-			0.036			
Totals:						0	0							0	0	0	0							0	0							0	0			
Number of Trades:						0								0		0								0.00								0				

NATIONAL BANK (CR)

(Contract Size: 100 Securities, Exercise Style: American, Physical Delivery)

Call Options																	Put Options																	
February 2017								March 2017							Other Months		February 2017								March 2017							Other Months		
Exercise Price	Open price	Price max	Price min	Last price	Closing price	Volume	Open Interest	Open price	Price max	Price min	Last price	Closing price	Volume	Open Interest	Volume	Open Interest	Open price	Price max	Price min	Last price	Closing price	Volume	Open Interest	Open price	Price max	Price min	Last price	Closing price	Volume	Open Interest	Volume	Open Interest	Exercise Price	
0.050	0.000	0.000	0.000		0.187	-	-	0.000	0.000	0.000		0.187	-	-			0.000	0.000	0.000		0.001	-	-	0.000	0.000	0.000		0.001	-	-			0.001	
0.100	0.000	0.000	0.000		0.137	-	-	0.000	0.000	0.000		0.138	-	-			0.000	0.000	0.000		0.001	-	-	0.000	0.000	0.000		0.001	-	-			0.001	
0.150	0.000	0.000	0.000		0.090	-	-	0.000	0.000	0.000		0.096	-	-			0.000	0.000	0.000		0.003	-	-	0.000	0.000	0.000		0.008	-	-			0.002	
0.200	0.000	0.000	0.000		0.052	-	-	0.000	0.000	0.000		0.063	-	-			0.000	0.000	0.000		0.015	-	-	0.000	0.000	0.000		0.025	-	-			0.002	
0.250	0.000	0.000	0.000		0.027	-	-	0.000	0.000	0.000		0.041	-	-			0.000	0.000	0.000		0.040	-	-	0.000	0.000	0.000		0.053	-	-			0.003	
0.300	0.000	0.000	0.000		0.013	-	-	0.000	0.000	0.000		0.026	-	-			0.000	0.000	0.000		0.076	-	-	0.000	0.000	0.000		0.088	-	-			0.003	
0.350	0.000	0.000	0.000		0.006	-	-	0.000	0.000	0.000		0.016	-	-			0.000	0.000	0.000		0.119	-	-	0.000	0.000	0.000		0.128	-	-			0.004	
0.400	0.000	0.000	0.000		0.003	-	-	0.000	0.000	0.000		0.010	-	-			0.000	0.000	0.000		0.165	-	-	0.000	0.000	0.000		0.172	-	-			0.004	
0.450	0.000	0.000	0.000		0.001	-	-	0.000	0.000	0.000		0.007	-	-			0.000	0.000	0.000		0.214	-	-	0.000	0.000	0.000		0.219	-	-			0.005	
0.500	0.000	0.000	0.000		0.001	-	-	0.000	0.000	0.000		0.004	-	-			0.000	0.000	0.000		0.263	-	-	0.000	0.000	0.000		0.266	-	-			0.005	
0.550						-	-	0.000	0.000	0.000		0.003	-	-							-	-		0.000	0.000	0.000		0.315	-	-			0.006	
0.600						-	-	0.000	0.000	0.000		0.002	-	-							-	-		0.000	0.000	0.000		0.364	-	-			0.006	
Totals:						0	0						0	0	0	0						0	0					0	0	0	0			
Number of Trades:						0							0		0							0.00						0		0				

OPAP (CR)

(Contract Size: 100 Securities, Exercise Style: American, Physical Delivery)

Call Options																	Put Options																		
February 2017								March 2017								Other Months		February 2017								March 2017								Other Months	
Exercise Price	Open price	Price max	Price min	Last price	Closing price	Volume	Open Interest	Open price	Price max	Price min	Last price	Closing price	Volume	Open Interest	Volume	Open Interest	Open price	Price max	Price min	Last price	Closing price	Volume	Open Interest	Open price	Price max	Price min	Last price	Closing price	Volume	Open Interest	Volume	Open Interest	Exercise Price		
4.000						-	-	0.000	0.000	0.000		4.51	-	-								-	-	0.000	0.000	0.000		0.001	-	-			0.040		
4.400						-	-	0.000	0.000	0.000		4.11	-	-								-	-	0.000	0.000	0.000		0.001	-	-			0.044		
4.800						-	-	0.000	0.000	0.000		3.71	-	-								-	-	0.000	0.000	0.000		0.001	-	-			0.048		
5.200						-	-	0.000	0.000	0.000		3.32	-	-								-	-	0.000	0.000	0.000		0.001	-	-			0.052		
5.600						-	-	0.000	0.000	0.000		2.92	-	-								-	-	0.000	0.000	0.000		0.001	-	-			0.056		
6.000	0.000	0.000	0.000		2.51	-	-	0.000	0.000	0.000		2.52	-	-			0.000	0.000	0.000		0.001	-	-	0.000	0.000	0.000		0.001	-	-			0.060		
6.400	0.000	0.000	0.000		2.11	-	-	0.000	0.000	0.000		2.12	-	-			0.000	0.000	0.000		0.001	-	-	0.000	0.000	0.000		0.001	-	-			0.064		
6.800	0.000	0.000	0.000		1.71	-	-	0.000	0.000	0.000		1.73	-	-			0.000	0.000	0.000		0.001	-	-	0.000	0.000	0.000		0.004	-	-			0.068		
7.200	0.000	0.000	0.000		1.31	-	-	0.000	0.000	0.000		1.34	-	-			0.000	0.000	0.000		0.002	-	-	0.000	0.000	0.000		0.018	-	-			0.072		
7.600	0.000	0.000	0.000		0.928	-	-	0.000	0.000	0.000		0.981	-	-			0.000	0.000	0.000		0.016	-	-	0.000	0.000	0.000		0.058	-	-			0.076		
8.000	0.000	0.000	0.000		0.580	-	-	0.000	0.000	0.000		0.667	-	-			0.000	0.000	0.000		0.068	-	-	0.000	0.000	0.000		0.142	-	-			0.080		
8.400	0.000	0.000	0.000		0.311	-	-	0.000	0.000	0.000		0.420	-	-			0.000	0.000	0.000		0.198	-	55	0.000	0.000	0.000		0.295	-	-			0.084		
8.800	0.000	0.000	0.000		0.138	-	50	0.000	0.000	0.000		0.240	-	-			0.000	0.000	0.000		0.426	-	-	0.000	0.000	0.000		0.516	-	-			0.088		
9.200	0.000	0.000	0.000		0.050	-	-	0.000	0.000	0.000		0.127	-	-			0.000	0.000	0.000		0.739	-	-	0.000	0.000	0.000		0.804	-	-			0.092		
9.600	0.000	0.000	0.000		0.014	-	-	0.000	0.000	0.000		0.060	-	-			0.000	0.000	0.000		1.11	-	-	0.000	0.000	0.000		1.14	-	-			0.096		
10.000	0.000	0.000	0.000		0.003	-	-	0.000	0.000	0.000		0.027	-	-			0.000	0.000	0.000		1.50	-	-	0.000	0.000	0.000		1.51	-	-			0.100		
11.000	0.000	0.000	0.000		0.001	-	-	0.000	0.000	0.000		0.002	-	-			0.000	0.000	0.000		2.50	-	-	0.000	0.000	0.000		2.50	-	-			0.110		
12.000	0.000	0.000	0.000		0.001	-	-	0.000	0.000	0.000		0.001	-	-			0.000	0.000	0.000		3.50	-	-	0.000	0.000	0.000		3.50	-	-			0.120		
Totals:						0	50							0	0	0	0							0	55							0	0	0	0
Number of Trades:						0							0			0							0.00							0			0		

OTE (CR)

(Contract Size: 100 Securities, Exercise Style: American, Physical Delivery)

Call Options																	Put Options																			
February 2017								March 2017								Other Months		February 2017								March 2017								Other Months		
Exercise Price	Open price	Price max	Price min	Last price	Closing price	Volume	Open Interest	Open price	Price max	Price min	Last price	Closing price	Volume	Open Interest	Volume	Open Interest	Open price	Price max	Price min	Last price	Closing price	Volume	Open Interest	Open price	Price max	Price min	Last price	Closing price	Volume	Open Interest	Volume	Open Interest	Exercise Price			
5.200						-	-	0.000	0.000	0.000		3.67	-	-								-	-	0.000	0.000	0.000		0.001	-	-			0.052			
5.600						-	-	0.000	0.000	0.000		3.27	-	-								-	-	0.000	0.000	0.000		0.001	-	-			0.056			
6.000						-	-	0.000	0.000	0.000		2.87	-	-								-	-	0.000	0.000	0.000		0.004	-	-			0.060			
6.400	0.000	0.000	0.000		2.46	-	-	0.000	0.000	0.000		2.47	-	-			0.000	0.000	0.000		0.002	-	-	0.000	0.000	0.000		0.001	-	-			0.064			
6.800	0.000	0.000	0.000		2.06	-	-	0.000	0.000	0.000		2.07	-	-			0.000	0.000	0.000		0.001	-	-	0.000	0.000	0.000		0.001	-	-			0.068			
7.200	0.000	0.000	0.000		1.66	-	-	0.000	0.000	0.000		1.68	-	-			0.000	0.000	0.000		0.001	-	-	0.000	0.000	0.000		0.006	-	-			0.072			
7.600	0.000	0.000	0.000		1.27	-	-	0.000	0.000	0.000		1.30	-	-			0.000	0.000	0.000		0.004	-	-	0.000	0.000	0.000		0.025	-	-			0.076			
8.000	0.000	0.000	0.000		0.885	-	-	0.000	0.000	0.000		0.948	-	-			0.000	0.000	0.000		0.023	-	-	0.000	0.000	0.000		0.074	-	-			0.080			
8.400	0.000	0.000	0.000		0.550	-	-	0.000	0.000	0.000		0.646	-	18			0.000	0.000	0.000		0.087	-	-	0.000	0.000	0.000		0.170	-	-			0.084			
8.800	0.000	0.000	0.000		0.293	-	23	0.000	0.000	0.000		0.406	-	-			0.000	0.000	0.000		0.230	-	25	0.000	0.000	0.000		0.331	-	-			0.088			
9.200	0.000	0.000	0.000		0.130	-	110	0.880	0.880	0.880	0.880	0.880	25	40			0.000	0.000	0.000		0.468	-	-	0.000	0.000	0.000		0.561	-	-			0.092			
9.600	0.000	0.000	0.000		0.048	-	5	0.000	0.000	0.000		0.126	-	-			0.000	0.000	0.000		0.787	-	-	0.000	0.000	0.000		0.852	-	-			0.096			
10.000	0.000	0.000	0.000		0.014	-	-	0.000	0.000	0.000		0.061	-	-			0.000	0.000	0.000		1.16	-	-	0.000	0.000	0.000		1.19	-	-			0.100			
11.000	0.000	0.000	0.000		0.001	-	-	0.000	0.000	0.000		0.007	-	-			0.000	0.000	0.000		2.15	-	-	0.000	0.000	0.000		2.15	-	-			0.110			
12.000	0.000	0.000	0.000		0.001	-	-	0.000	0.000	0.000		0.001	-	-			0.000	0.000	0.000		3.15	-	-	0.000	0.000	0.000		3.15	-	-			0.120			
13.000	0.000	0.000	0.000		0.002	-	-	0.000	0.000	0.000		0.001	-	-			0.000	0.000	0.000		4.15	-	-	0.000	0.000	0.000		4.15	-	-			0.130			
14.000						-	-	0.000	0.000	0.000		0.003	-	-								-	-	0.000	0.000	0.000		5.15	-	-			0.140			
Totals:						0	138							25	58	0	0							0	25							0	0	0	0	
Number of Trades:						0								1		0								0.00								0		0		

PIRAEUS BANK (CR)

(Contract Size: 100 Securities, Exercise Style: American, Physical Delivery)

Call Options																	Put Options																			
February 2017								March 2017								Other Months		February 2017								March 2017								Other Months		
Exerise Price	Open price	Price max	Price min	Last price	Closing price	Volume	Open Interest	Open price	Price max	Price min	Last price	Closing price	Volume	Open Interest	Volume	Open Interest	Open price	Price max	Price min	Last price	Closing price	Volume	Open Interest	Open price	Price max	Price min	Last price	Closing price	Volume	Open Interest	Volume	Open Interest	Exerise Price			
0.050	0.000	0.000	0.000		0.145	-	-	0.000	0.000	0.000		0.145	-	-			0.000	0.000	0.000		0.001	-	-	0.000	0.000	0.000		0.001	-	-			0.001			
0.100	0.000	0.000	0.000		0.096	-	-	0.000	0.000	0.000		0.100	-	-			0.000	0.000	0.000		0.001	-	-	0.000	0.000	0.000		0.005	-	-			0.001			
0.150	0.000	0.000	0.000		0.056	-	-	0.000	0.000	0.000		0.066	-	-			0.000	0.000	0.000		0.011	-	-	0.000	0.000	0.000		0.021	-	-			0.002			
0.200	0.000	0.000	0.000		0.030	-	-	0.000	0.000	0.000		0.043	-	-			0.000	0.000	0.000		0.035	-	-	0.000	0.000	0.000		0.048	-	-			0.002			
0.250	0.000	0.000	0.000		0.015	-	-	0.000	0.000	0.000		0.029	-	-			0.000	0.000	0.000		0.070	-	-	0.000	0.000	0.000		0.083	-	-			0.003			
0.300	0.000	0.000	0.000		0.008	-	-	0.000	0.000	0.000		0.019	-	-			0.000	0.000	0.000		0.112	-	-	0.000	0.000	0.000		0.123	-	-			0.003			
0.350	0.000	0.000	0.000		0.004	-	-	0.000	0.000	0.000		0.013	-	-			0.000	0.000	0.000		0.158	-	-	0.000	0.000	0.000		0.167	-	-			0.004			
0.400	0.000	0.000	0.000		0.002	-	-	0.000	0.000	0.000		0.009	-	-			0.000	0.000	0.000		0.207	-	-	0.000	0.000	0.000		0.213	-	-			0.004			
0.450	0.000	0.000	0.000		0.001	-	-	0.000	0.000	0.000		0.006	-	-			0.000	0.000	0.000		0.256	-	-	0.000	0.000	0.000		0.260	-	-			0.005			
0.500	0.000	0.000	0.000		0.001	-	-	0.000	0.000	0.000		0.004	-	-			0.000	0.000	0.000		0.305	-	-	0.000	0.000	0.000		0.308	-	-			0.005			
0.550						-	-	0.000	0.000	0.000		0.003	-	-								-	-	0.000	0.000	0.000		0.357	-	-			0.006			
Totals:						0	0						0	0	0	0						0	0					0	0	0	0					
Number of Trades:							0						0		0							0.00						0		0						

PPC (CR)		(Contract Size: 100 Securities, Exercise Style: American, Physical Delivery)																																	
Call Options																	Put Options																		
Exercise Price	February 2017							March 2017							Other Months		February 2017								March 2017								Other Months		Exercise Price
	Open price	Price max	Price min	Last price	Closing price	Volume	Open Interest	Open price	Price max	Price min	Last price	Closing price	Volume	Open Interest	Volume	Open Interest	Open price	Price max	Price min	Last price	Closing price	Volume	Open Interest	Open price	Price max	Price min	Last price	Closing price	Volume	Open Interest	Volume	Open Interest			
1.700						-	-	0.000	0.000	0.000		1.13	-	-								-	-	0.000	0.000	0.000	0.001	-	-			0.017			
1.800						-	-	0.000	0.000	0.000		1.03	-	-								-	-	0.000	0.000	0.000	0.001	-	-			0.018			
1.900	0.000	0.000	0.000		0.923	-	-	0.000	0.000	0.000		0.926	-	-			0.000	0.000	0.000		0.001	-	-	0.000	0.000	0.000	0.001	-	-			0.019			
2.000	0.000	0.000	0.000		0.823	-	-	0.000	0.000	0.000		0.826	-	-			0.000	0.000	0.000		0.001	-	-	0.000	0.000	0.000	0.001	-	-			0.020			
2.200	0.000	0.000	0.000		0.624	-	-	0.000	0.000	0.000		0.629	-	-			0.000	0.000	0.000		0.001	-	-	0.000	0.000	0.000	0.003	-	-			0.022			
2.400	0.000	0.000	0.000		0.427	-	-	0.000	0.000	0.000		0.442	-	-			0.000	0.000	0.000		0.003	-	-	0.000	0.000	0.000	0.015	-	-			0.024			
2.600	0.000	0.000	0.000		0.247	-	10	0.000	0.000	0.000		0.280	-	-			0.000	0.000	0.000		0.023	-	-	0.000	0.000	0.000	0.052	-	-			0.026			
2.800	0.000	0.000	0.000		0.113	-	25	0.000	0.000	0.000		0.156	-	-			0.000	0.000	0.000		0.089	-	-	0.000	0.000	0.000	0.128	-	-			0.028			
3.000	0.000	0.000	0.000		0.039	-	50	0.000	0.000	0.000		0.077	-	-			0.000	0.000	0.000		0.215	-	5	0.000	0.000	0.000	0.249	-	-			0.030			
3.200	0.000	0.000	0.000		0.009	-	-	0.000	0.000	0.000		0.033	-	-			0.000	0.000	0.000		0.386	-	-	0.000	0.000	0.000	0.406	-	-			0.032			
3.400	0.000	0.000	0.000		0.002	-	-	0.000	0.000	0.000		0.012	-	-			0.000	0.000	0.000		0.580	-	-	0.000	0.000	0.000	0.586	-	-			0.034			
3.600	0.000	0.000	0.000		0.002	-	-	0.000	0.000	0.000		0.004	-	-			0.000	0.000	0.000		0.780	-	-	0.000	0.000	0.000	0.780	-	-			0.036			
3.800	0.000	0.000	0.000		0.004	-	-	0.000	0.000	0.000		0.001	-	-			0.000	0.000	0.000		0.980	-	-	0.000	0.000	0.000	0.980	-	-			0.038			
4.000	0.000	0.000	0.000		0.001	-	-	0.000	0.000	0.000		0.001	-	-			0.000	0.000	0.000		1.18	-	-	0.000	0.000	0.000	1.18	-	-			0.040			
4.400	0.000	0.000	0.000		0.001	-	-	0.000	0.000	0.000		0.002	-	-			0.000	0.000	0.000		1.58	-	-	0.000	0.000	0.000	1.58	-	-			0.044			
4.800						-	-	0.000	0.000	0.000		0.001	-	-								-	-	0.000	0.000	0.000	1.98	-	-			0.048			
Totals:						0	85						0	0	0	0						0	5					0	0	0	0				
Number of Trades:						0							0		0							0.00					0		0						

Lending Products	Underlying Title	Multilateral Transactions[1]					Bilateral Transactions[2]		Stock Borrowing through OTC (volume)[3]
		Open Interest[5]	Volume(Offered)	Average Weighted	Transactions volume	Average Weighted	Transactions Volume	Average Weighte	Transactions Volume
AEGNBOR	AEGEAN AIRLINES (CR)	100	13,315	5.31%	---	---	---	---	11,701
ALPHABOR	ALPHA BANK (CR)	135,200	18,896	5.31%	---	---	---	---	4,327,747
ALMYBOR	ALUMIL (CR)	---	---	---	---	---	---	---	---
IATRBOR	ATHENS MEDICAL CENTER SA (CR)	---	36,398	5.31%	---	---	---	---	---
TATTBOR	ATTICA BANK S.A. (CR)	---	---	---	---	---	---	---	---
OTOELBOR	AUTOHELLAS SA (CR)	---	1,511	5.31%	---	---	---	---	---
EEEBOR	CC HBC AG (CR)	1,928	5,177	5.31%	---	---	---	---	70,546
CENTRBOR	CENTRIC HOLDINGS (CR)	---	16,000	5.31%	---	---	---	---	---
PLAKRBOR	CRETE PLASTICS SA (CR)	---	---	---	---	---	---	---	---
ELLAKTORBOR	ELLAKTOR (CR)	---	87,498	5.31%	---	---	---	---	---
ANEMOSBOR	ELTECH ANEMOS S.A. (CR)	---	7,440	5.31%	---	---	---	---	---
ELTONBOR	ELTON SA (CR)	---	---	---	---	---	---	---	---
EUROBBOR	EUROBANK ERGASIAS (CR)	3,312	248,265	5.31%	---	---	---	---	8,087,709
EUPICBOR	EUROPEAN RELIANCE INSUR. (CR)	---	---	---	---	---	---	---	---
EYDAPBOR	EYDAP S.A. (CR)	1,600	3,300	5.31%	---	---	---	---	18,780
FFGRPBOR	FOLLI FOLLIE (CR)	155	73,768	5.31%	---	---	---	---	624,200
FOYRKBOR	FOURLIS (CR)	2,000	3,529	5.31%	---	---	---	---	4,650
GEKTERNABOR	GEK TERNA (CR)	112	30,350	5.31%	---	---	---	---	---
SARBOR	GR. SARANTIS SA (CR)	205	492	5.31%	---	---	---	---	---
EUPROBOR	GRIVALIA PROPERTIES (CR)	1,000	94,451	5.31%	---	---	---	---	44,950
XAKOBOR	HALKOR SA (CB)	---	56,552	5.31%	---	---	---	---	---
EXAEBOR	HELLENIC EXCHANGES-A.S.E. (CR)	5,900	450,320	3.31%	---	---	---	---	100,365
ELPEBOR	HELLENIC PETROLEUM (CR)	300	125,024	5.31%	---	---	---	---	42,606
HYGEIABOR	HYGEIA SA (CR)	---	37,360	5.31%	---	---	---	---	---
IASOBOR	IASO SA (CR)	---	---	---	---	---	---	---	---
IKTINBOR	IKTINOS HELLAS SA (CR)	---	798	5.31%	---	---	---	---	---
INTRKBOR	INTRACOM HOLDINGS (CR)	---	173,549	5.31%	---	---	---	---	---
INLOTBOR	INTRALOT (CR)	---	54,099	5.31%	---	---	---	---	803
AVAXBOR	J & P - AVAX SA (CR)	---	20,335	5.31%	---	---	---	---	---
BELABOR	JUMBO SA (CR)	12,025	123,823	3.31%	---	---	---	---	6,365
KLEMBOR	KLEEMAN HELLAS SA (CR)	---	---	---	---	---	---	---	---

Stock Lending Notes

- [1] - Multilateral contracts Lending or Borrowing as per Methods 8-1, 8-2 and 8-3-3 (According to ATHEX BoD Resolution No.17)
- [2] - Billateral Contracts Lending or Borrowing as per Methods 8-3-1 and 8-3-2 (According to ATHEX BoD Resolution No.20)
- [3] - The information concerning OTC Stock Borrowing Transactions is based on the statements of the Dematerialised Securities System (DSS) operators involved and refers to volumes that have been registered up until the previous working day.
- [4] - Average Price (Volume weighted)
- [5] - The Data concerning Open Interest before the start of trading session

Lending Products	Underlying Title	Multilateral Transactions[1]					Bilateral Transactions[2]		Stock Borrowing through OTC (volume)[3]
		Open Interest[5]	Volume(Offered)	Average Weighted	Transactions volume	Average Weighted	Transactions Volume	Average Weighte	Transactions Volume
KORRESBOR	KORRES (CR)	---	319	5.31%	---	---	---	---	---
KRIBOR	KRI-KRI S.A. (CR)	---	47,768	5.31%	---	---	---	---	---
KYRMBOR	KYRIAKIDIS MARBLES SA (CR)	---	5,737	5.31%	---	---	---	---	---
LAMDABOR	LAMDA DEVELOPMENT SA (CR)	14	100	5.32%	---	---	---	---	10,377
MIGBOR	MARFIN INVESTMENT GROUP (CR)	---	272,235	5.31%	---	---	---	---	744,474
METKKBOR	METKA (CR)	21,583	7,382	3.55%	---	---	---	---	965
MLSBOR	MLS MULTIMEDIA SA (CR)	---	9,118	5.31%	---	---	---	---	---
MOHBOR	MOTOR OIL (CR)	14,219	19,767	5.31%	---	---	---	---	37,254
MYTILBOR	MYTILINEOS HOLDINGS (CR)	5,164	74,187	5.31%	---	---	---	---	---
ETEBOR	NATIONAL BANK (CR)	508,265	1,079,947	3.31%	---	---	---	---	6,939,014
ETFASEBOR	NBGAM ETF	---	---	---	---	---	---	---	---
ETFGT30PBOR	NBGAM ETF GREECE & TURKEY 30	---	---	---	---	---	---	---	---
OPAPBOR	OPAP (CR)	3,500	123,677	5.31%	---	---	---	---	818,058
HTOBOR	OTE (CR)	13,657	49,569	3.31%	---	---	---	---	336,094
PPABOR	P.P.A. S.A. (CR)	368	1,468	5.31%	---	---	---	---	2,901
PAPBOR	PAPOUTSANIS (CR)	---	---	---	---	---	---	---	---
PETROBOR	PETROPOULOS PETROS (CR)	---	---	---	---	---	---	---	---
TPEIRBOR	PIRAEUS BANK (CR)	6,061	423,954	5.31%	---	---	---	---	19,779,857
PLAISBOR	PLAISIO COMPUTERS SA (CR)	---	---	---	---	---	---	---	---
PPCBOR	PPC (CR)	12,600	110,235	5.31%	---	---	---	---	1,342,915
PROFBOR	PROFILE SA (CR)	---	---	---	---	---	---	---	---
QUALBOR	QUALITY & RELIABILITY SA (CR)	---	---	---	---	---	---	---	---
QUESTBOR	QUEST HOLDINGS (CR)	---	1,038	5.31%	---	---	---	---	---
REVOILBOR	REVOIL (CR)	---	---	---	---	---	---	---	---
EPILBOR	SELECTED TEXT. IND. ASSOC (CR)	---	---	---	---	---	---	---	---
SELOBOR	SELONDA AQUACULTURE SA (CR)	---	---	---	---	---	---	---	---
OLYMPBOR	TECHNICAL OLYMPIC SA (CR)	---	23,237	5.31%	---	---	---	---	---
TENERGYBOR	TERNA ENERGY (CR)	1,000	31,698	5.31%	---	---	---	---	---
EYAPSBOR	THESSALONIKA WATER & SEWERAGE	---	7,535	5.31%	---	---	---	---	---
PLATBOR	THRACE PLASTICS SA (CR)	---	43,699	5.31%	---	---	---	---	---
TITKBOR	TITAN CEMENT (CR)	1,633	218,613	5.31%	---	---	---	---	16,704

Stock Lending Notes

- [1] - Multilateral contracts Lending or Borrowing as per Methods 8-1, 8-2 and 8-3-3 (According to ATHEX BoD Resolution No.17)
- [2] - Billateral Contracts Lending or Borrowing as per Methods 8-3-1 and 8-3-2 (According to ATHEX BoD Resolution No.20)
- [3] - The information concerning OTC Stock Borrowing Transactions is based on the statements of the Dematerialised Securities System (DSS) operators involved and refers to volumes that have been registered up until the previous working day.
- [4] - Average Price (Volume weighted)
- [5] - The Data concerning Open Interest before the start of trading session

Lending Products	Underlying Title	Multilateral Transactions[1]					Bilateral Transactions[2]		Stock Borrowing through OTC (volume)[3]
		Open Interest[5]	Volume(Offered)	Average Weighted	Transactions volume	Average Weighted	Transactions Volume	Average Weighted	Transactions Volume
OLTHBOR	TPA SA (CR)	---	183	5.31%	---	---	---	---	---
VIOBOR	VIOHALCO SA/NV (CB)	500	61,962	5.31%	---	---	---	---	---

Stock Lending Notes

- [1] - Multilateral contracts Lending or Borrowing as per Methods 8-1, 8-2 and 8-3-3 (According to ATHEX BoD Resolution No.17)
- [2] - Bilateral Contracts Lending or Borrowing as per Methods 8-3-1 and 8-3-2 (According to ATHEX BoD Resolution No.20)
- [3] - The information concerning OTC Stock Borrowing Transactions is based on the statements of the Dematerialised Securities System (DSS) operators involved and refers to volumes that have been registered up until the previous working day.
- [4] - Average Price (Volume weighted)
- [5] - The Data concerning Open Interest before the start of trading session

Sectors codification for listed companies

533	-	Exploration & Production	537	-	Integrated Oil & Gas
1353	-	Commodity Chemicals	1357	-	Specialty Chemicals
1753	-	Aluminum	1755	-	Nonferrous Metals
1757	-	Steel	1775	-	General Mining
2353	-	Building Materials & Fixtures	2357	-	Heavy Construction
2723	-	Containers & Packaging	2727	-	Diversified Industrials
2733	-	Electrical Components & Equipment	2753	-	Commercial Vehicles & Trucks
2757	-	Industrial Machinery	2773	-	Marine Transportation
2777	-	Transportation Services	2791	-	Business Support Services
2797	-	Industrial Suppliers	3535	-	Distillers & Vintners
3537	-	Soft Drinks	3573	-	Farming Fishing & Plantations
3577	-	Food Products	3722	-	Durable Household Products
3726	-	Furnishings	3728	-	Home Construction
3747	-	Toys	3763	-	Clothing & Accessories
3765	-	Footwear	3767	-	Personal Products
3785	-	Tobacco	4533	-	Health Care Providers
4535	-	Medical Equipment	4577	-	Pharmaceuticals
5337	-	Food Retailers & Wholesalers	5371	-	Apparel Retailers
5373	-	Broadline Retailers	5375	-	Home Improvement Retailers
5379	-	Specialty Retailers	5553	-	Broadcasting & Entertainment
5555	-	Media Agencies	5557	-	Publishing
5751	-	Airlines	5752	-	Gambling
5753	-	Hotels	5755	-	Recreational Services
5757	-	Restaurants & Bars	5759	-	Travel & Tourism
6535	-	Fixed Line Telecommunications	6575	-	Mobile Telecommunications
7535	-	Conventional Electricity	7537	-	Alternative Electricity
7577	-	Water	8355	-	Banks
8534	-	Insurance Brokers	8536	-	Property & Casualty Insurance
8633	-	Real Estate Holding & Development	8637	-	Real Estate Services
8671	-	Industrial & Office REITs	8674	-	Diversified REITs
8675	-	Specialty REITs	8775	-	Specialty Finance
8777	-	Investment Services	8985	-	Equity Investment Instruments
9533	-	Computer Services	9535	-	Internet
9537	-	Software	9572	-	Computer Hardware
9574	-	Electronic Office Equipment	9578	-	Telecommunications Equipment
12003	-	ETF			



ATHEXGROUP
Athens Exchange Group

Λεωφ. Αθηνών 110 104 42 Αθήνα
110, Athinon Ave. GR 104 42 Athens
tel. (+30)210-33.66.800, fax (+30)210-33.66.101
www.athexgroup.gr