

**Ημερήσιο Δελτίο
Συναλλακτικής Δραστηριότητας**

Daily Official List
of Trading Activity



Friday, 30 June, 2017

Year: 138 Trading Day No: 124



ATHEXGROUP
Athens Exchange Group

Disclaimer:

Hellenic Exchanges-Athens Stock Exchange S.A. endeavours to ensure that the data and other material ("Information") presented on the Daily Official List are accurate and complete, but it is not liable for any errors or omissions of data or /and for the accuracy, credibility, updating and completeness of the aforesaid information nor it has any liability arising directly or indirectly from the use of the above Information.

The Company is not liable for the accuracy of the data included in listed companies' announcements. Only the sender of such an announcement is fully and solely liable for any infringement of third party's rights from the content of such announcement. All contents of the Daily Official List are provided only for information purposes and do not constitute investment advice or solicitation to invest in securities or other products listed for trading on the Exchange.

You acknowledge and agree that the Company is the owner of any property rights related to any Information appearing on the Daily Official List including intellectual property rights copyright, trademarks, etc.

The above data are a property of the Hellenic Exchanges-Athens Exchange and are copyright protected. Users are forbidden to reproduce, modify, copy, sale, transmit or redistribute, by all reproduction means and methods, part or the whole of the above data, without reference to their source.

The commercial exploitation of these data is, also, forbidden by third parties. Hellenic Exchanges-Athens Exchange does not carry any responsibility, direct or indirect, derived from usage or accidental alteration of the above data when used by third parties.

Hellenic Exchanges – Athens Stock Exchange S.A.

110 Athinon Ave., 10442 Athens, Tel: (210) 33.66.800, Fax: (210) 32.13.938

www.helix.gr

Thessalonica Stock Exchange Center (T.S.E.C)

16-18 Katouni Str., Thessalonica 546 25 Tel: (2310) 567.667, Fax: (2310) 530.545

Athex Members Guarantee Fund

14-16 Fidiou Str., Athens 106 78, Tel: (210) 33.04.682, Fax: (210) 33.04.155

Hellenic Republic Capital Market Commission

1 Kolokotroni Str. & 1 Stadiou Str., Athens 10562 Tel: (210) 33.77.100 Fax: (210) 33.77.173

Table of Contents

Section 1: Statistical Figures of Securities, Derivatives and Lending

Summary of Markets

Athex Indices

Analytic Figures for Athex Market's Boards and Categories

Trading Details by Athex Sectors and Financial Instruments (ETFs)

Top 10 best & worst performing Shares

Derivatives Summary

Section 2: Analytic Figures of Shares Transactions

Analytic Figures of Shares Transactions

Shares' Notes

Section 3: Figures of Securities Transactions

Securities Blocks Details

Shares Rights Details

Stock Borrowing

Shares Forced Sales

Forced Sales Registered Shares

Exchange Traded Funds (ETFs) Characteristics

Section 5: Bonds traded in Fixed Income Assets Market

Convertible Corporate Bonds - Regulated Market

Non Convertible Corporate Bonds - Regulated Market

Government Bonds

Treasury Bills & Zero Coupon Government Bonds

Government Bonds Traded with the Open Outcry Method

State Banks Bonds

Section 6: Additional Infos

Athex & ATHEXClear Members List

List of Stocks under Market Making operations

Section 7: Derivatives Market Analytic Figures

Index Futures

Stock Futures

Index Options

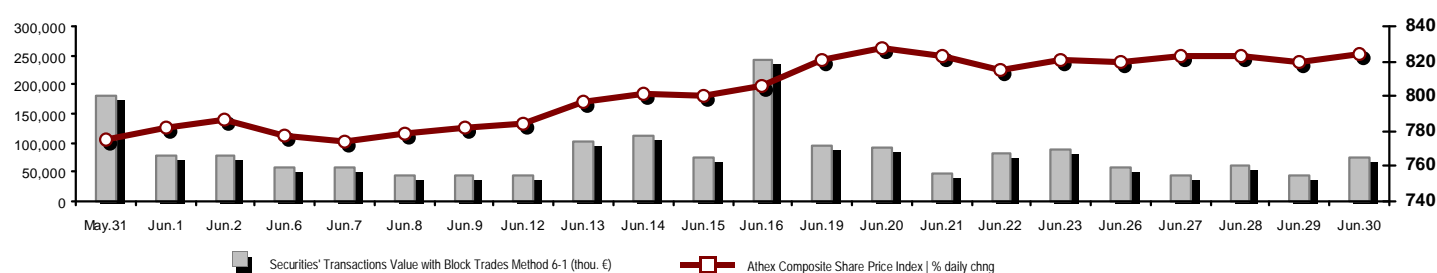
Stock Options

Stock Lending Analytic Figures

Appendix A: Sectors codification for listed companies

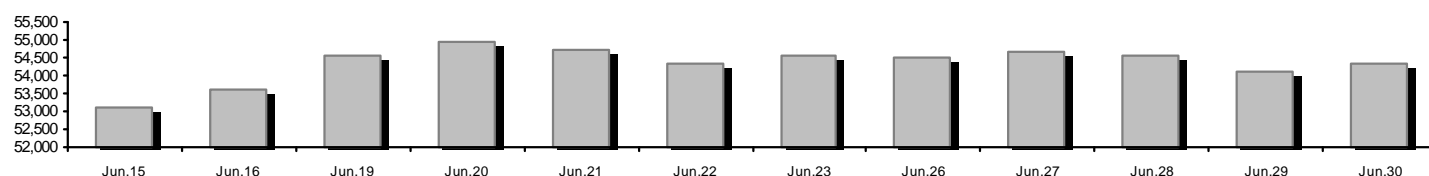
Summary of Markets

Athex Composite Share Price Index vs Shares and Derivatives Transactions Value

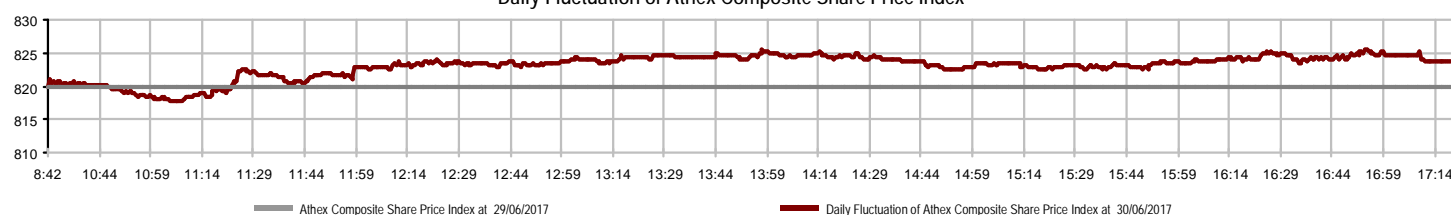


Athex Capitalisation (mill. €) **: 54,338.74		Derivatives Total Open Interest 619,429	
Daily change: mill. € %	207.41 0.38%	in Index Futures % daily chng	6,481 -0.66%
Yearly Avg Capitalisation: mill. € % chng prev year Avg	47,431.41 15.26%	in Stock Futures % daily chng	608,230 1.27%
Athex Composite Share Price Index % daily chng	823.74 0.49%	in Index Options % daily chng	2,238 1.18%
Athex Composite Share Price Index Capitalisation (mill. €)	50,348.72	in Stock Options % daily chng	2,480 4.20%
Daily change (mill. €)	179.97		
Securities' Transactions Value with Block Trades Method 6-1 (73,880.45		Derivatives Contracts Volume: 51,265	
Daily change: %	29,730.82 67.34%	Daily change: pieces %	-3,365 -6.16%
YtD Avg Trans. Value: thou. € % chng prev year Avg	58,396.17 -3.28%	YtD Avg Derivatives Contracts % chng prev year Avg	82,664 33.05%
Blocks Transactions Value of Method 6-1 (thou. €)	3,214.00	Derivatives Trades Number: 1,792	
Blocks Transactions Value of Method 6-2 & 6-3 (thou. €)	0.00	Daily change: number %	-94 -4.98%
Bonds Transactions Value (thou.€)	1,109.85	YtD Avg Derivatives Trades number % chng prev year Avg	2,624 1.13%
Securities' Transactions Volume with Block Trades Method 6-1 (th 73,896.85		Lending Total Open Interest 781,259	
Daily change: thou. pieces %	13,370.20 22.09%	Daily change: pieces %	33,101 4.42%
YtD Avg Volume: % chng prev year Avg	85,320.96 -11.34%	Lending Volume (Multilateral/Bilateral)	49,101
Blocks Transactions Volume of Method 6-1 (thou. Pieces)	303.95	Daily change: pieces %	13,050
Blocks Transactions Volume of Method 6-2 & 6-3 (thou. Pieces)	0.00	Multilateral Lending	35,101
Bonds Transactions Volume	1,096,200.00	Bilateral Lending	14,000
Securities' Trades Number with Block Trades Method 6-1 18,115		Lending Trades Number: 12	
Daily change: number %	2,212 13.91%	Daily change: %	-7 -5.83%
YtD Avg Derivatives Trades number % chng prev year Avg	17,685 -6.26%	Multilateral Lending Trades Number	11
Number of Blocks Method 6-1	6	Bilateral Lending Trades Number	1
Number of Blocks Method 6-2 & 6-3	0		
Number of Bonds Transactions	45		

Athex Capitalisation (mill. €) **



Daily Fluctuation of Athex Composite Share Price Index



Athex Indices

Index name	30/06/2017	29/06/2017	pts.	%	Min	Max	Year min	Year max	Year change
Athex Composite Share Price Index	823.74 #	819.72	4.02	0.49%	817.64	825.55	602.43	828.32	27.98% #
FTSE/Athex Large Cap	2,153.01 #	2,145.03	7.98	0.37%	2,138.94	2,160.35	1,610.77	2,190.74	23.68% #
FTSE/Athex Mid Cap Index	1,091.73 #	1,072.01	19.72	1.84%	1,072.01	1,094.41	753.69	1,115.72	44.85% #
FTSE/ATHEX-CSE Banking Index	787.31 #	772.03	15.28	1.98%	772.03	791.75	503.69	836.16	24.14% #
FTSE/ATHEX Global Traders Index Plus	2,218.75 €	2,226.09	-7.34	-0.33%	2,213.34	2,226.68	1,470.95	2,250.16	46.60% #
FTSE/ATHEX Global Traders Index	2,123.14 #	2,119.50	3.64	0.17%	2,111.73	2,125.92	1,591.53	2,139.84	29.17% #
FTSE/ATHEX Mid & Small Cap Factor-Weighted Ind	1,763.47 #	1,746.64	16.83	0.96%	1,741.97	1,767.79	1,304.24	1,767.79	31.53% #
Greece & Turkey 30 Price Index	521.80 #	519.02	2.78	0.54%	516.41	522.31	407.85	530.85	17.86% #
ATHEX Mid & SmallCap Price Index	3,076.47 #	3,007.42	69.05	2.30%	2,975.97	3,088.16	1,675.92	3,088.16	83.57% #
FTSE/Athex Market Index	530.29 #	528.15	2.14	0.41%	526.77	532.01	396.30	539.29	24.16% #
FTSE Med Index	4,808.23 €	4,811.34	-3.11	-0.06%			4,400.91	4,874.87	4.61% #
Athex Composite Index Total Return Index	1,269.78 #	1,263.58	6.20	0.49%	1,260.38	1,272.57	918.99	1,273.67	29.33% #
FTSE/Athex Large Cap Total Return	3,141.43 #	3,126.86	14.57	0.47%			2,349.55	3,184.82	24.96% #
FTSE/ATHEX Large Cap Net Total Return	917.65 #	914.25	3.40	0.37%	911.66	920.78	678.89	929.47	25.07% #
FTSE/Athex Mid Cap Total Return	1,333.34 #	1,309.25	24.09	1.84%			949.72	1,342.04	44.93% #
FTSE/ATHEX-CSE Banking Total Return Index	808.22 #	792.54	15.68	1.98%			527.29	834.42	24.14% #
Greece & Turkey 30 Total Return Index	674.08 €	679.23	-5.15	-0.76%			521.62	687.21	19.99% #
Hellenic Mid & Small Cap Index	1,031.72 #	1,031.00	0.72	0.07%	1,025.24	1,032.99	766.60	1,038.47	31.14% #
FTSE/Athex Banks	1,040.23 #	1,020.04	20.19	1.98%	1,020.04	1,046.09	665.50	1,104.77	24.14% #
FTSE/Athex Financial Services	1,193.66 €	1,202.66	-9.00	-0.75%	1,189.83	1,209.61	942.14	1,243.78	12.97% #
FTSE/Athex Industrial Goods & Services	2,144.68 €	2,147.46	-2.78	-0.13%	2,120.45	2,155.63	1,432.54	2,165.70	47.41% #
FTSE/Athex Retail	3,127.63 #	3,069.69	57.94	1.89%	3,047.96	3,127.63	2,529.24	3,172.14	11.31% #
FTSE/ATHEX Real Estate	3,345.95 €	3,371.35	-25.40	-0.75%	3,316.25	3,383.99	2,518.43	3,424.47	26.60% #
FTSE/Athex Personal & Household Goods	8,420.90 #	8,419.60	1.30	0.02%	8,368.33	8,459.87	6,663.96	8,561.96	10.08% #
FTSE/Athex Food & Beverage	9,621.35 €	9,680.72	-59.37	-0.61%	9,569.20	9,725.23	7,597.15	10,246.89	24.82% #
FTSE/Athex Basic Resources	3,633.74 €	3,682.13	-48.39	-1.31%	3,629.34	3,682.13	2,665.91	3,708.52	34.31% #
FTSE/Athex Construction & Materials	2,843.91 €	2,857.42	-13.51	-0.47%	2,842.77	2,871.17	2,130.43	2,913.10	26.12% #
FTSE/Athex Oil & Gas	4,703.40 €	4,708.57	-5.17	-0.11%	4,669.89	4,708.57	2,926.97	4,725.20	56.86% #
FTSE/Athex Chemicals	10,597.41 #	10,556.80	40.61	0.38%	10,272.58	10,597.41	9,947.76	10,962.83	4.82% #
FTSE/Athex Travel & Leisure	1,746.59 €	1,755.71	-9.12	-0.52%	1,746.59	1,763.75	1,424.34	1,772.65	19.10% #
FTSE/Athex Technology	727.77 #	718.86	8.91	1.24%	716.11	728.82	607.65	736.49	13.92% #
FTSE/Athex Telecommunications	2,901.21 #	2,890.20	11.01	0.38%	2,879.19	2,906.71	2,292.89	3,000.30	18.03% #
FTSE/Athex Utilities	2,283.56 #	2,270.21	13.35	0.59%	2,234.53	2,284.60	1,380.52	2,554.99	50.56% #
FTSE/Athex Health Care	147.18 #	146.72	0.46	0.31%	145.34	151.32	144.88	156.84	0.31% #
Athex All Share Index	194.77 #	194.03	0.73	0.38%	194.77	194.77	148.93	196.07	22.42% #
Hellenic Corporate Bond Index	113.20 €	113.23	-0.03	-0.03%			108.78	113.23	3.47% #
Hellenic Corporate Bond Price Index	98.79 €	98.83	-0.04	-0.04%			96.19	99.34	1.09% #

Note 1: FTSE/Med 100, Greece & Turkey 30 Rt., Hellenic Corporate Bond Price Index and Hellenic Corporate Bond Index closing prices refer to the previous trading day of 28/06/2017.

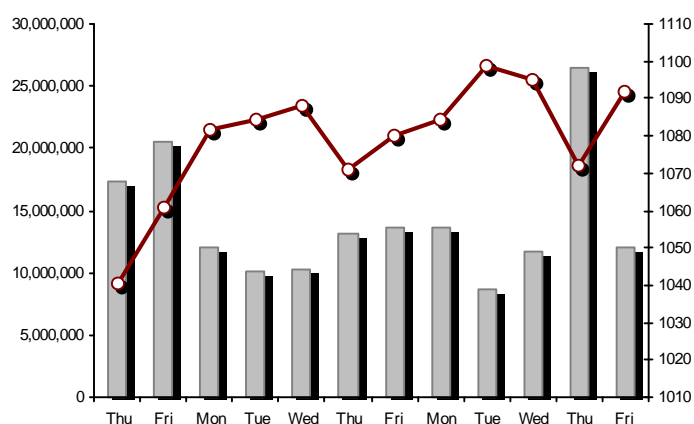
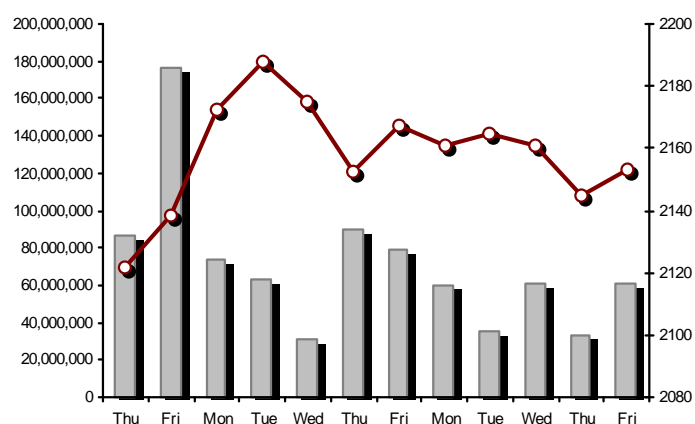
Note 2: The Hellenic Mid & Small Cap Index is a Customized index calculated by the Athens Exchange.

Athex Indices

FTSE/Large Cap

30/06/2017: 0.37% FTSE/Athex Mid Cap Index

30/06/2017: 1.84%

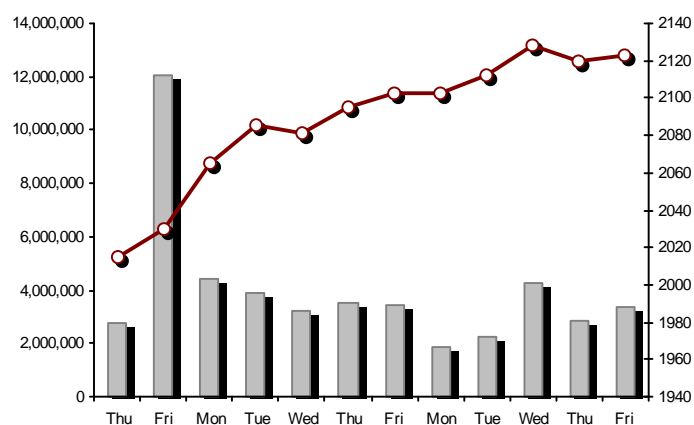
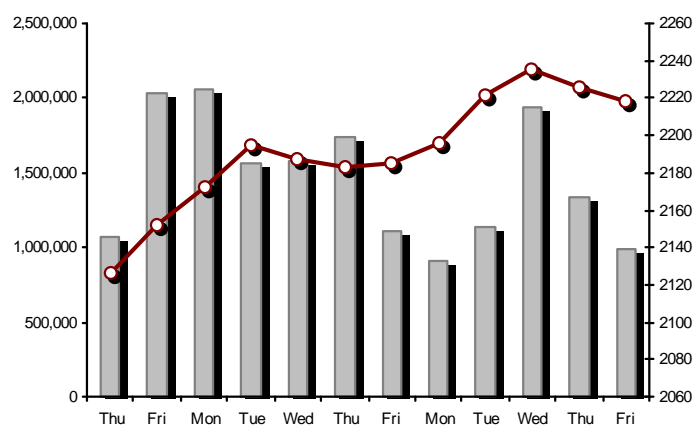


FTSE/ATHEX Global Traders Index Plus

30/06/2017: -0.33%

FTSE/ATHEX Global Traders Index

30/06/2017: 0.17%

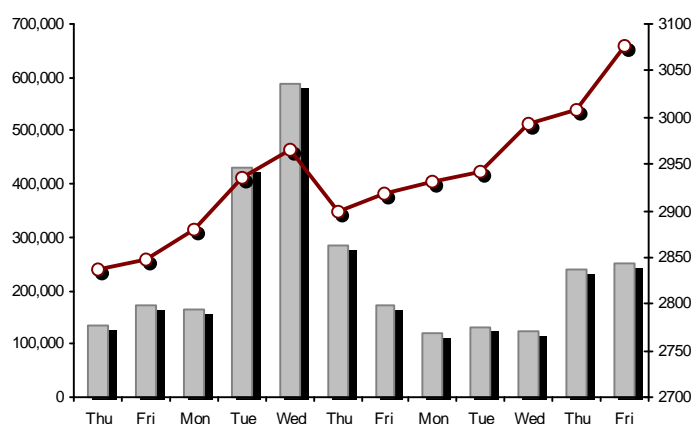
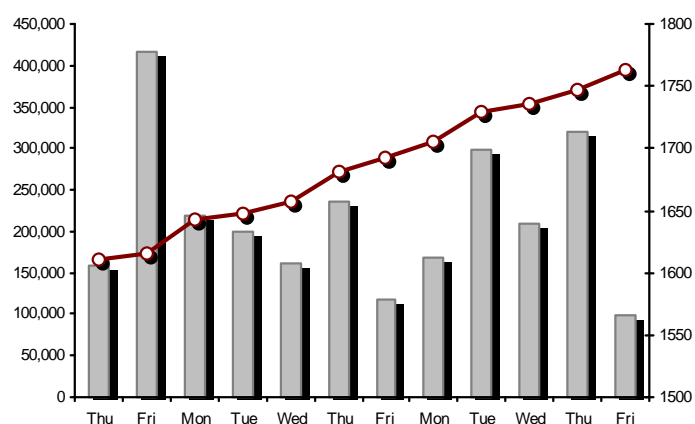


FTSE/ATHEX Mid & Small Cap Factor-Weighted Index

30/06/2017: 0.96%

ATHEX Mid & SmallCap Price Index

30/06/2017: 2.30%



Indices volume of transactions

Indices closing prices

Analytic Figures for Athex Market's Boards and Categories

	Total Traded Securities	Main Market	Low Dispersion	Other Categories (*)	Exchange Traded Funds (ETFs)	Warrants
Totals	133	109	5	17	0	2
Gain / Lose / Same:	75 / 35 / 23	62 / 31 / 16	4 / 0 / 1	9 / 4 / 4	0 / 0 / 0	0 / 0 / 2
Athex Capitalisation (mill. €) **	54,338.74	51,478.03	2,679.82	180.89		
Daily Average Trans/ons Value(thou.€)	58,396.17	58,089.11	322.83	14.97	58.25	4.68
Transactions Value	73,880.45	73,856.52	15.39	8.06	0.00	0.48
Main Board:	70,666.45	70,642.52	15.39	8.06	0.00	0.48
Blocks Board 6_2_3:	3,214.00	3,214.00	0.00	0.00	0.00	0.00
Forced Sales Board:	0.00	0.00	0.00	0.00	0.00	0.00
Special Terms Board:	0.00	0.00	0.00	0.00	0.00	0.00
Daily Average Transactions Volume	85,320,957	82,355,829	69,132	145,092	3,306	2,811,023
Transactions Volume	73,896,846	73,564,843	9,719	92,557	0	229,727
Main Board:	73,592,895	73,260,892	9,719	92,557	0	229,727
Blocks Board 6_2_3:	303,951	303,951	0	0	0	0
Forced Sales Board:	0	0	0	0	0	0
Special Terms Board:	0	0	0	0	0	0
Daily Average Number of Trades	17,685	17,509	60	85	3	30
Number of Trades	18,115	17,982	35	76	0	22
Main Board:	18,109	17,976	35	76	0	22
Blocks Board 6_2_3:	6	6	0	0	0	0
Forced Sales Board:	0	0	0	0	0	0
Special Terms Board:	0	0	0	0	0	0

(*) Summarised Transactions figures for Under Deletion and Under Supervision Categories.(**) The Market Capitalization of the Companies that belong in the Under Supervision Status is not included.

Trading Details by Athex Sectors and Financial Instruments (ETFs)

Code	Sectors	Gain / Lose / Same	Number of Trades	Transactions Volume	Transactions Value	% of Total Trans. Value
8300	- Banks	6 / 0 / 2	5,530	61,166,342	33,597,035.06	45.47%
1700	- Basic Resources	5 / 4 / 0	631	235,340	1,300,021.08	1.76%
1300	- Chemicals	1 / 0 / 1	27	4,886	11,329.11	0.02%
2300	- Construction & Materials	7 / 4 / 3	1,694	897,963	2,385,545.53	3.23%
12000	- Financial Instruments	0 / 0 / 0	---	---	---	---
8700	- Financial Services	2 / 1 / 0	1,222	6,623,947	1,373,320.37	1.86%
3500	- Food & Beverage	9 / 2 / 3	323	181,270	856,951.05	1.16%
4500	- Health Care	4 / 0 / 0	130	74,531	45,854.46	0.06%
2700	- Industrial Goods & Services	12 / 8 / 1	910	465,668	1,078,267.60	1.46%
8500	- Insurance	1 / 0 / 0	13	1,453	5,218.56	0.01%
5500	- Media	2 / 0 / 1	17	4,106	743.08	0.00%
500	- Oil & Gas	1 / 2 / 0	1,017	248,836	3,347,781.19	4.53%
3700	- Personal & Household Goods	7 / 2 / 6	995	601,957	7,633,691.41	10.33%
8600	- Real Estate	3 / 2 / 0	593	113,011	788,957.10	1.07%
5300	- Retail	3 / 1 / 2	588	65,602	1,272,352.04	1.72%
9500	- Technology	4 / 3 / 2	415	301,905	467,380.85	0.63%
6500	- Telecommunications	1 / 0 / 0	810	969,126	10,203,609.54	13.81%
5700	- Travel & Leisure	3 / 4 / 2	1,248	840,529	6,637,501.64	8.98%
7500	- Utilities	4 / 2 / 0	1,952	1,100,374	2,874,893.79	3.89%

Top 10 best & worst performing Shares

Main Market					
With positive Price change	Closing price	change	With negative Price change	Closing price	change
J & P - AVAX SA (CR)	0.563	11.71% #	IKTINOS HELLAS SA (CR)	1.26	-7.35% Ⓔ
KLOUKINAS - LAPPAS SA (CR)	0.690	11.47% #	TITAN CEMENT CO. (PR)	17.80	-2.20% Ⓔ
ILYDA S.A. (CR)	0.240	9.59% #	HELLENIC EXCHANGES-A.S.E. (CR)	5.68	-1.73% Ⓔ
PROFILE SA (CR)	0.790	8.22% #	MYTILINEOS HOLDINGS (CR)	8.26	-1.31% Ⓔ
ELASTRON (CR)	1.39	7.75% #	TITAN CEMENT (CR)	24.77	-1.20% Ⓔ
ATTICA BANK S.A. (CR)	0.119	5.31% #	HALKOR SA (CB)	0.747	-1.19% Ⓔ
MARFIN INVESTMENT GROUP (CR)	0.150	4.17% #	LAMDA DEVELOPMENT SA (CR)	6.63	-1.04% Ⓔ
IASO SA (CR)	0.970	4.08% #	VIOHALCO SA/NV (CB)	2.92	-1.02% Ⓔ
PIRAEUS BANK (CR)	0.215	3.86% #	AEGEAN AIRLINES (CR)	8.30	-0.95% Ⓔ
KRI-KRI S.A. (CR)	2.94	2.80% #	ADMIE (IPTO) HOLDING S.A. (CR)	2.24	-0.88% Ⓔ
With the highest Transactions Value	Value (thou. €)	change	With the highest Transactions Volume	Volume	change
ALPHA BANK (CR)	14,382.32	0.47% #	NATIONAL BANK (CR)	28,772,246	2.46% #
OTE (CR)	10,203.61	0.38% #	PIRAEUS BANK (CR)	15,112,909	3.86% #
NATIONAL BANK (CR)	9,521.75	2.46% #	ALPHA BANK (CR)	6,594,853	0.47% #
JUMBO SA (CR)	6,833.07	0.00% ↘	MARFIN INVESTMENT GROUP (CR)	6,543,482	4.17% #
EUROBANK ERGASIAS (CR)	5,945.21	2.62% #	EUROBANK ERGASIAS (CR)	6,082,287	2.62% #
OPAP (CR)	5,865.45	-0.50% Ⓔ	ATTICA BANK S.A. (CR)	4,372,268	5.31% #
PIRAEUS BANK (CR)	3,207.03	3.86% #	OTE (CR)	969,126	0.38% #
MOTOR OIL (CR)	2,282.06	-0.10% Ⓔ	OPAP (CR)	590,118	-0.50% Ⓔ
FOLLI FOLLIE (CR)	1,268.52	1.91% #	PPC (CR)	547,177	2.34% #
MYTILINEOS HOLDINGS (CR)	1,227.25	-1.31% Ⓔ	JUMBO SA (CR)	427,535	0.00% ↘

Note: Stocks that are not included in the "Low Dispersion" and "Under Supervision" categories, and the transactions value is more than 10,000 €.

Derivatives Summary

	Number of Trades	Volume	Open Interest
Index Futures	268	2,146	6,481
FTSE/Athex Large Cap	268	2,146	6,481
Stock Futures	1,434	48,717	608,230
ADMIE (IPTO) HOLDING S.A. (CR)	32	165	1,188
ALPHA BANK (CR)	211	3,812	32,740
CC HBC AG (CR)	3	3	82
CENERGY HOLDINGS (CB)	19	127	7,037
ELLAKTOR (CR)	19	135	5,665
EUROBANK ERGASIAS (CR)	258	6,518	35,942
EYDAP S.A. (CR)	11	20	1,201
FOLLI FOLLIE (CR)	28	58	1,636
FOURLIS (CR)	0	0	158
GEK TERNA (CR)	8	35	7,799
GRIVALIA PROPERTIES (CR)	0	0	115
HELLENIC EXCHANGES-A.S.E. (CR)	3	30	1,765
HELLENIC PETROLEUM (CR)	19	51	4,457
INTRALOT (CR)	22	229	6,402
JUMBO SA (CR)	21	93	344
LAMDA DEVELOPMENT SA (CR)	26	144	625
MARFIN INVESTMENT GROUP (CR)	161	8,345	93,295
MOTOR OIL (CR)	19	122	352
MYTILINEOS HOLDINGS (CR)	22	68	10,072
NATIONAL BANK (CR)	179	18,576	146,159
OPAP (CR)	10	28	1,893
OTE (CR)	49	281	7,209
P.P.A. S.A. (CR)	7	18	979
PIRAEUS BANK (CR)	169	9,315	227,642
PPC (CR)	20	96	360
TERNA ENERGY (CR)	39	99	4,520
TITAN CEMENT (CR)	20	35	115
VIOHALCO SA/NV (CB)	59	314	8,478
Index Options	86	282	2,238
FTSE/Athex Large Cap	86	282	2,238
Stock Options	4	120	2,480
ALPHA BANK (CR)	0	0	550
NATIONAL BANK (CR)	0	0	450
OPAP (CR)	1	10	159
OTE (CR)	0	0	231
PIRAEUS BANK (CR)	0	0	330
PPC (CR)	3	110	760
Total Derivatives Traded	1,792	51,265	619,429

Number of Outstanding Securities	Nominal Value	Dividends [1]			Date of Last Coupon		Note	Shares	Closing price	% change	Previous closing price/date	Open price	Price min	Price max	Last price	Avg price	Last Bid [7]	Last Ask [7]	P/E after	Year	Volume	Trades	Transactions Value[8]	Company Mkt Value (thou. €)	Year low	Year high	Sector[4]
		2014	2015	2016	Dividend [2]	Right																					
Warrants																											
1,141,734,167	---	---	---		11/06/2013	---	ALPHA BANK (W)	0.002	---	↘ 0.002	29/06/2017	0.001	0.001	0.002	0.002	0.0019932594@0.001	41174551@0.002	---	2015	153,019	13	154.52	3,334,390.66	0.001	0.002	8355	
245,745,661	---	---	---		27/06/2013	---	NATIONAL BANK (W)	0.005	---	↘ 0.005	29/06/2017	0.004	0.004	0.005	0.005	0.004639758@0.004	2498623@0.005	---	2015	76,708	9	330.43	3,046,001.46	0.004	0.008	8355	
843,637,022	---	---	---		03/07/2013	---	PIRAEUS BANK (W)	0.001	---	↘ 0.001	29/06/2017	---	---	---	---	---	---	30622263@0.001	---	2015	---	---	---	1,877,634.41	0.001	0.001	8355

Warrants

1,543,699,381	0.300	---	---	---	07/04/2008	18/04/2017	---	ALPHA BANK (CR)	2.16	0.47	#	2.15	29/06/2017	2.17	2.16	2.20	2.16	2.18	71552@2.16	41912@2.17	---	2015	6,594,853	1,372	14,382,318.36	3,334,390.66	1.53	2.33	8355
190,162,681		---	---	---		07/12/2016	---	CENERGY HOLDINGS (CB)	1.12	2.75	#	1.09	29/06/2017	1.09	1.08	1.14	1.12	1.11	5100@1.11	2081@1.13	---	---	213,070	241	235,380.40	212,982.20	0.620	1.16	2727
367,769,779	6.70	0.36	0.4	0.44	29/06/2017	29/04/2013	---	CC HBC AG (CR)	25.81	-0.62	€	25.97	29/06/2017	25.93	25.67	26.09	25.81	25.94	100@25.72	20@26.00	---	---	29,892	119	775,267.91	9,492,138.00	20.37	27.49	3537
66,948,210	0.300	0.1005	---	---	22/09/2015	22/09/2015	---	FOLLI FOLLIE (CR)	21.40	1.91	#	21.00	29/06/2017	21.00	20.85	21.40	21.40	21.28	200@21.34	6593@21.40	---	2015	59,622	574	1,268,516.80	1,432,691.69	17.31	21.71	5379
101,260,000	2.13	0.3037	0.3134	0.1902	27/03/2017	08/01/2014	---	GRIVALIA PROPERTIES (CR)	9.15	-0.54	€	9.20	29/06/2017	9.10	9.06	9.20	9.15	9.15	30@9.07	100@9.18	40.80	2016	24,245	150	221,840.42	926,529.00	7.54	9.84	8675
136,059,759	0.880	0.18	---	0.36	22/03/2017	05/03/2014	---	JUMBO SA (CR)	16.00	---	↘	16.00	29/06/2017	16.07	15.87	16.07	16.00	15.98	100@15.98	38400@16.00	26.40	2016	427,535	626	6,833,066.34	2,176,956.14	12.62	16.50	3747
79,721,775	0.300	---	---	---	30/05/2007	23/06/2014	---	LAMDA DEVELOPMENT SA (CR)	6.63	-1.04	€	6.70	29/06/2017	6.70	6.53	6.76	6.63	6.64	300@6.60	778@6.66	---	2015	84,330	413	559,614.45	528,555.37	4.20	6.88	8633
939,510,748	0.300	---	---	---	26/04/2007	29/08/2014	---	MARFIN INVESTMENT GROUP (CR)	0.150	4.17	#	0.144	29/06/2017	0.145	0.145	0.152	0.150	0.148	8870@0.149	167150@0.150	---	2015	6,543,482	945	970,944.05	140,926.61	0.134	0.213	8775
259,189,761		---	---	---		26/02/2016	---	VIOHALCO SANV (CB)	2.92	-1.02	€	2.95	29/06/2017	2.95	2.89	2.95	2.92	2.93	3400@2.91	1000@2.94	---	---	135,812	343	397,828.58	756,834.10	1.24	3.03	2727
232,000,000	2.12	---	---	---		19/06/2017	---	ADMIE (IPTO) HOLDING S.A. (CR)	2.24	-0.88	€	2.26	29/06/2017	2.23	2.20	2.27	2.24	2.23	1100@2.23	172@2.24	---	---	352,903	531	786,181.65	519,680.00	2.17	2.49	7535
71,417,100	0.650	0.7	0.7	0.4	17/05/2017	27/06/2014	---	AEGEAN AIRLINES (CR)	8.30	-0.95	€	8.38	29/06/2017	8.38	8.25	8.38	8.30	8.32	6@8.28	996@8.35	10.93	2015	69,819	281	580,875.07	592,761.93	6.30	8.58	5751
103,423,291	0.570	---	---	---		01/08/2011	19/04/2016	---	GEK TERNA (CR)	4.06	1.50	#	4.00	29/06/2017	4.00	4.00	4.06	4.05	100@4.06	100@4.08	25.50	2015	118,735	302	480,480.10	419,898.56	2.20	4.08	2357
232,000,000	2.48	0.05	---	---	20/07/2015	12/12/2001	---	PPC (CR)	2.19	2.34	#	2.14	29/06/2017	2.17	2.12	2.20	2.19	2.17	1025@2.14	38643@2.19	---	2015	547,177	805	1,185,327.16	508,080.00	1.75	4.73	7535
9,147,151,527	0.300	---	---	---	16/05/2008	30/11/2015	---	NATIONAL BANK (CR)	0.333	2.46	#	0.325	29/06/2017	0.327	0.325	0.333	0.333	0.331	50200@0.331	403719@0.333	---	2015	28,772,246	1,412	9,521,748.24	3,046,001.46	0.203	0.359	8355
177,001,313	1.03	---	---	---	05/07/2011	20/12/2007	---	ELLAKTOR (CR)	1.45	---	↘	1.45	29/06/2017	1.45	1.43	1.47	1.45	1.45	13670@1.45	8883@1.46	---	2015	260,837	333	377,911.55	256,651.90	1.04	1.55	2357
65,368,563	1.08	0.21	0.1026	0.065	30/05/2017	04/07/2016	---	HELLENIC EXCHANGES-A.S.E. (CR)	5.68	-1.73	€	5.78	29/06/2017	5.76	5.68	5.78	5.68	5.72	325@5.67	710@5.70	28.83	2015	68,955	265	394,221.78	371,293.44	4.25	5.86	8777
305,635,185	2.18	---	---	---	31/12/2014	01/10/2003	4795	HELLENIC PETROLEUM (CR)	8.30	-0.12	€	8.31	29/06/2017	8.18	8.18	8.32	8.30	8.28	1000@8.28	4459@8.30	92.11	2015	128,689	519	1,065,587.91	2,536,772.04	4.19	8.40	537
51,950,600	0.320	0.5	0.12	0.15	06/06/2017	21/10/2005	---	METKA (CR)	8.19	-0.12	€	8.20	29/06/2017	8.19	8.16	8.29	8.19	8.20	50@8.18	16501@8.20	24.59	2015	34,150	90	279,960.32	425,475.41	6.10	8.29	2757
110,782,980	0.750	---	0.65	0.9	26/06/2017	04/11/2013	---	MOTOR OIL (CR)	19.07	-0.10	€	19.09	29/06/2017	19.03	18.93	19.08	19.07	19.01	41@18.92	2500@19.07	10.51	2015	120,047	496	2,282,058.28	2,112,631.43	12.89	19.40	533
116,915,862	0.970	---	---	---	11/05/2009	19/10/2015	---	MYTILINEOS HOLDINGS (CR)	8.26	-1.31	€	8.37	29/06/2017	8.35	8.25	8.36	8.26	8.33	1500@8.25	25@8.32	---	2015	147,383	443	1,227,250.85	965,725.02	6.06	8.43	1755
25,000,000	2.00	0.099	0.1114	---	18/07/2016	08/08/2003	---	P.P.A. S.A. (CR)	15.43	0.07	#	15.42	29/06/2017	15.35	14.92	15.47	15.43	15.37	57@15.42	30@15.44	57.58	2016	6,933	92	106,532.84	385,750.00	12.30	15.63	2777
319,000,000	0.300	0.57	0.4	0.72	02/05/2017	25/04/2001	---	OPAP (CR)	9.90	-0.50	€	9.95	29/06/2017	9.95	9.90	10.00	9.90	9.94	500@9.89	61364@9.95	14.96	2015	590,118	753	5,865,447.91	3,158,100.00	8.02	10.12	5752
490,150,389	2.83	0.08	0.1	---	29/06/2016	18/06/1998	---	OTE (CR)	10.54	0.38	#	10.50	29/06/2017	10.56	10.46	10.58	10.54	10.53	500@10.48	500@10.55	55.79	2015	969,126	810	10,203,609.54	5,166,185.10	8.33	10.90	6535
8,733,183,280	0.300	---	---	---	16/05/2008	27/11/2015	---	PIRAEUS BANK (CR)	0.215	3.86	#	0.207	29/06/2017	0.207	0.206	0.215	0.215	0.212	500@0.213	1901481@0.216	---	2015	15,112,909	954	3,207,028.20	1,877,634.41	0.147	0.246	8355
34,780,982	1.55	0.15	0.16	0.175	09/05/2017	27/07/2000	---	GR. SARANTIS SA (CR)	12.19	-0.25	€	12.22	29/06/2017	12.23	12.12	12.23	12.19	12.18	20@12.02	120@12.29	38.42	2015	7,439	56	90,603.85	423,980.17	10.00	12.75	3767
109,314,400	0.300	---	0.0935	0.0939	19/06/2017	24/03/2017	---	TERNA ENERGY (CR)	3.99	2.57	#	3.89	29/06/2017	3.89	3.85	4.00	3.99	3.95	200@3.97	228@3.98	-(6)-	2015	44,662	232	176,512.05	436,164.46	2.71	4.00	7537
77,063,568	3.00	0.1551	0.3099	0.1049	13/06/2017	13/06/2017	---	TITAN CEMENT (CR)	24.77	-1.20	€	25.07	29/06/2017	25.16	24.77	25.16	24.77	24.87	639@24.75	208@24.93	34.86	2015	43,114	333	1,072,058.06	2,043,592.07	20.81	27.19	2353
2,185,998,765	0.300	---	---	---	02/05/2008	27/11/2015	---	EUROBANK ERGASIAS (CR)	0.980	2.62	#	0.955	29/06/2017	0.967	0.955	0.994	0.980	0.977	3813@0.978	22612@0.989	---	2015	6,082,287	1,377	5,945,205.95	2,142,278.79	0.498	1.03	8355

Main Market - Medium Liquidity Class

13,126,020	0.650	---	---	---	08/07/2010	12/10/2016	---	AS COMPANY SA (CR)	1.38	---	↘	1.38	29/06/2017	1.38	1.38	1.38	1.38	6800@1.32	540@1.38	11.75	2015	389	2	536.82	18,113.91	0.640	1.41	5379	
2,339,353,394	0.300	---	---	---	04/06/2008	01/12/2015	---	ATTICA BANK S.A. (CR)	0.119	5.31	#	0.113	29/06/2017	0.114	0.114	0.120	0.119	0.11801837@0.118	416199@0.120	---	2015	4,372,268	342	514,607.26	278,383.05	0.030	0.135	8355	
12,213,750	0.320	0.8	0.85	0.85	15/06/2017	22/11/2013	---	AUTOHELLAS SA (CR)	20.14	-0.05	€	20.15	29/06/2017	20.00	20.00	20.35	20.35	20.14	120@20.35	50@20.40	16.09	2015	1,152	6	23,203.80	245,984.93	11.53	20.35	5759
101,123,806	0.360	---	---	---	22/07/2010	28/06/2011	---	CENTRIC HOLDINGS (CR)	0.134	-0.74	€	0.135	29/06/2017	0.132	0.129	0.134	0.134	0.130	700@0.130	3615@0.133	---	2015	43,545	35	5,679.31	13,550.59	0.080	0.145	5752

Number of Outstanding Securities	Nominal Value	Dividends [1]			Date of Last Coupon Dividend [2]		Note	Shares	Closing price	% change	Previous closing price/date	Open price	Price min	Price max	Last price	Avg price	Last Bid [7]	Last Ask [7]	P/E after	Year	Volume	Trades	Transactions Value[8]	Company Mkt Value (thou. €)	Year low	Year high	Sector[4]
51,330,410	1.07	---	---	---	21/06/2010	16/07/2002	---	FOURLIS (CR)	5.87	0.34 #	5.85 29/06/2017	5.90	5.85	6.00	5.87	5.96	10000@5.75	4183@5.99	---	2015	116,340	230	693,502.37	301,309.51	3.95	6.00	3722
20,578,374	0.620	0.4	0.07	0.07	07/06/2017	18/05/2015	---	INFORM P. LYKOS SA (CR)	0.742	-0.14 €	0.743 29/06/2017	0.676	0.675	0.798	0.777	0.742	100@0.736	600@0.770	---	2015	1,890	11	1,402.03	15,269.15	0.427	0.880	2791
10,500,000	4.00	---	---	0.28	18/05/2017	02/08/2016	---	INTERCONTINENTAL (CR)	6.09	0.16 #	6.08 29/06/2017	6.08	6.08	6.11	6.11	6.09	309@6.08	100@6.14	10.23	2016	500	4	3,045.00	63,945.00	5.28	6.11	8674
133,025,996	1.41	---	---	---	03/07/2007	07/01/2002	---	INTRACOM HOLDINGS (CR)	0.454	2.25 #	0.444 29/06/2017	0.445	0.445	0.454	0.454	0.450	287@0.449	1398@0.454	---	2015	58,507	64	26,352.33	60,393.80	0.292	0.474	9578
23,154,250	1.36	---	---	---	12/08/2008	02/08/2010	---	INTRACOM CONSTR. (CR)	0.481	0.42 #	0.479 29/06/2017	0.479	0.479	0.487	0.481	0.482	5600@0.480	1350@0.486	---	2015	23,206	25	11,186.35	11,137.19	0.330	0.720	2357
77,654,850	0.580	---	---	---	01/07/2011	21/02/2003	---	J & P - AVAX SA (CR)	0.563	11.71 #	0.504 29/06/2017	0.514	0.514	0.574	0.563	0.549	5000@0.562	100@0.567	---	2015	306,738	388	168,455.59	43,719.68	0.380	0.574	2357
4,740,000	0.860	---	---	---	---	14/03/2003	---	LOGISMOS S.A. (CR)	0.520	---	0.520 29/06/2017	---	---	---	---	---	---	484@0.514	-(6)-	2016	---	---	---	2,464.80	0.168	0.548	9533
468,700	1.48	1	0.73	28/06/2017	21/05/2004	---	---	MERMEREN KOMB. A.D. PR. (GDR)	13.23	3.52 #	12.78 29/06/2017	12.77	12.77	13.32	13.25	13.23	254@13.10	100@13.25	1.77	2016	391	4	5,173.53	6,200.90	5.77	14.70	1775
6,200,000	0.500	---	---	---	22/06/2010	01/11/1995	---	MINERVA KNITWEAR SA (CB)	0.398	---	0.398 29/06/2017	---	---	---	---	---	---	5@0.390	---	2015	---	---	---	2,467.60	0.026	0.459	3763
12,417,000	0.370	---	---	---	28/07/2008	06/09/2011	---	MLS MULTIMEDIA SA (CR)	4.50	-0.88 €	4.54 29/06/2017	4.48	4.44	4.54	4.50	4.50	75@4.45	460@4.50	25.16	2016	70,102	50	315,277.86	55,876.50	3.98	4.60	9537
3,953,090	0.300	0.118	0.11	0.12	06/06/2017	05/12/2012	---	PAPERPACK (CR)	2.25	6.63 #	2.11 29/06/2017	2.16	2.16	2.25	2.25	2.18	5@2.20	695@2.25	6.58	2016	2,407	17	5,240.42	8,894.45	1.26	2.25	2723
11,812,193	0.470	0.02	---	---	26/03/2015	15/11/2006	---	PROFILE SA (CR)	0.790	8.22 #	0.730 29/06/2017	0.759	0.759	0.800	0.790	0.788	350@0.782	1500@0.793	---	2015	37,656	91	29,667.84	9,331.63	0.455	0.800	9533
27,345,120	0.470	---	---	---	18/07/2005	26/02/2014	---	QUALITY & RELIABILITY SA (CR)	0.190	6.74 #	0.178 29/06/2017	0.184	0.172	0.190	0.190	0.182	5000@0.186	962@0.190	---	2015	54,651	85	9,922.21	5,195.57	0.150	0.353	9533
11,921,531	3.32	---	---	---	05/09/2008	05/12/2016	---	QUEST HOLDINGS (CR)	9.70	-1.12 €	9.81 29/06/2017	9.81	9.64	9.81	9.70	9.72	110@9.64	22@9.70	---	2015	934	16	9,073.98	115,638.85	6.30	10.00	9533
3,125,463	0.300	---	---	---	16/11/1992	07/02/2017	---	UNIBIOS (CR)	0.505	3.06 #	0.490 29/06/2017	0.474	0.474	0.505	0.505	0.502	49@0.474	45@0.479	---	2015	11	4	5.52	1,578.36	0.420	0.755	2353
11,178,000	1.12	---	---	---	21/04/2010	15/12/2014	---	AEOLIAN INVESTMENT FUND (CR)	0.708	1.00 #	0.701 29/06/2017	0.707	0.701	0.710	0.708	0.708	50@0.701	3000@0.714	---	2016	11,510	12	8,154.54	7,914.02	0.530	0.802	8985
22,016,250	0.370	---	---	---	15/07/2009	11/05/2000	---	ALUMIL (CR)	0.464	1.53 #	0.457 29/06/2017	0.462	0.443	0.475	0.464	0.460	350@0.448	2835@0.455	---	2015	7,556	27	3,474.88	10,215.54	0.152	0.480	1753
417,608	16.00	---	---	---	29/04/2014	05/03/2013	---	ANDROMEDA SA (CR)	18.43	---	18.43 29/06/2017	---	---	---	---	---	5@17.95	14@18.43	10.93	2016	---	---	---	7,696.52	12.83	19.00	8985
18,810,000	0.400	---	---	---	08/07/2010	14/11/2007	---	VARVERIS - MODA BAGNO SA (CR)	0.448	---	0.448 29/06/2017	---	---	---	---	---	---	7158@0.498	---	2015	---	---	---	8,426.88	0.045	0.520	2353
14,076,360	0.370	---	---	---	19/08/2008	22/07/2003	---	GALAXIDI S.A. (CR)	0.700	---	0.700 29/06/2017	0.700	0.700	0.700	0.700	0.700	492921@0.700	20@0.705	68.52	2015	1,410	3	987.00	9,853.45	0.231	0.749	3573
24,060,000	0.300	0.02	0.01	---	11/07/2016	11/07/2016	---	GEN. COMMERCIAL & IND.SA (CR)	0.532	0.95 #	0.527 29/06/2017	0.527	0.501	0.533	0.533	0.529	1099@0.501	779@0.533	22.38	2015	17,520	17	9,266.66	12,799.92	0.319	0.534	2797
34,720,000	0.310	---	---	---	16/06/2010	01/08/2007	---	DROMEAS SA (CR)	0.210	3.45 #	0.203 29/06/2017	0.203	0.203	0.210	0.210	0.204	100@0.208	10@0.217	---	2015	5,490	2	1,121.40	7,291.20	0.100	0.254	3726
11,250,000	0.520	---	0.04	---	25/07/2016	09/11/2015	---	EKTER SA (CR)	0.673	5.49 #	0.638 29/06/2017	0.670	0.670	0.684	0.684	0.673	1069@0.636	500@0.679	21.25	2015	570	5	383.61	7,571.25	0.401	0.684	2357
82,667,000	0.300	---	---	---	---	22/07/2014	---	ELTECH ANEMOS S.A. (CR)	1.51	-0.66 €	1.52 29/06/2017	1.53	1.50	1.53	1.51	1.50	15852@1.50	53@1.51	16.24	2015	39,332	52	59,154.10	124,827.17	0.875	1.64	7537
18,421,516	1.00	---	---	---	07/07/2009	10/09/2010	---	ELASTRON (CR)	1.39	7.75 #	1.29 29/06/2017	1.32	1.28	1.39	1.39	1.35	300@1.35	498@1.38	---	2015	27,511	79	37,247.91	25,605.91	0.690	1.39	1757
3,307,500	0.960	---	---	---	11/08/2010	23/09/2016	---	ELVE SA (CR)	2.32	---	2.32 29/06/2017	---	---	---	---	---	100@2.23	30@2.39	18.49	2015	---	---	---	7,673.40	1.63	2.39	3763
19,864,886	5.60	0.672	0.672	0.672	09/03/2017	02/07/2008	---	BANK OF GREECE (CR)	12.54	0.24 #	12.51 29/06/2017	12.50	12.41	12.58	12.54	12.50	19@12.53	5@12.55	---	---	2,052	51	25,642.10	249,105.67	10.60	13.00	8355
26,730,187	0.600	---	---	---	23/06/2014	30/12/2010	---	ELTON SA (CR)	1.38	---	1.38 29/06/2017	1.39	1.35	1.39	1.38	1.37	500@1.34	1000@1.38	24.64	2015	1,108	13	1,517.36	36,887.66	0.837	1.40	1353
36,300,000	1.12	0.24	0.25	0.228	29/06/2017	12/12/2007	---	THESSALONIKA WATER & SEWERAGE	4.50	1.35 #	4.44 29/06/2017	4.44	4.42	4.50	4.50	4.47	362@4.48	1205@4.51	12.05	2015	8,215	28	36,724.40	163,350.00	3.42	4.77	7577
106,500,000	0.600	0.2	0.31	0.11	22/06/2017	28/01/2000	---	EYDAP S.A. (CR)	5.88	2.62 #	5.73 29/06/2017	5.73	5.69	5.89	5.88	5.84	200@5.87	2050@5.89	14.33	2015	108,085	304	630,994.43	626,220.00	5.01	6.07	7577
27,503,677	0.630	---	0.06	0.1	24/05/2017	18/10/1999	---	EUROPEAN RELIANCE INSUR. (CR)	3.65	0.27 #	3.64 29/06/2017	3.59	3.59	3.65	3.65	3.59	71@3.59	102@3.65	9.12	2015	1,453	13	5,218.56	100,388.42	1.95	3.70	8536
8,623,225	0.600	---	---	---	02/06/2010	30/05/2016	5031	EUROCONSULTANTS S.A. (CR)	0.515	9.34 #	0.471 29/06/2017	0.515	0.515	0.515	0.515	0.515	50@0.482	300@0.510	---	2015	100	1	51.50	4,440.96	0.297	0.655	2791
65,441,118	0.440	---	---	---	24/11/2014	11/08/2015	---	IASO SA (CR)	0.970	4.08 #	0.932 29/06/2017	0.920	0.920	0.989	0.970	0.966	1000@0.952	500@0.985	---	2015	20,368	66	19,669.72	63,477.88	0.385	1.10	4533
28,580,100	0.400	0.0301	---	---	20/03/2017	04/07/2016	---	IKTINOS HELLAS SA (CR)	1.26	-7.35 €	1.36 29/06/2017	1.38	1.25	1.40	1.26	1.28	25840@1.25	1097@1.28	34.67	2015	60,052	123	76,667.59	36,010.93	0.731	1.40	2353
11,233,200	0.730	---	---	---	12/07/2010	30/07/1999	---	INTERTECH SA (CR)	0.286	-8.63 €	0.313 29/06/2017	0.313	0.220	0.313	0.286	0.239	200@0.227	58@0.285	---	2016	1,044	10	249.89	3,212.70	0.129	0.449	9572
158,961,721	0.300	---	---	---	30/05/2013	14/11/2007	---	INTRALOT (CR)	1.20	---	1.20 29/06/2017	1.20	1.19	1.22	1.20	1.20	20862@1.19	4436@1.20	---	2015	124,384	149	149,741.73	190,754.07	1.02	1.32	5752
14,679,792	1.68	---	---	0.07	28/06/2017	04/09/2000	---	KARATZIS SA (CR)	5.65	-2.59 €	5.80 29/06/2017	5.65	5.65	5.65	5.65	5.65	250@5.61	55@5.75	16.22	2015	255	2	1,440.75	82,940.82	3.90	5.90	2723
6,700,000	0.800	0.03	0.023	0.028	29/06/2017	29/05/2014	---	MILLS KEPENOS (CR)	2.33	15.35 #	2.02 29/06/2017	2.40	2.33	2.40	2.33	2.37	900@2.01	290@2.33	8.10	2016	20	2	47.30	15,611.00	1.11	2.40	3577
40,219,218	0.300	---	---	---	20/06/2017	09/07/2013	---	KLOUKINAS - LAPPAS SA (CR)	0.690	11.47 #	0.619 29/06/2017	0.628	0.620	0.690	0.690	0.661	5000@0.671	202@0.690	---	2015	60,824	73	40,195.30	27,751.26	0.251	0.690	2357

Number of Outstanding Securities	Nominal Value	Dividends [1]			Date of Last Coupon Dividend [2]		Note	Shares	Closing price	% change	Previous closing price/date	Open price	Price min	Price max	Last price	Avg price	Last Bid [7]	Last Ask [7]	P/E after	Year	Volume	Trades	Transactions Value[8]	Company Mkt Value (thou. €)	Year low	Year high	Sector[4]
21,224,340	0.420	---	---	---	02/07/2008	25/04/2006	---	KORDELLOS BROS SA (CR)	0.330	-2.37 €	0.338 29/06/2017	0.342	0.330	0.374	0.330	0.344	1999@0.330	89@0.349	10.58	2016	21,525	30	7,415.17	7,004.03	0.176	0.405	1757
13,586,500	0.390	---	---	---	25/06/2010	28/05/2008	---	KORRES (CR)	4.39	-0.45 €	4.41 29/06/2017	4.29	4.29	4.39	4.39	4.35	270@4.32	428@4.40	---	2015	450	10	1,955.90	59,644.74	3.30	4.74	3767
29,480,000	0.420	---	---	---	19/07/2010	01/08/2007	---	KRETA FARM SA (CR)	0.557	1.27 #	0.550 29/06/2017	0.558	0.554	0.559	0.557	0.557	500@0.547	100@0.557	---	2015	5,230	10	2,914.74	16,420.36	0.399	0.568	3577
7,595,160	0.600	---	---	---	08/08/2008	18/08/2010	---	KIRIAKOULIS SHIPPING SA (CR)	0.598	---	0.598 29/06/2017	---	---	---	---	---	4500@0.501	100@0.598	74.46	2015	---	---	---	4,541.91	0.405	0.647	5759
17,125,062	0.940	---	---	---	01/06/2010	18/07/2016	---	LOULIS MILLS SA (CR)	2.35	---	2.35 29/06/2017	---	---	---	---	---	1250@2.20	1000@2.34	68.68	2015	---	---	---	40,243.90	1.33	2.39	3577
291,497,368	0.300	---	---	---	08/07/2008	21/03/2016	---	NIREFS SA (CR)	0.261	0.38 #	0.260 29/06/2017	0.257	0.252	0.266	0.261	0.258	11831@0.261	350@0.264	0.37	2015	108,219	79	27,888.54	76,080.81	0.162	0.297	3573
4,971,466	1.46	---	---	---	04/07/2007	08/10/2003	---	PAIRIS SA (CR)	0.226	-13.08 €	0.260 29/06/2017	0.279	0.226	0.337	0.226	0.275	3000@0.230	500@0.273	---	2015	615	5	168.93	1,123.55	0.106	0.369	2723
50,797,369	0.310	---	---	---	17/08/2000	12/10/2010	---	PAPOUTSANIS (CR)	0.239	1.70 #	0.235 29/06/2017	0.240	0.231	0.240	0.239	0.238	500@0.229	1469@0.239	---	2016	3,418	16	814.36	12,140.57	0.122	0.240	3767
22,075,665	0.330	---	0.08	0.05	30/05/2017	27/04/2015	---	PLAISIO COMPUTERS SA (CR)	4.36	---	4.36 29/06/2017	4.40	4.30	4.40	4.36	4.35	222@4.32	490@4.36	14.35	2015	14,073	39	61,261.48	96,249.90	3.30	4.64	9572
43,741,452	0.660	0.0225	---	---	20/04/2015	01/11/1999	---	THRACE PLASTICS SA (CR)	2.61	0.38 #	2.60 29/06/2017	2.53	2.53	2.61	2.61	2.60	573@2.61	200@2.62	-(6)-	2015	3,778	14	9,811.75	114,165.19	2.18	2.75	1357
40,693,350	5.00	---	---	---	03/07/2006	26/05/2015	---	TECHNICAL OLYMPIC SA (CR)	1.46	1.39 #	1.44 29/06/2017	1.47	1.43	1.47	1.46	1.46	803@1.44	1152@1.47	---	2015	5,381	22	7,848.89	59,412.29	0.897	1.69	3728
7,568,960	3.00	0.1551	0.3099	0.1049	13/06/2017	13/06/2017	---	TITAN CEMENT CO. (PR)	17.80	-2.20 €	18.20 29/06/2017	18.00	17.40	18.00	17.80	17.69	20@17.51	1338@17.80	25.05	2015	8,887	89	157,229.42	2,043,592.07	13.52	19.65	2353
305,732,436	0.410	---	---	---	08/07/2009	28/09/2011	---	HYGEIA SA (CR)	0.320	0.31 #	0.319 29/06/2017	0.329	0.316	0.329	0.320	0.322	1150@0.319	308@0.320	---	2015	44,264	50	14,234.28	97,834.38	0.147	0.352	4533
101,279,627	0.380	---	---	---	26/06/2008	14/07/2006	---	HALKOR SA (CB)	0.747	-1.19 €	0.756 29/06/2017	0.715	0.715	0.752	0.747	0.742	76@0.744	200@0.746	---	2015	24,499	39	18,173.83	75,655.88	0.429	0.778	1755

Main Market - Low Liquidity Class

49,630,457	0.700	---	---	---	01/07/2008	01/03/2010	---	AUDIO VISUAL ENTERPRISES (CR)	0.075	---	0.075 29/06/2017	0.068	0.068	0.068	0.068	0.068	4450@0.068	700@0.080	---	2015	50	1	3.40	3,722.28	0.056	0.094	5553
15,816,009	0.300	---	---	---	01/07/2009	17/07/2000	---	BYTE COMPUTER SA (CR)	0.328	---	0.328 29/06/2017	0.327	0.327	0.332	0.332	0.329	500@0.323	200@0.353	---	2015	132	4	43.47	5,187.65	0.267	0.332	9533
9,907,500	0.300	---	---	---	06/10/2005	13/02/2002	---	CPI SA (CR)	0.152	---	0.152 29/06/2017	---	---	---	---	---	500@0.151	1000@0.163	18.19	2016	---	---	---	1,505.94	0.140	0.192	9572
52,800,154	0.300	---	---	---	20/08/2014	21/06/2004	---	F.G. EUROPE S.A. (CR)	0.534	0.76 #	0.530 29/06/2017	0.530	0.530	0.535	0.535	0.534	500@0.545	620@0.580	23.59	2015	636	3	339.58	28,195.28	0.434	0.687	3722
11,720,024	0.540	---	---	---	21/08/2014	04/11/2015	---	FLEXOPACK SA (CR)	4.52	-3.42 €	4.68 29/06/2017	4.50	4.38	4.65	4.65	4.53	100@4.41	340@4.65	12.02	2015	532	5	2,407.06	52,974.51	2.90	5.00	2723
10,500,000	0.950	---	---	---	24/06/2008	30/06/2017	---	MEVACO SA (CR)	1.01	---	1.05 # 29/06/2017	---	---	---	---	---	1330@1.03	90@1.08	---	2016	---	---	---	10,605.00	0.900	1.15	2757
57,434,884	1.31	---	---	---	05/06/2008	12/06/2009	---	REDS S.A. (CR)	0.737	0.96 #	0.730 29/06/2017	0.745	0.730	0.745	0.744	0.742	2@0.740	399@0.745	---	2015	3,598	16	2,669.22	42,329.51	0.300	0.785	8633
6,456,530	1.61	---	---	---	29/06/2001	02/08/2010	---	SPACE HELLAS SA (CR)	1.53	---	1.53 29/06/2017	---	---	---	---	---	---	300@1.68	11.65	2015	---	---	---	9,878.49	0.601	1.80	9578
15,300,000	0.300	---	---	---	30/07/2009	13/12/1999	---	ATTICA PUBLICATIONS SA (CR)	0.704	---	0.704 29/06/2017	---	---	---	---	---	---	3094@0.634	---	2015	---	---	---	10,771.20	0.585	0.859	5557
23,986,500	1.05	---	---	---	26/06/2009	15/03/2000	---	BIOKARPET S.A.(CR)	0.292	8.15 #	0.270 29/06/2017	0.297	0.280	0.297	0.280	0.291	91@0.290	40@0.290	---	2015	1,255	9	365.79	7,004.06	0.197	0.331	3726
4,968,600	2.88	---	---	---	01/07/1998	14/12/1998	---	VIS SA (CR)	0.720	---	0.720 29/06/2017	0.790	0.790	0.790	0.790	0.790	6493@0.680	204@0.790	10.01	2016	3	2	2.37	3,577.39	0.700	0.910	2723
6,325,000	0.600	---	---	---	02/05/2014	17/02/2014	---	VOGIATZOGLOU SYSTEMS SA (CR)	1.47	8.89 #	1.35 29/06/2017	1.41	1.41	1.47	1.47	1.46	10@1.47	---	---	2015	783	5	1,143.43	9,297.75	0.891	1.48	2797
15,000,000	0.300	---	---	---	06/07/2007	18/07/2000	---	DAIOS PLASTICS SA (CR)	2.90	---	2.90 29/06/2017	---	---	---	---	---	200@2.75	---	---	2015	---	---	---	43,500.00	2.63	3.00	1357
13,673,200	0.880	---	---	---	18/07/2008	26/07/2001	---	EVROFARMA SA (CR)	0.372	9.74 #	0.339 29/06/2017	0.372	0.372	0.372	0.372	0.372	500@0.330	130@0.372	22.41	2015	2,000	4	744.00	5,086.43	0.225	0.380	3577
27,848,000	0.300	0.0032	0.0084	---	16/08/2016	02/09/2003	---	NEWSPHONE HELLAS SA (CR)	0.290	4.69 #	0.277 29/06/2017	0.289	0.277	0.291	0.290	0.289	50000@0.278	600@0.290	12.18	2015	4,326	12	1,250.43	8,075.92	0.201	0.330	2791
31,734,530	1.60	---	---	---	09/07/2007	19/07/2006	---	ELGEKA SA (CR)	0.166	9.21 #	0.152 29/06/2017	0.152	0.140	0.167	0.166	0.158	500@0.145	---	---	2015	8,699	23	1,371.14	5,267.93	0.100	0.174	3577
23,828,130	0.500	---	0.16	0.052	29/06/2017	17/02/2009	---	ELINOIL S.A. (CR)	1.35	4.65 #	1.29 29/06/2017	1.35	1.35	1.35	1.35	1.35	30@1.31	330@1.37	11.84	2015	100	2	135.00	32,167.98	0.753	1.54	537
14,050,971	0.340	---	---	---	06/07/2011	17/10/2002	---	ELTRAK SA (CR)	2.14	0.47 #	2.13 29/06/2017	2.00	2.00	2.14	2.14	2.08	55@1.99	130@2.14	42.53	2015	120	3	249.80	30,069.08	1.22	2.20	2753
52,067,296	0.300	---	---	---	23/12/2003	24/01/2007	---	SELECTED TEXT. IND. ASSOC (CR)	0.235	0.86 #	0.233 29/06/2017	0.242	0.230	0.243	0.235	0.239	3550@0.210	8021@0.235	---	2016	13,829	6	3,301.67	12,235.81	0.124	0.250	3763
86,735,980	0.310	---	---	---	06/07/2009	02/01/2002	---	ATHENS MEDICAL CENTER SA (CR)	1.32	0.76 #	1.31 29/06/2017	1.30	1.30	1.36	1.32	1.33	483@1.32	50@1.35	---	2015	8,899	13	11,799.46	114,491.49	0.549	1.40	4533
9,090,000	0.900	---	---	---	15/05/2009	13/10/2014	---	ILYDA S.A. (CR)	0.240	9.59 #	0.219 29/06/2017	0.240	0.235	0.240	0.240	0.240	37493@0.240	---	7.57	2016	64,806	56	15,531.79	2,181.60	0.173	0.476	9537
8,298,467	0.400	---	---	---	30/08/1993	08/05/2013	---	IDEAL GROUP SA (CR)	0.872	---	0.872 29/06/2017	---	---	---	---	---	500@0.819	2290@0.873	-(6)-	2015	---	---	---	7,236.26	0.675	0.872	9574
2,566,836	0.440	---	---	---	13/08/2010	09/01/2007	---	INTERWOOD-XYLEMPORIA (PR)	0.060	---	0.060 29/06/2017	---	---	---	---	---	12000@0.066	---	---	2015	---	---	---	2,463.11	0.060	0.109	2353
34,986,430	0.440	---	---	---	25/07/2008	23/02/2010	---	INTERWOOD-XYLEMPORIA (CR)	0.066	---	0.066 29/06/2017	---	---	---	---	---	7500@0.072	---	---	2015	---	---	---	2,463.11	0.060	0.066	2353

Number of Outstanding Securities	Nominal Value	Dividends [1]			Date of Last Coupon Dividend [2]		Note	Shares	Closing price	% change	Previous closing price/date	Open price	Price min	Price max	Last price	Avg price	Last Bid [7]	Last Ask [7]	P/E after	Year	Volume	Trades	Transactions Value[8]	Company Mkt Value (thou. €)	Year low	Year high	Sector[4]
7,500,000	0.690	0.1	---	---	19/06/2015	05/07/2016	---	S.KANAKIS SA (CR)	2.84	1.07 #	2.81 29/06/2017	2.85	2.77	2.85	2.84	2.80	120@2.79	284@2.84	10.18	2016	619	9	1,732.55	21,300.00	2.20	2.88	3577
9,742,920	0.400	0.01	0.01	---	12/08/2016	14/07/2000	---	KARAMOLEGOS SA (CR)	2.00	8.70 #	1.84 29/06/2017	2.00	2.00	2.00	2.00	2.00	1210@2.00	---	-(6)-	2015	1,699	7	3,398.00	19,485.84	1.84	2.14	3577
6,601,378	0.700	---	---	---	01/07/2004	30/06/2017	---	KEKROPS SA (CR)	0.500	---	↘ 0.250 # 29/06/2017	---	---	---	---	---	---	---	---	---	---	---	---	3,300.69	0.201	0.392	8633
11,510,102	0.890	---	---	---	24/06/2005	06/10/1999	---	NAFPAKTOS TEXTILE IND. SA (CB)	0.243	---	↘ 0.243 29/06/2017	0.240	0.240	0.240	0.240	0.240	1000@0.225	2000@0.250	---	2015	500	2	120.00	2,796.95	0.175	0.262	3763
33,065,136	0.380	0.06	0.06	---	18/08/2016	16/09/2013	---	KRI-KRI S.A. (CR)	2.94	2.80 #	2.86 29/06/2017	2.86	2.84	2.94	2.94	2.89	505@2.87	356@2.94	15.59	2016	14,010	47	40,514.12	97,211.50	1.75	2.94	3577
15,804,800	0.360	---	---	---	15/06/2010	12/03/2004	---	KTIMA KOSTAS LAZARIDIS SA (CR)	0.460	---	↘ 0.460 29/06/2017	0.414	0.414	0.414	0.414	0.414	500@0.416	---	---	2015	44	1	18.22	7,270.21	0.195	0.500	3535
21,364,000	1.12	---	---	---	05/07/2010	10/08/2005	---	LAMPSA HOTEL SA (CR)	16.95	---	↘ 16.95 29/06/2017	---	---	---	---	---	100@16.95	100@17.46	77.13	2015	---	---	---	362,119.80	16.00	17.50	5753
9,819,370	0.690	---	---	---	14/08/2007	09/01/2004	---	MATHIOS REFRACTORY SA (CR)	0.300	---	↘ 0.300 29/06/2017	0.318	0.270	0.318	0.270	0.293	2985@0.270	350@0.298	---	2015	614	4	180.18	2,945.81	0.151	0.318	2353
11,700,000	0.400	---	---	---	02/06/2009	02/06/2017	---	MOTODYNAMICS S.A. (CR)	0.639	6.50 #	0.600 29/06/2017	0.541	0.541	0.639	0.639	0.600	2031@0.550	18@0.620	23.33	2015	5,000	4	2,999.00	7,476.30	0.370	0.645	5379
32,188,050	1.04	---	---	---	21/07/2008	20/01/2000	---	EL. D. MOUZAKIS SA (CB)	0.175	---	↘ 0.175 29/06/2017	0.165	0.165	0.180	0.180	0.171	50@0.185	25@0.180	---	2015	180	6	30.84	5,632.91	0.119	0.234	3763
6,340,000	0.600	---	---	---	30/11/2009	09/11/2016	---	NAKAS MUSIC	1.30	---	↘ 1.30 29/06/2017	1.25	1.25	1.25	1.25	1.25	9980@1.25	50@1.30	8.18	2016	20	2	25.00	8,242.00	0.600	1.35	5379
3,873,120	0.300	---	---	---	07/07/2008	04/10/2012	---	DRUCKFARBEN HELLAS (CR)	1.39	---	↘ 1.39 29/06/2017	---	---	---	---	---	---	1467@1.52	2.22	2015	---	---	---	5,383.64	0.513	1.55	1357
10,080,000	3.00	1.95	0.58	---	18/07/2016	27/08/2001	---	TPA SA (CR)	22.20	0.09 #	22.18 29/06/2017	22.10	22.00	22.25	22.20	22.20	100@22.01	38@22.20	15.89	2016	1,243	27	27,593.98	223,776.00	17.55	22.25	2777
7,070,400	0.930	0.101	---	---	30/11/2016	06/05/2016	---	PETROPOULOS PETROS (CR)	5.09	0.79 #	5.05 29/06/2017	5.05	4.97	5.09	5.09	5.06	130@4.99	150@5.10	47.73	2015	462	8	2,338.94	35,988.34	4.07	5.11	2753
22,280,000	0.300	---	---	---	11/04/2011	23/02/2007	---	REVOIL (CR)	0.480	5.03 #	0.457 29/06/2017	0.479	0.479	0.500	0.500	0.479	500@0.450	1479@0.500	15.43	2015	511	5	245.02	10,694.40	0.252	0.500	5379
4,181,450	0.500	---	---	---	21/08/2000	05/03/2002	---	FLOUR MILLS SARANTOPOULOS SA	0.630	---	↘ 0.630 29/06/2017	0.600	0.600	0.600	0.600	0.600	250@0.600	---	---	2015	250	2	150.00	2,634.31	0.517	0.630	3577
245,497,164	0.300	---	---	---	01/07/2008	30/07/2012	---	SELONDA AQUACULTURE SA (CR)	0.222	-1.77 €	0.226 29/06/2017	0.220	0.220	0.228	0.222	0.222	200@0.219	800@0.222	---	2015	8,118	14	1,800.93	54,500.37	0.136	0.254	3573
28,438,268	0.300	---	---	---	21/08/2006	24/11/1999	---	SPIROY AGRICULTURE SA (CR)	0.511	---	↘ 0.511 29/06/2017	---	---	---	---	---	---	32919@0.460	---	2015	---	---	---	14,531.95	0.460	0.699	1357
10,203,575	0.730	---	---	---	16/07/2007	18/10/1999	---	FIERATEX SA (CR)	0.082	---	↘ 0.082 29/06/2017	---	---	---	---	---	10800@0.090	---	---	2016	---	---	---	836.69	0.054	0.090	3763
8,340,750	1.18	---	---	---	25/06/2009	09/09/2015	---	HAIDEMENOS SA (CR)	0.410	-2.38 €	0.420 29/06/2017	0.410	0.410	0.410	0.410	0.410	549@0.397	500@0.415	---	2016	1,550	4	635.50	3,419.71	0.211	0.475	2791

Exchange Traded Funds (ETFs)

619,082	---	---	---	---	15/06/2016	---	ALPHA ETF FTSE Athex Large Cap	21.63	---	↘ 21.63 29/06/2017	---	---	---	---	---	---	---	27@21.60	---	---	---	---	---	---	16.01	21.88	12003
---------	-----	-----	-----	-----	------------	-----	--------------------------------	-------	-----	--------------------	-----	-----	-----	-----	-----	-----	-----	----------	-----	-----	-----	-----	-----	-----	-------	-------	-------

Low Dispersion

14,000,000	4.15	---	---	---	23/04/2010	29/06/1999	4815	ALPHA REAL ESTATE SA(CR)	5.29	1.34 #	5.22 29/06/2017	5.28	5.28	5.29	5.29	5.29	190@5.12	191@5.29	26.73	2015	338	10	1,788.01	74,060.00	4.31	7.07	8637
191,660,320	0.300	---	---	---	20/07/2009	29/12/2010	4817	ATTICA HOLDINGS (CR)	1.32	2.33 #	1.29 29/06/2017	1.34	1.30	1.35	1.34	1.32	124@1.34	4150@1.35	-(6)-	2015	6,878	10	9,066.52	252,991.62	0.664	1.35	5759
22,996,875	1.25	---	---	---	24/06/2011	02/02/2016	5116	NEXANS HELLAS SA (CR)	1.14	6.54 #	1.07 29/06/2017	0.924	0.924	1.15	1.15	1.14	100@0.927	1350@1.15	17.14	2016	1,170	9	1,329.34	26,216.44	0.837	1.28	2733
80,690,653	0.500	---	---	---	25/04/2014	22/12/2016	5124	TRASTOR REAL EST. INV. CO.(CR)	0.833	---	↘ 0.833 29/06/2017	---	---	---	---	---	150@0.828	311@0.870	---	2015	---	---	---	67,215.31	0.742	0.899	8671
13,465,290	0.300	---	---	---	09/08/2004	09/11/2016	4814	ATHENA SA (CR)	0.616	---	↘ 0.616 29/06/2017	---	---	---	---	---	257@0.620	426@0.720	---	2015	---	---	---	8,294.62	0.408	0.790	2357
8,418,750	0.300	---	0.12	0.3	06/06/2017	27/06/2012	5127	GEKE SA (CB)	4.40	4.76 #	4.20 29/06/2017	4.40	4.40	4.40	4.40	4.40	100@3.81	38@4.30	20.48	2016	3	3	13.20	37,042.50	2.94	5.28	5753
255,494,534	3.00	---	0.2035	0.2	11/05/2017	23/12/2015	5104	NBG PANGAEA (CR)	4.43	---	↘ 4.43 29/06/2017	---	---	---	---	---	100@4.50	199@5.00	22.77	2015	---	---	---	1,131,840.79	3.77	5.00	8671
2,760,000	11.83	9.3	8.5	---	15/07/2016	16/07/1990	4823	KARELIA TOBACCO CO. SA (CB)	297.00	---	↘ 297.00 29/06/2017	---	---	---	---	---	1@280.05	10@304.00	15.35	2015	---	---	---	819,720.00	255.00	305.00	3785
106,980,050	2.25	---	---	---	25/07/2008	24/02/2014	5046	MINOAN LINES SA (CR)	2.40	---	↘ 2.40 29/06/2017	2.40	2.40	2.40	2.40	2.40	740@2.40	100@2.52	15.84	2015	1,330	3	3,192.00	256,752.12	2.22	2.55	5759
17,240,776	0.370	---	---	---	14/07/2005	30/09/2003	4827	PERSEUS SA (CR)	0.330	---	↘ 0.330 29/06/2017	---	---	---	---	---	1000@0.312	414@0.353	9.91	2016	---	---	---	5,689.46	0.200	0.359	3577

Surveillance

5,867,311	0.300	---	---	---	11/08/2010	28/04/2017	5123	DIONIC (CR)	0.310	-18.42 €	0.380 29/06/2017	0.310	0.310	0.310	0.310	0.310	35@0.390	300@0.410	0.10	2015	7	1	2.17	1,818.87	0.265	0.562	2797
21,820,410	0.800	---	---	---	22/05/2008	02/08/2011	4882	EUROMEDICA SA (CR)	0.151	19.84 #	0.126 29/06/2017	0.151	0.151	0.151	0.151	0.151	6500@0.151	---	---	2015	1,000	1	151.00	3,294.88	0.007	0.151	4533
110,122,976	0.300	---	---	---	19/09/2016	---	5118	Forthnet (CR)	0.390	---	↘ 0.390 29/06/2017	---	---	---	---	---	---	300@0.367	---	2015	---	---	---	42,947.96	0.172	0.474	9535
50,593,832	0.300	---	---	---	07/07/2010	07/09/2011	5113	FRIGOGLASS SA (CR)	0.095	1.06 #	0.094 29/06/2017	0.095	0.094	0.095	0.095	0.095	4634@0.095	4500@0.098	---	2016	42,720	15	4,042.15	4,806.41	0.076	0.157	2757

Number of Outstanding Securities	Nominal Value	Dividends [1]			Date of Last Coupon		Note	Shares	Closing price	% change	Previous closing price/date	Open price	Price min	Price max	Last price	Avg price	Last Bid [7]	Last Ask [7]	P/E after	Year	Volume	Trades	Transactions Value[8]	Company Mkt Value (thou. €)	Year low	Year high	Sector[4]		
		2014	2015	2016	Dividend [2]	Right																							
51,081,030	1.00	---	---	---	20/08/2007	03/09/2007	4912	LAVIPHARM SA (CR)	0.104	---	↘	0.104	29/06/2017	---	---	---	---	10000@0.098	1683@0.108	---	2015	---	---	---	5,312.43	0.070	0.129	4577	
4,419,616	1.58	---	---	---	21/07/2011	04/03/2015	4983	MEDICON S.A (CR)	0.651	---	↘	0.651	29/06/2017	---	---	---	---	---	647@0.781	1.78	2015	---	---	---	2,877.17	0.274	0.840	4535	
14,967,940	0.500	---	---	---	21/05/2008	04/01/2008	4956	PASAL DEVELOPMENT S.A. (CR)	0.090	---	↘	0.090	29/06/2017	---	---	---	---	2000@0.075	2000@0.088	---	2015	---	---	---	1,347.11	0.058	0.188	8633	
65,326,268	0.530	---	---	---	04/07/2007	19/07/2006	4750	SATO SA (CR)	0.048	---	↘	0.048	29/06/2017	---	---	---	---	2000@0.050	---	---	2015	---	---	---	3,135.66	0.033	0.109	3726	
13,191,620	0.620	---	---	---	04/08/2010	09/09/2002	4977	YALCO - CONSTANTINOU SA (CB)	0.043	---	↘	0.043	29/06/2017	0.043	0.043	0.043	0.043	496@0.043	---	---	2015	4	2	0.17	567.24	0.027	0.048	3722	
13,000,000	1.00	---	---	---	01/08/2007	07/04/2000	5093	AKRITAS SA (CR)	0.155	---	↘	0.155	29/06/2017	0.155	0.155	0.155	0.155	40@0.155	---	---	2015	10	1	1.55	2,015.00	0.106	0.244	2353	
185,373,016	0.300	---	---	---	02/07/2008	28/02/2011	4957	ANEK LINES SA (CR)	0.086	1.18	#	0.085	29/06/2017	0.084	0.084	0.090	0.090	0.085	200@0.086	31752@0.090	35.97	2015	3,300	8	282.10	16,206.52	0.051	0.099	5759
312,163	0.300	---	---	---	02/07/2008	28/02/2011	4959	ANEK LINES SA (PR, issue '90)	0.400	---	↘	0.400	29/06/2017	---	---	---	---	---	1@0.320	-(6)-	2015	---	---	---	16,206.52	0.400	0.422	5759	
2,969,713	0.300	---	---	---	02/07/2008	28/02/2011	4958	ANEK LINES SA (PR, issue '96)	0.047	---	↘	0.047	29/06/2017	---	---	---	---	4996@0.050	---	19.66	2015	---	---	---	16,206.52	0.047	0.058	5759	
4,737,503	0.320	---	---	---	22/06/2005	22/09/2015	5115	VARANGIS AVEPE S.A. (CR)	0.220	---	↘	0.220	29/06/2017	---	---	---	---	---	1407@0.176	---	2015	---	---	---	1,042.25	0.220	0.220	3726	
16,383,428	0.300	---	---	---	25/06/2002	21/06/2013	4997	VARVARESSOS SA (CB)	0.168	---	↘	0.168	29/06/2017	---	---	---	---	---	20@0.135	---	2016	---	---	---	2,752.42	0.031	0.168	3763	
77,376,446	0.340	---	---	---	23/05/2005	18/08/2011	5094	G.E. DIMITRIOU (CR)	0.015	---	↘	0.015	29/06/2017	0.015	0.015	0.015	0.015	55500@0.014	750@0.015	---	2015	18,750	3	281.25	1,160.65	0.009	0.032	3722	
15,878,748	0.480	---	---	---	10/07/2006	22/03/2004	5095	DOMIKI KRITIS SA (CR)	0.080	---	↘	0.080	29/06/2017	---	---	---	---	1000@0.085	1000@0.096	---	2015	---	---	---	1,270.30	0.070	0.290	2357	
3,961,300	1.28	---	---	---	29/06/2004	03/08/2000	5080	DUROS SA (CR)	0.200	---	↘	0.200	29/06/2017	---	---	---	---	3000@0.200	---	---	2016	---	---	---	792.26	0.169	0.400	3763	
7,085,888	1.59	---	---	---	02/07/1996	06/09/2010	4690	ELVIEMEK (CR)	4.70	---	↘	4.70	29/06/2017	---	---	---	---	---	200@3.76	---	2015	---	---	---	33,303.67	4.70	4.70	8633	
7,125,216	0.650	---	---	---	01/07/2005	14/12/1999	4955	KRE.KA SA (CR)	0.120	---	↘	0.120	29/06/2017	---	---	---	---	2000@0.100	1000@0.129	---	2016	---	---	---	855.03	0.042	0.190	3573	
7,734,375	1.00	---	---	---	09/07/2007	07/01/2011	5112	LIVANIS SA (CR)	0.010	11.11	#	0.009	29/06/2017	0.010	0.010	0.010	0.010	6200@0.010	---	---	2015	100	1	1.00	77.34	0.006	0.010	5557	
15,842,391	1.51	---	---	---	15/07/2009	12/05/2000	5141	BITROS HOLDING SA (CR)	0.139	6.92	#	0.130	29/06/2017	0.139	0.139	0.139	0.139	1@0.139	---	---	2015	1,265	3	175.84	2,202.09	0.078	0.220	1757	
25,179,640	0.600	---	---	---	08/08/1994	19/09/2000	5057	J.BOUTARIS & SON HOLD. SA (CB)	0.044	---	↘	0.044	29/06/2017	---	---	---	---	1280@0.041	2000@0.048	---	2015	---	---	---	1,215.70	0.036	0.084	3535	
1,540,000	0.600	---	---	---	08/08/1994	19/09/2000	5058	J.BOUTARIS & SON HOLD. (PB)	0.070	---	↘	0.070	29/06/2017	---	---	---	---	---	10200@0.084	---	2015	---	---	---	1,215.70	0.066	0.079	3535	
23,935,280	0.300	---	---	---	29/06/2009	13/06/2000	5140	NAYTEMPORIKI PUBLISHING SA(CR)	0.018	---	↘	0.018	29/06/2017	---	---	---	---	669@0.017	---	---	2016	---	---	---	430.84	0.017	0.070	5557	
79,596,820	0.300	---	---	---	15/07/2008	27/04/2017	5146	NIKAS SA (CR)	0.358	---	↘	0.358	29/06/2017	---	---	---	---	20000@0.331	215@0.429	---	2015	---	---	---	28,495.66	0.227	0.436	3577	
18,750,000	0.300	---	---	---	02/07/2001	31/12/2012	4985	PEGASUS PUBLISHING S.A. (CR)	0.187	18.35	#	0.158	29/06/2017	0.185	0.185	0.189	0.189	0.187	460@0.186	2144@0.189	---	2015	3,956	15	738.68	3,506.25	0.017	0.253	5557
10,186,667	1.35	---	---	---	24/06/2008	02/02/2016	4887	SIDMA SA (CR)	0.387	-7.86	€	0.420	29/06/2017	0.387	0.387	0.387	0.387	0.387	---	500@0.387	---	2015	410	1	158.67	3,942.24	0.157	0.420	1757
7,914,480	0.300	---	---	---	23/06/2008	29/06/2011	4888	SFAKIANAKIS SA (CR)	0.490	-18.33	€	0.600	29/06/2017	0.490	0.490	0.490	0.490	0.490	748@0.490	240@0.580	---	2015	60	1	29.40	3,878.10	0.210	1.04	5379
1,270,000	0.300	---	---	---	06/07/2007	06/02/2013	5007	GIRAKIAN PROFIL SA (CB)	0.016	---	↘	0.016	29/06/2017	---	---	---	---	5000@0.014	---	---	2016	---	---	---	20.32	0.016	0.100	1757	
4,034,950	0.680	---	---	---	01/07/2005	30/12/2010	5114	CHATZIKRANIOTIS & SONS SA (CR)	0.110	6.80	#	0.103	29/06/2017	0.110	0.110	0.110	0.110	7000@0.095	5089@0.110	---	2016	1,060	3	116.60	443.84	0.032	0.164	3577	

Under Deletion																													
1,130,180	0.440	---	---	---	20/06/2003	02/07/2014	5092	COMPUCON SA (CR)	0.006	---	↘	0.006	29/06/2017	---	---	---	---	4000@0.006	---	---	2016	---	---	---	6.78	0.006	0.006	9537	
17,579,754	4.16	---	---	---	18/08/2006	02/08/2010	5145	BIOTER SA (CR)	0.059	-9.23	€	0.065	29/06/2017	0.062	0.054	0.062	0.054	0.059	1635@0.054	228@0.056	---	2015	9,365	9	550.71	1,037.21	0.041	0.188	2357
5,939,268	0.620	---	---	---	10/07/2003	03/01/2002	5142	LANAKAM SA (CR)	0.452	---	↘	0.452	29/06/2017	0.452	0.452	0.452	0.452	0.452	---	456@0.430	---	2016	750	2	339.00	2,684.55	0.288	0.589	3763
8,321,682	0.670	---	---	---	17/08/2007	23/11/1999	5143	N. LEVEDERIS SA (CB)	0.150	---	↘	0.150	29/06/2017	---	---	---	---	---	---	1000@0.147	---	2016	---	---	---	1,676.04	0.088	0.242	1757
2,160,524	0.670	0.0436	0.0436	---	04/08/2016	23/11/1999	5144	N. LEVEDERIS SA (PB)	0.198	20.00	#	0.165	29/06/2017	0.198	0.198	0.198	0.198	0.198	930@0.180	---	---	2016	4,800	5	950.40	1,676.04	0.119	0.328	1757
9,567,289	0.300	---	---	---	01/07/2004	19/11/2007	5062	MARAC ELECTRONICS (CR)	0.298	---	↘	0.298	29/06/2017	---	---	---	---	---	---	12485@0.239	---	2015	---	---	---	2,851.05	0.298	0.298	9578
24,319,250	0.300	---	---	---	09/07/2002	04/07/2007	5111	PROODEFTIKH SA (CR)	0.048	9.09	#	0.044	29/06/2017	0.048	0.048	0.048	0.048	0.048	2000@0.040	1000@0.048	---	2015	5,000	5	240.00	1,167.32	0.020	0.063	2357
766,000	1.00	---	---	---	01/07/2004	11/12/2012	4937	TRIA ALFA SA (CR)	1.76	---	↘	1.76	29/06/2017	---	---	---	---	---	---	148@2.08	---	2016	---	---	---	1,747.51	1.70	2.59	3763
245,000	1.00	---	---	---	19/07/2010	11/12/2012	4938	TRIA ALFA SA (PR)	1.63	---	↘	1.63	29/06/2017	---	---	---	---	---	---	9045@1.31	---	2016	---	---	---	1,747.51	1.63	1.63	3763

Number of Outstanding Securities	Nominal Value	Dividends [1]			Date of Last Coupon Dividend [2]		Note	Shares	Closing price	% change	Previous closing price/date	Open price	Price min	Price max	Last price	Avg price	Last Bid [7]	Last Ask [7]	P/E after	Year	Volume	Trades	Transactions Value[8]	Company Mkt Value (thou. €)	Year low	Year high	Sector[4]
215,246,452	0.300	---	---	---	25/06/2001	24/09/2001	4446	ALTEC SA (CR)	0.012	---	0.012	30/11/2015	---	---	---	---	---	---	---	---	---	---	---	2,582.96	0.012	0.012	9533
20,255,805	0.300	---	---	---	22/08/2006	02/08/2010	5136	AXON HOLDING SA (CR)	0.058	---	0.058	28/04/2017	---	---	---	---	---	---	---	---	---	---	---	1,174.84	0.007	0.066	4533
13,555,100	1.00	---	---	---	08/07/2005	08/07/2005	4576	MICROLAND COMPUTERS SA (CR)	0.640	---	0.640	14/07/2009	---	---	---	---	---	---	---	---	---	---	---	8,675.26	0.640	0.640	5379
40,946,303	0.360	---	---	---	18/07/2005	27/11/2007	5089	PC SYSTEMS SA (CR)	0.006	---	0.006	31/03/2016	---	---	---	---	---	---	---	---	---	---	---	245.68	0.006	0.006	9533
33,301,715	0.320	---	---	---	27/06/2003	08/07/2009	5135	AEGEK (CR)	0.035	---	0.035	27/04/2017	---	---	---	---	---	---	---	---	---	---	---	1,165.56	0.031	0.056	2357
5,000,000	0.400	---	---	---	03/06/2009	01/09/2014	5087	ALCO HELLAS SA (CR)	0.180	---	0.180	31/03/2015	---	---	---	---	---	---	---	---	---	---	---	900.00	0.180	0.180	1753
14,870,100	0.300	---	---	---	15/05/2008	26/09/2011	5130	ALPHA GRISSIN S.A. (CR)	0.014	---	0.014	13/04/2017	---	---	---	---	---	---	---	---	---	---	---	208.18	0.014	0.031	9533
81,122,516	3.00	---	---	---	23/06/2003	04/11/2008	5131	ASTIR PALACE SA (CR)	5.48	---	5.48	20/04/2017	---	---	---	---	---	---	---	---	---	---	---	444,551.39	5.34	5.48	5753
81,644,555	0.300	---	---	---	01/07/2008	02/09/2002	5098	ATTI - KAT SA (CR)	0.012	---	0.012	29/05/2015	---	---	---	---	---	---	---	---	---	---	---	979.73	0.012	0.012	2357
20,121,710	1.21	---	---	---	27/07/1992	12/03/2003	5002	BALKAN R.E. (CR)	0.190	---	0.190	29/08/2013	---	---	---	---	---	---	---	---	---	---	---	3,823.12	0.190	0.190	8633
33,930,000	0.300	---	---	---	03/07/2006	30/05/2001	4865	BABIS VOVOS SA (CR)	0.304	---	0.304	30/03/2012	---	---	---	---	---	---	---	---	---	---	---	10,314.72	0.304	0.304	8633
6,000,000	0.600	---	---	---	13/06/2008	08/04/2004	5137	EUROBROKERS S.A. (CR)	0.007	---	0.007	28/04/2017	---	---	---	---	---	---	---	---	---	---	---	42.00	0.007	0.010	8534
7,847,611	1.20	---	---	---	01/08/2007	28/09/2011	4939	EDRASIS - C. PSALLIDAS SA (CR)	0.150	---	0.150	29/11/2012	---	---	---	---	---	---	---	---	---	---	---	1,177.14	0.150	0.150	2357
36,748,909	0.730	---	---	---	15/12/2005	13/12/2006	5109	HEL. SUGAR INDUSTRY SA (CB)	0.075	---	0.075	29/02/2016	---	---	---	---	---	---	---	---	---	---	---	2,756.17	0.075	0.075	3577
30,390,000	0.310	---	---	---	18/08/2008	29/12/2006	5099	HELLENIC FISHFARMING SA (CR)	0.070	---	0.070	02/06/2015	---	---	---	---	---	---	---	---	---	---	---	2,127.30	0.070	0.070	3573
13,692,227	1.47	---	---	---	07/07/2006	08/10/1999	5049	HELLENIC FABRICS SA (CR)	0.117	---	0.117	31/03/2014	---	---	---	---	---	---	---	---	---	---	---	1,601.99	0.117	0.117	3763
13,404,440	8.63	---	---	---	02/04/2001	06/03/1992	4822	IONIAN HOTELS SA (CR)	10.02	---	10.02	22/06/2017	---	---	---	---	---	---	---	---	---	---	---	134,312.49	9.30	10.02	5753
24,619,524	0.500	---	---	---	10/10/1986	30/12/2002	4914	KERAMIA-ALLATINI (CR)	0.088	---	0.088	30/08/2012	---	---	---	---	---	---	---	---	---	---	---	2,166.52	0.088	0.088	8633
23,286,253	0.990	0.2406	---	---	14/08/2015	15/09/2014	5128	KYRIAKIDIS MARBLES SA (CR)	4.50	---	4.50	22/06/2017	---	---	---	---	10380@4.50	---	---	---	---	---	---	104,788.14	3.04	4.90	2353
66,937,526	0.700	---	---	---	13/08/2010	21/05/2003	5003	MICHANIKI SA (CR)	0.100	---	0.100	29/08/2013	---	---	---	---	---	---	---	---	---	---	---	9,186.78	0.100	0.100	2357
25,968,987	0.700	---	---	---	13/08/2010	21/05/2003	5004	MICHANIKI SA (PR)	0.096	---	0.096	29/08/2013	---	---	---	---	---	---	---	---	---	---	---	9,186.78	0.096	0.096	2357
255,459,600	0.300	---	---	---	26/06/2000	03/12/2010	5101	NEL SA (CR)	0.070	---	0.070	31/08/2015	---	---	---	---	---	---	---	---	---	---	---	17,882.17	0.070	0.070	5759
23,463,874	0.800	---	---	---	23/05/2003	21/12/1999	4918	NEORION SA (CR)	0.125	---	0.125	30/08/2012	---	---	---	---	---	---	---	---	---	---	---	2,932.98	0.125	0.125	2753
41,068,800	0.420	(0.03)	0.1205	---	19/08/2016	17/02/2016	5129	CRETE PLASTICS SA (CR)	5.33	---	5.33	03/04/2017	---	---	---	---	900@4.80	---	---	---	---	---	---	218,896.70	4.77	5.35	1357
144,688,060	0.600	---	---	---	21/04/2008	10/03/2010	4982	T BANK (CR)	0.048	---	0.052 #	29/11/2011	---	---	---	---	---	---	---	---	---	---	---	6,945.03	0.048	0.048	8355
284,465,964	3.70	---	---	---	20/06/2008	15/06/2009	4913	TT HELLENIC POSTBANK (CR)	0.168	---	0.239 #	29/08/2012	---	---	---	---	---	---	---	---	---	---	---	47,790.28	0.168	0.168	8355
13,920,000	0.320	---	---	---	19/11/2001	01/08/2000	4726	TEXAPRET SA (CR)	0.080	---	0.080	28/02/2011	---	---	---	---	---	---	---	---	---	---	---	1,113.60	0.080	0.080	3763
100,793,572	0.300	---	---	---	16/07/2009	11/02/2016	5110	TELETIPOS SA (CR)	0.060	---	0.060	07/03/2016	---	---	---	---	---	5@0.048	---	---	---	---	---	6,047.61	0.060	0.060	5553
510,840	1.00	---	---	---	15/07/2008	21/11/2013	5036	TROPEA HOLDING (CR)	2.00	---	0.020 #	30/03/2012	---	---	---	---	---	---	---	---	---	---	---	1,021.68	2.00	2.00	3722

Shares' Notes

Code	Note text
()	- Adjusted dividends.
*	- Last adjusted closing price.
[1]	- Net dividends.
[2]	- The "Date of Last Coupon" for New listings refers to the date company's stocks started to trade in Athex
[3]	- The Company Market Value is referred to the number of outstanding shares
[4]	- Sectors codification can be found in Appendix A
[5]	- The Market Value refers to the total number of shares listed (including their several classes) in the exchange by the company.
[6]	- P/E greater than 100
[7]	- Last view of the Order Book before the end of the trading session
[8]	- All Blocks Methods' Transactions Value are included.
4446	- Transfer to the "Under Supervision" Category as of 20/10/2008.
4576	- Suspension of trading as of 14/7/2009.
4690	- Transfer to Surveillance category as of 4/4/2006.
4726	- Suspension of trading as of 1/3/2011.
4750	- Transfer to the "Under Surveillance Category" from 8/4/2011.
4795	- The final gross (pre-tax) dividend is € 0.30 per share and subject to withholding tax on the full dividend amount, i.e. 0,45 per share, for those shareholders liable to withholding tax, in accordance with the applicable tax law provisions.
4814	- Transfer to the Low Dispersion Category as of 30/5/2011.
4815	- Transfer to the Low Dispersion Category as of 30/5/2011.
4817	- Transfer to the Low Dispersion Category as of 30/5/2011.
4822	- Transfer to the Low Dispersion category as of 30/5/2011.
4823	- Transfer to the Low Dispersion category as of 4/4/2006.
4827	- Transfer to the Low Dispersion category as of 5/5/2010.
4865	- Suspension of trading as of 2/4/2012.
4882	- Transfer to the Surveillance Category as of 10/4/2012.
4887	- Transfer to the Surveillance Category as of 10/4/2012.
4888	- Transfer to the Surveillance Category as of 10/4/2012.
4912	- Transfer to the Surveillance Category as of 31/7/2012.
4913	- Suspension of trading as of 30/8/2012.
4914	- Suspension of trading as of 31/8/2012.
4918	- Suspension of trading as of 31/8/2012.
4937	- Transfer to the UNDER DELETION category as of 30/11/2012.
4938	- Transfer to the UNDER DELETION category as of 30/11/2012.
4939	- Suspension of trading as of 30/11/2012.
4955	- Transfer to the Surveillance Category as from 5/4/2013.
4956	- Transfer to the Surveillance Category as from 5/4/2013.
4957	- Transfer to the Surveillance Category as from 5/4/2013.
4958	- Transfer to the Surveillance Category as from 5/4/2013.
4959	- Transfer to the Surveillance Category as from 5/4/2013.
4977	- Transfer to the "Under Surveillance Category" from 11/6/2013.
4982	- Suspension of trading as of 1/12/2011.
4983	- Transfer to the Surveillance Category as of 5/4/2013.
4985	- Transfer to the "Under Surveillance Category" from 8/4/2011.
4997	- Transfer to the Under Supervision Category as of 21/12/2009. - The 6,870,053 new (CB) shares, resulting from the recent share capital increase through a rights issue, are not yet admitted to trading on the ATHEX.
5002	- Suspension of trading as of 30/08/2013.
5003	- Suspension of trading as of 30/08/2013.
5004	- Suspension of trading as of 30/08/2013.
5007	- Transfer to the Surveillance category, as of 11/10/2013.
5031	- The 612,300 new (CR) shares, resulting from the recent share capital increase through a rights issue, are not yet admitted to trading on the ATHEX.
5036	- The company's share is under suspension of trading as of 2/4/2012. During suspension, the company proceeded and concluded a share reverse split, according to which - after the conclusion of the corporate action - the total number of the company's shares, as well as, the last closing price of 30/03/2012 were adjusted.
5046	- Transfer to the Low Dispersion category as of 8/4/2011.

Shares' Notes

Code	Note text
5049	- Under suspension of trading as of 1/4/2014.
5057	- Transfer to the Surveillance Category as of 29/12/2011.
5058	- Transfer to the Surveillance Category as of 29/12/2011.
5062	- Transfer to the UNDER DELETION category as of 4/6/2014.
5080	- Suspension of trading as of 6/9/2011.
5087	- Suspension of trading as of 1/4/2015.
5089	- Transfer to the Surveillance Category as of 8/4/2015.
5092	- Transfer to the UNDER DELETION category as of 8/4/2015.
5093	- Transfer to the Surveillance Category as of 8/4/2015.
5094	- Transfer to the Surveillance Category as of 8/4/2015.
5095	- Transfer to the Surveillance Category as from 9/4/2015.
5098	- Suspension of trading as of 2/6/2015.
5099	- Suspension of trading as of 3/6/2015.
5101	- Suspension of trading as of 1/9/2015.
5104	- Transfer to the "Low Dispersion" Category as of 31/10/2014. Change of the company name from "MIG REAL ESTATE R.E.I.C." to "NBG PANGAEA R.E.I.C." as of 30/12/2015.
5109	- Suspension of trading as of 01/03/2016.
5110	- Suspension of trading as of 08/03/2016.
5111	- Transfer to the Under Deletion Category as of 15/04/2016.
5112	- Transfer to the Surveillance Category as of 15/04/2016.
5113	- Transfer to the Surveillance Category as of 15/04/2016.
5114	- Transfer to the Surveillance Category as of 15/04/2016.
5115	- Transfer to the Surveillance Category as of 15/04/2016.
5116	- Transfer to the Low Dispersion Category as of 20/4/2016.
5118	- Transfer to the Surveillance Category as of 25/11/2011. Issue of a Convertible Bond Loan in progress through a rights issue. Rights' trading period on ATHEX: 22/09/2016 - 03/10/2016, pre-emption rights' subscription period: 22/09/2016 - 06/10/2016.
5123	- Transfer to the Surveillance Category as of 10/4/2014.
5124	- The 30,874,635 new (CR) shares, resulting from the recent share capital increase through a rights issue, are not yet admitted to trading on the ATHEX.
5127	- Transfer to the Low Dispersion Category as of 03/03/2017.
5128	- Transfer to the Low Dispersion Category as of 24/03/2017.
5129	- Suspension of trading as of 04/04/2017.
5130	- Suspension of trading as of 18/04/2017.
5131	- Suspension of trading as of 21/04/2017.
5135	- Suspension of trading as of 28/04/2017.
5136	- Suspension of trading as of 02/05/2017.
5137	- Suspension of trading as of 02/05/2017.
5140	- Transfer to the Surveillance Category as of 10/05/2017.
5141	- Transfer to the Surveillance Category as of 10/05/2017.
5142	- Transfer to the Under Deletion Category as of 10/05/2017.
5143	- Transfer to the Under Deletion Category as of 10/05/2017.
5144	- Transfer to the Under Deletion Category as of 10/05/2017.
5145	- Transfer to the Under Deletion Category as of 10/05/2017.
5146	- Transfer to the Surveillance Category as of 10/4/2012. The 77,573,688 new (CR) shares, resulting from the recent share capital increase through a rights issue, are not yet admitted to trading on the ATHEX.

Securities Blocks Details

Securities	Block Volume	Price	Block Trade Value	Time of approval	Note
MLS MULTIMEDIA SA (CR)	59,800	4.50	269,100.00	10:31:39	20
MOTOR OIL (CR)	20,000	19.00	380,000.00	11:09:24	20
MYTILINEOS HOLDINGS (CR)	40,000	8.36	334,200.00	13:57:39	20
OTE (CR)	150,000	10.52	1,578,000.00	15:23:58	20
JUMBO SA (CR)	22,123	15.98	353,580.85	17:11:44	20
TITAN CEMENT (CR)	12,028	24.87	299,118.32	17:13:23	20

Blocks Notes

9 - Method 6-1 / Special Fees

10 - Method 6-1 / Special Fees, SDS

14 - Method 6-3 / Settlement, Incomplete Buy and Sell

18 - Method 6-2 / SPOT 1

19 - Method 6-2 / SPOT 2

20 - Method 6-1 and Method 6-1 Same Day Settlement

21 - Other Pre-agreed

Shares Rights Details

Occured date	Exercise from	Exercise until	Trading until	Rights	Price min	Price max	Closing price	Last Bid	Last Ask	Volume	Trades	Transactions Value
-----------------	------------------	-------------------	------------------	--------	--------------	--------------	------------------	----------	----------	--------	--------	-----------------------

No Rights Transactions.

Shares Forced Sales

Securities	Transaction s Volume	Number of Trades	Transactions Value	Note
No Forced Transactions.				

Forced Sales Notes

- 1 - Normal Forced Sale.
- 2 - Forced Sales of Fixed Registered Shares.
- 3 - Forced Sales of Remaining Stock Fractions.

Forced Sales Registered Shares

Securities	Start Date	End Date	Initial Volume	Remaining Volume	Date	Avg price (day)	Avg price (period)	Number of Trades	Transactions Volume	Transactions Value
------------	------------	----------	----------------	------------------	------	-----------------	--------------------	------------------	---------------------	--------------------

No Fixed Registered Shares Forced Sales.

Forced Sales Notes

According to Decision 1/380/04.05.2008 of the Hellenic Republic Capital Market Commission, the certificated registered shares that have not been deposited to the issuer for dematerialisation, will be auctioned in the Athens Exchange by the supervising issuer. Forced sales procedure is held according to Article 99A of the Athens Exchange Rulebook. The average price of the period is calculated by dividing the Total transactions value by the Total volume and includes all the transactions made until the current date.

Exchange Traded Funds (ETFs) Characteristics

	Transactions Date (T)	Creation / Redemption	Units (T-1)	New Units (T-1)	Redemptio n Units (T-	Units (T) [1]	Fund Assets [2]	Net Unit Price	Dividen d per	Dividend Date
ALPHA ETF FTSE Athex Large Cap	30/06/2017	5,000	619,082	---	---	619,082	13,326,380.00	21.5260	0.37	30/06/2016

ETFs Notes

[1] - Units (T) = Units (T-1) + New Units (T-1) - Redemption Units (T-1)

[2] - The Creation / Redemption Units of T-1 are included.

Convertible Corporate Bonds - Regulated Market

Num Listed Bonds	Nominal price	Issue price	Today's Rate	Exp. Date	Duration (years)	Note	Coupon		Trading	Corporate Bonds	Price min	Price max	Closing price	Previous closing price/date	Volume	Transactions Value	Last order		Date	ear min	Year max
							Common	Preferred									Price	Buy / Sell			
233,723,142	0.30	0.30	1.00	11/10/2025	9	---	4	---	1	FORTHNET S.A. (Convertible)	---	---	---	---	---	---	0.2000	B	10/05/2017	100.0000	100.0000
1,774,359	13.76	9.77	0.00	21/10/2025	18	---	26	---	1	NIREUS S.A. (Convertible)	---	---	---	89.1000 20/06/2017	---	---	0.8900	B	30/06/2017	89.1000	99.0000
212,237,880	1.00	1.00	6.30	29/07/2020	7	---	16	---	1	MARFIN INVESTMENT GROUP S.A. SERIES B (Convert.)	---	---	---	0.9000 10/04/2017	---	---	0.9100	B	30/06/2017	0.8500	0.9000
163,009,139	1.00	1.00	7.00	29/07/2019	6	---	16	---	1	MARFIN INVESTMENT GROUP S.A. SERIES A (Convert.)	---	---	---	1.0000 23/08/2013	---	---	0.9500	B	30/06/2017	1.0000	1.0000

Corporate Bonds Notes

Transactions Volume = (Pieces) * (Nominal Price). Transactions Value = (Pieces) * (Nominal Price) * (price %) + (Accrued interest).
The price of a Bond is stated as a percentage (%) of Bond's Nominal Price.
Nominal Price in Euros (€), except if it is noted differently.

Non Convertible Corporate Bonds - Regulated Market

Num Listed Bonds	Nominal price	Issue price	Today's Rate	Exp. Date	Duration (years)	Note	Coupon		Trading	Corporate Bonds	Accrued Int.	Yield.T.Mat	Price min	Price max	Closing price	Previous closing price/date	Volume	Transactions Value	Last order		Date	ear min	Year max
							Common	Preffered											Price	Buy / Sell			
300,000	1,000.00	1,000.00	3.10	27/06/2022	5	---	1	---	1	MYTILINEOS HOLDINGS S.A. (Non Convertible)	0.6028	2.9790	100.4600	100.6000	100.5291	100.5060 29/06/2017	762,000	766,451.73	100.3100	B	30/06/2017	100.3000	100.6400
50,000	1,000.00	1,000.00	4.25	20/06/2022	5	---	1	---	1	SYSTEMS SUNLIGHT S.A. (Non Convertible)	1.6528	4.0660	100.7500	100.7500	100.7500	100.8660 29/06/2017	1,000	1,009.15	100.6500	B	30/06/2017	100.0100	101.3500
200,000	1,000.00	1,000.00	3.50	21/03/2022	5	---	1	---	1	O.P.A.P. S.A. (Non Convertible)	10.2083	3.0400	101.8000	101.9000	101.8000	101.8020 29/06/2017	295,000	303,459.26	101.8000	B	30/06/2017	100.2800	102.0000
40,000,000	1.00	1.00	5.00	04/10/2021	5	---	3	---	1	HOUSEMARKET S.A. (Non Convertible)	---	4.3170	101.9000	101.9000	101.9000	101.6700 29/06/2017	38,200	38,925.80	101.5000	B	30/06/2017	100.1895	102.7000

Corporate Bonds Notes

Transactions Volume = (Pieces) * (Nominal Price). Transactions Value = (Pieces) * (Nominal Price) * (price %) + (Accrued interest).
The price of a Bond is stated as a percentage (%) of Bond's Nominal Price.
Nominal Price in Euros (€), except if it is noted differently.

Government Bonds

Number Listed Bonds	Nominal price	Today's Rate	Accrued Interest Calc	Exp. Date [1]	Duration (years)	Note	Coupons Date	Curr. coupon value	Trading Unit	Government Bonds	Price min	Price max	Closing price	Previous closing price/date	Volume	Transactions Value	Price	Last order Buy / Sell	Date
1,792,455,803	1.00	3.00	Actual/Actual	24/02/2023	11	---	24/02	3.00	1	GGB-FXD-240223-11Y-2.000-1.00	---	---	---	10.0000 22/06/2015	---	---	---	---	---
1,771,485,249	1.00	3.00	Actual/Actual	24/02/2024	12	---	24/02	3.00	1	GGB-FXD-240224-12Y-2.000-1.00	---	---	---	10.0000 22/06/2015	---	---	---	---	---
1,744,316,583	1.00	3.00	Actual/Actual	24/02/2025	13	---	24/02	3.00	1	GGB-FXD-240225-13Y-2.000-1.00	---	---	---	10.0000 22/06/2015	---	---	---	---	---
1,498,761,836	1.00	3.00	Actual/Actual	24/02/2026	14	---	24/02	3.00	1	GGB-FXD-240226-14Y-2.000-1.00	---	---	---	10.0000 22/06/2015	---	---	---	---	---
1,469,952,920	1.00	3.00	Actual/Actual	24/02/2027	15	---	24/02	3.00	1	GGB-FXD-240227-15Y-2.000-1.00	---	---	---	10.0000 22/06/2015	---	---	---	---	---
1,525,434,082	1.00	3.00	Actual/Actual	24/02/2028	16	---	24/02	3.00	1	GGB-FXD-240228-16Y-2.000-1.00	---	---	---	10.0000 22/06/2015	---	---	---	---	---
1,503,860,546	1.00	3.00	Actual/Actual	24/02/2029	17	---	24/02	3.00	1	GGB-FXD-240229-17Y-2.000-1.00	---	---	---	10.0000 22/06/2015	---	---	---	---	---
1,435,418,132	1.00	3.00	Actual/Actual	24/02/2030	18	---	24/02	3.00	1	GGB-FXD-240230-18Y-2.000-1.00	---	---	---	10.0000 22/06/2015	---	---	---	---	---
1,368,045,727	1.00	3.00	Actual/Actual	24/02/2031	19	---	24/02	3.00	1	GGB-FXD-240231-19Y-2.000-1.00	---	---	---	10.0000 22/06/2015	---	---	---	---	---
1,373,758,194	1.00	3.00	Actual/Actual	24/02/2032	20	---	24/02	3.00	1	GGB-FXD-240232-20Y-2.000-1.00	---	---	---	10.0000 22/06/2015	---	---	---	---	---
1,452,639,893	1.00	3.00	Actual/Actual	24/02/2033	21	---	24/02	3.00	1	GGB-FXD-240233-21Y-2.000-1.00	---	---	---	10.0000 22/06/2015	---	---	---	---	---
1,410,344,954	1.00	3.00	Actual/Actual	24/02/2034	22	---	24/02	3.00	1	GGB-FXD-240234-22Y-2.000-1.00	---	---	---	10.0000 22/06/2015	---	---	---	---	---
1,444,202,190	1.00	3.00	Actual/Actual	24/02/2035	23	---	24/02	3.00	1	GGB-FXD-240235-23Y-2.000-1.00	---	---	---	10.0000 22/06/2015	---	---	---	---	---
1,505,138,031	1.00	3.00	Actual/Actual	24/02/2036	24	---	24/02	3.00	1	GGB-FXD-240236-24Y-2.000-1.00	---	---	---	10.0000 22/06/2015	---	---	---	---	---
1,396,254,095	1.00	3.00	Actual/Actual	24/02/2037	25	---	24/02	3.00	1	GGB-FXD-240237-25Y-2.000-1.00	---	---	---	10.0000 22/06/2015	---	---	---	---	---
1,382,167,704	1.00	3.00	Actual/Actual	24/02/2038	26	---	24/02	3.00	1	GGB-FXD-240238-26Y-2.000-1.00	---	---	---	10.0000 22/06/2015	---	---	---	---	---
1,337,331,257	1.00	3.00	Actual/Actual	24/02/2039	27	---	24/02	3.00	1	GGB-FXD-240239-27Y-2.000-1.00	---	---	---	10.0000 22/06/2015	---	---	---	---	---
1,371,908,706	1.00	3.00	Actual/Actual	24/02/2040	28	---	24/02	3.00	1	GGB-FXD-240240-28Y-2.000-1.00	---	---	---	10.0000 22/06/2015	---	---	---	---	---
1,360,659,778	1.00	3.00	Actual/Actual	24/02/2041	29	---	24/02	3.00	1	GGB-FXD-240241-29Y-2.000-1.00	---	---	---	10.0000 22/06/2015	---	---	---	---	---
1,432,747,403	1.00	3.00	Actual/Actual	24/02/2042	30	---	24/02	3.00	1	GGB-FXD-240242-30Y-2.000-1.00	---	---	---	10.0000 22/06/2015	---	---	---	---	---
742,153	1,000.00	0.93	FLR Actual/360	10/08/2019	5	---	10/02 - 10/08	---	1	GGB-FLT-100819-05Y-0.934-1,000	---	---	---	---	---	---	---	---	---
4,030,827	1,000.00	4.75	Actual/Actual	17/04/2019	5	---	17/04	4.75	1	GGB-FXD-170419-05Y-4.750-1,000	---	---	---	---	---	---	---	---	---
2,089,066	1,000.00	3.38	Actual/Actual	17/07/2017	3	---	17/07	3.38	1	GGB-FXD-170717-03Y-3.375-1,000	---	---	---	---	---	---	---	---	---

Government Bonds Notes

Transactions Volume = (Pieces) * (Nominal Price). Transactions Value = (Pieces) * (Nominal Price) * (price %) + (Accrued interest).
The Value of current coupon for the issues with NV 0.01 euro refers to NV 100 euros
FLR: Floating Interest Rate.
[1] - The Expiration Date of the interest bearing period and the Date for coupon payment.

Bonds in Circulation	Currency / Min nominal traded Value	Coupons Payment Date	Current Coupon Value	Note	Coupon	Trading Unit	Issue Date	Duration (years)	Today's Interest	A.I.C in days	Bonds	Last price of previous days		Last Outcry in Cash (euro) Price Buy / Sell		Date	Trades in Pieces	Life min	Life Max
Corporate Bonds in Foreign Currency and Euro																			
103,746	GBP / 10	01/12	0.25	---	58	1	01/12/1930	98	2.5	360	National Mortgage Bank	2.27	05/02/1996	2.27	S	05/02/1996	---	2.27	2.27
0	GBP / 10	01/12	0.25	---	60	1	01/12/1928	100	2.5	360	National Mortgage Bank	---	---	---	---	---	---	---	---

Government Bonds Notes

A.I.C: Accrued Interest Calculation base.
FLR: Floating Interest Rate.
The minimum tradeable Nominal Value for all Demeterialised Government Titles is 100 Euros.
(μτφρ-0)

Athex & ATHEXClear Members List

Member Name			Stock Market			Derivatives Market		ATHEXClear Member	
Address	Phone	Fax	Market Member	Remote Member	Market Maker	Proprietary	Market Maker	General Clearing	Direct Clearing
A. SARRIS SECURITIES S.A.			a						
6, DRAGATSANIOU ATHINA	+30 2103367700	210-3312324							
ALPHA FINANCE INVESTMENT SERVICES S.A.			a		a	a	a		a
5, MERLIN ATHINA	+30 2103677400	210-33311193							
ALPHA BANK A.E.								a	
40, STADIOU STR ATHINA	(210)-3260000	(210)-3264116							
	(210)-3265546	(210)-3265811							
103, AVE. ATHINON ATHINA	+30 2103436820	210-3436270							
ARGUS STOCKBROKERS LTD			a	a		a			
25 , DIMOSTHENI SEVERI AVE NICOSIA	+357 22717000	0035722717070							
ATLANTIC SECURITIES LIMITED			a	a					
37, PRODROMOU NICOSIA	+357 22445400	00357 22661914							
ATLAS SECURITIES S.A			a			a			
, 125 MICHALAKOPOULOU & 14-16 VERVENON ATHINA	+30 2103363300	210-3238925							
ATTICA BANK S.A.								a	
54, AKADIMIAS STR. ATHINA	(210)-3390757	(210)-3646090							
23, OMIROU ATHINA	+30 2103669261	210-3669265							
23, OMIROU STR. ATHINA	(210)-3669000	(210)-3669410							
AXIA VENTURES GROUP LTD			a	a					
, KRANIDIOTI 10, OFFICE 102 NICOSIA	+357 22742000	357 22742001							
AXON SECURITIES S.A.			a			a			
48, STADIOU ATHINA	+30 2103363800	210-3243903							
BANK OF AMERICA MERRILL LYNCH			a	a					
2 , KING EDWARD STREET LONDON	+44 20276281000								
BETA SECURITIES S.A.			a		a	a			a
29 , ALEXANDRAS AVEN. & VRAILA ATHINA	+30 2106478900	210-6410139							
BNP PARIBAS SECURITIES SERVICES S.A.								a	
2, LAMPSAKOU ATHINA	+30 2107468500	210-7468579-581							
CAPITAL SECURITIES S.A.			a			a			
58, MITROPOLEOS ATHINA	+30 2103369700	+30 210 3369820							
CFS SECURITIES-INVESTMENT SERVICES S.A.			a						
3, PAPARRIGOPOULOU ATHINA	+30 2103360800	+30 210-3360980							
CITIGROUP GLOBAL MARKET LTD			a	a					
1, CITIGROUP CENTER , CANADA SQ., CANARY WHARF LONDON	+44 02079864000								
CREDIT SUISSE SECURITIES (EUROPE) LIMITED			a	a					
, ONE CABOT SQUARE LONDON	+44 2078888888								
CYCLOS SECURITIES S.A.			a			a			a
39, PANEPISTIMIOU ATHINA	+30 2103364300	+30 210-3239122							
D.A. TSEKOURAS SEC. S.A.			a						
33, STADIOU ATHINA	+30 2103245100	210-3211997							
DEUTSCHE BANK S.A.			a	a		a			
1 , GREAT WINCHESTER STREET LONDON	+44 20 754 54209	00441133361437							
DYNAMIC SECURITIES S.A.			a			a			a
8, OMIROU ATHINA	+30 2103677700	210-3677777							
EL. PETROPOULAKIS SECURITIES S.A.			a			a			
9, ARISTEIDOU ATHINA	+30 2103213928	+30 210-3216810							
EUROBANK ERGASIAS S.A.								a	
8, OTHONOS ATHINA	+30 2103337000	210-3245916							
8, OTHONOS STR. ATHINA	(210)-3337969	(210)-3245916							
	(210)-3337000	(210)-3233866							
EUROBANK SECURITIES INVESTMENT FIRM S.A			a		a	a	a		a
, FILELLINON 10 & XENOFONTOS 13 ATHINA	+30 2103720000	210-3720001							
EUROCORP SECURITIES S.A.			a			a			a
14, SQ.FILIKIS ETAIRIAS ATHINA	+30 2107263500	210-7263666							
EUOTRUST BROKERAGE S.A.			a						
113, SEVASTOUPOLEOS ATHINA	+30 2103363100	+30 210-3238334							
EUROXX SECURITIES S.A.			a		a	a	a		a
7, PALAIOLOGOU CHALANDRI	(210)-6879400	(210)-6879401							
7, PALEOLOGOU CHALANDRI	+30 2106879400	210-6879401							
G. A. PERVANAS SECURITIES-INVESTMENT SERVICES CO S.A.			a						
7-9, SOFOKLEOUS ATHINA	+30 2103727200	210-3210-291							
GLOBAL CAPITAL SECURITIES AND FINANCIAL SERVICES LTD			a	a					
50, AVE. ARCHIEPISKOPOU MAKARIOU NICOSIA	+357 22710710	357 22339332							

Athex & ATHEXClear Members List

Member Name			Stock Market			Derivatives Market		ATHEXClear Member	
Address	Phone	Fax	Market Member	Remote Member	Market Maker	Proprietary	Market Maker	General Clearing	Direct Clearing
GUARDIAN TRUST SECURITIES S.A			a			a			
31, ERMOU ATHINA	+30 2103378700	210-3220498							
HELLENIC BANK (INVESTMENTS) LTD			a						
, AVE. KYRIAKOU MATSI 31 - PO BOX 24747 NICOSIA	+357 22500100	357 22500110							
HELLENICAMERICAN SEC. S.A.			a		a	a			a
27, ANDREA PAPANDREOU ATHINA	+30 2103311100	+30 210-3215968							
HSBC BANK PLC								a	
109-111, AVE. MESOGION ATHINA	+30 2106960000	210-6928000							
INDEX SECURITIES S.A.			a						
6, DRAGATSANIOU ATHINA	+30 2103213920	+30 210-3213216							
INVESTMENT BANK OF GREECE S.A.			a		a	a	a	a	
32 , EGIALIAS & PARADISOU MAROUSI	+30 2108173111	+30 210-6896325							
J. CHR. MAVRIKIS SECURITIES S.A.			a						
5, SOFOKLEOUS ATHINA	+30 2103216730	210-3217767							
KAPPA SECURITIES S.A.			a			a			
15, VALAORITOU ATHINA	+30 2103678600	+30 210-3641002							
KARAMANOF SECURITIES-INV. SERVICES S.A.			a			a			
2, SQ. AGION THEODORON ATHINA	+30 2103212947	+30 210-3217088							
LAIKI FINANCIAL SERVICES LTD			a						
26, AVE. VYRONOS NICOSIA	357 22367367	357 22718567							
LEON DEPOLAS SECURITIES S.A.			a		a	a			
1, CHRISTOU LADA ATHINA	+30 2103213276	+30 210-3211618							
MAGNA TRUST SECURITIES S.A			a						
12-14, KARAGIORGI SERBIAS ATHINA	+30 2103800820	210-3220910							
MEGA EQUITY SECURITIES & FINANCIAL SERVICES PUBLIC LTD			a	a		a			
42-44, AVE. GRIVA DIGENI NICOSIA	+357 22711711	357 22711811							
MERIT SECURITIES S.A			a		a	a			a
3, GEORGIOU SOURI ATHINA	2103671800	210-3671830							
MIDAS BROKERAGE S.A.			a		a				
5, SOFOKLEOUS ATHINA	+30 2141008800	+30 210-3253205							
N. CHRYSOCHOIDIS STOCK BROKERAGE I.S.S.A.			a			a			a
7-9, SOFOKLEOUS ATHINA	+30 2103213913	+30 210-3216115							
NATIONAL BANK OF GREECE S.A.			a		a	a		a	
86, AIOLOU STR. ATHINA	(210)-3341000	(210)-3228187							
68, AKADIMIAS STR. ATHINA	(210)-3328817	(210)-3328678							
NATIONAL SECURITIES S.A			a		a	a	a		
66, KIFISIAS AVE , BUILDING A ATHINA	+30 2107720000	+30 210-7720002							
NUNTIUS SECURITIES S.A			a						
6, DRAGATSANIOU ATHINA	+30 2103350599	+30210-3254846							
ONE PLUS CAPITAL LIMITED			a	a					
, 75 PRODOMOU AVENUE, ONEWORLD PARKVIEW HOUSE, 3RD FLOOR NICOSIA	+357 22873760								
PANTELAKIS SECURITIES S.A.			a			a	a		
57, ETHNIKIS ANTISTASIS B CHALANDRI	+30 2106965000	210-6929550							
PEGASUS SECURITIES S.A			a			a			
17 , VALAORITOU & AMERIKIS ATHINA	+30 2103670700	+30 210-3670760							
PIRAEUS BANK S.A.			a			a		a	
4, AMERIKIS STR. ATHINA	(210)-3335000	(210)-3335079							
4, AMERIKIS STR ATHINA	(210)-3335918	(210)-3254207							
4, AMERIKIS ATHINA	+30 2103335000	210-3335079							
PIRAEUS SECURITIES S.A.			a		a	a	a		a
5, KORAI ATHINA	+30 2103354100	210-3354170							
PRELIUM SECURITIES-INVESTMENT SERVICES S.A.			a			a			
342, KIFISIAS ATHINA	+30 2103677000	+30 210-6926403							
PROCHOICE SECURITIES LTD			a	a					
57, SPYROY KYPRIANOY NICOSIA	+357-24-661192	+357-24-662464							
SHARELINK SECURITIES-FINANCIAL SERVICES LTD			a	a		a			
6 , THEOTOKI MEGARO ELLINA NICOSIA	+357 22554200	+357 22750852							
SOCIETE GENERALE S.A.			a	a		a			
, 17 COURS VALMY 92987 PUTEAUX - LA DEFENSE PARIS	+33 157290504	+33142138697							
SOLIDUS SECURITIES S.A			a			a			a
64, LOUIZIS RIANCOUR ATHINA	+30 2106900600	210-6985421							
ST. EM. LAVRENTAKIS SECURITIES S.A.			a			a			
7-9, SOFOKLEOUS ATHINA	+30 2103213336	+30 210-3246572							

Athex & ATHEXClear Members List

Member Name			Stock Market			Derivatives Market		ATHEXClear Member	
Address	Phone	Fax	Market Member	Remote Member	Market Maker	Proprietary	Market Maker	General Clearing	Direct Clearing
THE CYPRUS INVESTMENT & SECURITIES CORPORATION LTD			a	a					
154, LIMASSOL AVENUE, STROVOLOS NICOSIA	+357 22121700	357 22338800							
UBS LIMITED			a	a					
1 , FINSBURY AVENUE LONDON	+44 2075687135								

List of Stocks under Market Making operations

Securities	Stock Category
Market Maker	Start Market Making
ADMIE (IPTO) HOLDING S.A. (CR)	Main Market
PIRAEUS SECURITIES S.A.	29/06/2017
ALPHA BANK (CR)	Main Market
ALPHA FINANCE INVESTMENT SERVICES S.A.	29/02/2016
EUROBANK SECURITIES INVESTMENT FIRM S.A	24/10/2012
LEON DEPOLAS SECURITIES S.A.	04/01/2016
MERIT SECURITIES S.A	03/09/2013
MIDAS BROKERAGE S.A.	11/01/2006
NATIONAL SECURITIES S.A	15/01/2013
PIRAEUS SECURITIES S.A.	28/05/2013
ALUMIL (CR)	Main Market
BETA SECURITIES S.A.	18/07/2013
ATTICA BANK S.A. (CR)	Main Market
BETA SECURITIES S.A.	02/06/2014
EUROXX SECURITIES S.A.	22/01/2016
BYTE COMPUTER SA (CR)	Main Market
MERIT SECURITIES S.A	04/08/2013
CC HBC AG (CR)	Main Market
EUROBANK SECURITIES INVESTMENT FIRM S.A	23/10/2013
NATIONAL SECURITIES S.A	29/04/2013
PIRAEUS SECURITIES S.A.	04/05/2015
CENERGY HOLDINGS (CB)	Main Market
ALPHA FINANCE INVESTMENT SERVICES S.A.	02/01/2017
EUROBANK SECURITIES INVESTMENT FIRM S.A	02/01/2017
ELASTRON (CR)	Main Market
LEON DEPOLAS SECURITIES S.A.	20/02/2017
ELLAKTOR (CR)	Main Market
EUROBANK SECURITIES INVESTMENT FIRM S.A	01/06/2013
NATIONAL SECURITIES S.A	25/06/2013
ELTON SA (CR)	Main Market
BETA SECURITIES S.A.	03/09/2013
EUROBANK ERGASIAS (CR)	Main Market
ALPHA FINANCE INVESTMENT SERVICES S.A.	08/01/2013
EUROBANK SECURITIES INVESTMENT FIRM S.A	01/06/2013
HELLENICAMERICAN SEC. S.A.	25/07/2014
MIDAS BROKERAGE S.A.	07/01/2016
PIRAEUS SECURITIES S.A.	28/09/2013
FOLLI FOLLIE (CR)	Main Market
NATIONAL SECURITIES S.A	17/02/2014
PIRAEUS SECURITIES S.A.	04/05/2015
FOURLIS (CR)	Main Market
EUROBANK SECURITIES INVESTMENT FIRM S.A	01/12/2016
EUROXX SECURITIES S.A.	01/12/2016
PIRAEUS SECURITIES S.A.	06/03/2017
GEK TERNA (CR)	Main Market
HELLENICAMERICAN SEC. S.A.	07/09/2015
GR. SARANTIS SA (CR)	Main Market
ALPHA FINANCE INVESTMENT SERVICES S.A.	19/06/2017
BETA SECURITIES S.A.	14/05/2013
EUROBANK SECURITIES INVESTMENT FIRM S.A	24/10/2016
HELLENIC EXCHANGES-A.S.E. (CR)	Main Market
EUROBANK SECURITIES INVESTMENT FIRM S.A	01/06/2013
HELLENICAMERICAN SEC. S.A.	01/09/2014
NATIONAL SECURITIES S.A	25/06/2013
PIRAEUS SECURITIES S.A.	04/05/2015
HELLENIC PETROLEUM (CR)	Main Market
HELLENICAMERICAN SEC. S.A.	14/09/2015
PIRAEUS SECURITIES S.A.	20/03/2017
HYGEIA SA (CR)	Main Market
HELLENICAMERICAN SEC. S.A.	18/04/2016
INTERCONTINENTAL (CR)	Main Market
EUROXX SECURITIES S.A.	20/02/2017
INTRACOM HOLDINGS (CR)	Main Market
HELLENICAMERICAN SEC. S.A.	07/09/2015
INTRALOT (CR)	Main Market
BETA SECURITIES S.A.	10/04/2017
EUROXX SECURITIES S.A.	12/06/2017
PIRAEUS SECURITIES S.A.	28/09/2013

List of Stocks under Market Making operations

Securities	Stock Category
Market Maker	Start Market Making
J & P - AVAX SA (CR)	Main Market
EUROBANK SECURITIES INVESTMENT FIRM S.A	14/12/2015
JUMBO SA (CR)	Main Market
MIDAS BROKERAGE S.A.	27/07/2016
PIRAEUS SECURITIES S.A.	06/03/2017
KLOUKINAS - LAPPAS SA (CR)	Main Market
BETA SECURITIES S.A.	22/09/2014
KRI-KRI S.A. (CR)	Main Market
LEON DEPOLAS SECURITIES S.A.	16/01/2017
LAMDA DEVELOPMENT SA (CR)	Main Market
EUROBANK SECURITIES INVESTMENT FIRM S.A	08/12/2014
PIRAEUS SECURITIES S.A.	29/06/2017
LAMPSA HOTEL SA (CR)	Main Market
LEON DEPOLAS SECURITIES S.A.	16/01/2017
MARFIN INVESTMENT GROUP (CR)	Main Market
HELLENICAMERICAN SEC. S.A.	25/07/2014
LEON DEPOLAS SECURITIES S.A.	20/02/2017
PIRAEUS SECURITIES S.A.	02/02/2013
MLS MULTIMEDIA SA (CR)	Main Market
HELLENICAMERICAN SEC. S.A.	07/12/2015
MOTOR OIL (CR)	Main Market
EUROBANK SECURITIES INVESTMENT FIRM S.A	23/10/2012
HELLENICAMERICAN SEC. S.A.	01/09/2014
NATIONAL SECURITIES S.A	17/02/2014
PIRAEUS SECURITIES S.A.	04/05/2015
MYTILINEOS HOLDINGS (CR)	Main Market
NATIONAL SECURITIES S.A	25/06/2013
PIRAEUS SECURITIES S.A.	04/05/2015
NATIONAL BANK (CR)	Main Market
ALPHA FINANCE INVESTMENT SERVICES S.A.	08/01/2013
EUROBANK SECURITIES INVESTMENT FIRM S.A	24/10/2012
HELLENICAMERICAN SEC. S.A.	25/07/2014
LEON DEPOLAS SECURITIES S.A.	20/04/2015
MERIT SECURITIES S.A	03/09/2013
MIDAS BROKERAGE S.A.	07/01/2016
NATIONAL SECURITIES S.A	28/02/2013
PIRAEUS SECURITIES S.A.	08/09/2013
OPAP (CR)	Main Market
ALPHA FINANCE INVESTMENT SERVICES S.A.	08/01/2013
EUROBANK SECURITIES INVESTMENT FIRM S.A	24/10/2012
HELLENICAMERICAN SEC. S.A.	25/07/2014
MERIT SECURITIES S.A	20/03/2017
MIDAS BROKERAGE S.A.	04/04/2016
NATIONAL SECURITIES S.A	15/01/2013
PIRAEUS SECURITIES S.A.	04/05/2015
OTE (CR)	Main Market
ALPHA FINANCE INVESTMENT SERVICES S.A.	08/01/2013
EUROBANK SECURITIES INVESTMENT FIRM S.A	24/10/2012
HELLENICAMERICAN SEC. S.A.	25/07/2014
MERIT SECURITIES S.A	20/03/2017
MIDAS BROKERAGE S.A.	01/10/2015
NATIONAL SECURITIES S.A	01/12/2012
PIRAEUS SECURITIES S.A.	08/09/2013
PAPOUTSANIS (CR)	Main Market
BETA SECURITIES S.A.	25/11/2013
PETROPOULOS PETROS (CR)	Main Market
BETA SECURITIES S.A.	28/05/2013
PIRAEUS BANK (CR)	Main Market
EUROBANK SECURITIES INVESTMENT FIRM S.A	23/10/2012
EUROXX SECURITIES S.A.	15/02/2016
HELLENICAMERICAN SEC. S.A.	25/07/2014
MERIT SECURITIES S.A	16/09/2013
MIDAS BROKERAGE S.A.	11/01/2016
NATIONAL SECURITIES S.A	02/06/2013
PIRAEUS SECURITIES S.A.	16/02/2013
PLAISIO COMPUTERS SA (CR)	Main Market
BETA SECURITIES S.A.	05/05/2014
EUROBANK SECURITIES INVESTMENT FIRM S.A	02/03/2015

List of Stocks under Market Making operations

Securities	Stock Category
Market Maker	Start Market Making
PPC (CR)	Main Market
ALPHA FINANCE INVESTMENT SERVICES S.A.	08/01/2013
EUROBANK SECURITIES INVESTMENT FIRM S.A	23/10/2012
MIDAS BROKERAGE S.A.	04/04/2016
NATIONAL SECURITIES S.A	26/03/2013
PIRAEUS SECURITIES S.A.	28/09/2013
QUALITY & RELIABILITY SA (CR)	Main Market
BETA SECURITIES S.A.	20/08/2014
S.KANAKIS SA (CR)	Main Market
BETA SECURITIES S.A.	01/10/2013
TITAN CEMENT (CR)	Main Market
EUROBANK SECURITIES INVESTMENT FIRM S.A	23/10/2012
NATIONAL SECURITIES S.A	17/02/2014
PIRAEUS SECURITIES S.A.	04/05/2015
VIOHALCO SA/NV (CB)	Main Market
ALPHA FINANCE INVESTMENT SERVICES S.A.	17/02/2014
MERIT SECURITIES S.A	17/03/2014

Underlying Asset				Derivatives Market													
Price max	Price min	Closing price	change	Delivery Month	Open price	Price max	Price min	Last price	Closing price	Last Bid	Last Ask	Settlement price	Life high	Life low	Trades	Volume	Open Interest
FTSE/Athex Large Cap																	(Trade Unit: 1 Index Point x 2€, Cash Settlement)
2,160.35	2,138.94	2,153.01	0.37%	July 2017	2,140.00	2,161.00	2,134.25	2,152.50	2,152.50	---	---	2,155.50	2,193.25	---	209	1,605	5,663
				August 2017	2,143.00	2,159.00	2,140.00	2,153.00	2,153.00	---	---	2,155.50	---	2,176.75	58	539	770
				September 2017	2,140.00	2,140.00	2,140.00	2,140.00	2,140.00	---	---	2,139.50	2,166.00	---	1	2	48
				December 2017	---	---	---	---	2,165.25	---	---	---	---	---	---	---	---
				March 2018	---	---	---	---	2,176.00	---	---	---	---	---	---	---	---
				June 2018	---	---	---	---	2,186.75	---	---	---	---	---	---	---	---

Underlying Asset				Derivatives Market													
Price max	Price min	Closing price	change	Delivery Month	Open price	Price max	Price min	Last price	Closing price	Last Bid	Last Ask	Settlement price	Life high	Life low	Trades	Volume	Open Interest
ADMIE (IPTO) HOLDING S.A. (CR)				(Contract Size: 100 Securities, Physical Delivery)													
2.27	2.20	2.24	-0.88%	September 2017	2.27	2.27	2.23	2.23	2.23	---	---	2.24	2.30	2.20	32	165	1,188
				December 2017	---	---	---	---	2.28	---	---	---	---	---	---	---	---
				March 2018	---	---	---	---	2.29	---	---	---	---	---	---	---	---
				June 2018	---	---	---	---	2.30	---	---	---	---	---	---	---	---
ALPHA BANK (CR)				(Contract Size: 100 Securities, Physical Delivery)													
2.20	2.16	2.16	0.47%	September 2017	2.17	2.21	2.16	2.16	2.16	---	---	2.19	2.30	---	211	3,812	32,740
				December 2017	---	---	---	---	2.17	---	---	---	---	---	---	---	---
				March 2018	---	---	---	---	2.18	---	---	---	---	---	---	---	---
				June 2018	---	---	---	---	2.19	---	---	---	---	---	---	---	---
CC HBC AG (CR)				(Contract Size: 100 Securities, Physical Delivery)													
26.09	25.67	25.81	-0.62%	September 2017	25.75	25.83	25.75	25.83	25.83	---	---	25.63	26.83	---	3	3	82
				December 2017	---	---	---	---	26.21	---	---	---	---	---	---	---	---
				March 2018	---	---	---	---	26.35	---	---	---	---	---	---	---	---
				June 2018	---	---	---	---	26.48	---	---	---	---	---	---	---	---
CENERGY HOLDINGS (CB)				(Contract Size: 100 Securities, Physical Delivery)													
1.14	1.08	1.12	2.75%	September 2017	1.06	1.13	1.06	1.12	1.12	---	---	1.13	1.17	---	19	127	7,037
				December 2017	---	---	---	---	1.10	---	---	---	---	---	---	---	---
				March 2018	---	---	---	---	1.11	---	---	---	---	---	---	---	---
				June 2018	---	---	---	---	1.11	---	---	---	---	---	---	---	---
ELLAKTOR (CR)				(Contract Size: 100 Securities, Physical Delivery)													
1.47	1.43	1.45	0.00%	September 2017	1.45	1.47	1.44	1.47	1.47	---	---	1.47	1.54	---	19	135	5,665
				December 2017	---	---	---	---	1.46	---	---	1.44	1.47	---	---	---	---
				March 2018	---	---	---	---	1.47	---	---	---	---	---	---	---	---
				June 2018	---	---	---	---	1.48	---	---	---	---	---	---	---	---
EUROBANK ERGASIAS (CR)				(Contract Size: 100 Securities, Physical Delivery)													
0.994	0.955	0.980	2.62%	September 2017	0.955	0.989	0.949	0.975	0.975	---	---	0.986	1.03	---	258	6,518	35,942
				December 2017	---	---	---	---	0.964	---	---	---	---	---	---	---	---
				March 2018	---	---	---	---	0.969	---	---	---	---	---	---	---	---
				June 2018	---	---	---	---	0.974	---	---	---	---	---	---	---	---
EYDAP S.A. (CR)				(Contract Size: 100 Securities, Physical Delivery)													
5.89	5.69	5.88	2.62%	September 2017	5.75	5.88	5.75	5.88	5.88	---	---	5.89	6.03	---	11	20	1,201
				December 2017	---	---	---	---	5.78	---	---	---	---	---	---	---	---
				March 2018	---	---	---	---	5.81	---	---	---	---	---	---	---	---
				June 2018	---	---	---	---	5.84	---	---	---	---	---	---	---	---
FOLLI FOLLIE (CR)				(Contract Size: 100 Securities, Physical Delivery)													
21.40	20.85	21.40	1.91%	September 2017	21.12	21.45	21.12	21.45	21.45	---	---	21.34	21.60	---	28	58	1,636
				December 2017	---	---	---	---	21.20	---	---	---	---	---	---	---	---
				March 2018	---	---	---	---	21.30	---	---	---	---	---	---	---	---
				June 2018	---	---	---	---	21.41	---	---	---	---	---	---	---	---

Underlying Asset				Derivatives Market													
Price max	Price min	Closing price	change	Delivery Month	Open price	Price max	Price min	Last price	Closing price	Last Bid	Last Ask	Settlement price	Life high	Life low	Trades	Volume	Open Interest
FOURLIS (CR)				(Contract Size: 100 Securities, Physical Delivery)													
6.00	5.85	5.87	0.34%	September 2017	---	---	---	---	5.88	---	---	5.82	5.97	---	---	---	158
				December 2017	---	---	---	---	5.90	---	---	---	---	---	---	---	---
				March 2018	---	---	---	---	5.93	---	---	---	---	---	---	---	---
				June 2018	---	---	---	---	5.96	---	---	---	---	---	---	---	---
GEK TERNA (CR)				(Contract Size: 100 Securities, Physical Delivery)													
4.08	4.00	4.06	1.50%	September 2017	4.00	4.06	4.00	4.06	4.06	---	---	4.06	4.08	---	8	35	7,799
				December 2017	---	---	---	---	4.04	---	---	---	---	---	---	---	---
				March 2018	---	---	---	---	4.06	---	---	---	---	---	---	---	---
				June 2018	---	---	---	---	4.08	---	---	---	---	---	---	---	---
GRIVALIA PROPERTIES (CR)				(Contract Size: 100 Securities, Physical Delivery)													
9.20	9.06	9.15	-0.54%	September 2017	---	---	---	---	9.24	---	---	9.23	9.64	---	---	---	115
				December 2017	---	---	---	---	9.29	---	---	---	---	---	---	---	---
				March 2018	---	---	---	---	9.33	---	---	---	---	---	---	---	---
				June 2018	---	---	---	---	9.38	---	---	---	---	---	---	---	---
HELLENIC EXCHANGES-A.S.E. (CR)				(Contract Size: 100 Securities, Physical Delivery)													
5.78	5.68	5.68	-1.73%	September 2017	5.77	5.77	5.73	5.73	5.73	---	---	5.68	5.85	---	3	30	1,765
				December 2017	---	---	---	---	5.83	---	---	---	---	---	---	---	---
				March 2018	---	---	---	---	5.86	---	---	---	---	---	---	---	---
				June 2018	---	---	---	---	5.89	---	---	---	---	---	---	---	---
HELLENIC PETROLEUM (CR)				(Contract Size: 100 Securities, Physical Delivery)													
8.32	8.18	8.30	-0.12%	September 2017	8.10	8.19	8.09	8.10	8.10	---	---	8.18	8.26	---	19	51	4,456
				December 2017	---	---	---	---	8.39	---	---	8.18	7.80	---	---	---	1
				March 2018	---	---	---	---	8.43	---	---	---	---	---	---	---	---
				June 2018	---	---	---	---	8.47	---	---	---	---	---	---	---	---
INTRALOT (CR)				(Contract Size: 100 Securities, Physical Delivery)													
1.22	1.19	1.20	0.00%	September 2017	1.22	1.22	1.20	1.21	1.21	---	---	1.20	1.23	---	22	229	6,402
				December 2017	---	---	---	---	1.21	---	---	---	---	---	---	---	---
				March 2018	---	---	---	---	1.22	---	---	---	---	---	---	---	---
				June 2018	---	---	---	---	1.22	---	---	---	---	---	---	---	---
JUMBO SA (CR)				(Contract Size: 100 Securities, Physical Delivery)													
16.07	15.87	16.00	0.00%	September 2017	16.00	16.64	15.90	16.04	16.04	---	---	15.93	16.64	---	21	93	324
				December 2017	---	---	---	---	16.15	---	---	15.90	16.00	---	---	---	20
				March 2018	---	---	---	---	16.23	---	---	---	---	---	---	---	---
				June 2018	---	---	---	---	16.31	---	---	---	---	---	---	---	---
LAMDA DEVELOPMENT SA (CR)				(Contract Size: 100 Securities, Physical Delivery)													
6.76	6.53	6.63	-1.04%	September 2017	6.67	6.78	6.60	6.69	6.69	---	---	6.69	6.92	6.58	26	144	625
				December 2017	---	---	---	---	6.76	---	---	---	---	---	---	---	---
				March 2018	---	---	---	---	6.80	---	---	---	---	---	---	---	---
				June 2018	---	---	---	---	6.83	---	---	---	---	---	---	---	---

Underlying Asset				Derivatives Market														
Price max	Price min	Closing price	change	Delivery Month	Open price	Price max	Price min	Last price	Closing price	Last Bid	Last Ask	Settlement price	Life high	Life low	Trades	Volume	Open Interest	
MARFIN INVESTMENT GROUP (CR)				(Contract Size: 100 Securities, Physical Delivery)														
0.152	0.145	0.150	4.17%	September 2017	0.148	0.153	0.145	0.150	0.150	---	---	0.150	0.208	---	158	7,345	92,795	
				December 2017	0.151	0.151	0.141	0.141	0.141	---	---	0.142	---	0.151	---	3	1,000	500
				March 2018	---	---	---	---	0.146	---	---	---	---	---	---	---	---	
				June 2018	---	---	---	---	0.147	---	---	---	---	---	---	---	---	
MOTOR OIL (CR)				(Contract Size: 100 Securities, Physical Delivery)														
19.08	18.93	19.07	-0.10%	September 2017	18.93	19.08	18.93	19.08	19.08	---	---	18.93	19.08	---	19	122	352	
				December 2017	---	---	---	---	19.27	---	---	---	---	---	---	---	---	
				March 2018	---	---	---	---	19.37	---	---	---	---	---	---	---	---	
				June 2018	---	---	---	---	19.46	---	---	---	---	---	---	---	---	
MYTILINEOS HOLDINGS (CR)				(Contract Size: 100 Securities, Physical Delivery)														
8.36	8.25	8.26	-1.31%	September 2017	8.29	8.30	8.24	8.24	8.24	---	---	8.21	8.34	---	22	68	10,072	
				December 2017	---	---	---	---	8.45	---	---	---	---	---	---	---	---	
				March 2018	---	---	---	---	8.49	---	---	---	---	---	---	---	---	
				June 2018	---	---	---	---	8.53	---	---	---	---	---	---	---	---	
NATIONAL BANK (CR)				(Contract Size: 100 Securities, Physical Delivery)														
0.333	0.325	0.333	2.46%	September 2017	0.327	0.335	0.326	0.333	0.333	---	---	0.331	0.358	---	179	18,576	146,159	
				December 2017	---	---	---	---	0.328	---	---	---	---	---	---	---	---	
				March 2018	---	---	---	---	0.330	---	---	---	---	---	---	---	---	
				June 2018	---	---	---	---	0.331	---	---	---	---	---	---	---	---	
OPAP (CR)				(Contract Size: 100 Securities, Physical Delivery)														
10.00	9.90	9.90	-0.50%	September 2017	9.98	10.00	9.80	10.00	10.00	---	---	9.95	10.20	---	10	28	1,893	
				December 2017	---	---	---	---	10.04	---	---	---	---	---	---	---	---	
				March 2018	---	---	---	---	10.09	---	---	---	---	---	---	---	---	
				June 2018	---	---	---	---	10.14	---	---	---	---	---	---	---	---	
OTE (CR)				(Contract Size: 100 Securities, Physical Delivery)														
10.58	10.46	10.54	0.38%	September 2017	10.49	10.49	10.35	10.46	10.46	---	---	10.42	10.79	---	49	281	7,209	
				December 2017	---	---	---	---	10.60	---	---	10.28	9.85	---	---	---	---	
				March 2018	---	---	---	---	10.65	---	---	---	---	---	---	---	---	
				June 2018	---	---	---	---	10.70	---	---	---	---	---	---	---	---	
P.P.A. S.A. (CR)				(Contract Size: 100 Securities, Physical Delivery)														
15.47	14.92	15.43	0.07%	September 2017	15.37	15.39	15.26	15.26	15.26	---	---	15.44	15.47	---	7	18	979	
				December 2017	---	---	---	---	15.56	---	---	---	---	---	---	---	---	
				March 2018	---	---	---	---	15.64	---	---	---	---	---	---	---	---	
				June 2018	---	---	---	---	15.72	---	---	---	---	---	---	---	---	
PIRAEUS BANK (CR)				(Contract Size: 100 Securities, Physical Delivery)														
0.215	0.206	0.215	3.86%	September 2017	0.208	0.216	0.208	0.214	0.214	---	---	0.214	0.242	---	169	9,315	227,642	
				December 2017	---	---	---	---	0.209	---	---	0.214	0.233	---	---	---	---	
				March 2018	---	---	---	---	0.210	---	---	---	---	---	---	---	---	
				June 2018	---	---	---	---	0.211	---	---	---	---	---	---	---	---	

Underlying Asset				Derivatives Market													
Price max	Price min	Closing price	change	Delivery Month	Open price	Price max	Price min	Last price	Closing price	Last Bid	Last Ask	Settlement price	Life high	Life low	Trades	Volume	Open Interest
PPC (CR)				(Contract Size: 100 Securities, Physical Delivery)													
2.20	2.12	2.19	2.34%	September 2017	2.15	2.19	2.14	2.19	2.19	---	---	2.15	4.72	---	20	96	360
				December 2017	---	---	---	---	2.16	---	---	---	---	---	---	---	---
				March 2018	---	---	---	---	2.17	---	---	---	---	---	---	---	---
				June 2018	---	---	---	---	2.18	---	---	---	---	---	---	---	---
TERNA ENERGY (CR)				(Contract Size: 100 Securities, Physical Delivery)													
4.00	3.85	3.99	2.57%	September 2017	3.90	4.00	3.90	4.00	4.00	---	---	4.00	4.00	---	39	99	4,520
				December 2017	---	---	---	---	3.93	---	---	4.02	3.51	---	---	---	---
				March 2018	---	---	---	---	3.95	---	---	---	---	---	---	---	---
				June 2018	---	---	---	---	3.97	---	---	---	---	---	---	---	---
TITAN CEMENT (CR)				(Contract Size: 104 Securities, Physical Delivery)													
25.16	24.77	24.77	-1.20%	September 2017	24.99	25.10	24.50	24.50	24.50	---	---	24.76	26.10	---	20	35	115
				December 2017	---	---	---	---	25.31	---	---	---	---	---	---	---	---
				March 2018	---	---	---	---	25.43	---	---	---	---	---	---	---	---
				June 2018	---	---	---	---	25.56	---	---	---	---	---	---	---	---
VIOHALCO SA/NV (CB)				(Contract Size: 100 Securities, Physical Delivery)													
2.95	2.89	2.92	-1.02%	September 2017	2.94	2.97	2.90	2.92	2.92	---	---	2.94	3.00	---	56	295	8,473
				December 2017	2.98	2.98	2.83	2.95	2.95	---	---	2.96	2.98	---	3	19	5
				March 2018	---	---	---	---	2.99	---	---	---	---	---	---	---	---
				June 2018	---	---	---	---	3.01	---	---	---	---	---	---	---	---

FTSE/Athex Large Cap

(Trade Unit: 1 Index Point x 2€ - Exercise Style: European, Cash Settlement)

Call Options																	Put Options																	
Exerise Price	July 2017							August 2017							Other Months		July 2017							August 2017							Other Months		Exerise Price	
	Open price	Price max	Price min	Last price	Closing price	Volume	Open Interest	Open price	Price max	Price min	Last price	Closing price	Volume	Open Interest	Volume	Open Interest	Open price	Price max	Price min	Last price	Closing price	Volume	Open Interest	Open price	Price max	Price min	Last price	Closing price	Volume	Open Interest	Volume	Open Interest		
1,350	-	-	-	-	-	-	-	-	-	-	-	-	-	-	-	-	-	-	-	-	-	-	-	-	-	-	-	-	-	-	-	-	1,350	
1,375	-	-	-	-	-	-	-	-	-	-	-	-	-	-	-	-	-	-	-	-	-	-	-	-	-	-	-	-	-	-	-	-	1,375	
1,400	-	-	-	-	-	-	-	-	-	-	-	-	-	-	-	-	-	-	-	-	-	-	-	-	-	-	-	-	-	-	-	-	1,400	
1,425	-	-	-	-	-	-	-	-	-	-	-	-	-	-	-	-	-	-	-	-	-	-	-	-	-	-	-	-	-	-	-	-	1,425	
1,450	-	-	-	-	-	-	-	-	-	-	-	-	-	-	-	-	-	-	-	-	-	-	-	-	-	-	-	-	-	-	-	-	1,450	
1,475	-	-	-	-	-	-	-	-	-	-	-	-	-	-	-	-	-	-	-	-	-	-	-	-	-	-	-	-	-	-	-	-	1,475	
1,500	-	-	-	-	-	-	-	-	-	-	-	-	-	-	-	-	-	-	-	-	-	-	-	-	-	-	-	-	-	-	-	-	1,500	
1,525	-	-	-	-	-	-	-	-	-	-	-	-	-	-	-	-	-	-	-	-	-	-	-	-	-	-	-	-	-	-	-	-	1,525	
1,550	-	-	-	-	-	-	-	-	-	-	-	-	-	-	-	-	-	-	-	-	-	-	-	-	-	-	-	-	-	-	-	-	1,550	
1,575	-	-	-	-	-	-	-	-	-	-	-	-	-	-	-	-	-	-	-	-	-	-	-	-	-	-	-	-	-	-	-	-	1,575	
1,600	-	-	-	-	-	-	-	-	-	-	-	-	-	-	-	-	-	-	-	-	-	-	-	-	-	-	-	-	-	-	-	-	1,600	
1,625	-	-	-	-	-	-	-	-	-	-	-	-	-	-	-	-	-	-	-	-	-	-	-	-	-	-	-	-	-	-	-	-	1,625	
1,650	-	-	-	-	-	-	-	-	-	-	-	-	-	-	-	-	-	-	-	-	-	-	-	-	-	-	-	-	-	-	-	-	1,650	
1,675	0.00	0.00	0.00	-	467.00	-	20	-	-	-	-	-	-	-	-	-	0.00	0.00	0.00	-	0.02	-	-	-	-	-	-	-	-	-	-	-	-	1,675
1,700	0.00	0.00	0.00	-	442.00	-	-	-	-	-	-	-	-	-	-	-	0.00	0.00	0.00	-	0.01	-	-	-	-	-	-	-	-	-	-	-	-	1,700
1,725	0.00	0.00	0.00	-	417.00	-	-	-	-	-	-	-	-	-	-	-	0.00	0.00	0.00	-	0.01	-	-	-	-	-	-	-	-	-	-	-	-	1,725
1,750	0.00	0.00	0.00	-	392.00	-	-	-	-	-	-	-	-	-	-	-	0.00	0.00	0.00	-	0.01	-	-	-	-	-	-	-	-	-	-	-	-	1,750
1,775	0.00	0.00	0.00	-	367.00	-	-	-	-	-	-	-	-	-	-	-	0.00	0.00	0.00	-	0.01	-	-	-	-	-	-	-	-	-	-	-	-	1,775
1,800	0.00	0.00	0.00	-	342.00	-	-	-	-	-	-	-	-	-	-	-	0.00	0.00	0.00	-	0.02	-	-	-	-	-	-	-	-	-	-	-	-	1,800
1,825	0.00	0.00	0.00	-	317.00	-	-	-	-	-	-	-	-	-	-	-	0.00	0.00	0.00	-	0.01	-	-	-	-	-	-	-	-	-	-	-	-	1,825
1,850	0.00	0.00	0.00	-	292.00	-	-	-	-	-	-	-	-	-	-	-	0.00	0.00	0.00	-	0.03	-	-	-	-	-	-	-	-	-	-	-	-	1,850
1,875	0.00	0.00	0.00	-	267.00	-	-	-	-	-	-	-	-	-	-	-	0.00	0.00	0.00	-	0.07	-	-	-	-	-	-	-	-	-	-	-	-	1,875
1,900	0.00	0.00	0.00	-	243.00	-	10	0.00	0.00	0.00	-	245.00	-	-	-	-	0.00	0.00	0.00	-	0.17	-	8	0.00	0.00	0.00	-	2.90	-	-	-	-	-	1,900
1,925	0.00	0.00	0.00	-	218.00	-	-	0.00	0.00	0.00	-	222.00	-	-	-	-	0.00	0.00	0.00	-	0.39	-	-	0.00	0.00	0.00	-	4.40	-	-	-	-	-	1,925
1,950	0.00	0.00	0.00	-	193.00	-	17	0.00	0.00	0.00	-	199.00	-	-	-	-	0.00	0.00	0.00	-	0.84	-	-	0.00	0.00	0.00	-	6.60	-	-	-	-	-	1,950
1,975	0.00	0.00	0.00	-	169.00	-	-	0.00	0.00	0.00	-	177.00	-	-	-	-	0.00	0.00	0.00	-	1.70	-	-	0.00	0.00	0.00	-	9.60	-	-	-	-	-	1,975
2,000	157.00	158.00	156.00	156.00	156.00	5	70	0.00	0.00	0.00	-	156.00	-	-	-	-	2.50	158.00	2.50	3.00	3.00	5	195	0.00	0.00	0.00	-	13.50	-	1	-	-	-	2,000
2,050	0.00	0.00	0.00	-	102.00	-	55	0.00	0.00	0.00	-	118.00	-	-	-	-	0.00	0.00	0.00	-	9.30	-	76	0.00	0.00	0.00	-	24.75	-	-	-	-	-	2,050
2,100	0.00	0.00	0.00	-	65.00	-	32	0.00	0.00	0.00	-	85.00	-	-	-	-	23.00	0.00	18.00	18.00	18.00	17	185	0.00	0.00	0.00	-	42.00	-	30	-	-	-	2,100
2,150	42.25	42.50	40.00	42.25	42.25	80	412	0.00	0.00	0.00	-	58.00	-	-	-	-	0.00	42.50	0.00	-	44.25	-	37	0.00	0.00	0.00	-	65.00	-	-	-	-	-	2,150
2,200	15.00	22.25	15.00	19.75	19.75	133	368	0.00	0.00	0.00	-	38.00	-	40	-	-	0.00	22.25	0.00	-	76.00	-	141	0.00	0.00	0.00	-	95.00	-	40	-	-	-	2,200
2,250	9.00	9.00	8.00	8.00	8.00	42	392	0.00	0.00	0.00	-	23.50	-	60	-	-	0.00	9.00	0.00	-	115.00	-	-	0.00	0.00	0.00	-	130.00	-	-	-	-	-	2,250
2,300	0.00	0.00	0.00	-	3.10	-	-	0.00	0.00	0.00	-	13.75	-	-	-	-	0.00	0.00	0.00	-	160.00	-	-	0.00	0.00	0.00	-	170.00	-	-	-	-	-	2,300
2,350	0.00	0.00	0.00	-	1.00	-	1	0.00	0.00	0.00	-	7.70	-	20	-	-	0.00	0.00	0.00	-	208.00	-	-	0.00	0.00	0.00	-	214.00	-	-	-	-	-	2,350
2,400	0.00	0.00	0.00	-	0.30	-	-	0.00	0.00	0.00	-	4.10	-	-	-	-	0.00	0.00	0.00	-	257.00	-	-	0.00	0.00	0.00	-	260.00	-	-	-	-	-	2,400
2,450	0.00	0.00	0.00	-	0.07	-	-	0.00	0.00	0.00	-	2.10	-	-	-	-	0.00	0.00	0.00	-	307.00	-	-	0.00	0.00	0.00	-	308.00	-	-	-	-	-	2,450

FTSE/Athex Large Cap

(Trade Unit: 1 Index Point x 2€ - Exercise Style: European, Cash Settlement)

Call Options																	Put Options																			
Exercise Price	July 2017							August 2017							Other Months		July 2017							August 2017							Other Months		Exercise Price			
	Open price	Price max	Price min	Last price	Closing price	Volume	Open Interest	Open price	Price max	Price min	Last price	Closing price	Volume	Open Interest	Volume	Open Interest	Open price	Price max	Price min	Last price	Closing price	Volume	Open Interest	Open price	Price max	Price min	Last price	Closing price	Volume	Open Interest	Volume	Open Interest				
	Totals:						260	1,377							0	120	0	28							22	642							0	71	0	0
	Number of Trades:						81							0	0	0								5							0	0				

ALPHA BANK (CR)

(Contract Size: 100 Securities, Exercise Style: American, Physical Delivery)

Call Options																	Put Options																																
July 2017								August 2017								Other Months		July 2017								August 2017								Other Months															
Exerise Price	Open price	Price max	Price min	Last price	Closing price	Volume	Open Interest	Open price	Price max	Price min	Last price	Closing price	Volume	Open Interest	Volume	Open Interest	Open price	Price max	Price min	Last price	Closing price	Volume	Open Interest	Open price	Price max	Price min	Last price	Closing price	Volume	Open Interest	Volume	Open Interest	Exerise Price																
1.000	-						-	-						-	-						-	-						-	-						-	-						0.010							
1.100	-						-	-						-	-						-	-						-	-						-	-						-	-						0.011
1.200	0.000	0.000	0.000		0.951	-	-	-						-	-						0.000	0.000	0.000		0.001	-	-	-						-	-						0.012								
1.300	0.000	0.000	0.000		0.852	-	-	-						-	-						0.000	0.000	0.000		0.002	-	-	-						-	-						0.013								
1.400	0.000	0.000	0.000		0.752	-	-	-						-	-						0.000	0.000	0.000		0.001	-	-	-						-	-						0.014								
1.500	0.000	0.000	0.000		0.652	-	-	0.000	0.000	0.000		0.655	-	-	-						0.000	0.000	0.000		0.002	-	-	0.000	0.000	0.000		0.001	-	-	-						0.015								
1.600	0.000	0.000	0.000		0.552	-	-	0.000	0.000	0.000		0.557	-	-	-						0.000	0.000	0.000		0.001	-	-	0.000	0.000	0.000		0.002	-	-	-						0.016								
1.700	0.000	0.000	0.000		0.453	-	-	0.000	0.000	0.000		0.461	-	-	-						0.000	0.000	0.000		0.001	-	-	0.000	0.000	0.000		0.007	-	-	-						0.017								
1.800	0.000	0.000	0.000		0.355	-	-	0.000	0.000	0.000		0.371	-	-	-						0.000	0.000	0.000		0.003	-	-	0.000	0.000	0.000		0.016	-	-	-						0.018								
1.900	0.000	0.000	0.000		0.263	-	-	0.000	0.000	0.000		0.288	-	-	-						0.000	0.000	0.000		0.011	-	-	0.000	0.000	0.000		0.033	-	-	-						0.019								
2.000	0.000	0.000	0.000		0.181	-	40	0.000	0.000	0.000		0.216	-	-	-						0.000	0.000	0.000		0.029	-	-	0.000	0.000	0.000		0.061	-	-	-						0.020								
2.200	0.000	0.000	0.000		0.066	-	260	0.000	0.000	0.000		0.109	-	100	-						0.000	0.000	0.000		0.113	-	50	0.000	0.000	0.000		0.153	-	-	-						0.022								
2.400	0.000	0.000	0.000		0.016	-	100	0.000	0.000	0.000		0.047	-	-	-						0.000	0.000	0.000		0.264	-	-	0.000	0.000	0.000		0.291	-	-	-						0.024								
2.600	0.000	0.000	0.000		0.003	-	-	0.000	0.000	0.000		0.018	-	-	-						0.000	0.000	0.000		0.451	-	-	0.000	0.000	0.000		0.463	-	-	-						0.026								
2.800	0.000	0.000	0.000		0.001	-	-	0.000	0.000	0.000		0.006	-	-	-						0.000	0.000	0.000		0.650	-	-	0.000	0.000	0.000		0.652	-	-	-						0.028								
3.000	0.000	0.000	0.000		0.001	-	-	0.000	0.000	0.000		0.002	-	-	-						0.000	0.000	0.000		0.850	-	-	0.000	0.000	0.000		0.850	-	-	-						0.030								
3.200	0.000	0.000	0.000		0.003	-	-	0.000	0.000	0.000		0.001	-	-	-						0.000	0.000	0.000		1.05	-	-	0.000	0.000	0.000		1.05	-	-	-						0.032								
Totals:					0			400	0						100	0	0	0						50	0						0	0		0	0		0												
Number of Trades:					0			0						0	0.00						0		0																										

NATIONAL BANK (CR)

(Contract Size: 100 Securities, Exercise Style: American, Physical Delivery)

Call Options																Put Options																				
July 2017								August 2017								Other Months		July 2017								August 2017								Other Months		
Exerise Price	Open price	Price max	Price min	Last price	Closing price	Volume	Open Interest	Open price	Price max	Price min	Last price	Closing price	Volume	Open Interest	Volume	Open Interest	Open price	Price max	Price min	Last price	Closing price	Volume	Open Interest	Open price	Price max	Price min	Last price	Closing price	Volume	Open Interest	Volume	Open Interest	Exerise Price			
0.050	0.000	0.000	0.000		0.275	-	-	0.000	0.000	0.000		0.275	-	-			0.000	0.000	0.000		0.001	-	-	0.000	0.000	0.000		0.001	-	-			0.001			
0.100	0.000	0.000	0.000		0.225	-	-	0.000	0.000	0.000		0.225	-	-			0.000	0.000	0.000		0.001	-	-	0.000	0.000	0.000		0.001	-	-			0.001			
0.150	0.000	0.000	0.000		0.176	-	-	0.000	0.000	0.000		0.176	-	-			0.000	0.000	0.000		0.001	-	-	0.000	0.000	0.000		0.001	-	-			0.002			
0.200	0.000	0.000	0.000		0.129	-	-	0.000	0.000	0.000		0.129	-	-			0.000	0.000	0.000		0.003	-	-	0.000	0.000	0.000		0.003	-	-			0.002			
0.250	0.000	0.000	0.000		0.088	-	-	0.000	0.000	0.000		0.089	-	-			0.000	0.000	0.000		0.013	-	-	0.000	0.000	0.000		0.013	-	-			0.003			
0.300	0.000	0.000	0.000		0.057	-	200	0.000	0.000	0.000		0.058	-	-			0.000	0.000	0.000		0.032	-	-	0.000	0.000	0.000		0.032	-	-			0.003			
0.350	0.000	0.000	0.000		0.036	-	-	0.000	0.000	0.000		0.037	-	-			0.000	0.000	0.000		0.060	-	-	0.000	0.000	0.000		0.061	-	-			0.004			
0.400	0.000	0.000	0.000		0.021	-	-	0.000	0.000	0.000		0.022	-	-			0.000	0.000	0.000		0.096	-	-	0.000	0.000	0.000		0.096	-	-			0.004			
0.450	0.000	0.000	0.000		0.013	-	-	0.000	0.000	0.000		0.013	-	-			0.000	0.000	0.000		0.137	-	-	0.000	0.000	0.000		0.137	-	-			0.005			
0.500	0.000	0.000	0.000		0.007	-	-	0.000	0.000	0.000		0.008	-	-			0.000	0.000	0.000		0.182	-	-	0.000	0.000	0.000		0.182	-	-			0.005			
0.550	0.000	0.000	0.000		0.004	-	-	0.000	0.000	0.000		0.005	-	-			0.000	0.000	0.000		0.229	-	-	0.000	0.000	0.000		0.229	-	-			0.006			
0.600	0.000	0.000	0.000		0.002	-	-	0.000	0.000	0.000		0.003	-	-			0.000	0.000	0.000		0.277	-	-	0.000	0.000	0.000		0.277	-	-			0.006			
Totals:						0	200							0	0	0	0							0	0							0	250			
Number of Trades:						0								0	0	0								0.00								0	0			

OPAP (CR)

(Contract Size: 100 Securities, Exercise Style: American, Physical Delivery)

Call Options																	Put Options																			
July 2017																	August 2017																	Other Months		
Exerise Price	Open price	Price max	Price min	Last price	Closing price	Volume	Open Interest	Open price	Price max	Price min	Last price	Closing price	Volume	Open Interest	Volume	Open Interest	Open price	Price max	Price min	Last price	Closing price	Volume	Open Interest	Open price	Price max	Price min	Last price	Closing price	Volume	Open Interest	Volume	Open Interest	Exerise Price			
5.200						-	-							-	-								-	-					-	-			0.052			
5.600						-	-							-	-								-	-					-	-			0.056			
6.000						-	-							-	-								-	-					-	-			0.060			
6.400						-	-							-	-								-	-					-	-			0.064			
6.800	0.000	0.000	0.000		3.16	-	-							-	-		0.000	0.000	0.000		0.001	-	-					-	-				0.068			
7.200	0.000	0.000	0.000		2.76	-	-	0.000	0.000	0.000		2.77	-	-			0.000	0.000	0.000		0.001	-	-	0.000	0.000	0.000		0.001	-	-				0.072		
7.600	0.000	0.000	0.000		2.36	-	-	0.000	0.000	0.000		2.37	-	-			0.000	0.000	0.000		0.002	-	-	0.000	0.000	0.000		0.001	-	-				0.076		
8.000	0.000	0.000	0.000		1.96	-	-	0.000	0.000	0.000		1.97	-	-			0.000	0.000	0.000		0.001	-	-	0.000	0.000	0.000		0.002	-	-				0.080		
8.400	0.000	0.000	0.000		1.56	-	-	0.000	0.000	0.000		1.58	-	-			0.000	0.000	0.000		0.001	-	-	0.000	0.000	0.000		0.010	-	-				0.084		
8.800	0.000	0.000	0.000		1.16	-	-	0.000	0.000	0.000		1.21	-	-			0.000	0.000	0.000		0.004	-	60	0.000	0.000	0.000		0.033	-	-				0.088		
9.200	0.000	0.000	0.000		0.787	-	-	0.000	0.000	0.000		0.864	-	-			0.000	0.000	0.000		0.025	-	-	0.000	0.000	0.000		0.088	-	-				0.092		
9.600	0.000	0.000	0.000		0.458	-	5	0.000	0.000	0.000		0.576	-	-			0.000	0.000	0.000		0.097	-	-	0.000	0.000	0.000		0.201	-	-				0.096		
10.000	0.210	0.210	0.210	0.210	0.210	10	14	0.000	0.000	0.000		0.352	-	-			0.000	0.000	0.000		0.261	-	-	0.000	0.000	0.000		0.376	-	-				0.100		
11.000	0.000	0.000	0.000		0.013	-	-	0.000	0.000	0.000		0.069	-	30			0.000	0.000	0.000		1.06	-	-	0.000	0.000	0.000		1.10	-	-				0.110		
12.000	0.000	0.000	0.000		0.001	-	-	0.000	0.000	0.000		0.008	-	-			0.000	0.000	0.000		2.05	-	-	0.000	0.000	0.000		2.05	-	-				0.120		
13.000	0.000	0.000	0.000		0.001	-	-	0.000	0.000	0.000		0.001	-	-			0.000	0.000	0.000		3.05	-	-	0.000	0.000	0.000		3.05	-	-				0.130		
14.000	0.000	0.000	0.000		0.001	-	-	0.000	0.000	0.000		0.001	-	-			0.000	0.000	0.000		4.05	-	-	0.000	0.000	0.000		4.05	-	-				0.140		
15.000	0.000	0.000	0.000		0.001	-	-	0.000	0.000	0.000		0.001	-	-			0.000	0.000	0.000		5.05	-	-	0.000	0.000	0.000		5.05	-	-				0.150		
Totals:						10	19							0	30	0	0							10	60							0	50	0	0	
Number of Trades:						1								0		0								0.00								0		0		

OTE (CR)

(Contract Size: 100 Securities, Exercise Style: American, Physical Delivery)

Call Options																	Put Options																			
July 2017								August 2017								Other Months		July 2017								August 2017								Other Months		
Exerise Price	Open price	Price max	Price min	Last price	Closing price	Volume	Open Interest	Open price	Price max	Price min	Last price	Closing price	Volume	Open Interest	Volume	Open Interest	Open price	Price max	Price min	Last price	Closing price	Volume	Open Interest	Open price	Price max	Price min	Last price	Closing price	Volume	Open Interest	Volume	Open Interest	Exerise Price			
5.600						-	-							-	-							-	-					-	-				0.056			
6.000						-	-							-	-							-	-					-	-				0.060			
6.400	0.000	0.000	0.000		4.11	-	-							-	-		0.000	0.000	0.000		0.001	-	-					-	-				0.064			
6.800	0.000	0.000	0.000		3.71	-	-							-	-		0.000	0.000	0.000		0.001	-	-					-	-				0.068			
7.200	0.000	0.000	0.000		3.31	-	-							-	-		0.000	0.000	0.000		0.001	-	-					-	-				0.072			
7.600	0.000	0.000	0.000		2.91	-	-	0.000	0.000	0.000		2.92	-	-			0.000	0.000	0.000		0.001	-	-	0.000	0.000	0.000		0.001	-	-				0.076		
8.000	0.000	0.000	0.000		2.51	-	-	0.000	0.000	0.000		2.52	-	-			0.000	0.000	0.000		0.001	-	-	0.000	0.000	0.000		0.001	-	-				0.080		
8.400	0.000	0.000	0.000		2.11	-	-	0.000	0.000	0.000		2.13	-	-			0.000	0.000	0.000		0.001	-	-	0.000	0.000	0.000		0.002	-	-				0.084		
8.800	0.000	0.000	0.000		1.71	-	-	0.000	0.000	0.000		1.73	-	-			0.000	0.000	0.000		0.001	-	-	0.000	0.000	0.000		0.009	-	-				0.088		
9.200	0.000	0.000	0.000		1.31	-	-	0.000	0.000	0.000		1.35	-	-			0.000	0.000	0.000		0.003	-	55	0.000	0.000	0.000		0.029	-	-				0.092		
9.600	0.000	0.000	0.000		0.931	-	-	0.000	0.000	0.000		1.01	-	-			0.000	0.000	0.000		0.019	-	68	0.000	0.000	0.000		0.080	-	-				0.096		
10.000	0.000	0.000	0.000		0.587	-	5	0.000	0.000	0.000		0.700	-	-			0.000	0.000	0.000		0.075	-	28	0.000	0.000	0.000		0.174	-	-				0.100		
11.000	0.000	0.000	0.000		0.090	-	19	0.000	0.000	0.000		0.207	-	-			0.000	0.000	0.000		0.579	-	5	0.000	0.000	0.000		0.681	-	-				0.110		
12.000	0.000	0.000	0.000		0.004	-	-	0.000	0.000	0.000		0.037	-	-			0.000	0.000	0.000		1.50	-	-	0.000	0.000	0.000		1.52	-	-				0.120		
13.000	0.000	0.000	0.000		0.002	-	-	0.000	0.000	0.000		0.004	-	-			0.000	0.000	0.000		2.50	-	-	0.000	0.000	0.000		2.50	-	-				0.130		
14.000	0.000	0.000	0.000		0.001	-	-	0.000	0.000	0.000		0.001	-	-			0.000	0.000	0.000		3.50	-	-	0.000	0.000	0.000		3.50	-	-				0.140		
15.000	0.000	0.000	0.000		0.001	-	-	0.000	0.000	0.000		0.001	-	-			0.000	0.000	0.000		4.50	-	-	0.000	0.000	0.000		4.50	-	-				0.150		
16.000	0.000	0.000	0.000		0.001	-	-	0.000	0.000	0.000		0.001	-	-			0.000	0.000	0.000		5.50	-	-	0.000	0.000	0.000		5.50	-	-				0.160		
Totals:						0	24						0	0	0	51						0	156					0	0	0	0					
Number of Trades:							0						0		0							0.00					0		0							

PIRAEUS BANK (CR)

(Contract Size: 100 Securities, Exercise Style: American, Physical Delivery)

Call Options																Put Options																				
July 2017								August 2017								Other Months		July 2017								August 2017								Other Months		
Exercise Price	Open price	Price max	Price min	Last price	Closing price	Volume	Open Interest	Open price	Price max	Price min	Last price	Closing price	Volume	Open Interest	Volume	Open Interest	Open price	Price max	Price min	Last price	Closing price	Volume	Open Interest	Open price	Price max	Price min	Last price	Closing price	Volume	Open Interest	Volume	Open Interest	Exercise Price			
0.050	0.000	0.000	0.000		0.157	-	-	0.000	0.000	0.000		0.157	-	-			0.000	0.000	0.000		0.005	-	-	0.000	0.000	0.000		0.001	-	-			0.001			
0.100	0.000	0.000	0.000		0.108	-	-	0.000	0.000	0.000		0.109	-	-			0.000	0.000	0.000		0.001	-	-	0.000	0.000	0.000		0.002	-	-			0.001			
0.150	0.000	0.000	0.000		0.067	-	-	0.000	0.000	0.000		0.069	-	-			0.000	0.000	0.000		0.010	-	-	0.000	0.000	0.000		0.011	-	-			0.002			
0.200	0.000	0.000	0.000		0.039	-	330	0.000	0.000	0.000		0.041	-	-			0.000	0.000	0.000		0.032	-	-	0.000	0.000	0.000		0.033	-	-			0.002			
0.250	0.000	0.000	0.000		0.022	-	-	0.000	0.000	0.000		0.024	-	-			0.000	0.000	0.000		0.064	-	-	0.000	0.000	0.000		0.066	-	-			0.003			
0.300	0.000	0.000	0.000		0.012	-	-	0.000	0.000	0.000		0.014	-	-			0.000	0.000	0.000		0.104	-	-	0.000	0.000	0.000		0.106	-	-			0.003			
0.350	0.000	0.000	0.000		0.006	-	-	0.000	0.000	0.000		0.008	-	-			0.000	0.000	0.000		0.149	-	-	0.000	0.000	0.000		0.150	-	-			0.004			
0.400	0.000	0.000	0.000		0.003	-	-	0.000	0.000	0.000		0.004	-	-			0.000	0.000	0.000		0.196	-	-	0.000	0.000	0.000		0.197	-	-			0.004			
0.450	0.000	0.000	0.000		0.002	-	-	0.000	0.000	0.000		0.003	-	-			0.000	0.000	0.000		0.245	-	-	0.000	0.000	0.000		0.245	-	-			0.005			
0.500	0.000	0.000	0.000		0.001	-	-	0.000	0.000	0.000		0.002	-	-			0.000	0.000	0.000		0.294	-	-	0.000	0.000	0.000		0.294	-	-			0.005			
Totals:						0	330							0	0	0	0							0	0							0	0	0	0	
Number of Trades:						0								0	0	0								0.00								0	0		0	

PPC (CR)

(Contract Size: 100 Securities, Exercise Style: American, Physical Delivery)

Call Options																Put Options																	
July 2017																August 2017																Other Months	
Exercise Price	Open price	Price max	Price min	Last price	Closing price	Volume	Open Interest	Open price	Price max	Price min	Last price	Closing price	Volume	Open Interest	Volume	Open Interest	Open price	Price max	Price min	Last price	Closing price	Volume	Open Interest	Open price	Price max	Price min	Last price	Closing price	Volume	Open Interest	Volume	Open Interest	Exercise Price
1.600	0.000	0.000	0.000		0.543	-	-	0.000	0.000	0.000		0.549	-	-			0.000	0.000	0.000		0.001	-	-	0.000	0.000	0.000		0.005	-	-			0.016
1.700	0.000	0.000	0.000		0.445	-	-	0.000	0.000	0.000		0.457	-	-			0.000	0.000	0.000		0.003	-	-	0.000	0.000	0.000		0.012	-	-			0.017
1.800	0.000	0.000	0.000		0.351	-	-	0.000	0.000	0.000		0.371	-	-			0.000	0.000	0.000		0.009	-	-	0.000	0.000	0.000		0.026	-	-			0.018
1.900	0.000	0.000	0.000		0.265	-	-	0.000	0.000	0.000		0.292	-	-			0.000	0.000	0.000		0.022	-	-	0.000	0.000	0.000		0.047	-	-			0.019
2.000	0.000	0.000	0.000		0.189	-	-	0.000	0.000	0.000		0.224	-	-			0.000	0.000	0.000		0.046	-	-	0.000	0.000	0.000		0.079	-	-			0.020
2.200	0.000	0.000	0.000		0.081	-	-	0.130	0.130	0.120	0.130	0.130	110	260			0.000	0.000	0.000		0.139	-	-	0.000	0.000	0.000		0.175	-	-			0.022
2.400	0.000	0.000	0.000		0.028	-	-	0.000	0.000	0.000		0.058	-	450			0.000	0.000	0.000		0.285	-	-	0.000	0.000	0.000		0.313	-	-			0.024
2.600	0.000	0.000	0.000		0.008	-	-	0.000	0.000	0.000		0.025	-	50			0.000	0.000	0.000		0.466	-	-	0.000	0.000	0.000		0.480	-	-			0.026
2.800	0.000	0.000	0.000		0.002	-	-	0.000	0.000	0.000		0.010	-	-			0.000	0.000	0.000		0.660	-	-	0.000	0.000	0.000		0.666	-	-			0.028
3.000	0.000	0.000	0.000		0.001	-	-	0.000	0.000	0.000		0.004	-	-			0.000	0.000	0.000		0.860	-	-	0.000	0.000	0.000		0.861	-	-			0.030
3.200	0.000	0.000	0.000		0.001	-	-	0.000	0.000	0.000		0.001	-	-			0.000	0.000	0.000		1.06	-	-	0.000	0.000	0.000		1.06	-	-			0.032
3.400	0.000	0.000	0.000		0.001	-	-	0.000	0.000	0.000		0.001	-	-			0.000	0.000	0.000		1.26	-	-	0.000	0.000	0.000		1.26	-	-			0.034
3.600	0.000	0.000	0.000		0.001	-	-	0.000	0.000	0.000		0.001	-	-			0.000	0.000	0.000		1.46	-	-	0.000	0.000	0.000		1.46	-	-			0.036
3.800	0.000	0.000	0.000		0.001	-	-	0.000	0.000	0.000		0.001	-	-			0.000	0.000	0.000		1.66	-	-	0.000	0.000	0.000		1.66	-	-			0.038
4.000	0.000	0.000	0.000		0.001	-	-	0.000	0.000	0.000		0.001	-	-			0.000	0.000	0.000		1.86	-	-	0.000	0.000	0.000		1.86	-	-			0.040
4.400	0.000	0.000	0.000		0.001	-	-	0.000	0.000	0.000		0.001	-	-			0.000	0.000	0.000		2.26	-	-	0.000	0.000	0.000		2.26	-	-			0.044
4.800	0.000	0.000	0.000		0.001	-	-	0.000	0.000	0.000		0.001	-	-			0.000	0.000	0.000		2.66	-	-	0.000	0.000	0.000		2.66	-	-			0.048
5.200	0.000	0.000	0.000		0.001	-	-	0.000	0.000	0.000		0.001	-	-			0.000	0.000	0.000		3.06	-	-	0.000	0.000	0.000		3.06	-	-			0.052
5.600	0.000	0.000	0.000		0.001	-	-	0.000	0.000	0.000		0.001	-	-			0.000	0.000	0.000		3.46	-	-	0.000	0.000	0.000		3.46	-	-			0.056
6.000	0.000	0.000	0.000		0.001	-	-	0.000	0.000	0.000		0.001	-	-			0.000	0.000	0.000		3.86	-	-	0.000	0.000	0.000		3.86	-	-			0.060
6.400	0.000	0.000	0.000		0.001	-	-	0.000	0.000	0.000		0.001	-	-			0.000	0.000	0.000		4.26	-	-	0.000	0.000	0.000		4.26	-	-			0.064
6.800	0.000	0.000	0.000		0.001	-	-	0.000	0.000	0.000		0.001	-	-			0.000	0.000	0.000		4.66	-	-	0.000	0.000	0.000		4.66	-	-			0.068
Totals:						0	0							110	760	0	0							0	0	0	0						
Number of Trades:						0								3		0							0.00		0	0							

Lending Products	Underlying Title	Multilateral Transactions[1]					Bilateral Transactions[2]		Stock Borrowing through OTC (volume)[3]
		Open Interest[5]	Volume(Offered)	Average Weighted	Transactions volume	Average Weighted	Transactions Volume	Average Weighte	Transactions Volume
ADMIEBOR	ADMIE (IPTO) HOLDING S.A. (CR)	---	1,599	5.31%	---	---	---	---	402,300
AEGNBOR	AEGEAN AIRLINES (CR)	500	21,094	5.31%	---	---	---	---	11,701
ALPHABOR	ALPHA BANK (CR)	25,001	21,803	5.31%	---	---	---	---	13,298,341
ALMYBOR	ALUMIL (CR)	---	---	---	---	---	---	---	---
EEEBOR	CC HBC AG (CR)	2,177	8	5.34%	---	---	---	---	70,546
CENERBOR	CENERGY HOLDINGS (CB)	---	2,000	5.31%	---	---	---	---	---
ELLAKTORBOR	ELLAKTOR (CR)	---	64,006	5.31%	---	---	---	---	---
EUROBBOR	EUROBANK ERGASIAS (CR)	4,155	112,918	3.31%	---	---	14,000	0.01%	9,033,546
EYDAPBOR	EYDAP S.A. (CR)	800	2,456	5.31%	---	---	---	---	17,880
FFGRPBOR	FOLLI FOLLIE (CR)	1,716	85,936	5.31%	101	2.65%	---	---	582,380
FOYRKBOR	FOURLIS (CR)	---	4,878	5.31%	---	---	---	---	4,650
GEKTERNABOR	GEK TERNA (CR)	150	26,520	5.31%	---	---	---	---	129
SARBOR	GR. SARANTIS SA (CR)	270	13	5.38%	---	---	---	---	---
EUPROBOR	GRIVALIA PROPERTIES (CR)	2,700	96,062	3.31%	---	---	---	---	20,533
EXAEBOR	HELLENIC EXCHANGES-A.S.E. (CR)	6,400	399,079	3.31%	---	---	---	---	100,365
ELPEBOR	HELLENIC PETROLEUM (CR)	22,110	101,533	3.31%	---	---	---	---	48,025
INLOTBOR	INTRALOT (CR)	---	52,999	5.31%	---	---	---	---	803
BELABOR	JUMBO SA (CR)	8,824	146,166	3.31%	---	---	---	---	48,365
LAMDABOR	LAMDA DEVELOPMENT SA (CR)	14	100	5.32%	---	---	---	---	---
MIGBOR	MARFIN INVESTMENT GROUP (CR)	100,000	164,843	5.31%	---	---	---	---	744,474
MOHBOR	MOTOR OIL (CR)	4,609	28,802	5.31%	---	---	---	---	101,206
MYTILBOR	MYTILINEOS HOLDINGS (CR)	147,194	2,710	5.31%	---	---	---	---	3,200
ETEBOR	NATIONAL BANK (CR)	350,000	777,934	5.31%	---	---	---	---	23,061,707
OPAPBOR	OPAP (CR)	37,600	50,756	3.31%	30,000	2.87%	---	---	834,982
HTOBOR	OTE (CR)	6,281	58,466	5.31%	---	---	---	---	442,237
PPABOR	P.P.A. S.A. (CR)	368	1,377	5.31%	---	---	---	---	2,901
TPEIRBOR	PIRAEUS BANK (CR)	6,061	28,018	5.31%	---	---	---	---	20,415,654
PLAISBOR	PLAISIO COMPUTERS SA (CR)	---	---	---	---	---	---	---	---
PPCBOR	PPC (CR)	2,000	104,003	5.31%	---	---	---	---	476,658
QUALBOR	QUALITY & RELIABILITY SA (CR)	---	---	---	---	---	---	---	---
TENERGYBOR	TERNA ENERGY (CR)	1,000	26,349	5.31%	---	---	---	---	---

Stock Lending Notes

- [1] - Multilateral contracts Lending or Borrowing as per Methods 8-1, 8-2 and 8-3-3 (According to ATHEX BoD Resolution No.17)
- [2] - Billateral Contracts Lending or Borrowing as per Methods 8-3-1 and 8-3-2 (According to ATHEX BoD Resolution No.20)
- [3] - The information concerning OTC Stock Borrowing Transactions is based on the statements of the Dematerialised Securities System (DSS) operators involved and refers to volumes that have been registered up until the previous working day.
- [4] - Average Price (Volume weighted)
- [5] - The Data concerning Open Interest before the start of trading session

Lending Products	Underlying Title	Multilateral Transactions[1]					Bilateral Transactions[2]		Stock Borrowing through OTC (volume)[3]
		Open Interest[5]	Volume(Offered)	Average Weighted	Transactions volume	Average Weighted	Transactions Volume	Average Weighted	Transactions Volume
TITKBOR	TITAN CEMENT (CR)	10,829	208,714	5.31%	---	---	---	---	16,765
VIOBOR	VIOHALCO SA/NV (CB)	40,500	6,862	5.65%	5,000	5.20%	---	---	---

Stock Lending Notes

[1] - Multilateral contracts Lending or Borrowing as per Methods 8-1, 8-2 and 8-3-3 (According to ATHEX BoD Resolution No.17)

[2] - Billateral Contracts Lending or Borrowing as per Methods 8-3-1 and 8-3-2 (According to ATHEX BoD Resolution No.20)

[3] - The information concerning OTC Stock Borrowing Transactions is based on the statements of the Dematerialised Securities System (DSS) operators involved and refers to volumes that have been registered up until the previous working day.

[4] - Average Price (Volume weighted)

[5] - The Data concerning Open Interest before the start of trading session

Sectors codification for listed companies

533	-	Exploration & Production	537	-	Integrated Oil & Gas
1353	-	Commodity Chemicals	1357	-	Specialty Chemicals
1753	-	Aluminum	1755	-	Nonferrous Metals
1757	-	Steel	1775	-	General Mining
2353	-	Building Materials & Fixtures	2357	-	Heavy Construction
2723	-	Containers & Packaging	2727	-	Diversified Industrials
2733	-	Electrical Components & Equipment	2753	-	Commercial Vehicles & Trucks
2757	-	Industrial Machinery	2773	-	Marine Transportation
2777	-	Transportation Services	2791	-	Business Support Services
2797	-	Industrial Suppliers	3535	-	Distillers & Vintners
3537	-	Soft Drinks	3573	-	Farming Fishing & Plantations
3577	-	Food Products	3722	-	Durable Household Products
3726	-	Furnishings	3728	-	Home Construction
3747	-	Toys	3763	-	Clothing & Accessories
3765	-	Footwear	3767	-	Personal Products
3785	-	Tobacco	4533	-	Health Care Providers
4535	-	Medical Equipment	4577	-	Pharmaceuticals
5337	-	Food Retailers & Wholesalers	5371	-	Apparel Retailers
5373	-	Broadline Retailers	5375	-	Home Improvement Retailers
5379	-	Specialty Retailers	5553	-	Broadcasting & Entertainment
5555	-	Media Agencies	5557	-	Publishing
5751	-	Airlines	5752	-	Gambling
5753	-	Hotels	5755	-	Recreational Services
5757	-	Restaurants & Bars	5759	-	Travel & Tourism
6535	-	Fixed Line Telecommunications	6575	-	Mobile Telecommunications
7535	-	Conventional Electricity	7537	-	Alternative Electricity
7577	-	Water	8355	-	Banks
8534	-	Insurance Brokers	8536	-	Property & Casualty Insurance
8633	-	Real Estate Holding & Development	8637	-	Real Estate Services
8671	-	Industrial & Office REITs	8674	-	Diversified REITs
8675	-	Specialty REITs	8775	-	Specialty Finance
8777	-	Investment Services	8985	-	Equity Investment Instruments
9533	-	Computer Services	9535	-	Internet
9537	-	Software	9572	-	Computer Hardware
9574	-	Electronic Office Equipment	9578	-	Telecommunications Equipment
12003	-	ETF			



ATHEXGROUP

Όμιλος Χρηματοπιστηρίου Αθηνών

Λεωφ. Αθηνών 110 104 42 Αθήνα

110, Athinon Ave. GR 104 42 Athens

tel. (+30)210-33.66.800, fax (+30)210-33.66.101

www.athexgroup.gr