

Hellenic Exchanges – Athens Stock Exchange S.A.

**Ημερήσιο Δελτίο
Συναλλακτικής Δραστηριότητας**

Daily Official List
of Trading Activity



Thursday, 13 July, 2017

Year: 138 Trading Day No: 133



ATHEXGROUP
Athens Exchange Group

Disclaimer:

Hellenic Exchanges-Athens Stock Exchange S.A. endeavours to ensure that the data and other material ("Information") presented on the Daily Official List are accurate and complete, but it is not liable for any errors or omissions of data or /and for the accuracy, credibility, updating and completeness of the aforesaid information nor it has any liability arising directly or indirectly from the use of the above Information.

The Company is not liable for the accuracy of the data included in listed companies' announcements. Only the sender of such an announcement is fully and solely liable for any infringement of third party's rights from the content of such announcement. All contents of the Daily Official List are provided only for information purposes and do not constitute investment advice or solicitation to invest in securities or other products listed for trading on the Exchange.

You acknowledge and agree that the Company is the owner of any property rights related to any Information appearing on the Daily Official List including intellectual property rights copyright, trademarks, etc.

The above data are a property of the Hellenic Exchanges-Athens Exchange and are copyright protected. Users are forbidden to reproduce, modify, copy, sale, transmit or redistribute, by all reproduction means and methods, part or the whole of the above data, without reference to their source.

The commercial exploitation of these data is, also, forbidden by third parties. Hellenic Exchanges-Athens Exchange does not carry any responsibility, direct or indirect, derived from usage or accidental alteration of the above data when used by third parties.

Hellenic Exchanges – Athens Stock Exchange S.A.

110 Athinon Ave., 10442 Athens, Tel: (210) 33.66.800, Fax: (210) 32.13.938

www.helix.gr

Thessalonica Stock Exchange Center (T.S.E.C)

16-18 Katouni Str., Thessalonica 546 25 Tel: (2310) 567.667, Fax: (2310) 530.545

Athex Members Guarantee Fund

14-16 Fidiou Str., Athens 106 78, Tel: (210) 33.04.682, Fax: (210) 33.04.155

Hellenic Republic Capital Market Commission

1 Kolokotroni Str. & 1 Stadiou Str., Athens 10562 Tel: (210) 33.77.100 Fax: (210) 33.77.173

Table of Contents

Section 1: Statistical Figures of Securities, Derivatives and Lending

Summary of Markets

Athex Indices

Analytic Figures for Athex Market's Boards and Categories

Trading Details by Athex Sectors and Financial Instruments (ETFs)

Top 10 best & worst performing Shares

Derivatives Summary

Section 2: Analytic Figures of Shares Transactions

Analytic Figures of Shares Transactions

Shares' Notes

Section 3: Figures of Securities Transactions

Securities Blocks Details

Shares Rights Details

Stock Borrowing

Shares Forced Sales

Forced Sales Registered Shares

Exchange Traded Funds (ETFs) Characteristics

Section 5: Bonds traded in Fixed Income Assets Market

Convertible Corporate Bonds - Regulated Market

Non Convertible Corporate Bonds - Regulated Market

Government Bonds

Treasury Bills & Zero Coupon Government Bonds

Government Bonds Traded with the Open Outcry Method

State Banks Bonds

Section 6: Additional Infos

Athex & ATHEXClear Members List

List of Stocks under Market Making operations

Section 7: Derivatives Market Analytic Figures

Index Futures

Stock Futures

Index Options

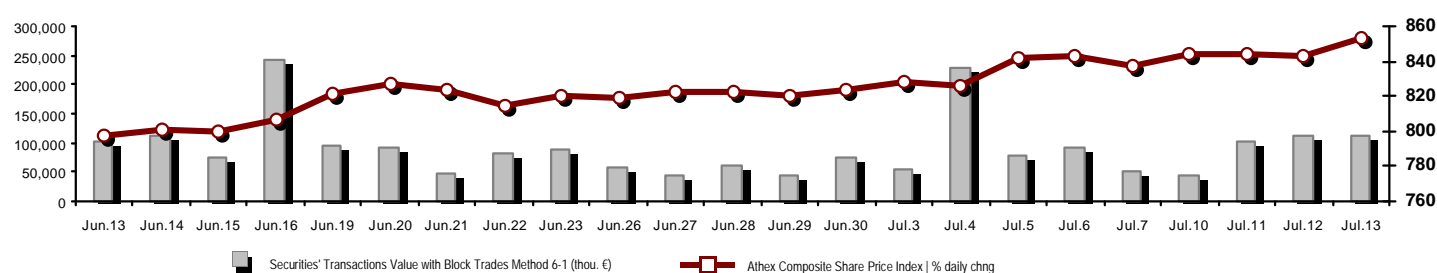
Stock Options

Stock Lending Analytic Figures

Appendix A: Sectors codification for listed companies

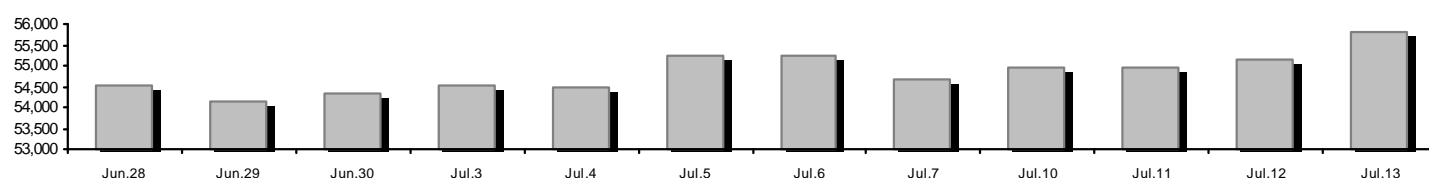
Summary of Markets

Athex Composite Share Price Index vs Shares and Derivatives Transactions Value

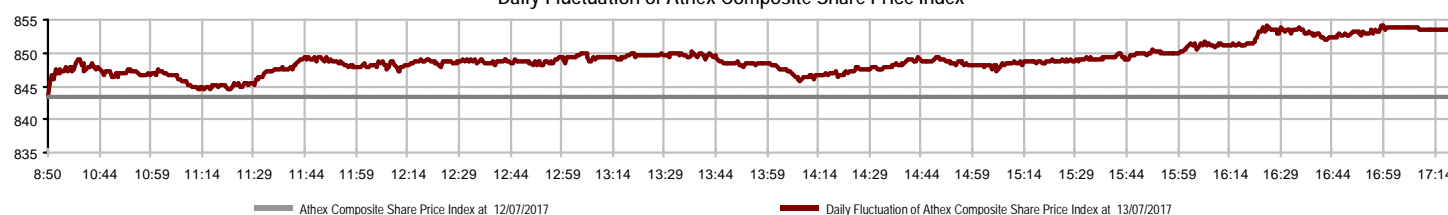


Athex Capitalisation (mill. €) **: 55,804.63			Derivatives Total Open Interest 612,694		
Daily change: mill. € %	664.70	1.21%	in Index Futures % daily chng	9,218	1.27%
Yearly Avg Capitalisation: mill. € % chng prev year Avg	47,943.76	16.51%	in Stock Futures % daily chng	598,433	0.67%
Athex Composite Share Price Index % daily chng	853.54	1.22%	in Index Options % daily chng	3,032	-0.49%
Athex Composite Share Price Index Capitalisation (mill. €)	51,607.29		in Stock Options % daily chng	2,011	-6.94%
Daily change (mill. €)	656.82				
Securities' Transactions Value with Block Trades Method 6-1 (114,107.11			Derivatives Contracts Volume: 51,646		
Daily change: %	1,890.04	1.68%	Daily change: pieces %	-66,519	-56.29%
YtD Avg Trans. Value: thou. € % chng prev year Avg	61,016.13	1.06%	YtD Avg Derivatives Contracts % chng prev year Avg	81,391	31.00%
Blocks Transactions Value of Method 6-1 (thou. €)	24,068.49		Derivatives Trades Number:	2,154	
Blocks Transactions Value of Method 6-2 & 6-3 (thou. €)	0.00		Daily change: number %	-995	-31.60%
Bonds Transactions Value (thou.€)	413.69		YtD Avg Derivatives Trades number % chng prev year Avg	2,609	0.55%
Securities' Transactions Volume with Block Trades Method 6-1 (th 156,583.11			Lending Total Open Interest 653,681		
Daily change: thou. pieces %	12,230.84	8.47%	Daily change: pieces %	-7,375	-1.12%
YtD Avg Volume: % chng prev year Avg	86,131.72	-10.50%	Lending Volume (Multilateral/Bilateral)	17,613	
Blocks Transactions Volume of Method 6-1 (thou. Pieces)	12,936.42		Daily change: pieces %	17,602	-0.06%
Blocks Transactions Volume of Method 6-2 & 6-3 (thou. Pieces)	0.00		Multilateral Lending	113	
Bonds Transactions Volume	408,000.00		Bilateral Lending	17,500	
Securities' Trades Number with Block Trades Method 6-1 20,477			Lending Trades Number: 2		
Daily change: number %	-2,714	-11.70%	Daily change: %	-2	-0.09%
YtD Avg Derivatives Trades number % chng prev year Avg	17,881	-5.22%	Multilateral Lending Trades Number	1	
Number of Blocks Method 6-1	23		Bilateral Lending Trades Number	1	
Number of Blocks Method 6-2 & 6-3	0				
Number of Bonds Transactions	37				

Athex Capitalisation (mill. €) **



Daily Fluctuation of Athex Composite Share Price Index



Athex Indices

Index name	13/07/2017	12/07/2017	pts.	%	Min	Max	Year min	Year max	Year change
Athex Composite Share Price Index	853.54 #	843.22	10.32	1.22%	843.22	854.14	602.43	854.14	32.61% #
FTSE/Athex Large Cap	2,218.80 #	2,187.16	31.64	1.45%	2,187.16	2,220.37	1,610.77	2,220.37	27.45% #
FTSE/Athex Mid Cap Index	1,156.82 #	1,147.51	9.31	0.81%	1,143.12	1,160.65	753.69	1,187.13	53.49% #
FTSE/ATHEX-CSE Banking Index	858.45 #	839.00	19.45	2.32%	839.00	860.38	503.69	860.38	35.36% #
FTSE/ATHEX Global Traders Index Plus	2,317.06 #	2,303.49	13.57	0.59%	2,295.07	2,324.69	1,470.95	2,324.69	53.09% #
FTSE/ATHEX Global Traders Index	2,155.32 #	2,139.93	15.39	0.72%	2,137.58	2,159.92	1,591.53	2,177.10	31.13% #
FTSE/ATHEX Mid & Small Cap Factor-Weighted Ind	1,806.99 #	1,801.39	5.60	0.31%	1,797.20	1,810.51	1,304.24	1,816.07	34.78% #
Greece & Turkey 30 Price Index	533.07 #	529.67	3.40	0.64%	529.56	535.22	407.85	535.22	20.41% #
ATHEX Mid & SmallCap Price Index	3,333.44 #	3,361.67	-28.23	-0.84%	3,312.20	3,391.68	1,675.92	3,391.68	98.90% #
FTSE/Athex Market Index	546.89 #	539.16	7.73	1.43%	539.16	547.26	396.30	547.26	28.05% #
FTSE Med Index	4,792.14 #	4,755.29	36.85	0.77%			4,400.91	4,874.87	4.26% #
Athex Composite Index Total Return Index	1,317.71 #	1,301.78	15.93	1.22%	1,301.78	1,318.64	918.99	1,318.64	34.21% #
FTSE/Athex Large Cap Total Return	3,251.39 #	3,205.03	46.36	1.45%			2,349.55	3,251.39	29.34% #
FTSE/ATHEX Large Cap Net Total Return	947.24 #	933.73	13.51	1.45%	933.73	947.91	678.89	947.91	29.10% #
FTSE/Athex Mid Cap Total Return	1,412.85 #	1,401.48	11.37	0.81%			949.72	1,427.18	53.57% #
FTSE/ATHEX-CSE Banking Total Return Index	881.28 #	861.31	19.97	2.32%			527.29	881.28	35.37% #
Greece & Turkey 30 Total Return Index	688.29 #	677.71	10.58	1.56%			521.62	688.29	22.52% #
Hellenic Mid & Small Cap Index	1,049.31 #	1,044.55	4.76	0.46%	1,041.98	1,051.38	766.60	1,064.17	33.37% #
FTSE/Athex Banks	1,134.23 #	1,108.52	25.71	2.32%	1,108.52	1,136.77	665.50	1,136.77	35.36% #
FTSE/Athex Financial Services	1,250.91 #	1,236.69	14.22	1.15%	1,233.91	1,258.89	942.14	1,279.72	18.38% #
FTSE/Athex Industrial Goods & Services	2,124.49 #	2,091.56	32.93	1.57%	2,067.81	2,131.68	1,432.54	2,242.95	46.02% #
FTSE/Athex Retail	3,155.96 #	3,099.46	56.50	1.82%	3,080.63	3,155.96	2,529.24	3,212.65	12.32% #
FTSE/ATHEX Real Estate	3,409.46 #	3,396.66	12.80	0.38%	3,386.03	3,445.65	2,518.43	3,545.33	29.00% #
FTSE/Athex Personal & Household Goods	8,002.95 #	8,079.08	-76.13	-0.94%	7,989.89	8,187.02	6,663.96	8,561.96	4.61% #
FTSE/Athex Food & Beverage	9,567.99 #	9,362.81	205.18	2.19%	9,362.81	9,568.20	7,597.15	10,246.89	24.13% #
FTSE/Athex Basic Resources	3,721.87 #	3,633.67	88.20	2.43%	3,598.40	3,721.87	2,665.91	3,721.87	37.57% #
FTSE/Athex Construction & Materials	2,999.91 #	2,971.00	28.91	0.97%	2,960.69	3,016.71	2,130.43	3,016.71	33.04% #
FTSE/Athex Oil & Gas	4,745.76 #	4,807.67	-61.91	-1.29%	4,745.76	4,826.94	2,926.97	4,826.94	58.27% #
FTSE/Athex Chemicals	11,490.68 #	11,247.06	243.62	2.17%	11,125.25	11,531.28	9,947.76	11,531.28	13.65% #
FTSE/Athex Travel & Leisure	1,781.93 #	1,774.50	7.43	0.42%	1,763.86	1,783.41	1,424.34	1,814.98	21.51% #
FTSE/Athex Technology	820.20 #	794.54	25.66	3.23%	792.27	820.69	607.65	821.07	28.39% #
FTSE/Athex Telecommunications	2,928.73 #	2,870.93	57.80	2.01%	2,870.93	2,945.25	2,292.89	3,000.30	19.15% #
FTSE/Athex Utilities	2,297.95 #	2,307.55	-9.60	-0.42%	2,290.45	2,321.94	1,380.52	2,554.99	51.50% #
FTSE/Athex Health Care	178.46 #	171.10	7.36	4.30%	171.10	179.38	144.88	186.27	21.63% #
Athex All Share Index	198.38 #	196.03	2.35	1.20%	198.38	198.38	148.93	198.38	24.68% #
Hellenic Corporate Bond Index	113.58 #	113.45	0.13	0.11%			108.78	113.58	3.82% #
Hellenic Corporate Bond Price Index	98.97 #	98.87	0.10	0.10%			96.19	99.34	1.27% #

Note 1: FTSE/Med 100, Greece & Turkey 30 Rt., Hellenic Corporate Bond Price Index and Hellenic Corporate Bond Index closing prices refer to the previous trading day of 11/07/2017.

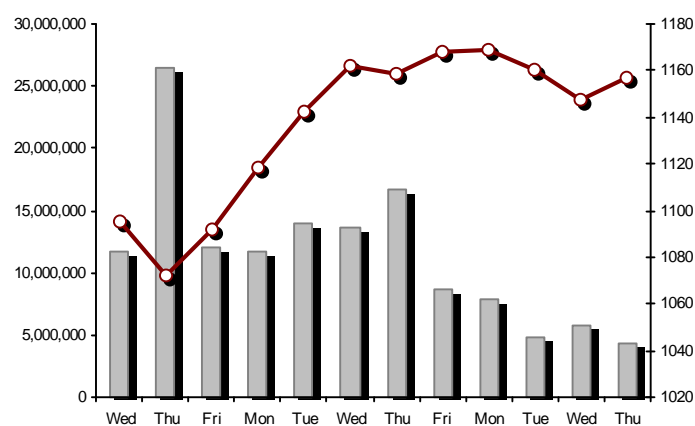
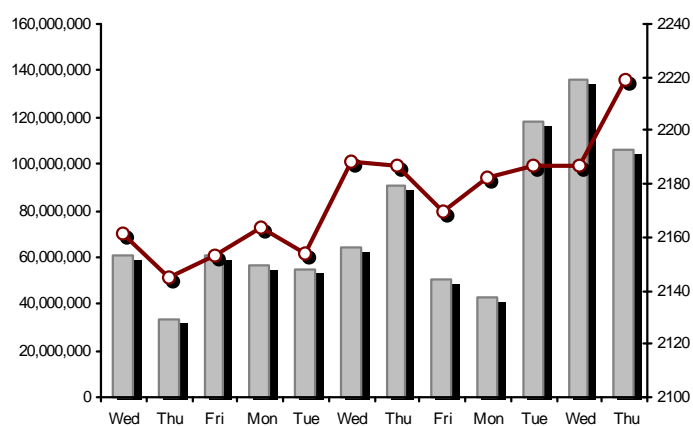
Note 2: The Hellenic Mid & Small Cap Index is a Customized index calculated by the Athens Exchange.

Athex Indices

FTSE/Large Cap

13/07/2017: 1.45% FTSE/Athex Mid Cap Index

13/07/2017: 0.81%

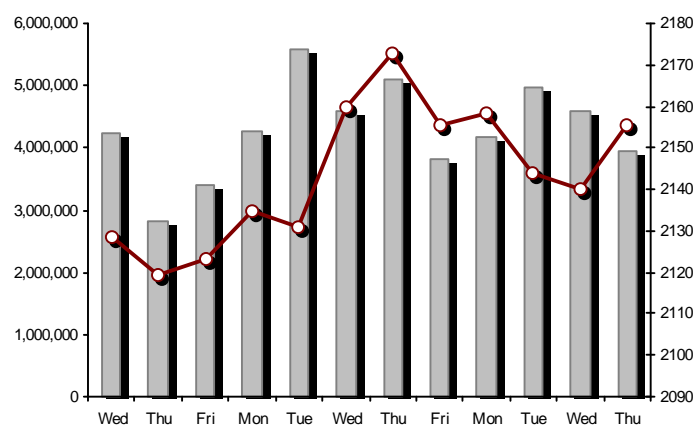
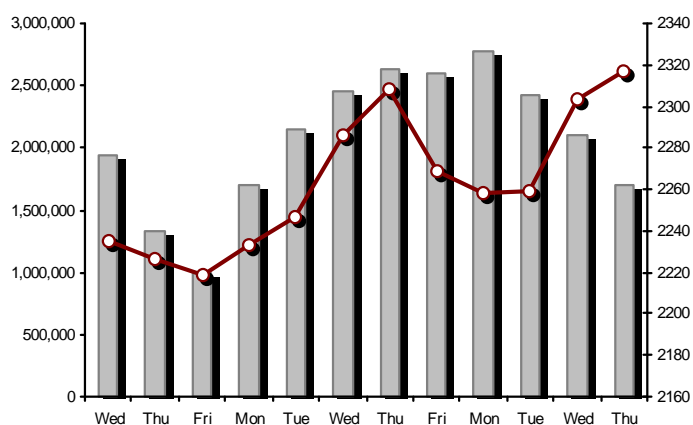


FTSE/ATHEX Global Traders Index Plus

13/07/2017: 0.59%

FTSE/ATHEX Global Traders Index

13/07/2017: 0.72%

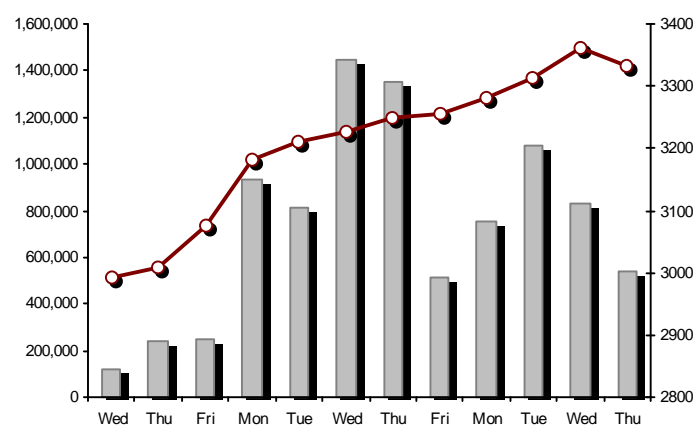
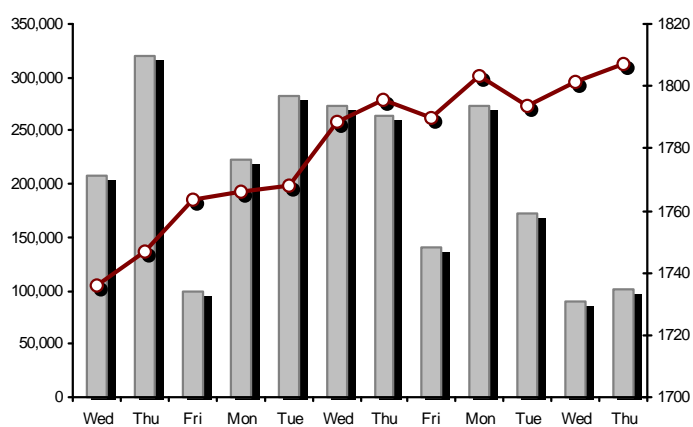


FTSE/ATHEX Mid & Small Cap Factor-Weighted Index

13/07/2017: 0.31%

ATHEX Mid & SmallCap Price Index

13/07/2017: -0.84%



Indices volume of transactions

Indices closing prices

Analytic Figures for Athex Market's Boards and Categories

	Total Traded Securities	Main Market	Low Dispersion	Other Categories (*)	Exchange Traded Funds (ETFs)	Warrants
Totals	135	106	7	20	0	2
Gain / Lose / Same:	66 / 44 / 25	54 / 36 / 16	1 / 3 / 3	11 / 5 / 4	0 / 0 / 0	0 / 0 / 2
Athex Capitalisation (mill. €) **	55,804.63	52,761.72	2,860.19	182.72		
Daily Average Trans/ons Value(thou.€)	61,016.13	60,726.96	302.88	15.26	54.39	4.82
Transactions Value	114,107.11	114,015.73	33.13	12.44	0.00	45.81
Main Board:	90,038.62	89,947.24	33.13	12.44	0.00	45.81
Blocks Board 6_2_3:	24,068.49	24,068.49	0.00	0.00	0.00	0.00
Forced Sales Board:	0.00	0.00	0.00	0.00	0.00	0.00
Special Terms Board:	0.00	0.00	0.00	0.00	0.00	0.00
Daily Average Transactions Volume	86,131,719	82,938,663	66,118	150,874	3,086	3,032,233
Transactions Volume	156,583,105	111,196,078	27,133	175,577	0	45,184,317
Main Board:	143,646,685	98,259,658	27,133	175,577	0	45,184,317
Blocks Board 6_2_3:	12,936,420	12,936,420	0	0	0	0
Forced Sales Board:	0	0	0	0	0	0
Special Terms Board:	0	0	0	0	0	0
Daily Average Number of Trades	17,881	17,705	59	87	3	29
Number of Trades	20,477	20,306	41	111	0	19
Main Board:	20,454	20,283	41	111	0	19
Blocks Board 6_2_3:	23	23	0	0	0	0
Forced Sales Board:	0	0	0	0	0	0
Special Terms Board:	0	0	0	0	0	0

(*) Summarised Transactions figures for Under Deletion and Under Supervision Categories.(**) The Market Capitalization of the Companies that belong in the Under Supervision Status is not included.

Trading Details by Athex Sectors and Financial Instruments (ETFs)

Code	Sectors	Gain / Lose / Same	Number of Trades	Transactions Volume	Transactions Value	% of Total Trans. Value
8300	- Banks	5 / 1 / 2	7,405	146,708,232	71,654,372.28	62.80%
1700	- Basic Resources	5 / 2 / 0	1,075	383,423	2,509,580.11	2.20%
1300	- Chemicals	1 / 1 / 1	86	26,739	48,949.67	0.04%
2300	- Construction & Materials	9 / 4 / 1	1,179	632,272	2,544,372.75	2.23%
12000	- Financial Instruments	0 / 0 / 0	---	---	---	---
8700	- Financial Services	1 / 1 / 1	743	3,042,218	1,029,280.98	0.90%
3500	- Food & Beverage	6 / 5 / 3	489	415,716	909,443.21	0.80%
4500	- Health Care	3 / 1 / 1	151	166,003	88,727.05	0.08%
2700	- Industrial Goods & Services	9 / 4 / 4	1,087	628,999	1,725,680.69	1.51%
8500	- Insurance	0 / 0 / 1	6	10,903	40,877.91	0.04%
5500	- Media	2 / 2 / 0	61	31,054	5,146.21	0.00%
500	- Oil & Gas	2 / 1 / 0	723	180,346	2,206,362.28	1.93%
3700	- Personal & Household Goods	8 / 5 / 1	1,736	421,669	4,156,058.40	3.64%
8600	- Real Estate	1 / 5 / 3	507	87,672	660,498.98	0.58%
5300	- Retail	3 / 0 / 1	437	52,857	1,054,404.03	0.92%
9500	- Technology	3 / 6 / 3	596	586,939	300,627.10	0.26%
6500	- Telecommunications	1 / 0 / 0	1,514	1,401,056	14,787,298.11	12.96%
5700	- Travel & Leisure	5 / 3 / 2	1,305	1,096,997	8,546,692.72	7.49%
7500	- Utilities	2 / 3 / 1	1,377	710,010	1,838,737.00	1.61%

Top 10 best & worst performing Shares

Main Market					
With positive Price change	Closing price	change	With negative Price change	Closing price	change
INTRACOM HOLDINGS (CR)	0.572	6.12% #	QUALITY & RELIABILITY SA (CR)	0.234	-4.49% ⚡
INTRACOM CONSTR. (CR)	0.561	5.25% #	KORRES (CR)	4.17	-4.14% ⚡
HYGEIA SA (CR)	0.388	4.30% #	KIRIAKOULIS SHIPPING SA (CR)	0.640	-3.76% ⚡
EUROBANK ERGASIAS (CR)	1.03	4.04% #	INFORM P. LYKOS SA (CR)	0.779	-2.62% ⚡
PIRAEUS BANK (CR)	0.256	3.23% #	TECHNICAL OLYMPIC SA (CR)	1.64	-2.38% ⚡
IKTINOS HELLAS SA (CR)	1.40	2.94% #	MOTOR OIL (CR)	19.42	-1.92% ⚡
MYTILINEOS HOLDINGS (CR)	8.44	2.43% #	ELASTRON (CR)	1.38	-1.43% ⚡
NIREFS SA (CR)	0.320	2.24% #	JUMBO SA (CR)	15.00	-1.38% ⚡
CC HBC AG (CR)	25.65	2.19% #	INTRALOT (CR)	1.25	-0.79% ⚡
THRACE PLASTICS SA (CR)	2.83	2.17% #	MARFIN INVESTMENT GROUP (CR)	0.155	-0.64% ⚡
With the highest Transactions Value	Value (thou. €)	change	With the highest Transactions Volume	Volume	change
ALPHA BANK (CR)	37,921.89	1.79% #	PIRAEUS BANK (CR)	39,406,835	3.23% #
OTE (CR)	14,787.30	2.01% #	NATIONAL BANK (CR)	25,364,601	1.09% #
EUROBANK ERGASIAS (CR)	13,365.48	4.04% #	ALPHA BANK (CR)	16,674,418	1.79% #
PIRAEUS BANK (CR)	9,983.22	3.23% #	EUROBANK ERGASIAS (CR)	13,274,320	4.04% #
NATIONAL BANK (CR)	9,421.62	1.09% #	ATTICA BANK S.A. (CR)	6,801,124	0.77% #
OPAP (CR)	7,964.98	0.40% #	MARFIN INVESTMENT GROUP (CR)	2,944,193	-0.64% ⚡
JUMBO SA (CR)	3,684.44	-1.38% ⚡	OTE (CR)	1,401,056	2.01% #
MYTILINEOS HOLDINGS (CR)	2,437.89	2.43% #	OPAP (CR)	793,983	0.40% #
TITAN CEMENT (CR)	1,630.43	0.90% #	VIOHALCO SA/NV (CB)	396,849	1.73% #
MOTOR OIL (CR)	1,262.37	-1.92% ⚡	ELLAKTOR (CR)	351,985	0.00% ➡

Note: Stocks that are not included in the "Low Dispersion" and "Under Supervision" categories, and the transactions value is more than 10,000 €.

Derivatives Summary

	Number of Trades	Volume	Open Interest
Index Futures	298	1,512	9,218
FTSE/Athex Large Cap	298	1,512	9,218
Stock Futures	1,813	49,727	598,433
ADMIE (IPTO) HOLDING S.A. (CR)	68	381	3,911
ALPHA BANK (CR)	269	7,039	48,456
CC HBC AG (CR)	5	11	90
CENERGY HOLDINGS (CB)	12	103	7,195
ELLAKTOR (CR)	33	208	9,221
EUROBANK ERGASIAS (CR)	179	7,500	41,310
EYDAP S.A. (CR)	14	29	1,808
FOLLI FOLLIE (CR)	10	29	1,855
FOURLIS (CR)	3	3	198
GEK TERNA (CR)	16	103	8,123
GRIVALIA PROPERTIES (CR)	6	6	218
HELLENIC EXCHANGES-A.S.E. (CR)	31	205	2,454
HELLENIC PETROLEUM (CR)	30	65	4,309
INTRALOT (CR)	38	283	6,212
JUMBO SA (CR)	103	195	405
LAMDA DEVELOPMENT SA (CR)	33	87	1,584
MARFIN INVESTMENT GROUP (CR)	116	3,959	104,450
MOTOR OIL (CR)	9	9	353
MYTILINEOS HOLDINGS (CR)	118	639	9,592
NATIONAL BANK (CR)	140	6,361	118,824
OPAP (CR)	30	247	2,331
OTE (CR)	90	395	8,053
P.P.A. S.A. (CR)	2	11	1,097
PIRAEUS BANK (CR)	288	20,923	200,385
PPC (CR)	31	202	2,116
TERNA ENERGY (CR)	3	12	4,487
TITAN CEMENT (CR)	5	13	122
VIOHALCO SA/NV (CB)	131	709	9,274
Index Options	39	157	3,032
FTSE/Athex Large Cap	39	157	3,032
Stock Options	4	250	2,011
ALPHA BANK (CR)	2	200	260
NATIONAL BANK (CR)	0	0	250
OPAP (CR)	0	0	164
OTE (CR)	0	0	237
PIRAEUS BANK (CR)	0	0	30
PPC (CR)	2	50	1,070
Total Derivatives Traded	2,154	51,646	612,694

Number of Outstanding Securities	Nominal Value	Dividends [1]			Date of Last Coupon		Note	Shares	Closing price	% change	Previous closing price/date	Open price	Price min	Price max	Last price	Avg price	Last Bid [7]	Last Ask [7]	P/E after	Year	Volume	Trades	Transactions Value[8]	Company Mkt Value (thou. €)	Year low	Year high	Sector[4]
		2014	2015	2016	Dividend [2]	Right																					
Warrants																											
1,141,734,167	---	---	---		11/06/2013	---	ALPHA BANK (W)		0.002	---	↘ 0.002	12/07/2017	0.001	0.001	0.002	0.002	0.007060977@0.001	64874282@0.002	---	2015	45,006,232	8	45,007.73	3,519,634.59	0.001	0.002	8355
245,745,661	---	---	---		27/06/2013	---	NATIONAL BANK (W)		0.004	---	↘ 0.004	12/07/2017	0.003	0.003	0.005	0.004	0.005 635@0.004	2352629@0.005	---	2015	178,085	11	805.86	3,402,740.37	0.003	0.008	8355
843,637,022	---	---	---		03/07/2013	---	PIRAEUS BANK (W)		0.001	---	↘ 0.001	12/07/2017	---	---	---	---	---	42091104@0.001	---	2015	---	---	---	2,235,694.92	0.001	0.001	8355

Main Market - High Liquidity Class

1,543,699,381	0.300	---	---	---	07/04/2008	18/04/2017	---	ALPHA BANK (CR)		2.28	1.79 #	2.24	12/07/2017	2.25	2.24	2.29	2.28	2.27 37770@2.27	281086@2.28	---	2015	16,674,418	2,223	37,921,886.71	3,519,634.59	1.53	2.33	8355
2,339,353,394	0.300	---	---	---	04/06/2008	01/12/2015	---	ATTICA BANK S.A. (CR)		0.130	0.77 #	0.129	12/07/2017	0.130	0.127	0.132	0.130	0.130139534@0.129	480092@0.131	---	2015	6,801,124	562	881,078.08	304,115.94	0.030	0.135	8355
190,162,681	---	---	---	---	07/12/2016	---	---	CENERGY HOLDINGS (CB)		1.09	1.87 #	1.07	12/07/2017	1.08	1.05	1.10	1.09	1.08 12177@1.08	4314@1.10	---	---	107,628	144	115,700.51	207,277.32	0.620	1.20	2727
367,769,779	6.70	0.36	0.4	0.44	29/06/2017	29/04/2013	---	CC HBC AG (CR)		25.65	2.19 #	25.10	12/07/2017	25.10	25.10	25.65	25.65	25.44 485@25.60	100@25.67	---	---	29,901	181	760,703.78	9,433,294.83	20.37	27.49	3537
66,948,210	0.300	0.1005	---	---	22/09/2015	22/09/2015	---	FOLLI FOLLIE (CR)		21.59	1.84 #	21.20	12/07/2017	21.34	21.07	21.59	21.59	21.34 100@21.50	1500@21.60	---	2015	49,309	424	1,052,009.96	1,445,411.85	17.31	21.98	5379
51,330,410	1.07	---	---	---	21/06/2010	16/07/2002	---	FOURLIS (CR)		5.81	0.52 #	5.78	12/07/2017	5.84	5.72	5.84	5.81	5.78 830@5.79	168@5.82	---	2015	31,165	129	180,214.18	298,229.68	3.95	6.05	3722
101,260,000	2.13	0.3037	0.3134	0.1902	27/03/2017	08/01/2014	---	GRIVALIA PROPERTIES (CR)		9.28	0.76 #	9.21	12/07/2017	9.17	9.17	9.47	9.28	9.37 347@9.28	51@9.44	41.38	2016	36,124	262	338,283.77	939,692.80	7.54	9.84	8675
136,059,759	0.880	0.18	---	0.36	22/03/2017	05/03/2014	---	JUMBO SA (CR)		15.00	-1.38 €	15.21	12/07/2017	15.40	14.97	15.40	15.00	15.15 829@15.02	300@15.10	24.75	2016	243,255	1,296	3,684,444.46	2,040,896.39	12.62	16.50	3747
79,721,775	0.300	---	---	---	30/05/2007	23/06/2014	---	LAMDA DEVELOPMENT SA (CR)		6.80	-0.15 €	6.81	12/07/2017	6.85	6.70	6.85	6.80	6.76 302@6.77	50@6.81	---	2015	47,119	219	318,371.02	542,108.07	4.20	7.10	8633
939,510,748	0.300	---	---	---	26/04/2007	29/08/2014	---	MARFIN INVESTMENT GROUP (CR)		0.155	-0.64 €	0.156	12/07/2017	0.159	0.153	0.159	0.155	0.155136212@0.154	41530@0.156	---	2015	2,944,193	472	457,132.03	145,624.17	0.134	0.213	8775
259,189,761	---	---	---	---	26/02/2016	---	---	VIOHALCO SA/NV (CB)		2.94	1.73 #	2.89	12/07/2017	2.89	2.82	2.95	2.94	2.88 680@2.93	4050@2.94	---	---	396,849	610	1,142,551.62	762,017.90	1.24	3.18	2727
232,000,000	2.12	---	---	---	19/06/2017	---	---	ADMIE (IPTO) HOLDING S.A. (CR)		2.20	-0.45 €	2.21	12/07/2017	2.21	2.19	2.23	2.20	2.21 50869@2.19	1214@2.22	---	---	339,349	560	748,743.84	510,400.00	2.17	2.49	7535
71,417,100	0.650	0.7	0.7	0.4	17/05/2017	27/06/2014	---	AEGEAN AIRLINES (CR)		8.37	1.33 #	8.26	12/07/2017	8.26	8.24	8.38	8.37	8.30 300@8.34	106@8.35	11.02	2015	32,006	210	265,527.32	597,761.13	6.30	8.64	5751
103,423,291	0.570	---	---	---	01/08/2011	19/04/2016	---	GEK TERNA (CR)		3.98	2.05 #	3.90	12/07/2017	3.94	3.87	3.98	3.98	3.90 100@3.95	211@3.98	25.00	2015	40,619	192	158,556.68	411,624.70	2.20	4.14	2357
232,000,000	2.48	0.05	---	---	20/07/2015	12/12/2001	---	PPC (CR)		2.26	-0.44 €	2.27	12/07/2017	2.27	2.24	2.29	2.26	2.26 7055@2.26	500@2.27	---	2015	282,043	502	638,222.35	524,320.00	1.75	4.73	7535
9,147,151,527	0.300	---	---	---	16/05/2008	30/11/2015	---	NATIONAL BANK (CR)		0.372	1.09 #	0.368	12/07/2017	0.372	0.367	0.374	0.372	0.371 20550@0.371	2769320@0.373	---	2015	25,364,601	1,559	9,421,618.63	3,402,740.37	0.203	0.376	8355
177,001,313	1.03	---	---	---	05/07/2011	20/12/2007	---	ELLAKTOR (CR)		1.80	---	↘ 1.80	12/07/2017	1.80	1.78	1.83	1.80	1.80 9135@1.79	5706@1.80	---	2015	351,985	465	634,083.46	318,602.36	1.04	1.83	2357
65,368,563	1.08	0.21	0.1026	0.065	30/05/2017	04/07/2016	---	HELLENIC EXCHANGES-A.S.E. (CR)		5.97	1.53 #	5.88	12/07/2017	5.92	5.92	6.00	5.97	5.97 6513@5.97	600@6.00	30.31	2015	95,475	265	570,330.46	390,250.32	4.25	6.08	8777
305,635,185	2.18	0.2	---	---	03/07/2017	01/10/2003	4795	HELLENIC PETROLEUM (CR)		8.21	0.12 #	8.20	12/07/2017	8.20	8.20	8.28	8.21	8.24 1225@8.21	50@8.24	91.11	2015	114,275	359	941,368.36	2,509,264.87	4.19	8.40	537
106,500,000	0.600	0.2	0.31	0.11	22/06/2017	28/01/2000	---	EYDAP S.A. (CR)		6.36	0.95 #	6.30	12/07/2017	6.35	6.26	6.39	6.36	6.35 840@6.35	143@6.38	15.51	2015	46,564	119	295,599.05	677,340.00	5.01	6.52	7577
110,782,980	0.750	---	0.65	0.9	26/06/2017	04/11/2013	---	MOTOR OIL (CR)		19.42	-1.92 €	19.80	12/07/2017	19.80	19.36	19.85	19.42	19.66 230@19.41	1500@19.50	10.70	2015	64,211	353	1,262,367.32	2,151,405.47	12.89	19.87	533
142,891,161	0.970	---	---	---	11/05/2009	07/07/2017	---	MYTILINEOS HOLDINGS (CR)		8.44	2.43 #	8.24	12/07/2017	8.21	8.14	8.44	8.44	8.29 250@8.42	5887@8.45	---	2015	293,921	886	2,437,889.96	1,206,001.40	6.04	8.44	1755
25,000,000	2.00	0.099	0.1114	---	18/07/2016	08/08/2003	---	P.P.A. S.A. (CR)		16.14	1.32 #	15.93	12/07/2017	16.00	16.00	16.24	16.14	16.04 10@16.01	355@16.14	60.23	2016	15,893	91	254,858.93	403,500.00	12.30	16.58	2777
319,000,000	0.300	0.57	0.4	0.72	02/05/2017	25/04/2001	---	OPAP (CR)		10.10	0.40 #	10.06	12/07/2017	10.06	9.99	10.11	10.10	10.03 7489@10.07	2976@10.11	15.26	2015	793,983	863	7,964,977.75	3,221,900.00	8.02	10.28	5752
490,150,389	2.83	0.08	0.1	0.16	07/07/2017	18/06/1998	---	OTE (CR)		10.64	2.01 #	10.43	12/07/2017	10.45	10.43	10.70	10.64	10.55 4000@10.63	2654@10.65	56.32	2015	1,401,056	1,514	14,787,298.11	5,215,200.14	8.33	10.90	6535
8,733,183,280	0.300	---	---	---	16/05/2008	27/11/2015	---	PIRAEUS BANK (CR)		0.256	3.23 #	0.248	12/07/2017	0.251	0.248	0.258	0.256	0.25366000@0.255	880484@0.257	---	2015	39,406,835	1,947	9,983,218.43	2,235,694.92	0.147	0.258	8355
34,780,982	1.55	0.15	0.16	0.175	09/05/2017	27/07/2000	---	GR. SARANTIS SA (CR)		12.38	1.31 #	12.22	12/07/2017	12.55	12.20	12.55	12.38	12.36 1223@12.32	33@12.44	39.02	2015	18,939	124	234,070.43	430,588.56	10.00	12.80	3767
109,314,400	0.300	---	0.0935	0.0939	19/06/2017	24/03/2017	---	TERNA ENERGY (CR)		3.95	0.25 #	3.94	12/07/2017	3.98	3.90	3.98	3.95	3.94 174@3.95	345@3.97	-(6)-	2015	33,485	157	132,081.25	431,791.88	2.71	4.14	7537
77,063,568	3.00	0.1551	0.3099	0.1049	13/06/2017	13/06/2017	---	TITAN CEMENT (CR)		25.73	0.90 #	25.50	12/07/2017	25.93	25.42	25.93	25.73	25.72 10@25.63	6500@25.78	36.21	2015	63,395	228	1,630,429.06	2,113,712.92	20.81	27.19	2353
2,185,998,765	0.300	---	---	---	02/05/2008	27/11/2015	---	EUROBANK ERGASIAS (CR)		1.03	4.04 #	0.990	12/07/2017	0.997	0.997	1.03	1.03	1.01 72000@1.02	262810@1.04	---	2015	13,274,320	1,049	13,365,481.69	2,251,578.73	0.498	1.04	8355

Main Market - Medium Liquidity Class

13,126,020	0.650	---	---	---	08/07/2010	12/10/2016	---	AS COMPANY SA (CR)		1.42	---	↘ 1.42	12/07/2017	1.42	1.42	1.42	1.42	1.42 4746@1.37	275@1.40	12.09	2015	500	1	710.00	18,638.95	0.640	1.48	5379
49,630,457	0.700	---	---	---	01/07/2008	01/03/2010	---	AUDIO VISUAL ENTERPRISES (CR)		0.185	-1.07 €	0.187	12/07/2017	0.187	0.154	0.220	0.185	0.179 2500@0.183	25780@0.185	---	2015	16,049	32	2,869.25	9,181.63	0.056	0.220	5553

Number of Outstanding Securities	Nominal Value	Dividends [1]			Date of Last Coupon Dividend [2]		Note	Shares	Closing price	% change	Previous closing price/date	Open price	Price min	Price max	Last price	Avg price	Last Bid [7]	Last Ask [7]	P/E after	Year	Volume	Trades	Transactions Value[8]	Company Mkt Value (thou. €)	Year low	Year high	Sector[4]
12,213,750	0.320	0.8	0.85	0.85	15/06/2017	22/11/2013	---	AUTOHELLAS SA (CR)	21.51	0.05 #	21.50 12/07/2017	21.50	21.50	21.60	21.50	21.51	20@21.50	15@21.60	17.18	2015	1,557	6	33,484.00	262,717.76	11.53	21.75	5759
101,123,806	0.360	---	---	---	22/07/2010	28/06/2011	---	CENTRIC HOLDINGS (CR)	0.180	-1.10 €	0.182 12/07/2017	0.185	0.174	0.185	0.180	0.177	1000@0.176	2140@0.180	---	2015	32,740	21	5,781.56	18,202.29	0.080	0.185	5752
20,578,374	0.620	0.4	0.07	0.07	07/06/2017	18/05/2015	---	INFORM P. LYKOS SA (CR)	0.779	-2.62 €	0.800 12/07/2017	0.800	0.766	0.803	0.779	0.780	100@0.770	100@0.793	---	2015	78,941	161	61,610.72	16,030.55	0.427	0.880	2791
133,025,996	1.41	---	---	---	03/07/2007	07/01/2002	---	INTRACOM HOLDINGS (CR)	0.572	6.12 #	0.539 12/07/2017	0.537	0.537	0.572	0.572	0.556	985@0.568	750@0.573	---	2015	258,376	283	143,591.83	76,090.87	0.292	0.572	9578
23,154,250	1.36	---	---	---	12/08/2008	02/08/2010	---	INTRACOM CONSTR. (CR)	0.561	5.25 #	0.533 12/07/2017	0.522	0.522	0.565	0.561	0.549	2000@0.543	799@0.561	---	2015	25,446	42	13,971.90	12,989.53	0.330	0.720	2357
77,654,850	0.580	---	---	---	01/07/2011	21/02/2003	---	J & P - AVAX SA (CR)	0.675	-0.15 €	0.676 12/07/2017	0.676	0.666	0.687	0.675	0.671	1000@0.671	155@0.675	---	2015	66,485	101	44,643.67	52,417.02	0.380	0.768	2357
468,700	1.48	1	0.73	0.73	28/06/2017	21/05/2004	---	MERMEREN KOMB. A.D. PR. (GDR)	12.04	-2.11 €	12.30 12/07/2017	12.05	12.04	12.16	12.04	12.06	200@11.78	91@12.04	1.61	2016	275	6	3,316.80	5,643.15	5.77	14.70	1775
12,417,000	0.370	---	---	---	28/07/2008	06/09/2011	---	MLS MULTIMEDIA SA (CR)	4.46	---	4.46 12/07/2017	4.41	4.40	4.49	4.46	4.43	30@4.41	56@4.45	24.93	2016	6,612	75	29,306.91	55,379.82	3.98	4.60	9537
3,953,090	0.300	0.118	0.11	0.12	06/06/2017	05/12/2012	---	PAPERPACK (CR)	2.18	-2.24 €	2.23 12/07/2017	2.23	2.15	2.24	2.18	2.21	206@2.15	50@2.24	6.37	2016	545	10	1,206.16	8,617.74	1.26	2.25	2723
11,812,193	0.470	0.02	---	---	26/03/2015	15/11/2006	---	PROFILE SA (CR)	0.847	2.17 #	0.829 12/07/2017	0.830	0.830	0.847	0.847	0.835	1030@0.828	33@0.847	---	2015	7,025	21	5,866.33	10,004.93	0.455	0.902	9533
27,345,120	0.470	---	---	---	18/07/2005	26/02/2014	---	QUALITY & RELIABILITY SA (CR)	0.234	-4.49 €	0.245 12/07/2017	0.247	0.220	0.247	0.234	0.227	500@0.227	1122@0.233	---	2015	285,300	137	64,746.67	6,398.76	0.150	0.353	9533
11,921,531	3.32	---	---	---	05/09/2008	05/12/2016	---	QUEST HOLDINGS (CR)	9.79	-0.10 €	9.80 12/07/2017	9.70	9.65	9.80	9.79	9.75	40@9.70	37@9.79	---	2015	114	7	1,111.91	116,711.79	6.30	10.00	9533
3,125,463	0.300	---	---	---	16/11/1992	07/02/2017	---	UNIBIOS (CR)	0.643	1.74 #	0.632 12/07/2017	0.590	0.590	0.643	0.643	0.603	208@0.542	185@0.641	---	2015	1,775	11	1,069.59	2,009.67	0.420	0.755	2353
11,178,000	1.12	---	---	---	21/04/2010	15/12/2014	---	AEOLIAN INVESTMENT FUND (CR)	0.710	---	0.710 12/07/2017	0.714	0.700	0.715	0.710	0.713	145@0.707	2000@0.713	---	2016	2,550	6	1,818.49	7,936.38	0.530	0.802	8985
22,016,250	0.370	---	---	---	15/07/2009	11/05/2000	---	ALUMIL (CR)	0.478	3.24 #	0.463 12/07/2017	0.480	0.459	0.480	0.478	0.467	235@0.468	2359@0.478	---	2015	11,324	27	5,289.79	10,523.77	0.152	0.502	1753
417,608	16.00	---	---	---	29/04/2014	05/03/2013	---	ANDROMEDA SA (CR)	18.00	---	18.00 12/07/2017	---	---	---	---	---	100@18.20	10@18.80	10.68	2016	---	---	---	7,516.94	12.83	19.00	8985
24,060,000	0.300	0.02	0.01	0.01	10/07/2017	10/07/2017	---	GEN. COMMERCIAL & IND.SA (CR)	0.527	---	0.527 12/07/2017	---	---	---	---	---	500@0.452	1000@0.526	22.17	2015	---	---	---	12,679.62	0.319	5.35	2797
34,720,000	0.310	---	---	---	16/06/2010	01/08/2007	---	DROMEAS SA (CR)	0.270	-0.37 €	0.271 12/07/2017	0.279	0.270	0.279	0.270	0.270	5000@0.250	44@0.270	---	2015	2,523	6	681.24	9,374.40	0.100	0.285	3726
27,848,000	0.300	0.0032	0.0084	---	16/08/2016	02/09/2003	---	NEWSPHONE HELLAS SA (CR)	0.299	3.82 #	0.288 12/07/2017	0.289	0.289	0.304	0.299	0.299	2000@0.291	2650@0.299	12.56	2015	995	3	297.11	8,326.55	0.201	0.330	2791
11,250,000	0.520	---	0.04	---	25/07/2016	09/11/2015	---	EKTER SA (CR)	0.695	1.76 #	0.683 12/07/2017	0.700	0.695	0.700	0.695	0.696	175@0.685	1500@0.699	21.94	2015	3,350	9	2,333.25	7,818.75	0.401	0.714	2357
82,667,000	0.300	---	---	---	22/07/2014	---	---	ELTECH ANEMOS S.A. (CR)	1.51	---	1.51 12/07/2017	1.53	1.51	1.53	1.51	1.52	362@1.51	916@1.53	16.24	2015	4,870	21	7,403.02	124,827.17	0.875	1.64	7537
18,421,516	1.00	---	---	---	07/07/2009	10/09/2010	---	ELASTRON (CR)	1.38	-1.43 €	1.40 12/07/2017	1.38	1.36	1.41	1.38	1.39	819@1.38	1500@1.40	---	2015	7,875	34	10,924.85	25,421.69	0.690	1.59	1757
3,307,500	0.960	---	---	---	11/08/2010	23/09/2016	---	ELVE SA (CR)	2.39	---	2.39 12/07/2017	---	---	---	---	---	600@2.27	100@2.40	19.05	2015	---	---	---	7,904.93	1.63	2.40	3763
19,864,886	5.60	0.672	0.672	0.672	09/03/2017	02/07/2008	---	BANK OF GREECE (CR)	13.50	-0.44 €	13.56 12/07/2017	13.31	13.31	13.60	13.50	13.48	32@13.43	23@13.59	---	---	2,617	46	35,275.15	268,175.96	10.60	13.76	8355
26,730,187	0.600	---	---	---	23/06/2014	30/12/2010	---	ELTON SA (CR)	1.40	---	1.40 12/07/2017	1.40	1.36	1.40	1.40	1.39	100@1.37	966@1.40	24.99	2015	16,240	40	22,521.14	37,422.26	0.837	1.42	1353
14,050,971	0.340	---	---	---	06/07/2011	17/10/2002	---	ELTRAK SA (CR)	2.14	-0.93 €	2.16 12/07/2017	2.11	2.11	2.14	2.14	2.13	40@2.12	50@2.15	42.53	2015	78	2	166.08	30,069.08	1.22	2.20	2753
52,067,296	0.300	---	---	---	23/12/2003	24/01/2007	---	SELECTED TEXT. IND. ASSOC (CR)	0.269	6.75 #	0.252 12/07/2017	0.252	0.252	0.270	0.270	0.269	5500@0.190	1129@0.240	---	2016	220	3	59.24	14,006.10	0.124	0.320	3763
36,300,000	1.12	0.24	0.25	0.228	29/06/2017	12/12/2007	---	THESSALONIKA WATER & SEWERAGE	4.53	-0.44 €	4.55 12/07/2017	4.55	4.50	4.55	4.53	4.51	100@4.53	230@4.57	12.13	2015	3,699	18	16,687.49	164,439.00	3.42	4.78	7577
27,503,677	0.630	---	0.06	0.1	24/05/2017	18/10/1999	---	EUROPEAN RELIANCE INSUR. (CR)	3.74	---	3.74 12/07/2017	3.75	3.71	3.75	3.74	3.75	373@3.71	1@3.74	9.34	2015	10,903	6	40,877.91	102,863.75	1.95	3.93	8536
65,441,118	0.440	---	---	---	24/11/2014	11/08/2015	---	IASO SA (CR)	1.20	---	1.20 12/07/2017	1.18	1.16	1.24	1.20	1.19	3000@1.19	55@1.20	---	2015	32,476	59	38,558.15	78,529.34	0.385	1.25	4533
28,580,100	0.400	0.0301	---	---	20/03/2017	04/07/2016	---	IKTINOS HELLAS SA (CR)	1.40	2.94 #	1.36 12/07/2017	1.37	1.35	1.42	1.40	1.38	1500@1.36	1695@1.40	38.52	2015	36,044	71	49,680.32	40,012.14	0.731	1.43	2353
9,090,000	0.900	---	---	---	15/05/2009	13/10/2014	---	ILYDA S.A. (CR)	0.270	-1.82 €	0.275 12/07/2017	0.272	0.270	0.279	0.270	0.272	305@0.270	2000@0.279	8.52	2016	13,745	9	3,732.45	2,454.30	0.173	0.476	9537
158,961,721	0.300	---	---	---	30/05/2013	14/11/2007	---	INTRALOT (CR)	1.25	-0.79 €	1.26 12/07/2017	1.26	1.23	1.26	1.25	1.25	7021@1.25	6000@1.26	---	2015	190,035	152	237,460.26	198,702.15	1.02	1.35	5752
7,500,000	0.610	0.1	---	---	19/06/2015	11/07/2017	---	S.KANAKIS SA (CR)	2.98	0.68 #	2.96 12/07/2017	2.96	2.96	2.98	2.98	2.97	2100@2.89	440@2.95	10.68	2016	312	5	927.96	22,350.00	2.20	3.00	3577
9,742,920	0.400	0.01	0.01	---	12/08/2016	14/07/2000	---	KARAMOLEGOS SA (CR)	2.00	---	2.00 12/07/2017	2.00	2.00	2.00	2.00	2.00	1579@2.00	---	(-6)-	2015	30	1	60.00	19,485.84	1.84	2.14	3577
6,601,378	0.300	---	---	---	01/07/2004	30/06/2017	---	KEKROPS SA (CR)	0.579	-2.53 €	0.594 12/07/2017	0.620	0.550	0.620	0.579	0.591	20@0.526	621@0.580	---	2016	2,068	13	1,222.10	3,822.20	0.402	0.784	8633
40,219,218	0.300	---	---	---	20/06/2017	09/07/2013	---	KLOUKINAS - LAPPAS SA (CR)	0.756	-0.39 €	0.759 12/07/2017	0.787	0.742	0.787	0.756	0.753	1000@0.741	410@0.755	---	2015	3,694	21	2,783.18	30,405.73	0.251	0.880	2357
21,224,340	0.420	---	---	---	02/07/2008	25/04/2006	---	KORDELLOS BROS SA (CR)	0.410	4.33 #	0.393 12/07/2017	0.410	0.410	0.410	0.410	0.410	3000@0.375	295@0.400	13.15	2016	200	2	82.00	8,701.98	0.176	0.450	1757
13,586,500	0.390	---	---	---	25/06/2010	28/05/2008	---	KORRES (CR)	4.17	-4.14 €	4.35 12/07/2017	4.19	4.10	4.23	4.17	4.17	221@4.17	30@4.21	---	2015	6,774	54	28,241.93	56,655.71	3.30	4.74	3767

Number of Outstanding Securities	Nominal Value	Dividends [1]			Date of Last Coupon		Note	Shares	Closing price	% change	Previous closing price/date	Open price	Price min	Price max	Last price	Avg price	Last Bid [7]	Last Ask [7]	P/E after	Year	Volume	Trades	Transactions Value[8]	Company Mkt Value (thou. €)	Year low	Year high	Sector[4]
		2014	2015	2016	Dividend [2]	Right																					
29,480,000	0.420	---	---	---	19/07/2010	01/08/2007	---	KRETA FARM SA (CR)	0.597	0.34 #	0.595 12/07/2017	0.560	0.560	0.600	0.597	0.576	200@0.580	6095@0.600	---	2015	6,450	13	3,712.85	17,599.56	0.399	0.645	3577
33,065,136	0.380	0.06	0.06	---	18/08/2016	16/09/2013	---	KRI-KRI S.A. (CR)	3.13	0.97 #	3.10 12/07/2017	3.12	3.08	3.13	3.13	3.11	250@3.10	50@3.13	16.60	2016	8,355	24	25,977.00	103,493.88	1.75	3.15	3577
7,595,160	0.600	---	---	---	08/08/2008	18/08/2010	---	KIRIAKOULIS SHIPPING SA (CR)	0.640	-3.76 €	0.665 12/07/2017	0.608	0.600	0.660	0.640	0.614	105@0.630	105@0.633	79.69	2015	16,374	22	10,061.31	4,860.90	0.405	0.710	5759
17,120,280	0.940	---	---	---	01/06/2010	07/07/2017	---	LOULIS MILLS SA (CR)	2.50	-1.96 €	2.55 12/07/2017	2.50	2.50	2.50	2.50	2.50	75@2.45	248@2.55	73.06	2015	250	1	625.00	42,800.70	1.33	3.00	3577
9,819,370	0.690	---	---	---	14/08/2007	09/01/2004	---	MATHIOS REFRACTORY SA (CR)	0.318	---	0.318 12/07/2017	---	---	---	---	---	500@0.251	3000@0.313	---	2015	---	---	---	3,122.56	0.151	0.329	2353
11,700,000	0.400	---	---	---	02/06/2009	02/06/2017	---	MOTODYNAMICS S.A. (CR)	0.610	---	0.610 12/07/2017	---	---	---	---	---	80@0.610	750@0.645	22.27	2015	---	---	---	7,137.00	0.370	0.645	5379
32,188,050	1.04	---	---	---	21/07/2008	20/01/2000	---	EL. D. MOUZAKIS SA (CB)	0.370	20.92 #	0.306 12/07/2017	0.306	0.306	0.380	0.370	0.337	500@0.355	4770@0.370	---	2015	23,392	55	7,879.44	11,909.58	0.119	0.430	3763
6,340,000	0.600	---	---	---	30/11/2009	09/11/2016	---	NAKAS MUSIC	1.48	---	1.48 12/07/2017	---	---	---	---	---	100@1.43	10@1.57	9.31	2016	---	---	---	9,383.20	0.600	1.54	5379
291,497,368	0.300	---	---	---	08/07/2008	21/03/2016	---	NIREFS SA (CR)	0.320	2.24 #	0.313 12/07/2017	0.318	0.310	0.322	0.320	0.319	500@0.316	4500@0.321	0.45	2015	249,803	149	79,712.54	93,279.16	0.162	0.328	3573
10,080,000	3.00	1.95	0.58	---	18/07/2016	27/08/2001	---	TPA SA (CR)	23.90	1.06 #	23.65 12/07/2017	23.64	23.35	23.94	23.90	23.72	3@23.80	56@23.94	17.11	2016	6,061	40	143,761.18	240,912.00	17.55	23.94	2777
4,971,466	1.46	---	---	---	04/07/2007	08/10/2003	---	PAIRIS SA (CR)	0.403	4.68 #	0.385 12/07/2017	0.422	0.385	0.422	0.387	0.403	1000@0.386	600@0.419	---	2015	1,300	5	523.70	2,003.50	0.106	0.449	2723
50,797,369	0.310	---	---	---	17/08/2000	12/10/2010	---	PAPOUTSANIS (CR)	0.234	0.43 #	0.233 12/07/2017	0.238	0.229	0.238	0.234	0.230	235@0.229	9773@0.234	---	2016	8,592	12	1,979.59	11,886.58	0.122	0.243	3767
7,070,400	0.930	0.101	---	---	30/11/2016	06/05/2016	---	PETROPOULOS PETROS (CR)	5.22	0.38 #	5.20 12/07/2017	5.10	5.10	5.22	5.22	5.16	230@5.12	255@5.23	48.95	2015	220	6	1,135.20	36,907.49	4.07	5.22	2753
22,075,665	0.330	---	0.08	0.05	30/05/2017	27/04/2015	---	PLAISIO COMPUTERS SA (CR)	4.48	0.90 #	4.44 12/07/2017	4.49	4.44	4.50	4.48	4.48	550@4.42	195@4.47	14.75	2015	11,275	44	50,515.69	98,898.98	3.30	4.81	9572
43,741,452	0.660	0.0225	---	---	20/04/2015	01/11/1999	---	THRACE PLASTICS SA (CR)	2.83	2.17 #	2.77 12/07/2017	2.76	2.74	2.84	2.83	2.79	879@2.83	125@2.85	-(6)-	2015	9,349	44	26,080.08	123,788.31	2.18	2.84	1357
22,280,000	0.300	---	---	---	11/04/2011	23/02/2007	---	REVOIL (CR)	0.575	3.42 #	0.556 12/07/2017	0.597	0.565	0.597	0.575	0.574	110@0.575	100@0.578	18.48	2015	2,550	11	1,464.95	12,811.00	0.252	0.597	5379
40,693,350	5.00	---	---	---	03/07/2006	26/05/2015	---	TECHNICAL OLYMPIC SA (CR)	1.64	-2.38 €	1.68 12/07/2017	1.71	1.61	1.71	1.63	1.67	1@1.63	300@1.64	---	2015	9,842	35	16,465.81	66,737.09	0.897	1.73	3728
7,568,960	3.00	0.1551	0.3099	0.1049	13/06/2017	13/06/2017	---	TITAN CEMENT CO. (PR)	17.29	-0.63 €	17.40 12/07/2017	17.38	16.98	17.38	17.29	17.29	100@17.20	204@17.29	24.33	2015	216	8	3,734.74	2,113,712.92	13.52	19.65	2353
305,732,436	0.410	---	---	---	08/07/2009	28/09/2011	---	HYGEIA SA (CR)	0.388	4.30 #	0.372 12/07/2017	0.374	0.373	0.390	0.388	0.383	840@0.378	1000@0.389	---	2015	124,050	70	47,487.71	118,624.19	0.147	0.405	4533
8,340,750	1.18	---	---	---	25/06/2009	09/09/2015	---	HAIDEMENOS SA (CR)	0.446	---	0.446 12/07/2017	0.446	0.446	0.446	0.446	0.446	400@0.421	400@0.464	---	2016	400	1	178.40	3,719.97	0.211	0.475	2791
101,279,627	0.380	---	---	---	26/06/2008	14/07/2006	---	HALKOR SA (CB)	0.747	1.08 #	0.739 12/07/2017	0.737	0.731	0.756	0.747	0.747	4726@0.747	146@0.751	---	2015	69,628	119	52,036.71	75,655.88	0.429	0.874	1755

Main Market - Low Liquidity Class

15,816,009	0.300	---	---	---	01/07/2009	17/07/2000	---	BYTE COMPUTER SA (CR)	0.416	-3.93 €	0.433 12/07/2017	0.429	0.415	0.429	0.415	0.421	300@0.371	200@0.460	---	2015	600	5	252.40	6,579.46	0.267	0.469	9533
9,907,500	0.300	---	---	---	06/10/2005	13/02/2002	---	CPI SA (CRP)	0.158	-6.51 €	0.169 12/07/2017	0.168	0.158	0.168	0.158	0.159	200@0.158	800@0.166	18.91	2016	900	2	143.20	1,565.39	0.140	0.192	9572
52,800,154	0.300	---	---	---	20/08/2014	21/06/2004	---	F.G. EUROPE S.A. (CR)	0.586	-5.48 €	0.620 12/07/2017	0.558	0.558	0.620	0.620	0.586	330@0.570	980@0.609	25.89	2015	448	6	262.58	30,940.89	0.434	0.687	3722
11,720,024	0.540	---	---	---	21/08/2014	04/11/2015	---	FLEXOPACK SA (CR)	4.63	---	4.63 12/07/2017	---	---	---	---	---	100@4.52	190@4.65	12.32	2015	---	---	---	54,263.71	2.90	5.00	2723
10,500,000	4.00	---	---	0.28	18/05/2017	02/08/2016	---	INTERCONTINENTAL (CR)	5.86	---	5.86 12/07/2017	5.86	5.86	5.86	5.86	5.86	10@5.86	150@6.00	9.84	2016	90	1	527.40	61,530.00	5.28	6.12	8674
4,740,000	0.860	---	---	---	14/03/2003	---	---	LOGISMOS S.A. (CR)	0.396	---	0.396 12/07/2017	---	---	---	---	---	110@0.400	300@0.435	-(6)-	2016	---	---	---	1,877.04	0.168	0.548	9533
10,500,000	0.950	---	---	---	24/06/2008	30/06/2017	---	MEVACO SA (CR)	1.31	1.55 #	1.29 12/07/2017	1.30	1.30	1.31	1.31	1.31	50@1.21	200@1.33	---	2016	1,047	2	1,371.10	13,755.00	0.900	1.31	2757
6,200,000	0.500	---	---	---	22/06/2010	01/11/1995	---	MINERVA KNITWEAR SA (CB)	0.398	---	0.398 12/07/2017	---	---	---	---	---	---	1132@0.394	---	2015	---	---	---	2,467.60	0.026	0.459	3763
57,434,884	1.31	---	---	---	05/06/2008	12/06/2009	---	REDS S.A. (CR)	0.780	-3.70 €	0.810 12/07/2017	0.753	0.753	0.780	0.780	0.773	550@0.756	200@0.789	---	2015	550	2	424.95	44,799.21	0.300	0.850	8633
6,456,530	1.08	---	---	---	29/06/2001	02/08/2010	---	SPACE HELLAS SA (CR)	1.53	---	1.53 12/07/2017	---	---	---	---	---	---	5@1.67	11.65	2015	---	---	---	9,878.49	0.601	1.80	9578
15,300,000	0.300	---	---	---	30/07/2009	13/12/1999	---	ATTICA PUBLICATIONS SA (CR)	0.704	---	0.704 12/07/2017	---	---	---	---	---	---	3294@0.634	---	2015	---	---	---	10,771.20	0.585	0.859	5557
18,810,000	0.400	---	---	---	08/07/2010	14/11/2007	---	VARVERIS - MODA BAGNO SA (CR)	0.489	---	0.489 12/07/2017	---	---	---	---	---	---	2000@0.494	---	2015	---	---	---	9,198.09	0.045	0.520	2353
23,986,500	1.05	---	---	---	26/06/2009	15/03/2000	---	BIOKARPET S.A.(CR)	0.330	---	0.330 12/07/2017	---	---	---	---	---	91@0.322	791@0.338	---	2015	---	---	---	7,915.55	0.197	0.353	3726
4,968,600	2.88	---	---	---	01/07/1998	14/12/1998	---	VIS SA (CR)	0.720	---	0.720 12/07/2017	0.720	0.720	0.720	0.720	0.720	200@0.722	204@0.790	10.01	2016	300	2	216.00	3,577.39	0.700	0.910	2723
6,325,000	0.600	---	---	0.11	04/07/2017	17/02/2014	---	VOGIATZOGLOU SYSTEMS SA (CR)	1.18	---	1.18 12/07/2017	1.18	1.18	1.18	1.18	1.18	150@1.20	147@1.29	---	2015	100	1	118.00	7,463.50	0.891	1.50	2797
15,000,000	0.300	---	---	---	06/07/2007	18/07/2000	---	DAIOS PLASTICS SA (CR)	2.90	---	2.90 12/07/2017	---	---	---	---	---	200@2.74	117@3.00	---	2015	---	---	---	43,500.00	2.63	3.00	1357
13,673,200	0.880	---	---	---	18/07/2008	26/07/2001	---	EVROFARMA SA (CR)	0.380	-1.30 €	0.385 12/07/2017	0.400	0.380	0.400	0.380	0.392	300@0.356	84@0.379	22.89	2015	8,011	10	3,136.79	5,195.82	0.225	0.400	3577

Number of Outstanding Securities	Nominal Value	Dividends [1]			Date of Last Coupon Dividend [2]		Note	Shares	Closing price	% change	Previous closing price/date	Open price	Price min	Price max	Last price	Avg price	Last Bid [7]	Last Ask [7]	P/E after	Year	Volume	Trades	Transactions Value[8]	Company Mkt Value (thou. €)	Year low	Year high	Sector[4]
31,734,530	1.60	---	---	---	09/07/2007	19/07/2006	---	ELGEKA SA (CR)	0.205	-1.91 €	0.209 12/07/2017	0.205	0.205	0.205	0.205	0.205	1000@0.192	300@0.213	---	2015	1,000	1	205.00	6,505.58	0.100	0.215	3577
23,828,130	0.500	---	0.16	0.052	29/06/2017	17/02/2009	---	ELINOIL S.A. (CR)	1.42	2.90 #	1.38 12/07/2017	1.42	1.38	1.42	1.42	1.41	100@1.40	40@1.42	12.45	2015	1,860	11	2,626.60	33,835.94	0.753	1.54	537
8,623,225	0.300	---	---	---	02/06/2010	30/05/2016	5031	EUROCONSULTANTS S.A. (CR)	0.514	--- ↘	0.514 12/07/2017	0.513	0.513	0.513	0.513	0.513	---	2670@0.506	---	2015	80	1	41.04	4,432.34	0.297	0.655	2791
86,735,980	0.310	---	---	---	06/07/2009	02/01/2002	---	ATHENS MEDICAL CENTER SA (CR)	1.42	0.71 #	1.41 12/07/2017	1.48	1.40	1.48	1.42	1.41	2460@1.42	100@1.44	---	2015	1,227	10	1,732.34	123,165.09	0.549	1.54	4533
8,298,467	0.400	---	---	---	30/08/1993	08/05/2013	---	IDEAL GROUP SA (CR)	0.834	-5.01 €	0.878 12/07/2017	0.828	0.828	0.870	0.870	0.834	650@0.815	307@0.870	-(6)-	2015	392	4	326.76	6,920.92	0.675	0.878	9574
2,566,836	0.440	---	---	---	13/08/2010	09/01/2007	---	INTERWOOD-XYLEMPORIA (PR)	0.060	--- ↘	0.060 12/07/2017	---	---	---	---	---	9364@0.066	---	---	2015	---	---	---	2,673.03	0.060	0.109	2353
34,986,430	0.440	---	---	---	25/07/2008	23/02/2010	---	INTERWOOD-XYLEMPORIA (CR)	0.072	--- ↘	0.072 12/07/2017	---	---	---	---	---	1000@0.079	---	---	2015	---	---	---	2,673.03	0.060	0.079	2353
11,233,200	0.730	---	---	---	12/07/2010	30/07/1999	---	INTERTECH SA (CR)	0.279	--- ↘	0.279 12/07/2017	0.304	0.279	0.304	0.279	0.280	12@0.297	4951@0.290	---	2016	100	5	27.95	3,134.06	0.129	0.449	9572
14,679,792	1.68	---	---	0.07	28/06/2017	04/09/2000	---	KARATZIS SA (CR)	5.60	--- ↘	5.60 12/07/2017	---	---	---	---	---	260@5.51	223@5.59	16.07	2015	---	---	---	82,206.84	3.90	5.90	2723
6,700,000	0.800	0.03	0.023	0.028	29/06/2017	29/05/2014	---	MILLS KEPENOS (CR)	2.43	--- ↘	2.43 12/07/2017	---	---	---	---	---	234@2.22	1000@2.40	8.45	2016	---	---	---	16,281.00	1.11	2.54	3577
11,510,102	0.890	---	---	---	24/06/2005	06/10/1999	---	NAFPAKTOS TEXTILE IND. SA (CB)	0.250	2.04 #	0.245 12/07/2017	0.250	0.250	0.250	0.250	0.250	300@0.222	305@0.250	---	2015	470	3	117.50	2,877.53	0.175	0.275	3763
15,804,800	0.360	---	---	---	15/06/2010	12/03/2004	---	KTIMA KOSTAS LAZARIDIS SA (CR)	0.550	--- ↘	0.550 12/07/2017	0.550	0.550	0.550	0.550	0.550	2000@0.550	9500@0.600	---	2015	500	1	275.00	8,692.64	0.195	0.605	3535
21,364,000	1.12	---	---	---	05/07/2010	10/08/2005	---	LAMPSPA HOTEL SA (CR)	17.30	1.77 #	17.00 12/07/2017	17.30	17.30	17.30	17.30	17.30	90@16.53	---	78.72	2015	100	2	1,730.00	369,597.20	16.00	17.50	5753
3,873,120	0.300	---	---	---	07/07/2008	04/10/2012	---	DRUCKFARBEN HELLAS (CR)	1.50	--- ↘	1.50 12/07/2017	---	---	---	---	---	---	7042@1.50	2.39	2015	---	---	---	5,809.68	0.513	1.55	1357
4,181,450	0.500	---	---	---	21/08/2000	05/03/2002	---	FLOUR MILLS SARANTOPOULOS SA	0.693	--- ↘	0.693 12/07/2017	---	---	---	---	---	---	---	---	2015	---	---	---	2,897.74	0.517	0.693	3577
245,497,164	0.300	---	---	---	01/07/2008	30/07/2012	---	SELONDA AQUACULTURE SA (CR)	0.281	0.36 #	0.280 12/07/2017	0.298	0.280	0.298	0.281	0.289	3500@0.281	191@0.283	---	2015	100,644	89	29,043.96	68,984.70	0.136	0.298	3573
28,438,268	0.300	---	---	---	21/08/2006	24/11/1999	---	SPIROY AGRICULTURE SA (CR)	0.303	-9.82 €	0.336 12/07/2017	0.303	0.303	0.303	0.303	0.303	---	44171@0.303	---	2015	1,150	2	348.45	8,616.80	0.303	0.699	1357
10,203,575	0.730	---	---	---	16/07/2007	18/10/1999	---	FIERATEX SA (CR)	0.082	--- ↘	0.082 12/07/2017	---	---	---	---	---	39290@0.090	---	---	2016	---	---	---	836.69	0.054	0.090	3763

Exchange Traded Funds (ETFs)

619,082	---	---	---	---	15/06/2016	---	ALPHA ETF FTSE Athex Large Cap	22.12	--- ↘	22.12 12/07/2017	---	---	---	---	---	---	15000@22.12	20@22.34	---	---	---	---	---	---	16.01	22.12	12003
---------	-----	-----	-----	-----	------------	-----	--------------------------------	-------	--------------	------------------	-----	-----	-----	-----	-----	-----	-------------	----------	-----	-----	-----	-----	-----	-----	-------	-------	-------

Low Dispersion

14,000,000	4.15	---	---	---	23/04/2010	29/06/1999	4815	ALPHA REAL ESTATE SA(CR)	5.67	-2.24 €	5.80 12/07/2017	5.66	5.66	5.97	5.97	5.67	40@5.70	47@5.97	28.65	2015	103	5	583.91	79,380.00	4.31	7.07	8637
191,660,320	0.300	---	---	---	20/07/2009	29/12/2010	4817	ATTICA HOLDINGS (CR)	1.42	4.41 #	1.36 12/07/2017	1.38	1.38	1.45	1.45	1.42	3578@1.45	3000@1.48	-(6)-	2015	15,610	18	22,217.72	272,157.65	0.664	1.45	5759
22,996,875	1.25	---	---	---	24/06/2011	02/02/2016	5116	NEXANS HELLAS SA (CR)	1.09	--- ↘	1.09 12/07/2017	---	---	---	---	---	100@0.971	101@1.09	16.39	2016	---	---	---	25,066.59	0.837	1.28	2733
80,690,653	0.500	---	---	---	25/04/2014	22/12/2016	5124	TRASTOR REAL EST. INV. CO.(CR)	0.850	--- ↘	0.850 12/07/2017	0.850	0.850	0.850	0.850	0.850	2000@0.850	250@0.869	---	2015	1,155	2	981.75	68,587.06	0.742	0.899	8671
13,465,290	0.300	---	---	---	09/08/2004	09/11/2016	4814	ATHENA SA (CR)	0.769	--- ↘	0.769 12/07/2017	---	---	---	---	---	---	200@0.797	---	2015	---	---	---	10,354.81	0.408	0.790	2357
14,076,360	0.370	---	---	---	19/08/2008	22/07/2003	---	GALAXIDI S.A. (CR)	0.700	--- ↘	0.700 12/07/2017	0.700	0.700	0.700	0.700	0.700	166664@0.700	1000@0.710	68.52	2015	5,894	5	4,125.80	9,853.45	0.231	0.749	3573
8,418,750	0.300	---	0.12	0.3	06/06/2017	27/06/2012	5127	GEKE SA (CB)	4.40	--- ↘	4.40 12/07/2017	---	---	---	---	---	41@4.10	81@4.39	20.48	2016	---	---	---	37,042.50	2.94	5.28	5753
255,494,534	3.00	---	0.2035	0.2	11/05/2017	23/12/2015	5104	NBG PANGAEA (CR)	4.96	-0.20 €	4.97 12/07/2017	4.96	4.96	4.96	4.96	4.96	200@4.41	46@4.96	25.49	2015	13	1	64.48	1,267,252.89	3.77	5.00	8671
2,760,000	11.83	9.3	8.5	---	15/07/2016	16/07/1990	4823	KARELIA TOBACCO CO. SA (CB)	300.00	--- ↘	300.00 12/07/2017	---	---	---	---	---	5@285.00	34@299.95	15.50	2015	---	---	---	828,000.00	255.00	305.00	3785
106,980,050	2.25	---	---	---	25/07/2008	24/02/2014	5046	MINOAN LINES SA (CR)	2.40	--- ↘	2.40 12/07/2017	2.40	2.40	2.40	2.40	2.40	2496@2.20	150@2.53	15.84	2015	1,792	4	4,300.80	256,752.12	2.22	2.55	5759
17,240,776	0.370	---	---	---	14/07/2005	30/09/2003	4827	PERSEUS SA (CR)	0.333	-4.59 €	0.349 12/07/2017	0.349	0.325	0.349	0.325	0.333	145@0.296	200@0.333	10.00	2016	2,566	6	853.53	5,741.18	0.200	0.395	3577

Surveillance

5,867,311	0.300	---	---	---	11/08/2010	28/04/2017	5123	DIONIC (CR)	0.320	-20.00 €	0.400 12/07/2017	0.320	0.320	0.320	0.320	0.320	700@0.322	1005@0.400	0.10	2015	962	3	307.84	1,877.54	0.250	0.562	2797
21,820,410	0.800	---	---	---	22/05/2008	02/08/2011	4882	EUROMEDICA SA (CR)	0.175	-12.50 €	0.200 12/07/2017	0.181	0.175	0.181	0.175	0.175	2500@0.160	799@0.175	---	2015	1,050	4	184.05	3,818.57	0.007	0.242	4533
110,122,976	0.300	---	---	---	19/09/2016	---	5118	Forthnet (CR)	0.402	--- ↘	0.402 12/07/2017	0.402	0.402	0.402	0.402	0.402	400@0.326	400@0.369	---	2015	2,500	4	1,005.00	44,269.44	0.172	0.474	9535
50,593,832	0.300	---	---	---	07/07/2010	07/09/2011	5113	FRIGOGLASS SA (CR)	0.093	1.09 #	0.092 12/07/2017	0.093	0.093	0.096	0.093	0.093	13000@0.093	1000@0.097	---	2016	17,600	5	1,637.10	4,705.23	0.076	0.157	2757
51,081,030	1.00	---	---	---	20/08/2007	03/09/2007	4912	LAVIPHARM SA (CR)	0.106	3.92 #	0.102 12/07/2017	0.105	0.105	0.109	0.109	0.106	5000@0.107	800@0.108	---	2015	7,200	8	764.80	5,414.59	0.070	0.129	4577

Number of Outstanding Securities	Nominal Value	Dividends [1]			Date of Last Coupon		Note	Shares	Closing price	% change	Previous closing price/date		Open price	Price min	Price max	Last price	Avg price	Last Bid [7]	Last Ask [7]	P/E after	Year	Volume	Trades	Transactions Value[8]	Company Mkt Value (thou. €)	Year low	Year high	Sector[4]
		2014	2015	2016	Dividend [2]	Right																						
4,419,616	1.58	---	---	---	21/07/2011	04/03/2015	4983	MEDICON S.A (CR)	1.08	---	↘	1.08	12/07/2017	---	---	---	---	350@0.870	800@1.07	2.96	2015	---	---	---	4,773.19	0.274	1.08	4535
14,967,940	0.500	---	---	---	21/05/2008	04/01/2008	4956	PASAL DEVELOPMENT S.A. (CR)	0.088	---	↘	0.088	12/07/2017	0.088	0.088	0.088	0.088	2750@0.089	2139@0.104	---	2015	450	2	39.60	1,317.18	0.058	0.188	8633
65,326,268	0.530	---	---	---	04/07/2007	19/07/2006	4750	SATO SA (CR)	0.048	20.00	#	0.040	12/07/2017	0.048	0.048	0.048	0.048	5000@0.040	---	---	2015	8,648	2	415.10	3,135.66	0.033	0.109	3726
13,191,620	0.620	---	---	---	04/08/2010	09/09/2002	4977	YALCO - CONSTANTINOU SA (CB)	0.051	---	↘	0.051	12/07/2017	---	---	---	---	15000@0.050	---	---	2015	---	---	---	672.77	0.027	0.051	3722
13,000,000	1.00	---	---	---	01/08/2007	07/04/2000	5093	AKRITAS SA (CR)	0.220	19.56	#	0.184	12/07/2017	0.220	0.220	0.220	0.220	60@0.161	350@0.217	---	2015	40	1	8.80	2,860.00	0.106	0.244	2353
185,373,016	0.300	---	---	---	02/07/2008	28/02/2011	4957	ANEK LINES SA (CR)	0.090	---	↘	0.090	12/07/2017	0.090	0.090	0.090	0.090	210@0.090	2000@0.100	37.65	2015	12,800	7	1,152.00	16,948.01	0.051	0.099	5759
312,163	0.300	---	---	---	02/07/2008	28/02/2011	4959	ANEK LINES SA (PR, Issue '90)	0.400	---	↘	0.400	12/07/2017	---	---	---	---	---	1@0.320	-(6)-	2015	---	---	---	16,948.01	0.400	0.422	5759
2,969,713	0.300	---	---	---	02/07/2008	28/02/2011	4958	ANEK LINES SA (PR, Issue '96)	0.047	---	↘	0.047	12/07/2017	---	---	---	---	7000@0.054	---	19.66	2015	---	---	---	16,948.01	0.047	0.058	5759
4,737,503	0.320	---	---	---	22/06/2005	22/09/2015	5115	VARANGIS AVEPE S.A. (CR)	0.176	---	↘	0.176	12/07/2017	---	---	---	---	---	1307@0.176	---	2015	---	---	---	833.80	0.176	0.220	3726
16,383,428	0.300	---	---	---	25/06/2002	21/06/2013	4997	VARVARESSOS SA (CB)	0.200	---	↘	0.200	12/07/2017	---	---	---	---	---	900@0.200	---	2016	---	---	---	3,276.69	0.031	0.227	3763
77,376,446	0.340	---	---	---	23/05/2005	18/08/2011	5094	G.E. DIMITRIOU (CR)	0.018	20.00	#	0.015	12/07/2017	0.018	0.018	0.018	0.018	54500@0.018	---	---	2015	67,311	10	1,211.60	1,392.78	0.009	0.032	3722
15,878,748	0.480	---	---	---	10/07/2006	22/03/2004	5095	DOMIKI KRITIS SA (CR)	0.079	12.86	#	0.070	12/07/2017	0.084	0.075	0.084	0.075	499@0.075	100@0.084	---	2015	70	3	5.52	1,254.42	0.066	0.290	2357
3,961,300	1.28	---	---	---	29/06/2004	03/08/2000	5080	DUROS SA (CR)	0.170	---	↘	0.170	12/07/2017	0.170	0.170	0.170	0.170	9979@0.170	10@0.200	---	2016	90	1	15.30	673.42	0.160	0.400	3763
7,085,888	1.59	---	---	---	02/07/1996	06/09/2010	4690	ELVIEMEK (CR)	4.70	---	↘	4.70	12/07/2017	---	---	---	---	---	200@3.76	---	2015	---	---	---	33,303.67	4.70	4.70	8633
7,125,216	0.650	---	---	---	01/07/2005	14/12/1999	4955	KRE.KA SA (CR)	0.110	---	↘	0.110	12/07/2017	---	---	---	---	1000@0.100	2000@0.132	---	2016	---	---	---	783.77	0.042	0.190	3573
7,734,375	1.00	---	---	---	09/07/2007	07/01/2011	5112	LIVANIS SA (CR)	0.037	19.36	#	0.031	12/07/2017	0.037	0.037	0.037	0.037	9680@0.037	---	---	2015	20	1	0.74	286.17	0.006	0.037	5557
15,842,391	1.51	---	---	---	15/07/2009	12/05/2000	5141	BITROS HOLDING SA (CR)	0.150	---	↘	0.150	12/07/2017	---	---	---	---	600@0.157	---	---	2015	---	---	---	2,376.36	0.078	0.220	1757
25,179,640	0.600	---	---	---	08/08/1994	19/09/2000	5057	J.BOUTARIS & SON HOLD. SA (CB)	0.042	-16.00	€	0.050	12/07/2017	0.042	0.042	0.042	0.042	1200@0.044	4440@0.060	---	2015	2,000	3	84.00	1,165.34	0.036	0.084	3535
1,540,000	0.600	---	---	---	08/08/1994	19/09/2000	5058	J.BOUTARIS & SON HOLD. (PB)	0.070	---	↘	0.070	12/07/2017	---	---	---	---	---	7000@0.084	---	2015	---	---	---	1,165.34	0.066	0.079	3535
23,935,280	0.300	---	---	---	29/06/2009	13/06/2000	5140	NAYTEMPORIKI PUBLISHING SA(CR)	0.037	19.36	#	0.031	12/07/2017	0.037	0.037	0.037	0.037	4980@0.037	---	---	2016	20	1	0.74	885.61	0.017	0.070	5557
79,596,820	0.300	---	---	---	15/07/2008	27/04/2017	5146	NIKAS SA (CR)	0.331	---	↘	0.331	12/07/2017	---	---	---	---	19959@0.331	---	---	2015	---	---	---	26,346.55	0.227	0.436	3577
18,750,000	0.300	---	---	---	02/07/2001	31/12/2012	4985	PEGASUS PUBLISHING S.A. (CR)	0.152	-16.94	€	0.183	12/07/2017	0.155	0.147	0.155	0.152	0.152	70@0.147	---	2015	14,965	27	2,275.48	2,850.00	0.017	0.336	5557
10,186,667	1.35	---	---	---	24/06/2008	02/02/2016	4887	SIDMA SA (CR)	0.309	---	↘	0.309	12/07/2017	---	---	---	---	750@0.300	150@0.349	---	2015	---	---	---	3,147.68	0.157	0.420	1757
7,914,480	0.300	---	---	---	23/06/2008	29/06/2011	4888	SFAKIANAKIS SA (CR)	0.440	0.46	#	0.438	12/07/2017	0.440	0.440	0.440	0.440	500@0.470	134@0.524	---	2015	498	1	219.12	3,482.37	0.210	1.04	5379
1,270,000	0.300	---	---	---	06/07/2007	06/02/2013	5007	GIRAKIAN PROFIL SA (CB)	0.019	---	↘	0.019	12/07/2017	---	---	---	---	20000@0.022	---	---	2016	---	---	---	24.13	0.016	0.100	1757
4,034,950	0.680	---	---	---	01/07/2005	30/12/2010	5114	CHATZIKRANIOTIS & SONS SA (CR)	0.110	---	↘	0.110	12/07/2017	---	---	---	---	3000@0.100	5000@0.120	---	2016	---	---	---	443.84	0.032	0.164	3577

Under Deletion																													
1,130,180	0.440	---	---	---	20/06/2003	02/07/2014	5092	COMPUCON SA (CR)	0.006	---	↘	0.006	12/07/2017	---	---	---	---	397@0.007	---	---	2016	---	---	---	6.78	0.006	0.006	9537	
17,579,754	4.16	---	---	---	18/08/2006	02/08/2010	5145	BIOTER SA (CR)	0.088	15.79	#	0.076	12/07/2017	0.076	0.076	0.091	0.091	0.088	2596@0.090	5590@0.091	---	2015	31,319	17	2,759.22	1,547.02	0.041	0.188	2357
5,939,268	0.620	---	---	---	10/07/2003	03/01/2002	5142	LANAKAM SA (CR)	0.367	---	↘	0.367	12/07/2017	---	---	---	---	300@0.294	840@0.434	---	2016	---	---	---	2,179.71	0.288	0.589	3763	
8,321,682	0.670	---	---	---	17/08/2007	23/11/1999	5143	N. LEVEDERIS SA (CB)	0.097	---	↘	0.097	12/07/2017	---	---	---	---	1000@0.084	10@0.116	---	2016	---	---	---	1,239.31	0.088	0.242	1757	
2,160,524	0.670	0.0436	0.0436	---	04/08/2016	23/11/1999	5144	N. LEVEDERIS SA (PB)	0.200	11.11	#	0.180	12/07/2017	0.200	0.200	0.200	0.200	1000@0.170	4330@0.200	---	2016	200	1	40.00	1,239.31	0.119	0.328	1757	
9,567,289	0.300	---	---	---	01/07/2004	19/11/2007	5062	MARAC ELECTRONICS (CR)	0.298	---	↘	0.298	12/07/2017	---	---	---	---	---	6464@0.239	---	2015	---	---	---	2,851.05	0.298	0.298	9578	
24,319,250	0.300	---	---	---	09/07/2002	04/07/2007	5111	PROODEFTIKH SA (CR)	0.040	-16.67	€	0.048	12/07/2017	0.040	0.040	0.040	0.040	0.040	---	266@0.040	---	2015	7,834	10	313.36	972.77	0.020	0.063	2357
766,000	1.00	---	---	---	01/07/2004	11/12/2012	4937	TRIA ALFA SA (CR)	1.76	---	↘	1.76	12/07/2017	---	---	---	---	---	---	148@2.07	---	2016	---	---	---	1,605.41	1.70	2.59	3763
245,000	1.00	---	---	---	19/07/2010	11/12/2012	4938	TRIA ALFA SA (PR)	1.05	---	↘	1.05	12/07/2017	---	---	---	---	---	40@0.840	704@1.19	---	2016	---	---	---	1,605.41	1.05	1.63	3763

215,246,452	0.300	---	---	---	25/06/2001	24/09/2001	4446	ALTEC SA (CR)	0.012	---	↘	0.012	30/11/2015	---	---	---	---	---	---	---	---	---	---	---	2,582.96	0.012	0.012	9533
-------------	-------	-----	-----	-----	------------	------------	------	---------------	-------	-----	---	-------	------------	-----	-----	-----	-----	-----	-----	-----	-----	-----	-----	-----	----------	-------	-------	------

Daily Official List

Year: 138 Trading Day No: 133

Section 2: Analytic Figures of Shares Transactions

Thursday, 13 July, 2017

Number of Outstanding Securities	Nominal Value	Dividends [1]			Date of Last Coupon Dividend [2]		Note	Shares	Closing price	% change	Previous closing price/date	Open price	Price min	Price max	Last price	Avg price	Last Bid [7]	Last Ask [7]	P/E after	Year	Volume	Trades	Transactions Value[8]	Company Mkt Value (thou. €)	Year low	Year high	Sector[4]
20,255,805	0.300	---	---	---	22/08/2006	02/08/2010	5136	AXON HOLDING SA (CR)	0.058	---	0.058	28/04/2017	---	---	---	---	---	---	---	---	---	---	---	1,174.84	0.007	0.066	4533
13,555,100	1.00	---	---	---		08/07/2005	4576	MICROLAND COMPUTERS SA (CR)	0.640	---	0.640	14/07/2009	---	---	---	---	---	---	---	---	---	---	---	8,675.26	0.640	0.640	5379
40,946,303	0.360	---	---	---	18/07/2005	27/11/2007	5089	PC SYSTEMS SA (CR)	0.006	---	0.006	31/03/2016	---	---	---	---	---	---	---	---	---	---	---	245.68	0.006	0.006	9533
33,301,715	0.320	---	---	---	27/06/2003	08/07/2009	5135	AECEK (CR)	0.035	---	0.035	27/04/2017	---	---	---	---	---	---	---	---	---	---	---	1,165.56	0.031	0.056	2357
5,000,000	0.400	---	---	---	03/06/2009	01/09/2014	5087	ALCO HELLAS SA (CR)	0.180	---	0.180	31/03/2015	---	---	---	---	---	---	---	---	---	---	---	900.00	0.180	0.180	1753
14,870,100	0.300	---	---	---	15/05/2008	26/09/2011	5130	ALPHA GRISSIN S.A. (CR)	0.014	---	0.014	13/04/2017	---	---	---	---	---	---	---	---	---	---	---	208.18	0.014	0.031	9533
81,644,555	0.300	---	---	---	01/07/2008	02/09/2002	5098	ATTI - KAT SA (CR)	0.012	---	0.012	29/05/2015	---	---	---	---	---	---	---	---	---	---	---	979.73	0.012	0.012	2357
20,121,710	1.21	---	---	---	27/07/1992	12/03/2003	5002	BALKAN R.E. (CR)	0.190	---	0.190	29/08/2013	---	---	---	---	---	---	---	---	---	---	---	3,823.12	0.190	0.190	8633
33,930,000	0.300	---	---	---	03/07/2006	30/05/2001	4865	BABIS VOVOS SA (CR)	0.304	---	0.304	30/03/2012	---	---	---	---	---	---	---	---	---	---	---	10,314.72	0.304	0.304	8633
6,000,000	0.600	---	---	---	13/06/2008	08/04/2004	5137	EUROBROKERS S.A. (CR)	0.007	---	0.007	28/04/2017	---	---	---	---	---	---	---	---	---	---	---	42.00	0.007	0.010	8534
7,847,611	1.20	---	---	---	01/08/2007	28/09/2011	4939	EDRASIS - C. PSALLIDAS SA (CR)	0.150	---	0.150	29/11/2012	---	---	---	---	---	---	---	---	---	---	---	1,177.14	0.150	0.150	2357
36,748,909	0.730	---	---	---	15/12/2005	13/12/2006	5109	HEL. SUGAR INDUSTRY SA (CB)	0.075	---	0.075	29/02/2016	---	---	---	---	---	---	---	---	---	---	---	2,756.17	0.075	0.075	3577
30,390,000	0.310	---	---	---	18/08/2008	29/12/2006	5099	HELLENIC FISHFARMING SA (CR)	0.070	---	0.070	02/06/2015	---	---	---	---	---	---	---	---	---	---	---	2,127.30	0.070	0.070	3573
13,692,227	1.47	---	---	---	07/07/2006	08/10/1999	5049	HELLENIC FABRICS SA (CR)	0.117	---	0.117	31/03/2014	---	---	---	---	---	---	---	---	---	---	---	1,601.99	0.117	0.117	3763
13,404,440	8.63	---	---	---	02/04/2001	06/03/1992	4822	IONIAN HOTELS SA (CR)	10.02	---	10.02	22/06/2017	---	---	---	---	---	---	---	---	---	---	---	134,312.49	9.30	10.02	5753
24,619,524	0.500	---	---	---	10/10/1986	30/12/2002	4914	KERAMIA-ALLATINI (CR)	0.088	---	0.088	30/08/2012	---	---	---	---	---	---	---	---	---	---	---	2,166.52	0.088	0.088	8633
23,286,253	0.990	0.2406	---	---	14/08/2015	15/09/2014	5128	KYRIAKIDIS MARBLES SA (CR)	4.50	---	4.50	22/06/2017	---	---	---	---	---	---	---	---	---	---	---	104,788.14	3.04	4.90	2353
66,937,526	0.700	---	---	---	13/08/2010	21/05/2003	5003	MICHANIKI SA (CR)	0.100	---	0.100	29/08/2013	---	---	---	---	---	---	---	---	---	---	---	9,186.78	0.100	0.100	2357
25,968,987	0.700	---	---	---	13/08/2010	21/05/2003	5004	MICHANIKI SA (PR)	0.096	---	0.096	29/08/2013	---	---	---	---	---	---	---	---	---	---	---	9,186.78	0.096	0.096	2357
255,459,600	0.300	---	---	---	26/06/2000	03/12/2010	5101	NEL SA (CR)	0.070	---	0.070	31/08/2015	---	---	---	---	---	---	---	---	---	---	---	17,882.17	0.070	0.070	5759
23,463,874	0.800	---	---	---	23/05/2003	21/12/1999	4918	NEORION SA (CR)	0.125	---	0.125	30/08/2012	---	---	---	---	---	---	---	---	---	---	---	2,932.98	0.125	0.125	2753
41,068,800	0.420	(0.03)	0.1205	---	19/08/2016	17/02/2016	5129	CRETE PLASTICS SA (CR)	5.33	---	5.33	03/04/2017	---	---	---	---	900@4.80	---	---	---	---	---	---	218,896.70	4.77	5.35	1357
144,688,060	0.600	---	---	---	21/04/2008	10/03/2010	4982	T BANK (CR)	0.048	---	0.052	# 29/11/2011	---	---	---	---	---	---	---	---	---	---	---	6,945.03	0.048	0.048	8355
284,465,964	3.70	---	---	---	20/06/2008	15/06/2009	4913	TT HELLENIC POSTBANK (CR)	0.168	---	0.239	# 29/08/2012	---	---	---	---	---	---	---	---	---	---	---	47,790.28	0.168	0.168	8355
13,920,000	0.320	---	---	---	19/11/2001	01/08/2000	4726	TEXAPRET SA (CR)	0.080	---	0.080	28/02/2011	---	---	---	---	---	---	---	---	---	---	---	1,113.60	0.080	0.080	3763
100,793,572	0.300	---	---	---	16/07/2009	11/02/2016	5110	TELETIPOS SA (CR)	0.060	---	0.060	07/03/2016	---	---	---	---	---	5@0.048	---	---	---	---	---	6,047.61	0.060	0.060	5553
510,840	1.00	---	---	---	15/07/2008	21/11/2013	5036	TROPEA HOLDING (CR)	2.00	---	0.020	# 30/03/2012	---	---	---	---	---	---	---	---	---	---	---	1,021.68	2.00	2.00	3722

Shares' Notes

Code	Note text
()	- Adjusted dividends.
*	- Last adjusted closing price.
[1]	- Net dividends.
[2]	- The "Date of Last Coupon" for New listings refers to the date company's stocks started to trade in Athex
[3]	- The Company Market Value is referred to the number of outstanding shares
[4]	- Sectors codification can be found in Appendix A
[5]	- The Market Value refers to the total number of shares listed (including their several classes) in the exchange by the company.
[6]	- P/E greater than 100
[7]	- Last view of the Order Book before the end of the trading session
[8]	- All Blocks Methods' Transactions Value are included.
4446	- Transfer to the "Under Supervision" Category as of 20/10/2008.
4576	- Suspension of trading as of 14/7/2009.
4690	- Transfer to Surveillance category as of 4/4/2006.
4726	- Suspension of trading as of 1/3/2011.
4750	- Transfer to the "Under Surveillance Category" from 8/4/2011.
4795	- The final gross (pre-tax) dividend is € 0.30 per share and subject to withholding tax on the full dividend amount, i.e. 0,45 per share, for those shareholders liable to withholding tax, in accordance with the applicable tax law provisions.
4814	- Transfer to the Low Dispersion Category as of 30/5/2011.
4815	- Transfer to the Low Dispersion Category as of 30/5/2011.
4817	- Transfer to the Low Dispersion Category as of 30/5/2011.
4822	- Transfer to the Low Dispersion category as of 30/5/2011.
4823	- Transfer to the Low Dispersion category as of 4/4/2006.
4827	- Transfer to the Low Dispersion category as of 5/5/2010.
4865	- Suspension of trading as of 2/4/2012.
4882	- Transfer to the Surveillance Category as of 10/4/2012.
4887	- Transfer to the Surveillance Category as of 10/4/2012.
4888	- Transfer to the Surveillance Category as of 10/4/2012.
4912	- Transfer to the Surveillance Category as of 31/7/2012.
4913	- Suspension of trading as of 30/8/2012.
4914	- Suspension of trading as of 31/8/2012.
4918	- Suspension of trading as of 31/8/2012.
4937	- Transfer to the UNDER DELETION category as of 30/11/2012.
4938	- Transfer to the UNDER DELETION category as of 30/11/2012.
4939	- Suspension of trading as of 30/11/2012.
4955	- Transfer to the Surveillance Category as from 5/4/2013.
4956	- Transfer to the Surveillance Category as from 5/4/2013.
4957	- Transfer to the Surveillance Category as from 5/4/2013.
4958	- Transfer to the Surveillance Category as from 5/4/2013.
4959	- Transfer to the Surveillance Category as from 5/4/2013.
4977	- Transfer to the "Under Surveillance Category" from 11/6/2013.
4982	- Suspension of trading as of 1/12/2011.
4983	- Transfer to the Surveillance Category as of 5/4/2013.
4985	- Transfer to the "Under Surveillance Category" from 8/4/2011.
4997	- Transfer to the Under Supervision Category as of 21/12/2009. - The 6,870,053 new (CB) shares, resulting from the recent share capital increase through a rights issue, are not yet admitted to trading on the ATHEX.
5002	- Suspension of trading as of 30/08/2013.
5003	- Suspension of trading as of 30/08/2013.
5004	- Suspension of trading as of 30/08/2013.
5007	- Transfer to the Surveillance category, as of 11/10/2013.
5031	- The 612,300 new (CR) shares, resulting from the recent share capital increase through a rights issue, are not yet admitted to trading on the ATHEX.
5036	- The company's share is under suspension of trading as of 2/4/2012. During suspension, the company proceeded and concluded a share reverse split, according to which - after the conclusion of the corporate action - the total number of the company's shares, as well as, the last closing price of 30/03/2012 were adjusted.
5046	- Transfer to the Low Dispersion category as of 8/4/2011.

Shares' Notes

Code	Note text
5049	- Under suspension of trading as of 1/4/2014.
5057	- Transfer to the Surveillance Category as of 29/12/2011.
5058	- Transfer to the Surveillance Category as of 29/12/2011.
5062	- Transfer to the UNDER DELETION category as of 4/6/2014.
5080	- Suspension of trading as of 6/9/2011.
5087	- Suspension of trading as of 1/4/2015.
5089	- Transfer to the Surveillance Category as of 8/4/2015.
5092	- Transfer to the UNDER DELETION category as of 8/4/2015.
5093	- Transfer to the Surveillance Category as of 8/4/2015.
5094	- Transfer to the Surveillance Category as of 8/4/2015.
5095	- Transfer to the Surveillance Category as from 9/4/2015.
5098	- Suspension of trading as of 2/6/2015.
5099	- Suspension of trading as of 3/6/2015.
5101	- Suspension of trading as of 1/9/2015.
5104	- Transfer to the "Low Dispersion" Category as of 31/10/2014. Change of the company name from "MIG REAL ESTATE R.E.I.C." to "NBG PANGAEA R.E.I.C." as of 30/12/2015.
5109	- Suspension of trading as of 01/03/2016.
5110	- Suspension of trading as of 08/03/2016.
5111	- Transfer to the Under Deletion Category as of 15/04/2016.
5112	- Transfer to the Surveillance Category as of 15/04/2016.
5113	- Transfer to the Surveillance Category as of 15/04/2016.
5114	- Transfer to the Surveillance Category as of 15/04/2016.
5115	- Transfer to the Surveillance Category as of 15/04/2016.
5116	- Transfer to the Low Dispersion Category as of 20/4/2016.
5118	- Transfer to the Surveillance Category as of 25/11/2011. Issue of a Convertible Bond Loan in progress through a rights issue. Rights' trading period on ATHEX: 22/09/2016 - 03/10/2016, pre-emption rights' subscription period: 22/09/2016 - 06/10/2016.
5123	- Transfer to the Surveillance Category as of 10/4/2014.
5124	- The 30,874,635 new (CR) shares, resulting from the recent share capital increase through a rights issue, are not yet admitted to trading on the ATHEX.
5127	- Transfer to the Low Dispersion Category as of 03/03/2017.
5128	- Transfer to the Low Dispersion Category as of 24/03/2017.
5129	- Suspension of trading as of 04/04/2017.
5130	- Suspension of trading as of 18/04/2017.
5135	- Suspension of trading as of 28/04/2017.
5136	- Suspension of trading as of 02/05/2017.
5137	- Suspension of trading as of 02/05/2017.
5140	- Transfer to the Surveillance Category as of 10/05/2017.
5141	- Transfer to the Surveillance Category as of 10/05/2017.
5142	- Transfer to the Under Deletion Category as of 10/05/2017.
5143	- Transfer to the Under Deletion Category as of 10/05/2017.
5144	- Transfer to the Under Deletion Category as of 10/05/2017.
5145	- Transfer to the Under Deletion Category as of 10/05/2017.
5146	- Transfer to the Surveillance Category as of 10/4/2012. The 77,573,688 new (CR) shares, resulting from the recent share capital increase through a rights issue, are not yet admitted to trading on the ATHEX.

Securities Blocks Details

Securities	Block Volume	Price	Block Trade Value	Time of approval	Note
OTE (CR)	250,000	10.45	2,612,500.00	11:06:34	20
OTE (CR)	123,800	10.50	1,299,900.00	11:44:58	20
ALPHA BANK (CR)	245,000	2.27	554,925.00	11:50:39	20
OPAP (CR)	150,000	10.00	1,500,000.00	12:07:37	20
ALPHA BANK (CR)	1,000,000	2.27	2,265,000.00	12:09:51	20
OPAP (CR)	67,750	10.00	677,500.00	12:19:56	20
OPAP (CR)	50,000	10.00	500,000.00	12:20:05	20
EUROBANK ERGASIAS (CR)	750,000	1.00	750,000.00	13:11:32	20
EUROBANK ERGASIAS (CR)	500,000	1.00	500,000.00	13:38:15	20
EUROBANK ERGASIAS (CR)	500,000	0.998	499,000.00	15:01:41	20
OTE (CR)	43,805	10.66	466,961.30	15:23:14	20
OTE (CR)	50,000	10.65	532,500.00	16:04:33	20
ALPHA BANK (CR)	270,000	2.28	615,600.00	16:07:15	20
ALPHA BANK (CR)	500,000	2.28	1,140,000.00	16:10:51	20
OPAP (CR)	123,000	10.05	1,236,150.00	16:20:44	20
ALPHA BANK (CR)	250,000	2.28	570,000.00	16:23:23	20
PIRAEUS BANK (CR)	3,000,000	0.257	769,500.00	16:37:23	20
ALPHA BANK (CR)	445,000	2.28	1,014,600.00	16:40:39	20
PIRAEUS BANK (CR)	2,100,000	0.258	540,750.00	16:46:38	20
ALPHA BANK (CR)	2,000,000	2.28	4,560,000.00	16:53:55	20
TITAN CEMENT (CR)	25,000	25.73	643,250.00	17:11:14	20
EUROBANK ERGASIAS (CR)	243,065	1.03	250,356.95	17:11:53	20
ALPHA BANK (CR)	250,000	2.28	570,000.00	17:18:08	20

Blocks Notes

- 9 - Method 6-1 / Special Fees
- 10 - Method 6-1 / Special Fees, SDS
- 14 - Method 6-3 / Settlement, Incomplete Buy and Sell
- 18 - Method 6-2 / SPOT 1
- 19 - Method 6-2 / SPOT 2
- 20 - Method 6-1 and Method 6-1 Same Day Settlement
- 21 - Other Pre-agreed

Shares Rights Details

Occured date	Exercise from	Exercise until	Trading until	Rights	Price min	Price max	Closing price	Last Bid	Last Ask	Volume	Trades	Transactions Value
-----------------	------------------	-------------------	------------------	--------	--------------	--------------	------------------	----------	----------	--------	--------	-----------------------

No Rights Transactions.

Shares Forced Sales

Securities	Transaction s Volume	Number of Trades	Transactions Value	Note
No Forced Transactions.				

Forced Sales Notes

- 1 - Normal Forced Sale.
- 2 - Forced Sales of Fixed Registered Shares.
- 3 - Forced Sales of Remaining Stock Fractions.

Forced Sales Registered Shares

Securities	Start Date	End Date	Initial Volume	Remaining Volume	Date	Avg price (day)	Avg price (period)	Number of Trades	Transactions Volume	Transactions Value
------------	------------	----------	----------------	------------------	------	-----------------	--------------------	------------------	---------------------	--------------------

No Fixed Registered Shares Forced Sales.

Forced Sales Notes

According to Decision 1/380/04.05.2008 of the Hellenic Republic Capital Market Commission, the certificated registered shares that have not been deposited to the issuer for dematerialisation, will be auctioned in the Athens Exchange by the supervising issuer. Forced sales procedure is held according to Article 99A of the Athens Exchange Rulebook. The average price of the period is calculated by dividing the Total transactions value by the Total volume and includes all the transactions made until the current date.

Exchange Traded Funds (ETFs) Characteristics

	Transactions Date (T)	Creation / Redemption	Units (T-1)	New Units (T-1)	Redemptio n Units (T-	Units (T) [1]	Fund Assets [2]	Net Unit Price	Dividen d per	Dividend Date
ALPHA ETF FTSE Athex Large Cap	13/07/2017	5,000	619,082	---	---	619,082	13,604,190.00	21.9748	0.37	30/06/2016

ETFs Notes

[1] - Units (T) = Units (T-1) + New Units (T-1) - Redemption Units (T-1)

[2] - The Creation / Redemption Units of T-1 are included.

Convertible Corporate Bonds - Regulated Market

Num Listed Bonds	Nominal price	Issue price	Today's Rate	Exp. Date	Duration (years)	Note	Coupon		Trading	Corporate Bonds	Price min	Price max	Closing price	Previous closing price/date	Volume	Transactions Value	Last order		Date	ear min	Year max
							Common	Preferred									Price	Buy / Sell			
233,723,142	0.30	0.30	1.00	11/10/2025	9	---	4	---	1	FORTHNET S.A. (Convertible)	---	---	---	---	---	---	0.2000	B	10/05/2017	100.0000	100.0000
1,774,359	13.76	9.77	0.00	21/10/2025	18	---	26	---	1	NIREUS S.A. (Convertible)	---	---	---	89.1000 20/06/2017	---	---	30.0000	B	13/07/2017	89.1000	99.0000
212,237,880	1.00	1.00	6.30	29/07/2020	7	---	16	---	1	MARFIN INVESTMENT GROUP S.A. SERIES B (Convert.)	---	---	---	0.9000 10/04/2017	---	---	0.3500	B	06/07/2017	0.8500	0.9000
163,009,139	1.00	1.00	7.00	29/07/2019	6	---	16	---	1	MARFIN INVESTMENT GROUP S.A. SERIES A (Convert.)	---	---	---	1.0000 23/08/2013	---	---	0.9500	B	30/06/2017	1.0000	1.0000

Corporate Bonds Notes

Transactions Volume = (Pieces) * (Nominal Price). Transactions Value = (Pieces) * (Nominal Price) * (price %) + (Accrued interest).
The price of a Bond is stated as a percentage (%) of Bond's Nominal Price.
Nominal Price in Euros (€), except if it is noted differently.

Non Convertible Corporate Bonds - Regulated Market

Num Listed Bonds	Nominal price	Issue price	Today's Rate	Exp. Date	Duration (years)	Note	Coupon		Trading	Corporate Bonds	Accrued Int.	Yield.T.Mat	Price min	Price max	Closing price	Previous closing price/date	Volume	Transactions Value	Last order		Date	ear min	Year max
							Common	Preffered											Price	Buy / Sell			
300,000	1,000.00	1,000.00	3.10	27/06/2022	5	---	1	---	1	MYTILINEOS HOLDINGS S.A. (Non Convertible)	1.7222	3.0740	100.0600	100.1500	100.0947	100.0550 12/07/2017	144,000	144,384.30	100.0600	B	13/07/2017	100.0500	100.6400
50,000	1,000.00	1,000.00	4.25	20/06/2022	5	---	1	---	1	SYSTEMS SUNLIGHT S.A. (Non Convertible)	3.1875	4.0730	100.6100	100.8500	100.6907	100.8040 12/07/2017	135,000	136,348.91	100.6600	B	13/07/2017	100.0100	101.3500
200,000	1,000.00	1,000.00	3.50	21/03/2022	5	---	1	---	1	O.P.A.P. S.A. (Non Convertible)	11.4722	3.0060	101.7500	101.9500	101.9174	101.9300 12/07/2017	129,000	132,953.42	101.9300	B	13/07/2017	100.2800	102.1000
40,000,000	1.00	1.00	5.00	04/10/2021	5	---	4	---	1	HOUSEMARKET S.A. (Non Convertible)	0.0018	4.2800	---	---	---	102.0000 12/07/2017	---	---	101.7000	B	13/07/2017	100.1895	102.7000

Corporate Bonds Notes

Transactions Volume = (Pieces) * (Nominal Price). Transactions Value = (Pieces) * (Nominal Price) * (price %) + (Accrued interest).
The price of a Bond is stated as a percentage (%) of Bond's Nominal Price.
Nominal Price in Euros (€), except if it is noted differently.

Government Bonds

Number Listed Bonds	Nominal price	Today's Rate	Accrued Interest Calc	Exp. Date [1]	Duration (years)	Note	Coupons Date	Curr. coupon value	Trading Unit	Government Bonds	Price min	Price max	Closing price	Previous closing price/date	Volume	Transactions Value	Price	Last order Buy / Sell	Date
1,792,455,803	1.00	3.00	Actual/Actual	24/02/2023	11	---	24/02	3.00	1	GGB-FXD-240223-11Y-2.000-1.00	---	---	---	10.0000 22/06/2015	---	---	---	---	---
1,771,485,249	1.00	3.00	Actual/Actual	24/02/2024	12	---	24/02	3.00	1	GGB-FXD-240224-12Y-2.000-1.00	---	---	---	10.0000 22/06/2015	---	---	---	---	---
1,744,316,583	1.00	3.00	Actual/Actual	24/02/2025	13	---	24/02	3.00	1	GGB-FXD-240225-13Y-2.000-1.00	---	---	---	10.0000 22/06/2015	---	---	---	---	---
1,498,761,836	1.00	3.00	Actual/Actual	24/02/2026	14	---	24/02	3.00	1	GGB-FXD-240226-14Y-2.000-1.00	---	---	---	10.0000 22/06/2015	---	---	---	---	---
1,469,952,920	1.00	3.00	Actual/Actual	24/02/2027	15	---	24/02	3.00	1	GGB-FXD-240227-15Y-2.000-1.00	---	---	---	10.0000 22/06/2015	---	---	---	---	---
1,525,434,082	1.00	3.00	Actual/Actual	24/02/2028	16	---	24/02	3.00	1	GGB-FXD-240228-16Y-2.000-1.00	---	---	---	10.0000 22/06/2015	---	---	---	---	---
1,503,860,546	1.00	3.00	Actual/Actual	24/02/2029	17	---	24/02	3.00	1	GGB-FXD-240229-17Y-2.000-1.00	---	---	---	10.0000 22/06/2015	---	---	---	---	---
1,435,418,132	1.00	3.00	Actual/Actual	24/02/2030	18	---	24/02	3.00	1	GGB-FXD-240230-18Y-2.000-1.00	---	---	---	10.0000 22/06/2015	---	---	---	---	---
1,368,045,727	1.00	3.00	Actual/Actual	24/02/2031	19	---	24/02	3.00	1	GGB-FXD-240231-19Y-2.000-1.00	---	---	---	10.0000 22/06/2015	---	---	---	---	---
1,373,758,194	1.00	3.00	Actual/Actual	24/02/2032	20	---	24/02	3.00	1	GGB-FXD-240232-20Y-2.000-1.00	---	---	---	10.0000 22/06/2015	---	---	---	---	---
1,452,639,893	1.00	3.00	Actual/Actual	24/02/2033	21	---	24/02	3.00	1	GGB-FXD-240233-21Y-2.000-1.00	---	---	---	10.0000 22/06/2015	---	---	---	---	---
1,410,344,954	1.00	3.00	Actual/Actual	24/02/2034	22	---	24/02	3.00	1	GGB-FXD-240234-22Y-2.000-1.00	---	---	---	10.0000 22/06/2015	---	---	---	---	---
1,444,202,190	1.00	3.00	Actual/Actual	24/02/2035	23	---	24/02	3.00	1	GGB-FXD-240235-23Y-2.000-1.00	---	---	---	10.0000 22/06/2015	---	---	---	---	---
1,505,138,031	1.00	3.00	Actual/Actual	24/02/2036	24	---	24/02	3.00	1	GGB-FXD-240236-24Y-2.000-1.00	---	---	---	10.0000 22/06/2015	---	---	---	---	---
1,396,254,095	1.00	3.00	Actual/Actual	24/02/2037	25	---	24/02	3.00	1	GGB-FXD-240237-25Y-2.000-1.00	---	---	---	10.0000 22/06/2015	---	---	---	---	---
1,382,167,704	1.00	3.00	Actual/Actual	24/02/2038	26	---	24/02	3.00	1	GGB-FXD-240238-26Y-2.000-1.00	---	---	---	10.0000 22/06/2015	---	---	---	---	---
1,337,331,257	1.00	3.00	Actual/Actual	24/02/2039	27	---	24/02	3.00	1	GGB-FXD-240239-27Y-2.000-1.00	---	---	---	10.0000 22/06/2015	---	---	---	---	---
1,371,908,706	1.00	3.00	Actual/Actual	24/02/2040	28	---	24/02	3.00	1	GGB-FXD-240240-28Y-2.000-1.00	---	---	---	10.0000 22/06/2015	---	---	---	---	---
1,360,659,778	1.00	3.00	Actual/Actual	24/02/2041	29	---	24/02	3.00	1	GGB-FXD-240241-29Y-2.000-1.00	---	---	---	10.0000 22/06/2015	---	---	---	---	---
1,432,747,403	1.00	3.00	Actual/Actual	24/02/2042	30	---	24/02	3.00	1	GGB-FXD-240242-30Y-2.000-1.00	---	---	---	10.0000 22/06/2015	---	---	---	---	---
742,153	1,000.00	0.93	FLR Actual/360	10/08/2019	5	---	10/02 - 10/08	---	1	GGB-FLT-100819-05Y-0.934-1,000	---	---	---	---	---	---	---	---	---
4,030,827	1,000.00	4.75	Actual/Actual	17/04/2019	5	---	17/04	4.75	1	GGB-FXD-170419-05Y-4.750-1,000	---	---	---	---	---	---	---	---	---
2,089,066	1,000.00	3.38	Actual/Actual	17/07/2017	3	---	17/07	3.38	1	GGB-FXD-170717-03Y-3.375-1,000	---	---	---	---	---	---	---	---	---

Government Bonds Notes

Transactions Volume = (Pieces) * (Nominal Price). Transactions Value = (Pieces) * (Nominal Price) * (price %) + (Accrued interest).
The Value of current coupon for the issues with NV 0.01 euro refers to NV 100 euros
FLR: Floating Interest Rate.
[1] - The Expiration Date of the interest bearing period and the Date for coupon payment.

Bonds in Circulation	Currency / Min nominal traded Value	Coupons Payment Date	Current Coupon Value	Note	Coupon	Trading Unit	Issue Date	Duration (years)	Today's Interest	A.I.C in days	Bonds	Last price of previous days		Last Outcry in Cash (euro) Price Buy / Sell		Trades in Pieces	Life min	Life Max	
Corporate Bonds in Foreign Currency and Euro																			
103,746	GBP / 10	01/12	0.25	---	58	1	01/12/1930	98	2.5	360	National Mortgage Bank	2.27	05/02/1996	2.27	S	05/02/1996	---	2.27	2.27
0	GBP / 10	01/12	0.25	---	60	1	01/12/1928	100	2.5	360	National Mortgage Bank	---	---	---	---	---	---	---	---

Government Bonds Notes

A.I.C: Accrued Interest Calculation base.
FLR: Floating Interest Rate.
The minimum tradeable Nominal Value for all Demeterialised Government Titles is 100 Euros.
(μτφρ-0)

Athex & ATHEXClear Members List

Member Name			Stock Market			Derivatives Market		ATHEXClear Member	
Address	Phone	Fax	Market Member	Remote Member	Market Maker	Proprietary	Market Maker	General Clearing	Direct Clearing
A. SARRIS SECURITIES S.A.			a						
6, DRAGATSANIOU ATHINA	+30 2103367700	210-3312324							
ALPHA FINANCE INVESTMENT SERVICES S.A.			a		a	a	a		a
5, MERLIN ATHINA	+30 2103677400	210-33311193							
ALPHA BANK A.E.								a	
40, STADIOU STR ATHINA	(210)-3260000	(210)-3264116							
	(210)-3265546	(210)-3265811							
103, AVE. ATHINON ATHINA	+30 2103436820	210-3436270							
ARGUS STOCKBROKERS LTD			a	a		a			
25 , DIMOSTHENI SEVERI AVE NICOSIA	+357 22717000	0035722717070							
ATLANTIC SECURITIES LIMITED			a	a					
37, PRODROMOU NICOSIA	+357 22445400	00357 22661914							
ATLAS SECURITIES S.A			a			a			
, 125 MICHALAKOPOULOU & 14-16 VERVENON ATHINA	+30 2103363300	210-3238925							
ATTICA BANK S.A.								a	
54, AKADIMIAS STR. ATHINA	(210)-3390757	(210)-3646090							
23, OMIROU ATHINA	+30 2103669261	210-3669265							
23, OMIROU STR. ATHINA	(210)-3669000	(210)-3669410							
AXIA VENTURES GROUP LTD			a	a					
, KRANIDIOTI 10, OFFICE 102 NICOSIA	+357 22742000	357 22742001							
AXON SECURITIES S.A.			a			a			
48, STADIOU ATHINA	+30 2103363800	210-3243903							
BANK OF AMERICA MERRILL LYNCH			a	a					
2 , KING EDWARD STREET LONDON	+44 20276281000								
BETA SECURITIES S.A.			a		a	a			a
29 , ALEXANDRAS AVEN. & VRAILA ATHINA	+30 2106478900	210-6410139							
BNP PARIBAS SECURITIES SERVICES S.A.								a	
2, LAMPSAKOU ATHINA	+30 2107468500	210-7468579-581							
CAPITAL SECURITIES S.A.			a			a			
58, MITROPOLEOS ATHINA	+30 2103369700	+30 210 3369820							
CFS SECURITIES-INVESTMENT SERVICES S.A.			a						
3, PAPARRIGOPOULOU ATHINA	+30 2103360800	+30 210-3360980							
CITIGROUP GLOBAL MARKET LTD			a	a					
1, CITIGROUP CENTER , CANADA SQ., CANARY WHARF LONDON	+44 02079864000								
CREDIT SUISSE SECURITIES (EUROPE) LIMITED			a	a					
, ONE CABOT SQUARE LONDON	+44 2078888888								
CYCLOS SECURITIES S.A.			a			a			a
39, PANEPISTIMIOU ATHINA	+30 2103364300	+30 210-3239122							
D.A. TSEKOURAS SEC. S.A.			a						
33, STADIOU ATHINA	+30 2103245100	210-3211997							
DEUTSCHE BANK S.A.			a	a		a			
1 , GREAT WINCHESTER STREET LONDON	+44 20 754 54209	00441133361437							
DYNAMIC SECURITIES S.A.			a			a			a
8, OMIROU ATHINA	+30 2103677700	210-3677777							
EL. PETROPOULAKIS SECURITIES S.A.			a			a			
9, ARISTEIDOU ATHINA	+30 2103213928	+30 210-3216810							
EUROBANK ERGASIAS S.A.								a	
8, OTHONOS ATHINA	+30 2103337000	210-3245916							
8, OTHONOS STR. ATHINA	(210)-3337969	(210)-3245916							
	(210)-3337000	(210)-3233866							
EUROBANK SECURITIES INVESTMENT FIRM S.A			a		a	a	a		a
, FILELLINON 10 & XENOFONTOS 13 ATHINA	+30 2103720000	210-3720001							
EUROCORP SECURITIES S.A.			a			a			a
14, SQ.FILIKIS ETAIRIAS ATHINA	+30 2107263500	210-7263666							
EUOTRUST BROKERAGE S.A.			a						
113, SEVASTOUPOLEOS ATHINA	+30 2103363100	+30 210-3238334							
EUROXX SECURITIES S.A.			a		a	a	a		a
7, PALAIOLOGOU CHALANDRI	(210)-6879400	(210)-6879401							
7, PALEOLOGOU CHALANDRI	+30 2106879400	210-6879401							
G. A. PERVANAS SECURITIES-INVESTMENT SERVICES CO S.A.			a						
7-9, SOFOKLEOUS ATHINA	+30 2103727200	210-3210-291							
GLOBAL CAPITAL SECURITIES AND FINANCIAL SERVICES LTD			a	a					
50, AVE. ARCHIEPISKOPOU MAKARIOU NICOSIA	+357 22710710	357 22339332							

Athex & ATHEXClear Members List

Member Name			Stock Market			Derivatives Market		ATHEXClear Member	
Address	Phone	Fax	Market Member	Remote Member	Market Maker	Proprietary	Market Maker	General Clearing	Direct Clearing
GUARDIAN TRUST SECURITIES S.A			a			a			
31, ERMOU ATHINA	+30 2103378700	210-3220498							
HELLENIC BANK (INVESTMENTS) LTD			a						
, AVE. KYRIAKOU MATSI 31 - PO BOX 24747 NICOSIA	+357 22500100	357 22500110							
HELLENICAMERICAN SEC. S.A.			a		a	a			a
27, ANDREA PAPANDREOU ATHINA	+30 2103311100	+30 210-3215968							
HSBC BANK PLC								a	
109-111, AVE. MESOGION ATHINA	+30 2106960000	210-6928000							
INDEX SECURITIES S.A.			a						
6, DRAGATSANIOU ATHINA	+30 2103213920	+30 210-3213216							
INVESTMENT BANK OF GREECE S.A.			a		a	a	a	a	
32 , EGIALIAS & PARADISOU MAROUSI	+30 2108173111	+30 210-6896325							
J. CHR. MAVRIKIS SECURITIES S.A.			a						
5, SOFOKLEOUS ATHINA	+30 2103216730	210-3217767							
KAPPA SECURITIES S.A.			a			a			
15, VALAORITOU ATHINA	+30 2103678600	+30 210-3641002							
KARAMANOF SECURITIES-INV. SERVICES S.A.			a			a			
2, SQ. AGION THEODORON ATHINA	+30 2103212947	+30 210-3217088							
LAIKI FINANCIAL SERVICES LTD			a						
26, AVE. VYRONOS NICOSIA	357 22367367	357 22718567							
LEON DEPOLAS SECURITIES S.A.			a		a	a			
1, CHRISTOU LADA ATHINA	+30 2103213276	+30 210-3211618							
MAGNA TRUST SECURITIES S.A			a						
12-14, KARAGIORGI SERBIAS ATHINA	+30 2103800820	210-3220910							
MEGA EQUITY SECURITIES & FINANCIAL SERVICES PUBLIC LTD			a	a		a			
42-44, AVE. GRIVA DIGENI NICOSIA	+357 22711711	357 22711811							
MERIT SECURITIES S.A			a		a	a			a
3, GEORGIOU SOURI ATHINA	2103671800	210-3671830							
MIDAS BROKERAGE S.A.			a		a				
5, SOFOKLEOUS ATHINA	+30 2141008800	+30 210-3253205							
N. CHRYSOCHOIDIS STOCK BROKERAGE I.S.S.A.			a			a			a
7-9, SOFOKLEOUS ATHINA	+30 2103213913	+30 210-3216115							
NATIONAL BANK OF GREECE S.A.			a		a	a		a	
86, AIOLOU STR. ATHINA	(210)-3341000	(210)-3228187							
68, AKADIMIAS STR. ATHINA	(210)-3328817	(210)-3328678							
NATIONAL SECURITIES S.A			a		a	a	a		
66, KIFISIAS AVE , BUILDING A ATHINA	+30 2107720000	+30 210-7720002							
NUNTIUS SECURITIES S.A			a						
6, DRAGATSANIOU ATHINA	+30 2103350599	+30210-3254846							
ONE PLUS CAPITAL LIMITED			a	a					
, 75 PRODOMOU AVENUE, ONEWORLD PARKVIEW HOUSE, 3RD FLOOR NICOSIA	+357 222873760								
PANTELAKIS SECURITIES S.A.			a			a	a		
57, ETHNIKIS ANTISTASIS B CHALANDRI	+30 2106965000	210-6929550							
PEGASUS SECURITIES S.A			a			a			
17 , VALAORITOU & AMERIKIS ATHINA	+30 2103670700	+30 210-3670760							
PIRAEUS BANK S.A.			a			a		a	
4, AMERIKIS STR. ATHINA	(210)-3335000	(210)-3335079							
4, AMERIKIS STR ATHINA	(210)-3335918	(210)-3254207							
4, AMERIKIS ATHINA	+30 2103335000	210-3335079							
PIRAEUS SECURITIES S.A.			a		a	a	a		a
5, KORAI ATHINA	+30 2103354100	210-3354170							
PRELIUM SECURITIES-INVESTMENT SERVICES S.A.			a			a			
342, KIFISIAS ATHINA	+30 2103677000	+30 210-6926403							
PROCHOICE SECURITIES LTD			a	a					
57, SPYROY KYPRIANOY NICOSIA	+357-24-661192	+357-24-662464							
SHARELINK SECURITIES-FINANCIAL SERVICES LTD			a	a		a			
6 , THEOTOKI MEGARO ELLINA NICOSIA	+357 22554200	+357 22750852							
SOCIETE GENERALE S.A.			a	a		a			
, 17 COURS VALMY 92987 PUTEAUX - LA DEFENSE PARIS	+33 157290504	+33142138697							
SOLIDUS SECURITIES S.A			a			a			a
64, LOUIZIS RIANCOUR ATHINA	+30 2106900600	210-6985421							
ST. EM. LAVRENTAKIS SECURITIES S.A.			a			a			
7-9, SOFOKLEOUS ATHINA	+30 2103213336	+30 210-3246572							

Athex & ATHEXClear Members List

Member Name			Stock Market			Derivatives Market		ATHEXClear Member	
Address	Phone	Fax	Market Member	Remote Member	Market Maker	Proprietary	Market Maker	General Clearing	Direct Clearing
THE CYPRUS INVESTMENT & SECURITIES CORPORATION LTD			a	a					
154, LIMASSOL AVENUE, STROVOLOS NICOSIA	+357 22121700	357 22338800							
UBS LIMITED			a	a					
1 , FINSBURY AVENUE LONDON	+44 2075687135								

List of Stocks under Market Making operations

Securities	Stock Category
Market Maker	Start Market Making
ADMIE (IPTO) HOLDING S.A. (CR)	Main Market
PIRAEUS SECURITIES S.A.	29/06/2017
ALPHA BANK (CR)	Main Market
ALPHA FINANCE INVESTMENT SERVICES S.A.	29/02/2016
EUROBANK SECURITIES INVESTMENT FIRM S.A	24/10/2012
LEON DEPOLAS SECURITIES S.A.	04/01/2016
MERIT SECURITIES S.A	03/09/2013
MIDAS BROKERAGE S.A.	11/01/2006
NATIONAL SECURITIES S.A	15/01/2013
PIRAEUS SECURITIES S.A.	28/05/2013
ALUMIL (CR)	Main Market
BETA SECURITIES S.A.	18/07/2013
ATTICA BANK S.A. (CR)	Main Market
BETA SECURITIES S.A.	02/06/2014
EUROXX SECURITIES S.A.	22/01/2016
BYTE COMPUTER SA (CR)	Main Market
MERIT SECURITIES S.A	04/08/2013
CC HBC AG (CR)	Main Market
EUROBANK SECURITIES INVESTMENT FIRM S.A	23/10/2013
NATIONAL SECURITIES S.A	29/04/2013
PIRAEUS SECURITIES S.A.	04/05/2015
CENERGY HOLDINGS (CB)	Main Market
ALPHA FINANCE INVESTMENT SERVICES S.A.	02/01/2017
EUROBANK SECURITIES INVESTMENT FIRM S.A	02/01/2017
ELASTRON (CR)	Main Market
LEON DEPOLAS SECURITIES S.A.	20/02/2017
ELLAKTOR (CR)	Main Market
EUROBANK SECURITIES INVESTMENT FIRM S.A	01/06/2013
NATIONAL SECURITIES S.A	25/06/2013
ELTON SA (CR)	Main Market
BETA SECURITIES S.A.	03/09/2013
EUROBANK ERGASIAS (CR)	Main Market
ALPHA FINANCE INVESTMENT SERVICES S.A.	08/01/2013
EUROBANK SECURITIES INVESTMENT FIRM S.A	01/06/2013
HELLENICAMERICAN SEC. S.A.	25/07/2014
MIDAS BROKERAGE S.A.	07/01/2016
NATIONAL SECURITIES S.A	01/01/2017
PIRAEUS SECURITIES S.A.	28/09/2013
FOLLI FOLLIE (CR)	Main Market
NATIONAL SECURITIES S.A	17/02/2014
PIRAEUS SECURITIES S.A.	04/05/2015
FOURLIS (CR)	Main Market
EUROBANK SECURITIES INVESTMENT FIRM S.A	01/12/2016
EUROXX SECURITIES S.A.	01/12/2016
PIRAEUS SECURITIES S.A.	06/03/2017
GEK TERNA (CR)	Main Market
HELLENICAMERICAN SEC. S.A.	07/09/2015
GR. SARANTIS SA (CR)	Main Market
ALPHA FINANCE INVESTMENT SERVICES S.A.	19/06/2017
BETA SECURITIES S.A.	14/05/2013
EUROBANK SECURITIES INVESTMENT FIRM S.A	24/10/2016
HELLENIC EXCHANGES-A.S.E. (CR)	Main Market
EUROBANK SECURITIES INVESTMENT FIRM S.A	01/06/2013
HELLENICAMERICAN SEC. S.A.	01/09/2014
NATIONAL SECURITIES S.A	25/06/2013
PIRAEUS SECURITIES S.A.	04/05/2015
HELLENIC PETROLEUM (CR)	Main Market
HELLENICAMERICAN SEC. S.A.	14/09/2015
PIRAEUS SECURITIES S.A.	20/03/2017
HYGEIA SA (CR)	Main Market
HELLENICAMERICAN SEC. S.A.	18/04/2016
INTERCONTINENTAL (CR)	Main Market
EUROXX SECURITIES S.A.	20/02/2017
INTRACOM HOLDINGS (CR)	Main Market
HELLENICAMERICAN SEC. S.A.	07/09/2015

List of Stocks under Market Making operations

Securities	Stock Category
Market Maker	Start Market Making
INTRALOT (CR)	Main Market
ALPHA FINANCE INVESTMENT SERVICES S.A.	03/07/2017
BETA SECURITIES S.A.	10/04/2017
EUROXX SECURITIES S.A.	12/06/2017
PIRAEUS SECURITIES S.A.	28/09/2013
J & P - AVAX SA (CR)	Main Market
EUROBANK SECURITIES INVESTMENT FIRM S.A	14/12/2015
JUMBO SA (CR)	Main Market
MIDAS BROKERAGE S.A.	27/07/2016
PIRAEUS SECURITIES S.A.	06/03/2017
KLOUKINAS - LAPPAS SA (CR)	Main Market
BETA SECURITIES S.A.	22/09/2014
KRI-KRI S.A. (CR)	Main Market
LEON DEPOLAS SECURITIES S.A.	16/01/2017
LAMDA DEVELOPMENT SA (CR)	Main Market
EUROBANK SECURITIES INVESTMENT FIRM S.A	08/12/2014
PIRAEUS SECURITIES S.A.	29/06/2017
LAMPSA HOTEL SA (CR)	Main Market
LEON DEPOLAS SECURITIES S.A.	16/01/2017
MARFIN INVESTMENT GROUP (CR)	Main Market
HELLENICAMERICAN SEC. S.A.	25/07/2014
LEON DEPOLAS SECURITIES S.A.	20/02/2017
PIRAEUS SECURITIES S.A.	02/02/2013
MLS MULTIMEDIA SA (CR)	Main Market
HELLENICAMERICAN SEC. S.A.	07/12/2015
MOTOR OIL (CR)	Main Market
EUROBANK SECURITIES INVESTMENT FIRM S.A	23/10/2012
HELLENICAMERICAN SEC. S.A.	01/09/2014
NATIONAL SECURITIES S.A	17/02/2014
PIRAEUS SECURITIES S.A.	04/05/2015
MYTILINEOS HOLDINGS (CR)	Main Market
NATIONAL SECURITIES S.A	25/06/2013
PIRAEUS SECURITIES S.A.	04/05/2015
NATIONAL BANK (CR)	Main Market
ALPHA FINANCE INVESTMENT SERVICES S.A.	08/01/2013
EUROBANK SECURITIES INVESTMENT FIRM S.A	24/10/2012
HELLENICAMERICAN SEC. S.A.	25/07/2014
LEON DEPOLAS SECURITIES S.A.	20/04/2015
MERIT SECURITIES S.A	03/09/2013
MIDAS BROKERAGE S.A.	07/01/2016
NATIONAL SECURITIES S.A	28/02/2013
PIRAEUS SECURITIES S.A.	08/09/2013
OPAP (CR)	Main Market
ALPHA FINANCE INVESTMENT SERVICES S.A.	08/01/2013
EUROBANK SECURITIES INVESTMENT FIRM S.A	24/10/2012
HELLENICAMERICAN SEC. S.A.	25/07/2014
MERIT SECURITIES S.A	20/03/2017
MIDAS BROKERAGE S.A.	04/04/2016
NATIONAL SECURITIES S.A	15/01/2013
PIRAEUS SECURITIES S.A.	04/05/2015
OTE (CR)	Main Market
ALPHA FINANCE INVESTMENT SERVICES S.A.	08/01/2013
EUROBANK SECURITIES INVESTMENT FIRM S.A	24/10/2012
HELLENICAMERICAN SEC. S.A.	25/07/2014
MERIT SECURITIES S.A	20/03/2017
MIDAS BROKERAGE S.A.	01/10/2015
NATIONAL SECURITIES S.A	01/12/2012
PIRAEUS SECURITIES S.A.	08/09/2013
PAPOUTSANIS (CR)	Main Market
BETA SECURITIES S.A.	25/11/2013
PETROPOULOS PETROS (CR)	Main Market
BETA SECURITIES S.A.	28/05/2013
PIRAEUS BANK (CR)	Main Market
EUROBANK SECURITIES INVESTMENT FIRM S.A	23/10/2012
EUROXX SECURITIES S.A.	15/02/2016
MERIT SECURITIES S.A	16/09/2013
MIDAS BROKERAGE S.A.	11/01/2016
NATIONAL SECURITIES S.A	02/06/2013
PIRAEUS SECURITIES S.A.	16/02/2013

List of Stocks under Market Making operations

Securities	Stock Category
Market Maker	Start Market Making
PLAISIO COMPUTERS SA (CR)	Main Market
BETA SECURITIES S.A.	05/05/2014
EUROBANK SECURITIES INVESTMENT FIRM S.A	02/03/2015
PPC (CR)	Main Market
ALPHA FINANCE INVESTMENT SERVICES S.A.	08/01/2013
EUROBANK SECURITIES INVESTMENT FIRM S.A	23/10/2012
MIDAS BROKERAGE S.A.	04/04/2016
NATIONAL SECURITIES S.A	26/03/2013
PIRAEUS SECURITIES S.A.	28/09/2013
QUALITY & RELIABILITY SA (CR)	Main Market
BETA SECURITIES S.A.	20/08/2014
S.KANAKIS SA (CR)	Main Market
BETA SECURITIES S.A.	01/10/2013
TITAN CEMENT (CR)	Main Market
EUROBANK SECURITIES INVESTMENT FIRM S.A	23/10/2012
NATIONAL SECURITIES S.A	17/02/2014
PIRAEUS SECURITIES S.A.	04/05/2015
VIOHALCO SA/NV (CB)	Main Market
ALPHA FINANCE INVESTMENT SERVICES S.A.	17/02/2014
EUROBANK SECURITIES INVESTMENT FIRM S.A	01/01/2017
MERIT SECURITIES S.A	17/03/2014

Underlying Asset				Derivatives Market													
Price max	Price min	Closing price	change	Delivery Month	Open price	Price max	Price min	Last price	Closing price	Last Bid	Last Ask	Settlement price	Life high	Life low	Trades	Volume	Open Interest
FTSE/Athex Large Cap				(Trade Unit: 1 Index Point x 2€, Cash Settlement)													
2,220.37	2,187.16	2,218.80	1.45%	July 2017	2,202.00	2,224.25	2,192.00	2,222.00	2,222.00	---	---	2,231.00	2,224.25	---	218	1,041	8,041
				August 2017	2,192.00	2,226.00	2,192.00	2,226.00	2,226.00	---	---	2,231.25	2,226.00	---	74	460	1,119
				September 2017	2,205.00	2,218.00	2,205.00	2,215.00	2,215.00	---	---	2,229.50	2,218.00	---	6	11	58
				December 2017	---	---	---	---	2,206.00	---	---	---	---	---	---	---	---
				March 2018	---	---	---	---	2,217.25	---	---	---	---	---	---	---	---
				June 2018	---	---	---	---	2,228.25	---	---	---	---	---	---	---	---

Underlying Asset				Derivatives Market													
Price max	Price min	Closing price	change	Delivery Month	Open price	Price max	Price min	Last price	Closing price	Last Bid	Last Ask	Settlement price	Life high	Life low	Trades	Volume	Open Interest
ADMIE (IPTO) HOLDING S.A. (CR)				(Contract Size: 100 Securities, Physical Delivery)													
2.23	2.19	2.20	-0.45%	September 2017	2.20	2.23	2.20	2.20	2.20	---	---	2.22	2.35	2.20	68	381	3,911
				December 2017	---	---	---	---	2.23	---	---	---	---	---	---	---	---
				March 2018	---	---	---	---	2.24	---	---	---	---	---	---	---	---
				June 2018	---	---	---	---	2.25	---	---	---	---	---	---	---	---
ALPHA BANK (CR)				(Contract Size: 100 Securities, Physical Delivery)													
2.29	2.24	2.28	1.79%	September 2017	2.26	2.31	2.26	2.28	2.28	---	---	2.30	2.31	---	269	7,039	48,456
				December 2017	---	---	---	---	2.26	---	---	---	---	---	---	---	---
				March 2018	---	---	---	---	2.27	---	---	---	---	---	---	---	---
				June 2018	---	---	---	---	2.28	---	---	---	---	---	---	---	---
CC HBC AG (CR)				(Contract Size: 100 Securities, Physical Delivery)													
25.65	25.10	25.65	2.19%	September 2017	25.43	25.60	25.43	25.60	25.60	---	---	25.47	26.83	---	5	11	90
				December 2017	---	---	---	---	25.32	---	---	---	---	---	---	---	---
				March 2018	---	---	---	---	25.44	---	---	---	---	---	---	---	---
				June 2018	---	---	---	---	25.57	---	---	---	---	---	---	---	---
CENERGY HOLDINGS (CB)				(Contract Size: 100 Securities, Physical Delivery)													
1.10	1.05	1.09	1.87%	September 2017	1.07	1.11	1.07	1.11	1.11	---	---	1.10	1.20	---	12	103	7,195
				December 2017	---	---	---	---	1.08	---	---	---	---	---	---	---	---
				March 2018	---	---	---	---	1.08	---	---	---	---	---	---	---	---
				June 2018	---	---	---	---	1.09	---	---	---	---	---	---	---	---
ELLAKTOR (CR)				(Contract Size: 100 Securities, Physical Delivery)													
1.83	1.78	1.80	0.00%	September 2017	1.82	1.82	1.79	1.82	1.82	---	---	1.80	1.85	---	33	208	9,221
				December 2017	---	---	---	---	1.82	---	---	1.79	1.78	---	---	---	---
				March 2018	---	---	---	---	1.82	---	---	---	---	---	---	---	---
				June 2018	---	---	---	---	1.83	---	---	---	---	---	---	---	---
EUROBANK ERGASIAS (CR)				(Contract Size: 100 Securities, Physical Delivery)													
1.03	0.997	1.03	4.04%	September 2017	0.999	1.03	0.997	1.03	1.03	---	---	1.02	1.04	---	179	7,500	41,310
				December 2017	---	---	---	---	0.999	---	---	---	---	---	---	---	---
				March 2018	---	---	---	---	1.00	---	---	---	---	---	---	---	---
				June 2018	---	---	---	---	1.01	---	---	---	---	---	---	---	---
EYDAP S.A. (CR)				(Contract Size: 100 Securities, Physical Delivery)													
6.39	6.26	6.36	0.95%	September 2017	6.30	6.39	6.30	6.39	6.39	---	---	6.43	6.58	---	14	29	1,808
				December 2017	---	---	---	---	6.35	---	---	6.46	6.58	---	---	---	---
				March 2018	---	---	---	---	6.39	---	---	---	---	---	---	---	---
				June 2018	---	---	---	---	6.42	---	---	---	---	---	---	---	---
FOLLI FOLLIE (CR)				(Contract Size: 100 Securities, Physical Delivery)													
21.59	21.07	21.59	1.84%	September 2017	21.36	21.60	21.34	21.60	21.60	---	---	21.50	22.02	---	10	29	1,855
				December 2017	---	---	---	---	21.38	---	---	---	---	---	---	---	---
				March 2018	---	---	---	---	21.49	---	---	---	---	---	---	---	---
				June 2018	---	---	---	---	21.60	---	---	---	---	---	---	---	---

Underlying Asset				Derivatives Market													
Price max	Price min	Closing price	change	Delivery Month	Open price	Price max	Price min	Last price	Closing price	Last Bid	Last Ask	Settlement price	Life high	Life low	Trades	Volume	Open Interest
FOURLIS (CR)				(Contract Size: 100 Securities, Physical Delivery)													
5.84	5.72	5.81	0.52%	September 2017	5.83	5.83	5.80	5.80	5.80	---	---	5.76	6.28	---	3	3	198
				December 2017	---	---	---	---	5.83	---	---	---	---	---	---	---	---
				March 2018	---	---	---	---	5.86	---	---	---	---	---	---	---	---
				June 2018	---	---	---	---	5.89	---	---	---	---	---	---	---	---
GEK TERNA (CR)				(Contract Size: 100 Securities, Physical Delivery)													
3.98	3.87	3.98	2.05%	September 2017	3.94	3.95	3.88	3.95	3.95	---	---	4.02	4.12	---	16	103	8,123
				December 2017	---	---	---	---	3.93	---	---	3.93	4.04	---	---	---	---
				March 2018	---	---	---	---	3.95	---	---	---	---	---	---	---	---
				June 2018	---	---	---	---	3.97	---	---	---	---	---	---	---	---
GRIVALIA PROPERTIES (CR)				(Contract Size: 100 Securities, Physical Delivery)													
9.47	9.17	9.28	0.76%	September 2017	9.25	9.42	9.25	9.42	9.42	---	---	9.32	9.72	---	6	6	218
				December 2017	---	---	---	---	9.29	---	---	---	---	---	---	---	---
				March 2018	---	---	---	---	9.34	---	---	---	---	---	---	---	---
				June 2018	---	---	---	---	9.38	---	---	---	---	---	---	---	---
HELLENIC EXCHANGES-A.S.E. (CR)				(Contract Size: 100 Securities, Physical Delivery)													
6.00	5.92	5.97	1.53%	September 2017	5.93	6.01	5.93	6.00	6.00	---	---	6.00	6.08	---	31	205	2,454
				December 2017	---	---	---	---	5.93	---	---	---	---	---	---	---	---
				March 2018	---	---	---	---	5.96	---	---	---	---	---	---	---	---
				June 2018	---	---	---	---	5.99	---	---	---	---	---	---	---	---
HELLENIC PETROLEUM (CR)				(Contract Size: 100 Securities, Physical Delivery)													
8.28	8.20	8.21	0.12%	September 2017	8.30	8.30	8.21	8.22	8.22	---	---	8.27	8.35	---	30	65	4,308
				December 2017	---	---	---	---	8.27	---	---	8.27	7.80	---	---	---	1
				March 2018	---	---	---	---	8.31	---	---	---	---	---	---	---	---
				June 2018	---	---	---	---	8.35	---	---	---	---	---	---	---	---
INTRALOT (CR)				(Contract Size: 100 Securities, Physical Delivery)													
1.26	1.23	1.25	-0.79%	September 2017	1.27	1.27	1.25	1.25	1.25	---	---	1.26	1.35	---	38	283	6,112
				December 2017	---	---	---	---	1.27	---	---	1.22	1.27	---	---	---	100
				March 2018	---	---	---	---	1.28	---	---	---	---	---	---	---	---
				June 2018	---	---	---	---	1.28	---	---	---	---	---	---	---	---
JUMBO SA (CR)				(Contract Size: 100 Securities, Physical Delivery)													
15.40	14.97	15.00	-1.38%	September 2017	15.44	15.44	15.03	15.03	15.03	---	---	15.07	16.64	---	103	195	405
				December 2017	---	---	---	---	15.34	---	---	15.00	16.00	---	---	---	---
				March 2018	---	---	---	---	15.42	---	---	---	---	---	---	---	---
				June 2018	---	---	---	---	15.50	---	---	---	---	---	---	---	---
LAMDA DEVELOPMENT SA (CR)				(Contract Size: 100 Securities, Physical Delivery)													
6.85	6.70	6.80	-0.15%	September 2017	6.85	6.86	6.75	6.85	6.85	---	---	6.88	7.16	6.58	33	87	1,584
				December 2017	---	---	---	---	6.87	---	---	---	---	---	---	---	---
				March 2018	---	---	---	---	6.90	---	---	---	---	---	---	---	---
				June 2018	---	---	---	---	6.94	---	---	---	---	---	---	---	---

Underlying Asset				Derivatives Market													
Price max	Price min	Closing price	change	Delivery Month	Open price	Price max	Price min	Last price	Closing price	Last Bid	Last Ask	Settlement price	Life high	Life low	Trades	Volume	Open Interest
MARFIN INVESTMENT GROUP (CR)				(Contract Size: 100 Securities, Physical Delivery)													
0.159	0.153	0.155	-0.64%	September 2017	0.158	0.159	0.154	0.157	0.157	---	---	0.155	0.208	---	116	3,959	103,950
				December 2017	---	---	---	---	0.157	---	---	0.147	---	0.151	---	---	500
				March 2018	---	---	---	---	0.158	---	---	---	---	---	---	---	---
				June 2018	---	---	---	---	0.159	---	---	---	---	---	---	---	---
MOTOR OIL (CR)				(Contract Size: 100 Securities, Physical Delivery)													
19.85	19.36	19.42	-1.92%	September 2017	19.55	19.81	19.55	19.81	19.81	---	---	19.26	19.81	---	9	9	353
				December 2017	---	---	---	---	19.97	---	---	---	---	---	---	---	---
				March 2018	---	---	---	---	20.07	---	---	---	---	---	---	---	---
				June 2018	---	---	---	---	20.17	---	---	---	---	---	---	---	---
MYTILINEOS HOLDINGS (CR)				(Contract Size: 100 Securities, Physical Delivery)													
8.44	8.14	8.44	2.43%	September 2017	8.27	8.45	8.18	8.45	8.45	---	---	8.41	8.45	---	118	639	9,592
				December 2017	---	---	---	---	8.31	---	---	---	---	---	---	---	---
				March 2018	---	---	---	---	8.35	---	---	---	---	---	---	---	---
				June 2018	---	---	---	---	8.39	---	---	---	---	---	---	---	---
NATIONAL BANK (CR)				(Contract Size: 100 Securities, Physical Delivery)													
0.374	0.367	0.372	1.09%	September 2017	0.372	0.374	0.367	0.373	0.373	---	---	0.373	0.375	---	140	6,361	118,824
				December 2017	---	---	---	---	0.371	---	---	---	---	---	---	---	---
				March 2018	---	---	---	---	0.373	---	---	---	---	---	---	---	---
				June 2018	---	---	---	---	0.375	---	---	---	---	---	---	---	---
OPAP (CR)				(Contract Size: 100 Securities, Physical Delivery)													
10.11	9.99	10.10	0.40%	September 2017	10.04	10.12	10.01	10.10	10.10	---	---	10.12	10.25	---	30	247	2,331
				December 2017	---	---	---	---	10.15	---	---	---	---	---	---	---	---
				March 2018	---	---	---	---	10.20	---	---	---	---	---	---	---	---
				June 2018	---	---	---	---	10.25	---	---	---	---	---	---	---	---
OTE (CR)				(Contract Size: 100 Securities, Physical Delivery)													
10.70	10.43	10.64	2.01%	September 2017	10.48	10.73	10.48	10.66	10.66	---	---	10.69	10.80	---	90	395	8,053
				December 2017	---	---	---	---	10.52	---	---	10.55	9.85	---	---	---	---
				March 2018	---	---	---	---	10.57	---	---	---	---	---	---	---	---
				June 2018	---	---	---	---	10.63	---	---	---	---	---	---	---	---
P.P.A. S.A. (CR)				(Contract Size: 100 Securities, Physical Delivery)													
16.24	16.00	16.14	1.32%	September 2017	16.00	16.00	15.96	15.96	15.96	---	---	16.24	16.47	---	2	11	1,097
				December 2017	---	---	---	---	16.07	---	---	---	---	---	---	---	---
				March 2018	---	---	---	---	16.15	---	---	---	---	---	---	---	---
				June 2018	---	---	---	---	16.23	---	---	---	---	---	---	---	---
PIRAEUS BANK (CR)				(Contract Size: 100 Securities, Physical Delivery)													
0.258	0.248	0.256	3.23%	September 2017	0.251	0.258	0.248	0.256	0.256	---	---	0.256	0.258	---	288	20,923	200,385
				December 2017	---	---	---	---	0.250	---	---	0.256	0.233	---	---	---	---
				March 2018	---	---	---	---	0.251	---	---	---	---	---	---	---	---
				June 2018	---	---	---	---	0.253	---	---	---	---	---	---	---	---

Underlying Asset				Derivatives Market													
Price max	Price min	Closing price	change	Delivery Month	Open price	Price max	Price min	Last price	Closing price	Last Bid	Last Ask	Settlement price	Life high	Life low	Trades	Volume	Open Interest
PPC (CR)				(Contract Size: 100 Securities, Physical Delivery)													
2.29	2.24	2.26	-0.44%	September 2017	2.26	2.30	2.26	2.26	2.26	---	---	2.27	4.72	---	31	202	2,116
				December 2017	---	---	---	---	2.29	---	---	---	---	---	---	---	---
				March 2018	---	---	---	---	2.30	---	---	---	---	---	---	---	---
				June 2018	---	---	---	---	2.31	---	---	---	---	---	---	---	---
TERNA ENERGY (CR)				(Contract Size: 100 Securities, Physical Delivery)													
3.98	3.90	3.95	0.25%	September 2017	3.94	3.97	3.94	3.97	3.97	---	---	3.96	4.13	---	3	12	4,487
				December 2017	---	---	---	---	3.97	---	---	3.98	3.51	---	---	---	---
				March 2018	---	---	---	---	3.99	---	---	---	---	---	---	---	---
				June 2018	---	---	---	---	4.01	---	---	---	---	---	---	---	---
TITAN CEMENT (CR)				(Contract Size: 104 Securities, Physical Delivery)													
25.93	25.42	25.73	0.90%	September 2017	25.55	25.86	25.55	25.77	25.77	---	---	26.06	26.10	---	5	13	122
				December 2017	---	---	---	---	25.72	---	---	---	---	---	---	---	---
				March 2018	---	---	---	---	25.85	---	---	---	---	---	---	---	---
				June 2018	---	---	---	---	25.98	---	---	---	---	---	---	---	---
VIOHALCO SA/NV (CB)				(Contract Size: 100 Securities, Physical Delivery)													
2.95	2.82	2.94	1.73%	September 2017	2.88	2.97	2.84	2.96	2.96	---	---	2.97	3.19	---	130	696	9,246
				December 2017	2.93	2.93	2.93	2.93	2.93	---	---	2.93	3.06	---	1	13	28
				March 2018	---	---	---	---	2.93	---	---	---	---	---	---	---	---
				June 2018	---	---	---	---	2.94	---	---	---	---	---	---	---	---

FTSE/Athex Large Cap

(Trade Unit: 1 Index Point x 2€ - Exercise Style: European, Cash Settlement)

Call Options																	Put Options																
Exerise Price	July 2017							August 2017							Other Months		July 2017							August 2017							Other Months		Exerise Price
	Open price	Price max	Price min	Last price	Closing price	Volume	Open Interest	Open price	Price max	Price min	Last price	Closing price	Volume	Open Interest	Volume	Open Interest	Open price	Price max	Price min	Last price	Closing price	Volume	Open Interest	Open price	Price max	Price min	Last price	Closing price	Volume	Open Interest	Volume	Open Interest	
1,350	-	-	-	-	-	-	-	-	-	-	-	-	-	-	-	-	-	-	-	-	-	-	-	-	-	-	-	-	-	-	-	1,350	
1,375	-	-	-	-	-	-	-	-	-	-	-	-	-	-	-	-	-	-	-	-	-	-	-	-	-	-	-	-	-	-	-	1,375	
1,400	-	-	-	-	-	-	-	-	-	-	-	-	-	-	-	-	-	-	-	-	-	-	-	-	-	-	-	-	-	-	-	1,400	
1,425	-	-	-	-	-	-	-	-	-	-	-	-	-	-	-	-	-	-	-	-	-	-	-	-	-	-	-	-	-	-	-	1,425	
1,450	-	-	-	-	-	-	-	-	-	-	-	-	-	-	-	-	-	-	-	-	-	-	-	-	-	-	-	-	-	-	-	1,450	
1,475	-	-	-	-	-	-	-	-	-	-	-	-	-	-	-	-	-	-	-	-	-	-	-	-	-	-	-	-	-	-	-	1,475	
1,500	-	-	-	-	-	-	-	-	-	-	-	-	-	-	-	-	-	-	-	-	-	-	-	-	-	-	-	-	-	-	-	1,500	
1,525	-	-	-	-	-	-	-	-	-	-	-	-	-	-	-	-	-	-	-	-	-	-	-	-	-	-	-	-	-	-	-	1,525	
1,550	-	-	-	-	-	-	-	-	-	-	-	-	-	-	-	-	-	-	-	-	-	-	-	-	-	-	-	-	-	-	-	1,550	
1,575	-	-	-	-	-	-	-	-	-	-	-	-	-	-	-	-	-	-	-	-	-	-	-	-	-	-	-	-	-	-	-	1,575	
1,600	-	-	-	-	-	-	-	-	-	-	-	-	-	-	-	-	-	-	-	-	-	-	-	-	-	-	-	-	-	-	-	1,600	
1,625	-	-	-	-	-	-	-	-	-	-	-	-	-	-	-	-	-	-	-	-	-	-	-	-	-	-	-	-	-	-	-	1,625	
1,650	-	-	-	-	-	-	-	-	-	-	-	-	-	-	-	-	-	-	-	-	-	-	-	-	-	-	-	-	-	-	-	1,650	
1,675	0.00	0.00	0.00	-	524.00	-	20	-	-	-	-	-	-	-	-	-	0.00	0.00	0.00	-	0.02	-	-	-	-	-	-	-	-	-	-	-	1,675
1,700	0.00	0.00	0.00	-	499.00	-	-	-	-	-	-	-	-	-	-	-	0.00	0.00	0.00	-	0.01	-	-	-	-	-	-	-	-	-	-	-	1,700
1,725	0.00	0.00	0.00	-	474.00	-	-	-	-	-	-	-	-	-	-	-	0.00	0.00	0.00	-	0.01	-	-	-	-	-	-	-	-	-	-	-	1,725
1,750	0.00	0.00	0.00	-	449.00	-	-	-	-	-	-	-	-	-	-	-	0.00	0.00	0.00	-	0.01	-	-	-	-	-	-	-	-	-	-	-	1,750
1,775	0.00	0.00	0.00	-	424.00	-	-	-	-	-	-	-	-	-	-	-	0.00	0.00	0.00	-	0.01	-	-	-	-	-	-	-	-	-	-	-	1,775
1,800	0.00	0.00	0.00	-	399.00	-	-	-	-	-	-	-	-	-	-	-	0.00	0.00	0.00	-	0.02	-	-	-	-	-	-	-	-	-	-	-	1,800
1,825	0.00	0.00	0.00	-	374.00	-	-	-	-	-	-	-	-	-	-	-	0.00	0.00	0.00	-	0.01	-	-	-	-	-	-	-	-	-	-	-	1,825
1,850	0.00	0.00	0.00	-	349.00	-	-	-	-	-	-	-	-	-	-	-	0.00	0.00	0.00	-	0.01	-	-	-	-	-	-	-	-	-	-	-	1,850
1,875	0.00	0.00	0.00	-	324.00	-	-	-	-	-	-	-	-	-	-	-	0.00	0.00	0.00	-	0.01	-	-	-	-	-	-	-	-	-	-	-	1,875
1,900	0.00	0.00	0.00	-	299.00	-	10	0.00	0.00	0.00	-	298.00	-	-	-	-	0.00	0.00	0.00	-	0.01	-	8	0.00	0.00	0.00	-	0.29	-	-	-	-	1,900
1,925	0.00	0.00	0.00	-	274.00	-	-	0.00	0.00	0.00	-	273.00	-	-	-	-	0.00	0.00	0.00	-	0.01	-	-	0.00	0.00	0.00	-	0.56	-	-	-	-	1,925
1,950	0.00	0.00	0.00	-	249.00	-	17	0.00	0.00	0.00	-	249.00	-	-	-	-	0.00	0.00	0.00	-	0.04	-	-	0.00	0.00	0.00	-	1.00	-	-	-	-	1,950
1,975	0.00	0.00	0.00	-	224.00	-	-	0.00	0.00	0.00	-	225.00	-	-	-	-	0.00	0.00	0.00	-	0.01	-	-	0.00	0.00	0.00	-	1.80	-	-	-	-	1,975
2,000	0.00	0.00	0.00	-	199.00	-	70	0.00	0.00	0.00	-	201.00	-	-	-	-	0.00	0.00	0.00	-	0.01	-	195	0.00	0.00	0.00	-	3.00	-	-	-	-	2,000
2,050	147.00	172.00	147.00	172.00	172.00	14	51	0.00	0.00	0.00	-	156.00	-	-	-	-	0.00	172.00	0.00	-	0.21	-	78	0.00	0.00	0.00	-	7.50	-	2	-	-	2,050
2,100	106.00	106.00	106.00	106.00	106.00	2	23	0.00	0.00	0.00	-	115.00	-	-	-	-	2.00	106.00	2.00	2.00	2.00	1	184	0.00	0.00	0.00	-	16.25	-	247	-	-	2,100
2,150	66.00	66.00	66.00	66.00	66.00	1	234	0.00	0.00	0.00	-	79.50	-	-	-	-	0.00	66.00	0.00	-	8.50	-	91	0.00	0.00	0.00	-	31.00	-	20	-	-	2,150
2,200	26.50	39.00	25.00	39.00	39.00	37	472	0.00	0.00	0.00	-	51.50	-	40	-	-	23.00	39.00	14.50	17.00	17.00	57	260	0.00	0.00	0.00	-	53.00	-	40	-	-	2,200
2,250	9.80	12.25	9.80	12.25	12.25	28	777	34.00	37.50	34.00	37.50	37.50	11	73	-	-	0.00	12.25	0.00	-	59.50	-	1	0.00	0.00	0.00	-	82.50	-	-	-	-	2,250
2,300	0.00	0.00	0.00	-	2.00	-	-	0.00	0.00	0.00	-	17.50	-	35	-	-	0.00	0.00	0.00	-	103.00	-	-	0.00	0.00	0.00	-	119.00	-	-	-	-	2,300
2,350	0.00	0.00	0.00	-	0.33	-	1	0.00	0.00	0.00	-	9.00	-	20	-	-	0.00	0.00	0.00	-	151.00	-	-	0.00	0.00	0.00	-	160.00	-	-	-	-	2,350
2,400	0.00	0.00	0.00	-	0.04	-	-	6.00	6.00	6.00	6.00	6.00	1	1	-	-	0.00	0.00	0.00	-	201.00	-	-	0.00	0.00	0.00	-	205.00	-	-	-	-	2,400
2,450	0.00	0.00	0.00	-	0.01	-	-	0.00	0.00	0.00	-	1.90	-	-	-	-	0.00	0.00	0.00	-	251.00	-	-	0.00	0.00	0.00	-	253.00	-	-	-	-	2,450

FTSE/Athex Large Cap

(Trade Unit: 1 Index Point x 2€ - Exercise Style: European, Cash Settlement)

Call Options																	Put Options																				
Exercise Price	July 2017							August 2017							Other Months		July 2017							August 2017							Other Months		Exercise Price				
	Open price	Price max	Price min	Last price	Closing price	Volume	Open Interest	Open price	Price max	Price min	Last price	Closing price	Volume	Open Interest	Volume	Open Interest	Open price	Price max	Price min	Last price	Closing price	Volume	Open Interest	Open price	Price max	Price min	Last price	Closing price	Volume	Open Interest	Volume	Open Interest					
	Totals:						82	1,675							12	169	5	42							58	817							0	309	0	20	
	Number of Trades:						18								3		1								17								0		0		

ALPHA BANK (CR)

(Contract Size: 100 Securities, Exercise Style: American, Physical Delivery)

Call Options																	Put Options																		
	July 2017							August 2017							Other Months		July 2017								August 2017								Other Months		
Exercise Price	Open price	Price max	Price min	Last price	Closing price	Volume	Open Interest	Open price	Price max	Price min	Last price	Closing price	Volume	Open Interest	Volume	Open Interest	Open price	Price max	Price min	Last price	Closing price	Volume	Open Interest	Open price	Price max	Price min	Last price	Closing price	Volume	Open Interest	Volume	Open Interest	Exercise Price		
1.000							-	-							-	-									-	-					0.010				
1.100							-	-							-	-									-	-					0.011				
1.200	0.000	0.000	0.000		1.04	-	-							-	-			0.000	0.000	0.000		0.001	-	-							-	-			0.012
1.300	0.000	0.000	0.000		0.941	-	-							-	-			0.000	0.000	0.000		0.002	-	-							-	-			0.013
1.400	0.000	0.000	0.000		0.841	-	-							-	-			0.000	0.000	0.000		0.001	-	-							-	-			0.014
1.500	0.000	0.000	0.000		0.741	-	-	0.000	0.000	0.000		0.743	-	-			0.000	0.000	0.000		0.002	-	-	0.000	0.000	0.000		0.001	-	-			0.015		
1.600	0.000	0.000	0.000		0.641	-	-	0.000	0.000	0.000		0.644	-	-			0.000	0.000	0.000		0.001	-	-	0.000	0.000	0.000		0.001	-	-			0.016		
1.700	0.000	0.000	0.000		0.541	-	-	0.000	0.000	0.000		0.545	-	-			0.000	0.000	0.000		0.001	-	-	0.000	0.000	0.000		0.001	-	-			0.017		
1.800	0.000	0.000	0.000		0.441	-	-	0.000	0.000	0.000		0.448	-	-			0.000	0.000	0.000		0.001	-	-	0.000	0.000	0.000		0.004	-	-			0.018		
1.900	0.000	0.000	0.000		0.344	-	-	0.000	0.000	0.000		0.355	-	-			0.000	0.000	0.000		0.003	-	-	0.000	0.000	0.000		0.012	-	-			0.019		
2.000	0.000	0.000	0.000		0.252	-	40	0.000	0.000	0.000		0.270	-	-			0.000	0.000	0.000		0.011	-	-	0.000	0.000	0.000		0.026	-	-			0.020		
2.200	0.080	0.080	0.080	0.080	0.080	100	60	0.130	0.130	0.130	0.130	0.130	100	-			0.000	0.000	0.000		0.064	-	50	0.000	0.000	0.000		0.092	-	-			0.022		
2.400	0.000	0.000	0.000		0.029	-	100	0.000	0.000	0.000		0.055	-	10			0.000	0.000	0.000		0.188	-	-	0.000	0.000	0.000		0.211	-	-			0.024		
2.600	0.000	0.000	0.000		0.005	-	-	0.000	0.000	0.000		0.018	-	-			0.000	0.000	0.000		0.364	-	-	0.000	0.000	0.000		0.375	-	-			0.026		
2.800	0.000	0.000	0.000		0.001	-	-	0.000	0.000	0.000		0.005	-	-			0.000	0.000	0.000		0.560	-	-	0.000	0.000	0.000		0.562	-	-			0.028		
3.000	0.000	0.000	0.000		0.001	-	-	0.000	0.000	0.000		0.001	-	-			0.000	0.000	0.000		0.760	-	-	0.000	0.000	0.000		0.760	-	-			0.030		
3.200	0.000	0.000	0.000		0.003	-	-	0.000	0.000	0.000		0.001	-	-			0.000	0.000	0.000		0.960	-	-	0.000	0.000	0.000		0.960	-	-			0.032		
Totals:						100	200						100	10	0	0						100	50						0	0	0	0			
Number of Trades:						1							1		0						0.00							0		0					

NATIONAL BANK (CR)

(Contract Size: 100 Securities, Exercise Style: American, Physical Delivery)

Call Options																Put Options																				
July 2017								August 2017								Other Months		July 2017								August 2017								Other Months		
Exercise Price	Open price	Price max	Price min	Last price	Closing price	Volume	Open Interest	Open price	Price max	Price min	Last price	Closing price	Volume	Open Interest	Volume	Open Interest	Open price	Price max	Price min	Last price	Closing price	Volume	Open Interest	Open price	Price max	Price min	Last price	Closing price	Volume	Open Interest	Volume	Open Interest	Exercise Price			
0.050	0.000	0.000	0.000		0.318	-	-	0.000	0.000	0.000		0.318	-	-			0.000	0.000	0.000		0.001	-	-	0.000	0.000	0.000		0.001	-	-			0.001			
0.100	0.000	0.000	0.000		0.268	-	-	0.000	0.000	0.000		0.268	-	-			0.000	0.000	0.000		0.001	-	-	0.000	0.000	0.000		0.001	-	-			0.001			
0.150	0.000	0.000	0.000		0.218	-	-	0.000	0.000	0.000		0.218	-	-			0.000	0.000	0.000		0.001	-	-	0.000	0.000	0.000		0.001	-	-			0.002			
0.200	0.000	0.000	0.000		0.170	-	-	0.000	0.000	0.000		0.170	-	-			0.000	0.000	0.000		0.001	-	-	0.000	0.000	0.000		0.001	-	-			0.002			
0.250	0.000	0.000	0.000		0.125	-	-	0.000	0.000	0.000		0.125	-	-			0.000	0.000	0.000		0.007	-	-	0.000	0.000	0.000		0.007	-	-			0.003			
0.300	0.000	0.000	0.000		0.088	-	-	0.000	0.000	0.000		0.088	-	-			0.000	0.000	0.000		0.020	-	-	0.000	0.000	0.000		0.020	-	-			0.003			
0.350	0.000	0.000	0.000		0.059	-	-	0.000	0.000	0.000		0.060	-	-			0.000	0.000	0.000		0.041	-	-	0.000	0.000	0.000		0.041	-	-			0.004			
0.400	0.000	0.000	0.000		0.039	-	-	0.000	0.000	0.000		0.039	-	-			0.000	0.000	0.000		0.070	-	-	0.000	0.000	0.000		0.070	-	-			0.004			
0.450	0.000	0.000	0.000		0.024	-	-	0.000	0.000	0.000		0.025	-	-			0.000	0.000	0.000		0.106	-	-	0.000	0.000	0.000		0.106	-	-			0.005			
0.500	0.000	0.000	0.000		0.015	-	-	0.000	0.000	0.000		0.016	-	-			0.000	0.000	0.000		0.147	-	-	0.000	0.000	0.000		0.147	-	-			0.005			
0.550	0.000	0.000	0.000		0.009	-	-	0.000	0.000	0.000		0.010	-	-			0.000	0.000	0.000		0.191	-	-	0.000	0.000	0.000		0.191	-	-			0.006			
0.600	0.000	0.000	0.000		0.006	-	-	0.000	0.000	0.000		0.006	-	-			0.000	0.000	0.000		0.237	-	-	0.000	0.000	0.000		0.237	-	-			0.006			
Totals:						0	0							0	0	0	0							0	0							0	250			
Number of Trades:						0								0	0	0							0.00								0	0				

OPAP (CR)

(Contract Size: 100 Securities, Exercise Style: American, Physical Delivery)

Call Options																Put Options																				
July 2017								August 2017								Other Months		July 2017								August 2017								Other Months		Exercise Price
Open price	Price max	Price min	Last price	Closing price	Volume	Open Interest		Open price	Price max	Price min	Last price	Closing price	Volume	Open Interest	Volume	Open Interest	Open price	Price max	Price min	Last price	Closing price	Volume	Open Interest	Open price	Price max	Price min	Last price	Closing price	Volume	Open Interest	Volume	Open Interest				
5.200					-	-							-	-								-	-					-	-			0.052				
5.600					-	-							-	-								-	-					-	-			0.056				
6.000					-	-							-	-								-	-					-	-			0.060				
6.400					-	-							-	-								-	-					-	-			0.064				
6.800	0.000	0.000	0.000		3.26	-	-						-	-			0.000	0.000	0.000		0.001	-	-					-	-			0.068				
7.200	0.000	0.000	0.000		2.86	-	-	0.000	0.000	0.000		2.87	-	-			0.000	0.000	0.000		0.001	-	-	0.000	0.000	0.000		0.001	-	-			0.072			
7.600	0.000	0.000	0.000		2.46	-	-	0.000	0.000	0.000		2.48	-	-			0.000	0.000	0.000		0.002	-	-	0.000	0.000	0.000		0.001	-	-			0.076			
8.000	0.000	0.000	0.000		2.06	-	-	0.000	0.000	0.000		2.08	-	-			0.000	0.000	0.000		0.001	-	-	0.000	0.000	0.000		0.001	-	-			0.080			
8.400	0.000	0.000	0.000		1.66	-	-	0.000	0.000	0.000		1.68	-	-			0.000	0.000	0.000		0.001	-	-	0.000	0.000	0.000		0.002	-	-			0.084			
8.800	0.000	0.000	0.000		1.26	-	-	0.000	0.000	0.000		1.29	-	-			0.000	0.000	0.000		0.001	-	60	0.000	0.000	0.000		0.013	-	-			0.088			
9.200	0.000	0.000	0.000		0.872	-	-	0.000	0.000	0.000		0.925	-	-			0.000	0.000	0.000		0.008	-	-	0.000	0.000	0.000		0.046	-	-			0.092			
9.600	0.000	0.000	0.000		0.513	-	5	0.000	0.000	0.000		0.607	-	-			0.000	0.000	0.000		0.048	-	-	0.000	0.000	0.000		0.128	-	-			0.096			
10.000	0.000	0.000	0.000		0.240	-	14	0.000	0.000	0.000		0.360	-	-			0.000	0.000	0.000		0.175	-	-	0.000	0.000	0.000		0.280	-	-			0.100			
11.000	0.000	0.000	0.000		0.009	-	-	0.000	0.000	0.000		0.056	-	30			0.000	0.000	0.000		0.946	-	-	0.000	0.000	0.000		0.980	-	-			0.110			
12.000	0.000	0.000	0.000		0.001	-	-	0.000	0.000	0.000		0.004	-	-			0.000	0.000	0.000		1.94	-	-	0.000	0.000	0.000		1.94	-	-			0.120			
13.000	0.000	0.000	0.000		0.001	-	-	0.000	0.000	0.000		0.001	-	-			0.000	0.000	0.000		2.94	-	-	0.000	0.000	0.000		2.94	-	-			0.130			
14.000	0.000	0.000	0.000		0.001	-	-	0.000	0.000	0.000		0.001	-	-			0.000	0.000	0.000		3.94	-	-	0.000	0.000	0.000		3.94	-	-			0.140			
15.000	0.000	0.000	0.000		0.001	-	-	0.000	0.000	0.000		0.001	-	-			0.000	0.000	0.000		4.94	-	-	0.000	0.000	0.000		4.94	-	-			0.150			
Totals:					0	19							0	30	0	0						0	60					0	50	0	5					
Number of Trades:					0								0		0							0.00						0			0					

OTE (CR)

(Contract Size: 100 Securities, Exercise Style: American, Physical Delivery)

Call Options																	Put Options																			
July 2017								August 2017								Other Months		July 2017								August 2017								Other Months		
Exercise Price	Open price	Price max	Price min	Last price	Closing price	Volume	Open Interest	Open price	Price max	Price min	Last price	Closing price	Volume	Open Interest	Volume	Open Interest	Open price	Price max	Price min	Last price	Closing price	Volume	Open Interest	Open price	Price max	Price min	Last price	Closing price	Volume	Open Interest	Volume	Open Interest	Exercise Price			
5.600						-	-							-	-							-	-						-	-			0.056			
6.000						-	-							-	-							-	-						-	-			0.060			
6.400	0.000	0.000	0.000		4.03	-	-							-	-		0.000	0.000	0.000		0.001	-	-						-	-			0.064			
6.800	0.000	0.000	0.000		3.63	-	-							-	-		0.000	0.000	0.000		0.001	-	-						-	-			0.068			
7.200	0.000	0.000	0.000		3.23	-	-							-	-		0.000	0.000	0.000		0.001	-	-						-	-			0.072			
7.600	0.000	0.000	0.000		2.83	-	-	0.000	0.000	0.000		2.85	-	-			0.000	0.000	0.000		0.001	-	-	0.000	0.000	0.000		0.001	-	-			0.076			
8.000	0.000	0.000	0.000		2.43	-	-	0.000	0.000	0.000		2.45	-	-			0.000	0.000	0.000		0.001	-	-	0.000	0.000	0.000		0.001	-	-			0.080			
8.400	0.000	0.000	0.000		2.03	-	-	0.000	0.000	0.000		2.05	-	-			0.000	0.000	0.000		0.001	-	-	0.000	0.000	0.000		0.001	-	-			0.084			
8.800	0.000	0.000	0.000		1.63	-	-	0.000	0.000	0.000		1.65	-	-			0.000	0.000	0.000		0.001	-	-	0.000	0.000	0.000		0.004	-	-			0.088			
9.200	0.000	0.000	0.000		1.24	-	-	0.000	0.000	0.000		1.27	-	-			0.000	0.000	0.000		0.002	-	55	0.000	0.000	0.000		0.018	-	-			0.092			
9.600	0.000	0.000	0.000		0.852	-	-	0.000	0.000	0.000		0.908	-	-			0.000	0.000	0.000		0.018	-	68	0.000	0.000	0.000		0.059	-	-			0.096			
10.000	0.000	0.000	0.000		0.512	-	5	0.000	0.000	0.000		0.598	-	-			0.000	0.000	0.000		0.077	-	28	0.000	0.000	0.000		0.148	-	-			0.100			
11.000	0.000	0.000	0.000		0.058	-	19	0.000	0.000	0.000		0.135	-	2			0.000	0.000	0.000		0.624	-	9	0.000	0.000	0.000		0.686	-	-			0.110			
12.000	0.000	0.000	0.000		0.001	-	-	0.000	0.000	0.000		0.015	-	-			0.000	0.000	0.000		1.57	-	-	0.000	0.000	0.000		1.57	-	-			0.120			
13.000	0.000	0.000	0.000		0.002	-	-	0.000	0.000	0.000		0.001	-	-			0.000	0.000	0.000		2.57	-	-	0.000	0.000	0.000		2.57	-	-			0.130			
14.000	0.000	0.000	0.000		0.001	-	-	0.000	0.000	0.000		0.001	-	-			0.000	0.000	0.000		3.57	-	-	0.000	0.000	0.000		3.57	-	-			0.140			
15.000	0.000	0.000	0.000		0.001	-	-	0.000	0.000	0.000		0.001	-	-			0.000	0.000	0.000		4.57	-	-	0.000	0.000	0.000		4.57	-	-			0.150			
16.000	0.000	0.000	0.000		0.001	-	-	0.000	0.000	0.000		0.001	-	-			0.000	0.000	0.000		5.57	-	-	0.000	0.000	0.000		5.57	-	-			0.160			
Totals:						0	24							0	2	0	51							0	160							0	0	0	0	
Number of Trades:						0								0		0							0.00								0		0			

PIRAEUS BANK (CR)

(Contract Size: 100 Securities, Exercise Style: American, Physical Delivery)

Call Options																Put Options																					
Exercise Price	July 2017							August 2017							Other Months		July 2017							August 2017							Other Months		Exercise Price				
	Open price	Price max	Price min	Last price	Closing price	Volume	Open Interest	Open price	Price max	Price min	Last price	Closing price	Volume	Open Interest	Volume	Open Interest	Open price	Price max	Price min	Last price	Closing price	Volume	Open Interest	Open price	Price max	Price min	Last price	Closing price	Volume	Open Interest	Volume	Open Interest					
0.050	0.000	0.000	0.000		0.198	-	-	0.000	0.000	0.000		0.198	-	-			0.000	0.000	0.000		0.005	-	-	0.000	0.000	0.000		0.001	-	-			0.001				
0.100	0.000	0.000	0.000		0.148	-	-	0.000	0.000	0.000		0.148	-	-			0.000	0.000	0.000		0.001	-	-	0.000	0.000	0.000		0.001	-	-			0.001				
0.150	0.000	0.000	0.000		0.100	-	-	0.000	0.000	0.000		0.100	-	-			0.000	0.000	0.000		0.002	-	-	0.000	0.000	0.000		0.002	-	-			0.002				
0.200	0.000	0.000	0.000		0.060	-	30	0.000	0.000	0.000		0.060	-	-			0.000	0.000	0.000		0.012	-	-	0.000	0.000	0.000		0.012	-	-			0.002				
0.250	0.000	0.000	0.000		0.033	-	-	0.000	0.000	0.000		0.033	-	-			0.000	0.000	0.000		0.034	-	-	0.000	0.000	0.000		0.034	-	-			0.003				
0.300	0.000	0.000	0.000		0.016	-	-	0.000	0.000	0.000		0.016	-	-			0.000	0.000	0.000		0.068	-	-	0.000	0.000	0.000		0.068	-	-			0.003				
0.350	0.000	0.000	0.000		0.008	-	-	0.000	0.000	0.000		0.008	-	-			0.000	0.000	0.000		0.110	-	-	0.000	0.000	0.000		0.110	-	-			0.004				
0.400	0.000	0.000	0.000		0.004	-	-	0.000	0.000	0.000		0.004	-	-			0.000	0.000	0.000		0.156	-	-	0.000	0.000	0.000		0.155	-	-			0.004				
0.450	0.000	0.000	0.000		0.002	-	-	0.000	0.000	0.000		0.002	-	-			0.000	0.000	0.000		0.204	-	-	0.000	0.000	0.000		0.203	-	-			0.005				
0.500	0.000	0.000	0.000		0.001	-	-	0.000	0.000	0.000		0.001	-	-			0.000	0.000	0.000		0.253	-	-	0.000	0.000	0.000		0.252	-	-			0.005				
Totals:							0	30								0	0	0	0								0	0								0	0
Number of Trades:							0							0		0	0.00							0							0						

PPC (CR)

(Contract Size: 100 Securities, Exercise Style: American, Physical Delivery)

Call Options																	Put Options																		
July 2017																	August 2017																	Other Months	
Exercise Price	Open price	Price max	Price min	Last price	Closing price	Volume	Open Interest	Open price	Price max	Price min	Last price	Closing price	Volume	Open Interest	Volume	Open Interest	Open price	Price max	Price min	Last price	Closing price	Volume	Open Interest	Open price	Price max	Price min	Last price	Closing price	Volume	Open Interest	Volume	Open Interest	Exercise Price		
1.600	0.000	0.000	0.000		0.671	-	-	0.000	0.000	0.000		0.674	-	-			0.000	0.000	0.000		0.001	-	-	0.000	0.000	0.000		0.001	-	-			0.016		
1.700	0.000	0.000	0.000		0.571	-	-	0.000	0.000	0.000		0.575	-	-			0.000	0.000	0.000		0.001	-	-	0.000	0.000	0.000		0.002	-	-			0.017		
1.800	0.000	0.000	0.000		0.473	-	-	0.000	0.000	0.000		0.478	-	-			0.000	0.000	0.000		0.002	-	-	0.000	0.000	0.000		0.005	-	-			0.018		
1.900	0.000	0.000	0.000		0.377	-	-	0.000	0.000	0.000		0.387	-	-			0.000	0.000	0.000		0.006	-	-	0.000	0.000	0.000		0.013	-	-			0.019		
2.000	0.000	0.000	0.000		0.287	-	-	0.000	0.000	0.000		0.301	-	-			0.000	0.000	0.000		0.016	-	-	0.000	0.000	0.000		0.027	-	-			0.020		
2.200	0.000	0.000	0.000		0.140	-	-	0.000	0.000	0.000		0.163	-	260			0.000	0.000	0.000		0.069	-	-	0.000	0.000	0.000		0.089	-	-			0.022		
2.400	0.000	0.000	0.000		0.053	-	-	0.085	0.085	0.085	0.085	0.085	50	620			0.000	0.000	0.000		0.182	-	-	0.000	0.000	0.000		0.201	-	-			0.024		
2.600	0.000	0.000	0.000		0.016	-	-	0.000	0.000	0.000		0.029	-	150			0.000	0.000	0.000		0.345	-	-	0.000	0.000	0.000		0.355	-	-			0.026		
2.800	0.000	0.000	0.000		0.004	-	-	0.000	0.000	0.000		0.010	-	-			0.000	0.000	0.000		0.533	-	-	0.000	0.000	0.000		0.536	-	-			0.028		
3.000	0.000	0.000	0.000		0.001	-	-	0.000	0.000	0.000		0.003	-	-			0.000	0.000	0.000		0.730	-	-	0.000	0.000	0.000		0.731	-	-			0.030		
3.200	0.000	0.000	0.000		0.001	-	-	0.000	0.000	0.000		0.001	-	-			0.000	0.000	0.000		0.930	-	-	0.000	0.000	0.000		0.930	-	-			0.032		
3.400	0.000	0.000	0.000		0.001	-	-	0.000	0.000	0.000		0.001	-	-			0.000	0.000	0.000		1.13	-	-	0.000	0.000	0.000		1.13	-	-			0.034		
3.600	0.000	0.000	0.000		0.001	-	-	0.000	0.000	0.000		0.001	-	-			0.000	0.000	0.000		1.33	-	-	0.000	0.000	0.000		1.33	-	-			0.036		
3.800	0.000	0.000	0.000		0.001	-	-	0.000	0.000	0.000		0.001	-	-			0.000	0.000	0.000		1.53	-	-	0.000	0.000	0.000		1.53	-	-			0.038		
4.000	0.000	0.000	0.000		0.001	-	-	0.000	0.000	0.000		0.001	-	-			0.000	0.000	0.000		1.73	-	-	0.000	0.000	0.000		1.73	-	-			0.040		
4.400	0.000	0.000	0.000		0.001	-	-	0.000	0.000	0.000		0.001	-	-			0.000	0.000	0.000		2.13	-	-	0.000	0.000	0.000		2.13	-	-			0.044		
4.800	0.000	0.000	0.000		0.001	-	-	0.000	0.000	0.000		0.001	-	-			0.000	0.000	0.000		2.53	-	-	0.000	0.000	0.000		2.53	-	-			0.048		
5.200	0.000	0.000	0.000		0.001	-	-	0.000	0.000	0.000		0.001	-	-			0.000	0.000	0.000		2.93	-	-	0.000	0.000	0.000		2.93	-	-			0.052		
5.600	0.000	0.000	0.000		0.001	-	-	0.000	0.000	0.000		0.001	-	-			0.000	0.000	0.000		3.33	-	-	0.000	0.000	0.000		3.33	-	-			0.056		
6.000	0.000	0.000	0.000		0.001	-	-	0.000	0.000	0.000		0.001	-	-			0.000	0.000	0.000		3.73	-	-	0.000	0.000	0.000		3.73	-	-			0.060		
6.400	0.000	0.000	0.000		0.001	-	-	0.000	0.000	0.000		0.001	-	-			0.000	0.000	0.000		4.13	-	-	0.000	0.000	0.000		4.13	-	-			0.064		
6.800	0.000	0.000	0.000		0.001	-	-	0.000	0.000	0.000		0.001	-	-			0.000	0.000	0.000		4.53	-	-	0.000	0.000	0.000		4.53	-	-			0.068		
Totals:						0	0							50	1,030	0	0							0	0	0	40								
Number of Trades:						0								2		0								0.00		0	0								

Lending Products	Underlying Title	Multilateral Transactions[1]					Bilateral Transactions[2]		Stock Borrowing through OTC (volume)[3]
		Open Interest[5]	Volume(Offered)	Average Weighted	Transactions volume	Average Weighted	Transactions Volume	Average Weighte	Transactions Volume
ADMIEBOR	ADMIE (IPTO) HOLDING S.A. (CR)	---	9,599	5.31%	---	---	---	---	---
AEGNBOR	AEGEAN AIRLINES (CR)	500	20,722	5.31%	---	---	---	---	11,701
ALPHABOR	ALPHA BANK (CR)	25,001	21,190	5.31%	---	---	---	---	13,354,970
ALMYBOR	ALUMIL (CR)	---	---	---	---	---	---	---	---
EEEBOR	CC HBC AG (CR)	1,928	88	5.31%	---	---	17,500	10.00%	70,546
CENERBOR	CENERGY HOLDINGS (CB)	101	1,919	5.31%	---	---	---	---	---
ELLAKTORBOR	ELLAKTOR (CR)	---	68,439	5.31%	---	---	---	---	---
EUROBBOR	EUROBANK ERGASIAS (CR)	100,659	20,361	3.31%	---	---	---	---	8,920,781
EYDAPBOR	EYDAP S.A. (CR)	1,101	1,974	5.31%	---	---	---	---	17,880
FFGRPBOR	FOLLI FOLLIE (CR)	1,728	85,835	5.31%	113	2.65%	---	---	582,380
FOYRKBOR	FOURLIS (CR)	---	4,878	5.31%	---	---	---	---	4,650
GEKTERNABOR	GEK TERNA (CR)	150	26,520	5.31%	---	---	---	---	129
SARBOR	GR. SARANTIS SA (CR)	270	13	5.38%	---	---	---	---	---
EUPROBOR	GRIVALIA PROPERTIES (CR)	900	96,063	5.31%	---	---	---	---	15,533
EXAEBOR	HELLENIC EXCHANGES-A.S.E. (CR)	6,400	399,079	5.31%	---	---	---	---	100,365
ELPEBOR	HELLENIC PETROLEUM (CR)	1,103	96,627	5.31%	---	---	---	---	42,606
INLOTBOR	INTRALOT (CR)	100	52,899	5.31%	---	---	---	---	803
BELABOR	JUMBO SA (CR)	3,324	151,967	5.31%	---	---	---	---	24,706
LAMDABOR	LAMDA DEVELOPMENT SA (CR)	14	100	5.32%	---	---	---	---	---
MIGBOR	MARFIN INVESTMENT GROUP (CR)	100,000	164,843	5.31%	---	---	---	---	744,474
MOHBOR	MOTOR OIL (CR)	4,609	35,949	5.31%	---	---	---	---	101,206
MYTILBOR	MYTILINEOS HOLDINGS (CR)	30,134	17,686	9.49%	---	---	---	---	4,165
ETEBOR	NATIONAL BANK (CR)	350,000	777,934	5.31%	---	---	---	---	21,638,890
OPAPBOR	OPAP (CR)	7,600	76,660	5.31%	---	---	---	---	860,784
HTOBOR	OTE (CR)	6,281	58,466	5.31%	---	---	---	---	406,456
PPABOR	P.P.A. S.A. (CR)	1,868	177	5.31%	---	---	---	---	2,901
TPEIRBOR	PIRAEUS BANK (CR)	6,061	16,157	5.31%	---	---	---	---	20,014,532
PLAISBOR	PLAISIO COMPUTERS SA (CR)	---	---	---	---	---	---	---	---
PPCBOR	PPC (CR)	2,000	106,003	5.31%	---	---	---	---	476,658
QUALBOR	QUALITY & RELIABILITY SA (CR)	---	---	---	---	---	---	---	---
TENERGYBOR	TERNA ENERGY (CR)	1,000	27,914	5.31%	---	---	---	---	---

Stock Lending Notes

- [1] - Multilateral contracts Lending or Borrowing as per Methods 8-1, 8-2 and 8-3-3 (According to ATHEX BoD Resolution No.17)
- [2] - Billateral Contracts Lending or Borrowing as per Methods 8-3-1 and 8-3-2 (According to ATHEX BoD Resolution No.20)
- [3] - The information concerning OTC Stock Borrowing Transactions is based on the statements of the Dematerialised Securities System (DSS) operators involved and refers to volumes that have been registered up until the previous working day.
- [4] - Average Price (Volume weighted)
- [5] - The Data concerning Open Interest before the start of trading session

Lending Products	Underlying Title	Multilateral Transactions[1]					Bilateral Transactions[2]		Stock Borrowing through OTC (volume)[3]
		Open Interest[5]	Volume(Offered)	Average Weighted	Transactions volume	Average Weighted	Transactions Volume	Average Weighted	Transactions Volume
TITKBOR	TITAN CEMENT (CR)	349	208,963	3.31%	---	---	---	---	16,704
VIOBOR	VIOHALCO SA/NV (CB)	500	57,578	5.31%	---	---	---	---	---

Stock Lending Notes

- [1] - Multilateral contracts Lending or Borrowing as per Methods 8-1, 8-2 and 8-3-3 (According to ATHEX BoD Resolution No.17)
- [2] - Bilateral Contracts Lending or Borrowing as per Methods 8-3-1 and 8-3-2 (According to ATHEX BoD Resolution No.20)
- [3] - The information concerning OTC Stock Borrowing Transactions is based on the statements of the Dematerialised Securities System (DSS) operators involved and refers to volumes that have been registered up until the previous working day.
- [4] - Average Price (Volume weighted)
- [5] - The Data concerning Open Interest before the start of trading session

Sectors codification for listed companies

533	-	Exploration & Production	537	-	Integrated Oil & Gas
1353	-	Commodity Chemicals	1357	-	Specialty Chemicals
1753	-	Aluminum	1755	-	Nonferrous Metals
1757	-	Steel	1775	-	General Mining
2353	-	Building Materials & Fixtures	2357	-	Heavy Construction
2723	-	Containers & Packaging	2727	-	Diversified Industrials
2733	-	Electrical Components & Equipment	2753	-	Commercial Vehicles & Trucks
2757	-	Industrial Machinery	2773	-	Marine Transportation
2777	-	Transportation Services	2791	-	Business Support Services
2797	-	Industrial Suppliers	3535	-	Distillers & Vintners
3537	-	Soft Drinks	3573	-	Farming Fishing & Plantations
3577	-	Food Products	3722	-	Durable Household Products
3726	-	Furnishings	3728	-	Home Construction
3747	-	Toys	3763	-	Clothing & Accessories
3765	-	Footwear	3767	-	Personal Products
3785	-	Tobacco	4533	-	Health Care Providers
4535	-	Medical Equipment	4577	-	Pharmaceuticals
5337	-	Food Retailers & Wholesalers	5371	-	Apparel Retailers
5373	-	Broadline Retailers	5375	-	Home Improvement Retailers
5379	-	Specialty Retailers	5553	-	Broadcasting & Entertainment
5555	-	Media Agencies	5557	-	Publishing
5751	-	Airlines	5752	-	Gambling
5753	-	Hotels	5755	-	Recreational Services
5757	-	Restaurants & Bars	5759	-	Travel & Tourism
6535	-	Fixed Line Telecommunications	6575	-	Mobile Telecommunications
7535	-	Conventional Electricity	7537	-	Alternative Electricity
7577	-	Water	8355	-	Banks
8534	-	Insurance Brokers	8536	-	Property & Casualty Insurance
8633	-	Real Estate Holding & Development	8637	-	Real Estate Services
8671	-	Industrial & Office REITs	8674	-	Diversified REITs
8675	-	Specialty REITs	8775	-	Specialty Finance
8777	-	Investment Services	8985	-	Equity Investment Instruments
9533	-	Computer Services	9535	-	Internet
9537	-	Software	9572	-	Computer Hardware
9574	-	Electronic Office Equipment	9578	-	Telecommunications Equipment
12003	-	ETF			



ATHEXGROUP

Όμιλος Χρηματιστηρίου Αθηνών

Λεωφ. Αθηνών 110 104 42 Αθήνα

110, Athinon Ave. GR 104 42 Athens

tel. (+30)210-33.66.800, fax (+30)210-33.66.101

www.athexgroup.gr