

**Ημερήσιο Δελτίο
Συναλλακτικής Δραστηριότητας**

Daily Official List
of Trading Activity



Monday, 6 November, 2017
Year: 138 Trading Day No: 214



ATHEXGROUP
Athens Exchange Group

Disclaimer:

Hellenic Exchanges-Athens Stock Exchange S.A. endeavours to ensure that the data and other material ("Information") presented on the Daily Official List are accurate and complete, but it is not liable for any errors or omissions of data or /and for the accuracy, credibility, updating and completeness of the aforesaid information nor it has any liability arising directly or indirectly from the use of the above Information.

The Company is not liable for the accuracy of the data included in listed companies' announcements. Only the sender of such an announcement is fully and solely liable for any infringement of third party's rights from the content of such announcement. All contents of the Daily Official List are provided only for information purposes and do not constitute investment advice or solicitation to invest in securities or other products listed for trading on the Exchange.

You acknowledge and agree that the Company is the owner of any property rights related to any Information appearing on the Daily Official List including intellectual property rights copyright, trademarks, etc.

The above data are a property of the Hellenic Exchanges-Athens Exchange and are copyright protected. Users are forbidden to reproduce, modify, copy, sale, transmit or redistribute, by all reproduction means and methods, part or the whole of the above data, without reference to their source.

The commercial exploitation of these data is, also, forbidden by third parties. Hellenic Exchanges-Athens Exchange does not carry any responsibility, direct or indirect, derived from usage or accidental alteration of the above data when used by third parties.

Hellenic Exchanges – Athens Stock Exchange S.A.

110 Athinon Ave., 10442 Athens, Tel: (210) 33.66.800, Fax: (210) 32.13.938

www.helex.gr

Thessalonica Stock Exchange Center (T.S.E.C)

16-18 Katouni Str., Thessalonica 546 25 Tel: (2310) 567.667, Fax: (2310) 530.545

Athex Members Guarantee Fund

14-16 Fidiou Str., Athens 106 78, Tel: (210) 33.04.682, Fax: (210) 33.04.155

Hellenic Republic Capital Market Commission

1 Kolokotroni Str. & 1 Stadiou Str., Athens 10562 Tel: (210) 33.77.100 Fax: (210) 33.77.173

Table of Contents

Section 1: Statistical Figures of Securities, Derivatives and Lending

Summary of Markets

Athex Indices

Analytic Figures for Athex Market's Boards and Categories

Trading Details by Athex Sectors and Financial Instruments (ETFs)

Top 10 best & worst performing Shares

Derivatives Summary

Section 2: Analytic Figures of Shares Transactions

Analytic Figures of Shares Transactions

Shares' Notes

Section 3: Figures of Securities Transactions

Securities Blocks Details

Shares Rights Details

Stock Borrowing

Shares Forced Sales

Forced Sales Registered Shares

Exchange Traded Funds (ETFs) Characteristics

Section 5: Bonds traded in Fixed Income Assets Market

Convertible Corporate Bonds - Regulated Market

Non Convertible Corporate Bonds - Regulated Market

Government Bonds

Treasury Bills & Zero Coupon Government Bonds

Government Bonds Traded with the Open Outcry Method

State Banks Bonds

Section 6: Additional Infos

Athex & ATHEXClear Members List

List of Stocks under Market Making operations

Section 7: Derivatives Market Analytic Figures

Index Futures

Stock Futures

Index Options

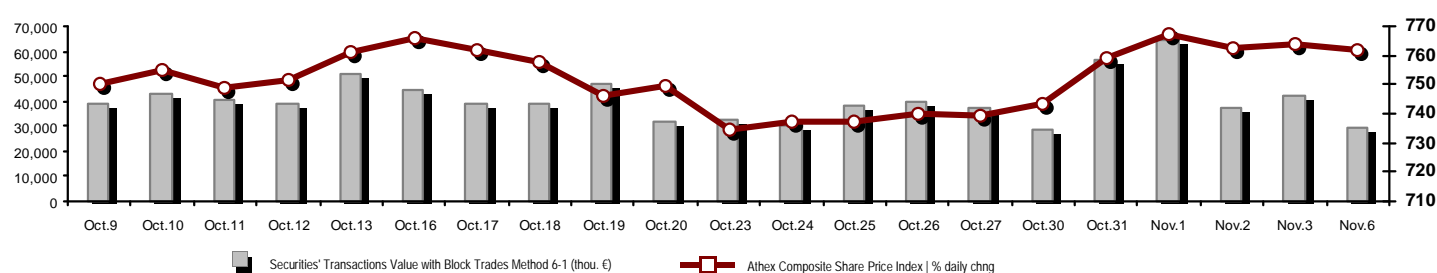
Stock Options

Stock Lending Analytic Figures

Appendix A: Sectors codification for listed companies

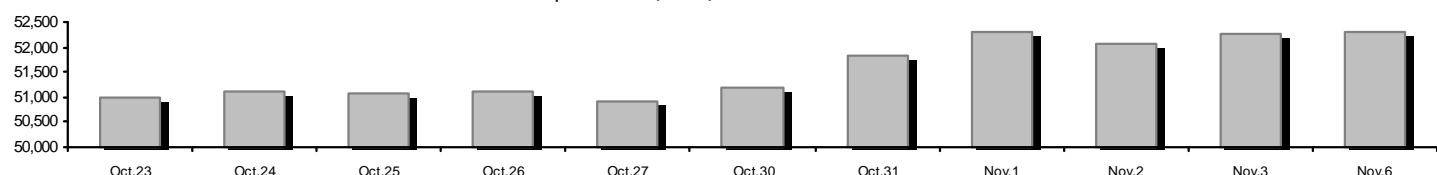
Summary of Markets

Athex Composite Share Price Index vs Shares and Derivatives Transactions Value

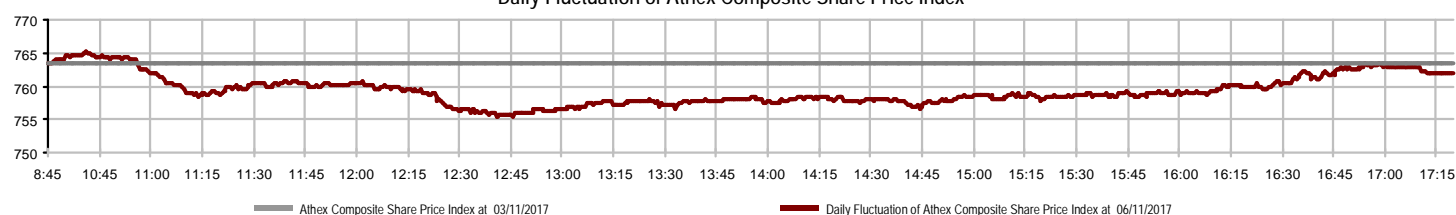


Athex Capitalisation (mill. €) **: 52,298.51		Derivatives Total Open Interest 413,482	
Daily change: mill. € %	17.09 0.03%	in Index Futures % daily chng	4,657 2.85%
Yearly Avg Capitalisation: mill. € % chng prev year Avg	50,015.34 21.54%	in Stock Futures % daily chng	400,390 -0.64%
Athex Composite Share Price Index % daily chng	761.91 -0.22%	in Index Options % daily chng	6,295 0.06%
Athex Composite Share Price Index Capitalisation (mill. €)	47,913.92	in Stock Options % daily chng	2,140 2.39%
Daily change (mill. €)	28.06		
Securities' Transactions Value with Block Trades Method 6-1 (29,799.72		Derivatives Contracts Volume: 49,793	
Daily change: %	-12,128.36 -28.93%	Daily change: pieces %	761 1.55%
YtD Avg Trans. Value: thou. € % chng prev year Avg	57,642.71 -4.53%	YtD Avg Derivatives Contracts % chng prev year Avg	75,399 21.35%
Blocks Transactions Value of Method 6-1 (thou. €)	5,418.35	Derivatives Trades Number: 2,360	
Blocks Transactions Value of Method 6-2 & 6-3 (thou. €)	0.00	Daily change: number %	-88 -3.59%
Bonds Transactions Value (thou.€)	1,131.38	YtD Avg Derivatives Trades number % chng prev year Avg	2,548 -1.82%
Securities' Transactions Volume with Block Trades Method 6-1 (th 23,085.34		Lending Total Open Interest 651,240	
Daily change: thou. pieces %	-13,334.18 -36.61%	Daily change: pieces %	-4,600 -0.70%
YtD Avg Volume: % chng prev year Avg	74,252.10 -22.85%	Lending Volume (Multilateral/Bilateral) 17,700	
Blocks Transactions Volume of Method 6-1 (thou. Pieces)	347.40	Daily change: pieces %	7,700
Blocks Transactions Volume of Method 6-2 & 6-3 (thou. Pieces)	0.00	Multilateral Lending 13,700	
Bonds Transactions Volume	1,110,728	Bilateral Lending 4,000	
Securities' Trades Number with Block Trades Method 6-1 12,295		Lending Trades Number: 3	
Daily change: number %	-3,123 -20.26%	Daily change: %	-1
YtD Avg Derivatives Trades number % chng prev year Avg	17,166 -9.01%	Multilateral Lending Trades Number 2	
Number of Blocks Method 6-1	3	Bilateral Lending Trades Number 1	
Number of Blocks Method 6-2 & 6-3	0		
Number of Bonds Transactions	33		

Athex Capitalisation (mill. €) **



Daily Fluctuation of Athex Composite Share Price Index



Athex Indices

Index name	06/11/2017	03/11/2017	pts.	%	Min	Max	Year min	Year max	Year change
Athex Composite Share Price Index	761.91	763.56	-1.65	-0.22%	755.23	765.13	602.43	859.78	18.38% #
FTSE/Athex Large Cap	2,009.69	2,012.42	-2.73	-0.14%	1,988.39	2,016.55	1,610.77	2,232.65	15.44% #
FTSE/Athex Mid Cap Index	1,036.94	1,040.40	-3.46	-0.33%	1,027.65	1,042.13	753.69	1,205.24	37.58% #
FTSE/ATHEX-CSE Banking Index	580.30	593.77	-13.47	-2.27%	566.10	596.14	503.69	867.45	-8.50% €
FTSE/ATHEX Global Traders Index Plus	2,255.42	2,252.85	2.57	0.11%	2,240.18	2,266.77	1,470.95	2,349.47	49.02% #
FTSE/ATHEX Global Traders Index	2,094.04	2,080.29	13.75	0.66%	2,072.04	2,103.19	1,591.53	2,184.91	27.40% #
FTSE/ATHEX Mid & Small Cap Factor-Weighted Ind	1,847.75	1,842.77	4.98	0.27%	1,837.67	1,857.45	1,304.24	1,882.74	37.82% #
ATHEX Mid & SmallCap Price Index	3,006.49	3,001.20	5.29	0.18%	2,969.75	3,011.52	1,675.92	3,410.07	79.39% #
FTSE/Athex Market Index	495.24	495.94	-0.70	-0.14%	490.03	496.94	396.30	550.39	15.96% #
FTSE Med Index	4,068.31	4,054.36	13.95	0.34%			4,024.74	4,897.79	-11.49% €
Athex Composite Index Total Return Index	1,177.22	1,179.77	-2.55	-0.22%	1,166.90	1,182.19	918.99	1,327.35	19.90% #
FTSE/Athex Large Cap Total Return	2,947.60	2,951.61	-4.01	-0.14%			2,349.55	3,263.22	17.25% #
FTSE/ATHEX Large Cap Net Total Return	858.63	859.80	-1.17	-0.14%	849.53	861.56	678.89	953.15	17.02% #
FTSE/Athex Mid Cap Total Return	1,268.89	1,273.13	-4.24	-0.33%			949.72	1,457.66	37.92% #
FTSE/ATHEX-CSE Banking Total Return Index	595.72	609.55	-13.83	-2.27%			527.29	881.88	-8.50% €
Hellenic Mid & Small Cap Index	996.34	995.10	1.24	0.12%	992.95	998.85	766.60	1,064.17	26.64% #
FTSE/Athex Banks	766.72	784.51	-17.79	-2.27%	747.96	787.64	665.50	1,146.11	-8.50% €
FTSE/Athex Financial Services	992.54	994.07	-1.53	-0.15%	980.36	997.62	942.14	1,294.25	-6.07% €
FTSE/Athex Industrial Goods & Services	2,120.18	2,135.24	-15.06	-0.71%	2,108.43	2,147.39	1,432.54	2,385.78	45.72% #
FTSE/Athex Retail	2,522.69	2,534.04	-11.35	-0.45%	2,501.16	2,548.53	2,501.16	3,212.65	-10.22% €
FTSE/ATHEX Real Estate	3,258.99	3,299.16	-40.17	-1.22%	3,227.20	3,316.20	2,518.43	3,545.33	23.31% #
FTSE/Athex Personal & Household Goods	7,410.54	7,389.78	20.76	0.28%	7,378.97	7,497.34	6,663.96	8,561.96	-3.13% €
FTSE/Athex Food & Beverage	11,102.16	11,020.38	81.78	0.74%	11,016.66	11,102.37	7,597.15	11,102.37	44.03% #
FTSE/Athex Basic Resources	4,012.92	3,999.69	13.23	0.33%	3,960.00	4,012.92	2,665.91	4,034.97	48.32% #
FTSE/Athex Construction & Materials	2,595.85	2,591.50	4.35	0.17%	2,571.57	2,602.78	2,130.43	3,016.71	15.12% #
FTSE/Athex Oil & Gas	4,923.81	4,878.70	45.11	0.92%	4,868.51	5,024.83	2,926.97	5,024.83	64.21% #
FTSE/Athex Chemicals	10,191.38	10,313.19	-121.81	-1.18%	10,191.38	10,434.99	9,825.95	12,505.75	0.80% #
FTSE/Athex Travel & Leisure	1,700.73	1,703.72	-2.99	-0.18%	1,682.93	1,714.69	1,424.34	1,816.39	15.97% #
FTSE/Athex Technology	811.10	804.09	7.01	0.87%	797.19	811.35	607.65	923.54	26.96% #
FTSE/Athex Telecommunications	2,972.78	2,917.72	55.06	1.89%	2,895.70	2,994.80	2,292.89	3,069.12	20.94% #
FTSE/Athex Utilities	1,951.63	1,962.27	-10.64	-0.54%	1,931.39	1,971.86	1,380.52	2,554.99	28.67% #
FTSE/Athex Health Care	166.96	166.50	0.46	0.28%	165.58	167.88	136.14	186.27	13.79% #
Athex All Share Index	184.22	184.17	0.05	0.03%	184.22	184.22	148.93	199.18	15.79% #
Hellenic Corporate Bond Index	116.61	116.54	0.06	0.06%			108.78	116.61	6.58% #
Hellenic Corporate Bond Price Index	100.28	100.23	0.05	0.04%			96.19	100.28	2.61% #

Note 1: FTSE/Med 100, Greece & Turkey 30 Rt., Hellenic Corporate Bond Price Index and Hellenic Corporate Bond Index closing prices refer to the previous trading day of 02/11/2017.

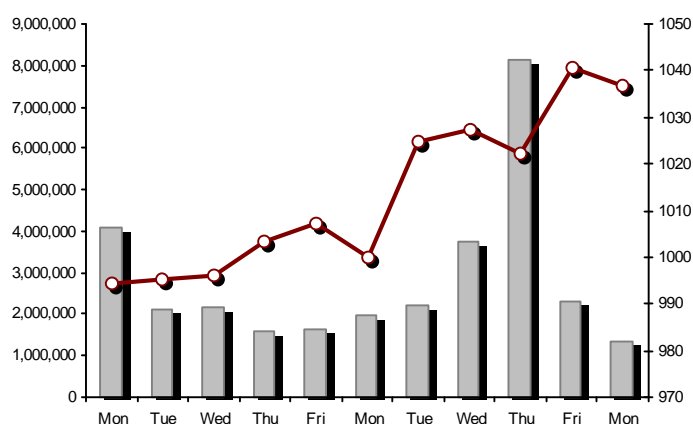
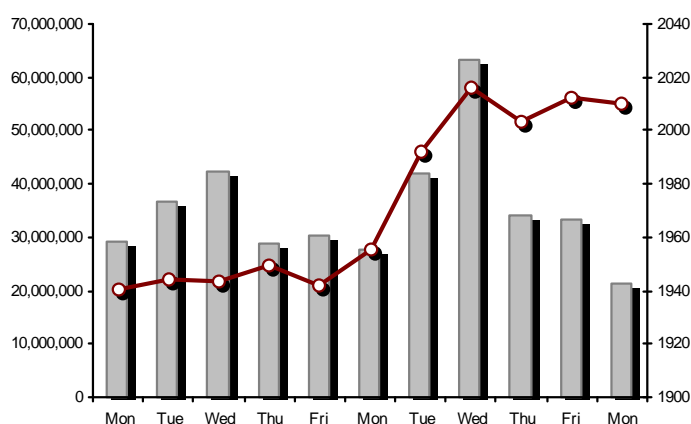
Note 2: The Hellenic Mid & Small Cap Index is a Customized index calculated by the Athens Exchange.

Athex Indices

FTSE/Large Cap

06/11/2017: -0.14% FTSE/Athex Mid Cap Index

06/11/2017: -0.33%

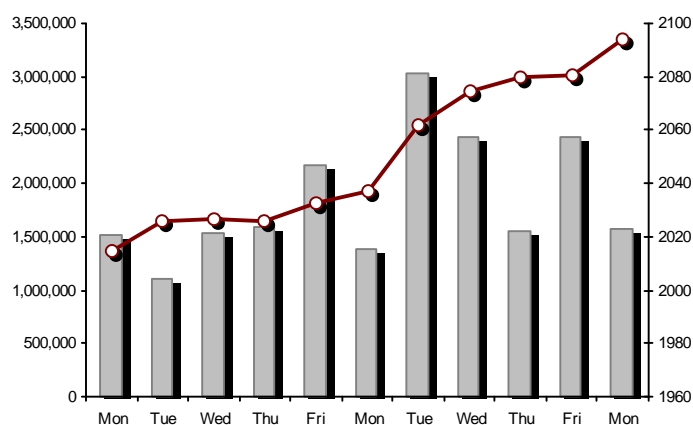
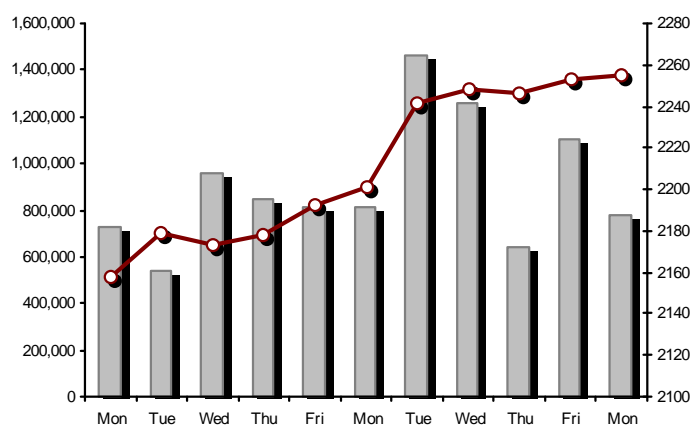


FTSE/ATHEX Global Traders Index Plus

06/11/2017: 0.11%

FTSE/ATHEX Global Traders Index

06/11/2017: 0.66%

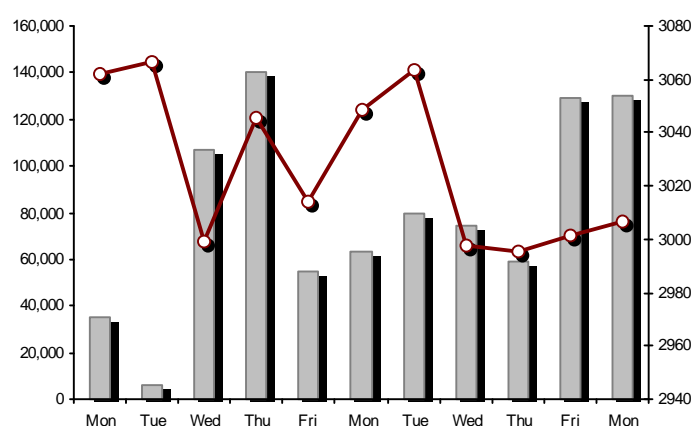
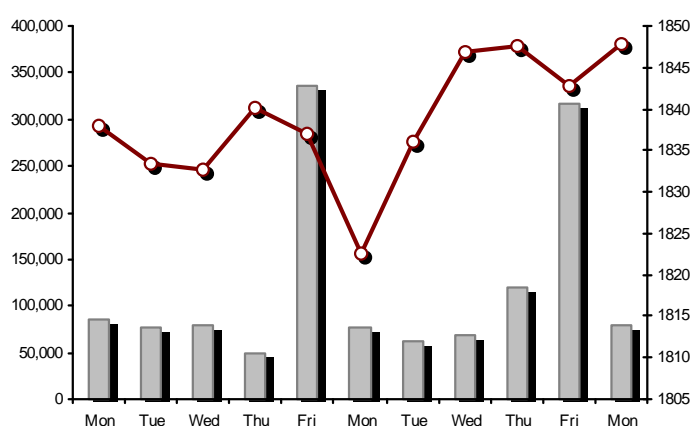


FTSE/ATHEX Mid & Small Cap Factor-Weighted Index

06/11/2017: 0.27%

ATHEX Mid & SmallCap Price Index

06/11/2017: 0.18%



Indices volume of transactions

Indices closing prices

Analytic Figures for Athex Market's Boards and Categories

	Total Traded Securities	Main Market	Low Dispersion	Other Categories (*)	Exchange Traded Funds (ETFs)	Warrants
Totals	120	99	5	14	1	1
Gain / Lose / Same:	45 / 53 / 22	39 / 45 / 15	0 / 2 / 3	5 / 6 / 3	1 / 0 / 0	0 / 0 / 1
Athex Capitalisation (mill. €) **	52,298.51	49,243.23	2,837.02	218.26		
Daily Average Trans/ons Value(thou.€)	57,642.71	57,459.14	195.08	13.65	41.35	4.31
Transactions Value	29,799.72	29,762.17	2.68	14.57	19.90	0.40
Main Board:	24,381.37	24,343.82	2.68	14.57	19.90	0.40
Blocks Board 6_2_3:	5,418.35	5,418.35	0.00	0.00	0.00	0.00
Forced Sales Board:	0.00	0.00	0.00	0.00	0.00	0.00
Special Terms Board:	0.00	0.00	0.00	0.00	0.00	0.00
Daily Average Transactions Volume	74,252,100	71,839,235	45,098	131,629	2,285	2,833,944
Transactions Volume	23,085,341	22,802,586	921	80,732	1,002	200,100
Main Board:	22,737,941	22,455,186	921	80,732	1,002	200,100
Blocks Board 6_2_3:	347,400	347,400	0	0	0	0
Forced Sales Board:	0	0	0	0	0	0
Special Terms Board:	0	0	0	0	0	0
Daily Average Number of Trades	17,166	17,015	46	79	2	24
Number of Trades	12,295	12,199	19	73	2	2
Main Board:	12,292	12,196	19	73	2	2
Blocks Board 6_2_3:	3	3	0	0	0	0
Forced Sales Board:	0	0	0	0	0	0
Special Terms Board:	0	0	0	0	0	0

(*) Summarised Transactions figures for Under Deletion and Under Supervision Categories. (**) The Market Capitalization of the Companies that belong in the Under Supervision Status is not included.

Trading Details by Athex Sectors and Financial Instruments (ETFs)

Code	Sectors	Gain / Lose / Same	Number of Trades	Transactions Volume	Transactions Value	% of Total Trans. Value
8300	- Banks	1 / 5 / 1	5,122	19,572,398	11,281,944.37	37.86%
1700	- Basic Resources	4 / 2 / 2	454	99,772	578,338.98	1.94%
1300	- Chemicals	3 / 1 / 0	43	11,991	46,523.35	0.16%
2300	- Construction & Materials	3 / 8 / 2	813	415,898	4,652,334.56	15.61%
12000	- Financial Instruments	1 / 0 / 0	2	1,002	19,900.36	0.07%
8700	- Financial Services	0 / 2 / 2	365	913,967	208,348.23	0.70%
3500	- Food & Beverage	3 / 3 / 4	193	44,563	233,108.90	0.78%
4500	- Health Care	2 / 2 / 0	80	141,906	56,462.43	0.19%
2700	- Industrial Goods & Services	3 / 8 / 0	330	167,025	352,438.27	1.18%
8500	- Insurance	1 / 0 / 0	8	3,537	12,349.11	0.04%
5500	- Media	0 / 1 / 0	10	1,548	130.21	0.00%
500	- Oil & Gas	2 / 0 / 0	919	87,424	1,410,213.31	4.73%
3700	- Personal & Household Goods	7 / 4 / 3	546	141,761	760,566.90	2.55%
8600	- Real Estate	3 / 3 / 2	394	79,039	461,354.37	1.55%
5300	- Retail	1 / 4 / 0	294	24,431	306,470.46	1.03%
9500	- Technology	7 / 4 / 0	347	140,100	122,733.28	0.41%
6500	- Telecommunications	1 / 0 / 0	740	483,782	5,200,532.28	17.45%
5700	- Travel & Leisure	1 / 4 / 4	1,037	484,316	3,504,409.23	11.76%
7500	- Utilities	2 / 2 / 2	598	270,881	591,559.17	1.99%

Top 10 best & worst performing Shares

Main Market					
With positive Price change	Closing price	change	With negative Price change	Closing price	change
AUTOHELLAS SA (CR)	23.53	3.20% #	EUROBANK ERGASIAS (CR)	0.675	-4.39% Ⓔ
MERMEREN KOMB. A.D. PR. (GDR)	13.60	2.87% #	PROFILE SA (CR)	0.685	-3.38% Ⓔ
PAPOUTSANIS (CR)	0.260	2.77% #	PIRAEUS BANK (CR)	2.40	-2.83% Ⓔ
MLS MULTIMEDIA SA (CR)	4.42	2.32% #	NATIONAL BANK (CR)	0.281	-2.09% Ⓔ
PLAISIO COMPUTERS SA (CR)	3.87	2.11% #	LAMDA DEVELOPMENT SA (CR)	6.47	-1.97% Ⓔ
OTE (CR)	10.80	1.89% #	CENERGY HOLDINGS (CB)	1.05	-1.87% Ⓔ
ATTICA BANK S.A. (CR)	0.055	1.85% #	IASO SA (CR)	0.857	-1.49% Ⓔ
HELLENIC PETROLEUM (CR)	7.50	1.49% #	ALPHA BANK (CR)	1.69	-1.17% Ⓔ
GEK TERNA (CR)	4.36	1.39% #	TITAN CEMENT CO. (PR)	16.09	-1.17% Ⓔ
ELASTRON (CR)	1.24	0.81% #	MARFIN INVESTMENT GROUP (CR)	0.093	-1.06% Ⓔ
With the highest Transactions Value	Value (thou. €)	change	With the highest Transactions Volume	Volume	change
OTE (CR)	5,200.53	1.89% #	NATIONAL BANK (CR)	10,726,538	-2.09% Ⓔ
TITAN CEMENT (CR)	4,234.48	-0.20% Ⓔ	EUROBANK ERGASIAS (CR)	3,906,707	-4.39% Ⓔ
ALPHA BANK (CR)	3,270.32	-1.17% Ⓔ	ALPHA BANK (CR)	1,958,334	-1.17% Ⓔ
NATIONAL BANK (CR)	2,985.66	-2.09% Ⓔ	ATTICA BANK S.A. (CR)	1,842,829	1.85% #
EUROBANK ERGASIAS (CR)	2,662.96	-4.39% Ⓔ	PIRAEUS BANK (CR)	936,869	-2.83% Ⓔ
OPAP (CR)	2,491.12	-0.21% Ⓔ	MARFIN INVESTMENT GROUP (CR)	887,553	-1.06% Ⓔ
PIRAEUS BANK (CR)	2,246.48	-2.83% Ⓔ	OTE (CR)	483,782	1.89% #
MOTOR OIL (CR)	1,162.65	0.71% #	OPAP (CR)	256,969	-0.21% Ⓔ
AEGEAN AIRLINES (CR)	876.02	0.00% ▾	TITAN CEMENT (CR)	208,665	-0.20% Ⓔ
MYTILINEOS HOLDINGS (CR)	514.06	0.33% #	PPC (CR)	158,325	-1.05% Ⓔ

Note: Stocks that are not included in the "Low Dispersion" and "Under Supervision" categories, and the transactions value is more than 10,000 €.

Derivatives Summary

	Number of Trades	Volume	Open Interest
Index Futures	297	957	4,657
FTSE/Athex Large Cap	297	957	4,657
Stock Futures	2,047	48,729	400,390
ADMIE (IPTO) HOLDING S.A. (CR)	13	69	6,976
ALPHA BANK (CR)	223	6,064	41,695
ATTICA BANK S.A. (CR)	1	100	1,201
CC HBC AG (CR)	8	20	300
CENERGY HOLDINGS (CB)	35	205	8,047
ELLAKTOR (CR)	15	43	6,890
EUROBANK ERGASIAS (CR)	387	9,057	62,850
EYDAP S.A. (CR)	10	18	1,313
FOLLI FOLLIE (CR)	41	64	1,163
FOURLIS (CR)	1	3	168
GEK TERNA (CR)	27	138	8,193
GRIVALIA PROPERTIES (CR)	0	0	302
HELLENIC EXCHANGES-A.S.E. (CR)	23	50	4,788
HELLENIC PETROLEUM (CR)	38	143	3,618
INTRALOT (CR)	16	100	4,780
JUMBO SA (CR)	14	20	1,265
LAMDA DEVELOPMENT SA (CR)	11	24	1,783
MARFIN INVESTMENT GROUP (CR)	59	2,715	54,374
MOTOR OIL (CR)	23	39	539
MYTILINEOS HOLDINGS (CR)	54	229	10,307
NATIONAL BANK (CR)	330	23,599	132,392
OPAP (CR)	60	298	2,984
OTE (CR)	177	886	6,391
P.P.A. S.A. (CR)	1	1	1,066
PIRAEUS BANK (CR)	289	3,735	15,772
PPC (CR)	91	816	6,466
TERNA ENERGY (CR)	7	11	3,750
TITAN CEMENT (CR)	32	65	735
VIOHALCO SA/NV (CB)	61	217	10,282
Index Options	15	57	6,295
FTSE/Athex Large Cap	15	57	6,295
Stock Options	1	50	2,140
ALPHA BANK (CR)	0	0	175
NATIONAL BANK (CR)	0	0	0
OPAP (CR)	0	0	165
OTE (CR)	0	0	165
PIRAEUS BANK (CR)	0	0	300
PPC (CR)	1	50	1,335
Total Derivatives Traded	2,360	49,793	413,482

Number of Outstanding Securities	Nominal Value	Dividends [1]			Date of Last Coupon Dividend [2]		Date of Right	Note	Shares	Closing price	% change	Previous closing price/date	Open price	Price min	Price max	Last price	Avg price	Last Bid [7]	Last Ask [7]	P/E after	Year	Volume	Trades	Transactions Value[8]	Company Mkt Value (thou. €)	Year low	Year high	Sector[4]
1,141,734,167		---	---	---			11/06/2013	---	ALPHA BANK (W)	0.001	---	0.001	03/11/2017	---	---	---	---	---	53417196@0.001	---	2015	---	---	---	2,608,851.95	0.001	0.002	8355
245,745,661		---	---	---			27/06/2013	---	NATIONAL BANK (W)	0.002	---	0.002	03/11/2017	0.002	0.002	0.002	0.002	0.002194313@0.001	5840831@0.002	---	2015	200,100	2	400.20	2,570,349.58	0.001	0.008	8355
843,637,022		---	---	---			03/07/2013	---	PIRAEUS BANK (W)	0.001	---	0.001	03/11/2017	---	---	---	---	---	49022004@0.001	---	2015	---	---	---	1,047,981.99	0.001	0.001	8355

Main Market - High Liquidity Class

1,543,699,381	0.300	---	---	---	07/04/2008	18/04/2017	---	ALPHA BANK (CR)	1.69	-1.17	€	1.71	03/11/2017	1.70	1.63	1.72	1.69	1.67	2659@1.68	67580@1.70	---	2015	1,958,334	920	3,270,315.52	2,608,851.95	1.51	2.33	8355
2,339,353,394	0.300	---	---	---	04/06/2008	01/12/2015	---	ATTICA BANK S.A. (CR)	0.055	1.85	#	0.054	03/11/2017	0.055	0.053	0.058	0.055	0.055428489@0.054	339199@0.056	---	2015	1,842,829	197	101,875.16	128,664.44	0.030	0.135	8355	
190,162,681		---	---	---		07/12/2016	---	CENERGY HOLDINGS (CB)	1.05	-1.87	€	1.07	03/11/2017	1.07	1.05	1.07	1.05	1.05	16201@1.04	14@1.05	---	---	54,816	93	57,753.21	199,670.82	0.620	1.31	2727
367,769,779	6.70	0.36	0.4	0.44	29/06/2017	29/04/2013	---	CC HBC AG (CR)	29.80	0.74	#	29.58	03/11/2017	29.63	29.57	29.80	29.80	29.69	30@29.75	1220@29.89	---	---	5,612	44	166,606.03	10,959,539.41	20.37	29.80	3537
66,948,210	0.300	0.1005	---	---	22/09/2015	22/09/2015	---	FOLLI FOLLIE (CR)	17.20	-0.41	€	17.27	03/11/2017	17.21	17.04	17.37	17.20	17.17	28@17.14	55@17.20	---	2015	17,498	254	300,361.45	1,151,509.21	17.04	21.98	5379
51,330,410	0.970	---	---	---	21/06/2010	21/07/2017	---	FOURLIS (CR)	5.59	0.18	#	5.58	03/11/2017	5.55	5.55	5.64	5.59	5.60	918@5.59	140@5.63	---	2015	18,280	90	102,443.78	286,936.99	3.95	6.18	3722
101,260,000	2.13	0.3037	0.3134	0.1902	27/03/2017	08/01/2014	---	GRIVALIA PROPERTIES (CR)	8.90	-0.67	€	8.96	03/11/2017	9.04	8.82	9.04	8.90	8.87	70@8.85	1042@8.90	39.69	2016	26,814	190	237,773.84	901,214.00	7.54	9.84	8675
133,025,996	1.41	---	---	---	03/07/2007	07/01/2002	---	INTRACOM HOLDINGS (CR)	0.597	0.34	#	0.595	03/11/2017	0.595	0.584	0.600	0.597	0.593	1000@0.592	3500@0.600	---	2015	46,103	67	27,340.37	79,416.52	0.292	0.708	9578
136,059,759	0.880	0.18	---	0.36	22/03/2017	05/03/2014	---	JUMBO SA (CR)	13.60	0.30	#	13.56	03/11/2017	13.56	13.53	13.79	13.60	13.62	12014@13.60	51@13.79	22.44	2016	35,840	298	488,121.87	1,850,412.72	12.62	16.50	3747
79,721,775	0.300	---	---	---	30/05/2007	23/06/2014	---	LAMDA DEVELOPMENT SA (CR)	6.47	-1.97	€	6.60	03/11/2017	6.60	6.39	6.60	6.47	6.45	100@6.42	500@6.48	---	2015	32,470	129	209,418.20	515,799.88	4.20	7.10	8633
939,510,748	0.300	---	---	---	26/04/2007	29/08/2014	---	MARFIN INVESTMENT GROUP (CR)	0.093	-1.06	€	0.094	03/11/2017	0.094	0.091	0.095	0.093	0.093	10200@0.092	29811@0.093	---	2015	887,553	197	82,629.78	87,374.50	0.076	0.213	8775
259,189,761		---	---	---		26/02/2016	---	VIOHALCO SA/NV (CB)	3.03	-0.66	€	3.05	03/11/2017	3.08	3.01	3.08	3.03	3.04	1085@3.03	1566@3.04	---	---	82,285	151	249,886.71	785,344.98	1.24	3.51	2727
232,000,000	2.12	---	---	---		19/06/2017	---	ADMIE (IPTO) HOLDING S.A. (CR)	1.87	---	↘	1.87	03/11/2017	1.85	1.84	1.88	1.87	1.86	249@1.86	1300@1.88	---	---	63,247	108	117,696.33	433,840.00	1.75	2.49	7535
71,417,100	0.650	0.7	0.7	0.4	17/05/2017	27/06/2014	---	AEGEAN AIRLINES (CR)	7.88	---	↘	7.88	03/11/2017	8.00	7.87	8.02	7.88	7.98	1925@7.88	998@8.00	10.37	2015	109,743	267	876,019.29	562,766.75	6.30	8.64	5751
103,423,291	0.570	---	---	---	01/08/2011	19/04/2016	---	GEK TERNA (CR)	4.36	1.39	#	4.30	03/11/2017	4.37	4.31	4.37	4.36	4.34	1077@4.35	2798@4.37	27.38	2015	33,760	178	146,594.51	450,925.55	2.20	4.40	2357
232,000,000	2.48	0.05	---	---	20/07/2015	12/12/2001	---	PPC (CR)	1.89	-1.05	€	1.91	03/11/2017	1.93	1.87	1.93	1.89	1.89	7366@1.89	665@1.90	---	2015	158,325	333	299,437.61	438,480.00	1.75	4.73	7535
9,147,151,527	0.300	---	---	---	16/05/2008	30/11/2015	---	NATIONAL BANK (CR)	0.281	-2.09	€	0.287	03/11/2017	0.287	0.274	0.288	0.281	0.278160000@0.280	126152@0.281	---	2015	10,726,538	1,255	2,985,658.30	2,570,349.58	0.203	0.377	8355	
177,001,313	1.03	---	---	---	05/07/2011	20/12/2007	---	ELLAKTOR (CR)	1.61	---	↘	1.61	03/11/2017	1.59	1.58	1.61	1.61	1.59	4012@1.60	13250@1.61	---	2015	98,324	163	156,477.76	284,972.11	1.04	1.83	2357
60,599,000	0.840	0.21	0.1026	0.065	30/05/2017	24/07/2017	---	HELLENIC EXCHANGES-A.S.E. (CR)	4.79	---	↘	4.79	03/11/2017	4.81	4.73	4.81	4.79	4.77	5@4.78	1043@4.80	24.32	2015	26,160	166	124,723.33	290,269.21	4.25	6.26	8777
305,635,185	2.18	0.2	---	---	03/07/2017	01/10/2003	4795	HELLENIC PETROLEUM (CR)	7.50	1.49	#	7.39	03/11/2017	7.39	7.36	7.54	7.50	7.45	500@7.49	4566@7.52	83.23	2015	33,241	272	247,561.69	2,292,263.89	4.19	8.40	537
110,782,980	0.750	---	0.65	0.9	26/06/2017	04/11/2013	---	MOTOR OIL (CR)	21.25	0.71	#	21.10	03/11/2017	21.17	21.03	21.90	21.25	21.46	100@21.23	250@21.37	11.71	2015	54,183	647	1,162,651.62	2,354,138.33	12.89	21.90	533
142,891,161	0.970	---	---	---	11/05/2009	07/07/2017	---	MYTILINEOS HOLDINGS (CR)	9.10	0.33	#	9.07	03/11/2017	9.06	8.98	9.10	9.10	9.04	244@9.09	410@9.11	---	2015	56,890	345	514,057.22	1,300,309.57	6.04	9.15	1755
25,000,000	2.00	0.099	0.1114	0.0892	19/07/2017	08/08/2003	---	P.P.A. S.A. (CR)	15.49	-0.39	€	15.55	03/11/2017	15.55	15.40	15.72	15.49	15.49	1578@15.45	386@15.49	57.81	2016	361	21	5,591.64	387,250.00	12.30	16.77	2777
319,000,000	0.300	0.57	0.4	0.72	27/09/2017	25/04/2001	---	OPAP (CR)	9.70	-0.21	€	9.72	03/11/2017	9.72	9.58	9.77	9.70	9.69	250@9.65	19968@9.70	14.66	2015	256,969	620	2,491,117.72	3,094,300.00	8.02	10.28	5752
490,150,389	2.83	0.08	0.1	0.16	07/07/2017	18/06/1998	---	OTE (CR)	10.80	1.89	#	10.60	03/11/2017	10.63	10.52	10.88	10.80	10.75	1464@10.79	19@10.85	57.17	2015	483,782	740	5,200,532.28	5,293,624.20	8.33	11.15	6535
436,659,164	6.00	---	---	---	16/05/2008	31/07/2017	---	PIRAEUS BANK (CR)	2.40	-2.83	€	2.47	03/11/2017	2.46	2.35	2.50	2.40	2.40	2000@2.39	3500@2.41	---	2015	936,869	940	2,246,484.58	1,047,981.99	2.09	5.36	8355
34,938,742	1.55	0.15	0.16	0.175	09/05/2017	27/07/2000	---	GR. SARANTIS SA (CR)	12.57	0.40	#	12.52	03/11/2017	12.52	12.48	12.58	12.58	12.52	228@12.56	397@12.58	39.62	2015	9,059	44	113,383.51	439,179.99	10.00	12.83	3767
77,063,568	3.00	0.1551	0.3099	0.1049	13/06/2017	13/06/2017	---	TITAN CEMENT (CR)	20.29	-0.20	€	20.33	03/11/2017	20.33	20.14	20.47	20.29	20.29	440@20.28	1803@20.29	28.55	2015	208,665	239	4,234,479.38	1,685,404.36	19.98	27.19	2353
2,185,998,765	0.300	---	---	---	02/05/2008	27/11/2015	---	EUROBANK ERGASIAS (CR)	0.675	-4.39	€	0.706	03/11/2017	0.705	0.663	0.713	0.675	0.682485445@0.675	34700@0.683	---	2015	3,906,707	1,761	2,662,960.55	1,475,549.17	0.498	1.04	8355	

Main Market - Medium Liquidity Class

13,126,020	0.610	---	---	---	08/07/2010	08/09/2017	---	AS COMPANY SA (CR)	1.52	-3.80	€	1.58	03/11/2017	1.58	1.50	1.58	1.52	1.51	206@1.52	300@1.56	12.94	2015	2,170	12	3,275.78	19,951.55	0.640	1.62	5379
49,630,457	0.700	---	---	---	01/07/2008	01/03/2010	---	AUDIO VISUAL ENTERPRISES (CR)	0.089	-2.20	€	0.091	03/11/2017	0.091	0.075	0.093	0.089	0.084	7@0.075	485@0.089	---	2015	1,548	10	130.21	4,417.11	0.056	0.220	5553
12,213,750	0.320	0.8	0.85	0.85	15/06/2017	22/11/2013	---	AUTOHELLAS SA (CR)	23.53	3.20	#	22.80	03/11/2017	23.50	23.31	24.00	23.31	23.53	248@23.31	700@23.90	18.79	2015	834	7	19,624.08	287,389.54	11.53	24.00	5759

Number of Outstanding Securities	Nominal Value	Dividends [1]			Date of Last Coupon Dividend [2]		Note	Shares	Closing price	% change	Previous closing price/date	Open price	Price min	Price max	Last price	Avg price	Last Bid [7]	Last Ask [7]	P/E after	Year	Volume	Trades	Transactions Value[8]	Company Mkt Value (thou. €)	Year low	Year high	Sector[4]
11,921,531	2.33	---	---	---	31/07/2017	---	---	BRIQ PROPERTIES (CR)	1.72	0.58 #	1.71 03/11/2017	1.74	1.70	1.74	1.72	1.71	500@1.68	400@1.72	---	---	800	3	1,370.00	20,505.03	1.63	2.05	8671
101,123,806	0.360	---	---	---	22/07/2010 28/06/2011	---	---	CENTRIC HOLDINGS (CR)	0.150	-5.06 €	0.158 03/11/2017	0.143	0.143	0.153	0.150	0.150	500@0.146	227@0.153	---	2015	5,651	18	848.46	15,168.57	0.080	0.190	5752
9,907,500	0.300	---	---	---	06/10/2005 13/02/2002	---	---	CPI SA (CR)	0.170	17.24 #	0.145 03/11/2017	0.170	0.170	0.170	0.170	0.170	500@0.134	995@0.170	48.68	2017	5	1	0.85	1,684.28	0.126	0.197	9572
20,578,374	0.620	0.4	0.07	0.07	07/06/2017 18/05/2015	---	---	INFORM P. LYKOS SA (CR)	0.763	0.66 #	0.758 03/11/2017	0.762	0.762	0.763	0.763	0.763	100@0.727	100@0.759	---	2015	1,000	2	762.77	15,701.30	0.427	0.880	2791
30,477,156	0.300	---	---	---	12/08/2008 17/10/2017	---	---	INTRACOM CONSTR. (CR)	0.782	2.90 #	0.760 03/11/2017	0.780	0.763	0.786	0.782	0.782	50@0.765	800@0.783	---	2015	7,726	43	6,040.26	23,833.14	0.543	1.19	2357
77,654,850	0.580	---	---	---	01/07/2011 21/02/2003	---	---	J & P - AVAX SA (CR)	0.677	-1.02 €	0.684 03/11/2017	0.684	0.670	0.685	0.677	0.676	1000@0.674	935@0.677	---	2015	20,324	41	13,733.89	52,572.33	0.380	0.768	2357
4,740,000	0.860	---	---	---	14/03/2003	---	---	LOGISMOS S.A. (CR)	0.370	---	0.370 03/11/2017	---	---	---	---	---	1000@0.262	1250@0.370	-(6)-	2016	---	---	---	1,753.80	0.168	0.548	9533
468,700	1.48	1	0.73	24/08/2017 21/05/2004	---	---	---	MERMEREN KOMB. A.D. PR. (GDR)	13.60	2.87 #	13.22 03/11/2017	13.40	13.25	13.65	13.60	13.47	100@13.40	70@13.60	1.82	2016	2,107	16	28,379.45	6,374.32	5.77	14.80	1775
12,417,000	0.310	---	---	---	28/07/2008 28/08/2017	---	---	MLS MULTIMEDIA SA (CR)	4.42	2.32 #	4.32 03/11/2017	4.29	4.29	4.42	4.42	4.34	100@4.29	165@4.42	24.71	2016	3,705	29	16,071.35	54,883.14	3.98	4.65	9537
3,953,090	0.300	0.118	0.11	0.12	06/06/2017 05/12/2012	---	---	PAPERPACK (CR)	2.05	---	2.05 03/11/2017	---	---	---	---	---	150@1.93	98@2.02	5.99	2016	---	---	---	8,103.83	1.26	2.41	2723
11,812,193	0.470	0.02	---	---	26/03/2015 15/11/2006	---	---	PROFILE SA (CR)	0.685	-3.38 €	0.709 03/11/2017	0.700	0.685	0.709	0.685	0.686	150@0.676	120@0.700	---	2015	37,301	28	25,587.16	8,091.35	0.455	0.902	9533
27,345,120	0.470	---	---	---	18/07/2005 26/02/2014	---	---	QUALITY & RELIABILITY SA (CR)	0.243	-4.71 €	0.255 03/11/2017	0.258	0.235	0.258	0.243	0.241	230@0.238	1000@0.244	---	2015	16,754	49	4,045.43	6,644.86	0.150	0.353	9533
11,921,531	1.02	---	---	---	05/09/2008 05/12/2016	---	---	QUEST HOLDINGS (CR)	8.30	1.84 #	8.15 03/11/2017	8.15	8.15	8.31	8.31	8.26	10@8.31	70@8.32	---	2015	1,063	16	8,782.99	98,948.71	6.30	10.08	9533
6,456,530	1.08	0.03	---	---	19/07/2017 02/08/2010	---	---	SPACE HELLAS SA (CR)	3.82	-0.52 €	3.84 03/11/2017	3.84	3.80	3.99	3.82	3.90	2@3.82	2830@3.86	29.08	2015	2,848	18	11,106.64	24,663.94	0.601	3.99	9578
3,125,463	0.300	---	---	---	16/11/1992 07/02/2017	---	---	UNIBIOS (CR)	0.499	-1.77 €	0.508 03/11/2017	0.512	0.480	0.512	0.499	0.499	38@0.463	100@0.499	---	2015	311	9	155.30	1,559.61	0.420	0.755	2353
2,235,600	0.350	---	---	---	21/04/2010 25/07/2017	---	---	AEOLIAN INVESTMENT FUND (CR)	0.454	-2.15 €	0.464 03/11/2017	0.454	0.454	0.454	0.454	0.454	200@0.455	2000@0.490	---	2016	204	1	92.62	1,014.96	0.330	4.01	8985
22,016,250	0.370	---	---	---	15/07/2009 11/05/2000	---	---	ALUMIL (CR)	0.349	---	0.349 03/11/2017	0.356	0.343	0.356	0.350	0.349	700@0.347	1626@0.350	---	2015	15,458	16	5,401.15	7,683.67	0.152	0.502	1753
34,720,000	0.310	---	---	---	16/06/2010 01/08/2007	---	---	DROMEAS SA (CR)	0.204	14.61 #	0.178 03/11/2017	0.179	0.178	0.204	0.204	0.194	365@0.183	369@0.203	---	2015	3,186	7	617.84	7,082.88	0.100	0.285	3726
13,673,200	0.880	---	---	---	18/07/2008 26/07/2001	---	---	EVROFARMA SA (CR)	0.325	---	0.325 03/11/2017	0.310	0.310	0.325	0.325	0.311	100@0.309	11@0.325	19.58	2015	760	5	236.50	4,443.79	0.225	0.420	3577
27,848,000	0.300	0.0032	0.0084	---	16/08/2016 02/09/2003	---	---	NEWSPHONE HELLAS SA (CR)	0.243	---	0.243 03/11/2017	---	---	---	---	---	400@0.222	359@0.246	10.21	2015	---	---	---	6,767.06	0.180	0.330	2791
11,250,000	0.520	---	0.04	0.04	24/07/2017 09/11/2015	---	---	EKTER SA (CR)	0.600	-0.83 €	0.605 03/11/2017	0.606	0.600	0.612	0.600	0.603	1000@0.589	921@0.600	18.95	2015	8,580	31	5,176.45	6,750.00	0.401	0.810	2357
82,667,000	0.300	---	---	---	22/07/2014	---	---	ELTECH ANEMOS S.A. (CR)	1.41	-0.70 €	1.42 03/11/2017	1.38	1.38	1.41	1.41	1.38	300@1.40	4@1.41	15.17	2015	16,806	8	23,225.16	116,560.47	0.875	1.64	7537
18,421,516	1.00	---	---	---	07/07/2009 10/09/2010	---	---	ELASTRON (CR)	1.24	0.81 #	1.23 03/11/2017	1.23	1.20	1.24	1.24	1.22	1018@1.20	25098@1.24	---	2015	13,233	49	16,073.00	22,842.68	0.690	1.59	1757
3,307,500	0.960	---	---	---	11/08/2010 23/09/2016	---	---	ELVE SA (CR)	2.74	-5.52 €	2.90 03/11/2017	2.74	2.74	2.74	2.74	2.74	200@2.73	80@2.90	21.84	2015	50	1	137.00	9,062.55	1.63	3.10	3763
19,864,886	5.60	0.672	0.672	0.672	09/03/2017 02/07/2008	---	---	BANK OF GREECE (CR)	13.97	-0.57 €	14.05 03/11/2017	14.09	13.80	14.09	14.00	13.96	2@13.90	438@14.00	---	---	1,021	47	14,250.06	277,512.46	10.60	15.08	8355
26,730,187	0.520	---	---	---	23/06/2014 01/08/2017	---	---	ELTON SA (CR)	1.34	1.52 #	1.32 03/11/2017	1.38	1.34	1.38	1.34	1.34	200@1.30	125@1.34	23.92	2015	354	4	475.60	35,818.45	0.837	1.52	1353
36,300,000	1.12	0.24	0.25	0.228	29/06/2017 12/12/2007	---	---	THESSALONIKA WATER & SEWERAGE	4.35	0.23 #	4.34 03/11/2017	4.35	4.35	4.35	4.35	4.35	30@4.35	150@4.36	11.65	2015	120	1	522.00	157,905.00	3.42	4.78	7577
106,500,000	0.600	0.2	0.31	0.11	22/06/2017 28/01/2000	---	---	EYDAP S.A. (CR)	5.94	---	5.94 03/11/2017	5.92	5.92	6.00	5.94	5.96	110@5.93	913@5.94	14.48	2015	7,020	82	41,850.77	632,610.00	5.01	6.52	7577
27,503,677	0.630	---	0.06	0.1	24/05/2017 18/10/1999	---	---	EUROPEAN RELIANCE INSUR. (CR)	3.50	0.29 #	3.49 03/11/2017	3.50	3.49	3.50	3.50	3.49	4161@3.49	6864@3.50	8.74	2015	3,537	8	12,349.11	96,262.87	1.95	3.93	8536
87,254,824	0.440	---	---	---	24/11/2014 01/08/2017	---	---	IASO SA (CR)	0.857	-1.49 €	0.870 03/11/2017	0.870	0.851	0.870	0.857	0.863	743@0.857	3499@0.870	---	2015	18,977	36	16,374.91	74,777.38	0.289	1.01	4533
28,580,100	0.400	0.0301	---	---	30/10/2017 04/07/2016	---	---	IKTINOS HELLAS SA (CR)	2.04	---	2.04 03/11/2017	2.04	1.98	2.08	2.04	2.04	300@2.00	1210@2.04	56.12	2015	23,970	72	48,880.15	58,303.40	0.731	2.08	2353
8,226,132	0.900	---	---	---	15/05/2009 13/10/2014	---	---	ILYDA S.A. (CR)	0.218	-0.46 €	0.219 03/11/2017	0.154	0.154	0.218	0.218	0.184	65@0.190	749@0.218	6.88	2016	8,528	69	1,570.41	1,793.30	0.154	0.476	9537
11,233,200	0.730	---	---	---	12/07/2010 30/07/1999	---	---	INTERTECH SA (CR)	0.288	6.67 #	0.270 03/11/2017	0.270	0.270	0.288	0.288	0.273	48700@0.270	208@0.288	---	2016	1,600	3	437.40	3,235.16	0.129	0.449	9572
158,961,721	0.300	---	---	---	30/05/2013 14/11/2007	---	---	INTRALOT (CR)	1.11	---	1.11 03/11/2017	1.11	1.07	1.12	1.11	1.09	11957@1.11	12770@1.12	---	2015	104,949	102	114,864.72	176,447.51	1.02	1.37	5752
7,500,000	0.610	0.1	---	---	19/06/2015 11/07/2017	---	---	S.KANAKIS SA (CR)	3.33	-0.30 €	3.34 03/11/2017	3.33	3.20	3.33	3.33	3.24	50@3.18	---	11.94	2016	489	10	1,582.37	24,975.00	2.20	3.65	3577
19,804,134	0.300	---	---	---	01/07/2004 06/11/2017	---	---	KEKROPS SA (CR)	0.520	14.79 #	0.620 03/11/2017	0.500	0.474	0.546	0.520	0.504	35@0.503	375@0.520	---	2016	16,510	55	8,315.54	10,298.15	0.402	1.27	8633
40,219,218	0.300	---	---	---	20/06/2017 09/07/2013	---	---	KLOUKINAS - LAPPAS SA (CR)	0.668	1.21 #	0.660 03/11/2017	0.670	0.658	0.670	0.668	0.666	500@0.654	969@0.668	---	2015	3,794	12	2,527.27	26,866.44	0.251	0.880	2357
11,510,102	0.890	---	---	---	24/06/2005 06/10/1999	---	---	NAFPAKTOS TEXTILE IND. SA (CB)	0.327	-3.54 €	0.339 03/11/2017	0.302	0.301	0.327	0.327	0.307	1000@0.326	395@0.327	---	2015	13,497	13	4,146.12	3,763.80	0.175	0.440	3763
21,224,340	0.420	---	---	0.01	24/07/2017 25/04/2006	---	---	KORDELLOS BROS SA (CR)	0.377	---	0.377 03/11/2017	---	---	---	---	---	30@0.321	50@0.380	12.09	2016	---	---	---	8,001.58	0.176	0.775	1757

Number of Outstanding Securities	Nominal Value	Dividends [1]			Date of Last Coupon		Note	Shares	Closing price	% change	Previous closing price/date	Open price	Price min	Price max	Last price	Avg price	Last Bid [7]	Last Ask [7]	P/E after	Year	Volume	Trades	Transactions Value[8]	Company Mkt Value (thou. €)	Year low	Year high	Sector[4]	
		2014	2015	2016	Dividend [2]	Right																						
13,586,500	0.390	---	---	---	25/06/2010	28/05/2008	---	KORRES (CR)	4.05	0.25 #	4.04 03/11/2017	4.04	4.01	4.09	4.05	4.06	2500@4.00	31@4.08	---	2015	8,965	21	36,400.55	55,025.33	3.30	4.74	3767	
29,480,000	0.420	---	---	---	19/07/2010	01/08/2007	---	KRETA FARM SA (CR)	0.524	---	0.524 03/11/2017	0.530	0.521	0.530	0.521	0.524	24@0.530	495@0.562	---	2015	996	3	521.71	15,447.52	0.399	0.645	3577	
33,065,136	0.380	0.06	0.06	0.09	17/08/2017	16/09/2013	---	KRI-KRI S.A. (CR)	3.00	0.67 #	2.98 03/11/2017	2.98	2.97	3.01	3.00	3.00	500@2.96	7561@3.00	15.91	2016	19,456	79	58,328.53	99,195.41	1.75	3.15	3577	
7,595,160	0.600	---	---	---	08/08/2008	18/08/2010	---	KIRIAKOULIS SHIPPING SA (CR)	0.639	---	0.639 03/11/2017	---	---	---	---	---	300@0.510	290@0.639	79.56	2015	---	---	---	4,853.31	0.405	0.860	5759	
9,819,370	0.690	---	---	---	14/08/2007	09/01/2004	---	MATHIOS REFRACTORY SA (CR)	0.230	-14.81 €	0.270 03/11/2017	0.280	0.190	0.280	0.230	0.275	429@0.231	600@0.314	---	2015	991	4	272.53	2,258.46	0.151	0.359	2353	
11,700,000	0.400	---	---	---	02/06/2009	02/06/2017	---	MOTODYNAMICS S.A. (CR)	0.585	-11.36 €	0.660 03/11/2017	0.671	0.581	0.671	0.585	0.590	909@0.585	70@0.661	21.36	2015	4,138	22	2,442.28	6,844.50	0.370	0.828	5379	
32,188,050	1.04	---	---	---	21/07/2008	20/01/2000	---	EL. D. MOUZAKIS SA (CB)	0.353	---	0.353 03/11/2017	---	---	---	---	---	500@0.255	1150@0.356	---	2015	---	---	---	11,362.38	0.119	0.430	3763	
291,497,368	0.300	---	---	---	08/07/2008	21/03/2016	---	NIREFS SA (CR)	0.238	---	0.238 03/11/2017	0.236	0.232	0.240	0.238	0.237	50@0.235	1000@0.239	0.34	2015	9,065	41	2,150.88	69,376.37	0.162	0.328	3573	
10,080,000	3.00	1.95	0.58	0.49	31/07/2017	27/08/2001	---	TPA SA (CR)	22.90	-0.78 €	23.08 03/11/2017	22.64	22.50	22.90	22.90	22.65	5@23.07	200@23.08	16.39	2016	1,060	15	24,010.78	230,832.00	17.55	24.00	2777	
4,971,466	1.46	---	---	---	04/07/2007	08/10/2003	---	PAIRIS SA (CR)	0.368	---	0.368 03/11/2017	---	---	---	---	---	200@0.258	328@0.367	---	2015	---	---	---	1,829.50	0.106	0.633	2723	
50,797,369	0.310	---	---	---	17/08/2000	12/10/2010	---	PAPOUTSANIS (CR)	0.260	2.77 #	0.253 03/11/2017	0.253	0.252	0.265	0.260	0.261	477@0.260	8626@0.265	---	2016	44,898	49	11,699.06	13,207.32	0.122	0.338	3767	
7,070,400	0.930	0.101	---	---	30/11/2016	06/05/2016	---	PETROPOULOS PETROS (CR)	5.44	-0.18 €	5.45 03/11/2017	5.35	5.35	5.45	5.43	5.44	90@5.35	285@5.43	51.01	2015	529	8	2,876.23	38,462.98	4.07	5.45	2753	
22,075,665	0.330	---	0.08	0.05	30/05/2017	27/04/2015	---	PLAISIO COMPUTERS SA (CR)	3.87	2.11 #	3.79 03/11/2017	3.80	3.76	3.87	3.87	3.79	10@3.84	23@3.87	12.74	2015	5,929	47	22,495.62	85,432.82	3.30	4.81	9572	
43,741,452	0.660	0.0225	---	---	20/04/2015	01/11/1999	---	THRACE PLASTICS SA (CR)	2.51	-1.18 €	2.54 03/11/2017	2.57	2.51	2.57	2.51	2.54	340@2.51	50@2.56	-(6)-	2015	381	5	966.87	109,791.04	2.18	3.08	1357	
22,280,000	0.300	---	---	---	11/04/2011	23/02/2007	---	REVOIL (CR)	0.611	-0.81 €	0.616 03/11/2017	0.610	0.610	0.614	0.614	0.611	194@0.432	206@0.615	19.64	2015	150	2	91.70	13,613.08	0.252	0.750	5379	
245,497,164	0.300	---	---	---	01/07/2008	30/07/2012	---	SELONDA AQUACULTURE SA (CR)	0.176	---	0.176 03/11/2017	---	---	---	---	---	110@0.170	412@0.175	---	2015	---	---	---	43,207.50	0.136	0.298	5373	
28,438,268	0.300	---	---	---	21/08/2006	24/11/1999	---	SPIROY AGRICULTURE SA (CR)	0.285	2.52 #	0.278 03/11/2017	0.265	0.229	0.285	0.285	0.244	80@0.239	271@0.285	---	2015	3,410	13	832.80	8,104.91	0.212	0.699	1357	
109,314,400	0.300	---	0.0935	0.0939	19/06/2017	24/03/2017	---	TERNA ENERGY (CR)	4.28	0.23 #	4.27 03/11/2017	4.20	4.20	4.31	4.28	4.29	611@4.28	250@4.31	-(6)-	2015	25,363	66	108,827.30	467,865.63	2.71	4.37	7537	
40,693,350	5.00	---	---	---	03/07/2006	26/05/2015	---	TECHNICAL OLYMPIC SA (CR)	1.61	-5.29 €	1.70 03/11/2017	1.62	1.60	1.69	1.61	1.63	792@1.61	2259@1.69	---	2015	1,491	12	2,436.05	65,516.29	0.897	1.90	3728	
305,732,436	0.410	---	---	---	08/07/2009	28/09/2011	---	HYGEIA SA (CR)	0.363	0.28 #	0.362 03/11/2017	0.362	0.360	0.365	0.363	0.360	1700@0.361	350@0.363	---	2015	103,666	36	37,348.59	110,980.87	0.147	0.405	4533	
8,340,750	1.18	---	---	---	25/06/2009	09/09/2015	---	HAIDEMENOS SA (CR)	0.470	---	0.470 03/11/2017	---	---	---	---	---	---	100@0.470	---	---	2016	---	---	---	3,920.15	0.211	0.766	2791
101,279,627	0.380	---	---	---	26/06/2008	14/07/2006	---	HALKOR SA (CB)	1.22	---	1.22 03/11/2017	1.20	1.20	1.23	1.22	1.22	1772@1.22	2000@1.23	---	2015	11,819	25	14,402.53	123,561.14	0.429	1.27	1755	

Main Market - Low Liquidity Class

15,816,009	0.300	---	---	---	01/07/2009	17/07/2000	---	BYTE COMPUTER SA (CR)	0.478	---	0.478 03/11/2017	---	---	---	---	---	---	1000@0.525	---	2015	---	---	---	7,560.05	0.267	0.480	9533
52,800,154	0.300	---	---	---	20/08/2014	21/06/2004	---	F.G. EUROPE S.A. (CR)	0.485	---	0.485 03/11/2017	0.485	0.485	0.485	0.485	0.485	10@0.518	50@0.518	21.43	2015	85	2	41.23	25,608.07	0.434	0.687	3722
11,720,024	0.540	---	---	---	21/08/2014	04/11/2015	---	FLEXOPACK SA (CR)	4.60	-6.31 €	4.91 03/11/2017	4.44	4.44	4.65	4.60	4.53	100@4.61	150@4.92	12.24	2015	400	3	1,813.00	53,912.11	2.90	5.10	2723
10,500,000	4.00	---	---	0.28	18/05/2017	02/08/2016	---	INTERCONTINENTAL (CR)	5.34	-0.37 €	5.36 03/11/2017	5.36	5.34	5.36	5.34	5.36	500@4.90	120@5.39	8.97	2016	420	4	2,249.20	56,070.00	4.97	6.12	8674
10,500,000	0.950	---	---	---	24/06/2008	30/06/2017	---	MEVACO SA (CR)	0.930	-0.22 €	0.932 03/11/2017	0.940	0.930	0.940	0.930	0.931	700@0.930	95@0.985	---	2016	320	2	297.80	9,765.00	0.900	1.31	2757
6,200,000	0.500	---	---	---	22/06/2010	01/11/1995	---	MINERVA KNITWEAR SA (CB)	0.398	---	0.398 03/11/2017	---	---	---	---	---	---	1232@0.399	---	2015	---	---	---	2,467.60	0.026	0.459	3763
57,434,884	1.31	---	---	---	05/06/2008	12/06/2009	---	REDS S.A. (CR)	0.660	3.13 #	0.640 03/11/2017	0.600	0.600	0.660	0.660	0.607	850@0.604	440@0.660	---	2015	1,831	6	1,111.35	37,907.02	0.300	0.850	8633
417,608	16.00	---	---	---	29/04/2014	05/03/2013	---	ANDROMEDA SA (CR)	18.05	---	18.05 03/11/2017	18.05	18.05	18.05	18.05	18.05	30@17.99	50@18.05	10.71	2016	50	1	902.50	7,537.82	12.83	19.95	8985
15,300,000	0.300	---	---	---	30/07/2009	13/12/1999	---	ATTICA PUBLICATIONS SA (CR)	0.704	---	0.704 03/11/2017	---	---	---	---	---	---	3319@0.634	---	2015	---	---	---	10,771.20	0.585	0.859	5557
18,810,000	0.400	---	---	---	08/07/2010	14/11/2007	---	VARVERIS - MODA BAGNO SA (CR)	0.489	---	0.489 03/11/2017	---	---	---	---	---	---	30@0.444	---	2015	---	---	---	9,198.09	0.045	0.520	2353
23,986,500	1.05	---	---	---	26/06/2009	15/03/2000	---	BIOKARPET S.A.(CR)	0.280	---	0.280 03/11/2017	---	---	---	---	---	500@0.252	200@0.280	---	2015	---	---	---	6,716.22	0.197	0.400	3726
4,968,600	2.88	---	---	---	01/07/1998	14/12/1998	---	VIS SA (CR)	0.715	---	0.715 03/11/2017	---	---	---	---	---	649@0.678	500@0.786	9.94	2016	---	---	---	3,552.55	0.618	0.910	2723
6,325,000	0.600	---	---	0.11	04/07/2017	17/02/2014	---	VOGIATZOGLOU SYSTEMS SA (CR)	1.59	---	1.59 03/11/2017	---	---	---	---	---	200@1.44	1000@1.65	---	2015	---	---	---	10,056.75	0.891	1.84	2797
24,060,000	0.300	0.02	0.01	0.01	10/07/2017	10/07/2017	---	GEN. COMMERCIAL & IND.SA (CR)	0.504	9.80 #	0.459 03/11/2017	0.450	0.450	0.504	0.504	0.489	2000@0.462	1511@0.504	21.20	2015	4,775	14	2,336.35	12,126.24	0.319	0.553	2797
15,000,000	0.300	---	---	---	06/07/2007	18/07/2000	---	DAIOS PLASTICS SA (CR)	2.88	---	2.88 03/11/2017	---	---	---	---	---	200@2.67	---	---	2015	---	---	---	43,200.00	2.60	3.00	1357
31,734,530	1.60	---	---	---	09/07/2007	19/07/2006	---	ELGEKA SA (CR)	0.186	---	0.186 03/11/2017	---	---	---	---	---	280@0.168	469@0.187	---	2015	---	---	---	5,902.62	0.100	0.216	3577

Number of Outstanding Securities	Nominal Value	Dividends [1]			Date of Last Coupon		Note	Shares	Closing price	% change	Previous closing price/date		Open price	Price min	Price max	Last price	Avg price	Last Bid [7]	Last Ask [7]	P/E after	Year	Volume	Trades	Transactions Value[8]	Company Mkt Value (thou. €)	Year low	Year high	Sector[4]	
		2014	2015	2016	Dividend [2]	Right																							
23,828,130	0.500	---	0.16	0.052	29/06/2017	17/02/2009	---	ELINOIL S.A. (CR)	1.42	---	↘	1.42	03/11/2017	---	---	---	---	100@1.37	60@1.45	12.45	2015	---	---	---	33,835.94	0.753	1.64	537	
14,050,971	0.340	---	---	---	20/09/2017	17/10/2002	---	ELTRAK SA (CR)	2.24	---	↘	2.24	03/11/2017	---	---	---	---	70@2.27	664@2.36	44.52	2015	---	---	---	31,474.18	1.22	2.58	2753	
51,887,910	0.300	---	---	---	23/12/2003	24/01/2007	---	SELECTED TEXT. IND. ASSOC (CR)	0.154	---	↘	0.154	03/11/2017	0.150	0.150	0.154	0.153	10@0.165	650@0.165	---	2016	1,500	2	229.00	7,990.74	0.124	0.320	3763	
11,497,633	0.300	---	---	---	02/06/2010	06/11/2017	5031	EUROCONSULTANTS S.A. (CR)	0.323	---	↘	0.330	# 03/11/2017	---	---	---	---	76@0.303	80@0.359	---	2015	---	---	---	3,713.74	0.293	0.655	2791	
86,735,980	0.310	---	---	---	06/07/2009	02/01/2002	---	ATHENS MEDICAL CENTER SA (CR)	1.35	-0.74	€	1.36	03/11/2017	1.35	1.35	1.35	1.35	250@1.34	1996@1.35	---	2015	500	3	675.00	117,093.57	0.549	1.65	4533	
8,298,467	0.400	---	---	---	30/08/1993	08/05/2013	---	IDEAL GROUP SA (CR)	0.792	---	↘	0.792	03/11/2017	---	---	---	---	---	1115@0.870	-(6)-	2015	---	---	---	6,572.39	0.675	0.950	9574	
2,566,836	0.440	---	---	---	13/08/2010	09/01/2007	---	INTERWOOD-XYLEMPORIA (PR)	0.060	---	↘	0.060	03/11/2017	---	---	---	---	8238@0.066	---	---	2015	---	---	---	4,072.49	0.060	0.109	2353	
34,986,430	0.440	---	---	---	25/07/2008	23/02/2010	---	INTERWOOD-XYLEMPORIA (CR)	0.112	---	↘	0.112	03/11/2017	---	---	---	---	---	3000@0.123	---	2015	---	---	---	4,072.49	0.060	0.126	2353	
9,742,920	0.400	0.01	0.01	---	12/08/2016	14/07/2000	---	KARAMOLEGOS SA (CR)	2.30	0.88	#	2.28	03/11/2017	2.30	2.30	2.30	2.30	300@2.32	---	-(6)-	2015	300	1	690.00	22,408.72	1.84	2.33	3577	
14,679,792	1.68	---	---	0.07	28/06/2017	04/09/2000	---	KARATZIS SA (CR)	5.10	0.39	#	5.08	03/11/2017	5.10	5.10	5.10	5.10	10@5.10	350@5.23	14.64	2015	480	6	2,448.00	74,866.94	3.90	6.10	2723	
6,700,000	0.800	0.03	0.023	0.028	29/06/2017	29/05/2014	---	MILLS KEPENOS (CR)	1.85	-1.60	€	1.88	03/11/2017	1.90	1.85	1.90	1.85	1.86	500@1.86	140@2.02	6.43	2016	650	3	1,211.50	12,395.00	1.11	2.54	3577
18,017,472	0.360	---	---	---	15/06/2010	28/08/2017	---	KTIMA KOSTAS LAZARIDIS SA (CR)	0.430	---	↘	0.430	03/11/2017	---	---	---	---	2500@0.430	370@0.473	---	2015	---	---	---	7,747.51	0.171	0.535	3535	
21,364,000	1.12	---	---	---	05/07/2010	10/08/2005	---	LAMPSPA HOTEL SA (CR)	17.01	---	↘	17.01	03/11/2017	---	---	---	---	100@17.00	---	77.40	2015	---	---	---	363,401.64	16.00	17.50	5753	
17,120,280	0.940	---	---	---	01/06/2010	07/07/2017	---	LOULIS MILLS SA (CR)	2.07	-1.43	€	2.10	03/11/2017	2.07	2.03	2.07	2.04	2.07	99@2.04	701@2.29	60.49	2015	735	6	1,521.38	35,438.98	1.33	3.00	3577
6,340,000	0.600	---	---	---	30/11/2009	06/11/2017	---	NAKAS MUSIC	1.48	---	↘	1.58	# 03/11/2017	---	---	---	---	100@1.34	2500@1.58	12.47	2017	---	---	---	9,383.20	0.600	1.73	5379	
3,873,120	0.300	---	---	---	07/07/2008	04/10/2012	---	DRUCKFARBEN HELLAS (CR)	1.10	---	↘	1.10	03/11/2017	---	---	---	---	---	---	1.75	2015	---	---	---	4,260.43	0.513	1.55	1357	
41,068,800	0.420	(0.03)	0.1205	---	19/08/2016	17/02/2016	---	CRETE PLASTICS SA (CR)	5.90	0.68	#	5.86	03/11/2017	5.65	5.60	6.08	6.08	5.64	41@5.80	3@6.17	19.80	2015	7,846	21	44,248.08	242,305.92	4.77	6.70	1357
4,181,450	0.500	---	---	---	21/08/2000	05/03/2002	---	FLOUR MILLS SARANTOPOULOS SA	0.534	---	↘	0.534	03/11/2017	---	---	---	---	150@0.587	---	---	2015	---	---	---	2,232.89	0.481	0.744	3577	
7,568,960	3.00	0.1551	0.3099	0.1049	13/06/2017	13/06/2017	---	TITAN CEMENT CO. (PR)	16.09	-1.17	€	16.28	03/11/2017	15.80	15.80	16.09	16.09	15.95	450@15.96	350@16.09	22.64	2015	2,340	14	37,312.60	1,685,404.36	13.52	19.65	2353
10,203,575	0.730	---	---	---	16/07/2007	18/10/1999	---	FIERATEX SA (CR)	0.160	---	↘	0.160	03/11/2017	---	---	---	---	---	500@0.152	---	2016	---	---	---	1,632.57	0.054	0.175	3763	

Exchange Traded Funds (ETFs)

619,082	---	---	---	---	15/06/2016	---	---	ALPHA ETF FTSE Athex Large Cap	20.18	0.55	#	20.07	03/11/2017	19.86	19.86	20.18	20.18	19.86	---	53@22.99	---	---	1,002	2	19,900.36	---	16.01	22.40	12003
---------	-----	-----	-----	-----	------------	-----	-----	--------------------------------	-------	------	---	-------	------------	-------	-------	-------	-------	-------	-----	----------	-----	-----	-------	---	-----------	-----	-------	-------	-------

Low Dispersion

14,000,000	4.15	---	---	---	23/04/2010	29/06/1999	4815	ALPHA REAL ESTATE SA(CR)	6.03	---	↘	6.03	03/11/2017	6.03	6.03	6.03	6.03	60@5.82	50@6.30	30.47	2015	147	6	886.41	84,420.00	4.31	7.07	8637	
191,660,320	0.300	---	---	---	20/07/2009	29/12/2010	4817	ATTICA HOLDINGS (CR)	1.21	-0.82	€	1.22	03/11/2017	1.21	1.21	1.22	1.22	1.21	634@1.21	390@1.22	-(6)-	2015	378	3	457.48	231,908.99	0.664	1.53	5759
22,996,875	1.25	---	---	---	24/06/2011	02/02/2016	5116	NEXANS HELLAS SA (CR)	1.01	---	↘	1.01	03/11/2017	---	---	---	---	1378@0.910	200@1.02	15.18	2016	---	---	---	23,226.84	0.837	1.28	2733	
80,690,653	0.500	---	---	---	25/04/2014	22/12/2016	5124	TRASTOR REAL EST. INV. CO.(CR)	0.864	---	↘	0.864	03/11/2017	---	---	---	---	200@0.700	110@0.950	---	2015	---	---	---	69,716.72	0.742	0.899	8671	
113,465,290	0.300	---	---	---	09/08/2004	09/11/2016	4814	ATHENA SA (CR)	0.420	-19.85	€	0.524	03/11/2017	0.420	0.420	0.420	0.420	0.420	658@0.430	---	---	2015	113	2	47.46	47,655.42	0.408	0.898	2357
8,418,750	0.300	---	0.12	0.3	06/06/2017	27/06/2012	5127	GEKE SA (CB)	4.50	---	↘	4.50	03/11/2017	4.50	4.50	4.50	4.50	10@4.50	492@5.39	20.95	2016	236	7	1,062.00	37,884.38	2.94	6.88	5753	
255,494,534	3.00	---	0.2035	0.2	11/05/2017	23/12/2015	5104	NBG PANGAEA (CR)	4.89	---	↘	4.89	03/11/2017	4.89	4.89	4.89	4.89	250@4.15	286@5.86	25.13	2015	47	1	229.83	1,249,368.27	3.77	5.70	8671	
2,760,000	11.83	9.3	8.5	9.2	24/07/2017	16/07/1990	4823	KARELIA TOBACCO CO. SA (CB)	301.00	---	↘	301.00	03/11/2017	---	---	---	---	10@286.50	5@306.00	15.56	2015	---	---	---	830,760.00	255.00	309.00	3785	
106,980,050	2.25	---	---	---	25/07/2008	24/02/2014	5046	MINOAN LINES SA (CR)	2.40	---	↘	2.40	03/11/2017	---	---	---	---	500@2.40	---	15.84	2015	---	---	---	256,752.12	2.14	2.55	5759	
17,240,776	0.370	---	---	---	14/07/2005	30/09/2003	4827	PERSEUS SA (CR)	0.309	---	↘	0.309	03/11/2017	---	---	---	---	550@0.296	---	9.27	2016	---	---	---	5,327.40	0.200	0.415	3577	

Surveillance

5,867,311	0.300	---	---	---	11/08/2010	28/04/2017	5123	DIONIC (CR)	0.515	---	↘	0.515	03/11/2017	---	---	---	---	---	300@0.509	0.16	2015	---	---	---	3,021.67	0.250	0.625	2797
21,820,410	0.800	---	---	---	22/05/2008	02/08/2011	4882	EUROMEDICA SA (CR)	0.109	---	↘	0.109	03/11/2017	---	---	---	---	1500@0.090	2000@0.130	---	2015	---	---	---	2,378.42	0.007	0.242	4533
110,147,660	0.300	---	---	---	19/09/2016	5118	Forthnet (CR)	0.326	19.85	#	0.272	03/11/2017	0.324	0.324	0.326	0.326	0.326	24572@0.326	---	---	2015	16,264	20	5,295.06	35,908.14	0.172	0.474	9535
191,452,873	0.360	---	---	---	07/07/2010	21/09/2017	---	FRIGOGLASS SA (CR)	0.222	-8.26	€	0.242	03/11/2017	0.222	0.222	0.222	0.222	2704@0.222	299@0.235	---	2016	20,999	15	4,661.78	42,502.54	0.138	0.471	2757

Number of Outstanding Securities	Nominal Value	Dividends [1]			Date of Last Coupon Dividend [2]		Note	Shares	Closing price	% change	Previous closing price/date	Open price	Price min	Price max	Last price	Avg price	Last Bid [7]	Last Ask [7]	P/E after	Year	Volume	Trades	Transactions Value[8]	Company Mkt Value (thou. €)	Year low	Year high	Sector[4]
51,081,030	1.00	---	---	---	20/08/2007	03/09/2007	4912	LAVIPHARM SA (CR)	0.110	4.76 #	0.105 03/11/2017	0.110	0.110	0.110	0.110	0.110	1237@0.110	2600@0.126	---	2015	18,763	5	2,063.93	5,618.91	0.070	0.129	4577
4,419,616	1.58	---	---	---	21/07/2011	04/03/2015	4983	MEDICON S.A (CR)	0.894	---	0.894 03/11/2017	---	---	---	---	---	---	209@0.894	2.45	2015	---	---	---	3,951.14	0.274	1.09	4535
14,967,940	0.500	---	---	---	21/05/2008	04/01/2008	4956	PASAL DEVELOPMENT S.A. (CR)	0.080	---	0.080 03/11/2017	---	---	---	---	---	749@0.066	498@0.080	---	2015	---	---	---	1,197.44	0.056	0.188	8633
65,326,268	0.530	---	---	---	04/07/2007	19/07/2006	4750	SATO SA (CR)	0.035	---	0.035 03/11/2017	---	---	---	---	---	500@0.033	---	---	2015	---	---	---	2,286.42	0.033	0.109	3726
13,191,620	0.620	---	---	---	04/08/2010	09/09/2002	4977	YALCO - CONSTANTINOU SA (CB)	0.129	---	0.129 03/11/2017	0.129	0.129	0.129	0.129	0.129	---	1500@0.127	---	2015	2,000	2	258.00	1,701.72	0.027	0.265	3722
13,000,000	1.00	---	---	---	01/08/2007	07/04/2000	5093	AKRITAS SA (CR)	0.200	---	0.200 03/11/2017	---	---	---	---	---	50@0.202	---	---	2015	---	---	---	2,600.00	0.106	0.244	2353
185,373,016	0.300	---	---	---	02/07/2008	28/02/2011	4957	ANEK LINES SA (CR)	0.075	---	0.075 03/11/2017	0.063	0.063	0.076	0.076	0.075	600@0.071	4589@0.076	31.37	2015	5,511	12	410.89	14,234.61	0.051	0.099	5759
312,163	0.300	---	---	---	02/07/2008	28/02/2011	4959	ANEK LINES SA (PR, issue '90)	0.092	---	0.092 03/11/2017	---	---	---	---	---	---	---	38.48	2015	---	---	---	14,234.61	0.077	0.422	5759
2,969,713	0.300	---	---	---	02/07/2008	28/02/2011	4958	ANEK LINES SA (PR, issue '96)	0.102	-5.56 €	0.108 03/11/2017	0.102	0.102	0.102	0.102	0.102	455@0.102	---	42.67	2015	45	1	4.59	14,234.61	0.021	0.124	5759
4,737,503	0.320	---	---	---	22/06/2005	22/09/2015	5115	VARANGIS AVEPE S.A. (CR)	0.175	---	0.175 03/11/2017	---	---	---	---	---	---	362@0.176	---	2015	---	---	---	829.06	0.174	0.220	3726
16,383,428	0.300	---	---	---	25/06/2002	21/06/2013	4997	VARVARESSOS SA (CB)	0.124	---	0.124 03/11/2017	---	---	---	---	---	---	93@0.100	---	2016	---	---	---	2,031.55	0.031	0.240	3763
77,126,446	0.340	---	---	---	23/05/2005	18/08/2011	5094	G.E. DIMITRIOU (CR)	0.014	-6.67 €	0.015 03/11/2017	0.014	0.014	0.014	0.014	0.014	10850@0.014	10000@0.017	---	2015	260	2	3.64	1,079.77	0.009	0.032	3722
6,000,000	0.600	---	---	---	13/06/2008	08/04/2004	5152	EUROBROKERS S.A. (CR)	0.007	---	0.007 03/11/2017	---	---	---	---	---	---	---	---	2016	---	---	---	42.00	0.007	0.010	8534
15,878,748	0.480	---	---	---	10/07/2006	22/03/2004	5095	DOMIKI KRITIS SA (CR)	0.091	-9.00 €	0.100 03/11/2017	0.091	0.091	0.091	0.091	0.091	138@0.091	1800@0.110	---	2015	7,000	5	637.00	1,444.97	0.066	0.290	2357
3,961,300	1.28	---	---	---	29/06/2004	03/08/2000	5080	DUROS SA (CR)	0.085	---	0.085 03/11/2017	---	---	---	---	---	954@0.070	50@0.102	---	2016	---	---	---	336.71	0.085	0.400	3763
7,085,888	1.59	---	---	---	02/07/1996	06/09/2010	4690	ELVIEMEK (CR)	4.70	---	4.70 03/11/2017	---	---	---	---	---	---	200@3.76	---	2015	---	---	---	33,303.67	4.70	4.70	8633
7,125,216	0.650	---	---	---	01/07/2005	14/12/1999	4955	KRE.KA SA (CR)	0.108	---	0.108 03/11/2017	---	---	---	---	---	988@0.087	2000@0.107	---	2016	---	---	---	769.52	0.042	0.190	3573
7,734,375	1.00	---	---	---	09/07/2007	07/01/2011	5112	LIVANIS SA (CR)	0.053	---	0.053 03/11/2017	---	---	---	---	---	500@0.048	3706@0.057	---	2015	---	---	---	409.92	0.006	0.123	5557
15,842,391	1.51	---	---	---	15/07/2009	12/05/2000	5141	BITROS HOLDING SA (CR)	0.170	---	0.170 03/11/2017	---	---	---	---	---	---	800@0.204	---	2015	---	---	---	2,693.21	0.078	0.239	1757
25,179,640	0.600	---	---	---	08/08/1994	19/09/2000	5057	J.BOUTARIS & SON HOLD. SA (CB)	0.040	---	0.040 03/11/2017	0.040	0.040	0.040	0.040	0.040	4500@0.038	759@0.040	---	2015	6,500	1	260.00	1,136.55	0.036	0.096	3535
1,540,000	0.600	---	---	---	08/08/1994	19/09/2000	5058	J.BOUTARIS & SON HOLD. (PB)	0.084	---	0.084 03/11/2017	---	---	---	---	---	---	20@0.068	---	2015	---	---	---	1,136.55	0.066	0.084	3535
79,596,820	0.300	---	---	---	15/07/2008	27/04/2017	5146	NIKAS SA (CR)	0.500	---	0.500 03/11/2017	---	---	---	---	---	---	10@0.600	---	2015	---	---	---	39,798.41	0.227	0.500	3577
10,186,667	1.35	---	---	---	24/06/2008	02/02/2016	4887	SIDMA SA (CR)	0.354	-8.29 €	0.386 03/11/2017	0.354	0.354	0.354	0.354	0.354	30@0.310	100@0.352	---	2015	20	1	7.08	3,606.08	0.157	0.600	1757
7,914,480	0.300	---	---	---	23/06/2008	29/06/2011	4888	SFAKIANAKIS SA (CR)	0.630	18.42 #	0.532 03/11/2017	0.630	0.630	0.630	0.630	0.630	---	300@0.629	---	2015	475	4	299.25	4,986.12	0.210	1.04	5379
1,270,000	0.300	---	---	---	06/07/2007	06/02/2013	5007	GIRAKIAN PROFIL SA (CB)	0.031	19.23 #	0.026 03/11/2017	0.031	0.031	0.031	0.031	0.031	16300@0.031	---	---	2016	195	1	6.05	39.37	0.016	0.100	1757
4,034,950	0.680	---	---	---	01/07/2005	30/12/2010	5114	CHATZIKRANIOTIS & SONS SA (CR)	0.120	---	0.120 03/11/2017	---	---	---	---	---	2000@0.101	---	---	2016	---	---	---	484.19	0.032	0.164	3577

Under Deletion																											
1,130,180	0.440	---	---	---	20/06/2003	02/07/2014	5092	COMPUCON SA (CR)	0.006	---	0.006 03/11/2017	---	---	---	---	---	---	---	---	2016	---	---	---	6.78	0.006	0.007	9537
17,579,754	4.16	---	---	---	18/08/2006	02/08/2010	5145	BIOTER SA (CR)	0.087	---	0.087 03/11/2017	---	---	---	---	---	---	3000@0.099	---	2015	---	---	---	1,529.44	0.041	0.188	2357
5,939,268	0.620	---	---	---	10/07/2003	03/01/2002	5142	LANAKAM SA (CR)	0.245	18.93 #	0.206 03/11/2017	0.245	0.245	0.245	0.245	0.245	4200@0.245	---	---	2016	2,650	3	649.25	1,455.12	0.200	0.589	3763
8,321,682	0.670	---	---	---	17/08/2007	23/11/1999	5143	N. LEVEDERIS SA (CB)	0.209	---	0.209 03/11/2017	---	---	---	---	---	---	1000@0.180	---	2016	---	---	---	2,279.36	0.073	0.242	1757
2,160,524	0.670	0.0436	0.0436	0.0436	07/08/2017	23/11/1999	5144	N. LEVEDERIS SA (PB)	0.250	-16.11 €	0.298 03/11/2017	0.250	0.250	0.250	0.250	0.250	---	3714@0.250	---	2016	50	1	12.50	2,279.36	0.119	0.328	1757
9,567,289	0.300	---	---	---	01/07/2004	19/11/2007	5062	MARAC ELECTRONICS (CR)	0.298	---	0.298 03/11/2017	---	---	---	---	---	---	7424@0.239	---	2015	---	---	---	2,851.05	0.298	0.298	9578
766,000	1.00	---	---	---	01/07/2004	11/12/2012	4937	TRIA ALFA SA (CR)	2.07	---	2.07 03/11/2017	---	---	---	---	---	---	148@2.07	---	2016	---	---	---	1,742.42	1.70	2.59	3763
245,000	1.00	---	---	---	19/07/2010	11/12/2012	4938	TRIA ALFA SA (PR)	0.640	---	0.640 03/11/2017	---	---	---	---	---	---	---	---	2016	---	---	---	1,742.42	0.640	1.63	3763

Suspension Status																											
215,246,452	0.300	---	---	---	25/06/2001	24/09/2001	4446	ALTEC SA (CR)	0.012	---	0.012 30/11/2015	---	---	---	---	---	---	---	---	---	---	---	---	2,582.96	0.012	0.012	9533
20,255,805	0.300	---	---	---	22/08/2006	02/08/2010	5136	AXON HOLDING SA (CR)	0.058	---	0.058 28/04/2017	---	---	---	---	---	---	---	---	---	---	---	---	1,174.84	0.007	0.066	4533

Daily Official List

Year: 138 Trading Day No: 214

Section 2: Analytic Figures of Shares Transactions

Monday, 6 November, 2017

Number of Outstanding Securities	Nominal Value	Dividends [1]			Date of Last Coupon Dividend [2]	Coupon Right	Note	Shares	Closing price	% change	Previous closing price/date	Open price	Price min	Price max	Last price	Avg price	Last Bid [7]	Last Ask [7]	P/E after	Year	Volume	Trades	Transactions Value[8]	Company Mkt Value (thou. €)	Year low	Year high	Sector[4]
13,555,100	1.00	---	---	---	08/07/2005		4576	MICROLAND COMPUTERS SA (CR)	0.640	---	0.640	14/07/2009	---	---	---	---	---	---	---	---	---	---	---	8,675.26	0.640	0.640	5379
40,946,303	0.360	---	---	---	18/07/2005	27/11/2007	5089	PC SYSTEMS SA (CR)	0.006	---	0.006	31/03/2016	---	---	---	---	---	---	---	---	---	---	---	245.68	0.006	0.006	9533
33,301,715	0.320	---	---	---	27/06/2003	08/07/2009	5149	AEGEK (CR)	0.031	---	0.031	28/09/2017	---	---	---	---	---	---	---	---	---	---	---	1,032.35	0.028	0.056	2357
5,000,000	0.400	---	---	---	03/06/2009	01/09/2014	5087	ALCO HELLAS SA (CR)	0.180	---	0.180	31/03/2015	---	---	---	---	---	---	---	---	---	---	---	900.00	0.180	0.180	1753
14,870,100	0.300	---	---	---	15/05/2008	26/09/2011	5130	ALPHA GRISSIN S.A. (CR)	0.014	---	0.014	13/04/2017	---	---	---	---	---	---	---	---	---	---	---	208.18	0.014	0.031	9533
81,644,555	0.300	---	---	---	01/07/2008	02/09/2002	5098	ATTI - KAT SA (CR)	0.012	---	0.012	29/05/2015	---	---	---	---	---	---	---	---	---	---	---	979.73	0.012	0.012	2357
20,121,710	1.21	---	---	---	27/07/1992	12/03/2003	5002	BALKAN R.E. (CR)	0.190	---	0.190	29/08/2013	---	---	---	---	---	---	---	---	---	---	---	3,823.12	0.190	0.190	8633
33,930,000	0.300	---	---	---	03/07/2006	30/05/2001	4865	BABIS VOVOS SA (CR)	0.304	---	0.304	30/03/2012	---	---	---	---	---	---	---	---	---	---	---	10,314.72	0.304	0.304	8633
14,076,360	0.370	---	---	---	19/08/2008	22/07/2003	5151	GALAXIDI S.A. (CR)	0.700	---	0.700	02/10/2017	---	---	---	---	---	756552@0.700	---	---	---	---	---	9,853.45	0.231	0.749	3573
7,847,611	1.20	---	---	---	01/08/2007	28/09/2011	4939	EDRASIS - C. PSALLIDAS SA (CR)	0.150	---	0.150	29/11/2012	---	---	---	---	---	---	---	---	---	---	---	1,177.14	0.150	0.150	2357
36,748,909	0.730	---	---	---	15/12/2005	13/12/2006	5109	HEL. SUGAR INDUSTRY SA (CB)	0.075	---	0.075	29/02/2016	---	---	---	---	---	---	---	---	---	---	---	2,756.17	0.075	0.075	3577
30,390,000	0.310	---	---	---	18/08/2008	29/12/2006	5099	HELLENIC FISHFARMING SA (CR)	0.070	---	0.070	02/06/2015	---	---	---	---	---	---	---	---	---	---	---	2,127.30	0.070	0.070	3573
13,692,227	1.47	---	---	---	07/07/2006	08/10/1999	5049	HELLENIC FABRICS SA (CR)	0.117	---	0.117	31/03/2014	---	---	---	---	---	---	---	---	---	---	---	1,601.99	0.117	0.117	3763
24,619,524	0.500	---	---	---	10/10/1986	30/12/2002	4914	KERAMIA-ALLATINI (CR)	0.088	---	0.088	30/08/2012	---	---	---	---	---	---	---	---	---	---	---	2,166.52	0.088	0.088	8633
66,937,526	0.700	---	---	---	13/08/2010	21/05/2003	5003	MICHANIKI SA (CR)	0.100	---	0.100	29/08/2013	---	---	---	---	---	---	---	---	---	---	---	9,186.78	0.100	0.100	2357
25,968,987	0.700	---	---	---	13/08/2010	21/05/2003	5004	MICHANIKI SA (PR)	0.096	---	0.096	29/08/2013	---	---	---	---	---	---	---	---	---	---	---	9,186.78	0.096	0.096	2357
23,935,280	0.300	---	---	---	29/06/2009	13/06/2000	5153	NAYTEMPORIKI PUBLISHING SA(CR)	0.107	---	0.107	02/10/2017	---	---	---	---	---	---	---	---	---	---	---	2,561.07	0.017	0.118	5557
255,459,600	0.300	---	---	---	26/06/2000	03/12/2010	5101	NEL SA (CR)	0.070	---	0.070	31/08/2015	---	---	---	---	---	---	---	---	---	---	---	17,882.17	0.070	0.070	5759
23,463,874	0.800	---	---	---	23/05/2003	21/12/1999	4918	NEORION SA (CR)	0.125	---	0.125	30/08/2012	---	---	---	---	---	---	---	---	---	---	---	2,932.98	0.125	0.125	2753
18,750,000	0.300	---	---	---	02/07/2001	31/12/2012	5154	PEGASUS PUBLISHING S.A. (CR)	0.089	---	0.089	02/10/2017	---	---	---	---	---	---	---	---	---	---	---	1,668.75	0.017	0.336	5557
24,319,250	0.300	---	---	---	09/07/2002	04/07/2007	5150	PROODEFTIKH SA (CR)	0.060	---	0.060	28/09/2017	---	---	---	---	---	---	---	---	---	---	---	1,459.16	0.020	0.069	2357
144,688,060	0.600	---	---	---	21/04/2008	10/03/2010	4982	T BANK (CR)	0.048	---	0.052 #	29/11/2011	---	---	---	---	---	---	---	---	---	---	---	6,945.03	0.048	0.048	8355
284,465,964	3.70	---	---	---	20/06/2008	15/06/2009	4913	TT HELLENIC POSTBANK (CR)	0.168	---	0.239 #	29/08/2012	---	---	---	---	---	---	---	---	---	---	---	47,790.28	0.168	0.168	8355
13,920,000	0.320	---	---	---	19/11/2001	01/08/2000	4726	TEXAPRET SA (CR)	0.080	---	0.080	28/02/2011	---	---	---	---	---	---	---	---	---	---	---	1,113.60	0.080	0.080	3763
100,793,572	0.300	---	---	---	16/07/2009	11/02/2016	5110	TELETIPOS SA (CR)	0.060	---	0.060	07/03/2016	---	---	---	---	---	5@0.048	---	---	---	---	---	6,047.61	0.060	0.060	5553
510,840	1.00	---	---	---	15/07/2008	21/11/2013	5036	TROPEA HOLDING (CR)	2.00	---	0.020 #	30/03/2012	---	---	---	---	---	---	---	---	---	---	---	1,021.68	2.00	2.00	3722

Shares' Notes

Code	Note text
()	- Adjusted dividends.
*	- Last adjusted closing price.
[1]	- Net dividends.
[2]	- The "Date of Last Coupon" for New listings refers to the date company's stocks started to trade in Athex
[3]	- The Company Market Value is referred to the number of outstanding shares
[4]	- Sectors codification can be found in Appendix A
[5]	- The Market Value refers to the total number of shares listed (including their several classes) in the exchange by the company.
[6]	- P/E greater than 100
[7]	- Last view of the Order Book before the end of the trading session
[8]	- All Blocks Methods' Transactions Value are included.
4446	- Transfer to the "Under Supervision" Category as of 20/10/2008.
4576	- Suspension of trading as of 14/7/2009.
4690	- Transfer to Surveillance category as of 4/4/2006.
4726	- Suspension of trading as of 1/3/2011.
4750	- Transfer to the "Under Surveillance Category" from 8/4/2011.
4795	- The final gross (pre-tax) dividend is € 0.30 per share and subject to withholding tax on the full dividend amount, i.e. 0,45 per share, for those shareholders liable to withholding tax, in accordance with the applicable tax law provisions.
4814	- Transfer to the Low Dispersion Category as of 30/5/2011.
4815	- Transfer to the Low Dispersion Category as of 30/5/2011.
4817	- Transfer to the Low Dispersion Category as of 30/5/2011.
4823	- Transfer to the Low Dispersion category as of 4/4/2006.
4827	- Transfer to the Low Dispersion category as of 5/5/2010.
4865	- Suspension of trading as of 2/4/2012.
4882	- Transfer to the Surveillance Category as of 10/4/2012.
4887	- Transfer to the Surveillance Category as of 10/4/2012.
4888	- Transfer to the Surveillance Category as of 10/4/2012.
4912	- Transfer to the Surveillance Category as of 31/7/2012.
4913	- Suspension of trading as of 30/8/2012.
4914	- Suspension of trading as of 31/8/2012.
4918	- Suspension of trading as of 31/8/2012.
4937	- Transfer to the UNDER DELETION category as of 30/11/2012.
4938	- Transfer to the UNDER DELETION category as of 30/11/2012.
4939	- Suspension of trading as of 30/11/2012.
4955	- Transfer to the Surveillance Category as from 5/4/2013.
4956	- Transfer to the Surveillance Category as from 5/4/2013.
4957	- Transfer to the Surveillance Category as from 5/4/2013.
4958	- Transfer to the Surveillance Category as from 5/4/2013.
4959	- Transfer to the Surveillance Category as from 5/4/2013.
4977	- Transfer to the "Under Surveillance Category" from 11/6/2013.
4982	- Suspension of trading as of 1/12/2011.
4983	- Transfer to the Surveillance Category as of 5/4/2013.
4997	- Transfer to the Under Supervision Category as of 21/12/2009. - The 6,870,053 new (CB) shares, resulting from the recent share capital increase through a rights issue, are not yet admitted to trading on the ATHEX.
5002	- Suspension of trading as of 30/08/2013.
5003	- Suspension of trading as of 30/08/2013.
5004	- Suspension of trading as of 30/08/2013.
5007	- Transfer to the Surveillance category, as of 11/10/2013.
5031	- The 612,300 new (CR) shares, resulting from the recent share capital increase through a rights issue, are not yet admitted to trading on the ATHEX.
5036	- The company's share is under suspension of trading as of 2/4/2012. During suspension, the company proceeded and concluded a share reverse split, according to which - after the conclusion of the corporate action - the total number of the company's shares, as well as, the last closing price of 30/03/2012 were adjusted.
5046	- Transfer to the Low Dispersion category as of 8/4/2011.
5049	- Under suspension of trading as of 1/4/2014.
5057	- Transfer to the Surveillance Category as of 29/12/2011.

Shares' Notes

Code	Note text
5058	- Transfer to the Surveillance Category as of 29/12/2011.
5062	- Transfer to the UNDER DELETION category as of 4/6/2014.
5080	- Suspension of trading as of 6/9/2011.
5087	- Suspension of trading as of 1/4/2015.
5089	- Transfer to the Surveillance Category as of 8/4/2015.
5092	- Transfer to the UNDER DELETION category as of 8/4/2015.
5093	- Transfer to the Surveillance Category as of 8/4/2015.
5094	- Transfer to the Surveillance Category as of 8/4/2015.
5095	- Transfer to the Surveillance Category as from 9/4/2015.
5098	- Suspension of trading as of 2/6/2015.
5099	- Suspension of trading as of 3/6/2015.
5101	- Suspension of trading as of 1/9/2015.
5104	- Transfer to the "Low Dispersion" Category as of 31/10/2014. Change of the company name from "MIG REAL ESTATE R.E.I.C." to "NBG PANGAEA R.E.I.C." as of 30/12/2015.
5109	- Suspension of trading as of 01/03/2016.
5110	- Suspension of trading as of 08/03/2016.
5112	- Transfer to the Surveillance Category as of 15/04/2016.
5114	- Transfer to the Surveillance Category as of 15/04/2016.
5115	- Transfer to the Surveillance Category as of 15/04/2016.
5116	- Transfer to the Low Dispersion Category as of 20/4/2016.
5118	- Transfer to the Surveillance Category as of 25/11/2011. Issue of a Convertible Bond Loan in progress through a rights issue. Rights' trading period on ATHEX: 22/09/2016 - 03/10/2016, pre-emption rights' subscription period: 22/09/2016 - 06/10/2016.
5123	- Transfer to the Surveillance Category as of 10/4/2014.
5124	- The 30,874,635 new (CR) shares, resulting from the recent share capital increase through a rights issue, are not yet admitted to trading on the ATHEX.
5127	- Transfer to the Low Dispersion Category as of 03/03/2017.
5130	- Suspension of trading as of 18/04/2017.
5136	- Suspension of trading as of 02/05/2017.
5141	- Transfer to the Surveillance Category as of 10/05/2017.
5142	- Transfer to the Under Deletion Category as of 10/05/2017.
5143	- Transfer to the Under Deletion Category as of 10/05/2017.
5144	- Transfer to the Under Deletion Category as of 10/05/2017.
5145	- Transfer to the Under Deletion Category as of 10/05/2017.
5146	- Transfer to the Surveillance Category as of 10/4/2012. The 77,573,688 new (CR) shares, resulting from the recent share capital increase through a rights issue, are not yet admitted to trading on the ATHEX.
5149	- Suspension of trading as of 29/09/2017.
5150	- Suspension of trading as of 29/09/2017.
5151	- Suspension of trading as of 03/10/2017.
5152	- Transfer to the Surveillance Category as of 10/4/2012.
5153	- Suspension of trading as of 03/10/2017.
5154	- Suspension of trading as of 03/10/2017.

Securities Blocks Details

Securities	Block Volume	Price	Block Trade Value	Time of approval	Note
TITAN CEMENT (CR)	187,400	20.29	3,802,346.00	15:40:55	20
AEGEAN AIRLINES (CR)	40,000	8.00	320,000.00	16:02:55	20
OTE (CR)	120,000	10.80	1,296,000.00	17:12:17	20

Blocks Notes

9 - Method 6-1 / Special Fees

10 - Method 6-1 / Special Fees, SDS

14 - Method 6-3 / Settlement, Incomplete Buy and Sell

18 - Method 6-2 / SPOT 1

19 - Method 6-2 / SPOT 2

20 - Method 6-1 and Method 6-1 Same Day Settlement

21 - Other Pre-agreed

Shares Rights Details

Occured date	Exercise from	Exercise until	Trading until	Rights	Price min	Price max	Closing price	Last Bid	Last Ask	Volume	Trades	Transactions Value
-----------------	------------------	-------------------	------------------	--------	--------------	--------------	------------------	----------	----------	--------	--------	-----------------------

No Rights Transactions.

Shares Forced Sales

Securities	Transaction s Volume	Number of Trades	Transactions Value	Note
No Forced Transactions.				

Forced Sales Notes

- 1 - Normal Forced Sale.
- 2 - Forced Sales of Fixed Registered Shares.
- 3 - Forced Sales of Remaining Stock Fractions.

Forced Sales Registered Shares

Securities	Start Date	End Date	Initial Volume	Remaining Volume	Date	Avg price (day)	Avg price (period)	Number of Trades	Transactions Volume	Transactions Value
------------	------------	----------	----------------	------------------	------	-----------------	--------------------	------------------	---------------------	--------------------

No Fixed Registered Shares Forced Sales.

Forced Sales Notes

According to Decision 1/380/04.05.2008 of the Hellenic Republic Capital Market Commission, the certificated registered shares that have not been deposited to the issuer for dematerialisation, will be auctioned in the Athens Exchange by the supervising issuer. Forced sales procedure is held according to Article 99A of the Athens Exchange Rulebook. The average price of the period is calculated by dividing the Total transactions value by the Total volume and includes all the transactions made until the current date.

Exchange Traded Funds (ETFs) Characteristics

	Transactions Date (T)	Creation / Redemption	Units (T-1)	New Units (T-1)	Redemptio n Units (T-	Units (T) [1]	Fund Assets [2]	Net Unit Price	Dividen d per	Dividend Date
ALPHA ETF FTSE Athex Large Cap	06/11/2017	5,000	619,082	---	---	619,082	12,500,010.00	20.1912	0.37	30/06/2016

ETFs Notes

[1] - Units (T) = Units (T-1) + New Units (T-1) - Redemption Units (T-1)

[2] - The Creation / Redemption Units of T-1 are included.

Convertible Corporate Bonds - Regulated Market

Num Listed Bonds	Nominal price	Issue price	Today's Rate	Exp. Date	Duration (years)	Note	Coupon		Trading	Corporate Bonds	Price min	Price max	Closing price	Previous closing price/date		Volume	Transactions Value	Last order		ear min	Year max	
							Common	Preferred										Price	Buy / Sell			Date
233,698,458	0.30	0.30	1.00	11/10/2025	9	---	5	---	1	FORTHNET S.A. (Convertible)	---	---	---	---	---	---	---	0.0500	B	04/10/2017	100.0000	100.0000
1,774,359	13.76	9.77	0.00	21/10/2025	18	---	26	---	1	NIREUS S.A. (Convertible)	---	---	---	74.0000	28/09/2017	---	---	60.0000	B	06/11/2017	61.0501	99.0000

Corporate Bonds Notes

Transactions Volume = (Pieces) * (Nominal Price). Transactions Value = (Pieces) * (Nominal Price) * (price %) + (Accrued interest).
The price of a Bond is stated as a percentage (%) of Bond's Nominal Price.
Nominal Price in Euros (€), except if it is noted differently.

Non Convertible Corporate Bonds - Regulated Market

Num Listed Bonds	Nominal price	Issue price	Today's Rate	Exp. Date	Duration (years)	Note	Coupon		Trading	Corporate Bonds	Accrued Int.	Yield.T.Mat	Price min	Price max	Closing price	Previous closing price/date	Volume	Transactions Value	Last order		Date	ear min	Year max	
							Common	Preferred											Price	Buy / Sell				
60,000	1,000.00	1,000.00	3.85	21/07/2022	5	---	1	---	1	TERNA ENERGY FINANCE S.A. (Non Convertible)	11.7639	3.7570	100.2000	100.2000	100.2000	100.2700	03/11/2017	147,000	149,023.29	100.0600	B	36/11/2017	100.0200	100.5000
300,000	1,000.00	1,000.00	3.10	27/06/2022	5	---	1	---	1	MYTILINEOS HOLDINGS S.A. (Non Convertible)	11.5389	2.9690	100.3900	100.4100	100.4006	100.4100	03/11/2017	755,000	766,322.81	100.3700	B	36/11/2017	100.0100	100.6400
50,000	1,000.00	1,000.00	4.25	20/06/2022	5	---	1	---	1	SYSTEMS SUNLIGHT S.A. (Non Convertible)	16.6458	3.7250	101.8500	101.8500	101.8500	101.6500	03/11/2017	153,000	158,377.31	101.4500	B	36/11/2017	100.0230	101.8500
200,000	1,000.00	1,000.00	3.50	21/03/2022	5	---	2	---	1	O.P.A.P. S.A. (Non Convertible)	4.6667	2.7040	102.9100	102.9100	102.9100	102.9370	03/11/2017	6,000	6,202.60	102.9100	B	36/11/2017	100.2800	103.1000
40,000,000	1.00	1.00	5.00	04/10/2021	5	---	5	---	1	HOUSEMARKET S.A. (Non Convertible)	0.0049	3.9120	102.9800	103.0000	102.9940	103.0000	03/11/2017	49,728	51,458.57	103.0000	B	36/11/2017	100.1895	103.0000

Corporate Bonds Notes

Transactions Volume = (Pieces) * (Nominal Price). Transactions Value = (Pieces) * (Nominal Price) * (price %) + (Accrued interest).
The price of a Bond is stated as a percentage (%) of Bond's Nominal Price.
Nominal Price in Euros (€), except if it is noted differently.

Government Bonds

Number Listed Bonds	Nominal price	Today's Rate	Accrued Interest Calc	Exp. Date [1]	Duration (years)	Note	Coupons Date	Curr. coupon value	Trading Unit	Government Bonds	Price min	Price max	Closing price	Previous closing price/date	Volume	Transactions Value	Price	Last order Buy / Sell	Date
3,000,000	1,000.00	4.38	Actual/Actual	01/08/2022	5	---	01/08	4.38	1	GGB-FXD-010822-05Y-4.375-1.000	---	---	---	---	---	---	93.0000	B	01/08/2017
1,792,455,803	1.00	3.00	Actual/Actual	24/02/2023	11	---	24/02	3.00	1	GGB-FXD-240223-11Y-2.000-1.00	---	---	---	10.0000 22/06/2015	---	---	---	---	---
1,771,485,249	1.00	3.00	Actual/Actual	24/02/2024	12	---	24/02	3.00	1	GGB-FXD-240224-12Y-2.000-1.00	---	---	---	10.0000 22/06/2015	---	---	---	---	---
1,744,316,583	1.00	3.00	Actual/Actual	24/02/2025	13	---	24/02	3.00	1	GGB-FXD-240225-13Y-2.000-1.00	---	---	---	10.0000 22/06/2015	---	---	---	---	---
1,498,761,836	1.00	3.00	Actual/Actual	24/02/2026	14	---	24/02	3.00	1	GGB-FXD-240226-14Y-2.000-1.00	---	---	---	10.0000 22/06/2015	---	---	---	---	---
1,469,952,920	1.00	3.00	Actual/Actual	24/02/2027	15	---	24/02	3.00	1	GGB-FXD-240227-15Y-2.000-1.00	---	---	---	10.0000 22/06/2015	---	---	---	---	---
1,525,434,082	1.00	3.00	Actual/Actual	24/02/2028	16	---	24/02	3.00	1	GGB-FXD-240228-16Y-2.000-1.00	---	---	---	10.0000 22/06/2015	---	---	---	---	---
1,503,860,546	1.00	3.00	Actual/Actual	24/02/2029	17	---	24/02	3.00	1	GGB-FXD-240229-17Y-2.000-1.00	---	---	---	10.0000 22/06/2015	---	---	---	---	---
1,435,418,132	1.00	3.00	Actual/Actual	24/02/2030	18	---	24/02	3.00	1	GGB-FXD-240230-18Y-2.000-1.00	---	---	---	10.0000 22/06/2015	---	---	---	---	---
1,368,045,727	1.00	3.00	Actual/Actual	24/02/2031	19	---	24/02	3.00	1	GGB-FXD-240231-19Y-2.000-1.00	---	---	---	10.0000 22/06/2015	---	---	---	---	---
1,373,758,194	1.00	3.00	Actual/Actual	24/02/2032	20	---	24/02	3.00	1	GGB-FXD-240232-20Y-2.000-1.00	---	---	---	10.0000 22/06/2015	---	---	---	---	---
1,452,639,893	1.00	3.00	Actual/Actual	24/02/2033	21	---	24/02	3.00	1	GGB-FXD-240233-21Y-2.000-1.00	---	---	---	10.0000 22/06/2015	---	---	---	---	---
1,410,344,954	1.00	3.00	Actual/Actual	24/02/2034	22	---	24/02	3.00	1	GGB-FXD-240234-22Y-2.000-1.00	---	---	---	10.0000 22/06/2015	---	---	---	---	---
1,444,202,190	1.00	3.00	Actual/Actual	24/02/2035	23	---	24/02	3.00	1	GGB-FXD-240235-23Y-2.000-1.00	---	---	---	10.0000 22/06/2015	---	---	---	---	---
1,505,138,031	1.00	3.00	Actual/Actual	24/02/2036	24	---	24/02	3.00	1	GGB-FXD-240236-24Y-2.000-1.00	---	---	---	10.0000 22/06/2015	---	---	---	---	---
1,396,254,095	1.00	3.00	Actual/Actual	24/02/2037	25	---	24/02	3.00	1	GGB-FXD-240237-25Y-2.000-1.00	---	---	---	10.0000 22/06/2015	---	---	---	---	---
1,382,167,704	1.00	3.00	Actual/Actual	24/02/2038	26	---	24/02	3.00	1	GGB-FXD-240238-26Y-2.000-1.00	---	---	---	10.0000 22/06/2015	---	---	---	---	---
1,337,331,257	1.00	3.00	Actual/Actual	24/02/2039	27	---	24/02	3.00	1	GGB-FXD-240239-27Y-2.000-1.00	---	---	---	10.0000 22/06/2015	---	---	---	---	---
1,371,908,706	1.00	3.00	Actual/Actual	24/02/2040	28	---	24/02	3.00	1	GGB-FXD-240240-28Y-2.000-1.00	---	---	---	10.0000 22/06/2015	---	---	---	---	---
1,360,659,778	1.00	3.00	Actual/Actual	24/02/2041	29	---	24/02	3.00	1	GGB-FXD-240241-29Y-2.000-1.00	---	---	---	10.0000 22/06/2015	---	---	---	---	---
1,432,747,403	1.00	3.00	Actual/Actual	24/02/2042	30	---	24/02	3.00	1	GGB-FXD-240242-30Y-2.000-1.00	---	---	---	10.0000 22/06/2015	---	---	---	---	---
742,153	1,000.00	0.36	FLR Actual/360	10/08/2019	5	---	10/02 - 10/08	---	1	GGB-FLT-100819-05Y-0.934-1.000	---	---	---	---	---	---	---	---	---
2,456,470	1,000.00	4.75	Actual/Actual	17/04/2019	5	---	17/04	4.75	1	GGB-FXD-170419-05Y-4.750-1.000	---	---	---	---	---	---	---	---	---

Government Bonds Notes

Transactions Volume = (Pieces) * (Nominal Price). Transactions Value = (Pieces) * (Nominal Price) * (price %) + (Accrued interest).
The Value of current coupon for the issues with NV 0.01 euro refers to NV 100 euros
FLR: Floating Interest Rate.
[1] - The Expiration Date of the interest bearing period and the Date for coupon payment.

Bonds in Circulation	Currency / Min nominal traded Value	Coupons Payment Date	Current Coupon Value	Note	Coupon	Trading Unit	Issue Date	Duration (years)	Today's Interest	A.I.C in days	Bonds	Last price of previous days		Last Outcry in Cash (euro) Price Buy / Sell Date			Trades in Pieces	Life min	Life Max
Corporate Bonds in Foreign Currency and Euro																			
103,746	GBP / 10	01/12	0.25	---	58	1	01/12/1930	98	2.5	360	National Mortgage Bank	2.27	05/02/1996	2.27	S	05/02/1996	---	2.27	2.27
0	GBP / 10	01/12	0.25	---	60	1	01/12/1928	100	2.5	360	National Mortgage Bank	---	---	---	---	---	---	---	---

Government Bonds Notes

A.I.C: Accrued Interest Calculation base.
FLR: Floating Interest Rate.
The minimum tradeable Nominal Value for all Demeterialised Government Titles is 100 Euros.
(μτφρ-0)

Athex & ATHEXCclear Members List

Member Name			Stock Market			Derivatives Market		ATHEXCclear Member	
Address	Phone	Fax	Market Member	Remote Member	Market Maker	Proprietary	Market Maker	General Clearing	Direct Clearing
A. SARRIS SECURITIES S.A.			a						
6, DRAGATSANIOU ATHINA	+30 2103367700	210-3312324							
ALPHA FINANCE INVESTMENT SERVICES S.A.			a		a	a	a		a
5, MERLIN ATHINA	+30 2103677400	210-33311193							
ALPHA BANK A.E.								a	
40, STADIOU STR ATHINA	(210)-3260000	(210)-3264116							
103, AVE. ATHINON ATHINA	+30 2103436820	210-3436270							
40, STADIOU STR ATHINA	(210)-3265546	(210)-3265811							
ARGUS STOCKBROKERS LTD			a	a		a			
25 , DIMOSTHENI SEVERI AVE NICOSIA	+357 22717000	0035722717070							
ATLANTIC SECURITIES LIMITED			a	a					
37, PRODROMOU NICOSIA	+357 22445400	00357 22661914							
ATLAS SECURITIES S.A			a			a			
, 125 MICHALAKOPOULOU & 14-16 VERVENON ATHINA	+30 2103363300	210-3238925							
ATTICA BANK S.A.								a	
54, AKADIMIAS STR. ATHINA	(210)-3390757	(210)-3646090							
23, OMIROU ATHINA	+30 2103669261	210-3669265							
23, OMIROU STR. ATHINA	(210)-3669000	(210)-3669410							
AXIA VENTURES GROUP LTD			a	a					
, KRANIDIOTI 10, OFFICE 102 NICOSIA	+357 22742000	357 22742001							
AXON SECURITIES S.A.			a			a			
48, STADIOU ATHINA	+30 2103363800	210-3243903							
BANK OF AMERICA MERRILL LYNCH			a	a					
2 , KING EDWARD STREET LONDON	+44 20276281000								
BETA SECURITIES S.A.			a		a	a			a
29 , ALEXANDRAS AVEN. & VRAILA ATHINA	+30 2106478900	210-6410139							
BNP PARIBAS SECURITIES SERVICES								a	
2, LAMPSAKOU ATHINA	+30 2107468500	210-7468579-581							
CAPITAL SECURITIES S.A.			a			a			
58, MITROPOLEOS ATHINA	+30 2103369700	+30 210 3369820							
CFS SECURITIES-INVESTMENT SERVICES S.A.			a						
3, PAPARRIGOPOULOU ATHINA	+30 2103360800	+30 210-3360980							
CITIGROUP GLOBAL MARKET LTD			a	a					
1, CITIGROUP CENTER , CANADA SQ., CANARY WHARF LONDON	+44 02079864000								
CREDIT SUISSE SECURITIES (EUROPE) LIMITED			a	a					
, ONE CABOT SQUARE LONDON	+44 2078888888								
CYCLOS SECURITIES S.A.			a			a			a
39, PANEPISTIMIOU ATHINA	+30 2103364300	+30 210-3239122							
D.A. TSEKOURAS SEC. S.A.			a						
33, STADIOY ATHINA	+30 2103245100	210-3211997							
DEUTSCHE BANK S.A.			a	a		a			
1 , GREAT WINCHESTER STREET LONDON	+44 20 754 54209	00441133361437							
DYNAMIC SECURITIES S.A.			a			a			a
8, OMIROU ATHINA	+30 2103677700	210-3677777							
EL. PETROPOULAKIS SECURITIES S.A.			a			a			
9, ARISTEIDOU ATHINA	+30 2103213928	+30 210-3216810							
EUROBANK EQUITIES INVESTMENT FIRM S.A			a		a	a	a		a
, FILELLINON 10 & XENOFONTOS 13 ATHINA	+30 2103720000	210-3720001							
EUROBANK ERGASIAS S.A.								a	
8, OTHONOS ATHINA	+30 2103337000	210-3245916							
8, OTHONOS STR. ATHINA	(210)-3337969	(210)-3245916							
	(210)-3337000	(210)-3233866							
EUROCORP INVESTMENT SERVICES S.A.			a			a			a
14, FILIKIS ETERIAS SQ, ATHINA	+30 2107263500	2107263666							
EUROTRUST BROKERAGE S.A.			a						
113, SEVASTOUPOLEOS ATHINA	+30 2103363100	+30 210-3238334							
EUROXX SECURITIES S.A.			a		a	a	a		a
7, PALAIOLOGOU CHALANDRI	(210)-6879400	(210)-6879401							
7, PALEOLOGOU CHALANDRI	+30 2106879400	210-6879401							
G. A. PERVANAS SECURITIES-INVESTMENT SERVICES CO S.A.			a						
7-9, SOFOKLEOUS ATHINA	+30 2103727200	210-3210-291							
GLOBAL CAPITAL SECURITIES AND FINANCIAL SERVICES LTD			a	a					
50, AVE. ARCHIEPISKOPOU MAKARIOU NICOSIA	+357 22710710	357 22339332							

Athex & ATHEXClear Members List

Member Name			Stock Market			Derivatives Market		ATHEXClear Member	
Address	Phone	Fax	Market Member	Remote Member	Market Maker	Proprietary	Market Maker	General Clearing	Direct Clearing
GUARDIAN TRUST SECURITIES S.A			a			a			
31, ERMOU ATHINA	+30 2103378700	210-3220498							
HELLENIC BANK (INVESTMENTS) LTD			a						
, AVE. KYRIAKOU MATSI 31 - PO BOX 24747 NICOSIA	+357 22500100	357 22500110							
HELLENICAMERICAN SEC. S.A.			a		a	a			a
27, ANDREA PAPANDREOU ATHINA	+30 2103311100	+30 210-3215968							
HSBC BANK PLC								a	
109-111, AVE. MESOGION ATHINA	+30 2106960000	210-6928000							
INDEX SECURITIES S.A.			a						
6, DRAGATSANIOU ATHINA	+30 2103213920	+30 210-3213216							
INVESTMENT BANK OF GREECE S.A.			a		a	a	a	a	
32 , EGIALIAS & PARADISOU MAROUSI	+30 2108173111	+30 210-6896325							
J. CHR. MAVRIKIS SECURITIES S.A.			a						
5, SOFOKLEOUS ATHINA	+30 2103216730	210-3217767							
KAPPA SECURITIES S.A.			a			a			
15, VALAORITOU ATHINA	+30 2103678600	+30 210-3641002							
KARAMANOF SECURITIES-INV. SERVICES S.A.			a			a			
2, SQ. AGION THEODORON ATHINA	+30 2103212947	+30 210-3217088							
LAIKI FINANCIAL SERVICES LTD			a						
26, AVE. VYRONOS NICOSIA	357 22367367	357 22718567							
LEON DEPOLAS SECURITIES S.A.			a		a	a			
1, CHRISTOU LADA ATHINA	+30 2103213276	+30 210-3211618							
MAGNA TRUST SECURITIES S.A			a						
12-14, KARAGIORGI SERBIAS ATHINA	+30 2103800820	210-3220910							
MEGA EQUITY SECURITIES & FINANCIAL SERVICES PUBLIC LTD			a	a		a			
42-44, AVE. GRIVA DIGENI NICOSIA	+357 22711711	357 22711811							
MERIT SECURITIES S.A			a		a	a			a
3, GEORGIOU SOURI ATHINA	+30 2103671800	210-3671830							
MIDAS BROKERAGE S.A.			a		a				
5, SOFOKLEOUS ATHINA	+30 2141008800	+30 210-3253205							
N. CHRYSOCHOIDIS STOCK BROKERAGE I.S.S.A.			a			a			a
7-9, SOFOKLEOUS ATHINA	+30 2103213913	+30 210-3216115							
NATIONAL BANK OF GREECE S.A.			a		a	a		a	
86, AIOLOU STR. ATHINA	(210)-3341000	(210)-3228187							
68, AKADIMIAS STR. ATHINA	(210)-3328817	(210)-3328678							
NATIONAL SECURITIES S.A			a		a	a	a		
66, KIFISIAS AVE , BUILDING A ATHINA	+30 2107720000	+30 210-7720002							
NUNTIUS SECURITIES S.A			a						
6, DRAGATSANIOU ATHINA	+30 2103350599	+30210-3254846							
ONE PLUS CAPITAL LIMITED			a	a					
, 75 PRODOMOU AVENUE, ONEWORLD PARKVIEW HOUSE, 3RD FLOOR NICOSIA	+357 22873760								
PANTELAKIS SECURITIES S.A.			a		a	a	a		
57, ETHNIKIS ANTISTASIS B CHALANDRI	+30 2106965000	210-6929550							
PEGASUS SECURITIES S.A			a			a			
17 , VALAORITOU & AMERIKIS ATHINA	+30 2103670700	+30 210-3670760							
PIRAEUS BANK S.A.			a			a		a	
4, AMERIKIS STR. ATHINA	(210)-3335000	(210)-3335079							
4, AMERIKIS STR ATHINA	(210)-3335918	(210)-3254207							
4, AMERIKIS ATHINA	+30 2103335000	210-3335079							
PIRAEUS SECURITIES S.A.			a		a	a	a		a
5, KORAI ATHINA	+30 2103354100	210-3354170							
PRELIUM SECURITIES-INVESTMENT SERVICES S.A.			a			a			
342, KIFISIAS ATHINA	+30 2103677000	+30 210-6926403							
PROCHOICE SECURITIES LTD			a	a					
57, SPYROY KYPRIANOY NICOSIA	+357-24-661192	+357-24-662464							
SHARELINK SECURITIES-FINANCIAL SERVICES LTD			a	a		a			
6 , THEOTOKI MEGARO ELLINA NICOSIA	+357 22554200	+357 22750852							
SOCIETE GENERALE S.A.			a	a		a			
, 17 COURS VALMY 92987 PUTEAUX - LA DEFENSE PARIS	+33 157290504	+33142138697							
SOLIDUS SECURITIES S.A			a			a			a
64, LOUIZIS RIANCOUR ATHINA	+30 2106900600	210-6985421							
ST. EM. LAVRENTAKIS SECURITIES S.A.			a			a			
7-9, SOFOKLEOUS ATHINA	+30 2103213336	+30 210-3246572							

Athex & ATHEXClear Members List

Member Name			Stock Market			Derivatives Market		ATHEXClear Member	
Address	Phone	Fax	Market Member	Remote Member	Market Maker	Proprietary	Market Maker	General Clearing	Direct Clearing
THE CYPRUS INVESTMENT & SECURITIES CORPORATION LTD			a	a					
154, LIMASSOL AVENUE, STROVOLOS NICOSIA	+357 22121700	357 22338800							
UBS LIMITED			a	a					
1 , FINSBURY AVENUE LONDON	+44 2075687135								

List of Stocks under Market Making operations

Securities	Stock Category
Market Maker	Start Market Making
ADMIE (IPTO) HOLDING S.A. (CR)	Main Market
PIRAEUS SECURITIES S.A.	29/06/2017
ALPHA BANK (CR)	Main Market
ALPHA FINANCE INVESTMENT SERVICES S.A.	29/02/2016
EUROBANK EQUITIES INVESTMENT FIRM S.A	24/10/2012
LEON DEPOLAS SECURITIES S.A.	04/01/2016
MERIT SECURITIES S.A	03/09/2013
MIDAS BROKERAGE S.A.	11/01/2006
NATIONAL SECURITIES S.A	15/01/2013
PIRAEUS SECURITIES S.A.	28/05/2013
ALUMIL (CR)	Main Market
BETA SECURITIES S.A.	18/07/2013
ATTICA BANK S.A. (CR)	Main Market
BETA SECURITIES S.A.	02/06/2014
EUROXX SECURITIES S.A.	22/01/2016
PIRAEUS SECURITIES S.A.	20/09/2017
BYTE COMPUTER SA (CR)	Main Market
MERIT SECURITIES S.A	04/08/2013
CC HBC AG (CR)	Main Market
EUROBANK EQUITIES INVESTMENT FIRM S.A	23/10/2013
NATIONAL SECURITIES S.A	29/04/2013
PIRAEUS SECURITIES S.A.	04/05/2015
CENERGY HOLDINGS (CB)	Main Market
ALPHA FINANCE INVESTMENT SERVICES S.A.	02/01/2017
EUROBANK EQUITIES INVESTMENT FIRM S.A	02/01/2017
EKTER SA (CR)	Main Market
EUROBANK EQUITIES INVESTMENT FIRM S.A	16/10/2017
ELASTRON (CR)	Main Market
LEON DEPOLAS SECURITIES S.A.	20/02/2017
ELLAKTOR (CR)	Main Market
EUROBANK EQUITIES INVESTMENT FIRM S.A	01/06/2013
NATIONAL SECURITIES S.A	25/06/2013
ELTON SA (CR)	Main Market
BETA SECURITIES S.A.	03/09/2013
EUROBANK ERGASIAS (CR)	Main Market
ALPHA FINANCE INVESTMENT SERVICES S.A.	08/01/2013
EUROBANK EQUITIES INVESTMENT FIRM S.A	01/06/2013
HELLENICAMERICAN SEC. S.A.	25/07/2014
MERIT SECURITIES S.A	06/11/2017
MIDAS BROKERAGE S.A.	07/01/2016
NATIONAL SECURITIES S.A	01/01/2017
PIRAEUS SECURITIES S.A.	28/09/2013
FOLLI FOLLIE (CR)	Main Market
NATIONAL SECURITIES S.A	17/02/2014
PIRAEUS SECURITIES S.A.	04/05/2015
FOURLIS (CR)	Main Market
EUROBANK EQUITIES INVESTMENT FIRM S.A	01/12/2016
EUROXX SECURITIES S.A.	01/12/2016
PIRAEUS SECURITIES S.A.	06/03/2017
GEK TERNA (CR)	Main Market
HELLENICAMERICAN SEC. S.A.	07/09/2015
GR. SARANTIS SA (CR)	Main Market
ALPHA FINANCE INVESTMENT SERVICES S.A.	19/06/2017
BETA SECURITIES S.A.	14/05/2013
EUROBANK EQUITIES INVESTMENT FIRM S.A	24/10/2016
GRIVALIA PROPERTIES (CR)	Main Market
EUROBANK EQUITIES INVESTMENT FIRM S.A	20/09/2017
HELLENIC EXCHANGES-A.S.E. (CR)	Main Market
EUROBANK EQUITIES INVESTMENT FIRM S.A	01/06/2013
HELLENICAMERICAN SEC. S.A.	01/09/2014
NATIONAL SECURITIES S.A	25/06/2013
PIRAEUS SECURITIES S.A.	04/05/2015
HELLENIC PETROLEUM (CR)	Main Market
HELLENICAMERICAN SEC. S.A.	14/09/2015
PIRAEUS SECURITIES S.A.	20/03/2017
HYGEIA SA (CR)	Main Market
HELLENICAMERICAN SEC. S.A.	18/04/2016
INTERCONTINENTAL (CR)	Main Market
EUROXX SECURITIES S.A.	20/02/2017

List of Stocks under Market Making operations

Securities	Stock Category
Market Maker	Start Market Making
INTRACOM HOLDINGS (CR)	Main Market
HELLENICAMERICAN SEC. S.A.	07/09/2015
INTRALOT (CR)	Main Market
ALPHA FINANCE INVESTMENT SERVICES S.A.	03/07/2017
BETA SECURITIES S.A.	10/04/2017
EUROXX SECURITIES S.A.	12/06/2017
PIRAEUS SECURITIES S.A.	28/09/2013
J & P - AVAX SA (CR)	Main Market
EUROBANK EQUITIES INVESTMENT FIRM S.A	14/12/2015
JUMBO SA (CR)	Main Market
MERIT SECURITIES S.A	06/11/2017
MIDAS BROKERAGE S.A.	27/07/2016
PIRAEUS SECURITIES S.A.	06/03/2017
KLOUKINAS - LAPPAS SA (CR)	Main Market
BETA SECURITIES S.A.	22/09/2014
KRI-KRI S.A. (CR)	Main Market
LEON DEPOLAS SECURITIES S.A.	16/01/2017
LAMDA DEVELOPMENT SA (CR)	Main Market
EUROBANK EQUITIES INVESTMENT FIRM S.A	08/12/2014
PANTELAKIS SECURITIES S.A.	06/11/2017
PIRAEUS SECURITIES S.A.	29/06/2017
LAMPSA HOTEL SA (CR)	Main Market
LEON DEPOLAS SECURITIES S.A.	16/01/2017
MARFIN INVESTMENT GROUP (CR)	Main Market
HELLENICAMERICAN SEC. S.A.	25/07/2014
LEON DEPOLAS SECURITIES S.A.	20/02/2017
PIRAEUS SECURITIES S.A.	02/02/2013
MLS MULTIMEDIA SA (CR)	Main Market
HELLENICAMERICAN SEC. S.A.	07/12/2015
MOTOR OIL (CR)	Main Market
EUROBANK EQUITIES INVESTMENT FIRM S.A	23/10/2012
HELLENICAMERICAN SEC. S.A.	01/09/2014
NATIONAL SECURITIES S.A	17/02/2014
PIRAEUS SECURITIES S.A.	04/05/2015
MYTILINEOS HOLDINGS (CR)	Main Market
EUROBANK EQUITIES INVESTMENT FIRM S.A	20/09/2017
NATIONAL SECURITIES S.A	25/06/2013
PIRAEUS SECURITIES S.A.	04/05/2015
NATIONAL BANK (CR)	Main Market
ALPHA FINANCE INVESTMENT SERVICES S.A.	08/01/2013
EUROBANK EQUITIES INVESTMENT FIRM S.A	24/10/2012
HELLENICAMERICAN SEC. S.A.	25/07/2014
LEON DEPOLAS SECURITIES S.A.	20/04/2015
MERIT SECURITIES S.A	03/09/2013
MIDAS BROKERAGE S.A.	07/01/2016
NATIONAL SECURITIES S.A	28/02/2013
PIRAEUS SECURITIES S.A.	08/09/2013
OPAP (CR)	Main Market
ALPHA FINANCE INVESTMENT SERVICES S.A.	08/01/2013
EUROBANK EQUITIES INVESTMENT FIRM S.A	24/10/2012
HELLENICAMERICAN SEC. S.A.	25/07/2014
MERIT SECURITIES S.A	20/03/2017
MIDAS BROKERAGE S.A.	04/04/2016
NATIONAL SECURITIES S.A	15/01/2013
PIRAEUS SECURITIES S.A.	04/05/2015
OTE (CR)	Main Market
ALPHA FINANCE INVESTMENT SERVICES S.A.	08/01/2013
EUROBANK EQUITIES INVESTMENT FIRM S.A	24/10/2012
HELLENICAMERICAN SEC. S.A.	25/07/2014
MERIT SECURITIES S.A	20/03/2017
MIDAS BROKERAGE S.A.	01/10/2015
NATIONAL SECURITIES S.A	01/12/2012
PIRAEUS SECURITIES S.A.	08/09/2013
PAPOUTSANIS (CR)	Main Market
BETA SECURITIES S.A.	25/11/2013
PETROPOULOS PETROS (CR)	Main Market
BETA SECURITIES S.A.	28/05/2013

List of Stocks under Market Making operations

Securities	Stock Category
Market Maker	Start Market Making
PIRAEUS BANK (CR)	Main Market
EUROBANK EQUITIES INVESTMENT FIRM S.A	23/10/2012
EUROXX SECURITIES S.A.	15/02/2016
MERIT SECURITIES S.A	16/09/2013
MIDAS BROKERAGE S.A.	11/01/2016
NATIONAL SECURITIES S.A	02/06/2013
PIRAEUS SECURITIES S.A.	16/02/2013
PLAISIO COMPUTERS SA (CR)	Main Market
BETA SECURITIES S.A.	05/05/2014
EUROBANK EQUITIES INVESTMENT FIRM S.A	02/03/2015
PPC (CR)	Main Market
ALPHA FINANCE INVESTMENT SERVICES S.A.	08/01/2013
EUROBANK EQUITIES INVESTMENT FIRM S.A	23/10/2012
MERIT SECURITIES S.A	06/11/2017
MIDAS BROKERAGE S.A.	04/04/2016
NATIONAL SECURITIES S.A	26/03/2013
PIRAEUS SECURITIES S.A.	28/09/2013
QUALITY & RELIABILITY SA (CR)	Main Market
BETA SECURITIES S.A.	20/08/2014
S.KANAKIS SA (CR)	Main Market
BETA SECURITIES S.A.	01/10/2013
TITAN CEMENT (CR)	Main Market
EUROBANK EQUITIES INVESTMENT FIRM S.A	23/10/2012
NATIONAL SECURITIES S.A	17/02/2014
PIRAEUS SECURITIES S.A.	04/05/2015
VIOHALCO SA/NV (CB)	Main Market
ALPHA FINANCE INVESTMENT SERVICES S.A.	17/02/2014
EUROBANK EQUITIES INVESTMENT FIRM S.A	01/01/2017
MERIT SECURITIES S.A	17/03/2014

Underlying Asset				Derivatives Market													
Price max	Price min	Closing price	change	Delivery Month	Open price	Price max	Price min	Last price	Closing price	Last Bid	Last Ask	Settlement price	Life high	Life low	Trades	Volume	Open Interest
FTSE/Athex Large Cap																	(Trade Unit: 1 Index Point x 2€, Cash Settlement)
2,016.55	1,988.39	2,009.69	-0.14%	November 2017	2,011.50	2,014.00	1,987.00	2,014.00	2,014.00	---	---	2,011.25	2,128.50	---	255	808	4,236
				December 2017	1,995.50	2,015.00	1,991.00	2,009.50	2,009.50	---	---	2,014.50	2,029.50	---	42	149	421
				January 2018	---	---	---	---	2,021.00	---	---	---	---	---	---	---	---
				March 2018	---	---	---	---	2,027.25	---	---	---	---	---	---	---	---
				June 2018	---	---	---	---	2,037.50	---	---	---	---	---	---	---	---
				September 2018	---	---	---	---	2,048.50	---	---	---	---	---	---	---	---

Underlying Asset				Derivatives Market													
Price max	Price min	Closing price	change	Delivery Month	Open price	Price max	Price min	Last price	Closing price	Last Bid	Last Ask	Settlement price	Life high	Life low	Trades	Volume	Open Interest
ADMIE (IPTO) HOLDING S.A. (CR)				(Contract Size: 100 Securities, Physical Delivery)													
1.88	1.84	1.87	0.00%	December 2017	1.86	1.87	1.86	1.87	1.87	---	---	1.88	2.10	---	13	69	6,976
				March 2018	---	---	---	---	1.88	---	---	1.86	---	1.93	---	---	---
				June 2018	---	---	---	---	1.89	---	---	---	---	---	---	---	---
				September 2018	---	---	---	---	1.90	---	---	---	---	---	---	---	---
ALPHA BANK (CR)				(Contract Size: 100 Securities, Physical Delivery)													
1.72	1.63	1.69	-1.17%	December 2017	1.71	1.72	1.64	1.69	1.69	---	---	1.69	2.20	---	223	6,064	41,693
				March 2018	---	---	---	---	1.72	---	---	1.71	---	1.74	---	---	2
				June 2018	---	---	---	---	1.73	---	---	---	---	---	---	---	---
				September 2018	---	---	---	---	1.74	---	---	---	---	---	---	---	---
ATTICA BANK S.A. (CR)				(Contract Size: 100 Securities, Physical Delivery)													
0.058	0.053	0.055	1.85%	December 2017	0.056	0.056	0.056	0.056	0.056	---	---	0.055	0.074	---	1	100	1,201
				March 2018	---	---	---	---	0.054	---	---	---	---	---	---	---	---
				June 2018	---	---	---	---	0.055	---	---	---	---	---	---	---	---
				September 2018	---	---	---	---	0.055	---	---	---	---	---	---	---	---
CC HBC AG (CR)				(Contract Size: 100 Securities, Physical Delivery)													
29.80	29.57	29.80	0.74%	December 2017	29.65	29.78	29.65	29.78	29.78	---	---	29.81	29.78	---	8	20	300
				March 2018	---	---	---	---	29.80	---	---	---	---	---	---	---	---
				June 2018	---	---	---	---	29.95	---	---	---	---	---	---	---	---
				September 2018	---	---	---	---	30.11	---	---	---	---	---	---	---	---
CENERGY HOLDINGS (CB)				(Contract Size: 100 Securities, Physical Delivery)													
1.07	1.05	1.05	-1.87%	December 2017	1.07	1.07	1.05	1.05	1.05	---	---	1.05	1.28	---	35	205	8,047
				March 2018	---	---	---	---	1.08	---	---	---	---	---	---	---	---
				June 2018	---	---	---	---	1.08	---	---	---	---	---	---	---	---
				September 2018	---	---	---	---	1.09	---	---	---	---	---	---	---	---
ELLAKTOR (CR)				(Contract Size: 100 Securities, Physical Delivery)													
1.61	1.58	1.61	0.00%	December 2017	1.58	1.60	1.58	1.59	1.59	---	---	1.60	1.78	---	15	43	6,890
				March 2018	---	---	---	---	1.62	---	---	---	---	---	---	---	---
				June 2018	---	---	---	---	1.63	---	---	---	---	---	---	---	---
				September 2018	---	---	---	---	1.64	---	---	---	---	---	---	---	---
EUROBANK ERGASIAS (CR)				(Contract Size: 100 Securities, Physical Delivery)													
0.713	0.663	0.675	-4.39%	December 2017	0.712	0.712	0.665	0.678	0.678	---	---	0.684	0.946	---	387	9,057	62,840
				March 2018	---	---	---	---	0.711	---	---	0.688	---	0.761	---	---	10
				June 2018	---	---	---	---	0.715	---	---	---	---	---	---	---	---
				September 2018	---	---	---	---	0.719	---	---	---	---	---	---	---	---
EYDAP S.A. (CR)				(Contract Size: 100 Securities, Physical Delivery)													
6.00	5.92	5.94	0.00%	December 2017	5.98	6.00	5.96	5.96	5.96	---	---	5.95	6.58	---	10	18	1,313
				March 2018	---	---	---	---	5.98	---	---	---	---	---	---	---	---
				June 2018	---	---	---	---	6.01	---	---	---	---	---	---	---	---
				September 2018	---	---	---	---	6.05	---	---	---	---	---	---	---	---

Underlying Asset				Derivatives Market													
Price max	Price min	Closing price	change	Delivery Month	Open price	Price max	Price min	Last price	Closing price	Last Bid	Last Ask	Settlement price	Life high	Life low	Trades	Volume	Open Interest
FOLLI FOLLIE (CR)				(Contract Size: 100 Securities, Physical Delivery)													
17.37	17.04	17.20	-0.41%	December 2017	17.32	17.34	17.05	17.19	17.19	---	---	17.15	21.64	---	41	64	1,162
				March 2018	---	---	---	---	17.40	---	---	17.27	---	17.99	---	---	1
				June 2018	---	---	---	---	17.48	---	---	---	---	---	---	---	---
				September 2018	---	---	---	---	17.58	---	---	---	---	---	---	---	---
FOURLIS (CR)				(Contract Size: 100 Securities, Physical Delivery)													
5.64	5.55	5.59	0.18%	December 2017	5.65	5.65	5.65	5.65	5.65	---	---	5.56	5.79	---	1	3	168
				March 2018	---	---	---	---	5.62	---	---	---	---	---	---	---	---
				June 2018	---	---	---	---	5.65	---	---	---	---	---	---	---	---
				September 2018	---	---	---	---	5.68	---	---	---	---	---	---	---	---
GEK TERNA (CR)				(Contract Size: 100 Securities, Physical Delivery)													
4.37	4.31	4.36	1.39%	December 2017	4.31	4.37	4.31	4.37	4.37	---	---	4.38	4.40	---	27	138	7,693
				March 2018	---	---	---	---	4.33	---	---	4.40	---	4.34	---	---	500
				June 2018	---	---	---	---	4.35	---	---	---	---	---	---	---	---
				September 2018	---	---	---	---	4.38	---	---	---	---	---	---	---	---
GRIVALIA PROPERTIES (CR)				(Contract Size: 100 Securities, Physical Delivery)													
9.04	8.82	8.90	-0.67%	December 2017	---	---	---	---	8.98	---	---	8.96	9.14	---	---	---	302
				March 2018	---	---	---	---	9.03	---	---	---	---	---	---	---	---
				June 2018	---	---	---	---	9.07	---	---	---	---	---	---	---	---
				September 2018	---	---	---	---	9.12	---	---	---	---	---	---	---	---
HELLENIC EXCHANGES-A.S.E. (CR)				(Contract Size: 100 Securities, Physical Delivery)													
4.81	4.73	4.79	0.00%	December 2017	4.80	4.80	4.75	4.77	4.77	---	---	4.81	5.50	---	23	50	4,788
				March 2018	---	---	---	---	4.83	---	---	---	---	---	---	---	---
				June 2018	---	---	---	---	4.85	---	---	---	---	---	---	---	---
				September 2018	---	---	---	---	4.88	---	---	---	---	---	---	---	---
HELLENIC PETROLEUM (CR)				(Contract Size: 100 Securities, Physical Delivery)													
7.54	7.36	7.50	1.49%	December 2017	7.36	7.52	7.35	7.52	7.52	---	---	7.52	7.80	---	38	143	3,617
				March 2018	---	---	---	---	7.44	---	---	7.54	---	7.29	---	---	1
				June 2018	---	---	---	---	7.48	---	---	---	---	---	---	---	---
				September 2018	---	---	---	---	7.52	---	---	---	---	---	---	---	---
INTRALOT (CR)				(Contract Size: 100 Securities, Physical Delivery)													
1.12	1.07	1.11	0.00%	December 2017	1.10	1.12	1.08	1.11	1.11	---	---	1.12	1.31	---	16	100	4,780
				March 2018	---	---	---	---	1.12	---	---	---	---	---	---	---	---
				June 2018	---	---	---	---	1.12	---	---	---	---	---	---	---	---
				September 2018	---	---	---	---	1.13	---	---	---	---	---	---	---	---
JUMBO SA (CR)				(Contract Size: 100 Securities, Physical Delivery)													
13.79	13.53	13.60	0.30%	December 2017	13.56	13.82	13.56	13.62	13.62	---	---	13.80	16.00	---	14	20	1,265
				March 2018	---	---	---	---	13.66	---	---	---	---	---	---	---	---
				June 2018	---	---	---	---	13.73	---	---	---	---	---	---	---	---
				September 2018	---	---	---	---	13.80	---	---	---	---	---	---	---	---

Underlying Asset				Derivatives Market													
Price max	Price min	Closing price	change	Delivery Month	Open price	Price max	Price min	Last price	Closing price	Last Bid	Last Ask	Settlement price	Life high	Life low	Trades	Volume	Open Interest
LAMDA DEVELOPMENT SA (CR)				(Contract Size: 100 Securities, Physical Delivery)													
6.60	6.39	6.47	-1.97%	December 2017	6.53	6.53	6.40	6.50	6.50	---	---	6.45	7.28	---	11	24	1,783
				March 2018	---	---	---	---	6.65	---	---	---	---	---	---	---	---
				June 2018	---	---	---	---	6.68	---	---	---	---	---	---	---	---
				September 2018	---	---	---	---	6.72	---	---	---	---	---	---	---	---
MARFIN INVESTMENT GROUP (CR)				(Contract Size: 100 Securities, Physical Delivery)													
0.095	0.091	0.093	-1.06%	December 2017	0.097	0.097	0.093	0.093	0.093	---	---	0.093	0.151	---	59	2,715	54,374
				March 2018	---	---	---	---	0.095	---	---	---	---	---	---	---	---
				June 2018	---	---	---	---	0.095	---	---	---	---	---	---	---	---
				September 2018	---	---	---	---	0.096	---	---	---	---	---	---	---	---
MOTOR OIL (CR)				(Contract Size: 100 Securities, Physical Delivery)													
21.90	21.03	21.25	0.71%	December 2017	21.01	21.69	21.01	21.15	21.15	---	---	21.07	21.69	---	23	39	539
				March 2018	---	---	---	---	21.26	---	---	20.97	20.74	---	---	---	---
				June 2018	---	---	---	---	21.36	---	---	---	---	---	---	---	---
				September 2018	---	---	---	---	21.48	---	---	---	---	---	---	---	---
MYTILINEOS HOLDINGS (CR)				(Contract Size: 100 Securities, Physical Delivery)													
9.10	8.98	9.10	0.33%	December 2017	9.10	9.12	8.99	9.11	9.11	---	---	9.09	9.17	---	54	229	10,307
				March 2018	---	---	---	---	9.14	---	---	9.09	9.09	---	---	---	---
				June 2018	---	---	---	---	9.18	---	---	---	---	---	---	---	---
				September 2018	---	---	---	---	9.23	---	---	---	---	---	---	---	---
NATIONAL BANK (CR)				(Contract Size: 100 Securities, Physical Delivery)													
0.288	0.274	0.281	-2.09%	December 2017	0.287	0.289	0.275	0.281	0.281	---	---	0.281	0.365	---	330	23,599	132,392
				March 2018	---	---	---	---	0.289	---	---	---	---	---	---	---	---
				June 2018	---	---	---	---	0.291	---	---	---	---	---	---	---	---
				September 2018	---	---	---	---	0.292	---	---	---	---	---	---	---	---
OPAP (CR)				(Contract Size: 100 Securities, Physical Delivery)													
9.77	9.58	9.70	-0.21%	December 2017	9.65	9.75	9.59	9.69	9.69	---	---	9.71	9.77	---	60	298	2,984
				March 2018	---	---	---	---	9.79	---	---	---	---	---	---	---	---
				June 2018	---	---	---	---	9.84	---	---	---	---	---	---	---	---
				September 2018	---	---	---	---	9.89	---	---	---	---	---	---	---	---
OTE (CR)				(Contract Size: 100 Securities, Physical Delivery)													
10.88	10.52	10.80	1.89%	December 2017	10.66	10.90	10.55	10.80	10.80	---	---	10.87	10.90	---	177	886	6,348
				March 2018	---	---	---	---	10.68	---	---	10.83	10.79	---	---	---	43
				June 2018	---	---	---	---	10.73	---	---	---	---	---	---	---	---
				September 2018	---	---	---	---	10.79	---	---	---	---	---	---	---	---
P.P.A. S.A. (CR)				(Contract Size: 100 Securities, Physical Delivery)													
15.72	15.40	15.49	-0.39%	December 2017	15.57	15.57	15.57	15.57	15.57	---	---	15.47	16.07	---	1	1	1,066
				March 2018	---	---	---	---	15.66	---	---	---	---	---	---	---	---
				June 2018	---	---	---	---	15.74	---	---	---	---	---	---	---	---
				September 2018	---	---	---	---	15.83	---	---	---	---	---	---	---	---

Underlying Asset				Derivatives Market													
Price max	Price min	Closing price	change	Delivery Month	Open price	Price max	Price min	Last price	Closing price	Last Bid	Last Ask	Settlement price	Life high	Life low	Trades	Volume	Open Interest
PIRAEUS BANK (CR)				(Contract Size: 100 Securities, Physical Delivery)													
2.50	2.35	2.40	-2.83%	December 2017	2.47	2.50	2.35	2.39	2.39	---	---	2.41	5.05	---	289	3,735	15,772
				March 2018	---	---	---	---	2.49	---	---	2.43	---	2.61	---	---	---
				June 2018	---	---	---	---	2.50	---	---	---	---	---	---	---	---
				September 2018	---	---	---	---	2.51	---	---	---	---	---	---	---	---
PPC (CR)				(Contract Size: 100 Securities, Physical Delivery)													
1.93	1.87	1.89	-1.05%	December 2017	1.92	1.92	1.88	1.90	1.90	---	---	1.90	2.31	---	91	816	6,465
				March 2018	---	---	---	---	1.92	---	---	1.90	---	2.06	---	---	1
				June 2018	---	---	---	---	1.93	---	---	---	---	---	---	---	---
				September 2018	---	---	---	---	1.94	---	---	---	---	---	---	---	---
TERNA ENERGY (CR)				(Contract Size: 100 Securities, Physical Delivery)													
4.31	4.20	4.28	0.23%	December 2017	4.28	4.30	4.28	4.30	4.30	---	---	4.29	4.35	---	7	11	3,750
				March 2018	---	---	---	---	4.30	---	---	---	---	---	---	---	---
				June 2018	---	---	---	---	4.32	---	---	---	---	---	---	---	---
				September 2018	---	---	---	---	4.35	---	---	---	---	---	---	---	---
TITAN CEMENT (CR)				(Contract Size: 100 Securities, Physical Delivery)													
20.47	20.14	20.29	-0.20%	December 2017	20.22	20.48	20.18	20.33	20.33	---	---	20.37	24.60	---	32	65	734
				March 2018	---	---	---	---	20.48	---	---	20.33	---	21.24	---	---	1
				June 2018	---	---	---	---	20.58	---	---	---	---	---	---	---	---
				September 2018	---	---	---	---	20.69	---	---	---	---	---	---	---	---
VIOHALCO SA/NV (CB)				(Contract Size: 100 Securities, Physical Delivery)													
3.08	3.01	3.03	-0.66%	December 2017	3.06	3.06	3.02	3.05	3.05	---	---	3.04	3.49	---	61	217	10,282
				March 2018	---	---	---	---	3.07	---	---	2.99	---	3.18	---	---	---
				June 2018	---	---	---	---	3.09	---	---	---	---	---	---	---	---
				September 2018	---	---	---	---	3.10	---	---	---	---	---	---	---	---

FTSE/Athex Large Cap

(Trade Unit: 1 Index Point x 2€ - Exercise Style: European, Cash Settlement)

Call Options																	Put Options																			
November 2017								December 2017								Other Months		November 2017								December 2017								Other Months		Exerise Price
Open price	Price max	Price min	Last price	Closing price	Volume	Open Interest	Open price	Price max	Price min	Last price	Closing price	Volume	Open Interest	Volume	Open Interest	Open price	Price max	Price min	Last price	Closing price	Volume	Open Interest	Open price	Price max	Price min	Last price	Closing price	Volume	Open Interest	Volume	Open Interest					
1,500	-	-	-	-	-	-	-	0.00	0.00	0.00	-	509.00	-	-	-	-	-	-	-	-	-	-	-	0.00	0.00	0.00	-	0.01	-	-	-	1,500				
1,525	-	-	-	-	-	-	-	0.00	0.00	0.00	-	484.00	-	-	-	-	-	-	-	-	-	-	-	0.00	0.00	0.00	-	0.02	-	-	-	1,525				
1,550	-	-	-	-	-	-	-	0.00	0.00	0.00	-	459.00	-	-	-	-	-	-	-	-	-	-	-	0.00	0.00	0.00	-	0.05	-	-	-	1,550				
1,575	-	-	-	-	-	-	-	0.00	0.00	0.00	-	435.00	-	-	-	-	-	-	-	-	-	-	-	0.00	0.00	0.00	-	0.09	-	-	-	1,575				
1,600	-	-	-	-	-	-	-	0.00	0.00	0.00	-	410.00	-	-	-	-	-	-	-	-	-	-	-	0.00	0.00	0.00	-	0.17	-	-	-	1,600				
1,625	-	-	-	-	-	-	-	0.00	0.00	0.00	-	385.00	-	-	-	-	-	-	-	-	-	-	-	0.00	0.00	0.00	-	0.31	-	-	-	1,625				
1,650	-	-	-	-	-	-	-	0.00	0.00	0.00	-	360.00	-	-	-	-	-	-	-	-	-	-	-	0.00	0.00	0.00	-	0.53	-	-	-	1,650				
1,675	-	-	-	-	-	-	-	0.00	0.00	0.00	-	336.00	-	20	-	-	-	-	-	-	-	-	-	0.00	0.00	0.00	-	0.89	-	-	-	1,675				
1,700	-	-	-	-	-	-	-	0.00	0.00	0.00	-	311.00	-	-	-	-	-	-	-	-	-	-	-	0.00	0.00	0.00	-	1.40	-	-	-	1,700				
1,725	-	-	-	-	-	-	-	0.00	0.00	0.00	-	287.00	-	-	-	-	-	-	-	-	-	-	-	0.00	0.00	0.00	-	2.30	-	-	-	1,725				
1,750	-	-	-	-	-	-	-	0.00	0.00	0.00	-	263.00	-	-	-	-	-	-	-	-	-	-	-	0.00	0.00	0.00	-	3.50	-	-	-	1,750				
1,775	-	-	-	-	-	-	-	0.00	0.00	0.00	-	240.00	-	-	-	-	-	-	-	-	-	-	-	0.00	0.00	0.00	-	5.10	-	-	-	1,775				
1,800	0.00	0.00	0.00	-	210.00	-	-	0.00	0.00	0.00	-	217.00	-	-	-	0.00	0.00	0.00	-	0.36	-	-	-	0.00	0.00	0.00	-	7.40	-	-	-	1,800				
1,825	0.00	0.00	0.00	-	185.00	-	-	0.00	0.00	0.00	-	195.00	-	-	-	0.00	0.00	0.00	-	0.80	-	-	-	0.00	0.00	0.00	-	10.50	-	-	-	1,825				
1,850	0.00	0.00	0.00	-	161.00	-	-	0.00	0.00	0.00	-	174.00	-	2	-	0.00	0.00	0.00	-	1.60	-	4	-	0.00	0.00	0.00	-	14.25	-	-	-	1,850				
1,875	0.00	0.00	0.00	-	138.00	-	-	0.00	0.00	0.00	-	154.00	-	-	-	0.00	0.00	0.00	-	3.20	-	-	-	0.00	0.00	0.00	-	19.25	-	20	-	1,875				
1,900	0.00	0.00	0.00	-	115.00	-	1	0.00	0.00	0.00	-	135.00	-	20	-	0.00	0.00	0.00	-	5.70	-	80	-	0.00	0.00	0.00	-	25.25	-	120	-	1,900				
1,925	0.00	0.00	0.00	-	94.50	-	1	0.00	0.00	0.00	-	118.00	-	22	-	0.00	0.00	0.00	-	9.70	-	1,559	-	0.00	0.00	0.00	-	32.50	-	440	-	1,925				
1,950	0.00	0.00	0.00	-	75.00	-	229	110.00	110.00	110.00	110.00	110.00	3	40	-	0.00	0.00	0.00	-	15.50	-	324	-	0.00	0.00	0.00	-	41.25	-	1,111	-	1,950				
1,975	42.00	42.00	42.00	42.00	42.00	2	475	0.00	0.00	0.00	-	86.50	-	58	-	0.00	42.00	0.00	-	23.50	-	172	-	0.00	0.00	0.00	-	51.50	-	188	-	1,975				
2,000	27.00	34.00	27.00	34.00	34.00	3	272	0.00	0.00	0.00	-	73.50	-	24	-	35.00	34.00	35.00	35.00	35.00	1	240	-	0.00	0.00	0.00	-	63.00	-	-	-	2,000				
2,050	18.00	18.00	14.00	14.00	14.00	7	395	40.25	52.50	37.25	52.50	52.50	41	71	-	0.00	18.00	0.00	-	62.50	-	120	-	0.00	0.00	0.00	-	90.50	-	9	-	2,050				
2,100	0.00	0.00	0.00	-	9.80	-	205	0.00	0.00	0.00	-	34.00	-	10	-	0.00	0.00	0.00	-	100.00	-	-	-	0.00	0.00	0.00	-	123.00	-	-	-	2,100				
2,150	0.00	0.00	0.00	-	3.70	-	44	0.00	0.00	0.00	-	21.75	-	-	-	0.00	0.00	0.00	-	144.00	-	-	-	0.00	0.00	0.00	-	161.00	-	-	-	2,150				
2,200	0.00	0.00	0.00	-	1.20	-	15	0.00	0.00	0.00	-	13.25	-	4	-	0.00	0.00	0.00	-	191.00	-	-	-	0.00	0.00	0.00	-	202.00	-	-	-	2,200				
2,250	0.00	0.00	0.00	-	0.34	-	-	0.00	0.00	0.00	-	7.90	-	-	-	0.00	0.00	0.00	-	240.00	-	-	-	0.00	0.00	0.00	-	247.00	-	-	-	2,250				
2,300	0.00	0.00	0.00	-	0.08	-	-	0.00	0.00	0.00	-	4.50	-	-	-	0.00	0.00	0.00	-	290.00	-	-	-	0.00	0.00	0.00	-	293.00	-	-	-	2,300				
2,350	0.00	0.00	0.00	-	0.02	-	-	0.00	0.00	0.00	-	2.40	-	-	-	0.00	0.00	0.00	-	340.00	-	-	-	0.00	0.00	0.00	-	341.00	-	-	-	2,350				
2,400	0.00	0.00	0.00	-	0.01	-	-	0.00	0.00	0.00	-	1.30	-	-	-	0.00	0.00	0.00	-	390.00	-	-	-	0.00	0.00	0.00	-	390.00	-	-	-	2,400				
2,450	0.00	0.00	0.00	-	0.01	-	-	0.00	0.00	0.00	-	0.65	-	-	-	0.00	0.00	0.00	-	440.00	-	-	-	0.00	0.00	0.00	-	439.00	-	-	-	2,450				
2,500	-	-	-	-	-	-	-	0.00	0.00	0.00	-	0.32	-	-	-	-	-	-	-	-	-	-	-	0.00	0.00	0.00	-	489.00	-	-	-	2,500				
Totals:						12	1,637							44	271	0	0							1	2,499							0	1,888	0	0	
Number of Trades:						9								5		0								1								0		0		

ALPHA BANK (CR)

(Contract Size: 100 Securities, Exercise Style: American, Physical Delivery)

Call Options																	Put Options																			
November 2017								December 2017								Other Months		November 2017								December 2017								Other Months		
Exerise Price	Open price	Price max	Price min	Last price	Closing price	Volume	Open Interest	Open price	Price max	Price min	Last price	Closing price	Volume	Open Interest	Volume	Open Interest	Open price	Price max	Price min	Last price	Closing price	Volume	Open Interest	Open price	Price max	Price min	Last price	Closing price	Volume	Open Interest	Volume	Open Interest	Exerise Price			
1.000	0.000	0.000	0.000		0.711	-	-	0.000	0.000	0.000		0.712	-	-			0.000	0.000	0.000		0.001	-	-	0.000	0.000	0.000		0.001	-	-			0.010			
1.100	0.000	0.000	0.000		0.611	-	-	0.000	0.000	0.000		0.613	-	-			0.000	0.000	0.000		0.001	-	-	0.000	0.000	0.000		0.001	-	-			0.011			
1.200	0.000	0.000	0.000		0.511	-	-	0.000	0.000	0.000		0.513	-	-			0.000	0.000	0.000		0.001	-	-	0.000	0.000	0.000		0.001	-	-			0.012			
1.300	0.000	0.000	0.000		0.411	-	-	0.000	0.000	0.000		0.415	-	-			0.000	0.000	0.000		0.001	-	-	0.000	0.000	0.000		0.002	-	-			0.013			
1.400	0.000	0.000	0.000		0.312	-	100	0.000	0.000	0.000		0.321	-	-			0.000	0.000	0.000		0.001	-	-	0.000	0.000	0.000		0.008	-	-			0.014			
1.500	0.000	0.000	0.000		0.217	-	-	0.000	0.000	0.000		0.235	-	-			0.000	0.000	0.000		0.006	-	-	0.000	0.000	0.000		0.022	-	-			0.015			
1.600	0.000	0.000	0.000		0.133	-	50	0.000	0.000	0.000		0.162	-	-			0.000	0.000	0.000		0.022	-	-	0.000	0.000	0.000		0.049	-	-			0.016			
1.700	0.000	0.000	0.000		0.070	-	-	0.000	0.000	0.000		0.104	-	-			0.000	0.000	0.000		0.059	-	-	0.000	0.000	0.000		0.091	-	-			0.017			
1.800	0.000	0.000	0.000		0.031	-	25	0.000	0.000	0.000		0.063	-	-			0.000	0.000	0.000		0.120	-	-	0.000	0.000	0.000		0.149	-	-			0.018			
1.900	0.000	0.000	0.000		0.011	-	-	0.000	0.000	0.000		0.036	-	-			0.000	0.000	0.000		0.200	-	-	0.000	0.000	0.000		0.222	-	-			0.019			
2.000	0.000	0.000	0.000		0.004	-	-	0.000	0.000	0.000		0.019	-	-			0.000	0.000	0.000		0.293	-	-	0.000	0.000	0.000		0.305	-	-			0.020			
2.200	0.000	0.000	0.000		0.001	-	-	0.000	0.000	0.000		0.004	-	-			0.000	0.000	0.000		0.490	-	-	0.000	0.000	0.000		0.492	-	-			0.022			
2.400	0.000	0.000	0.000		0.001	-	-	0.000	0.000	0.000		0.001	-	-			0.000	0.000	0.000		0.690	-	-	0.000	0.000	0.000		0.690	-	-			0.024			
2.600	0.000	0.000	0.000		0.001	-	-	0.000	0.000	0.000		0.001	-	-			0.000	0.000	0.000		0.890	-	-	0.000	0.000	0.000		0.890	-	-			0.026			
2.800	0.000	0.000	0.000		0.001	-	-	0.000	0.000	0.000		0.001	-	-			0.000	0.000	0.000		1.09	-	-	0.000	0.000	0.000		1.09	-	-			0.028			
3.000	0.000	0.000	0.000		0.001	-	-	0.000	0.000	0.000		0.001	-	-			0.000	0.000	0.000		1.29	-	-	0.000	0.000	0.000		1.29	-	-			0.030			
3.200	0.000	0.000	0.000		0.001	-	-	0.000	0.000	0.000		0.002	-	-			0.000	0.000	0.000		1.49	-	-	0.000	0.000	0.000		1.49	-	-			0.032			
Totals:						0	175							0	0	0	0							0	0							0	0	0	0	
Number of Trades:						0								0		0								0.00								0		0		

NATIONAL BANK (CR)

(Contract Size: 100 Securities, Exercise Style: American, Physical Delivery)

Call Options																Put Options																				
Exercise Price	November 2017							December 2017							Other Months		November 2017										December 2017							Other Months		Exercise Price
	Open price	Price max	Price min	Last price	Closing price	Volume	Open Interest	Open price	Price max	Price min	Last price	Closing price	Volume	Open Interest	Volume	Open Interest	Open price	Price max	Price min	Last price	Closing price	Volume	Open Interest	Open price	Price max	Price min	Last price	Closing price	Volume	Open Interest	Volume	Open Interest				
0.050	0.000	0.000	0.000		0.237	-	-	0.000	0.000	0.000		0.237	-	-			0.000	0.000	0.000		0.001	-	-	0.000	0.000	0.000		0.001	-	-			0.001			
0.100	0.000	0.000	0.000		0.187	-	-	0.000	0.000	0.000		0.187	-	-			0.000	0.000	0.000		0.001	-	-	0.000	0.000	0.000		0.001	-	-			0.001			
0.150	0.000	0.000	0.000		0.137	-	-	0.000	0.000	0.000		0.139	-	-			0.000	0.000	0.000		0.005	-	-	0.000	0.000	0.000		0.001	-	-			0.002			
0.200	0.000	0.000	0.000		0.091	-	-	0.000	0.000	0.000		0.096	-	-			0.000	0.000	0.000		0.004	-	-	0.000	0.000	0.000		0.008	-	-			0.002			
0.250	0.000	0.000	0.000		0.053	-	-	0.000	0.000	0.000		0.062	-	-			0.000	0.000	0.000		0.016	-	-	0.000	0.000	0.000		0.024	-	-			0.003			
0.300	0.000	0.000	0.000		0.028	-	-	0.000	0.000	0.000		0.038	-	-			0.000	0.000	0.000		0.041	-	-	0.000	0.000	0.000		0.051	-	-			0.003			
0.350	0.000	0.000	0.000		0.014	-	-	0.000	0.000	0.000		0.023	-	-			0.000	0.000	0.000		0.077	-	-	0.000	0.000	0.000		0.085	-	-			0.004			
0.400	0.000	0.000	0.000		0.006	-	-	0.000	0.000	0.000		0.013	-	-			0.000	0.000	0.000		0.119	-	-	0.000	0.000	0.000		0.126	-	-			0.004			
0.450	0.000	0.000	0.000		0.003	-	-	0.000	0.000	0.000		0.008	-	-			0.000	0.000	0.000		0.166	-	-	0.000	0.000	0.000		0.170	-	-			0.005			
0.500	0.000	0.000	0.000		0.001	-	-	0.000	0.000	0.000		0.004	-	-			0.000	0.000	0.000		0.214	-	-	0.000	0.000	0.000		0.217	-	-			0.005			
0.550	0.000	0.000	0.000		0.001	-	-	0.000	0.000	0.000		0.003	-	-			0.000	0.000	0.000		0.263	-	-	0.000	0.000	0.000		0.265	-	-			0.006			
0.600	0.000	0.000	0.000		0.002	-	-	0.000	0.000	0.000		0.001	-	-			0.000	0.000	0.000		0.313	-	-	0.000	0.000	0.000		0.314	-	-			0.006			
0.650						-	-	0.000	0.000	0.000		0.001	-	-								-	-	0.000	0.000	0.000		0.363	-	-			0.007			
Totals:						0	0						0	0	0	0						0	0					0	0	0	0					
Number of Trades:						0							0	0	0							0.00						0		0						

OPAP (CR)

(Contract Size: 100 Securities, Exercise Style: American, Physical Delivery)

Call Options																	Put Options																			
November 2017								December 2017								Other Months		November 2017								December 2017								Other Months		
Exerise Price	Open price	Price max	Price min	Last price	Closing price	Volume	Open Interest	Open price	Price max	Price min	Last price	Closing price	Volume	Open Interest	Volume	Open Interest	Open price	Price max	Price min	Last price	Closing price	Volume	Open Interest	Open price	Price max	Price min	Last price	Closing price	Volume	Open Interest	Volume	Open Interest	Exerise Price			
6.000						-	-	0.000	0.000	0.000		3.73	-	-								-	-	0.000	0.000	0.000		0.001	-	-			0.060			
6.400						-	-	0.000	0.000	0.000		3.33	-	-								-	-	0.000	0.000	0.000		0.001	-	-			0.064			
6.800	0.000	0.000	0.000		2.93	-	-	0.000	0.000	0.000		2.94	-	-			0.000	0.000	0.000		0.001	-	-	0.000	0.000	0.000		0.001	-	-			0.068			
7.200	0.000	0.000	0.000		2.53	-	-	0.000	0.000	0.000		2.54	-	-			0.000	0.000	0.000		0.001	-	-	0.000	0.000	0.000		0.001	-	-			0.072			
7.600	0.000	0.000	0.000		2.13	-	-	0.000	0.000	0.000		2.14	-	-			0.000	0.000	0.000		0.001	-	-	0.000	0.000	0.000		0.001	-	-			0.076			
8.000	0.000	0.000	0.000		1.73	-	-	0.000	0.000	0.000		1.74	-	-			0.000	0.000	0.000		0.001	-	-	0.000	0.000	0.000		0.001	-	-			0.080			
8.400	0.000	0.000	0.000		1.33	-	-	0.000	0.000	0.000		1.35	-	-			0.000	0.000	0.000		0.001	-	-	0.000	0.000	0.000		0.009	-	-			0.084			
8.800	0.000	0.000	0.000		0.929	-	-	0.000	0.000	0.000		0.975	-	-			0.000	0.000	0.000		0.002	-	-	0.000	0.000	0.000		0.035	-	-			0.088			
9.200	0.000	0.000	0.000		0.550	-	15	0.000	0.000	0.000		0.645	-	-			0.000	0.000	0.000		0.023	-	-	0.000	0.000	0.000		0.104	-	-			0.092			
9.600	0.000	0.000	0.000		0.246	-	60	0.000	0.000	0.000		0.383	-	20			0.000	0.000	0.000		0.119	-	-	0.000	0.000	0.000		0.242	-	-			0.096			
10.000	0.000	0.000	0.000		0.075	-	-	0.000	0.000	0.000		0.200	-	-			0.000	0.000	0.000		0.349	-	-	0.000	0.000	0.000		0.460	-	-			0.100			
11.000	0.000	0.000	0.000		0.001	-	-	0.000	0.000	0.000		0.022	-	-			0.000	0.000	0.000		1.28	-	-	0.000	0.000	0.000		1.29	-	-			0.110			
12.000	0.000	0.000	0.000		0.002	-	-	0.000	0.000	0.000		0.001	-	-			0.000	0.000	0.000		2.28	-	-	0.000	0.000	0.000		2.28	-	-			0.120			
13.000	0.000	0.000	0.000		0.001	-	-	0.000	0.000	0.000		0.002	-	-			0.000	0.000	0.000		3.28	-	-	0.000	0.000	0.000		3.28	-	-			0.130			
14.000	0.000	0.000	0.000		0.001	-	-	0.000	0.000	0.000		0.001	-	-			0.000	0.000	0.000		4.28	-	-	0.000	0.000	0.000		4.28	-	-			0.140			
15.000						-	-	0.000	0.000	0.000		0.001	-	-								-	-	0.000	0.000	0.000		5.28	-	-			0.150			
Totals:						0	75						0	20	0	0						0	0					0	70	0	0					
Number of Trades:						0							0		0							0.00						0		0						

OTE (CR)

(Contract Size: 100 Securities, Exercise Style: American, Physical Delivery)

Call Options																	Put Options																			
November 2017								December 2017								Other Months		November 2017								December 2017								Other Months		
Exercise Price	Open price	Price max	Price min	Last price	Closing price	Volume	Open Interest	Open price	Price max	Price min	Last price	Closing price	Volume	Open Interest	Volume	Open Interest	Open price	Price max	Price min	Last price	Closing price	Volume	Open Interest	Open price	Price max	Price min	Last price	Closing price	Volume	Open Interest	Volume	Open Interest	Exercise Price			
6.400						-	-	0.000	0.000	0.000		4.21	-	-								-	-	0.000	0.000	0.000		0.001	-	-			0.064			
6.800						-	-	0.000	0.000	0.000		3.82	-	-								-	-	0.000	0.000	0.000		0.001	-	-			0.068			
7.200						-	-	0.000	0.000	0.000		3.42	-	-								-	-	0.000	0.000	0.000		0.001	-	-			0.072			
7.600						-	-	0.000	0.000	0.000		3.02	-	-								-	-	0.000	0.000	0.000		0.001	-	-			0.076			
8.000	0.000	0.000	0.000		2.61	-	-	0.000	0.000	0.000		2.62	-	-			0.000	0.000	0.000		0.001	-	-	0.000	0.000	0.000		0.001	-	-			0.080			
8.400	0.000	0.000	0.000		2.21	-	-	0.000	0.000	0.000		2.22	-	-			0.000	0.000	0.000		0.001	-	-	0.000	0.000	0.000		0.001	-	-			0.084			
8.800	0.000	0.000	0.000		1.81	-	-	0.000	0.000	0.000		1.82	-	-			0.000	0.000	0.000		0.001	-	-	0.000	0.000	0.000		0.002	-	-			0.088			
9.200	0.000	0.000	0.000		1.41	-	-	0.000	0.000	0.000		1.43	-	-			0.000	0.000	0.000		0.001	-	-	0.000	0.000	0.000		0.011	-	-			0.092			
9.600	0.000	0.000	0.000		1.02	-	-	0.000	0.000	0.000		1.06	-	-			0.000	0.000	0.000		0.010	-	-	0.000	0.000	0.000		0.039	-	-			0.096			
10.000	0.000	0.000	0.000		0.657	-	-	0.000	0.000	0.000		0.729	-	7			0.000	0.000	0.000		0.049	-	-	0.000	0.000	0.000		0.106	-	-			0.100			
11.000	0.000	0.000	0.000		0.103	-	-	0.000	0.000	0.000		0.188	-	126			0.000	0.000	0.000		0.495	-	-	0.000	0.000	0.000		0.565	-	-			0.110			
12.000	0.000	0.000	0.000		0.004	-	-	0.000	0.000	0.000		0.024	-	-			0.000	0.000	0.000		1.40	-	-	0.000	0.000	0.000		1.41	-	-			0.120			
13.000	0.000	0.000	0.000		0.001	-	-	0.000	0.000	0.000		0.001	-	-			0.000	0.000	0.000		2.40	-	-	0.000	0.000	0.000		2.40	-	-			0.130			
14.000	0.000	0.000	0.000		0.001	-	-	0.000	0.000	0.000		0.001	-	-			0.000	0.000	0.000		3.40	-	-	0.000	0.000	0.000		3.40	-	-			0.140			
15.000	0.000	0.000	0.000		0.001	-	-	0.000	0.000	0.000		0.001	-	-			0.000	0.000	0.000		4.40	-	-	0.000	0.000	0.000		4.40	-	-			0.150			
16.000	0.000	0.000	0.000		0.001	-	-	0.000	0.000	0.000		0.001	-	-			0.000	0.000	0.000		5.40	-	-	0.000	0.000	0.000		5.40	-	-			0.160			
Totals:						0	0						0	133	0	0						0	0						0	32	0	0				
Number of Trades:						0							0		0							0.00							0		0					

PIRAEUS BANK (CR)

(Contract Size: 100 Securities, Exercise Style: American, Physical Delivery)

Call Options																	Put Options																			
November 2017								December 2017								Other Months		November 2017								December 2017								Other Months		
Exercise Price	Open price	Price max	Price min	Last price	Closing price	Volume	Open Interest	Open price	Price max	Price min	Last price	Closing price	Volume	Open Interest	Volume	Open Interest	Open price	Price max	Price min	Last price	Closing price	Volume	Open Interest	Open price	Price max	Price min	Last price	Closing price	Volume	Open Interest	Volume	Open Interest	Exercise Price			
0.050						-	-	0.000	0.000	0.000		2.42	-	-								-	-	0.000	0.000	0.000		0.001	-	-			0.001			
0.100						-	-	0.000	0.000	0.000		2.37	-	-								-	-	0.000	0.000	0.000		0.006	-	-			0.001			
0.150						-	-	0.000	0.000	0.000		2.32	-	-								-	-	0.000	0.000	0.000		0.022	-	-			0.002			
0.200						-	-	0.000	0.000	0.000		2.27	-	-								-	-	0.000	0.000	0.000		0.046	-	-			0.002			
0.250						-	-	0.000	0.000	0.000		2.22	-	-								-	-	0.000	0.000	0.000		0.077	-	-			0.003			
0.300						-	-	0.000	0.000	0.000		2.17	-	-								-	-	0.000	0.000	0.000		0.113	-	-			0.003			
0.350						-	-	0.000	0.000	0.000		2.12	-	-								-	-	0.000	0.000	0.000		0.152	-	-			0.004			
0.400						-	-	0.000	0.000	0.000		2.07	-	-								-	-	0.000	0.000	0.000		0.194	-	-			0.004			
0.450						-	-	0.000	0.000	0.000		2.02	-	-								-	-	0.000	0.000	0.000		0.238	-	-			0.005			
0.500						-	-	0.000	0.000	0.000		1.97	-	-								-	-	0.000	0.000	0.000		0.001	-	-			0.005			
1.600	0.000	0.000	0.000		0.871	-	-	0.000	0.000	0.000		0.874	-	-			0.000	0.000	0.000		0.001	-	-	0.000	0.000	0.000		0.001	-	-			0.016			
1.700	0.000	0.000	0.000		0.771	-	-	0.000	0.000	0.000		0.776	-	-			0.000	0.000	0.000		0.001	-	-	0.000	0.000	0.000		0.002	-	-			0.017			
1.800	0.000	0.000	0.000		0.671	-	-	0.000	0.000	0.000		0.679	-	-			0.000	0.000	0.000		0.001	-	-	0.000	0.000	0.000		0.005	-	-			0.018			
1.900	0.000	0.000	0.000		0.572	-	-	0.000	0.000	0.000		0.586	-	-			0.000	0.000	0.000		0.001	-	-	0.000	0.000	0.000		0.011	-	-			0.019			
2.000	0.000	0.000	0.000		0.474	-	50	0.000	0.000	0.000		0.496	-	-			0.000	0.000	0.000		0.002	-	-	0.000	0.000	0.000		0.021	-	-			0.020			
2.200	0.000	0.000	0.000		0.289	-	-	0.000	0.000	0.000		0.337	-	-			0.000	0.000	0.000		0.018	-	-	0.000	0.000	0.000		0.062	-	-			0.022			
2.400	0.000	0.000	0.000		0.144	-	-	0.000	0.000	0.000		0.212	-	60			0.000	0.000	0.000		0.072	-	30	0.000	0.000	0.000		0.137	-	-			0.024			
2.600	0.000	0.000	0.000		0.057	-	-	0.000	0.000	0.000		0.122	-	-			0.000	0.000	0.000		0.185	-	-	0.000	0.000	0.000		0.247	-	-			0.026			
2.800	0.000	0.000	0.000		0.017	-	150	0.000	0.000	0.000		0.067	-	-			0.000	0.000	0.000		0.345	-	-	0.000	0.000	0.000		0.392	-	-			0.028			
3.000	0.000	0.000	0.000		0.004	-	-	0.000	0.000	0.000		0.033	-	-			0.000	0.000	0.000		0.533	-	-	0.000	0.000	0.000		0.558	-	-			0.030			
3.200	0.000	0.000	0.000		0.001	-	-	0.000	0.000	0.000		0.016	-	-			0.000	0.000	0.000		0.730	-	-	0.000	0.000	0.000		0.741	-	-			0.032			
3.400	0.000	0.000	0.000		0.001	-	-	0.000	0.000	0.000		0.007	-	-			0.000	0.000	0.000		0.930	-	-	0.000	0.000	0.000		0.933	-	-			0.034			
3.600	0.000	0.000	0.000		0.001	-	-	0.000	0.000	0.000		0.003	-	-			0.000	0.000	0.000		1.13	-	-	0.000	0.000	0.000		1.13	-	-			0.036			
3.800	0.000	0.000	0.000		0.001	-	-	0.000	0.000	0.000		0.001	-	-			0.000	0.000	0.000		1.33	-	-	0.000	0.000	0.000		1.33	-	-			0.038			
4.000	0.000	0.000	0.000		0.001	-	-	0.000	0.000	0.000		0.001	-	-			0.000	0.000	0.000		1.53	-	-	0.000	0.000	0.000		1.53	-	-			0.040			
4.400	0.000	0.000	0.000		0.001	-	-	0.000	0.000	0.000		0.001	-	-			0.000	0.000	0.000		1.93	-	-	0.000	0.000	0.000		1.93	-	-			0.044			
4.800	0.000	0.000	0.000		0.002	-	-	0.000	0.000	0.000		0.001	-	-			0.000	0.000	0.000		2.33	-	-	0.000	0.000	0.000		2.33	-	-			0.048			
5.200	0.000	0.000	0.000		0.001	-	-	0.000	0.000	0.000		0.001	-	-			0.000	0.000	0.000		2.73	-	-	0.000	0.000	0.000		2.73	-	-			0.052			
5.600	0.000	0.000	0.000		0.001	-	-	0.000	0.000	0.000		0.002	-	-			0.000	0.000	0.000		3.13	-	-	0.000	0.000	0.000		3.13	-	-			0.056			
6.000	0.000	0.000	0.000		0.001	-	-	0.000	0.000	0.000		0.001	-	-			0.000	0.000	0.000		3.53	-	-	0.000	0.000	0.000		3.53	-	-			0.060			
6.400	0.000	0.000	0.000		0.001	-	-	0.000	0.000	0.000		0.002	-	-			0.000	0.000	0.000		3.93	-	-	0.000	0.000	0.000		3.93	-	-			0.064			
6.800	0.000	0.000	0.000		0.001	-	-	0.000	0.000	0.000		0.001	-	-			0.000	0.000	0.000		4.33	-	-	0.000	0.000	0.000		4.33	-	-			0.068			
7.200	0.000	0.000	0.000		0.001	-	-	0.000	0.000	0.000		0.001	-	-			0.000	0.000	0.000		4.73	-	-	0.000	0.000	0.000		4.73	-	-			0.072			
Totals:						0	200							0	60	0	0							0	30							0	10	0	0	
Number of Trades:						0								0		0								0.00								0		0		

PPC (CR)

(Contract Size: 100 Securities, Exercise Style: American, Physical Delivery)

Call Options																	Put Options																			
November 2017								December 2017								Other Months		November 2017								December 2017								Other Months		
Exerise Price	Open price	Price max	Price min	Last price	Closing price	Volume	Open Interest	Open price	Price max	Price min	Last price	Closing price	Volume	Open Interest	Volume	Open Interest	Open price	Price max	Price min	Last price	Closing price	Volume	Open Interest	Open price	Price max	Price min	Last price	Closing price	Volume	Open Interest	Volume	Open Interest	Exerise Price			
1.300	0.000	0.000	0.000		0.611	-	-	0.000	0.000	0.000		0.613	-	-			0.000	0.000	0.000		0.001	-	-	0.000	0.000	0.000		0.001	-	-			0.013			
1.400	0.000	0.000	0.000		0.511	-	-	0.000	0.000	0.000		0.514	-	-			0.000	0.000	0.000		0.001	-	-	0.000	0.000	0.000		0.001	-	-			0.014			
1.500	0.000	0.000	0.000		0.411	-	-	0.000	0.000	0.000		0.416	-	-			0.000	0.000	0.000		0.001	-	-	0.000	0.000	0.000		0.002	-	-			0.015			
1.600	0.000	0.000	0.000		0.313	-	-	0.000	0.000	0.000		0.321	-	-			0.000	0.000	0.000		0.002	-	-	0.000	0.000	0.000		0.008	-	-			0.016			
1.700	0.000	0.000	0.000		0.221	-	-	0.000	0.000	0.000		0.235	-	-			0.000	0.000	0.000		0.009	-	-	0.000	0.000	0.000		0.021	-	-			0.017			
1.800	0.000	0.000	0.000		0.140	-	-	0.000	0.000	0.000		0.162	-	70			0.000	0.000	0.000		0.029	-	-	0.000	0.000	0.000		0.048	-	-			0.018			
1.900	0.000	0.000	0.000		0.079	-	-	0.000	0.000	0.000		0.104	-	10			0.000	0.000	0.000		0.068	-	-	0.000	0.000	0.000		0.089	-	-			0.019			
2.000	0.000	0.000	0.000		0.039	-	320	0.075	0.075	0.075	0.075	0.075	50	525			0.000	0.000	0.000		0.128	-	-	0.000	0.000	0.000		0.148	-	-			0.020			
2.200	0.000	0.000	0.000		0.006	-	310	0.000	0.000	0.000		0.018	-	-			0.000	0.000	0.000		0.295	-	-	0.000	0.000	0.000		0.304	-	-			0.022			
2.400	0.000	0.000	0.000		0.001	-	-	0.000	0.000	0.000		0.004	-	-			0.000	0.000	0.000		0.490	-	-	0.000	0.000	0.000		0.491	-	-			0.024			
2.600	0.000	0.000	0.000		0.001	-	-	0.000	0.000	0.000		0.001	-	-			0.000	0.000	0.000		0.690	-	-	0.000	0.000	0.000		0.690	-	-			0.026			
2.800	0.000	0.000	0.000		0.003	-	-	0.000	0.000	0.000		0.001	-	-			0.000	0.000	0.000		0.890	-	-	0.000	0.000	0.000		0.890	-	-			0.028			
3.000	0.000	0.000	0.000		0.001	-	-	0.000	0.000	0.000		0.001	-	-			0.000	0.000	0.000		1.09	-	-	0.000	0.000	0.000		1.09	-	-			0.030			
3.200	0.000	0.000	0.000		0.001	-	-	0.000	0.000	0.000		0.002	-	-			0.000	0.000	0.000		1.29	-	-	0.000	0.000	0.000		1.29	-	-			0.032			
3.400						-	-	0.000	0.000	0.000		0.001	-	-					0.000	0.000	0.000	-	-	0.000	0.000	0.000		1.49	-	-			0.034			
3.600						-	-	0.000	0.000	0.000		0.001	-	-					0.000	0.000	0.000	-	-	0.000	0.000	0.000		1.69	-	-			0.036			
3.800						-	-	0.000	0.000	0.000		0.001	-	-					0.000	0.000	0.000	-	-	0.000	0.000	0.000		1.89	-	-			0.038			
4.000						-	-	0.000	0.000	0.000		0.001	-	-					0.000	0.000	0.000	-	-	0.000	0.000	0.000		2.09	-	-			0.040			
4.400						-	-	0.000	0.000	0.000		0.001	-	-					0.000	0.000	0.000	-	-	0.000	0.000	0.000		2.49	-	-			0.044			
4.800						-	-	0.000	0.000	0.000		0.001	-	-					0.000	0.000	0.000	-	-	0.000	0.000	0.000		2.89	-	-			0.048			
5.200						-	-	0.000	0.000	0.000		0.002	-	-					0.000	0.000	0.000	-	-	0.000	0.000	0.000		3.29	-	-			0.052			
5.600						-	-	0.000	0.000	0.000		0.001	-	-					0.000	0.000	0.000	-	-	0.000	0.000	0.000		3.69	-	-			0.056			
6.000						-	-	0.000	0.000	0.000		0.001	-	-					0.000	0.000	0.000	-	-	0.000	0.000	0.000		4.09	-	-			0.060			
6.400						-	-	0.000	0.000	0.000		0.001	-	-					0.000	0.000	0.000	-	-	0.000	0.000	0.000		4.49	-	-			0.064			
6.800						-	-	0.000	0.000	0.000		0.001	-	100					0.000	0.000	0.000	-	-	0.000	0.000	0.000		4.89	-	-			0.068			
Totals:						0	630							50	705	0	0							0	0							0	0			
Number of Trades:						0								1		0								0.00								0				

Lending Products	Underlying Title	Multilateral Transactions[1]					Bilateral Transactions[2]		Stock Borrowing through OTC (volume)[3]
		Open Interest[5]	Volume(Offered)	Average Weighted	Transactions volume	Average Weighted	Transactions Volume	Average Weighte	Transactions Volume
ADMIEBOR	ADMIE (IPTO) HOLDING S.A. (CR)	---	20,078	5.31%	---	---	---	---	---
AEGNBOR	AEGEAN AIRLINES (CR)	1,520	11,041	5.31%	---	---	---	---	11,701
ALPHABOR	ALPHA BANK (CR)	28,001	56,682	4.24%	---	---	---	---	6,142,781
ALMYBOR	ALUMIL (CR)	---	---	---	---	---	---	---	---
TATTBOR	ATTICA BANK S.A. (CR)	2,100	2,798	5.31%	---	---	---	---	3,140
EEEBOR	CC HBC AG (CR)	3,474	12	5.28%	---	---	---	---	70,546
CENERBOR	CENERGY HOLDINGS (CB)	---	57,997	5.31%	---	---	---	---	---
ELLAKTORBOR	ELLAKTOR (CR)	4,000	82,667	5.31%	---	---	---	---	---
EUROBBOR	EUROBANK ERGASIAS (CR)	1,655	131,509	5.31%	---	---	---	---	9,050,405
EYDAPBOR	EYDAP S.A. (CR)	1,500	5,056	5.31%	---	---	---	---	17,780
FFGRPBOR	FOLLI FOLLIE (CR)	1,615	75,938	5.31%	---	---	---	---	634,304
FOYRKBOR	FOURLIS (CR)	---	4,501	5.31%	---	---	---	---	4,650
GEKTERNABOR	GEK TERNA (CR)	150	26,520	5.31%	---	---	---	---	1,293
SARBOR	GR. SARANTIS SA (CR)	790	3,567	5.31%	---	---	---	---	195
EUPROBOR	GRIVALIA PROPERTIES (CR)	4,180	86,342	3.31%	---	---	---	---	10,533
EXAEBOR	HELLENIC EXCHANGES-A.S.E. (CR)	1,699	492,300	5.31%	---	---	---	---	100,365
ELPEBOR	HELLENIC PETROLEUM (CR)	29,263	111,197	3.31%	13,000	2.65%	---	---	42,606
INLOTBOR	INTRALOT (CR)	2	63,996	5.31%	---	---	---	---	803
BELABOR	JUMBO SA (CR)	3,124	6,052	5.31%	---	---	---	---	18,006
LAMDABOR	LAMDA DEVELOPMENT SA (CR)	14	100	5.32%	---	---	---	---	---
MIGBOR	MARFIN INVESTMENT GROUP (CR)	100,000	182,129	5.31%	---	---	---	---	744,474
MOHBOR	MOTOR OIL (CR)	14,119	51,381	3.31%	700	2.65%	---	---	47,256
MYTILBOR	MYTILINEOS HOLDINGS (CR)	2,066	266,164	5.31%	---	---	4,000	0.01%	4,165
ETEBOR	NATIONAL BANK (CR)	400,000	237,521	5.31%	---	---	---	---	56,162,235
OPAPBOR	OPAP (CR)	31,600	149,041	5.31%	---	---	---	---	814,784
HTOBOR	OTE (CR)	6,281	104,398	3.31%	---	---	---	---	355,094
PPABOR	P.P.A. S.A. (CR)	528	1,135	5.31%	---	---	---	---	2,901
TPEIRBOR	PIRAEUS BANK (CR)	306	3,002	5.31%	---	---	---	---	7,239,625
PLAISBOR	PLAISIO COMPUTERS SA (CR)	---	---	---	---	---	---	---	---
PPCBOR	PPC (CR)	5,490	111,534	5.31%	---	---	---	---	476,658
QUALBOR	QUALITY & RELIABILITY SA (CR)	---	---	---	---	---	---	---	---

Stock Lending Notes

- [1] - Multilateral contracts Lending or Borrowing as per Methods 8-1, 8-2 and 8-3-3 (According to ATHEX BoD Resolution No.17)
- [2] - Billateral Contracts Lending or Borrowing as per Methods 8-3-1 and 8-3-2 (According to ATHEX BoD Resolution No.20)
- [3] - The information concerning OTC Stock Borrowing Transactions is based on the statements of the Dematerialised Securities System (DSS) operators involved and refers to volumes that have been registered up until the previous working day.
- [4] - Average Price (Volume weighted)
- [5] - The Data concerning Open Interest before the start of trading session

Lending Products	Underlying Title	Multilateral Transactions[1]					Bilateral Transactions[2]		Stock Borrowing through OTC (volume)[3]
		Open Interest[5]	Volume(Offered)	Average Weighted	Transactions volume	Average Weighted	Transactions Volume	Average Weighted	Transactions Volume
TENERGYBOR	TERNA ENERGY (CR)	1,500	43,429	5.31%	---	---	---	---	---
TITKBOR	TITAN CEMENT (CR)	1,329	204,154	5.31%	---	---	---	---	16,704
VIOBOR	VIOHALCO SA/NV (CB)	4,934	64,410	5.31%	---	---	---	---	---

Stock Lending Notes

- [1] - Multilateral contracts Lending or Borrowing as per Methods 8-1, 8-2 and 8-3-3 (According to ATHEX BoD Resolution No.17)
- [2] - Bilateral Contracts Lending or Borrowing as per Methods 8-3-1 and 8-3-2 (According to ATHEX BoD Resolution No.20)
- [3] - The information concerning OTC Stock Borrowing Transactions is based on the statements of the Dematerialised Securities System (DSS) operators involved and refers to volumes that have been registered up until the previous working day.
- [4] - Average Price (Volume weighted)
- [5] - The Data concerning Open Interest before the start of trading session

Sectors codification for listed companies

533	-	Exploration & Production	537	-	Integrated Oil & Gas
1353	-	Commodity Chemicals	1357	-	Specialty Chemicals
1753	-	Aluminum	1755	-	Nonferrous Metals
1757	-	Steel	1775	-	General Mining
2353	-	Building Materials & Fixtures	2357	-	Heavy Construction
2723	-	Containers & Packaging	2727	-	Diversified Industrials
2733	-	Electrical Components & Equipment	2753	-	Commercial Vehicles & Trucks
2757	-	Industrial Machinery	2773	-	Marine Transportation
2777	-	Transportation Services	2791	-	Business Support Services
2797	-	Industrial Suppliers	3535	-	Distillers & Vintners
3537	-	Soft Drinks	3573	-	Farming Fishing & Plantations
3577	-	Food Products	3722	-	Durable Household Products
3726	-	Furnishings	3728	-	Home Construction
3747	-	Toys	3763	-	Clothing & Accessories
3765	-	Footwear	3767	-	Personal Products
3785	-	Tobacco	4533	-	Health Care Providers
4535	-	Medical Equipment	4577	-	Pharmaceuticals
5337	-	Food Retailers & Wholesalers	5371	-	Apparel Retailers
5373	-	Broadline Retailers	5375	-	Home Improvement Retailers
5379	-	Specialty Retailers	5553	-	Broadcasting & Entertainment
5555	-	Media Agencies	5557	-	Publishing
5751	-	Airlines	5752	-	Gambling
5753	-	Hotels	5755	-	Recreational Services
5757	-	Restaurants & Bars	5759	-	Travel & Tourism
6535	-	Fixed Line Telecommunications	6575	-	Mobile Telecommunications
7535	-	Conventional Electricity	7537	-	Alternative Electricity
7577	-	Water	8355	-	Banks
8534	-	Insurance Brokers	8536	-	Property & Casualty Insurance
8633	-	Real Estate Holding & Development	8637	-	Real Estate Services
8671	-	Industrial & Office REITs	8674	-	Diversified REITs
8675	-	Specialty REITs	8775	-	Specialty Finance
8777	-	Investment Services	8985	-	Equity Investment Instruments
9533	-	Computer Services	9535	-	Internet
9537	-	Software	9572	-	Computer Hardware
9574	-	Electronic Office Equipment	9578	-	Telecommunications Equipment
12003	-	ETF			



ATHEXGROUP

Όμιλος Χρηματοπιστηρίου Αθηνών

Λεωφ. Αθηνών 110 104 42 Αθήνα

110, Athinon Ave. GR 104 42 Athens

tel. (+30)210-33.66.800, fax (+30)210-33.66.101

www.athexgroup.gr