

Hellenic Exchanges – Athens Stock Exchange S.A.

**Ημερήσιο Δελτίο
Συναλλακτικής Δραστηριότητας**

Daily Official List
of Trading Activity



Wednesday, 20 December, 2017
Year: 138 Trading Day No: 246



ATHEXGROUP
Athens Exchange Group

Disclaimer:

Hellenic Exchanges-Athens Stock Exchange S.A. endeavours to ensure that the data and other material ("Information") presented on the Daily Official List are accurate and complete, but it is not liable for any errors or omissions of data or /and for the accuracy, credibility, updating and completeness of the aforesaid information nor it has any liability arising directly or indirectly from the use of the above Information.

The Company is not liable for the accuracy of the data included in listed companies' announcements. Only the sender of such an announcement is fully and solely liable for any infringement of third party's rights from the content of such announcement. All contents of the Daily Official List are provided only for information purposes and do not constitute investment advice or solicitation to invest in securities or other products listed for trading on the Exchange.

You acknowledge and agree that the Company is the owner of any property rights related to any Information appearing on the Daily Official List including intellectual property rights copyright, trademarks, etc.

The above data are a property of the Hellenic Exchanges-Athens Exchange and are copyright protected. Users are forbidden to reproduce, modify, copy, sale, transmit or redistribute, by all reproduction means and methods, part or the whole of the above data, without reference to their source.

The commercial exploitation of these data is, also, forbidden by third parties. Hellenic Exchanges-Athens Exchange does not carry any responsibility, direct or indirect, derived from usage or accidental alteration of the above data when used by third parties.

Hellenic Exchanges – Athens Stock Exchange S.A.

110 Athinon Ave., 10442 Athens, Tel: (210) 33.66.800, Fax: (210) 32.13.938

www.athexgroup.gr

Thessalonica Stock Exchange Center (T.S.E.C)

16-18 Katouni Str., Thessalonica 546 25 Tel: (2310) 567.667, Fax: (2310) 530.545

Athex Members Guarantee Fund

14-16 Fidiou Str., Athens 106 78, Tel: (210) 33.04.682, Fax: (210) 33.04.155

Hellenic Republic Capital Market Commission

1 Kolokotroni Str. & 1 Stadiou Str., Athens 10562 Tel: (210) 33.77.100 Fax: (210) 33.77.173

Table of Contents

Section 1: Statistical Figures of Securities, Derivatives and Lending

Summary of Markets

Athex Indices

Analytic Figures for Athex Market's Boards and Categories

Trading Details by Athex Sectors and Financial Instruments (ETFs)

Top 10 best & worst performing Shares

Derivatives Summary

Section 2: Analytic Figures of Shares Transactions

Analytic Figures of Shares Transactions

Shares' Notes

Section 3: Figures of Securities Transactions

Securities Blocks Details

Shares Rights Details

Stock Borrowing

Shares Forced Sales

Forced Sales Registered Shares

Exchange Traded Funds (ETFs) Characteristics

Section 5: Bonds traded in Fixed Income Assets Market

Convertible Corporate Bonds - Regulated Market

Non Convertible Corporate Bonds - Regulated Market

Government Bonds

Treasury Bills & Zero Coupon Government Bonds

Government Bonds Traded with the Open Outcry Method

State Banks Bonds

Section 6: Additional Infos

Athex & ATHEXClear Members List

List of Stocks under Market Making operations

Section 7: Derivatives Market Analytic Figures

Index Futures

Stock Futures

Index Options

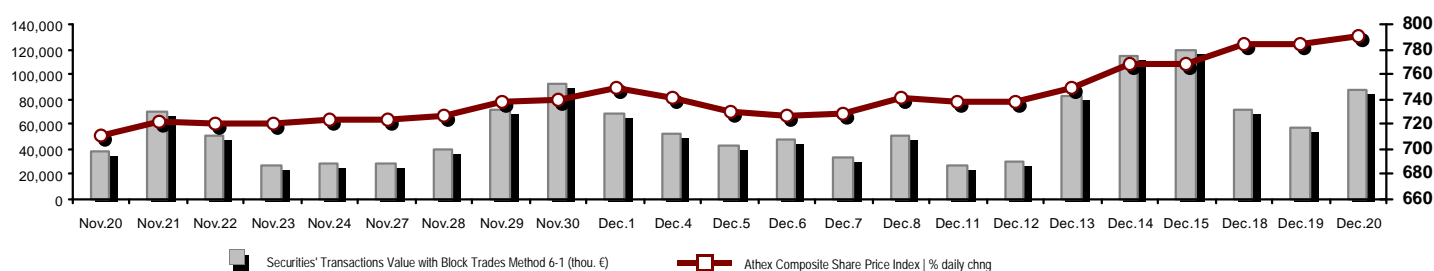
Stock Options

Stock Lending Analytic Figures

Appendix A: Sectors codification for listed companies

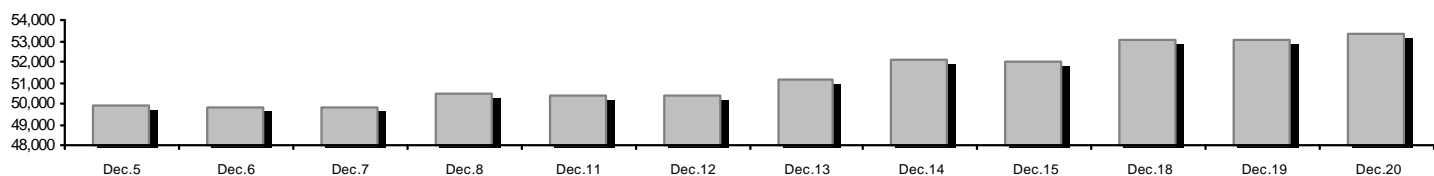
Summary of Markets

Athex Composite Share Price Index vs Shares and Derivatives Transactions Value

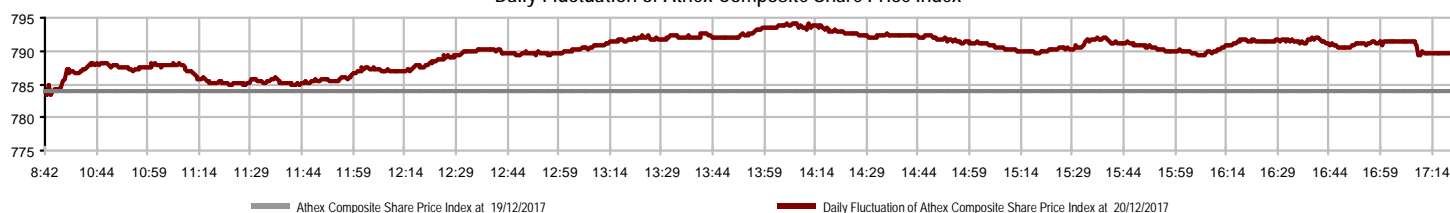


Athex Capitalisation (mill. €) **: 53,334.46	Derivatives Total Open Interest 420,009
Daily change: mill. € % 300.56 0.57%	in Index Futures % daily chng 6,176 6.83%
Yearly Avg Capitalisation: mill. € % chng prev year Avg 50,076.80 21.69%	in Stock Futures % daily chng 409,474 3.29%
Athex Composite Share Price Index % daily chng 789.74 0.73%	in Index Options % daily chng 3,457 13.57%
Athex Composite Share Price Index Capitalisation (mill. €) 48,917.77	in Stock Options % daily chng 902 -12.09%
Daily change (mill. €) 338.64	
Securities' Transactions Value with Block Trades Method 6-1 (87,879.92	Derivatives Contracts Volume: 59,803
Daily change: % 30,575.29 53.36%	Daily change: pieces % -13,325 -18.22%
YtD Avg Trans. Value: thou. € % chng prev year Avg 57,536.94 -4.71%	YtD Avg Derivatives Contracts % chng prev year Avg 78,176 25.82%
Blocks Transactions Value of Method 6-1 (thou. €) 16,640.42	Derivatives Trades Number: 2,859
Blocks Transactions Value of Method 6-2 & 6-3 (thou. €) 76.40	Daily change: number % 164 6.09%
Bonds Transactions Value (thou.€) 298.81	YtD Avg Derivatives Trades number % chng prev year Avg 2,637 1.60%
Securities' Transactions Volume with Block Trades Method 6-1 (th 62,121.74	Lending Total Open Interest 1,313,946
Daily change: thou. pieces % 6,323.22 11.33%	Daily change: pieces % -63,912 -4.64%
YtD Avg Volume: % chng prev year Avg 71,644.69 -25.55%	Lending Volume (Multilateral/Bilateral) 26,300
Blocks Transactions Volume of Method 6-1 (thou. Pieces) 5,884.91	Daily change: pieces % -204,850
Blocks Transactions Volume of Method 6-2 & 6-3 (thou. Pieces) 230.68	Multilateral Lending 9,400
Bonds Transactions Volume 288,800	Bilateral Lending 16,900
Securities' Trades Number with Block Trades Method 6-1 25,489	Lending Trades Number: 9
Daily change: number % 5,084 24.92%	Daily change: % 6
YtD Avg Derivatives Trades number % chng prev year Avg 17,425 -7.64%	Multilateral Lending Trades Number 7
Number of Blocks Method 6-1 18	Bilateral Lending Trades Number 2
Number of Blocks Method 6-2 & 6-3 2	
Number of Bonds Transactions 34	

Athex Capitalisation (mill. €) **



Daily Fluctuation of Athex Composite Share Price Index



Athex Indices

Index name	20/12/2017	19/12/2017	pts.	%	Min	Max	Year min	Year max	Year change
Athex Composite Share Price Index	789.74 #	783.99	5.75	0.73%	783.32	794.12	602.43	859.78	22.70% #
FTSE/Athex Large Cap	2,049.65 #	2,036.60	13.05	0.64%	2,035.45	2,059.47	1,610.77	2,232.65	17.74% #
FTSE/Athex Mid Cap Index	1,179.34 #	1,165.42	13.92	1.19%	1,164.19	1,185.36	753.69	1,205.24	56.48% #
FTSE/ATHEX-CSE Banking Index	653.37 #	648.20	5.17	0.80%	646.68	662.19	457.74	867.45	3.02% #
FTSE/ATHEX Global Traders Index Plus	2,299.72 #	2,293.97	5.75	0.25%	2,289.26	2,311.14	1,470.95	2,349.47	51.95% #
FTSE/ATHEX Global Traders Index	2,150.87 #	2,139.94	10.93	0.51%	2,137.58	2,161.53	1,591.53	2,184.91	30.86% #
FTSE/ATHEX Mid & Small Cap Factor-Weighted Ind	1,965.43 #	1,954.98	10.45	0.53%	1,944.60	1,974.49	1,304.24	1,983.60	46.60% #
ATHEX Mid & SmallCap Price Index	3,439.63 #	3,386.73	52.90	1.56%	3,367.96	3,439.63	1,675.92	3,439.63	105.24% #
FTSE/Athex Market Index	506.59 #	503.25	3.34	0.66%	502.95	509.01	396.30	550.39	18.61% #
FTSE Med Index	4,246.93 #	4,244.29	2.64	0.06%			3,792.30	4,897.79	-7.60% €
Athex Composite Index Total Return Index	1,227.82 #	1,218.87	8.95	0.73%	1,217.83	1,234.61	918.99	1,327.35	25.05% #
FTSE/Athex Large Cap Total Return	2,969.99 #	2,951.07	18.92	0.64%			2,349.55	3,263.22	18.14% #
FTSE/ATHEX Large Cap Net Total Return	881.74 #	876.12	5.62	0.64%	875.63	885.96	678.89	953.15	20.17% #
FTSE/Athex Mid Cap Total Return	1,419.84 #	1,403.08	16.76	1.19%			949.72	1,457.66	54.33% #
FTSE/ATHEX-CSE Banking Total Return Index	626.08 #	621.12	4.96	0.80%			477.21	881.88	-3.83% €
Hellenic Mid & Small Cap Index	1,022.64 #	1,015.69	6.95	0.68%	1,013.85	1,027.80	766.60	1,064.17	29.98% #
FTSE/Athex Banks	863.26 #	856.42	6.84	0.80%	854.43	874.92	604.79	1,146.11	3.02% #
FTSE/Athex Financial Services	1,081.51 #	1,057.97	23.54	2.23%	1,057.87	1,083.26	888.97	1,294.25	2.35% #
FTSE/Athex Industrial Goods & Services	2,271.34 #	2,225.33	46.01	2.07%	2,216.98	2,276.46	1,432.54	2,385.78	56.11% #
FTSE/Athex Retail	2,678.98 #	2,630.03	48.95	1.86%	2,630.03	2,681.66	2,110.99	3,212.65	-4.66% €
FTSE/ATHEX Real Estate	3,244.80 #	3,206.03	38.77	1.21%	3,206.03	3,280.28	2,518.43	3,545.33	22.77% #
FTSE/Athex Personal & Household Goods	7,698.74 €	7,774.43	-75.69	-0.97%	7,698.74	7,815.95	6,663.96	8,561.96	0.64% #
FTSE/Athex Food & Beverage	10,091.15 #	9,984.42	106.73	1.07%	9,935.63	10,091.15	7,597.15	11,102.57	30.91% #
FTSE/Athex Basic Resources	3,974.07 #	3,970.96	3.11	0.08%	3,966.64	3,996.68	2,665.91	4,131.98	46.89% #
FTSE/Athex Construction & Materials	2,744.68 #	2,721.98	22.70	0.83%	2,715.75	2,767.80	2,130.43	3,016.71	21.72% #
FTSE/Athex Oil & Gas	4,484.63 €	4,502.11	-17.48	-0.39%	4,484.63	4,545.71	2,926.97	5,024.83	49.56% #
FTSE/Athex Chemicals	11,065.78 #	10,997.96	67.82	0.62%	10,781.01	11,176.08	9,135.70	12,505.75	9.45% #
FTSE/Athex Travel & Leisure	1,758.21 €	1,762.00	-3.79	-0.22%	1,757.33	1,772.19	1,424.34	1,816.39	19.89% #
FTSE/Athex Technology	873.27 #	864.72	8.55	0.99%	858.94	886.70	607.65	923.54	36.69% #
FTSE/Athex Telecommunications	3,159.95 #	3,121.41	38.54	1.23%	3,110.40	3,181.97	2,292.89	3,181.97	28.56% #
FTSE/Athex Utilities	2,018.79 #	2,000.07	18.72	0.94%	1,978.16	2,024.30	1,380.52	2,554.99	33.10% #
FTSE/Athex Health Care	303.56 €	305.86	-2.30	-0.75%	301.72	310.00	136.14	310.00	106.90% #
Athex All Share Index	187.79 #	186.73	1.05	0.56%	187.79	187.79	148.93	199.18	18.03% #
Hellenic Corporate Bond Index	116.81 €	116.85	-0.03	-0.03%			108.78	116.85	6.77% #
Hellenic Corporate Bond Price Index	99.94 €	99.98	-0.04	-0.04%			96.19	100.36	2.26% #

Note 1: FTSE/Med 100, Greece & Turkey 30 Rt., Hellenic Corporate Bond Price Index and Hellenic Corporate Bond Index closing prices refer to the previous trading day of 18/12/2017.

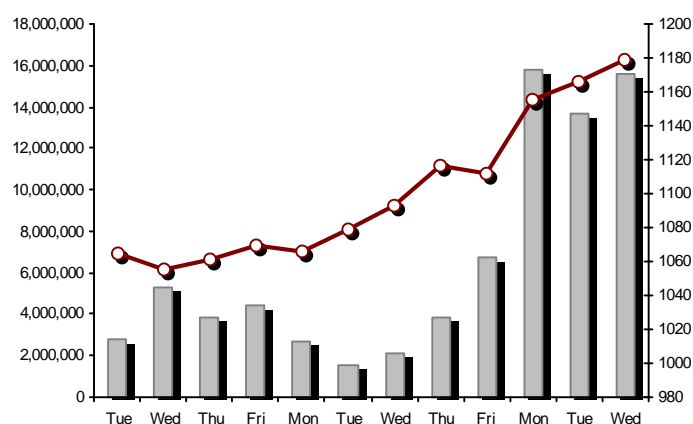
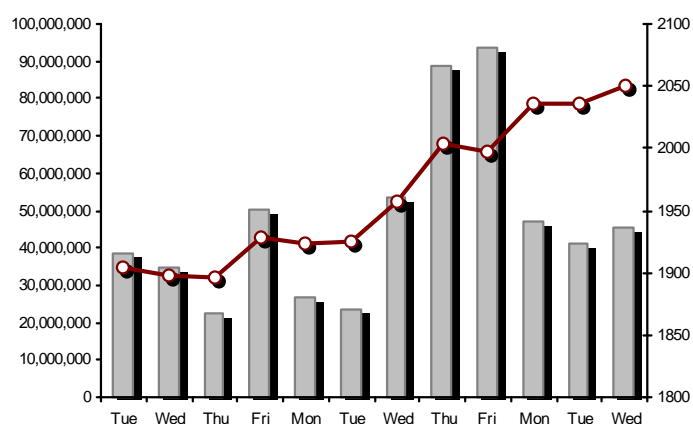
Note 2: The Hellenic Mid & Small Cap Index is a Customized index calculated by the Athens Exchange.

Athex Indices

FTSE/Large Cap

20/12/2017: 0.64% FTSE/Athex Mid Cap Index

20/12/2017: 1.19%

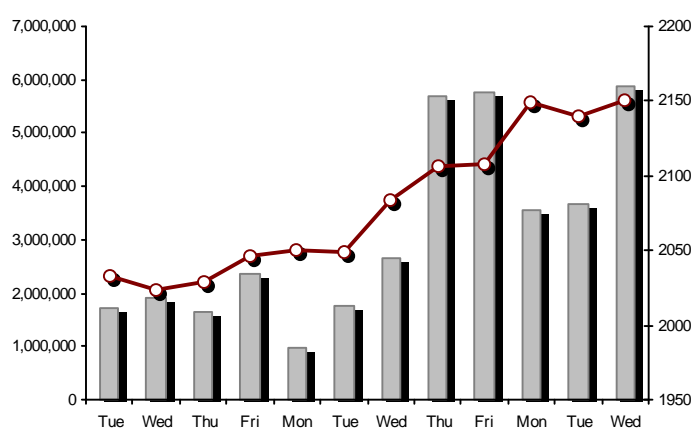
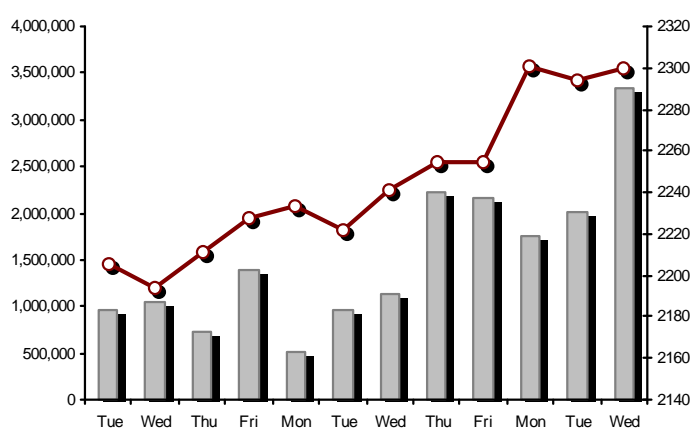


FTSE/ATHEX Global Traders Index Plus

20/12/2017: 0.25%

FTSE/ATHEX Global Traders Index

20/12/2017: 0.51%

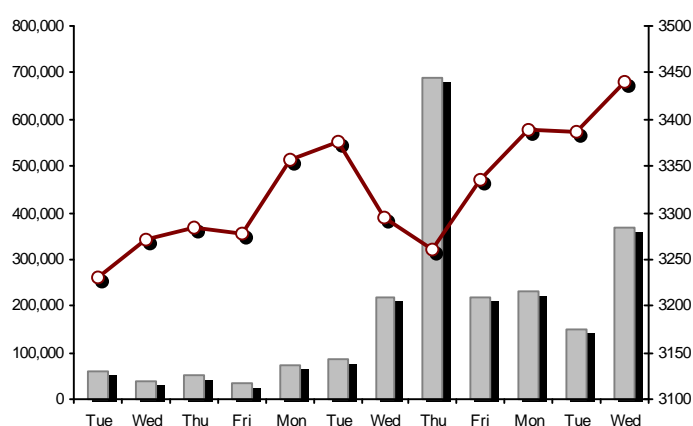
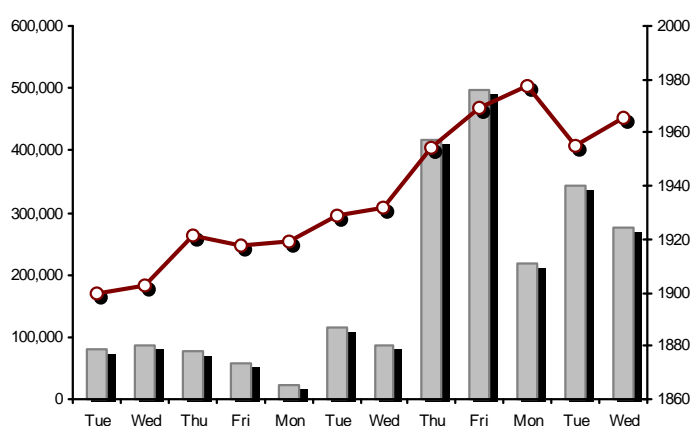


FTSE/ATHEX Mid & Small Cap Factor-Weighted Index

20/12/2017: 0.53%

ATHEX Mid & SmallCap Price Index

20/12/2017: 1.56%



Indices volume of transactions

Indices closing prices

Analytic Figures for Athex Market's Boards and Categories

	Total Traded Securities	Main Market	Surveillance	Exchange Traded Funds (ETFs)	Warrants
Totals	137	117	18	1	1
Gain / Lose / Same:	64 / 39 / 34	54 / 33 / 30	9 / 6 / 3	1 / 0 / 0	0 / 0 / 1
Athex Capitalisation (mill. €) **	53,334.46	53,087.99	246.47		
Daily Average Trans/ons Value(thou.€)	57,536.94	57,374.12	22.11	38.34	3.81
Transactions Value	87,956.32	87,891.47	64.79	0.02	0.04
Main Board:	71,239.50	71,174.64	64.79	0.02	0.04
Blocks Board 6_2_3:	16,716.82	16,716.82	0.00	0.00	0.00
Forced Sales Board:	0.00	0.00	0.00	0.00	0.00
Special Terms Board:	0.00	0.00	0.00	0.00	0.00
Daily Average Transactions Volume	71,644,691	69,413,854	194,062	2,109	2,521,927
Transactions Volume	62,352,412	61,932,942	379,469	1	40,000
Main Board:	56,236,824	55,817,354	379,469	1	40,000
Blocks Board 6_2_3:	6,115,588	6,115,588	0	0	0
Forced Sales Board:	0	0	0	0	0
Special Terms Board:	0	0	0	0	0
Daily Average Number of Trades	17,425	17,278	82	2	22
Number of Trades	25,491	25,375	114	1	1
Main Board:	25,471	25,355	114	1	1
Blocks Board 6_2_3:	20	20	0	0	0
Forced Sales Board:	0	0	0	0	0
Special Terms Board:	0	0	0	0	0

Trading Details by Athex Sectors and Financial Instruments (ETFs)

Code	Sectors	Gain / Lose / Same	Number of Trades	Transactions Volume	Transactions Value	% of Total Trans. Value
8300	- Banks	2 / 3 / 2	10,410	44,423,972	34,635,113.43	39.38%
1700	- Basic Resources	3 / 3 / 1	895	455,507	3,497,749.61	3.98%
1300	- Chemicals	1 / 3 / 1	98	25,143	87,761.99	0.10%
2300	- Construction & Materials	8 / 4 / 4	1,882	794,575	3,196,911.56	3.63%
12000	- Financial Instruments	1 / 0 / 0	1	1	20.70	0.00%
8700	- Financial Services	2 / 1 / 1	1,285	8,756,255	2,312,361.98	2.63%
3500	- Food & Beverage	3 / 3 / 5	340	259,476	1,120,606.19	1.27%
4500	- Health Care	1 / 4 / 0	258	358,226	295,257.72	0.34%
2700	- Industrial Goods & Services	12 / 3 / 3	1,095	682,224	1,072,171.78	1.22%
8500	- Insurance	0 / 1 / 0	9	901	3,273.74	0.00%
5500	- Media	0 / 0 / 1	1	500	61.00	0.00%
500	- Oil & Gas	2 / 1 / 0	1,383	291,758	4,385,316.75	4.99%
3700	- Personal & Household Goods	10 / 5 / 2	1,225	404,270	3,324,974.94	3.78%
8600	- Real Estate	6 / 1 / 3	960	300,783	1,386,075.88	1.58%
5300	- Retail	1 / 1 / 1	575	56,002	940,208.73	1.07%
9500	- Technology	3 / 2 / 6	555	560,782	443,830.17	0.50%
6500	- Telecommunications	1 / 0 / 0	1,245	1,732,568	19,851,777.62	22.57%
5700	- Travel & Leisure	4 / 3 / 3	1,738	2,590,520	9,696,029.12	11.02%
7500	- Utilities	4 / 1 / 1	1,536	658,949	1,706,816.50	1.94%

Top 10 best & worst performing Shares

Main Market					
With positive Price change	Closing price	change	With negative Price change	Closing price	change
KEKROPS SA (CR)	0.72	10.77% #	KARELIA TOBACCO CO. SA (CB)	276	-5.48% Ⓔ
MARFIN INVESTMENT GROUP (CR)	0.126	8.62% #	ATTICA HOLDINGS (CR)	1.45	-3.97% Ⓔ
INTRACOM CONSTR. (CR)	0.948	5.33% #	LOULIS MILLS SA (CR)	1.89	-2.58% Ⓔ
PROFILE SA (CR)	0.73	3.99% #	IASO SA (CR)	1.15	-2.54% Ⓔ
VIOHALCO SA/NV (CB)	3.26	3.66% #	ATTICA BANK S.A. (CR)	0.0257	-2.28% Ⓔ
TITAN CEMENT CO. (PR)	16	3.56% #	IKTINOS HELLAS SA (CR)	2.33	-2.10% Ⓔ
PIRAEUS BANK (CR)	3.16	3.27% #	JUMBO SA (CR)	14.18	-1.53% Ⓔ
TERNA ENERGY (CR)	4.58	2.69% #	CRETE PLASTICS SA (CR)	6.55	-1.50% Ⓔ
J & P - AVAX SA (CR)	0.683	1.94% #	ELASTRON (CR)	1.39	-1.42% Ⓔ
FOLLI FOLLIE (CR)	18.28	1.90% #	BANK OF GREECE (CR)	14.85	-1.00% Ⓔ
With the highest Transactions Value	Value (thou. €)	change	With the highest Transactions Volume	Volume	change
OTE (CR)	19,851.78	1.24% #	NATIONAL BANK (CR)	20,851,016	-0.07% Ⓔ
ALPHA BANK (CR)	13,620.99	0.00% -	EUROBANK ERGASIAS (CR)	10,131,661	1.77% #
EUROBANK ERGASIAS (CR)	8,248.21	1.77% #	MARFIN INVESTMENT GROUP (CR)	8,498,882	8.62% #
OPAP (CR)	7,258.10	-0.40% Ⓔ	ALPHA BANK (CR)	7,570,559	0.00% -
NATIONAL BANK (CR)	6,496.93	-0.07% Ⓔ	ATTICA BANK S.A. (CR)	3,881,953	-2.28% Ⓔ
PIRAEUS BANK (CR)	6,108.30	3.27% #	PIRAEUS BANK (CR)	1,944,784	3.27% #
MOTOR OIL (CR)	3,679.14	-0.96% Ⓔ	OTE (CR)	1,732,568	1.24% #
MYTILINEOS HOLDINGS (CR)	3,383.93	0.11% #	INTRALOT (CR)	1,667,608	1.32% #
JUMBO SA (CR)	1,952.72	-1.53% Ⓔ	OPAP (CR)	717,138	-0.40% Ⓔ
TITAN CEMENT (CR)	1,898.08	0.69% #	INTRACOM HOLDINGS (CR)	438,826	1.63% #

Note: Stocks that are not included in the "Low Dispersion" and "Under Supervision" categories, and the transactions value is more than 10,000 €.

Derivatives Summary

	Number of Trades	Volume	Open Interest
Index Futures	375	1,075	6,176
FTSE/Athex Large Cap	375	1,075	6,176
Stock Futures	2,460	58,064	409,474
ADMIE (IPTO) HOLDING S.A. (CR)	35	143	7,157
ALPHA BANK (CR)	339	12,290	39,378
ATTICA BANK S.A. (CR)	10	671	2,830
CC HBC AG (CR)	6	64	78
CENERGY HOLDINGS (CB)	54	262	6,036
ELLAKTOR (CR)	53	402	6,389
EUROBANK ERGASIAS (CR)	306	6,992	62,391
EYDAP S.A. (CR)	7	17	1,076
FOLLI FOLLIE (CR)	17	69	773
FOURLIS (CR)	9	19	213
GEK TERNA (CR)	13	53	8,663
GRIVALIA PROPERTIES (CR)	2	6	290
HELLENIC EXCHANGES-A.S.E. (CR)	9	12	3,658
HELLENIC PETROLEUM (CR)	61	144	3,539
INTRALOT (CR)	35	605	5,038
JUMBO SA (CR)	42	143	1,015
LAMDA DEVELOPMENT SA (CR)	15	192	1,671
MARFIN INVESTMENT GROUP (CR)	229	7,962	63,697
MOTOR OIL (CR)	44	142	1,060
MYTILINEOS HOLDINGS (CR)	68	490	10,568
NATIONAL BANK (CR)	297	21,063	137,650
OPAP (CR)	22	96	1,856
OTE (CR)	101	367	5,208
P.P.A. S.A. (CR)	3	3	992
PIRAEUS BANK (CR)	408	4,828	16,483
PPC (CR)	59	302	6,551
TERNA ENERGY (CR)	10	12	3,387
TITAN CEMENT (CR)	77	148	870
VIOHALCO SA/NV (CB)	129	567	10,957
Index Options	10	418	3,457
FTSE/Athex Large Cap	10	418	3,457
Stock Options	14	246	902
ALPHA BANK (CR)	0	0	100
NATIONAL BANK (CR)	0	0	300
OPAP (CR)	0	0	135
OTE (CR)	9	36	127
PIRAEUS BANK (CR)	0	0	100
PPC (CR)	5	210	140
Total Derivatives Traded	2,859	59,803	420,009

Number of Outstanding Securities	Nominal Value	Dividends [1]			Date of Last Coupon		Note	Shares	Closing price	% change	Previous closing price/date	Open price	Price min	Price max	Last price	Avg price	Last Bid [7]	Last Ask [7]	P/E after	Year	Volume	Trades	Transactions Value[8]	Company Mkt Value (thou. €)	Year low	Year high	Sector[4]	
		2014	2015	2016	Dividend [2]	Right																						
Warrants																												
245,745,661		---	---	---		27/06/2013	---	NATIONAL BANK (W)	0.001	---	↘ 0.001	19/12/2017	0.001	0.001	0.001	0.001	0.001	---	3996372@0.001	---	2015	40,000	1	40.00	2,833,787.54	0.001	0.008	8355
843,637,022		---	---	---		03/07/2013	---	PIRAEUS BANK (W)	0.001	---	↘ 0.001	19/12/2017	---	---	---	---	---	---	43095004@0.001	---	2015	---	---	---	1,379,842.96	0.001	0.001	8355

1,543,699,381	0.300	---	---	---	07/04/2008	18/04/2017	---	ALPHA BANK (CR)	1.8	---	↘ 1.8	19/12/2017	1.8	1.781	1.819	1.8	1.799	10000@1.80	11854@1.80	---	2015	7,570,559	2,190	13,620,990.92	2,778,658.89	1.32	2.33	8355
2,339,353,394	0.300	---	---	---	04/06/2008	01/12/2015	---	ATTICA BANK S.A. (CR)	0.0257	-2.28	☒ 0.026	19/12/2017	0.0263	0.0257	0.0267	0.0257	0.026	85781@0.026	221151@0.026	---	2015	3,881,953	283	101,207.03	60,121.38	0.0252	0.135	8355
190,162,681		---	---	---		07/12/2016	---	CENERGY HOLDINGS (CB)	1.298	-0.15	☒ 1.3	19/12/2017	1.308	1.284	1.312	1.298	1.302	100@1.29	2686@1.30	---	---	117,806	182	153,429.93	246,831.16	0.62	1.312	2727
367,769,779	6.70	0.36	0.4	0.44	29/06/2017	29/04/2013	---	CC HBC AG (CR)	27.09	1.08	# 26.8	19/12/2017	26.68	26.67	27.09	27.09	26.881	249@26.86	1000@27.10	---	---	31,849	142	856,143.00	9,962,883.31	20.37	29.8	3537
66,948,210	0.300	0.1005	---	---	22/09/2015	22/09/2015	---	FOLLI FOLLIE (CR)	18.28	1.90	# 17.94	19/12/2017	18.08	17.96	18.3	18.28	18.175	691@18.20	159@18.28	---	2015	51,352	560	933,316.06	1,223,813.28	14.36	21.98	5379
51,330,410	0.970	---	---	---	21/06/2010	21/07/2017	---	FOURLIS (CR)	5.55	0.73	# 5.51	19/12/2017	5.55	5.52	5.7	5.55	5.62	25@5.53	200@5.55	---	2015	184,580	450	1,037,378.21	284,883.78	3.95	6.18	3722
101,260,000	2.13	0.3037	0.3134	0.1902	27/03/2017	08/01/2014	---	GRIVALIA PROPERTIES (CR)	8.81	1.03	# 8.72	19/12/2017	8.83	8.77	8.88	8.81	8.819	499@8.81	2654@8.82	39.28	2016	56,232	271	495,923.35	892,100.60	7.54	9.84	8675
133,025,996	1.41	---	---	---	03/07/2007	07/01/2002	---	INTRACOM HOLDINGS (CR)	0.684	1.63	# 0.673	19/12/2017	0.671	0.671	0.705	0.684	0.692	701@0.684	17654@0.690	---	2015	438,826	318	303,465.61	90,989.78	0.292	0.708	9578
136,059,759	0.880	0.18	---	0.36	19/12/2017	05/03/2014	---	JUMBO SA (CR)	14.18	-1.53	☒ 14.4	19/12/2017	14.3	14.18	14.44	14.18	14.335	341@14.16	3040@14.28	23.40	2016	136,218	465	1,952,722.46	1,929,327.38	12.58	16.5	3747
79,721,775	0.300	---	---	---	30/05/2007	23/06/2014	---	LAMDA DEVELOPMENT SA (CR)	6.5	1.40	# 6.41	19/12/2017	6.49	6.47	6.68	6.5	6.539	50@6.48	1876@6.50	---	2015	121,763	446	796,206.16	518,191.54	4.2	7.1	8633
939,510,748	0.300	---	---	---	26/04/2007	29/08/2014	---	MARFIN INVESTMENT GROUP (CR)	0.126	8.62	# 0.116	19/12/2017	0.1166	0.1166	0.126	0.126	0.123	10000@0.124	415930@0.126	---	2015	8,498,882	957	1,048,095.91	118,378.35	0.076	0.213	8775
259,189,761		---	---	---		26/02/2016	---	VIOHALCO S.A/NV (CB)	3.26	3.66	# 3.145	19/12/2017	3.15	3.125	3.28	3.26	3.204	1700@3.25	3103@3.27	---	---	221,126	559	708,392.98	844,958.62	1.24	3.51	2727
232,000,000	2.12	---	---	---		19/06/2017	---	ADMIE (IPTO) HOLDING S.A. (CR)	1.934	-0.21	☒ 1.938	19/12/2017	1.89	1.89	1.962	1.934	1.938	176@1.93	579@1.94	---	---	235,029	500	455,521.64	448,688.00	1.68	2.49	7535
71,417,100	0.650	0.7	0.7	0.4	17/05/2017	27/06/2014	---	AEGEAN AIRLINES (CR)	8.19	0.61	# 8.14	19/12/2017	8.12	8.06	8.19	8.19	8.149	612@8.11	40@8.19	10.78	2015	67,410	295	549,298.26	584,906.05	6.3	8.64	5751
103,423,291	0.570	---	---	---	01/08/2011	19/04/2016	---	GEK TERNA (CR)	4.475	1.02	# 4.43	19/12/2017	4.55	4.465	4.55	4.475	4.506	108@4.47	3549@4.49	28.11	2015	142,195	345	640,722.94	462,819.23	2.2	4.645	2357
232,000,000	2.48	0.05	---	---	20/07/2015	12/12/2001	---	PPC (CR)	2.04	---	↘ 2.04	19/12/2017	2.01	2	2.07	2.04	2.031	867@2.04	9842@2.04	---	2015	302,763	422	614,945.86	473,280.00	1.75	4.73	7535
9,147,151,527	0.300	---	---	---	16/05/2008	30/11/2015	---	NATIONAL BANK (CR)	0.3098	-0.07	☒ 0.31	19/12/2017	0.308	0.3062	0.316	0.3098	0.312	78500@0.309	203000@0.310	---	2015	20,851,016	1,946	6,496,932.56	2,833,787.54	0.203	0.377	8355
177,001,313	1.03	---	---	---	05/07/2011	20/12/2007	---	ELLAKTOR (CR)	1.65	1.23	# 1.63	19/12/2017	1.62	1.62	1.674	1.65	1.657	400@1.64	720@1.66	---	2015	200,657	410	332,477.80	292,052.17	1.04	1.83	2357
60,599,000	0.840	0.21	0.1026	0.065	30/05/2017	24/07/2017	---	HELLENIC EXCHANGES-A.S.E. (CR)	4.99	0.81	# 4.95	19/12/2017	4.95	4.93	5	4.99	4.94	246@4.98	150@5.00	25.33	2015	255,741	318	1,263,438.24	302,389.01	4.25	6.26	8777
305,635,185	2.18	0.2	---	---	04/12/2017	01/10/2003	4795	HELLENIC PETROLEUM (CR)	7.51	0.94	# 7.44	19/12/2017	7.44	7.44	7.61	7.51	7.548	4112@7.50	1812@7.54	83.34	2015	93,146	445	703,101.64	2,295,320.24	4.19	8.4	537
110,782,980	0.750	---	0.65	0.9	11/12/2017	04/11/2013	---	MOTOR OIL (CR)	18.62	-0.96	☒ 18.8	19/12/2017	19.06	18.6	19.06	18.62	18.737	242@18.62	500@18.70	10.26	2015	196,362	931	3,679,140.10	2,062,779.09	12.89	21.9	533
142,891,161	0.970	---	---	---	11/05/2009	07/07/2017	---	MYTILINEOS HOLDINGS (CR)	9.02	0.11	# 9.01	19/12/2017	9	9	9.07	9.02	9.047	338@9.02	2000@9.04	---	2015	374,051	693	3,383,925.58	1,288,878.27	6.0441	9.38	1755
25,000,000	2.00	0.099	0.1114	0.0892	19/07/2017	08/08/2003	---	P.P.A. S.A. (CR)	15.86	1.02	# 15.7	19/12/2017	15.4	15.4	15.86	15.86	15.748	15@15.62	170@15.88	59.19	2016	6,339	166	99,829.44	396,500.00	12.3	16.77	2777
319,000,000	0.300	0.57	0.7	0.72	11/12/2017	25/04/2001	---	OPAP (CR)	10.06	-0.40	☒ 10.1	19/12/2017	10.1	10.04	10.16	10.06	10.121	17276@10.06	26102@10.09	15.20	2015	717,138	837	7,258,102.25	3,209,140.00	8.02	10.28	5752
490,150,389	2.83	0.08	0.1	0.16	07/07/2017	18/06/1998	---	OTE (CR)	11.48	1.24	# 11.34	19/12/2017	11.3	11.3	11.56	11.48	11.458	18227@11.48	30@11.49	60.77	2015	1,732,568	1,245	19,851,777.62	5,626,926.47	8.33	11.58	6535
436,659,164	6.00	---	---	---	16/05/2008	31/07/2017	---	PIRAEUS BANK (CR)	3.16	3.27	# 3.06	19/12/2017	3.026	3.026	3.21	3.16	3.141	100@3.15	500@3.17	---	2015	1,944,784	2,319	6,108,299.80	1,379,842.96	1.98	5.36	8355
34,938,742	1.55	0.15	0.16	0.175	09/05/2017	27/07/2000	---	GR. SARANTIS SA (CR)	13.25	1.15	# 13.1	19/12/2017	13.55	13.1	13.55	13.25	13.402	65@13.20	16@13.25	41.76	2015	15,731	149	210,823.15	462,938.33	10	13.78	3767
77,063,568	3.00	0.1551	0.3099	0.1049	13/06/2017	13/06/2017	---	TITAN CEMENT (CR)	21.85	0.69	# 21.7	19/12/2017	21.45	21.45	22	21.85	21.748	3558@21.85	198@21.90	30.75	2015	87,274	475	1,898,077.45	1,804,942.32	19.48	27.19	2353
2,185,998,765	0.300	---	---	---	02/05/2008	27/11/2015	---	EUROBANK ERGASIAS (CR)	0.804	1.77	# 0.79	19/12/2017	0.7975	0.795	0.827	0.804	0.814	11552@0.803	3255@0.815	---	2015	10,131,661	3,572	8,248,205.87	1,757,543.01	0.498	1.04	8355

13,126,020	0.610	---	---	---	08/07/2010	08/09/2017	---	AS COMPANY SA (CR)	1.53	---	↘ 1.53	19/12/2017	1.51	1.5	1.54	1.53	1.519	227@1.52	273@1.53	13.02	2015	4,120	10	6,259.87	20,082.81	0.64	1.62	5379
49,630,457	0.700	---	---	---	01/07/2008	01/03/2010	---	AUDIO VISUAL ENTERPRISES (CR)	0.093	---	↘ 0.093	19/12/2017	---	---	---	---	---	500@0.081	500@0.089	---	2015	---	---	---	4,615.63	0.056	0.22	5553
12,213,750	0.320	0.8	0.85	0.85	15/06/2017	22/11/2013	---	AUTOHELLAS SA (CR)	22.4	-1.75	☒ 22.8	19/12/2017	22	22	23.4	22.8	22.913	30@22.60	48@22.80	17.89	2015	294	8	6,736.40	273,588.00	11.53	24	5759
11,921,531	2.33	---	---	---		31/07/2017	---	BRIO PROPERTIES (CR)	1.755	0.86	# 1.74	19/12/2017	1.7	1.7	1.77	1.77	1.733	100@1.71	200@1.76	---	---	978	11	1,694.74	20,922.29	1.54	2.05	8671

Number of Outstanding Securities	Nominal Value	Dividends [1]			Date of Last Coupon		Note	Shares	Closing price	% change	Previous closing price/date	Open price	Price min	Price max	Last price	Avg price	Last Bid [7]	Last Ask [7]	P/E after	Year	Volume	Trades	Transactions Value[8]	Company Mkt Value (thou. €)	Year low	Year high	Sector[4]		
		2014	2015	2016	Dividend [2]	Right																							
101,123,806	0.360	---	---	---	22/07/2010	28/06/2011	---	CENTRIC HOLDINGS (CR)	0.137	---	↘	0.137	19/12/2017	0.145	0.134	0.145	0.136	0.136	1000@0.136	7500@0.139	---	2015	25,760	21	3,509.37	13,853.96	0.08	0.19	5752
9,907,500	0.300	---	---	---	06/10/2005	13/02/2002	---	CPI SA (CR)	0.17	---	↘	0.17	19/12/2017	0.165	0.165	0.165	0.165	0.165	4300@0.121	2440@0.165	48.68	2017	20	1	3.30	1,684.28	0.124	0.218	9572
20,578,374	0.620	0.4	0.07	0.07	07/06/2017	18/05/2015	---	INFORM P. LYKOS SA (CR)	0.724	---	↘	0.724	19/12/2017	0.766	0.742	0.766	0.742	0.754	1000@0.740	215@0.764	---	2015	900	5	678.47	14,898.74	0.427	0.88	2791
30,477,156	0.300	---	---	---	12/08/2008	17/10/2017	---	INTRACOM CONSTR. (CR)	0.948	5.33	#	0.9	19/12/2017	0.918	0.918	0.952	0.948	0.937	100@0.942	2600@0.954	---	2015	69,922	158	65,542.14	28,892.34	0.54331	1.854	2357
77,654,850	0.580	---	---	---	01/07/2011	21/02/2003	---	J & P - AVAX SA (CR)	0.683	1.94	#	0.67	19/12/2017	0.67	0.662	0.685	0.683	0.68	1000@0.681	890@0.685	---	2015	61,842	102	42,031.49	53,038.26	0.38	0.768	2357
4,740,000	0.860	---	---	---		14/03/2003	---	LOGISMOS S.A. (CR)	0.272	---	↘	0.272	19/12/2017	---	---	---	---	---	300@0.254	270@0.306	-(6)-	2016	---	---	---	1,289.28	0.168	0.548	9533
468,700	1.48	1	0.73	24/08/2017	21/05/2004	---	---	MERMEREN KOMB. A.D. PR. (GDR)	15.15	1.00	#	15	19/12/2017	15.15	14.9	15.15	15.15	14.971	67@14.85	99@15.15	2.03	2016	386	5	5,778.65	7,100.81	5.77	16	1775
12,417,000	0.310	---	---	---	28/07/2008	28/08/2017	---	MLS MULTIMEDIA SA (CR)	4.24	0.47	#	4.22	19/12/2017	4.19	4.17	4.27	4.24	4.214	370@4.17	203@4.24	23.70	2016	3,164	26	13,332.16	52,648.08	3.98	4.65	9537
3,953,090	0.300	0.118	0.11	0.12	06/06/2017	05/12/2012	---	PAPERPACK (CR)	2.18	-0.91	€	2.2	19/12/2017	2.18	2.18	2.18	2.18	2.18	1000@1.97	280@2.18	6.37	2016	20	1	43.60	8,617.74	1.26	2.41	2723
11,812,193	0.470	0.02	---	---	26/03/2015	15/11/2006	---	PROFILE SA (CR)	0.73	3.99	#	0.702	19/12/2017	0.706	0.7	0.744	0.73	0.723	1817@0.718	15@0.730	---	2015	94,661	87	68,437.78	8,622.90	0.455	0.902	9533
27,345,120	0.470	---	---	---	18/07/2005	26/02/2014	---	QUALITY & RELIABILITY SA (CR)	0.24	---	↘	0.24	19/12/2017	0.244	0.233	0.244	0.24	0.237	2000@0.230	1855@0.240	---	2015	6,452	12	1,531.46	6,562.83	0.15	0.353	9533
11,913,632	0.680	---	---	---	05/09/2008	08/11/2017	---	QUEST HOLDINGS (CR)	9.46	---	↘	9.46	19/12/2017	9.2	9.2	9.58	9.46	9.473	36@9.46	40@9.58	---	2015	1,111	29	10,524.30	112,702.96	6.3	10.08	9533
6,456,530	1.08	0.03	---	---	19/07/2017	02/08/2010	---	SPACE HELLAS SA (CR)	3.94	---	↘	3.94	19/12/2017	3.8	3.8	4.02	3.9	3.953	149@3.86	250@4.04	30.00	2015	3,056	17	12,080.98	25,438.73	0.601	4.28	9578
3,125,463	0.300	---	---	---	16/11/1992	07/02/2017	---	UNIBIOS (CR)	0.482	-0.41	€	0.484	19/12/2017	0.42	0.42	0.482	0.482	0.471	50@0.475	40@0.480	---	2015	236	11	111.09	1,506.47	0.405	0.755	2353
2,235,600	0.350	---	---	---	21/04/2010	25/07/2017	---	AEOLIAN INVESTMENT FUND (CR)	0.484	-2.81	€	0.498	19/12/2017	0.45	0.45	0.488	0.48	0.484	300@0.457	495@0.480	---	2016	1,630	8	789.43	1,082.03	0.33	4.01	8985
22,016,250	0.370	---	---	---	15/07/2009	11/05/2000	---	ALUMIL (CR)	0.365	-1.35	€	0.37	19/12/2017	0.363	0.34	0.385	0.365	0.357	500@0.330	300@0.360	---	2015	2,887	13	1,029.83	8,035.93	0.152	0.502	1753
34,720,000	0.310	---	---	---	16/06/2010	01/08/2007	---	DROMEAS SA (CR)	0.194	4.87	#	0.185	19/12/2017	0.187	0.187	0.194	0.194	0.189	500@0.183	999@0.192	---	2015	16,559	15	3,121.60	6,735.68	0.1	0.285	3726
13,673,200	0.880	---	---	---	18/07/2008	26/07/2001	---	EVROFARMA SA (CR)	0.336	---	↘	0.336	19/12/2017	0.344	0.344	0.344	0.344	0.344	400@0.314	1450@0.344	20.24	2015	20	2	6.88	4,594.20	0.225	0.42	3577
27,848,000	0.300	0.0032	0.0084	---	16/08/2016	02/09/2003	---	NEWSPHONE HELLAS SA (CR)	0.25	4.17	#	0.24	19/12/2017	0.214	0.214	0.25	0.25	0.24	25@0.246	951@0.250	10.50	2015	41,053	58	9,861.92	6,962.00	0.18	0.33	2791
11,250,000	0.520	---	0.04	0.04	24/07/2017	09/11/2015	---	EKTER SA (CR)	0.595	---	↘	0.595	19/12/2017	0.59	0.59	0.62	0.615	0.604	3000@0.510	1754@0.620	18.79	2015	8,945	37	5,405.85	6,693.75	0.401	0.81	2357
82,667,000	0.300	---	---	---		22/07/2014	---	ELTECH ANEMOS S.A. (CR)	1.535	0.33	#	1.53	19/12/2017	1.485	1.485	1.535	1.535	1.526	300@1.51	847@1.54	16.51	2015	8,445	20	12,884.64	126,893.85	0.875	1.64	7537
18,421,516	1.00	---	---	---	07/07/2009	10/09/2010	---	ELASTRON (CR)	1.39	-1.42	€	1.41	19/12/2017	1.345	1.33	1.405	1.39	1.375	700@1.38	750@1.40	---	2015	22,668	75	31,172.50	25,605.91	0.69	1.59	1757
3,307,500	0.710	---	---	---	11/08/2010	15/12/2017	---	ELVE SA (CR)	2.9	0.69	#	2.88	19/12/2017	2.9	2.9	2.9	2.9	2.9	100@2.60	500@2.90	23.12	2015	100	1	290.00	9,591.75	1.63	3.12	3763
19,864,886	5.60	0.672	0.672	0.672	09/03/2017	02/07/2008	---	BANK OF GREECE (CR)	14.85	-1.00	€	15	19/12/2017	15	14.7	15	14.85	14.863	7@14.75	244@14.95	---	---	3,999	99	59,437.25	294,993.56	10.6	15.08	8355
26,730,187	0.520	---	---	---	23/06/2014	01/08/2017	---	ELTON SA (CR)	1.3	-1.52	€	1.32	19/12/2017	1.35	1.28	1.35	1.3	1.299	180@1.28	1081@1.30	23.21	2015	5,685	29	7,386.10	34,749.24	0.837	1.52	1353
36,300,000	1.12	0.24	0.25	0.228	29/06/2017	12/12/2007	---	THESSALONIKA WATER & SEWERAGE	4.58	1.78	#	4.5	19/12/2017	4.51	4.51	4.58	4.58	4.538	50@4.43	637@4.58	12.27	2015	9,020	51	40,936.12	166,254.00	3.42	4.78	7577
106,500,000	0.600	0.2	0.31	0.11	22/06/2017	28/01/2000	---	EYDAP S.A. (CR)	6.15	1.48	#	6.06	19/12/2017	6.09	6.07	6.19	6.15	6.145	95@6.11	620@6.17	14.99	2015	70,245	269	431,689.19	654,975.00	5.01	6.52	7577
27,503,677	0.630	---	0.06	0.1	24/05/2017	18/10/1999	---	EUROPEAN RELIANCE INSUR. (CR)	3.55	-4.05	€	3.7	19/12/2017	3.7	3.55	3.74	3.55	3.633	230@3.55	100@3.67	8.87	2015	901	9	3,273.74	97,638.05	1.95	3.93	8536
87,254,824	0.440	---	---	---	24/11/2014	01/08/2017	---	IASO SA (CR)	1.15	-2.54	€	1.18	19/12/2017	1.16	1.14	1.18	1.15	1.161	5430@1.14	2000@1.16	---	2015	122,866	103	142,597.24	100,343.05	0.2888	1.2	4533
28,580,100	0.400	0.0301	---	---	19/12/2017	04/07/2016	---	IKTINOS HELLAS SA (CR)	2.33	-2.10	€	2.38	19/12/2017	2.32	2.3	2.38	2.33	2.33	250@2.32	468@2.36	64.10	2015	17,646	105	41,122.72	66,591.63	0.731	2.6	2353
8,226,132	0.900	---	---	---	15/05/2009	13/10/2014	---	ILYDA S.A. (CR)	0.224	---	↘	0.224	19/12/2017	0.218	0.216	0.218	0.216	0.218	500@0.180	360@0.216	7.06	2016	500	2	108.80	1,842.65	0.15	0.476	9537
11,233,200	0.730	---	---	---	12/07/2010	30/07/1999	---	INTERTECH SA (CR)	0.382	---	↘	0.382	19/12/2017	0.378	0.376	0.378	0.376	0.376	101@0.342	10@0.370	---	2016	1,138	3	428.16	4,291.08	0.		

Number of Outstanding Securities	Nominal Value	Dividends [1]			Date of Last Coupon		Note	Shares	Closing price	% change	Previous closing price/date	Open price	Price min	Price max	Last price	Avg price	Last Bid [7]	Last Ask [7]	P/E after	Year	Volume	Trades	Transactions Value[8]	Company Mkt Value (thou. €)	Year low	Year high	Sector[4]		
		2014	2015	2016	Dividend [2]	Right																							
29,480,000	0.420	---	---	---	19/07/2010	01/08/2007	---	KRETA FARM SA (CR)	0.576	---	↘	0.576	19/12/2017	0.576	0.576	0.576	0.576	200@0.554	364@0.576	---	2015	136	1	78.34	16,980.48	0.399	0.645	3577	
33,065,136	0.380	0.06	0.06	0.09	17/08/2017	16/09/2013	---	KRI-KRI S.A. (CR)	2.97	---	↘	2.97	19/12/2017	2.96	2.96	2.99	2.99	2.982	180@2.97	656@2.99	15.75	2016	1,247	3	3,718.76	98,203.45	1.75	3.15	3577
7,595,160	0.600	---	---	---	08/08/2008	18/08/2010	---	KIRIAKOULIS SHIPPING SA (CR)	0.59	---	↘	0.59	19/12/2017	0.59	0.59	0.615	0.615	0.59	100@0.590	200@0.650	73.46	2015	51,000	8	30,110.00	4,481.14	0.405	0.86	5759
9,819,370	0.690	---	---	---	14/08/2007	09/01/2004	---	MATHIOS REFRACTORY SA (CR)	0.246	---	↘	0.246	19/12/2017	0.252	0.252	0.252	0.252	0.252	220@0.208	50@0.246	---	2015	2,000	1	504.00	2,415.57	0.151	0.359	2353
11,700,000	0.400	---	---	---	02/06/2009	02/06/2017	---	MOTODYNAMICS S.A. (CR)	0.625	---	↘	0.625	19/12/2017	---	---	---	---	---	2000@0.438	2880@0.640	22.82	2015	---	---	---	7,312.50	0.37	0.828	5379
32,188,050	1.04	---	---	---	21/07/2008	20/01/2000	---	EL. D. MOUZAKIS SA (CB)	0.356	-7.29	↗	0.384	19/12/2017	0.35	0.34	0.364	0.364	0.35	49@0.342	2283@0.364	---	2015	11,846	18	4,140.60	11,458.95	0.119	0.438	3763
291,497,368	0.300	---	---	---	08/07/2008	21/03/2016	---	NIREFS SA (CR)	0.25	1.21	#	0.247	19/12/2017	0.24	0.24	0.255	0.25	0.252	394@0.250	1508@0.253	0.35	2015	67,406	55	16,966.39	72,874.34	0.162	0.328	3573
10,080,000	3.00	1.95	0.58	0.49	31/07/2017	27/08/2001	---	TPA SA (CR)	24.3	0.83	#	24.1	19/12/2017	24.1	24.1	24.3	24.3	24.246	210@24.10	14@24.30	17.39	2016	552	5	13,383.60	244,944.00	17.55	24.8	2777
4,971,466	1.46	---	---	---	04/07/2007	08/10/2003	---	PAIRIS SA (CR)	0.264	3.13	#	0.256	19/12/2017	0.264	0.264	0.264	0.264	0.264	343@0.264	1100@0.280	---	2015	1,657	2	437.45	1,312.47	0.106	0.633	2723
50,797,369	0.310	---	---	---	17/08/2000	12/10/2010	---	PAPOUTSANIS (CR)	0.25	-0.79	↗	0.252	19/12/2017	0.252	0.247	0.254	0.25	0.249	206@0.247	1079@0.250	---	2016	14,556	35	3,631.12	12,699.34	0.122	0.338	3767
7,070,400	0.930	0.101	---	---	30/11/2016	06/05/2016	---	PETROPOULOS PETROS (CR)	5.12	0.39	#	5.1	19/12/2017	5	5	5.12	5.12	5.041	210@5.04	24@5.12	48.01	2015	2,115	18	10,662.28	36,200.45	4.07	5.45	2753
22,075,665	0.330	---	0.08	0.05	30/05/2017	27/04/2015	---	PLAISIO COMPUTERS SA (CR)	4.03	-0.74	↗	4.06	19/12/2017	3.99	3.99	4.06	4.03	4.035	211@4.01	298@4.03	13.27	2015	8,080	48	32,601.57	88,964.93	3.3	4.81	9572
43,741,452	0.660	0.0225	---	---	20/04/2015	01/11/1999	---	THRACE PLASTICS SA (CR)	2.75	1.10	#	2.72	19/12/2017	2.76	2.64	2.76	2.75	2.7	26@2.67	461@2.75	-(6)-	2015	4,114	38	11,105.75	120,288.99	2.18	3.08	1357
22,280,000	0.300	---	---	---	11/04/2011	23/02/2007	---	REVOIL (CR)	0.63	---	↘	0.63	19/12/2017	---	---	---	---	---	172@0.486	1000@0.600	20.25	2015	---	---	---	14,036.40	0.252	0.758	5379
245,497,164	0.300	---	---	---	01/07/2008	30/07/2012	---	SELONDA AQUACULTURE SA (CR)	0.1675	---	↘	0.168	19/12/2017	0.173	0.1635	0.173	0.17	0.169	50@0.164	10000@0.170	---	2015	23,703	18	3,998.96	41,120.77	0.125	0.298	3573
28,438,268	0.300	---	---	---	21/08/2006	24/11/1999	---	SPIROY AGRICULTURE SA (CR)	0.23	-8.73	↗	0.252	19/12/2017	0.19	0.19	0.254	0.23	0.205	160@0.230	69@0.254	---	2015	4,890	13	1,004.84	6,540.80	0.19	0.699	1357
109,314,400	0.300	---	0.0935	0.0939	19/06/2017	24/03/2017	---	TERNA ENERGY (CR)	4.58	2.69	#	4.46	19/12/2017	4.42	4.42	4.58	4.58	4.51	1000@4.57	3000@4.60	-(6)-	2015	33,447	274	150,839.05	500,659.95	2.71	4.66	7537
40,693,350	5.00	---	---	---	03/07/2006	26/05/2015	---	TECHNICAL OLYMPIC SA (CR)	1.55	1.31	#	1.53	19/12/2017	1.58	1.455	1.58	1.55	1.513	50@1.49	498@1.54	---	2015	964	16	1,458.75	63,074.69	0.897	1.9	3728
305,732,436	0.410	---	---	---	08/07/2009	28/09/2011	---	HYGEIA SA (CR)	0.66	-0.75	↗	0.665	19/12/2017	0.656	0.656	0.674	0.66	0.664	620@0.659	6100@0.667	---	2015	215,060	134	142,897.73	201,783.41	0.147	0.674	4533
8,340,750	1.18	---	---	---	25/06/2009	09/09/2015	---	HAIDEMENOS SA (CR)	0.446	---	↘	0.446	19/12/2017	0.44	0.44	0.44	0.44	0.44	---	440@0.450	---	2016	400	2	176.00	3,719.97	0.211	0.766	2791
101,279,627	0.380	---	---	---	26/06/2008	14/07/2006	---	HALKOR SA (CB)	1.41	---	↘	1.41	19/12/2017	1.39	1.38	1.42	1.4	1.391	850@1.39	2200@1.40	---	2015	54,248	100	75,446.01	142,804.27	0.429	1.51	1755

Main Market - Low Liquidity Class

14,000,000	4.15	---	---	---	23/04/2010	29/06/1999	---	ALPHA REAL ESTATE SA(CR)	6.05	---	↘	6.05	19/12/2017	6.2	6.05	6.2	6.05	6.052	61@6.05	16@6.20	30.57	2015	100	10	605.15	84,700.00	4.31	7.68	8637
191,660,320	0.300	---	---	---	20/07/2009	29/12/2010	---	ATTICA HOLDINGS (CR)	1.45	-3.97	↗	1.51	19/12/2017	1.51	1.43	1.51	1.45	1.461	450@1.44	250@1.45	-(6)-	2015	37,950	72	55,443.85	277,907.46	0.664	1.53	5759
15,816,009	0.300	---	---	---	01/07/2009	17/07/2000	---	BYTE COMPUTER SA (CR)	0.47	---	↘	0.47	19/12/2017	---	---	---	---	---	319@0.450	---	---	2015	---	---	---	7,433.52	0.267	0.49	9533
52,800,154	0.300	---	---	---	20/08/2014	21/06/2004	---	F.G. EUROPE S.A. (CR)	0.434	-3.13	↗	0.448	19/12/2017	0.448	0.414	0.448	0.416	0.434	300@0.446	236@0.470	19.18	2015	584	5	253.69	22,915.27	0.382	0.687	3722
11,720,024	0.540	---	---	---	21/08/2014	04/11/2015	---	FLEXOPACK SA (CR)	5.75	-1.71	↗	5.85	19/12/2017	5.35	5.35	5.75	5.75	5.396	12@5.35	385@5.75	15.30	2015	490	5	2,644.10	67,390.14	2.9	6	2723
10,500,000	4.00	---	---	0.28	18/05/2017	02/08/2016	---	INTERCONTINENTAL (CR)	4.98	-1.39	↗	5.05	19/12/2017	5.05	4.98	5.05	4.98	5.003	100@4.94	96@4.98	8.36	2016	1,960	22	9,805.25	52,290.00	4.62	6.12	8674
10,500,000	0.950	---	---	---	24/06/2008	30/06/2017	---	MEVACO SA (CR)	0.95	---	↘	0.95	19/12/2017	---	---	---	---	---	1000@0.950	400@0.995	---	2016	---	---	---	9,975.00	0.885	1.31	2757
6,200,000	0.500	---	---	---	22/06/2010	01/11/1995	---	MINERVA KNITWEAR SA (CB)	0.398	---	↘	0.398	19/12/2017	---	---	---	---	---	---	1000@0.360	---	2015	---	---	---	2,467.60	0.026	0.459	3763
22,996,875	1.25	---	---	---	24/06/2011	02/02/2016	---	NEXANS HELLAS SA (CR)	1.23	3.36	#	1.19	19/12/2017	1.15	1.15	1.23	1.23	1.22	120@1.13	333@1.24	18.49	2016	340	5	414.68	28,286.16	0.837	1.28	2733
57,434,884	1.31	---	---	---	05/06/2008	12/06/2009	---	REDS S.A. (CR)	0.8	3.90	#	0.77	19/12/2017	0.72	0.72	0.8	0.8	0.771	101@0.760	1365@0.800	---	2015	7,899	14	6,090.74	45,947.91	0.3	0.85	8633
80,690,653	0.500	---	---	---	25/04/2014	22/12/2016	---	TRASTOR REAL EST. INV. CO.(CR)	0.85	---	↘	0.85	19/12/2017	0.85	0.85	0.85	0.85	0.85	---	500@0.895	---	2015	470	2	399.50	68,587.06	0.742	0.899	8671
113,465,290	0.300	---	---	---	09/08/2004	09/11/2016	---	ATHENA SA (CR)	0.68	---	↘	0.68	19/12/2017	0.68	0.68	0.68	0.68	0.68	657@0.680	200@0.690	---	2015	3,965	7	2,696.20	77,156.40	0.4	0.898	2357
417,608	16.00	---	---	---	29/04/2014	05/03/2013	---	ANDROMEDA SA (CR)	19.5	---	↘	19.5	19/12/2017	18.5	18.5	19.9	19.9	19.2	5@18.70	210@19.90	11.57	2016	2	2	38.40	8,143.36	12.83	19.95	8985
15,300,000	0.300	---	---	---	30/07/2009	13/12/1999	---	ATTICA PUBLICATIONS SA (CR)	0.57	---	↘	0.57	19/12/2017	---	---	---	---	---	---	295@0.595	---	2015	---	---	---	8,721.00	0.514	0.859	5557
18,810,000	0.400	---	---	---	08/07/2010	14/11/2007	---	VARVERIS - MODA BAGNO SA (CR)	0.49	---	↘	0.49	19/12/2017	---	---	---	---	---	---	7815@0.442	---	2015	---	---	---	9,216.90	0.045	0.52	2353
23,986,500	1.05	---	---	---	26/06/2009	15/03/2000	---	BIOKARPET S.A.(CR)	0.27	---	↘	0.27	19/12/2017	---	---	---	---	---	190@0.276	901@0.296	---	2015	---	---	---	6,476.36	0.197	0.4	3726
4,968,600	2.88	---	---	---	01/07/1998	14/12/1998	---	VIS SA (CR)	0.85	---	↘	0.85	19/12/2017	---	---	---	---	---	---	1051@0.880	11.81	2016	---	---	---	4,223.31	0.618	0.91	2723

Number of Outstanding Securities	Nominal Value	Dividends [1]			Date of Last Coupon		Note	Shares	Closing price	% change	Previous closing price/date		Open price	Price min	Price max	Last price	Avg price	Last Bid [7]	Last Ask [7]	P/E after	Year	Volume	Trades	Transactions Value[8]	Company Mkt Value (thou. €)	Year low	Year high	Sector[4]	
		2014	2015	2016	Dividend [2]	Right																							
6,325,000	0.600	---	---	0.11	04/07/2017	17/02/2014	---	VOGIATZOGLOU SYSTEMS SA (CR)	1.36	---	↘	1.36	19/12/2017	---	---	---	---	109@1.28	---	---	2015	---	---	---	8,602.00	0.891	1.84	2797	
8,418,750	0.300	---	0.12	0.3	06/06/2017	27/06/2012	---	GEKE SA (CB)	4.7	---	↘	4.7	19/12/2017	---	---	---	---	---	20@4.94	21.88	2016	---	---	---	39,568.13	2.94	6.88	5753	
24,060,000	0.300	0.02	0.01	0.01	10/07/2017	10/07/2017	---	GEN. COMMERCIAL & IND.SA (CR)	0.496	1.22	#	0.49	19/12/2017	0.494	0.494	0.496	0.496	500@0.474	3000@0.500	20.86	2015	2,200	2	1,090.80	11,933.76	0.319	0.553	2797	
15,000,000	0.300	---	---	---	06/07/2007	18/07/2000	---	DAIOS PLASTICS SA (CR)	2.88	---	↘	2.88	19/12/2017	---	---	---	---	200@2.70	400@2.88	---	2015	---	---	---	43,200.00	2.6	3	1357	
255,494,534	3.00	---	0.2035	0.2	11/05/2017	23/12/2015	---	NBG PANGAEA (CR)	4.8	---	↘	4.8	19/12/2017	5.2	4.92	5.2	4.92	5.047	84@4.92	500@5.20	24.67	2015	11	2	55.52	1,226,373.76	3.77	5.7	8671
31,734,530	1.60	---	---	---	09/07/2007	19/07/2006	---	ELGEKA SA (CR)	0.151	9.42	#	0.138	19/12/2017	0.15	0.141	0.151	0.151	0.148	55@0.151	---	---	2015	5,745	11	853.02	4,791.91	0.1	0.216	3577
23,828,130	0.500	---	0.16	0.052	29/06/2017	17/02/2009	---	ELINOIL S.A. (CR)	1.41	8.46	#	1.3	19/12/2017	1.32	1.32	1.41	1.41	1.367	150@1.32	500@1.40	12.37	2015	2,250	7	3,075.01	33,597.66	0.753	1.64	537
14,050,971	0.340	---	---	---	13/12/2017	17/10/2002	---	ELTRAK SA (CR)	3.28	3.80	#	3.16	19/12/2017	3.2	3.2	3.3	3.2	3.256	1000@3.08	70@3.28	65.19	2015	350	9	1,139.50	46,087.18	1.22	3.88	2753
51,887,910	0.300	---	---	---	23/12/2003	24/01/2007	---	SELECTED TEXT. IND. ASSOC (CR)	0.18	2.86	#	0.175	19/12/2017	0.184	0.175	0.184	0.18	0.18	500@0.174	1000@0.181	---	2016	3,807	11	683.90	9,339.82	0.124	0.32	3763
11,125,110	0.300	---	---	---	02/06/2010	06/11/2017	5031	EUROCONSULTANTS S.A. (CR)	0.34	9.68	#	0.31	19/12/2017	0.282	0.28	0.34	0.34	0.302	500@0.282	---	---	2015	10,137	23	3,062.29	3,782.54	0.280	6.401	2791
86,735,980	0.310	---	---	---	06/07/2009	02/01/2002	---	ATHENS MEDICAL CENTER SA (CR)	1.44	-1.37	€	1.46	19/12/2017	1.42	1.42	1.46	1.44	1.438	3300@1.43	149@1.44	---	2015	5,300	14	7,618.80	124,899.81	0.549	1.65	4533
8,298,467	0.400	---	---	---	30/08/1993	08/05/2013	---	IDEAL GROUP SA (CR)	0.765	---	↘	0.765	19/12/2017	---	---	---	---	71@0.690	250@0.745	-(6)-	2015	---	---	---	6,348.33	0.628	0.95	9574	
2,566,836	0.440	---	---	---	13/08/2010	09/01/2007	---	INTERWOOD-XYLEMPORIA (PR)	0.06	---	↘	0.06	19/12/2017	---	---	---	---	10511@0.066	---	---	2015	---	---	---	4,002.52	0.06	0.109	2353	
34,986,430	0.440	---	---	---	25/07/2008	23/02/2010	---	INTERWOOD-XYLEMPORIA (CR)	0.11	---	↘	0.11	19/12/2017	---	---	---	---	3000@0.099	23000@0.121	---	2015	---	---	---	4,002.52	0.06	0.126	2353	
9,742,920	0.400	0.01	0.01	---	12/08/2016	14/07/2000	---	KARAMOLEGOS SA (CR)	2.46	---	↘	2.46	19/12/2017	---	---	---	---	---	---	-(6)-	2015	---	---	---	23,967.58	1.84	2.46	3577	
14,679,792	1.68	---	---	0.07	28/06/2017	04/09/2000	---	KARATZIS SA (CR)	5	---	↘	5	19/12/2017	5.05	4.96	5.05	5	4.996	240@4.96	3029@5.00	14.35	2015	1,830	14	9,143.10	73,398.96	3.9	6.1	2723
2,760,000	11.83	9.3	8.5	9.2	24/07/2017	16/07/1990	4823	KARELIA TOBACCO CO. SA (CB)	276	-5.48	€	292	19/12/2017	280	276	280	276	277.557	5@272.00	1@276.00	14.26	2015	176	27	48,850.00	761,760.00	255	309	3785
6,700,000	0.800	0.03	0.023	0.028	29/06/2017	29/05/2014	---	MILLS KEPENOS (CR)	1.92	---	↘	1.92	19/12/2017	---	---	---	---	1000@1.90	200@2.00	6.68	2016	---	---	---	12,864.00	1.11	2.54	3577	
18,017,472	0.360	---	---	---	15/06/2010	28/08/2017	---	KTIMA KOSTAS LAZARIDIS SA (CR)	0.5	---	↘	0.5	19/12/2017	---	---	---	---	500@0.464	2695@0.550	---	2015	---	---	---	9,008.74	0.1711	0.649	3535	
21,364,000	1.12	---	---	---	05/07/2010	10/08/2005	---	LAMPSA HOTEL SA (CR)	17	1.19	#	16.8	19/12/2017	17	17	17	17	50@17.00	---	77.36	2015	150	2	2,550.00	363,188.00	16	17.5	5753	
5,939,268	0.620	---	---	---	10/07/2003	03/01/2002	---	LANAKAM SA (CR)	0.362	---	↘	0.362	19/12/2017	---	---	---	---	---	5000@0.390	---	---	2016	---	---	---	2,150.02	0.2	0.589	3763
8,321,682	0.670	---	---	---	17/08/2007	23/11/1999	---	N. LEVEDERIS SA (CB)	0.172	---	↘	0.172	19/12/2017	---	---	---	---	1000@0.162	600@0.186	---	2016	---	---	---	1,936.89	0.073	0.242	1757	
2,160,524	0.670	0.0436	0.0436	0.0436	07/08/2017	23/11/1999	---	N. LEVEDERIS SA (PB)	0.234	---	↘	0.234	19/12/2017	---	---	---	---	---	1800@0.256	---	---	2016	---	---	---	1,936.89	0.119	0.334	1757
17,120,280	0.940	---	---	---	01/06/2010	07/07/2017	---	LOULIS MILLS SA (CR)	1.89	-2.58	€	1.94	19/12/2017	1.9	1.88	1.91	1.89	1.899	260@1.88	40295@1.90	55.23	2015	125,115	101	237,551.30	32,357.33	1.33	3	3577
106,980,050	2.25	---	---	---	25/07/2008	24/02/2014	---	MINOAN LINES SA (CR)	2.4	2.56	#	2.34	19/12/2017	2.38	2.3	2.4	2.4	2.395	999@2.30	398@2.40	15.84	2015	1,139	7	2,727.70	256,752.12	2.07	2.55	5759
6,340,000	0.600	---	---	---	30/11/2009	06/11/2017	---	NAKAS MUSIC	1.19	-7.03	€	1.28	19/12/2017	1.2	1.19	1.2	1.2	1.194	190@1.20	2709@1.40	10.03	2017	530	5	632.80	7,544.60	0.6	1.73	5379
3,873,120	0.300	---	---	---	07/07/2008	04/10/2012	---	DRUCKFARBEN HELLAS (CR)	1.02	---	↘	1.02	19/12/2017	0.93	0.93	0.93	0.93	0.93	38@0.930	---	1.63	2015	40	1	37.20	3,950.58	0.513	1.55	1357
17,240,776	0.370	---	---	---	14/07/2005	30/09/2003	4827	PERSEUS SA (CR)	0.344	---	↘	0.344	19/12/2017	---	---	---	---	200@0.314	1100@0.358	10.33	2016	---	---	---	5,930.83	0.2	0.415	3577	
41,068,800	0.420	(0.03)	0.1205	---	19/08/2016	17/02/2016	---	CRETE PLASTICS SA (CR)	6.55	-1.50	€	6.65	19/12/2017	6.65	6.55	6.65	6.55	6.552	200@6.20	2@6.55	21.98	2015	10,414	17	68,228.10	269,000.64	4.77	6.9	1357
4,181,450	0.500	---	---	---	21/08/2000	05/03/2002	---	FLOUR MILLS SARANTOPOULOS SA	0.53	---	↘	0.53	19/12/2017	---	---	---	---	70@0.478	110@0.580	---	2015	---	---	---	2,216.17	0.478	0.744	3577	
7,568,960	3.00	0.1551	0.3099	0.1049	13/06/2017	13/06/2017	---	TITAN CEMENT CO. (PR)	16	3.56	#	15.45	19/12/2017	15.45	15.45	16.2	16	15.806	200@16.00	51@16.20	22.52	2015	4,109	58	64,946.70	1,804,942.32	13.52	19.65	2353
766,000	1.00	---	---	---	01/07/2004	11/12/2012	---	TRIA ALFA SA (CR)	2.08	---	↘	2.08	19/12/2017	---	---	---	---	---	200@2.28	---	---	2016	---	---	---	1,740.28	1.7	2.59	3763
245,000	1.00	---	---	---	19/07/2010	11/12/2012	---	TRIA ALFA SA (PR)	0.6	---	↘	0.6	19/12/2017	---	---	---	---	---	---	---	---	2016	---	---	---	1,740.28	0.6	1.63	3763
10,203,575	0.730	---	---	---	16/07/2007	18/10/1999	---	FIERATEX SA (CR)	0.148	---	↘	0.148	19/12/2017	0.162	0.162	0.162	0.162	0.163	76@0.135	76@0.148	---	2016	4	1	0.65	1,510.13	0.054	0.175	3763

Exchange Traded Funds (ETFs)

619,082	---	---	---	---	15/06/2016	---	---	ALPHA ETF FTSE Athens Large Cap	20.7	0.95	#	20.51	19/12/2017	20.7	20.7	20.7	20.7	20.7	---	53@22.99	---	---	---	1	1	20.70	---	16.011	22.4	12003
---------	-----	-----	-----	-----	------------	-----	-----	---------------------------------	------	------	---	-------	------------	------	------	------	------	------	-----	----------	-----	-----	-----	---	---	-------	-----	--------	------	-------

Surveillance

1,130,180	0.440	---	---	---	20/06/2003	02/07/2014	5157	COMPUCON SA (CR)	0.006	---	↘	0.006	18/12/2017	---	---	---	---	---	---	---	---	---	---	---	---	6.78	0.006	0.007	9537
-----------	-------	-----	-----	-----	------------	------------	------	------------------	-------	-----	---	-------	------------	-----	-----	-----	-----	-----	-----	-----	-----	-----	-----	-----	-----	------	-------	-------	------

Number of Outstanding Securities	Nominal Value	Dividends [1]			Date of Last Coupon Dividend [2]		Note	Shares	Closing price	% change	Previous closing price/date	Open price	Price min	Price max	Last price	Avg price	Last Bid [7]	Last Ask [7]	P/E after	Year	Volume	Trades	Transactions Value[8]	Company Mkt Value (thou. €)	Year low	Year high	Sector[4]
5,867,311	0.300	---	---	---	11/08/2010	28/04/2017	5123	DIONIC (CR)	0.316	19.70 #	0.264 19/12/2017	0.316	0.316	0.316	0.316	0.316	1391@0.316	---	0.10	2015	109	1	34.44	1,854.07	0.192	0.625	2797
21,820,410	0.800	---	---	---	22/05/2008	02/08/2011	4882	EUROMEDICA SA (CR)	0.125	---	0.125 19/12/2017	---	---	---	---	---	---	2000@0.150	---	2015	---	---	---	2,727.55	0.007	0.242	4533
110,147,660	0.300	---	---	---	19/09/2016		5118	Forthnet (CR)	0.348	-0.57 €	0.35 19/12/2017	0.35	0.302	0.35	0.35	0.349	2781@0.300	506@0.350	---	2015	3,774	12	1,316.05	38,331.39	0.172	0.474	9535
355,437,751	0.360	---	---	---	07/07/2010	21/09/2017	---	FRIGOGLASS SA (CR)	0.21	2.94 #	0.204 19/12/2017	0.214	0.21	0.214	0.21	0.21	4500@0.208	58683@0.210	---	2016	274,800	38	57,747.20	74,641.93	0.077	0.471	2757
51,081,030	1.00	---	---	---	20/08/2007	03/09/2007	4912	LAVIPHARM SA (CR)	0.141	-11.87 €	0.16 19/12/2017	0.141	0.141	0.141	0.141	0.141	2000@0.133	499@0.146	---	2015	14,950	5	2,107.95	7,202.43	0.07	0.162	4577
4,419,616	1.58	---	---	---	21/07/2011	04/03/2015	4983	MEDICON S.A (CR)	0.72	20.00 #	0.6 19/12/2017	0.72	0.72	0.72	0.72	0.72	920@0.480	280@0.720	1.97	2015	50	2	36.00	3,182.12	0.274	1.09	4535
14,967,940	0.500	---	---	---	21/05/2008	04/01/2008	4956	PASAL DEVELOPMENT S.A. (CR)	0.0575	19.79 #	0.048 19/12/2017	0.0575	0.0575	0.0575	0.0575	0.058	2800@0.058	---	---	2015	2,050	2	117.88	860.66	0.048	0.188	8633
65,326,268	0.530	---	---	---	04/07/2007	19/07/2006	4750	SATO SA (CR)	0.03	20.00 #	0.025 19/12/2017	0.03	0.03	0.03	0.03	0.03	15000@0.028	---	---	2015	1,000	1	30.00	1,959.79	0.025	0.109	3726
13,191,620	0.620	---	---	---	04/08/2010	09/09/2002	4977	YALCO - CONSTANTINOU SA (CB)	0.129	---	0.129 19/12/2017	---	---	---	---	---	---	1986@0.151	---	2015	---	---	---	1,701.72	0.027	0.265	3722
33,301,715	0.320	---	---	---	27/06/2003	08/07/2009	5149	AEGEK (CR)	0.024	-2.04 €	0.025 19/12/2017	0.0225	0.022	0.025	0.022	0.024	6089@0.022	5000@0.025	---	2015	46,769	19	1,119.99	799.24	0.022	0.056	2357
13,000,000	1.00	---	---	---	01/08/2007	07/04/2000	5093	AKRITAS SA (CR)	0.16	---	0.16 19/12/2017	0.16	0.16	0.16	0.16	0.16	---	40@0.160	---	2015	100	3	16.00	2,080.00	0.106	0.244	2353
185,373,016	0.300	---	---	---	02/07/2008	28/02/2011	4957	ANEK LINES SA (CR)	0.065	---	0.065 19/12/2017	0.064	0.063	0.066	0.066	0.065	1000@0.065	2804@0.066	27.19	2015	22,071	12	1,432.51	12,330.39	0.051	0.099	5759
312,163	0.300	---	---	---	02/07/2008	28/02/2011	4959	ANEK LINES SA (PR, issue '90)	0.092	---	0.092 19/12/2017	---	---	---	---	---	---	---	38.48	2015	---	---	---	12,330.39	0.077	0.422	5759
2,969,713	0.300	---	---	---	02/07/2008	28/02/2011	4958	ANEK LINES SA (PR, issue '96)	0.085	---	0.085 19/12/2017	---	---	---	---	---	---	3000@0.085	35.56	2015	---	---	---	12,330.39	0.021	0.124	5759
4,737,503	0.320	---	---	---	22/06/2005	22/09/2015	5115	VARANGIS AVEPE S.A. (CR)	0.17	---	0.17 19/12/2017	---	---	---	---	---	---	202@0.136	---	2015	---	---	---	805.38	0.17	0.22	3726
16,383,428	0.300	---	---	---	25/06/2002	21/06/2013	4997	VARVARESSOS SA (CB)	0.1	---	0.1 19/12/2017	---	---	---	---	---	---	83@0.080	---	2016	---	---	---	1,638.34	0.031	0.24	3763
17,579,754	4.16	---	---	---	18/08/2006	02/08/2010	5156	BIOTER SA (CR)	0.075	-0.66 €	0.076 19/12/2017	0.075	0.075	0.075	0.075	0.075	3000@0.070	1000@0.090	---	2015	3,000	2	225.00	1,318.48	0.041	0.188	2357
77,126,446	0.340	---	---	---	23/05/2005	18/08/2011	5094	G.E. DIMITRIOU (CR)	0.013	8.33 #	0.012 19/12/2017	0.013	0.013	0.013	0.013	0.013	50000@0.010	2599@0.013	---	2015	5,000	5	65.00	1,002.64	0.009	0.032	3722
6,000,000	0.600	---	---	---	13/06/2008	08/04/2004	5152	EUROBROKERS S.A. (CR)	0.007	---	0.007 19/12/2017	---	---	---	---	---	6000@0.007	---	---	2016	---	---	---	42.00	0.007	0.01	8534
15,878,748	0.480	---	---	---	10/07/2006	22/03/2004	5095	DOMIKI KRITIS SA (CR)	0.124	11.71 #	0.111 19/12/2017	0.124	0.124	0.124	0.124	0.124	1000@0.106	400@0.127	---	2015	1,000	1	124.00	1,968.96	0.066	0.29	2357
3,961,300	1.28	---	---	---	29/06/2004	03/08/2000	5080	DUROS SA (CR)	0.23	19.79 #	0.192 19/12/2017	0.23	0.23	0.23	0.23	0.23	---	350@0.230	---	2016	40	2	9.20	911.10	0.07	0.4	3763
7,085,888	1.59	---	---	---	02/07/1996	06/09/2010	4690	ELVIEMEK (CR)	4.7	---	4.7 19/12/2017	---	---	---	---	---	---	---	---	2015	---	---	---	33,303.67	4.7	4.7	8633
7,125,216	0.650	---	---	---	01/07/2005	14/12/1999	4955	KRE.KA SA (CR)	0.134	---	0.134 19/12/2017	---	---	---	---	---	1000@0.108	2000@0.130	---	2016	---	---	---	954.78	0.042	0.19	3573
7,734,375	1.00	---	---	---	09/07/2007	07/01/2011	5112	LIVANIS SA (CR)	0.122	---	0.122 19/12/2017	0.122	0.122	0.122	0.122	0.122	---	999@0.109	---	2015	500	1	61.00	943.59	0.006	0.123	5557
9,567,289	0.300	---	---	---	01/07/2004	19/11/2007	5158	MARAC ELECTRONICS (CR)	0.298	---	0.298 18/12/2017	---	---	---	---	---	---	2000@0.240	---	---	---	---	---	2,851.05	0.298	0.298	9578
15,842,391	1.51	---	---	---	15/07/2009	12/05/2000	5141	BITROS HOLDING SA (CR)	0.19	5.56 #	0.18 19/12/2017	0.144	0.144	0.19	0.19	0.19	699@0.144	590@0.190	---	2015	301	3	57.14	3,010.05	0.078	0.239	1757
25,179,640	0.600	---	---	---	08/08/1994	19/09/2000	5057	J.BOUTARIS & SON HOLD. SA (CB)	0.038	-5.00 €	0.04 19/12/2017	0.038	0.038	0.038	0.038	0.038	95@0.038	21026@0.040	---	2015	2,905	2	110.39	1,086.19	0.032	0.096	3535
1,540,000	0.600	---	---	---	08/08/1994	19/09/2000	5058	J.BOUTARIS & SON HOLD. (PB)	0.084	---	0.084 19/12/2017	---	---	---	---	---	---	100@0.084	---	2015	---	---	---	1,086.19	0.066	0.084	3535
79,596,820	0.300	---	---	---	15/07/2008	27/04/2017	5146	NIKAS SA (CR)	0.5	---	0.5 19/12/2017	---	---	---	---	---	---	---	---	2015	---	---	---	39,798.41	0.227	0.5	3577
10,186,667	1.35	---	---	---	24/06/2008	02/02/2016	4887	SIDMA SA (CR)	0.32	---	0.32 19/12/2017	---	---	---	---	---	310@0.280	210@0.360	---	2015	---	---	---	3,259.73	0.157	0.6	1757
7,914,480	0.300	---	---	---	23/06/2008	29/06/2011	4888	SFAKIANAKIS SA (CR)	0.65	---	0.65 19/12/2017	---	---	---	---	---	40@0.520	500@0.700	---	2015	---	---	---	5,144.41	0.21	1.08	5379
1,270,000	0.300	---	---	---	06/07/2007	06/02/2013	5007	GIRAKIAN PROFIL SA (CB)	0.037	---	0.037 19/12/2017	---	---	---	---	---	1920@0.044	---	---	2016	---	---	---	46.99	0.016	0.1	1757
4,034,950	0.680	---	---	---	01/07/2005	30/12/2010	5114	CHATZIKRANIOTIS & SONS SA (CR)	0.174	-2.25 €	0.178 19/12/2017	0.176	0.143	0.176	0.143	0.174	---	50@0.160	---	2016	1,050	3	183.15	702.08	0.032	0.178	3577

Suspension Status

215,246,452	0.300	---	---	---	25/06/2001	24/09/2001	4446	ALTEC SA (CR)	0.012	---	0.012 30/11/2015	---	---	---	---	---	---	---	---	---	---	---	---	2,582.96	0.012	0.012	9533
20,255,805	0.300	---	---	---	22/08/2006	02/08/2010	5136	AXON HOLDING SA (CR)	0.058	---	0.058 28/04/2017	---	---	---	---	---	---	---	---	---	---	---	---	1,174.84	0.007	0.066	4533
13,555,100	1.00	---	---	---	08/07/2005		4576	MICROLAND COMPUTERS SA (CR)	0.64	---	0.64 14/07/2009	---	---	---	---	---	---	---	---	---	---	---	---	8,675.26	0.64	0.64	5379
40,946,303	0.360	---	---	---	18/07/2005	27/11/2007	5089	PC SYSTEMS SA (CR)	0.006	---	0.006 31/03/2016	---	---	---	---	---	---	---	---	---	---	---	---	245.68	0.006	0.006	9533
5,000,000	0.400	---	---	---	03/06/2009	01/09/2014	5087	ALCO HELLAS SA (CR)	0.18	---	0.18 31/03/2015	---	---	---	---	---	---	---	---	---	---	---	---	900.00	0.18	0.18	1753

Daily Official List

Year: 138 Trading Day No: 246

Section 2: Analytic Figures of Shares Transactions

Wednesday, 20 December, 2017

Number of Outstanding Securities	Nominal Value	Dividends [1]			Date of Last Coupon Dividend [2]		Right	Note	Shares	Closing price	% change	Previous closing price/date	Open price	Price min	Price max	Last price	Avg price	Last Bid [7]	Last Ask [7]	P/E after	Year	Volume	Trades	Transactions Value[8]	Company Mkt Value (thou. €)	Year low	Year high	Sector[4]
14,870,100	0.300	---	---	---	15/05/2008	26/09/2011	5130	ALPHA GRISSIN S.A. (CR)		0.014	---	0.014	13/04/2017	---	---	---	---	---	---	---	---	---	---	---	208.18	0.014	0.031	9533
81,644,555	0.300	---	---	---	01/07/2008	02/09/2002	5098	ATTI - KAT SA (CR)		0.012	---	0.012	29/05/2015	---	---	---	---	---	---	---	---	---	---	---	979.73	0.012	0.012	2357
20,121,710	1.21	---	---	---	27/07/1992	12/03/2003	5002	BALKAN R.E. (CR)		0.19	---	0.19	29/08/2013	---	---	---	---	---	---	---	---	---	---	---	3,823.12	0.19	0.19	8633
33,930,000	0.300	---	---	---	03/07/2006	30/05/2001	4865	BABIS VOVOS SA (CR)		0.304	---	0.304	30/03/2012	---	---	---	---	---	---	---	---	---	---	---	10,314.72	0.304	0.304	8633
7,847,611	1.20	---	---	---	01/08/2007	28/09/2011	4939	EDRASIS - C. PSALLIDAS SA (CR)		0.15	---	0.15	29/11/2012	---	---	---	---	---	---	---	---	---	---	---	1,177.14	0.15	0.15	2357
36,748,909	0.730	---	---	---	15/12/2005	13/12/2006	5109	HEL. SUGAR INDUSTRY SA (CB)		0.075	---	0.075	29/02/2016	---	---	---	---	---	---	---	---	---	---	---	2,756.17	0.075	0.075	3577
30,390,000	0.310	---	---	---	18/08/2008	29/12/2006	5099	HELLENIC FISHFARMING SA (CR)		0.07	---	0.07	02/06/2015	---	---	---	---	---	---	---	---	---	---	---	2,127.30	0.07	0.07	3573
13,692,227	1.47	---	---	---	07/07/2006	08/10/1999	5049	HELLENIC FABRICS SA (CR)		0.117	---	0.117	31/03/2014	---	---	---	---	---	---	---	---	---	---	---	1,601.99	0.117	0.117	3763
24,619,524	0.500	---	---	---	10/10/1986	30/12/2002	4914	KERAMIA-ALLATINI (CR)		0.088	---	0.088	30/08/2012	---	---	---	---	---	---	---	---	---	---	---	2,166.52	0.088	0.088	8633
66,937,526	0.700	---	---	---	13/08/2010	21/05/2003	5003	MICHANIKI SA (CR)		0.1	---	0.1	29/08/2013	---	---	---	---	---	---	---	---	---	---	---	9,186.78	0.1	0.1	2357
25,968,987	0.700	---	---	---	13/08/2010	21/05/2003	5004	MICHANIKI SA (PR)		0.096	---	0.096	29/08/2013	---	---	---	---	---	---	---	---	---	---	---	9,186.78	0.096	0.096	2357
23,935,280	0.300	---	---	---	29/06/2009	13/06/2000	5153	NAYTEMPORIKI PUBLISHING SA(CR)		0.107	---	0.107	02/10/2017	---	---	---	---	---	---	---	---	---	---	---	2,561.07	0.017	0.118	5557
255,459,600	0.300	---	---	---	26/06/2000	03/12/2010	5101	NEL SA (CR)		0.07	---	0.07	31/08/2015	---	---	---	---	---	---	---	---	---	---	---	17,882.17	0.07	0.07	5759
23,463,874	0.800	---	---	---	23/05/2003	21/12/1999	4918	NEORION SA (CR)		0.125	---	0.125	30/08/2012	---	---	---	---	---	---	---	---	---	---	---	2,932.98	0.125	0.125	2753
18,750,000	0.300	---	---	---	02/07/2001	31/12/2012	5154	PEGASUS PUBLISHING S.A. (CR)		0.089	---	0.089	02/10/2017	---	---	---	---	---	---	---	---	---	---	---	1,668.75	0.017	0.336	5557
24,319,250	0.300	---	---	---	09/07/2002	04/07/2007	5150	PROODEFTIKH SA (CR)		0.06	---	0.06	28/09/2017	---	---	---	---	---	---	---	---	---	---	---	1,459.16	0.02	0.069	2357
144,688,060	0.600	---	---	---	21/04/2008	10/03/2010	4982	T BANK (CR)		0.048	---	0.052 #	29/11/2011	---	---	---	---	---	---	---	---	---	---	---	6,945.03	0.048	0.048	8355
284,465,964	3.70	---	---	---	20/06/2008	15/06/2009	4913	TT HELLENIC POSTBANK (CR)		0.168	---	0.239 #	29/08/2012	---	---	---	---	---	---	---	---	---	---	---	47,790.28	0.168	0.168	8355
13,920,000	0.320	---	---	---	19/11/2001	01/08/2000	4726	TEXAPRET SA (CR)		0.08	---	0.08	28/02/2011	---	---	---	---	---	---	---	---	---	---	---	1,113.60	0.08	0.08	3763
100,793,572	0.300	---	---	---	16/07/2009	11/02/2016	5110	TELETIPOS SA (CR)		0.06	---	0.06	07/03/2016	---	---	---	---	---	---	---	---	---	---	---	6,047.61	0.06	0.06	5553
510,840	1.00	---	---	---	15/07/2008	21/11/2013	5036	TROPEA HOLDING (CR)		2	---	0.02 #	30/03/2012	---	---	---	---	---	---	---	---	---	---	---	1,021.68	2	2	3722

Shares' Notes

Code	Note text
()	- Adjusted dividends.
*	- Last adjusted closing price.
[1]	- Net dividends.
[2]	- The "Date of Last Coupon" for New listings refers to the date company's stocks started to trade in Athex
[3]	- The Company Market Value is referred to the number of outstanding shares
[4]	- Sectors codification can be found in Appendix A
[5]	- The Market Value refers to the total number of shares listed (including their several classes) in the exchange by the company.
[6]	- P/E greater than 100
[7]	- Last view of the Order Book before the end of the trading session
[8]	- All Blocks Methods' Transactions Value are included.
4446	- Transfer to the "Under Supervision" Category as of 20/10/2008.
4576	- Suspension of trading as of 14/7/2009.
4690	- Transfer to Surveillance category as of 4/4/2006.
4726	- Suspension of trading as of 1/3/2011.
4750	- Transfer to the "Under Surveillance Category" from 8/4/2011.
4795	- The final gross (pre-tax) dividend is € 0.30 per share and subject to withholding tax on the full dividend amount, i.e. 0.45 per share, for those shareholders liable to withholding tax, in accordance with the applicable tax law provisions.
4823	- Transfer to the Low Dispersion category as of 4/4/2006.
4827	- Transfer to the Low Dispersion category as of 5/5/2010.
4865	- Suspension of trading as of 2/4/2012.
4882	- Transfer to the Surveillance Category as of 10/4/2012.
4887	- Transfer to the Surveillance Category as of 10/4/2012.
4888	- Transfer to the Surveillance Category as of 10/4/2012.
4912	- Transfer to the Surveillance Category as of 31/7/2012.
4913	- Suspension of trading as of 30/8/2012.
4914	- Suspension of trading as of 31/8/2012.
4918	- Suspension of trading as of 31/8/2012.
4939	- Suspension of trading as of 30/11/2012.
4955	- Transfer to the Surveillance Category as from 5/4/2013.
4956	- Transfer to the Surveillance Category as from 5/4/2013.
4957	- Transfer to the Surveillance Category as from 5/4/2013.
4958	- Transfer to the Surveillance Category as from 5/4/2013.
4959	- Transfer to the Surveillance Category as from 5/4/2013.
4977	- Transfer to the "Under Surveillance Category" from 11/6/2013.
4982	- Suspension of trading as of 1/12/2011.
4983	- Transfer to the Surveillance Category as of 5/4/2013.
4997	- Transfer to the Under Supervision Category as of 21/12/2009. - The 6,870,053 new (CB) shares, resulting from the recent share capital increase through a rights issue, are not yet admitted to trading on the ATHEX.
5002	- Suspension of trading as of 30/08/2013.
5003	- Suspension of trading as of 30/08/2013.
5004	- Suspension of trading as of 30/08/2013.
5007	- Transfer to the Surveillance category, as of 11/10/2013.
5031	- The 612,300 new (CR) shares, resulting from the recent share capital increase through a rights issue, are not yet admitted to trading on the ATHEX.
5036	- The company's share is under suspension of trading as of 2/4/2012. During suspension, the company proceeded and concluded a share reverse split, according to which - after the conclusion of the corporate action - the total number of the company's shares, as well as, the last closing price of 30/03/2012 were adjusted.
5049	- Under suspension of trading as of 1/4/2014.
5057	- Transfer to the Surveillance Category as of 29/12/2011.
5058	- Transfer to the Surveillance Category as of 29/12/2011.
5080	- Suspension of trading as of 6/9/2011.
5087	- Suspension of trading as of 1/4/2015.
5089	- Transfer to the Surveillance Category as of 8/4/2015.
5093	- Transfer to the Surveillance Category as of 8/4/2015.
5094	- Transfer to the Surveillance Category as of 8/4/2015.

Shares' Notes

Code	Note text
5095	- Transfer to the Surveillance Category as from 9/4/2015.
5098	- Suspension of trading as of 2/6/2015.
5099	- Suspension of trading as of 3/6/2015.
5101	- Suspension of trading as of 1/9/2015.
5109	- Suspension of trading as of 01/03/2016.
5110	- Suspension of trading as of 08/03/2016.
5112	- Transfer to the Surveillance Category as of 15/04/2016.
5114	- Transfer to the Surveillance Category as of 15/04/2016.
5115	- Transfer to the Surveillance Category as of 15/04/2016.
5118	- Transfer to the Surveillance Category as of 25/11/2011. Issue of a Convertible Bond Loan in progress through a rights issue. Rights' trading period on ATHEX: 22/09/2016 - 03/10/2016, pre-emption rights' subscription period: 22/09/2016 - 06/10/2016.
5123	- Transfer to the Surveillance Category as of 10/4/2014.
5130	- Suspension of trading as of 18/04/2017.
5136	- Suspension of trading as of 02/05/2017.
5141	- Transfer to the Surveillance Category as of 10/05/2017.
5146	- Transfer to the Surveillance Category as of 10/4/2012. The 77,573,688 new (CR) shares, resulting from the recent share capital increase through a rights issue, are not yet admitted to trading on the ATHEX.
5149	- Suspension of trading as of 29/09/2017.
5150	- Suspension of trading as of 29/09/2017.
5152	- Transfer to the Surveillance Category as of 10/4/2012.
5153	- Suspension of trading as of 03/10/2017.
5154	- Suspension of trading as of 03/10/2017.
5156	- Transfer to the Surveillance Category as of 11/12/2017.
5157	- Transfer to the Surveillance Category as of 11/12/2017.
5158	- Transfer to the Surveillance Category as of 11/12/2017.

Securities Blocks Details

Securities	Block Volume	Price	Block Trade Value	Time of approval	Note
HELLENIC EXCHANGES-A.S.E. (CR)	176,000	4.92	865,920.00	10:40:20	20
MOTOR OIL (CR)	35,551	18.84	669,780.84	10:48:05	20
TITAN CEMENT (CR)	27,100	21.57	584,547.00	11:37:40	20
EUROBANK ERGASIAS (CR)	500,000	0.802	401,000.00	11:45:44	20
OTE (CR)	196,372	11.40	2,238,640.80	11:56:20	20
EUROBANK ERGASIAS (CR)	400,000	0.819	327,600.00	12:27:14	20
OTE (CR)	75,000	11.41	855,750.00	13:18:45	20
NATIONAL BANK (CR)	220,800	0.299	66,019.20	13:45:30	14
NATIONAL BANK (CR)	1,000,000	0.315	314,500.00	13:54:39	20
ALPHA BANK (CR)	297,894	1.80	536,209.20	14:31:46	20
ALPHA BANK (CR)	250,000	1.80	450,000.00	14:39:41	20
ALPHA BANK (CR)	170,000	1.80	305,830.00	15:04:24	20
ALPHA BANK (CR)	250,000	1.80	449,250.00	15:22:10	20
ALPHA BANK (CR)	250,000	1.80	449,250.00	15:22:49	20
INTRALOT (CR)	9,875	1.05	10,384.55	15:24:15	14
OTE (CR)	90,749	11.44	1,037,714.82	16:33:11	20
INTRALOT (CR)	1,000,000	1.07	1,069,000.00	16:42:53	20
OTE (CR)	456,247	11.53	5,260,527.91	16:49:23	20
EUROBANK ERGASIAS (CR)	460,000	0.815	374,900.00	16:53:32	20
ALPHA BANK (CR)	250,000	1.80	450,000.00	17:17:41	20

Blocks Notes

- 9 - Method 6-1 / Special Fees
- 10 - Method 6-1 / Special Fees, SDS
- 14 - Method 6-3 / Settlement, Incomplete Buy and Sell
- 18 - Method 6-2 / SPOT 1
- 19 - Method 6-2 / SPOT 2
- 20 - Method 6-1 and Method 6-1 Same Day Settlement
- 21 - Other Pre-agreed

Shares Rights Details

Occured date	Exercise from	Exercise until	Trading until	Rights	Price min	Price max	Closing price	Last Bid	Last Ask	Volume	Trades	Transactions Value
-----------------	------------------	-------------------	------------------	--------	--------------	--------------	------------------	----------	----------	--------	--------	-----------------------

No Rights Transactions.

Shares Forced Sales

Securities	Transaction s Volume	Number of Trades	Transactions Value	Note
No Forced Transactions.				

Forced Sales Notes

- 1 - Normal Forced Sale.
- 2 - Forced Sales of Fixed Registered Shares.
- 3 - Forced Sales of Remaining Stock Fractions.

Forced Sales Registered Shares

Securities	Start Date	End Date	Initial Volume	Remaining Volume	Date	Avg price (day)	Avg price (period)	Number of Trades	Transactions Volume	Transactions Value
------------	------------	----------	----------------	------------------	------	-----------------	--------------------	------------------	---------------------	--------------------

No Fixed Registered Shares Forced Sales.

Forced Sales Notes

According to Decision 1/380/04.05.2008 of the Hellenic Republic Capital Market Commission, the certificated registered shares that have not been deposited to the issuer for dematerialisation, will be auctioned in the Athens Exchange by the supervising issuer. Forced sales procedure is held according to Article 99A of the Athens Exchange Rulebook. The average price of the period is calculated by dividing the Total transactions value by the Total volume and includes all the transactions made until the current date.

Exchange Traded Funds (ETFs) Characteristics

	Transactions Date (T)	Creation / Redemption	Units (T-1)	New Units (T-1)	Redemptio n Units (T-	Units (T) [1]	Fund Assets [2]	Net Unit Price	Dividen d per	Dividend Date
ALPHA ETF FTSE Athex Large Cap	20/12/2017	5,000	619,082	---	---	619,082	12,736,110.00	20.5726	0.37	30/06/2016

ETFs Notes

[1] - Units (T) = Units (T-1) + New Units (T-1) - Redemption Units (T-1)

[2] - The Creation / Redemption Units of T-1 are included.

Convertible Corporate Bonds - Regulated Market

Num Listed Bonds	Nominal price	Issue price	Today's Rate	Exp. Date	Duration (years)	Note	Coupon		Trading	Corporate Bonds	Price min	Price max	Closing price	Previous closing price/date		Volume	Transactions Value	Last order		Date	ear min	Year max
							Common	Preferred										Price	Buy / Sell			
233,698,458	0.30	0.30	1.00	11/10/2025	9	---	5	---	1	FORTHNET S.A. (Convertible)	---	---	---	---	---	---	---	0.1501	B	20/12/2017	100.0000	100.0000
1,774,359	13.76	9.77	0.00	21/10/2025	18	---	26	---	1	NIREUS S.A. (Convertible)	---	---	---	80.0000	13/12/2017	---	---	61.0001	B	20/12/2017	61.0501	99.0000

Corporate Bonds Notes

Transactions Volume = (Pieces) * (Nominal Price). Transactions Value = (Pieces) * (Nominal Price) * (price %) + (Accrued interest).
The price of a Bond is stated as a percentage (%) of Bond's Nominal Price.
Nominal Price in Euros (€), except if it is noted differently.

Non Convertible Corporate Bonds - Regulated Market

Num Listed Bonds	Nominal price	Issue price	Today's Rate	Exp. Date	Duration (years)	Note	Coupon		Trading	Corporate Bonds	Accrued Int.	Yield.T.Mat	Price min	Price max	Closing price	Previous closing price/date	Volume	Transactions Value	Last order		Date	ear min	Year max	
							Common	Preferred											Price	Buy / Sell				
60,000	1,000.00	1,000.00	3.85	21/07/2022	5	---	1	---	1	TERNA ENERGY FINANCE S.A. (Non Convertible)	16.4694	3.5420	100.9999	103.4800	101.0000	101.0000	19/12/2017	64,000	66,784.04	100.3501	B	20/12/2017	100.0200	103.4800
300,000	1,000.00	1,000.00	3.10	27/06/2022	5	---	1	---	1	MYTILINEOS HOLDINGS S.A. (Non Convertible)	15.3278	2.9460	100.3200	100.4400	100.4400	100.4400	19/12/2017	109,000	111,067.33	100.3501	B	20/12/2017	100.0100	100.6400
50,000	1,000.00	1,000.00	4.25	20/06/2022	5	---	2	---	1	SYSTEMS SUNLIGHT S.A. (Non Convertible)	0.2361	3.7830	101.5000	101.5000	101.5000	101.1350	19/12/2017	5,000	5,076.18	101.1200	B	20/12/2017	100.0230	101.8500
200,000	1,000.00	1,000.00	3.50	21/03/2022	5	---	2	---	1	O.P.A.P. S.A. (Non Convertible)	8.9444	2.7030	102.7000	102.8800	102.8000	102.8000	19/12/2017	21,000	21,785.43	102.7000	B	20/12/2017	100.2800	103.1000
40,000,000	1.00	1.00	5.00	04/10/2021	5	---	5	---	1	HOUSEMARKET S.A. (Non Convertible)	0.0110	3.7390	103.6300	103.7000	103.4687	103.4690	19/12/2017	89,800	94,092.53	103.4000	B	20/12/2017	100.1895	103.7000

Corporate Bonds Notes

Transactions Volume = (Pieces) * (Nominal Price). Transactions Value = (Pieces) * (Nominal Price) * (price %) + (Accrued interest).
The price of a Bond is stated as a percentage (%) of Bond's Nominal Price.
Nominal Price in Euros (€), except if it is noted differently.

Government Bonds

Number Listed Bonds	Nominal price	Today's Rate	Accrued Interest Calc	Exp. Date [1]	Duration (years)	Note	Coupons Date	Curr. coupon value	Trading Unit	Government Bonds	Price min	Price max	Closing price	Previous closing price/date	Volume	Transactions Value	Price	Last order Buy / Sell	Date
3,000,000	1,000.00	4.38	Actual/Actual	01/08/2022	5	---	01/08	4.38	1	GGB-FXD-010822-05Y-4.375-1,000	---	---	---	---	---	---	55.0001	B	12/12/2017
4,355,990,324	1.00	3.50	Actual/Actual	30/01/2023	5	---	01/02 - 31/01	3.50	1	GGB-FXD-300123-05Y-3.500-1.00	---	---	---	---	---	---	83.0001	B	18/12/2017
5,962,747,327	1.00	3.75	Actual/Actual	30/01/2028	10	---	/02 - 01/02 - 31/	3.75	1	GGB-FXD-300128-10Y-3.750-1.00	---	---	---	---	---	---	77.0001	B	18/12/2017
6,091,218,404	1.00	3.90	Actual/Actual	30/01/2033	15	---	/02 - 01/02 - 31/	3.90	1	GGB-FXD-300133-15Y-3.900-1.00	---	---	---	---	---	---	70.0001	B	18/12/2017
4,805,399,486	1.00	4.00	Actual/Actual	30/01/2037	19	---	/02 - 01/02 - 31/	4.00	1	GGB-FXD-300137-19Y-4.000-1.00	---	---	---	---	---	---	69.0001	B	18/12/2017
4,603,713,186	1.00	4.20	Actual/Actual	30/01/2042	24	---	/02 - 01/02 - 31/	4.20	1	GGB-FXD-300142-24Y-4.200-1.00	---	---	---	---	---	---	67.0001	B	18/12/2017
550,418,123	1.00	3.00	Actual/Actual	24/02/2023	11	---	24/02	3.00	1	GGB-FXD-240223-11Y-2.000-1.00	---	---	---	10.0000 22/06/2015	---	---	---	---	---
445,007,576	1.00	3.00	Actual/Actual	24/02/2024	12	---	24/02	3.00	1	GGB-FXD-240224-12Y-2.000-1.00	---	---	---	10.0000 22/06/2015	---	---	---	---	---
423,674,226	1.00	3.00	Actual/Actual	24/02/2025	13	---	24/02	3.00	1	GGB-FXD-240225-13Y-2.000-1.00	---	---	---	10.0000 22/06/2015	---	---	---	---	---
212,292,153	1.00	3.00	Actual/Actual	24/02/2026	14	---	24/02	3.00	1	GGB-FXD-240226-14Y-2.000-1.00	---	---	---	10.0000 22/06/2015	---	---	---	---	---
160,621,352	1.00	3.00	Actual/Actual	24/02/2027	15	---	24/02	3.00	1	GGB-FXD-240227-15Y-2.000-1.00	---	---	---	10.0000 22/06/2015	---	---	---	---	---
183,244,055	1.00	3.00	Actual/Actual	24/02/2028	16	---	24/02	3.00	1	GGB-FXD-240228-16Y-2.000-1.00	---	---	---	10.0000 22/06/2015	---	---	---	---	---
164,802,894	1.00	3.00	Actual/Actual	24/02/2029	17	---	24/02	3.00	1	GGB-FXD-240229-17Y-2.000-1.00	---	---	---	10.0000 22/06/2015	---	---	---	---	---
165,460,943	1.00	3.00	Actual/Actual	24/02/2030	18	---	24/02	3.00	1	GGB-FXD-240230-18Y-2.000-1.00	---	---	---	10.0000 22/06/2015	---	---	---	---	---
129,007,241	1.00	3.00	Actual/Actual	24/02/2031	19	---	24/02	3.00	1	GGB-FXD-240231-19Y-2.000-1.00	---	---	---	10.0000 22/06/2015	---	---	---	---	---
126,192,683	1.00	3.00	Actual/Actual	24/02/2032	20	---	24/02	3.00	1	GGB-FXD-240232-20Y-2.000-1.00	---	---	---	10.0000 22/06/2015	---	---	---	---	---
146,905,168	1.00	3.00	Actual/Actual	24/02/2033	21	---	24/02	3.00	1	GGB-FXD-240233-21Y-2.000-1.00	---	---	---	10.0000 22/06/2015	---	---	---	---	---
154,475,606	1.00	3.00	Actual/Actual	24/02/2034	22	---	24/02	3.00	1	GGB-FXD-240234-22Y-2.000-1.00	---	---	---	10.0000 22/06/2015	---	---	---	---	---
144,429,441	1.00	3.00	Actual/Actual	24/02/2035	23	---	24/02	3.00	1	GGB-FXD-240235-23Y-2.000-1.00	---	---	---	10.0000 22/06/2015	---	---	---	---	---
166,211,676	1.00	3.00	Actual/Actual	24/02/2036	24	---	24/02	3.00	1	GGB-FXD-240236-24Y-2.000-1.00	---	---	---	10.0000 22/06/2015	---	---	---	---	---
145,461,669	1.00	3.00	Actual/Actual	24/02/2037	25	---	24/02	3.00	1	GGB-FXD-240237-25Y-2.000-1.00	---	---	---	10.0000 22/06/2015	---	---	---	---	---
146,941,087	1.00	3.00	Actual/Actual	24/02/2038	26	---	24/02	3.00	1	GGB-FXD-240238-26Y-2.000-1.00	---	---	---	10.0000 22/06/2015	---	---	---	---	---
135,115,612	1.00	3.00	Actual/Actual	24/02/2039	27	---	24/02	3.00	1	GGB-FXD-240239-27Y-2.000-1.00	---	---	---	10.0000 22/06/2015	---	---	---	---	---
141,909,637	1.00	3.00	Actual/Actual	24/02/2040	28	---	24/02	3.00	1	GGB-FXD-240240-28Y-2.000-1.00	---	---	---	10.0000 22/06/2015	---	---	---	---	---
136,788,720	1.00	3.00	Actual/Actual	24/02/2041	29	---	24/02	3.00	1	GGB-FXD-240241-29Y-2.000-1.00	---	---	---	10.0000 22/06/2015	---	---	---	---	---
163,643,410	1.00	3.00	Actual/Actual	24/02/2042	30	---	24/02	3.00	1	GGB-FXD-240242-30Y-2.000-1.00	---	---	---	10.0000 22/06/2015	---	---	---	---	---
742,153	1,000.00	0.36	FLR Actual/360	10/08/2019	5	---	10/02 - 10/08	---	1	GGB-FLT-100819-05Y-0.934-1,000	---	---	---	---	---	---	50.0001	B	12/12/2017
2,456,470	1,000.00	4.75	Actual/Actual	17/04/2019	5	---	17/04	4.75	1	GGB-FXD-170419-05Y-4.750-1,000	---	---	---	---	---	---	---	---	---

Government Bonds Notes

Transactions Volume = (Pieces) * (Nominal Price). Transactions Value = (Pieces) * (Nominal Price) * (price %) + (Accrued interest).
The Value of current coupon for the issues with NV 0.01 euro refers to NV 100 euros
FLR: Floating Interest Rate.
[1] - The Expiration Date of the interest bearing period and the Date for coupon payment.

Bonds in Circulation	Currency / Min nominal traded Value	Coupons Payment Date	Current Coupon Value	Note	Coupon	Trading Unit	Issue Date	Duration (years)	Today's Interest	A.I.C in days	Bonds	Last price of previous days		Last Outcry in Cash (euro) Price		Buy / Sell	Date	Trades in Pieces	Life min	Life Max
Corporate Bonds in Foreign Currency and Euro																				
103,746	GBP / 10	01/12	0.25	---	59	1	01/12/1930	98	2.5	360	National Mortgage Bank	2.27	05/02/1996	2.27	S	05/02/1996	---	2.27	2.27	
0	GBP / 10	01/12	0.25	---	61	1	01/12/1928	100	2.5	360	National Mortgage Bank	---	---	---	---	---	---	---	---	---

Government Bonds Notes

A.I.C: Accrued Interest Calculation base.
FLR: Floating Interest Rate.
The minimum tradeable Nominal Value for all Demeterialised Government Titles is 100 Euros.
(μτφρ-0)

Athex & ATHEXClear Members List

Member Name			Stock Market			Derivatives Market		ATHEXClear Member	
Address	Phone	Fax	Market Member	Remote Member	Market Maker	Proprietary	Market Maker	General Clearing	Direct Clearing
A. SARRIS SECURITIES S.A.			a						
6, DRAGATSANIOU ATHINA	+30 2103367700	210-3312324							
ALPHA FINANCE INVESTMENT SERVICES S.A.			a		a	a	a		a
5, MERLIN ATHINA	+30 2103677400	210-33311193							
ALPHA BANK A.E.								a	
40, STADIOU STR ATHINA	(210)-3260000	(210)-3264116							
	(210)-3265546	(210)-3265811							
103, AVE. ATHINON ATHINA	+30 2103436820	210-3436270							
ARGUS STOCKBROKERS LTD			a	a		a			
25 , DIMOSTHENI SEVERI AVE NICOSIA	+357 22717000	0035722717070							
ATLANTIC SECURITIES LIMITED			a	a					
37, PRODROMOU NICOSIA	+357 22445400	00357 22661914							
ATLAS SECURITIES S.A			a			a			
, 125 MICHALAKOPOULOU & 14-16 VERVENON ATHINA	+30 2103363300	210-3238925							
AXIA VENTURES GROUP LTD			a	a					
, KRANIDIOTI 10, OFFICE 102 NICOSIA	+357 22742000	357 22742001							
AXON SECURITIES S.A.			a			a			
48, STADIOU ATHINA	+30 2103363800	210-3243903							
BANK OF AMERICA MERRILL LYNCH			a	a					
2 , KING EDWARD STREET LONDON	+44 20276281000								
BETA SECURITIES S.A.			a		a	a			a
29 , ALEXANDRAS AVEN. & VRILA ATHINA	+30 2106478900	210-6410139							
BNP PARIBAS SECURITIES SERVICES								a	
2, LAMPSAKOU ATHINA	+30 2107468500	210-7468579-581							
CAPITAL SECURITIES S.A.			a			a			
58, MITROPOLEOS ATHINA	+30 2103369700	+30 210 3369820							
CFS SECURITIES-INVESTMENT SERVICES S.A.			a						
3, PAPARRIGOPOULOU ATHINA	+30 2103360800	+30 210-3360980							
CITIGROUP GLOBAL MARKET LTD			a	a					
1, CITIGROUP CENTER , CANADA SQ., CANARY WHARF LONDON	+44 02079864000								
CREDIT SUISSE SECURITIES (EUROPE) LIMITED			a	a					
, ONE CABOT SQUARE LONDON	+44 2078888888								
CYCLOS SECURITIES S.A.			a			a			a
39, PANEPISTIMIOU ATHINA	+30 2103364300	+30 210-3239122							
D.A. TSEKOURAS SEC. S.A.			a						
33, STADIOU ATHINA	+30 2103245100	210-3211997							
DEUTSCHE BANK S.A.			a	a		a			
1 , GREAT WINCHESTER STREET LONDON	+44 20 754 54209	00441133361437							
DYNAMIC SECURITIES S.A.			a			a			a
8, OMIROU ATHINA	+30 2103677700	210-3677777							
EUROBANK EQUITIES INVESTMENT FIRM S.A			a		a	a	a		a
, FILELLINON 10 & XENOFONTOS 13 ATHINA	+30 2103720000	210-3720001							
EUROBANK ERGASIAS S.A.								a	
8, OTHONOS STR. ATHINA	(210)-3337969	(210)-3245916							
	(210)-3337000	(210)-3233866							
8, OTHONOS ATHINA	+30 2103337000	210-3245916							
EUROCORP INVESTMENT SERVICES S.A.			a			a			a
14, FILIKIS ETERIAS SQ, ATHINA	+30 2107263500	2107263666							
EUOTRUST BROKERAGE S.A.			a						
113, SEVASTOUPOLEOS ATHINA	+30 2103363100	+30 210-3238334							
EUROXX SECURITIES S.A.			a		a	a	a		a
7, PALEOLOGOU CHALANDRI	+30 2106879400	210-6879401							
7, PALAIOLOGOU CHALANDRI	(210)-6879400	(210)-6879401							
G. A. PERVANAS SECURITIES-INVESTMENT SERVICES CO S.A.			a						
7-9, SOFOKLEOUS ATHINA	+30 2103727200	210-3210-291							
GLOBAL CAPITAL SECURITIES AND FINANCIAL SERVICES LTD			a	a					
50, AVE. ARCHIEPISKOPOU MAKARIOU NICOSIA	+357 22710710	357 22339332							
GUARDIAN TRUST SECURITIES S.A			a			a			
31, ERMOU ATHINA	+30 2103378700	210-3220498							
HELLENIC BANK (INVESTMENTS) LTD				a					
, AVE.KYRIAKOU MATSI 31 - PO BOX 24747 NICOSIA	+357 22500100	357 22500110							
HELLENICAMERICAN SEC. S.A.			a		a	a			a
27, ANDREA PAPANDREOU ATHINA	+30 2103311100	+30 210-3215968							

Athex & ATHEXClear Members List

Member Name			Stock Market			Derivatives Market		ATHEXClear Member	
Address	Phone	Fax	Market Member	Remote Member	Market Maker	Proprietary	Market Maker	General Clearing	Direct Clearing
HSBC BANK PLC								a	
109-111, AVE. MESOGION ATHINA	+30 2106960000	210-6928000							
INDEX SECURITIES S.A.			a						
6, DRAGATSANIOU ATHINA	+30 2103213920	+30 210-3213216							
INVESTMENT BANK OF GREECE S.A.			a		a	a	a	a	
32 , EGIALIAS & PARADISOU MAROUSI	+30 2108173111	+30 210-6896325							
J. CHR. MAVRIKIS SECURITIES S.A.			a						
5, SOFOKLEOUS ATHINA	+30 2103216730	210-3217767							
KAPPA SECURITIES S.A.			a			a			
15, VALAORITOU ATHINA	+30 2103678600	+30 210-3641002							
KARAMANOF SECURITIES-INV. SERVICES S.A.			a			a			
2, SQ. AGION THEODORON ATHINA	+30 2103212947	+30 210-3217088							
LAIKI FINANCIAL SERVICES LTD			a						
26, AVE. VYRONOS NICOSIA	357 22367367	357 22718567							
LEON DEPOLAS SECURITIES S.A.			a		a	a			
1, CHRISTOU LADA ATHINA	+30 2103213276	+30 210-3211618							
MAGNA TRUST SECURITIES S.A			a						
12-14, KARAGIORGI SERBIAS ATHINA	+30 2103800820	210-3220910							
MEGA EQUITY SECURITIES & FINANCIAL SERVICES PUBLIC LTD			a	a		a			
42-44, AVE. GRIVA DIGENI NICOSIA	+357 22711711	357 22711811							
MERIT SECURITIES S.A			a		a	a			a
5, SOFOKLEOUS ATHINA	+30 2141008800	210-3671830							
N. CHRYSOCHOIDIS STOCK BROKERAGE I.S.S.A.			a			a			a
7-9, SOFOKLEOUS ATHINA	+30 2103213913	+30 210-3216115							
NATIONAL BANK OF GREECE S.A.			a		a	a		a	
86, AIOLOU STR. ATHINA	(210)-3341000	(210)-3228187							
68, AKADIMIAS STR. ATHINA	(210)-3328817	(210)-3328678							
NATIONAL SECURITIES S.A			a		a	a	a		
66, KIFISIAS AVE , BUILDING A ATHINA	+30 2107720000	+30 210-7720002							
NUNTIUS SECURITIES S.A			a						
6, DRAGATSANIOU ATHINA	+30 2103350599	+30210-3254846							
ONE PLUS CAPITAL LIMITED			a	a					
, 75 PRODOMOU AVENUE, ONEWORLD PARKVIEW HOUSE, 3RD FLOOR, 22873760									
PANTELAKIS SECURITIES S.A.			a		a	a	a		
57, ETHNIKIS ANTISTASIS B CHALANDRI	+30 2106965000	210-6929550							
PEGASUS SECURITIES S.A			a			a			
17 , VALAORITOU & AMERIKIS ATHINA	+30 2103670700	+30 210-3670760							
PIRAEUS BANK S.A.			a			a		a	
4, AMERIKIS STR ATHINA	(210)-3335918	(210)-3254207							
4, AMERIKIS ATHINA	+30 2103335000	210-3335079							
4, AMERIKIS STR. ATHINA	(210)-3335000	(210)-3335079							
PIRAEUS SECURITIES S.A.			a		a	a	a		a
10, STADIOU ATHINA	+30 2103354100	210-3354170							
PRELIUM SECURITIES-INVESTMENT SERVICES S.A.			a			a			
342, KIFISIAS ATHINA	+30 2103677000	+30 210-6926403							
PROCHOICE SECURITIES LTD			a	a					
57, SPYROU KYPRIANOY NICOSIA	+357-24-661192	+357-24-662464							
SHARELINK SECURITIES-FINANCIAL SERVICES LTD			a	a		a			
6 , THEOTOKI MEGARO ELLINA NICOSIA	+357 22554200	+357 22750852							
SOCIETE GENERALE S.A.			a	a		a			
, 17 COURS VALMY 92987 PUTEAUX - LA DEFENSE PARIS	+33 157290504	+33142138697							
SOLIDUS SECURITIES S.A			a			a			a
64, LOUIZIS RIANCOUR ATHINA	+30 2106900600	210-6985421							
ST. EM. LAVRENTAKIS SECURITIES S.A.			a			a			
7-9, SOFOKLEOUS ATHINA	+30 2103213336	+30 210-3246572							
THE CYPRUS INVESTMENT & SECURITIES CORPORATION LTD			a	a					
154, LIMASSOL AVENUE, STROVOLOS NICOSIA	+357 22121700	357 22338800							
UBS LIMITED			a	a					
1 , FINSBURY AVENUE LONDON	+44 2075687135								

List of Stocks under Market Making operations

Securities	Stock Category
Market Maker	Start Market Making
ADMIE (IPTO) HOLDING S.A. (CR)	Main Market
PIRAEUS SECURITIES S.A.	29/06/2017
ALPHA BANK (CR)	Main Market
ALPHA FINANCE INVESTMENT SERVICES S.A.	29/02/2016
EUROBANK EQUITIES INVESTMENT FIRM S.A	24/10/2012
LEON DEPOLAS SECURITIES S.A.	04/01/2016
MERIT SECURITIES S.A	03/09/2013
NATIONAL SECURITIES S.A	15/01/2013
PIRAEUS SECURITIES S.A.	28/05/2013
ALUMIL (CR)	Main Market
BETA SECURITIES S.A.	18/07/2013
ATTICA BANK S.A. (CR)	Main Market
BETA SECURITIES S.A.	02/06/2014
EUROXX SECURITIES S.A.	22/01/2016
PIRAEUS SECURITIES S.A.	20/09/2017
BYTE COMPUTER SA (CR)	Main Market
MERIT SECURITIES S.A	04/08/2013
CC HBC AG (CR)	Main Market
EUROBANK EQUITIES INVESTMENT FIRM S.A	23/10/2013
NATIONAL SECURITIES S.A	29/04/2013
PIRAEUS SECURITIES S.A.	04/05/2015
CENERGY HOLDINGS (CB)	Main Market
ALPHA FINANCE INVESTMENT SERVICES S.A.	02/01/2017
EUROBANK EQUITIES INVESTMENT FIRM S.A	02/01/2017
EKTER SA (CR)	Main Market
EUROBANK EQUITIES INVESTMENT FIRM S.A	16/10/2017
ELASTRON (CR)	Main Market
LEON DEPOLAS SECURITIES S.A.	20/02/2017
ELLAKTOR (CR)	Main Market
EUROBANK EQUITIES INVESTMENT FIRM S.A	01/06/2013
NATIONAL SECURITIES S.A	25/06/2013
ELTON SA (CR)	Main Market
BETA SECURITIES S.A.	03/09/2013
EUROBANK ERGASIAS (CR)	Main Market
ALPHA FINANCE INVESTMENT SERVICES S.A.	08/01/2013
EUROBANK EQUITIES INVESTMENT FIRM S.A	01/06/2013
HELLENICAMERICAN SEC. S.A.	25/07/2014
MERIT SECURITIES S.A	06/11/2017
NATIONAL SECURITIES S.A	01/01/2017
PIRAEUS SECURITIES S.A.	28/09/2013
FOLLI FOLLIE (CR)	Main Market
NATIONAL SECURITIES S.A	17/02/2014
PIRAEUS SECURITIES S.A.	04/05/2015
FOURLIS (CR)	Main Market
EUROBANK EQUITIES INVESTMENT FIRM S.A	01/12/2016
EUROXX SECURITIES S.A.	01/12/2016
PIRAEUS SECURITIES S.A.	06/03/2017
GEK TERNA (CR)	Main Market
HELLENICAMERICAN SEC. S.A.	07/09/2015
GR. SARANTIS SA (CR)	Main Market
ALPHA FINANCE INVESTMENT SERVICES S.A.	19/06/2017
BETA SECURITIES S.A.	14/05/2013
EUROBANK EQUITIES INVESTMENT FIRM S.A	24/10/2016
GRIVALIA PROPERTIES (CR)	Main Market
EUROBANK EQUITIES INVESTMENT FIRM S.A	20/09/2017
HELLENIC EXCHANGES-A.S.E. (CR)	Main Market
EUROBANK EQUITIES INVESTMENT FIRM S.A	01/06/2013
HELLENICAMERICAN SEC. S.A.	01/09/2014
NATIONAL SECURITIES S.A	25/06/2013
PIRAEUS SECURITIES S.A.	04/05/2015
HELLENIC PETROLEUM (CR)	Main Market
HELLENICAMERICAN SEC. S.A.	14/09/2015
PIRAEUS SECURITIES S.A.	20/03/2017
HYGEIA SA (CR)	Main Market
HELLENICAMERICAN SEC. S.A.	18/04/2016
INTERCONTINENTAL (CR)	Main Market
EUROXX SECURITIES S.A.	20/02/2017
INTRACOM HOLDINGS (CR)	Main Market
HELLENICAMERICAN SEC. S.A.	07/09/2015

List of Stocks under Market Making operations

Securities		Stock Category
Market Maker	Start Market Making	
INTRALOT (CR)		Main Market
ALPHA FINANCE INVESTMENT SERVICES S.A.	03/07/2017	
BETA SECURITIES S.A.	10/04/2017	
EUROBANK EQUITIES INVESTMENT FIRM S.A	18/12/2017	
EUROXX SECURITIES S.A.	12/06/2017	
PIRAEUS SECURITIES S.A.	28/09/2013	
J & P - AVAX SA (CR)		Main Market
EUROBANK EQUITIES INVESTMENT FIRM S.A	14/12/2015	
JUMBO SA (CR)		Main Market
MERIT SECURITIES S.A	06/11/2017	
PIRAEUS SECURITIES S.A.	06/03/2017	
KLOUKINAS - LAPPAS SA (CR)		Main Market
BETA SECURITIES S.A.	22/09/2014	
KRI-KRI S.A. (CR)		Main Market
LEON DEPOLAS SECURITIES S.A.	16/01/2017	
LAMDA DEVELOPMENT SA (CR)		Main Market
EUROBANK EQUITIES INVESTMENT FIRM S.A	08/12/2014	
PANTELAKIS SECURITIES S.A.	06/11/2017	
PIRAEUS SECURITIES S.A.	29/06/2017	
LAMPSPA HOTEL SA (CR)		Main Market
LEON DEPOLAS SECURITIES S.A.	16/01/2017	
MARFIN INVESTMENT GROUP (CR)		Main Market
HELLENICAMERICAN SEC. S.A.	25/07/2014	
LEON DEPOLAS SECURITIES S.A.	20/02/2017	
PIRAEUS SECURITIES S.A.	02/02/2013	
MLS MULTIMEDIA SA (CR)		Main Market
HELLENICAMERICAN SEC. S.A.	07/12/2015	
MOTOR OIL (CR)		Main Market
EUROBANK EQUITIES INVESTMENT FIRM S.A	23/10/2012	
HELLENICAMERICAN SEC. S.A.	01/09/2014	
NATIONAL SECURITIES S.A	17/02/2014	
PIRAEUS SECURITIES S.A.	04/05/2015	
MYTILINEOS HOLDINGS (CR)		Main Market
EUROBANK EQUITIES INVESTMENT FIRM S.A	20/09/2017	
NATIONAL SECURITIES S.A	25/06/2013	
PIRAEUS SECURITIES S.A.	04/05/2015	
NATIONAL BANK (CR)		Main Market
ALPHA FINANCE INVESTMENT SERVICES S.A.	08/01/2013	
EUROBANK EQUITIES INVESTMENT FIRM S.A	24/10/2012	
HELLENICAMERICAN SEC. S.A.	25/07/2014	
LEON DEPOLAS SECURITIES S.A.	20/04/2015	
MERIT SECURITIES S.A	03/09/2013	
NATIONAL SECURITIES S.A	28/02/2013	
PIRAEUS SECURITIES S.A.	08/09/2013	
OPAP (CR)		Main Market
ALPHA FINANCE INVESTMENT SERVICES S.A.	08/01/2013	
EUROBANK EQUITIES INVESTMENT FIRM S.A	24/10/2012	
HELLENICAMERICAN SEC. S.A.	25/07/2014	
MERIT SECURITIES S.A	20/03/2017	
NATIONAL SECURITIES S.A	15/01/2013	
PIRAEUS SECURITIES S.A.	04/05/2015	
OTE (CR)		Main Market
ALPHA FINANCE INVESTMENT SERVICES S.A.	08/01/2013	
EUROBANK EQUITIES INVESTMENT FIRM S.A	24/10/2012	
HELLENICAMERICAN SEC. S.A.	25/07/2014	
MERIT SECURITIES S.A	20/03/2017	
NATIONAL SECURITIES S.A	01/12/2012	
PIRAEUS SECURITIES S.A.	08/09/2013	
PAPOUTSANIS (CR)		Main Market
BETA SECURITIES S.A.	25/11/2013	
PETROPOULOS PETROS (CR)		Main Market
BETA SECURITIES S.A.	28/05/2013	
PIRAEUS BANK (CR)		Main Market
EUROBANK EQUITIES INVESTMENT FIRM S.A	23/10/2012	
EUROXX SECURITIES S.A.	15/02/2016	
MERIT SECURITIES S.A	16/09/2013	
NATIONAL SECURITIES S.A	02/06/2013	
PIRAEUS SECURITIES S.A.	16/02/2013	

List of Stocks under Market Making operations

Securities	Stock Category
Market Maker	Start Market Making
PLAISIO COMPUTERS SA (CR)	Main Market
BETA SECURITIES S.A.	05/05/2014
EUROBANK EQUITIES INVESTMENT FIRM S.A	02/03/2015
PPC (CR)	Main Market
ALPHA FINANCE INVESTMENT SERVICES S.A.	08/01/2013
EUROBANK EQUITIES INVESTMENT FIRM S.A	23/10/2012
MERIT SECURITIES S.A	06/11/2017
NATIONAL SECURITIES S.A	26/03/2013
PIRAEUS SECURITIES S.A.	28/09/2013
QUALITY & RELIABILITY SA (CR)	Main Market
BETA SECURITIES S.A.	20/08/2014
S.KANAKIS SA (CR)	Main Market
BETA SECURITIES S.A.	01/10/2013
TITAN CEMENT (CR)	Main Market
EUROBANK EQUITIES INVESTMENT FIRM S.A	23/10/2012
NATIONAL SECURITIES S.A	17/02/2014
PIRAEUS SECURITIES S.A.	04/05/2015
VIOHALCO SA/NV (CB)	Main Market
ALPHA FINANCE INVESTMENT SERVICES S.A.	17/02/2014
EUROBANK EQUITIES INVESTMENT FIRM S.A	01/01/2017
MERIT SECURITIES S.A	17/03/2014

Underlying Asset				Derivatives Market														
Price max	Price min	Closing price	change	Delivery Month	Open price	Price max	Price min	Last price	Closing price	Last Bid	Last Ask	Settlement price	Life high	Life low	Trades	Volume	Open Interest	
FTSE/Athex Large Cap																		(Trade Unit: 1 Index Point x 2€, Cash Settlement)
2,059.47	2,035.45	2,049.65	0.64%	January 2018	2,038.00	2,062.00	2,036.50	2,049.00	2,049.00	---	---	2,057.50	2,062.00	---	368	1,026	6,086	
				February 2018	2,045.75	2,060.00	2,045.75	2,058.00	2,058.00	---	---	2,056.50	2,060.00	---	7	49	90	
				March 2018	---	---	---	---	2,046.50	---	---	---	---	---	---	---	---	
				June 2018	---	---	---	---	2,056.75	---	---	---	---	---	---	---	---	
				September 2018	---	---	---	---	2,067.75	---	---	---	---	---	---	---	---	
				December 2018	---	---	---	---	2,078.00	---	---	---	---	---	---	---	---	

Underlying Asset				Derivatives Market													
Price max	Price min	Closing price	change	Delivery Month	Open price	Price max	Price min	Last price	Closing price	Last Bid	Last Ask	Settlement price	Life high	Life low	Trades	Volume	Open Interest
ADMIE (IPTO) HOLDING S.A. (CR)				(Contract Size: 100 Securities, Physical Delivery)													
1.962	1.89	1.934	-0.21%	March 2018	1.93	1.97	1.92	1.94	1.94	---	---	1.93	1.97	---	35	143	7,157
				June 2018	---	---	---	---	1.96	---	---	---	---	---	---	---	---
				September 2018	---	---	---	---	1.97	---	---	---	---	---	---	---	---
				December 2018	---	---	---	---	1.98	---	---	---	---	---	---	---	---
ALPHA BANK (CR)				(Contract Size: 100 Securities, Physical Delivery)													
1.819	1.781	1.8	0.00%	March 2018	1.82	1.82	1.78	1.80	1.80	---	---	1.80	1.83	---	339	12,290	39,378
				June 2018	---	---	---	---	1.82	---	---	---	---	---	---	---	---
				September 2018	---	---	---	---	1.83	---	---	---	---	---	---	---	---
				December 2018	---	---	---	---	1.84	---	---	---	---	---	---	---	---
ATTICA BANK S.A. (CR)				(Contract Size: 100 Securities, Physical Delivery)													
0.0267	0.0257	0.0257	-2.28%	March 2018	0.028	0.028	0.027	0.027	0.027	---	---	0.024	0.040	---	10	671	2,830
				June 2018	---	---	---	---	0.027	---	---	---	---	---	---	---	---
				September 2018	---	---	---	---	0.027	---	---	---	---	---	---	---	---
				December 2018	---	---	---	---	0.027	---	---	---	---	---	---	---	---
CC HBC AG (CR)				(Contract Size: 100 Securities, Physical Delivery)													
27.09	26.67	27.09	1.08%	March 2018	26.69	26.96	26.69	26.96	26.96	---	---	26.94	26.96	---	6	64	78
				June 2018	---	---	---	---	27.07	---	---	---	---	---	---	---	---
				September 2018	---	---	---	---	27.21	---	---	---	---	---	---	---	---
				December 2018	---	---	---	---	27.35	---	---	---	---	---	---	---	---
CENERGY HOLDINGS (CB)				(Contract Size: 100 Securities, Physical Delivery)													
1.312	1.284	1.298	-0.15%	March 2018	1.30	1.33	1.30	1.30	1.30	---	---	1.30	1.33	---	54	262	6,014
				June 2018	---	---	---	---	1.31	---	---	1.30	1.27	---	---	---	22
				September 2018	---	---	---	---	1.32	---	---	---	---	---	---	---	---
				December 2018	---	---	---	---	1.33	---	---	---	---	---	---	---	---
ELLAKTOR (CR)				(Contract Size: 100 Securities, Physical Delivery)													
1.674	1.62	1.65	1.23%	March 2018	1.66	1.67	1.65	1.65	1.65	---	---	1.65	1.67	---	53	402	6,389
				June 2018	---	---	---	---	1.65	---	---	1.64	1.62	---	---	---	---
				September 2018	---	---	---	---	1.65	---	---	---	---	---	---	---	---
				December 2018	---	---	---	---	1.66	---	---	---	---	---	---	---	---
EUROBANK ERGASIAS (CR)				(Contract Size: 100 Securities, Physical Delivery)													
0.827	0.795	0.804	1.77%	March 2018	0.799	0.832	0.799	0.805	0.805	---	---	0.820	0.835	---	306	6,992	62,381
				June 2018	---	---	---	---	0.798	---	---	0.812	0.717	---	---	---	10
				September 2018	---	---	---	---	0.802	---	---	---	---	---	---	---	---
				December 2018	---	---	---	---	0.806	---	---	---	---	---	---	---	---
EYDAP S.A. (CR)				(Contract Size: 100 Securities, Physical Delivery)													
6.19	6.07	6.15	1.48%	March 2018	6.16	6.19	6.15	6.15	6.15	---	---	6.15	6.24	---	7	17	1,076
				June 2018	---	---	---	---	6.12	---	---	---	---	---	---	---	---
				September 2018	---	---	---	---	6.15	---	---	---	---	---	---	---	---
				December 2018	---	---	---	---	6.18	---	---	---	---	---	---	---	---

Underlying Asset				Derivatives Market													
Price max	Price min	Closing price	change	Delivery Month	Open price	Price max	Price min	Last price	Closing price	Last Bid	Last Ask	Settlement price	Life high	Life low	Trades	Volume	Open Interest
FOLLI FOLLIE (CR)				(Contract Size: 100 Securities, Physical Delivery)													
18.3	17.96	18.28	1.90%	March 2018	18.08	18.26	18.00	18.26	18.26	---	---	18.18	18.26	---	17	69	773
				June 2018	---	---	---	---	18.12	---	---	18.39	---	17.16	---	---	---
				September 2018	---	---	---	---	18.22	---	---	---	---	---	---	---	---
				December 2018	---	---	---	---	18.31	---	---	---	---	---	---	---	---
FOURLIS (CR)				(Contract Size: 100 Securities, Physical Delivery)													
5.7	5.52	5.55	0.73%	March 2018	5.56	5.61	5.53	5.58	5.58	---	---	5.62	5.69	---	9	19	213
				June 2018	---	---	---	---	5.56	---	---	---	---	---	---	---	---
				September 2018	---	---	---	---	5.59	---	---	---	---	---	---	---	---
				December 2018	---	---	---	---	5.62	---	---	---	---	---	---	---	---
GEK TERNA (CR)				(Contract Size: 100 Securities, Physical Delivery)													
4.55	4.465	4.475	1.02%	March 2018	4.52	4.56	4.50	4.50	4.50	---	---	4.53	4.56	---	13	53	8,663
				June 2018	---	---	---	---	4.47	---	---	---	---	---	---	---	---
				September 2018	---	---	---	---	4.50	---	---	---	---	---	---	---	---
				December 2018	---	---	---	---	4.52	---	---	---	---	---	---	---	---
GRIVALIA PROPERTIES (CR)				(Contract Size: 100 Securities, Physical Delivery)													
8.88	8.77	8.81	1.03%	March 2018	8.82	8.85	8.82	8.85	8.85	---	---	8.91	8.85	---	2	6	290
				June 2018	---	---	---	---	8.81	---	---	---	---	---	---	---	---
				September 2018	---	---	---	---	8.85	---	---	---	---	---	---	---	---
				December 2018	---	---	---	---	8.90	---	---	---	---	---	---	---	---
HELLENIC EXCHANGES-A.S.E. (CR)				(Contract Size: 100 Securities, Physical Delivery)													
5	4.93	4.99	0.81%	March 2018	4.99	5.00	4.97	4.99	4.99	---	---	4.96	5.00	---	9	12	3,658
				June 2018	---	---	---	---	5.00	---	---	---	---	---	---	---	---
				September 2018	---	---	---	---	5.03	---	---	---	---	---	---	---	---
				December 2018	---	---	---	---	5.05	---	---	---	---	---	---	---	---
HELLENIC PETROLEUM (CR)				(Contract Size: 100 Securities, Physical Delivery)													
7.61	7.44	7.51	0.94%	March 2018	7.49	7.59	7.48	7.56	7.56	---	---	7.51	7.65	---	61	144	3,539
				June 2018	---	---	---	---	7.51	---	---	---	---	---	---	---	---
				September 2018	---	---	---	---	7.55	---	---	---	---	---	---	---	---
				December 2018	---	---	---	---	7.59	---	---	---	---	---	---	---	---
INTRALOT (CR)				(Contract Size: 100 Securities, Physical Delivery)													
1.084	1.062	1.078	1.32%	March 2018	1.09	1.09	1.08	1.08	1.08	---	---	1.10	1.10	---	35	605	5,008
				June 2018	---	---	---	---	1.07	---	---	1.12	---	1.10	---	---	30
				September 2018	---	---	---	---	1.08	---	---	---	---	---	---	---	---
				December 2018	---	---	---	---	1.09	---	---	---	---	---	---	---	---
JUMBO SA (CR)				(Contract Size: 100 Securities, Physical Delivery)													
14.44	14.18	14.18	-1.53%	March 2018	14.45	14.45	14.22	14.22	14.22	---	---	14.41	14.65	---	42	143	1,015
				June 2018	---	---	---	---	14.54	---	---	---	---	---	---	---	---
				September 2018	---	---	---	---	14.62	---	---	---	---	---	---	---	---
				December 2018	---	---	---	---	14.69	---	---	---	---	---	---	---	---

Underlying Asset				Derivatives Market													
Price max	Price min	Closing price	change	Delivery Month	Open price	Price max	Price min	Last price	Closing price	Last Bid	Last Ask	Settlement price	Life high	Life low	Trades	Volume	Open Interest
LAMDA DEVELOPMENT SA (CR)				(Contract Size: 100 Securities, Physical Delivery)													
6.68	6.47	6.5	1.40%	March 2018	6.65	6.68	6.50	6.50	6.50	---	---	6.56	6.68	---	15	192	1,671
				June 2018	---	---	---	---	6.47	---	---	---	---	---	---	---	---
				September 2018	---	---	---	---	6.51	---	---	---	---	---	---	---	---
				December 2018	---	---	---	---	6.54	---	---	---	---	---	---	---	---
MARFIN INVESTMENT GROUP (CR)				(Contract Size: 100 Securities, Physical Delivery)													
0.126	0.1166	0.126	8.62%	March 2018	0.120	0.128	0.119	0.125	0.125	---	---	0.127	0.128	---	229	7,962	63,697
				June 2018	---	---	---	---	0.117	---	---	---	---	---	---	---	---
				September 2018	---	---	---	---	0.118	---	---	---	---	---	---	---	---
				December 2018	---	---	---	---	0.118	---	---	---	---	---	---	---	---
MOTOR OIL (CR)				(Contract Size: 100 Securities, Physical Delivery)													
19.06	18.6	18.62	-0.96%	March 2018	18.90	18.90	18.65	18.65	18.65	---	---	18.71	20.74	---	44	142	1,060
				June 2018	---	---	---	---	18.99	---	---	---	---	---	---	---	---
				September 2018	---	---	---	---	19.09	---	---	---	---	---	---	---	---
				December 2018	---	---	---	---	19.18	---	---	---	---	---	---	---	---
MYTILINEOS HOLDINGS (CR)				(Contract Size: 100 Securities, Physical Delivery)													
9.07	9	9.02	0.11%	March 2018	9.08	9.12	9.06	9.06	9.06	---	---	9.08	9.37	---	68	490	10,536
				June 2018	---	---	---	---	9.10	---	---	9.06	9.02	---	---	---	32
				September 2018	---	---	---	---	9.15	---	---	---	---	---	---	---	---
				December 2018	---	---	---	---	9.19	---	---	---	---	---	---	---	---
NATIONAL BANK (CR)				(Contract Size: 100 Securities, Physical Delivery)													
0.316	0.3062	0.3098	-0.07%	March 2018	0.311	0.317	0.305	0.311	0.311	---	---	0.311	0.317	---	297	21,063	137,550
				June 2018	---	---	---	---	0.313	---	---	0.315	0.310	---	---	---	100
				September 2018	---	---	---	---	0.315	---	---	---	---	---	---	---	---
				December 2018	---	---	---	---	0.316	---	---	---	---	---	---	---	---
OPAP (CR)				(Contract Size: 100 Securities, Physical Delivery)													
10.16	10.04	10.06	-0.40%	March 2018	10.17	10.18	10.09	10.09	10.09	---	---	10.02	10.18	---	22	96	1,856
				June 2018	---	---	---	---	10.20	---	---	---	---	---	---	---	---
				September 2018	---	---	---	---	10.25	---	---	---	---	---	---	---	---
				December 2018	---	---	---	---	10.31	---	---	---	---	---	---	---	---
OTE (CR)				(Contract Size: 100 Securities, Physical Delivery)													
11.56	11.3	11.48	1.24%	March 2018	11.39	11.57	11.38	11.50	11.50	---	---	11.54	11.57	---	101	367	4,968
				June 2018	---	---	---	---	11.45	---	---	11.70	10.55	---	---	---	240
				September 2018	---	---	---	---	11.51	---	---	---	---	---	---	---	---
				December 2018	---	---	---	---	11.57	---	---	---	---	---	---	---	---
P.P.A. S.A. (CR)				(Contract Size: 100 Securities, Physical Delivery)													
15.86	15.4	15.86	1.02%	March 2018	15.75	15.84	15.64	15.64	15.64	---	---	15.92	15.87	---	3	3	992
				June 2018	---	---	---	---	15.86	---	---	---	---	---	---	---	---
				September 2018	---	---	---	---	15.94	---	---	---	---	---	---	---	---
				December 2018	---	---	---	---	16.02	---	---	---	---	---	---	---	---

Underlying Asset				Derivatives Market													
Price max	Price min	Closing price	change	Delivery Month	Open price	Price max	Price min	Last price	Closing price	Last Bid	Last Ask	Settlement price	Life high	Life low	Trades	Volume	Open Interest
PIRAEUS BANK (CR)				(Contract Size: 100 Securities, Physical Delivery)													
3.21	3.026	3.16	3.27%	March 2018	3.07	3.22	3.03	3.15	3.15	---	---	3.16	3.22	---	408	4,828	16,483
				June 2018	---	---	---	---	3.09	---	---	3.14	---	2.77	---	---	---
				September 2018	---	---	---	---	3.11	---	---	---	---	---	---	---	---
				December 2018	---	---	---	---	3.12	---	---	---	---	---	---	---	---
PPC (CR)				(Contract Size: 100 Securities, Physical Delivery)													
2.07	2	2.04	0.00%	March 2018	2.01	2.07	2.00	2.03	2.03	---	---	2.05	2.13	---	59	302	6,551
				June 2018	---	---	---	---	2.06	---	---	---	---	---	---	---	---
				September 2018	---	---	---	---	2.07	---	---	---	---	---	---	---	---
				December 2018	---	---	---	---	2.08	---	---	---	---	---	---	---	---
TERNA ENERGY (CR)				(Contract Size: 100 Securities, Physical Delivery)													
4.58	4.42	4.58	2.69%	March 2018	4.49	4.55	4.49	4.55	4.55	---	---	4.71	4.64	---	10	12	3,387
				June 2018	---	---	---	---	4.50	---	---	---	---	---	---	---	---
				September 2018	---	---	---	---	4.53	---	---	---	---	---	---	---	---
				December 2018	---	---	---	---	4.55	---	---	---	---	---	---	---	---
TITAN CEMENT (CR)				(Contract Size: 100 Securities, Physical Delivery)													
22	21.45	21.85	0.69%	March 2018	21.70	22.00	21.51	21.90	21.90	---	---	21.97	22.00	---	77	148	870
				June 2018	---	---	---	---	21.91	---	---	---	---	---	---	---	---
				September 2018	---	---	---	---	22.03	---	---	---	---	---	---	---	---
				December 2018	---	---	---	---	22.14	---	---	---	---	---	---	---	---
VIOHALCO SA/NV (CB)				(Contract Size: 100 Securities, Physical Delivery)													
3.28	3.125	3.26	3.66%	March 2018	3.17	3.30	3.14	3.26	3.26	---	---	3.29	3.30	---	129	567	10,957
				June 2018	---	---	---	---	3.18	---	---	3.29	---	3.18	---	---	---
				September 2018	---	---	---	---	3.19	---	---	---	---	---	---	---	---
				December 2018	---	---	---	---	3.21	---	---	---	---	---	---	---	---

FTSE/Athex Large Cap

(Trade Unit: 1 Index Point x 2€ - Exercise Style: European, Cash Settlement)

Call Options																	Put Options																			
January 2018								February 2018								Other Months		January 2018								February 2018								Other Months		
Exercise Price	Open price	Price max	Price min	Last price	Closing price	Volume	Open Interest	Open price	Price max	Price min	Last price	Closing price	Volume	Open Interest	Volume	Open Interest	Open price	Price max	Price min	Last price	Closing price	Volume	Open Interest	Open price	Price max	Price min	Last price	Closing price	Volume	Open Interest	Volume	Open Interest	Exercise Price			
1,575	-	-	-	-	-	-	-	-	-	-	-	-	-	-	-	-	-	-	-	-	-	-	-	-	-	-	-	-	-	-	-	1,575				
1,600	-	-	-	-	-	-	-	-	-	-	-	-	-	-	-	-	-	-	-	-	-	-	-	-	-	-	-	-	-	-	-	1,600				
1,625	-	-	-	-	-	-	-	-	-	-	-	-	-	-	-	-	-	-	-	-	-	-	-	-	-	-	-	-	-	-	-	1,625				
1,650	-	-	-	-	-	-	-	-	-	-	-	-	-	-	-	-	-	-	-	-	-	-	-	-	-	-	-	-	-	-	-	1,650				
1,675	-	-	-	-	-	-	-	-	-	-	-	-	-	-	-	-	-	-	-	-	-	-	-	-	-	-	-	-	-	-	-	1,675				
1,700	0.00	0.00	0.00	-	337.00	-	-	-	-	-	-	-	-	-	-	-	0.00	0.00	0.00	-	0.02	-	-	-	-	-	-	-	-	-	-	-	1,700			
1,725	0.00	0.00	0.00	-	312.00	-	-	-	-	-	-	-	-	-	-	-	0.00	0.00	0.00	-	0.05	-	-	-	-	-	-	-	-	-	-	-	1,725			
1,750	0.00	0.00	0.00	-	287.00	-	5	0.00	0.00	0.00	-	288.00	-	-	-	-	0.00	0.00	0.00	-	0.11	-	-	0.00	0.00	0.00	-	1.90	-	-	-	-	1,750			
1,775	0.00	0.00	0.00	-	262.00	-	-	0.00	0.00	0.00	-	264.00	-	-	-	-	0.00	0.00	0.00	-	0.25	-	-	0.00	0.00	0.00	-	2.90	-	-	-	-	1,775			
1,800	0.00	0.00	0.00	-	238.00	-	-	0.00	0.00	0.00	-	240.00	-	-	-	-	0.00	0.00	0.00	-	0.52	-	2	0.00	0.00	0.00	-	4.40	-	-	-	-	1,800			
1,825	0.00	0.00	0.00	-	213.00	-	40	0.00	0.00	0.00	-	217.00	-	-	-	-	0.00	0.00	0.00	-	1.00	-	35	0.00	0.00	0.00	-	6.40	-	-	-	-	1,825			
1,850	0.00	0.00	0.00	-	189.00	-	-	0.00	0.00	0.00	-	195.00	-	-	-	-	0.00	0.00	0.00	-	1.90	-	31	0.00	0.00	0.00	-	9.20	-	-	-	-	1,850			
1,875	0.00	0.00	0.00	-	166.00	-	80	0.00	0.00	0.00	-	174.00	-	-	-	-	0.00	0.00	0.00	-	3.40	-	190	0.00	0.00	0.00	-	12.75	-	-	-	-	1,875			
1,900	0.00	0.00	0.00	-	143.00	-	89	0.00	0.00	0.00	-	154.00	-	-	-	-	0.00	0.00	0.00	-	5.70	-	504	0.00	0.00	0.00	-	17.50	-	-	-	-	1,900			
1,925	0.00	0.00	0.00	-	121.00	-	180	0.00	0.00	0.00	-	135.00	-	-	-	-	0.00	0.00	0.00	-	9.10	-	302	0.00	0.00	0.00	-	23.25	-	-	-	-	1,925			
1,950	0.00	0.00	0.00	-	101.00	-	1	0.00	0.00	0.00	-	117.00	-	-	-	-	0.00	0.00	0.00	-	14.00	-	510	0.00	0.00	0.00	-	30.25	-	-	-	-	1,950			
1,975	0.00	0.00	0.00	-	83.00	-	2	0.00	0.00	0.00	-	100.00	-	-	-	-	0.00	0.00	0.00	-	20.50	-	204	0.00	0.00	0.00	-	38.75	-	-	-	-	1,975			
2,000	0.00	0.00	0.00	-	66.50	-	18	0.00	0.00	0.00	-	85.50	-	-	-	-	27.00	0.00	20.00	20.00	20.00	408	1,013	0.00	0.00	0.00	-	48.75	-	-	-	-	2,000			
2,050	0.00	0.00	0.00	-	39.75	-	20	0.00	0.00	0.00	-	60.00	-	-	-	-	0.00	0.00	0.00	-	52.00	-	-	0.00	0.00	0.00	-	73.00	-	-	-	-	2,050			
2,100	27.00	27.00	25.00	25.00	25.00	10	72	0.00	0.00	0.00	-	40.00	-	6	-	-	0.00	27.00	0.00	-	84.00	-	5	0.00	0.00	0.00	-	103.00	-	1	-	-	2,100			
2,150	0.00	0.00	0.00	-	10.50	-	-	0.00	0.00	0.00	-	25.75	-	-	-	-	0.00	0.00	0.00	-	123.00	-	-	0.00	0.00	0.00	-	139.00	-	-	-	-	2,150			
2,200	0.00	0.00	0.00	-	4.70	-	-	0.00	0.00	0.00	-	15.75	-	-	-	-	0.00	0.00	0.00	-	167.00	-	-	0.00	0.00	0.00	-	179.00	-	-	-	-	2,200			
2,250	0.00	0.00	0.00	-	1.90	-	-	0.00	0.00	0.00	-	9.30	-	-	-	-	0.00	0.00	0.00	-	214.00	-	-	0.00	0.00	0.00	-	222.00	-	-	-	-	2,250			
2,300	0.00	0.00	0.00	-	0.67	-	-	0.00	0.00	0.00	-	5.20	-	-	-	-	0.00	0.00	0.00	-	263.00	-	-	0.00	0.00	0.00	-	268.00	-	-	-	-	2,300			
2,350	-	-	-	-	-	-	-	-	-	-	-	-	-	-	-	-	-	-	-	-	-	-	-	-	-	-	-	-	-	-	-	2,350				
2,400	-	-	-	-	-	-	-	-	-	-	-	-	-	-	-	-	-	-	-	-	-	-	-	-	-	-	-	-	-	-	-	2,400				
2,450	-	-	-	-	-	-	-	-	-	-	-	-	-	-	-	-	-	-	-	-	-	-	-	-	-	-	-	-	-	-	-	2,450				
2,500	-	-	-	-	-	-	-	-	-	-	-	-	-	-	-	-	-	-	-	-	-	-	-	-	-	-	-	-	-	-	-	2,500				
Totals:						10	507							0	6	0	75							408	2,796							0	1	0	72	
Number of Trades:						4								0		0								6								0		0		

ALPHA BANK (CR)

(Contract Size: 100 Securities, Exercise Style: American, Physical Delivery)

Call Options																	Put Options																			
January 2018								February 2018								Other Months		January 2018								February 2018								Other Months		Exercise Price
Exercise Price	Open price	Price max	Price min	Last price	Closing price	Volume	Open Interest	Open price	Price max	Price min	Last price	Closing price	Volume	Open Interest	Volume	Open Interest	Open price	Price max	Price min	Last price	Closing price	Volume	Open Interest	Open price	Price max	Price min	Last price	Closing price	Volume	Open Interest	Volume	Open Interest				
0.900	0.000	0.000	0.000		0.902	-	-						-	-			0.000	0.000	0.000		0.001	-	-					-	-			0.009				
0.950	0.000	0.000	0.000		0.852	-	-	0.000	0.000	0.000		0.853	-	-			0.000	0.000	0.000		0.001	-	-	0.000	0.000	0.000		0.001	-	-			0.010			
1.000	0.000	0.000	0.000		0.802	-	-	0.000	0.000	0.000		0.803	-	-			0.000	0.000	0.000		0.001	-	-	0.000	0.000	0.000		0.001	-	-			0.010			
1.100	0.000	0.000	0.000		0.702	-	-	0.000	0.000	0.000		0.704	-	-			0.000	0.000	0.000		0.001	-	-	0.000	0.000	0.000		0.001	-	-			0.011			
1.200	0.000	0.000	0.000		0.602	-	-	0.000	0.000	0.000		0.605	-	-			0.000	0.000	0.000		0.001	-	-	0.000	0.000	0.000		0.001	-	-			0.012			
1.300	0.000	0.000	0.000		0.502	-	-	0.000	0.000	0.000		0.508	-	-			0.000	0.000	0.000		0.001	-	-	0.000	0.000	0.000		0.004	-	-			0.013			
1.400	0.000	0.000	0.000		0.404	-	-	0.000	0.000	0.000		0.414	-	-			0.000	0.000	0.000		0.001	-	-	0.000	0.000	0.000		0.010	-	-			0.014			
1.500	0.000	0.000	0.000		0.309	-	100	0.000	0.000	0.000		0.328	-	-			0.000	0.000	0.000		0.006	-	-	0.000	0.000	0.000		0.023	-	-			0.015			
1.600	0.000	0.000	0.000		0.222	-	-	0.000	0.000	0.000		0.251	-	-			0.000	0.000	0.000		0.019	-	-	0.000	0.000	0.000		0.046	-	-			0.016			
1.700	0.000	0.000	0.000		0.148	-	-	0.000	0.000	0.000		0.185	-	-			0.000	0.000	0.000		0.046	-	-	0.000	0.000	0.000		0.079	-	-			0.017			
1.800	0.000	0.000	0.000		0.091	-	-	0.000	0.000	0.000		0.131	-	-			0.000	0.000	0.000		0.088	-	-	0.000	0.000	0.000		0.126	-	-			0.018			
1.900	0.000	0.000	0.000		0.052	-	-	0.000	0.000	0.000		0.090	-	-			0.000	0.000	0.000		0.149	-	-	0.000	0.000	0.000		0.185	-	-			0.019			
2.000	0.000	0.000	0.000		0.027	-	-	0.000	0.000	0.000		0.060	-	-			0.000	0.000	0.000		0.224	-	-	0.000	0.000	0.000		0.255	-	-			0.020			
2.200	0.000	0.000	0.000		0.006	-	-	0.000	0.000	0.000		0.024	-	-			0.000	0.000	0.000		0.404	-	-	0.000	0.000	0.000		0.419	-	-			0.022			
2.400	0.000	0.000	0.000		0.001	-	-	0.000	0.000	0.000		0.009	-	-			0.000	0.000	0.000		0.600	-	-	0.000	0.000	0.000		0.605	-	-			0.024			
2.600	0.000	0.000	0.000		0.001	-	-	0.000	0.000	0.000		0.003	-	-			0.000	0.000	0.000		0.800	-	-	0.000	0.000	0.000		0.800	-	-			0.026			
2.800						-	-						-	-								-	-					-	-			0.028				
3.000						-	-						-	-								-	-					-	-			0.030				
3.200						-	-						-	-								-	-					-	-			0.032				
Totals:													0	0	0	0						0	0					0	0	0	0					
Number of Trades:													0	0	0							0.00						0	0	0	0					

NATIONAL BANK (CR)

(Contract Size: 100 Securities, Exercise Style: American, Physical Delivery)

Call Options																Put Options																							
Exercise Price	January 2018							February 2018							Other Months		January 2018							February 2018							Other Months		Exercise Price						
	Open price	Price max	Price min	Last price	Closing price	Volume	Open Interest	Open price	Price max	Price min	Last price	Closing price	Volume	Open Interest	Volume	Open Interest	Open price	Price max	Price min	Last price	Closing price	Volume	Open Interest	Open price	Price max	Price min	Last price	Closing price	Volume	Open Interest	Volume	Open Interest							
0.050	0.000	0.000	0.000		0.260	-	-	0.000	0.000	0.000		0.260	-	-			0.000	0.000	0.000		0.002	-	-	0.000	0.000	0.000		0.001	-	-			0.001						
0.100	0.000	0.000	0.000		0.210	-	-	0.000	0.000	0.000		0.210	-	-			0.000	0.000	0.000		0.001	-	-	0.000	0.000	0.000		0.002	-	-			0.001						
0.150	0.000	0.000	0.000		0.161	-	-	0.000	0.000	0.000		0.161	-	-			0.000	0.000	0.000		0.001	-	-	0.000	0.000	0.000		0.001	-	-			0.002						
0.200	0.000	0.000	0.000		0.114	-	-	0.000	0.000	0.000		0.116	-	-			0.000	0.000	0.000		0.004	-	-	0.000	0.000	0.000		0.005	-	-			0.002						
0.250	0.000	0.000	0.000		0.076	-	-	0.000	0.000	0.000		0.079	-	-			0.000	0.000	0.000		0.015	-	-	0.000	0.000	0.000		0.018	-	-			0.003						
0.300	0.000	0.000	0.000		0.047	-	-	0.000	0.000	0.000		0.051	-	-			0.000	0.000	0.000		0.037	-	-	0.000	0.000	0.000		0.040	-	-			0.003						
0.350	0.000	0.000	0.000		0.028	-	-	0.000	0.000	0.000		0.032	-	-			0.000	0.000	0.000		0.067	-	-	0.000	0.000	0.000		0.071	-	-			0.004						
0.400	0.000	0.000	0.000		0.016	-	-	0.000	0.000	0.000		0.020	-	-			0.000	0.000	0.000		0.106	-	-	0.000	0.000	0.000		0.109	-	-			0.004						
0.450	0.000	0.000	0.000		0.009	-	-	0.000	0.000	0.000		0.012	-	-			0.000	0.000	0.000		0.148	-	-	0.000	0.000	0.000		0.151	-	-			0.005						
0.500	0.000	0.000	0.000		0.005	-	-	0.000	0.000	0.000		0.007	-	-			0.000	0.000	0.000		0.194	-	-	0.000	0.000	0.000		0.196	-	-			0.005						
0.550	0.000	0.000	0.000		0.003	-	-	0.000	0.000	0.000		0.004	-	-			0.000	0.000	0.000		0.242	-	-	0.000	0.000	0.000		0.243	-	-			0.006						
0.600																																							
0.650																																							
Totals:																0		0																		0		300	
Number of Trades:								0								0		0		0.00								0								0			

OPAP (CR)

(Contract Size: 100 Securities, Exercise Style: American, Physical Delivery)

Call Options																	Put Options												
Call Options																	Put Options												
Call Options																	Put Options												
Call Options																	Put Options												
Call Options																	Put Options												
Call Options																	Put Options												
Call Options																	Put Options												
Call Options																	Put Options												
Call Options																	Put Options												
Call Options																	Put Options												
Call Options																	Put Options												
Call Options																	Put Options												
Call Options																	Put Options												
Call Options																	Put Options												
Call Options																	Put Options												
Call Options																	Put Options												
Call Options																	Put Options												
Call Options																	Put Options												
Call Options																	Put Options												
Call Options																	Put Options												
Call Options																	Put Options												
Call Options																	Put Options												
Call Options																	Put Options												
Call Options																	Put Options												
Call Options																	Put Options												
Call Options																	Put Options												
Call Options																	Put Options												
Call Options																	Put Options												
Call Options																	Put Options												
Call Options																	Put Options												
Call Options																	Put Options												
Call Options																	Put Options												
Call Options																	Put Options												
Call Options																	Put Options												
Call Options																	Put Options												
Call Options																	Put Options												
Call Options																	Put Options												
Call Options																	Put Options												
Call Options																	Put Options												
Call Options																	Put Options												
Call Options																	Put Options												
Call Options																	Put Options												
Call Options																	Put Options												
Call Options																	Put Options												
Call Options																	Put Options												
Call Options																	Put Options												
Call Options																	Put Options												
Call Options																	Put Options												
Call Options																	Put Options												
Call Options																	Put Options												
Call Options																	Put Options												
Call Options																	Put Options												
Call Options																	Put Options												
Call Options																	Put Options												
Call Options																	Put Options												
Call Options																	Put Options												
Call Options																	Put Options												
Call Options																	Put Options												
Call Options																	Put Options												
Call Options																	Put Options												
Call Options																	Put Options												
Call Options																	Put Options												
Call Options																	Put Options												
Call Options																	Put Options												
Call Options																	Put Options												
Call Options																	Put Options												
Call Options																	Put Options												
Call Options																	Put Options												
Call Options																	Put Options												
Call Options																	Put Options												
Call Options																	Put Options												
Call Options																	Put Options												
Call Options																	Put Options												
Call Options																	Put Options												
Call Options																	Put Options												
Call Options																	Put Options												
Call Options																	Put Options												
Call Options																	Put Options												
Call Options																	Put Options												
Call Options																	Put Options												
Call Options																	Put Options												
Call Options																	Put Options												
Call Options																	Put Options												
Call Options																	Put Options												
Call Options																	Put Options												
Call Options																	Put Options												
Call Options																	Put Options												
Call Options																	Put Options												
Call Options																	Put Options												
Call Options																	Put Options												
Call Options																	Put Options												
Call Options																	Put Options												
Call Options																	Put Options												
Call Options																	Put Options												
Call Options																	Put Options												
Call Options																	Put Options												
Call Options																	Put Options												
Call Options																	Put Options												
Call Options																	Put Options												
Call Options																	Put Options												
Call Options																	Put Options												
Call Options																	Put Options												
Call Options																	Put Options												
Call Options																	Put Options												
Call Options																	Put Options												
Call Options																	Put Options												
Call Options																	Put Options												
Call Options																	Put Options												
Call Options																	Put Options												
Call Options																	Put Options												
Call Options																	Put Options												
Call Options																	Put Options												
Call Options																	Put Options												
Call Options																	Put Options												
Call Options																	Put Options												
Call Options																	Put Options												
Call Options																	Put Options												
Call Options																	Put Options												
Call Options																	Put Options												
Call Options																	Put Options												
Call Options																	Put Options												
Call Options																	Put Options												
Call Options																	Put Options												
Call Options																	Put Options												
Call Options																	Put Options												
Call Options																	Put Options												
Call Options																	Put Options												
Call Options																	Put Options												
Call Options																	Put Options												
Call Options																	Put Options												
Call Options																	Put Options												
Call Options																	Put Options												
Call Options																	Put Options												
Call Options																	Put Options												
Call Options																	Put Options												
Call Options																	Put Options												
Call Options																	Put Options												
Call Options																	Put Options												
Call Options																	Put Options												
Call Options																	Put Options												
Call Options																	Put Options												
Call Options																	Put Options												
Call Options																	Put Options												
Call Options																	Put Options												
Call Options																	Put Options												
Call Options																	Put Options												
Call Options																	Put Options												
Call Options																	Put Options												
Call Options																	Put Options												
Call Options																	Put Options												
Call Options																	Put Options												
Call Options																	Put Options												
Call Options																	Put Options												
Call Options																	Put Options												
Call Options																	Put Options												
Call Options																	Put Options												
Call Options																	Put Options												
Call Options																	Put Options												
Call Options																	Put Options												
Call Options																	Put Options												
Call Options																	Put Options												
Call Options																	Put Options												

OTE (CR)

(Contract Size: 100 Securities, Exercise Style: American, Physical Delivery)

Call Options																	Put Options																			
January 2018								February 2018								Other Months		January 2018								February 2018								Other Months		
Exerise Price	Open price	Price max	Price min	Last price	Closing price	Volume	Open Interest	Open price	Price max	Price min	Last price	Closing price	Volume	Open Interest	Volume	Open Interest	Open price	Price max	Price min	Last price	Closing price	Volume	Open Interest	Open price	Price max	Price min	Last price	Closing price	Volume	Open Interest	Volume	Open Interest	Exerise Price			
6.400						-	-							-	-							-	-						-	-			0.064			
6.800						-	-							-	-							-	-						-	-			0.068			
7.200						-	-							-	-							-	-						-	-			0.072			
7.600						-	-							-	-							-	-						-	-			0.076			
8.000	0.000	0.000	0.000		3.35	-	-	0.000	0.000	0.000		3.37	-	-			0.000	0.000	0.000		0.001	-	-	0.000	0.000	0.000		0.001	-	-			0.080			
8.400	0.000	0.000	0.000		2.95	-	-	0.000	0.000	0.000		2.97	-	-			0.000	0.000	0.000		0.001	-	-	0.000	0.000	0.000		0.002	-	-			0.084			
8.800	0.000	0.000	0.000		2.56	-	-	0.000	0.000	0.000		2.57	-	-			0.000	0.000	0.000		0.001	-	-	0.000	0.000	0.000		0.002	-	-			0.088			
9.200	0.000	0.000	0.000		2.16	-	-	0.000	0.000	0.000		2.17	-	-			0.000	0.000	0.000		0.001	-	-	0.000	0.000	0.000		0.001	-	-			0.092			
9.600	0.000	0.000	0.000		1.76	-	-	0.000	0.000	0.000		1.78	-	-			0.000	0.000	0.000		0.005	-	-	0.000	0.000	0.000		0.005	-	-			0.096			
10.000	0.000	0.000	0.000		1.36	-	-	0.000	0.000	0.000		1.39	-	-			0.000	0.000	0.000		0.004	-	-	0.000	0.000	0.000		0.020	-	-			0.100			
11.000	0.000	0.000	0.000		0.482	-	10	0.706	0.706	0.706	0.706	0.706	5	5			0.000	0.000	0.000		0.124	-	-	0.000	0.000	0.000		0.204	-	-			0.110			
12.000	0.000	0.000	0.000		0.067	-	-	0.000	0.000	0.000		0.145	-	81			0.000	0.000	0.000		0.712	-	-	0.763	0.764	0.755	0.755	0.755	31	31			0.120			
13.000	0.000	0.000	0.000		0.003	-	-	0.000	0.000	0.000		0.019	-	-			0.000	0.000	0.000		1.66	-	-	0.000	0.000	0.000		1.66	-	-			0.130			
14.000	0.000	0.000	0.000		0.001	-	-	0.000	0.000	0.000		0.001	-	-			0.000	0.000	0.000		2.66	-	-	0.000	0.000	0.000		2.66	-	-			0.140			
15.000	0.000	0.000	0.000		0.001	-	-	0.000	0.000	0.000		0.001	-	-			0.000	0.000	0.000		3.66	-	-	0.000	0.000	0.000		3.66	-	-			0.150			
16.000	0.000	0.000	0.000		0.001	-	-	0.000	0.000	0.000		0.001	-	-			0.000	0.000	0.000		4.66	-	-	0.000	0.000	0.000		4.66	-	-			0.160			
Totals:						0	10						5	86	0	0						0	0						31	31	0	0				
Number of Trades:						0							1		0							0.00						8		0						

PIRAEUS BANK (CR)

(Contract Size: 100 Securities, Exercise Style: American, Physical Delivery)

Call Options																	Put Options																			
January 2018								February 2018								Other Months		January 2018								February 2018								Other Months		
Exercise Price	Open price	Price max	Price min	Last price	Closing price	Volume	Open Interest	Open price	Price max	Price min	Last price	Closing price	Volume	Open Interest	Volume	Open Interest	Open price	Price max	Price min	Last price	Closing price	Volume	Open Interest	Open price	Price max	Price min	Last price	Closing price	Volume	Open Interest	Volume	Open Interest	Exercise Price			
0.050						-	-							-	-							-	-						-	-			0.001			
0.100						-	-							-	-							-	-						-	-			0.001			
0.150						-	-							-	-							-	-						-	-			0.002			
0.200						-	-							-	-							-	-						-	-			0.002			
0.250						-	-							-	-							-	-						-	-			0.003			
0.300						-	-							-	-							-	-						-	-			0.003			
0.350						-	-							-	-							-	-						-	-			0.004			
0.400						-	-							-	-							-	-						-	-			0.004			
0.450						-	-							-	-							-	-						-	-			0.005			
0.500						-	-							-	-							-	-						-	-			0.005			
1.500	0.000	0.000	0.000		1.56	-	-	0.000	0.000	0.000		1.56	-	-			0.000	0.000	0.000		0.001	-	-	0.000	0.000	0.000		0.001	-	-			0.015			
1.600	0.000	0.000	0.000		1.46	-	-	0.000	0.000	0.000		1.47	-	-			0.000	0.000	0.000		0.001	-	-	0.000	0.000	0.000		0.001	-	-			0.016			
1.700	0.000	0.000	0.000		1.36	-	-	0.000	0.000	0.000		1.37	-	-			0.000	0.000	0.000		0.002	-	-	0.000	0.000	0.000		0.001	-	-			0.017			
1.800	0.000	0.000	0.000		1.26	-	-	0.000	0.000	0.000		1.27	-	-			0.000	0.000	0.000		0.001	-	-	0.000	0.000	0.000		0.002	-	-			0.018			
1.900	0.000	0.000	0.000		1.16	-	-	0.000	0.000	0.000		1.17	-	-			0.000	0.000	0.000		0.003	-	-	0.000	0.000	0.000		0.001	-	-			0.019			
2.000	0.000	0.000	0.000		1.06	-	100	0.000	0.000	0.000		1.07	-	-			0.000	0.000	0.000		0.001	-	-	0.000	0.000	0.000		0.002	-	-			0.020			
2.200	0.000	0.000	0.000		0.864	-	-	0.000	0.000	0.000		0.875	-	-			0.000	0.000	0.000		0.001	-	-	0.000	0.000	0.000		0.007	-	-			0.022			
2.400	0.000	0.000	0.000		0.668	-	-	0.000	0.000	0.000		0.691	-	-			0.000	0.000	0.000		0.004	-	-	0.000	0.000	0.000		0.023	-	-			0.024			
2.600	0.000	0.000	0.000		0.483	-	-	0.000	0.000	0.000		0.523	-	-			0.000	0.000	0.000		0.019	-	-	0.000	0.000	0.000		0.055	-	-			0.026			
2.800	0.000	0.000	0.000		0.321	-	-	0.000	0.000	0.000		0.381	-	-			0.000	0.000	0.000		0.057	-	-	0.000	0.000	0.000		0.112	-	-			0.028			
3.000	0.000	0.000	0.000		0.194	-	-	0.000	0.000	0.000		0.265	-	-			0.000	0.000	0.000		0.129	-	-	0.000	0.000	0.000		0.196	-	-			0.030			
3.200	0.000	0.000	0.000		0.106	-	-	0.000	0.000	0.000		0.176	-	-			0.000	0.000	0.000		0.241	-	-	0.000	0.000	0.000		0.307	-	-			0.032			
3.400	0.000	0.000	0.000		0.052	-	-	0.000	0.000	0.000		0.112	-	-			0.000	0.000	0.000		0.387	-	-	0.000	0.000	0.000		0.442	-	-			0.034			
3.600	0.000	0.000	0.000		0.023	-	-	0.000	0.000	0.000		0.069	-	-			0.000	0.000	0.000		0.559	-	-	0.000	0.000	0.000		0.600	-	-			0.036			
3.800	0.000	0.000	0.000		0.009	-	-	0.000	0.000	0.000		0.041	-	-			0.000	0.000	0.000		0.746	-	-	0.000	0.000	0.000		0.772	-	-			0.038			
4.000	0.000	0.000	0.000		0.004	-	-	0.000	0.000	0.000		0.023	-	-			0.000	0.000	0.000		0.941	-	-	0.000	0.000	0.000		0.955	-	-			0.040			
4.400						-	-							-	-							-	-					-	-			0.044				
4.800						-	-							-	-							-	-					-	-			0.048				
5.200						-	-							-	-							-	-					-	-			0.052				
5.600						-	-							-	-							-	-					-	-			0.056				
6.000						-	-							-	-							-	-					-	-			0.060				
6.400						-	-							-	-							-	-					-	-			0.064				
6.800						-	-							-	-							-	-					-	-			0.068				
7.200						-	-							-	-							-	-					-	-			0.072				
Totals:						0	100						0	0	0	0						0	0					0	0	0	0					
Number of Trades:						0							0		0							0.00						0		0						

PPC (CR)

(Contract Size: 100 Securities, Exercise Style: American, Physical Delivery)

Call Options																Put Options																				
January 2018								February 2018								Other Months		January 2018								February 2018								Other Months		
Exerise Price	Open price	Price max	Price min	Last price	Closing price	Volume	Open Interest	Open price	Price max	Price min	Last price	Closing price	Volume	Open Interest	Volume	Open Interest	Open price	Price max	Price min	Last price	Closing price	Volume	Open Interest	Open price	Price max	Price min	Last price	Closing price	Volume	Open Interest	Volume	Open Interest	Exerise Price			
1.200	0.000	0.000	0.000		0.842	-	-	0.000	0.000	0.000		0.844	-	-			0.000	0.000	0.000		0.001	-	-	0.000	0.000	0.000		0.001	-	-			0.012			
1.300	0.000	0.000	0.000		0.742	-	-	0.000	0.000	0.000		0.744	-	-			0.000	0.000	0.000		0.001	-	-	0.000	0.000	0.000		0.002	-	-			0.013			
1.400	0.000	0.000	0.000		0.642	-	-	0.000	0.000	0.000		0.645	-	-			0.000	0.000	0.000		0.001	-	-	0.000	0.000	0.000		0.001	-	-			0.014			
1.500	0.000	0.000	0.000		0.543	-	-	0.000	0.000	0.000		0.547	-	-			0.000	0.000	0.000		0.001	-	-	0.000	0.000	0.000		0.002	-	-			0.015			
1.600	0.000	0.000	0.000		0.444	-	-	0.000	0.000	0.000		0.451	-	-			0.000	0.000	0.000		0.001	-	-	0.000	0.000	0.000		0.006	-	-			0.016			
1.700	0.000	0.000	0.000		0.347	-	-	0.000	0.000	0.000		0.361	-	-			0.000	0.000	0.000		0.004	-	-	0.000	0.000	0.000		0.015	-	-			0.017			
1.800	0.000	0.000	0.000		0.256	-	-	0.000	0.000	0.000		0.278	-	-			0.000	0.000	0.000		0.013	-	-	0.000	0.000	0.000		0.033	-	-			0.018			
1.900	0.000	0.000	0.000		0.177	-	-	0.000	0.000	0.000		0.207	-	-			0.000	0.000	0.000		0.034	-	-	0.000	0.000	0.000		0.061	-	-			0.019			
2.000	0.095	0.095	0.095	0.095	0.095	120	70	0.125	0.125	0.125	0.125	0.125	90	50			0.000	0.000	0.000		0.070	-	-	0.000	0.000	0.000		0.102	-	-			0.020			
2.200	0.000	0.000	0.000		0.036	-	10	0.000	0.000	0.000		0.067	-	-			0.000	0.000	0.000		0.193	-	10	0.000	0.000	0.000		0.221	-	-			0.022			
2.400	0.000	0.000	0.000		0.008	-	-	0.000	0.000	0.000		0.026	-	-			0.000	0.000	0.000		0.365	-	-	0.000	0.000	0.000		0.380	-	-			0.024			
2.600	0.000	0.000	0.000		0.001	-	-	0.000	0.000	0.000		0.009	-	-			0.000	0.000	0.000		0.560	-	-	0.000	0.000	0.000		0.564	-	-			0.026			
2.800	0.000	0.000	0.000		0.001	-	-	0.000	0.000	0.000		0.003	-	-			0.000	0.000	0.000		0.760	-	-	0.000	0.000	0.000		0.760	-	-			0.028			
3.000	0.000	0.000	0.000		0.001	-	-	0.000	0.000	0.000		0.001	-	-			0.000	0.000	0.000		0.960	-	-	0.000	0.000	0.000		0.960	-	-			0.030			
3.200	0.000	0.000	0.000		0.001	-	-	0.000	0.000	0.000		0.001	-	-			0.000	0.000	0.000		1.16	-	-	0.000	0.000	0.000		1.16	-	-			0.032			
3.400						-	-						-	-								-	-						-	-			0.034			
3.600						-	-						-	-								-	-						-	-			0.036			
3.800						-	-						-	-								-	-						-	-			0.038			
4.000						-	-						-	-								-	-						-	-			0.040			
4.400						-	-						-	-								-	-						-	-			0.044			
4.800						-	-						-	-								-	-						-	-			0.048			
5.200						-	-						-	-								-	-						-	-			0.052			
5.600						-	-						-	-								-	-						-	-			0.056			
6.000						-	-						-	-								-	-						-	-			0.060			
6.400						-	-						-	-								-	-						-	-			0.064			
6.800						-	-						-	-								-	-						-	-			0.068			
Totals:						120	80							90	50	0	0							120	10							0	0	0	0	
Number of Trades:						2								3		0								0.00								0		0		

Lending Products	Underlying Title	Multilateral Transactions[1]					Bilateral Transactions[2]		Stock Borrowing through OTC (volume)[3]
		Open Interest[5]	Volume(Offered)	Average Weighted	Transactions volume	Average Weighted	Transactions Volume	Average Weighte	Transactions Volume
ADMIEBOR	ADMIE (IPTO) HOLDING S.A. (CR)	---	19,599	5.31%	---	---	---	---	35,628
AEGNBOR	AEGEAN AIRLINES (CR)	500	21,715	5.31%	---	---	---	---	65,254
ALPHABOR	ALPHA BANK (CR)	12,501	80,813	5.31%	---	---	---	---	7,393,817
ALMYBOR	ALUMIL (CR)	---	---	---	---	---	---	---	---
TATTBOR	ATTICA BANK S.A. (CR)	19,020	6,442	5.31%	---	---	---	---	3,140
EEEBOR	CC HBC AG (CR)	3,234	196	5.32%	---	---	---	---	70,546
CENERBOR	CENERGY HOLDINGS (CB)	---	53,098	5.31%	---	---	16,500	5.00%	---
ELLAKTORBOR	ELLAKTOR (CR)	---	86,667	5.31%	---	---	---	---	---
EUROBBOR	EUROBANK ERGASIAS (CR)	38,500	4,667	5.31%	---	---	---	---	24,406,626
EYDAPBOR	EYDAP S.A. (CR)	5,549	1,719	3.31%	---	---	---	---	17,780
FFGRPBOR	FOLLI FOLLIE (CR)	1,615	60,055	5.31%	---	---	---	---	618,859
FOYRKBOR	FOURLIS (CR)	---	838	3.30%	---	---	---	---	4,650
GEKTERNABOR	GEK TERNA (CR)	150	26,520	5.31%	---	---	---	---	1,293
SARBOR	GR. SARANTIS SA (CR)	680	684	3.31%	---	---	---	---	195
EUPROBOR	GRIVALIA PROPERTIES (CR)	400	101,734	5.31%	---	---	---	---	11,233
EXAEBOR	HELLENIC EXCHANGES-A.S.E. (CR)	2,100	509,051	5.31%	---	---	---	---	105,365
ELPEBOR	HELLENIC PETROLEUM (CR)	4,500	117,479	3.31%	---	---	---	---	43,941
INLOTBOR	INTRALOT (CR)	9,877	53,622	3.31%	---	---	---	---	803
BELABOR	JUMBO SA (CR)	3,474	153,375	3.31%	---	---	---	---	58,541
LAMDABOR	LAMDA DEVELOPMENT SA (CR)	14	100	5.32%	---	---	---	---	---
MIGBOR	MARFIN INVESTMENT GROUP (CR)	100,000	168,630	5.31%	---	---	---	---	744,474
MOHBOR	MOTOR OIL (CR)	919	56,605	5.31%	---	---	---	---	47,206
MYTILBOR	MYTILINEOS HOLDINGS (CR)	2,066	266,262	5.31%	---	---	---	---	37,365
ETEBOR	NATIONAL BANK (CR)	985,605	8,350	5.31%	---	---	---	---	114,611,472
OPAPBOR	OPAP (CR)	71,100	62,101	5.31%	---	---	---	---	864,784
HTOBOR	OTE (CR)	36,681	9,410	3.31%	9,400	3.31%	400	5.00%	285,094
PPABOR	P.P.A. S.A. (CR)	368	943	5.31%	---	---	---	---	2,901
TPEIRBOR	PIRAEUS BANK (CR)	306	1,112	3.31%	---	---	---	---	8,639,887
PLAISBOR	PLAISIO COMPUTERS SA (CR)	---	---	---	---	---	---	---	---
PPCBOR	PPC (CR)	6,190	108,834	5.31%	---	---	---	---	2,669,506
QUALBOR	QUALITY & RELIABILITY SA (CR)	---	---	---	---	---	---	---	---

Stock Lending Notes

- [1] - Multilateral contracts Lending or Borrowing as per Methods 8-1, 8-2 and 8-3-3 (According to ATHEX BoD Resolution No.17)
- [2] - Billateral Contracts Lending or Borrowing as per Methods 8-3-1 and 8-3-2 (According to ATHEX BoD Resolution No.20)
- [3] - The information concerning OTC Stock Borrowing Transactions is based on the statements of the Dematerialised Securities System (DSS) operators involved and refers to volumes that have been registered up until the previous working day.
- [4] - Average Price (Volume weighted)
- [5] - The Data concerning Open Interest before the start of trading session

Lending Products	Underlying Title	Multilateral Transactions[1]					Bilateral Transactions[2]		Stock Borrowing through OTC (volume)[3]
		Open Interest[5]	Volume(Offered)	Average Weighted	Transactions volume	Average Weighted	Transactions Volume	Average Weighted	Transactions Volume
TENERGYBOR	TERNA ENERGY (CR)	4,034	40,895	5.31%	---	---	---	---	---
TITKBOR	TITAN CEMENT (CR)	1,329	204,150	5.31%	---	---	---	---	31,304
VIOBOR	VIOHALCO SA/NV (CB)	3,234	66,113	5.31%	---	---	---	---	---

Stock Lending Notes

- [1] - Multilateral contracts Lending or Borrowing as per Methods 8-1, 8-2 and 8-3-3 (According to ATHEX BoD Resolution No.17)
- [2] - Bilateral Contracts Lending or Borrowing as per Methods 8-3-1 and 8-3-2 (According to ATHEX BoD Resolution No.20)
- [3] - The information concerning OTC Stock Borrowing Transactions is based on the statements of the Dematerialised Securities System (DSS) operators involved and refers to volumes that have been registered up until the previous working day.
- [4] - Average Price (Volume weighted)
- [5] - The Data concerning Open Interest before the start of trading session

Sectors codification for listed companies

533	-	Exploration & Production	537	-	Integrated Oil & Gas
1353	-	Commodity Chemicals	1357	-	Specialty Chemicals
1753	-	Aluminum	1755	-	Nonferrous Metals
1757	-	Steel	1775	-	General Mining
2353	-	Building Materials & Fixtures	2357	-	Heavy Construction
2723	-	Containers & Packaging	2727	-	Diversified Industrials
2733	-	Electrical Components & Equipment	2753	-	Commercial Vehicles & Trucks
2757	-	Industrial Machinery	2773	-	Marine Transportation
2777	-	Transportation Services	2791	-	Business Support Services
2797	-	Industrial Suppliers	3535	-	Distillers & Vintners
3537	-	Soft Drinks	3573	-	Farming Fishing & Plantations
3577	-	Food Products	3722	-	Durable Household Products
3726	-	Furnishings	3728	-	Home Construction
3747	-	Toys	3763	-	Clothing & Accessories
3765	-	Footwear	3767	-	Personal Products
3785	-	Tobacco	4533	-	Health Care Providers
4535	-	Medical Equipment	4577	-	Pharmaceuticals
5337	-	Food Retailers & Wholesalers	5371	-	Apparel Retailers
5373	-	Broadline Retailers	5375	-	Home Improvement Retailers
5379	-	Specialty Retailers	5553	-	Broadcasting & Entertainment
5555	-	Media Agencies	5557	-	Publishing
5751	-	Airlines	5752	-	Gambling
5753	-	Hotels	5755	-	Recreational Services
5757	-	Restaurants & Bars	5759	-	Travel & Tourism
6535	-	Fixed Line Telecommunications	6575	-	Mobile Telecommunications
7535	-	Conventional Electricity	7537	-	Alternative Electricity
7577	-	Water	8355	-	Banks
8534	-	Insurance Brokers	8536	-	Property & Casualty Insurance
8633	-	Real Estate Holding & Development	8637	-	Real Estate Services
8671	-	Industrial & Office REITs	8674	-	Diversified REITs
8675	-	Specialty REITs	8775	-	Specialty Finance
8777	-	Investment Services	8985	-	Equity Investment Instruments
9533	-	Computer Services	9535	-	Internet
9537	-	Software	9572	-	Computer Hardware
9574	-	Electronic Office Equipment	9578	-	Telecommunications Equipment
12003	-	ETF			



ATHEXGROUP

Όμιλος Χρηματοπιστηρίου Αθηνών

Λεωφ. Αθηνών 110 104 42 Αθήνα

110, Athinon Ave. GR 104 42 Athens

tel. (+30)210-33.66.800, fax (+30)210-33.66.101

www.athexgroup.gr